

Filed
 In case of _____
 vs. _____ Plaintiff No. _____
 Filed _____ 19____
 J. B. M. _____, Clerk
 Deputy

MICROFILMED

DEC 21 1964

Exhibit 9
 In case of Daly Corp
 vs. Noble Rhodes Plaintiff No. 59751
 Defendant
 Filed April 15 30 1930
 J. B. M. _____ Clerk
 By L. Palmer
 Deputy

Our Leather Bound Engineers Note Books are carried in the following rulings:

- No. 380 LEVEL BOOK. Left and Right Hand Page the same as Left Hand Page of this Book.
- No. 382 FIELD BOOK. Left Hand Page as in this Book, Right Hand Page 4 x 4 to the inch, Center Line Red.
- No. 384 MINING TRANSIT BOOK. Left Hand Page as in this Book, Right Hand Page 8x8 to the inch, Center Line Red.
- No. 385 FIELD BOOK. Left Hand Page as in this Book, Right Hand Page 8 vertical and 4 horizontal lines to the inch, Center Line Red.

We also carry the Note Books listed above, bound in extra strong Fabri-Hide (otherwise the same quality of book), which can be furnished at a somewhat lower price.

In ordering Fabri-Hide covered books, add the letter "F" to catalog number.

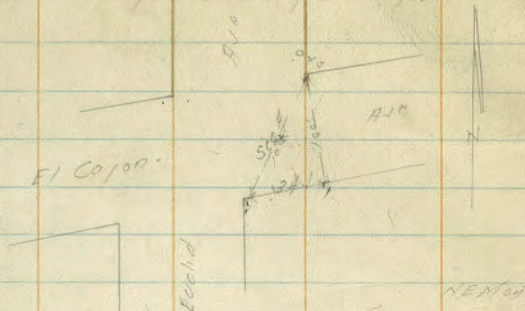
THE FREDERICK POST CO.
 ENGINEERING and DRAFTING SUPPLIES
 IRVING PARK STATION
 CHICAGO, ILL.

Cross Section of El Cajon Ave

Elev'd to

100' wide
16' Obs
17' Obs

15' H. Strip Pav' on S. S. of S. Street



3M	498	453.19	348.21
N		54	347.6
CB	10 Drive Way	57	347.3
	+8 N. Edge Pav'ing	62.5	346.9
	1/4	62.5	347.0
		6.21	346.8
		6.20	346.3
CB	on Pav'ing	7.81	345.4
	on Pav'ing	7.82	346.1
		7.5	346.7
		7.5	345.7
		7.5	346.7
		7.5	345.7
S		4.6	346.6
CB	+8 Ground	6.70	346.5
1/4		7.2	346.93
	+8 - Slope Pav'ing	7.81	345.9
		6.21	346.98
		6.27	347.1
+8	+8 N. Edge	6.10	347.1
CB	10 Drive Way	5.7	347.5
N		5.4	347.6

350 19

50' E

N	48	348.4
CB	488	349.31
50' H. Strip Pav'ing	5.4	347.8
1/4	5.6	347.6
+10.5 N. Edge Pav'ing	5.68	347.5
1/4 on "	5.73	347.5
+8 S. Edge	6.22	346.9
1/4	5.9	347.3
CB + Ground	6.01	347.2
S	6.0	347.2

100' E

S	4.2	349.0
+8	5.3	347.9
CB	5.1	347.6
1/4	5.3	347.9
+12.5 S. Edge Pav'ing	5.84	347.9
1/4 on "	5.82	348.2
+10.5 N. Edge	5.82	348.1
1/4	5.2	348.0
CB - 10 Drive	5.1	348.1
	4.8	348.8
	4.3	348.9

150' E

H	3.8	349.4
CB - 10 Drive	4.5	348.7
1/4	4.5	348.7

100' wide
16' Obs
17' Obs

El Cajon Ave

35319

S	3.1	349.0	
cb	3.0	349.3	
"	3.3	349.9	
+107 S Edge Pavings	2.8	350.2	
" "	2.75	350.4	
+107 N Edge	2.85	350.3	
"	2.9	350.3	
cb	2.8	350.4	
N	2.7	350.5	
	± 107th St 101.5		
N	2.7	350.5	
cb	2.6	350.6	
"	2.7	350.5	
+166 N Edge Pavings	2.72	350.5	
" "	2.66	350.5	
+166 S Edge	2.85	350.3	
"	2.8	350.0	
cb	2.6	349.6	
S	3.3	349.9	
	" 101.5		
S	3.4	349.8	
cb	3.1	349.8	
"	3.1	350.1	
+107 S Edge Pavings	2.80	350.4	
" "	2.59	350.7	
+107 N Edge	2.69	350.5	

35319

"	2.6	350.6	
cb	2.8	350.4	
"	2.8	350.4	
cb	101.5		
"	2.7	350.5	
"	2.7	350.5	
"	2.5	350.7	
"	2.60	350.6	
" "	2.48	350.7	
"	2.71	350.5	
"	3.1	350.1	
cb	3.5	349.7	
S	3.7	349.5	
	FL 101th St 101.5		
"	2.25	351.0	
cb Top	2.61	350.6	
Gutter	2.3	349.9	
"	2.9	350.3	
"	2.51	350.7	
" "	2.34	350.9	
"	2.50	350.7	
"	2.1	350.8	
Gutter	2.2	350.5	
cb	2.18	351.0	
"	2.2	351.0	
	FL 101th St 101.5 E on 2		
	2.2	351.0	

El Cajos Ave.		H.I.		EI.		35578	
Cb	+			351.0	Gutter	5.0	350.8
Gutter				350.5	1/4	4.8	351.0
1/4				350.8	+1.5H Edge Paving	4.8	350.9
+1.5 N Edge Paving				350.4	2 on "	4.8	350.9
2 on "				350.8	+1.5 Edge	5.0	350.8
+1.5 S Edge "				350.6	1/4	5.0	350.5
1/4				350.4	Gutter	5.7	350.1
Gutter				350.2	Cb Top	5.3	350.4
Cb				350.7	1/4	5.3	350.5
S on Curbwalk				350.9	S	4.1	351.7
TP	5.36	35578	3.77	350.4		150' E	
			50' E		S	4.9	350.9
S				351.1	Cb Top	5.4	350.4
+5				350.3	Gutter	5.9	349.9
Cb on Top				350.5	1/4	5.1	350.7
Gutter				350.2	+1.5S Edge Paving	4.8	350.9
1/4				350.6	2 on "	4.8	351.2
+1.5 S Edge Paving				350.8	+1.5H Edge "	4.8	351.0
2 on "				351.0	1/4	4.7	351.1
+1.5 N Edge				350.8	Gutter	5.0	350.8
1/4				351.0	Cb Top	4.5	351.3
Gutter				350.6	D	3.7	352.1
Cb Top				351.2		200' E	
28				351.1	N	4.3	351.5
N				351.7	Cb	4.5	351.2
			100' E		Gutter	5.0	350.9
N				351.8	1/4	4.6	351.2
Cb Top				351.2			

El Cojos R/c.

35578

E1

+65N Edge Paving	475	351.0
B on "	456	351.2
+2.5 S Edge "	473	351.1
"	47	351.1
+6 "	59	349.9
Gutter	61	349.7
Cb on Top	598	350.3
S	56	350.2
257.2E = N 2 Estrella on S		
S	57	350.0
Cb on Top	553	350.3
Gutter	58	350.0
"	52	350.6
+12.5 So Edge Paving	463	351.2
B on "	446	351.3
+10.5 N Edge "	467	351.1
"	46	351.2
Gutter	48	350.9
Cb Top	417	351.3
N	43	351.5
Takin on Diagonal 12.80ch		
274.5E = N 2 Estrella on S 101.51ch 12.80ch		
357.7E on S		
N	43	351.5
Cb	437	351.4
Gutter	52	350.6
"	46	351.2
+6.5N Edge Paving	463	351.2
B on "	444	351.4

35579

+16.5 Edge Paving	460	351.2
"	52	350.6
Gutter	58	350.0
Cb Top	558	350.3
S	58	350.0
N 2 101.5		
S	59	349.9
Cb	53	350.5
"	48	351.0
+1.5 S End 24" Corp Pipe on Line	610	349.7
4" Hand Drill Top	480	351.0
+12.5 S Edge Paving	456	351.2
B on "	438	351.4
+10.7 N Edge "	452	351.3
"	43	351.5
+1.5 N End 24" Corp Pipe on Line	877	350.0
4" Core Hand Drill Top	407	351.7
Cb	50	350.8
N	48	351.0
TP 5.81	350.25	431 351.14
N 1/4 101.5		
N	57	351.4
Cb	57	351.6
"	58	351.5
+1.4 N Edge Paving	602	351.3
B on "	588	351.4
+1.6 S Edge "	608	351.2

El Cajon Ave.

357.3

1/4	6.4	350.9
cb	6.9	350.4
s	7.3	350.0
	2 Estrella 101.5	
s	7.3	350.0
cb	7.1	350.2
1/4	6.3	351.0
+127 S Edge Parking	6.06	351.2
2. 00 "	5.88	351.4
+107 N Edge "	6.03	351.3
1/4	5.5	351.8
cb	5.6	351.7
N	5.9	351.4
	E 1/4 101.5	
N	5.8	351.5
cb	5.5	351.8
1/4	5.5	351.8
+11 N Edge Parking	5.95	351.3
2. 00 "	5.82	351.5
+91.5 Edge	6.00	351.3
1/4	6.3	351.0
cb	6.5	350.8
s	7.2	350.1
	cb	
s	7.5	349.8
cb	6.9	350.4
1/4	6.4	350.9

357.3

+127 S Edge Parking	5.97	351.3
2. 00 "	5.92	351.5
+107 N Edge "	5.92	351.4
1/4	5.5	351.8
cb	5.5	351.8
N	5.9	351.4
	E L Estrella 101.5	
N	5.7	351.6
cb + Ground	5.65	351.6
1/4	5.5	351.8
+106 N Edge Parking	5.90	351.4
2. 00 "	5.68	351.6
+106 S Edge "	5.93	351.4
1/4	6.3	351.0
cb + Ground	6.88	350.4
s	6.8	350.5
	E L 04 N 17.55 00 S 100	
s	6.7	350.6
cb	6.6	350.6
Gutter	6.9	350.4
1/4	6.1	351.2
+105 S Edge Parking	5.90	351.5
2. 00 "	5.60	351.7
+105 N Edge "	5.80	351.5
1/4	5.6	351.7
cb + Ground	5.65	351.6
N	5.7	351.6

El Cajon Ave

357.3

E1.

50' E

N	47	352.6
Cb Top	452	352.8
Gutter	51	352.2
1/4	51	352.2
+1.5 N Edge Paving	492	352.3
2 00 "	480	352.5
+1.5 S Edge "	500	352.3
1/4	52	352.0
Gutter	62	351.1
Cb Top	572	351.6
S on Conc Walk	527	352.0

100' E

S on Conc Walk	422	353.0
Cb Top	407	352.5
Gutter	52	352.1
1/4	46	352.7
+12.5 S Edge Paving	402	353.3
2 00 "	398	353.4
+10.5 N Edge "	406	353.2
1/4	47	353.2
Gutter	41	353.2
Cb Top	269	353.6
2	38	353.5

150' E

N	28	354.4
Cb Top	283	354.5

Gutter	24	353.9
1/4	25	353.8
1/4	21	354.2
+1.5 N Edge Paving	222	354.1
2 00 "	202	354.3
+1.5 S Edge "	219	354.2
1/4	25	353.8
Gutter	11	352.9
Cb Top	285	353.4
2	10	353.3

200' E

S	20	354.3
Cb	296	354.3
G	24	353.9
1/4	26	354.7
+12.5 S Edge Paving	222	354.4
2 00 "	206	355.2
+10.5 N Edge "	221	355.1
1/4	21	355.1
2 00 "	20	355.3
2 03	20	354.3
Gutter	24	354.9
Cb Top	190	355.4
N	22	355.1

250' E = 1/4 L 49' to Station S

N	11	356.2
Cb	100	356.3
Gutter	13	356.0

El Cajon Ave

357.25

+10		0.8	356.5
1/4		1.1	356.2
+6.5	N Edge Paving	1.25	359.4 355.9
S	0.0	1.20	356.1
+4.5	S Edge "	1.38	355.9
1/4		1.5	355.8
cb	+ Ground	1.82	355.5
S		2.1	355.2
	279.2 E on S = 186.197		161.51116 16.24665 192.494
S		2.1	355.2
cb	+ Ground	1.82	355.5
1/4		2.3	356.0
+12.7	S Edge Paving	1.20	356.1
S	0.0	1.04	356.3
+10.7	N Edge "	1.16	356.1
1/4		0.8	356.5
cb	+ Ground	0.90	356.6
N		0.5	356.8
P	10.68	0.80	357.05
	N cb 47'	101.5	
N		10.9	356.8
cb		11.1	356.6
1/4		10.9	356.8
+6.6	N Edge Paving	11.29	356.4
S	0.0	11.3	356.6
+4.6	S Edge "	11.23	356.4
1/4		11.6	356.1

367.73

8
10-26-26

cb		12.1	355.3
S		12.5	355.2
N	101.5	11.1	
S		12.4	355.3
cb		12.1	355.6
1/4		11.2	356.5
+12.75	Edge Paving	11.12	356.6
S	0.0	10.25	356.7
+10.7	Edge "	11.07	356.6
N		10.8	356.9
+3		10.7	357.0
cb		11.0	356.7
N		10.6	357.1
S	19.1654		
N		10.2	357.5
cb		10.9	357.3
1/4		10.2	357.5
+6.6	N Edge Paving	10.81	356.9
S	0.0	10.69	357.0
+6.6	Edge "	10.91	356.8
+1.8		10.8	356.9
1/4		11.1	356.6
1/4		11.6	356.1
cb		11.8	355.9
S		12.0	355.7
1/4	101.5	11.7	356.0

347.73

cb	11.5	356.2
1/4	10.8	356.9
+4	10.4	357.3
+127 S Edge Parking	10.70	357.0
2 on	10.93	357.3
+107 N Edge	10.52	357.2
1/4	10.1	357.6
+7	10.3	357.4
cb	10.4	357.3
1/4	10.0	357.7
	FCb	
1/4	9.6	358.1
cb	10.2	357.5
1/4	9.8	357.9
+66 N Edge Parking	10.28	357.4
2 on	10.15	357.5
+21 S Edge	10.87	357.3
+11	10.1	357.6
1/4	10.5	357.2
+4	11.0	356.7
cb	11.2	356.5
S	10.9	356.8
	EL 49 1/2 11.5	
S	10.6	357.1
cb Top	10.52	357.2
Gutter	10.5	356.9
+8	10.7	357.0

347.73

1/4	9.7	358.0
-127 S Edge Parking	9.93	357.8
2 on	9.66	358.0
+107 N Edge	9.80	357.9
1/4	9.3	358.4
Gutter	9.4	358.3
cb Top	9.00	358.7
N	8.7	359.0
	EL 49 1/2 09 N 17.5 100'	
1/4	8.7	359.0
cb Top	8.89	358.84
Gutter	9.4	358.3
1/4	9.1	358.6
+65 N Edge Parking	9.50	358.2
2 on	9.30	358.4
+15 S Edge	9.51	358.2
1/4	9.4	358.3
+6	10.8	357.3
Gutter	10.5	357.2
cb Top	10.30	357.7
S	10.1	357.6
	50'	
S	8.8	359.5
cb Top	9.05	359.8
Gutter	8.5	359.2
1/4	8.3	359.4
1/4	7.5	360.2

+12.5 S Edge Pavilion	677	360.9
S	660	361.1
+10.5 N Edge	625	360.9
"	69	360.8
Gutter	69	360.8
Cb Top	647	361.23
N	69	361.73
100' E		
N	35	364.23
Cb Top	620	363.93
Gutter	45	363.23
+12	48	362.93
"	48	363.53
+1.5 N Edge Pavilion	395	363.78
S	388	363.85
+1.5 S Edge	402	363.71
+11	41	363.63
"	55	362.23
+1	62	361.73
Gutter	12	361.53
Cb Top	571	362.02
S	59	361.83
150' E		
S	32	364.53
Cb Top	279	364.99
Gutter	34	364.33
+15	31	364.63

11.5' 00"
Carb Folds
No. 11.5' Pavilion

"	23	365.43
"	15	366.23
+12.5 S Edge Pavilion	122	366.51
S	111	366.62
+10.5 N Edge	122	366.51
+15	11	366.13
"	12	366.03
+8	21	365.33
+12	21	365.63
Cb	12	366.53
+5	0.8	366.93
N	0.0	367.73
TP	10.00	367.21 ✓
250' W		
N	64	370.86
+12	60	371.26
Cb	62	370.56
+8	86	368.66
+6	85	368.76
+7	77	369.46
+13	77	369.56
"	82	368.76
+10.5 N Edge Pavilion	806	369.20
S	705	369.31
+1.5 S Edge	816	369.12
+12	85	368.76
"	80	369.06

7.3	9.30	368.96
7.6	9.10	368.26
Gutter	9.50	367.76
Cb Top	9.33	367.93
5	9.2	368.06
	235 E	
5	7.5	369.76
Cb Top	7.81	370.05
Gutter	7.1	369.86
+10	7.3	369.96
7.1	6.0	371.26
7.4	6.6	370.66
+12.5 S Edge Par. 10.9	4.01	371.18
5 0.0	5.90	371.36
+10.5 N Edge "	6.01	371.22
7.6	6.4	370.86
+8	5.8	371.46
+11	6.6	370.66
+14	6.2	371.06
Cb	5.0	372.26
+3	9.2	373.56
+5	8.1	374.86
N	3.0	374.26
	257 = N. N. W. pond	
N	2.3	374.96
+7	1.8	375.46
+10	1.3	374.96

0.6	4.1	373.16
7.5	5.0	372.26
7.2	5.1	372.16
+6.5 N Edge Par. 10.9	4.81	372.5
2 0.0	4.71	372.6
+4.5 S Edge	4.88	372.4
+1.2	5.3	372.0
7.4	4.1	372.9
+5	5.5	371.8
Cb Top + Ground	5.77	371.547
5	6.0	371.3
	207 Pond	
	2245 Pond = N. N. W. pond	10.5
5	6.0	371.3 N. pond
Cb Top + Ground	5.80	371.7 N. pond
+9	5.8	372.1 Cb 12.8.46
7.1	4.2	373.1
7.4	4.1	373.2
+2	4.8	372.4
+12.7 S. Edge Par. 10.9	4.55	372.8
2 0.0	4.21	373.0
+10.7 N Edge	4.27	373.0
7.4	4.7	372.6
7.4	4.0	373.3
7.9	4.1	373.2
Cb	4.8	374.5
+2	2.1	375.2
N	1.5	375.8

	HCB	101.5	
H	07	376.5	
+12	16	375.7	
cb	25	374.8	
+5	32	373.6	
1/4	41	373.2	
+6.6 N Edge Paving	382	373.4	
8 00	382	373.4	
+4.6 S Edge	405	373.2	
1/4	42	373.1	
cb	50	372.3	
S	59	371.9	
	114	101.5	
S	52	372.1	
cb	44	372.9	
1/4	38	373.5	
+127 S Edge Paving	362	373.7	
8 00	342	373.9	
+109 N Edge	355	373.7	
1/4	36	373.7	
cb	21	375.2	
+9	10	376.3	
H	07	376.4	
	8 Arizona	101.5	
H	02	377.00	
+12	13	376.0	
cb	17	375.6	

46	24	374.9	
1/4	28	374.5	
+6.6 N Edge Paving	327	374.0	
8 00	314	374.2	
+6.6 S Edge	335	374.0	
+12	37	373.6	
1/4	34	373.9	
cb	40	373.3	
S	46	372.7	
	114	101.5	
S	44	372.9	
cb	47	373.6	
1/4	28	374.5	
7.5	33	374.0	
+127 S Edge Paving	312	374.2	
8 00	290	374.4	
+109 N Edge	302	374.3	
1/4	26	374.7	
413	16	375.7	
cb	16	375.7	
N	02	377.1	
P 701	38398 ✓	035	376.01
	114	101.5	
H	11	377.8	
+12	14	377.5	
cb	22	376.7	
46	82	375.7	

38392

1/4		90	374.9
46.1	N Edge Point	945	373.5
5	00	933	374.6
46.1	S Edge	956	374.3
713		97	374.2
1/4		89	375.0
47		95	374.4
cb		10.3	373.6
S		10.0	373.9

E. L. Wirona

S		94	374.5
cb top		905	374.87
Gutter		9.3	374.6
73		9.3	374.6
416		70	376.9
1/4		76	376.3
74		95	374.9
1129	S Edge Point	920	374.7
5	00	894	375.0
1107	N Edge	908	374.8
412		91	374.8
1/4		82	375.7
43		73	376.6
49		76	376.3
cb		64	377.5
N		51	378.8

E. L. Wirona 001
125 E 000

38392

N		51	378.8
cb		48	377.7
42		72	376.6
72		72	376.7
82		82	375.7
89		89	375.0
105	N Edge Point	913	375.1
5	00	871	375.2
105	S Edge	890	375.0
47		93	374.9
1/4		66	377.3
49		65	377.4
Gutter		85	375.4
cb top		842	375.5
S		74	375.5
50.5			
S		62	377.7
cb top + ground		67	377.4
44		65	377.4
410		47	379.2
4		43	379.6
45		95	376.4
105	S Edge Point	712	376.5
5	00	720	376.7
105	N Edge	703	376.6
715		77	376.2
1/4		55	378.4

E/Cajon

38392

100' wide
16 Cbs
17 Qts

38392

14

cb	52	380.0
H	32	380.7
100'		
N	25	381.4
cb	35	380.4
1/4	60	377.9
+1.5 N Edge Paving	520	378.2
2 on "	556	378.3
+1.5 S Edge "	520	378.2
+1.0	59	378.0
1/4	32	380.6
+2	25	381.4
+6	21	381.5
7/4	42	379.2
Gutter	18	379.1
cb Top	150	379.4
S	47	379.2
150'		
S	31	380.8
cb Top & Ground	381	380.6
+5	33	380.6
+1.0	21	381.5
1/4	13	381.6
+3	27	381.7
+8	15	379.4
+12.5 S Edge Paving	283	379.7
2 on "	207	379.8

+1.5 N Edge Paving	419	379.7
+1.5	11	379.5
1/4	40	379.9
cb	21	381.3
N	18	382.1
200'		
N	08	383.1
cb	17	382.2
+1.5	23	381.6
1/4	31	381.3
+1.5 N Edge	210	381.3
2	211	381.5
+1.5 S Edge	211	381.3
1/4	20	381.1
1/4	09	383.0
1/10	19	382.0
cb & Ground	222	381.0
S	21	381.7
250' E - W 1.5' N 0.5'		
S	10	382.9
cb Top	102	382.9
Gutter	13	382.6
29	11	382.8
1/4	11	382.8
+12.5 S Edge Paving	090	383.0
2 07	072	383.2
+10.5 N Edge	075	383.0

El Cajon

383.92

N	1.2	382.7
cb	0.5	383.4
N	0.4	383.5
N	0.2	383.7
cb	0.5	383.4
N	0.9	383.0
N	0.1	383.1
+6.6 N Edge Paving	0.51	383.3
N on "	0.51	383.3
+4.6 S Edge "	0.22	383.2
N	0.9	383.0
Gutter	1.2	382.6
CB Top	0.91	382.9
S	1.0	382.9
N	0.55	383.2
S on CB	7.82	383.3
Gutter	8.5	382.7
cb	8.3	382.9
N	8.4	382.8
+1.27 S Edge Paving	7.70	383.5
N on "	7.50	383.7
+0.9 N Edge "	7.65	383.6
N	7.6	383.6
N	7.8	383.3
cb	8.0	383.2

391.20

11-22-56

N	7.4	383.8
N	7.5	383.7
cb	7.5	383.7
N	7.5	383.7
+6.6 N Edge Paving	7.43	383.8
N on "	7.33	383.9
+4.6 S Edge "	7.49	383.7
N	7.80	383.4
cb	8.0	383.2
S	8.0	383.2
S	7.7	383.5
cb	7.6	383.6
N	7.4	383.8
N	7.22	383.9
N on "	7.07	384.1
+10.9 N Edge "	7.23	384.0
N	7.2	384.0
cb	7.2	384.0
N	7.0	384.2
N	7.2	384.0
cb	7.1	384.1
N	7.0	384.2
+4.6 N Edge Paving	7.03	384.2
N on "	6.87	384.3

781 SE Paving	70.5	384.1
"	7.5	383.7
cb	7.6	383.6
S	7.7	383.5
	F CB	
S Top Ch	7.1	383.8
Gutter	7.7	383.5
cb	7.7	383.5
"	7.8	384.0
"	7.7	383.5
+127 S Edge Paving	6.9	384.3
" " "	6.8	384.4
+107 N Edge "	6.9	384.3
"	6.9	384.3
cb	7.1	384.1
"	6.9	384.3
	F L 50' Stk	101.5
"	6.1	385.1
cb	6.5	384.7
"	6.7	384.5
+66 N Edge Paving	6.7	384.6
" " "	6.5	384.7
+46 S Edge "	6.9	384.5
"	7.2	384.0
"	7.2	384.0
Gutter	7.5	383.7
Top Ch	7.1	384.0

"	6.9	384.30
	F L 60' N	
	175' E of F L 90' S	100' Wide
"	6.8	384.4
cb Top	6.8	384.3
Gutter	7.3	383.9
"	7.0	384.2
"	7.1	384.1
	+125 S0 Edge Paving	6.1
"	" "	6.0
	110.5 N Edge "	6.5
"	"	6.6
cb	6.3	384.9
"	6.1	385.1
	50' F	
"	5.0	386.2
cb	5.5	385.7
"	6.1	385.1
	+65 N Edge Paving	6.0
"	" "	5.9
	+45 SE	6.0
"	" "	6.5
"	" "	6.8
Gutter	6.2	384.9
Top Ch	5.9	385.3
S	5.6	385.6
	100' F	
"	4.4	386.8

391-20

Co Top	47	386.4
Gutter	50	386.0
"	52	386.0
"	58	385.4
112.5 S Edge Paring	55.8	385.6
S. 02 "	56.1	385.8
110.5 N Edge "	56.5	385.6
"	55	385.7
cb	50	386.2
"	45	386.7
	150	
N.	42	387.0
cb	43	386.9
"	44	386.8
"	47	386.5
165 N Edge Paring	51.1	386.1
S. 02 "	49.5	386.3
115 S Edge "	51.4	386.1
"	51	386.1
115	32	387.4
"	38	387.4
Gutter	26	386.6
Top cb	43.3	386.9
S	39	387.3
	200	
S	35	387.4
Top cb	40.1	387.2

391-20

Gutter	41	386.8
"	35	387.7
"	35	387.7
"	49	386.3
112.5 Edge Paring	46.0	386.6
S. 02 "	44.2	386.8
110.5 N Edge "	46.6	386.5
"	45	386.7
"	41	387.1
cb	41	387.1
"	42	387.0
	257	Top NW Altadena 100
N.	43	386.9
cb	38	387.4
"	39	387.3
165 N Edge Paring	40.4	387.2 <u>382.2</u>
S. 02 "	38.2	387.4
115 S Edge "	39.4	387.3
"	42	386.9
"	37	387.4
Gutter	40	387.2
cb Top	36.5	387.6
S	37	387.5
	257	Top NW Altadena 100
	274.5	Top NW Altadena 100
S	37	387.5
cb Top	36.3	387.6
Gutter	39	387.3

E/Copon

39120

74	3.2	388.0
74	4.2	387.0
+122 S Edge Paving	3.90	387.3
5 02 "	3.98	387.4
+107 N Edge "	3.93	387.3
74	3.8	387.4
cb	3.9	387.3
H	4.2	387.0
	HCB	
H	4.1	386.8
cb	3.8	387.4
74	3.1	387.4
+66 N Edge Paving	3.90	387.3
5 02 "	3.77	387.4
+46 S Edge "	3.94	387.3
+12	4.0	387.2
74	3.3	387.9
cb	3.9	387.3
S Gutter	4.3	386.9
Top cb	3.13	387.6
	74	
S	3.9	387.3
cb	3.9	387.3
+10	3.7	387.5
74	3.0	388.2
+5	4.1	387.1

39120

+122 S Edge Paving	3.95	387.3
5 02 "	3.79	387.4
+107 N Edge "	3.90	387.3
74	4.0	387.2
cb	3.7	387.4
H	4.0	387.2
	2. Algodora ✓	
H	3.9	387.3
cb	3.7	387.5
74	3.9	387.3
+66 N Edge Paving	3.94	387.3
5 02 "	3.79	387.4
+46 S Edge "	3.93	387.3
+12	3.9	387.3
74	3.7	387.5
cb	3.7	387.5
S	3.1	387.6
	74	
S	3.6	387.6
cb	3.8	387.4
+8	3.9	387.3
74	3.4	387.8
74	4.0	387.2
+122 S Edge Paving	3.90	387.3
5 02 "	3.76	387.4
+107 N Edge "	3.90	387.3
74	3.9	387.3

391.20

cb	3.7	387.6
N	4.0	387.2
F cb		
N	3.8	387.4
cb	3.3	387.9
1/4	4.0	387.2
+4.6 N Edge Paving	3.86	387.3
2 on Paving	3.75	387.5
+4.6 S Edge	3.85	387.3
+1.2	4.1	386.8
1/4	3.0	388.2
+7	3.8	387.4
cb	3.9	387.3
S on cb	3.41	387.8
Gutter	4.1	387.1
E L Altadena	3.015	
S	3.4	387.8
cb top	3.22	387.9
Gutter	4.0	387.2
+8	3.6	387.6
1/4	3.0	388.2
+3	3.0	388.2
+1	4.1	386.8
+13.7 S Edge Paving	3.84	387.3
2 on "	3.79	387.4
+10.9 N Edge "	3.85	387.3
1/4	4.1	387.1

391.20

19

+2	3.8	388.0
1/4	3.6	388.6
cb	3.3	387.9
N	3.9	388.3
E L on N		
17.5 E of E L on S	100	
N	3.9	388.3
cb	3.8	388.0
+5	3.6	387.6
+1.0	2.1	388.8
+1.6	3.0	388.2
1/4	4.2	387.0
+6.5 N Edge Paving	3.83	387.3
2 on "	3.69	387.5
+4.5 S Edge "	3.93	387.3
+1.2	4.1	386.8
+1.8	3.0	388.2
1/4	3.7	388.5
+6	3.5	387.7
Gutter	3.5	387.7
cb top	3.14	388.1
S	3.3	387.9
50' E		
S	3.1	388.1
cb on top	2.81	388.4
Gutter	3.6	387.6
+1.0	3.5	387.7
1/4	2.8	388.4

391.80

+1		30	388.2
+5		42	386.4
+12.5 S Edge Pairing		406	387.1
Z. ca. "		382	387.3
+10.5 N Edge "		400	387.2
1/4		44	386.8
+3		17	389.5
+6		18	389.4
+13		34	387.8
cb		29	388.3
H		37	387.8
TP	530	392.96	388.6 ✓
		100 F	
H		54	388.6
cb		48	387.2
+6		59	388.6
+10		61	389.9
1/4		55	388.8
+1		21	386.9
+6.5 N Edge Pairing		690	387.1
Z. ca. "		628	387.2
+15 S Edge "		624	387.1
+12		76	386.4
+13		51	388.9
1/4		48	389.2
+8		51	388.4
Gulfar		58	388.2

393.96

cb Top		5.20	388.8
S		55	388.5
		150 F	
S		46	389.4
cb Top		515	388.8
Gulfar		57	388.3
+10		52	388.8
1/4		47	389.6
+5		17	389.3
+6		76	386.4
+12.5 S Edge Pairing		705	387.0
Z. ca. "		679	387.2
+10.5 N Edge "		620	387.0
+11		73	386.7
1/4		68	387.2
+3		38	390.2
+9		35	390.5
+12		52	388.8
cb		47	389.3
H		49	389.1
		200 F	
H		46	389.4
cb		48	389.2
+6		52	389.8
+12		37	390.3
+15		40	390.0
1/4		48	389.2

12		73	386.7
+6.5	N Edge Paving	71	386.9
2	on Paving	67	387.1
+1.5	S Edge Paving	70	387.00
1.12		74	386.6
1.12		81	390.2
1/2		39	390.1
+10	Gutter	49	389.1
		51	388.4
cb top		52	388.8
5		41	389.2
	257 E 111 51 100		
5		52	388.7
cb top		56	388.6
Gutter		58	388.2
+1		51	388.4
+9		47	388.3
1/2		47	388.3
+5		81	385.9
+12.5	S Edge Paving	73.5	386.6
2	on "	77	386.9
+10.5	N Edge "	73	386.8
+16		76	386.4
1/2		52	388.9
+3		43	388.7 - 389.7
1/2		59	388.1
cb		57	388.3
+5		60	388.0

		53	388.7	Curb on S side
	257 E 111 51 100			El Cajon
	257 E 111 51 100		101.5	End S 111 51
		51	388.2	
		59	388.1	S 111 51
		60	388.0	W do 60
		46	389.4	Ch 12/13
		54	388.6	9/13 9/13
		76	386.4	
	+6.5 N Edge Paving	72.9	386.7	
	2 on "	71.1	386.9	
	+16 S Edge "	73.3	386.7	
	+12	96	386.0	
	1/2	48	389.2	
	+7	48	389.2	
	Gutter	60	388.0	
	cb	54.1	388.6	
	5	53	388.7	
	ncb			
	See cb	54.1	388.6	
	Gutter	62	387.8	
	cb	59	388.1	
	+1	57	388.3	
	1/2	53	388.7	
	+5	79	386.1	
	+12.7 S Edge Paving	71.4	386.7	
	2 on "	72.2	386.8	
	+10.7 N Edge "	73.9	386.6	

Curb ends on 50. 1/2 of 51 51 51.

39396

1/2		77	386.3
+2		52	388.7
cb		62	387.7
N		64	387.6
	N 1/2		
N		66	387.4
cb		67	387.3
+9		68	387.1
1/4		79	386.1
+66	N Edge Paving	754	386.5
2	on Paving	736	386.7
+4.6	S Edge "	750	386.5
+8		78	386.2
1/4		68	387.2
+5		62	387.8
cb		60	388.0
S		58	388.2
	S 57' N		
S		57	388.3
cb		61	387.9
+12		61	387.9
1/4		66	387.4
+6		80	386.0
+127	S Edge Paving	762	386.4
2	on "	744	386.6
+107	N Edge "	762	386.3
1/4		80	386.0

39396

		49	387.1
		62	387.3
		68	387.2
	F 1/4		
		72	386.8
		68	387.1
		68	387.2
		80	386.0
	+66 N Edge Paving	799	386.1
	2 on "	766	386.3
	+4.6 S Edge "	788	386.1
	+8	83	385.7
	1/4	70	387.0
	+8	59	388.3
	+12	61	387.9
	cb	64	387.6
	S	63	387.7
	Fcb		
	S Gutter	61	387.2
	S on cb	61	387.8
	cb	64	387.6
	+5	64	387.6
	+11	55	388.5
	1/4	69	387.1
	+5	80	386.0
	+127 S Edge Paving	798	386.0
	2 on "	778	386.2

389.96

+107 N Edge Paving	797	386.0
"	80	386.0
+2	81	385.9
+8	70	387.0
cb	71	386.9
N	75	386.5
	335.41E	
	FL 50'S	1015
N	74	386.6
cb	76	386.4
+11	81	385.9
"	83	385.7
+66 N Edge Paving	811	385.9
" 07 "	801	386.0
+66 S Edge "	830	385.7
+12	84	385.6
"	60	388.0
+8	71	386.9
cb	67	387.3
S	67	387.3
B.M.	684	387.2
B.M.	221	389.38 ✓
	2450' 07	387.7
	125' 5" 15' 100'	
S	84	387.0
cb	87	386.7
+13	17	387.7
"	35	385.9
+5	15	384.9

389.38

+125 S Edge Paving	381	385.6
" 07 "	355	385.8
+105 N Edge	366	385.7
"	38	385.6
cb	30	386.4
N	28	386.6
	50'E	
N	152	384.2
+1	46	384.8
cb	63	383.1
"	64	383.0
+10 N Edge Paving	590	383.6
" 07 "	561	383.8
+10 S Edge	525	383.6
"	56	383.8
+5	63	385.1
cb	47	384.5
S	46	384.8
	90' E	
S	64	383.0
cb	76	381.8
"	83	381.1
"	83	381.1
+134 S Edge Paving	802	381.4
" 07 "	782	381.5
+14 N Edge	820	381.2
"	85	380.9

389.38

112		90	380.4
cb		93	381.1
47		71	382.3
N		70	382.4
	100 F		
N		75	381.9
cb		91	380.3
110		95	379.9
1/4		90	380.4
+5.5	N Edge Pavilion	875	380.7
S	00	852	380.9
+3.5	S Edge	866	380.7
+12		91	380.3
1/4		88	380.6
+5		79	381.5
cb		89	380.7
S		82	381.2
	150 F		
S		118	377.6
cb		118	377.6
+13		117	377.7
1/4		123	377.1
+14	S Edge Pavilion	1172	377.7
S	00	1155	377.9
+12	N Edge	1178	377.7
1/4		116	377.8
cb		116	377.8

389.38

+12		90	380.2	
N		82	380.2	
	200 F			
N		108	378.6	
+4		111	378.3	
TP	121	377.54	180.5	371.23
cb		81	375.1	
+4		87	374.8	
113		80	375.5	
1/4		18	375.7	
+4.5	N Edge Pavilion	196	375.5	
S	00	180	375.7	
+2.5	S Edge	200	375.5	
+13		82	375.3	
1/4		32	374.3	
cb		36	373.9	
S		32	374.3	
	240 F			
S		713	370.2	
cb		79	369.6	
1/4		57	371.8	
+4		29	374.6	
+14.9	S Edge Pavilion	277	374.7	
S	00	262	374.9	
+12.9	N Edge	280	374.7	
1/4		27	374.8	
+10		40	373.5	

372.54

100' N. side
16' CBS
17' QTS

cb		3.5	374.0		cb	4.6	372.9
+7		1.0	376.5		+8	4.0	373.5
N		0.8	377.3		N	3.3	375.2
	2.57' = 11.158°	St. on S	100		Ncb	101.5	
N		1.0	376.5		N	9.9	373.1
+6		1.2	375.8		cb	4.5	373.0
+12		2.9	373.6		1/4	3.1	374.4
cb		4.1	373.1		+8 N Edge	2.2	374.6
+10		4.2	373.3		S	2.2	374.7
1/4		3.1	374.4		+1.8 S Edge	2.9	374.6
+3.9 N Edge Paving		2.2	374.7		1/4	2.1	375.1
S on "		2.7	374.7		1/4	5.2	372.3
+1.9 S Edge "		2.9	374.6		1.8	7.1	370.1
+13		2.2	374.3		cb	2.2	368.8
1/4		5.8	371.7		S	1.4	367.1
cb		8.1	369.4		+10	10.7	366.8
S		10.0	367.5				
+10		10.5	367.6		-10	10.0	366.6
	27.5' 20.7° N. side						
	25.7' 20.5°	101.5					
S		10.0	367.5			10.3	367.2
cb		9.3	369.2		cb	9.0	368.5
1/4		5.8	371.7		+7	7.5	370.0
-7		2.0	374.6		1/4	5.1	372.1
+15.5 S Edge Paving		2.9	373.5	374.5	+7	2.9	374.8
S on "		2.0	374.7		+15.5 S Edge Paving	3.0	374.5
+13.5 N Edge "		2.2	374.6		S on "	2.3	374.7
1/4		8.0	374.3		+13.5 N Edge "	3.0	374.4
					1/4	3.1	374.4

El Cajon

87754

100' N. dc
16' Cb
17' Qls21
11-21-56

13			37	373.8	14	14	374.3
cb			49	372.6	+2	14	374.3
N			45	373.0	+9	36	372.1
			520'		cb	40	371.7
N			47	372.8	N	32	372.5
cb			52	372.3			
+6			53	372.2	N	30	372.7
14			42	374.3	cb	16	371.1
138	N Edge of		31	374.4	+4	44	371.3
6	02		312	374.5	+11	14	374.3
118	S Edge		318	374.3	14	14	374.3
+8			32	374.5	138 N Edge of	130	374.4
14			167	370.8	6	112	374.6
+5			80	369.5	118 S Edge	131	374.4
cb			91	368.4	+10	19	373.8
S			117	365.8	14	64	369.3
115			157	361.8	+7	9.0	366.7
BM	5.59	375.72	7.41	370.12	cb	10.5	365.2
			10.5		S	13.5	362.2
-20			16.8	359.9	+25	18.6	357.1
S			138	361.9			
cb			10.5	365.2	-30	20.0	355.7
14			67	369.0	S	17.2	358.5
+7			1.8	373.9	cb	14.0	361.7
155	S Edge of		131	374.4	+7	13.1	363.1
6	07		114	374.6	14	8.0	367.7
135	N Edge		129	374.4	+7	1.7	374.0

North Pole
574
El Cajon 11-21-56

F Cb

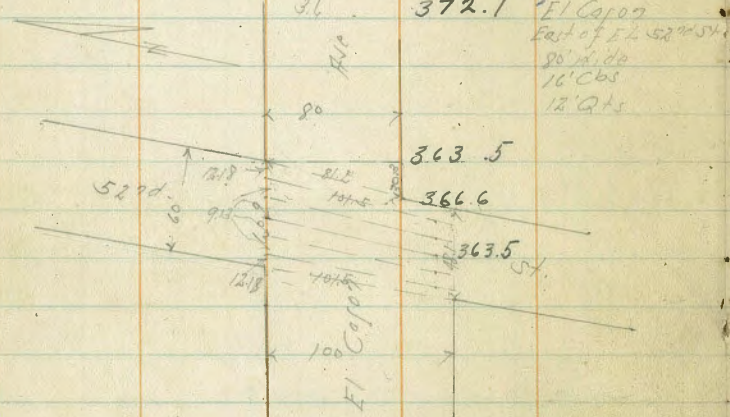
F 4.520' 101.5

37572

37572

+155 S Edge Parking	1.34	374.4
8	1.14	374.6
+13.5 N Edge Parking	1.21	374.5
1/4	1.6	374.1
74	1.5	374.2
+11	4.7	371.0
cb	5.0	370.7
77	4.8	370.9
N	3.6	372.1
		363.5
		366.6
		363.5
		370.7
		370.7
N	3.6	372.1
78	4.8	370.9
cb	5.0	370.7
+6	1.8	370.9
1/4	1.6	374.1
188 N Edge Parking	1.22	374.5
8 00 "	1.07	374.6
+118 S Edge	1.32	374.4
1/4	1.4	374.3

+4	1.9	374.0
cb	7.2	368.5
+10	12.6	363.1
5	13.3	362.4
+20	18.2	357.5
-35	21.2	354.5
-20	19.8	355.9
5	14.8	360.9
cb	7.0	368.7
+8	1.5	374.2
1/4	1.4	374.3
+0.3 S Edge Parking	1.90	374.3
2 00	1.06	374.6
+3.3 N Edge	1.18	374.5
4	1.5	374.2
+8	5.0	370.7
cb	5.0	370.7
46	5.0	370.7
N	3.6	372.1
		370.7
		370.7
N	5.0	370.7
+8	6.5	369.2
cb	5.6	370.1
+6	5.0	370.7
1/4	1.7	374.0
+8.2 N Edge Parking	1.26	374.4

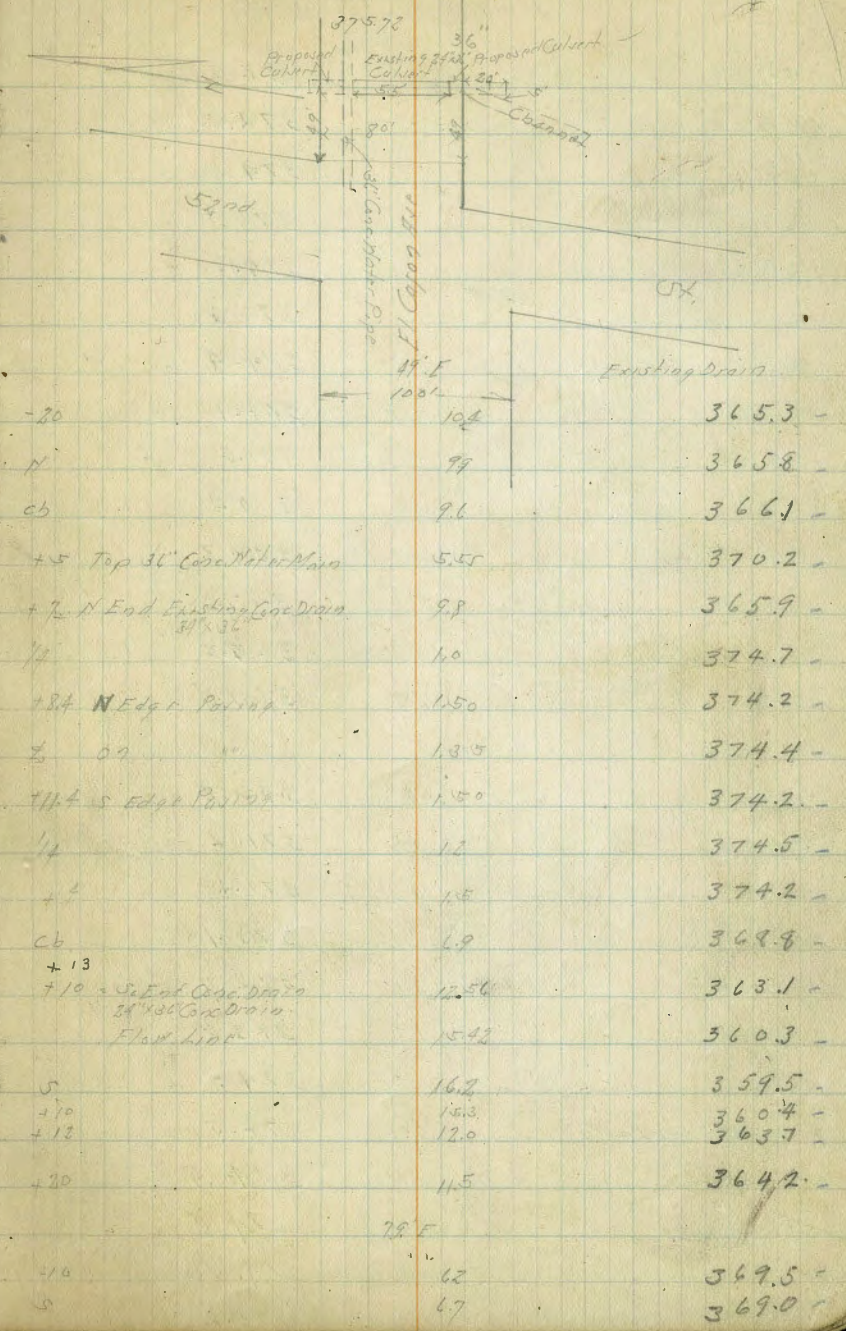


El Cajon
East of E 252nd St
80' wide
16' Cbs
12' Qts

El Cajon
JAG's Edge
80'

E 152nd St 81.8 on diagonal

2	on Pavement	115	374.5 -
116	S Edge	111	374.3 -
11		11	374.3 -
14		18	373.9 -
cb		75	368.2 -
S		151	360.6 -
+15		193	356.4 -
+35		208	354.9 -
		272	
-30		178	357.9 -
-15		170	358.7 -
S		111	361.3 -
cb		72	368.5 -
+8		20	373.7 -
14		18	373.9 -
7.6	S Edge Pavement	150	374.2 -
2	on	123	374.5 -
7.6	N Edge	137	374.4 -
11		16	374.1 -
+8		54	370.3 -
cb		56	370.1 -
+6		16	369.1 -
+3		23	367.4 -
N		22	367.0 -
110		21	367.6 -



375.72

+7	61	369.6 -
cb	29	372.8 -
+6	16	374.1 -
1/4	1.0	374.7 -
+10.9 S Edge Parking	1.16	374.6
A on	1.10	374.6
+13.9 N Edge "	1.31	374.4 -
1/4	1.3	374.4 -
+7	7.3	371.4 -
cb	19	370.8 -
+5	5.1	370.3 -
+10	8.1	367.3 -
N	8.7	367.0 -
+15	8.7	367.0 -
	100' F	
-10	48	370.9 -
N	4.5	371.2 -
+5	4.3	371.4 -
+10	2.6	373.1 -
cb	3.0	372.7 -
+6	2.7	373.0 -
1/4	0.8	374.9 -
+8 N Edge Parking	0.97	374.7 -
2 on	0.84	374.9 -
+11 S Edge	0.90	374.8 -
1/4	0.8	374.9 -
cb	1.5	374.2 -

375.73

5	4.0	371.7 -
6/10	3.4	372.3 -
	100' F	
5	1.7	374.0 -
cb	1.3	374.4 -
1/4	0.4	375.3 -
+13 S Edge Parking	0.84	375.4 -
2 on	0.83	375.5 -
+13 N Edge	0.40	375.3 -
1/4	0.8	374.9 -
cb	1.7	374.0 -
N	3.7	373.0 -
12.30	387.35	0.75
	150' F	
N	12.4	375.0 -
cb	12.0	375.4 -
1/4	11.4	376.0 -
7.6 N Edge Parking	10.80	376.6 -
2 on	10.67	376.7 -
11.6 S Edge	10.81	376.6 -
1/4	10.9	376.5 -
cb	11.3	376.1 -
5	11.9	375.5 -
	200' F	
5	8.7	378.7 -
cb	8.2	379.2 -
+6	8.1	379.3 -

387.4

28	88	378.5	-
14	84	379.0	-
+17 S Edge	834	379.2	-
2 00	811	379.3	-
+47 N Edge	825	379.1	-
14	82	379.7	378.1
cb	82	379.7	376.1
77	80	379.4	
N	84	379.0	
	854		
N	88	383.6	-
15	82	384.2	-
cb	80	383.4	-
+3	81	383.3	-
+5	84	382.0	-
14	87	381.7	-
+19 N Edge	818	381.9	-
8	826	382.1	-
+99 S Edge	850	381.9	-
14	88	381.6	-
+6	60	381.4	-
48	81	382.3	-
cb	88	383.6	-
5	80	383.4	-
	874 E - W. Down 80 ft		
5	15	385.9	60.9
+14	07	386.7	width

387.4

cb	12	386.2	-
75	17	385.7	-
+10	47	382.7	-
14	43	383.1	-
723 S Edge Parking	724	383.2	-
8 07	406	383.3	-
753 NE	419	383.2	-
14	43	383.1	-
77	40	383.4	-
110	71	385.6	-
cb	17	385.7	-
N	13	386.1	-
	80		
	15	385.9	-
cb	14	386.0	-
74	15	385.9	-
+6	21	385.0	-
14	31	384.3	-
+12 N Edge	352	383.9	-
2	240	384.0	-
+93 S Edge	368	383.8	-
14	37	383.7	-
25	43	383.1	-
77	810	385.25	-
	91	385.9	-
47	81	387.4	-
110	89	386.6	-

395.48

cb	80	387.5 ✓
+7	75	388.0 ✓
S	81	387.1 -
	W 7/4	
S	73	388.2 -
+4	67	388.8 -
cb	70	388.5 -
+5	87	386.8 -
+2	67	388.8
+11	121	383.4
1/4	112	384.2
+37 S Edge	1122	384.3
S	1027	384.5
+57 N Edge	1108	384.4
1/4	106	384.9
cb	95	386.0
N	92	386.3
	L. D. J. 507	
1/4	85	387.0
cb	90	386.5
1/4	89	385.6
+63 N Edge	1057	384.9
S	1046	385.0
+93 S Edge	1073	384.7
1/4	108	384.6
+5	114	384.1
+7	58	389.7

395.48

31

49	57	389.8
+10	91	385.9
cb	80	387.5
+2	50	390.0
+4	48	390.7
+8	58	389.7
S	61	389.4
	E 1/4	
S	51	390.4
+6	19	390.6
+9	38	391.7
+17	40	391.5
cb	81	387.4
+1	92	386.3
+5	54	390.1
+7	57	389.8
+8	106	384.9
1/4	103	385.2
+27 S Edge Par. 100	1018	385.4
S 07	967	385.5
+57 N Edge	1011	385.4
1/4	93	386.2
cb	88	387.7
N	83	387.2
	E cb	
N	80	387.5
cb	81	387.4

398.73

+3		40	394.7
cb		44	394.3
+5		50	393.7
+10		68	391.9
1/4		100	388.7
+28	S Edge Parking	938	389.4
2		909	389.6
+58	N Edge	929	387.4
+10		97	389.0
1/4		80	390.7
+6		86	390.1
cb		57	393.0
N		57	393.0
	100' E		
N		42	394.5
cb		41	394.6
76		54	393.3
1/4		52	393.6
1/4		72	391.4
+6.0	N Edge	620	391.8
2		667	392.0
+79.0	S Edge	485	391.9
1/4		70	391.7
1/4		72	391.5
+5		52	393.5
cb		41	394.6
-8		33	395.4

0.20
N End
1000 ft
6/1/2002

398.73

S		28	395.9
	150' E		
S		11	397.6
cb		17	397.0
1/4		27	396.0
+9		53	393.4
1/4		51	393.6
+21	S Edge	493	393.8
2		474	394.0
+61	N Edge	450	393.8
1/4		53	393.4
+2		40	394.7
cb		37	395.0
+5		32	395.5
N		33	395.4
	100' E - N. Corner Blvd		
N		32	395.5
cb		31	395.3
+2		38	394.9
1/4		39	394.8
+48	N Edge Parking	413	394.6
2		388	394.8
+88	S Edge	405	394.7
1/4		40	394.7
+3		41	394.6
+5		18	396.9
cb		17	397.0

395.5
Corner
20.77 ft
51' Ch
76' Ch

39873

S		12	397.4
TP	153	461.42	396.89
		W Cb	
S		32	397.5
Cb		43	397.1
+8		48	396.6
+9		65	394.9
1/4		65	394.9
+32	S Edge	66	396.8
2		63	395.0
+62	N Edge	67	394.7
1/4		65	394.9
Cb		63	395.2
N		58	395.6
		1/4	
N		53	396.1
Cb		61	395.3
1/4		64	395.0
+58	N Edge	66	394.8
2		63	395.1
+88	S Edge	64	394.9
1/4		64	395.0
Cb		51	396.3
S		49	396.5
		2 Contour	
S		42	397.2
Cb		53	396.1

Post. Pile

+9		64	395.0
1/4		63	395.1
+32	S Edge	63	395.1
2		61	395.2
+62	N Edge	65	394.9
1/4		63	395.1
Cb		63	395.1
N		55	395.9
		1/4	
N		57	396.0
Cb		61	395.3
1/4		64	395.0
+58	N Edge	63	395.0
2		60	395.3
+88	S Edge	62	396.2
1/4		61	395.3
+8		62	395.2
Cb		52	396.2
S		44	397.0
		E Cb	
S		37	397.7
Cb		42	397.1
+5		50	396.4
+6		60	395.4
1/4		60	395.4
+32	S Edge	61	395.3
2		50	395.4

40.42

+62	N Edge Paving	628	395.1 -	45	51	396.3 -
41		61	395.0 -	N	51	396.3 -
cb		62	395.2 -		900 ft	
N		58	396.2 -	N	48	396.6 -
	224.5 E - E.L. Contour 5			cb	46	396.8 -
N		57	396.0 -	1/4	56	395.8 -
cb		61	395.3 -	+5.4 N Edge	523	395.6 -
1/4		63	395.1 -	2	515	395.8 -
+58	N Edge Paving	623	395.2 -	+8.4 S Edge	523	395.6 -
2	on "	525	395.5 -	1/4	51	395.8 -
+88	S Edge "	609	395.3	154	51	395.8 -
1/4		605	395.3 -	cb	44	397.0 -
+6		61	395.3 -	S	37	397.7 -
+7		63	397.1 -		350 ft	
cb		41	397.3 -	S	39	397.5 -
S		36	397.8 -	cb	41	397.0 -
	250 ft of E.L. of 50 ft			1/4	53	396.1 -
S		37	397.7 -	+3.7 S Edge	561	395.8 -
cb		40	397.4 -	2	516	395.9 -
+7		48	396.6 -	+6.2 N Edge	519	395.7 -
+8		59	395.5 -	1/4	53	396.1 -
1/4		59	395.5 -	+5	49	396.5 -
+34	S Edge Paving	615	395.3 -	cb	41	396.8 -
2	on "	588	395.5 -	N	52	396.2 -
+64	N Edge "	610	395.3 -		400 ft	
1/4		61	395.3 -	N	59	395.6 -
cb		61	395.3 -	+10	50	396.4 -

40141

cb		50	396.4	-
"		52	396.2	-
15.1	N Edge Parlor	547	395.9	-
4	on	528	396.1	-
78.1	S Edge	548	395.9	-
"		51	396.3	-
cb		45	396.9	-
7.6		40	397.4	-
S		42	397.2	-
	150'			
S		48	396.6	-
cb		52	396.2	-
"		54	396.0	-
4.6	S Edge Parlor	551	395.9	-
4	on	528	396.1	-
25	N E	551	395.9	-
"		51	396.0	-
cb		52	396.2	-
N		56	395.8	-
	170' - 11.53' Parlor			
N		52	396.2	- 53rd 50' off 10' cb 11.53' on
cb		52	396.2	-
"		55	395.9	-
44.9	N Edge Parlor	561	395.9	-
4	on	528	396.0	-
17.9	S Edge	558	395.8	-
"		51	395.9	-

40142

cb		52	396.2	-
S		50	396.4	-
		cb		
S		54	396.0	-
cb		53	396.1	-
"		55	395.9	-
142	S Edge Parlor	560	395.8	-
S	on	541	396.0	-
172	N Edge	561	395.8	-
"		55	395.9	-
cb		53	396.1	-
"		54	396.0	-
		11		
N		55	395.9	-
cb		53	396.1	-
"		51	395.9	-
148	N Edge Parlor	571	395.7	-
4	on	548	395.9	-
178	S Edge	566	395.7	-
"		56	395.8	-
cb		55	395.9	-
S		55	395.9	-
		2.53' 9		
S		57	395.7	-
cb		56	395.8	-
"		57	395.7	-
148	S Edge Parlor	569	395.7	-

401.42

79		64	395.0	-
+10		48	396.6	-
Cb		48	396.6	-
S		49	396.5	-
TP	5.29	103.22	370	398.12

652.5

S		64	396.8	-
Cb		65	396.7	-
+5		91	394.1	-
1/4		85	394.7	-
+49	S Edge Paving	8.48	394.7	-
2	on "	8.21	394.9	-
+97	N Edge "	8.28	394.7	-
1/4		85	394.7	-
Cb		85	394.7	-
N		93	393.9	-
+10		12.4	380.8	390.8

675.5

-20		19.1	384.1	-
N		15.7	387.5	-
+12		12.5	389.7	-
Cb		11.3	391.9	-
+7		8.8	394.4	-
1/4		85	394.7	-
+43	N Edge Paving	8.55	394.7	-
2	on "	8.10	394.8	-
+73	S Edge "	8.11	394.6	-

403

1/4		82	394.5	-
79		90	394.2	-
Cb		70	396.2	-
+3		61	397.1	-
S		57	396.7	-
S		57	397.5	-

195.5

S		57	397.3	-
1/4		62	397.0	-
Cb		71	396.1	-
+5		92	394.0	-
1/4		90	394.2	-
+48	S Edge Paving	8.70	394.5	-
2	on "	8.53	394.7	-
+98	N Edge "	8.73	394.5	-
1/4		87	394.5	-
15		88	394.4	-
+9	Top Conc Water Pipe	10.37	392.8	-
Cb		12.3	390.0	-
N		20.1	383.1	-
+25		32.0	380.2	-

722.5

-20		19.8	393.4	-
N		19.2	394.0	-
Cb		17.0	396.2	-
+3	on Conc Water Pipe	11.39	391.8	-
+5		13.5	389.7	-
1/2		8.3	394.9	-

El Cajon

403.22

+41	N Edge Paving	888	394.3 -
8	on	865	394.6 -
+71	S Edge	896	394.3 -
74		91	394.1 -
+9		92	394.0 -
cb		70	396.2 -
5		57	397.5 -
	750'E		
5		60	397.2 -
cb		72	396.0 -
+4		92	394.0 -
74		88	394.4 -
+5	S Edge Paving	880	394.4 -
8	on	858	394.6 -
+8	N Edge	873	394.5 -
74		84	394.8 -
+3		92	394.0 -
+9	Cl. Water Pipe on Conc. Piers	1180	391.3 -
cb		163	386.9 -
N		166	386.6 -
+10		167	386.5 -
+15		158	387.4 -
	780'E		
-15		114	391.8 -
N		138	389.4 -
cb		137	399.5 -
+3	Cl. Water Pipe	140	391.8 -

403.26

461.95

1016

393.06

TP	889		
+5	N End 18" Concr. Pipe	1283	389.1 -
on	Conc. Hand Wall	1055	391.4 -
+9		67	395.2 -
74		69	395.0 -
+4	N Edge Paving	911	394.8 -
8	on	888	394.9 -
+7	S Edge	723	394.7 -
74		91	394.8 -
+8	S End 18" Concr. Pipe	750	394.4 -
	Flow Line	976	392.1 -
+9		94	392.5 -
cb		81	393.8 -
+8		80	393.9 -
5		69	395.0 -
	790'E		
5		90	392.9 -
cb		53	393.6 -
+4		85	393.4 -
+7		68	395.1 -
74		91	394.8 -
+5	S Edge Paving	905	394.8 -
8	on	875	395.2 -
+8	N E	600	395.0 -
74		66	395.3 -
+3		67	395.2 -
+9	on Top Cl. Pipe	918	392.0 -
cb		106	391.3 -

El Cajon

401.95

392.12

N	2.7	391.2
+10	8.0	393.9
	800' E	
-10	6.9	395.0
N	7.2	394.7
cb	8.1	393.6
+5	8.4	393.5
+10	6.2	396.7
1/4	6.3	395.6
+3.9 N Edge Porcup	6.54	395.4
2 on "	6.42	395.5
+6.9 S Edge "	6.76	395.2
1/4	6.7	395.2
+9	6.7	395.2
cb	8.5	393.4
S	8.8	393.1
	817' E	
S	8.2	393.7
cb	7.0	394.9
1/4	6.2	395.7
+5.2 S Edge Porcup	6.53	395.7
2 on "	5.92	396.0
+8.2 N Edge "	6.05	395.9
1/4	5.9	396.0
+4	5.9	396.0
+6	6.8	395.1
cb	6.6	395.3

40

401.95

N	5.9	396.0
	850' E	
N	2.4	398.5
cb	4.2	397.7
+2	5.1	396.8
1/4	4.9	397.0
+3.8 N Edge Porcup	4.05	397.2
2 on "	4.56	397.3
+6.8 S Edge "	4.80	397.1
1/4	5.09	396.8
cb	5.2	396.7
+5	4.3	397.7
S	3.7	398.2
	900' E	
S	1.1	400.8
17	1.6	400.3
+14	1.7	400.2
cb	2.7	399.2
1/4	2.8	399.1
+5.4 S Edge Porcup	2.50	399.4
2 on "	2.35	399.7
+8.4 N Edge "	2.46	399.4
1/4	2.5	399.4
+10	2.1	399.6
cb	1.6	400.2
N	1.1	400.8
	920' E	

El Cajon

40195

N		0.3	401.6	
cb		0.2	401.6	
+2		1.3	400.6	
1/4		1.1	400.5	
+3.5	N Edge Parking	1.50	400.4	
5	on "	1.30	400.6	
+6.5	S Edge "	1.45	400.5	
1/4		2.0	399.9	
+9		2.1	399.8	
cb		1.1	400.8	
+11		0.7	401.5	
S		2.0	401.9	
TP	6.89	408.38 ✓	0.46	401.49 ✓
B.M.	9.35	411.41 ✓	6.33	402.06 ✓
9385 E - H.L. Radio Road 54th St.				
S		9.3	402.1	
cb		9.2	402.2	
17		10.9	401.0	
1/4		10.5	400.9	
+5.5	S Edge Parking	10.36	401.0	
5	on "	10.30	401.1	
+8.5	N Edge "	10.07	401.3	
1/4		10.4	401.0	
cb		10.3	401.1	
+5		9.3	402.1	
N		9.2	402.2	

N.C.

Non H.P.

El Cajon Radio Rd.
90205

50 mda

10 Ch

7500

N		8.6	402.8
cb		9.3	402.1
+8		10.9	401.0
1/4		10.1	401.3
+3.5	N Edge Parking	9.88	401.5
5	on "	9.17	401.8
+6.5	S Edge "	9.81	401.6
1/4		10.0	401.4
+7		10.1	401.3
cb		9.3	402.1
S		8.8	402.6
1/4			
S		8.8	402.6
cb		9.1	402.3
+5		9.6	401.8
1/4		9.5	401.9
+5.5	S Edge Parking	9.68	401.9
5	on "	9.77	402.1
+8.5	N Edge "	9.40	402.0
1/4		9.6	401.8
+6		10.2	401.2
+9		9.1	402.3
cb		9.0	402.4
N		8.2	403.2
5		514.51	
N		8.1	403.3
cb		8.9	402.7

El Cajon

+6		90	402.0	✓		85	402.9	
1/4		91	402.3	-		86	402.8	
+35	N Edge Parking	912	402.3	-	cb	80	403.4	
±	on "	891	402.5	-	S	77	403.7	
+65	S Edge "	913	402.3					
1/4		89	402.5		S	75	403.9	
cb		87	402.7		cb	77	403.7	
S		85	402.9		+2	83	403.1	
		1/4			1/4	80	403.4	
S		82	403.1		+55 S Edge Parking	791	403.5	
cb		85	402.9		± on "	766	403.8	
1/4		86	402.8		+85 N Edge "	782	403.6	
+55	S Edge Parking	881	402.6		1/4	79	403.5	
±	on "	858	402.8		+6	79	402.5	
+85	N Edge "	876	402.6		cb	79	403.5	
1/4		89	402.5		H	73	404.1	
+6		99	402.0		TP 1075	4381 ✓	935	402.6 ✓
cb		89	402.5					
N		81	403.3					
		FCB						
H		79	403.5					
cb		84	403.0					
+6		92	402.2					
1/4		85	402.9					
+35	N Edge Parking	839	403.0		+35 N Edge Parking	725	405.6	
±	on "	820	403.2		± on "	701	405.8	
+65	S Edge "	849	402.9		+65 S Edge "	750	405.6	
					1/4	71	405.5	
					+2	77	405.1	

4/11/41

41
122226

E. L. Roddy Road - 54/1951

50' E of EL 54/1951

+8		8.9	403.9
cb		8.4	404.4
+5		7.3	405.5
S		7.3	405.5
	100'F		
S		5.2	407.6
cb		5.4	407.4
+5		6.7	406.1
+8		5.5	407.3
1/4		5.1	407.6
+5.6	S Edge Pavilion	5.03	407.8
2	27	4.8	408.0
+8.6	N Edge	5.05	407.7
1/4		5.3	407.5
+9		6.2	406.6
+8		5.3	407.5
cb		4.6	408.2
N		5.3	407.5
	150'F		
N		3.6	409.2
cb		2.7	410.1
+3		3.6	409.2
1/4		3.3	409.5
+3.4	N Edge Pavilion	3.28	409.5
2	27	3.08	409.7
+6.4	S Edge	3.31	409.5
4		3.6	409.2

+8		4.3	408.5
cb		3.6	409.2
S		3.4	409.4
	703.8 E = N L Pavilion		
S		2.4	410.4
cb		2.3	410.5
+8		3.1	409.7
1/4		2.1	410.7
+5.7	S Edge Pavilion	1.9.2	410.9
2	20	1.1.9	411.1
+8.7	N Edge	1.9.7	411.0
1/4		2.0	410.8
+8		2.6	410.2
cb		1.1	411.7
+5		1.9	411.1
N		1.8	411.0
	N cb		
N		1.8	411.0
cb		1.3	411.5
2.2		2.5	410.3
1/4		1.9	410.9
+3.3	N Edge Pavilion	1.7.3	411.1
2	20	1.5.5	411.2
+6.3	S Edge	1.7.8	411.0
1/4		2.6	410.8
+8		3.0	409.8
cb		2.4	410.4

4/28/81

v		22	410.6
	1/4		
s		21	410.7
cb		21	410.7
+4		29	409.9
1/4		18	411.0
+57	S Edge Parings	140	411.2
2	07	135	411.5
+87	N Edge	155	411.3
1/4		16	411.2
cb		16	411.2
N		17	411.1
	2 Sectioning		
N		14	411.4
cb		15	411.3
1/4		15	411.3
+3.3	N Edge Parings	143	411.4
2	07	119	411.6
+6.3	S Edge	142	411.4
1/4		16	411.2
+8		28	410.0
cb		22	410.6
s		19	410.9
	1/4		
s		18	411.0
cb		19	410.9
+4		26	410.2

4/28/81

1/4		15	411.3
+57	S Edge Parings	123	411.6
2	07	103	411.8
+87	N Edge	124	411.6
1/4		13	411.5
cb		14	411.4
N		12	411.6
	ECB		
N		0.9	411.9
cb		0.8	412.0
+4		1.5	411.3
1/4		11	411.7
+3.3	N Edge Parings	110	411.7
2	07	0.89	411.9
+6.3	S Edge	109	411.7
1/4		13	411.5
+8		21	410.4
cb		18	411.0
s		16	411.2
	EL Berlin's		
s		15	411.3
cb		1.5	411.3
+4		2.2	410.6
1/4		1.1	411.7
+57	S Edge Parings	0.95	411.9
2	07	0.75	412.1
+87	N Edge	1.00	411.8

4/28/

1/4		08	411.9
+8		14	411.4
cb		05	412.3
+2		01	412.7
N		04	412.4
TP	887	421.25 ✓ 043	412.85 ✓

50' E of F.L. Becklin

N		69	414.4
cb		74	413.9
+2		77	413.6
+3		83	413.0
+5		80	413.3
1/4		80	413.3
+32 N Edge Parking		819	413.1
8 07 "		798	413.3
+62 S Edge "		812	413.1
1/4		84	412.9
+8		83	412.0
cb		89	412.4
S		86	412.7

100' E

Start

S		74	413.9
cb		77	413.6
+4		84	413.0
1/4		84	414.2
+48 S Edge Parking		708	414.3
8 07 "		681	414.5

4/25

+88 N Edge Parking	782	414.3
1/4	70	414.3
+7	70	414.3
cb	61	415.2
+5	54	415.9
1/4	50	416.3

150' E

N	42	417.1
1/4	46	416.7
cb	53	416.0
+5	61	415.2
1/4	58	415.5
+32 N Edge Parking	594	415.4
8 07 "	574	415.6
+62 S Edge "	596	415.4
1/4	63	415.0
+5	73	414.0
cb	69	415.4
+4	60	415.3
S	62	415.1

200' E

S	54	415.9
cb	56	415.7
1/4	61	415.2
1/4	52	416.1
+59 S Edge Parking	480	416.5
8 07 "	460	416.7

431.25

+89	N Edge Pavilion	480	416.5
44		50	416.3
+7		52	415.6
46		50	416.3
+2		42	417.1
4		37	417.6

250'E

N		30	418.3
+12		36	417.7
cb		42	417.1
+5		50	416.3
44		41	416.9
+31	N Edge Pavilion	390	417.4
4	on	372	417.6
+61	S Edge	391	417.4
44		41	417.2
cb		42	417.0
S		42	417.1

9 →

307.2 - N. L. Dayton

S		38	417.5
+10		38	417.4
+13		47	416.6
cb		50	416.3
+4		51	416.2
4		38	417.5
+6	S Edge Pavilion	322	418.1
4	on	303	418.3

431.25

+9	N Edge Pavilion	323	418.1
44		36	417.7
46		39	417.4
cb		34	417.9
45		27	418.6
N		21	419.2

W cb

N		30	418.3
cb		33	418.0
+5		38	417.5
44		36	417.7
+3	N Edge Pavilion	319	418.1
4	on	296	418.4
+6	S Edge	316	418.1
44		37	417.6
+8		50	416.3
cb		45	416.8
+5		37	417.6
S		36	417.7
4		36	417.7
cb		37	417.6
44		47	416.6
44		35	417.8
+6	S Edge Pavilion	310	418.2
4	on	290	418.4
+9	N Edge	314	418.2

42125

71	35	417.8
+6	37	417.6
Cb	33	418.0
N	31	418.2

El Cajon

N	26	418.7
Cb	30	418.3
+5	31	417.7
1/4	33	418.0

+3	N Edge Paving	273	418.27	13
----	---------------	-----	--------	----

2	on	290	418.4	35
---	----	-----	-------	----

+6	S Edge	311	418.2	14
----	--------	-----	-------	----

1/4	33	418.0
-----	----	-------

+8	46	416.7
----	----	-------

Cb	44	416.9
----	----	-------

+2	35	417.8
----	----	-------

S	36	417.7
---	----	-------

14

S	34	417.9
---	----	-------

+12	34	417.9
-----	----	-------

Cb	42	417.1
----	----	-------

+2	47	416.6
----	----	-------

1/4	32	418.1
-----	----	-------

+6	S Edge Paving	300	418.3	25
----	---------------	-----	-------	----

2	on	292	418.5	43
---	----	-----	-------	----

+9	N Edge	300	418.3
----	--------	-----	-------

1/2	32	418.1
-----	----	-------

42125

+6	35	417.8
----	----	-------

Cb	31	418.2
----	----	-------

N	29	418.4
---	----	-------

FCb

N	26	418.7
---	----	-------

Cb	30	418.3
----	----	-------

+5	33	418.0
----	----	-------

1/4	31	418.2
-----	----	-------

+3	N Edge Paving	293	418.4
----	---------------	-----	-------

2	on	273	418.6
---	----	-----	-------

+6	S Edge	296	418.4
----	--------	-----	-------

1/4	33	418.0
-----	----	-------

+8	46	416.7
----	----	-------

Cb	38	417.5
----	----	-------

S	33	418.0
---	----	-------

El Cajon

S	32	418.1
---	----	-------

Cb	34	417.9
----	----	-------

+4	43	417.0
----	----	-------

1/4	31	418.2
-----	----	-------

+6	S Edge Paving	290	418.4
----	---------------	-----	-------

2	on	270	418.6
---	----	-----	-------

+9	N Edge	293	418.4
----	--------	-----	-------

1/4	30	418.3
-----	----	-------

+6	33	418.0
----	----	-------

Cb	29	418.4
----	----	-------

N	19	418.4
---	----	-------

		421.25		419.22	NX Neo El Cajon + Dayton		422.01	
B.M.	478	422.01	197	419.22	N		42	419.7
		50' F			cb		42	419.2
N			48	419.3	+5		52	418.9
cb			47	419.4	1/4		47	419.4
+5			55	419.6	+8.9 N Edge Pointing		45.8	419.5
1/4			52	418.9	8 on "		43.2	419.8
+3	N Edge Pointing		52.8	418.8	+5.9 S Edge "		45.4	419.6
8	"		50.8	419.0	1/4		47	419.4
+6	S Edge "		52.5	418.7	+8		51	418.5
1/4			54	418.7	cb		55	418.6
+8			61	418.0	+6		46	419.5
cb			58	418.3	5		45	419.6
5			56	418.5				
		100' F					200' F	
S			51	419.0	5		44	419.7
+10			51	419.0	+9		44	419.7
cb			51	418.5	cb		53	418.8
+4			59	418.3	+4		61	418.0
1/4			50	419.7	1/4		44	419.7
+61	S Edge Pointing		49.5	419.13	+6.6 S Edge Pointing		41.2	420.0
8	"		47.4	419.4	8 on "		39.8	420.2
+9.1	N Edge "		49.1	419.1	+9.2 N Edge "		41.4	420.0
1/4			49	419.2	1/4		41	420.0
+7			52	418.9	+6		47	419.4
cb			47	419.4	cb		44	419.7
1			45	419.6	N		46	419.5
		150' F					250' F	
					N		45	419.6

12406

Cb		44	419.7
1/4		58	420.3
+28	N Edge Paving	373	420.4
S	on	253	420.6
+58	S Edge	375	420.4
1/4		41	420.0
+4		57	418.9
Cb		48	419.3
S		49	419.2
	300 E		
S		50	419.1
Cb		46	419.7
+1		52	418.9
+6		48	419.2
1/4		57	420.4
+62	S Edge Paving	320	420.8
S	on	307	421.0
+92	N Edge	322	420.8
1/4		34	420.7
Cb		38	420.3
N		41	420.0
	353.5 E - 1/4 55 th on N		
N		30	421.1
Cb		48	421.3
1/4		25	421.6
+27	N Edge Paving	259	421.5
S	on	235	421.7

42106

+57	S Edge Paving	258	421.5
1/4		27	421.4
+3		38	420.3
Cb		37	420.4
S		41	420.0
	Ncb		
S		38	420.3
Cb		30	421.1
1/4		26	421.5
+63	S Edge Paving	237	421.7
S	on	214	421.9
+93	N Edge	238	421.7
1/4		23	421.8
Cb		27	421.4
N		28	421.3
	1/4		
N		28	421.3
Cb		24	421.7
1/4		21	422.0
+27	N Edge Paving	228	421.8
S	on	204	422.0
+57	S Edge	225	421.8
1/4		21	421.7
+8		25	420.6
Cb		30	421.1
S		26	420.5
	S		

S		23	420.8
Cb		31	421.0
+7		24	420.7
1/4		23	421.8
+6.3	S Edge Paving	202	422.0
E	on "	190	422.2
+9.3	N Edge "	210	422.0
1/4		22	422.0
Cb		21	422.0
N		26	421.5
1/4			
N		26	421.5
Cb		22	421.9
1/4		19	422.2
+2.7	N Edge Paving	199	422.2
E	on "	171	422.4
+5.7	S Edge "	191	422.2
1/4		22	421.9
+5		32	420.9
Cb		30	421.1
S		29	421.2
1/4			
S		29	421.2
Cb		27	421.4
+6		31	421.0
1/4		20	422.1
+6.3	S Edge Paving	173	422.4

S	on Paving	252	422.6
+9.3	N Edge "	173	422.4
1/4		18	422.3
Cb		18	422.3
N		26	421.7
BM		128	422.2
EL 455.37			
N		13	422.8
Cb		14	422.7
1/4		15	422.6
+2.7	N Edge Paving	153	422.6
E	on "	130	422.8
+5.7	S Edge "	150	422.6
1/4		18	422.3
+8		32	421.1
Cb		26	421.5
S		27	421.4
1/4			
S		15	422.6
Cb		18	422.3
+7		18	422.3
1/4		08	423.3
+6.4	S Edge Paving	028	423.8
E	on "	008	424.0
+9.4	N Edge "	035	423.8
1/4		03	423.8
+7		06	423.5

Cb.		0.0	424.1
+7		0.5	423.6
N		0.4	423.7
TP	12.13	435.39	423.71
		100' E	
N		11.2	424.2
Cb		10.6	424.8
+3		11.1	424.3
1/4		10.3	425.1
+26	N Edge Paving	10.20	425.2
S	on	9.98	425.4
+56	S Edge	10.19	425.2
1/4		10.7	424.7
+5		12.0	423.4
Cb		11.7	423.7
S		11.9	423.5
		150' E	
S		10.6	424.8
+8		10.0	425.4
Cb		10.0	425.4
1/4		9.2	426.2
+64	S Edge Paving	8.76	426.6
S	on	8.55	426.9
+94	N Edge	8.77	426.6
1/4		8.8	426.6
+8		9.9	425.5
Cb		9.5	424.9

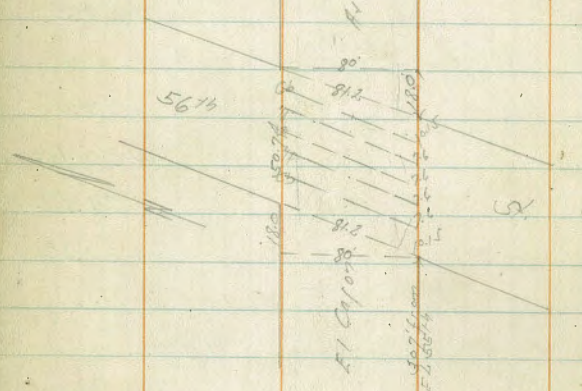
N		10.2	425.2	197' East of Corner Wall 8.20
		200' E		
N		8.5	426.9	
Cb		7.9	427.5	
1/4		7.4	428.0	
+25	N Edge Paving	7.25	428.1	
S	on	7.05	428.3	
+55	S Edge	7.35	428.1	
1/4		7.4	427.8	
Cb		8.0	427.4	
S		8.1	427.3	
		250' E		
S		5.4	430.0	
Cb		5.3	430.1	
1/4		5.5	429.9	
+65	S Edge Paving	5.09	430.3	
S	on	4.92	430.5	270' East of Corner Wall
+95	N Edge	5.21	430.2	107
1/4		5.4	430.0	
+5		6.0	429.4	
Cb		5.5	429.9	
1/4		5.9	429.5	
N		5.2	430.2	
		167	430.7	
		300' E		
N		3.5	432.9	
Cb		3.0	432.8	

43539

43526

73		26	433.2	432.8
44		34	432.0	
14		27	432.7	
72.5	N Edge Pav 199	235	433.0	
2	07 "	220	433.2	
155	S Edge "	240	433.0	
14		28	432.6	
cb		25	432.9	
S		27	432.7	
TP	10.71	415.76	0.84	434.55

76		131	432.2	
710		119	433.4	
cb		119	433.4	
N		119	433.4	
		10.7	434.6	31.5
cb		112	434.	wide 52.74
+6		115	433.8	911 7.6
14		119	434.0	
134	N Edge Pav 199	1107	434.2	
2	07 "	1105	434.2	4.3
154	S Edge "	1130	434.0	
14		117	433.6	
cb		120	433.3	
S		122	433.1	
		121	433.2	
cb		117	433.6	
14		111	434.2	
166	S Edge Pav 199	1010	434.7	
2	07 "	1041	434.9	
196	N Edge "	1019	434.8	
14		106	434.7	
cb		108	434.6	
X		103	435.0	
X		101	435.2	



56TH ST

S		121	433.2	
cb		120	433.3	
14		121	433.2	
166	S Edge Pav 199	1182	433.5	
2	07 "	1167	433.6	
196	N Edge "	1181	433.5	
14		120	433.3	

134	N Edge Pav 199	1107	434.2	
2	07 "	1105	434.2	4.3
154	S Edge "	1130	434.0	
14		117	433.6	
cb		120	433.3	
S		122	433.1	
		121	433.2	
cb		117	433.6	
14		111	434.2	
166	S Edge Pav 199	1010	434.7	
2	07 "	1041	434.9	
196	N Edge "	1019	434.8	
14		106	434.7	
cb		108	434.6	
X		103	435.0	
X		101	435.2	

cb		10.1	434.9
1/4		10.2	435.1
+2A	N Edge Paving	10.12	435.2
2	on	10.07	435.2
+5A	S Edge	10.32	435.0
1/4		10.9	434.4
cb		11.2	434.1
S		11.7	433.6
	2 51 th St		
S		10.8	434.5
cb		10.8	434.5
1/4		10.6	434.7
+6.6	S Edge Paving	9.84	435.5
2	on	9.61	435.7
+9.6	N Edge	9.55	435.7
1/4		9.7	435.6
cb		9.9	435.4
N		9.9	435.4
	1/4		
N		9.6	435.7
cb		9.7	435.6
1/4		9.2	436.1
+2A	N Edge Paving	9.12	436.2
2	on	9.06	436.2
+5A	S Edge	9.35	435.9
1/4		9.8	435.5
cb		10.6	434.7

S		10.3	435.0
	Ecb		
S		10.9	435.3
cb		10.2	435.1
1/4		9.6	435.7
+6.6	S Edge Paving	9.01	436.3
2	on	8.68	436.6
+9.6	N Edge	8.77	436.5
1/4		9.0	436.3
cb		9.3	436.0
N		9.3	436.1
	E 51 st St		
N		8.1	437.2
cb		8.1	436.9
+6		8.6	436.7
1/4		8.3	437.0
+3A	N Edge Paving	8.18	437.1
2	on	8.06	437.2
+5A	S Edge	8.30	437.0
1/4		8.8	436.5
cb		9.7	435.6
S		9.5	435.8
	E 51 st St 15' E of E 100's 90'		
S		8.5	436.8
cb		8.6	436.7
1/4		8.3	437.0
+6.6	S Edge Paving	7.78	437.6

44526

z		749	437.8
+96	N Edge Parking	770	437.6
71		78	437.5
+6		83	437.0
cb		82	437.1
H		81	437.2
	50' E		
H		12	440.4
cb		15	440.8
+5		50	440.3
+6		58	439.6
71		50	440.3
+24	N Edge Parking	471	440.6
z	on "	449	440.8
+54	S Edge "	473	440.6
71		52	440.1
cb		57	439.6
S		56	439.7
	100' E		
S		30	442.3
cb		21	443.2
71		20	443.3
+67	S Edge Parking	173	443.6
z	on "	148	443.8
+99	N Edge	165	443.7
71		19	443.4
47		28	442.5

44526

+8		142	443.6
cb		16	443.7
H		11	444.2
TP	119.5	452.03	0.18
		150' E	445.08
H		86	448.4
cb		91	447.9
+4		100	447.0
+5		110	446.0
71		106	446.4
+23	N Edge Parking	1048	446.5
z	on "	1028	446.7
+52	S Edge	1050	446.5
71		109	446.1
+6		102	446.8
cb		101	446.9
S		105	446.5
	200' E		
S		60	450.8
cb		50	451.1
71		70	449.8
71		77	449.3
+67	S Edge Parking	740	449.6
z	on "	724	449.7
+97	N Edge	748	449.5
71		75	449.5
+5		78	449.8

457.03

+9		67	450.3	
cb		51	451.6	
N		19	452.1	
	250'E			
N		14	455.6	
cb		3.0	454.0	
+7		13	452.7	
1/4		2.9	452.6	
+23	N Edge Parking	4.2	452.6	
8	on	4.2	452.7	
+53	S Edge	4.8	452.5	
+10		1.5	452.5	
1/4		3.5	453.5	
+7		2.1	454.9	
cb		1.9	455.1	
S		2.2	454.8	
TP	10.28	462.03 ✓	0.28	456.75 ✓
		300'E		
S		8.4	458.4	
cb		8.7	458.3	
+10		9.8	457.2	
1/4		10.7	456.3	
+7		11.8	455.2	
+68	S Edge Parking	11.60	455.4	
2	on	11.3	455.7	
+28	N Edge	11.61	455.4	
1/4		11.9	455.6	

467.03

+5		11.0	456.0
cb		9.0	458.0
N		8.5	458.5
	325'E = N.E. of Corral Dr		
N		5.8	460.2
300'		6.77	460.3 ✓
cb		7.2	459.7
+7		10.8	456.6
1/4		10.0	457.0
+22	N Edge Parking	9.20	457.1
2	on	9.50	457.2
+52	S Edge	10.00	457.0
+10		10.4	456.6
1/4		8.6	457.4
+3		8.5	458.5
cb		8.6	458.4
S		7.2	457.8
	8'E of H.L.		
S		7.0	460.0
cb		7.2	459.8
+10		8.2	458.8
1/4		9.1	457.9
+2		10.0	457.0
+68	S Edge Parking	9.69	457.3
2	on	9.46	457.5
+28	N Edge	9.62	457.4
1/4		9.7	457.3

467.03

17		101	456.9
Cb		7.3	459.7
N		6.5	460.5
	HCB		
N		8.9	458.1
Cb		9.6	457.4
1/4		9.4	457.6
+22	N Edge Parings	9.39	457.6
8	02	9.32	457.8
+52	S Edge	9.14	457.6
+10		9.7	457.3
1/4		8.9	458.1
+2		7.9	459.1
Cb		7.0	460.0
S		6.8	460.2
	N 1/4		
S		6.5	460.5
Cb		6.5	460.5
+10		7.5	459.5
1/4		8.1	458.9
+2		9.4	457.6
+68	S Edge Parings	9.03	458.0
8	02	8.80	458.2
+98	N Edge	8.93	458.1
1/4		9.0	458.0
Cb		9.2	457.8
N		9.3	457.8

467.03

			4
N		9.0	458.0
Cb		8.9	458.3
1/4		8.5	458.5
+22	N Edge Parings	8.48	458.5
8	02	8.33	458.7
+52	S Edge	8.50	458.5
+10		8.8	458.2
1/4		7.5	459.5
Cb		6.1	460.9
S		6.2	460.8
			1/4
S		5.1	461.4
Cb		5.1	461.4
1/4		7.1	459.9
+2		8.3	458.7
+68	S Edge Parings	8.02	459.0
8	02	7.81	459.2
+98	N Edge	8.00	459.0
1/4		8.0	459.0
Cb		8.3	459.7
N		8.7	458.3
	E Cb		
N		8.3	459.7
Cb		7.9	459.1
1/4		7.1	459.4
+22	N Edge Parings	7.53	459.5

467.03

80' side
12' Cbs
12' Qts

± on Pavine	7.27	459.6
+52 S Edge	7.57	459.4
+70	7.9	459.1
1/4	6.9	460.1
Cb	5.5	461.5
S	5.3	461.7
S.E. of ECB		
S	5.3	461.7
Cb	5.2	461.8
1/4	6.8	460.2
+2	7.8	459.2
+68 S Edge Pavine	7.32	459.6
± on "	7.19	459.8
+99 N Edge "	7.33	459.7
1/4	7.5	459.5
+5	7.9	459.1
Cb	6.2	460.7
N	4.9	462.1



467.03

(677)

BM	12.64	472.90	27	460.24	N. of NW El Cajon Hill
E.L. El Carrizo					
75 - EC			10.2	462.7	El Cajon side 12' Cbs 12' Qts
N			10.4	462.5	67' Pavine N. End of Pavine S. End of Hill
Cb			10.0	462.9	
79			10.8	462.1	
1/4			12.4	460.5	El Carrizo
13			12.5	459.4	51' side 12' Cbs 12' Qts
99.5 N Edge Pavine			12.80	460.1	
±			12.65	460.3	
+10. S Edge Pavine			12.85	460.1	
1/4			13.1	459.8	
72			12.5	460.4	
Cb			11.0	461.9	
S			11.0	461.9	
10.5 Center of Curve out					
S			10.0	462.9	
Cb			10.2	462.7	
11			11.7	461.2	
1/4			12.2	460.7	
+4.5 S Edge Pavine			12.04	460.9	
± on "			11.96	461.0	
+5 N Edge			12.15	460.8	
71			12.9	460.0	
71.2			11.8	461.1	
1/4			11.3		

472.90

90' wide

16 Obs

1450 ft

463.0

f5	99	463.0
cb	97	463.2
N	97	463.2
+9 - Center of Canal	102	462.7
	31' E - E.C. on N	
N	88	464.1
cb	93	463.6
+7	95	463.4
1/4	105	462.4
+9.5 N Edge Par. 107	1087	462.0
2 on "	1067	462.2
+10 S Edge "	1080	462.0
1/4	110	461.9
+8	105	462.4
cb	90	463.9
S	87	464.2
	50' E	
S	80	464.9
cb	86	464.3
+11	94	463.5
1/4	100	462.9
+11.5 S Edge Par. 107	974	463.2
2 on "	958	463.3
+5 N Edge "	976	463.1
1/4	93	463.6
cb	85	464.4
N	78	465.1

472.90

57

100' E

N	59	467.0
cb	57	467.2
1/4	69	466.0
+9.5 N Edge Par. 107	691	466.0
2 on "	676	466.1
+10 S Edge "	700	465.9
1/4	72	465.7
cb	68	466.1
S	62	466.7
	150' E	
S	44	468.5
cb	46	468.3
1/4	44	468.5
+11.5 S Edge Par. 107	436	468.5
2 on "	418	468.7
+5 N Edge "	434	468.5
1/4	48	468.7
+10	38	469.7
cb	36	469.3
N	39	469.0
	200' E - 1/4 58' 1/2 Station S	
N	22	470.5
+12	16	471.3
cb	24	470.5
1/4	27	470.2
+9.5 N Edge Par. 107	237	470.5

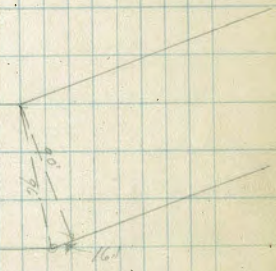
± on Paving	218	470.7
+10 S Edge "	240	470.5
1/4	28	470.1
cb	29	470.0
S	28	470.1
	1/4 cb	
S	24	470.5
cb	27	470.2
1/4	24	470.5
+4.5 S Edge Paving	208	470.8
± on "	193	471.0
+5 N Edge "	310	470.8
1/4	20	470.7
cb	15	471.4
N	20	470.9
	1/4	
N	18	471.1
cb	13	471.6
1/4	21	470.8
+9.5 N Edge Paving	188	471.0
± on "	169	471.2
+10 S Edge "	188	471.0
1/4	21	470.8
cb	26	470.3
S	22	470.6

172.90

584.5

El Cajon

El Cajon
200.0
Office Note



S	23	470.6
cb	24	470.5
1/4	18	471.1
+5 S Edge Paving	167	471.2
± on "	150	471.4
+5 N Edge "	149	471.7
1/4	17	471.2
1/4	09	472.0
cb	13	471.6
N	16	471.3
	1/4	
N	14	471.5
cb	10	471.9

47290

+8		06	472.3
7/4		1.7	471.2
+9.5	N Edge Pavings	1.99	471.5
±	on "	1.84	471.7
+10	S Edge "	1.48	471.4
7/4		1.8	471.1
cb		2.2	470.7
S		2.2	470.7
	FCB		
S		1.9	471.0
cb		1.9	470.0
7/4		1.4	471.5
+10.5	S Edge Pavings	1.33	471.6
±	on "	1.05	471.9
+5	N Edge "	1.23	471.7
7/4		1.3	471.6
cb		0.8	472.1
H		1.1	471.8
	E of 58° 07' S - PC on N		
H		1.0	471.9
cb		0.9	472.0
7/4		1.0	471.9
+9.5	N Edge Pavings	1.00	471.9
±	on "	0.85	472.1
+10	S Edge "	1.07	471.8
7/4		1.2	471.7
cb		1.8	471.1

47290

S		1.6	471.3
	18' E of A, 58° 00' S - Center of Curve on N		
S		1.2	471.7
cb		1.3	471.6
7/4		0.8	472.1
+9.5	N Edge Pavings	0.65	472.3
±	on "	0.56	472.3
+5	N Edge "	0.71	472.2
7/4		0.7	472.2
cb		0.3	472.6
H		0.7	472.2
+7.5	= Center of Curve	0.7	472.2
	25' E of F, 58° 00' S H of 58° Produced So on N		
-25		0.6	472.3
H		0.5	472.4
cb		0.1	472.8
7/4		0.7	472.2
+9.5	N Edge Pavings	0.59	472.3
±	on "	0.34	472.6
+10	S Edge "	0.44	472.5
7/4		0.6	472.3
+10		1.1	471.8
cb		0.6	472.3
±		0.3	472.6
S		0.9	472.0
TP	648	17891	0.94
			472.6

El Cofon

478.94

	HCB		
S		64	472.5
+8		65	472.4
cb		60	472.4
+5		67	472.2
7/4		64	472.5
+9.5 S Edge Paving		618	472.7
8 00 "		613	472.8
+5 N Edge "		635	472.6
7/4		64	472.5
cb		59	473.0
N		64	472.5
+25		61	472.8
	H 1/4	60	472.9
-25		62	472.7
N		59	473.0
cb		57	473.2
+8		64	472.5
7/4		630	472.6
+9.5 N Edge Paving		601	472.9
8 00 "		605	472.9
+10 S Edge "		63	472.6
7/4		66	472.3
+9		61	472.8
cb		63	472.6
S		61	472.8
	8 58 ^{1/4}	62	472.5
S		61	472.8
+8		62	472.5

478.94

61

		113	55
		cb	60
		+4	65
		7/4	60
		+9.5 S Edge Paving	593
		8 00 "	595
		+5 N Edge "	620
		7/4	60
		+6	53
		cb	57
		+25	62
			60
		-25	56
		N	60
		cb	56
		+8	52
		7/4	61
		+9.5 N Edge Paving	613
		8 00 "	596
		+10 S Edge "	598
		7/4	59
		+9	60
		cb	56
		+6	64
		S	61
			61
			61
			63
			61
			63

17894

cb		56	473.4
18		60	472.9
74		57	473.2
+4.5	S Edge Paving	562	473.3
8	on "	567	473.2
+5	N Edge "	606	472.8
74		57	473.2
+7		51	473.8
cb		56	473.3
H		59	473.0
+25		56	473.3
	E. L. 58 th St. Prod. Co.		
-25		56	473.3
H		55	473.4
cb		55.5	473.4
+9		49	474.0
74		54	473.6
+9.5	N Edge Paving	591	473.0
8	on "	519	473.4
+10	S Edge "	548	473.5
74		55	473.4
+7		56	473.3
cb		53	473.6
S		57	473.2
	7'E of E.L. 58 th = Center of Curve. on H.		
S		56	473.3
cb		52	473.7

1789

74		52	473.7
+4.5	S Edge Paving	525	473.7
8	on "	534	473.6
+5	N Edge "	523	473.2
74		51	473.5
16		47	474.2
cb		50	473.9
H		54	473.5
+7.5	Center Curve	53	473.6
	25'E of E.L. 58 th = PC on H.		
H		53	473.4
cb		53	473.6
+5		47	474.2
74		53	473.6
+9	N Edge Paving	554	473.4
8	on "	516	473.7
+7.5	S Edge "	511	473.8
74		52	473.7
cb		52	473.7
8		51	473.8
	50'E		
S		46	474.3
cb		52	473.7
74		50	473.9
+9	S Edge Paving	478	474.1
8	on "	481	474.1
+9.5	N Edge "	525	473.6

1/4	49	474.0
cb	46	474.3
N	50	473.7
76.9 E of A on N		
N	45	474.4
cb	46	474.3
1/4	49	474.0
+33 N Edge Parking	497	473.9
2	48	474.4
+38 S Edge "	456	474.7
1/2	50	473.9
cb	47	474.2
S	48	474.1
76.9 East N - Δ 94.8 East S		
S	47	474.2
+8	48	474.1
cb	45	474.4
1/4	47	474.2
+137 S Edge Parking	446	474.4
2	48	474.5
+142 N Edge "	493	474.0
1/2	50	473.9
cb	45	474.4
N	45	474.4
Δ on N 161 East S		
N	45	474.4
cb	41	474.9

see sketch
Diagram 96 Page 59
El Copo
Pic 96
Col 170
Obs 15.8

1/2	52	473.7
N Edge Parking	488	474.0
2	47	474.5
S Edge "	438	474.5
1/4	48	474.1
cb	48	474.1
S	49	474.0
50' E of A on N		
S	45	474.4
cb	48	474.1
1/4	46	474.5
+65 S Edge Parking	438	474.5
2	47	474.4
+70 N Edge "	418	474.2
1/4	47	474.2
cb	46	474.7
N	40	474.9
100' E		
N	44	474.5
cb	41	474.8
1/4	45	474.7
1/4	50	473.9
+22 N Edge Parking	481	474.1
2	45	474.4
+129 S Edge "	450	474.4
1/4	47	473.8
cb	50	473.9

50' E of A on N
161 East S
105 East S
E of 1/4 1/2 2/2

47894

S		46	474.3
	150 E		
S		51	473.8
cb		53	473.6
1/4		48	474.1
+18	S Edge Parking	482	474.1
2	on "	186	474.0
+63	N Edge "	503	473.9
1/4		49	474.0
+4		49	474.0
cb		41	474.8
+10		51	473.8
N		51	473.8
	200 E		
N		55	473.4
+6		55	473.4
cb		47	474.2
1/4		51	473.8
+5		52	473.5
+122	N Edge Parking	505	473.9
2	on "	186	474.0
+127	S Edge "	502	473.9
1/4		51	473.8
+8		51	473.3
cb		53	473.6
S		53	473.6
	221 E - 25.00 N		
S		51	473.5

47894

+14		50	473.9
cb		55	473.4
1/4		53	473.6
+118	S Edge Parking	520	473.7
2	on "	186	473.8
+23	N Edge "	522	473.7
1/4		50	473.9
cb		50	473.9
N		56	473.3
TP	238 - 471.30 ✓	502	473.92 ✓
	2399 E - Center of Curvature		
-75	Cent Curve	25	473.8
N		27	473.6
1/4		29	473.4
+10		28	474.1
cb		21	474.2 (476.5)
1/4		25	473.8
+122	N Edge Parking	265	473.7
2	on "	252	473.8
+127	S Edge "	265	473.7
1/4		25	473.8 (476)
cb		28	473.5
+3		19	
+8		31	
S		29	473.4
	241 E - N. Alicia Prod. Se		
S		24	473.9

26		30	473.3
cb		22	473.6
72		18	473.5
118	S Edge Parking	272	473.6
E	on	210	473.7
+2.3	N Edge	271	473.6
+8		30	473.3
39		24	473.9
74		26	473.7
76		24	473.9
78		19	474.4
cb		20	474.3
+9		29	473.4
N		29	473.4
+85	IC	29	473.4
	Ncb		
-25		29	473.4
N		29	473.4
+9		21	474.2
cb		21	474.2
37		19	474.4
38		21	474.2
74		26	473.7
77		30	473.3
+122	N Edge Parking	287	473.4
L	on	275	473.6
+127	S Edge	289	473.4

Alice
50 N do
10 Cbs
75 Qts

74		29	473.4
cb		29	473.4
S		21	473.7
	N/A		
S		26	473.7
+7		32	473.1
cb		25	473.8
74		29	473.4
118	S Edge Parking	293	473.4
E	on	226	473.4
122	N Edge	286	473.3
+5		32	473.1
76		28	473.5
74		28	473.5
38		31	474.2
cb		21	474.2
39		22	474.1
N		28	473.5
+25		30	473.3
	L Alice		
-25		30	473.3
N		28	473.5
77		24	473.9
cb		21	474.2
74		28	473.5
77		33	473.0
+122	N Edge Parking	292	473.2

476.30

2 on Pavint	308	473.3
+12.7 S Edge	308	473.2
74	311	473.2
cb	29	473.4
+2	23	474.0
+11	32	473.1
5	25	473.8
E 1/4		
5	28	473.5
+7	32	473.1
+14	25	473.8
cb	30	473.3
74	23	473.0
+18 S Edge Pavint	322	473.1
2 on	316	473.1
+23 N Edge	344	473.1
+5	21	472.7
+6	28	473.5
74	28	473.4
+8	20	474.3
cb	22	474.1
+7	28	473.5
4	31	473.2
+25	31	473.2
Ecb		
+25	33	473.0
4	32	473.1

476.30

66

29		473.4
410	25	473.8
cb	21	473.9
74	22	474.1
74	31	473.2
26	21	473.2
17	38	472.5
+122 N Edge Pavint	340	472.9
2 on	332	473.0
+127 S Edge	341	472.9
74	35	472.8
26	38	472.5
cb	26	473.7
+3	25	473.8
+9	33	473.0
5	28	473.5
E L. Alice Prod Co		
5	31	473.2
49	34	472.9
+14	27	473.6
cb	31	473.2
+6	39	472.4
2	38	472.5
+18 S Edge Pavint	370	472.6
2 on	362	472.7
+23 N Edge	370	472.6
+5	41	472.2

+6	22	473.1
7a	23	473.4
+8	23	474.0
cb	24	473.9
+9	24	473.9
12	23	473.0
+15	30	473.3
9' E of FL Alice - Center of Curve		
-25	21	472.7
N	27	472.6
+9	21	473.7
cb	27	473.6
7a	29	473.5
12	32	473.0
+16	28	472.5
+22	26	471.7
+122 N Edge Pavilion	216	471.1
2 on "	208	472.2 ✓
+127 S Edge "	215	472.1
12	25	472.1
+6	43	472.0
+9	36	472.7
cb	33	473.0
3	34	472.9
25' E of FL Alice - EC on N		
5	32	473.1
+7	39	472.4

20	33	473.0
+5	40	472.3
+6	46	471.7
1/4	46	471.7
+118 S Edge Pavilion	449	471.8
2 on "	439	471.9
+223 N Edge "	450	471.9
+5	49	471.4
+6	39	472.4
1/4	34	472.9
cb	33	473.0
10	32	473.1
N	40	472.3
TP	0.95	474.87 ✓
		238 473.92 ✓
50' E of FL Alice		
N	31	471.8
cb	25	472.4
+6	21	472.8
1/4	28	472.1
+5	34	471.5
+6	43	470.6
+122 N Edge Pavilion	409	470.9
2 on "	389	471.0
+127 S Edge "	391	471.0
1/4	403	470.9
77	39	471.9
cb	33	471.6

El Capon

17187

S		3.3	471.6
	100' E		
S		18	470.1
Cb		5.1	469.8
+9		5.9	469.0
1/4		6.0	468.9
118	S Edge Paving	579	469.1
8	on "	572	469.2
123	N Edge "	579	469.1
+8		58	469.1
111		52	469.7
1/4		1.7	470.2
+3		1.3	470.6
Cb		1.4	470.5
+6		1.4	470.5
N		5.0	469.9
	150' E		
N		6.8	468.0
Cb		6.1	468.5
+8		6.2	468.7
1/4		6.7	468.2
+4		6.8	468.1
+5		7.3	467.6
1127	N Edge Paving	758	467.3
8	on "	744	467.5
1127	S Edge "	758	467.3
1/4		7.6	467.3

42487

68
1-437

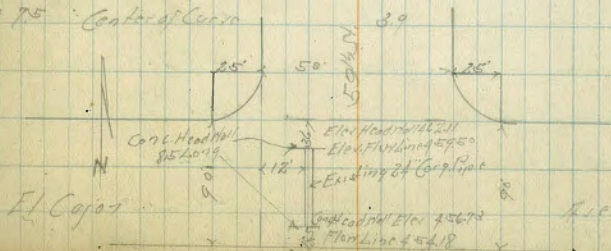
Cb		7.3	467.6
S		7.0	467.9
	200' E		
S		9.3	465.6
17		10.4	464.5
112		9.3	465.6
Cb		9.1	465.8
18		9.9	465.0
1/4		9.1	465.5
118	S Edge Paving	942	465.5
8	on "	930	465.6
123	N Edge "	935	465.6
1/4		9.6	465.3
17		8.9	466.0
Cb		8.6	466.3
N		8.8	466.1
	225' E		
N		10.4	464.5
Cb		10.0	464.9
1/4		10.3	464.6
1127	N Edge Paving	1038	464.6
8	on "	1018	464.7 ✓
1127	S Edge	1029	464.7
1/4		10.3	464.6
Cb		11.3	463.6
17		12.7	462.2
S		12.2	462.7

474.87

TP	290	465.15 ✓	12.62	462.53 ✓
		250°E		
-10			7.9	457.3
5			6.0	459.2
+14			4.7	460.5
cb			4.1	461.1
+7			2.6	462.6
+12			1.6	463.6
1/4			1.5	463.7
+1.8	S Edge Parking		1.38	463.8
5	on		1.36	463.8
+2.3	N Edge "		1.43	463.8
1/4			2.2	463.0
+6			3.1	462.1
cb			2.6	462.6
1/4			2.7	462.5
		275°E - PC cut		
1/4			3.9	461.3
+12			4.7	460.5
cb			4.5	460.7
1/4			3.7	461.5
+5			3.1	462.1
+7			2.6	462.6
+12.2	N Edge Parking		2.19	463.0
5	on		2.07	463.1
+12.7	S Edge		2.16	463.0

465.15

1/4			2.2	463.0
+7			2.1	462.6
cb			5.7	459.5
+6			8.4	456.8
5			10.1	455.1
+1.5			11.4	453.8
		292°E - Center of Curve cut		
-20			13.5	451.7
5			12.6	452.6
+7			11.7	453.5
cb			6.6	458.6
+7			3.7	461.5
1/4			3.9	462.3
+1.8	S Edge Parking		3.78	462.4
5	on		2.57	462.6
+2.2	N Edge		2.71	462.5
+9			3.0	462.2
+10			3.7	461.5
1/4			4.2	461.0
cb			4.8	460.4
1/4			4.0	461.2
+7.5	Center of Curve		3.9	461.3



3005 = 46515

-25		41	461.1	597652
N		39	461.3	50' width 10' Cb 75' Q15
Cb		47	460.5	
1/4		43	460.9	
+1		39	461.3	
+6		31	462.1	
+122	N Edge Paving	290	462.3	
2	07	278	462.4	✓
+127	S Edge	291	462.3	
1/4		29	462.3	
+7		44	460.8	
Cb		60	459.2	
+18		123	452.9	
S		130	452.2	
+20		142	451.0	
	N.Cb			
-26		145	450.7	
-14		130	452.2	
S		127	452.5	
7.5		117	453.5	
Cb		89	456.3	
19		37	461.3	
14		31	461.8	
18	S Edge Paving	315	462.0	
2	07	252	462.3	
123	N Edge	302	462.2	

+9		30	462.2	
711		52	460.0	
1/4		53	459.9	
Cb		42	460.3	
N		42	461.0	
125		43	460.9	
	N 1/4			
-25		42	461.0	
N		45	460.7	
Cb		50	460.2	
1/4		43	460.9	
16		32	462.0	
+122	N Edge Paving	311	462.1	
2	07	302	462.2	
+127	S Edge	325	462.0	
1/4		33	461.9	
17		41	461.1	
Cb		79	457.8	
112		123	452.9	
S		127	452.5	
120		131	452.1	
	2 597652			
-20		119	453.3	
S		111	454.1	
19		94	455.8	
Cb		62	458.9	
17		55	461.7	

El Cajon

465.75

1/2		32	462.0
+2.8	S Edge Paving	334	461.9
2	on	310	462.1
+2.3	N Edge	316	462.0
+8		31	462.1
+11		45	460.7
1/4		49	460.3
Ob		47	460.5
N		44	460.8
+2.5		41	461.1
	E 1/4		
-2.5		39	461.3
N		43	460.9
Ob		45	460.7
1/4		40	461.2
1/4		42	461.0
+7		33	461.9
+12.2	N Edge Paving	320	462.00
2	on	309	462.1
+12.7	S Edge	333	461.9
1/4		33	461.9
+7		31	462.1
Ob		67	459.5
+11		84	456.8
5		90	456.2
+15		108	454.9
TD	807	466.92	630

466.75

-15		11.5	455.4
S		9.8	457.1
Ob		9.0	457.9
+10		5.5	461.4
1/4		5.0	461.9
+18	S Edge Paving	5.9	461.9
2	on	4.3	462.0
+2.3	N Edge	5.03	461.9
+9		5.3	461.6
+12		6.1	460.8
1/4		6.1	460.8
Ob		6.2	460.7
N		5.8	461.1
+2.5		5.4	461.5
	E 1/2 59 th Prod So.		
-2.5	- I.C.	5.2	461.7
N		5.8	461.1
Ob		6.0	460.9
1/4		5.9	461.0
+5		5.3	461.6
+12.2	N Edge Paving	5.09	461.8
2	on	4.86	462.0
+12.7	S Edge	5.05	461.8
1/4		5.1	461.8
+8		5.4	461.5
Ob		7.3	459.6
S		8.8	458.1

+15		10.4	456.5
	7° E of El of 50° 34' - Center of Curve and		
-10		8.6	458.3
S		7.2	459.7 ✓
+10		6.2	460.7
Cb		5.5	461.4
1/4		5.0	461.9
+1.8	S Edge Parking	1.95	462.0
1/2	on	1.87	462.1
+2.3	N Edge	1.93	462.0
1/4		1.55	461.4
Cb		1.52	461.7
N		1.50	461.9 ✓
+7.5	Center of Curve	1.48	462.1
	25° E of El of 50° 34' - E. on N		
N		1.45	462.4
Cb		1.49	462.0
+10		1.57	461.2
1/4		1.55	461.4
+5		1.50	461.9
+12.2	N Edge Parking	1.87	462.0
1/2	on	1.76	462.2 ✓
+12.7	S Edge	1.81	462.1
1/4		1.50	461.9
Cb		1.53	461.6
S		1.55	461.4
TP	514	468.48 ✓	463.34 ✓

	50° E	6.5	462.0
		6.3	462.2
		6.3	462.2
	+1.7 S Edge Parking	6.15	462.2
	1/2 on	6.05	462.4
	+3.2 N Edge	6.13	462.4
	1/4	6.2	462.3
	Cb	5.3	463.2
	N	5.2	463.3 ✓
	100° E		
	N	3.1	465.4 ✓
	Cb	3.4	465.1
	1/4	4.1	464.1
	+6	4.1	464.1
	+7	5.8	462.7
	+12.3 N Edge Parking	5.36	463.1
	1/2 on	5.21	463.3
	+12.8 S Edge	5.39	463.1
	1/4	5.1	462.9
	Cb	5.5	463.0
	S	4.9	463.6 ✓
	on Canal Island 2 Gas Pumps	4.37	464.1
	150° E		
	S	4.5	464.0 ✓
	Cb	4.6	463.9
	1/4	4.9	463.6

El Cajon

46848

+17	S Edge Parking	472	463.8
2	09	452	463.9 ✓
+22	N Edge	470	463.8
+6		51	463.4
+8		29	465.6
1/4		27	465.8
Cb		19	466.6 ✓
N		20	466.5 ✓
	170° N		
N		14	467.1 ✓
Cb		15	467.0
1/4		24	466.1
+5		33	465.2
+6		48	463.7
+123	NE Edge Parking	438	464.1
2	02	425	464.2
+127	S Edge	425	464.1
1/4		43	464.2
Cb		36	464.9
S		27	465.8 ✓
	200° E		
S		21	466.4 ✓
Cb		26	465.9
+8		32	465.3
1/4		10	464.5
+16	S Edge Parking	390	464.6
2	02	385	464.7 ✓

46848

73

+214	Edge Parking	393	464.6
+6		44	464.1
+8		25	466.0
1/4		18	466.7
Cb		12	467.3
N		12	467.3 ✓
	250° E		
N		15	467.0 ✓
Cb		15	467.0
1/4		18	466.6
+9		39	464.6
+124	N Edge Parking	340	464.9
2	02	349	465.0
+129	S Edge	360	464.9
1/4		37	464.8
Cb		28	465.7
S		32	465.3
	275° E = PC 00 N		
S	02 Core Drive & Ground	315	465.3 ✓
Cb		32	465.3
1/4		31	464.9
+16	S Edge Parking	352	465.0
2	02	341	465.1 ✓
+21	N Edge	352	465.0
+8		38	464.7
+11		25	466.0
1/4		24	466.1

Fl Coy 07

+68.48

468.48

74

Cb	20	466.5
N - P.C.	19	466.6
	293' E = Center of Course end	
-75 Center of Course	18	466.3
N	23	466.2
Cb	23	466.2
1/4	28	465.7
1/4	37	464.8
+124 N Edge Paving	347	465.0
2 00 "	335	465.1
+129 S Edge "	347	465.0
1/2	37	464.8
17	33	465.2
Cb	31	465.4
S	32	465.3
	300' E	
S	34	465.1
Cb	31	465.4
17	35	465.0
1/4	36	464.9
+16 S Edge Paving	347	465.0
2 00 "	336	465.1
+21 N Edge "	346	465.0
210	37	464.8
1/4	27	465.8
Cb	28	466.2
N	23	466.2

Esther
50' wide
10' Cb's
750'±

+75	23	466.2
	N Cb	
25	21	466.1
N	26	465.9
Cb	26	465.9
1/4	29	465.6
+124 N Edge Paving	348	465.1
2 00 "	339	465.2
+129 S Edge "	343	465.1
1/4	35	465.0
Cb	34	465.1
S	34	465.1
	1/4	
S 20' Conc Drive	36	464.9
Cb	34	465.1
1/4	34	465.1
+16 S Edge Paving	337	465.1
2 00 "	335	465.2
+21 N Edge "	348	465.1
1/4	31	465.4
Cb	28	465.7
N	26	465.9
+75	28	465.7
7P 250	204	466.44
	2 Esther	
-25	30	465.9
N	31	465.8

Map No.
E 10110
Opp 5555
466.44

El Cajon

468.94

Cb		32	465.7
1/4		36	465.3
+124 N Edge Parking		384	465.0
2 on "		372	465.24
+129 S Edge "		387	465.0
1/4		40	464.9
Cb		39	465.0
S		40	464.9
	1/4		
S		42	464.7
Cb		39	465.0
1/4		39	465.0
+16 S Edge Parking		384	465.0
2 on "		368	465.24
+21 N Edge "		379	465.1
29		42	464.7
1/4		37	465.2
Cb		34	465.5
N		31	465.9 ✓
+25		33	465.6
	Ecb		
-25		34	465.5
N		35	465.4 ✓
Cb		26	465.3
1/4		28	465.1
+5		43	464.6
+124 N Edge Parking		278	465.1

75

468.94

2 on Parking		365	465.3
+129 S Edge "		383	465.1
1/4		39	465.0
Cb		39	465.0
S		42	464.6
	E.L. of Esth...		
S		41	464.9
Cb		39	465.0
1/4		39	465.0
+16 S Edge Parking		383	465.1
2 on "		372	465.2 ✓
+21 N Edge "		365	465.3
+10		42	464.7
1/4		38	465.1
Cb		37	465.2
N		34	465.5
+25 F.C.		35	465.4
	7.5 - Center of Curve on N		
-25 - Center of Curve		34	465.5 ✓
N		35	465.4
Cb		38	465.1
1/4		38	465.1
25		42	464.7
+124 N Edge Parking		367	465.2
2 on "		359	465.3 ✓
+129 S Edge "		382	465.1
1/4		39	465.0

40897

75		42	464.7
76		38	465.1
cb		40	464.9
S		44	464.5
	25' E		
	ES. of N		
S		49	464.0
cb		46	464.3
79		36	465.3
110		40	464.9
1/4		38	465.1
115	S Edge Paving	369	465.2
2	07	362	465.34
12	N Edge	373	465.2
110		42	464.7
14		40	464.9
cb		40	464.9
N		38	465.1 ✓
	50' E		
N		40	464.9 ✓
cb		41	464.8
1/4		39	465.0
74		42	464.7
112.5	N Edge Paving	368	465.2
2	07	353	465.4
112	S Edge	374	465.2
1/4		39	465.0
76		40	464.9

40898

cb		51	463.8
S		55	463.4 ✓
	100' E		
S		49	464.0 ✓
cb		42	464.7
75		38	465.1
79		43	464.6
1/4		37	465.2
115	S Edge Paving	356	465.3
2	07	345	465.3 ✓
12	N Edge	354	465.4
1/4		38	465.1
cb		38	465.1
N		35	465.4
	150' E		
N		27	466.2
cb		31	465.8
1/4		35	465.4
112.5	N Edge Paving	350	465.4
2	07	335	465.5
113	S Edge	348	465.4
1/4		36	465.3
77		42	464.7
cb		42	464.7
S		46	464.3 ✓
	176' E = 151' of 60% Reduced S.		
S		45	464.4 ✓

12.6.26

BM	1.36	389.53		387.17	NE Mon El Cajon x East St
TP	3.79	379.47	129.5	375.58	
TP	11.92	391.18	0.21	379.21	
TP	10.27	401.45	0.10	391.08	
BM			7.19	394.26	Conc. Mon on NE El Cajon 79.5 ELD 27.500
TP	101.5	108.27	3.33	398.12	
BM			6.22	402.05	NW Mon 154.45 El Cajon x Pacific
TP	9.09	417.09	0.27	408.00	
TP	6.54	423.28	0.35	416.74	
BM	5.60	424.88	4.00	419.28	NW Mon El Cajon x Dayton
BM			2.10	422.78	NE Mon 55.75 El Cajon x 9th St
TP	12.91	437.45	0.34	424.54	
BM			1.63	435.92	S.E. P.P. El Cajon x 55th St Hwy 160
TP	11.39	447.93	0.91	436.54	
TP	11.48	459.26	0.15	447.28	
TP	10.80	469.38	0.68	458.58	
BM			9.12	460.26	NW Mon Contact El Cajon x El Cerrillo
TP	9.70	478.84	0.24	469.14	
BM			4.18	474.66	Conc. Mon S.E. El Cajon El Cajon - East St
TP	1.09	473.96	5.97	472.87	
TP	6.28	462.59	6.65	462.31	
BM			3.17	466.43	Conc. Mon N.E. El Cajon opp. S.E. House
TP	2.73	462.71	2.61	466.28	
BM			7.99	461.72	Conc. Mon S.E. El Cajon El Cajon x

DIRECTIONS FOR USE OF TABLES

TABLE No. 1.

Distance of slope stake from side or shoulder stake for any width roadway, slope 1 1/2 to 1. If ground is nearly level, the cut or fill at side stake is located by the double entry method in left column and top row. The number in body of table in same row and column gives distance

cut
fill
1 1/2
2

from side stake to slope stake. If ground is not

IMPROVED TABLES AND INFORMATION

TABLE No. 2.

To find Tangent and External for curve of any other degree, divide by degree of curve and add correction found in column of corrections. Degree of curve with a given T may be found by dividing tangent (or external) opposite T by given tangent (or external). The distance from a point on the tangent to the curve is very nearly the square of the tangent length divided by twice the radius.