

1171

LAST

FIELD BOOK

No. 385

Our Leather Bound Engineers Note Books are carried in the following rulings:

- No. 380 LEVEL BOOK. Left and Right Hand Page the same as Left Hand Page of this Book.
- No. 382 FIELD BOOK. Left Hand Page as in this Book, Right Hand Page 4 x 4 to the inch, Center Line Red.
- No. 384 MINING TRANSIT BOOK. Left Hand Page as in this Book, Right Hand Page 8x8 to the inch, Center Line Red.
- No. 385 FIELD BOOK. Left Hand Page as in this Book, Right Hand Page 8 vertical and 4 horizontal lines to the inch, Center Line Red.

We also carry the Note Books listed above, bound in extra strong Fabri-Hide (otherwise the same quality of book), which can be furnished at a somewhat lower price.

In ordering Fabri-Hide covered books, add the letter "F" to catalog number.

THE FREDERICK POST CO.

ENGINEERING and DRAFTING SUPPLIES

IRVING PARK STATION

CHICAGO, ILL.

92 FIFTH ST.
PORTLAND, ORE.

75 NEW MONTGOMERY ST.
SAN FRANCISCO, CAL.

AGENTS FOR

"BERGER" TRANSITS and LEVELS

"GURLEY" SURVEYING and HYDRAULIC INSTRUMENTS

"CHICAGO" STEEL TAPES, etc.

MICROFILMED

DEC 21 1964

Indexed

47 th St	Univ. to Polk	1 - 4
Merilo	" " "	5 - 9
"	El Cajon. 250' South	10 - 12
"	Polk to Orange	13 - 15
46	Univ. " Orange.	16 - 22
48	"	23 - 48

Orange Ave.	33 rd South to Boundary	62 - 66
Bancroft.	Orange to Boundary	67 - 70

Alley Block 16A.	Univ. Hts	49-50
" " 2	Gurwell Hts	51-54
" " 61	City Hts	57-56
" " 9	Terralta	57-58
" " 58	City Hts	59-60
" " 11	Univ. Hts	61-62
" " 74	" "	71-73
" " 21	" "	74-75
" " 2	Gurwell	76-78

Cross Section 47th St.
University to Park

60' wide
15' Obs
9' Obs

B.M.	5.34	346.02	340.68
		N.L. University	
F		16	341.42
Cb	Top Conc.	4.99	341.03
Gutter	"	Passing	5.44
1/4	"	"	5.11
2	"	"	4.85
1/4	"	"	4.99
Gutter	"	"	5.31
Cb	Top Conc.	4.48	341.54
N	on Conc. Walk	1.25	341.77
		2' N	
N	on Conc. Walk	4.20	341.82
Cb		4.1	341.42
1/4		4.8	341.22
2		4.8	341.22
1/4		4.8	341.22
+3		4.5	341.52
Cb		2.7	343.32
F		1.8	344.22
		50' N	
F		0.8	345.22
Cb		1.2	345.82
+1		6.2	343.8
1/4		2.1	343.6

Plotted on old Profile
March 16-27 1944

NOT B.P.
University
of Chicago

346.02

2		2.0	344.0
1/4		2.3	343.7
Cb		2.5	343.5
N	on Conc. Walk	2.8	343.2
		75' N	N. End Conc. Walk
N	on Conc. Walk	2.3	343.7
Cb		1.8	344.2
1/4		1.6	344.4
2		1.5	344.5
1/4		1.7	344.3
Cb		0.8	345.2
F		0.5	345.5
T.P.	5.94	352.57	0.37
		100' N	
F		5.0	346.6
Cb		5.5	346.1
1/4		6.3	345.3
1/4		6.5	345.1
2		6.5	345.1
1/4		6.5	345.1
Cb		6.0	345.4
N		5.7	345.9
	on Conc. Drive	5.49	346.1
		150' N	
N		5.0	346.6
Cb		5.2	346.4

12/10/44
5:55 PM
Bliss
Northrup

75' N on Conc. Walk
N. End Conc. Walk
Northrup

15	57	345.9
14	58	345.8
2	51	346.0
14	58	345.8
14	51	346.0
Cb	51	346.5
E	48	346.8
200' N		
E	44	347.2
Cb	48	346.8
14	52	346.4
14	52	346.4
2	48	346.7
14	51	346.5
14	54	346.2
Cb	46	347.0
14	48	346.8
250' N		
14	44	347.2
Cb	46	347.0
75	50	346.6
14	48	346.8
2	46	347.0
14	49	346.7
14	51	346.5
Cb	47	346.9

312' No. EL
Conc Walk
423
347.36

30' No. EL
Conc Walk
419
347.40

275' No. EL
Conc Walk
416
347.13

E	46	347.0
300' N		
E	48	346.8
Cb	48	346.8
14	52	346.4
14	52	346.4
2	48	346.8
14	50	346.6
14	51	346.5
Cb	45	347.1
14	45	347.1
350' N		
14	54	346.2
Cb	52	345.9
16	62	345.4
14	59	345.7
E	55	346.1
14	58	345.8
14	61	345.5
Cb	52	345.3
E	52	345.4
400' N		
E	74	344.2
Cb	74	344.2
14	75	344.1
Cb	84	343.2

312' No. EL
Conc Walk
423
346.57

322' No. EL
Conc Walk
425
347.1

1/4	8.0	343.6	
2	7.6	344.0	413 No. 52 Conc. Walk
1/4	8.0	343.6	726 343.43
+3	8.3	343.3	115 No. 52 Conc. Walk
cb	7.7	344.4	960 340.99
N	7.0	344.6	120 No. 52 Conc. Walk
	450' N		800 343.06
N	8.9	342.7	115 No. 52 Conc. Walk
cb	9.1	342.2	872 342.39
+5	10.5	341.1	
1/4	10.4	341.2	
2	10.1	341.5	452' N on 111 Conc. Walk
1/4	10.6	344.0	900 342.36
cb	10.7	340.9	
E	10.8	340.8	
	500' N		
F	13.1	338.2	
cb	12.7	338.9	
1/4	12.0	339.6	
2	11.4	340.2	
1/4	11.7	339.9	
cb	11.8	340.4	
N	9.9	341.7	
	550' N		
N	10.1	341.5	
cb	11.0	340.6	

1/4	11.8	339.6	
1/4	12.0	339.6	
2	13.5	339.1	
1/4	12.7	338.9	
cb	13.6	338.0	
F	14.7	336.9	
TP	5.25	346.27	10.57
			341.02
			on 111 Conc. Walk 47' Polk
			600' N = S L Polk
F	9.1	337.2	Polk
+10	9.3	337.0	40' wide 6.5' cb 6.75' 4.5'
cb	8.5	337.8	
1/4	6.7	339.6	
2	6.8	339.5	
1/4	6.6	339.8	
cb	6.8	339.5	
N	5.4	340.9	
	5' cb		
N	5.7	340.4	
cb	6.4	339.9	
1/4	6.4	339.9	
2	6.6	339.7	
1/4	6.7	339.6	
cb	6.9	339.4	
F	7.1	338.9	
	1/4		
	6.0	340.3	
	6.2	340.1	

17/12/54

T 346.27

1/4	53	340.0
2	51	340.2
1/4	58	340.5
Cb	59	340.4
H	57	340.6
	2 Polk	
H	50	341.3
Cb	53	341.0
1/4	53	341.0
2	53	341.0
1/4	55	340.8
Cb	57	340.6
E	57	340.6
	1/4	
E	58	340.5
Cb	56	340.7
1/4	58	340.6
2	57	340.6
1/4	56	340.7
Cb	55	340.8
H	57	341.2
	HCB	
H	54	340.9
Cb	57	340.6
1/4	56	340.7
2	56	340.7

346.47

1/4	56	340.7
Cb	56	340.7
E	57	340.6
	N.L. Polk	
E	55	340.8
Cb Top Conc	525	341.02
Gutter	54	340.9
1/4	55	340.8
2	54	340.9
1/4	55	340.8
Gutter	55	340.8
Cb Top Conc	536	340.91
H	55	340.8

Cross Section Maple Ave
University to Park

60' Hda
12' Cb
9' Gk

34811

BM	6.56	348.11	341.55	NW 8P Corner 47' 10"			
					1/4	56	342.51
					2	53	342.81
					1/4	56	342.51
N			343.4		Cb	61	342.01
Cb Top		5.03	343.08		F	60	342.11
Gutter Top Parking		5.75	342.36				
"						100'	
"		5.61	342.50		F	62	341.91
"		5.55	342.56		Cb	61	341.71
"		5.72	342.39		"	61	342.01
Gutter		6.11	342.00		2	57	342.21
Cb Top Conc		5.52	342.52		1/4	61	341.71
F		5.3	342.81		Cb	63	341.81
		2.11			"	56	342.51
F		5.1	343.01			115'	
Cb		5.6	342.51		"	58	342.31
"		6.0	342.11		Cb	61	342.01
"		6.1	342.01		1/4	62	341.31
"		5.7	342.41		2	58	342.31
"		5.7	342.41		1/4	61	342.01
"		5.5	342.61		Cb	61	341.71
Cb		4.9	343.21		F	69	341.21
"		4.4	343.71			150'	
		50'			F	61	342.01
"		4.8	343.31		Cb	64	341.71
Cb		5.4	342.71		1/4	67	341.41
"		5.6	342.51		1/4	64	341.71

Plotted on old profile
March-16-27 CBN

Mento Ave.

348.11

2	58	342.31
1/4	61	342.01
+5	63	341.81
+7	59	342.21
cb	58	342.31
H	55	342.61
200' N		
H	60	342.11
cb	60	342.11
1/4	64	341.71
+2	64	341.71
2	58	342.31
1/4	64	341.71
+6	65	341.61
cb	57	342.11
F	52	342.91
250' N		
F	53	342.81
cb	59	342.21
+1	61	342.01
1/4	61	342.01
2	58	342.31
+5	58	342.31
1/4	62	341.91
cb	60	342.11
H	59	342.41

348.11

255' N

H	47	343.41
110	60	342.11
cb	61	342.01
1/4	63	341.81
2	58	342.31
1/4	60	342.11
cb	59	342.21
F	52	342.91
300' N		
F	37	344.1
cb	43	343.81
+8	51	343.01
1/4	51	343.01
2	48	343.31
+7	55	342.61
1/4	53	342.81
cb	55	342.61
+9	56	342.51
H	45	343.61
TP	9.94	344.59
350' N		
H	9.9	344.69
cb	10.0	344.59
1/4	10.8	343.79
2	9.8	344.79

6

332' N on H/L
Conc Walk
340

341.71

332' N on H/L
Conc Walk

8.79

345.80

Nepe Ave

354.59

+8	10.0	344.59
1/4	10.2	344.39
1/4	10.18	344.29
cb	8.9	345.69
F	8.1	346.49
	400'N	
F	6.7	347.89
+5	7.3	347.29
cb	7.5	347.09
+5	8.1	346.49
1/4	8.2	346.39
5	7.8	346.79
1/4	8.3	346.29
+2	8.5	346.09
cb	7.8	346.79
N	7.6	346.99
	450'N	
N	6.7	347.89
cb	6.4	348.19
+1	6.4	348.19
+5	7.2	347.39
1/4	6.9	347.69
5	6.3	348.29
+6	6.4	348.19
1/4	6.6	347.99
+3	6.9	347.69

477' N on FL
Conc Walk
5.19
348.40
482' N on FL
Conc Walk
5.38
347.21

354.59

7

cb	54	349.19
F	53	349.29
	500'N	
F	52	349.39
cb	50	349.59
+4	55	349.09
1/4	55	349.09
5	52	349.39
1/4	59	348.69
+3	61	348.49
1/2	52	349.39
cb	49	349.69
N	47	349.89
	550'N	
N on Conc Walk	4.05	350.54
cb	4.5	350.09
+5	5.0	349.59
1/4	4.8	349.79
5	4.7	349.89
1/4	4.9	349.69
+5	5.1	349.49
1/4	4.8	349.79
5	4.9	349.69
cb	5.0	349.59
F	5.2	349.39
	600'N - S. Park	
F	5.2	349.39

511' N on FL
Conc Walk
4.09
350.50

cb		50	349.59
45		53	349.29
1/4		51	349.49
2		48	349.79
1/4		48	349.79
1/4		47	349.89
cb		36	350.99
H		36	350.99
TP	3.12	422	350.37
		55b	
H		30	350.49
c		35	349.99
1/4		36	349.89
2		39	349.39
1/4		40	349.49
cb		43	349.19
F		44	348.89
		1/4	
F		44	349.09
cb		40	348.49
1/4		38	349.69
2		36	349.89
1/4		33	350.19
cb		32	350.29
H		28	350.69
		2	

Folk 40 N de	H	27	350.79
6506	cb	30	350.49
67596	1/4	32	350.29
	2	34	350.09
	1/4	36	349.89
	cb	39	349.19
	F	43	349.19
on N N Ind		1/4	
Curp Bilt	F	41	349.09
1000	cb	41	349.39
	1/4	37	349.79
	2	34	350.09
	1/4	33	350.19
	cb	31	350.39
	H	28	350.69
		Hcb	
	H	33	350.19
	cb	35	349.99
	1/4	35	349.99
	2	33	350.19
	1/4	38	349.69
	cb	43	349.19
	F	47	348.79
		H.L.P.H	
	F	45	348.99
	cb entap. Con	39D	349.51

Mento Ave. T. 353.49

Gutter	11	349.09
14	10	349.49
14	36	349.89
14	27	349.79
Gutter	36	349.89
Cb Top Conc.	312	350.37
H	25	350.99

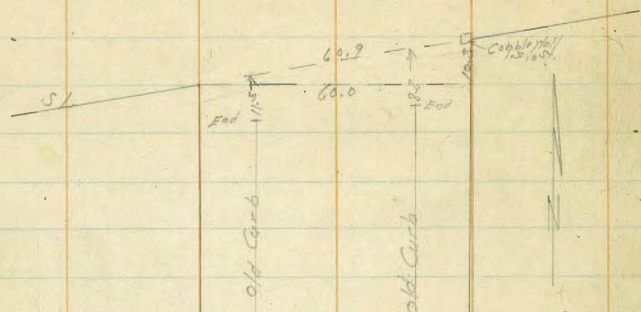
Cont. on Page 13

Cross Section Manila Ave.
From S.L. El Cajon 250'S

60' H. d. a.
13' Cbs
9' Qls

$\pi = 360.99$

10



BM	821	355.51	347.20
		S.L. El Cajon	60.9
N		38	351.71
Cb on Top Cone		440	351.11
Gutter on Top Paving		500	350.51
1/4 " "		492	350.59
2 " "		488	350.63
1/4 " "		504	350.47
Gutter " "		534	350.17
Cb Top Cone		427	350.74
F		423	351.21
TP	1026	360.99	478
		S.L. El Cajon on N	
		2' S.S.L. on East	
F		60	354.99
H		89	352.09
Cb		101	350.89
1/4		104	350.59
2		103	350.69

1/4	104	350.59
Cb	86	352.39
N	88	352.19
	S.L. El Cajon on N	
	102.5 of East	600
		354.99
N	89	352.09
Cb	86	352.39
1/4	103	350.69
2	103	350.69
1/4	103	350.69
+7	90	351.99
Cb + Ground Old Curb	467	356.32
+4	50	355.99
+1	75	353.49
+10	74	353.59
F	48	356.19
	35	
F	47	356.29
+2	70	353.99
+8	73	353.69
+9	42	356.29
Cb + Ground	468	356.31
+2	95	351.49
1/4	103	350.69
2	102	350.79
1/4	101	350.89
1/4	96	354.39

360.99

Cb	66	354.39
H	55	355.49
H	56	355.39
	13'S	
H	55	355.49
Cb + Ground	542	355.57
H	9.3	351.69
H	9.7	351.29
S	10.0	350.90
H	10.0	350.90
H	9.5	351.49
Cb + Ground	470	356.29
F	47	356.29
	50'S	
F	43	356.69
Cb + Ground	477	356.20
Gutter	56	355.39
+2	67	354.29
15	84	352.59
H	89	352.09
S	92	351.79
H	88	352.19
+7	79	353.09
Gutter	63	354.69
Cb + Ground	547	355.52
H	54	355.59

360.99

11

	100'S	
H	55	355.49
Cb + Ground	569	355.30
Gutter	67	354.29
+2	76	353.39
H	74	353.59
S	74	353.59
H	73	353.69
+7	72	353.79
Gutter	61	354.89
Cb + Ground	513	355.86
F	46	356.39
	120'S	
F	49	356.09
Cb + Ground	511	355.88
Gutter	58	355.19
H	65	354.49
S	68	354.19
H	72	353.79
+8	70	353.99
Gutter	64	354.59
Cb + Ground	571	355.28
H	58	355.19
	160'S	
	57	355.29
Cb + Ground	590	355.19

= H End Conc Walk on End

Meolo Ave.

$\Sigma = 360.99$

Gutter	1.5	354.49
"	1.7	354.29
2	1.4	354.59
"	1.3	354.69
Gutter	1.57	355.29
Cb + Ground	5.19	355.80
W Edge Walk	5.90	355.59
F	4.6	356.39
	200.5	
F	5.6	355.39
W Edge Walk	5.82	355.17
Cb	5.66	355.33
Gutter	6.3	354.69
"	6.2	354.79
2	6.2	354.79
"	6.5	354.49
Gutter	6.6	354.39
Cb Top	6.18	354.81
"	6.3	354.69
	250.5	
"	6.6	354.39
Cb Top	6.77	354.22
Gutter	7.4	353.59
"	6.9	354.09
2	6.6	354.39
"	6.9	354.09
Gutter	7.0	353.99

360.99

12

Cb Top	6.35	354.64
W Edge Walk	6.35	354.64
F	6.2	354.79

Note
100' Walk on E
Side of Main Cb

Cross Section Mendocino
Felt to Orange

Cont'd
12 Cbs
9' Qls

352.51

13

Cont. From Page 9

TP	214	352.51	350.37
		N.L. Path	
W		1.6	350.91
Cb Top		2.14	350.37
Gutter		2.5	350.01
W		2.7	349.81
E		2.7	349.81
W		3.0	349.51
Gutter		3.4	349.11
Cb Top		3.00	349.51
E		3.6	348.91
E		3.8	348.71
Cb Top		3.50	349.01
Gutter		4.1	348.41
W		3.7	348.81
E		3.3	349.21
W		3.6	348.91
Gutter		3.7	348.81
Cb Top		3.6	349.55
W		2.9	349.61
W		3.7	348.81
Cb Top		3.72	348.79
Gutter		4.1	348.11

Plotted in old Profile
March - 14 - 1927 - cont

50' N

100' N

T.P.N.N.
Excl. Curb
Felt to Mendocino

W	4.2	348.31
E	4.0	348.51
W	4.4	348.11
Gutter	4.7	347.81
Cb Top	3.86	348.65
E	4.0	348.51
E	4.1	348.21
Cb Top	4.19	348.32
Gutter	5.1	347.41
W	4.7	347.81
E	4.2	348.31
W	4.6	347.91
Gutter	4.2	347.71
Cb Top	4.03	348.48
W	4.0	348.51
W	4.1	348.41
Cb Top	4.26	348.25
Gutter	5.0	347.51
W	4.8	347.71
E	4.4	348.11
W	4.7	347.81
Gutter	5.1	347.41
Cb Top	4.13	348.08
E	4.6	347.91

150' N

200' N

E		48	347.71
Cb Top		471	347.80
Gutter		53	347.21
1/4		47	347.81
2		47	347.81
1/4		52	347.31
Gutter		52	347.31
Cb Top		453	347.98
N		41	348.41

N		48	347.71
N Edge Walk		423	348.29
Cb Top		471	347.80
Gutter		56	346.91
1/4		50	347.51
2		49	347.61
1/4		51	347.41
Gutter		55	347.01
Cb Top		433	347.68
E		49	347.61

S.L.

Orange

Catch Basin
Gardling
Red
575
346.76



347.08

Catch Basin
Gardling
Red 575

Red

N		41	348.41
43.5' N Edge Case Walk		412	348.39
Cb		459	347.92
Gutter		43	347.21
1/4		49	347.61
2		46	347.91
1/4		47	347.81
Gutter		51	347.41
Cb Top		457	347.94
E		49	347.81

E		43	348.21
Cb Top		433	348.18
Gutter		50	347.51
1/4		47	348.11
2		44	348.11
1/4		47	347.81
Gutter		50	347.51
Cb Top		439	348.12
48.5' N Edge Walk		392	348.59
N		41	348.41

N		43	348.21
Cb Top		417	348.34
Gutter		49	347.61

Meal Aie

352.51

11	44	348.11
2	43	348.21
11	41	348.11
Gutter	47	347.81
Cb Top	410	348.41
F	40	348.51
500' N		
F	41	348.41
Cb Top	383	348.68
Gutter	45	348.01
11	42	348.31
2	41	348.41
11	41	348.41
Gutter	46	347.91
Cb Top	374	348.57
49.5 N Edge Walk	369	348.87
11	35	349.01
550' N		
11	38	349.71
49.5 N Edge Walk	338	349.13
Cb Top	365	348.86
Gutter	31	348.41
11	37	348.81
2	37	348.91
11	38	348.71
Gutter	40	348.51

425' N 200'
S. Edge Const. Walk
N Edge
375

348.76

352.51

15

Cb Top	363	348.88
F	37	348.81
600' N - S. L. Orange		
F	34	349.21
Cb Top	341	349.07
Gutter	40	348.51
11	36	348.91
2	34	349.11
11	38	348.71
Gutter	42	348.31
Cb Top	347	349.04
110 N Edge Redwood	317	349.34
11	31	349.41

Cross Section 46th St.
University to Orange Ave

60' wide
12' Obs
9' Obs

355.29

12-13-21
5:45 AM
9:15
Northway

BM	12.20	355.29	343.09	100' N	34	351.89
					37	351.59
		H.L. University Ave			38	351.49
N		37	351.59		CB	352.69
CB top		41	351.19		F	352.59
Gutter on Pav 199		46.0	350.69			
" " "		47.7	350.82		F	350.39
" " "		48.8	350.91		CB	350.29
" " "		45.7	350.72		43	350.29
Gutter " "		47.6	350.57		46	349.69
CB top		45.3	350.76		44	349.89
F		39	351.39		43	349.99
					44	349.79
F		38	354.49		CB	350.59
CB		37	354.59		N	351.19
43		41	354.19			
47		41	351.19		N	349.39
44		43	351.09		CB	348.89
42		43	350.99		44	348.59
44		43	350.99		42	348.79
CB		40	351.29		44	348.49
N		34	351.89		45	348.29
					47	348.99
N		29	352.39		CB	348.99
CB		30	352.29		F	348.89
44		35	351.79			

Plotted on old profile
March - 16 - 1917 - 2288

50' N

100' N

150' N

200' N

157' N 27' E
Cont'd
581

175' N 29' E
Cont'd
710

349.48

348.19

355.29

F		7.6	347.69	
Cb		7.8	347.49	
1/4		7.6	347.69	
L		7.5	347.79	
1/4		7.4	347.89	212' N 5' W N.E.L. Conc Walk 6.50 347.79
Cb		7.5	347.79	213' N Conc Walk 7.40 347.89
N		7.0	348.79	210' N Conc Walk 7.25 347.61
	2.50 N			
N		7.3	347.99	212' N Conc Walk 7.25 347.61
Cb		7.8	347.49	212' N Conc Walk 6.70
1/4		8.4	346.89	348.59
L		8.0	347.29	
1/4		8.1	347.19	281' N Conc Walk 7.99
Cb		8.5	346.79	352.30
F		8.7	346.39	
TP	5.25	8.51.73	346.45	
		308 N		
F		4.5	347.23	
Cb		4.0	347.73	
+1		4.4	347.33	
1/4		4.5	347.23	
L		4.5	347.23	
1/4		4.7	347.03	
+2		4.6	347.13	
+3		4.1	348.63	
Cb		3.1	348.63	

351.73

17

		2.6	349.13	
	350' N			
		2.2	349.53	
		2.9	348.83	
		2.1	348.63	
		4.8	346.93	
		4.9	346.83	
		4.2	347.53	358' N Conc Drive 4.25
		4.6	347.13	347.49
		4.7	347.03	
		3.9	347.83	325' N Conc Walk 4.27
		4.2	347.53	347.46
	400' N			
		4.8	346.93	
		5.0	346.73	432' N Conc Walk 4.90
		5.4	346.33	346.33
		5.1	346.63	
		4.9	346.83	
		5.3	346.40	
		5.2	346.53	
		3.5	348.23	
		3.5	348.23	
		2.1	348.63	
	150' N			
		4.1	347.63	
		5.1	346.63	

351.73

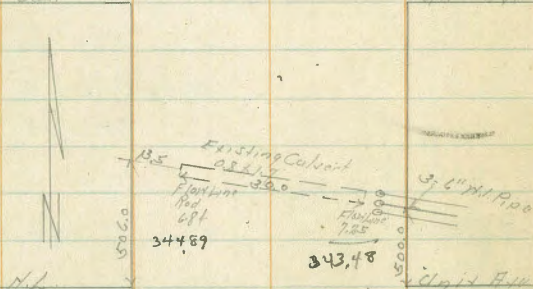
1/4	51	346.13
2	54	346.33
1/4	56	346.13
cb	57	346.33
E	55	346.23

500'N

E	51	346.63
cb	55	346.23
1/4	58	345.93
2	52	346.53
1/4	54	346.33
cb	62	345.53
N	59	345.83

S.L.

Pole #10



550'N

N	64	345.33
cb	64	345.33
1/4	57	346.03
2	55	346.23

351.73

18

1/4	54	346.33
cb	56	346.13
1/4	50	346.23
E	47	347.03

575'N

E of Case Mark	49	347.44
2	42	346.93
cb	51	346.63
1/4	52	346.53
2	50	346.73
1/4	53	346.53
cb	51	346.63
N	48	346.93

600'N = S.L. Pole

N	51	346.63	Pole
cb	50	346.73	45' wide
1/4	52	346.53	6.5' ch
2	48	346.93	6.75' ch
1/4	48	346.93	
cb	48	346.93	
E	46	347.13	

cb

E	45	347.23
cb	46	347.13
1/4	47	347.03
2	47	347.03

46th St

3/5/73

H	48	346.93
cb	51	346.63
H	51	346.63
1/4		
H	48	346.93
cb	47	347.03
1/4	45	347.23
Z	45	347.23
1/4	40	347.73
cb	46	347.53
F	42	347.53
Z Park		
F	38	347.93
cb	39	347.83
1/4	41	347.63
Z	43	347.43
1/4	43	347.43
cb	43	347.43
H	45	347.23
1/4		
H	46	347.13
cb	42	347.43
1/4	43	347.43
Z	42	347.53
1/4	40	347.73
cb	38	347.93

19

3/5/73

F	37	348.03
cb		
F	38	347.93
cb	40	347.73
1/4	40	347.73
Z	41	347.63
1/4	43	347.43
cb	45	347.23
H	44	347.33
NL Park		
H	44	347.33
cb	44	347.33
1/4	42	347.43
Z	41	347.63
1/4	41	347.63
Gutter	40	347.73
cb. Top	34	348.12
F	27	348.03
50th		
F	28	348.93
cb Top	26	349.03
Gutter	35	348.23
1/4	33	348.43
Z	35	348.23
1/4	37	348.03
cb	38	347.93

56th St
Cool Drive

348.62

75th St
Cool Drive
289

348.84

351.73

N		22	348.03	
	100' N			
N		24	349.13	119' North Cone Walk
cb		25	348.93	173 35200
N		25	349.23	
E		22	349.53	183' North Cone Walk
N		21	349.63	115
Gutter		20	349.53	35059
cb Top		1.85	349.28	
E		1.2	350.53	
	150' N			
E		0.2	351.53	
cb Top		0.50	351.23	
Gutter		1.2	350.63	
N		1.0	350.73	
E		0.9	350.83	
N		1.4	350.33	
+6		1.9	349.83	
cb		1.8	349.93	
N		1.6	350.13	
TP	645	356.69	350.19	
	200' N			
N		5.8	350.84	186' North Cone Walk 585
cb		6.2	350.44	350.79
+3		6.3	350.34	
N		5.8	350.84	

350.69

20

E		5.3	351.34	
N		5.4	351.24	271' North Cone Walk 518
Gutter		5.4	351.24	
cb Top		4.78	351.86	350.86
E		4.5	352.14	
	250' N			
E		4.1	352.54	
cb Top		4.23	352.41	
Gutter		4.9	351.74	
N		4.9	351.74	
E		4.9	351.74	259' North Cone Walk 510
N		5.3	351.34	
+6		5.7	350.94	351.54
cb		5.7	350.94	
N		5.4	351.24	
	300' N			
N		4.5	352.14	304' North Cone Walk 515
+3		4.9	351.74	
+10		4.2	351.74	352.11
cb		5.2	351.44	
N		5.0	351.64	
E		4.6	352.04	
N		4.5	352.14	
Gutter		4.6	352.04	
cb Top		3.83	352.81	
E		3.7	352.94	

16th St.

356.64

350' N

F	35	353.14	
Cb Top	356	352.08	
Gutter	41	352.54	352.10 274
1/4	39	352.74	Conc. Wall
2	40	352.64	382
1/4	43	352.33	352.57
Cb	47	351.94	
N	42	352.44	

400' N

N	36	353.04	
Cb	40	352.64	
1/4	38	352.84	445' Con. Wall
2	37	352.94	Conc. Drain
1/4	39	352.74	445
Gutter	40	352.64	352.19
Cb Top	330	353.34	
F	32	353.44	

450' N

F	36	353.04	475' X
Cb Top	310	353.54	091 - 8.5m
Gutter	39	352.94	Conc. Wall
1/4	37	352.94	Extends to 310
2	33	353.34	Orange
1/4	34	353.24	
Cb	38	352.84	

356.64

21

13	31	353.24	
N	30	353.64	
	500' N		
N	29	353.74	
Cb	25	353.14	
1/4	32	353.34	
2	23	353.34	
1/4	33	353.34	
Gutter	35	353.14	

Cb Top	240	353.74	
F	27	353.94	

550' N

F	25	354.14	
Cb Top	211	354.03	
Gutter	31	353.54	
1/4	31	353.54	
2	28	353.84	
1/4	29	353.74	
Cb	29	353.74	
N	24	354.24	

578' N = S. L. Orange

N	21	354.51	Note S.L. Return Out
Cb	27	353.94	
1/4	25	354.14	
2	25	354.14	
1/4	29	353.74	

46th St

35664

22

Gutter 30 353.64

Cb Top 211 354.20

F 24 354.24

BM 271 353.93 ✓

N 19.87
Orange 46th

353.99

Cross Section 48th St.
University to

60 ft wide
15' Cbs
9' gts

350.07

1-15-27
S. W. 1st
S. 1st St
S. 1st St

B.M.	9.89	350.07 ✓	340.68	HWBP Chas. H. Field			
		N.L. University			13	27	347.4
					14	25	47.6
					15	25	47.6
W		19	345.2		14	24	47.7
Cb	Top End Return	192	45.15		16	20	48.1
Gutter	17 Parapet	5.51	44.56		16	19	48.7
1/4	" "	5.22	44.80		15	18	48.9
8	" "	4.88	45.09				
1/4	" "	4.88	45.19		15	15	48.6
Gutter	" "	4.88	45.19		16	15	48.6
Cb	Top End Return	4.08	45.99		13	21	47.7
E		3.8	46.3		14	25	47.6
		2 ft of H.L.			15	25	47.6
E		17	48.4		14	25	47.6
Cb		18	48.3		16	25	47.6
+5		12	45.9		13	14	48.7
1/4		14	45.7		14	14	48.7
2		17	45.4				
1/4		5.0	45.1		14	12	48.3
+7		3.9	46.7		17	18	48.3
Cb		20	48.1		16	22	47.3
1/4		17	48.4		12	15	45.6
		20 ft			14	15	45.6
1/4		14	48.7		15	15	45.6
+11		15	48.6		14	17	45.4
Cb		18	48.2		13	17	45.4

58 ft

100 ft

487654

350.07

xL	25	347.6
Cb	25	47.6
F	27	47.4
F	38	46.3
Cb	39	46.7
12	36	46.5
15	57	44.4
14	60	44.1
Z	58	44.3
14	60	44.1
17	60	44.1
Cb	53	44.8
14	23	47.8
H	24	47.7
H	31	47.0
19	35	46.6
Cb	57	44.7
15	75	42.6
14	76	42.5
Z	75	42.6
14	74	42.7
12	70	43.1
17	41	45.5
Cb	45	45.6

125'H

150'H

347.6

47.6

47.4

46.3

46.7

46.5

44.4

44.1

44.3

44.1

44.1

44.8

47.8

47.7

47.0

46.6

44.7

42.6

42.5

42.6

42.7

43.1

45.5

45.6

E

E

Cb

1/4

Z

1/4

+5

Cb

+6

H

H

+7

Cb

+7

1/4

+1

Z

+2

1/4

+5

Cb

F

E

150'H

180'H

180'H

52

69

71

76

75

77

74

57

55

51

52

59

71

112

115

108

102

113

110

85

83

76

112

344.9

43.7

43.0

42.5

42.6

42.4

42.7

44.4

46.6

47.0

44.9

44.7

41.0

38.9

38.6

39.3

39.2

38.8

39.1

41.6

41.8

42.5

38.6

116.5N
on F.L.
Cond. Hall
7.04

343.03

24

48th St.

350.07

Cb		10.4	339.7
1/4		11.3	38.8
E		11.4	38.7
+7		11.2	38.8
1/4		11.9	38.2
+6		11.4	38.7
Cb		9.2	40.9
+7		5.9	44.4
H		5.9	44.4
	200'H		
H		7.6	42.5
+6		9.1	40.7
Cb		11.4	38.7
+4		12.2	37.9
1/4		13.2	36.8
+2		12.8	37.3
E		12.6	37.5
1/4		13.0	37.1
+5		10.8	39.3
Cb		11.1	39.0
E		11.8	38.3
TP	2.87	339.90 ✓	337.04
		228'H	
-10		8.0	31.9
E		6.9	33.0
Cb		6.2	33.6

337.90

25

1/4		6.4	333.5
E		5.7	34.2
1/4		5.8	34.1
+5		5.6	34.3
Cb		4.7	35.2
H		4.3	35.6
	248'H		
H		6.4	33.3
+6		7.0	32.9
Cb		7.7	32.2
1/4		8.1	31.8
E		8.1	31.8
1/4		8.5	31.4
Cb		9.9	30.0
F		10.5	29.4
11.5		12.0	27.9
	250'H		
11.5		12.5	27.4
F		11.6	28.9
Cb		10.0	29.9
1/4		9.0	30.9
E		8.5	31.4
1/4		8.6	31.3
Cb		8.1	31.8
H		8.1	31.8
	267'H		

4874.51

33990

X		10.8	329.1
+3		10.5	29.4
Cb		10.7	29.2
1/4		10.5	24.4
1/2		10.4	29.5
1/4		10.9	29.0
+5		12.6	27.3
Cb		12.9	27.0
F		14.0	25.9
+15		15.0	24.9
TP	2.53	329.51 v	326.98 v
		290'N	
-20		10.7	18.8
F		9.0	26.5
+9		8.3	21.2
Cb		7.1	22.1
1/4		3.0	26.5
+6		2.3	27.2
1/2		2.2	27.3
1/4		2.1	27.4
+6		1.1	28.4
Cb		1.2	28.3
X		1.2	28.3
+10		2.4	27.1
		300'N	
-10		3.8	25.7

329.51

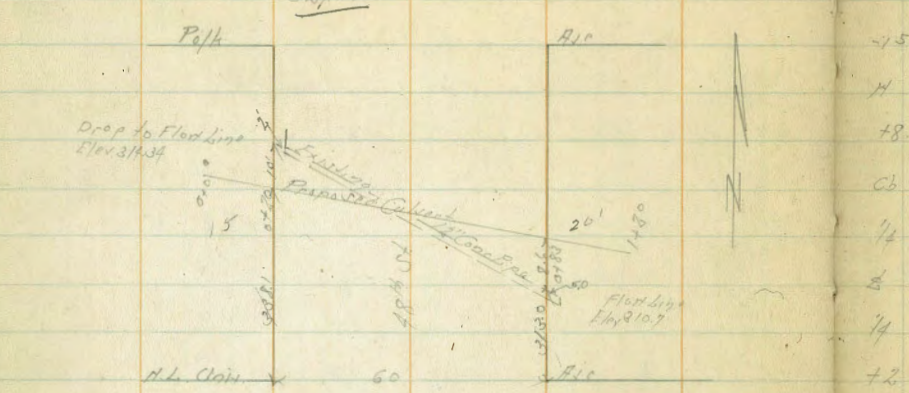
26

X		2.5	327.0
Cb		2.5	27.0
1/4		2.2	27.3
+5		3.2	26.3
1/2		3.1	26.4
1/4		3.7	25.8
+2		4.3	25.2
Cb		7.3	22.2
+4		2.2	19.7
F		11.5	18.0
+2.5		13.8	15.7
		310'N	
-20		17.8	11.7
F		15.6	13.9
Cb		8.9	20.6
+7		4.3	25.2
1/4		4.3	25.2
1/2		3.8	25.7
1/4		3.9	25.6
Cb		3.1	26.4
+5		4.0	25.5
X		6.2	23.3
+15		9.1	20.4
TP	11.59	329.18 v	317.59 v

0.00
2.14
11.21
31.50

329.18

330' N of H.L. of Cdn



Levels For Proposed Canal

0 + 0	115	317.4
+ 20	114	17.8
+ 37	51	24.1
+ 63	46	24.6
+ 78	141	15.1
+ 83	151	14.1
+ 10	16.3	12.9
+ 20	17.8	11.3

-15	99	319.3
H	72	20.0
+8	82	25.3
Cb	30	26.2
14	40	25.2
8	41	25.1
14	76	24.6
+2	50	24.2
Cb	25	19.7
+10	142	15.0
1	152	14.0
+30	171	11.6
340' N		
-25	120	17.2
1	115	16.7
+1	140	15.2
+6	140	15.2
+8	113	17.9
Cb	88	20.4
14	45	24.7
8	47	24.5
2	49	24.3
Cb	73	21.9
H	117	17.5
+20	118	17.4

48765H

38918

356N

-20	120	317.2
H	125	16.7
77	11.6	17.6
Cb	83	20.9
1/4	51	24.1
L	46	24.6
1/4	43	24.9
+5	47	24.5
Cb	67	20.5
+8	11.9	17.3
F	94	19.8
+15	95	19.7

365N

-10	78	21.4
F	76	21.6
+9	77	21.5
Cb	58	23.4
1/4	50	24.2
L	48	24.4
1/4	48	24.4
+2	52	24.0
Cb	95	20.7
12	102	19.0
H	114	17.8
+20	105	18.7

32918

380N

-15	72	314.0
H	75	21.7
Cb	55	23.7
+3	48	24.4
1/4	46	24.6
L	45	24.7
1/4	42	24.3
Cb	52	24.0
F	52	23.4
+10	52	23.4

395N

F	40	25.2
Cb	38	25.4
1/4	37	25.5
L	33	25.9
1/4	37	25.5
Cb	35	25.7
H	36	25.6
+10	36	25.6

425N

H	03	28.9
Cb	06	28.6
+3	02	28.3
1/4	10	28.7
L	10	28.7

28
119-37

32818

14		11	328.1
Cb		11	27.6
+2		11	28.1
F		11	28.1
TP	12.02	340.66 ✓	328.64 ✓
		431' N	
F		10.5	30.2
+7		10.8	29.9
Cb		12.0	28.7
+2		12.5	28.2
14		12.0	28.7
8		12.2	28.5
14		12.0	28.7
+6		11.7	29.0
Cb		10.2	29.8
N		10.8	29.9
	450' N		
N		8.5	32.2
Cb		8.8	31.9
+2		10.2	30.5
14		10.1	30.6
2		10.0	30.7
14		10.0	30.7
Cb		10.7	30.0
+2		9.1	31.3
F		9.2	31.5

24066

453' N

F	89	331.8
+11	87	32.0
Cb	10.2	30.5
+2	10.1	30.3
14	9.8	30.9
2	9.1	31.3
14	10.0	30.7
+6	9.6	31.1
Cb	8.2	34.4
14	7.1	33.6
N	7.0	33.7

1775' of conc. H₂O
4.55

336.08

498' N

N	32	37.5
+6	3.3	37.4
Cb	4.1	36.6
15	5.0	35.7
14	5.1	35.6
13	4.6	36.1
8	4.6	36.1
14	4.8	35.9
11	5.7	35.0
Cb	5.2	35.5
+3	2.7	38.0
F	2.5	37.8

503' N

48th St.

340.66

503' N

F		28	338.5	
+10		20	38.7	
CB		29	37.8	
+2		46	36.1	
+5		54	35.3	
1/4		41	36.6	
2		40	36.7	
1/4		47	36.0	
+5		38	36.9	
CB		18	38.9	
H		12	39.4	
TP	7.86	347.93 ✓	0.09	340.57
		530' N		
H		67	41.2	
CB		69	41.0	
+2		70	40.9	
+4		81	39.5	
+7		92	38.7	
1/4		87	39.2	
2		82	39.7	
1/4		83	39.6	
+6		89	39.0	
+4		88	39.1	
CB		65	41.1	
F		68	41.1	

550' N

30

347.93

550' N

F		54	342.5
CB		56	42.3
+3		65	41.4
1/4		65	41.4
2		65	41.4
+5		70	40.9
1/4		73	40.6
+5		70	40.9
+6		56	42.3
CB		53	42.6
H		54	42.5
	598.57	52.91	64.4
H		30	44.9
CB		31	44.8
+3		40	43.9
1/4		44	43.5
2		38	44.1
1/4		39	44.0
CB		41	43.8
F		42	43.7
	506		
F		45	43.4
CB		41	43.8
1/4		37	44.2
2		37	44.2
1/4		40	43.9

574.57
09 E. 2.
Crestok
452

343.4

2016
11/14/11
02/05
1/19/11

481657

34793

cb	39	344.0
H	33	44.6
	14	
H	21	45.3
cb	31	44.8
1/4	36	44.3
2	33	44.6
1/4	36	44.3
cb	39	44.0
F	12	43.7
	2 Palk Bur	
F	40	43.9
cb	38	44.1
1/4	35	44.4
2	32	44.7
1/4	32	44.7
cb	28	45.1
H	29	45.5
	14	
H	21	45.3
cb	28	45.1
1/4	30	44.9
2	31	44.8
1/4	35	44.4
cb	32	44.1
F	41	43.8

34793

31

	N CB	
F	40	343.9
cb	31	44.1
1/4	34	44.5
2	28	45.0
1/4	29	45.0
cb	32	44.7
H	21	45.3
	1/2 Palk	
H	21	45.8
cb	25	45.4
1/4	29	45.0
2	29	45.0
2	28	45.1
1/4	32	44.7
cb	36	44.3
F	32	44.1
	50' N of Palk	
F	40	43.9
cb	28	44.1
1/4	35	44.1
1/4	35	44.4
2	33	44.6
1/4	35	44.4
2	32	44.1
cb	30	44.9
F	25	45.4

12' N of Palk
So. of ATMS
75' E of Palk

15' N of Palk
00' W of
Camp Palk
2.02 = 345.91

38' N of
ATMS
75' E of Palk

347.93

N		23	345.6
	100°N		
N		38	44.1
cb		4.3	42.6
+2		52	42.7
1/4		52	42.7
L		55	42.4
1/4		55	42.4
+3		61	41.8
+6		53	42.6
cb		52	42.7
F		51	42.3
	120°N		
F		65	41.4
+5		77	40.2
cb		74	40.5
+3		77	40.2
+5		84	39.5
1/4		78	40.1
+1		75	40.4
L		71	40.8
1/4		71	40.8
+4		72	40.7
cb		65	41.4
+2		58	42.1
N		55	42.4

347.93

	130°N		
N		66	341.3
		68	41.1
cb		73	40.6
+2		82	39.7
1/4		80	39.9
L		80	39.9
1/4		82	39.1
+3		95	38.4
+6		81	39.3
cb		88	39.1
F		90	38.9
		98	38.1
	150°N		
		108	36.1
F		112	36.7
cb		106	37.3
+6		107	37.2
1/4		104	37.5
L		102	37.7
1/4		99	38.0
+5		101	37.8
+7		100	37.9
cb		94	38.5
N		83	39.6
TP	112	341.6 ✓	119
			336.7 ✓

150°N
 00 N.L.
 Cone 10/16
 9.10 - 338.13

Levels And Location Proposed Drain

34116 ✓

83

Orange	Ave	Proposed Drain	Level of H of Path	Level of Path
			47	336.5
			51	36.1
			53	35.9
			55	35.7
			58	35.4
			59	35.3
60	Path Ave		68	34.4
Path	Ave		70	34.2
TP 0.15 337.22	336.71	0.07	71	33.8
0.10 337.40	332.5		78	33.4
50'E	77			329.5
90'E	77		10	327.5
100'E	102		E	326.4
TP 109'E Δ R 47° 30' 2.01 338.16	11.07	326.15	0.07	326.15
136'E	3.3	324.9		324.9
163'E	2.6	325.6		325.6
165'E	4.3	323.9		323.9
170'E Top Cobble Stone Wall	4.20	324.0		324.0
173'E	6.3	321.9		321.9
200'E	7.1	321.1		321.1
233'E	7.6	320.6		320.6
238'E Top Conc Wall	7.00	321.2		321.2
241'E - End	9.9	318.8		318.8



Level of H of Path	Level of Path
47	336.5
51	36.1
53	35.9
55	35.7
58	35.4
59	35.3
68	34.4
70	34.2
71	33.8
78	33.4
90	32.2
83	32.9
80	33.2
80	33.2
64	34.8
59	35.3
51	35.6
55	35.7
65	34.7
53	35.9
66	34.6
67	34.5
55	35.3

48th St.

34116

Mido Co

Cbs 78

9149

35.2

335.2

34.4

33.1

33.9

33.6

33.7

34.6

34.9

35.0

34.3

35.2

35.3

35.6

35.8

35.5

35.6

35.3

35.5

36.8

36.2

35.8

36.2

36.4

2545 N on FL

Conc. Milk

716

34116

52

56

51

48

53

37

38

40

39

36

38

38

28

24

11

15

30

30

27

29

28

30

27

27

336.0

35.6

36.1

36.8

35.9

37.5

37.7

37.2

37.3

37.6

37.4

37.4

38.4

38.8

40.1

39.7

38.2

38.2

38.5

38.3

38.4

38.2

38.5

38.5

275 N

356 N

375 N

300 N

34

48th St.

341.16

400' N

F			17	39.5
19			18	39.8
cb			21	39.1
12			24	38.8
14			20	39.2
2			17	39.5
4			16	39.6
14			18	39.4
17			13	39.9
cb			01	41.1
TP	769	347.60 ✓	125	339.9 ✓
H			60	341.6
		438' N		
H			41	43.2
+3			53	42.3
cb			57	41.9
12			58	41.8
+3			69	41.2
14			66	41.0
2			66	41.0
14			72	40.4
12			75	40.1
11			79	39.7
cb			70	40.6
F			68	40.8

450' N

35

347.60

F			67	340.9
cb			62	41.4
+3			73	40.3
14			68	40.8
2			62	41.4
14			62	41.4
16			60	41.6
cb			52	42.4
H			42	43.4
		500' N		
H			41	43.5
cb			46	43.0
13			57	41.9
14			60	41.6
2			58	41.8
14			61	41.5
+5			64	41.2
cb			61	41.5
F			64	41.2
		550' N		
F			49	42.7
cb			53	42.3
+3			57	41.9
14			56	42.0
2			41	42.7
14			52	42.4

16			52	342.2
cb			41	43.5
H			43	43.3
		577.5 - 54 Orange		
H			45	43.1
cb			49	42.7
1/4			52	42.4
2			47	42.9
1/4			51	42.5
cb			50	42.6
H			50	42.6
TP	P12	350.80	422	342.8
		5cb		
H			80	42.8
cb			82	42.5
1/4			80	42.8
2			79	42.9
1/4			80	42.8
cb			82	42.6
F			83	42.5
		1/4		
F			81	42.7
cb			82	42.6
1/4			81	42.7
2			79	42.9
1/4			77	43.1

cb			78	43.0
H			77	343.1
		Orange		
H			71	43.7
cb			74	43.4
1/4			74	43.4
2			77	43.1
1/4			79	42.9
cb			76	43.2
F			74	43.4
		1/4		
F			75	43.3
cb			75	43.3
1/4			76	43.2
2			75	43.3
1/4			77	43.1
cb			77	43.1
H			74	43.4
		H CB		
H			75	43.3
cb			75	43.3
1/4			78	43.0
2			74	43.4
1/4			77	43.1
cb			77	43.1
F			77	43.1

487657

350.80

N. of Orange

E	Top Cone Walk Ground	679	344.01
Cb		72	43.5
1/4		71	43.2
S		75	43.3
1/4		76	43.2
+6		79	42.9
Cb		74	43.4
H		72	43.6

N. of N. of Orange

H		72	43.6
Cb		74	43.4
+4		72	43.0
1/4		74	43.4
S		73	43.5
1/4		72	43.4
Cb		72	43.6
E		70	43.8

Top Cone Walk

80 N

E	on Cone Walk	655	44.25
Cb		70	43.8
+5		74	43.4
1/4		71	43.7
S		68	44.0
1/4		71	43.7

350.80

89

+6		75	343.3
Cb		68	44.2
H		61	344.7

50 N

H		63	44.5
Cb		67	44.1
+4		74	43.4
1/4		69	43.9
S		65	44.3
1/4		67	44.1
+4		72	43.5

Cb		67	44.1
E		65	44.3

70 N

E		63	44.5
Cb		65	44.3
1/4		64	44.4
S		62	44.6
1/4		66	44.2

+5		72	43.6
Cb		67	44.1
H		68	44.0

100 N

H		69	44.9
Cb		69	44.8
+4		68	44.0

287457

250.90

74		62	44.6	
8		56	345.7	118 North Concord 478
74		57	45.1	
+5		61	44.4	346.02
cb		58	45.0	
F		55	45.3	
	125.71			
F		79	45.9	135 North Concord 505
cb		50	45.0	
74		56	45.2	345.71
74		52	45.6	
8		51	45.7	
1/2		56	45.2	
+2		60	44.8	
cb		52	45.6	
74		79	45.9	
	150.71			
74		50	45.8	
cb		47	46.1	
74		52	45.5	
74		48	46.0	
8		43	46.5	
1/2		47	46.1	
+4		49	45.9	
+6		42	46.6	
cb		40	46.8	

68

250.90

		89	346.9	
	200.71			
		28	48.0	
		27	48.1	
		28	48.0	
		36	47.2	
		34	47.6	
		22	48.0	
		32	47.5	
		27	47.1	
		33	47.5	
		32	47.6	
	250.71			
		28	48.0	
		31	47.7	
		34	47.3	
		31	47.7	
		22	48.0	
		28	47.6	
		32	47.5	
		27	48.1	
		21	48.7	
	200.71			
		22	48.6	
		25	48.3	
		31	47.7	

487454

350.80

+2	37	47.1	
1/4	36	47.2	307'N 007'W Conc Drive
2	30	47.8	300 347.8
1/4	36	47.2	
+5	39	46.9	332'N 007'W Conc Drive
cb	37	47.1	308
H	30	47.8	347.7
			350'N
H	39	46.9	
cb	51	45.7	
+2	53	45.5	
1/4	47	46.1	
2	42	46.6	
1/4	46	46.2	
+2	49	45.9	
cb	38	47.0	
18	30	47.8	
F	28	48.0	
			368'N
F	46	46.7	
cb	48	46.0	
+5	56	45.2	
1/4	54	45.4	
2	50	45.8	
1/4	52	45.6	
+5	60	44.8	

350.80

37

47	59	344.9	
cb	54	45.4	
+2	49	45.9	
H	42	46.6	
			393'N
H	45	46.3	
+3	58	45.0	
cb	62	44.6	
+2	67	44.1	
1/4	67	44.1	
2	62	44.6	
1/4	67	44.1	
cb	76	43.2	
F	106	40.7	
+15	124	38.4	
TP	299	346.74 ✓	705
		409'N	343.75 ✓
-20	110	35.7	
F	93	37.4	
cb	59	40.8	
+3	45	42.2	
1/4	34	43.3	
2	39	43.8	
1/4	30	43.7	
+5	35	43.2	
cb	21	43.6	

346.74

13		25	344.2
14		26	44.7
	950' N		
14		26	44.1
16		28	43.9
18		30	42.7
cb		32	42.4
18		32	42.0
11		35	42.2
8		37	41.3
11		39	41.8
12		41	41.6
cb		43	37.9
13		45	35.9
F		48	34.7
125		50	33.5
	115' N		
-25		132	33.5
F	Bottom Wash	130	33.7
18		131	34.6
cb		134	35.3
15		133	40.4
14		134	41.3
8		138	41.9
11		139	41.8
16		150	41.7

346.74

cb		46	342.1
14		40	42.7
18		38	42.9
11		29	43.8
	175' N		S End Conc. Wall on E
11		25	43.2
19		46	42.1
cb		51	41.6
12		51	41.3
8		51	41.3
11		53	41.4
12		60	40.7
13		65	40.2
cb		97	37.0
16		142	32.5
F	on Top Conc. Wall	133	33.4
125		132	340.3
		132	33.5
	1500' N		
	on Top Conc. Wall	575	341.0
F		107	334.0
cb		114	35.3
11		56	41.1
8		57	41.0
14		58	40.9
cb		60	40.7
12		68	39.9
11		69	39.8

48165A

346.67

7/2	57	341.0
2	55	41.7
+6	59	40.8
1/4	76	39.1
Cb	76	39.1
F	76	39.1

545'H

F	47	42.0
Cb	55	41.2
1/4	55	41.2
2	53	41.4
1/4	58	40.9
Cb	62	40.5
H	76	39.1
+10	81	38.6

560'H

H	61	40.6
Cb	54	41.3
1/4	56	41.1
2	52	41.5
1/4	55	41.2
H	52	41.5
Cb	48	41.9
F	40	42.7

600'H. S. of Trajan

F	39	42.8
---	----	------

346.67

44

Cb	62	42.4
1/4	45	42.2 Trajan
2	43	42.4 60' side 13' Cb 9' Qls
1/4	49	41.8
Cb	48	41.9
H	45	42.2

5 Cb

H	49	41.8
Cb	48	41.9
1/4	46	42.1
2	41	42.6
1/4	42	42.5
Cb	39	42.8
F	42	42.5

1/4

F	42	42.5
Cb	37	43.0
1/4	38	42.9
2	39	42.8
1/4	42	42.5
Cb	45	42.2
H	46	42.1

2 Trajan

H	45	42.2
Cb	43	42.4
2	42	42.5

48th St.

346.67

2	38	42.9
1/4	36	43.1
cb	36	43.1
E	40	42.7
1/4		
E	37	43.0
cb	35	43.2
1/4	35	43.2
2	36	43.1
1/4	39	42.8
cb	43	42.4
1/4	43	42.4
1/4	43	42.4
	N.Cb	
Top Case Cb	3.40	43.27
1/4	41	42.6
cb	39	42.8
1/4	31	43.1
2	34	43.3
1/4	31	43.6
cb	32	43.5
E	35	43.2
	N.L. Trap	
E	22	44.5
cb Top or End Case Cb	194	44.73
Gutter	30	43.7
1/4	27	44.0

Note
Grade at
End of Trap
Lower than 1/4

346.67

43
1-20-37

2	29	43.8
1/4	31	43.6
Gutter	33	43.4
cb Top	289	43.78
1/4	33	43.4
	50 ft of N.L. Trap	
1/4	19	44.8
cb Top	159	45.08
Gutter	21	44.6
1/4	16	45.1
2	14	45.3
1/4	12	45.5
Gutter	15	45.2
cb Top	0.62	46.05
E	0.2	46.5
TR	693	453.25 ✓
	100 ft	
E	57	47.5
cb Top	605	47.2
Gutter	70	46.3
1/4	67	46.6
2	64	46.9
1/4	67	46.5
Gutter	75	45.8
cb Top	678	46.47
1/4	68	46.4

48th St.

35325

150' = Break in Grade

N		52	348.0
Cb Top		533	47.92
Gutter		62	47.1
1/4		58	47.5
1/2		55	47.7
1/4		58	47.5
Gutter		63	47.0
Cb Top		532	47.93
F		48	48.5
200' N			
F		46	48.6
Cb Top		480	48.45
Gutter		56	47.7
1/4		52	48.1
1/2		51	48.1
1/4		51	48.2
Gutter		59	47.5
Cb Top		487	48.38
N		46	48.6
250' N			
N		45	48.7
Cb Top		456	48.69
Gutter		53	48.0
1/4		47	48.6
1/2		44	48.8

35325

1/4		47	48.6
Gutter		50	48.3
Cb Top		415	49.10
F		41	49.1
300' N			
F		38	49.4
Cb Top		362	49.63
Gutter		44	48.9
1/4		43	49.0
1/2		41	49.1
1/4		45	48.8
Gutter		53	48.0
Cb Top		431	49.04
N		44	48.8
350' N			
N		40	49.2
Cb Top		394	49.31
Gutter		44	48.9
1/4		41	49.2
1/2		38	49.4
1/4		36	49.7
Gutter		41	49.2
Cb		309	50.16
F		31	50.1
370' N = 56' E / Cb Top 30' N			
F		28	50.4

481651

353.25

Cb Top	281	50.44
Gutter	39	49.4
"	35	49.8
L	35	49.7
"	38	49.5
Gutter	43	49.0
Cb Top	370	49.55
"	39	49.3
N	39	49.3
Cb Top	370	49.55
Gutter	43	49.0
"	38	49.5
L	34	49.8
"	36	49.7
Gutter	38	49.5
Cb Top	272	50.53
F	27	50.5
B.M	506	50.819 ✓
TP	640	357.47 ✓ 218 351.07 ✓
F	64	51.1
Cb Top	640	51.07
Gutter	69	50.6
"	70	50.5
L	70	50.5

3707/1004 - 52 El Cajon
3812/1015 on Diagonal 600 N. do
123 Cbs
91 QLS

Mon NE
El Cajon
4500
3482
NE of El Cajon
487

N. of El Cajon on Diagonal 600 N. do
123 Cbs
91 QLS

45

357.47

"	70	350.5
Gutter	70	50.5
Cb Top	693	50.54
"	69	50.6
N. of El Cajon on Diagonal	67	50.8
Cb Top	680	50.67
Gutter	70	50.5
"	68	50.7
L	69	50.6
"	70	50.5
Gutter	69	50.6
Cb Top	640	51.07
F	64	51.1
F	56	51.9
Cb Top	565	51.87
Gutter	68	51.3
"	63	51.2
L	57	51.8
"	60	51.5
Gutter	68	51.3
Cb Top	583	51.64
"	55	51.0
"	44	51.9

N. of El Cajon on Diagonal
100' of N. do

data
100' of Walk
100' of
N. of El Cajon
on Diagonal

50' N

100' N = N End of Case Walk on Diagonal

48th St.

357.47

Cb	495	357.52
Gutter	54	52.1
"	50	52.5
E	45	53.0
"	51	52.4
Gutter	54	52.1
Cb Top	481	54.63
F	48	54.7

150' N

F	39	53.6
Cb Top	339	53.58
Gutter	49	52.6
"	47	52.8
E	38	53.7
"	44	53.1
Gutter	50	52.5
Cb Top	408	53.39
"	36	53.9

200' N

"	22	54.8
Cb Top	316	54.31
Gutter	41	53.4
"	37	53.8
E	31	54.4
"	38	53.7
Gutter	42	53.3

357.47

46

Cb Top	309	54.38
"	31	54.4
"	250' N	
F	22	55.3
Cb Top	223	55.44
Gutter	32	54.2
"	33	54.2
E	24	55.1

"	32	54.3
Gutter	32	54.3
Cb Top	222	55.45
"	19	55.6

300' N

"	16	55.9
Cb Top	188	55.59
Gutter	24	54.9
"	29	54.6
E	21	55.4
"	27	54.8
Gutter	29	54.6
Cb Top	194	55.53
F	18	55.7

350' N

F	14	56.1
Cb Top	171	55.76
Gutter	22	55.3

48th St.

35717

1/4	25	55.0
1/2	18	55.7
3/4	24	55.1
Gutter	23	55.2
Cb Top	1.52	55.88
W	1.5	56.0

400'N

W	1.1	56.4
Cb Top	1.93	56.04
Gutter	1.7	55.8
1/4	1.9	55.6
1/2	1.4	56.1
3/4	2.0	55.5
Gutter	1.8	55.7
Cb Top	1.82	56.20
E	1.2	56.3

450'N

E	0.8	56.7
Cb Top	0.92	56.54
Gutter	1.5	56.0
1/4	1.6	55.9
1/2	1.0	56.4
3/4	1.5	56.0
Gutter	1.7	55.8
Cb Top	1.00	56.47
W	0.8	56.7

35717

49

500'N

W	0.3	57.2
Cb Top	0.70	56.77
Gutter	1.5	56.0
1/4	1.1	56.1
1/2	0.9	56.6
3/4	1.4	56.1
Gutter	1.4	56.1
Cb Top	0.67	56.80
E	0.6	56.9

TR 6.56 363.01 v 1.02 556.45 v

550'N

E	6.0	57.0
Cb Top	5.90	57.11
Gutter	7.0	56.0
1/4	6.6	56.4
1/2	6.2	56.8
3/4	6.8	56.2
Gutter	6.8	56.2
Cb Top	5.95	57.06
W	5.9	57.1

600'N

W	5.5	57.6
Cb Top	5.61	57.35
Gutter	6.4	56.6
1/4	6.3	56.7

4813 St

363.01

2	58	57.2
1/4	63	56.7
Gutter	63	56.7
Cb Top	563	57.38
E	59	57.1

650'H

E	55	57.5
Cb Top	533	57.68
Gutter	59	57.1
1/4	60	57.0
2	55	57.5
1/4	60	57.0
Gutter	60	57.0
Cb Top	536	57.65
H	52	57.8

700'H

H	46	58.4
Cb Top	501	58.0
Gutter	51	57.4
1/4	51	57.4
2	51	57.9
1/4	54	57.6
Gutter	59	57.6
Cb Top	502	57.99
E	49	58.1

750'H

363.01

78

E	44	58.6
Cb Top	418	58.33
Gutter	51	57.9
1/4	49	58.1
2	47	58.3
1/4	52	57.8
Gutter	51	57.6
Cb Top	475	58.26
H	46	58.4

800'H

H	42	58.8
Cb Top	443	58.58
Gutter	51	57.9
1/4	50	58.0
2	41	58.6
1/4	50	58.0
Gutter	50	58.0
Cb Top	439	58.64
E	42	58.6

848.2'H = H2 of Belmont

E	38	59.2
Cb Top + Ground	420	58.81
1/4	36	59.4
2	38	59.2
1/4	35	59.5
Cb Top + Ground	420	58.81
H	37	60.3

Walker
1-57

X. Section Alley 5th 164 Janv. 21st
Del. 30th + Ohio
From N.W. Lincoln to S.W. Park.

B.M. 52 BP
Park + Ohio 319 369.15 - 365.96

T.P. 5.37 369.10 5.42 363.73

N.W. Lincoln

W top cb. 6.85 362.25

Gutter on ground 7.2 361.9

L 6.7 362.4

Gutter 6.9 362.2

E top cb. 6.70 362.4

Plotted
3/10
5/15/17

15' N

E 5.5 363.6

L 5.6 363.5

N 6.0 363.1

46' N = L Garage on E 10' wide 0.4' back
con. floor

N 5.9 363.2

L 5.8 363.3

E on concrete 5.53 363.57

R = 5.18 363.92

53' N = S End of ble. Garage on E 5.5' back con. floor

R = 5.18 363.92

72' N = N " " " " " " Back

100' N

E 5.6 363.5

L 5.55 363.6

N 5.4 363.7

150' N

W 5.0 364.1

L 5.5 363.6

369.10

49

E 5.4 363.7

200' N

E 4.8 364.3

L 4.8 364.3

N 5.0 364.1

258' N = L Garage on E 14' wide 10' back dirt floor

N 4.7 364.4

L 4.9 364.2

E 4.6 364.5

+10 = Garage 4.6 364.5

303.5' N = L M.H.

E 4.0 365.1

L = Rim of M.H. 4.55 364.75

N 4.7 364.4

350' N

N 4.6 364.5

L 4.7 364.4

E 4.5 364.6

398' N = L Garage on W 10' wide 6' back dirt floor

E 4.3 364.8

L 4.5 364.6

N 4.3 364.8

+6 = Garage 4.3 364.8

403' N = L Con. Walk on E 2' wide 1' in Alley

W 4.7 364.4

L 4.3 364.8

E top M.H. 4.30 364.8

Garage 15' Back

440' N = E Garage on E. Cor. Apron Approach 2.8' in Alley

- 4 = Garage	4.5	364.6
E	4.60	364.5
+ 1.8 = toe Apron	4.73	364.37
E	4.7	364.4
N	4.7	364.4
T.P.	4.81	369.36
	4.55	364.55

442' N = S End dble. Garage on W. Cor. Floor. Cor. Apron Approach = 2.8' Back

N - 1.1 = Garage Floor	4.58	364.78
N - 0.3 = toe of Apron	4.71	364.65

460' N = N End dble. Garage Above

N - 11 = Garage Floor	4.57	364.79
N - 0.3 = toe Apron	4.77	364.59

500' N

N	5.0	364.4
E	5.0	364.4
E	5.1	364.3
	R = 5.0	364.4

508' N = E Garage on E. 16' wide 0.8' in Alley, dirt floor

550' N

E	5.1	364.3
E	5.0	364.4
N	5.1	364.3

600' N = S.E. 18' x 5'

N top cb	5.15	364.21
E	5.4	364.0
Gutter	5.2	364.2

top cb. E

4.83 364.53

T.P.

5.37

365.97

365.96 = BM.

0.01 diff.

Plotted
5/25/21
B.B.

WALKER
1-27

X Section Alley Bk. 2nd Turnwell Hts. Bet. 30th + 31st Sts.

From St. PAUL St. to N.W. Olive St.

B.T. SY. RR PAUL + 30 th	10.02	311.02	301.00
		St. PAUL St.	
N top ch.		4.77	306.25
N gutter on paving		4.83	306.19
L " "		5.05	305.97
E gutter " "		4.90	306.12
E top ch.		4.78	306.24
15' South = North end of side walk on E. parallel with Alley 1' Back			
- 1' = Walk		4.29	306.73
E		4.2	306.8
L		4.3	306.7
N		4.3	306.7
45' South = South end of above walk on line			
N		4.7	306.3
L		4.5	306.5
E - top of walk		4.39	306.63
89' South = N. end of side Garage on West Con. Floor 7' Back			
E		5.6	305.4
L		5.6	305.4
N		5.8	305.2
+ 7 = Garage Floor		5.84	305.18
111' = South end of above Garage			
- 7 = Garage Floor		5.81	305.21
N		6.3	304.7
L		6.5	304.5

311.02

51

E		6.5	304.5
	122'S = E Garage on E. 12' wide 4.5' Back. Con. Floor		
	- 4.5' = Garage Floor	6.76	304.26
E		6.8	304.2
L		6.7	304.3
N		6.8	304.2
T.P. 1.02	304.72	7.38	303.70
	147'S		
N		0.9	303.8
L		1.4	303.3
E		1.5	303.2
	165'S = E FENCE on N. 4.5' long 1' in Alley		
	206' South = E. End of Walk on E. 2' wide 1.4' Back		
	- 2' = top of walk	3.76	300.96
E		4.0	300.7
L		3.8	300.9
N		3.6	301.1
	230' South		
N		4.9	299.8
L		5.2	299.5
E		5.2	299.5
	243'S = N. End Con. Returning Wall on E. 0.3' Back		
	- 0.3' = top of wall	6.10	298.62
E		6.3	298.4
L		6.5	298.2
N		5.9	298.8

250' S

W		7.0	297.7	
E		7.8	296.9	
E		7.2	297.5	
263' S	^{N End} = Con. Retaining Wall on west 0.2' Back			
-0.2' = Top Wall		9.50	295.22	
W = Ground at wall		10.0	294.7	
270' S	= N.W. Olive = South End Con. Wall on E on line			
W = Ground		11.3	293.4	
E		11.5	293.2	
E		11.4	293.3	
E Top Ch. = Base of Wall		11.55	293.17	
E Top Wall		8.50	296.22	
273' S	= S. End Con. Wall on west			
Top Wall		10.00	294.72	
274' S	= N. End Combination Walk on west			
Top of Walk = Ground at wall		11.50	293.22	
T.P.	4.12	307.82	1.02	303.70

Marker
-27X. Section of E + W Alley ^{16' wide} Bk 2 S. Gurnell Hts.

From E. E. of North + South Alley

307.82 = Ht. from Above

E. E. of N + South Alley = West End Garage on S

-3' = Garage Floor	4.34	303.48
-1' = Toe of Con. Apron	4.64	303.18
S	4.6	303.2

E	4.3	303.5
N	4.2	303.6
10' E = E End Garage on S		
S+1' = Toe of Apron	4.65	303.17
+3' = Garage Floor	4.36	303.46
13.5' E = E Walk on S Parallel with Alley 1' Back		
31' E = West End dble. Garage on South Con. Floor 3.2' Back		
-3.2' = Garage Floor	4.52	303.30
-0.4' = Toe of Apron	4.67	303.15
S	4.6	303.2
E	4.5	303.3
N	3.9	303.9
48' E = E End of Floor Garage		
S+0.4' = Toe of Apron	4.70	303.12
+3' = Garage Floor	4.45	303.37
50' E = West End dble. Garage on N 4.2' Back Con. Floor		
E+7.6' = Toe of Apron	4.42	303.40
N+4.2' = Garage Floor	4.00	303.82
60' E = E Garage on S. 12' Wide 3.2' Back		
S+0.4' = Toe of Apron	4.75	303.07
+3.2' = Garage Floor	4.60	303.22
70' E = E End dble. Garage on N 4.2' Back		
S	4.7	303.1
E	4.5	303.3
+7.6' = Toe of Apron	4.34	303.48
N+4.2' = Garage Floor	3.99	303.83

307.82

110' E = Garage on S 6.3' Back 12' Wide		
N	4.0	303.8
Q	4.9	302.9
S	5.0	302.8
+3.3' = toe of Apron	4.86	302.96
+6.3' = Garage Floor	4.74	303.08
130' E = West End triple Garage on N 4.7' Back Con. Floor		
N = toe of Apron	5.25	302.57
+4.7' = Garage Floor	4.81	303.01
R = 6.50 301.32		
152' E = West End. dble Garage on S 5' Back Con. Floor		
does not parallel Alley		
159' E = East End of triple Garage on N 6' Back Con. Floor		
- 6' = Garage Floor	4.95	302.87
- 0.8' = toe of Apron	5.59	302.23
172' E = East End dble. Garage on south 5' Back		
- 6' = Garage Floor	6.57	301.25
S	6.7	301.1
Q	6.3	301.5
N	5.9	301.9
185' E		
N	6.4	301.4
Q	6.9	300.9
S	7.2	300.6
215' E		
S	9.1	298.7
Q	9.1	298.7
N	8.8	299.0

307.82

243' E = Garage on South 2.6' Back 12' Wide Wood Floor		
N	11.2	296.6
Q	11.3	296.5
S	10.4	297.4
+2.6' = Garage Floor	10.15	297.47
255' E		
S	12.1	295.7
Q	12.2	295.6
N	11.8	296.0
TP 636	301.86	295.54
270' E = West End Garage on S West Entrance Con. Floor		
N	6.7	295.2
Q	7.0	294.9
S	7.1	294.8
+5.5' = Entrance on Floor	7.05	294.81
285' E		
S	8.1	293.8
Q	8.3	293.6
N	8.3	293.6
300' E		
N	10.6	291.3
Q	10.9	291.0
S	10.8	291.1
325' E		
S	14.3	287.6
Q	14.2	287.7

301.86

356.03

54

N		135	288.4
T.P.	13.00	311.23	363 298.23
T.P.		10.18	301.05
			301.00 = B.M.
			0.05

134' to 315^{W.V.} St. Cont. on Eng. 76

MAKER
1-25-27

X Section 20' Alley (City Hts.) bet. 35th + Wilson

From S.L. Nightman to N.L. Landis St.

B.M. N.V. B.P.

Nightman + 36.23

8.35	356.03	347.68
------	--------	--------

S.L. Nightman

E top cb.	5.04	350.99
Gutter on ground	5.0	51.03
E	5.4	50.63
N Gutter	4.7	51.33
N top cb.	4.74	51.29

Plotted
K.L. 10/20

5' South

N	4.3	51.73
E	4.5	51.53
E	4.3	51.73

20' S = 8' M.H.

E	4.4	51.63
E = Rim of M.H.	4.74	51.29
N	4.1	51.93

50' S

N	4.7	51.33
E	4.8	51.23
E	4.8	51.23

70' S = 8' Garage on E 10' wide 0.5' in Alley dirt floor

E + 0.5' = Garage	5.3	350.73
-------------------	-----	--------

E	4.8	51.23
---	-----	-------

N	5.2	50.83
---	-----	-------

83' S = 8' Garage on W 12' wide 5' Back Con. Floor

N - 5' = Garage floor	5.14	50.89
-----------------------	------	-------

- 3' = toe of Apron	5.36	50.67
---------------------	------	-------

N	5.3	50.73
---	-----	-------

E	5.3	50.73
---	-----	-------

E	5.2	50.83
---	-----	-------

110' S

E	6.3	49.73
---	-----	-------

E	5.9	50.13
---	-----	-------

N	6.2	49.83
---	-----	-------

160' S

N	6.6	49.43
---	-----	-------

E	6.8	49.23
---	-----	-------

E	6.8	49.23
---	-----	-------

200' S

E	7.5	48.53
---	-----	-------

E	7.4	48.63
---	-----	-------

N	7.4	48.63
---	-----	-------

231' S = 8' Garage on W 4.3' Back 12' wide Con Floor

N - 4.3' = Garage floor	7.90	48.13
-------------------------	------	-------

- 2.3' = toe of Apron	8.20	47.83
-----------------------	------	-------

N	8.2	47.83
---	-----	-------

2		8.2	348.83
E		8.0	48.03
	280' S = 2 Garage on N 15' Back 12' Wide dirt Floor		
E		9.4	46.63
2		8.9	47.13
N		9.0	47.03
+ 15' = Garage		9.0	47.03
T.P.	0.04 346.99	9.08	346.75
	315' South = 2 Garage on N 12' Wide Con. Floor 12' Back		
- 1.2' = Garage Floor		0.50	46.49
N		0.6	46.39
2		0.6	46.39
E		0.7	46.29
	350' S		
E		1.3	45.69
2		1.3	45.69
N		1.3	45.69
	401' S = 2 M.H.		
N		2.4	44.59
2 on Rim		2.51	44.48
E		2.5	44.49
	418' S = 2 Garage on N 5' Back dirt Floor		
	450' S		
E		3.5	43.49
2		3.8	43.19
N		3.9	43.09

	455' S = N End Dble Garage on E 5.2' Back Con Floor		
N		3.7	343.29
2		4.0	42.99
E		4.1	42.89
+ 3' = toe of Apron		4.70	42.29
+ 15' = Garage Floor		4.60	42.39
	472' S = S End Above Garage		
- 5' = Garage Floor		4.66	42.33
- 3' = toe of Apron		4.70	42.29
E		4.7	42.29
2		4.6	42.39
N		4.7	42.29
	500' S		
N		5.5	41.49
2		5.7	41.29
E		5.4	41.59
	519' S = 2 Garage on E 12' Wide 6.5' Back Con Floor		
	527' S = N End dble. Garage on E 2.3' Back Con Floor		
- 2.3' = Garage Floor		6.30	40.69
E + 0.3' = toe of Apron		6.62	40.37
2		6.4	40.59
N		6.5	40.49
	548' S = S End dble Garage on E		
N		7.1	39.89
2		7.4	39.59
N		7.1	39.89

346.99

+ 9.7 = toe of apron	6.82	340.17
E + 2.3 = Garage Floor	6.44	40.55
5.57'S = Garage on N 10' wide 2.5' back Cor. Floor		
N + 0.5 = toe of Apron	7.35	39.64
+ 2.5 = Garage Floor	7.25	39.74

568'S

E	7.9	39.09
+3	8.0	38.99
+4	8.6	38.39
E	8.9	38.09
+6	8.8	38.19
+7	8.4	38.59
N	8.0	38.99

590'S

N	8.8	38.19
+3	8.8	38.19
+0	14.1	32.89
E	14.2	32.79
+6	13.9	33.09
+8	8.3	38.69
E		

597'S

E	8.8	38.19
+2	8.8	38.19
+4	15.3	31.69
E	15.6	31.39

346.99

51

+5	15.5	331.49
+8	11.6	35.39
N	11.6	35.39
T.P. 382	338.18	12.69
		334.36

600'S = N.W. LANDIS ST.

N-top ch.	7.76	330.42
Gutter on paving	8.17	30.01
E. " "	8.35	29.83
Gutter " "	7.63	30.55
E-top ch.	7.14	31.04
T.P.	2.94	

335.24
 335.25 = 8.11 NW 1/4
 Landis
 0.01 + 36.44

Section 20' Alley Bk. 9 TERRA 87 364
 From S.W. Orange to N.W. Polk Cherokee

378.39

57

B.M. NW. B.P.
 Orange + Cherokee 6.22 378.39

372.17

S.L. Orange

E to Cb Returns 5.8 372.6
 S 5.8 372.6
 W 5.8 373.1

45' S

W 5.1 373.3
 S 5.2 373.2
 E 5.2 373.2

100' S

E 6.0 372.4
 S 5.7 372.7
 W 5.5 372.9

123' S = N End cble. Garage on W 5.4' Back Cor. Floor

-5.4 = Garage Floor 5.16 373.2
 W 5.5 372.9
 S 6.0 372.4
 E 6.3 372.1

144 S = S End Above Garage

E 6.3 371.9
 S 6.1 372.3
 W 6.0 372.4
 +5.4 = Garage Floor 5.33 373.1

187' S = S Garage on W 12' Wide dirt floor on line

W 6.4 372.0

Plotted by Tolman
 3/8/27

S 6.3 372.1
 E 6.4 372.0

235' S = S Garage on E 4.5' Back dirt floor

-4.5 = Garage 7.1 371.3
 E 7.1 371.3
 S 6.8 371.6
 W 6.9 371.5

270' S

W 6.9 371.5
 S 7.0 371.4
 E 7.3 371.1

306' S

E 6.9 371.5
 S 6.9 371.5
 W 7.1 371.3

7.P. 260 374.20 6.99 371.40

338' S

W 9.3 370.9
 S 7.8 371.4
 E 3.1 371.1

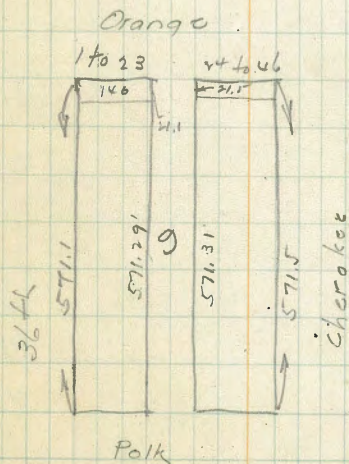
365' S = S Garage on E 34' Back dirt floor

-3.4 = Garage 4.1 370.1
 E 4.1 370.1
 S 3.8 370.4
 W 3.8 370.4

400' S

N	4.6	369.6
S	4.4	369.8
E	4.5	369.7
433'S = Garage on N 2.6' Back Con. Floor		
E	4.3	369.9
S	4.5	369.7
+ 8.5' = toe of Apron	4.31	369.9
N + 2.6' Garage Floor	3.99	370.2
462'S = Garage on N 3' Back 12' Wide Con. Floor		
- 3' = Garage Floor	4.49	369.7
N + 1' = toe of Apron	4.73	369.5
S	5.0	369.2
E	4.5	369.7
500'S		
E	5.7	368.5
S	6.0	368.2
N	5.6	368.6
529'S = Garage on N 4.8' Back Con. Floor 12' Wide		
- 4.8' = Garage Floor	5.46	368.7
- 1' = toe of Apron	5.86	368.3
N	6.1	368.1
S	6.4	367.8
E	6.0	368.2
561'S		
E	6.9	367.3
S	7.1	367.1

N	6.0	368.2
574'S = 5' N of N ob. line Polk		
N = top walk	7.50	366.7
S = " "	8.00	366.2
E	7.91	366.3
TP 7.09	378.49	2.80
TP	6.32	372.17
		372.17 = 374.00
		0.00



Walker
1-29-27

T. Section 20' Alley Blk. 58 (City Hts) ^{Bet. R.R. + 30' W.}
from N.L. Menroe to S.L. Morrison Ave

382.38

57

Blk. 58, B.P.

Menroe + 30' W. 3.43 382.38 378.95

U. Hts.

-35 = Garage Floor 52 377.18

W 57 76.68

E 55 76.88

E 47 77.68

200' N

E 45 77.88

E 48 77.58

W 46 77.78

228' N

W 35 78.88

E 40 78.38

E 43 78.08

245' N

E 43 78.08

E 44 77.98

W 42 78.18

265' N

W 28 79.58

E 37 78.48

E 42 78.18

290' N

E 38 78.58

E 40 78.38

W 36 78.78

307' N Garage on E 3' Back 10' Wide Con. Floor

W 37 78.68

Plotted
N.L. B.

N.L. Menroe

E Top Ch. 5.99 376.39

Gutter 6.4 75.98

E 6.6 75.78

Gutter 6.8 75.58

W Top Ch. 6.29 76.09

38' N = Garage on E 0.5' in Alley 20' long Con. Foundation St. Entrance

W 6.6 75.78

E 6.4 75.98

+9.5 6.1 76.28

68' N = Garage on E 5' Back 10.5 wide Con. Floor

-5' = Garage Floor 5.5 76.88

E 5.6 76.78

E 5.9 76.48

W 5.6 76.78

100' N

W 6.4 75.98

E 6.3 76.08

E 5.8 76.58

150' N

E 6.0 76.38

E 5.5 76.88

W 5.6 76.78

167' N = Garage on W 3.5' Back 10' Wide Con. Floor

ℓ	3.6	378.78
E	3.2	79.78
+ 3.3' = Garage Floor	2.95	79.43
355' North		
E	2.8	79.58
ℓ	3.1	79.28
W	3.2	79.18
391' N = ℓ Garage on E. 8' Back 8' wide Cor. Floor		
W	3.0	79.38
ℓ	3.0	79.38
E	2.6	79.78
+ 2.8 = Garage Floor	2.20	80.18
440' N = ℓ Garage on S. 5.4' Back 12' wide Cor. Floor		
- 5.0 = Floor	2.5	79.88
E	2.5	79.88
ℓ	2.5	79.88
W	2.5	79.88
492' N = ℓ Garage on E. 3.8' Back 12' wide Cor. Floor		
W	1.7	80.68
ℓ	1.5	80.88
E	1.8	80.58
+ 3.8 = Garage Floor	0.59	81.79
509' N = ℓ Garage on E. 3.8' Back 12' wide Cor. Floor		
" " " " " N 39' " " " "		
- 3.8 = Garage Floor	0.45	81.93
E = toe of Apron	0.72	81.66

ℓ	1.0	381.38
W = toe of Apron	12.0	81.18
+ 3.9 = Garage Floor	0.82	81.56
	Rd = 1.10	81.28
514' N = S end of Cor. walk on West 0.3' Back parallel with Alley		
	Rd = 0.50	81.88
514' N = S " " " " " East 19' " " " "		
584' N = Brk. in walks as above		
E = 19' top walk	0.37	82.01
E	0.7	81.68
ℓ	0.8	81.58
W	1.0	81.38
+ 0.3 = top walk	0.72	81.66
600' = Sh. Madison = N End of Above Walks		
- 0.3 = top walk	1.41	80.97
W top of	1.41	80.97
Gutter	1.6	80.78
ℓ	1.0	81.38
Gutter	1.0	81.38
top of	0.81	81.57
+ 1.9 = top walk	0.62	81.74

Walker
1-29-27

20' Alley Blk. 11 Univ. Hts.
From S.W. 20115 to N.W. Madison Ave.

Set
30' 11' +
Ohio

S.M.S.E. & P.
Holmes + 300'

5.71 394.75

389.04

S.W. Adams

W top cb	4.84	389.91
" Gutter on Paving	5.06	89.69
ℓ " " "	5.29	89.46
E " " "	4.90	89.85
E top cb	4.87	89.88

E	3.9	90.85
ℓ	4.1	90.65
W	4.2	90.55
W	4.4	90.35
ℓ	4.4	90.35
E	4.5	90.25

9.8' S = N End. Dble. Garage on E. Cor. Floor 7.7' Back

-7.7 = Garage Floor	4.34	90.41
E	4.5	90.25
ℓ	4.6	90.15
W	4.4	90.35
11.6' S = S End Above Garage		
W	4.6	90.15
ℓ	4.5	90.25
E	4.3	90.45
+ 7.7 = Garage Floor	4.30	90.45

Use Other
Notes
Plan Made
By L. Gold
in 1926.

394.75

61

TP. 386 393.59 4.42 390.33

15.5' S = N End Dble. Garage on W 1.8' Back dirt Floor

E	3.8	389.79
ℓ	3.8	89.79
W	3.8	89.79
+ 1.8 = dirt floor	1.5	92.09
17.5' S = S end Above Garage	1.6	91.99

200'S

W	3.8	89.79
ℓ	4.0	89.59
E	4.1	89.49

250'S

E	4.2	89.39
ℓ	4.2	89.39
W	4.1	89.49

300'S

W	4.5	89.09
ℓ	4.5	89.09
E	4.3	89.29

350'S

E	4.8	88.79
ℓ	4.9	88.69
W	4.7	88.89

400'S

W	4.9	88.69
ℓ	5.0	88.59
E	5.0	88.59

} ?

450' South

E	5.0	388.59
S	5.0	88.59
W	5.1	88.49

500' S

W	5.0	88.59
S	5.1	88.49
E	4.9	88.69

530' S = Garage on E. 0.9' Back 7' wide Co. Floor

-0.9 = Floor	4.67	88.92
E	4.80	88.79
S	4.6	88.99
W	4.8	88.79

580' S

W	5.4	88.19
S	5.5	88.09
E	5.3	88.29

600' S = N.W. Mainson Ave.

E = Top Ch.	5.92	87.67
Gutter	6.2	87.39
S	6.3	87.29
Gutter	6.1	87.49
Top Ch.	6.10	87.49

T.P.	2.69	391.14	5.14	388.45
------	------	--------	------	--------

T.P.			2.07	289.07
------	--	--	------	--------

289.04	-	81.5188
0.03		Feb 96
		4.3020

X. Section Orange Ave 50' wide
 14' Cbs.
 13' 25"
 from N.W. 33rd on South to N.W. Boundary st

367.81

WALKER 1-31-27 63

B.M. N.Y.S.P.

Orange + 33rd 115 367.81 361.66

N.W. 33rd on S.W. Orange

N.Cb. 3.83 363.98

Gutter on Paving 4.53 363.28

1/4 " " 4.06 363.75

2 " " 4.18 363.68

1/4 " " 4.42 363.39

Gutter " " 5.25 362.56

S top cb. 4.68 363.13

50' West

S top cb. 5.60 362.2

Gut. on Ground 6.2 361.6

1/4 5.4 362.4

2 4.8 363.0

1/4 4.9 362.9

Gut. on Ground 5.5 362.3

N top cb. 4.66 363.15

100' W

N top cb. 5.62 362.19

Gutter on Ground 6.1 361.7

1/4 5.7 362.1

2 5.6 362.2

1/2 6.2 361.6

Gutter on Ground 6.8 361.0

S top cb. 6.45 361.36

140' W = End of existing cb. on South

S top cb. 7.14 360.67

Gutter on Ground 7.0 360.8

1/4 6.5 361.3

2 6.9 361.8

1/4 6.2 361.6

Gut. 6.7 361.1

N top cb. 6.35 361.46

150' W = End of existing cb. on North

N top cb. 6.52 361.29

Gut. 6.5 361.3

1/4 6.0 361.8

2 6.2 361.6

1/4 6.9 360.9

S cb on Ground 6.3 361.5

5 5.8 362.0

182' W

5 6.1 361.7

2 6.0 361.8

+3 6.1 361.7

+4 4.6 363.2

1/4 5.0 362.8

2 5.4 362.4

1/2 5.3 362.5

+5 6.3 361.5

+9 4.6 363.2

367.81

cb	4.7	363.1
+5	5.3	362.5
N	4.0	363.8
200'W		
N	4.2	363.6
cb	4.9	362.9
+4	4.9	362.9
+7	6.5	361.3
1/2	4.7	363.1
2	5.4	362.4
1/4	5.6	362.2
+8	5.4	362.4
cb	7.0	360.8
+2	6.3	361.5
S	6.5	361.3
225'W		
S	7.4	360.4
cb	7.7	360.1
+4	6.9	360.9
1/2	6.9	360.9
2	6.4	361.4
+6	6.2	361.6
+7	5.4	362.4
1/4	5.7	362.1
+5	7.1	360.7
cb	6.0	361.8

367.81

64

N	5.1	362.7
275'W		
N	7.3	360.5
cb	8.0	359.8
1/2	8.5	359.3
2	9.5	358.3
1/4	9.6	358.2
+8	9.6	358.2
+10	10.3	357.5
cb	9.3	358.5
S	8.8	359.0
TP 8.84	366.11	(1054?) 357.27
300'W = E. Bancroft. (80' wide 14'cd 13-1/2)		
S	9.6	356.5
cb	9.2	356.9
1/2	8.6	357.5
2	8.2	357.9
1/4	7.7	358.4
cb	7.4	358.7
N	7.1	359.0
Ecb		
N	8.3	357.8
cb	8.0	358.1
1/4	8.0	358.1
2	8.5	357.6
1/2	8.8	357.3

366.11

cb.		9.2	356.9
S		9.3	356.8
	E $\frac{1}{4}$		
S		9.0	357.1
cb.		9.0	357.1
$\frac{1}{4}$		8.8	357.3
$\frac{1}{2}$		8.7	357.4
$\frac{1}{4}$		8.1	358.0
cb.		8.3	357.8
N		8.5	357.6
	S Bancroft		
N		9.0	357.1
cb.		9.5	356.6
+6		8.0	358.1
$\frac{1}{4}$		8.2	357.9
$\frac{1}{2}$		8.4	357.7
$\frac{1}{4}$		8.7	357.4
cb.		9.2	356.9
S		9.3	356.8
	N $\frac{1}{2}$		
S		9.0	357.1
cb.		9.1	357.0
$\frac{1}{4}$		9.0	357.1
$\frac{1}{2}$		8.9	357.2
$\frac{1}{2}$		8.3	357.8
cb.		8.6	357.5

366.11

65

N		7.8	358.3
	N cb.		
N		7.8	358.3
cb.		8.0	358.1
$\frac{1}{4}$		8.5	357.6
$\frac{1}{2}$		8.8	357.3
$\frac{1}{4}$		9.0	357.1
cb.		9.0	357.1
S		9.2	356.9
	N.W. Bancroft. st.		
S		8.7	357.4
cb.		8.8	357.3
$\frac{1}{4}$		8.5	357.6
$\frac{1}{2}$		8.2	357.9
$\frac{1}{4}$		8.0	358.1
$\frac{1}{2}$		7.2	358.9
N		6.5	359.6
	50' N.W. Bancroft. st. = 4+30		
N		4.4	361.7
cb.		4.8	361.3
$\frac{1}{4}$		5.4	360.7
$\frac{1}{2}$		6.8	359.3
$\frac{1}{4}$		7.0	359.1
cb.		7.7	358.4
S		8.2	357.9

100' N = 4+80

S	6.7	359.4
cb.	6.1	360.0
$\frac{1}{4}$	5.4	360.7
$\frac{1}{2}$	4.4	361.7
$\frac{3}{4}$	4.4	361.7
cb.	3.9	362.2
N	3.3	362.8

135' W = 5+15

N	2.6	363.5
cb.	3.4	362.7
$\frac{1}{4}$	3.9	362.2
$\frac{1}{2}$	4.5	361.6
$\frac{3}{4}$	5.0	361.1
cb.	5.9	360.2
S	6.2	359.9

152.5' W = N.L. Boundary on South
Section at Rt. Maples to Orange

S	6.0	360.1
cb.	6.0	360.1
$\frac{1}{4}$	5.6	360.5
$\frac{1}{2}$	5.0	361.1
$\frac{3}{4}$	4.0	362.1
cb.	3.0	363.1
N	2.6	363.5

152.5' W = Section Parallel with Boundary

N top cb.	4.15	361.6
Gut	4.6	361.5

$\frac{1}{2}$	4.8	361.31
$\frac{1}{4}$	5.4	360.7
$\frac{3}{4}$	5.8	360.3
Gut	6.3	359.8
Stop cb.	6.08	360.03
T.P. 235	359.62	8.84 357.27

This H.I. Used on Page 67

Potted
2/2/71
B.B.

X Section CROCKET ST. 80' wide 14' Cbs.
13' 1/2

From S.W. ORANGE Ave. to Boundary st.

359.62
- H.I. from Page 66

S.W. Orange

E	3.2	356.4
cb.	2.9	356.7
1/4	3.0	356.6
1/2	2.9	356.7
1/4	2.5	357.1
cb.	2.7	356.9
H'	2.2	357.4
18' S		
H'	2.8	356.8
cb.	3.1	356.5
1/4	3.0	356.6
+10	4.6	355.0
+12	4.6	355.0
1/4	3.0	356.6
1/4	3.5	356.1
cb.	3.2	356.4
E	3.0	356.6
42' S		
E	3.0	356.6
cb.	3.3	356.1
1/2	3.8	355.8
1/4	4.1	355.5
+7	4.1	355.5
+8	5.9	353.7

Plotted
2/2/27
J.G.B.

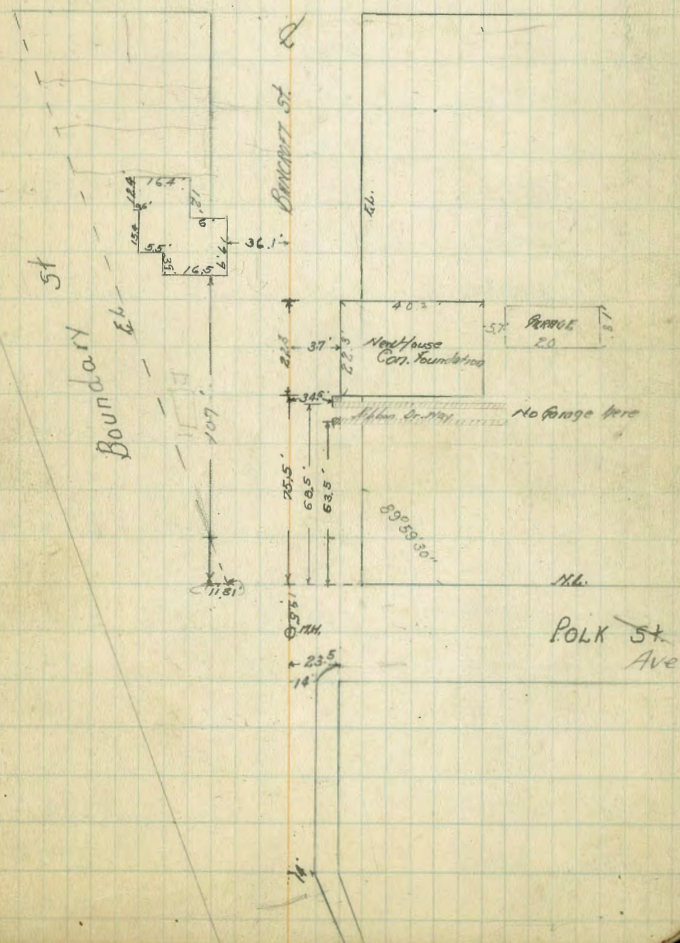
359.62

MAKER
1-31-27
19

1/2	4.0	355.6
cb.	3.8	355.8
H'	3.8	355.8

ORANGE

Ave.



57' South

N	4.5	355.1
cb.	5.1	354.5
+5	5.6	354.0
+7	8.0	351.6
$\frac{1}{4}$	6.6	353.0
$\frac{1}{2}$	5.3	354.3
$\frac{1}{4}$	3.7	355.9
cb.	3.6	356.0
+12	3.0	356.6
E	2.2	357.4

67'S

-9 = Con. Walk to house	1.01	358.61
E	1.0	358.6
+2	2.9	356.8
cb.	3.6	356.0
$\frac{1}{4}$	3.6	356.0
$\frac{1}{2}$	3.0	356.6
+7	5.7	353.9
$\frac{1}{4}$	7.3	352.3
cb.	5.5	354.1
N	5.5	354.1

84'S = 8' Dr. Way on E } 6.5' Side
9' Back }
{ Con. Ribbon }
{ Or Way }
{ Or Way }

N	6.4	353.2
cb.	6.7	352.9
+6	8.7	350.9

$\frac{1}{4}$	5.6	354.0
$\frac{1}{2}$	3.9	355.8
$\frac{1}{4}$	4.1	355.5
cb.	3.6	356.0
E	2.7	356.9
+9 = Con. Ribbon	1.30	358.42

111'S = E Con. Walk on E 3.2' wide

E = Top Walk	1.85	357.77
+2 = Con. Step	2.27	357.35
+3	2.7	356.9
cb.	3.8	355.8
$\frac{1}{4}$	4.2	355.4
$\frac{1}{2}$	4.0	355.6
+5	4.5	355.1
$\frac{1}{4}$	4.7	354.9
cb.	7.4	352.2
N	6.8	352.8

150'S

N	6.0	353.6
cb.	5.6	354.0
$\frac{1}{4}$	5.3	354.3
$\frac{1}{2}$	4.6	355.0
$\frac{1}{4}$	4.2	355.4
cb.	4.0	355.6
+3	3.9	355.7
+5	3.3	356.3

359.62

E	2.9	356.7
200' South		
E	3.2	356.4
+10	3.6	356.0
cb	4.4	355.2
$\frac{1}{4}$	4.5	355.1
E	5.3	354.3
$\frac{1}{4}$	6.3	353.3
cb	7.4	352.2
N	7.4	352.2
250' S		
N	8.5	351.1
cb	8.4	351.2
$\frac{1}{4}$	6.9	352.7
E	6.0	353.6
$\frac{1}{4}$	5.3	354.3
cb	5.3	354.3
+5	4.5	355.1
E	4.2	355.4
302' S = E of Perch on N 10' wide 25' in St.		
E	5.4	354.2
cb	6.0	353.6
+3	6.8	352.8
$\frac{1}{4}$	6.8	352.8
E	7.3	352.3
+9	8.7	350.9

359.62

$\frac{1}{4}$	8.6	351.0	
cb	9.0	350.6	
111.5' = Ground at Perch			
350' S			
N	11.0	348.6	
cb	10.7	348.9	
$\frac{1}{4}$	9.8	349.8	
E	9.4	350.2	
$\frac{1}{4}$	9.1	350.5	
cb	9.0	350.6	
+3	9.3	350.3	
E	7.9	351.7	
400' S			
E	9.9	349.7	
cb	10.8	348.8	
+2	11.2	348.4	
$\frac{1}{4}$	11.1	348.5	
E	11.3	348.3	
+10	12.4	347.2	
$\frac{1}{4}$	12.0	347.6	
cb	12.7	346.9	
N	12.6	347.0	
435' S = E Walk on			
T.P. 7.70	354.34	12.98	346.64
N+2.6 = Con Perch			
cb	8.2	346.3	

$\frac{1}{4}$	7.6	346.9
+3	8.0	346.5
$\frac{1}{2}$	7.0	347.5
$\frac{1}{4}$	7.0	347.5
cb.	6.9	347.6
+7 = top cen walk	5.90	348.64
E	5.7	348.8
470' S		
E+3 = Edge of foundation	7.1	347.4
cb.	7.2	347.3
+6	7.7	346.8
$\frac{1}{4}$	7.6	346.9
$\frac{1}{2}$	7.8	346.7
+9	8.7	345.8
$\frac{1}{4}$	8.4	346.1
cb.	9.0	345.5
W	9.0	345.5
504' S = E. South Ribbon on E		
W	9.5	345.0
cb.	9.5	345.0
$\frac{1}{4}$	8.8	345.7
+15	9.4	345.1
$\frac{1}{2}$	8.6	345.9
$\frac{1}{4}$	8.5	346.0
cb.	8.2	346.3
+9.4 = top of Cen. Ribbon	7.23	347.31

567.12 South = N.W. Polk st.		
E	8.9	345.6
cb.	9.2	345.3
$\frac{1}{4}$	9.4	345.1
$\frac{1}{2}$	10.0	344.5
$\frac{1}{4}$	10.4	344.1
cb.	10.7	343.8
+2.19 = E.W. Boundary st.	10.7	343.8
586.62 S = E.M.H. on Rim	10.05	344.29
T.P.	18.5?	

353.09
 $\frac{353.09}{0.04} = 8786.75$
 353.09
 353.04 = 8156.25
 0.04 = 3225 st.

Plotted
 7/2/27
 J.P.

X-Section Alley Blk. 74 Univ. Hs. Bet. ALABAMA + Miss.
 FROM N.L. MEADE TO ST. MONROE AVE.

BM S.E. of P. MEADE + ALABAMA	12.96	331.83	318.87
		N.L. MEADE	
W top cb.		3.35	328.48
Gutter		3.7	28.1
E		2.1	28.7
Gutter		3.10	28.73
E top cb.		2.63	29.20
	S'N = Con. Walk on N. Parallel with Alley		
E		1.1	30.7
E		1.4	30.4
W		1.6	30.2
+ 1.7 = top of walk		1.62	30.21
T.P.	3.34	333.95	1.82 330.61
	19' N = E. Con. Porch on W 6' Wide 0.5' Back		
N - 0.5' = top of Porch		2.67	31.28
W		3.6	30.3
		R = 3.77	30.18
	4' N = N. End. Con. Walk on W 1.7' Back		
	45' N = E. Garage on W 3' Back 11' Wide. With Con. Apron 6' Wide 1' in Alley		
- 3' = Garage Floor		3.69	30.26
W + 1 = top of Con. Apron		3.80	30.15
E		3.1	30.8
E		2.4	31.5
	78' N = S. End. Dble. Garage on E 2' Back Con. Floor		
- 2' = Floor		1.74	32.21
E		2.3	31.6

PLOTTED
 11-27
 1944

333.95

E		2.8	31.1
W		3.4	30.5
+ 5		4.0	29.9
	75' N = N. End of Dble. Garage on E 2' Back Con. Floor		
- 3		4.0	29.5
W		3.5	30.4
E		3.0	30.9
E		2.1	31.8
+ 7 = Garage Floor		1.83	32.12
	124' N		
E		2.6	31.3
E		3.5	30.4
W		4.0	29.9
+ 3		4.4	29.5
	142' N = S. End. Triple Garage on W 10' Back dirt Floor		
T.P.	4.39	335.16	3.18 330.77
- 10 = Garage Floor		6.3	28.9
W		5.4	29.8
E		4.5	30.7
E		4.2	31.0
	172' N = N. End of Above Garages		
E		4.7	30.5
E		5.5	29.7
W		5.9	29.3
+ 10 = Garage Floor		6.6	28.6
	195' N = E. Shed on W 3' Wide 0.5' in Alley		

	206' N = S End dble Garage on E 0.5' in Alley ^{Con. Floor}		
N	6.4	28.8	
⊘	6.3	28.9	
+ 9.5' = Garage Floor	4.85	30.31	
	225' N = N End dble Garage on E 0.1' in Alley		
E + 0.1' = Garage Floor	4.85	30.31	
⊘	6.4	28.8	
N	6.7	28.5	
	235' N		
N	6.7	28.5	
⊘	6.7	29.0	
+ 3	5.6	29.6	
E	3.6	31.6	
	242' N		
E	5.6	29.6	
⊘	6.7	29.0	
N	6.6	28.6	
247' N ⊘ Garage on E 12' wide R = 5.8 4' Back		29.4	
	254' N		
N	6.7	28.5	
⊘	6.3	28.9	
E	5.7	29.5	
	255' N		
E	4.7	30.5	
⊘	6.1	29.1	
N	6.7	28.5	

	7.P. 5.53	335.06	5.63	329.53
	306' N = ⊘ Garage on W on line 16' wide dirt floor			
	306' N = ⊘ Garage on E 18' wide 13' Back Con. Floor			
N = Garage	6.2	29.0		
⊘	5.6	29.6		
E	5.0	30.2		
+ 13' = Garage Floor	3.41	31.65		
	342' N = ⊘ Garage on E 10' wide Con. Floor 2.4' Back			
- 2.4' = Garage Floor	4.31	30.75		
E	5.1	30.0		
⊘	5.6	29.5		
N	5.5	29.6		
	361' N = S End dble Garage on N 0.2' Back Con. Floor With Garage Approach			
N + 0.2' = Garage Floor	5.35	29.71		
N + 18' = toe of Apron	5.35	29.71		
⊘	5.3	29.8		
E	5.1	30.0		
	388' N = N End Horse Garage on line			
E	4.6	30.5		
⊘	4.7	30.4		
+ 8' = toe of Apron	5.16	29.90		
N = Floor	5.26	29.80		
	Rel. = 4.25	30.81		
	393' N = ⊘ Garage on E 2.8' Back 10' wide dirt floor			
	444' N = ⊘ Garages on E ^{1st} next Bodhi are 12' wide			
W - 3.7' = Con. Floor	4.40	30.66		
W + 0.3' = toe of Apron	4.40	30.66		
⊘	4.1	31.0		

335.06

E		3.9	31.2
+2.5 = Garage Floor (dirt)		3.6	31.5
	449' N		
E		3.6	31.5
W		4.1	31.0
W		4.4	30.7
	450' N		
W		4.4	30.7
W		4.2	30.9
+6		3.8	31.3
+8		3.1	32.0
E		2.6	32.5
	473' N		
E		2.3	32.8
+2		2.5	32.6
+4		3.3	31.8
W		3.6	31.5
W		4.3	30.8
	474' N		
W		4.2	30.9
W		3.5	31.6
E		2.8	32.3
	496' N = Garage on E. 12' wide 9' in Alley Con. Floor		
E + 0.9' = Garage Floor		2.0	33.06
W		3.2	31.9
W		3.3	31.8

335.06

73

527' N = S end of House on E. 1' in Alley			
W		3.0	32.1
W		2.3	32.8
+9 = Ground at house		2.0	33.1
574' N = N end of above house 0.5' in Alley (Does not Parallel Alley)			
E + 0.5' = Ground at house		0.6	34.5
W		1.0	34.1
W		1.5	33.6
	590' N		
-5		1.7	33.4
W		1.1	34.0
W		0.9	34.2
E		0.8	34.3
T.P. 240	335.39	2.16	33.2.90
	600' N = St. Monroe		
E = top cb.		1.68	33.62
Gutter		1.2	33.7
W		2.4	32.9
Gut		2.5	32.8
W = top cb.		2.28	32.82
T.P.		10.64	
			32.66
			32.61
			0.05 + Alabama

X Section 20' Alley Bk. 21' Alley Hts. ^{bet.} Alabama + Miss.
 From N.W. Madison to S.W. Adams Ave.

340.31

74

B.M. S.E. C.P.

Madison + Miss.

0.25

340.31

340.06

N.W. Madison = S. End Small ^{same size as curb.} NW on West

115' N.

E top cb.	4.40	335.9
Gut	4.6	335.7
E	5.1	335.2
Gut	5.2	335.1
N top cb.	4.80	335.5
44' N = N end of Above Wall of Back		
N top of Wall	3.96	336.35
N on Ground	4.3	336.0
E	3.9	336.4
E	3.5	336.8
58' N = S end Quadrupled garage on N 2.8' Back dirt Floor		
E	3.3	337.0
E	3.7	336.6
N	3.9	336.4
+ 2.8' = Garage	3.9	336.4
94' N = N end above Garages		
- 2.8' = Garage	3.6	336.7
N	3.6	336.7
E	3.2	337.1
E	2.9	337.4
100' N = E Garage on E 12' wide 2.5' Back dirt Floor ^{Rd = 2.5}		
- 2.5' = Garage	2.1	338.1

Plotted
5/11/13
JBB

E	2.1	338.2
E	3.0	337.3
N	3.4	336.9
139' N = E Garage on N 18' wide 9.4' Back Con. Floor		
- 9.4' = Garage Floor	2.60	337.7
N	2.8	337.5
E	2.5	337.8
E	2.0	338.3
172' N = E Garage on N 9.4' back 12' wide Con. Floor ^{Rd = 2.45}		
- 9.4' = Garage Floor	1.4	338.9
E	1.4	338.9
E	1.7	338.6
N	1.9	338.4
190' N = E Garage on N 11' wide 12' Back 2.2' Con. Floor		
T.P. 10.11	350.11	0.31
340.00		
250' N		
N	10.4	339.7
E	10.1	340.0
E	9.7	340.4
259' N = E Garage on N 10' wide 2' Back dirt Floor ^{Rd = 9.6}		
300' N		
E	8.9	341.2
E	7.1	341.0
N	7.3	340.8
318' N = E Garage on E 8' wide 5' Back dirt Floor ^{Rd = 8.3}		

360' N = S End Garage on E with N Entrance 1 1/2' in Alley		
N	8.1	342.0
E	8.2	341.9
+ 8.9 = Ground at Blvd.	7.5	342.6
376' N = N End of Above Garage		
E - 3' = Garage Floor N Entrance	6.79	343.32
387' N = S end dble Garage on W or 2' Back dirt Floors		
E	7.1	343.0
E	7.6	342.5
N + 0.2' = Garage	7.5	342.6
405' N = N end Above Garages	Rd = 7.3	342.8
	Rd = 7.5	342.6
407' N = S end dble Garage on W dirt floor or 2' Back		
426' N = N " " " " " " " "		
N - 0.2' = Garage	7.3	342.8
E	7.1	343.0
E	6.9	343.2
476' N		
E	6.2	343.9
E	6.5	343.6
N	6.6	343.5
500' N = E Garage on W 15' wide 2' Back ^{dirt floor}		
N - 0.2' = Garage	6.4	343.7
E	6.3	343.8
E	6.2	343.9
551' N = E Garage on E 5' wide 2' Back Con. Floor		
- 2' = Garage Floor	5.15	344.96

551' N.			
E	5.3	344.8	
E	5.6	344.5	
N	5.9	344.2	
561' N = S end dble. Garage on E 18' Back Con. Floor			
N	5.9	344.2	
E	5.3	344.8	
+ 9' = toe of Con. Apron	5.11	345.0	
E + 18' = Garage Floor	5.01	345.1	
579' N = N end of Above dble. Garage			
- 1.8' = Garage floor	4.81	345.23	
E + 0.9' = toe of Con. Apron	5.03	345.08	
E	5.2	344.9	
N	5.7	344.4	
607' N = S. L. Hobbs Ave			
N top Ch.	5.21	344.9	
Gutter on Parking	5.46	344.65	
E " "	5.22	344.89	
Gutter " "	4.60	345.51	
E top Ch.	4.40	345.71	
T.P. 119	343.73	7.57	342.54
T.P. 749	342.94	8.28	335.45
T.P.		2.90	340.04

340.06 = B.M. S.E. of P.
0.02' Rod, Miss

Plotted by
J.B.B.

X. Section Alley B.H. 2 Gurnell Hts (E+W Alley)
 16' wide
 Cont. from page 54

B.M. 511.89				
RAIN + 3.07	6.54	307.54		301.00
T.P.	0.02	295.61	11.95	295.59
		357' E		
N			11.1	284.5
E			11.3	84.3
S			11.1	84.5
+5			12.2	83.4
T.P.	0.67	283.17	13.11	282.50
		370' E		
-10			4.7	78.5
-5			2.5	80.7
S			2.2	81.0
E			2.0	81.2
N			0.1	82.4
T.P.	1.45	283.95	0.67	282.50
		378' E	✓	
N			1.9	82.1
+2			3.1	80.9
E			4.8	79.2
S			5.7	78.3
+5			7.5	76.5
+15			13.0	71.0
		387' E		
-15			15.6	68.4
-5			7.9	74.1

283.95

75

S		8.2	75.8
+2		7.3	76.7
E		7.4	76.6
+5		6.2	77.8
N		4.0	80.0
+2		2.3	81.7
		390' E	
-5		2.8	81.2
N		5.4	78.6
+3		7.6	77.4
E		9.0	75.0
S		9.6	74.4
+15		15.6	68.4
		394' E	
-15		19.6	64.4
S		14.1	69.9
+4		10.8	73.2
E		10.3	73.7
+6		8.6	75.4
N		5.6	78.4
+5		3.7	80.3
T.P.	1.79	271.66	13.08
		408' E	270.87
-2		+1.0	73.7
N		0.1	72.6
+3		3.9	68.8

272.66

E		5.2	67.5
S		5.6	67.1
+1		8.6	64.1
+4 on Ground		8.9	63.8
+4 on E.ve of Road	shed or Garage 418' E	7.9	64.8
-4 = E Garage	Above	14.4	58.3
S		14.1	58.6
+5		11.5	61.2
E		10.3	62.4
+6		9.2	62.5
N		6.4	66.3
+15		2.6	70.1
T.P.	121	260.75	1292 257.4
		428' E	
-15		+0.5	61.5
N		0.2	60.8
+1		0.5	60.5
+2		1.5	59.5
E		2.6	58.4
+1		3.8	57.2
S		4.2	56.8
+15		5.0	56.0
		435	
-4 of house		5.1	55.9
S		5.1	55.9

260.95

77

E		4.9	56.1
+2		4.9	56.1
N		1.1	39.9
+5		1.7	59.3
	R=5.1		55.9
	440' E = E House on S 14' wide 4' Back		
	452' E		
-5		1.8	59.2
N		2.2	58.8
+3		7.0	54.0
E		7.1	53.9
S		7.1	53.9
+10		8.1	52.9
	459' E = N.W. 31st St.		
-10		11.0	49.7
S		8.9	52.1
E		8.5	52.5
+5		8.5	52.5
N		3.0	58.0
+5		2.8	58.2
	N.W. 31st + 4'		
N		8.6	52.4
E		9.0	52.0
S		10.3	50.7
+10		13.3	47.7
	N.W. + 8' = N.W. temporary Rd. to S.W. Palm		
-10		15.4	45.6

4.7
5.2
27.9

From 60's Alley

26095

S	13.2	47.8
E	11.2	49.8
N	10.3	50.7

W.L. + 17' = E.L. Temporary Rd. upto Palm

N	10.8	50.2
E	11.3	49.7
S	13.9	47.7
+ 10	14.8	46.2

W.L. 32'

- 10	22.0	39.0
S	20.0	41.0
E	19.0	42.0
N	17.9	43.1
+ 10	17.5	43.5

T.P.	12.83	273.44	0.34	260.61
T.P.	12.84	286.22	0.06	273.38
T.P.	12.83	298.07	0.38	285.84
T.P.	11.29	308.55	0.81	297.26

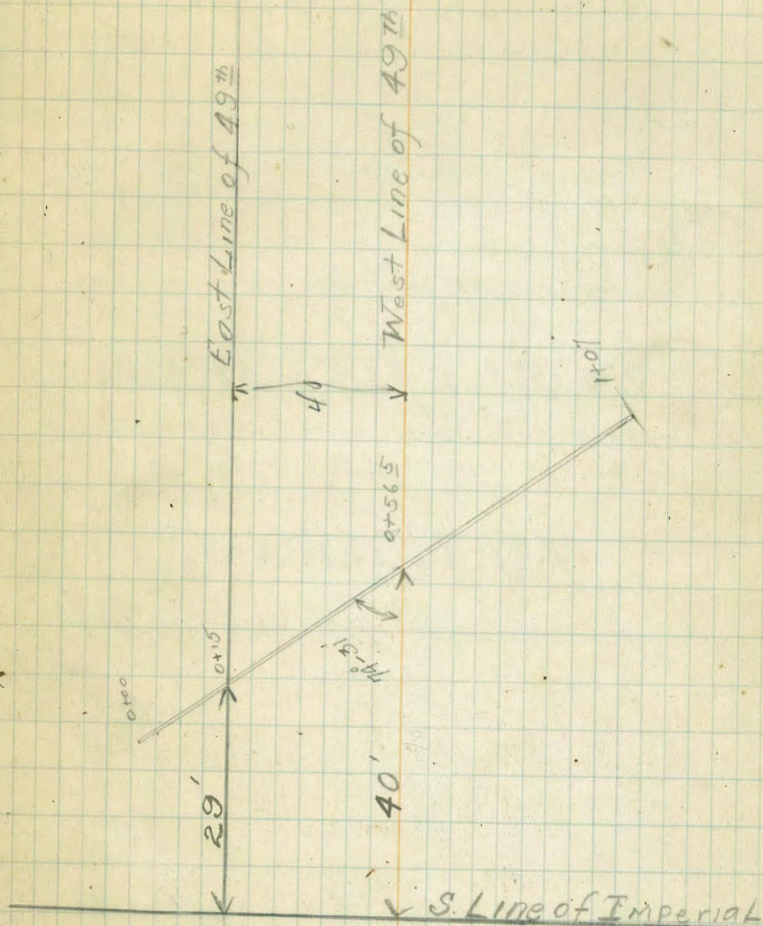
T.P. 005M. Palm + 30th

7.54	301.01
	301.00 = 817.
	0.01

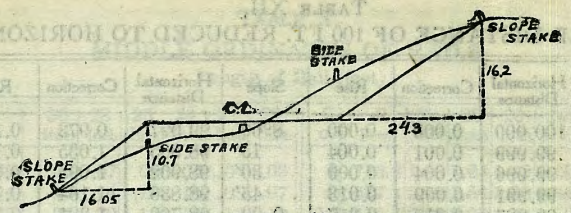
Bliss
10/25/27

Location of Culvert 49th, Imperial

	+	x		Elev	
	4.4	152.1	152.6	1477	Elev of Ground SW Prop 49 th Imp.
0+00	15' East of the East Line of 49 th		3.6	1485	x
0+15			4.0	1481	x
0+26			3.9	1482	x
+32			4.2	1479	x
+37			4.8	1473	x
0+56 ⁵	W. Line of 49 th		5.2	1469	x
0+59			5.7	1464	x
0+82			7.4	1447	x
1+07			8.1	1440	x



567.12
195
59662



DISTANCES FROM SIDE STAKES FOR CROSS-SECTIONING.

SLOPE 1 1/2 TO 1. ROADWAY OF ANY WIDTH.

	0	.1	.2	.3	.4	.5	.6	.7	.8	.9	
0	0 00	0 15	0 30	0 45	0 60	0 75	0 90	1 05	1 20	1 35	0
1	1 50	1 65	1 80	1 95	2 10	2 25	2 40	2 55	2 70	2 85	1
2	3 00	3 15	3 30	3 45	3 60	3 75	3 90	4 05	4 20	4 35	2
3	4 50	4 65	4 80	4 95	5 10	5 25	5 40	5 55	5 70	5 85	3
4	6 00	6 15	6 30	6 45	6 60	6 75	6 90	7 05	7 20	7 35	4
5	7 50	7 65	7 80	7 95	8 10	8 25	8 40	8 55	8 70	8 85	5
6	9 00	9 15	9 30	9 45	9 60	9 75	9 90	10 05	10 20	10 35	6
7	10 50	10 65	10 80	10 95	11 10	11 25	11 40	11 55	11 70	11 85	7
8	12 00	12 15	12 30	12 45	12 60	12 75	12 90	13 05	13 20	13 35	8
9	13 50	13 65	13 80	13 95	14 10	14 25	14 40	14 55	14 70	14 85	9
10	15 00	15 15	15 30	15 45	15 60	15 75	15 90	16 05	16 20	16 35	10
11	16 50	16 65	16 80	16 95	17 10	17 25	17 40	17 55	17 70	17 85	11
12	18 00	18 15	18 30	18 45	18 60	18 75	18 90	19 05	19 20	19 35	12
13	19 50	19 65	19 80	19 95	20 10	20 25	20 40	20 55	20 70	20 85	13
14	21 00	21 15	21 30	21 45	21 60	21 75	21 90	22 05	22 20	22 35	14
15	22 50	22 65	22 80	22 95	23 10	23 25	23 40	23 55	23 70	23 85	15
16	24 00	24 15	24 30	24 45	24 60	24 75	24 90	25 05	25 20	25 35	16
17	25 50	25 65	25 80	25 95	26 10	26 25	26 40	26 55	26 70	26 85	17
18	27 00	27 15	27 30	27 45	27 60	27 75	27 90	28 05	28 20	28 35	18
19	28 50	28 65	28 80	28 95	29 10	29 25	29 40	29 55	29 70	29 85	19
20	30 00	30 15	30 30	30 45	30 60	30 75	30 90	31 05	31 20	31 35	20
21	31 50	31 65	31 80	31 95	32 10	32 25	32 40	32 55	32 70	32 85	21
22	33 00	33 15	33 30	33 45	33 60	33 75	33 90	34 05	34 20	34 35	22
23	34 50	34 65	34 80	34 95	35 10	35 25	35 40	35 55	35 70	35 85	23
24	36 00	36 15	36 30	36 45	36 60	36 75	36 90	37 05	37 20	37 35	24
25	37 50	37 65	37 80	37 95	38 10	38 25	38 40	38 55	38 70	38 85	25
26	39 00	39 15	39 30	39 45	39 60	39 75	39 90	40 05	40 20	40 35	26
27	40 50	40 65	40 80	40 95	41 10	41 25	41 40	41 55	41 70	41 85	27
28	42 00	42 15	42 30	42 45	42 60	42 75	42 90	43 05	43 20	43 35	28
29	43 50	43 65	43 80	43 95	44 10	44 25	44 40	44 55	44 70	44 85	29
30	45 00	45 15	45 30	45 45	45 60	45 75	45 90	46 05	46 20	46 35	30
31	46 50	46 65	46 80	46 95	47 10	47 25	47 40	47 55	47 70	47 85	31
32	48 00	48 15	48 30	48 45	48 60	48 75	48 90	49 05	49 20	49 35	32
33	49 50	49 65	49 80	49 95	50 10	50 25	50 40	50 55	50 70	50 85	33
34	51 00	51 15	51 30	51 45	51 60	51 75	51 90	52 05	52 20	52 35	34
35	52 50	52 65	52 80	52 95	53 10	53 25	53 40	53 55	53 70	53 85	35
36	54 00	54 15	54 30	54 45	54 60	54 75	54 90	55 05	55 20	55 35	36
37	55 50	55 65	55 80	55 95	56 10	56 25	56 40	56 55	56 70	56 85	37
38	57 00	57 15	57 30	57 45	57 60	57 75	57 90	58 05	58 20	58 35	38
39	58 50	58 65	58 80	58 95	59 10	59 25	59 40	59 55	59 70	59 85	39
40	60 00	60 15	60 30	60 45	60 60	60 75	60 90	61 05	61 20	61 35	40
41	61 50	61 65	61 80	61 95	62 10	62 25	62 40	62 55	62 70	62 85	41
42	63 00	63 15	63 30	63 45	63 60	63 75	63 90	64 05	64 20	64 35	42
43	64 50	64 65	64 80	64 95	65 10	65 25	65 40	65 55	65 70	65 85	43
44	66 00	66 15	66 30	66 45	66 60	66 75	66 90	67 05	67 20	67 35	44
45	67 50	67 65	67 80	67 95	68 10	68 25	68 40	68 55	68 70	68 85	45
46	69 00	69 15	69 30	69 45	69 60	69 75	69 90	70 05	70 20	70 35	46
47	70 50	70 65	70 80	70 95	71 10	71 25	71 40	71 55	71 70	71 85	47
48	72 00	72 15	72 30	72 45	72 60	72 75	72 90	73 05	73 20	73 35	48
49	73 50	73 65	73 80	73 95	74 10	74 25	74 40	74 55	74 70	74 85	49
50	75 00	75 15	75 30	75 45	75 60	75 75	75 90	76 05	76 20	76 35	50

Computed by L. Leland Locke.

$\frac{33525}{7.73} = \text{BM. NY}$

$\frac{35777}{2.95}$
~~28962~~

35962
1298
34664
.770
35434

81.5
25

106.5

4.95

3.16