

1176



Monte Vista Ave. Sea Lane to Marine ✓	22
Olivitas from Marine North	25
Marine., Olivitas to W. end ✓	26
Vista Del Mar Marine to Sea Lane	38
L.J. RR. right of way. Sea Lane. to F.T.S.	40
Cuver. To Pearl.	43
Marine. Draper Produced SW.	45

Alley Block 76 City Hts.	62
Alley Block 21. Normal Heights	67
" " 73 Villa Tract.	70
" " 69 Normal. H.T.S.	73
" " 63 " "	74
Sewer Levels on Runnymede Lane	78

Cross Section of El Cajon Ave.

See Book No 1170 Page 77

98' Wide to EL of 20' 1/4  
1/4 Cbs  
145 Q's

471.45 Brought Forward From 1170 Page 77

N 1/4 of 60th St as Diag 1034

N	4.6	466.9
Cb	5.0	466.5
1/2	5.6	465.9
+141 N Edge Paving	5.76	465.7
Z	5.66	465.8
+151 S Edge	5.84	465.6
1/2	5.9	465.6
Cb	6.4	465.1
S	7.1	464.4
S of 60th St		
S	6.9	464.6
Cb	6.3	465.2
1/2	5.8	465.7
+116 S Edge Paving	5.72	465.7
Z	5.65	465.8
+211 N Edge	5.80	465.7
1/2	5.5	466.0
Cb	4.9	466.6
N	4.6	466.9
E 1/2		
H	4.5	467.0
Cb	4.9	466.6
1/2	5.5	466.0
+141 N Edge Paving	5.80	465.7

471.45

5.55  
Blk  
50' Well

Z	5.7 Paving	572	465.7
+151 S Edge	"	580	465.7
1/2	"	58	465.7
Cb	"	6.3	465.2
S	"	6.3	465.2
-	F Cb		
S	"	6.6	464.9
Cb	"	6.4	465.1
1/2	"	5.7	465.8
+116 S Edge Paving	"	5.73	465.7
Z	"	5.69	465.8
+211 N Edge	"	5.80	465.7
1/2	"	5.4	466.1
Cb	"	5.0	466.5
N	"	4.7	466.8
E L of 60th as Diag 1034			
N	"	4.9	466.6
Cb	"	5.2	466.3
1/2	"	5.4	466.1
1/2	"	5.4	466.1
+141 N Edge Paving	"	5.72	465.7
Z	"	5.64	465.8
+151 S Edge	"	5.77	465.7
1/2	"	5.8	465.7
Cb	"	6.1	465.4
S	"	6.6	464.9

E1 Cg 107

471.45

45° E of E1 of 107 on N  
E. of 107 on NE1 Cg 107  
90° W side  
16 Cbs  
150 ft  
80° W side

S	57	465.8 ✓
cb	57	466.1 ✓
16	57	466.4 ✓
18	57	465.8 ✓
14	58	465.7 ✓
139 S Edge	563	465.8 ✓
2	511	466.0 ✓
16.9 H Edge	566	465.8 ✓
11	59	465.6 ✓
11	50	466.5 ✓
cb	50	466.5 ✓
N	53	466.2 ✓
15° E of E1 of 107 on N		
N	46	466.9 ✓
cb	51	466.4 ✓
112	47	466.8 ✓
11	56	465.9 ✓
151 H Edge	566	465.8 ✓
2	542	466.0 ✓
181 S Edge	561	465.8 ✓
11	56	465.9 ✓
cb	57	466.1 ✓
S	57	466.1 ✓
30° E		
S	53	466.2 ✓

471.45

cb	52	466.3 ✓
14	51	465.9 ✓
13.9 S Edge	555	465.9 ✓
2	525	466.1 ✓
16.9 H Edge	561	465.8 ✓
11	51	466.1 ✓
14	45	467.0 ✓
cb	43	467.2 ✓
11	39	468.1 ✓
N	27	468.8 ✓
57° E		
N	49	466.6 ✓
cb	48	466.7 ✓
110	44	466.3 ✓
14	53	466.2 ✓
15.1 H Edge	558	465.9 ✓
2	535	466.1 ✓
18.1 S Edge	558	465.9 ✓
11	55	466.0 ✓
cb	52	466.3 ✓
S	52	466.3 ✓
71.5° E - HA GRACE		
cb	48	466.7 ✓ Grace 624 ft
cb	49	466.6 ✓ Cbs 11.6
14	55	466.0 ✓ 9 to 11.6
14 S Edge	559	465.9 ✓

471.45

2	o.o Paving	530	466.2 ✓
+7	N Edge	550	466.0 ✓
1/4		57	466.1 ✓
+5		48	466.7 ✓
cb		48	466.7 ✓
+5		41	467.4 ✓
N		48	466.7 ✓
	Ncb		
N		52	466.3 ✓
cb		50	466.5 ✓
+2		53	466.2 ✓
+6		50	466.5 ✓
1/4		57	466.1 ✓
+5	N Edge	550	466.0 ✓
2		538	466.1 ✓
+8	S Edge	566	465.8 ✓
1/4		55	466.0 ✓
cb		51	466.4 ✓
5		48	466.7 ✓
	1/4		
5		48	466.7 ✓
cb		55	466.0 ✓
1/4		57	465.8 ✓
+4	S Edge	514	465.8 ✓
2		536	466.1 ✓
+7	N Edge	553	465.9 ✓

471.45

1/4		51	466.1 ✓
cb		58	466.3 ✓
+7		52	466.3 ✓
N		45	467.0 ✓
	2		
N		43	467.2 ✓
+12		57	466.1 ✓
cb		52	466.3 ✓
1/4		54	466.1 ✓
+5	N Edge	552	465.9 ✓
2 o.o		535	466.1 ✓
+8	S Edge	565	465.8 ✓
1/4		58	465.7 ✓
cb		57	465.8 ✓
5		51	466.4 ✓
	F 1/4		
5		56	465.9 ✓
cb		57	465.8 ✓
1/4		59	465.7 ✓
+4	S Edge	513	465.8 ✓
2		539	466.1 ✓
+7	N Edge	556	465.9 ✓
1/4		54	466.1 ✓
cb		57	466.1 ✓
+1		47	466.8 ✓
+10		55	466.0 ✓
N		52	466.3 ✓

El Cajon

17/45

F CB

N	49	466.6
+12	53	466.2
cb	48	466.7
+2	55	466.0
1/4	55	466.0
+5 N Edge Pairing	561	465.9
E	573	466.0
+8 S Edge	564	465.8
1/4	50	465.6
cb	57	465.8
S	51	465.9

EL of Grace

S	57	465.8
cb	58	465.7
1/4	57	465.8
+4 S Edge P	567	465.8
E	573	466.0
+7 N Edge	562	465.8
1/4	51	465.9
cb	56	465.9
+6	51	466.4
N	55	466.0

50' E of EL

N	53	466.2
cb	57	465.8
1/4	51	465.7

17/45

+5 N Edge	578	465.7
E	561	465.8
+8 S Edge	586	465.6
1/4	62	465.3
cb	63	465.2
S	62	465.3

100' E

S	64	465.1
cb	65	465.0
1/4	67	464.8
1/4	62	465.3
+41 S Edge Pairing	604	465.4
E	577	465.7
+71 N Edge	575	465.5
1/4	59	465.6
+9	65	465.0
cb	65	465.0
N	57	465.8

150' E

N	59	465.6
cb	64	465.1
+2	65	465.0
1/4	62	465.3
+49 N Edge Pairing	622	465.2
E	601	465.4
+79 S Edge	620	465.3
1/4	63	465.2

El Cajo

H.I.

471.45

+L		7.0	464.5 ✓
Cb		7.2	464.3 ✓
S		7.5	464.0 ✓
TP	3.91	168.39	464.28
		300' E	
S		9.1	464.0 ✓
Cb		9.1	464.3 ✓
+L		9.6	464.8 ✓
76		9.6	464.8 ✓
+4.2	S Edge Point	9.33	465.1 ✓
2	on "	9.14	465.3 ✓
+7.3	N Edge	9.32	465.1 ✓
76		9.3	465.1 ✓
Cb		9.8	464.6 ✓
N		9.1	465.3 ✓
		250' E	
N		9.7	464.7 ✓
+1.6		9.3	465.1 ✓
Cb		9.7	464.5 ✓
+L		9.8	464.6 ✓
74		9.5	464.9 ✓
+4.8	N Edge Point	9.34	464.9 ✓
2	on "	9.34	465.1 ✓
+7.8	S Edge	9.55	464.8 ✓
74		9.7	464.7 ✓
Cb		9.9	464.0 ✓
S		11.1	463.8 ✓

468.39

		300' E	
S		11.1	464.0 ✓
Cb		11.1	464.0 ✓
74		9.9	464.5 ✓
+4.2	S Edge Point	9.15	464.7 ✓
2	on "	9.14	465.0 ✓
+7.3	N Edge	9.34	464.8 ✓
76		9.2	464.7 ✓
Cb		9.8	464.6 ✓
N		9.3	465.1 ✓
		320' E - 4.1. Glacier on S.	
N		9.3	465.1 ✓ Glacier
76		9.0	465.4 ✓
Cb		9.0	464.4 ✓
+2		9.3	464.1 ✓
+5		9.0	464.4 ✓
74		9.8	464.6 ✓
+4.7	N Edge Point	9.29	464.6 ✓
2	on "	9.26	464.8 ✓
+7.5	S Edge	9.78	464.6 ✓
76		9.8	464.6 ✓
Cb		11.1	464.3 ✓
S		11.3	464.1 ✓
		Cb	
S		11.2	464.2 ✓
Cb		11.0	464.4 ✓
74		11.0	464.4 ✓



468.39

+4.3	S Edge Pairing	3.76	464.6✓
2	on	3.57	464.8✓
+7.3	N Edge	3.71	464.6✓
1/4		3.8	464.6✓
Cb		4.4	464.0✓
+6		3.1	465.3✓
N		3.4	465.0✓
	N 1/4		
N		3.3	465.1✓
+12		3.0	465.4✓
Cb		4.6	463.8✓
1/4		3.9	464.5✓
1/4		3.8	464.6✓
+4.7	N Edge Pairing	3.81	464.6✓
2	on	3.60	464.8✓
+7.7	S Edge	3.82	464.6✓
1/4		4.0	464.4✓
Cb		4.8	464.2✓
S		4.0	464.4✓
	2		
S		4.1	464.3✓
Cb		4.2	464.1✓
1/4		4.1	464.3✓
+4.3	S Edge Pairing	3.91	464.5✓
2	on	3.69	464.7✓
+7.3	N Edge	3.88	464.5✓
1/4		4.0	464.4✓

468.39

1/2		4.0	464.4✓
Cb		4.4	464.0✓
1/4		3.6	464.8✓
1/8		2.2	466.2✓
N		3.2	465.2✓
	E 1/4		
N		3.5	464.9✓
Cb		4.4	464.0✓
1/8		4.2	464.2✓
1/4		4.0	464.4✓
+4.7	N Edge Pairing	3.94	464.5✓
2	on	3.75	464.6✓
+7.7	S Edge	3.97	464.4✓
1/4		4.2	464.2✓
Cb		4.1	464.3✓
S		4.6	463.8✓
	FCb		
S		4.9	463.5✓
Cb		4.4	464.0✓
1/4		4.3	464.1✓
+4.3	S Edge Pairing	4.00	464.4✓
2	on	3.80	464.6✓
+7.3	N Edge	3.99	464.4✓
1/4		4.0	464.4✓
1/4		4.4	464.0✓
Cb		4.1	463.8✓
N		4.1	464.3✓

El Cajon

468.39

E.L. of Gilcher

N	43	464.1 ✓
cb	47	463.7 ✓
+9	45	463.9 ✓
1/4	40	464.4 ✓
+4.7 N Edge Paving	402	464.4 ✓
to on "	383	464.6 ✓
+7.7 S Edge "	404	464.4 ✓
1/4	41	464.2 ✓
cb	42	464.2 ✓
S	47	463.7 ✓

50' E of E.L. Gilcher

S	60	462.4 ✓
cb	55	462.9 ✓
1/4	49	463.5 ✓
1/4	47	463.7 ✓
+4.4 S Edge Paving	425	464.1 ✓
to on "	405	464.3 ✓
+7.4 N Edge "	428	464.1 ✓
1/4	43	464.1 ✓
+5	53	463.1 ✓
cb	55	462.9 ✓
1/4	56	462.8 ✓
+10	44	464.0 ✓
N	43	464.1 ✓

75' E

N	47	463.7 ✓
1/4	50	463.4 ✓

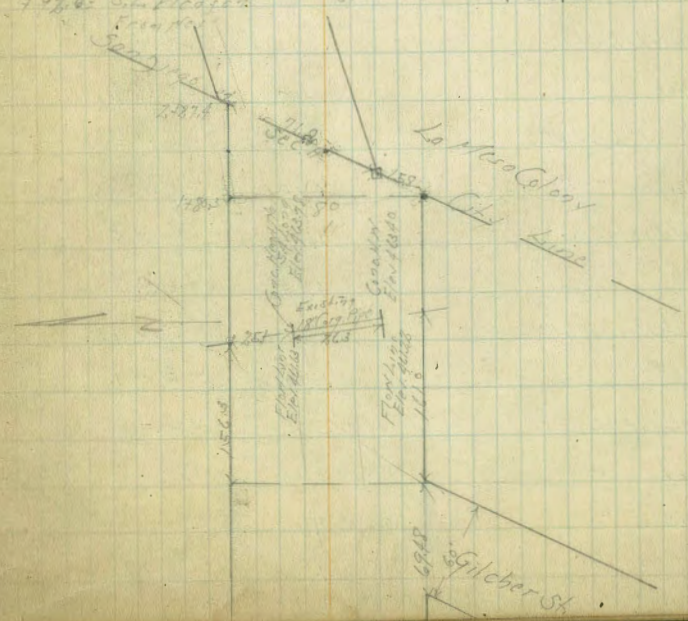
468.39

+10	57	462.7 ✓
cb	57	462.7 ✓
+9	56	462.8 ✓
1/4	46	463.8 ✓
+4.6 N Edge Paving	440	464.0 ✓
to on "	419	464.2 ✓
+7.6 S Edge "	437	464.0 ✓
1/4	46	463.8 ✓
+3	53	463.1 ✓
46	54	463.0 ✓
cb	61	462.3 ✓
+9	65	461.9 ✓
S	64	462.0 ✓
	100' E	PC of Paving
S	68	461.5 ✓
cb	69	461.5 ✓
1/4	66	461.8 ✓
1/4	51	463.3 ✓
+3	46	463.8 ✓
+4.5 S Edge Paving	453	463.9 ✓
S on "	434	464.1 ✓
+7.5 N Edge "	454	463.9 ✓
1/4	48	463.6 ✓
+7	61	462.3 ✓
cb	50	462.5 ✓
+2	53	463.1 ✓
N	56	463.0 ✓

N	N		62	462.0✓	
cb	+3		67	461.7✓	
+9	cb		65	461.9✓	
1/4	+4		62	462.2✓	
+9	+10		49	463.5✓	
1/4	1/4		18	463.6✓	
+7	+34	N Edge Point	180	463.6✓	
1/4	L	00	110	463.8✓	
cb	+6.6	S Edge	182	463.6✓	
S	1/4		18	463.6✓	
+1	+1		63	462.1✓	
S	cb		71	461.3✓	
C	S		71	460.8✓	
1	BM	527	467.12✓	664	461.75
1/4		180.3 E			
S			65	460.6✓	
110			59	461.2✓	
cb			60	461.1✓	
1/4			50	461.2✓	
+11			55	461.6✓	
1/4			66	462.5✓	
+5			37	463.4✓	
+9	S Edge Point		266	463.4✓	
1/4	00		353	463.6✓	
1/4	N Edge		266	463.5✓	
+7			39	463.3✓	

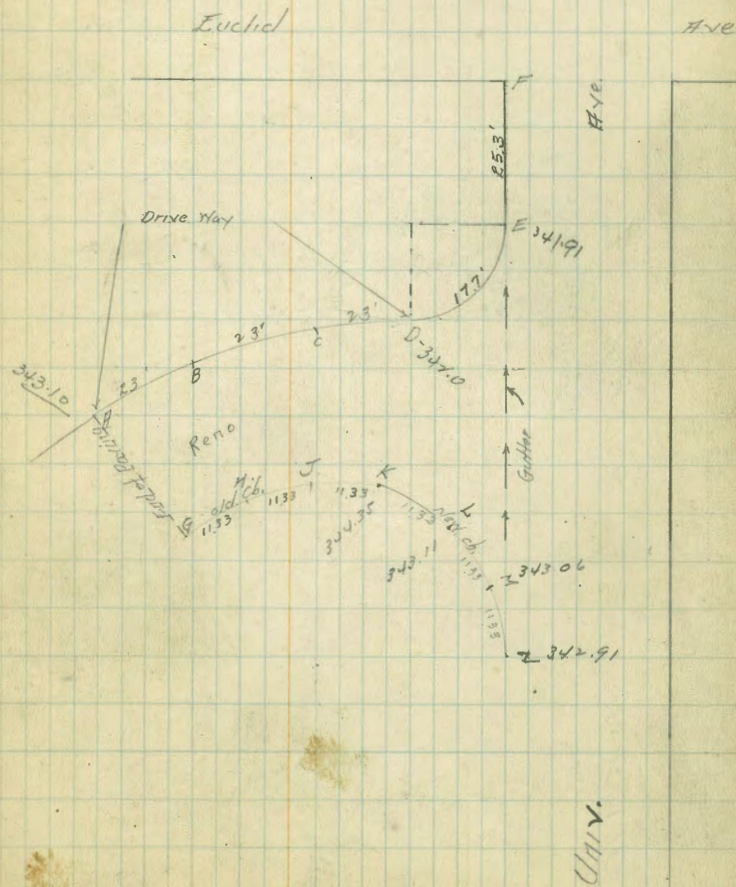
Mag 2  
Chyler  
Shiffman

cb		52	461.9✓
N		50	462.1✓
	Sec A		
N. L. El Cope		40	462.6✓
+13		46	462.5✓
+20		40	463.1✓
+36.5	N Edge Point	105	463.4✓
+46.5	S Edge	388	463.3✓
+59		45	462.6✓
+62		54	461.7✓
+65		60	461.1✓
+70		57	461.4✓
+78		57	461.4✓
+97.6	S Edge Point	65	460.6✓



cb. Levels on RENO AND Univ.

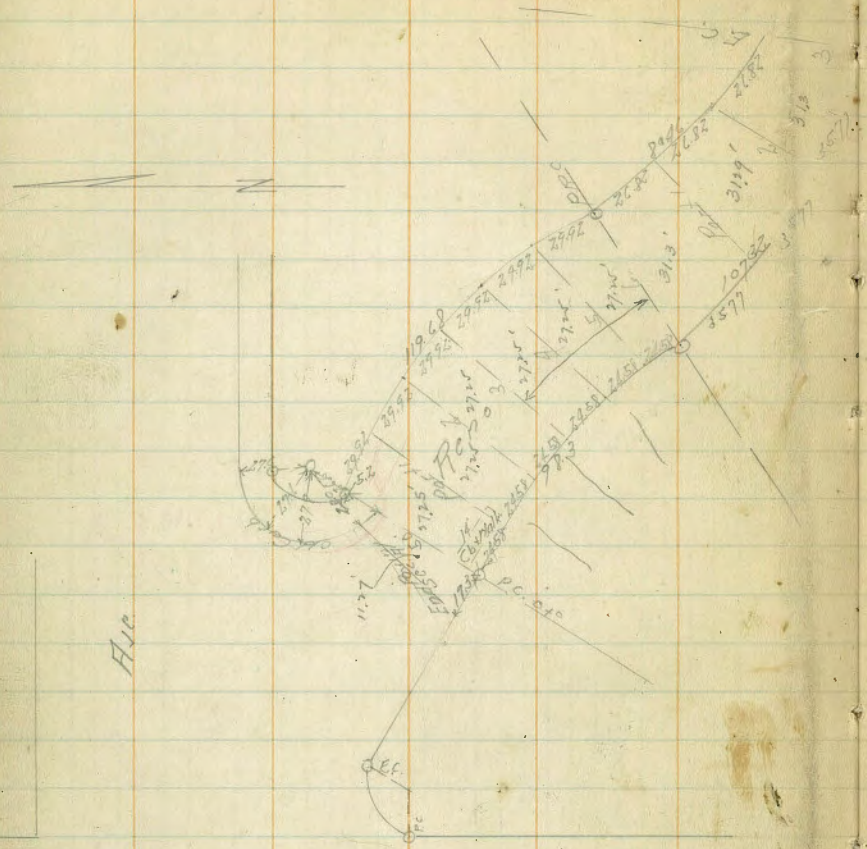
4.53	347.21	340.68
on top of cb at A	4.11	343.10
" Gutter " "	4.56	342.65
" " " B	5.02	342.13
" " " C	5.45	341.76
" top of cb at D	5.21	342.00
" Gutter " "	5.85	341.36
" top of cb " E	5.30	341.91
" Gutter " "	6.05	341.16
" top of cb at F	5.96	341.25
" Gutter " "	6.32	340.89
on top of old cb at G	3.21	344.00
" Gutter at G	4.24	342.97
" top of old cb at H	3.16	344.05
" Gutter " "	4.52	342.69
" top of old cb at J	3.07	344.14
" Gutter " "	4.75	342.46
" top of old cb at K	2.86	344.35
" Gut " "	4.83	342.38
" top of new cb at L	3.94	343.27
" " " " " M	4.10	343.11
" Gutter at L	5.03	342.18
" top of cb " M	4.15	343.06
" Gutter " "	5.02	342.19
" top of cb " N	4.38	342.91
" Gutter " "	4.90	342.31



Cross Section of Reno And Estrella Ave.

50' Wide  
10' Cb  
75' H

1-2-27  
S. 500  
Bl. 11  
S. 1111



Estrella Ave →

Ave

University

Station	Elevation	Notes
BM	3492.1	340.68
Sec H - End of Parading Sta 0-11.27'		
NE	50	344.2 = 0-52
CB	52	344.0 = 2+66.56
+ Top old Curb	52.2	344.0
Gutter Top Parading	6.20	343.0
1/4	6.1	343.0
1/2	5.93	343.2 = 2+68.66
3/4	6.17	343.2
Gutter	6.56	342.6
CB Top	6.13	343.1
SW	5.9	343.4
PC 0+0		
SW	5.6	343.6
CB Top	5.84	343.4 =
Gutter	6.4	342.8
1/4	6.3	342.9
1/2	6.0	343.2 = 2+57.39
3/4	6.0	343.2
+4.5	6.1	343.1
+4.5 Top old cb	5.7	344.2
CB	5.2	344.0 = 2+58.94
NE	5.0	344.2 = 0+0
Part 1 0+27.45		
NE	4.9	344.3 = 0+29.97
CB	5.1	344.2 = 2+30.09

Plotted  
J.B.B.  
1-19-27

349.21

Gutter	0+27.52'	5.5	343.7
1/4		5.8	343.4
1/2		5.7	343.5 = 2+30.14
3/4		5.9	343.3
Cb		5.8	343.4
SW		5.6	343.6

Part 2 = 0+54.5'

SW		5.9	343.3
Cb		6.0	343.2
1/4		5.7	343.5
1/2		5.5	343.7 = 2+02.89
3/4		5.5	343.7
Gutter		5.5	343.7
Cb Top		5.08	344.1 = 2+01.24
NE		4.9	344.3 = 0+59.84

Part 3 = 0+81.75'

NE		4.9	344.3 = 0+89.76
Cb Top		4.86	344.3 = 1+72.38
Gutter		5.6	343.6
1/4		5.6	343.6
1/2		5.5	343.7 = 1+75.64
3/4		5.7	343.5
Cb		6.1	343.1
SW		6.5	342.7

Part 4 = PRC =  $\frac{1+0.9}{1.7}$  63.5'

SW		6.7	342.5
Cb		6.3	342.9

349.21

1/4		5.9	343.3
1/2		5.5	343.7 = 0+93.89
3/4		5.5	343.7
Gutter		5.6	343.6
Cb Top		4.96	344.3 = 0+85.83
NE		4.9	344.5 = 1+77.52

Part 1 = 1+<sup>40.3</sup>77.8'

NE		5.0	344.2 = 2+06.34
Cb Top		4.96	344.2 = 0+57.22
Gutter		5.6	343.6
1/4		5.6	343.6
1/2		5.5	343.7 = 0+62.59
3/4		5.9	343.3
Cb		6.3	342.9
+		6.5	342.7
SW		7.0	342.2

Part 2 =  $\frac{2+26.09}{1}$  1+71.6

SW		6.5	342.7
Cb		6.0	343.2
1/4		5.6	343.6
1/2		5.3	343.9 = 0+31.3
3/4		5.5	343.7
Gutter		5.3	343.9
Cb Top		4.71	344.5 = 0+28.61
NE		4.6	344.6 = 2+33.16

Part 3 = P.C. =  $\frac{2+57.34}{2}$  2+02.9

NE		4.5	344.7 = 2+57.98
----	--	-----	-----------------

349.2'

Cb Top	44	344.7	Reverse = 0+0
Gutter	53	343.9	
1/4	52	344.0	
2	50	344.2	20+0
1/4	51	343.8	?
Cb	51	343.6	
SW	63	342.9	
50' SE of End Curve = 3+07.39'			
SW	57	343.5	
Cb	50	344.2	
1/4	46	344.6	
2	43	344.9	72' SE
1/4	44	344.8	on SW Curb Walk 5.10 = 344.1
Gutter	46	344.6	
Cb Top	358	345.6	
NE	37	343.5	
100' SE = 3+57.39'			
NE	37	345.5	
Cb Top	329	345.4	
Gutter	44	344.8	
1/4	41	345.1	
2	38	345.4	
1/4	40	345.2	
Cb	45	344.7	
SW	54	343.8	
150' SE = 4+07.39'			
SW	50	344.2	

349.2'

4+07.39'	46	344.6	
	45	344.7	
	41	345.1	
	39	345.3	
	42	345.0	
	41	345.1	
	384	345.4	
	37	345.5	
TP	2.99	348.43	377
200' SE = 4+57.39'			
NE	38	348.6	
Cb Top	429	345.44	
Gutter	33	345.1	
1/4	34	345.0	
2	31	345.3	
1/4	34	345.0	
Cb	37	344.7	
SW	40	344.4	
250' SE = 5+07.39'			
SW	35	344.9	215' SE on S.W. side Curb Drive 377
Cb	34	344.8	
1/4	33	345.1	
2	33	345.1	
1/4	33	345.1	
Gutter	37	344.7	
Cb Top	303	345.4	
NE	29	345.5	

3471)

300' SE = 5+57.39'

NE	35	344.9
CB Top	35.4	344.91
Gutter	42	344.2
1/4	40	344.4
1/2	36	344.8
3/4	39	344.53
15	41	344.3
CB	38	344.6
SW	37	344.7

450' SE = 6+07.39'

SW	43	344.1
SE	45	343.9
CB	48	343.6
1/4	47	343.7
1/2	46	343.8
3/4	49	343.5
Gutter	51	343.3
CB Top	42.2	344.21
NE	39	344.5

400' SE = 6+57.39'

NE	48	343.6
CB Top	52.5	343.18
Gutter	58	342.6
1/4	56	342.8
1/2	56	342.8
3/4	58	342.6

CB	60	342.4
SW	55	342.9

430' SE = 6+87.39'

SW	55	342.9
CB	68	341.6
1/4	64	344.0
1/2	64	342.0
3/4	62	342.2
Gutter	64	343.0
CB Top	611	342.32
NE	56	342.8

470' SE = 6+97.39'

NE	50	342.5
CB Top	646	341.97
Gutter	69	341.5
1/4	66	341.8
1/2	66	341.8
3/4	60	341.8
CB	70	341.4
SW	67	341.7

457.7' SE = P.C.L. = 7+15.09'

SW	71	341.3	Divided Curve into 6 Parts N 8.42 S 26.61 E = 17.615'
CB	75	340.9	
1/4	74	341.0	
1/2	71	341.3	
3/4	75	340.9	
Gutter	80	340.4	



50' wide  
10' Cbr  
75945

31843

Cb Top 736 341.07

NE 71 341.3

26.15 E on S  
8.62 S on N = Part 1 = 7 + 37.71

NE 80 340.4

Cb Top 818 340.25 0 + 12 + 218

Gutter 87 339.7

1/4 84 340.0

2 80 340.4

1/4 80 340.4

Cb 80 340.4

SW 78 340.5

Part 2 = 7 + 50.32

SW 85 339.9

Cb 88 339.6

1/4 95 338.9

2 91 339.3

1/4 95 338.9

Gutter 98 338.6

Cb Top 916 339.27

N 90 339.4

Part 3 = 7 + 67.94

N 102 338.2

Cb Top 1045 337.98

Gutter 110 337.4

1/4 110 337.4

2 10.5 337.9

1/4 10.9 337.5

12' E of 816  
20' S of 816  
E of 816  
816

Cb 10.6 337.8

15 10.7 337.7

S 111 337.3

TP 214 339.90 11.47 336.26

13.3 E of Part 2 on N  
13.3 E of Part 2 on S = 7 + 72.44

10 45 335.3

S 28 337.0

Cb 28 337.0

1/4 27 337.1

2 25 337.3

1/4 22 336.9

Gutter 30 336.8

Cb Top 241 337.39

N 21 337.7

Part 4 = 7 + 85.55

N 25 337.3

Cb Top 291 336.89

Gutter 26 336.2

1/4 36 336.2

2 32 336.6

1/4 32 336.6

Cb 28 336.6

16 41 335.7

S 57 334.1

25 80 331.8

15 97 330.1

Part 5 2

Part 3  
on 24' corner  
9.82

Estrella St

33980

Part 5 = 8 + 03.17

50' N. of  
10' Cb's  
75' Qls

335.53

15  
1-1-37

-15	Part 5	132	326.6
-4		114	328.4
F		97	330.1
+8		51	334.7
Cb		46	335.2
1/4		45	335.3
1/2		42	335.6
1/4		45	335.3
Gutter		46	335.2
Cb Top		374	336.06
H		34	336.4

Part 6: F.C. = 8 + 20.78

H		40	335.8
Cb Top		435	335.45
Gutter		53	334.5
1/4		52	334.6
1/2		52	334.6
1/4		54	334.4
Cb		58	334.0
F		112	327.9
+15		158	324.0

25' E of F.C. = 8 + 45.78

-15		124	323.1
-4		93	326.2
F		73	328.2

48		26	332.9
Cb		25	333.0
1/4		22	333.3
1/2		21	333.4
1/4		21	333.4
Gutter		20	333.5
Cb Top		132	334.21
H		11	334.4

50' N = 8 + 70.78

H		22	333.2
Cb Top		154	332.99
Gutter		37	331.8
1/4		32	332.3
1/2		32	332.3
1/4		35	332.0
Cb		35	332.0
+5		40	331.5
F		62	329.3
+10		115	324.0
+15		139	322.6

75' N = Break Cb line on West = 8 + 95.78

-15		86	321.9
F		79	325.6
+8		45	331.0
Cb		47	330.8
1/4		41	331.1

33553

2	4.0	331.5
1/4	4.0	331.5
Gutter	4.1	331.1
Cb Top = Break Grade	3.70	331.83
H	3.3	332.2
100' H = 9 + 20.78		
H	4.1	331.1
Cb Top	4.33	331.2
Gutter	5.0	330.3
1/4	4.7	330.8
2	4.6	330.9
1/4	5.0	330.5
Cb	5.3	330.2
+3	5.1	330.1
F	9.1	326.1
+8	13.1	322.4
+15	15.0	320.5
150' H = 9 + 70.78		
-15	13.1	322.1
-10	12.5	323.0
F	7.0	328.3
Cb	6.5	329.0
1/4	6.0	329.3
2	5.9	329.6
1/4	5.9	329.6
Gutter	6.0	329.5

33557

Cb Top	5.29	330.24
H	5.1	330.4
200' H = 10 + 20.78		
H	5.1	330.1
Cb Top	5.87	329.66
Gutter	6.5	329.0
1/4	6.5	329.0
2	6.3	329.2
1/4	6.4	328.9
Cb	6.9	328.6
F	7.5	328.0
110	10.6	324.9
225' H = 10 + 45.78		
-10	10.5	325.0
F	8.7	326.8
+7	7.0	328.3
Cb	7.1	328.4
1/4	6.9	328.7
2	6.5	329.0
1/4	6.7	328.8
Gutter	6.7	328.8
Cb Top	5.98	329.55
H	5.6	329.9
250' H = 10 + 70.78		
H	5.7	329.8
Cb Top	6.08	329.45
Gutter	7.0	328.5

335.53

1/4	68	328.7
2	66	328.9
1/4	69	328.6
1/4	70	328.5
Cb	68	328.6
E	74	328.1
300' N = 10 + 95.78		
E	78	327.7
Cb	75	328.0
1/4	75	328.0
2	76	327.9
1/4	76	327.9
Gutter	70	328.5
Cb Top	601	329.52
N	54	330.1
320' N = 11 + 15.78		
N	51	330.4
Cb Top	592	329.61
Gutter	69	328.6
+5	84	327.1
1/4	88	326.7
2	92	326.3
1/4	93	326.0
Cb	98	325.7
1/4	88	326.7
+7	77	327.8

26.5' North  
Conc. Walk  
7.12

335.53

E	80	327.5
327' N = 11 + 22.78		
E	88	326.6
+5	107	324.8
Cb	108	324.8
1/4	103	325.2
2	100	325.5
1/4	94	326.1
+1	89	326.6
Gutter	71	328.4
Cb Top	596	329.67
N	54	330.1
328.5' S.L. of University on E = 11 + 23.78		
N	59	330.1
Cb Top	586	329.67
Gutter	71	328.4
+3	90	326.5
1/4	90	326.5
2	101	325.4
1/4	103	325.2
Cb	108	324.7
+6	108	324.7
E	115	324.0
338.5' N on E 335.0' N on N = 11 + 27.03		50
E	115	324.0
Cb Top End Return	10.85	324.68
Gutter	11.47	324.06

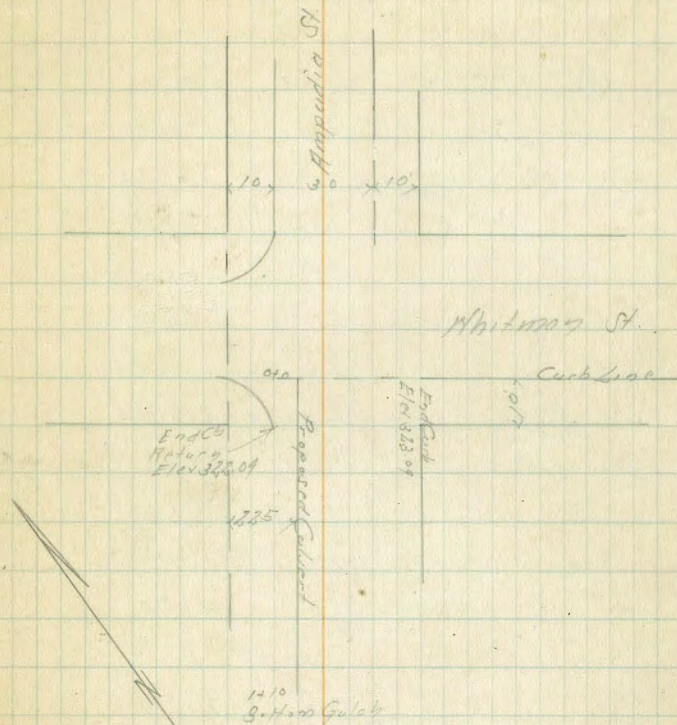
33553

11		10.5	325.0	
2		10.2	325.3	
14		10.1	325.4	
11		9.8	326.3	
Gutter		7.4	328.1	
Ob	Top old	5.0	329.73	
11		5.2	330.3	
		225.7 N on N	= 11 + 30.63	
		328.5 N on E	= S. Lower edge	5.5 E H. da
				CB 701
11		8.1	326.7	91.26
Ob	Top End of Post Return	9.58	325.95	
Gutter	on Post 129	10.25	325.28	
14	" "	10.25	325.28	
2	" "	10.30	325.23	
11	" "	10.91	324.62	
Gutter	" "	11.47	324.06	
Ob	Top End of Post Return	10.85	324.68	
E		11.5	324.03	
BN		5.0	329.73	SW. B.P. Univ + Estrella 33571

Plotted 1-19-27  
J.B.

Levels For Proposed Culvert  
Whitman + Ampudia

BM	0.83	249.84		249.01	NE BP Whitman Trias
TP	0.18	237.48	13.04	236.80	
BM	21.045	225.54	18.39	225.09	BP SE Whitman + Ampudia
0+0	= S.E. Cb line of Whitman		2.9	222.64	
+10			3.0	222.52	
+15			3.5	222.0	
+52			5.4	220.1	
+62			10.7	214.8	
TP	1.28	213.79	12.03	212.51	
+72			5.6	208.19	
TP	2.20	203.14	12.85	200.94	
+87			6.0	197.14	
+10			13.3	189.84	
+10	= Bottom of Gulch		17.0	186.14	



R

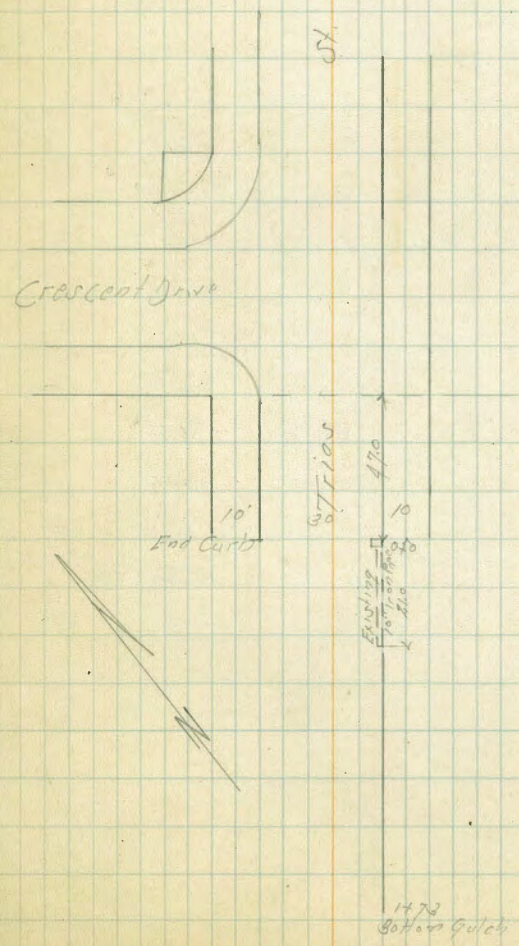
Levels For Proposed Culvert  
Treas St South of Crescent Drive

	+	H.I.	-	EI.	
BM	BM	0.77	249.78	249.01	
TP	TP	0.87	237.69	236.82	
BM	TP	1.43	226.57	225.14	
0+0	0+0		Top End of Curb	1.42	225.14
+1			Flot Line Existing 18" Pipe	2.91	223.66
+1	+2			1.8	224.8
+5	+5			3.3	223.8
+6	+15			9.8	216.8
TP	TP	0.43	214.35	213.92	
+7	+21		End of Existing 10" I.P. Flot Line	2.63	211.72
TP			Ground	3.8	210.6
+8	+30			10.0	204.4
1+0	TP	0.44	201.93	201.49	
+1	+46			6.6	195.7
	TP	0.12	189.29	189.17	
+6				1.3	188.0
+7				10.2	179.1
TP	TP	0.32	176.61	176.29	
+9				6.9	171.7
1+0				9.0	167.6
TP	TP	0.26	164.11	163.90	
+1	+15			2.7	161.5
+3	+35			9.3	154.9
TP	TP	2.42	152.58	150.16	
+6				7.5	146.1

NE BP  
Whitman  
Treas

153.58

170  
173 - Bottom of Gulch  
10.5  
12.3  
143.1  
141.3



Crescent Drive

10'  
End Curb

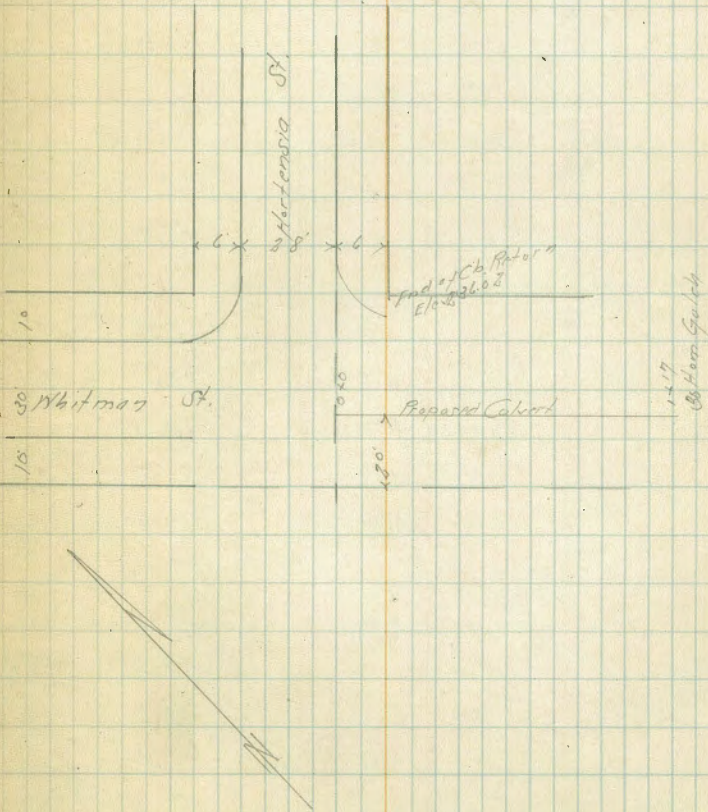
SECTION  
470  
10  
470  
Existing 18" I.P.  
470  
470

1473  
Bottom Gulch

Levels For Proposed Culvert  
Whitman + Hortensia St.

	+	H.I.	-	EI	
BM	0.44	249.15		249.01	N.E.S.P. Whitman + Hortensia
TP	11.5	237.72	1288	226.57	E.C.B. EI. 20' N. RL.
0+0			1.8	235.9	
+11			3.4	234.3	
+25			9.4	228.5	
TP	0.57	225.44	1285	224.87	
+40			3.7	221.7	
+50			8.9	216.5	
TP	1.28	214.23	12.49	212.95	
+60			3.1	210.6	
+70			10.3	203.9	
TP	0.85	202.51	12.57	201.66	
+80			4.1	198.4	
+95			11.9	190.6	
TP	2.59	192.93	12.17	190.84	
+110			9.2	183.7	
+117			11.4	181.5	Bottom of Gully

21  
1-14-27  
S. J. S.  
81-55  
S. J. S.





40' wide  
5' db  
7.5' 114

X Sea Monte Visla Ave  
from N. Line Sea Lane to 130' N. of N. Line Marine

3/28/27  
miller 22

B.M. 12 86 49.12 36.26 N.W. Sea Lane & Viola Del Mar

T.P. 8.24 56.65 0.71 48.41

00 = N. Line Sea Lane

Plotted March-9-27  
G.B.H.

E		4.0	52.6
5' W = db		4.58	52.07
12.5' W = 114		5.2	51.4
20' W = c		5.5	51.1
42.5' W = 114		6.4	50.2
65' W = W db		7.00	49.65
70' W = W line		6.7	50.0
	25' N		
E		3.9	52.7
5' W = db		4.1	52.6
12.5' W = 114		4.7	52.0
20' W = db		4.9	51.7
40' W		6.4	50.2
	50' N		
E		3.7	53.0
5' W = db		3.9	52.7
12.5' W = 114		4.0	52.6
20' W = c		4.2	52.4
50' W		5.9	51.7
	75' N = E.C		
W		5.6	51.0
db		5.2	51.5
114		4.8	51.8

56.65

C		4.4	52.2
114		4.0	52.7
db		3.9	52.7
E		3.7	53.0
	100' N		
E		3.8	52.8
db		4.2	53.5
114		4.3	52.3
C		4.6	52.0
114		5.0	51.7
db		5.4	51.3
W		5.7	51.0
	125' N		
W		5.6	51.0
db		5.4	51.4
114		5.0	51.7
C		4.6	52.0
114		4.3	52.3
db		4.2	52.5
E		4.0	52.7
	150' N		
E		3.8	52.9
db		3.8	52.8
114		4.3	52.3
C		4.6	52.0
114		5.1	51.6

56.65  
150' N. (con)

cl	5.4	51.2
W	5.5	51.1

200' N

W	5.6	51.1
cl	5.5	51.1
"4	5.4	51.3
E	5.1	51.6
"4	4.9	51.8
cl	4.7	52.0
E	4.5	52.2

260' N

E	4.9	51.7
cl	4.9	51.6
"4	5.3	51.4
E	5.6	51.1
"4	5.8	51.8
cl	6.1	50.6
W	6.2	50.4

268' N

W-7	6.3	50.4
W-5	8.9	49.7
W	10.5	46.2
cl	10.5	46.2
"4	6.3	50.4
E	5.7	51.0
"4	5.3	51.4

56.65

cl	4.9	51.7
E	4.8	51.8

275' N

E	5.0	51.7
cl	5.0	51.7
"4	5.1	51.6
E	5.5	51.1
"4	5.8	50.8
cl	8.1	48.6
W	11.2	45.5
+10	12.0	44.6

283' N

W	6.7	50.0
cl	6.1	50.6
"4	5.8	50.9
E	5.6	51.0
"4	5.2	51.4
cl	5.1	51.6
E	4.9	51.7

308' N

E	4.9	51.8
cl	5.1	52.6
"4	5.4	51.3
E	5.6	51.0
"4	5.9	50.7
cl	6.4	50.3
W	6.5	50.1

56.65

315' N = S. Line Marine

W	14.7	42.0
cl	14.5	42.2 ✓
+4	14.9	41.8 ✓
14	10.1	46.6 ✓
73	6.2	50.5 ✓
C	5.6	51.1 ✓
14	5.2	51.5 ✓
cl	5.0	51.7 ✓
E	4.9	51.8 ✓

MARINE

200' N Line Marine

2	5.1	51.6 ✓
cl	5.2	51.5 ✓
14	5.4	51.3 ✓
C	5.5	51.2 ✓
14	5.8	50.9 ✓
cl	6.3	50.4 ✓
W	6.4	50.3 ✓

50' N

W	7.1	49.5
cl	6.8	49.8
14	6.7	50.0
C	6.6	50.0
14	6.1	50.6
cl	5.9	50.7
E	5.6	51.0

Monk's Vista

24

56.65

100' N = S. Line Golden Vista St

E	6.4	50.3
cl	6.4	50.3
14	6.9	49.7
C	7.1	49.6
14	7.3	49.4
cl	7.4	49.4
W	7.6	49.1

130' N = N. Line Golden Vista St

W	7.7	48.7
cl	7.7	49.0
14	7.5	49.2
C	7.3	49.4
14	7.0	49.7
cl	6.6	50.0
C	6.4	50.3

T.P. 12.08 63.62 5.11 51.54

40' wide  
10' cbs  
20' Roadway

X See Olivitas.

N. Line Marine 130' N

V63.62 Page 24

00 = N. Line Marine

3/24/27

McHugh

X Sec. Alley Block 42 University Hts. 25  
bet Maryland + Cleveland, from Madison to  
Monte 20' wide. Returns paved at both ends

0+00 = S. Madison

W	4.5	59.1
cb	4.7	58.9
c	4.6	59.0
cb	4.5	59.1
cb	4.08	59.54 emb'd
E	3.8	59.8
50' N		
E	3.8	59.8
cb	4.3	59.3
c	4.6	59.0
cb	4.8	58.8
W	5.5	58.1

Plotted March 9-27  
S.H.

100' N = S. Line Golden Vista St

W	5.6	58.0
cb	5.1	58.5
c	4.9	58.7
cb	4.7	58.9
E	4.6	59.0
130' N		
E	4.3	59.3
cb	4.5	59.1
c	4.9	58.7
cb	5.4	58.2
W	5.9	57.7
W. of Olivitas to N	5.66	57.96 s. end emb'd.

B.M. Madison + Maryland S.M.R. 346.98

T.P. 6.88 353.86

0+00 on Paving

Wcb + paving 5.24 348.62

2 on paving 5.33 348.53

Ecb + paving 4.97 348.89

0+28 = Start of 8 unit garage on West (concrete floors)

EL 4.9 349.0

2 5.1 48.8

WL 5.2 48.7

+3.8 = Line of garage doors 5.00 48.86

0+63

W.L. -3.9 Garage door 5.01 48.85

WL 5.0 48.9

2 5.3 48.6

EL 5.3 48.6

1+00 = End of 8 unit garage on West

EL 5.5 48.4

2 5.6 48.3

WL 5.4 48.5

+4 = Line of garage door 5.13 48.73

1+57 = 2 single garage on West (concrete floor)

WL -4.6 = Garage door 5.32 48.54

WL 5.6 48.3

2 5.8 48.1

EL 5.9 48.0

continued on page 37.

60' wide  
10' deep  
10' high

X Sec Marine St.  
W. Line Olivitas to W. End

✓ 63.62 Page 24

3/28/27  
mll

26

63.62

00 = W. Line Olivitas.

N	4.5	59.1
cb	4.6	59.0
+3	5.5	58.1
1/4	5.2	58.4
c	4.8	58.8
1/4	5.1	58.4
cb	5.2	58.4
cb	4.67	58.95 cont. cb
S	4.5	59.1

Plotted 4-11-1927  
C.B.H.

50' W

S	7.2	56.4
cb	6.5	57.1
1/4	7.0	56.6
c	6.9	56.7
1/4	7.0	56.6
+7	7.2	56.4
cb	6.7	56.9
N	6.8	56.8

75' W

N	8.0	55.6
+6	7.4	55.8
cb	8.7	54.9
1/4	8.2	55.4
c	7.9	55.7
1/4	8.2	55.4

+5	8.5	55.1
cb	8.0	55.6
S	8.2	55.4
S	8.9	54.7
+7	8.4	54.8
cb	9.6	54.0
1/4	9.2	54.4
c	7.2	54.4
1/4	9.3	54.3
cb	9.6	54.0
N	9.7	53.9

100' W

150' W

N	11.3	52.3
cb	11.3	52.3
1/4	11.3	52.3
c	11.0	52.6
1/4	11.3	52.3
cb	10.9	52.7
S	10.5	53.1

180' W = E. Line Monte Vista

S	11.8	51.8
cb	11.9	51.9
1/4	12.2	51.4
c	11.9	51.7
1/4	12.0	51.6

63.62

E. line Monte Vista (Con)

cl		12.1	51.5
N		12.0	51.4 ✓
T.P.	2.14	53.68 E. cl	12.08 51.54
N		2.2	51.5 ✓
cl		2.2	51.4
1/4		2.1	51.5
e		2.2	51.4
1/4		2.2	51.4
cl		2.2	51.4
S		2.0	51.7
		E. 1/4	
S		2.2	51.5
cl		2.4	51.2
1/4		2.0	51.6
C		2.4	51.2
1/4		2.2	51.4
cl		2.2	51.4
N		2.4	51.3
		♀	
N		2.5	51.2 ✓
cl		2.4	51.3
1/4		2.4	51.3
C		2.4	51.3
1/4		2.1	51.6
+7		2.1	51.6
cl		9.0	44.7
S		2.3	51.1

53.68

Marine

37

4.5 W of ♀

S		3.3	50.6	50.4
cl		3.0		50.7
1/4		2.6		50.1
+8		2.7		51.0
C		11.6		42.1
1/4		7.1		46.6
cl		3.4		49.9
N		2.6		50.1
		W. 1/4		
N		2.8	50.9	50.9
cl		3.3		50.4
1/4		8.0		45.7
C		11.8		41.9
+2		2.7		51.0
1/4		2.6		51.1
+7		3.2		50.5
cl		4.6		49.1
S		7.1	46.6	46.6
		3.5 W of W 1/4		
S		11.9	41.8	41.8
cl		5.9		47.8
+5		3.0		50.7
1/4		3.1		50.6
C		3.2		50.5
+2		14.6		39.1
1/4		9.4		44.3

53.68  
3.5 W of N. 1/4 (cont)

N. cl	3.5	50.2
N.	3.0	50.7
N. cl		
N	3.3	50.4
cl	3.7	50.0
1/4	9.0	44.7
+8	14.7	39.0
c	3.2	50.5
1/4	3.3	50.4
+5	3.0	50.7
cl	5.6	48.1
S	11.5	42.2

00-W Line Monte Vista

S	11.7	42.0
cl	6.5	47.2
+4	3.5	50.2
1/4	3.3	50.4
c	3.5	50.2
+3	14.9	38.8
1/4	10.2	42.5
cl	4.2	49.5
N	3.7	50.3

15' W

N	3.6	49.9
+6	4.0	49.7
cl	4.8	46.9

Marine

21

53.68

1/4	13.0	40.7
+7	19.5	34.2
c	4.2	49.5
1/4	4.2	49.5
+2	4.2	49.5
cl	8.1	45.6
+5	6.8	46.9
S	13.2	40.5
+3	9.0	44.7
+10	8.3	45.4

30' W

S-8	5.6	48.1
S	18.0	35.7
+2	10.4	43.3
+5	11.9	41.8
cl	9.5	44.2
1/4	8.0	45.7
+5	6.8	46.9
c	8.6	45.1
1/4	13.0	40.7
cl	4.6	49.1
N	4.6	49.1

45' W

N	5.4	48.3
cl	10.1	43.6
1/4	13.0	40.7

53.64  
45' W. (con)

1/4+2	26.7	47.0
+8	27.0	26.7
e	10.3	43.4
1/4	12.0	41.7
e	16.0	37.7
+6	16.9	36.8
S	22.0	31.7
+3	10.9	42.8
+10	12.5	41.2

55' W

5-15	14.5	37.2
-3	14.5	39.2
S	23.5	30.2
+4	19.5	34.2
e	19.3	34.4
1/4	17.3	36.4
+4	17.3	36.4
+5	29.0	24.7
e	28.0	25.7
+4	17.6	36.1
1/4	15.8	37.9
e	11.7	42.0
N	9.8	43.9

53.64

60' W

N		11.7	42.0
T.P.	0.29	41.72	12.25
e		1.5	40.2
1/4		3.3	38.4
e		7.7	34.0
+3		15.0	26.7
+7		15.8	25.9
+8		7.0	34.7
1/4		7.0	34.7

e

S		11.5	30.2
S		11.7	30.0
+5		4.4	36.9
+15		6.7	35.0
T.P.	7.29	40.96	8.15

63' W

+15		6.1	34.7
S		5.8	35.0
+3		11.1	29.8
e		13.6	27.2
1/4		5.2	35.7
+3		15.0	25.9
+7		14.5	26.4
e		5.8	35.0
1/4		2.4	38.5
e		0.9	40.0
N		0.0	40.8

Marine

29

33.57

Nail in Pole



40.86  
70' W.

N-10	0.8	40.0
N	12.2	28.7
+7	4.0	36.9
cb	4.7	36.2
1/4	6.0	34.9
2	4.9	34.0
+3	7.4	33.5
+5	15.6	25.3
1/4	15.7	25.2
+1	7.4	33.1
+6	15.0	25.9
cb	15.2	25.7
+2	7.5	33.4
S	6.7	34.2
+15	7.3	33.6

78' W

S-18	12.2	28.6
-5	10.8	30.0
S	8.3	32.6
+3	6.7	34.2
+7	6.7	34.1
cb	11.5	29.4
+4	14.2	24.7
+8	16.0	24.9
1/4	13.0	27.9
+6	8.1	32.8

Marine 30

40.86

C	8.2	32.7
1/4	9.8	31.1
+5	9.8	31.1
+7	8.2	32.6
+9	8.2	32.6
cb	14.6	26.3
+2	14.6	26.2
+7	6.6	34.3
N	5.7	35.2
+5	5.8	35.0

87' W

-5	7.4	33.5
N	9.9	30.0
cb	9.7	31.2
+3	15.5	25.4
1/4	15.5	25.4
+7	10.7	30.2
1/4	12.7	28.2
C	14.3	26.6
1/4	13.5	27.4
+1	16.6	24.3
+6	16.0	24.9
cb	8.7	32.1
+3	7.0	33.9
+4	7.0	33.8
S	11.2	29.7

40.86

87' W. (cont.)

+5		13.0	27.9	
+10		13.2	27.6	
+22		9.0	31.9	
		92' W		
9-12		9.0	31.9	
-10		12.5	28.3	
S		14.2	26.7	
cl		16.2	24.7	
14		14.3	24.6	
C		16.0	24.9	
14		15.8	25.1	
+5		15.8	25.1	
+8		11.1	29.8	
cl		12.1	28.7	
+3		13.4	27.4	
N		8.9	32.0	
+5		7.4	33.5	
		96' W		
-5		8.2	32.7	
N		2.0	31.9	
T.P.	3.38	35.07	9.17	31.62
cl		9.8	25.3	
14		10.3	24.8	
C		10.7	24.4	
14		10.3	24.8	
cl		10.3	24.8	

31

35.07

S		8.8	26.3
+12		6.0	29.1
		100' W	
S		0.9	34.2
cl		6.5	28.6
+2		9.8	25.3
14		10.6	24.5
C		10.9	24.2
14		10.5	24.6
cl		9.9	25.2
+5		5.5	29.6
N		5.1	30.0
+10		7.0	28.1
		110' W	
-10		7.6	27.5
N		2.0	28.1
+4		7.4	27.7
cl		10.2	24.9
14		10.6	24.5
C		10.9	24.2
+2		10.4	24.7
14		5.3	29.8
cl		1.7	33.4
			from Profile → 32.2

35.07

116' W

-5	3.8	31.3
S	3.8	31.3
cl	4.0	31.1
114	4.3	30.8
C	10.8	24.3
+5	11.1	24.0
114	10.5	24.6
cl	10.5	24.6
+5	7.1	28.0
N	7.3	27.8
+10	7.8	27.3

144' W

-10	9.3	25.8
N	9.2	25.9
+7	11.3	23.8
cl	11.5	23.6
114	11.7	23.4
+3	11.5	23.6
C	7.6	27.5
114	6.4	28.7
cl	6.0	29.1
S	3.7	31.4

147' W

S	1.9	33.2
cl	5.9	29.2
+2	6.4	28.7

35.07

Marine 32

114	6.8	28.3
C	7.5	27.6
+3	8.1	27.0
114	11.8	23.3
cl	11.7	23.4
+4	11.3	23.8
+7	9.7	25.4
N	9.4	25.7
+10	9.3	25.8

T.P. 6.25 33.82 1.50 33.57

145' W

-5	8.8	25.0
N	8.7	25.1
+5	8.7	25.1
+7	10.8	23.0
cl	10.4	23.6
+3	8.2	25.6
114	7.9	25.9
C	7.6	26.2
114	7.2	26.6
+5	6.6	27.2
cl	5.0	28.8
+7	2.5	30.3

30.3 N side House <sup>2' in</sup> street

175' W

s' of s. line	2.4	31.0
cl	5.4	28.0

33.42 175' W. (con)

+5	7.3	26.5
14	8.0	25.8
c	8.3	25.5
14	8.7	25.1
d	8.9	24.9
+2	9.0	24.8
+3	11.0	22.8
+8	11.0	22.8
N	9.0	24.8
+5	9.0	24.8

176's Garage under house 3' in street

-5	9.0	24.8
N	9.0	24.8
+1	11.0	22.8
+7	11.0	22.8
+8	9.0	24.8
d	8.9	24.9
14	8.7	25.1
c	8.3	25.5
14	8.0	25.8
d	8.0	25.8
+7	8.0	25.8

Et garage/por  
House 3' in street

184' W

3' N. of S. line	8.0	25.8
c	8.0	25.8
14	8.5	25.3

33.42

Marine

33

c	8.8	25.0
14	9.2	24.6
d	9.6	24.2
+3	9.6	24.2
14	11.2	22.6
N	11.0	22.8
+1	9.6	24.2
+5	9.6	24.2

186' W

-5	9.6	24.2
-2	9.6	24.2
X (11)	11.2	22.6
+5	11.3	22.5
+6	9.6	24.2
d	9.6	24.2
14	9.2	24.6
c	8.8	25.0
14	8.5	25.3
d	6.3	27.5
+7	27	31.1 House

192' W = Wedge House No section

205' W

s	4.4	29.4
d	6.8	27.0
14	8.9	24.9
c	9.8	24.0

33.82 205' W (con)

1/4	10.2	23.6
cl	10.6	23.2
N	10.6	23.2
+5	10.4	23.2
-5	13.5	20.3
N	13.2	20.6
+3	11.7	22.1
cl	11.1	22.7
1/4	10.9	22.9
C	9.8	24.0
1/4	9.3	24.5
+5	8.8	25.0
cl	7.8	26.0
S	7.1	26.7
E. cl		
S	7.5	26.3
cl	8.6	25.2
1/4	9.3	24.5
C	10.3	23.5
1/4	11.2	22.6
cl	11.6	22.2
N	12.5	21.3
+5	13.5	20.3
E. 1/4		
-5	13.3	20.5
N	12.4	21.4

215 W = E. line Vista Del Mar

{ 45' W of  
 5' cl  
 8.75 W of

MARINE

34

33.82

cl	12.2	21.6
1/4	11.7	22.1
C	10.6	23.2
1/4	9.4	24.4
cl	8.8	25.0
S	8.2	25.6
S	8.2	25.6
cl	8.9	24.9
1/4	10.0	23.8
C	10.7	23.1
1/4	12.1	21.7
cl	12.9	20.9
N	12.7	21.1
+5	13.0	20.8
N. 1/4		
-5	13.3	20.5
N	12.6	21.2
cl	13.0	20.8
1/4	12.4	21.4
C	11.4	22.4
1/4	10.2	23.6
cl	9.5	24.3
S	8.6	25.2

33.82

W. cl

S	8.5	25.3
cl	10.1	23.7
14	10.6	23.2
E	11.9	21.9
14	12.8	21.0
cl	13.2	20.6
N	13.2	20.6
+5	13.8	20.0

oo = N. line Vista Del Mar.

-3	13.8	20.0
N	13.2	20.5
cl	13.3	20.5
14	12.8	21.0
E	12.3	21.5
14	11.2	22.6
cl	10.3	23.5
S	8.8	25.0

50' W

S	10.3	23.5
+2	10.4	23.4
+4	12.9	20.9
T.P.	R.50 23.13	13.19 20.63
cl	2.5	20.6
14	2.6	20.5
E	3.6	19.5
14	3.8	19.3

23.13

Marine

35

cl	4.9	18.2
N	4.5	18.6
+5	5.0	18.1
	70' W	
-5	6.9	16.2
N	5.8	17.3
cl	5.1	18.0
14	4.1	19.0

+9	4.1	19.0
E	6.6	16.5
+9	7.5	15.6
14	3.4	19.7
cl	3.0	20.1
+6	2.7	20.4
+7	0.8	22.3
S	0.6	22.5

85' W

S	0.8	22.3
+3	0.9	22.2
+5	2.9	20.2
cl	3.5	19.6
14	3.8	19.3
+5	4.5	18.6
+6	14.0	09.1
E	14.2	08.9
+5	15.2	07.9

23.13  
85' W (cont)

14	5.2	17.9
cl	7.4	15.7
N	7.9	15.2
+5	8.6	14.5
100' W		
-10	13.1	10.0
N	13.1	10.0
+1	14.4	08.3
+7	10.3	12.8
cl	10.4	12.7
+5	10.5	12.6
14	18.7	04.4
e	16.5	06.6
+7	12.2	10.9
14	5.4	17.7
cl	2.8	20.3
S	1.0	22.1
117' W		
S	3.0	20.1
cl	4.5	18.6
14	8.5	14.6
+5	17.6	15.5
e	14.0	05.1
14	20.0	03.1
cl	18.2	04.9
N	19.4	03.7

23.13

Mar 14<sup>th</sup>

36

+1	15.7	7.4
+10	15.7	7.4
125' W on Beach		
-10	15.8	7.3
-1	15.8	7.3
N	20.7	2.4
cl	20.9	2.2
14	21.4	1.7
e	20.0	3.1
14	19.0	4.1
cl	18.1	5.0
S	17.5	5.6

126' W on Beach

S	17.6	5.5
cl	18.1	5.0
14	17.0	4.1
e	20.0	3.1
14	21.9	1.2
cl	20.9	2.2
N	20.7	2.4
+10	20.8	2.3

47  
25  
22

Continuation of X SEC  
Alley Block 42 University Hts  
continued from Page 25

37

23.13  
on Beach 129.48 W on N Wend street on Diagonal  
147.17 W on S

A		21.0	2.1
d		22.0	1.1
"4		22.2	0.9
c		21.4	1.7
"4		21.0	2.1
cl		20.4	2.3
S		20.6	2.5
T.P.	9.90	30.53	2.50 20.63

7 353.86

1+86 = £ single garage on West (Concrete floor)

EL 5.8 348.1

£ 5.8 48.1

WL 5.9 48.0

+4.8 = garage door 5.92 47.94

2+38 = £ single garage on West (concrete floor)

WL - 5.1 = Garage door 6.49 47.37

WL 6.4 47.5

£ 6.3 47.4

EL 6.2 47.7

T.P. 4.77 351.87 6.76 347.10

2+91 = £ double garage on West (concrete floor)

EL 4.9 47.0

£ 4.8 47.1

WL 4.7 47.2

+5.5 = garage door 4.59 47.28

3+14 = £ double garage on East (concrete floor)

WL 4.9 47.0

£ 4.9 47.0

EL 4.9 47.5

+1.6 on edge of Apron 4.18 47.69

3+65 = £ single garage on West (concrete floor)

EL 4.9 47.0

£ 4.9 47.0

WL = Garage door 4.96 46.91

Continued on page 44



9  
Plat Eb center

Sec. Vista Del Mar  
Marine to Sealane

15' wide 3/24/27  
5' els  
8.75' 1/2

40.64

38

30.53 Page 37

00 = S. line Marine

W	5.5	25.0
cl	5.2	25.3
1/4	5.3	25.2
E	4.9	25.6
1/4	4.9	25.6
cl	4.2	26.3
E	3.8	26.7

Plotted - 4-11-1927  
EBH.

50'S

E	1.0	29.5
cl	1.2	29.3
1/4	1.8	28.7
E	1.4	29.1
3/4	1.7	28.8
cl	1.9	28.6
W	1.7	28.8

T.P. 10.39 40.64 0.28 30.25

100'S

W	8.0	32.6
cl	7.9	32.7
1/4	7.9	32.7
E	7.9	32.7
1/4	8.1	32.5
cl	8.3	32.3
E	8.1	32.5

125'S

E	6.8	33.8
cl	7.1	33.5
1/4	6.6	34.0
E	6.5	34.1
1/4	6.6	34.0
cl	6.6	34.0
W	6.6	34.0

150'S

W	6.6	34.0
cl	6.3	34.3
1/4	6.1	34.5
E	5.7	34.9
1/4	5.7	34.9
cl	6.0	34.6
E	6.0	34.6

175'S

E	5.5	35.1
cl	5.6	35.0
1/4	5.3	35.3
E	5.4	35.2
1/4	5.5	35.1
cl	5.6	35.0
W	5.9	34.7

40.64  
215' S

W	5.6	35.0	N. end emtd cl
cl	5.74	34.90	rwalk on W emtd OK
"4	5.0	35.6	
C	4.8	35.8	
"4	4.9	35.7	
cl	4.9	35.7	
C	4.7	35.9	

235' S

E	3.2	37.4	
cl	4.3	36.3	
"4	4.6	36.0	
C	4.6	36.0	
"4	4.7	35.9	
cl	5.44	35.20 emtd cl o.k.	
W	5.4	35.2	

265' S

W	5.5	35.1	
cl	5.6	35.0 emtd sunk	
"4	4.5	36.1	
C	4.1	36.5	
"4	4.3	36.3	
cl	3.7	36.9	
E	2.6	38.0	1.6 Back garage floor

Visla Del Mar

40.64

39

289' S

E	2.4	37.8	
cl	3.4	37.2	
"4	3.4	36.8	
C	3.9	36.7	
"4	4.3	35.3	
cl	4.70	35.94 emtd OK	
W	4.6	36.0	

315' S = N line sea lane

W. cl	4.31	36.33	
"4	4.0	36.6	
C	3.3	37.3	
"4	3.1	37.5	
guller	2.7	37.9	
emtd return	2.07	38.57	
E	1.9	38.7	
chk on BM	4.36	36.28 = 36.26	

40' wide  
5' cl-9  
7.5 1.45

X Sec La Jolla Rail Road Right of Way 3/30/27  
Sea Lane N to N. Line F.T. Seripps Hold 3/30/27 miles

94.59

40

B.M.	0.81	✓ 107.29	106.48	S.W. Draper & Center.	+ 3.5	75	87.1
T.P.	0.51	✓ 94.59	13.21	94.08	cl	5.2	89.4
Stations on W. Line sections on Radial Lines					W	5.3	89.3
with exception of N. Line Sea Lane & N.S. of Marine							
00 = N. Line Sea Lane					W	5.4	89.2
E		3.5	91.1	Hedge walk	cl	5.4	89.2
cl		3.7	90.9		+ 5	8.2	86.4
1/4		4.1	90.5		1/4	8.4	86.2
C		4.5	90.1		C	8.0	86.6
1/4		4.7	89.9		1/4	7.2	87.4
cl		5.1	89.5		cl	3.9	90.7
W		5.2	89.4		C	3.5	91.1
55' N on W Line							
W		5.0	89.6		E	3.5	91.1
cl		5.1	89.5		+ 3	3.6	91.0
1/4		5.4	89.2		cl	4.7	89.9
C		4.9	89.7		1/4	7.7	86.9
1/4		4.7	89.9		C	8.3	86.3
cl		3.8	90.8		1/4	8.5	86.1
C		3.2	91.4		+ 3	8.2	86.4
65' N							
E		3.4	91.2		cl	5.5	89.1
cl		3.6	91.0		W	5.5	89.1
1/4		6.9	87.7				
C		7.4	87.2				
1/4		7.8	86.8				
100' N							
					W	5.1	89.5
					cl	5.0	89.6
					+ 4	8.0	86.6
135' N							
					E	3.5	91.1
					+ 3	3.6	91.0
					cl	4.7	89.9
					1/4	7.7	86.9
					C	8.3	86.3
					1/4	8.5	86.1
					+ 3	8.2	86.4
					cl	5.5	89.1
					W	5.5	89.1
170' N							
					W	5.1	89.5
					cl	5.0	89.6
					+ 4	8.0	86.6

Plotted 4-11-1937  
G.B.H.

94.59  
94.55  
170' N. cor

114	8.3	86.3
e	8.4	86.2
114	8.0	86.6
+4	7.1	87.5
cl	3.7	90.9
E	3.2	91.4

200' N

E	3.6	91.0
cl	3.9	90.7
+3	4.9	87.7
114	7.8	86.8
e	8.5	86.1
114	9.2	85.4
+3	8.8	85.8
cl	5.3	89.3
W	5.3	89.3

235' N

W	5.8	88.8
cl	5.7	88.9
+3	8.8	85.8
114	9.0	85.6
e	8.8	85.8
114	9.0	85.6
cl	4.0	90.6
E	4.0	90.6

RR Right of way

94.59  
270' N

41

E	4.5	90.1
cl	4.9	89.7
+5	8.3	86.3
114	8.8	85.8
e	9.0	85.6
114	9.3	85.3
+5	9.4	85.2
cl	5.9	88.7
W	6.0	88.6

300' N

W	7.0	87.6
cl	7.0	87.6
+3	9.5	85.1
114	9.3	85.3
e	8.8	85.8
114	8.1	86.5
cl	5.2	89.4
E	5.0	89.6

316' N = S. Line Marine

E	5.6	89.0
cl	6.6	88.0
114	8.0	86.6
e	8.7	85.9
114	9.0	85.6
cl	8.2	86.4
W	8.4	86.2

	91.5			
T.P.	94.59			
T.P.	91.91	93.50	3.00	91.59
	00 = N. Line Marine			
W		7.1		86.4
cl		7.4		86.1
114		7.0		86.5
C		4.8		86.7
114		7.1		86.4
+5		7.7		85.8
cl		5.9	87.6	
E		5.1		88.4
	35' N. on W. Line			
e		5.1		88.4
cl		5.4		88.1
+1		7.0		86.5
114		7.5		86.0
C		7.5		86.0
114		7.5		86.0
cl		4.4		86.9
W		6.9		86.6
	70' N.			
W		7.3		86.2
cl		7.3		86.2
114		6.5		85.0
C		8.2		85.3
114		7.3		86.2

	479.5	E 81.0	
	93.50		42
cl		7.5	86.0
+1		5.8	87.7
C		5.4	88.1
	77' N		
E		5.3	88.2
cl		5.7	87.8
+2		8.4	85.1
114		10.1	83.4
C		10.2	83.3
114		10.5	83.0
+4		10.3	83.2
cl		7.3	86.2
W		7.2	86.3
	100' N		
W		7.5	86.0
cl		7.0	86.5
+3		10.5	83.0
114		10.5	83.0
C		10.5	83.0
114		10.1	83.4
cl		8.3	85.2
E		5.8	87.7
	130' N = N Line - F.T. Seripps Add. 40' wide		
C		6.0	87.5
+5 = cl		7.3	86.2
+12.5 = 114		4.6	84.9

93 50.

N. Line F.T. Scripps Add (con)

+20 = D	8.8	84.7
+27.5 = 1/4	8.8	84.7
+32.5 = +5	8.8	84.7
+35 = cl	7.4	85.7
+40 = W	4.2	85.3

↑  
same  
section

X See Cuvier St from N. Line F.T. Scripps Add North

Cuvier <sup>80' wide</sup>  
<sub>14' cl</sub>  
<sub>13' 11/2</sub>

↓ 130' N of Marine = N. Line F.T. Scripps Add. 80' wide

W	8.7	84.8
+14 = cl	8.1	85.4
+24	7.8	85.7
+27 = 1/4	8.4	84.7
+40 = C	8.8	84.7
+53 = 1/4	7.6	85.9
+66 = cl	6.3	87.2
+80 = C Line	5.5	88.0

25' N

Cuvier graded from here North to Pearl

D	6.0	87.5
cl	6.7	86.8
1/4	7.5	86.0
C	8.1	85.4
1/4	8.7	84.8
cl	8.8	84.7
W	9.0	84.5

Plotted 4-11-27

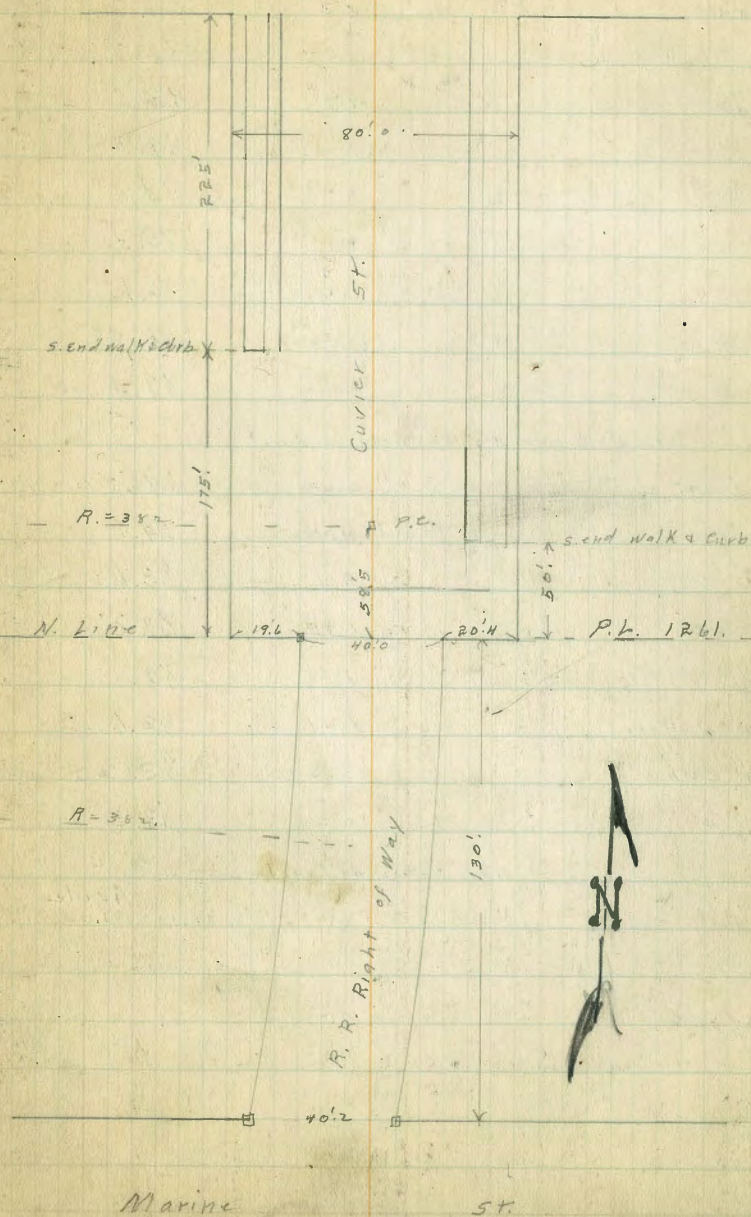
CBH

Cuvier

43

Pearl

St.



9350  
50' N. S. End Walk & Curb on E.

W	9.3	84.2
cl	8.8	84.7
+1	9.7	83.8
"4	9.2	84.3
c	8.7	84.8
"4	8.2	85.3
+12 gutter	7.4	86.1
E. emb'd	6.62	86.88
E	6.1	87.4
175' N. S. end Walk & Curb on West		
E. int cl	8.80	84.70
+1 gutter	9.4	84.1
"4	9.9	83.6
c	10.5	83.0
"4	10.8	82.7
+12 gutter	10.9	82.6
W. emb'd curb	10.30	83.20
W	10.2	83.3

400' N. S. Line Pearl

E. cl	12.37	81.13 = 81.00
-------	-------	---------------

Grade

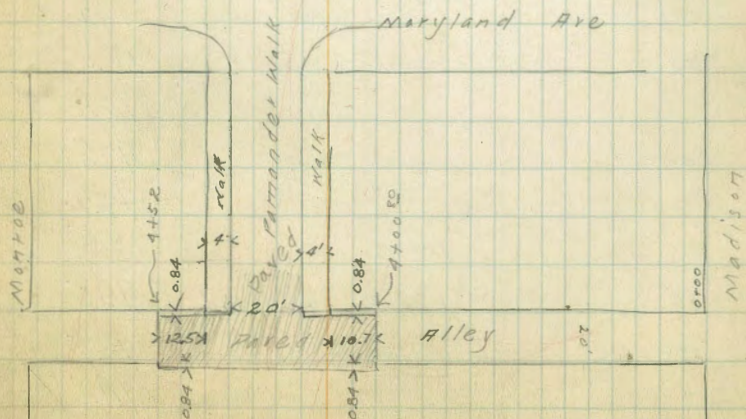
Alley Block 42 University Wts  
continued from page 37.

44

520

T 351.87

4+00 <sup>20</sup> = start of Paving at Remander Walk		
WL (on dirt)	5.1	346.8
+ 0.84 = Edge of Concrete on West	5.19	346.68
ℓ on paving	5.43	46.44
EL on paving	5.05	46.82
4+26 = center of concrete strip from Remander Walk		
EL on paving	5.15	46.72
ℓ	5.33	46.54
WL	5.38	46.49
4+52 = South edge of Pavement of Remander Walk		
WL	5.3	46.6
+ 0.84	5.32	46.55
ℓ	5.48	46.39
EL	5.25	46.62



continued on Page 48

60' wide  
10' els  
10' 114s

2 Sec Marine St  
from W. Line Draper produced from South  
West

3/30/27  
millen

99.84

45

T.P. Page 42 8.25 99.84 91.59

00 = W. line Draper

S.	0.5	99.3
cont el Return	0.81	99.03
r1 gutter	1.5	98.3
114	1.3	98.5
c	1.3	98.5
114	1.5	98.3
+9 = gutter	1.7	98.1
cont el.	0.64	99.16
N	0.8	99.0
	35' W	
N	2.8	97.0
d	2.8	97.0
+2	3.6	96.2
114	3.8	96.0
c	3.6	96.2
114	3.5	96.3
+9	4.0	95.8
d	2.0	97.8
S	1.6	98.2
	70' W	
S	3.3	96.5
d	3.3	96.5
+1	5.0	94.8
114	5.0	94.8

Plotted 4-11-1927 CBH

c	5.2	94.6
114	5.4	94.4
d	5.2	94.6
+1	4.3	95.5
N	4.5	95.3
	100' W	
N	5.8	94.0
+9	5.4	94.4
d	6.4	93.4
114	6.4	93.0
c	6.9	92.9
114	6.6	93.2
+9	6.0	93.8
d	5.0	94.8
S	5.0	94.8
	135' W	
S	6.3	93.5
d	6.5	93.3
+2	8.0	91.8
114	8.4	91.4
c	8.1	91.7
114	8.1	91.7
+9	8.5	91.3
d	7.1	92.7
N	7.1	92.7



99.84

170'W

N	9.0	90.8
d	8.4	91.0
r2	10.0	89.8
14	9.4	90.0
e	9.7	90.1
14	10.3	89.5
+8	10.0	89.8
d	8.2	91.6
S	8.0	91.8

200'W

S	9.5	90.3
d	9.7	90.1
+2	11.3	88.5
14	11.4	88.4
e	11.3	88.5
14	11.4	88.4
+9	11.4	88.4
d	10.3	89.5
N	10.5	89.3

219'W on S. } E. Line R.R. Right of Way (140'W, 14' } diagonal  
 215.2'W on N } (5' elev }  
 2.5' elev }

N	11.5	88.3
+8	11.0	88.8
d	12.3	87.5
14	12.5	87.3
e	12.4	87.4
14	12.6	87.2

99.84

Marine

46

+8	12.4	87.4
d	11.2	88.6
S	10.9	88.9
T.P.	1.95	88.89
	12.90	84.94
		8. elev
S	0.9	88.0
d	1.7	87.2
14	2.0	86.9
e	1.8	87.1
14	1.9	87.0
d	2.0	86.9
N	1.3	87.6
		E. 114
N	2.7	86.2
d	2.7	86.2
14	2.3	86.6
e	2.2	86.7
14	2.5	86.4
d	2.2	86.7
S	2.2	86.7
		±
S	2.8	86.1
d	2.4	86.5
14	2.7	86.2
e	2.5	86.4
14	2.4	86.3

± (con)

cl	3.0	85.9
N	2.3	86.6
W 1/4		
N	2.1	86.8
cl	3.1	85.8
1/4	3.0	85.9
e	2.7	86.2
1/4	2.9	86.0
cl	2.6	86.3
S	2.7	86.2
W. cl.		
S	2.3	86.6
cl	2.9	86.0
1/4	3.0	85.9
e	2.9	86.0
1/4	3.1	85.8
cl	3.1	85.8
N	2.8	86.1
W. Line R.R. Right of way diagonal = E. end walk on South		
N	2.4	86.5
cl	3.2	85.7
1/4	3.0	85.9
e	3.0	85.9
1/4	3.0	85.9
cl	3.6	85.3 ground

emt. cl.	2.82	86.07
S	1.7	87.2.
50' W of N. Line R.R. Right of Way on N. Line of Marine section at 90° 00		
S emt. cl.	4.43	84.46
H = gutter	5.2	83.7
1/4	4.6	84.3
e	4.7	84.2
1/4	5.1	83.8
+ 9	5.4	83.5
cl	4.7	84.2
+ 8	4.5	84.4
N	3.8	85.1
100' W. on N.		
N	6.4	82.5
cl	7.3	81.6
1/4	6.9	82.0
e	6.4	82.5
1/4	6.5	82.4
+ 9	6.9	82.0
S emt. cl.	6.23	82.66
Marine graded four beds water from Here to La Jolla Blvd. 159.7 W. on N = 8 end walk + cl on N = N. Line lot 3		
S emt. cl.	8.35	80.54
+ 1	9.0	79.9
1/4	8.5	80.4
e	8.4	80.5

88.89

159.5

117	8.8	80.1
119	9.0	79.9
N. ent ch	8.53	80.36
N	8.2	80.7

Alley Block 42  
Continued from page 44

48

T 351.87

4188 = \$ single garage on West

EL	5.2	346.7
\$	5.1	46.8
WL = Garage door	5.36	46.51
5+50	3	
W.L.	5.30	46.57
\$	5.5	46.4
EL	5.9	46.8

6401<sup>10</sup> = NL Monroe

E. cb	6.15	45.72
Gutter	6.56	45.31
\$	6.76	45.11
W. cb x Gutter	6.52	45.35

T.P.	7.54	348.25	11.16	340.71
------	------	--------	-------	--------

T.P.	6.25	342.00
------	------	--------

RM. Monroe + Marginal	342.05
--------------------------	--------

.05 ERROR

THE END

3

X See Surfston Place  
Vista Del Mar To Montevista  
50' wide 10' elev 75' elev

3/3/27  
millin

51.09

49

150'E

B.M.	3.06	51.09	48.03
			Belvedere SE Vista Del Mar
			00 = E line Vista Del Mar
S		11.4	39.9
entd return		12.13	38.96
W		11.8	39.3
E		11.8	39.3
W		11.4	39.3
entd		11.79	39.30
N		11.8	39.3

N			5.8	45.3
cl			5.6	45.5
W			5.3	45.8
E			5.1	46.0
W			4.9	46.2
cl			5.0	45.1
S			4.4	46.7
T.P.	7.45	54.46	4.08	47.01

200'E

N		8.7	42.4
cl		8.7	42.4
W		9.5	41.6
E		9.4	41.7
W		9.4	41.7
cl		9.4	41.7
S		9.2	41.9

S			5.7	48.8
cl			6.2	48.3
W			6.4	48.1
E			6.4	48.1
W			6.5	48.0
cl			6.7	47.8
N			7.2	47.3

250'E

S		6.5	44.6
cl		6.9	44.3
W		6.8	44.3
E		7.0	44.1
W		7.2	43.9
cl		7.4	43.7
N		7.8	43.3

N			6.0	48.5
cl			5.6	48.9
W			5.3	48.2
E			5.0	49.5
W			5.0	49.5
cl			4.7	49.8
S			4.6	49.9

Plotted 7-26-28 - C.B.H.

54.46  
300'E

S	3.0	51.5
cl	3.4	51.1
1/4	3.7	50.8
E	3.9	50.6
1/4	4.5	50.0
cl	4.9	49.6
N	6.4	48.1

350'E

-10	9.4	44.8
N	8.5	46.0
cl	4.5	48.0
1/4	5.0	49.5
E	4.2	50.3
1/4	3.5	51.0
cl	3.0	51.5
S	2.5	52.0

374.7E

S	3.2	51.3
cl	4.4	49.9
1/4	5.6	48.9
E	4.6	47.9
N	7.1	47.4
cl	7.8	46.7
N	8.8	45.7
+10	9.4	44.1

54.46

374.7 E on N  
388.0 E on S

-10	9.4	45.1
N	8.8	46.7
cl	8.0	46.5
1/4	7.4	47.1
E	6.7	47.8
1/4	6.2	48.3
cl	5.6	48.9
S	4.5	50.0

374.7 E on N } - W. Line Monte Vista.  
401.4 E on S }

S	11.2	43.3
cl	8.8	45.7
1/4	8.4	46.1
E	8.7	45.8
1/4	8.6	45.9
cl	8.5	46.0
N	8.8	45.7

T.P. on Hub

8.89

45.57

53.35  
7.76  
45.59

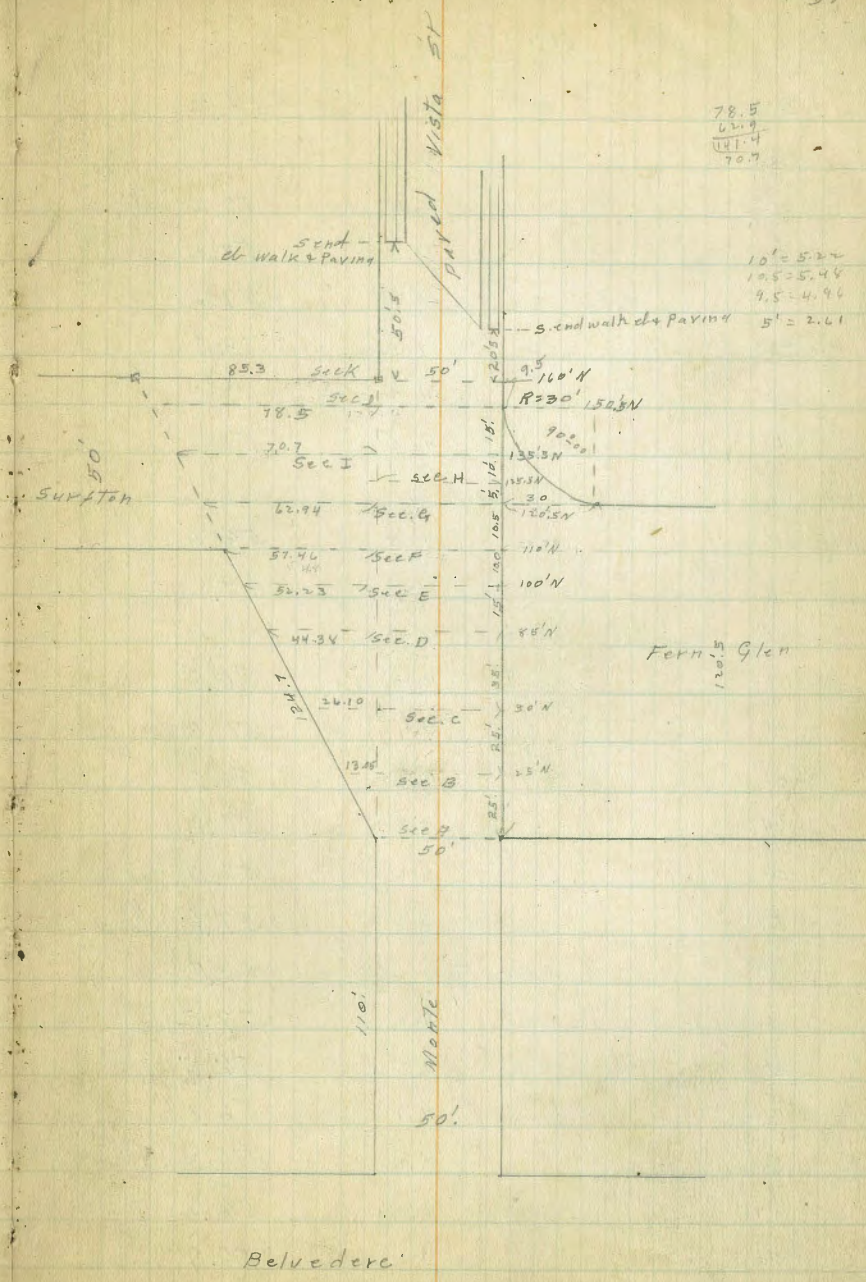
Surfton

50

X Sec Monte Vista St. 3/21/27  
 N. line Belvedere North Miller  
 50' wide 12' ds 7.5 14.5

B.M. 1.67 61.24 59.57 S.W. Belvedere  
 00: N. line Belvedere

W	2.0	59.2
omit no yardage	2.66	58.58
cb	2.0	59.2
1/4	1.9	59.3
c	2.0	59.2
1/4	1.9	59.2
cb	2.0	59.2
omit no yardage	2.24	59.00
E.	1.8	59.4
50' N		
E	2.2	59.0
cb	2.5	58.7
1/4	2.7	58.5
c	3.0	58.2
1/4	2.9	58.3
cb	2.9	58.3
W	3.0	58.2
75' N		
W	3.9	57.3
cb	3.5	57.7
1/4	3.7	57.5
c	3.5	57.7
1/4	3.4	57.8
cb	3.2	58.0
E	3.0	58.2



61.24  
80' N

E	3.0	58.2
cl	3.4	57.8
"	3.6	57.6
c	3.6	57.6
"	3.4	57.6
+L	7.4	53.8
cl	4.2	57.0
W	4.5	56.7

100' N

W	4.5	56.7
+5	11.4	49.8
cl	11.4	49.8
+5	4.4	56.8
"	4.4	56.8
c	4.3	56.9
"	4.3	56.9
cl	4.2	57.0
c	3.6	57.6

110' N S. line Fert. Glen on c = Sec A

c	3.0	57.2
cl	4.7	56.5
"	4.9	56.3
c	4.9	56.3
"	5.0	56.2
cl	5.3	55.9
+4	5.5	55.7

61.24

+5	12.4	48.8
W	13.8	47.4
+1	6.7	54.5
+5	6.4	54.8

25' N of Sec A = Sec B

23.05 W of W line Produced slope	8.4	52.8
13.05 " " " " " " " " = W line	14.6	46.6
10' " " " " " " " " " " " "	15.4	45.8
W line Produced	11.4	49.4
cl	9.3	52.0
"	8.0	53.2
c	6.0	55.2
"	6.3	55.0
cl	6.4	54.8
c	6.2	55.0

50' N of A = Sec C

e	8.7	52.5
cl	9.2	53.0
"	8.3	52.9
c	9.1	52.1
"	9.4	51.8
cl	10.4	50.8
W Produced	11.7	49.5
11' W	13.5	47.7
18' W	16.6	44.6
26.10 W = W line	12.0	49.2
36.10 W = out	10.1	

61.24

85' N of Sec A = Sec D

54.38 W of W Line Produced - out	13.3	47.9
44.35 N " " " = White	17.1	44.1
40 " " " " "	18.0	43.2
25 " " " " "	14.9	46.3
" " " " "	10.9	50.3
W cl	10.6	50.6
ly	11.4	49.8
c	13.0	48.2
ly	12.0	49.3
cl	10.7	50.5
E	9.5	51.7

100' N of A = E

E - 15	15.1	45.8
E	16.0	45.2
cl	17.0	44.2
ly	17.2	44.0
c	16.8	44.4
ly	16.0	45.2
cl	13.0	48.2
W Produced	10.6	50.6
20 W of " "	13.4	47.8
T.R. 5.26 53.35	13.15	48.09
35' W of W Produced	7.5	45.9
48 " " " "	10.3	43.1
52.23 " " = White	10.0	43.4
62.23 " " = out	7.3	46.1

53.35

Monte Vista

53

110' N of A = Sec F

S.W. BK cor surstn

57.46 W of W Produced = Monte Vista	9.1	44.3
53 " " " "	10.6	42.8
25 " " " "	6.1	47.3
10 " " " "	3.2	50.2
W " " "	2.5	50.9
cl	8.3	45.0
ly	12.1	41.3
c	13.6	39.8
ly	12.1	41.3
cl	9.1	44.3
E	8.5	44.9

120.5 N of A = Sec G = N. Line Fern Glen Produced from c.

E	8.7	44.7
cl	9.1	44.3
ly	14.3	39.1
c	14.7	38.7
ly	14.9	38.5
cl	15.0	38.4
W	3.0	50.4
12' W	2.9	50.5
35' W	2.4	45.0
54' W	11.0	42.4
62.94 W = W Line	7.9	45.5



## 125.5 N of A = Sec H

White Produced	3.0	50.4
cl	15.2	38.1
"	15.0	38.4
c	15.0	38.4
"	14.3	39.1
cl	13.0	40.4
E	12.4	41.0

## 135.5 N of A = Sec I

70.7 W of W Produced = White	7.2	46.2
54 W " " "	12.1	41.3
30 W " " "	7.7	45.7
15 W " " "	5.5	47.9
W Produced	6.0	47.4
cl	15.2	38.1
" on a dead cat	14.2	39.2
c	10.2	43.2
"	8.3	45.1
cl	7.2	46.2
E	4.0	49.4

## 150.5 N of A = Sec J

E	4.4	49.0
cl	5.0	48.3
"	5.3	48.1
c	8.7	44.7
"	15.0	38.4
d	15.2	38.1

+1	11.9	41.5
W	8.4	45.0
7 W of W Produced	5.5	47.9
30 W " " "	7.0	46.4
55 W " " "	12.5	40.9
78.5 " " " = White	7.6	45.8

## 160' N of A = Sec K - N. line 54 ft on = 00

853 W of White Produced = White	7.7	45.7
75 " " " " "	9.1	44.3
59 " " " " "	15.7	37.7
56 " " " " "	12.7	40.7
40 " " " " "	8.6	44.8
20 " " " " "	5.6	47.8
10 " " " " "	6.2	47.2
W " " " "	11.2	42.2
+5	15.1	38.3
cl	15.1	38.3
+5	15.0	38.4
"	11.0	42.4
c	5.9	47.5
"	5.3	48.1
cl	5.1	48.3
E	4.7	48.7

53.35

205N of N. line Surfston = S. end walk  
+ curb on E side Monte Vista

E	5.0	48.4
second emt cl	5.35	48.00
+1	4.8	47.6
"4	4.7	47.7
C	5.5	47.9
"4	5.5	47.9
D	10.7	42.7
W	16.7	36.7
5' W	16.7	36.7
7' W	13.6	39.8
10' W	8.4	44.8
59' W	15.7	37.7

405N of Surfston

W-30	15.3	38.1
W-23	18.6	34.8
W	8.1	45.3
FH	6.6	46.8
cl	6.1	47.4
"4	6.2	47.2 on paving
C	5.7	47.7 " "
"4	6.4	47.0 " "
D	6.1	47.3 " "

53.35

55

50.5 N of Surfston = S. line walk cl & paving on  
W. side Monte Vista

W cl	6.08	47.27 emt cl
W	7.4	46.0
+20	13.4	40.0

Tolson  
5/14/27

Xsection of Niagara Ave  
WLGuizot to R. Ebers

80' st  
20' cbs

Note: All Xsections run from N. to S.  
Xsections on this page were  
run with a constant H.I.

2.05 190.02

187.97  
B P N E  
Nia. & Guizot

W.L. Guizot  
= 0+00 ±

2.6 187.4

185.9	186.2	186.9	187.4	188.0	188.8	189.5	190.0
4.1	3.8	3.1	2.6	2.0	1.2	0.5	
NL	cb	1/4	±	1/4	cb	5L	190.0

0+50 ±

3.9 186.1

185.4	185.4	185.7	186.1	186.5	186.9	188.0	190.0
5.6	4.6	4.3	3.9	3.5	3.1	2.0	
NL	cb	1/4	±	1/4	cb	5L	190.0

1+00 ±

5.0 185.0

183.4	184.1	184.5	185.0	185.2	185.6	186.4	190.0
6.6	5.9	5.5	5.0	4.8	4.4	3.6	
NL	cb	1/4	±	1/4	cb	5L	190.0

1+50 ±

5.8 184.2

182.4	183.4	184.0	184.7	184.3	184.7	185.6	190.0
7.6	7.2	6.0	5.8	5.7	5.3	4.6	
NL	cb	1/4	±	1/4	cb	5L	190.0

3+00 ±

7.1 182.9

181.6	182.0	182.6	182.9	183.4	184.0	184.6	190.0
8.9	8.0	7.4	7.1	6.6	6.0	5.4	
NL	cb	1/4	±	1/4	cb	5L	190.0

2+50 ±

7.8 182.2

180.5	181.4	181.8	182.2	182.6	183.1	184.2	190.0
9.5	8.6	8.2	7.8	7.4	6.9	5.8	
NL	cb	1/4	±	1/4	cb	5L	190.0

3+00 ±

8.1 181.9

179.8	180.9	181.4	181.9	182.2	182.5	183.9	190.0
10.2	9.1	8.6	8.1	7.8	7.1	6.1	
NL	cb	1/4	±	1/4	cb	5L	190.0

3+50 ±

8.9 181.1

178.2	179.7	180.6	181.1	181.9	182.5	183.5	190.0
12.0	10.3	9.4	8.9	8.1	7.5	6.5	
NL	cb	1/4	±	1/4	cb	5L	190.0

4+00 ±

11.1 178.9

175.1	176.9	177.9	178.9	179.9	180.8	182.5	190.0
14.9	13.1	12.1	11.1	10.1	9.2	7.5	
NL	cb	1/4	±	1/4	cb	5L	190.0

TP 0.84 180.59

10.27 179.75

4+50 ±

5.6 175.0

169.2	172.6	173.6	175.0	174.8	175.0	176.8	180.6
11.4	8.0	7.0	5.6	5.8	5.6	3.8	
NL	cb	1/4	±	1/4	cb	5L	180.6

180.59

4+70  $\phi$  10.1 170.5

TP 0.24 167.84 12.99 167.60

5+00  $\phi$  1.0 166.85+10  $\phi$  7.1 160.75+43  $\phi$  11.1 156.7

TP 0.73 156.44 12.13 155.71

5+60  $\phi$  8.4 148.0  
~~146.2~~5+80  $\phi$  15.0 141.4EL Found  $\phi$  6+00  $\phi$  13.0 143.4

TP 1.80 145.14 12.10 143.34

E cb (12)  $\phi$  2.0 143.1E  $\frac{1}{4}$  (9)  $\phi$  2.4 142.7 $\phi$  (9)  $\phi$  2.5 142.6

Niagara Ave.

51  
175.2

HI Variable

170.0	166.1	166.2	168.6	170.5	170.0	171.8	172.2	172.3	171.0	170.9
7.0	2.8	7.0	6.6	4.7	4.8	3.4	4.0	2.9	4.2	4.4
	NL	cb	1/2	1/2	1/2	cb	+11	+12	SL	+10

161.9	162.4	161.9	165.7	166.8	166.5	167.6	168.6	168.9	168.9	172.9
11.0	10.5	7.7	7.2	6.1	6.0	5.3	8.3	7.0	7.0	
-10	NL	cb	1/2	1/2	1/2	+7	cb	SL	+10	

158.2	158.9	161.8	162.1	160.7	162.7	168.2	164.9	165.4	165.9	170.2
13.2	12.3	9.4	9.1	10.5	5.5	3.0	6.3	5.8	5.3	
-10	NL	cb	1/2	1/2	1/2	cb	+10	SL	+10	

151.4	153.2	156.3	153.8	157.7	157.9	146.7	149.9	148.6	151.1	152.4	161.4
10.0	7.8	5.1	5.6	4.7	5.5	13.7	11.5	12.8	10.3	9.0	
-10	NL	cb	1/2	1/2	1/2	+6	1/2	cb	SL	+10	

149.5	151.1	153.1	153.7	150.7	148.0	146.0	143.9	147.1	148.2	149.0	156.2
6.7	5.1	8.1	8.7	5.5	8.2	10.2	12.3	9.1	8.0	7.2	
-10	NL	cb	+5	1/2	1/2	1/2	+6	cb	SL	+10	

145.8	147.3	150.0	146.7	144.4	144.3	143.5	147.8	147.6	152.4
6.6	5.1	2.0	5.7	11.0	8.1	8.7	5.0	4.8	
-10	NL	cb	1/2	1/2	1/2	cb	SL	+10	

142.8	143.8	143.8	141.6	138.8	139.2	143.1	140.8	144.8	144.7	146.5	147.1	149.7
7.1	5.9	4.2	6.0	3.2	4.9	10.5	6.6	4.3	4.9	4.0	3.2	2.6
-10	NL	+15	cb	+9	1/2	+5	1/2	1/2	cb	SL	+10	

139.6	141.4	140.2	140.1	140.3	137.4	140.7	141.6	142.1	144.2	146.0	147.2	147.6	147.6	147.6
8.0	6.2	5.4	7.5	7.3	10.2	6.9	9.0	4.5	3.0	1.6	0.0	0.0	0.0	
-10	NL	+5	+13	+18	cb	1/2	1/2	1/2	1/2	cb	SL	+10		

132.2	132.8	135.9	134.8	134.9	141.4	141.7	143.7	144.9	146.8	147.7	148.2
15.9	14.8	12.3	8.4	8.3	6.8	5.5	4.5	3.3	1.0	0.5	
-10	NL	1/2	+18	cb	1/2	1/2	1/2	cb	SL	+10	

135.5	136.6	139.9	141.3	142.6	144.3	146.1	146.6	146.9	148.6	148.6
13.0	12.0	8.7	7.3	6.0	4.3	3.5	2.0	1.7		
-10	NL	cb	1/2	1/2	1/2	cb	SL	+10		

145.14

W<sub>2</sub> (9) ± 4.0 141.1

Wob (9) ± 7.3 137.8

0+00 =  
WPL (12) ± 12.6 132.5

TP 0.24 132.39 12.99 132.15 ✓

0+25 ± 5.0 127.4

0+50 ± 4.7 127.7

1+00 ± 10.4 122.0

TP 1.05 127.97 5.47 126.92 ✓  
Nail in fence  
corner  
Post #4 506

1+50 ± 12.8 115.2

TP 1.51 116.97 12.51 115.46 ✓

2+00 ± 7.5 109.5

I+50 ± 10.9 106.1

TP 0.55 104.55 12.97 104.00 ✓

HI variable

Niagara Ave

58

135.6	137.2	138.8	136.6	137.4	139.0	141.4	141.1	143.3	143.9	142.5	144.8	149.2
13.6	12.2	12.4	12.6	11.8	10.2	7.8	8.1	5.9	5.3	6.7	6.4	
-10	NL	+18	cb	1/4	+6	+7	±	1/4	cb	5L	+10	

134.3	137.6	136.2	137.1	137.4	141.3	143.3	144.7	144.4				147.8
11.5	10.2	11.6	10.7	10.8	6.5	4.5	3.1	3.4				
-11	NL	cb	1/4	±	1/4	cb	5L	+10				

130.8	130.8	129.7	130.7	130.8	134.3	135.7	139.5	136.7	137.3	142.3		
11.5	10.0	12.6	11.5	9.8	8.0	6.6	3.8	5.6	4.0			
-10	NL	cb	1/4	±	1/4	+5	cb	5L	+10			

127.4	129.1	129.0	129.1	127.4	128.2	129.3	131.6	131.2	131.9	140.0		
12.6	10.9	11.0	12.9	12.6	11.8	10.7	8.4	2.0	0.1			
-10	NL	cb	1/4	±	1/4	cb	+8	5L	+10			

118.3	118.5	126.1	127.6	127.7	129.9	131.2	131.3	135.5	136.6	137.1		
18.8	18.6	11.0	9.5	9.4	7.4	5.9	1.6	0.5				
-10	NL	cb	1/4	±	1/4	cb	5L	+10				

119.0	119.0	119.5	121.3	121.7	124.0	127.7	123.7	126.1	130.4			
11.4	10.7	9.1	8.7	8.4	7.7	6.7	4.3					
-10	NL	cb	1/4	±	1/4	cb	5L		Fence on line			

112.5	113.7	114.3	114.7	115.2	115.7	116.9	118.8			122.1		
7.2	8.4	7.8	7.4	6.9	6.2	5.2	3.3					
-10	NL	cb	1/4	±	1/4	cb	5L			Ditto		

106.3	107.2	108.3	108.7	109.5	110.4	111.2	113.3			115.3		
9.0	8.1	7.0	6.6	5.8	4.9	4.1	2.0					
-10	NL	cb	1/4	±	1/4	cb	5L			Ditto		
101.7	102.0	104.5	105.0	106.1	107.5	108.5	109.8			111.8		
102.3	102.6	105.1	105.5	106.7	108.1	109.1	109.8					
10.1	7.8	7.8	6.8	5.7	4.3	3.3	2.0					
-10	NL	cb	1/4	±	1/4	cb	5L			Ditto		

104.55

3+00 k 1.9 102.6

3+50 ± 6.3 98.2

4+00 ± 12.7 91.8

TP 1.14 92.69 13.00 91.55

4+50 ± 8.9 83.8

TP 2.17 81.87 12.99 79.70

5+00 ± 5.9 76.0

TP 0.24 69.30 12.81 69.06

5+50 ± 4.2 65.1

5+98 ± 10.1 59.2

TP 0.33 58.04 11.59 57.71

EL Ebers  
6+00 ± 4.1 53.9

TP 0.58 46.38 12.24 45.80

2.26 35.99 12.65 33.73

9.98 26.01

25.99

BM NW  
Nia + DeFoo

## HI variable

98.4	99.0	101.1	102.2	102.6	103.5	104.0	105.9	108.4
10.0	11.0	7.3	6.2	5.8	4.9	4.0	2.8	
-10	NL	cb	1/4	±	1/4	±	5L	Fence on line

95.6	95.7	97.4	97.8	98.2	99.1	99.8	101.6	104.9
9.3	9.0	7.5	7.1	6.7	5.8	5.1	3.3	
-10	NL	cb	1/4	±	1/4	±	5L	End fence

89.8	90.6	91.1	91.4	91.8	91.9	92.6	93.8	98.8
7.0	8.2	7.7	7.4	7.0	6.9	6.4	5.9	
-10	NL	cb	1/4	±	1/4	cb	5L	98.8

84.5	82.7	83.6	83.4	83.8	84.8	85.1	85.7	90.8
6.5	8.1	7.2	7.0	7.0	6.0	5.7	5.0	
-10	NL	cb	1/4	±	1/4	cb	5L	

75.6	75.9	76.2	75.5	76.0	76.4	76.7	77.8	83.5
7.9	7.6	7.3	8.0	7.5	7.1	6.9	5.7	
-10	NL	cb	1/4	±	1/4	cb	5L	

64.8	65.7	65.7	65.7	65.7	66.2	66.4	66.9	72.8
8.0	7.6	7.1	7.1	7.7	6.6	6.4	5.9	
-10	NL	cb	1/4	±	1/4	cb	5L	

58.3	58.3	58.5	58.8	59.2	57.8	60.2	59.7	66.2
9.7	9.7	7.5	7.2	6.5	6.2	5.8	6.3	
-10	NL	cb	1/4	±	1/4	cb	5L	

52.0	52.2	51.6	53.0		53.6	52.8	52.8	62.2
10.2	11.0	10.6	9.2	8.3	8.6	9.4	9.4	
-10	NL	cb	1/4	±	1/4	cb	5L	

checked 9/7/27  
L.P.H.Notes reduced 9/1/27  
HWS

Tolman  
8/27

X section of Runnymede Lane  
in Block C, Golden Park

30 wide

60

H I is variable

Top Stucco  
Wall (Miller)

11.79 151.26 139.47

10.35 161.13 0.48 150.78

North & South Lane

0+00  
Top Ech (see sketch) 2.34 158.79

0+25± 0.5 160.6

IP 8.07 168.05 11.5 159.98

0+50± 4.3 163.8

0+75± 4.1 164.0

1+00± 6.1 162.0

1+25± 6.5 161.5

1+50± 6.3 161.8

TP 1.80 156.91 12.94 155.11

East & West Lane

2+00± 12.5

1+50± 4.5

155.0 13.0 -7.5	152.79 9.16 EL Top Ob	160.24 7.21 ±	162.79 5.16 WL Top Ob	164.6 1.4 +1.5	168.0
-----------------------	--------------------------------	---------------------	--------------------------------	----------------------	-------

141.0 6.7 -1.5	140.5 7.4 EL	140.4 7.3 ±	162.2 5.7 WL	145.4 2.5 +1.5	167.9
----------------------	--------------------	-------------------	--------------------	----------------------	-------

161.4 8.5 -1.5	163.2 6.7 EL	163.8 6.1 ±	166.4 3.5 WL	168.8 1.1 +1.5	169.9
----------------------	--------------------	-------------------	--------------------	----------------------	-------

159.3 9.8 -1.5	162.6 6.5 EL	164.0 5.1 ±	165.9 3.2 WL	169.0 0.1 +1.5	169.1
----------------------	--------------------	-------------------	--------------------	----------------------	-------

157.8 12.0 -1.5	160.7 9.1 EL	162.0 7.8 ±	165.2 4.6 WL	169.0 0.8 +1.5	169.8
-----------------------	--------------------	-------------------	--------------------	----------------------	-------

157.5 12.4 -1.5	159.9 10.0 EL	161.5 8.2 ±	163.5 6.4 WL	167.7 2.2 +1.5	169.9
-----------------------	---------------------	-------------------	--------------------	----------------------	-------

156.8 11.0 -1.5	159.4 8.2 EL	161.8 6.0 ±	163.1 4.7 WL	167.1 0.7 +1.5	167.8
-----------------------	--------------------	-------------------	--------------------	----------------------	-------

148.1 3.1 -1.5	146.2 4.0 EL	144.4 5.8 ±	143.7 6.5 WL	142.4 2.8 +1.5	150.2
----------------------	--------------------	-------------------	--------------------	----------------------	-------

152.8 3.9 -1.5	152.7 4.0 EL	152.4 4.3 ±	151.4 5.3 WL	150.5 6.2 +1.5	156.7
----------------------	--------------------	-------------------	--------------------	----------------------	-------

South

North

TP 12.16 168.44 0.63 156.28

1+10 ± 9.8

0+95 ± 7.5

0+80 ± 5.1

TP 11.0 179.41 0.03 168.41

0+50 ± 10.6

0+00 ± 1.7

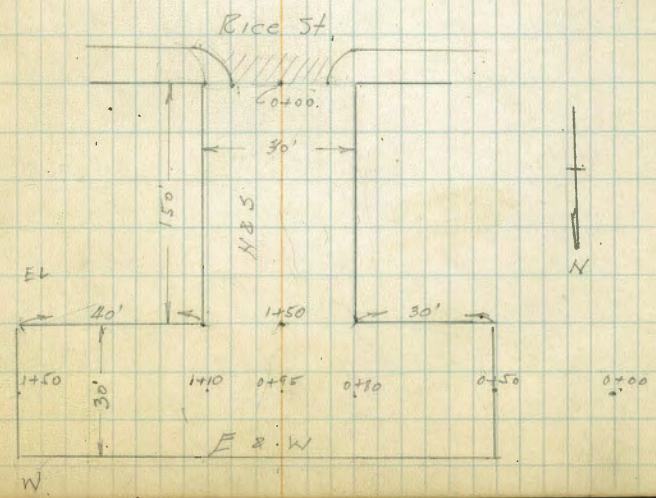
TP 11.79 190.79 0.41 179.00

TP 11.60 200.92 1.47 189.32

9.83 191.09 = 191.0 Top

curb NE  
corner Rice  
& Martinez

	South	North	
159.7	159.0	158.6	158.0
4.0	4.7	5.1	5.7
-15	EL	±	WL
161.6	161.8	160.9	159.8
4.4	4.2	5.1	6.2
-15	EL	±	WL
163.6	163.3	163.3	163.0
4.4	4.7	4.7	5.0
-15	EL	±	WL
170.7	169.9	168.8	166.9
2.4	3.2	4.3	6.2
-15	EL	±	WL
180.1	178.8	177.7	176.0
2.9	4.2	5.3	7.0
-15	EL	±	WL





01/30  
 Isabelle  
 Morgan  
 11/3/27  
 B.M. N.W. B.P.  
 Van Dyke & Landis

X. Sections Alley. Block 76 City Hts.  
 Van Dyke & Landis 93' Driveway & Landis 20' Alley

+      +      -      Eley  
 6.28    351.26      344.98

01.00 - N. line of Landis

E Top of 0.81      346.45  
 +6      9.9      346.4  
 +8      5.2      346.1  
 ♀      5.1      346.2  
 W Top of 5.09      346.17

\* Return to green in future  
 in bad condition  
 should be replaced

05' South

W      4.9      346.4  
 ♀      4.9      346.4  
 E      4.8      346.5

25' South

E      4.9      346.4  
 ♀      5.0      346.3  
 W      5.2      346.1

50' South

W      5.7      345.6  
 + 4      5.2      346.1  
 ♀      5.3      346.0  
 E      5.1      346.2

75' South

E      5.5      345.8  
 +6      5.5      345.8  
 ♀      5.6      345.7  
 W      5.8      345.5

+      +      -      Eley  
 351.26  
 87' South

W      6.9      344.9  
 +5      6.0      345.3  
 ♀      5.7      345.6  
 +3      5.6      345.9  
 +5      5.8      345.5  
 E      5.6      345.7

93' South Single Garage on East

0.8 in alley Driveway & 5.7      345.6

100' South

E      5.9      345.4  
 +3      5.9      345.4

+5      6.2      345.1

♀      6.1      345.2

+2      6.2      345.1

W      6.3      345.0 ✓

+9 187      346.81      6.32      344.94

105' South Single Garage on East

1.1 in alley Driveway & 1.7      345.1

120' South

W      2.3      344.5

+4      2.0      344.8

♀      2.0      344.8

+9      2.3      344.5

E      2.1      344.7

346.81

132' South  
 E 2.0 344.8  
 S 2.2 344.6  
 +5 2.6 344.2  
 W 2.9 344.4

155' South

W 3.0 343.8  
 S 2.8 344.0  
 +9 2.7 344.1  
 E 2.5 344.3

175' South

E 2.5 344.3  
 +3 2.8 344.0  
 S 3.0 343.8  
 W 3.2 343.6

245' Fence  
 1.3 in alley

200' South

W 3.1 343.4  
 S 3.1 343.7  
 E 3.0 343.8

225' South

E 3.5 343.3  
 S 3.5 343.3  
 W 3.5 343.3

243' South Single Garage on West

cutting dirt floor on E 3.7 343.1

250

3.7 343.1

346.81

engulfed on E 0.2  
 +6 3.6 343.2  
 S 3.5 343.3  
 +3 3.7 343.1  
 E 3.6 343.2

273' South

E 3.7 343.1  
 S 3.6 343.2  
 +3 4.0 342.8  
 W 4.1 342.7

275' South

W 4.2 342.6  
 +7 4.0 342.8  
 S 3.6 343.2  
 +6 3.7 343.1  
 +7 3.3 343.5 ✓  
 E 3.3 343.5

284' South

E 3.3 343.5  
 +3 3.9 343.4  
 +5 4.0 342.8  
 S 3.9 342.9  
 +5 4.1 342.7  
 W 4.4 342.7

291' South

W 4.4 342.7  
 +5 4.0 342.8 ✓

	+	⊥	-	Elev
		346.81		
		271' South		
E		3.9		342.9
+5		3.9		342.9
+7		3.6		343.2
E		3.6		343.2
		300'		
E		4.0		342.8
⊥		3.9		342.9
W		4.1		342.7
		325' South		
W		4.5		342.3
⊥		4.2		342.6
+2		4.3		342.5
+5		4.4		342.4
+7		3.9		342.9
E		4.0		342.8
		331' South Single Garage on West		
		1.8 Back Dirt floor on ⊥	4.6	342.2
		340' South		
E		4.0		342.8
⊥		4.5		342.3
W		5.0		341.8 ✓
		369' South		
W		5.2		341.6
⊥		4.7		342.1
+3		4.7		342.1
+4		4.9		341.9

	+	⊥	-	Elev	64
		346.81			
E		4.6		342.2 ✓	
E		4.9		342.7	
		386' South ⊥ Single Garage on West			
E		4.7		342.1	
+3		4.8		342.0	
+4		5.0		341.8	
+6		4.9		341.9	
⊥		4.8		342.0	
W		5.2		341.6	
		2.0 Back Dirt floor on ⊥	5.2	341.6	
		395' South Single Garage on West			
		2.0 Back Dirt floor on ⊥	5.3	341.5	
		400' South			
W		5.3		341.5	
+6		5.0		341.8	
⊥		5.0		341.8	
+3		4.9		341.9	
+5		5.0		341.8	
+7		4.6		342.2	
E		4.7		342.1	
		406' South Single Garage on East			
		5.0 Back Dirt floor on ⊥	4.7	342.1	
		425' South			
E		4.9		341.9	
+4		5.2		341.6	
+5		5.3		341.5	

+

T  
346.81

-

Elev

Q 5.4 341.4

W 5.6 341.2

450'

W 5.8 341.0

Q 5.6 341.2

+2 5.5 341.3

+7 5.3 341.5

E 5.4 341.4

467' South Single Garage on West

E 5.6 341.2

+7 5.9 340.9

Q 5.7 341.1

W 5.9 340.9

9.5 Back Dirt/floor on 5.8 341.0

480' South

W 5.8 341.0

Q 5.8 341.0

+4 5.5 341.0

E 5.6 341.2

TP 4.93 346.00 5.74 341.07

491' South Single Garage on West

10' Back concrete floor on 5.08 340.92

500' South

E 5.2 340.8

+3 5.3 340.7

Q 5.9 340.6

+

T  
346.00

-

Elev

65

+7 5.1 340.9

W 4.6 341.4

511' South Single Garage on East

28 Back Dirt/floor on 5.1 340.9

520' South

W 4.6 341.4

+4 5.1 340.9

Q 5.0 341.0

E 5.1 340.9

532' South

E 4.9 341.1

Q 5.2 340.8

W 5.2 340.8

541' South Single Garage on East

48 Back Concrete floor on 4.93 341.07

553' South Single Garage on West

W 5.3 340.5

+2.6 N end concrete lip on 5.67 340.33

+5 5.5 340.5

Q 5.4 340.6

+4 5.3 340.7

+8 5.9 340.1

E 5.5 340.5

565' South

E-3 on walk 5.08 340.92

E 5.7 340.3

+2 6.1 339.9

+       $\pi$       -      Eley  
 346.00

+6	5.4	340.6
E	5.4	340.6
+7.2 on ledge of concrete lip	5.70	340.30
W	5.6	340.4

572 South

W	5.7	340.3
+4	5.3	340.7
E	5.3	340.7
+5	5.4	340.6
+8	6.2	339.8
E	5.6	340.4

587 South

E	6.2	339.8
+2	6.7	339.3
+6	5.7	340.3
E	5.9	340.1
W	6.0	340.0
+ oil on W & R	5.83	340.17

597 South

W - oil on concrete W & R	6.00	340.00
W	6.3	339.7
E	6.5	339.5
+4	6.4	339.6
+9	6.9	339.1
E	6.6	339.4

+       $\pi$       -      Eley      66  
 346.00

601 South N line of Dwight

E	6.8	339.2	
+2	7.1	338.9	
+5	6.8	339.2	
E	6.9	339.1	
W	6.9	339.1	
+ oil on W & R running parallel	6.75	339.25	
+ P - 7.53	351.22	2.31	343.69
B.M. N.W. York Dyke - Land's	6.24	344.98	

X Sections of North and South  
Alley. Block 21 Normal Hts. Mt. View Drive to  
North line East West Alley

BMSF			
Adams Choke	5.57	391.35	385.78
Top of Mt. View Drive S. sketch	12.93		378.42
Top of " "	13.57		377.78

0+00 = S line Mt. View Drive

Sec A see sketch

E	13.		378.4
+3.5	12.5		378.9
E	12.9		379.0
+3	12.9		379.0
+6	11.7		379.7
W	11.4		380.0

Sec B see sketch

W	11.7		379.7
+3	12.0		379.4
E	12.5		378.9
+2.5	12.7		378.7
E	13.0		378.4

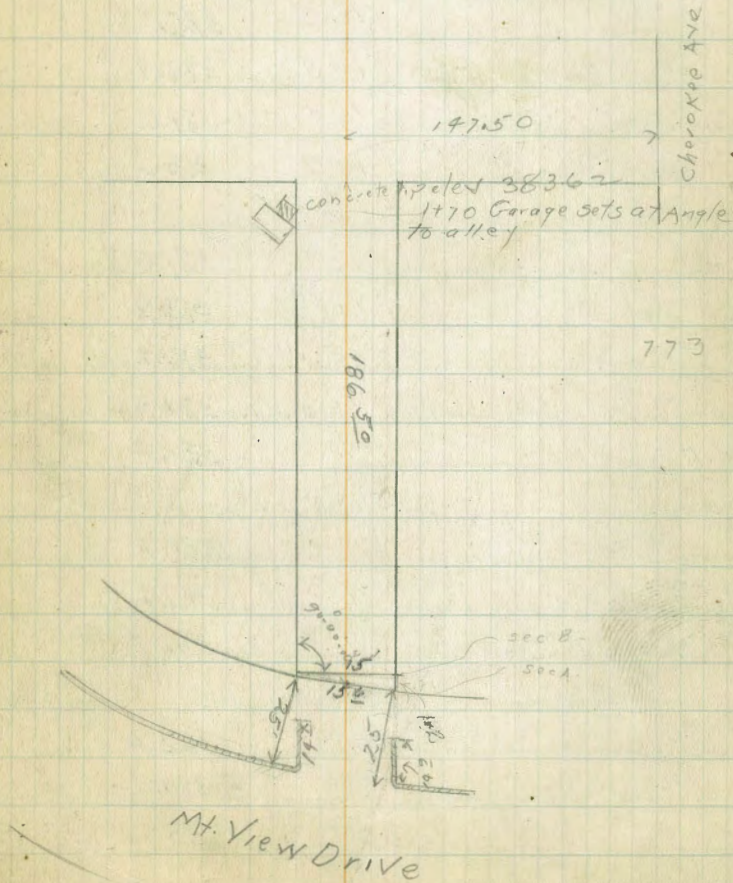
0+ South

E	11.8		379.8
+4	11.5		379.9
+5	12.1		379.3
+6	11.7		379.7
E	11.7		379.7
+3	11.6		379.8
+5	11.4		380.0
W	11.8		379.6

SKETCH

19.5  
14.5

67



39/35

Elev

10' South

W	11.2	380.2
+2	10.9	380.5
♀	11.0	380.4
E	11.9	380.0

25' South

E-12 on Walkway parallel to Alley	10.46	380.87
E	10.6	380.8
♀	10.5	380.9
+6	10.4	381.0
W	10.8	380.6

50' South

W	10.4	381.0
+1.5	10.0	381.4
♀	10.2	381.2
E	10.1	381.3
E+0.1	10.00	381.4

75'

E	10.0	381.4
♀	10.0	381.4
W	9.7	381.7

100' South

W	9.4	382.0
♀	9.7	381.7
E	9.7	381.7

107' South Single Garage on Wood

W-6'0 to ♀ faces North side of L	9.0	382.4
----------------------------------	-----	-------

39/35

Elev

68

125' South

E	9.1	382.3
+2	8.8	382.6
♀	9.0	382.4
+4.5	9.0	382.4
W	8.6	382.8

190' South

N	8.1	383.3
♀	8.2	383.2
+5	8.1	383.3
E	8.3	383.1

155'

E	7.8	383.6
♀	8.1	383.3
+4	8.2	383.2
W	8.1	383.3

162' South

N	7.5	383.9
+0.5	7.8	383.6
♀	7.9	383.5
E	7.9	383.5

170' South Single Garage on Wood

on concrete lip	7.73	383.62
-----------------	------	--------

180' South

E	7.8	383.6
♀	7.8	383.6
+4	8.0	383.4

39/35

L/04

69

W 8.0 383.4

186 <sup>50</sup> N line East & West Alley

W 8.1 383.3

E 8.2 383.2

75 8.2 383.2

E 8.3 383.1



X. Section 20' Alley Bldg 73  
or Olivet Lane  
Villa Tract.

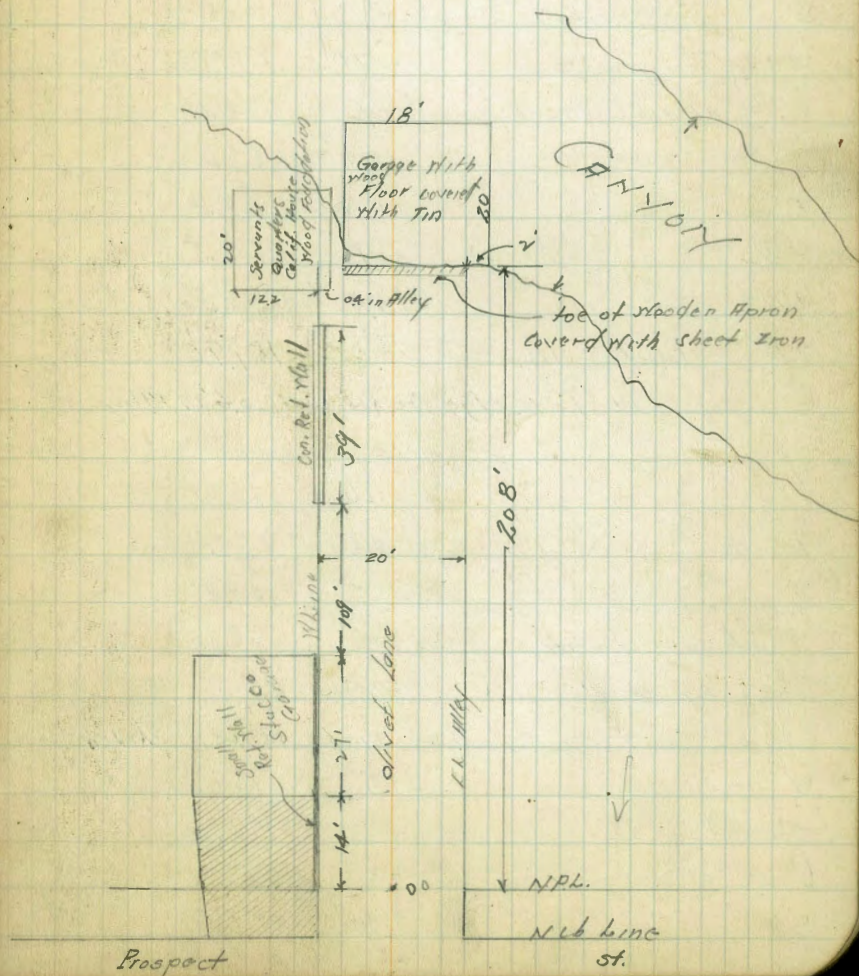
N.E. SP	Prospect	+	0.11	age		
T.P.	13.03	200.91			187.58	
	2.23	202.54	0.53		200.88	
20' N Hcb Line Prospect = 0+00						
W top Ch	2.23	200.38				
" Gut. on Pav.	2.44	200.17				
W " "	2.17	200.44				
E " "	1.13	201.48				
" top Ch	0.84	201.77				
0+19 = South edge Garage St. Ent. see sketch						
E - 5'	2.3	200.3				
E	4.4	200.2				
W	2.9	199.7				
W at Base of Red Wall	3.40	199.2				
W " top " "	2.25	200.36				
0+41 = N edge Garage						
W at Base of Garage Bld.	4.2	198.4				
W	4.1	198.5				
E	3.9	198.7				
+5	3.9	198.7				
0+81						
-5	5.5	197.1				
E	6.1	196.5				
W	6.5	196.1				
W	6.2	196.4				
+5	6.4	196.2				

202.61

70

1+31

-5	9.4	193.2
W	9.2	193.4
W	9.2	193.4
E	9.1	193.5
+5	8.9	193.7



Wall is 0.5' thick.

1+50 = S edge Cor. Ret. Wall on W of C2 in Alley

-5	11.1	191.5
E	11.0	191.6
L	10.8	191.8
W at Base of Wall	10.4	192.2
W on top of Wall	9.67	192.94

1+70

W +0.3' on top of Wall	10.70	191.91
W +0.3' at Base of Wall	12.6	190.0
L	13.1	189.5
E	13.2	189.4
+5	13.1	189.5
+10'	13.8	188.8
T.P. 6.27 196.23	12.65	189.96

1+89 = N. edge Cor. Ret. on W of 0.6' in Alley

-10	10.6	185.6
-5	9.1	187.1
E	8.8	187.4
L	8.5	187.7
W at Base of Wall	8.3	187.9
" on top of "	5.21	191.02

L+06 = toe of Apron as per sketch

W	9.5	186.7
+6 on toe of Apron	9.33	186.80
L	9.26	186.97
E	9.51	186.72

+2' = East edge of Garage	10.1	186.1
+10	12.8	183.4

L+08 = S edge Garage - East of Canyon

L on Garage Floor	8.95	187.28	
T.P. 4.13	195.24	5.12	191.11
chk. on N.E. 1/4 Prospect & College	7.41	187.83	
		187.83	
		0.05	

B.M. 12.75	200.43	187.88	
T.P. 0.79	201.13	0.39	200.34
T.P. 0.93	189.44	12.62	188.51

228' N. = N. End Garage

E-10	12.5
E	8.3
E	7.1
+7	5.9
W	4.5

240' N.

W	5.8
+2	7.7
E	8.3
E	11.5
+10	16.7

T.P. 0.13	178.42	11.15	178.29
-----------	--------	-------	--------

270' N.

E-10	20.0	
E	16.0	162.4

178.42

72

270' B. (cont)

C			13.6	
W			10.8	
+10			6.4	
T.P.	0.25	165.88	12.79	165.63

300' N

-10			8.0	
W			10.0	155.9
C			13.3	
T.P.	0.39	153.43	12.84	153.04
E			3.7	149.7
+10			6.5	

325' N

-10			17.4	
E			12.0	141.4
C			8.8	
W			4.4	149.0
+10			2.1	

15' Wide

X Sec. Alley BIK. 63 Resub Normal Htg.

1-31-22  
mills.

73

E. + W. Alley 34' to Hawley S. of Adams.

39905

B.M.	5.27	398.05	392.78	S.E. Adams + Mansfield	C	4.8	394.2
T.P.	7.27	399.05	391.78		S	4.9	394.1 floor
		oo = W line Hawley					148' W garage on N dirt floor 1.0 Back
S		6.64	392.41	Pavmt	S	4.8	394.2
E		7.01	392.04	"	C	4.7	394.3
N		7.04	392.01	"	N	5.0	394.4 floor
		20' W					180' W
N		5.6	393.4		N	4.9	394.1
E		5.5	393.5		C	4.9	394.1
S		5.9	393.1		S	5.3	393.7
		30' W					220' W
S		5.3	393.7		S	6.3	392.7
E		4.9	394.1		C	5.8	393.2
N		4.9	394.1		N	5.6	393.4
		90' W. garage on N dirt floor 7.3 Back					245' W
N-73		5.0	394.0	floor	N	6.1	392.9
N		4.8	394.2		C	6.1	392.9
E		4.5	394.5		S	6.6	392.4
S		4.6	394.4				275' W
		119' W. garage on N. dirt floor 4' Back					
S		4.9	394.1		S	7.5	391.5
E		4.6	394.4		C	7.8	391.2
N		5.1	393.9		N	7.6	391.4
T.P.		4.9	394.1	floor	N	9.18	389.87 Pavmt
		130' W garage on S. Wood floor 0.9 Back					389.54
N		4.9	394.1		C	9.51	389.89
					S	9.16	
							281' W = E. Line 34' ST
					T.P.	4.93	394.80
				chk on B.M.		5.47	389.87
							389.31
							sw Adams + 34'

2/19/78  
 13453  
 Tabor  
 Mo-gan  
 BMSW  
 Adams +  
 392

X Section North and South Alley Block  
 65 Normal Heights - South of Adams  
 Between Adams & Madison

2701 Fence 15

74

	+	+	-	Elev			
	7.53	396.78		389.25	E	4.6	392.5
T.P.	2.93	397.19	2.57	394.21	±	4.4	392.7
					N	4.2	392.9
			0+00 = Sline E-W Alley				
N			2.9	394.2			
±			3.0	394.1	W	4.3	392.8
+5.9 Garage v Lunalily					±	4.5	392.6
E			3.2	393.9	E	4.7	392.4
			10' South				
E			3.3	393.8	E	4.6	392.5
±			3.3	393.8	±	4.9	392.2
W			3.3	393.8	N	4.9	392.2
			25' South				
W			3.8	393.3	W	4.8	392.3
±			3.9	393.2	±	5.0	392.1
+5.5 edge of Garage			3.9	393.2	E	4.9	392.2
E			3.9	393.2			
			30' South				
E			4.2	392.9	E	5.0	392.1
+3.5 edge of shed					±	5.1	392.0
±			4.4	392.7	N	5.0	392.1
W			4.2	392.9			
			75' South				
N			4.3	392.8	±3.5	4.7	392.4
±			4.3	392.8	±	4.7	392.4
E			4.5	392.6	E	4.7	392.4
			225' South				
					E	4.5	392.6

X  
 39714  
 94' South

100' South

125' South

150' South

175' South

200' South

225' South

397.14

♀ 49 392.2  
 +3 4.4 392.7  
 W 4.4 392.7

239' South Single Garage on West

8.7 Back Dirt floor etc. 5.4 391.7

250' South

W 9.8 392.3  
 ♀ 4.7 392.4  
 E 4.5 392.6

271' South Walkway East

1.5 in alley 4.28 392.86

E 4.7 392.4  
 W 5.0 392.1

272' South Single Garage on West

6' Back Dirt floor 5.8 391.3

285' South

W 4.9 392.2  
 ♀ 5.0 392.1  
 E 4.7 392.4

300' South

E 5.0 392.1  
 ♀ 5.0 392.1  
 W 4.9 392.2

T.P. 4.41 397.11 4.44 392.70

312' South N. end of 3 car Garage on East

5.5 Back 4.36 392.78

397.1

75

325' South

W 4.8 392.3  
 ♀ 5.0 392.1  
 E 4.8 392.3

339' South S end 3 car Garage on East

5.5 Back concrete floor 4.97 392.64

350' South

E 5.1 392.0  
 ♀ 5.2 391.9  
 W 5.2 391.9

375' South

W 5.1 392.0  
 ♀ 5.2 391.9  
 E 5.3 391.8

400' South

E 5.3 391.8  
 ♀ 5.2 391.9  
 W 5.2 391.9

425' South

W 5.3 391.8  
 ♀ 5.3 391.8  
 E 5.1 392.0

450'

E 5.6 391.5  
 +2 4.9 392.2  
 ♀ 5.3 391.8  
 +4 4.9 392.2

X  
397.11

W	5.3	391.8
	765' South	
W	5.1	392.0
+1	4.8	392.3
£	5.2	391.9
+3	5.2	391.9
+4	4.7	392.4
E	4.6	392.5
	992' South	
E	5.5	391.6
£	5.1	392.0
W	5.4	391.7
	500' South	
W	4.8	392.3
£	4.8	392.3
+4	5.1	392.0
E	5.2	391.9
	508' South Single Garage on West	
	0.6 Back Concrete floor etc	4.76 392.35
	525' South	
E	4.5	392.6
£	4.6	392.5
W	4.7	392.4
W+0.5	edge of walk	4.61 392.5
	550	
W	4.3	392.8

X  
397.11

76

+3	4.3	392.4
£	4.6	392.5
E	4.7	392.4
	575' South	
E	4.9	392.2
£	5.0	392.1
+5	4.9	392.2
W	4.2	392.9
	600' S	
W	4.1	393.0
+5	5.3	391.8
£	5.4	391.7
E	5.3	391.8
	617	
E	5.4	391.7
£	5.5	391.6
+4	5.2	391.9
W	4.5	392.6
	640' South	
W	5.5	391.6
£	5.9	391.2
E	5.7	391.4
TP	3.38	399.57 592 391.19
	649' South	
W	3.8	390.8
£	3.8	390.8

394.57

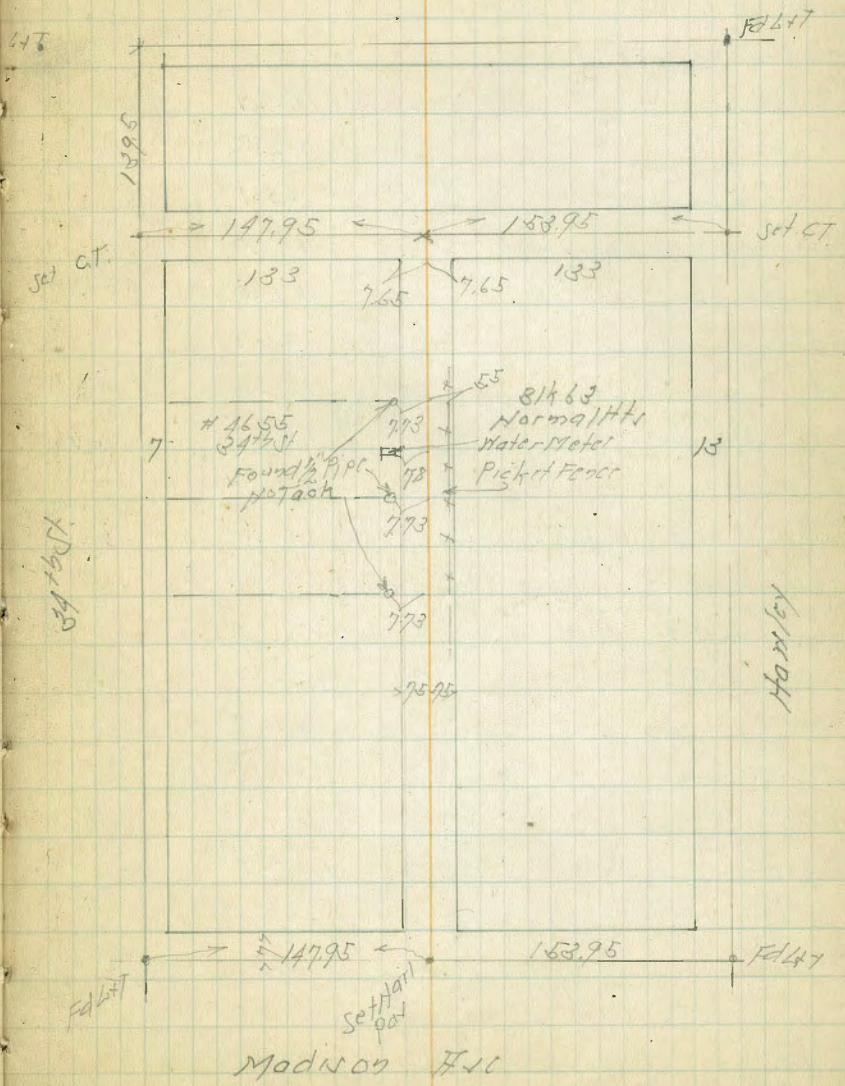
N	3.7	390.9	
653' South N Line of Madison			
W	4.7	389.9	
E	4.7	389.9	
E	4.5	390.1	
654' South Alley returns back to Prop.			
E Topch	5.03	389.54	
W Topch	5.19	389.38	
T.P.	5.18	393.91	5.84
		388.73	
		964	389.27 = 024
			389.25

3M SW Adams 392

Block 63 Normal Hts. North & South Alley  
Line Back # 4655-34th St.

Rep 4-45  
Simon  
Bliss  
Cobbler  
Harding

Adams Flc



1899

Harley

Madison Flc



4/9/68  
Moore

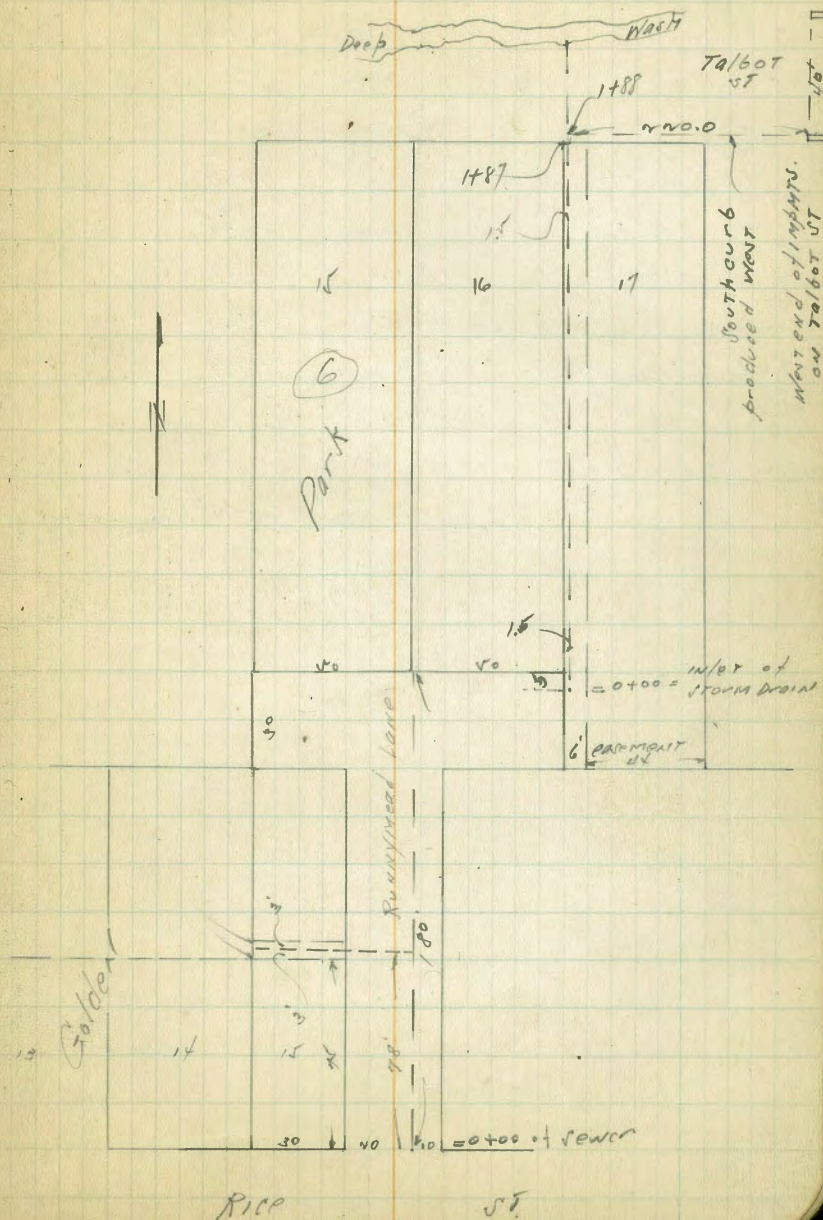
Sewer Levels  
Runnymede Lane

Golden Park

Lead by NE of T.P.	0.51	191.70	191.19	Rice + Celina
T.P.	0.40	179.85	179.45	
T.P.	4.08	171.56	167.48	
NL Rice ST = 0+00 (top paving)		11.50	160.1	
0+25		11.7	160.4	
0+50		8.6	163.0	
0+70 = Line to west		8.5	163.1	
70' west = NL Runnymede		5.6	166.0	
50' N of main line		0.6	171.0 = BL lot 14	
1+14		10.7	161.4	
1+50		10.7	160.9	
1+50 = SL of lot 15 + 16		14.5	159.1	
2+10 = 30' out for slope		16.2	155.4	
T.P.	0.42	158.97	158.54	

Levels for Storm Drain thru Lot 17

5' S of SL of lot 16 = 0+00		7.6	151.4 = 12/17
0+50		11.7	147.8
T.P.	0.61	146.76	146.15
0+75		12.5	144.0
1+00		8.4	138.4
T.P.	0.75	135.17	134.37
1+25		10.1	125.0
T.P.	0.82	143.05	142.23
1+34		7.5	120.5
T.P.	0.07	110.14	110.05



## Levels for Storm Drain

110.12

1 + 50		0.5	109.6	
T.P. 146	98.86	12.72	97.10	
1 + 75		5.3	95.6	
1 + 87 = 1496		7.7	91.2	
1 + 88 = line of S curb to east		8.0	90.9	on Talbot St
1 + 92		10.4	88.5	
1 + 100		11.2	87.7	
1 + 98 = top bank edge of wash		10.4	88.5	
1 + 29 = bottom wash		17.0	81.9	
T.P. 007	86.06	12.87	85.19	
200 east of outlet		9.54	76.52	check to profile
Top of S curb		10.60	75.46	please - thank you
" " " "				

DIRECTIONS FOR USE OF TABLES

9.022

TABLE No. 1.

Distance of slope stake from side or shoulder stake for any width roadway, slope 1 1/2 to 1. If ground is nearly level, the cut or fill at side stake is located by the double entry method in left column and top row. The number in body of table is same row and column with distance from side stake to slope stake. If ground is not

IMPROVED TABLES AND INFORMATION

TABLE No. 2.

To find Tangent and External for curve of any other degree, divide by degree of curve and add correction found in column of corrections. Degree of curve with a given T may be found by dividing tangent (or external), opposite T by given tangent (or external). The distance from a point on the tangent to the curve is very nearly the square of the tangent length divided by twice the radius.

060  
1297  
1357

0.02  
1.447  
0.20  
1.23  
= S. 5017  
1423  
3.594

0  
0-2  
0-4  
1-0  
1-2  
1-4  
2-0  
2-2  
2-4  
3-0  
3-2  
3-4  
4-0  
4-2  
4-4  
5  
6  
7

Van Dyke  
Dwight N. W. B. P.  
337.27  
93.339.77

190.04	727.97	
10.47	12.57	
<u>179.57</u>	<u>115.40</u>	KW
	1.51	25.99
180.59	116.97	
12.99	12.97	0.55
<u>167.60</u>	<u>104.00</u>	337.27
25	55	
127.84	104.55	8.26
12.13	13.00	<u>345.53</u>
155.71	91.55	0.55
0.73	1.14	
156.44	92.69	349.98
13.1	12.99	
143.34	79.70	337.21
1.80	2.17	7.71
145.14	81.87	
12.99	12.81	337.27
134.15	69.06	8.26
25	25	345.53
132.39	69.80	0.55
5.47	11.57	347.98
126.92	57.71	
1.05	53	
127.97	58.04	
	12.20	
	<u>45.80</u>	
	.59	
	46.39	
	12.65	
	<u>33.73</u>	
	2.26	
	<u>35.99</u>	
	9.98	
	<u>45.97</u>	