

1077

1887

FIELD BOOK

No. 345 F

Included to P. 62-D

MICROFILMED

DEC 21 1964

Our Leather Bound Engineers Note Books are carried in the following rulings:

- No. 380 LEVEL BOOK. Left and Right Hand Page the same as Left Hand Page of this Book.
- No. 382 FIELD BOOK. Left Hand Page as in this Book, Right Hand Page 4 x 4 to the inch, Center Line Red.
- No. 384 MINING TRANSIT BOOK. Left Hand Page as in this Book, Right Hand Page 8x8 to the inch, Center Line Red.
- No. 385 FIELD BOOK. Left Hand Page as in this Book, Right Hand Page 8 vertical and 4 horizontal lines to the inch, Center Line Red.

We also carry the Note Books listed above, bound in extra strong Fabri-Hide (otherwise the same quality of book), which can be furnished at a somewhat lower price.

In ordering Fabri-Hide covered books, add the letter "F" to catalog number.

THE FREDERICK POST CO.
ENGINEERING and DRAFTING SUPPLIES
IRVING PARK STATION
CHICAGO, ILL.

- Xsec. Walnut - Kite to Lark. X sec - P. 1-5,
- " Kite Upas to --- 6-8
 - " Union Upas to Thorn " 9-12
 - Alley BIK ST - LaTollu Park Sewer Lead - 13
 - " Lark St. Putarhough to Middlelns X Sec 14-21
 - " Alley BIK II - Mission Hills X-sec 21-22
 - " High St. - College to Center add. --- 24-30
 - " Birch - Boston to Thor --- 31-46
 - " Thor. - Birch to Cottonwood --- 47-48
 - " Beta - 37 to 36 --- 49-51
 - " 36th - Beta North --- 52-53
 - " Sive - Cottonwood to Acacia 54-58

Inscribed to P. 62-8

$\Delta = \frac{36-04}{14-04}$ R.E.P. Prop 122.5
 R.W. 172.8
 Δ to End ch 7-43 chd E 33.0 W 46.44
 Δ " 3-51-30 chd E-16.33 W 23.20
 N.E. 5.9 S. of N. Line Upas

St. Upas

30		10	
60	5	4.1	81.67
95	17	5.9	5.9
20	30		75.77
35	40		7.5
55	70		60.7
75	75		4
100	100		51
125	125		12.2
225	150	165	31.5
240	175	180	42.00
265	200	210	52.50
290	220		15.35
300	220		50.10
			150.10
			175
			200
			225
			275
			300
			315 N.P.A.

20	
60	1/4
100	+2
135	0
180	
220	+8
255	
270	
300	1/4
	0
	+7
	W

80 wide
14' elev.
13' 1/4 s.

Walnut St 250 e
W Line Kite to Line Lark

1-5-27
miller

BMBP	6.59	250.64 ✓	244.05	N.W. Kite Walnut
		00 = White Kite		
N		6.4	244.2 ✓	
cl		6.67	243.97 ✓	ent cl
114		6.7	243.9 ✓	
cl		6.8	243.8 ✓	
114		6.9	243.7 ✓	
cl		7.10	243.5 ✓	ent cl
S		6.9	243.7 ✓	
		5' W.		
S		6.4	244.2 ✓	
cl		6.4	244.2 ✓	
114		6.6	244.0 ✓	
cl		6.2	244.4 ✓	
114		6.5	244.1 ✓	
+7		6.2	244.4 ✓	
cl		4.6	246.0 ✓	
N		4.9	245.7 ✓	
		17' W		
N		2.3	248.3 ✓	
cl		3.4	247.2 ✓	
114		4.3	246.3 ✓	
114		4.8	245.8 ✓	
cl		5.2	245.4 ✓	
114		5.4	245.2 ✓	
+10		5.5	245.1 ✓	

Plotted 11/10/27

250.64

17' W (204)

cl	4.5	246.1 ✓
S	4.6	246.0 ✓
	30' W	
S	3.6	247.0 ✓
+11	3.2	247.9 ✓
cl	4.3	246.3 ✓
114	4.7	245.9 ✓
e	4.2	246.4 ✓
114	3.6	247.0 ✓
+9	2.1	247.5 ✓
cl	2.0	248.6 ✓
N	1.2	249.4 ✓
	60' W	
N	0.1	250.5 ✓
+1	1.8	248.6 ✓
cl	1.5	249.1 ✓
114	1.7	248.9 ✓
e	2.3	248.3 ✓
114	2.5	248.1 ✓
cl	3.0	247.6 ✓
+6	2.0	248.6 ✓
S	2.0	248.6 ✓
	70' W	
S	1.9	248.7 ✓
cl	2.1	248.5 ✓
114	1.9	248.7 ✓

Plotted 11/10/27

250.64

70' W (COP)

c	1.4	249.2 ✓
14	1.6	249.0 ✓
cl	1.0	249.6 ✓ ✓
+5	0.5	250.1 ✓
17	1.7	248.9 ✓
+13	1.7	248.9 ✓
N	0.3	250.3 ✓

75' W

N	0.4	250.2 ✓
cl	1.0	249.6 ✓ ↓
14	1.3	249.3 ✓
c	1.5	249.1 ✓
14	1.5	249.1 ✓
cl	2.0	248.6 ✓ ↓
S	1.8	248.8 ✓

100' W

S. Noyardag c	3.5	247.1 ✓ <small>cont approx to 74249 c. 5' 2. x 10m</small>
S	3.2	247.4 ✓
cl	3.1	247.5 ✓ ↓
14	2.7	247.9 ✓
c	2.7	247.9 ✓
14	2.3	248.3 ✓
cl	1.9	248.7 ✓ ↓
14	1.2	249.4 ✓

250.64

Walnut 2

125' W

N	3.1	247.5 ✓
cl	3.8	246.8 ✓ ✓
14	3.8	246.8 ✓
c	4.0	246.6 ✓
14	4.3	246.3 ✓
cl	4.8	245.8 ✓ ✓
S	5.3	245.3 ✓

150' W

S	9.8	240.8 ✓
cl	8.4	242.2 ✓ ✓
14	7.5	243.1 ✓
c	6.9	243.7 ✓
14	6.6	244.0 ✓
c	6.2	244.4 ✓ ✓
N	5.8	244.8 ✓

165' W

N	7.9	242.7 ✓
cl	8.2	242.9 ✓ ✓
14	8.7	241.9 ✓
c	9.1	241.5 ✓
14	9.8	240.8 ✓
cl	10.5	240.1 ✓ ✓
S	11.6	239.0 ✓

250.64

180' W

S	15.1	235.5	/
cl	13.4	237.2	/ ✓
1/4	12.6	238.0	/
C	12.0	238.6	/
1/4	11.2	239.4	/
d	11.0	239.6	/ ✓
N	10.7	239.9	/ ✓
T.P.	0.10	237.91	12.83 237.81 ✓

200' W

N	0.7	237.2	/ ✓
cl	1.2	236.7	/ ✓
1/4	2.0	235.9	/
C	2.9	235.0	/
1/4	4.4	233.5	/
cl	5.7	232.2	/ ✓
S	7.2	230.7	/ ✓
S	10.0	227.9	/ ✓
cl	8.0	229.3	/ ✓
1/4	7.1	230.8	/ ✓
C	6.0	231.9	/ ✓
1/4	4.7	233.2	/ ✓
cl	3.0	234.3	/ ✓
N	2.5	235.4	/ ✓

211' W

237.91

Walnut

3

N	2.20' W = E. Line Lark St	4.90	232.01 / snHub
cl		6.4	/ 231.5 / ✓ -
1/4		7.6	/ 230.3 / ✓ -
C		8.7	/ 229.2 / ✓ -
1/4		9.5	/ 228.4 / ✓ -
cl		10.7	/ 227.2 / ✓ -
S		12.0	225.9 / ✓
S	E. cl	14.9	223.0 / ✓
cl		14.5	/ 223.4 / ✓ -
1/4		13.9	/ 222.0 / ✓ -
C		12.5	/ 225.4 / ✓ -
1/4		11.9	/ 226.0 / ✓ -
cl		10.3	/ 227.6 / ✓ -
N		9.0	228.9 / ✓
N	3' W of E. cl	9.7	229.2 / ✓
cl		11.2	/ 226.7 / ✓ -
1/4		12.4	/ 225.5 / ✓ -
T.P.	0.41	225.18	13.14 224.77
C		0.8	/ 224.4 / ✓ -
1/4		1.9	/ 223.2 / ✓ -
cl		2.3	/ 222.9 / ✓ -
S		2.6	222.6 / ✓

80' wide
17' cl.
13' 1/2"Planted 1/10/27
HAC

225.18

6' W. of E. cl

S	3.2	222.0	/	0
cl	3.1	222.7	/	✓
1/4	2.9	222.3	/	-
C	2.1	223.1	/	-
1/4	0.9	224.3	/	-
cl	0.5	224.7	/	✓
N	0.1	225.1	/	-

E. 1/4

N	1.9	223.0	/	✓
cl	3.8	221.4	/	✓
1/4	5.4	219.8	/	-
C	6.2	219.0	/	-
1/4	7.5	217.7	/	-
cl	7.8	217.4	/	-
S	4.8	220.4	/	-

2' W. of E. 1/4

S	8.4	216.8	/	-
cl	8.7	216.5	/	-
1/4	8.3	216.9	/	-
C	7.4	217.8	/	-
1/4	6.4	218.8	/	✓
cl	4.2	224.0	/	✓
N	1.9	223.3	/	✓

225.18

Walnut

4

E Lark St

N	2.7	222.5	/	-
cl	5.2	220.0	/	✓
1/4	7.2	218.0	/	-
C	9.2	216.0	/	-
1/4	11.3	213.9	/	-
cl	11.4	213.6	/	✓
S	11.5	213.7	/	-

8' W. of E

S	14.4	210.8	/	-
cl	13.8	211.4	/	✓
1/4	11.7	213.5	/	-
C	9.6	215.6	/	-
1/4	7.5	217.7	/	-
cl	5.8	219.4	/	✓
N	3.7	221.5	/	-

W. 1/4

N-5	5.1	220.1	/	-
N	6.8	218.4	/	-
1/8	5.8	219.4	/	-
cl	6.3	218.9	/	✓
1/4	8.3	216.9	/	✓
C	10.0	215.2	/	✓
1/4	12.4	212.8	/	-
cl	13.9	211.3	/	-
S	14.7	210.5	/	-

225.18

W cl.

S	14.9	210.3 ✓ -
cl	14.2	211.0 ✓ ✓ -
+10	13.1	212.1 ✓ ✓ -
114	12.3	212.9 ✓ -
E	10.4	214.8 ✓
114	10.0	215.2 ✓ -
cl	8.6	216.6 ✓ ✓ -
N	10.8	214.4 ✓
+10	9.8	215.4 ✓

7' W of W cl.

N-10	10.9	214.3 ✓
N	12.1	213.1 ✓
+6	12.5	212.7 ✓
cl	11.4	213.8 ✓ ✓ -
114	12.0	213.2 ✓ ✓
E	11.4	215.8 ✓ -
114	13.8	211.4 ✓ -
cl	14.4	210.8 ✓ on wood running to garage
S	14.6	210.6 ✓ on lawn

W. Line Lark

S	14.8	210.4 ✓ on lawn
+12	14.5	210.7 ✓ " "
cl	15.7	209.5 ✓ upper wood on way to garage
cl + 3 = garage no yardage	17.4	210.8 ✓ garage on W line back st
+8	17.0	208.2 ✓
114	17.5	207.7 ✓ ✓
cl	15.0	210.2 ✓ ✓

225.18

Walnut

5

114	13.8	211.7 ✓
cl	15.3	209.9 ✓ ✓ -
N	14.0	211.2 ✓
+10	12.9	212.3 ✓

Planted 11/14/47
HPS

50' wide
19' deep
7.5' 1/4s

(Horton Ave) Kite 57 X 50
From Shine Upas N to End
of Present grading

1-5-27
Mullis

6

B.M.	0.15	244.20	244.05	N.W. Kite W. Walnut E. of Kite N of Upas
T.P. on B.M.B.P.	0.18	235.27	7.11	235.09

10' S. of S. Line Upas

E	16.6	218.71
cb	15.0	220.3
114	14.3	221.0
E	13.8	221.5
114	13.3	222.0
cb	12.9	222.4
W	12.6	222.7

S. Line Upas
50' wide x 130' closed
19' deep
7.5' 1/4s

W	11.1	224.2
cb	11.4	223.9
114	11.6	223.7
E	12.4	222.9
114	12.8	222.5
cb	12.9	222.4
E	14.2	221.1
410	14.0	219.3

Platted 1/10/27
H.A.

S. cb

E-10	14.5	220.8
E	12.6	222.7
cb	11.5	223.8
114	11.3	224.0
E	10.7	224.5
114	9.7	225.6

235.27

S. cl Upas (con)

cl	9.8	225.5 /
W	9.8	225.5 /
S. 114		
W	9.3	226.0 /
cl	8.7	226.6 /
114	9.7	226.6 /
C	9.4	225.9 /
114	10.2	225.1 /
cl	10.6	224.7 /
E	12.0	223.3 /
110	13.2	222.1 /

E-10

E	12.3	223.0 /
E	10.9	224.4 /
cl	9.7	225.6 /
114	8.5	226.8 /
C	8.0	227.3 /
114	7.6	227.7 /
cl	8.0	227.3 /
W	8.0	227.3 /

N. 114

W	7.8	227.5 /
cl	7.4	227.9 /
114	7.0	228.3 /
C	6.8	228.5 /
114	7.3	228.0 /

235.27

(Horton Ave)
Kite St 7

cl	8.3	227.0 /
E	7.7	225.6 /
+5	10.6	222.7 /
N. cl:		
E-5	9.7	225.6 /
E	8.7	226.6 /
cl	6.8	228.5 /
114	6.6	228.7 /
C	6.4	228.9 /
114	6.7	228.6 /
cl	6.8	228.5 /
W	7.3	228.0 /

H.I.N. of N. cl = SW cor B1K 404 sec at 40° 00'

W	6.7	228.6 /
cl	6.3	229.0 /
114	6.4	228.9 /
C	6.1	229.2 /
114	6.2	229.1 /
cl	6.2	229.1 /
E	9.2	227.1 ^{SW. cor} _{B1K 404}

N. line Upas

E	7.0	228.3 /
cl	5.9	229.4 /
114	5.6	229.7 /
E	5.8	229.5 /
114	6.1	229.2 /

235.27

N. Line - Uipas (con)

cl	-6.1	229.2	/
W	6.4	229.9	/
20' N. of N. line - Uipas			
W	5.4	229.9	/
cl	4.7	230.6	/
1/4	4.8	230.5	/
C	4.4	230.5	/
1/4	4.8	230.5	/
cl	4.4	230.9	/
E	5.0	230.3	/

50' N. of N. line - Uipas

E	3.2	232.1	/
cl	2.5	232.8	/
1/4	2.8	232.5	/
C	3.4	231.9	/
1/4	3.8	231.5	/
cl	4.2	231.1	/
W	4.9	230.4	/
75.77' N. of N. line - Uipas = 81.76' N. of S.W. cor. BIK 4045 } = P.C.			
W	3.8	231.5	/
cl	3.4	231.9	/
1/4	2.9	232.4	/
C	2.5	232.8	/
1/4	2.5	232.8	/
cl	1.7	233.6	/
E	2.0	233.3	/

Plotted 1/10/27
HAB

(Horton Ave)

S. End of cl-walk on E
on Radial Line
 $\Delta = 13^{\circ}48'$
 chd = 29.50 E. Line
 $R = 722.8''$ "
 $R = 172.8''$ W "
 chd = 41.52 W "

Kite St

E	0.3	235.0	/
cl	1.0	234.3	/
1/4	0.9	234.9	/
C	0.7	234.6	/
1/4	0.9	234.4	/
cl	1.5	233.8	/
W	2.4	232.7	/

S. End of walk del Both sides

Not on Radial line 52.5' wide, 10.5' chd

 E. Line $R = 122.8$
 $\Delta = 13^{\circ}48'$
 chd = 29.50
 W line $R = 172.8$
 $\Delta = 20^{\circ}14'$
 chd = 60.7

W	0.0	235.2	
cl	0.30	235.0	s. end ent cl
+1 = gutter	1.0	234.3	
1/4	0.5	234.8	
C	0.3	235.0	
1/4	0.6	234.7	
+7.5 = gutter	0.9	234.4	
cl	0.28	235.09	s. end ent cl
E	0.3	235.0	

Plotted 1/10/27
HAB

75' W.P.C.
12' d.s.
1275' 44.5

Union St & Sec
S. line UP45 to S. line Thorh

1-6-7
miller

22434

9

B.M.B.P.	0.27	235.36	235.09	Ed. K. 2 N. of UP45
T.P.	1.45	224.38	222.93	13
60' S. line UP45				
E		6.8	217.6	
cb		8.1	216.3	
"4		8.7	215.7	
E		9.4	214.6	
"4		12.4	211.8	
cb		15.3	209.1	
W		17.5	206.9	
N-5		17.3	207.1	
W		14.4	207.6	
cb		14.7	209.7	
"4		12.0	212.9	
C		9.5	214.9	
"4		8.5	215.9	
cb		7.5	216.9	
+6		7.2	217.2	
E		5.0	219.4	
35' S				
E		4.6	219.9	
cb		7.1	217.3	
"4		8.2	216.2	
C		9.0	215.4	
"4		11.5	213.9	

Placed 1/11/27
14' 6"
15' 5"

cb	14.0	210.4
W	16.4	208.0
+5	16.9	207.5
50' S		
-5	13.4	211.0
W	13.3	211.1
cb	12.7	211.7
"4	10.6	213.8
C	8.9	215.6
"4	8.2	216.2
cb	7.0	217.4
+8	4.4	219.6
E	4.7	219.7
68' 3" mt walk on rd 2' in street		
W	12.75	211.63
100' S: Bodge garage on W 1' Bank don't float		
E	5.1	219.8
cb	5.5	218.9
"4	6.5	217.9
C	7.9	216.5
"4	9.0	215.4
cb	10.8	213.6
W	12.2	212.4 / garage floor

Placed 1/11/27
14' 6"

224.38
115' S

W	10.2	214.2 ✓
cb	9.7	214.7
114	8.4	216.0
c	7.5	216.9 ✓
114	6.5	217.9
cb	5.5	218.9
E	5.2	219.2 ✓

150' S

Revised 11/14 HPL

E	6.7	217.7 ✓
cb	6.2	218.2
114	7.1	217.3
c	8.0	216.4 ✓
114	8.2	216.2
cb	8.9	215.5
W	9.4	215.0 ✓

175' W

W	9.8	214.6 ✓
cb	9.3	215.1
114	8.7	215.7
c	8.5	215.9 ✓
114	7.7	216.7
cb	7.2	217.2
E	7.7	216.7 ✓

224.38
200' S

E	8.7	215.7 ✓
cb	8.7	215.7
114	8.5	215.9
c	8.3	215.1 ✓
114	9.3	215.1
cb	10.0	214.4
W	10.6	213.8 ✓

225' S

Revised 11/14 HPL

W	11.0	213.9 ✓
cb	10.8	213.6
114	10.1	214.3
c	10.0	214.4 ✓
114	9.8	214.6
cb	9.7	214.7
E	9.4	215.0 ✓

275' S

E	12.0	212.9 ✓
cb	11.5	212.9
114	11.2	213.2
c	12.1	212.3 ✓
114	12.1	210.3
cb	12.6	211.8
W	13.7	211.2 ✓
T.P.	4.62	215.96 ✓
	13.04	211.34 ✓

215.96

300' S = Old Mine Thorn 15' closed

w	5.7	210.7 ✓
cb	5.5	210.5
ny	4.7	211.3
l	3.9	211.1 ✓
ny	3.4	212.6
cb	3.8	212.2
E	4.3	211.7 ✓

315' S = N Mine Thorn 15' closed

50' wide
15' 20'
15' 14.5'

E	4.7	211.3 ✓
cb	4.4	211.6
ny	4.2	211.8
E	4.5	211.5 ✓
ny	4.8	211.2
cb	4.3	209.7
w	7.5	208.5 ✓

Plotted 1/14
RFR

N. cb

w	7.7	208.3 ✓
cb	6.4	209.6
ny	5.4	210.6
E	5.1	210.9 ✓
ny	5.0	211.0
cb	4.9	211.1
E	5.1	210.9 ✓

UNION

11

215.96

N. 14

E	5.6	210.9 ✓
cb	5.3	210.7
ny	5.2	210.8
E	5.6	210.9 ✓
ny	4.0	210.0
cb	7.0	209.0
w	8.2	207.8 ✓

w	8.4	207.6 ✓
cb	7.6	208.4
ny	6.6	209.9
E	6.13	209.88 ✓ in ctr. Mon
ny	5.9	210.1
cb	5.4	210.6
E	5.8	210.2 ✓

Plotted 1/14
RFR

S. 14

E	6.3	209.7 ✓
cb	6.1	209.1
ny	6.5	209.5
E	6.9	209.1 ✓
ny	7.4	208.6
cb	8.1	207.9
w	8.7	207.3 ✓

215.96

S. db

w	9.0	207.0	✓
cl	8.5	207.5	
114	9.3	207.7	
e	7.5	208.5	✓
114	6.9	209.1	
cl	6.7	209.3	
e	7.2	208.8	✓

S. line Thorn

e	7.8	208.2	✓
cl	7.0	209.0	
114	7.0	209.0	
e	7.9	208.1	✓
114	8.4	207.6	
cl	9.5	206.5	
w	10.1	205.9	✓

Planted 11/1/57
RMB

Levels on Existing Sewer
in Alley BIK 55 La Jolla Park

1-6-27
Miller

169.4

13

Elevations on Top of 6" Pipe

RM	0.34	88.25	87.91	SE Ends + Prospect
T.R	0.95	76.00	13.20	75.05
T.P	10.40	74.15	12.25	43.75
100' N. Line Ends 24' Roadway Cts.			13.15	61.00
109' N			10.5	63.65
149' N			8.5	65.65
199.5 N = N. End Pipe			7.7	66.45

169.4 W. of W. Line Prospect on N. Prop Line

18.65
2.55
13.15

3.4
4.1
10.5
4.9
3.6
8.5

14.7
50.5
79.5

Lark St X Sec

1-22-27
-miller

S. Line Puterbaugh S. to Middle Town Line
30' wide 8' elev 8.5' ys From S. Line Marine View to
N. Line Walnut East 50' of Lark K. From S. Line
Walnut to Middle Town Line 86' wide

BM. 11.43 267.43 ✓ 286.00 NW. Kite
y Brooks

T.P. 0.08 265.10 2.41 265.02 ✓

00 = S. Line Puterbaugh

E. cl 0.10 265. ✓ cont'd

+1 gutter 0.6 264.5

1/4 0.5 264.6

0 0.3 264.8 ✓

1/4 0.9 264.7

cl 1.1 264.0

+2 0.8 263.5

W 0.4 263.7 ✓

W 3.2 261.9 ✓

cl 3.4 261.7

+2 3.9 261.7

1/4 3.5 261.6

0 3.1 262.0 ✓

1/4 3.2 261.9

+8-gutter 3.5 261.6

E. cl 2.90 262.7 ✓ cont'd

E. cl 5.70 259.7 ✓ cont'd

+0.5-gutter 6.3 258.8

1/4 4.0 259.1

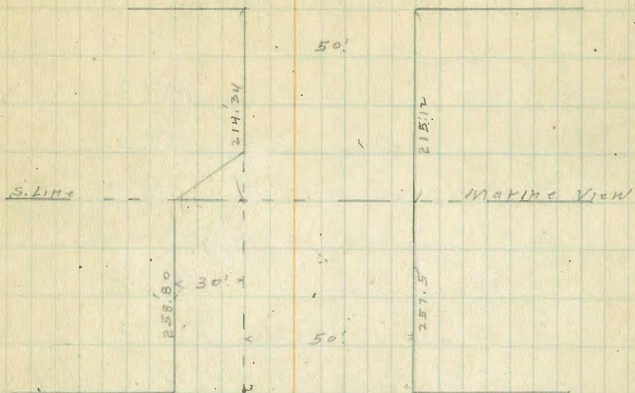
50'S

Platted
AK

100'S

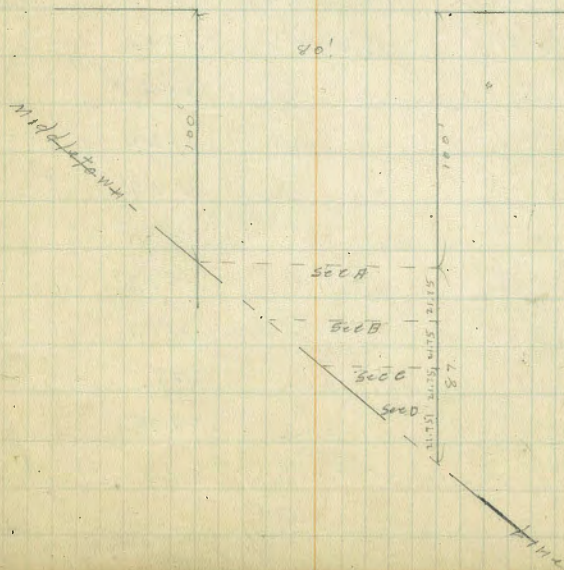
Puterbaugh

S.T.



Walnut

Ave



265.10

100'S (con)

c	5.8	259.3	✓	/
114	4.4	258.7		
+7	6.8	258.3		
cl	6.2	258.9		
W	5.9	259.2	✓	
150'S				
W	8.9	256.2	✓	
cl	8.8	256.3		/
114	9.1	256.0		/
c	8.7	256.4	✓	
114	8.8	256.3		
+8-gutter	9.1	256.0		
E. cl	8.43	256.67	✓	empt

185'S

E. cl	10.43	254.67	✓	empt
+0.5 gutter	10.8	254.3		
114	10.6	254.5		
c	10.5	254.6	✓	254.6
114	10.2	254.9		/
+3	10.2	254.9		
+4	11.8	253.3		ingarden
cl	13.2	251.9		" "
W	17.4	248.7	✓	" "
+13	24.6	249.5		" "
T.P. 1.09	253.13	13.06	252.04	on E. cl
+14		15.3	237.8	in garden

253.13

Lark

15

+26	18.8	234.3		ingarden
+44	27.3	225.8		" "
200'S				
W-40	27.0	225.1		" "
W-18	19.6	233.5		" "
W-	11.5	241.6	✓	
cl	6.9	246.2		/
114	1.7	251.4		/
+5	10.4	253.5		
c	10.2	253.3	✓	/
114	0.0	253.1		
E gutter	0.0	253.1		/

Purple line { 244.34 son W
241.125 " E

E gutter	0.4	252.3	✓	/
114	0.5	252.6		
c	0.1	253.0	✓	/
+3	0.4	252.7		
114	5.5	247.6		/
cl	11.4	241.7		/
W	17.0	236.1	✓	
+16	25.5	227.6		ingarden
+43	32.0	221.1		" "

253.13

230'S

W-65	48.3	204.8
W-32	37.0	216.1
N	18.7	234.4
dr	13.8	239.3
1/4	7.1	246.0
C	1.3	251.8 ✓
1/4	1.5	251.6
E gutter	1.6	251.5
E. dr	1.11	ent dr 251.5 ✓
E dr	1.70	ent dr 251.43 ✓
E gutter	2.5	250.6
1/4	2.3	250.8
+6	2.1	251.0
C	3.1	250.5 ✓
1/4	8.4	244.7 ✓
dr	13.3	239.8
N	19.0	234.1 ✓
+18	29.00	224.1
+36	38.00	215.1
+50	45.5	207.6
+80	56.0	197.1
W-80	55.0	198.1
W-50	43.0	210.1
W-15	22.6	230.5

255'S

253.13

Lark

11

14.6	238.5 ✓
10.9	242.2
7.9	245.2 ✓
4.0	249.1 ✓
2.9	250.2
3.0	250.1
3.2	249.9 ✓
273'S = S. end ent dr + walk on E	
4.5	248.6 ✓
4.90	248.28 ✓ ent dr
5.7	247.8
5.2	247.9
4.5	248.6
7.2	245.9 ✓
10.1	243.0 ✓
12.2	240.9
15.00	238.8 ✓
22.5	230.6
300'S	
21.0	232.1
15.4	237.7 ✓
10.0	239.1
12.5	240.6 ✓
11.4	241.7 ✓
10.7	242.4
9.1	244.0 ✓

300' S. (cont)

cl		8.8	244.3		
E		8.0	245.1	/	✓
	330' S				
E		11.3	241.8	/	✓
cl		12.1	241.0		
TP	0.01	240.82	240.82		
		83			
W		0.7	240.1		✓
E		1.8	239.0	/	✓
W		3.3	237.5		✓
cl		4.1	236.7		
W		5.4	235.4	/	
+20		9.0	231.8		

360' S

-15		12.5	228.3		
W		8.7	232.1	/	
cl		7.2	233.6		
W		7.4	234.4	/	
E		5.6	235.2	/	✓
W		3.6	237.2		
cl		2.5	238.3		
E		1.3	239.5	/	✓

380' S

E		3.0	237.8	/	
cl		3.9	236.9		
W		4.6	236.2	/	✓
E		6.5	234.3	/	✓

W		8.0	232.8	/	
cl		9.6	231.2		
W		11.7	229.1	/	
+15		14.1	226.7		
	400' S				
W		18.0	222.8		
W		13.2	227.6	/	
cl		11.6	229.2		
W		9.5	231.3	/	
E		7.4	233.4	/	✓
W		4.5	234.3		
cl		5.6	235.2		
E		4.5	236.3	/	

W side
H18 5' garage 12' E+W 18' N 2.5 W side on E cl line of Lark

420' S

E		4.7	236.1	/	✓ in garage
cl		5.8	235.0		
+5		8.6	232.2		
W		8.6	232.2	/	✓
E		9.2	231.6	/	✓
W		10.3	230.5	/	✓
cl		12.4	228.4		
TP	5.08	234.07	11.81	229.06	
W		8.2	225.9	/	
+20		13.8	220.3		

234.09
440' S.

W-20	17.0	227.1	
W	11.7	2230	✓
d	7.4	2267	
"4	5.7	2284	✓
c	5.3	2288	✓ ✓
"4	4.2	229.9	✓
+2	3.8	230.3	
+3	1.2	232.9	
cb	0.2	233.9	
E	+1.0	236.1	✓ ✓

473' S = N. Line Walnut

E	1.10	233.0	✓
cb	3.4	230.7	✓
"4	5.8	228.3	✓
+3.5	9.0	225.1	
c	10.3	223.8	✓
"4	11.0	223.1	
cb	11.9	222.2	
+6	12.6	221.5	
W	13.7	220.7	✓

Intersection + see
Book 177 Page 1.

234.09

LARK

18

T.P.	5.08	226.60	12.57	221.52	
(00 = S. Line Walnut) Lark St					$\left. \begin{matrix} 8.5' \text{ wide} \\ 14' \text{ deep} \\ 13' \text{ bus} \end{matrix} \right\}$
W			16.2	210.4	on lawn
cb			16.3	210.3	✓
"4			16.1	210.5	✓ ✓
+5			15.8	210.8	✓
c			12.9	213.7	✓ ✓
+11			9.8	216.8	
"4			6.2	220.4	✓
cb			3.6	223.0	
E			0.7	225.9	✓ ✓

35' S

E	1.9	2247	✓ ✓	
cb	4.6	2220		
"4	7.6	2190	✓	
+5	8.7	2179		
+8	12.5	2141		
c	13.7	2129	✓ ✓	
"4	16.8	2098	✓	
cb	16.8	2098		
W	16.6	2100	on lawn	
+0.5	12.6	2100	E. side House	
43' S				
W	16.6	2100	on lawn	
cb	16.6	2100		
"4	16.8	2092	✓	

226.60

43' S. Con

c	13.7	212.9	/
+3	12.9	213.7	
+6	9.1	217.5	
1/4	7.7	218.9	↓
cl	5.0	221.6	
e	2.3	224.3	/

48' S

e	2.3	224.3	/ /
cl	5.0	221.6	
1/4	7.8	218.8	/
+8	9.4	217.2	
+11	13.3	213.3	
e	14.1	212.2	/ /
1/2	16.3	210.3	✓
+7	17.4	209.2	
cl	17.0	209.6	
+8	16.6	210.0	Fence
w	22.4	202.2	in garden

70' S

w	22.3	204.3	in garden
+6	17.0	209.6	Fence
cl	17.6	209.0	
+6	17.4	209.2	
1/4	16.4	210.2	✓
+10	12.2	214.4	
c	10.5	216.1	/ /

226.60

LAP 14

17

1/4	8.1	218.5	↓
cl	5.6	221.0	
e	3.1	223.5	/ /

100' S approx = S, end on W = Sec A, see Plat Page

e	2.6	224.0	/ /
cl	5.1	221.5	
1/4	7.1	219.5	↓
c	9.2	217.4	/ /
+7	10.7	215.9	
+9	14.8	211.8	
1/4	15.6	211.0	✓
cl	17.6	209.0	
+4	18.2	209.4	
+8	17.8	209.8	
✓	22.0	204.6	

121.75 S = Sec B

wcl +6 = Middle town line	15.4	201.2	
1/4	13.9	212.7	✓
+5	10.4	216.2	
e	9.1	217.5	/ /
1/4	6.7	219.9	✓
cl	4.6	222.0	
e	2.1	224.5	✓

143.5 S = Sec C

e	0.2	226.4	/ /
cl	3.4	223.2	

226.60

Sec C. (con)

E 14 5.7 220.9 ✓

+ Lark = Middle town line 9.5 217.8

165.255 = Sec D.

7' E of E. 14 3.0 223.6 ✓

ch 2.0 224.6

E 1.07 227.3 ✓

187' S on E - approx. = Middle town line

E 1.0 227.6 ✓

T.P. 10.60 235.05 2.15 224.45

chk on Hub N.E Lark & Walnut 2.05 233.0

~~Plotted
all~~

2 See Alley Bk II Mission Hills

1-24-27
mills

B.M.	4.32	271.26	266.94	7.7. Street NE Sierra Vista
T.P.	10.07	281.191	0.14	271.12
90' E Line St James				
N		5.46	775.73	d + paving
E		5.78	775.41	paving
S		5.76	775.43	d + paving
16' E				
S		4.0	777.4	
E		4.5	776.7	
N		4.5	776.7	
60' E				
N		4.7	76.5	
E		4.6	76.6	
S		4.3	76.9	
95' E = garage on S. ent floor apron on line garage 6' back				
S		4.71	76.5	ent apron
E		5.2	76.0	
N		5.2	76.0	
130' E W end Double garage on S. 5' Back ent apron on line				
N		6.1	75.1	
E		6.0	75.2	
S		5.4	75.8	ent apron
135' E = N Line N & S. Paved Alley				
N		6.43	74.76	pavement
142.5' E = N & S. Alley				
N		6.70	74.49	Pavement

Plotted
J.L.M.

281.19

21.

150' E = SE Edge Double Garage on S. E Line N & S. Alley				
N		6.63	74.56	Pavement
E		6.6	74.6	
S		5.50	75.7	ent apron
160' E				
S		6.4	74.8	
E		6.8	74.4	
N		6.7	74.5	
184' E = garage on S. ent floor 1.5' Back				
N		6.8	74.4	
E		7.0	74.2	
S		6.6	74.6	
541.5				
S		6.2	75.0	
209' E = garage on N. dirt floor 9' Back				
S		7.0	74.2	
11.5 = Fence				
E		7.1	74.1	
N		7.2	74.0	
221' E = garage on N. 14' Back				
N		7.1	74.1	
E		7.0	74.2	
S		6.8	74.4	
T.P.	9.26	283.12	7.33	273.86
255.5' E = W end Plastered garage on S. No entrance on Alley 12' wide That is 1.5' in Alley				

283.12

260'E.

S	8.7	774.4
E	8.7	74.4
N	8.8	74.3

289'E = garage on S end floor 8.5 Back

N	8.6	74.5
E	8.7	74.4
S	8.4	74.7
+ 8.5	7.7	75.4

310'E

S	7.4	75.3
E	7.7	75.4
N	7.6	75.5

325'E

N	6.0	77.1
E	6.4	76.7
S	6.3	76.8

345'E.

S	3.7	79.4
E	3.8	79.3
N	3.1	80.0

370'E

N	2.1	81.0
E	2.5	80.6
S	2.2	80.9

283.12

Alley B115 11 Mission Hills

22

390'E

S	2.5	780.6
E	2.7	80.9
N	2.1	81.0

402'E = W end Double garage on N end floor 4.5 Back

N-1.5	3.30	79.8	ent apron
N	3.2	79.9	
E	3.2	79.9	
S	3.4	79.7	

4.11'E = E end of above garage also E edge wood garages. 0.5 in alley

S	4.4	78.7	
E	4.2	78.9	
N	3.6	79.5	
+1.5	3.47	79.6	ent apron

450'E.

N	6.4	76.7
E	6.3	76.8
S	6.2	76.9

477'E = P.C. into N & S Alley

S	7.0	76.1	
E	7.2	75.9	
N	7.3	76.8	P.C.

485'E = W. Line N & S Alley

N	7.7	75.4	P.C. of curve
E	7.3	75.8	
S	7.1	76.0	

283.12

500' E = E. Line N + S. Alley

S	7.2	775.9
E	7.5	75.6
N	7.8	75.3
T.P.	1.25	277.01
	7.34	275.76

amt approx 1/2 acre on 5 10' back

N. & S. Alley

Sec A = 8' W of N. line of E & W Alley

E	1.6	775.4
E	1.8	75.7
N	1.7	75.3

Sec B

N	2.0	75.0
E	2.5	74.5
E	3.6	73.4

Sec C

E	3.5	73.5
E	3.6	73.4
W	2.5	74.5

Sec D

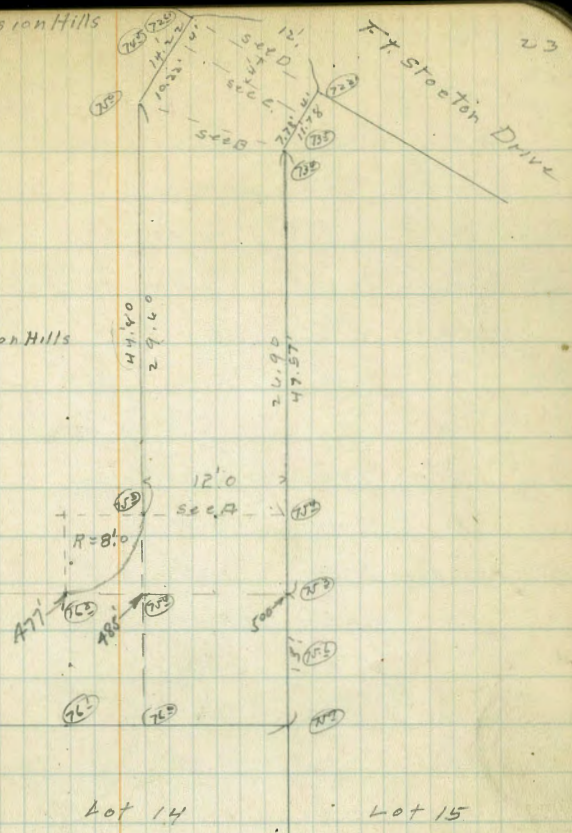
W	4.40	74.61
E	4.76	74.45
E	4.80	77.01
alt. ch. B.M.	11.61	265.402

amt ch. per Vol. 11.61
amt ch. 5.80
SS. Fr. Stockton
+ Lewis
265.44

Alley BIK II Mission Hills

BIK II Mission Hills

← To St James 500'



60' wide
10' db
10' 1/4s

X See High St Center Adl La Jolla
College to S. Line Center Adl

1-26-28
mills

128.37

24

B.M.	0.20	128.29	128.09	X.W. Kline + Van Hook		12.2	113.2
		00 = S. Line College			C		
					1/4	11.9	113.5
N			11.4		db	12.0	113.4
db			12.1		+5	12.6	112.8
1/4			12.0		E	12.0	113.4
C			11.5		+10	11.0	114.4
1/4			11.3				
db			11.2		-10	12.4	113.0
E			10.1		E	12.7	112.7
E. A. Yardage			9.0	College Grad	db	12.7	112.7
T.P.	9.93	125.37	12.85	115.44	+4	12.0	113.4
		50' S.			1/4	11.8	113.6
E-10			10.7		C	12.1	113.3
E			10.7		1/4	12.4	113.0
db			10.4		db	12.6	112.8
1/4			10.8		+3	14.0	111.4
C			10.8		W	14.2	111.2
1/4			10.9		+10	12.8	112.6
db			10.9				
W			10.3		-10	15.3	110.1
+10			9.9		W	14.7	110.7
		90' S.			db	13.8	111.6
-10			12.0		+4	12.7	112.7
W			12.3		1/4	12.2	113.2
db			12.3		C	11.7	113.7
1/4			12.2		1/4	11.6	113.8

108' S

120' S

125.37

125.37

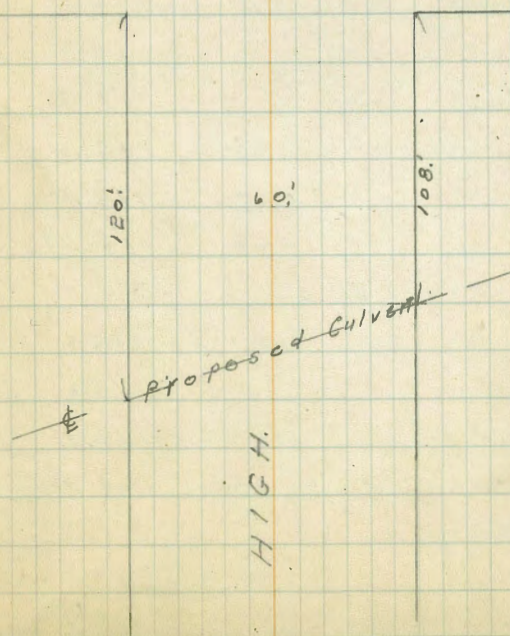
f7	11.6	113.8
ch	12.2	113.2
E	11.3	114.1
+10	11.0	114.4
140' S.		
-10	9.7	115.7
E	10.1	114.3
ch	11.0	114.4
14	11.0	114.4
C	11.0	114.4
14	11.8	113.6
ch	13.6	111.8
W	14.5	110.9
+10	15.2	110.2
165' S.		
-10	12.4	113.0
W	12.3	113.1
ch	11.2	114.2
14	10.9	114.5
C	10.2	115.2
14	10.1	115.3
ch	10.1	115.3
E	9.3	116.1
+10	8.5	116.9

con. Page 26.

Culvert

20' E. of E. line = 0+00	12.4	113.0
0+20 E. line High	12.6	112.8
0+30	12.7	112.7
0+35	11.9	113.5
0+67	12.6	112.8
0+72	13.9	111.5
0+81.3 = W. line High	14.5	110.9
1+00	15.4	110.0

COLLEGE



125.37

200'S.

E-5	7.1	118.5
E	7.3	118.1
cl	8.0	117.4
"4	8.7	116.7
C	8.8	116.6
"4	9.7	115.7
cl	10.4	115.0
W	10.7	114.7
+10	11.0	114.4

231'S

-5	8.8	116.6	on walk to House
W	8.7	116.7	" " " "
"4	7.9	117.5	
C	7.6	117.8	
"4	7.1	118.5	
cl	7.2	118.2	
E	6.3	119.1	
+5	6.0	119.4	

256'S

E	5.7	119.7	
cl	6.0	119.4	
"4	6.1	119.3	
C	6.0	119.4	
"4	6.7	118.7	
cl	7.5	117.9	
W	7.6	117.8	on walk to House
+5	7.7	117.7	" " " "

125.37

High St LaJolla

24

290'S

-5	6.5	118.9	Lump
W	6.3	119.1	"
cl	6.0	119.4	
"4	5.4	120.0	
C	4.9	120.5	
"4	4.5	120.9	
cl	4.3	121.1	
E	3.3	122.1	

319'S

E	2.2	125.2	
cl	3.3	122.1	
"4	3.7	121.7	
C	3.9	121.5	
"4	4.6	120.8	
cl	5.4	120.0	on emt strips
W	5.9	119.5	to garage
+5	6.2	119.2	" " "

360'S

-5	4.9	120.5	
W	4.4	121.0	
cl	3.7	121.7	
"4	3.0	122.4	
C	2.4	123.0	
"4	2.4	123.0	
cl	2.3	123.1	
E	1.4	124.0	

125.37

380'.S

E		0.2	125.2	
+5		0.0	125.4	
+8		1.6	123.8	
cb		1.6	123.8	
"4		1.6	123.8	
e		1.8	123.6	
"4		2.4	123.0	
cb		2.7	122.7	
W		4.1	121.3	
+5		4.6	120.8	
T.P.	7.03	131.09	1.31	124.06
		492'.S.		
-5		9.0	122.1	
W		8.9	122.2	
cb		8.0	123.1	
"4		7.5	123.6	
e		6.9	124.2	
"4		6.9	124.2	
cb		6.7	124.4	
+2		6.5	124.6	
+4		5.4	125.7	
E		5.0	126.1	
+1.2		4.5	126.6	cmt walk to House
		465'.S.		
E		2.6	128.5	cmt steps to House
+0.2		3.3	127.8	ground

131.09

+7		4.0	127.1	
cb		5.2	125.9	
"4		5.3	125.8	
e		5.5	125.6	
"4		5.7	125.4	
cb		5.8	125.3	
W		6.0	125.1	
+5		6.0	125.1	
		490.5' = N. Line Pearl St		
W		4.7	126.4	
cmt cb ret.		5.06	126.03	
"4		5.2	125.9	
e		4.8	126.3	
"4		5.0	126.1	
+9		4.8	126.3	
cmt cb ret.		4.00	127.09	
E		3.5	127.6	
		003 S. Line Pearl St.		
E		1.3	129.8	
cb. use for yardage		2.3	128.8	
cmt cb ret no yardage		2.91	128.18	
+1		3.0	128.7	
cb		3.1	128.0	
e		3.5	127.6	
"4		3.8	127.5	
cmt cb ret		3.90	127.19	
W.		3.6	127.5	

131.09

T.P	12.07	141.68	1.48	129.61	
		19'.5			
W.			12.3	129.4	emt walk to House
cl			12.7	129.0	
"4			12.4	129.3	
c			12.3	129.4	
"4			11.7	130.0	
cl			11.7	130.0	
+3			10.5	131.2	
E			9.8	131.9	
		30'.5			
E-4.3			7.6	134.1	emt walk to House
E			9.2	132.5	
+7			9.8	131.9	
cl			10.4	130.9	
"4			11.1	130.6	
c			11.1	130.6	
"4			11.6	130.1	
cl			11.9	129.8	
W			12.0	129.7	Lawn
		50'.5			
W			10.5	131.2	
cl			10.4	131.3	
"4			9.8	131.9	
c			9.5	132.2	
"4			9.3	132.4	

141.68

High St. La Jolla 28

cl		9.2	132.5	
+3		8.2	133.5	
E		7.8	133.9	
		109'.5		
E-07		4.9	136.8	emt drive
E		5.2	136.5	
cl		6.4	135.8	
"4		6.8	134.9	
c		6.8	134.9	
"4		7.1	134.6	
cl		7.6	134.1	
W		7.8	133.9	
+5		8.0	133.7	
		116'.5		
-5		7.7	134.0	
W		7.6	134.1	
cl		7.2	134.5	
"4		6.7	135.0	
c		7.6	134.1	
"4		6.5	135.2	
cl		6.3	135.4	
+4		5.4	136.3	
E		5.1	136.6	
+0.9		4.8	136.9	emt walk to House

141.68

150'.S.

E	3.9	137.5
+6	4.0	137.7
+8	5.2	136.5
cb	5.2	136.5
14	5.2	136.5
E	5.2	136.5
14	5.5	136.2
cb	6.1	135.6
W	6.0	135.7
+5	6.3	135.4

184'.S

-5	5.1	136.6
W	4.9	136.8
cb	4.4	137.1
14	4.0	137.7
E	3.9	137.8
14	3.6	138.1
cb	3.4	138.3
+1	2.8	138.9
E.	1.8	139.9

cont drive.

192'.S.

E neyandage	1.0	140.7	cont walk to house
E	1.9	139.8	
+8	2.5	139.2	
cb	3.2	138.5	
14	3.3	138.4	

141.68

High St. La Jolla

29

C	3.6	138.1
14	3.8	137.9
cb	4.6	137.2
W	4.6	137.1
+5	5.0	136.7

250'.S.

-5	4.2	137.5		
W	3.6	138.1		
cb	3.1	138.6		
14	2.3	139.4		
C	1.9	139.8		
14	1.5	140.2		
cb	1.5	140.2		
+1	1.5	140.2		
T.P.	9.23	149.41	1.50	140.18
+2	7.7	141.7		
E	7.6	141.8		

300'.S.

E	5.8	143.6
+8	6.2	143.2
+9	7.7	141.7
cb	7.7	141.7
14	8.0	141.4
C	8.3	141.1
14	8.7	140.7
cb	9.4	140.0

149.41
300's. (cont)

W	9.8	139.6
+5	10.3	139.1
350's.		
W-5	8.8	140.6
W	8.6	140.8
cb	8.3	141.1
"4	7.5	141.9
c	6.9	142.5
"4	6.6	142.8
cb	6.3	143.1
FZ	4.7	144.7
E	4.0	145.4

400's. S. Line Center Add.

E	2.3	147.1
cb	3.3	146.1
"4	5.0	144.4
c	4.7	144.7
"4	5.4	144.0
cb	6.6	142.8
W	7.5	141.9
+10	8.3	141.1

425's.

-10	8.3	141.1
W	7.2	142.2
cb	6.2	143.2
+8	5.2	144.2

High St Labolla

30

149.41

"4	3.8	145.6
c	3.6	145.8
"4	3.9	145.5
+5	4.0	145.4
+7	2.8	146.6
cb	2.5	146.9
E	1.8	147.6

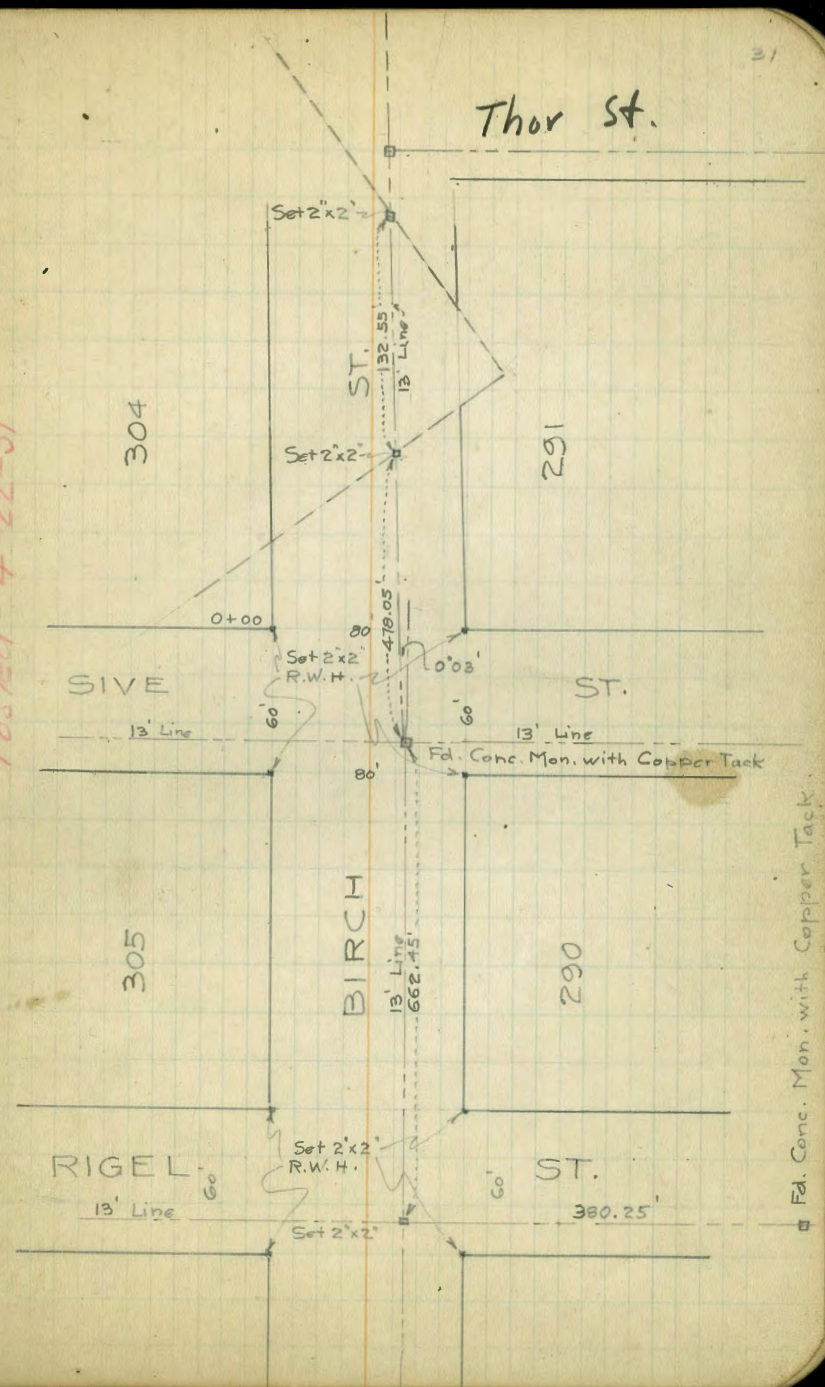
X-Section BIRCH from E.L. Boston to E.L. Thor

Birch 80' wide, 14' s.w., 13' Quarters

STA	+	H.I.	-	Elev
SE. B.P. National & 34 th				6.82
	1.79	8.61		
T.P.			5.52	3.09
	3.97	7.06 ✓		
			0.70	6.36 ✓
	0.22	6.58 ✓		
0+00	E.L. Boston			
	S.L. Birch			
			7.1	-0.5
0+53 ⁹⁰				
	S.L.			
			6.9	0.3
	S. Curb			
			6.8	
	S 1/4			
			6.8	
	E.L. Boston			
			6.8	-0.2
0+63 ⁹⁰	W. Curb Ploto			
	S.L.			
			6.7	6.1
	S. Curb			
			6.8	
	S 1/4			
			7.1	
	E			
			7.4	-0.8
	E.L. Boston			
			7.5	
0+73 ⁹⁰	W 1/4 Ploto			
	S.L.			
			7.3	-0.7
	S. Curb			
			7.0	
	S 1/4			
			7.3	
	E			
			7.6	-1.0
	N 1/4			
			7.8	

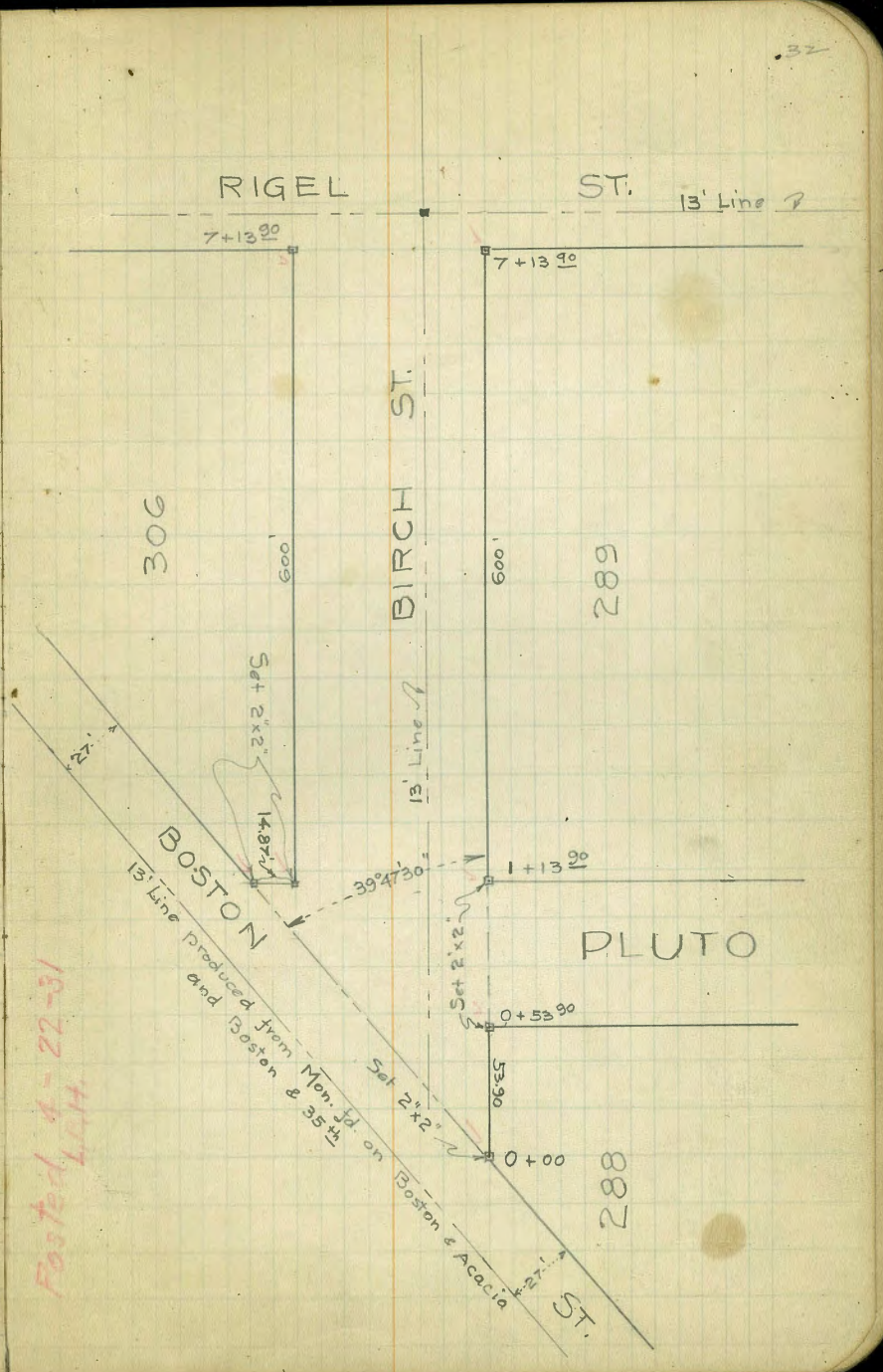
Plotted 9-29-28 - GBH

Posted - 4-22-31



Fd. Conc. Mon. with Copper Tack

STA		H.I.	-	Elev.
0+83 ⁹⁰	ϕ Pluto			
S.L.		7.3		-0.7
S.Curb		7.5		
S'⁄₄		7.7		
ϕ		8.2		-1.6
N'⁄₄		8.2		
E.L. Boston		8.2		-1.6
0+93 ⁹⁰	E'⁄₄ Pluto			
S.L.		8.1		-1.5
S.Curb		8.2		
S'⁄₄		8.2		
ϕ		8.1		-1.5
N'⁄₄		8.0		
E.L. Boston		8.0		-1.4
0+03 ⁹⁰	E. Curb Pluto			
S.L.		8.2		-1.6
S.Curb		8.2		
S'⁄₄		8.3		
ϕ		7.9		-1.3
N'⁄₄		7.9		
N.Curb		8.0		
E.L. Boston		8.6		-2.0



Routed 4-22-31
Left

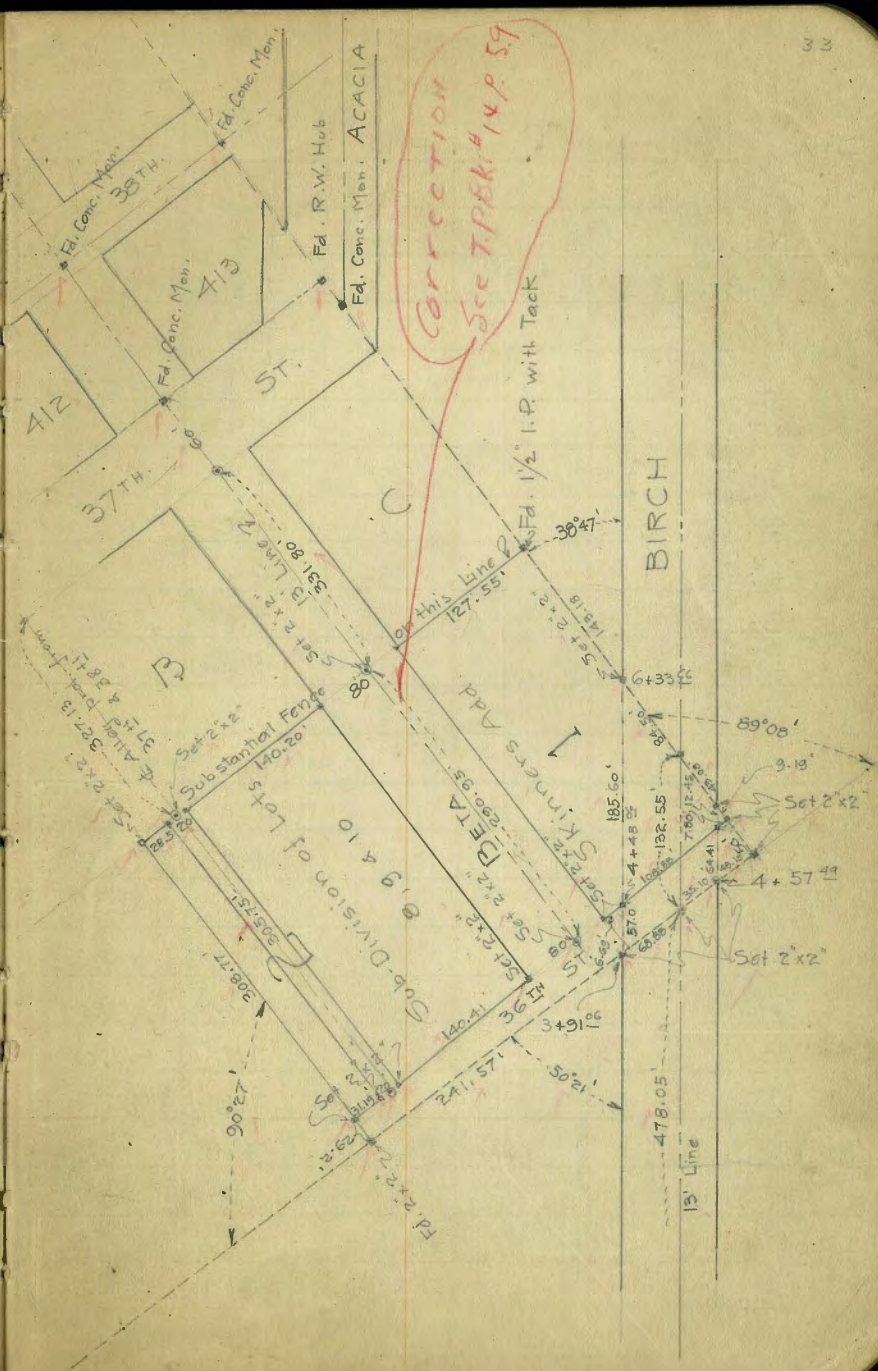
15' Line Produced from Men. Id. on Boston & 35th

PLUTO

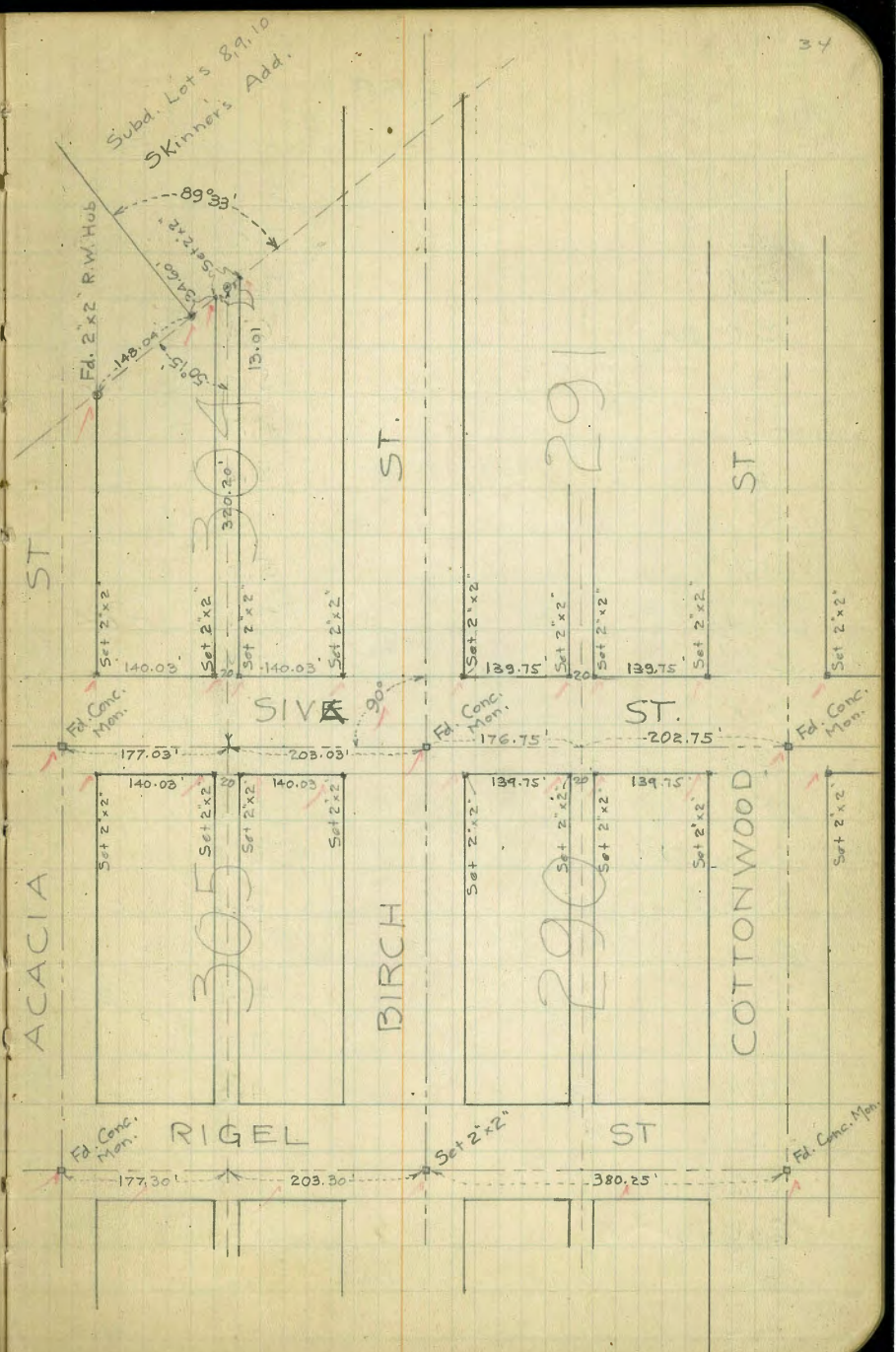
288

288

STA	H.I.	Elev.
1+13.90 E.L. Pluto		
S.L.	8.2	-1.6
S. Curb	8.3	
S/4	8.0	
☐	8.1	-1.5
N/4	8.0	
+8'	7.8	
N. Curb	6.7	
+6'	5.0	
N.L.	5.1	1.5
+14.87	5.1	
E.L. Boston		
1+50		
S.L.	8.3	-1.7
S. Curb	7.6	
+5'	7.1	
S/4	4.5	
☐	4.9	1.7
+6'	4.7	
+12'	6.9	
N/4	7.2	
N. Curb	7.0	
N.L.	7.4	-0.8

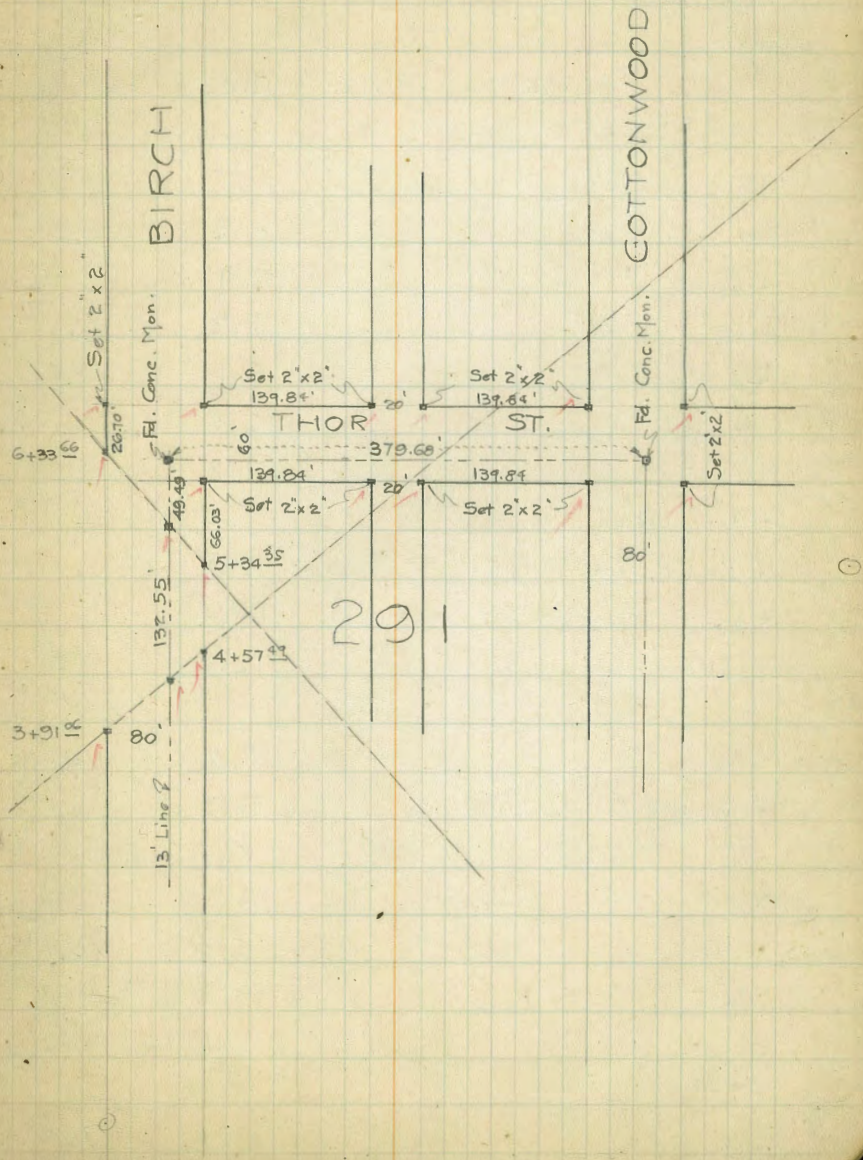


STA	+ H.I.	- Elev.
1+65		
N.L.	7.0	-0.4
N. Curb	7.3	
N ¹ / ₄	7.6	
☼	6.8	-0.2
+7'	4.7	
S ¹ / ₄	4.9	
S. Curb	4.6	
+3'	4.4	
S.L.	7.5	-0.9
+10'	8.4	
1+75		
+25'	8.3	
+13'	7.9	
S.L.	4.7	1.9
S. Curb	4.8	
+8'	5.4	
S ¹ / ₄	7.2	
☼	7.6	-1.0
N ¹ / ₄	7.3	
N. Curb	7.0	
N.L.	6.7	-0.1
1+90		
N.L.	6.6	0.0
N. Curb	6.3	



6.58

STA	+	H.I.	-	Elev.
N/4			6.8	
¢			7.4	- 0.8
S/4			7.4	
S.Curb			6.4	
S.L.			5.0	1.6
+18'			4.7	
+31'			8.0	
2+00				
+15'			5.0	
S.L.			7.1	- 0.5
S.Curb			7.3	
S/4			7.0	
¢			6.4	0.2
N/4			6.0	
N.Curb			6.4	
N.L.			6.3	0.3
2+50				
N.L.			4.4	2.2
N.Curb			4.7	
N/4			4.3	
¢			3.2	3.4
S/4			2.4	
S.Curb			1.7	
+9'			1.7	
S.L.			2.4	4.2



6.58

STA	+	H.I.	-	Elev.
+15'			4.0	
				6.36 ✓
	12.76	19.12 ✓	0.25	18.87 ✓
3+00				
+10'			7.5	
S.L.			8.3	10.8
S. Curb			7.9	
S 1/4			6.3	
⊕			6.1	13.0
+6'			6.6	
N 1/4			7.8	
+4'			8.0	
N. Curb			10.2	
+5'			11.6	
N.L.			12.0	7.1
3+25				
N.L.			8.8	10.3
N. Curb			7.3	
+11'			5.5	
N 1/4			5.5	
⊕			5.0	14.1
S 1/4			5.0	
S. Curb			5.8	
+7'			6.8	
S.L.			5.9	13.2

19.12

34

STA	+	H.I.	-	Elev.
3+38				
N.L.			3.1	16.0
N. Curb			4.8	
N 1/4			4.5	
⊕			4.3	14.8
S 1/4			4.5	
+12'			4.8	
S. Curb			5.2	
S.L.			4.8	14.3
4+00				
S.L.			2.4	16.7
S. Curb			2.3	
S 1/4			1.7	
⊕			1.1	18.0
N 1/4			0.9	
+8'			0.8	
+9'			0.0	
	5.87	24.74 ✓	10.39	14.35 ✓
N. Curb			5.7	
N.L.			4.7	20.0
4+50				
N.L.			2.8	21.9
N. Curb			4.4	
+6'			5.6	
N 1/4			5.8	

24.74

STA	+	H.I.	-	Elev.
¢			5.9	188
S/4			6.2	
S. Curb			7.0	
S.L.			7.3	17.4
S+00				
S.L.			7.0	12.7
S. Curb			7.3	
+9'			6.2	
S/4			6.1	
¢			5.7	19.0
N/4			5.6	
+7'			5.3	
+9'			4.5	
N. Curb			3.9	
N.L.			2.6	22.1
S+50				
N.L.			3.1	21.6
N. Curb			4.0	
+3'			4.3	
+6'			5.0	
N/4			5.0	
¢			5.3	19.4
S/4			5.5	
+5'			5.8	
S. Curb			7.3	

24.74

37

STA	+	H.I.	-	Elev.
+5'			7.3	
S.L.			6.7	18.0
6+00				
S.L.			5.7	19.0
S. Curb			5.3	
S/4			5.2	
¢			4.7	20.0
N/4			4.4	
N. Curb			3.9	
N.L.			3.3	21.4
6+50				
N.L.			2.8	21.9
N. Curb			3.3	
+3'			3.5	
+7'			4.2	
N/4			4.4	
¢			4.5	20.2
S/4			4.7	
+6'			4.8	
+8'			4.0	
S. Curb			3.9	
S.L.			3.9	20.8
7+13 ⁹⁰				
W.L. Rigel				
S.L.			4.5	20.2
S. Curb			4.7	

24.74

24.74

STA	+	H.I.	-	Elev.
+5'			4.7	
+7'			5.7	
S/4			5.7	
☐			5.8	18.9
N/4			5.4	
+6			5.8	
+12'			4.6	
N. Curb			4.6	
N.L.			4.7	20.0
7+23 ⁹⁰	W. Curb	Rigel		
N.L.			4.7	20.0
N. Curb			4.5	
+3'			4.8	
+5'			5.5	
N/4			6.2	
☐			6.0	18.7
S/4			6.3	
+5'			6.4	
+9'			5.2	
S. Curb			5.2	
S.L.			5.3	19.4
7+28				
S.L.			6.2	18.5
S. Curb			6.2	
+9'			6.4	

STA	+	H.I.	-	Elev.
S/4			6.4	
☐			6.2	18.5
N/4			6.2	
N. Curb			5.9	
N.L.			5.9	18.8
7+33 ⁹⁰	W/4	Rigel		
N.L.			6.1	18.6
N. Curb			6.4	
N/4			6.6	
☐			6.5	18.2
S/4			6.6	
S. Curb			6.7	
S.L.			6.6	18.1
7+43 ⁹⁰	☐	Rigel		
S.L.			6.8	17.9
S. Curb			6.8	
S/4			6.9	
☐			6.8	17.9
N/4			6.5	
N. Curb			6.3	
N.L.			6.1	18.6
7+53 ⁹⁰	E/4	Rigel		
N.L.			6.0	18.0
N. Curb			6.4	
N/4			6.7	

24.74

24.74

STA	+	H.I.	-	Elev.
			6.7	18.0
			7.1	
			6.9	
			6.8	17.9
7+63 ⁹⁰	E. Curb	Rigel		
			7.5	17.2
			7.2	
			7.2	
			7.3	17.4
			7.3	
			7.0	
			6.5	18.2
7+73 ⁹⁰	E. L.	Rigel		
			6.6	18.1
			7.5	
			7.6	
			7.8	16.9
			7.6	
			8.0	
			8.0	16.7
8+00				
			10.3	14.4
			10.0	
			9.4	
			8.7	

STA	+	H.I.	-	Elev.
			8.5	
			8.5	16.2
			8.2	
			8.3	
			7.8	
			7.5	
			6.4	18.3
8+50				
			7.3	17.4
			8.1	
			8.0	
			9.2	
			9.3	
			9.7	15.0
			9.5	
			9.4	
			10.4	
			10.7	14.0
9+00				
			10.6	14.1
			10.7	
			10.9	
			10.8	13.9
			10.6	
			10.6	

24.74

STA	+	H.I.	-	Elev.
N. Curb			10.3	
N.L.			10.5	14.2
	10.44	24.79	12.80	11.99
9+50				
N.L.			9.4	15.4
N. Curb			10.1	
+5'			10.4	
+8'			11.3	
N $\frac{1}{4}$			11.4	
☐			11.3	13.5
S $\frac{1}{4}$			11.8	
S. Curb			13.2	
S.L.			14.3	10.5
10+00				
S.L.			14.4	10.4
S. Curb			13.0	
S $\frac{1}{4}$			12.2	
☐			11.5	13.3
N $\frac{1}{4}$			11.3	
+9'			10.9	
N. Curb			9.7	
N.L.			8.9	15.9
10+45				
N.L.			10.6	14.2
N. Curb			11.3	

24.79

STA	+	H.I.	-	Elev.
N $\frac{1}{4}$			11.8	
☐			12.5	123
S $\frac{1}{4}$			13.2	
S. Curb			14.2	
S.L.			14.1	107
11+00				
S.L.			10.0	148
S. Curb			10.2	
S $\frac{1}{4}$			10.0	
☐			9.3	15.5
N $\frac{1}{4}$			8.7	
N. Curb			7.3	
N.L.			6.5	183
11+50				
N.L.			5.1	19.7
N. Curb			5.8	
N $\frac{1}{4}$			6.2	
☐			6.3	18.5
S $\frac{1}{4}$			5.9	
S. Curb			5.7	
S.L.			5.4	19.4
12+00				
S.L.			2.8	220
S. Curb			4.0	
S $\frac{1}{4}$			4.4	

24.79

41

15.17

STA	+	H.I.	-	Elev.
¢			4.4	20.4
N/4			3.9	
N. Curb			3.9	
N.L.			4.0	20.8
12+50				
N.L.			5.1	19.7
N. Curb			5.4	
N/4			5.5	
¢			5.7	19.1
S/4			6.0	
S. Curb			5.9	
S.L.			5.2	19.6
13+00				
S.L.			7.9	16.9
S. Curb			8.1	
S/4			8.3	
¢			8.3	16.5
N/4			8.3	
N. Curb			8.3	
N.L.			7.6	17.2
13+76 ³⁶				
W.L. Sive				
T.P.	3.18	15.17 ✓	11.40	3.77
Conc. Mon. 13 Line Sive & Birch			4.19	10.98 ✓

STA	+	H.I.	-	Elev.
N.L.			0.8	14.4
N. Curb			2.0	
N/4			2.5	
¢			3.0	12.2
S/4			3.4	
S. Curb			4.1	
S.L.			4.2	11.0
13+86 ³⁶				
W. Curb Sive				
S.L.			5.1	10.1
S. Curb			4.7	
S/4			3.9	
¢			3.1	12.1
N/4			3.0	
N. Curb			2.3	
N.L.			1.6	13.6
13+96 ³⁶				
W/4 Sive				
N.L.			2.1	13.1
N. Curb			2.7	
N/4			3.2	
¢			3.6	11.6
S/4			4.2	
S. Curb			4.9	
S.L.			5.4	9.8

15.17

15.17

STA	+	H.I.	-	Elev.
14+06 ³⁶	¢	Sire		
S.L.			5.7	9.5
S.Curb			5.2	
S ¹ / ₄			4.7	
¢			4.0	11.2
N ¹ / ₄			3.3	
N.Curb			3.3	
N.L.			2.5	12.7

STA	+	H.I.	-	Elev.
14+16 ³⁶	E ¹ / ₄	Sire		
N.L.			2.7	12.5
N.Curb			3.5	
N ¹ / ₄			4.0	
¢			4.6	10.6
S ¹ / ₄			5.4	
S.Curb			5.9	
S.L.			6.2	9.0

STA	+	H.I.	-	Elev.
14+26 ³⁶	E.Curb	Sire		
S.L.			6.9	8.3
S.Curb			6.5	
S ¹ / ₄			5.9	
¢			5.0	10.2
N ¹ / ₄			4.3	
N.Curb			3.6	
N.L.			2.7	12.5

STA	+	H.I.	-	Elev.
14+36 ³⁶	E.L.	Sire		
N.L.			3.3	11.9
N.Curb			4.0	
N ¹ / ₄			4.9	
¢			5.8	9.4
S ¹ / ₄			6.8	
S.Curb			7.2	
S.L.			7.7	7.5

STA	+	H.I.	-	Elev.
0+40				
S.L.			10.8	4.4
S.Curb			9.4	
S ¹ / ₄			8.4	
¢			7.2	8.0
N ¹ / ₄			5.9	
N.Curb			4.8	
N.L.			4.2	11.0

STA	+	H.I.	-	Elev.
1+00				
N.L.			6.8	8.4
N.Curb			6.3	
N ¹ / ₄			7.0	
¢			8.2	7.0
S ¹ / ₄			9.8	
S.Curb			10.3	
S.L.			9.9	5.3

15.17

STA	+	H.I.	-	Elev.
1+50				
S.L.			9.6	5.6
S. Curb			10.5	
S'g			9.9	
☐			9.7	5.5
N'g			9.3	
N. Curb			9.5	
N.L.			10.1	5.1
1+98				
N.L.			9.7	5.5
N. Curb			10.0	
N'g			10.5	
☐			10.5	4.7
S'g			10.3	4.9
S. Curb			10.2	5.0
S.L.			9.9	5.3
2+07				
S.L.			10.4	4.8
S. Curb			10.6	4.6
+2'			10.7	4.5
+5'			12.7	
S'g			12.9	
☐			14.3	0.9
N'g			14.7	
N. Curb			14.7	

15.17

43

STA	+	H.I.	-	Elev.
N.L.			14.4	0.8
+10'			14.2	
2+14				
+10'			15.0	
N.L.			15.0	0.2
N. Curb			14.8	
N'g			14.9	
☐			14.7	0.5
S'g			14.4	
S. Curb			15.1	0.1
S.L.			16.3	-1.1
+10'			15.8	
2+25				
+10'			16.0	
S.L.			15.1	0.0
S. Curb			14.9	0.2
S'g			14.8	
☐			12.3	2.9
N'g			12.2	
N. Curb			12.6	
N.L.			13.2	2.0
+10'			13.2	
2+30				
+10'			11.9	
N.L.			11.0	4.2

15.17

STA	+	H.I.	-	Elev.
N. Curb			10.8	
N ¹ / ₄			11.4	
☒			11.3	3.9
S ¹ / ₄			11.7	
+3'			11.8	
+10'			14.5	
S. Curb			12.2	3.0
S. L.			12.5	2.7
+5'			15.20	
+10'			15.5	
2+36				
+10'			12.3	
S. L.			11.0	4.2
S. Curb			10.8	4.4
+3'			14.5	
+9'			10.5	
S ¹ / ₄			10.4	
☒			10.1	5.1
N ¹ / ₄			9.8	
N. Curb			9.3	
N. L.			9.3	5.9
T.P.	6.31	10.08 ✓	5.89	4.19 ✓
2+41				
N. L.			4.3	5.8
N. Curb			4.5	

10.08

44

STA	+	H.I.	-	Elev.
N ¹ / ₄			4.7	
☒			4.7	5.4
S ¹ / ₄			4.7	
+5'			4.6	
+10'			9.2	
S. Curb			4.5	5.6
S. L.			4.4	5.7
3+00				
S. L.			4.9	5.2
S. Curb			5.4	4.7
+4'			8.6	1.5
+9'			5.3	
S ¹ / ₄			4.3	
☒			4.4	5.7
N ¹ / ₄			4.6	
N. Curb			4.9	
N. L.			4.5	5.6
3+50				
N. L.			5.0	5.1
N. Curb			4.6	
N ¹ / ₄			5.0	
☒			5.2	4.9
S ¹ / ₄			5.3	
+5'			5.1	
+10'			8.1	2.0

10.08

STA	+	H.I.	-	Elev.
S. Curb			4.8	5.3
S.L.			4.8	5.3
3+91 ⁰⁶				
S.L.			4.9	5.2
S. Curb			4.2	5.9
+6'			7.8	2.3
+10'			4.5	
S ¹ / ₄			4.6	
¢			4.7	5.4
N ¹ / ₄			4.8	
N. Curb			4.8	
N.L.			4.5	5.6
4+57 ⁴⁹				
N.L.			5.1	5.0
N. Curb			4.5	
N ¹ / ₄			4.4	
¢			5.0	5.1
S ¹ / ₄			5.2	
+4'			5.2	
+8'			7.3	2.7
S. Curb			5.0	5.1
S.L.			4.2	5.9
5+34 ³⁵				
S.L.			4.8	5.3
S. Curb			5.0	

10.08

45

STA	+	H.I.	-	Elev.
+6'			7.2	
+10'			5.0	
S ¹ / ₄			4.8	
¢			4.7	5.4
N ¹ / ₄			5.0	
N. Curb			4.9	
N.L.			4.7	5.4
6+00 ³⁸				
W.L. THOR				
N.L.			5.2	4.9
N. Curb			5.0	
N ¹ / ₄			5.0	
¢			4.9	5.2
S ¹ / ₄			5.1	
+4'			5.1	
+7'			7.2	
+10'			5.0	
S. Curb			4.8	5.3
S.L.			4.8	
6+10 ³⁸				
W. Curb Thor				
S.L.			4.5	5.6
S. Curb			4.5	
+2'			5.0	
+6'			7.2	
+9'			5.0	
S ¹ / ₄			5.0	

		10.08			
STA	+	H.I.	-	Elev.	
			4.6	5.5	
			4.9		
			4.7		
			4.9	5.2	
G+20 ³⁸	W 1/4	Thor			
			4.7	5.4	
			4.4		
			4.6		
			4.7	5.4	
			4.8		
			5.0		
			7.2		
			5.1		
			4.5		
			4.9	5.2	
G+30 ³⁸	ϕ	Thor			
			5.0	5.1	
			4.6		
			4.8		
			7.1		
			5.1		
			4.6		
			4.4	5.7	
			4.4		
			4.4		

		10.08		46	
STA	+	H.I.	-	Elev.	
			4.6	5.5	
G+40 ³⁸	E 1/4	Thor			
			4.5	5.6	
			4.2		
			3.9		
			3.9	6.2	
			4.6		
			4.2		
			7.9		
			4.7		
			4.9	5.2	
G+50 ³⁸	E. Curb	Thor			
			4.3	5.8	
			4.6		
			8.1		
			7.8		
			5.4		
			5.2		
			4.4		
			3.5	6.6	
			3.6		
			4.1		
			4.1	6.0	
G+60 ³⁸	E.L.	Thor			
			3.6	6.5	

1008

STA	+	H.I.	-	Elev.
N. Curb			4.0	
N 1/4			3.6	
¢			3.3	6.8
S 1/4			3.8	
S. Curb			4.1	
+3 ¢ 36" Culvert			3.96	6.12
Bottom "			7.31	2.77
S.L.			2.80	7.28
G+60 9 ³				
S. Curb Top			3.17	6.91
✓ Bott.			3.85	6.23
N. Curb Top			3.15	6.93
✓ Bott.			4.05	6.03

X- Section THOR from S.L. Birch to S.L. Cotton^{Wood}

60' wide, 10' S.W. 10' Quarters

5.21 9.40 ✓

0+00

W.L.			4.1	5.3
W. Curb			3.8	
W 1/4			4.3	
¢			4.4	5.0
E 1/4			4.3	
+8"			4.3	
E. curb			3.6	

Plotted 10-1-28
C.B.H.

Thor.

47

940

STA	+	H.I.	-	Elev.
E.L.			2.1	7.3
0+50				
E.L.			4.6	4.8
E. Curb			4.6	
E 1/4			4.6	
¢			4.3	5.1
W 1/4			4.8	
W. Curb			4.5	
W.L.			4.4	5.0
1+00				
W.L.			4.6	4.8
W. Curb			4.7	
W 1/4			4.8	
¢			4.6	4.8
E 1/4			4.9	
E. Curb			4.8	
E.L.			5.0	4.4
1+39 8 ⁹				
N.L. Alley				
E.L.			5.1	4.3
E. Curb			5.2	
E 1/4			5.3	
¢			4.7	4.7
W 1/4			4.5	
W. Curb			4.9	
W.L.			5.0	4.4

X-Section Beta St. from E.L. 37th to E.L. 36th
 80' Str. 14' S.W. 13' Quarter

STA		H.I.	Elev.
		11.00 ✓	4.19 ✓
0+00	E.L. 37 th	6.81	
	N.L.		4.2
	N. Curb		4.3
	N 1/4		4.6
	☐		4.7
	S 1/4		4.9
	S. Curb		4.7
	S.L.		4.8
0+10	E. Curb 37 th		
	S.L.		4.8
	S. Curb		4.7
	S 1/4		4.9
	☐		4.7
	N 1/4		4.4
	N. Curb		4.2
	N.L.		4.4
0+20	E 1/4 37 th		
	N.L.		4.6
	N. Curb		4.1
	N 1/4		4.5
	☐		4.7
	S 1/4		5.1
	S. Curb		5.1

Plotted 10/31/28
C.B.H.

STA		H.I.	Elev.
		11.00	
0+30	S.L. ☐ 37 th		
	S.L.		5.1
	S. Curb		4.7
	S 1/4		4.7
	☐		4.6
	N 1/4		4.6
	N. Curb		4.8
	N.L.		4.6
0+40	W 1/4 37 th		
	N.L.		4.6
	N. Curb		4.8
	N 1/4		4.9
	☐		4.8
	S 1/4		5.0
	S. Curb		5.1
	S.L.		5.2
0+50	W. Curb 37 th		
	S.L.		4.4
	S. Curb		4.3
	S 1/4		5.0
	☐		4.7
	N 1/4		4.9
	N. Curb		4.7
	N.L.		4.2

STA	+	H.I.	-	Elev.
0+60	W.L.	37 th		
		11.00		
N.L.			4.3	6.7
N.Curb			4.5	
N ¹ / ₄			4.7	
☼			4.5	6.5
S ¹ / ₄			4.5	
S.Curb			4.5	
S.L.			4.5	6.5
1+00				
S.L.			4.9	6.1
S.Curb			4.8	
S ¹ / ₄			4.7	
☼			4.5	6.5
N ¹ / ₄			4.7	
N.Curb			4.6	
N.L.			4.6	6.4
1+50				
N.L.			4.8	6.2
N.Curb			4.9	
N ¹ / ₄			5.1	
☼			4.8	6.2
S ¹ / ₄			5.1	
S.Curb			5.1	
S.L.			5.1	5.9

STA	+	H.I.	-	Elev.
2+00				
		11.00		
S.L.			5.1	5.9
S.Curb			5.1	
S ¹ / ₄			4.9	
☼			4.9	6.1
N ¹ / ₄			5.2	
N.Curb			4.8	
N.L.			4.9	6.1
2+50				
N.L.			4.8	6.2
N.Curb			4.7	
N ¹ / ₄			5.0	
☼			5.0	6.0
S ¹ / ₄			5.2	
S.Curb			5.3	
S.L.			5.3	5.7
3+00				
S.L.			5.3	5.7
S.Curb			5.4	
S ¹ / ₄			5.1	
☼			5.0	6.0
N ¹ / ₄			5.0	
N.Curb			5.0	
N.L.			4.8	6.2

11.00

STA	+	H.I.	-	Elev.
3+50				
N.L.			5.1	5.9
N.Curb			5.4	
N $\frac{1}{4}$			4.8	
☐			4.9	6.1
S $\frac{1}{4}$			4.8	
S.Curb			5.0	
S.L.			5.1	5.9

4+00

S.L.			5.0	6.0
S.Curb			4.9	
S $\frac{1}{4}$			4.8	
☐			4.6	6.4
N $\frac{1}{4}$			4.8	
N.Curb			5.3	
N.L.			5.2	5.8

4+50

N.L.			5.0	6.0
N.Curb			5.1	
N $\frac{1}{4}$			5.5	
☐			5.8	5.2
S $\frac{1}{4}$			6.0	
S.Curb			5.0	
S.L.			5.0	6.0

11.00

51

STA	+	H.I.	-	Elev.
5+00				
S.L.			6.1	4.9
S.Curb			5.5	
S $\frac{1}{4}$			5.2	
☐			5.2	5.8
N $\frac{1}{4}$			5.0	
N.Curb			5.0	
N.L.			4.8	6.2

5+50

N.L.			5.2	5.8
N.Curb			5.1	
N $\frac{1}{4}$			5.1	
☐			5.1	5.9
S $\frac{1}{4}$			5.5	
S.Curb			5.4	
S.L.			5.3	5.7

6+00

S.L.			5.5	5.5
S.Curb			5.9	
S $\frac{1}{4}$			5.7	5.3
☐			5.5	
N $\frac{1}{4}$			5.6	
N.Curb			5.7	5.3
N.L.			5.6	5.4

11.00

STA	+	H.I.	-	Elev.
6+8 ²⁵	E.L.	36 th		
N.L.			5.4	5.6
N. Curb			5.3	
N'/'a			5.6	
¢			5.0	6.0
S'/'a			5.5	
S. Curb			5.1	
S.L.			5.4	5.6

X-Section 36th St. from S.L. Beta to N.L. Skinners Add.

4.19 ✓

STA	+	H.I.	-	Elev.
0+00	S.L. Beta	6.56	10.75 ✓	
E.L.			5.1	5.7
+20			5.3	5.5
W.L.			5.1	5.7
0+40	¢ Beta		4.7	6.1
E.L.			4.7	6.1
W.L.			5.1	5.7
0+80	N.L. Beta		5.1	5.7
E.L.			5.1	5.7
W.L.			5.1	5.7

Plotted - 10-3-28
C.B.H.

Sketch page in this Book

36th
10.75

52

STA	+	H.I.	-	Elev.
1+50	E.L.		5.0	5.8
	+10'		5.7	
	+14'		4.4	
	W.L.		4.4	6.4
1+89	E.L.		4.7	6.1
	+12'		5.8	
	+21'		4.7	
	+28'		4.3	
	W.L.		4.6	6.2
	+30'		4.6	
2+10	T.P.		4.79	5.96
	S.13	11.09 ✓		
	E.L.		5.4	5.7
	+4'		6.0	
	+8'		7.4	
	+15'		5.5	
	+23'		4.9	
	+33'		6.6	
	+41'		7.9	
	+50'	Bottom of Creek	11.7	

11.09

STA	+	H.I.	-	Elev.
2+20 ⁴¹	S.L. Alley	Skinner's Add.		
+8'			4.4	
E.L.			6.8	4.3
+15'			8.5	
+18'	Bottom Creek		13.0	
+30'	"	"	12.0	0.9
+40'	Bottom Creek		12.2	
2+30 ⁴¹	♀ Alley	Skinner's Add.		
+23'	Top	Manhole	4.90	
+8'	"	Conc. Sewer	9.34	
	Botl.	" "	10.1	
E.L.	Top	" "	9.47	1.62
	Botl.	" "	10.7	
+31'	Top	" "	9.01	✓ 2.08
	Botl.	" "	10.0	
+49'	Top	Manhole	4.12	
2+40 ⁴¹	N.L. Alley	Skinner's Add.		
+40'			4.6	
+15'			10.5	
E.L.	Bottom Creek		10.5	0.6
+10'			9.9	
+15'			8.2	
+28'			7.7	
+31'			5.8	5.3
+50'			4.5	

11.09

53

STA	+	H.I.	-	Elev.
2+71 ⁶⁰	N.L. Alley	Skinner's Add.		
+41'	Bottom Creek		12.3	
+32'			11.1	
+13'			5.6	
E.L.			4.3	6.8
+29.2	W.L.		4.6	6.5

X-Section SIV A ST. from N.L. Cottonwood to
60' wide, 10' s.w. 10 Quarters

STA	+	H.I.	-	Elev.
Conc. Mon. 13' Line				10.98
	0.84	11.82	✓	
0+00	N.L. Cottonwood			
W.L.			8.3	3.5
W. Curb			8.5	
W ¹ / ₄			8.5	
☐			8.4	3.4
E ¹ / ₄			8.7	
E. Curb			8.6	
E.L.			8.5	3.3
0+50				
E.L.			8.2	3.6
E. Curb			8.3	
E ¹ / ₄			8.0	
☐			8.2	3.6
W ¹ / ₄			8.2	
W. Curb			8.3	
W.L.			8.0	3.8
1+00				
W.L.			8.6	3.2
W. Curb			8.5	
W ¹ / ₄			7.8	
☐			8.3	3.5
E ¹ / ₄			8.6	
E. Curb			8.0	

Plotted 10-3-28 - C.B.H.

N.L. Acacia

11.82

54

STA	+	H.I.	-	Elev.
			7.8	4.0
1+39 ⁷⁵	S.L. Alley			
E.L.			8.2	3.6
E. Curb			8.3	
E ¹ / ₄			8.0	
☐			7.9	3.9
W ¹ / ₄			8.2	
W. Curb			8.5	
W.L.			8.0	3.8
1+49 ⁷⁵	☐ Alley			
W.L.			7.4	4.6
W. Curb			8.1	
W ¹ / ₄			8.5	
☐			7.9	3.9
E ¹ / ₄			7.8	
E. Curb			7.8	
E.L.			7.9	3.9
1+59 ⁷⁵	N.L. Alley			
E.L.			8.0	3.8
E. Curb			7.6	
E ¹ / ₄			7.6	
☐			8.2	3.6
W ¹ / ₄			7.5	
W. Curb			7.5	
W.L.			7.5	4.3

1182

STA	+	H.I.	-	Elev.
2+00				
W.L.			6.5	5.3
W. Curb			7.0	
W/4			7.2	
☐			7.4	4.4
E/4			8.2	
E. Curb			8.0	
E.L.			7.8	4.0
2+50				
E.L.			5.7	6.1
E. Curb			5.2	
E/4			4.7	
☐			4.2	7.6
W/4			3.8	
W. Curb			3.5	
W.L.			3.2	8.6
2+99 ⁵⁰		S.L. Birch		
W.L.			0.8	11.0
W. Curb			1.7	
W/4			2.1	
☐			2.2	9.6
E/4			2.7	
E. Curb			3.5	
E.L.			4.3	7.5

55

STA	+	H.I.	-	Elev.
				10.98 ✓
		12.89	23.87 ✓	
0+00		N.L. Birch		
W.L.			9.5	14.4
W. Curb			10.2	
W/4			10.8	
☐			11.1	12.8
E/4			11.3	
E. Curb			11.3	
E.L.			12.0	7.8
0+50				
E.L.			9.8	14.1
E. Curb			9.1	
E/4			8.7	
☐			8.4	15.5
W/4			8.2	
W. Curb			7.8	
W.L.			7.6	16.3
1+00				
W.L.			5.3	18.6
W. Curb			6.0	
W/4			6.5	
☐			7.1	16.8
E/4			7.7	
E. Curb			8.5	

2387

2387

STA	+	H.I.	-	Elev.
			9.5	14.4
1+40 ⁰³		S.L. Alley		
			8.4	15.5
			7.9	
			6.9	
			5.8	18.1
			5.0	
			4.6	
			4.2	19.7
1+50 ⁰³				
			3.7	20.2
			4.2	
			4.5	
			5.4	18.5
			6.4	
			7.3	
			8.2	15.7
1+60 ⁰³				
			7.7	16.2
			7.2	
			6.0	
			5.6	18.3
			4.5	
			3.9	
			3.5	20.4

STA	+	H.I.	-	Elev.
2+00				
			1.0	22.9
			1.5	
			2.0	
			3.5	20.4
			4.1	
			4.6	
			5.1	18.8
2+50				
			0.91	22.96
		S.89	28.85	✓
			7.5	21.4
			7.3	
			6.7	
			6.7	22.2
			5.9	
			5.1	
			4.5	24.4
3+00 ⁰⁶		S.L. Acacia		
			4.2	24.7
			4.7	
			5.6	
			6.0	22.9
			5.9	
			6.0	22.11

28.85

STA	+	H.I.	-	Elev.
			5.4	235
3+14 ⁰⁶	S. Curb ³	Acacia		
	E.L.		4.8	241
	E. Curb		5.2	
	E ¹ / ₄		5.5	
	☐		5.7	23.2
	W ¹ / ₄		5.4	
	W. Curb		5.3	
	W.L.		4.3	24.6
3+27 ⁰⁶	S ¹ / ₄	Acacia		
	W.L.		3.7	25.2
	W. Curb		3.8	
	W ¹ / ₄		4.0	
	☐		4.4	24.5
	E ¹ / ₄		4.3	
	E. Curb		4.4	
	E.L.		4.5	24.4
3+40 ⁰⁶	☐	Acacia		
	E.L.		3.6	25.3
	E. Curb		3.5	
	E ¹ / ₄		3.4	
	☐	Top Manhole	3.49	25.36
	W ¹ / ₄		3.5	
	W. Curb		3.2	
	W.L.		3.1	25.8

28.85

57

STA	+	H.I.	-	Elev.
3+53 ⁰⁶	N ¹ / ₄	Acacia		
	W.L.		3.0	25.9
	W. Curb		3.0	
	W ¹ / ₄		3.3	
	☐		3.1	25.8
	E ¹ / ₄		3.6	
	E. Curb		3.3	
	E.L.		3.5	25.4
3+66 ⁰⁶	N. Curb	Acacia		
	E.L.		2.5	26.4
	E. Curb		2.4	
	E ¹ / ₄		2.3	
	☐		2.2	26.7
	W ¹ / ₄		2.2	
	W. Curb		2.2	
	W.L.		1.8	27.1
3+80 ⁰⁶	N.L.	Acacia		
	W.L.		1.8	27.1
	W. Curb		1.6	
	W ¹ / ₄		1.6	
	☐		1.7	27.2
	E ¹ / ₄		1.9	
	E. Curb		1.9	
	E.L.		1.9	27.0
	T.P.		0.66	28.19

STA	+	H.I.	-	Elev.
	7.30	35.49		
	"		3.94	31.55
	8.88	40.43		
			1.48	38.95
	6.41	45.36		
B.M. Top Hydr. 35 th Nat'l	44.19		1.17	44.19

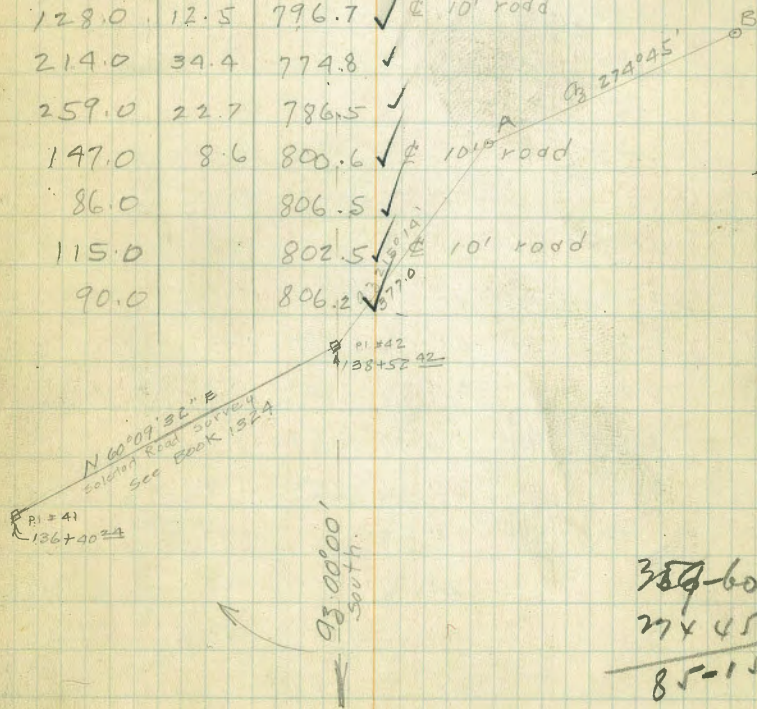
Topog of. Tot of Soledad Mountain

4/2/29 Loudon.

57

Az 0° = South Az 90° = West etc.

Sta	stadia	az	vert. L	Red.	H. I.	Hor Dist	Diff.	Elev
Inst at P.1 #42 Soledad Road Survey								
Ht. inst. = 5.1 oriented on P.1. #41.								
A	3.77	215°14'	+1°51'			377.0		
Ht. inst. 5.2								
Inst at A oriented on P.1. #42								
B	5.75	274°45'	+5°12'			570.0		809.2
Ht. inst. 5.2								
Inst at B oriented on A								
	5.75		-5°13'		814.3	220.0	36.0	773.2
1	2.26	63°-38'	-9°-18'			220.0	36.0	773.2
2	1.30	74°-17'	-11°-55'			124.5	26.3	782.9
3	1.29	131°-11'	-5°-37'			128.0	12.5	796.7
4	2.20	117°-30'	-9°-07'			214.0	34.4	774.8
5	2.60	153°-22'	-4°-21'	up 3'		259.0	22.7	786.5
6	1.47	153°-22'	-3°-22'			147.0	8.6	800.6
7	0.86	153°-22'		7.8		86.0		806.5
8	1.15	186°-21'		11.8		115.0		802.5
9	0.90	186°-21'		8.1		90.0		806.2



389-60
 774-45

 85-15

Sta.	Stadia	Az.	Vert. L	Rod	H.I.	Hor. Dist.	Diff.	Elev.
					814.3			809.2
10	1.90	186°-21'	-4°-15'	up 7'		189.0	21.1	788.1 ✓
11	1.70	218°-25'	-8°-04'	Up 6'		167.0	29.6	779.6 ✓
12	1.40	218°-25'	-8°-16'			137.0	20.0	789.2 ✓ # Bridal path
13	0.78	218°-25'		13.5		79.0		800.8 ✓ # 10' Road
14	0.44	218°-25'		8.4		44.0		805.9 ✓
15	0.20	261°-44'		6.8		20.0		807.5 ✓
16	0.80	261°-44'		10.7		80.0		803.6 ✓ # 10' Road
17	1.16	261°-44'	-4°-23'			116.0	8.4	800.8 ✓
18	1.62	261°-44'	-5°-20'	Up 5'		161.0	20.0	789.2 ✓
19	1.48	295°-05'	-4°-04'	Up 11'		148.0	21.5	787.7 ✓
20	1.11	295°-05'		9.0		111.0		805.3 ✓
21	0.72	295°-05'		8.4		72.0		805.9 ✓ # 10' Road
22	0.24	295°-05'		7.0		24.0		807.3 ✓
23	0.29	317°-57'		7.3		29.0		807.0 ✓
24	0.58	317°-57'		9.7		58.0		804.6 ✓ # 10' Road
25	1.78	317°-57'	-5°-20'	Up 6'		176.0	22.4	786.8 ✓
26	1.25	335°-24'	-7°-55'	Up 8'		123.0	25.1	784.1 ✓
27	0.50	335°-24'		10.5		50.0		803.9 ✓ # 10' Road
28	0.36	335°-24'		8.2		36.0		806.1 ✓
29	0.28	10°-15'		7.3		28.0		807.0 ✓
30	0.53	10°-15'	-9°-34'			52.0	8.6	800.6 ✓ # 10' Road
31	1.05	10°-15'	-10°-20'			103.0	18.5	779.0 ✓
32	1.46	10°-15'	-11°-50'	Up 4'		140.0	33.4	775.3 ✓

Sta.	Stadia	Az.	Vert. L	Red.	H. I.	Horz. Dist.	Diff.	Elev.
					814.3			809.2
33	1.45	29°-25'	-12°-45'	Up 6'			37.2	772.0 ✓
34	0.80	29°-25'	-9°-47'				13.4	795.8 ✓ Edge of Road
35	0.64	29°-25'	-10°-56'				11.9	797.3 ✓ E of Road
36	0.49	29°-25'	-11°-03'				9.2	800.0 ✓
37	0.20	29°-25'		7.0				807.3 ✓
38	0.26	43°-11'		8.3				806.0 ✓
39	0.85	43°-11'	-11°-37'				16.7	792.5 ✓ E 10' Road
40	1.03	43°-11'	-11°-00'				19.3	789.9 ✓
41	2.20	43°-11'	-13°-28'				50.0	759.2 ✓
42	1.35	63°-18'	-11°-25'				26.2	783.0 ✓
43	0.74	63°-18'	-11°-50'				14.9	794.3 ✓
44	0.23	63°-18'		8.3				806.0 ✓
45	0.25	96°-30'		8.0				806.3 ✓
46	0.92	96°-30'	-11°-04'				17.3	791.9 ✓
47	1.08	96°-30'	-11°-09'				20.6	788.6 ✓ E 10' Road
48	1.23	96°-30'	-10°-57'				23.0	786.2 ✓
49	1.81	96°-30'	-11°-23'				35.0	774.2 ✓
50	1.77	117°-30'	-8°-20'				25.4	783.8 ✓
51	1.30	117°-30'	-7°-53'				17.6	791.6 ✓
52	1.16	117°-30'	-8°-05'				16.1	793.1 ✓ E 10' Road
53	1.03	117°-30'	-8°-21'				14.8	794.4 ✓
54	0.39	117°-30'		8.8				805.5 ✓
55	0.62	139°-00'		9.1				805.2 ✓

809.2
9.2

	Stadia	Ag.	Vert. L	Rod.	H.I.	Horz. Dist.	diff	Elev.
					814.3			809.2
56	1.22	139°-00'	-4°-11'				8.8	800.4 ✓
57	1.35	153°-22'		12.2				802.1 ✓
58	0.88	153°-22'		8.0				806.3

BM	2.01	824.01		822.00				
	0.00	814.35	9.66	814.35				
"B"			5.10	809.25				

Jarvis

Indexed
LM

Levels for Proposed Water Line on
10' S. of R

	Elev.	
B.M. S.E. 7' ct. Inflow Willow	41.27	
1.39 42.66		
0-35 = E Willow on pave	6.38	36.28
0+00 = E.L. Willow		
0+00.3 = face of cb. Inlet 15' opening		
Top cb. on N. edge opening	6.39	36.27
Flowline of N. end opening	8.00	34.66
Fl. box 15' Rt.	12.02	30.62
0+17	5.7	37.0
8' Rt. = edge of ditch	5.9	36.8
12' Rt. = fl. end 3' con. iron pipe	12.34	30.32
0+50	7.4	35.3
4+00	9.4	33.3
4' R = Edge ditch	9.2	33.5
9' R = E ditch	12.0	30.7
1+50	11.1	31.6
2+00 = edge of ditch	13.0	29.7
4' R. E ditch	15.7	27.0
T.P.	12.75	29.91 ✓
0.46 30.37		
2+50	2.3	28.1
5' R = E ditch	5.3	25.1
3+00 = W.L. Evergreen		
3' L = edge ditch	4.5	26.9
Line	6.9	23.5
3' R = E ditch	7.5	22.9

Notes Reduced 9-29-21

Osborne
Rand
Sudmoe

Keats + Lowel

See sketch - page 67

63

Jarvis - Willow to Rosecrans

Sta.	+ HI	-	Elev.
35' E. = E Evergreen	30.37		
3' L = Edge ditch		6.1	24.3
Line		8.0	22.2
4' R = E ditch		9.1	21.3
0+00 = E.L. Evergreen			
3' L		7.5	22.9
Line		9.3	21.1
5' R = E ditch		10.4	20.0
0+50 = Edge of ditch		12.6	17.8
3' R = E ditch		15.0	15.2
T.P.		12.63	17.74 ✓
	2.04	19.78	
1+00 edge		3.0	16.8
4' R = E		5.7	14.1
1+46.5 = W. end 2' iron pipe			
Line		4.3	15.5
3' R = Flowline pipe		6.03	13.75
1+50		3.8	16.0
2+00		5.8	14.0
2+35		6.6	13.2
2+46			
1' L = edge ditch		7.0	12.8
Line		8.6	11.2
3' R = F.L. E. end 2' pipe		9.00	10.8

	+	HI	-	Eleo.
3+00 = W.L. Louost		19.78		
2' L = edge		8.3		11.5
Line		9.5		10.3
1' R = \oplus		9.7		10.1
35' E = \oplus				
1' L = edge		8.5		11.3
Line		10.6		09.2
2' R = \oplus		10.5		09.3
0+00 = E.L.				
1' L = edge		9.7		10.1
Line		10.3		09.5
2' R = \oplus		10.9		08.9
0+50				
1' L = edge		10.2		09.6
Line		11.3		08.5
2' R = \oplus		11.5		08.3
T.P.		✓	10.79	8.99 ✓
	2.81	11.80		
1+00				
1' L = edge		3.3		08.5
Line		4.4		07.9
2' R = \oplus		4.6		07.2
1+50 on edge		4.2		07.6
3' R = \oplus		5.2		06.6

Sta.	+	H.I.	-	Eleo.
		11.80		
2+00 on edge		4.8		07.0
2' R = \oplus ditch		6.5		05.3
2+01				
Line		4.1		07.7
2' R = F.L. of 2' iron pipe		6.53		05.27
2+16				
Line		5.0		06.8
2' R = F.L. E. end 2' pipe		6.70		05.1
2+18				
Line		5.1		06.7
2' R = \oplus ditch		7.0		09.8
2+50		5.4		06.9
7' R = edge		5.1		06.7
10' R = \oplus ditch		8.6		03.2
2+72.9 = Edge of pave.		7.15		09.65
Note: open ditch runs into Conc. Culvert 15' R.				
3+00 = W.L. Rosecrans pave		6.95		09.85
3+50 = \oplus		6.25		05.55
T.P.		4.99		6.81
T.P.		7.24		4.56
	5.14	9.80		6.41
		1		

to Keats for check
5+7 disk Inflow + Rosec.
3.39
3.34
- .05 diff.

Keats - Willow to Rosecrans
10's. of #

sta	+	H.I.	-	Elev.
BM.	S.W. Willow + Lowell			52.26
T.P.	1.66	53.92	10.26	43.66 ✓ Keats
	3.98	47.64 ✓		
0+35 = #	Willow on pave.	2.37		45.27
0+00 = E.L.	Willow on pave edge	3.54		49.10
0+08		2.8		44.8
0+50		5.5		42.1
0+65		4.2		43.2
0+82		10.2		37.2
1+00		11.7		35.9
1+50		13.9		33.7
T.P.		12.34		35.30 ✓
	0.18	35.48 ✓		
2+00		3.4		32.1
2+50		5.6		29.9
3+00 = W.L.	Evergreen	10.6		29.9
35' E. = #	"	12.5		28.0
T.P.		12.67		22.91 ✓
	1.01	23.82		
0+00 = E.L.		2.3		21.5
0+50		3.3		20.5
1+00		5.2		18.6
1+50		7.2		16.6
2+00		8.9		19.9

44.10
21.67

sta	+	H.I.	-	Elev.
		23.82		
2+50		10.1		13.7
3+00 = W.L.	Locust	10.8		13.0
35' E. = #		11.1		12.7
T.P.		10.77		13.05 ✓
	2.48	15.53		
0+00 = E.L.		3.5		12.0
0+50		4.5		11.0
1+00		4.7		10.8
1+50		5.2		10.3
2+00		5.7		09.8
2+50		6.6		08.9
2+73 =	Edge of pave	8.67		06.86
3+00 = W.L.	Rosecrans	8.69		06.87
3+50 = #	"	9.14		07.39
T.P.	Set from Jarvis line	8.73		6.80 -
	See page 64			6.81
				.01 error
T.P.	S.W. Lowell - for check	6.53		9.00 ✓

Lowell St. - Willow to Rosecrans

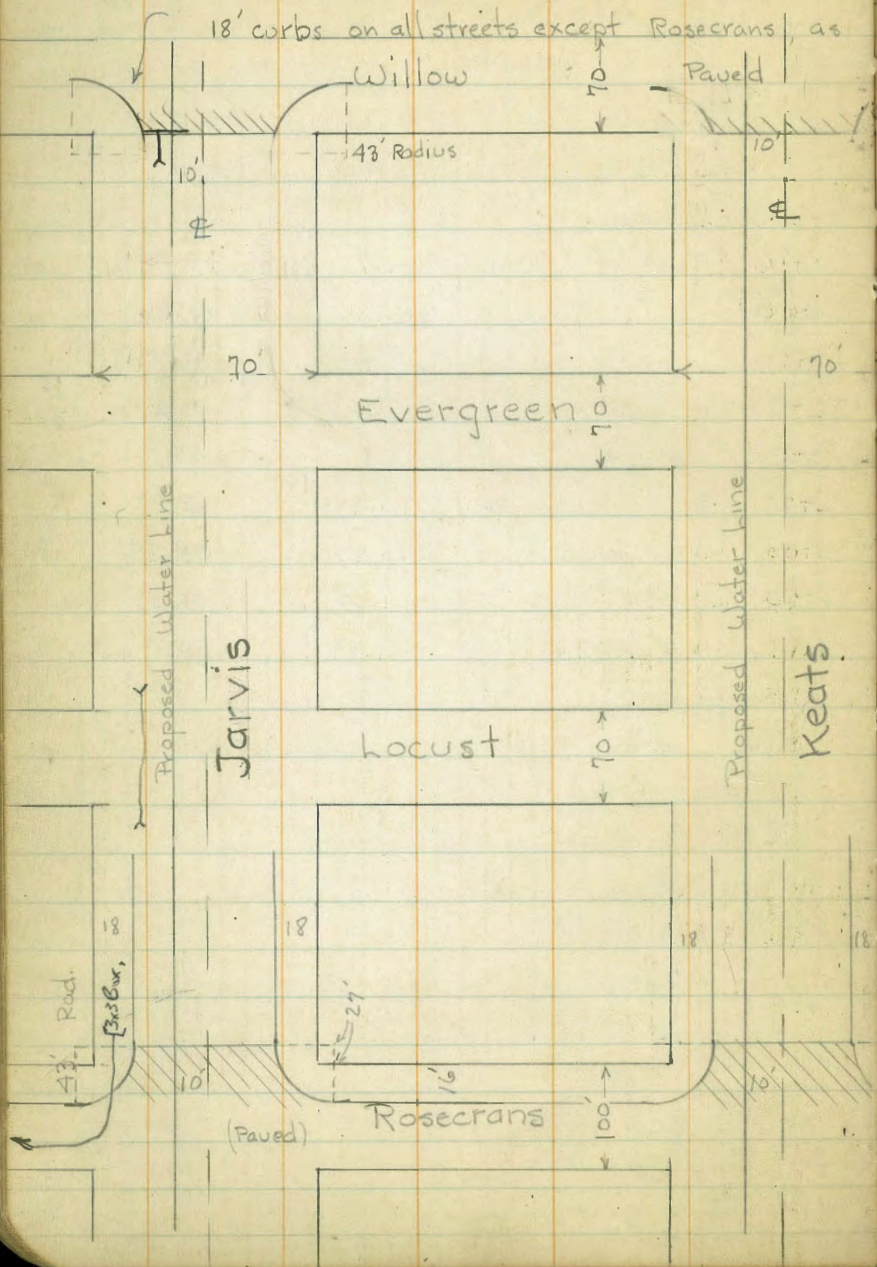
10' S. of #

sta.	+	H.I.	-	Elev.
B.M.	S.W. Willow + Lowell			52.26
	1.68	53.94		
0-35 = #	Willow on pave	1.63		52.31
0-22.4 = #	gate online	2.10		51.89
0+00 = E.L.	Willow on pave	3.19		50.75
Note: Line on pavement - looks like				
S. edge of thick oil & rock and N. edge of light oil strip to cb.				
0+50		7.2		46.7
1+00		11.2		42.7
		12.61		41.33
	0.37	41.70		
1+50		2.9		38.8
2+00		7.0		32.7
2+50		10.7		31.0
3+00 = W.L.	Evergreen	13.7		28.0
T.P.		12.89		28.81
	1.28	30.09		
35' E. = #		3.4		26.7
0+00 = E.L.		4.6		25.6
0+50		6.0		22.1
1+00		7.6		22.5
1+50		9.2		20.9
2+00		10.8		19.3
2+50		12.1		18.0
T.P.		12.17		17.92

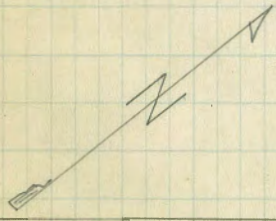
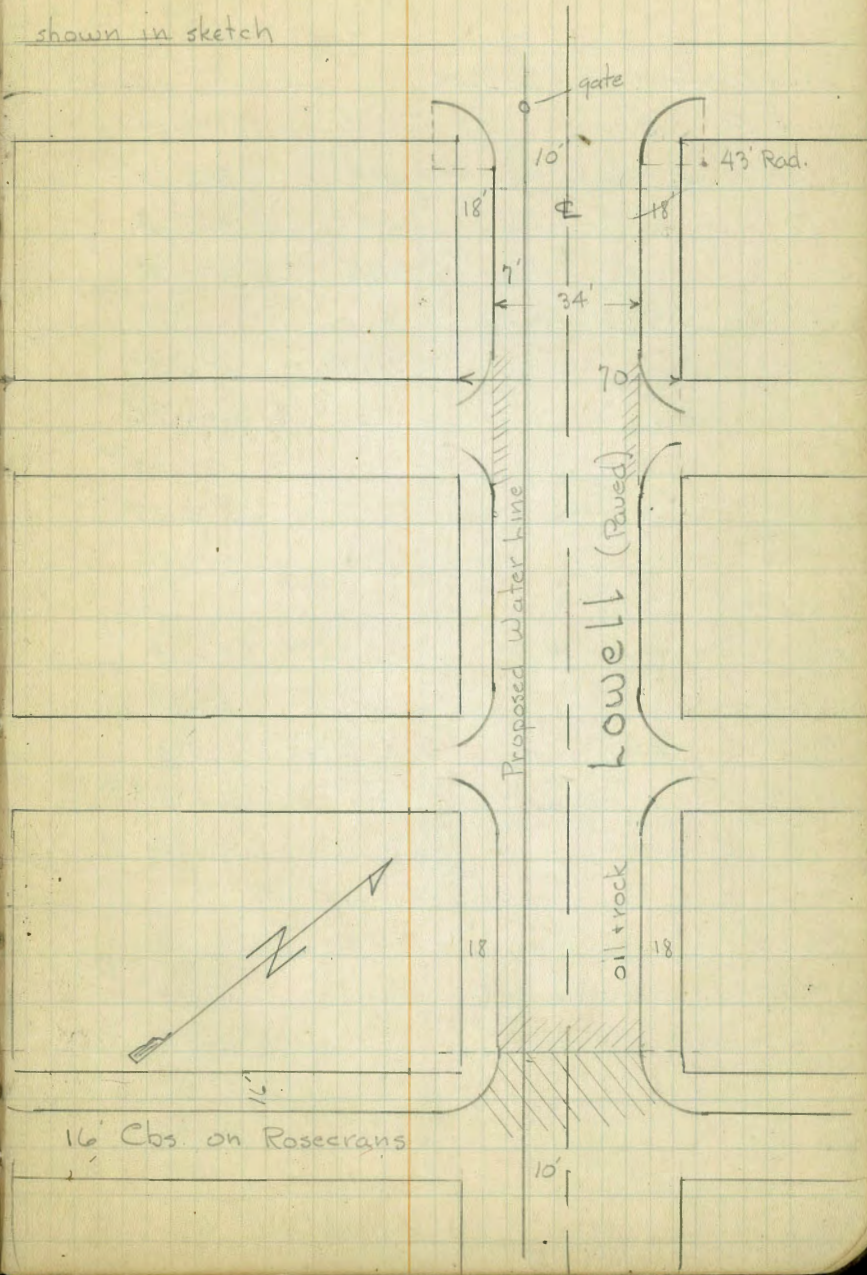
sta.	+	H.I.	-	Elev.
	0.95	18.87		
3+00 = W.L.	Locust	2.0		16.9
35' E. = #		2.9		16.0
0+00 = E.L.		3.8		15.1
0+50		4.8		14.1
1+00		6.0		12.9
1+50		7.2		11.7
2+00		8.4		10.5
2+50		9.8		09.1
2+73 =	Edge of Rosecrans - pave	10.40		08.97
3+00 = W.L.	Rosecrans - pave	10.33		08.52
3+50 = #	" "	9.65		09.22
T.P.	S.W. cor.	9.87		9.00 check
				9.00 ✓
See page 65				

PROPOSED WATER LINES

Notes - P. 63-to 66



shown in sketch

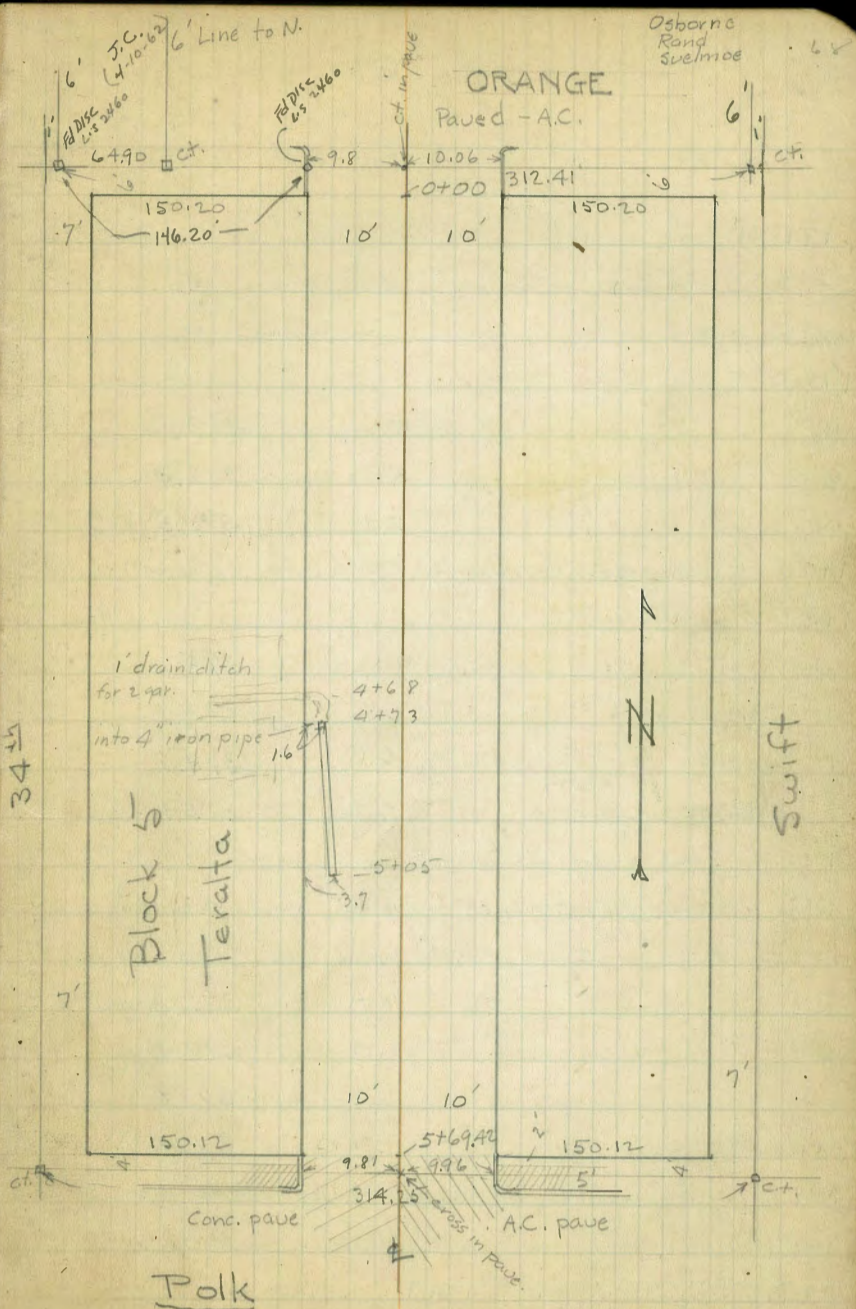


X-Sect. of Alley 20' Wide
 Block 5 Teralta - Bet. Orange & Polk + 34th & Swift.

9-16-41

	H.I.	Elev.	
B.M. B.P. 4.79	379.26	374.47	N.W. 34 th + Orange
0-14 ✓			
E. pav. s. gut. Orange (A.C.)	5.43	373.83	
C. "	5.48	373.78	
W. "	5.55	373.71	
0+00 = S.L. Orange			
W. top cb.	4.99	374.27	
W. pav. A.C.	5.00	374.26	
C. "	5.31	373.95 ✓	
E. " A.C.	4.99	374.27	
E top cb.	4.90	374.36	
0+28 ✓			
E	5.0	374.3	
C	5.1	374.2	
W.	4.9	374.4	
W to 7 = NE cor double gr. 16.2' wide facing N. dirt floor	4.9	374.4	Floor elev. ✓
0+44 - N. end board fence on E. 0.3 in alley ✓			
0+62 ✓			
W-0.6 - Sim. gr. dirt fl.	5.5	373.8	✓
W	5.5	373.8	
C	5.5	373.8	
E	5.4	373.9	
0+70 N. end Lath fence 0.8 in alley on W. ✓			

Reduced and Plotted
9-18-41 C.R.H.



379.26

0+71 p. pole on W. 12" dia 1.0 in alley ✓

0+94 S. end board fence on E. 0.1 back ✓

0+95 S. end lath " on W. 1.0 in alley ✓

1+00 ✓

E 5.6 373.7

C 5.9 373.4

W 5.8 373.5

1+20 N. end picket fence on W. 1.0 in Alley ✓

1+29 ✓

W 6.3 373.0

C 6.2 373.1

E 6.1 373.2

E + 4.5 (unused) E singar. dirt fl. 6.2 373.1 ✓

1+54 N. end board fence on E. 1.3 in ✓

1+60 S. end picket fence on W. 0.7 in ✓

1+65 ✓

E 6.4 372.9

C 6.2 373.1

W 6.3 373.0

W + 0.6 = E singar. dirt fl. 6.4 372.9 ✓

1+70 p. pole on W. 12" dia. W. edge 1.4 in alley. ✓

1+97 S. end board fence on E. 0.3 in ✓

1+97 N.W. cor board shed on E. 0.3 in ✓

379.26

69

2+00 ✓

W-15 7.5 371.8

W 7.1 372.2

C 6.8 372.5

E 7.1 372.2

2+12 = S.W. cor board shed on E. 0.5 in ✓

2+12 = N. end board fence on E. 0.5 in ✓

2+19 = S. " " " " 0.6 in ✓

2+20 = N. end " " " W 0.8 in ✓

2+51 = S " " " " 1.5 in ✓

2+51 = N.E. cor. board shed on W. 1.7 in ✓

E 7.1 372.2

C 7.4 371.9

C + 8.3 edge of shed 7.6 371.7

2+69 = S.E. cor. board shed on W. 1.4 in ✓

2+69 = p. pole on W. 12" dia. W. edge 2.3 in ✓

2+69 N. end board fence on W. 0.7 in ✓

T.P. nail in pole 6.13 373.13

167 374.80 -

3+18 - on E. 1' square Conc. block support for fence Cor.

top block 0.1 in 3.09 371.71 ✓

3+19 N. end Evergreen hedge twine fence on E. 0.2 in ✓

W + 0.3 = Board fence 4.0 370.8 ✓

C 4.0 370.8 ✓

E 3.9 370.9

374.80

3+44 = S. end board fence on W. online ✓
 3+47 = N. end doub. gar. on W. no apron.
 1.6 Back on conc. floor 4.16 370.64 ✓
 3+67 S. end doub. gar. on W.
 E 4.6 370.2
 C 4.8 370.0
 W. 4.7 370.1
 W+1.5 on Conc. floor of gar. 4.24 370.56
 3+69 p. pole on W. 12" dia. 1.2 in = w. edge ✓
 3+69 End. of hedge + fence on E. 0.3 in ✓
 4+00 ✓
 W-15 5.6 369.2 ^{Low spot}
 W. 5.0 369.8 ✓
 C 5.2 369.6
 E 5.1 369.7
 4+11 = Sin. gar. on W. dirt floor
 12.5 back (w=12.5) on floor 5.3 369.5 ✓
 4+44 = N. end doub. gar. on W. dirt floor. ✓
 E-20 5.7 369.1 ^{Low spot}
 E 5.5 369.3
 C 5.4 369.4
 W 5.4 369.4
 W+1.3 = gar. - on floor 5.5 369.3 ✓

374.80

4+66 S. end doub. gar. on W. ✓
 W-13 = on dirt floor 6.0 368.8 ✓
 4+68 p. pole on W. 10" dia. 1.4 in ✓
 4+68 = 1' drain ditch for 2 gar. on W. See sketch
 W-10 in flawline ditch 6.3 368.5 ✓
 W. " " " " 6.3 368.5
 W+2' " " " " at bend 6.3 368.5
 W+4 5.7 369.1
 C 5.6 369.2
 E 5.6 369.2
 E+20 5.6 369.2
 4+73 = 4" ^{N. end} pipe for drain on W.
 W+1.6 = f.L. of pipe 6.40 368.40 ✓
 4+74 = N. end 3 car gar. on W. Conc. floor - no apron.
 W-0.2 on Conc. floor 5.93 368.87 ✓
 4+92 = 4" doub. gar. on E. + Conc. apron 8' wide at alley ^{widens out to gar.}
 E-29.3 = Conc. floor gar. 4.98 369.82 ✓
 E-2.2 = edge Conc apron 5.55 368.25 ✓
 E 5.7 369.1
 C 5.8 369.0
 W 6.1 368.7
 4+96 S. end 3 car gar. on E.
 W-0.2 on Conc. floor 6.04 368.76 ✓
 5+05 = S. end 4" pipe on W.
 W+3.7 = f.L. pipe 6.28 368.52 ✓

374.80

√ 5+30			
W	7.0	367.8	
C	6.1	368.7	
E	6.3	368.5	
√ 5+55			
F	6.8	368.0	
C	7.2	367.6	
W	7.2	367.6	
√ 5+69.42 = N.L. Polk			
W top cb	8.14	366.66	
W gut on Conc. pav.	8.51	366.29	
C " " "	8.49	366.31 ✓	
E gut on A.C. pav.	8.20	366.60	
2' of curb broken out to edge of E walk. - Top at end	7.92	366.88	
√ 5+76.42 = N. gut. of Polk			
E	8.33	366.47	
C	8.68	366.12	
W	8.82	365.98	
T.P.	2.29	272.51	
6.68	279.19		
	4.72	274.47	
B.P. N.W. 34 th + Orange		274.47 ✓	

Additional "Outs" on Alley S. Teralta.

Nail in pole	496	378.09	373.13
0+70			
W-20		4.7	373.4
E+20		4.1	374.0
1+10			
E-20		4.9	373.2
W+20		4.7	373.4
1+29			
W-1' = 4' Cem. walk		5.05	373.04
E +20'		5.1	373.0
1+60			
E-20		5.0	373.1
W+10 - on com. walk		5.15	372.94
1+75			
E-15		5.6	372.5
1+95			
E-15		6.0	372.1
2+25			
E-15		6.1	372.0
W+15		6.5	371.6
T.P.	3.31	376.44	4.96
2+70			
W-20		5.5	370.9
E+20		4.4	372.0

376.44

3+00		
E-10	4.9	371.5
W+20	5.7	370.7
3+30		
W-20	6.2	370.2
E+5	6.1	370.3
3+44		
W-13	6.5	369.9
W-4	6.6	369.8

indexed
c.s.k.

22 87
229.79
22, 6

33.
2, 61
330
330.
33.
30.

3.
? , 1
?
?

332.7,

? ,
332.0
332.

32.

32

4

33598

1+25

-10	30	333.0
N	28	333.2
Z	32	332.7
F	31	332.9
+10	31	332.9

1+50

-10	28	333.2
-1.9 = Picket Fence		
F	27	333.3
Z	28	333.2
+7.2 = Sty Board Fence		
N	26	333.4
+10	28	333.2

1+65

F-1.9 = 3.5 Conc Walk	2.45	333.53
TP	6.02	<u>339.36</u> 2.64 333.34

1+79

N+1.1 = Fly 24' Conc Walk	5.78	333.58
N on Walk	5.82	333.54

1+81

N-0.1 = Sty Board Fence		
+10		
-5	5.3	334.1
N	5.2	334.2

33936

Z	56	333.8
F	55	333.9
+1.5 = Nly Picket Fence		
+10	55	333.9

2+01

N = Sty Shed		
2+04		

F-9.1 = Sty Do Garage	5.32	334.04
Conc F floor		
2+19		

N+0.2 = Nly Shed		
N-0.3 = Sty Board Fence		

2+20

F-9.5 = Nly Do Garage	5.30	334.06
Conc F floor		
2+28		

N+1.0 = Nly Porter Pole		
2+50		

-10	5.1	334.3
F	4.9	334.5
Z	4.9	334.5
N	4.8	334.6

-0.3 = Nly Board Fence		
2+51		

N-0.2 = Sty Garage West Entrance		
2+63		

N-0.3 = Nly Garage West Entrance		
----------------------------------	--	--

33936

2+66

N+0.5 = Sly Board Fence

3+0

-0.1 = Sly Corq Metal Shed

N 4.4 335.0

+0.2 = Nly Board Fence

S 0.7 Man Hole Rim 4.6 334.8

F = Sly Lot 4 Fence 4.2 335.2

+10 4.3 335.1

3+10.5

N = Nly Corq Shed

3+11.5

N = 2.22 Conc Walk 4.09 335.32

3+13

N = Sly Brick Tile Wall

3+15.0

-10 5.4 Picket Fence 4.3 335.1

-0.8 = Nly Lot 4 Fence

F 4.0 335.4

S+7.3 = Sly Shed 3.9 335.5

N = Nly Brick Tile Wall 4.2 335.2

3+62

N+8.2 = Nly Power Pole

N+0.3 = Nly Shed = Sly + Fly Hedge

75

33936

3+63

-10 4.0 335.4

N = Bottom 1 Drainage Ditch 4.4 335.0

+2 3.6 335.8

S 3.8 335.6

F 4.0 335.4

+10 4.1 335.3

JP 5.50 346.49 3.87 335.99

4+0

-10 6.0 335.5

-1.8 = Picket Fence

F 5.4 336.1

S 5.4 336.1

+5 5.3 336.2

+6.3 = Fly + Nly Hedge

+7.3 = Sly Wire Fence

N = Bottom 1 Drainage Ditch 6.1 335.4

+10 6.2 335.3

4+25

-10 5.5 336.0

-5 5.5 336.0

N 5.2 336.3

S 5.2 336.3

F 5.5 336.0

+1.5 = Nly 1.6 Conc. Walk 5.50 335.99

341.49

4+50

-10 = Wly Picket Fence		
F	5.3	336.2
L	5.3	336.2
+72 = Wly Wire Fence		
W	5.3	336.2
+10	5.6	335.9

4+79

F-20 = Sly Lot's Fence		
-10	5.6	335.9

4+90

W	5.2	336.3
+0.1 = Sly Shed		
L	5.3	336.2
F	5.1	336.4
+10 = Wly Lot's Fence		
+10	5.4	336.1

5+0

-10	5.2	336.3
-1.3 = Sly Wire Fence		
F	5.1	336.4
L	5.0	336.4
+4.2 = Wly Power Pole		
+5	4.9	336.6
+72 = Wly Shed		

76

341.49

W on Sly Conc Drive	5.09	336.40
+10 " " "	4.96	336.53

5+02

W+0.2 = Break Conc Drive	5.33	336.16
W-10 " " "	5.25	336.24

5+13

W+0.4 = Fly Conc Drive	5.04	336.45
W-9.4 = Sly Car Garage Conc Floor	4.71	336.78

5+39

W+0.6 = Fly Conc Drive	4.99	336.50
W-9.4 = Wly 3 Car Garage Conc Floor	4.76	336.73

5+49

-10 = Wly Conc Drive	5.04	336.45
W " " "	5.05	336.44

+0.6 = Fly Wly Conc Dr.	5.05	336.44
L	4.9	336.6

F	4.9	336.6
+10	5.2	336.3

5+50

W+0.2 = Sly Garage North Entrance		
	5.60	

F-0.7 = Wly Wire Fence		
	5.67	

-4.5 = Wly Frame House	5.3	336.2
F	5.3	336.2

341.49

±		5.0	336.0
H	= W. Ely Garage N Entrance Brick Floor 5+87	5.2	336.3
-10		5.9	335.6
W		5.8	335.7
±		6.3	335.2
+2		6.3	335.2
+5		5.5	336.0
F		5.4	336.1
+4.5	= W. Ely Frame House 5+99	5.4	336.1
-10		5.8	335.7
F		5.8	335.7
+3		5.8	335.7
+6		8.2	333.3
±		8.2	333.3
H		8.1	333.4

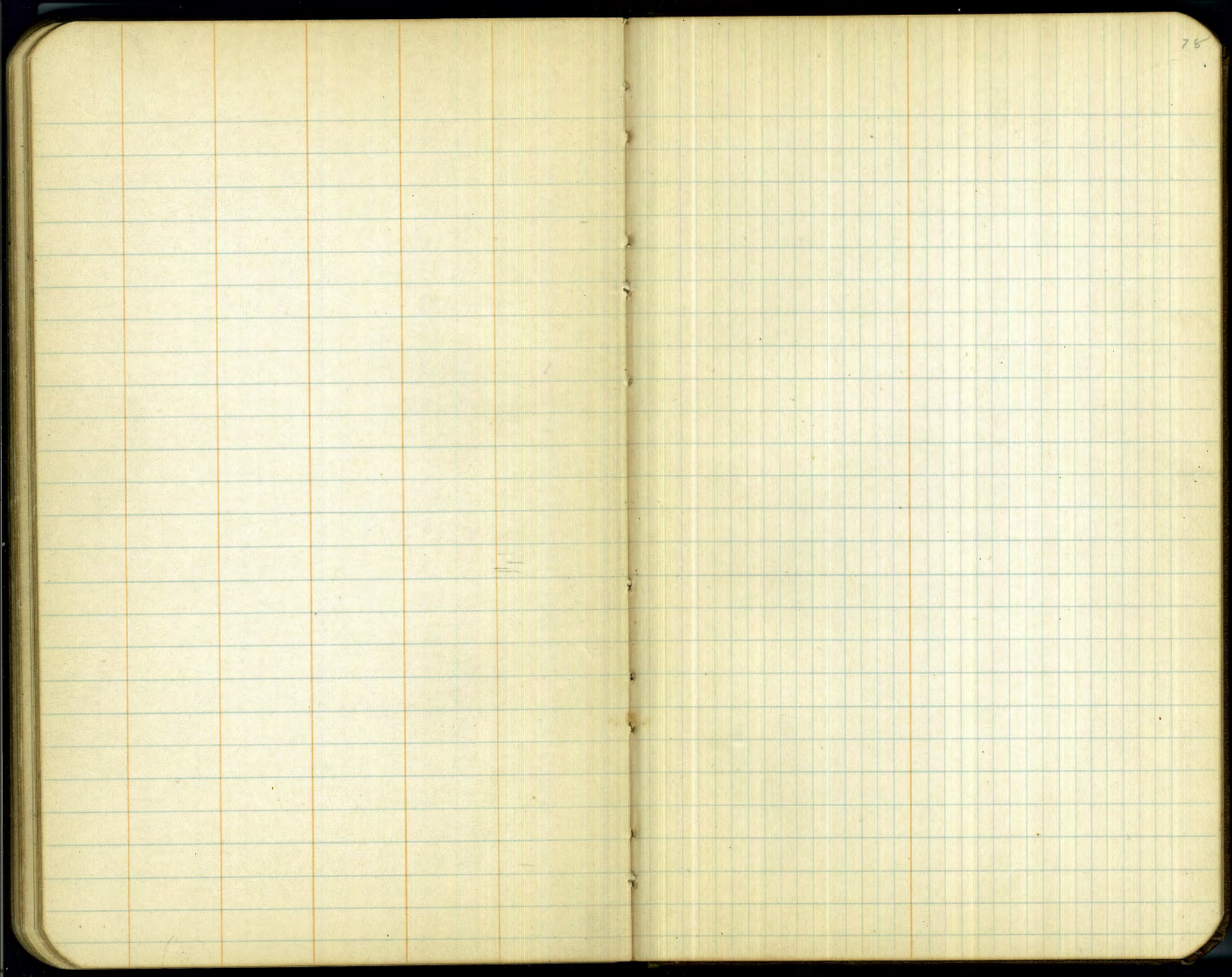
6+00.5 = S. Ely Dwight

H	TopC6	8.04	333.45
H	07	8.25	333.24
±		8.38	333.11
F	07 Pav. 09	8.21	333.28
F	TopC6	8.12	333.37

6+10.5 = S Carb of Dwight

F	07 Pav. 09	9.02	332.47
±	" "	8.98	332.51
H	" "	8.87	332.62

see 1762 p 59

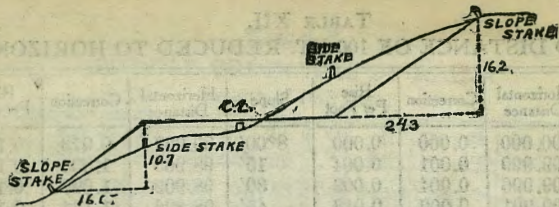


Flow Line Eley on M.H.
Brant & Barnson & Nutmeg & Brant

1-22-27
mills

79

B.M.	0.47	187.26	186.79	Boltin C.N.E. Brant & Barnson	10.4
M.H. & Brant & Barnson		5.16	182.09	Flow Line	4.9
1/4 Nutmeg St No M.H.		13.7	171.56	Top pic.	13.7



DISTANCES FROM SIDE STAKES FOR CROSS-SECTIONING.

SLOPE 1 1/2 TO 1. ROADWAY OF ANY WIDTH.

	0	.1	.2	.3	.4	.5	.6	.7	.8	.9	
0	0.00	0.15	0.30	0.45	0.60	0.75	0.90	1.05	1.20	1.35	0
1	1.50	1.65	1.80	1.95	2.10	2.25	2.40	2.55	2.70	2.85	1
2	3.00	3.15	3.30	3.45	3.60	3.75	3.90	4.05	4.20	4.35	2
3	4.50	4.65	4.80	4.95	5.10	5.25	5.40	5.55	5.70	5.85	3
4	6.00	6.15	6.30	6.45	6.60	6.75	6.90	7.05	7.20	7.35	4
5	7.50	7.65	7.80	7.95	8.10	8.25	8.40	8.55	8.70	8.85	5
6	9.00	9.15	9.30	9.45	9.60	9.75	9.90	10.05	10.20	10.35	6
7	10.50	10.65	10.80	10.95	11.10	11.25	11.40	11.55	11.70	11.85	7
8	12.00	12.15	12.30	12.45	12.60	12.75	12.90	13.05	13.20	13.35	8
9	13.50	13.65	13.80	13.95	14.10	14.25	14.40	14.55	14.70	14.85	9
10	15.00	15.15	15.30	15.45	15.60	15.75	15.90	16.05	16.20	16.35	10
11	16.50	16.65	16.80	16.95	17.10	17.25	17.40	17.55	17.70	17.85	11
12	18.00	18.15	18.30	18.45	18.60	18.75	18.90	19.05	19.20	19.35	12
13	19.50	19.65	19.80	19.95	20.10	20.25	20.40	20.55	20.70	20.85	13
14	21.00	21.15	21.30	21.45	21.60	21.75	21.90	22.05	22.20	22.35	14
15	22.50	22.65	22.80	22.95	23.10	23.25	23.40	23.55	23.70	23.85	15
16	24.00	24.15	24.30	24.45	24.60	24.75	24.90	25.05	25.20	25.35	16
17	25.50	25.65	25.80	25.95	26.10	26.25	26.40	26.55	26.70	26.85	17
18	27.00	27.15	27.30	27.45	27.60	27.75	27.90	28.05	28.20	28.35	18
19	28.50	28.65	28.80	28.95	29.10	29.25	29.40	29.55	29.70	29.85	19
20	30.00	30.15	30.30	30.45	30.60	30.75	30.90	31.05	31.20	31.35	20
21	31.50	31.65	31.80	31.95	32.10	32.25	32.40	32.55	32.70	32.85	21
22	33.00	33.15	33.30	33.45	33.60	33.75	33.90	34.05	34.20	34.35	22
23	34.50	34.65	34.80	34.95	35.10	35.25	35.40	35.55	35.70	35.85	23
24	36.00	36.15	36.30	36.45	36.60	36.75	36.90	37.05	37.20	37.35	24
25	37.50	37.65	37.80	37.95	38.10	38.25	38.40	38.55	38.70	38.85	25
26	39.00	39.15	39.30	39.45	39.60	39.75	39.90	40.05	40.20	40.35	26
27	40.50	40.65	40.80	40.95	41.10	41.25	41.40	41.55	41.70	41.85	27
28	42.00	42.15	42.30	42.45	42.60	42.75	42.90	43.05	43.20	43.35	28
29	43.50	43.65	43.80	43.95	44.10	44.25	44.40	44.55	44.70	44.85	29
30	45.00	45.15	45.30	45.45	45.60	45.75	45.90	46.05	46.20	46.35	30
31	46.50	46.65	46.80	46.95	47.10	47.25	47.40	47.55	47.70	47.85	31
32	48.00	48.15	48.30	48.45	48.60	48.75	48.90	49.05	49.20	49.35	32
33	49.50	49.65	49.80	49.95	50.10	50.25	50.40	50.55	50.70	50.85	33
34	51.00	51.15	51.30	51.45	51.60	51.75	51.90	52.05	52.20	52.35	34
35	52.50	52.65	52.80	52.95	53.10	53.25	53.40	53.55	53.70	53.85	35
36	54.00	54.15	54.30	54.45	54.60	54.75	54.90	55.05	55.20	55.35	36
37	55.50	55.65	55.80	55.95	56.10	56.25	56.40	56.55	56.70	56.85	37
38	57.00	57.15	57.30	57.45	57.60	57.75	57.90	58.05	58.20	58.35	38
39	58.50	58.65	58.80	58.95	59.10	59.25	59.40	59.55	59.70	59.85	39
40	60.00	60.15	60.30	60.45	60.60	60.75	60.90	61.05	61.20	61.35	40
41	61.50	61.65	61.80	61.95	62.10	62.25	62.40	62.55	62.70	62.85	41
42	63.00	63.15	63.30	63.45	63.60	63.75	63.90	64.05	64.20	64.35	42
43	64.50	64.65	64.80	64.95	65.10	65.25	65.40	65.55	65.70	65.85	43
44	66.00	66.15	66.30	66.45	66.60	66.75	66.90	67.05	67.20	67.35	44
45	67.50	67.65	67.80	67.95	68.10	68.25	68.40	68.55	68.70	68.85	45
46	69.00	69.15	69.30	69.45	69.60	69.75	69.90	70.05	70.20	70.35	46
47	70.50	70.65	70.80	70.95	71.10	71.25	71.40	71.55	71.70	71.85	47
48	72.00	72.15	72.30	72.45	72.60	72.75	72.90	73.05	73.20	73.35	48
49	73.50	73.65	73.80	73.95	74.10	74.25	74.40	74.55	74.70	74.85	49
50	75.00	75.15	75.30	75.45	75.60	75.75	75.90	76.05	76.20	76.35	50

Computed by L. Leland Locke.

180
60-09-32
719-50-28

379.50
80.00
2799.50
149.75
10
139.75

149.75
53.00
202.75

149.75
27.00
176.75
202.75
379.50

380.06
300.06
150
20
280.06

150.03
53
203.03
150.03
27.00
177.03

0+60
2 31.80
3+91.80
290.95
6+829.5

380.60
300.60
150.30
53.00
203.30

150.30
27
177.30

143.18
84.50
43.08
9.19
279.95



0°52'

50
26
13

50.00
29.20
20.80

27.8
20.0
140.
80.
125.8

393.6

$\tan 0°52' = \frac{20.80}{x}$

$x = 20.80 \cdot \frac{100}{\sin 0°52'}$

2080000 ÷

1513

632.88

327.13

305.75

5.1 -
0.0 +
9.66
2.01

154.55
27.00
127.55

163.80
77.70
141.50

48.15
35.10
68.88
152.13



38
65
93

10.98
+ 0.84
11.82

10.98
12.89

23.87
0.91
22.96

5.89

28.85 ✓

0.66

28.19 ✓

7.30

35.49

- 3.94

31.55

+ 8.88

40.43

- 1.48

38.95

6.41

45.36

1.17

44.19

4.19
6.81

11.00

4.19

6.56

10.75

- 4.79

5.96

5.13

11.09

160.03
140.03
300.06

0+60

3 31.80

2 90.95

6+ 82.75

108.88 ✓

6.69 ✓

7.80 ✓

123.37

48.15 ✓

35.10 ✓

68.88 ✓

241.57 ✓

393.70 ✓

34.60 ✓

359.10 ✓

26.04 ✓

333.08 ✓

- 123.37

S.L.

209.71 ✓

13.01

Alley @

222.72 ✓

90.13.01

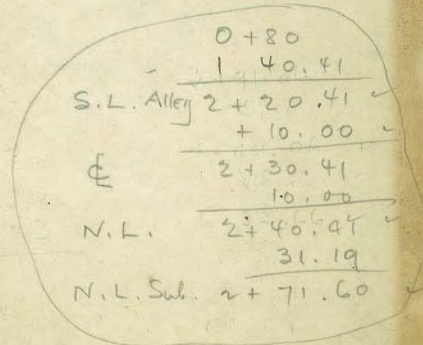
N.L.

235.73 ✓

34.60

N.L. Sub.

270.33 ✓



0+80

1 40.41

S.L. Alley 2+ 20.41 ✓

+ 10.00 ✓

@

2+ 30.41

10.00

N.L.

2+ 40.41 ✓

31.19

N.L. Sub.

2+ 71.60