

EL CERRITO HEIGHTS

No 2.

1180

MASTY

FIELD BOOK

No. 385

Our Leather Bound Engineers Note Books are carried in the following rulings:

No. 380 LEVEL BOOK. Left and Right Hand Page the same as Left Hand Page of this Book.

No. 382 FIELD BOOK. Left Hand Page as in this Book, Right Hand Page 4 x 4 to the inch, Center Line Red.

No. 384 MINING TRANSIT BOOK. Left Hand Page as in this Book, Right Hand Page 8x8 to the inch, Center Line Red.

No. 385 FIELD BOOK. Left Hand Page as in this Book, Right Hand Page 8 vertical and 4 horizontal lines to the inch, Center Line Red.

We also carry the Note Books listed above, bound in extra strong Fabri-Hide (otherwise the same quality of book), which can be furnished at a somewhat lower price.

In ordering Fabri-Hide covered books, add the letter "F" to catalog number.

THE FREDERICK POST CO.

ENGINEERING and DRAFTING SUPPLIES

IRVING PARK STATION

CHICAGO, ILL.

MICROFILMED

DEC 21 1964

51-68

54-26

41-65

13-55

009200

025

5180

0000

Indexed to P 65

B.M. Run. & Points on
Back Lines
El Cerrito Unit #2

B.M.			474.48
	2.28	476.76 ✓	
B.M.		6.11	470.65
B.M.		7.67	469.09
1-2	76.8	4.0	472.8
2-3		3.6	473.2
3-4		3.5	473.3
4-5		3.9	472.9
5-6		4.1	472.7
P		4.00	472.76 ✓
	2.37	475.13 ✓	
6-7		15.0	3.5
			471.5
7-8		3.7	471.3
8-9		5.0	470.0
9-10		7.9	467.1
10-11		12.6	462.4
P		12.44	462.69 ✓
	1.77	464.46 ✓	
11-12		11.9	452.6
P		11.65	452.81 ✓
	0.65	453.46 ✓	
12-PL		11.0	442.5
P		10.97	442.49 ✓
	0.65	443.14	

Top of Conc Monument. & Pt. N. Side El Cajon Blvd

N.W. Cor BIK 10

" " " " 11

BIK 10 Back Line

Top of Hub 10-11 Back Line BIK 10

Top of Hub 11-12

N.E. Cor BIK 10

" " " " Top of Hub

B.M. Run

443.14 ✓

B.M.		8.05	435.09
1-PL		8.1	435.0
P		12.01	431.13 ✓

NE. Cor BIK 15 Top of Hub
 " " " " " Ground

1.94 433.07 ✓

B.M.		0.56	432.51
1-2	(331)	6.8	426.8
2-3		9.4	423.7
3-4		8.2	424.9
4-5		6.6	426.5
5-6		6.5	426.6
6-7		8.4	424.7
7-8		10.9	422.2
P		10.63	422.44 ✓

S.W. Cor 15
 BIK 15 Back Line

2.36 424.80

8-9		5.1	419.7
9-PL		5.73	419.07 ✓
P		1.56	423.24

Top of Hub 7-8 Back Line BIK 15

NE. Cor BIK 15 B.C. Top of Hub

12.82 436.06

1-2	(361)	9.6	426.5
2-3		7.9	428.2
3-4		4.8	431.3
4-5		2.2	433.9
P		1.15	434.91

Back Line BIK 16 60th St.

12.73 447.64

B.M. Run

447.64

5-6

(47.6)

10.4

437.2

Back Line BIK 16

6-7

7.4

440.0

7-8

4.9

442.7

8-9

2.4

445.2

B.M.

5.44

442.20

N.E. Cor BIK 16

P

1.52

446.12

9.83

455.95

56.0

9-10

8.3

447.7

10-PL

5.7

450.3

P

1.67

454.28

Top of Pipe #25 on E. Line

12.58

466.86

B.M.

7.93

458.93

Top of Hub S.E. Cor BIK 16

P

3.01

463.85

Back Line BIK 17. Top of Hub

2.41

466.26

B.M.

3.76

462.50

S.E. Cor BIK 17

P

11.41

454.85

8-7 BIK 18

2.76

457.61

P

13.01

444.60

Top of Pipe #29 on E. Line

5.24

449.84

P

12.38

436.94

S.E. Cor of Tract #31 Top of Pipe

2.14

439.08

B.M. Run

433.08

P 0.66 427.03 12.71 426.37

P 1.60 416.48 12.15 414.88

P 1.17 407.76 9.89 406.59

S.W. Cor BIK 19 Top of Hub

P 1.76 397.79 11.73 396.03

BM. 11.45 386.34

S.E. Cor BIK 20 Top of Hub

P 1.34 396.45

10.53 407.04

P 10.03 416.23 0.84 406.20

P 11.33 427.59 0.57 415.66

P 11.65 438.15 1.09 426.50

P 12.38 450.00 0.53 437.62

P 9.34 457.79 1.55 448.45

B.M. Run

457.79

BM.	457.79	7.98	449.81
7-6		4.5	453.3
6-5		6.3	451.5
5-4		10.1	447.7
P		12.31	445.48
	2.01	447.49	
P		12.20	435.29
	1.26	436.55	
P		10.47	426.08
	5.06	431.14	
Ret.		9.96	421.18
P		0.63	430.51
	12.59	443.10	
P.I.		9.6	433.5
P		1.57	441.53
	11.60	453.13	
P		2.63	450.50
	6.86	457.36	
P		9.45	447.91
	1.06	448.97	
P		10.28	438.69
	1.67	440.36	

S.W. Cor BIK 20 Top of Hub
W. Line BIK 20

Return; NW 20

Int of Para. & 60th. S. Side

S.W. Cor #17 BIK Top of Hub

6

B.M. Run

440.36

P			11.53	428. ⁸³	
	0.61	429.44			
P			10.41	419. ⁰³	419. ⁰⁹
	0.88	419.91			Top of Hub N.E. Cor 15
P			6.30	413. ⁶¹	
	0.50	414.11			Top of Hub 13-14 BIK 13
P			7.26	406. ⁸⁵	
	1.50	408.35			
P			5.46	402. ⁸⁹	
	7.30	410.19			Top of Hub 2-3 BIK 13
P			2.91	407. ²⁸	
	8.20	415.48			
P			2.98	412. ⁵⁰	
	12.32	424. ⁸²			Top of Hub S.W. Cor BIK 12
P			1.90	422. ⁹²	
	12.53	435. ⁴⁵			
P			1.78	433. ⁶⁷	
	12.91	446. ⁵⁸			
Backline			10.42	436. ¹⁶	
P			0.38	446. ²⁰	
	12.10	459. ³⁰			Backline BIK 12 on 58th St

7.

B.M. Run

458.30

Ret

6.52

P

2.32

455.98

12.02

468.00

P

2.01

465.99

10.96

476.95

2.485

474.47

474.48

BLK 12 on 58th St.

Estelle St. 40' wide 10' Walks

Ret B.M

470.65

N.W. Cor BIK 10. Top of Hub

P	South	P	C	E	C	P	North
	0+00	69.1	69.9	70.3	70.6	70.0	
	1-2	6.8	6.1	5.4	5.3	5.9	
	0+62.5	70.9	71.5	71.5	71.3	71.1	
	2-3	5.1	4.4	4.4	4.6	4.5	
	1+25	71.0	70.9	71.4	71.2	72.1	
	3-4	4.9	5.0	4.5	4.2	3.5	
	1+87.5	71.1	71.4	71.7	71.6	71.9	
	4-5	4.8	4.5	4.2	4.3	4.1	
	2+50	70.5	70.7	70.9	71.0	71.3	
	5-6	5.4	5.2	5.0	4.9	4.6	
	3+125	69.4	70.0	70.4	70.4	70.7	
	6-7	6.5	5.9	5.5	5.5	5.2	
P				4.91		470.96	

East side of 58th St.

1-2

2-3

3-4

4-5

5-6

6-7

7-8

8-9

9-10

10-11

11-12

P	0.91	471.87			
	3+75	67.9	68.0	68.5	69.2
	4-5	4.0	3.9	3.4	2.7
	4+37.5	65.9	66.6	67.0	67.9
	6-7	6.1	5.3	4.9	4.0
	5+00	64.2	64.9	65.5	66.2
	8-9	7.7	7.0	6.4	5.7
	5+62.5	63.2	60.8	61.3	62.4
	9-10	12.7	11.8	10.6	9.5
P				8.52	463.35

P	0.70	464.05			
	6+25	50.5	51.6	52.7	53.8
	10-11	13.6	12.5	11.4	10.3
P				8.09	455.96

P	0.10	456.06			
	6+87.5	42.4	43.4	44.3	45.3
	11-12	13.7	12.4	11.6	10.8
P				9.68	446.38
	50	0.52	446.90		

Estelle St.

South

446.00

North

	P	C	L	C	P
7+50	34.5 12.4	35.0 11.9	35.6 11.3	36.4 10.5	37.5 9.4
7+60	33.1 13.8	33.9 13.0	34.4 12.5	35.3 11.6	36.4 10.5

P 942 437.48

	P	C	L	C	P
7+70	32.1 5.8	32.7 5.2	33.2 4.7	33.9 4.0	34.9 3.0
7+80	31.1 6.8	31.6 6.3	32.4 5.5	33.1 4.8	33.6 4.3
7+90	30.3 7.6	30.9 7.0	31.5 6.4	32.1 5.8	32.5 5.4
8+52.5	23.7 14.2	23.8 14.1	24.1 13.8	24.7 13.2	25.4 12.5

P 12.21 425.70

	P	C	L	C	P
9+1.5	18.4 7.8	18.6 7.6	18.9 7.3	19.3 6.9	19.7 6.5
9+77.5	16.1 8.1	16.7 7.5	17.1 7.5	17.7 7.2	18.4 6.8
10+40	16.6 9.6	17.4 8.8	18.1 8.1	18.9 7.3	19.2 6.5
11+02.5	16.1 10.1	17.0 9.2	17.9 8.3	18.9 7.3	19.8 6.4
11+65	15.4 10.8	16.2 10.0	17.0 9.2	17.8 8.4	18.9 7.3
12+27.5	15.6 10.6	15.8 10.4	16.0 10.2	16.1 10.1	16.4 10.0
12+90	17.9 8.3	18.2 8.8	18.4 8.2	17.9 8.3	17.5 8.7
13+32	20.9 5.9	19.9 6.3	19.6 6.6	19.3 6.9	19.1 7.1

B.M. 7.13 419.00 719.07

W. side of 59th St. East Line of Block
Curb 59th St.

Estelle & 59th St.

Curb

East side of 59th St.

1-2 Bk 15-14

Top of Hub 1-2 Bk 15 south line

2-3

3-4

4-5

5-6

6-7

7-8

8-9

9- PL W side of 60th St.

N.E. Cor Bk 15 Top of Hub

59th St. 40' Wide 10' Walks

442.43

West 1.03 443.52 East

	P	C	F	C	P
0+00	22.5	40.8	38.8	37.1	35.1
	1.0	2.7	4.7	6.4	8.1
0+50	30.6	38.3	36.4	34.7	33.8
	3.9	5.2	7.1	8.8	9.7
0+80	37.3	36.4	34.8	33.6	32.5
	6.2	7.1	8.7	9.9	11.0
1+20	34.5	33.0	31.9	30.9	30.2
	9.0	10.5	11.6	12.6	13.3
P			9.02	434.50	

North Line of Tract stationing runs South

N. Side Estelle

S " "

N.E. Cor B1K11 Top of Hub

	P	C	F	C	P
1+70	30.8	30.0	29.2	28.7	27.9
	4.8	5.6	6.2	6.9	7.7
2+02	28.6	27.9	27.4	26.5	25.5
	7.0	7.7	8.2	9.1	10.1
2+20	27.9	26.4	25.8	25.1	24.4
	8.7	9.2	9.8	10.5	11.0
P			12.46	423.00	

Back line

Front line

	P	C	F	C	P
2+70	20.9	19.9	19.3	19.0	18.6
	2.4	3.4	4.0	4.3	4.7
3+02	16.0	15.5	15.0	14.7	14.6
	7.3	7.8	8.3	8.6	8.7
B.M.			9.62	413.65	413.61

N. Side of Adelaide St

Top of Hub 13-14 Blk 13 on Meade Ave

80
40
20
10

11.

Block 11. Back Line

BM.			432.51
	6.37	438.88	
		(38.9)	10.3
			428.6
14-13		6.5	432.9
12-11		5.6	433.3
15-14		2.1	436.8
P		1.87	437.01
	12.14	449.15	
		(49.2)	9.9
11-10			438.3
16-15		7.1	442.1
10-19		3.0	446.2
17-16		1.7	447.5
P		1.42	447.73
	11.63	459.36	
		(59.1)	7.0
18-9			452.4
18-17		2.0	457.4
19-18		1.86	457.50
P			
	11.15	468.65	
		(68.7)	10.2
7-8			458.5
20-19		6.9	461.8
7-6		5.6	463.1
21-20		4.2	464.5

SW Cor B1K 15 Top of Hub

Back Line of B1K on W side of 59th St

468.65
 6-5 (468.7) 2.7 466.0
 22-21 2.5 466.2
 4-5 0.2 468.5
 23-22
 P 1.12 467.53

7.49 475.02
 24-23 (75.0) 5.9 469.1
 4-3 5.6 469.4
 25-24 5.1 469.9
 3-2 5.5 469.5
 26-25 5.6 469.4
 2-1 5.4 469.6
 27-26 6.0 469.0
 27-PL 7.3 467.7
 BM. 4.36 470.66 470.65

NW Cor BIR ID Top of Hub

Adelaide St. (W) 50' wide 10' walks

BM.

North

0.32 471 57 470.65

NW Cor BIK 10

P C R South,

0+00 = East side of 58th St.

	P	C	R	E	R	C	P
0+00	63.6 8.0	63.1 8.5	62.6 9.0	62.2 9.4	61.8 9.8	61.0 10.6	60.0 11.6
+50	65.0 6.6	64.3 7.3	63.8 7.8	63.2 8.4	62.6 9.0	61.6 10.0	60.1 10.9
1+00	65.2 6.4	64.3 7.1	63.9 7.7	63.2 8.4	62.4 9.2	61.4 10.2	60.6 11.0

27-26

1-2

25-26

2-3

25-24 Top of Hub

P 6.85 464.72

	P	C	R	E	R	C	P
1+50	64.5 0.7	63.7 1.5	62.9 2.3	62.2 3.0	61.3 3.9	59.1 6.1	57.0 8.2
2+00	63.4 1.8	62.2 3.0	61.2 4.0	60.1 5.1	58.5 6.7	57.1 8.1	56.6 9.6
2+50	59.3 5.4	58.4 6.8	57.3 7.9	56.1 9.1	54.9 10.3	53.7 11.5	52.1 13.1

25-24

3-4

24-23

4-5

23-22

5-6

22-21 Top of Hub

P 9.31 455.92

	P	C	R	E	R	C	P
3+00	55.6 0.6	53.9 2.3	52.6 3.6	51.6 4.6	50.3 5.9	48.4 7.6	46.9 9.3
3+50	49.6 6.6	47.4 8.8	46.3 9.9	45.0 10.6	44.3 11.9	42.9 13.3	41.1 15.1

22-21

6-7

21-20

7-8

20-19 Top of Hub

P 11.30 444.92

	P	C	R	E	R	C	P
4+00	44.4 0.6	43.4 2.0	42.3 3.1	41.2 4.2	40.0 5.4	38.7 6.7	37.3 8.1
4+50	40.6 4.8	39.4 6.0	38.3 7.1	36.9 8.5	35.8 9.6	34.7 10.7	33.8 11.6
5+00	35.8 9.6	34.5 10.9	33.7 11.7	33.1 12.3	32.6 12.8	31.6 13.8	30.2 15.2

20-19

8-9

19-18

9-10

18-17

10-11

18-17 Top of Hub

P 9.35 436.00

P 0.28 436.28

P 5.61 430.67

17-16

" " "

P 0.35 431.02

Adelaide St (W)

431.02

North	P	C	Q	R	S	T	P South
5+50	30.0 30.6	28.1 2.9	26.1 4.9	25.8 6.0	23.5 7.1	22.7 8.3	21.2 9.8
6+00	29.1 3.9	27.3 3.7	25.9 5.1	24.4 6.6	23.0 8.0	21.3 9.7	18.8 12.2

P	C	Q	R	S	T	P	
242	0.40	424	21	7.21	423.81		
6+50	23.1 0.7	21.5 2.7	20.3 3.9	19.2 5.0	17.9 6.3	16.4 7.6	15.1 9.1
7+00	19.0 5.2	17.4 6.8	16.1 8.1	15.2 9.0	14.2 10.0	13.1 11.1	12.1 12.1

P	C	Q	R	S	T
	1.37	417.39	8.19	416.02	
			3.72	413.67	413.64

P	C	Q	R	S	T	P	
18.6	4.94	418.58		413.64			
7+50	16.0 2.6	14.6 4.0	13.1 4.9	12.8 5.8	12.1 6.5	11.5 7.1	10.5 8.1
7+60	15.5 3.1	14.2 4.4	13.1 5.5	12.4 6.2	11.7 6.9	11.2 7.4	10.3 8.3
7+70	15.0 3.6	13.8 4.8	13.1 5.5	12.2 6.4	11.6 7.0	10.9 7.7	10.3 8.3
7+80	14.6 4.0	13.3 5.3	12.7 5.9	11.9 6.7	11.3 7.3	10.7 7.9	09.9 8.7
7+90	14.6 4.0	13.4 5.2	12.6 6.0	12.0 6.6	11.2 7.4	10.6 8.0	09.8 8.8
8+00	14.3 4.3	13.5 5.1	12.6 6.0	11.8 6.8	11.1 7.5	10.3 8.3	09.4 9.2
8+40	10.8 7.8	10.8 7.8	08.9 9.7	08.4 10.2	07.9 10.7	07.4 11.2	07.0 11.6
8+20	08.5 10.5	06.5 12.1	05.5 13.1	04.4 14.2	05.2 13.4	04.7 13.0	04.9 13.7

BIR 11

17-16

16-15

15-14 Top of Hub

15-14

14-13

S.E. Cor BIR 11

13-14 BIR 13 Top of Hub

13-14 BIR 13 on Meade Ave

W side of 59th St

Curb

±

Curb

E. Side 59th St

12-11

11-10

BIR 12

11-12

12-13

13-14

14-15

Adelaide ST. ^(V) Back Line BIK 12

418.58

	P	C	q	+	+	q	C	P
9+40	07.9	07.7	07.6	07.4	07.6	08.5	09.3	09.3
	10.8	10.2	11.0	11.2	11.0	10.1	10.3	10.3

In Meade Ave.

P 12.31 406.27

2.79 409.06

12-11 409.1 7.0 402.1

Back Line BIK 12

11-10 6.9 402.2

10-9 2.4 406.7

P 2.16 406.90

Top of Hub 10-9 Back Line BIK 12

10.97 417.87

9-8 17.9 8.2 409.7

8-7 5.1 412.8

P 0.30 417.57

11.75 429.32

7-6 29.3 11.0 418.3

6-5 5.8 413.5

5-4 0.8 428.5

P 0.42 428.90

5-4 Top of Hub

10.46 439.36

4-3 39.1 7.8 431.6

3-2 6.2 433.2

2-1 3.9 435.5

1-PL 3.2 436.2

BM 3.16 436.20 436.16

Backline BIK 12 on 58th St. Top of Hub

58th St.

412.50

West 6.57 419.07 East

	P	C	Q	E	Q	C	P
0+60	15.1 4.0	14.9 4.2	14.7 4.4	14.5 4.6	13.5 5.6	13.3 5.8	12.5 6.6
1+00	13.0 0.1	18.4 0.7	18.1 1.0	18.7 0.4	18.5 0.6	18.5 0.6	18.1 1.0

P 0.74 418.33

(31)

	P	C	Q	E	Q	C	P
1+50	27.8 3.3	27.3 3.8	27.0 4.1	27.5 3.6	27.3 3.8	27.1 4.0	26.7 4.4

P 0.88 430.17

(43.0)

	P	C	Q	E	Q	C	P
2+00	37.0 6.0	36.5 6.5	36.2 6.8	37.0 6.0	37.0 6.0	37.0 6.0	36.2 6.8

P 0.85 442.14

(55.2)

	P	C	Q	E	Q	C	P
2+50	44.9 10.3	44.8 10.4	44.9 10.3	45.2 10.0	45.7 9.5	45.7 9.5	45.5 9.7
3+00	51.6 3.6	51.6 3.6	52.3 2.9	53.1 2.1	53.4 1.8	53.5 1.7	53.5 1.7

P 1.18 454.06

(66.0)

	P	C	Q	E	Q	C	P
3+40	57.9 8.1	58.1 7.9	58.5 7.5	59.2 6.8	59.6 6.4	59.7 6.3	59.9 6.1
3+50	59.4 6.6	59.4 6.6	59.7 6.3	60.3 5.7	60.7 5.3	60.8 5.2	61.1 4.9
3+57	59.9 6.1	60.4 5.6	60.5 5.5	60.8 5.2	61.2 4.8	61.4 4.6	61.8 4.2
3+65	60.3 5.7	60.9 5.1	61.0 5.0	61.5 4.5	61.6 4.4	61.8 4.2	62.1 3.9
3+72	61.3 4.7	61.6 4.4	61.7 4.3	61.9 4.1	62.0 4.0	62.3 3.7	62.6 3.4
3+80	61.6 4.4	62.1 3.9	62.2 3.8	62.3 3.7	62.6 3.4	62.7 3.3	63.0 3.0
3+90	62.2 3.8	62.5 3.5	62.7 3.3	62.7 3.3	63.1 2.9	63.3 2.7	63.5 2.5

SW Cor Blk 12 Top of Hub

0+00 = side of Meade Ave

Back Line Blk 12.

Prop line S. Side of Adelaide

- Curb
- Quarter
- ±
- Quarter
- Curb
- P.L.

58th St

466.02

66.0

P	C	A	E	R	C	P
4+00	62.9 3.6	63.0 3.0	63.4 2.6	63.3 2.7	63.5 2.5	63.4 2.4
4+50	64.6 1.4	64.8 1.2	65.3 0.7	65.5 0.5		64.1 1.9

P 0.56 465 46

9.03 474 49

4+50	65.9	66.3	66.3	66.4	66.2	66.4	66.5
4+90	66.1	66.3	66.5	66.9	66.9	67.3	67.7
5+00	66.3	66.3	66.5	67.0	67.0	67.2	67.8
5+50	66.9	67.4	67.6	68.1	68.2	67.9	67.9
5+72	67.4	67.8	67.9	68.3	68.2	68.1	68.8
5+82	67.6	67.7	67.9	68.3	68.2	68.3	69.0
5+92	67.8	68.1	68.1	68.2	68.1	68.6	69.0
6+02	67.8	68.0	68.2	68.3	68.4	69.5	70.4
6+12	68.0	68.2	68.3	68.3	68.4	69.5	70.4
6+50	69.2	69.1	69.3	69.3	69.4	69.5	70.5
6+92	69.3	70.1	70.3	70.1	70.4	70.3	70.5
7+50	70.1	70.2	70.4	70.6	71.0	70.3	70.5
7+60	70.3	70.4	70.6	70.8	71.0	71.2	71.4
7+70	70.7	71.0	71.2	71.4	71.5	71.7	71.9
7+80	70.8	71.0	71.3	71.6	71.9	72.1	72.2
BM							

Back line

S. side Estelle St.

curb

E

curb

N side Estelle

Section line North line of Tract.

E El Cajon Blvd
N.W. Cor Blk 10. Top of Hub

Adelaide St. (E)

R
North

458.93

L
South

S.E. Cor BIR 16. Top of Hub.

	P	C	Q	R	Q	C	P
(64)	580	464	73				
0+00	58.8 5.3	59.0 5.7	59.4 5.3	59.7 5.0	59.9 4.8	60.3 4.4	60.8 3.9
0+50	58.4 6.5	58.7 6.0	59.1 5.6	59.6 5.1	60.3 4.4	60.6 4.1	61.3 3.4
1+00	57.6 7.1	58.7 6.0	59.2 5.5	59.7 5.0	60.3 4.4	60.7 4.0	61.4 3.3
1+50	55.6 9.1	56.7 8.0	57.1 6.9	58.4 6.3	59.1 5.6	59.3 5.2	60.0 4.7
2+00	51.1 13.6	52.2 12.5	52.6 12.1	53.3 11.4	54.9 10.8	54.3 10.4	55.2 9.5

P

11.17

453.56

	P	C	Q	R	Q	C	P
(56.3)	270	456	26				
2+50	46.9 9.4	47.4 8.9	47.7 8.6	48.2 8.1	48.8 7.5	49.1 7.2	50.0 6.3
3+00	42.8 13.5	43.1 13.2	43.1 13.2	43.8 12.5	45.0 11.3	45.5 10.8	46.3 10.0

P

9.76

446.50

	P	C	Q	R	Q	C	P
(49.5)	1.95	448	45				
3+50	39.8 8.7	40.4 8.1	41.1 7.4	41.8 6.7	42.4 5.9	43.1 5.4	44.2 4.3
4+00	37.3 11.2	38.4 10.1	39.2 9.3	39.8 8.7	40.4 8.1	40.9 7.6	41.9 6.6
4+50	35.2 13.3	34.0 12.5	37.0 11.5	37.6 10.9	38.4 10.1	39.1 9.4	40.0 8.5

0+00 = Westside of 61st. St. Line runs west.

11-12

11-10

12-13

9-10

13-14

8-9

14-15

7-8

15-16

6-7

16-17

5-6

Top of Hub 5-6

18-17

4-5

18-19

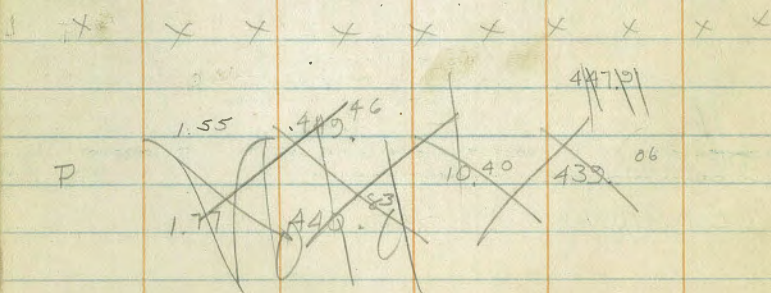
3-4

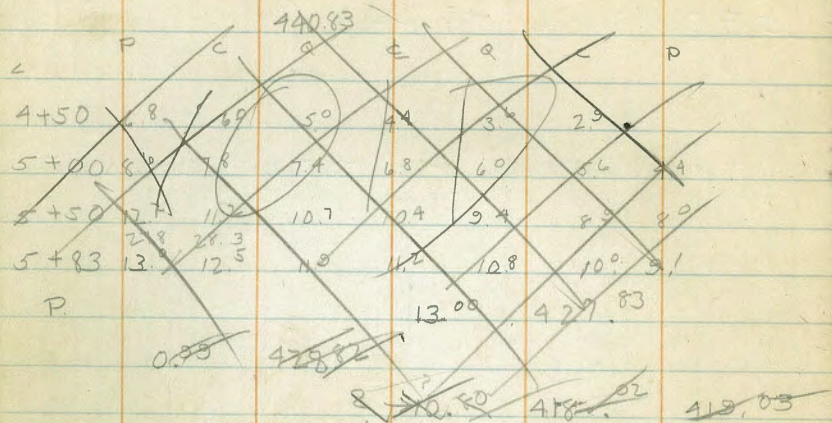
19-20

2-3

S.W. Cor BIR 17

P





12 09 431.¹² 419.03

1.63 429.49

(39.6)

	10.06	439. ⁵⁵				
5+00	33.2 6.4	34.1 3.5	34.5 5.1	34.9 4.7	35.9 3.7	36.4 3.2
5+50	30.4 2.2	31.4 8.5	31.4 8.2	31.9 7.6	32.6 7.0	33.1 6.5
5+83	28.9 10.7	29.4 10.2	30.0 9.6	30.7 8.9	31.2 8.4	31.9 7.7
P			2.89	436. ⁶⁶		
	12.71	449. ²⁷				

21-20

1-2

E Side of 60th St

NE Cor BIK 15 Top of Hub

NE Cor BIK 15

E side of 60th St

BLK 17 Back Line

		449.37		
PL&I			7.0	
P			1.25	448.12
	12.49	460.61		
1-2		(60.0)	10.5	450.1
2-3			7.4	453.2
3-4			6.3	454.3
4-5			4.1	456.5
5-6			1.7	458.9
P			1.45	459.16
	3.47	468.63		
6-7		(68.6)	8.0	460.6
7-8			6.4	462.2
8-9			5.2	463.4
9-10			4.4	464.2
10-11			4.1	464.5
11-PL			4.9	463.7
BM			4.85	463.78
				463.85

Back Line BLK 17 Top of Hub

Meade Ave (E) 50' wide 10' walks

B.M.

462.50

	9.35	471	85				
North	P	C	Q	±	Q	C	P. South
0+00	62.5 3.4	62.3 9.6	62.1 9.8	62.0 9.9	62.0 9.9	61.9 10.1	61.9 10.1
0+50	64.8 7.1	64.6 7.3	64.9 7.0	65.0 6.9	65.1 6.8	65.0 6.9	64.8 7.1
1+00	65.1 6.8	65.2 6.7	65.4 6.5	65.3 6.6	65.3 6.6	65.3 6.6	65.5 6.7
1+50	65.4 6.5	65.1 6.8	65.3 6.6	65.2 6.7	65.5 6.4	65.8 6.1	65.3 6.0
2+00	63.7 8.7	63.1 8.8	63.0 8.9	64.0 7.9	65.3 6.6	67.4 4.5	65.5 6.4
2+50	64.8 7.1	65.1 6.8	65.1 6.8	66.2 5.7	67.7 4.3	65.8 6.1	65.4 6.5
3+00	64.1 7.8	64.4 7.5	64.3 7.6	64.4 7.5	64.0 7.9	64.5 7.4	64.4 7.5
3+50	63.9 8.5	63.9 8.1	63.6 8.3	64.0 7.9	63.7 8.2	64.2 7.7	64.4 7.5
4+00	62.8 9.1	62.9 9.0	63.0 8.9	63.2 8.7	63.9 8.6	63.6 8.3	63.7 8.2
4+25	62.5 9.6	62.4 9.5	62.3 9.6	62.4 9.5	62.4 9.5	62.7 9.2	62.8 9.1
4+50	61.2 10.7	61.7 10.2	61.7 10.2	61.7 10.2	61.6 10.3	61.9 10.0	62.0 9.9

P

10.36 461 49

	2.03	463.52					
4+75	60.2 3.3	60.4 3.1	60.3 3.2	60.4 2.9	60.5 3.0	60.9 2.6	60.8 2.7
4+85	59.2 4.3	59.6 3.9	59.5 4.0	59.1 3.8	59.8 3.7	60.2 3.3	60.4 3.1
4+92.5	58.5 7.3	58.9 4.6	58.9 4.6	59.1 4.4	59.3 4.2	59.7 3.8	59.7 3.8
5+00	57.3 6.2	57.9 5.6	58.1 5.4	58.6 4.9	58.6 4.9	59.2 4.3	59.2 4.3
5+07.5	56.5 7.0	57.0 6.5	57.3 6.2	57.6 5.9	58.1 5.4	58.5 5.0	58.6 4.9
5+15	55.7 7.8	56.0 7.5	56.3 7.2	56.8 6.7	57.3 6.2	57.7 5.8	57.9 5.6
5+25	54.8 8.3	54.8 8.1	55.1 8.1	55.7 7.8	56.1 7.4	56.6 6.9	57.0 6.5

S.E. Cor BIK 17

0+00 = West Side of 61st St

12-13

13-14

14-15

15-16

16-17

17-18

18-19

19-20

Return

20-21

20-21 Top of Hub

E Side Campbell Drive

21-22 ± " "

W Side of Campbell Dr.

Meade Ave (E)

	N	#	S
5+34	53.1 10.4	53.7 9.8	54.2 9.3
5+84±	48.0 15.5	49.0 14.5	49.5 14.0
P	6.02	457.83	11.71
BM		9.90	447.93

463.52

#

S

53.1 53.7 54.2 54.7 55.4 56.0
 10.4 9.8 9.3 8.8 8.1 7.5
 48.0 49.0 49.5 49.8 50.0 49.9
 15.5 14.5 14.0 13.7 13.5 13.6

11.71

451.81

6.02

457.83

BM

9.90

447.93

447.91

S.W. Cor BIK 17

Return

EastSide of BOTH ST.

Estelle Ave (E) 50 wide 10' walks

B.M.

442.20

N.E. Cor Blk 16 Top of Hub

NORTH		443.36		South			
0+00	39.20 4.2	39.15 3.5	40.20 3.2	40.6 2.8	41.10 2.3	41.70 1.7	42.20 1.2
0+50	35.0 8.4	35.6 7.8	36.4 7.0	37.4 6.0	37.4 6.0	37.9 5.5	38.3 5.1
1+00	33.0 10.4	33.8 9.6	34.1 9.3	34.5 8.5	34.3 8.1	34.5 7.9	34.4 7.0
1+25	32.4 11.0	32.7 10.7	32.9 10.5	33.0 10.4	32.7 10.7	33.5 9.9	33.9 9.5
1+35	31.8 11.6	32.2 11.2	32.1 11.3	32.8 10.6	32.7 11.1	33.3 10.1	33.7 9.7
1+45	30.6 12.8	31.7 12.2	31.4 12.0	31.6 11.8	31.6 11.8	32.9 11.1	33.2 10.2

0+00 = W. Side of 61st St

10-9

9-8

E side of Street Running N. to El Cajon Blvd

P		10.17		433.19			
341		0.88	434.07				
1+55	30.4 3.7	30.9 3.2	31.2 2.9	31.0 2.8	31.3 2.8	32.1 2.0	32.9 1.2
1+65	30.1 4.0	30.8 3.3	31.1 3.0	31.2 2.9	31.3 2.8	31.8 2.3	32.5 1.6
1+75	29.5 4.6	30.6 3.5	30.8 3.3	30.7 3.4	30.5 3.6	31.1 3.0	31.9 2.2
1+85	28.0 6.1	28.9 5.2	29.7 4.4	29.9 4.2	29.6 4.5	30.4 3.7	31.9 2.8
2+00	25.7 8.4	26.8 7.3	28.3 5.8	29.0 5.1	28.6 5.5	29.7 4.4	30.3 3.8
2+50	24.7 9.4	24.5 9.6	24.5 9.6	24.5 9.6	26.1 8.0	26.4 7.7	26.9 7.2
3+00	23.4 10.7	23.7 10.4	24.1 10.0	24.7 9.4	24.8 9.3	25.0 9.1	25.3 8.8
3+50	22.3 11.8	22.4 11.7	22.9 11.2	23.4 10.7	23.1 11.0	23.7 10.4	23.8 10.3
4+00	21.5 12.6	21.6 12.5	21.7 12.4	22.0 12.1	21.7 12.4	22.1 12.0	22.4 11.7

W. side of street

7-6

6-5

5-4

4-3

3-2

3-2 Top of Hub

P		11.48		422.59			
256		3.25	425.84				
4+50	20.9 4.9	20.9 4.9	20.8 5.0	20.8 5.0	20.4 5.4	20.5 5.3	20.5 5.3

Estelle (E)

425.84

25.8

	P	C	Q	E	Q	C	P
4+97	20.6 52	19.7 64	19.9 53	20.0 58	19.3 65	19.5 63	19.2 66
B.M.			6.77	419.07		419.07	

E. Side of 60th ST
NE. Cor. Blk 15.

61st Street 60' wide 10' walks

442.20

N.E. Cor Blk 16 Top of Hub

West P C Q E Q C P East

	P	C	Q	E	Q	C	P East
(16.9)	4.69	446.89					
0+00	39.0 7.3	39.6 7.3	40.1 6.8	40.4 6.5	40.9 6.0	41.4 5.5	41.9 5.0
0+10	39.9 7.0	40.3 6.6	40.9 6.0	40.9 6.0	41.5 5.4	41.9 5.0	42.5 4.4
0+17.5	40.1 6.8	40.7 6.2	41.3 5.6	41.7 5.2	42.2 4.7	42.6 4.3	43.3 3.6
0+25	40.6 6.3	41.1 5.8	41.7 5.2	42.3 4.6	42.9 4.0	43.4 3.5	44.1 2.8
0+32.5	41.0 5.9	41.8 5.5	42.1 4.8	42.5 4.4	42.8 4.1	43.7 3.6	44.4 2.5
0+40	41.6 5.3	42.5 4.4	42.9 4.0	43.4 3.5	43.3 3.6	43.8 3.1	44.4 2.5
0+50	42.2 4.7	43.9 3.0	44.5 2.4	44.8 2.1	44.1 2.8	44.4 2.5	44.8 2.1

N Side of Estelle St

Curb

Quarter

±

Quarter

Curb

S. Side Estelle St

P 2.18 444.71

	P	C	Q	E	Q	C	P East
(56.1)	11.38	456.09					
1+00	45.0 11.1	45.7 10.4	46.0 10.1	46.5 9.6	46.9 9.2	47.5 8.6	48.2 7.9
1+50	48.3 7.8	48.7 7.4	49.0 7.1	50.2 5.9	50.5 5.6	50.9 5.2	51.1 5.0
1+75	50.3 5.9	50.6 5.5	50.7 5.4	52.3 3.9	53.0 3.1	52.2 3.3	52.3 3.8
2+00	52.0 4.1	52.7 3.4	52.5 3.6	53.3 2.8	53.6 2.5	54.4 1.1	55.5 0.6

Back Line Blk 16

#25 Top of Pipe

	P	C	Q	E	Q	C	P East
(67.3)	13.07	467.34					
2+50	56.2 11.1	56.3 11.0	56.1 11.2	56.2 11.1	56.0 11.3	56.5 10.8	58.6 8.7
3+00	58.8 8.5	58.9 8.4	58.6 8.7	58.6 8.7	58.8 8.5	59.7 7.6	60.8 6.5
3+10	59.0 8.3	59.1 8.2	59.1 8.2	58.8 8.5	58.9 8.4	59.6 7.7	60.4 6.5
3+17.5	59.4 7.9	59.5 7.8	59.7 7.6	59.5 7.8	59.7 8.1	59.4 7.5	60.0 7.3

N side of Adelaide St.

Curb

Quarter

27

8.87

(67.3)

61st Street

West	467.34				East			
3+25	59.6 7.7	60.0 7.3	60.2 7.1	60.8 7.1	59.5 7.8	59.6 7.7		
3+32.5	59.9 7.4	60.7 6.6	61.7 5.6	61.9 5.4	60.9 6.7	60.2 7.1	60.0 7.3	
3+40	60.4 6.3	61.1 6.2	62.6 4.7	62.7 4.6	62.1 5.2	61.1 6.2	60.4 6.9	
3+50	60.8 6.5	61.3 6.0	62.6 4.7	63.1 4.2	63.0 4.3	61.9 5.4	60.8 6.5	
P			3.91		4.63		93	

± Adelaide St

Quarter

Curb

S. side Adelaide St.

Top of Pipe #26

(67.9)

	400		467.93				
4+00	63.0 4.9	64.8 3.1	64.5 3.4	63.7 4.2	63.4 4.5	64.1 3.8	63.7 4.2
4+50	63.9 4.0	63.4 4.5	63.3 4.6	63.2 4.7	62.9 5.0	62.5 5.4	62.2 5.7
4+75	63.8 4.1	63.8 4.1	62.6 5.3	62.0 5.9	62.3 5.6	62.6 5.3	62.4 5.5
5+00	63.5 4.4	63.1 4.8	62.4 5.1	62.1 5.8	61.1 6.8	60.6 7.3	60.5 7.4
5+50	63.0 4.9	62.0 5.9	61.2 6.7	60.3 7.6	59.2 8.7	58.6 9.3	57.6 10.3
6+00	62.4 5.5	61.5 6.4	59.9 8.0	58.4 9.5	56.5 11.4	54.8 13.3	52.9 15.0

Backline BIK 17

N. side of Meade Ave

S.E. Cor. BIK 17 Top of Hub

PBM

5.45 462.48 462.50

(63.3)

	0 84		463.32				
6+10	62.4 0.3	61.7 1.6	60.3 3.0	58.4 4.9	56.8 6.5	54.6 8.7	52.7 10.6
6+17.5	62.1 1.2	61.1 2.2	60.0 3.3	58.3 5.0	56.5 6.8	54.1 9.2	52.2 11.1
6+25	61.9 1.4	60.9 2.4	59.5 3.8	57.7 5.6	55.9 7.4	53.7 9.6	51.6 11.7
6+32.5	61.9 1.4	60.6 2.7	59.3 4.0	57.4 5.9	55.1 8.2	53.2 10.1	51.3 12.0
6+40	61.7 1.6	60.4 2.9	59.0 4.3	57.0 6.3	54.5 8.8	52.4 10.9	51.2 12.1
6+50	61.7 1.6	59.3 3.0	58.7 4.6	56.7 6.6	54.3 9.0	52.3 11.0	50.4 12.9
7+00	59.7 3.6	58.3 5.0	55.5 7.8	53.3 10.0	51.0 11.3	49.8 13.5	48.2 15.1

Curb

Quarter

± Meade Ave

Quarter

Curb

South Side Meade Ave

P

8.87 454.45

1.99 456.34

61 ST ST

56.3

456.34

West	P	C	Q	R	S	T	P East
7+50	54.6 1.7	52.3 4.0	51.0 5.3	49.1 7.2	47.3 9.0	45.0 11.3	43.1 13.2

P

6.50 449.75

7-8

Top of Hub 8-9

49.9

	P	C	Q	R	S	T	P East
8+00	49.6 0.3	47.8 2.1	45.8 4.1	44.4 5.5	42.9 7.0	41.2 8.7	39.0 10.0
8+50	45.4 4.5	43.2 6.7	41.3 8.6	39.6 10.3	37.3 12.6	35.1 14.8	33.3 16.6
9+00	45.5 4.6	43.3 6.6	41.5 8.4	39.7 10.2	37.4 12.5	35.0 14.3	32.7 17.2

8-9

9-10

10-11 Top of Hub

Top of Pipe #28

P

8.84 441.02

49.8

	P	C	Q	R	S	T	P East
9+50	46.6 3.2	44.6 5.2	42.6 7.2	41.0 8.8	38.8 11.0	36.8 13.0	34.7 15.1
10+00	48.8 1.0	45.9 3.9	44.6 5.2	44.0 5.8	42.6 7.2	40.2 9.6	37.8 12.0

11-12

12-13

12-13 Top of Hub

P

0.75 449.00

52.1

	P	C	Q	R	S	T	P East
10+50	51.6 0.5	49.0 3.1	46.3 5.8	44.7 7.4	42.8 9.3	41.1 11.0	39.1 13.0
11+00	52.6 0.5	50.9 1.2	49.0 3.1	46.3 5.8	43.9 8.2	42.7 9.4	40.8 11.3

P

3.16 448.92

53.0

	P	C	Q	R	S	T	P East
11+50	52.0 1.0	50.7 2.3	49.9 4.1	46.9 6.1	44.6 8.4	43.3 9.7	42.1 10.9
12+00	49.9 3.1	48.8 4.2	47.4 5.6	46.6 6.7	45.7 7.3	44.4 8.6	42.5 10.5
12+26.5	48.9 4.1	48.3 4.7	46.6 6.4	45.2 7.8	44.7 8.3	44.1 8.9	42.2 10.8
12+50	46.4 6.6	46.1 6.9	45.3 7.5	44.8 8.2	43.8 9.2	42.8 10.2	41.2 11.8

15-16

Return

61st ST.

53.0

452.96

West	P	C	Q	#	Q	C	P East
13+00	41.1 11.9	41.2 11.8	41.1 11.9	41.0 12.0	40.8 12.2	40.3 12.7	39.7 13.3

P

44.6

12.27

440.69

P.I. Top of Hub

	3 87	444	56				
13+04	40.7 3.9	40.7 3.9	40.6 4.0	40.5 4.1	40.1 4.5	39.8 4.8	39.5 5.1
13+15	39.0 5.6	38.8 5.8	38.7 5.9	39.2 5.4	38.9 5.7	38.6 6.0	38.2 6.4
13+25	37.1 7.5	37.6 7.0	38.2 6.4	38.2 6.4	37.9 6.7	37.8 6.8	37.2 7.4
13+35	35.9 8.7	36.6 8.0	37.4 7.2	37.3 7.3	36.9 7.7	37.0 7.6	36.3 8.3
13+45	35.1 9.5	36.1 8.5	37.1 7.5	37.0 7.6	36.2 8.4	36.0 8.6	35.7 8.9

P.I.

B.M.

7.59

436.97

436.94

Top of pipe #31 S.E. Cor of Tract

BIR 18. Back line

436.⁹⁴

S. E. Cor. of Tract Top of pipe #31

7.59 444.⁵³

P

0.33

444.²⁰11.99 456.¹⁹

15-16

(56.2)

3.5

452.⁷

15-17

2.3

453.⁹

P

2.22

453.⁹⁷13.11 467.⁰⁸

14-15

(67.1)

8.7

458.⁴

13-14

4.5

462.⁶

12-13

2.8

464.³

11-12

2.0

465.¹

10-11

2.3

464.⁸

9-10

2.3

464.⁸

8-9

2.5

464.⁶

20-5

1.2

465.⁹

7-8

1.0

466.¹

P

1.35

465.⁷³5.86 476.⁵⁹

6-7

(71.6)

5.1

466.⁵

5-6

6.4

465.²

P. L. Meade Ave

471.59

(71.6)

4-5

5.8

465.8

3-4

5.7

465.9

2-3

6.6

465.0

1-2

6.5

465.1

B.M.

9.13

462.96

462.50

S. E. Cor BIK 17. Top of Hub

Meade Ave (W) 60' Wide 10' walks

412.50

R

North	3.62		416.12				South	
	P	C	P	C	P	C	P	C
0+00	14.0 12	13.5 2.6	13.0 3.1	12.2 3.9	11.4 4.7	09.7 6.4	07.6 8.5	
0+10	14.8 1.3	13.1 3.0	12.1 4.0	11.6 4.5	10.7 5.4	08.7 7.4	07.6 8.5	
0+17.5	14.5 1.6	12.8 3.3	12.1 4.0	11.5 4.6	09.8 6.3	08.5 7.6	07.5 8.6	
0+25	13.9 2.2	12.7 3.4	12.1 4.0	10.8 5.3	09.2 6.9	08.1 8.0	07.3 8.8	
0+32	13.4 2.7	12.7 3.4	11.8 4.3	10.4 5.9	09.0 7.1	08.0 8.1	07.1 9.0	
0+40	12.8 3.3	11.8 4.3	10.9 5.2	09.8 6.3	08.7 7.4	07.7 8.4	06.8 9.3	
0+50	12.4 3.7	11.3 4.8	10.5 5.6	09.5 6.6	08.5 7.6	07.5 8.6	06.7 9.4	
1+00	11.3 4.8	10.1 6.0	09.4 6.7	08.6 7.5	07.9 8.2	07.0 9.1	06.3 9.8	
1+50	09.6 6.5	08.8 7.3	07.9 8.2	07.2 8.9	06.5 9.6	05.7 10.4	02.4 13.7	

S.W. Cor BIK 12 Top of Hub.

0+00 = W. side of 58th St.

Curb

Quarter

E

Quarter

Curb

E. side of 58th St.

23-22

22-21

21-20 Top of Hub

21-20

20-19

13-18 BIK 12

1-2 BIK 13

2-3 " "

07.4

	401.18		407.44		8.86		A 07.26	
	P	C	P	C	P	C	P	C
2+00	400.0 0.3	405.8 1.6	404.5 2.9	401.5 5.3	394.0 13.4	391.8 15.6	392.9 14.5	
2+50	403.0 4.9	402.0 5.4	399.9 7.5	396.9 10.5	392.4 15.0	392.7 14.7	393.3 13.5	
3+00	398.9 8.5	397.0 10.4	395.8 11.6	394.9 12.5	394.4 13.9	393.3 14.1	394.2 13.2	
3+01.24-P	396.2 10.5	395.8 11.6	394.8 12.6	394.1 13.3	393.7 12.4	395.6 11.8	396.2 11.2	
3+50	397.6 9.8	396.5 10.9	395.6 11.8	395.5 11.9	396.9 10.5	397.3 10.1	398.1 9.3	
4+00	397.6 9.8	395.3 12.1	396.7 10.7	397.3 10.1	397.6 9.8	398.5 8.9	400.1 7.3	
4+50	397.9 9.5	398.4 9.0	398.3 9.1	398.7 8.7	399.1 8.3	400.1 7.3	401.2 6.7	
5+00	397.7 9.7	399.2 8.2	399.3 8.1	399.4 8.0	399.9 7.5	400.8 6.6	402.2 5.2	
5+38	399.4 8.0	398.2 9.2	400.0 7.4	400.5 6.9	401.0 6.4	401.3 6.1	402.7 4.7	

Meade Ave (W)

07^A

407.44

North	P	C	a	+	a	c	P	South
6+38	401.0 6 ⁺	399.0 8 ⁺	400.1 7 ³	401.0 6 ⁺	401.2 6.2	401.4 6 ⁰	402.5 4 ⁹	
	P			4.67		402	77	

15⁰

	12.21	414	98				
6+88	401.9 13.1	399.8 15.2	400.8 14.2	401.9 13.1	402.0 13.0	402.6 12.4	404.8 10.2
7+38	403.0 12.0	399.9 15.1	401.6 13.4	402.8 12.2	403.4 11.6	404.0 11.0	406.2 8.8
7+88	405.5 9.5	403.6 11.4	400.8 14.2	402.6 12.4	403.4 11.6	404.8 10.2	405.5 9.5
8+38	405.6 9.4	405.3 9.7	403.9 11.1	400.7 14.3	404.0 11.0	404.6 10.4	406.1 8.9
8+88	406.8 8.2	405.9 9.1	405.1 9.9	402.1 12.1	403.8 11.2	405.3 9.7	406.4 8.4
9+38	407.2 7.8	406.4 8.6	405.1 9.9	403.4 11.6	404.5 10.5	406.3 8.7	407.1 7.9
9+70	406.7 8.3	406.3 8.7	405.5 9.5	404.8 10.2	403.9 11.1	406.7 8.3	407.9 7.1
9+80	406.7 8.3	406.5 8.5	405.7 9.3	404.4 10.6	404.7 10.3	407.5 7.5	408.6 6.1
9+90	407.1 7.9	407.1 7.9	405.5 9.5	404.5 10.5	406.2 8.8	408.1 6.9	409.1 5.9
10+00	406.8 8.2	405.9 9.1	403.9 11.1	404.8 10.2	406.9 8.1	408.5 6.5	409.6 5.4
10+10	405.2 9.8	405.8 9.2	405.2 9.8	406.0 9.0	407.8 7.2	408.8 6.2	410.0 5.0
10+20	405.8 9.2	405.8 9.2	405.9 9.1	406.7 8.3	408.6 6.4	409.6 5.4	410.8 4.2

1.40

413

58

413.61

13-14

17⁵

	3.91	417	49				
10+30	406.3 11.2	06.2 11.3	06.6 10.9	06.9 10.6	08.8 8.7	10.2 7.3	11.5 6.3
10+40	06.5 11.0	06.9 10.6	07.0 10.5	07.2 10.3	08.8 8.7	10.1 7.9	11.3 6.2
10+50	07.5 10.0	07.3 10.2	07.2 10.3	08.3 9.2	09.3 8.2	10.4 7.1	11.4 6.1
10+60	07.6 9.9	07.6 9.9	07.9 9.6	09.4 8.1	10.4 7.1	11.3 6.2	11.8 5.7

5+31
5-30
10-28

3-4 BIK 13

Topo Hub 3-4 BIK 13

45 BIK 13

5-6 " "

6-7 " "

7-8 " "

8-9 " " Ret

9-10

P.I. Adelaide & Meade

34

(17.5)

Meade Ave (W)

North

417.49

South

10+88	07.7 9.8	08.3 9.2	08.9 9.6	10.0 10.5	10.7 12.2	11.7 12.5	12.2 13.1
11+38	08.9 9.6	07.6 9.9	09.5 8.0	11.1 6.1	12.2 5.3	12.5 5.0	13.1 4.1
11+88	11.7 5.9	12.6 4.9	13.1 4.4	12.9 4.6	13.3 4.2	14.0 3.5	15.0 2.5
12+38	13.5 4.0	13.7 3.8	14.5 3.0	15.1 2.4	15.9 1.6	16.5 1.9	17.9 +0.4

12-13

13-14

14-15

15-16

P

(22.9)

10.55

422.86

5.18

412.31

12+88	14.3 2.6	15.1 7.9	15.9 7.0	16.6 6.3	17.3 5.6	17.8 5.1	18.5 4.4
13+38	13.9 3.0	13.9 3.0	16.7 6.2	17.8 5.1	18.8 4.1	20.5 2.4	20.8 2.1
13+55	14.1 8.8	14.5 8.9	16.8 6.1	18.0 4.9	18.0 4.0	19.6 3.3	20.1 2.8
14+04	17.3 5.0	18.3 4.6	19.0 3.9	19.6 3.3	20.3 2.6	20.8 2.1	21.6 1.3

16-17

17-18

Return

PI this section 11 to 60th St.

328

413.58

413.61

Campbell Drive 40' wide 10' Walks

West 436.94 East

10.32 447 26

41.3

	P	C	C	C	P
0+00	32.7 19.6	34.7 12.6	35.9 11.4	37.2 10.1	38.0 9.3
0+21	35.9 11.4	36.8 10.5	38.0 9.3	39.4 7.9	40.7 6.6
0+30	36.9 10.4	37.4 9.9	38.6 8.7	39.9 7.4	41.1 6.2
0+40	37.0 10.3	38.3 9.3	38.8 8.5	40.4 6.9	41.9 5.1
0+50	37.0 10.3	37.8 9.5	38.9 8.4	40.8 6.5	42.3 5.0
0+60	37.0 10.3	38.5 8.8	39.8 7.5	41.5 5.8	42.7 4.6
0+70	37.4 9.9	39.1 8.2	40.9 6.4	42.4 4.9	43.6 3.7
0+80	38.6 8.7	39.9 7.4	41.8 5.5	43.4 3.3	44.8 2.5
0+90	39.7 7.6	41.0 6.3	42.5 4.8	44.3 3.0	45.7 1.6
1+00	39.9 7.4	41.4 5.9	43.0 4.3	44.7 2.6	45.9 1.4

0+00 = S.E. Cor. Of Tract #31 Top of Pipe
PI on E side of St.

Retan E side St.

P

1.31 445.95

53.3

	P	C	C	C	P
1+40	41.0 12.3	42.9 10.4	45.2 8.1	47.6 5.7	49.4 3.9
1+90	42.5 10.8	44.9 8.4	47.7 5.6	50.3 3.0	52.4 0.9

14-13
13-12
12-11 Top of Hub

P

9.16 444.11

57.3

	P	C	C	C	P
2+40	43.9 13.4	46.5 10.8	49.5 7.8	52.0 5.3	53.8 3.5
2+90	44.6 12.7	47.2 10.1	49.8 7.5	53.2 4.1	54.9 2.4
3+40	47.3 10.0	49.1 8.2	51.9 5.4	53.9 3.1	55.0 2.3

12-11
11-10
10-9

7.08 450.17

12.72 462.99

Campbell Drive

63.0

462.99

West	P	S	E	S	E	East
	50.1	51.7	53.2	55.4	57.1	
3+30	12.9	11.3	9.8	7.6	5.9	
4+40	53.9	56.4	59.0	60.9	62.2	
	9.1	6.6	4.4	2.1	0.8	

7.8

P 3.47 459.52

62.0

9.52 469.04

4+30	59.4	60.8	61.8	62.9	63.6	
	9.6	8.2	7.2	6.1	5.4	
5+40	61.4	63.0	64.2	64.5	64.6	
	7.6	6.0	4.8	4.5	4.4	5-6
5+30	63.0	63.7	63.0	64.1	64.3	
	6.0	5.3	5.0	4.9	4.7	5-4
6+40	62.6	62.6	63.0	64.1	64.7	
	6.4	6.4	6.0	4.9	4.3	4-3
6+30	62.3	63.3	64.1	63.8	63.4	
	6.7	5.7	4.9	5.2	5.6	3-2
7+40	62.1	61.9	62.3	62.6	62.8	
	6.9	7.1	6.7	6.4	6.2	2-1
7+79±	60.8	61.3	62.1	63.0	63.0	
	8.2	7.7	6.9	6.0	6.0	

Ret 617 E. Side St.

P 7.91 461.13

0.58 461.71

P 12.28 449.43

5.45 454.88

B.M. 6.96 447.92 447.91

S.W. Cor Bk 17.

Paradise Vista. 50' Wide 10' Walks.

B.M.

386.34

S.E. Cor. BIK 20 Top of Hub.

11.57

397.

91

West

East

(97.9)

P C Q R C P

0+00 86.2 90.8 93.4 96.7/2

0+54.5 80.5 94.9 7.4 3.0

1+08.5 4.1

0+00 = S.E. Cor BIK 20 ↓ to West line of street

6-7

P 0.83 397.08

09.5 12.41 409.49

0+00 399.8 404.6 408.4

0+54.5 398.0 401.9 405.5 408.2

1+08.5 397.9 400.9 404.3 407.5

1+63 400.9 404.9 407.3 8.6 4.6 2.2

2+19.5 1.0

3-4

P 1.36 408.13

(21.1) 12.25 421.08

2+19.5 12.6 15.0 16.9 18.7

1+63 8.5 6.1 4.2 2.4 11.6 14.4 16.1 17.7

1+08 9.5 6.7 5.0 3.4 10.9 13.4

0+54.5 10.7 10.7 09.5 11.6

2+60.6 11.8 15.3 16.9 18.8 20.6

2+86 9.7 5.8 4.2 2.3 0.5

3+45.5 12.2 16.8 19.4 11.1 1.1

4+00 8.9 4.3 1.1 4.8

12.8 14.7 16.3 4.8

8.3 6.4 20.9

16.0 20.9

5.1 0.7

P 2.90 418.18

B.C.

2-3

1-2

Paradise Vista

	P	C	Q	R	R	C	P
						418.15	
(30.2)	12.00		430.18				
4+00			22.1 8.1	24.4 5.8	26.4 3.8	29.8 0.4	
3+45.5				19.2 11.0	21.5 2.7	24.5 5.7	27.6 2.6
2+86				21.5 8.1	23.4 6.8	25.1 5.1	27.2 3.0
2+60						21.9 8.3	24.4 5.8
2+19.5						21.3 8.9	23.6 6.6
4+50	12.5 10.7	23.6 6.6	26.3 3.9	28.8 1.9			
5+00	22.2 8.0	25.9 4.3					

	P	C	Q	R	R	C	P
				2.60		427.58	
(40.5)	12.91		440.49				
5+50	31.3 9.2	33.0 7.5	34.2 6.3	36.3 4.2	37.8 2.7	39.7 0.8	
5+00			28.6 11.9	30.9 9.6	33.7 6.8	36.1 4.4	39.5 1.0
4+50				31.2 9.3	34.3 6.2	37.4 3.1	39.9 7.4
4+00							33.1
5+80	33.5 7.0	36.2 4.3	37.8 2.7				

	P	C	Q	R	R	C	P
				2.65		437.84	
(50.9)	13.01		450.85				
5+80			39.7 11.2	41.2 9.7	42.8 8.1	45.4 5.5	

Ret 5' more

60th St East side

Paradise Vista

150.85

(50.9)

P	C	Q	E	Q	C	P
5+50						42.9 8
P			4.21		446.64	
	8.07	454.71				
B.M.			6.80	447.91	447.91	

S.W. 17 Top of Hub

Zephyr Drive 60' wide 10' walks

	P	C	Q	R	Q	C	P
48.2						447.01	
North	0 ²⁴		448.15				South
0+00	37.2 11.0	37.6 10.6	37.1 10.5	38.4 9.8	39.4 8.4	40.9 7.3	40.9 7.3
0+30	36.0 12.2	36.9 12.3	36.4 11.8	37.2 11.0	38.4 9.8	40.1 8.1	40.9 7.3
0+80	32.5 15.7	33.3 14.9	34.1 14.1	35.2 13.0	36.1 12.1	37.2 11.0	38.1 10.1

10.09 438.06

	P	C	Q	R	Q	C	P
43.7							
1+30	33.6 10.1	35.3 8.4	36.4 7.3	36.3 7.4	36.9 6.8	37.6 6.1	38.6 5.1
1+80	36.4 7.3	37.2 6.5	38.1 5.6	38.8 4.9	39.7 4.0	40.8 2.9	42.7 1.0

3.15 440.52

	P	C	Q	R	Q	C	P
53.3							
2+30	40.4 12.9	40.7 12.0	41.4 11.9	42.6 10.7	43.3 10.0	44.2 9.1	45.1 8.2
2+80	45.0 8.3	46.3 7.0	47.1 6.2	48.3 5.0	49.2 4.1	49.9 3.4	50.3 3.0

4.01 449.27

	P	C	Q	R	Q	C	P
61.2							
3+20	48.6 12.6	50.3 10.9	51.4 9.8	52.5 8.7	53.2 8.0	54.1 7.1	54.9 6.3
3+30	50.1 11.1	51.6 9.6	52.9 8.3	53.4 7.8	54.4 6.8	55.4 5.8	56.3 4.9

5.88 455.32

	P	C	Q	R	Q	C	P
67.7							
3+80	55.5 12.2	56.7 11.0	57.7 10.0	59.0 8.7	59.3 7.4	61.2 6.5	62.1 5.6

SW 17

0+00 = W side of 60th St - on both St

Return on North to P from South

19-20

RTX | ALL



20-21

21-22

22-23

23-24

East side of St. on South line of Tract.

24-25

25-26

41

Zephyr Drive

North
67.760.4
4+30 7361.7
60

467.66

63.4
9364.8
2965.2
2565.6
21

South

66.4
13

P

0.88

455.69

12.85

454.81

7.81

447.88

447.91

Blk line of Blk Sta of this point is
approximate. 5±

B/K 13. Back Lines

419.03

13.11

432.14

PL #17	<u>33.00</u>	2.8	429.3
17-16		4.5	427.3
16-15		6.6	425.5
15-14		8.2	423.9
14-13		9.8	422.3
13-12		10.0	422.1
12-11		7.7	424.4
11-10		4.1	428.0
10-9		2.6	429.5
P		2.40	429.74

6.75 436.49

9-8	36.5	6.1	430.4
8-7		5.0	431.5
7-6		4.6	431.9
6-5		6.4	430.1
5-4		7.0	429.5
4-3		7.9	428.6
3-2		10.7	425.8
2-1			

60th St 60' Wide 10' Walks

419.03

N.E. Cor 15 BIR

West	P	C	a	±	a	c	P	East
26.9		7.83	426.86					
0+00	20.3 6.6	20.4 6.5	20.7 6.2	20.9 6.0	20.8 6.1	20.6 6.3	20.6 6.3	
0+10	19.6 7.3	19.7 7.2	19.9 7.0	20.1 6.8	20.2 6.7	20.2 6.7	19.8 7.1	
0+17.5	19.4 7.5	19.7 7.2	19.6 7.3	19.8 7.1	19.9 7.0	19.8 7.0	19.9 7.0	
0+25	19.0 7.9	19.4 7.5	19.4 7.5	19.6 7.3	19.6 7.3	19.6 7.3	20.2 6.7	
0+32.5	18.9 8.0	19.0 7.9	19.1 7.8	19.2 7.7	19.4 7.5	19.5 7.4	19.3 7.6	
0+40	18.8 8.1	19.0 7.9	19.1 7.8	19.1 7.8	19.3 7.6	19.3 7.6	19.5 7.4	
0+50	18.5 8.4	18.6 8.3	19.1 7.8	19.2 7.7	19.3 7.6	19.5 7.4	19.2 7.7	
1+05	19.1 7.8	19.1 7.8	19.4 7.5	19.6 7.3	19.9 7.0	20.1 6.8	20.6 6.3	
1+15	19.0 7.9	19.3 7.6	19.5 7.4	19.8 7.1	20.3 6.6	20.8 6.1	21.4 5.5	
1+25	19.2 7.7	19.8 7.1	19.8 7.1	20.1 6.8	20.5 6.4	21.1 5.8	21.7 5.2	
1+35	19.2 7.7	19.6 7.3	20.2 6.7	20.4 6.5	20.8 6.1	21.6 5.3	22.1 4.8	
1+45	18.0 8.3	19.7 7.2	19.9 7.0	20.8 6.1	21.4 5.5	22.2 4.7	22.9 4.0	
1+55	19.0 7.9	19.7 7.2	20.2 6.7	20.7 6.2	21.1 5.8	21.9 5.0	22.4 4.5	
1+65	18.9 8.0	19.7 7.2	20.2 6.7	21.2 5.7	21.3 5.6	22.2 4.7	22.8 4.1	
1+75	18.7 8.2	19.8 7.1	20.9 6.0	21.5 5.5	21.9 5.0	22.5 4.4	23.3 3.6	
1+85	19.0 7.9	20.2 6.7	21.1 5.8	20.9 6.0	22.2 4.7	22.8 4.1	23.6 3.3	
1+95	19.4 7.5	20.3 6.6	21.4 5.5	22.1 4.8	22.8 4.1	23.1 3.8	23.7 3.2	
2+05	19.7 7.2	20.7 6.2	21.6 5.3	22.3 4.6	23.2 3.7	23.4 3.5	23.9 3.0	

N Side Estelle

Curb

Quarter

±

Quarter

Curb

S Side Estelle

N "

Curb

±

Curb

S Side Estelle

North - E

South W.

60175 ST

West

426.86

East

	P	C	Q	E	Q	C	P
2+15	20.2 6.7	21.1 5.8	21.0 5.0	22.6 4.5	23.1 3.8	23.8 3.1	24.2 2.7
2+25	20.9 6.0	22.0 4.9	22.4 4.5	23.1 3.8	23.9 3.0	24.3 2.6	24.6 2.5
2+35	21.6 5.3	22.9 4.0	23.3 3.6	23.3 3.6	23.9 3.0	23.9 3.0	24.8 2.1
2+45	21.7 5.2	22.9 4.0	23.8 3.1	23.7 3.2	24.0 2.9	24.8 2.1	25.1 1.8
2+55	22.0 4.9	23.0 3.9	23.5 3.4	23.8 3.1	24.3 2.6	25.0 1.9	25.4 1.5
2+65	22.8 4.1	23.4 3.5	23.7 3.2	24.1 2.8	24.7 2.2	25.5 1.4	25.9 1.0
2+75	23.3 3.3	24.4 2.5	24.6 2.3	24.5 2.4	24.8 2.1	25.6 1.3	26.2 0.7
2+85	24.0 2.9	24.8 2.1	25.1 1.8	25.0 1.9	25.3 1.6	26.1 0.8	26.6 0.3
2+95	24.2 2.7	25.2 1.7	25.6 1.3	25.5 1.4	25.6 1.5	26.3 0.6	27.1 +0.2

P

2.43 424.43

37.6

	13 14	437	57				
3+05	24.4 13.2	25.0 12.6	25.4 12.2	25.8 11.8	26.1 11.5	26.9 10.7	27.9 9.7
3+23	25.4 12.2	25.4 12.2	25.7 11.9	26.4 11.2	27.1 10.5	27.8 9.8	28.8 8.8
3+33	25.6 12.0	25.9 11.7	26.5 11.1	27.2 10.4	27.9 9.7	28.7 9.0	29.5 8.1
3+40.5	25.8 11.8	26.4 11.2	26.4 11.2	28.1 9.5	28.7 8.9	29.4 8.2	30.1 7.5
3+48	26.3 11.3	27.0 10.6	28.0 9.6	29.1 8.5	30.1 7.5	30.3 7.3	30.8 6.8
3+55.5	26.9 10.7	27.5 10.1	28.8 8.8	30.1 7.5	31.0 6.6	31.0 6.6	31.3 6.5
3+63	27.5 10.1	28.0 9.6	29.0 8.6	30.5 7.1	31.3 6.3	31.5 6.1	32.1 5.5
3+73	28.0 9.6	28.4 9.2	29.3 8.3	30.4 7.2	31.2 6.4	32.0 5.6	32.8 4.8
3+94	29.3 8.3	30.0 7.6	31.0 6.6	32.4 5.2	33.7 3.9	34.0 3.6	34.3 3.5

Return

N. side Adelaide St (E)

Curb

Quarter

E

Quarter

Curb

D.V.

Back Line Blk 13

45

60 1/2 ST

West

437.57

East.

37.6

4+00	29.1 8.2	30.1 7.5	31.3 6.3	32.9 4.7	33.8 3.8	34.2 3.4	34.7 2.9
------	-------------	-------------	-------------	-------------	-------------	-------------	-------------

P

48.1

	11.93	4.48	10	1.40	436.17		
4+50	33.0 15.1	34.5 13.6	36.0 12.1	37.0 11.1	36.9 11.2	37.4 10.7	38.8 9.3
4+57	35.3 12.8	36.1 12.0	36.9 11.2	38.5 9.6	40.0 8.1	42.0 6.1	42.3 5.8
5+05	36.2 11.9	36.9 11.2	37.6 10.5	38.8 9.3	40.1 8.0	42.1 6.0	42.8 5.3
5+36	37.3 10.8	38.1 10.0	39.0 9.1	40.6 7.5	42.0 6.1	42.7 5.4	44.4 3.7
5+47	37.6 10.5	38.5 9.6	39.5 8.6	40.6 7.5	41.8 6.3	43.1 5.0	44.7 3.7
5+58	37.6 10.5	38.8 9.3	40.1 8.0	41.8 6.3	42.7 5.4	43.5 4.6	45.4 2.7
5+69	38.3 9.8	39.5 8.4	40.9 7.2	43.0 5.1	41.6 4.5	44.0 4.1	45.9 2.2
5+80	39.2 8.9	40.9 7.2	41.7 6.4	43.0 5.1	44.0 4.1	44.8 3.3	46.2 1.9
5+99	40.7 7.4	41.9 6.2	42.4 5.7	43.0 5.1	43.9 4.2	45.1 3.0	46.7 1.4
6+08	40.9 7.2	42.0 6.1	42.9 5.2	43.7 4.4	44.6 3.5	45.9 2.2	47.1 1.0

P

53.9

	13.00	453.89	7.21	440.89			
6+20	40.9 13.0	41.9 12.0	43.6 10.3	44.6 9.3	45.2 8.7	46.0 7.3	47.9 6.0
6+30	41.5 12.4	42.6 11.3	43.7 10.2	44.6 9.2	45.7 8.2	47.3 6.1	48.3 5.6
6+37.5	42.1 11.8	43.3 10.6	44.0 9.2	44.8 8.1	46.5 7.4	48.0 5.9	49.0 4.9
6+45	42.6 11.3	43.8 10.1	44.3 9.6	45.2 8.7	46.9 7.0	48.6 5.3	49.4 4.5
6+52.5	43.1 10.8	44.0 9.9	44.7 9.2	45.8 8.1	47.1 6.8	48.7 5.2	49.7 4.2
6+60	44.1 9.8	44.7 9.2	45.3 8.6	46.9 7.0	47.9 6.0	48.8 5.1	50.1 3.8
6+70	45.7 8.2	46.4 7.5	46.4 7.5	48.0 5.9	48.9 5.0	49.1 4.9	49.9 4.0

5-36

67

6 00

Back Line

Return

Pl. N Side Zephyr Drv

Curb

Quarter

±

Quarter

Curb

S. Side of Zephyr Drv

Top of Hub ↗

N Side of Meade Ave.

Curb

Quarter

±

Quarter

Curb

S Side Meade Ave.

60th St.

	P	C	C	C	C	C	P. East
West							
7+00	47.2 67	47.8 61	48.2 57	48.9 57	49.7 42	50.8 31	51.6 23
7+50	50.4 30	50.9 30	51.3 26	51.6 23	51.8 21	52.3 11	53.9 0

	P	C	C	C	C	C	P. East
West							
7+75	51.8 60	51.7 61	51.6 62	52.0 58	52.8 50	54.0 38	54.7 31
8+19	50.8 70	51.1 67	51.5 63	51.4 64	50.7 71	50.3 75	50.5 73
8+34	50.0 78	49.8 80	50.0 78	49.9 79	49.3 83	49.6 82	48.5 93
8+44.5	48.3 95	47.6 102	47.2 106	47.4 104	46.9 103	45.8 120	45.5 123
				12.89		444.31	
	9.68	453.	59		5.69	447.90	447.01

$$50.70 \times 70 = 3549$$

$$660 \div 30 = 22$$

$$14 \div 10 = 1.4$$

$$50.70 \times 8.4 = 425.98$$

BC
 Pl. N. side of Paradise Vista
 Curb
 Quarter
 &
 Quarter
 Curb
 S. side st.

47

60th St.

W

449.81

S.W. 20

West

EAST

	11.08	460.80			
13+45	59.5 1.4	57.7 3.2	56.2 4.7	56.1 4.8	53.8 7.1
12+45	60.8 0.1	57.2 1.2	58.0 2.0	56.3 4.1	54.4 6.5
12+45		59.4 1.5	57.6 3.5	55.3 5.6	53.6 7.3
11+44	59.1 1.8	56.5 4.4	54.0 6.0	53.1 7.8	50.4 10.5

P

6.47

454.42

66.0

	11.61	466.03		
11+44	61.5 4.5			
12+45	63.0 3.0	61.6 4.4		
12+45	62.7 3.3			
11+44	57.5 8.5	55.3 10.7	53.5 12.5	

P

12.63

453.40

58.8

11+50

5.42

458.82

48.5

46.0

44.7

43.7

B.M.

9.00

449.82

449.81

S.W. 20

48

60th St.

59.2

449.81

West 9.43 450.24 East

	P	C	Q	R	S	T	U
11+00	54.2 5.0	52.0 7.2	48.2 11.0	45.4 13.8			
10+50	48.1 11.1	45.3 13.9					

P

12.18

447.06

48.4

1.32

448.38

10+50		43.2 5.2	40.9 7.5	38.1 10.5	35.3 13.1		
11+00				43.1 5.3	40.3 8.1	37.5 10.9	
10+00	44.3 4.1	41.8 6.6	39.2 8.9	36.4 12.0			
9+50	43.3 5.1	40.2 8.2	37.1 11.3				

P

11.96

436.42

36.1

0.19

436.61

9+50			34.1 4.0	28.0 8.1	24.4 11.7	20.5 15.6	
10+00				32.2 3.9	29.1 7.0	25.0 11.1	
10+50						32.1 4.0	
9+00		34.3 1.8	31.2 4.9	29.2 6.9	25.1 11.0	21.0 9.1	
P			1.09		435.52	36.1	

43.8

8.31

443.83

9+00	44.0 2.8	38.1 5.7					
8+76	43.2 0.6	41.2 2.6	38.2 5.6	35.2 8.6	33.7 10.1	33.3 12.5	33.5 10.3
8+62	42.8 0.9	41.3 2.5	39.1 4.7	37.2 6.2	36.6 7.2	36.4 7.4	36.7 7.1
8+51	44.5 +0.7	42.7 1.1	41.2 2.5	40.6 3.2	39.6 4.2	38.8 5.0	39.2 4.6

Ret.

49

60th St.

P

443.83

P

0.82

443.01

12.70

455.71

7.81

447.30

447.91

50

El Cerrito

Road in Draw Unit #2

B.M.

447.91

S.W. 17

6.82 454.73

0+00 6.0 448.7 ✓

0+50 3.4 451.3 ✓

1+00 1.7 453.0 ✓

1+30.2 5.1 449.6 ✓

1+50 8.9 445.8 ✓

P 12.90 441.83

0.34 442.17

2+00 7.8 434.4 ✓

P 11.59 430.58

0.18 430.76

2+42 7.5 423.3 ✓

2+50 7.6 423.2 ✓

P 11.88 418.88

1.52 420.40

3+00 8.2 412.2 ✓

P 12.60 407.80

2.54 410.34

3+50 4.9 405.4 ✓

4+00 13.8 396.5 ✓

P 12.12 398.22

1.44 399.66

Water cut

399.66

4+50		6.6	393.1	✓
5+00		12.2	387.5	✓
P		12.20	387.46	

2.21 389.67

5+50		4.4	385.3	✓
6+00.5		6.9	382.8	✓
6+50		10.4	379.3	✓
7+00		12.8	376.9	✓
P		11.80	377.87	

1.36 379.23

7+50		5.7	373.5	✓
8+00		8.0	371.2	✓
8+50		9.8	369.4	✓
9+00		12.7	366.5	✓
9+50		15.4	363.8	✓
10+14.0		15.5	363.7	✓
P		0.48	378.75	

12.54 391.29

P		0.85	390.44	
---	--	------	--------	--

11.99 402.43

P		0.38	402.05	
---	--	------	--------	--

12.44 414.49

		414.49			
P			0.29	414.20	
	11.49	425.69			
P			0.82	424.87	
	11.87	436.74			
P			0.78	435.96	
	13.06	449.02			
P			1.42	447.60	
	8.04	455.64			
B.M.			5.85	449.79	449.81

Emerson Heights
37th St. 60' St 10' Walks

W P 0 10 20 30 40 50 60 E

B.M. 47.00

	0	10	20	30	40	50	60
0+00	48.6	47.9	48.2	48.5	48.6	48.7	49.7
0+14	47.2	47.4	47.6	47.8	48.1	48.3	48.5
0+27	47.4	47.3	47.9	48.1	48.3	48.4	48.8
0+40	47.5	47.6	47.8	48.0	48.2	48.5	48.8
0+53	47.0	47.9	47.4	47.6	47.8	48.0	48.2
0+66	46.3	46.4	46.7	46.9	47.1	47.3	47.5
0+80	47.2	46.6	47.0	47.5	47.6	47.6	48.4
1+00	46.7	46.1	46.8	47.3	47.5	47.0	47.9
1+34	46.1	45.4	46.4	46.7	46.9	46.4	47.5
1+50	46.1	45.9	46.2	46.5	46.6	46.2	47.2
2+09	45.5	44.5	45.3	45.9	45.9	45.6	46.7
2+19	45.3	44.2	45.2	45.8	45.8	45.5	46.5
2+29	45.1	44.0	45.0	45.3	45.4	45.1	46.1
2+39	45.0	43.9	44.8	45.4	45.5	45.3	46.0
2+49	43.8	43.0	43.8	45.2	45.3	45.2	45.6
3+00	43.2	43.0	43.8	44.3	44.5	44.1	45.2

P 7.54 43.41

1.74 45.15

B.M. Top of Brass Plug S.W. Cor Nat & 37th Sts.

0+00 = N. Side of National Ave

Curb

Quarter

±

Quarter

Curb

Prop Line S. Side National Ave

N. Line of Tract

N. Line Burroughs St

Curb

±

Curb

S Line

Emerson Heights

37th St

	F	C	Q	±	Q	C	P
West	45.2		45.15				East
3+22	43.5 1.7	42.5 2.7	43.5 1.7	44.1 1.1	44.3 0.9	43.9 1.3	44.8 0.4
3+50	43.2 2.0	42.1 3.1	43.0 2.2	43.6 1.6	43.8 1.4	43.5 1.7	44.5 0.7
3+95	42.6 2.6	41.5 3.7	42.3 2.9	43.0 2.2	43.2 2.0	43.0 2.2	43.9 1.3
4+09	42.4 2.8	41.5 3.7	42.2 3.0	42.8 2.4	43.1 2.1	42.8 2.4	43.0 2.2
4+22	42.4 2.8	41.3 3.9	42.1 3.1	42.7 2.5	43.0 2.2	42.7 2.5	43.3 1.9
4+35	42.2 3.0	41.2 4.0	42.0 3.2	42.5 2.7	42.8 2.4	42.5 2.7	43.2 2.0
4+48	42.2 3.0	41.0 4.2	41.8 3.4	42.4 2.8	42.7 2.5	42.4 2.8	42.9 2.3
4+61	42.0 3.2	41.0 4.2	41.7 3.5	42.3 2.9	42.6 2.6	42.3 2.9	42.5 2.7
4+75	41.8 3.4	40.8 4.4	41.6 3.6	42.2 3.0	42.4 2.8	42.0 3.2	43.4 1.8
5+00	41.4 3.8	40.4 4.8	41.2 4.0	41.8 3.4	41.9 3.3	41.6 3.6	42.7 2.5
5+40.5	40.6 4.6	39.4 5.8	40.3 4.9	40.9 4.3	41.2 4.1	40.7 4.5	41.9 3.3
5+50	40.4 4.8	39.3 5.9	40.1 5.1	40.7 4.5	40.8 4.3	40.4 4.8	41.7 3.5
6+06	39.3 5.9	38.1 7.1	38.9 6.3	39.5 5.7	39.7 5.5	39.3 5.9	40.3 4.9
6+16	39.0 6.2	37.9 7.3	38.7 6.5	39.2 6.0	39.3 5.9	39.1 6.1	39.6 5.6
6+26	38.7 6.5	37.6 7.6	38.5 6.7	38.9 6.3	39.1 6.1	38.9 6.3	39.4 5.8
6+36	38.4 6.8	37.3 7.9	38.2 7.0	38.7 6.5	38.9 6.3	38.5 6.7	39.5 5.7
6+46	38.3 6.9	37.1 8.1	38.0 7.2	38.5 6.7	38.7 6.5	38.3 6.9	39.4 5.8
7+00	36.9 8.3	36.0 9.2	36.9 8.3	37.3 7.9	37.4 7.8	36.9 8.3	38.0 7.2
7+11.5	36.8 8.4	35.6 9.6	36.6 8.6	37.0 8.2	37.2 8.0	36.8 8.4	37.6 7.6
7+50	35.8 9.4	34.9 10.3	36.8 9.4	36.2 9.0	36.3 8.8	35.8 9.4	37.0 8.2

Back Line

N. Side Newton St

Curb " "

Quarter " "

± " "

Quarter " "

Curb " "

Prop " "

Back Line

N Side Gordon St

Curb " "

± " "

Curb " "

S Side " "

Back Line

Emerson Heights

37th St.

45.15

West	P	C	Q	E	Q	C	P	East
7+735	35.2 10.0	34.5 10.7	35.4 9.8	35.3 9.3	35.8 9.4	35.6 9.6	36.5 8.7	
7+88	34.6 10.6	34.5 10.7	35.0 10.2	35.3 9.9	35.5 9.7	35.4 9.8	35.3 9.9	
8+01	34.3 10.9	34.8 10.4	35.0 10.2	35.2 10.0	35.4 9.8	35.5 9.7	35.7 9.5	
8+14	34.3 10.9	34.7 10.5	34.8 10.4	35.0 10.2	35.2 10.0	35.3 9.9	35.4 9.8	
8+27	34.1 11.0	34.2 10.7	34.5 10.7	34.7 10.5	34.8 10.4	34.8 10.4	34.8 10.4	
8+40	33.3 11.9	33.3 11.9	34.1 11.1	34.4 10.8	34.5 10.7	34.3 10.9	34.1 11.1	
8+54	34.0 11.2	32.9 12.3	43.7 11.5	44.1 11.1	44.2 11.0	43.7 11.5	34.6 10.4	

P.L. Boston St

Curb " "

Quarter " "

± Boston St.

Quarter " "

Curb " "

P.L. " "

43.2
30.1

NEWTON ST 80' ST 14' Walks

45.15

South

South	P	C	Q	E	Q	C	P	North
0+00	41.7 ✓ 3.5 ✓	45.2 45.2	45.1 45.1	42.3 42.3	42.3 42.3	42.3 42.3	42.3 42.3	42.3 ✓ 42.6 ✓
0+50	33.8 ✓ 11.4 ✓	33.7 11.5	35.0 10.2	34.9 10.3	36.0 9.2	37.1 8.1	37.9 ✓ 7.3	
0+83	34.1 ✓ 9.6 ✓	35.6 9.6	36.8 8.4	37.1 ✓ 8.1	38.0 7.2	39.3 5.9	40.3 ✓ 4.9	
1+00	35.7 ✓ 9.5 ✓	37.2 8.0	38.0 7.2	38.7 ✓ 6.5	38.7 6.5	39.2 6.0	39.4 ✓ 5.8	
1+50	37.3 ✓ 7.9 ✓	37.1 8.1	37.3 7.9	37.7 ✓ 7.5	38.0 7.2	38.5 6.7	38.8 ✓ 6.4	
1+65	36.9 ✓ 8.3 ✓	37.0 8.2	36.9 8.3	37.4 ✓ 7.4	37.8 7.4	37.8 7.4	37.7 ✓ 7.5	
2+00	33.9 ✓ 11.3 ✓	34.0 11.2	34.3 10.9	34.6 10.6	34.9 10.4	35.7 9.5	37.4 ✓ 7.8	

0+00 = West Side of 37th St.

P

822

36

93

0.64

37.57

350

Emerson Heights

Newton St.

(37.6)

37.57

South	P	c	a	c	a	c	P North
2+47	30.9 4.7	31.6 6.0	32.5 5.1	33.0 4.6	33.8 3.8	34.7 2.9	35.5 2.1
3+00	29.3 2.2	29.8 7.8	30.6 7.6	31.5 5.8	32.5 5.1	32.6 5.0	32.2 5.4
3+29	27.2 10.4	27.7 9.9	28.5 9.1	29.5 8.1	28.9 8.7	28.6 9.0	28.1 9.2
3+50	24.1 13.5	24.1 13.5	24.9 12.7	25.8 11.8	25.2 12.4	25.6 12.0	25.2 12.4
P			12.18		25.39		

(28.5)

30.7

28.46

4+00	18.9 5.6	19.1 9.4	19.1 9.4	19.2 9.3	19.2 9.3	19.3 9.2	19.8 8.7
4+11	19.0 9.5	19.1 9.4	19.2 9.3	19.3 9.2	19.3 9.2	19.4 9.1	19.6 8.9
4+21	19.7 9.8	19.0 9.5	19.8 8.7	20.1 8.4	20.9 8.1	20.3 8.2	20.9 7.9
4+31	18.7 9.8	19.4 9.1	20.5 8.9	20.8 7.7	20.8 7.7	20.7 7.8	21.7 6.8
4+50	19.1 9.4	20.4 8.1	21.8 6.7	22.7 5.8	22.9 5.6	23.4 5.1	23.5 5.0
5+00	26.7 1.8	27.4 1.1	28.0 0.5	28.5 0.0			

P

1.49

26.97

(37.7)

10.73

37.70

5+00					8.6	8.1	20.1 7.6
5+16	28.3 9.4	28.7 9.0	29.2 8.4	30.3 7.4	30.9 6.8	30.8 6.9	31.5 6.2
5+50	36.3 1.4	35.7 2.0	35.6 2.1	35.4 2.1	35.0 2.1	35.2 2.5	35.1 2.6

P

1.20

36.50

11.51

48.01

East side 20' Alley

E

"

"

W

"

"

"

Newton St.

	<u>48.0</u>		48.01				
G+01	466 1.4	462 1.8	45.7 2.3	45.2 2.8	45.0 3.0	44.7 3.3	44.3 3.7
B.M.				1.38		46.63	
P				2.89		38.12	
	11.21		49.33				
BM			2.34		46.99	47.00	

Top of Hub

Brass Plug in Curb S.W. Cor Nat & 37th Sts.

36th St

		2.90	49.53			46.63	
P				10.60		38.93	
<u>45.1</u>	6.12		45.05				
West	41.0 4.0	39.6 5.5	39.3 5.8	38.8 6.1	38.4 6.7	37.7 7.4	38.1 East
0+00	39.4 5.7	39.1 6.0	38.7 6.4	38.4 6.7	38.0 7.1	37.6 7.5	37.4
0+14	39.8 5.3	39.3 5.8	38.9 6.2	38.6 6.5	38.3 6.8	37.9 7.2	37.8
0+27	39.8 5.3	39.3 5.8	38.9 6.2	38.5 6.6	38.3 6.8	38.0 7.1	37.8
0+40	39.3 5.8	38.8 6.3	38.5 6.6	38.2 6.9	37.9 7.2	37.6 7.5	37.4
0+53	38.1 6.7	38.1 7.0	37.8 7.3	37.4 7.7	37.1 8.0	36.6 8.5	36.3
0+66	39.4 5.7	38.6 6.5	38.3 6.8	38.1 7.0	37.6 7.5	37.4 7.7	37.4 ✓
0+80	43.8 1.3	43.3 1.7	43.1 1.9	42.1 ✓ 2.9	40.3 4.8	40.2 4.9	37.8 ✓
1+00	45.0 1.4	43.7 1.9	43.2 2.3	40.9 4.2	40.9 4.2	38.9 6.2	
1+20	Stair Way of School						

0+00 = N side of National Ave

Curb

Quarter

±

Quarter

Curb

P.L. S. side of Nat Ave.

36th St.

45.05

P

0.80

44.25

(52.7)

8.43

52

68

45.0

42.5

41.4

41.2

1+50	51.7 1.0	51.1 1.6	48.1 4.6	45.0 7.7	42.5 10.2	41.4 11.3	41.2 11.5
1+93.5	52.3 0.4	52.3 0.4	52.2 0.5	47.7 5.8	43.3 9.4	41.1 11.6	39.8 12.9
2+03.5	52.3 0.4	52.4 0.3	52.0 0.7	47.5 5.2	43.8 9.8	41.3 11.4	40.3 12.4
2+13.5	52.2 0.5	52.3 0.4	52.2 0.5	47.7 5.0	43.4 9.3	41.5 11.2	40.1 12.6
2+23.5	52.2 0.5	52.1 0.6	51.7 1.0	46.8 5.9	43.3 9.4	41.4 11.3	40.0 12.7
2+33.5	52.1 0.6	52.1 0.6	51.5 0.8	47.1 5.6	43.0 9.7	41.5 11.2	40.2 12.5
2+50	52.0 0.7	51.9 1.3	49.9 2.8	46.4 6.3	43.5 9.2	41.8 10.9	40.9 12.7
3+00	51.3 1.4	51.5 1.2	50.9 1.8	47.0 5.7	44.1 8.6	42.5 10.2	40.9 11.8
3+07	51.7 1.0	50.8 1.9	50.5 2.2	47.1 5.6	44.3 8.4	42.6 10.1	40.7 12.0
3+50	51.4 1.3	51.2 1.5	49.9 2.8	47.9 4.8	46.1 6.6	44.7 8.2	42.2 10.5
3+80	51.9 0.8	51.0 1.7	50.0 2.7	48.7 4.0	47.5 5.2	46.4 6.3	44.3 8.4
4+00	1.2	1.9	2.8	3.6	4.7	5.9	7.7

N side Burroughs St

Curb

E

Curb

PL S side

P

1.59

51.19

(55.1)

3.32

55.11

3+94	51.7 3.4	51.0 4.1	50.0 5.1	49.2 5.9	47.8 7.3	46.9 8.2	44.7 10.4
4+07	51.4 3.7	50.8 4.3	49.9 5.2	48.8 4.3	48.0 7.1	46.9 8.2	45.0 10.1
4+20	51.6 3.5	51.1 4.0	50.6 4.5	49.8 5.3	48.5 6.6	47.2 7.9	45.4 9.7
4+33	51.4 3.7	51.0 4.1	50.5 4.6	49.7 5.4	48.5 6.6	47.7 7.4	45.7 9.4
4+46	51.1 4.0	51.1 4.0	50.6 4.5	49.9 5.2	48.9 6.2	48.2 6.9	46.3 9.8
4+60	50.8 4.3	51.0 4.1	50.6 4.5	49.7 5.4	49.1 6.0	48.7 6.4	46.7 8.4

Curb

Quarter

E

Quarter

Curb

PL

N side Newton St.

36th St.

West	P	C	a	±	a	c	P	East
(55')			55.11					
5+00	✓ 49.5 5.6	49.4 5.7	49.1 6.0	48.1 7.0	✓ 47.7 7.4	48.5 8.4	44.9 10.2	✓
5+25.5	✓ 49.3 5.8	49.2 5.3	48.8 6.3	18.1 7.0	48.0 7.1	46.7 8.4	45.2 9.9	
5+50	✓ 50.1 5.0	50.1 4.7	50.0 5.1	49.0 6.1	✓ 48.4 6.7	47.5 7.6	46.3 8.8	✓
5+90	✓ 49.1 6.0	49.1 6.0	49.0 6.1	48.7 6.4	✓ 48.7 6.4	48.3 6.8	47.9 7.2	✓
6+00	✓ 49.2 5.9	49.1 6.0	49.2 5.9	48.8 6.3	48.9 6.2	48.4 6.7	47.9 7.2	
6+10	✓ 49.1 6.0	49.3 5.8	49.2 5.9	49.1 6.0	✓ 49.0 6.1	48.8 6.3	48.3 6.8	✓
6+20	✓ 49.0 6.1	49.2 5.9	49.2 5.9	49.2 5.9	49.1 6.0	48.9 6.2	48.4 6.7	
6+30	✓ 49.0 6.1	49.2 5.9	49.2 5.9	49.3 5.8	✓ 49.0 6.1	48.9 6.2	48.6 6.5	✓
6+50	✓ 48.7 6.4	48.9 6.2	49.0 6.1	49.4 5.9	✓ 49.2 5.9	48.8 6.3	48.5 6.6	✓
6+95	✓ 48.0 7.1	47.8 7.3	47.9 7.2	48.1 7.0	✓ 48.0 7.1	47.6 7.5	47.4 7.7	✓
7+50	✓ 45.9 9.2	45.6 9.5	45.7 9.4	45.9 9.2	✓ 45.8 9.3	45.6 9.5	45.2 9.9	✓
7+61	✓ 45.6 9.5	45.3 9.8	45.3 9.8	45.3 9.8	✓ 45.1 10.0	45.0 10.1	44.7 10.4	✓
7+75	✓ 44.7 10.4	44.4 10.7	44.5 10.6	44.6 10.5	✓ 44.6 10.5	44.5 10.6	44.4 10.7	
7+82	✓ 43.8 11.3	44.1 11.0	44.1 11.0	44.1 11.0	✓ 44.1 11.0	44.0 11.1	43.8 11.3	✓
B.M				8.45		48.66	48.63	

B.L.

N. side Gordon St

Curb

±

Curb

S. side Gordon St

B.L.

South P.L. N. Side of Boston St.

Curb

Fence

Burroughs St.

South P. ± P North.

B.M.

47.00

	0.70	47.70		
0+00	✓ 44.7 3.0	✓ 45.1 2.6	✓ 45.5 2.2	
0+21	✓ 44.3 3.4	✓ 44.7 3.0	✓ 45.5 2.7	
0+50	✓ 36.3 11.4	✓ 36.5 11.2	✓ 37.9 9.8	
0+83	✓ 34.2 13.5	36.0 11.7	✓ 38.2 9.5	

0+00 = W side of 37th St.

P

9.42 38.28

Top of Hub N side of St. Sta 0+83

	2.75	41.03		
1+00	✓ 33.8 7.2	✓ 36.4 4.6	✓ 39.5 1.5	
1+50	✓ 33.2 7.8	✓ 36.3 4.7	✓ 38.3 2.7	
1+65	✓ 33.0 8.0	✓ 35.8 5.2	✓ 38.0 5.0	
2+00	✓ 32.3 8.7	✓ 34.7 6.3	✓ 35.3 5.8	
2+47	✓ 32.3 8.7	✓ 33.1 7.9	✓ 33.4 7.6	
3+00	✓ 30.9 10.1	✓ 33.4 7.6	✓ 35.2 5.8	
3+29	✓ 32.0 9.9	✓ 34.7 6.3	✓ 35.5 5.5	
3+50	✓ 32.9 8.1	✓ 34.8 6.2	✓ 35.7 7.3	

P

8.96 32.07

	0.37	32.44		
4+00	✓ 24.7 7.7	✓ 24.6 7.8	24.7 7.7	
4+11	✓ 24.7 8.8	24.4 8.0	✓ 25.1 7.3	
4+21	✓ 24.1 8.3	24.7 7.7	25.2 7.2	
4+31	✓ 24.4 8.0	25.0 7.4	25.7 6.7	

Burroughs St

32.44

	South P	E	P North
(32.4)	25.2	26.0	25.7
4+50	✓ 7.2	✓ 0.4	6.7
P		3.16	2.9 2.9
(42.0)	12.69	4 1.97	
5+00	✓ 33.7	✓ 36.3	36.8
	8.3	5.7	5.2
5+16	✓ 34.7	✓ 37.4	38.3
	7.3	4.6	3.7
5+50	35.8	37.2	38.7
	6.2	4.8	3
6+01	40.8	✓ 40.0	39.8
	1.8	2	2.2
P		1.24	40.73
	10.58	51.31	

E. Side of 36th St.

(51.3)

Gordon St

	South P	E	P North
6+01	48.4	49.1	47.8
	2.9	3.2	3.5
5+50	43.3	44.9	42.5
	8.0	9.4	8.8
5+16	38.2	37.5	36.7
	1.3	1.3	1.5
P		13.11	38.20
(39.2)	0.98	39.18	
5+00	34.8	34.6	34.2
	4.4	4.6	5.0
4+70	31.9	30.7	28.2
	7.3	8.5	11.0
P		12.53	26.65
	0.80	27.45	

Gordon St.

South P E P North

(27.5)

27.45

4+50	20.6 6.9	20.9 6.6	19.8 7.7
4+31	16.8 10.7	16.8 10.7	17.0 10.5
4+21	16.1 11.4	16.6 10.9	17.0 10.5
4+11	16.4 11.1	16.6 10.9	17.0 10.5
4+00	16.3 11.2	16.7 10.8	16.8 10.7
3+50	19.8 7.7	20.8 6.7	21.1 6.4
3+29	20.5 7.0	23.2 4.3	23.5 4.0
3+00	21.5 6.0	24.3 3.2	26.1 4.4

SW Cor Alley B.M.

10.62 16.83

P

0.81 26.4

Tip of Hub

1+65 Top of Hub

(37.0)

12.37

37.01

2+47	22.6 14.4	25.5 11.5	26.5 8.5
2+00	23.7 13.3	24.2 10.8	29.1 7.9
1+65	26.4 10.4	25.4 11.6	27.6 9.4
1+50	27.8 9.2	26.2 10.8	26.9 10.1
1+00	33.8 3.2	32.7 4.3	32.8 4.2
0+83	35.5 1.5	35.4 1.6	35.3 1.7
0+50	37.4 +0.4	37.5 +0.5	37.6 +0.6
0+00	38.4 See 37th St.	38.7 37th St.	38.3

Cont on Pg 64

Topo

T at 225 S of Cor B.S. South

	Dist	# Δ	VA	±
Corner(?)	500	5°29'	-1°40'	8
Top Bank	560	20°19'	-1°45'	7
	620	24°24'	-1°40'	7
	680	30°04'	-1°45'	7
	640	37°55'	-2°00'	7
	460	44°05'	-2°15'	10
	540	51°50'	-2°00'	10
*	548	56°30'	-1°50'	10
	668	"	"	"
*	609	66°48'	2°04'	8
	794			
	555	75°35'	-2°10'	9
	376	76°25'	-2°40'	10
Draw #4	208	73°45'	-3°30'	10
	232	74°12'	-3°25'	10

Boston Ave

North P 20 South-

(37.0)

37.01

0+00	35.2 1.8	34.2 2.8
0+50	32.0 5.0	30.9 6.1
0+83	32.4 9.6	30.9 6.1
1+00	32.8 4.2	30.9 4.1
1+50	31.2 5.8	30.1 6.5
1+65	31.4 5.6	29.9 7.1
2+00	31.3 5.7	29.7 7.3
2+47	29.0 8.0	27.8 5.2
3+00	24.9 12.1	23.4 3.6

0+00 = W Side of 37th St.

P

12.25

24.76

(27.9)

3.13

27

89

3+29	22.6 5.3	19.3 8.6
3+50	18.4 9.5	16.9 11.0
4+00	13.9 4.0	13.5 4.4
4+11	14.1 3.8	13.7 4.2
4+21	14.4 3.5	15.9 12.1
4+31	16.9 11.0	16.7 11.2

BM P

11.06

16.83

(29.1)

12.26

22.8

6.3

29.09

22.3

6.8

4+50

P

0.92

28.17

13.14

4.1

31

Boston Ave

North P 20 South

(41.3)

	41.31		
5+00	34.5 6.8	35.9 5.4	
5+16	37.0 4.3	37.3 4.0	
P		4.22	37.09

(48.3)

	11.21	48	30	
5+50	42.3 6.0	43.2 5.1		
6+01±	44.8 3.5	43.9 4.4		
S.W. Cor of Tract.		3.49		
B.M.		1.71	46.59	46.63

Top of Pipe
SE Cor of Newton & 36th.

Alley

B.M.

(26.7)

	9.94	26.67	16.83
0+00	W PL 76.9 9.8	E 14.5 12.2	PL E 14.1 12.6
0+50	16.6 10.6	15.2 11.5	15.0 11.7
0+63	16.4 10.3	15.5 11.2	15.1 11.6
1+00	16.9 9.8	15.9 10.0	15.9 10.8
1+28.5	16.8 9.9	16.1 10.6	16.3 10.4
1+48.5	16.9 9.8	16.6 10.1	16.7 10.0
1+68.5	17.0 9.7	17.0 9.7	17.0 9.7

S.W. Cor of 20' Alley

0+00 = S. P.L. of Tract.

S Garden

E "

N "

ALLEY

	West P	±	P	East
(26.7)				
	26.67			
2+00	17.4 93	17.4 93	17.4 93	
2+34.0	17.9 88	17.9 88	17.9 88	
2+50	18.6 86	18.3 84	18.2 85	
3+00	18.7 81	18.8 79	19.0 77	
3+10 ⁵⁰	20.8 59	20.3 64	19.2 75	
3+80	21.6 51	20.6 61	19.6 71	
4+00	21.7 50	20.7 60	19.7 70	
4+53	20.9 58	20.6 61	20.7 61	

S Newton

P 5.85 20.82

	West P	±	P	East
(339)				
	13.05			
	33.87			
5+00	23.5 10.4	23.3 10.6	21.7 12.2	
5+26	24.4 95	24.1 98	23.7 10.2	
5+46	24.8 91	24.8 91	24.6 93	
5+66	25.7 82	25.2 87	25.1 88	
6+00	27.4 65	26.3 74	26.7 72	

S Bar.

E "

N "

P 1.80 32.07

11.62 43.69

P 5.57 38.12

12.00 50.12

B.M. 3.13 46.99 47.00

New Rd

BM			447.91	
	6.97	454. ⁸⁸		
1+30.2			5.2 447. ⁷ ✓	
1+50			8.7 446. ² ✓	
P			11.24 443. ⁶⁴	
	0.15	443. ⁷⁹		
2+00			6.2 437. ⁶ ✓	
2+50			11.5 432. ³ ✓	
P			11.55 432. ²⁴	
	0.20	432.44		
3+00			4.4 428. ⁰ ✓	
3+26.4 P.I.			5.2 427. ² ✓	
3+50			7.6 424. ³ ✓	
4+00			12.7 419. ⁷ ✓	
P			11.28 421. ¹⁶	
	0.43	421. ⁵⁹		
4+27.4			5.4 416. ² ✓	
4+50			9.1 412. ⁵ ✓	
5+00			10.6 411. ⁰ ✓	
P			11.32 410. ²⁷	
	1.50	411. ⁷⁷		
5+50			10.6 401. ³ ✓	

		411.77		
P			12.57	399.20
	0.40	399.60		
6+00			4.8	394.8 ✓
6+50			8.6	391.0 ✓
6+94.7			12.2	387.4 ✓
7+00			12.4	387.2 ✓
P			12.13	387.47
	1.54	389.01		
7+50			5.7	383.3 ✓
8+00			11.4	377.6 ✓
P			11.83	377.18
	2.10	379.28		
8+51.05			8.4	370.9 ✓
9+00			12.7	366.4 ✓
9+60.8=			15.6	363.7 ✓
9+64.7,				
P			1.10	378.18
	12.27	390.45		
P			1.83	388.62
	12.35	401.57		
P			0.62	400.95
	12.74	413.69		

X

		413.69			
P			1.50	412.19	
	12.60	424.79			
P			0.40	424.39	
	12.52	436.91			
P			1.52	435.39	
	11.39	446.78			
P			2.09	444.69	
	11.55	456.24			
			6.44	449.80	449.81

Back Lines Blk 8 Unit No. I.

B.M.		479. ⁹⁸	479. ⁴⁸
	5.50		
9-10-18		7.8	
10-11		7.7	
11-12		7.4	
Ret		6.6	
12-13		6.9	
13-14		6.9	
14-15		6.2	
15-16		6.3	
11-14-18		6.3	
16-17		7.4	
B.M.		5.50	479.48

Top of Hwy Mon at L pt in El Cajon Blvd

Blk 8 Back Line

on 58th

" "

on 58th

Back line of lots.

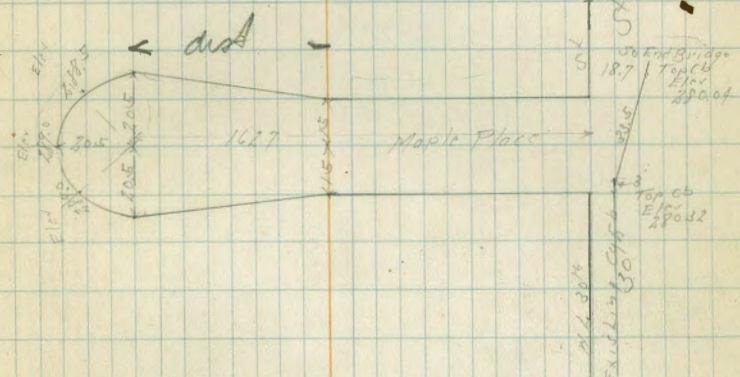
Maple Place Cross Section
N of 30th St

30th side

50-127
72

BM	237	293.08 ✓	289.71	SE 88°
TP	1182	292.47 ✓	280.65 ✓	
		N of 30 th St		
S		121	280.4 ✓	
		Top Case Wall	284.63	
8		120	280.5 ✓	
11		118	280.7 ✓	
11		110	281.5 ✓	
		31 st of 156 30 th		
11		95	283.0 ✓	
13		100	282.5 ✓	
14		110	281.5 ✓	
8		101	281.9 ✓	
17		107	281.8 ✓	
19		112	281.2 ✓	
10		106	281.9 ✓	
S		100	282.5 ✓	
		N End of Case Wall	285.99	
		50 th		
S		77	284.8 ✓	
11		82	284.3 ✓	
11		82	283.6 ✓	
8		81	283.9 ✓	
19		88	283.7 ✓	
11		77	284.8 ✓	

PLOTTED
6/27/27



Laurel



CITY OF SAN DIEGO
OFFICE OF CITY ENGINEER
INFORMATION REQUEST

No 6075

W.O.NO. 20006

TO BUNCH FROM ZWECK DATE 2-26-52

FLAG NLY PROPERTY LINE MAPLE CT. WLY
30TH ST.

REFERENCES: DRAWING NO. MAP SCC, 19594

TP 164

FIELD BOOK NO. 1502-

1180-72

REPORT BY Sisson TO _____ DATE _____

FORM 211

INFORMATION ON DRAWING NO. _____

DATA IN BOOK _____

293.47

75.24

N	68	285.7	✓	+15	44	288.1
+6	76	284.9		+17	37	288.8
S	72	285.3	✓		39	288.6
+10	73	285.2				
+11	67	285.8				
S	64	286.1	✓			

100.48

S	54	287.1	✓
+4	60	286.5	
+6	65	286.0	
S - Top May Hole	590	286.57	✓
+10	63	286.2	
N	50	287.5	✓

PLOTTED
 Chase
 9/2/27

122.7 ft

30° wide

N	47	287.8	✓
+3	42	287.8	
+5	54	287.1	
S	49	287.6	
+11	54	287.1	✓
+12	48	287.7	
S	46	287.9	✓

162.7 - R

410° wide

S	35	288.0	✓
+6	41	287.4	
S	37	288.8	✓

68
7.1
2.5

B.M. F.H. flange 58th + Adelaide 457.04

7.80 464.84

457.13 458.03

7.71 6.81 4.59

£ N

9.6 468.6

2.0 466.6

B.M. above 457.04

11.39 468.43

458.84 466.4

9.59 2.0

TP 0.41 468.02

4.96 473.00

8.88 476.90

TP 9.33 467.57

2.28 469.85

TP 13.02 456.83

0.22 457.05

TP 12.31 444.74

0.12 444.86

Hub NE Cor RR 10 2.36 442.50

434.5 442.49

134.16 10.38

34.2 10.70

0100

31.2

434.5

2.7

44486

TP 11.05 433.81

0.11 433.92

~~432.3~~

15

17.411

TP 600 N Adelaide 398 429.94

11.32 441.26

Ok. T.P. 9.43 431.83

5440 9.5 431.8

TP 7.98 433.28

9.55 442.83

TP 6.80 436.03

0.72 436.75

TP 12.37 424.38

0.22 424.60

SW Cor BLK 12 11.6 413.0

9.1 415.5

TP 11.58 413.02

0.60 413.62

1452.29 6.17 407.4 401.8 ^{Cost} 5.6 ✓

1492.29 9.54 404.1 400.0 4.1 ✓

TP 12.85 400.77

3.82 404.59

1492.29 8.2 396.4 399.0 Fr

1452.29

404.39

7.7

196.9

401.1 F.4.2

1400

1.6

403.0

405.0 F.2.0

Seis. {
 Meade. {
 1415 }
 From # 58th
 1430 }
1430

404.0

391.9

391.9

0.6

12.7

12.7

±

10' 50" off

±

402.8

392.5

392.5

1.8

12.1

12.1

±

10' 20" off

±

New Road.

6+00.5 A

R 175° 52' ~~N~~ 18° 40' W ✓

9+60 = 9+64.0

Mag

L 5° 16' S 22° 48' E ✓ S 23° E

8+51.0

R 10° 23' S 17° 32' E ✓ S 18° 30' E

6+24.7

R 12° 48' S 27° 55' E ✓ S 28° E

4+27.4

R 2° 49' S 40° 43' E ✓ S 41° E

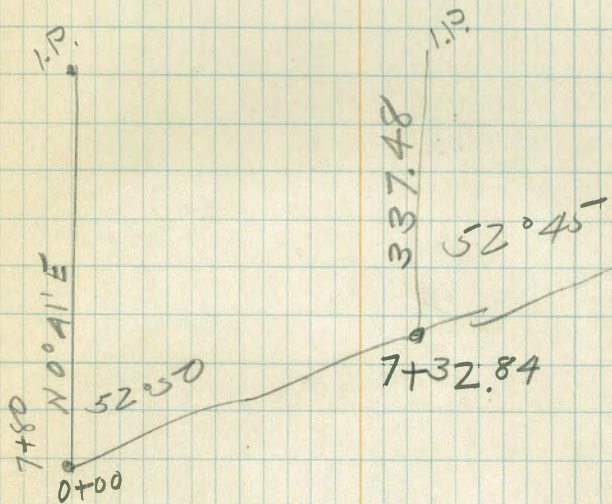
3+26.4

⁴⁴ L 4° 15' S 43° 32' E ✓ S 43-30' E

1+30.2

S 0° 43' 30" W

NO. 411'E
50-10
2000



S 63°51' N
37°38'

107.29

N 78-31W
10 21

88-52
3

88-55
90

960.
130.0

830
.12

1660
830

99.6
7.2

92.4

449.7
363.7

86.0

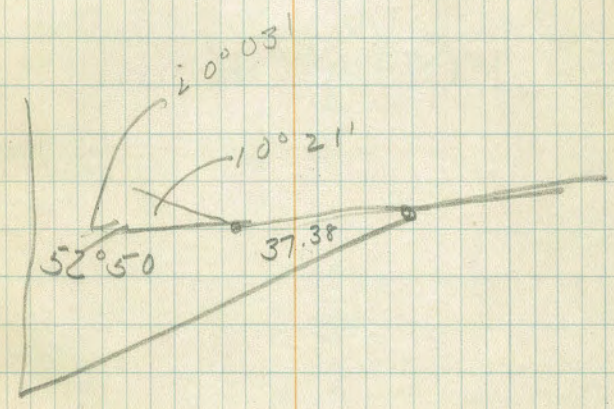
449.7
366.4

83.1

71

12
60
720

10.9
830) 860
830
3000



$$\begin{array}{r} 960 \\ 130 \\ \hline 830 \end{array}$$

$$\begin{array}{r} 63-51 \\ 37-38 \\ \hline 26 \\ 10 \\ 10 \\ \hline 21 \\ 80.08 \end{array}$$

S 53°31' W 10°21'
 37 38

$$\begin{array}{r} 91-09 \\ 79-13 \\ \hline 170-22 \\ 170-22 \\ \hline 9-38 \end{array}$$

$$\begin{array}{r} 179-60 \\ 101-29 \\ \hline N 78-31 W \\ 10-21 \\ \hline 88-52 \end{array}$$

S 63°51' W

$$\begin{array}{r} 37-38 \\ 101-29 \\ 79-13 \\ \hline 180-42 \\ N 60°42' E \end{array}$$

$$\begin{array}{r} 449.7 \\ 363.7 \\ \hline 86.0 \end{array}$$

DIRECTIONS FOR USE OF TABLES

TABLE No. 1.

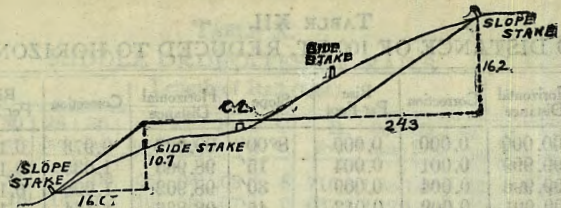
Distance of slope stake from side of shoulder
 stake for any width roadway, slope 1% to 1.
 If ground is nearly level, the cut or fill at side
 stake is located by the double entry method in
 left column and top row. The number in body
 of table in same row and column gives distance
 from side stake to slope stake. If ground is not

IMPROVED TABLES

amount if cut, elevate if fill. Add this amount
 to cut or fill and had in table. Set up
 rod at this point, and line of sight should cut
 target.
 necessary.

TABLE No. 2.

To find Tangent and External for curve of
 any other degree, divide by degree of curve and
 add correction found in column of corrections.
 Degree of curve with a given L may be found
 by dividing tangent (or external), opposite L by
 given tangent (or external).
 The distance from a point on the tangent to
 the curve is very nearly the square of the tangent
 length divided by twice the radius.



DISTANCES FROM SIDE STAKES FOR CROSS-SECTIONING.

SLOPE 1 1/4 TO 1. ROADWAY OF ANY WIDTH.

	0	.1	.2	.3	.4	.5	.6	.7	.8	.9	
0	0 00	0 15	0 30	0 45	0 60	0 75	0 90	1 05	1 20	1 35	0
1	1 50	1 65	1 80	1 95	2 10	2 25	2 40	2 55	2 70	2 85	1
2	3 00	3 15	3 30	3 45	3 60	3 75	3 90	4 05	4 20	4 35	2
3	4 50	4 65	4 80	4 95	5 10	5 25	5 40	5 55	5 70	5 85	3
4	6 00	6 15	6 30	6 45	6 60	6 75	6 90	7 05	7 20	7 35	4
5	7 50	7 65	7 80	7 95	8 10	8 25	8 40	8 55	8 70	8 85	5
6	9 00	9 15	9 30	9 45	9 60	9 75	9 90	10 05	10 20	10 35	6
7	10 50	10 65	10 80	10 95	11 10	11 25	11 40	11 55	11 70	11 85	7
8	12 00	12 15	12 30	12 45	12 60	12 75	12 90	13 05	13 20	13 35	8
9	13 50	13 65	13 80	13 95	14 10	14 25	14 40	14 55	14 70	14 85	9
10	15 00	15 15	15 30	15 45	15 60	15 75	15 90	16 05	16 20	16 35	10
11	16 50	16 65	16 80	16 95	17 10	17 25	17 40	17 55	17 70	17 85	11
12	18 00	18 15	18 30	18 45	18 60	18 75	18 90	19 05	19 20	19 35	12
13	19 50	19 65	19 80	19 95	20 10	20 25	20 40	20 55	20 70	20 85	13
14	21 00	21 15	21 30	21 45	21 60	21 75	21 90	22 05	22 20	22 35	14
15	22 50	22 65	22 80	22 95	23 10	23 25	23 40	23 55	23 70	23 85	15
16	24 00	24 15	24 30	24 45	24 60	24 75	24 90	25 05	25 20	25 35	16
17	25 50	25 65	25 80	25 95	26 10	26 25	26 40	26 55	26 70	26 85	17
18	27 00	27 15	27 30	27 45	27 60	27 75	27 90	28 05	28 20	28 35	18
19	28 50	28 65	28 80	28 95	29 10	29 25	29 40	29 55	29 70	29 85	19
20	30 00	30 15	30 30	30 45	30 60	30 75	30 90	31 05	31 20	31 35	20
21	31 50	31 65	31 80	31 95	32 10	32 25	32 40	32 55	32 70	32 85	21
22	33 00	33 15	33 30	33 45	33 60	33 75	33 90	34 05	34 20	34 35	22
23	34 50	34 65	34 80	34 95	35 10	35 25	35 40	35 55	35 70	35 85	23
24	36 00	36 15	36 30	36 45	36 60	36 75	36 90	37 05	37 20	37 35	24
25	37 50	37 65	37 80	37 95	38 10	38 25	38 40	38 55	38 70	38 85	25
26	39 00	39 15	39 30	39 45	39 60	39 75	39 90	40 05	40 20	40 35	26
27	40 50	40 65	40 80	40 95	41 10	41 25	41 40	41 55	41 70	41 85	27
28	42 00	42 15	42 30	42 45	42 60	42 75	42 90	43 05	43 20	43 35	28
29	43 50	43 65	43 80	43 95	44 10	44 25	44 40	44 55	44 70	44 85	29
30	45 00	45 15	45 30	45 45	45 60	45 75	45 90	46 05	46 20	46 35	30
31	46 50	46 65	46 80	46 95	47 10	47 25	47 40	47 55	47 70	47 85	31
32	48 00	48 15	48 30	48 45	48 60	48 75	48 90	49 05	49 20	49 35	32
33	49 50	49 65	49 80	49 95	50 10	50 25	50 40	50 55	50 70	50 85	33
34	51 00	51 15	51 30	51 45	51 60	51 75	51 90	52 05	52 20	52 35	34
35	52 50	52 65	52 80	52 95	53 10	53 25	53 40	53 55	53 70	53 85	35
36	54 00	54 15	54 30	54 45	54 60	54 75	54 90	55 05	55 20	55 35	36
37	55 50	55 65	55 80	55 95	56 10	56 25	56 40	56 55	56 70	56 85	37
38	57 00	57 15	57 30	57 45	57 60	57 75	57 90	58 05	58 20	58 35	38
39	58 50	58 65	58 80	58 95	59 10	59 25	59 40	59 55	59 70	59 85	39
40	60 00	60 15	60 30	60 45	60 60	60 75	60 90	61 05	61 20	61 35	40
41	61 50	61 65	61 80	61 95	62 10	62 25	62 40	62 55	62 70	62 85	41
42	63 00	63 15	63 30	63 45	63 60	63 75	63 90	64 05	64 20	64 35	42
43	64 50	64 65	64 80	64 95	65 10	65 25	65 40	65 55	65 70	65 85	43
44	66 00	66 15	66 30	66 45	66 60	66 75	66 90	67 05	67 20	67 35	44
45	67 50	67 65	67 80	67 95	68 10	68 25	68 40	68 55	68 70	68 85	45
46	69 00	69 15	69 30	69 45	69 60	69 75	69 90	70 05	70 20	70 35	46
47	70 50	70 65	70 80	70 95	71 10	71 25	71 40	71 55	71 70	71 85	47
48	72 00	72 15	72 30	72 45	72 60	72 75	72 90	73 05	73 20	73 35	48
49	73 50	73 65	73 80	73 95	74 10	74 25	74 40	74 55	74 70	74 85	49
50	75 00	75 15	75 30	75 45	75 60	75 75	75 90	76 05	76 20	76 35	50

Computed by L. Leland Locke.

79-13

53-31
37-18
90-49
89-16

179-60
337-38
142-22

179 60
520 50
127 10

10° 25'

179-60
142-22
37-38
142-22
127-10

553-31' W
37-38
91-09
88°-51

553°31' W
37-38
91-09
79-13
170-22

53-31
37-38
79-13
170-22

180-22
-38

To find

3+95
14
4709
13
4722
13
4735
13

4+48
13

4+61
14

4+75
65.5
51405

8.43-4

46.63

53 67
20

3 2-

5+50
56
6106

405
655
4+000
50
560

3+80
80

4+60

1320
25

13+45

1-

5+16
85
6+01

69
54

1+20.5
73

1+93.5
20.5

2+14.8

1+93.5
20

2+13.5
20

2+33.5

165

4+60
65.5

5+25.5
65.5

5+90.8
40

6+30
65.5

6+95.5
65.5

7+61
71.1

7+75
77

7+82

474 666

83
82

1465
35

2100

1465
82

2447
82

3+29
82

4+11
20

4+31
85

5+16
85

6+01
54

52-50
91

N 52°09' E

53.31

63.
27

53-31
31-18

84-44
2-50

4) 211-20
20 200

500
20
11
7

63-51

52-09

11-42

110-24

1+18

52°50"
0°41'

53-31

Alley

63
65.5

4285
20

17485
20

17685
45.1

2+34.0
65.5

24995
80

3+806
73

4+53
73

5+26
20

5+46
20

5+66
73

6+39

N 0°41' E

52°50

53.31

63-51

53-81

10-20

63.51

53-31

10-20

63°51

53°31

10-20