

1181

PASTS

FIELD BOOK

No. 385 F

MICROFILMED

DEC 21 1964

Our Leather Bound Engineers Note Books are carried in the following rulings:

- No. 380 LEVEL BOOK. Left and Right Hand Page the same as Left Hand Page of this Book.
- No. 382 FIELD BOOK. Left Hand Page as in this Book, Right Hand Page 4 x 4 to the inch, Center Line Red.
- No. 384 MINING TRANSIT BOOK. Left Hand Page as in this Book, Right Hand Page 8x8 to the inch, Center Line Red.
- No. 385 FIELD BOOK. Left Hand Page as in this Book, Right Hand Page 8 vertical and 4 horizontal lines to the inch, Center Line Red.

We also carry the Note Books listed above, bound in extra strong Fabri-Hide (otherwise the same quality of book), which can be furnished at a somewhat lower price.

In ordering Fabri-Hide covered books, add the letter "F" to catalog number.

THE FREDERICK POST CO.
ENGINEERING and DRAFTING SUPPLIES
IRVING PARK STATION
CHICAGO, ILL.

Fostered to P. 85

Vesta St	Main	to Filbert	1
Thor "	"	" "	3
39 th "	Delta	" Birch	5
L st.	EL 33 rd	" —	10
49 th "	ELCAJON	" Trojon	18
Estrella Ave.	"	" " "	20
Winona St	"	" " "	22
50 th "	"	" " "	24
51 st "	"	" " "	26
4 th "	Montecilo	" Lewis	28
Alley Blk 63	City Heights		29
40 th St.	Meade	to 150' N.	31
St James	Alameda	" 125' S	32
FOLK	Louisiana	" Georgia	34
56 th St	Meade	" 500' S.	56
39 th "	Bonnie Brae		62
Boulevard Place	La Jolla Hills		69

N. Section VESTA ST. 60' wide
From S.W. MAIN to N.E. T. Herbert

10' x 8'
10' Cbs.

BM 3 W. SAK

Main + Vesta 5.77 22.44 16.67

S.W. MAIN

E 5.9 16.5

cb. 5.7 16.7

+7 6.8 15.6

$\frac{1}{4}$ 6.7 15.7

$\frac{1}{2}$ 6.7 15.7

$\frac{3}{4}$ 6.7 15.7

cb. 6.7 15.7

W 6.5 15.9

10' S

W 6.6 15.8

cb. 6.6 15.8

$\frac{1}{4}$ 6.6 15.8

$\frac{1}{2}$ 6.5 15.9

$\frac{3}{4}$ 6.5 15.9

+3 6.7 15.7

+5 5.5 16.9

X cb. 5.2 17.2

E 5.2 17.2

50' South

E 5.6 16.8

cb. 5.6 16.8

+4 5.8 16.6

+5 6.7 15.7

22.44

1
10' x 8'
10' Cbs.

$\frac{1}{2}$ 6.5 15.9

$\frac{1}{4}$ 6.5 15.9

$\frac{1}{4}$ 6.8 15.6

+5 7.0 15.4

cb. 7.0 15.4

W 6.8 15.6

100' S

W. 7.5 14.9

cb. 7.8 14.6

+5 7.7 14.8

$\frac{1}{4}$ 7.8 15.2

$\frac{1}{2}$ 6.7 15.7

$\frac{3}{4}$ 7.0 15.4

+5 7.4 15.0

+6 6.1 16.3

cb. 6.1 16.3

E 6.4 16.0

150' S

E 7.3 15.1

cb. 7.3 15.1

+5 7.6 14.8

$\frac{1}{4}$ 7.6 14.8

$\frac{1}{2}$ 7.5 14.9

$\frac{3}{4}$ 8.1 14.3

+5 8.5 13.9

cb. 8.2 14.2

W 8.3 14.1

22.44

200' South

W	9.3	13.1
cb.	9.0	13.4
+5	9.2	13.2
$\frac{1}{4}$	8.8	13.6
$\frac{1}{2}$	8.4	14.0
$\frac{3}{4}$	8.6	13.8
+0	9.1	13.3
+6	7.9	14.5
cb.	8.0	14.4
E	7.9	14.5

250' S

E	8.7	13.7
cb.	8.7	13.7
+4	8.6	13.8
+6	7.8	14.6
$\frac{3}{4}$	9.5	12.9
$\frac{1}{2}$	9.2	13.2
$\frac{1}{4}$	9.6	12.8
+5	10.1	12.3
cb.	10.1	12.3
W	10.1	12.3

301' S = N.6.5/60 + 5'

W	10.6	11.8
cb.	10.5	11.9
+5	11.0	11.4

 $\frac{1}{4}$

10.5

11.9

 $\frac{1}{2}$

10.1

12.3

 $\frac{3}{4}$

10.4

12.0

+3

10.6

11.8

cb.

9.5

12.9

E

9.6

12.8

✓

X. Section THOR St. 60' wide.

From S.W. Main St to N.W. Albert St.

10' chs.
10' 1/2' S

1538

Walker 3
10-0-107

B.M.S.W.
Main + Thor 6.67 1538 871

S.W. Main St.

N	7.0	8.4
cb.	6.8	8.6
1/4	7.2	8.2
1/2	7.7	7.7
3/4	7.4	8.0
cb.	6.5	8.9
E	5.6	9.8

25' South

E	5.0	10.4
cb.	5.4	10.0
+4	6.8	8.6
1/4	6.9	8.5
1/2	7.0	8.4
3/4	7.0	8.4
cb.	7.1	8.3
N	7.8	8.2

50' S

N	6.8	8.6
cb.	5.7	8.7
+7	7.2	8.2
1/4	7.2	8.2
1/2	7.0	8.4
3/4	6.9	8.5

+7	6.7	8.7
+8	5.7	9.7
cb.	5.7	9.7
E	5.1	10.3

100' S

E	5.3	10.1
cb.	5.5	9.9
+2	5.5	9.9
+4	6.6	8.8
1/4	6.8	8.6
1/2	6.8	8.6
3/4	7.2	8.2
+5	7.2	8.2
+6	6.6	8.8
cb.	6.7	8.7
N	7.0	8.4

150' S

N	7.8	7.7
cb.	7.4	8.0
1/4	7.2	8.2
1/2	7.0	8.4
3/4	6.9	8.5
cb.	6.2	9.2
E	5.9	9.5

200' S

E	6.6	8.8
---	-----	-----

1538

cb.	6.7	8.7
+3	6.7	8.7
+5	7.6	7.8
$\frac{1}{4}$	7.6	7.8
$\frac{1}{2}$	7.3	8.1
$\frac{3}{4}$	7.5	7.9
+5	7.7	7.7
cb.	7.4	8.0
W	7.7	7.7

250' South

W	6.7	8.7
cb.	7.1	8.3
+5	7.4	8.0
$\frac{1}{4}$	7.4	8.0
$\frac{1}{2}$	7.3	8.1
$\frac{3}{4}$	7.6	7.8
+5	7.6	7.8
+7	7.1	8.3
cb.	7.1	8.3
E	7.3	8.1

301' South = N.L. FILBERT ST.

E	7.2	8.2
cb.	7.4	8.0
$\frac{1}{4}$	7.8	7.6
$\frac{1}{2}$	7.7	7.7
$\frac{3}{4}$	7.8	7.6

1538

2

cb.	7.6	7.8
W	7.2	8.2

Walker
(2-3-87)

X. Section 39th St. 60' wide
From S.W. DELTA to N.W. BIRCH Sts

12' c'ds.
9' 1/2

48.80

5

B.M. B.P. in school

ERUION + 40th

	6.44	56.83		50.39	
T.P.	1.05	48.80	908	47.75	
		S.W. Delta St			
E			1.8	47.0	
cb			2.2	46.6	
+3			2.3	46.5	
+5			3.0	45.8	
1/4			2.9	45.9	
1/2			3.0	45.8	
3/4			3.3	45.5	
cb.			3.6	45.2	
N			4.2	44.6	
		50' S			
N			4.9	43.9	
cb.			4.1	44.7	
+3			4.6	44.2	
1/2			3.9	44.9	
1/2			3.0	45.8	
1/4			3.2	45.6	
+4			3.6	45.2	
cb.			2.7	46.1	
E			2.4	46.4	
		100' South			
E			3.3	45.5	
cb.			3.3	45.5	

+5	39	44.9
1/4	3.8	45.0
1/2	3.7	45.1
3/4	4.3	45.5
+6	4.8	44.0
cb	4.3	44.5
N	5.0	43.8
	150' S	
N	5.4	43.6
cb	5.0	43.8
1/4	4.7	44.1
1/2	4.1	44.7
3/4	4.3	44.5
cb.	4.3	44.5
E	4.1	44.7
	200' South	
E	3.5	45.3
cb	3.9	44.9
+5	4.6	45.2
1/4	4.1	44.7
1/2	4.4	44.4
3/4	4.7	44.1
+6	5.3	43.5
cb	4.7	44.1
N	5.1	43.7
	250' South	

48.80

W	5.4	43.4
cb.	4.9	43.9
+3	5.2	43.6
$\frac{1}{4}$	4.8	44.0
2	4.7	44.1
$\frac{1}{4}$	4.2	44.6
+6	4.7	44.1
cb.	4.2	44.6
E	3.8	45.0

300 S = N.W. Epsilon St.

E	4.4	44.4
cb.	4.8	44.0
+3	5.4	43.4
$\frac{1}{4}$	5.3	43.5
2	5.4	43.4
$\frac{1}{4}$	5.9	42.9
cb.	6.6	42.2
+4	6.6	42.2
+5	5.7	43.1
W	6.0	42.8

Southline Epsilon St.

W	6.5	42.3
+6	6.0	42.8
+8	6.8	42.0
cb.	6.6	42.2
$\frac{1}{4}$	6.0	42.8

48.80

6

2	5.4	43.4
$\frac{1}{4}$	5.3	43.5
+5	5.3	43.5
cb.	4.8	44.0
E	4.8	44.0

50' South

E	4.5	44.3
cb.	4.7	44.1
+4	5.4	43.4
$\frac{1}{4}$	5.2	43.6
2	5.4	43.4
$\frac{1}{4}$	5.6	43.2
+6	6.5	42.3
cb.	6.0	42.8
W	6.0	42.8

100' S

W	7.1	41.7
cb.	6.5	42.3
+4	6.7	42.1
$\frac{1}{4}$	6.2	42.6
2	5.8	43.0
$\frac{1}{4}$	5.9	42.9
+5	6.2	42.6
cb.	5.3	43.5
E	5.7	43.1

150' South

E	6.4	42.4
cb.	6.4	42.4
+5	7.4	41.0
$\frac{1}{4}$	7.1	41.7
$\frac{1}{2}$	6.7	42.1
$\frac{3}{4}$	7.5	41.3
+4	7.6	41.2
cb.	7.6	41.2
W	7.8	41.0

200' S

W	9.5	39.3
cb.	9.1	39.7
+5	9.0	39.8
$\frac{1}{4}$	8.4	40.4
$\frac{1}{2}$	7.9	40.9
$\frac{3}{4}$	8.1	40.9
+6	8.1	40.7
cb.	7.6	41.2
E	7.4	41.4

250' S

E	8.7	40.1
cb.	8.7	40.1
+4	9.7	39.1
$\frac{1}{4}$	9.4	39.4
$\frac{1}{2}$	9.2	39.6
$\frac{3}{4}$	9.7	39.1

+5	10.3	38.5
cb.	10.3	39.5
W	10.4	38.4

304.45 South = NW. 5th St

18' cb.
32.5

W	11.6	37.2
cb.	11.9	36.9
$\frac{1}{4}$	11.1	37.7
$\frac{1}{2}$	10.8	38.0
$\frac{3}{4}$	10.6	38.7
+6	11.0	37.8
cb.	10.5	38.3
E	9.9	38.9

on con. wall

TP. 016 41.26 7.90 40.90

N to ETH St.

E	2.2	38.9
cb.	2.9	38.2
$\frac{1}{4}$	3.1	38.0
$\frac{1}{2}$	3.5	37.6
$\frac{3}{4}$	3.6	37.5
cb.	4.0	37.1
+4	4.3	36.8
W	4.0	37.1

N 44'

W	4.2	36.9
+4	4.8	36.3
cb.	4.1	37.0

41.06

$\frac{1}{2}$	3.9	37.2
$\frac{2}{4}$	3.7	37.4
$\frac{3}{4}$	3.5	37.6
cb.	3.2	37.9
E	2.9	38.2

S Sta

E	3.2	37.9
cb.	3.4	37.7
$\frac{1}{4}$	3.7	37.4
$\frac{2}{4}$	4.2	36.9
$\frac{3}{4}$	4.4	36.7
cb.	4.4	36.7
W	4.8	36.3

S $\frac{1}{2}$

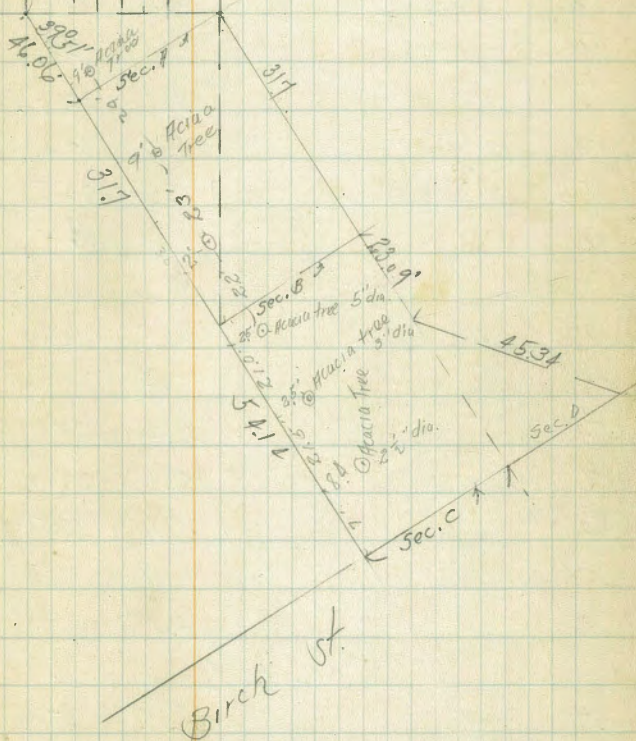
W	4.9	36.2
cb.	5.1	36.0
$\frac{1}{4}$	4.6	36.5
$\frac{2}{4}$	4.3	36.8
$\frac{3}{4}$	4.0	37.1
cb.	3.7	37.4
E	3.3	37.8

O cb.

E	3.4	37.7
cb.	4.1	37.0
$\frac{1}{4}$	4.2	36.9
$\frac{2}{4}$	4.6	36.5

8

3915



4106

7	5.1	36.0
cb.	5.5	35.6
W.	5.5	35.6

V.L. Eta

W	5.1	36.0
cb.	5.1	36.0
$\frac{1}{4}$	5.1	36.0
8	4.1	37.0
$\frac{1}{2}$	4.1	37.0
cb.	4.6	36.5
E	3.9	37.2

Section A

W	5.0	36.1
cb.	5.1	36.0
$\frac{1}{4}$	3.2	35.9
8	5.8	35.3
$\frac{1}{2}$	5.6	35.5
cb.	4.9	36.2
E	4.3	36.8

Sec. B

E	6.5	35.6
cb.	7.0	34.1
$\frac{1}{4}$	6.8	34.3
8	6.5	34.6
$\frac{1}{2}$	6.6	34.5
+2	6.2	34.9

4106

9

cb.	6.3	34.8
W	6.3	34.8

Section C

W	7.8	33.3
cb.	7.5	33.6
$\frac{1}{4}$	8.3	33.9
8	8.0	33.1
$\frac{1}{2}$	8.2	32.9
cb.	8.0	33.1
E	7.7	33.4

Section D

E	7.7	33.4	
T.	7.6	33.5	
TP 7.11	48.16	0.01	41.05
TP 6.87	54.35	0.68	47.48
TP		4.01	50.34

$$\begin{array}{r} 50.34 \\ 50.39 = \text{BM. Epsilon} \\ \quad \quad \quad 1902 \\ \hline 0.05 \end{array}$$

Crass Section 4 St.
300' E of EL of 33rd St.

60' x 60'
10' Cbs
10' Qts

38.78

3-10-24
5:55
9:15
Sat. Heli 10

BM 0.41 29.36 2885 NE Top of
Impenetrable
TP 2.71 30.78 119 28.07 NE 43rd

150' E

113' E on 1/4
Cone of 1/4
115

EL 33rd St.

H 44 26.4 ✓
Cb 49 25.9 ✓
1/4 50 25.8 ✓
1/4 50 25.8 ✓
1/4 53 25.5 ✓
Cb 57 25.6 ✓
S 48 26.0 ✓

Plotted
J.H.G.
3-14-24

1/2 E of 1/4
1/4 Tree of 1/4
1/4 S of 1/4

50' E of EL of 33rd

S 47 26.1 ✓
Cb 50 25.8 ✓
1/4 50 25.8 ✓
1/4 48 26.0 ✓
1/4 47 26.1 ✓
Cb 51 25.7 ✓
H 47 26.1 ✓

1/4 E of 1/4
1/4 Tree of 1/4
1/4 S of 1/4

100' E

H 44 26.4 ✓
Cb 51 25.7 ✓
1/4 50 25.8 ✓
1/4 53 25.6 ✓
1/4 55 25.3 ✓
Cb 56 25.2 ✓

200' E

to here - 200' E

5.3 25.5 ✓
4.5 26.3 ✓
5.0 25.8 ✓
5.1 25.4 ✓
5.0 25.8 ✓
5.0 25.8 ✓
4.8 26.0 ✓
5.1 25.7 ✓
4.8 26.0 ✓
5.8 25.0 ✓
5.5 25.3 ✓
5.1 25.7 ✓
5.1 25.7 ✓
5.0 25.8 ✓
5.5 25.3 ✓
4.7 26.1 ✓
4.6 26.2 ✓

216' E

to here - 200' E

5.6 25.2 ✓
5.4 25.4 ✓
5.1 25.2 ✓
5.9 25.1 ✓
5.8 25.0 ✓
6.0 24.8 ✓

Lst.

3078

H		57	25.1	✓
	221E			
H	H Edge Creek	95	21.3	✓
cb		74	23.4	✓
19		70	23.8	✓
14		58	25.0	✓
6		58	25.0	✓
14		57	25.1	✓
cb		58	25.0	✓
S		57	25.1	✓

232E

S		58	25.0	✓
13		60	24.8	✓
cb		86	22.2	✓
14	H Edge Creek	95	21.3	✓
2		98	21.0	✓
14		99	20.9	✓
cb		97	21.1	✓
H		100	20.8	✓

236E

H		102	20.6	✓
cb		103	20.5	✓
14		105	20.3	✓
2		105	20.3	✓
14		103	20.5	✓
cb		100	20.8	✓

3078

11

S	H Edge Creek	98	21.0	✓
	270E			
S		95	21.6	✓
cb		90	21.8	✓
14		90	21.8	✓
2		90	21.8	✓
14		92	21.6	✓
cb		90	21.8	✓
H		91	21.7	✓

300E

H		88	22.2	✓
cb		88	22.2	✓
14		90	21.8	✓
2		95	21.6	✓
14		91	21.7	✓
cb		91	21.7	✓
S		90	21.8	✓

Plotted -
J.H. 3-14-27

Cross Section 1/2 St.

33rd to Rail Road Right of Way

60' wide
10' Cbs.
10' Qts.

3575

BM	768	3575	2807	70.75 NE 1/4	cb	10.7	25.0	✓
				151 + 33rd	S	10.6	25.1	✓
				150' W				
N		10.0	25.7	4' W of 1/2 of 33rd	S	9.6	26.1	✓
cb		10.1	25.6	10' from 10' diam	77	9.7	26.0	✓
		10.2	25.5	7.5' of d.h.	cb	10.8	25.5	✓
1/4		10.3	25.4		1/4	10.0	25.7	✓ 174' from S.E.
1/4		10.4	25.3		1/4	9.5	26.2	✓ Conc Walk 9.57
cb		10.5	25.2		cb	9.9	25.8	✓
S		10.1	25.3		N	9.7	26.0	✓
				50' W of 1/2 of 33rd				
		10.5	25.2		N	9.6	26.1	✓
1/4		10.6	25.1		cb	9.8	25.9	✓
cb		10.9	24.8		1/4	10.0	25.7	✓
1/4		10.6	25.1	53' W of N.E. Conc Walk	1/4	9.7	26.0	✓
1/4		10.5	25.2	196	1/4	10.4	25.3	✓
1/4		10.3	25.4		cb	10.5	25.2	✓
1/4		10.3	25.4		S	10.1	25.6	✓
cb		10.1	25.6					
		10.0	25.7		S	10.3	25.4	✓ 27' from N.E. Conc Walk 9.60
					cb	10.5	25.2	✓
		10.2	25.5	96' W of S.E. Conc Walk 9.98	1/4	10.3	25.4	✓
cb		10.4	25.3		1/4	10.1	25.6	✓
1/4		10.4	25.3		1/4	10.0	25.7	✓
1/4		10.5	25.2		cb	10.0	25.7	✓
1/4		10.8	24.9		N	9.8	25.9	✓

Plotted
J.H. 3-14-27

300' W

N	9.8	25.9	385' Non Ch Cone Walk 7087
cb	10.2	25.5	
1/4	10.4	25.3	
1/2	10.1	25.6	
3/4	10.4	25.3	
cb	10.7	24.8	385' Non Ch Cone Walk
S	10.5	25.2	1273

350' W

S	10.6	25.1	
cb	10.2	25.5	
1/4	10.2	25.5	
1/2	10.0	25.7	
3/4	9.8	25.9	
cb	9.7	26.0	
N	9.3	26.4	

375' W

N	6.6	29.1	375' Non Ch Garage Ditch 920
cb	7.2	28.5	
1/4	7.6	28.1	
1/2	7.9	27.8	
3/4	8.4	27.3	
cb	8.7	27.0	
S	9.0	26.7	

400' W

S	5.2	30.5	to here - 375'
---	-----	------	----------------

cb	4.6	31.1	
1/4	4.0	31.7	
1/2	3.2	32.4	
3/4	3.0	32.7	
cb	2.0	33.7	
N	0.6	35.1	
TP	8.8	43.7	0.76
			34.59
			406.4 M on N
			108.5 W on S = Railroad Right Way
		5.1	37.6
cb		6.9	36.3
1/4		7.8	35.4
1/2		8.5	34.7
3/4		9.0	34.2
cb		9.6	33.6
S		9.7	33.5

Plotted
J.H. - 3-14-27

Cross Section N5th
200' E of 33rd St.

60' High
10' Cbs
10'

33.71

14

BN	564	33.71	28.07	Nails N.E. Rd 1st + 33rd	H	55	29.2	✓
		E.L. of 33rd			H	58	27.9	✓
S		58	28.5	8' E of E.L. of 33rd N. Tron of 3	cb	60	27.7	✓
cb		55	28.2	9' S.H.L.	1/4	61	27.3	✓
1/4	Plotted J.H. 3-14-27	55	28.2	✓	1/4	62	26.9	✓
1/2		53	28.1	✓	1/4	65	27.2	✓
1/4		53	28.1	✓	cb	63	27.4	✓
cb		52	28.5	✓	S	62	27.5	✓
H		50	28.7	✓	✓	173' E		✓
		50' E of E.L. of 33rd			S	63	27.4	✓
H		54	28.3	7' SE - EASTING	cb	63	27.4	✓
cb		57	28.5	9' S.H.L.	1/4	60	27.7	✓
1/4		57	28.0	✓	1/4	69	26.8	✓
1/4		51	28.1	✓	1/5	79	25.8	✓
1/2		57	28.0	✓	1/4	70	26.7	✓
1/4		58	27.9	✓	cb	60	27.7	✓
cb		59	27.8	✓	H	57	28.0	✓
S		51	28.1	✓	176' E			
	100' E				H	74	26.3	✓
S		58	27.9	✓	15	83	25.9	✓
cb		58	27.9	137' E on S.L. Board 17' 1/2 C.S.	cb	81	25.3	✓
1/4		60	27.7	✓	1/4	89	24.8	✓
1/2		58	27.9	✓	1/2	81	25.1	✓
1/4		57	28.0	✓	1/4	93	24.4	✓
cb		59	27.8	✓	cb	93	24.4	✓

KST

33.71

S		9.3	24.4	✓
	180°E	2nd Edge Creek		
S		9.6	24.1	✓
Cb		10.0	23.7	✓
1/4		10.3	23.4	✓
1/2		10.2	23.5	✓
1/2		10.0	23.7	✓
Cb		9.6	24.1	✓
H		9.3	24.4	✓
	200°E			
H		8.9	24.9	✓
Cb		8.7	25.0	✓
1/4		8.8	24.9	✓
1/2		9.2	24.5	✓
1/2		10.2	23.5	✓
1/4		10.4	23.3	✓
Cb		11.0	22.7	✓
S		11.0	22.7	✓

Plotted
J.H. 3-14-27

KST

33rd St to Rail Road Right of Way

60' Wide
10' Cb
10' G.P.

15

33.71

1/4 33rd St

H		50	28.7	✓
Cb		53	28.4	✓
1/4		53	28.4	✓
1/2		54	28.3	✓
1/2		55	28.2	✓
Cb		60	27.7	✓
Cb		55	28.2	✓
S		51	28.1	✓
	50' W of H L of 33rd			
S		56	28.1	✓
Cb		55	28.2	✓
H		59	27.8	✓
1/2		55	28.2	✓
1/4		50	28.7	✓
1/2		58	28.5	✓
1/4		50	28.7	✓
Cb		49	28.8	✓
H		48	28.9	✓
	100' W			
H		44	29.3	✓
Cb		49	28.8	✓
1/4		51	28.6	✓
1/2		50	28.7	✓
1/4		54	28.3	✓
Cb		56	28.1	✓

Plotted
J.H. 3-14-27

23' W of H L
Garage Dist Floor
H

33.71

S		55	28.2	✓
	150' N			
S		53	28.4	✓
cb		51	28.6	✓
1/4		52	28.5	✓
S		50	28.7	✓
1/4		50	28.7	✓
cb		50	28.7	✓
N		46	29.1	✓
	200' N			
N		46	29.1	✓
cb		49	28.8	✓
1/4		48	28.9	✓
S		47	29.0	✓
1/4		52	28.5	✓
cb		53	28.4	✓
S		54	28.3	✓
	250' N			
S		51	28.6	✓
cb		51	28.6	✓
1/4		47	29.0	✓
S		47	29.0	✓
1/4		46	29.1	✓
cb		44	29.3	✓
N		46	29.1	✓
JP	9.61	39.79	30.58	30.13

179' N on S.E.
Corner Walk
(5.1)

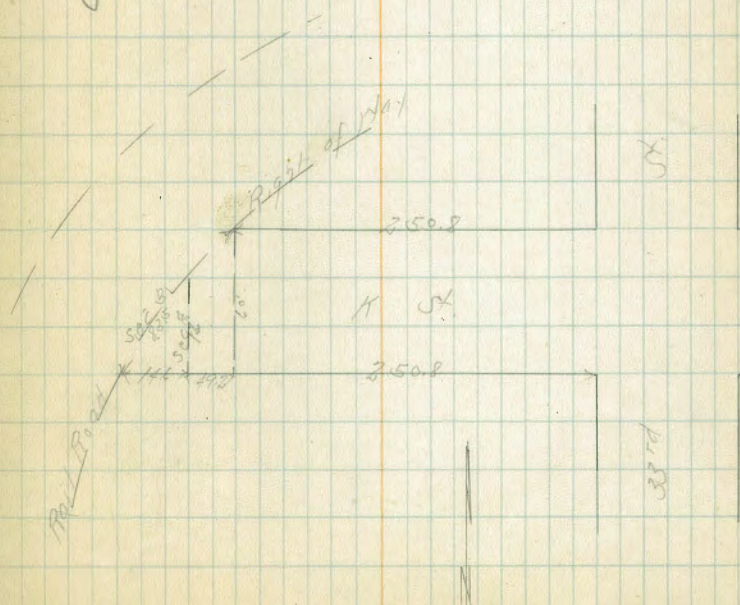
194' N on S.E.
Garage Driv Floor
Top

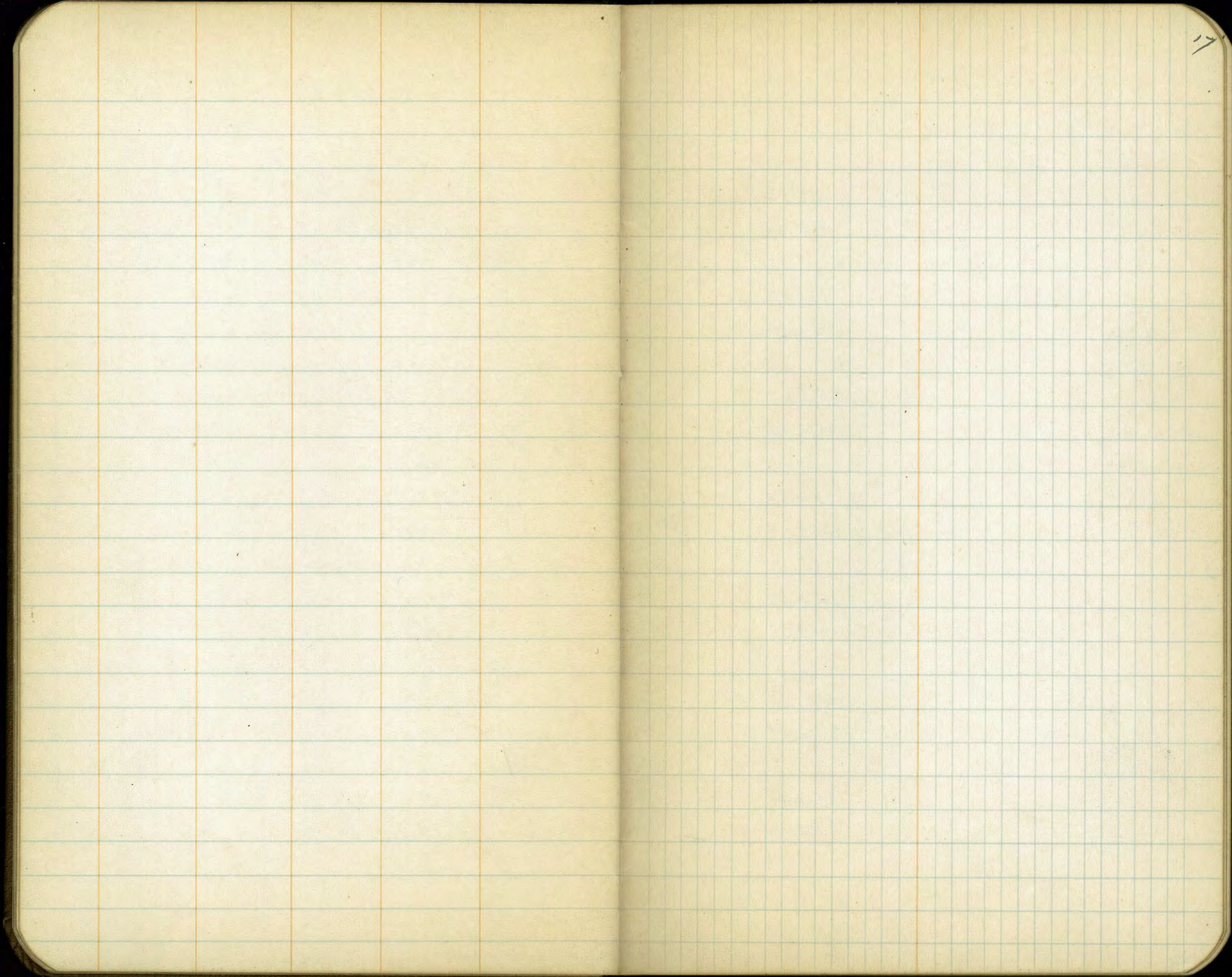
39.74

	Secff	12		
		9.5	30.2	✓
		9.4	30.3	✓
		9.0	30.7	✓
	Sec B	83.5		
		44	35.3	✓
		79	31.8	✓
		96	30.7	✓
		104	29.3	✓
		107	29.0	✓
		10.7	29.0	✓
		10.3	29.4	✓

17.10.825
Sec 132
9.5 13.9

Plotted
J.S.K. 3-14-27





17

Top Curb Levels 49th St.
El Cajon to Trojon

BM	1.82	358.87	357.05	S.F.C.P. El Cajon x 49th St.	F		353.40
					N		352.66
E		1.94	356.83				
N		3.47	355.40		N		352.40
					E		353.23
N		3.47	355.40				
E		6.02	356.85		E		353.03
					N		352.10
E		3.24	355.65				
N		4.02	354.85		N		351.92
					E		353.03
N		4.55	354.32				
E		4.24	354.63				
E		1.58	354.29				
N		5.11	353.76				
N		5.64	353.23				
E		4.78	354.09				
E		5.00	353.87				
N		5.99	353.08				
N		5.92	352.95				
E		5.19	353.68				

358.87

356.5

400.5

450.5

488.5 = N.L. Trojon

18
3/1/27
S. J. J.
B. J. J.
S. J. J.

Top Curb Levels 49th St.
El Cajon North

19
3-1-27

		358.87	Bl Ford	
			N.E. El Cajon	
N		2.30	356.67	
E		0.08	358.79	
			N.E. El Cajon 09 E	
			7' N of N.E. El Cajon 09 E	
E		0.08	358.79	
N		2.03	356.84	
TP	1239	370.90	0.36	359.54 ✓
			56' N of N.E. El Cajon 09 E	
N		12.39	358.51	
E		11.01	359.89	
			100' N	
E		9.42	361.48	
N		10.71	360.19	
			150' N	
N		8.18	362.22	
E		7.70	363.20	
			200' N	
E		5.37	365.58	
N		6.32	364.57	
			250' N	
N		3.70	367.00	
E		2.94	367.96	
			300' N	
E		0.54	370.36	
N		1.54	369.4	

		370.90		
TP	7.74	378.14	0.52	370.38 ✓
		350' N		
N			1.78	371.3
E			4.85	372.3
			400' N	
E			4.65	373.5
N			5.31	372.7
			450' N	
N			4.09	374.0
E			3.65	374.5
			500' N	
E			2.74	375.4
N			2.84	375.2
TP	11.6	366.69	12.61	315.53 ✓
TP	1.92	361.82	6.79	359.99 ✓

Top Curb Levels Estrella Ave.
El Cajon North

20

361.82

~~361.82~~ 84. Ford

N. L. El Cajon

E	10.27	351.55
N	10.11	351.6
	N. L. El Cajon on E	
	7' N. of N. L. El Cajon on E	
N	10.23	351.6
E	10.27	351.5
	50' N. of N. L. of El Cajon on E	
E	9.55	352.3
N	9.47	352.3
	100' N	
N	8.62	353.1
E	8.78	353.0
	150' N	
E	8.02	353.8
N	7.95	353.9
	200' N	
N	7.19	354.6
E	7.20	354.6
	250' N	
E	6.18	355.6
N	6.30	355.5
	300' N	
N	5.32	356.5
E	5.08	356.7
	350' N	

361.82

E	3.96	357.8
N	4.40	357.4
	400' N	
N	3.40	358.4
E	2.93	358.9
	450' N	
E	1.92	359.9
N	2.48	359.3
	500' N	
N	1.58	360.2
E	0.84	361.0
TD	3.54	355.09
	2.55	10.27
		351.55
		351.6

Top Carb Levels Estralla Area
El Cajon to Trojon

355.09
~~355.4~~

SL El Cajon

E	488	350.2
N	486	350.2
SL El Cajon 200 N		
75 S of SL El Cajon 200 E		
N	486	350.2
E	488	350.2
50 S of SL of El Cajon 200 N		
E	521	349.8
N	524	349.9
100 S		
N	563	349.5
E	567	349.4
150 S		
E	601	349.1
N	605	349.0
200 S		
N	652	348.5
E	627	348.7
250 S		
E	673	348.4
N	698	348.1
300 S		
N	700	347.8
E	708	348.0
350 S		

355.09

E	748	347.6
N	776	347.3
400 S		
N	825	346.9
E	787	347.2
431 S = PL Trojon		
E	725	347.3
N	848	346.6
BM	687	349.22

349.22
349.22
349.22

Top Corb Levels, Mission Rte
El Cajon to Tropic

Station	Notes	Reading	Correction	Adjusted Reading	Remarks	Height
BN	12.25	369.30 ✓	357.05	369.30	SE 3.0 El Cajon = 49.45	6.29
TP	8.79	377.80 ✓	0.29	379.01		300'S
		54 El Cajon				5.56
E		5.81		374.0		6.53
H		5.87		371.9		350'S
		52 El Cajon on H 71'S of S1 El Cajon 225'				6.90
H		5.87		371.9		5.97
E		4.23		373.6		100'S
		50'S of S1 El Cajon 225'				6.20
E		7.14		370.7		7.16
H		8.57		369.2		450'S
		100'S				H - Break 7.25
H		11.35		366.4		E - Break 6.40
E		10.06		367.7		175'S
		150'S				5.91
E		12.95		365.9		6.70
TP	9.02	367.88 ✓	12.95	364.85 ✓		500'S
H		4.25		365.6		5.25
		175'S				5.35
H	- Break	5.64		362.3		546'S = 1/2 Tropic
E	- Break	4.25		363.5		4.15
		200'S				4.60
E		4.63		363.3		
H		5.95		362.0		
		250'S				

367.88

3.12.27
SJM
BMS
SJK

21

Top Curb Levels 50th St.
El Cajon to Torjon

12' curbs
96/8
Book 1286-14

23

B.M.	Dist	385.75	383.45	Dist	385.75	379.08
				250'S		
				400'S		
				450'S		
				500'S		
				550'S		
				600'S		
				650'S		
				700'S		
				750'S		
				800'S		
				850'S		
				900'S		
				950'S		
				1000'S		
				1050'S		
				1100'S		
				1150'S		
				1200'S		
				1250'S		
				1300'S		
				1350'S		
				1400'S		
				1450'S		
				1500'S		
				1550'S		
				1600'S		
				1650'S		
				1700'S		
				1750'S		
				1800'S		
				1850'S		
				1900'S		
				1950'S		
				2000'S		
				2050'S		
				2100'S		
				2150'S		
				2200'S		
				2250'S		
				2300'S		
				2350'S		
				2400'S		
				2450'S		
				2500'S		
				2550'S		
				2600'S		
				2650'S		
				2700'S		
				2750'S		
				2800'S		
				2850'S		
				2900'S		
				2950'S		
				3000'S		
				3050'S		
				3100'S		
				3150'S		
				3200'S		
				3250'S		
				3300'S		
				3350'S		
				3400'S		
				3450'S		
				3500'S		
				3550'S		
				3600'S		
				3650'S		
				3700'S		
				3750'S		
				3800'S		
				3850'S		
				3900'S		
				3950'S		
				4000'S		
				4050'S		
				4100'S		
				4150'S		
				4200'S		
				4250'S		
				4300'S		
				4350'S		
				4400'S		
				4450'S		
				4500'S		
				4550'S		
				4600'S		
				4650'S		
				4700'S		
				4750'S		
				4800'S		
				4850'S		
				4900'S		
				4950'S		
				5000'S		

Top Carb Levels Altadena Ave
El Cajon to Trojan

24

BM	905	392.50 ✓	388.5	S. of Mon El Cajon	392.50	350'S		
		S. L. El Cajon					E	560
F		460	387.9				H	565
H		480	387.7			400'S		
		S. L. El Cajon on W 7.5' S. of S. L. El Cajon on E					H	642
H		480	387.7				F	640
F		452	387.9			425'S		
		50'S of S. L. El Cajon on W					F	680
F		446	388.0				H	700
H		482	387.7			150'S		
		100'S					H	753
H		490	387.6				F	748
F		443	388.1			175'S		
		150'S					F	820
F		437	388.1				H	825
H		485	387.7					
		200'S					H	975
H		483	387.7				F	960
F		442	388.1			525'S		
		250'S					F	1135
F		468	387.8				H	1160
H		490	387.6				TP	121
		300'S				380.81 ✓		1200
						379.50 ✓		
H		498	387.0			550'S	H Ob Broken	189
F		490	387.6				F	172

Top Curb Levels Alhondra

380.81

575.5

E 4.19 376.6

W Curb Grades 3.67 377.1

600.5

W Curb Grades 6.13 374.7

E 6.90 374.6

625.5

E 8.41 372.4

W Cb. O.K. 7.55 373.3

660.5 - N. L. Top of

W 10.14 370.7

E 11.38 369.4

Top Carb Levels 5th St.

El Cajon to Trojan

26

39257

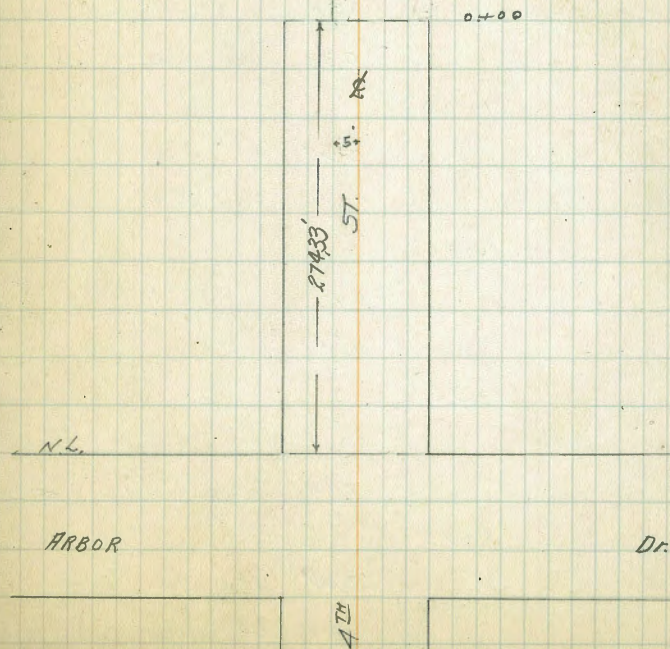
BN	640	39257	38717	NE Mon El Cajon 1.5 th St.			
		S.L. El Cajon				350'S	388.24
						533	
						521	388.31
E		570	387.87			400'S	
N		490	388.67			551	388.01
		S.L. El Cajon on N 750' S of S.L. El Cajon on E				607	387.50
N		490	388.67			425'S	
E		519	387.88			150	387.07
		50' S of S.L. El Cajon on				598	387.59
E		568	387.99			150'S	
N		489	388.68			670	386.87
		100'S				701	386.56
N		484	388.73			475'S	
E		556	388.91			716	385.91
		150'S				760	385.97
E		552	388.05			500'S	
N		479	388.78			853	385.04
		200'S				888	384.69
N		488	388.69			525'S	
E		547	388.70			10.68	382.89
		250'S				970	383.67
E		546	388.11			551.0'S - End Carb	
N		502	388.55			12.35	381.22
		300'S				130.5	380.52
N		528	388.29				
E		547	388.10				

Notes Reduced by: Neese 3/15/27

LEVELS FOR PROPOSED DRAIN
ON 4th St. N of Arbor Dr.

27

SE 7' lock			
Arbor +9' 1/2	1.87	290.90	289.03
0+00		5.0	285.9
+25		21.3	269.6
+38		25.7	265.2
+50		31.7	259.7
+69		40.8	250.1
+87		55.5	235.4
+100 = Bottom of Canyon		61.9	229.0



Walter
8-4-27

LEVELS on Curb on 4th
From S.W. Montecito to N.W. Lewis

28763

28

Station	Level	Reading	Height
Montecito 1919	2.60	287.63	285.03
0+00 = S.W. Montecito			
N top cb		4.63	285.00
E " "		5.70	281.93
" " "	²⁵ 0+25	6.12	281.51
" " "		4.88	282.75
" " "	⁵⁰ 0+75	5.06	282.57
E " "		6.41	281.22
" " "	0+75	6.72	280.91
" " "		5.33	282.30
" " "	1+00	5.57	282.06
E " "		7.09	280.54
" " "	1+25	6.92	280.71
" " "		5.84	281.79
" " "	1+50	6.08	281.55
E " "		7.14	280.57
" " "	1+75	7.59	280.04
" " "		6.32	281.51

Station	Level	Reading	Height
2+00			
N top cb		6.59	281.04
E " "		7.89	279.74
2+25			
" " "		8.04	279.59
" " "		6.90	280.73
2+50 = End of cb. on EAST.			
" " "		7.15	280.48
E " "		8.33	279.30
3+00 = N.W. Lewis st.			
E " " Return		8.57	279.06
" " "		7.57	280.06

20 Alley: + π - E.L.

Xsection Alley Blk 63 City Hts.

Aug 29-27

4.42 352.10 347.68 B.R.N.W. Cor 36th and Wightman 17;

Curb E side alley: S curb Wightman 5.18

" " " " " " " 5.22

0+00 = S.L. Wightman St;

W.L. 5.1 347.0

± 5.0 347.1

E.L. 5.1 347.0

From 0+21 to 0+49 = 3 car garage on the West 5' West of line, concrete apron in front of same extends 1' into alley; Concrete floor in garage;

0+21 W.L. on concrete apron: 5.03 347.0

0+49 W.L. " " " " 5.21 346.9

0+35, 5' W of W.L. = Front garage on apron 4.77 347.3

0+48 on the E 2' Con walk to house 5.06 347.0

0+50

E.L. 5.3 346.8

± 5.0 347.1

W.L. 5.4 346.7

0+98 ^{single} unpaved garage 2.5 E of E.L. 5.3 346.8

W.L. 1400

W.L. 5.8 346.3

± 5.6 346.5

E.L. 5.4 346.7

Note from Sta 1400 to 2+00 fence on the N from 1' to 0.5' in St:

1450

E.L. 6.0 346.1

± 5.9 346.2

W.L. 6.2 345.9

+ π - E.L.

352.10

at 1455 unpaved single garage 1 1/2 E of E.L. G.1

2+00

W.L. 6.2 345.9

± 6.3 345.8

E.L. 6.3 345.8

3.03 348.78 6.30 345.70

at 2+44 paved single garage 4' E of E.L. with apron extending to E.L. on apron at garage

3.47 345.3

2+50

E.L. 3.3 345.5

± 3.3 345.5

W.L. 3.5 345.3

3+00

W.L. 4.3 344.5

± 4.5 344.3

E.L. 4.2 344.5

3+50

E.L. 4.6 344.2

± 4.6 344.2

W.L. 5.1 343.7

4+00

W.L. 5.1 343.7

± 5.0 343.8

E.L. 4.9 343.9

On the West from 4+00 to 4+75 woven wire fence 1.0' in alley.

(at 4+06 unpaved single garage 7' E of E.L. at garage Ground. 4.6 344.2

+ π 348.78
 Alley Blk 63 City Hts:

At 4+40± of unpaved single garage 5' E of E.L.
 Ground garage Entrance

4+50
 E.L. 7.2 341.6
 t 6.8 342.0
 W.L. 7.2 341.6

At 4+60± paved single garage 5' E of E.L.
 On pavement garage:

5+00
 W.L. 8.8 340.0
 t 8.4 340.4
 E.L. 8.4 340.4

5+50
 E.L. 8.6 340.2
 t 8.6 340.2
 W.L. 8.7 340.1

5+85
 W.L. 9.3 339.5
 t 9.5 339.3
 E.L. 9.8 339.0

6+00± N.W. Landis St
 E.L. 11.1 337.7
 t 11.1 337.7
 W.L. 11.3 337.5
 W. curb of alley N curb Landis 11.29 337.3
 E " " " " " 11.29 337.6

+ π 348.78
 E 10 30

6.11 351.74 2.90 345.83 Avels.
 4.26 347.68 = 347.68 Initial B.M.

E 1/2 St.

Xsection 40th St from Meade 150' North

30' St 10' C63, 10' Qfs:

Aug 30th

Dannan:
Flood.
Biebet.
Kiernan:
-27

+	π	-	E/e
5.77	371.87		366.05 B.P.S.W Cor E/Cajon and 40th:
7.36	374.78	9.40	367.47

0+00 = N.L. Meade Arc:

On return N.W. Cor. 40th and Meade 4.99 369.79

" " N.E. " " " "

E.L. on Cor. sidewalk 4.90 369.88

C6 on car return: 5.10 369.68

+5 4.0 370.2

1/4 4.9 369.9

± 4.7 370.1

0+05

± 4.6 370.2

1/4 5.0 369.8

+10 3.6 371.2

C6 3.7 371.1

E.L. 3.5 371.3

0+25

E.L. 2.9 371.9

C6 4.1 370.7

1/4 4.7 370.1

± 4.5 370.3

0+50

± 4.3 370.5

+7 4.5 370.3

1/4 3.2 371.6

+

π
374.78

-

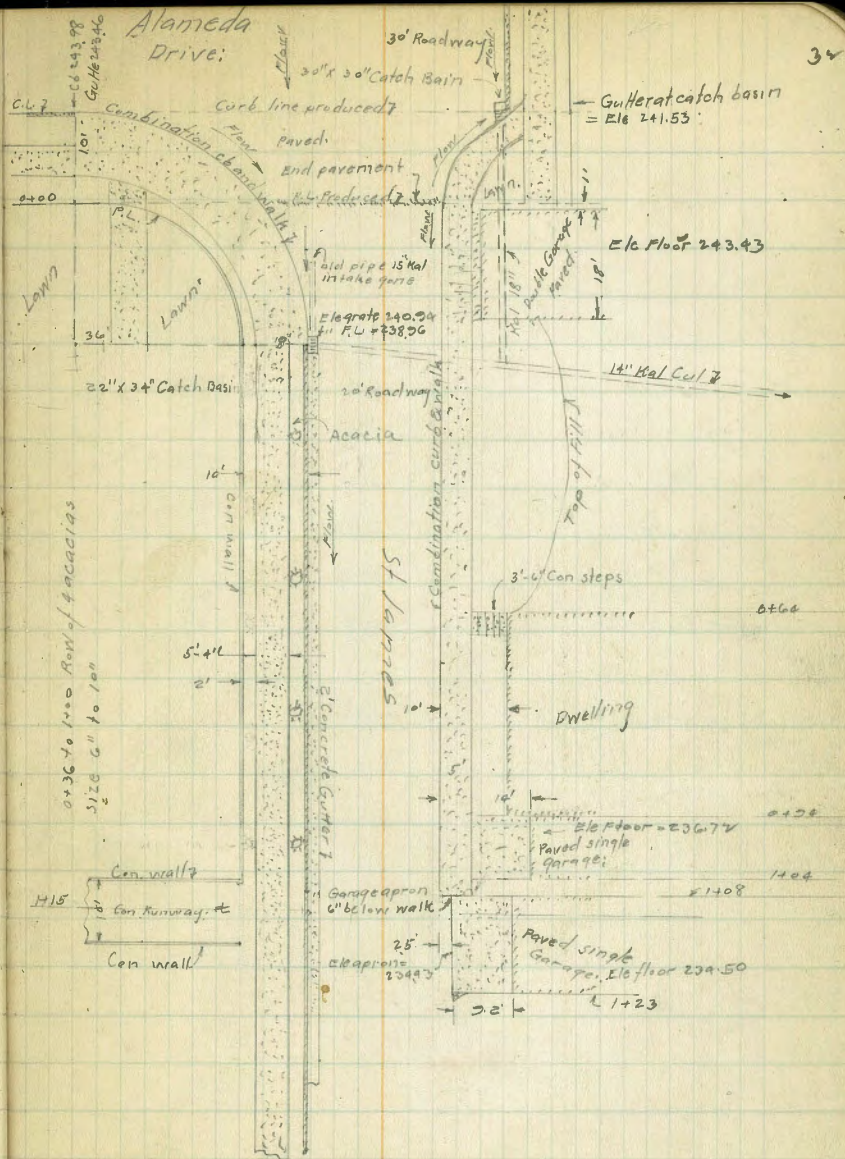
E/e

31

C6	3.1	371.7
E.L.	3.7	371.1
	0+75	
E.L.	4.0	370.4
C6	4.0	370.2
1/4	4.4	370.4
+10	3.1	371.7
±	4.0	370.8
	1+00	
±	4.3	370.5
1/4	4.3	370.5
C6	4.2	370.6
E.L.	4.2	370.6
	1+25	
E.L.	2.3	372.5
C6	3.9	370.9
1/4	4.2	370.6
+10	3.1	371.7
±	4.0	370.8
	1+50	
±	4.1	370.7
1/4	4.3	370.5
Gutter	4.7	370.1
Curb = End Cor. Curb	4.21	370.57
E.L. = on edge sidewalk	3.99	370.79
4.33	371.97	
7.17		367.64 on walk.
5.90		366.07 = B.M. 366.05

Yardage
Book 15
TR:

	+	π	-	E/e	Perron Flood Bichet Kiernan
Xsection of St James from s.e. Alameda to 125' south					
20' Roadway: Cbs and ±					
Aug 20th 27					
	2.28	296.26		243.98	s.w. Cor St James and Alameda:
0+00 = S.L. of Alameda = End of Existing paving:					
Ecb on concrete:			4.11		
E Gutter Paving:			4.46		
±			4.20		
W curb line: In cross gutter:			4.95		
W curb line + 8 = West gutter on curve			4.26		
" " " + 8 = " Curb " "			3.24		
0+22 = End of curve of curb on West					
Cb Concrete			4.80		
Gutter "			5.32		
±			6.1		
E Gutter ground			6.6		
E Cb Corr			6.75		
0+50					
E Cb Con			7.40		
Gutter Ground			8.3		
± "			8.0		
+ 8 "			7.7		
Gutter Con			7.38		
W cb "			6.59		
±	4.23	241.22	9.27	236.99	
0+75					
Wcb Concrete			3.25		
Gutter "			4.09		
+ 2 Ground			4.4		



+ π - E/o:
291.22

±			4.5	
Gutter			4.7	
EC6 Conr				
	1400			
EC6 Con Runway			5.51	
Gutter			6.4	
±			6.4	
+8			6.2	
Gutter Concrete			5.94	
Curb "			5.09	
	1408			
1408 on the E-End curb			6.11	
	1420			
East gutter ground			7.9	
±			7.6	
Gutter Con			7.86	
WC6 "			7.01	
#	9.35	246.39	4.23	236.99
			2.36	243.98 = 243.98 (initial)

$$\begin{array}{r} 158 \\ 149 \\ \hline 307 \end{array}$$

X sections of Polk Ave from the West
 Line of Louisiana to the East Line of Georgia
 Bliss 111.7 + - Elev 80.5
 14' cbs
 13' 05"

	+	-	Elev
B.M.S.F.B.P. Polk and Bliss	3.34	313.31	309.97
W Line of Louisiana			
N.		10.6	302.70
cb		11.25	302.06
Gutter		11.89	301.42
1/4		11.75	301.56
1/4		11.75	301.56
1/4		11.98	301.33
Gutter		12.25	301.06
Top cb		11.60	301.71
S		11.4	301.9
05' West			
S		11.4	301.9
cb		11.4	301.9
1/4		11.6	301.7
1/4		11.6	301.7
1/4		11.7	301.6
+5		11.5	301.8
cb		10.7	302.6
+8		10.1	303.2
N		8.9	304.4
33' West			
N		8.3	305.0
+11		8.5	304.8
cb		9.1	304.2

	+	-	Elev
		313.31	
+7		10.0	303.3
1/4		10.3	303.0
R		10.7	302.6
1/4		10.9	302.4
cb		11.0	302.3
S		11.3	302.0
50' West			
S		10.7	302.6
+8		10.7	302.6
cb		10.2	303.1
1/4		10.0	303.3
1/4		9.9	303.4
1/4		9.2	304.1
cb		7.9	305.4
+3		7.0	306.3
N		6.3	307.0
75' West			
N		9.5	308.8
+10		5.2	308.1
cb		6.4	306.9
1/4		7.7	305.6
1/4		8.2	305.1
1/4		8.9	304.4
+10		9.0	304.3
cb		8.5	304.8
+4		8.7	304.6

	+	313.31	-	Elev
S			8.7	304.6
			8.8 West	
S			8.4	304.9
+10			8.4	304.9
cb			8.0	305.3
+1/4			7.5	305.8
♀			7.1	306.2
+2			6.6	306.7
+10			5.9	307.4
1/4			6.0	307.3
+2			5.6	307.7
cb			4.6	308.7
+9N			3.6	309.7
			10.0 West	
N			3.0	310.3
cb			3.8	309.5
+10			4.5	308.8
1/4			5.0	308.3
+8			5.5	307.8
♀			6.3	307.0
1/4			6.6	306.7
cb			7.5	305.8
+2			7.9	305.4
S			8.2	305.1
			12.5 West	
S			6.0	307.3

	+	313.31	-	Elev	35
				12.5 West	
			+6	5.7	307.6
			cb	6.0	307.3
			+9	6.0	307.3
			+8	5.3	308.0
			1/4	5.0	308.3
			+10	4.8	308.5
			♀	4.4	308.9
			+10	4.0	309.3
			1/4	3.6	309.7
			cb	2.8	310.5
			N	1.6	311.7
				14.0 West East Line of Alley	
			N	0.8	312.5
			cb	2.1	311.2
			1/4	2.7	312.6
			+10	3.0	310.3
			♀	3.4	309.9
			1/4	4.2	309.1
			cb	4.5	308.8
			S	4.9	308.4
				16.0 West	
			S	4.0	309.3
			cb	3.6	309.7
			1/4	3.1	310.2
			+5	3.1	310.2
			♀	2.7	310.6

Mn Hole to Alley 149.5 West
 Rod on Rim 2.92

	+	π	-	Elev
		313.31		
1/4			2.0	311.3
cb			1.6	311.7
N			0.8	312.5
		175 West		
N			0.7	312.6
cb			1.5	311.8
+2			1.7	311.6
1/4			1.7	311.6
2			1.9	311.4
+7			2.4	310.9
1/4			2.5	310.8
cb			2.9	310.4
S			3.4	309.9
T.P.	50.8	315.99	2.90	310.91
		182 West		
S			5.9	310.1
cb			5.9	310.6
1/4			9.6	311.4
+5			9.6	311.4
2			3.9	312.1
+6			3.5	312.5
1/4			3.5	312.5
+6b			3.9	312.1
N			3.4	312.6
		193 West		
N			3.6	312.4

	+	π	-	Elev	36
		315.99			
cb			3.4	312.1	
1/4			3.5	312.5	
2			3.5	312.5	
1/4			3.3	312.7	
cb			5.4	310.6	
S			5.8	310.2	
		204 West			
S			5.6	310.4	
cb			5.3	310.7	
1/4			4.7	311.3	
+5			4.6	311.4	
2			3.6	312.4	
1/4			3.6	312.4	
cb			3.5	312.5	
N			3.4	312.6	
		215 West			
N			3.3	312.7	
cb			4.0	312.0	
1/4			3.7	312.3	
+8			3.6	312.4	
2			4.2	311.8	
1/4			4.6	311.4	
cb			4.0	312.0	
+4			4.0	312.0	
S			4.8	311.2	

+

315.99

-

Elev

224 West

S	49	311.1
+10	42	311.8
cb	41	311.9
1/4	44	311.6
2	45	311.5
1/4	44	311.6
cb	41	311.9
N	36	312.4

225 West

N	37	312.3
+5	41	311.9
cb	42	311.8
1/4	44	311.6
+6d	48	311.2
1/4	48	311.2
cb	51	310.9
S	54	310.6

250 West

S	53	310.7
cb	47	311.3
1/4	49	311.1
2	47	311.3
+11	37	312.3
1/4	41	311.9
+5	44	311.6
cb	42	311.8

+

315.99

-

Elev

37

+3 on edge of Schwarz	5.00	311.0
N	40	312.0

261 West

N	41	311.9
+5 Edge of Walk	48	311.2
+10	49.6	311.0
cb	47	311.3
1/4	45	311.5
2	50	311.0
1/4	46	311.4
+6	41	311.9
cb	44	311.6
S	49	311.1

280 N

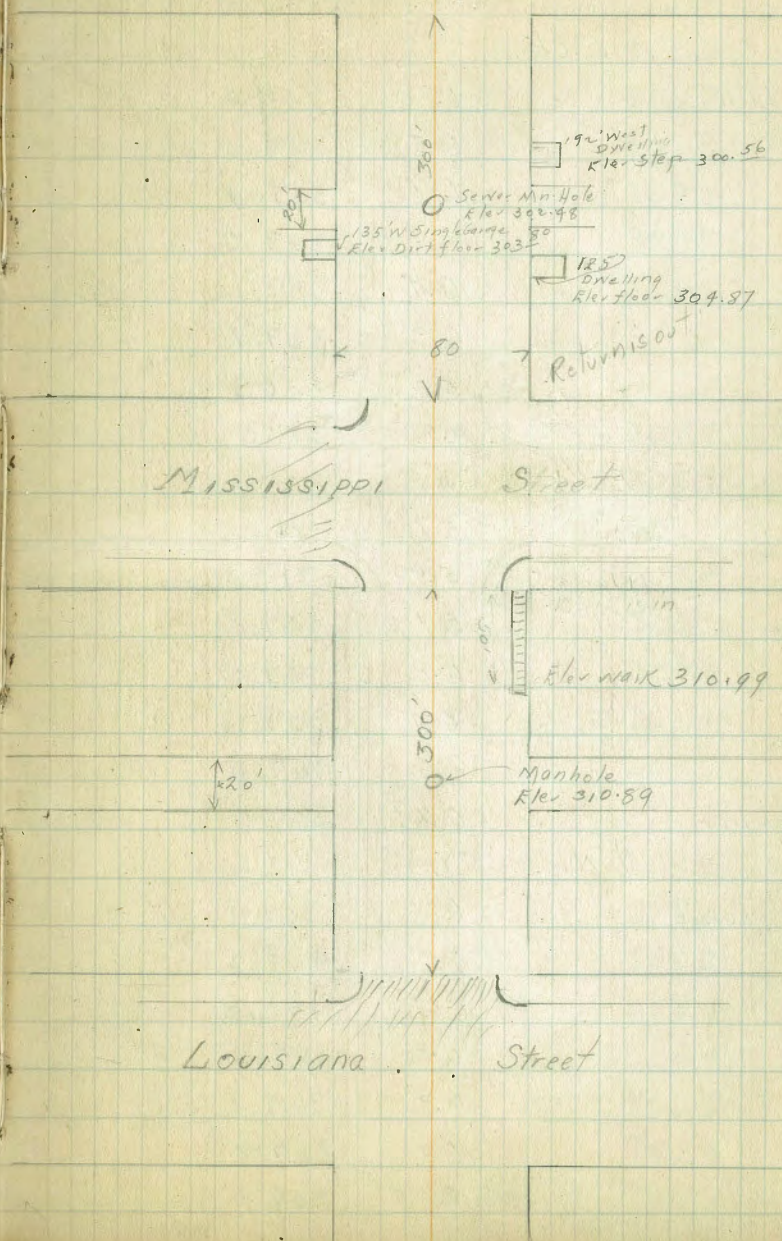
S	57	310.3
cb	51	310.9
1/4	52	310.8
2	51	310.9
1/4	50	311.0
cb	49	311.1
+9 Edge of Walk	49.2	311.1
N	42	311.8

293 West

N	45	311.5
+5	47	311.3
+10	48.6	311.1

Alabama St

	+	∞	-	Elev
		315.99		
cb			4.9	311.1
1/4			5.0	311.0
1/2			5.1	310.9
3/4			5.5	310.5
cb			5.9	310.6
S.			5.9	310.6
		29.8 West		
S			5.9	310.6
+5			5.2	310.8
cb			5.7	310.3
1/4			5.7	310.3
1/2			5.3	310.7
3/4			5.3	310.7
9			5.3	310.7
			9.8	311.2
9 walk			9.84	311.2
N			9.6	311.4
		300 West E. line of Mississippi		
N			9.6	311.4
Walk			9.82	311.2
cb			9.9	311.1
1/4			5.3	310.7
1/2			5.4	310.6
3/4			5.4	310.6
1/4			5.8	310.2
S. Top cb			5.98	310.0



	+	-	Elev
	315.99		
S	300 W. E Line Mississippi	5.8	310.2
	E. cb.		
S. on paving		6.80	309.2
cb.		6.5	309.5
1/4		6.6	309.4
1/4		6.4	309.6
cb.		6.3	309.7
N.		5.7	310.3
N top cb		4.98	311.0
	E 1/4		
N		5.7	310.3
cb.		5.9	310.1
1/4		6.1	309.9
1/4		6.2	309.8
cb.		6.4	309.6
S. on paving		6.6	309.4
		6.63	309.4
	Q. Miss + Polk		
S. on paving		6.88	309.1
cb.		6.8	309.2
1/4		6.6	309.4
1/4		6.5	309.5
cb.		6.3	309.7
N		6.2	309.8
		6.1	309.9

	+	-	Elev
	315.99		
N	W 1/4	7.2	308.8
cb.		7.3	308.7
1/4		7.3	308.7
1/4		7.4	308.6
cb.		7.5	308.5
S. on paving		7.5	308.5
		7.53	308.5
	W cb.		
S. on paving		8.52	307.5
cb.		8.2	307.8
1/4		8.1	307.9
cb.		8.1	307.9
1/4		8.1	307.9
cb.		8.0	308.0
N		8.1	307.9
NW top cb.		7.6	308.4
		6.92	309.1
	T West of West cb		
N		6.9	309.1
1/4		7.0	309.0
cb.		7.5	308.5
1/4		7.6	308.4
1/4		7.6	308.4
1/4		7.8	308.2
cb.		7.8	308.2
cb.		8.9	307.6
cb.		7.8	308.2

+ T 315.99 - Elev

W line of Mass

S	7.9	308.1
+5 on WALK	7.76	308.2
Top cb	8.00	308.0
Center	8.2	307.8
1/4	7.7	308.3
1/4	7.5	308.5
1/4	7.6	308.4
cb	7.9	308.6
+2	7.1	308.9
N	6.7	309.3

05' West

N	7.5	308.5
cb	7.8	308.2
1/4	7.9	308.1
1/4	7.8	308.2
1/4	7.9	308.1
cb	7.9	308.1
S	8.0	308.0

17' West

S	8.2	307.8
+6	7.8	308.2
cb	8.2	307.8
1/4	8.1	307.9
1/4	8.0	308.0
1/4	8.1	307.9

+ T 315.99 - Elev 40

cb	8.0	308.0
N	7.8	308.2
10' West		
N	8.7	307.3
cb	8.9	307.1
1/4	9.2	306.8
1/4	9.4	306.6
1/4	9.7	306.3
cb	9.0	307.0
S	8.8	307.2

65' West

S	9.4	306.6
cb	10.1	305.9
1/4	10.6	305.4
1/4	10.6	305.4
1/4	10.6	305.4
cb	10.3	305.7
N	9.9	306.1

100' West

N	11.5	304.5
cb	11.7	304.3
1/4	12.0	304.0
1/4	12.2	303.8
1/4	12.1	303.9
cb	11.3	304.7
S	11.0	305.0

+ T - Elev

305.99

125' West

S		11.9	304.6
cb		11.9	304.1
+7		12.9	303.1
1/4		12.6	303.4
1/4		12.6	303.4
1/4		12.5	303.5
cb		12.2	303.8
N		11.9	304.1
N-1. Floor of House		11.12	304.9
	140' W. E. line of Alley		
N		12.7	303.3
cb		13.1	302.9
1/4		13.3	303.7
1/4		13.3	303.7
1/4		13.4	302.6
cb		12.8	303.2
S		12.7	303.6
T.P.	0.83	304.33	12.49 303.50
	1750 ft. Alley		
S		2.2	302.1
cb		1.7	302.6
1/4		2.0	302.3
1/4 Mn Hole		1.85	302.4
1/4		1.8	302.5
cb		1.7	302.6
N		1.5	302.8

+ T - Elev

303.50 304.33

160' West W. line of Alley

N		2.1	302.2
cb		1.9	302.4
+10		2.2	302.1
1/4		2.3	302.0
1/4		2.4	301.9
1/4		2.5	301.8
cb		2.4	301.9
S		2.7	301.6
	175' West		
S		3.9	300.4
cb		3.7	300.6
1/4		3.6	300.7
1/4		3.2	301.1
1/4		3.1	301.2
cb		3.0	301.3
N		2.9	301.4
	190' West - step off house	3.77	300.5
	200' West		
N		3.7	300.6
cb		4.4	299.9
1/4		4.6	299.7
1/4		5.5	298.8
1/4		4.6	299.7
cb		5.0	299.3
S		4.8	299.5

+

~~303.50~~ 304.33
220 West

Elev

S	6.0	298.3
cb	5.8	298.5
1/4	5.7	298.6
2	5.6	298.7
1/4	5.5	298.8
cb.	5.4	298.9
N	4.5	299.8
225 West		
N	9.9	299.4
cb.	5.5	298.8
+6	5.1	299.2
1/4	4.7	299.6
2	5.7	298.6
1/4	6.0	298.3
cb.	6.2	298.1
S	6.3	298.0
250 West		
S	7.6	296.7
cb	7.2	297.1
+7	7.0	297.3
1/4	6.4	297.9
+3	6.0	298.3
2	6.2	298.1
1/4	6.3	298.0
cb	6.4	297.9
+2	7.1	297.2

+

~~303.50~~ 304.33

Elev

42

N	6.6	297.7
265 West		
N	7.5	296.8
cb	7.6	296.7
1/4	7.9	296.4
+6	8.2	296.1
2	8.2	296.1
+9	7.9	296.4
1/4	7.9	296.4
+7	7.9	296.4
cb	8.5	295.8
S	8.2	296.1
275 West		
S	8.7	295.6
+10	8.8	295.5
cb	8.0	296.3
+9	8.9	295.4
1/4	8.6	295.7
2	8.7	295.6
1/4	8.6	295.7
cb.	8.9	295.9
N	7.9	296.4
294 West		
N	9.5	294.8
cb	8.8	295.5
+10	9.4	294.9

+ ~~30350~~ 304.33 Elev
294' West

Q		9.2	295.1
1/4		9.1	295.2
cb		9.1	295.2
+9		9.3	295.0
+9		10.5	293.8
S		10.9	293.9
	296' W.		
S		10.7	293.6
+2		10.3	294.0
+6		11.5	292.8
+10		10.4	293.9
cb		10.1	294.2
1/4		10.0	294.3
Q		10.2	294.1
1/4		10.3	294.0
cb		10.3	294.0
N		10.5	293.8
T.D	2.6/	11.74	292.59
N		5.0	290.2
VTopd		5.15	290.02
+1		4.3	290.9
+5		4.0	291.2
+7		4.5	290.7
1/4		4.9	290.8
Q		4.1	291.1
+5		3.4	291.8

300' West of E Line of Alo bama

+ ~~29520~~ 295.20 Elev 13

1/4		4.0	291.2
+11		3.5	291.7
Top cb		4.29	291.0
S		3.9	291.3
	4' West of E Line		
S		3.9	291.3
cb		4.29	291.0
1/4		4.7	290.5
Q		4.8	290.4
1/4		5.2	290.0
cb		5.18	290.0
N		4.9	290.3
	E Corb		
Top cb		5.20	290.0
N		5.7	289.5
cb		5.6	289.6
1/4		5.6	289.6
Q		5.6	289.6
1/4		5.3	289.9
cb		5.1	290.1
S on Paving		4.97	290.2
	E 1/4		
S on Paving		4.82	290.4
cb		5.1	290.1
1/4		5.2	290.0
Q		5.3	289.9

+

29520

-

Elev

E. 1/4

1/4	5.6	289.6
cb.	5.8	289.4
N	5.7	289.5

Q. Alabama + Polk

N	5.8	289.4
cb	6.0	289.2
1/4	5.6	289.6
Q on P. m of Ma. Hole	5.27	289.9
1/4	5.4	289.8
cb	5.2	290.0
S.	4.97	290.2

W. 1/4

S. on Paving	5.21	290.0
cb	5.8	289.4
1/4	6.1	289.1
Q	6.1	289.1
N 1/4	6.2	289.0
cb	6.5	288.7
N N	6.5	288.7
W. cb		
Top cb	6.19	289.0
N	6.7	288.5
cb	6.6	288.6
1/4	6.6	288.6
Q	6.5	288.7
1/4	6.9	288.8

+

29520

-

Elev

44

cb	6.2	289.0
S. on Paving	5.76	289.4

W. Line of Alabama

S	5.1	290.1
Top cb	5.19	290.01
1/4	6.0	289.2
Q	6.2	289.0
1/4	5.9	289.3
+5	6.0	289.2
+7	6.8	288.4
+9	6.2	289.0
N of cb	6.19	289.01
N	5.9	289.3

0.5' West

N	6.0	289.2
cb	5.3	289.9
+5	6.3	288.9
+7	7.0	288.2
+10	5.8	289.4
1/4	6.0	289.2
Q	6.3	288.9
1/4	6.3	288.9
+8	6.1	289.1
cb	5.5	289.7
S	5.2	290.0

+ 295.20 - Elev

50' West

S	8.0	287.2
+8	8.8	286.4
00	6.9	288.3
+2	6.4	288.8
1/4	6.7	288.5
1/2	6.6	288.6
+10	6.5	288.7
1/4	7.5	287.7
+4	8.4	286.8
+6	7.6	287.6
cb	7.7	287.5
+7	8.0	287.2
N	9.0	286.2

50' West

N	10.0	285.2
cb	9.0	286.2
+7	8.8	286.4
1/4	7.8	287.4
1/2	7.6	287.6
+12	7.8	287.4
1/4	7.2	288.0
+45	7.3	287.9
cb	8.4	286.8
S	9.7	285.5

57' West

S	10.1	285.1
+2	10.8	284.6

+ 295.20 - Elev 45

cb	9.3	285.9
+6	8.5	286.7
+11	8.3	286.9
1/4	9.0	286.2
1/2	8.2	287.0
+12	8.5	286.7
1/4	9.2	286.0
+2	10.2	285.0
+5	9.0	286.2
cb	9.3	285.9
+3	9.9	285.3
N	10.4	284.8

75' West

N	11.7	283.5
cb	11.4	283.8
+7	10.2	285.0
+11	10.8	284.4
1/4	10.6	284.6
1/2	10.3	284.9
1/4	10.3	284.9
cb	10.6	284.6
+7	11.2	284.0
+9	11.7	283.5
S	11.8	283.4

T.P. 0.81 283.97 12.59 282.66

60' West
Sight to Ground
Centre of Flag
P.O. 10.00

+

283.47

E/W

100' West

S	1.0	282.5
+5	1.8	281.7
cb	1.6	281.9
+3	0.0	283.5
1/4	0.0	283.5
2	0.2	283.3
1/4	0.3	283.2
+2	1.1	282.4
+8	0.2	283.3
+10	0.2	283.3
cb	1.4	282.1
N	1.3	282.2

125' West

N	2.3	281.2
+10	2.6	280.9
cb	1.4	282.1
+3	1.1	282.4
+5	1.7	281.8
+8	1.7	281.8
+9	1.0	282.5
1/4	1.2	282.3
2	1.5	282.0
+11	1.6	281.9
1/4	2.4	281.1
+5	1.5	282.0

+

283.47

E/W

46

cb	1.5	282.0
+2	1.4	282.1
+4	2.7	280.8
1/5	2.3	281.2

140' W East line of alley

S	3.3	280.2
+5	3.8	279.7
+9	3.0	280.5
cb	2.8	280.7
1/4	2.9	280.6
+3	2.7	280.8
2	3.0	280.5
+8	2.9	281.1
1/4	2.2	281.3
+3	2.2	281.3
+6	3.1	280.4
+10	2.2	281.3
cb	2.2	281.3
+9	3.7	279.8
N	3.7	279.8

150' W E. Alley

N	4.7	278.8
cb	3.1	280.4
+2	3.1	280.4
+7	4.1	279.4
+12	3.1	280.3

+

Σ
283.47

-

Elev

1/4	3.1	280.4
£	3.9	279.6
1/4	3.6	279.9
+6	3.9	279.6
cb.	3.9	280.1
+6	3.9	280.1
+9	4.2	279.3
S.	4.5	279.0

160' West

S	5.9	277.1
cb	4.5	279.0
1/4	4.3	279.2
£	4.0	279.5
1/4	3.9	279.6
+3	3.6	279.9
+6	4.6	278.9
+9	3.7	279.8
cb	3.8	279.7
+2	4.0	279.5
+9	5.2	278.3
N	5.2	278.3

175' West

N	7.0	276.5
+7	7.1	276.4
cb	5.4	278.1
+5	5.1	278.4

+

Σ
283.47

-

Elev

47

+6	5.9	278.1
+12	5.9	278.1
1/4	5.1	278.4
£	5.2	278.3
1/4	5.4	278.1
cb	5.7	277.8
S.	6.0	277.5

185' West

S	6.8	276.7
+6 Concrete Driveway on s.m.	6.67	276.8
cb.	6.9	276.6
1/4	6.8	276.7
+3	6.4	277.1
£	6.6	276.9
+2	5.9	277.6
+10	5.9	277.6
1/4	6.6	276.9
+5	6.0	277.5
cb	6.3	277.2
+7	7.5	276.0
N	7.5	276.0

200' West

N	8.0	275.5
cb	8.0	275.5
1/4	7.4	276.1
£	7.5	276.0
1/4	8.2	275.3

on South
mark +10
+ Rod
Rod out floor
off 4.0

+ 283.97 - Elev

cb	8.9	275.1
S.	8.2	275.3
215' West		
S	9.2	274.3
cb	9.1	274.4
1/4	9.0	274.5
k	8.7	274.8
1/4	8.8	274.7
cb	8.8	274.7
N	8.6	274.9

231' West

N	8.8	274.7
cb	9.6	273.9
1/4	9.3	274.2
k	9.6	273.9
1/4	9.8	273.7
cb	10.0	273.5
S.	10.3	273.2

250' West

S	11.3	272.2
cb	11.1	272.4
1/4	11.1	272.4
k	10.5	273.0
1/4	9.9	273.6
cb	9.8	273.7
N	10.1	273.4

+ 283.97 - Elev 48

258 W.

N	10.7	273.8
cb	11.1	272.4
1/4	11.4	272.1
+9	10.2	273.3
1/4	10.4	273.1
k	10.8	272.7
1/4	11.0	272.5
cb	11.0	272.5
S.	11.1	272.4

275' West

S	11.1	272.4
cb	10.9	272.6
1/4	10.8	272.7
k	10.8	272.7
+5	10.7	272.8
1/4	11.3	272.7
+3	11.0	272.5
cb	9.9	273.6
N	9.8	273.7

286' West

N	9.9	274.1
cb	9.9	274.1
+8	10.1	273.4
1/4	10.6	272.9
k	10.9	272.6

T. 283.97 - Elev

286 West 10.9 272.6

cb. 10.7 272.8

S. 10.7 272.8

300 West 9.5 274.0

+10 10.0 273.5

cb. 9.8 273.7

1/4 8.9 274.6

+5 8.5 275.0

+7 8.1 275.4

E. 7.9 275.6

+5 7.3 276.2

1/4 6.9 276.6

cb. 8.1 275.4

N. 8.6 274.9

309 1/2 E. Road of Florida

N. 6.9 277.1

N Top cb 6.50 277.07

1/4 7.0 276.5

E. 7.1 276.4

1/4 7.8 275.7

S Top cb 7.46 276.01

S. 7.3 276.2

E. cb.

Top cb 7.50 276.0

S. 8.1 275.4

T. 283.97 - Elev 49

E. cb. 7.6 275.9

1/4 7.5 276.0

E. 7.2 276.3

1/4 7.1 276.4

cb. 6.9 276.6

N. 6.8 276.7

Top cb 6.53 277.0

E. 1/4

N. 6.7 276.8

cb. 7.0 276.5

1/4 7.2 276.3

E. 7.5 276.0

1/4 7.7 275.8

cb. 8.0 275.5

S. 7.9 275.6

E. Florida - Polk

S. 7.9 276.1

cb. 7.2 276.3

1/4 7.1 276.4

E. 6.9 276.6

1/4 6.7 276.8

cb. 6.5 277.0

N. 6.3 277.2

W 1/4

N. 6.3 277.2

cb. 6.4 277.1

+ 283.47 - Elev

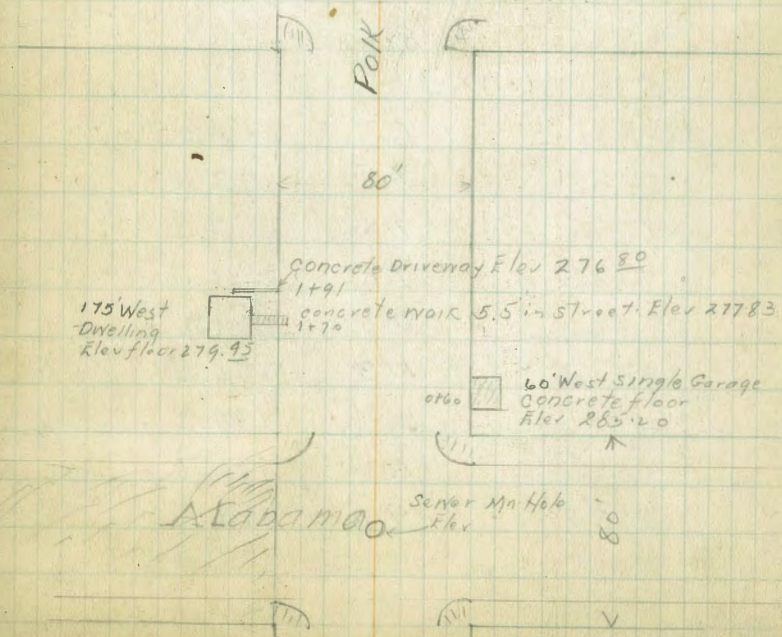
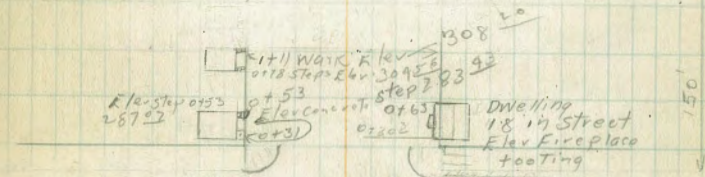
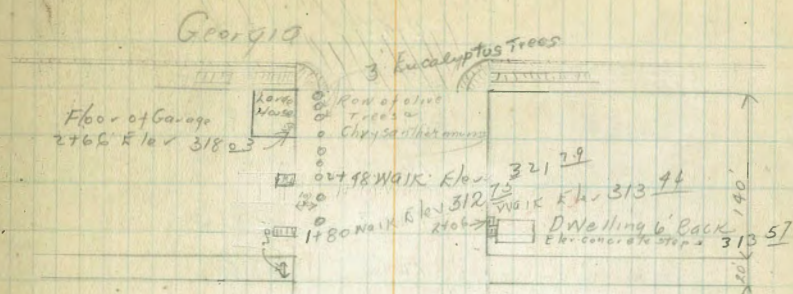
1/4	6.6	276.9
1/4	6.7	276.8
1/4	6.9	276.6
cb	7.1	276.4
S	7.2	276.3

W cb

Top cb	6.54	277.0
S	7.3	276.2
cb	7.0	276.5
1/4	6.6	276.9
1/4	6.6	276.9
1/4	6.7	276.8
cb	6.5	277.0
N	5.9	277.6
Top cb	5.45	278.0

W Line of Florida

N	5.1	278.4
Top cb	5.41	278.06
Gutter	5.9	277.6
1/4	6.1	277.4
1/4	5.9	277.6
1/4	6.0	277.5
Top cb	6.45	277.0
S	6.2	277.3
TP	12.48	290.66
	5.29	278.18



	+	π	-	Elev
		29066		
		07' West		
S Top of Con. Wall		11.46		279.2
S		12.3		278.4
+11		12.0		278.7
cb		12.9		278.3
+5		12.7		278.0
1/4		12.6		278.1
+7		12.2		278.5
♀		11.5		279.2
+6		11.4		279.3
+11		11.7		279.0
1/4		11.6		279.1
+7		10.9		279.8
cb		9.7		281.0
N		9.9		281.3
		20' West		
N		6.7		284.0
cb		7.5		283.2
+8		7.8		282.9
1/4		9.0		281.7
♀		9.5		281.2
+3		10.3		280.4
+11		10.4		280.3
1/4		10.0		280.7
cb		9.8		280.9
+1		9.3		281.4
S		9.3		281.4

0+3 Concrete
strip of House
on 11/12/00
123

0+302
House on
North side
18-10 St
50 Chimney
3.6 in Street
Radon chimney
footing 4.39
Radon floor
0.53

	+	π	-	Elev	51
		29066			
		35' West			
S		7.6		283.1	
cb		7.6		283.1	
1/4		7.4		283.3	
+4		7.8		282.9	
♀		7.1		283.6	
+7		6.4		284.3	
1/4		6.4		284.3	
+2		5.9		284.8	
cb		5.1		285.6	
N		4.7		286.0	
		45' West			
N		3.4		287.3	
cb		3.7		287.0	
1/4		4.5		286.2	
+11		4.3		286.4	
♀		5.0		285.7	
+5		5.5		285.2	
1/4		5.6		285.1	
cb		6.0		284.7	
S		5.7		285.0	
		68' West			
S		2.0		288.7	
cb		2.2		288.5	
1/4		1.9		288.8	
♀		1.4		289.3	

53' West
Rear end
of House
Radon Porch
3.59
on 1 floor
3.60

	+	↑ 290.66	-	Elev
+4			0.7	290.0
+7			1.1	289.6
1/4			1.1	289.6
+3			0.3	290.4
T.P.	13.03	303.24	0.45	290.21
cb			12.3	290.9
N			12.1	291.1
		90' West		
N			8.9	294.3
cb			9.2	294.0
1/4			9.5	293.7
ℓ			9.9	293.3
+5			10.2	293.0
1/4			10.6	292.6
cb			10.6	292.6
S			11.0	292.2
		105' West		
S			8.0	294.8
cb			8.0	295.2
1/4			8.1	295.1
ℓ			7.4	295.8
1/4			7.4	295.8
cb			6.1	297.1
N			5.5	297.7
		128' West		
N			1.7	301.5

	+	↑ 303.24	-	Elev	52
		128' West			
cb			2.2	301.0	
+8			2.6	300.6	
1/4			3.3	299.9	
ℓ			3.6	299.6	
1/4			4.2	299.0	
cb			4.4	298.8	
S			4.7	298.5	
T.P.	12.93	316.12	0.05	303.19	
		150' West			
S			13.2	302.9	
cb			12.2	303.9	
+8			12.4	303.7	
1/4			12.9	303.2	
ℓ			12.3	303.8	
1/4			12.1	304.0	
cb			11.9	304.2	
N			11.8	304.3	
		160' West			
N			10.6	305.5	
cb			10.8	305.3	
1/4			11.0	305.1	
+11			10.4	305.7	
ℓ			10.6	305.5	
1/4			10.9	305.2	
cb			11.2	304.9	
S			11.5	304.6	

+	X 316.12	-	Elev
			170' West
S		9.8	306.3
cb.		9.8	306.3
+10		9.7	306.4
1/4		9.1	307.0
2		8.6	307.5
1/4		9.0	307.1
+5		9.7	306.4
cb.		9.7	306.4
N		9.4	306.7

+	X 316.12	-	Elev
			180' W Kind House
on Walk N		3.7	312.4
+5		9.7	311.4
+6		5.7	310.4
cb.		5.5	310.6
+8		5.6	310.5
1/4		6.6	309.5
2		6.9	309.2
1/4		7.1	309.0
cb.		7.4	308.7
S.		8.0	308.1

+	X 316.12	-	Elev
			194' West
S		5.3	310.8
+10		4.6	311.5
cb.		4.5	311.6
1/4		4.6	311.5

+	X 316.12	-	Elev
			200' West
2		4.2	311.9
1/4		4.1	312.0
+6		3.6	312.5
cb.		3.2	312.9
+7		3.2	312.9
1/4 Edge of Walk		2.55	313.5
+13 Step		2.36	313.7

+	X 316.12	-	Elev
			200' West
N Edge of Walk		2.33	313.8
+3 Edge of Walk		2.36	313.7
cb.		2.6	313.5
+6		2.6	313.5
1/4		3.2	312.9
2		3.0	313.1
1/4		3.2	312.9
cb.		3.3	312.8
+6		3.4	312.7
+10		9.1	312.0
S		9.1	312.0

T.P. 12.78 328.63 0.27 315.85

+	X 316.12	-	Elev
			218' West
S		13.0	315.6
cb.		12.8	315.8
1/4		12.4	316.2
+7		11.9	316.7
2		11.8	316.8

	+	-	Elev
	328.63		
	218' West		
+8		11.7	316.9
1/4		12.2	316.4
cb		12.4	316.2
N		11.9	316.7
Top. P. bbb wall	0.5	Back	11.43
	221' West		
N		9.8	318.8
cb		10.2	318.4
+6		10.9	318.2
1/4		11.1	317.5
ℓ		11.0	317.6
1/4		11.7	316.9
+11		12.0	316.6
cb		11.6	317.0
+7		12.2	316.4
S		12.2	316.4
	244' West		
S		7.5	321.1
cb		6.8	321.8
1/4		6.3	322.3
ℓ		5.7	322.9
1/4		5.8	322.8
cb		5.3	323.3
N		5.1	323.5
	251' West		
N		3.2	325.4

2135 ℓ.
House 12' BK
Redent floor
6.35

2198
Walk
Rod 6-24

	+	-	Elev	
	328.63			54
	266' West			
cb		2.8	325.8	
+7		3.1	325.5	
+10		3.7	324.9	
1/4		3.9	324.7	
ℓ		4.0	324.6	
1/4		9.5	324.1	
cb		5.3	323.3	
S		5.6	323.0	
	266' West			
S		3.4	325.2	
cb		3.3	325.3	
1/4		2.4	326.2	
ℓ		2.0	326.6	
1/4		1.8	326.8	
+3		1.8	326.8	
+10		0.8	327.8	
cb		0.7	327.9	
N		0.9	327.7	
T.P.	11.10	339.21	0.52	328.11
	275' West			
N		9.0	319.6	330.2
cb		9.3	329.9	
1/4		9.2	330.0	
ℓ		9.5	329.7	
+8		9.6	329.6	
1/4		10.1	329.1	

2166
Parage
concrete floor
Rod 10.60

?

	+	↑ 339.21	-	Elev
cb			10.9	328.3
S.			10.9	328.8
			283' West	
S			8.8	330.4
cb			8.9	330.3
1/4			8.2	331.0
L.			7.8	331.4
1/4			7.7	331.5
cb.			7.7	331.5
N.			7.5	331.7
			295' West	
N			5.0	334.2
cb			5.3	333.9
1/4			5.4	333.8
qt			5.8	333.4
1/4			5.4	333.8
+8			9.9	334.3
cb			5.5	333.7
+7			6.6	332.6
S			6.8	332.4
			300' West	
S.			5.9	333.3
+5' Top Sewer Pipe Exposed			5.74	333.5
+11			4.7	334.5
cb.			4.7	334.5
1/4			4.6	333.6

	+	↑ 339.21	-	Elev	55
Q.			5.2	334.0	
1/4			5.0	334.2	
cb			4.8	334.4	
N			4.7	334.5	
			310' West E. line of Georgia on Paving		
N			3.9	335.3	
Top cb.			4.22	335.0	4.99
Gutter Paving			4.80	334.4	4.41
1/4			4.60	334.6	
Q.			4.92	334.7	
1/4			4.59	334.6	
Gutter "			4.92	334.3	4.29
Stop cb			4.25	334.96	
S.			4.0	335.21	
B.N.S. E Georgia + Polk			4.24	334.97	

X. Sections of 56th Street from the South
Line of Meade to 500' South

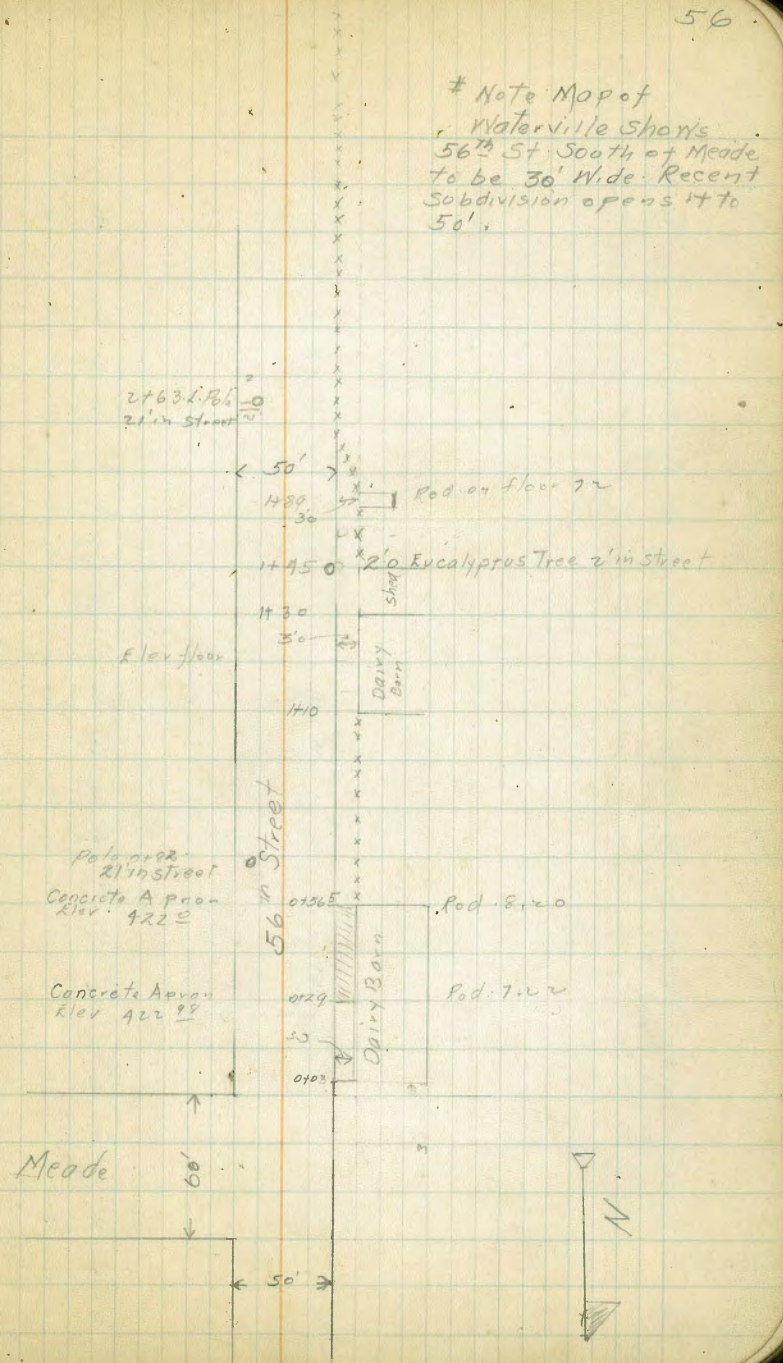
Bliss
Isabel
Morgan
B.M. on R.W.
Hub. N.L. Meade
Sussex Notes

	+	-	Elev	56' 57
				10' cb
				7 1/2' 273
6.93	430.20		423.27	

S Line of Meade

W	6.5	23.7
+7	6.5	23.7
cb	6.9	23.3
1/4	7.7	22.5
L	7.1	22.8
1/4	7.1	23.1
cb	7.2	23.0
F	7.0	23.2
07'S		
L	5.7	24.5
cb	6.3	23.9
1/4	6.6	23.6
L	6.8	23.4
1/4	6.9	23.3
+1	6.9	23.3
cb	6.6	23.6
W	6.5	23.7
16'		
	6.9	23.3
	6.9	23.3
1/4	6.9	23.9
L	6.6	23.6
1/4	5.9	24.3

Note Map of
Waterville Shows
56th St. South of Meade
to be 30' Wide. Recent
Subdivision opens it to
50'.



	+	⌘ 430.20	-	Elev
cb.			5.9	24.3
+5.			5.5	24.7
E			4.9	25.3
		92' South		
E			6.0	24.2
cb.			6.3	23.9
1/4			7.0	23.2
1/4			7.5	22.7
1/4			7.3	22.9
cb			7.7	22.5
W on concrete apron			8.0	22.18
		58'S		
W			8.6	21.6
cb			8.6	21.6
1/4			8.5	21.7
1/4			8.2	22.0
1/4			7.6	21.6
cb			7.0	23.2
E			6.1	24.1
		75' South		
E			6.5	23.7
cb			7.5	22.7
1/4			8.1	22.1
+3			8.4	21.3
1/4			9.9	20.3
1/4			10.1	20.1

	+	⌘ 430.20	-	Elev	57
cb			10.2		20.0
W			9.9		20.3
W+15			9.8		20.4
		100' South			
W-15			14.4		15.8
W			12.3		17.9
cb.			12.4		17.8
1/4			12.6		17.6
1/4			12.6		17.6
1/4			10.5		19.7
cb			8.1		22.1
E			7.9		22.3
		120' South			
E			8.6		21.6
+5			9.0		21.2
cb			10.6		19.6
1/4			12.7		17.5
+5			13.7		16.5
1/4			14.1		16.1
1/4			13.9		16.3
cb			14.1		16.1
W			14.1		16.1
W-3 Floor of wall			13.8		16.4
		140' South			
W			14.9		15.3
cb			14.9		15.3

	+	π 430.20	-	Elev
		140 West		
1/4			15.0	15.2
♀			14.9	15.3
1/4			14.3	15.9
cb.			13.2	17.0
E			11.0	19.2
E+15			10.6	19.6
T.P.	0.52	419.62	11.10	419.10
		152 South		
E			2.8	16.8
cb			4.5	15.1
1/4			4.7	14.9
+4			5.5	14.1
♀			5.5	14.1
+5			5.1	14.5
1/4			5.0	14.6
cb.			5.3	14.3
W			5.5	14.1
		165 South		
W			5.7	13.6
cb			5.8	13.8
1/4			5.6	14.0
+4			5.5	14.1
♀			5.9	13.7
+3			6.0	13.6
1/4			5.3	14.3
cb			4.9	14.7

	+	π 419.62	-	Elev
E			9.8	14.8
		200 South		
			7.4	12.2
cb			7.3	12.3
1/4			7.4	12.2
+4			8.1	11.5
♀			7.9	11.7
1/4			7.5	12.1
cb			7.7	11.9
W			7.8	11.8
		237 South		
W			10.5	09.1
cb.			10.2	09.4
1/4			9.9	09.7
♀			9.9	09.7
1/4			9.8	09.8
cb			9.8	09.8
E			9.7	09.9
		258 South		
E			11.2	08.4
cb.			11.2	08.4
1/4			11.5	08.1
♀			11.8	07.8
1/4			11.8	07.8
cb			12.1	07.5
+2			12.3	07.3

	+	X	-	Elev
		419.62		
		258' South		
W		12.3		07.3
T.P.	0.25	407.39	12.98	407.14
		279' South		
W-15		2.3		05.1
W		1.4		06.0
cb.		1.4		06.0
1/4		1.7		05.7
£		1.9		05.5
1/4		2.0		05.4
cb.		1.8		05.6
E		1.6		05.8
		297' West		
E		3.6		03.8
cb		3.8		02.6
1/4		3.8		02.6
£		3.8		02.6
1/4		3.7		03.7
cb.		3.4		04.0
W		3.5		03.9
W+15		4.3		403.1
		3.31 South		
W-15		8.0		399.4
W		7.6		99.8
cb.		7.3		400.1
1/4		7.4		400.0
£		7.6		399.8

	+	X	-	Elev
	7.5	10.0		
	-15	12.1		
	+15	19.0		
		407.39		
				59
1/4				7.9
399.5				
cb				8.0
99.4				
E				7.9
99.5				
				352' South
E				9.7
97.7				
cb				10.2
97.2				
1/4				10.1
97.3				
£				9.9
97.5				
1/4				10.0
97.4				
cb				9.8
97.6				
W				10.0
97.4				
W+15				10.0
97.4				
				372' South
W-15				12.1
95.3				
W				11.8
95.6				
cb				11.7
95.7				
1/4				11.6
95.8				
£				11.5
95.9				
1/4				11.2
96.2				
cb.				11.6
95.8				
E				11.7
95.7				
				391' South
E				13.4
94.0				
cb				13.6
93.8				
1/4				13.6
93.8				
£				13.7
93.7				

	+	π	-	Elev
		407.89	-	
		391' South		
1/4		13.6		93.8
cb.		13.6		93.8
W		13.6		93.8
W+15		14.0		93.4
T.P.	1.58	395.95	13.02	394.37
		416' South		
W-15		4.5		91.4
W		4.8		91.1
cb		4.6		91.3
1/4		4.3		91.6
♀		4.3		91.6
1/4		4.1		91.8
cb.		4.1		91.8
F		4.1		91.8
		446' South		
E		6.0		90.0
cb.		6.3		89.6
1/4		6.3		89.6
♀		6.5		89.4
1/4		6.8		89.1
cb.		7.0		89.0
W		7.0		89.0
		486' West		
W		9.1		86.8
cb		9.2		86.7
1/4		8.9		87.0

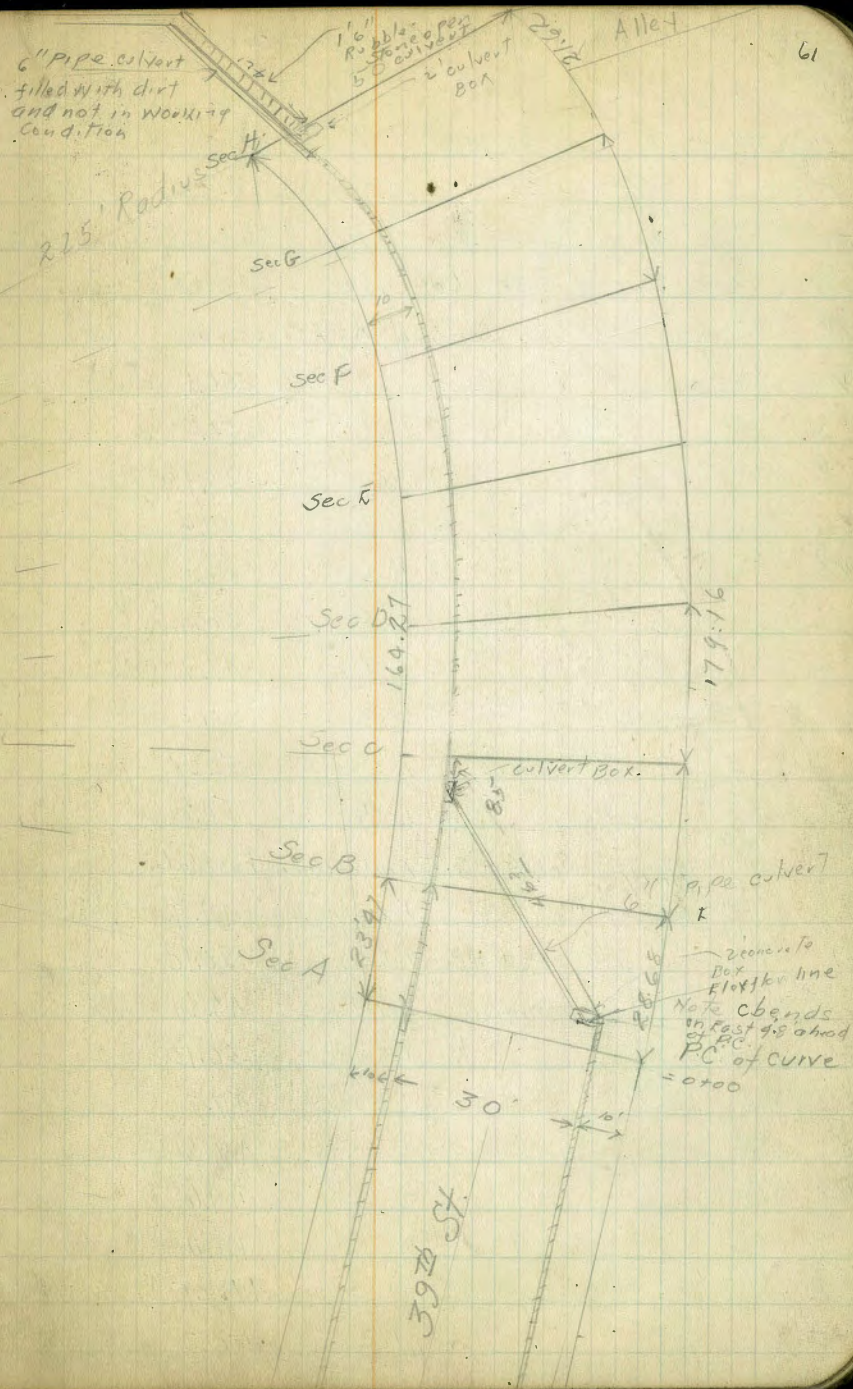
	+	π	-	Elev	60
		395.95			
		500' South			
♀				8.8	87.1
1/4				8.7	87.2
cb				8.8	87.1
F				8.6	87.3
		500' South			
F-15				9.1	86.8
F				9.9	86.5
cb.				9.5	86.4
1/4				9.7	86.2
♀				9.8	86.1
1/4				10.1	85.8
cb				10.2	85.7
W				10.0	86.0
W+15				10.6	85.3
T.P.	12.75	408.40	0.30		395.65
T.P.	11.73	420.12	0.01		408.39
T.P.	10.92	430.13	0.91		419.21
B.M.				6.88	423.25

Sketch of 39th St. Bonnie Bred

Addition

See Book 1197-61
for Xsection of
remainder of 39th

See 120879 for detail of
drain at end of 39th



X sections of 39th Street Bonnie Brae.

Bliss HA/47

+	π	-	Elev	
B.M. S.E. Adams 73923	2.30	373.17	370.87	
T.P.	3.67	368.12	8.72	369.35
T.P.	1.63	362.46	62.9	361.73
T.P.	1.07	351.60	12.93	350.43
Section A P.C. of Curve				
W		0.7	350.9	
+2		1.1	350.5	
Top cb.		1.61	349.99	
Gutter		2.0	49.6	
1/4		1.6	50.0	
1/2		1.6	50.0	
3/4		1.7	49.9	
Gutter		2.3	49.3	
cb.		1.32	50.28	
E		1.4	50.2	
* note All pluses refer to larger Radius curve or the East Prop line.				
E		1.7	49.9	
cb.		1.50	50.10	
Gutter		2.79	46.61	
Edge of Box		1.50	50.10	
1/4		1.9	49.7	
1/2		1.8	49.8	
3/4		2.0	49.6	
Gutter		2.2	49.4	
Top cb		1.75	49.8.5	
+7		1.3	50.3	

Plotted by Tolmou 7/19/18

Sec A + 8.5 End of cb on East Side.

+	π	-	Elev	
			351.60	
W			0.9	50.7
Sec B.				
W - 4 Step at House			0.03	51.57
W			1.9	49.7
+2			2.9	48.2
cb			2.48	49.12
Gutter			2.6	49.0
1/4			2.6	49.0
1/2			2.9	49.2
3/4			2.2	49.4
cb			2.0	49.6
+5			1.9	50.2
E			1.8	49.8
E+3			2.2	48.4
E+7			6.3	45.3
E+15			7.6	44.0
Sec C - 8.5 Flow Line of Culvert S.O.C.				
E-15			12.2	39.4
E-2			6.2	45.4
E			4.7	46.9
+5			3.5	48.1
cb			3.0	48.6
1/4			3.0	48.6
1/2			3.3	48.3
3/4			3.7	47.9
Gutter			4.2	47.4

35/60

E/e-

Sec C:

Top cb 3.39 48.21'

W 3.1 48.5

Sec C+14

W 3.5 48.1

Top 3.73 47.87

Gutter 4.4 47.2

+3 4.4 47.2

+4 3.8 47.8

E 3.6 48.0

+4 3.5 48.1

cb 3.8 47.8

+1 4.1 47.5

+8 5.4 46.2

E 6.3 45.3

+9 8.6 43.0

E+15 14.7 36.9

Sec C+17

E-15 18.7 32.9

E-6 16.2 35.4

E-5 12.8 38.8

E-2 11.0 40.6

E 8.0 43.6

+2 5.2 46.4

+5 4.6 47.0

cb 3.6 48.0

35/60

E/e-

63

+ 3.5 48.1

E 3.8 47.8

+4 4.0 47.6

+4 4.5 47.1

Gutter 4.6 45.0 47.0

Top cb 3.84 47.76

W 3.9 48.2

Sec C+22

W 3.5 48.1

Top cb 4.01 47.59

Gutter 4.9 46.7

+3 4.7 46.9

+4 4.1 47.5

E 4.0 47.6

+4 3.7 47.9

cb 3.6 48.0

+5 4.9 46.7

+8 11.6 40.0

E 12.0 39.6

E+5 13.0 38.6

E-15 19.0 32.6

E+25 23.6 28.0

Sec C+25

E-25 21.0 30.6

E-15 18.0 33.6

E-5 14.0 37.6

	+	X 35/60	-	Elev
I			11.2	40.4
+5	?	9.9		41.7 46.7
cb		3.9		47.7
1/4		3.9		47.7
E	?	9.1		48.5 47.5
1/4		9.2		47.4
+9		4.8		46.8
Gutter		5.0		46.6
cb		9.11		47.49
W		3.8		47.8
		Sec D	✓	
W		3.8		47.8
Topcb		9.25		47.35
Gutter		5.1		46.5
+3		4.8		46.8
1/4		4.4		47.2
E		4.2		47.4
1/4		3.8		47.8
+2		4.0		47.6
+3 Water Pipe		5.15		46.45
+35		5.1		46.5
+7		5.8		45.8
cb		9.1		42.5 47.5
+3		4.5		47.1
E		7.1		44.5
E+15		16.2		35.4

	+	X 35/60	-	
				19.7
				23.2
				28.3
				Sec D + 12 ✓
				32.7
				26.5
				19.5
				7.9
				5.1
				7.2
				4.1
				9.6
				4.8
				5.5
				9.70
				9.5
				Sec D + 15 ✓
				4.5
				4.80
				5.6
				4.9
				4.7
				4.3
				7.3
				14.0
				21.3

	T 35/60	-	Elev
	Sec D+16		
E+35	32.2		19.4
	Sec D+19 ✓		
E-35	31.4		20.2
E-15	21.7		29.9
E	13.5		38.1
cb.	7.8		43.8
+5	4.6		47.0
1/4	4.5		47.1
E	4.8		46.8
1/4	5.0		46.6
+5	5.7		45.9
cb.	5.7		45.9
Topcb	4.93		46.67
W.	4.8		47.0
	Sec D+21 ✓		
W.	4.7		41.9 46.9
Topcb	4.95		46.65
Gutter	4.8		46.8
1/4	5.1		46.5
Q.	4.8		46.8
1/4	4.7		46.9
cb.	5.2		46.4
E	10.1		41.5
E+15	19.5		32.1
E+35	32.9		18.7

	T 35/60	-	Elev
	Sec E ✓		
E-35	31.7		19.9
E-15	19.9		31.7
E	10.9		40.7
cb.	5.6		46.0
+4	4.8		46.8
1/4	5.0		46.6
1/4	4.9		46.7
1/4	5.2		46.4
Gutter	5.9		45.7
Topcb	5.17		46.43
W	4.6		47.0
	Sec E+15 ✓		
W	5.1		46.5
Topcb	5.58		46.02
Gutter	6.2		45.4
1/4	5.6		46.0
Q	5.2		46.4
1/4	5.0		46.6
+1	5.2		46.4
cb	7.4		44.2
+	9.5		42.1
E	15.5		36.1
E+15	23.6		28.0
E+35	33.7		17.9

+

35/60

Elev

Sec F ✓

E-45	40.1	11.5
E-25	32.5	19.1
E-15	24.6	27.0
E	16.5	35.1
cb	9.1	42.5
+5	5.7	45.9
1/4	5.5	46.0
2	5.7	45.9
1/4	6.0	45.6
+5	6.9	44.7
Gutter	7.1	44.5
Top cb	6.05	45.55 ✓
W	5.3	46.3
Sec F+9 ✓		
W	5.6	46.0
Top	6.2	45.38
Gutter	7.0	44.6
+2	7.0	44.6
1/4	6.3	45.3
2	5.6	46.0
1/4	5.6	46.0
+2	7.5	44.1
cb.	9.4	42.2
E	14.9	36.7
E+15	25.4	26.2

35/60

Elev

66

E+25

30.0

21.6

E+35

36.6

15.0

Sec F+11 ✓

E-35

35.8

15.8

E-25

29.6

22.0

E-15

29.9

26.7

E

16.2

35.4

+5

12.9

38.7

+6

14.3

37.3

cb.

14.4

37.2

1/4

10.1

41.5

+1

9.3

42.3

+3

5.8

45.8

2

5.8

45.8

1/4

6.3

45.3

+5

7.1

44.5

Gutter

7.0

44.6

Top cb

6.24

45.36

W

5.7

45.9

Sec F+20 ✓

W

5.7

45.9

Top

6.58

45.02

Gutter

7.1

44.5

1/4

6.4

45.2

2

6.0

45.6

+5

5.8

45.8

	+	X	-	Elev
		351.60		
		Sec F + 19		
1/4		10		41.6
cb		13.3		38.3
E		17.4		34.2
E-15		29.0		22.6 27.6
E+25		29.0		22.6
		Sec F + 23 ✓		
E-25		28.6		23.0
E-15		23.0		28.6
E		15.5		36.1
+5		11.5		40.1
cb		9.8		41.8
+3		8.9		42.7
1/4		6.0		45.6
2		6.1		45.5
1/4		6.6		45.0
+5		7.1		44.5
Gutter		7.1		44.5
Top cb		6.68		44.92
W		5.9		45.7
		Sec G ✓		
W		5.1		46.5
+5		6.4		45.2
Top cb		6.41		44.69
Gutter		7.2		44.4
1/4		6.7		44.9

	+	X	-	Elev
		351.60		67
cb		6.2		45.4
1/4		6.0		45.6
+4		6.6		45.0
cb		7.6		44.0
E		13.4		38.2
E+15		23.8		27.8
E+25		29.6		27.0
		Section G + 7.06 5' line of Alley ✓		
E-25		25.1		26.5
E		12.7		38.9
cb		7.2		44.4
+2		6.6		45.0
1/4		5.9		45.7
2		6.4		45.2
1/4		6.8		44.8
Gutter		7.3		44.3
Top cb		7.08		44.52
+5		6.5		45.1
W		5.0		46.6
		Sec H		
W		5.1		46.5
+3		6.7		44.9
Top cb		7.65		43.95
+2		7.50		44.01
Bottom of open culvert		8.14		43.46
E.S.D.		7.43		44.17

+
351.60

- Elev

Sec. H.

68

1/4			7.1	44.5
2			6.7	44.9
1/4			6.5	45.1
Acb			6.6	45.0
E+8			7.9	43.7
F			9.1	42.5
E+10			14.3	37.3
E+25			21.4	30.2
92' North A and				
break in ^{TIP} Rubble Stone culvert		7.85		43.75
E of Flowline		8.55		43.05
N. Edge on Top		7.85		43.75
		X		
		X		
		X		
Flowline 6" pipe		10.00		
T.P.	12.51	363.16	0.95	350.65
T.P.	5.52	367.48	1.20	361.96
T.P.	7.53	373.62	1.39	366.09
B.M. ^{5' dome} _{439.00}			2.73	370.89

Boulevard Place Cross Section
 La Jolla Hills
 From Torrey Pine Road to Lookout Drive

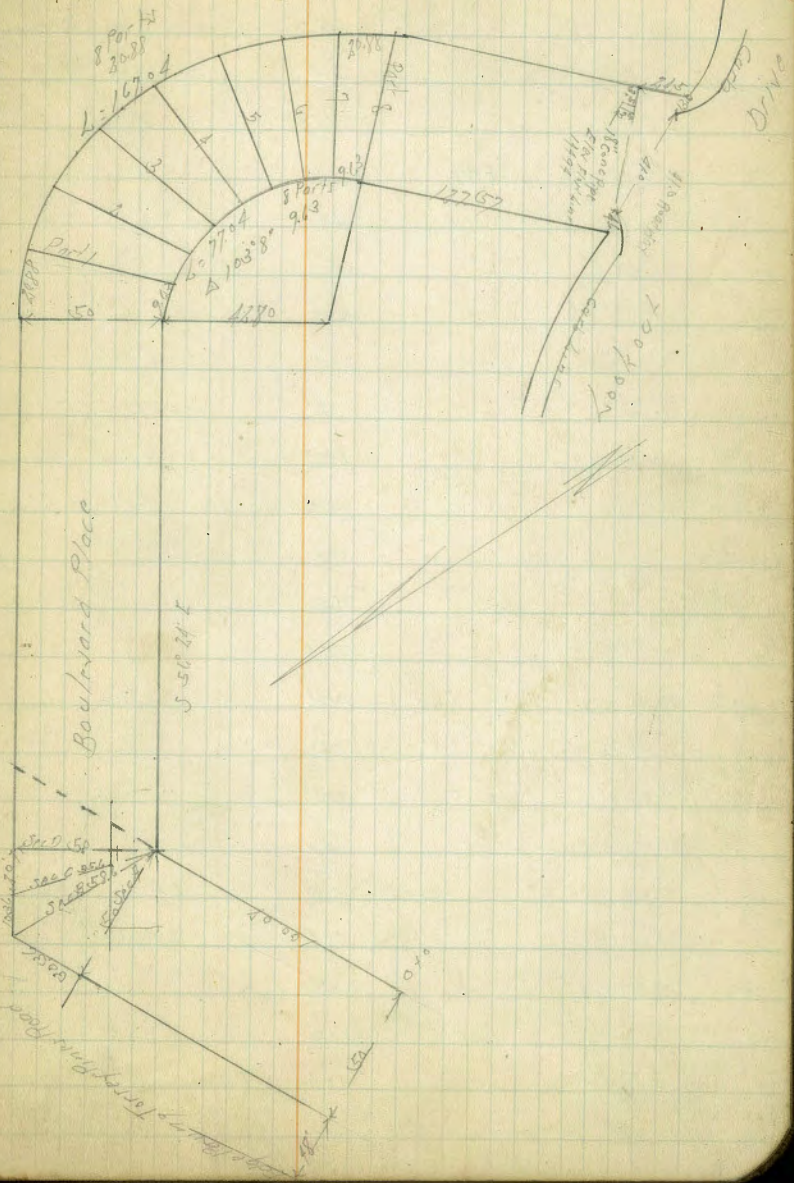
50' High From S.H.
 10' cut
 75' 91'

BN	13.07	82.13		6906
TP	13.74	94.86	0.01	8212
TP	7.59	102.00	0.45	9441
TP	13.19	106.89	7.82	9118
TP	7.23	112.76	0.84	105533
		0.10		

W.M.B.P.
 Princesa *
 Spindrift
 on top of Pipe
 with 5' 4" pipe
 face of Road to
 Boulevard Place

5			0.9	111.9
cb			11	108.4
4			7.0	105.8
2			10.1	102.7
+6			13.4	100.4
11			14.0	98.8
cb			16.0	96.8
+5			16.3	96.5
17			19.8	93.0
+4			22.4	90.4
+2.5			23.8	89.0
+1.8 = S Edge Parking			24.3	88.5
		25.2		
-4.4 = S Edge Parking			25.0	87.8
-2.3			24.5	88.3
11			24.0	88.8
+7			18.5	94.3
cb			16.2	96.6
+4			14.9	97.9

Plotted
 H.C.H.
 5/16/24



1/4	149	97.9
1/2	13.8	99.0
1/4	96	103.6
cb	94	105.4
S	26	110.2
58 E		
S	41	108.7
X5	65	106.3
cb	119	100.9
1/4	125	100.3
1/2	128	100.0
1/4	132	99.6
cb	179	95.9
+5	190	93.8
+7	250	87.8
X	259	86.9
+15	256	87.2
+35 = S Edge Paving	255	87.3
71 E		
30 = S Edge Paving	260	86.8
X	265	86.3
+2	262	88.6
cb	187	94.1
1/4	160	96.8
1/2	136	99.2
1/4	104	102.4

cb	107	102.1
S	102	102.6
100.08 E - 1 on S = 50'		
S	97	105.6
+5	95	105.3
cb	94	103.4
1/4	116	101.2
1/2	740	98.8
1/4	154	97.4
cb	180	94.8
+5	261	86.7
X	267	86.1
+28 = S Edge Paving		
Sec B		
-15	280	94.8
X	284	94.4
1/4	275	85.3
+8	207	92.1
cb	200	92.8
1/4	142	98.3
1/2	125	100.3
1/4	105	102.3
cb	94	103.4
+7	71	105.7
S	72	105.6
Sec C		
S	72	105.6

1122064
82224

86.8
26

cb 1112
586 94.8 83

74	72	105.6
cb	9.0	103.8
1/4	104	102.4
1/2	120	100.8
1/4	134	99.4
1/4	146	98.2
cb	188	94.0
11	217	91.1
1/2	270	85.8
115	272	85.6
Sec 0		
-25	287	83.9
-20	280	84.8
-13	210	91.8
-8	204	92.4
11	149	97.9
1/2	135	99.3
cb	121	100.7
1/4	107	102.1
1/2	99	102.9
1/4	90	103.8
cb	75	105.3
S	76	105.6
30 E of Sec 0		
S	51	107.7
cb	47	108.1
1/4	43	108.5

1/2	53	107.5
1/4	66	106.2
cb	81	104.7
11	97	103.1
120	145	98.3
15 E of Sec 0		
-25	128	99.0
11	86	104.2
cb	62	106.6
1/4	50	107.8
1/2	34	109.4
1/4	35	109.3
cb	39	108.9
15	39	108.9
TP	1312	124.93
S	201	110.75
S	97	114.2
75 E		
S	76	116.3
15	95	114.4
cb	125	111.4
1/4	130	110.9
1/2	121	111.3
1/4	123	109.6
cb	181	105.8
11	159	104.0
115	149	99.0
100 E		

123.93

-25	33.8	100.1
H	17.6	106.3
cb	150	108.9
1/4	121	111.8
+5	102	113.7
S	109	113.0
1/4	113	112.6
+2	113	112.6
cb	77	116.2
S	51	118.8
125.5		
S	19	122.0
cb	48	119.1
+5	60	117.9
1/4	80	115.9 ✓
+2	90	114.9
S	92	114.7
1/4	86	115.3
cb	131	111.8
H	150	108.9
+25	221	101.8
150.5		
-25	304	103.5
H	128	111.1
cb	99	114.0
+5	66	117.3
1/4	69	117.0

123.93

S	7.4	116.7
+5	3.3	120.6
1/4	26	121.3 ✓
cb	05	123.4
TP	12.79	123.10 ✓
S	102	125.7
175.5		
S	70	128.9
cb	98	126.1
1/4	119	124.0 ✓
S	17.6	118.3
1/4	173	118.6
cb	175	118.4
H	22.9	113.0
+25	30.0	105.9
200.5		
-25	30.0	108.9
H	21.2	114.6
cb	15.2	120.7
1/4	15.5	120.4
S	15.5	120.4
+5	11.6	124.7
1/4	10.3	125.6
cb	7.7	128.2
S	4.5	131.4
218.5 = 0.0		
S	3.1	132.3

Curve into 8 Par 44
9.62 on S
20.88 on N

13589

cb	72	128.7
1/4	95	126.4
+3	104	128.5
+1	128	123.1
8	136	122.3
1/4	134	122.5
cb	132	122.7
H	200	115.9
+10	238	112.1
+25	300	105.9

Part 1

-25	266	109.3
H	185	117.4
cb	114	124.5
1/4	114	124.5
8	112	124.7
1/4	111	124.8
+8	79	128.0
cb	58	130.1
S	43	133.6

Part 2

S	13	134.6
cb	45	131.4
+1	56	130.3
1/4	75	128.4
+1	88	127.1
8	91	126.8

13589

1/4	92	126.7
25	92	126.7
cb	104	125.5
H	145	119.4
+25	203	112.6

Part 3

-25	168	119.1
H	108	125.1
cb	80	127.9
+5	67	129.2
1/4	66	129.3
8	68	129.1
1/4	62	129.6
+1	45	131.4
cb	26	133.3
TP	10.87	145.31
S	84	136.9

Part 4

S	70	138.3
+8	87	136.6
cb	97	135.6
+5	101	135.2
1/4	114	133.9
+1	136	131.7
8	138	131.5
1/4	136	131.7
cb	133	132.0

N	15.6	129.7
+15	81.2	124.1
Part 5		
-25	20.4	124.9
N	13.5	131.8
cb	10.6	134.7
1/4	10.4	134.9
2	11.1	134.2
1/4	11.3	134.0
1/2	7.1	138.2
cb	7.2	138.0
S	6.8	138.5

Part 6

S	5.6	139.7
cb	7.1	137.7
1/4	9.0	136.3
2	9.0	136.3
1/4	8.5	136.8
cb	9.2	136.1
N	13.2	132.1
+15	22.6	122.7

Part 7

-25	20.9	124.4
N	11.7	133.4
cb	6.9	138.4
1/4	6.8	138.5
2	7.5	137.8

1/4	7.5	137.8
cb	7.0	138.3
S	5.9	139.4
Part 8: FC		
S-11	5.6	139.7
cb	5.9	139.4
1/4	6.1	139.2
2	6.0	139.3
1/4	5.5	139.8
cb	4.2	141.0
N-1	8.1	137.2
+15	12.3	127.0

8.5 of FC

-25	17.5	127.8
F	4.5	140.8
cb	3.5	141.8
1/4	4.3	141.0
2	5.1	140.2
1/4	5.1	139.9
cb	4.9	140.4
1/4	4.1	141.2

TP

1154 156.67 0.18

125.13

35.5 of FC

N	7.5	149.2
cb	4.2	140.5
1/4	1.4	142.3
2	1.4	142.3

15667

1/4	144	142.3
cb	136	143.1
F	130	143.7
+10	124	144.3
50 S of FC		
-15	102	146.5
F	100	146.7
cb	103	146.4
1/4	112	145.5
1/2	118	144.9
1/4	116	145.1
cb	75	149.2
1/4	103	150.4
75 S		
1/4	01	152.6
cb	56	151.1
1/4	84	148.3
1/2	85	148.2
1/4	81	148.6
cb	77	149.0
F	71	149.6
+10	81	148.6
90 S		
-25 - Bottom Mark	19.0	137.7
-4	66	120.1
F	52	107.4

15667

75

cb	52	150.9
1/4	62	150.5
1/2	66	150.1
1/4	68	149.9
cb	44	157.9
1/4	39	152.8
105 S		
1/4	26	154.1
1/2	29	153.8
cb	12	152.5
1/2	50	157.7
1/4	53	157.4
1/2	52	157.4
1/4	44	157.9
cb	42	152.5
1/2	39	152.8
F	52	157.5
+15 - Bottom Mark	139	138.8
+20	140	142.7
120 S		
-5	79	148.8
F - Bottom Mark	121	144.6
cb	32	153.5
1/4	31	153.6
1/2	25	153.2
1/4	28	152.9

15667

Cb	3.8	152.9
H	1.6	155.1

12757'S = N. of Lookout on H

H	1.6	155.1
B.M.	1.63	155.04

on P.P. N.W. Cor
Boulevard Place
Lookout

Cb	2.8	152.9
----	-----	-------

H	3.4	153.3
---	-----	-------

S	3.0	153.7
---	-----	-------

H	2.6	154.1
---	-----	-------

Cb	2.2	154.5
----	-----	-------

I	8.3	148.4
---	-----	-------

+3	6.9	149.8
----	-----	-------

+15	11.0	145.7
-----	------	-------

N. of Lookout on H

1455' on I = N. of Lookout on B.M.

11720'S

679.4'S

I	0.50	153.87
---	------	--------

Cb on top	1.92	154.74
-----------	------	--------

Gutter on P.P.	2.11	154.23
----------------	------	--------

H " "	2.25	153.89
-------	------	--------

S " "	3.21	153.43
-------	------	--------

H " "	3.69	152.96
-------	------	--------

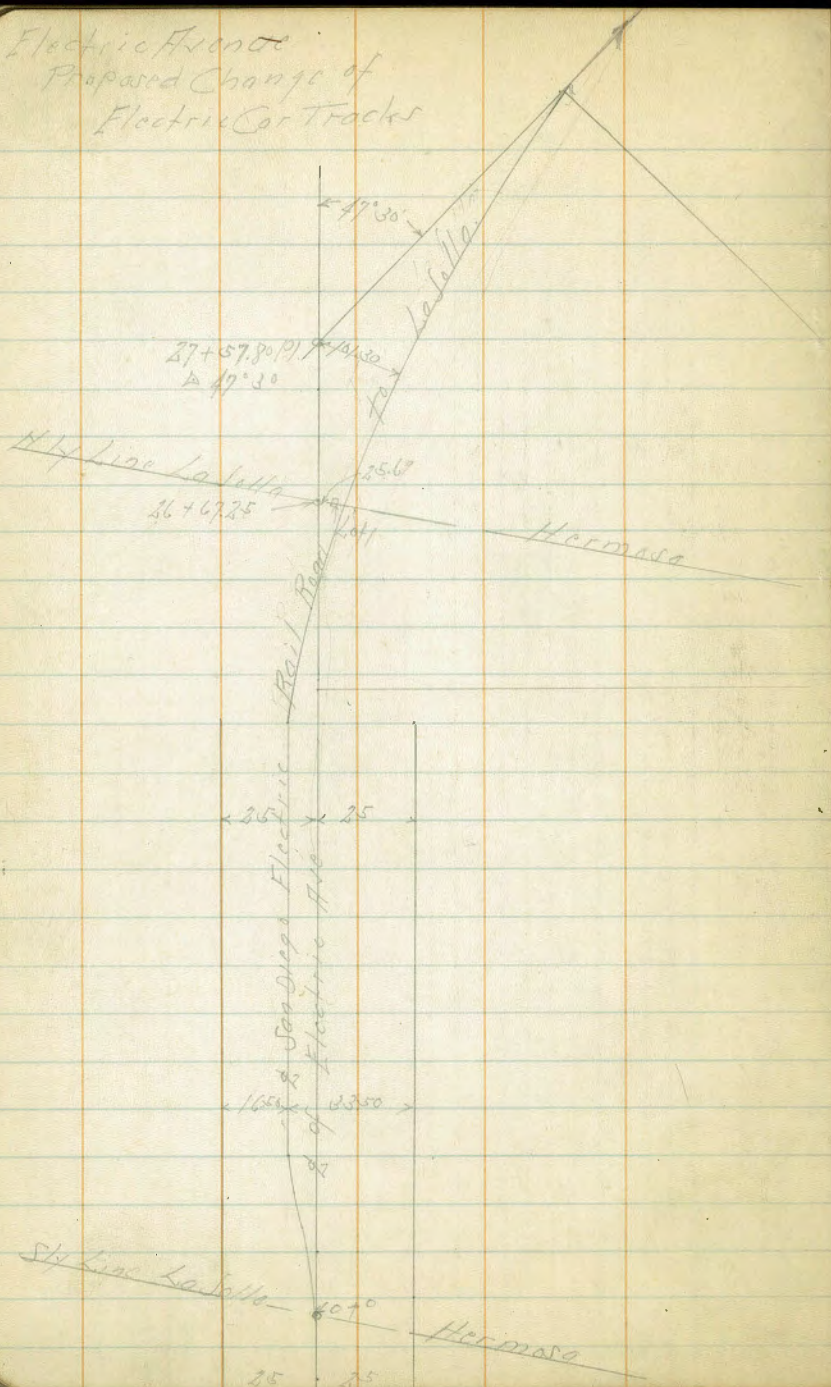
Gutter " "	4.13	152.54
------------	------	--------

Cb	3.92	152.95
----	------	--------

H	1.6	155.07
---	-----	--------

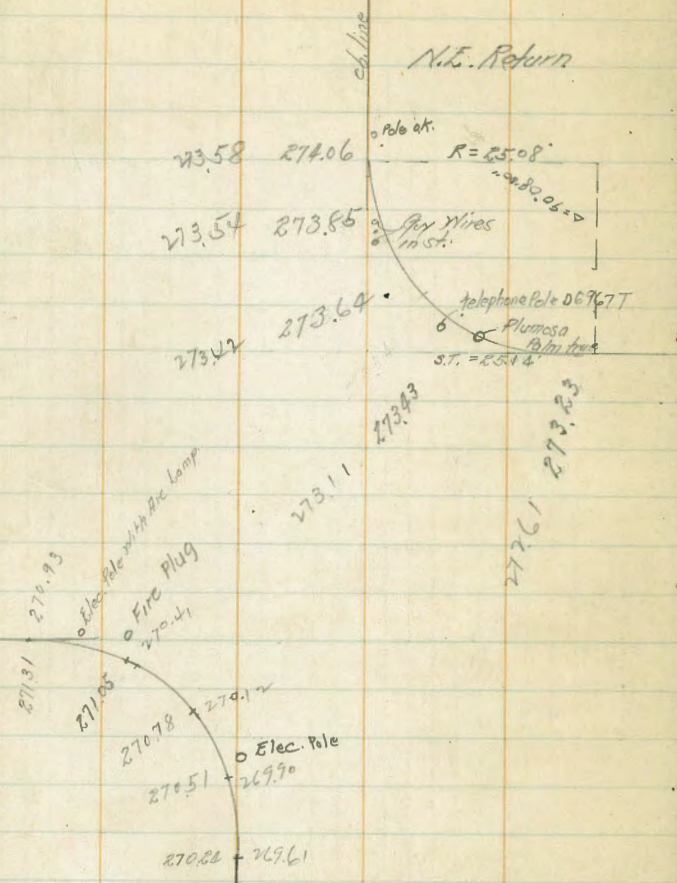
Electric Avenue
 Proposed Change of
 Electric Car Tracks

11-8-29
 D. W. S.



Change 10 Returns N.E. + S.W. C's
 GRAPE + FERN STS.

989 279.36 269.47 = 27.51/89 Grape + Fern



DIRECTIONS FOR USE OF TABLES

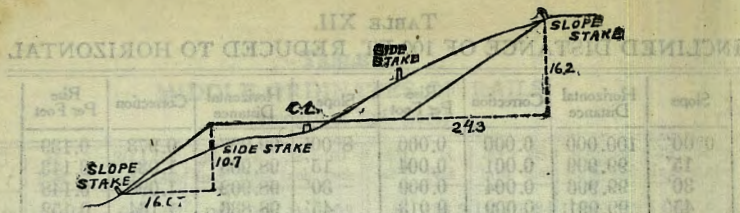
TABLE No. 1.

Distance of slope stake from side or shoulder stake for any width roadway, slope 1/2 to 1. If ground is nearly level, the cut or fill at side stake is located by the double entry method in left column and top row. The number in body of table in same row and column gives distance from side stake to slope stake. If ground is not level in the roadway, the elevation of the side stake is cut, elevate if fill. Add this amount to cut or fill and find in table. Set up rod at this point and line of sight should cut target.

IMPROVED TABLES AND INFORMATION

TABLE No. 2

To find Tangent and External for curve of any other degree, divide by degree of curve and add connection found in column of connection. Degree of curve with a given L may be found by dividing tangent (or external) opposite L by given tangent (or external). The distance from a point on the tangent to the curve is very nearly the square of the tangent length divided by twice the radius.



DISTANCES FROM SIDE STAKES FOR CROSS-SECTIONING.

SLOPE 1 1/4 TO 1. ROADWAY OF ANY WIDTH.

	0	.1	.2	.3	.4	.5	.6	.7	.8	.9	
0	0.00	0.15	0.30	0.45	0.60	0.75	0.90	1.05	1.20	1.35	0
1	1.50	1.65	1.80	1.95	2.10	2.25	2.40	2.55	2.70	2.85	1
2	3.00	3.15	3.30	3.45	3.60	3.75	3.90	4.05	4.20	4.35	2
3	4.50	4.65	4.80	4.95	5.10	5.25	5.40	5.55	5.70	5.85	3
4	6.00	6.15	6.30	6.45	6.60	6.75	6.90	7.05	7.20	7.35	4
5	7.50	7.65	7.80	7.95	8.10	8.25	8.40	8.55	8.70	8.85	5
6	9.00	9.15	9.30	9.45	9.60	9.75	9.90	10.05	10.20	10.35	6
7	10.50	10.65	10.80	10.95	11.10	11.25	11.40	11.55	11.70	11.85	7
8	12.00	12.15	12.30	12.45	12.60	12.75	12.90	13.05	13.20	13.35	8
9	13.50	13.65	13.80	13.95	14.10	14.25	14.40	14.55	14.70	14.85	9
10	15.00	15.15	15.30	15.45	15.60	15.75	15.90	16.05	16.20	16.35	10
11	16.50	16.65	16.80	16.95	17.10	17.25	17.40	17.55	17.70	17.85	11
12	18.00	18.15	18.30	18.45	18.60	18.75	18.90	19.05	19.20	19.35	12
13	19.50	19.65	19.80	19.95	20.10	20.25	20.40	20.55	20.70	20.85	13
14	21.00	21.15	21.30	21.45	21.60	21.75	21.90	22.05	22.20	22.35	14
15	22.50	22.65	22.80	22.95	23.10	23.25	23.40	23.55	23.70	23.85	15
16	24.00	24.15	24.30	24.45	24.60	24.75	24.90	25.05	25.20	25.35	16
17	25.50	25.65	25.80	25.95	26.10	26.25	26.40	26.55	26.70	26.85	17
18	27.00	27.15	27.30	27.45	27.60	27.75	27.90	28.05	28.20	28.35	18
19	28.50	28.65	28.80	28.95	29.10	29.25	29.40	29.55	29.70	29.85	19
20	30.00	30.15	30.30	30.45	30.60	30.75	30.90	31.05	31.20	31.35	20
21	31.50	31.65	31.80	31.95	32.10	32.25	32.40	32.55	32.70	32.85	21
22	33.00	33.15	33.30	33.45	33.60	33.75	33.90	34.05	34.20	34.35	22
23	34.50	34.65	34.80	34.95	35.10	35.25	35.40	35.55	35.70	35.85	23
24	36.00	36.15	36.30	36.45	36.60	36.75	36.90	37.05	37.20	37.35	24
25	37.50	37.65	37.80	37.95	38.10	38.25	38.40	38.55	38.70	38.85	25
26	39.00	39.15	39.30	39.45	39.60	39.75	39.90	40.05	40.20	40.35	26
27	40.50	40.65	40.80	40.95	41.10	41.25	41.40	41.55	41.70	41.85	27
28	42.00	42.15	42.30	42.45	42.60	42.75	42.90	43.05	43.20	43.35	28
29	43.50	43.65	43.80	43.95	44.10	44.25	44.40	44.55	44.70	44.85	29
30	45.00	45.15	45.30	45.45	45.60	45.75	45.90	46.05	46.20	46.35	30
31	46.50	46.65	46.80	46.95	47.10	47.25	47.40	47.55	47.70	47.85	31
32	48.00	48.15	48.30	48.45	48.60	48.75	48.90	49.05	49.20	49.35	32
33	49.50	49.65	49.80	49.95	50.10	50.25	50.40	50.55	50.70	50.85	33
34	51.00	51.15	51.30	51.45	51.60	51.75	51.90	52.05	52.20	52.35	34
35	52.50	52.65	52.80	52.95	53.10	53.25	53.40	53.55	53.70	53.85	35
36	54.00	54.15	54.30	54.45	54.60	54.75	54.90	55.05	55.20	55.35	36
37	55.50	55.65	55.80	55.95	56.10	56.25	56.40	56.55	56.70	56.85	37
38	57.00	57.15	57.30	57.45	57.60	57.75	57.90	58.05	58.20	58.35	38
39	58.50	58.65	58.80	58.95	59.10	59.25	59.40	59.55	59.70	59.85	39
40	60.00	60.15	60.30	60.45	60.60	60.75	60.90	61.05	61.20	61.35	40
41	61.50	61.65	61.80	61.95	62.10	62.25	62.40	62.55	62.70	62.85	41
42	63.00	63.15	63.30	63.45	63.60	63.75	63.90	64.05	64.20	64.35	42
43	64.50	64.65	64.80	64.95	65.10	65.25	65.40	65.55	65.70	65.85	43
44	66.00	66.15	66.30	66.45	66.60	66.75	66.90	67.05	67.20	67.35	44
45	67.50	67.65	67.80	67.95	68.10	68.25	68.40	68.55	68.70	68.85	45
46	69.00	69.15	69.30	69.45	69.60	69.75	69.90	70.05	70.20	70.35	46
47	70.50	70.65	70.80	70.95	71.10	71.25	71.40	71.55	71.70	71.85	47
48	72.00	72.15	72.30	72.45	72.60	72.75	72.90	73.05	73.20	73.35	48
49	73.50	73.65	73.80	73.95	74.10	74.25	74.40	74.55	74.70	74.85	49
50	75.00	75.15	75.30	75.45	75.60	75.75	75.90	76.05	76.20	76.35	50

Computed by L. Leland Locke.

7.96
16.16
24.06
27.74
29.06
3.28
2.07

BM Main + Thor 871

Port and George FEB R 334.97

B.M. Meade 423.27 First Tie Hub

Adelaide 423.21

Rt. Cojon 456th 431.61

370.87

419.60

12.48

407.12

0.29

407.43

395.65

12.75

408.40

11.53

420.12

4.9.21

10.92

430.13

12.5

2868

21.60

7.04

Univ + Wilson H.W. 360.61