

1182

POSTS

---

FIELD BOOK

No. 3851

---

MICROFILMED

DEC 21 1964

Our Leather Bound Engineers Note Books are carried in the following rulings:

- No. 380 LEVEL BOOK. Left and Right Hand Page the same as Left Hand Page of this Book.
- No. 382 FIELD BOOK. Left Hand Page as in this Book, Right Hand Page 4 x 4 to the inch, Center Line Red.
- No. 384 MINING TRANSIT BOOK. Left Hand Page as in this Book, Right Hand Page 8x8 to the inch, Center Line Red.
- No. 385 FIELD BOOK. Left Hand Page as in this Book, Right Hand Page 8 vertical and 4 horizontal lines to the inch, Center Line Red.

We also carry the Note Books listed above, bound in extra strong Fabri-Hide (otherwise the same quality of book), which can be furnished at a somewhat lower price.

In ordering Fabri-Hide covered books, add the letter "F" to catalog number.

**THE FREDERICK POST CO.**  
*ENGINEERING and DRAFTING SUPPLIES*  
IRVING PARK STATION  
CHICAGO, ILL.

INDEX

	Page
Riggs St. X Section - - - -	1-14
Culvert on Riggs St - - - - -	14
35 <sup>th</sup> St. X Section - - - - -	15-47
Culvert on 35 <sup>th</sup> St. - - - - -	29
McKinley St. X Section - - - -	48
LEVELS FOR DRAIN - - - - -	55
Kaltrina St. X Sections	58
" " Drain	64
Profile Sener Bdy. at Thorn.	79

Index of P. 59

X Section Right St. 60' wide  
 from Main St. to Acadia St.

10' chg.  
 10' 1/4"

6.87

BM. 51578  
 MAIN + 2.00 5.45 6.87 1.00

N.L. MAIN ST - 24.5' = N. Edge of Paving

N on paving	5.49	1.38
cb	5.48	1.39
1/2	5.50	1.37
1/4	5.50	1.37
1/4	5.54	1.33
cb	5.54	1.33
E	5.55	1.32
N.L. - 22'		
E	5.2	1.7
cb	5.3	1.6
1/4	5.2	1.7
1/4	5.1	1.8
1/4	5.1	1.8
cb	5.2	1.7
N	5.4	1.5
N.L. - 18'		
-5	5.5	1.4
N	7.5	-0.6
cb	7.7	-0.8
1/4	7.7	-0.8
1/4	7.5	-0.6
1/4	7.6	-0.7
cb	7.4	-0.5

N.L. MAIN ST

+6	7.8	-0.4
E	5.8	+1.1
N.L. MAIN ST		
E	5.5	+1.4
+8	7.5	-0.6
cb	7.5	-0.6
1/4	7.3	-0.4
1/4	7.7	-0.8
1/4	7.8	-0.9
cb	8.1	-1.2
+7	7.8	-0.9
N	5.6	+1.3
50' N		
N	5.2	+1.7
+5	6.5	+0.4
cb	6.8	+0.1
1/4	6.8	+0.1
1/4	6.8	+0.1
1/4	7.2	-0.3
cb	6.6	+0.3
E	5.3	+1.6
100' N		
<del>E-5</del>	4.6	+2.3
E	6.7	+0.2
cb	6.4	+0.5
1/4	6.4	+0.5

6.87

2	6.4	0.5
$\frac{1}{4}$	6.4	0.5
cb	6.4	0.5
+8	6.4	0.5
N	4.6	2.3
150' N		
N	5.0	1.9
+2	5.0	1.9
+6	6.7	0.2
cb	6.7	0.2
$\frac{1}{4}$	6.8	0.1
2	6.9	0.0
$\frac{1}{4}$	6.9	0.0
cb	6.9	0.0
E	7.1	-0.2
+5	4.3	+2.6
200' N		
-8	5.2	+1.7
E	7.2	-0.3
cb	7.3	-0.4
$\frac{1}{4}$	7.2	-0.3
2	7.0	-0.1
$\frac{1}{4}$	7.0	-0.1
cb	7.2	-0.3
+5	7.1	-0.2
+8	5.4	+1.5

6.87

RIGEL ST.

N	5.4	+1.5
250' N		
N	5.4	+1.5
+5	7.4	-0.5
cb	7.4	-0.5
$\frac{1}{4}$	7.4	-0.5
2	7.3	-0.4
$\frac{1}{4}$	7.2	-0.3
cb	7.3	-0.4
+8	7.1	-0.2
E	6.3	+0.6
+5	5.3	+1.6
292' N		
-5	4.9	+2.0
E	6.7	+0.2
cb	7.3	-0.4
$\frac{1}{4}$	7.5	-0.6
2	7.4	-0.5
$\frac{1}{4}$	7.7	-0.8
cb	7.1	-0.2
N	6.4	+0.5
300' N = S.L. DALBERG		
N. 27.5' top Rail approx. 2.5' N S.L.	3.81	+3.06
N on Ground	4.5	+2.4
cb	4.8	+2.1
$\frac{1}{4}$	5.7	+1.2

Void

See page 68

24' ch's  
13' 23' } for location of  
culvert in this  
intersection See  
page 14

6.87

L	6.1	+0.7
$\frac{1}{4}$	6.8	+0.1
cb.	6.7	+0.2
+5	7.1	-0.2
E	5.4	+1.5
+9'		
E	4.4	+2.5
cb.	4.8	+2.1
$\frac{1}{4}$	4.7	+2.2
+8	4.6	+2.3
L	4.2	+2.7
$\frac{1}{4}$	4.0	+2.9
cb.	4.1	+2.8
N	4.4	+2.5

SL. +7 = approx. dist. to <sup>top</sup> Rail 376 on West Side 3544 st.

SL. +20'

-10' = N toe of Embankment	10.5	-3.6
N	4.9	+2.0
cb.	4.9	+2.0
$\frac{1}{4}$	4.9	+2.0
L	4.8	+2.1
$\frac{1}{4}$	4.8	+2.1
cb.	4.6	+2.3
E	3.8	+3.1

<sup>= approx. dist.</sup>  
SL. +16 = North Rail 20 East Side 3544 st.

24' N of SL. = cb.

For new notes on this intersection

See Page 68

6.87

RIGEL ST.

3

E	3.8	+3.1
cb.	4.8	+2.1
$\frac{1}{4}$	4.8	+2.1
L	5.0	+1.9
+5	5.3	+1.6
$\frac{1}{4}$	7.3	-0.4
cb.	7.8	-0.9
N	8.7	-1.8
+10	10.5	-3.6
cb. +5		
-10	9.9	-3.0
N	10.3	-3.4
cb.	10.3	-3.4
$\frac{1}{4}$	9.8	-2.9
L	7.7	-0.8
$\frac{1}{4}$	6.3	+0.6
cb.	5.1	+1.8
E	4.1	+2.8
South $\frac{1}{4}$		
E	4.2	+2.7
cb.	4.6	+2.3
+5	9.8	-2.9
$\frac{1}{4}$	9.8	-2.9
L	9.5	-2.6
$\frac{1}{4}$	9.9	-3.0
cb.	10.3	-3.4

See page 66

687

N	8.6	-1.7
+10	7.6	-0.7
S Dalbergia		
N	6.4	+0.5
cb.	7.2	-0.3
$\frac{1}{4}$	7.9	-1.0
2	8.7	-1.8
+5	9.2	-2.3
$\frac{1}{4}$	6.1	+0.8
cb.	5.3	+1.6
E	4.9	+2.0
+5	8.8	-1.9
+10	8.7	-1.8
N $\frac{1}{2}$		
-5	8.4	-1.5
E	8.1	-1.2
+5	5.9	+1.0
cb.	5.7	+1.2
$\frac{1}{4}$	5.7	+1.2
2	6.2	+0.7
$\frac{1}{4}$	6.3	+0.6
cb.	6.5	+0.4
N	6.3	+0.5
N cb.		
N	6.2	+0.7
cb.	5.6	+1.3

see page 68

687

RIGEL ST. 4

$\frac{1}{2}$	6.0	+0.9
2	6.1	+0.8
$\frac{1}{4}$	6.2	+0.7
cb.	6.4	+0.5
E	6.5	+0.4
+10	7.8	-0.9

N.L. DALBERGIA ST.

E	6.4	+0.5
cb.	6.3	+0.6
$\frac{1}{4}$	6.4	+0.5
2	6.1	+0.8
$\frac{1}{4}$	5.9	+1.0
cb.	5.0	+1.9
N	5.0	+1.9

50' N

N	4.1	+2.8
cb.	4.3	+2.6
$\frac{1}{4}$	4.5	+2.4
2	4.6	+2.3
$\frac{1}{4}$	4.9	+2.0
+5	5.1	+1.8
+6	4.5	+2.4
cb.	4.5	+2.4
E	4.8	+2.1

100' N

E	2.3	+4.6
---	-----	------

6.87

cb		2.3	4.6	
+4		3.1	3.8	
$\frac{1}{4}$		2.9	4.0	
2		2.8	4.1	
$\frac{1}{4}$		3.1	3.8	
cb		2.8	4.1	
N		2.7	4.2	
T.P.	12.67	17.38	2.16	4.71

150' N

N		11.9	5.5
cb		11.8	5.6
$\frac{1}{4}$		11.6	5.8
2		11.1	6.3
$\frac{1}{4}$		11.4	6.0
cb		10.8	7.2
E		9.6	7.8

200' N

E		6.2	11.2
cb		7.1	10.3
+4		7.4	10.0
+5		8.4	9.0
$\frac{1}{4}$		8.6	8.8
2		8.7	8.7
$\frac{1}{4}$		9.0	8.4
cb		10.1	7.3
N		10.4	7.0

17.38

RIGEL ST.

5

+5		10.9	6.5
	250' N		
-5		7.6	9.8
N		7.0	10.4
cb		6.2	11.2
$\frac{1}{4}$		5.9	11.5
2		5.7	11.7
$\frac{1}{4}$		5.8	11.6
+3		5.7	11.7
+5		4.3	13.1
cb		4.1	13.3
E		3.6	13.8

300' N = C.L. Cottonwood st. 14' cb's  
13' 14's

E		1.8	15.6
cb		2.1	15.3
+8		3.3	14.1
$\frac{1}{4}$		3.3	14.1
2		3.3	14.1
$\frac{1}{4}$		3.6	13.8
cb		3.5	13.9
N		4.3	13.7
	5 cb		
N		2.6	14.8
cb		3.3	14.1
$\frac{1}{4}$		2.9	14.5
2		2.8	14.6



17.38

$\frac{1}{4}$			8.7	14.7
cb.			2.0	15.4
E			1.6	15.8
	$5\frac{1}{4}$			
E			0.9	16.5
cb.			1.1	16.3
$\frac{1}{4}$			2.2	15.2
L			2.2	15.2
$\frac{1}{4}$			2.3	15.1
cb.			2.4	15.0
N			2.9	14.5
T.P.	9.08	24.12	2.28	15.10
		L		
N			7.2	14.9
cb.			8.8	15.3
$\frac{1}{4}$			8.6	15.5
L			8.4	15.7
$\frac{1}{4}$			8.1	15.7
cb.			7.4	16.7
E			7.8	16.8
	$N\frac{1}{4}$			
E			6.8	17.3
cb.			7.0	17.1
+5			7.0	17.1
$\frac{1}{4}$			7.8	16.3
L			7.9	16.2

cap. lock in Mon.  
at Honwood  
+3.5th

24.12

RIGGL ST.

6

$\frac{1}{4}$				7.9	16.2
cb.				7.7	16.4
N				9.2	14.9
	$N\frac{1}{2}+6$				
N				9.2	14.9
cb.				7.9	16.2
$\frac{1}{4}$				7.9	16.2
L				7.6	16.5
$\frac{1}{4}$				7.6	16.5
+3				7.6	16.5
+6				6.7	17.4
cb.				6.6	17.5
E				6.5	17.6
	$N\frac{1}{2}+8$				
E				6.1	17.7
cb.				6.4	17.7
+4				6.6	17.5
+7				7.5	16.6
$\frac{1}{4}$				6.8	17.3
L				7.4	16.7
$\frac{1}{4}$				7.8	16.3
+5				8.2	15.9
+7				7.6	16.5
cb.				7.7	16.4
N				7.7	16.4

Ncb.

24.12

N	7.3	16.8
cb	7.3	16.8
+3	7.3	16.8
+5	8.1	16.0
$\frac{1}{4}$	7.7	16.4
$\frac{1}{2}$	7.3	16.8
$\frac{1}{4}$	7.4	16.7
+3	7.4	16.7
+6	6.4	17.7
cb	6.3	17.8
E	6.2	17.9

N/L Cottonwood st. = 0+00

E	5.8	18.3
cb	5.7	18.4
+4	5.8	18.3
+7	6.7	17.4
$\frac{1}{4}$	6.8	17.3
$\frac{1}{2}$	6.7	17.4
$\frac{1}{4}$	7.1	17.0
+5	7.4	16.7
+7	6.7	17.4
cb	6.7	17.4
N	6.8	17.3

50' N

N	4.5	19.6
cb	4.3	19.8

24.12

RIBBEN ST

7

cb.+4	4.3	19.8
+6	5.2	18.9
$\frac{1}{4}$	5.1	19.0
$\frac{1}{2}$	4.9	19.2
$\frac{1}{4}$	5.1	19.0
+4	5.1	19.0
+6	4.4	19.7
cb	4.3	19.8
E	4.6	19.5

65.5' N =  $\frac{1}{2}$  Leavate tree on west 11.5' E of N.L. 3" diam.

80' " = " fig tree " " " " " " " " " "

93' " = " PEAR " " " " " " " " " " " "

107' " = " APRICOT " " " " " " " " " " " "

100' N

E	4.0	20.1
cb	3.9	20.2
$\frac{1}{4}$	4.0	20.1
$\frac{1}{2}$	3.8	20.3
$\frac{1}{4}$	3.7	20.4
+5	3.7	20.4
+7	3.1	21.0
cb	3.1	21.0
N	3.1	21.0

150' N

N	2.9	21.2
cb	3.0	21.1

24.12

N	1/4	3.4	20.7
C	2	3.4	20.7
+	1/4	3.3	20.8
+	cb	3.7	20.4
1/4	E	3.8	20.3
2	164' N		
1/4	E	4.0	20.1
+	cb	3.7	20.4
+	1/4	3.6	20.5
cb	2	3.6	20.5
E	1/4	3.7	20.4
+	+4	3.7	20.4
E	+6	2.5	21.6
cb	cb	2.5	21.6
+	W	2.7	21.4
+	200' N		
1/4	W	2.6	21.5
2	cb	2.9	21.2
1/4	+3	3.1	21.0
+	+5	3.9	20.2
+	1/4	4.1	20.0
cb	2	4.1	20.0
N	1/4	4.3	19.8
cb	cb	4.6	19.5
N	E	5.0	19.1
cb	250' N		

24.16

RIDGE ST.

8

E	6.2	17.9
cb	5.9	18.2
1/4	5.4	18.7
2	5.2	18.9
1/4	5.4	18.7
+4	5.2	18.9
+7	4.3	19.8
cb	4.0	20.1
W	3.4	20.7
	300' N = S.W. Birch St.	<sup>14' cb's</sup> 13' 7.5
W	3.8	20.3
cb	4.6	19.5
+3	4.9	19.2
+5	5.6	18.5
1/4	5.8	18.3
2	6.1	18.0
1/4	6.0	18.1
cb	6.5	17.6
E	7.0	17.4
+5	7.7	16.4
	500' N	
-5	7.8	16.9
E	6.9	17.2
cb	6.4	17.7
1/4	6.1	18.0
2	6.0	18.1

24.12

$\frac{1}{4}$	6.0	18.1
+5	5.7	18.4
+8	4.5	19.6
cb	4.5	19.6
N	4.0	20.1

S cb + 6'

N	3.9	20.2
cb	4.4	19.7
+2	4.4	19.7
+7	5.7	18.4
$\frac{1}{4}$	5.9	18.2
L	6.1	18.0
$\frac{1}{4}$	6.1	18.0
cb	6.4	17.7
E	7.0	17.1

S cb + 8'

E	7.0	17.1
cb	6.2	17.7
$\frac{1}{4}$	6.1	18.0
L	6.0	18.1
$\frac{1}{4}$	5.9	18.2
cb	5.5	18.6
N	5.1	19.0

S  $\frac{1}{4}$ 

N	5.1	19.0
cb	5.5	18.6

24.12

RIGEL ST.

9

$\frac{1}{4}$	5.8	18.3
L	6.1	18.0
$\frac{1}{4}$	6.1	18.0
cb	6.4	17.7
E	6.8	17.3

L Birch

E	6.9	17.2
cb	6.3	17.8
$\frac{1}{4}$	5.9	18.2
L	5.9	18.2
$\frac{1}{4}$	5.7	18.4
cb	5.2	18.9
N	5.0	19.1

N  $\frac{1}{4}$ 

N	4.7	19.4
cb	5.4	18.7
$\frac{1}{4}$	5.6	18.5
L	5.7	18.4
$\frac{1}{4}$	5.8	18.3
cb	6.2	17.9
E	6.9	17.2

N  $\frac{1}{4}$  + 8'

E	6.7	17.4
cb	6.2	17.9
$\frac{1}{4}$	5.5	18.6
L	5.6	18.5

24.12

1/4	56	18.5
cb.	51	19.0
N	49	19.2
N cb		
N	39	20.2
cb.	39	20.2
+2	39	20.2
+4	55	18.6
1/4	55	18.6
1/2	54	18.7
1/4	56	18.5
cb.	61	18.0
E	66	17.5

N.L. Birch

E	52	18.9
cb.	56	18.5
1/2	53	18.8
1/4	52	18.9
1/4	52	18.9
+6	54	18.7
+8	40	20.1
cb.	40	20.1
N	40	20.1

50' N

N	31	21.0
cb.	37	20.4

24.12

RIGER ST.

10

+6	41	20.0
+8	44	19.7
1/4	44	19.7
1/2	42	19.9
1/4	44	19.7
cb.	44	19.7
E	43	19.8

100' N

E	23	21.8
cb.	25	21.6
1/2	24	21.7
1/4	23	21.8
1/4	25	21.6
+4	28	21.3
cb.	20	22.1
N	22	21.9

150' N

N	00	24.1
cb.	00	24.1
1/4	01	24.0
1/2 = sum of MH.	030	23.82
1/4	03	23.8
cb.	05	23.6
E	07	23.4

T.P. 971 335V 031 23.81

200' N

33.52

E	8.0	25.5
cb.	8.0	25.5
$\frac{1}{4}$	8.1	25.4
$\frac{1}{2}$	7.6	25.9
$\frac{3}{4}$	8.0	25.5
+5	8.0	25.5
+7	7.4	26.1
cb.	7.4	26.1
N	7.8	25.7

250' N

N	6.7	26.8
cb.	6.5	27.0
+5	6.4	27.1
+6	6.7	26.8
$\frac{1}{4}$	6.7	26.8
$\frac{1}{2}$	6.4	27.1
$\frac{3}{4}$	6.6	26.9
cb.	6.5	27.0
E	6.3	27.2

300' N = sl. <sup>14 ch</sup> ~~13' 43~~

E	6.4	27.1
cb.	6.1	27.4
$\frac{1}{2}$	5.4	28.1
$\frac{1}{4}$	5.9	28.2
$\frac{3}{4}$	5.7	27.8
+6	5.9	27.6

33.52

RIGEL ST.

11

+7	5.4	28.1
cb.	5.2	28.3
N	5.5	28.0
S cb.		
N	5.3	28.2
+8	5.1	28.4
cb.	5.5	28.0
$\frac{1}{4}$	5.2	28.3
$\frac{1}{2}$	4.7	28.8

$\frac{3}{4}$	5.0	28.5
cb.	5.3	28.2
E	6.1	27.4

S  $\frac{1}{4}$ 

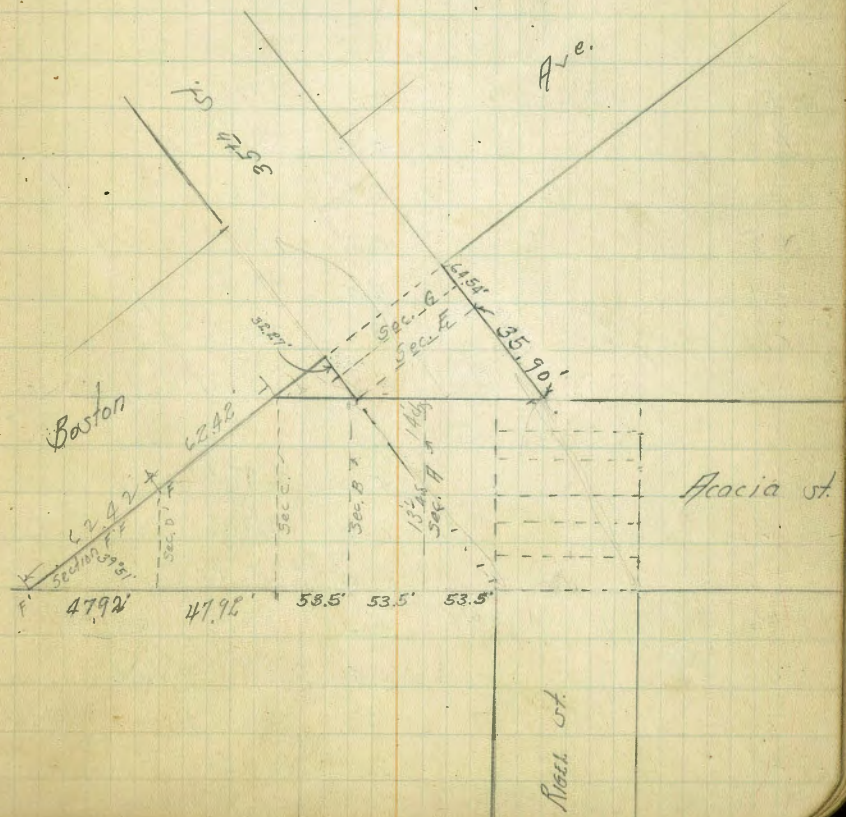
E	5.3	28.2
cb.	5.0	28.5
$\frac{1}{4}$	4.4	29.1
$\frac{1}{2}$	4.1	29.4
$\frac{3}{4}$	4.7	28.8
cb.	5.1	28.4
N	5.2	28.3

E

N	4.8	28.7
cb.	4.7	28.8
$\frac{1}{4}$	4.2	29.3
$\frac{1}{2}$	4.1	29.4
$\frac{3}{4}$	4.5	29.0

cb		47	28.8
E		51	28.4
	N $\frac{1}{4}$		
E		48	28.7
cb		44	29.1
$\frac{1}{4}$		43	29.2
$\frac{1}{2}$		43	29.2
$\frac{1}{4}$		43	29.2
cb		43	29.2
N		45	29.0
	N cb		
N		41	29.4
cb		41	29.4
$\frac{1}{4}$		42	29.3
$\frac{1}{2}$		41	29.4
$\frac{1}{4}$		39	29.6
cb		40	29.5
E		41	29.4
	N.L.		
E		42	29.3
cb		42	29.3
$\frac{1}{4}$		42	29.3
$\frac{1}{2}$		40	29.5
$\frac{1}{4}$		39	29.6
cb		34	30.1
N		34	30.1

T.P. 5.09 39.58 5.03 28.49



Section A (See sketch? Page 15)

N	4.8	28.8
cb.	5.2	28.4
$\frac{1}{4}$	5.3	28.3
L	5.3	28.3
$\frac{1}{4}$	5.6	28.0
cb.	5.8	27.8
S	6.0	27.6

Section B

S	6.0	27.6
cb.	6.0	27.6
$\frac{1}{4}$	6.0	27.6
L	5.5	28.1
$\frac{1}{4}$	5.6	28.0
+8	5.6	28.0
+9	5.0	28.6
cb.	4.9	28.7
N	4.4	29.2

Sec C

N	5.2	28.4
cb.	6.2	27.6
+6	6.5	27.2
$\frac{1}{4}$	6.4	27.2
L	6.4	27.2
$\frac{1}{4}$	6.8	26.8
cb.	7.0	26.6

+5	6.1	27.5
S	5.9	27.7

Section D

S	9.0	24.6
cb.	8.4	25.2
$\frac{1}{4}$	7.4	26.2
L	6.9	26.7

Section FF'

L	6.9	26.7
$\frac{1}{4}$	7.5	26.1
cb.	8.3	25.3
S	8.9	24.7

See sketch on B.M. See Page 60



LEVELS & LOCATION OF CULVERT.  
ON RIGEL ST. at intersection of DALBERG ST.

5.66

14

Cap. tack 10  
1762. C. H. 1709  
35 11 1096

1.35 16.45 15.10 5.66

T.P. 13.05

16.56

2.15

3.51

T.P. 2.15 5.66 16.94 3.51

1.46

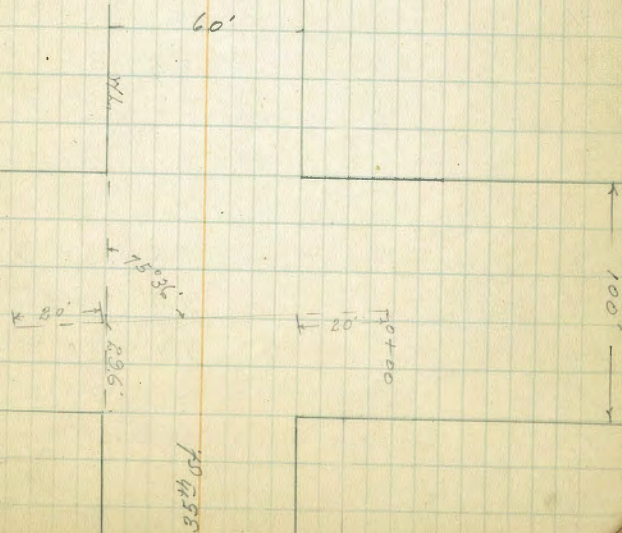
15.10

0+20 = 20' E.E.N. DALBERG ST.

1510 = cap tack  
177 1709  
C. H. 1709 35 11

0+00 = d. ditch	7.6	-1.9
+10 = " "	7.7	-2.0
+14 = " "	3.3	+2.4
+31 = " "	3.9	+1.8
+33 = " "	8.3	-2.6
18' South " "	3.7	+1.8
3' South " "	8.3	-2.6
2' North " "	5.6	+0.1
0+48 = d. " "	8.2	-2.5
12' N of d. ditch	7.7	-2.0
3' S " " "	8.2	-2.5
14' S " " "	3.7	+2.0
0+80 = d. ditch	9.3	-3.6
14' South of d. " "	3.7	+2.0
12' " " " "	7.2	-1.5
7' " " " "	7.6	-1.9
6' " " " "	8.9	-3.2
2' N " " " "	7.3	-1.6
4' N " " " "	7.0	-1.3
1+00 = d. of ditch	9.3	-3.6
1' N of d. " "	9.0	-3.3
4' N of d. ditch	7.5	-1.8
7' S of d. ditch	9.3	-3.6
14' S " " "	3.7	+2.0

DALBERG ST.



N. Section 35th St. 60' Wide 10' cbs.  
 From Acaja St to IMPERIAL AVE. 10' 4's.

4061

Walker  
 Feb. 1927

15

18.16 40.61 28.49 = T.P. Page 12 E

64.54 South Side Boston = Sec. 8 {<sup>see</sup> page 12}

5 cb

88 31.4

N	11.7	28.9	E	88	32.4
cb	11.7	29.4	cb	88	32.4
$\frac{1}{4}$	10.8	29.8	+4	85	32.1
$\frac{1}{2}$	10.6	30.0	+6	94	31.7
$\frac{3}{4}$	10.5	30.1	$\frac{1}{4}$	94	31.2
cb	10.2	30.4	$\frac{1}{2}$	95	31.1
E	10.1	30.5	$\frac{3}{4}$	98	30.8

38.27 South Side Boston = Sec. 9 {<sup>see page</sup> 12}

E	9.8	31.4	cb	94	31.2
-6	9.9	30.7	N	91	31.5

5  $\frac{1}{4}$

$\frac{1}{4}$	10.2	30.4	N	92	31.4
$\frac{1}{2}$	10.1	30.5	cb	94	31.2
$\frac{3}{4}$	10.3	30.3	$\frac{1}{4}$	95	31.1
cb	10.1	30.5	$\frac{1}{2}$	91	31.5
N	9.5	31.1	$\frac{3}{4}$	91	31.5

Sh. Boston 14' cbs.  
 13' 4's

N	9.1	31.5	cb	92	31.4
cb	9.4	31.2	E	85	32.1

$\frac{1}{4}$

$\frac{1}{4}$	9.9	30.7	E	84	32.2
$\frac{1}{2}$	9.7	30.9	cb	83	32.3
$\frac{3}{4}$	9.7	30.9	$\frac{1}{4}$	90	31.6
+4	9.6	31.0	$\frac{1}{2}$	89	31.7
+6	8.7	31.9	$\frac{3}{4}$	93	31.3
cb	8.8	31.8	cb	92	31.4

40.61

N	9.4	31.2
N $\frac{1}{2}$		
N	9.7	30.9
cb.	9.5	31.1
$\frac{1}{4}$	9.5	31.1
$\frac{1}{2}$	9.2	31.4
$\frac{1}{4}$	9.1	31.5
cb.	9.0	31.4
E	8.7	31.9
	N cb.	
E	8.0	32.6
$\frac{1}{2}$	9.0	31.6
$\frac{1}{4}$	9.2	31.4
$\frac{1}{2}$	9.1	31.5
$\frac{1}{4}$	9.3	31.3
cb.	9.3	31.3
N	9.2	31.4
	N. to Boston = 0400	
N	9.1	31.5
cb.	9.0	31.6
$\frac{1}{4}$	9.0	31.6
$\frac{1}{2}$	8.8	31.8
$\frac{1}{4}$	9.1	31.5
+3	9.1	31.5
+6	8.3	32.3
cb.	8.2	32.4

40.61

35th St

16

E	7.8	32.8
	50' N	
E	7.5	33.1
cb.	7.8	32.8
+4	7.6	33.0
+7	8.1	31.8
$\frac{1}{2}$	8.3	32.3
$\frac{1}{2}$	8.2	32.4
$\frac{1}{2}$	8.4	32.2
+5	8.5	32.1
+7	8.1	32.9
cb.	8.2	32.8
N	8.4	32.4
	100' N	
N	7.3	33.3
cb.	7.3	33.3
+2	7.5	33.1
+5	7.8	32.8
$\frac{1}{4}$	7.7	32.9
$\frac{1}{2}$	7.5	33.1
$\frac{1}{4}$	7.8	32.8
+4	7.7	32.9
+5	7.4	33.2
cb.	7.3	33.3
E	6.9	33.7

125' N

40.61

E	58	34.8
cb	57	34.9
+3	59	34.7
+6	73	33.3
$\frac{1}{4}$	72	33.4
$\frac{1}{2}$	69	33.7
$\frac{3}{4}$	73	33.3
cb	74	33.2
N	71	33.5

150' N

N	67	33.9
cb	69	33.7
$\frac{1}{4}$	68	33.8
$\frac{1}{2}$	65	34.1
$\frac{3}{4}$	62	34.4
cb	60	34.6
E	56	35.0

175' N

E	50	35.6
cb	53	35.3
+6	60	34.6
$\frac{1}{4}$	61	34.5
$\frac{1}{2}$	62	34.4
$\frac{3}{4}$	65	34.1
cb	68	33.8
+3	65	34.1

40.61

35<sup>th</sup> St 17

N	61	34.5
---	----	------

200' N

N	54	35.2
cb	58	34.8
+5	54	35.2
+7	61	34.5
$\frac{1}{4}$	60	34.6
$\frac{1}{2}$	57	34.9
$\frac{3}{4}$	57	34.9
+3	56	35.0
+6	48	35.8
cb	48	35.8
E	46	36.0

250' N

E	37	36.9
cb	39	36.7
+4	41	36.5
+7	48	35.8
$\frac{1}{4}$	50	35.6
$\frac{1}{2}$	49	35.7
$\frac{3}{4}$	53	35.3
+4	55	35.1
+6	50	35.6
cb	50	35.6
N	51	35.5

300' N = S.L. New Len Ave 14' cb.  
13' 2' 3

N-10	6.3	34.3
N	5.0	35.6
cb	4.8	35.8
+4	4.7	35.9
+6	5.1	35.5
$\frac{1}{4}$	5.1	35.5
E	4.7	35.9
$\frac{1}{4}$	4.7	35.9
+4	4.4	36.2
+6	3.8	36.8
cb.	3.5	37.1
E	3.5	37.1
	S $\frac{1}{6}$	
E	3.2	37.4
cb.	3.7	36.9
+4	3.9	36.7
+6	4.5	36.1
$\frac{1}{4}$	4.9	35.7
E	5.1	35.5
$\frac{1}{4}$	5.3	35.3
cb.	5.3	35.3
N	5.5	35.1
+10	6.4	34.2
	S cb. + 10'	
-10	7.4	33.2
N	6.0	34.6

cb.	5.9	34.7
$\frac{1}{4}$	5.1	35.2
E	4.8	35.8
$\frac{1}{4}$	4.7	35.9
+5	4.6	36.0
+7	3.6	37.0
cb.	3.6	37.0
E	3.4	37.2
	S $\frac{1}{4}$	
E	4.4	36.2
cb.	4.6	36.0
$\frac{1}{4}$	4.6	36.0
E	4.7	35.9
$\frac{1}{4}$	5.4	35.2
cb.	6.3	34.3
N	6.7	33.9
+10	7.2	33.4
	E	
-10	7.8	32.8
N	6.7	33.9
cb.	5.8	34.8
$\frac{1}{4}$	5.1	35.5
E	4.7	35.9
$\frac{1}{4}$	4.4	36.2
cb.	4.1	36.5
E	3.8	36.8

4061

N 1/4

E	3.5	37.1
cb.	4.3	36.3
1/4	5.0	35.6
2	5.2	35.4
1/4	5.4	35.2
cb.	6.3	34.3
N	6.9	33.7
+10	8.0	32.6

N cb.

-10	6.9	33.7
N	6.5	34.1
cb.	6.2	34.4
1/4	5.3	35.3
2	5.0	35.6
1/4	5.1	35.5
cb.	4.2	36.4
E	3.5	37.1

N 1/4. Newton = 0700

E	3.3	37.3
cb.	4.6	36.0
1/4	4.8	35.8
2	4.7	35.9
1/4	5.0	35.5
+5	5.5	35.1
cb.	6.2	34.4

4061

3.5<sup>th</sup> st.

19

N

6.4	34.2	
20'N		
N	4.5	36.1
+7	6.2	34.4
cb.	6.0	34.6
+2	6.0	34.6
1/4	4.8	35.8
2	4.3	36.3
1/4	4.5	36.1
cb.	4.6	36.0
E	4.3	36.3

50'N

E	3.5	37.1
cb.	3.8	36.8
1/4	3.9	36.7
2	3.6	37.0
1/4	4.3	36.3
+5	4.2	36.4
+7	5.3	35.3
cb.	5.7	34.9
+5	4.4	36.2
N	4.0	36.6

100'N

N	2.2	38.4
+8	1.7	38.9
cb.	4.1	36.5
+4	4.4	36.2

Void  
see page 7

40.61

+5	2.4	38.2
$\frac{1}{4}$	2.4	38.2
cb	2.3	38.3
$\frac{1}{4}$	2.4	38.2
cb	2.3	38.3
E	1.9	38.7

137' N

E	1.7	38.9
cb	2.3	38.3
$\frac{1}{4}$	2.7	37.9
cb	3.0	37.6
$\frac{1}{4}$	2.3	38.3
+3	2.8	37.8
+5	3.8	36.8
+9	3.9	36.7
cb	0.8	39.8
N	0.1	40.5

138' N = Paving - 2's. of S.L. Alley

N	3.1	37.5
Top cb.	3.42	37.19
Gut. on paving	3.85	36.76
$\frac{1}{4}$	3.20	37.41
cb	2.82	37.89
$\frac{1}{4}$	2.74	37.87
Gut	2.88	37.73
Top cb.	2.12	38.49

40.61

35<sup>th</sup> st.

80

E	1.9	38.7
T.P. 1300	50.19	37.19
chk. on 817	<sup>52. Top. Hgt.</sup> National + 35 <sup>th</sup>	5.82
		44.37
		44.19 = B.M.
		0.18 Probable Variation in BENCH MARKS
Note; from N.L. NATIONAL AVE. North 817. at National + 35 <sup>th</sup> Used		
	5.82	50.01
		44.19

N.L. NATIONAL AVE.

E	6.7	43.3
Top cb.	7.08	42.93
Gut. on paving	7.78	42.23
$\frac{1}{4}$	" "	7.75
cb	" "	7.90
$\frac{1}{4}$	" "	8.40
Gut	" "	8.98
Top cb.	8.49	41.52
N	8.22	41.8

5' N

N	4.7	45.3
+9	5.5	44.5
cb.	8.0	42.0
$\frac{1}{4}$	7.8	42.2
cb	7.4	42.4
+4	7.0	43.0
+6	4.1	45.9
$\frac{1}{4}$	4.1	45.9
cb.	3.4	46.6

50.01

E	2.7	47.3
25' North		
E	2.4	47.6
cb.	3.1	46.9
$\frac{1}{4}$	3.4	46.6
+5	4.0	46.0
+7	5.3	44.7
$\frac{1}{2}$	5.4	44.6
$\frac{3}{4}$	5.5	44.5
+7	5.7	44.3
cb.	4.7	45.3
W	4.9	45.1

50' North

W	3.9	46.1
cb.	3.7	46.3
+5	4.6	45.4
$\frac{1}{4}$	4.7	45.3
$\frac{1}{2}$	4.6	45.4
$\frac{3}{4}$	3.1	46.9
+2	2.2	47.8
cb.	1.9	48.1
E	1.4	48.6

75' North

E	1.1	48.9
cb.	1.4	48.6
+8	1.9	48.1

50.01

35+H st.

21

$\frac{1}{4}$	2.7	47.3
$\frac{1}{2}$	3.9	46.1
$\frac{3}{4}$	3.9	46.1
cb.	3.5	46.5
W	3.5	46.5

112' North

W	1.6	48.4
+8	1.2	48.8
cb.	2.3	47.7
$\frac{1}{4}$	2.7	47.3
$\frac{1}{2}$	2.7	47.3
$\frac{3}{4}$	2.0	48.0
+3	1.2	48.8
cb.	1.0	49.0
E	1.0	49.0

T.P. 10.50 59.90 0.61 49.40

140' North

E	9.8	50.6
cb.	9.0	50.9
+5	9.2	50.7
$\frac{1}{4}$	11.0	48.9
$\frac{1}{2}$	11.2	48.7
$\frac{3}{4}$	11.5	48.4
cb.	11.4	48.5
W	11.8	48.1

160' North



N	11.8	48.6
cb.	11.1	48.8
$\frac{1}{4}$	10.9	49.0
$\frac{1}{2}$	10.3	49.6
$\frac{3}{4}$	10.3	49.6
cb.	9.6	50.3
E	9.4	50.5

200' North

E	8.2	51.7
cb.	8.7	51.2
$\frac{1}{4}$	8.8	51.1
$\frac{1}{2}$	8.9	51.0
$\frac{3}{4}$	9.4	50.5
cb.	9.6	50.3
N	9.6	50.3

250' North

N	8.2	51.7
cb.	8.2	51.7
$\frac{1}{4}$	8.0	51.9
$\frac{1}{2}$	7.6	52.3
$\frac{3}{4}$	7.3	52.6
cb.	6.5	53.4
E	6.2	53.7

300' N - SL Logan Ave.

E	5.7	54.2
cb.	5.7	54.2

14' dis.  
13'  $\frac{1}{4}$  S.

$\frac{1}{4}$	6.4	53.5
$\frac{1}{2}$	6.7	53.2
$\frac{3}{4}$	7.3	52.6
cb.	7.2	52.7
N	7.2	52.7

S cb

N	6.6	53.3
cb.	6.8	53.1
$\frac{1}{4}$	6.9	53.0
$\frac{1}{2}$	6.4	53.5
$\frac{3}{4}$	6.1	53.8
$\frac{1}{4}$	5.9	54.5
cb.	5.1	54.8
E	5.4	54.5

S  $\frac{1}{4}$ 

E	5.0	54.9
cb.	4.6	55.3
$\frac{1}{4}$	5.3	54.6
$\frac{1}{2}$	6.0	53.9
$\frac{3}{4}$	6.7	53.2
cb.	6.7	53.2
N	6.7	53.2

E

N	7.7	52.7
cb.	7.0	52.9
$\frac{1}{4}$	6.6	53.3

5990

L	6.0	53.9
$\frac{1}{4}$	5.2	54.7
cb.	5.0	54.9
E	5.0	54.9

N  $\frac{1}{4}$ 

E	5.1	54.8
cb.	5.3	54.6
$\frac{1}{4}$	5.4	54.5
+5	6.1	53.8
L	6.3	53.6
$\frac{1}{4}$	6.6	53.3
cb.	6.9	53.0
N	7.1	52.8

Ncb

N	6.9	53.0
cb.	7.0	52.9
$\frac{1}{4}$	6.7	53.2
L	6.5	53.4
$\frac{1}{4}$	5.7	54.2
cb.	5.1	54.8
E	4.7	55.2

Nth Logan = 0+00

E	4.6	55.3
cb.	4.6	55.3
$\frac{1}{4}$	5.3	54.6
+5	6.0	53.9

59.90

35+H st.

20

L	6.2	53.7
$\frac{1}{4}$	6.6	53.3
cb.	6.9	53.0
N	6.9	53.0

35' N Nth Logan

N	7.4	52.5
cb.	6.5	53.4
$\frac{1}{4}$	5.6	54.3
L	5.1	54.8
+5	5.1	54.8
$\frac{1}{4}$	4.2	55.7
cb.	3.9	56.0
E	3.0	56.9

70' N

E	4.7	55.2
cb.	4.7	55.2
$\frac{1}{4}$	5.9	54.0
L	6.5	53.6
$\frac{1}{4}$	6.7	53.2
cb.	7.0	52.9
N	7.1	52.8

100' N

N	8.3	51.6
cb.	8.2	51.7
$\frac{1}{4}$	7.6	52.3
L	4.8	53.1

59.90

$\frac{1}{4}$	6.6	53.3
cb.	6.0	53.9
E	5.3	54.6
140' N = S.W. Alley = Section B {See sketch page 86}		
E = N.W. 35 <sup>th</sup> St. Produced from North C. 1	6.1	53.8
cb.	6.4	53.5
$\frac{1}{4}$	6.8	53.1
$\frac{1}{2}$	7.4	52.5
$\frac{1}{4}$	8.1	51.8
cb.	8.2	51.7
N	8.5	51.4
165' N = Pueblo line (Section B)		
N	7.5	52.4
cb.	7.5	52.4
$\frac{1}{4}$	7.3	52.6
$\frac{1}{2}$	7.0	52.9
$\frac{1}{4}$	6.5	53.4
cb.	6.2	53.7
E = N.W. 35 <sup>th</sup> St. Produced from N	5.7	54.0
T.P.	7.17	60.61
140' N = S.W. Alley = Section C		
N	6.8	53.8
cb.	6.1	54.5
$\frac{1}{4}$	5.8	54.8
$\frac{1}{2}$	5.5	55.1
$\frac{1}{4}$	5.1	55.5

C.O.C.I

35<sup>th</sup> St.

84

cb.	4.3	56.3
E	3.6	57.0
165' N = Pueblo line (Section D)		
E	3.5	57.1
cb.	4.1	56.5
$\frac{1}{4}$	4.3	56.3
$\frac{1}{2}$	5.0	55.4
$\frac{1}{4}$	5.3	55.3
cb.	5.8	54.8
N	6.6	54.0
200' N		
N	4.5	56.1
cb.	4.4	56.2
$\frac{1}{4}$	4.3	56.3
$\frac{1}{2}$	4.9	56.7
$\frac{1}{4}$	3.4	57.2
cb.	3.7	56.9
E	3.6	57.0
240' N		
E	5.0	55.6
cb.	4.7	55.9
$\frac{1}{4}$	4.5	56.1
$\frac{1}{2}$	4.4	56.2
$\frac{1}{4}$	4.2	56.4
cb.	3.8	56.8
N	4.0	56.6

265' N

N	4.4	56.2
cb.	4.8	55.8
$\frac{1}{4}$	5.6	55.0
$\frac{1}{2}$	5.5	55.1
$\frac{3}{4}$	5.7	54.9
cb.	6.1	54.5
E	6.6	54.0
+10	7.2	53.4

299' N

-10	7.3	51.3
E	8.9	51.7
cb.	8.4	52.2
$\frac{1}{4}$	7.8	53.3
$\frac{1}{2}$	7.0	53.6
$\frac{3}{4}$	7.7	52.9
cb.	7.0	53.6
N	6.0	54.6

302.4' N = S.L. Florence St.

11.26.5.  
9.5.25.

N	9.0	51.6
cb.	7.5	53.1
$\frac{1}{4}$	7.9	52.7
$\frac{1}{2}$	7.1	53.5
$\frac{3}{4}$	7.6	53.0
$\frac{1}{4}$	8.7	51.9
cb.	9.1	51.5

E	9.5	51.1
+10	9.9	50.7
cb.	10.2	50.4
-10	9.6	51.0
E	9.5	51.1
cb.	8.6	52.0
$\frac{1}{4}$	7.9	52.7
$\frac{1}{2}$	8.0	52.6
cb.	9.0	51.6
N	9.7	50.9
Wtopcb.	9.15	51.46
$\frac{1}{4}$	9.7	50.9
N	8.6	52.0
cb.	8.5	52.1
$\frac{1}{4}$	8.8	51.8
$\frac{1}{2}$	9.4	51.2
cb.	10.2	50.4
E	10.2	50.4
+10	10.8	49.8
-10	11.5	49.1
E	10.7	49.9
cb.	10.5	50.1
$\frac{1}{4}$	10.0	50.6

2	9.1	51.5
1/4	8.9	51.7
cb.	8.6	52.0
N	9.4	51.2

N 1/4

N	9.9	50.7
cb.	9.6	51.0
1/2	9.2	51.4
2	9.6	51.0
1/4	10.6	50.0
cb.	11.0	49.6
E	11.2	49.4
+10	12.6	48.0

N cb.

-10	13.2	47.4
E	12.0	48.6
cb.	11.8	48.8
1/4	10.9	49.7
2	10.3	50.3
1/4	9.8	50.8
cb.	9.9	50.7
N	10.3	50.3
N-top cb.	9.63	50.98

N.W. Florence St. = 0+00

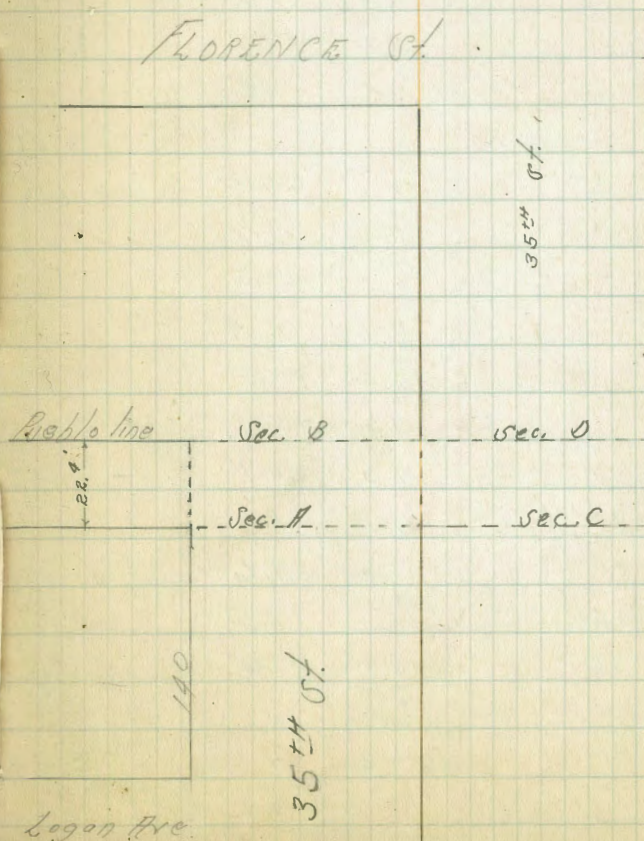
N	9.3	51.3
cb.	9.8	50.8

1/2	9.8	50.8
E.	10.7	49.9
1/4	11.4	49.2
cb.	12.1	48.5
E.	12.7	47.9
+10	14.2	46.4

TP. / 63	52.52	9.92	50.89
----------	-------	------	-------

N.W. 1/4 Florence  
+ 35th  
not to be used  
until verified  
by col. of records

FLORENCE ST.



## 50' N. Florence St

-20	11.5	41.0
E	8.4	44.1
+3	7.2	45.3
cb.	6.7	45.8
+	5.7	46.8
8	4.4	48.1
1/4	3.0	49.5
cb.	2.7	49.8
N	1.7	50.8

## 100' N

N	3.1	49.4
cb.	4.0	48.5
1/4	4.4	48.1
8	6.0	46.5
1/4	8.4	44.1
+6	9.1	43.4
cb.	10.4	42.1
+6	11.5	41.0
E	12.9	39.6
+12	16.0	36.5
+20	16.9	35.6

## 150' N

-20	18.4	34.1
E	14.4	38.1
cb.	13.3	39.2

+2	12.8	40.2
+8	12.0	40.5
1/4	11.0	41.5
8	8.0	44.5
+5	5.1	47.4
1/4	4.8	47.7
cb.	5.1	47.4
N	4.7	47.8

## 145' N

N	5.4	47.1	
+5	5.8	46.7	
cb.	8.6	43.9	
1/4	12.2	40.3	
8	14.7	37.8	
1/4	16.9	35.6	
cb.	18.6	33.9	
T.P. 0.32	39.87	18.97	39.55
E	7.5	32.4	
+25	11.9	28.0	

## 160' N

-25	18.0	26.9
-20	12.9	27.0
E	10.1	29.8
cb.	8.5	31.4
+2	8.0	31.9
1/4	7.3	32.6

d		5.0	34.9
$\frac{1}{4}$		3.7	36.2
cb		2.2	37.7
W		0.1	39.8
	190° N		
W		3.6	36.3
cb		5.8	34.1
$\frac{1}{4}$		7.7	32.2
d		9.4	30.5
$\frac{1}{4}$		11.8	28.1
cb		13.5	26.4
E		15.1	24.8
+25		15.1	24.8
	225° N		
-25		16.5	23.4
E		16.9	23.8
cb		15.9	24.6
+4		15.4	24.5
$\frac{1}{4}$		15.2	24.7
d		13.5	26.4
$\frac{1}{4}$		11.0	28.9
cb		9.3	30.6
W		6.4	33.5
T.P.	1.57 28.42	13.02	26.85
	295° N		
W		0.5	27.9

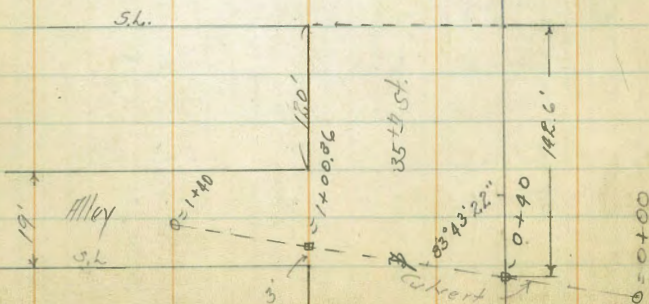
cb		2.5	25.9
$\frac{1}{4}$		3.9	24.5
d		5.2	23.2
+7		6.5	21.9
$\frac{1}{4}$		6.5	21.9
cb		6.5	21.9
E		6.4	22.0
+25		6.0	22.4
	265° N		
-25		6.6	21.8
E		7.1	21.3
cb		7.3	21.1
$\frac{1}{4}$		7.5	20.9
d		7.5	20.9
$\frac{1}{4}$		7.3	21.1
cb		6.5	21.9
W		4.6	23.8
+15		4.3	24.1
	285° N		
-15		7.8	20.6
W		7.9	20.5
cb		8.1	20.3
$\frac{1}{4}$		8.2	20.2
d		8.1	20.3
$\frac{1}{4}$		8.0	20.4
cb		7.5	20.9

E	7.1	21.3
+25	6.7	21.7
500' N		
-85	7.0	21.4
E	7.1	21.3
cb.	7.4	21.6
1/4	7.8	20.6
1/2	8.0	20.4
3/4	8.3	20.1
cb.	8.3	20.1
N	8.5	19.9
+25	8.9	19.5

Levels for Culvert

40' E. E.H. = 0+00	6.9	21.5
+40 on slab	7.19	21.23
1+00 <sup>36</sup> = N.L. on slab	8.65	19.87
1+40 = End	9.7	18.7

MARTIN AVE



325' N

-85	8.9	19.5
N	8.6	19.8
cb.	8.4	20.0
1/4	8.0	20.4
1/2	7.5	20.9
3/4	7.3	21.1
cb.	7.3	21.1
E	6.9	21.5
+25	5.7	22.7

355' N

-20	1.9	26.5	
E	2.7	25.7	
cb.	3.2	24.8	
1/4	4.1	24.3	
1/2	4.0	24.4	
3/4	4.4	24.0	
cb.	3.7	24.7	
N	3.6	24.8	
+20	4.2	24.2	
T.P. 1314	41.54	0.02	28.40

380' N

-20	13.4	28.3
N	12.3	29.2
cb.	12.0	29.5
1/4	11.8	29.7



2	11.8	29.7
$\frac{1}{4}$	11.2	30.3
cb.	10.9	30.6
E	10.7	30.8
+20	11.0	30.5

400' N

-15	6.2	35.3
E	6.6	34.9
cb.	6.4	35.1
$\frac{1}{4}$	6.6	34.9
2	7.3	34.2
$\frac{1}{4}$	7.4	34.1
cb.	7.4	34.1
$\frac{1}{4}$ W	7.2	34.3
+15	8.0	33.5

420' N

-10	4.1	37.4
W	3.5	38.0
cb.	3.7	37.8
$\frac{1}{4}$	4.0	37.5
2	4.3	37.2
$\frac{1}{4}$	3.7	37.8
cb.	2.7	38.8
E	2.2	39.3
+10	1.6	39.9

425' N

-10	0.6	40.9
E	0.9	40.6
cb.	0.8	40.7
$\frac{1}{4}$	0.8	40.7
2	1.5	40.0
$\frac{1}{4}$	2.3	39.2
cb.	2.9	38.6
E (W?)	2.7	38.8
+10	3.5	38.0

TP 12.85 5347 0.92 40.62

444' N = S.G. MARTIN HILL 10' obs. 10' 2.5.

E	8.4	45.1
cb.	8.7	44.8
$\frac{1}{4}$	9.0	44.5
2	9.1	44.1
$\frac{1}{4}$	10.0	43.5
cb.	10.5	43.0
W	10.6	42.9
+10	10.9	42.6

S cb.

W	9.8	44.2
cb.	9.0	44.5
$\frac{1}{4}$	8.2	45.3
2	7.6	45.9
$\frac{1}{4}$	7.3	46.2
cb.	6.8	46.7

53.47

E		6.1	47.4
	S $\frac{1}{4}$		
E		4.1	49.4
cb.		4.8	48.7
$\frac{1}{4}$		5.5	48.0
$\frac{1}{4}$		6.0	47.5
$\frac{1}{4}$		6.7	46.8
cb.		7.8	45.7
W		8.2	45.3
	S		
W		6.9	46.6
cb.		6.4	47.1
$\frac{1}{4}$		5.5	48.0
$\frac{1}{4}$		4.6	48.9
$\frac{1}{4}$		3.7	49.8
cb.		2.9	50.6
E		2.1	51.4
	N $\frac{1}{2}$		
E		0.0	53.5
cb.		0.9	52.6
$\frac{1}{4}$		1.8	51.7
$\frac{1}{4}$		2.7	50.8
$\frac{1}{4}$		3.3	50.2
cb.		4.1	49.4
W		5.1	48.4
TP	12.85 65.67	0.05	53.42

65.67

61

	N cb.		
W		15.7	49.8
cb.		15.0	50.7
$\frac{1}{4}$		13.9	51.8
$\frac{1}{4}$		13.3	52.4
$\frac{1}{4}$		12.5	53.2
cb.		11.6	54.1
E		10.4	55.3
	N.L. MARTIN = 0400		
E		8.5	57.2
cb.		9.9	55.8
$\frac{1}{4}$		10.6	55.1
$\frac{1}{4}$		11.7	54.0
$\frac{1}{4}$		12.5	53.2
cb.		13.6	52.1
W		14.5	51.2
	50'N		
W		10.8	54.9
cb.		10.9	55.4
$\frac{1}{4}$		9.2	56.5
$\frac{1}{4}$		8.1	57.6
$\frac{1}{4}$		7.3	58.4
cb.		6.1	59.6
E		4.5	61.2
	50'N		
E		2.4	63.3

cb.		8.1	62.6	
$\frac{1}{4}$		3.8	61.9	
$\frac{1}{2}$		4.3	61.4	
$\frac{3}{4}$		5.1	60.6	
cb.		6.7	59.0	
N		7.5	58.2	
T.P.	16.55	77.74	0.48	65.19
	80' N			on stump
N		16.6	61.1	
cb.		16.4	61.3	
$\frac{1}{4}$		15.8	61.9	
$\frac{1}{2}$		14.8	62.9	
$\frac{3}{4}$		14.5	63.2	
cb.		14.1	63.6	
E		12.8	64.9	
	100' N			
E		12.7	65.0	
cb.		13.3	64.4	
$\frac{1}{4}$		13.8	63.9	
$\frac{1}{2}$		14.5	63.2	
$\frac{3}{4}$		15.2	62.5	
cb.		15.6	62.1	
N		15.6	62.1	
	150' N			
N		13.5	64.2	
cb.		13.6	64.1	

$\frac{1}{4}$		13.3	64.4
$\frac{1}{2}$		12.9	64.8
$\frac{3}{4}$		12.3	65.4
cb.		11.5	66.2
E		10.5	67.2
	200' North		
E		8.9	68.8
cb.		9.3	68.4
$\frac{1}{4}$		9.9	67.8
$\frac{1}{2}$		10.4	67.3
$\frac{3}{4}$		11.0	66.7
cb.		11.3	66.4
N		11.5	66.2
	260' N = S.W. Valley St.		
N		9.5	68.2
cb.		9.3	68.4
$\frac{1}{4}$		8.4	69.3
$\frac{1}{2}$		7.8	69.9
$\frac{3}{4}$		7.5	70.2
cb.		7.2	70.5
E		7.0	70.7
	8' cb.		
E		6.5	71.2
cb.		6.9	70.8
$\frac{1}{4}$		7.3	70.4
$\frac{1}{2}$		7.1	69.9

77.74

$\frac{1}{4}$		80	69.7
cb.		89	68.8
N.		7.3	68.4
	S $\frac{1}{4}$		
N.		87	69.0
cb.		86	69.1
$\frac{1}{4}$		77	70.0
$\frac{1}{4}$		74	70.3
$\frac{1}{4}$		73	70.4
cb.		67	71.0
E.		63	71.4
	E Valle St.		
E.		62	71.5
cb.		64	71.3
$\frac{1}{4}$		70	70.7
$\frac{1}{4}$		71	70.6
$\frac{1}{4}$		73	70.4
cb.		78	69.9
N.		62	69.5
	N $\frac{1}{2}$		
N.		83	69.4
cb.		79	69.8
$\frac{1}{4}$		72	70.5
$\frac{1}{4}$		69	70.8
$\frac{1}{4}$		67	71.0
cb.		63	71.4

77.74

33

E.		60	71.7
	Ncb.		
E.		58	71.9
cb.		60	71.7
$\frac{1}{4}$		66	71.1
$\frac{1}{4}$		66	71.1
$\frac{1}{4}$		69	70.8
cb.		77	70.0
N.		80	69.7
	N.L. Valle St = 0+00		
N.		73	70.4
cb.		75	70.2
$\frac{1}{4}$		67	71.0
$\frac{1}{4}$		65	71.2
$\frac{1}{4}$		65	71.2
cb.		59	71.8
E.		56	72.1
	4.5' North		
E.		43	73.4
cb.		46	73.1
$\frac{1}{4}$		52	72.5
$\frac{1}{4}$		51	72.6
$\frac{1}{4}$		57	72.0
cb.		64	71.1
N.		66	71.1
	70' N		

77.74

N	6.5	71.2
cb.	6.4	71.3
$\frac{1}{4}$	5.6	72.1
$\frac{1}{2}$	5.0	72.7
$\frac{3}{4}$	4.6	73.1
cb.	3.7	74.0
E	2.9	74.8

100' N

E	2.7	75.6
cb.	3.4	74.3
$\frac{1}{4}$	4.2	73.5
$\frac{1}{2}$	4.5	73.2
$\frac{3}{4}$	5.2	74.5
cb.	5.9	73.8
N	6.0	71.7

150' N

N	5.1	72.6
cb.	4.9	72.8
$\frac{1}{4}$	4.3	73.4
$\frac{1}{2}$	3.7	74.0
$\frac{3}{4}$	3.3	74.4
cb.	3.0	74.7
E	2.7	75.5

180' N

E	1.6	76.1
cb.	2.0	75.7

77.74

34

$\frac{1}{4}$	3.0	74.7
+3	3.7	74.6
$\frac{1}{2}$	3.9	73.8
$\frac{3}{4}$	4.0	73.7
+3	3.6	74.1
cb.	3.9	73.8
N	3.9	73.8

200' N

N	3.4	74.3
cb.	3.4	74.3
+8	3.0	74.7
$\frac{1}{4}$	4.5	73.2
$\frac{1}{2}$	4.2	73.5
$\frac{3}{4}$	3.6	74.1
+3	2.2	75.5
cb.	1.6	76.1
E	1.3	76.4

235' N

E	1.3	76.4
cb.	1.7	76.0
+8	1.8	75.9
$\frac{1}{4}$	6.9	70.8
$\frac{1}{2}$	7.1	70.6
$\frac{3}{4}$	6.7	71.0
+2	2.4	75.3
cb.	2.7	75.0

N		2.7	75.0
	254' N		
N		2.8	74.9
cb		3.5	74.2
+5		10.6	67.1
$\frac{1}{4}$		10.2	67.5
$\frac{1}{4}$		10.3	67.4
$\frac{1}{4}$		9.7	68.0
+2		1.3	76.4
cb		1.6	76.1
L		1.3	76.4
	258' N		
L		1.4	76.3
cb		1.7	76.0
+6		1.8	75.9
$\frac{1}{4}$		11.2	66.5
$\frac{1}{4}$		11.3	66.4
$\frac{1}{4}$		11.5	66.2
+5		11.5	66.2
cb		10.8	67.2
N		7.9	69.8
T.P.	12.39 78.38	11.75	65.99
	260' N = Sh. Woolman Ave.		
N top cb		12.39	65.99
Gutter on Paring		13.01	65.37
$\frac{1}{4}$		12.64	65.74

L on Paring	12.43	65.95
$\frac{1}{4}$ " "	12.57	65.81
gut " "	13.01	65.37
L top cb.	12.47	65.91
<sup>SE top height</sup> Chon & M. Woolman + 35' N	10.09	68.29
		68.38 = 8' N
		0.089
10.09	78.47	68.38 from N.W. Woolman
		8' N Woolman
		+ 35' N, 11.5' cb
		from N.W. Woolman
		Notes
	N.W. Woolman Ave = 0+00	
L top cb.	12.47	66.00
Gutter on Paring	13.09	65.38
$\frac{1}{4}$ " "	12.62	65.85
$\frac{1}{4}$ " "	12.44	66.03
$\frac{1}{4}$ " "	12.49	65.78
gut " "	13.06	65.41
N top cb.	12.46	66.01
T.P. 479	79.66 3.60	74.87
	1' N N.W. Woolman	
N	4.7	75.0
+4	5.1	74.6
+5	10.1	69.6
+9	7.9	69.8
cb.	7.9	71.9
+3	8.9	70.9
+5	11.7	68.0
$\frac{1}{4}$	13.0	66.7
$\frac{1}{4}$	13.1	66.6

+5		11.8	67.9
+8		10.0	69.7
$\frac{1}{4}$		4.9	74.8
+5		4.7	75.0
cb.		3.0	76.7
E		2.3	77.4

15' N

E		2.1	77.6
cb.		2.6	77.1
+2		2.6	77.1
+4		4.5	75.2
$\frac{1}{4}$		4.7	75.0
+2		4.7	75.0
+5		10.3	69.4
$\frac{1}{4}$		11.1	68.6
$\frac{1}{4}$		11.0	68.7
+4		9.7	70.0
+5		5.7	74.0
cb.		5.4	74.3
+5		5.2	74.5
N		4.2	75.5

25' N

N		4.5	75.2
cb.		5.1	74.6
+2		5.5	74.2
+3		8.7	71.0

$\frac{1}{4}$		9.4	70.3
$\frac{1}{4}$		9.5	70.2
+5		8.8	70.9
+6		5.0	74.7
$\frac{1}{4}$		4.5	75.2
+5		4.9	74.8
+7		3.0	76.7
cb.		2.8	76.9
E		2.2	77.5

28' N =  $\frac{1}{4}$  Palm tree in E. 3' diam. (west edge on line)

34' N

E		2.5	77.2
cb.		3.0	76.7
+3		3.3	76.4
+5		4.9	74.8
$\frac{1}{4}$		4.8	74.9
+3		5.2	74.5
+4		8.1	71.6
$\frac{1}{4}$		8.3	71.4
$\frac{1}{4}$		8.3	71.4
+2		8.3	71.4
+3		5.0	74.7
cb.		5.2	74.5
N		4.6	75.1

44' North =  $\frac{1}{4}$  Pepper tree on E. 11' in st. 15" dia.51' " =  $\frac{1}{4}$  Palm " " " 06' in st. 3' dia.

N	46	75.1
cb	52	74.5
+8	54	74.3
+9	66	73.1
$\frac{1}{4}$	66	73.1
$\frac{1}{2}$	68	72.9
+6	69	72.8
+7	51	74.6
$\frac{1}{4}$	50	74.7
+5	48	74.9
+7	32	76.5
cb.	32	76.5
+9.4 of tree	26	77.1

70'N

E	32	76.5
cb.	38	75.9
+3	38	75.9
+5	52	74.5
$\frac{1}{4}$	53	74.4
$\frac{1}{2}$	56	74.1
$\frac{1}{4}$	59	73.8
+3	54	74.3
cb.	51	74.6
N	46	75.1

100'N =  $\frac{1}{2}$  Pepper tree on E 10' in st. 15' diam.

N	50	74.7
---	----	------

cb.	54	74.3
$\frac{1}{4}$	56	74.1
$\frac{1}{2}$	55	74.2
$\frac{1}{4}$	55	74.2
+5	55	74.2
cb. of tree	37	76.0
E	32	76.5

131'N =  $\frac{1}{2}$  Pepper tree on E 10' in st. 1' diam.

145'N

E	44	75.3
cb.	49	74.8
+7	57	74.0
$\frac{1}{4}$	57	74.0
$\frac{1}{2}$	54	74.3
$\frac{1}{4}$	58	73.9
cb.	56	74.1
N	55	74.2

200'N

N	58	73.9
cb.	58	73.9
$\frac{1}{4}$	60	73.7
$\frac{1}{2}$	55	74.2
$\frac{1}{4}$	58	73.9
+5	60	73.7
+7	54	74.3
cb.	54	74.3



79.66

E	51	74.6
	350' N	
E	51	74.6
cb.	57	74.0
+5	61	73.6
$\frac{3}{4}$	62	73.5
$\frac{2}{4}$	56	74.1
$\frac{1}{4}$	61	73.6
cb.	60	73.7
W	61	73.6
	300' N	
W	64	73.3
cb.	64	73.3
$\frac{1}{4}$	67	73.0
$\frac{2}{4}$	63	73.4
$\frac{1}{4}$	65	73.2
+5	66	73.1
cb.	60	73.7
E	56	74.1
	335' N	
E	60	73.7
cb.	63	73.4
+5	68	72.9
$\frac{1}{4}$	67	73.0
$\frac{2}{4}$	64	73.3
$\frac{1}{4}$	69	72.8

79.66

38

cb.	66	73.1	
W	68	72.9	
T.P. 3.10	77.67	509	74.57
	389' N = S.L. Franklin		$\frac{10' \text{ obs. } \frac{1}{4} \text{ c.}}{7.5' \text{ obs. } \frac{1}{4} \text{ c.}}$
W	53	72.4	
cb.	51	72.6	
+5	55	72.2	
$\frac{1}{4}$	52	72.5	
$\frac{2}{4}$	47	73.0	
$\frac{1}{4}$	48	72.9	
cb.	46	73.1	
E	45	73.2	
	5 cb.		
E	45	73.2	
cb.	49	72.8	
$\frac{1}{4}$	48	72.9	
$\frac{2}{4}$	48	72.9	
$\frac{1}{4}$	53	72.4	
cb.	56	72.1	
W	59	71.8	
	5 $\frac{1}{2}$		
W	60	71.7	
cb.	56	72.1	
$\frac{1}{2}$	51	72.6	
$\frac{2}{4}$	47	73.0	
$\frac{1}{4}$	46	73.1	

77.67

cb.		47	73.0
E		47	73.0
	2		
E		45	73.2
cb.		46	73.1
$\frac{1}{4}$		42	73.5
2		46	73.1
$\frac{1}{4}$		51	72.6
cb.		53	72.4
N		59	71.8
	N $\frac{1}{2}$		
N		60	71.7
cb.		56	72.1
$\frac{1}{4}$		51	72.6
2		45	73.2
$\frac{1}{4}$		43	73.4
cb.		45	73.2
E		45	73.2
	N ob		
E		43	73.4
cb.		44	73.3
$\frac{1}{4}$		45	73.2
E		45	73.2
$\frac{1}{4}$		51	72.6
cb.		54	72.3
N		57	72.0

77.67

89

N.L. FRANKLIN = 0400

N		52	72.5
cb.		49	72.8
+5		54	72.3
$\frac{1}{4}$		50	72.7
2		45	73.2
$\frac{1}{4}$		46	73.1
cb.		43	73.4
E		41	73.6
	50' N		
E		38	73.9
cb.		43	73.4
$\frac{1}{4}$		48	72.9
2		46	73.1
$\frac{1}{4}$		50	72.7
cb.		50	72.7
N		48	72.9
	100' N		
N		50	72.7
cb.		52	72.5
$\frac{1}{4}$		53	72.4
$\frac{1}{4}$		49	72.8
$\frac{1}{4}$		49	72.8
cb.		45	73.2
E		42	73.5
	150' N		

77.67

E	4.6	73.1
cb.	4.5	73.2
$\frac{1}{4}$	5.1	72.6
$\frac{1}{2}$	4.9	72.8
$\frac{3}{4}$	5.4	72.3
cb.	5.1	72.6
N	5.3	72.4

200' N

N	5.3	72.4
cb.	5.1	72.6
$\frac{1}{4}$	5.3	72.4
$\frac{1}{2}$	4.8	72.9
$\frac{3}{4}$	5.0	72.7
cb.	4.7	73.0
E	4.4	73.3

250' N

E	4.5	73.2
cb.	4.9	72.8
$\frac{1}{4}$	5.5	72.2
$\frac{1}{2}$	5.1	72.6
$\frac{3}{4}$	5.6	72.1
+4	5.6	72.1
+7	5.1	72.6
cb.	5.1	72.6
N	5.2	72.5

300' N

77.67

40

N	5.8	71.9
cb.	5.3	72.4
+5	5.4	72.3
+8	5.8	71.9
$\frac{1}{4}$	5.7	72.0
$\frac{1}{2}$	5.4	72.3
$\frac{3}{4}$	5.5	72.2
cb.	5.2	72.5
E	5.1	72.6

350' N

E	5.1	72.6
cb.	5.2	72.5
$\frac{1}{4}$	5.6	72.2
$\frac{1}{2}$	5.2	72.5
$\frac{3}{4}$	5.5	72.2
cb.	5.4	72.3
N	5.4	72.3

400' N

N	5.4	72.3
cb.	5.5	72.2
+5	5.9	71.8
$\frac{1}{4}$	5.6	72.1
$\frac{1}{2}$	5.1	72.6
$\frac{3}{4}$	5.7	72.0
cb.	5.3	72.4
E	5.2	72.5

77.67

450' North

E	58	71.9
cb.	58	71.9
$\frac{1}{4}$	57	72.0
$\frac{1}{2}$	5.4	72.3
$\frac{1}{4}$	6.0	71.7
cb.	6.1	71.6
W	6.3	71.4

500' N

W	6.6	71.1
cb.	6.3	71.4
$\frac{1}{4}$	6.4	71.3
$\frac{1}{2}$	5.8	71.9
$\frac{1}{4}$	6.0	71.7
+8	6.8	70.9
cb.	6.1	71.6
E	6.3	71.4

550' N

E	6.2	71.5
cb.	6.4	71.3
+2	6.9	70.8
$\frac{1}{4}$	6.4	71.3
$\frac{1}{2}$	6.0	71.7
$\frac{1}{4}$	6.6	71.1
+6	7.0	70.7
cb.	6.6	71.1

77.67

41

W	6.9	70.8
+5	7.7	70.0

600' N

-5	9.0	68.7
W	7.2	70.5
cb.	6.7	71.0
+4	7.4	70.3
$\frac{1}{4}$	6.8	70.9
$\frac{1}{2}$	6.3	71.4
$\frac{1}{4}$	6.4	71.3
+7	6.9	70.8
cb.	6.5	71.2
E	6.2	71.5

660' N = S.L. Webster et al. <sup>10' cb's</sup> 10'  $\frac{1}{4}$ 's

E	6.2	71.5	
cb.	6.9	70.8	
$\frac{1}{4}$	7.2	70.5	
$\frac{1}{2}$	7.0	70.7	
$\frac{1}{4}$	7.6	70.1	
cb.	7.8	69.9	
W	8.2	69.5	
+5	10.4	67.3	
T.P. 731	77.83	71.5	70.52

S line + 1'

-5	9.5	68.3
W	8.4	69.4

cb.	81	69.7
$\frac{1}{4}$	78	70.0
$\frac{2}{4}$	74	70.4
$\frac{3}{4}$	73	70.5
cb.	69	70.9
E	63	71.5

O cb

E	66	71.2
cb.	71	70.7
$\frac{1}{4}$	72	70.6
$\frac{2}{4}$	75	70.3
$\frac{3}{4}$	78	70.0
cb.	82	69.6
N	85	69.3

O  $\frac{3}{4}$ 

N	86	69.2
cb.	83	69.5
$\frac{1}{4}$	78	70.0
$\frac{2}{4}$	75	70.3
$\frac{3}{4}$	73	70.5
cb.	72	70.8
E	66	71.2

 $\frac{2}{4}$ 

E	60	71.8
cb.	66	71.2
$\frac{1}{4}$	70	70.8

$\frac{2}{4}$	73	70.5
$\frac{1}{4}$	74	70.4
75 = Rim of MH	763	70.20
cb.	83	69.5
N	85	69.3

N  $\frac{1}{4}$ 

N	88	69.0
cb.	83	69.5
$\frac{1}{4}$	76	70.2
$\frac{2}{4}$	75	70.3
$\frac{3}{4}$	71	70.7
cb.	68	71.0
E	63	71.5

N cb.

E	62	71.6
cb.	70	70.8
$\frac{1}{4}$	72	70.6
$\frac{2}{4}$	75	70.3
$\frac{3}{4}$	74	70.4
cb.	82	69.6
N	84	69.4

N.L. Webster = 0+00

N	84	69.4
cb.	82	69.6
$\frac{1}{4}$	74	70.4
$\frac{2}{4}$	73	70.5

77.83

$\frac{1}{4}$	7.3	70.5
cb.	7.0	70.8
E	6.4	71.4

50' N. N. h. Webster St.

E	5.7	72.1
+4	6.9	70.9
cb.	7.1	70.7
+3	7.8	70.0
$\frac{1}{2}$	7.3	70.5
$\frac{1}{4}$	7.3	70.5
$\frac{1}{4}$	7.5	70.5
cb.	8.1	69.7
N	8.4	69.4

100' N

N	8.5	69.3
cb.	8.1	69.7
$\frac{1}{4}$	7.7	70.1
$\frac{1}{2}$	7.1	70.7
$\frac{1}{4}$	6.9	70.9
cb.	7.1	70.7
+8	6.6	71.2
E	5.3	72.5

114' <sup>14</sup> N = O.L. DURANT ST.

E	5.8	72.0
cb.	6.0	71.8
$\frac{1}{4}$	4.5	71.3

77.83

43

$\frac{1}{4}$	6.9	70.9
$\frac{1}{4}$	7.3	70.5
cb.	7.9	69.9
N	8.5	69.3

146.74' N = N.L. DURANT ST = 0+00

N	7.3	70.5
cb.	7.3	70.5
$\frac{1}{4}$	7.0	70.8
$\frac{1}{2}$	6.4	71.4
$\frac{1}{4}$	5.2	72.6
cb.	3.9	73.9
E	2.8	75.0

85' North

E	0.9	76.9
cb.	1.5	76.3
+5	2.1	75.7
$\frac{1}{4}$	3.7	74.1
$\frac{1}{2}$	5.8	72.0
$\frac{1}{4}$	6.8	71.0
cb.	7.2	70.6
N	7.2	70.6

45' N

N	7.7	70.1
cb.	7.5	70.3
$\frac{1}{2}$	6.8	71.0
$\frac{1}{4}$	6.4	71.4

77.83

1/6	57	72.1
1/4	46	73.2
cb	26	75.2
E	22	75.6

63' N

E	59	71.9
cb	69	70.9
1/4	76	70.2
1/2	83	69.5
1/4	82	69.6
cb	81	69.7
W	80	69.8

85' N

W	109	66.9
cb	107	67.1
1/2	106	67.2
1/4	96	68.2
1/4	89	68.9
cb	88	69.0
E	88	69.5

100' N

E	55	72.3
cb	72	70.6
1/2	92	68.6
1/4	105	67.3
1/4	111	66.7

77.83

445

cb	11.4	66.4
W	11.8	66.0

125' N

W	12.5	65.3
cb	11.9	65.9
1/4	11.2	66.6
1/2	10.2	67.4
1/4	9.0	68.8
+6	7.2	70.6
cb	6.5	71.3
E	4.3	73.5

135' N

E	3.8	74.0
+7	5.1	72.7
cb	6.7	71.1
1/4	8.4	69.4
1/2	9.9	67.9
1/4	11.5	66.3
cb	12.0	65.8
W	12.5	65.3

138' N

W	12.3	65.5
cb	12.0	65.8
1/2	11.6	66.2
1/4	9.8	68.0
1/4	8.2	69.6

7783

cb	6.7	71.1
E	5.6	72.2

155' N

E	5.5	72.3
cb	6.3	71.5
$\frac{1}{4}$	7.4	70.4
$\frac{1}{2}$	8.3	69.5
$\frac{1}{4}$	9.1	68.7
+5	11.5	66.3
cb	11.8	66.0
N	12.1	65.7

178' N

N	11.4	66.4
cb	10.9	66.9
$\frac{1}{2}$	9.0	68.8
$\frac{1}{2}$	7.9	70.0
$\frac{1}{2}$	7.0	70.8
cb	6.3	71.5
E	5.3	72.5

190' N

E	5.5	72.3
cb	4.1	71.7
$\frac{1}{4}$	7.0	70.8
$\frac{1}{2}$	8.3	69.5
$\frac{1}{4}$	8.2	69.6
+1	10.8	67.0

7783

45

cb	11.3	66.5
N	11.5	66.3

207' N

N	10.7	67.1
cb	10.4	67.4
$\frac{1}{4}$	9.5	68.3
$\frac{1}{2}$	9.7	68.1
$\frac{1}{4}$	7.7	70.1
cb	6.4	71.4
E	5.5	72.3

216' N

E	5.9	71.9
cb	6.7	71.1
$\frac{1}{4}$	7.8	70.0
$\frac{1}{2}$	9.7	68.1
$\frac{1}{2}$	10.3	67.5
cb	11.1	66.7
N	11.3	66.5
TP 0.75	67.57	11.01

225' N = Sec. 4. see sketch page 46

N	2.5	65.1
cb	2.4	65.2
$\frac{1}{4}$	1.6	66.0
$\frac{1}{2}$	1.7	65.9
$\frac{1}{4}$	1.9	65.9
cb	2.1	65.5



F <sub>0</sub>	2.1	65.5
Section B		
F <sub>0</sub>	8.4	59.2
cb.	8.0	59.6
$\frac{1}{4}$	7.1	60.5
+ 6.4 = s.h. Imp.	6.4	61.2
E	6.1	61.5
$\frac{1}{4}$	5.2	62.4
cb.	5.6	62.0
W	5.5	62.1

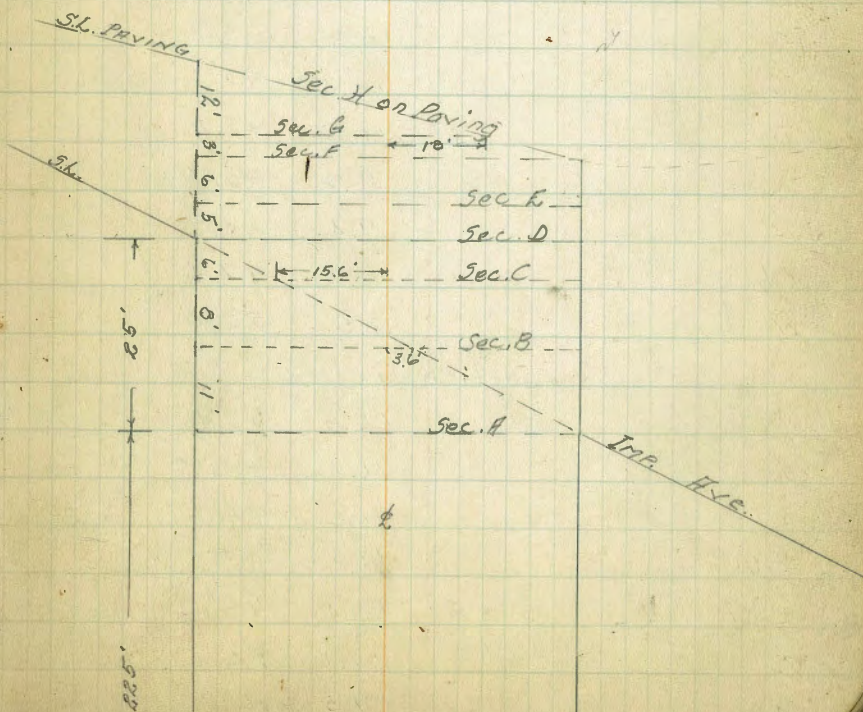
## Section C

W	7.5	60.1
cb.	8.3	59.3
+ 4.4 = s.h. Imp.	8.2	59.4
$\frac{1}{4}$	8.0	59.6
+ 1	11.5	56.1
2	12.8	54.8
+ 4	11.8	55.8
+ 5	9.0	58.6
$\frac{1}{4}$	9.2	58.4
cb.	10.2	57.4
E	11.2	56.4

## Section D

E	17.1	50.5
cb.	16.2	51.4
$\frac{1}{4}$	13.2	54.4

+ 2	16.1	51.5
2	16.1	51.5
+ 9	13.7	53.9
$\frac{1}{4}$	10.0	57.6
cb.	10.1	57.5
W	8.9	58.7
SECTION E		
W	11.2	56.4
cb.	12.1	55.5
$\frac{1}{4}$	12.6	55.0



67.57

+2		16.7	50.9
$\frac{1}{2}$		18.1	49.5
$\frac{1}{4}$		18.4	49.2
cb.		18.7	48.9
+1		22.7	44.9
E.		21.4	46.2
T.P.	0.89	55.55	18.91
		54.66	

## SECTION F

E = top of Pavement		7.85	47.70
cb.		8.6	47.0
+5		9.0	46.6
$\frac{1}{4}$		10.3	45.3
$\frac{1}{2}$		10.5	45.1
+5		10.5	45.1
+6		9.2	46.4
$\frac{1}{4}$		9.4	46.2
cb.		8.0	47.6
N		3.6	52.0

## Section G

N		12.5	43.1
cb.		11.8	43.8
$\frac{1}{4}$		11.4	44.2
+6		11.0	44.6
+7		10.4	45.2
$\frac{1}{2}$		10.0	45.6
$\frac{1}{4}$		9.5	46.1

55.55

47

+8 = top of paving 8.73 46.82

## SECTION H

Ecb + E' on paving		8.73	46.82
$\frac{1}{4}$	"	9.33	46.22
$\frac{1}{2}$	"	10.01	45.54
$\frac{1}{4}$	"	10.64	44.91
cb.	"	11.26	44.29
N	"	11.93	43.62

T.P.	12.93	67.95	0.53	55.02
T.P.	12.53	80.15	0.33	67.62
T.P.	12.87	92.14	0.18	79.77
T.P.	10.53	100.90	2.47	90.37
T.P.	0.45	91.91	9.44	91.46
T.P.	0.03	78.88	13.06	78.85
T.P.	6.35	73.09	12.14	66.74
T.P.		4.72		68.37

68.37  
 6838 = BM. S.E. Top Hydr.  
 + 0.01 = 1/10000 + 35' 10"

Additional Sections on Page 73

DRINKER  
V. 27

X. Section N. 1/2 Sec. 10, T. 30 N. R. 75 W.  
From N.W. Redwood St. to N.W. Boundary St.

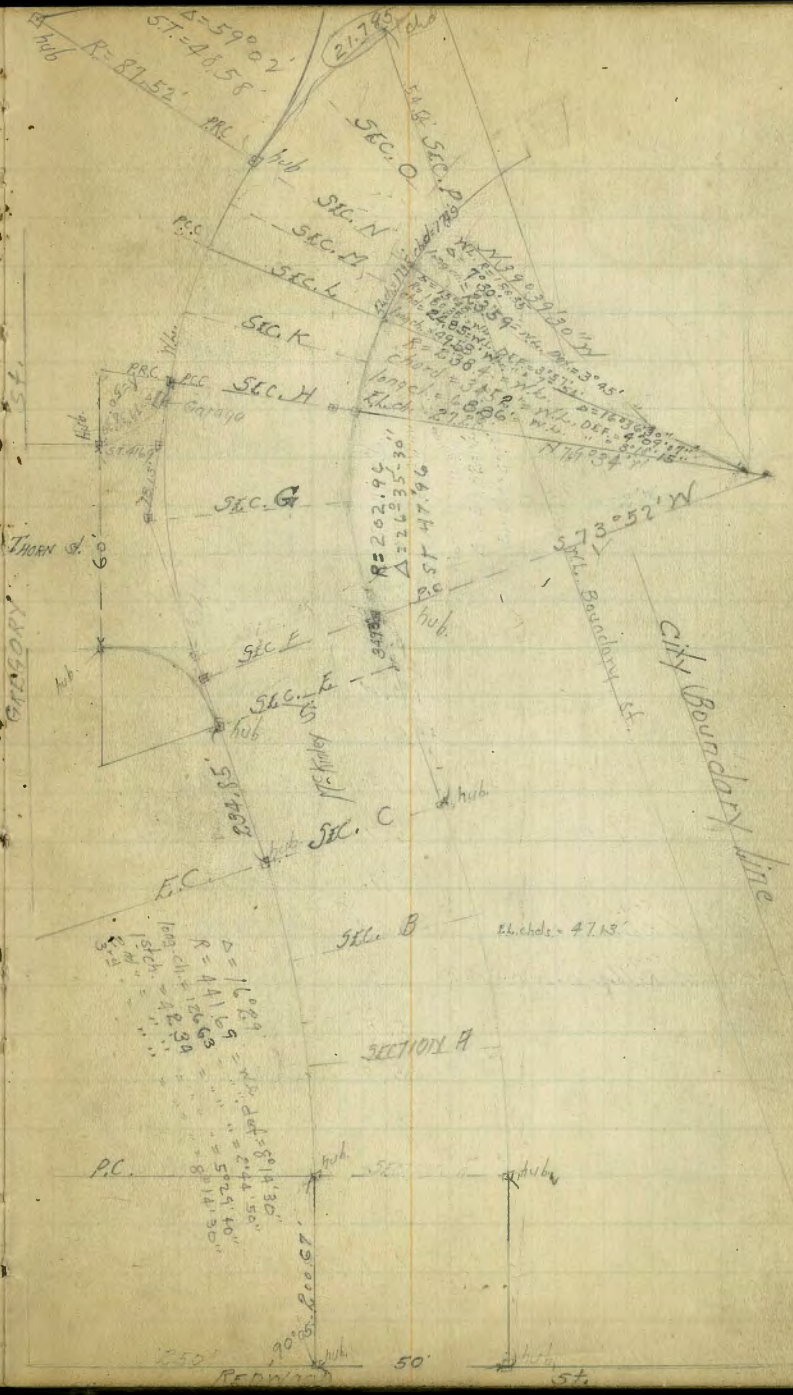
MINOR THORN GREGORY ST.	0.65	318.66		318.01
T.P.	6.53	314.51	10.68	307.98

N.W. Redwood

6		6.9		307.6
cb		4.9		307.6
1/4	Platted 3-11-27 J.H.	7.0		307.5
2		6.7		307.8
1/4		6.7		307.8
cb		6.6		307.9
H		6.0		305.5

46' N = <sup>Cap</sup> Ribbon dr. on N.W. track 1/2 Sec. 10 on Dr. on E. side of Park

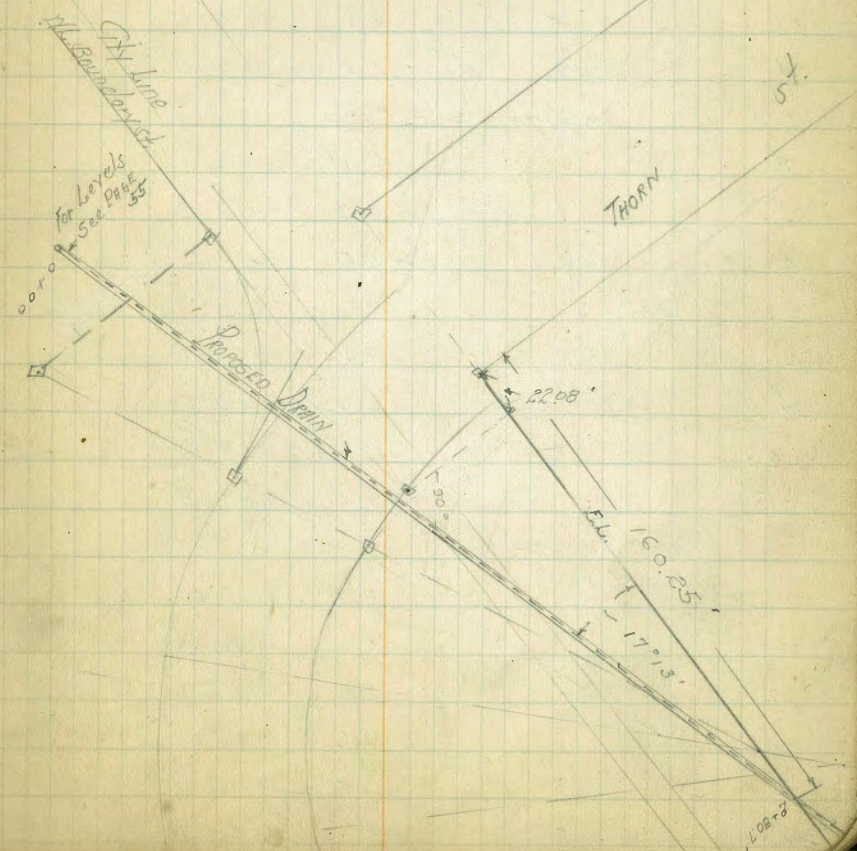
6'	Top of Ribbon	4.75		310.8
W		5.6		308.9
cb		5.9		308.6
1/4		6.3		308.2
2		6.0		308.5
1/4		6.5		308.0
cb		6.8		307.7
+2		6.4		308.1
E.		6.5		308.0
-2	Top Dr.	6.51		308.0
56' N = 1/2 Cent. on W. side N edge Ribbon Dr. on E.				
-2	Top of N Ribbon	6.50		308.0
E		6.5		308.0
-8		6.3		308.3



cb.	6.4	307.9
$\frac{1}{2}$	6.3	308.2
$\frac{1}{4}$	5.8	308.7
$\frac{1}{4}$	5.7	308.8
cb.	5.6	308.9
N	5.6	308.9
N = top Con. Dr.	5.05	309.5
150' N		
N	5.0	309.5
cb.	5.8	308.7
$\frac{1}{2}$	5.6	308.9
$\frac{1}{4}$	5.4	309.1
$\frac{1}{4}$	6.0	308.5
+6	6.3	308.2
cb.	5.9	308.6
E	5.9	308.6
164' N = <sup>con.</sup> E Ribbon Dr. on W	4.54	309.9
195' N = <sup>con.</sup> E Ribbon Dr. on W		
E	5.9	308.6
cb.	5.8	308.7
$\frac{1}{4}$	5.6	308.9
$\frac{1}{4}$	5.3	308.2
$\frac{1}{2}$	5.4	308.1
cb.	4.9	309.6
N	4.5	310.0
N on top <sup>con.</sup> Ribbon	4.22	310.3

## Section H

N	4.0	310.5
cb.	4.6	309.9
$\frac{1}{4}$	4.9	309.6
$\frac{1}{4}$	5.0	309.5
$\frac{1}{4}$	5.4	309.1
cb.	5.3	309.2
E	5.6	308.9



R = 4.05

Section H + 5' =  $\frac{1}{2}$  cen Dr. on W 10' wide

Section B

-5	6.8	307.7
E	6.0	308.5
cb.	5.7	308.8
$\frac{1}{4}$	5.5	309.2
$\frac{1}{2}$	5.3	309.2
$\frac{3}{4}$	5.3	309.2
cb.	4.9	309.6
W.	4.5	310.0

Section C = E.C.

W	4.9	309.6
cb.	5.3	309.2
$\frac{1}{4}$	5.5	309.0
$\frac{1}{2}$	5.5	309.0
$\frac{3}{4}$	5.9	308.6
cb.	6.0	308.5
E	6.6	307.9
+5	7.0	307.5

50' N

-10	8.9	305.6
-8	7.9	306.6
E	6.6	307.9
cb.	6.6	307.9
$\frac{1}{4}$	6.3	308.2
$\frac{1}{2}$	5.8	308.7

$\frac{3}{4}$	5.8	308.7
cb.	5.7	308.8
W	5.1	309.4
80' N of E.C. = $\frac{1}{2}$ <sup>cen.</sup> Ribbon Dr. on West 2' Back	5.21	309.3
105' N = $\frac{1}{2}$ Walk in rd to Residence		
-2 = top of Walk	5.32	309.19
W	5.6	308.9
cb.	6.0	308.5
$\frac{1}{4}$	6.4	308.1
$\frac{1}{2}$	6.2	308.3
$\frac{3}{4}$	6.7	307.8
cb.	6.8	307.7
E	7.3	307.2
+15	10.6	303.9
130' N = $\frac{1}{2}$ <sup>cen.</sup> Ribbon Dr. on E		
-15 on Dr.	9.6	304.9
E on top Dr.	6.91	307.6
cb.	6.8	307.7
$\frac{1}{4}$	6.6	307.9
$\frac{1}{2}$	6.6	307.9
$\frac{3}{4}$	6.4	308.1
cb.	6.3	308.2
W	5.8	308.7
150' N		
W	5.7	308.8
cb.	6.3	308.2

1/4	6.5	308.0
E	6.5	308.0
1/4	6.7	307.8
cb	6.5	308.0
E	6.8	307.7
165' N		
E	6.8	307.7
cb	6.4	307.9
+2	7.2	307.3
1/4	6.9	307.6
E	6.6	307.9
1/4	6.6	307.9
cb	6.3	308.2
+5	5.7	308.8
N	5.6	308.9
166' N		
N	5.6	308.9
+5	5.7	308.8
cb	6.3	308.2
1/4	6.6	307.9
E	6.6	307.9
1/4	6.9	307.6
+5	7.2	307.3
cb	6.6	307.9
+7	7.0	307.5
E	7.9	306.6

+15	11.3		
TP 4.14	312.05	6.60	307.91
200' N			
-15	8.3		303.7
-9	7.3		304.7
E	5.1		306.9
+3	4.5		307.5
cb	4.1		307.9
+2	4.7		307.3
1/4	4.3		307.7
E	4.0		308.0
1/4	4.1		307.9
+6	4.1		307.9
cb	3.4		308.6
N	2.9		309.1
Section E = 234.85' N.E.C = PC on N			
N	2.6		309.4
cb	2.9		309.1
+2	4.1		307.9
1/4	4.1		307.9
E	4.1		307.9
1/4	4.2		307.8
cb	4.3		307.7
+2	3.8		308.2
E	4.0		308.0
+15	8.0		304.0

## Section F = PC

-15	7.2	304.8
E	4.0	308.0
+7	3.9	308.1
cb	4.5	307.5
$\frac{1}{4}$	4.3	307.7
E	4.0	308.0
$\frac{1}{4}$	4.1	307.9
cb	4.0	308.0
+3	3.9	308.1
+6	2.5	309.5
N	2.3	309.7
+ 9' on N = + 7.2' on E		
N	2.2	309.8
+4	3.8	308.2
cb	3.9	308.1
$\frac{1}{4}$	4.1	307.9
E	3.9	308.1
$\frac{1}{4}$	4.2	307.8
cb	4.7	307.3
+5	3.9	308.1
E	4.2	307.8
+15	7.0	305.0
+ 15' on N = + 12' on E		
-15	7.8	304.2
E	4.3	307.8

+8	4.0	308.0
cb	4.5	307.5
$\frac{1}{4}$	4.3	307.7
E	4.1	307.9
$\frac{1}{4}$	4.1	307.9
cb	4.0	308.0
N	3.6	308.4

## Section G

N	4.4	307.6
cb	4.6	307.4
$\frac{1}{4}$	4.9	307.1
E	5.3	306.7
$\frac{1}{4}$	5.3	306.7
+5	5.5	306.5
cb	5.1	306.9
+3	4.6	307.4
E	5.6	306.4
+8	6.2	305.8
+15	8.5	303.5

## + 31' on N - + 25' on E

-15	10.3	299.7
E	7.0	305.0
cb	5.6	306.4
+3	6.7	305.3
$\frac{1}{4}$	6.7	305.3
E	6.7	305.3

1/4	6.8	305.2
cb.	6.6	305.4
N	6.4	305.6
+2	4.8	307.2

= +38' on E

Sec G + 47' on N = 8' Garage on N Con. Floor. This Garage is  
on the Reverse Curve line and is supposed to be on Grade. - Walker  
Please see me

- 7' Approx. = Garage Floor	7.58	304.47
N	6.5	305.5
cb.	7.2	304.8
1/4	7.7	304.3
1/4	8.0	304.0
1/4	7.8	304.2
cb.	7.0	305.0
E	8.6	303.4
+15	11.6	300.4

Section H = P.C.

-15	13.0	298.71
E	8.7	303.3
cb.	8.9	303.1
1/4	9.1	302.9
1/4	9.0	303.0
1/4	8.7	303.3
cb.	7.7	304.3
N	7.2	304.8

+ 28.5 on N = +22.5 on E.

4' Back is supposed to be on Grade about this }  
Walker

-4' = Garage Floor	10.05	302.00
N	9.7	302.3
cb.	10.0	302.0
1/4	10.4	301.6
1/4	11.4	300.6
1/4	11.0	301.0
cb.	10.5	301.5
E	10.8	301.2
+9	11.5	300.5
+21	19.0	293.0

Section K

-21	19.5	292.5	
-9	13.3	298.7	
E	12.1	299.9	
cb.	11.0	301.0	
1/4	11.4	300.6	
1/4	11.6	300.4	
1/4	11.0	301.0	
cb.	10.3	301.7	
N	10.1	301.9	
T.P. 0.81	299.82	13.04	299.01

Section L = P.C.

N	1.4	298.4
cb.	1.5	298.3
1/4	2.1	297.7
1/4	2.1	297.7



1/4	19	297.9
+3	11	298.7
cb	17	298.1
E	5.3	294.5
+15	9.8	290.0
+20	10.5	289.3

## Section M

-20	12.7	287.1
E	11.1	288.7
cb	5.7	294.1
1/4	3.5	296.3
E	3.9	295.9
1/4	4.0	295.8
cb	4.1	295.7
W	3.9	295.9

## Section N = P.P.C on W

-10	9.4	290.4
-5	10.9	288.9
W	8.3	291.5
+6	5.5	294.3
cb	5.4	294.4
1/4	5.7	294.1
cb	5.6	294.2
+2	5.6	294.2
1/4	9.0	290.8
cb	12.6	287.2

E	16.6	283.2
+15	17.0	282.8
+20	17.5	282.3

## Section O

E	17.7	282.1
+7	17.2	282.6
cb	15.7	284.1
1/4	11.1	288.7
+5	7.2	292.6
E	7.2	292.6
1/4	6.8	293.0
cb	6.6	293.2
+5	7.9	291.9
W	10.7	289.1
+6	14.6	285.2
+10	14.1	285.2
+15	14.0	285.8

## Section P

-15	15.7	284.1
-6	14.3	285.5
W	12.5	287.3
cb	8.1	291.7
1/4	7.6	292.2
+5	7.6	292.2
E	10.3	289.5
1/4	13.1	286.2

299.82

cb.	Plotted 3-11-27 J.H.	16.3	283.5	✓
+3		17.0	282.8	✓
5		17.6	282.2	✓

LEVELS For Drain See Sketch Page 49

0+00	299.82	14.3	285.5	✓	
+30		14.6	285.2	✓	
+75		17.1	282.7	✓	
+80		14.0	285.8	✓	
+94		7.4	292.4	✓	
1+04		7.5	292.3	✓	
1+24		17.0	282.8	✓	
T.P.	140	288.56	12.66	287.16	✓
1+40		8.6	280.0	✓	
+48		7.7	280.9	✓	
+64		7.2	281.4	✓	
2+00		8.7	279.9	✓	
+50		10.9	277.7	✓	
+61		12.3	276.3	✓	
+65		13.9	274.7	✓	
2+80.7		14.6	274.0	✓	
+85		14.6	274.0	✓	
+86		13.0	275.6	✓	
3+00		12.0	276.6	✓	
+25		15.3	273.9	✓	
3+40		16.2	272.4	✓	
3+75 = End		16.6	272.0	✓	

288.56

T.P. 13.02	301.42	0.16	288.40	✓
T.P. 11.57	312.82	0.17	301.25	✓
T.P. 5.81	318.44	0.19	312.63	✓
T.P. on B.M. Thorn + Gregory	0.41		318.03	✓
			315.01 = B.M.	
			2.02	

65

North  
E-29-27

X. Section Thorn St. 40' wide 10' cbs.  
From Bld. Gregory to P.C. 100' E 10' 1/2 S.

318.4B

56

04/	31842	31801	
	E.W.		
S	1.3	317.1	✓
Top cb.	1.43	316.99	✓
Gut	2.2	316.2	✓
1/4	1.6	316.8	✓
1/2	1.3	317.1	✓
L	1.5	316.9	✓
Gut.	1.5	316.9	✓
top cb.	0.92	317.5	✓
N	0.7	317.7	✓
	30' E		
N	2.6	315.8	✓
+ 2	3.3	315.1	✓
cb.	3.3	315.1	✓
+ 4	4.4	314.0	✓
1/4	4.2	314.2	✓
1/2	4.0	314.4	✓
3/4	4.4	314.0	✓
cb.	4.4	314.0	✓
+ 2	3.5	314.9	✓
+ 7	3.5	314.9	✓
S	3.0	315.4	✓
	78' E		
S	4.2	314.2	✓
+ 2	5.0	313.4	✓

cb	5.5	312.9	✓
+ 2	6.3	312.1	✓
1/4	6.1	312.3	✓
1/2	6.1	312.3	✓
3/4	6.2	312.2	✓
+ 8	6.4	312.0	✓
cb.	6.2	312.2	✓
+ 2	4.8	313.6	✓
+ 8	4.8	313.6	✓
N	4.1	314.3	✓
	R = 4.04		
	80' E = Wedge dble. Garage on N. Con. Floor 10' Salt = toe of third		
	P.C. = 100' E = 15 " " " 4 1/2 " " " " "		
N	6.1	312.3	✓
cb.	6.4	312.0	✓
+ 2	7.8	310.6	✓
1/4	7.6	310.8	✓
1/2	7.6	310.8	✓
3/4	7.4	311.0	✓
cb.	7.5	310.9	✓
+ 4	6.2	312.2	✓
S	5.5	312.9	✓
	104' E = 3 con. steps to house on N		
S	5.5	312.6	✓
+ 7	6.4	312.0	✓
cb.	7.5	310.9	✓
1/2	7.6	310.8	✓

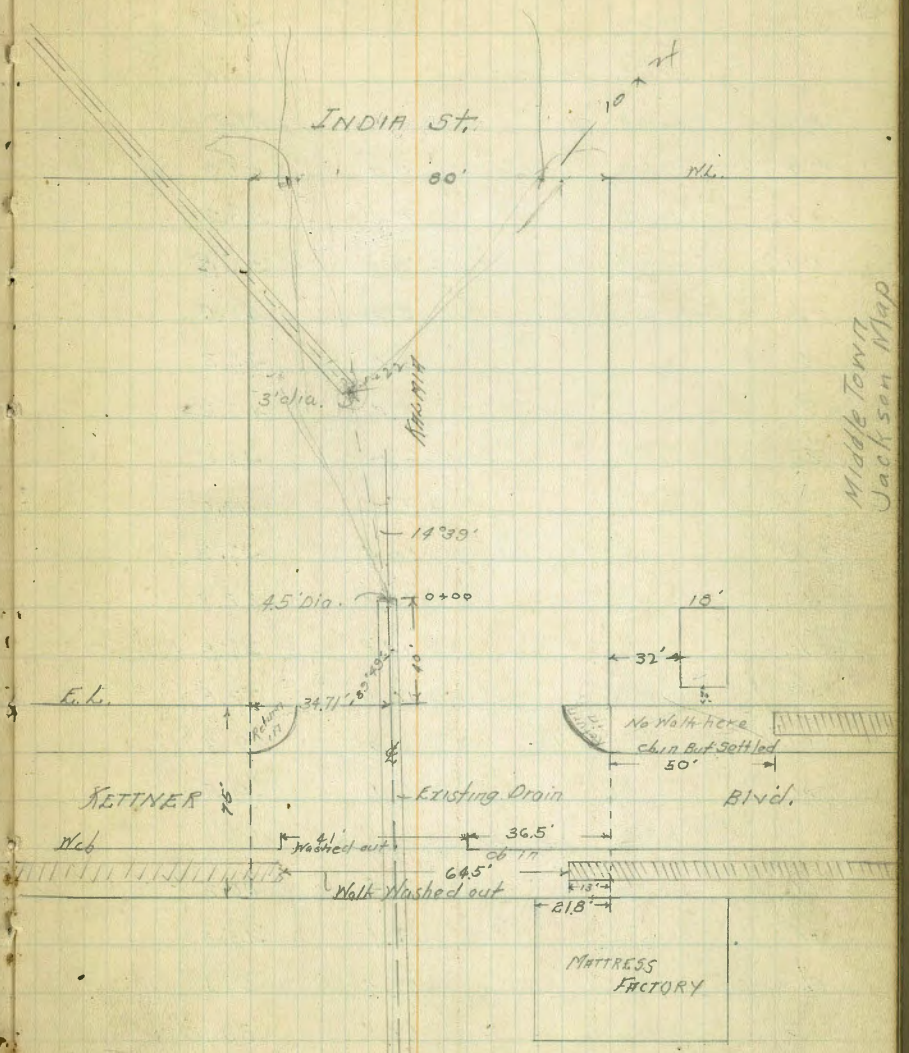
d	7.8	310.6	✓
$\frac{1}{4}$	7.9	310.5	✓
+8	8.2	310.2	✓
cb.	7.3	311.1	✓
N	6.7	311.7	✓
N + 0.3' approx. on Steps	9.02	309.4	✓

Walker  
5-2-27

X Section KALMIA ST. 80' wide  
From N.W. India St. West  
14' cbs  
13' 7/8

S.M.B.P.			
Jumper + India	0.75	47.62	46.87
		N.W. India	
S		5.3	42.3
s top cb.		5.56	42.06
s Gut on Paving		5.56	42.06
1/4 " "		5.59	42.03
1/2 " "		5.82	41.80
3/4 " "		5.79	41.63
N Gut " "		5.90	41.72
N top cb.		5.75	41.87
N		5.5	42.1
	7' W		
N		5.9	41.7
+7		6.5	41.1
+10		13.7	33.9
cb.		13.7	33.9
+2		13.7	33.9
+3		10.2	37.4
+8		6.1	41.5
1/4		6.0	41.6
1/2		5.5	42.1
3/4		5.8	42.3
+12		5.8	41.8
cb.		6.9	40.7
+2		5.3	42.3

Plotted 4-2-1927  
C.E.H. 6094



S		5.8	41.8
	10' N		
S		6.4	41.2
+9		5.9	41.7
+10		9.3	38.3
+13		9.8	37.8
cb.		6.7	41.9
$\frac{1}{4}$		5.4	42.2
$\frac{1}{2}$		5.4	42.2
$\frac{3}{4}$		6.0	41.6
+5		6.6	41.0
+11		10.4	37.2
+12		14.8	32.8
cb.		14.8	32.8
+3		14.8	32.8
+6		8.3	39.3
N		6.1	41.5
	18' N		
-11		7.4	40.2
N		12.1	35.5
cb.		17.5	30.1
+2		17.5	30.1
$\frac{1}{2}$		10.1	37.5
$\frac{3}{4}$		5.6	32.0
$\frac{1}{4}$		6.6	31.0
+1		7.4	30.2

+8		7.9	39.7
+9		11.0	36.6
cb.		11.0	36.6
+2		11.0	36.0
+4		7.0	40.6
S		7.0	40.6
T.P.	0.71	40.47	39.76 ✓
		36' N	
S		0.7	39.8
cb.		5.0	35.0
+6		6.0	34.5
+7		4.2	36.3
$\frac{1}{4}$		5.3	35.2
$\frac{1}{2}$		4.6	35.9
+5		6.2	34.3
+7		9.3	30.2
$\frac{1}{2}$		11.8	28.7
+8		16.7	23.8
cb.		17.4	23.1
+3		17.4	23.1
N		11.9	28.6
+15		6.3	33.2
		40' N	
-15		6.8	33.7
N		13.3	27.2
-7		22.0	18.5

cb.	17.9	22.6
+9	16.9	23.6
$\frac{1}{4}$	13.3	27.2
+6	10.4	30.1
+8	7.5	33.0
<del>8</del>	6.1	34.4
$\frac{1}{4}$	6.0	34.5
+5	5.5	35.0
+6	6.6	31.9
cb.	7.7	32.8
+1	5.0	35.5
+11	3.6	36.9
S	0.8	39.7
49'N		
-5	1.0	39.5
S	2.8	37.7
cb.	6.1	34.4
+1	6.1	34.4
+2	8.6	31.9
$\frac{1}{4}$	10.6	29.9
+6	16.7	23.8
+9	16.7	23.8
<del>8</del>	7.9	32.6
+9	12.9	27.6
+11	15.7	24.8
$\frac{1}{4}$	16.9	23.6

+9	17.9	22.6
cb.	19.7	20.8
+7	22.8	17.7
N	19.8	20.7
+15	13.8	26.7
+20	10.8	29.7

57'N

-20	9.9	30.6
N	18.0	22.5
cb.	18.3	22.2
$\frac{1}{4}$	16.7	23.8
<del>8</del>	17.7	22.8
+10	17.7	22.8
$\frac{1}{4}$	11.3	28.2
+2	8.2	32.3
cb.	8.2	32.3
+3	6.4	34.1
S	5.6	34.9
+5	4.4	36.1
TP. 7.89	35.29	13.07
72'N		
-15	6.0	29.3
S	6.4	28.9
+1	7.7	27.6
cb.	7.4	27.9
$\frac{1}{4}$	9.4	25.9

27.40 ✓

35.29

+9	12.8	22.5
L	12.7	22.6
+10	12.4	22.9
$\frac{1}{4}$	13.3	22.0
cb.	11.6	23.7
N	11.6	23.7
+20	2.0	33.3
82' W		
-12	0.5	34.8
N	9.5	25.8
cb.	11.1	24.2
$\frac{1}{4}$	12.4	22.9
L	13.8	21.5
$\frac{1}{4}$	13.9	21.4
+3	11.0	24.3
cb.	10.0	24.3
S	10.0	24.3
+20	8.4	26.9
100' W		
-20	13.0	22.3
S	13.5	21.8
cb.	11.1	24.2
+6	10.3	25.0
+8	13.9	21.4
$\frac{1}{4}$	14.0	21.3
L	12.8	22.5

35.29

61

$\frac{1}{4}$	12.3	23.0
cb.	11.3	24.0
N	4.3	31.0
+3	2.8	32.5
113' W		
N	2.7	32.6
+6	3.2	32.1
cb.	8.1	27.2
$\frac{1}{4}$	12.4	22.9
L	14.3	21.0
$\frac{1}{4}$	14.2	21.1
+5	9.7	25.6
cb.	10.2	25.1
S	14.3	21.0
+20	15.3	20.0
136' W		
-20	17.7	17.6
S	15.7	19.6
+12	11.2	24.1
cb.	11.0	24.3
$\frac{1}{4}$	10.8	24.5
+6	12.0	23.3
L	14.4	20.9
$\frac{1}{4}$	13.1	22.2
+7	9.7	25.6
cb.	2.7	32.6



35.29 ✓

N	1.7	33.6
	139' N	
N	2.2	32.1
cb.	3.5	31.8
+5	9.6	25.7
+9	11.7	23.6
$\frac{1}{4}$	18.3	17.0
+3	20.5	14.8
$\frac{1}{2}$	20.5	14.8
+3	12.4	22.9
$\frac{1}{4}$	10.8	24.5
cb.	11.3	24.0
S	14.7	20.6
+5	16.7	18.6
+20	16.7	18.6
	159' N	
-20	16.7	18.6
-5	16.7	18.6
S	14.7	20.6
cb.	12.3	23.0
$\frac{1}{4}$	12.8	22.5
+5	13.5	21.8
+6	16.3	18.0
$\frac{1}{2}$	21.0	14.3
+10	21.0	14.3
$\frac{1}{4}$	13.9	21.4

35.29 ✓

62

+5	11.7	23.6
+8	7.1	28.2
cb.	4.5	30.8
N	3.8	31.5
	141' N	
N	3.8	31.5
cb.	5.0	30.3
+7	7.9	27.4
+9	12.0	23.3
$\frac{1}{4}$	14.1	21.2
+3	17.6	17.7
$\frac{1}{2}$	15.8	18.5
+5	15.9	19.4
+7	13.5	21.8
$\frac{1}{4}$	12.9	22.4
cb.	12.3	23.0
S	14.5	20.8
+5	16.5	18.8
+20	16.5	18.8
	165' N	
-20	16.8	18.5
-5	16.8	18.5
S	14.8	20.5
cb.	12.2	23.1
+11	12.5	22.8
$\frac{1}{4}$	14.9	20.4

d	16.6	18.7
+10	18.6	16.7
$\frac{1}{4}$	13.8	21.5
+3	11.2	24.1
cb.	7.7	27.6
+5	3.7	31.6
N	3.4	31.9
171' W		
N	3.4	31.9
+8	3.7	31.6
cb.	7.2	28.1
$\frac{1}{4}$	11.8	23.5
+3	15.7	19.6
$\frac{1}{4}$	15.4	19.9
$\frac{1}{4}$	15.5	19.8
cb.	15.8	19.5
S	14.5	20.8
+5	16.5	18.8
+20	16.5	18.8
177' W		
-20	15.5	19.8
-5	14.5	20.8
S	13.5	21.8
cb.	12.0	23.3
$\frac{1}{4}$	12.4	22.9
d	11.7	23.6

$\frac{1}{2}$	11.2	24.1
cb.	7.4	27.9
+4	4.5	30.8
N	1.8	33.5
187' W		
N	2.6	32.7
cb.	3.0	32.3
$\frac{1}{4}$	5.8	29.5
$\frac{1}{4}$	6.3	29.0
$\frac{1}{4}$	8.2	27.1
cb.	9.9	25.4
S	11.2	24.1
+32 = N edge Bld.	12.9	22.4
195' W		
-32 = N edge Bld.	10.0	25.3
S	9.0	26.3
cb.	4.8	30.5
$\frac{1}{4}$	3.9	31.5
$\frac{1}{4}$	3.8	31.5
$\frac{1}{4}$	4.1	31.2
cb.	4.1	31.2
N	3.5	31.8
200' W = E. Kettner		
N	3.6	31.7
N top of cb.	4.26	31.03
Gutter on Paring	4.99	30.31

$\frac{1}{4}$ on Paving	4.67	30.62
+5 " "	4.07	31.22
$\frac{1}{2}$ " "	3.69	31.60
$\frac{1}{4}$ " "	3.72	31.57
Gut. " "	4.35	31.94
S top of cb.	3.81	31.48
S on top curb.	3.79	31.50
S on dirt.	4.7	30.6
+25	8.8	26.5
+32 = Ne edge BW	8.1	27.2
+50 = S " "	5.0	30.3

E.L. +1'

-50	3.8	31.5
-25	5.6	29.7
S	4.5	30.8
T.P. 4.77	✓ 27.42	✓ 12.57
		✓ 27.72

Levels for Drain see sketch Page 58

0+00 = Flow line 4.5' Drain	15.04	12.45
+19	13.0	14.5
+30	6.4	21.1
+80	4.0	23.5
+85	2.9	24.6
+95	4.6	22.9
1+05	5.0	22.5
+15	9.5	18.0
1+22 = Flow line 3' Drain	11.23	16.26

T.P. 7.86	✓ 34.71	0.64	✓ 26.85
	E cb. Line Kettner		
S top cb.	3.07		31.64
+12 <sup>A</sup> top cb	3.46		31.25
+50	2.95		31.76

N  $\frac{1}{4}$  +7'

S on Paving	5.15	29.56
cb. " "	5.12	29.59
$\frac{1}{4}$ " "	5.09	29.62
$\frac{1}{2}$ " "	5.12	29.59
$\frac{1}{4}$ " "	4.93	29.78
cb. " "	4.86	29.85
N " "	4.81	29.90

N  $\frac{1}{4}$  +10'

N on Paving	5.17	29.54
+9 " "	5.41	29.30
+10	10.8	23.9
cb.	11.3	23.4
$\frac{1}{2}$	12.8	21.9
$\frac{1}{4}$	10.5	24.2
+1 on Paving	5.73	28.98
$\frac{1}{4}$	5.36	29.35
cb.	5.48	29.23
S	5.38	29.33
	N cb.	
S top cb.	5.27	29.44

S. Gut on Paring	5.77	28.94
S cb. top cb.	5.26	29.44
" " Gut on Paring	5.79	28.92
$\frac{1}{4}$ " " "	5.77	28.94
$\frac{1}{4}$ = top cb.	5.12	29.59
+10 " "	5.08	29.63
+10 Gut on Paring	5.84	28.87
+11	10.1	24.6
$\frac{1}{2}$	10.7	24.0
$\frac{1}{4}$	14.5	20.2
cb.	12.5	22.2
+7	9.3	23.4
+8	5.60	29.11
+11 = top cb.	5.01	29.60
+11 = Gut on Paring	5.55	29.16
N = " " "	5.47	29.24
N on top cb.	4.97	29.74
N cb + 8'		
N	4.5	30.2
+7	5.0	29.7
cb	7.7	27.0
+5	10.9	23.8
+8	15.6	19.4
$\frac{1}{4}$	16.5	18.2
+8	15.3	19.4
$\frac{1}{2}$	11.7	23.0

+6	7.7	27.0
+11	5.6	29.1
$\frac{1}{4}$	5.0	29.7
+2	12.2	22.5
cb.	11.5	23.2
+1	5.5	29.2
S	5.3	29.4
N cb + 9'		
S	9.0	25.7
cb	12.7	22.0
+12	8.8	25.9
$\frac{1}{4}$	5.7	29.0
+7	6.6	28.1
$\frac{1}{2}$	11.1	23.6
$\frac{1}{4}$	16.8	17.9
+5	15.7	19.0
+7	10.5	24.2
cb	8.4	26.3
+3	5.2	29.5
N	4.5	30.2
N L. Ketter		
N	4.8	29.9
cb.	6.0	28.7
+3	7.4	27.3
+10	16.0	18.7
$\frac{1}{4}$	16.8	17.9

L	14.4	20.3
+2	8.2	26.5
+10	7.0	27.7
+11	11.8	22.9
$\frac{1}{4}$	12.7	22.0
cb.	12.3	22.4
S	7.4	27.3
+2	7.4	27.3

## 10' N N.W. Kettner

5 cb. under Bld.	13.7	21.0
+7.2 = Nedge Bld.	13.7	21.0
+12	13.7	21.0
$\frac{1}{4}$	11.6	23.1
L	12.4	22.3
+2	12.4	22.3
+3	17.6	17.1
$\frac{1}{4}$	17.0	17.7
+7	15.0	19.7
+9	11.3	23.4
cb.	10.5	24.2
N	9.0	25.7

## 25' N

N	10.0	24.7
cb.	10.7	23.8
+8	16.3	18.4
$\frac{1}{4}$	16.9	17.9

L	17.2	17.5
$\frac{1}{4}$	16.3	18.4
+L = Nedge Bld.	16.3	18.4
cb. under Bld.	15.3	19.4
ch. on S.E. of Laurel + Kettner	1.24	32.97 ✓

Survey of Pueblo Lot 1167  
For The OPENING of RIGEL ST. (shown shaded)

49.35  
132.55  
181.90

PL 1167

PL 1167  
Set Redwood hub  
under Ground  
for Transit hubs on this PL. Con.  
See Red Back Grade Book 467 - Page 2  
" " 141 - Page 6

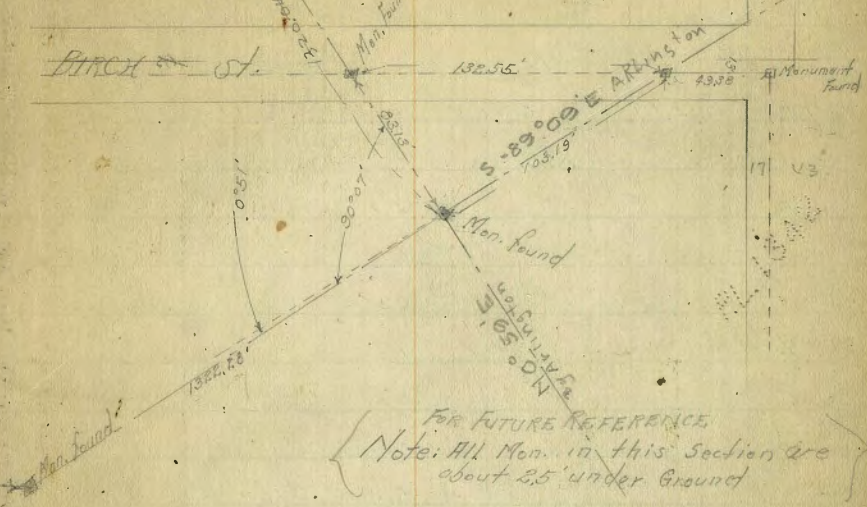
RIGEL

ST

Walker  
Walbreck  
178 Hugh  
3-7-87

Co. Mon. # 11-59  
P. 1843

67



FOR FUTURE REFERENCE  
Note: All Mon. in this section are  
about 2.5' under Ground

See F.B. 1503 - P 33.  
for additional ties.  
Also F.B. 1573 - 78.  
The Book 14 - Page 51 and 55 + 59

PL 1167

MONUMENT ST.

49.3  
43  
72.3

Yolker  
3-29-27

X. Section of INTERSECTION DALBERG St.  
And RIGEL St. 24' cbs  
13'  $\frac{1}{2}$  S

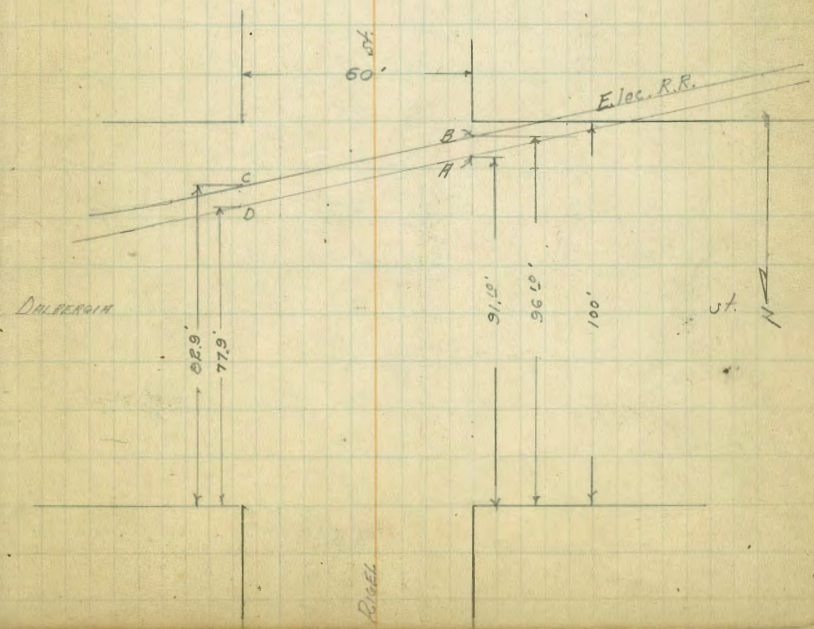
690

68

B.M. Con. Mar.  
Cottontail + RIGEL  
See Page 6

	0.44	15.54	15.10
T.P.	4.19	6.90	12.83
		N.L.	2.71
E		5.9	1.0
cb		6.1	0.8
$\frac{1}{4}$		6.4	0.5
$\frac{1}{2}$		6.2	0.7
$\frac{3}{4}$		6.0	0.9
cb		5.0	1.9
N		5.0	1.9
		N.L. + 10'	
N		5.9	1.0
cb		5.4	1.5
$\frac{1}{2}$		6.3	0.6
$\frac{1}{4}$		6.4	0.5
$\frac{3}{4}$		6.2	0.5
cb		6.8	0.1
E		6.8	0.1
+5		6.7	0.2
		+2.0	
-5		6.7	0.2
E		7.0	-0.1
cb		6.8	+0.1
$\frac{1}{2}$		6.8	0.1
$\frac{1}{4}$		6.4	0.5

+5	6.6	0.3
+6	8.2	-1.3
+7	8.2	-1.3
$\frac{1}{4}$	6.6	+0.3
cb	5.8	1.1
N	6.0	0.9
	N cb	
N	6.1	0.8
cb	5.5	1.4
$\frac{1}{2}$	6.1	0.8
+2	6.4	0.5
+3	8.0	-1.1
+8	8.2	-1.3



d	68	+0.1
$\frac{1}{4}$	66	0.3
cb	68	0.1
E	65	0.4
+3	62	0.7
+5	73	-0.4
	cb+5	
-5	84	-1.5
-3	71	-0.2
E	66	+0.3
cb	67	0.2
$\frac{1}{4}$	66	0.3
+6	67	0.2
+7	88	-1.9
cb	88	-1.9
+5	84	-1.5
+6	65	+0.4
$\frac{1}{4}$	62	0.7
cb	58	1.1
x	61	0.8
	cb+8	
x	61	0.8
cb	62	0.7
$\frac{1}{4}$	61	0.8
+5	67	0.2
+6	89	-2.0

d	89	-2.0
+6	89	-2.0
+8	65	+0.4
$\frac{1}{4}$	65	0.4
cb	67	0.2
+8	74	-0.5
+9	88	-1.9
E	88	-1.9
+10	86	-1.7
	N $\frac{1}{2}$	
-10	87	-1.8
E	91	-2.2
cb	91	-2.2
$\frac{1}{4}$	88	-1.9
d	90	-2.1
+2	92	-2.3
+5	61	+0.8
$\frac{1}{4}$	64	0.5
cb	64	0.5
x	62	0.7
+5	61	0.8
	d	
-5	63	0.6
x	62	0.7
+7	65	0.4
cb	84	-1.5



$\frac{1}{2}$	7.8	-0.9
+2	7.6	-0.7
+3	8.3	-1.4
$\frac{1}{4}$	9.3	-2.4
$\frac{1}{4}$	9.0	-2.1
cb	7.3	-0.4
E	6.4	+0.5
+5	6.6	+0.3
+6	8.0	-1.1
+10	8.2	-1.3
	$\frac{1}{2} + 5'$	
-10	7.7	-0.8
-5	5.2	+1.7
E	5.8	1.1
cb	6.0	0.9
$\frac{1}{4}$	7.5	-0.6
$\frac{1}{6}$	9.7	-2.8
$\frac{1}{4}$	9.0	-2.1
+3	8.0	-1.1
cb	7.6	-0.7
N	7.8	-0.9
+3	6.8	+0.1
+5	6.2	+0.7
	$\frac{1}{2}$	
-10	8.3	-1.4
N	9.1	-2.2

cb	9.7	-2.8
$\frac{1}{4}$	9.4	-2.5
$\frac{1}{4}$	8.5	-1.6
$\frac{1}{4}$	6.6	+0.3
+2	6.0	0.9
cb	4.8	2.1
E	4.1	2.8
+5	4.2	2.7
	$\frac{1}{2}$ cb	
-5	3.8	3.1
E	3.9	3.0
cb	4.5	2.4
$\frac{1}{4}$	4.5	2.4
$\frac{1}{6}$	4.6	2.3
+5	4.7	2.2
$\frac{1}{4}$	6.3	0.6
cb	8.2	-1.3
N	10.1	-3.2
+10	10.3	-3.4
	$\frac{1}{2}$ cb + 7'	
-10	8.7	-1.8
-9	6.5	+0.4
-5	4.8	2.1
N	4.8	2.1
cb	4.5	2.4
$\frac{1}{4}$	4.2	2.7

690

Walker  
3-29-27X. Section 35' H St. 60' Wide 10' cbs  
10' fs  
From N.L. NEWTON 1381 N to paving

71

2	43	2.6
1/2	41	2.5
cb	40	2.9
E	41	2.8
S cb + 14'		
E	47	2.2
cb	48	2.1
1/2	48	2.1
2	47	2.2
1/4	40	2.9
cb	40	2.9
X	43	2.6
+10	45	2.4
S.L.		
X	45	2.4
cb	49	2.0
1/2	59	1.0
2	66	0.3
1/2	72	-0.3
cb	67	+0.2
E	55	1.4
+5	50	1.9
C on top of Rail	394	2.96
D " " " "	378	3.12
F " " " "	374	3.16
B " " " "	380	3.10

0.21

44.40 ✓

SE top Hyd.  
44.19 = BM. Nail + 35.4

N.L. NEWTON = 0+00

X	10.2	34.2
cb	9.9	34.5
1/2	9.2	35.2
2	8.7	35.7
1/4	8.5	35.9
cb	8.4	36.0
E	7.2	37.2
12' N		
E	7.8	36.6
cb	8.6	35.8
1/2	8.6	35.8
2	8.7	35.7
1/4	9.1	35.3
cb	9.7	34.7
+3	10.1	34.3
X	8.9	35.5
50' N		
X	7.9	36.5
+7	8.6	35.8
cb	9.5	35.9
+5	8.7	35.7
1/2	8.6	35.8
2	8.5	35.9
1/4	8.3	36.1

Plotted  
March 21-1927  
C.W. Hays

4440 ✓

cb	8.1	36.3
E	7.9	36.5
86' N		
E	6.9	37.5
cb	6.7	37.7
$\frac{1}{4}$	7.4	37.0
$\frac{1}{2}$	7.4	37.0
$\frac{3}{4}$	7.2	37.2
+5	7.5	36.9
+8	8.6	35.8
cb	7.5	36.9
+2	6.5	37.9
N	6.3	38.1

135' N

N	5.0	39.4
+9	4.7	39.7
cb	6.2	38.2
+1	8.0	36.4
$\frac{1}{2}$	7.1	37.3
$\frac{1}{4}$	6.7	37.7
$\frac{3}{4}$	6.6	37.8
cb	6.3	38.1
E	5.3	39.1

138' N = Paving

E	5.4	39.0
top cb	6.09	38.3

4440 ✓

72

Gut on Paving	6.86	37.5
$\frac{1}{4}$ " "	6.66	37.7
$\frac{1}{2}$ " "	6.76	37.6
$\frac{3}{4}$ " "	7.16	37.2
Gut " "	7.81	36.6
N top cb	7.37	37.0
N	7.2	37.2

Tolman  
8-1-27

X section at 35th &  
Imperial. See sketch on Page 46.

Sections shown on this sketch  
are carried out 20' to west

Section H (on paving)

	11.97	55.59	43.62
10' west		12.60	43.0
20' west		13.21	42.4

Section G

10' west		11.7	43.9
20' west		12.7	42.9

Section F

10' west		5.0	50.6
20' west		8.4	47.2
TP	12.72	66.59 <sup>5</sup>	136
			53.83

Section E

10' west		10.2	56.3
20' west		9.6	56.9

Section D

10' west		6.8	59.7
20' west		9.9	56.6

Section C

10' west	5.3	61.3
20' "	3.6	62.9

Section B

10' west	4.1	62.4
20' west	3.4	63.1

Section A

10' west	1.9	64.6
20' "	1.5	65.0
TP 9.22	72.45 <sup>41</sup>	3.36
		63.23 <sup>19</sup>

2+14 (Page 45)

10' west	6.7	65.7
20' west	6.7	65.7

2+07 (ditto)

10' west	6.4	66.0
20' west	6.6	65.8

Bliss  
11/9/27  
X Sections of Eugene Place.  
Normal Hts  
+  
X  
60' St  
12' cbs  
9' OTS  
From a point 50' West East of end of Street end to 75' Elev.

	+	X	
B.M. S.W. 2nd Ave. Mt. View	4.93	396.23	391.80
T.P.	2.83	292.69	6.37 289.86
T.P.	1.88	282.97	12.10 280.59
		0+00	
N		4.0	278.5
+1.5 N Edge of Walk		3.93	278.54
+6.5 S "		9.05	278.42
cb		4.22	278.25
Gutter		4.66	277.81
1/4		4.7	277.8
1/2		4.3	278.2
3/4		4.5	278.0
+4 N Edge of concrete Gutter		4.63	277.84
Gutter		5.01	277.46
5/8		4.15	278.32
+5.5 N edge walk		4.00	278.5
+10.5 S " "		3.89	278.58
S		3.8	278.7
-5		3.0	279.5
-8		21.0	261.5
-15		23.0	259.5
		0+30	
-13		29.0	253.5
-7		28.0	254.5
-3		5.3	277.2
S		5.3	277.2
T 1.5		5.90	277.05
cb		5.72	276.75

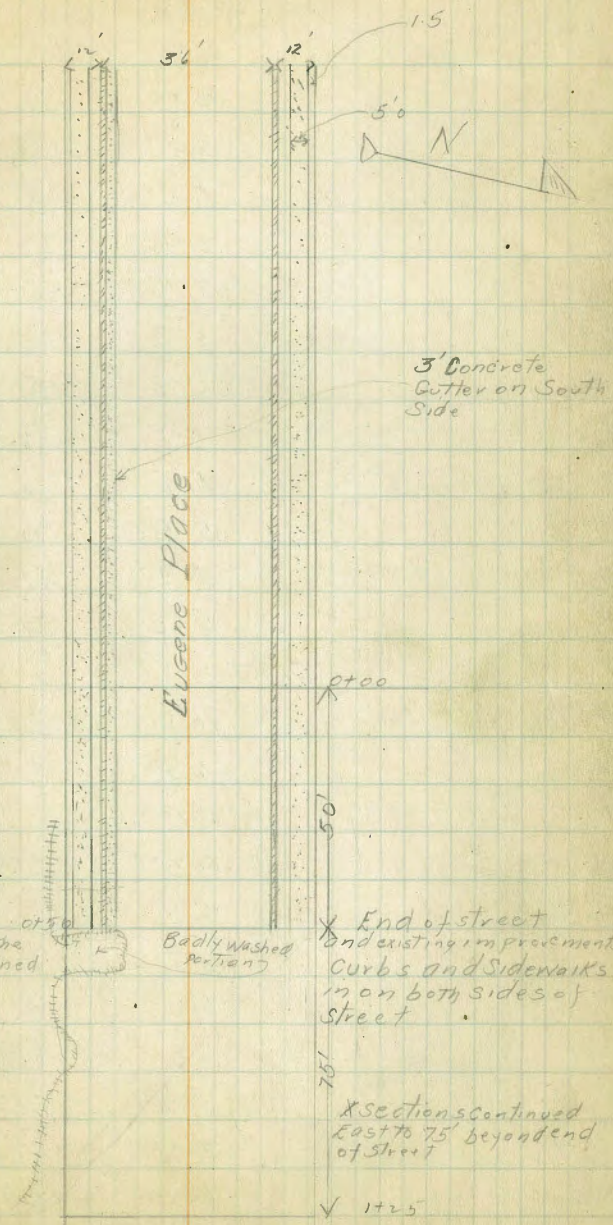
This property is the site of an abandoned gravel quarry

Badly washed section

End of street and existing improvements curbs and sidewalks in on both sides of street

X sections continued East to 75' beyond end of street

1125



0+30

Gutter	6.92	276.05
+3	6.19	276.28
1/4	5.9	276.6
+3	5.6	276.9
2	5.5	277.0
+7	5.9	276.6
1/4	6.3	276.2
+2	6.3	276.2
+4	5.8	276.7
Gutter	5.7	276.8
cb	5.60	276.9
+10.5 N Edge of walk	5.97	277.0
N	5.3	277.2

0+47

N-15	10.0	272.5
N	6.5	276.0
+1.5 N Edge of walk	6.33	276.14
cb	6.55	275.92
+6	6.3	276.2
1/4	6.7	275.8
2	6.8	275.7
1/4	7.0	275.5
+6 Edge of Gutter	6.95	275.52
Gutter	7.41	275.06
Touch	6.56	275.91
+10.5 S Edge of walk	6.16	276.31

S	6.5	276.0
+6	10.4	272.1
+8	24.8	257.7
0+50		
S	22.5	260.0
cb	26.9	255.6
+6	26.5	256.0
+7	7.2	275.3
1/4	7.3	275.2
2	7.0	275.5
1/4	6.6	275.9
cb	6.71	275.76
+10.5 N Edge of walk	6.44	276.03
N	6.8	275.7
+5	10.8	271.7

0+61

N-25	14.7	267.8
N	9.8	272.7
+9	7.4	275.1
cb	7.0	275.5
+5	6.5	276.0
1/4	6.8	275.7
2	7.3	275.2
+6	7.8	274.7
+7	29.5	253.0
1/4	29.7	252.8
cb	31.3	251.2

+	282.97	-	Elev
S		31.5	251.0
S+15		33.6	248.9
	0+75		
S-15		34.6	247.9
S		33.3	249.2
cb		31.0	251.6
1/4		29.7	252.8
+1		29.7	252.8
+2		8.7	273.8
2		8.9	274.1
+5		7.9	274.6
1/4		6.6	275.9
+3		5.8	276.7
+6		6.3	276.2
cb		6.4	276.1
+2		6.8	275.7
+4		9.4	273.1
N		12.4	269.6
N+25		17.0	265.5
	0+78		
N+25		17.8	264.7
N		13.3	269.2
+4		6.8	275.7
cb		6.4	276.1
+6		5.8	276.7
1/4		6.6	275.9

+	282.97	-	Elev
		7.4	275.1
		8.5	274.0
		8.5	273.7
		9.2	273.3
		9.8	272.7
		10.4	272.1
		10.7	271.8
		31.3	251.2
		S	33.7
		S+15	34.4
	0+87		
		S-15	34.4
		S	33.4
		+3	31.5
		+5	11.3
		cb	10.7
		1/4	10.1
		+8	9.4
		2	8.1
		+2	7.3
		1/4	6.6
		cb	6.8
		N	14.9
		N+5	18.5
		+10	26.5
		+13	26.5
			256.0
			256.0

	+	-	Elev
	282.97		
	0+87		
N-20		31.8	250.7
	1+00		
N-26		22.5	260.0
N-23		92.0	240.5
N-17		41.8	240.7
N-15		29.8	252.7
N-7		21.3	261.2
N		17.5	265.0
cb		10.5	272.0
1/4		6.3	276.2
1/2		6.0	276.5
3/4		7.3	275.2
1		7.6	274.9
1+1		7.8	274.7
1+5		11.0	271.5
1/4		11.5	271.0
cb		11.9	270.6
+7		12.2	270.3
+9		29.8	252.7
S		31.3	251.2
S+55		33.8	248.7
	1+25		
S-15		33.4	249.1
S		29.5	253.0
S+1		13.8	268.7
cb		13.6	264.9

	+	-	Elev
	282.97		
+9		10.7	271.8
1/4		10.0	272.5
+7		9.2	273.3
1/2		9.5	273.0
3/4		14.5	268.0
+3		15.4	267.1
cb		17.0	265.5
N		20.6	261.9
N+15		25.5	257.0
B.M.	Set on South west Pole 3 Nails	1.57	380.90

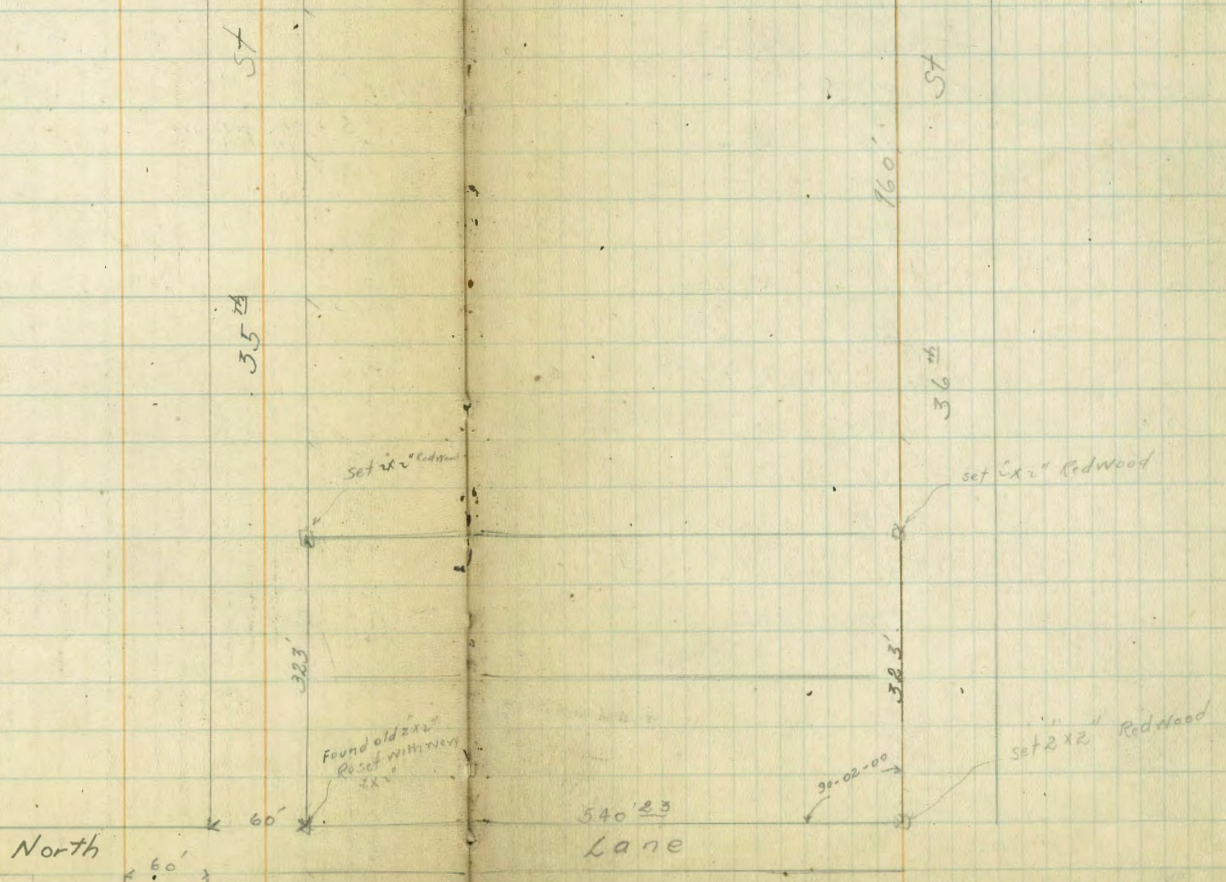


Bliss  
Isbell  
Perce  
3/1/8

Survey of Lots G + H Central. Homestead. Between Woolman + North Lane - 35<sup>th</sup> + 36<sup>th</sup>  
Prop of the Helping Hand Home.

Woolman Ave

539.50



North

35<sup>th</sup>

36<sup>th</sup>

323'

323.5'

540.23  
Lane

Found old 2x2  
Post with iron  
2x2

Set 2x2 Redwood

Set 2x2 Redwood

90-02-00

Sewer Profiles  
Bdy. St of Thorn

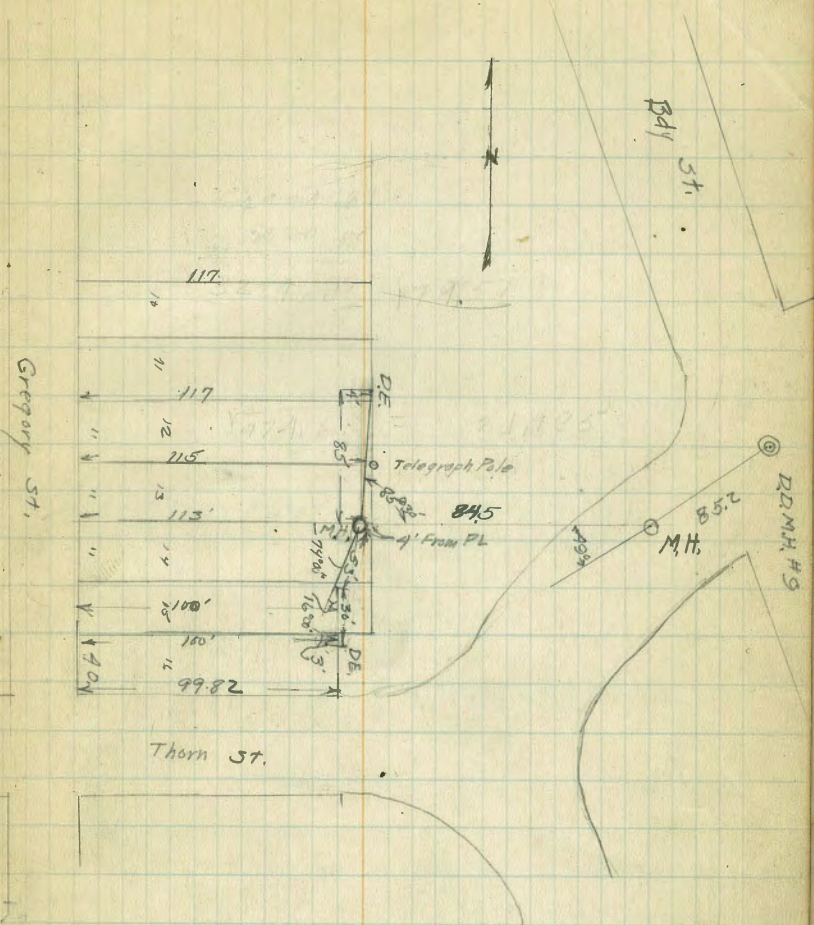
BM Felton & Redwood 313.01

T.P.	9.17	322.18		313.01
T.P.	2.12	321.89	2.41	319.77
T.P.	7.79	318.29	11.39	310.50
D.E.S. of M.H. 0+00			5.0	313.3
0+05			6.0	312.3
+30 Ch. M.H. +83			6.8	311.5
			9.1	309.2
T.P.	0.59	310.15	8.73	
Going North 0+00 = M.H.			1.0	309.2
+43			4.1	306.1
+85 = D.E. Going East 0+00 = M.H.			8.0	302.7
			1.0	309.2
+45			6.6	303.6
+64			13.5	296.7
T.P.	0.93	298.73	12.35	
= 0+00 +88.5 = M.H.			3.1	295.6
+43			4.7	294.0
+67 = M.H. +85.2			14.1	284.6
			7.4	291.33

12.37 To Flowline.

291.33  
12.37  
278.96

Flow line To South = 279.6m Profile



8558  
1009  
68.29

DIRECTIONS FOR USE OF TABLES 67

TABLE No. 1.

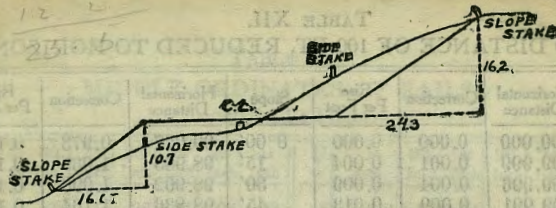
Distance of slope stake from side or shoulder  
stake for any width roadway, slope  $1\frac{1}{2}$  to 1.  
If ground is nearly level, the cut or fill at side  
stake is located by the double entry method in  
left column and top row. The number in body  
of table is same for any column gives distance  
from side stake to slope stake. If ground is not

IMPROVED TABLES  
AND  
INFORMATION

TABLE No. 2

To find Tangent and External for curve of  
any other degree, divide by degree of curve and  
add correction found in column of corrections.  
Degree of curve with a given  $L$  may be found  
by dividing tangent (or external), opposite  $L$  by  
given tangent (or external).  
The distance from a point on the tangent to  
the curve is very nearly the square of the tangent  
length divided by twice the radius.





**DISTANCES FROM SIDE STAKES FOR CROSS-SECTIONING.**

SLOPE 1 1/2 TO 1. ROADWAY OF ANY WIDTH.

	0	.1	.2	.3	.4	.5	.6	.7	.8	.9	
0	0.00	0.15	0.30	0.45	0.60	0.75	0.90	1.05	1.20	1.35	0
1	1.50	1.65	1.80	1.95	2.10	2.25	2.40	2.55	2.70	2.85	1
2	3.00	3.15	3.30	3.45	3.60	3.75	3.90	4.05	4.20	4.35	2
3	4.50	4.65	4.80	4.95	5.10	5.25	5.40	5.55	5.70	5.85	3
4	6.00	6.15	6.30	6.45	6.60	6.75	6.90	7.05	7.20	7.35	4
5	7.50	7.65	7.80	7.95	8.10	8.25	8.40	8.55	8.70	8.85	5
6	9.00	9.15	9.30	9.45	9.60	9.75	9.90	10.05	10.20	10.35	6
7	10.50	10.65	10.80	10.95	11.10	11.25	11.40	11.55	11.70	11.85	7
8	12.00	12.15	12.30	12.45	12.60	12.75	12.90	13.05	13.20	13.35	8
9	13.50	13.65	13.80	13.95	14.10	14.25	14.40	14.55	14.70	14.85	9
10	15.00	15.15	15.30	15.45	15.60	15.75	15.90	16.05	16.20	16.35	10
11	16.50	16.65	16.80	16.95	17.10	17.25	17.40	17.55	17.70	17.85	11
12	18.00	18.15	18.30	18.45	18.60	18.75	18.90	19.05	19.20	19.35	12
13	19.50	19.65	19.80	19.95	20.10	20.25	20.40	20.55	20.70	20.85	13
14	21.00	21.15	21.30	21.45	21.60	21.75	21.90	22.05	22.20	22.35	14
15	22.50	22.65	22.80	22.95	23.10	23.25	23.40	23.55	23.70	23.85	15
16	24.00	24.15	24.30	24.45	24.60	24.75	24.90	25.05	25.20	25.35	16
17	25.50	25.65	25.80	25.95	26.10	26.25	26.40	26.55	26.70	26.85	17
18	27.00	27.15	27.30	27.45	27.60	27.75	27.90	28.05	28.20	28.35	18
19	28.50	28.65	28.80	28.95	29.10	29.25	29.40	29.55	29.70	29.85	19
20	30.00	30.15	30.30	30.45	30.60	30.75	30.90	31.05	31.20	31.35	20
21	31.50	31.65	31.80	31.95	32.10	32.25	32.40	32.55	32.70	32.85	21
22	33.00	33.15	33.30	33.45	33.60	33.75	33.90	34.05	34.20	34.35	22
23	34.50	34.65	34.80	34.95	35.10	35.25	35.40	35.55	35.70	35.85	23
24	36.00	36.15	36.30	36.45	36.60	36.75	36.90	37.05	37.20	37.35	24
25	37.50	37.65	37.80	37.95	38.10	38.25	38.40	38.55	38.70	38.85	25
26	39.00	39.15	39.30	39.45	39.60	39.75	39.90	40.05	40.20	40.35	26
27	40.50	40.65	40.80	40.95	41.10	41.25	41.40	41.55	41.70	41.85	27
28	42.00	42.15	42.30	42.45	42.60	42.75	42.90	43.05	43.20	43.35	28
29	43.50	43.65	43.80	43.95	44.10	44.25	44.40	44.55	44.70	44.85	29
30	45.00	45.15	45.30	45.45	45.60	45.75	45.90	46.05	46.20	46.35	30
31	46.50	46.65	46.80	46.95	47.10	47.25	47.40	47.55	47.70	47.85	31
32	48.00	48.15	48.30	48.45	48.60	48.75	48.90	49.05	49.20	49.35	32
33	49.50	49.65	49.80	49.95	50.10	50.25	50.40	50.55	50.70	50.85	33
34	51.00	51.15	51.30	51.45	51.60	51.75	51.90	52.05	52.20	52.35	34
35	52.50	52.65	52.80	52.95	53.10	53.25	53.40	53.55	53.70	53.85	35
36	54.00	54.15	54.30	54.45	54.60	54.75	54.90	55.05	55.20	55.35	36
37	55.50	55.65	55.80	55.95	56.10	56.25	56.40	56.55	56.70	56.85	37
38	57.00	57.15	57.30	57.45	57.60	57.75	57.90	58.05	58.20	58.35	38
39	58.50	58.65	58.80	58.95	59.10	59.25	59.40	59.55	59.70	59.85	39
40	60.00	60.15	60.30	60.45	60.60	60.75	60.90	61.05	61.20	61.35	40
41	61.50	61.65	61.80	61.95	62.10	62.25	62.40	62.55	62.70	62.85	41
42	63.00	63.15	63.30	63.45	63.60	63.75	63.90	64.05	64.20	64.35	42
43	64.50	64.65	64.80	64.95	65.10	65.25	65.40	65.55	65.70	65.85	43
44	66.00	66.15	66.30	66.45	66.60	66.75	66.90	67.05	67.20	67.35	44
45	67.50	67.65	67.80	67.95	68.10	68.25	68.40	68.55	68.70	68.85	45
46	69.00	69.15	69.30	69.45	69.60	69.75	69.90	70.05	70.20	70.35	46
47	70.50	70.65	70.80	70.95	71.10	71.25	71.40	71.55	71.70	71.85	47
48	72.00	72.15	72.30	72.45	72.60	72.75	72.90	73.05	73.20	73.35	48
49	73.50	73.65	73.80	73.95	74.10	74.25	74.40	74.55	74.70	74.85	49
50	75.00	75.15	75.30	75.45	75.60	75.75	75.90	76.05	76.20	76.35	50

Computed by L. Leland Locke.

280.50  
 9.88  
 287.47 26  
 6  
 32  
 28  
 6  
 34.1  
 25.3  
 253  
 253  
 253  
 253  
 15.10  
 24.72  
 44.9  
 582  
 5001  
 13.00  
 37.80  
 34.0  
 40.43  
 12.12  
 28.5  
 5.63  
 3334  
 9.71  
 13.63  
 0.31  
 13.94  
 9.02  
 14.92