

1188

SEWERS

WASIX

FIELD BOOK

No. 385

PC N 78-78-
- Guilford Dunton

MICROFILMED
DEC 22 1964

Our Leather Bound Engineers Note Books are carried in the following rulings:

- No. 380 LEVEL BOOK. Left and Right Hand Page the same as Left Hand Page of this Book.
- No. 382 FIELD BOOK. Left Hand Page as in this Book, Right Hand Page 4 x 4 to the inch, Center Line Red.
- No. 384 MINING TRANSIT BOOK. Left Hand Page as in this Book, Right Hand Page 8x8 to the inch, Center Line Red.
- No. 385 FIELD BOOK. Left Hand Page as in this Book, Right Hand Page 8 vertical and 4 horizontal lines to the inch, Center Line Red.

We also carry the Note Books listed above, bound in extra strong Fabri-Hide (otherwise the same quality of book), which can be furnished at a somewhat lower price.

In ordering Fabri-Hide covered books, add the letter "F" to catalog number.

THE FREDERICK POST CO.
ENGINEERING and DRAFTING SUPPLIES
IRVING PARK STATION
CHICAGO, ILL.

Sewer Bk's. 98-113	1 - 1
" " 114-97	2 - 4
" " Jefferson LaJolla-Couts	5 - 7
" " 35-54 Middletown	8 - 9
" " W. Atlantic St. Add.	10 - 11
" " Lots ¹⁸ / ₂₀ Bk. Logan Ave Add.	12
" " 1-2-3-6-7 Presido Ridge	13
13-14-18-19-20 " "	14 - 18
X. Sec "Z" Street 39 to 37. Sts.	19 - 30
" " 60 th St. Estelle to El Cajon Blvd.	31 - 39
" " Bradford St. 60 th to College	40 - 41
" " Carol. St. " " "	42 - 45
6th & Robinson	58

Walker
5-11-27

Preliminary Levels For Sewer in BHS.
98 + 113 Bet G + MARKET Sts.
From 2 30th St to 32nd St. (E of Alley)

SE. BP	1.90	166.89	146.99	
T.P.	3.25	161.72	10.42	158.47
2 30th = 0+00			3.8	157.9
+50			2.9	158.8
1+00			2.4	159.1
+40			3.6	158.1
+50			4.9	156.8
+65			6.2	155.5
2+05			7.5	154.2
+15			9.2	152.5
+50			12.6	149.1
T.P.	0.44	149.19	12.97	146.75
3+00			1.8	147.4
+50			4.3	144.9
4+00			6.0	143.2
+50			9.6	139.6
T.P.	0.08	136.48	12.79	134.0
5+00			6.0	130.5
+50			14.0	127.5
T.P.	0.09	123.90	12.77	123.71
6+00			8.1	115.7
6+31 = W. 31st St.			12.1	111.7
+61 = " "			12.8	111.0
+91 = E.L. " = 0+00			13.4	110.4
0+50			14.2	109.6

75'N
137 135.5
75'N
167 132.5
50'N
22.0 127.2
50'N
12.8 116.7
75'N
19.6 104.2

123.80

1

T.P. 2.29	111.20	12.89	110.91
1+00		3.8	107.4
+50		7.6	103.6
2+00		12.3	98.9
T.P. 0.10	98.77	12.53	98.67
2+50		3.4	95.4
3+00		5.7	93.1
+50		8.2	90.6
4+00		10.1	88.7
+50		11.1	87.7
T.P. 0.82	88.19	11.40	87.37
5+00		1.8	86.4
+50		2.4	85.8
+75		3.0	85.2
6+00 = W. 32nd St		6.9	81.3
T.P. 12.33	95.02	5.50	82.69

This H.I. used on Page 2

Walker
5-11-27

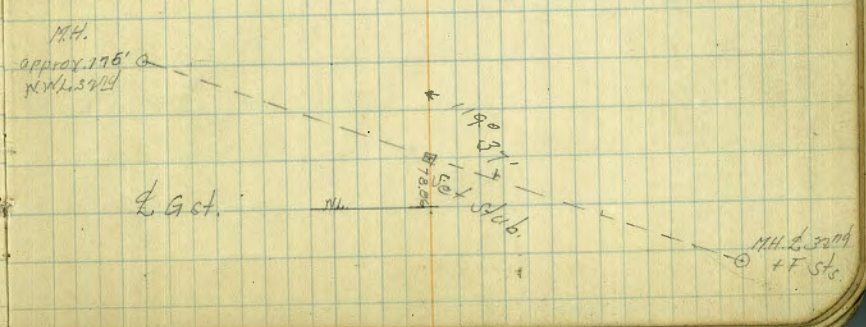
Prelim. Levels For Sewer & Alley in Blks
114 + 97 bet G + F Sts
From N.W. 32nd to E.L. 30th

HI. from Page 1
95.02

Station	8.82	86.20	83.6	85.0	83.7	86.3	88.8	86.3	90.5	94.8	94.90	98.6	102.9	84.39	104.8	107.58	108.6	112.7	116.1	120.2	125.7	131.82	132.7	138.6	142.4
Flow line M.H.																									
32nd + F St																									
N.W. 32nd St																									
0+00																									
+25																									
+45																									
+75																									
+78.8																									
1+00																									
+50																									
T.P.	12.80	107.70	0.12	75'S	98.6																				
2+00																									
2+25																									
M.H. N.W. 32nd																									
& G St. Flow line																									
2+50																									
T.P.	11.99	119.57	0.12	75'S	98.6																				
3+00																									
+45																									
+70																									
T.P.	12.36	131.92	0.01	50'S	122.1																				
4+00																									
+30																									
T.P.	13.06	144.89	0.10	50'S	122.1																				
4+60																									
+80																									
5+85																									

144.88

Station	157.00	0.31	144.57
T.P. 12.03			
5+80		11.8	145.2
6+00 = E.L. 31st St		10.9	146.6
2 " "		10.0	147.0
0+00 = N.W. 31st St		9.5	147.5
+40		9.3	153.7
+75		1.2	155.8
1+10		2.4	154.6
+70		1.8	155.2
+76		0.5	156.5
T.P. 9.25	166.53	0.32	156.68
2+00		7.3	159.2
+50		5.2	161.3
3+00		7.1	159.4
+25		7.5	159.0
+40		5.3	161.2
4+00		5.6	160.9



Prelim. Survey Levels Cont.

166.53 ✓

4+50 6.3 166.2 ✓

5+00 7.8 156.7 ✓

+20 12.6 153.9 ✓

+35 14.5 152.0 ✓

+52 14.1 152.4 ✓

+70 7.5 159.0 ✓

6+01 = Kib. 30th 6.7 159.8 ✓

T.P. 11.02 171.00 4.55 159.98 ✓

chk. on 8M. SWBP F+30th 4.08 166.72 ✓

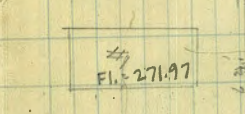
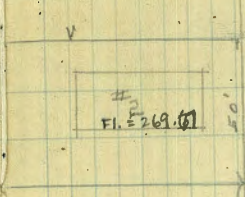
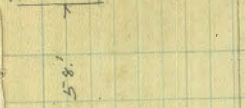
166.99 = 8M.
0.07

3

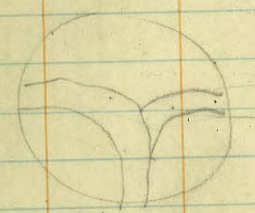
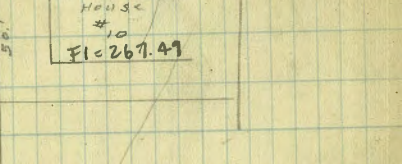
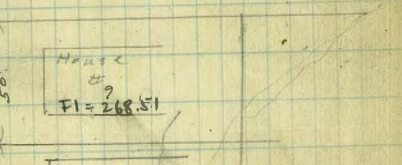
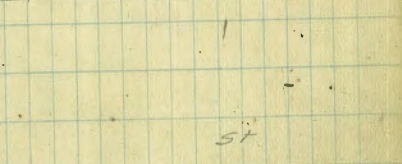
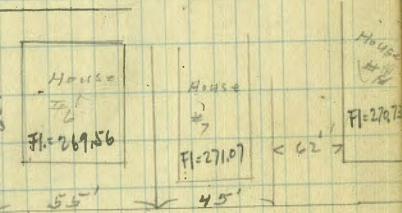
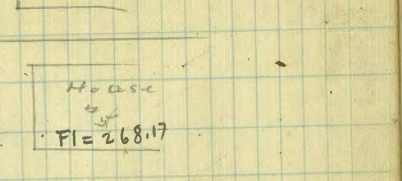
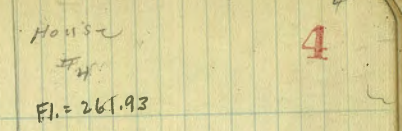
Levels for Sewer Montecito #1/15

BM	1.67	277.17	275.50	SW Jackson # Montecito
M.H. # Montecito Ibis 54	15.76	261.41	(300' notes)	
I.P.	3.42	271.47	9.12	268.05
House #1	7.50	270.97		floor
" #2	7.8	269.87		floor
" #3	0.0	271.87		floor
" #4	9.54	261.93		"
" #5	3.30	268.17		"
" #6	1.91	269.56		"
" #7	0.40	271.07		"
" #8	0.74	270.73		"
" #9	2.96	268.51		"
" #10	3.98	267.49		"

House 3
Fl. = 271.87



EXISTING MANHOLE
#10
#11
#12
#13
#14
#15
#16
#17
#18
#19
#20
#21
#22
#23
#24
#25
#26
#27
#28
#29
#30
#31
#32
#33
#34
#35
#36
#37
#38
#39
#40
#41
#42
#43
#44
#45
#46
#47
#48
#49
#50
#51
#52
#53
#54
#55
#56
#57
#58
#59
#60
#61
#62
#63
#64
#65
#66
#67
#68
#69
#70
#71
#72
#73
#74
#75
#76
#77
#78
#79
#80
#81
#82
#83
#84
#85
#86
#87
#88
#89
#90
#91
#92
#93
#94
#95
#96
#97
#98
#99
#100



8.73
7.03
15.76

IBIS

4

House #4

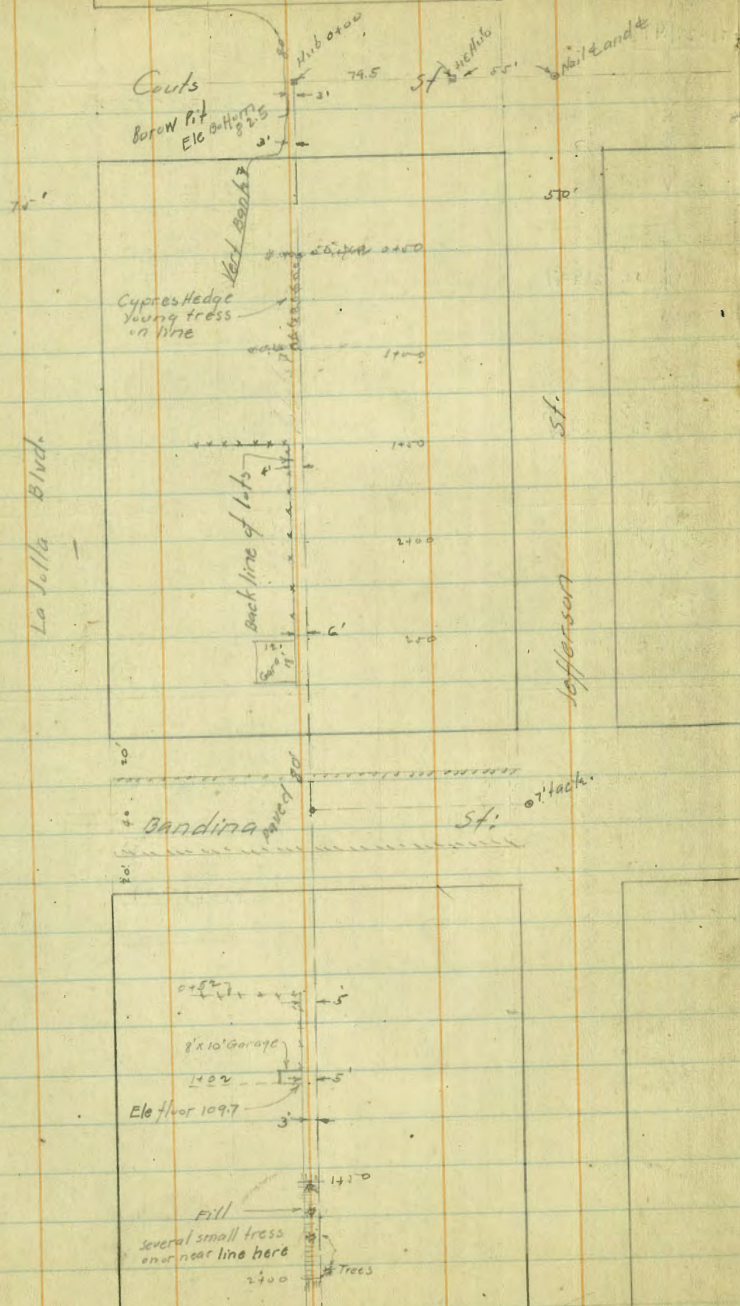
Fl. = 270.73

5'

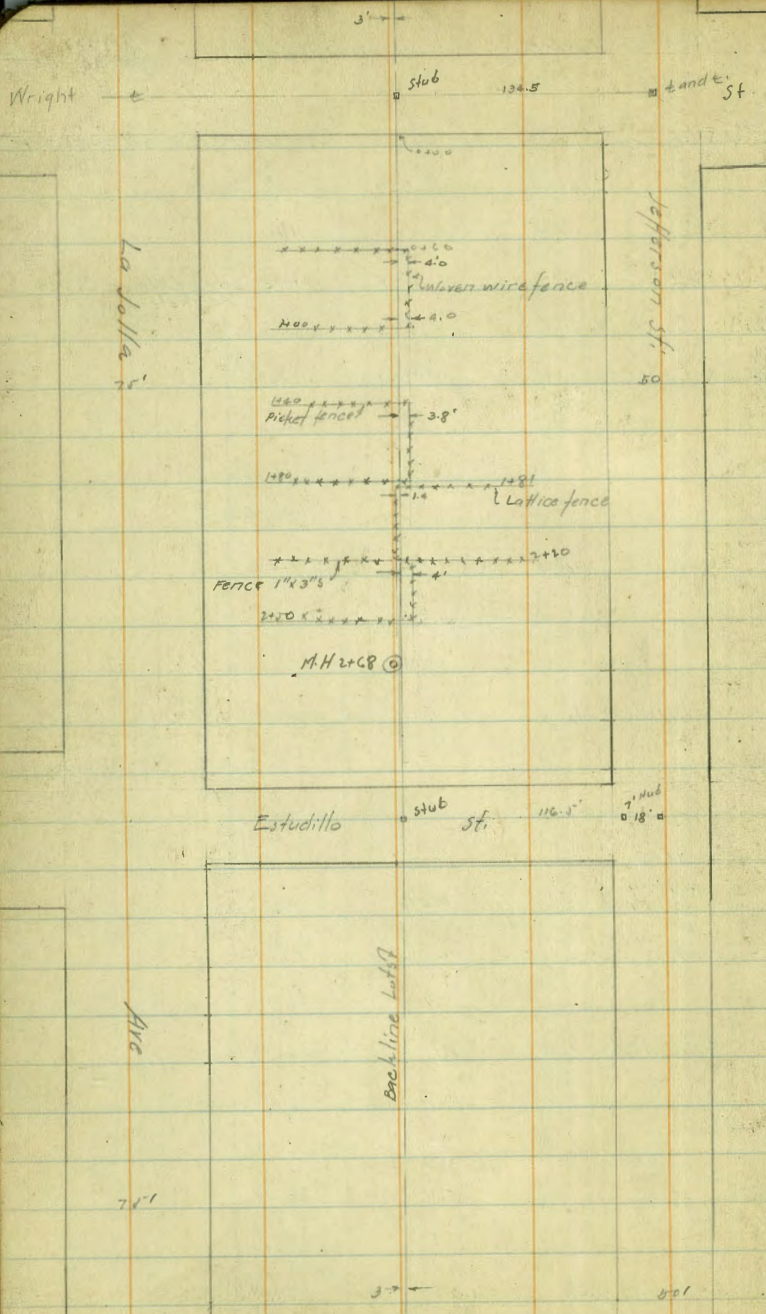
+ π - E/E
 Sewer Between Jefferson and La Jolla
 Couts South:

Dennan
 Osborne
 Flood
 July 30-27

5



Station	Elevation	Notes
11.09	91.14	20.05 B.P. NE Couts and La Jolla
# 11.99	101.86	89.87 stone
# 12.89	113.95	101.06 "
# 11.82	123.72	111.90 Reduced Hub to Couts See sketch
± line of Couts Hub	11.82	111.90
0+00 = S.L. Couts	10.3	113.4
0+50	9.6	115.3
1+00	6.5	117.2
1+50	6.3	117.4
H 2.70	120.96	118.26
2+00	4.2	116.8
2+50	4.1	116.9
3+00 = N.W. Bandini St	5.1	115.9
3+07	5.4	115.6
3+10	8.4	112.6
3+20 = Cement curb	8.47	112.49
3+40 = to Bandini St on concrete paving	9.42	111.54
3+60 = Cement curb	9.54	111.42
3+70	9.7	111.3
3+80 = S.W. Bandini St = 0+00	10.7	106.3
0+50	12.6	108.4
0+75	8.9	112.1
1+00	5.1	115.9
1+25	1.9	119.1
# 3.07	122.48	119.41 Rock
1+40	4.6	117.9
1+50	2.3	120.2



	+	x	-	Elev.
		122.98		
1+95			2.4	120.1
2+00			6.1	116.4
2+50			8.1	114.4
3+00			9.1	113.4
3+70 N.W. Wright			10.5	112.0
# 3+60 2.29	113.88		10.89	111.59 = Pine stub to Wright
3+60 = S.W. Wright = 0+00			3.4	110.5
0+70			5.5	108.4
1+00			8.9	105.0
1+50			12.1	101.8
# 5.02	106.77		12.13	101.75 Nail in fence.
2+00			8.4	98.4
2+50			13.5	93.2
3+42	98.91		12.78	93.99 on Rock:
2+68 Manhole 2.5 West		5.5	Ground	93.4
" " " "		6.05	Rim:	92.36
" " " "		11.85	Flow Line:	87.06
2+70 Top Bank		5.5		93.4
2+72 Bottom Creek		10.2		88.7
2+78 " "		10.2		88.7
2+80		7.6		91.3
# 12.70	114.45	+ 2.84		101.75 Seabore nail fence.
3+00		17.2		97.3
3+42 = N.W. Estudillo		11.7		102.8
3+62 = "		11.12	Pine stub	103.33
3+82 = S.W. Est = 0+00		9.5		105.0

Wright 40 st:
Pine stub to Wright:

Nail in fence.

on Rock:

118.5
6.55
5.30

	+	T	-	Elev
		114.25		
0+50			6.7	107.8
1+00			4.8	109.7
1+50			6.1	108.4
2+00			3.4	111.1
2+50			3.1	111.4
2+75 - end line			4.4	110.1

#	1.76	103.51	12.70	101.75
#	2.81	93.54	12.78	90.73
#	4.86	87.59	10.81	82.73

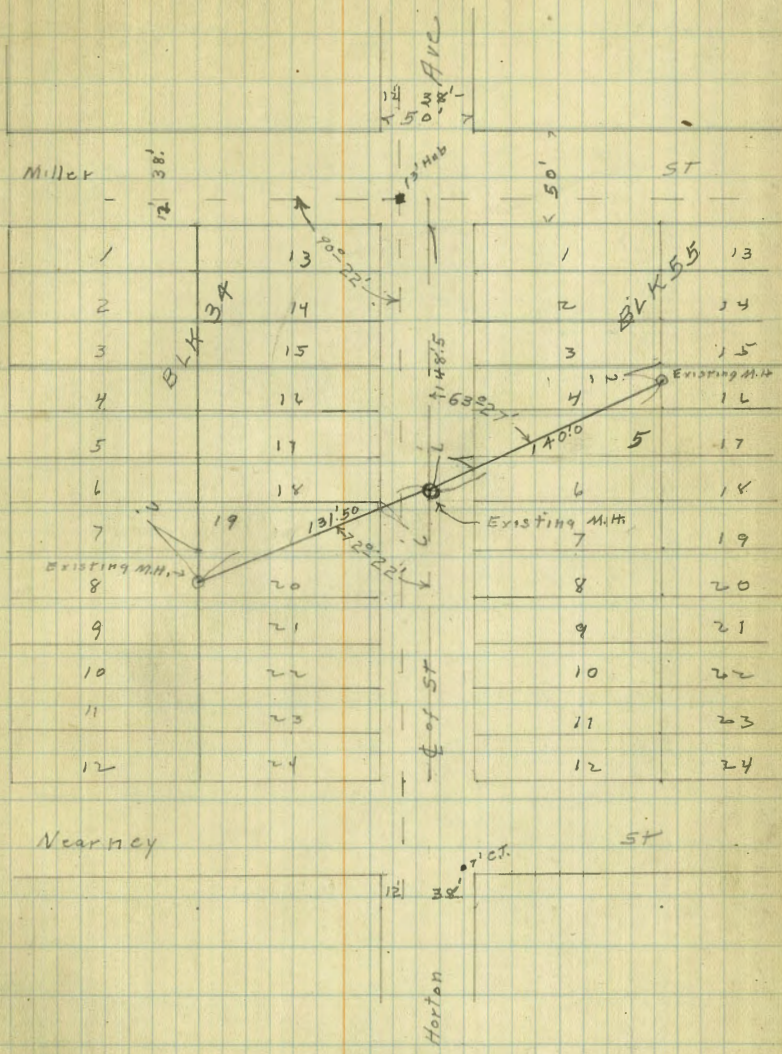
5.85
82.14 = 82° W N.E.
Cor. Lea Jolla and Wright
R.P.

Wright N.E. 82.14

7
7

Location of Existing Sewer
 IN BKS. 55 + 34 MiddleTown Add

Miller
 Northey
 Shaw

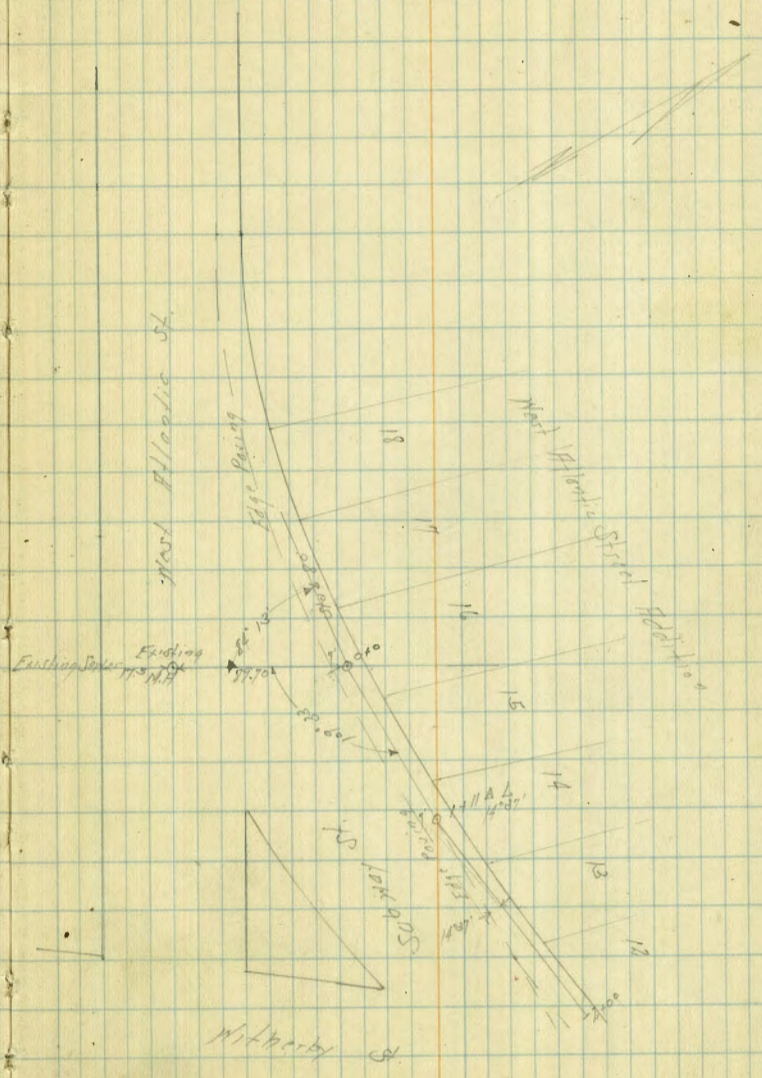


Sewer Levels
West Atlantic St. Edd.

10
1.0
5/10/28
H.C.M.

BM	1.49	587	138	SE 70th St W. Atlantic Atlantic
				Stub West of A
010 - A		5.9	0.0	9' ducts
85 W		55	0.4	77
50 W		51	0.8	64
80 W		49	1.0	80
				78
				74
				79
010 - A		59	0.0	
125 E		53	0.6	57
150		46	-0.7	78
175		71	-1.2	
171 - A N'37'		43	1.6	54
				73
150		45	1.4	
110		43	1.6	

Plotted
3-16-28
H.C.M.



Location Levels House 3277 Browning St.

11
11
11
11
11
11
11

34 3-21 133.12 129.91

SH BP
M.L.H. +
Browning

Bottom Step 127' Exp. E.L. Hillier 9.72 123.30
21' Sep 24 Browning

Coco Drive & Ridge 145' Exp. E.L. Hillier 11.25 121.87
18' Sep 24 Browning

129.50
3277

Coco Drive

127
127
127
127

Excavation

Browning St

Millard

St

St

Sewer Levels Lots 19-19-20
 BIK 1. Logan Ave. Add.

5-2-29
 Miller.

4/109.5
 27.4

6.36
 6.166
 13.02

17

11.18
 4.82
 +6.36

BM.	12.57	59.46		46.89	5th 37 th + National
T.P.	8.74	43.85	4.39	55.07	
152' N. of M. line 37 th St. 43' N. " " Logan Ave. } Sewer outlet at House			10.15	53.70	Flow Line
Floor of House.		7.75		56.10	
BM.	10.60	67.58		56.98	S.E. 37 th + Logan
T.P.	10.01	65.98	11.61	55.97	
Sewer outlet			12.27	53.71	
W. at 4" Vent.			12.07	53.91	
Sewer Main derived from Bate Bet M. H.			13.02	52.96	

27.4
 27.4
 54.8
 42.2
 27.4
 109.6

110.0
 .0864
 109.9136
 88
 70
 40

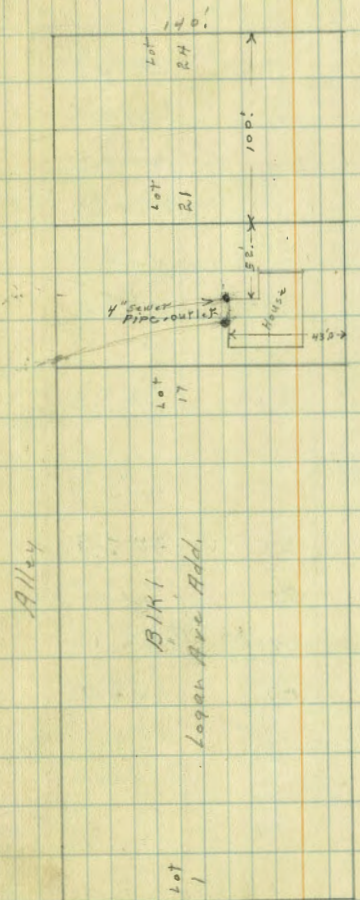
.0864
 27.4
 34.56
 60.48
 172.8
 2367.84

11.97
 3.6
 12.20
 11.71
 3.6
 12.07

53.91
 2.24
 52.67
 2.1
 53.43
 2.3
 53.20
 2.4
 52.96

52.71
 54.96
 0.07
 110.075
 53.91
 52.96
 .95

6.44
 5.20
 1.24
 5.16
 6.45



Note, See Profile 343-D - Sewer for S.E. Portion of City.
 Bunker took rod readings as follows (5-3-29)
 Top of 4" soil pipe at house 11.1
 Top of 6" sewer opposite soil line 11.55

Construction Notes

65.98

c.c. Main 4" Cent.	10.63	55.35	53.91	+1.44	
+ 27.4	9.54	56.47	53.67	+2.77	
+ 54.8	7.94	58.04	53.43	+4.61	
+ 42.2	6.45	59.53	53.20	+6.33	36 th St
1409.4 Main Sewer	6.49	57.49	52.96	+6.53	

Lot 1

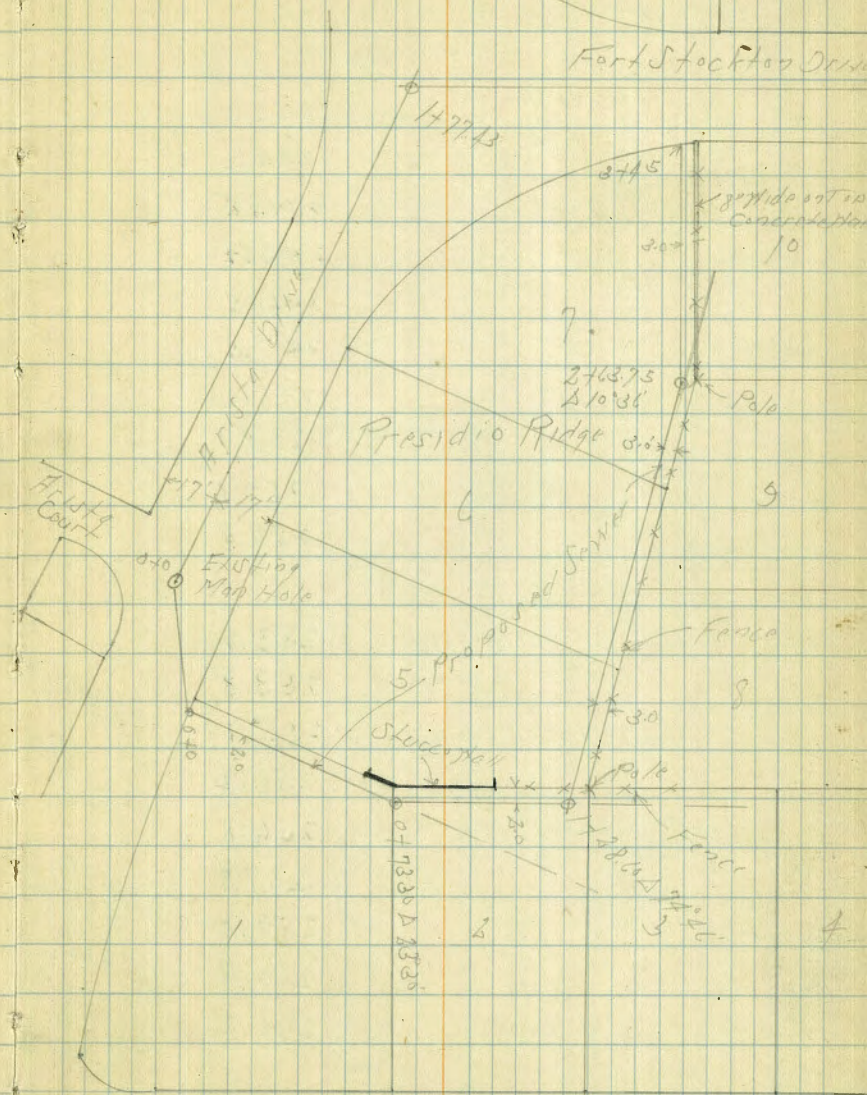
Sewer Levels

To Serve Lots 1-23-67 Presidio Ridge

B

10-31-29
S. J. ...
13
...
...

BM	0.77	267.83		267.06	N.E.P.P. Fort Stockton ATTOR
TP	0.75	255.71	12.87	254.91	
TP	0.10	244.67	11.14	244.57	
on Rim of Faultline M.H. Arista & Fort Stockton Flux Line			4.09	240.58 ✓	
			10.55	234.12	
			5.15	239.52	
	+1.0		0.25	241.2	
	+1.33 & 33.30		0.05	244.62	on St. 15
TP	6.36	250.98	0.05	244.62	
	+1.0		5.1	245.6	
	+2.10 Δ 47° 10'		1.77	246.71	on St. 15
	+5.0		3.7	247.3	
TP	9.6	252.31	2.23	248.15	
	+1.0		8.7	248.7	
	+3.0		7.5	249.9	
	+5.0		5.9	251.5	
	+6.75 Δ 6 10 30		1.93	252.43	on St. 15
	+1.0		5.2	252.1	
	+1.0		5.9	251.5	
	+1.5 S.W. Fort Stockton		6.56	250.80	on St. 15
TP			12.78	244.58	



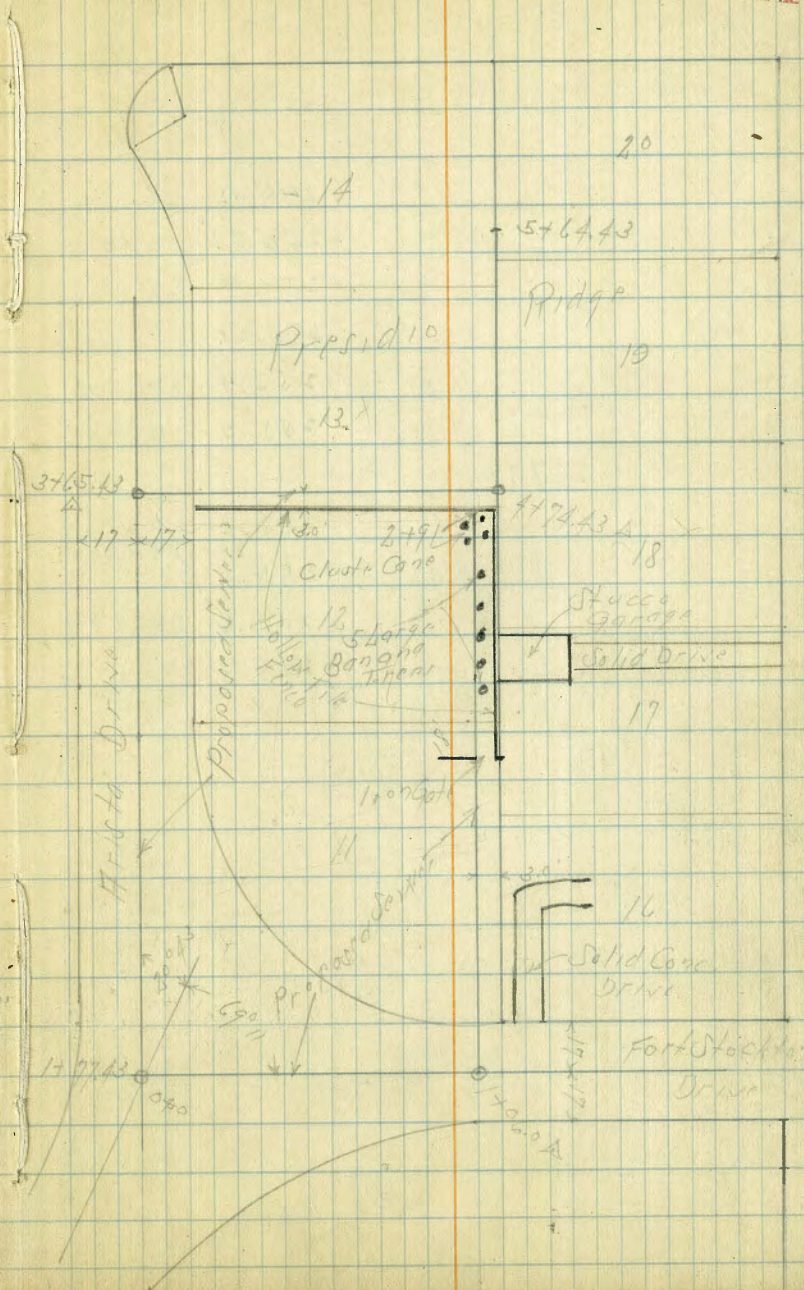
Santa Lucia

Aristo Drive And Lots 13-14-18-19-20

Presidio Ridge

BM	12.12	25270	240.58	211.39
10x0 - Eucalyptus	12.12	(211.39)?		
41 Aristo + Aristo Court	10.4	242.3		
+150'				
1x0	85	244.2		
+150	72	245.5		
+7713 & Fort Stockton	7.31	246.4		
2x0	11	246.6		
+150	52	247.5		
3x0	41	248.6		
+1543 A 90°	1.86	250.84		
+7743 - Gutter	1.9	250.8		
Top Cb	1.33	251.4		
TP	10.41	211.79	1.32	251.38
190	86	253.2		
1x0	80	253.8		
123 - Cypress Tree	67	255.1		
+150	56	256.2		
+7443 A 90°	50	256.8		
5x0	39	257.9		
+27	28	259.0		
+70	12	260.4		
+1043	0.2	261.5		

on Rim MH
Aristo Court
on Rim MH

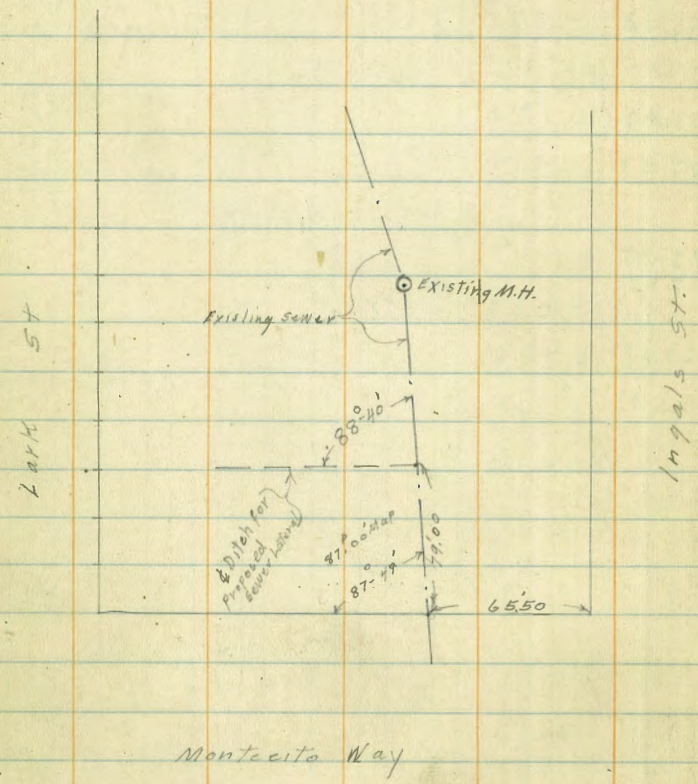


Survey Levels
 Fort Stockton + Lots 11-12-17-18
 Presidio Ridge

Station	Reading	Height	Reduced	Remarks
535	256.15	250.80	✓	on wall Feb 3+45 32.77 Stockton
1+70 = 1+77.43	97.6	246.39		1+77.43
+50	7.2	249.0		2+27.43
1+060 A 90'	5.34	250.81		2+83.43
+18 Gutter	5.3	250.9		2+95.43
Top 66	4.95	251.20		
+50	3.8	252.4		3+27.43
2+0	3.2	253.0		3+77.43
TP 486	257.82	319	252.96	
+15	4.8	253.0		3+92.43
+30	3.6	254.2		4+07.43
+50	2.2	254.6		22 West House Pier 22 -253.6
+91 - South Stone House	2.2	255.6		4+27.43
				4+68.43

Location of Sewer Lateral in
BIR RR Arnold + Chutes

11-21-29
Miller



Flood
Kamer
Snow
4/1/30 see
Levels for Sewer Boarding Ridge
Sketch on P. 18
B 1691

	+	π	-	Elev
B.M. N.W. BR.	1.31	265.23		263.92
T.P.	0.00	257.16	11.07	259.16
0400 = Connection to Existing Sewer				
at C of R/Way Through Lot				
0400		13.2		241.0
+ 19		10.1		244.1
+ 30		8.6		245.6
+ 50		6.4		247.8
+ 08.1 = Line of Aristo Dr.		5.7		248.5
+ 25.1 = " " " L th M.H. 5.95		5.95		248.21
+ 96 = " " " L th M.H. 3.50		3.50		250.66
+ 713 = Line of Aristo Dr.		2.85		251.31
+ 418		1.8		252.4
T.P.	7.26	257.07	1.35	249.81
+ 437 = Line of House				
42' R/W of C Sts 3437 = Corner House				
Floor level Garage (Built Unitary with House) 5.32				
Floor level of House approx 1.0 Higher Basement floor 8' lower				
+ 460		3.1		254.0
68' RT to Kitchen. Floor level		3.5		253.6
+ 402 M.H. A to Kewitts Line		1.6		255.5
T.P.	8.08	257.89	7.36	249.81
T.P.	10.88	265.04	3.73	254.16
+ 405 Base of Johnson's Wall		8.3		256.74

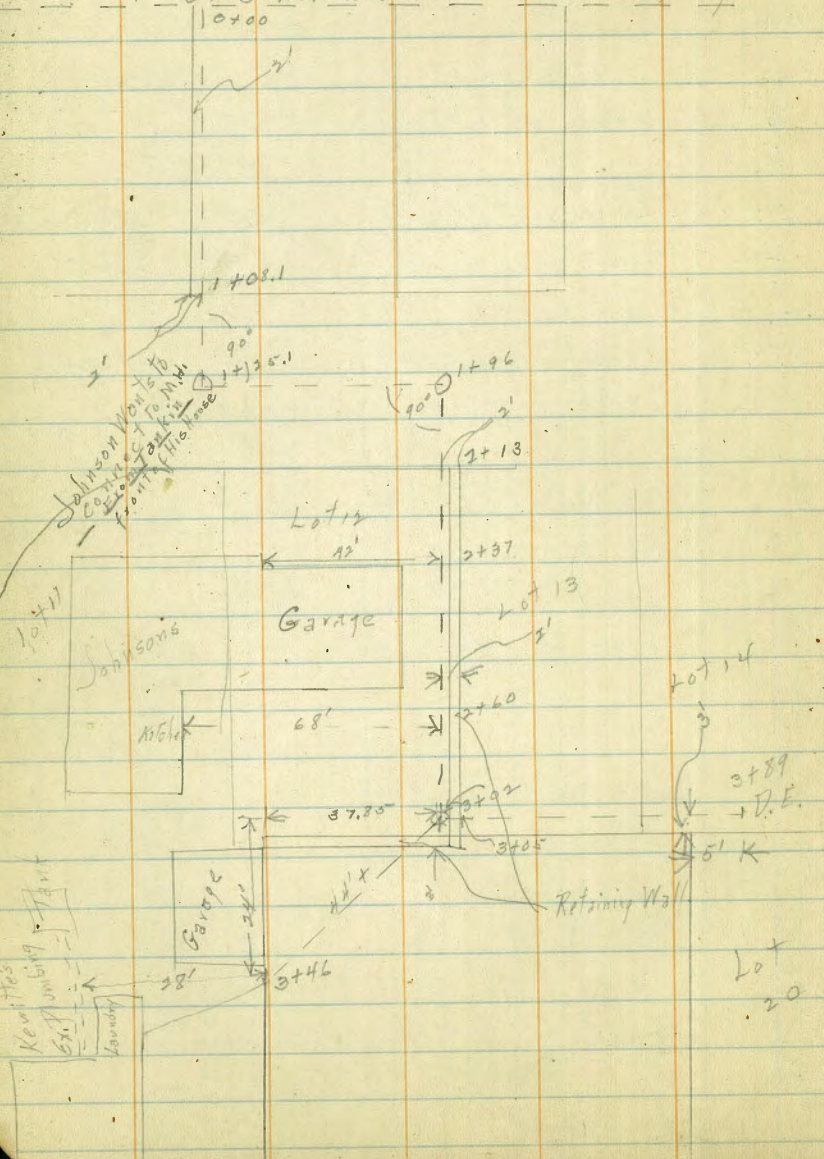
	3789 = D.E. off lot 30	3.8		261.2	
	T.P.	12.26	264.42	10.88	254.16
	B.M.			2.49	263.73
		2.11	266.03		263.92
	T.P.	2.40	261.25	7.18	258.85
	End of Proposed Sewer on				
	3446 = Line of Kewitts Property.	5.0		256.3	
	+ 38 To ex. plumbing (eng. ground)	5.8		256.0	
	floor level of Laundry	4.2		257.1	
	T.P.	6.48	266.00	1.73	259.52
	B.M.			2.07	263.93

Amplitude of
Pine

Amplitude
of Pine

Amplitude
of Pine
of error

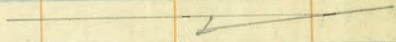
Est. Sewer Block 497 Old San Diego



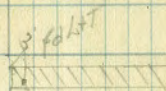
Cross Section Z St.
 37th St to Skinners Add.
 from W Line 38th to the E Line
 of 37th St

Indexed
 LM

July 3-91
 515507
 Hartberg
 Moor
 Albin



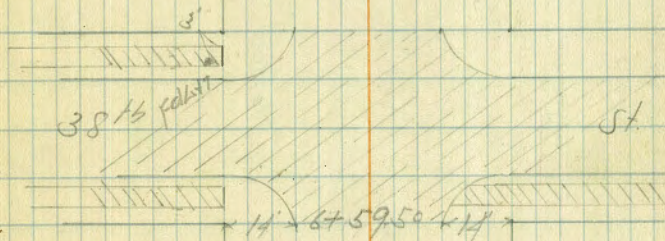
37th



St



3749 x 1305 — 344
 Board
 House — 342



40 x 40

39th

0 x 602
 117
 13

St

0 x 07

Cross Section Z St
39th St. to Skinners Add.

1+0

0+85

0+60 = W.L. 39th St.

0+30 = L.

0+0 = F.L. 39th St.

Plotted 7/25-41 C.B.H.

TP	0.72	28.29	276	27.57
TP	8.48	21.33	0.22	22.85
BM	12.01	23.07		11.06

S.F.B.P.
7/19/50
38133

4+5

4

Rt. N

20

20.7	21.6	22.7	23.6	23.5	22.7	23.2	22.9
76 50	67 40	56 26	47 10	48	56 18	65 26	51 40

20.3	21.3	22.2	22.9	22.5	21.6	21.8
80 50	70 40	61 26	54 10	58	67 26	65 40

18.4	19.5	19.9	19.6	19.5	20.4	20.5
99 50	88 40	84 26	87 10	88	79 26	78 40

16.6	16.2	16.3	18.21	20.0	20.6
117 55	131 40	120 26	10.08 26 SOUTH RIDGE	8.2 26	7.7 40

14.6	14.8	16.8	18.5	20.7	21.3
137 55 Top Spot	135 40	115 26	9.8	7.6 26	7.0 40

28.39

2+2 28.7 Lt of 2 = Fly Lat's Fence

2+0

2+86 38.1 Lt of 2 = Fly Lat's Fence

2+65

TP 8.35 35.92 0.72 27.57

2+30

2+0

1+65

1+30

28.29

	Lt	Z	RA
2+2	22.9	27.7	26.6
2+0	13.0 50	13.2 40	11.0 26
2+86	22.6	23.6	20.3
2+65	16.3 50	12.3 40	11.0 26
TP	22.0	23.2	24.3
2+30	6.8 50	5.1 40	3.9 26
2+0	2.6	2.5	2.8
1+65	2.6	2.5	2.8
1+30	2.6	2.5	2.8

28.29

4760 40.2 Lt of L = 1/4 Fences

25.3	26.4	28.1	29.9	30.5	32.9	32.9	32.0	39.5	43.4
106	95	78	60	85	65	60	19	136	125
50	40	26	19	84	60	60	6	16	40

4730

24.4	25.5	27.4	29.1	29.5	31.7	31.7	32.5	38.9	41.7
115	104	85	68	64	42	42	30	130	158
50	40	26	17	17	8	8	64	16	40

470

23.9	24.8	26.5	27.9	28.3	29.8	31.1	35.1	38.1
120	111	94	80	76	61	48	0	127
50	40	26	16	7	6	8	26	40

3793 = L 2' Core Walk on Lt

23.99
11.93
50 on Walk

24.98
10.94
398-42 Core
Walk

3765

23.7	24.6	25.9	27.3	27.6	29.3	29.4	30.4	32.8	34.8
124	113	100	86	83	66	65	55	201	170
50	40	26	17	6	6	10	10	26	40

3730 39.7 Lt of L = 1/4 Fence

23.4	23.9	25.3	24.5	26.7	28.28	29.4	31.3	32.9
125	120	106	94	90	76	65	46	30
50	40	26	17	6	6	10	26	40

35.92

35.92

6735

338	374	373	349	354	359	378	404	420
77	61	65	66	61	65	67	61	65
50	40	26	24	19	26	26	26	40

6721

336	348	360	347	349	365	373	410	420
79	67	65	66	66	67	62	65	65
50	40	26	26	26	26	26	26	40

670

328	345	347	336	345	361	362	371	407
87	70	68	79	70	65	66	61	68
50	40	26	26	26	26	26	26	40

5760

398 Pt of 2 - Fly Lot 6 Ford

285	298	317	328	333	353	358	369	405
130	117	98	87	82	162	57	16	10
50	40	26	26	26	26	26	26	40

TP

6.92 41.54 1.30 34.62

41.54

5730

273	288	294	318	328	344	344	350	399
86	71	65	71	71	65	65	69	65
50	40	26	26	26	26	26	26	40

570

261	275	292	308	313	334	336	342	399
98	84	67	51	46	85	23	17	14
50	40	26	19	26	26	26	26	40

3592

3592

0403

328	358	362	365	371	374	378	404	416
106	76	72	69	63	60	56	30	18
55	40	26	13		13	26	27	40

0400 W. Line 38^M

348	360	362	365	369	374	370	379	388	399
86	74	68	75	68	64	63	55	46	35
50	40	26-03	26-04	13		13	26-01	26-06	27

0-10 W. ob Line 38^M

859	35.18	36.48	35.50	36.11	36.47	36.78	37.18	37.52	38.03	38.82	39.35
74	8.22	6.22	7.76	7.23	6.93	6.62	6.22	5.78	5.37	4.53	4.05
90	40-01	36-06	36-04	26	13		13	26	36-01	36-05	30-06

TP 7.89 43.40 6.03 35.51

334 LTT 3800
ZST 2873

35.75	36.25	35.31	35.87	36.14	36.46	36.96	37.44	37.90	38.79	39.41
5.79	5.29	6.23	5.67	5.40	5.08	4.58	4.16	3.64	3.15	2.72
40-06	36-06	36-04	26	13		13	26	36-01	36-05	30-06

6+69.5 = FCB 4171

6+59.5 = F.L. 3816.5

36.1	36.43	35.76	36.46	36.78	37.14	37.48	37.94	40.1
5.4	5.11	5.78	5.08	4.86	4.40	4.06	3.69	1.4
40	36-06	26-04	13		13	36-01	26-05	40

6+55 398 Rt of Z = Wly Lath France

34.3	34.8	36.7	35.7	36.1	36.9	39.7	40.8	42.4
7.2	6.7	4.8	5.8	5.0	4.6	1.8	0.7	1.09
60	40	28	26		18	20	26	40

4154

4154

K-5

4

RT N.

25

1425

27.8	30.9	32.8	34.1	35.8	37.8	38.7	40.5
15.6	12.5	10.6	9.3	7.6	5.6	4.7	2.9
65	40	26	13		13	26	40

1400

25.4	28.2	30.0	32.0	35.0	36.8	37.6	39.7
18.6	15.0	12.8	10.8	8.3	6.6	5.8	3.7
65	40	26	13		13	26	40

0480

24.9	28.2	31.1	32.6	35.6	36.7	37.9	39.2	40.1
18.5	14.6	12.0	9.8	7.7	6.7	6.1	5.2	3.3
65	40	26	13		13	24	26	40

0460

22.7	31.9	33.4	35.5	36.8	37.0	37.7	38.4	41.0
17.7	11.5	10.0	7.9	6.6	6.4	5.7	4.0	2.4
65	40	26	13		13	21	26	40

0435

31.0	34.2	36.1	36.3	38.8	37.5	38.0	38.5	40.6	42.0
12.0	9.2	7.3	7.1	6.6	5.9	5.4	4.9	2.8	1.4
55	40	30	26	13		13	23	26	40

0410

32.9	34.2	36.1	36.9	37.5	37.6	38.2	39.2	40.2	41.8
10.5	8.2	7.3	6.5	5.9	5.8	5.2	4.2	3.1	1.6
50	40	26	13		13	24	26	27	40

43.40

43.40

2155

384	389	304	313	316	323	390	332
91	86	71	62	59	52	45	43
50	40	26	13		13	26	40

2135

399	412	322	336	336	442	447	453
76	63	53	39	39	33	28	27
56	40	26	13		13	26	40

2115 & 6. WALKONS

2205	4195	423	434	444	450	459	469
545	555	52	41	31	25	16	06
40	31.8 walk	26	13		13	26	40

2100

346	400	417	421	445	451	458	467
89	75	58	44	30	24	17	08
55	40	26	13		13	26	40

TP. 4.17 47.50 0.07 43.33

4750

1770

340	360	371	375	383	418	425	434
89	76	57	39	31	16	09	00
55	40	26	13		13	26	40

1755

310	337	345	349	384	401	419	420
124	97	79	65	50	33	25	14
65	40	26	13		13	26	40

4340

4340

T.P. 2.95 30.85 10.82 27.90

3475

244	255	272	261	274	286	295	305	309
14.1	13.2	12.4	11.8	11.3	10.1	9.2	8.2	7.8
50	40	26	13		13	26	40	50

3450

280	287	296	302	304	320	325	340	342
10.7	10.0	9.1	8.5	8.3	6.7	6.2	4.7	4.5
50	40	26	13		13	26	40	50

3437

33.46
 0.26 Floor of House
 34.3

3425

32.8	32.5	32.9	33.2	34.0	35.1	36.1	37.8	38.1
5.9	6.2	5.8	5.5	4.7	3.6	2.8	1.8	0.8
50	40	26	13		13	26	40	50

T.P. 2.23 30.72 11.01 36.99

3400

35.8	34.0	34.6	35.7	36.0	36.9	38.1	40.3
13.7	13.5	12.9	11.8	11.5	10.6	8.8	7.2
50	40	26	13		13	26	40

2475

39.2	37.0	37.7	38.5	38.9	39.5	41.5	42.5
10.7	10.5	9.8	9.0	8.6	7.8	6.0	5.0
50	40	26	13		13	26	40

4750

4750

Lt. South

♀

Rt. North

5465

252	262	262	270	271	271	280	278	279
4.9	4.6	4.2	3.8	3.7	3.7	2.8	3.0	2.9
50	40	26	13		13	10	26	40

5430

253	266	271	269	271	275	267	276	272
4.5	4.2	3.7	3.9	4.1	4.3	4.1	3.2	3.6
50	40	26	13		13	26	40	50

5400

End chicken wire fence on South 0.3 in alley

262	266	269	272	272	279	279	272	275
4.6	4.2	4.3	4.2	5.1	5.9	5.9	5.7	5.3
55	40	26	13		13	26	40	50

4465

277	277	272	270	279	279	270	250	260
6.1	6.1	6.6	6.8	6.9	6.9	6.8	5.8	4.8
55	40	26	13		13	26	40	50

4430

Begin chicken wire fence on South 0.6 in street

279	273	270	274	272	275	272	260	277
8.9	8.5	7.8	7.4	6.6	6.3	5.6	4.8	4.1
55	40	26	13		13	26	40	50

4400

272	271	272	272	274	272	266	277	283
8.6	7.7	6.7	6.1	5.4	5.3	4.2	3.1	2.5
55	40	26	13		13	26	40	50

3085

3085

50 S of S Line Z

0+00 S Line Z + 37th

100' North of N Line Z

50' N North Line Z 1st

0+00 N Line Z Street on 37th

6+10 E Gutter 37th St

6+00

30.85

Profile 1636
7-25-41
C.B.H.

Lt West

6 1/2	8 1/2	1 1/2	2 1/2	2 2/8	1 1/2	2 1/2	2 1/4	2 4/0
6.9	7.0	8.1	8.7	8.0	7.7	7.2	6.7	6.8
30	18	15	10		10	20	22	30

8 1/2	6 1/2	2 1/2	8 1/2	2 1/4	8 1/2	2 1/2	2 1/4	2 1/4
6.0	5.9	7.5	7.0	6.8	6.0	5.2	4.7	4.7
80	21	18	10		10	19	21	30

2 1/2	2 1/2	1 1/2	2 1/2	2 1/4	2 1/2	2 1/4
2.58	2.3	3.1	2.7	2.4	2.5	2.5
20 Topcb	20 Topcb	10		10	20 Topcb	20 Topcb

2 1/2	2 1/2	2 1/2	2 1/2	2 1/2	2 1/2	2 1/2
3.52	4.3	4.2	3.7	3.5	3.5	2.58
20 Topcb		10		10	20 Topcb	20 Topcb

2 1/2	8 1/2	8 1/2	2 1/2	2 1/2	8 1/2	2 1/2
4.75	5.0	5.0	4.6	4.2	4.0	3.82
20 Topcb	20	10		10	20 Topcb	20 Topcb

Lt South

2 1/2	5 1/2	6 1/2	1 1/2	8 1/2	2 1/2	1 1/2	6 1/2	8 1/2
5.6	5.3	4.9	4.7	4.5	4.2	4.1	3.9	3.82
30	40	26	13		13	26	40 Gutter	40 Topcb

8 1/2	1 1/2	6 1/2	6 1/2	7 1/2	8 1/2	2 1/2	2 1/2
5.0	4.7	4.5	4.4	4.2	4.0	3.7	3.5
50	40	26	13	40	13	26	40

30.85

Rt East 0137th 29

				0.14 Diff
				46.89
check BM	SM National x 37 th	2.44		47.03
T.P.	11.12	49.47	0.35	38.35
End of TP cb NE 37 th Z	11.67	38.70	3.82	27.03
		30.85		

Cross Section 60th St
 Estelle St to E/Cojo Blvd.

1+0 29.4 Rt of St - Fly Power Pole 29.0 ft - W/ Pay Pole

0+86 24.2 Lt of St = 7' 2" Ribbon Conc Dr. 2' Ribbon

0+65 28.7 Rt of St - W/ Conc Drive

0+51 28.9 Rt of St = Fly Conc Drive

0+41 23.1 Lt of St 7' Conc Dr

0+0 = N/6 Estelle St

B.M. 11.69 430.35 418.66

716 fted 12-3-41 G.D.H.
 12-4-41 W.L.P. (4x stake)
 "

H.W.E.P.
 Estelle St
 60th St

H.W. S Rt = E

757°	755°	754°	751°	752°	247°	753°	246°	424°
4.65	4.76	5.0	5.3	5.2	5.7	5.1	5.8	5.6
30	27.5	18	14-FOUR		14-FOUR	18	30	40
	27.5-Fly 20 Ribbon Conc Dr.							

424.04 ✓
 6.33
 28.7 - Fly W/ Conc Drive

424.25
 6.06
 50.8
 8.11 Do Garage Conc Floor

423.76 ✓
 6.59
 28.9 - Fly W/ Conc Drive

424.31
 5.98
 50.7 - Fly Do Garage Conc Floor

423.69 ✓	236°	233°	229°	231°	226°	231°	235°	423°
6.66	6.75	7.1	7.5	7.3	7.8	7.3	6.9	6.9
30 - G.D.H.	23.1 - 2' 7" Conc Dr	18	13 - Fly		13 - Fly	18	30	40

421.4	215°	210°	205°	420.7	206°	213°	218°	422°
9.0	8.9	9.4	9.9	9.7	9.2	8.7	8.6	8.4
40	30	18	17 - Fly Conc Dr + Fly		13 - Fly Conc Dr + Rock Pav	18	30	40

430.35

210

4333	4334	4336	4334	4336	4334	4332	4335	4337
7.4	7.3	7.1	7.3	7.1	7.3	7.0	7.6	7.0
40	30	18	14-Edg		14-Edg	18	30	40

1490

29.4 R1/2 - 27' Conc Drive

432.95	432.97
7.77	7.25
29.4-Top Conc Drive	400' Drive

1477

432.02	432.04	431.9	431.5	431.7	431.4	431.7	431.9	432.0
8.70	8.68	8.8	9.3	9.0	9.3	9.0	8.8	8.7
30.07 Walk	28.7-Top Conc	18	14-Edg		14-Edg		30	40

1461

236 Lt - 27' 2 Ribbed Conc Dr. 2 Ribbed

430.39	430.48
10.33	10.24
30.07 Drive	23.6-Top Conc

TP

10.44 440.72 0.07 430.28

440.72

1440

Conc Drive R1/2 Lt

429.18	429.02	429.0	428.8	428.9	428.6	428.4	428.72	428.58
1.17	1.33	1.4	1.6	1.5	1.8	1.5	1.53	1.77
30.07 Conc Drive	19.8-Top Conc Drive	18	14-Edg		14-Edg		29.3-Top Conc Drive	40.0 Drive

1410

427.8	427.65	427.55	427.7	426.5	426.8	426.4	427.1	426.8	426.8
2.70	2.80	3.7	3.8	3.6	4.0	3.2	3.6	3.6	3.6
30.07 Conc Drive	26.7-Top Conc Drive	18	14-Edg		14-Edg		30	40	40

430.35

3+40

29.3 R1 of L2 = 2.7 Conc Dr.

446.10 / 446.03
 4.25 4.32
 23.0 19.0
 SFLY Conc
 Walk

447.67 / 448.07
 2.68 2.78
 29.3 30.0
 SFLY Conc
 Dr.

3+19

446.01 / 446.89
 4.34 2.46
 29.3 30.0
 SFLY Conc
 Walk

3+0

442.9 442.8 442.5 442.2 442.5 442.9 442.9 442.1 442.5
 7.5 7.6 7.9 8.2 7.9 8.2 7.5 6.3 5.8
 40 30 18 15-Edge 14-Edge 18 30 40

2+82

21.2 L1 of L2 = 2.7 2 Ribbon Dr. 2 Ribbon

440.99 / 441.15
 9.36 9.20
 30.0 21.7
 SFLY Conc
 Dr.

TP

10.22 450.35 0.59 440.13

439.69 439.82 439.4 439.2 439.4 438.9 439.4 439.9 440.2
 1.03 0.90 1.2 1.9 1.3 1.8 1.3 0.8 0.5
 30.0 23.1 18 14-Edge 15-Edge 18 30 40

2+66

2+35

436.58 436.67 436.6 436.4 436.6 436.1 436.6 436.4 436.4
 4.14 3.96 4.1 4.3 4.1 4.6 4.1 4.3 4.3
 30.0 22.0 18 14-Edge 14-Edge 15-Edge 18 30 40
 SFLY Conc Dr. Ribbon

440.72

440.72

4758.65 JCB

45743 421/19
 45710 457/18
 4575 41
 4577 39/78
 45806 358
 45843 321/38-CbTop

4749.65 - S. L. Carol ST

45668 496/19-Cb
 45634 530/78-Gutter
 4569 47
 45690 474/20.5-Gutter
 45724 440/21.7-Cb
 4575 41/30

4739.65 - Cb BC on Pt

45581 583/19-CbTop
 45544 618/78-Gut
 4560 56
 45598 586/18-Gut
 45634 530/19-CbTop
 45710 45/30

4715.5 - 1 1/4 Conc Dr. on Pt

45401 763/19-Cb ✓
 45415 719/30-1 1/4 Conc Dr ✓

470

45209 958/19-Cb
 45772 997/78-Gut
 4527 94
 45710 951/78-Gut
 45246 918/19-Top
 45282 875/30-1 1/4 Conc Dr

TP 11.34 461.64 0.05 450.30

461.64 ↓

3750 = 5 End Roll Curb Pt + Lt

447.2 332/30
 44690 345/19-Top Roll
 44663 377/78-Gutter
 447.1 38
 44700 325/78-Gutter
 44735 300/19-Top Roll
 4482 33/30

450.35

450.35

6019.57

Δ Z RA 36

5750 285' 110' 1/2 - 1/4 Parner Pole

462.9	462.65	462.30	462.7	462.57	462.89	463.3
59	6.12	6.47	6.1	6.20	5.88	5.5
30	17-cb	18-Gut		18-Gut	19-cb	30

5725

461.6	461.55	461.29	461.6	461.56	461.87	462.5
7.2	7.22	7.53	7.2	7.21	6.90	6.3
30	19-cb	18-Gut		18-Gut	19-cb	30

TP 7.35 468.77 022 461.92

468.77 ✓

570965 - Cb FC 07 RA

460.7	460.79	460.20	460.8	460.75	461.10	461.6
0.9	0.85	1.21	0.8	0.89	0.51	0.0
30	19-cb	18-Gut		18-Gut	19-cb	30

479965 - 1/2 Carol

460.6	460.73	460.19	459.82	460.7	460.34	460.65	460.8
1.0	1.41	1.45	1.82	1.4	1.30	0.99	0.8
30	20-17-11-11	19-cb	18-Gut		204-Gut	216-cb	30

479065 - 1/4 Cb Line

459.63	459.78	459.6	459.7	459.68	460.10
2.01	2.26	2.0	1.9	1.96	1.54
19-cb	18-Gut		18	35-Gut	35-cb

477465 - 1/2 Carol

458.57	458.73	458.7	458.9	459.0	459.7
3.07	3.41	2.9	2.7	2.6	2.4
19-cb	18-Gut		18	30	38

461.64

461.64

TP 6.08 47060 425 46452 ^{High 12 cb} on Rt

6+09 = 1/2 Conc Drive on Rt ✓

469120 ✓ 469125
487 487
19-cb 30-11/11 Conc Drive

6+0 294 Rt of 1/2 - Fly TCI Pole ✓

463.7 463.87 463.89 463.9 463.70 463.09 463.9
46 493 528 49 507 493 44
30 19-cb 18-5ul 18-5ul 19-cb 30

5+89 = 1/2 Conc Drive on Lt

463.99 ✓ 463.99
478 508
30-11/11 19-cb

5+75.6 = 1/2 Conc Drive on Rt

463.8 463.36 463.07 463.5 463.32 463.63 463.88
50 541 575 53 545 544 ✓ 489
30 19-cb 18-5ul 18-5ul 19-cb 30-11/11 Conc Drive

5+72 = 1/2 3' Conc Walk on Lt

463.78 ✓ 463.32
499 545
30 on walk 19-cb

5+60.6

463.27 ✓ 463.29
550 528
19-cb 30-11/11 Conc Drive

468.77

468.77 ✓

7+570 = S.L. El Cajon on diagonal

465.9	465.78	465.75	465.53	465.67	465.65	466.0	466.0
4.7	4.82	5.35	5.07	4.93	5.02	4.60	4.76
34.7-Ed	22.0-Cb	22.0-50th	11.	11	11	31.0-Cb	34.7-Ed

7+395 = S.L. El Cajon on //

465.9	466.3	465.7	465.9	465.3	465.7
4.7	4.3	5.1	5.2	5.3	4.7
30	22	18-Ed		18-Ed	30

7+32 29.2 Rt of L = Fly Pol. Pole

7+25 21.0 Rt of L = Fly Power Pole

7+0

466.0	466.1	469.8	465.0	469.7	465.9
16	4.5	5.8	5.1	5.7	5.2
30-Ed	32	18-Ed		18-Ed	30

6+63 29' W of L = Sky Lab Fence

465.7	464.1	469.5	469.16	469.57	465.3
5.4	6.5	6.1	6.44	6.08	5.3
38-Ed	Ed on Pt		18-50th	19-Ed	30

6+50 = N/4 Cb on Pt

6+20 = N/4 Cb on Lt

65.1	62.26	43.99	469.3	465.03	460.37	65.1
5.5	6.24	6.66	6.3	5.57	6.23	5.5
30	19-N/4 Cb	18-50th		18-50th	19-Cb	30

6+24 240' Rt of L = L 3' Cone Walk

464.69	465.08
5.96	5.52
24 = N/4 Cb	34.00

470.60

470.60 ✓

Lt

L

PL

39

B.M

5.36

465.24

H.W.B.P
El Cap on
Coll. 10/11/19
465.27

74714 = S.C. 6. line El Cap on on 10/19.

470.60

445.67	445.74	445.77	445.79	445.80	445.70	445.37	445.93
498	5.46	5.22	4.98	4.80	4.90	5.37	4.67
387	387	308	11		11	387	367
46.50	50th					50th	50th

470.60

CrossSection Bradford St.
60th to College

Sisson
Northern
W. Moore
8/27/41

Indexed
LM Lt. = North

£

Rt. = South 40

2+00

438.7	436.9	436.2	435.7	435.2	434.7	434.2	433.2
2.0	3.3	3.8	4.5	4.8	5.5	5.8	6.8
25	23	15	10		15	25	35

1+50

438.8	437.5	437.7	436.5	436.1	435.5	434.9	433.8
1.4	2.7	3.0	3.7	4.1	4.7	5.3	6.4
25	23	18	15		15	25	35

1+00

439.1	438.1	436.9	436.7	435.8	435.5	434.5	433.9
1.1	2.1	3.3	4.0	4.4	4.7	5.7	6.8
25	23	15		15	20	25	35

0+50

438.5	437.5	436.7	436.0	435.3	435.0	434.7	433.7
1.7	2.7	3.5	4.2	4.9	5.2	7.0	7.0
25	23	15		15	23	25	30

0+30 Garage on South 31° out

432.99 ✓
7.25
31 W. Conc. Drive

0+00 East Line 60th

437.7	436.8	435.7	434.8	433.8
2.5	3.4	4.5	5.4	6.4
25	15		15	25

T.P. 11.47 440.24 0.13 428.77

B.M. 10.24 428.90 418.66 N.W.B.P. Estelle 9
+ ↑ - 60th

440.24 ✓
428.90

Notes Reduced - 8.28.41. P.
Plotted 12-3-41 C.M.
" " 12-4-41 W.M.O. (K.S. SCHE)

440.24

Lt. = North

£

Rt. = South 41

	11.40	463.15	0.07	451.75
T.P.	11.85	451.82	0.27	439.97

3+12 = East Line College

431.5	430.9	430.1	429.5	429.6
8.7	9.8	10.1	10.6	10.6
25	15		15	25

3+00

433.0	431.8	431.0	431.0	430.3	430.3	429.8
7.2	8.4	9.2	9.2	9.9	9.9	10.4
25	23	15		15	25	35

2+75

439.1	433.1	432.6	432.6	432.1	432.3	430.7
6.1	7.1	7.6	7.6	8.1	7.9	9.5
25	23	15		15	25	35

2+50

435.7	434.4	434.2	434.2	432.6	433.2	432.0
4.5	5.8	6.0	6.0	6.6	7.0	8.2
25	23	15		15	25	35

2+25

437.4	436.0	436.7	435.0	434.9	434.4	434.1	432.8
2.8	4.2	4.5	5.2	5.3	5.8	6.1	7.4
25	23	15	12		15	25	35

440.24

440.24

Cross Section Carol St.
60th to College

INDEXED
LM

8/27/41

Lt. = North

Q

Rt. = South 42

463.15

0+75

0+57.5 = Q of 7° Drive on South

0+50

0+29.5 = Q 3° Walk on South

0+08 = End Curb Returns East Edge 3° Walk on North

0+00 = East Line 60th St

463.15

463.15

457.1	458.52	459.74	459.2	458.1	457.9	457.52	457.82	458.2
4.1	4.63	4.93	5.0	5.1	5.3	5.43	5.32	5.1
25	16	15	7.5	Rock oil	7.5	15	16	25
	cb.Top	Gut.				Gut.	cb.Top	

457.99	458.35	458.49
5.16	4.80	4.66
15	19	25
Gut.		

460.4	459.6	459.35	459.05	458.9	458.6	458.5	458.18	458.49	458.8
2.8	3.6	3.80	4.10	4.3	4.4	4.7	5.02	4.68	4.4
25	20	16	15	7.5		7.5	15	16	25
		cb.Top	Gut.				Gut.	cb.Top	

460.4	460.1	459.59	459.57	459.4	459.1	458.7	458.15	458.50	459.15
2.0	3.1	3.26	3.58	3.8	4.1	4.5	5.00	4.65	4.00
25	20	16	15	7.5		7.5	15	16	25
		cb.Top	Gut				Gut.	cb.Top	25 on Walk

460.59	460.19	459.74	459.5	459.2	458.7	458.04	458.43	458.6
2.56	3.05	3.41	3.7	4.0	4.5	5.11	4.72	4.4
25	16	15	7.5	Rock oil	7.5	15	16	25
on Walk	cb.Top	Gut.				Gut	cb.Top	

461.0	459.29	459.6	459.1	458.6	458.10	458.0
2.2	2.86	3.6	4.1	4.6	5.05	5.2
25	17.6	7.5	Rock oil	7.5	17.6	25
	cb.Top				cb.Top	

463.15

Lt. = North.

£

Rt. = South

43

1+61⁵ £ of 7° Drive on North

4534.50	4533.74	4533.34
8.65	9.43	9.83
25	17 Break	15 Gut.

on Drive

1+55 £ of Wall #4 Wide on South

4533.65	4533.59
9.50	9.56
16 on Wall	25 on Wall

1+50

4541.6	4543.34	4539.99	4544.0	4541.1	453.9	4533.63	452.97	452.9
8.6	8.81	9.16	9.2	9.1	9.3	9.52	9.18	9.3
25	16	15	7.5	Rock	7.5	15	16	25
	on Top	Gut.		on	on	Gut	on	on
				on	on			

1+25

4563	455.83	457.47	457.6	457.6	457.4	457.11	457.45	457.5
1.9	7.32	7.68	7.6	7.6	7.8	8.00	7.70	7.7
25	16	15	7.5	7.5	15	15	16	25
	on	on	on	on	on	on	on	on
	on	on	on	on	on	on	on	on

1+08 = £ of 7° Drive on South

4566.01	456.41	456.45
7.10	6.74	6.70
15 Gut.	20 Break	25

1+00

457.8	457.34	456.99	457.0	457.0	456.8	456.44	456.83	456.9
5.4	5.81	6.16	6.2	6.2	6.4	6.66	6.32	6.3
25	16	15	7.5	7.5	7.5	15	16	25
	on	on	on	on	on	on	on	on
	on	on	on	on	on	on	on	on

0+83⁵ = £ of 3° Walk on South.

457.56	457.73
5.59	5.42
16 on Walk	25 on Walk

463.15

463.15 ✓

453.05

2+57 = East Edge of Drive on North
 & of 8° Drive on South

2+40 = West Edge of Drive on North

2+25

2+045 = & of 7° Drive on South

2+00

1+75

T.P.

0.05

453.05

10.15

453.00

Lt = North

£

Rt. = South, 44

453.05

448.31	448.09	447.55	447.4	447.5	447.3	447.07	447.20	447.27
4.74	4.96	5.50	5.7	5.6	5.8	2.03	5.75	5.78
On Drive	18.6 on Drive	15	7.5	Rock	7.5	15 Gut	18 End of Solid Drive	25 on Ribbon Drive

448.61	448.61	448.5
4.44	4.44	4.53
on Drive	18.6 on Drive	15 on Drive

449.0	449.68	449.40	449.4	449.4	449.0	449.99	449.32	449.7
2.1	3.37	3.65	3.7	3.7	3.9	4.06	3.73	3.4
25	16	15	7.5	Rock	7.5	15 Gut	16	25
	cb. Top	Gut		Oil			cb. Top	

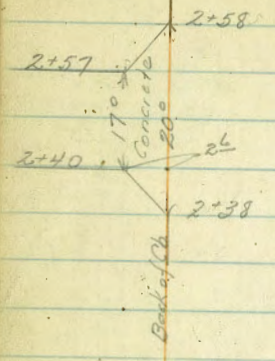
450.59	450.74
2.46	2.31
16 on Drive	25 on Drive

451.7	451.77	450.90	451.0	451.0	450.8	450.57	450.87	51.1
0.4	1.84	2.15	2.1	2.1	2.3	2.48	2.18	2.0
25	16	15	7.5		7.5	15	16	25
	cb. Top	Gut				Gut	cb. Top	

452.1	452.50	452.48	452.5	452.6	452.4	452.13	452.43	452.5
0.5	0.25	0.57	0.5	0.5	0.7	0.92	0.62	0.6
25	16	15	7.5	Rock	7.5	15	16	25
	cb. Top	Gut		Oil		Gut	cb. Top	

453.05

Note!
Detail of Drive on North



3+12 = W. Line College End of Rock & Oil
Bremen

3+00

2+96 = E of 3° Walk on North

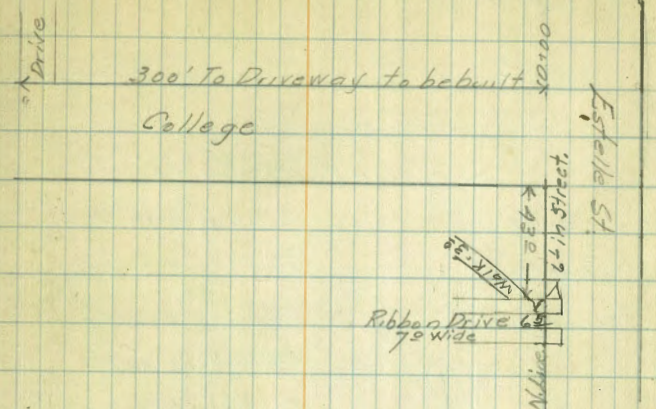
2+862 E of 3° Walk on South

2+75

Lt. = North

£

Rt. = South 45



445.3	444.38	444.06	444.0	444.1	443.8	443.55	443.85	443.9
7.8	8.67	8.99	9.1	9.0	9.3	9.50	9.20	9.2
25	16 Co.Top	15 Gut	7.5		7.5	15 Gut	16 Co.Top	25

446.1	445.06	444.75	444.7	444.7	444.6	444.25	444.55	444.7
6.9	7.99	8.30	8.4	8.4	8.5	8.80	8.50	8.4
25	16 Co.Top	15 Gut	7.5	Rock Oil	7.5	15 Gut	16 Co.Top	25

446.36	445.31
6.67	7.74
25 on Walk	16 Co.Top

445.40	445.40
7.65	7.65
16 Co.Top	25 on Walk

446.1	446.0	446.35	446.4	446.4	446.7	445.83	446.12	446.1
5.0	6.45	6.75	6.7	6.7	6.9	7.22	6.93	7.0
25	16 Co.Top	15 Gut	7.5		7.5	15 Gut	16 Co.Top	25

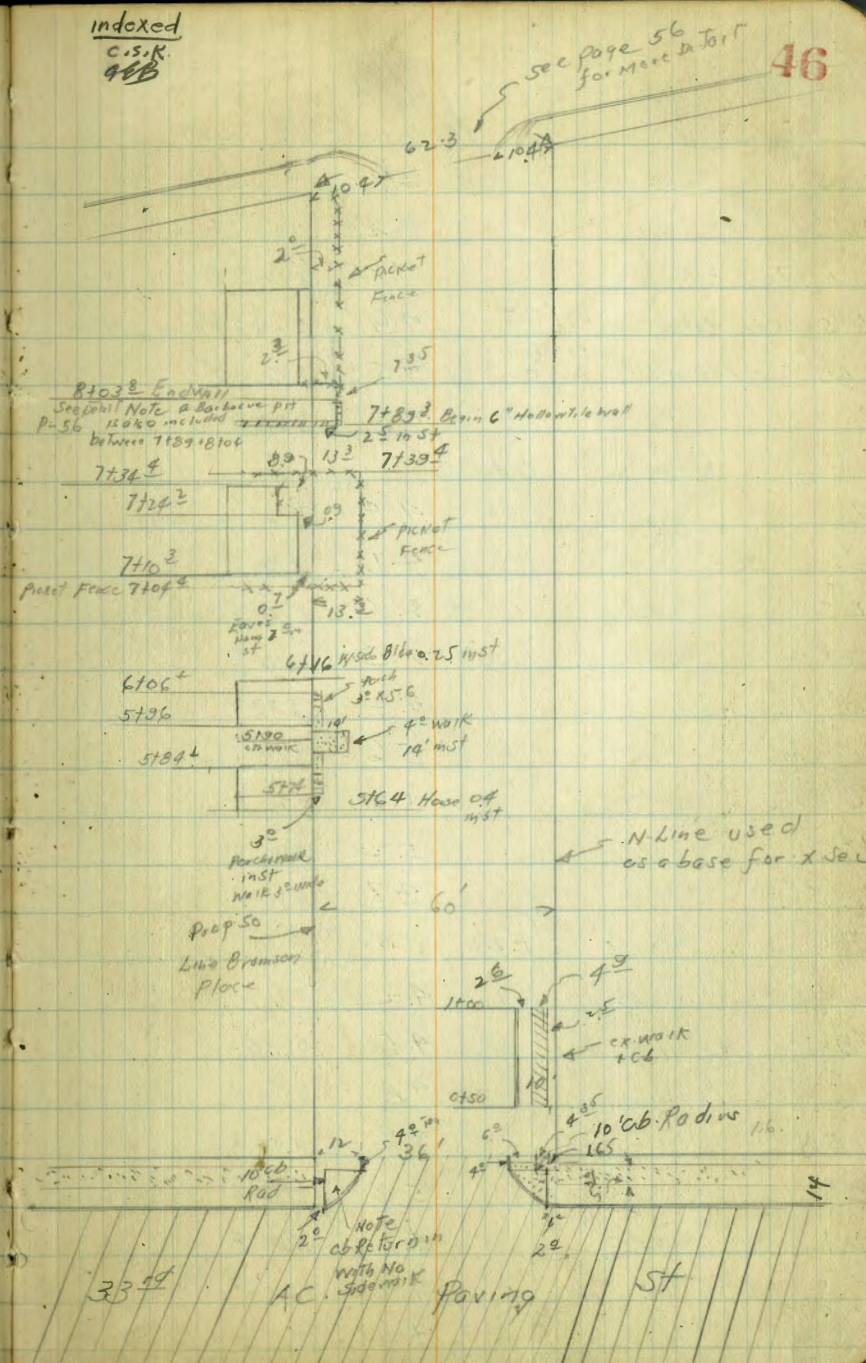
453.05 ✓

Bliss Notes
 Summary of
 Bagg Rod
 3/19/42

	X Section	Bramson Place	60' ST	N line used as a base line
BM	308	377.33	374.25	SWBP E. Capin 12752
TP	458	375.62	6.29	371.04
Section in West Gutter 33 rd St				
N-25	Gutter	483	370.59	
N-25	Top cb	438	321.24	
N	Gutter	515	370.47	
N	Top cb	471	320.91	
12' S		538	370.24	
20.5		549	320.13	
30.5		561	370.01	
40.5		580	369.82	
48.5		593	369.69	
60.5	Gutter	617	369.45	
"	Top cb	562	370.00	
88' S	Gutter	667	368.95	
W-7 inside edge ex walk on South				
105	Side Edge or Edge toward cb	559	370.03	
W-1.7 outside edge " on South				
outside "		532	370.30	
0700 N Line used as a base				
60' S		52	320.4	
48' S	Top ex cb	539	370.23	
"	Gutter	579	369.93	
40' S		558	370.04	
30' S		520	370.42	

Feb 3/23/42
 REB.
 Plotted

Indexed
 C.S.K.
 46B



↑
375.62

-20'S	5.18	370.44
-12'S	5.23	370.39
" " Top cb	4.78	370.84
-6'S edge walk	4.67	370.95
-1.65 S.H. edge walk <small>see table page 46</small>	4.58	371.04
N	4.6	371.0

0+05

N	4.4	371.2
10'S	4.7	370.9
12'S	5.1	370.5
20'S	5.2	370.4
30'S &	5.2	370.4
40'	5.6	370.0
46'	5.6	370.0
48'S	5.2	370.4
60'S	4.7	370.9

0+30

-60'S	4.2	371.4
-40	4.6	371.0
40	4.8	370.8
30'S &	4.8	370.8
20'S	5.0	370.6
-12'S	4.7	370.9
-10'S	4.7	370.9
N	4.4	371.2

↑
375.62

47

0+50

N	4.9	370.7
+2.5	5.03	370.59
+7.4	5.16	370.46
+10 Top ex cb	5.29	370.33
+12	5.2	370.4
+20	5.4	370.2
+30 &	5.1	370.5
+40	4.9	370.7
+48	4.9	370.7
+60 S line	4.8	370.8
+70	4.5	371.1

1+00

-70	5.4	371.2
-60 S line	5.3	370.3
-48	5.5	370.1
-40	5.8	369.8
-30 &	5.8	369.8
-20	5.8	369.8
-12	6.1	369.5
-10 Top ex cb	5.85	369.77
-7.4 inside edge ex walk	5.76	369.86
-2.5 outside " " "	5.73	369.89
N	5.6	370.0

1+25

N	5.8	369.8
---	-----	-------

T
375.62

+12	6.1	369.5
+20	6.0	369.6
+30 ♀	6.0	369.6
+40	5.9	369.7
+50	5.6	370.0
+60	5.5	370.1
+70	5.5	370.1

1450

-70	5.8	369.8
-60	6.0	369.6
-48	6.0	369.6
-40	6.5	369.1
-30 ♀	6.4	369.2
-20	6.4	369.2
-12	6.5	369.1
N	6.2	369.4

T.P. 389 373.11 6.90 369.22

1475 Con. Walk. on North

2.4 Walk. 1.6 m. Street 3.82 369.29

2400

N-10	4.2	368.9
N	4.2	368.9
+12	4.4	368.7
+20	4.4	368.7
+30 ♀	4.3	368.8

T
373.11

48

+40	3.8	368.3
+48	4.2	368.9
+60	4.4	368.7
+70	4.5	368.6

2450

-70	5.2	367.9
-60	5.1	368.0
-48	5.1	368.0
-40	4.9	368.2
-30 ♀	4.9	368.2

-20	5.3	367.8
-12	5.3	367.8

N	5.3	367.8
+10	5.3	367.8

3400

N-10	5.6	367.5
N	5.9	367.2

+12	6.0	367.1
-----	-----	-------

+20	6.0	367.1
-----	-----	-------

+30	5.7	367.4
-----	-----	-------

+40	5.8	367.3
-----	-----	-------

+48	5.7	367.4
-----	-----	-------

+60	5.8	367.3
-----	-----	-------

+70	5.9	367.2
-----	-----	-------

π
373.11

3+25

-70	5.8	367.3
-60	5.8	367.3
-48	6.3	366.8
-40	6.3	366.8
-30	6.1	367.0
-20	6.5	366.6
-12	6.3	366.8
N	5.7	366.4
+10	5.5	366.6

3+40

N-10	5.3	366.8
N	5.2	366.9
+12	6.0	362.1
+20	6.7	366.4
+30 ϕ	6.6	366.5
+40	6.5	366.6
+50	6.7	366.4
+60	6.5	366.6
+70	6.5	366.6

3+65

-70	7.0	366.1
-60	6.9	366.2
-48	6.9	366.2
-40	6.9	366.2
-30 ϕ	6.5	366.6

 π
373.11

49

-20	6.7	366.4
-12	6.3	366.8
N	5.8	367.3
N+10	6.5	366.6

4+00

N-10	6.9	366.2
N	6.6	366.5
+12	6.5	366.6
+20	6.6	366.5
+30 ϕ	7.1	366.0
+40	7.3	365.8
+48	7.2	365.9
+60	6.9	366.7
+70	7.0	366.1

4+15

-70	7.4	365.7
-60	7.4	365.7
-48	7.2	365.9
-40	7.1	366.0
-30 ϕ	7.1	366.0
-20	7.4	365.7
-12	7.4	365.7
N	6.5	366.6

T
373.11

Sec. Taken on Diag on a t. 4+15 N = 450 on S

N-10	6.8	366.3
N	6.6	366.5
+10	7.1	366.0
+20	6.9	366.2
+30	6.9	366.2
+40	7.1	366.0
+50	7.6	365.5
+60	7.6	365.5
+69.35 line	7.6	365.5
+79	7.8	365.3

4+21 N = 4156 on S

-79	6.9	366.2
-69.35 line	7.6	365.5
-60	5.5	367.6
-50	5.0	368.1
-40	4.2	368.9
-30	4.0	369.1
-20	4.6	368.5
-10	4.1	369.0
N	3.9	369.2

4+25 N = 4+61

-10	3.7	369.4
N	4.0	369.1
+10	4.9	368.2

T
373.11

50

+20	3.8	369.3
+30	4.0	369.7
+40	5.1	368.0
+50	5.2	367.9
+60	6.2	366.9
+69.35 line	7.6	365.5
+79	7.4	365.7

4+36 N = 4+66.5

-80	7.6	365.5
-67.15 line	7.6	365.5
-60	9.6	363.5
-50	8.8	364.3
-40	8.4	364.7
-30	7.5	365.6
-20	6.8	366.3
-10	7.9	365.2
N	8.4	364.7
+10	8.0	365.7

TP. 2.97 370.73 5.35 367.76

4+40 N = 4+71.5

N-10	13.1	357.6
N	13.3	357.4
+10	13.7	357.0
+20	13.7	357.0
+30	14.0	356.7

T
370.73

+40	13.7	357.0
+50	14.3	356.4
+60	14.2	356.5
+67.5 S. line	14.6	356.1
+80	14.7	356.0

4157N = 4188 S.

-80	14.6	356.1
-67.5 S. line	14.6	356.1
-60	14.4	356.3
-50	14.3	356.4
-40	14.0	356.7
-30	13.8	356.9
-20	13.8	356.9
-10	13.7	357.0
N	13.4	357.3
+10	13.4	357.3

Flow of culvert Not Bronson 140+

Flow of Box culvert 3x4' 11.08 359.65

4163 N. = 4197 on S.

-80	6.0	364.7
-69 S. line	6.7	364.0
-60	11.0	366.7
-50	8.1	362.6
-40	7.1	363.6
-30	8.2	362.5

T
370.73

51

-20	8.2	362.5
-10	6.6	364.1
N	6.6	364.1
+10	6.6	364.1

Flowline of 40" pipe culvert S. of Bronson

51 S of Bronson + Flow 15.37 355.36

3.22 370.98 2.97 367.76

4167N = 5165 S

N-10	2.6	368.4
N	3.1	368.9
+10	3.6	367.4
+20	3.0	368.0
+30	4.1	366.9
+40	5.0	366.0
+50	5.6	365.4
+60	8.9	362.1

+65 6.8 364.2

+71 S line 6.4 364.6

+80 6.2 364.8

4173N = 5109 S

-80 6.2 364.8

-70 S. line 6.3 364.7

-60 6.4 364.6

-50 5.8 365.2

↑
37098

-40 7.8 366.2
-30 3.0 368.0
-20 2.5 368.5
-10 2.1 368.9
-4 5.2 365.8
N 5.2 365.8
+10 3.2 367.8

4+75 E. End on Wall 0.3 Wide 0.158m

Top Wall 6.00 364.98

4+78 N = 5+12 S

N-10 5.8 365.2
N-010 Top 0.3 Wall 5.98 365.00
N 6.2 364.8
+10 3.2 367.8
+15 2.3 368.2
+20 4.9 366.1
+30 4.3 366.7
+40 5.8 365.2
+50 6.0 365.0
+60 6.3 364.7
+69 Soline 6.2 364.8
+80 6.3 364.7

4+82 N = 5+14 S

-80 6.2 364.8
-69 S 6.1 364.9

↑
37098

52

-60 6.3 364.7
-50 6.0 365.0
-40 6.3 364.7
-30 5.9 365.1
-20 6.0 365.0
-10 6.0 365.0
N 6.2 364.8

+0.1 Top on Wall

+10 5.83 365.15
5.7 365.3

4+96^E of 3.6 Walk 2.1 Back on North

of Walk 5.62 365.36

5+14 of Garage Driveway on N 2.4 Back

Ribbon
of Driveway 6.0 Driveway 5.34 365.64

5+16 P/Ls to

N-10 5.2 365.8
N 5.4 365.6
+12 5.8 365.2
+20 6.0 365.0
+30 6.0 365.0
+40 6.0 365.0
+48 6.1 364.9
+60 Soline 6.1 364.9
+70 6.3 364.7

5+56^E of 7.0 Driveway on N

12.2 Book of 4.31 366.67

T
370.98

5+64

-70 4.8 366.2
-60 S. Line 4.4 366.6
-48 4.4 366.6
-40 4.8 366.2
-30 $\frac{1}{2}$ 5.3 365.7
-20 5.3 365.7
-10 5.2 365.8
N 4.9 366.1

N+0.15 Top 0.9 con wall

4.17 366.81

N+10

4.0 367.0

5+75 ctr. Walk on North

ctr 1.5 Back 3° Walk 4.00 366.94

5+90 ctr 4° Walk 14' in st on Side

ctr 14' N of So. Line 3.98 367.00

ctr on Prop 3.98 367.00

5+92⁵ ctr. Con. Driveway on North

Ribbon 6" wide - 2° Back ctr 3.63 367.35

6+00

N-10 3.4 367.6

-0.2 Top 0.3 con wall 3.56 367.42

N 4.2 366.8

+12 4.5 366.5

+20 4.5 366.5

+30 4.5 366.5

+40 4.2 366.8

T
370.98

605 Top of
6731

53

+48 4.0 367.0

+60 4.0 367.0

+70 4.0 367.0

6+19 4' Walk on North

2.9 Back ctr 3.05 367.93

6+34² ctr. 6° Driveway on North

1.6 Back ctr Ribbon Driveway 3.03 367.95

6+50

-70 4.2 366.8

-60 3.9 367.1

-48 3.9 367.1

-40 3.6 367.4

-30 $\frac{1}{2}$ 3.3 367.7

-20 3.5 367.5

-12 3.5 367.5

N 3.3 367.7

+1 2.9 368.1

+10 2.7 368.3

TR 5.92 373.95 2.95 368.03

6+58 3° Walk on N

ctr 0.4 Back 5.62 368.33

7+00

N-10 4.8 369.2

-1 5.0 369.0

N 5.4 368.6

T
373.95

+4 56 370.4
+12 55 368.5
+20 57 368.3
+30 60 368.0
+40 6.2 367.8
+48 6.3 367.7
+60 6.5 367.5
+70 6.5 367.5

7+02[±] Sidewalk on South

2.7 Wide .2.6 inst. ch 6.13 367.82

7+12 3.~ Walk on North

1[°] Back ch 4.86 369.09

on North 7+43[±] Ribbon Driveway 6⁷ over 11

E Ribbon 2 Ribbons 0.4 Back 4.76 369.19

W Ribbon 4.73 369.22

7+47. Solid Driveway 7[°] wide

3.1 in street ch 6.12 367.83 ON SOUTH

7+50

-60 6.1 367.9
-48 5.8 368.2
-40 57 368.3
-30 5.8 368.2
-20 5.6 368.4
-12 5.3 368.7
-3 5.3 368.7

T
373.95

54

N 4.6 369.4
7+67[±] 3[°] Walk on N
0.4 in street ch 4.2~ 369.73
8+00

N 4.5 369.5
+5 4.9 369.1
+12 5.0 370.0
+20 5.3 368.7

+30 5.4 368.6

+40 5.7 368.3

+43 5.4 368.6

+48 5.2 368.8

+57.5 Fence 7/8 5.2 368.8

-60 5.3 368.7

8+11[±] 2' Walk on North

0.3 in st ch 4.01 369.94

8+25[±] Sidewalk on North. Parallel to

East End 0.3 in st 3.53 370.42

8+48. 6⁷ Lt DiMan 8 inst

8+50

N 3.35 370.60
+0.4 edge walk 3.36 370.59
+9 4.5 369.5
+12 4.4 369.6
+20 4.6 369.4

↑
373.95

+30	4.8	369.2
+40	5.1	368.9
+45	5.3	368.7
+48	4.8	369.2
+60 So Line	4.9	369.1

8+64⁺ P/L to S. Prop Cor.

-60 on walk	4.86	369.09
-58 ² fence	4.93	369.02
-50	4.9	369.1
-48	5.2	368.8
-40	4.9	369.1
-30	4.5	369.5
-20	4.2	369.8
-12	4.2	369.8
-5	4.1	369.9
-1	3.8	370.2
-0.4 edge walk	3.36	370.59
N	3.36	370.59

8+64.15 = 8+78⁴⁶ N on A.C. Parson

N on Edge walk	3.25	370.70
+10.4 Top cb	3.58	370.37
" Gutter	3.99	369.96
+20	4.05	369.90
+31 ⁺ d	4.25	369.70
+40	4.71	369.24

↑
373.95

55

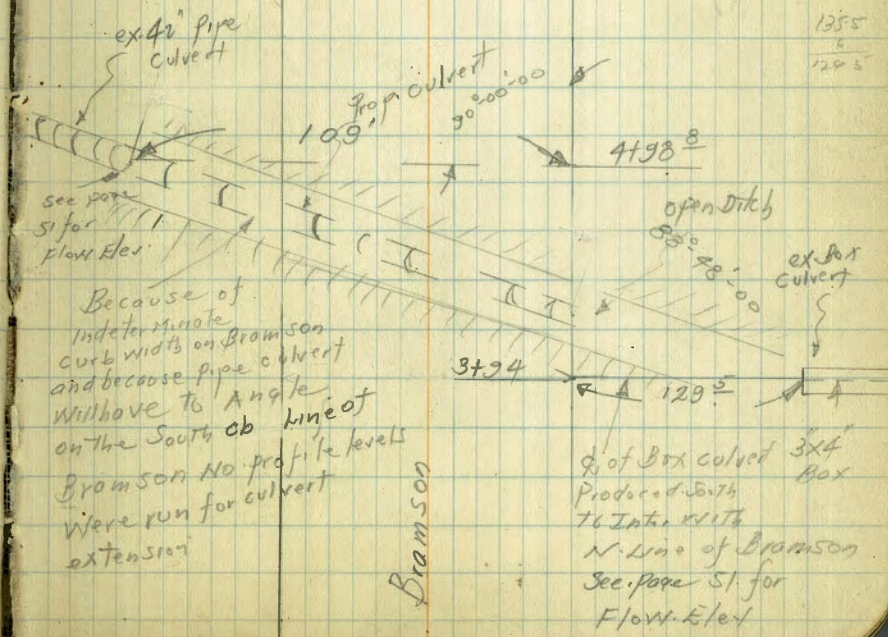
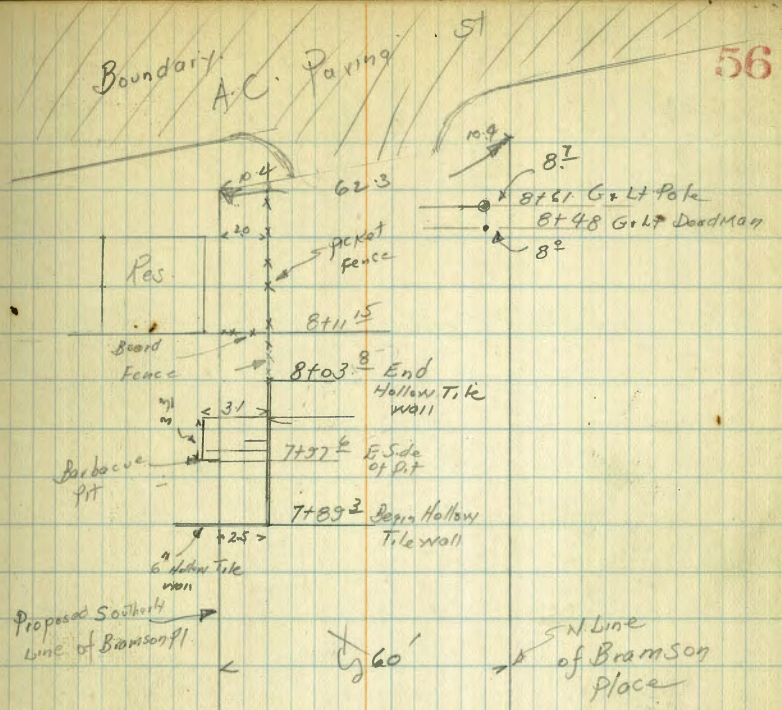
+50	5.28	368.67
+52 ^E Gutter	5.43	368.52
" Top cb	5.06	368.89
62.35 S Line	4.85	369.10

Sec. in E Gutter of Boundary

N	4.06	369.86	
+10.4	4.22	369.73	
+20	4.33	369.62	
+31 ⁺ d Prod	4.54	369.41	
+40	4.80	369.15	
+50	5.18	368.77	
+60	5.55	368.40	
+62.3 S Line	5.56	368.39	
+70	5.73	368.22	
+70	6.24	367.71	
TP 2.97	370.56	6.36	367.59
TP 6.79	373.97	3.38	367.18
TP 6.28	377.34	2.91	371.06
Check Starting B.M.	3.07	374.27	

379.25
0.02 error

Sketch of Bramson Place
 Showing West End of Boundary St
 end in More detail →



Because of indeterminate curb widths on Bramson and because pipe culvert will have to angle on the south ob line of Bramson No profile levels were run for culvert extension

Bramson

A faint pencil sketch of a curved line on a grid. The line starts at the bottom left of the grid and curves upwards and to the right, ending near the top right. It is drawn on the right page of the notebook.

1596-CV
1603-

INDEXED
C.S.R.

Levels on S.E. Cor. of
6th & Robinson

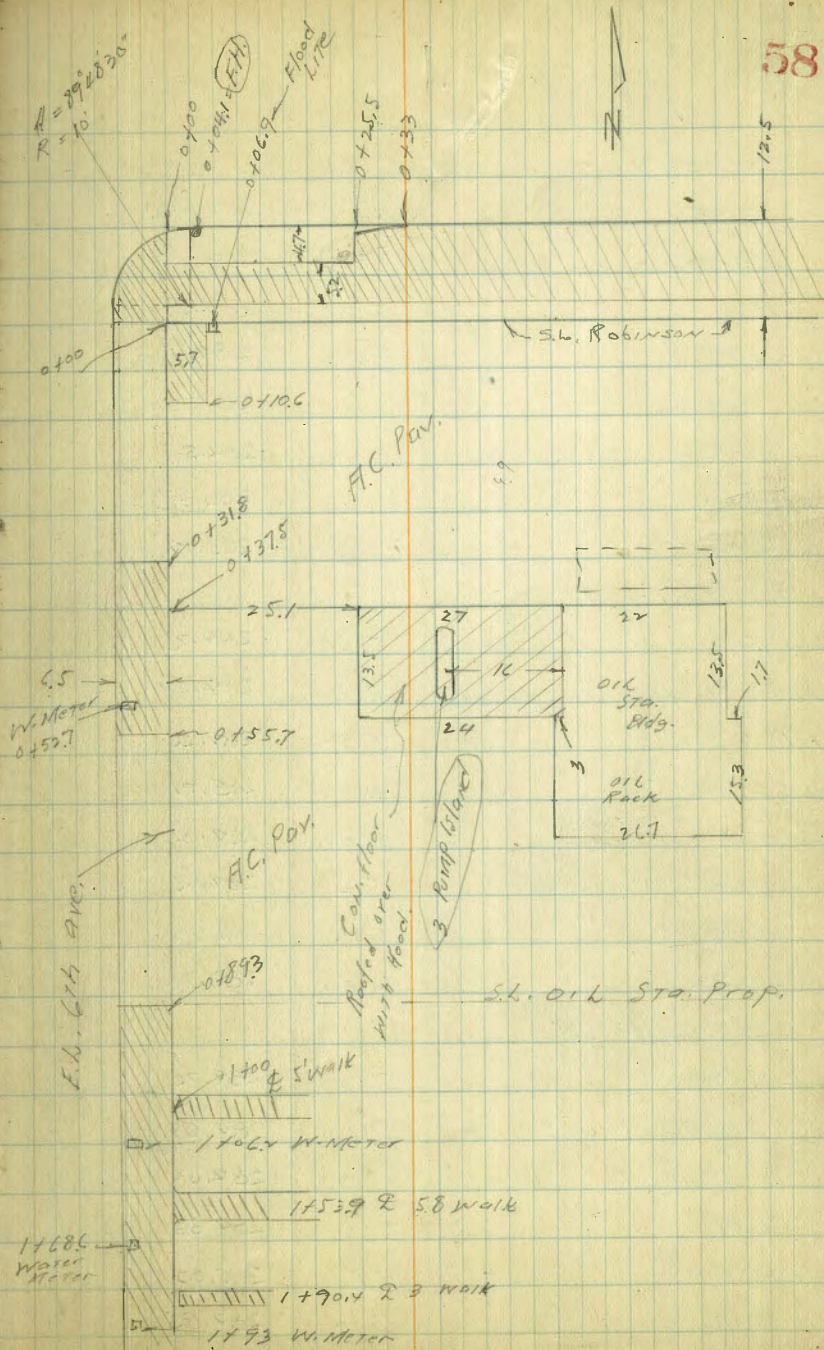
C. Moore
S. Miller
W. Moore
S. 995
C. G. Hill

N.W. BP 3.60 289.87 287.27 L.H. 45 ft

Levels on 6th Ave.

0+100 S.E. Robinson on E.L. 6th

E.L. 6th	5.23	289.67
+6.5 top cb	5.26	289.61
" 907	5.95	283.92
+16.5 pav.	5.70	289.17
+26.5 approx. 6th	5.11	289.76
0+102		
E.L. 6th	5.21	289.66
+6.5 gut. in drive	5.95	283.92
+16.5 pav.	5.71	289.16
+26.5 "	5.08	289.79
0+106		
E.L. 6th	5.20	289.67
+6.5 Gut. in drive	5.91	283.96
+16.5 pav.	5.64	289.23
+26.5 "	5.02	289.85
E.L. -15	5.25	289.62
" -25 } oil stor	5.54	289.33
" -40 } pav.	6.17	283.70
" -50	6.39	283.28



289.87

0 + 2.5		
EL 6th	5.23	289.69
+ 6.5 gut in drive	5.83	289.09
+ 10.5	5.55	289.31
+ 26.5	4.90	289.97
EL - 15	5.12	289.75
" - 25 } oil sta	5.29	289.58
" - 40 } Pav.	6.00	283.87
" - 50	6.13	283.74
0 + 29.5		
EL 6th	5.14	289.73
+ 6.5 gut in drive	5.80	289.07
+ 10.5	5.52	289.35
+ 26.5	4.86	285.01
EL - 15	5.06	289.81
" - 25 } oil sta. Pav.	5.24	289.63
" - 40	5.95	283.92
" - 50	6.09	283.78
0 + 31.8		
EL 6th	5.13	289.74
+ 6.5 Top curb	5.18	289.69
" gut	5.79	289.08
+ 10.5	5.51	289.36
+ 26.5	4.85	285.02
EL - 15	5.02	289.85

289.87

59

EL - 25 oil sta	5.19	289.68
" - 40 Pav	5.96	283.91
" - 50	6.04	283.83
0 + 37.5		
EL 6th	5.14	289.73
+ 6.5 Top curb	5.16	289.71
" gut	5.79	289.08
+ 10.5 Pav	5.45	289.42
+ 26.5 Pav	4.82	285.05
EL - 18 oil sta. Pav	4.96	289.91
EL - 25.1 Cor. Con. slab	5.28	289.59
" - 34.5 " "	5.29	289.58
" - 38.5 " "	5.90	283.97
" - 50 " "	5.89	283.98
0 + 51		
EL 6th	5.00	289.87
+ 6.5 Top curb	5.04	289.83
" gut	5.73	289.12
+ 10.5 Pav	5.40	289.47
+ 26.5 Pav	4.76	285.11
EL - 18	4.91	289.96
- 25.1 Cor. Con slab	5.13	289.74
- 34.5 " slab	5.20	289.67
- 38.5 " "	5.78	289.09
- 50 " "	5.81	289.06

289.87 ✓

Lth. Ave

01557		
EL Lth	5.02	289.85
+ 6.5 Top curb	5.01	289.86
" gut	5.68	289.19
+ 16.5	5.32	289.49
+ 26.5	4.75	285.14
EL - 15	4.95	289.94
" - 25	5.02	289.85
" - 40	5.74	289.13
" - 50	5.83	289.09
0158		
EL Lth	5.03	289.82
+ 6.5 gut in drive	5.69	289.18
+ 16.5	5.22	289.53
+ 26.5	4.72	285.15
EL - 15	4.95	289.94
" - 25 oil sta pav.	5.02	289.85
" - 40	5.73	289.19
" - 50	5.87	289.00
0175		
EL Lth	5.02	289.85
+ 6.5 gut in drive	5.64	289.25
+ 16.5 pav.	5.24	289.63
+ 26.5 "	4.63	285.29
EL - 15	4.83	285.09
" - 25	4.92	289.95

189.87

60

EL - 40 oil sta pav	5.53	289.39
" - 50	5.76	289.11
0187		
EL Lth	4.82	285.05
+ 6.5 gut in drive	5.54	289.33
+ 16.5 pav	5.22	289.65
+ 26.5 " approx B Lth.	4.60	285.27
EL - 15	4.80	285.07
0189,3		
EL Lth	4.70	285.17
+ 6.5 Top curb	4.85	285.02
" gut	5.51	289.36
+ 16.5	5.22	289.65
+ 26.5	4.60	285.27
EL - 15 SL oil pav STA.	4.78	285.09
1100		
EL Lth	4.67	285.20
+ 6.5 Top curb	4.82	285.05
" gut	5.48	289.39
+ 16.5	5.19	289.68
+ 26.5	4.58	285.29
1113.3		
EL Lth	4.60	285.27
+ 6.5 Top curb	4.69	285.18
" gut	5.38	289.49

289.87 ✓

EL. +16.5	5.10	289.77
EL. +26.5	4.53	285.89
1+116		
EL. 6th	4.58	285.29
+6.5 on drive	5.28	289.59
+6.5 gut.	5.36	289.51
+16.5	5.07	289.80
+26.5	4.51	285.36
1+133		
EL. 6th	4.37	285.50
+6.5 on drive	5.09	289.78
+6.5 gut	5.14	289.73
+16.5	4.99	289.88
+26.5	4.42	285.95
1+136		
EL. 6th	4.30	285.57
+6.5 Top curb	4.46	285.91
" gut	5.12	289.75
+16.5	4.97	289.90
+26.5	4.39	285.98
1+153.9		
EL. 6th	4.16	285.71
+6.5 Top curb	4.34	285.53
" gut	5.06	289.81
+16.5	4.82	285.05

Notes Reduced 6-9-02

289.87 ✓

61

EL. +26.5	4.32	285.55
2+00 = 200'S of St. Robinson		
EL. 6th	4.25	285.67
+6.5 Top curb	4.30	285.57
" gut	4.93	289.99
+16.5	4.61	285.26
+26.5	4.12	285.77

289.87

Levels on Robinson + 675

Intersection

Mid. Return S.E. Cor

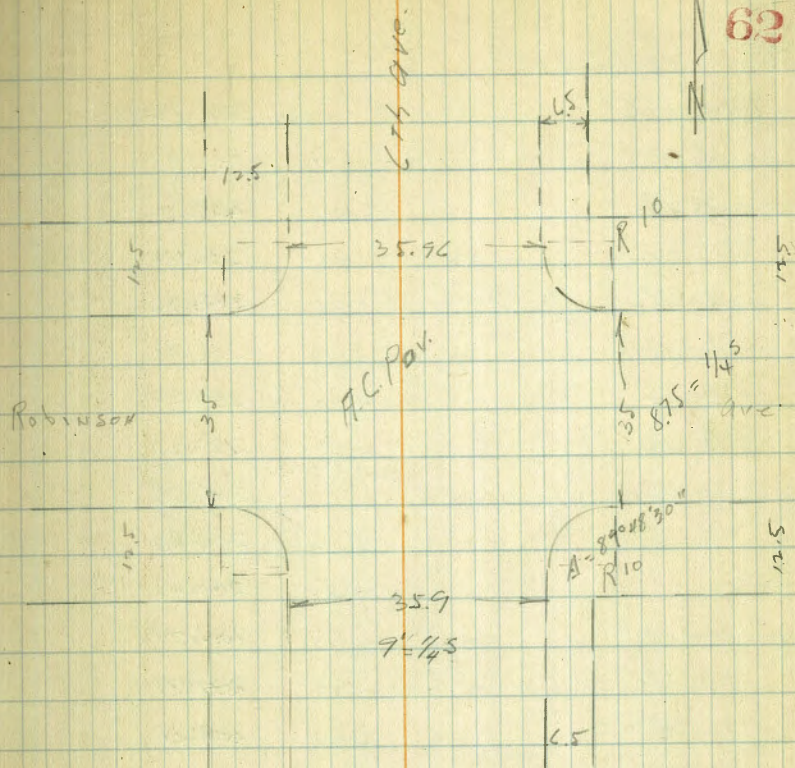
Top curb	5.30	289.57
g.u.T.	5.97	283.90
10' OUT on Pav.	5.51	284.36

T.P. 245 289.14 320 284.47 Top F.H.

S.W. Robinson

W C6	3.80	285.32
W g.u.T.	4.31	289.81
1/4	4.29	289.83
C	4.44	289.68
1/4	5.00	289.12
E g.u.T.	5.19	283.93
E C6	4.50	284.62
E	4.48	284.69
E + 3.5 C6 BC	4.46	284.66
+ 2.5.5	5.18	283.94
+ 2.8	5.25	283.87
+ 3.3	5.39	283.73
+ 5.0	5.84	283.28
+ 6.0	6.01	283.11
+ 63.4	6.09	283.03

62



S.L. + 6.5

E.L. 6.24	6.20	282.92	
- 60	6.15	282.97	
- 50	5.90	283.22	
- 33	5.46	283.66	
- 28	5.36	283.76	
- 25.5	5.29	283.83	
- 3.5	4.70	284.92	
E.L. 6.14	4.61	284.51	
+ 5.5 E cb	4.54	284.58	
" gut	5.19	283.93	
E 1/4	5.02	284.10	
C	4.53	284.59	
W 1/4	4.35	284.77	
W gut	4.28	284.84	
W cb	3.73	285.39	
S cb Robinson			
W.L. 6.14 cb	3.70	285.42	
" gut	4.11	285.01	
cb par	4.33	284.79	+v
W 1/4	4.41	284.71	
C	4.64	284.98	✓
E 1/4	4.88	284.24	
E cb par	5.13	283.99	✓
E.L. gut	5.26	283.86	
" Top cb	4.68	284.44	

E.L. 6.14 + 3.5 cb	4.74	284.33	
" " " gut	5.36	283.76	
" + 2.5.5 cb end	5.35	283.76	
" " gut	5.87	283.25	
" + 2.8 gut drive	5.93	283.19	
" + 3.3 " "	6.05	283.07	
" + 5.0 " "	6.52	282.60	
" + 6.0 " "	6.78	282.34	
" + 6.3.4 gut	6.87	282.25	
" " Top cb	6.44	282.68	
S 1/4 Robinson			
E.L. 6.14 - 60	6.44	282.68	
" - 30	5.65	283.47	
E.L. 6.14	4.87	284.25	
E cb	4.69	284.93	
1/4	4.51	284.61	
C	4.29	284.83	
1/4	4.11	285.01	
W cb	3.96	285.16	
W.L. 6.14	3.75	285.37	
E Robinson			
W.L. 6.14	3.62	285.50	
W cb	3.81	285.31	+1
W 1/4	3.96	285.16	
C	4.13	284.99	+02

289.12 ✓

E Robinson

E 1/4	4.30	289.85 ✓	
cb	4.51	289.61	+1
EL 6th	4.63	289.99	+1
+30	5.42	283.70	
+60	6.21	282.91	
N 1/4 Robinson			
-60	6.35	282.77	
-30	5.56	283.56	
EL 6th	4.84	289.28	
E cb line	4.66	289.96	
E 1/4	4.40	289.66	
C	4.26	289.86	
W 1/4	4.08	285.09	
W cb line	3.90	285.22	
WL 6th	3.73	285.39	
N cb Robinson			
WL 6th top cb	3.66	285.96	
" " gut	4.10	285.02	
W cb pay	4.27	289.85	+3
W 1/4	4.33	289.79	
C	4.55	289.57	+4
E 1/4	4.79	289.33	
E cb line	5.13	283.99	+07
EL 6th gut	5.25	283.87	+04
" " Top cb	4.70	289.37	

289.12 ✓

64

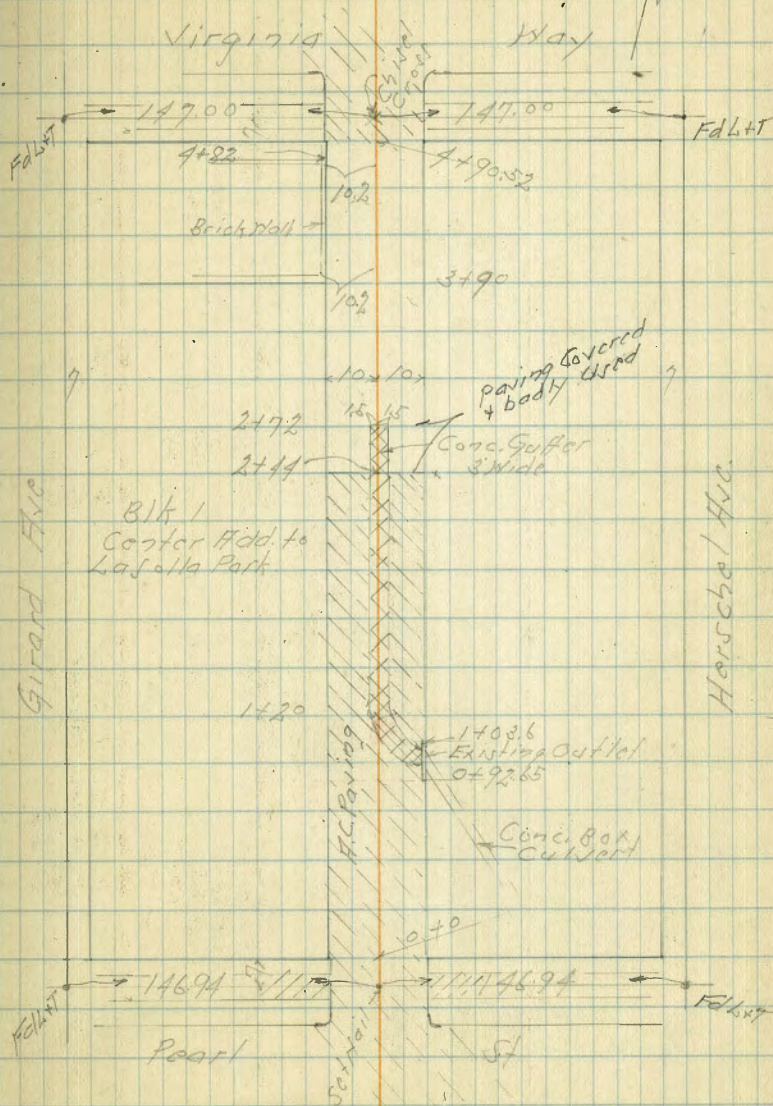
EL 6th + 3.5 cb	4.80	289.31 ✓	
" " gut	5.27	283.85	
" + 30 cb	5.49	283.63	
" " gut	5.96	283.16	
" 60 cb	6.18	282.92	
" " gut	6.66	282.96	
N L Robinson			
EL 6th - 60	5.83	283.29	
" - 30	5.27	283.85	
" - 3.5	4.54	289.56	
EL 6th	4.47	289.65	+5
E cb top	4.53	289.59	
" gut	5.10	289.02	+5
E 1/4	4.92	289.20	
C	4.38	289.79	+5
W 1/4	4.23	289.89	
W gut	4.32	289.80	+3
W cb	3.59	285.53	
WL 6th	3.42	285.70	
check to emp. B.M.	2.85	286.27 ✓	

Re Cross Section Alley Block 1
Center Add. to La Solla Park

original # 1556-34 Levels next Page

Sept. 14. 45
Sisson
Bliss
8099

65



Levels Alley Block 1 Center. Add to
Losolla Park

Sketch Page 65

1720

17036

+90

+50

+25

070 = N. 2. Pearl St.

B.M.

1.87

117.04

115.17

SE BP
Pearl St
Girard

27-11

2

RT-2

66

10750

9.54

10-11/10/11

10716

9.91

1.5-11/10/11
SE BP

10761

10.03

10-11/10/11

10759

9.95

1.5-11/10/11
SE BP

10817

8.87

10-11/10/11

10756

9.48

10-11/10/11
SE BP

10859

8.45

10-11/10/11
SE BP

10714

8.90

10-11/10/11
SE BP

10828

8.76

10-11/10/11

11007

7.07

10-11/10/11

10957

7.22

10-11/10/11

11018

6.86

10-11/10/11

11167

5.37

10-11/10/11

11181

5.93

10-11/10/11

11167

5.35

10-11/10/11

11388

5.16

10-11/10/11

11308

3.96

10-11/10/11

11284

4.20

10-11/10/11

11320

3.84

10-11/10/11

11391

3.13

10-11/10/11

11704

2102.5

+96

+89

+70

TP 3.70 109.94 10.80 106.27

+50

1432

117.04

10592	10559	10566	10590	10510	10552
399	435	486	494	484	442
13	10	11.5		11.5	10
13 = 1/2 Car Garage		11.5 = 1/2 Car Garage		11.5 = 1/2 Car Garage	

10599	10566	10522	10514
397	434	477	480
13	10	11.5	
13 = 1/2 Car Garage			

10615	10585	10540	10581	10584	10576	10680
375	419	454	463	450	418	304
14	10	11.5		11.5	10	14.7
14.7 = 1/2 Car Garage						

10631	10605	10525	10521	10583	10612	10684
365	389	415	433	411	382	310
13	10	11.5		11.5	10	14.7
13 = 1/2 Car Garage				14.7 = 1/2 Car Garage		

10645	10628	10721	10629	10648	10709
1059	1076	1083	1075	1058	995
10	15		15	10	14.7
14.7 = 1/2 Car Garage					

10704	10677	10664	10625	10680	10710
78.06	1065	1040	1049	1014	994
10	15		11.5	10	14.7
14.7 = 1/2 Car Garage					

+14 9.5 Rl of 1/2 - Sly Picket Fence

+13

3+0

+72 = NY 3 Conc. Gutter

+44 = NY AC Parking

+34

2+17.8

109.94

103.14
6.80
26 = 2 Gallons Cool. 17004

103.14
6.8
20

103.5
6.4
16

103.4
6.5

103.4
6.5
10

104.2
5.6
10 Dirt

103.64
6.30
1.5 = NY Conc Gutter

103.56
6.38

103.63
6.29
1.5 = NY Conc Gutter

104.3
5.6
10 Dirt

104.66
5.28
10 = NY Pav.

104.24
5.20
1.5

104.15
5.79

104.22
5.72
1.5

104.41
5.53
10 = NY Pav.

105.86
4.06
4.13 = NY Car Garage 5 1/2 ft x 12 ft

105.03
4.91
1.0

104.52
5.12
1.5

104.40
5.54

104.42
5.47
1.5

104.85
5.09
9 = NY Conc Appr.

106.32
3.67
17.5 = NY Dr. Garage

105.84
3.10
1.3 = NY Garage

105.34
4.60
1.0 = NY Pav.

104.84
5.13
1.5

104.72
5.22

104.84
5.10
1.5

105.16
4.76
9.5 = NY Conc Appr.

106.36
3.58
17.5 = NY Dr. Garage

109.94

Lt.

L

Rt

BM

1.94

115.16

SEBP
Pearl &
Gard
9/15/19

TP

9.67

117.10

2.51

107.43

+90.52 = S.W. Virginia Hwy

 $\frac{97.27}{12.67}$
10 = Cb $\frac{97.14}{12.80}$
10 = Gutter $\frac{97.07}{12.87}$
10 = Conc
10 = L $\frac{97.89}{13.55}$
10 = Gutter $\frac{97.24}{13.10}$
10 = Cb

ALB

+75

 $\frac{98}{11.1}$
10 $\frac{98.2}{11.7}$
10 $\frac{98.2}{11.7}$
10 $\frac{98.0}{10.9}$
10

+50

 $\frac{98.8}{10.1}$
10 $\frac{98.8}{10.1}$
10 $\frac{98.0}{10.9}$
5 $\frac{100.4}{9.5}$
10

+10

 $\frac{101.1}{8.8}$
10 $\frac{100.9}{9.0}$
10 $\frac{100.5}{9.4}$
15 $\frac{101.3}{8.6}$
10

+89

98 Rt of L-H by Picket Fence

+150

 $\frac{102.2}{7.7}$
20 $\frac{102.3}{7.6}$
10 $\frac{102.9}{7.0}$
10 $\frac{102.8}{7.0}$
10

P

109.94

109.94

Levels Alley East of Centre St.
From Robinson to University Ave.

Sketch Page 70

Plotted 288B

Lt = M

L

Rt = F

71

0+52

2830

5.8

13 = H.C.P.

8.09

2831

5.7

7.5

2839

4.9

2841

4.7

7.5

0+25

2836

5.3

13 = E.H.B.G.

2825

5.0

7.5

2842

4.6

2847

4.6

7.5

0+18

5.8 Rt of L = My Power Pole

0+16

28853

5.3

13 = E.H.B.G. on top of basement

28508

3.8

7.2 = E.H.C.P. No. 11

TP

4.29

28876

8.54

28947

28853

5.3

13 = E.H.B.G. on top of basement

28508

3.8

7.2 = E.H.C.P. No. 11

0+0

= N.L. Robinson

28584

7.17

7.2 = Cb

28824

7.6

7.2 = gutter

28501

8.00

28511

7.90

7.2 = gutter

28549

7.61

7.6 = Cb

0-10 = N.C.B. L. 170 Robinson

28506

7.95

7.5

28478

8.23

28458

8.43

7.5

28452

8.49

7.5 = d. 15.00

28451

11.50

11.75 = Flow Line

TP

0.04

292.01

12.91

292.97

292.01

BM

1.87

305.88

304.01

H.E.P.
Robinson +
Park Blvd

Lt.

Rt.

Rt.

72

1+25

<u>2865</u>	<u>2821</u>	<u>2821</u>	<u>2843</u>	<u>2857</u>
12.0	11.7	9.7	4.5	3.6
25	13	7.5		7.5

+23

8.3 Lt of 2 = Ely Anchor Post
5.1 Rt of 2 = Fly Power Post

+17

6.6 Lt of 2 = Fly 6.6' Clotter Post

1+12

2864
9.1
13.8 - NE Cor
5.09

1+0

<u>2866</u>	<u>2868</u>	<u>2824</u>	<u>2843</u>	<u>2856</u>	<u>2854</u>
7.3	7.0	5.4	4.5	3.8	3.4
14 = Ely Bldg	7.5	5		7.5	20

0+80

<u>28581</u>	<u>2846</u>	<u>2821</u>	<u>2841</u>	<u>2842</u>
2.95	4.2	5.7	4.7	4.1
14 = Ely Bldg Upper Floor	14 Ground	7.5		7.5

0+75

28558
3.3
13 = NE Top
Cont. Foundation

0+63

<u>28530</u>	<u>2823</u>
3.40	5.5
13 = SE Top Cont. Foundation	13 Ground

28876

28876

+55

2817	2807	2820	2819	2828	2815
10.9	12.0	10.5	10.4	8.7	5.6
25	75	75		75	15

+97

3.8 R of 2 = Wly Tail Pole

+25

2811	2775	2799	2805	2853	2826
13.0	14.6	14.2	11.6	6.8	4.5
25	75	2		75	12

210

2771	2769	2817	2822	2824
15.0	15.4	10.4	4.9	4.9
25	75		75	20

1+83

6.4 R of 2 = Fly Power Pole

2764	2758	2773	2819	2760	2822
15.7	16.3	14.8	7.2	6.1	4.9
30	12	75		2	75

TP

3.51

292.10

0.17

288.59

0.2 Rock
7 R of 1+65

292.10

1+55

2760	2738	2783	2806	2818	2860
12.8	15.0	9.5	8.2	2.5	2.8
85	25	15	75		75

1+35

2898	2829	2882	2815	2866	2860	2864
14.0	14.9	14.6	7.0	2.2	2.8	2.9
35	25	21	75		75	20

288.76

288.76

Lt.

L

Pt

74

4+03 54' Lt. Fly Power Pole

3 + 90.24 = $\frac{1}{2}$ Essex St.

TP 8.44 296.87 267 288.43

3 + 75.24 = South Curb of Essex St.

3 + 73 54 Pt of $\frac{1}{2}$ = H/4 Tel Pole

3 + 50

3 + 17

3 + 03 65' Lt of $\frac{1}{2}$ = Fly Power Pole

2 + 75

$\frac{2917}{5.2}$ 7.5	$\frac{2915}{5.4}$ 7.5	$\frac{2912.9}{5.58}$ R. 2.1 Sewer MH	$\frac{2884}{7.5}$ 7.5	$\frac{286.15}{10.73}$ 18.3 = H/4 Tel	$\frac{285.54}{11.33}$ 4100 Pal
		296.87			

$\frac{2900}{7.1}$ 21.8 = Fly Hoist = Fly Over-29 H/Garage	$\frac{2901}{7.0}$ 7.5	$\frac{289.3}{6.8}$	$\frac{289.1}{3.0}$ 7.5	$\frac{288.1}{4.0}$ 7.5	$\frac{286.08}{6.02}$ 18.3 = H/4 Tel	$\frac{285.55}{6.55}$ 18.3 = H/4 Tel	$\frac{284.73}{7.37}$ 41.2 = 18.3 = H/4 Tel
---	---------------------------	---------------------	----------------------------	----------------------------	---	---	--

$\frac{289.5}{7.5}$	$\frac{289.1}{3.0}$ 7.5	$\frac{287.15}{4.3}$ 4	$\frac{2874}{4.4}$	$\frac{287.3}{4.8}$ 7.5	$\frac{286.2}{5.9}$ 20
---------------------	----------------------------	---------------------------	--------------------	----------------------------	---------------------------

$\frac{289.8}{7.3}$ 7.5	$\frac{288.1}{4.0}$ 7.5	$\frac{287.6}{4.5}$	$\frac{287.3}{4.8}$ 7.5
----------------------------	----------------------------	---------------------	----------------------------

$\frac{287.6}{7.5}$	$\frac{285.8}{6.2}$ 7.5	$\frac{286.8}{5.3}$	$\frac{287.4}{5.1}$ 7.5	$\frac{287.2}{4.9}$ 20
---------------------	----------------------------	---------------------	----------------------------	---------------------------

$\frac{285.0}{7.7}$ 20	$\frac{282.0}{10.1}$ 7.5	$\frac{285.0}{7.1}$	$\frac{285.6}{6.5}$ 7.5
---------------------------	-----------------------------	---------------------	----------------------------

292.10

292.10

Lst

L

Rt

75

TP 12.00 307.70 1.17 295.70 ^{Nail Stamp} 251.49

5+41 4.3 Rt of L - 6" Acacia Tree

5+40

<u>2937</u>	<u>2929</u>	<u>2928</u>	<u>2908</u>	<u>2878</u>
3.3	4.0	4.1	6.0	9.0
15	7.5		7.5	20

5+30 4.4 Rt - 8" 10" Acacia Tree
5.9 Lt of L - Fly Power Pole

5+26

2928
4.1
4 - Fly Stacks
4 - Fly Stacks
1 - Fly Stacks
1 - Fly Stacks
1 - Fly Stacks
1 - Fly Stacks

5+22 2.5 Rt of L - 12" Acacia Tree

5+04 7' Lt of L - Fly Wire Fence

5+03 5.1 Rt of L - Fly Wire Pole

<u>2926</u>	<u>2925</u>	<u>2919</u>	<u>2892</u>	<u>2874</u>	<u>28590</u>
5.5	4.1	5.0	7.2	9.5	7.97
15	7.5		7.5	20	11 - Top 1/2 Clearcut

4+80

<u>2922</u>	<u>2916</u>	<u>2906</u>	<u>2886</u>	<u>2876</u>
3.7	5.3	6.3	8.3	9.3
15	7.5		7.5	20

4+74 7.3 Lt of L - Fly Wire Fence

4+50

<u>2923</u>	<u>2922</u>	<u>2918</u>	<u>2916</u>	<u>2902</u>	<u>2893</u>	<u>2882</u>
3.6	4.1	5.1	5.3	6.2	7.6	8.7
15	7.5		5	7.5	20	20

4+05.24 = Fly Wire Fence

<u>2928</u>	<u>2919</u>	<u>2910</u>	<u>2902</u>	<u>2896</u>	<u>28655</u>	<u>28609</u>
4.4	5.0	5.9	6.7	7.1	10.29	10.78
15	7.5		7.5	14	18.1	18.1

396.87

396.87

675465 = SL University Ave

6740

135

67' ft of 2" Wly Tel Pole

67246

6720

670

5775

5755

5753

0.9' W of 2.6" Euc. Tree

30770

30727

0.33

7.5 = Walk
Pole

30715

0.55

30729

0.41

7.507 Pole

3068

0.8

7.5 = Fly
804

3075

1.2

3037

4.5

7.5

2884

9.3

20

2867

11.5

30

2974

10.3

40

3058

1.9

7.45 = 5.5' Cor
804, 704
Pole

3059

1.8

15

3057

2.0

7.5

3041

0.1

3025

7.2

7.5

2842

13.0

20

2824

14.8

30

2833

14.4

40

3063

2.4

15

2849

2.8

7.5

2885

9.2

2851

12.6

7.5

2819

13.8

13

2803

17.4

25

2819

16.4

40

3050

2.7

20

2845

3.2

10

3032

4.0

7.5

2890

8.7

2828

14.8

7.5

2815

16.2

12

2865

21.8

25

2864

21.8

40

2833

4.4

25

2835

4.2

15

2858

8.9

7.5

2888

11.9

2867

16.0

7.5

2858

21.9

25

2857

22.0

40

30770

Lt

z

Rx

77

BM

7.05

303.91

MMBP
University
Center
303.88

TP

3.71

310.96

0.45

307.25

6+68.65 = South Carb Limd University Hsc

30697

0.73

7.5 = db

30645

1.25

7.5 = Gutter

30630

1.20

30681

1.14

7.5 = Gutter

30694

0.76

7.5 = db

307.70

307.70

Cross Section Alley Block 2 Essex Place
West of Park Blvd. South of Essex St.

Sept. 27-45

51507
Bliss
056070

78

Sketch Page 70

Page 71

302.68

TP 8 11.59 300.02 288.43

0-10 = South Curb Line Essex St

L 1.96 298.08
Z 2.53 297.49
H 3.09 296.93

0+0 = S.E. Essex St

H Top Ch 2.47 297.55

" Gutter 2.52 297.50

Z 2.51 297.51

E Gutter 1.86 298.16

E Top Ch 1.35 298.67

TP 4.83 302.68 2.17 299.85

0+20

F 4.5 298.2

Z 4.5 298.2

H 4.7 298.0

+15 5.2 297.5

0+24

E +0.3 = Hly Board Fence

0+32

H -8' = Hly Conc Porch 4.52 298.16

0+49

E +0.7 = Sly Board Fence

0+60

T -7.8 = Sly Conc Porch 4.61 298.07

H -7' 5.3 297.4

H 4.9 297.8

Z 4.5 298.2

F 4.6 298.1

F 4.2 298.5

0+85

H +10 = Fly Porter Pole

0+98

H -22 = Z Garage Dirt Floor 4.9 297.8

1+07 = Hly Private Paving H.C.

F 0.7 Paving 4.82 297.86

Z " " 5.04 297.64

+6.9 = Fly Anchor Pole

H 0.7 Paving 4.87 297.81

1+48 = Z Paving to West

-7.5 6.55 296.03

H 6.09 296.59

Z 5.66 297.02

+7 = Hly Bldg. 5.20 297.38

1+55.6 = Sly Strip Paving to West

F 5.29 297.39

Z 5.60 297.08

H 5.97 296.71

+10 6.50 296.18

Bliss 3/20/42
Sommermyer
Begg

indexed
C-S.K.

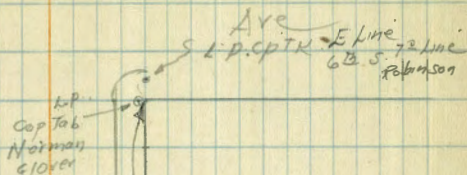
79

TP. 9.65 302.68 1.15 301.53

BM 7.15 304.03

NFBP
Robinson +
East Blvd
304.01

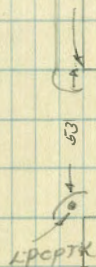
Robinson



528.70
present East line of 65 St

Pennsylvania

60'



DIRECTIONS FOR USE OF TABLES

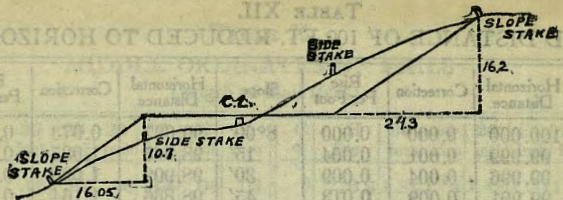
TABLE No. 1

Distance of slope stake from side or shoulder stake for any width roadway, slope 1 1/2 to 1. If ground is nearly level, the cut or fill at side stake is located by the double entry method in left column and top row. The number in body of table in same row and column gives distance from side stake to slope stake. If ground is not

IMPROVED TABLES AND INFORMATION

TABLE No. 2

To find tangent and external for curve of any other degree, divide by degree of curve and add correction found in column of correction. Degree of curve with a given L may be found by dividing tangent (or external), opposite L by given tangent (or external). The distance from a point on the tangent to the curve is very nearly the square of the tangent length divided by twice the radius.



478.84
70.9
57x.5.7v

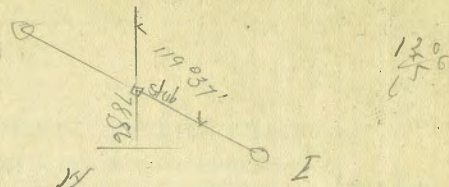
DISTANCES FROM SIDE STAKES FOR CROSS-SECTIONING.

SLOPE 1 1/4 TO 1. ROADWAY OF ANY WIDTH.

	0	.1	.2	.3	.4	.5	.6	.7	.8	.9	
0	0 00	0 15	0 30	0 45	0 60	0 75	0 90	1 05	1 20	1 35	0
1	1 50	1 65	1 80	1 95	2 10	2 25	2 40	2 55	2 70	2 85	1
2	3 00	3 15	3 30	3 45	3 60	3 75	3 90	4 05	4 20	4 35	2
3	4 50	4 65	4 80	4 95	5 10	5 25	5 40	5 55	5 70	5 85	3
4	6 00	6 15	6 30	6 45	6 60	6 75	6 90	7 05	7 20	7 35	4
5	7 50	7 65	7 80	7 95	8 10	8 25	8 40	8 55	8 70	8 85	5
6	9 00	9 15	9 30	9 45	9 60	9 75	9 90	10 05	10 20	10 35	6
7	10 50	10 65	10 80	10 95	11 10	11 25	11 40	11 55	11 70	11 85	7
8	12 00	12 15	12 30	12 45	12 60	12 75	12 90	13 05	13 20	13 35	8
9	13 50	13 65	13 80	13 95	14 10	14 25	14 40	14 55	14 70	14 85	9
10	15 00	15 15	15 30	15 45	15 60	15 75	15 90	16 05	16 20	16 35	10
11	16 50	16 65	16 80	16 95	17 10	17 25	17 40	17 55	17 70	17 85	11
12	18 00	18 15	18 30	18 45	18 60	18 75	18 90	19 05	19 20	19 35	12
13	19 50	19 65	19 80	19 95	20 10	20 25	20 40	20 55	20 70	20 85	13
14	21 00	21 15	21 30	21 45	21 60	21 75	21 90	22 05	22 20	22 35	14
15	22 50	22 65	22 80	22 95	23 10	23 25	23 40	23 55	23 70	23 85	15
16	24 00	24 15	24 30	24 45	24 60	24 75	24 90	25 05	25 20	25 35	16
17	25 50	25 65	25 80	25 95	26 10	26 25	26 40	26 55	26 70	26 85	17
18	27 00	27 15	27 30	27 45	27 60	27 75	27 90	28 05	28 20	28 35	18
19	28 50	28 65	28 80	28 95	29 10	29 25	29 40	29 55	29 70	29 85	19
20	30 00	30 15	30 30	30 45	30 60	30 75	30 90	31 05	31 20	31 35	20
21	31 50	31 65	31 80	31 95	32 10	32 25	32 40	32 55	32 70	32 85	21
22	33 00	33 15	33 30	33 45	33 60	33 75	33 90	34 05	34 20	34 35	22
23	34 50	34 65	34 80	34 95	35 10	35 25	35 40	35 55	35 70	35 85	23
24	36 00	36 15	36 30	36 45	36 60	36 75	36 90	37 05	37 20	37 35	24
25	37 50	37 65	37 80	37 95	38 10	38 25	38 40	38 55	38 70	38 85	25
26	39 00	39 15	39 30	39 45	39 60	39 75	39 90	40 05	40 20	40 35	26
27	40 50	40 65	40 80	40 95	41 10	41 25	41 40	41 55	41 70	41 85	27
28	42 00	42 15	42 30	42 45	42 60	42 75	42 90	43 05	43 20	43 35	28
29	43 50	43 65	43 80	43 95	44 10	44 25	44 40	44 55	44 70	44 85	29
30	45 00	45 15	45 30	45 45	45 60	45 75	45 90	46 05	46 20	46 35	30
31	46 50	46 65	46 80	46 95	47 10	47 25	47 40	47 55	47 70	47 85	31
32	48 00	48 15	48 30	48 45	48 60	48 75	48 90	49 05	49 20	49 35	32
33	49 50	49 65	49 80	49 95	50 10	50 25	50 40	50 55	50 70	50 85	33
34	51 00	51 15	51 30	51 45	51 60	51 75	51 90	52 05	52 20	52 35	34
35	52 50	52 65	52 80	52 95	53 10	53 25	53 40	53 55	53 70	53 85	35
36	54 00	54 15	54 30	54 45	54 60	54 75	54 90	55 05	55 20	55 35	36
37	55 50	55 65	55 80	55 95	56 10	56 25	56 40	56 55	56 70	56 85	37
38	57 00	57 15	57 30	57 45	57 60	57 75	57 90	58 05	58 20	58 35	38
39	58 50	58 65	58 80	58 95	59 10	59 25	59 40	59 55	59 70	59 85	39
40	60 00	60 15	60 30	60 45	60 60	60 75	60 90	61 05	61 20	61 35	40
41	61 50	61 65	61 80	61 95	62 10	62 25	62 40	62 55	62 70	62 85	41
42	63 00	63 15	63 30	63 45	63 60	63 75	63 90	64 05	64 20	64 35	42
43	64 50	64 65	64 80	64 95	65 10	65 25	65 40	65 55	65 70	65 85	43
44	66 00	66 15	66 30	66 45	66 60	66 75	66 90	67 05	67 20	67 35	44
45	67 50	67 65	67 80	67 95	68 10	68 25	68 40	68 55	68 70	68 85	45
46	69 00	69 15	69 30	69 45	69 60	69 75	69 90	70 05	70 20	70 35	46
47	70 50	70 65	70 80	70 95	71 10	71 25	71 40	71 55	71 70	71 85	47
48	72 00	72 15	72 30	72 45	72 60	72 75	72 90	73 05	73 20	73 35	48
49	73 50	73 65	73 80	73 95	74 10	74 25	74 40	74 55	74 70	74 85	49
50	75 00	75 15	75 30	75 45	75 60	75 75	75 90	76 05	76 20	76 35	50

Computed by L. Leland Locke.

90
89.48
1.12
0.0



136.48
95
127.0
220

550
74
115.80
739.80
774.89
1514.69
757.35

7452.0
1215
7395

11.73
380
15.53

Flow
of 4" Drain
51' S of Bromson Pl

1138
305
888

62.2

23.31

80.00
7.68
87.73

+15
721
725

N

3756
3693
63

82.4 + 8.9

134.0
11.
79.4

109.0
22
134.4

375

S N

56 = 21

61 = 25

66 = ?

1157
380
1537

121.0
11.3
109.7

373.11

380
369.27

4498.8

103

109 from N. L. M.

624
1158
7398
640
99.8

140
340
160
640

7398
480
7598