

1191

SEWERS.

335



126.20

125.00

6

257.20

15

28

MICROFILMED  
DEC 22 1964

Kenneth Dillinger

151.45

2

303.30

Our Leather Bound Engineers Note Books are carried in the following rulings:

- No. 380 LEVEL BOOK. Left and Right Hand Page the same as Left Hand Page of this Book.
- No. 382 FIELD BOOK. Left Hand Page as in this Book, Right Hand Page 4 x 4 to the inch, Center Line Red.
- No. 384 MINING TRANSIT BOOK. Left Hand Page as in this Book, Right Hand Page 8x8 to the inch, Center Line Red.
- No. 385 FIELD BOOK. Left Hand Page as in this Book, Right Hand Page 8 vertical and 4 horizontal lines to the inch, Center Line Red.

We also carry the Note Books listed above, bound in extra strong Fabri-Hide (otherwise the same quality of book), which can be furnished at a somewhat lower price.

In ordering Fabri-Hide covered books, add the letter "F" to catalog number.

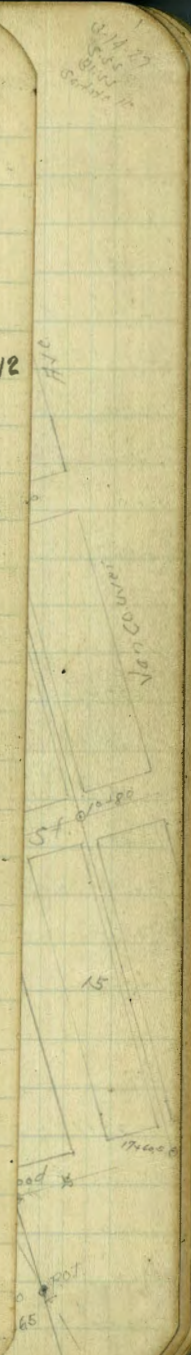
**THE FREDERICK POST CO.**  
 ENGINEERING and DRAFTING SUPPLIES  
 IRVING PARK STATION  
 CHICAGO, ILL.

Mr. Dillinger 80 7/18/20 H.H.



Sewer levels Kalmia St. Vancouver to Cooper	27
" " Westland + Juniper	28
" " Commonwealth - Laurel to Ivy	29
" " Juniper + Pentucket	30
" " 33rd St from 300' S of Ivy to Kalmia	31
" " Alley bet Felton + 33rd - Palm to Nutmeg and Felton St - Nutmeg to Juniper	32
" " Gregory St - Nutmeg to Juniper	34
" " Block 67 - Eastern Addition	35
" " Hillside St - Nutmeg St to Juniper	36
" " 33rd St - Kalmia St South	38
" " Kalmia St + across Blk 39, Eastern Addn	38
" " Carmel Hts Extension Outfall	40
" " Alley bet Felton + Gregory - Upas St South	42
" " Quince St - Alley E to Alley W of Nile	42
" " Change of line Block 6 Montclair	43
" " Haller St - Thorn to Quince	45
" " Alley bet Vancouver + Haller - Blks G+H, Montclair	46
" " " " " (Change of line)	47
" " Nile St + Olive St "A" Line (Change of line)	48
" " Newton Ave. - Highland Ave to 41st St.	49

Sewer Levels Blks 57-58 Park Villas	1
" " " 60-64 " "	3
" " Georgia St. Thorn to Upas	4
" " Blks - 2-3-4 City Hts	5
" " Bet. Nile + Vancouver	6
" " " " " " S. of Dwight	7+12
" " " Vancouver + Haller <sup>Redwood</sup> Quince	9
" " " " " " Quince - no bark	10
" " Alley bet Nile + Vancouver - South of Dwight	12
" " Alleys 57-58 Park Villas <sup>Boundary 2</sup> across Blk 4	13
" " " Bet. Vancouver - Haller <sup>Quince to</sup> Olive	16
" " Alley Blk H, Aladena <sup>Gregory + McKinley</sup> Redwood + Thorn	17
" " Boundary St - Redwood to Thorn	18
" " Alley East of Boundary - <sup>220' South of Olive</sup> to E Quince	19
" " Haller St - E Maple to 300' South	20
" " Vancouver St - E Maple to 200' South	20
" " Haller St - Maple and Vancouver	21
" " Cooper St - from Olive St South	22
" " Boundary St " " " "	24
X. Sec. Chatsworth from Alcott to Voltaire	51
" " Voltaire from Chatsworth to Villa Dr.	59
Sewer Levels - Highland Crest Sub.	60
X. Sec. 34th EICANon to Monroe	64
Sewer Levels North Half of Avenue Courts	61

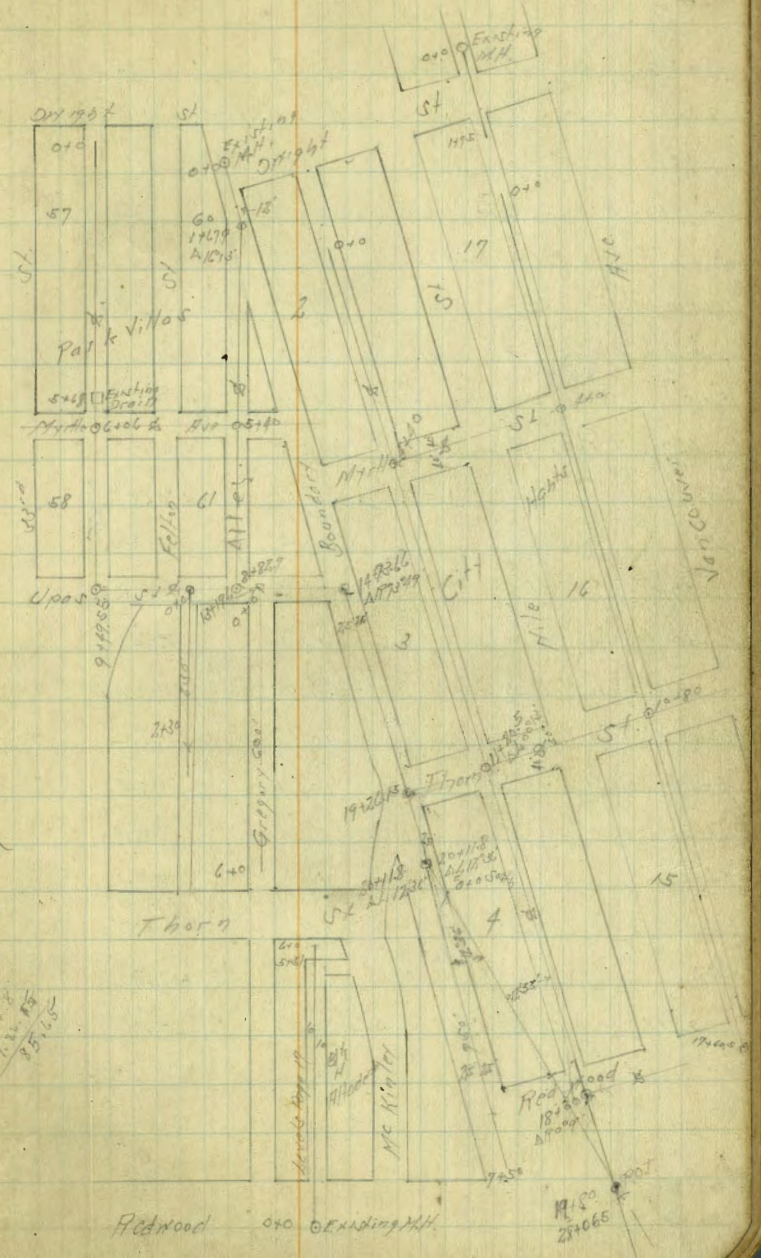




Sever Levels & Fall Chart 57-58 Park Villas  
 Collins 33rd + Fallon

BM	537	332.32	(326.95)	SE 2nd Drift + Fallon
0+0	25' Soft L. Drift	44	327.9	
+50		50	327.3	
+100		65	325.8	
+150		76	324.7	
+200		84	323.9	
+250		93	323.0	
+300		108	321.5	
+350		118	320.5	
+400		123	320.0	
TP	277	322.62	1247	(319.5)
+50		91	318.5	
+100		45	318.1	
+150		50	317.6	
+18	Drain 25' x 2' Gutting	480	317.82	
	Flood Line	1195	310.67	
+76	N Edge Parking	467	317.95	
+60	on "	49	311.7	
+06	S My-Ho	495	317.67	
+36	S Edge Parking	573	316.89	
+50		68	316.4	
+75		71	315.5	
+70		71	315.5	74.25 57.5 Fall of 11.75
+50		67	315.9	11.10
+40		77	314.9	

Plotted  
 K. L. B.  
 1-2 Incl.



11.75  
 11.50  
 11.25  
 11.00

11.75  
 11.50  
 11.25

11.75  
 11.50  
 11.25



37263

Plotted  
K.L.B.

8750	68	315.8
940	58	316.8
128	48	317.8
437.6 - N Edge Par 197	6.64	315.98
149.55 A - S Upper on Par 197	6.25	316.37
1040	687	315.75
450	822	314.40
1140	986	312.76
346.7 - E Edge of Par 197	11.55	311.07
TP 608	315.8	1202
1240	105	305.2
427	125	303.2
450	129	302.8
179.13 on Stab = S Alley	11.73	303.95
1340	104	305.3
119.6 on Stab = S Gregory St.	10.17	305.51
450	99	305.8
1440	86	307.1
450	69	308.8
TP 288	311.96	309.08
173.66 A R 78°49' - S Boundary	1.78	310.18
1540	23	309.7
450	36	308.4
1640	50	307.0
450	71	304.9

311.96  
~~311.86~~

Plotted  
K.L.B.

1740	9.5	302.5
450	11.6	300.4
TP 921	299.46	299.20
1840	12.71	299.10
450	2.0	297.5
1940	6.0	295.5
TP +26.15 = S Thorn	292.69	291.9
450	7.35	292.11
44	1.0	292.01
450	8.5	291.7
465	11.7	284.2
485	13.3	281.0
2040	13.5	279.4
408	14.1	279.2
45	10.2	278.6
TP +118 A L 12°36' 609	288.06	282.5
446	10.72	281.97
450	11.1	281.87
450	9.6	277.0
TP 0.77	278.80	278.5
2140	10.03	278.03
17	1.8	277.52
430	4.8	277.0
425	2.1	275.2
450	3.2	274.0
455	4.7	276.2
2240	7.1	275.6
450	7.0	274.1
		271.7
		271.8

Cook on Page 13



Senior Levels Boundary St. Alex Block Co. 44 Park Villas  
Between Fallon & Boundary

314.21 ✓

3 ✓

See Sketch Page 1

SEAP

BM	326	330.31 ✓	321.95	321.95	Dr Wright & Fallon	84.50	66	307.6 ✓
070	= Existing M.H. Dr Right Boundary 6.38		323.93 ✓			+18	7.9	306.3 ✓
	Flank Line		11.20	319.11 ✓		+72	10.3	303.9 ✓
+50	Plotted K.L.B.		7.0	323.3 ✓		+82.7 = 2 doors = 12 + 70.3	10.23	303.59 ✓
+40			8.1	322.2 ✓				
+50			8.7	321.6 ✓				
+67.9	AP 16' 10"		9.25	320.96 ✓	on Stab			
+10			9.3	321.0 ✓				
+84			9.0	321.3 ✓				
TP	187	322.61 ✓	10.57	319.74 ✓				
+50			28	321.8 ✓				
+70			33	321.3 ✓				
+50			50	319.6 ✓				
+10			79	316.7 ✓				
+50			82	316.3 ✓				
+510			83	316.3 ✓				
+10	= N Edge Porch		8.30	316.31 ✓				
+40	= S Middle		8.71	315.90 ✓				
+70	= S Edge Porch		9.54	315.07 ✓				
+60			9.8	315.4 ✓				
+50			9.7	314.9 ✓				
+70			10.0	314.6 ✓				
+50			11.8	312.8 ✓				
TP	225	314.21 ✓	12.05	311.56 ✓				
+80			13.3	310.9 ✓				

Plotted  
K.L.B.



Senior Levels Gregory St.  
Thorn to Upas

✓ 4.

314.21

See Sketch Page 1

0+0	Upas	8.70	305.51 ✓	22 Stub
+50		8.8	304.4 ✓	
+10		11.1	303.1 ✓	
+50		9.1	305.1 ✓	
+70		6.6	307.6 ✓	
+50		7.1	310.1 ✓	
+30		1.8	312.4 ✓	
TP	7.53	321.11 ✓	0.13	314.08 ✓
+50		7.0	314.6 ✓	
+10		5.5	316.1 ✓	
+50		4.7	316.7 ✓	
+70		4.5	317.1 ✓	
+50		4.2	317.4 ✓	
+40		4.1	317.5 ✓	

Plotted  
K.L.B.



Section Levels & Alley Blocks 2-3-4 City Heights  
Between Boundary & Nile

BM	10.06	331.02 ✓		
TP	381	323.55	11.28	319.74 ✓
0+0 - 100' N of N.E. of Myrtle			2.0	321.8 <sup>5</sup> ✓
+50			3.0	320.6 <sup>5</sup> ✓
+10			4.2	319.4 <sup>3</sup> ✓
+50			4.7	318.8 ✓
+40			4.8	318.7 ✓
+50			4.8	318.7 ✓
+20			4.9	318.6 ✓
+50			5.4	318.1 ✓
+40 - 1/2 W of Myrtle			6.2	317.3 ✓
+10 - 1/2 Myrtle			6.76	316.79 ✓ on stub
+50			7.3	316.2 ✓
+50			7.9	315.6 ✓
6+0			9.1	314.4 ✓
+50			10.0	313.5 ✓
7+0			11.0	312.5 ✓
TP	0.55	313.05 ✓	11.05	312.50 ✓
+50			1.3	311.7 ✓
8+0			2.7	310.6 ✓
+50			3.9	309.1 ✓
9+0			4.9	308.1 ✓
+50			6.4	306.6 ✓
10+0			7.5	305.5 ✓
+50			9.1	304.0 ✓

Plotted  
5-6 Incl.

318.05 ✓

11+0			12.0	301.0 ✓
TP	0.99	301.16 ✓	12.88	299.17 ✓
+20.5 - 1/2 Thorn St. S. 100' N			1.56	299.60 ✓ on stub
+50			4.0	297.2 ✓
12+0			6.3	294.9 ✓
+50			10.9	290.3 ✓
+1.8			13.3	287.9 ✓
13+0			13.8	287.4 ✓
+50			14.5	289.7 ✓
14+0			11.1	290.1 ✓
+50			12.5	288.7 ✓
TP	0.98	289.77 ✓	12.37	288.79 ✓
15+0			2.7	286.1 ✓
+50			7.0	282.8 ✓
+16+0			9.6	280.2 ✓
+50			11.0	278.8 ✓
17+0			14.8	278.0 ✓
+50			13.2	276.6 ✓
TP	0.43	277.85 ✓	12.35	277.42 ✓
+70			2.9	274.9 ✓
TP	0.57	265.98 ✓	12.80	265.05 ✓
18+0 - 1/2 Rodney St.			1.40	264.52 ✓ on stub
+20			5.4	260.5 ✓
+30			7.9	258.0 ✓
+50			8.5	257.4 ✓
+70			10.5	255.4 ✓

Plotted  
K.H.B.



26592 ✓

24597 ✓

18772	Bottom Creek	115	254.4	✓
+79		112	254.7	✓
1940		120	253.9	✓
+5		123	253.6	✓
+10		101	255.8	✓
+30		74	258.5	✓
+50		93	256.6	✓
TP +80	225. 257.25	119.7	257.00	✓ on Stub
2040		19	252.3	✓ 2-30-27
+12		59	251.3	✓
138		83	248.9	✓ Bottom Creek
150		76	249.6	✓
2140		96	247.6	✓
+12		111	246.1	✓
+16		131	244.1	✓ Bottom Creek
+21		127	244.3	✓
+26		115	245.7	✓
+50		78	249.4	✓
2240		100	247.2	✓
+22		125	244.4	✓
TP 157	245.97	128.5	244.40	✓
+32		29	243.1	✓
142		53	240.7	✓
+47		80	238.0	✓ Bottom Creek
+53		50	238.0	✓

Plotted  
K.L.13

22454		51	240.4	✓
+63		41	241.9	✓
2310		27	243.3	✓
+25		55	240.5	✓
+30		65	241.5	✓
+50		47	241.3	✓
2410		52	240.8	✓
+15		49	241.1	✓
+50		57	240.3	✓
2780	2430.15 = 28 Quips	57.5	240.22	✓ on Stub
2540		100	236.0	✓
+50		117	234.3	✓
TP 235	23246	1286	233.11	✓
2640		19	231.6	✓
+50		41	229.4	✓
+55		57	227.8	✓ in Creek
2740		65	227.0	✓ " "
+20		77	225.8	✓ " "
+25		63	227.2	✓
+50		71	226.4	✓
2840		74	226.1	✓
+5		80	225.5	✓
+20		110	222.5	✓
+30		113	222.2	✓
+53		129	219.6	✓

Plotted  
K.L.13



Center Levels & Alley Between Mile St + Vancouver St  
At D Wright

BM	436	321.21	322.95	SEB.P D Wright + Patton
TP	114	323.59	936	321.95
BM	51	6.44	317.15	NEBP D Wright + Mile
0.0	Existing Flash Tank on Rim = 20' H of H <sub>2</sub> O of D Wright Bottom Conc		732	316.26 ✓
		12.55		311.04 ✓
	Flow Line	14.23		309.36 ✓
+15.0'S		7.3		316.3 ✓
+17.0	= S.L. D Wright	7.5		316.1 ✓
+50		9.1		314.2 ✓
+75	= N Edge Canyon	15.5		308.1 ✓

Plotted  
K.L.B.

Center Levels & Alley Between Mile St + Vancouver St  
South of D Wright

3.25.27

3.23.59 M. B. I. Ford

See Sketch Page 1

0.0	= 400' H of D Wright	12.2		311.4 ✓
+50		8.6		315.0 ✓
TP	478	319.75	8.22	314.27 ✓
+17.0			4.1	315.6 ✓
+50			3.5	316.2 ✓
+20.0			3.5	316.2 ✓
+50			3.9	315.8 ✓
+20.0			4.0	315.7 ✓
+50			4.1	315.1 ✓
+75	= S. Myrtle	5.63		314.12 ✓ on stub
+50		6.0		313.7 ✓
+50		7.0		312.7 ✓
+50		7.6		312.1 ✓
+60		8.2		311.5 ✓
+50		8.2		311.5 ✓
+70		8.9		310.8 ✓
+50		9.3		310.4 ✓
+20.0		9.6		310.1 ✓
TP	313	313.78	9.60	310.15 ✓
+50			3.3	310.0 ✓
+90			3.8	309.5 ✓
+50			4.2	309.1 ✓
+100			4.7	308.6 ✓
+50			5.1	307.7 ✓
+80	= S. Theron	5.60		307.68 ✓ on stub

Plotted  
K.L.B.  
7-8  
& 12



Section Levels of Alluvial Deposits - Nile + Vancouver  
South of Dwight

↓ 8  
8-29-27

313.28

BM	11+0		61	307.2	✓	
TP	+50		63	307.0	✓	
BM	12+0		69	306.4	✓	
0+0	+50		72	306.1	✓	
13+0	+50		78	305.5	✓	
	+50		85	304.8	✓	
+50	14+0		91	304.2	✓	
14+0	TP	0.01	304.22	9.07	304.21	✓
+50	+50		0.6	303.6	✓	
+75	15+0		12	303.0	✓	
	+50		17	302.5	✓	
	16+0		23	301.9	✓	
	+50		28	301.4	✓	
	17+0		37	300.5	✓	
	16.05	Redwood	422	300.00	on Stab	
	18+0		49	299.3	✓	
	+50		54	298.8	✓	
	19+0		60	298.2	✓	
	+50		66	297.6	✓	
	20+0		75	296.7	✓	
	+50		82	296.0	✓	
	21+0		89	295.3	✓	
	+50		97	294.5	✓	
	22+0		105	293.7	✓	
TP	284	296.58	10.28	293.71	✓	

Plotted  
K.L.B.

296.58

	22+50		38	292.8	✓	
	23+0		48	291.8	✓	
	+50		62	290.4	✓	
	24+0		84	288.2	✓	
	+407	Quince	1033	286.25	✓	
	BM	2.95	297.31	2.22	297.31	✓
	+50		10.4	286.9	✓	
	25+0		8.7	288.6	✓	
	+50		6.3	291.0	✓	
	26+0		48	292.5	✓	
	+30.8	A.P. 87'54"	489	292.42	✓	
	+50	Quince	52	292.1	✓	
	27+0		63	291.0	✓	
	+50		73	290.0	✓	
	28+0		82	289.1	✓	
	+50		102	287.1	✓	
	29+0		112	286.1	✓	
	TP	1.21	295.90	12.62	284.69	✓
	+50		24	283.3	✓	
	30+0		77	278.2	✓	
	+75		108	275.1	✓	
	TP	0.77	273.66	12.01	272.89	✓
	+50		32	270.5	✓	
	+75		80	265.7	✓	
TP	0.47	261.35	12.88	260.78	✓	

Plotted  
K.L.B.

on Stab  
N.M. Prop. 425  
Quince 87'54"  
80' Vancouver  
Heller

on Stab

Cont on Page 12

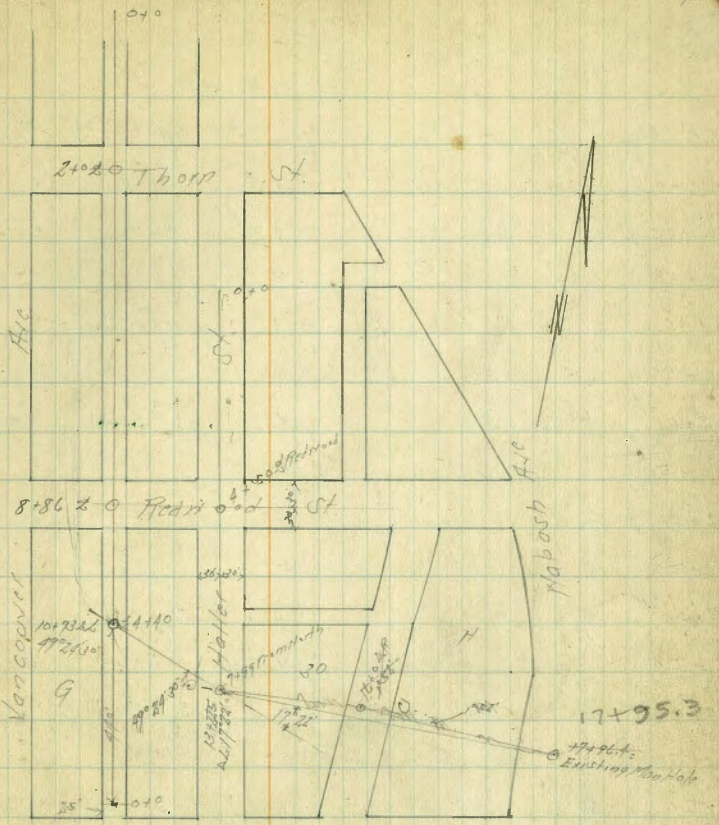


Some Levels of Alley Between Vancouver & Holler St  
 Redwood & Quince

296.58 St. Ford

TP	59.0	299.10	338	293.20	
BN			474	294.36	NW Parcel Quince Hill
0+0 = 25' of H/L of Quince			48	294.3	
+50'			45	294.6	
+40			50	294.1	
+50			6.5	292.6	
2+0			9.5	289.6	
+50			12.1	287.0	
TP	0.48	286.79	12.79	286.31	
3+0			19	284.9	
+35			4.5	282.3	
+50			6.1	280.7	
+75			11.5	275.3	
TP	0.17	274.56	12.90	273.89	
4+0			18	272.8	
+5			26	272.0	
12.5			81	266.5	
+40 = 10+70 Δ L Front			14.53	260.03	on St. Hub

Plotted  
R.L. 13



1322.5  
 10730  
 2995  
 4728  
 1073  
 88.6  
 10.9



Section Levels of Alley between Vancouver & Haller  
Thorn & Quince - Nabors

See Sketch Page 9

293.26

BM	CS	314.53	307.68	00 Stab Thorn / Quince 10.80	9+50	117	281.6	
0+0	- 200' off St. Paul St		303.7	✓	TP 0.52	291.05	127.3	280.53 ✓
+25			306.3	✓	+75		28	278.2 ✓
+50			308.9	✓	10+0		7.0	274.0 ✓
1+0			310.7	✓	+25		11.9	269.1 ✓
+50			310.5	✓	TP 119	269.14	130.5	268.00 ✓
2+0	- Thorn St		310.41	00 Stab	+50		61	263.0 ✓
+50			309.7	✓	+62		10.1	259.0 ✓
3+0			309.2	✓	+73	261.24	9.19	259.95 on Stab 3-28-27
+50			308.8	✓	11+0	0.9		260.4 ✓
4+0			308.2	✓	+12		3.4	257.9 ✓
+50			307.4	✓	+32		9.8	251.5 ✓
5+0			306.4	✓	+50		10.6	250.7 ✓
+50			305.3	✓	TP 0.58	249.13	127.7	248.55 ✓
6+0			304.1	✓	+90		22	246.9 ✓
TP	0.45	304.54	304.09		16+0		4.4	244.7 ✓ Bottom Gulch
+50			302.7	✓	+30		1.5	242.9 ✓
7+0			300.9	✓	+38		7.2	241.9 ✓
+50			299.2	✓	+40		9.8	239.3 ✓ Bottom Gulch
8+0			297.7	✓	+50		10.9	238.2 ✓ " "
+50			295.8	✓	+60		9.6	239.5 ✓
+86	- Redwood St		293.31	07 Stab	+92	80°30'	10.91	238.22 ✓ on Stab
9+0			290.3	✓	13+0		11.7	237.4 ✓
TP	1.09	292.26	292.17		TP 0.68	237.43	12.38	236.75 ✓
+25			287.7	✓	+50		18	232.6 ✓

Plotted  
K.K. 13

Plotted  
K.K. 13

No. Good

Change



237.43 ✓

13.55		5.9	231.5	✓
+57		6.9	230.5	Bottom Gulch
+65		7.5	229.9	✓
+67		6.8	230.6	✓
+75		7.2	230.2	✓
+85		8.9	228.5	✓
+87		9.9	227.5	Bottom Gulch
+95		10.4	227.0	✓
14.10		9.4	228.0	✓
+86		11.5	225.9	✓
+35		13.0	224.4	✓
TP	1.74	226.28	12.97	224.46 ✓
+37		2.6	223.6	✓
+42		2.8	223.4	✓
+43		1.8	224.4	✓
+58		1.2	221.9	?
+75		5.7	220.5	✓
+85		7.8	218.4	Bottom Gulch
+90		6.7	219.5	✓
15.10		7.3	218.9	✓
+18		10.5	215.1	✓
+20		11.4	214.8	✓
+50		12.5	212.1	✓
TP	1.69	214.94	12.95	213.27 ✓
+75		3.9	211.1	Bottom Creek

Plotted  
K.L.B.Flood Line  
Bottom Line

214.96 ✓

15.76		2.1	212.4	✓
16.10	19.15	4.1	210.54	on stub
+50		10.1	204.9	✓
TP	15.6	208.64	12.88	202.08 ✓
17.10		5.1	198.0	✓
+50		12.5	190.1	✓
TP	3.20	194.19	12.15	190.99 ✓
+9.64	Excl. up N in March	4.9	189.21	on floor
Flood Line		10.57	183.62	✓

Plotted  
K.L.B.







Survey Lands of A.W. 57-58 Park Villas  
Boundary St. East Acres Block 4

278.80 ✓  
~~278.90~~ St. East From Page 2

2340		77	271.1	✓
450		110	267.8	✓
170		116	267.2	✓
171		130	265.8	✓
180		130	265.8	✓
185		120	266.8	✓
210		130	265.8	✓
TP	218	<del>218.51</del> 218.51	1277	266.03 ✓
150		38	<del>265.93</del> 264.7	✓
172		55	263.0	✓
173		66	261.9	✓
187		74	261.1	Bottom Creek ✓
185		66	261.9	✓
2570		56	262.9	✓
150		69	261.6	✓
194		92	259.3	✓
195		101	258.4	Bottom Creek ✓
2610		102	258.3	✓
110		65	262.0	✓
125		70	261.5	✓
140		94	259.1	✓
178		123	256.2	10 Creek ✓
2710		128	255.7	✓
TP	154	<del>257.35</del> 257.35	1270	255.81 ✓ <del>255.71</del>
143		45	252.8	✓

Plotted  
K.L.B.

257.35 ✓  
~~257.25~~

27180	2.0	255.35 ✓
28	24	254.9 ✓
+065-19490	3.25	254.10 ✓

Plotted  
K.L.B.



D 14  
1227

23346 <sup>✓</sup> 9<sup>th</sup> Ford From Page 6

21249 <sup>✓</sup>

28185		14.5	219.0	✓
TP	009	22117	22108	✓
+90		3.6	217.6	✓ Bottom Creek
+95		3.8	217.4	✓ " "
2910		1.7	219.5	✓
+25		0.8	220.4	✓
+50		2.9	218.3	✓
+92		6.7	214.5	✓
+93		7.9	213.3	✓ Bottom Creek
3070		8.3	212.9	✓ " "
+3		6.7	214.5	✓
+35		2.6	218.6	✓
+50		2.4	218.8	✓
+85		4.4	216.8	✓
3170		6.9	214.3	✓
+25		9.1	211.8	✓
+64		11.0	210.2	✓
TP	2.33	21249	21016	✓
+16		5.0	207.4	✓
+82		6.9	206.6	✓
3210		4.5	207.9	✓
+5		5.1	207.1	✓
+10		6.9	206.6	✓
+20		7.7	204.8	✓
+22		5.8	206.7	✓

Plotted  
K.L.B.  
4#15  
9mcs

32150		5.1	207.1	✓
3310		6.2	206.3	✓
+50		6.9	205.6	✓
TP	+292 AL	0.97	20588	758 ✓ on stub
	-34+291			
3410		3.2	202.7	✓
+25		5.2	200.7	✓ Bottom Creek
+50		5.3	200.6	✓
3510		6.7	199.2	✓
+10		6.2	199.7	✓
+50		8.1	197.8	✓
3610		10.9	195.0	✓
+20		12.8	193.1	✓
+23		11.6	194.3	✓
+50		12.2	193.7	✓
TP	2.13	19586	12.15	193.73 ✓
			?	
+90		1.0	191.9	?
+95		5.2	190.7	✓
37120		6.0	189.9	✓ Bottom Creek
+22		7.1	191.8	✓
+2925 AL		1.11	191.55	✓ on stub
-8+55 FROM				
+50		2.7	193.2	✓
+80		6.1	189.8	✓
3810		7.8	188.7	✓
+50		10.0	185.9	✓
+76		11.3	184.6	✓
+90		12.9	183.0	✓

Plotted  
K.L.B.



15  
4-4-37

177.78

19586

29+03.9	Δ R 9° 26' 30"	11.85	184.01	on Stab
+25	Holler	12.0	183.9	
TP	0.66	183.57	182.91	
+60		3.7	179.9	
+73		2.7	180.9	
4040		4.1	179.5	
+15		5.9	177.7	Bottom Creek
+30		3.6	180.0	
+58		4.3	179.3	
4140		5.4	178.2	
+30		7.2	176.4	
+40		6.8	176.8	
+45		9.2	174.4	
+50		7.3	176.3	
+66		7.8	175.8	
+70		9.2	174.4	
+95		7.6	176.0	
4240		9.0	174.6	on Pick 42404
TP	3.19	177.28	174.59	1.7 line
+50		5.1	174.4	
4340		7.6	170.4	
+25		9.0	168.8	
+33		8.0	169.8	
+50		8.8	169.0	
+90		8.6	169.2	

Plotted  
K.H. 193

43494	10.6	167.2	
+96	12.1	165.7	Bottom Creek
44422	10.8	167.0	
+23	8.8	169.0	
+269 - Existing Section	9.04	168.74	on Pub
On River Man Hole 159.3, 144.219	4.8	172.80	
Flux Line	12.12	165.66	

Plotted  
K.H. 193



Server Levels of Alley Between Vancouver & Haller  
From Quince to Olive

16  
4-27

26005

NY Prop. No 5  
Quince & Alley Bet  
Vancouver & Haller

BM	0.67	2950.3		294.36	
0+0			18	293.2	
+50			2.6	292.4	
1+0			3.4	291.6	
+50			4.3	290.7	
2+0			5.2	289.8	
+50			6.5	288.5	
3+0			7.5	287.5	
+50			7.9	287.1	
4+0			8.6	286.4	
+50			9.9	285.1	
5+0			12.2	282.8	
TP	1.44	284.14	12.33	282.70	
+54			5.0	279.1	
+64			6.2	277.9	
+70			15.6	268.5	
+80			22.8	261.3	
6+0			21.8	262.3	
+5			8.7	274.4	
TP	0.98	272.13	12.99	271.15	
+30			13.0	269.1	
+55			10.2	261.9	
TP	0.93	260.05	13.01	259.12	
+80			15.0	255.0	
7+0.5			12.5	247.5	

Plotted  
K.L.B.

TP	0.20	247.35	12.90	247.15	
7+1.5			2.39	244.96	oo Stub
+35			7.1	239.9	
TP	0.81	235.04	13.12	234.23	
+60			4.1	230.9	
TP	0.18	222.48	12.74	222.30	
+85			2.5	219.0	
8+0			11.0	211.5	
TP	0.22	210.29	12.1	210.07	
+10			2.5	207.8	
+25			13.2	197.1	
TP	4.23	201.47	13.05	197.24	
+25			10.00	191.47	
7+25				191.27	

Plotted  
K.L.B.

oo Stub  
Page 14.



Section Levels of Alley Block H Altadena  
Between Gregory & McKinley From Redwood to Thorn

17  
4-4-37

See Sketch Page 1

N.W. Thorn  
& Gregory

BM	0.21	318.22	318.01	
0+0 - Finishing M.H. to Redwood	0.21	9.55	308.67	✓
Flank Line		15.04	303.18	✓
+50		8.0	310.22	✓
1+0		6.8	311.4	✓
+50		6.1	312.1	✓
2+0		5.8	312.4	✓
+50		5.7	312.5	✓
3+0		5.2	312.8	✓
+50		5.5	312.7	✓
4+0		5.8	312.4	✓
+50		6.3	311.9	✓
5+0		6.1	312.1	✓
+51 = N.E. of E.H. Alley		5.6	312.6	✓
6+0		5.0	313.2	✓

Plotted  
A.L.B.



Set of Levels to Boundary St.  
 There 10 Redwood

See Sketch Page 1

292.69 ✓  
~~292.59~~

292.11 ✓

on Stub Thorn  
 to Boundary

See Cor. Page 2.

B.M. 0.58 = 80+11.8 Δ 6.1231 10.72 281.97 02 Stub

7.25 12.9 279.8 ✓

1.50 10.8 278.9 ✓

1.70 14.8 277.9 ✓

7.50 13.8 278.9 ✓

2.10 10.1 282.1 ✓

7.50 9.2 283.5 ✓

3.70 8.3 284.4 ✓

1.50 7.7 285.0 ✓

4.10 6.4 286.3 ✓

7.50 3.0 289.7 ✓

5.10 3.0 289.7 ✓

7.50 3.1 289.6 ✓

6.10 3.8 289.5 ✓

7.50 3.3 289.4 ✓

7.10 2.6 290.1 ✓

1.50 2.0 290.7 ✓

Plotted  
 K.H. B.



Section Levels & Alley East of Boundary St  
From 220 So. Olive to 1/2 Quince

See Sketch Page 12

244.81

19

BM	7.73	303.62		295.89	
0+00	-220 So. Olive	4.3	✓	299.3	✓
+50	Plotted K.L.B.	3.6	✓	300.0	✓
1+00		3.4	✓	300.2	✓
+50		3.9	✓	299.7	✓
2+00		5.0	✓	298.6	✓
2+20	1/2 Olive St.	5.7	✓	297.9	✓
+50		6.5	✓	297.1	✓
3+00		8.7	✓	294.9	✓
+50		10.8	✓	292.8	✓
T.P.	0.98	291.85	12.77	290.85	✓
4+00		2.2	✓	289.6	✓
+50		5.8	✓	286.0	✓
5+00		11.0	✓	280.6	✓
T.P.	0.81	279.86	12.78	279.05	✓
+50		3.6	✓	276.3	✓
6+00		9.8	✓	270.1	✓
T.P.	0.07	267.05	12.88	266.98	✓
+50		2.8	✓	264.2	✓
7+00		6.9	✓	260.1	✓
+15		11.0	✓	256.0	✓
T.P.	0.14	255.33	11.86	255.19	✓
+25		2.0	✓	253.3	✓
+50		11.3	✓	244.0	✓
T.P.	2.25	244.81	12.77	242.56	✓

1/2 Mer. of Maple  
E.L. Boundary

+ 75

6.9

237.9

8+00

7.6

237.2

+ 25

7.8

237.0

+ 38

9.7

236.1

+ 60

7.5

237.3

7.85

5.1

239.7

9+01  $\Delta$  = 241.799  
= 1/2 Quince

4.53

240.28 on stub  
E.L. 140.00

Plotted  
K.L.B.



Saxon Levels & Haller St.  
300' South of Maple

18-27

9.01	278.58	270.87	
10.0	271.67	275.67	on St. 1+60
150.5	274.5		
1.0	273.5		
150	272.1		
2.0	270.2		
150	268.2		
2.0	266.4		

Plotted  
K.K.B.

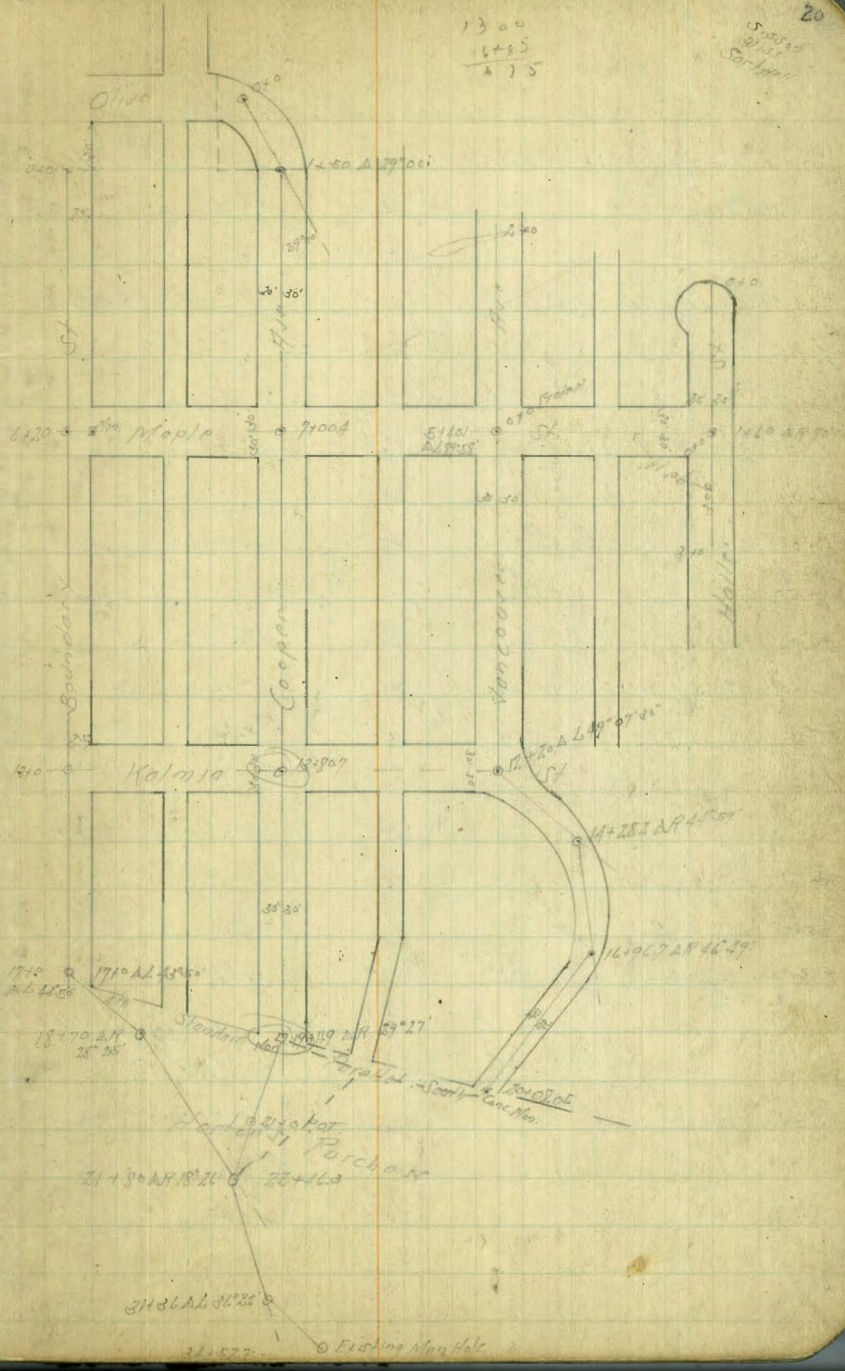
Saxon Levels & Vancouver N of Maple

275.02, H from Page 21

2.0	272.15	272.15	on St. 1+60
150.5	272.0		
1.0	270.9		
150	267.7		
2.0	259.3		

Plotted  
K.K.B.

22+10 East break  
3' below in. gradual slope  
to 22+46.3 & to Peter the line  
21+30 to 21+80





See Sketch Page 20

279.88 H/B. Fort Page 20

0+0	Haller St. 126' N of 1/2 Maple	3.2	276.7	✓	
+50		3.1	276.8	✓	
+100		3.5	276.4	✓	
+150	Δ P 90° 14' - of Maple	4.21	275.67	✓	on Stab
+200		5.2	274.7	✓	
+250		5.6	274.3	✓	
+300		6.6	273.3	✓	
+350		7.1	272.3	✓	
+400		9.8	270.1	✓	
+450		10.2	269.7	✓	
+500		8.8	271.1	✓	
+550	Δ L 89° 58' - of Vancouver	7.74	272.15	✓	on Stab
TP	287	275.05	7.73	272.15	✓ 5+70' 500
+600		8.1	271.4	✓	+30
+650		5.2	269.8	✓	+80
+700		5.7	269.3	✓	+30
+750		6.4	268.6	✓	+80
TP	314	273.32	5.14	269.88	✓
+790		5.7	267.6	✓	2+00
+810		5.0	268.3	✓	2+30
+850		3.9	269.4	✓	2+80
+900		2.5	270.8	✓	3+30
+950		2.3	271.0	✓	3+80
+1000		2.5	270.8	✓	4+30
+1050		3.5	269.8	✓	4+80

Plotted  
K.H. 13  
Map #1  
checked  
2/17/71

273.32

10+65		7.4	265.9	✓	4+95
+80		13.5	259.8	✓	5+10
+90		17.3	256.0	✓	5+20
1110		15.7	257.6	✓	5+30
+115		11.6	261.7	✓	5+45
+125		6.8	266.5	✓	5+55
+150		3.8	269.5	✓	5+80
1210		4.4	268.9	✓	6+30
+170				✓	6+50
+180	Δ L 89° 07' 30" - of Kalmia	4.63	268.69	✓	on Stab
+150		6.6	266.7	✓	6+80
1370		8.9	264.4	✓	7+30
+150		9.0	264.3	✓	7+80
+187		8.1	265.2	✓	8+17
TP	11+282 Δ R 46° 59'	271.13	6.59	266.73	✓ 8+58 <sup>20</sup>
+150		5.0	266.1	✓	8+80
1540		5.4	265.7	✓	9+30
+150		5.5	265.6	✓	9+80
1640		4.9	266.2	✓	10+30
+150		4.1	266.7	✓	10+80
+1967	Δ R 46° 49'	4.56	266.57	✓	11+26.7
17+150		5.5	265.6	✓	11+80
+180		7.4	263.7	✓	12+30
+150		8.1	263.0	✓	12+80
1940		8.9	262.2	✓	13+30
+150		8.4	262.7	✓	13+80
20+0805	Δ R Vancouver 14° 54' 20"	8.30	262.83	✓	14+38 <sup>50</sup>

Plotted  
K.H. 13  
checked  
2/17/71

✓  
1-8-27



Senior Levels of Cooper Hill  
From Oliva to

22  
1-5-27

See Sketch Page 20

280.03

BM	1.59	297.48	295.89	Maple	TP	10.87	290.86	0.04	279.89
TP	3.50	295.19	5.79	5.79	7+2.0			6.2	284.7
0.70			2.9	292.3	+5.0			4.6	286.3
+2.5			2.7	292.5	8+0			3.0	287.9
+5.0			3.2	292.0	+5.0			3.6	287.3
+7.0			6.2	289.0	9+0			4.5	286.4
+5.0	ΔP 29°00'		6.25	288.94	+5.0			5.8	285.1
2+0			6.4	288.8	10+0			7.1	283.5
+5.0			4.3	290.9	+5.0			9.8	281.1
3+0			3.2	292.0	11+0			12.1	278.5
+5.0			2.8	292.4	TP	0.89	278.93	12.82	278.04
+6.5			2.8	292.4	+5.0			2.2	276.7
+1.0			3.2	292.0	12+0			3.4	275.5
+5.0			3.9	291.3	+5.0			4.9	274.0
5+0			4.3	290.9	13+0			7.1	271.8
TP	0.38	292.07	3.50	291.69	+5.0			10.2	268.7
+3.5			1.5	290.6	+8.02	2. Kalmia		10.95	267.98
+5.0			1.8	290.3	14+0			12.0	266.9
6+0			3.7	288.4	TP	0.39	266.46	12.84	266.07
+5.0			7.5	284.6	+5.0			1.3	265.2
TP	0.77	280.03	12.83	279.24	15+0			3.9	262.6
+7.3			5.0	278.0	+5.0			4.6	261.9
+8.5			14.4	265.6	16+0			4.4	262.1
+9.3			14.4	265.6	+5.0			5.5	261.0
7+0.0 = g Maple St.			7.6	272.4	17+0			7.3	259.2

Plotted  
K.L.B.  
#2  
Map  
checked  
J.M.

Plotted  
K.L.B.  
checked  
J.M.

7+30.4=00  
+19.6  
+69.6  
+19.6  
+69.6  
5.0  
7.0  
1.5

5.0  
7.0  
2.0  
1.5

5.0  
7.0  
1.5



266.46 ✓

17+50 9.3 257.2 ✓ 1127 26559 10+19.6

18+0 13.3 253.2 ✓ 10+69.5

TP 1.04 255.21 1229 254.17 ✓

+50 8.9 246.3 ✓ 11+19.5

TP 2.00 244.27 1294 242.27 ✓

19+0 5.8 238.5 ✓ 11+69.5

TP 11.9 0.55 236.78 804 236.23 ✓ on Nov ✓  
 2 Cooper 2204/200

+50 5.6 231.2 ✓ 47-27

20+0 12.6 224.2 ✓

TP 1.47 225.34 1291 223.87 ✓

+50 6.8 218.5 ✓

TP 1.88 212.38 1284 212.50 ✓

21+0 2.00 211.38 ✓ on Stub

+25 8.0 205.4 ✓

TP 0.62 201.09 1291 200.47 ✓

+50 5.6 195.5 ✓

+75 12.6 188.5 ✓

TP 0.90 189.30 1269 188.40 ✓

+90 5.3 184.0 ✓

22+0 9.3 180.1 ✓

TP 1.32 178.96 1266 176.64 ✓

+18 4.2 174.8 ✓

+16.3 = 2180/1821 7.21 171.70 ✓ on Stub  
 Page 22

11+81<sup>5</sup> = 5 line Montclair  

$$\frac{11+81^5}{313}$$
  
 11+84<sup>63</sup> see Book 1288 page 9

Plotted  
 K. B.  
 checked  
 2/27  
 map



Sea Level & Boundary St. South of Olive

SeaSketch Page 20

BM	8.08	30397	295.89	✓
0+0	305 of 51	4.5	299.5	✓
+50		47	299.3	✓
1+0		47	299.1	✓
+50		54	298.6	✓
2+0		46	299.4	✓
+50		54	298.6	✓
3+0		48	299.2	✓
+50		46	299.4	✓
4+0		49	299.1	✓
+50		57	298.3	✓
5+0		63	297.7	✓
150		71	296.9	✓
6+0		75	296.5	✓
120	Maple	810	295.87	on Stake
+50		85	295.5	✓
7+0		92	294.8	✓
TP	130	29614	294.54	✓
+50		18	294.3	✓
8+0		27	293.4	✓
+50		36	292.5	✓
9+0		44	291.7	✓
+50		54	290.7	✓
10+0		69	289.2	✓
+50		87	287.4	✓

Plotted  
M.T.B.  
Map  
checked  
M.T.B.

Plotted  
M.T.B.  
checked  
M.T.B.

11+0			296.14	✓
+50				✓
12+0				✓
TP	0.95	294.04	283.09	✓
+50			281.7	✓
13+0	Maple		279.28	on Stake
+50			276.1	✓
TP	0.21	271.21	270.95	✓
14+0			270.8	✓
+50			265.0	✓
TP	0.05	258.24	258.29	✓
15+0			256.1	✓
125			251.4	✓
+50			245.2	✓
TP	0.33	245.94	245.61	✓
+75			241.4	✓
16+0			236.6	✓
TP	0.20	233.30	233.10	✓
+25			226.5	✓
TP	0.48	220.68	220.20	✓
+50			216.4	✓
TP	0.54	208.61	208.07	✓
+75			203.6	✓
+88			199.6	✓
17+0	A.L. 12' 50"		199.89	on Stake

4-6-27  
Sawyer  
Sigsbee  
W.P.M.



20261

17+7		10.2	198.4	✓	
+30		11.8	196.8	✓	
+40		11.1	197.5	✓	
+50		10.6	198.0	✓	
TP	158	197.68	12.51	196.10	✓
+75		2.7	195.0	✓	
+80		4.7	193.0	✓	
+90		5.3	192.4	✓	
+94		5.3	194.4	✓	
1840		8.0	194.7	✓	
+7		2.5	195.2	✓	
+50		6.1	191.6	✓	
+70	AP 1185	8.02	189.66	✓	
1940		9.2	188.5	✓	
+25		9.5	188.2	✓	
+50		10.3	185.4	✓	
TP	0.21	185.74	12.15	185.53	✓
2070		2.6	183.1	✓	
+30		3.3	182.4	✓	
+50		7.2	178.5	✓	
+65		9.4	176.3	✓	
+70		8.1	177.6	✓	
+80		9.4	176.3	✓	
+85		10.5	175.2	✓	
+87		9.5	176.2	✓	

Platted  
checked  
map= New Sta. 1181  
or Sta. 6

18571

2140		10.3	175.4	✓	
+20		10.5	175.2	✓	
+30		10.7	175.0	✓	
+35		11.0	174.7	✓	
+50		12.3	173.4	✓	
TP	108	174.02	13.10	172.64	✓
+80	AP 1826		2.34	171.68	✓
+87			3.0	171.0	✓
2240			6.5	167.5	✓
+20			8.0	166.0	✓
+22			6.3	167.7	✓
+35			4.4	169.6	✓
+50			4.4	169.6	✓
+88			7.9	166.1	✓
+92			9.9	164.1	✓
+98			10.4	163.6	✓
2340			8.6	165.4	✓
+40			10.5	163.5	✓
+45			12.9	161.1	✓
TP	4.81	166.68	12.95	161.27	✓
+53			4.5	161.6	✓
+55			3.3	162.8	✓
+63			2.4	163.7	✓
+80			3.2	162.9	✓
2440			6.2	159.9	✓

Platted  
checked  
map

00.5+06.833



16608

14790

24+10	68	159.3	✓	17+21 <sup>52</sup>
+15	57	160.4	✓	17+26 <sup>52</sup>
+50	75	158.6	✓	17+61 <sup>52</sup>
+65	91	157.0	✓	17+76 <sup>52</sup>
+70	105	155.6	✓	17+81 <sup>52</sup>
+73	84	157.7	✓	17+84 <sup>52</sup>
+90	100	156.1	✓	18+01 <sup>52</sup>
+98	122	153.9	✓	18+09 <sup>52</sup>
25+0	107	155.4	✓	18+11 <sup>52</sup>
7P	120	156.80	✓	10.98
+50	87	153.1	✓	18+61 <sup>52</sup>
+60	46	152.2	✓	18+71 <sup>52</sup>
+95	54	151.4	✓	19+06 <sup>52</sup>
26+0	50	151.3	✓	19+11 <sup>52</sup>
+35	64	150.4	✓	19+46 <sup>52</sup>
+37	75	149.3	✓	19+48 <sup>52</sup>
+50	77	149.1	✓	19+61 <sup>52</sup>
27+0	85	148.3	✓	20+11 <sup>52</sup>
+35	107	146.1	✓	20+46 <sup>52</sup>
+50	123	144.5	✓	20+61 <sup>52</sup>
7P	315	147.90	✓	120.5
+60	43	143.6	✓	20+71 <sup>52</sup>
+66	57	142.0	✓	20+73 <sup>52</sup>
+73	68	141.1	✓	20+84 <sup>52</sup>
+80	86	144.3	✓	20+91 <sup>52</sup>

Plotted checked down map

28+0	44	143.5	✓	21+11 <sup>52</sup>
+25	60	141.9	✓	21+36 <sup>52</sup>
+27	67	141.2	✓	21+38 <sup>52</sup>
+30	86	139.3	✓	21+44 <sup>52</sup>
+35	91	138.8	✓	21+46 <sup>52</sup>
+36	67	141.2	✓	21+47 <sup>52</sup>
+50	66	141.3	✓	21+61 <sup>52</sup>
29+0	82	139.7	✓	22+11 <sup>52</sup>
+50	22	138.7	✓	22+61 <sup>52</sup>
30+0	106	137.3	✓	23+11 <sup>52</sup>
+36	125	134.4	✓	23+47 <sup>52</sup>
7P	0.71	135.60	✓	1301
+42	76	131.0	✓	134.89
+50	52	130.3	✓	23+53 <sup>52</sup>
+60	58	129.8	✓	23+61 <sup>52</sup>
+70	58	129.8	✓	23+71 <sup>52</sup>
31+0	31	132.5	✓	23+81 <sup>52</sup>
+70	58	129.8	✓	24+11 <sup>52</sup>
+15	78	128.4	✓	24+26 <sup>52</sup>
+20	88	126.8	✓	24+31 <sup>52</sup>
+22	75	128.1	✓	24+33 <sup>52</sup>
+36	69	128.61	✓	24+47 <sup>52</sup>
+50	80	127.6	✓	24+61 <sup>52</sup>
+70	105	125.1	✓	24+81 <sup>52</sup>
+75	93	126.3	✓	24+88 <sup>52</sup>
32+0	87	126.9	✓	25+11 <sup>52</sup>

Plotted checked down map

31+26  
2+20  
9.56



18560

32+50		122	123.4	✓	25+61 <sup>52</sup>
TP	171	124.47	1284	✓	26+11 <sup>52</sup>
33+0		32	121.3	✓	26+55 <sup>52</sup>
44		57	118.8	✓	26+61 <sup>52</sup>
750		75	117.0	✓	
TP	337	115.60	1224	✓	26+68 <sup>52</sup>
757		58	109.8	✓	27+11 <sup>52</sup>
34+0		52	110.3	✓	27+64 <sup>52</sup>
4527	Existing Markers	392	111.28	✓	
Flax Line		940	106.20	✓	

Part of  
sketch  
from  
map

new chaining makes  
this the 27+64<sup>52</sup>

see Book 1288 page 14

27

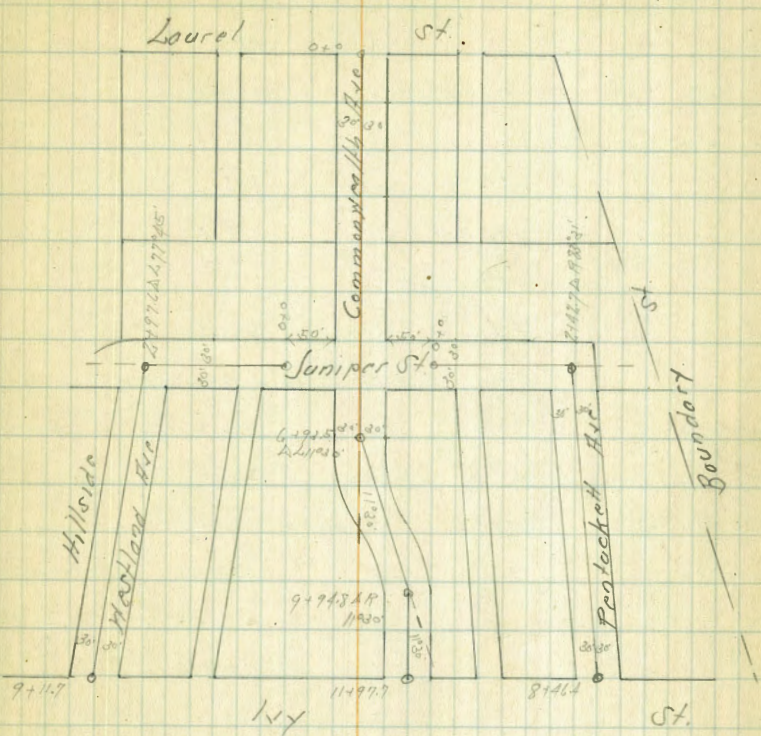
311	843	27712	✓	26719	✓	27 St. S. of Olive Kalmia St
0+0 = 2	Kalmia at Vancouver	843	268.69	✓	page 21	
+50	74	270.7	✓			
1+0	29	272.2	✓			
750	30	274.1	✓			
2+0	27	274.4	✓			
+50	31	274.0	✓			
3+0	27	273.4	✓			
750	56	271.5	✓			
+834 = 2	Kalmia at Cooper	714	267.98	✓	27 St. S. of Olive pg. 22	

Plotted  
map #1  
277



BM	5.51	216.38	216.84	✓	SST on Hill Juniper & Westland
010	- S. Juniper 50' of N. Commonwealth	0.84	265.44	✓	on Par 109
+50		2.15	264.23	✓	" "
+10		3.44	262.94	✓	" "
+50		4.66	261.72	✓	" "
+10		5.89	260.49	✓	" "
+50		7.15	259.23	✓	" "
+97.6	66° 77' 45" - Hill Westland Hill	8.54	257.84	✓	" "
3+28	- S. L. Juniper	8.82	257.56	✓	" "
+30		4.8	261.6	✓	" "
+50		4.1	262.0	✓	" "
+10		4.6	261.8	✓	" "
+50		4.6	261.8	✓	" "
+10		5.6	260.8	✓	" "
+50		5.8	260.6	✓	" "
+10		6.0	260.4	✓	" "
+50		7.0	259.4	✓	" "
+10		8.5	257.9	✓	" "
+50		10.3	256.1	✓	" "
+10		12.5	253.9	✓	" "
TP	223	256.27	254.04	✓	
+50		4.9	251.4	✓	
+10		8.6	247.7	✓	
+117	- N. L. of Hill	9.08	247.19	✓	on Stake
BM		6.51	249.76	✓	Spot B/L for Hill Westland

Plotted on Map #3





Some Levels & Components  
From Laurel to W

29  
48.27

BW	1153	28153	270.00	✓	
TP	727	28256	281.29	✓	
0.0	= 2 Components 54 Laurel		275	285.81	✓
+50.5			3.5	285.1	✓
+70			42	284.4	✓
+50			50	283.6	✓
+70			63	282.3	✓
+50			81	280.2	✓
+10			103	278.3	✓
+50			123	276.3	✓
TP	082	27653	275.71	✓	
+10			20	274.5	✓
+50			41	272.4	✓
+10			65	270.0	✓
+50			86	267.9	✓
+60.6	= H.L. Sampler		931	267.19	✓
+90.6	= " "		936	267.17	✓
+10			983	266.10	✓
+20.6	= " "		980	266.73	✓
+750			99	266.6	✓
+93.5	= L 11°30'		1128	265.25	✓
+70			114	265.1	✓
+50			128	263.7	✓
TP	133	26522	263.89	✓	
810			23	262.9	✓

Plotted  
K.L.B.  
#1  
Map  
checked  
J.M.

26522

SE Top 110	81.50	36	261.6	✓
Swampy Component	9+0	48	260.4	✓
	+50	55	259.7	✓
+94.8 L.P. 11°30'		608	259.14	✓
	10+0	60	259.2	✓
	+50	67	258.5	✓
	11+0	76	257.6	✓
	+50	73	257.9	✓
+97.64 = H.L. 100		562	259.60	✓
311		434	260.38	✓

Plotted  
K.L.B.  
checked  
J.M.

09 Stub  
Sph. Calc.  
N.W. Cor.  
1994 Commission



Santa Lucia Juniper Sta. Postcard #4

SE Top Hill

B.M.	113	271.12	270.00	Juniper Comm. Sta.
0+0	Juniper Sta. E. of P. Comm. Sta.	1.55	269.58	07 Pav. 179
+50		0.92	270.71	" "
+10		1.10	270.03	" "
+25		2.00	268.83	" "
+50		3.93	267.20	" "
+75		7.00	265.15	" "
+100		8.52	262.60	" "
+127	W.P. Rd. 31. - S Postcard #4	10.73	260.40	" "
+127.4	S Edge Pav. 179	11.03	260.10	" "
+150		8.6	262.5	" "
+50		6.8	264.3	" "
TP	6.55	270.51	7.17	263.96
+10		3.7	266.8	" "
+50		1.5	269.0	" "
+40		0.3	270.2	" "
+50		0.2	270.3	" "
+10		1.5	269.0	" "
+50		3.2	267.3	" "
+10		6.6	263.9	" "
+50		10.2	260.2	" "
+10		12.4	258.1	" "
+164	W.L. 144	14.74	255.71	028706

~~Postcard #4~~

Plotted & checked  
May 3 1977

244.7  
8746.4  
6.037



Sewer Levels & 33rd St.

From 300 S of E of Hwy to E' Kalman

1827

SMBP Top Mt

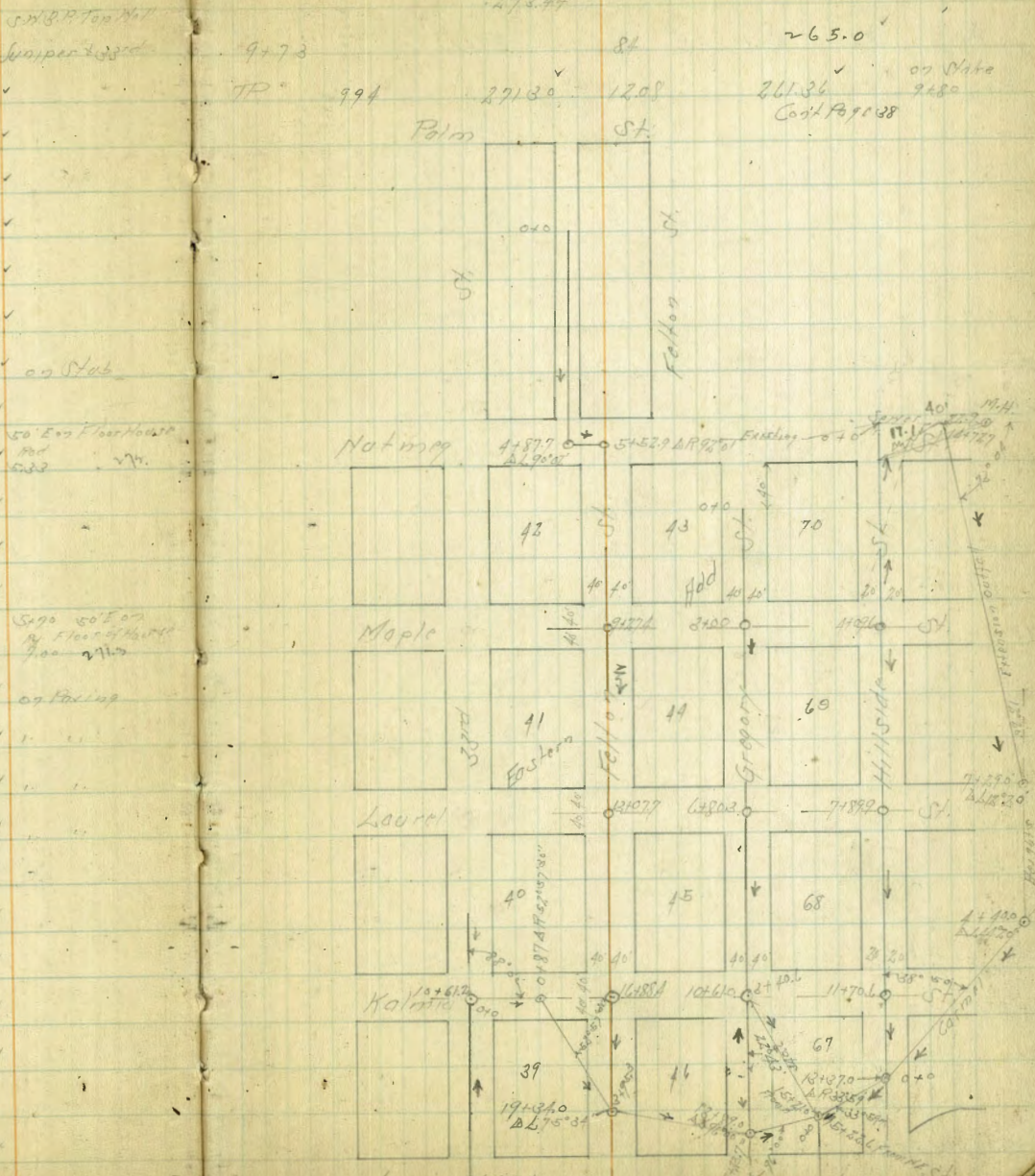
Juniper 2335

273.44

265.0

B/M	0.20	278.32	278.12	
0+0	300 S of E of Hwy	16.0	262.3	
+50 ft		12.2	266.0	
+10		9.4	268.9	
+50		6.5	271.8	
+20		4.8	273.5	
+50		2.2	275.4	
3+0	300 S of E of Hwy	3.12	275.19	
+50		2.7	275.6	
4+0		5.4	274.9	
+50		5.8	274.4	
5+0		4.2	273.7	
+50		5.0	273.3	
6+0		5.0	273.3	
+40.5	South Edge Parking	5.22	272.50	
+30.5	Juniper	5.17	272.85	
7+0		5.77	272.55	
+20.5	N Edge Parking	5.72	272.59	
+27		4.4	273.9	
+50		5.5	272.8	
8+0		6.2	272.1	
+50		6.4	271.9	
9+0		7.7	270.6	
TP	269	273.44	7.57	270.75
+50		6.8	267.2	

Plotted & checked  
11.11.11  
11/23/13





BM	8.43	302.51 ✓	294.08	N.E.P. Nutmeg + Barrel
0+0	Sof. SL 18/20	0.1	302.4 ✓	
+50.5		23	300.2 ✓	
1+0		4.9	297.6 ✓	
+50		7.9	294.6 ✓	
+82		9.7	292.8 ✓	
2+0		12.3	290.2 ✓	
TP	0.36	289.85 ✓	289.49 ✓	
+50		1.8	285.0 ✓	
3+0		10.6	279.2 ✓	
+50		16.1	273.7 ✓	
+65		18.2	271.6 ✓	
+82		24.3	265.5 ✓	
4+0		26.2	263.6 ✓	
+5		27.4	262.4 ✓	
+10		26.0	263.8 ✓	
+20		20.4	269.4 ✓	
+30		19.6	270.2 ✓	
+47		8.3	281.5 ✓	
+67.8	N.C. of Nutmeg	8.51	281.34 ✓	on Top Ch.
	Gutter	9.38	280.47 ✓	on Corn Gutter
+87.7	N. of Nutmeg A.S. 20.2	9.00	280.85 ✓	on St. 20.2
9+5+0		10.0	279.8 ✓	
TP	2.85	279.95 ✓	277.10 ✓	
+52.9	A.P. 20.2 of Nutmeg + Fallon	2.3.5	276.70 ✓	on St. 20.2

Plotted & checked  
4/27/27  
Map 3

			279.95 ✓	
5+7.3		4.5	275.4 ✓	
+9		4.3	275.6 ✓	
6+0		12.2	267.7 ✓	
+10		16.4	263.5 ✓	
+22		16.0	263.9 ✓	
+60		13.1	266.8 ✓	
7+0		12.1	267.8 ✓	
+50		11.4	268.5 ✓	
TP	1.47	268.42 ✓	266.91 ✓	
8+0		2.5	265.9 ✓	
+50		7.0	261.4 ✓	
9+0		11.7	256.7 ✓	
TP	1.65	257.05 ✓	255.40 ✓	
+27.4	N. Maple St.	3.80	253.25 ✓	on St. 20.2
+50		15.5	241.5 ✓	
+60		16.0	241.0 ✓	
+70		13.2	243.8 ✓	
10+0		4.5	252.5 ✓	
TP	5.38	262.23 ✓	262.85 ✓	
+50		4.2	258.0 ✓	
+50		6.9	259.3 ✓	
11+0		2.9	259.3 ✓	
+50		2.4	259.8 ✓	
12+0		2.0	260.2 ✓	
+50		3.0	259.4 ✓	

Plotted & checked  
4/27/27  
Map 3



212.23 ✓

259.27 ✓

1340			6.5	255.7 ✓	
+077	- Laurel		8.29	253.94 ✓	on Stubs
TP	398	253.55 ✓	12.16	249.57 ✓	
+36			5.0	248.5 ✓	
+50			10.1	243.1 ✓	
+65			16.3	237.2 ✓	
+78			11.7	236.8 ✓	
1410			8.1	245.4 ✓	
+20			2.8	250.7 ✓	
TP	11.79	214.61 ✓	0.68	252.87 ✓	
+50			8.2	256.5 ✓	
+85			5.0	259.7 ✓	
+90			3.8	260.9 ✓	
1510			2.7	262.0 ✓	
+30			1.0	263.7 ✓	
TP	7.09	271.45 ✓	0.30	264.36 ✓	
+50			5.3	266.1 ✓	
+90			2.0	269.4 ✓	
1610			2.1	269.3 ✓	
+50			3.3	268.1 ✓	
+84	- Kalmia		5.53	265.93 ✓	on Stubs
1719			6.5	264.9 ✓	
TP	0.30	259.29 ✓	11.46	258.99 ✓	
+50			1.0	258.3 ✓	
+75			5.9	253.4 ✓	

Plotted & checked  
Mag. 3  
Mar. 31/17

1840			18.0	247.3 ✓	
TP	0.38	246.68 ✓	12.99	246.30 ✓	
+75			6.3	240.4 ✓	
+50			13.4	233.3 ✓	
TP	0.44	234.74 ✓	12.98	234.30 ✓	
+75			8.7	226.0 ✓	
TP	0.44	222.76 ✓	12.42	222.32 ✓	
1940			1.5	218.3 ✓	
+25			12.0	210.8 ✓	
+11			13.0	209.8 ✓	Bottom Guleb
+30			12.2	210.6 ✓	
TP	+0.54	214.91 ✓	11.39	211.37 ✓	on Stubs 1-15-27
+34	2 67584	214.91 ✓	4.3	210.6 ✓	
+50			4.5	210.4 ✓	
+75			7.7	207.2 ✓	
2040			9.7	205.2 ✓	
+50			11.6	203.3 ✓	
2140			10.9	204.0 ✓	
+9			12.77	202.14 ✓	
TP	1.30	203.44 ✓	3.2	200.2 ✓	
+50			6.1	197.0 ✓	
2240			7.04	196.40 ✓	on Stubs Jan 27/1935
+23.7	- 13+89				

Plotted & checked  
Mag. 3  
Mar. 31/17







Gregory St.

208.04

12+89	46	(96?)	11.67	196.40 ✓	02 Stab
1410			12.5	195.5 ✓	
TP	134	196.73 ✓	12.65	195.39 ✓	See Page 33
+50			4.5	192.2 ✓	
+85			5.4	191.3 ✓	
1510			6.7	190.0 ✓	
+21	= 15+226		6.45	190.28 ✓	07 Stab

Dist. of  
277.

Section Levels Across Block 67  
Eastern Add.

35  
4-15-27

See Sketch Page 31

BM	12.97	202.75 ✓	190.28 ✓	02 Stab
010	= 15+21+15+226	12.97	190.28 ✓	15+21 = 15+22.1
+20		12.5	190.2 ✓	
+23		14.0	188.7 ✓	
+50		13.9	189.6 ✓	
+75		12.2	190.5 ✓	
+10		11.6	191.1 ✓	
+30		11.8	190.9 ✓	
+50		8.9	193.9 ✓	
+75		7.0	195.7 ✓	
+80		9.0	193.7 ✓	
210		7.4	195.3 ✓	
+25		7.0	195.7 ✓	
+50		2.9	199.8 ✓	
TP	615	207.34 ✓	201.19 ✓	
210		4.0	203.3 ✓	
+25		5.7	201.6 ✓	
+40.6	= 10+11 & Gregory St.	6.59	200.75 ✓	02 Stab See Page 34

Dist. of  
277.



BM	12.97	289.57 ✓		276.70 ✓	02 Stab	TP	0.47	288.47 ✓			
TP	1.91	280.05 ✓	10.93	278.14 ✓	2/16/29 & Fellen 5+5.9	71899	2 Laurel	272.29 ✓	11.85	271.85 ✓	02 Stab
TP	1.17	268.84 ✓	1.838	267.67 ✓					0.8	271.5 ✓	
BM			10.72	258.12 ✓	OR P100 of Map 1/2 of 100 & 1/2				3.2	269.1 ✓	
0+0	= Existing Sewer		12.0	256.8 ✓		TP	0.26	259.89 ✓	7.5	264.8 ✓	
+30			9.6	259.2 ✓					12.17	257.62 ✓	
+50			6.3	262.5 ✓					2.2	257.7 ✓	
TP	9.93	273.65 ✓	5.12	263.72 ✓					10+0	250.4 ✓	
+10			8.7	264.9 ✓					19	249.4 ✓	
+50			6.0	267.6 ✓		TP	0.89	248.57 ✓	12.20	247.68 ✓	
+65			2.7	270.9 ✓					3.3	245.3 ✓	
3+0			1.1	272.5 ✓					8.0	240.6 ✓	
TP	10.59	283.67 ✓	0.57	272.08 ✓					10.9	237.7 ✓	
+150			8.6	275.1 ✓					12.4	236.2 ✓	
3+0			5.6	278.1 ✓		TP	1.11	236.64 ✓	13.04	235.53 ✓	
+150			4.3	279.4 ✓					3.0	233.6 ✓	
+10			3.7	280.0 ✓					5.4	231.2 ✓	
+09.6	= Maple		3.82	279.85 ✓	02 Stab				8.4	228.2 ✓	
+50			4.5	279.2 ✓					12.01	224.63 ✓	02 Stab
+50			5.2	278.5 ✓					TP	0.05	229.01 ✓
+50			5.9	277.8 ✓					12.68	223.96 ✓	
+60			6.7	277.0 ✓					2.8	221.2 ✓	
+150			7.8	275.9 ✓					12+00	217.6 ✓	
+20			8.8	274.9 ✓					+2.5	211.6 ✓	
+50			10.4	273.31 ✓					TP	0.05	211.35 ✓
									12.71	211.30 ✓	
									1.50	206.0 ✓	
									+7.0	202.1 ✓	

Plotted & checked  
Map 3

Plotted & checked  
Map 3



211.35 ✓

+75			11.1	200.2	✓
+80			12.8	198.5	✓
TP	1.48	200.20	12.63	198.72	✓
1340			4.1	196.1	✓
+15			3.8	196.4	✓
TP	0.87	194.11	6.96	193.24	02.5/45 ✓
+137	Δ P 32.59				
+50			1.5	192.6	✓
+70			3.1	191.0	✓
+75			4.0	190.1	✓
1440			4.4	189.7	✓
+50			4.7	189.4	✓
1540			4.1	189.7	✓
+1			4.5	189.6	✓
+7			5.2	188.9	?
+22.6 = 151.21	(1348.9 Gregory's line)		2.88	190.23	02.5/45 ✓

Platted  
 1/27/11  
 Map 3



271.30 (Bl) Ford Piquet

271.80 H1

See Sketch Page 8

9495	18.5	252.8 ✓
10105	19.2	252.1 ✓
+35	7.5	263.8 ✓
+37	7.0	264.3 ✓
+41	9.5	261.8 ✓
+50	8.0	263.3 ✓
+62 = Kalmia	7.79	263.31 ✓ on Stubs
+75	7.8	263.5 ✓
+78	11.6	259.7 ✓
+82	11.3	260.0 ✓
+85	7.3	264.0 ✓
+92	7.2	264.1 ✓
1170	13.2	258.1 ✓
+05	14.2	257.1 ✓
+11	8.6	262.7 ✓
+20	19.8	251.5 ✓
+25	20.0	251.3 ✓
+27	13.6	257.7 ✓
+40	14.3	257.0 ✓
+41	14.1	257.2 ✓
+47	6.3	265.0 ✓
+65	5.2	266.1 ✓
1240	8.7	267.6 ✓
+49 = Ford Piquet	0.91	270.39 ✓ on Piquet

checked & checked  
 3-7-27  
 Map 3

0+0 = 1011122 33rd Kalmia	7.79	263.51 ✓	on Stubs
+75 F	10.7	260.6 ✓	
TP 0.74	258.97	13.10	258.20 ✓
+42	5.8	253.1 ✓	
+50	9.1	249.8 ✓	
TP 0.60	247.10	12.44	246.50 ✓
+61	2.0	245.1 ✓	
+74	8.2	238.6 ✓	
+75	11.1	236.0 ✓	
TP 1.16	235.97	12.28	234.82 ✓
+87 A P 57-57-30	3.27	232.76 ✓	on Stubs
+10	4.8	231.2 ✓	
+2	3.5	232.5 ✓	
+39	7.5	228.5 ✓	
+38	8.2	227.8 ✓	
+40	7.0	229.0 ✓	
+50	7.5	228.5 ✓	
+70	10.3	225.7 ✓	
+77	10.8	225.2 ✓	
+80	9.0	227.0 ✓	
2+05	11.0	225.0 ✓	
TP 2.69	226.17	12.19	223.47 ✓
+82	9.0	222.2 ✓	
+50	5.1	221.1 ✓	
+55	3.7	222.5 ✓	

checked & checked  
 2-7-27  
 Map 3



226.18 ✓

2763		28	223.4 ✓
370		6.1	220.1 ✓
160		9.3	216.9 ✓
150		11.9	214.3 ✓
160		13.8	212.4 ✓
TP	1.59	214.96 ✓	213.37 ✓
161		3.6	211.4 ✓
170		4.0	211.0 ✓
187		5.1	209.9 ✓
188		3.9	211.1 ✓
195.3	= 19+34 & Fellow St.	3.54	211.45 ✓

*Rentals & eh  
H.P. 3  
1/2000*

*025/05  
Dr. Payee*



Server Levels @ Armal Heights Extension  
Oatfall

No  
4-21-57

See Sketch Page 31

224.78

203.83

00 Sub  
12472 H. Verde St.

BM	10.59	203.83	193.24	515.0
0+0	12+87	20	193.24	610
+15		10.59	193.24	750
+25		10.2	191.8	910
+32		12.9	191.1	129 4.6 12.20
+35		12.7	192.2	165
+75		11.6	195.1	167
+80		8.7	194.2	170
+84		9.6	193.8	810
+90		10.0	194.5	165
+95		9.3	196.8	187
+100		7.0	197.2	170
+105		6.6	195.8	172
+108		8.0	198.2	910
+195		5.6	197.3	TP
+200		6.5	201.8	12.57
+50		2.0	203.18	236.96
TP	10135	213.53	204.3	0.41
3+0		9.2	204.2	10.2
+50		9.3	203.6	10.4
+54		9.9	203.7	10.9
+60		9.8	207.4	10.5
+70		6.1	208.17	9.4
+80	4.6 14.20	45.36	210.3	8.5
+90		3.2	211.74	9.2
TP	1204	224.78		9.6

Plotted & given  
Map 3

Plotted & checked  
Map 3

128	212.0
10.2	214.6
8.4	216.4
7.7	217.1
6.38	218.40
5.3	219.5
6.7	218.1
6.5	219.3
8.7	221.1
2.5	221.3
1.2	220.6
0.5	221.3
2.7	222.1
0.6	224.2
0.41	224.37
10.2	226.8
10.4	226.6
10.9	226.1
10.5	226.5
9.4	227.6
8.5	228.5
9.2	227.8
9.6	227.8
8.3	228.7
5.7	231.3

See Sketch

Get into Grid



236.96 ✓

10+80	1.7	235.3 ✓
11+0	3.1	233.9 ✓
11.6	4.6	232.4 ✓
13.0	1.6	235.4 ✓
15.0	0.8	236.2 ✓

Bottom Creek

TP	12.26	248.69 ✓	0.53	236.43 ✓
16.6			14.0	234.7 ✓
18.5			11.0	237.7 ✓
19.5			11.6	237.1 ✓
12+0			11.0	237.7 ✓
13.0			7.8	240.9 ✓
15.0			7.1	241.6 ✓
18.0			5.6	243.1 ✓
19.0			6.6	242.1 ✓
13+0			5.3	243.5 ✓
12.5			1.1	247.6 ✓

Plotted from map

TP	10.79	259.16 ✓	0.33	248.27 ✓
15.0			12.1	247.1 ✓
15.7			13.5	245.7 ✓
18.0			10.6	248.6 ✓
14+0			10.4	248.8 ✓
15.0			7.3	251.9 ✓

1727 - Existing Section  
 10' West of 1st St.  
 On River N.H. 229 E of 144727

7.42	251.74 ✓	on slab
10.5	258.11 ✓	Page 36



Sewer Levels to Alley Between Felton & Gregory  
 230's & Upas

Sewer Levels to Quince St.  
 From Alley Between Nile & Vancouver to  
 Alley Between Nile & Boundary

42

BM	328	315.63	312.35	N.H. BR Upas & Felton
0+0	-4 Upas		308.23	
+12'S		61	309.53	
+50		40	311.63	
+70		0.2	315.33	
TP	895	324.43	315.18	
+50		6.6	312.83	
+70		1.8	319.63	
+30		8.6	320.83	

Plotted  
 B.D.P.

BM	084	277.09	276.25	Sec Sketch Page 12	405 St 45 2410.7 20 Quince Page 8
0+0	- 2419.7	277.09	280.25	0.84	
+32'N			284.6	3.5	
+50			277.6	9.5	
+70			266.6	20.5	
+85			273.7	18.4	
+10			278.8	8.3	
+25			283.8	8.3	
+60			282.1	5.0	
+69			280.8	6.3	
+75			279.6	8.5	
+10			275.5	11.6	
TP	135	275.43	274.07	13.02	
+17			272.9	2.5	
+36			267.0	8.4	
TP	0.21	263.95	262.74	12.14	
+63			258.25	4.7	
+80			251.10	11.8	
TP	0.13	249.98	249.85	13.10	
+10			242.68	7.3	
+18			237.58	12.4	
+35			237.18	12.8	
TP	102	241.47	237.46	12.52	
+40			235.8	7.7	
+46			231.5	10.0	

Plotted  
 B.D.P.  
 5/12/27



Sewer Levels Change of Line  
On Easement Block C. Westchir

✓ 43.  
5-9-27

See Sketch Page 12.

241.48

Plotted

3251	102	230.7	
353	80	233.5	
162	50	236.5	
+796 = 241.799	123	240.25	on Stub

314	✓		
24799	1.23	241.45	240.25 on Stub Page 6
2510		71	239.4
26		44	237.1
P 247.4 ΔL	<sup>1.88</sup> 33° 53' 20"	237.06	5.67 235.78 on Stub
2610		34	233.7
150		11	231.0
2719		81	229.0
110		10.6	226.5
225		10.9	224.2
226		97	227.4
450		11.3	225.8
358		10.4	226.7
2810		11.0	226.0
110		16.8	224.3
143		12.1	225.0
455		12.9	224.2
TP 0.73		224.99	1250 224.26
2910		51	219.4
72		76	217.8
112		75	217.5
113		5.9	219.1
225		50	220.0
150		1.5	218.5
285		8.4	216.6

Plotted  
B.P.P.  
5/12/27



224.99

3040			111	213.9
+10			121	212.9
+12			100	215.0
+25			89	216.1
+42			58	219.2
+50			61	218.9
+80			64	218.6
3140			87	216.3
+25			129	212.1
TP	123	213.20	1292	212.07
+73			25	209.8
+74			51	207.9
+90			60	207.0
3240			52	208.1
+22			66	206.7
+28			76	205.7
+40			86	204.7
+41			75	205.8
+50			72	206.1
3340			82	205.1
+10			86	206.7
+20			105	202.8
+50			104	202.9
3440			119	201.4
+184	34413.9		1122	201.7
			831	201.99

02 Stab  
 00 Stab 33499



Senior Levels of Haller St.  
Between Thorpe + Quince

See Sketch Page 2

on stub  
3+81  
& Redwood 3/8/40  
Dist. 161/100 Vancouver  
Page 10

26158

5-10-27  
5-10-27  
5-10-27  
5-10-27

BM	13.09	306.40		293.31
TP	6.47	312.09'	0.78	305.12
0+0	- 450 ft of Redwood		8.6	303.5
+30			48	307.3
+50			4.3	307.8
1			4.2	307.9
+50			4.9	307.2
2+0			5.4	306.7
+50			6.5	305.8
3+0			7.0	305.1
+50			7.9	304.2
4+0			9.1	303.0
+50	2 Redwood		10.22	301.87
5+0			11.9	300.2
TP	0.15	299.21'	13.03	299.06
+50			1.8	297.4
6+0			6.9	292.3
+50			13.0	286.2
TP	0.11	284.31'	13.01	286.29
7+0			7.5	278.8
+6			8.4	277.9
TP	0.12	274.23'	12.60	274.11
+2.5			1.8	269.4
TP	0.04	261.58'	12.69	261.54
+40			1.0	260.6

Plotted  
W.T.C.

on stub  
9+50 40

	7+50		7.8	253.8
TP	0.37	249.06	12.89	248.69
			2.5	246.6
			10.1	239.0
			13.1	235.5
			15.7	233.4
			16.2	232.9
			12.33	235.73

799 = 13 + 28.5 + 1.7 + 2.5

on stub



Senior Levels Alley Between Vancouver + Haller  
 Across Blocks G + H North to Existing Senior in Habash Ave

See Sketch Page 9

Ford From Page 10

on 5/26/6  
 12+73-4420  
 Page 10

239.49

44  
 5/20/67

87	1.60	261.55	259.95	131.4	9.7	229.7
11.0			259.2	19.5	9.2	229.9
17			258.7	18.3	11.2	227.9
+22			254.4	+9.2	11.8	227.3
28			252.0	14.0	10.5	228.6
50			252.3	TP	0.81	227.40
+73			248.4	12.5	3.2	224.0
TP	1.60	250.35	248.25	13.7	4.5	222.9
+92			244.9	14.0	1.4	223.0
+95			247.4	+1.5	3.0	224.4
12.0			247.1	+5.0	4.1	223.3
20			246.9	7.5	7.4	220.0
40			243.6	+8.3	8.6	218.8
+50			242.1	+8.4	7.1	220.3
+58			239.8	15.10	8.6	218.8
+63			236.7	12.4	12.9	214.5
+70			236.1	TP	0.91	215.42
+88			235.0	15.0	2.8	212.6
13.0			234.3	17.0	1.6	213.8
+9			235.3	16.0	4.8	210.6
TP	1.47	239.09	237.62	4.50	10.6	204.8
+22.5	1.2	7.22 = 7.99 Haller	235.69	TP	0.89	203.50
+50			232.5	17.0	5.9	197.6
+54			231.5	TP	0.95	194.60
+57			229.7	15.0	4.5	190.1

Plotted  
 BOP



Sewer Levels & Alley Between Vancouver & Haller

Change of Line

See Sketch Page 18

✓  
47  
5-17-57

194.60

Cont From Page 16

17+95.3 - Existing MH  
107660  
Flat Line 189.18  
183.62

7+15 ROT	0.08	215.24	214.91	Van Stos Page 14
+2.5		50	240.04	
+50		15.8	234.24	
TP	0.30	232.53	232.03	
+7.5		10.2	222.1	
TP	0.31	219.60	219.29	
+10		9.5	210.1	
TP	0.21	206.92	206.71	
		98		
+25		145.12	98	
TP	2.84	197.90	195.04	
+40		53	192.6	
+46		7.3	190.6	
+45.6 = 37+416		7.88	190.02	on Stos



✓ Sewer Levels Mile St and Olive St  
 "A Line"  
 Change of line

See Sketch Page 12

"B Line" Change

✓ 5/17/27

	1285	214.26	201.68	341.84:341.129 Page 12	861.43	8.0	195.2
31+47.1	$\Delta R 7^{\circ} 20'$		273	213.7	4.50	8.2	195.0
+73			4.4	209.7	37.10	10.2	193.2
+76			6.8	207.3	4.22	11.3	191.9
+96			7.2	206.9	4.25	12.5	190.7
32+0			6.2	207.9	4.16 $\Delta 4^{\circ} 21' 04''$ 8+45.21	13.2	190.1
+11			7.2	206.9	4.45	12.7	190.5
+31			9.0	205.0	4.46	11.1	192.1
+33			7.2	206.9	4.50	10.8	192.4
+50			6.2	207.9	4.73	5.7	195.5
33+0			6.0	208.1	38+0	10.7	192.5
+50			6.1	207.5	TP 1.88	12.80	190.2
34+0			8.6	205.5	4.20	2.4	189.9
+31.4	$\Delta 48^{\circ} 21' 30''$		10.34	203.76	4.50	4.5	187.8
+50			11.7	202.4	39+0	6.9	185.4
TP	2.11	203.22	12.94	201.2	4.15	9.5	183.1
+84			2.6	200.6	4.31 $= 39^{\circ} 03.9' = 2.16/10'$	8.20	181.1
+85			3.7	199.5			
35+0			4.4	198.8			
+25			5.8	197.4			
+35			1.8	198.4			
+50			4.9	198.3			
+77			6.4	196.8			
36+0			7.7	195.5			
+11			7.8	193.4			

Plotted  
 B. D. P.

as Stub  
 between C and D

as Stub  
 Page 15



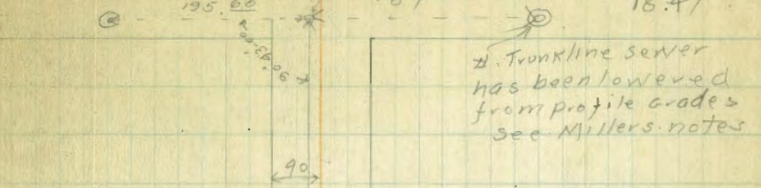
Bliss  
Isabel  
November  
11/22/27

Sewer Levels Newton Ave from the West  
Line of Highland Ave West to intersection with  
Trunk line sewer in E of 91st Street

	+	H.I.	-	El.
BM Top Five S.W. Natural	0.86	66.26		65.40
TP	00	53.69	12.57	53.69
TP	005	46.99	12.80	40.89
TP	2.73	30.08	12.59	28.35
TP	7.16	32.66	5.58	25.50
TP	12.85	45.38	0.13	32.53
TP	12.20	57.58	00	45.38
TP	13.01	70.32	0.27	57.31
TP	180	71.57	0.55	69.77
Point Marked in Highland Square		0.95		70.67
on concrete paving at 0000			5.97	66.10
0+00 on ground			5.5	66.07 ✓
0+50			7.2	64.37 ✓
1+00			8.9	62.67 ✓
1+50			10.5	61.07 ✓
2+00			11.5	60.07 ✓
2+50			12.3	59.27 ✓
3+00			13.0	58.57 ✓
3+50			14.0	57.57 ✓
3+57			14.0	57.57 ✓
3+75			12.8	58.77 ✓
3+87			12.6	58.97 ✓
4+00			11.7	59.87 ✓
4+20			12.3	59.27 ✓
TP	0.76	60.33	12.00	59.57

Plotted by  
K.F.J. 15/12/27

Elev flow line 16.4



Elev at 3137 = 57.77



Mn. Hole Highland Square.  
Elev flow line?  
Note: This Mn. Hole Cover  
is concrete in. Tom Allen is the  
engineer for the project and elevs.  
should be available in his office.



	+	7	-	Elev		+	7	-	Elev	
		60.33					25.91			50
4+30			1.1	59.23 ✓		8+00		4.9	21.01 ✓	
4+40			3.9	56.43 ✓		8+07		6.4	19.51 ✓	
4+50			4.4	55.93 ✓		8+14		10.2	15.74 ✓	
4+80			6.8	53.53 ✓		8+25		10.3	15.61 ✓	
5+00			9.5	50.83 ✓		8+48		7.6	18.31 ✓	
5+09			11.0	49.32 ✓		8+57		7.7	18.21 ✓	
T.P.	0.39	47.72	13.00	47.33		8+65		9.9	16.01 ✓	
5+50			7.3	40.42 ✓		8+72		9.3	16.61 ✓	
5+65			9.8	37.94 ✓		8+77		6.3	19.61 ✓	
T.P.	0.25	34.91	13.06	34.66		T.P.	6.78	30.61	23.83	
6+00			1.5	33.41 ✓		8+78		3.1	27.51 ✓	
6+50			4.7	30.21 ✓		9+00		3.6	27.05 ✓	
6+68			5.5	29.41 ✓		9+50		4.0	26.61 ✓	
6+83			7.5	27.41 ✓		10+00		4.4	26.21 ✓	
6+86			7.0	27.91 ✓		10+50		4.8	25.81 ✓	
6+95			10.4	24.51 ✓		10+84 <sup>on 11/6/4</sup>		5.67	24.94 ✓	
6+98			11.7	23.21 ✓		Flowline of Mo Hole South of Δ		14.19	16.42	
T.P.	2.48	25.91	11.48	23.43		Flowline of Mo Hole North of Δ		12.14	18.47	
7+00			4.5	21.41 ✓		T.P. <sup>12.36</sup> <del>4.36</del>		42.33	0.64	29.97
7+02			5.4	20.51 ✓		T.P.	12.54	54.86	0.01	42.32
7+50			5.0	20.91 ✓		T.P.	11.25	65.82	0.23	54.57
7+59			5.6	20.31 ✓		B.M. <sup>iron pipe</sup> <del>also</del> <sup>noted</sup>	12.81	78.17	0.46	65.36 - 65.40
7+66			7.0	18.91 ✓			9.41	87.49	0.09	78.08
7+71			5.7	20.21 ✓		B.M. <sup>brass</sup> <del>also</del> <sup>noted</sup>			9.45	83.09 - 83.05
7+88			6.6	19.31 ✓						
7+95			5.1	20.81 ✓						

Plotted by  
K.F.J. 15/12/27



CHATSWORTH BLVD X sec

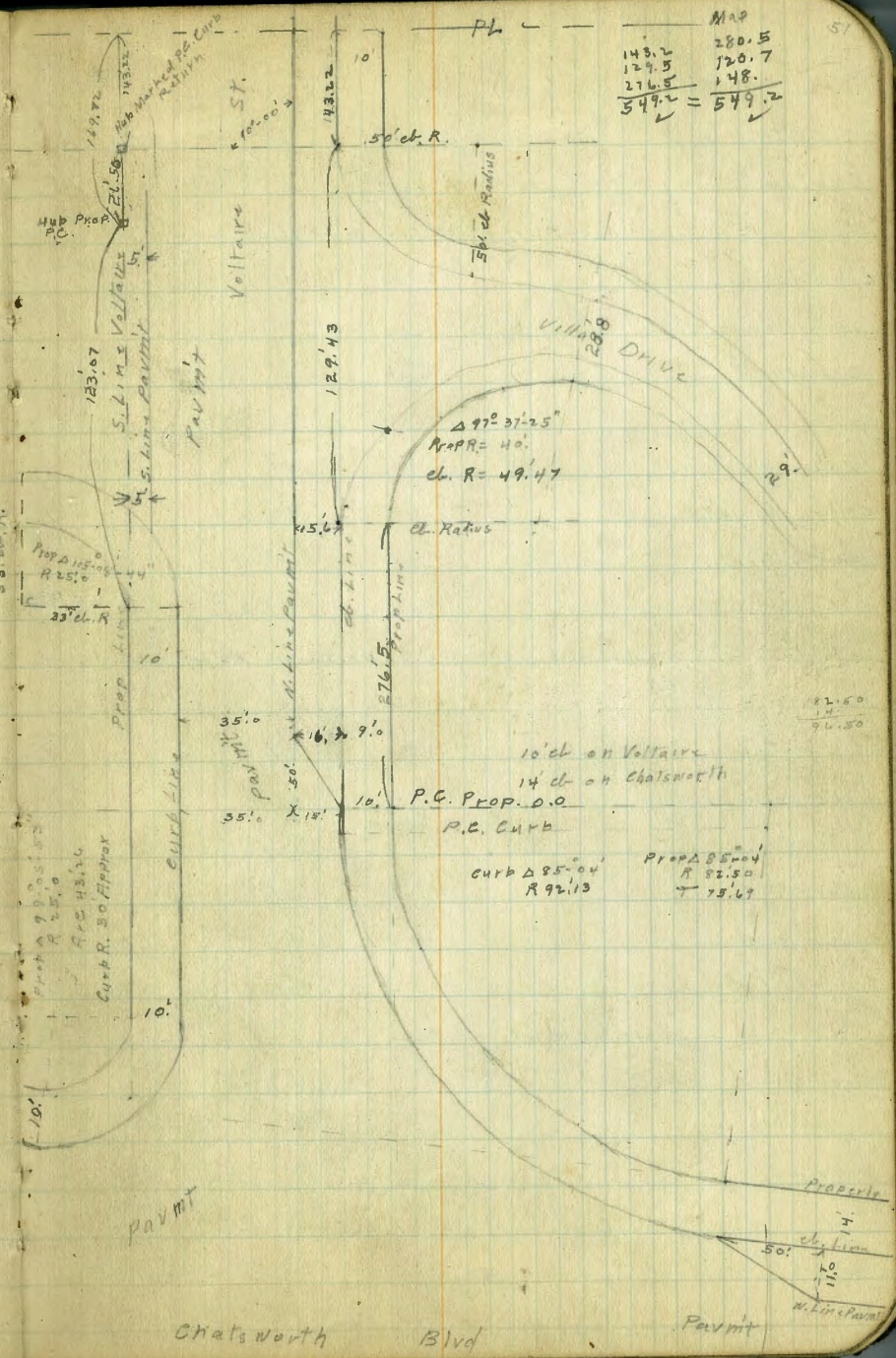
11-30-27  
miller

From S. End of Full Width Pavmt. 13.5 S. (on W. ch. Line)  
of First P.C. S. of ALCOY ST. To S. Line of  
Voltaire St Produced from West.

B.M. 6.66 168.24 141.58  
00 = N. Line Bag Lomas  
W. ch. Chatsworth  
200. S. of Alcot St

(13.10) 00 = S. End Full width Pavmt 13.5 S. (on W. ch. Line) of 1<sup>st</sup> P.C. S. of Alcot  
on Radial Line. (13.91)

W. emt ch	7.85	160.4	
Wedge emt gutter	8.49	159.7	
+ 6" = E. Edge emt gutter	8.37	159.8	
+ 11.8" = W. edge 20' Pavmt	8.36	159.8	
±	7.93	160.3	
E. Edge 20' Pavmt	7.93	160.3	
+ 11" = gutter	8.33	159.9	
+ 11" = emt ch.	7.63	160.6	
(48.51) 50' S. (on W. ch. Line) of 00 on Radial Line			
E. emt ch	7.25	161.0	
gutter	7.0	161.2	dirt
E. edge Pavmt	7.34	160.9	
±	7.45	160.8	
W. Pavmt	7.44	160.4	
E. Edge 3" gutter	8.02	160.2	
W " " "	8.14	160.1	
W. emt ch	7.42	160.8	
(0+97.1) 100' S. (on N. ch. Line) of 00 on Radial Line (1+12.91)			
W. emt ch	7.09	161.1	
emt gutter	7.83	160.4	
+ 2" = E. edge emt gutter	7.70	160.5	
+ 11" = W. edge Pavmt	7.42	160.8	
±	6.93	161.3	
E. edge Pavmt	4.90	161.3	



143.2	280.5
129.5	120.7
276.5	148.
549.2	549.2

Chatsworth Blvd Pavmt



168.24

100' S. (EON)

S. gutter 6.8 161.4 dirt

E. cmt cl 6.81 161.4

(145.52) 150' S. (on W. cl line) of 00 = S. end cmt gutter on W.

S. cmt cl 6.39 161.8

gutter 6.5 161.7 dirt

E. Pavmt 6.41 161.8

ϕ 6.49 161.7

W. Pavmt 6.90 161.3

E. edge cmt gutter 7.20 161.0

cmt gutter 7.33 160.9

W. cmt cl 6.68 161.5

(146.19) 161' S. of 00 (on W. cl line) approx = P.C. Ho. 3 Radius Return into Zola on E.

N. cmt cl 6.56 161.6 161.9

dirt gutter 7.3 160.9

W. Pavmt 6.80 161.4

ϕ 6.37 161.8

E. Pavmt 6.24 161.9

gutter pavmt 6.78 161.4

E. cl at P.C. Return 6.32 161.9

(149.75) 203.60 S. of 0+00 (on W. cl line) = E.C

W. cmt cl 6.14 162.1

dirt gutter 6.7 161.5

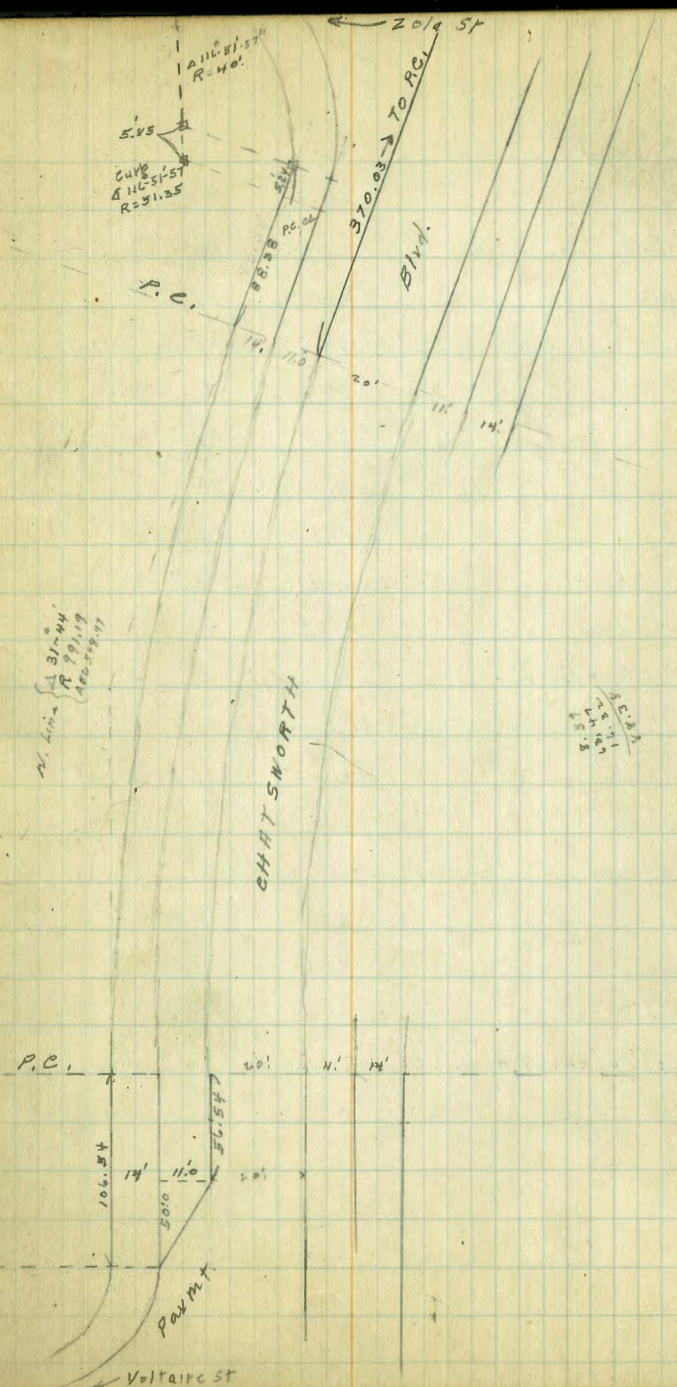
W. Pavmt 6.29 161.9

ϕ 5.99 162.2

(176.86)

(179.83)

(249.07)





168.24

50' W. of above E.C.

±	5.53	162.7
W. Pavmt	5.66	162.5
dirt gutter	6.4	161.8
W. emt cl	5.54	162.7

84.97 S. of above E.C. = P.C. 34.75 Radius cl. Return into Zola on E.

W. emt cl	5.17	163.0
dirt gutter	6.0	162.2
W. Pavmt	5.41	162.8
±	5.25	163.0
E. 20' pavmt	5.41	162.8
E. gutter on pavmt	5.67	162.5
E. emt cl at P.L. Return	5.06	163.2

90.97 S. of E.C. = End Pavmt at E. cl Line

E. emt cl	4.93	163.3
gutter Pavmt	5.51	162.7

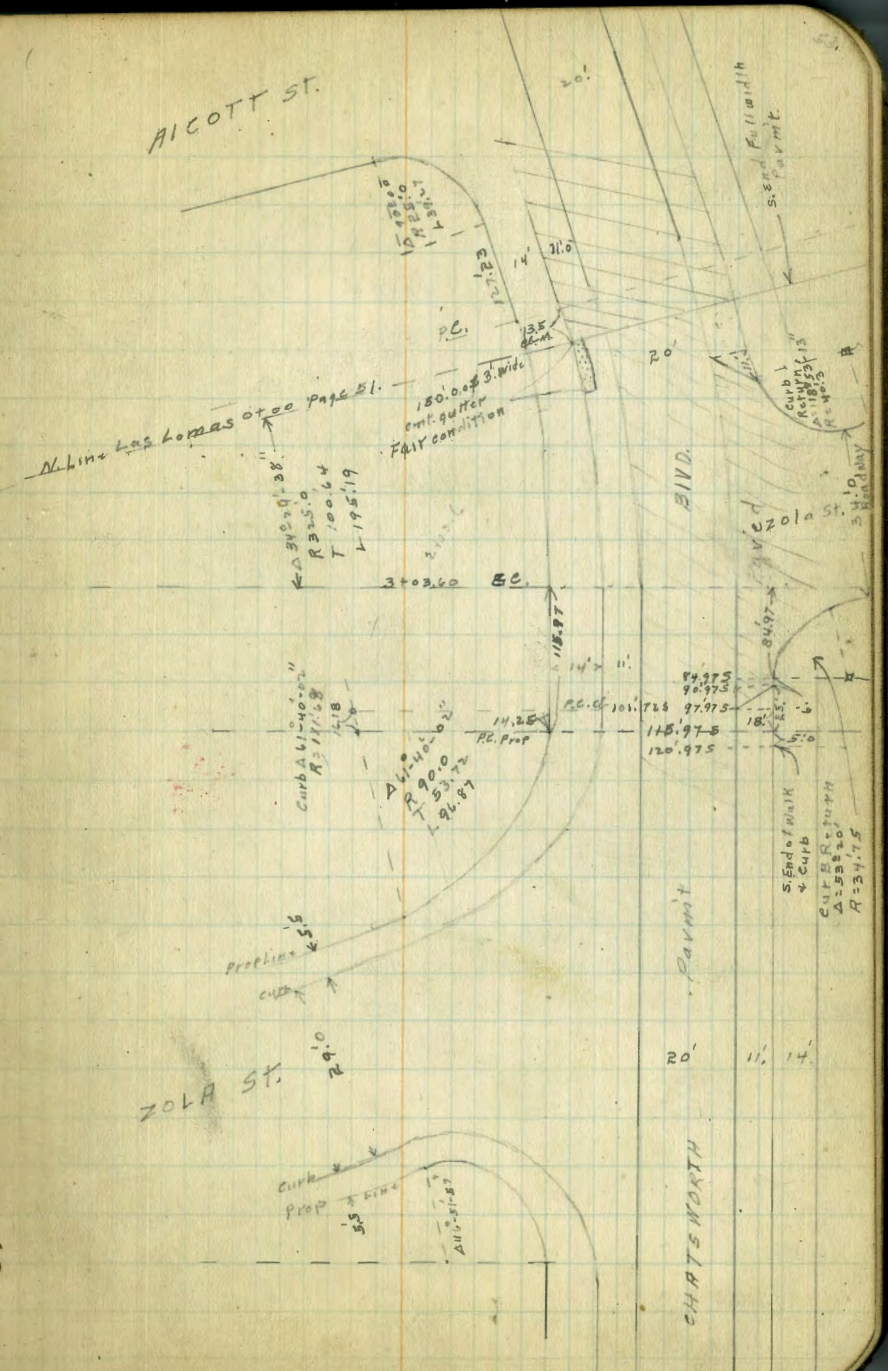
97.97 S. of E.C. = End pavmt at E. edge 20' strip

E. emt cl	4.86	163.4
dirt gutter	5.4	162.8
S. edge 20' Pavmt	5.33	162.9

101.72 = P.C. 111.68 Radius Curb Return into Zola on W.

S. emt cl	4.83	163.4
dirt gutter	5.3	162.9
E. 20' Pavmt	5.30	162.9
±	5.12	163.1
W. Pavmt	5.23	163.0
dirt gutter	5.8	162.4
W. emt cl P.C. Return	5.02	163.2

163.24





168.24

115' 97 S. of E.C. = P.C. 90' Radius Prop. Curve into Zola on W

W. cont'dr.	4.93	163.3	on curve
dirt gutter	5.5	162.7	
W. 20' Pavmt	5.08	163.2	
⊥	4.95	163.3	
E. 20' Pavmt	5.15	163.1	
dirt gutter	5.2	163.0	
E. cont'dr.	4.77	163.4	

+ 120' 97 S. of above E.C. = S. End dr. + walk on E.

E. Line	4.5	163.7	
E. cont'dr.	4.71	163.5	
dirt gutter	5.0	163.2	
E. Pavmt	5.10	163.1	
⊥	4.91	163.3	
W. Pavmt	5.07	163.2	
dirt gutter	5.4	162.8	
W. cont'dr.	4.89	163.3	on curve

1 155' S. of E.C. (approx) = P.I. W. Line Chatsworth + 111.68 Radius curb return into Zola on W.

W. Line = cont'dr.	4.14	164.1	
dirt gutter	5.3	162.9	
dr. Line	5.3	162.9	
W. Pav.	4.98	163.3	
⊥	4.82	163.4	
E. Pav	5.00	163.2	
dr.	4.8	163.4	
E. Line	4.6	163.6	

W. End 111.68 Radius Return on cont'dr.

2.42

165.8

NW. Cor Zola  
+ Chatsworth

Chatsworth Blvd

168.24  
200' S. of above E.C.

E. Line	4.6	163.6	
dr.	5.1	163.1	
E. Pav	5.37	162.8	
⊥	5.20	163.0	
W. Pav	5.38	162.8	
dr.	5.6	162.6	
W. Line	5.2	163.0	

252' S. of E.C. (approx) = P.I. W. Line Chatsworth + 51.35 Radius curb Return on S.W. Cor Zola + Chatsworth

W. Line = cont'dr. Return	5.57	162.6	61
dirt gutter	6.6	161.6	
dr. Line	7.2	161.0	
W. Pavmt	6.65	161.6	
⊥	6.44	161.8	
E. Pavmt	6.61	161.6	
dr.	6.7	161.5	
+ 8	5.5	162.7	
E.	5.1	163.1	

281.65 W = P.C. 40' Radius Prop. S.W. Zola + Chatsworth

E.	5.2	163.0	
+ 8	6.0	162.2	
dr.	7.9	160.3	
E. Pav	7.68	160.5	
⊥	7.52	160.7	
W. Pav	7.77	160.4	
dirt gutter	8.6	159.6	
W. cont'dr.	7.38	160.8	



168.24

286.89 S. of E.C. = P.C. 51.35 Radius Curve R-Turn SW. Zola + Chatsworth

W. ent. ch	7.71	160.5
gutter	8.9	159.3
+11 = W. Pav	7.98	160.2
↓	7.72	160.5
E. Pav	7.90	160.3
+11 = ch	8.1	160.1
+5	6.2	162.0
E. Line	5.4	162.8

330' S. of above E.C.

E. Line	7.3	160.9
+9	8.6	159.6
ch	10.7	157.5
E. Pav	10.05	158.2
↓	9.82	158.4
W. Pav	10.02	158.2
gutter	11.1	157.1
W. ent. ch	10.15	158.1

370'.03 S = P.C. Δ31°44' R = 956.19 N. line R 991.19

W. ent. ch	12.05	156.2
gutter	12.8	155.4
W. Pav	12.07	156.2
↓	11.85	156.4
E. Pav	12.07	156.2
ch	12.6	155.6
+2	13.0	155.2
+3	11.5	156.7

168.24

Chatsworth Blvd

E. Line	9.4	158.8	
T.P. N. 42	157.26	12.40	155.84

This curve divided into 11 parts Δ 2°53'-05" chds

E	2.3	155.0
+10	3.6	153.7
+11	4.8	152.5
ch	4.4	152.9
E Pav.	3.63	153.5
↓	3.52	153.8
W. Pav	3.62	153.7
gutter	4.8	152.5
W. ent. ch	3.50	153.8

W. ent. ch	6.14	151.1
gutter	7.3	150.0
W. Pav	6.26	151.0
E	6.06	151.2
E. Pav	6.17	151.1
ch	6.7	150.6
+2	7.4	149.9
+3	6.0	151.3
E.	5.0	152.3



157.26  
#3

E	7.7	149.6
+12	8.6	148.7
ch	9.5	147.8
E. Pav	8.74	148.5
♀	8.61	148.7
W. Pav	8.80	148.5
gutter	9.3	148.0
W. ch	8.68	148.6

#4

W. ch	11.14	146.1
gutter	11.8	145.5
W. Pav	11.23	146.1
♀	11.10	146.2
E. Pav	11.32	146.0
ch	11.8	145.5
+2	12.2	145.1
+3	10.9	146.4
+9	16.6	146.7
E	8.7	148.6

TP	1.75	146.20	12.81	144.85
----	------	--------	-------	--------

#5

E	0.7	145.5
+3	1.9	144.3
+9	2.5	143.7
+10	3.5	142.7
+11	2.4	143.4

146.20

Chatsworth Blvd

ch	2.6	143.6
E. Pav	2.29	143.9
♀	2.25	144.0
W. Pav	2.41	143.8
gutter	3.3	142.9
W. cont ch	2.44	143.8

#6

W. cont ch	4.84	141.4
gutter	5.7	140.5
W. Pav	4.90	141.3
♀	4.80	141.4
E. Pav	4.90	141.3
ch	5.3	140.9
+2	6.0	140.2
+4	5.2	141.0
E	4.2	142.0

#7

E	6.5	139.7
+9	7.3	138.9
+11	8.6	137.6
+13	7.7	138.5
ch	7.6	138.6
E. Pav	7.52	138.7
♀	7.39	138.8
W. Pav	7.52	138.7
gutter	8.4	137.8
W. cont ch	7.42	138.8



w. cnt. cl.	10.00	136.2
gutter	11.3	134.9
w. Pav	10.08	136.1
¢	9.95	136.2
E. Pav	10.05	136.2
+8	9.9	136.3
cl	11.2	135.0
+3	11.2	135.0
+4	9.4	136.8
+8	9.2	137.0
+10	7.7	138.5
E	7.2	139.0
	#9	
E	10.2	136.0
+3	12.1	134.1
+12	12.3	133.9
+13	14.6	131.6
cl	14.6	131.6
+1	12.7	133.5
E. Pav	12.68	133.5
¢	12.54	133.7
w. Pav	12.68	133.5
gutter	13.8	132.4
w. cnt. cl.	12.54	133.7
T.P.	0.53	133.84
	12.89	133.31

w. cnt. cl.	2.86	131.0
gutter	3.9	129.9
w. Pav.	2.98	130.8
¢	2.84	131.0
E. Pav	2.97	130.9
cl	3.1	130.7
+3	3.2	130.6
+5	3.7	130.1
+6	3.0	130.8
E.	2.6	131.2
	#11 = E.C.	
E.	5.1	128.7
cl	5.4	128.4
E. Pav	5.41	128.4
¢	5.21	128.6
w. Pav	5.32	128.5
gutter	6.3	127.5
w. cnt. cl.	5.18	128.6
	56.54 S. of above E.C. = Pt. of paymt widening on W. edge of strip	
v. cl	7.78	126.0
dirt gutter	8.5	125.3
w. Pav	7.47	126.3
¢	7.33	126.5
E. Pav	7.52	126.3
cl	7.4	126.4
+2	7.6	126.2



13384

56.54 S. of E.C. (con)

± 3	8.7	125.1
+ 5	7.3	126.5
E	7.0	126.8
106.54 S. of above E.C. <sup>S.P.C. 92.13 Radius curb RETURNING VOLTAGE</sup> <sub>P.C. 82.50 " Property Curve " "</sub>		
E	8.7	125.1
+ 9	9.3	124.5
+ 10	10.3	123.5
+ 13	10.6	123.2
cl	9.3	124.5
E. Pav	9.38	124.4
±	9.24	124.6
+ 10	9.44	124.4
gutter on parmt	10.32	123.5
W. ent cl.	10.00	123.8
T.P.	1.56	123.45
	11.95	121.89
N. Line Voltairre produced from West		
E. Edge Parmt	2.10	121.3
cl	2.3	121.2
+ 3	2.8	120.6
+ 4	1.8	121.6
E	1.8	121.6
N. cl Voltairre produced from West		
E	1.5	121.4
+ 11	3.0	120.4
cl	2.6	120.8
E. Pav	2.54	120.9

123.45

Chatsworth Blvd

53

± Voltairre produced from West

E. Edge Parmt	3.47	119.8
+ 6	4.1	119.3
cl	3.1	120.4
+ 3	3.1	120.3
+ 10	1.0	122.4
E	0.1	123.4
12.5 S. of VOLTAGE produced from West		
E	0.0	123.5
+ 2	1.0	122.4
+ 6	1.4	122.0
+ 12	4.0	119.4
cl	4.5	119.0
+ 6	4.1	119.4
E. Pav	4.16	119.3

S. cl. Voltairre produced from West

E. Pav	4.72	118.7
+ 11 = cl.	5.0	118.4
+ 4	5.2	118.2
E	3.3	120.2

S. Line Voltairre produced from West

E	3.5	120.0
+ 10 = N. End curb & Walk	4.84	118.6
gutter	5.4	117.8
regular 14' cl	5.5	117.9
E. Edge Parmt	5.14	118.3
From Voltairre S. Chatsworth is 70' wide with 10' cl-s 50' Roadway		



VOLTAIRE ST. 7 Sec 12-1-27  
Chatsworth to Villa Drive

123.45 Page 58

00 = Property P.C. NW. Voltaire & Chatsworth

ch. Voltaire at pt of full width Pavmt	6.44	117.0
0 Pavmt gutter	7.40	116.0
15'S = N. edge 20' strip Produced	7.22	116.2
25'S = Ch. Voltaire	7.47	115.9
50' W = E. End of Angle widening of Pavmt.		
Ch. Voltaire	9.80	113.6
N. Edge Pavmt.	9.84	113.6
dirt gutter	10.3	113.2
N. cmt. ch.	9.70	113.7
T.P.	0.24	110.76
	12.93	110.52

From Sta. 50' W to Villa Drive N. ch. is out of line  
with original 20' Pavmt See Plat Page 51.

100' W

N. cmt. ch.	1.08	<del>107.1</del> 109.68
dirt gutter	1.6	109.2
N. Edge Pavmt.	1.12	109.6
Ch.	1.06	109.7

150' W

Ch.	5.15	105.6
N. Pav	5.20	105.6
dirt gutter	5.7	105.1
N. cmt. ch.	5.16	105.6

Plat Page 51

123.45  
L. 62  
116.83 BM SW. Voltaire & Chatsworth w. end R. +  
110.76

200' W

N. cmt. ch.		9.24	101.5	✓
From Here West Sand spilled over curb to prevent erosion				
N. Pav		9.29	101.5	✓
Ch.		9.29	101.5	✓
T.P.	0.04	98.27	12.53	98.23

250' W

Ch.		0.84	97.4	✓
N. Pav		0.94	97.3	✓
N. cmt. ch.		0.71	97.5	✓

265' W

N. cmt. ch.		1.54	96.7	✓
N. Pav		1.75	96.5	✓
Ch.		1.74	96.5	✓

276.5 W = P.C. 49.47 R. cmt. ch. Return into Villa Drive on N. (Ch. Radius)  
280.51 W = P.C. Property Curves to Villa Drive on N. 49.47

Ch.		2.41	95.9	✓
N. Pav		2.35	95.9	✓
N. cmt. ch.		2.26	96.0	✓

265' W, Approx = P.I. N. Line Voltaire & 49.47 Radius Return into Villa Drive

N. Line Voltaire cmt. ch. Return		3.61	94.6	✓
gutter		4.2	94.1	✓
N. ch. Line		4.4	93.9	✓
N. Pavmt		3.33	94.9	✓
Ch.		3.45	94.8	✓
ch. Koh. B.M.		2.00	96.27	Ch. Voltaire Ch. Villa Drive



Sewer Levels Highland Crest Subdivision

Bliss  
Isabelle  
Morgan  
12/27/27

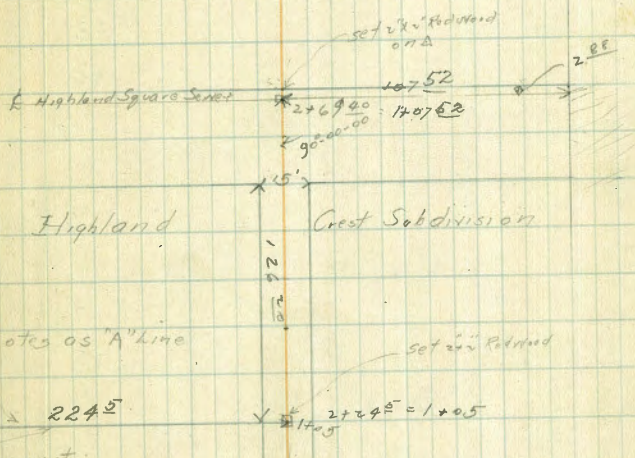
70.83  
4.72  
66.11

	+	X	-	Elev
P.M. of Mt. Holy Highland Square Sub	0.21	70.83		70.62
set BM:SE			0.15	70.68
Top Five Hydrant Newton's Highway			1.4	69.43 ✓
0+00			2.8	68.03 ✓
0+31			3.4	67.43 ✓
0+50			4.6	66.23 ✓
0+75			5.71	65.12 ✓
1+05 on A			6.4	64.43 ✓
1+31			6.6	64.23 ✓
1+60			6.7	64.13 ✓
1+76			7.3	63.53 ✓
2+00			7.8	63.03 ✓
2+14			8.5	62.33 ✓
2+31 on prop			7.70	63.13 ✓
2+31 on top of E side			9.1	61.73 ✓
2+47 curb			8.39	62.44 ✓
2+67 <sup>40</sup> Δ				

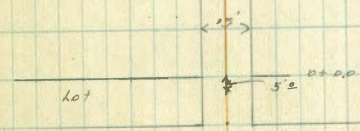
Plotted 12/28/27  
K.F.J.

A Line

0+00	3.2	67.63 ✓
0+18	2.8	68.03 ✓
0+25	4.4	66.43 ✓
0+50	4.7	66.13 ✓
0+75	5.6	65.23 ✓
1+00	5.9	64.93 ✓
1+25	6.1	64.73 ✓
1+50	6.2	64.63 ✓
1+75	6.4	64.43 ✓
2+00	6.2	64.63 ✓
2+24 <sup>E</sup> Δ	5.71	64.63 ✓
on driving 0+00 of Highland Square Levels	4.72	65.14 ✓
		66.11 ✓



0+00  
Lot 6 easement

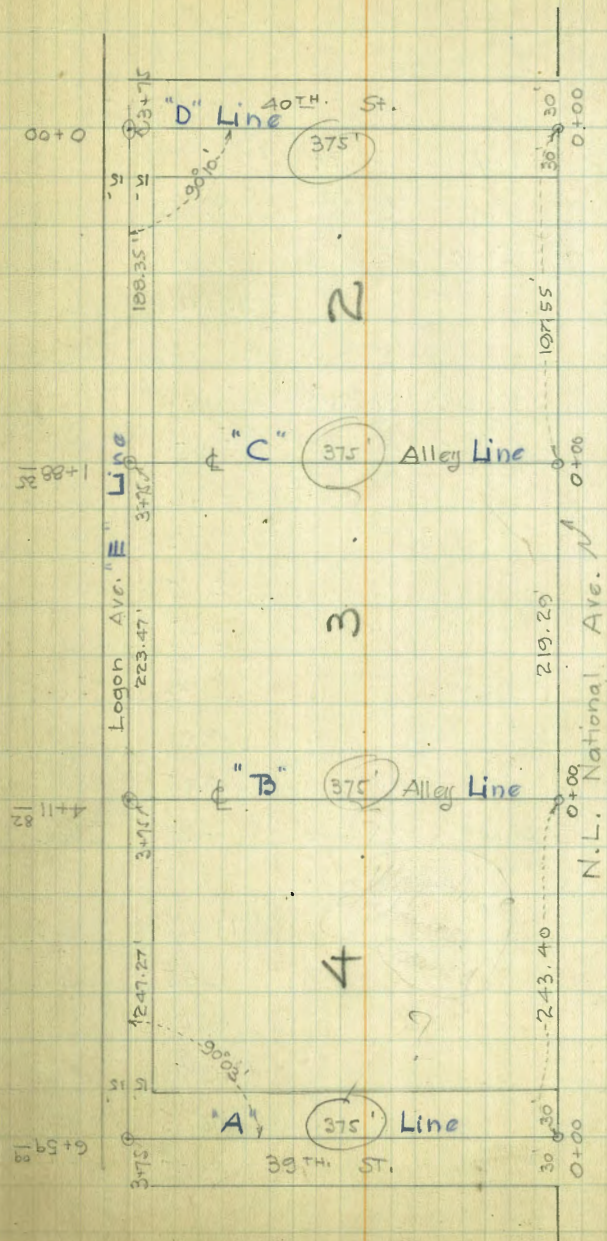




SEWER LEVELS ON NORTH PORTION OF AVENUE COURTS.

JAEGER } April. 16<sup>th</sup> 1928.  
 Baillet }  
 Clavett }

STA.	+	H.I.	-	Elev.
BM.	NE. Corb National Ave. & 39 <sup>th</sup> St.			84.00
<b>"A" Line</b>				
	6.75	90.75		
0+00			6.75	84.00 ✓
+50			6.26	84.49 ✓
1+00			5.56	85.19 ✓
+50			4.81	85.94 ✓
2+00			3.85	86.90 ✓
+50			3.01	87.74 ✓
3+00			2.07	88.68 ✓
+75 = 6+59 <sup>09</sup>	<b>"E" Line</b>		1.35	89.40 ✓
<b>"B" Line</b>				
BM.				84.00 ✓
	1.80	85.80		
T.P.			9.10	76.70 ✓
	11.83	88.53		
0+00			11.40	77.13 ✓
+60			9.55	78.98 ✓
1+10			6.12	82.41 ✓
+60			4.09	84.44 ✓
2+10			1.44	87.09 ✓
+60			1.96	86.57 ✓
3+10			6.35	82.18 ✓
+75 = 4+11 <sup>82</sup>	<b>"E" Line</b>		10.91	77.62 ✓
falls on Gas Service Box				





STA.	+	H.I.	-	Elev.
	<b>"C" Line</b>			
T.P.				76.70 ✓
	1.61	78.31 ✓		
T.P.			8.53	69.78 ✓
	5.40	75.18 ✓		
			10.10	65.08 ✓
				65.00 ✓
	10.10	75.10 ✓		

} B.M. NW. Curb Natl. Ave. & 40<sup>TH</sup> St.

0+00			5.05	70.05 ✓
+ 50			3.36	71.74 ✓
1+00			2.73	72.37 ✓
+ 50			2.15	72.95 ✓
2+00			2.71	72.39 ✓
+ 50			3.76	71.34 ✓
3+00			4.81	70.29 ✓
+ 50			4.95	70.15 ✓
+ 75 = 1+88 <sup>35"</sup> E Line			4.27	70.83 ✓

**"D" Line**

0+00			11.28	63.82 ✓
+ 50			8.45	66.65 ✓
1+00			9.68	65.42 ✓
+ 50			10.90	64.20 ✓
2+00			10.95	64.15 ✓
+ 50			9.75	65.35 ✓



STA.	+	H.I.	-	Elev.
		75.10		
3+00			8.10	67.00 ✓
+50			6.80	68.30 ✓
3+75 = 0+00	"E" Line		5.65	69.45 ✓
0+50			6.25	68.85 ✓
1+00			5.85	69.25 ✓
+50			5.10	70.00 ✓
+88 <sup>35</sup> = 3+75	"C" Line		4.26	70.84 ✓
2+00	T.P.		4.14	70.96 ✓
		11.79	82.75 ✓	
+50			10.45	72.30 ✓
3+00			9.60	73.15 ✓
+50			8.15	74.60 ✓
4+00			6.05	76.70 ✓
+11 <sup>82</sup> = 3+75	"B" Line		5.15	77.60 ✓
+50			3.92	78.83 ✓
	T.P.		1.75	81.00 ✓
		8.71	89.71 ✓	
5+00			8.52	81.19 ✓
+50			5.84	83.87 ✓
6+00			2.75	86.96 ✓
+89 <sup>09</sup> = 3+75	"A" Line		0.30	89.41 ✓



8-16-28  
J.C. Bliss  
Drebeck  
Rouner

X section 34<sup>th</sup> Street  
El Cajon to Monroe

B.M. J.W.B.P. El Cajon + 34<sup>th</sup>  
+ Rod - Elev 378.92  
6.95  
Σ 385.87

34<sup>th</sup> is 60' wide from El Cajon to Meade  
with 12' cbs + 9' 1/4's

0 to 100 = N. Line El Cajon

E	5.0	380.8	
Top cb	5.43	380.44	
G	6.09	379.8	
1/4 - on Paving	56.9	380.2	
1/4 - " "	55.5	380.32	
1/4 - " "	58.2	380.05	
G - "	6.17	379.70	
Top cb	5.81	380.26	
W	5.5	380.4	
W	385.9	5.4	380.5
Top cb	5.62	380.25	
G	6.3	379.6	
1/4	5.7	380.2	
1/4	5.5	380.4	
1/4	5.4	380.5	
cb	5.5	380.47	
E	5.0	380.9	

Void to Page 66  
of New cb as W.  
of Put in

Platted 8-20-28 G.B.H.

Σ 385.87

E	4.6	381.3
cb	5.3	380.6
1/4	5.2	380.7
1/4	5.7	380.2
1/4	5.9	380.0
G	6.2	379.7
Top cb	5.51	380.36
W	5.2	380.7
W	5.2	380.7
Top cb	5.40	380.47
G	6.0	379.9
1/4	5.8	380.1
1/4	5.2	380.7
1/4	4.5	381.4
cb	5.2	380.7
1/2	4.7	381.2
E	4.5	381.4
E	4.8	381.1
1/4	5.0	380.9
cb	5.5	380.4
1/4	5.0	380.9
1/4	5.4	380.5
1/4	5.6	380.3

385.9

0+42

0+67

0+92



T 385.87

G	6.0	379.9
Tpcb	5.25	380.62
W	5.0	380.9
	1+17	
W	4.6	381.3
Tpcb	5.04	380.83
G	5.8	380.1
1/4	5.5	380.4
£	5.3	380.6
1/4	5.3	380.6
cb	5.3	380.6
+2	5.0	380.6
E	4.7	381.2
	+42	
E	4.2	381.7
cb	5.2	380.7
1/4	5.0	380.9
£	5.0	380.9
1/4	5.3	380.6
G	5.6	380.3
Tpcb	4.95	380.92
W	4.4	381.5
	1+67	
W	4.5	381.4
Tpcb	4.76	381.11

T 385.87

65

G	5.4	380.5
1/4	5.0	380.9
£	4.5	381.4
1/4	4.4	381.5
cb	4.8	381.1
+2	3.7	382.2
E	3.9	382.0
	1+92	
E	3.6	382.3
cb	3.6	382.3
+2	4.4	381.5
1/4	4.1	381.8
£	4.3	381.6
1/4	4.8	381.1
G	5.3	380.9
Tpcb	4.61	381.26
W	4.3	381.6
	2+17	
W	4.2	381.7
Tpcb	4.45	381.42
G	5.1	380.8
1/4	4.7	381.2
£	4.3	381.6
1/4	4.1	381.8
+2	4.2	381.7



T 385.87

cb	3.9	382.0
E	3.7	382.2
2+42		
B	3.0	382.9
cb	3.7	382.7
41	4.1	381.8
44	4.0	381.9
¢	4.1	381.8
44	4.5	381.4
G	4.9	381.0
Tpcb	4.28	381.59
W	4.0	381.9
2+67		
W	3.8	382.1
Tpcb	4.15	381.72
G	4.8	381.1
44	4.4	381.5
¢	3.9	382.0
44	3.7	382.2
cb	4.0	381.9
tv	3.1	382.8
E	3.3	382.6

Void See P. 75

3+04 = Beginning of existing cb on East side

E	2.4	383.0
Tpcb	3.40	382.47

T 385.87

G	3.8	382.1
44	3.4	382.5
¢	2.5	382.4
44	4.1	381.8
G	4.5	381.4
Tpcb	3.78	382.09
W	3.5	382.4
T.P		- 3.41 382.46

+ 6.30 T 388.76

3+17

W	6.4	382.4
Tpcb	6.58	382.18
G	7.3	381.5
44	6.8	382.0
¢	6.4	382.4
44	6.4	382.4
G	6.7	382.1
Tpcb	6.20	382.56
E	5.9	382.9
3+17 Driveway incb East side 6.70		
3+42		
E	5.7	383.1
Tpcb	5.94	382.82
G	6.5	382.3
44	6.5	382.3

388.8



T 388.76

£	6.2	382.6
114	6.7	382.1
G	7.2	381.6
Tpob	6.50	382.26
W	6.2	382.6
3+52 Driveway in East cb 6.33		
3+67		
W	6.0	382.8
Tpob	6.25	382.51
G	7.1	381.7
114	6.6	382.2
£	6.1	382.7
114	6.3	382.5
G	6.3	382.5
Tpob	5.92	383.04
F	5.4	383.4
3+92		
E	5.2	383.6
Tpob	5.62	383.14
G	6.4	382.4
114	6.0	382.8
£	6.0	382.8
114	6.5	382.3
G	6.9	381.9
Tpob	6.09	382.68

T 388.76

E	5.8	383.0
4+17		
W	5.5	383.3
Tpob	5.96	382.80
G	6.7	382.1
114	6.4	382.4
£	5.8	383.0
114	5.9	382.9
G	6.4	382.4
Tpob	5.53	383.23
E	5.3	383.5
4+22 Driveway in West cb 6.42		
4+42		
E	5.3	383.5
Tpob	5.44	383.32
G	6.3	382.5
114	5.9	382.9
£	5.4	383.1
114	6.2	382.6
G	6.2	382.6
Tpob	5.68	383.08
W	5.4	383.4
4+62 Driveway in West cb 6.19		
4+67		
W	5.2	383.6



π 388.76

Tpcb	559	383.17
G	65	382.3
1/4	61	382.7
⊕	57	383.1
1/4	57	383.1
G	62	382.6
Tpcb	522	383.54
E	49	383.9
	492	
E	48	384.0
Tpcb	502	383.74
G	60	382.8
1/4	56	383.2
⊕	54	383.4
1/4	58	383.0
G	62	382.6
Tpcb	542	383.29
W	51	383.7
Tpcb	497	Drive way in West cb
G	603	
	517	
W	50	383.8
⊕	525	383.51
Tpcb	60	382.8
G	56	383.2
1/4	54	383.4
⊕		

π 388.76

1/4	55	383.3
G	59	382.9
Tpcb	488	383.88
E	47	384.1
	5132	Drive way in West cb
	577	
	5142	
E	42	384.6
Tpcb	468	384.08
G	57	383.1
1/4	53	383.5
⊕	53	383.5
1/4	54	383.4
G	62	382.6
Tpcb	515	383.61
W	48	384.0
	5167	
W	47	384.1
Tpcb	498	383.78
G	58	383.0
1/4	54	383.4
⊕	51	383.7
1/4	52	383.6
G	54	383.4
Tpcb	450	384.26
E	42	384.6



$\pi 388.76$

5+92

E	40	384.8
Tpcb	440	384.36
G	51	383.7
114	51	383.7
Q	5.0	383.8
114	53	383.5
G	56	383.2
Tpcb	493	383.88
W	45	384.3

6+08.5 = South Line Meade Ave

W	45	384.3
Tpcb	467	384.09
G	51	383.7
114	49	383.9
Q	47	384.1
114	46	384.2
G	48	384.0
Tpcb	424	384.52
E	38	385.0

Intersection X sectioned on Meade Ave

From Meade to Monroe 34<sup>th</sup> St  
1580' wide. 12' cbs + 14' 1143

$\pi 388.76$

0+00 = North Line Meade Ave

E	3.5	385.3
Tpcb	394	384.82
G	44	384.4
114	41	384.7
Q	44	384.4
114	47	384.1
G	51	383.7
Tpcb	460	384.16
W	45	384.3

0+25

W	43	384.5
Tpcb	444	384.32
G	49	383.9
114	44	384.4
Q	42	384.6
114	40	384.8
G	40	384.8
Tpcb	385	384.91
E	3.5	385.3

0+50

E	3.2	385.6
Tpcb	372	385.04
G	44	384.4
114	40	384.8
Q	40	384.8



π 388.76

114	43	384.5
G	49	388.9
Tpcb	427	384.49
W	42	384.2

0475

W	42	384.6
Tpcb	411	384.65
G	48	384.0
114	42	384.6
E	40	384.8
114	39	384.9
G	43	384.5
Tpcb	352	385.24
E	3.0	385.8

1400

E	30	385.8
Tpcb	337	385.39
G	43	384.5
114	37	385.1
E	36	385.2
114	40	384.8
G	45	384.3
Tpcb	388	384.88
W	37	385.1

π 388.76

1425

W	37	385.1
Tpcb	388	384.88
G	45	384.3
114	38	385.0
E	36	385.2
114	35	385.3
G	40	384.8
Tpcb	330	385.46
E	29	385.9

1450

E	2.8	386.0
Tpcb	3.08	385.68
G	3.8	385.0
114	3.4	385.4
E	3.3	385.5
114	3.6	385.2
G	4.4	384.4
Tpcb	3.72	385.04
W	3.6	385.2
T.P.	-3.56	385.20

+6.591

π 391.79

1475

W	65	385.3	
Tpcb	391.8	659	385.22
G	73	384.5	



π 391.79

1/4	391.8	6.8	385.0
6		6.2	385.6
1/4		6.3	385.5
G		6.8	385.0
Tpcb		6.04	385.75
E		5.4	386.4
	2+00		
E		5.5	386.3
Tpcb		5.88	385.91
G		6.5	385.3
1/4		6.2	385.6
6		6.1	385.7
1/4		6.4	385.4
G		7.0	384.8
Tpcb		6.41	385.38
W		6.3	385.5
	2+25		
W		6.1	385.7
Tpcb		6.19	385.60
G		6.7	385.1
1/4		6.2	385.6
6		5.9	385.9
1/4		6.0	385.8
G		6.5	385.3
Tpcb		5.69	386.10

π 391.79

E		5.3	386.5
	2+50		
E		5.1	386.7
Tpcb		5.58	386.21
G		6.4	385.4
1/4		5.8	386.0
6		5.8	386.0
1/4		6.1	385.7
G		6.4	385.4
Tpcb		6.03	385.76
W		5.4	386.4
	2+75		
W		5.6	386.2
Tpcb		5.85	385.84
G		6.4	385.4
1/4		5.8	386.0
6		5.6	386.2
1/4		5.7	386.1
G		6.2	385.6
Tpcb		5.43	386.36
E		4.9	386.9
	3+00		
E		4.8	387.0
Tpcb		5.31	386.48
G		6.0	385.8



π 391.79

1/4	55	386.3
♀	54	386.4
1/4	57	386.1
G	63	385.5
Trcb	563	386.16
W	52	386.6

3+12 = 4' of broken cb on East side

3+25

W	52	386.6
Trcb	544	386.35
G	61	385.7
1/4	55	386.3
♀	52	386.6
1/4	53	386.5
G	58	386.0
Trcb	5.15	386.64
E	47	387.1
3+30 Drive way in West cb	5.98	
	3+50	

E	45	387.3
Trcb	503	386.76
G	56	386.2
1/4	51	386.7
♀	50	386.8
1/4	53	386.5
G	59	385.9

π 391.79

Trcb	534	386.45
W	49	386.9
	3+75	
W	47	387.1
Trcb	5.25	386.54
G	58	386.0
1/4	52	386.6
♀	49	386.9
1/4	50	386.8
G	55	386.3
Trcb	4.90	386.89
E	42	387.6
	4+00	
E	42	387.6
Trcb	4.60	387.19
G	5.3	386.5
1/4	49	386.9
♀	48	387.0
1/4	51	386.7
G	5.7	386.1
Trcb	5.12	386.67
W	47	387.1
	4+25	
W	48	387.0
Trcb	4.96	386.83



π 391.19

G	56	386.2
1/4	49	386.9
£	47	387.1
1/4	47	387.1
G	52	386.6
Tpcb	4.42	387.37
E	39	387.9
4442 Drive Way in Eastch 4.78		
4450		
E	35	388.3
Tpcb	4.22	387.57
G	49	386.9
1/4	46	387.2
£	45	387.3
1/4	49	386.9
G	54	386.4
Tpcb	4.83	387.96
W	46	387.2
4475		
W	42	387.6
Tpcb	4.56	387.23
G	53	386.5
1/4	47	387.1
£	44	387.4
1/4	44	387.4

π 391.19

72

G	47	387.1
Tpcb	4.04	387.75
E	3.5	388.3
4484 = Drive way in Eastch 4.62		
4488 = Drive way in Westch 5.14		
5100		
E	3.7	388.1
Tpcb	3.98	387.81
G	4.7	387.1
1/4	4.3	387.5
£	4.1	387.7
1/4	4.5	387.3
G	4.9	386.9
Tpcb	4.40	387.39
W	4.1	387.7
5125		
W	3.8	388.0
Tpcb	4.18	387.61
G	4.6	387.2
1/4	4.3	387.5
£	4.0	387.8
1/4	4.1	387.7
G	4.7	387.1
Tpcb	3.85	387.94
E	3.5	388.3



π 391.79

5+30 = Drive way in West 4.48

5+50

E	3.5	388.3
Tpcb	3.72	388.07
G	4.4	387.4
114	4.0	387.8
E	3.9	387.9
114	4.2	387.6
G	4.6	387.2
Tpcb	4.04	387.75
W	3.5	388.3

5+75

W	3.3	388.5
Tpcb	3.86	387.93
G	4.3	387.5
114	4.0	387.8
E	3.6	388.2
114	3.8	388.0
G	4.1	387.7
Tpcb	3.56	388.23
E	3.1	388.7

6+00 = South Line Monroe

E	3.0	388.8
Tpcb	3.36	388.43
G	4.2	387.6

π 391.79

114	3.4	388.4
E	3.4	388.1
114	3.5	388.3
G	4.0	387.8
Tpcb	3.61	388.18
W	3.5	388.3
B.M. SE, B.P. Monroe 34th		- 3.34 388.45
		388.36



34th St. Cross Section

El Cajon to 384th St

Co. side  
12' C&S  
9' Q15

Note: Near Curby Park on the east  
has very poor Gravel and Lint  
Several bad cracks 385.54

316.75  
5.50  
Pool  
North  
380.9

BM	666	385.54	378.92	S&B.P El Cajon to 384th St
				N.L. El Cajon Ave
"		52	380.34	
Cb Fixing		52.5	380.26	
Gutter or Pavement		58	379.7	
"		55	380.0	
"		53	380.3	
"		54	380.1	
Gutter		57	379.8	
Cb Fixing		50.5	380.49	
F		46	380.9	
				17th of N.L. El Cajon
F		46	380.9	
Cb Fixing		49.8	380.56	
Gutter		55	380.0	
"		47	381.4	
"		51	380.4	
"		52	380.3	
"		53	380.3	
Gutter		59	379.6	
Cb Fixing		53.0	380.24	
"		50	380.5	
				46th
"		49	380.6	
Cb Fixing		51.8	380.36	
Gutter		57	379.8	

Con. #1'd on Page 66

"		56	379.9	
"		53	380.2	
"		49	380.6	
"		46	380.9	
Gutter		54	380.1	
Cb Fixing		48.5	380.69	
F		45	381.0	
				67th
F		43	381.2	
Cb Fixing		46.1	380.9	
Gutter		51	380.4	
"		36	381.9	
"		40	381.5	
"		50	380.5	
"		54	380.1	
Gutter		57	379.8	
Cb Fixing		50.8	380.46	
"		48	380.7	
				92nd
"		46	380.9	
Cb Fixing		49.1	380.63	
Gutter		57	379.8	
"		52	380.3	
"		51	380.4	
"		47	380.8	
"		44	381.1	



385.54

Gutter	51	380.9
cb Existing	453	381.01
F	12	381.3
	117' H	
F	42	381.3
cb Existing	443	381.11
Gutter	50	380.5
1/4	48	380.7
2	50	380.5
1/4	51	380.4
Gutter	55	380.0
cb Existing	472	380.82
H	43	381.2
	142' H	
H	410	381.44
cb Existing	460	380.94
Gutter	53	380.2
1/4	49	380.6
2	47	380.8
1/4	46	380.9
+L	43	381.2
Gutter	50	380.5
cb Existing	461	381.33
F	40	381.5
	167' H	
F	35	382.0

38554

cb Existing	395	381.59
Gutter	46	380.9
+S	34	382.1
1/4	39	381.6
2	42	381.3
1/4	18	380.7
Gutter	51	380.4
cb Existing	441	381.10
H	42	381.3
	192' H	
H	10	381.5
cb Existing	428	381.26
Gutter	50	380.5
1/4	45	381.0
2	40	381.5
1/4	35	382.0
1/4	33	382.2
Gutter	44	381.1
cb Existing	378	381.76
F	31	381.9
	217' H	
F	34	382.1
cb Existing	365	381.89
Gutter	42	381.3
1.5	33	382.2
1/4	31	381.9



4	40	381.5
1/4	43	381.0
Gutter	48	380.7
Cb Existing	410	381.44
H	38	381.7
242H		
H	36	381.9
Cb Existing	391	381.60
Gutter	47	380.8
1/4	42	381.3
4	38	381.7
1/4	35	382.0
1/4	31	382.4
Gutter	41	381.4
Cb Existing	348	382.06
E	36	382.5
267H		
E	30	382.5
Cb Existing	334	382.20
Gutter	40	381.5
1/4	39	382.5
1/4	34	382.1
4	25	382.0
1/4	11	381.4
Gutter	45	381.0
Cb Existing	283	381.71

H	35	382.0
242H: End of New Cb. Walk on East		
H	31	382.4
Cb Existing	345	382.09
Gutter	42	381.3
1/4	38	381.7
4	32	382.3
1/4	30	382.5
1/4	38	382.3
Gutter	36	381.9
Cb Existing	309	382.45
E	27	382.8

Cont Page 66



Levels on Existing Sewer  
in 31<sup>st</sup> St, Bet. Island Ave & J. St.

4-19-29  
Miller

B.M. 2.43 83.06 80.63

Mon SW. 31<sup>st</sup>  
& Island

8<sup>ft</sup> M.H. @ 31<sup>st</sup> & Alley Bet. J. Sts

9.06 74.00

Flow Line

9<sup>ft</sup> N. of M.H. = N. End Existing Pipe.

7.20 75.86

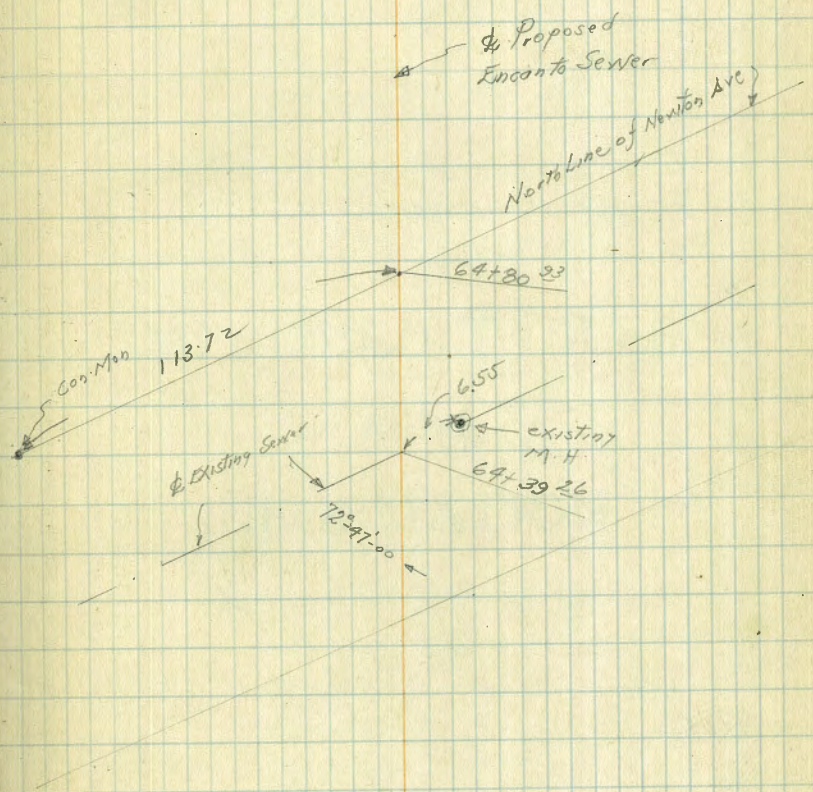
Top 4" Vitrified  
Sewer Pipe

0.5 E. of ~~center~~ of 31<sup>st</sup> St.

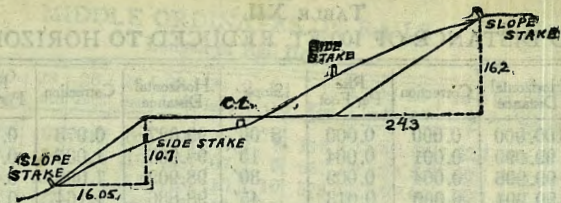


Bliss  
Sommerper  
Beggs  
2/11/42

Ties to existing Sewer Newton Ave. + Proposed  
Encanto Sewer







**DISTANCES FROM SIDE STAKES FOR CROSS-SECTIONING.**

SLOPE  $1\frac{1}{2}$  TO 1. ROADWAY OF ANY WIDTH.

	0	.1	.2	.3	.4	.5	.6	.7	.8	.9	
0	0 00	0 15	0 30	0 45	0 60	0 75	0 90	1 05	1 20	1 35	0
1	1 50	1 65	1 80	1 95	2 10	2 25	2 40	2 55	2 70	2 85	1
2	3 00	3 15	3 30	3 45	3 60	3 75	3 90	4 05	4 20	4 35	2
3	4 50	4 65	4 80	4 95	5 10	5 25	5 40	5 55	5 70	5 85	3
4	6 00	6 15	6 30	6 45	6 60	6 75	6 90	7 05	7 20	7 35	4
5	7 50	7 65	7 80	7 95	8 10	8 25	8 40	8 55	8 70	8 85	5
6	9 00	9 15	9 30	9 45	9 60	9 75	9 90	10 05	10 20	10 35	6
7	10 50	10 65	10 80	10 95	11 10	11 25	11 40	11 55	11 70	11 85	7
8	12 00	12 15	12 30	12 45	12 60	12 75	12 90	13 05	13 20	13 35	8
9	13 50	13 65	13 80	13 95	14 10	14 25	14 40	14 55	14 70	14 85	9
10	15 00	15 15	15 30	15 45	15 60	15 75	15 90	16 05	16 20	16 35	10
11	16 50	16 65	16 80	16 95	17 10	17 25	17 40	17 55	17 70	17 85	11
12	18 00	18 15	18 30	18 45	18 60	18 75	18 90	19 05	19 20	19 35	12
13	19 50	19 65	19 80	19 95	20 10	20 25	20 40	20 55	20 70	20 85	13
14	21 00	21 15	21 30	21 45	21 60	21 75	21 90	22 05	22 20	22 35	14
15	22 50	22 65	22 80	22 95	23 10	23 25	23 40	23 55	23 70	23 85	15
16	24 00	24 15	24 30	24 45	24 60	24 75	24 90	25 05	25 20	25 35	16
17	25 50	25 65	25 80	25 95	26 10	26 25	26 40	26 55	26 70	26 85	17
18	27 00	27 15	27 30	27 45	27 60	27 75	27 90	28 05	28 20	28 35	18
19	28 50	28 65	28 80	28 95	29 10	29 25	29 40	29 55	29 70	29 85	19
20	30 00	30 15	30 30	30 45	30 60	30 75	30 90	31 05	31 20	31 35	20
21	31 50	31 65	31 80	31 95	32 10	32 25	32 40	32 55	32 70	32 85	21
22	33 00	33 15	33 30	33 45	33 60	33 75	33 90	34 05	34 20	34 35	22
23	34 50	34 65	34 80	34 95	35 10	35 25	35 40	35 55	35 70	35 85	23
24	36 00	36 15	36 30	36 45	36 60	36 75	36 90	37 05	37 20	37 35	24
25	37 50	37 65	37 80	37 95	38 10	38 25	38 40	38 55	38 70	38 85	25
26	39 00	39 15	39 30	39 45	39 60	39 75	39 90	40 05	40 20	40 35	26
27	40 50	40 65	40 80	40 95	41 10	41 25	41 40	41 55	41 70	41 85	27
28	42 00	42 15	42 30	42 45	42 60	42 75	42 90	43 05	43 20	43 35	28
29	43 50	43 65	43 80	43 95	44 10	44 25	44 40	44 55	44 70	44 85	29
30	45 00	45 15	45 30	45 45	45 60	45 75	45 90	46 05	46 20	46 35	30
31	46 50	46 65	46 80	46 95	47 10	47 25	47 40	47 55	47 70	47 85	31
32	48 00	48 15	48 30	48 45	48 60	48 75	48 90	49 05	49 20	49 35	32
33	49 50	49 65	49 80	49 95	50 10	50 25	50 40	50 55	50 70	50 85	33
34	51 00	51 15	51 30	51 45	51 60	51 75	51 90	52 05	52 20	52 35	34
35	52 50	52 65	52 80	52 95	53 10	53 25	53 40	53 55	53 70	53 85	35
36	54 00	54 15	54 30	54 45	54 60	54 75	54 90	55 05	55 20	55 35	36
37	55 50	55 65	55 80	55 95	56 10	56 25	56 40	56 55	56 70	56 85	37
38	57 00	57 15	57 30	57 45	57 60	57 75	57 90	58 05	58 20	58 35	38
39	58 50	58 65	58 80	58 95	59 10	59 25	59 40	59 55	59 70	59 85	39
40	60 00	60 15	60 30	60 45	60 60	60 75	60 90	61 05	61 20	61 35	40
41	61 50	61 65	61 80	61 95	62 10	62 25	62 40	62 55	62 70	62 85	41
42	63 00	63 15	63 30	63 45	63 60	63 75	63 90	64 05	64 20	64 35	42
43	64 50	64 65	64 80	64 95	65 10	65 25	65 40	65 55	65 70	65 85	43
44	66 00	66 15	66 30	66 45	66 60	66 75	66 90	67 05	67 20	67 35	44
45	67 50	67 65	67 80	67 95	68 10	68 25	68 40	68 55	68 70	68 85	45
46	69 00	69 15	69 30	69 45	69 60	69 75	69 90	70 05	70 20	70 35	46
47	70 50	70 65	70 80	70 95	71 10	71 25	71 40	71 55	71 70	71 85	47
48	72 00	72 15	72 30	72 45	72 60	72 75	72 90	73 05	73 20	73 35	48
49	73 50	73 65	73 80	73 95	74 10	74 25	74 40	74 55	74 70	74 85	49
50	75 00	75 15	75 30	75 45	75 60	75 75	75 90	76 05	76 20	76 35	50

Computed by L. Leland Locke.

To find



National at 40<sup>th</sup> S.W. Top H<sub>y</sub>  
65.90

39<sup>th</sup> S.W. B.P. = 83.05

National

3094  
19.86  
11.68  
70.96  
11.79  
82.75  
3094  
14.00  
1694

217.60  
20.05  
197.55  
219.29  
243.00  
660.24  
659.09  
1.15  
93.99  
8.04  
39.98

B.M. NE Boston 131

Elev  
51.48  
1.70 +  
53.18  
11.14  
41.99  
2.00 +  
43.99  
2.79 +  
41.20 B.M. SW Top H<sub>y</sub>  
Main = 32.98

250  
31.5  
88.34  
369.88

7.5  
242  
1795  
192.0  
75  
1945  
25  
245  
40.93  
181.26  
58.51  
180.  
42  
280.51

4.01  
300  
63  
65  
62.16  
54.80  
548.97

95.44  
101.  
110  
50.01  
110  
82.42  
548.89  
17.58  
32.42  
370.00

155.  
45.  
200  
50  
250  
31.65  
281.65  
88.38  
370.03  
289  
83  
40

155.

5369.  
1280  
40.89  
95  
90.99  
12.57  
2785

26  
60  
47

3491  
1148  
23.43  
2981  
25.91  
23.83  
6727  
30.61  
19.19  
16.42

19.00  
16.42

1.58  
370.03  
88.38  
281.65

281.65  
5.24  
286.89  
43.11  
330.00

47.60

51.35  
45.50  
5.85  
991.19  
35  
956.19

111.64  
95.50  
16.14

115.97  
31  
84.97  
90.97

115.97  
15  
99.97  
15  
115.97  
14.25  
101.72

30.61  
12.14  
18.47

116  
39  
155

98.27  
4.33  
93.94  
2.74  
101.72  
5.08  
96.64

96.65