

1192

FIELD BOOK

No. 385



MICROFILMED  
DEC 22 1964

Dir included. pp 80 7/12/20 H.H.

693.59  
675  
8.59

251.79  
14.85  
577.64

Our Leather Bound Engineers Note Books are carried in the following rulings:

- No. 380 LEVEL BOOK. Left and Right Hand Page the same as Left Hand Page of this Book.
- No. 382 FIELD BOOK. Left Hand Page as in this Book, Right Hand Page 4 x 4 to the inch, Center Line Red.
- No. 384 MINING TRANSIT BOOK. Left Hand Page as in this Book, Right Hand Page 8x8 to the inch, Center Line Red.
- No. 385 FIELD BOOK. Left Hand Page as in this Book, Right Hand Page 8 vertical and 4 horizontal lines to the inch, Center Line Red.

We also carry the Note Books listed above, bound in extra strong Fabri-Hide (otherwise the same quality of book), which can be furnished at a somewhat lower price.

In ordering Fabri-Hide covered books, add the letter "F" to catalog number.

**THE FREDERICK POST CO.**  
**ENGINEERING and DRAFTING SUPPLIES**  
**IRVING PARK STATION**  
**CHICAGO, ILL.**



Dir indexed, D. pp 80 7/10/20 AA.

31 <sup>st</sup> St.	National to Woolman	1
Saratoga	DeFoe .. Guizot	18
Richmond	40'S .. NL Cypress	30
28 <sup>th</sup>	Mercey .. Woolman	34
Whitman	Witherby .. Aloha	45
Aloha	Whitman .. Witherby	58-49
Mendocino Blvd	Green .. Voltaire	54
Alley Blk 5 Hartleys North Park	Landis to Nightman ✓	61
Santa Cruz	DeFoe to Ebers	63
"B" Survey of Old Town Grade & of Persido Dr.		70



Cross Section of 31<sup>st</sup> ST. 60' wide  
National to Woolman 10' curbs  
10' / 1/4"

81.92

Moore  
3/16/47

9-20-47

W	1046	81.92	71.46	same Ht.
	NL National = 00			
W		10.4	71.5	N.E. Cor Walk to Carbons
cb		10.7	71.5	57' N on E Lk Cone Drift
1/4		10.6	71.3	80' Drift
c		10.4	71.5	73.8
1/4		10.5	71.4	
cb	top curv curb	10.44	71.5	
E		10.4	71.7	

E		7.3	74.6	
	1+00			
E		5.7	76.2	110' N on E Lk old Conc Walk
cb		6.6	75.3	1.45 = 77.5
1/4		7.0	74.9	
c		6.6	75.3	
1/4		6.6	75.3	
cb		6.1	75.8	
W		5.8	74.1	

sidewalk of municipal net int. curb in ok to  
point 4' S of NL National

1+50

0+7

E		7.9	74.0
cb		9.6	72.3
1/4		9.9	72.0
c		9.8	72.1
1/4		10.3	71.6
cb		10.4	71.5
W		10.3	71.6

W		4.7	77.2	118' N on E Lk Sidewalk
cb		4.8	77.1	4.7 77.2
1/4		5.4	76.7	
c		5.1	76.8	
1/4		5.4	76.5	
cb		4.9	77.0	
E		4.9	77.0	

2+00

0+50

W		8.1	73.5
cb		8.3	73.6
1/4		5.5	73.4
c		8.3	73.6
1/4		8.4	73.5
cb		8.2	73.7

E		4.7	77.2	231' N on E Lk Cone Walk
cb		4.8	77.1	4.7 77.2
1/4		4.9	77.0	
c		4.4	77.5	
1/4		4.6	77.3	
cb		3.8	75.1	
W		3.6	75.3	



81.92

2+50

W	3.6	79.3
cb	3.7	79.2
1/4	4.9	77.0
C	4.8	77.1
1/4	5.3	76.6
cb	5.2	76.7
E	4.9	77.0

2+75

E	5.2	76.7	27' N of E.L.
cb	5.6	76.3	60' N of E.L.
1/4	6.3	75.6	Est. 76.08
C	6.3	75.6	
1/4	6.4	75.5	
+3	6.4	75.5	
+2	5.4	76.5	
cb	5.3	76.6	
W	4.1	77.8	

2+95

W	4.4	77.5
cb	6.9	75.0
1/4	8.0	73.9
C	7.9	74.0
1/4	8.1	73.8
+7	7.3	74.6
cb	7.6	74.3
E	8.4	75.0

81.92

31st

3+00 = SL Logan - 80 wide

E	8.1	73.5	Intersection of Logan graded
cb	8.3	73.6	NW Return only
+3	8.1	73.5	one constructed 10' x 14'
1/4	8.5	73.4	All Returns 12.0K
C	8.1	73.5	
1/4	8.2	73.7	
cb	7.8	74.1	
W	7.2	74.7	

NE Logan = 0.0

W	7.8	74.1	
cb	8.0	73.9	top corr curb
1/4	8.9	73.0	
C	8.7	73.2	
1/4	9.1	72.8	
cb	8.9	73.0	
E	9.0	72.9	

0+10

-5	13.2	69.7
E	12.9	68.0
cb	9.4	72.5
1/4	9.4	72.5
C	8.5	73.4
1/4	9.5	72.4
cb	8.8	73.1
W	8.1	73.5

T.P. 232 73.71 10.53 71.39'



73.71

0+25

W	1.2	72.5
cb	1.8	71.9
1/4	2.0	71.7
C	2.2	71.5
1/2	3.5	70.2
cb	4.4	69.3
E	6.3	67.4
+5	6.3	67.4

0+50

-5	7.9	65.8
E	7.9	65.8
cb	6.1	67.6
1/4	5.2	68.5
C	4.3	69.4
1/2	4.7	69.0
cb	3.9	69.8
W	2.9	70.8

0+75

W	5.6	68.1
cb	6.6	67.1
1/2	7.3	66.4
C	7.2	66.5
1/4	8.1	65.6
cb	8.7	65.0
E	9.1	64.6
+5	9.0	64.7

73.71

3104

3

1+00

-5	10.8	62.9
E	10.8	62.9
cb	10.2	63.5
1/4	9.5	64.2
C	8.7	65.0
1/2	8.9	64.8
cb	7.9	65.8
W	6.7	67.0

1+25

W	8.1	65.6
cb	9.7	64.0
1/2	11.4	62.3
C	11.4	62.3
1/4	12.1	61.6
cb	13.6	60.1
E	13.7	60.0
+5	13.8	59.9
T.P.	12.80	60.91

1+50

-5	6.8	56.7
E	6.6	56.9
cb	5.6	57.9
1/4	4.3	59.2
C	2.7	60.8
1/2	1.9	61.6

6346



6346

cb	1.3	62.7
w	0.7	62.6
	1+75	
w	1.9	61.4
cb	3.2	60.3
1/4	4.3	59.2
c	5.0	58.5
1/4	6.3	57.2
cb	7.0	56.5
E	7.6	55.9
+5	7.9	55.6
	2+00	
-5	8.7	54.8
E	8.1	55.4
cb	7.5	56.0
1/4	7.2	56.3
c	6.2	57.0
1/4	5.7	57.8
cb	4.8	58.7
w	3.6	59.9
	x+75	
w	5.0	59.5
cb	6.2	57.3
1/4	6.7	56.8
c	7.5	56.0
+6	8.7	54.8

6346

31 at

1/4	10.4	53.1
cb	11.3	52.7
E	11.5	52.0
+5	11.7	51.8
	2+50	
-5	15.4	48.1
E	14.9	48.6
cb	13.9	49.6
1/4	13.5	50.0
c	11.5	52.0
1/4	10.1	53.4
cb	8.5	55.0
w	7.0	56.5
	2+75	
w	10.2	53.3
cb	11.3	52.7
T.P.	130	51.97
1/4	12.79	50.67
	2.3	49.7
c	3.3	48.7
1/4	4.5	47.5
cb	5.0	47.0
E	5.2	46.8
	Store bldg 070 W Street	
	3+07 = old St Greeley	
-5	9.9	42.1
E	9.3	42.7



51.97

cb	8.1	43.9
1/4	6.8	45.2
C	6.2	45.8
1/4	4.8	47.2
cb	4.0	48.0
W	2.8	49.2

3+12 = New SL Greeley = 60 wide 10' curbs

W	4.5	47.5
cb	4.8	47.2
1/4	5.7	46.3
C	6.8	45.2
1/4	8.1	43.9
cb	9.1	42.9
E	9.9	42.1
±5	10.1	41.9

S curb

-5	10.0	42.0
E	9.7	42.3
cb	9.0	43.0
1/4	8.2	43.8
C	7.2	44.8
1/4	6.5	45.5
cb	5.8	46.2
W top curb	4.94	47.1
5 1/2		
W	5.8	46.2

51.97

31.04

5

cb	6.5	45.5
1/4	7.5	44.5
C	8.0	44.0
1/4	8.2	43.8
cb	8.8	43.2
E	9.5	42.5
±5	9.9	42.1

± Greeley

-5	10.2	41.8
E	9.8	42.2
cb	8.9	43.1
1/4	8.2	43.8
C	7.7	44.3
1/4	7.0	45.0
cb	6.4	45.6
W	5.6	46.4
N 1/4		
W	6.2	45.8
cb	6.7	45.3
1/4	7.2	44.8
C	7.8	44.2
1/4	8.4	43.6
cb	9.1	42.9
E	9.8	42.2
±5	10.4	41.8



5197

N curb

-5	10.2	41.8
E	9.9	42.1
cb	9.4	42.6
1/4	8.6	43.4
c	7.8	44.2
1/4	7.3	44.7
cb	6.8	45.2
w/ Top com curb	5.97	46.0

New N/L Greeley = 0400

w/	5.9	46.1
cb	6.9	45.1
1/4	7.8	44.2
c	8.2	43.8
1/4	8.8	43.2
cb	9.9	42.1
E	11.4	40.6
+5	12.2	39.8

0+10 = old N/L Greeley

-5	12.0	40.0
E	11.3	40.7
cb	11.1	40.9
1/4	10.2	41.8
c	8.9	43.1
1/4	8.0	44.0
cb	6.7	45.3
w/	6.0	46.0

5197

0+25

w/	6.3	44.7
cb	7.9	44.1
1/4	9.1	42.9
c	9.9	42.1
1/4	10.5	41.5
cb	11.4	40.6
E	11.6	40.4
+5	11.9	40.1

0+50

-5	11.1	40.9
E	10.3	41.7
cb	9.5	42.5
1/4	9.2	42.8
c	9.5	42.5
1/4	9.2	42.8
cb	9.0	43.0
w/	7.4	44.4

0+75

w/	7.8	44.2
cb	8.1	43.9
1/4	8.3	43.7
c	9.1	42.9
1/4	8.8	43.2
cb	9.0	43.0
E	9.7	42.3
+5	10.1	41.9



51.97

1+00

-5	10.0	42.0
E	9.8	42.2
cb	9.8	42.2
1/4	9.7	42.3
c	10.2	41.8
1/4	9.3	42.7
cb	8.9	43.1
w	8.0	44.0

1+25

w	8.8	43.2
cb	10.2	41.8
1/4	10.8	41.2
c	11.1	40.4
1/4	10.9	41.1
cb	9.8	42.2
E	10.0	42.0
+5	9.9	42.1

1+50

-5	12.0	40.0
E	11.3	40.7
cb	12.6	39.4
1/4	12.2	39.8
c	11.6	40.4
1/4	11.4	40.6
cb	10.4	40.6
w	8.8	43.2

51.97

31.4 7

1+65 = 2 alley

# Street Sewer M.H. 1171	11.71	40.26
= 1+75		
w	8.1	43.9
cb	9.9	42.1
1/4	12.0	40.0
c	12.5	39.5
1/4	✓ 13.1	38.9
T.P. 717	47.43	11.71
cb	9.5	37.9
E	9.1	38.0
+5	9.8	37.6

2+00

-10	10.1	37.3
E	10.7	36.7
cb	10.2	37.2
1/4	9.4	38.0
c	8.4	39.0
1/4	8.3	39.1
cb	6.6	40.8
w	4.7	42.7

2+25

-5	6.2	41.2
w	6.9	40.5
cb	7.5	39.9
1/4	8.1	39.3
c	8.6	38.8



47.43

	1/4		9.6	37.6
-5	cb		10.9	36.5
E	E		11.9	35.5
cb	+10		12.1	35.3
1/4		2+50		
e	-10	Note: - Culvert	11.4	36.0
1/4	E	May be improved	10.9	36.5
cb	cb	by filling a foot	8.9	37.5
w	1/4	yds dirt west of	7.6	39.5
	C	W.L. of 31st	6.9	40.5
w	1/4		6.9	40.5
cb	cb		6.8	40.6
1/4	w		7.4	40.0
C	+10		7.0	40.4
1/4		2+75		
cb	-5		4.9	42.5
E	w		5.9	41.5
+5	cb		6.0	41.4
	1/4		6.3	41.1
-5	e		6.3	41.1
E	1/4		6.4	41.0
cb	cb		6.3	41.1
1/4	E		6.7	40.7
C	+5		6.4	41.0
1/4		3+10 = old S.L. MARTIN		
cb	E		5.1	42.3
w				

47.43

31 + 8

cb	1/4		4.4	43.0
1/4			4.7	43.2
C			4.4	43.7
1/4			4.3	43.1
cb			3.8	43.6
w			3.2	44.2
		3+19		
w			1.9	45.5
cb			2.8	44.6
1/4			3.4	44.0
C			3.5	43.9
		3+20 = New S.L. MARTIN = 60 wide 10 curbs		
w			4.1	43.3
cb			3.7	43.7
1/4			3.5	43.9
e			3.6	43.8
1/4			3.3	44.1
cb			4.0	43.4
E			5.4	42.0
		Sound		
E			4.8	42.6
cb			4.4	43.2
1/4			3.7	44.2
C			3.2	44.2
1/4			3.1	44.3
cb			3.9	43.5



4743

w	Top corr curb	4.82	42.61
	S 1/4		
w		4.5	42.9
cb		3.8	43.6
1/4		2.7	44.7
c		2.8	44.6
1/4		3.4	44.0
cb		4.0	43.4
E		4.6	42.8
	± Martin		
E		3.8	43.6
cb		4.0	43.4
1/4		3.7	43.7
c		3.0	44.4
1/4		3.0	44.4
cb		4.0	43.4
w		4.5	42.5
	N 1/4		
w		4.8	42.6
cb		4.8	42.6
1/4		4.1	43.0
c		4.3	43.1
1/4		4.2	43.2
cb		4.4	43.0
E		4.7	42.7

4743

31

9

	N cb		
E		7.0	40.4
cb		6.6	40.8
1/4		5.9	41.5
c		5.5	41.9
1/4		5.4	42.0
cb		4.9	42.5
w	Top corr curb	5.28	42.15
	New NL Martin = 0+00		
w		4.7	42.7
cb		4.7	42.7
1/4		4.9	42.5
c		4.7	42.7
1/4		4.8	42.6
cb		5.1	42.3
E		5.7	41.7
	0+10 = Old NL Martin		
E		4.7	42.7
cb		3.8	43.6
1/4		3.5	43.9
c		4.0	43.4
1/4		5.2	42.2
cb		5.4	42.0
w		4.4	43.0
	0+25		
-5		6.6	40.8



4743

w/	0+25	6.8	40.6
cb		7.4	40.0
1/4		7.6	39.8
e		6.4	41.0
1/4		4.2	43.2
cb		3.0	44.4
E		5.2	42.2
+5		6.6	40.8
	0+50		
-10		11.2	36.2
E		7.5	39.9
cb		6.4	41.0
1/4		9.6	37.8
C		11.6	35.8
1/4		11.9	35.5
cb		11.2	36.2
W		11.4	36.0
+10		11.6	35.8
T.P.	539	39.93	12.89
	0+75		34.54 <sup>v</sup>
-10		7.1	32.8
w/		8.0	31.9
cb		8.4	31.5
1/4		8.6	31.3
C		8.8	31.1
1/4		7.7	32.2

3993

31 or 10

cb		8.3	31.6
E		9.8	30.1
+15		10.8	29.1
	0+85		
-15		12.0	27.9
E		11.6	28.3
cb		11.8	28.1
1/4		11.0	28.9
C		10.7	29.2
1/4		10.0	29.9
cb		8.6	31.3
w/		8.3	31.6
+10		8.0	31.9
	1+19	Good for Culvert	not less than 18" diam
-15		9.0	30.9
W		9.7	30.2
cb		12.2	27.7
1/4		12.3	27.6
C		12.4	27.5
1/4		12.5	27.4
cb		12.6	27.3
E		12.9	27.0
+15		13.7	26.2
	1+50		
-10		7.2	22.7
E		11.6	28.3



3993

cb	12.2	27.7
1/4	12.0	27.9
c	11.4	28.5
1/4	11.0	28.9
ab	10.4	29.3
w	9.5	29.4
+10	8.1	31.5
	1+69	
-5	7.4	32.5
w	7.5	32.4
cb	8.0	31.9
1/4	8.3	31.6
c	9.1	30.8
1/4	9.8	30.1
cb	10.3	29.6
+5	10.1	29.8
E	6.8	33.1
+5	5.4	34.5
	1+75	
-5	5.3	34.6
E	6.0	33.9
46	9.6	30.3
cb	10.0	29.9
1/4	9.1	30.8
c	8.4	31.7
1/4	5.1	34.8

3993

31-11

cb	4.3	35.6
w	3.9	36.0
	2+06	
w	2.3	37.6
cb	3.6	36.3
1/4	4.3	35.6
c	4.7	35.2
1/4	5.5	34.4
cb	5.3	34.6
E	5.0	34.9
+5	6.2	33.7
	2+25	
-5	5.5	34.4
E	5.0	34.9
cb	4.3	35.6
1/4	4.6	35.3
c	2.8	37.1
1/4	2.2	37.7
cb	1.7	38.2
w	0.4	39.5
T.P.	8.75 47.27 144	38.52
	2+50	
w	5.1	42.2
cb	6.3	41.0
1/4	6.9	40.4
c	7.4	39.9



4727

C + 4	10.9	364
1/4	11.4	359
cb	11.9	354
E	11.5	358
+5	11.5	358
2+75		
-5	11.3	360
E	11.2	361
cb	11.1	362
1/4	10.6	367
+7	10.4	369
C	8.8	385
+5	5.6	417
1/4	5.1	422
cb	4.0	433
W	1.8	455
3+00		
W	1.7	456
cb	3.6	437
1/4	5.3	420
C	9.8	375
1/4	10.5	368
cb	10.6	367
E	10.6	367
+5	10.7	366

4727

31 17

3+15		
-5	10.4	369
E	10.3	370
cb	10.1	372
1/4	10.0	373
e	8.2	391
1/4	5.9	414
cb	4.0	433
W	2.4	449
3+20 = Next St. of Valle		Area = 60' wide 10' curbs 10' 1/2's
W	6.8	405
cb	7.6	397
1/4	7.9	394
e	9.2	381
1/4	10.0	373
cb	10.1	372
E	10.1	372
+5	10.2	371
5+00		
-5	10.0	373
E	10.0	373
cb	9.9	374
1/4	9.8	375
C	9.6	377
1/4	8.5	388
cb	7.8	395



47.27

s curb

w for ydge	7.7	39.6
w top cem curb	8.66	38.61
S 1/4		
w	8.5	38.8
cb	8.8	38.5
1/4	9.1	38.2
c	9.1	38.2
1/4	9.4	37.9
cb	9.5	37.8
E	10.2	37.1
+5	10.4	36.9

E Valle

-5	10.7	36.9
E	10.1	37.2
cb	9.5	37.9
1/4	8.9	38.4
c	8.9	38.4
1/4	8.7	38.6
cb	8.3	39.0
w	7.8	39.5

N 1/4

w	7.7	39.6
cb	8.1	39.2
1/4	8.5	38.8
c	8.4	38.9
1/4	8.6	38.7

47.27

31 of 13

cb	9.5	37.9
E	10.1	37.2
+5	10.4	36.9

N curb

-5	10.0	37.3
E	9.7	37.6
cb	8.8	38.5
1/4	8.2	39.1
c	8.0	39.3
1/4	7.9	39.4
cb	7.6	39.7
w Top cem curb	7.18	40.09

New N Valle = 0+00

w	6.4	40.9
cb	6.8	40.5
1/4	7.1	40.2
c	7.6	39.7
1/4	8.0	39.3
cb	8.8	38.5
E	9.5	38.1
+5	9.6	37.7

0+07

-5	9.6	37.7
E	9.1	38.2
cb	8.5	38.9
1/4	8.0	39.3



47.27

c	7.6	39.7
+5	7.2	40.1
1/4	5.8	41.5
cb	4.1	43.2
w	2.7	44.6
	0+15	
w	0.9	46.4
+3	2.0	45.3
+4	3.0	44.3
cb	4.1	43.2
+5	4.6	42.7
1/4	6.2	41.1
+4	7.2	40.1
C	7.6	39.7
1/4	7.8	39.5
cb	8.2	39.1
E	8.9	38.4
+5	9.2	38.1
	0+45	
-5	10.1	37.2
E	8.4	38.9
cb	7.5	39.8
1/4	7.1	40.2
c	7.0	40.3
+6	6.9	40.4
1/4	5.8	41.5

47.27

31.2 14

+5	4.6	42.7
cb	4.6	42.7
+5	4.1	43.2
w	2.5	44.8
	0+75	
w	3.7	43.6
cb	4.8	42.3
1/4	6.6	40.7
C	6.5	40.8
+5	6.6	40.7
1/4	8.1	39.2
cb	10.2	36.9
E	12.2	35.1
+15	16.2	31.1
	1+00	
-15	16.2	31.1
E	14.1	33.2
cb	12.2	35.1
+5	10.9	36.4
1/4	8.6	38.7
+6	6.5	41.2
C	6.0	41.3
1/4	5.9	41.4
cb	4.8	42.5
w	4.4	42.9



4727

	1725		
w/	4.2	43.1	
cb	4.9	42.4	
1/4	5.4	41.9	
c	5.5	41.8	
+5	5.5	41.8	
1/4	8.0	39.3	
cb	12.9	34.4	
E	14.7	32.6	
+15	16.2	31.1	

1750

-15	14.2	33.1	
E	12.1	35.2	
cb	12.0	35.3	
1/4	10.2	37.1	
c	4.9	42.4	
1/4	5.0	42.3	
cb	4.8	42.5	
w	4.4	42.9	

1760

w	4.6	42.7	
cb	4.8	42.5	
1/4	4.6	42.7	
c	4.8	42.5	
1/4	8.8	38.5	
cb	8.4	38.9	

4727

310 15

E	9.9	37.4	
+15	12.5	34.8	
	1770		
-15	14.4	32.9	
E	12.4	34.9	
+3	12.0	35.3	
+4	8.2	39.1	
cb	8.5	38.8	
+5	8.6	38.7	
1/4	6.2	41.1	
c	4.8	42.5	
1/4	4.7	42.6	
cb	4.3	43.0	
w	6.1	41.2	
+5	5.2	42.1	
	1775		
-5	5.1	42.2	
w	6.1	41.2	
cb	5.6	41.7	
1/4	4.5	42.8	
c	4.9	42.4	
1/4	5.2	42.1	
+5	7.9	39.4	
cb	8.5	38.8	
+4	8.8	38.5	
+5	11.8	35.5	



47.27

E	11.2	36.1
+10	8.7	38.6
+13	4.9	42.4
2+00		
-5	3.9	43.4
E	4.9	42.4
+2	5.2	42.1
+3	7.9	39.4
cb	7.5	39.8
1/4	6.3	41.0
+4	3.5	43.8
C	3.4	43.9
1/4	3.5	43.8
cb	4.8	42.5
+4	4.7	39.6
w	2.3	45.0
T.P. 714	51.29	31.2
2+25		
w	5.0	46.3
+11	5.0	46.3
cb	7.8	43.5
1/4	6.6	44.7
C	6.8	45.0
1/4	7.0	44.3
+7	7.2	43.9
+7	9.4	41.9

51.29

31.07

16

+9	9.2	41.8
+9	SDERR Drain tile ditch from Woolman	7.4
cb	7.4	43.9
E	6.7	44.6
2+50		
E	6.0	45.3
cb	6.1	45.2
cb+1	6.1	45.2
+1	elev. in bottom of	8.8
+3	ditch - approx flowline	8.8
+3		6.1
1/4		6.0
C		6.1
1/4		5.7
+6		5.8
cb		4.6
w		3.8
2+75		
w		4.6
cb		3.9
1/4		4.6
C		5.2
1/4		5.5
+7		5.2
+7		8.0
+9		8.0



5129

79	5.2	46.1
cb	5.2	46.1
E	5.2	46.1
3410 = SL Woolman		
E	5.0	46.3
cb top cem curb	5.47	45.62
41	5.5	45.5
41	7.5	43.5
43	7.5	43.5
43	6.0	45.3
1/4	5.3	46.0
c	4.9	46.4
1/4	4.9	46.4
cb top cem curb	4.47	46.92
in	4.0	47.3
NWBR Woolman + 31°	2.71	48.58

48.61  
0.03 error

31°

17

Woolman

Ave RR

Low point on Woolman

4" conc. pipe  
drain

31°

Valle

Ave



Moore  
Walbridge  
Flood  
Osborn

Cross Section of Saratoga  
DeFoe to Guizot

34.27

18

	10.26	34.27	24.01	Case May DeFoe	cb + 15	6.4	27.9 ✓
	E.L. DeFoe = 00				S	6.0	28.3 ✓
N	8.5	25.8 ✓		1 + 50			
cb top cement	8.78	25.49 ✓		S	4.4	29.9 ✓	
1/4	9.0	25.3 ✓		+5	4.5	29.8 ✓	
c	8.9	25.4 ✓		+7	5.6	28.7 ✓	
1/4	9.0	25.3 ✓		cb	5.8	28.5 ✓	
cb top cement	8.74	25.52 ✓		1/4	5.8	28.5 ✓	
S	8.3	26.0 ✓		C	5.8	28.5 ✓	
	0 + 5.0			1/4	5.8	28.5 ✓	
S	7.4	26.9 ✓		cb	6.0	28.3 ✓	
cb	8.3	26.0 ✓		+13	5.8	28.5 ✓	
1/4	8.1	26.2 ✓		N	5.0	29.3 ✓	
c	8.0	26.3 ✓					
1/4	7.7	26.6 ✓		1 + 88			
cb	8.1	26.2 ✓		N	3.9	30.4 ✓	
N	7.8	26.5 ✓		cb	4.8	29.5 ✓	
	1 + 00			1/4	4.7	29.6 ✓	
N	6.3	28.0 ✓		C	4.6	29.7 ✓	
+5	7.1	27.2 ✓		1/4	4.6	29.7 ✓	
cb	6.9	27.4 ✓		cb	4.6	29.7 ✓	
1/4	7.0	27.3 ✓		+12	4.2	30.1 ✓	
c	7.0	27.3 ✓		S	3.1	31.2 ✓	
1/4	7.2	27.1 ✓					
cb	7.2	27.1 ✓		2 + 00			
+12	7.0	27.3 ✓		S	2.8	31.5 ✓	
				+8	3.8	30.5 ✓	
				cb	4.1	30.2 ✓	



3427

1/4		4.1	30.2
c		4.4	29.9
1/4		4.5	29.8
cb		4.1	30.2
+7		4.6	29.7
+15		3.0	31.3
N		2.7	31.6
	+50		
N		1.7	32.6
+12		3.2	31.1
cb		3.0	31.3
1/4		2.9	31.4
C		2.5	31.8
1/4		2.2	32.1
cb		2.2	32.1
+12		2.3	32.0
+15		1.2	33.1
S		0.4	33.9
T.P.	1970 46.51	0.46	33.81
	+75		
S		11.8	34.7
+5		11.8	34.7
+7		13.0	33.5
cb		13.3	33.2
1/4		13.5	33.0
c		13.3	33.2

46.51

SARATOGA 19

1/4		13.5	33.0
cb		14.4	32.1
+10		13.1	33.4
N		13.3	33.2
	+100		
N		12.1	34.4
+10		11.7	34.8
cb		13.2	33.3
+4		12.3	34.2
1/4		13.1	33.4
+7		12.0	34.5
C		12.1	34.4
1/4		12.2	34.3
cb		11.8	34.7
+12		11.8	34.7
S		11.1	35.4
	+50		
S		9.4	37.3
cb		9.8	36.7
1/4		10.0	36.5
c		10.1	36.4
1/4		10.1	36.4
cb		9.9	36.6
N		10.2	36.3
	+100		
N		8.5	38.0



46.51

cb		8.6	37.9 ✓
1/4		8.4	38.1 ✓
C		8.6	37.9 ✓
1/4		8.0	38.5 ✓
cb		8.1	38.4 ✓
S		6.8	39.7 ✓
	4+50		
S		5.5	41.0 ✓
cb		6.3	40.2 ✓
1/4		6.6	39.9 ✓
C		6.5	40.0 ✓
1/4		6.9	39.6 ✓
cb		6.7	39.8 ✓
N		6.9	39.6 ✓
	5+00		
N		5.8	40.7 ✓
cb		5.4	41.3 ✓
1/4		5.1	41.4 ✓
C		5.0	41.5 ✓
1/4		4.9	41.6 ✓
cb		4.8	41.7 ✓
S		4.3	42.2 ✓
	5+50		
S		2.8	43.7 ✓
cb		3.8	42.7 ✓
1/4		3.7	42.8 ✓

46.51

Saratoga

20

C		3.3	43.2 ✓
1/4		3.9	42.6 ✓
cb		4.0	42.5 ✓
N		4.2	42.3 ✓
	6+00 - W.L. Ebers		under contract
N		2.7	43.8 ✓
cb		2.0	44.5 ✓
1/4		2.7	44.3 ✓
C		2.0	44.5 ✓
1/4		1.8	44.7 ✓
cb		2.0	44.5 ✓
S		1.0	45.5 ✓
	T.P. 12.9 ✓ 59.3 ✓ 0.09		46.4 ✓
	FL Ebers = 00		
S		11.4	47.9 ✓
cb		12.3	47.0 ✓
1/4		12.1	47.2 ✓
C		12.6	46.7 ✓
1/4		12.4	47.1 ✓
cb		12.7	46.6 ✓
N		13.3	46.0 ✓
	0+50		
N		11.5	47.8 ✓
cb		10.7	48.6 ✓
1/4		10.3	49.0 ✓
C		10.3	49.0 ✓



59.34

1/4	10.3	49.0	✓
cb	9.5	49.8	✓
S	9.0	50.3	✓
1+00			
S	7.1	52.2	✓
+13	7.6	51.7	✓
+17	8.3	51.0	✓
cb	8.2	51.1	✓
1/4	8.1	51.2	✓
C	8.1	51.2	✓
1/4	8.2	51.1	✓
cb	8.5	50.8	✓
N	9.5	49.8	✓
+5	9.7	49.6	✓
-5/	7.6	51.7	✓
N	7.4	51.9	✓
cb	6.6	52.7	✓
1/4	6.0	53.3	✓
C	5.9	53.4	✓
1/4	5.6	53.7	✓
cb	5.9	53.4	✓
S	5.0	54.3	✓
2+00			
S	2.5	56.8	✓
cb	3.4	55.9	✓
1/4	3.1	56.2	✓
C	3.2	56.1	✓

59.34 Saratoga

21

1/4	3.5	55.8	✓
cb	3.9	55.4	✓
N	4.6	54.7	✓
+5	4.9	54.4	✓
T.P.	12.00	70.37	0.97
	2+50		
-5	13.3	57.1	✓
N	12.9	57.5	✓
cb	11.8	58.6	✓
1/4	11.6	58.8	✓
C	11.4	59.0	✓
1/4	11.7	58.7	✓
cb	11.2	59.2	✓
+10	10.9	59.5	✓
+12	10.4	60.0	✓
S	10.3	60.1	✓
3+00			
S	7.0	63.4	✓
cb	8.2	62.2	✓
1/4	8.1	62.3	✓
C	8.2	62.2	✓
1/4	8.4	62.0	✓
cb	9.0	61.4	✓
N	10.2	60.2	✓
+5	10.6	59.8	✓



7037

3+50

-5	7.3	63.1	✓
N	7.1	63.3	✓
cb	6.0	64.4	✓
1/4	5.5	64.9	✓
C	5.5	64.9	✓
1/4	5.4	65.0	✓
cb	5.2	65.2	✓
S	4.0	66.4	✓

3+75

S	2.5	67.9	✓
cb	3.4	67.0	✓
1/4	3.8	66.6	✓
C	4.0	66.4	✓
1/4	3.9	66.5	✓
cb	4.0	66.4	✓
N	3.9	66.5	✓
+5	4.2	66.2	✓

4+00

-5	1.2	69.2	✓
N	1.2	69.2	✓
cb	1.3	69.1	✓
1/4	1.3	69.1	✓
C	1.6	68.8	✓
1/4	1.6	68.8	✓
cb	1.3	69.1	✓

7037

Saratoga

S	0.6	69.8	✓
T.P.	17.5	82.24	0.64 69.73
	4+25		

S	10.6	71.7	✓
cb	11.0	71.3	✓
1/4	11.1	71.2	✓
C	10.7	71.6	✓
1/4	10.9	71.4	✓
cb	11.1	71.2	✓
N	10.3	72.0	✓
+5	10.3	72.0	✓

4+50

-5	7.9	74.4	✓
N	7.9	74.4	✓
cb	8.4	73.9	✓
1/4	8.2	74.1	✓
C	8.2	74.1	✓
1/4	8.8	73.5	✓
cb	8.8	73.5	✓
S	8.4	73.9	✓

4+75

S	5.4	76.9	✓
cb	5.7	76.6	✓
1/4	5.7	76.6	✓
C	5.6	76.7	✓
1/4	5.3	77.0	✓



8224

cb	5.4	76.9	✓
N	5.1	77.2	✓
+5	5.0	77.3	✓
4+99			
-5	2.8	79.5	✓
N	2.8	79.5	✓
cb	2.4	79.9	✓
1/4	2.6	79.7	✓
c	3.0	79.3	✓
1/4	3.2	79.1	✓
cb	3.4	78.9	✓
S	4.5	77.8	✓
5+00			
S	2.2	80.1	✓
cb	3.0	79.3	✓
1/4	3.0	79.3	✓
c	2.4	79.9	✓
1/4	2.3	80.0	✓
cb	2.0	80.3	✓
N	2.8	79.5	✓
5+10			
N	2.1	80.2	✓
cb	1.6	80.7	✓
1/4	0.7	81.6	✓
c	1.0	81.3	✓
1/4	1.3	81.0	✓

8224

SARATOGA. 23

cb	1.2	81.1	✓
S	0.9	81.4	✓
T.P. 1297	94.65	0.56	81.68
5+25			
S	11.7	83.0	✓
cb	11.3	83.4	✓
1/4	12.0	82.7	✓
c	12.0	82.7	✓
1/4	11.7	83.0	✓
cb	11.7	83.0	✓
+5	11.6	83.1	✓
+6	13.0	81.7	✓
N	13.9	80.8	✓
+5	13.6	81.1	✓
5+30			
-5	12.3	82.4	✓
N	11.5	83.2	✓
cb	10.9	83.8	✓
1/4	11.0	83.7	✓
c	11.1	83.6	✓
1/4	11.2	83.5	✓
cb	10.8	83.9	✓
S	10.9	83.8	✓
5+50			
S	8.8	85.9	✓
cb	8.1	86.6	✓



94.65

105.37

SAROTOGA

24

1/4		8.0	86.7	✓					
c		8.3	86.4	✓	N		15.2	90.2	✓
1/4		8.4	86.3	✓	cb		14.5	90.9	✓
cb		8.6	86.1	✓	1/4		13.8	91.6	✓
N		10.6	84.1	✓	c		12.6	92.8	✓
+5		11.1	83.6	✓	1/4		11.9	93.5	✓
	5+75				cb		11.5	93.9	✓
-5		8.6	86.1	✓	+5		10.9	94.5	✓
N		8.1	86.6	✓	S		11.5	93.9	✓
cb		6.2	88.5	✓		W 1/4			
1/4		5.7	89.0	✓	S		10.5	94.9	✓
c		5.4	89.3	✓	+1/4		10.2	95.2	✓
1/4		5.3	89.4	✓	cb		10.8	94.6	✓
cb		5.0	89.7	✓	1/4		11.1	94.3	✓
S		4.6	90.1	✓	c		11.8	93.6	✓
	6+00 = WL Froude = 60' wide 12' curbs				1/4		12.9	92.5	✓
S		2.0	92.7	✓	cb		13.9	91.5	✓
cb		2.0	92.7	✓	N		14.4	91.0	✓
1/4		2.4	92.3	✓		center			
c		3.0	91.7	✓	N		13.4	92.0	✓
1/4		4.0	90.7	✓	cb		12.8	92.6	✓
cb		5.2	89.5	✓	1/4		12.0	93.4	✓
N		5.8	88.9	✓	c		11.0	94.4	✓
+5		6.0	88.7	✓	1/4		10.2	95.2	✓
T.P.	10.74	105.37	0.00	94.65	cb		10.0	95.4	✓
				marked pole	S		9.8	95.6	✓



105.37

E 1/4

S	8.6	96.8 ✓
cb	9.3	96.1 ✓
1/4	9.7	95.7 ✓
c	10.5	94.9 ✓
1/4	10.6	94.8 ✓
cb	11.7	93.7 ✓
t10	12.5	92.9 ✓
N	12.0	93.4 ✓

E curb

N	9.9	95.5 ✓
cb	10.0	95.4 ✓
1/4	9.6	95.8 ✓
c	9.8	95.6 ✓
1/4	9.0	96.4 ✓
cb	9.3	96.1 ✓
S	8.0	97.4 ✓

EL Froude = 00

S	7.3	98.1 ✓
cb	7.2	98.2 ✓
1/4	7.6	97.8 ✓
c	8.3	97.1 ✓
1/4	8.1	97.3 ✓
cb	8.3	97.1 ✓
N	8.1	97.3 ✓

105.37

SARATOGA

25

0+25

N	4.9	100.5 ✓
cb	5.0	100.4 ✓
1/4	5.0	100.4 ✓
c	5.2	100.2 ✓
1/4	5.1	100.3 ✓
cb	5.1	100.3 ✓
S	5.7	99.7 ✓

0+50

S	3.0	102.4 ✓
cb	3.0	102.4 ✓
1/4	3.0	102.4 ✓
c	2.9	102.5 ✓
1/4	2.8	102.6 ✓
cb	2.6	102.8 ✓
N	2.3	103.2 ✓
T.P.	12.83	117.17
	1.03	104.34 ✓

1+00

N	11.7	105.5 ✓
cb	11.8	105.4 ✓
1/4	11.8	105.4 ✓
c	12.0	105.2 ✓
1/4	12.0	105.2 ✓
cb	12.0	105.2 ✓
S	12.4	104.8 ✓



117.17

1+50

S	10.0	107.2
cb	10.0	107.2
1/4	10.0	107.2
c	9.8	107.4
1/4	9.7	107.5
cb	9.6	107.6
N	9.8	107.4

2+00

N	7.9	109.3
cb	7.7	109.5
1/4	7.5	109.7
c	7.6	109.6
1/4	7.9	109.3
cb	8.0	109.2
S	7.6	109.6

2+50

S	5.6	111.6
cb	5.6	111.6
1/4	6.0	111.2
c	5.9	111.3
1/4	5.9	111.3
cb	6.0	111.2
N	5.8	111.4

3+00

-5	11.0	113.2
----	------	-------

117.17

Saratoga 26

N	3.8	113.4
cb	3.6	113.6
1/4	3.5	113.7
c	3.5	113.7
1/4	3.4	113.8
cb	3.4	113.8
S	3.2	114.0
+5	3.0	114.2

T.P. 12.85 129.24 0.78 116.39

3+50

-5	11.5	117.7
S	11.5	117.7
cb	12.1	117.1
1/4	12.1	117.1
c	12.5	116.7
1/4	12.8	116.4
cb	12.4	116.8
N	13.5	115.7
+5	13.8	115.4

4+00

-5	8.9	120.3
N	8.9	120.3
cb	8.5	120.7
1/4	8.4	120.8
c	8.5	120.7
1/4	8.1	121.1



129.24

cb		7.8	121.4 ✓	
S		7.1	122.1 ✓	
+5		6.9	122.3 ✓	
	4+50			
-5		3.2	126.0 ✓	
S		3.2	126.0 ✓	
cb		4.3	124.9 ✓	
1/4		4.4	124.8 ✓	
c		4.5	124.7 ✓	
1/4		4.4	124.8 ✓	
cb		4.4	124.8 ✓	
N		5.0	124.2 ✓	
+5		5.2	124.0 ✓	
	5+00			
-5		1.7	127.5 ✓	
N		1.5	127.7 ✓	
cb		1.2	128.0 ✓	
1/4		0.8	128.4 ✓	
c		0.8	128.4 ✓	
1/4		0.6	128.6 ✓	
cb		0.5	128.7 ✓	
T.P.	13.14	14.32 ✓	0.06	129.18 ✓
S		12.0	130.3 ✓	
+5		11.6	130.7 ✓	
	5+25			
-5		9.6	132.7 ✓	

142.32

Saratoga

29

S		9.8	132.5 ✓
cb		11.0	131.3 ✓
1/4		11.6	130.7 ✓
c		12.0	130.3 ✓
1/4		12.1	130.2 ✓
cb		12.5	129.8 ✓
N		12.9	129.4 ✓
+5		12.9	129.4 ✓
	5+40		
N		8.7	133.6 ✓
+10		9.1	133.2 ✓
cb		11.0	131.3 ✓
1/4		10.8	131.5 ✓
c		10.5	131.8 ✓
1/4		10.2	132.1 ✓
cb		9.4	132.9 ✓
S		8.0	134.3 ✓
+5		7.8	134.5 ✓
	5+50		
-5		7.5	134.8 ✓
S		7.6	134.7 ✓
cb		8.6	133.7 ✓
1/4		9.4	132.9 ✓
c		9.6	132.7 ✓
1/4		9.8	132.5 ✓
cb		10.1	132.2 ✓







Levels on curbs on St. Robinson  
at ALBERT ST - 80' wide

4/12/27  
Moore

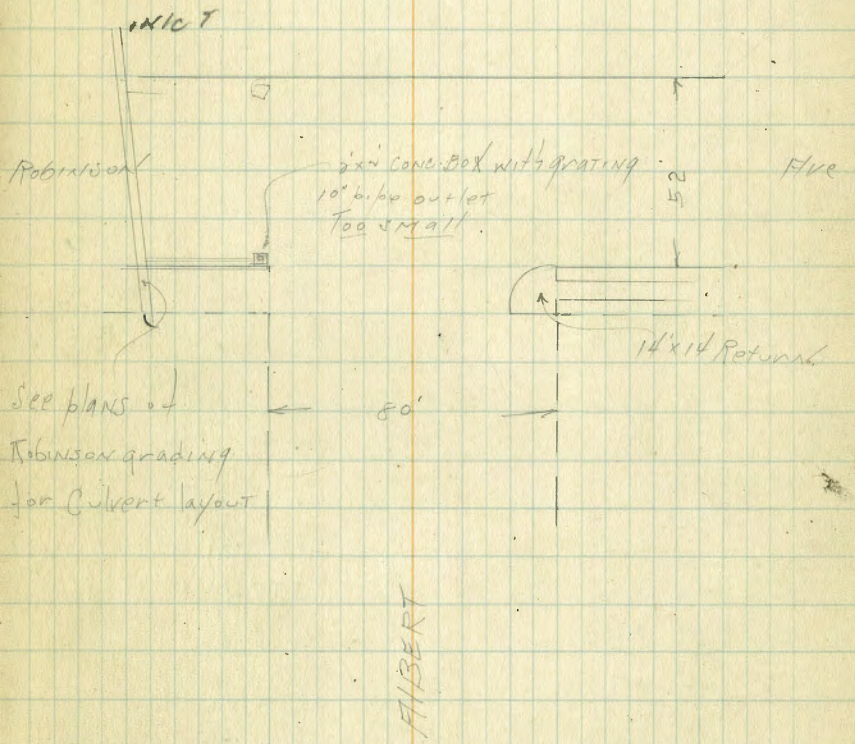
29

NEBP	0.00	294.09	294.05	Robinson Herbert
E.C. of Albert with Robinson	4.09	290.00		top of return
EL of " on curb "	4.07	290.02		" " "
50' E of EL Albert	3.57	290.52		" " curb
W.L. Albert	5.38	288.71		" " "
" " " catch basin	6.28	287.81		grading of C.B.
50' W of W.L. Albert	3.97	290.12		Top of curb
100' " " "	5.90	291.19		" " "

SE Return of Robinson & Albert in 14"x14"

Sub in NOT IN

714	297.78	295	290.64
check to BM Robinson + Robinson	368	294.10	294.05





Sta. 1  
Moore  
Cross Section of Richmond = 80' wide  
140' S to N/L Cypress  
14' curbs  
13' 1/4

287-76

30

SWBP	1.1	295.19	-	291.05	Robinson Richmond
T.P.	0.79	284.76	13rd	281.97	
140' S to N/L Cypress					
w		2.0		280.8	✓
cb		2.8		280.0	✓
1/4		4.1		278.7	✓
1/4		2.8		280.0	✓
c		2.0		280.8	✓
1/4		1.8		281.0	✓
cb		0.7		282.1	✓
E		0.2		282.6	✓
165' S					
E		2.7		280.1	✓
cb		3.3		279.5	✓
+6		4.1		278.7	✓
1/4		3.6		279.2	✓
c		4.2		278.6	✓
1/4		5.2		277.6	✓
+3		6.0		276.8	✓
+6		5.8		277.0	✓
cb		5.2		277.6	✓
w		4.9		277.9	✓
190' S					
w		8.1		274.7	✓
cb		8.2		274.6	✓
1/4		8.0		274.8	✓

c	7.3	275.5	✓
1/4	7.0	275.8	✓
+6	7.7	275.1	✓
cb	6.3	276.5	✓
E	6.2	276.6	✓
215' S			
E	9.4	273.4	✓
cb	10.7	272.1	✓
+6	11.5	271.3	✓
1/4	10.7	272.1	✓
c	11.1	271.7	✓
1/4	12.2	270.6	✓
cb	12.4	270.4	✓
w	11.9	270.9	✓
T.P.	0.98	269.5	✓
240' S			
w	4.0	266.5	✓
cb	3.7	266.8	✓
1/4	3.3	267.2	✓
c	2.1	268.4	✓
1/4	1.5	269.0	✓
+7	2.4	268.1	✓
cb	1.9	268.6	✓
E	0.2	270.3	✓
270' S			
E	3.6	266.9	✓



270.50

cb	4.5	266.0	✓
1/4	4.7	265.8	✓
C	5.3	265.2	✓
1/4	6.0	264.5	✓
cb	6.5	264.0	✓
w	7.1	263.4	✓
+6	6.5	264.0	✓
+14	10.6	259.9	✓
275's			
-10	9.4	261.3	✓
-6	6.8	263.7	✓
w	7.6	262.9	✓
cb	7.4	263.3	✓
1/4	6.6	263.9	✓
C	5.7	264.8	✓
1/4	5.1	265.4	✓
+5	6.9	263.6	✓
+9	5.0	265.5	✓
cb	4.6	265.9	✓
E	3.9	266.6	✓
280's			
E	4.3	266.2	✓
cb	5.0	265.5	✓
+3	7.0	263.5	✓
+7	8.7	261.8	✓
1/4	5.4	265.1	✓

270.50

Richmond 31

C	6.3	264.2	✓
1/4	7.3	263.2	✓
cb	8.0	262.5	✓
w	7.8	262.7	✓
+5	7.4	263.3	✓
+10	9.7	260.6	✓
290's			
-10	11.3	259.2	✓
-5	8.1	262.4	✓
w	8.8	261.7	✓
cb	13.0	257.5	✓
+6	12.6	257.9	✓
1/4	8.5	262.0	✓
+3	7.4	263.1	✓
C	6.8	263.7	✓
+10	6.1	264.4	✓
+11	10.0	260.5	✓
1/4	10.7	259.8	✓
+5	13.3	257.2	✓
cb	10.4	260.1	✓
+6	7.0	263.5	✓
+11	5.1	265.4	✓
E	4.7	265.8	✓
+4	4.8	265.7	✓
+10	8.6	261.9	✓



270.50

300 S - old NW Cypress

-10	12.1	258.4	✓
E	8.5	262.0	✓
cb	12.6	255.9	✓
+6	16.4	254.3	✓
1/4	12.9	257.6	✓
+6	6.9	263.6	✓
C	7.2	263.3	✓
+10	11.0	259.5	✓
1/4	8.1	262.4	✓
+4	12.8	257.7	✓
cb	17.8	252.7	✓
+5	19.8	250.7	✓
W	12.3	257.2	✓
+10	18.3	252.2	✓

325 S

-15	20.3	250.2	✓
-5	15.2	255.3	✓
W	16.8	253.7	✓
+10	21.3	249.2	✓
cb	20.9	249.6	✓
1/4	9.2	261.5	✓
+3	14.4	256.1	✓
+7	9.1	261.4	✓
C	9.7	260.8	✓
+10	10.1	260.4	✓

270.50

Richmond

34

1/4	13.0	257.5	✓
+8	17.7	252.8	✓
cb	16.0	254.5	✓
E	13.2	257.3	✓
+3	12.6	257.1	✓
+15	18.4	252.1	✓

310 S - New NW Cypress

-20	22.0	248.5	✓
E	14.7	255.8	✓
cb	18.3	252.2	✓
+5	19.3	251.2	✓
1/4	17.4	253.1	✓
+7	13.6	256.9	✓
C	13.0	257.5	✓
+7	13.0	257.5	✓
+9	16.5	254.0	✓
1/4	15.0	255.5	✓
+5	13.4	257.1	✓
cb	18.3	252.2	✓
+3	24.0	246.5	✓
W	20.4	250.1	✓
+5	18.0	252.5	✓
+20	25.1	245.4	✓

330 S - NW 1/4

-25	32.0	238.5	✓
W	30.2	240.3	✓

Cypress is

60' wide 1.015

EAST



270.50

cb	28.7	242.3	✓
1/4	27.1	243.4	✓
c	26.3	244.2	✓
1/4	26.6	243.9	✓
+7	26.0	244.5	✓
+9	28.1	242.4	✓
cb	28.1	242.4	✓
E	26.1	244.4	✓
+25	30.6	239.9	✓

340.5 = Express

-25	32.8	237.7	✓	
E	32.1	238.4	✓	
cb	31.8	238.7	✓	
1/4	31.2	239.3	✓	
c	30.5	240.0	✓	
1/4	31.6	238.9	✓	
cb	32.3	238.2	✓	
W/	33.1	237.4	✓	
+15	34.1	236.4	✓	
+25	32.0	238.5	✓	
T.P.	127.4	233.15	009	270.11
T.P.	13.00	245.83	03	272.83
check to DM	175	294.08	294.05	

Richmond

33











1/4		4.6	77.99
+7		5.3	77.29
cb		4.3	78.29
w/		4.7	77.89
	2+00		
w/		4.0	78.59
cb		4.1	78.49
+5		4.5	78.09
1/4		4.0	78.59
c		3.7	78.89
1/4		3.7	78.89
+5		4.6	77.99
+6		3.5	79.09
cb		3.5	79.09
E		3.1	79.49
	2+50		
E		2.6	79.99
cb		2.7	79.89
+2		2.8	79.79
+6		3.7	78.89
1/4		3.2	79.39
c		3.0	79.59
1/4		3.2	79.39
+8		3.7	78.89
cb		3.3	79.29
w/		3.3	79.29

	3+00		
w/		2.1	80.49
cb		2.2	80.39
w/		3.1	79.49
1/4		2.3	80.29
c		2.1	80.49
1/4		2.4	80.19
+4		2.7	79.89
cb		2.3	80.29
E		2.0	80.59
	3+50		
E		1.1	81.49
cb		1.4	81.19
+5		2.1	80.49
1/4		1.5	81.09
c		1.3	81.29
1/4		1.4	81.19
+5		1.8	80.79
+7		2.4	80.19
cb		1.2	81.39
w/		1.2	81.39
	3+80		
w/		0.3	82.29
cb		0.9	81.69
+3		1.7	80.89
1/4		1.9	80.69



82.59

c		1.8	80.79	
1/4		1.0	81.59	
+6		1.6	80.99	
cb.		1.0	81.59	
E		0.0	82.59	
T.P.	10.80	92.56	0.83	81.76
3+90.57 = SL Harrison = Sec F				
E		10.2	82.36	
cb		10.6	81.96	
+5		11.4	81.16	
1/4		10.7	81.86	
c		10.5	82.06	
1/4		10.7	81.86	
+6		11.6	80.96	
cb. top zone curb		9.5	83.02	
w		9.4	83.16	
Sec B s. d.				
w	ingutter on paving	10.00	82.56	
cb		10.3	82.26	
+5		10.7	81.86	
1/4		10.3	82.26	
c		10.2	82.36	
1/4		10.5	82.06	
+5		11.2	81.36	
cb		10.1	82.46	
E		9.9	82.66	

S. End. amt.  
ch. + Return

92.56

28.56

37

Sec C s. 114

E		9.3	83.26
cb		9.7	82.86
+3		9.9	82.66
+5		10.6	81.96
1/4		10.0	82.56
c		9.6	82.96
1/4		9.9	82.66
cb		9.8	82.76
w	on paving	9.22	83.34
Sec D s.			
w	on paving	8.67	83.89
cb.		9.4	83.16
1/4		9.2	83.36
c		9.1	83.46
1/4		9.3	83.26
+5		9.9	82.66
cb		9.3	83.26
E		9.0	83.56
Sec E N. 114			
E		8.8	83.76
cb		8.6	83.96
+5		9.2	83.36
1/4		8.9	83.06
c		8.7	83.86
1/4		8.7	83.86



9256

1/4 +6	9.4	83.16
cb	9.0	83.56
w/ on paving	8.42	84.14
Sec F = N. ch		
w/ on paving	8.40	84.16
cb	8.7	83.86
+3	9.0	83.56
1/4	8.5	84.06
c	8.4	84.16
1/4	8.5	84.06
+5	9.2	83.36
+6	8.5	84.06
cb	8.3	84.26
E	8.2	84.36
Sec G = N. Harrison = 0100		
E	7.6	84.96
cb	7.9	84.66
+3	8.2	84.36
+5	8.9	83.66
1/4	8.3	84.26
c	8.0	84.56
1/4	8.2	84.36
gutter	8.4	84.16
cb top cem curb	7.57	84.99
w/	7.5	85.06

N. End. cont. cb  
+ Walk Return.

9256

28 + 4

33

0 + 50		
w/	6.8	85.76
cb	7.0	85.56
+2	7.9	84.66
1/4	7.4	85.16
c	7.2	85.36
1/4	7.5	85.06
+5	8.3	84.26
+6	7.4	85.16
cb	6.6	85.96
E	6.6	85.96
1 + 50		
E	6.2	86.36
cb	6.2	86.36
+3	6.6	85.96
+5	7.4	85.16
1/4	6.9	85.66
c	6.6	85.96
1/4	6.6	85.96
+6	7.0	85.56
cb	6.3	86.26
w/	6.5	86.06
1 + 50		
w/	6.0	86.56
cb	5.9	86.66
+3	6.5	86.06



92.56

1/4	6.2	86.36
c	6.0	86.56
1/2	6.3	86.26
+5	6.6	85.96
cb	5.4	87.16
E	5.6	86.96
2+00		
E	4.4	88.16
cb	4.7	87.86
+4	5.3	87.26
+5	6.0	86.56
1/4	6.6	85.96
c	5.4	87.16
1/4	5.4	87.16
+8	5.7	86.86
cb	5.3	87.26
w	4.4	88.16
2+36.38 = Ek Sicard at RT 1 with 200th = Sec A		
w	4.0	88.56
cb	4.7	87.86
+2	5.3	87.26
1/2	5.0	87.56
c	4.9	87.66
1/4	5.1	87.46
+5	5.5	87.06
cb	4.7	87.86
E	4.3	88.26

92.56

2844

39

Sec B = s.d.

E	4.3	88.26
cb	4.5	88.06
+3	4.7	87.86
+4	5.4	87.16
1/4	4.8	87.76
c	4.6	87.96
1/4	4.8	87.76
+8	5.2	87.36
cb	5.0	87.56
w	4.7	87.86

Sec C s. 114

w	4.6	87.96
cb	4.9	87.66
1/4	4.6	87.96
c	4.4	88.16
1/4	4.6	87.96
+6	5.2	87.36
+7	4.6	87.96
cb	4.3	88.26
E	4.1	88.46

Sec D on w. line

E	3.8	88.76
cb	3.7	88.86
+2	4.1	88.46
+3	5.0	87.56



1/4	4.3	88.26
c	4.1	88.46
1/4	4.2	88.36
cb	4.3	88.26
w	4.4	88.16
Sec E N. 1/4		
w	4.1	88.46
cb	4.0	88.56
1/4	3.9	88.66
c	3.8	88.76
1/4	4.0	88.56
+7	4.8	87.76
+8	3.8	88.76
cb	3.4	89.16
E	3.4	89.16
Sec F = N. 1/4		
E	3.0	89.56
cb	3.0	89.56
+2	3.5	89.06
+3	4.5	88.06
1/4	3.6	88.96
c	3.6	88.96
1/4	3.9	88.66
cb	3.8	88.76
+5	4.0	88.56
+6	4.5	88.06

w	gutter??	4.4	88.16
w	top curb (Sicard)	3.52	89.04
Sec B = W2 Sicard at RTA with north			
w	188	3.3	89.26
cb	top cement	3.37	89.17
gutter		4.1	88.46
1/4	188	3.6	88.96
c	188	3.4	89.16
1/4	188	3.4	89.16
+6		4.2	88.36
+9		3.0	89.56
cb		2.9	89.66
E		3.0	89.56
SL Wapman at RTA with north = Sec A			
E		1.6	90.96
cb		2.0	90.50
+2		3.1	89.46
1/4		2.7	89.86
c		2.8	89.76
1/4		2.8	89.76
gutter		3.4	89.16
cb	top cement	2.56	90.00
w		2.3	90.26
Sec B = on angle 1/40 prop. Cor. to prop. Cor			
w		2.3	90.26
cb	top cement	2.56	90.00



92.56

Gutter	2.3	89.26	
1/4	2.8	89.26	
c	2.8	89.26	
1/4	3.0	89.56	
+8	3.1	89.46	
cb	2.8	89.76	
4W	1.5	91.06	
E	1.6	90.96	
Top of SE Return	2.55	90.01	1.8 N. of see B
check to BM Woolmax 0.5.16	1.5W	91.04	91.05



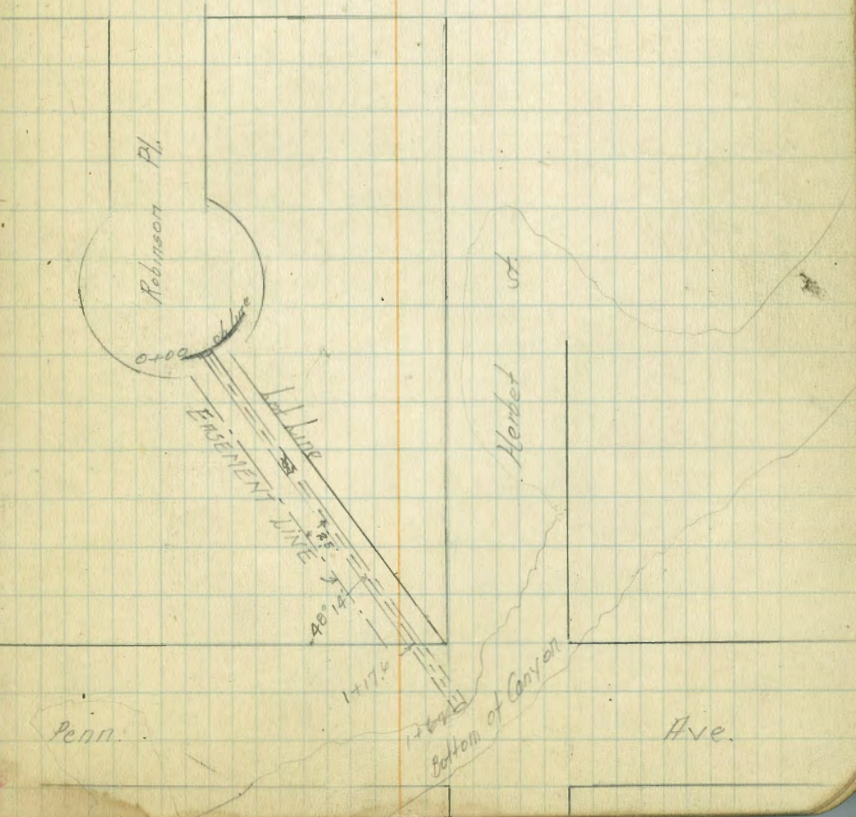
Waiker  
4-18-27

LEVELS FOR PROPOSED DRAIN.  
Robinson Place thru. EMBANKMENT IN lot 6

NE BR				
Robinson + Herbert	1.44	295.49		294.05
T.P.	1.11	284.28	1232	283.17
0+00 = top cb		547		278.81
+45		6.3		278.0
+63		2.9		281.4
+79		9.5		274.8
+94		17.0		267.0
1409		23.0		261.3
1+17.6 = N.W. Penn. Ave.		25.9		258.4
1+42 = Bottom of Canyon		37.2		247.1
T.P.	11.30	225.22	0.36	283.92
T.P.	6.62	297.03	4.81	290.1
chk. on B.M. Robinson + Herbert		2.98		294.05
				294.05
				0.00

4/25/27  
Plotted  
4-22-27  
L.B.H.

Robinson Ave





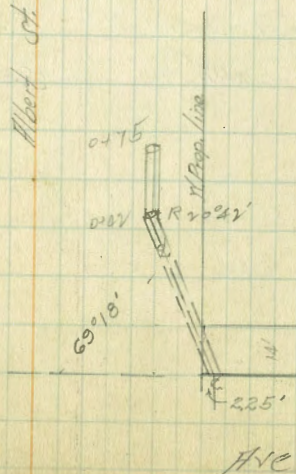
Walker  
5-10-27

Levels for Drain on Albert + Robinson

Point	Offset	Level	Level
N.E. BP			
Robinson at West	0.00	294.05	294.05
0 + 00 = top cb	5.27		288.78
+12	4.9		289.2
+12.7	6.1		288.0
+15	6.4		287.7
+17	9.9		284.2
+19	10.5		283.6
+21	12.4		281.7
+22	14.0		279.5
+28	16.5		277.6
+29	15.0		279.1
+42 = Δ R 20° 22'	21.1		273.1
+57	25.3		268.8
+59	26.8		267.3
+75 = End	28.7		265.4

cb line

Robinson













S		8.3	250.5
+10		9.1	249.5
✓	24'N		
-15		10.7	247.9
S		8.6	250.0
cb		9.6	249.0
$\frac{1}{4}$		6.6	252.0
$\frac{1}{2}$		5.8	252.8
✓ N top cb.		5.9	252.68
	30'N		
N top cb		6.74	251.85
$\frac{1}{2}$		6.5	252.1
+1		6.6	252.0
$\frac{1}{4}$		10.2	248.4
+3		11.0	247.6
cb		10.8	247.8
S		9.9	248.7
+15		11.0	247.6
✓	6.5'N = 8. DRIVE WAY on North		
-15		15.9	242.7
S		15.3	243.3
cb		15.1	243.5
$\frac{1}{4}$		14.5	244.1
+N		11.7	247.4
$\frac{1}{2}$		11.5	247.1
TP	0.02	VA553	1308 VA5.49

✓	100'N W.L. Mithelby		
N top cb		3.43	242.10
$\frac{1}{2}$		3.5	242.0
+N		3.4	242.1
$\frac{1}{4}$		5.7	239.8
cb		7.9	237.6
S		8.3	237.2
+15		8.3	237.2
✓	112'N		
-15		11.2	234.3
S		11.1	234.4
cb		10.1	235.4
$\frac{1}{2}$		7.2	238.3
+5		5.4	240.1
$\frac{1}{4}$		5.2	240.3
N top cb.		5.17	240.36
	136'N		
N top cb.		8.53	237.00
$\frac{1}{2}$		8.3	237.2
$\frac{1}{4}$		13.1	232.4
cb		17.4	228.1
+5		22.4	223.1
S		19.5	226.0
+1		18.4	227.1
+no		16.0	229.5
	144.7'N = cb, P.C. on North = Bk.	7.77	235.76
	147'N = Con. cb. gutter of cb. =	10.55	234.98







S	28.7	206.9
cb	21.3	214.3
$\frac{1}{4}$	17.7	217.9
$\frac{1}{2}$	13.9	221.7
$\frac{3}{4}$	9.5	226.1
cb	6.7	228.9
+1	8.1	227.5
+4	7.8	227.8
+5	6.1	229.5
N	6.0	229.6
36' N		
N	8.2	227.4
+7	9.1	226.5
+8	10.9	224.7
cb	12.0	223.6
+2	11.0	224.6
+3	10.2	225.4
$\frac{1}{4}$	12.0	223.6
$\frac{1}{2}$	15.2	220.4
$\frac{3}{4}$	18.5	217.1
cb	23.0	212.6
S	28.6	207.0
+22	36.0	209.6
+25	40.1	195.5
+45	33.6	202.0

50' N

-50	39.4	196.2
-36	43.8	191.8
-32	40.2	195.4
S	29.5	206.1
cb	25.0	210.6
$\frac{1}{4}$	22.8	212.8
$\frac{1}{2}$	21.1	214.5
$\frac{3}{4}$	19.8	215.8
+4	16.9	218.7
+5	20.4	215.2
cb	19.4	216.2
+2	16.5	219.1
N	16.2	219.4
+10	16.2	219.4
T.P.	15.7	234.06

Note: this T.P. used on Page 49 for Check out on B.M. see Page

enter cb  
N.Y. 4100a Place  
+ 2161.0000



Walker  
5-11-27  
Plotted

Section Aloha Place 30' wide 5' cbs.  
From Whitman to Netherby St.  
(Note, no  $\frac{1}{2}$ 's taken Pluses will be from Prop. or curb  
or center line sketch on Page 45)

74190

49

7.84 741.90 234.06 - I.P. Page 48  
0400

E top cb	6.73	235.17
Gutter on Corn. of cb	7.53	234.37
N " " " "	8.55	233.35
N top cb	7.76	234.14

P.C. Curve #1

N top cb	7.11	234.79
E " "	5.91	235.99
E cb + 4' = E side walk	5.77	236.13
E = Ground	5.1	236.8

Center Curve #1

E	4.1	237.8
+1 = top walk	4.89	237.01
E top cb	5.03	236.87
N " "	6.05	235.85

E.C. Curve #1

N top cb	5.15	236.75
E " "	4.42	237.48
+4 = top walk	4.30	237.60
E	3.4	238.5

P.C. Curve #2

E	2.7	239.2
+1 = top walk	3.32	238.51
E top cb	3.42	238.50

N top cb.	4.04	237.86
Center Curve #2		

N top cb	3.41	238.49
E " "	2.62	239.28
E " walk	2.48	239.42
E	2.1	239.8

T.P. 8.94 247.93 291 238.99  
E.C. Curve #2

E top cb	7.86	240.07
N " "	8.89	239.04
+4 = N top walk	8.84	239.11
N	9.1	238.8
+5	12.8	235.3
+10	15.9	232.0

21' N of E.C. Curve #2 = End of E side walk on N

-10	14.2	231.7
N	8.8	239.11
+1 = top walk	8.38	239.55

N top cb	8.38	239.55
E top cb	7.39	240.54
R = 893 { 18' south E.C. Curve #2 = beginning con. gutter on E 2' wide }		

P.C. Curve #3

E top cb	6.42	241.51
E gutter of cb.	7.07	240.86
E	7.0	240.9
N cb	6.9	241.0



W	23	238.6
+20	22.6	225.3
Sec. H See sketch		
-25	237	224.2
-20	220	225.9
-10	159	232.0
N	7.9	240.0
+3	6.3	241.6
Q	6.9	241.0
E Gut. on Con. at cb	6.99	240.94
E top cb	6.31	241.62
Sec. B		
SE top cb	6.19	241.74
SE Gut. on Con.	6.87	241.06
Q	6.5	241.4
cb	6.3	241.6
NW	6.0	241.9
+6	8.8	239.1
+13	13.7	234.2
+20	19.0	228.9
Sec. C		
-10	8.7	239.2
-5	6.3	241.6
NW	5.6	242.3
cb	6.4	241.7
Q	6.0	241.9

S.E. Gut. on Con.	6.71	241.22
SE top cb	6.04	241.89
E.C. Curve #3		
S top cb	5.81	242.12
" Gut. on Con.	6.50	241.43
Q	5.7	242.2
cb	5.4	242.5
N	5.3	242.6
+1	5.8	242.1
+6	10.9	237.0
+14	16.0	231.9
+22	23.8	224.1
+26	28.0	219.9
+31	28.4	219.5
+33	24.2	223.7
+44	20.2	227.7
P.C. 27.51'E = Curve #4		
-34	15.6	232.3
-30	18.1	229.8
-28	20.1	227.8
-22	21.0	226.9
-19	18.4	229.5
N	6.2	241.7
cb	3.0	244.9
+3	4.0	243.9
Q	5.1	242.8



+3		4.4	243.5
S Gut on Con.		4.57	243.36
S top cb		3.89	244.04
TP	7.28	253.94	1.27

## PART 1 CURVE # 4

S top cb		8.70	245.24
S Gut on Con.		9.39	244.55
L		9.9	244.0
+4		10.0	243.9
+5		9.1	244.8
cb		8.7	245.2
+3		9.7	244.2
N		12.3	241.6
+5		16.5	237.4
+6		19.6	234.3
+9		20.4	233.5
+10		18.6	235.3
+15		22.4	231.5
+23		24.9	229.0
+28		23.3	230.6
+30		21.6	232.5
+32		20.5	233.4

## PART 2

-33		19.1	234.8
-29		20.5	233.4
-20		22.7	231.2

-5		13.5	240.4
-2		14.9	239.0
N		18.2	235.7
cb		15.6	238.3
+5		9.0	244.9
%		8.2	245.7
S Gut on Con.		7.97	245.97
S top cb		7.27	246.67

## PART 3

S top cb		6.15	247.79
S Gut on Con.		6.81	247.13
+4		6.6	247.3
+6		7.2	246.7
L		7.0	246.9
+1		7.1	246.8
L + 5		10.7	243.2
cb.		13.2	240.7
+1		15.2	238.7
+2		9.8	244.1
N		10.2	243.7
+7		14.9	239.0
+17		19.7	234.2
+21		19.0	234.9
+26		19.5	234.4
+32		18.3	235.6



-30	157	238.2
-18	143	239.6
-15	160	237.9
-13	160	237.9
N	56	248.3
+2	50	248.9
cb	54	248.5
+4	57	248.2
+7	61	247.8
+8	75	246.4
8	80	245.9
+3	71	246.8
+4	67	247.2
S Gut. on Con.	525	248.69
S top cb	460	249.34
T.P. 557	255.86	365 250.29
Sec D see sketch		
S top cb	639	249.47
S Gut. on Con.	705	248.81
+2 " "	679	249.07
+4	75	248.4
+6	77	248.7
+7	91	246.8
8	85	247.4
+11	73	248.6
+6	69	249.0

+8	63	249.6
cb	64	249.5
+2	65	249.4
N	105	245.4
+2	110	244.9
+10	89	247.0
+22	16	247.3
Sec E = 1' East of Sec D on North and South = line of Red Wall		
-22 on top. Red Wall	755	248.31
-10 " " " "	755	248.31
-10 " " Con. cb	720	248.66
-4	814	247.72
N = End of Wall	817	247.69
+1	64	249.5
cb	63	249.6
+2	63	249.6
+4	70	248.9
8	73	248.6
+5	75	248.4
+8 = top Con Gut.	672	249.14
S Gut. on Con.	696	248.90
Stop cb	626	249.60
E.C. Curve #5		
S top cb	461	251.25
S Gutter on Con.	528	250.58
+2 " "	503	250.81



+6	59	250.0
+8	53	250.6
2	54	250.7
+6	43	251.6
+9	60	249.9
16	57	250.2
+1	48	251.1
N	48	251.1
+5 = top cb	441	251.45

8.4' East of EC Curve #5 = Bk. in South cb

-5	389	251.97
N	41	251.8
cb	42	251.7
2	42	251.7
Gutter on Con.	448	251.38
Stop cb	374	252.12

22.10' E of EC Curve #5 = M. Witherby

7.5'  $\frac{1}{4}$ S  
Across Parking

stop cb	280	253.06
s. on Con.	341	252.45
$\frac{1}{4}$ " Pav.	310	252.76
$\frac{1}{2}$ " "	298	252.88
$\frac{1}{4}$ " "	316	252.70
N Gut "	340	252.46
N top cb	289	252.97
T.P. 841 2058	069	255.17

Cbk. on NE. BP. Sunset + Witherby 257

261.01  
261.02 = BM  
201' N. ETC.



Tolman  
9-27  
(Calzabon  
Morgan)

X section Mendocino Blvd  
Green to Voltaire

60' Street  
10' cbs

54

6.67	51.19		44.52
1.68	47.02	5.85	45.34
7.49	48.77	5.74	41.28
12.46	61.01	0.22	48.55
12.77	73.25	0.53	60.48
4.18	77.12	0.31	72.94
		4.00	73.12
3.43	70.87	9.68	67.44

BP NY Prude  
& Voltaire  
(BP is out)

7' Hub at SW  
Green & Bolinas

WL

3.1

67.8

0+70±

N.L.

J.L. Avalon St

All  
X sections on radial  
line on curve

WL

2.3

68.6

cb

5.1

65.8

1/4

5.5

65.4

1/2

6.1

64.8

1/4

6.2

64.5

cb

7.0

63.9

EL

7.7

63.2

S. L. Green St.

WL		3.7	67.7
cb		3.9	67.0
1/4		3.8	67.1
1/2		4.5	66.4
1/4		5.2	65.7
cb		5.6	65.3
EL		6.2	64.7

1+00.62 on west line

EL

8.6

62.3

cb

7.7

63.2

1/4

6.9

64.0

1/2

6.4

64.5

1/4

5.9

65.0

cb

5.5

65.4

WL

2.4

68.5

0+50.62 = BC curve

EL		6.8	64.1
cb		6.7	64.2
1/4		6.3	64.6
1/2		5.4	65.5
1/4		5.3	65.6
cb		3.5	65.4

1+50.62 on west line

WL

4.2

66.7

cb

6.0

64.9

1/4

6.7

64.2

1/2

7.2

63.7

1/4

7.8

63.1



71.87

cb	8.2	62.7
EL	8.5	62.4

2+00.62 on west line

EL	8.2	62.3
cb	9.2	61.6
1/4	8.3	62.6
±	7.9	63.0
1/4	7.5	63.4
cb	6.5	64.4
W.L	5.0	65.9

2+50.62 on west line

W.L	6.3	64.6
cb	7.3	63.6
1/4	8.1	62.8
±	8.5	62.4
1/4	8.8	62.1
cb	9.4	61.5
EL	7.1	61.9

3+00.3 on west line = EC

EL	9.6	61.3
cb	9.9	61.0
1/4	9.4	61.5
±	9.1	61.8

56

1/4	6.7	62.2
cb	7.8	63.1
W.L	6.6	64.3

TP	7.40	69.45	6.82	62.05
			= 3+50 =	

W.L	5.8	63.7
cb	7.5	62.0
1/4	8.0	61.5
±	8.2	61.3
1/4	8.6	60.9
cb	8.9	60.6
EL	9.1	60.4

= 4+00 =

EL	8.5	61.0
cb	7.9	61.6
1/4	7.5	62.0
±	7.0	62.5
1/4	7.0	62.5
cb	6.8	62.7
+5	6.0	63.5
W.L	4.5	65.0
+5	0.5	69.0



7945

= 4 + 56 =

WL		1.0	68.5
+ 2		2.5	67.0
cb		3.2	66.3
1/4		4.1	65.4
±		4.4	65.1
		4.4	65.1
±b		4.7	64.8
EL		4.8	64.7

TP 11.24 79.86 0.83 68.62

= 5 + 00 =

EL		11.2	68.7
cb		11.2	68.7
1/4		11.2	68.7
±		10.8	69.1
1/4		10.6	69.3
cb		9.5	70.4
+ 4		9.7	70.2
+ 5		8.6	71.3
+ 8		8.5	71.4
WL		7.3	72.6

= 5 + 50 =

WL		4.1	75.8
cb		5.0	74.9
1/4		5.9	74.0
±		6.1	73.8
1/4		6.7	73.2
cb		7.2	72.7
EL		7.3	72.6

= 5 + 89.71 =

EL		4.1	75.8
cb		3.9	76.0
1/4		3.6	76.3
±		3.6	76.9
1/4		2.8	77.1
cb		2.5	77.4
WL		1.9	78.0

= 5 + 96.6 on XL Line = Section A

WL on paving		2.01	77.9
cb		2.2	77.7
1/4		2.4	77.5
±		2.4	77.5
1/4		2.9	77.0
cb		3.0	76.9
EL		3.6	76.3



89.81  
= Sect A + 25' =

EL	3.0	76.9	
cb	2.6	77.3	
1/4	2.8	77.1	
1/2	2.5	77.4	
3/4	2.0	77.4	
+ 1.5	2.46	77.4	Paving

= Sect. A + 50' =

EL	2.5	77.4	
cb	2.8	77.1	
1/4	3.0	76.9	
+ 7	3.17	76.7	Paving

= Sect A + 75'

EL	3.2	76.7	
cb	3.5	76.4	
+ 7	3.83	76.1	Paving

= Sect A + 100'

EL	4.2	75.7	
cb	4.3	75.6	
+ 2	4.22	75.5	Paving

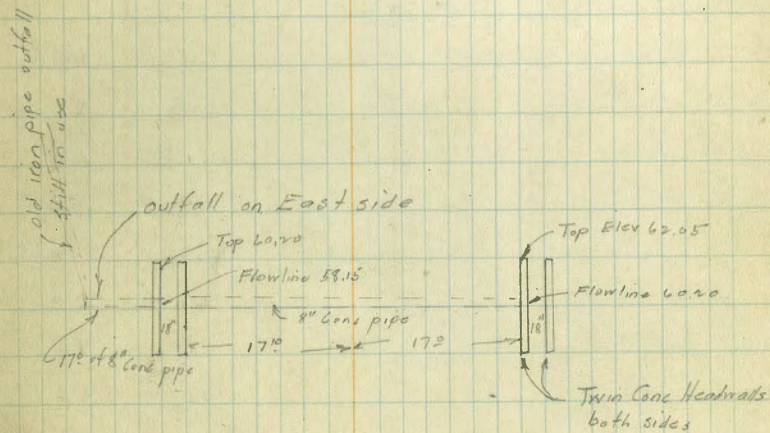
Sect A + 75'

EL	5.0	74.9	
+ 8 ±	4.65	75.2	Top cb

Sect A + 93.59

EL	5.3	74.6	
+ 6 ±	5.06	74.8	Top cb

TP	1.89	67.73	12.02	67.84
TP	7.29	68.55	8.47	61.26
			3.72	64.83 TP



Culvert at Sta 3+71 (on west line)

Note: The man who owns the property  
the water dumps on complains about it



Tolman  
927

X section Avalon St  
Mendocino to Whittier  
(Rough Graded)

Lo 57  
10' cbs

3.72 68.55 64.83 TP on Page 57

E.L. Mendocino

Note: Sections are run at R.L. to N.L. of Street

N.L.	5.3	63.3
cb	5.9	62.7
1/4	6.0	62.6
1/2	6.0	62.6
3/4	6.2	62.4
cb	6.6	62.0
S.L.	5.8	62.8

= + 50' =

-5	8.0	60.6
-3	8.4	60.2
S.L.	11.1	57.5
cb	12.4	56.2
1/4	12.2	56.4
1/2	11.7	56.9
3/4	12.3	56.3
cb	12.5	56.1
+1	13.2	55.4
+3	11.6	57.0
N.L.	11.4	57.2

TP 0.41 56.76 12.20 56.35

58

= 1+00 =

NE	H.I. 56.8	6.2	50.6
+8		6.0	50.8
15		7.7	49.1
+5		6.7	50.1
1/4		6.5	50.3
1/2		6.5	50.3
3/4		6.7	50.1
cb		6.9	50.0
S.L.		6.1	50.7

= 1+50 =

S.L.		12.5	44.3
+7		12.4	44.4
+8		13.8	43.0
cb		13.7	43.1
1/4		13.1	43.7
1/2		13.1	43.7
3/4		13.5	43.3
+5		13.2	43.6
+8		14.0	42.8
cb		13.7	43.1
+3		12.6	44.2
N.L.		12.7	44.1

TP 0.43 44.75 12.44 44.32



= 2+00 =

H.F.  
44.8

NL	5.5	39.3
+7	6.8	38.0
+9	8.7	38.1
cb	9.0	35.8
+4	10.1	34.7
1/4	7.7	37.1
4	7.2	37.6
1/6	7.3	37.5
+4	8.3	36.5
cb	6.6	38.2
SL	7.2	37.4

= 2+50 =

H.F.

SL	11.9	32.9
+5	11.7	33.1
+9	12.8	32.0
cb	12.8	32.0
1/2	12.3	32.5
4	12.3	32.5
1/4	12.8	32.0
cb	12.5	32.3
+3	12.4	32.4
NL	9.6	35.2

TP 1.30 33.59 1246 32.29

= 3+00 =

NL	33.6	4.5	29.1
cb		5.0	28.6
1/2		5.0	28.6
4		4.6	29.0
1/2		4.8	28.8
cb		5.2	28.4
SL		4.9	28.7

= 3+50 =

(33.6)

SL	7.9	25.8
cb	8.3	25.3
1/2	7.9	25.7
4	7.6	26.0
1/4	8.1	25.5
cb	8.3	25.3
NL	8.1	25.5

= 4+00 =

NL	33.6	10.7	22.9
cb		10.1	23.5
1/4		10.0	23.6
4		9.2	24.2
1/4		9.4	24.2
cb		9.9	23.7
SL		8.9	24.7



31.87

= 4 + 50 =

SL	33.6	9.4	24.2
+7		9.6	24.0
+8		10.5	23.1
cb		10.7	22.9
1/4		10.3	23.3
L		10.5	23.1
1/6		11.4	22.2
cb		11.0	22.6
NL		10.1	23.5

= 4 + 83.9 = NL Whittier

NL		11.7	21.9
cb		11.1	22.5
1/4		10.8	22.8
L		10.7	22.9
1/6		10.1	23.5
cb		10.1	23.5
SL		9.5	24.1

T.P.	12.35	44.62	1.30	32.21
	12.98	57.20	0.40	44.22
	12.14	69.24	0.10	57.10
	10.01	77.43	1.81	67.43
	0.99	67.30	11.12	66.31
	0.39	55.22	12.47	54.83

55.22

3.79

46.32

11.69

43.53

8.13

51.25

3.20

43.11

6.79

44.46

= 44.52 BPBM  
Frank &  
Koffare



Cross Section Alley Block 5 Hartley North Port  
 From Landis to Nightman  
 Between Herman & 32nd St. 16' wide

347.04

61  
 9.30.37  
 Cross  
 dirt  
 section

BM	8.57	347.04	338.77	N.H. B.P. Landis & 32nd St.	L	5.1	341.9
		N.H. Landis		No Corb. Returns to Cray with No Good	F	5.4	341.6
F		58	341.7		F	4.8	342.4
L		56	341.4		L	4.8	342.1
H		53	341.7		H	4.56 = N End of Alley Fence	
H		47	342.3		H	4.7	342.3
L		50	342.0		H	2.50' H	
F		54	341.6		L	4.7	342.3
		50' H			L	4.8	342.2
F		52	341.7		F	4.8	342.2
+1.8 = Pole					F	3.00' H	
L		52	341.8		F	4.3	342.7
H		50	342.0		+2 = Pole		
		100' H			L	4.2	342.8
H		48	342.2		H	4.0	343.0
L		50	342.0		TP	9.70	352.93
F		50	342.0			3.50' H	
		135' H			H	9.5	343.4
F		55	341.5		L	9.8	343.1
L		54	341.6		F	9.8	343.1
H		53	341.7			4.00' H = N End Fence with ok	
		157' H			L	8.8	344.1
H		50	342.0		+2 = Pole		
+2 = Garage Concrete 11.5' H		48	342.22		L	9.0	343.9
					H	8.9	344.0

PLOTTED  
 J.B.B.  
 15' H

5.18' on H =  
 S.E. End Fence  
 10' 10' Alley



352.93

450' N

N	78	345.1	158' x 100' x L. 27706.0 Drive Capp. #26 345.07	BM
S	79	345.0		BM
E	79	345.0		

500' N

E	72	345.7
S	68	346.1
N	69	346.0

525' N

N	62	346.7
S	62	346.6
E	67	346.2

550' N

E	59	347.0
+2	54	347.5
S	51	347.8
+6	52	347.7
N	54	347.3

575' N

N	51	347.8
S	47	348.2
E	50	347.9

600' N - St. Wightman

to Curb Returns to  
Crosswalk at Ford

E	48	348.1
S	47	348.2
N	48	348.1

352.93

3.93

349.00

6.50

346.43

SE N1/4

- 1/2 Acre

5.4 8.8

341.40

60



Santa Cruz Ave Cross Section  
De Foe to Ebers

80' wide  
30' Cb  
10' O/S

61.94

63  
9.20.17  
5.20.17  
8.19.17  
5.17.17

BM	11.98	49.03	37.05	SE BP	H	24	55.3
TP	13.01	61.94	48.93	SE Top H/d	4	19	57.0
BM		55.0	56.44	Santa Cruz De Foe	3	13	55.6
		EL De Foe			4	4.1	56.3
H		75	54.4		4	10	57.9
Cb		60	55.9		16	32	59.7
H		62	55.7		Cb	16	60.7
+6		77	54.2		TP	18.02	74.13
2		78	54.1		S	110	63.1
H		74	54.5			50.5	
+5		64	55.5		S	74	66.7
Cb		68	55.1		Cb	10.9	63.2
S		64	55.5		H	14.2	59.9
		37 of EL De Foe			H	11.1	57.7
S		18	60.7		S	76.7	57.4
+12		31	58.8		H	16.5	57.6
+13		49	59.0		H	16.5	57.6
Cb		61	55.8		H	16.7	57.4
H		69	55.0		Cb	15.9	58.2
2		76	54.3		H	17.5	56.6
+4		75	54.4			75.5	
H		57	56.2		H	15.0	59.1
Cb		59	56.0		H	13.6	60.5
H		75	54.4		Cb	12.6	62.5
					H	10.0	64.1

25.5



Santa Cruz Arc

74.13

Note: 6 Polcs in Black  
7' N of 2 of 8'

86.58

69

M		12.5	61.6
+2		14.1	60.0
8		14.6	59.5
+7		14.5	59.6
1/4		11.5	62.3
+5		8.6	65.5
cb		6.6	67.5
S		3.8	70.3
	100'E		
S		0.7	73.4
cb		2.5	71.6
TP	12.80	86.58	03.5
			73.78
+6		26.2	66.4
+7		24.5	62.1
1/4		25.2	61.4
8		25.2	61.4
+6		25.5	61.1
1/4		23.8	62.8
cb		23.5	63.1
H		24.7	61.9
	125'E		
H		21.9	64.7
cb		22.6	64.0
1/4		22.6	64.0
8		23.0	63.6
1/4		22.7	63.9

+2		22.6	64.0
+5		17.0	59.6
+7		14.8	71.8
cb		12.5	74.1
1/4		9.6	77.0
S		9.0	77.6
	150'E		
S		5.1	81.5
1/4		6.5	80.1
cb		8.7	77.9
+2		9.2	77.4
+4		12.2	73.4
+6		21.1	65.5
1/4		21.0	65.6
8		20.7	65.9
1/4		20.5	66.0
cb		20.6	66.0
H		20.4	66.2
	175'E		
H		18.6	73.0
1/4		19.0	67.6
cb		19.0	67.6
1/4		18.7	67.9
8		18.5	68.1
1/4		18.0	68.6
+1		18.9	67.7



86.58

T3		19.0	67.6
+6		10.1	76.5
Cb		5.4	81.2
+4		4.7	81.9
+5		5.7	82.9
J		2.0	84.6
TP	10.76	75.86	148
		85.10	

3.00' 184' E  
0.00' 0.00'

200' E

J		8.6	87.6
+10		9.2	86.6
Cb		10.8	85.0
+1		13.1	82.7
+8		23.5	72.3
1/4		26.6	69.2
+2		26.8	69.0
+3		25.3	70.5
2		25.6	70.2
1/4		26.2	69.6
Cb		25.7	70.1
+12		21.5	71.3
+18		20.3	75.5
N		20.3	75.5

230' E

N	on Conc. Landing Top of Steps	17.0	78.6
+5	= Bottom of Steps	20.8	75.0
Cb		22.0	73.8

95.86

65  
9-22-27

1/4		23.9	72.9
2		23.0	72.8
+9		22.8	73.0
1/4		23.8	72.0
Cb		12.5	83.3
+4		6.5	89.3
J		4.8	91.0

250' E

J		3.6	92.3
+17		5.8	90.6
Cb		8.2	87.5
+5		21.9	74.0
1/4		25.1	73.8
+2		24.8	75.0
2		21.1	74.8
1/4		21.2	74.6
Cb		19.8	76.0
+10		18.2	77.6
+15		17.8	78.6
N		16.1	79.7

257' E

N		16.3	82.5
+15		14.1	81.8
Cb		15.7	80.2
+7		20.6	75.6
1/4		20.5	75.3



9581

S	205	75.3
+6	201	75.8
1/4	208	75.0
+5	207	75.1
C6	87	87.1
1/3	45	91.3
S	201	92.7

275.2

S - Conc. Walk	275	93.1
+17	3.6	92.2
C6	7.0	88.8
+5	19.0	76.8
1/4	19.6	76.2
+1	18.7	77.1
S	19.1	76.7
+8	18.7	77.1
1/4	19.5	76.3
+3	19.5	76.3
C6	15.2	80.6
+3	9.6	86.2
+10	10.0	85.8
H	10.5	85.3

300.5

N	85	87.3
+10	82	87.6
+17	72	88.6

9586

+18	127	83.1
C6	120	82.8
+7	165	79.5
1/4	170	78.8
S	173	78.5
1/4	168	79.0
+3	175	78.3
+8	165	79.3
C6	9.1	86.2
+3	8.1	93.2
S	20	93.8

325.2

S	2.0	93.8
+19	2.7	93.1
C6	4.2	91.6
+4	15.0	80.8
1/4	15.5	80.3
H	15.0	80.8
S	15.1	80.5
1/4	15.1	80.5
+7	12.1	83.7
C6	7.2	88.6
H	7.5	88.3

350.5

N	1.9	89.0
C6	7.0	88.8



9586

13	71	88.8
17	121	83.4
14	133	82.5
15	129	82.0
2	137	82.1
14	133	82.5
15	147	81.2
19	34	92.4
cb	33	92.5
S	30	92.8

105 F

S	42	91.6
cb	45	91.3
15	46	91.2
17	131	82.7
14	113	84.5
2	112	84.6
14	110	84.8
13	104	85.4
17	72	88.7
cb	70	88.8
N	68	89.0
12.5	618	89.6

100 F

N	68	89.0
cb	68	89.0

Top of Brick Step

9586

15	68	89.0
cb ?	96	86.2
15	101	85.7
2	99	86.0
14	91	86.4
12	113	84.5
15	113	84.5
16	77	88.1
cb	69	89.0
S	65	89.3

105 F

S	65	89.3
cb	69	89.0
14	91	86.7
18	96	86.2
2	87	87.1
14	86	87.3
cb	69	89.0
N	57	90.1

150 F

N	56	90.2
cb	75	88.3
14	75	88.3
2	76	88.2
14	79	88.0
cb	73	88.5

100 F  
5' N of 146  
Wood Porch



Santo Cruz Av.

9586

S		73	88.6
	47.5 E		
S		68	89.0
cb		62	89.5
1/4		65	89.3
1/2		67	89.1
3/4		63	89.5
cb		65	89.3
H		62	89.6
	500 E		
H		62	89.6
cb		59	90.0
1/4		57	90.1
1/2		59	90.0
3/4		56	90.2
cb		58	90.0
S		58	90.0
	525 E		
S		32	92.5
1/4		43	91.5
cb		48	91.0
1/4		42	91.3
1/2		47	91.1
3/4		47	91.1
1.5		40	91.8
1/4		44	91.2

9586

cb		51	90.8
H		55	90.3
1/2		71	88.8
1/10		80	87.8
	550 E		
		73	88.5
		62	89.5
H		44	91.4
cb		42	91.6
1/4		34	92.4
1.5		30	92.8
1/2		38	92.0
1/4		38	92.0
1/2		36	92.2
cb		36	92.2
1.1		30	92.8
S		38	93.0
TP	7.42	100.42	3.05
	575 E		92.81
S		37	96.5
1.9		65	93.7
cb		68	93.4
1/4		70	93.2
1/2		71	93.1
1.8		70	93.2
1.3		65	93.7



100.23

S	67	93.5
cb	72	93.0
N	76	93.0
+2	86	91.6
110	189	89.8
593 E		
-10	73	90.9
-2	84	91.8
N	71	93.1
12	63	93.9
cb	65	93.7
1/4	60	94.2
S	63	93.9
1/4	62	94.0
cb	60	94.2
+15	59	94.8
S	41	96.1
598 E		
S	50	95.2
cb	52	94.4
1/4	60	94.2
S	59	94.3
1/4	57	94.5
cb	58	94.4
N	61	94.1
+5	83	91.9

100.23

+10	90	91.2
600 E - 114 Fibers		
N	71	92.4
+18	70	92.2
cb	76	92.6
1/4	62	93.4
S	62	94.0
1/4	60	94.2
cb	63	93.9
12	51	94.6
S	52	95.0
S.E. Tap Hole		
B.M.	8.63	99.60
Santa Cruz Fibers		
For Check on S.N. Cor. Santa Cruz Fibers		
Marked Cell 4		







15797

c	4.3	147.0
1/4	6.5	144.5
cb	6.7	144.6
w	7.2	144.0
+10	8.0	143.1
	1450	
-10	9.8	141.5
w	9.0	142.3
cb	7.8	143.5
1/4	7.0	144.3
c	6.3	145.0
1/4	5.2	146.1
cb	4.5	146.8
E	4.9	146.4
	2+00	
E	9.4	141.9
cb	9.8	141.5
1/4	9.9	141.4
c	9.9	141.4
1/4	11.5	139.8
cb	14.0	137.9
w	14.5	136.8
+10	15.7	135.6
	2+10	
-10	20.4	130.9
w	18.1	133.2

15757

Pasadio Dr

71

cb	15.0	136.3
1/4	10.8	140.5
c	11.0	140.3
1/4	11.0	140.3
cb	10.8	140.5
+3	9.7	141.6
E Top tank	4.7	146.6
	2+01	
E	2.7	149.6
cb	4.8	146.5
1/4	6.1	145.2
+6.5 Top bank	9.1	142.2
c	15.8	135.5
1/4	15.5	135.8
cb	15.6	135.7
w	15.8	135.5
	2+90.9-AC	
w	19.1	132.2
cb	18.9	132.4
+3	18.7	132.6
1/4	14.3	137.0
+3 Top bank	8.7	142.6
c	7.7	143.6
1/4	6.0	145.3
cb	5.7	145.6
c	2.8	148.5



15/27

3426.51

E		10.6	1407
cb		12.3	1390
1/4		12.8	1385
C		13.9	1374
+5	Top bank	15.0	1363
1/4		15.1	1292
cb		20.8	1305
W		20.5	1308
T.P.	0.23	138.51	138.48 ✓
	3403.43		
W		8.6	1299
cb		10.2	1283
1/4		10.7	1278
e		11.0	1275
1/4		11.0	1275
cb		11.0	1275
E		11.3	1272
	4400.05		
E		15.7	1228
cb		16.6	1219
1/4		16.9	1219
C		17.2	1210
1/4		17.0	1215
+2		16.5	1220
cb		11.5	1270
W		10.2	1283

138.51

Prosidio Dr

72

4+36.69 = EC.

W = Right of A or EL.	12.6	1241
TP 0.70	126.37 ✓	125.67 ✓
+7	9.3	117.1
cb	8.9	117.5
1/4	8.7	117.7
C	8.6	1278
1/4	10.1	116.3
cb	12.6	114.0
E = Left of A = WL	14.7	111.7
+10	16.5	109.9
TP 1.86	115.67 ✓	113.76 ✓
	4+65	
-10	10.2	105.4
W = Left of A	8.2	107.4
cb	7.8	107.6
1/4	5.5	110.1
e	3.1	112.5
+2	0.7	114.9
1/4	0.7	114.9
cb	0.8	114.8
E = Right of A	0.5	115.1
	5+25	
-9 = flowline 12" wood stove	7.7	107.9 culvert inlet
E	6.5	109.2
cb	6.7	108.9
1/4	11.2	104.4



1156W

+3		12.8	102.8
c		10.7	104.9
1/4		12.1	103.5
cb		12.6	102.0
w		16.0	99.6
+10		17.6	98.0
	5+05		
-15		19.4	96.2
w		17.0	98.6
cb		14.2	101.2
1/4		14.8	102.8
c		14.2	101.2
1/4		12.6	103.0
+2	outlet in advent	10.9	104.7
cb		8.0	107.6
E		7.7	107.9
	5+44		
E		8.9	106.7
cb		9.4	106.2
1/4		10.0	105.6
c		14.9	100.7
+2		17.4	98.4
1/4		18.1	97.4
cb		20.1	95.5
w		24.2	91.3
+6		24.6	91.0

1156W

Presidio Dr.

73

+8		18.1	97.5
+15		19.3	96.3
	5+50		
-15		19.3	96.3
-11		26.4	89.2
-5		23.2	92.4
w		18.8	96.8
cb		16.7	98.9
1/4		15.7	99.9
c		14.0	101.6
1/4		10.2	105.4
cb		9.8	105.8
E		9.3	106.3
	5+70		
E		8.0	107.6
+5		11.7	103.9
cb		11.6	104.0
1/4		11.9	103.7
c		11.9	103.7
1/4		14.6	101.0
cb		15.0	100.6
w		17.2	98.2
+15		22.4	93.2
	6+00		
-15		23.8	91.8
w		18.8	96.8



115.64

cb		16.6	99.2
+5		14.6	101.0
1/4		14.6	101.0
e		14.7	100.9
1/4		14.8	100.8
cb		14.5	101.1
E		7.5	108.1
	6+50		
E		17.1	103.5
+6	Top bank	13.5	102.1
T.P.	253	103.07	102.52
cb	Bottom bank	7.3	95.6
1/4		6.9	96.2
e		6.6	96.5
1/4		6.6	96.5
+3		6.6	96.5
cb		8.7	94.4
w		11.2	92.7
+15		15.7	87.4
	7+00		
-15		21.4	81.7
w		20.3	82.8
cb		17.1	86.0
1/4		14.1	89.0
e		17.8	90.3
1/4		14.5	90.6

103.07

Prospero Dr

72

cb		14.4	90.7
E	Bottom bank	11.9	91.2
T.P.	0.03	90.12	90.02
	7+50		
E		5.0	84.9
cb		5.0	85.1
1/4		5.0	85.1
e	w edge prospero road	4.9	85.2
1/4		7.8	82.3
cb		9.3	80.8
w		10.0	80.1
+10		11.9	78.2
	8+00		
-10		17.2	72.9
w		15.2	74.9
cb		13.3	76.8
1/4		11.7	78.4
C	wedge present road	10.1	80.0
1/4		10.1	80.0
cb		10.4	79.7
E		10.3	79.8
T.P.	0.02	77.30	77.28
	8+50		
E		2.5	74.8
cb		2.4	74.9
1/4		2.4	75.1



e	4.2	73.1
1/2	5.8	71.5
cb	5.9	71.4
w	6.9	70.4
+10	8.5	68.8

9400

-10	12.8	64.5
w	11.9	66.1
cb	10.2	66.9
1/2	9.2	67.9
e	8.5	68.8
1/4 wedge present road	7.4	69.9
cb	7.3	70.0
E	7.9	69.4

9750

E	12.6	64.7
cb	12.8	64.5
1/2	13.6	63.7
T.P.	0.53	65.79
1/2	14.6	62.66
1/4	2.0	63.2
1/4	2.9	62.3
cb	4.2	61.0
w	5.6	59.4
+10	7.1	58.1

10100

-10	11.8	53.4
-----	------	------

w	10.8	54.4
cb	9.9	55.3
1/4	8.9	56.3
e	8.2	57.0
1/2	7.4	57.8
cb	6.6	58.6
E	5.7	59.5

10450

E	12.1	53.1
cb	12.5	52.7
1/2	13.0	52.2
e	13.3	51.9

T.P.	1.51	52.97
1/4	2.9	51.1
cb	3.6	50.4
w	4.3	49.7
+10	5.6	48.4

10458

-10	14.5	41.5
w	5.6	48.4
cb	3.8	50.2
1/4	3.0	51.0
e	2.2	51.8
1/2	2.1	51.9
cb	1.6	52.4
E	1.2	52.8



53.97

	10+68		
-8	outlet	3.9	50.1
E		1.6	52.4
cb		2.1	51.9
1/4		2.6	51.4
e		4.0	50.0
1/4		4.8	49.2
+1		10.1	43.9
cb		9.6	44.4
+5		7.1	46.9
w		7.2	46.6
+10		8.4	45.6

10+7d

-10		7.9	46.1
w		7.1	46.9
cb		6.3	47.7
1/4		5.8	48.2
+3		5.7	48.3
e		9.1	44.9
1/4		4.5	49.2
cb		3.8	50.2
E		3.8	50.2
+5		5.1	48.9
+10		2.6	51.4

10+77

-5		2.9	51.1
----	--	-----	------

53.97

Presidio Dr

76

E		6.3	47.7
cb		7.6	46.4
1/4		8.3	45.7
+3		5.0	49.0
e		5.1	48.9
1/4		5.7	48.3
cb		6.2	47.8
w		7.1	46.9
+10		7.9	46.1

10+79

-10		7.7	46.3
w		7.0	47.0
cb		6.2	47.7
1/4		5.6	48.4
C		5.2	48.8
1/4		4.5	49.5
cb		4.0	50.0
E		3.1	50.9

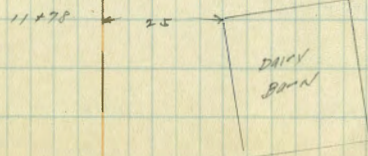
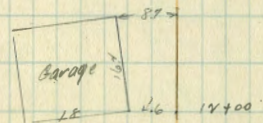
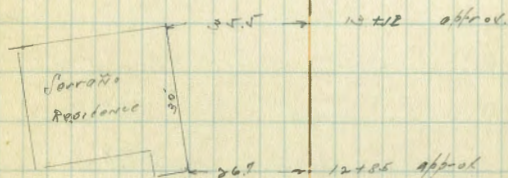
11+00

E		3.3	50.7
cb		3.7	50.3
1/4		4.3	49.7
e		4.7	49.3
1/4		5.5	48.5
cb		7.0	47.0
w		9.0	45.0
+10		10.4	43.6



11+75			
-10		12.7	41.3
W		11.9	42.1
cb		10.9	43.1
1/4		9.9	44.1
c		9.4	44.6
1/2		8.7	45.3
cb		7.8	46.2
E		7.3	46.7
11+78			
E = NW corner of road		11.7	42.3
cb		13.3	40.7
T.P.	0.59	41.8 <sup>v</sup>	12.7 <sup>d</sup>
1/4		1.8	40.0
c		2.0	39.8
1/4		2.5	39.3
cb		3.6	38.2
W		5.0	36.8
+10		6.8	35.0
12+80			
-10		9.8	32.0
W		8.6	33.2
cb		7.7	34.1
1/4		6.7	35.1
c		6.4	35.4
1/2		5.6	36.2

cb		4.1	37.7
E		2.3	39.5
13+75			
E		5.4	36.6
cb		6.7	35.1
1/4		8.1	33.7
c		10.0	31.8
1/4		11.3	30.5
cb		11.8	30.0
W		12.3	29.5
+10		14.7	29.1





41.8W

14+85	26.7 W E = Cor House	13.4	25.6	on ground	c
T.P.	346	34.8%	14+8	29.34 ✓	1/4
	13+14				cb
-10.5	Cor House floor elev.	4.20	28.4		E
"	" " on ground	7.4	25.6		14+42.97
W		6.3	26.5		E
cb		5.7	27.1		cb
1/4		4.6	28.2		1/4
c		2.8	30.0		c
1/4		-1.5	34.3		T.P. 1.9 ✓
cb		-0.0	32.8		21.9 ✓
E		+1.8	31.0		1/4
	13+50				cb
E		-1.1	33.9		W
cb		3.0	29.8		10
1/4		4.4	28.4		14+90.85 = E.C.
c		5.8	27.0		-10
1/4		7.3	25.5		W
cb		8.9	23.9		+4
W = fence line		9.8	23.0		cb
+10	among shrubbery	10.2	22.5		1/4
	13+95.09 = P.L.				cb
-10	Shrubbery	14.6	20.2		E
W = fence line		11.6	21.2		
cb		11.8	21.0		
1/4		10.1	22.7		

37.80

Frasido Dr 78

		9.1	23.7		
		8.0	24.8		
		6.8	26.0		
		5.1	27.7		
		9.5	23.3		
		11.0	21.8		
		14.0	20.8		
		12.1	19.7		
		17.80	40.00 ✓		
		3.3	18.6		
		2.7	17.2		
		5.6	16.3		
		4.6	15.3		
		8.0	13.9		
		7.6	14.3		
		7.3	14.4		
		4.6	17.3		
		3.9	18.0		
		3.7	18.2		
		3.3	18.6		
		-1.4	23.1		
		+1.9	20.0		

21.9 ✓  
11.27  
10.67  
1.77  
15.66  
1.02  
14.64  
1.44 ✓  
0.00 ✓  
Mod Juan + Wallace

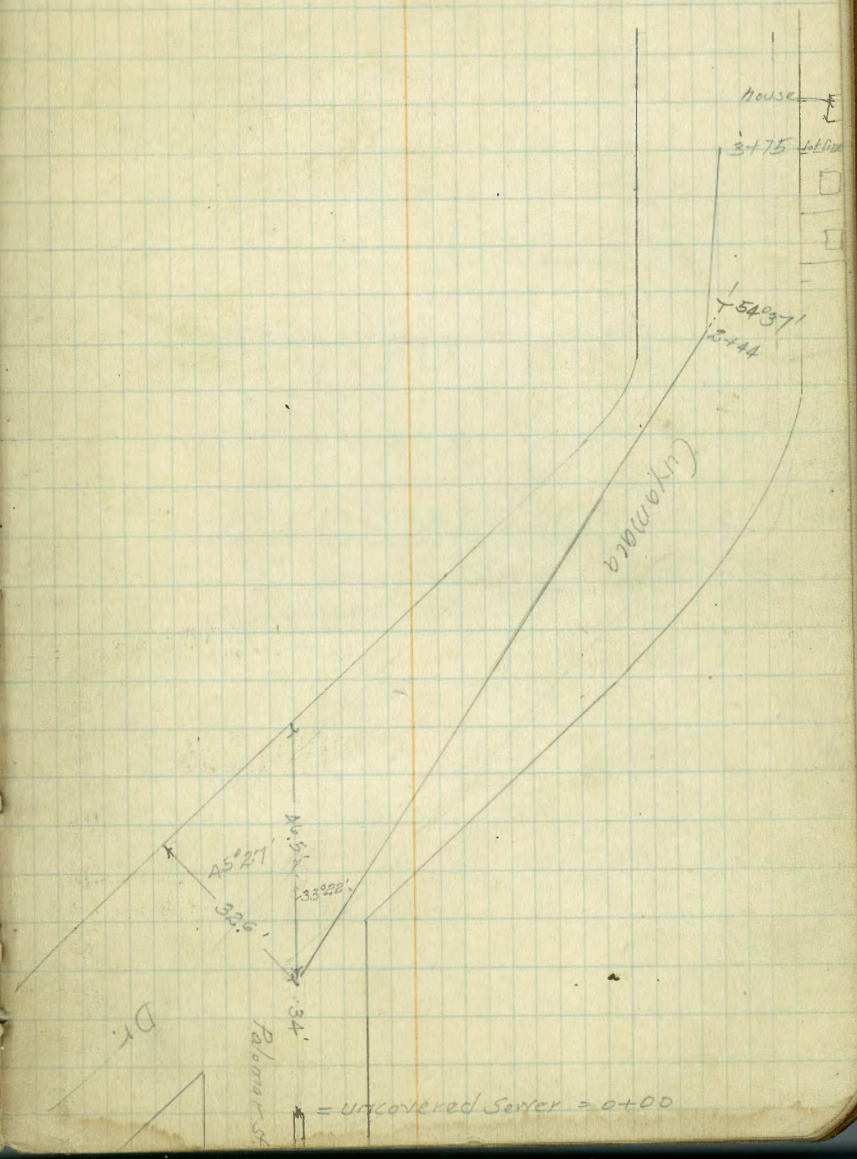


Walker  
5-12-97

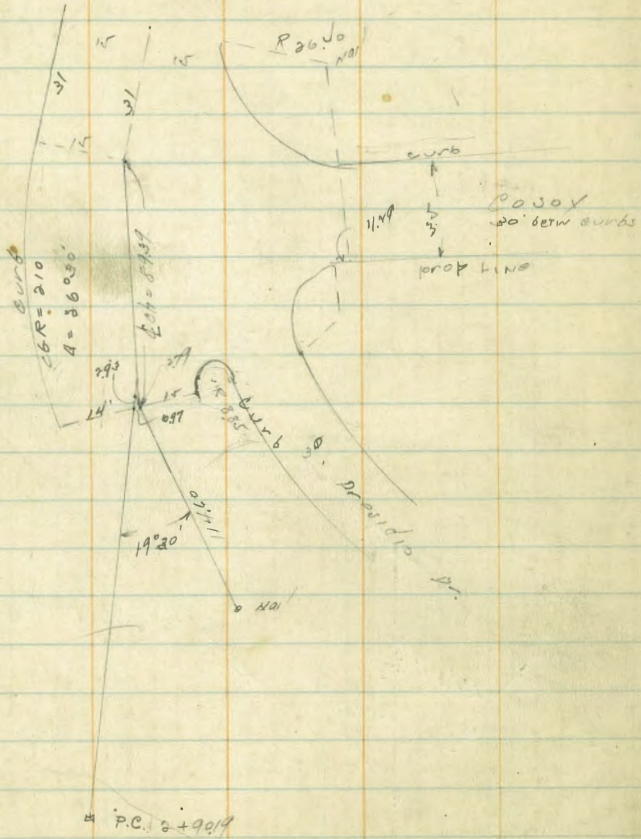
Preliminary Sewer Notes  
Cuyamaca St + Palomar Dr.

0+00  
Assumed  
Elev.      9.21    109.21      100.00 on top Sewer Pipe

0+34 = ΔR 33° 22'	2.6	106.6
+50	2.7	106.5
1+00	3.9	105.3
1+50	5.9	103.3
2+00	8.0	101.2
2+44 = ΔL 54° 37'	7.6	101.6
2+99	7.3	101.9
3+44	6.8	102.4
3+75	5.9	103.3







DIRECTIONS FOR USE OF TABLES

279

TABLE No. 1.

Distance of slope stake from side of shoulder stake for any width roadway, slope 1% to 1%. If ground is nearly level, the cut or fill at side stake is located by the double curve method in left column and top row. The number in body of table is same row and column distance.

IMPROVED TABLES

AND

INFORMATION

TABLE No. 2.

To find Tangent and External for curve of any other degree, divide by degree of curve and add correction found in column of correction. Degree of curve with a given  $L$  may be found by dividing tangent (or external), opposite  $L$  by given tangent (or external).

The distance from a point on the tangent to the curve is very nearly the square of the tangent length divided by twice the radius.



11.47 TR  
1.574

24553  
1147  
23406  
1.57  
23563

186

50.6 ✓  
249.68  
300.30

106  
242

Woodman  
NE 91.05

104

148  
6  
2

64.5 out  
94.9 out  
65.0 out  
100.0  
100.0  
100.0

240  
131  
375

137  
FV  
271

26.25  
10.12  
12.06

59.60  
10.00  
70.27