

1202

BAST

FIELD BOOK

No. 385

ENGINEERING DEPARTMENT,
CITY OF SAN DIEGO,
CALIFORNIA.

Our Leather Bound Engineers' Note Books are carried in the following rulings:

- No. 380 LEVEL BOOK. Left and Right Hand Page the same as Left Hand Page of this Book.
- No. 382 FIELD BOOK. Left Hand Page as in this Book, Right Hand Page 4 x 4 to the inch, Center Line Red.
- No. 384 MINING TRANSIT BOOK. Left Hand Page as in this Book, Right Hand Page 8x8 to the inch, Center Line Red.
- No. 385 FIELD BOOK. Left Hand Page as in this Book, Right Hand Page 8 vertical and 4 horizontal lines to the inch, Center Line Red.

We also carry the Note Books listed above, bound in extra strong Fabri-Hide (otherwise the same quality of book), which can be furnished at a somewhat lower price.

In ordering Fabri-Hide covered books, add the letter "F" to catalog number.

THE FREDERICK POST CO.
ENGINEERING and DRAFTING SUPPLIES
IRVING PARK STATION
CHICAGO, ILL.

MICROFILMED
DEC 22 1964

76. Div. 15790-80 7/11/30 M.A.

70. Jim 1577-80 7/1/30 2 WA.

INDEX

PAGE

X. Section Estrella Ave - - - - 1

X. Sections Wilson Ave 19-35

X " Alley M. Gurnells subdivision 36-39

X " Center St. La Jolla 40-57

X Sections Alley S.D. Land & Town Sub. Block 275 58-64

Walker
5-29-27

X Section Estrella Ave. 60' Wide
From Univ. to El Cajon Ave's

12.65
9.75

339.94

STY. BP
Univ. to Acadia 10.23 339.94 329.71

N.W. UNIV.

E 11.2 327.7
E top cb 11.98 327.96
E Gut. on Pav. 11.57 327.37
1/4 011 " 11.96 327.98
1/2 " " 11.55 328.39
1/2 " " 11.40 328.54
W Gut. on Pav. 11.45 328.49
W top cb 10.70 329.24
W 10.0 329.9

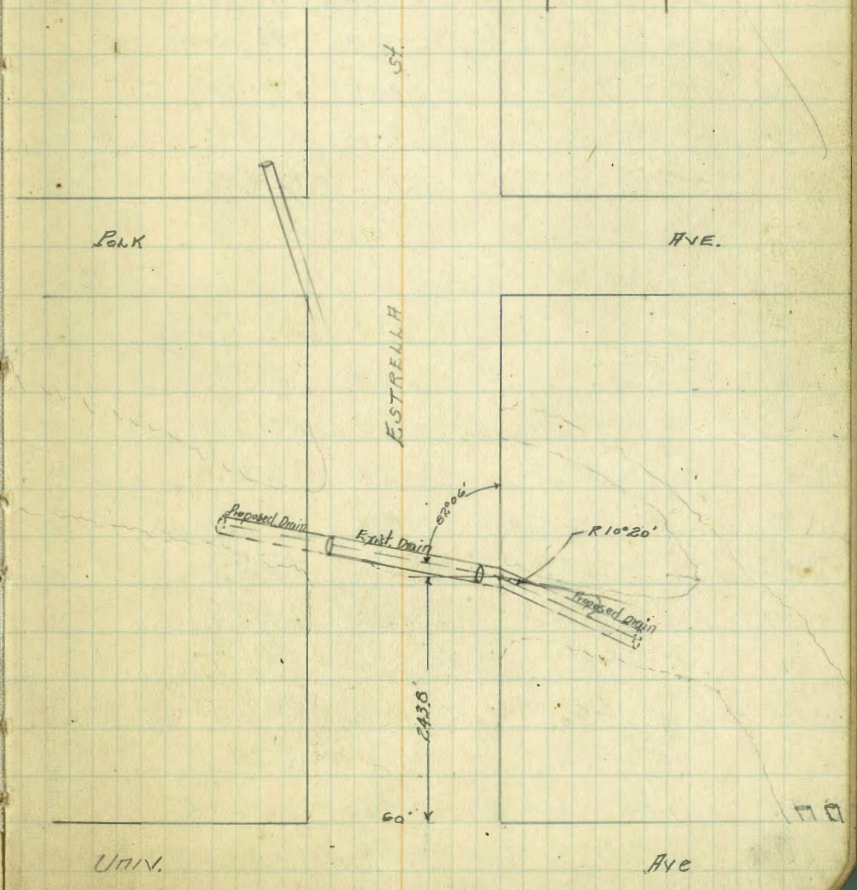
1' N N.W. UNIV.

W 3.9 336.0
+5 10.0 339.9
cb 11.0 328.9
1/4 11.4 328.5
1/2 11.6 328.3
1/4 12.0 327.9
cb 12.0 327.9
+6 11.4 328.5
+7 9.3 330.6
E 9.0 330.9
E 9.0 330.3
+V 9.8 330.1

Plotted
1-26-27
L.B.H.

34' N

cb	10.0	329.9
+2	10.8	329.1
1/2	10.7	329.2
1/2	10.7	329.2
1/2	10.9	329.0
cb	10.7	329.2
+5	10.5	329.4



+10		8.8	331.1
N		7.7	332.2
	84' N		
N		10.3	329.6
+4		11.7	328.2
cb		12.5	327.4
$\frac{1}{4}$		12.9	327.0
$\frac{1}{2}$		12.6	327.3
$\frac{3}{4}$		12.7	327.2
+6		12.5	327.4
cb		11.8	328.1
+1		11.6	328.3
E		11.6	328.3
	118' N		
E		13.1	326.8
cb		12.9	327.0
$\frac{1}{4}$		14.0	325.9
$\frac{1}{2}$		13.9	326.0
$\frac{3}{4}$		14.3	325.6
+5		14.2	325.7
+7		13.5	326.4
cb		13.3	326.6
+9		13.4	326.5
N		14.0	327.9
T.P.	113 328.07	13.00	326.94
	146' N		

N		2.3	325.8
+5		4.1	323.0
cb		4.3	323.8
$\frac{1}{4}$		5.2	322.9
$\frac{1}{2}$		5.3	322.8
$\frac{3}{4}$		4.8	323.3
cb		4.1	324.0
E		5.1	323.0
	167' N		
E		10.4	317.7
cb		8.7	319.4
$\frac{1}{4}$		7.3	320.8
$\frac{1}{2}$		7.4	320.7
$\frac{3}{4}$		7.8	320.3
cb		7.3	320.8
+5		5.6	322.5
+10		6.5	321.6
N		5.5	322.6
	184' N		
N		8.5	319.6
+5		6.8	321.3
cb		8.7	319.4
$\frac{1}{4}$		2.5	318.6
$\frac{1}{2}$		9.1	319.0
$\frac{3}{4}$		9.4	318.9
$\frac{1}{4}$		10.3	317.8

32807

cb		14.4	313.7	
E		16.9	311.2	
+70		21.1	307.0	
T.P.	239	318.71	11.75	316.32
	203'N			
-20		14.7	302.0	
E		14.5	304.2	
cb		10.6	308.1	
$\frac{1}{4}$		5.1	313.6	
+5		1.8	316.9	
$\frac{1}{2}$		2.0	316.7	
$\frac{1}{4}$		1.4	317.3	
cb		1.7	317.0	
+4		1.7	317.0	
W		5.8	312.9	
+10		5.1	313.6	
	223'N			
-15		11.2	307.5 ✓	
W		9.9	308.8 ✓	
cb		4.1	314.6	
$\frac{1}{4}$		3.5	315.2	
$\frac{1}{2}$		3.8	314.9	
+5		5.2	315.5	
cb		13.0	305.7	
+5		15.0	303.7	
E		16.5	302.2	

31871

3

+25	18.2	300.5
LEVELS FOR CULVERT #1		
-100' in Bottom of Canyon	11.2	307.5
-50' " " " "	12.9	305.8
+00	13.9	304.8
+20	14.6	304.1
+25 - Flow line 18" Con. Pipe	16.13	302.58
+45	5.5	313.2
+63	5.0	313.7
+83.35 - Flow line	17.40	301.11
+89.7 = ΔR/D ² = E.L.	18.0	300.7
1736	19.0	299.7
1485	21.1	297.6
259'N N.W. Univ.		
-15	11.7	307.0
E	11.6	307.1
cb	12.3	306.4
+3	11.3	307.4
$\frac{1}{4}$	10.1	308.6
$\frac{1}{2}$	4.4	314.3
$\frac{1}{4}$	5.2	315.5
+6	5.5	313.2
cb	4.5	312.2
W	13.5	305.2
+70	13.7	305.0
271'N		

318.71

-20		11.7	307.0
N		17.2	306.5
cb		20	312.4
+4		5.1	313.6
$\frac{1}{4}$		5.0	313.7
$\frac{1}{2}$		4.7	314.0
$\frac{1}{4}$		4.1	314.6
cb		5.8	312.9
E		7.4	311.3
+10		8.2	310.5
	297' N		
-10		7.1	311.6
E		5.2	313.5
cb		3.5	315.2
$\frac{1}{4}$		3.2	315.5
$\frac{1}{2}$		3.5	315.2
$\frac{1}{4}$		3.1	315.6
cb		2.8	315.9
N		2.6	316.1
+5		2.6	316.1
TP	8.36 325.99	10.8	317.63
	346' N		
N		3.3	322.7
+3		5.1	320.9
cb		5.1	320.9
+11		5.1	320.9

325.99

+4		6.8	319.2
$\frac{1}{4}$		6.2	319.8
$\frac{1}{2}$		6.4	319.6
$\frac{1}{4}$		6.9	319.1
cb		8.5	317.5
E		10.0	316.0
+10		11.0	315.0
	376' N		
-10		12.3	313.7
E		9.0	317.0
cb		7.9	311.1
+5		6.4	319.6
$\frac{1}{4}$		5.9	320.1
$\frac{1}{2}$		5.5	320.5
$\frac{1}{4}$		5.6	320.4
+7		5.9	320.1
cb		5.2	320.8
+10		4.5	321.5
N		7.4	323.6
	400' N		
N		2.9	323.1
+11		5.1	320.9
cb		5.1	320.3
+11		4.3	319.7
$\frac{1}{4}$		6.1	319.9
$\frac{1}{2}$		4.8	319.8

32599

$\frac{1}{4}$	6.7	319.3
+3	7.7	318.3
cb	8.2	317.8
+7	8.7	317.3
E	11.4	314.4
+10	14.3	311.7

414' N

-10	16.4	309.6
E	12.5	313.5
cb	8.7	317.3
$\frac{1}{4}$	7.8	318.2
$\frac{1}{2}$	7.0	319.0
$\frac{1}{4}$	6.7	319.3
+7	7.3	318.7
cb	6.2	319.8
+10	5.2	320.8
N	1.9	324.1

455' N

N	5.1	320.9
+3	7.5	318.5
cb	8.4	317.6
+3	9.1	316.9
$\frac{1}{2}$	9.3	316.7
$\frac{1}{2}$	9.1	316.9
$\frac{1}{4}$	10.0	316.0
+5	10.4	315.8

32599

5

cb.	12.0	314.0
E	15.1	310.9
+10	18.1	307.9
+15	18.3	307.7

486' N

-15	17.2	308.8
-10	17.2	308.8
E	17.7	308.3
+8	17.7	308.3
cb	14.8	311.2
+3	14.1	311.9
$\frac{1}{4}$	11.3	314.7
$\frac{1}{2}$	10.4	315.6
$\frac{1}{4}$	10.4	315.6
cb	9.8	316.2
+8	9.3	316.7
N	6.5	319.5

510' N

N	8.2	317.8
+3	9.3	316.7
cb	10.2	315.8
$\frac{1}{4}$	10.2	315.8
$\frac{1}{2}$	10.2	315.8
$\frac{1}{4}$	10.5	315.5
cb	10.9	315.1
E	12.0	313.8

+5		112	314.8
	548' N		
E		74	318.6
cb		89	317.1
$\frac{1}{4}$		91	316.9
$\frac{1}{2}$		90	317.0
$\frac{1}{4}$		92	316.6
cb		94	316.6
N		86	317.4

565' N

N		74	318.6
cb		86	317.4
$\frac{1}{4}$		84	317.6
$\frac{1}{2}$		79	318.1
$\frac{1}{4}$		82	317.8
cb		74	318.6
+10		71	318.9
E		57	320.3

598.85' N = S.W. Polk 65' obs 40' wide No. 7's taken

E		35	322.5
+3		46	321.4
cb		50	320.0
$\frac{1}{4}$		54	320.6
$\frac{1}{2}$		53	320.7
$\frac{1}{4}$		59	320.1
cb		56	320.4

N		53	320.7
	566		
N		54	320.6
cb		55	320.5
$\frac{1}{4}$		52	320.8
$\frac{1}{2}$		49	321.1
$\frac{1}{4}$		51	320.9
cb		45	321.5
E		37	322.3

E Polk st.

E		24	323.6
cb		32	322.8
$\frac{1}{4}$		40	322.0
$\frac{1}{2}$		41	321.9
$\frac{1}{4}$		42	321.8
cb		45	321.5
N		46	321.4

Ncb

N		48	321.2
cb		39	322.6
$\frac{1}{2}$		35	322.5
$\frac{1}{4}$		30	322.0
$\frac{1}{4}$		34	322.6
cb		24	323.6
E		21	323.9

Ncb+4'

32599

E	0.9	325.1
cb	2.0	324.0
$\frac{1}{2}$	3.7	322.3
$\frac{1}{4}$	2.9	323.1
$\frac{1}{4}$	3.3	322.7
cb	3.4	322.6
N	5.8	320.2
+5	4.5	319.5

N.W. Palt

-5	7.0	319.0
N	6.2	319.8
cb	3.6	322.4
$\frac{1}{2}$	3.1	322.9
$\frac{1}{4}$	2.6	323.4
$\frac{1}{4}$	3.1	322.9
cb	1.6	324.4
E	0.6	325.4
TP	10.95 · 33603	0.91 325.08

50' N N.W. Palt

E	7.8	328.2
cb	8.3	327.7
+N	9.8	326.2
+8	11.4	324.6
$\frac{1}{2}$	9.9	326.1
$\frac{1}{4}$	9.3	326.7
$\frac{1}{4}$	9.4	326.6

33603

cb	9.9	329.1
N	11.0	325.0
+5	11.3	324.7

51' N

-5	11.2	324.8
N	10.9	325.1
cb	9.8	326.2
$\frac{1}{2}$	9.3	326.7
$\frac{1}{4}$	9.2	326.8
$\frac{1}{4}$	9.8	326.2
+8	9.6	326.4
cb	9.0	327.0
+2	8.1	327.9
E	7.5	328.5

100' N

E	5.9	330.4
cb	7.1	328.9
$\frac{1}{2}$	6.5	329.5
$\frac{1}{4}$	6.2	329.8
$\frac{1}{4}$	6.6	329.4
cb	6.6	329.4
N	7.0	329.0

548' N = L. Con. Ribbon Dr. on N 0.5' back of rise

-0.5' on N Ribbon	38.4	332.21
N	3.8	332.2
cb	4.0	332.0

336.03

E	$\frac{1}{4}$	3.7	332.3
	$\frac{1}{2}$	3.4	332.6
cb	$\frac{1}{4}$	3.5	332.5
$\frac{1}{2}$	cb	3.3	332.7
$\frac{1}{4}$	E	2.5	333.5
cb	251' N = $\frac{1}{2}$ Con. Steps on E 43' inst. 2.5' wide		
N	Ground at Bottom of Steps	2.3	333.7
TS	on top of 1st step	1.6	334.37
		R = 3.4	332.6
	160' N = $\frac{1}{2}$ Kaciu Tree on W 10' inst. 5' dia.		
		R = 1.8	
-5	188' " " " " " " " " " "		
		R = 1.0	
N	214' N = " " " " " " " " " "		
cb	178' N = $\frac{1}{2}$ Con. Walk on W		
$\frac{1}{4}$	E	0.3	335.7
$\frac{1}{2}$	cb	1.4	334.6
$\frac{1}{4}$	TS	2.5	333.5
cb	$\frac{1}{4}$	2.4	333.6
E	$\frac{1}{2}$	1.6	334.4
TP	$\frac{1}{4}$	2.1	333.9
	cb	2.6	333.4
E	N	2.7	333.3
cb	+0.4 = top Walk	2.53	333.50
+2	T.P.	1275	348.65
+8	211' N = $\frac{1}{2}$ Con. Walk on E 2.5' wide of Back		
$\frac{1}{2}$	N	13.9	334.8
$\frac{1}{4}$	cb	13.7	335.0
$\frac{1}{2}$	$\frac{1}{4}$	13.1	335.6

348.65

8

$\frac{1}{2}$	12.5	336.2
$\frac{1}{4}$	13.1	335.6
cb	12.1	336.6
E	10.8	337.9
+0.4 = top of Walk	10.27	338.38
248' N		
E	9.3	339.4
cb	9.9	338.8
+7	11.4	336.3
$\frac{1}{4}$	10.7	338.0
$\frac{1}{2}$	10.8	337.9
$\frac{1}{4}$	11.7	337.0
cb	12.3	336.4
N	12.7	336.0
TS	13.0	335.7
295' N = $\frac{1}{2}$ Con. Walk on E 3' wide of Back		
-5	12.0	336.7
N	11.7	337.0
cb	11.3	337.4
$\frac{1}{4}$	10.7	338.0
$\frac{1}{2}$	10.1	338.6
$\frac{1}{4}$	10.3	338.4
+6	9.9	338.8
cb	8.9	339.8
E	8.7	340.0
+0.4 = top of Walk	8.31	340.34

338' N

E	7.3	341.4
cb	7.7	341.0
+2	7.7	341.0
+5	9.3	339.4
$\frac{1}{2}$	8.8	339.9
$\frac{1}{2}$	8.7	340.0
$\frac{1}{2}$	9.4	339.3
cb	9.7	339.0
N	10.4	338.3
+5	10.6	338.1

361' N = 2 con. Walk on E 4' wide

N	9.8	338.9
cb	9.3	339.4
$\frac{1}{2}$	8.8	339.9
$\frac{1}{2}$	8.0	340.7
$\frac{1}{2}$	8.1	340.6
+5	8.4	340.3
+8	7.2	341.5
cb	7.2	341.5

E = top of Walk

R = 8.3

387' N = 2 Acacia Tree on N 11' in st. 4" dia.

421' N = " " " " " " " " " "

E	4.8	343.9
cb	5.4	343.3
+5	6.7	342.0

$\frac{1}{2}$	6.1	342.6
$\frac{1}{2}$	5.9	342.8
$\frac{1}{2}$	6.7	342.0
cb	6.8	341.9
N	7.4	341.3

483' N = 2 ^{Palm} Plumbosa tree on N 10.5' in st. 6" dia.

N	5.5	343.2
+10.5 = tree	5.0	343.7
cb	5.0	343.7
$\frac{1}{2}$	4.9	343.8
$\frac{1}{2}$	4.3	344.4
$\frac{1}{2}$	4.4	344.3

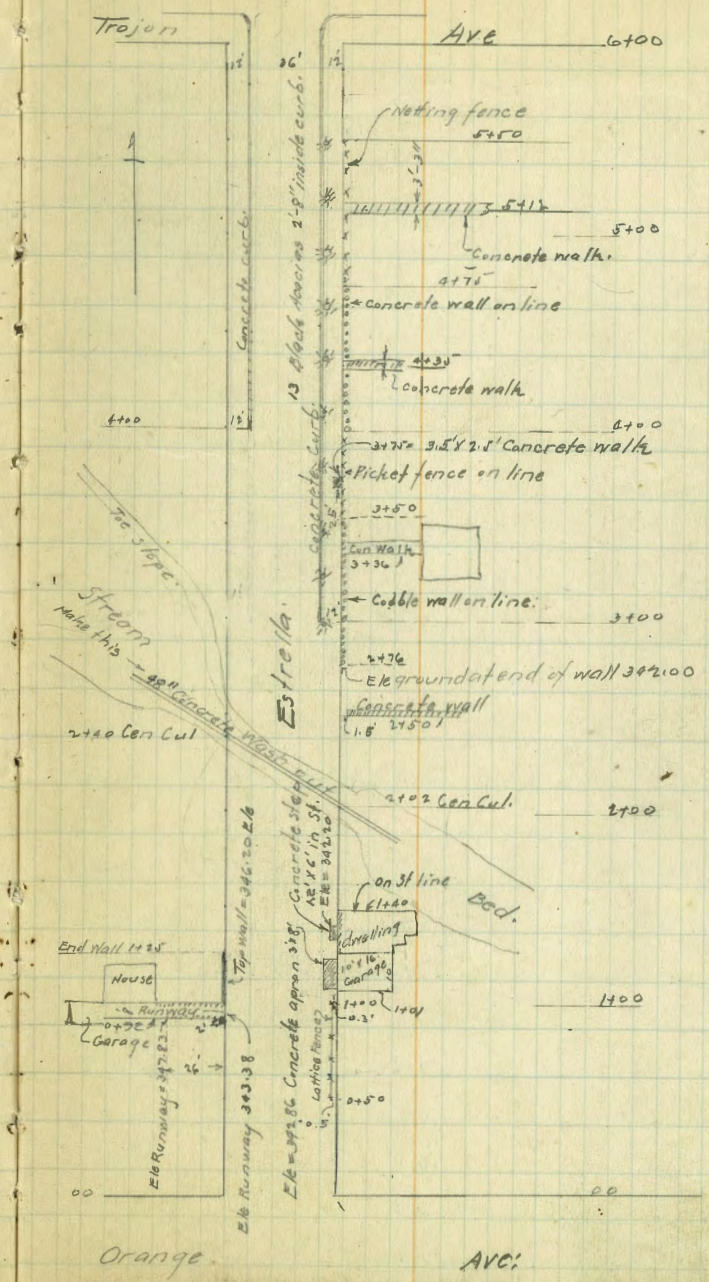
+5	4.6	344.1
+8	3.7	345.0
cb	3.6	345.1
E	3.3	345.4

521' N = 2 Plumbosa Palm tree on N 10.5' in st. 6" dia.

E	2.4	346.3
cb	3.3	345.4
$\frac{1}{2}$	3.3	345.4
$\frac{1}{2}$	3.1	345.6
$\frac{1}{2}$	3.8	344.9
cb	4.0	344.7
+15 = tree	4.0	344.7
N	4.3	344.4

577' N = S.L. Orange Ave.

N	2.3	346.4
cb	2.3	346.4
Z	2.3	346.4
Z	1.8	346.9
1/4	2.0	346.7
cb	2.0	346.7
E	1.9	346.8
Chk. on S.R. B.P. Orange + Estrella Church step 0.26 348.39 348.45 = BM 0.06 in. Error		
July 21 st 27 { Pannan: sections continued Osburne: 12 Cbs 9 Gts Flood		
2.41	350.86	348.45
0+0 = N.L. Orange St.		
W.L.	2.5	348.4
+8	2.5	348.4
cb	4.0	346.9
+5	5.9	345.5
1/4	5.9	345.5
E	5.0	345.9
1/4	5.2	345.7
cb	4.1	346.8
E.L.	3.7	347.2
20+25 EL	4.0	346.9
cb	4.0	346.9
+3	4.2	346.7
1/4	5.8	345.1



	+	-	E/e
	350.86		Estrela.
0+20 E		5.0	345.4
1/4		5.9	345.0
+5		5.8	345.1
Cb		5.1	345.8
+4		3.0	347.9
W.L.		2.8	348.1
0+30 W.L.		3.1	347.8
+2		3.5	347.4
+4		6.4	344.5
Cb		7.0	343.9
1/4		6.8	344.1
E		6.2	344.7
1/4		6.4	344.5
Cb		5.5	345.4
E.L.		4.5	346.4
0+20 E.L.		5.3	345.6
Cb		5.1	345.8
+4		5.4	345.5
1/4		7.4	343.5
E		7.1	343.8
1/4		7.6	343.3
Cb		8.1	342.8
+6		3.9	347.0
W.L.		3.6	347.3
0+30 W.L.		3.5	347.4
+5		3.7	347.2

	+	-	E/e
	350.86		
+7		7.0	343.9
Cb		7.8	343.1
1/4		8.3	342.6
E		7.8	343.1
1/4		8.1	342.8
+6		5.5	345.4
Cb		5.5	345.4
E.L.		6.5	344.4
1+27 E.L. on concrete apron (see sketch)		8.0	342.86
Cb		8.3	342.6
1/4		8.9	342.0
E		8.9	342.0
1/4		9.0	341.9
Cb		8.2	342.7
W.L.		8.0	342.9
1+25 W.L.		8.6	342.3
Cb		10.0	340.9
1/4		10.5	340.4
E		10.7	340.2
1/4		10.4	340.5
+4		9.4	341.5
Cb		10.3	340.6
E.L.		11.6	339.3
1+50 W.L.		8.0	342.9
+4		9.2	341.7
+7		12.4	338.5

	+	π	-	E/L
		350.86		Estrella.
cb			12.6	338.3
←			12.7	338.2
1/4			12.9	338.0
cb			15.6	335.3
#	1.70	339.71	12.85	338.01 on stone
E.L.			7.6	332.1
E.L.+15			10.5	329.2
1+15 E.L. - 20 = flow line Creek:			12.8	326.9
E.L.			12.2	327.5
cb			8.5	331.2
1/4			4.3	335.4
+3			5.0	334.7
←			4.6	335.1
1/4			4.0	335.7
cb			3.2	336.1
+3			3.6	336.1
+6			1.6	338.1
W.L.			0.0	339.71
2+00 W.L.			3.1	336.6
+5			5.1	334.6
cb			5.7	334.0
1/4			5.7	334.0
←			6.0	333.7
1/2			6.7	333.0
cb			12.2	327.5
E.L. Flow Line stream:			13.0	326.7
E.L.+20 Flow Line stream			12.9	326.8

	+	π	-	E/L
		339.71		
2+05 E.L. - 20' stream bed			12.9	326.8
E.L. stream bed			12.9	326.8
cb " "			12.9	326.8
1/4 " "			13.0	326.7
← too slope			11.8	327.9
+4			6.2	333.5
1/4			5.9	333.8
cb			6.0	333.7
W.L.			4.4	335.3
2+20 W.L. - 10'			5.7	334.0
W.L.			8.0	331.7
cb			6.1	333.6
+3			6.1	333.6
1/4			12.0	327.7
← stream bed			12.9	326.8
1/4			12.0	327.2
cb			11.1	328.6
E.L.			11.8	327.9
E.L.+10			9.1	330.6
2+40 E.L. - 10			1.3	338.4
E.L.			3.0	336.7
cb			5.4	334.3
1/4			4.8	334.9
←			5.2	334.5
1/4			5.5	334.2
+6			5.9	333.6

	+	π	-	E/e
		339.71		Estrella.
cb			10.4	329.3
W.L. stream bed			12.7	326.8
W.L + 20'			8.3	331.4
#	5.27	336.96	3.02	336.69 Nail fence Post at Sta 200
2+75 W.L. - 20' stream bed			13.7	328.3
W.L. stream bed			10.2	327.7
cb			7.8	334.2
1/4			4.1	337.9
ε			3.9	338.1
1/4			3.4	338.6
cb			2.1	339.9
E.L.			0.6	341.4
#	6.62	347.08	1.00	340.46
3+00 = E.L. foot stone wall.			4.05	342.6
Cement Cb			5.16	341.92
Gut			6.0	341.1
1/4			6.8	340.3
ε			6.8	340.3
1/4			7.2	339.9
cb			7.8	339.3
W.L.			13.8	333.3
+12			18.8	328.3
+20			18.8	328.3
3+25 W.L. - 10'			9.05	337.6
W.L.			6.3	340.8
cb			5.7	341.4

	+	π	-	E/e
		347.08		
1/4			5.6	342.5
ε			5.2	341.9
1/4			5.1	342.0
Gut			5.1	342.0
C.C.B.			4.19	342.99 ✓
E.L. foot stone wall:			3.7	343.4 ✓
3+00 E.L.			2.05	344.6 ✓
C.B.B.			3.16	343.92
Gut			4.2	342.9
1/4			4.1	343.0
ε			4.1	343.0
1/4			4.6	342.5
cb			4.8	342.3
W.L.			4.4	342.7 ✓
3+75 W.L.			3.2	343.9
cb			3.7	343.2
1/4			3.3	343.8
ε			2.7	344.4
1/4			3.1	344.0
Gut			3.2	343.9
C.C.B.			2.18	344.90
E.L. On cement apron (see sketch)			1.36	345.72
4+00 foot of stone wall			0.7	346.4
C.C.B.			1.19	345.89
Gutter			1.8	345.3
1/4			2.0	345.1

	+	π 347.08	-	E/e Estrella.
±			1.8	345.3
1/4			2.5	344.6
Gut			3.0	344.1
Top Ccb			1.97	345.11
Ccb + 1 (dirt sidewalk not up to grade of curb)			3.0	344.1
W.L.			2.9	344.2
4+72 W.L.			1.3	345.8
Ccb			1.16	345.92
Gut			2.1	345.0
1/4			1.4	345.7
±			0.8	346.3
1/4			0.9	346.2
Gut			0.7	346.4
Ccb			0.05	347.03
E.L. foot stone wall (see sketch)			0.0	347.08
#	7.11	353.93	0.30	346.78
4+50 foot stone wall			4.2	347.7
Top C. Cb			6.18	347.75
Gut			6.9	347.0
1/4			6.8	347.1
±			6.8	347.1
1/4			7.4	346.5
Gut			8.0	345.9
Top Ccb			7.30	346.63
W.L.			8.0	345.9
4+75 W.L.			6.7	347.2

	+	π 353.93	-	E/e
Ccb			6.47	347.46
Gut			7.2	346.7
1/4			6.7	347.2
±			6.3	347.6
1/4			6.6	347.3
Gut			6.8	347.1
Ccb			5.82	348.11
E.L. ground end of stone wall (see sketch)			4.8	348.1
500 E.L.			5.3	348.6
Ccb			5.42	348.51
Gut			6.3	347.6
1/4			6.2	347.7
±			5.8	348.1
1/4			6.1	347.8
Gut			6.7	347.2
Ccb			5.72	348.21
W.L.			6.2	347.7
5+25 W.L.			5.8	348.1
Ccb			5.59	348.34
Gut			6.5	347.4
1/4			5.9	348.0
±			5.6	348.3
1/4			5.8	348.1
Gut			6.1	347.8
Ccb			5.40	348.53
E.L.			5.2	348.7

5470 E.L.	5.3	348.6
Ccb	5.37	348.56
Gut	6.2	347.7
1/4	5.7	348.2
E	5.5	348.4
1/4	6.0	347.9
Gut	6.6	347.3
Ccb	5.66	348.27
W.L.	5.7	348.7
5475 W.L.	5.3	348.6
Ccb	5.71	348.22
Gut	6.7	347.2
1/4	6.1	347.8
E	5.8	348.1
1/4	6.0	347.9
Gut	6.6	347.3
Ccb	5.18	348.35
E.L.	5.6	348.3
6+002 = S.L. Trojan Ave 60' wide! All curd returns in:		
E.L.	5.8	348.1
Ccb	5.72	348.21
Gut	6.6	347.3
1/4	6.5	347.4
E	6.3	347.6
1/4	6.0	347.4
Gut	6.7	347.2

Ccb	5.66	348.27
W.L.	6.00	347.93 Hub. N. Cor Estrella and Trojan.
S. Cb Line of Trojan Ave:		
Top Ccb W.L.	6.30	347.63
Cor Cb center return	5.92	348.01
Gut	7.0	346.9
1/4	6.9	347.0
E	6.9	347.0
1/4	6.8	347.1
Gut	6.6	347.3
Cor Cb center return	5.82	348.11
E.L. Top Ccb	5.92	348.01
South Gutter line:		
E.L.	6.8	347.1
Cb	7.0	346.9
1/4	6.9	347.0
E	6.9	347.0
1/4	6.9	347.0
Cb	7.2	346.7
W.L.	7.5	346.4
S 1/4		
W.L.	7.2	346.7
Cd	6.9	347.0
1/4	6.9	347.0
E	6.9	347.0
1/4	6.8	347.1
Cb	6.8	347.1

+ T 353.93 - Ele. Estrella.

E.U.	6.6	347.3
+ Trojan Arc:		
E.U.	6.4	347.5
cb	6.7	347.2
1/4	6.8	347.1
±	6.9	347.0
1/4	7.0	346.9
cb	7.1	346.8
W.U.	7.2	346.6

N 1/4

W.U.	7.9	346.0
cb	7.6	346.3
1/4	7.2	346.7
±	7.1	346.8
1/4	7.0	346.9
cb	7.0	346.9
E.L.	7.0	346.9

North Gutter Trojan Arc

E.U.	7.1	346.8
cb	7.4	346.5
1/4	7.1	346.8
±	7.1	346.8
1/4	7.4	346.5
cb	7.4	346.5
W.U.	8.0	345.9

North Curd Trojan Arc:

+ T 353.93 - Ele. 16

Top Con Curd W.U.	7.30	346.63
Con curb cen of return:	7.32	346.61
Gutter	7.4	346.5
1/4	7.4	346.5
±	7.1	346.8
1/4	7.1	346.8
Gut	7.4	346.5
Con curb cen of return	6.79	347.14
" " E.U.	6.75	347.18

Mc Trojan Ave = 0+00

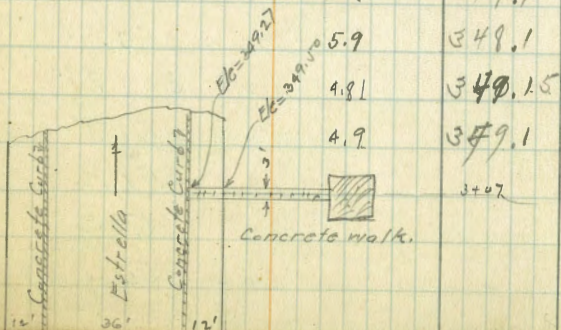
E.U.	6.7	347.2
Cb	6.70	347.23
Gut	7.2	346.7
1/4	7.2	346.7
±	7.2	346.7
1/4	7.3	346.6
Gut	7.5	346.4
Cb	7.34	346.59
W.U.	7.8	346.1

Note: Concrete Curds all in in this Blk 12 from P.U.

0+00 W.U.	7.4	346.5
Cb	6.92	347.01
Gutter	7.2	346.7
1/4	7.1	346.8
±	7.0	346.9
1/4	7.0	346.9

	+	π	-	E/c	Estrella
Gut				7.3	346.6
Ccb				6.53	347.40
E.L.				6.5	347.4
1400 E.L.				6.2	347.7
Ccb				6.17	347.76
Gut				6.8	347.1
1/4				6.7	347.2
⊕				6.4	347.5
1/4				6.9	347.0
Gut				7.3	346.6
Ccb.				6.44	347.49
W.L.				6.3	347.6
#	6.41	343.96		6.38	347.55
1450 W.L.				5.9	348.1
Ccb				6.08	347.88
Gut				7.2	346.8
1/4				6.3	347.7
⊕				6.0	348.0
1/4				6.4	347.6
Gut				6.8	347.2
Ccb				5.82	348.14
E.L.				5.7	348.3
2100 E.L.				5.2	348.6
Ccb				5.48	348.48
Gut				6.2	347.8
1/4				5.9	348.1

	+	π	-	E/c
⊕				5.6
1/4				5.9
Gut				6.6
Ccb				5.72
W.L.				5.6
2100 W.L.				5.3
Ccb				5.36
Gut				6.4
1/4				5.6
⊕				5.3
1/4				5.6
Gut				6.0
Ccb				5.16
E.L.				5.4
3700 E.L.				4.7
Ccb				4.75
Gut				5.5
1/4				5.0
⊕				4.8
1/4				4.9
Gut				5.9
Ccb				4.81
W.L.				4.9



+

π
35396

-

E/e

Estrella.

3+50 W.L.	4.4	349.6
Ceb	4.38	349.58
Gut	5.2	348.8
1/4	4.7	349.3
⊕	4.6	349.4
1/4	4.8	349.2
Gut	5.0	349.0
Ceb	4.41	349.55
E.L.	4.6	349.4
4+00 E.L.	4.1	349.9
Ceb	4.00	349.96
Gut	3.9	350.1
1/4	4.1	349.9
⊕	4.2	349.8
1/4	4.1	349.9
Gut	4.6	349.4
Ceb	4.04	349.92
W.L.	4.3	349.7

4+2795 on the West = S.L. El Cajon Ave. Rt 4

W.L.	3.9	350.1
Ceb	3.72	350.24
Gut	4.2	349.8
1/4	3.9	350.1
⊕	3.8	350.2
1/4	3.8	350.2
Gut	3.9	350.1

+

π
35396

-

E/e

18

Ceb	3.76	350.20
E.L.	3.8	350.2
4+2795 West = S.L. El Cajon Ave; Diagonal Sec. 4+3841 East		
E.L.	3.4	350.6
Ceb	3.72	350.24
Gut	3.8	350.2
1/4	3.6	350.4
⊕	3.8	350.2
1/4	3.6	350.4
Gut	4.0	350.0
Ceb	3.72	350.24
W.L.	3.8	350.2

6.78 358.58

35180
2.16 = lower datt in parter pote
N° 4849#
1.52
357.00 = 357.00 B.P.
S.E. 49th El Cajon.

Bliss
Isabel M.
Horgan
1/18/27

X Sections Wilson Ave from South Propline
of Landis to S line of North

+ 336.10 Elev 80.5 ft
14' obs
13' obs

+

336.10 Elev
36' South

19

S Line of Landis on Paving

10'	3.4	332.7	+5	5.2	330.9
Torch	3.62	332.48	+11	4.9	331.2
Gutter	4.33	331.77	+12	4.5	331.6
1/4	3.71	332.39	cb	5.2	330.9
1/2	3.47	332.63	+1	6.4	329.7
1/4	3.60	332.50	+2	6.3	329.8
Gutter	4.10	332.00	+3	5.1	331.0
Torch	3.50	332.60	+6	4.4	331.7
W	3.3	332.80	1/4	4.7	331.4

Plotted. 4-14-28.
C.P.H.

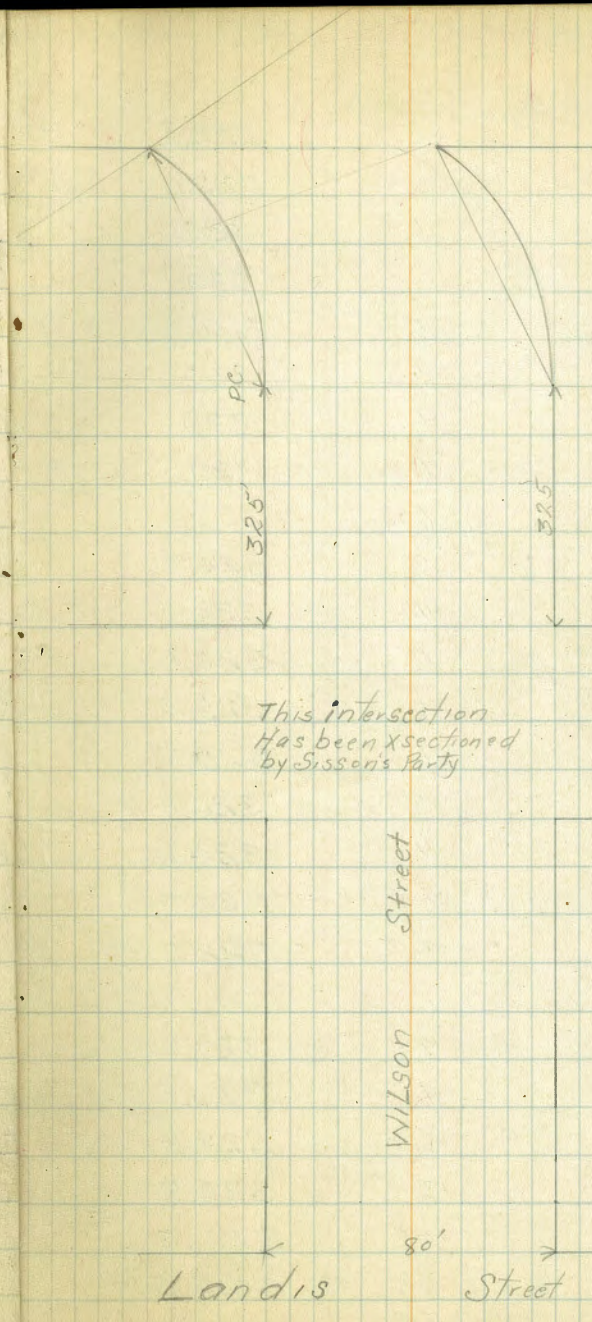
17' South

W	3.5	332.6	+4	4.6	331.5
cb	3.5	332.6	+6	4.4	331.7
+1	4.3	331.8	+9	4.8	331.3
+3	3.7	332.4	+12	5.1	331.0
1/4	3.6	332.5	cb	4.7	331.4
1/2	3.5	332.6	W	4.6	331.5

58' South

1/4	3.4	332.7	W	5.5	330.6
+9	3.9	332.2	+12	5.4	330.7
+10	4.9	331.2	cb	6.0	330.1
+12	5.0	331.1	+2	6.1	330.0
cb	4.3	331.8	+5	5.5	330.6
+2	3.6	332.5	1/4	5.3	330.8
+13	2.7	332.4	1/2	5.3	330.8
E	4.3	331.8	1/4	5.6	330.5

	+	-	Elev
	336.10		
	58' South		
+7		5.8	330.3
+11		6.3	329.8
+15		7.4	328.7
cb.		7.9	328.7
+0.5		6.9	329.7
+2		5.7	330.4
+12		5.9	330.2
E		6.6	329.5
	64' South		
E		7.2	328.9
+12		6.6	329.5
+12		6.1	330.0
cb.		7.0	329.1
+0.5		8.1	328.0
+2		8.0	328.1
+2.5		6.7	329.4
+6		6.0	330.1
+1/4		5.9	330.2
+1/4		5.6	330.5
+1/4		5.6	330.5
+10		5.9	330.2
cb		6.3	329.8
+2		5.8	330.3
+ N. line on Walk 2.5 inst		5.57	330.53
	69' South		
W		5.8	330.3



	+	336.10	-	Elev
		69		
+1		58		330.3
cb.		65		329.6
+2		65		329.6
+9		60		330.1
1/4		59		330.2
2		59		330.2
1/4		60		329.4 330.1
+8		62		329.9
+10		68		329.3
+11		98		326.3
+12		11.6		324.5
cb.		10.1		326.0
+3		67		329.4
+7		72		328.9
+9		92		326.9
E		11.3		324.8
E+6		11.9		324.7
E+10		7.9		328.2
		75' South		
E-10		9.1		327.0
E-8		9.8		326.3
E-6		12.3		323.8
E		13.8		322.3
+5		10.9		325.7
+8		7.7		328.4
+10		7.5		328.6

	+	336.10	-	Elev
		75' South		
+12		12.6		323.5
cb.		12.7		323.4
+2		12.1		324.0
+4		6.7		329.4
1/4		6.2		329.9
2		6.2		329.9
1/4		6.3		329.8
+11		6.6		329.5
cb.		6.9		329.2
+2		6.2		329.9
W		6.2		329.9
		87' South		
W		6.9		329.2
+12		7.0		329.1
cb.		7.4		328.7
+3		6.9		329.2
1/4		7.0		329.1
2		6.7		329.4
1/4		6.7		329.4
+8		7.0		329.1
+10		13.5		322.6
cb.		15.7		320.4
+10		16.4		319.7
+11		13.7		322.4
E		15.8		320.3
E+2		19.0		317.1

+

336.10

L10-

875

+5	18.5	317.6
+7	18.0	318.1
+10	13.5	322.6
+17	11.0	325.1
100' South		
E-2)	19.5	316.6
E-21	18.0	318.1
E-16	24.0	312.1
E-13	24.0	312.1
E-5	19.7	316.4
E	22.5	313.6
E+8	21.5	314.6
cb	15.9	320.2
+3	13.3	322.8
+10	7.6	328.5
1/4	7.1	329.0
E	7.1	329.0
1/4	7.1	329.0
+9	7.5	328.6
cb	8.3	327.8
+5	7.1	329.0
W	7.4	328.7
113 South		
W	8.1	328.0
cb	7.8	328.3
+5	9.1	327.0

+

336.10

Eley

126

+10	7.8	328.3
1/4	8.0	328.1
E	7.6	328.5
+7	7.5	328.6
1/4	9.5	326.6
cb	18.3	317.8
+7	21.5	314.6
+8	25.0	311.1
E	26.8	309.3
E+8	30.0	306.1
E+10	25.0	311.1
E+25	30.0	306.1
126 South		
E-35	33.5	302.6
E-25	31.0	305.1
E	29.5	306.6
E+6	28.0	308.1
E+7	26.5	309.6
cb	23.0	313.1
+7	18.1	318.0
1/4	14.9	321.2
E	11.2	325.9
+4	10.6	325.5
+10'	12.6	323.5
1/4	12.5	323.6
+7	9.9	326.7

324.9

	+	33610	Klev		+	33610	Elev	
cb.		1 1/2' So	8.6	327.5	W	142' South	10.3	325.8
W			8.9	327.2	T.P.	1.99	325.31	323.32
		136' South ✓				150' South ✓		
W			9.8	326.3	W-10		1.0	324.3
+11			9.2	326.9	W		3.9	321.4
cb.			10.1	326.0	+5		3.4	321.9
+8			11.4	324.7	+10		4.6	320.7
1/4			15.8	320.3	+12		7.1	318.2
+5			18.6	317.5	cb.		8.5	316.8
R			16.5	319.6	+4		8.8	316.5
1/4			21.3	314.8	+6		7.3	318.0
cb.			26.8	309.3	1/4		9.3	316.0
E			32.0	304.1	+8		12.2	313.1
E+26			34.4	301.7	+11		12.1	313.2
		192' South ✓			R		14.9	310.4
E-25			35.5	300.6	1/4		17.3	308.0
E			33.2	302.9	+1		16.3	309.0
cb.			29.5	306.6	+8		19.6	305.7
1/4			24.4	311.7	+10		21.8	303.5
+11			20.3	315.8	cb.		23.0	302.3
R			21.5	314.6	E		24.8	300.5
+8			22.0	314.1	E+24		26.5	298.8
1/4			15.7	320.4	E+26		24.5	300.8
+8			13.5	322.6	E+30		22.5	302.8
cb.			14.6	321.5		158' South		
+9			11.0	325.1	E-23		24.5	300.8

	+	325.31	-	Elev
E-18		156	27.5	297.8
E-12			27.0	298.3
E			26.5	298.8
cb			22.5	302.8
1/4			21.2	304.1
+3			20.6	304.7
+8			16.5	308.8
E			15.7	309.6
1/4			13.5	311.8
+7			12.3	313.0
cb			13.5	311.8
+9			10.3	315.0
W			8.1	317.2
W+15			4.0	321.3
T.P.	174	325.06	1.99	323.32
		160' South		
W-20			4.3	320.8
W			8.3	316.8
+7			9.0	316.1
+11			10.3	314.8
+12			12.3	312.8
cb			13.2	311.9
+7			11.5	313.6
1/4			13.2	311.9
+9			15.0	310.1
⊙			16.1	309.0

	+	325.06	-	Elev
				160' South
				16.9
				17.1
				18.0
				22.9
				23.6
				25.2
				28.0
				29.7
				27.2
				171' South
				26.9
				28.2
				29.1
				28.9
				25.6
				22.4
				21.6
				20.2
				20.6
				20.1
				20.9
				20.6
				19.6
				16.5
				10.5

	+	X 325.06	-	Elev	
TP	1.15	313.29	12.92	312.14	
			189' South ✓		
W-20			10.8	302.5	
W			14.6	298.7	
TP	5.43	305.65	13.07	300.22	
+4			7.8	297.9	
+7			8.8	296.9	
cb			8.9	296.8 297.3	
+4			9.5	296.2	
1/4			9.5	296.2	
+6			8.5	297.2	
2			8.1	297.6	
1/4			7.8	297.9	
+2			8.0	297.7	
+7			9.1	296.6	
cb			9.3	296.4	
E			9.0	296.7	
E+9			9.0	296.7	
E+16			5.7	299.0 300	
		200' South ✓			
E-20		(200)	2.1	303.6	
E+8			8.2	297.5	
E			9.0	296.7	
C			9.4	295.3 296.3	
1/4			10.1	295.6	
2			10.8	294.9	

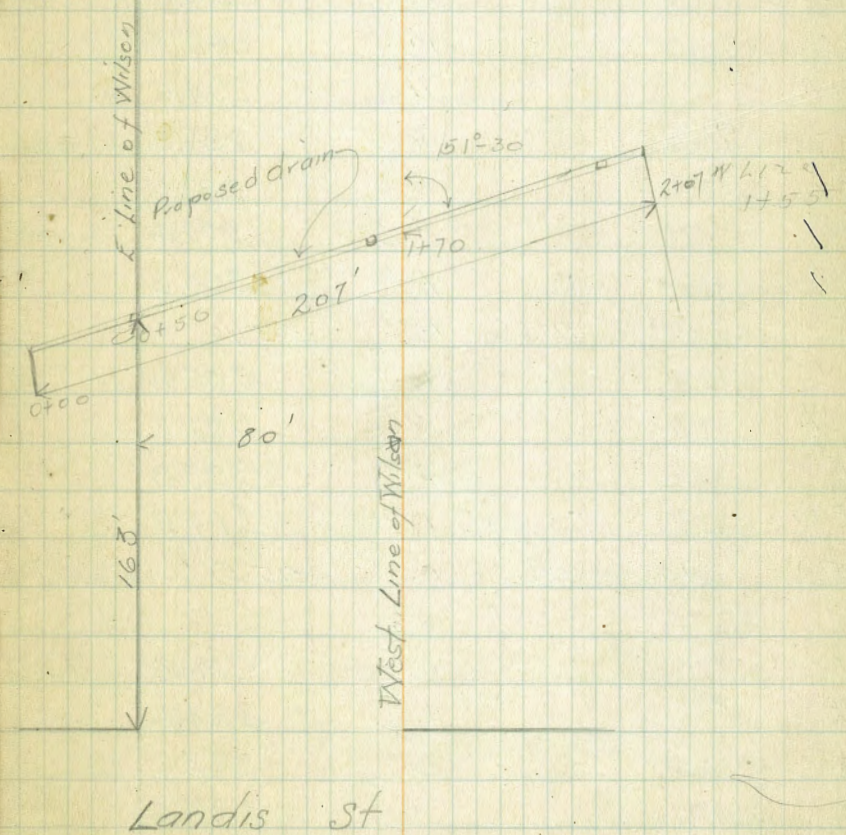
	+	X 305.65	-	Elev	
1/4			11.9	294.3	
cb			12.0	293.7	
W			12.3	293.4	
W+20			11.4	294.3	
W+40			4.9	301.3	
		210' South			
W-40			8.8	296.9	
W-20			14.0	291.7	
W-12			7.3	291.9	
W			13.1	292.6	
cb			13.0	292.7	
1/4			11.6	294.1	
2			11.0	294.7	
1/4			10.4	295.3	
cb			10.3	295.4	
+9			7.9	297.8	
E			7.0	298.7	
E+15			1.5	294.2 304.2	
		217' South			
E-15			-5.0	300.7 310.7	
E			2.0	303.7	
cb			7.3	298.4	
1/4			9.9	295.8	
2			10.7	295.0	
1/4			10.9	294.8	
cb			11.3	294.4	
W			13.1	292.6 ✓	

For Drain

Sketch of Proposed drain

56

	+	x	-	Elev	TR. Verified
	0.56	300.78		300.22	
0+00			0.2	300.6	
0+25			2.3	298.5	
0+50	E Line		3.5	297.3	
0+65			3.9	297.4	
0+78			4.3	296.5	
1+18			6.6	294.2	
1+37			5.3	295.5	
1+55	W. Line		7.1	293.7	
1+79			10.4	290.4	
2+07			14.9	285.9	



	+	T 305.65 (2+17 So. Con)	-	Elev
W+20			15.1	290.6
W+30			15.2	290.5
W+90			12.0	293.7
		231 South ✓		
W+0			16.3	289.4
W-20			15.7	290.0
W			12.3	292.4 293.4
+7			11.1	294.6
+12			9.5	295.2 296.2
cb			8.6	297.1
1/4			9.3	300.4 301.4
1/2			1.1	304.6
T.P	11.96	315.86	1.75	303.90
1/4			10.7	305.2
cb			8.7	307.2
K			6.1	309.8
E+15			1.9	314.0
T.P	10.86	326.36	0.36	315.50
		254' South ✓		
E-15			0.2	326.2
K			1.8	324.6
+5			3.4	323.0
+7			3.8	322.6
+9			5.1	321.3
cb			5.8	320.6
+4			6.5	319.9

	+	T 326.36	-	Elev
		254' South		
		8.8		317.6
		13.2		313.2
		18.0		308.4
		22.3		304.1
		29.5		301.9
		36.6	W+18	290.4
		41.5	W+90	284.9
		266' South		
		42.0	W+43	284.4
		39.0	W+30	287.4
		27.0	W	299.4
		20.5	cb	305.9
		15.5	1/4	310.9
		9.9	1/2	316.5
		5.7	+10	320.7
		4.9	1/4	321.5
		2.1	cb	324.3
		0.43	T.P 5.48	325.93
		5.0	K	326.4
		4.2	E+15	327.2
		300' South		
		4.6	K	326.8
		5.1	cb	326.3
		5.8	1/4	325.6
		7.1	1/2	324.3
		9.6	1/4	321.8

	+	331.41	-	Elev
		200 So		
+6		11.1		320.3
cb		13.5		317.9
W		19.1		312.3
W+20		28.2		303.2
W+90		42.0		289.4
		32.5 South		
W-30		29.0		307.4
W-15		18.2		313.2
W		12.8		318.6
+9		9.6		321.8
cb		8.6		322.8
1/4		7.2		324.2
E		6.4		325.0
1/4		5.8		325.6
cb		5.0		326.4
E		4.6		326.8
		350 South		
E		4.7		326.7
cb		5.1		326.3
1/4		5.6		325.8
E		6.5		324.9
1/4		7.2		324.2
cb		8.2		323.2
+7		9.1		322.3
W		10.7		320.7
W+10		13.2		318.2

	+	331.41	-	Elev
W+20		18.4		313.0
		375 South		
W-20		13.3		318.1
W		9.7		321.7
cb		8.6		322.8
1/4		7.5		323.9
E		6.6		324.8
cb 1/4		6.1		325.3
cb		5.3		326.1
E		4.9		326.5
		425 South		
E		5.0		326.4
cb		5.5		325.9
1/4		6.2		325.2
E		7.0		324.4
1/4		7.8		323.6
+4		9.0		323.4
cb		9.0		322.4
W		9.3		322.1
W+8.9 House in floor		9.25		322.16
T.P. 5.90		329.13	8.18	323.23
W-10		7.8		321.3
W		6.6		322.5
cb		6.1		323.0
1/4		5.9		323.7
E		4.6		324.5

what x

	+	7 329.13	-	Elev
1/4			3.9	325.2
cb			3.4	325.7
E			2.9	326.2
			475' South	
E			3.1	326.0
cb			3.5	325.6
1/4			4.0	325.1
♀			4.4	324.7
1/4			4.8	324.3
cb			5.6	323.5
W			6.2	322.9
W-10			7.2	321.9
			500' South	
W-10			6.4	322.7
W			5.7	323.4
cb			5.3	323.8
1/4			4.8	324.3
♀			4.1	325.0
1/4			3.8	325.3
cb			3.6	325.5
E			3.2	325.9
			⑤ 450' South	
E			3.8	325.3
cb			4.0	325.1
1/4			4.3	324.8
♀			4.7	324.4

	+	7 329.13	-	Elev
1/4			4.7	324.4
cb			5.2	323.9
W			5.2	323.9
			575' Walk on West	
WALK on line			5.45	323.68
			600' South N Line Delight	
W			5.4	323.7
cb			5.5	323.6
1/4			5.7	323.9
♀			5.2	323.9
1/4			4.9	324.2
cb			4.7	324.4
E			4.6	324.5
			S. line of	
E			6.0	323.1
cb			6.2	322.9
1/4			6.1	323.0
♀			6.0	323.1
1/4			5.9	323.2
cb			5.9	323.2
W			6.1	323.0
			50' South	
W			6.4	322.7
cb			6.4	322.7
1/4			6.4	322.7
♀			6.4	322.7

	T 329.13	Flev
1/4	6.6	322.5
cb	6.8	322.3
E	6.9	322.2
	100' South	
E	7.8	321.3
cb	7.8	321.3
1/4	7.5	321.6
E	7.5	321.6
1/4	7.6	321.5
cb	7.8	321.3
W	8.1	321.0
	150' South	
W	9.6	319.5
cb	9.3	319.8
1/4	9.1	320.0
E	8.8	320.3
1/4	8.6	320.5
cb	8.7	320.4
E	8.8	320.3
	200' South	
E	9.9	319.2
cb	9.8	319.3
1/4	10.0	319.1
E	10.1	319.0
1/4	10.4	318.7
cb	10.5	318.6

	T 329.13	Flev
W	10.9	318.2
T.P. 1.67	320.66	10.14
	250' South	
W-10	5.0	315.7
W	4.3	316.4
cb	3.6	317.1
1/4	3.2	317.5
E	2.8	317.9
1/4	2.6	318.1
cb	2.4	318.3
E	2.4	318.3
	275' South	
E	3.0	317.7
cb	3.3	317.4
1/4	3.5	317.2
E	4.0	316.7
1/4	4.4	316.3
cb	4.8	315.9
W	5.9	314.8
W+15	7.0	313.7
Walk on East 44 ²⁺⁸⁹ in street	3.08	317.58
Wall 2' wide start here	300' South	
W-15	9.3	310.4
W	8.0	312.7
cb	6.9	313.8
1/4	6.0	314.7

	32913	Elev
	320.66	
	300' South	
♀	5.4	315.3
1/4	4.6	316.1
cb.	4.1	316.6
E	3.9	316.8
# Notes up to PC are o.k curve will have to be rerun.		
	325' South PC 13°54' curve to left	
E	4.9	315.8
cb	5.3	315.4
1/4	5.8	314.9
E	6.5	314.2
1/4	7.8	312.9
cb.	8.7	312.0
W	10.1	310.6
W120	12.4	307.3
Sec B		
W-25	15.4	
W	12.4	
cb	10.8	
1/4	9.4	
♀	8.6	
1/4	7.4	
cb.	6.5	
E	6.0	
Sec C		
E	7.0	
cb.	7.8	
1/4	6.8	

	32913	Elev
	320.66	
♀	9.9	
1/4	11.3	
cb.	13.1	
W	15.2	
W+30	21.0	13
Sec D		
W-30	29.0	
W-20	26.4	
W	20.6	
cb.	17.0	
+11	13.4	
1/2	13.4	
+9	13.0	
+11	12.2	
♀	11.8	
1/4	10.5	
cb.	9.1	
E	8.1	
T.P.	1.60	311.88
		10.38
		310.285
Sec E		
E		0.3
cb.		1.8
1/4		2.9
+5		3.2
♀		6.4
+6		8.6

+

+
311.88 ✓

-

Elev

12

+9	10.0
1/4	10.9
+4	10.8
+7	12.3
cb	13.9
W	17.8
W+20	22.0
W+30	25.0

Section F

W+15	23.0
W	19.9
cb	17.0
+10	15.9
1/4	13.4
W	9.4
W	6.4
cb	3.4
1/4	3.1
cb	1.9

Section G

cb	3.2
E	3.8
cb	5.5
+4	6.5
1/4	10.1
cb	14.8
1/4	

+

+

-

Elev

32

cb	16.7
W	19.1
W+15	22.3

Set B.M. on pole S. side of Myrtle 9.43 307.45 ✓

Reserved for Wilson

Reserved for Wilson

23

Reserved for Wilson

Reserved for Wilson

34

Reserved for Wilson

Reserved for Wilson

35

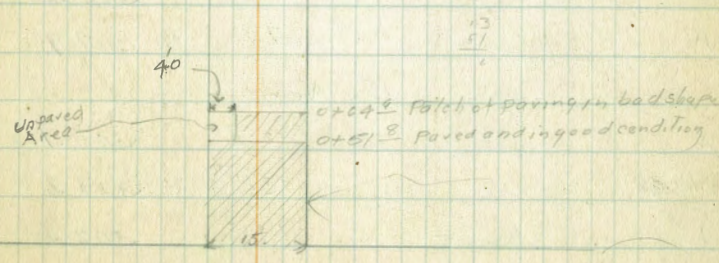
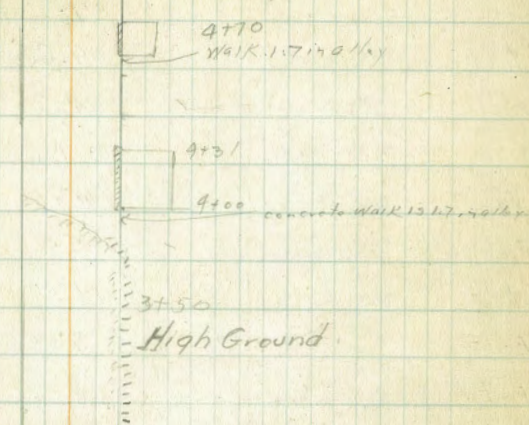
Bliss
 Isa bell
 Morgan
 11/10/17
 B.M. S.E.
 Redwood Dale

Ek - 15' Alley

Thorn ST

X Sections of Alley M. Gur Wells
 Addition between Redwood + Thorn
 Date + 30th Lot 8

T.P.	2.44	316.91	2.97	319.47
		51 ² North		
E			2.94	314.47
Q			2.39	314.52
W			2.25	314.66
		64 ² North		
W			2.4	314.5
W+Q			2.46	314.45
Q			2.50	314.41
E			2.96	314.45
		70 ² North		
E			2.6	314.3
Q			2.5	314.4
W			2.4	314.5
		85 ² North		
W			2.6	314.3
Q			2.9	314.0
E			3.0	313.9
		100 ² North		
E			3.5	313.4
Q			3.3	313.6
W			3.0	313.9
		115 ² North		
W			3.6	313.3
Q			3.7	313.2



Redwood

	+ 316.91	Elev
K	4.0	312.9
	135' North	
E	4.8	312.1
Q	4.6	312.3
W	4.3	312.6
	153' North	
W	5.5	311.4
+3	5.7	311.2
Q	6.3	310.6
E	7.4	309.5
E+1	8.0	308.9
E+15	9.5	307.4
	165' North	
E-15	14.7	302.2
E-1	11.2	305.7
K	10.4	306.5
Q	9.2	307.7
+4	7.1	309.8
W	7.6	309.9
	180' North	
W	12.8	304.1
W+5	13.1	303.8
W+9	14.3	302.6
Q	14.9	302.0
E-4	14.8	302.1
K	15.2	301.7

	+ 316.91	Elev
E+15	18.5	308.4
TP	2.67	317.65
	1.93	319.98
	350' North	
E	4.9	312.75
+3	5.9	311.75
Q	8.4	309.25
+9	8.9	308.75
W	10.9	306.75
W+10	15.5	302.15
	365' North	
W-10	11.6	306.05
W	7.6	310.05
+6	4.9	312.75
Q	4.7	312.95
+2.5	3.5	314.15
E	2.2	315.45
	378' North	
E	1.3	316.35
TP	6.83	321.81
	2.67	319.98
+6	5.4	316.4
Q	5.6	316.2
W	8.2	313.6
W+10	12.1	309.7
	900' North S. End scarp on East	
W-10	6.7	315.1
W	4.7	317.1

	+	321.81	-	K/lev
+3			4.9	317.8
♀			4.3	317.9
+6.2			4.7	317.11
+6.2	Edge of Garage lip		4.09	317.77
915 North End 3 car Garage on East				
E	1.7 in alley	11P	3.95	317.86
♀			4.2	317.6
W			4.9	317.4
W+2			9.5	317.3
W+10			5.4	316.4
931 N End 3 car Garage on East				
W+10			9.8	317.0
W			9.6	317.2
+9			9.5	317.3
+6			4.2	317.6
♀			9.1	317.7
+5.8	Edge of lip		3.96	317.85
E			3.96	317.85
942 N				
E			4.0	317.8
♀			4.2	317.6
W			4.5	317.3
952 North Step of House 1.4 in alley				
	on step		2.99	319.37
968 North Single Garage on West on ♀				
2.3	Back concrete floor		3.18	318.63

	+	321.81	-	K/lev
368 North				
W			3.7	318.1
♀			3.6	318.2
+			3.9	318.4
	Edge of Walk		3.16	318.65
470 North 3 car Garage on East				
	on Edge of lip	1.7 in alley	3.13	318.68
485 North				
	on lip		3.05	318.76
	Ground		3.1	318.7
♀			3.2	318.6
+			3.3	318.5
+3			3.5	318.3
W			3.9	318.4
500 North End 3 car Garage on East				
W			3.1	318.7
♀			3.1	318.7
+5.8	Walk		2.94	318.87
E			2.90	318.91
501 S. End 9 car Garage on East				
	E on floor		2.59	319.27
+			2.9	318.9
♀			3.1	318.7
W			3.0	318.8
510 North				
			2.7	319.1
			2.7	319.1

+ 7.0 Edge of lip 2.56 319.25
 on lip 2.99 319.35
 6.9 Back on floor 2.39 319.47
 6.9 Back on floor West 2.32 319.49
 W 2.3 319.5
 E 2.4 319.4
 E on lip 0.514 alley 2.39 319.42

548' North Walk on West

1.0 BACK 2.90 319.41

575' North

E 2.3 319.5
 E 2.3 319.5
 W 2.1 319.7

587' North

W 2.0 319.8
 E 2.1 319.7
 E 2.1 319.7

595' North

E 2.3 319.5
 E 2.3 319.5
 + 3.5 2.6 319.2
 W 2.1 319.7

660' North S. Line Thorn

on Paving
 Topch 2.66 319.15
 Gutter 2.76 319.05
 E 2.81 319.00
 Gutter 2.66 319.15
 E Torch 2.99 319.32
 TP 978 52410 2.49 319.32
 BM N.W. Thorn Dale 5.72 318.30 ✓

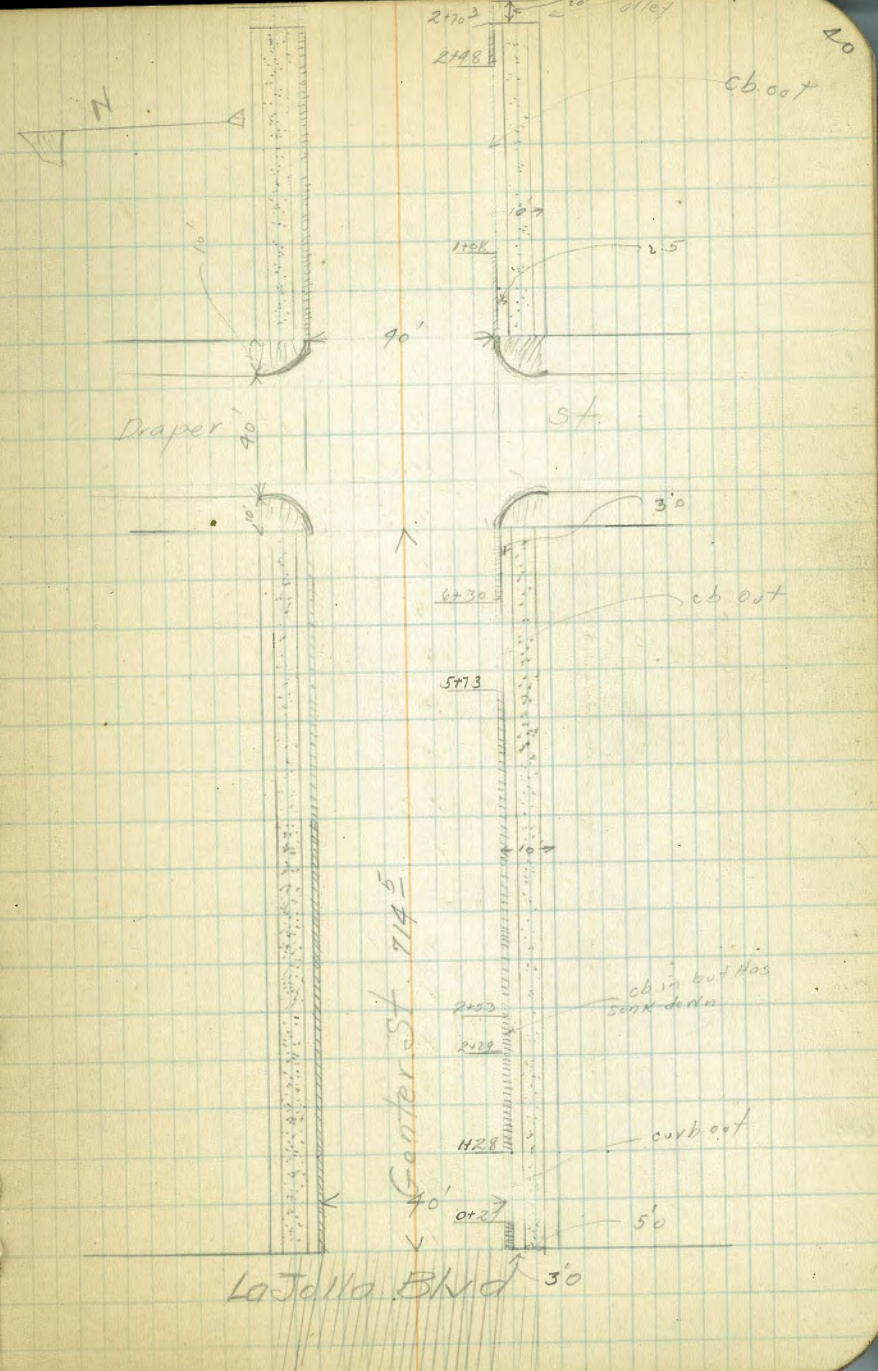
Bkss
Isobell
Morgan
Northern
11/1/17

X-Sections of Center St La Jolla
from the East line of La Jolla Blvd to the West line
of Gerard

	+	-	Elev
BM. N.E. La Jolla Blvd & Center	11.73	81.56	69.83
E. line of La Jolla Blvd on Pavina			
N		7.2	70.4
Top cb.		7.73	69.83
Gutter		12.35	69.21
1/4		12.23	69.33
φ		12.24	69.32
1/4		12.41	69.15
Gutter		12.79	68.77
Top cb.		12.12	69.44
S		11.8	69.8
27' East curb.			
S		10.7	70.9
Top cb.		11.00	70.56
Gutter		11.9	69.7
+		11.8	69.8
+3		11.9	70.1
1/4		11.1	70.4
φ		10.8	70.8
1/4		10.5	70.8
Gutter		11.2	70.4
Top cb.		10.53	71.03
N		10.3	71.3
75' East			
N		7.8	73.8

Cross Sectioned
&
Planimetered
S.P.B.H.

There must be a
Mistake in these
Elevations (L.S.M.)



	+	↑ 81.5.6	-	↑ Elev.
+2			8.2	73.4
Topcb			8.39	73.17
Gutter			9.3	72.3
1/4			8.8	72.8
1/4			9.2	72.4
+7			9.9	71.7
+8			10.6	71.0
cb.			10.2	71.4
+1			10.9	71.2
+2			9.1	72.5
+3	Edge of walk		8.89	72.67
8			8.8	72.8
		100' East		
S.			7.7	73.9
Edge			7.86	73.70
+8			8.2	73.4
+9			9.6	72.0
cb.			9.8	71.8
+2			9.9	71.7
+3			8.6	73.0
1/4			8.1	73.5
1/4			7.7	73.9
1/4			7.7	73.9
Gutter			7.9	73.7
Topcb.			7.32	74.24

	81.5.6	41
+8	7.2	74.4
N	7.9	73.7
	128' East	
N	5.8	75.8
Topcb.	6.15	75.41
Gutter	7.2	74.4
+1	6.9	74.7
1/4	6.5	75.1
1/4	6.5	75.1
1/4	6.9	74.7
+5	6.9	74.7
+8	8.1	73.5
Gutter	8.2	73.4
Topcb	6.82	74.74
S.	6.7	74.9
	175' East	
S.	9.6	77.0
Topcb.	9.84	76.72
Gutter	6.0	75.6
+2	6.4	75.2
+4	5.4	76.2
1/4	5.0	76.6
1/4	4.5	77.1
1/4	4.5	77.1
Gutter	4.7	76.9
Topcb	4.12	77.44

	+	-	Elev
	81.56		
N		3.7	77.9
N		2.9	78.7
	200' East		
N		2.9	78.7
Topcb		3.00	78.56
Gutter		3.8	77.8
1/4		3.9	78.2
k		3.5	78.1
1/4		4.0	77.6
+4		4.1	77.5
+6		4.9	76.7
+7		4.3	77.3
Gutter		4.3	77.3
topcb		3.83	77.73
S.		3.6	78.0
	229 East		
S		2.2	79.4
Topcb		2.70	78.86
Gutter		2.8	78.8
+3		3.4	78.2
+7		2.9	78.7
1/4		2.8	78.8
k		2.2	79.4
1/4		2.2	79.4
Gutter		2.6	79.0

	+	-	Elev
	81.56		
	229 East		
Topcb		1.78	79.78
N		1.6	80.0
	241 East		Break in cb on South
N		1.0	80.6
Top		1.9	80.37
Gutter		2.0	79.6
+2		2.3	79.3
+3		1.9	79.7
1/4		1.6	80.0
k		1.6	80.0
1/4		2.3	79.3
+8		2.3	79.3
Gutter		3.1	78.5
Topcb		2.45	79.11
S.		1.9	79.7
	253 East		
S		1.2	80.4
N. Edge walk		1.45	80.11
Topcb		1.83	79.73
Gutter		2.4	79.2
+2		2.5	79.1
+4		2.9	78.7
+4.5		2.1	79.5
1/4		1.7	79.9
k		1.1	80.5
1/4		1.1	80.5

	+	X 8/56	-	Elev
Gutter			1.7	79.9
Topcb			0.69	80.87
N			0.5	81.1
TP	12.27	93.19	0.69	80.92
		300' East		
N			10.0	83.2
TPCB			10.23	82.96
Gutter			11.3	81.9
+1			11.3	81.9
+2			10.9	82.3
1/4			10.5	82.7
E			10.6	82.6
1/4			10.7	83.0
+6.5			11.6	81.6
+7			12.7	80.5
Gutter			13.1	80.1
Topcb			11.21	81.98
Edge Walk +3			11.07	82.12
S			10.9	82.3
		350' East		
S			7.8	85.4
N-Edge Walk +7			8.19	85.00
Topcb			8.38	84.81
Gutter			8.7	84.5
+3			10.0	83.2
+5			9.0	84.2

	+	π 93.19	-	Elev
		350' East		
1/4			8.5	84.7
E			8.0	85.2
1/4			7.9	85.3
+8			8.3	84.9
+9			8.7	84.5
Gutter			8.7	84.5
Topcb			7.52	85.67
N			7.2	86.0
		374' East		
N			5.9	87.3
Topcb			6.22	87.07
Gutter			7.0	86.2
1/4			6.6	86.6
E			6.6	86.6
1/4			7.2	86.0
+5			7.6	85.6
+7			7.9	85.3
Gutter			7.4	85.8
Topcb			7.10	86.09
+3 Edge Walk			6.79	86.40
S			6.7	86.5
		400' East		
S			4.8	88.4
+7 on Driveway			5.26	87.93
cb			5.94	87.25
1/4			5.7	87.5

	+	X 93.19	-	Elev
G ₁ Q			5.2	88.0
Top 1/4			5.2	88.0
N & +7			5.7	87.5
TP Gutter			5.6	87.6
Topcb.			4.78	88.41
N			4.9	88.9
TP		450' East		
G ₁ N			1.6	91.6
+ Topcb.			1.97	91.22
+ Gutter			2.9	90.3
1/4			2.9	90.8
Q			2.3	90.9
1/4			2.7	90.5
+ +7			3.2	90.0
+7 Gutter			2.9	90.3
G Topcb.			2.90	90.79
Top +9			2.1	91.1
Ed S.			1.4	91.8
S I.P.	12.94	106.05	0.08	93.11
		500' East		
S S			11.3	94.8
N +2			12.0	94.1
Top Topcb			12.24	93.81
G Gutter			13.1	93.0
+ 1/4			12.5	93.6
+ Q			12.3	93.8

	+	X 106.05	-	Elev
1/4			12.9	93.7
Gutter			13.1	93.0
Topcb			12.07	93.98
N			11.7	94.4
		556' East		
N			9.0	97.1
Topcb			9.31	96.74
Gutter			10.4	95.7
+2			9.9	96.2
1/4			9.6	96.5
Q			9.9	96.7
1/4			9.6	96.5
+7			9.9	96.2
+7.5			10.2	95.9
Gutter			10.3	95.8
Topcb			9.95	96.60
+9			8.6	97.5
S			7.3	97.8
		578' East		
S			6.7	99.4
+2			7.6	98.5
+7. Edge walk			7.89	98.16
Topcb			8.21	97.84
Gutter			9.9	96.7
+1			9.7	96.4
+2			9.3	96.8

	+	-	Elev
	106.05		
+3		8.5	97.6
1/4		8.3	97.8
2		8.1	98.0
1/4		8.3	97.8
Gutter		8.7	97.4
Topcb		8.06	97.99
N		7.8	98.3
		583' East	
N		7.0	99.1
Topcb		7.46	98.59
Gutter		8.2	97.9
1/4		7.7	98.4
2		7.5	98.6
1/4		7.7	98.4
+7		7.9	98.2
+8		7.9	96.7
Gutter		9.2	97.1
Topcb. sunk		8.99	97.11
+1.5		7.9	98.7
+3 Edge of walk		7.37	98.68
+8		7.2	98.9
S		6.3	99.8
		600' East	
S		5.9	100.7
+2		6.1	100.0
+7. Edge walk		6.31	99.64

	+	-	Elev
	106.05		
+9		6.3	99.8
Topcb		6.85	99.20
Gutter		7.9	98.2
+2		8.1	98.0
+3		7.0	99.1
1/4		6.7	99.4
2		6.5	99.6
1/4		6.1	100.0
+7		7.2	98.9
Gutter		6.9	99.2
Topcb		6.98	99.67
N		6.2	99.9
		630' East curb out there	
N		4.5	101.6
Topcb		4.78	101.27
Gutter		5.2	100.9
1/4		5.0	101.1
2		4.8	101.3
1/4		5.0	101.1
+6		5.2	100.9
+6.5		6.0	100.1
Gutter		6.0	100.1
Topcb		4.68	101.37
+3 Edge walk		4.58	101.47
S		4.5	101.6

+
T
106.05-
R/ov

670' East

S.	1.8	104.3
+7 Edge Walk	2.22	103.73
Topcb.	2.38	103.67
Gutter	3.8	102.3
+2	3.8	102.3
+3	2.5	103.6
1/4	2.6	103.5
2	2.6	103.5
1/4	2.8	103.3
Gutter	3.1	103.0
Topcb.	2.59	103.46
N	2.2	103.9

693' East

N	1.1	105.0
Topcb	1.27	104.78
Gutter	1.9	104.2
1/4	1.5	104.6
2	1.2	104.9
1/4	1.0	105.1
+7	1.2	104.9
+8	2.1	104.0
Gutter	2.5	103.6
Topcb	1.09	105.01
S. Edge Walk	0.75	105.30
S.	0.9	105.2
T.P.	12.89	116.85
	2.04	104.01

+
T
116.85-
E/ov

46

719' East. White Diaper

S.	10.0	106.9
Topcb.	10.42	106.43
Gutter	11.3	105.6
1/4	11.1	105.8
2	11.1	105.8
1/4	11.5	105.4
Gutter	11.8	105.1
Topcb.	10.87	105.98
N.	10.6	106.3
	11 cb.	
Topcb.	10.84	106.01
N	11.6	105.3
cb.	11.5	105.4
1/4	11.2	105.7
2	10.8	105.1
1/4	10.8	105.1
cb	11.1	105.8
S	11.1	105.8
Stopcb	10.27	106.58
	11 1/4	
S	10.5	106.4
cb.	10.7	106.2
1/4	10.7	106.2
2	10.7	106.2
1/4	11.0	105.9
cb.	11.2	105.7

	+	116.85	Elev
N		11.9	105.5
		E. Diaper + Gutter	
N		11.0	105.9
cb		11.0	105.9
1/4		10.7	106.2
1/4		10.4	106.5
cb		10.9	106.5
S		10.1	106.8
		East 1/4	
S		10.0	106.9
cb		10.1	106.9
1/4		10.2	106.7
1/4		10.1	106.8
cb		10.5	106.4
N		10.6	106.13
		10.7	106.12
		East cb	
Topcb.		9.78	107.07
N		10.6	106.3
cb		10.9	106.5
1/4		10.2	106.7
1/4		9.9	107.0
1/4		9.8	107.1
cb		9.9	107.0
S		9.9	107.0
Topcb		9.29	107.56

	+	116.85	Elev
		E Line of Diaper	
S		8.9	109.0
Topcb.		9.25	107.60
Gutter		9.7	107.2
1/4		9.6	107.3
1/4		9.5	107.4
1/4		9.8	107.1
Gutter		10.2	106.7
Topcb		9.79	107.11
N		9.5	107.4
T.P.	1219	121.32	7.72
		50' East of the East line of Diaper	
N		11.1	110.2
Topcb		11.71	109.61
Gutter		12.3	109.0
+3		12.6	108.7
1/4		11.9	109.4
1/4		11.7	109.6
1/4		11.8	109.5
Gutter		12.0	109.3
Topcb.		11.31	110.01
+3		11.6	109.7
S		10.8	110.5
		100' East	
S		8.5	112.6
+7		8.70	112.62
Topcb		8.74	112.58

*	X 121.32	-	Elev
Gutter		8.9	112.4
+6		9.5	111.8
1/4		9.3	112.0
2		9.2	112.1
1/4		9.5	111.8
+6		9.8	111.5
+7		10.5	110.8
+8		10.5	110.8
+9		9.8	111.5
Gutter		9.9	111.4
Topcb		9.2	112.10
N		8.8	112.5

108' East ^{cb out}

X		8.4	112.9
TopCb		8.81	112.51
Gutter		9.8	111.5
+3		10.0	111.3
+4		9.3	112.0
1/4		9.1	112.2
2		8.7	112.6
1/4		8.9	112.14
Gutter		8.6	112.7
Topcb		8.31	113.01
+2.5		8.28	113.04
S		8.0	113.3

*	X 121.32	-	Elev
S		5.9	115.9
+2		6.0	115.3
+7.5		6.09	115.23
cb		6.6	114.7
1/4		6.7	114.6
2		6.6	114.7
1/4		6.9	114.4
Gutter		7.2	114.1
Topcb		6.70	114.62
N		6.2	115.1

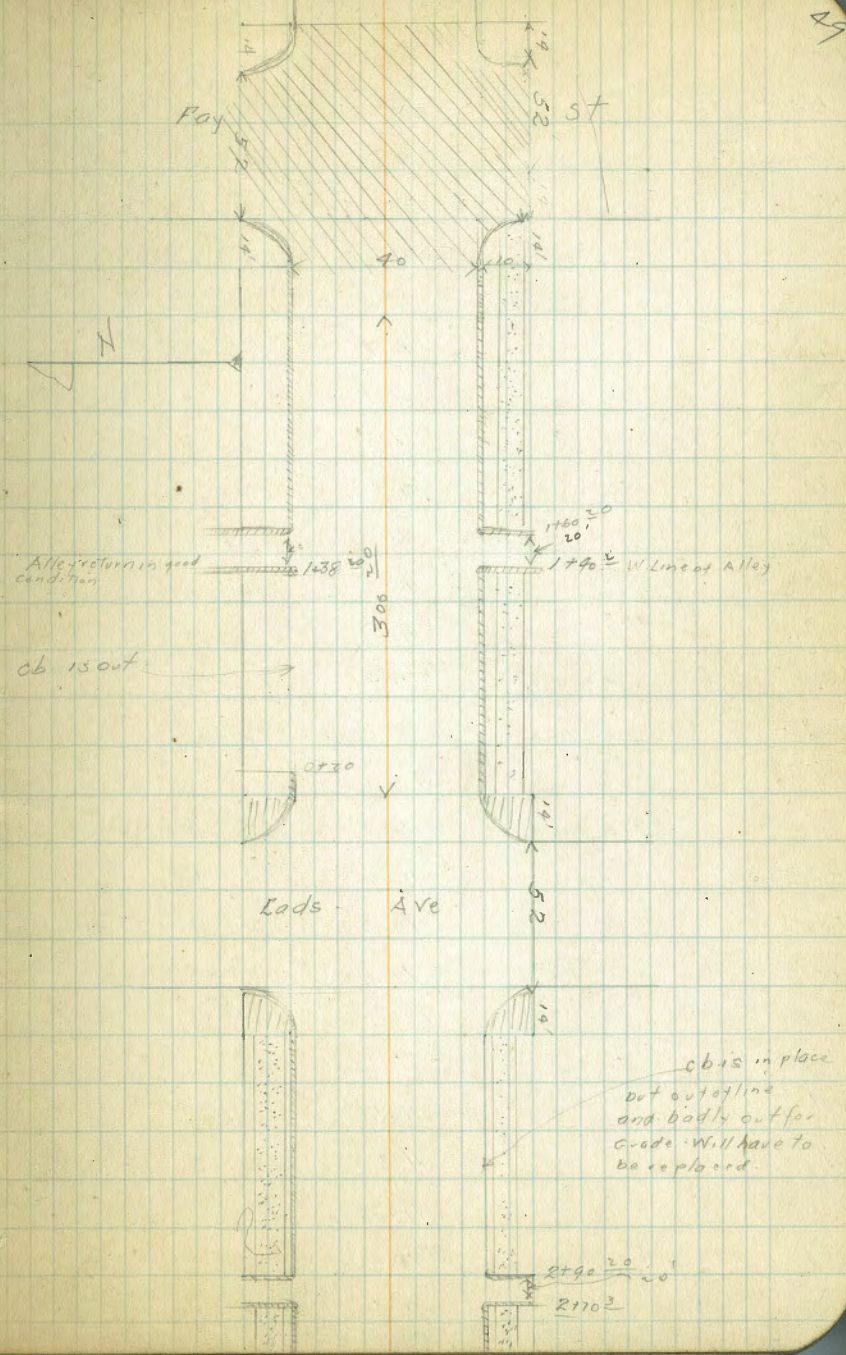
200' East

N		9.0	117.3
Topcb		9.15	117.17
Gutter		5.1	116.2
1/4		9.5	116.8
2		9.1	117.2
1/4		9.1	117.2
+5		9.3	117.0
cb		9.0	117.3
+2.5		3.59	117.73
S		3.2	118.1

248' East ^{cb in}

S		0.8	120.5
+7.5		1.03	120.29
Topcb		1.19	120.13
Gutter		1.3	120.0

		121.32	-	Elev
		298' East		
+5			1.9	119.4
1/4			1.7	119.6
2			1.7	119.6
1/4			2.1	119.2
Gutter			2.5	118.8
Topcb			6.9	119.63
N			1.7	119.6
TP	1205	13275	0.62	120.70
		268 ²		
N			12.0	120.8
Topcb			12.08	120.67
Gutter			12.8	120.0
1/4			12.5	120.3
2			12.2	120.6
1/4			12.2	120.6
+7			12.9	120.4
Gutter			12.0	120.8
Topcb			11.56	121.19
+2.5			11.90	121.35
S			7.3	125.5
		270 ²		
cbout			11.10	121.65
S			11.6	121.2
cb			12.3	120.5
1/4			12.1	120.7
2			12.1	120.7



	T 132.75	Elev
1/4	12.9	120.4
cb	12.8	120.0
N on ground	12.4	120.4
Topcb	11.86	120.89
290 ²⁰ E face Alley		
N Topcb	10.75	122.00
N	11.1	121.7
cb	11.8	121.0
1/4	11.4	121.4
2	11.1	121.7
1/4	11.1	121.7
cb	11.1	121.7
S	10.9	121.9
Topcb	10.17	122.51
292 ²⁰		
S	10.1	122.7
+7.5	10.27	122.48
Topcb	10.30	122.45
Gutter	10.6	122.1
+5	11.2	121.5
1/4	11.1	121.7
2	11.1	121.7
1/4	11.3	121.5
Gutter	11.7	121.1
cb	10.84	121.91
N	10.6	122.2

	T 132.75	Elev
307 ⁵⁰ East		
N	9.8	123.0
Topcb	10.12	122.63
Gutter	11.0	121.8
1/4	10.5	122.2
2	10.2	122.5
1/4	10.2	122.5
+8	10.0	122.8
Topcb	9.59	123.16
+2.5	9.47	123.28
S	9.3	123.5
350 East		
S	7.1	125.7
+7.5	7.36	125.39
Topcb	7.94	125.31
Gutter	7.9	124.9
1/4	8.0	124.8
2	8.1	124.7
1/4	8.3	124.5
Gutter	8.9	123.9
Topcb	7.93	124.82
N	7.7	125.1
400 East		
N	5.2	127.6
Topcb	5.44	127.31
Gutter	6.3	126.5

	+	132.75	-	Ele
1/4			5.7	127.1
¢			5.4	127.4
1/4			5.9	127.4
cb.			5.0	127.8
+2.5			9.80	127.95
S.			4.5	128.3
		432' East. W Line		Ends Ave
S			2.9	129.9
Topcb			3.23	129.52
Gutter			3.8	129.0
1/4			3.9	128.9
¢			3.9	128.9
1/4			4.1	128.7
Gutter			4.6	128.2
Topcb			3.78	129.97
N			3.7	129.1
		W. cb		
N. Topcb			3.72	129.03
N			4.5	128.3
cb.			4.3	128.5
1/4			3.8	129.0
¢			3.6	129.2
1/4			3.8	129.0
cb.			3.7	129.1
S.			3.5	129.3
S. Topcb			3.22	129.53

	+	132.75	-	Ele
				57
				W 1/4
			3.4	129.4
			3.8	129.0
			3.7	129.1
			3.5	129.3
			3.7	129.1
			9.0	128.8
			9.1	128.7
				¢. Ends + Center
			3.5	129.3
			3.8	129.0
			3.5	129.3
			3.4	129.4
			3.5	129.3
			3.5	129.3
			3.2	129.6
				E 1/4
			2.9	129.9
			3.3	129.5
			3.0	129.8
			3.2	129.6
			3.4	129.4
			3.5	129.3
			3.6	129.2
				E. cb.
			2.69	130.06
				Top cb. N

	+	X	-	Elev
		132.75		
N			3.6	129.2
cb			3.4	129.4
1/4			3.2	129.6
2			2.9	129.9
1/4			2.8	130.0
cb			2.8	130.0
S			2.9	129.9
S-Topcb			2.24	130.51
E Prop Line of Fods				
S			1.9	130.9
Topcb			2.20	130.55
Gutter			2.5	130.3
1/4			2.5	130.3
2			2.6	130.2
1/4			2.9	129.9
Gutter			3.1	129.7
Topcb			2.65	130.10
N			2.3	130.5
T.P.	10.70	142.69	0.76	131.99
20' East				
N			11.4	131.3
77.5 F			11.47	131.22
Topcb			11.65	131.04
Gutter			12.7	130.0
1/4			12.1	130.6
2			11.7	131.0

	+	X	-	Elev
		142.69		
1/4			11.8	130.9
Gutter			11.9	130.8
Topcb			11.22	131.47
S			11.0	131.7
50' East				
S			9.5	133.2
Topcb			9.69	133.00
Gutter			10.3	132.4
1/4			10.3	132.4
2			10.2	132.5
1/4			10.5	132.2
Gutter			11.2	131.5
Topcb			11.3	131.4
77.5			10.10	132.59
N			10.1	132.6
100' East				
N			7.8	134.9
77.5			7.78	134.71
79			8.0	134.7
cb			8.8	133.9
1/4			8.1	134.6
2			7.8	134.9
1/4			7.8	134.9
Gutter			7.9	134.8
Topcb			7.23	135.46
S			6.8	135.9

192.69 - Elev

138 ²⁰ East		
S	5.1	137.6
Topcb	5.94	137.25
Gutter	5.9	136.8
1/4	5.9	136.8
1/2	5.8	136.9
1/4	6.1	136.6
Gutter	6.6	136.1
Topcb	6.15	136.44
+2.5	6.05	136.64
N	6.0	136.7

140 ²⁰ White Alley		
N Topcb	5.79	136.90
N	5.9	136.8
cb	6.4	136.3
1/4	6.0	136.7
1/2	5.7	137.0
1/4	5.8	136.9
cb	5.7	137.0
S	4.7	138.0
Stopcb	5.10	137.59

160 ²⁰ East Line Alley		
S Topcb	4.03	138.66
S	4.0	138.7
cb	5.0	137.7
1/4	4.9	137.8
1/2	4.8	137.9

142.49 - Elev

160 ²⁰ E. Line of Alley		
1/4	5.0	137.7
cb	5.6	137.1
N	5.2	137.5
N Topcb	4.87	137.12

162 ²⁰		
N	4.6	138.1
+7.5	4.94	137.75
Topcb	5.02	137.67
Gutter	5.9	137.3
1/4	5.0	137.7
1/2	4.7	138.0
1/4	4.8	137.9
Gutter	4.8	137.9
Topcb	4.19	138.50
S	3.8	138.9

200' East		
S	2.0	140.7
Topcb	2.39	140.30
Gutter	2.8	139.9
1/4	3.1	139.6
1/2	3.2	139.5
1/4	3.3	139.4
Gutter	3.5	139.2
Topcb	3.33	139.36
+7.5	3.15	139.54
N	2.9	139.8

142.69

Elev.

Fay 80

250' East

N		0.7	142.0	
+75		0.82	141.87	
Topcb		0.95	141.74	
Gutter		1.9	141.3	
1/4		1.0	141.7	
2		0.7	142.0	
1/4		0.6	142.1	
Gutter		0.6	142.1	
T.P	13.08	159.99	0.78	141.91
Cb		12.22	142.77	
+8		12.0	143.0	
S		11.5	143.5	

300' W. line of Fay on Paving

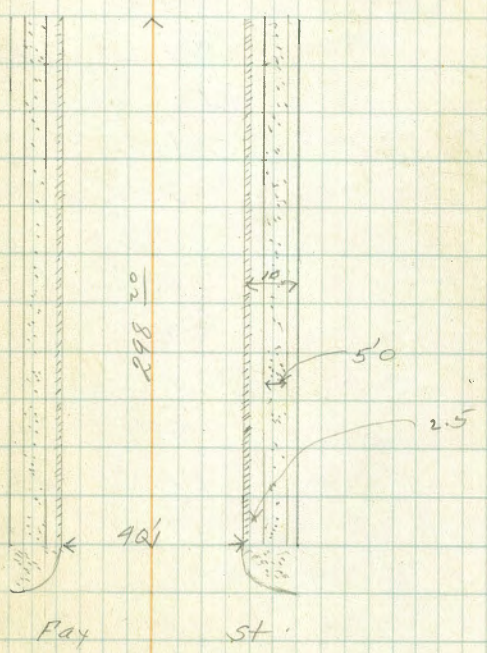
S		9.6	145.4
Topcb		9.81	145.18
Gutter		10.52	144.47
1/4		10.98	144.51
2		10.60	144.39
1/4		10.96	144.03
Gutter		11.94	143.55
Topcb		11.01	143.98
+25		10.91	144.08
N		10.8	144.2

E. line of Fay on Paving

N		9.0	146.0
+2		9.7	145.3

54

Sketch showing curb & sidewalk on Genter
 from the East Line of Fay to the W. Line of
 Gerard # all curb and walk are in and in
 Gerard St Good condition



+
15499

Elev

E. line of Foy on Parling

Topcb.	9.97	145.02
Gutter	10.37	144.62
1/4	9.87	145.12
1/2	9.55	145.44
3/4	9.50	145.49
Gutter	9.60	145.39
Topcb	9.02	145.97
S.	8.6	146.4

41' East

S	6.8	148.2
Topcb	7.01	147.98
Gutter	8.0	147.0
+1	8.2	146.8
+1.5	9.0	146.0
+3	9.2	145.8
+4	8.1	146.9
1/4	7.7	147.3
1/2	7.6	147.4
3/4	8.0	147.0
Gutter	9.1	145.9
Topcb	8.06	146.93
N	7.6	147.4

93' East

N	7.6	147.4
Topcb	7.99	147.00

15499

E5

Gutter	9.0	146.0
1/2	7.9	147.1
1/4	7.6	147.4
1/4	7.7	147.3
+8	8.0	147.0
+9	9.1	145.9
Gutter	8.9	146.1
Topcb	6.99	148.05
S.	6.7	148.3

66' East

S	5.7	149.3
Topcb	5.89	149.10
Gutter	8.3	146.7
+2	8.6	146.4
+3	6.9	148.1
1/4	6.6	148.4
1/2	6.4	148.6
3/4	7.0	148.0
Gutter	7.9	147.1
Topcb	6.79	148.20
N	6.5	148.5

69' East

N	6.2	148.8
Topcb	6.69	148.30
Gutter	7.6	147.4
1/4	6.8	148.2

159.99

Elev

d	6.3	148.7
To 1/4	6.4	148.6
Go +7	6.8	148.2
1/4 +8	7.3	147.7
1/4 +9	6.9	148.1
1/4 Gutter	6.9	148.1
Go Topcb.	5.75	149.24
To S	5.5	149.5
S	100' East	
S	4.0	151.0
S Topcb	4.29	150.70
To Gutter	5.2	149.8
Go 1/4	5.0	150.0
+ 1/4	4.8	150.2
+ 1/4	5.4	149.6
+ Gutter	6.2	148.8
+ Topcb.	5.29	149.70
1/4 N	5.0	150.0
1/4	150' East	
1/4 N	2.4	152.6
C+2	2.9	152.1
To Topcb	3.01	151.98
N Gutter	3.9	151.1
1/4	3.1	151.9
N 1/4	2.6	152.14
To 1/4	2.8	152.2

159.99

Elev

560

Gutter	3.2	151.8
Topcb	2.0	152.97
S	1.7	153.3
T.P.	7.15	141.62
	0.52	154.77
	200' East	
S	5.9	150.7
Topcb	6.39	155.23
Gutter	7.1	154.5
1/4	7.0	154.6
1/4	7.0	154.6
1/4	7.0	154.6
1/4	7.5	154.1
Gutter	8.1	153.5
Topcb.	7.32	154.50
N	7.0	154.6
	250' East	
N	4.7	156.9
Topcb.	4.26	156.66
Gutter	5.8	155.8
1/4	5.1	156.5
1/4	4.8	156.8
1/4	4.6	157.0
1/4	4.8	156.8
1/4	5.0	156.6
Gutter	4.7	156.9
Topcb.	4.01	157.61
S	3.6	158.0

161.62

Elev

298²⁰ East-West line of Gerard.

S.		1.8	159.8
Topcb		1.76	159.86
Gutter		2.7	158.9
1/4		2.8	158.8
1/2		2.5	159.1
3/4		2.7	158.9
Gutter		3.3	158.3
Topcb		2.75	158.87
N.		2.8	158.8
T.P	2.62	152.99	1125 150.37
BN SETOP Elev. of point Face Center		4.85	148.19

Cross Sectioned
for
Yardage.
11-21-27
& 13th

Planimetered

57

Bliss
Isabelle
Morgan
11/19/27

X Sections Alley. San Diego Land and Town
Subdivision Block 275. Between Woolman and
Harrison - Evans + Sampson 20' Alley.

B.M. B.P.N.E.
Evans + Woolman

	+	+	-	Elev	
	1.03	96.01		94.98	+6
					+8
					S
N. Top cb.			4.20	91.81	
+1			4.2	91.8	S
+5			5.3	90.7	+
0			5.4	90.6	+4
+5			5.6	90.4	+7
+8			5.0	91.0	+9
S Top cb.			4.76	91.25	0
			0.5' East		+2
S			4.7	91.3	+4
+1			4.7	91.3	+6
+5			5.5	90.5	N
+8			5.3	90.7	
0			5.0	91.0	N
+5			5.2	90.8	+5
+7			4.1	91.9	+7
N			3.0	93.0	0
			2.5' East		+2
N			2.0	94.0	+5
+5			4.4	91.6	S
+8			4.9	91.1	
0			4.6	91.4	S
+2			4.6	91.4	+4
+9			5.0	91.0	+8

96.01

Elev

58

	9.7	91.3
	9.0	92.0
	3.9	92.1
	3.5	92.5
	3.5	92.5
	4.6	91.4
	4.8	91.2
	4.5	91.5
	4.5	91.5
	4.7	91.3
	4.7	91.3
	3.3	92.7
	2.3	93.7
	2.3	93.7
	3.6	92.4
	4.7	91.3
	4.9	91.6
	4.9	91.6
	4.7	91.3
	4.3	91.7
	4.1	91.9
	4.5	91.5
	4.2	91.8

33' East

36' East

46' East

+

π
96.01

Elev

Q	4.3	91.7
+3	4.6	91.4
+5	4.2	91.8
N	2.4	93.6

48' East

N	3.1	92.9
+7	4.5	91.5
Q	4.2	91.8
+2	4.2	91.8
+6	4.5	91.5
S	4.0	92.0

61' East

S	3.7	92.3
+4	4.2	91.8
+7	4.1	91.9
+9	3.8	92.2
Q	3.8	92.2
+3	4.2	91.8
+9	4.3	91.7
+6	3.7	92.3
+7	3.0	93.0
N	2.8	93.2

65' East

N	3.7	92.3
+7	4.1	91.9
Q	3.7	92.3

873

59

+1	3.7	92.3
+6	4.1	91.9
S	3.9	92.1
T.P.	9.88	102.30

3.59 92.42
67 East Db Garage on South West End

3.2 Back Dirt floor 9.90 92.4

83 East E. End Db Garage on South

3.2 Back Dirt floor 9.95 92.35

100 East

S	9.1	93.2
+5	9.1	93.2
Q	9.1	93.2
+3	9.5	92.8
N	9.5	92.8

105 East Single Garage on South

0.2 Back Dirt floor in Q 8.5 93.8

123 East

N	8.0	94.3
+7	8.4	93.9
Q	8.1	94.2
+2	8.1	94.2
+3	8.5	93.8
S	7.6	94.9

145 East Single Garage on South

0.5 Back Dirt floor 6.3 96.2

S	6.3	96.2
+4	6.8	95.7

+ 102.30

£	7.0	95.3
+5	7.1	95.2
+7	6.9	95.9
N	6.2	96.1

153' East Db Garage on North W End

4.1 Back dirt floor	5.5	96.8
N	5.7	96.6
+6	6.4	95.9
£	6.9	95.9
+9	6.4	95.9
S	5.9	96.4

169' East. End db Garage on North

S	4.5	97.8
+6	5.0	97.3 ✓
+9	4.8	97.5
£	4.7	97.6
+1	4.8	97.5
+2	4.7	97.6
+4	5.0	97.3
+7	4.8	97.5
N	5.3	97.0

4.1 Back dirt floor 5.3 97.0

180' East

N	3.3	99.0
+2	3.6	98.7
+4	4.1	98.2 ✓

+ 102.30 Elev

60

+8	4.3	98.0
£	4.0	98.3
+3	4.3	98.0
S	3.8	98.5

200' East

S	2.8	98.5
+5	3.3	99.0
+8	3.2	99.1
£	3.0	99.3
+3	3.2	99.1
+6	3.1	99.2
N	2.5	99.8

206' East Db Garage on South W End

on lip 0.6 Back concrete 1.98 100.32

215' East

N	2.9	99.9
+6	2.8	99.5
£	2.5	99.8
+2	2.7	99.6
S	2.2	100.1 ✓

230' East end Db Garage on South

on lip 0.5 Back concrete 1.59 100.71

S	1.7	100.6
£	2.1	100.2
+9	2.9	99.9
N	2.0	100.3 ✓

+	X	-	Elev
	102.30		
	231' East Single Garage on North		
1.4 Back Dirt floor on	2.0		100.3
	232.5 Walk on South		
0.6 Back concrete	1.12		101.18
	234' East Db Garage on South W End		
0.6 Back concrete lip	1.08		101.22
	249' East E end Db Garage		
0.6 Back concrete lip	1.15		101.15
S	1.3		101.0
+7	1.8		100.5
♀	1.7		100.6
+4	1.8		100.5
+7	1.5		100.8
N	1.4		100.9
T.P	5.48	106.45	1.33 100.97
	254 Single Garage on North		
0.6 in alley	Dirt floor	5.5	100.95
	260 East W end Db Garage on North		
0.6 in alley concrete	5.32		101.13
	262' East Mn. Hole		
on rim	5.48		100.97
	275 East End Db Garage on North		
0.6 in alley concrete floor	5.25		101.20
N	5.2		101.2
+3	5.5		100.9
♀	5.3		101.1

+	X	-	Elev
	106.45		
	276 Single Garage on South		
1.0 Back Dirt floor on	5.5		100.9
	278' East West end 5 car Garage on North		
3.0 Back Dirt floor			
	292' East Single Garage on South		
on rim concrete lip	4.13		102.32
	300' East		
S	4.2		102.2
+4	4.9		101.5
+9 on rim of Mn Hole	4.95		101.50
♀	4.9		101.5
N	5.1		101.3
	310' East		
N	5.1		101.3
+5	5.2		101.2
♀	4.9		101.5
+5	4.0		101.5
S	4.5		101.9
	318' East Single Garage on South		
0.4 Back Dirt floor	4.5		101.9
	325 East End 5 car Garage on North		
3.0 Back Dirt floor	5.1		101.3
N	5.1		101.3
♀	5.0		101.4

	+	X	-	Elev
		106.45		
+3		5.1		101.3
+8		4.9		101.5
S.		4.2		102.2
		33' East Single Garage on North		
	0.4 Alley	Dirt floor	5.2	101.2
		35' East Dbl Garage on North W. End		
2.2	Back	5.8		100.6
N		5.8		100.6
♀		5.4		101.0
+6		5.3		101.1
+8		5.0		101.4
S.		4.8		101.6
		35.2' East W. end Dbl Garage on South		
4.4	Back	Dirt floor	9.8	101.6
		36.7' East E. end Dbl Garage on North		
S.		5.3		101.1
+8		5.9		100.5
♀		5.8		100.6
+2		5.9		100.5
+5		6.2		100.2
N		6.1		100.3
N+2.2	Dirt floor	5.8		100.6
		37.1' East E. end Dbl Garage on South		
4.4	Back	Dirt floor	4.8	101.6

	+	X	-	Elev
		106.45		
		400' East		
		6.5		99.9
		7.9		99.4
		6.6		99.8
		6.3		100.1
		6.6		99.8
		6.4		100.0
		6.0		100.4
		401' East W. end 5 car Garage on North		
	3.5	Back	Dirt floor	6.9
				99.5
		415' East		
		6.3		100.1
		6.9		99.5
		6.9		99.5
		6.6		99.8
		6.9		99.5
		7.3		99.1
		7.0		99.4
		424' East Single Garage on South		
	0.7	Back	Dirt floor	6.6
				99.8
		450' East E. end 5 car Garage on North		
	3.5	Back	Dirt floor	7.4
				99.0
		7.8		98.6
		8.2		98.2
		7.7		98.7
		7.5		98.9
		7.7		98.7

	+	T 106.95	-	Elev
+6			7.9	98.5
S			7.1	99.3
459 West End Dbl Garage on South				
3.2 Back Dirt floor			7.5	98.9
T.P	4.32	102.99	7.78	98.67
461 East 3 Car Garage on North West				
3.2 Back Dirt floor			4.9	98.1
			4.63	
S			4.2	98.8
+1			4.2	98.8
+3			4.5	98.5
+6			4.7	98.3
+7			4.5	98.5
Q			4.3	98.7
+3			4.5	98.5
+6			5.0	98.0
N			4.8	98.2
472 East End Dbl Garage on South				
3.2 Back Dirt floor			4.1	98.9
490 East End 3 Car Garage on North				
3.2 Back Dirt floor			5.2	97.8
N			5.5	97.5
+5			5.5	97.5
+6			5.1	97.9
Q			4.8	98.2
+7			5.3	97.7

	+	T 102.99	-	Elev
			9.5	98.5
			4.4	98.6
497 East Single Garage on North				
Online Dirt floor			5.5	97.5
500 East				
			4.6	98.4
			5.6	97.4
			5.3	97.7
			4.9	98.1
			5.9	97.6
			5.7	97.3
			5.5	97.5
525 East				
			5.2	97.8
			5.4	97.6
			6.3	96.7
			5.8	97.2
			5.7	97.3
			5.6	97.4
			5.9	97.1
			6.3	96.7
			6.0	97.0
			4.9	98.1
550 East				
			6.0	97.0
			6.7	96.3

	+	102.99	Elev
+3		6.8	96.2
+8		6.2	96.8
£		6.4	96.6
+1		6.6	96.4
+5		6.7	96.3
+7		6.9	96.6
+8		5.8	97.2
N		5.6	97.4
575' East			
N		6.0	97.0
+2		6.1	96.9
+3		7.0	96.0
+4		8.1	94.9
+6		7.8	95.2
+9		8.9	94.1
£		7.5	95.5
+2		7.5	95.5
+8		8.2	94.8
+9		6.3	96.7
S		5.6	97.4
695' East			
S		6.2	96.8
+1		6.7	96.3
+2		9.5	93.5
+5		9.8	93.2
+8		9.4	93.6

	+	102.99	Elev
		9.1	93.9
+3		9.7	93.3
+8		9.6	93.4
+9		7.7	95.3
N		6.8	96.2
700' East			
N		7.8	95.2
+0.5		9.1	93.9
+2		9.8	93.2
+7		10.1	92.9
£		9.6	93.4
+5		10.1	92.9
+9		9.7	93.3
S		8.6	94.4
701 W line of Simpson			
S Topch		9.78	93.21
+2		9.6	93.4
+3		9.9	93.1
+5		10.1	92.9
+7		9.8	93.2
+9 on K.M. of Min. Hole		9.74	93.25
£		9.8	93.2
+4		10.2	92.8
+8		9.9	93.1
N Topch		9.82	93.17
+P. 450	97.67	9.82	93.17
B.M. NW Simpson & Woolman		6.71	90.96

Bliss
Zabell
Korvden
9/25/1928
BM. N.W. 8 P
Landis + Wilson

Re-X section of Wilson Ave from
the S line of Landis to 575' South

↑
335.09

65

	+	x	-	Elev
	1.39	335.09		333.70
		0+00 S line of Landis		
W		2.3		332.8
W Top cb		2.48		332.61
Gutter		3.07		332.02
1/4		2.59		332.50
1/4		2.44		332.65
1/4		2.68		332.41
Gutter		3.27		331.02
E Top cb		2.61		332.48
E		1.9		333.2
		17' S		
E		2.6		332.5
+12		2.6		332.5
cb		3.6		331.5
+3		3.9		331.2
+4		2.9		332.2
1/4		2.3		332.8
1/4		2.4		332.7
1/4		2.6		332.5
+10		2.7		332.4
cb		3.3		331.8
+1		2.7		332.4
W		2.6		332.5
		36' S		
W		3.6		331.5

Platted 5-15-28

+13	3.6	331.5
cb	4.2	330.9
+8	3.9	331.7
1/4	3.5	331.6
1/4	3.9	331.2
+7	3.2	331.9
+4	3.6	331.5
1/4	3.7	331.4
+10	4.0	331.1
+11	5.1	330.0
cb	5.9	329.7
+1	4.2	330.9
+3	3.5	331.6
E	3.9	331.2
	used - 55 85's	
E	5.6	329.5
+2	4.9	330.2
+12	4.7	330.4
cb	5.4	329.7
+1	6.5	328.6
+2	6.5	328.6
+3	5.2	329.9
+6	4.7	330.4
1/4	4.6	330.5
+7	4.6	330.5
1/4	4.3	330.8

335.09

335.09

66

1/4	4.3	330.8	E
+9	4.6	330.5	+6
+11	5.2	329.9	+8
cb	5.1	330.0	+12
+2	4.4	330.7	cb
W	4.5	330.6	+1.5
	64's		+3
W	4.4	330.7	+6
+12	4.7	330.4	1/2
cb	5.2	329.9	2
+2	5.3	329.8	1/4
+4	4.8	330.3	+9
+8	4.9	330.2	+11
1/4	4.5	330.6	cb
2	4.6	330.5	+1
1/4	4.8	330.3	+3
+7	5.0	330.1	W
+10	5.4	329.7	
+11	7.2	327.9	W
cb	7.3	327.8	+11
cb on top vertical bank	6.5	328.6	cb
+2	5.1	330.0	+3
+6	6.0	329.1	1/4
+12	6.1	329.0	2
E	7.7	327.4	1/4
			+9

69 South

10.7	324.4
8.3	326.8
6.1	329.0
5.6	329.5
11.8	323.3
11.8	323.3
5.7	329.4
5.2	329.9
5.0	330.1
5.0	330.1
4.9	330.2
5.1	330.0
5.5	329.6
5.4	329.7
5.4	329.7
4.8	330.3
4.8	330.3
75.5	
5.2	329.9
5.1	330.0
5.9	329.2
5.5	329.6
5.3	329.8
5.2	329.9
5.2	329.9
5.6	329.5

π
335.09

+12	12.0	323.1
cb	12.6	322.5
+1	12.7	322.4
+v	9.6	325.5
+6	8.8	326.3
+10	9.6	325.5
+12	12.0	323.1
E	12.8	322.1
+6	11.9	324.1
+8	9.3	325.8
+13	7.4	327.7
87'S.		
E-20	13.5	321.6
E-15	12.8	322.3
E-12	15.1	320.0
E-7	19.9	315.2
E-3	18.7	316.4
E	15.3	319.8
+1	14.2	320.9
+3	15.6	319.5
cb	14.4	320.7
+2	13.1	322.0
+5	6.2	328.9
1/4	5.7	329.4
ϕ	5.6	329.5
1/4	6.0	329.1

12.0

π
335.09

19.5

6.7

+10	6.0	329.1
cb	6.4	328.7
+3	5.8	329.3
N	6.0	329.1
100.5.		
N	6.4	328.7
+12	6.2	328.9
cb	6.8	328.3
+v	7.2	327.9
+5	6.4	328.7
1/4	6.2	328.9
ϕ	6.1	329.0
1/4	6.0	329.1
+4	6.4	328.7
cb	12.3	322.8
+8	20.1	315.0
E	21.5	313.6
+5	19.5	315.6
+10	21.7	313.4
+16	24.0	311.1
+20	20.2	314.9
+28	22.0	313.1
113 South		
E-25	28.0	307.1
-15	26.5	308.6
E	24.5	310.6

T
335.09

+1	+4	23.5	311.6
cb	+6	21.3	313.8
+1	cb	18.7	316.4
+2	1/4	9.2	325.9
+6	+8	7.2	327.9
+10	ϕ	6.7	328.4
+12	1/4	7.0	328.1
E	+5	7.2	327.9
+6	+8	7.9	327.2
+8	cb	6.9	328.2
+13	W	7.2	327.9
11.9 South			
E-2	W	7.6	327.5
E-	cb	7.1	328.0
E-1	+6	7.5	327.6
E-7	+9	9.3	325.8
E-3	+11	8.0	327.1
E	1/4	7.9	327.2
+1	ϕ	7.7	327.4
+3	+3	8.1	327.0
cb	+7	9.1	326.0
+2	+9	9.7	325.4
+5	1/4	12.1	323.0
1/4	T.P	0.45	328.30
ϕ	+11	13.5	314.8
1/4	cb	13.9	314.4

328.30

68

+8	15.5	312.8
+10	18.3	310.0
E	20.0	308.3
+5	21.5	306.8
+15	20.8	307.5
+18	22.0	306.3
+30	23.0	305.3
12.6 South		
E-30	25.0	303.3
E-20	22.9	305.4
E-5	23.3	305.0
E	21.3	307.0
+2	22.2	306.1
+5	19.0	309.3
+12	17.4	310.9
cb	16.1	312.2
+8	10.9	317.4
1/4	8.6	319.7
+8	4.1	324.2
ϕ	3.2	325.1
+4	2.5	325.8
+6	3.7	324.6
+11	9.7	323.6
1/4	7.6	323.7
+6	1.2	327.1
cb	0.5	327.8

π
328.30

W	0.7	327.6	
	136' South		
W	2.1	326.2	
+12	1.3	327.0	
cb	2.0	326.3	
+9	3.5	324.8	
1/4	7.2	321.1	
+5	10.3	318.0	
⊕	9.2	319.1	
+2	9.3	319.0	
1/4	13.2	315.1	
T6	16.0	312.3	
cb	19.2	309.1	
+2	21.2	307.1	
E	24.5	303.8	
E+13	25.8	302.5	
E+25	27.5	300.8	
T.P.E+30	27.5	300.8	
T.P	0.52	326.94	1.88
			326.42
	142'S		
W	1.2	325.5	
+8	1.6	325.3	
cb	4.7	322.2	
+6	4.1	322.8	
+10	6.2	320.7	
1/4	6.2	320.7	

π
326.99

+2	6.2	320.7	
+3	9.8	317.1	
+5	10.8	316.1	
+6	12.5	314.4	
+12	13.0	313.9	
⊕	11.9	315.0	
+9	13.2	313.7	
1/4	15.2	311.7	
cb	20.6	306.9	
+6	22.6	304.3	
E	25.2	301.7	
E+15	26.0	300.9	
E+30	27.0	299.9	
	150'S		
E-25	28.0	298.9	
E-15	28.0	298.9	
E	26.0	300.9	
+8	26.6	300.3	
cb	24.0	302.9	
+2	23.0	303.9	
+11	18.5	308.4	
1/4	18.5	308.4	
+12	16.8	310.1	
⊕	15.6	311.3	
+2	13.1	313.8	
1/4	10.7	316.2	

X
32694

+7	8.3	318.6
+9	9.3	317.6
cb	9.5	317.4
+~	8.9	318.0
+9	6.0	320.9
+8	5.0	321.9
W	5.3	321.6
W+10	2.9	324.5
	158.5	
W-15	5.9	321.0
W	9.9	317.0
+7	10.5	316.4
+10	11.8	315.1
+12	14.7	312.2
J.P.	0.90	315.21
cb	4.2	311.6
+7	2.5	313.3
1/4	4.2	311.6
ϕ	5.4	310.4
+3	5.9	309.9
+6	10.2	305.6
1/4	11.1	304.7
+8	11.9	304.4
cb	12.9	302.9
+3	13.0	302.8
+6	15.3	300.5

315.81

7.8
13.4
6.4

7.0

308.6

70

5	16.8	299.0
+13	17.4	298.4
+19	17.0	298.8
+25	14.5	301.3
	160.5	
-25	14.5	301.3
-19	17.0	298.8
-13	17.5	298.3
5	17.1	298.7
+8	15.4	300.4
cb	13.4	302.4
+5	10.5	305.3
1/4	7.2	308.6
ϕ	5.1	309.7
1/4	4.8	311.0
+8	3.9	311.9
cb	5.4	310.4
+~	5.2	310.6
+7	1.1	314.7
W	0.1	315.7
W+15	-3.8	319.6
	171.5	
W-20	1.4	314.4
W	7.8	308.0
+3	7.2	308.6
+10	9.4	306.4

315.81

cb		11.0	304.8
1/4		16.1	304.7
ϕ		16.0	304.8
+9		10.6	305.2
1/4		11.3	304.5
+7		12.8	303.0
cb		15.2	300.6
+7		18.7	297.1
E		18.7	297.1
+12		18.3	297.5
		18.9'S	
E-S	Ground Break ^{up at} 45° angle	19.0	296.8
E		19.3	296.5
cb		19.6	296.2
+5		20.0	295.8
1/4		18.6	297.2
ϕ		18.3	297.5
1/4		19.3	296.5
cb		18.6	297.2
+7		19.1	296.7
W		17.3	298.5
W+20		13.4	301.4
T.P	o 32 303.65	12.48	303.33
		200'S	
W- ⁴⁰ ₂₅		0.6	303.1
W-20		6.8	296.8

303.65

W		9.9	293.7
cb		9.8	293.9
1/4		9.3	294.4
ϕ		8.9	294.8
1/4		8.0	295.7
cb		7.2	296.5
E		6.8	296.9
E+3	Bottom slope up at 35°	6.4	296.3
		210'S	
E-			
E		5.0	297.7
+10		7.7	296.0
cb		8.0	295.7
1/4		8.0	295.7
ϕ		8.6	295.1
1/4		9.4	294.3
cb		10.6	293.1
+9		10.8	292.9
W		11.5	292.2
W+5		11.9	290.7
W+18	bottom slope	11.2	291.5
		217'S	
W-30		12.9	290.7
W-19		13.1	290.6
W-9		12.0	290.7
W		11.3	292.4

303.65

cb		9.5	294.2
+10		8.8	294.9
1/4		8.6	295.1
ϕ		8.7	295.0
1/4		8.4	295.3
cb		5.3	298.4
E		0.4	303.3
T.P	11.52	309.86	5.31 298.34
E+9		3.7	306.2
T.P	9.51	319.02	0.35 309.51
		231.5	
E-10		4.1	314.9
E		8.8	310.2
+7		9.5	309.5
cb		10.3	308.7
1/4		14.0	305.0
ϕ		14.7	304.3
1/4		18.0	301.0
+5		19.3	299.7
cb		22.0	297.0
W		26.6	292.4
+11		28.0	291.0
+18		29.4	289.6
+23		31.5	287.5
+32		31.0	288.0
T.P.	11.53	326.30	4.25 319.77

326.30
254' South

12.5
9

W-35		33.7	282.6
W-25		37.5	288.8
W		30.0	296.3
cb		23.0	303.3
1/4		18.1	308.2
ϕ		12.9	313.4
1/4		8.6	317.7
cb		5.5	320.8
+9		5.1	321.2
+7		3.3	323.0
E		1.7	324.6
E+10		0.6	325.7
T.P	5.62	330.671-25	325.05
		266.5	
E-15		3.2	327.5
E		4.2	326.5
cb		6.2	324.5
1/4		8.9	321.8
+7		10.3	320.4
ϕ		13.6	317.1
1/4		19.6	311.1
cb		25.0	305.7
W		31.7	299.0
W+25		42.4	288.3
W+38		43.4	287.3
		300.5	

330.67

11.6
-1.5

300' S.

N-25	33.6	297.1
N	18.6	312.1
cb	12.8	317.9
1/4	9.0	321.7
ϕ	6.4	324.3
1/4	4.8	325.9
cb	4.1	326.6
E	3.6	327.1

325' S.

E	3.8	326.9
cb	4.1	326.6
1/4	4.9	325.8
ϕ	5.4	325.3
1/4	6.0	324.7
cb	7.4	323.3
N	11.7	319.0
N+15	18.5	312.2
N+30	25.5	304.2

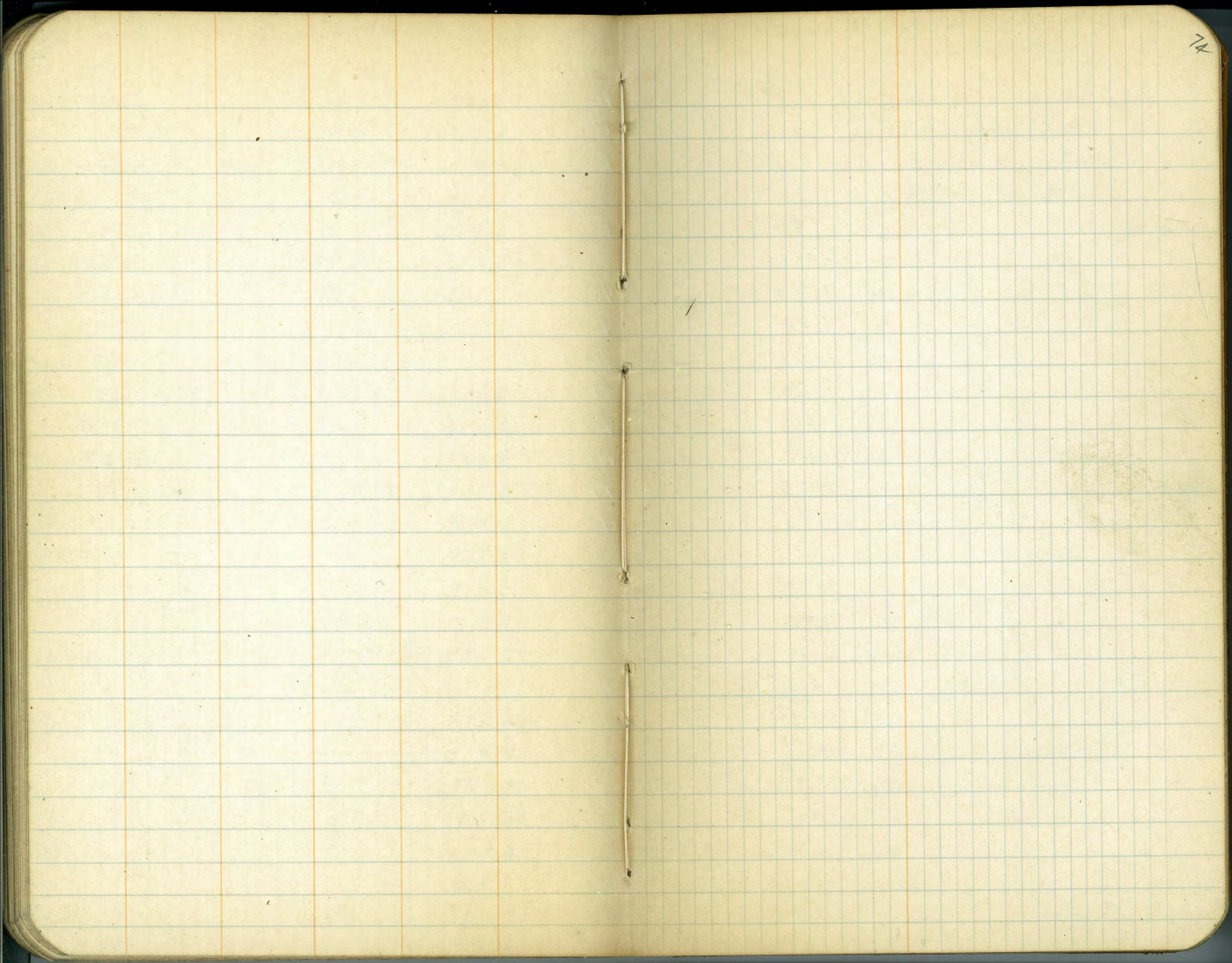
350' S.

N-20	18.3	312.4
N-10	12.3	318.4
N	9.9	320.8
cb	7.3	323.4
1/4	6.3	324.4
ϕ	5.6	325.1
+8	4.8	325.9

330.67

73

1/4	4.7	326.0
cb	4.2	326.5
E	3.7	327.0
375' S.		
E	4.0	326.7
cb	4.5	326.2
1/4	5.1	325.5
ϕ	5.7	325.0
1/4	6.6	324.1
cb	7.6	323.1
N	8.9	321.8
N+20	13.9	316.8
T.P.	7.67	337.55
check on starting M.	0.79	329.88
	3.76	333.79



74

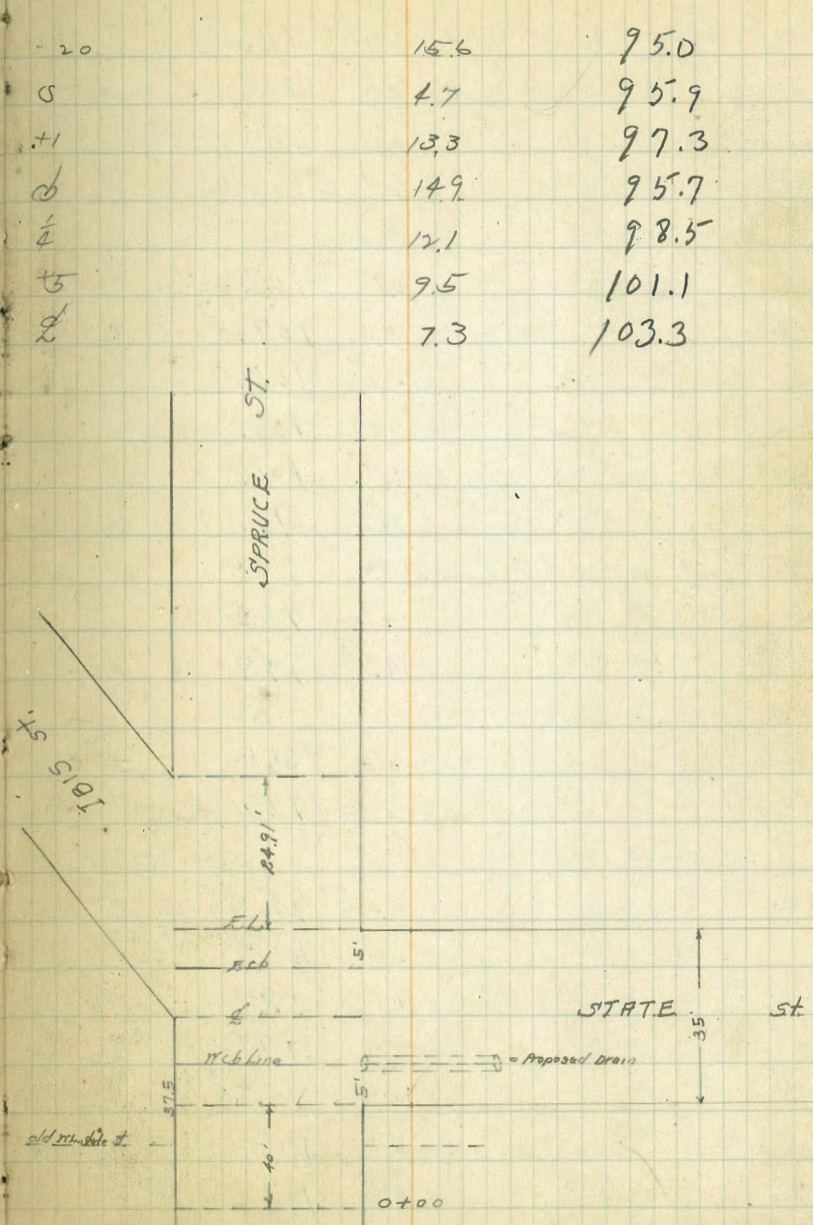
Marker
5-24-21

X. Section of Intersection SPRUCE AND STATE ST.

110.22

75

			110.62
S.B.P.P.			
Spruce + India	12.86	98.86	86.00
T.P.	12.01	110.62	0.25 78.61
	40' W. W.L. State = 0+00		
-20		15.9	95.7
5		5.0	105.6
+3		3.4	107.2
cb		3.7	106.9
+2		4.7	105.9
1/4		5.1	105.5
1/2		4.8	105.8
3/4		4.4	106.2
cb		3.4	107.2
N		2.8	107.8
	0+09		
N		2.8	107.8
cb		3.3	107.3
1/4		4.2	106.4
1/2		4.2	106.4
3/4		4.5	106.1
+2		9.9	100.7
cb		10.7	99.9
+4		11.1	99.5
5		4.6	106.0
+20		15.6	95.0
	0+15		



+6	3.9	106.7
$\frac{1}{4}$	4.2	106.4
cb	3.1	107.5
N	2.7	107.9
0+16		
N	2.9	107.7
cb	3.1	107.5
$\frac{1}{4}$	4.2	106.4
+5	3.8	106.8
$\frac{1}{2}$	9.7	100.9
$\frac{1}{2}$	10.7	99.9
+7	13.6	96.0
cb	14.6	96.0
+4	14.9	95.7
S	13.0	97.6
+1	4.3	106.3
+20	15.6	95.0
0+19		
S -20	15.4	95.2
S -2	4.9	105.7
S -1	11.8	98.8
S	13.3	97.3
cb	14.7	95.9
+3	5.9	104.7
+9	5.4	105.2
$\frac{1}{4}$	12.0	98.6

$\frac{1}{2}$	10.3	100.3
+6	3.7	107.9
$\frac{1}{4}$	4.1	106.5
cb	3.1	107.5
N	2.8	109.8
0+31		
N	2.6	108.0
cb	2.8	107.8
+4	3.0	107.6
+5	3.6	107.0
$\frac{1}{2}$	3.6	107.0
+4	3.6	107.0
$\frac{1}{2}$	9.2	101.4
+1	10.7	99.9
$\frac{1}{2}$	10.3	100.3
+2	4.5	106.1
+7	5.1	105.5
cb	7.6	103.0
+5	11.5	99.1
+6	16.3	94.3
S	16.3	94.3
+6	14.8	95.8
+7	5.8	104.8
+9	5.8	104.8
+15	15.2	95.4
0+38		

-6	7.6	103.0
-5	14.6	96.0
-2	16.3	94.3
-1	15.8	94.8
0	11.8	98.8
0b	8.1	102.5
+6	4.4	106.2
$\frac{1}{4}$	4.2	106.4
+6	4.3	106.3
+7	10.2	100.4
2	9.4	101.2
+8	3.6	107.0
$\frac{1}{4}$	3.7	106.9
+8	3.6	107.0
0b	2.9	107.7
N	2.6	108.0
	5' obs. 0+40' = N.L. State St. No 4s are taken	
N	2.6	108.0
0b	3.1	107.5
$\frac{1}{4}$	3.5	107.1
+2	3.6	107.0
0	9.7	100.9
+3	10.1	100.5
+4	4.2	106.4
$\frac{1}{4}$	4.2	106.4
+5	4.5	106.1

+8	6.2	104.4
+9	8.2	102.4
0b	8.8	101.8
+1	10.3	100.3
+4	10.7	99.9
5	15.6	95.0
+4	16.5	94.1
+6	13.7	96.9
+7	8.7	101.9
+20	14.8	93.8

N.C. Line State. Note: Use this section for drain levels

-25	16.3	94.3
-20	16.3	94.3
-19	17.8	92.8
-5	17.0	93.6
5	14.1	96.5
+6	10.9	99.7
0b	4.3	106.3
$\frac{1}{4}$	4.0	106.6
+7	4.1	106.5
+8	10.1	100.5
0	9.5	101.1
+8	3.4	107.2
$\frac{1}{4}$	3.6	107.0
0b	3.0	107.6
N	2.1	107.9

Ncb + 8'

N	2.6	108.0
cb	2.8	107.8
+3 = top cb at catch Basin	3.02	107.6
+3 = on top of Grate	4.05	106.6
+4	3.7	106.9
$\frac{1}{2}$	3.5	107.1
+3	3.1	107.5
$\frac{1}{2}$	8.2	102.4
+2	8.6	102.0
+3	3.7	106.9
$\frac{1}{2}$	3.7	106.9
cb	3.6	107.0
+5	3.5	107.1
+6	10.7	99.9
S	11.6	99.0
+13	14.7	93.9
+14	11.3	99.3
+20	13.3	97.3
E state		
-20	13.3	97.3
S	3.1	107.5
cb	3.5	107.1
$\frac{1}{2}$	3.7	106.9
+10	3.6	107.0
$\frac{1}{2}$	8.1	102.5

+10	3.1	107.5
$\frac{1}{2}$	3.2	107.4
cb	2.7	107.9
N	2.6	108.0
E + 04'		
N	2.5	108.1
cb	3.2	107.4
$\frac{1}{2}$	3.1	107.5
$\frac{1}{2}$	3.5	107.1
$\frac{1}{2}$	3.6	107.0
cb	3.5	107.1
S	3.6	107.0
+15	12.8	99.8
E cb		
-15	11.5	99.1
S	3.3	107.3
cb	3.3	107.3
$\frac{1}{2}$	3.4	107.2
$\frac{1}{2}$	3.2	107.4
$\frac{1}{2}$	3.1	107.5
cb	3.4	107.2
N	3.4	107.0
E to 1500		
N	3.3	107.3
cb	3.3	107.3
$\frac{1}{2}$	3.2	107.4

d	3.7	107.4
$\frac{1}{4}$	3.3	107.3
cb	3.7	107.4
S	3.8	106.8
+15	12.1	98.5

85' E of Ek. stake

-5	3.3	107.3
J	3.0	107.6
cb	2.3	107.3
$\frac{1}{2}$	3.8	106.8
2	3.5	107.1
$\frac{1}{4}$	3.3	107.3
cb	2.5	108.1
N	2.9	107.7
T.P.	0.14	98.73
	12.53	98.09

Chk. ^{SE} B.M. Spruce & Indiq

14.74	85.99
	<u>86.00 = B.M.</u>
	+ 0.01

DIRECTIONS FOR USE OF TABLES

TABLE No. 1.

Distance of slope stake from side or shoulder stake for any width roadway, slope $1\frac{1}{2}$ to 1. If ground is nearly level, the cut or fill at side stake is located by the double entry method in left column and top row. The number in body of table in same row and column gives distance from side stake to slope stake. If ground is not level estimate the difference in elevation between the side stake and slope stake, lower target by this amount if cut, elevate if fill. Add this amount to cut or fill and find distance in table. Set up rod at this point, and line of sight should cut target. If it does not make the slight adjustment necessary.

TABLE No. 9.

To find Tangent and External for curve of any other degree, divide by degree of curve and add correction found in column of corrections.

Degree of curve with a given I may be found by dividing tangent, (or external), opposite I by given tangent, (or external).

The distance from a point on the tangent to the curve is very nearly the square of the tangent length divided by twice the radius.

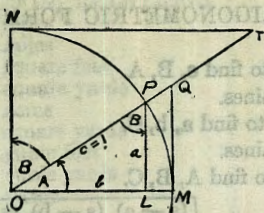


TABLE II

TRIGONOMETRIC FORMULÆ.

$$\angle A = \angle MOP \quad \angle B = \angle PON = \angle OPL$$

$$R = OB = c = 1$$

$$\sin A = \frac{a}{c} = \frac{a}{1} = a = \cos B = LP$$

$$\cos A = \frac{b}{c} = \frac{b}{1} = b = \sin B = OL$$

$$\tan A = \frac{a}{b} = \frac{MQ}{OM} = \frac{MQ}{1} = MQ = \cot B = MQ$$

$$\cot A = \frac{NT}{ON} = \frac{NT}{1} = NT = \tan B = NT$$

$$\sec A = \frac{OQ}{OM} = \frac{OQ}{1} = OQ = \csc B = OQ$$

$$\csc A = \frac{OT}{ON} = \frac{OT}{1} = OT = \sec B = OT$$

$$\text{vers } A = \frac{LM}{OP} = LM = \text{covers } B \#$$

$$\text{covers } A = \frac{OP - LP}{OP} = OP - LP = \text{vers } B$$

$$\text{exsec } A = PQ = \text{coexsec } B$$

$$\text{coexsec } A = PT = \text{exsec } B$$

$$\sin \frac{1}{2} A = \sqrt{\frac{1 - \cos A}{2}} \quad \cos \frac{1}{2} A = \sqrt{\frac{1 + \cos A}{2}}$$

$$\sin 2A = 2 \sin A \cos A \quad \cos 2A = \cos^2 A - \sin^2 A$$

$$\text{Law of Lines} \quad \frac{\sin A}{a} = \frac{\sin B}{b} = \frac{\sin C}{c}$$

$$\text{Law of Cosines} \quad c^2 = a^2 + b^2 - 2ab \cos C$$

$$\text{Law of Tangents} \quad \frac{a+b}{a-b} = \frac{\tan \frac{1}{2}(A+B)}{\tan \frac{1}{2}(A-B)}$$

2+45 45 682006
R 10990 - Prop line

8740 8335
5325 25
L.C. 58.35

11.67
593
17.60
274.70
4241
272.29
47.70
1250
274.70
175
257.20

(84.83)
4241

106.05 116.95
2.04 2.72
104.01

ENGINEERING DEPARTMENT,
CITY OF SAN DIEGO,
CALIFORNIA.

Gentry + Jolla Blvd. N.E. B.P. 69.83
" " Fay S.E. Top Hg. 148.14
" " Draper S.W. B.P. 106.98
Redwood + Dale S.E. 311.82
" " 117th + 11th S.W. 302.06

311.82
56

317.44
2.97

314.47
2.44

316.91
1.93

318.88
3.26

318.65
2.67

315.98
6.83

322.81
2.96

320.32
4.78

324.10
5.72

318.38

91.44
12.78

78.70
2.66

81.36
8.27

73.09

W. E. D. 90.0780

F 11 0796

B.M. NW Wilson
+ 0.90
TP 2.20
TP 2.66
B.M. Condish + W 150

319.48

326.81

360.61

26.91
333.70

109.17
12.19

101.32

120.70
12.05

132.75

69.83

11.73

874.56

8.64

80.92

12.27

93.19

93.11
12.99

16.05

101.32

120.70
12.05

132.75