

1203

FIELD BOOK

No. 385

ENGINEERING DEPARTMENT,
CITY OF SAN DIEGO,
CALIFORNIA.

Our Leather Bound Engineers Note Books are carried in the following rulings:

- No. 380 LEVEL BOOK. Left and Right Hand Page the same as Left Hand Page of this Book.
- No. 382 FIELD BOOK. Left Hand Page as in this Book, Right Hand Page 4 x 4 to the inch, Center Line Red.
- No. 384 MINING TRANSIT BOOK. Left Hand Page as in this Book, Right Hand Page 8x8 to the inch, Center Line Red.
- No. 385 FIELD BOOK. Left Hand Page as in this Book, Right Hand Page 8 vertical and 4 horizontal lines to the inch, Center Line Red.

We also carry the Note Books listed above, bound in extra strong Fabri-Hide (otherwise the same quality of book), which can be furnished at a somewhat lower price.

In ordering Fabri-Hide covered books, add the letter "F" to catalog number.

THE FREDERICK POST CO.
ENGINEERING and DRAFTING SUPPLIES
IRVING PARK STATION
CHICAGO, ILL.

566
13
303
5.33

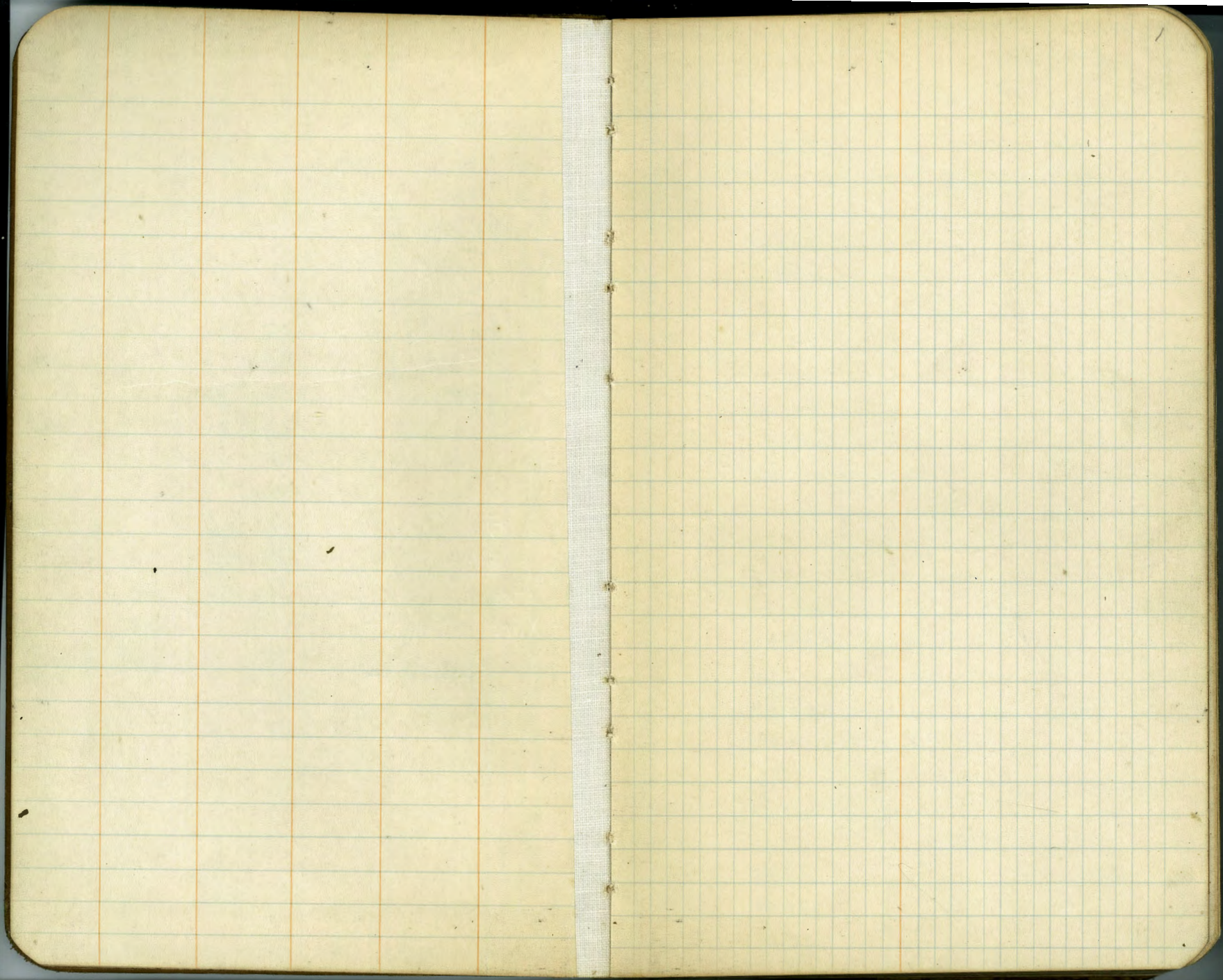
MICROFILMED
DEC 22 1964

This indexed copy 80 7/11/80 H.H.

This indexed by 80 7/11/80 H.H.

—Index—

X Sec Arista Dr - Arista G. to Hickory	2
Curb levels El Cajon - Euclid to 48th	5
X Sec. Works Ave - Bdry to Waverly	6
Levels Drain Franklin - 30 to 31st	9
X Sec. Tupper - Portola to Keating	10
" Keating - Tupper to Cemetery	"
" Sublett St - Cemetery South	"
" Pringle to Middletown Line	11
" Alley Blk 24, Park Villas	21
" " " D, Estudillo + Capron	26
" " " 189, University Hts	31
" " " 43, Normal Hts	36
" Front St - Island Ave to SD&A	44
" Alley Blk 244, University Hts	49
Presidio Drive - F7 Stockton Grade	53
X Sec. 49th St - Univ. Arc to Orange	54
" Hawthorne St - 32nd to Marleton	63
" 35th St - Landis St. So.	68
" Villa Terrace Inter. Upas St	72
" Upas - Villa Terrace to Arnold	73



244.60

N		618	238.48
	80.5		
-20		94	235.2
N		77	236.9
CB		72	236.9
11		95	235.1
+2	-N Edge Parings	760	237.00
1/2	Top	744	237.16
11		744	237.15
Gutter		740	237.20
E CB Top		625	237.65
	100's		
FCU		819	236.41
Gutter Top P		853	236.02
11		811	235.99
1/2		860	236.00
+2	-N Edge Parings	850	236.10
1/2		85	236.1
CB		88	235.8
N		84	236.2
+5		110	233.6
TP	7.75	239.86	1249
+10		89	231.0
+25		182	221.7
+30		149	225.0
+45		166	223.3

239.86

	111.5' - FC		
	-60	211	215.5
	-39	238	216.1
	-35	213	213.6
	-36	252	214.7
	N	110	228.9
	CB	94	235.5
	11	92	235.7
	+3 - Edge Parings	92	235.7
	1/2	125	235.61
	11	111	235.42
	Gutter	154	235.32
	E CB Top	110	235.46
	131.5		
	E CB Top	538	234.48
	Gutter on Parings	583	234.03
	11	570	234.16
	1/2	556	234.30
	+2 Edge Parings	545	234.41
	11	51	234.8
	CB	57	234.2
	1/2	60	233.9
	11	73	232.6
	+25	310	209.9
	+40	305	204.4
	+44	325	206.4

239.86

239.86

+65		207	209.2
	151.5	-PC N of Hickory 25A	
-90		440	195.9
-65		414	198.5
-55		452	194.7
-45		395	200.4
-25		290	210.9
N		147	225.2
cb		107	229.2
74		72	232.7
13	Edge Parking	647	233.39
8	on	655	233.31
76	"	675	233.11
Gutter	"	695	232.91
E Ob Top		647	233.39
	171.5		
E		690	232.96
+1 Gutter		715	232.41
cb		715	232.41
74		714	232.42
8	Edge Parking	740	232.46
76		76	232.3
cb		78	232.1
N		110	228.9
+45		200	209.6
157		190	190.9

+65	521	187.7
+85	570	182.9
700	617	178.2

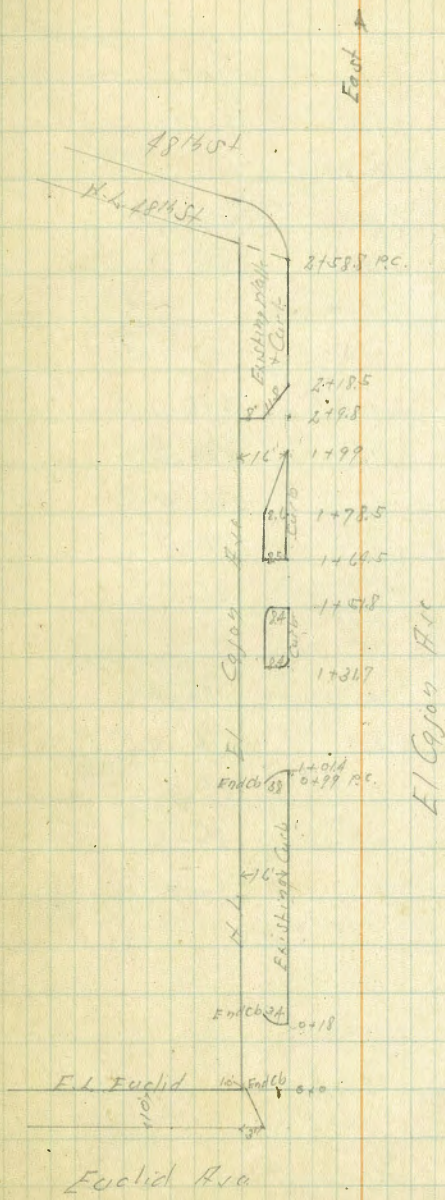
Top Carb Levels N Carb of El Cajon
 Euclid to 48th St.

BM	118	352.39 ✓	348.7	N.E. Men EL Cajon Euclid
Top Carb N.E. Co. El Cajon Euclid to 3rd St. El Cajon	468		347.7	
0+18' E of E of Euclid	444		348.0	
7+50' E	409		348.3	
1+99	359		348.8	
1+317	318		349.1	
1+518	311		349.3	
1+665	291		349.6	
1+785	284		349.6	
1+999	254		349.9	
2+185	253		349.9	
2+50	204		350.4	
2+588 = N.E. 18th St. Produced to	197		350.5	

Reduced by Neese
6/13/27

Neese
 June

5
 S. 507
 31/25
 S. 11/11



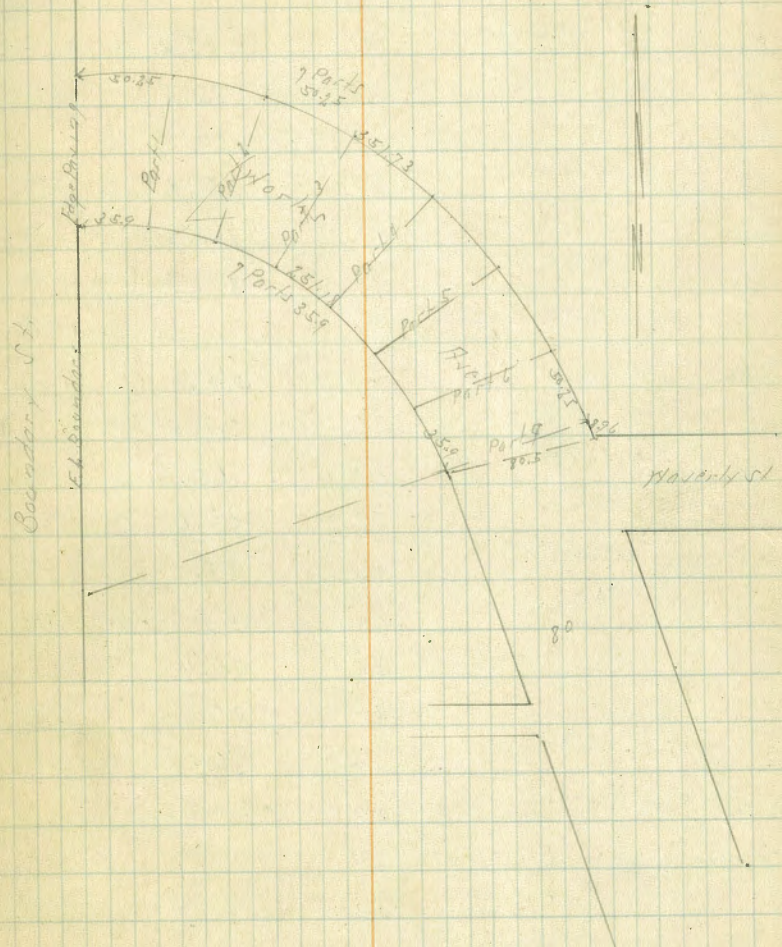
Cross Section Works etc.
Boundary to Newark

80' wide
12' curb
12' gully

Indexed
LMI

6
6727
S. 100
100
100
100

				S.F. & P.
BM	329	391.25	390.76	Adams St Boundary
TP	371	390.43	386.69	
		E.L. Boundary		
S		3.4	387.0	
Cb Top		3.74		
Gutter on Pavement		4.25		
1/4		3.72		
1/2		3.67	386.7	
1/4		3.81	386.6	
Gutter		4.16	386.7	
Cb		3.55	86.8	
H		3.1	86.8	
		Part 1: 25.8 f curb		
N		4.0	86.4	
Cb Top		4.38	86.0	
Gutter		5.1	85.3	
1/4		4.3	86.1	
1/2		4.0	86.4	
1/4		4.3		
Gutter		4.9		
Cb Top		4.25		
S		3.4		
		Part 2		
S		4.0		
Cb Top		4.70		



Gutter	53	
1/4	47	
2	46	3 85.8
1/4	49	85.5
Gutter	57	84.7
Cb Top	509	85.3
H	61	84.3
110	10.0	80.4
	2512E of Part 300 N 18' E of 11' 15"	
-75	556	34.8
-40	380	54.4
-20	218	68.6
H	68	83.6
Cb Top	526	85.1
Gutter	60	84.4
1/4	50	85.4
2	48	85.6
1/4	50	
Gutter	55	
Cb Top	481	
S	43	
	Part 3	
S	46	
Cb top	517	
Gutter	57	
1/4	52	

2	49	3 85.5
1/4	52	85.4
Gutter	62	84.7
Cb Top	549	84.9
H	68	83.6
+20	242	66.4
+40	320	57.4
+60	50.5	39.9
+80	60.4	30.0
	Part 4	
-80	602	30.7
-60	475	47.9
-40	340	56.4
-20	202	70.7
H	70	83.4
Cb Top	602	84.4
Gutter	67	83.7
1/4	57	84.7
2	54	85.0
1/4	57	
Gutter	62	
Cb Top	572	
S	52	
	2512 E of Part 400 N 18' "	
S	55	
cb	582	

390.43

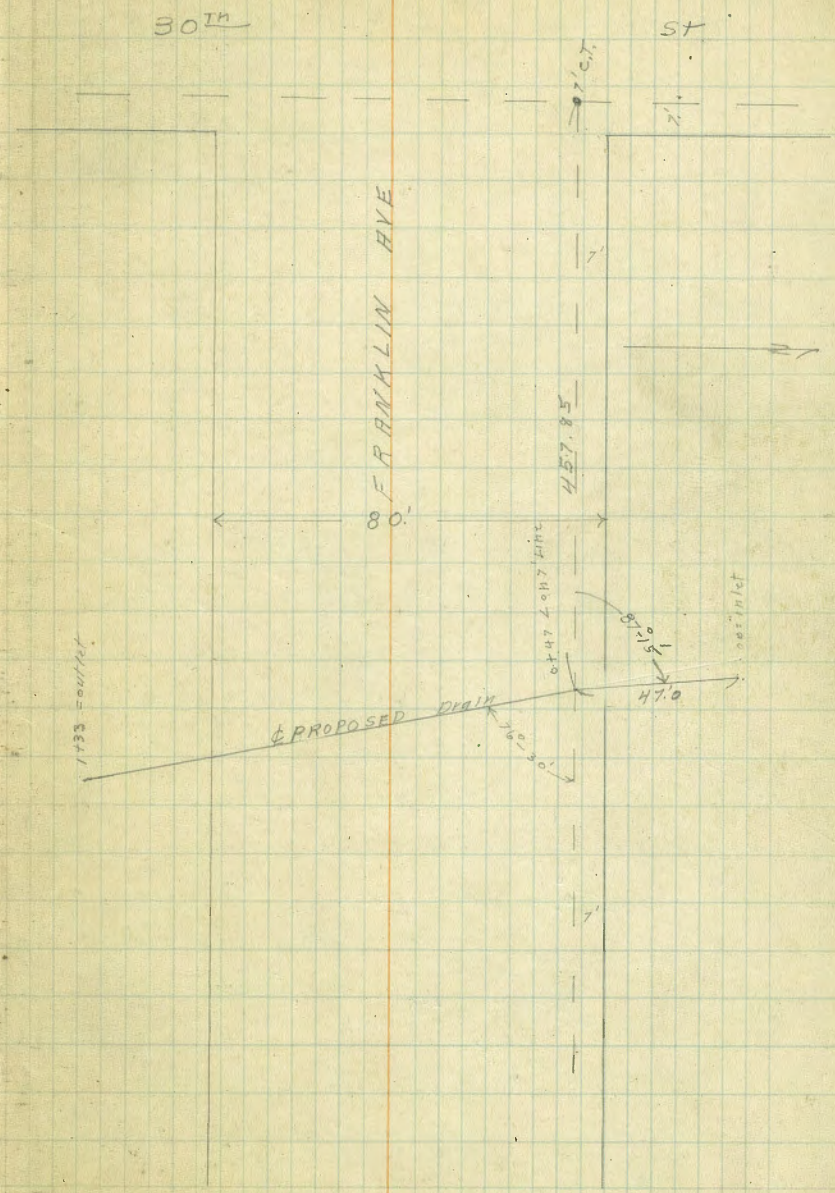
Gutter	64	
"	60	
2	57	384.7
"	60	84.4
Gutter	69	83.5
Cb Top	631	84.1
"	60	84.4
+5	63	84.1
Part 5		
5	71	83.3
"	62	84.2
Cb	656	83.9
Gutter	73	83.1
"	64	84.0
2	59	84.6
"	59	
Gutter	67	
Cb Top	615	
5	59	
Part 6		
5	68	
Cb Top	662	
Gutter	70	
"	62	
2	64	84.0
"	69	83.5

Gutter	70	384.8
Cb Top	627	83.4
"	72	83.2
Part 7		
"	71	84.8
Cb Top	750	84.9
Gutter	78	84.6
"	72	83.2
2	68	83.6
"	69	
Gutter	74	
Cb	700	
5	67	
Part 7005 891 E of Part 7000: H.L. of Slaverdy on diagonal box		
5	67	
Cb	688	
Gutter	73	
"	69	
2	68	83.6
"	70	83.2
Gutter	79	82.5
Cb Top	757	84.8
(S) N	71	

Levels for Proposed Drain
 Xing Franklin Ave Bet 30th + 31st E

7-2-27
 Miller

BM.	4.68	53.29		48.61	NW 31 st E + Woolman
T.P.	3.42	56.81	0.10	53.19	
T.P.	3.60	56.53	3.84	52.93	grade
00 = inlet		9.3	47.2	48.2	-1.00
0+25		3.4	53.1		
0+47.0 Δ		3.6	52.9	47.4	+5.5
0+90.5		5.7	50.8	46.7	+4.1
1+18		7.0	49.5		
1+33 = outlet		8.3	48.2	46.0	+2.2



50' wide
10' clear
7.5' high

Xsup Pringle to Middletown line - Tupper St
in Middletown

261.12

11

B.M.	0.94	261.12	260.18	NE. Pringle + Portola Way BR. In wall	1/4	4.6	256.5
					cl	4.3	256.8
N		2.2	258.9		S	3.7	257.4 ✓
cl		2.47	258.45	ent cl ✓			
114		3.0	258.1		S	3.9	257.2 ✓
C		3.1	258.0	✓ ✓	cl	4.7	256.5
114		3.6	257.5		1/4	4.4	256.7
cl		3.63	257.49	ent cl ✓	C	3.9	257.2 ✓
S		3.5	257.6		114	4.0	257.1

Elevations
Computed
9-19-27
Rymidde

Sec #3 Radial line

Curve bet e. line Portola & EC. ΔR 8° 20' R 196.97

Divided into 5 parts L 51.40'

Sec #1 on Radial line

cl + 9.5
N

S		3.5	257.6	✓ ✓			
cl		4.1	257.0				
114		4.0	257.1				
C		3.5	257.6	✓ ✓			
114		3.4	257.7				
cl		3.3	257.8				
cl + 9.7		2.8	258.3				
N		1.7	260.0	Top ent wall ✓ ✓			

Sec #4 Radial line

N. of Double Garage on line
No wall in front of Garage

						3.5	257.6 ✓ ✓
					cl	4.3	256.8
					1/4	4.2	256.9
					C	4.1	257.0 ✓ ✓
					114	4.4	256.7
					cl	4.8	256.3
					S	4.0	257.1 ✓ ✓

Sec #2 on Radial

Sec #5 = End of Curve

N		1.0	260.1	Top wall ✓			
to S		2.7	258.4				
cl		3.5	257.6				
114		3.9	257.2				
C		3.6	257.5	✓ ✓			

					5-5	6.7	254.4
					S	4.4	256.7 ✓
					cl	4.9	256.2
					114	4.9	256.2
					C	4.5	256.6 ✓ ✓

261.12
23' E. of Sec #5 E.C. = sec #8

N. line Tupper	+2.0	263.1	✓ 2 mt steps
+2	+1.3	262.4	✓ sedge steps
cl	+0.7	261.8	
1/4	0.6	260.5	
C	1.4	259.7	✓
1/4	4.9	256.2	
cl	5.0	256.1	
S. line Tupper Produced	5.0	256.1	✓
+4.5 = S. line Pringle in Miss Hills	4.8	256.3	✓

32' E. of Sec #5 E.C. = sec #9 72.19' W. of N. line Keating

48' S. of P.L. S. line Tupper + P.L.	5.0	256.1	✓ S. line Pringle in Mission Hills
S. line Tupper	5.5	255.6	✓
cl	5.2	255.9	
1/4	5.0	256.1	
C	1.8	259.3	✓
1/4	0.4	260.7	
cl	+0.4	261.5	
N	+1.7	262.8	✓

22.19' E. of sec #9 = sec #10 = 50' W. of N. line Keating

N	+0.4	261.5	✓
cl	0.3	260.8	
1/4	1.0	260.1	
C	1.8	259.3	✓
1/4	5.5	255.6	
cl	5.5	255.6	
S	5.4	255.7	✓

261.12
30' E. of sec #10 = sec #11 20' W. of N. line Keating

S-5	8.5	252.6	
S	5.2	255.9	✓
cl	6.0	255.1	
1/4	6.1	255.0	
C	6.1	255.0	✓
+5	2.7	258.4	
1/4	2.6	258.5	
cl	2.0	259.1	
N	1.0	260.1	✓

5' E. of sec #11 = sec #12

N	1.2	259.9	✓
cl	2.6	258.5	
1/4	3.2	257.9	
C	6.4	254.7	✓
1/4	6.2	254.9	
cl	6.0	255.1	
S	6.9	254.2	✓
+5	9.2	251.2	

2' E. of sec #12 = sec #13 = 13' W. of Keating

-5	9.7	251.4	
S	7.9	253.2	✓
+4	6.6	254.5	
cl	6.1	255.0	
1/4	6.5	254.6	
C	6.1	255.0	✓ on empty drive
1/4	5.0	256.0	

261.12
 #
 Sec 13 (con)

cl	3.7	257.4	on entrance
N	3.0	258.1	✓✓
9' E. of #13 = Sec #14 = 4' W. of Keating			
N	3.3	257.8	✓✓
cl	3.8	257.3	
1/4	5.3	255.8	
+3	6.4	254.7	
C	6.4	254.7	✓✓
1/4	6.3	254.8	
cl	6.4	254.7	
+3	6.6	254.5	
S	10.0	251.1	✓✓
+20	16.0	245.1	

W. line Keating 50' wide 10' elev 25' 1/4 S

S-20	16.6	244.5	
S	10.5	250.6	✓✓
+8	6.5	254.6	
cl	6.5	254.6	
1/4	6.5	254.6	
C	6.7	254.4	✓✓
1/4	7.0	254.1	
+5	6.8	254.3	
cl	4.5	256.6	
N	3.5	257.6	✓✓
T.P.	1.02	253.32	6.82 254.30

255132

Tupper 14

W. cl of Keating

N	1.5	253.8	✓✓
cl	1.3	254.0	
1/4	1.0	254.3	
C	0.9	254.4	✓✓
1/4	1.1	254.2	
cl	3.5	251.8	
S	2.3	249.0	✓✓
+20	12.1	243.2	

W. 1/4

S-20	13.1	242.2	
S	8.0	247.3	✓✓
cl	5.6	249.7	
1/4	3.0	252.3	
+4	1.5	253.8	
C	1.1	254.2	✓✓
1/4	1.0	254.3	
cl	1.0	254.3	
N	1.4	253.9	✓✓

⊕ Keating

N	1.5	253.8	✓✓
cl	1.7	253.6	
1/4	1.7	253.6	
C	2.8	252.5	✓✓
1/4	6.0	249.3	
cl	7.5	247.8	
S	9.3	246.0	✓✓
+20	14.4	240.7	

S-20	16.0	239.3	
S	11.3	244.0	✓✓
cl	9.3	246.0	
1/4	7.8	247.5	
C	6.8	248.5	✓✓
1/4	5.0	250.3	
cl	4.7	250.6	
N	4.7	252.6	✓✓

E. cl

N	7.6	247.7	✓✓
cl	7.9	247.4	
1/4	8.3	247.0	
C	8.8	246.5	✓✓
1/4	9.5	245.9	
cl	11.1	244.2	
S	13.2	242.1	✓✓
+20	17.8	237.5	

E. line Keating

-20	18.8	236.5	
S	15.6	239.7	✓✓
cl	14.1	241.2	
1/4	12.9	242.4	
C	12.2	243.7	✓✓
1/4	11.7	243.6	
cl	11.6	243.7	
N	11.4	243.9	✓✓

N	19.8	235.5	✓✓	
cl	19.5	235.8		
1/4	19.5	235.8		
C	20.0	235.3	✓✓	
1/4	20.5	234.8		
cl	21.1	234.2		
S	22.0	233.3	✓✓	
+20 S	24.4	230.9		
T.P.	4.13	258.43	1.02	254.30

Keating St

00 = N. line TUPPER

N.	0.7	257.7	✓
+5	2.5	255.9	
cl	4.6	253.8	
1/4	4.5	253.9	
C	4.6	253.8	✓
1/4	7.8	250.6	
cl	10.7	247.7	
E	14.5	243.9	✓

25' N

-25	25.0	233.4	
E	16.0	242.4	✓
cl	11.7	246.7	
1/4	8.6	249.0	
+5	5.6	252.8	
C	5.4	253.0	✓

258.43

25' N. con

1/4	5.3	253.1	
+5	5.2	253.2	
cb	3.6	254.8	
+5	1.7	256.7	
W	7.0	257.4	✓

50' N

W	1.6	256.8	✓
+5	3.0	255.4	
cb	5.2	253.2	
+3	6.7	251.7	
1/4	6.7	251.7	
E	6.3	252.1	✓
1/4	11.1	247.3	
cb	14.0	244.4	
E	17.8	240.6	✓
+25	26.3	232.1	

75' N

E-25	26.4	232.0	
E	19.0	239.4	✓
cb	15.3	243.1	
1/4	12.8	245.6	
C	8.2	250.2	✓
+2	7.4	251.0	
1/4	7.4	251.0	
cb	7.4	251.0	
+5	3.7	254.7	

258.43

Keating

16

W	2.1	256.3	✓
100' N			
W	2.7	255.7	✓
+5	5.4	253.0	
cb	8.0	250.4	
"	8.0	250.4	
C	8.6	249.8	✓
1/4	13.3	245.1	
cb	15.6	242.8	
E	18.7	239.7	✓
+25	25.0	233.4	

119' N

-25	24.4	234.0	
E	18.5	239.9	✓
cb	15.5	242.9	
1/4	12.7	245.7	
C	9.0	249.4	✓
+2	8.4	250.0	
1/4	8.3	250.1	
cb	8.0	250.4	
+2	7.9	250.5	
+5	5.7	252.7	
W	3.6	254.8	✓

258.43
138.34 N = Sec A.

N	3.6	254.8	✓✓
+5	6.2	252.2	
cl	8.3	250.1	
114	8.5	249.9	
e	8.7	249.7	✓✓
+4	9.2	249.2	
1/4	10.7	247.7	
cl	14.0	244.4	
E A	18.0	240.4	✓

Sec B. 52' approx

E-25	24.0	234.4	
E.A	18.0	240.4	✓✓
cl	13.3	245.1	
114	9.6	248.8	
+2	8.8	249.6	
e	8.7	249.7	✓✓
1/4	8.7	249.7	
+4	8.6	249.8	
cl	7.3	251.1	
+5.~	5.3	253.1	

Δ^{on} W Line Keating + Middletown Line = 3.7
 + Sec. 40' R. of Way. ^{5' cl's} 7.5 _{1/4's}

Sec C.

N line	7.8	250.6	✓✓
5's = cl	8.6	249.8	
1/4	7.0	249.4	

258.43

Keating 17.
+ 40' R. of Way

e	8.9	249.5	✓✓
114	13.3	245.1	
cl	16.0	242.4	
E	18.0	240.4	✓✓

17' E. of Sec C.

S-25	25.8	232.6	
S	19.7	238.7	✓✓
+5-cl	18.1	240.3	
1/4	16.0	242.4	
+3.5 = S. end 12" emt Pipe Culvert	14.4	244.0	

e	10.6	247.8	✓✓
+5	9.3	249.1	
114	9.4	249.0	
cl	8.7	249.7	
N	8.6	249.8	✓✓

40' E. of Sec C

N	8.6	249.8	✓✓
cl	8.6	249.8	
114	8.8	249.6	
+3	8.8	249.6	
cl	10.5	247.9	✓✓
1/4	14.4	244.0	
cl	16.2	242.2	
S	17.2	241.2	
+20	21.7	236.7	✓✓

258.43

70' E. of sec. C.

S-20	18.0	240.4	
S	13.2	245.2	✓✓
cl	11.9	246.5	
h4	10.4	248.0	
L	7.1	251.3	✓✓
h4	6.8	251.6	
cl	6.9	251.5	
+2	6.9	251.5	
N	4.9	252.5	✓✓

106.6 E. of sec C = sec D.
 Δ cons. line to R of way
 + 45' line to Sublett St

N	70.4	259.2	✓✓
cl	1.3	257.1	
h4	2.5	255.9	
e	2.4	255.8	✓✓
h4	2.5	255.9	
cl	4.1	254.3	
S-A	5.2	253.2	✓✓

20' out S. on split of L

sec E 50' wid. 10' chs 75' h4

S	5.2	253.2	✓✓	
+10 = cl	1.8	256.6		
h4	1.6	256.8		
e	1.5	256.9	✓✓	
T.P.	7.22	264.82	0.83	257.60
h4	5.9	258.9		
cl	2.8	262.0		

264.82

40' R of Way
 + Sublett St

18

N	1.5	263.3	✓
1.4 E of sec E = sec F = 00			
N	1.3	263.5	✓
cl	2.7	262.1	
h4	5.7	9.1	
e	8.0	254.8	✓
h4	8.0	256.8	
cl	8.2	254.6	
S	11.6	253.2	✓

26.4 E. of sec E = 25' E. of sec F.

S-10	11.8	253.0	
S	10.3	254.5	✓
cl	7.5	257.3	
h4	6.4	258.4	
e	6.4	258.4	✓
h4	6.3	258.5	
+2	4.7	260.1	
cl	3.3	261.5	
N	1.5	263.3	✓

50' N. of sec F

N	1.5	263.3	✓
h4	2.0	262.8	
cl	4.4	260.0	
h4	5.1	259.7	
e	5.1	259.7	✓
h4	6.4	258.4	

50' E of C0H

cl	8.2	256.6	
S	10.6	254.2	✓
+10	13.4	251.4	
75' E of Sec F			
-10	12.0	252.8	
S	9.5	255.3	✓
cl	8.0	256.8	
"H	7.3	257.5	
C	5.1	259.7	✓
+4	4.5	260.3	
"H	4.5	260.3	
cl	4.5	260.2	
+2	4.5	260.3	
N	1.9	262.9	✓

100' E of Sec F

N	2.7	262.1	✓
+2	4.2	260.6	
cl	4.2	260.6	
"H	4.2	260.6	
C	4.6	260.2	✓
"H	6.7	258.1	
cl	7.8	257.0	
S	9.5	255.3	✓
+10	11.8	253.0	

125' E. of Sec F

5-10	9.2	255.6	
S	7.8	257.0	✓
cl	5.8	259.0	
"H	4.7	260.1	
C	4.4	260.4	✓
"H	4.3	260.5	
cl	4.3	260.5	
N	4.1	260.7	✓

150' E. of Sec F

N	2.6	262.2	✓
+3	3.8	261.0	
cl	4.1	260.7	
"H	4.3	260.5	
C	4.4	260.4	✓
"H	4.6	260.2	
cl	4.7	260.1	
+3	5.0	259.8	
S	7.3	257.5	✓
+10	8.4	256.4	

173' E. of Sec F = Top of Capon

-10	9.6	255.2	
S	8.1	256.7	✓
cl	6.9	257.9	
"H	6.1	258.7	
C	5.2	259.6	✓
"H	4.9	259.9	

264.82

173' E. of sec F

d. 4.7 260.1

N 4.0 260.8

T.P. 6.25 261.13 9.94 254.88

T.P. 10.20 270.40 0.93 260.20:15 B.M. CHK original

T.P. on B.M. N.W. Pringle + W. Washington 5.33 265.07 = 265.07

265.07

sheet 5A

20

Bliss
Isabel
Morgan
11/18/27
BM Dwight
Ray, N.E. B.Phy

X-sections Alley Block 24 Park Villas
Between Dwight & Myrtle-Ray & Grimm
+
+
- Elev
Elev
337.89
332.46
Indexed
LM

S Prop line of Dwight on 00

on Paving

W Topch	4.56	33.0
Gutter	4.69	33.12
A	4.71	33.2
Gutter	4.52	33.37
E Topch	4.45	33.44
02' South		
E	4.7	33.2
+9	4.8	33.1
E	4.7	33.2
W	4.8	33.1
05' South		
W	5.0	32.9
E	5.0	32.9
E	4.8	33.1
25' East		
E	4.9	33.0
E	4.9	33.0
W	5.1	32.8
38' South		
W	5.2	32.7
E	5.1	32.8
+3	4.9	33.0
E	4.9	33.0

+
+
- Elev
Elev
337.89
Elev
21

42' South Single Garage on East		
6.2 Back Concrete lip out	4.68	333.21
60' South		
E	5.6	32.3
+2	5.9	32.5
+3	5.8	32.1
E	5.8	32.1
W	6.0	31.9
80' South		
W	6.8	31.9
E	5.9	32.0
E	5.9	32.0
92' South Single Garage on East		
1.1 Back Dirt floor out	5.5	32.4
100' South		
E	5.9	32.0
+2	6.1	31.8
E	6.4	31.5
W	6.8	31.1
125' South		
W	6.6	31.3
E	7.0	30.9
+5	6.7	31.2
E	6.2	31.7
144' South Single		
8.5 Back Dirt floor out	6.7	31.2

	+	^	Elev
		337.89	
E		7.0	30.9
+5		7.4	30.5
Q		7.5	30.4
W		7.2	30.7
		165' South	
W		8.0	29.9
+2		7.8	30.1
Q		7.7	30.2
E		7.6	30.3
		195' South Single Garage on East	
		3.4' Back Concrete floor on E	7.30
			30.6
		200' South	
E		7.5	30.4
Q		7.8	30.1
+3.5		7.8	30.1
+4		8.0	29.9
W		8.0	29.9
		208' South	
W		7.7	30.2
+2		7.9	30.0
Q		8.0	29.9
E		7.7	30.2
		236' South	
E		8.3	29.6
Q		8.5	29.4
+2		8.4	29.5

	+	^	Elev
		337.89	
W		8.3	29.6
		244' South	
W		8.5	29.4
+4		7.9	30.0
Q		8.2	29.7
+2		8.6	29.3
E		8.4	29.5
		260' South	
E		8.8	29.1
Q		9.0	28.9
+3.5		9.0	28.9
+9.5		8.5	29.4
W		8.7	29.2
		270' South	
W		9.4	28.5
Q		9.2	28.7
+4		9.0	28.9
+5		8.8	29.1
E		8.9	29.0
		280' South	
E		9.4	28.5
Q		9.3	28.6
W		9.5	28.4
		283' South	
W		9.6	28.3
Q		9.9	28.5

	+	X	Elev
		337.89	
+3.5		9.3	28.6
E		9.0	28.9
T.P.	4.4'	333.04	328.63
		284	South Single Garage on East
2.2 Back.		3.90	327.1
		298 S	
E		4.4	28.6
+2		4.7	28.3
Q		4.7	28.3
+1.5		4.7	28.3
+2.5		4.5	28.5
W		4.6	28.4
		302' South	
W		4.7	28.3
+5		4.8	28.2
Q		4.9	28.1
E		5.0	28.0
		325' South	
E		5.0	28.0
Q		5.1	27.9
W		5.0	28.0
		330 South concrete walk on West	
		on line concrete on k 4.11	328.93
		345' South Single Garage on East	
		0.5' Back on k concrete lip 5.11	327.9
		350' South	
W		5.1	27.9

	+	X	Elev
		333.09	
		5.3	27.7
		5.1	27.9
		375' South	
		5.1	27.9
		5.2	27.8
		5.0	28.0
		5.2	27.8
		383' South	
		5.3	27.7
		5.5	27.5
		5.2	27.8
		5.0	28.0
		398' South concrete walk on West	
		0.2 Back on k 5.19	327.85
		400' South	
		5.4	27.6
		5.6	27.4
		5.7	27.3
		418' South Single Garage on West	
		0.1 Back concrete on k 5.03	328.01
		5.6	27.4
		5.6	27.4
		5.5	27.5
		435' South	
		5.3	27.7

333.04

Elev

♀	5.1	27.9
E	5.2	27.8
	450' South	
E	5.2	27.8
♀	5.3	27.7
W	5.2	27.8
	470' South Single Garage on East Garage faces South	
	6.0 East to ♀ 2.2 Back. Dirt floor end	327.04
	475' South	
W	5.5	27.5
+4	5.5	27.5
+6.5	5.3	27.7
♀	5.3	27.7
E	5.2	27.8
	500' South	
E	5.2	27.8
♀	5.3	27.7
W	5.5	27.5
	504' South 2'-0" Eucalyptus Tree 0.6 in Alley	
	510' South	
W	5.4	27.6
♀	5.3	27.7
E	5.3	27.7
	520' South	
E	5.3	27.7
♀	5.2	27.8

333.04

Elev

29

W	5.5	27.5
	529' South Single Garage on West	
	1.4 Back Concrete on lip ♀ on floor	5.61 5.21
		327.43
		327.73
	534' South Db'l Garage on East. N. End	
	1.7 Back on concrete lip	4.95
	4 " Top floor	4.78
		328.04
		328.26
	539' N. end Single Garage on West	
	0.5 Back on concrete lip	4.96
		328.04
W	5.2	27.8
♀	5.2	27.8
E	5.2	27.8
	549' S. End of Db'l Garage on East	
	1.7 Back on lip	4.98
		328.04
E	5.2	27.8
♀	4.9	28.1
+2.5	5.1	27.9
W	5.0	28.0
	0.1 Back. S. end Single Garage on West	4.79
		328.23
	560' South	
	0.7 Back on concrete walk	5.02
		328.02
W	5.0	28.0
+5.5	5.0	28.0
♀	4.9	28.1
E	4.8	28.2

+ 333.09 Elev

E	48	28.2
E	49	28.1
W	49	28.1
+ 0.3 on concrete Walk	4.52	328.52

597 South

- 0.5 on concrete Walk	4.36	328.65
W	4.7	28.3
+ 3.5	4.8	28.2
E	4.7	28.3
E	4.5	28.5

601 50 South N line of Myrtle

on Paving			
E Top cb	4.59	328.40	
Gutter	5.10	27.9	
E	5.22	27.8	
Gutter	4.98	28.0	
W Top cb	4.51	328.53	
TP 438	335.18	2.29	320.80
TP 571	336.99	3.95	331.23
BM NE Owight Ray	4.97	332.47	

Bliss
Isobell
Morgan
1/15/17
+ 10th + 9th
B.M. S.W
Univ 106

X-Sections of Alley. Block 'D' Estudillo.
Caprons Addition. Between Univ + Grant

Elev
+ 785 + 289.87 - 282.02

Indexed
LM

On Paving
W. line of 10th St = 00

S Top Cb	5.74	284.13
Gutter	5.82	284.05
£	5.96	283.91
Gutter	5.81	284.06
N Top Cb	5.56	284.31

05' West

N	5.2	284.7
£	5.6	284.3
+ 4	5.6	284.3
S	5.2	284.7

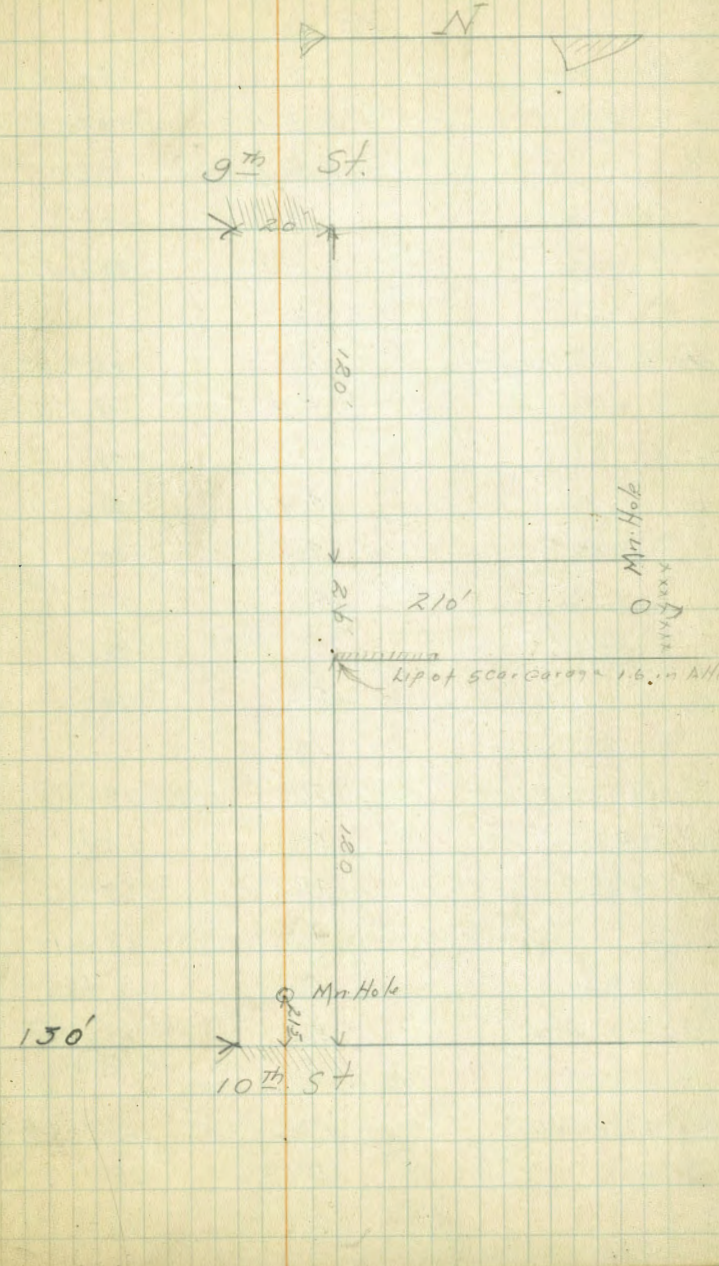
21' West

S	4.9	285.0
+ 7.5	5.0	284.9
+ 8 edge Mn	4.78	285.09
£	4.76	285.11
+ 1	4.75	285.12
N	4.8	285.1

36' West

N-0.5 on walk	3.39	286.48
N	5.0	284.9
£	5.0	284.9
S	4.8	285.1 ✓

Sketch of Alley. Estudillo + Caprons. Addition
Block 'D' Not Drawn to Scale



+
289.87

Elev.

45' West

S	5.0	284.9
+2	5.0	284.9
+4	4.7	285.2
Q	4.8	285.1
N	4.9	285.0

65' West

N-0.5 on Walk	5.27	284.60
N	5.3	284.6
+2	5.3	284.6
+4	4.9	285.0
Q	4.8	285.1
+4	4.8	285.1
+6	5.1	284.8
S.	5.2	284.7

84' West

S.	5.3	284.6
+2	5.2	284.7
Q	4.8	285.1
+2	4.8	285.1
N	5.3	284.6
N+0.5 on Walk	5.39	284.48

102' West

N-0.5 on Walk	5.38	284.49
N	5.6	284.3
+3	5.7	284.2 ✓

+
289.87

Elev.

27

Q	5.1	284.8
+6	5.2	284.7
S	5.3	284.6

114' West

S	5.1	284.8
+4	5.2	284.7
Q	5.1	284.8
+2	5.2	284.7
+4	5.5	284.4
N	5.7	284.2

120' West E Line of North + South Alley

N	5.8	284.1
Q	5.4	284.5
S	5.1	284.8

130' ²⁰ West

S	5.7	284.2
Q	5.5	284.4
+5	5.5	284.4
N	5.8	284.1

140' West ^N

N	5.9	284.0
+6	5.6	284.3
Q	5.6	284.3
+5	5.8	284.1
S	5.9	284.0

+ 289.87 - Elev

158' West Single Garage on North

1.5 Back Dirt floor on 6.2 283.7
T.P. 5.08 289.19 5.76 284.11 ground this T.P. for
Nov 27 1930 74 day

175' West

S 5.2 284.0
E 5.2 284.0
+6 5.4 283.8
N 5.9 283.8

193' West Machine shop on South

N 5.5 283.7
+2 5.9 283.8
+4 5.2 284.0
E 5.1 284.1

S on E. of floor concrete 5.04 284.15

200'

S 5.1 284.1
E 5.1 284.1
+4 5.1 284.1
N 5.5 283.8

215' West

N 5.9 283.8
+6 5.2 284.0
E 5.1 284.1
+4 5.3 283.9
S 5.4 283.8

+ 289.19 - Elev

220' West

S 5.9 283.8
+4 5.2 284.0
E 5.1 284.1
+5 5.3 283.9
N 5.3 283.9

246' West

N 5.1 284.1
+5 5.2 284.0
E 5.0 284.2
+5 5.1 284.1
S 5.3 283.9

252' West

S 5.1 284.1
E 5.1 284.1
N 5.3 283.9

260' West E. Line of 9th St.

N Top cb 5.10 284.09
Gutter 5.27 283.92
E 5.59 283.60
Gutter 5.33 283.86
S Top cb 5.22 283.97

T.P. 5.19 289.28 5.10 284.09
B.M. N.W. 9th Univ 5.56 283.72 283.76

X Sections of North and South Alley Estudillo
 Caprens Addition Block 'D'. From the North line of East West
 Alley to 210' North

29

	+	X	-	Elev
	9.71	288.82		284.11 <small>verified TP. see papers</small>
North Line of East West Alley = 00				
E on floor		4.61		284.21
E		4.8		284.0
+1.6 on lip concrete		9.76		284.06
E		4.8		284.0
W		4.9		283.9
25' North				
W		4.9		283.7
E		4.9		283.9
+8.4		4.81		284.01
E on floor		4.52		284.30
50' North				
E on floor		4.51		284.31
+1.9 on lip		4.93		283.89
E		5.1		283.7
W		5.0		283.8
55' North Single Garage on West				
0.7 Back Dirt floor		5.0		283.8
60' North Needs car Garage on East				
on line floor		4.52		284.30
+1.9 on lip		4.99		283.83
79' North Single Garage on West				
14.3 Back concrete floor		5.15		283.67
W		5.2		283.6
E		5.3		283.5 ✓

East	5.4	283.4
89' North Single Garage on East		
on line Dirt floor	5.4	283.4
91' North		
E	5.5	283.3
+8	5.4	283.4
E	5.6	283.2
W	5.2	283.6
101' North Single Garage on West		
W-1 Dirt floor	5.6	283.2
W	5.6	283.2
+2	5.5	283.3
E	5.7	283.1
E	5.5	283.3
107' Single Garage on East		
2.6 Back Dirt floor	5.5	283.3
125' North		
E	5.8	283.0
E	5.9	282.9
+3	5.8	283.0
W	5.9	282.9
145' North		
W	6.1	282.7
+3	6.2	282.6
+6	5.9	282.9
E	5.9	282.9 ✓

E	5.8	283.0
	172' North Single Garage on Foot	
	4.4 Back Dirt floor	282.5
E	6.3	282.5
E	6.1	282.7
+3	6.2	282.6
+5	6.3	282.5
W	6.12	282.6
	176' North Mn. Hole on E	
	on rim	4.52
		284.30
	178' North	
W	6.3	282.5
+5	6.6	282.2
+5.5	6.9	281.9
+7	6.8	282.0
+8	6.0	282.4
E	6.2	282.6
E	6.3	282.5
	185' North	
E	6.3	282.5
+4	6.8	282.0
E	7.2	281.6
+1.5	7.2	281.6
+2	6.9	281.9
W	6.6	282.2

200' North

YK	6.8	282.0
+8	7.1	281.7
+9	8.6	280.2
E	8.8	280.0 ✓
+1	7.2	281.6
E	6.6	282.2 ✓

210' North

Breaks into Canyon

E	10.1	278.7
+3	9.8	279.0
+7	10.1	278.7
+9	11.6	277.2
E	11.8	277.0
+3	12.6	276.2
W	12.3	276.5

B/15
200
100
1/12

8.1
100

	+	x 303.15	-	Elev
Q			4.4	296.8
+2			4.3	298.7
+4			4.0	299.2
N +9.3	edge of walk		4.02	299.13
C N			4.0	299.2
		40' East		
G N			4.0	299.2
S +0.7	edge of walk		3.97	299.18
+6			4.0	299.2
S Q			4.2	299.0
+5			3.9	298.3
Q S			3.8	298.4
		55' East		
+ S			3.6	299.6
N +5			3.8	299.4
Q			4.1	299.1
N +3			4.1	299.1
N +4			3.9	299.3
+2 +9.3	edge of walk		3.95	299.20
Q N			4.0	299.2
+5		80' North		
+ N			3.8	299.4
S +0.7			3.73	299.38
+6			3.9	299.3
S Q			4.0	299.2
+5			3.8	299.4

	+	x 303.15	-	Elev	32
+7			3.6		299.4
S			3.5		299.7
		100' East			
S			3.4		299.8
+5			3.9		299.8
Q			3.9		299.3
+8			3.7		299.5
+9	edge of walk		3.73		299.42
N			3.7		299.5
TP. 537		30481	3.71		299.44
		115' East			
N			5.4		299.4
+1			5.36		299.45
+8			5.4		299.5
Q			5.5		299.3
+6			5.3		299.5
S			5.5		299.3
		129' West of Garage on North			
		2.1 in alley on concrete	5.11		299.70
		130' East			
N +2.1	on lip		5.27		299.54
+5			5.5		299.3
Q			5.3		299.5
S			5.1		299.7
		138' Single Garage on South			
S	Dirt floor		5.1		299.7

+

304.81

-

Elev

142 E end db/ Garage on North

on top w/ in alley

5.27

299.54

146 Single Garage on South

0.9 in Alley

5.0

299.8

147 West end 4 car Garage on North

2.2 Back Dirt floor

5.2

299.6

N.

5.2

299.6

+5

5.3

299.5

♀

5.3

299.5

S.

5.0

299.8 ✓

166'

S.

5.3

299.5

♀

5.4

299.4

N

5.1

299.7

+2.2 ctr

4.9

299.9 ✓

186 East. East end 4 car

2.2 Back Dirt floor

4.9

299.9

N

5.1

299.7

♀

5.2

299.6

+3

5.2

299.6

+5

5.2

299.6

200'

S

5.1

299.7

+4

4.9

299.9

♀

4.9

299.9

N

5.0

299.8

+

304.81

Elev

33

213⁵ W. end db/ Garage on South.

N

4.7

300.1

♀

4.7

300.1

+6

4.5

300.3

S.

4.3

300.5 ✓

T.P. 5.65

305.69

4.77

300.04

1.0' Back on concrete floor

5.09

300.60

235' East end db/ Garage on South

10 Back. on concrete floor

5.27

300.42

S.

5.3

300.4

♀

5.2

300.5

+6

5.5

300.2

N.

5.6

300.1

293.63

N

5.3

300.4

+4

5.5

300.2

+7

5.3

300.4

♀

5.4

300.3

S.

5.2

300.5

T.P. 3.92

305.42

3.87

301.82
301.50

Sec A

N

5.3

300.4

♀

5.5

300.2

ON W. Hole h. of Alley on Sec A

5.1

300.6

2156.83

♀

5.3

300.4

+

X 74
305.42

Elev

+6	5.3	300.4	
Q	5.5	300.2	
+2	5.6	300.1	
+3	5.4	300.3	
W	5.3	300.4	
2488.2 E = 275' = 2461.80 W			
W	5.2	300.5	Fence 16 in alley
+9	5.2	300.5	
77	5.5	300.2	
Q	5.4	300.3	
+1	5.3	300.4	
+2	5.6	300.1	
+5	5.3	300.4	
E	4.8	300.9	300'
E	4.9	300.8	0.5' alley
+3	4.9	300.8	
+5	5.3	300.4	
+8	5.1	300.6	
Q	5.2	300.5	
+1	5.3	300.4	
+9	5.0	300.7	
W	4.8	300.9	3 to 9 end of fence 300.9
W	4.6	301.1	313'
+9	5.0	300.7	

+

X 74
305.42

Elev

34

Q	5.0	300.7	
+2	4.9	300.8	
+5	5.0	300.7	
+7	4.7	301.0	
E	4.5	301.2	
3+30			
E	4.1	301.6	
+4	4.5	301.2	
+7	4.5	301.2	
+9	4.7	301.0	
Q	4.8	300.9	
W	4.5	301.2	
3+38 Single Garage on West			
4.7 Back. Dirt floor	4.9	301.3	
3+50			
W	4.2	301.5	
+6	4.4	301.3	
Q	4.4	301.3	
+3	4.5	301.2	
E	3.8	301.9	
3+67			
E	4.0	301.7	
+8	4.5	301.2	
Q	4.4	301.3	
+8	4.0	301.7	
W	4.0	301.7	

+ π 74
305.92 - Elev

3477. Concrete Walk on West

0.9 Backen ϕ 3.82 301.92

3479

3.8 301.9

+2 3.9 301.9

+5 4.3 301.4

ϕ 4.2 301.5

+5 4.2 301.5

E 4.1 301.6

4+00

E 3.5 302.2

+5 3.8 301.9

ϕ 3.7 302.0

+6 3.8 301.9

W 3.0 302.7

4+10

W 3.0 302.7

+4 3.9 302.3

+7 3.9 302.3

ϕ 3.9 302.0

+4 3.5 302.2

E 3.2 302.5 ✓

4+17 ϕ on Paving

Topob-E 2.58 303.16

Gutter 2.82 302.92

ϕ 3.16 302.58

π - Elev 305.74 35

Gutter 3.01 302.73 3419 ϕ

W Topob 2.73 303.01

TP ~~5.77~~ 6.96 310.27 308.26 2.43 303.31 302.99

TF 4.26

BM N.E. Blaine Normal used to be University St. 4.35 305.92 BM. 305.98

Bliss
Isabel
Manager
11/16/77
J.E. Adams
Cherokee S.P.

X Sections Alley. Block 43 Normal Hts
Between Adams, Madison. 36th Cherokee
15' Alley
385.78

Indexed
w/m

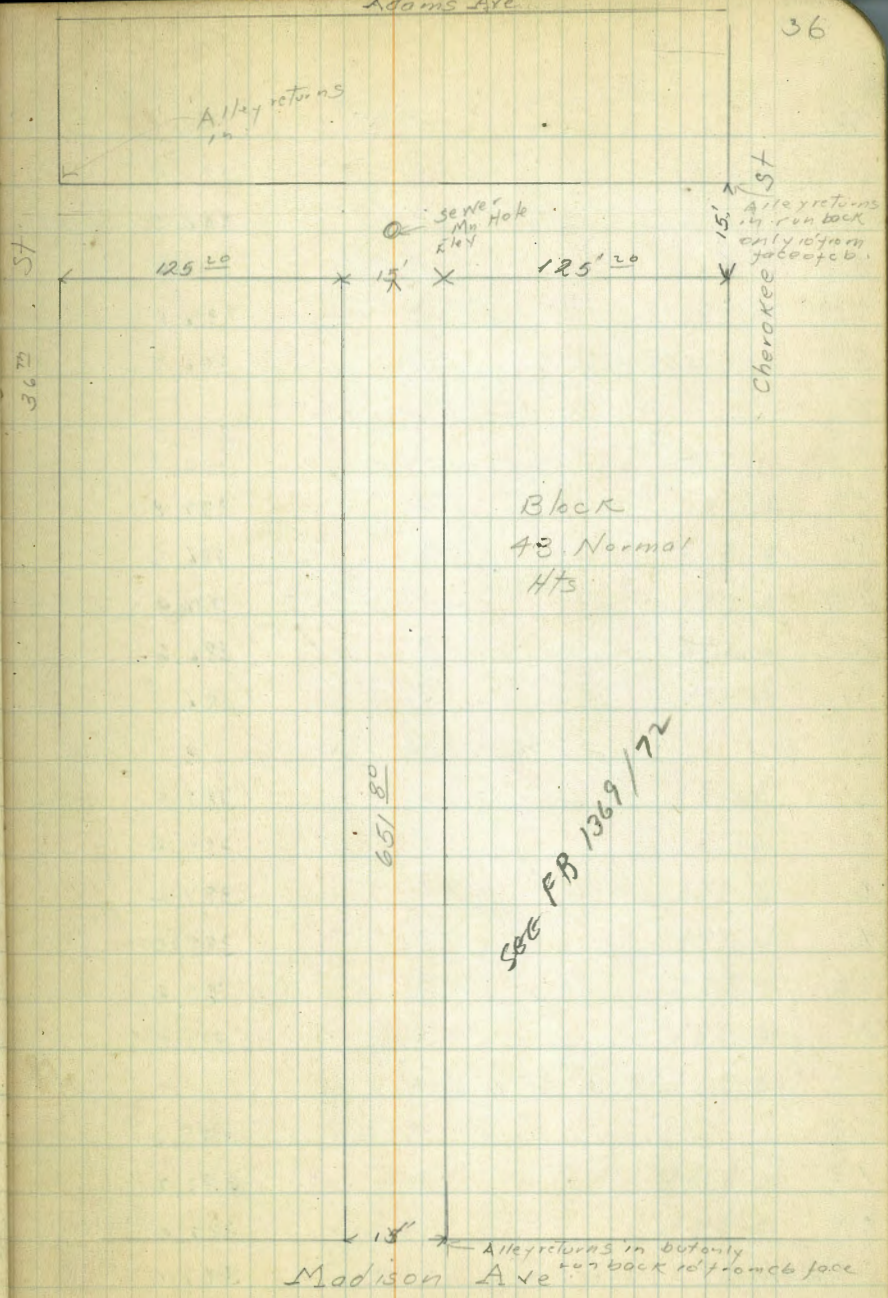
W line of Cherokee = 0.0

N Top cb	4.55	385.91
Gutter	4.5	386.0
k	4.5	386.0
Gutter	4.5	386.0
S Top cb	4.47	385.99
0.5' West		
S	4.3	386.2
+2	4.2	386.3
+5	4.5	386.0
k	4.3	386.2
+6	4.4	386.1
N	5.0	386.5
20' West		
N	4.9	385.6
+4	4.1	386.4
k	4.2	386.3
S	4.1	386.4
90' West		
S	4.1	386.4
+6	4.2	386.3
k	4.2	386.3
+5	4.0	386.5
N	4.5	386.0
N+5	4.8	386.0

Reduced & Plotted on Profile # 2098
July 16-1941 C.B.H.

Adams Ave

36



SEE FB 1369/72

18' ← Alley returns in but only run back to french face Madison Ave

75' West

N-5	4.9	386.1
N	4.2	386.8
+3	3.9	386.6
♀	3.9	386.6
+3	3.7	386.8
S 1	3.8	386.7

100' West

S-5	3.9	386.6
S	3.8	386.7
+5	3.5	387.0
♀	3.6	386.9
+2	3.6	386.9
N	3.9	386.6
N+5	4.1	386.4

125' West. E. line of N. 5' alley

S	3.2	387.3
+2	3.1	387.4
+6	3.3	387.2
♀	3.5	387.0
+4	3.3	387.2
N	3.5	387.0

132° W & alley

N	3.3	387.2
+3	3.3	387.2
+4	3.5	387.0
♀ on rim of Mt. Hole.	3.39	387.07
S	3.3	387.2

140' West West Line Alley

S	3.2	387.3
+3	3.0	387.5
♀	3.3	387.2
+4	3.1	387.4
N	3.3	387.2

150' West

N	3.4	387.1
+1	3.4	387.1
+2	3.1	387.4
+5	3.2	387.3
♀	3.1	387.4
S	3.1	387.4

165' West

S	3.1	387.4
+4	2.9	387.6
♀	2.9	387.6
+2	3.1	387.4
+3	2.6	387.9
+6	2.2	388.3
N	2.5	388.0

173' West

N	2.1	388.4
+2	2.5	388.0
+4	2.3	388.2
+5	2.8	387.7

	+	↑	-	Elev
		390.46		
♀			2.8	387.7
S.			2.9	387.6
		177' West		
S.			2.8	387.7
+9			2.7	387.8
♀			2.8	387.7
+3			2.6	387.9
N			2.7	387.8
		188' West		
N.			2.4	388.1
+5			2.2	388.3
+6			2.6	387.9
♀			2.6	387.9
+3			2.9	388.1
S			2.3	388.2
		192' West		
S			2.9	388.1
+9			2.3	388.2
♀			2.5	388.0
+2			2.9	388.1
+3			1.9	388.6
N			1.8	388.7
T.P.	5.25	392.50	3.21	387.25
		195' West		
		5' Back, on concrete floor	3.53	388.97

	+	↑	-	Elev
		392.50		
		5' Back		
		208' West		
N.			3.3	389.2
+2			3.3	389.2
♀			4.2	388.3
+3			4.0	388.5
S			4.1	388.4
		212' West		
S			4.1	388.4
+9			4.0	388.5
♀			4.1	388.4
+3			3.7	388.8
+6			3.6	388.9
N			3.7	388.8
		226' West		
N			3.7	388.8
+9			3.5	389.0
+5			3.8	388.7
♀			3.8	388.7
+2			3.7	388.8
S			3.8	388.7
		242' West		
S			3.7	388.8
♀			3.8	388.7
+1			3.5	389.0
+4			3.2	389.3
N			3.3	389.2

	392.50	Elev
258' West		
N	3.7	388.8
+2	3.5	389.0
+6	3.7	388.8
♀	3.9	388.6
+3	3.8	388.7
S	3.6	388.9
264' West		
S	3.9	388.6
+3	3.9	388.6
♀	4.1	388.4
+5	3.9	388.6
N	3.9	388.6
265' E. line 36 th St		
N Top cb.	4.22	388.28
Gutter	4.2	388.3
♀	4.1	388.4
Gutter	4.1	388.4
S Top cb.	4.14	388.36
S. Line of East West Alley = 00 of North-South Alley		
E	5.2	387.3
+2	5.2	387.3
+4	5.9	387.1
♀	5.2	387.3
+3	4.9	387.6
+5	5.3	387.2
W	5.3	387.2

	392.50	Elev
15' South		
W	4.9	387.6
+5	4.9	387.6
♀	5.2	387.3
+2	5.4	387.1
+6	5.1	387.4
E	5.3	387.2
28' South		
E	5.2	387.3
+3	4.9	387.6
+4	5.3	387.2
♀	5.1	387.4
+3	4.9	387.6
W	5.0	387.5
50' South		
W	4.8	387.7
+5	4.8	387.7
♀	5.0	387.5
+4	4.9	387.6
E	5.3	387.2
75' South		
E	4.9	387.6
♀	5.0	387.5
+3	4.7	387.8
W	4.3	388.2

392.50

Elev

100' South

W	4.1	388.4
+2	4.0	388.4
+5	4.3	388.2
♀	4.7	387.8
+2	4.7	387.8
+5	5.1	387.4
E	5.2	387.3

125' South

E	4.7	387.8
+3	4.5	388.0
♀	4.9	388.1
+4	4.4	388.1
W	3.9	388.6

150' South

W	3.6	388.9
♀	4.1	388.4
+4	4.3	388.2
E	4.0	388.5

175' South

E	4.6	387.9
+3	4.2	388.3
♀	4.0	388.5
+3	3.7	388.8
W	3.6	388.9

392.50

Elev

40

200' South

W	3.8	388.7
+2	3.7	388.8
+5	4.0	388.5
♀	3.8	388.7
+4	3.9	388.6
E	4.1	388.4
TP	5.33	394.11 3.72 388.78

225' South

E-5	5.9	388.2
E	5.9	388.2
+9	5.3	388.8
♀	5.2	388.9
+3	5.1	389.0
+6	4.9	389.2
W	5.3	388.8

250' South

W-5	5.5	388.6
W	5.3	388.8
+2	4.9	389.2
+5	4.9	389.2
♀	5.2	388.9
+3	4.9	389.2
E	5.0	389.1

275' South

E	5.1	389.0
---	-----	-------

	+	394.11	-	Elev
+3			4.7	389.4
♀			5.0	389.1
+5			4.9	389.2
W			5.4	388.7
		300' South		
			4.6	389.5
+2			4.9	389.7
+9			4.9	389.2
♀			4.9	389.2
+9			4.7	389.4
♀			4.7	389.4
		323' South		
♀			5.2	388.9
+2			4.7	389.4
+5			5.0	389.1
♀			5.2	388.9
+3			4.9	389.2
W			4.8	389.3
		334' South		
W			4.7	389.4
♀			5.2	388.9
+5			5.0	389.1
♀			5.2	388.9
		352' South		
♀			5.1	389.0
+4			4.9	389.2

	+	394.11	-	Elev
♀			5.0	389.1
+5			4.6	389.5
W			4.6	389.5
		366' South Single Garage on West		
		15' Back	4.35	389.76
		375' South		
			4.7	389.4
			4.9	389.2
			5.2	388.9
			5.1	389.0
		390' South		
			5.3	388.8
			5.1	389.0
			5.3	388.8
			5.3	388.8
			4.7	389.4
		396' South Single Garage on West		
		15' Back Dirt House on	4.7	389.4
			5.1	389.0
			4.9	389.2
			5.2	388.9
			5.1	389.0
			5.3	388.8
		400' South		
			5.2	388.9
			5.1	389.0

394.11 Elev

K	5.4	388.7
W	5.2	388.9
411' South Single Garage on West		
13' Back Concrete floor on E	4.55	389.56
426' South Single Garage on East faces South		
E-2 to edge of concrete lip	5.31	388.80
E	5.9	388.7
+3	5.3	388.8
K	5.3	388.8
W	5.3	388.8
443' South Single Garage on West		
15' Back concrete floor on E	4.72	389.39
450' South		
W	5.2	388.9
+2	5.0	389.1
K	5.3	388.8
+4	5.1	389.0
E	5.0	389.1
475' South		
E	5.1	389.0
+3	5.1	389.0
K	5.1	389.0
+4	5.2	388.9
+6	4.8	389.3
W	4.8	389.3

394.11 Elev

500' South		
W	4.9	389.2
+3	4.9	389.2
K	5.2	388.9
E	5.0	389.1
515' South		
E	5.2	388.9
K	4.9	389.2
+5	4.7	389.4
W	5.0	389.1
545' South		
W	4.7	389.4
K	4.9	389.2
E	5.0	389.1
570' South Single Garage on East		
12' Back on E faces South	4.7	389.4
575' South		
E	4.7	389.4
K	4.6	389.5
+5	4.5	389.6
W	5.1	389.0
600' South		
	4.3	389.8
+1	4.6	389.5
K	4.9	389.7
+4	4.4	389.7
W	4.5	389.6

Bliss
Iso bell
Morgan
11/17/27

X Sections of Front Street from the
South Line of Island to track of S.D. & A.
R.R. + - Elev 1966

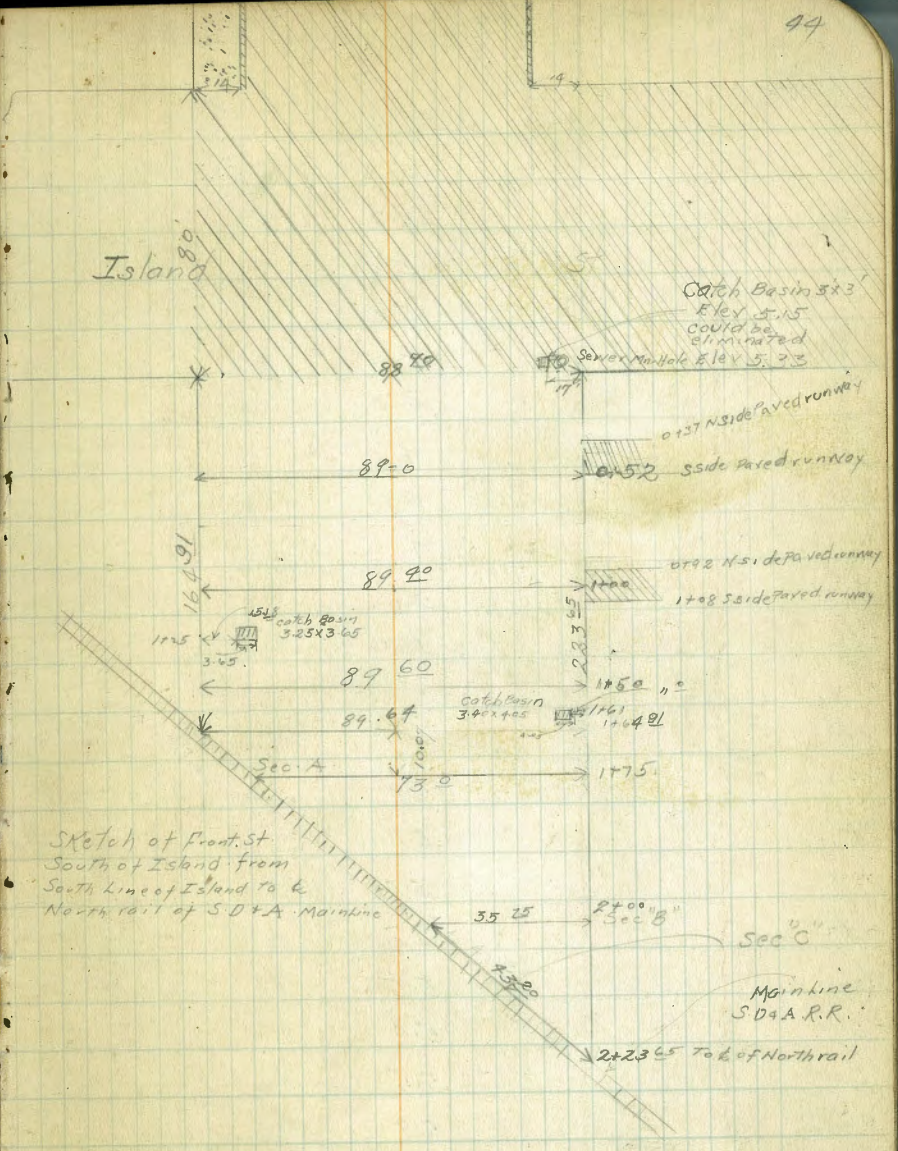
BM.S.W				
E. Front	2.91	19.34		16.43
TP	2.54	12.22	9.66	9.68
TP	4.93	10.14	7.01	5.21

S Line of Island = 00

on Pavine				
W		4.93		5.21
+6.6		5.06		5.08
cb		5.22		4.92
1/4		4.87		5.27
1/2		4.67		5.47
3/4		4.83		5.31
+10 =		4.97		5.17
catch Basin &		4.99		5.15
cb		4.82		5.32
E		4.46		5.68

01' South

E		4.7		5.4
cb		4.8		5.3
7.5		5.1		5.0
1/4		4.9		5.2
1/2		4.7		5.4
3/4		5.0		5.1
+10		5.5		4.6
cb		5.8		4.3
+7.4		5.3		4.8
W		5.2		4.9



Sketch of Front St
South of Island from
South Line of Island to &
North rail of S.D. & A. Mainline

Sec C
Mainline
S.D. & A. R.R.

05' South

W	5.5	4.6
cb	5.7	4.4
1/4	5.0	5.1
Q	5.0	5.1
1/4	5.3	4.8
+8	4.8	5.3
cb	4.8	5.3
E	4.8	5.3

25' South

E	5.0	5.1
+6	5.3	4.8
+12	5.2	4.9
cb	5.1	5.0
+11	4.9	5.2
1/4	5.1	5.0
+9	5.4	4.7
+12	5.7	4.4
Q	5.5	4.6
+5	5.4	4.7
1/4	5.5	4.6
cb	5.9	4.2
W	6.0	4.1

37' South Paved on Way N. end.

on line	5.20	4.9
---------	------	-----

52' South

W	6.3	3.8
+9	6.4	3.7
cb	6.1	4.0
+5	6.0	4.1
1/4	6.1	4.0
+5	6.5	3.6
+7	6.5	3.6
+10	5.9	4.2
Q	5.8	4.3
1/4	5.6	4.5
cb	5.7	4.4
E on paved on way	5.28	4.8

64' South

E	5.9	4.2
cb	6.1	4.0
1/4	6.0	4.1
Q	6.2	3.9
+13	6.4	3.7
1/4	6.6	3.5
+5	6.6	3.5
+7	6.4	3.7
cb	6.7	3.4
W	6.8	3.3

75' South

W	6.9	3.2
cb	6.7	3.4

T	T 10.14	Elev
+5	6.6	3.5
+7	6.8	3.3
14	6.5	3.6
k	6.4	3.7
19	6.3	3.8
+10	6.2	3.9
cb	6.9	3.7
+5	6.5	3.6
+6	6.2	3.9
k	6.1	4.0

92' South Edge of Paved runway on East

E-0.5 edge of parking	6.45	3.6
k	6.3	3.8
cb	6.2	3.9
19	6.3	3.8
k	6.6	3.5
+6	6.5	3.6
14	6.9	3.2
cb	6.9	3.2
W	6.9	3.2

8940
100' South E. of Paved runway

0.5' Back on Parking 6.61

108' South S edge of Paved runway on East

19	7.1	3.0
cb	7.1	3.0
19	7.1	3.0

T	T 10.14	Elev
k	6.8	3.3
14	6.4	3.7
cb	6.1	4.0
k	6.4	3.7
E+0.5	6.36	3.7

125' South

k	7.1	3.0
+9	7.1	3.0
+10	6.6	3.5
cb	6.6	3.5
19	6.9	3.2
k	7.0	3.1
14	7.2	2.9
+ 10.49 ^{on S. Edge} catch Basin 2' x 2.25	7.47	2.6
cb	7.4	2.7
W	7.6	2.5

135' South

W	7.9	2.2
cb	7.5	2.6
19	7.1	3.0
k	7.1	3.0
+10	7.1	3.0
+12	7.1	3.0
+19	6.9	3.2
14	6.8	3.3
cb	6.8	3.3

	+	-	Ele
	10.14		
+4		6.9	3.2
+5		7.2	2.9
E		7.9	2.9
	150' South	89.90	
E		7.1	3.0
+10		7.3	2.8
cb		7.3	2.8
+6		7.0	3.1
1/4		6.9	3.2
2		7.1	3.0
1/4		7.6	2.5
+5		7.8	2.3
cb		7.7	2.4
W		7.8	2.3
	157' South		
W		7.7	2.4
+4		7.8	2.3
+5		8.2	1.9
+12		8.3	1.8
cb		7.8	2.3
1/4		7.5	2.6
2		7.1	3.0
1/4		7.1	3.0
+14		7.1	3.0
cb		7.2	2.9
+2		7.4	2.7

	+	-	Ele
	10.14		
+6		7.1	3.0
E		7.2	2.9
	161' South	89.60	
E		7.3	2.8
+9		7.6	2.5
+11 edge of catch Basin	2.40	7.48	2.6
Flowline incoming pipe		11.74	-1.60
Flowline outgoing pipe		12.72	-2.58
cb		7.48	2.66
+3		7.0	3.0
1/4		7.2	2.9
2		7.1	3.0
1/4		7.6	2.5
+8		7.8	2.3
+14		8.0	2.1
cb		7.7	2.4
+9		7.0	3.1
W		7.0	3.1
	164' 21'	Rail on West	
W top of rail		6.43	3.71
W on ground		6.9	3.2
+10		6.9	3.2
cb		7.1	3.0
+6		7.0	3.1
+10		7.5	2.6
1/4		7.6	2.5

	T 10.14	Elev
k	7.3	2.8
1/4	7.2	2.9
cb	7.1	3.0
F	7.4	2.7

Sec A = 175' South

F	7.5	2.8
cb	7.3	2.8
1/4	7.3	2.8
k	7.3	2.8
1/4	7.2	2.9
Ground	6.9	3.2
Toprail	6.51	3.6

Sec B

Toprail	6.69	3.45
Ground	6.7	3.4
1/4	6.7	3.4
+9	6.7	3.4
cb	7.1	3.0
1/2	7.4	2.7
1/2	7.4	2.7

Sec C = 225' 43"

Ground	7.2	2.9
Toprail	6.82	3.32
K+12	7.1	3.0
Toprail	6.77	3.37
cb Toprail	6.76	3.38
Ground	6.8	3.3

	T 10.14	Elev
T.P. 9.45	19.01	0.58
B.M. SW. Front + G		2.60
		16.41 ✓

7 Sec Alley BIK 244 U.H.
Bet Herbert + Park Blvd - Myrtle + Brookes

11-26-27
Miller

B.M.	7.75	296.88	289.13	S.E. Brookes & Herbert
				N + S. Alley
				00 = S. Line Brookes St 60' wide, 10' chs
W		4.10	292.78	emt el return
W		4.6	292.3	ground
C		4.8	292.1	"
E		4.3	292.6	"
E		3.72	293.16	emt el return
				20'S
E		3.3	293.6	
+3		4.5	292.4	
C		4.7	292.2	
+7		4.4	292.3	
W		3.7	293.2	✓
				50'S
W		4.6	292.3	
C		4.6	292.3	
+6		4.4	292.5	
E		3.3	293.6	
				70'S = Double garage on W. emt floor 6.6 Back
E		3.7	293.2	
+4		4.7	292.2	
C		4.8	292.1	
W		4.6	292.3	emt appon
+6.6		4.4	292.5	✓ floor

289.

49

296.84

82'S = Garage on E dirt floor 1.7 Back				
W		4.9	292.0	
C		4.8	292.1	
+6		4.6	292.3	
E		4.0	292.9	
+1.7		3.9	293.0	floor
				140'S = garage on E dirt floor 1.0 Back
-1.0		5.2	291.7	floor
E		5.2	291.7	
C		5.0	291.9	
W		5.4	291.5	
				120'S = N. Line E + W Alley
W		5.3	291.6	
C		5.1	291.8	
E		5.1	291.8	
				170'S = S Line E + W Alley
E		4.8	292.1	
C		5.3	291.6	
W		5.3	291.6	
				195'S = Double garage on E. emt floor 13' Back
W		5.7	291.2	
C		5.6	291.3	
+9.3		5.0	291.9	emt appon
C		5.0	291.9	" "

296.88

206' S = N. End 3. Garages on E cmt floors. 3.5 Back

E - 3.5	5.4	291.5	floor
E	5.5	291.4	
+ 0.4	5.5	291.4	cmt apron
E	5.8	291.1	
W	5.8	291.1	

232' S = S. End above Garages

W	6.4	290.5	
E	6.3	290.6	
+ 8	6.2	290.7	
+ 9.6	5.7	291.2	cmt apron
E	5.8	291.2	
+ 3.5	5.5	291.4	

243' S = Garage on E cmt floor 3.2 Back

E - 3.2	6.0	290.9	floor
E	6.4	290.5	cmt apron
E	6.4	290.5	
W	6.7	290.2	

280' S

W	7.2	289.7	
E	6.7	290.2	
E	6.8	290.1	
220' S = N. line Myrtle 10' els 6' wide			
E	6.57	290.31	cmt el + ground
E	7.2	289.7	ground
W	7.5	289.4	"
W	7.36	289.52	cmt el Return

Alley BIK 244 21H.

50,

296.88

E + W. Alley

00 = W line N. & S. Alley

N	5.3	291.6	
E	5.5	291.4	
S	5.3	291.6	
T.P.	0.86	292.42	5.32 291.56
55' W garage on S cmt floor 4.3 Back			
55' W garage on N cmt floor 6.3 Back			
S - 4.3	0.8	291.6	floor
S - 3	1.1	291.3	cmt apron
S	1.2	291.2	
E	1.9	290.5	
N	1.7	290.7	
+ 5	1.6	290.8	cmt apron
+ 6.3	1.4	291.0	floor
68' W garage on N cmt floor 6.3 Back			
- 6.3	1.4	291.0	
- 5.0	1.7	290.7	
N	1.9	290.5	
E	2.2	290.2	
S	1.4	290.8	
85' W			
S	2.6	289.8	
E	3.0	289.4	
N	2.7	289.7	

292.42

90' W

- 6	5.1	287.3
N	5.4	287.0
E	3.3	289.1
S	2.9	289.5

100' W

S	3.4	289.0
+3	5.1	287.3
E	6.8	285.6
N	11.2	281.2
+10	11.6	280.8

102' W

- 10	11.8	280.6
N	11.8	280.6
E	3.9	284.5
S	5.4	287.0
+5	5.1	287.3

112' W

- 7	7.6	284.8
S	9.4	283.0
E	11.0	281.4
N	12.8	279.6
+12	12.8	279.6

125' W

- 15	14.3	278.1
N	14.5	277.9
E	13.6	278.8

289.95 N.W. Herbert + 21 pas

Alley Blk 24421.H.

292.42

125' W (Eon).

+ 8	10.4	282.0
S	10.4	282.0
+ 7	10.1	282.3
T-P.	1.71	283.83
	10.30	282.12

135' W

- 15	4.2	279.6
S	5.8	278.0
E	7.0	276.8
N	6.5	277.3
+15	5.7	278.1

150' W

- 15	5.1	278.7
N	6.5	277.3
E	8.3	275.5
S	8.9	277.9
+20	10.0	273.8

175' W

- 20	11.0	272.8
S	7.9	275.9
E	6.7	277.1
N	4.7	279.1
+10	2.6	281.2

193' W

- 5	0.0	283.8
N	1.3	282.5
E	3.4	280.4

51

283.83
193' W. com

+3	6.2	277.6
S	6.4	277.4
+20	9.8	274.0

195' W

-20	9.7	274.6
S	5.0	278.8
E	2.9	280.9
N	0.7	283.1
+4	0.0	283.8

207.2 W = W. End of E. W. Alley

N	+2.0	285.8
E	0.6	283.2
S	1.5	282.3
+10	4.4	279.4

T.P. 11.16 292.49 2.50 281.33

chk on BM NW. Upport Har Port 2.50 287.99 = 287.95

Alley BIK 2442H.

52

175
320.5
207.05

60' wide
12' cbs
9' 1/4's

49th St X Sec
Univ. Ave to Orange

1-28
mils.

BM 0.20 326.88 326.65
T.P. 10.28 324.08 13.08 313.80

SW. Univ Ave
& Estrella.

324.08

54

00' N. line Univ. Ave

W 12.7 311.4
cl 12.82 311.26
gutter 13.34 310.74
1/4 12.76 311.22
c 12.42 311.66
1/4 12.33 311.75
gutter 12.55 311.53
cl 11.82 312.26
c 11.3 312.8

emt cl
pavmt
"
"
"
"
emt cl
E

1/4 12.6 311.5
cl 11.9 312.2
E 11.3 312.8
1/4 10.5 313.6
cl 11.4 312.7
1/4 12.0 312.1
c 11.9 312.2
1/4 12.1 312.0
cl 13.1 311.0
W 14.6 309.5
+5 15.1 309.0

13' N

70' N

E 11.3 312.8
cl 11.8 312.3
1/4 12.4 311.7
c 12.5 311.6
1/4 13.4 310.7
cl 13.0 311.1
W 11.9 312.2

-10 12.7 311.4
W 11.8 312.3
cl 10.2 313.9
1/4 9.4 314.7
c 9.0 315.1
1/4 8.8 315.3
cl 9.3 314.8
+1 8.3 315.8
E 8.1 316.0

19' N

-10 16.0 308.1
W 15.3 308.8
cl 15.0 309.1
1/4 13.7 310.4
c 13.2 310.9

100' N

E 4.3 319.8
+1 5.4 318.7
+11 5.9 318.2

324.08

el	6.7	317.4
14	6.2	317.9
c	6.2	317.9
14	6.7	317.4
el	7.4	316.7
W	8.7	315.4
+10	10.1	314.0

150' N

-10	7.4	316.7
W	6.0	318.1
el	3.7	320.4
14	2.8	321.3
c	2.4	321.5
14	2.7	321.4
el	3.0	321.1
+11	2.3	321.8
e	1.8	322.3
T.P.	10.98	334.79
	0.27	323.81

200' N

E	9.2	325.6
+10	9.9	324.9
el	11.9	322.9
+3	11.4	323.0
+6	10.8	324.0
14	10.6	324.2
c	10.0	324.8

334.79

44	10.0	324.8
+6	10.8	324.0
el	10.2	324.6
W	11.4	323.4
+5	11.9	322.9

R 35' N

-5	9.9	324.9
W	9.6	325.2
el	8.8	326.0
14	8.1	326.7
c	7.9	326.9
14	8.3	326.5
+5	9.7	325.1
el	10.0	324.8
+2	7.4	327.4
+10	6.6	328.2
E	5.9	328.9

R 65' N

E	3.3	331.5
+2	4.9	329.9
+10	5.8	329.0
el	7.5	327.3
+3	7.2	327.6
14	6.5	328.3
c	6.2	328.6
14	6.7	328.1

334.79
265' N (cont)

cl	7.5	327.3
W	7.8	327.0
+5	8.4	326.4

300' N

-5	7.9	327.1
W	7.3	327.5
cl	6.6	328.2
1/4	5.7	329.1
E	4.9	329.9
1/4	5.4	329.4
+2	6.0	328.8
cl	5.6	329.2
+2	5.0	329.8
+10	3.7	331.1
E	3.2	331.6

335' N

E	2.3	332.5
+2	3.1	331.7
+11	3.8	331.0
cl	4.8	330.0
1/4	4.5	330.3
E	4.6	330.2
1/4	5.2	329.6
cl	6.1	328.7
W	6.9	327.9
+8	7.5	327.3

334.79

365' N

-5	6.4	328.4
W	6.1	328.7
cl	5.6	329.2
1/4	4.9	329.9
E	4.3	330.5
1/4	3.9	330.9
+8	4.1	330.7
d	3.4	331.4
E	2.2	332.6

400' N

E	1.3	333.5
cl	2.0	332.2
+1	3.4	331.4
1/4	3.4	331.4
E	3.7	331.1
1/4	4.3	330.5
cl	5.1	329.7
W	5.6	329.2
+5	5.8	329.0

425' N

-5	5.4	329.4
W	5.2	329.6
cl	4.6	330.2
1/4	3.6	331.2
E	3.2	331.6
1/4	3.4	331.4

49th ST

56

334.79
425' N. (cont)

cl	2.7	332.1
E	1.4	333.4
455' N.		
E	0.4	334.4
cl	1.2	333.6
+5	2.6	332.2
14	2.4	332.4
E	2.3	332.5
14	2.9	331.9
cl	3.3	331.5
W	4.3	330.5
+5	4.5	330.3

500' N.

-5	4.1	330.7		
W	3.9	330.9		
cl	3.0	331.8		
14	2.0	332.8		
E	1.5	333.3		
14	1.4	333.4		
+6	1.4	333.4		
cl	0.3	334.5		
T.P.	13.06	347.05	0.80	333.99
E	11.5	335.5		

550' N.

E	11.3	335.7
cl	12.4	334.6

347.05

49th St

57

14	12.6	334.4
E	12.6	334.4
14	13.3	333.7
cl	14.3	332.7
W	15.1	331.9
+5	15.3	331.7

600' N. = S. line Polk

40' wide
5' obs.
7.5' obs.

-5	17.3	332.7
W	14.1	332.9
cl	13.4	333.6
14	12.6	334.4
E	11.9	335.1
14	11.8	335.2
+5	11.6	335.4
cl	10.7	336.3
E	10.0	337.0
S. cl		
E	10.1	336.9
cl	10.8	336.2
14	11.5	335.5
E	11.7	335.3
14	12.4	334.6
cl	13.2	333.8
W	14.1	332.9

347.05

S. 1/4

W	13.6	333.4
cl	12.8	334.2
1/4	12.1	334.9
E	11.5	335.5
1/4	11.1	335.9
cl	10.8	336.2
E	9.8	337.2

E Polk

E	9.7	337.3
cl	10.4	336.6
1/4	11.0	336.0
E	11.7	335.3
1/4	12.5	334.5
cl	12.5	334.5
W	13.3	333.3

N. 1/4

W	13.2	333.8
cl	12.5	334.5
1/4	11.8	335.2
E	11.4	335.6
1/4	11.1	335.9
cl	10.2	336.8
E	9.4	337.6

N. cl

E	9.5	337.5
cl	10.4	336.6

347.05

49th St

58

1/4	10.8	336.2
E	10.8	336.2
1/4	11.5	335.5
cl	12.3	334.7
W	13.0	334.0

00 - N. Line Polk

-5	12.8	334.2
W	12.5	334.5
cl	11.5	335.5
1/4	11.2	335.8
E	10.8	336.2
1/4	10.5	336.5
+7	10.7	336.3
cl	9.9	337.1
E	9.0	338.0

50' N

E	6.4	340.6
cl	7.5	339.5
+3	8.4	338.6
1/4	8.1	338.9
E	8.4	338.6
1/4	8.8	338.2
cl	9.4	337.6
W	9.9	337.1
+5	10.3	336.7

347.05
75' N.

-5	8.7	338.3
W	8.5	338.5
cb	8.0	339.0
1/4	7.4	339.6
C	7.0	340.0
1/4	6.7	340.3
+5	7.4	339.6
cb	5.9	341.1
E	5.3	341.7

100' N

E	4.0	343.0
cb	4.1	342.9
+6	5.2	341.8
1/4	5.2	341.8
C	5.4	341.6
1/4	6.1	340.9
cb	6.8	340.2
W	7.2	339.8
+5	7.3	339.7

135' N

-5	4.6	342.4
W	4.5	342.5
cb	4.5	342.5
+2	4.9	342.1
1/4	4.3	342.7
C	3.6	343.4

347.05

49 ST

59

3/4	3.7	343.3
+7	4.0	343.0
cb	3.3	343.7
E	2.7	344.3

170' N

E	1.0	346.0
cb	1.7	345.3
+2	2.4	344.6
1/4	2.3	344.7
C	1.9	345.1
1/4	2.5	344.5
+6	2.9	344.1
cb	2.6	344.4
W	3.3	343.7

200' N

W	2.1	344.9
cb	1.8	345.2
1/4	1.5	345.5
C	0.9	346.1
1/4	1.3	345.7
+6	1.5	345.5
cb	0.8	346.2
E	0.5	346.5
T.P.	5.10	357.69

351.69

250' N.

E	3.5	348.2
cb	4.0	346.7
+2	4.4	347.3
1/4	4.3	347.4
e	3.8	347.9
+7	4.6	347.1
+6	4.2	346.8
cb	4.3	347.4
W	4.4	347.3

300' N

W	3.3	348.4
cb	3.1	348.6
1/4	3.1	348.6
e	2.2	349.5
1/4	2.6	349.1
+7	3.1	348.6
cb	2.3	349.4
e	2.4	349.3

340' N

E	1.3	350.4
cb	1.8	349.9
1/4	2.0	349.7
e	2.1	349.6
1/4	2.2	349.5
cb	2.1	349.6
W	2.2	349.5

351.69

370' N

W	1.5	350.2
cb	1.7	350.0
1/4	2.7	349.0
e	3.0	348.7
1/4	3.2	348.5
cb	3.3	348.4
+7	2.7	349.0
+8	0.8	350.9
e	0.8	350.9

400' N

e	0.4	351.3
+4	1.7	350.0
+5	4.1	347.6
cb	4.1	347.6
1/4	4.2	347.5
e	4.3	347.4
1/4	4.4	347.3
cb	4.3	347.4
+4	4.3	347.4
+9	3.1	348.6
W	1.3	350.4

425' N

W	1.3	350.4
+2	3.2	348.5
+8	4.2	347.5
+10	5.4	346.3

49th St

20

351.69

425' N. (con)

cl	5.5	346.2
"4	5.4	345.9
c	6.0	345.7
"4	6.0	345.7
cl	6.2	345.5
+8	5.5	346.2
c	0.7	351.0

460' N

E	1.5	350.2
+2	2.7	349.0
+3	7.7	344.0
cl	9.2	342.5
"4	9.0	342.7
c	9.2	342.5
"4	8.5	343.2
cl	7.4	343.9
+3	4.5	347.2
+10	3.3	348.4
W	1.5	350.2

500' N

W	2.5	349.2
+10	6.8	344.9
cl	11.0	340.7
"4	12.3	339.4
c	12.1	338.6
"4	13.0	338.7

351.69

49th st

61

cl	12.0	339.7
+8	10.5	341.2
E	3.8	347.9

525' N

E	5.4	346.3
+8	9.8	341.9
+9	12.9	338.8
cl	14.5	337.2
"4	14.6	337.1
c	15.3	336.4
"4	14.7	337.0
cl	12.7	339.0
+2	9.1	342.6
+10	3.8	347.9
W	3.3	348.4

550' N

W	5.1	346.6
+1	5.3	346.4
cl	12.1	339.6
+1	15.4	335.9
"4	16.8	334.9
c	17.2	334.5
"4	17.2	334.5
+5	17.1	334.6
cl	16.2	335.5
+2	15.4	336.3

351.69
550' N. con

+3.		12.4	339.3	
+7		9.9	341.8	
E		8.8	342.9	
T.P.	3.55	344.65	10.59	341.10
		572' N		
E		5.0	339.6	
+7		9.8	334.8	
d		10.2	334.4	
+2		10.2	334.4	
+3		11.4	333.2	
"4		11.6	333.0	
E		11.7	333.2	
"4		11.2	333.4	
+8		10.1	334.5	
eb		7.4	337.2	
+4		5.8	338.8	
+8		2.5	342.1	
W		1.7	342.9	
		576' N		
W		2.7	341.9	
rio		7.7	336.9	
eb		11.4	330.2	
"4		11.7	332.9	
C		11.8	332.8	
"4		12.0	332.6	
+4		12.0	332.6	

344.65

49th St

62

+7		10.4	334.2
eb		10.3	334.3
+7		10.5	334.1
E		8.0	336.6
		577' N = S. line Orange	
E		12.2	332.4
eb		12.0	332.6
"4		12.1	332.5
e		11.9	332.7
"4		12.0	332.6
eb		11.7	332.9
W		11.4	333.2

T.P. 5.64 350.06 0.23 344.42

Chk. in B.M. B.P. Church St. op

1.64 348.42

= 348.45

S.E. Orange +

Estrella

Plotted
2/28
H.C.M.

80' wide
14' cbs.
13' 1/4 S.

Hawthorn St X Sec
32nd St to Marketon

2-1-28
mills

283.38

63

B.M.	1.32	283.38	282.06	N.W. 32 nd Hawthorn	1/4	2.2	281.2
					cb	2.7	280.7
S.			282.0		N	4.0	279.4
emt cb			281.56		+5	5.0	278.4
gutter part			281.22				
1/4 "			281.69		-5	7.5	275.9
1/4 "			281.99		N	6.4	277.0
1/4 "			281.80		cb	3.7	279.7
gutter "			281.42		1/4	2.9	280.5
emt cb			282.06		1/4	3.6	279.8
N			282.3		+1	4.2	278.7
	17.09 E. on S				1/4	5.3	278.1
	18.5 E. on N				+12	5.7	277.7
N			281.4		5.0 mt. cb	4.99	278.9
cb			281.5				
1/4			281.6				
1/8			281.6				
1/4			281.2				
cb			281.3				
S			281.7				
	34.18 E. on S						
	37.0 E. on N						
S			281.4				
W. end emt. cb.			280.70				
+1			280.0				
1/4			279.9				
+10			280.1				
			281.1				

Plotted
H.C.H.
3/28/28

18' S. on S } at 90° to Hawthorn
15' E. on N } Sections

33' E. on S } (7.15)
20' E. on N } at 90°

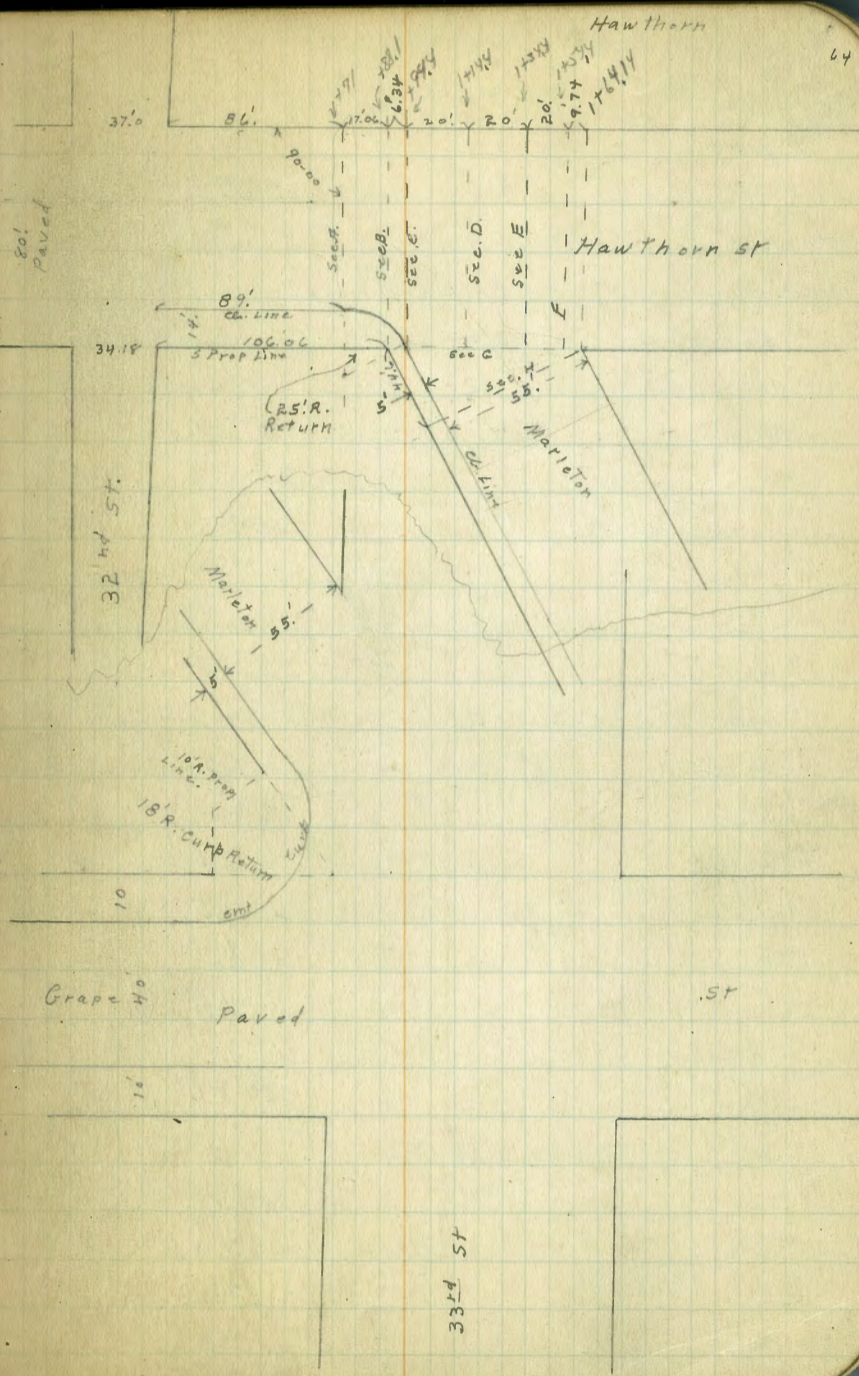
(0 to 100 on planimetered)

293.38

53' E. on S. } at 90°
50' E. on N. }

(135)

-10		10.9	273.5
N		9.9	273.5
cb		9.7	273.7
1/4		8.8	274.6
+11		8.7	274.7
C		9.9	273.5
1/4		9.9	273.5
+12		10.1	273.3
S. cmt. db.		9.43	273.95
	80' E. on S. } 77' " " N. } = at 90°		(162)
S. cmt. db.		12.89	270.49
+1		12.6	269.8
1/4		13.1	270.3
C		12.8	270.6
+1		12.3	271.1
1/4		11.0	272.4
cb		10.8	272.6
N		11.0	272.4
Sec. A.	{ 89' E. on S. } { 86' E. on N. } at 90° = P.C. R.S.R. Return into Marleton.		
-15	771	21.5	261.9
N.		16.5	266.9
cb		11.0	272.4
1/4		10.7	272.7
+5		12.3	271.1
C		13.3	270.1
T.P.	0.44	271.22	12.60
			270.78



271.22
89' E. on S. (Can)

S. 1/4	1.2	269.5	
+ 12	2.4	268.8	
S. cont. of W. End 25' R. Return.	1.84	269.34	
Sec. B. 106.61 E. on S. = S.W. Cor Hawthorn + Marleton. sec. at 90° to Hawthorn			
S. + 7.2 = cont. of return + 88°	2.95	268.27	
+ 7.5	3.8	267.4	
d	3.5	267.7	
1/4	2.9	268.3	
c	2.0	269.2	
1/4	1.8	269.4	Top Fill
cb	8.4	262.8	
N	14.7	256.5	
Sec. C. = 6.34 E. of above = P.I. S. line Hawthorn + W. of Marleton			
N. cb	19.4	259.5	
N. 1/4	4.8	266.4	
+ 6	2.1	269.1	Top Fill
c	2.4	268.8	
1/4	3.0	268.2	
d	3.7	267.5	
+ 13 gutter	4.2	267.0	
S. line cont. of	3.38	267.84	
Sec. D = 20' E. of above sec.			
S	11.4	266.2	
d	4.2	267.0	
1/4	2.7	267.5	Top Fill
c	2.0	263.2	
N. 1/4	15.0	256.2	

271.22
20' E. of Above = Sec E.

S. 1/4	14.4	256.8	
S. cb	9.0	262.2	
S. line	4.9	266.3	Top Fill
20' E. of Sec. E = Sec. F			
S. line Hawthorn	14.3	256.9	
9.72 E. of sec F = S.E. Cor Hawthorn + Marleton.			
S. line Hawthorn	20.4	250.8	
60' wide Marleton & Sec Hawthorn to Grape 5' cont. of on W.			
Sec. G S. line Hawthorn on diagonal 76.06 wide			
S. line Hawthorn E. line Marleton	20.4	250.8	
19.72 W	14.3	256.9	
29.72 W	4.9	266.3	Top Fill
49.72 W	5.0	266.2	
69.72 W gutter	4.2	267.0	
69.72 W cont. of	3.38	267.84	
Sec. H. 44.6 S. on W. line Marleton = 90° from S.E. Cor Hawthorn + Marleton.			
N. cont. of	4.96	266.26	
+ 1.6 gutter	5.9	265.3	
20' E. of W. cb	6.0	265.2	
34' E. " " "	5.9	265.3	Top Fill
44' E. " " "	12.3	258.9	
31.09 S. of sec H.			
50' E. of W. cb	15.3	256.9	
37' E. " " "	7.2	264.0	Top Fill
20' E. " " "	6.8	264.4	

Hawthorn St
Marleton " 65

271.22

31.09 S. of Sec. H. (Con)

W. gutter	7.0	264.2	
W. cnt. cl.	6.03	265.19	Curve divided into
			62.19 S. of sec. H. = P.C.A 40° 02' 3. Parts
W. cnt. cl.	7.06	264.16	
gutter	8.2	263.0	
20' E. of W. cl.	7.8	263.4	
39' E. " "	8.1	263.1	Top Fill
50' " " "	14.2	257.0	
#1 Radial Line			
50' E. of W. cl.	16.3	254.9	
39' E. " " "	9.2	262.0	Top Fill
20' " " " "	8.6	262.6	
gutter	8.5	262.7	
W. cnt. cl.	8.00	263.2	
#2 Radial Line			
W. cnt. cl.	8.85	262.37	
gutter	9.5	261.7	
20' E. of W. cl.	9.5	261.7	
37' " " " "	9.9	261.3	Top Fill.
45' " " " "	14.6	256.6	
#3 = E.C.			
45' E. of W. cl.	11.8	254.4	
35' " " " "	10.6	260.6	Top Fill.
20' " " " "	10.2	261.0	
gutter	10.2	261.0	
W. cnt. cl.	9.71	261.51	

271.22

Marlton

66

11.5 of E.C.

W. cnt. cl.	9.90	261.32	
gutter	10.4	260.8	
20' E. of W. cl.	10.3	260.9	
25' " " "	10.5	260.7	
35' " " "	17.8	253.4	
50' " " "	24.5	246.7	
20' S. of E.C.			
50' S. of W. cl.	22.0	249.2	
31' E. " " "	10.6	260.6	Top Fill
20' " " " "	10.4	260.8	
gutter	10.6	260.6	
W. cnt. cl.	10.07	261.15	This curve divided
			62.74 S. of E.C. = P.C. Δ 37° 57' 30 into 3. Parts
W. cnt. cl.	10.84	260.38	
gutter	11.5	259.7	
20' E. of W. cl.	11.0	260.2	
28' E. " " "	11.0	260.2	Top Fill
40' " " " "	18.6	252.6	
53' " " " "	32.3	238.9	
64' " " " "	33.9	237.3	
#1 = 1.3 S. of E 10' cl. inlet on W. cl.			Radial Line
65' Toe	57.8	233.4	
40' E. of W. cl.	20.0	251.2	
27' " " " "	11.3	259.9	Top Fill
20' " " " "	11.3	259.9	
W. gutter	12.0	259.9	Top Fill of cl. inlet
W. cnt. cl.	10.93	260.29	
T.P.	5.54	266.36	260.82
Flow Line Barb Inlet	10.80	255.6	18" Corlon Pipe

266.36

✓ #2. Radial Line

W. cnt. cl.	6.12	260.24	
gutter	6.7	259.7	
20' E. of W. cl.	6.6	259.8	
28' " " "	6.7	259.7	Top Fill
37' " " "	12.7	253.7	
9' N.W. of above Point at 90° to Radial line = outlet 1/8" Cor. Iron Pipe from curb inlet	11.8	254.6	Flow Line
90	14.7	251.7	
55	31.8	244.6	
	✓ #3 = E.C.		
60	21.2	245.4	
40' E. of W. cl.	13.5	252.9	
28' " " "	6.4	260.0	Top Fill
20' " " "	6.5	259.9	
gutter	6.6	259.8	
W. cnt. cl.	6.08	260.28	
	✓ 40's. of E.C.		
W. cnt. cl. Brk.	5.39	260.97	
gutter	5.8	260.6	
20' E. of W. cl.	5.5	260.9	
29' " " "	5.5	260.9	Top Fill
40' " " "	13.0	253.4	
+60	25.2	241.2	
60' Top of present fill steps slope	80's. of E. 28.7	244.6	
50	21.8	252.3	
40' E. of W. cl.	14.1	252.3	
30' " " "	4.1	262.3	Top Fill
20' " " "	4.0	262.4	
gutter	4.4	262.0	
W. cnt. cl.	3.79	262.57	

Marlton

266.36

67

120.93 S. of E.C. = P.C. 10 R. on Prop Line into Grape St N.W. cor.

W. cnt. cl.	2.05	264.31	
gutter	2.6	263.8	
8' E. of W. cl.	2.8	263.6	
20' " " "	2.0	264.4	
26' " " "	2.3	264.1	Top Fill
40' " " "	11.8	254.6	
59	19.6	246.9	
60	23.2	243.2	
	N. Line Grape St.		
14' E. of Prop P.C. 10' R. on N. Line Grape St			
Cent. cl. Ret	0.82	265.54	
gutter part P.C. 10' R. on N. Line Grape St	1.71	264.58	
21.45 E. = N. Line Grape	1.58	264.78	
40.3 E. = E. Bet curbs	1.84	264.52	
66.6 E. = cl. return on N.E. cor.	3.02	263.34	gutter
" " " " " " " "	2.39	263.97	cnt. cl.
80 E. = Top Fill	3.0	263.4	
T.P. 12.80	278.44	0.72	265.64
T.P. 9.44	286.31	1.57	276.87
cl. on B.M.	4.25	282.06	✓

20' wide
14' ch
13' 11/4's

35th St X Sec
Landis St So.

2-2-28
Miller

N.W. 35th
& Landis

327.68
150's

68

B.M.	1.31	327.68	326.37
		S. line Landis	
E. ent. ch.	1.17	326.51	
gutter on Parrot	1.87	325.81	
" " "	1.62	326.06	
" " "	1.82	325.86	
" " "	2.27	325.41	
gutter " "	3.02	324.66	
W. ent. ch.	2.43	325.25	
		50's	
W. ent. ch.	3.95	323.73	
gutter	4.7	323.0	
"	4.1	23.6	
"	3.3	24.4	
"	3.2	24.5	
+ 9	2.7	25.0	
gutter	3.4	24.3	
E. ent. ch.	2.72	24.96	
		100's	
E. ent. ch.	1.34	23.34	
gutter	5.5	22.2	
+ 4	4.5	23.2	
"	4.5	23.2	
"	5.1	22.6	
"	5.7	22.0	
gutter	6.4	21.3	
W. ent. ch.	5.50	22.18	

W. ent. ch.	6.97	321.71
gutter	8.1	19.6
"	7.0	20.7
"	6.4	21.3
"	6.3	21.4
+ 9	6.0	21.7
gutter	6.6	21.1
E. ent. ch.	5.83	21.85
		200's
E. ent. ch.	7.49	20.19
gutter	8.3	19.4
+ 6	7.7	20.0
"	7.8	19.9
"	8.0	19.7
"	8.5	19.2
gutter	9.5	18.2
W. ent. ch.	8.42	19.26
		250's
W. ent. ch.	9.91	17.77
gutter	10.5	17.2
"	10.4	17.3
"	9.6	18.1
"	9.3	18.4
+ 9	9.1	18.6
gutter	9.7	18.0
E. ent. ch.	9.13	18.55

327.68
300's.

E. cnt. cl.	10.67	317.01
gutter	11.6	16.1
+6	10.6	17.1
"4	10.8	16.9
c	11.0	16.7
"4	11.7	16.0
gutter	11.9	15.8
W. cnt. cl.	11.42	16.26
T.P.	3.18	318.78
		12.08
		315.60

325's.

W. cnt. cl.	3.22	315.56
gutter	4.0	14.8
+3	3.4	15.4
"4	2.8	16.0
c	2.5	16.3
"4	2.4	16.4
+8	2.1	16.7
gutter	3.4	15.4
E. cnt. cl.	2.53	16.25

350's.

E. cnt. cl.	3.20	15.6
gutter	3.6	15.2
+5	3.1	15.7
"4	3.0	15.8
c	2.5	16.3
"4	2.6	16.2

318.78

35th

69

+9	3.0	315.8
+11	4.3	14.5
gutter	4.6	14.2
W. cnt. cl.	3.98	14.80

375's.

W. cnt. cl.	4.55	14.23
gutter	4.7	14.1
+2	4.7	14.1
+7	3.0	15.8
"4	2.9	15.9
c	3.1	15.7
"4	2.9	15.9
+11	3.4	15.4
gutter	4.2	14.6
E. cnt. cl.	3.56	15.22
+6.8 = W. edge of s. end. cnt. walk th	3.46	15.32
E. line	3.4	15.4

399

E-15	20.4	298.2
c	10.2	308.6
+8	5.0	13.8
S. end. cnt. cl. on E.	4.06	14.72
gutter	5.2	13.6
"4	2.6	16.2
c	3.1	15.7
"4	3.1	15.7

318.78

W 1/4 + 6	3.3	315.5
+ 9	5.4	13.4
gutter	5.5	13.3
W. ent. cl.	5.15	13.63

413.5

W. ent. cl.	5.47	13.31
gutter	5.7	13.1
+ 4	5.7	13.1
+ 5	3.8	15.0
1/4	3.2	15.6
E	3.1	15.7
1/4	3.5	15.3
+ 9	5.3	13.5
cl.	13.0	305.8
+ 6	10.8	308.0
E	15.2	303.6

418.5

E	14.8	300.0
cl.	8.8	10.0
+ 9	3.4	15.4
1/4	4.0	14.8
E	3.4	15.4
1/4	3.7	15.1
+ 8	3.7	15.1
+ 9	5.9	12.9
ent. cl.	5.57	13.21

318.78

431.5

W. ent. cl.	6.00	312.8
+ 7	5.8	13.0
1/4	3.9	14.9
E	3.7	15.1
+ 9	4.0	14.8
1/4	6.0	12.8
cl.	13.4	305.4
E	21.2	297.6

440.5

E. cl.	16.6	302.2
E. 1/4	10.6	308.2
E	4.5	14.3
1/4	4.8	14.0
W. cl.	4.0	14.8

447.5

W	5.7	13.1
+ 7 - edges ent. walk	6.1	12.7
" " " "	9.0	309.8
S. end. ent. cl. on W	6.36	12.42
1/4	6.4	12.4
+ 10	5.6	13.2
E	6.5	12.3
E 1/4	14.0	304.8
E. cl.	21.8	297.0

on walk

on ground
walk under
thinned to
W. edge

25th ST

70

318.78
452'S.

E. '14	15.2	303.6
e	8.6	10.2
+5	6.7	12.1
+11	6.9	11.9
'14	9.0	309.8
+5	9.3	309.5
+7	12.2	306.6
el	13.0	305.8
+9: walk undermined here	12.0	306.8
W	5.9	312.9

462'S.

W	6.3	312.5
+7 = E. edge of S. End of emb walk on W.	6.4	312.4
+8	13.4	305.4
el	16.0	302.8
+11	17.4	301.4
'14	15.8	303.0
e	15.3	303.5
E. '14	21.0	297.8

468'S.

e	20.0	298.8
W. '14	20.0	298.8
+12	20.0	298.8
el	12.0	306.8
+16	6.8	312.0
W.	6.4	312.4

318.78

354'S.

71

T.P. 0.55 306.60 12.73 306.05

Levels for Culvert 1.0 E. of W. 4. From Sta 468'S. of
Landis to Bottom of gulch

475'S. of Landis	7.3	299.3	
2'E. of above	8.6	298.0	
T.P. 0.00	293.80	12.80	293.80
490'S	0.0	293.80	
4'E. of above	4.7	289.1	
10' n "	4.7	289.1	
93'S	0.8	293.0	
4'E. of above	2.6	291.2	
505'S	6.6	287.2	
517'S	14.0	279.8	
T.P. 0.98	281.86	12.92	280.88
525'S	8.1	273.8	
553'S	15.0	266.9	
556'S	18.0	263.9	creek Bottom

Villa Terrace
50' width
10' edge
7.5' 4" 2"

Intersection Villa Terrace & Upas XSec

23-28
middle

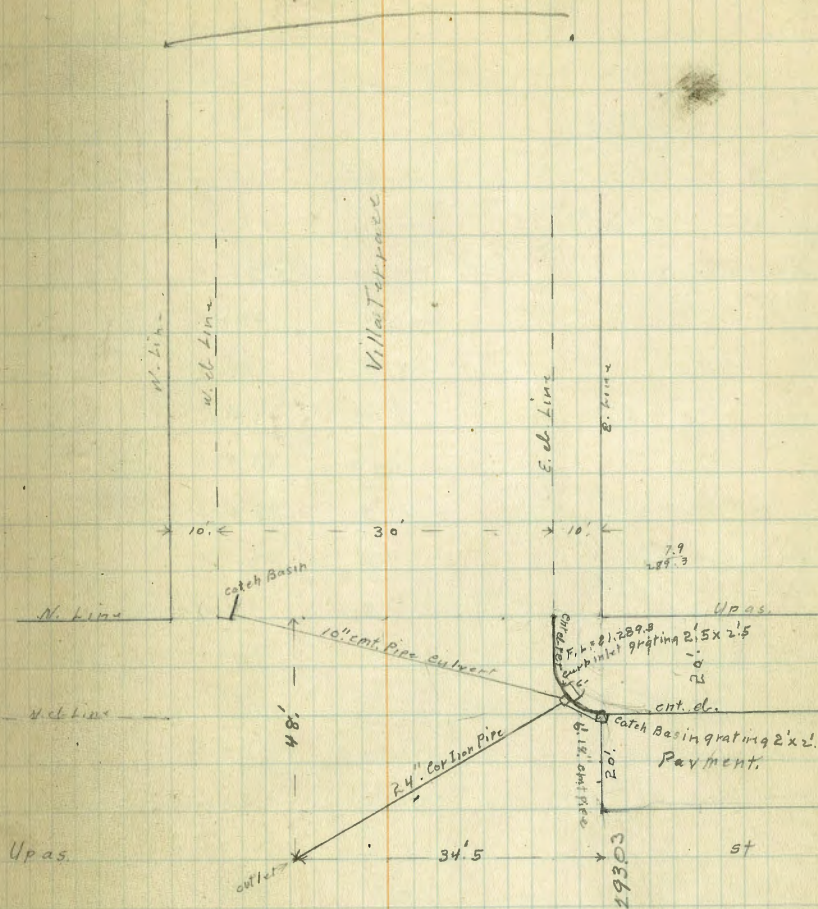
B.M.	1.32	301.33		300.01
T.P.	3.67	297.23	7.77	293.56

E. line Villa Terrace

Nemick		4.12		298.11	
gutter pavmt		4.77		297.46	pavmt
10' s. of N. cl		4.37		297.86	pavmt
15' " " "		4.25		297.98	"
20' " " "		4.20		298.03	5. Edge Pavmt " No yardage
26' " " "		2.7		297.5	dirt for yardage
30' " " "		3.2		297.0	
40' " " "		4.4		297.8	
48' " " "		6.2		291.0	
51' " " "		9.0		289.7	
56' " " "		8.5		288.7	
60' " " "		9.1		288.1	
E. cl					
60' s. of N. cl		11.5		285.7	
57' " " "		10.4		286.8	
53' " " "		12.2		285.0	
50' " " "		12.3		284.9	
45' " " "		7.9		289.2	
40' " " "		7.7		289.5	
30' " " "		6.8		290.4	
20' " " "		3.4		293.8	
10' " " "		3.9		293.3	
N. cl Upas		4.5		297.7	

BM 269.95 NW. Corner of Upas

7.2



297.23
E. cl (cont)

N. line Ugas	4.15	293.08
" " "	4.8	292.4
E. 1/4		
N	4.5	292.7
cl	4.0	293.2
10's. of N. cl	3.4	293.4
15' " " "	5.0	292.2
20' " " "	7.3	289.9
30' " " "	12.5	284.7
40' " " "	12.4	284.8
48' " " "	12.9	284.3
50' " " "	14.6	282.6
55' " " "	13.3	283.9
60' " " "	14.1	283.1

♀ Villa Terrace

60's. of N. cl	14.3	280.9
55' " " "	15.5	281.7
47' " " "	17.2	280.0
40' " " "	16.7	280.5
32' " " "	16.9	280.8
20' " " "	10.0	287.2
10' " " "	5.6	291.6
N. cl	3.8	293.4
N. line	4.3	292.9

297.23

W. 1/4

N. line	4.1	293.1	
N. cl	5.1	292.1	
10's. of N. cl	8.2	289.0	
20' " " "	13.3	283.9	
24' " " "	17.4	279.8	
2' W. of above = outlet 24" Gal. Trap pipe	19.0	277.6	Flow Line
35' S. of N. cl	20.0	277.2	
40' " " "	18.1	279.1	
60' " " "	18.7	278.5	
W. cl.			
60's. of N. cl	21.0	276.2	
40' " " "	21.4	275.8	
32' " " "	21.6	275.6	
20' " " "	18.2	282.0	
10' " " "	9.8	287.4	
N. cl	8.5	288.7	
1/4 N. of N. cl	10.7	286.5	
7' " " "	9.7	287.5	
10' " " "	5.5	291.7	
N. Line	4.8	292.4	
20' N. of N. Line	4.7	292.5	
40' " " "	4.5	292.7	
4' W. of W. cl			
N. line	4.9	292.3	OK
7's.	7.5	289.7	291.8
9's.	5.4	291.8	OK

Ugas

73

297.23

4' W. of N. cl cor

13'S	5.4	291.8	
15'S	10.0	287.2	
N. cl	13.3	283.9	
4'S. of N. cl.	14.0	283.2	
5. " " " "	11.2	286.0	OK
11. " " " "	12.5	284.7	
20. " " " "	16.9	280.3	
30. " " " "	21.6	275.6	
35. " " " "	23.0	274.2	
40. " " " "	22.4	274.8	
60. " " " "	22.0	275.2	
6' W. of N. cl			
60'S. of N. cl.	22.5	274.7	
40. " " " "	22.8	274.4	
38. " " " "	23.5	273.7	
32. " " " "	22.5	274.7	OK
20. " " " "	17.2	280.0	
9. " " " "	14.3	283.9	
8. " " " "	15.5	281.7	
3. " " " "	14.4	282.8	
N. cl	11.0	286.2	
9' N. " "	5.3	291.9	OK
12' " " "	8.6	289.6	290.7
N	5.2	292.0	292.4

Upas + Villa Terrace

74

297.23

W. line Villa Terrace

40' N of N. line	4.4	292.8	
" " " "	4.9	292.3	
N. line	4.4	290.8	292.4
8'S	10.4	286.8	289.0
15'S	8.0	289.2	OK
N. cl	10.2	287.0	
5'S. of N. cl	16.5	280.7	
13. " " " "	19.0	278.2	
16. " " " "	17.7	279.5	
20. " " " "	19.0	278.2	
32. " " " "	23.8	273.4	
38. " " " "	24.2	273.0	
40. " " " "	23.5	273.7	
60. " " " "	23.4	273.8	
5' W.			
60'S. of N. cl	24.2	273.0	
50. " " " "	25.4	271.8	
40. " " " "	24.8	272.4	
20. " " " "	21.6	275.6	
5. " " " "	18.3	278.9	
3. " " " "	13.3	283.9	
N. cl	12.2	285.0	
3' N	10.9	286.3	
5' N	13.0	284.2	OK
10' N	13.3	283.9	285.5
N	9.5	287.7	291.5
+10' N	7.7	289.5	292.0

297.23
10' W

5' N. of N. Line			292.0	
20' N. of N. Line	11.5	285.7		
N. Line	12.4	284.8	290.5	
18' S.	13.3	283.9	284.4	
T.P.	0.00	284.23	284.23	
16' S.	4.1	280.1	283.0	
17' S.	1.3	282.9	O.K.	
N. cl	1.9	282.3	Y	
20' S. of N. cl	9.3	272.9		
40' " " " "	12.1	272.1		
48' " " " "	13.0	271.2		
60' " " " "	12.0	272.2		
	19' W. of N. Line			
60' S. of N. cl	13.1	271.1		
48' " " " "	14.6	269.6		
40' " " " "	12.6	271.6		
20' " " " "	10.4	273.4		
15' " " " "	11.3	272.9	↑	
N. cl	8.1	276.1	O.K.	
7' N	7.4	276.8	279.3	
9' N	5.2	279.0	280.6	
N	4.2	280.0	286.0	
10' N. of N. Line			289.4.	
25' N	4.0	280.2		
	35' W.			
30' N	6.8	277.4	280.0	
N	10.3	273.9	275.4	
N. cl	10.4	273.8	O.K.	

284.23

Up as

75

20' S. of N. cl	13.6	270.6		
30' " " " "	14.8	269.4	Y	
40' " " " "	15.0	269.2	O	
60' " " " "	15.0	269.2		
See Page 80 for Extra Sec 8 40' W 50' W. of W. Line Villa Terrace				
60' S. of N. cl	16.2	268.0		
40' " " " "	16.2	268.0		
20' " " " "	16.1	268.1	Y	
N. cl	13.6	270.6	O	
N. Line	11.8	272.4		
30' N	8.9	275.3		
T.P.	0.20	271.43	13.00	271.23
	75' W			
25' N	0.0	271.43		
N. Line	1.7	269.7		
N. cl	3.8	267.6		
20' S. of N. cl	4.7	266.7		
40' S " " "	5.6	266.4		
60' " " " "	5.7	265.7		
	110' W			
60' S. of N. cl	8.3	263.1		
40' " " " "	7.1	264.3		
20' " " " "	6.2	265.2		
N. cl	5.4	266.0		
N	3.3	268.1		
20' N	2.2	269.2		

271.43

150' W.

- 20	4.2	267.2
N	4.7	266.7
N. cl	5.5	265.9
20' S. of " "	6.8	264.6
40' " " " "	8.1	263.3
60' " " " "	9.4	262.0

190' W.

60' S. of N. cl	10.4	261.0
40' " " " "	9.3	262.1
20' " " " "	8.4	263.0
N. cl	7.8	263.6
N.	7.1	264.3
10' N	7.0	264.4

220' W

- 10	8.8	262.6
N	9.0	262.4
N. cl	9.8	261.6
20' S. of " "	10.8	260.6
40' " " " "	11.4	260.0
60' " " " "	11.9	259.5

250' W

60' S. of N. cl	14.1	257.3
40' " " " "	13.1	258.3
20' " " " "	12.3	259.1
N. cl	11.3	260.1
N	9.9	261.5
+ 10	9.7	261.7

271.43

272' W = E. line Arnold

65' wide
10' elev
11.25 443

Upas.

76

N	9.1	262.3
N. cl	11.3	260.1
20' S. of " "	12.1	259.3
40' " " " "	13.3	258.1
60' " " " "	14.5	256.9

E. cl.

60' S. of N. cl	14.3	257.1
40' " " " "	13.0	258.4
20' " " " "	12.0	259.4
N. cl	10.4	261.0
N cont. cl	9.2	262.2
N gutter	9.7	261.7

E. 1/4

N part	8.8	262.6
cl	8.8	262.6
15' S. of N. cl	9.5	261.9
20' " " " "	10.7	260.7
27' " " " "	12.4	259.0
40' " " " "	12.9	258.5
60' " " " "	14.1	257.3

E

60' S. of N. cl.	13.2	258.2
40' " " " "	12.4	259.0
25' " " " "	11.2	260.2
20' " " " "	9.1	262.3
N. cl	8.9	262.5
N. Part	8.4	263.0

271.43
W. 1/4

N	8.4	263.0
N. ch	8.9	262.5
15' S of " "	9.2	262.2
20 " " " "	10.3	261.1
40 " " " "	11.9	259.5
60 " " " "	13.0	258.4

W. ch

60' S. of N ch	13.0	258.4
40 " " " "	11.1	260.3
20 " " " "	10.3	261.1
15 " " " "	9.0	262.4
N. ch	9.0	262.4
N. Parrot gutter	8.8	262.6
N. ent. ch	8.2	263.2

N line Arnold

N. ch	8.3	263.1
gutter	8.8	262.6
20' S. of N. ch	8.6	262.8
25 " " " "	8.6	262.8
40 " " " "	10.3	261.1
60 " " " "	11.1	260.3
chk on B.M.	12.7	258.7
	1.40	270.03

N.W. 1/4
& Arizona
219.95

50' wide Villa Terrace X Sec
18' ch. on E.
9.5' ch. " " " " should be 10'
30' S. Parrot
7.25' 1/4 S.
B.M. 4.79 304.80

2-25-29
Miller 77
N.W. Myrtle
& Villa Terrace
300.01

00 = S. line Myrtle

W. ent. ch	4.77	300.23
gutter Parrot	5.32	299.48
" " "	4.82	299.98
" " "	4.50	300.30
gutter "	4.35	300.45
E. ent. ch	4.48	300.32
	3.76	301.04
E. ent. ch	25.5	
gutter	4.36	300.44
" "	5.1	299.70
" "	5.2	299.60
" "	5.1	299.7
gutter	5.7	299.1
W. ent. ch	6.2	298.6
	5.36	299.44
75' S = s. end ent. walk ch. on E.		
W. ent. ch	6.52	298.28
gutter	7.3	297.50
" "	6.7	298.10
" "	6.2	298.8
gutter	6.3	298.7
ent. ch	6.2	298.8
+ 5' = N. edge ent walk	5.54	299.26
+ 10 = E = 2 " " "	5.38	299.42
	5.30	299.50

N. Office
Parrot

304.80

77.5

E	2.9	301.90
+7	5.2	299.60
+9	5.4	299.40
cl	6.1	298.70
1/4	6.4	298.4
E	6.2	298.6
1/4	6.8	298.0
gutter	7.4	297.4
W. ent. cl	6.58	298.22

100'S

W. ent. cl	7.09	297.71
gutter	7.9	296.9
1/4	7.4	297.4
E	6.8	298.0
1/4	6.7	298.1
cl	6.5	298.0
+1	6.2	298.6
+6	5.6	299.2
E	3.4	301.4

150'S - s. end ent. cl. + walk on W.

E	4.2	300.6
+4	6.6	298.2
+9	7.0	297.8
cl	8.0	296.8
1/4	7.9	296.9
E	8.0	296.8

304.80

Villa Terrace

78

1/4	8.5	296.30
gutter	8.9	295.9
ent. cl.	8.10	296.70
+5' = E. edge ent. walk	7.79	297.01
+10' = 0.5 W. of W. line = W. edge ent. walk	7.75	297.05

200'S.

W	9.1	295.7
cl	9.5	295.3
+2	9.9	294.9
1/4	9.7	295.1
E	9.0	295.8
1/4	9.0	295.8
cl	9.1	295.7
+1	8.5	296.3
E	7.6	297.2

220'S

E	7.1	297.7
+4	8.5	296.3
+9	8.6	296.2
cl	7.6	295.2
1/4	9.4	295.4
E	9.4	295.4
1/4	10.0	294.8
+6	10.6	294.2
cl	9.9	294.9
W	9.7	295.1

304.80
225' S.

W	9.8	295.0
cb	10.0	294.8
+2	10.9	293.9
"4	10.1	294.7
C	9.5	295.3
"4	9.5	295.3
cb	9.7	295.1
+1	8.9	295.9
E	8.2	296.6

250' S.

E	8.2	296.6
+3	9.2	295.6
+9	9.5	295.3
cb	10.3	294.5
"4	10.1	294.7
C	10.2	294.6
"4	10.7	294.1
+6	11.4	293.4
cb	10.6	294.2
W	10.4	294.4

300' S.

W	11.5	293.3
cb	11.7	293.1
+2	12.4	292.4
"4	11.9	292.9
C	11.3	293.5

Villa Terrace

304.80

79

"4	11.3	293.5
cb	11.6	293.2
+2	10.8	294.0
E	10.2	294.6

330' S.

E	10.9	293.9
+8	11.4	293.4
cb	12.0	292.8
"4	11.7	293.1
E	11.8	293.0
"4	12.3	292.5
+6	12.6	292.2
cb	12.0	292.8
W	12.0	292.8

T.P.	4.54	297.62	11.72	293.08
------	------	--------	-------	--------

354' S. = N. Line 11 pas.

W	5.2	292.4	see Page 74
cb	5.2	292.4	Page 73
"4	4.5	293.1	Page 73
C	4.7	292.9	Page 73
"4	4.9	292.7	
cont gutter	5.22	292.40	Page 73
W end emb. cb. Return	4.54	293.08	" 73
E	4.2		

40' W. of W. line Villa Terrace

30' N. of N. line Upps.

276.2

N. line Upps.

273.0

DIRECTIONS FOR USE OF TABLES

TABLE No. 1.

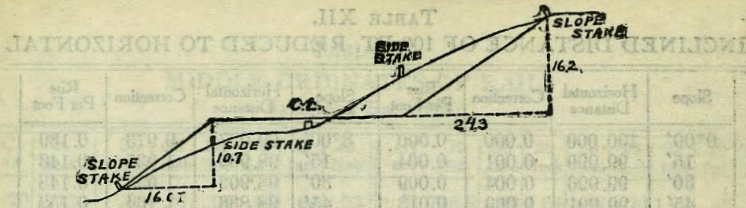
Distance of slope stake from side or shoulder stake for any width roadway, slope 1% to 1%. If ground is nearly level, the cut or fill at side stake is located by the double entry method in left column and top row. The number in body of table in same row and column gives distance from side stake to slope stake. If ground is not

IMPROVED TABLES

AND

INFORMATION

To find Tangent and External for curve of any other degree, divide by degree of curve and add correction found in column of corrections. Degree of curve with a given L may be found by dividing tangent (or external), opposite L by given tangent (or external). The distance from a point on the tangent to the curve is very nearly the square of the tangent length divided by twice the radius.



DISTANCES FROM SIDE STAKES FOR CROSS-SECTIONING.

SLOPE 1 1/4 TO 1. ROADWAY OF ANY WIDTH.

	0	.1	.2	.3	.4	.5	.6	.7	.8	.9	
0	0 00	0 15	0 30	0 45	0 60	0 75	0 90	1 05	1 20	1 35	0
1	1 50	1 65	1 80	1 95	2 10	2 25	2 40	2 55	2 70	2 85	1
2	3 00	3 15	3 30	3 45	3 60	3 75	3 90	4 05	4 20	4 35	2
3	4 50	4 65	4 80	4 95	5 10	5 25	5 40	5 55	5 70	5 85	3
4	6 00	6 15	6 30	6 45	6 60	6 75	6 90	7 05	7 20	7 35	4
5	7 50	7 65	7 80	7 95	8 10	8 25	8 40	8 55	8 70	8 85	5
6	9 00	9 15	9 30	9 45	9 60	9 75	9 90	10 05	10 20	10 35	6
7	10 50	10 65	10 80	10 95	11 10	11 25	11 40	11 55	11 70	11 85	7
8	12 00	12 15	12 30	12 45	12 60	12 75	12 90	13 05	13 20	13 35	8
9	13 50	13 65	13 80	13 95	14 10	14 25	14 40	14 55	14 70	14 85	9
10	15 00	15 15	15 30	15 45	15 60	15 75	15 90	16 05	16 20	16 35	10
11	16 50	16 65	16 80	16 95	17 10	17 25	17 40	17 55	17 70	17 85	11
12	18 00	18 15	18 30	18 45	18 60	18 75	18 90	19 05	19 20	19 35	12
13	19 50	19 65	19 80	19 95	20 10	20 25	20 40	20 55	20 70	20 85	13
14	21 00	21 15	21 30	21 45	21 60	21 75	21 90	22 05	22 20	22 35	14
15	22 50	22 65	22 80	22 95	23 10	23 25	23 40	23 55	23 70	23 85	15
16	24 00	24 15	24 30	24 45	24 60	24 75	24 90	25 05	25 20	25 35	16
17	25 50	25 65	25 80	25 95	26 10	26 25	26 40	26 55	26 70	26 85	17
18	27 00	27 15	27 30	27 45	27 60	27 75	27 90	28 05	28 20	28 35	18
19	28 50	28 65	28 80	28 95	29 10	29 25	29 40	29 55	29 70	29 85	19
20	30 00	30 15	30 30	30 45	30 60	30 75	30 90	31 05	31 20	31 35	20
21	31 50	31 65	31 80	31 95	32 10	32 25	32 40	32 55	32 70	32 85	21
22	33 00	33 15	33 30	33 45	33 60	33 75	33 90	34 05	34 20	34 35	22
23	34 50	34 65	34 80	34 95	35 10	35 25	35 40	35 55	35 70	35 85	23
24	36 00	36 15	36 30	36 45	36 60	36 75	36 90	37 05	37 20	37 35	24
25	37 50	37 65	37 80	37 95	38 10	38 25	38 40	38 55	38 70	38 85	25
26	39 00	39 15	39 30	39 45	39 60	39 75	39 90	40 05	40 20	40 35	26
27	40 50	40 65	40 80	40 95	41 10	41 25	41 40	41 55	41 70	41 85	27
28	42 00	42 15	42 30	42 45	42 60	42 75	42 90	43 05	43 20	43 35	28
29	43 50	43 65	43 80	43 95	44 10	44 25	44 40	44 55	44 70	44 85	29
30	45 00	45 15	45 30	45 45	45 60	45 75	45 90	46 05	46 20	46 35	30
31	46 50	46 65	46 80	46 95	47 10	47 25	47 40	47 55	47 70	47 85	31
32	48 00	48 15	48 30	48 45	48 60	48 75	48 90	49 05	49 20	49 35	32
33	49 50	49 65	49 80	49 95	50 10	50 25	50 40	50 55	50 70	50 85	33
34	51 00	51 15	51 30	51 45	51 60	51 75	51 90	52 05	52 20	52 35	34
35	52 50	52 65	52 80	52 95	53 10	53 25	53 40	53 55	53 70	53 85	35
36	54 00	54 15	54 30	54 45	54 60	54 75	54 90	55 05	55 20	55 35	36
37	55 50	55 65	55 80	55 95	56 10	56 25	56 40	56 55	56 70	56 85	37
38	57 00	57 15	57 30	57 45	57 60	57 75	57 90	58 05	58 20	58 35	38
39	58 50	58 65	58 80	58 95	59 10	59 25	59 40	59 55	59 70	59 85	39
40	60 00	60 15	60 30	60 45	60 60	60 75	60 90	61 05	61 20	61 35	40
41	61 50	61 65	61 80	61 95	62 10	62 25	62 40	62 55	62 70	62 85	41
42	63 00	63 15	63 30	63 45	63 60	63 75	63 90	64 05	64 20	64 35	42
43	64 50	64 65	64 80	64 95	65 10	65 25	65 40	65 55	65 70	65 85	43
44	66 00	66 15	66 30	66 45	66 60	66 75	66 90	67 05	67 20	67 35	44
45	67 50	67 65	67 80	67 95	68 10	68 25	68 40	68 55	68 70	68 85	45
46	69 00	69 15	69 30	69 45	69 60	69 75	69 90	70 05	70 20	70 35	46
47	70 50	70 65	70 80	70 95	71 10	71 25	71 40	71 55	71 70	71 85	47
48	72 00	72 15	72 30	72 45	72 60	72 75	72 90	73 05	73 20	73 35	48
49	73 50	73 65	73 80	73 95	74 10	74 25	74 40	74 55	74 70	74 85	49
50	75 00	75 15	75 30	75 45	75 60	75 75	75 90	76 05	76 20	76 35	50

Computed by L. Leland Locke.

B.M. S. N. Adams 34th
 " " " " Mansfield

389.25
 392.78

B.M. S. E. Drange & Estrella
 B.M. S. W. University & Estrella

348.45 S.E. Church St
 326.68

2750 23

ENGINEERING DEPARTMENT,
CITY OF SAN DIEGO,
CALIFORNIA.

337
333.53 SPK NE 35 Landis
334.61 SPK S Castle But 354 Wilson
Klarber wigalman

515
10
505

481
497
4.02
5.00
1170
7773
47
43
90
43
1335
46
47
95
46
131
92
467
490
5

Next clean d Upas
Grimm & R...

337.89
926
328 66
99
333.04
224
330.80
48
335.08
320
331.89
331.99
3.95
327.99

250.23
660
253.63
335.18
395
331.23
250.23
660
256.83
4.93

B/K 29

289.87
575
288.14
289.19
510
289.09
5.9
289.28
5.56
283.72
350.06
345.45
4.61

112° 55'

225.50
529
4.98
4.60
4.63
6.8
5.03
7.2
4.58
2.026
4.63