

1200

LIST

FIELD BOOK

NO. 385 F

See Grade Book 129  
for 1208-X section Book

MICROFILMED

DEC 22 1964

CITY OF SAN DIEGO

Our Leather Bound Engineers Note Books are carried in the following rulings:

- No. 380 LEVEL BOOK. Left and Right Hand Page the same as Left Hand Page of this Book.
- No. 382 FIELD BOOK. Left Hand Page as in this Book, Right Hand Page 4 x 4 to the inch, Center Line Red.
- No. 384 MINING TRANSIT BOOK. Left Hand Page as in this Book, Right Hand Page 8x8 to the inch, Center Line Red.
- No. 385 FIELD BOOK. Left Hand Page as in this Book, Right Hand Page 8 vertical and 4 horizontal lines to the inch, Center Line Red.

We also carry the Note Books listed above, bound in extra strong Fabri-Hide (otherwise the same quality of book), which can be furnished at a somewhat lower price.

In ordering Fabri-Hide covered books, add the letter "F" to catalog number.

**THE FREDERICK POST CO.**  
*ENGINEERING and DRAFTING SUPPLIES*  
IRVING PARK STATION  
CHICAGO, ILL.

X- Sec. Voltaire, Villa Dr. to Mendocino 1

X- Sec. E  $\frac{1}{2}$  Intersection Cass + 26  
Diamond St., Pacific Beach

X- Sec. W  $\frac{1}{2}$  Cass fr. S. Line 29  
Garnet to N. Line Alley S. Garnet

X- Sec. Adelaide St. Arboles Tract 31  
W. of 56<sup>th</sup>

X- Sec. Nile, Thorn to University 38

X- Sec. Nile, inters. Myrtle 56

Nile, location of culvert at 57  
Nile + Dwight

X- Sec. Alley, Blk. 145, Univ. Hts. 58  
Poke to Howard bet. Ala. + Miss.

X- Sec. "T" St. - 40<sup>th</sup> to Boundary 63

X- Sec. Plum - Carleton to Byron 68

X- Sec. Perry - San Antonio to 200' W. 1<sup>st</sup> 72  
39<sup>th</sup> St 74

70' wide X sec. Voltaire St from Villa Drive 10-25-27  
 10' chs miller  
 20' Pavling Strip  
 to Mendocino

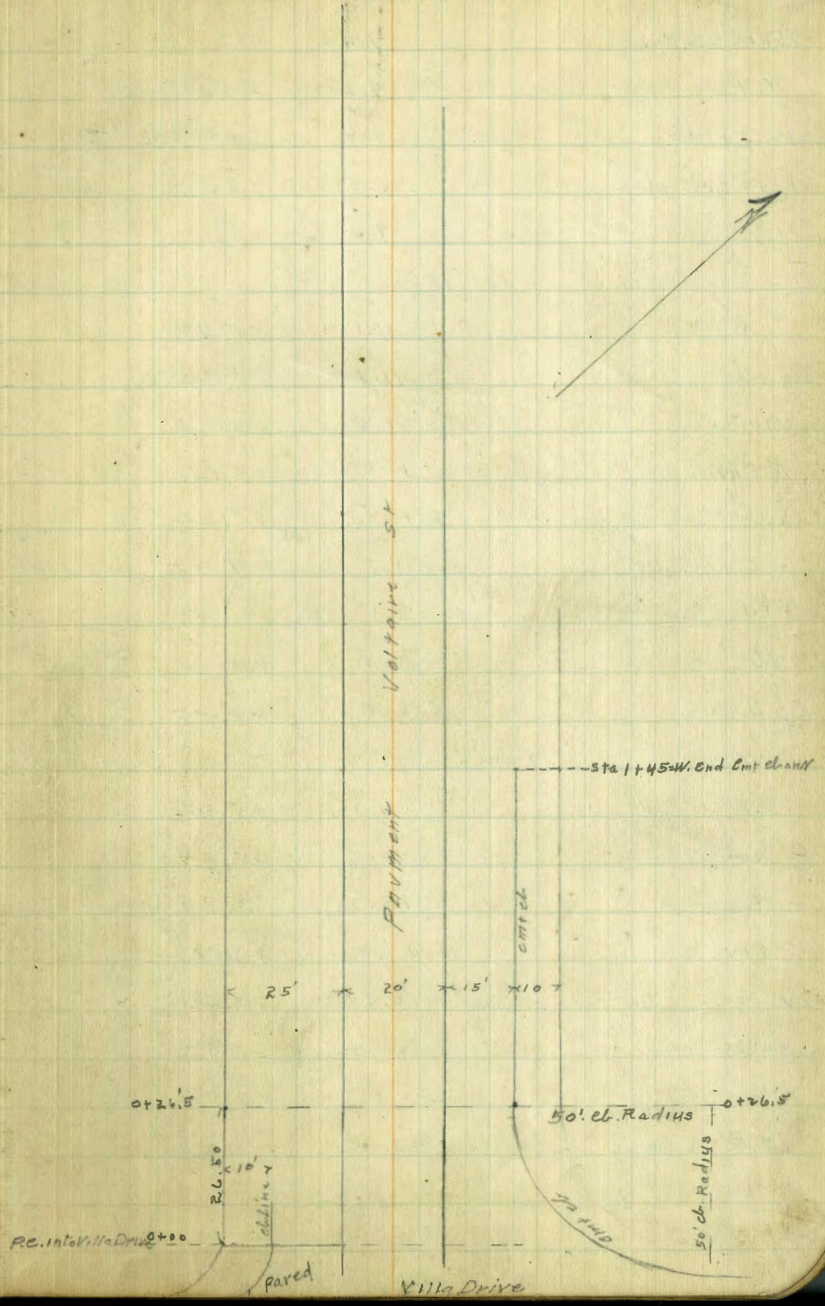
BM	5.18	101.83	96.65	SM. Chatsworth & Tennesse St
T.P.	4.19	96.57	94.5	92.38
chk on B.M. S.C. NE. BK. Co. Voltaire & Warrington	5.57	91.00	R.M.G. Book 100 Page 73	90.99
Set B.M. B.P. N.E. Voltaire & Villa Drive	0.31	96.26		

0+00 = P.C. into Villa Drive on S.

S. Line	4.4	92.17	
ch	5.69	90.88	Pavmt
+15 edge 20' Pavmt	5.15	91.42 = 91.40	Grade
N. edge 20' Pavmt	5.0	91.07	
+15 = N. ch. 144 =	5.5	91.07	
+7.3 = gutter	5.7	90.87	
+7.4 = cont ch Return	5.43	91.14	

24.5 N = P.C. ch Return into Villa Drive on N.

N. line	96.57	6.7	89.87
cont ch	6.47	90.10	
+0.2 gutter	7.0	89.57	
+15 = N. Pav	6.57	90.00	
S. Pav	6.57	90.00	
+9	7.0	89.57	
+12	5.0	91.57	
+15 = ch	5.0	91.57	
S	5.3	91.27	
70' W			
S	8.0	89.57	
ch	6.8	89.77	
+10	9.2	87.37	



96.57

70' W com

dt 15 = S. Pav	9.45	87.12
N. Pav	9.43	87.14
+15 = gutter	9.18	86.77
+15 = cnt cl	9.21	87.36
N	9.4	87.17

100' W

N	11.1	85.97
cl	11.18	85.39
gutter	11.8	84.77
N. Pav	11.35	85.22
S. "	11.35	85.22
+5	11.7	84.87
+10	8.1	88.47
cl	6.8	89.77
S	8.0	88.57

125' N

S	11.2	85.37
cl	10.6	85.97
+8	12.8	83.77
S. Pav	13.0	83.57
N. "	12.95	83.62
cnt cl	12.83	83.74
N	12.7	83.87
T.P.	0.22	83.74
	13.05	83.52

83.74

145' W = N. Endem? cl on N.

N	1.1	82.64
W. end N. cnt cl	1.20	82.54
N. Pav	1.35	82.39
S. "	1.35	82.39
cl	2.0	81.74
S	2.9	80.84
+5	2.7	81.04

169.72' W = P.L.

-15	13.6	70.14
S	11.6	72.14
+4	10.7	83.04
cl	7.6	76.14
+7	3.3	80.44
S Pav	3.05	80.69
N "	3.05	80.69
cl	3.1	80.64
+3	3.2	80.54
+6	7.0	76.14
N	3.5	80.24
+5	3.6	80.14

1+89.72 P.V.C. 8-25' chds

-16	14.0	69.74
N	13.2	70.54
+4	19.2	64.54
+7	15.6	68.14
cl	9.5	74.24

Voltaire

2

83.74

189.72 W. com

Nch +7	4.7	79.04
N Pav	4.33	79.41
S "	4.35	79.39
+7	4.6	79.14
cl	9.2	74.54
S	16.1	67.64
+20	18.2	65.54

2+04<sup>22</sup> W

-25	83.74	21.0	62.74
-4		20.5	63.24
S		18.2	65.54
cl		11.0	72.74
+8		5.4	78.34
S Pav		5.25	78.19
N "		5.23	78.51
+8		5.5	78.24
cl		10.5	73.24
+7		15.7	68.04
N		26.4	57.34
+8		26.7	57.04
+10		20.3	63.44
+25		19.8	63.94

2+14<sup>22</sup>

-25		23.5	60.24
-16		23.4	60.34
-14		28.0	55.74

83.74

Voltaire

3

-10		28.6	55.14
-8		22.9	60.84
N		18.6	65.14
cl		11.2	72.54
+8		6.0	78.74
N Pav		5.75	77.99
S "		5.79	77.95
+7		6.0	77.74
cl		11.6	72.14
S		18.7	65.04
+2		21.3	62.44
+25.46		22.2	61.54
+30		26.3	57.44
+35		22.4	60.94

2+28<sup>22</sup>

-30		22.6	61.14
-20		26.5	57.24
-10.5 S. E. H. 30" emb Pipe Culvert		27.2	56.54
-10		23.7	60.04
S		20.9	62.84
cl		12.8	70.94
+9		6.6	77.14

2+39<sup>22</sup>

-25		26.8	62.94
S		20.0	63.74
cl		12.9	70.84

2+39<sup>22</sup> W

s.d.+9	4.8	76.94
S.PAV	6.75	76.94
N. 11	6.75	76.99
+8	7.1	76.64
cl.	12.0	71.74
N	19.1	64.64
+13	27.0	56.74
+35	27.7	56.04

2+47<sup>22</sup> W

-35	28.7	56.04
-15 N End 30" emt Pipe Culvert	30.1	53.64 F.L.
-14	26.5	57.24
N	19.1	64.64
cl.	11.7	72.04
+7	7.2	76.54
N. Pav	7.0	76.74

2+49<sup>22</sup> W

-35	83.74	29.4	54.34
-15		30.1	53.64
-14		26.5	57.24
N		23.5	60.24
cl.		19.6	64.14
+7		13.4	70.34
+9		7.3	76.44
N. Pav		7.0	76.74

2+51<sup>22</sup> W

-40	31.4	52.34
-15	29.0	54.74
N	18.5	65.24
cl.	11.9	71.84
+7	7.3	76.44
N. Pav	7.1	76.64

2+64<sup>22</sup> W

-60		52.8
-40	30.3	58.74
-12	27.5	56.24
N	19.8	63.94
cl.	12.0	71.74
+8	7.6	76.14
N. Pav	7.30	76.44
S. 11	7.28	76.46
+7	7.5	76.24
cl.	13.2	70.54
S	19.0	65.74

2+89<sup>22</sup> W

+20	19.0	65.74
+40	17.8	65.9
-35	12.6	71.1
-15	13.2	70.54
S	13.0	70.74
cl.	13.2	70.54
+7	7.8	75.94
S.PAV	7.47	76.27
N. PAV	7.50	76.24
+7	8.0	75.74

2+89<sup>22</sup> W con

cl	14.0	69.74
N	19.5	64.24
+9	24.8	59.94
+35	24.5	55.24
+60		53.3
	314 <sup>22</sup> W	57.8
-40	25.5	58.24
-30		
-20	24.1	59.64
N	18.7	65.04
cl	12.5	71.24
+8	7.2	76.54
N.Pav	7.20	76.54
S, "	7.10	76.64
+10	5.8	77.14
cl	4.3	77.44
S	7.5	76.24
+5	6.1	77.64
+20	6.7	77.0
	339 <sup>22</sup> W	
S-15	2.7	81.0
S	3.4	80.34
cl	3.5	80.24
+8	4.3	77.44
S.Pav	6.37	77.37
N.Pav	6.44	77.30
+9	6.5	77.24
cl	10.4	73.34
N	17.0	66.74
+10	19.6	64.14
+23	20.4	63.34

3+64<sup>22</sup>

-16		14.0	69.74
N		12.6	71.14
cl		9.8	73.94
+8		5.4	78.34
N.Pav		5.20	78.54
S "		5.10	78.64
+6		5.1	78.64
T.P.	10.75	92.82	1.67
			82.07
+10		9.1	83.72
cl		8.5	84.32
S		7.8	85.02
			389 <sup>22</sup> W - EXC. = 50' E. of E. Line Warrington
S		3.8	89.02
cl		4.6	88.22
+1		4.9	87.92
+9		13.6	79.32
S.Pav		12.80	80.02
N. "		12.85	79.97
+5		13.0	79.82
+7		10.8	82.02
cl		12.3	80.52
+5		14.3	78.52
N		15.0	77.52
+10		15.5	77.32



92.82

4+29<sup>2</sup> N. 10° E. of S. line Warrington

N		3.5	89.32	
cl		3.0	89.82	
+2		3.0	89.82	
+9		10.5	82.32	
N.Pav		10.77	82.65	
S "		10.17	82.65	
+7		10.1	82.72	
cl		1.3	91.52	
S		0.5	92.32	
T.P.	8.41	100.79	0.44	92.38
				<sup>50' wide</sup> <sub>10' elev</sub> 75' 4.5
				4+39 <sup>2</sup> N-E. line Warrington
S		7.4	83.19	
cl		8.6	82.19	
+8		17.5	83.29	
S.Pav		17.66	83.13	
N. "		17.64	83.11	
+6		18.00	82.79	
cl		9.5	91.29	
N		9.8	91.0	
			E. cl	
N		8.4	92.39	
cl		8.3	92.49	
+9		17.6	83.19	
N.Pav		17.44	83.35	
S.Pav		17.42	83.37	
+7		17.6	83.19	

100.79

Voltaire

6

cl		7.9	92.89
S		6.5	94.29
			E. 1/4
S		4.2	94.59
+9		6.8	93.99
cl		7.7	93.09
+2		11.4	89.39
+9		17.5	83.29
S.Pav		17.34	83.45
N.Pav		17.37	83.42
+6		17.1	83.69
cl		7.6	93.19
N		7.8	92.99
			E
N		7.3	93.49
cl		7.0	93.79
+10		17.4	83.39
N.Pav		17.42	83.37
S "		17.34	83.45
+6		17.6	83.19
+13		11.2	89.59
cl		7.3	93.49
+1		5.8	94.19
S		5.5	95.29

100.79

W. 44

S	5.5	95.29
+8	5.7	95.09
cl	10.7	90.09
+2	12.0	88.79
+10	17.4	83.39
SPAY	17.32	83.47
N. "	17.45	83.39
+6	17.2	83.59
cl	6.7	94.09
N	6.9	93.89

W. cl

N	6.7	94.09
+9	4.8	93.99
cl	8.4	92.39
+9	17.0	83.79
N. Par	17.32	83.47
S. "	17.30	83.49
+6	17.1	83.69
+12	11.0	89.79
cl	10.4	90.39
+2	5.6	95.19
S	5.6	95.19

oo = W. line Warrington

S	4.8	95.99
+7	4.6	96.19
cl	10.0	90.79

100.79

Voltaire

7

+3	10.7	90.09
+9	17.0	83.79
SPAY	17.00	83.79
N. "	17.10	83.69
+6	17.0	83.79
cl	7.6	93.19
+1	6.2	94.59
N	6.4	94.39

10' W

N	5.9	94.89
cl	4.0	96.79
+9	16.3	84.49
N. Par	16.64	84.15
S. "	16.64	84.15
+6	16.5	84.29
+13	9.8	90.99
cl	8.5	92.29
+3	4.3	96.49
S	4.1	96.69

50' W

S	2.8	97.99
+8	2.4	97.99
cl	5.2	95.59
+9	14.3	86.49
SPAY	13.90	86.89
N. Par	13.90	86.89

100.79  
50'N (con)

+6		13.9	86.89
cl		4.8	95.99
N		4.8	95.99
N		2.6	98.19
cl		2.4	98.39
+10		11.1	89.69
N.Pav		10.42	90.37
S. "		10.42	90.37
+7		10.4	90.39
cl		2.4	98.39
S		2.5	98.29

100'W = P.V.C. for Est. grade. (Revised)

125'W

S		1.2	99.59	
cl		1.7	99.09	
+2		2.1	98.69	
+8		9.0	91.79	
S.Pav		8.66	92.13	
N. "		8.66	92.13	
+6		9.2	91.59	
cl		1.3	99.49	
N		1.2	99.59	
T.P.	6.46	106.75	0.50	100.29

150'W

N		5.1	101.65
cl		5.4	101.35

106.75

Voltaire

8

+9		14.1	92.65
N.Pav		13.86	92.89
S. "		13.86	92.89
+8		13.8	92.95
+13		6.6	100.15
cl		6.6	100.15
S		6.8	99.95

175'W

S		5.8	100.95
cl		5.7	101.05
+2		5.7	101.05
+8		13.3	93.45
S.Pav		13.25	93.50
N. "		13.15	93.60
+6		12.9	93.85
cl		3.4	103.35
N		3.1	103.65

182'W

N		2.8	103.95
cl		3.1	103.65
+9		12.8	93.95
N.Pav		12.97	93.78
S "		13.09	93.66
+7		12.6	94.15
+13		5.4	101.35
cl		5.3	101.45
S		5.5	101.25

106.75  
200'W

S	4.6	102.15
cl	4.1	102.65
+2	4.1	102.65
+9	12.2	94.85
S.Pav	12.70	94.05
N "	12.45	94.10
cl	11.3	95.45
+3	10.6	96.15
N	1.7	105.05
+5	1.7	105.05

225'W

-5	0.6	106.15
N	0.8	105.95
+7	10.0	96.75
cl	11.0	95.75
N.Pav	12.41	94.34
S "	12.43	94.32
+6	11.6	95.15
+14	3.6	103.15
cl	3.6	103.15
S	4.1	102.65

250'W

S	3.8	102.95
cl	3.3	103.45
+1	3.3	103.45
+9	11.8	94.95

106.75

Voltaire 9

S.Pav	12.51	94.24
N "	12.51	94.24
cl	11.1	95.65
+2	10.5	96.25
N	0.2	106.55
+5	0.2	106.55

275'W

-5	+0.2	106.95
N	0.2	106.55
+7	11.2	95.55
cl	11.8	94.95
N.Pav	12.48	94.07
S "	12.71	94.04
+7	12.0	94.75
+14	3.4	103.35
cl	3.4	103.35
S	4.0	102.75

300'W = E. Lime Warden

S	4.5	102.25
cl	3.8	102.95
+1	3.8	102.95
+8	12.6	94.15
S.Pav	13.29	93.46
N "	13.20	93.45
cl	12.4	94.35
+3	11.5	95.25

50' width  
10' elev  
2.5' / 4.5

106.75  
300 W (E-H)

N	0.1	106.65
+5	+0.4	106.35
	E. cl	
-5	0.0	106.75
N	0.4	106.35
+7	11.4	95.35
cl	12.4	94.35
N.Pav	13.62	93.13
S. "	13.65	93.10
+7	13.1	93.65
cl	4.2	102.55
S	4.4	102.35
	E. "H	
S-5	12.8	93.95
S	12.8	93.95
cl	13.2	93.55
S.Pav	13.88	92.87
N. "	13.88	92.87
cl	12.7	94.05
+8	12.0	94.75
N	2.0	104.75
+5	0.7	106.85
	⊕	
-5	2.2	104.55
N	2.2	104.55
+7	13.2	93.55

106.75

Voltaire

10

cl	13.3	93.45
N.Pav	14.15	92.60
S. "	14.13	92.62
cl	14.1	92.65
S	13.9	92.85
+5	13.8	92.95
	W. "H	
-5	14.3	92.45
S	14.3	92.45
cl	14.4	92.35
S.Pav	14.37	92.38
N.Pav	14.40	92.35
cl	13.7	93.05
+3	12.5	94.25
N	2.1	104.65
+5	2.1	104.65
	W. cl	
-5	2.1	104.65
N	1.6	105.15
		c.
cl.	13.8	92.95
N.Pav	13.70	93.05
S. "	13.63	93.12
cl	14.7	92.05
S	14.7	92.05
+5	14.8	91.95

These must be  
1 ft high

106.75  
00 = W. Line Warden

-5		15.3	91.45
S		15.3	91.45
cl		15.5	91.25
S.Pav		15.12	91.63
N. "		15.12	91.53
cl		15.1	91.63
+2		14.4	92.35
N		4.4	102.35
cl		3.9	102.85
N	10' W		
-5		5.1	101.65
N		5.5	101.25
+7		15.1	91.65
cl		16.0	90.75
N.Pav		15.70	91.05
S.Pav		15.70	91.05
cl		16.0	90.75
S		15.7	91.05
+5		15.5	91.25
cl	25' W		
-5		16.5	90.25
S		16.5	90.25
cl		14.8	89.95
S.Pav		14.85	89.90
N.Pav		14.85	89.90
cl		17.00	89.75

106.75

Voltaire

11

+2		14.5	90.25
N		7.6	99.15
+5		7.0	99.75
	50' W		
-5		10.7	96.05
N		10.8	95.95
T.P	0.21	94.47	12.49
+7		7.0	87.47
cl		7.2	87.27
N.Pav		4.50	87.97
S. "		4.56	87.91
cl		6.4	88.07
S		6.0	88.47
+5		5.8	88.67
	100' W		
-5		10.4	84.07
S		10.5	83.97
cl		10.9	83.57
S.Pav		10.54	83.93
N. "		10.54	83.93
cl		11.6	82.87
+4		10.5	83.97
N		4.3	90.17
+5		4.2	90.27

94.47

150' W

-5		8.7	85.77
N		8.3	86.17
+7		15.1	79.37
cl		15.1	79.37
T.P.	1.37	83.06	12.74
			81.69
N.Pav		3.16	79.90
S. "		3.21	79.85
cl		3.4	79.46
S		3.4	79.46
+5		3.5	79.56

175' W

-5		4.0	77.06
S		6.0	77.06
cl		6.0	77.06
S.Pav		5.19	77.87
N. "		5.19	77.87
cl		6.4	76.66
+3		6.4	76.66
N		+0.7	83.76
+5		+0.7	83.76

200' W

-5		2.0	81.06
N		2.4	80.66
+4		7.8	75.26
cl		8.6	74.46

83.06

Voltaire

12

N.Pav		7.15	75.91
S "		7.75	75.91
cl		8.1	74.98
S		8.1	74.96
+5		8.1	74.96

225' W

-5		10.2	72.86
S		10.2	72.86
cl		9.6	73.46
S.Pav		9.20	73.86
N.Pav		9.20	73.86
cl		10.9	72.16
+5		10.5	72.56
N		5.3	77.76
+5		5.1	77.96

230' W

-5		6.2	76.86
A		9.1	73.96
+4		11.0	72.06
cl		11.2	71.86
N.Pav		9.57	73.49
S "		9.57	73.49
cl		10.0	73.06
S		10.3	72.76
+5		10.4	72.66

83.06

250' W

73.85

Voltaire

13

-5			11.4	71.66		cl	5.1	68.75
S			11.4	71.66		N	4.8	69.05
cl			11.2	71.86		+3	2.2	71.65
S.Pav			11.13	71.93				
N. "			11.13	71.93		N	4.1	69.75
cl			12.4	70.66		cl	5.2	68.65
+4			12.1	70.96		N. Pav	5.43	68.22
N			10.2	72.86		S. "	5.60	68.25
+5			9.2	73.86		+5	5.4	68.45
T.P	3.27	73.85	12.48	70.54	Nail in Tel Pole	cl	8.0	65.35
		275' W				S	8.5	65.35
-2			1.7	72.15		+10	8.5	65.35
N			2.7	71.15				
+2			4.2	69.65		-10	9.6	64.25
cl			4.4	69.45		S	9.3	64.55
N. Pav			3.96	69.89		cl	8.5	65.35
S "			3.97	69.88		+10	5.4	68.45
cl			4.0	69.85		S.Pav	6.04	67.79
S			4.3	69.55		N. "	6.06	67.79
+5			4.4	69.45		cl	5.2	68.65
		290' W				N	4.5	69.25
-5			5.5	68.35				
S			5.7	68.15		N	4.7	69.15
cl			5.0	68.85		cl	5.6	68.25
S.Pav			5.02	68.83		N. Pav	6.20	67.65
N "			5.00	68.85		S. "	6.30	67.55

300' W = E line Wells St.

50' wide

E cl

E. 14



73.85

E 44 (com)

+5	6.0	67.85
el	9.1	64.75
S	9.5	64.35
+10	10.4	63.45
	♀	
-10	10.8	63.05
S	10.3	63.05
el	9.8	64.05
+11	6.2	67.65
S Pav	6.4 ✓	67.37
N "	4.40	67.45
el	6.4	67.45
+4	7.0	66.85
N	4.6	69.25
+2	4.4	69.45
	N "4	
-2	4.0	69.85
N	5.5	68.35
+2	7.9	65.95
el	7.8	66.05
N.Pav	6.57	67.28
S.Pav	6.64	67.21
+4	6.4	67.45
el	10.0	63.85
S	10.9	62.95
+10	11.6	62.25

73.85

W. el

-10	12.3	61.55
S	11.3	62.05
el	10.1	63.75
+11	6.4	67.45
S.Pav.	6.70	67.15
N.Pav.	6.70	67.15
el	7.6	66.25
+7	8.1	65.75
N	5.8	65.05
+2	4.2	69.65
	00 W line Malls St.	
-8	4.4	69.45
N	6.0	67.85
+3	8.5	65.35
el	8.4	65.45
+7	6.9	66.95
N.Pav	6.85	67.00
S "	6.85	67.00
+4	6.5	67.35
el	9.7	64.15
S	11.5	62.35
+10	12.9	60.95
	40 W	
-22	20.0	53.85
S	15.8	58.05
+5	14.6	58.25

Voltaire

14

73.85

40' W (con)

cl	11.5	62.35
+8	4.5	67.35
S.PAY	6.30	67.55
N "	6.37	67.48
+5	6.5	67.35
+12	10.2	63.65
cl	10.3	63.55
+6	11.6	62.25
N	9.1	67.75
+3	5.5	68.35
70' W		
-7	8.7	65.15
N	9.7	66.15
+7	13.5	60.35
cl	11.9	61.95
+10	5.9	67.95
N.PAY	5.94	68.01
S. "	5.94	68.01
+4	5.4	68.45
+8	6.4	67.05
cl	11.4	62.45
S	18.4	55.45
+6	21.7	52.15
+32	24.7	49.15

73.85

Voltage

.15

98' W = 36" Culvert on W. inlet

-35	25.3	48.55
-18	27.3	46.55
-17	23.5	50.35
-13	23.3	50.55
S	14.0	57.85
cl	10.9	62.95
+10	5.7	68.15
S.PAY	5.35	68.50
N. "	5.35	68.52
+4	5.1	68.75
cl	12.7	61.15
+6	16.6	57.25
N	15.0	58.85
+15	14.5	59.35
120' W		
-30	17.4	56.45
N	18.7	55.15
cl	12.7	61.15
+10	5.2	68.65
N.PAY	5.00	68.85
S. "	5.05	68.80
+7	5.0	68.85
cl	10.0	63.85
S	15.1	58.75
+13	22.5	51.35
+30	23.6	50.25

73.85

140' W

-30	23.0	50.85
-12	22.3	51.50
S	14.8	59.00
cl	10.0	63.85
+8	5.3	68.50
S Pav	4.70	69.15
N. "	4.70	69.15
+7	5.5	68.35
cl	11.5	62.35
N	18.0	55.85
+5	20.2	53.65
+17	21.0	52.85
+20	18.4	55.15

170' W

-30	22.0	51.85
-15	24.4	49.45
N	14.4	59.45
cl	9.9	63.90
+8	4.7	69.15
N. Pav	4.15	69.70
S. "	4.15	69.70
+4	4.0	69.85
+7	4.7	69.15
cl	10.5	63.35
S	16.2	57.65
+6	20.2	53.65

73.85

Vollmer

16

+13	20.9	53.15
+24	17.5	66.35
200' W		
-20	14.7	59.15
-5	18.3	55.55
S	16.2	57.65
cl	16.2	57.65
+8	4.2	69.65
S. Pav	3.62	70.23
N. "	3.62	70.23
+7	4.0	69.85
cl	8.9	64.90
N	14.2	59.65
+25	28.8	45.00
+35	29.5	44.35
+50	27.4	46.45

2+17W outlet 36" culvert on B.

-50	31.5	42.35	
-25	32.2	41.65	F.L.
-24	28.0	45.85	
-19	28.0	45.85	
N	14.6	59.25	
cl	8.5	65.35	
+8	3.4	70.45	
N. Pav	3.30	70.55	
S. "	3.30	70.55	

73.85

277 W (con)

S.Pav+7	3.8	70.05
cl.	9.4	64.45
S	14.2	59.65
+15	10.6	63.25

245 W

-8	1.8	72.05
S	5.2	68.65
cl	8.0	65.45
+9	3.0	70.85
S.Pav	2.75	71.10
N. "	2.83	71.02
+8	3.9	69.65
cl	9.0	64.85
N	15.9	57.85
+20	29.3	44.55
+50	33.8	40.05

$\nearrow$  76.52  
 245 W  
 $\searrow$  for this only

-55	36.0	40.5
-37	34.7	41.8
-15	29.2	47.9
N	19.0	57.5
cl	12.0	64.5
+10	5.5	71.0
N.Pav	2.45	71.20
S.Pav	2.65	71.20
+11	2.4	71.45

73.85

VOLTAGE

17

cl	6.3	67.55
S	2.0	71.85
+5	2.0	71.88

280' N B.Y.K. in grade approx P.C. Pavmt 48.165

-5	1.6	72.25
S	1.6	72.25
cl	1.6	72.25
S.Pav	2.20	71.55
N.Pav	1.30	71.55
+5	2.3	71.55
cl	9.2	64.65
N	16.3	57.55
+3	18.2	55.65
+30	22.5	51.35
+50	30.0	43.85

300 W

-25	14.0	57.85
N	11.6	62.25
+2	11.2	62.65
cl	6.3	67.55
+8	2.4	71.45
T.P.	1.45	<u>74.81</u>
	0.49	73.36
+13 = N edge Pavmt on curve	3.17	71.62
S.Pav	3.10	71.69
cl	3.0	71.79
N	3.0	71.79
+5	3.0	71.79

7479

330' N

-2	1.1	73.69
B	2.7	72.09
cl	3.1	71.69
+21 S.Pav	3.20	71.59
N.Pav	3.24	71.55
cl	3.4	71.39
+5	4.2	70.59
N	4.9	69.89
+15	10.0	69.79

365' W EC, N.Pav 15' from N. line

-5	4.6	70.19
N	4.1	70.69
cl	3.6	71.19
+5 = N.Pav	3.43	71.16
S " = cl St	3.37	71.32
+12.5 = S. 1/4	3.2	71.59
cl	3.2	71.59
S	2.0	72.79

400' W = E. line San Clemente 10' 1/4s

S	2.4	72.39
cl	2.8	71.99
+12.5 = 1/4	3.3	71.49
cl = S.Pav	3.60	71.19
N. "	3.63	71.16
+8 = cl	3.8	70.99
N	4.4	70.39
+5	4.6	70.19

7479

Voltaire

14

chk on B.M.

2.38

72.41 = 72.42 S.E. Voltaire  
San Clemente

E. cl		
-5	4.5	70.29
N	4.3	70.49
cl	3.9	70.89
+5 N.Pav	3.75	71.04
cl = S.Pav	3.41	71.18
+12.5 = 1/4	3.2	71.59
cl	2.9	71.89
S	2.4	72.39
S		
cl		
1/4		
cl = S.Pav		
N.Pav		
cl		
N		
+5		

E. 1/4

cl

-5	4.9	69.89
N	4.5	70.29
cl	4.1	70.69
N.Pav	3.94	70.85
cl S "	3.74	71.05
1/4	3.2	71.59

74.79

cb	3.0	71.79
S	2.5	72.29
	W. 1/4	
S	2.7	72.09
cb	3.3	71.49
1/4	3.4	71.39
1/2 S. Pav	3.80	70.99
N "	4.09	70.7
cb	4.2	70.59
N	4.4	70.59
+5	4.5	70.29
	W. cb	
-5	5.0	69.79
N	4.4	69.99
cb	4.5	70.29
N. Pav	4.13	70.66
1/2 S "	3.84	70.95
1/4	3.7	71.09
cb	3.6	71.19
S	2.5	72.25
	00 = W. line San Clemente	
S	2.0	72.79
cb	3.4	71.89
+1	3.9	70.89
1/4	4.0	70.79
1/2 S. Pav	3.96	70.83

74.79

Votaine

19

N. Pav	4.20	70.59
cb	4.4	70.39
N	4.0	70.79
	5' W.	
N	3.0	71.79
+7	3.8	70.99
1cb	4.5	70.29
N. Pav	4.30	70.49
1/2 S. Pav	4.06	70.73
1/4	4.1	70.69
cb	4.1	71.69
+1	3.5	71.29
+8	3.3	71.49
S	2.1	72.69
	50' W	
S	1.6	73.19
+3	3.9	70.89
cb	4.2	70.59
+1	4.7	70.09
1/4	4.8	70.0
1/2 S. Pav	4.84	69.95
N. "	5.18	69.61
cb	5.5	69.3
+2	4.2	70.6
N	4.0	70.8

74.79

100' W

N	4.9	69.9
+8	4.9	69.9
cl	4.1	68.7
N. Pav	6.12	68.7
φ S. Pav	5.74	69.1
"	5.5	69.3
cl	5.6	69.2
+1	5.0	69.8
+8	3.7	71.1
S	3.3	71.5

150' W

S	5.3	69.5
+8	5.9	68.9
cl	6.6	68.2
"	6.5	68.3
φ S. Pav	6.72	68.1
N. Pav	7.09	67.7
cl	7.4	67.4
+2	5.7	69.1
N	5.5	69.3

200' W

N	6.9	67.9
+8	7.0	67.8
cl	8.3	66.5
N. Pav	8.17	66.6
φ S. "	7.64	67.2

74.79

Voltaire

20

"	7.5	67.3
cl	7.6	67.2
S	6.3	68.5

250' W

S	8.2	66.6		
cl	8.9	65.9		
"	8.7	66.1		
φ S. Pav	8.60	66.2		
N "	9.00	65.8		
cl	8.9	65.9		
N	8.7	66.1		
T.P.	1.69	44.60	9.88	64.91

300' W

-5	3.0	63.6
N	2.0	64.0
cl	1.7	64.9
N. Pav	1.67	64.9
φ S. Pav	1.38	65.2
"	1.5	65.1
cl	1.7	64.9
S	1.8	64.8
+5	1.7	64.9

350' W

-5	3.1	63.5
S	3.0	63.6
cl	2.7	63.9

66.60

350' W. (Cont)

34	2.4	64.2
E.S. Pav	2.34	64.3
N "	2.67	62.9
cl	2.9	63.7
N	3.3	63.3

400' N

N	4.3	62.3
cl	3.5	63.1
N Pav	3.55	63.0
E.S. "	3.27	63.0
" "	3.4	63.2
cl	3.4	63.2
S	3.4	63.2
+5	3.4	63.2

4+50 W APPROX P.C. N Line Pavmt

S	3.4	63.2
cl	4.3	62.3
" "	4.3	62.3
E-S Pav	4.24	62.4
N. "	4.51	62.1
cl	4.6	62.0
N	4.5	62.1

496.4 W = E. Line Cataleria

70' wide  
10' cbs  
125' W

N	5.1	61.5
cl	4.8	61.8
2.5 N. Pav	5.44	61.2

66.60

Vollaire

21

E-S Pav	5.03	61.6
" "	4.7	61.9
cl	4.4	62.2
S	3.6	63.0

E. cl 69.6 wide

-5	4.3	62.3
S	4.6	62.0
" "	4.9	61.7
cl	5.1	61.5
2' S of cl	5.6	61.0
cl	4.9	61.7
N	5.0	61.6

5.1/4 68.9 wide

N	5.1	61.5
cl	5.2	61.4
+3	5.7	60.9
cl	5.2	61.7
" "	4.8	61.8
cl	4.6	62.0
S	4.5	62.1
+7	4.3	62.3

cl 68.2 wide

-10	4.2	62.4
S	4.4	62.2
cl	4.7	61.9
" "	4.9	61.7



66.60

E (con)

E	5.3	61.0
2' S of ch	6.0	60.6
ch	5.1	61.5
N	5.2	61.4

N. 1/4 67.5 Wide

N	4.8	61.8
ch	5.2	61.4
+2	6.2	60.4
e	5.4	61.2
1/4	5.0	61.6
ch	4.9	61.7
S	4.7	61.9
+10	4.5	62.1

T.P. on SPK Pole 5.29 68.07 3.82 62.78 S.E. Voltaire + Catalina

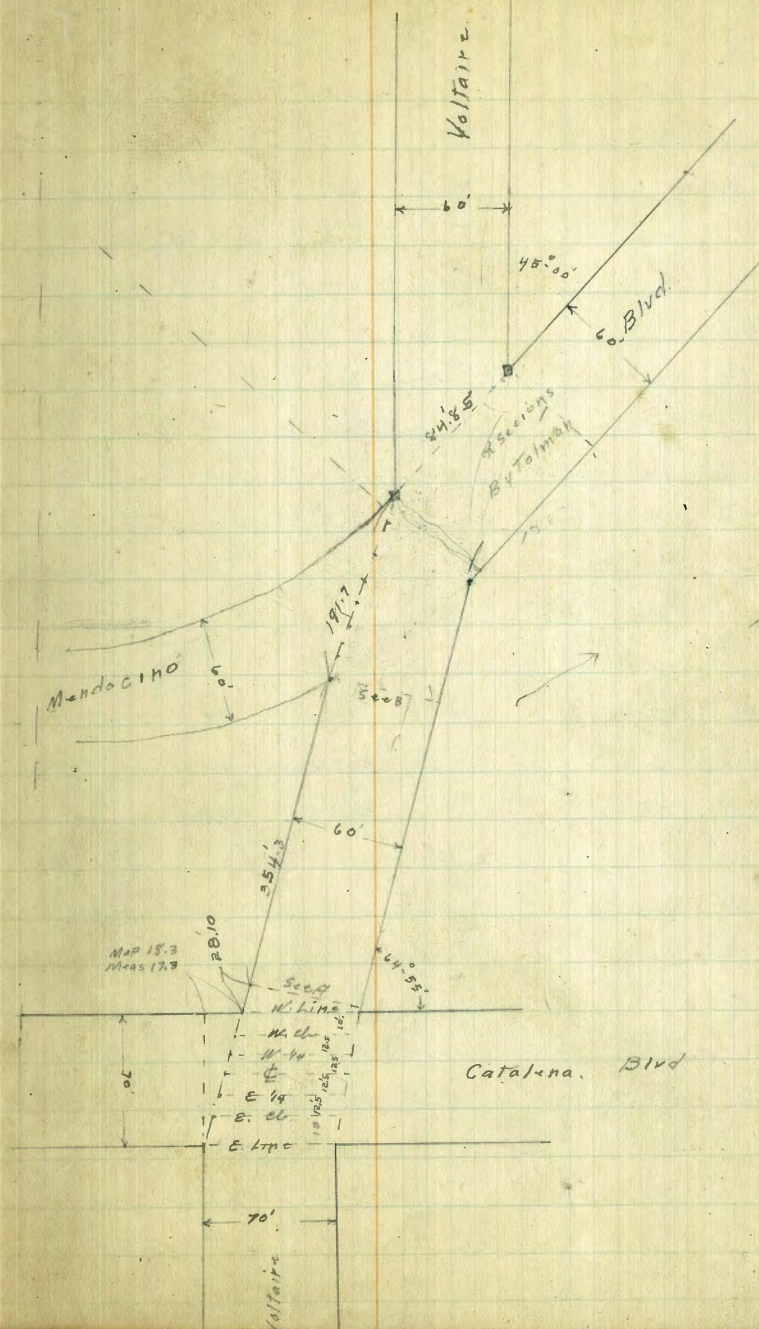
N. ch 66.8 Wide

-17	10.0	58.1
-10.4	10.0	58.1
P.E. of above: & S End 30' emt Pipe Culvert	10.2	57.9 F.L.
-7	6.8	61.3
S	5.7	62.4
ch	6.1	62.0
1/4	6.3	61.8
e	7.0	61.1
N. ch	6.70	61.4 Top emt ch

emt ch. follows N.E. Edge of Pavement &amp; extends 97 E. of above

N 6.3 61.8

Voltaire 22



68.07

W Line Catalina 64.25 wide

N	6.1	62.0	
N. cnt cl	6.75	61.3	
⊕ s. Pav	6.7	61.2	
"4	6.6	61.5	
cl	6.0	62.1	
S	6.2	61.9	
+10	7.2	60.9	
+20	7.7	60.4	
0.700 S. Pav. = 28.10 W. on S = 90.00 from N.W. Cor 60.0 wide <sup>10' cl s</sup> <sub>10' ins s</sub>			
-5	5.4	62.5	
S	5.7	62.4	
cl	4.1	62.0	
"4	4.5	61.6	
⊕	6.77	61.4	s. Pav
N. cnt cl	6.74	61.3	
N	6.1	62.0	
50' W			
N	5.7	62.4	
N. cnt cl	6.16	61.9	
⊕ = S. Pav	6.10	62.0	
"4	6.0	62.1	
cl	5.8	62.3	
S	5.4	62.7	
+5	5.2	62.9	

68.07

Vallaire

23

100' W

-5	4.8	63.3
S	4.8	63.3
cl	4.8	63.5
"4	5.1	63.0
⊕ = S. Pav	5.15	63.0
N. cnt cl	5.29	62.8
N	5.2	62.9

120' W

N	4.8	63.3
N. cnt cl	4.75	63.3
⊕ s. Pav	4.64	63.5
"4	4.6	63.7
cl	4.7	63.4
S	4.4	63.7
+5	4.6	63.5

140' W

-5	3.8	64.3
S	3.8	64.3
cl	4.2	63.9
"4	4.2	63.9
⊕ = S. Pav	4.11	64.0
N. cnt cl	4.09	64.0
N	4.3	63.8

68.07

160' W

N	3.3	64.8
cm tel	3.41	64.7
± S Pav	3.53	64.6
1/4	3.5	64.3
cl	3.9	64.2
S	3.3	64.4
+5	3.3	64.8

200' W

-5	2.4	65.7
S	2.4	65.7
cl	2.4	65.7
1/4	2.4	65.7
± S Pav	2.18	65.9
N cm tel	2.10	66.0
N	1.8	66.3

250' W

N	1.0	67.1
N cm tel	0.47	67.6
± S Pav	0.50	67.6
1/4	0.8	67.3
cl	1.2	66.9
S	0.7	67.4
+5	0.7	67.4
T.P.	11.24	79.01
	0.30	67.77

79.01

300' W

-5	10.2	68.8
S	10.4	68.6
cl	16.2	68.8
1/4	10.0	69.0
± S Pav	9.80	69.2
N cm tel	9.70	69.5
+1	10.6	68.4
N	9.4	69.4

354.3 W = S.E. Cor Voltaire + Mendocino = Sec B

N-2	9.0	70.0
N	8.9	70.1
+9	8.4	70.6
cm tel	7.94	71.1
± S Pav	8.07	70.9
1/4	8.3	70.7
cl	8.0	71.0
S	8.0	71.0
+20	6.3	72.7

Following Sections Taken S + N at 90° from line from SE. Cor of  
Voltaire + Mendocino to SW. Cor Voltaire + Mendocino

13' N of Sec B. on Base Line

20's	6.1	72.9
Base Line	7.3	71.7
10' N	8.1	70.9
29' N = S. Pav	7.77	71.2

Voltaire

24

79.01

20' W of Sec B. on Baseline

28.2 N of Baseline = S Pav	7.54	71.5
10' " " " "	7.7	71.3
Baseline	7.3	71.7
10' S of Baseline	7.0	72.0
20' " " " "	3.0	76.0

35' W of Sec B.

20' S of B. L.	2.0	77.0
15' " " " "	0.0	79.0
5' " " " "	6.6	72.4
B. L.	7.0	72.0
20' N of B. L.	7.3	71.7
26.5 N " " " = S. Pav	7.07	71.9

50' W of Sec B

24.9 N of B. L. = S. Pav	6.55	72.0
10' " " " "	6.8	72.2
B. L.	6.3	72.7
10' S. of B. L.	6.0	73.0
20' " " B. L.	1.4	77.6

70' W of Sec B.

20' S of B. L.	0.8	78.2
12' " " " "	1.7	77.3
7' " " " "	5.7	73.3
B. L.	5.7	72.3
10' N of B. L.	6.3	72.7
22.7 " " " " = S. Pav	5.86	73.1

79.01

100' W of Sec B

18' N of B. L. = S. Pav	4.82	74.2
B. L.	5.0	74.0
7' S of " " "	4.9	74.1
10' " " " "	2.0	77.0
20' " " " "	1.2	77.8

135' W of Sec B.

20' S of B. L.	0.9	78.1
B. L.	3.4	75.6
14' N of B. L. = S. Pav	3.68	75.3

170' W of Sec B.

8.6 N of B. L. = S. Pav	2.88	76.1
B. Line	2.5	76.5
20' S of B. L.	1.6	77.4

191.7' W of Sec B = S. W. Cor Voltaire &amp; Mendocino

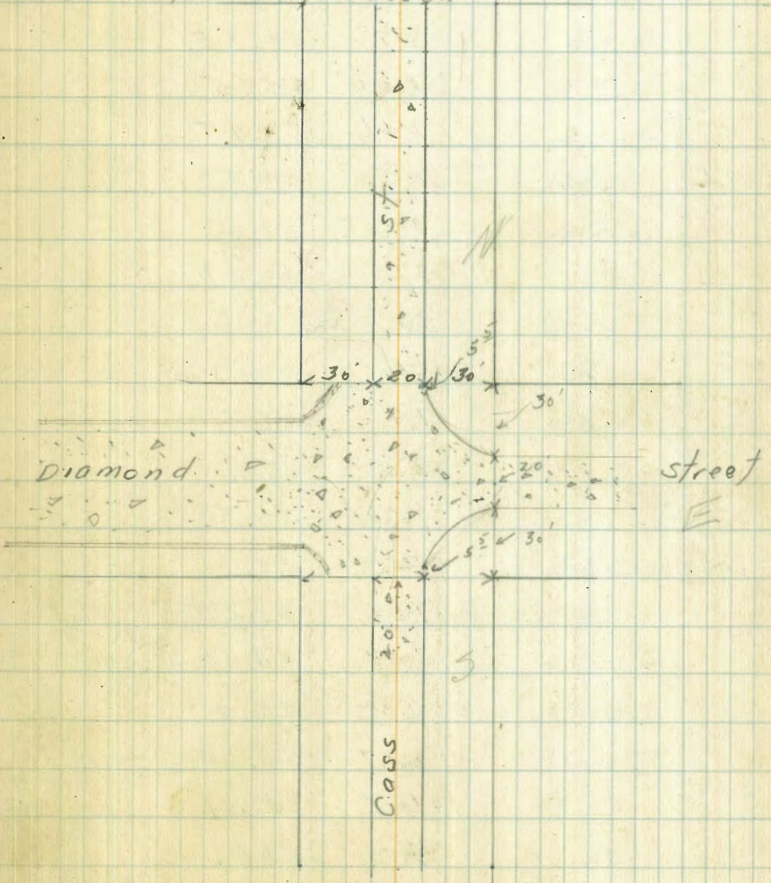
10' S of S. W. Cor Voltaire & Mendocino	1.1	77.9	
S. W. Cor = B. L.	2.1	76.9	
2.8 N of B. L. = { S. edge Pavant E. end cont. elev.	2.07	76.9 top elev.	
" " " " " "	2.50	76.5 " Pavant	
T.P. 0.14	67.91	11.24	67.77
T.P. 10.39	73.17	5.13	62.78
chk on spk Voltaire & San Clemente	0.76		72.41 = 72.41

492 figured Book 15

Bliss  
Isbell  
Pearson  
3/16/28  
8' x 5' pipe  
in Pch. SN  
Cass Diamond  
X Sections of the E 1/4 of the  
Intersections of Cass and Diamond streets  
Pacific Beach.

	+	x	-	El. at	80' st 14' cbs 13' 1/4
	7.32	51.11		43.79	
Φ					
S		7.53		43.58	
cb		7.27		43.84	
1/4		7.03		44.08	
Φ		6.80		44.31	
1/4		6.58		44.53	
cb		6.31		44.80	
N		6.09		45.02	
	Φ + 10				
N		6.15		44.96	
cb		6.42		44.69	
1/4		6.61		44.50	
Φ		6.82		44.29	
1/4		7.13		43.98	
cb		7.38		43.73	
S		7.64		43.47	
	E 1/4				
S		8.1		43.01	
cb		7.4		43.71	
~	edge of paving	7.64		43.47	
1/4		7.32		43.79	
Φ		6.95		44.16	
1/4		6.67		44.44	
~	edge of paving	6.51		44.60	
cb		6.7		44.41	

Sketch of the Intersection of Diamond & Cass Sts. Pacific Beach.



π  
51.11

N		6.7	44.41
	1/4 + ~		
N		7.0	44.11
cb		7.1	44.01
+6	edge of paving	6.70	44.41
1/4		6.76	44.35
1/4		7.06	44.05
1/4		7.46	43.65
+7	edge of paving	7.68	43.43
cb		7.7	43.41
+5		7.7	43.41
S		9.0	42.11
	1/4 + 5		
S		7.7	43.41
cb		8.0	43.11
+5		7.6	43.51
+9	edge of paving	7.70	43.41
1/4		7.56	43.55
1/4		7.09	44.02
1/4		6.89	44.27
+4		6.87	44.24
cb		6.9	44.21
N		6.3	44.81
	E cb		
N		5.5	45.61
cb		6.1	45.01

π  
51.11

29

1/4		7.0	44.11
+1	edge of paving	7.03	44.08
1/4		7.15	43.96
+12	edge of paving	7.54	43.57
1/4		7.3	43.81
+2		7.2	43.91
+8		8.0	43.11
+10		8.1	43.11
cb		7.0	44.11
S		7.3	43.81
	E Line of Cass		
S		6.8	44.31
cb		6.7	44.41
+2		6.7	44.41
+4		7.9	43.21
+6		7.6	43.51
+8		6.9	44.71
1/4		6.8	44.31
+3	edge of paving	6.9	44.19
1/4		6.78	44.33
+10	N edge of paving	6.66	44.45
1/4		6.9	44.21
+3		6.6	44.45
+6		5.8	45.31
cb		5.7	45.41
N		5.4	45.71

51.11

20' E. of the E Line of Cass

N	4.6	46.51
cb	5.1	46.01
+8	5.3	45.81
+10	6.6	44.51
1/4	6.4	44.71
+3 edge of Paving	6.13	44.98
ϕ	6.09	45.02
+10 edge of Paving	6.25	44.86
1/4	6.6	44.51
+2	6.2	44.91
+6	6.7	44.41
+9	7.7	43.41
+10	7.7	43.41
+11	6.2	44.91
cb	6.2	44.91
s	6.7	44.41

35' E. of the E Line of Cass

S	6.4	44.71
cb	6.0	45.11
+2	6.0	45.11
+3	7.7	43.41
+5	7.7	43.41
+6	6.7	44.41
1/4	6.7	44.81
+3 edge of Paving	6.02	45.09

51.11

28

ϕ	5.84	45.27
+10 edge of Paving	5.89	45.22
1/4	6.8	44.31
+3	6.5	44.61
+4	5.0	46.11
cb	4.9	46.21
N	4.6	46.51

Section on Paving 75' East of the E Line of Cass

N edge	5.38	45.73
ϕ	5.33	45.78
S edge	5.48	45.63

Section on Paving 100' E. of the E Line of Cass

S edge	5.10	46.01
ϕ	4.92	46.19
N edge	5.03	46.08

Bliss  
Isbell  
Pearson  
3/16/28  
W.P. Cass  
- Garnet

X Sections of The W 1/2 of of Cass St  
from the S line of Garnet to the N line of  
Ally. South of Garnet.

Ely  
80' St  
19' cbs  
13' 19"

+ x -  
9.02 32.56 28.54

0' 00' S line of Garnet

W 5.82 26.74  
Topcb 6.09 26.47 .46  
Gutter 6.55 26.01  
1/4 5.79 26.77  
E 5.53 27.03

25' South

E 5.87 26.69  
1/4 6.11 26.45  
Gutter 6.94 25.62 .43  
Topcb 6.51 26.05  
W 6.16 26.40

50' South

W 6.66 25.90  
Topcb 6.90 25.66  
Gutter 7.37 25.19 .47  
1/4 6.54 26.02  
E 6.30 26.26

75' South

E 6.82 25.74  
1/4 7.01 25.55  
Gutter 7.79 24.77 .43  
Topcb 7.36 25.20  
W 7.05 25.51

Sketch of W 1/2 of Cass St + Pacific Beach  
Garnet St from the S line of  
Garnet South to N line  
of Alley



14'  
combination of  
WALK and cbs



7  
32.56

100' South

W	7.93	25.73	
Topcb	7.69	24.87	
Gutter	8.18	24.38	7.49
1/4	7.55	25.01	
1/2	7.29	25.27	

184<sup>5</sup> South N. line of Alley

1/2	7.72	24.84	
1/4	7.98	24.58	
Gutter	8.52	24.04	7.45
Topcb	8.07	24.49	
W.	7.89	23.67	

B1100  
I.S. 601  
Pearson  
3/17/28  
Blk. Hub.

X. Sections of Adelaide St. Arboles Tract  
West of 56<sup>th</sup>.  
Elev 50' st  
10' cbs  
7 5/8"

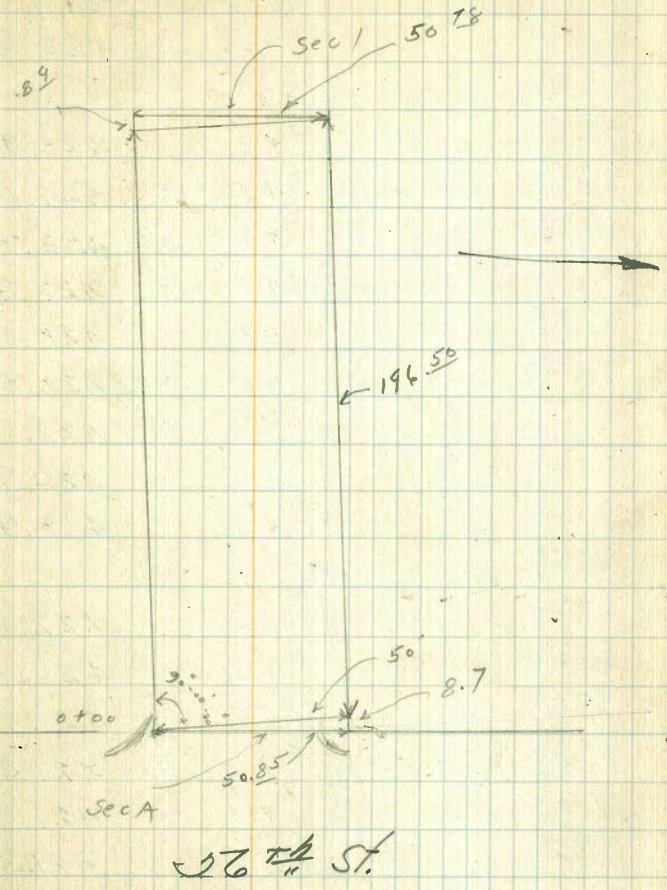
5.90 428.67 423.27

Sec A. See sketch  
on page 31

N	3.7	425.0
cb	3.91	424.76
Gutter	4.35	424.32
1/4	4.38	424.29
1/4	4.44	424.23
1/4	4.54	424.13
cb	4.81	423.86
S	5.36	423.31
St. 52 <sup>nd</sup> Gutter	5.42	423.25
S Top cb	4.97	423.70
	00	
S	5.36	423.31
cb	4.7	424.0
1/4	4.5	424.2
1/4	4.3	424.4
1/4	4.9	424.3
cb	4.5	424.2
N	4.5	424.2
	09' West	
N	5.2	423.5
cb	5.2	423.5
1/4	5.3	423.4
1/4	4.7	424.0
1/4	4.5	424.2

Platted A-24-20 C.B. Hough

Sketch of Adelaide St. Arboles Addition  
Showing Sections Taken



56<sup>th</sup> St.

x  
428.67

cb	4.5	424.2
s	4.9	423.8
19' West		
s	4.9	423.8
cb	4.7	424.0
1/4	5.0	423.7
+2	4.8	423.9
⊘	5.3	423.4
+5	6.2	422.5
1/4	6.2	422.5
cb	6.2	422.5
N	5.8	422.9
28' W		
N	6.3	422.4
+4	6.3	422.4
+5	7.3	421.4
cb	7.3	421.4
1/4	7.4	421.3
+5	7.4	421.3
⊘	6.4	422.3
+3	6.7	422.0
+5	5.5	423.2
1/4	5.1	423.6
cb	4.9	423.8
s	5.3	423.4

x  
428.67

32

48' West		
s	5.8	422.9
cb	5.7	423.0
+2	5.6	423.1
1/4	6.2	422.5
+3	8.0	420.7
⊘	7.9	420.8
1/4	7.6	421.1
cb	7.5	421.2
N	7.4	421.3
65' W		
N	7.7	421.0
cb	7.7	421.0
1/4	7.8	420.9
⊘	8.5	420.2
+2	8.3	420.4
+5	6.6	422.1
1/4	6.3	422.4
cb	6.1	422.6
s	6.2	422.5
89' W		
s	7.0	421.7
+5	7.6	421.1
cb	7.5	421.2
1/4	8.9	419.8
+3	8.9	420.3
⊘	9.0	419.7

X  
42867

+5	8.8	419.9
1/4	8.8	419.9
cb	8.6	420.1
+11	8.2	420.5
N	8.2	420.5

95' West

N	8.4	420.3
+8	8.5	420.2
cb	8.9	419.8
1/4	9.2	419.5
+	9.6	419.1
+~	9.0	419.7
1/4	9.2	419.5
cb	9.0	419.7
S.	8.1	420.6
S+05	8.7	420.0
S+15	11.1	417.6

100' West

S-25	14.8	413.9
S-10	13.6	415.1
S.	10.5	418.2
cb	9.3	419.4
+3	9.0	419.7
1/4	9.2	419.5
+3	9.3	419.4
+	10.~	418.5

X  
42867

33

+7	9.3	419.4
1/4	9.3	419.4
cb	9.0	419.7
N	8.5	420.2

103' West

N	9.0	419.7
+5	8.8	419.9
cb	9.2	419.5
1/4	9.9	418.8
+	10.9	417.8
1/4	9.9	418.8
cb	9.8	418.9
S.	12.5	416.2
S+5	16.8	411.9

112' West

S-25	19.0	409.7
S-10.	19.0	409.7
S	17.9	411.3
cb	19.4	414.3
1/4	13.0	415.7
+5	14.7	417.0
+	11.7	417.0
+3	16.8	417.9
1/4	10.5	418.2
cb	9.9	418.8
+5	9.2	419.5

428.67

N	9.3	419.4
	195'W	
N	10.7	418.0
+5	10.7	418.0
cb	11.2	417.5
1/4	12.1	416.6
1/4	13.8	414.9
1/2	14.0	414.7
1/4	15.8	412.9
cb	17.7	411.0
S	20.7	408.0
St 10	23.0	405.7
St 20	24.0	404.7
St 30	23.0	405.7
	158'W	
S-30	24.6	404.7
S-25	25.6	403.7
S-10	23.6	405.1
S	22.0	406.7
cb	19.3	409.4
1/4	17.5	411.2
1/4	15.8	412.9
1/4	14.3	414.4
cb	12.7	416.0
N	11.4	417.3
T.P.	0.88	417.95
	11.60	417.07

417.95

34

177' West

418.0

N	2.5	415.5
+4	3.4	414.6
cb	4.6	413.4
1/4	6.6	411.4
1/4	7.8	410.2
1/4	10.0	408.0
cb	11.3	406.7
S	13.0	405.0
St 5	13.8	404.2
St 30	14.5	403.5
	196'50. end of Prop on N	
S-35	15.0	403.0
S-5	14.6	403.4
S	14.0	404.0
cb	13.1	404.9
1/4	12.1	405.9
1/4	11.1	406.9
1/4	9.5	408.5
cb	7.9	410.1
N	5.9	412.6
	2 to 5 4 = seal End of Prop on	
N	5.4	412.6
cb	7.9	410.1
1/4	9.9	408.1
1/4	11.2	406.8

417.95

4180

35

1/4		12.6	405.4	
1/2		13.3	404.7	
5		14.7	403.3	
5+5		19.7	403.3	
5+30		15.0	403.0	
T.P.	10.98	428.84	0.09	417.86
check on starting B.M.		5.58	423.26	

Voltaire 34 X Sec  
Additional Notes for sections Pages 2-3

7-17-28  
mill

81.65

36

N.E. Villa Drive  
4 Voltline

B.M. BP.	0.27	96.53	96.26		
T.P.	0.64	84.10	13.07	83.46	
		1 + 89.72 W.			
S. Pavmt		4.71	79.39		
N. "		4.69	79.41		
16' N of N line		14.4	69.7		
25' " " "		16.1	68.0	New	
20' S. of S line		18.5	65.5		
30' " " "		19.6	64.5	New	
		2 + 04.72 W			
25' N of N line		20.2	63.9		
35' " " "		20.7	63.4	New	
25' S of S line		21.4	62.7		
33' " " "		23.0	61.1	New	
45' " " "		25.9	58.4	New	
		2 + 14.72 W			
25' N of N line		23.9	60.2		
40' " " "		23.5	60.6	New	
		2 + 28.72 W			
40' S of S line		22.0	62.1	New	
S cl + 2		7.0	77.1	old	
S. Pavmt		6.72	77.4	New	
N. "		6.71	77.39	"	
T.P.	4.69	81.65	7.14	76.96	
+ 8			4.5	77.1	

cl	9.7	72.0
N	17.9	63.7
+10	24.0	57.6
+16	24.2	57.4
+18	28.7	52.9
+20	24.4	57.2
+25	24.6	57.0
+50	24.4	57.2
	2 + 47.72 W	
60' N of N line	27.0	54.6 New
N. Pav	4.91	old
S. "	4.85	76.8 New
+5	3.9	77.7
+7	4.7	77.0
cl	10.4	71.2
S	14.4	65.0
+2	18.2	63.4
+40	18.0	63.6
	2 + 49.72 W	
-40	14.0	63.6
-2	18.2	63.4
S	16.6	65.0
cl	10.4	71.2
+8	4.7	77.0
+10	3.9	77.7

81.65

2+49.72 W

S. Pay	4.87	76.8
N. "	4.91	76.7
<hr/> 60' of N. line	27.0	54.6

37



80 wide  
14' els  
13' 1/4 s.

Nile St X. Sec. Thorn to University

9-19-29  
Miller

315.05  
100' N

38

B.M.B.P.	11.36	315.05	303.69	N.E. Nile 4 Thorn	W. ent. el	9.00	306.05
	00=N. line Thorn st				gutter	9.4	305.6
e. ent. el	11.45		303.60		+7	9.5	305.5
gutter parmt.	12.10		302.95		1/4	7.2	305.8
" "	11.98		303.07		+	8.9	306.1
+	12.00		303.05		1/4	9.1	305.9
" "	12.19		302.86		+7	9.4	305.6
gutter m.	12.51		302.54		gutter	9.1	305.9
N. ent. el	11.95		303.10		E. ent. el	8.69	306.36
	25' N.				150' N.		
N. ent. el	11.25		303.60		E. ent. el	7.29	307.76
gutter	11.6		303.4		gutter	7.5	307.5
1/4	11.9		303.3		+6	7.9	307.1
+	11.1		303.9		1/4	7.6	307.4
1/4	11.2		303.8		+	7.5	307.5
gutter	11.2		303.8		1/4	7.6	307.4
e. ent. el	10.78		304.27		+7	8.10	307.0
	50' N.				gutter	7.9	307.1
E. ent. el	10.07		304.98		W. ent. el	7.54	307.51
gutter	10.4		304.6		200' N.		
1/4	10.7		304.3		W. ent. el	6.05	309.00
+	10.5		304.5		gutter	6.4	308.6
1/4	10.8		304.2		+6	6.6	308.4
gutter	11.1		303.9		1/4	6.3	308.7
W. ent. el	10.53		304.52		+	6.2	308.8
					1/4	6.1	308.6

1939-Notes 156014

315.05

200' N. con.

E. 1/4 +7	4.6	308.5
gutter	4.2	308.8
E. cont. el	5.84	309.21

250' N.

E. cont. el	4.48	310.57
gutter	4.9	310.1
+6	5.3	309.7
1/4	5.1	309.9
4	4.8	310.2
1/4	5.0	310.0
+7	5.4	309.6
gutter	5.0	310.0
W. cont. el	4.65	310.40

290' N.

W. cont. el	3.51	311.54
E. " "	3.43	311.62

300' N.

W. cont. el	3.30	311.75
gutter	3.7	311.3
+6	4.2	310.8
1/4	3.9	311.1
4	3.7	311.3
1/4	3.9	311.1
+7	4.1	310.9
gutter	3.6	311.4
E. cont. el	3.26	311.79

315.05

Nile St.

37

310' N.

E. cont. el	3.13	311.92
W. " "	3.16	311.89

350' N.

E. cont. el	2.68	312.37
gutter	3.0	312.0
+6	3.3	311.7
1/4	3.1	311.9
4	2.9	312.1
1/4	3.2	311.8
+7	3.3	311.7
gutter	2.8	312.2
W. cont. el	2.55	312.55

400' N.

W. cont. el	2.88	312.97
gutter	2.5	312.5
+6	2.7	312.3
1/4	2.5	312.5
4	2.4	312.6
1/4	2.6	312.4
+7	2.9	312.1
gutter	2.6	312.4
E. cont. el	2.26	312.79

315.05

450' N

E. ent. cl.	1.81	313.24
gutter	2.1	312.9
+6	2.3	312.7
"4	2.0	313.0
φ	1.8	313.2
"4	1.8	313.2
+7	2.0	313.0
gutter	1.7	313.3
W. ent. cl.	1.54	313.51

500' N.

W. ent. cl.	1.10	313.95
gutter	1.3	313.7
+6	1.6	313.4
"4	1.4	313.6
φ	1.4	313.6
"4	1.8	313.2
+7	1.9	313.1
gutter	1.7	313.3
E. ent. cl.	1.40	313.65

550' N.

E. ent. cl.	1.03	314.02
gutter	1.4	313.6
+6	1.6	313.4
"4	1.4	313.6
φ	1.1	313.9
"4	1.1	313.9

315.05

Mile 51 40

+7	1.2	313.8
gutter	1.0	314.0
W. ent. cl.	0.61	314.44
600' N		
W. ent. cl.	0.16	314.89
gutter	0.4	314.6
+6	0.6	314.4
"4	0.6	314.4
φ	0.7	314.3
"4	1.0	314.0
+7	1.3	313.7
gutter	0.8	314.2
E. ent. cl.	0.60	314.45

610' N = S. Line Myrtle

E. ent. cl.	0.51	314.54
gutter cut for pavmt. grade	1.00	314.05
"4 on pavmt. stake	0.55	314.50
φ " " "	0.36	314.69
"4 " " "	0.30	314.75
gutter cut for pavmt. grade	0.68	314.37
W. ent. cl.	0.05	315.00
chk BM. B.P. S.E. Myrtle + N. 1/2	0.50	314.55 = 314.57
B.M. 5.21	319.78	314.57

319.78  
00 = Machine Myrtle.

W. ent. cl	4.17	315.61
ch. cut. for parmt.	4.77	315.01
1/4	4.7	315.1
⊕	4.7	315.1
1/4	4.9	314.9
ch. cut. for parmt.	5.17	314.61
E. ent. cl	4.69	315.09
50' N		
E. ent. cl	4.61	315.17
gutter	5.0	314.8
+6	5.2	314.6
1/4	4.9	314.9
⊕	4.6	315.2
1/4	4.7	315.1
+7	4.8	315.0
gutter	4.5	315.3
W. ent. cl	4.11	315.67
100' N		
W. ent. cl	3.91	315.87
gutter	4.3	315.5
+6	4.5	315.3
1/4	4.4	315.4
⊕	4.4	315.4
1/4	4.6	315.2
+7	4.9	314.9
gutter	4.7	315.1

319.78

Wile St 41

E. ent. cl	4.53	315.25
150' N		
E. ent. cl	4.33	315.45
gutter	4.6	315.2
+6	4.8	315.0
1/4	4.5	315.3
⊕	4.2	315.6
1/4	4.2	315.6
+7	4.4	315.4
gutter	4.0	315.8
W. ent. cl	3.83	315.95
200' N		
W. ent. cl	3.73	316.05
gutter	4.2	315.6
+6	4.4	315.4
1/4	4.2	315.6
⊕	4.2	315.6
1/4	4.5	315.3
+7	4.8	315.0
gutter	4.7	315.1
E. ent. cl	4.21	315.57
250' N		
E. ent. cl	4.17	315.61
gutter	4.5	315.3
+6	4.7	315.1
1/4	4.4	315.4

319.78  
250' N. (con)

♀	4.0	315.8
14	4.1	315.7
+7	4.3	315.5
gutter	4.0	315.8
W. ent. cl.	3.63	316.15

300' N

W. ent. cl.	3.64	316.14
gutter	3.9	315.9
+6	4.2	315.6
14	4.1	315.7
♀	4.1	315.7
14	4.3	315.5
+7	4.6	315.2
gutter	4.3	315.5
E. ent. cl.	3.96	315.82

330' N

E. ent. cl.	3.97	315.81
7' E. = W. edge ent. walk	3.87	315.91
12' 2 1/2' E. " " "	3.78	316.00

350' N

E. edge ent. walk	3.73	316.05
W. " " "	3.80	315.98
E. ent. cl.	3.80	315.98
gutter	4.2	315.6
+6	4.5	315.3
14	4.3	315.5

319.78

Wile St.

42

♀	4.0	315.8
14	4.1	315.7
+7	4.3	315.5
gutter	3.9	315.9
W. ent. cl.	3.48	316.30

399' N. S. End. sag in e. cl. + walk

W. ent. cl.	3.28	316.50
gutter	3.7	316.08
+6	4.1	315.7
14	3.9	315.9
♀	4.0	315.8
14	4.3	315.5
+7	4.6	315.2
gutter	4.3	315.5
E. ent. cl.	3.88	315.90
+7 = W. edge walk	3.45	316.13
4 1/2' 2" E. " " "	3.82	316.26
E	3.7	316.1

410' N

E-2	4.4	315.4
E	4.3	315.5
E. edge walk	3.8	316.0
W. " " "	3.8	316.0
E. cl. sink	4.0	315.8



319.78  
550' N

N. ent. cl	3.06	316.72
gutter	3.4	316.4
+6	3.9	315.9
1/4	3.8	316.0
⊕	3.5	316.3
1/4	3.7	316.1
gutter	3.4	316.0
E. ent. cl	3.40	316.38
T.P.	6.75	322.69
	3.84	315.94

600' N

E. ent. cl	6.10	316.59
W " "	5.85	316.84
608.3 N = S. line Dwight. st <sup>80' wide</sup> <sub>14' els</sub> <sub>13' 1/4"</sub>		
E. ent. cl	6.06	316.63
gutter	6.7	316.0
1/4	6.6	316.1
⊕	6.3	316.4
1/4	6.4	316.3
gutter	6.7	316.0
W. ent. cl	5.94	316.75

S. el. line

W. line on W. end. ent. Ret.	6.44	316.25
" " gutter	6.6	316.1
cl	6.8	315.9
1/4	6.4	316.3
⊕	6.3	316.4

322.69

N. 1/2 ST 77

1/4	6.6	316.1
cl	6.8	315.9
E. line gutter	6.5	316.2
E " E. end. ent. Ret	6.13	316.56
S. 1/4		
E	6.3	316.4
cl	6.6	316.1
1/4	6.5	316.2
⊕	6.3	316.4
1/4	6.3	316.4
cl	6.5	316.2
W	6.3	316.4
⊕		
W	5.9	316.5
+1.0	5.7	317.0
cl	6.74	316.3
1/4	6.2	316.5
⊕	6.1	316.6
1/4	6.3	316.4
cl	6.5	316.2
E	6.3	316.4

N. 1/4

E	6.2	316.5
cl	6.4	316.3
1/4	6.0	316.7
⊕	6.0	316.7
1/4	6.1	316.6

322.69  
N. 1/4 Dwight (cont)

el.	6.4	316.3
+3	5.4	317.3
W	5.9	316.8

N. line N. el.

W. gutter	5.7	317.0
W. on W. end. emt. Ret	5.31	317.38
el.	6.3	316.4
"	6.1	316.6
"	5.9	316.8
"	6.0	316.7
el.	6.4	316.3
E. gutter	6.1	316.6
E. on E. end. emt. Ret	5.59	317.40

6. curb Intets with gratings on All Returns

S.W. cor Top grating	6.87	315.82
S.E. " " "	7.13	315.56
N.E. " " "	6.40	316.29
N.W. " " "	5.97	316.72

00 = N. Line Dwight St.

E. emt. el	5.59	317.10
gutter	6.2	316.5
"	5.9	316.8
"	5.6	317.1
"	5.9	316.8
+7	6.1	316.6
gutter	5.7	317.0

322.69

B.M. 5.54

Wile St

45

W. emt. el	5.06	317.63
------------	------	--------

50' N.

W. emt. el	4.60	317.809
gutter	5.0	317.7
+6	5.4	317.3
"	5.3	317.4
"	5.2	317.5
"	5.5	317.2
+7	5.7	317.0
gutter	5.5	317.2
E. emt. el.	5.11	317.58

100' N.

E. emt. el	4.64	318.05
gutter	5.0	317.7
+6	5.2	317.5
"	4.9	317.8
"	4.6	318.1
"	4.6	318.1
+7	4.8	317.9
gutter	4.4	318.3
W. emt. el	4.06	318.63

150' N.

W. emt. el	3.57	319.12
gutter	3.9	318.8
+6	4.3	318.4
"	4.2	318.5



322.69

150' N. (con)

♀	4.2	318.5
14	4.5	318.2
+7	4.7	318.0
gutter	4.5	318.2
E. ent. el.	4.11	318.58

200' N.

E. ent. el.	3.58	319.11
gutter	3.9	318.8
+6	4.1	318.6
14	3.8	318.9
♀	3.6	319.1
14	3.6	319.1
+7	3.8	318.9
gutter	3.5	319.2
W. ent. el.	3.07	319.62

250' N.

W. ent. el.	2.52	320.17
gutter	2.9	319.8
+6	3.3	319.4
14	3.0	319.7
♀	3.0	319.7
14	3.5	319.2
+7	3.7	319.0
gutter	3.5	319.2
E. ent. el.	3.10	319.59

322.69

300' N.

E. ent. el.	2.58	320.11
gutter	3.0	319.7
+6	3.2	319.5
14	2.9	319.8
♀	1.6	320.1
14	2.6	320.1
+7	2.7	320.0
gutter	2.5	320.2
W. ent. el.	2.13	320.56

350' N.

W. ent. el.	1.53	321.16
gutter	1.9	320.8
+6	2.2	320.5
14	2.1	320.6
♀	2.1	320.6
14	2.5	320.2
+7	2.7	320.0
gutter	2.4	320.3
E. ent. el.	2.12	320.57

T.P. 6.67 327.25 2.11 320.58

400' N.

E. ent. el.	6.07	321.18
gutter	6.3	321.0
+6	6.6	320.7
14	6.4	320.9
♀	6.0	321.3

Mile 5<sup>+</sup>  
46

327.25

400' N (con)

W. '14	6.0	321.3
+7	6.2	321.1
gutter	6.0	321.3
W. ent. el.	5.54	321.71

450' N

W. ent. el.	5.11	322.14
gutter	5.4	321.9
+6	5.8	321.5
'14	5.5	321.8
⊕	5.4	321.9
'14	5.6	321.7
+7	6.0	321.3
gutter	6.0	321.3
E. ent. el.	5.75	321.50

500' N.

E. ent. el.	5.35	321.90
gutter	5.7	321.6
+6	5.8	321.5
'14	5.5	321.8
⊕	5.1	322.2
'14	5.2	322.1
+7	5.4	321.9
gutter	5.0	322.3
W. ent. el.	4.59	322.66

327.25

Nik 57

47

550' N

W. ent. el.	4.11	323.14
gutter	4.5	322.8
+6	4.9	322.4
'14	4.9	322.4
⊕	4.9	322.4
'14	5.3	322.0
+7	5.5	321.8
gutter	5.4	321.9
E. ent. el.	5.07	322.18

598' N = 5. line Landis St

80' width  
14' ebs  
13' nps

E. ent. el.	4.88	322.37
gutter	5.3	322.0
+6	5.4	321.9
'14	5.1	322.2
⊕	4.7	322.6
'14	4.7	322.6
+7	4.7	322.6
gutter	4.2	323.1
W. ent. el.	3.68	323.57

S. el.

W. on W. End ent. Ret	3.65	323.60
W. gutter	4.4	322.9
el.	4.5	322.8
'14	4.6	322.7
⊕	4.6	322.7
'14	5.0	322.3

327.25

S. cl. (con)

cl	5.4	321.9
E. on E. End emb. Ret	4.82	322.43
E. gutter	5.7	321.6
S. 1/4 Landis		
E	5.9	321.4
d'	5.3	322.0
1/4	5.0	322.3
♀	4.6	322.7
1/4	4.6	322.7
cl	4.3	323.0
W.	3.9	323.4

♀

W	4.1	323.2
cl	4.6	322.7
1/4	4.6	322.7
♀	4.6	322.7
1/4	4.9	322.4
cl	5.2	322.1
E	5.3	322.0

N. 1/4

E	5.3	322.0
cl	5.3	322.0
1/4	4.9	322.4
♀	4.7	322.6
1/4	4.7	322.6
cl	4.7	322.6

327.25

Nile St.

48

W.	4.7	322.6
N. cl.		
W. gutter	4.9	322.4
W. on emb. cl. Ret	4.19	323.06
cl.	4.9	322.4
1/4	4.9	322.4
♀	4.8	322.5
1/4	5.0	322.3
cl	5.6	321.7
E. gutter	5.7	321.6
E. on E. End emb. Ret.	5.16	322.09

00 = N. line Landis St.

E. emb. cl	5.24	322.01
gutter	5.8	321.5
1/4	5.3	322.0
C.	5.0	322.3
1/4	5.0	322.3
gutter	4.8	322.5
W. emb. cl	4.29	322.96

50' N.

W. emb. cl	5.06	322.19
gutter	5.6	321.7
1/4	5.4	321.5
♀	5.9	321.4
1/4	6.2	321.1
gutter	6.5	320.8
E. emb. cl	6.06	321.19

327.25  
100' N.

E. ent. el	6.93	320.32
gutter	7.4	319.9
+6	7.6	319.7
"4	7.1	320.2
♀	6.7	320.6
"4	6.7	320.6
+7	6.7	320.6
gutter	6.4	320.9
W. ent. el	5.87	321.38

150' N.

W. ent. el	6.76	320.49
gutter	7.3	320.0
+5	7.5	319.8
"4	7.4	319.9
♀	7.4	319.9
"4	7.7	319.6
+8	8.2	319.1
gutter	8.1	319.2
E. ent. el	7.66	319.59

200' N.

E. ent. el	8.43	318.82
gutter	8.8	318.5
+5	8.9	318.4
"4	8.6	318.7
♀	8.3	319.0
"4	8.2	319.1

327.25

8.38 Mile St 49

+8	8.4	318.9
gutter	8.1	319.2
W. ent. el	7.56	319.69
T.P.	1.22 320.09	8.38 318.87

250' N.

W. ent. el	1.36	318.73
gutter	1.8	318.3
+5	2.1	318.0
"4	2.1	318.0
♀	2.2	317.9
"4	2.8	317.6
+8	2.8	317.5
gutter	2.5	317.6
E. ent. el	2.20	317.89

300' N.

E. ent. el	3.05	317.04
gutter	3.3	316.8
+5	3.6	316.5
"4	3.3	316.8
♀	3.1	317.0
"4	2.9	317.2
+8	2.9	317.2
gutter	2.8	317.3
W. ent. el	2.12	317.97

320.09  
350' N

W. ent. cl	2.91	317.18
gutter	3.4	316.7
+5	3.6	316.5
"4	3.6	316.5
♀	3.6	316.5
"4	4.0	316.1
+8	4.5	315.6
gutter	4.3	315.8
E. ent. cl.	3.83	316.26

400' N

E. ent. cl.	4.65	315.44
gutter	5.0	315.1
+5	5.3	314.8
"4	4.9	315.2
♀	4.4	315.7
"4	4.4	315.7
+8	4.5	315.6
gutter	4.4	315.7
W. ent. cl.	3.74	316.35

450' N.

W. ent. cl	4.57	315.52
gutter	4.9	315.2
+5	5.3	314.8
"4	5.1	315.0
♀	5.1	315.0
"4	5.8	314.3

320.09

Mile St. 50

+8	6.1	314.0
gutter	5.9	314.2
E. ent. cl.	5.51	314.58

500' N

E. ent. cl.	6.33	313.76
gutter	6.7	313.4
+5	7.0	313.1
"4	6.6	313.5
♀	6.1	314.0
"4	6.2	313.9
+8	6.2	313.9
gutter	5.9	314.2
W. ent. cl.	5.45	314.64

517' N walk sank from Here North

E. ent. cl.	6.65	313.44
+ = W. edge walk	6.52	313.57
+ = E. " "	6.46	313.63
+14 = E. line	6.5	313.6

538' N.

W. ent. cl.	6.20	313.89
gutter	6.7	313.4
+5	7.1	313.0
"4	7.0	313.1
♀	6.9	313.2
"4	7.4	312.7
+8	7.7	312.4



W. cl	7.7	312.4
W. on W. end cnt. cl. Ret.	7.12	312.97
W. gutter	6.8	313.3
	S. 1/4	
W.	6.7	313.4
cl	7.4	312.7
1/4	7.4	312.7
♀	7.3	312.8
1/4	7.6	312.5
+12	8.2	311.9
cl	7.0	313.1
E.	6.5	313.6
	♀	
E	6.2	313.9
cl	6.8	313.3
+1	7.7	312.4
1/4	7.3	312.8
♀	7.0	313.1
1/4	7.2	312.9
cl	7.2	312.9
W	6.5	313.6
	N. 3/4	
W.	6.3	313.8
cl	6.8	313.3
1/4	6.8	313.3
♀	6.5	313.6

1/4	6.8	313.3
+12	7.4	312.7
cl	6.8	313.3
E	6.3	313.8
	2 N. of W. 1/4 = cl. Return on N.E. cor	
E. line top cnt. cl. Ret.	6.10	313.99
	N. cl	
E. cnt. cl. 1/2 N. 1/4. Radius RE. Return	5.95	314.14
gutter	6.8	313.3
1/4	6.5	313.6
♀	6.2	313.9
1/4	6.4	313.7
+8	6.6	313.5
cl	6.1	314.0
W. line gutter	5.4	314.7
W. cnt. cl. Ret.	5.05	315.04
	00 = N. line Wightman	
W. cnt. cl.	4.97	315.12
gutter	5.7	314.4
+5	6.1	314.0
1/4	6.1	314.0
♀	6.0	314.1
1/4	6.2	313.9
+8	6.4	313.7
gutter	6.1	314.0
E. cnt. cl.	5.76	314.33

320.09

T.P. 8.65 323.49 5.25 314.84

50' N. of Nightman

E. emb. cl.	8.33	315.16
gutter	8.6	314.9
+5	8.9	314.6
1/4	8.7	314.8
¢	8.4	315.1
1/4	8.4	315.1
+8	8.6	314.9
gutter	8.3	315.2
W. emb. cl.	7.66	315.83

100' N.

W. emb. cl.	6.99	316.50
gutter	7.4	316.1
+5	7.7	315.8
1/4	7.4	316.1
¢	7.5	316.0
1/4	7.8	315.7
+8	8.2	315.3
gutter	8.1	315.4
E. emb. cl.	7.62	315.87

150' N.

E. emb. cl.	6.70	316.79
gutter	7.2	316.3
+5	7.4	316.1
1/4	6.8	316.7

323.49

Nile St.

53

¢	6.7	316.8
1/4	6.6	316.9
+8	7.0	316.5
gutter	6.7	316.8
W. emb. cl.	6.25	317.24

200' N.

W. emb. cl.	5.50	317.99
gutter	6.0	317.5
+5	6.4	317.1
1/4	6.0	317.5
¢	5.9	317.6
1/4	6.2	317.3
+8	6.5	317.0
gutter	6.3	317.2
E. emb. cl.	5.92	317.57

250' N.

E. emb. cl.	5.15	318.34
gutter	5.4	318.1
+5	5.5	318.0
1/4	5.3	318.2
¢	5.1	318.4
1/4	5.2	318.3
+8	5.4	318.1
gutter	5.0	318.5
W. emb. cl.	4.76	318.73



323.49

300' N.

W. ent. cl.	4.08	319.41
gutter	4.5	319.0
+5	4.9	318.6
14	4.6	318.9
⊕	4.4	319.1
14	4.5	319.0
+8	4.9	318.6
gutter	4.8	318.7
E. ent. cl.	4.44	319.05

350' N

E. ent. cl.	3.58	319.91
gutter	4.0	319.5
+5	4.2	319.3
14	3.7	319.8
⊕	3.5	320.0
14	3.7	319.8
+8	4.1	319.4
gutter	3.8	319.7
W. ent. cl.	3.43	320.06

381' N

E. ent. cl.	3.07	320.42
+7.0 = W. edge ent. walk	2.99	320.50
+12.3 = E. " " "	2.94	320.55
E. Line on ent. walk Top wall	3.0	320.5
+5 " " " "	3.0	320.5

323.49

382' N.

E. ent. cl.	3.06	320.43
+7 W. edge walk	2.99	320.50
+12.3 E " "	2.93	320.56
E. line	4.0	317.5
+15	17.0	306.5
+25	18.0	305.5

400' N.

E-25	18.0	305.5
E-13	18.3	305.2
E	4.5	319.0
+1.7 = E. edge walk	2.76	320.73
+6.7 = W " "	2.85	320.64
E. ent. cl.	2.96	320.53
gutter	3.1	320.4
+5	3.3	320.2
14	3.1	320.4
⊕	2.8	320.7
14	3.0	320.5
+8	3.2	320.3
gutter	3.0	320.5
W. ent. cl.	2.62	320.87

413' N

E. ent. cl.	2.87	320.62
+7 = W. edge walk	2.72	320.77
+12.3 = E. " "	2.53	320.96
E	2.9	320.6
+5	4.0	319.5

Nile St.

59

323.49

431' N

E. emb. ch.	2.56	320.93
+7.1 E w. edge walk	2.16	321.33
H23 = 8	2.17	321.32
E	2.7	320.8
E+5	3.4	320.1

450' N

W. emb. ch.	1.93	321.56
gutter	2.2	321.3
1/4	2.1	321.4
1/2	2.0	321.5
1/4	2.2	321.3
+8	2.6	320.9
gutter	2.4	321.1
E. emb. ch.	2.09	321.40

463.5' N = S. End curb inlet on E.

E. emb. ch.	1.88	321.61
gutter on grating	2.86	320.63
1/4	2.0	320.9
1/2	1.8	321.7
1/4	2.0	321.5
gutter	2.0	321.5
W. emb. ch.	1.70	321.79

323.49

Nile St.

55

4+80.5 = { S. Line Univ Ave  
N. End ch. inlet on E.

W. emb. ch.	1.44	322.05
gutter Pavmt.	1.72	321.77
1/4	1.66	321.83
1/2	1.78	321.71
E 1/4	2.20	321.29
E 1/4 dirt	1.8	321.7
gutter Pavmt.	2.42	321.07
gutter Lip of curb inlet	2.71	320.78
E. emb. ch.	1.70	321.79
chk. on BM B.P. S.W. Nile 1/4	1.32	322.17 = 322.15

See page 56 for  
Nights Parking

Nile St X Sections  
 Intersection of Myrtle  
 on New Pavement

10-28-29  
 Miller

B.M. 4.37 318.94 314.57 s.e. Nile  
 + Myrtle

S. Line Myrtle St

E. emb. el	4.36	314.58
gutter pavm't.	4.92	314.02
" "	4.50	314.44
" "	4.29	314.65
" "	4.30	314.44
gutter "	4.50	314.44
W. emb. curb.	3.90	314.04

315.09

N. Line Myrtle

W. emb. el	3.33	315.61
gutter Pavmt	3.94	315.00
" "	3.72	315.22
" "	3.76	315.24
" "	3.89	315.95
gutter "	4.30	314.64
E. emb. el	3.86	315.04



3-3-33  
Miller  
Walker  
Bliss.

X See Alley BIK 145 Univ. Hts.

Polk to Howard. bet Alabama & Mississippi Sts.

B.M. 0.80 310.77 302.97  
304.72 303.92 S.E. Polk & Mississippi

14' S. of N. Line = N. cl. Line Polk

E. gutter	parmt.	9.25	301.52
4 "	"	9.83	300.94
W. "	"	10.38	300.39

at 00 = N. Line Polk

W.	on cmt. cl.	9.61	301.16
W.	N. end parmt.	9.72	301.05
4	" " "	9.54	301.19
E	" " "	8.95	301.82
E.	cmt. cl.	8.51	302.26

1.0 N

E		7.7	303.0
+3		8.9	301.9
4		9.6	301.2
W		9.6	301.2

30' N.

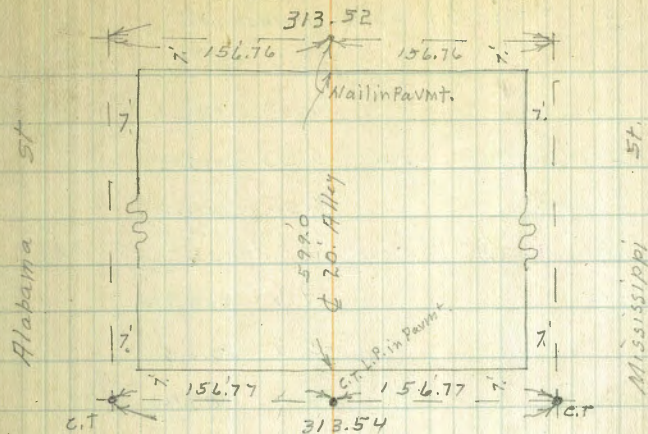
W.		8.6	302.2
+3		9.0	301.8
4		8.9	301.9
+7		8.4	302.4
E		7.5	303.3
1	62' N Garage on W. cmt. floor	0.5 Back	
E		7.6	303.2
+2		8.1	302.6
4		8.2	302.6
W	cmt. floor	8.5	302.3

Plotted AFB 3-10-33

Indexed  
C.S.R.

Howard Ave

58



Polk Ave.

310.77  
304.72

80' N

W.		8.3	302.5
4		7.9	303.0
+4		7.9	302.9
E.		7.3	303.5

103' N. = S. End of 4 Garages on E. cmt. floors 4' Back

E. 4 floor		6.96	303.9
E. = 0.5 = W. edge cmt. apron.		7.40	303.4
+3		7.9	302.9
4		7.9	302.9
W.		8.1	302.7
T.P.	6.31	309.36 303.51	7.78 296.97

309.36  
303.31

139' N = N. End above 4. garages

W	6.6	302.8
±	6.3	303.1
↓ E line = edge cmt. apron	5.53	303.83
E + 4' floor	5.35	304.01
168' N = N. side of N. Entrance garage on E cmt. floor 3.8' Back		
E - 3.8' floor	4.62	304.74
E	5.9	303.5
±	6.2	303.2
W.	6.9	302.5

191' N. garage on W. dirt floor 5.2' Back

W - 5.2' floor	7.3	302.1
W	7.2	302.2
± 6	6.5	302.9
±	6.3	303.1
E	5.9	303.5

207' N { garage on E. dirt floor 5.5' Back  
" " W " " 5.5 "

E - 5.5 floor	5.1	304.3
E.	5.1	304.3
±	6.1	303.3
W	7.2	302.2
W + 5.5 floor	7.3	302.1

220' N.

W.	6.7	302.7
±	6.2	303.2
± 7	6.0	303.4
E	5.2	304.2

309.36  
303.31

Alley BIK 145 U.H. 59

From 215' N to 282' N. wire fence on E. 0.414 Alley.

255' N.		
E	5.2	304.2
± 4	6.0	303.4
±	6.1	303.3
± 6	6.1	303.3
W.	6.6	302.8
263' N. garage on W. dirt floor 10.5' Back		
W - 10.5 floor	7.5	301.9

270' N.

W	6.2	303.2
±	5.3	304.1
E	4.6	304.8

280' N. garage on W. cmt. floor 7.5' Back.

W - 7.5' floor	6.81	302.55
W - 3.5 E. end cmt. apron	6.81	302.55

291' N. garage on E. dirt floor. 5.8' Back

E - 5.8' floor	4.6	304.8
----------------	-----	-------

300' N.

E	4.5	304.9
± on M.H. Cover	4.97	304.39
± 2	5.5	303.9
W.	5.7	303.7

317' N. garage on W. emt. floor 7.5 Back

W-7.5 floor	6.76	302.60
W-3.5 G. edge emt. apron.	6.84	302.52
W	6.7	302.7
+3	6.3	302.1
⊕	6.0	303.4
E.	4.5	304.9

335' N

E	4.9	304.5
+8	6.0	303.4
⊕	6.1	303.3
+7.	6.4	303.0
W.	6.9	302.5
+5.	7.6	306.8

350' N

W.	5.6	303.8
+8	6.0	303.4
⊕	5.5	303.9
E.	4.2	305.2

370' N

E	4.4	305.0
+2	5.0	304.4
⊕	5.5	303.9
W.	5.5	303.9

379' N garage on W. dirt floor 2.2 Back

W-2.2 floor	6.8	302.6
W	6.8	302.6
+7	5.8	303.6
⊕	5.5	303.9
+6.	5.1	304.3
E	4.3	305.1

390' N garage on W dirt floor 2.2 Back

E	3.9	305.5
+5	5.0	304.4
+8	5.0	304.4
⊕	5.6	303.8
W	6.5	302.9
W+2.2 floor.	6.4	302.6

400' N

W.	5.3	304.1
⊕	5.0	304.4
E.	3.7	305.2

415' N garage on E. dirt floor 6.3 Back

E-6.3 floor	3.0	306.4
E	3.5	305.9
+5	4.2	305.2
⊕	4.4	305.0
+6	4.6	304.8
W.	5.6	303.8

309.36  
303.31

432' N. garage on W. dirt floor 0.2 Back

W. floor	6.0	302.4
✓ ♀	5.1	304.2
+5.	4.7	304.2
E.	3.6	305.8

450' N

E	4.4	305.0
✓ ♀	5.2	304.2
W.	5.3	304.1

469' N. garage on W. dirt floor 0.3 in Alley

W. floor	5.6	303.8
✓ ♀	5.1	304.3
E.	4.3	305.1

481' N. garage on W. dirt floor 0.5 Back.

W-0.5. floor.	5.7	303.7
---------------	-----	-------

490

E	3.5	305.9
✓ ♀	4.7	304.7
W.	4.9	304.5
T.P.	3.90	<del>307.58</del>
		304.93
		<del>297.69</del>

523' N. double garage on W. dirt floors 10' o. Back

W-10 floor	5.4	303.2
W.	4.5	304.1
✓ ♀	4.2	304.4
E.	3.9	304.2

308.63  
~~304.74~~

Alley BIK 145 U.H. 61

549' N. = S. End Double Garage on W. dirt floor 3.0 Back

E	3.3	305.3
+4	3.9	304.7
✓ ♀	4.3	304.3
W.	4.0	304.6
W+3 floor	3.88	304.75

566' N = N. End above garages

W-3 floor	3.90	304.23
W.	4.3	304.3
✓ ♀	4.2	304.4
+7	3.8	304.8
E.	2.9	305.2

580' N

E	2.6	306.0
+3	3.6	305.0
✓ ♀	4.3	304.3
W. = E. side House	4.7	303.9

595' N

W	4.9	303.2
✓ ♀	4.8	303.8
+9	4.1	304.5
E.	3.6	305.0

599.3 = S. Line Howard.

E. cont. d.	4.01	304.62
E. S. End. paymt.	4.37	304.26
✓ ♀ S " "	5.48	303.15
+6 S " "	5.40	303.23
W S " " + cont. d.	5.71	302.92



308.63  
~~302.54~~

Alley BIK 145 U.H.

62

14' N of S. Line = S. curb Line Howard.

W. gutter paymt.		6.65	201.88		339
↓ " "		5.85	202.78		4.60
£ " "		4.96	203.67		309.96
T.P.	11.97	<del>310.25</del> 314.23	0.32	<del>308.31</del> 308.26	
Set. B.M. BP	4.81	<del>320.25</del> 314.70	4.34	<del>315.94</del> 309.89	S.W. Howard + Mississippi
T.P.	0.75	<del>316.10</del> 310.25	5.40	<del>315.35</del> 309.30	
chk original B.M.		6.13	<del>309.92</del> 305.92		309.97

1 1  
12 1  
1 12

Mills  
Bliss  
Scriber

T. 54 X Sec.  
40<sup>th</sup> St to Boundary.

50' wide  
10' ch-s  
7.5' 1/4s.

N.W. Cor. 40<sup>th</sup>  
4 T. sts.

Indexed  
C.S.R.

B.M. B.P.	4.52	55.14	50.62
		W. Line 40 <sup>th</sup>	
N.		4.0	51.1
cont. ch		4.54	50.60
+1		4.0	51.1
1/4		4.2	50.9
1/4		4.4	50.7
1/4		4.4	50.7
ch. on ground		4.4	50.7
E. End. cont. ch.		5.54	49.60
S.		4.6	50.5
		W. ch. line	
S		4.7	50.4
ch		4.7	50.4
1/4		4.5	50.6
1/4		4.3	50.8
1/4		4.2	50.9
ch.		4.0	51.1
N. on cont. ch.		4.04	51.10
		W. 1/4	
N.		3.5	51.6
ch		3.8	51.3
1/4		3.9	51.2
1/4		4.1	51.0
1/4		4.3	50.8
ch		4.7	50.4

	55.14	5.0	50.1
	E. 40 <sup>th</sup>		
S		4.8	50.3
ch		3.5	51.6
1/4		4.1	51.0
1/4		3.9	51.2
1/4		3.7	51.4
ch		3.4	51.7
N		3.2	51.9
		E. 1/4	
N		2.0	53.1
ch		2.6	52.5
1/4		3.2	51.9
1/4		3.5	51.6
1/4		3.5	51.6
ch		3.5	51.6
S.		4.9	50.2
		E. ch. line	
S		4.2	50.9
ch		3.7	51.4
1/4		3.5	51.6
1/4		2.8	52.3
1/4		2.5	52.6
ch		2.0	53.1
N		2.0	53.1

55.14

00 = 8. line 40<sup>76</sup>

N	2.0	53.1
cl	1.8	53.3
1/4	2.0	53.1
±	2.7	52.4
1/4	3.3	51.8
cl	4.0	51.1
S.	4.5	50.6

50' E

S	6.1	49.0
cl	5.0	50.1
1/4	4.5	50.6
±	4.2	50.9
1/4	3.6	51.5
cl	3.0	52.1
N	2.7	52.4

100' E

N	4.5	50.6
cl	4.5	50.6
1/4	4.8	50.3
±	5.3	49.8
1/4	5.5	49.6
cl	5.7	49.4
S.	6.4	48.7

150' E

-10	2.5	47.6
S	2.5	47.6
cl	2.5	47.6
1/4	2.0	53.1

55.14

T. ST 69

±	6.6	48.5
1/4	6.0	49.1
cl	6.0	49.7
N	6.2	48.9
-10	200' E	
N	9.2	45.9
cl	9.5	45.6
cl	7.9	45.2
1/4	10.1	45.0
±	10.6	44.5
1/4	10.8	44.3
cl	10.7	44.4
S.	10.8	44.3
+20	11.0	44.1
-20	225' E	
S	11.0	44.1
cl	10.6	44.5
1/4	10.4	44.7
1/4	10.1	45.0
±	10.0	45.1
1/4	9.9	45.2
cl	9.8	45.3
N	9.7	45.4
+20	9.5	45.6

55.14

250' E.

-15	7.8	47.3
N	7.9	47.2
cl	8.1	47.0
1/4	8.3	46.8
E	9.1	46.0
1/4	9.5	45.6
cl	10.2	44.9
S	10.4	44.7
+20	11.2	43.9

275' E.

-20	8.7	46.4
S	9.9	45.2
cl	9.7	45.4
1/4	9.7	45.4
E	9.7	45.4
1/4	9.4	45.7
cl	8.8	46.3
N	8.8	46.3
+10	8.0	47.1

300' E

-10	8.1	47.0
N	8.0	47.1
cl	8.2	46.9
1/4	8.3	46.8
E	8.3	46.8
1/4	7.5	47.6

55.14

7.51 65

cl	7.3	47.8
S	7.0	48.1
+10	6.9	48.2

338' E.

-10	3.2	51.9
S	4.1	51.0
cl	4.7	50.4
1/4	4.7	50.4
E	4.5	50.6
1/4	4.3	50.8
cl	4.6	50.5
N	4.8	50.3
+10	3.7	51.4

3.50 E

-10	3.4	51.7
N	4.2	50.9
cl	3.6	51.5
1/4	3.8	51.3
E	3.6	51.5
1/4	3.7	51.4
cl	3.0	52.1

T.P. 12.94 68.08 0.04 55.10

S	13.7	54.4
+10	13.0	55.1

68.08

375' E

S	10.6	57.5
cl	11.6	56.5
" <sub>4</sub>	13.0	55.1
cl	14.5	53.6
" <sub>4</sub>	15.3	52.8
cl	15.1	53.0
N	15.3	52.8
+10	15.5	52.6

400' E

-10	13.0	55.1
N	12.7	55.4
cl	11.6	56.5
" <sub>4</sub>	10.8	57.3
cl	9.0	59.1
" <sub>4</sub>	7.9	60.2
cl	8.1	60.0
S	8.5	59.6

425' E

S	4.7	63.4
cl	6.0	62.1
" <sub>4</sub>	6.2	61.9
cl	7.3	60.8
" <sub>4</sub>	8.4	59.7
cl	9.0	59.1
N	10.1	58.0
+10	10.1	58.0

68.08

450' E

N	6.2	61.9
cl	4.8	63.3
" <sub>4</sub>	4.7	63.4
cl	3.9	64.2
" <sub>4</sub>	3.6	64.5
cl	3.1	65.0
S	1.0	67.1
T.P.	6.22	73.60
	0.70	67.38

475' E

S	6.3	67.3
cl	7.2	66.4
" <sub>4</sub>	8.0	65.6
cl	8.2	65.4
" <sub>4</sub>	8.0	65.6
cl	8.3	65.3
N	8.7	64.9

500' E

N	7.2	66.4
cl	6.9	66.7
" <sub>4</sub>	6.7	66.9
cl	6.1	67.5
" <sub>4</sub>	5.2	68.4
cl	4.7	68.9
S	4.9	68.7

T. St. 66

73.60

521.8 E. at 90°

N. at NW. Cor T<sub>1</sub> + Boundary. 5.7 67.9<sup>v</sup> Book 1398 P. 43

eb 6.0 67.6

ny 6.0 67.6

d 5.9 67.7

ny 5.9 67.7

eb 5.6 68.0

S 4.9 68.7

521.8 E on N  
Σ 405 } = W. Line Boundary.

S 5.3 68.3

eb 5.3 68.3

ny 5.7 67.9

d 5.8 67.8

ny 5.9 67.7

eb 5.9 67.7

N 5.7 67.9

T. St.

67

X SEC PLUM ST. 70 wide 18" curbs  
 Carleton to Byron

SWBP	1308	99.48		86.40	Willow Carleton
T.P.	12.86	111.93	0.41	99.07	
T.P.	12.91	124.65	0.19	111.74	
T.P.	12.90	137.17	0.38	124.27	

Levels on Ex. curbs & gutters

S Ely Con. Ret. in 5 parts

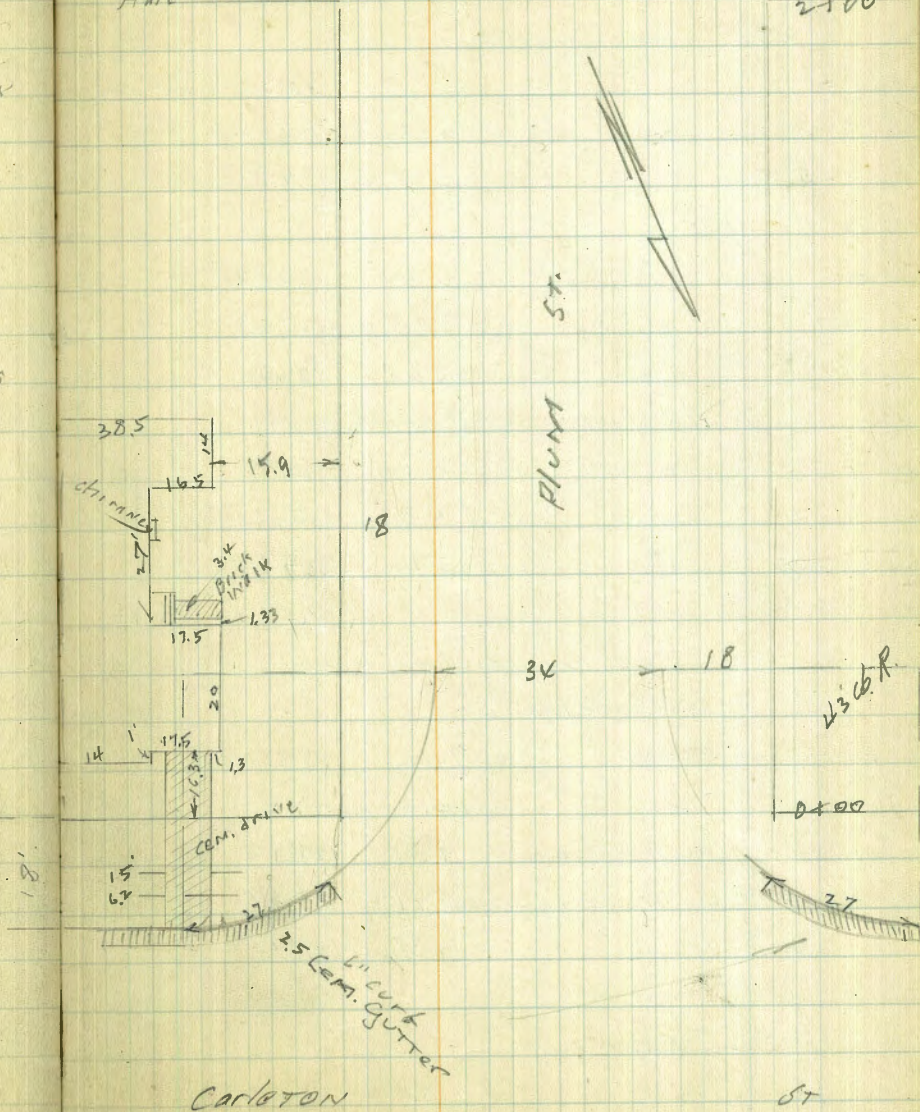
B.C. on Carleton			
cb - 34.3	garage floor cen.	5.29	131.89
cb in drive		8.30	128.37
gut		8.80	128.37
+2.5		8.67	128.50
0+13.5 Part 1			
cb		4.01	131.16
gut		4.47	130.50
+7.5		4.56	130.61
0+27 Part 2 end cb & gut			
cb		4.21	132.96
gut		4.97	132.20
+7.5		4.80	132.37

INDEXED  
 EFB

Moore  
 OSBORN 8-8-40.  
 HALL

Byron St.

2100



SWly Ret.  
B.C. on Carleton

cb	1.84	135.21	135.34
gut	2.41	134.66	
+2.5	2.41	134.76	

+13.5 Part 1

cb	4.34	134.83	
gut	3.15	134.02	
+2.5	3.08	134.09	

+27 Part 2 end cb & gut

cb	3.10	134.02	
gut	3.84	133.31	
+2.5	3.76	133.41	

Levels on 15' Cem. drive  
S of Carleton St.

E-1 Top cb	9.28	129.89	
" " gut	10.01	122.16	
" " gut edge	9.85	127.32	
EL Drive in gut	9.71	127.41	
WL " " "	7.38	129.79	

S of Carleton

EL drive	7.35	129.82	
WL "	6.58	130.59	

16.3 S of SL Carleton St

WL Drive	5.32	131.86	900 ft/1000
EL "	5.27	131.90	

T.P. 10.20 143.35 402 133.15

0+00 = S of Carleton

W	8.3	135.1	
cb	9.0	134.4	
1/2	9.8	133.6	
C	10.3	133.7	
1/2	10.3	133.1	
cb	10.4	133.0	
E	10.4	133.0	
+5 Lawn	11.7	132.7	

0+03

W	3.7	139.7	
cb	5.1	138.8	
1/2	9.4	134.0	
C	10.3	133.1	

0+25 cb.E.C.

-5 Lawn	11.6	131.8	
E "	11.8	131.6	
+3	9.5	130.9	
+15	9.7	133.7	



cb	10.3	133.1
1/4	10.1	132.3
c	9.0	132.4
+6	8.2	135.2
1/4	7.5	135.9
+8	6.6	138.8
cb	6.0	139.4
w	2.7	140.7
0+39.0 E Brick walk		
E on lawn	11.4	132.0
E - 14.9 top Brick	11.16	132.19
0+50		
w	1.7	141.7
cb	3.2	140.2
1/4	4.2	139.2
+4	7.3	136.1
c	7.8	135.6
1/4	8.4	135.0
cb	9.0	134.4
+9	8.4	135.0
+15	9.0	134.4
E	11.3	132.1
+5 lawn	11.3	132.1
0+75		
-5 lawn	11.0	132.4

E lawn	11.1	132.3
+4	8.1	135.3
+10	7.6	135.8
cb	7.6	135.8
1/4	7.3	136.1
c	6.7	137.2
+w	5.9	137.6
+x	4.4	139.0
1/4	3.8	139.6
cb	3.4	140.0
w	0.9	142.5
1+00		
w	0.2	143.2
cb	1.9	141.5
1/4	2.7	140.7
c	3.8	139.6
1/4	4.8	138.6
cb	6.1	137.3
E	8.7	134.9
+w lawn	10.2	133.2
+5	10.6	132.8
1+03		
-5	9.2	134.2
E	8.4	135.0
cb	6.1	137.3

1+25

-5	8.8	134.6
E	7.9	135.5
cb	5.4	138.0
1/4	4.4	139.0
C	3.1	140.3
1/4	2.7	141.2
cb	1.4	142.0
W	0.3	143.1

1+50

W	1.2	142.2
cb	2.5	140.9
1/4	3.1	140.3
C	4.0	139.4
1/4	4.8	138.6
cb	6.0	137.4
E	7.6	135.8
+5	9.0	134.4

1+75

-5	9.9	133.5
E	9.3	134.1
cb	7.3	136.1
1/4	6.6	136.8
C	5.6	137.8
1/4	4.9	138.5
cb	4.2	139.2

W	3.5	139.9
2+00 N L Byron St.		
W ON CON. MAN.	6.9	136.41
W " ground	6.7	136.7
cb	7.2	136.2
1/4	7.7	135.9
C	8.3	135.1
1/4	8.8	134.6
cb	9.4	133.8
E	11.0	132.4
ON CON. MAN.		
S 7' CARLTON	9.2	134.09
W L PLUM		

check to  
Byron  
+ sec.

X sec Perry St. 50' wide  
10' curbs  
SAN ANTONIA to 200 Wly

SW 8P 4.20 15.33 11.17 11.13

E.L. SAN ANTONIA  
FBOOK 1163-13

S cb 12.89 2.44  
N cb 13.32 2.01

E curb SAN ANTONIA

NL Top cb 13.38 1.95  
" gut 13.97 1.36  
SL " 13.30 2.03  
" Top cb 12.78 2.55

E SAN ANTONIA

S dirt 12.1 3.2  
" " 12.6 2.7  
" " 12.9 2.4

E + 11.5 line edge con. gutter

N 13.02 2.31  
S 12.39 2.94

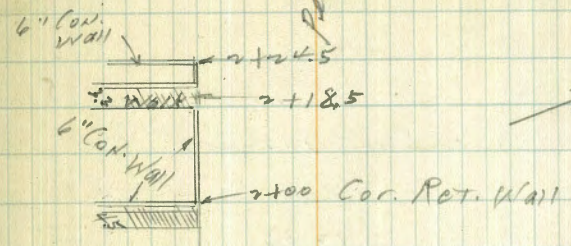
N curb SAN ANTONIA

S Top cb 11.79 3.54  
S gut. 12.58 2.75  
cb dirt 12.7 2.6  
1/4 12.6 2.7  
c 12.7 2.6

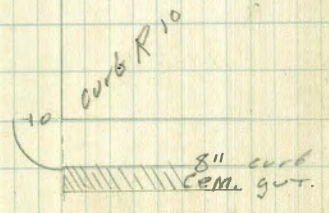
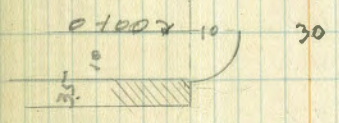
INDEXED

E.F.B.

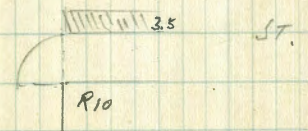
Moore  
8-8-40



Reduced by  
H.M. Cole  
8-10-46



SAN ANTONIA



15.33

1/4	13.0	23
cb	13.4	21
N cb	12.27	306
N gutter	13.24	211

0+00 W.L. SAN ANTONIO

N	11.6	37
cb TOP CENT. CB.	12.33	300
42	11.1	42
1/4	11.9	34
C	11.3	40
1/4	11.3	40
cb TOP CENT. CB.	11.82	3.51 <sup>cb</sup> <sub>GROUND</sub> <sub>SAME</sub>
S	10.4	4.9

0+03

S	6.6	87
cb	9.4	59
1/4	9.9	54
C	10.2	51
1/4	10.3	50
cb	10.1	52
N	9.4	59

0+15

N	6.5	88
cb	6.0	93
1/4	6.0	93

15.33

73

C	6.0	93
1/4	6.3	90
43	5.0	103
cb	4.4	109
S	4.3	110

0+32

S	3.0	123
cb	3.9	114
1/4	4.1	112
C	4.1	112
1/4	4.1	112
cb	4.1	112
N	3.8	115

T.P. 12.23 27.16 0.40 14.13

0+43

N	15.5	117
cb	14.5	127
1/4	14.3	129
C	13.7	135
1/4	14.3	129
cb	14.0	132
S	13.5	137

2716

	0148		
S	12.9	143	
#7	12.7	145	
cb	13.3	139	
1/4	13.1	141	
+ U.S. Power Pole			
C	12.9	143	
1/4	13.3	139	
cb	13.X	138	
N	13.X	138	

0175

N	9.0	182	
cb	8.6	186	
1/4	8.8	184	
c	8.6	188	
1/4	9.0	182	
cb	9.0	182	
S	8.9	183	

1100

S	4.0	232	
cb	4.2	230	
1/4	4.1	231	
c	3.8	234	
1/4	3.8	234	
cb	3.9	233	

2716

79

N	4.3	229	
	1+25		
N	2.5	247	
cb	2.3	249	
1/4	2.4	246	
c	2.2	250	
1/4	1.7	255	
cb	0.6	266	
S	0.4	268	

T.P. 12.55 39.03 0.48 26.48

1145

S	12.1	269	
cb	11.6	274	
1/4	11.6	274	
c	11.4	276	
1/4	10.9	281	
cb	10.7	283	
N	10.6	284	

1175

N	6.5	325	
cb	6.1	329	
1/4	6.8	322	
+5	6.6	324	

39.03

C	5.7	33 3
1/4	5.5	33 5
cb	5.8	33 2
S	6.3	32 7
S	1 + 96.5 @ 45 Cor. walk	35 15
	2 + 00	
S	Top 4" wall	1.47 37 56
S	dirt	3.2 35 8
cb	3.7	35 3
1/4	3.0	36 0
C	1.9	37 1
1/4	1.9	37 1
cb	2.2	36 8
N	2.8	36 2

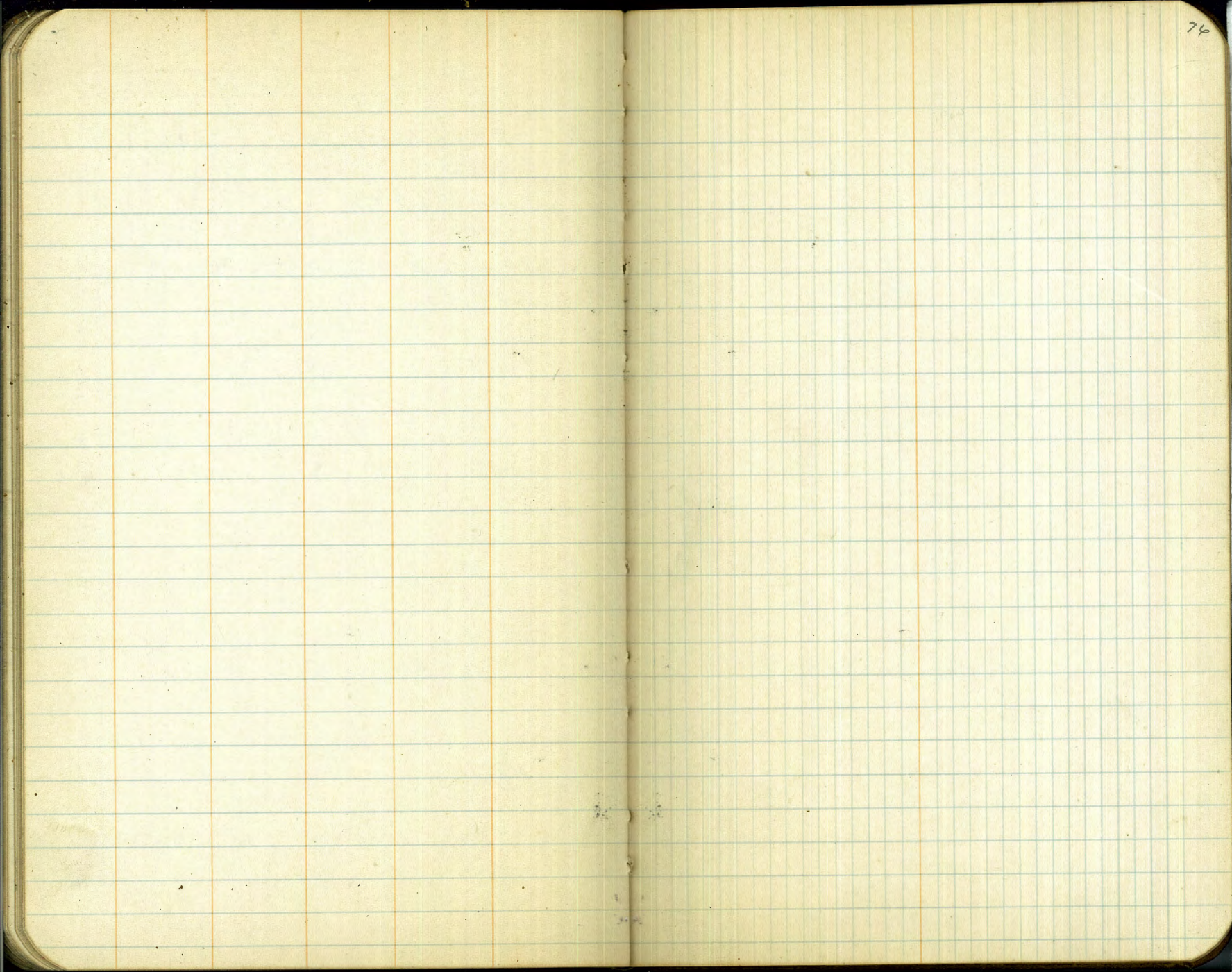
T.P. 12.48 51.14 0.37 38.66

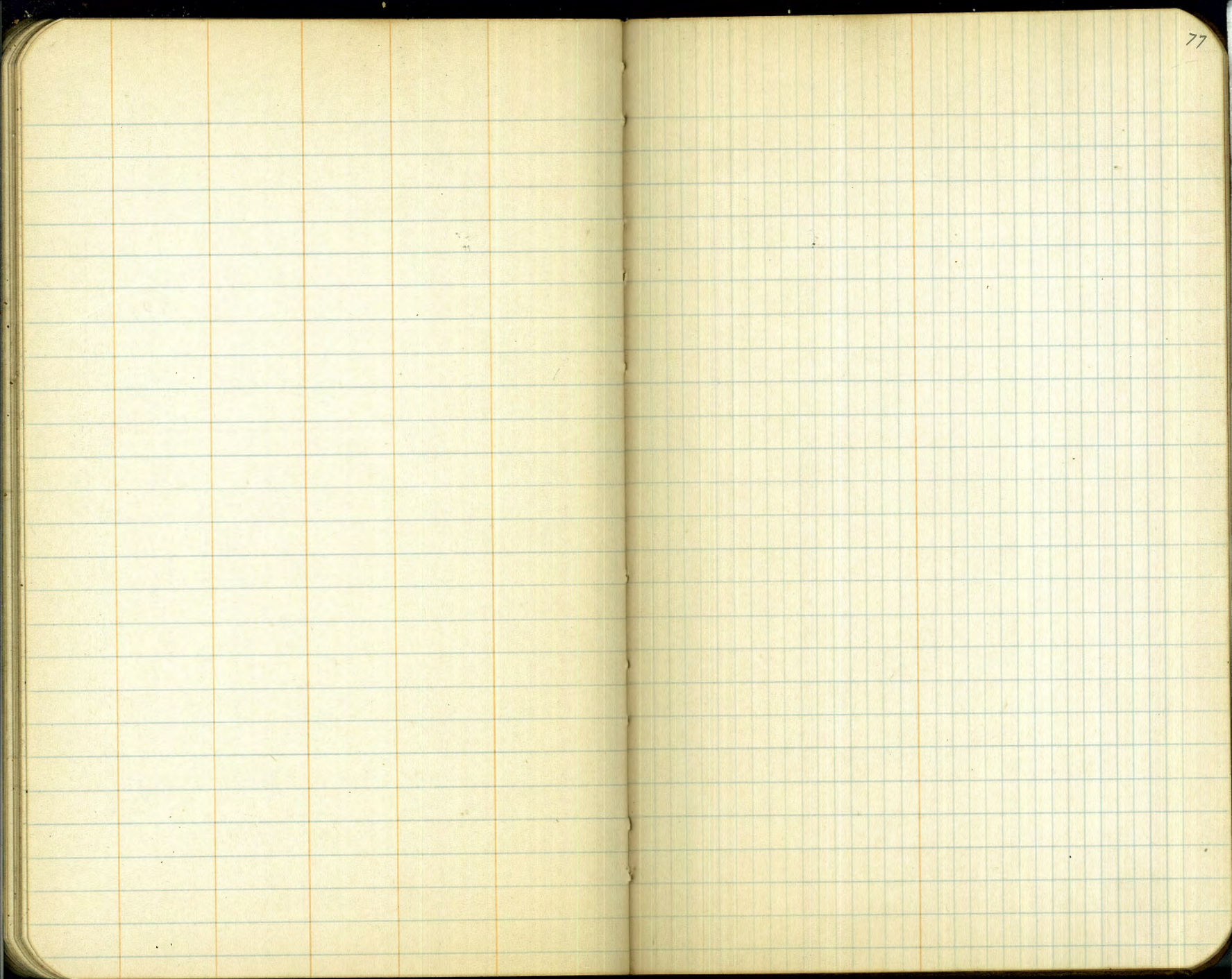
S	2 + 18.5 @ 33 Cor. walk	12.10 39.04
	2 + 24.5	
S	Top Cor. 6" wall	10.30 40.84
S	ground d	10.3 40.8

75

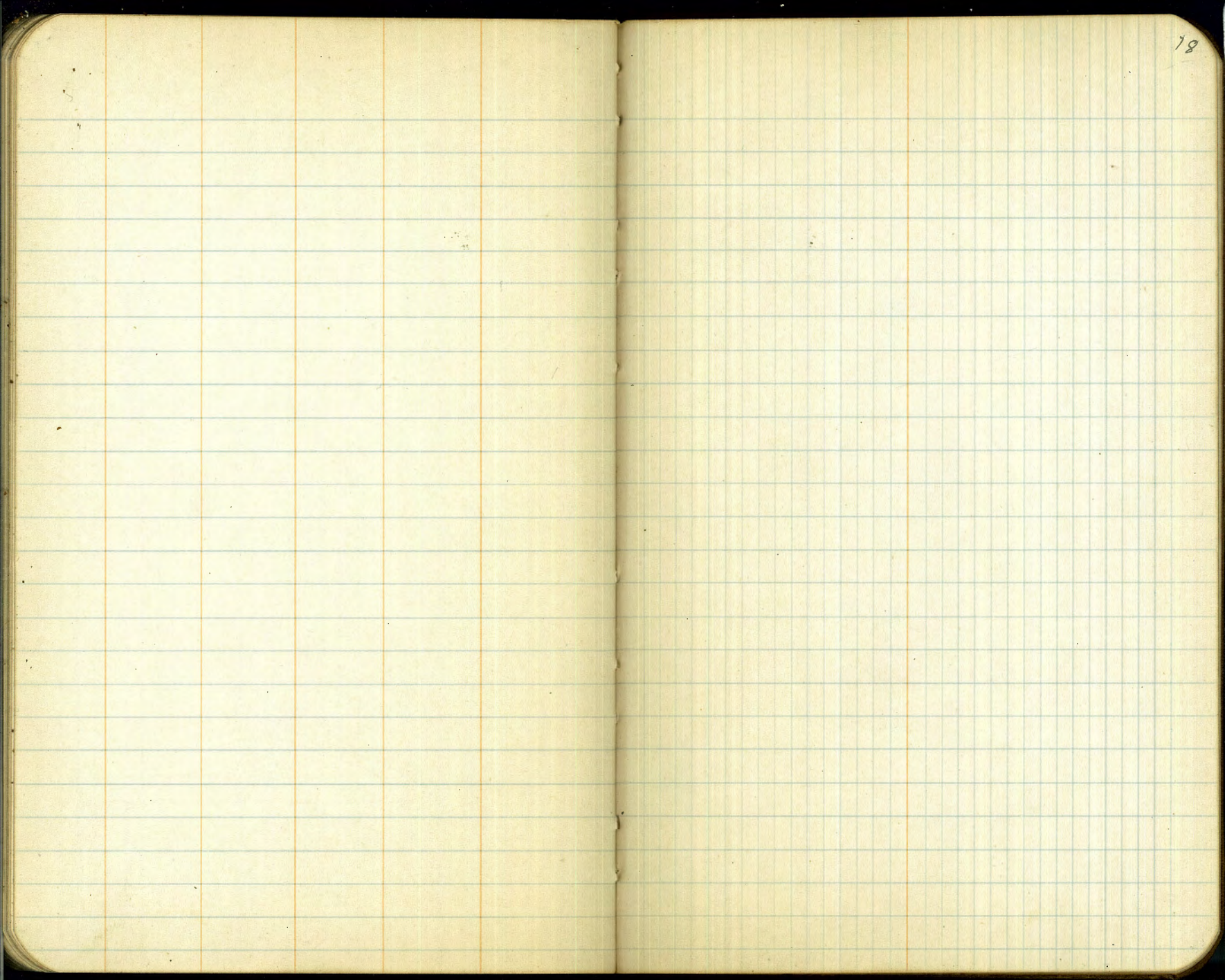
	51.14		
T.P. 12.73	63.66	0.21	50.93
T.P. 7.22	68.58	2.30	61.26
to NEBP in curb	4.58	64.00	64.15
Roscorans & Perry			<u>0.15</u>

curb has settled







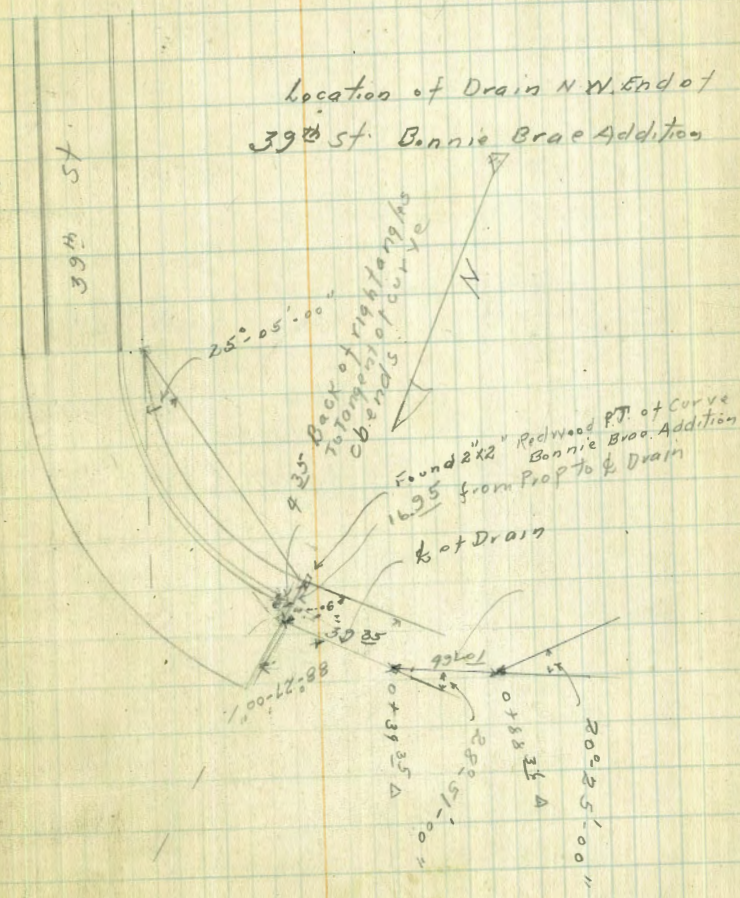


Bliss  
Zsbell  
Pearson  
3/6/28  
BM SPIR  
Pole. sec 109  
x-sec. of 1397

Location of Drain at the N.W. end of  
Bonnie Brae Addition

	+	π	-	Elev
Elev flow line of Pipe	1.54	352.00	9.22	350.26
		4.35 back of L		
		To curve tangent		
Elev flow line of ditch		8.73		343.27 ✓
Elev flow	10+39.35	9.92		342.58 ✓
"	pipe	10.97		341.53 ✓
	0+44	11.6		340.38 ✓
	0+46	14.8		337.20 ✓
TP	00		13.00	
TP	00		13.00	
TP	2 30		11.20	
Flow line at 0+28.36 Δ		5.60		313.7

Tolman  
7-2-28



3/1  
8M  
P. 1  
X. 3

EA  
EA  
EA

T  
T  
T  
T

1/1

DIRECTIONS FOR USE OF TABLES

TABLE No. 1.

Distance of slope stake from side or shoulder stake for any width roadway, slope 1 1/2 to 1. If ground is nearly level, the cut or fill at side stake is located by the double entry method in left column and top row. The number in body of table is same as width roadway.

from side stake to slope stake. If ground is not

**IMPROVED TABLES  
AND  
INFORMATION**

TABLE No. 2.

To find Tangent and External for curve of any other degree, divide by degree of curve and add correction found in column of corrections. Degree of curve with a given  $L$  may be found by dividing tangent (or external) opposite  $L$  by given tangent (or external). The distance from a point on the tangent to the curve is very nearly the square of the tangent length divided by twice the radius.

327.25  
T.P. 0.80  

---

326.45  
6.38  

---

332.83  
5.78  

---

327.05

326.95  
322.15 SW. Hill + Univ.  

---

325.47  
322.15  

---

323.32

302.26<sup>3</sup>  
11.90  

---

314.16  
4.24  

---

309.92

94.7

