

1211

1885

FIELD BOOK

No. 385

MICROFILMED
DEC 22 1964

ENGINEERING DEPARTMENT,
CITY OF
SAN DIEGO,
CALIFORNIA.

Our Leather Bound Engineers Note Books are carried in the following rulings:

- No. 380 LEVEL BOOK. Left and Right Hand Page the same as Left Hand Page of this Book.
- No. 382 FIELD BOOK. Left Hand Page as in this Book, Right Hand Page 4 x 4 to the inch, Center Line Red.
- No. 384 MINING TRANSIT BOOK. Left Hand Page as in this Book, Right Hand Page 8x8 to the inch, Center Line Red.
- No. 385 FIELD BOOK. Left Hand Page as in this Book, Right Hand Page 8 vertical and 4 horizontal lines to the inch, Center Line Red.

We also carry the Note Books listed above, bound in extra strong Fabri-Hide (otherwise the same quality of book), which can be furnished at a somewhat lower price.

In ordering Fabri-Hide covered books, add the letter "F" to catalog number.

THE FREDERICK POST CO.
ENGINEERING and DRAFTING SUPPLIES
IRVING PARK STATION
CHICAGO, ILL.

11
12
13
22
52
Mr. J. J. ...

Woolman.	-	45 th Boundary	1-23
EARL	-	Birch Cottonwood	24-26
CAPPS	-	30 th Ray	27-28
SAN MIGUEL	-	Woolman-North	29-32
CUYAMACA	"	Jamul	33-35
PENDLETON.		Garnet-Diamond	36-42
WOOLMAN.		45 th 47 th	43-50
33 RD		El Cajon Monroe	51-55
FELTON	"	"	56-61
ALLEY BLK. 14	Higgins	}	62-69
"	" 242. Univ Hts		
"	" 2	St Louis	70-74
QUINCE		30 th Canyon East	75-78

+ T - E
 Donnar
 Flood
 Bichet
 Woolman
 ave

Xsection Woolman Ave from the \pm of 45th to Boundary
 St: 530 90.22 84.92 Coll. Feb 75 827
 SW. Cor 45th and Woolman.

- 45th is 30' from \pm of paving to W.L. Pavement 18' in width.
 Woolman Ave 60' wide: 10' Cbs, 10' Qts:

\pm 45th st = \pm paving:

S.L. Paving	3.95	86.3
cb "	4.20	86.0
1/4 "	4.50	85.7
\pm "	4.80	85.4
1/4 "	5.00	85.2
cb "	5.40	84.8
N.L. "	5.59	84.6

Yardage in
 Book 16 - Pp. 64-71.

\pm +9 also good for W 1/4 = edge pavement

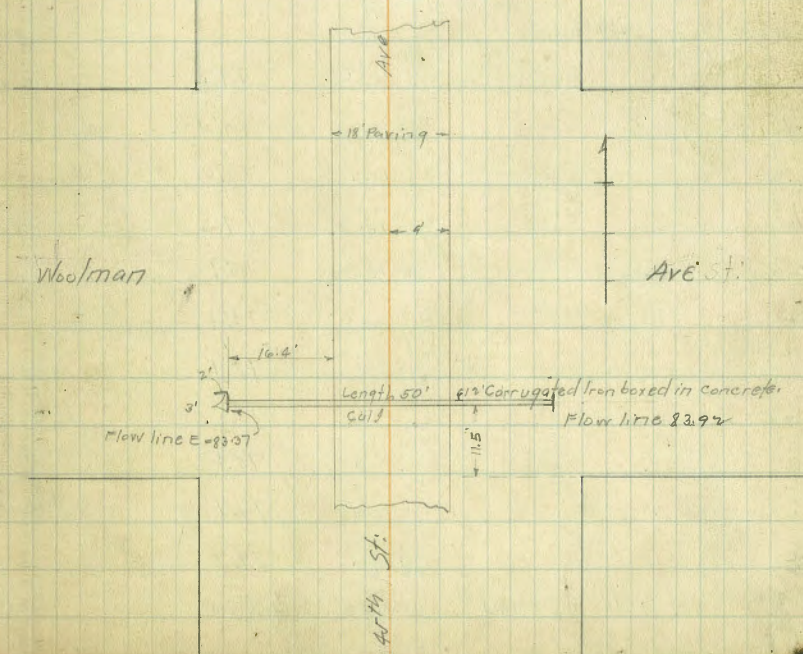
N.L. "	5.82	84.4
cb "	5.65	84.6
1/4 "	5.33	84.9
\pm "	5.00	85.2
1/4 "	4.70	85.5
cb "	4.42	85.8
S.L.	4.10	86.1

W cb of 45th

S.L.	5.3	84.9
cb	5.3	84.9
1/4	5.3	84.9
\pm	5.1	85.1

+	T	-	E/e	2
	90.22			
1/4		5.1	84.7	
cb		6.4	83.8	
N.L.		6.7	83.5	
W.L. \pm 45th = 00				
N.L.		6.8	83.4	
cb		6.7	83.5	
1/4		6.4	83.8	
\pm		5.6	84.6	
1/4		5.8	84.4	
cb		7.0	83.2	
+3		6.2	84.0	
S.L.		6.4	83.8	

Plotted
 by D.C. Miller



+ T 90.22 - Elevation: Woolman Ave

Note: Row of small black acacias 1' inside N Cd from W.L. 45th 1454

N.W. Elizabeth " " " " " " " " E.L. Elizabeth + 45
0+50

S.L.	8.2	82.0
Cb	8.7	81.5
+2	9.2	81.0
+3	10.7	79.5
+5	9.1	81.1
1/4	8.9	81.3
E	8.5	81.7
1/4	9.0	81.2
Cb	8.8	81.4
N.C.	8.3	81.9
1+00		
N.C.	10.6	79.6
Cb.	10.8	79.4
+3	11.2	78.0
1/4	10.7	79.5
E	10.3	79.9
1/4	10.8	79.4
+5	11.5	78.7
+6	12.4	77.8
+8	11.3	78.9
Cb	10.5	79.7
S.L.	10.5	79.7
#	0.84	82.44
	8.62	81.60 Rocks:

+ T 82.44 - Elevation: 3

1+50

S.L.	4.3	78.1
Cb	4.7	77.7
+3	6.6	75.8
+5	5.7	76.7
1/4	5.0	77.4
E	4.5	77.9
1/4	4.9	77.5
+6	5.5	76.9
Cb	4.8	77.6
N.C.	4.8	77.6
2+00		
N.C.	6.7	75.7
+7	6.6	75.8
Cb	7.0	75.4
+5	8.0	74.4
1/4	7.2	75.2
E	6.7	75.7
1/4	7.0	75.4
+8	8.5	73.9
Cb	7.2	75.2
+8	7.1	75.3
S.L.	6.7	75.7
2+50		
S.L.	8.6	73.8
+3	9.4	73.0

+ π
82.44

Woolman Ave.

c6	9.4	73.0
+3	10.2	72.2
1/2	9.2	73.2
±	9.1	73.3
1/4	9.3	72.9
+c	9.7	72.7
c6	9.3	73.1
+5	8.6	73.8
N.L.	8.6	73.8
2+86 = E.L. Elizabeth on the South, east 10 c6s 10' of 6		
N.L.	10.2	72.2
c6	10.8	71.6
+5	11.1	71.3
1/4	10.9	71.5
±	10.7	71.7
1/4	11.0	71.4
+7	11.6	70.8
+8	12.2	70.2
c6	11.1	71.3
S.L.	11.1	71.3
E.C. Elizabeth		
S.L.	12.3	70.1
+8	12.4	70.0
c6	13.00	69.4
Culvert in south gutter Woolman 40' in length no concrete at ends;		
+3	12.0	70.4

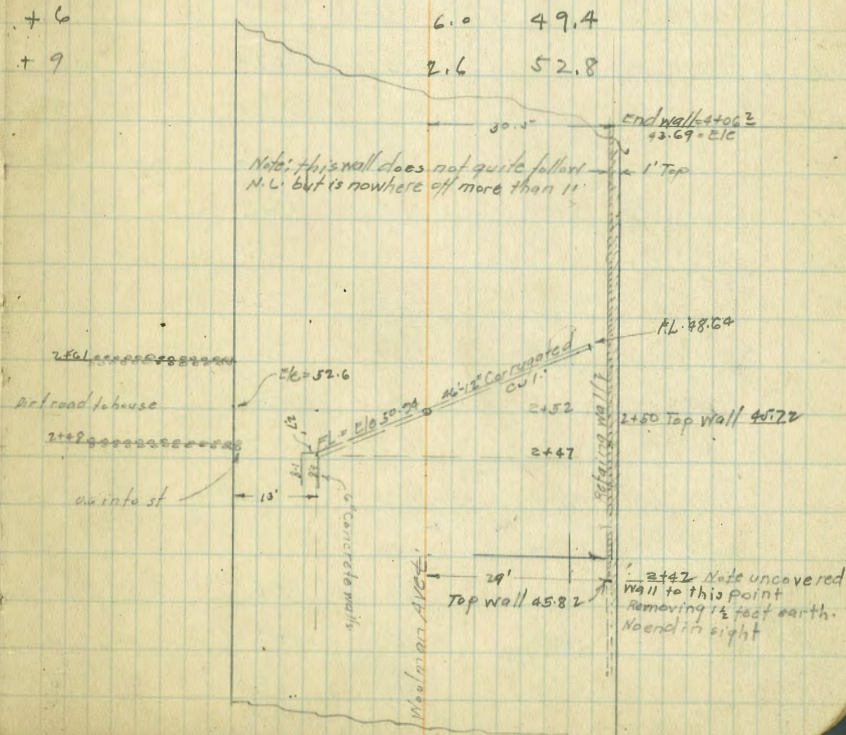
+ π
82.44

+5	12.0	70.4
1/2	11.4	71.0
±	11.2	71.2
1/4	11.3	71.1
c6	11.6	70.8
N.L.	10.8	71.6
E 1/4 Elizabeth St:		
N.L.	11.7	70.7
c6	12.0	70.4
1/2	11.7	70.7
±	11.6	70.8
1/2	11.9	70.5
+5	12.3	70.1
c6	12.1	70.3
S.L.	11.9	70.5
± Eliz		
S.L.	12.3	70.1
c6	12.0	69.8
+4	12.7	69.7
1/4	12.3	70.1
±	12.1	70.3
1/2	12.3	70.1
c6	12.6	69.8
N.L.	12.7	70.1
N. 1/4 Eliz.		
N.L.	12.5	69.9

+		T		-		+		T		-	
		82.44						70.93			E/E
					Wadman Ave						5
cb			12.9	69.5		+8			3.2	67.7	
1/4			12.7	69.7		cb			2.1	68.8	
±			12.5	69.9		S.L.			1.0	69.3	
1/2			12.7	69.7			0.50				
cb			12.8	69.6		S.L.			4.5	66.4	
S.L.			12.6	69.8		cb			5.1	65.8	
#	0.54	70.93	12.05	70.39	Rock	+3			7.3	63.6	
	W.C.B. Eliz					+5			5.9	65.0	
S.L.			1.6	69.3		1/2			5.4	65.5	
+8			1.7	69.2		±			5.0	65.9	
cb			2.9	68.0		1/2			5.4	65.5	
Gutter End culvert descibed above F.L.			3.19	67.7		cb			5.7	65.2	
cb+r			2.8	68.1		N.L.			5.3	65.6	
+4			2.0	68.9			1.00				
1/4			1.8	69.1		N.L.			8.6	62.3	
±			1.5	69.4		cb			9.0	61.9	
1/4			1.8	69.1		1/2			8.4	62.5	
cb			2.0	68.9		±			8.1	62.8	
N.L.			2.2	68.7		1/2			8.3	62.6	
	W.L. Elizabeth St on the South	0.00				+3			8.8	62.1	
N.L.			2.0	68.9		+4			9.9	61.0	
cb			2.8	68.1		+8			9.9	61.0	
1/4			2.5	68.4		cb			8.4	62.5	
±			2.1	68.8		S.L.			8.2	62.7	
1/2			2.3	68.6			1.50				
+6			2.0	68.7		S.L.			11.2	59.7	

	+	π 70.93	-	Elev.	
cb			11.6	59.3	
+v			13.7	57.2	
+3			14.3	58.6	
1/4			11.3	59.6	
⊖			11.0	59.9	
1/4			11.7	59.2	
+5			12.0	58.9	
cb			11.7	59.2	
N.L.			11.8	59.1	
#	0.29	58.67	12.60	58.33	Rock!
		2100			
N.L.			3.9	54.7	
cb			2.6	56.0	
1/4			2.7	55.9	
⊖			2.3	56.3	
1/4			2.5	56.1	
+6			3.0	55.6	
+7			4.2	54.4	
+9			4.3	54.3	
cb			2.7	55.9	
S.L.			2.4	55.2	
#	2.20	55.44	5.38	53.24	End wall:
		2+20			
S.L.			1.1	54.3	
cb			1.3	54.1	
+2			1.6	53.8	

	+	π 55.44	-
	+2	2.8	52.6
	+4	2.9	52.5
	+5	1.9	53.5
	1/4	1.3	54.1
	⊖	0.9	54.5
	1/4	1.1	54.3
	+5	1.8	53.6
	+8	1.1	54.3
	cb	1.0	53.9
	+8	5.7	49.7
	N.L.	5.3	50.1
	+6	6.0	49.4
	+9	2.6	52.8



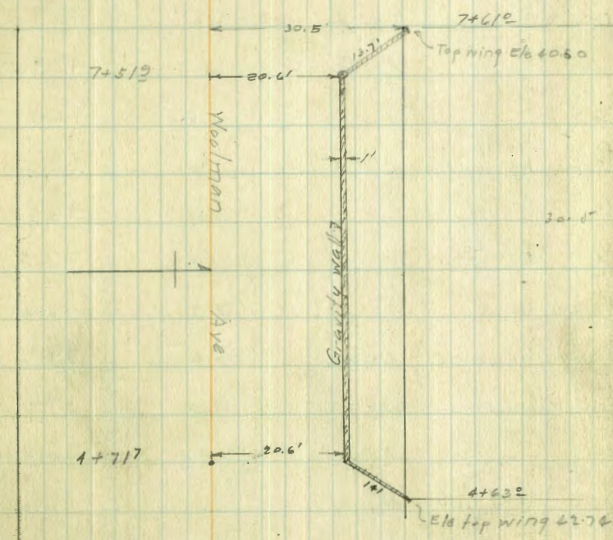
	+	π	-
		55.44	
			Woolman.
		2+44	
S.W.		2.2	53.2
cb		2.3	53.1
+2	on top cul intake wall south	2.8	52.6
+2	" Bottom " " "	4.5	50.9
+4	" " " " north	4.5	50.9
+4.5	" Top cul intake wall north	2.8	52.6
		2+45	
S.W.		2.3	53.1
cb		2.4	53.0
+4		2.8	52.6
		2+50	
N.L.-10		6.4	49.0
N.L.-2		9.0	46.4
N.L.		8.8	46.6
+5		8.5	46.9
cb		3.6	51.8
1/4		3.0	52.4
±		2.7	52.7
1/2		3.1	52.3
cb		2.0	53.4
S.W. In dirt driveway:		2.7	52.7
		2+00	
S.W.		4.9	50.5
cb		6.1	49.3
1/4		6.0	49.4

	+	π	-	E/c
		55.44		
				7
±			5.6	49.8
1/4			6.4	49.0
cb			7.5	47.9
+8			10.5	44.9
N.L. on top retaining wall			10.67	44.9
N.L. Bottom wall bed stream			16.4	39.0
N.L. + 20 " "			17.4	38.0
			3+50	
N.L.-20			17.3	38.1
N.L. Bottom wall stream bed			17.5	37.9
N.L. Top wall.			11.27	44.1
cb			10.1	45.1
1/4			8.5	46.9
±			8.3	47.1
1/2			8.5	46.9
+7			9.4	46.0
cb			8.4	47.0
+6			8.5	46.9
S.W.			6.8	48.6
#	2.08	48.45	9.07	46.37 Rock
			4+00	
S.W.			2.5	45.9
+3			3.4	45.0
cb			3.5	44.9
1/4			3.7	44.7
±			3.4	45.0

Note: sections to show detail with adjacent

+	π 48.45		Elev.
		Woolman	
1/4		3.8	44.6
cb		4.1	44.3
N.L. Top wall		4.65	43.8
N.L. Bottom wall stream bed		10.3	38.1
+20 stream bed:		10.1	38.3
		4+062 = End wall:	
N.L. -1'		10.4	38.0
N.L. -5		10.3	38.1
N.L.		8.1	40.3
+5		4.8	43.9
cb		4.5	43.9
1/2		4.0	44.0
±		3.8	44.6
1/4		3.8	44.6
+7		4.1	44.3
cb		3.6	44.8
S.L.		3.3	45.1
	4+50		
S.L.		4.4	44.0
cb		5.0	43.4
+3		5.7	42.7
1/4		4.9	43.5
±		5.0	43.4
1/4		5.3	43.1
+8		5.6	42.8
cb		6.6	41.8

+	π 48.45		Elev.
+8		stream bed	11.1 37.3
N.L.		" " "	11.0 37.4
+10		" "	10.4 38.0
#	4.37 47.18		5.64 42.81 Top concrete wall:



Note: Mr Draftsman: Still taking this for a 60 ft as Weitkamps map shows it is to be; in sections took wall as curb line.

N.L. -10	10.1	37.1
N.L. at foot of wing	10.2	37.0
cb	5.2	42.0
+6	4.0	43.2
1/4	4.4	42.8
±	3.9	43.3

	+	π 47.18	-	E.L.
				Woolman
1/4	1/4		3.9	43.3
cb	+8		4.7	42.5
N.L.	cb		9.3	42.9
N.L.	S.L.		3.7	43.5
+20		4+712 see sketch		
	S.L.		4.1	43.1
N.L.	cb		4.3	42.9
N.L.	+2		4.8	42.4
N.L.	1/4		4.0	43.2
+5	±		4.1	43.1
cb	1/4		1.6	42.6
1/4	cb on wall		4.37	42.8
±	+2 on ground stream		8.0	39.2
1/4	N.L. " " "		9.3	37.9
+7	+10 " " "		10.4	36.8
cb		5100		
S.L.	N.L.-10 stream bed		9.1	38.1
	N.L. " "		8.5	38.7
S.L.	+8 foot wall " "		8.5	38.7
cb	cb on wall		4.50	42.7
+3	1/4		4.8	42.4
1/4	±		4.6	42.6
±	1/4		4.5	42.7
1/4	+8		5.1	42.1
+8	cb		4.8	42.7
cb	S.L.		4.3	42.9

	+	π 47.18	-	E.L.
		5750		
	S.L.		4.8	42.4
	cb		5.3	41.9
	1/4		4.7	42.5
	±		4.8	42.6
	1/4		5.2	42.0
	+5		5.7	41.5
	cb on wall		4.95	42.2
	+2 ground stream bed		9.0	38.2
	N.L.		8.5	38.7
	+10		8.7	38.7
		6+00		
	N.L.-10 in stream bed		8.9	38.3
	N.L. " " "		9.0	38.2
	+8 " " "		9.0	38.2
	cb on wall		5.33	41.9
	+3		6.0	41.2
	1/4		5.5	41.7
	±		5.3	41.9
	1/4		5.3	41.9
	cb		5.9	41.3
	S.L.		4.9	42.3
	Note: From 6+00 to the E.L. Lot 12 Caruthers Add Olive and Lemon Oratard on South; Tress overhang St One; 6+50			
	N.L.		5.6	41.6
	cb		6.0	41.2
	1/4		5.9	41.4

	+	π 47.18	-	E/e
				Woolman
E			5.8	41.4
1/2			6.0	41.2
+7			6.1	40.7
cb on wall			5.66	41.5
+2 Ground stream bed.			9.3	39.9
N.L.			9.3	37.9
+10			9.4	37.8
	7400			
N.L.-10 stream bed			9.9	37.3
N.L.	"	"	9.9	37.3
+8	"	"	10.0	37.2
cb Top wall.			6.00	41.2
1/2			6.4	40.8
E			6.0	41.2
1/4			6.2	41.0
cb			6.6	40.6
S.L.			6.2	41.0
#	820	44.80	6.53	40.65 Cor wall.
	7451 ²			End wall see sketch.
S.L.			4.0	40.9
cb			4.0	40.9
+4			4.7	40.2
1/2			4.1	40.8
E			4.0	40.9
1/2			4.4	40.5
+6			5.3	39.6
+9			5.2	39.7

	+	π 44.80	-	E/e	10
cb on wall			4.20	40.7	
+2 Stream bed.			9.6	35.3	
N.L.	"	"	8.4	36.5	
+10	"	"	8.6	36.3	
					7401° end of wing see sketch
N.L.-10 stream bed.			8.7	36.2	
N.L.			8.4	36.5	
cb			4.6	40.3	
1/2			4.7	40.2	
E			4.2	40.7	
1/4			4.3	40.6	
+6			4.8	40.1	
cb			4.1	40.8	
S.L.			4.0	40.9	
					8400
S.L.			4.5	40.4	
cb			4.4	40.5	
+4			5.3	39.6	
1/2			4.6	40.3	
E			4.5	40.4	
1/4			4.6	40.3	
+6			4.9	40.0	
cb			4.2	40.7	
+4			3.9	41.0	
+5			8.9	36.0	
N.L.	"	"	8.8	36.1	
+10	"	"	8.6	36.3	

49.85

E/e

Woolman

8+50

N.L-25 ped stream	9.3	35.6
N.L-22	6.8	38.1
N.L-15	5.1	39.8
N.L.	6.0	39.9
Cb	5.2	39.7
1/2	5.3	39.5
E	5.1	39.8
1/2	5.1	39.8
+6	5.9	39.0
Cb	4.4	40.5
S.L.	4.9	40.0
9+00.		
S.L.	5.2	39.7
Cb	4.9	40.0
+2	6.5	38.4
1/2	5.4	39.5
E	5.5	39.4
1/2	5.8	39.1
+7	5.9	39.0
Cb	5.6	39.3
+2	4.9	40.0
+4	5.6	39.3
N.L.	5.3	39.6
+10	5.4	39.5

42.85

11

9+50

N.L.	6.0	38.9
+7	5.3	39.6
Cb	6.0	38.9
1/2	6.4	38.5
E	6.2	38.7
1/2	6.2	38.7
+9	7.0	37.9
Cb	5.4	39.5
S.L.	5.7	39.2
(9+57.85 = W.L. Lot 50 Hortons purchase (9+57 by Walter Bauer) = 0+00		
S.L.	5.8	39.1
Cb	5.4	39.5
+1	7.0	37.9
1/2	6.2	38.7
E	6.2	38.7
1/2	6.4	38.5
+7	6.5	38.4
Cb	6.1	38.8
+3	5.5	39.4
N.L.	6.1	38.8
#	3.24	41.57
W.L. Lot 50 Hortons Purchase = 0+00		
0+50		
N.L.	3.2	38.4
+8	3.4	38.2
Cb	2.7	38.9

38.03 Hub. s/nk. Cor. Lot 50 H.P.

+

π
41.57

-

Woolman

+4	3.5	38.1
1/6	3.6	38.0
±	3.4	38.2
1/6	3.6	38.6
+8	4.4	37.2
cb	2.9	38.7
S.L.	3.1	38.5
1400		
S.L.	3.9	37.7
cb	3.3	38.3
+2	4.6	37.0
1/4	4.0	37.6
±	3.7	37.9
1/6	4.1	37.5
cb	3.3	38.3
N.L.	3.2	38.4
1450		
N.L.	3.5	38.1
cb	3.9	37.7
1/4	4.5	37.1
±	4.3	37.3
1/4	4.4	37.2
+9	4.9	36.7
cb	3.8	37.8
S.L.	4.5	37.1

2400

+

π
41.57

-

12

S.L.	5.0	36.6
+5	4.9	36.7
cb	4.0	37.6
+2	5.2	36.4
1/4	4.7	36.9
±	4.6	37.0
1/6	4.7	36.9
cb	4.0	37.6
N.L.	3.8	37.8
e+35.9 ± ± Alley on the South - 1/2" Pipe and concrete plug noted on Job's Tap as N.E. Cor Lot 12 Caruthers:		
N.L.	3.8	37.8
cb	4.0	37.6
+2	4.8	36.8
1/4	4.5	37.1
±	4.5	37.1
1/4	4.8	36.8
cb	5.0	36.6
S.L. on pipe noted above in read		
3400		
S.L.	5.7	35.9
cb	5.4	36.2
1/6	5.0	36.6
±	5.0	36.6
1/6	4.8	36.8
cb	4.7	36.9
N.L.	4.5	37.1

Woolman

+

∑

41.57

-

Elev

13

6.70

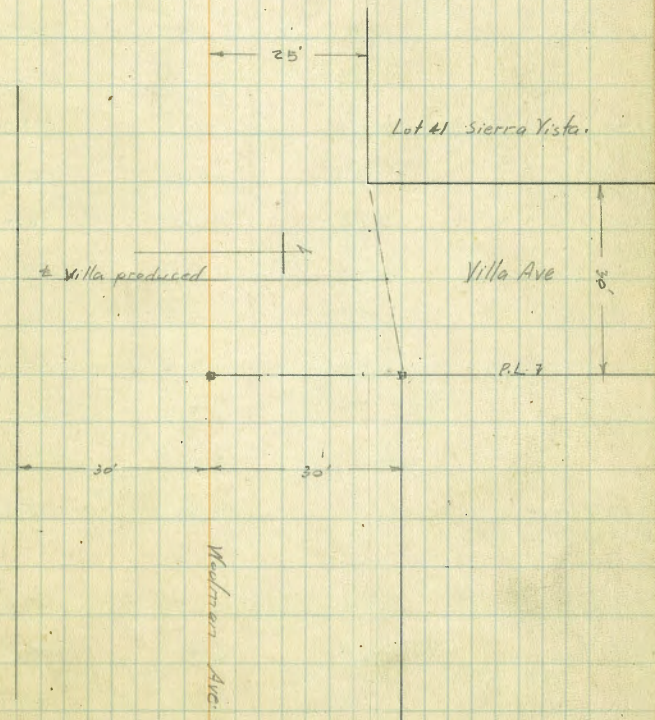
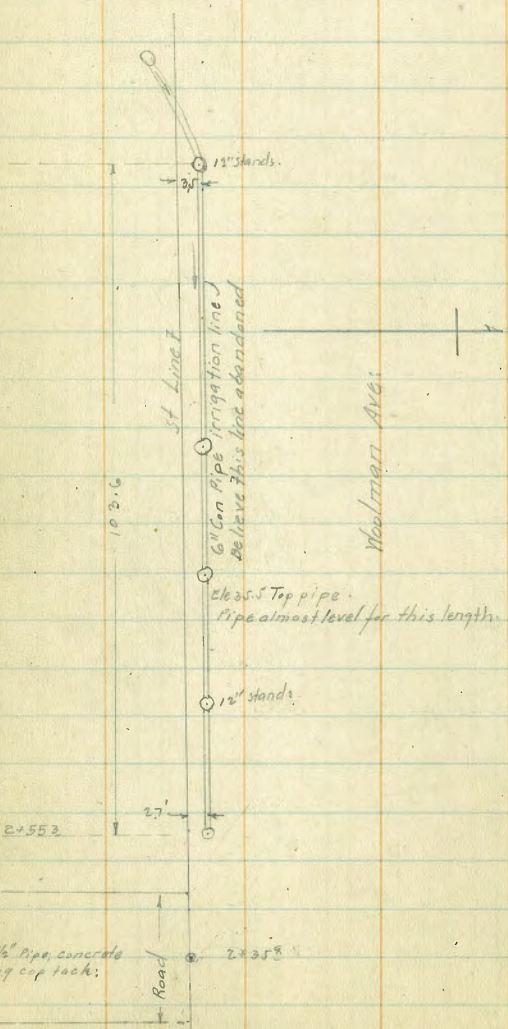
43.34

4.94

36.62

3+39.12 - East line of Sierra Vista Tract; here end the 60 sf.

N.C.	57	37.6
cb	64	36.9
1/2	66	36.7
1/2	69	36.4
1/2	49	36.4
cb	73	36.0
S.L.	80	35.3
S.L. 410	84	35.1



	+	∩ 43.32	-	E/e
<i>Villa Ave: See sketch</i>				
S.L.-10			8.1	35.2
S.L.			8.1	35.2
1/4			6.8	36.5
±			6.6	36.7
1/4			6.6	36.7
cb			6.5	36.8
N.L.			6.6	36.7
<i>+100 = W.L. Villa Ave on the North. 55' S of 10 Cbs 8.75 Qts;</i>				
N.L.			6.1	37.2
cb			6.4	36.9
1/4			6.2	37.1
±			6.3	37.0
1/4			6.4	36.9
+7			6.7	36.6
cb			6.1	37.2
+5			6.0	37.3
S.L.			7.4	36.1
S.L.+10			8.2	35.1
<i>0+50</i>				
S.L.-10			8.2	35.1
S.L.-5			7.7	35.6
S.L.			5.9	37.4
S.L.+3			4.8	38.5
S.L.+8			4.8	38.5
cd			5.6	37.7

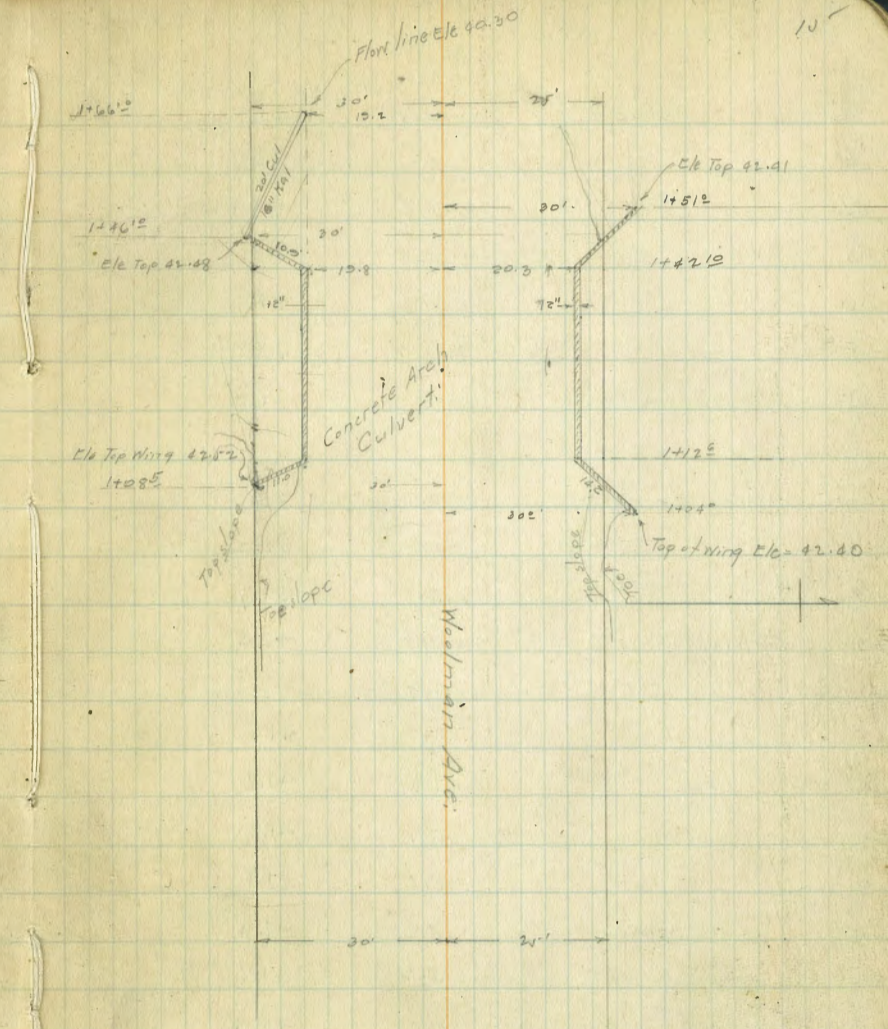
	+	∩ 43.32	-	E/e	#
				4.6	38.7
				4.4	38.9
				4.4	38.9
				5.3	38.0
				5.4	37.9
				4.4	38.9
				4.5	38.8
				4.9	38.4
				6.7	36.6
				6.9	36.4
<i>0+80</i>					
				14.8	28.5
				13.0	30.3
				7.6	35.7
				6.9	36.4
				2.8	40.5
				2.6	40.7
				3.5	39.8
				3.0	40.3
				3.0	40.3
				3.0	40.3
				3.7	39.6
				3.5	39.8
				4.6	38.7
				7.4	35.9
				8.2	35.1

43.37

Elc

Woolman.

S.L-15	7.7	35.6
S.L-8	7.3	36.0
S.L.	3.6	39.7
+3	2.7	40.6
C.B.	3.0	40.3
+3	3.3	40.0
1/4	2.0	40.7
+	2.5	40.8
1/4	2.5	40.8
C.B.	3.0	40.3
+3	2.9	40.4
+4	2.2	41.1
M.L.	2.7	40.6
+3	10.8	32.5
+10 Stream bed	14.7	28.6
+20 " "	12.4	28.9
#	4.07	47.00
	0.89	42.43 B.P. Cul = 42.43
	1.04	See sketch
M.L-20	18.9	28.1
M.L-5 Feet of wing	18.9	28.1
M.L-3 Top of slope	18.9	28.1
M.L on slope	12.0	35.0
M.L+4 Top of fill	5.8	41.2
C.B.	5.9	41.1
1/4	5.5	41.5



Deck of Culvert of arch and of Woolman Ave = Elev 39.98
 Deck seems to be finished pavement;
 Deck 12" thick at this point.
 Earth covering at this point = 2.2

	+	π	E/G
		97.00	
			Woolman
±	5.5	41.5	
1/4	5.6	41.4	
cb	5.9	41.1	
+3	5.4	41.6	
S.L.	11.3	35.7	
+5	13.2	33.8	
+10	13.2	33.8	
	14.26		
S.L.-10 Ground	14.0	33.0	
S.L.	14.8	32.2	
+9	15.3	31.7	
+9 Top wall/curb	4.99	42.5	
cb	4.99	42.5	
cb on ground	5.5	41.5	
1/4	5.2	41.8	
±	5.4	41.8	
1/2	5.1	41.9	
cb	5.6	41.4	
+5 Ground	5.2	41.8	
+5 on top wall	4.57	42.4	
+6 " " "	4.57	42.4	
+6 Stream bed	18.9	28.1	
N.L. " "	18.9	28.1	
+10 " "	18.9	28.1	
	14.210		
N.L.-20	13.9	33.1	

	+	π	E/G
		47.00	
N.L.	16.2	30.8	
+4 Ground bottom wall	17.6	29.4	
+4 Top of wall	4.59	42.4	
+5 " " "	4.59	42.4	
+5 on ground	5.3	41.7	
cb " "	5.2	41.8	
1/4 " "	4.8	42.2	
E " "	4.9	42.1	
1/4 " "	5.0	42.0	
cb on ground	5.3	41.7	
" " Top wall	4.50	42.5	
cb+1 " " "	4.50	42.5	
cb+1 Ground bottom of wall Stream 19.0		28.0	
S.L. " " " " " 19.0		28.0	
+20 " " " " " 19.0		28.0	
			+51 see sketch
S.L.-15	18.0	29.0	
S.L.	16.7	30.3	
cb	5.0	42.0	
1/4	4.7	42.3	
±	4.7	42.3	
1/4	4.8	42.2	
cb	5.3	41.7	
+5	5.1	41.9	
N.L.	6.7	40.3	
+10	11.4	36.6	

+ π 47.00

Woolman.

1+65

N.L.-10	8.6	38.4
N.L.-5	8.5	38.5
N.L.	5.2	41.8
Cb	5.4	41.6
1/4	4.7	42.3
E	4.6	42.4
1/4	4.6	42.4
Cb	4.9	42.9
+7	5.1	41.9
S.L.	8.8	38.2
+4	11.0	36.0
+20	17.0	30.0
1+962 = E.L. San Miguel Ave on the North ^{50.5ft} 50.12 Diagonal ^{10 Cbs.} 7 1/2 Qts:		
S.L.-15	10.8	36.2
S.L.-7 <i>Toc slope</i>	9.9	37.9
S.C.	6.8	40.2
S.L.+4	4.7	42.3
Cb	4.7	42.3
1/4	4.5	42.5
+	4.3	42.7
1/4	4.3	42.7
Cb	4.9	42.1
N.L.	5.1	41.9
E Curb San Miguel Ave		
N.L.	5.0	42.0

+ π 47.00

Cb	4.7	42.3
1/4	4.2	42.8
E	4.1	42.9
1/4	4.3	42.7
Cb	4.4	42.6
+7	4.5	42.5
S.L.	6.6	40.4
+7 <i>Toc slope</i>	10.5	36.5
+15	10.8	36.2
<i>East 1/4 San Miguel</i>		
S.L.-15	10.9	36.1
S.C.-8	10.6	36.4
S.L.	5.7	41.3
+3	4.3	42.7
Cb	4.1	42.9
1/4	4.1	42.9
E	4.0	43.0
1/4	4.0	43.0
Cb	4.3	42.7
N.L.	4.5	42.5
<i>E San Miguel</i>		
N.L.	4.1	42.9
Cb	4.0	43.0
1/4	3.7	43.3
E	3.8	43.2
1/4	4.0	43.0

	+	π 47.00	-	Elv:
				Woolman
cb			3.9	43.1
+7			0.4	42.6
S.L			5.9	41.1
+8 Toe slope			10.5	36.5
+15			10.6	36.4
				W 1/2 San Miguel:
S.L-14			10.5	36.5
S.L-9 Toe slope			10.5	36.5
S.L			5.7	41.0
+4			3.9	43.1
cb			3.8	43.2
1/4			3.9	43.1
t			3.7	43.3
1/4			3.5	43.5
cb			3.9	43.1
N.L			4.5	42.5
				W Curb San Miguel:
N.L			4.0	43.0
cb			4.0	43.0
1/4			3.4	43.6
t			3.4	43.6
1/4			3.6	43.4
cb			3.7	43.3
+8			4.2	42.8
S.L			5.4	41.6
S.L + 8 Toe slope			10.1	36.9
S.L + 15			10.1	36.9

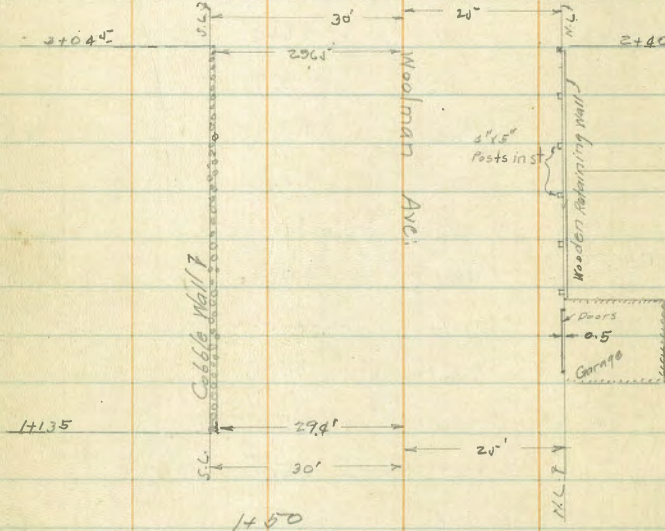
	+	π 47.00	-	Elv:
				W.L. San Miguel Ave on the North = 0+00
				S.L-15
				S.L-8 Toe
				S.L
				+4
				cb
				1/4
				t
				1/4
				cb
				MU
				# 11.48 57.53 D+50
				M.L-5
				N.L
				cb
				1/4
				t
				1/4
				+5
				cb
				S.L
				S.L+9
				S.L+15
				1+00
				S.L+10
				S.L

9.4	37.6
9.3	37.7
4.9	42.1
3.5	43.5
3.5	43.5
3.4	43.6
3.1	43.9
3.3	43.7
3.6	43.4
3.2	43.8
0.95	46.05
8.1	49.4
11.1	46.4
12.1	45.4
11.6	45.9
11.9	45.6
11.9	45.6
13.0	44.5
12.4	45.1
12.3	45.2
15.4	42.3
15.6	41.9
15.5	47.0
9.0	48.5

π
57.53

Woolman

cb	9.2	48.3
+2	11.0	46.5
1/4	8.5	48.0
E	9.1	49.4
1/4	8.9	48.6
cb	9.7	47.8
N.C.	8.0	49.5



N.C.	5.7	51.8
cb	6.3	51.2
1/4	6.3	51.2
E	6.4	51.1
1/4	6.6	50.9
+5	7.2	50.3
cb	6.2	51.3
+9 Foot Cobble wall	6.4	51.1

π
57.53

19

+9 Top cobble wall	4.2	53.3
S.L. on ground back of wall	4.8	52.7
2+00		
S.L. Ground back of wall	0.8	56.7
+1 on Cobble wall	0.4	57.1
+1 bottom wall	3.5	54.0
cb	3.8	53.7
+5	5.1	52.4
1/4	4.3	53.2
E	3.9	53.6
1/4	3.8	53.7
cb	3.9	53.6
N.C. foot of board retaining wall	3.0	54.5
#	11.95	54.38
#	10.94	65.25
2+50		
N.C. - 10 Top slope	0.3	64.9
N.C.	8.0	57.2
cb	10.1	55.1
1/4	9.6	55.6
E	9.6	55.6
1/4	10.0	55.2
+4	10.9	54.3
cb	9.3	55.9
+9 bottom wall	9.0	56.2
+9 Top wall	7.0	58.2
S.L.	7.2	58.0

15.10 42.43 B.P. Culvert:
59.31 Rock:

	+	π	-	E/c:
		65.25		Woolman.
		3+00		
S.L. on top wall			7.27	57.9
S.L. + 0.5 on ground			7.5	57.7
cb			8.0	57.2
+6			9.2	56.2
1/4			8.3	56.9
±			7.9	57.3
1/4			8.0	57.2
+6			7.0	56.2
cb			7.5	57.7
N.L.			6.6	58.6
From 3+25 to 3+428 = double garage 12' North of N.L. dirt floor				
to garage entrance			6.6	58.6
		3+10		
N.L.			9.6	60.6
+7			6.6	58.6
cb			7.0	58.2
1/4			6.7	58.5
±			6.8	58.4
1/4			6.9	58.3
+6			7.8	57.4
cb			7.0	58.2
+8			6.5	58.7
S.L.			6.6	58.6
+10			7.9	57.3

	+	π	-	E/c:
		65.25		20
From 3+36 to 3+95 small garage 12' North of the cement floor				
on cement floor			4.61	60.6
		4+00		
S.L.-10			9.1	56.1
S.L.-2			7.8	57.4
S.L.			6.0	59.2
cb			6.0	59.2
1/4			5.8	59.4
cb			5.6	59.6
1/4			5.5	59.7
cb			5.6	59.6
N.L.			4.3	60.9
From 4+36 to 4+46 Garage cement floor 1 Garage about 3' N of N.L.				
on garage floor			2.33	61.9
		4+50		
N.L.			3.7	61.5
cb			4.3	60.9
1/4			4.5	60.7
±			4.5	60.7
1/4			4.6	60.6
cb			5.0	60.2
+2			4.6	60.6
+8			4.7	60.5
S.L.			5.6	59.6
+4			7.6	57.6
+10			8.5	56.7

	+	π 61.25	-	Elc:
Woolman.				
From 4+88 to 4+98 Concrete floored garage				
on N. Line; on floor			2.55	62.7
		5+00		
S.L. -10			7.4	57.8
S.L. -6			6.9	58.3
S.L.			3.5	61.7
cb			3.8	61.4
1/4			3.4	61.8
±			3.3	61.9
1/4			3.2	62.0
cb			2.7	62.5
N.L.			2.8	62.7
5+53.82 = E.L. Cuyamaca Ave. 50' st 52.16' diagonal 10' Cb. 7 1/2' Gts				
N.L.			1.3	63.9
cb			1.7	63.5
1/4			1.7	63.5
±			1.7	63.5
1/4			1.8	63.4
cb			2.0	63.2
+5			2.0	63.2
S.L.			3.1	62.1
+10			4.9	60.3
#	9.80	73.56	1.49	63.76
East curb Cuyamaca Ave.				
S.L. -10			12.3	61.3
S.L.			11.3	62.3

	+	π 73.15	-	Elc:
				21
+5			10.0	63.6
cb			9.8	63.8
1/4			9.7	63.9
±			9.7	63.9
1/4			9.6	64.0
cb			9.7	63.9
N.L.			9.5	64.1
East 1/4 Cuyamaca Ave.				
N.L.			8.9	64.7
cb			9.4	64.2
1/4			9.5	64.1
±			7.3	64.3
1/4			9.5	64.1
cb			9.6	64.0
+5			9.7	63.9
S.L.			10.7	62.9
S.L. +10			12.3	61.3
± Cuyamaca Ave.				
S.L. -10			12.0	61.6
S.L.			10.9	62.7
+5			9.5	64.1
cb			9.4	64.2
1/4			9.3	64.3
±			9.1	64.5
1/4			9.0	64.6
cb			9.0	64.6
N.L.			8.5	65.1

73.0-6

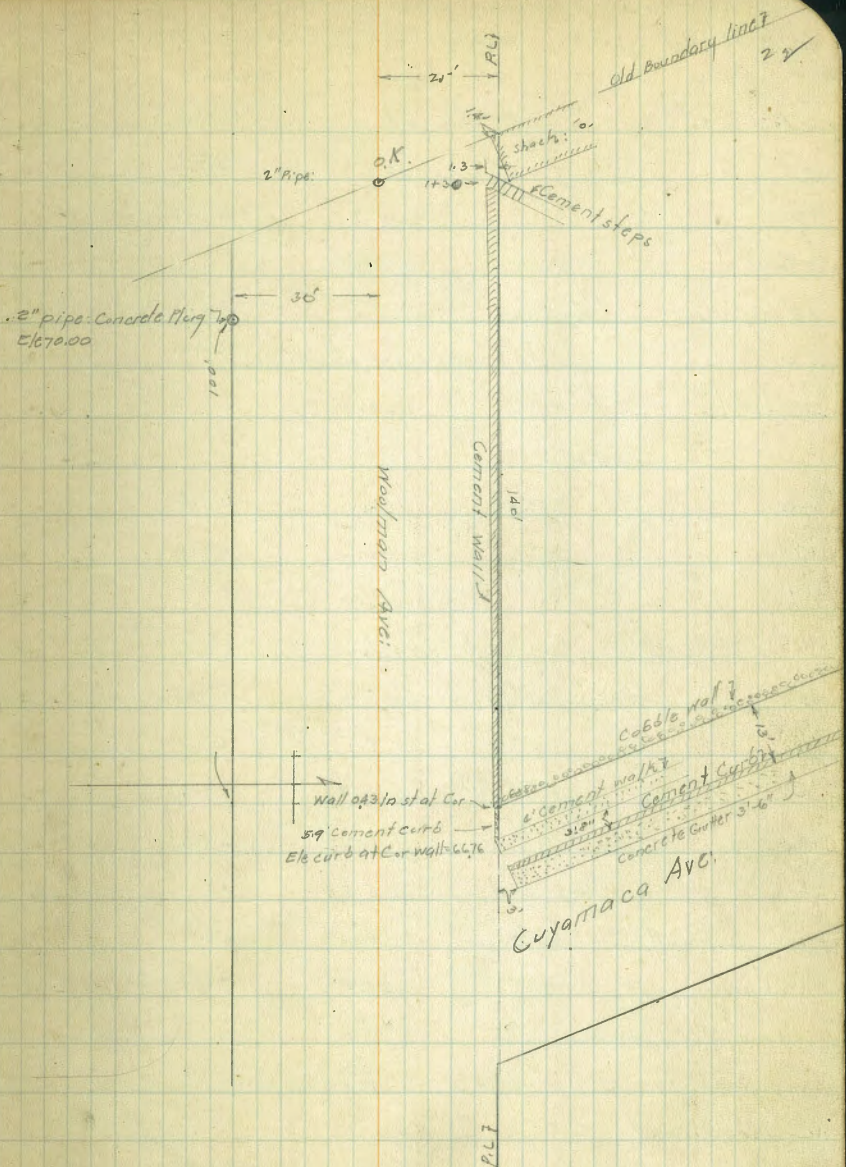
Woolman.

West 1/4 Cuyamaca Ave:

N.L.	8.5	65.1
cb	8.9	64.7
1/4	8.6	65.0
E	8.7	64.9
1/4	8.9	64.7
cb	9.1	64.5
+5	9.1	64.5
S.L.	10.1	63.5
S.L.+10	10.6	62.9

West curb of Cuyamaca Ave:

S.L.-10	10.5	63.1
S.L.	9.3	64.3
+0	8.7	64.5
cb	8.7	64.5
1/4	8.0	65.1
E	8.3	65.3
1/4	8.3	65.3
cb	8.8	64.8
N.V. ground:	8.1	65.5
N.L.+3. End of curb:	7.66	65.9
0100 = W.L. Cuyama Ave on the North:		
N.L. on cement wall: See sketch	5.24	68.4
N+2.5 on ground foot wall	7.4	66.2
+7	8.3	65.3
Eb	8.3	65.3



+
Xsection Earl St 60' Wide

Aug 23rd-27
Dannan
Flood
Bichet

+
π
43.08

-
E/e

24

#	4.98	55.37		30.39 B.P. 40th and Epsilon
#	5.50	50.13	10.84	nc in school house
#	0.80	43.08	7.80	Rocky
	0+00 = S.L. Birch St.			
W.L.		1.9	41.2	
c.b.		2.2	41.0	
+8		3.1	40.0	
1/4		4.0	39.1	
±		4.4	39.7	
1/2		5.0	38.1	
+3		1.6	38.5	
c.b.		1.8	38.3	
E.L.		5.2	37.9	
0+35	0+35'			
E.L.		7.5	35.6	
+6		7.7	35.4	
c.b.		7.2	35.9	
+6		6.8	36.3	
+7		7.4	35.7	
1/4		7.3	35.9	
±		6.9	36.2	
1/2		6.7	36.4	
+2		5.7	37.4	
c.b.		5.2	37.9	
W.L.		4.6	38.5	

Plotted
H.C.H.
4/2/78

W.L.		6.8	36.3
c.b.		7.1	36.0
+9		8.0	35.1
1/4		9.2	33.9
±		8.8	34.3
1/4		9.3	33.8
+6		8.9	34.2
c.b.		9.0	34.1
E.L.		9.3	33.9
		0+85	
E.L.		12.9	30.2
c.b.		12.7	30.4
1/4		12.6	30.5
±		12.3	30.8
+9		11.9	31.2
1/4		10.5	32.6
c.b.		10.1	33.0
+6		10.2	32.9
#	0.92	31.92	12.08
		1+10	
W.L.		5.0	26.9
c.b.		5.5	26.4
1/2		5.4	26.5
±		6.1	25.8
1/4		6.5	25.4
c.b.		6.7	25.2
E.L.		7.0	24.9

3100 On cement walk to house
at 0+965 W.L. St.

0160

	+	π	-	E 10
		3192		Earl St.
EL+5			7.4	24.5
		1735		
EL-5			10.2	21.7
E.L.			11.5	20.4
cb			11.5	20.4
1/4			11.4	20.5
E			11.4	20.5
1/4			10.9	21.0
cb			10.4	21.5
W.L.			10.3	21.6
W.L.+5			10.1	21.8
#	0.97	20.37	12.57	19.35
At 1+18 on the E, is 3' cement walk to house			+3.2	23.5
A 1+50 on the E = double garage dirt floor 15' E of E.L.				
Ele run way to garage at door			1.6	18.7
At 1+54 on W.L. 86" cement walk to house			1.56	18.76
		1760		
W.L.-5			2.5	17.8
W.L.			2.5	17.8
cb			2.6	17.7
1/4			2.9	17.4
E			3.3	17.0
1/4			2.1	17.2
cb			3.3	17.0
E.L.			3.1	17.2
EL+5			4.0	16.3

	+	π	-	E 10
		2032		
		1785		
EL-5			6.1	14.2
E.L.			5.9	14.4
cb			6.0	14.3
1/4			5.7	14.6
E			5.5	14.8
1/4			5.9	14.4
cb			6.4	13.9
W.L.			6.1	13.2
W.L.+5			6.0	14.3
A7 2045 on the west 3' cement walk to house extends into st 3' feet				
on cement walk			6.81	13.51
		2410		
W.L.-5			6.9	13.4
W.L.			7.1	13.2
cb			7.1	13.2
1/4			6.9	13.4
E			6.6	13.7
1/4			6.7	13.6
cb			6.7	13.6
E.L.			6.8	13.5
EL+5			6.8	13.5
2+547 on the west 3' cement walk to house extends into st 3'				
on cement walk			7.45	12.87
		2400		
E.L.			7.1	13.2

Xsection Capps St 30th to Ray

Elev
Aug 24-27

Domnair.
Flood.
Bichet.

80' St			240.91
14' Cbs	0.87	341.78	240.91
13' Gts:	8.93	340.88	231.91
		983	
	+00 = N.L. Ray St		
N.L. On Ray St cement walk	8.93	331.95	
Cb on Cement	8.85	332.03	
Gutter on Pavement	9.54	331.34	
1/4 " "	9.56	331.22	
± " "	9.65	331.13	
1/4 " "	9.80	331.08	
Gutter " "	8.89	331.99	
Curb on concrete	9.35	331.53	
S.C. " "	9.27	331.61	
	+0.25		
S.C. on Lavin	7.0	333.9	
+3	8.2	332.7	
+12	8.3	332.6	
Cb	9.1	331.8	
1/4	9.1	331.8	
±	9.1	331.8	
1/4	9.1	331.8	
+6	9.0	331.9	
Cb	8.1	332.8	
N.L.	8.2	332.7	
	+0.50		
N.L.	7.0	333.9	
Cb	6.7	334.2	

Head
Plotted
10/10/11
J.S.

30th and Capps St 336-65

27

+

π
340.88

+8	7.9	333.0
1/4	8.0	332.9
±	8.0	332.9
1/4	7.9	333.0
Cb	7.8	333.1
++	6.9	334.0
+11	7.1	333.8
S.W. on Lavin	6.4	334.5
At 0+69, on the South, a 2' Cement walk to back of house, reads		
reading on walk	5.69	335.19
	+0.70	
S.C.	5.6	335.3
+10	6.1	334.8
Cb	6.7	334.2
1/4	7.0	333.9
±	6.8	334.1
1/4	7.1	333.8
+8	5.9	335.0
Cb	6.0	334.9
N.L.	6.0	334.9
At 0+92 on the North - ± of 8' Cement runway to Garage: Garage 20'		
N of N. Line:		
On runway at garage entrance	5.24	335.64
" " " N.L. St	5.47	335.41
At 0+88 to 100 on south, Garage dirt floor; Garage flush with St line		
± garage runway	5.1	335.8

Xsection of San Miguel Ave
Woolman North.

Dennan
Head.
Dibet. Sep-8-1927

50.5' 10' cbs;

50.5' 47.48

42.43 R.R. Concrete Bridge
See Page 10 of this Book.

Sec A = N.L. Woolman

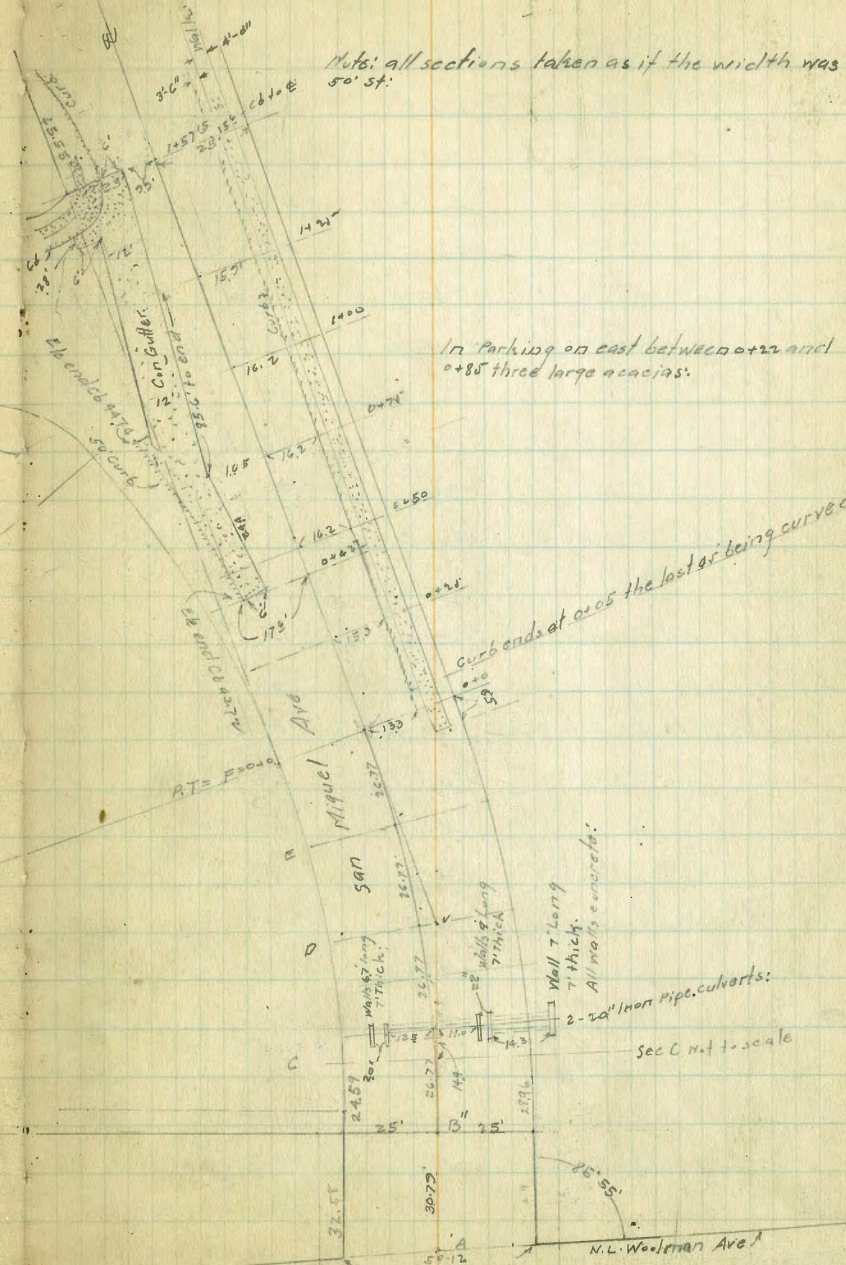
E.L. -10	6.0	41.5
E.L.	5.0	42.0
cb	5.6	41.9
1/4	5.0	42.5
t	4.5	43.0
1/4	4.9	42.6
cb	4.8	42.7
W.C.	3.6	43.9

Sec B = P.C. of curve

W.C.	4.6	42.9
cb	5.1	42.4
1/4	5.2	42.3
t	5.1	42.4
1/4	5.6	41.9
cb	5.9	41.6
E.L.	7.8	39.7
E.L. +10	9.0	38.5

$\Delta = 20^\circ$
 $R = 306.8'$

Franklin
Ave.



In parking on east between +22 and +85 three large acacias.

Curb ends at +25 the last of being curved.

1 Wall 7' Long
7" thick.
All walls concrete.

2-20" Iron Pipe culverts.
Sec C 1" = 20' to scale

+ π
47.48

- E/e

San Miguel Ave 50'

Sec C:

E.L. -10	8.8	38.7
E.L.	8.0	39.5
cb	6.0	41.5
1/4	6.1	41.4
E	5.2	42.3
1/4	5.3	42.2
+6	5.8	41.7
cb	5.0	42.5
W.L.	4.6	42.9

Sec C + 10.9 = \pm of double Culvert:

W.L.	4.5	43.0
Cb on top of west curb wall	4.63	42.9
Flow line Cul	7.58	39.9
Top of east wall of ^{west} catch basin	4.62	42.9
1/4	5.3	42.2
E	5.2	42.3
1/4	5.7	41.8
1/4 + 3/2 Top of west wall of east basin	5.77	41.7
Flow line	8.60	38.9
1/4 + 6 Top of east wall of east basin:	5.86	41.6
cb	5.9	41.6
E.L.	6.2	41.3
E.L. + 2 Top of retaining wall	5.97	41.5
E.L. + 4 Flow Line	8.9	38.6
E.L. + 10	8.2	39.3

+ π
47.48

- E/e

30

Sec D

E.L. -10 = toe slope	8.0	39.5
E.L.	5.6	41.9
cb	5.4	42.1
+2	6.0	41.5
1/4	5.6	40.9
E	5.2	42.3
1/4	5.3	42.2
+6	5.9	41.6
cb	4.8	42.7
W.L.	4.4	43.1

Sec E

W.L.	2.9	44.6
cb	4.4	43.1
+2	5.7	41.8
1/4	5.0	42.5
E	4.9	42.6
1/4	5.0	42.5
+5	5.1	42.4
cb	4.2	43.3
E.L.	4.7	42.8
E.L. + 6	6.7	40.8
E.L. + 10	7.0	40.5
See sketch; end walk on the east:	4.46	43.1

Sec F = end of curve = 0+00

	+	π	-	E/c
		47.48		San Miguel Ave 50' 51'
cb ground			4.5	43.0
1/4			4.5	43.0
±			4.0	43.5
1/4			4.8	42.7
+5			5.4	42.1
cb			4.1	43.4
+3			3.3	44.2
W.L.			3.1	44.4
at 0.5' end of east concrete curb			4.2	43.1
0+35'				
Note: concrete curb on the east taken as curb line for levels, but is not on line at all sections, see sketch.				
W.L.			3.0	44.5
+6			3.0	44.5
cb			4.1	43.4
+5			5.0	42.5
1/4			4.6	42.9
±			4.0	43.5
1/4			4.2	43.3
Gutter			4.4	43.1
cb concrete			4.02	43.5
#	5.83	49.49	3.82	43.66 'Rock'
cb concrete		0+50		
E.cb			5.74	43.8
E.Gutter			6.2	43.3
1/4			5.9	43.6
±			5.7	43.8
1/4			5.9	43.6

	+	π	-	E/c
		49.49		
+6				
Edge con Gutter			6.17	43.3
cb line comes in con gutter			7.00	42.5
" " +3 = existing gutter			7.07	42.4
" " +3 = " concrete curb			5.60	43.9
W.L.			4.9	44.6
W.L. +6 = bottom of cut:			4.5	45.0
0+70'				
W.L. -10 = bottom of cut:			4.5	45.0
W.L. comes on existing curb			5.06	44.4
W.L. +0.5 in existing gutter			6.56	42.9
W.L. + " " "			6.46	43.0
W.L. & edge gutter			5.81	43.7
cb line			5.9	43.6
1/4			5.3	44.2
±			5.2	44.3
1/4			5.7	43.8
E gutter			6.1	43.4
E cb concrete			5.62	43.9
#	4.32	49.34	4.47	45.02 Nail/Pole
		1+00		
E.cb concrete			5.43	43.9
gutter			5.8	43.5
1/4			5.3	44.0
±			4.9	44.4
1/4			4.9	44.4
+6 = edge of existing con Gutter			5.32	44.0

+

π
49.34

-

E/e

50'

San Miguel Ave

+

π
49.34

-

E/e

32

cb line is in existing Con Gutter	5.66	43.7
+5 " " " "	6.28	43.1
N.L. on edge of existing Gutter	5.36	44.0
N.L. +10 Ground	5.0	44.3
	1425'	
W.L. -10	4.3	45.0
W.L.	5.0	44.3
N.L. +1 = edge of existing Con Gutter	5.15	44.2
+6 in " " "	6.03	43.3
cb line " " " "	5.71	43.6
cb line +3 edge of existing Gutter	5.05	43.3
1/2	4.7	44.6
±	4.7	44.6
1/2	5.1	44.2
Gutter	5.6	43.7
Ecb concrete	5.06	44.3
1457' ¹⁰ See sketch		
Ecb concrete	4.57	44.8
Gutter	5.1	44.2
1/2	4.6	44.7
±	4.3	45.0
1/2	5.0	44.3
+3 on edge of existing Con Gutter	4.86	44.5
Gutter on concrete	5.72	43.6
On West return to Franklin:	4.62	44.7
W.L. Cor. of return Con	4.47	44.8

+

π
50.02

-

E/e
43.66 Rock:

7.59

42.43 = Initial B.M. 42.43

50' St
10' C&S

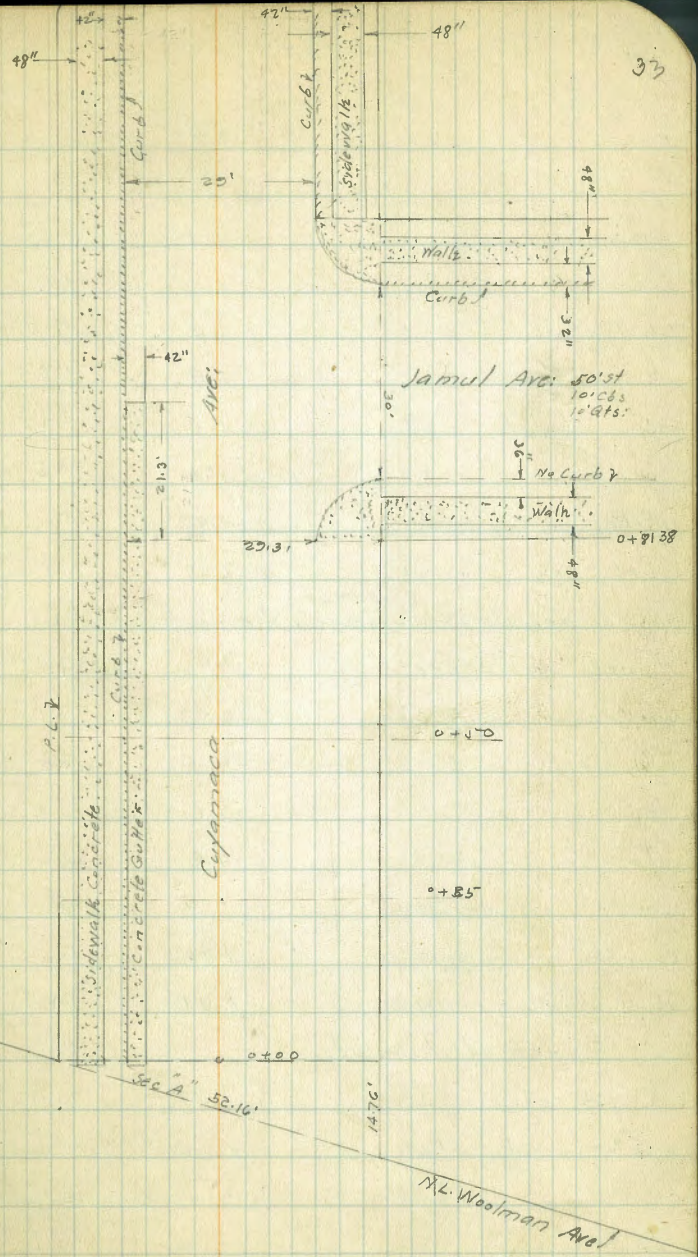
Xsection of Cuyamaca Ave Woolman to Jamul: Dennon Flood Bicket.

Aug 8th - 27

	+	π	-	Elc
	5.93	75.93		70.00 Pipe see page 23 of this Book
"Sec A"				
W. Cb on ground			10.0	65.9
Gutter on Concrete			11.06	64.9
1/4			10.9	65.0
±			10.7	65.00
1/4			11.3	64.6
Elc			12.0	63.9
+3			11.6	64.3
E.L.C.			12.0	63.9
0+00 Sec sketch				
E.L.C.			10.4	65.5
cb.			11.1	64.8
1/4			10.7	65.2
±			10.4	65.5
1/4			10.4	65.5
Gutter Concrete			10.88	65.1
W. Curb, " bad shape			9.92	66.0
0+25				
W. Curb Corr			7.30	68.6
Gutter "			8.39	67.5
1/4			8.2	67.7
±			8.2	67.7
1/4			8.3	67.6
+7			8.9	67.0
cb			8.2	67.7

Plotted 9-14-27 by Dr. Milner.

Note: Took midway between curbs for E of Cuyamaca Ave.



NW 7th Ct. 40th + Ocean View 8218

Cuyamaca Ave

E.L.	7.7	68.2
0+0-0		
E.L.	4.7	71.2
C.B.	5.6	70.3
+1	6.4	69.5
1/4	5.9	70.0
±	5.5	70.4
1/4	5.4	70.5
Gutter on Concrete	5.87	70.1
W Curb " "	4.98	71.0
Jamul 0+8138- S.L. Cuyamaca Ave on the east:		
W Curb on Concrete	1.90	74.0
Gutter " "	2.93	73.0
1/4	2.5	73.4
±	2.6	73.3
1/4	2.8	73.1
Gutter on ground	2.9	73.0
Curb " Concrete	1.74	74.2
E.L. on Car return	1.41	74.5
S curb of Jamul		
E.L. on return Con.	1.55	74.4
2.3 ground, gutter	2.3	73.6
E.C.B.	2.5	73.4
1/4	2.2	73.7
±	2.0	73.9
1/4	2.1	73.8

Gutter on concrete	2.64	73.3
W Curb " "	1.63	74.3
S 1/4 of Jamul:		
		73.1
W curb on concrete	1.57	74.4
W Gutter " "	2.46	73.5
1/4	1.9	74.0
±	1.6	74.3
1/4	1.7	74.2
C.B.	1.8	74.1
E.L.	2.1	73.8
± of Jamul:		
E.L.	1.5	74.4
C.B.	1.5	74.4
1/4	1.4	74.5
±	1.4	74.5
1/4	1.7	74.2
gutter on ground:	2.4	73.5
W Curb "	1.59	74.3
N 1/4 of Jamul:		
W Curb on concrete	1.54	74.4
W Gutter " ground	2.1	73.8
1/4	1.5	74.4
±	1.1	74.8
1/4	1.2	74.7
C.B.	1.3	74.6
E.L.	1.5	74.4

+

T

-

E/c

50'

75.93

35

Cuyamaca Ave

N. Curb of Jamuli:

E.L. on concrete curb	1.38	74.6
E.L. on ground gutter	1.7	74.2
cb	1.3	74.6
1/4	1.1	74.8
t	0.9	75.0
1/4	1.3	74.6
gutter on ground	1.6	74.3
W Curb " concrete:	1.44	74.5

N.L. of Jamuli:

W Curb on Concrete	1.33	74.6
Gutter " ground:	1.1	74.8
1/6	0.9	75.0
t	0.6	75.3
1/4	1.0	74.9
gutter ground	1.3	74.6
Curb concrete	1.27	74.6
E.L. " Car return	1.27	74.6
#	5.93	70.00 = 70.00

Tolman
7/27

Xsection Pendleton
Garnet to Diamond

80' street
20' cbs

0.42	45.52	45.10	B.P. Olney + Garnet
5.61	43.33	7.80	37.72

0-30 Edge paving-Garnet

WL	7.40	35.93
±	7.86	35.47
EL	8.55	34.78

0-20 Top Cb

WL	6.43	36.70
----	------	-------

=0-04=

WL	6.27	Edge SW 37.06
cb	6.2	37.1
1/4	7.2	36.1
±	7.3	36.0
1/4	6.6	36.7
cb	6.9	36.4
EL	6.7	36.6

=0+00=N.P.L. Garnet ST

EL	5.3	38.0
cb	5.7	37.6
1/4	6.3	37.0
±	7.1	36.2

Notes Reduced by L.P.L.
43.33

1/4	7.1	36.2
cb	6.3	37.0
WL	6.0	37.3

=0+50=Fence on W. 2' in street

WL	4.6	38.7
cb	4.7	38.6
1/4	4.9	38.4
±	4.4	38.9
1/4	4.1	39.2
cb	3.6	39.7
EL	1.3	42.0

TP	11.18	52.48	2.03	41.30
----	-------	-------	------	-------

=1+00=Garage on W. 3.5' in street

EL	8.5	44.0
cb	9.8	42.7
1/4	10.8	41.7
±	11.2	41.3
1/4	11.6	40.9
cb	11.8	40.7
WL	11.6	40.9

=1+50=

WL	8.4	44.1
----	-----	------

cb	8.4	44.1
1/4	8.0	44.5
2	8.1	44.4
1/2	8.4	44.1
cb	8.1	44.4
EL	6.9	45.6

= 2 + 00 =

EL	4.0	47.9
cb	5.3	47.2
1/4	5.1	47.4
2	5.0	47.5
1/4	5.0	47.5
cb	4.8	47.7
WL	4.3	48.2

= 2 + 50 =

WL	1.9	50.6
cb	2.2	50.3
1/4	2.5	50.0
2	1.6	49.9
1/4	2.5	50.0
cb	2.7	49.8
E.L.	2.0	50.5

T.P. 11.05 62.39 1.14 51.34

= 2 + 70 = 5.2

EL	10.6	51.8
cb	11.3	51.1
1/4	11.1	51.3
2	11.2	51.2
1/4	11.0	51.4
cb	10.7	51.7
W.L.	10.6	51.8

2 + 90 = cb.

W.L.	9.3	53.1
cb	9.4	53.0
1/4	9.6	52.8
2	9.7	52.7
1/4	9.5	52.9
cb	10.0	52.4
EL	9.2	53.2

= 3 + 00 = 1/4

EL	8.3	54.1
cb	9.0	53.4
1/4	8.7	53.7
2	8.9	53.5
1/4	8.7	53.7
cb	8.7	53.7
WL	8.4	54.0

Feldspar
 ♀ = 3+10

W.L.	7.8	54.6	EL
cb	8.1	54.3	cb
1/4	8.0	54.4	1/4
♀	8.0	54.4	♀
1/4	8.1	54.3	1/4
cb	8.2	54.2	cb
EL	7.6	54.8	WL

1/4 = 3+20

E.L.	6.8	55.6	W.L.
cb	7.5	54.9	cb
1/4	7.2	55.2	1/4
♀	7.3	55.1	♀
1/4	7.3	55.1	1/4
cb	7.3	55.1	cb
W.L.	7.2	55.2	EL

cb = 3+30

W.L.	6.5	55.9	T.P.
cb	6.6	55.8	9.77
1/4	6.6	55.8	71.39
♀	6.7	55.7	0.77
1/4	6.5	55.9	61.62
cb	6.8	55.6	
EL	6.2	56.2	

0+00 N.L

4.7	57.7
5.1	57.3
4.8	57.6
4.9	57.5
4.7	57.7
4.6	57.8
4.5	57.9

0+00

W.L.	1.5	60.9
cb	1.1	61.3
1/4	1.0	61.4
♀	1.2	61.2
1/4	1.1	61.3
cb	1.6	60.8
EL	1.3	61.1

= 1+00 =

7.9	63.5
7.9	63.5
7.3	64.1
7.5	63.9
7.5	63.9
7.7	63.7
8.3	63.1

= 1750 =

W.L.	6.7	64.7
cb	6.0	65.4
1/4	5.9	65.5
♀	5.8	65.6
1/4	5.5	65.9
cb	6.0	65.4
E.L.	6.0	65.4

= 2180 =

E.L.	4.5	66.9
cb	5.0	66.4
1/4	5.0	66.4
♀	5.1	66.3
1/4	5.2	66.2
cb	5.4	66.0
W.L.	6.1	65.3

= 2150 =

W.L.	4.6	66.8
cb	4.1	67.3
1/4	4.2	67.2
♀	4.1	67.3
1/4	4.0	67.4
cb	4.2	67.2
EL	3.7	67.7

= 2170 = S.L.

E.L.	3.5	67.9
------	-----	------

cb.	3.8	67.6
1/4	3.5	67.9
♀	3.5	67.9
1/4	3.5	67.9
cb	3.5	67.9
W.L.	3.8	67.6

= 2190 = cb

W.L.	3.4	68.0
cb	3.2	68.2
1/4	3.1	68.3
♀	3.3	68.1
1/4	3.3	68.1
cb	3.6	67.8
EL	3.7	67.7

3100 = #

EL	3.6	67.8
cb	3.5	67.9
1/4	3.2	68.2
♀	3.0	68.4
1/4	3.0	68.4
cb	2.9	68.5
W.L.	3.1	68.3

3110 = ♀ Emerald

W.L.	2.7	68.7
cb	2.6	68.8
1/4	2.8	68.6

71.39

= 3+10 = ♀

♀	2.8	68.6
1/4	2.9	68.5
cb	3.4	68.0
EL	3.8	67.6

= 3+20 = 1/4

EL	3.6	67.8
cb	3.2	68.2
1/4	2.6	68.8
♀	2.5	68.9
1/4	2.5	68.9
cb	2.4	69.0
W.L	2.3	69.1

- 3+30 = cb

W.L	2.0	69.4
cb	2.1	69.3
1/4	2.3	69.1
♀	2.3	69.1
1/4	2.6	68.8
cb	3.1	68.3
EL	3.6	67.8

0+00 = NL

EL	3.4	68.0
cb	2.9	68.5
1/4	2.5	68.9
♀	2.8	68.6

40

71.39

1/4	1.5	69.9
cb	2.4	69.0
W.L	1.2	70.2
TP	10.46	79.44
	2.36	69.03

= 0+50

W.L	7.4	72.1
cb	7.6	71.9
1/4	6.7	72.8
♀	8.8	70.7
1/4	8.8	70.7
cb	9.0	70.5
EL	9.7	69.8

= 1+00

EL	7.1	72.4
cb	6.5	73.0
1/4	6.4	73.1
♀	5.9	73.6
1/4	5.6	73.9
cb	5.3	74.2
W.L	5.0	74.5

= 1+50

W.L	3.0	76.5
cb	3.4	76.1
1/4	3.7	75.8
♀	3.9	75.6

= 1750

1/4	4.2	75.3	cb
cb	4.3	75.2	W.L.
EL	4.5	74.7	

2700

EL	2.8	76.7	cb
cb	2.3	77.2	1/4
1/4	2.3	77.2	£
£	2.2	77.3	1/4
1/4	1.7	77.8	cb
cb	1.4	78.1	EL

W.L.	0.5	79.0	
T.P.	9.47	87.61	78.14
		1.35	
		2750	

W.L.	6.8	80.8	cb
cb	7.4	80.2	1/4
1/4	8.0	79.6	£
£	7.9	79.7	1/4
1/4	7.9	79.7	cb
cb	7.8	79.8	W.L.
EL	8.2	79.4	

= 2770 - S.L.

EL	7.0	80.6	cb
cb	7.0	80.6	1/4
1/4	6.8	80.8	£
£	6.8	80.8	1/4
1/4	6.8	80.8	cb
			EL

2790 = cb

W.L.	5.8	81.8
cb	5.2	82.4
1/4	5.2	82.4
£	5.5	82.1
1/4	5.7	81.9
cb	6.0	81.6
EL	6.2	81.4

= 3100 = 1/4

EL	5.5	82.1
cb	5.0	82.6
1/4	4.9	82.7
£	4.6	83.0
1/4	4.5	83.1
cb	4.8	82.8
W.L.	5.09	82.52 parcment

= 3110 = £ Diamond

W.L.	4.94	82.67 parcment
cb	4.9	82.7
1/4	4.4	83.2
£	4.3	83.3
1/4	4.4	83.2
cb	4.7	82.9
EL	5.2	82.4

87.61

= 3720 = 1/4

EL	4.4	83.2	WL
cb	4.2	83.4	cb
1/4	4.0	83.6	1/4
¢	4.1	83.5	¢
1/4	4.5	83.1	1/4
cb	4.7	82.9	cb
W.L.	4.95	82.63	FL

pavement

3726

W.L.	4.7	82.9	TP	0.13	76.37	11.37	74.24
cb	4.5	83.1	TP	0.90	66.12	11.15	65.22
1/4	4.3	83.3	TP	1.82	53.84	13.10	53.02
¢	4.0	83.6				8.74	45.10 = 45.10 chh
1/4	3.9	83.7					
cb	4.1	83.5					
FL	4.2	83.4					

= 3730 = cb

FL	4.1	83.5					
cb	3.8	83.8					
1/4	3.7	83.9					
¢	3.7	83.9					
1/4	3.8	83.8					
cb	3.6	84.0					
W.L.	3.1	84.5					

87.61

42

= 3150 = NL

2.7	85.2		
3.6	84.0		
3.5	84.1		
3.6	84.0		
3.6	84.0		
3.8	83.8		
4.5	83.1		

TP	0.13	76.37	11.37	74.24
TP	0.90	66.12	11.15	65.22
TP	1.82	53.84	13.10	53.02
			8.74	45.10 = 45.10 chh

Tolman
7/19/27

Xsect of Woolman Ave
45th to 47th

60 St.
10' cbs

94.36

43

94.4	94.36	84.92	Elevation as Shown on Page 2 Elev written on pole = 88.26	cb	79	86.5
				S.L.	79	86.5

± Paving

NL	9.72	84.64	SL	79	86.5
cb	9.51	84.9	cb	87	85.7
1/2	9.18	85.2	1/2	80	86.4
±	8.93	85.4	±	81	86.3
1/2	8.64	85.7	1/2	86	85.8
cb	8.38	86.0	cb	87	85.7
S.L.	8.10	86.3	NL	79	86.5

E L 45th St = 0+00

79	86.5
87	85.7
80	86.4
81	86.3
86	85.8
87	85.7
79	86.5

Plotted
10/11/27 by
D.C. Milner.

Edge Paving (9')

SL	8.08	86.3	NL	5.6	88.8
cb	8.31	86.1	cb	6.5	87.9
1/2	8.65	85.7	1/2	6.7	87.7
±	8.91	85.5	±	6.3	88.1
1/2	9.14	85.2	1/2	6.5	88.1
cb	9.45	84.9	cb	6.2	88.2
NL	9.69	84.7	SL	5.7	88.7

0+50

5.6	88.8
6.5	87.9
6.7	87.7
6.3	88.1
6.5	88.1
6.2	88.2
5.7	88.7

Yardage in
Book 16 - Pp. 74-77

cb 45th St culvert shown on Page 2

NL	9.9	84.5	SL	3.5	90.9
cb	9.2	85.2	cb	4.5	89.9
1/2	8.7	85.7	1/2	4.2	90.2
±	8.5	85.9	±	4.0	90.4
1/2	8.2	86.2	1/2	4.1	90.3

1+00

3.5	90.9
4.5	89.9
4.2	90.2
4.0	90.4
4.1	90.3

94.36

1700

cb		3.9	90.5
N.L.		3.0	90.9
TP	8.00	98.63	3.73
			90.63

1750

N.L.		6.4	92.2
cb		6.4	92.2
1/4		6.9	91.7
2		6.5	92.1
1/4		6.4	92.2
cb		6.8	91.8
SL		5.6	93.0

2700

SL		4.5	94.1
cb		5.4	93.2
1/4		5.0	93.6
2		5.2	93.4
1/4		5.5	93.1
cb		4.9	93.7
N.L.		4.7	93.9

2765 Wk of West St

N.L.		4.1	94.5
cb		4.4	94.2
1/4		4.9	93.7

60' street
10' curbs

98.63

Woolman

44

2		4.7	93.9
1/4		4.6	94.0
cb		5.1	93.5
SL		4.3	94.3

= cb =

SL		4.5	94.1
cb		5.0	93.6
1/4		4.5	94.4
2		4.6	94.0
1/4		4.8	93.8
cb		4.4	94.2
N.L.		4.6	94.0

= 1/4 =

N.L.		4.7	93.9
cb		4.4	94.2
1/4		4.7	93.9
2		4.6	94.0
1/4		4.5	94.1
cb		4.8	93.8
SL		4.6	94.0

= 2 = of West St

SL		4.5	94.1
cb		4.5	94.1
1/4		4.4	94.2
2		4.6	94.0

- E -

1/4	4.5	93.8
cb	4.3	94.3
NL	4.6	94.0

- 1/4 -

N.L.	4.5	94.1
cb	4.3	94.3
1/4	4.7	93.9
E	4.7	93.9
1/4	4.7	93.9
cb	4.1	94.5
SL	4.3	94.3

- cb -

SL	4.4	94.2
cb	4.7	93.9
1/4	4.5	94.1
E	4.8	93.8
1/4	4.8	93.8
cb	4.4	94.2
N.L.	5.2	93.4

- 0+0.0 - EL of West St.

N.L.	5.1	93.5
cb	4.3	94.3
1/4	4.8	93.8
E	4.6	94.0
1/4	4.5	94.1

cb	5.2	93.4
SL	4.4	94.2

- 0+50 -

SL	4.4	94.2
cb	5.0	93.6
1/4	4.5	94.1
E	4.7	93.9
1/4	4.8	93.8
cb	4.4	94.2
NL	3.8	94.8

- 1+00 -

NL	3.8	94.8
cb	4.5	94.1
1/4	4.8	93.8
E	4.5	94.1
1/4	4.5	94.1
cb	5.0	93.6
SL	4.6	94.0
T.P. 646	100.56	4.53 94.10

- 1+50 -

SL	6.5	94.1
cb	7.3	93.3
1/4	6.5	94.1
E	6.5	94.1
1/4	6.7	93.9

= 1750 -

cb	6.2	94.4
NL	7.1	93.5
= 2100 -		
NL	7.0	93.6
cb	6.6	94.6
+5	7.2	93.4
1/4	6.9	93.7
φ	6.7	93.9
1/4	6.7	93.9
cb	7.1	93.5
SL	6.8	93.8
- 2765 = W.L. of Meridian ^{46th St.} ^{30' street} ^{14' curbs}		
SL	6.7	93.9
cb	6.8	93.8
1/4	6.7	93.9
φ	6.7	93.9
1/4	6.5	93.8
cb	6.8	93.8
+9	7.0	93.6
NL	9.8	90.8
Wi cb		
NL	9.3	91.3
+7	6.9	93.7
cb	6.9	93.7
1/4	6.8	93.8
φ	6.7	93.9
1/4	6.7	93.9
cb	6.6	94.0
SL	6.4	94.2

5.45 95.1

SL 17

= 1750 -

SL	6.3	94.3
cb	6.5	94.1
1/4	6.7	93.9
φ	6.7	93.9
1/4	6.7	93.9
cb	6.8	93.8
NL	7.0	93.6
φ of Meridian St 46 th St.		
NL	7.0	93.1
cb	6.7	93.9
1/4	6.7	93.9
φ	6.4	94.2
1/4	6.5	94.1
cb	6.4	94.2
SL	6.3	94.3
1/4		
SL	6.0	94.6
cb	6.0	94.6
1/4	6.2	94.4
φ	6.1	94.5
1/4	6.5	94.1
cb	6.6	94.0
NL	7.0	93.6
E cb		
NL	6.0	94.6

E.Cb

cb	5.9	94.7
1/4	6.5	94.1
£	5.9	94.7
1/4	6.0	94.6
cb	6.1	94.5
SL	6.0	94.6
+7	5.00	95.6
E.L. - 0+00 - P.L. E of Meridian 46TH St.		
SL	5.8	94.8
cb	6.0	94.6
1/4	5.7	94.9
£	5.6	95.0
1/4	6.2	94.4
cb	5.4	95.2
NL	4.6	96.0
- 0+50 -		
NL	3.5	97.1
cb	4.1	96.5
+6	5.3	95.3
1/4	4.9	95.7
£	4.5	96.1
1/4	4.0	96.6
cb	5.6	95.0
+3	4.5	96.1
SL	4.5	96.1
1+00 =		
SL	3.2	97.4
+6	3.3	97.3
cb	3.9	96.7

-1+00-

1/4	2.9	97.7
£	3.1	97.5
1/4	3.7	96.9
+5	4.2	96.4
cb	3.0	97.6
NL	2.7	97.9
-1+50-		
NL	1.5	99.1
+3 fence	1.4	99.2
cb	1.8	98.8
1/4	2.4	98.2
£	2.2	98.4
1/4	1.7	98.9
cb	3.3	97.3
+5	3.0	98.6
SL	2.0	98.6
2+00		
SL	0.5	99.8
+7	0.9	99.7
NL	2.1	98.5
1/4	0.7	99.9
d	1.0	99.6
1/4	1.4	99.2
+6	1.6	99.0
cb	0.9	99.7
+8	1.0	99.6
NL	0.9	99.7

T.P.	8.80	108.65	.71	99.85	40' offset 10' curbs
		= 2 + 65 =	WL of	East St	
NL				8.0	100.7
+2	fence corner			8.1	100.6
cb				8.8	100.6
1/4				8.3	100.4
1/4				8.0	100.7
1/4				7.4	101.3
cb				8.3	100.4
SL				7.5	101.2
		= cb =			
SL				7.4	101.3
cb				8.1	100.6
1/4				7.2	101.5
1/4				7.8	100.9
1/4				8.0	100.7
cb				8.3	100.4
NL				8.2	100.5
		= 1/4 =			
NL				7.9	100.8
cb				8.0	100.7
1/4				7.8	100.9
1/4				7.5	101.2
1/4				7.4	101.3
cb				7.8	100.9
SL				7.4	101.3

4 of East St		
7.1		101.6
7.6		101.1
7.2		101.5
7.2		101.5
7.5		101.2
7.9		100.8
7.7		101.0
	= 1/4 =	
7.8		100.9
7.4		101.3
7.3		101.4
6.9		101.8
7.0		101.7
7.5		101.2
6.7		102.0
	cb	
6.5		102.2
6.9		101.8
6.4		102.3
6.7		102.0
7.0		101.7
6.9		101.8
7.2		101.5

	0+00	EL of East St			1+50		
NL		7.0	101.7	SL		8.0	110.4
cb		6.6	102.1	cb		8.4	110.0
1/4		6.6	102.1	+2		9.0	111.4
1/4		6.4	102.3	1/4		8.2	110.2
1/4		6.0	102.7	1/4		8.2	110.2
+7		7.2	101.5	1/4		8.3	110.1
cb		6.5	102.2	+7		8.8	09.6
SL		6.4	102.3	cb		8.0	110.4
	0+50			NL		8.3	110.1
					2+00		
SL		4.3	104.4	NL		4.6	113.9
cb		4.9	103.8	cb		4.9	113.5
1/4		4.1	104.6	+2		5.8	112.6
1/4		4.4	104.3	1/4		5.6	112.8
1/4		4.5	104.2	1/4		5.3	113.1
+7		5.3	103.4	1/4		5.4	113.0
cb		4.4	104.3	+8		5.6	112.8
NL		4.5	104.2	cb		4.7	113.7
	1+00			SL		4.3	114.1
					2+65		
NL		1.5	107.2	SL on cement		1.68	116.8
+2		1.5	107.2	cb		2.00	116.4
cb		2.3	106.4	Gutter		3.0	115.4
1/4		1.6	107.1	1/4		3.7	114.7
1/4		1.5	107.2	1/4		3.7	114.7
1/4		1.6	107.1	1/4		3.9	114.5
cb		2.0	106.7	Gutter		3.6	114.8
SL		1.5	107.2	cb		2.76	115.6
T.P.	10.29	118.44	0.50	PL		?	—

T.P.	0.88	106.21	13.01	105.43
T.P.	4.60	199.48	11.33	194.88
T.P.	1.03	194.21	6.30	93.15
B.M.			9.25	84.96

= 84.92
 Elev. of plug
 in pole at
 beginning

Street was Xsectioned as being
 a continuation of Woolman Ave from
 the west. The ξ was located by
 "splitting the curbs" on 47th & using the
 tack in the pavement on 45th.

McHugh
Raughter

X SECTION 33 rd. El Cajon to
Montroe.

381.1

57

12' cbs 14' quarters

0+00 = N.A. El Cajon

B.M.	33rd + El Cajon SWCR	374.25	
T.P.	6.85	381.10	374.25
0+00			
E. cb.	5.62	375.58	
Gut	6.34		
$\frac{1}{4}$	5.91		
$\frac{1}{2}$	5.89		
$\frac{3}{4}$	6.14		
gut	6.65		
cb	6.05	375.05	
0+50			
w cb	5.82	375.28	
Gut	6.2		
$\frac{1}{4}$	5.8		
$\frac{1}{2}$	5.6		
$\frac{3}{4}$	5.7		
Gut	5.9		
cb	5.35	375.75	
1+00			
E cb	5.19	375.91	
Gut	5.7		
$\frac{1}{4}$	5.5		
$\frac{1}{2}$	5.4		
$\frac{3}{4}$	5.5		

Gut	6.0		
cb	5.48	375.63	
1+50			
w cb	5.26	375.84	
Gut	5.6		
$\frac{1}{4}$	5.2		
$\frac{1}{2}$	5.0		
$\frac{3}{4}$	5.1		
Gut	5.6		
cb	4.85	376.25	
2+00			
E cb	4.63	376.17	
Gut	5.1		
$\frac{1}{4}$	4.8		
$\frac{1}{2}$	4.5		
$\frac{3}{4}$	4.9		
Gut	5.9		
cb	4.89	376.21	
2+50			
w cb	4.73	376.37	
Gut	5.0		
$\frac{1}{4}$	4.6		
$\frac{1}{2}$	4.3		
$\frac{3}{4}$	4.5		
Gut	5.0		
E cb	4.32	376.78	

381.10

3+00			
Ecb	4.13	376.97	
Gut	4.5		
$\frac{1}{4}$	4.3		
L	4.0		
$\frac{1}{4}$	4.3		
Gut	4.9		
wcb	driveway	—	

3+50			
wcb	4.13	376.97	
Gut	4.5		
$\frac{1}{4}$	4.1		
L	3.8		
$\frac{1}{4}$	4.0		
Gut	4.3		
Ecb	3.86	377.24	
T.P.	5.76	382.87	399 377.11

4+00			
Ecb	5.38	377.49	
Gut	5.9		
$\frac{1}{4}$	5.4		
L	5.2		
$\frac{1}{4}$	5.6		
Gut	5.8		
wcb	5.54	377.33	
4+50			

382.87

52

wcb	5.31	377.56	
Gut	5.7		
$\frac{1}{4}$	5.4		
L	5.2		
$\frac{1}{4}$	5.3		
Gut	5.8		
Ecb	5.15	377.72	

5+00			
Ecb	4.87	398.00	
Gut	5.5		
$\frac{1}{4}$	5.1		
L	4.8		
$\frac{1}{4}$	4.9		
Gut	5.5		
wcb	4.93	377.94	
5+50			

wcb	4.61	378.26	
Gut	5.2		
$\frac{1}{4}$	4.9		
L	4.7		
$\frac{1}{4}$	4.8		
Gut	5.2		
Ecb	4.62	378.25	
6+00			
Ecb	4.29	378.58	

38287

Gut	4.8	
$\frac{1}{4}$	4.7	
$\frac{1}{4}$	4.4	
$\frac{1}{4}$	4.6	
Gut	4.8	
wcb	4.30	378.57
$6+07^{90} = SL$ Mead		
w. cb	4.34	378.53
Gut	4.6	
$\frac{1}{4}$	4.7	
$\frac{1}{4}$	4.2	
$\frac{1}{4}$	4.6	
Gut	4.6	
E cb	4.25	378.62
<u>Gurb</u>		
EL	4.6	
cb	4.8	378.07
$\frac{1}{4}$	4.4	
$\frac{1}{4}$	4.2	
$\frac{1}{4}$	4.6	
cb	4.4	
W.L.	4.7	
<u>Quarter</u>		
n.s.	4.5	
cb	4.5	378.37

38287

53

$\frac{1}{4}$	4.2	
$\frac{1}{4}$	4.0	
$\frac{1}{4}$	4.1	
cb	4.9	377.97
EL	4.1	
<u>Center</u>		
EL	3.9	
cb	4.3	378.57
$\frac{1}{4}$	3.9	
$\frac{1}{4}$	3.8	
$\frac{1}{4}$	4.0	
cb	3.9	378.97
wl	4.0	
<u>Quarter</u>		
wl	4.2	
cb	4.0	378.87
$\frac{1}{4}$	4.1	
$\frac{1}{4}$	3.9	
$\frac{1}{4}$	4.2	
cb	4.3	378.57
EL	3.9	
<u>Gurb</u>		
EL	4.0	
cb	4.4	378.47
$\frac{1}{4}$	4.1	

38287

£	3.9	
$\frac{1}{4}$	4.0	
cb	4.5	378.37
wl	4.6	
0+00 = NL Mead		
wcb	3.92	378.95
Gut	4.6	
$\frac{1}{4}$	4.0	
£	3.6	
$\frac{1}{4}$	4.0	
Gut	4.3	
ECB	3.87	379.00
0+50		
ECB	3.77	379.10
Gut	4.2	
$\frac{1}{4}$	3.8	
£	3.5	
$\frac{1}{4}$	4.0	
Gut	4.4	
wcb	3.86	379.01
1+00		
wcb	3.84	379.03
Gut	4.2	
$\frac{1}{4}$	3.9	
£	3.5	

38287

54

$\frac{1}{4}$	3.6	
Gut	4.0	
ECB	3.67	379.20
T.P.	5.75	384.89
3.73		379.14
1+50		
ECB	5.65	379.24
Gut	6.1	
$\frac{1}{4}$	5.6	
£	5.2	
$\frac{1}{4}$	5.8	
Gut	6.0	
wcb	5.56	379.33
2+00		
wcb	5.42	379.47
Gut	5.8	
$\frac{1}{4}$	5.6	
£	5.2	
$\frac{1}{4}$	5.6	
Gut	6.0	
ECB	5.44	379.45
2+50		
ECB	5.36	379.53
Gut	5.8	
$\frac{1}{4}$	5.4	
£	5.1	

384.89

$\frac{1}{4}$	5.5	
Gut	5.7	
Wcb	5.39	379.50
3+00		
Wcb	5.32	379.57
Gut	5.8	
$\frac{1}{4}$	5.3	
$\frac{1}{4}$	5.1	
$\frac{1}{4}$	5.3	
Gut	5.6	
Ecb	5.20	379.69
3+50		
Ecb	5.16	379.73
Gut	5.40	
$\frac{1}{4}$	5.2	
$\frac{1}{4}$	4.8	
$\frac{1}{4}$	5.2	
Gut	5.7	
Wcb	5.27	379.62
4+00		
Wcb	5.14	379.75
Gut	5.7	
$\frac{1}{4}$	5.1	
$\frac{1}{4}$	4.9	
$\frac{1}{4}$	5.2	

384.89

55

Gut	5.3	
Ecb	5.09	379.80
4+50		
Ecb	4.96	379.93
Gut	5.4	
$\frac{1}{4}$	5.1	
$\frac{1}{4}$	4.8	
$\frac{1}{4}$	4.9	
Gut	5.5	
Wcb	4.93	379.96
5+00		
Wcb	4.76	380.13
Gut	5.3	
$\frac{1}{4}$	4.7	
$\frac{1}{4}$	4.6	
$\frac{1}{4}$	4.9	
Gut	5.1	
Ecb	4.76	380.13
5+50		
Ecb	4.73	380.16
Gut	5.0	
$\frac{1}{4}$	4.7	
$\frac{1}{4}$	4.4	
$\frac{1}{4}$	4.6	
Gut	5.2	
Wcb	4.63	380.26

6+00 = S.L. Montro

wcb 4.50 380.39

Gut 5.2

$\frac{1}{4}$ 4.4

L 3.9

$\frac{1}{4}$ 4.6

Gut 5.0

Ec 4.38 380.51

T.P. 5.25 ^{387.85} 378.85 2.29 382.60

continued on next page

X Section Felton from
El Cajon to Montro 56
12' cbs 14' quarters

0+00 = S.L. Montro

387.86

0+00

wcb 3.62 384.23

Gut 3.8

$\frac{1}{4}$ 3.4

L 3.0

$\frac{1}{4}$ 3.1

Gut 2.8

Ec 2.52 385.33

0+50

Ec 3.13 384.72

Gut 3.8

$\frac{1}{4}$ 3.5

L 3.7

$\frac{1}{4}$ 4.0

Gut 4.4

wcb 4.02 383.83

1+00

wcb 4.20 383.63

Gut 4.7

$\frac{1}{4}$ 4.2

L 3.9

$\frac{1}{4}$ 3.8

Gut 4.1

Ec 3.46 384.39

1+50		
Ecb	3.83	38402
Gut	4.5	
$\frac{1}{4}$	4.2	
$\frac{1}{4}$	4.2	
$\frac{1}{4}$	4.6	
Gut	5.0	
Wcb	4.56	38329
2+00		
wcb	4.79	38306
Gut	5.3	
$\frac{1}{4}$	4.6	
$\frac{1}{4}$	4.5	
$\frac{1}{4}$	4.5	
cut	4.6	
Ecb	4.10	383.75
2+50		
Ecb	4.30	383.55
Gut	5.0	
$\frac{1}{4}$	4.7	
$\frac{1}{4}$	4.7	
$\frac{1}{4}$	5.0	
Gut	5.7	
Wcb	5.15	382.70
3+00		
Wcb	5.25	382.60

Gut	5.9	
$\frac{1}{4}$	5.3	
$\frac{1}{4}$	5.0	
$\frac{1}{4}$	5.8	
Gut	5.4	
Ecb	4.72	38313
3+50		
Ecb	4.99	38286
Gut	5.7	
$\frac{1}{4}$	5.3	
$\frac{1}{4}$	5.3	
$\frac{1}{4}$	5.5	
Gut	6.1	
Wcb	5.53	38232
4+00		
Wcb	5.75	38216
Gut	6.5	
$\frac{1}{4}$	5.8	
$\frac{1}{4}$	5.5	
$\frac{1}{4}$	5.5	
Gut	5.9	
Ecb	5.21	382.64
4+50		
Ecb	5.55	382.30
Gut	6.1	

$\frac{1}{4}$			5.8	
$\frac{1}{2}$			5.9	
$\frac{1}{4}$			6.1	
Gut			6.6	
wcb			6.06	381.85
T.P.	4.95	386.30	6.50	381.35
5+00				
wcb			4.72	381.58
Gut			5.2	
$\frac{1}{4}$			4.8	
$\frac{1}{2}$			4.6	
$\frac{1}{4}$			4.6	
Gut			4.9	
Ec			4.35	381.95
5+50				
Ec			4.60	381.70
Gut			5.2	
$\frac{1}{4}$			4.8	
$\frac{1}{2}$			4.8	
$\frac{1}{4}$			5.0	
Gut			5.5	
wcb			4.96	381.34
6+00	= NL Mead			
wcb			5.06	381.24
Gut			5.5	

58

$\frac{1}{4}$			5.2	
$\frac{1}{2}$			4.8	
$\frac{1}{4}$			4.9	
Gut			5.3	
Ec			4.89	381.41
T.P.	3.57	384.34	5.53	380.77
Curb				
EL			3.3	
cb			3.0	381.34
$\frac{1}{4}$			3.0	
$\frac{1}{2}$			3.3	
$\frac{1}{4}$			3.3	
cb			3.8	380.54
wl			3.9	
Quarter				
wl			3.5	
cb			3.3	381.04
$\frac{1}{4}$			3.2	
$\frac{1}{2}$			3.2	
$\frac{1}{4}$			3.1	
cb			2.9	381.44
EL			2.9	
Center				
EL			2.8	
cb			2.9	381.44

1/4	2.9	
2	3.0	
1/4	3.2	
cb	3.4	380.94
w.l.	3.5	
Quarter		
wl	3.5	
cb	3.4	380.94
1/4	3.0	
2	2.8	
1/4	3.0	
cb	2.8	381.54
EL	2.7	
Currb		
EL	3.6	
cb	3.8	380.54
1/4	3.1	
2	3.0	
1/4	3.3	
cb	3.7	380.64
wl	4.1	
0+00 = S.L. Mead = 60' street = 12' cbs 9' gts.		
wcb	3.37	380.97
Gut	3.7	
1/4	3.4	

2	3.0	
1/4	3.3	
Gut	3.3	
ecb	3.00	387.34
0+50		
ecb	3.28	387.06
Gut	4.0	
1/4	3.7	
2	3.7	
1/4	3.8	
Gut	4.4	
wcb	3.63	380.71
1+00		
wcb	3.99	380.35
Gut	4.5	
1/4	4.1	
2	4.0	
1/4	4.0	
Gut	4.3	
ecb	3.67	380.67
1+50		
ecb	3.99	380.35
Gut	4.8	
1/4	4.2	
2	4.4	

1/4	4.5	
Gut	4.8	
w cb	4.29	380.05
2+00		
w cb	4.62	379.72
Gut	5.2	
1/4	4.8	
2	4.7	
1/4	4.7	
Gut	5.1	
E cb	4.29	380.06
2+50		
E cb	4.58	379.76
Gut	5.4	
1/4	4.9	
2	5.0	
1/4	5.1	
Gut	5.6	
w cb	5.06	379.28
3+00		
w cb	5.37	378.97
Gut	6.0	
1/4	5.5	
2	5.3	
1/4	5.3	

Gut	5.7	
E cb	4.91	379.43
3+50		
E cb	5.23	379.11
Gut	5.8	
1/4	5.7	
2	5.6	
1/4	5.9	
Gut	6.4	
w cb	5.64	378.70
4+00		
w cb	6.05	378.29
Gut	6.6	
1/4	6.4	
2	5.8	
1/4	6.1	
Gut	6.4	
E cb	5.55	378.79
T.P.	5.10	382.98
4+50		
E cb	4.53	378.45
Gut	5.2	
1/4	5.2	
2	5.3	
1/4	5.6	

Gut	5.7	
wcb	4.92	378.06
5+00		
wcb	5.31	379.67
Gut	6.1	
$\frac{1}{4}$	5.7	
$\frac{1}{4}$	5.4	
$\frac{1}{4}$	5.4	
Gut	5.7	
Ecb	4.75	378.23
5+50		
Ecb	5.09	377.89
Gut	5.9	
$\frac{1}{4}$	5.7	
$\frac{1}{4}$	5.6	
$\frac{1}{4}$	6.1	
Gut	6.3	
wcb	5.73	377.25
6+07 ⁵⁰ = NL El Cajon		
wcb	6.00	376.98
Gut	6.52	
$\frac{1}{4}$	6.01	
$\frac{1}{4}$	5.70	
$\frac{1}{4}$	5.77	
Gut	6.03	

Ecb	Driveway	5.51	377.47
			378.47
T.P.		286	374.12
		374.25	
		<u>374.12</u>	
		.13	

Section Alleys Block 14 Higgins
 Addition Block 242 Univ Heights

B.M. P.R. spike
 Cypress + Indiana
 S.W.

			Elev
	1.37	302.35	300.98
T.P.	9.52	298.77	810 294.25

6100 N Line of Cypress

E Topcb	9.03
Gutter	4.3
Φ	4.6
+4	4.6
Gutter	4.3
W Topcb	4.30

07' North

W	4.2
+6	4.6
Φ	4.7
E	4.7

18' West

E	5.3
Φ	5.4
+4	5.3
W	5.1

40' North

W	6.0
+5	5.8
Φ	5.7
+6	5.4
E	5.3

298.77

60

67' North

E	5.9
Φ	5.8
+5	6.2
W	6.51
	80' North
W	6.9
+4	5.7
Φ	5.9
+5	5.5
E	5.0

160' North

E	4.6
+3	4.6
+4	5.2
Φ	5.3
+6	5.5
W	6.6

125' W

W	5.7
+5	5.1
Φ	5.1
+7	4.9
Φ	4.1
	1.37
E	4.3
E	4.9

298.77

63

+6	9.9	
W	5.5	
	152	
W	5.5	
+9	5.0	
E	4.9	
+6	4.5	
E	4.1	
Set BM Pole SW of E Walky	9.84	293.93

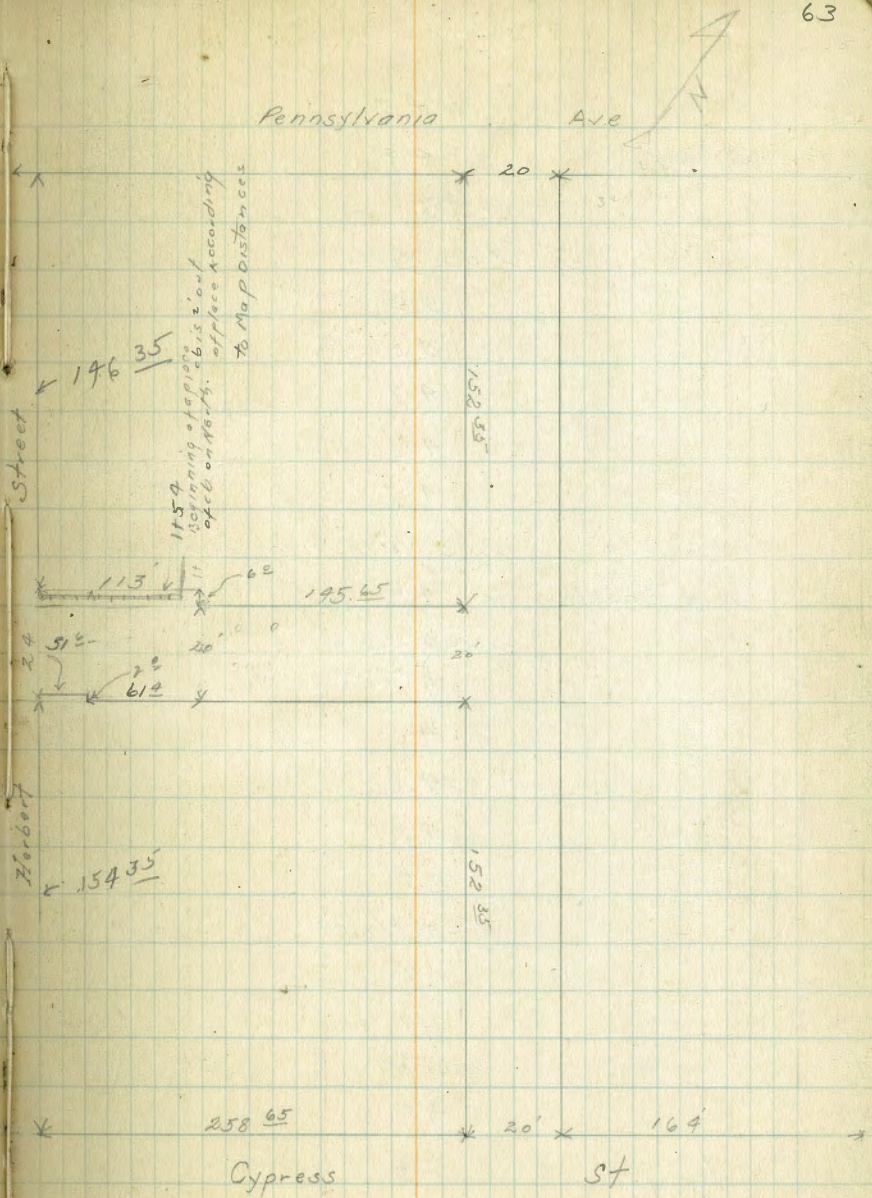
163' North

E	4.0			
+5	4.3			
E	4.5			
+4	4.7			
W	5.0			
TP	5.90	299.83	4.84	293.93

168' North Single Garage on East
7.5' Back. Dirt/floor etc 3.9

170' North

W	6.0	
E	5.1	
+5	5.0	
E	4.6	
	184 North	
E	4.3	



X
29983

+7 47
 E 49
 W 5.5

200' North

W 5.5
 +5 5.0
 E 4.7
 +7 4.7
 E 4.5

203' North Single Garage on East

6' Back Dirt floor ctr 4.0

209' North

E 4.4
 +7 4.5
 E 4.6
 +5 5.0
 W 5.5

225' North

W 5.9
 +5 4.9
 E 4.7
 +7 4.2
 +8 3.9
 E 3.9

235' North

E 4.3

X
29983

69

+7 4.6
 E 4.8
 +4 4.7

W 5.8

299' North

W 5.9
 +4 5.0
 E 5.0
 +5 4.8
 E 4.5

265' North

E 3.7
 +2 3.7
 +5 4.2
 E 4.3
 +6 4.6
 W 5.5

282' North

W 5.3
 +5 4.7
 E 4.9
 E 4.4

300' North

E 3.5
 +5 4.3
 E 4.5

299.83

+6	4.4	
W	5.1	
	318' North	
W	4.8	
+6	4.3	
⊕	4.0	
+5	3.9	
E	3.5	
	323' North	
E	3.6	
+5	4.2	
⊕	4.6	
+3	4.5	
W	4.9	
	324' ^{to} S Line of Penn	
W Top cb.	4.91	
Gutter	4.9	
+5	4.7	
⊕	4.6	
+5	4.5	
Gutter	4.4	
E Top cb.	4.33	
check on B.M.	5.90	299.83

X Sections of East and West Alley Block
14 Higgins Addition 20' Alley 65

B.M. 5PK Pole 5.90
S.W. Alley

299.83

293.93

0+00 = W line of North and South Alley

S	6.7
⊕	6.5
+2	6.5
+7	5.9
N	5.9
	0.5' West Single Garage on South
	4' Back Dirt floor ctr 7.1
	15' West
N	7.1
+5	7.2
⊕	8.4
S	8.4
	23' West
S	9.4
+5	10.2
⊕	10.0
+2	9.5
+5	8.1
N	8.0
	35' West
N	9.3
+5	11.9
⊕	12.9
+5	12.5

π
299.83

S. 13.1
T.P. 0.18 287.07 12.94 286.59

50' West

S. 5.3
+2 9.8
+5 4.5
ϕ 4.5

+5 4.5

+6 3.2

N 3.6

56' West

N-15 7.5

N 6.6

ϕ 5.9

+5 5.9

S. 7.0

S+15 8.4

66' West

S-15 8.1

S-8 9.3

S 8.5

+5 7.9

ϕ 7.7

+4 7.3

N 7.5

N+15 9.0

π
287.07

66

78' West

N-15 10.1

N 8.3

+5 8.0

ϕ 8.9

S. 8.0

S+10 7.3

85' West

S-10 4.9

S-7 6.0

S. 7.1

+5 7.9

ϕ 8.4

N 9.2

N+15 10.3

95' West

N-15 10.4

N 9.5

+4 8.9

+5 7.2

ϕ 5.8

+5 5.1

+5 4.5

S+10 2.8

105' West

S. 2.0

ϕ 2.1

287.07

+5		3.1
+7		9.7
N		5.9
N+2		8.9
N+15		10.8
		115 West
N-15		7.2
N-5		9.6
N		5.0
+3		4.7
+3.5		1.8
T.P	11.38	298.43 0.02 287.05
⊕		11.1
S.		10.9
		125 West
S.		6.6
⊕		7.5
+7		9.1
+8		11.4
N		12.6
N+15		12.8
		127 West
N-10		10.1
N		6.5
⊕		6.7
S		5.7

298.43

67

138 West Single Garage on South

6.5 Back concrete floor etc 9.21

		195 6.5 West for walk
S		5.0
⊕		5.5
N		6.0
		145 6.5
		26' Alley Note Alley Widens to 26 feet as provided by opening
N		6.0
⊕		5.6
S		5.0
T.P.	3.73	297.83 4.33 294.10
		150 West
S		4.2
+1		9.19
+1.5		9.5
⊕		9.9
+11		5.2
N		5.0
		Beginning of piece of cb on N side of Alley
		154 West
N		4.8
+1.7		4.63
Gutter		5.0
+6		5.1
⊕		4.7
+4		4.6
+12		4.4
Top cb		4.07

π
297.83

S. 4.1
165' West

S. 4.1
+1 4.0
+15 4.3
ϕ 4.5
+7 4.8
+12 Gutter 4.8
cb 4.42
N 4.6

188' West

N. 4.4
+2 4.29
Gutter 4.7
ϕ 4.5
+3 4.9
S. 4.0

200' West

S. 3.6
+9 4.0
ϕ 4.2
+5 4.4
+12 4.6
Top cb 4.40
N 4.4

π
297.83

68

202' West Single Garage - South

1. Back. Concrete 3.21

207⁰⁵ End of 26' Alley
N 4.4
+2 Top cb 4.03
+10 4.3
ϕ 4.2
S 3.9
207⁰⁵ 24' alley
S 3.9
ϕ 4.2
+2 4.3
+10 4.7
Top cb 4.43
N 4.4

212' West Single Garage on S.

3 Back ctr 4.95
N 4.4
+4 Top cb 4.91
Gutter 4.7
+9 4.4
ϕ 4.3
+7 4.3
S 3.9
235' West
S 4.1

↑
297.83

7
2100

69

S. + 4			4.6	
2			4.7	
S. + 10 cutter			4.9	
+ top cb			4.51	
+ N			4.6	
2			2 + 58.65	value of Herbert
+ N			4.71	
+ 2			4.71	
+ Top cb			4.71	
C cutter			5.2	
N 2			5.1	
+ 7			4.8	
N 5			4.5	
+ T.P	11.46	301.83	7.46	290.37
C check on starting B.M.			0.84	300.99
				<u>300.98</u>
				.01 ✓

Bliss
 To bell
 187504
 3/4/25
 BM NEBP
 29th + Thorn

X Section s Alley Block 2nd St Louis

H/S Between Thorn & Upas 29th + Granada

	+	π	-	Elev
	6.31	327.52		321.21

±100 = 8' Lin of Thorn

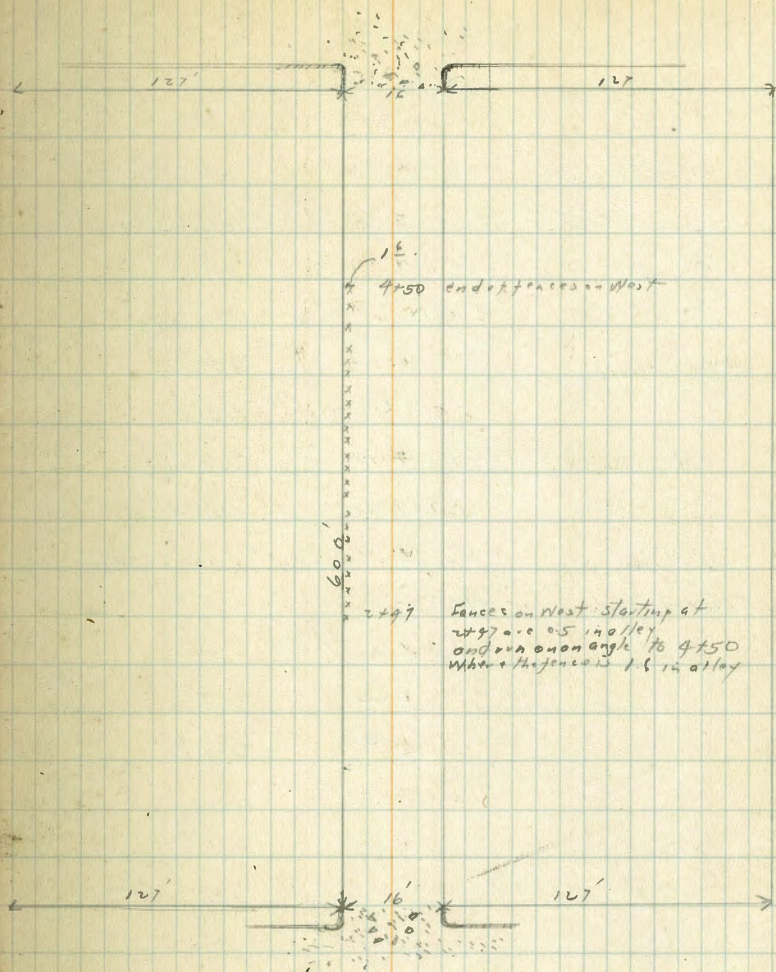
E Gutter on Paving	4.50	230	✓
+ E " "	4.63	229	✓
W Gutter " "	4.55	229	✓
01 North			
W Top Retaining wall	2.24	25.3	✓
+1	4.0	23.3	✓
±	4.4	23.1	✓
E	4.3	23.1	✓
E Top retaining wall	2.16	25.3	✓
06 North			
E	2.2	25.3	✓
+3	3.2	24.9	✓
±	3.9	24.1	✓
+5	3.5	24.0	✓
W	2.7	24.8	✓
W Top wall	2.14	25.4	✓
16 North			
W	2.5	25.0	✓
+3	2.9	24.6	✓
±	2.8	24.7	✓
+4	2.9	24.6	✓
+6	2.3	25.2	✓
E	2.2	25.3	✓

Plotted
 0-8-28
 Wall

Sketch of Alley
 Block - St Louis Heights

Wolfe 70

270
 26
 1284



25' North

E	2.3	252 ✓
+3	2.6	249 ✓
±	2.5	250 ✓
+4	2.2	249 ✓
UV	2.2	253 ✓

50' North

W	2.3	252 ✓
±	2.2	253 ✓
+3	2.0	255 ✓
E	2.0	255 ✓

56' North Single Garage on West

concrete floor top etc 2.17 253 ✓

75' North

E	2.2	253 ✓
+4	1.9	256 ✓
±	2.0	255 ✓
+4	2.1	254 ✓
W	2.3	252 ✓

100' North

W	2.0	255 ✓
±	1.8	257 ✓
E	1.7	258 ✓

T.P. 6.03 332.15 1.40 326.12 ✓

105' North Single Garage on East

4-2 Back. etc 6.02 261 ✓

115' North

E	6.0	262 ✓
±	6.1	261 ✓
W	6.4	258 ✓

150' North

W	5.9	268 ✓
±	5.8	264 ✓
±	6.0	262 ✓
E	5.8	266 ✓

170' N.

E	5.6	266 ✓
E	5.6	266 ✓
+4	5.0	266 ✓
W	5.3	269 ✓

200' N

W	5.0	272 ✓
±	5.2	270 ✓
+3	5.2	270 ✓
E	4.9	273 ✓

225' N

E	4.8	274 ✓
+5	4.8	274 ✓
±	4.8	274 ✓
W	4.6	276 ✓

232' N. Walk on West

0.5 in alley etc 4.56 276 ✓

332.15

296' N. Single Garage on East

1.8 Back ctr 4.3 279 ✓

297' N. Single Garage on West

on Line Dir/floor 4.4 278 ✓

250' North

W 4.3 279 ✓

E 4.4 278 ✓

E 4.4 278 ✓

257' N. Single Garage on West

0.6 in Alley ^{concrete} floor ctr 4.11 281 ✓

271' North Mn. Hole

on Rim 3.82 284 ✓

275' N.

E 4.0 282 ✓

E 3.8 284 ✓

W 4.0 282 ✓

300' N.

W 3.6 286 ✓

E 3.6 286 ✓

E 3.5 287 ✓

325' N.

E 3.1 281 ✓

E 3.2 290 ✓

W 3.3 289 ✓

T.P 613 335.16 3.12 329.03 ✓

Waste
Plotted

72

335.16

346' N. Single Garage on East

4 Back ^{concrete} floor ctr 6.07 291 ✓

345' N.

W 6.1 291 ✓

E 6.2 290 ✓

E 6.2 290 ✓

358' East. Single Garage on East

5.2 Back ^{concrete} floor ctr 5.43 298 ✓

5.7 295 ✓

5.9 293 ✓

5.8 294 ✓

5.8 294 ✓

375' North

W 5.5 297 ✓

E 5.6 296 ✓

7.3 295 ✓

E 5.5 297 ✓

400' North

E 5.3 299 ✓

E 5.3 299 ✓

W 5.9 298 ✓

409' N. Single Garage on East

5.2 Back ^{concrete} floor ctr 5.01 300.5 ✓

425' North

W 5.2 300 ✓

E 5.1 301 ✓

E 4.8 304 ✓

Plotted

	450' North	ends 1.6 in alley	
E	4.3	30.9 ✓	
+6	4.8	30.4 ✓	
E	4.7	30.5 ✓	
W	4.5	30.7 ✓	
	475' N.		
W	4.0	31.2 ✓	
+6	4.5	30.7 ✓	
E	4.4	30.8 ✓	
E	4.1	31.1 ✓	
	488' North	Single Garage on East	
	5.4 Back concrete floor	ctr 4.15	31.01 ✓
	4.97' North	Single Garage on East	
	6.0 Back concrete floor	ctr 4.24	30.92 ✓
	500' North	send of 2 car Garage on East	
	Lip on line	4.01	31.13 ✓
E	4.1	31.1 ✓	
W	4.0	31.2 ✓	
	5.02 North	car Garage on West end of Lip	
	Lip 1.5 in alley	on Lip 3.87	31.29 ✓
	5.18' North	end of 2 car Garage on East	
	Lip 0.5 in alley	in Lip 3.80	31.4 ✓
	5.21	send of 2 car Garage on East	
	Lip 0.5 in alley	Lip 3.76	31.40 ✓
	5.25' North	end of 2 car Garage on West	
	Lip 1.5 in alley	Lip 3.70	31.5 ✓
E	3.7	31.5 ✓	

Plotted

	3.8	31.4 ✓	
	539' North	end of 2 car Garage on East	
	Lip 0.5 in alley	Lip 3.69	31.47 ✓
+9	3.6	31.6 ✓	
E	3.5	31.7 ✓	
W	3.2	32.0 ✓	
	560' N.		
W	3.0	32.2 ✓	
+3	3.1	32.1 ✓	
+6	3.6	31.6 ✓	
E	3.5	31.7 ✓	
E	3.5	31.7 ✓	
	574' N.		
E	3.4	31.8 ✓	
E	3.8	31.4 ✓	
W	3.5	31.7 ✓	
	575' North	Man Hole	
	on Riv	3.77	31.39 ✓
	590' N.		
W	3.6	31.6 ✓	
+5	5.2	30.0 ✓	
E	5.1	30.1 ✓	
+4	5.3	29.9 ✓	
E	4.3	30.9 ✓	
	598' N.		
E	5.5	29.7 ✓	

Plotted

T
335.16

+3	6.3	3289	✓
ϕ	6.3	3289	✓
+4	6.3	3299	✓
W	49	303	✓

600' N. Skine of Upas

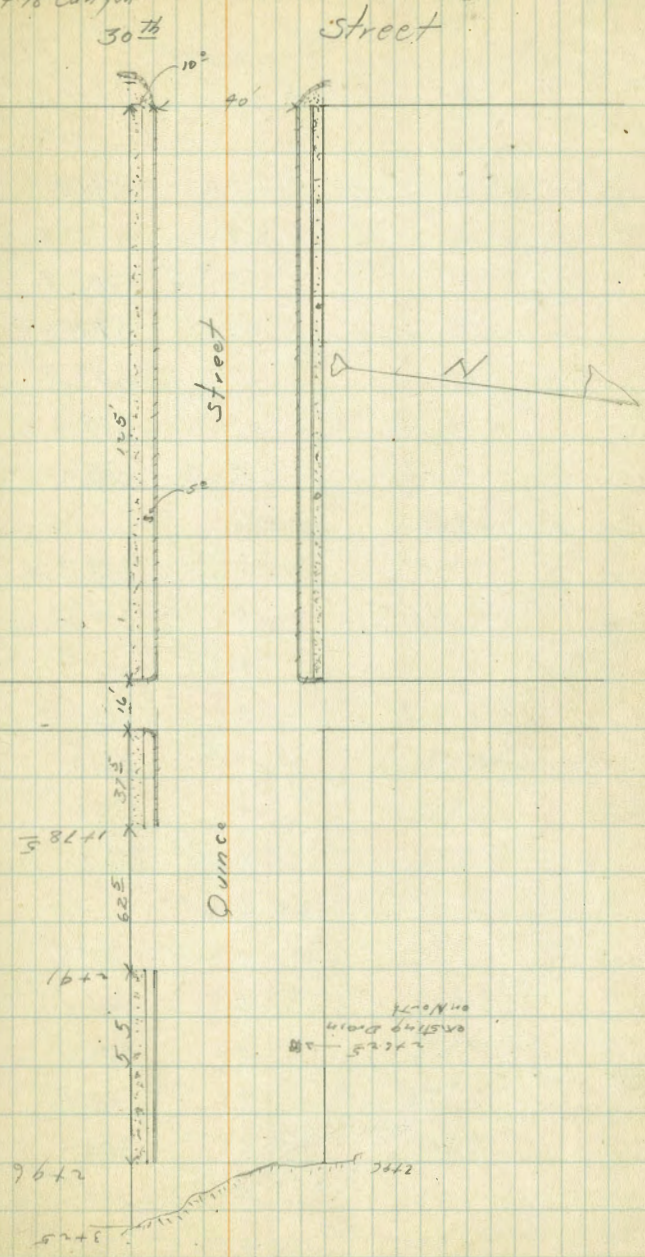
on paving

W Cutler	6.33	3228.89	✓
ϕ	6.57	328.59	✓
E Cutler	6.55	328.61	✓

IP	1.69	331.20	5.60	329.56	✓	
B.M. NEBP	check	on starting	BM	10.01	321.19	✓
43 at then				321.19		

Sketch of Quince Street from 30th
East to Canyon.

74



Bliss
E. Bell
Pegerson
3/7/28
O.M. SW BP
30th + Palm

X Sections of Quince Street
from 30th Street to Canyon East of 30th

314.15

75
314.2

+ * - Elev 314.2

50' East

13.15 314.15 301.00
0+00 = E line of 30th on Paving

S Top cb 9.17 310.0
Gutter 9.56 309.6
1/4 9.26 309.9
1/2 9.17 310.0
1/4 9.31 309.9
Gutter 9.58 309.6
N Top cb 9.16 309.6

N Top cb 5.20 309.0
Gutter 6.0 308.2
1/4 5.8 308.4
+5 5.6 308.6
1/2 5.5 308.7
1/4 5.8 308.4
Gutter 6.0 308.2
S Top cb 5.17 309.0

15' East

75' East

N Top cb 4.50 309.7
Gutter 5.1 309.1
1/4 4.7 309.5
1/2 4.7 309.5
1/4 4.9 309.3
Gutter 5.1 309.1
S Top cb 9.51 309.7

S Top cb Garage entrance 4.35 307.8
Gutter 6.4 307.8
+5 6.5 307.7
1/4 6.3 307.9
1/2 5.9 308.3
1/4 6.3 307.9
Gutter 6.6 307.6
N Top cb 5.85 308.4

25' East

100' East

S Top cb 4.72 309.5
Gutter 5.3 308.9
1/4 5.1 309.1
1/2 4.8 309.4
+6 4.8 309.4
1/4 5.1 309.1
Gutter 5.4 308.9
N Top cb 4.70 309.5

N Top cb 6.50 307.7
Gutter 7.4 306.8
1/4 6.9 307.3
+5 6.6 307.6
1/2 6.5 307.7
+7 6.5 307.7
1/4 6.7 307.5
Gutter 7.2 307.6

X
314.15

314.2

S Top cb	6.31	307.9
125' East W. line of Alley		
S Top cb of Alley return	6.63	307.6
Gutter	7.3	306.9
1/4	7.5	306.7
2	7.1	307.1
1/4	7.7	306.5
+6	8.1	306.1
Gutter	7.7	306.5
N Top cb	7.06	307.1
141' East E. line of Alley		
N	7.9	306.8
cb	8.0	306.2
+5	8.4	305.8
1/4	8.1	306.1
2	7.7	306.5
1/4	7.7	306.5
Gutter	7.6	306.6
S Top cb	7.01	307.2
160' East		
S Top	7.27	306.9
Gutter	7.7	306.5
1/4	8.1	306.1
2	7.9	306.3
1/4	8.5	305.7
+5	8.8	305.4

314.15

314.2

175.5 76
171
37.5

cb	8.9	305.8
+2	8.0	306.2
N	7.8	306.4
178.5		
N	8.1	306.1
+8	8.3	305.9
cb	8.9	305.3
+2	9.2	305.0
1/4	8.8	305.4
2	8.2	306.0
1/4	8.4	305.8
Gutter	8.9	305.8
S Top cb	7.99	306.8
270.0		
S	7.8	306.4
+2	8.1	306.1
+8	8.2	306.0
cb	8.7	305.5
Gutter	9.3	304.9
1/4	8.9	305.3
2	8.8	305.4
+5	9.0	305.2
1/4	9.3	304.9
+5	9.6	304.6
cb	9.1	305.1
+2	8.8	305.4

314.15

314.2

N	8.6	305.6
	291	
N	9.2	305.0
+2	9.6	304.6
+8	9.7	304.5
cb	10.2	304.0
+2	10.5	303.7
1/4	10.2	304.0
⊕	9.6	304.6
1/4	9.6	304.6
Gutter	9.8	304.4
S Topcb	8.91	305.3

257 East

S Top Cb	9.56	304.6
Gutter	10.2	304.0
1/4	9.9	304.3
⊕	9.9	304.3
1/4	10.7	303.5
Gutter	11.0	303.2
cb	10.3	303.9
+2	10.0	304.2
N	10.0	304.2

262.5 East ^{entrance of existing} 9" concrete Pipe Drain

entrance on curbline ^{that} _{line} 11.61 302.6

T.P. 4.41 308.01 10.55 303.60

308.01

291 77
785
615

308.0

275 East

N-15	13.8	292.2
N-4	6.0	302.0
N	5.3	302.7
+5	4.7	303.3
cb	4.9	303.1
+5	5.0	303.0
1/4	9.7	303.3
⊕	4.1	303.9
+5	4.1	303.9
1/4	4.3	303.7
Gutter	4.5	303.5
S Topcb	3.38	304.6

296 East

S Topcb	3.75	304.2
Gutter	4.3	303.7
1/4	4.6	303.4
⊕	4.6	303.4
1/4	5.1	302.9
cb	6.0	302.0
+5	6.7	301.3
N	9.0	299.0
N+3	9.5	298.5
N+15	14.0	290.0

306

N+15	19.6	288.4
N+10	15.1	289.9

T
308.01

308.0

21
11
123

T
308.01

15.1

12.0

78

308.0

N	11.7	296.3
+5	9.2	298.8
cb	8.7	299.3
+5	7.5	300.5
+7	6.3	301.7
1/4	5.7	302.3
¢	5.0	303.0
1/4	4.6	303.4
cb	4.4	303.6
S	4.1	303.9

315' East

S	4.9	303.1
cb	4.7	303.3
1/4	4.7	303.3
+5	4.7	303.3
¢	5.8	302.2
1/4	10.1	297.9
+2	12.2	295.8
cb	14.9	293.1
+3	14.0	294.0
N	16.4	291.6
N+10	22.2	285.8
N+15	24.5	283.5
N+25	31.0	277.0

325' East

N-25	34.2	273.8
------	------	-------

N-15	27.2	280.8
N	22.0	286.0
cb	18.6	289.4
+5	16.0	292.0
1/4	14.1	293.9
+5	11.9	296.1
¢	10.2	297.8
+7	9.7	298.3
1/4	7.7	300.3
+5	6.6	301.4
cb	5.8	302.2
S	5.9	302.1

T.P. 9.52	313.79	3.74	304.27
BM starting		12.79	301.00

Levels for Proposed Drain on the N Side of
Quince on the N. Cb line Produced East

used T.P. 220	306.47		304.27
44		4.4	302.1
410		7.2	299.3
419		10.6	295.9
T.P. 260	293.47	13.60	292.87
430		4.9	288.6
437	Horizontal of 69' drain	8.70	284.8
440		9.1	284.4
450		15.0	278.5

293.5

456.65
 10
 942.65
 184.00
 258.65

DIRECTIONS FOR USE OF TABLES

TABLE No. 1.

Distance of slope stake from side or shoulder
 stake for any width roadway slope 1 1/2 to 1.
 If ground is nearly level the cut or fill at side
 stake is located by the double entry method in
 left column and top row. The number in body

IMPROVED TABLES
 AND
 INFORMATION

To find Tangent and External for curve of
 any other degree, divide by degree of curve and
 add correction found in column of correction.
 Degree of curve with a given L may be found
 by dividing tangent (or external) opposite L by
 given tangent (or external).
 The distance from a point on the tangent to
 the curve is very nearly the square of the tangent
 length divided by twice the radius.

329.70
12.35

162.35

ENGINEERING DEPARTMENT,
CITY OF CALIFORNIA,
SAN DIEGO.

Alta Vista Suburb 1008 - 1029

125
719
1969

3391w
2489
100.22
10489
161

10
4
10.
18.75
27.00
36.25
45.00
55.00

1618
70
1868

12.9
6

27.00
8.75
36.25

47.18
4.94
42.79

2.37
0.41
46

44.85
4.25
40.60

47.00
6.67
40.31

24.359
794
21.553

55.44
9.59
45.86

161.8

161.0
85.6
75.4

56.44
9.72
46.72

33912
1990
35892
25530
10362

47.00
41.59
42.41

41.57
6.06
35.51

144210
29.50
141260

14135
191
3044

10.8
4.6
15.3

47.00
4.12
42.88

47.00
4.05
42.95

17.4
3.254
34.28

73.56
6.80
66.76

