

1213

THE
BIBLE
FOR
THE
SCHOOL

Transmitted App 60 7/10/30-114

PARTMENT,
IEGO.

ENGINEERING
CITY OF CALIFORNIA.

ENGINEERING DEPARTMENT,
SAN DIEGO.
CITY OF CALIFORNIA.

MICROFILMED
DEC 22 1964

ENGINEERING DEPARTMENT, CITY OF SAN DIEGO, CALIFORNIA.

Our Leather Bound Engineers Note Books are carried in the following rulings:

- No. 380 LEVEL BOOK. Left and Right Hand Page the same as Left Hand Page of this Book.
- No. 382 FIELD BOOK. Left Hand Page as in this Book, Right Hand Page 4 x 4 to the inch, Center Line Red.
- No. 384 MINING TRANSIT BOOK. Left Hand Page as in this Book, Right Hand Page 8x8 to the inch, Center Line Red.
- No. 385 FIELD BOOK. Left Hand Page as in this Book, Right Hand Page 8 vertical and 4 horizontal lines to the inch, Center Line Red.

We also carry the Note Books listed above, bound in extra strong Fabri-Hide (otherwise the same quality of book), which can be furnished at a somewhat lower price.

In ordering Fabri-Hide covered books, add the letter "F" to catalog number.

THE FREDERICK POST CO.
ENGINEERING and DRAFTING SUPPLIES
IRVING PARK STATION
CHICAGO, ILL.

Transcluded App 80 7/10/20 HLL

INDEX

PAGE

Ash St. X Section	1-16
Gregory St X Section	17-27
52 nd St X sec. - El Cajon North.	28.
Franklin St 28 th + 0 31 st	59-ent.

Walker
ca. 10' below
Marian
9-6-87

λ. Section ASH ST 30' ^{20' cbs} ^{10' 25'}
FROM BANCROFT to WHALLEY STS.

193.66

NE Mon.			
ASH + 33'	6.73	199.58	192.85
T.P.	1.33	193.66	7.25 192.33
	-2.5' = 25' West N.W. Bancroft - 35' W N.C. line		
N-10		10.5	183.2
N		10.5	83.2 ^v
cb		12.7	81.0
z		14.0	79.7
z		15.1	78.6
z		15.5	78.2
cb		17.0	76.7
+8		18.5	75.2
+12		21.3	72.4
+15		18.5	75.2
S		19.5	74.2
+20		21.3	72.4
	-8'		
-20		17.1	76.6
S		15.7	78.0
+18		12.8	80.9
cb		16.0	77.7
+2		12.3	81.4
z		11.3	82.4
z		10.4	83.3
z		7.6	87.1
cb		3.4	190.7

N	1.7	192.7 ✓
10' West N.C. line Bancroft = N.W. Bancroft.		
N	1.7	92.7
cb	2.3	91.4
z	4.4	89.3
z	6.7	87.0
z	10.0	83.7
+5	13.0	80.7
cb	10.4	83.3
S	14.5	79.2
+20	17.5	76.2
	cb	
-20	13.7	80.7
U	10.4	82.9
cb	6.9	86.4
z	6.7	87.0
+5	5.6	88.1
z	9.4	84.3
z	5.4	85.3
cb	2.4	91.3
	8.07	91.59 ✓
	cb + 6'	
N	2.4	91.3
cb	3.0	90.7
z	3.4	90.5
z	3.4	190.3

Note: No cb. Returns cb. And walk
Stops at N.W. ASH ST.
N = top of East cb

19366

1/4	4.0	189.7
cb	5.1	88.6
S	8.5	85.2
+10	11.1	82.6
+15	11.9	81.8
	<i>W 1/4</i>	
-10	7.9	85.8
S	6.7	87.0
cb	4.4	89.3
1/4	3.7	90.5
1/2	2.9	90.8
1/4	2.6	91.1
cb	2.3	91.4
N	1.7	92.7 ✓
	<i>1/2</i>	
N	1.0	92.7 ✓
cb	-1.7	92.0
1/4	2.0	91.7
<i>1/2 = Rem of M.H.</i>	1.98	91.68
1/2	2.4	91.1
cb	3.1	90.6
S	6.1	87.6
+10	8.0	85.7
	<i>E 1/4</i>	
-10	5.5	88.2
S	4.5	189.2

19366

cb	5.8	190.9	
1/4	5.3	91.4	
1/2	1.8	91.9	
1/4	1.2	92.5	
cb	1.1	92.6	
N	0.6	93.1 ✓	
	<i>E cb</i>		
	Note: <i>cb returns. cb not work</i>		
	<i>stop at N.W. 1/4 St.</i>		
	<i>N on top of exist. cb.</i>	0.11	93.55 ✓
cb	0.5	93.2	
1/2	0.4	93.3	
1/2	0.8	92.9	
1/4	1.4	92.7	
cb	2.1	91.7	
S	3.9	89.8	
+10	2.9	88.8	
	<i>10' East of E. cb. Line Bancroft = 0+00</i>		
-10	3.2	90.5	
S	2.5	91.2	
cb	1.5	92.2	
1/2	0.8	92.9	
1/2	0.1	93.6	
TD 643	199.85	92.7	193.4 ✓
1/2	5.9	94.0	
cb	6.0	93.9	
N	5.8	194.1 ✓	

11' E

199.85

199.85

3

N	3.6	196.3 ✓
cb	4.9	95.0
$\frac{1}{4}$	5.4	94.5
$\frac{1}{2}$	5.9	94.0
$\frac{3}{4}$	6.5	93.4
cb	7.3	92.6
S	8.1	91.9

13' E

S	8.0	91.9
cb	7.2	92.7
$\frac{1}{4}$	6.4	93.5
$\frac{1}{2}$	5.9	94.0
$\frac{3}{4}$	5.3	94.6
cb	4.7	95.2
+9	3.2	96.7
N	2.7	97.2 ✓

34' E = $\frac{1}{2}$ Con. Walk on South ^{10' inst.} 7.76 98.09
 = Approx. 50' Back with dirt Dr. But this con. Retaining walls on each side of Drive way 6' wide
 55' E = $\frac{1}{2}$ Garage on South

N	1.7	98.2 ✓
+13	2.6	97.3
+17	3.9	96.0
cb	4.2	95.7
$\frac{1}{4}$	4.9	95.0
$\frac{1}{2}$	5.3	94.6
$\frac{3}{4}$	6.1	93.9
cb	6.8	93.1

+10' = on top West Wall	7.50	192.35
+10' = " " East "	7.70	92.15
S = $\frac{1}{2}$ Drive on dirt	8.0	91.9
DRIVE IS 10' Wide		6' 10" in St.
70.5' E = $\frac{1}{2}$ Garage on South dirt Dr. with con. walls on both sides of Dr.		
S = $\frac{1}{2}$ Dr. on Ground	8.2	91.7 ✓
+10' = top Wall on E	8.1	91.8
+10' = " " " W	7.60	92.25
cb	7.4	92.5
$\frac{1}{2}$	6.7	93.2
$\frac{1}{4}$	5.8	94.1
$\frac{3}{4}$	5.4	94.5
cb	4.5	95.4
+3	4.4	95.5
+8	2.8	97.1
N	2.2	97.7 ✓

1+00

N	2.7	97.2 ✓
+13	3.5	96.4
+17	5.0	94.9
cb	5.3	94.6
$\frac{1}{4}$	6.2	93.7
$\frac{1}{2}$	6.7	93.2
$\frac{3}{4}$	7.6	92.3
+9	7.8	92.1
cb	14	92.5
S	17	192.2

199.85

199.85

4

127' E = Garage on South approx 25' back dirt Dr. With low Wall on E-West

S = 2 Drive on Ground	8.6	91.3
+8' = top Wall on E	8.36	91.49
+8' = " " " W	8.23	91.62
cb	8.6	91.3
1/2	8.3	91.6
1/4	7.8	92.6
1/4	6.9	93.0
cb	6.3	93.6
+3	5.8	94.1
+7	4.1	95.8
N	3.6	96.3 ✓

150' E

N	3.8	96.1 ✓
+13	4.3	95.6
+17	6.1	93.8
cb	6.5	93.4
1/4	7.4	92.5
1/4	7.9	92.0
1/4	8.7	91.2
cb	8.9	91.0
+5	7.9	92.0
S	8.5	91.4

200' E

S	10.1	89.8 ✓
+15	9.9	190.0

cb	10.3	129.6
+5	10.9	89.0
1/4	10.8	89.1
1/2	10.3	89.6
1/4	9.6	90.3
+5	8.7	91.2
cb	8.2	91.7
+3	8.1	91.8
+7	6.0	93.9
N	5.5	94.4

218' E

N	6.2	93.7
+13	6.6	93.3
+17	8.6	91.3
cb	9.6	90.3
1/2	11.5	88.4
1/4	12.1	87.8
1/4	12.1	87.8
cb	12.0	87.0
S	12.4	87.5

220' E = 116.33' S of = 10' N. N. cb. line 33.9

S	12.6	87.3
cb. = top cb.	12.83	87.02
1/2	12.9	87.0
1/4	12.7	87.2 ✓
1/4	12.4	187.7

19985

N top cb. 11.77 188.08

N 10.6 89.3

10' E East cb line 33rd st = 0+00 ✓

N 10.3 89.6 ✓

N top cb. 10.87 88.98

" cb gutter 11.2 88.7

N 1/4 11.5 88.4

S 11.5 88.4 ✓

1/4 11.8 88.1

S top cb. 7/50 = Growing 11.87 87.98

S 11.7 88.2 ✓

5' E

-5 11.2 85.2

S 11.1 85.8 ✓

+10 12.5 87.4

cb 12.0 87.9

1/4 11.8 88.1

S 11.3 88.6 ✓

1/4 11.3 88.6

cb 10.9 89.6

+5 9.9 90.0

N (Not a turn) 8.0 91.9 ✓

cb on N.Y. B.M. on Mon. 7.01 192.84

50' E

N 4.7 95.2 ✓

+13 5.7 194.2

19985

5

+17 6.9 193.9

cb 7.1 92.8

1/2 7.3 92.6

S 8.3 91.6 ✓

1/2 9.1 90.5

cb 10.2 89.5

S 11.8 88.1 ✓

+10 12.3 87.6

80' E

-10 10.4 89.5

S 9.6 90.3 ✓

cb 9.4 91.3

1/2 7.2 92.7

S 6.6 93.3 ✓

+5 5.3 94.6

1/4 4.8 95.1

cb 4.5 95.4

+3 4.3 95.6

+7 2.9 97.0

N 1.7 198.2 ✓

95' E

+01 200.0 ✓

+13 199.0

+17 97.2

cb 96.7

1/4 36 196.3

199.85

2		4.5	195.4 ✓
4		5.8	94.1
cb		7.2	92.7
S		8.7	91.2 ✓
+10		9.3	90.6
	140' E		
-10		5.0	94.9
S		4.0	95.9 ✓
cb		2.5	97.4
4		1.6	98.3
6		0.8	99.1 ✓
TD	9.09	208.12	0.82 ✓ 199.03
4		8.4	199.7
cb		7.9	200.2
+5		7.7	00.4
+8		7.0	01.1
N		5.9	02.2 ✓
	150' E		
N		5.2	02.9 ✓
+8		6.2	01.9
+15		7.1	01.0
cb		7.9	00.8
7		7.6	200.5
6		8.4	199.7 ✓
4		9.6	98.5
cb		10.5	197.6

208.12

S		11.7	196.4 ✓
+10		11.5	96.6
	175' E		
-5		8.3	199.8
S		8.1	200.0 ✓
+10		7.4	00.7
+15		7.8	00.3
cb		8.1	00.0
4		7.6	00.5
2		6.6	01.5 ✓
4		5.9	02.2
cb		5.8	02.3
N		4.4	03.7 ✓
	210' E = beginning of cb. Returns		
N		4.4	03.7 ✓
N top cb		4.63	03.49
4		4.8	03.3
6		4.9	03.2 ✓
4		5.4	02.7
S Ant		5.8	02.9
S top cb		5.12	03.00
S		5.6	02.5 ✓
	220' E = 10' West N. cb. Line Felton st = N.L. Felton		
S		5.02	03.1
stop cb		4.18	02.94
S gutter		3.6	202.5

7	54	202.7
20	50	03.1 ✓
7	51	03.0
CB gutter	51	03.0
top cb.	4.65	03.4
N.	4.2	03.3 ✓

10' EAST E cb. line = 0+00

N	3.5	04.0 ✓
N top cb.	3.75	04.37
Gut.	4.3	03.8
7	4.0	04.1
2	4.2	03.3 ✓
7	4.4	03.7
S Gut.	4.7	03.4
S top cb.	4.01	04.11
S	3.7	04.4 ✓

5' E

S	1.1	07.0 ✓
+5	3.0	05.1
top cb	4.05	04.07
7	4.3	03.8
2	3.9	04.2 ✓
7	3.8	04.3
N top cb	3.76	04.36
N	3.5	204.6 ✓

10' E = End of cb. Returns

N	3.3	209.8 ✓
N top cb.	3.75	04.37
7	3.5	04.6
2	3.6	04.5 ✓
7	3.9	04.2
S top cb.	4.05	04.07
+12	3.0	05.1

TP 5.73	113.42	04.3	207.69
+18		4.5	08.3
S		4.7	08.7 ✓

18' E

S	2.7	10.7 ✓
cb	3.3	10.1
7	3.4	10.0
+10	3.8	09.6
2	6.4	07.0 ✓
+5	8.5	04.3
7	8.7	04.7
cb	8.2	05.2
+2	7.3	06.1
+10	8.4	05.0
N	8.8	04.6 ✓

45' E

N	10.7	02.7 ✓
cb	8.2	05.2
7	7.1	206.3

21342

7	+5	6.7	206.7
8	cb	5.4	08.0 ✓
4	z	4.3	09.1
cb	cb	4.1	09.3
+	+4	3.7	09.7
+	+7	2.9	10.5
	S	2.5	10.9 ✓
	90° E		
S	S	4.8	09.6 ✓
	+12	6.0	07.4
z	cb	7.5	05.3
z	z	7.8	05.6
z	+4	8.3	05.1
S	+7	7.4	04.0
S	z	9.2	04.2 ✓
S	z	9.8	03.6
	cb	10.8	02.4
S	N	12.6	200.8 ✓
+	+10	14.7	198.7
	180° E		
z	-10	17.7	25.7
z	N	16.3	26.1 ✓
z	cb	14.0	199.4
N	z	12.4	201.0
N	+7	11.4	02.0
z	z	11.8	201.6 ✓

21344

+12	11.4	202.0
+5	12.1	01.3
z	10.5	02.9
cb	10.4	03.0
+6	9.1	04.3
S	7.8	05.6 ✓
	150° E	
S	11.1	02.3 ✓
+13	12.3	01.1
T.P. 484	20575 12.51	200.91
+16	5.8	200.0
cb	5.9	199.9
+8	5.6	200.3
z	6.4	199.4
z	6.6	99.2 ✓
z	7.9	97.9
cb	7.6	96.2
N	11.2	94.6 ✓
+15	13.0	92.8
	170° E	
-15	15.0	90.8
N	12.8	93.0 ✓
cb	11.5	94.3
z	9.7	96.1
z	8.6	97.2 ✓
+8	9.2	196.6

185.28

z	16.3	169.0
cb	19.4	65.3
N	258	59.5 ✓
+19	32.9	52.4
+30	312	54.1
0+40		
-30	29.1	56.2
-13	36.0	49.3
N	32.5	52.8 ✓
cb	26.0	59.3
1/4	24.0	61.3
1/2	21.3	64.0 ✓
1/2	19.6	65.7
cb	17.8	67.5
S	12.4	72.9 ✓
+15	11.2	74.1
T.P.	0.01	172.41
	12.88	172.40
0+59		
-15	5.6	66.8
S	6.8	65.6 ✓
cb	10.4	62.0
1/2	14.0	60.4
1/2	14.6	57.8 ✓
1/2	16.2	56.2
cb	19.6	52.9
N	23.4	149.2 ✓

172.41

Asb st. N. Section

11

+15	19.8	152.6
+35	12.1	60.3
0+69		
-25	14.4	58.0
N	24.9	47.5 ✓
+5	25.8	46.6
cb	23.8	48.6
1/2	21.4	51.0
1/2	19.8	52.6 ✓
1/2	17.5	54.9
cb	15.1	57.3
S	12.4	60.9 ✓
+20	10.1	62.3
0+92		
T.P. 0.59	160.11	159.54
-25	8.4	51.7
S	10.3	49.8 ✓
cb	15.6	44.5
1/4	16.0	44.1
1/2	15.7	44.9 ✓
1/2	15.0	45.1
cb	11.9	48.2
N	5.4	54.7 ✓
T.P. 12.92	170.41	151.29
+30	4.4	166.2
1+10		

-25	40	166.4
N	12.4	58.0 ✓
cb	17.4	53.0
$\frac{1}{2}$	19.8	50.6
$\frac{1}{4}$	22.4	48.0 ✓
$\frac{1}{4}$	24.5	45.9
cb.	27.0	43.4
S	28.8	41.6 ✓
+35	27.8	42.6

1+21

-40	3.1	67.3
-20	31.3	39.1
S	28.1	42.3 ✓
cb.	25.4	45.0
$\frac{1}{2}$	22.5	47.9
$\frac{1}{4}$	19.7	50.7 ✓
$\frac{1}{4}$	16.8	53.6
cb.	14.7	55.7
N	10.0	60.4 ✓
+25	2.0	68.4

1+47

Note plus Ref.

-15	+3.5	73.9
N	-1.5	68.9 ✓
cb.	7.6	62.8
$\frac{1}{2}$	11.4	169.2

X	13.7	156.7 ✓
$\frac{1}{2}$	15.3	55.1
cb.	17.8	52.6
S	22.3	48.1 ✓
+35	31.5	38.9
+50	34.2	36.2

1+67

-35	27.1	43.3
S	17.2	53.0 ✓
cb	13.0	57.4
$\frac{1}{2}$	10.5	59.9
$\frac{1}{4}$	7.3	63.1 ✓

T.P. 1261

18219 0.83 169.58

$\frac{1}{2}$	15.8	66.4
cb.	13.2	69.0
N	7.6	74.6 ✓
+10	5.0	77.2

1+82

-12	3.9	78.3
N	6.4	75.8 ✓
cb.	9.0	73.2
$\frac{1}{2}$	11.5	70.7
$\frac{1}{4}$	13.8	68.4 ✓
$\frac{1}{4}$	16.6	65.6
cb.	20.4	62.0
S	25.7	156.5 ✓

18219

18219

fish st.

13

+30		32.1	150.1	d	1.4	180.8	✓
	1+94			TP 12.46	19+45	0.80	181.99
-30		29.5	52.7	$\frac{1}{2}$	11.8	82.7	
S		22.4	59.8	✓	cb	11.1	83.4
cb		16.0	66.2	N	9.6	84.9	✓
$\frac{1}{2}$		13.5	68.7	+10	8.4	86.1	
d		11.7	71.5	✓			
$\frac{1}{2}$		8.5	73.7	N	6.3	88.2	
cb		7.0	75.2	cb	8.3	86.2	
N		4.8	77.4	✓	$\frac{1}{2}$	9.1	85.4
+10		3.6	78.6	d	10.3	84.2	✓
	2+09			$\frac{1}{2}$	12.6	81.9	
-10		0.5	81.7	cb	14.4	80.1	
N		1.5	80.7	✓	S	12.7	75.8
cb		2.4	79.8	+20	21.6	72.9	
$\frac{1}{2}$		5.1	77.1				
d		6.7	75.5	✓			
$\frac{1}{2}$		8.2	74.0	-20	18.7	75.8	
cb		10.2	72.0	S	14.4	80.1	✓
S		15.5	66.7	✓	+14	10.9	83.6
+26		21.5	60.7	cb	10.1	84.4	
	2+89			$\frac{1}{2}$	9.0	85.5	
-25		14.6	67.6	d	8.2	86.3	✓
S		10.0	72.2	✓	$\frac{1}{2}$	7.6	87.9
cb		6.7	76.0	cb	6.3	88.2	
$\frac{1}{2}$		4.3	177.9	N	4.4	90.3	✓
				+9	3.7	190.8	

2+45.10 on N.W. = 2+46.75 on S.W. = Pueblo line - Sec 8 See sketch

p-10

Sec 8 = 0+00

19445

20941

Ash St.

14

0+12

-5		1.9	192.6 ✓
N		2.5	92.0 ✓
cb		4.6	89.9
$\frac{1}{4}$		5.6	88.9
$\frac{1}{2}$		6.6	87.9 ✓
$\frac{3}{4}$		7.4	87.1
cb		8.7	85.9
S		11.2	83.3
+10		12.1	82.4

0+52.55 on South = N.W. 34th St. 20' chs. 10' & S

-10		5.9	88.6
S		4.6	89.9 ✓
T.P.	12.95	76338	402 190.43
cb		4.1	92.3
$\frac{1}{4}$		9.8	93.6
$\frac{1}{2}$		8.7	94.7 ✓
$\frac{3}{4}$		7.4	96.0
cb		6.6	96.8
N		4.4	99.0 ✓
+5		4.0	199.4
T.P.	7.19	20941	116 10222
	Ncb		
N		6.9	202.5 ✓
cb		8.6	200.8
$\frac{1}{4}$		9.6	199.8

$\frac{1}{2}$		10.7	198.7 ✓
$\frac{3}{4}$		12.6	96.8
cb		13.9	95.5
S		16.6	92.8 ✓
+10		18.1	91.3
	N $\frac{1}{4}$		
-10		16.5	92.9
S		15.2	94.2 ✓
cb		12.2	97.2
$\frac{1}{4}$		10.6	198.8
$\frac{1}{2}$		9.4	200.0 ✓
$\frac{3}{4}$		8.0	01.4
cb		7.1	02.3
N		5.0	04.4 ✓
	$\frac{1}{2}$ 34th		
N		6.9	05.5 ✓
cb		6.8	03.6
$\frac{1}{4}$		7.0	02.4
$\frac{1}{2}$		8.2	01.2 ✓
$\frac{3}{4}$		7.4	200.0
cb		10.6	198.8
S		13.9	95.5 ✓
+10		15.0	94.4
	E $\frac{1}{4}$		
-10		14.2	95.2
S		12.8	196.6 ✓

cb.	9.2	200.2
$\frac{1}{2}$	9.0	01.4
$\frac{1}{4}$	6.7	02.7 ✓
$\frac{1}{2}$	5.9	03.5
cb.	4.5	04.9
N	2.8	06.6 ✓

E.Cb.

N	7.0	07.4 ✓
cb.	3.3	06.1
$\frac{1}{2}$	4.6	04.8
$\frac{1}{4}$	5.5	03.9 ✓
$\frac{1}{2}$	6.9	02.5
cb.	8.1	201.3
S	10.7	198.7 ✓
+10	12.4	97.0

E.C. 34th = 0+00

-10	10.1	199.3
S	8.7	200.7 ✓
cb.	6.3	03.1
$\frac{1}{2}$	4.9	04.5
$\frac{1}{4}$	3.8	05.6 ✓
$\frac{1}{2}$	3.0	06.4
cb.	2.7	07.2
N	0.7	09.2 ✓
T.P.	4.54	213.26

0+25

N	37	209.6 ✓
cb.	52	08.1
$\frac{1}{2}$	61	07.1
$\frac{1}{4}$	67	06.6 ✓
$\frac{1}{2}$	74	05.9
cb.	84	04.9
S	108	02.5 ✓
+10	122	01.1

0+50

-10	117	01.6
S	106	02.7 ✓
cb.	84	04.9
$\frac{1}{2}$	76	05.7 ✓
$\frac{1}{4}$	70	06.3
$\frac{1}{2}$	62	07.1
cb.	58	07.5
N	51	08.2 ✓

0+75

N	77	05.6 ✓
cb.	79	05.3
$\frac{1}{2}$	84	04.9
$\frac{1}{4}$	85	04.8 ✓
$\frac{1}{2}$	9.0	04.3
cb.	9.9	03.4
S	12.0	01.4 ✓
+10	130	200.9

1+00

-10	14.0	199.3
S	13.6	199.7 ✓
cb	12.9	200.4
1/4	12.7	00.6
1/2	12.1	01.2 ✓
1/4	12.0	01.3
cb	12.0	01.3
N	12.2	201.1 ✓
T.P.	116 202.33	12.09 201.17

1+25

N	4.3	198.0 ✓
cb	4.6	97.7
1/4	4.8	97.5
1/2	5.1	97.2 ✓
1/4	5.2	97.1
cb	5.2	97.1
S	6.1	96.2 ✓
+10	6.4	95.9

1+50

-10	9.7	92.6
S	9.4	92.9 ✓
cb	8.6	93.7
1/4	8.4	93.9
1/2	7.9	94.4 ✓
1/4	7.9	194.4

cb	8.2	194.1
N	9.0	93.3 ✓
+10	9.3	93.0
T.P. 372	195.22 10.83	191.50

1+75

-10	8.1	87.1
N	7.6	87.6 ✓
cb	6.6	88.6
1/4	6.2	89.0
1/2	6.8	88.4 ✓
1/4	6.8	88.4
cb	7.0	88.2
S	7.3	87.9 ✓
+10	8.3	86.9

2+00 = H.L. Whaley St

-10	14.0	81.2
S	13.3	81.9 ✓
cb	12.6	82.6
1/4	12.6	82.6
1/2	12.8	82.4 ✓
1/4	12.9	82.3
cb	13.2	82.0
N	13.8	81.4 ✓
+10	13.8	81.4

T.P. 501 199.53 070 194.52

T.P. Nails 523 19430

Yaker
for
Shaw
Shaw 11-17-87

X. Section GREGORY of 80' wide 30' dia 10' dia
From sh. CEDAR to sh. Y. Termination

183.81

17

2.28	ms. 60		172.37
T.P.	0.06	112.57	112.51
T.P.	1.61	101.23	119.62
T.P.	0.41	189.04	128.63
T.P.	7.86	183.81	175.95
sh. Cedar d = 0+00			
-40		11.9	171.9
-37		13.7	70.1
-23		18.6	65.2
-15		14.2	69.6
-8		12.3	71.5
E		11.0	72.8 ✓
+13		9.7	74.1
cb		10.1	73.7
1/2		11.1	72.6
1/2		11.7	72.1
1/2		12.6	71.2
cb		12.1	71.7
+17		10.4	73.4
+18		12.3	71.5
Y		12.3	71.5 ✓
+5		9.5	74.3
+30		4.3	79.5
0+07			
-30		7.9	176.0

-13	9.9	173.9
Y	16.4	67.4 ✓
cb	18.1	65.7
+7	18.9	64.9
1/2	14.2	69.6
1/2	14.3	69.5
1/2	13.1	70.7
cb	11.7	72.1
E	12.6	71.2 ✓
+10	13.2	70.6
+24	22.0	61.8
+30	16.7	67.1
0+13		
-30	6.	57.3
-25	24.1	59.7
-20	17.7	66.1
E	14.3	69.5 ✓
cb	14.1	69.7
1/2	16.0	67.8
+15	16.2	67.6
1/2	20.1	63.7
1/2	17.9	65.9
+10	13.3	70.8
cb	12.8	71.3
Y	10.4	73.6 ✓
+5	10.1	173.7

+10	154	168.9
+20	14.2	69.6
+30	9.0	74.8
T.P.	9.9P 188.90	4.89 178.92
	0+18	
-30	17.6	71.3
-28	15.6	73.3
-25	15.8	73.1
-23	13.6	75.3
✓	13.8	75.1 ✓
cb.	16.8	72.1
$\frac{1}{2}$	19.5	69.4
+2	20.1	68.8
+4	21.8	67.1
$\frac{1}{2}$	25.5	63.4
+8	25.6	63.3
+9	23.1	65.8
$\frac{1}{4}$	23.1	65.8
cb.	21.5	67.4
E	20.4	68.5 ✓
+20	23.9	65.0
+26	28.3	60.6
+35	27.1	61.8
	0+30	
-45	31.5	57.4
-36	34.6	154.2

-30	29.9	159.0
-12	27.2	61.7
-10	33.1	55.8
E	30.4	58.5 ✓
+10	28.2	60.7
+15	29.1	59.8
cb.	28.6	65.3
$\frac{1}{2}$	21.1	68.8
$\frac{1}{2}$	17.8	71.2
$\frac{1}{2}$	16.0	72.9
cb.	15.1	73.8
✓	11.4	77.5 ✓
+30	7.1	79.8
	0+35	
-20	5.9	83.0
-13	7.4	81.5
✓	9.7	79.2 ✓
cb.	11.8	77.1
$\frac{1}{2}$	13.8	75.1
$\frac{1}{2}$	10.1	72.8
$\frac{1}{2}$	18.7	70.2
cb.	21.0	67.9
+15	22.3	66.6
E	24.4	64.5 ✓
+10	21.8	59.6
+11	34.3	154.6

+14	31.9	154.6
+16	30.2	58.7
+25	30.1	58.8
+38	35.3	53.6
+48	31.1	57.8
0+14		
-55	33.0	55.9
-40	36.0	52.9
-39	38.0	50.9
-23	35.8	53.2
-21	31.4	57.4
-8	24.1	64.8
-4	21.4	67.4
E	20.4	68.4 ✓
cb	16.9	72.0
$\frac{1}{4}$	15.2	73.7
$\frac{1}{2}$	12.9	76.0
$\frac{1}{4}$	11.0	77.9
cb	9.0	79.9
H	7.9	81.0 ✓
+7	5.2	83.7
+20	2.3	86.6
+30	2.1	86.8
0+60		
-20	+3.3	92.2
H	+1.8	190.7 ✓

cb	-37	185.0
$\frac{1}{2}$	6.2	82.7
$\frac{1}{2}$	8.3	80.6
$\frac{1}{4}$	10.7	78.2
cb	13.3	75.6
E	16.3	72.6 ✓
+23	20.9	68.0
+50	34.3	54.6
0+82		
-45	22.8	66.1
E	10.0	78.9 ✓
cb	5.9	83.0
T.P. 1266	199.18	23.8
$\frac{1}{4}$	11.8	87.4
$\frac{1}{2}$	9.9	89.3
$\frac{1}{2}$	7.9	91.3
cb	6.2	93.0
H	3.2	96.0 ✓
+10	1.8	197.3
0+97		
T.P. 1127	209.40	10.7
-10	9.4	200.0
H	10.4	199.0 ✓
cb	13.1	96.3
$\frac{1}{4}$	14.6	94.8
E	16.0	193.4

80940

1/2		17.7	191.7
cb.		19.5	89.9
E		23.6	85.8 ✓
+7		26.0	83.4
+30		36.6	72.8
+46		38.4	71.0
	1+16		
-35		33.1	76.3
-20		24.7	84.7
E		22.7	86.7 ✓
cb		16.7	92.7
1/2		14.4	95.0
1/2		18.5	96.9
1/2		11.4	98.0
cb		9.6	199.8
H		7.1	202.3 ✓
+10		5.6	03.8
T.P.	9.86	217.15	2.11
	1+51		
-10		5.7	11.5
H		7.4	10.1 ✓
+3		8.3	08.9
cb		11.5	05.7
1/2		13.6	03.6
1/2		15.0	02.2
1/2		16.5	200.7

217.15

Gregory St. x. Section

20

cb		18.2	199.0
E		22.3	94.9 ✓
+25		24.7	192.5
	to Residence 1+74 = 8' Can. Walk on W	11.1	216.04
	1+81		
-20		20.9	196.8
E		17.2	200.0 ✓
cb.		14.6	02.6
1/2		13.0	04.2
1/2		11.1	06.1
1/2		9.5	07.7
cb.		7.5	09.7
71		4.4	12.8 ✓
	2+16		
H		1.8	15.4 ✓
cb		4.0	13.2
1/2		5.4	11.8
1/2		6.7	10.5
1/2		8.4	08.8
cb.		9.9	07.3
E		13.3	03.9 ✓
+15 at Foundation of house		13.7	03.5
	2+46 = 2' solid Can. Dr. on E 3.5' Back. 8' Side		
-35 = Top Dr.		9.36	07.79
E		9.2	08.0 ✓
cb		6.4	210.8

4' Side
12.5' Back.

217.15

$\frac{1}{4}$		5.0	212.2
$\frac{1}{2}$		3.6	13.6
$\frac{1}{4}$		2.6	14.6
cb.		1.8	15.4
N		0.5	16.7 ✓
T.P.	156	271.04	0.67
	2160		216+8

N		3.9	17.1 ✓
cb		4.9	16.1
$\frac{1}{4}$		5.6	15.4
$\frac{1}{2}$		4.4	14.4
$\frac{1}{2}$		7.5	13.5
cb		2.4	12.6
E		10.4	10.6 ✓
+15		12.4	08.6
+20		14.4	06.6

3+00 = N.W. Beech St. 20' cbs. 10' $\frac{1}{2}$ S

E		7.1	13.9
cb.		5.0	16.0
$\frac{1}{2}$		4.4	16.6
$\frac{1}{4}$		3.6	17.9
$\frac{1}{4}$		3.1	17.9
cb.		3.1	17.9
N		3.9	17.1 ✓

N cb.

N		4.1	216.1
---	--	-----	-------

221.04

Gregory St. X-Section

21

cb		2.8	218.2
$\frac{1}{4}$		2.4	18.6
$\frac{1}{2}$		3.0	18.0
$\frac{1}{4}$		3.4	17.6
cb		4.0	17.0
E		6.0	15.0

N $\frac{1}{2}$

E		5.5	15.5
cb		3.7	17.3
$\frac{1}{4}$		2.9	18.2
$\frac{1}{2}$		2.6	18.3
$\frac{1}{2}$		2.5	18.5
cb		2.8	18.2
N		4.3	16.7

N Beech

N		4.3	16.7
cb		2.9	18.1
$\frac{1}{4}$		2.3	18.7
$\frac{1}{2}$		2.2	18.8
$\frac{1}{4}$		2.5	18.5
cb		3.3	17.7
E		3.5	15.5 ✓

S $\frac{1}{2}$

E		5.5	15.5
cb		3.4	17.6
$\frac{1}{4}$		2.6	218.4

d.	2A	218.6
$\frac{1}{4}$	2A	18.6
cb	3.1	17.9
W	4.6	16.4
	S. cb.	
W	4.7	16.3
cb	3.2	17.8
$\frac{1}{4}$	2.5	18.5
d.	2.5	18.5
$\frac{1}{4}$	2.8	18.2
cb	3.6	17.4
E	5.7	15.3
	S. L. Beech = 0+00	
E	6.4	14.6 ✓
cb	5.0	16.0
$\frac{1}{4}$	4.0	17.0
d.	3.6	17.4 ✓
$\frac{1}{4}$	3.7	17.3
cb.	4.2	16.8
W	5.9	15.1 ✓
	0+35	
W	8.4	12.6 ✓
cb	7.3	13.7
$\frac{1}{4}$	7.7	13.8
d.	7.7	13.7
$\frac{1}{2}$	7.7	13.3

cb	8.5	212.5
E	9.8	11.2 ✓
	0+50	
E	11.8	09.2 ✓
cb	10.8	10.2
$\frac{1}{4}$	10.5	10.5
d.	10.1	10.9
$\frac{1}{2}$	9.0	12.0
cb.	9.1	11.9
W	10.1	10.3 ✓
	0+59 = 2 Con Ribbon R. on E. of Line	
W	11.9	09.1 ✓
U	10.8	10.2
$\frac{1}{4}$	10.7	10.3
d.	10.7	10.3
$\frac{1}{4}$	11.8	09.2
cb.	12.6	08.4
	E. top of Drive Way	13.98
	TP. 127	20957 1274
		20830
	0+75	
E	4.9	04.7 ✓
cb.	3.4	06.2
$\frac{1}{4}$	3.1	06.5
d.	3.3	06.3
$\frac{1}{4}$	3.3	06.3
cb.	3.2	206.4

X		4.1	205.5 ✓
	1+10		
-10'		10.8	198.8
X		10.8	98.8 ✓
cb		10.9	98.7
$\frac{1}{2}$		10.4	99.2
L		10.7	99.9
$\frac{1}{4}$		11.0	98.6
b		11.5	98.1
E		12.7	97.9 ✓
+10		13.2	96.4
T.P.	0.73	127.77	12.53 197.04
	1+50		
-10'		7.5	90.3
E		7.5	90.3 ✓
cb		7.6	90.2
$\frac{1}{2}$		7.3	90.5
L		7.1	90.7
$\frac{1}{4}$		6.8	91.0
cb		6.5	91.3
X		7.0	90.8 ✓
+10		6.9	90.9
	1+70		
-15		15.0	82.7
X		14.5	83.3 ✓
cb		13.0	184.7

$\frac{1}{4}$		13.5	184.3
$\frac{1}{2}$		12.8	85.0
$\frac{1}{4}$		12.4	85.7
cb		12.7	85.1
$\frac{1}{2}$		12.0	85.5 ✓
$\frac{1}{4}$		12.0	85.8
	5 ft. Ash + Gregory		
	Chk. on 24 Nails in Pole	3.41	24.194.86
		3.41	197.77
	T.P. 0.24	185.35	12.61 15.511
	1+93		
-15		5.4	80.0
E		6.5	78.9 ✓
cb		8.1	77.3
$\frac{1}{2}$		8.3	77.1
L		8.6	76.8
$\frac{1}{4}$		8.8	76.6
cb		9.3	76.1
X		10.3	75.1 ✓
+15		10.5	74.9
	2+25		
-35		12.9	74.5
T.P.	0.77	173.01	13.11 172.24
X		8.2	64.8 ✓
cb		7.7	65.3
$\frac{1}{4}$		8.0	69.0
L		7.4	165.6

on rock
on X

1/4	7.3	165.7
1/2	5.6	67.9
E	4.8	68.2 ✓
+20	3.6	69.6

levels for Whert sketch Page 10

0+00	5.2	67.8	
+45	7.7	65.3	
T.P. 0.07	161.39	11.69	161.32
0+98.82 on stud = A.R. 24'	2.73		
1+25	6.1		
1+51	9.3		
1+76	12.2		
T.P. 303	151.72	12.70	148.69
2+25.61 on stud = A.R. 24'	6.23		
+71.80 = sketch on S cb line	8.38		
2+80	9.0		
3+30	14.1		
chk. on ground on South Sta 1412 Page 12	10.16	141.56	141.6

X. Section Gregory cont.

on Rect.

6.64 178.90 172.24 = E lev. T.P. Page 23

2+41

-25	14.1	64.8
E	16.9	62.0 ✓
1/2	18.2	60.7
1/4	19.2	59.7
+5	20.1	158.8

2	19.2	159.7
1/2	17.3	61.6
1/4	15.8	63.1
cb.	10.3	68.6 ✓
1/2	7.9	74.1

2+60

-15	0.3	78.6
1/2	2.6	76.3 ✓
1/4	5.1	73.8
1/2	9.7	69.2
1/4	12.6	66.3
1/2	15.2	63.7
cb.	17.9	61.0
E	23.7	55.2 ✓
+25	21.4	57.5

2+80

-35	26.0	52.0	
-90	27.0	51.0	
E	17.7	61.0 ✓	
cb	12.3	66.2	
1/2	8.9	70.0	
1/4	6.1	72.8	
1/2	1.6	77.3	
T.P. 11.71	189.07	154	177.24
cb.	10.1	79.1	
1/2	6.6	182.5 ✓	

+15

37

for Intersection of Ash see Page 9-10

T.P.	10.25	197.94	146	187.61	
Chk. on BM					St. Ash
Nails in Pole			36.3	194.33	+Gregory
	5.98	200.29		194.31	-BM
					(Ash?)
					25' South S.L. Gregory

W		3.6	96.7	✓
cb		5.5	94.9	
$\frac{1}{2}$		7.8	92.5	
$\frac{1}{4}$		7.8	92.5	✓
$\frac{1}{2}$		9.8	90.5	
cb		11.5	88.8	
+10		13.4	86.9	
E		16.0	84.3	✓
+15		19.3	81.0	
	50' South			
-15		17.3	83.0	
E		14.7	86.1	✓
cb		10.1	90.2	
$\frac{1}{2}$		7.8	92.5	
$\frac{1}{4}$		7.5	92.8	✓
+5		7.0	93.3	
+7		5.5	94.8	
$\frac{1}{2}$		5.3	95.0	
cb		4.7	96.1	
W		1.8	198.5	✓

92' South = $\frac{1}{2}$ Con. Ribbon Dr. on W on line

W on Dr.	0.83	199.46	✓
cb	3.1	97.2	
$\frac{1}{2}$	4.3	96.0	
$\frac{1}{4}$	6.1	94.2	✓
$\frac{1}{2}$	6.4	93.9	
cb	7.9	92.4	
+18	11.4	88.9	
E	12.7	87.6	✓
+15	14.3	86.0	

125' South

-15	14.7	86.1	
-2	14.0	86.3	
E	12.0	88.3	✓
cb	7.5	92.8	
$\frac{1}{2}$	5.9	94.4	
$\frac{1}{4}$	5.3	95.0	✓
$\frac{1}{2}$	4.3	96.0	
cb	3.6	96.7	
W	2.2	98.1	✓

1+68 = $\frac{1}{2}$ Con. Walk on W on line 25' side on line

W on top Walk.	4.25	96.04	✓
cb	5.2	95.1	
$\frac{1}{2}$	5.6	94.7	
$\frac{1}{4}$	6.8	93.5	✓
$\frac{1}{2}$	8.0	92.3	

200.29

cb	8.5	191.8		
E	11.9	88.4 ✓		
+15	14.1	86.2		
192' South = 2' Con. Ribbon Dr. on W on line				
-15	15.5	84.8		
E	13.5	86.8		
cb	11.5	88.8		
$\frac{1}{2}$	10.0	90.3		
2	8.9	91.4 ✓		
$\frac{1}{2}$	7.6	92.7		
+7	5.9	94.4		
cb	5.9	94.4		
W on top Dr.	5.30	94.99		
237' South				
W	7.9	92.4		
+9	9.6	90.7		
+13	11.4	88.9		
cb	11.7	88.6		
T.D.	260	190.00	12.89	187.40
$\frac{1}{2}$			3.6	86.4
2			4.7	85.3 ✓
$\frac{1}{2}$			5.9	84.1
cb			6.6	83.4
E			8.2	82.8 ✓
+15			9.4	180.6

258' South

190.00

Gregory S.T. Section 26

-15	12.0	178.0		
E	10.6	79.4 ✓		
cb	8.5	81.5		
$\frac{1}{2}$	7.8	82.2		
2	6.6	83.4		
$\frac{1}{2}$	5.8	84.2		
cb	4.6	85.4		
W	2.0	88.0		
2+87.38 on East - Pueblo line section on Pueblo line				
-5	5.2	84.8		
W	5.5	84.5		
cb	8.1	81.9		
$\frac{1}{2}$	9.2	80.8		
2	10.3	79.7		
$\frac{1}{2}$	11.8	78.7		
cb	12.3	77.7		
E	14.2	75.8 ✓		
+15	17.1	72.9		
T.P.	8.55	185.82	12.73	177.27
20' South of Pueblo line				
-20	18.1	67.7		
E	13.4	72.4 ✓		
cb	10.7	75.1		
$\frac{1}{2}$	9.8	76.0		
2	9.0	76.8 ✓		
$\frac{1}{2}$	7.6	178.2		

cb	6.4	179.4
st	3.7	182.1 ✓
+10	3.0	182.8

Levels for Drain

0+00	8.0	177.8		
+30	12.2	173.6		
+40	13.4	172.4		
T.P.	12.17	197.07	1.87	1839.5
chk. on Nails in Pole	276	194.31		

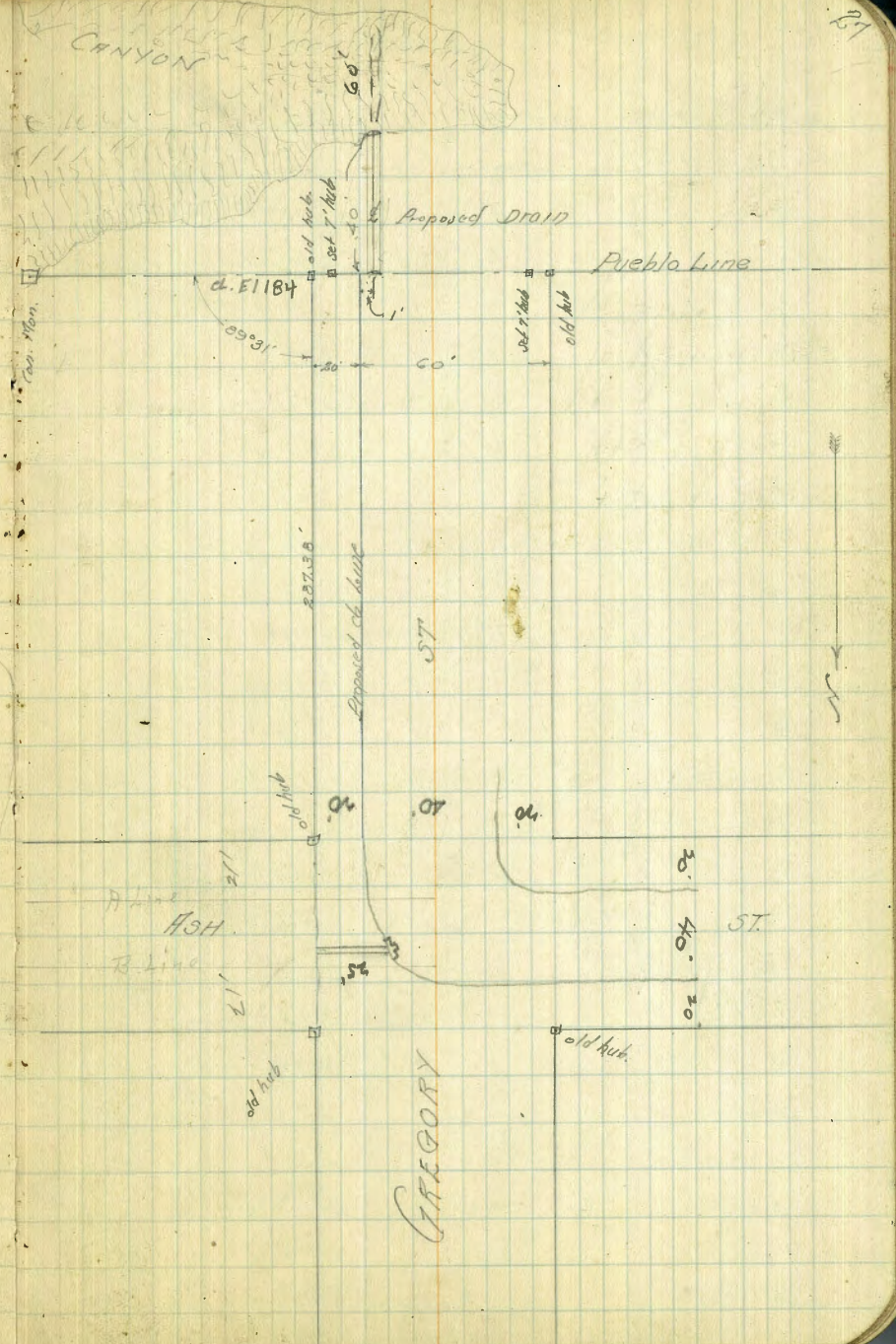
19431 = B.M.

B.M.	3.09	197.40	194.31	S.V. Ash & Gregory
T.P.	0.65	185.89	12.16	185.24

Levels S. of Pueblo Line 21' W. of E.A. Gregory St.

0+00 = Pueblo Line	8.1	177.8 ✓		
0+30	12.3	173.6 ✓		
T.P.	4.26	177.41 ✓	12.24	173.15 ✓
0+40	5.0	171.4 ✓		
+65	9.7	167.7 ✓		
+92	12.1	165.3 ✓		
1+10	10.2	167.2 ✓	app bank	
T.P.	12.29	188.67	1.23	176.38
T.P.	10.53	199.02	0.18	188.49
B.M.	4.72	194.30	194.31	

For Levels in Culvert in Ash see p 36



60' wide
12' chs
9' 1149

52nd St X Sec
El Cajon to North of Contour Blvd.

2-6-29
mills

382.83

58

B.M.	12.70	382.83	370.13
	N. Line El Cajon on diagonal 108' wide		
W		7.4	375.4
+2		9.1	373.7
ch		9.9	372.9
"4		9.8	373.0
E		9.9	372.9
"4		10.3	372.5
ch		10.2	372.6
E		10.4	372.4
+10		12.0	370.8
	30' N on W } 19.6' N " E } at 90° from 52 nd St.		
-5		9.5	373.3
E		9.4	373.4
ch		9.4	373.4
"4		9.3	373.5
E		8.8	374.0
"4		8.6	374.2
+6		8.7	374.1
ch		8.1	374.7
+11		7.9	374.9
W		6.9	375.9
	65' N. on W.		
W		6.0	376.8
+1		7.0	375.8
ch		7.1	375.7

Plotted
H.C.H.

Yardage figured -
Feb. 20, 1927
H.C.H.

SPK. N.M. 52nd
+ El Cajon

	1/4	8.0	374.8
	E	8.0	374.8
	1/4	8.4	374.6
	ch	8.8	374.0
	E	8.9	373.9
	+5	9.3	373.5
	100' N. on W.		
	-5	8.3	374.5
	E	7.9	374.9
	ch	8.0	374.9
	1/4	7.8	375.0
	E	7.1	375.7
	1/4	7.1	375.7
	ch	6.3	376.5
	+11	6.3	376.5
	W	5.5	377.3
	set RM. Hub 800' N.W. Tie		
		5.92	El Cajon to 52 nd St.
	150' N on W.		
	W	4.5	378.3
	+1	5.1	377.7
	ch	5.4	377.4
	1/4	5.9	376.7
	E	5.9	376.9
	1/4	6.2	376.6
	ch	6.6	376.2
	E	6.6	376.2
	+5	6.7	376.1

382.83

200' N. on W.

-5	4.9	377.9
E	5.2	377.6
cl	5.3	377.5
+3	5.4	377.4
"4	4.7	378.1
E	4.3	378.5
"4	4.5	378.3
+7	4.4	378.4
cl	4.0	378.8
+11	3.5	379.3
W	3.0	379.8

250' N. on W.

W	1.8	381.0
+1	2.5	380.3
cl	2.7	380.1
+2	3.2	379.6
"4	3.2	379.6
C	3.1	379.7
"4	3.7	379.1
cl	3.8	379.0
E	3.9	378.9
+5	3.3	379.5

300' N. on W.

-3	1.6	381.2
E	2.1	380.7
cl	2.2	380.6

382.83

52nd St.

"4	2.1	380.7
E	1.6	381.2
"4	1.4	381.2
+7	1.8	381.0
cl	1.3	381.5
+11	1.1	381.7
W	0.6	382.2
T.P.	7.99	390.47
0.35		382.48

350' N. on W.

W	7.0	383.5
+1	7.5	383.0
cl	7.6	382.9
"4	8.0	382.5
C	7.8	382.3
"4	8.3	382.2
cl	8.6	381.9
E	8.3	382.5
+5	7.8	382.7

400' N. on W.

-5	6.5	384.0
E	6.5	384.0
cl	7.1	383.4
+3	7.7	382.8
"4	7.2	383.3
E	6.9	383.6
"4	6.8	383.7

390.47

400' N. on W. (con)

cb	7.0	383.5
+11	6.2	383.8
W	5.4	385.1

450' N. on W.

W	4.8	385.7
+2	5.7	384.8
cb	6.2	384.3
"4	6.3	384.2
E	6.0	384.5
"4	6.1	384.4
+6	6.6	383.9
cb	6.2	384.3
E	5.9	384.6
+5	5.2	385.3

500' N. on W.

E	5.2	385.3
cb	5.4	385.1
+3	5.8	384.7
"4	5.4	385.1
e	5.2	385.3
"4	5.4	385.1
cb	5.5	385.0
+2	4.7	385.8
+11	4.7	385.8
W	4.0	386.5

390.47

552.27 N. on W = S. Line Monroe

60' W. of
12' E. of
9' 44.5

522 ST

30

W	4.1	386.4
+1	4.4	386.1
+10	4.5	386.0
cb	5.0	385.5
"4	5.0	385.5
E	4.8	385.7
"4	5.0	385.5
+7	5.5	385.0
cb	5.0	385.5
E	4.4	386.1
	5. cb	
E	4.9	385.6
cb	5.3	385.2
"4	4.9	385.6
E	4.7	385.8
"4	5.0	385.5
cb	4.9	385.6
W	4.9	386.6
	5. "4.	
W	5.1	385.4
cb	4.9	385.6
"4	4.6	385.9
E	4.7	385.8
"4	5.0	385.5
cb	5.0	385.5
E	4.8	385.7

390.47

2 Monroe.

E	4.6	385.9
cb	4.7	385.8
"4	4.7	385.8
e	4.4	386.1
"4	4.4	385.9
cb	4.7	385.8
W	4.3	386.2

N. "4

W	5.0	385.5
cb	5.0	385.5
"4	4.8	385.7
e	4.6	385.9
"4	4.9	385.6
cb	5.0	385.5
E	4.8	385.7

8' N. of N. "4

E	5.1	385.4
cb	5.1	385.4
"4	4.0	386.5
e	4.6	385.9
"4	4.8	385.7
cb	5.3	385.2
W	5.3	385.2

N. cb.

W	4.7	385.8
+10	4.6	385.9

52.29 ST.

390.47

cb	5.0	385.5
"4	4.8	385.7
e	4.6	385.9
"4	4.8	385.7
cb	5.1	385.4
+2	4.7	385.8
e	4.6	385.9

00 = N. Line Monroe

E	4.6	385.9
+10	4.6	385.9
cb	5.0	385.5
"4	4.8	385.7
e	4.6	385.9
"4	4.8	385.7
+7	4.9	385.6
cb	4.5	386.0
W.	4.4	386.1

50' N.

W.	4.7	385.8
+10	4.7	385.8
cb	5.2	385.3
"4	4.9	385.6
e	4.4	386.1
"4	4.7	385.8
cb	5.0	385.5
+2	4.2	386.3
e	4.1	386.4

390.47
100' N.

E	4.1	386.4
+10	4.3	386.2
cb	4.8	385.7
"4	4.5	386.0
c	4.1	386.4
"4	4.6	385.9
cb	4.9	385.6
+2	4.4	386.1
w	4.4	386.1

150' N

w	4.6	385.9
+3	4.1	386.4
+10	4.1	386.4
cb	4.6	385.9
"4	4.3	386.2
c	4.0	386.5
"4	4.3	386.2
cb	4.6	385.9
+2	4.0	386.5
E	4.0	386.5

200' N

E	3.6	386.9
+10	3.7	386.8
cb	4.2	386.3
"4	4.0	386.5
c	3.6	386.9

390.47

5244 ST

32

"4	3.9	386.6
cb	4.2	386.3
+2	3.7	386.8
+9	3.8	386.7
w	4.2	386.3

250' N

w	3.6	386.9
+10	3.3	387.2
cb	3.9	386.6
"4	3.5	387.0
c	3.2	387.3
"4	3.6	386.9
cb	4.0	386.5
+2	3.5	387.0
E	3.4	387.1

300' N

E	3.0	387.5
+10	3.1	387.4
cb	3.7	386.8
"4	3.3	387.2
c	3.0	387.5
"4	3.2	387.3
cb	3.5	387.0
+2	3.0	387.5
w	3.2	387.3

T.P. 2.07 390.34 2.16 388.31

390.38

350' N

W	2.9	387.5
+3	2.5	387.9
+10	2.5	387.9
cb	3.2	387.2
W	2.8	387.6
E	2.5	387.9
1/4	2.9	387.5
cb	3.2	387.2
+2	2.8	387.6
E	2.6	387.8

400' N

E	2.5	387.9
+10	2.9	387.5
cb	3.5	386.9
1/4	3.2	387.2
C	3.0	387.4
1/4	3.0	387.4
cb	3.2	387.2
+2	2.6	387.8
+9	2.7	387.7
W	3.1	387.3

425' N

W	3.8	386.6
+8	3.4	387.0
+10	3.2	387.2
cb	3.9	386.5

390.38

52nd ST

1/4	3.4	386.8
C	3.5	386.9
1/4	3.9	386.5
cb	4.3	386.1
+2	3.7	386.7
E	3.5	386.9

450' N

E	3.8	386.6
+1	4.3	386.1
+10	4.4	386.0
cb	4.8	385.6
1/4	4.5	385.9
C	4.2	386.2
1/4	4.3	386.1
cb	4.7	385.7
+2	4.4	386.0
W	4.8	385.6

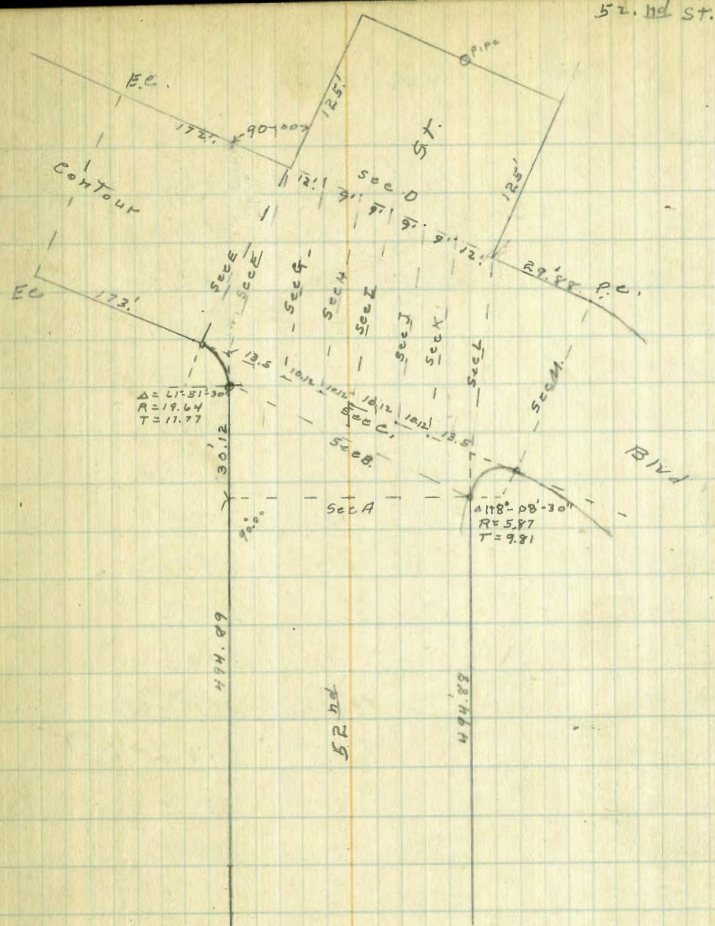
Sec A = 494.88 N = P.C. S.E. Cor 52nd + Contour Blvd at 90°.

W	6.1	384.3
+10	6.0	384.4
cb	6.5	383.9
1/4	6.0	384.4
C	5.6	384.8
1/4	5.8	384.6
cb	6.4	384.0
+2	5.5	384.9

390.38

494.84 N. (con)

+10			5.7	384.7
	E		5.0	385.4
	E		5.0	385.1
+2			5.8	384.6
+11			5.6	384.8
cl.			6.6	383.8
14			6.2	384.2
E			6.2	384.2
14			6.8	383.6
cl.			7.2	383.2
+2			7.0	383.4
W.			7.2	383.2
T.P. on Hub	0.82	386.11	5.09	385.27
				67.5 wide on S. line Contour 13.3' chs 10.12' chs
	Sec C.			
			3.8	382.3
			3.4	382.7
			3.3	382.8
			3.2	382.9
			2.5	383.6
			2.6	383.5
			2.5	383.6
			1.2	384.9
			1.0	385.1



Monroe

Ave

$\frac{494.84}{52.00} = 9.516$
 $\frac{52.00}{52.00} = 1.0$
 $\frac{52.00}{52.00} = 1.0$

52.00 E.

39

386.11
N. Line Contour Blvd = Set D Page 34.

E	3.6	382.5
ch	4.3	381.8
1/4	4.6	381.5
C	5.0	381.1
1/4	5.2	380.9
ch	5.1	381.0
W.	5.3	380.8
25' N		
- 5	7.1	379.0
W	6.7	379.4
ch	6.2	379.9
1/4	6.8	379.3
C	6.8	379.3
1/4	6.3	379.8
ch	5.8	380.3
E	5.2	380.9
50' N		
E	6.5	380.0
ch	7.1	379.0
1/4	7.9	378.2
C	8.6	376.5
1/4	9.0	377.1
ch	9.7	376.4
+3	8.6	377.5
W	9.9	376.2
+5	11.4	377.7

386.11

60' N

-10	13.6	372.5
W	12.5	373.6
ch	10.7	375.4
1/4	10.2	375.9
C	9.2	376.9
1/4	8.2	377.9
ch	7.2	378.9
E	6.5	379.6
75' N		
E	6.6	379.5
ch	7.8	378.3
1/4	8.7	377.4
C	9.8	376.3
1/4	10.9	375.2
ch	12.2	373.9
W	13.3	372.8
+10	16.6	369.2
+30	21.6	364.5
100' N		
W-27	28.0	368.1
W.	17.4	368.7
ch	13.6	372.5
1/4	11.9	374.2
C	10.4	375.7
1/4	8.8	377.3
ch	7.8	378.3
E	6.6	379.5

52nd St.

35

386.11
125' N. = N. End. 52nd St

E.	7.4	378.7
cb.	8.7	377.4
"4	9.8	376.3
E	11.9	374.2
"4	15.0	371.1
cb	17.2	368.9
W	22.0	364.1
+26	33.0	353.1
T.P.	7.67	389.76
	4.02	382.09

B Line 21' S of N.L. Ash

B.M. SW 3/4 110	195.41	194.31	Gregory Ash
0400 = E Gregory	12.1		
T.P.	0.37	197.84	12.94 192.47
0440 = E.L. Gregory	10.1		
0460	15.8		
+94	28.0		
+20	36.7		Bottom
+30	35.1		opp bank
T.P.	12.58	195.05	0.37 192.47
B.M.	0.72	194.33	

52nd St

36

Levels for proposed culvert in Ash
S E of Gregory
A Line 21' N of S.L. Ash

B.M. Gregory & Ash

11.10	195.41	194.31
0400 = E Gregory	7.5	187.9
T.P. 0.37	182.84	12.94 182.47
0440 = E.L. Gregory	3.8	179.00 ✓
0459	7.5	175.3 ✓
0474	11.6	171.7 ✓
0484	15.2	167.6 ✓
1400	21.6	161.0 ✓
1415	29.0	153.8 ✓
1435	38.8	144.0 } Bottom ✓
1450	39.0	143.8 } ✓
1460	36.2	146.6 } opp bank ✓
T.P.	12.58	195.05 0.37 182.47 ✓
B.M.	0.72	194.33 ✓

194.33
194.33
194.33

60' width
12' elev
9' 1145

Contour Blvd X Sec
E. Line 51st St to Madison

2-6-24
miller

389.76

57

H.I. 389.76 Page 37

E. Line 51st St = P.C. Δ 24°05' S. Line R = 400

S. Line Contour

	1.9	387.9
+2	2.6	387.2
cb	2.9	386.9
"14	2.9	386.9
z	2.6	387.2
"14	2.7	387.1
+8	2.7	387.1
cb	2.2	387.6
N.	2.0	387.8

Plotted
H.C.H.

This Curve divided into 4 Parts Δ 7°02'-07"

#7

N	2.8	387.0
cb	2.8	387.0
"14	2.8	387.0
c	2.8	387.0
"14	3.1	386.7
cb	3.1	386.1
+10	2.8	387.0
S	1.8	388.0
#10		
S	2.3	387.5
+2	3.6	386.2
cb	3.9	385.9
+3	4.7	385.1

"14	4.1	385.7
z	3.8	386.0
"14	4.0	385.8
cb	4.4	385.4
N.	4.1	385.7
#3		
N	5.3	384.5
+4	5.3	384.5
+10	6.7	383.1
cb	6.5	383.3
+2	6.4	383.4
+5	5.3	384.5
"14	5.3	384.5
c	4.7	385.1
"14	4.9	385.1
cb	5.7	384.1
+2	4.8	385.0
+10	4.7	385.1
S.	3.8	386.0
#4 = E.C.		
S	4.8	385.0
+1	5.3	384.5
+10	5.6	384.2
cb	6.3	383.5
"14	5.9	383.9
c	5.4	384.4

389.76

E.C. (con)

N. 14	6.2	383.6
+5	4.5	383.3
14	7.3	382.5
cb	7.3	382.5
12	6.4	383.4
N	6.4	383.4

45' S.E. of E.C.

N	7.6	382.2
+9	7.9	381.9
cb	9.0	380.8
+5	9.0	380.8
+6	2.5	382.3
14	7.4	382.4
e	6.9	382.9
14	7.4	382.4
cb	7.6	382.2
S	6.9	382.9

55' S.E.

S	7.3	382.5
cb.	7.8	382.0
14	7.7	382.1
e	7.2	382.6
14	7.6	382.2
+3	7.5	382.3
+4	9.0	380.8
cb	9.0	380.8

389.76

Contour Blvd

38

+4	7.7	382.1
N	9.2	380.6
+5	9.2	380.6

95' S.E.

-25	20.7	369.1
-10	18.4	371.4
N	11.7	378.1
+5	9.2	380.6
cb	13.5	376.3
14	8.5	381.3
e	8.3	381.5
14	8.6	381.2
cb	8.9	380.9
S	8.4	381.4

T.P. on Hub c.p.

385.30

4.47

385.29

S.E. 52199 9
Contour

98' S.E.

S	4.1	381.2
cb	4.4	380.9
14	4.1	381.2
e	3.8	381.5
14	4.0	381.3
+4	4.4	380.9
cb	8.0	377.3
N	12.0	373.3
+16	15.1	370.2
+25	16.3	369.0

385.30

105' S.E.

N-25	17.4	367.9
-12	14.3	371.0
N.	10.2	375.1
ch	8.0	378.3
+7	4.7	380.6
"4	4.4	380.9
e	3.8	381.5
"4	4.1	381.2
ch	4.3	381.0
S	4.0	381.3

112' S.E.

S	3.9	381.4
ch	4.3	381.0
"4	4.2	381.1
e	3.8	381.5
"4	4.3	381.0
ch	5.9	379.4
N.	6.0	379.3
+12	15.0	370.3
+26	18.0	367.3

125' S.E.

N-26	18.3	367.0
N	7.4	377.9
+6	4.8	380.5
ch	6.4	379.3
"4	4.1	381.2

385.30

Contour Blvd.

39

e	3.5	381.5
"4	4.1	381.2
ch	4.2	381.1
S	4.0	381.3

130' S.E.

S	3.9	381.4
ch	4.0	381.3
"4	4.0	381.3
e	3.8	381.5
"4	4.1	381.2
+7	5.0	380.3
ch	6.7	378.6
+5	5.0	380.3
N	11.0	374.3
+20	15.0	370.3

138' S.E.

N-16	13.7	371.6
-7	10.5	364.8
N	5.9	379.4
ch	5.4	379.9
"4	4.1	381.2
e	3.9	381.4
"4	4.0	381.3
ch	4.1	381.2
S	4.0	381.3

384.30

172.25 S.E. of N } Sec. E - Plat Page 34
172.44 " " " S

S.	3.0	382.3	P.E. into 52 nd st
cb	3.3	382.0	
+2	3.7	381.6	
"4	3.6	381.7	
c	3.6	381.7	
"4	4.0	381.3	
cb	4.4	380.9	
N.	4.4	380.9	N.W. cor. 52 nd & Contour

W. line Sec F - Page 34

N.W. cor. 52nd & Contour

N.	4.4	380.9	
cb	4.3	381.0	
"4	3.9	381.4	
c	3.5	381.8	
"4	3.4	381.9	
+7	3.5	381.8	
cb	3.0	382.3	
S	2.6	382.7	P.E. curve into 52 nd st

Sec G - Page 34 N. d.

S	2.5	382.8	
cb	3.2	382.1	
"4	3.0	382.5	
c	3.3	382.0	
"4	3.7	381.6	
cb	4.0	381.3	
N	4.3	381.0	

385.30

W. 1/4 Sec. H, Page 34

Contour Blvd.

20

N	4.4	380.9	
cb	4.0	381.3	
"4	3.5	381.8	
c	3.0	382.3	
"4	2.7	382.6	
cb	2.7	382.6	
S	2.3	383.0	
S	1.7	383.6	
cb	2.5	382.8	
"4	2.5	382.8	
c	2.7	382.6	
"4	3.3	382.0	
cb	3.7	381.6	
N	4.2	381.1	

Sec I

Sec J. E. 1/4

N	3.8	381.5	
cb	3.5	381.8	
"4	3.0	382.3	
c	2.5	382.8	
"4	2.3	383.0	
cb	2.5	382.8	
S	2.0	383.3	

Sec K E. cb

S	1.7	383.6	
cb	2.4	382.9	

385.30

1/4	2.1	383.2
c	2.1	383.2
1/4	2.7	382.6
cb	3.4	381.9
N	3.4	381.9

See L. 2. line 52nd st

N	2.8	382.5	N.B. Cor 52 + contour
cb	3.0	382.3	—
1/4	2.4	382.7	—
e	1.7	383.6	—
1/4	1.6	383.7	—
cb	2.1	383.2	✓
+2	1.0	384.3	—
S.	0.3	385.0	—

See M. P.C. Page 34 $\Delta = 4.05'$ S. line R=400'

S	0.2	385.1	
+9	0.8	384.5	
cb	1.4	383.5	✓
1/4	1.2	384.1	—
e	1.0	384.3	—
1/4	1.9	383.4	—
cb	2.4	382.9	—
N	2.0	383.3	—

T.P. 6.37 391.66 0.01 385.29

391.64

Contour Blvd

21

This Curve Divided into 5 Parts $\Delta = 4.049'$

-5	6.9	384.8
-1	6.7	385.0
N	7.5	384.2
cb	8.0	383.7
1/4	7.4	384.3
e	6.5	385.2
1/4	6.5	385.2
+8	7.2	384.5
cb	6.4	385.3
+11	5.8	385.9
S	4.5	387.2
SW.	4.0	387.7
+1	5.2	386.5
+10	5.5	386.2
cb	6.2	385.5
1/4	5.8	385.9
e	5.8	385.9
1/4	6.5	385.2
cb	7.2	384.6
+10	4.9	384.8
N	6.0	385.7
+2	5.4	386.3

391.66
#3

-2	4.5	387.2
N.E.	5.7	386.0
cl	6.4	385.3
1/4	5.9	385.8
e	5.4	386.3
1/4	5.4	386.3
+8	5.6	386.1
cl	5.2	386.5
+17	4.7	387.0
SW	3.8	387.9
#4		
SW	3.5	388.2
+1	4.4	387.3
cl	5.0	386.7
1/4	5.0	386.7
e	4.5	387.2
1/4	5.1	386.6
cl	5.6	386.1
+10	5.6	386.1
N.E.	4.8	386.9
#5 = E.C.		
-5	5.7	386.0
N.E.	5.8	385.9
cl	6.2	385.5
1/4	5.5	386.2
e	4.6	387.1

391.66

Contour

47

1/4	4.8	386.9
cl	4.8	386.9
SW	4.1	387.6
25' S.E. of P.E.		
SW	4.3	387.4
cl	4.6	387.1
+1	5.1	386.6
1/4	4.9	386.9
e	4.8	386.9
1/4	5.8	385.9
cl	6.5	385.2
N.E.	6.5	385.2
+2	7.2	384.5
+5	7.2	384.5
70' S.E. of E.C.		
-15	10.6	381.1
-5	9.8	381.9
N.E.	6.7	385.0
cl	6.1	385.6
1/4	5.7	386.0
e	4.7	387.0
1/4	4.7	387.0
cl	4.7	387.0
+1	4.1	387.6
SW	4.3	387.4
+5	4.9	386.8

391.66

100' S.E. of E.C.

- 5	4.2	387.5
S.W.	3.9	387.8
+ 10	4.0	387.7
cl	4.6	387.1
"4	4.4	387.3
c	4.4	387.3
"4	5.4	386.3
cl	6.1	385.6
N.E.	4.3	385.4
+ 5	8.7	383.0
+ 10	9.0	382.7

150' S.E. of E.C.

- 5	5.8	385.9
N.E.	5.3	386.4
cl	5.5	386.2
"4	4.6	387.1
c	3.8	387.9
"4	4.0	387.7
cl	3.9	387.8
+ 2	3.5	388.2
S.W.	3.5	388.2
+ 5	4.4	386.3
T.P.	6.64	395.58
	2.72	388.94

198.76 S.E. of E.C. = P.C. 14 to Dawson = Sec A. Page 44.

- 5	7.3	388.3	P.C. 14 to Dawson
S.W.	7.2	388.4	

395.58

Contour Blvd.

+ 10	7.0	388.6
cl	7.5	388.1
"4	7.4	388.2
c	7.2	388.4
"4	7.9	387.7
cl	8.2	387.4
N.E.	8.1	387.5
+ 5	8.0	387.6

19.74 S.E. of Sec. A. = Sec. B. = N. Line Dawson

- 5	7.6	388.0
N.E.	7.6	388.0
cl	7.8	387.8
"4	7.6	388.0
c	6.8	388.8
"4	7.1	388.5
cl	7.2	388.4
S.W.	6.8	388.8

19.6 S.E. of Sec. B. = Sec. C. Page 44 = N. ch of Dawson

S.W.	7.0	388.6
cl	7.8	388.6
"4	6.8	388.8
c	6.5	389.1
"4	7.2	388.4
cl	7.6	388.0
N.E.	7.0	388.6

395.58

14.7 S.E. of sec. C. = sec D. = W. 1/4 of Dawson

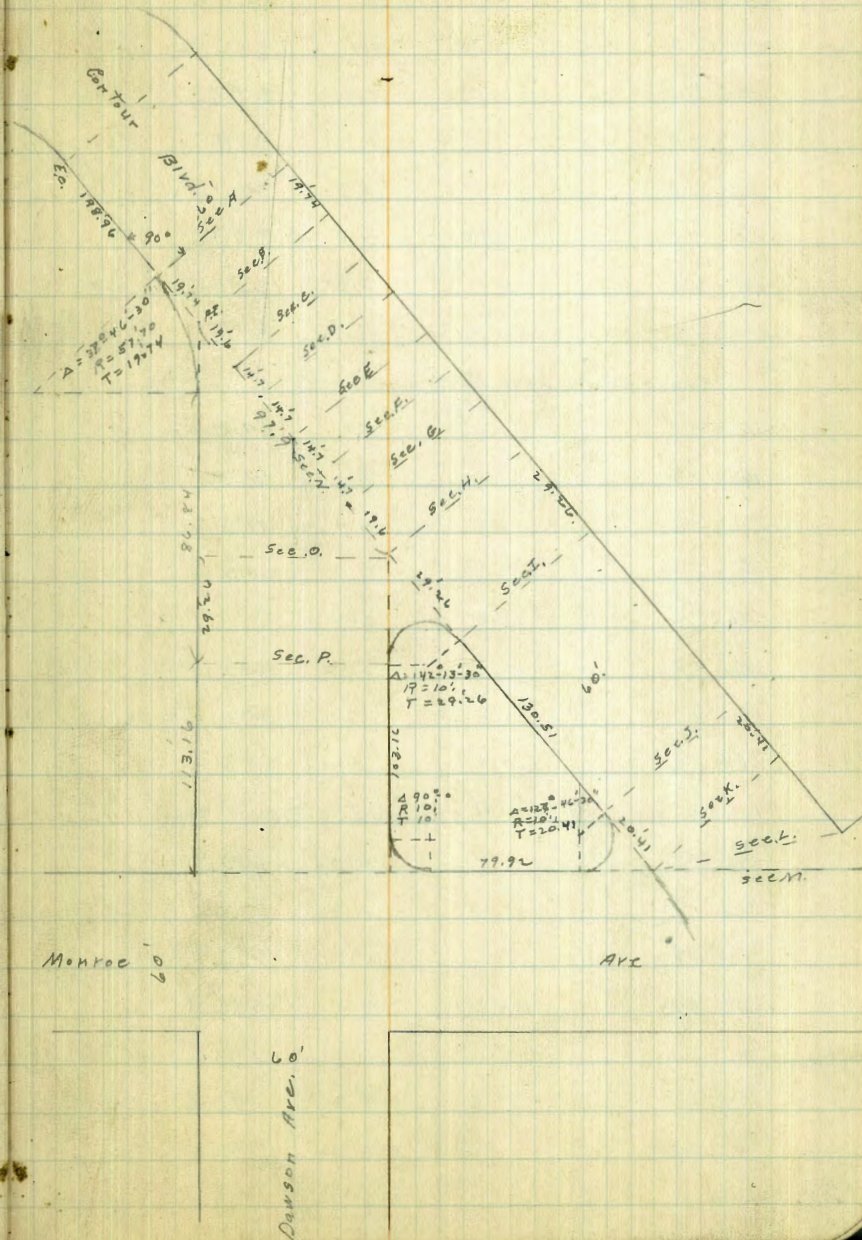
N.E.	6.5	389.1
cb.	7.3	388.3
1/4	7.0	388.6
C	6.2	389.4
1/4	6.5	389.1
cb.	6.5	389.1
S.W.	6.7	388.9

14.7 S.E. of sec D. = Sec E. = 1/4 Dawson

S.W.	6.3	389.3
cb.	6.1	389.5
1/4	6.2	389.4
C	4.0	389.6
1/4	6.7	388.9
cb.	6.8	388.8
N.E.	6.2	389.4

14.7 S.E. of sec E = Sec F. E 1/4 of Dawson

N.E.	6.0	389.6
cb.	6.7	388.9
1/4	6.4	389.2
C	5.8	389.8
1/4	5.9	389.7
cb.	6.1	389.5
S.W.	6.1	389.5



395.58
14.7 S.E. of Sec. F = Sec G = E. cl. Dawson.

S.W.	6.1	389.5
+11	5.4	390.2
cl	5.8	389.8
"4	5.7	389.9
C	5.5	390.1
"4	4.0	389.6
cl	6.3	389.3
N.E.	5.5	390.1

19.6 S.E. of Sec G = sec. H. = E. line Dawson

N.E.	5.1	390.5
cl	5.6	390.0
"4	5.4	390.2
C	5.3	390.3
"1	5.5	390.1
cl	5.5	390.1
+1	5.1	390.5
S.W.	5.1	390.5

29.26 S.E. of Sec H. = sec I. = P.C. Page 44.

S.W.	4.8	390.8
+10	4.8	390.8
cl	5.3	390.3
"4	4.9	390.7
C	4.8	390.8
"4	5.0	390.6
cl	5.2	390.4
N.E.	4.8	390.8

Contour Blvd

395.58
40' S.E. of Sec. I.

N.E.	4.0	391.6
cl	4.4	391.2
"4	4.2	391.4
C	4.1	391.5
"4	4.3	391.3
cl	4.8	390.8
+2	4.4	391.2
S.W.	4.4	391.2

70' S.E. of Sec. F. Page 44

S.W.	4.2	391.4
+10	4.1	391.5
cl	4.6	391.0
"4	3.9	391.7
C	3.6	392.0
"4	3.7	391.7
cl	3.7	391.9
N.E.	3.1	392.5

100' S.E. of Sec. I.

N.E.	3.3	392.3
cl	3.7	391.9
"4	3.4	392.2
C	3.4	392.2
"4	3.7	391.9
cl	4.4	391.2
S.W.	3.9	391.7

395.58
130.51 S.E. of Sec. I = Sec J Page 44 P.C. Int. Monroe

S.W.	4.0	391.6
cb	3.7	391.9
'14	3.5	392.1
c	3.1	392.5
'14	3.2	392.4
cb	3.4	392.2
N.E.	3.6	392.0

20.41 S.E. of Sec. J. = Sec. K.

N.E.	3.8	391.8
cb	3.4	392.2
'14	3.3	392.3
c	3.0	392.1
'14	3.5	392.1
cb	3.6	392.0
S.W.	3.9	391.7 P.I.

Sec. L.

S.W.	3.9	391.7 P.I.
cb	3.6	392.0
'14	3.2	392.4
c	3.2	392.4
'14	3.5	392.1
cb	3.7	391.9
N.E.	4.2	391.4

N.E. Cor Monroe
+ Contour Blvd

Contour Blvd.

46

395.58
Sec. M. = N. Line Monroe. Produced.

N.E. Line Contour Produced	4.2	391.4
cb	4.1	391.5
'14	3.4	392.2
c	3.3	392.3
'14	3.2	392.4
cb	3.6	392.0
S.W.	3.9	391.7 P.I.

60' wide
12' elev
9' 1145

Dawson Ave X Sec
Contour Blvd To El Ceyon Arc

2-7-24
mills

HI. 395.58 Page 46.

See N. Page 44 = S.W. Line Contour Blvd

W	6.8	388.9
cb	7.0	388.6
1/4	6.7	388.9
C	6.3	389.3
1/4	6.1	389.5
cb	6.7	389.5
E	5.1	390.5

Plotted
M.C.H.
3/14/28

See O Page 44

E	5.1	390.5	P.I.
cb	6.0	389.6	
1/4	6.1	389.5	
e	6.0	389.6	
1/4	6.4	389.2	
cb	6.4	389.2	
N	6.3	389.3	

See P. Page 44.

W	6.4	389.2
cb	6.8	388.8
1/4	6.6	389.0
e	6.2	389.4
1/4	6.3	389.3
cb	6.2	389.4
E	5.5	390.1

395.58
60' S. of Sec. P

E	6.1	389.5
cb	6.8	388.8
1/4	6.7	388.9
e	6.6	389.0
1/4	7.0	388.6
cb	7.1	388.5
W	6.8	388.8

113.16 S. of Sec P = N Line Monroe

W	7.2	388.4
cb	7.3	388.3
1/4	7.3	388.3
e	6.8	388.8
1/4	6.9	388.7
cb	6.9	388.7
E	6.4	389.2
+10	6.2	389.4 P.C.

N. cb

E	6.7	388.9
cb	7.0	388.6
1/4	6.9	388.7
e	6.8	388.8
1/4	7.2	388.4
cb	7.3	388.3
W	7.4	388.0

395.58

N. 1/4 Monroe

W	7.4	388.2
cl	7.3	388.3
1/4	7.1	388.5
c	6.7	388.9
1/4	6.8	388.9
cl	6.8	388.8
E	6.6	389.0
E		
E	6.3	389.3
cl	6.9	388.7
1/4	6.8	388.8
c	6.7	388.9
1/4	7.0	388.6
cl	7.1	388.5
W	7.1	388.5

S. 1/4

W	7.2	388.4
cl	7.2	388.4
1/4	7.1	388.5
c	6.8	388.8
1/4	6.9	388.7
cl	7.1	388.5
E	6.8	388.9

S. cl

E	6.8	388.9
cl	7.1	388.5

395.58

Dawson

48

1/4	6.9	388.7
c	6.8	388.8
1/4	7.1	388.5
cl	7.3	388.3
W	7.2	388.4

00 = S. 1/4 Monroe

W	7.2	388.4
cl	7.1	388.5
+1	7.5	388.1
1/4	7.3	388.3
c	6.8	388.8
1/4	6.9	388.7
cl	7.2	388.4
+1	6.5	389.1
E	6.1	389.5

50.5.

E	6.8	388.8
+11	6.9	388.7
cl	7.7	387.9
1/4	7.3	388.3
c	7.3	388.3
1/4	8.0	387.6
+8	8.4	387.2
cl	7.7	387.9
+10	7.7	387.9
W	8.1	387.5
+5	8.3	387.3

395.58

100' S

-5	8.9	386.7
W	8.7	386.9
+2	8.2	387.4
cl	8.2	387.4
+1	8.6	387.0
"4	8.3	387.8
C	7.6	388.0
"4	7.7	387.9
cl	7.8	387.8
+1	7.2	388.4
E	7.2	388.4
T.P.	3.80	391.88
	7.50	388.08 ✓

150' S

E	4.0	387.9
+11	3.7	388.2
cl	4.4	387.5
"4	4.2	387.7
C	4.2	387.7
"4	4.8	387.1
+8	5.2	386.7
cl	4.7	387.2
+9	4.7	387.2
W	5.4	386.5
+5	5.8	386.1

391.88

200' S

-5	5.8	386.1
W	5.5	386.4
+3	4.8	387.1
cl	5.0	386.9
+1	5.3	386.6
"4	5.7	386.8
C	4.5	387.4
"4	4.5	387.4
cl	4.6	387.3
+1	4.0	387.9
E	3.8	387.1

250' S

E	4.0	387.9
cl	4.7	387.2
"4	4.7	387.3
C	4.9	387.0
"4	5.2	386.7
+8	5.5	386.4
cl	5.0	386.9
+10	5.2	386.7
W	5.6	386.4
+5	6.4	385.5

300' S

-5	6.6	385.3
W	6.4	385.5
+2	5.4	386.5

Dawson

391.88
300's (con)

cl	5.2	386.7
+1	5.6	386.3
'14	5.3	386.6
c	5.0	386.9
'14	4.7	387.2
cl	4.5	387.4
+10	4.1	387.8
E	3.6	388.3

350's

E	1.8	390.1
+2	3.3	388.6
cl	3.6	388.3
'14	3.9	388.0
c	4.6	387.3
'14	4.8	387.1
cl	5.2	386.7
W	5.4	386.5
+5	5.9	386.0

395's

-5	5.3	386.6
W	5.2	386.7
cl	5.2	386.7
'14	4.7	387.2
c	4.6	387.3
'14	3.6	387.3
cl	3.5	388.4

Dawson

50

391.88

+10	3.1	388.8
E	1.2	390.7
	400's.	
E	2.8	389.1
cl	3.5	388.4
'14	3.2	388.1
c	4.4	387.5
'14	4.5	387.4
cl	5.8	386.1
W	5.3	386.6
+5	5.4	386.5

413's

-5	5.3	386.6
W	5.4	386.5
cl	5.1	386.8
'14	4.4	387.5
c	4.1	387.8
'14	3.5	388.4
cl	3.7	388.2
E	3.9	388.9

415's

E	1.2	390.7
+2	3.4	388.5
cl	3.7	388.2
'14	3.6	388.3
c	4.0	387.9

391.88

415' 5.20 W

114	4.2	387.7
ch	5.0	386.9
W	5.3	386.6
+5	5.3	386.6

450' S.

W	5.4	386.5
ch	5.3	386.6
114	4.9	387.0
C	4.1	387.8
101	4.1	387.8
ch	4.0	387.9
+10	3.7	388.2
E	2.2	389.7

484.64 S. on E }

495.05 S " W }

} = N. Line El Cajon on diagonal

E	2.2	389.7
+2	3.8	388.1
ch	4.4	387.5
114	4.7	387.2
E	5.0	386.9
114	5.5	386.4
ch	5.9	386.0
W	5.9	386.0

T.P.	7.04	397.95'	0.97	390.91'
------	------	---------	------	---------

ch on BM S. line El Cajon E. of Dawson	1.31	396.64	= 396.62 Mon
--	------	--------	--------------

Dawson

(5)

60' wide
15' ebs
7.5' 1/4s

Belleve Ave X Sec
Forward to Midway

2-7-28
Miller

57

B.M. 12.60 130.57 117.97

T.P. 6.03 134.43 0.17 130.40

50' s.w. of Midway
& Belleve

S. Line Forward on diagonal

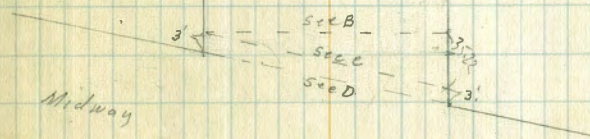
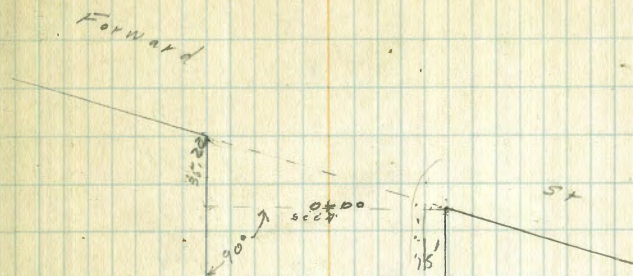
W.	2.5	133.9	
W. cl.	2.32	134.14	cont el
gutter	2.92	133.51	parmt
"4	2.56	133.81'	"
"	2.32	134.11'	"
"4	2.16	134.27	"
gutter	2.10	134.33	
E. cont. el. Ret.	1.75	135.00	
E	1.0	135.4	

0100 = see A

E	1.0	135.4
el	1.8	134.6
+2	2.6	133.8
"4	2.4	134
"	2.4	134
"4	2.5	133.9
el	3.0	133.4
+10	3.7	132.7
W	3.2	133.2
+5	3.2	133.2

50' s. of 00

-5	5.1	131.3
W	5.0	131.4



136.43

50' S. (Ech)

cl	4.7	131.7
"4	3.8	132.6
c	3.7	132.7
"4	3.6	132.8
+5	3.7	132.7
cl	3.1	133.3
E	2.0	134.4

185' S

E	1.4	135.
+8	3.5	132.9
cl	4.2	132.2
"4	4.4	132.
c	4.7	131.7
"4	5.0	131.4
cl	5.9	130.5
W	6.7	129.7
+5	6.9	129.5

100' S

-5	7.2	129.2
W	6.9	129.5
+13	5.7	130.7
cl	6.2	130.2
"4	5.4	131.0
c	4.9	131.5
"4	4.7	131.7
cl	4.5	131.9
E	3.2	133.2

136.43

135' S.

E	4.5	131.9
cl	5.1	131.3
"4	5.3	131.1
c	5.5	130.9
"4	5.9	130.5
cl	6.9	129.5
+2	6.2	130.2
W	7.4	128.9
+5	8.4	128.0

170' S.

-5	8.0	128.4
W	7.6	128.8
cl	6.8	129.6
+2	7.0	129.4
"4	6.2	130.2
c	5.9	130.5
"4	5.6	130.8
cl	5.5	130.9
E	4.3	132.1

200' S

E	4.3	132.1
cl	6.0	130.4
"4	5.9	130.5
c	5.9	130.5
"4	6.3	130.1
cl	7.2	129.2

Athevur

53

136.43

200's. (con)

+10	7.0	129.4
W	7.7	128.7
+5	8.2	128.2

242's.

-5	8.0	128.4
W	8.0	128.4
+5	7.6	128.8
cb	8.0	128.4
'14	7.0	129.4
C	6.5	129.9
'14	4.4	130.
cb	6.7	129.7
+2	6.1	130.3
E	5.3	131.1

263's.

E	5.6	130.8	dirt drive
+12	6.5	129.9	
d	7.2	129.2	
'14	6.8	129.6	
C	7.1	129.3	
'14	7.4	129.0	
cb	8.4	128.0	
+10	8.0	128.4	
W	8.7	127.7	
+5	8.9	127.5	

136.43

Bellevue

54

300's.

-5	10.0	126.4
W	9.8	126.6
cb	9.1	127.3
'14	8.2	128.2
C	7.6	128.8
'14	7.5	128.9
cb	7.7	128.7
+3	6.9	129.5
E	5.0	131.4

350's

E	7.1	129.3
cb	8.8	127.6
'14	8.7	127.7
C	8.7	127.7
'14	9.5	126.9
cb	10.2	126.2
W	10.8	125.6
+5	11.5	124.9

400's

-5	12.1	124.3
W	11.6	124.8
cb	11.0	125.4
'14	10.3	126.1
C	9.8	126.6
'14	9.6	126.8
cb	9.6	126.8
E	8.1	128.3

136.43

T.P. 1.51 128.26 9.64 126.75

450' S.

E 1.0 127.3

cl 2.0 126.3

" 2.3 126

e 2.5 125.7

" 2.8 125.5

cl 3.7 124.6

W 4.0 124.3

500' S.

N 4.8 123.5

cl 4.2 124.1

" 3.6 124.7

c 3.2 125.1

" 3.1 125.2

cl 3.1 125.2

E 1.9 126.4

545' S.

E 2.8 125.5

cl 3.8 124.5

" 4.4 123.9

c 4.5 123.8

" 4.9 123.4

cl 5.2 123.1

W 6.0 122.3

12826

~~565' S. = sec. B.~~

562

N 6.7 121.6

cl 5.6 122.7

+3 7.2 121.1

" 6.4 121.9

c 6.0 122.3

" 5.0 123.3

cl 3.9 124.4

E 2.9 125.4

sec. C. on line 300' & parallel to White Midway

E 3.8 124.5

+14 4.4 123.9

cl 6.0 122.3

" 6.8 121.5

e 7.7 120.6

" 8.3 120.0

cl 8.2 120.1

+3 6.0 122.3

W 6.3 122.0

sec. D. = White Midway

N 8.0 120.3

n. ent. cl. return 8.21 120.05

gutter pavement 8.83 119.43

" 8.42 119.84

c 8.11 120.15

" 7.95 120.31

gutter 7.86 120.40

Bellevue

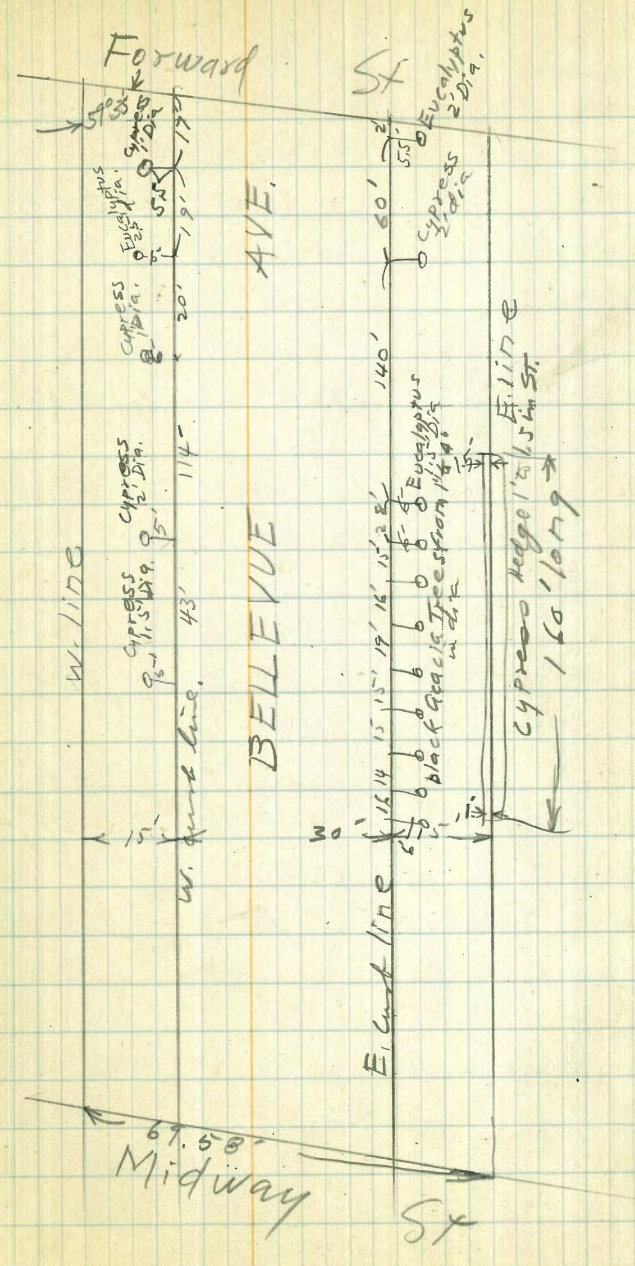
58

128.26
N. line Midway (com)

E. cut. etc.	7.20	121.06
E	6.8	121.5
chk on B.M.	10.29	117.97 ✓

Bellevue

56



Bliss Meade Ave Levels on Cb. from the W line of Alabama to the East line of Florida

	2.64	321.51	318.87	Elev
				0+00 W line Alabama
S		3.61	317.90	
N		2.60	318.91	
				0+25
N		3.82	317.69	
S		4.83	316.68	
				0+50
S	Auto Driveway	6.51	315.00	
N		5.03	316.48	
				0+75
N		6.20	315.31	
S		7.15	314.36	
				1+02
S		8.44	313.07	
N		7.47	314.04	
				1+25
N		8.57	312.94	
S		9.57	311.94	
				1+40 E Line Alley
S		10.16	311.35	
N		9.09	312.42	
				1+60 W line of Alley BIK
N		10.07	311.44	
S		11.18	310.33	

Platted 4-20-28
Canton

	1+75	11.29	321.51
S		10.16	310.22
N			311.35
	2+00		
N		10.44	311.07
S		11.53	309.98
	2+25		
S		11.89	309.62
N		10.78	310.73
	2+47		
N		11.08	310.49
S		12.00	309.51
	2+75		
S		12.26	309.25
N		11.26	310.25
	3+00		
N		11.36	310.15
S		12.38	309.13
			3+10 E line of Florida
S		12.48	309.03
N		11.50	310.01
			N. on N. end of Return
S		11.45	310.06
			S. on S " " "
S		12.32	309.19

Yolker
Ruphinder
Shan
Shan 5-1-78

LEVELS ON CURB Returns
on Cass St.

{ LORING + CASS }

BN NW 7 fact.			
Beryl + Bayard	7.40	74.43	67.03
H = cb. PC. on Cass		6.48	67.95
B = cb. EC. Loring		7.10	67.33
C = SW ch. EC. on Loring		7.97	66.46
D = SW " PC. " Cass		7.71	66.72

{ BERYL + CASS }

NW A = cb. PC. on Cass		1.00	73.43
B = NW EC. " Beryl		2.37	72.06
C = SW PC. " "		3.39	71.04
D = SW ch. EC. on Cass		2.50	71.93
T.P.	10.40	84.05	0.78
			73.65

{ WILBUR + CASS }

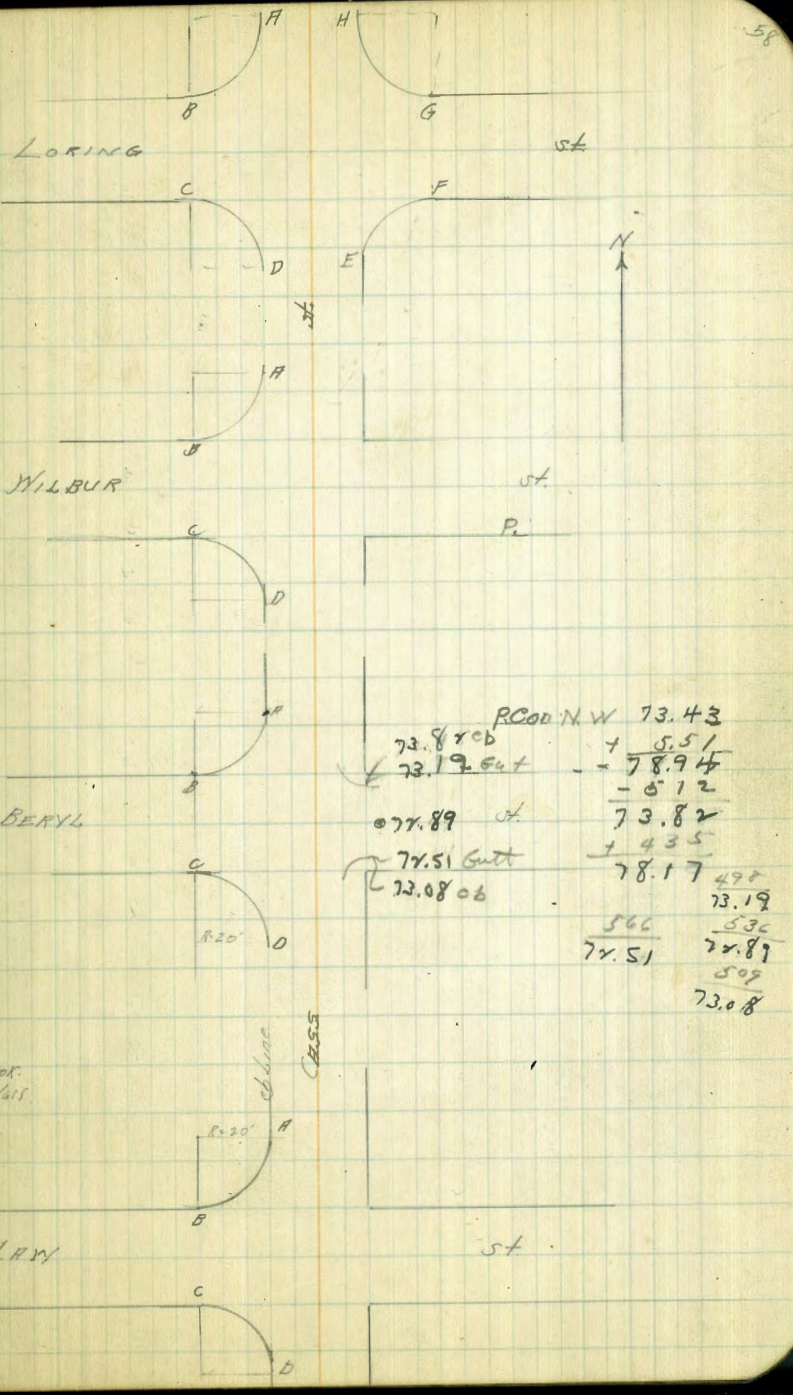
NW H = cb. PC. on Cass		1.66	82.39
B = NW EC. " Wilbur		3.05	81.00
C = SW ch. PC. " "		4.06	79.99
D = " " " " Cass		3.08	80.97
T.P.	8.44	90.91	1.58
			82.47

{ LORING + CASS }

T.P.	2.30	93.21	0.00	90.91
NW R = cb. PC. on Cass		0.45		92.76
NW B = " EC. " Loring		2.30		90.91
SW C = PC. " "		3.74		89.47
SW D = EC. " Cass		2.93		90.28
SE E = cb. PC. " "		2.91		90.30
SE F = " EC. " Loring		2.60		90.61
NE G = " PC. " "		1.61		91.60
H = NE ch. EC. on Cass		0.68		92.53

π
3321
1151
81.70 ch. on SW
5173 - BN
0.03 = Error

SW Spk.
Wilbur + Cass



PC on N.W	73.43	
73.89	+ 5.51	
73.19	- 78.94	
	- 6.12	
	73.82	
0.77.89	+ 4.35	
	78.17	498
		73.19
	566	530
	72.51	72.81
		509
		73.08

LORING

st

Gross-section Franklin St. From
80' wide 40' Roadway.

28th to 31st

(About June 1928)

B.M.	2.31	13.36	91.05	20th Woodman	0+03	91.11	E.I.
T.R.	5.25	191.11	250	85.86	5/4	5.6	85.5
0+00 = E.L.	28th				+7	5.7	85.4
S.L.	9.10	4.9	86.2		+9	5.3	85.8
+8		4.9	86.2		+6	5.4	85.7
cb tab cb		5.25	85.86	✓	+3	4.9	86.2
9d		5.8	85.3		+5	4.2	86.9
+4		5.8	85.3		S.L.	3.8	87.3
1/4		5.9	85.4		0+33		
±		5.9	85.4		S.L.	3.1	88.0
1/4		6.3	84.9		+4	3.4	87.7
+7		6.9	84.2		+17	3.6	87.5
9d		6.6	84.5		cb	3.9	87.2
cb tab cb		6.59	84.52	✓	+4	5.8	85.8
+10		6.3	84.8		1/4	4.8	86.3
N.L.		6.4	84.9		±	5.3	85.8
0+03					1/4	5.9	85.2
N.L.		5.9	85.2		+7	6.2	84.9
+8		6.2	84.9		cb	5.7	85.4
+12		5.9	85.2		+9	5.8	85.3
+17		6.0	85.1		N.L.	5.9	85.2
cb		6.5	84.6				
+3		6.8	84.3				
1/4		6.2	84.9				
±		5.8	85.3				

2 Rubber tires 0+53 to 0+69 1" x 18" dia
 15' South of North line

Franklin St.

0+66	91.11		
N.L.	4.6	86.5	
+10	4.5	86.6	
cb	4.8	86.3	
+4	5.3	85.8	
1/4	4.7	86.4	
±	4.0	87.1	
1/4	3.6	87.5	
+2	3.6	87.5	
+8	4.1	87.0	
+9	3.1	88.0	
cb	2.8	88.3	
+4	2.4	88.7	
5+15.5	2.2	88.9	
SL	1.8	89.3	
1+00			
SL	0.7	90.4	
+5	1.1	90.0	
+15	1.2	89.9	
cb	2.0	89.1	
+1	2.2	88.9	
+3	2.8	88.3	
+7	2.4	88.7	
1/4	2.4	88.7	
±	2.9	88.2	

91.11

N/A	3.8	87.3	
+7	4.2	86.9	
cb	3.9	87.2	
+10	3.7	87.4	
N.L.	3.4	87.7	
T.P. 11.19	99.24	2.56	88.55
1+2A			
(N.L.) 1+2A 1.25' in street	11.49		88.55
+12.5	11.56		88.18
+10	11.5		88.2
+7	11.7		88.0
cb	12.0		87.7
+2	12.2		87.5
1/4	11.6		88.1
±	10.6		89.1
1/2	10.1		89.6
+3	10.0		89.7
+7	10.3		89.4
+9	9.6		90.1
cb	9.3		90.4
+4	9.00		90.7
S.L.	8.6		91.1

Franklin St.

1+66	99.74		
S.L.	7.0	92.7	
+8	7.5	92.2	
+15	7.4	92.3	
cb	8.1	91.6	
+1	8.4	91.3	
+2	9.0	90.7	
+7	8.8	90.9	
1/4	8.9	90.8	
£	9.5	90.2	
1/4	10.6	89.1	
+7	11.0	88.7	
2 ⊕ cb	10.6	89.1	
+5	10.3	89.4	
+12	10.2	89.5	
N.L.	10.1	89.6	
Walk ^{on N.L.} 3.3' wind at 1735	9.43	90.31	
2+00			
N.L.	8.8	90.9	
+15	9.1	90.6	
cb	9.5	90.2	
+2	10.0	89.7	
1/4	9.2	90.5	
£	8.2	91.5	
1/4	7.8	91.9	

2+00	99.74		
S/L+4	7.8	91.9	
+8	7.9	91.8	
cb	7.2	92.5	
+2	6.7	93.0	
+6	6.4	93.3	
S.L.	6.1	93.6	
2+31			
1's. walk	4.21	95.53	
S.L.	4.9	94.8	
+10	5.3	94.4	
+16	5.4	94.3	
cb	6.6	93.1	
+2	6.8	92.9	
+5	6.5	93.2	
1/4	6.5	93.2	
+5	6.7	93.0	
£	7.0	92.7	
1/4	8.2	91.5	
+8	9.0	90.7	
cb	8.8	90.9	
+3	8.2	90.5	
N.L.	7.9	91.8	

Franklin St.

99.74

Step at 2+695 on NL610	93.64	
2+71		
NL	6.8	92.9
+13	6.9	92.8
cb	7.7	92.0
+2	7.7	92.0
1/4	7.0	92.7
£	5.8	93.9
+8	5.3	94.4
1/4	5.3	94.4
+8	5.3	94.4
+9	4.7	95.0
cb	4.6	95.1
+2	4.0	95.7
+7	4.2	95.5
+18	3.8	95.9
S.L.	3.1	96.6
Step at ^{DD S.L.} 2+76 62w. d. 3.08	96.66	
3+00		
S.L.	2.8	96.9
+4	3.7	96.0
+18	3.9	95.8
cb	4.3	95.4
+2	4.7	95.0

99.7

99.74

3+00

S 1/4	4.8	94.9
£	5.4	94.3
1/4	6.6	93.1
+7	7.1	92.6
cb	6.9	92.8
+5	6.8	92.9
N.L.	6.4	93.3
3+24		
N.L.	6.3	93.4
cb	6.8	92.9
1/4	6.6	93.1
£	5.4	94.3
+5	5.0	94.7
1/4	5.8	93.9
+8	5.9	93.8
cb	4.9	94.8
+6	3.8	95.9
S.L.	3.6	96.1
3+39		
S.L.	2.7	97.0
+2	3.4	96.3
+18	3.9	95.8
cb	4.2	95.5
+2	5.0	94.7

Franklin St.

3+39	99.74		
S/A	5.0	94.7	
+5	5.2	94.5	
⊕	5.6	94.1	
1/4	6.7	93.0	
cb	7.0	92.7	
N.L.	6.4	93.3	
Walk ^{on N.L.} at 3+37 A'wide	6.13	93.61	
3+46			
N.L.	6.6	93.1	
+5	7.2	92.5	
cb	7.4	92.3	
+3	7.6	92.1	
1/4	7.1	92.6	
⊕	6.1	93.6	
+5	5.7	94.0	
1/4	5.4	94.3	
+8	5.4	94.3	
cb	4.5	95.2	
+7	4.1	95.6	
+10	4.3	95.4	
S.L.	3.3	96.4	
4+00			
S.L.	3.8	95.9	
+3	4.7	95.0	

4

99.74

~~3~~+00

S.L.+9	5.1	94.6	
+12	4.9	94.8	
+18	5.0	94.7	
cb	5.4	94.3	
+2	6.3	93.4	
1/4	6.3	93.4	
+3	6.4	93.3	
⊕	7.0	92.7	
1/4	7.7	91.8	
+8	8.4	91.3	
cb	8.4	91.3	
+8	8.1	91.6	
+12	8.3	91.4	
N.L.	7.9	91.8	
Walk ^{2' wide} at 4+01 on N.L.	7.81	91.93	
Walk ^{3.5' wide} at 4+33.5 3'N	8.83	90.91	
4+35			
N.L.	9.0	90.7	
+10	8.8	90.9	
+17	8.9	90.8	
cb	9.0	90.7	
+2	9.2	90.5	
1/4	8.7	91.0	
⊕	7.6	92.1	

Franklin St.

4+35	99.74		
4+5	7.3	92.4	
1/4	7.1	92.6	
+4	7.1	92.6	
+7	7.2	92.5	
cb	6.2	93.5	
+3	5.7	94.0	
+18	5.1	94.6	
S.L.	4.5	95.2	
4+67			
S.L.	6.0	93.7	
+6	6.4	93.3	
+14	6.4	93.3	
+18	6.7	93.0	
cb	7.2	92.5	
+2	7.8	91.9	
1/4	7.7	92.0	
+7	8.0	91.7	
4	8.3	91.4	
1/4	9.4	90.3	
+8	9.7	89.8	
cb	9.8	89.9	
+3	9.6	90.1	
+10	9.6	90.1	
N.L.	9.6	90.1	

4+67	99.74		
walk 2.5' wide 3' N	9.55	90.19	
steps ^{South side. 5' wide} at 4+73.06' in street	5.52	94.22	
walk ^{3' wide} at 4+98' on N.L.	10.00	89.74	
5+00			
N.L.	10.4	89.3	
+10	10.3	89.4	
+18	10.4	89.3	
cb	10.6	89.1	
+2	10.7	89.0	
1/4	10.1	89.6	
4	9.0	90.7	
+5	8.7	91.0	
1/4	8.5	91.2	
+4	8.4	91.3	
+8	8.6	91.1	
cb	7.5	92.2	
S.L.	6.7	93.0	
5+33			
S.L.	7.5	92.2	
+7	7.9	91.8	
+18	8.1	91.6	
cb	8.5	91.2	
+2	9.5	90.2	
1/4	9.3	90.4	

Franklin St

5+33	99.74		
£	9.7	90.0	
1/4	10.8	88.9	
+7	11.4	88.3	
cb	11.0	88.7	
+12	11.0	88.7	
N.L.	11.0	88.7	
5+66			
N.L.	11.7	88.0	
cb	11.8	87.9	
+2	12.2	87.5	
1/4	11.6	88.1	
£	10.6	89.1	
1/4	10.0	89.7	
+4	10.0	89.7	
+8	10.1	89.6	
cb	9.2	90.5	
+3	8.9	90.8	
+10	8.6	91.1	
S.L.	8.3	91.4	

99.74

↳ T.D. = W.L. 29.12

S.L.	9.3	90.4	
+10	9.6	90.1	
+19	10.1	89.6	
cb	11.0	88.7	
+2	11.4	88.3	
+7	11.0	88.7	
1/4	11.1	88.6	
£	11.5	88.2	
1/4	12.5	87.2	
+9	13.5	86.2	
cb	12.9	86.8	
+3	12.6	87.1	
+14	12.5	87.2	
+17	12.8	86.9	
N.L.	12.5	87.2	
T.P.	5.90	93.09	12.55 87.19

Intersection Franklin & 29th
29th 60' wide 40' Roadway.

93.09

Wcb line 29th

NL	6.4	86.7
+3	7.0	86.1
+6	6.5	86.6
+17	7.1	86.0
cb	7.0	86.1
+3	6.5	86.6
1/4	6.0	87.1
E	5.3	87.8
1/4	5.0	88.1
+5	4.9	89.2
+8	5.1	88.0
cb	4.2	88.9
+10	3.5	89.6
S.L.	3.0	90.1

Wcb line 29th +A

S.L.	4.3	88.8
cb	5.1	88.0
1/4	5.3	87.8
E	5.5	87.6
1/4	6.1	87.0
cb	6.7	86.4
+5	7.3	85.8
N.L.	7.5	85.6

66

W/A line 29th 93.09

N.L.	7.1	86.0
cb	6.5	86.6
1/4	6.2	86.9
E	5.8	87.3
1/4	5.3	87.8
cb	4.9	88.2
S.L.	4.3	88.8
E 29th		
S.L.	4.5	88.6
cb	5.3	87.8
1/4	5.7	87.4
E	6.0	87.1
1/4	6.4	86.7
cb	6.6	86.5
N.L.	7.2	85.9

E/A line 29th

N.L.	7.3	85.8
cb	7.2	85.9
1/4	6.9	86.2
E	6.5	86.6
1/4	6.1	87.0
cb	5.7	87.4
S.L.	5.0	88.1

Franklin St

93.09

Ecb line 29th

S.L.	5.5	87.6
cb	6.3	86.8
1/4	6.6	86.5
1/2	6.8	86.3
3/4	7.4	85.7
cb	7.9	85.2
+10	7.9	85.2
N.L.	7.8	85.3

Ecb line 29th +A

N.L.	7.9	85.2
+15	7.3	85.8
cb	8.0	85.1
+5	7.5	85.6
1/4	7.3	85.8
1/2	6.7	86.4
3/4	6.4	86.7
+8	6.3	86.8
cb	6.1	87.0
+4	4.9	88.2
+8	5.2	87.9
S.L.	4.9	88.2

67

93.09

O+00 = E.L. 29th

S.L.	4.4	88.7
+15	5.1	88.0
cb	5.9	87.2
+6	6.2	86.9
1/4	6.4	86.7
+6	6.3	86.8
1/2	6.5	86.6
3/4	7.2	85.9
+7	7.9	85.2
+9	7.8	85.3
cb	7.4	85.7
N.L.	7.5	85.6
O+09		
N.L.	6.9	86.2
+2	7.4	85.7
+17	7.4	85.7
cb	7.6	85.5
+4	7.8	85.3
1/4	7.0	86.1
+7	6.3	86.8
1/2	6.1	87.0
3/4	6.1	87.0
+9	5.9	87.2
cb	5.2	87.9

Franklin St

0+09	93.09		
Scb +1	4.8	88.3	
+14	4.6	88.5	
+18	4.2	88.9	
S.L.	3.0	90.1	
0+40			
S.L.	3.6	89.5	
+3	4.4	88.7	
+19	4.6	88.5	
cb	5.3	87.8	
+2	5.9	87.2	
1/4	5.8	87.3	
+	6.1	87.0	
1/4	6.8	86.3	
+8	7.2	85.5	
cb	7.4	85.7	
+16	7.4	85.7	
N.L.	6.5	86.6	

0+66			
N.L.	6.8	86.3	
cb	7.3	85.8	
+1	7.5	85.6	
1/4	6.7	86.4	
+	5.9	87.2	
1/4	5.4	87.7	

93.09

0+66

5/4 +5	5.5	87.6	
+9	5.7	87.4	
cb	5.1	88.0	
+3	4.7	88.4	
+17	4.4	88.7	
S.L.	3.5	89.6	
1+00			
S.L.	3.7	89.4	
cb	4.7	88.4	
+1	5.4	87.7	
1/4	5.2	87.9	
+5	5.4	87.7	
+	5.8	87.3	
1/4	6.7	86.4	
cb	7.2	85.9	
N.L.	7.0	86.1	
1+31			

Walk 3' wide 5' N.	6.46	86.53	
N.L.	7.1	86.0	
+17	6.8	86.3	
cb	7.1	86.0	
1/4	6.7	86.4	
+	5.8	87.3	
+5	5.4	87.7	

Franklin St

1+31	93.09		
5 1/2	5.2	87.9	
+8	5.2	87.9	
cb	4.5	88.6	
+4	4.1	89.0	
o. +18	3.7	89.4	
S.L.	3.3	89.8	
1+66			
S.L.	3.7	89.4	
+18	4.1	89.0	
cb	4.5	88.6	
+2	5.0	88.1	
1/4 { Tree at	5.1	88.0	
+4 { 1+77 8" dia	5.2	87.9	
¢ { 17' Not S.L.	5.7	87.4	
1/4	6.6	86.5	
cb	7.1	86.0	
+2	6.9	86.2	
N.L.	6.7	86.4	
2+00			
N.L.	6.7	86.4	
+10	6.7	86.4	
cb	6.9	86.2	
+2	7.0	86.1	
1/4	6.5	86.6	

93.09

2+00			
N 1/2 +5	6.1	87.0	
¢ { Tree 5" dia	5.2	87.5	
+5 { at 2+00 17' Not	5.2	87.9	
1/4 { S.L.	5.0	88.1	
+8	4.9	88.2	
cb	4.3	88.8	
+2 { Tree at 2+26	3.7	89.4	
S.L. { 17' Not S.L. 6" dia	3.5	89.6	
2+33			
S.L.	3.5	89.6	
+19	4.0	89.1	
cb	4.2	88.9	
+2	4.8	88.3	
1/4	4.8	88.3	
+5	4.9	88.2	
¢	5.3	87.8	
1/4	6.2	86.9	
+8	6.8	86.3	
cb	6.7	86.4	
+10	6.8	86.3	
S.L.N.L.	6.7	86.4	

Franklin St.

2+71	93.09		
walk on NL 3' wide	6.16	86.93	
SL NL	6.3	86.8	
+13	6.3	86.8	
cb	6.6	86.5	
+5	6.5	86.6	
1/4	6.1	87.0	
4	5.1	88.0	
+5	4.7	88.4	
1/4	4.5	88.6	
+4	4.4	88.7	
+8	Tree at 2+75	4.5	88.6
cb	16' Nat SL	4.2	88.9
+1	6" dia	3.8	89.3
SL	Tree at 2+99	3.2	89.9
3+00	16' Nat SL 3" dia		
SL		3.3	89.8
+19		3.6	89.5
cb		3.8	89.3
+2		4.3	88.8
1/4		4.5	88.6
4		5.0	88.1
+5		5.4	87.7
1/4		5.9	87.2
+9		6.3	86.8

93.09

cb			6.2	86.9
+9			6.1	87.0
+12			6.2	86.9
NL			6.1	87.0
T.P.*			6.03	87.06 (86.99)
TP	10.33	97.11	6.31	86.78
T.P.	6.99	96.84	7.26	89.85
B.M.			5.64	91.20 91.05
T.P.	7.64	94.63		86.99
walk on NL 3+08 3' wide			7.63	87.00
3+33				
NL			7.2	87.4
+7			7.2	87.4
+16			7.5	87.1
cb			7.7	86.9
1/4			7.2	87.4
4			6.3	88.3
1/4			5.8	88.8
+7			5.7	88.9
cb			5.0	89.6
+1			4.8	89.8
+12			4.6	90.0
SL			4.3	90.3

Franklin St

94.63

Dr. way at 3+61 on SL	3.88	90.75
3+66		
S.L.	3.9	90.7
+7	4.2	90.4
+16	4.2	90.4
cb	4.8	89.8
+2	5.5	89.1
$\frac{1}{4}$	5.6	89.0
$\frac{1}{2}$	6.2	88.4
$\frac{1}{4}$	7.0	87.6
cb	7.5	87.1
+11	7.2	87.4
N.L.	7.2	87.4
A+00		
N.L.	6.6	88.0
+8	7.0	87.6
+17	7.2	87.4
cb	7.1	87.5
$\frac{1}{4}$	6.8	87.8
$\frac{1}{2}$	5.9	88.7
$\frac{1}{4}$	5.4	89.2
+8	5.4	89.2
cb	4.6	90.0
+3	4.2	90.4

4+00

94.63

scb +17	4.0	90.6
S.L.	3.5	91.1
A+33		
S.L.	3.1	91.5
+3	3.9	90.7
+16	4.2	90.4
cb	4.8	89.8
+2	5.3	89.3
+5	5.1	89.5
$\frac{1}{4}$	5.2	89.4
$\frac{1}{2}$	5.8	88.8
$\frac{1}{4}$	6.7	87.9
+8	7.3	87.3
cb	7.3	87.3
+7	6.9	87.7
+17	6.7	87.9
N.L.	5.4	89.2
A+71		
N.L.	4.7	89.9
+4	6.4	88.2
+10	6.8	87.8
cb	6.9	87.7
+3	7.2	87.4
$\frac{1}{4}$	6.6	88.0

Franklin St.

4471	94.63	
£	5.6	89.0
5/4	5.2	89.4
+4	5.2	89.4
+8	5.4	89.2
cb	4.9	89.7
+2	4.4	90.2
+13	4.1	90.5
S.L.	3.8	90.8
steps on S.L. 1' wide	3.19	91.44
5400		
S.L.	3.3	91.3
+2	4.0	90.6
+7	4.6	90.0
+18	4.8	89.8
cb	5.2	89.4
+2	6.0	88.6
+6	5.8	88.8
1/4	5.8	88.8
£	6.2	88.4
1/4	7.0	87.6
+8	7.7	86.9
cb	7.4	87.2
+2	7.0	87.6
+10	7.0	87.6
+16	6.5	88.1

Franklin St.

94.63

5400		
N.L.	5.1	89.5
5+33		
N.L.	6.2	88.4
+4	7.3	87.3
+14	7.7	86.9
cb	8.2	86.4
+3	8.5	86.1
1/4	7.9	86.7
£	7.1	87.5
1/4	7.1	87.5
+4	7.1	87.5
+8	7.4	87.2
cb	6.5	88.1
+4	5.9	88.7
+16	5.6	89.0
S.L.	5.1	89.5
5+65		
S.L.	7.1	87.5
+1	7.4	87.2
+10	7.8	86.8
+17	7.7	86.9
cb	8.2	86.4
+1	8.7	85.9
+2	9.4	85.2
1/4	8.8	85.8

Franklin St.

5+65	94.63	
5/4+5	8.6	86.0
4	8.7	85.9
1/4	9.1	85.5
+6	9.4	85.2
+8	9.5	86.1
cb	8.6	86.0
+4	8.3	86.3
+12	8.9	85.7
N.L.	9.9	86.1
Dr. way at 5+56 3'N	6.63	88.0
6+00		
N.L.	9.5	85.1
+7	10.0	84.6
+13	10.0	84.6
+18	10.3	84.3
cb	10.2	84.4
+3	10.0	84.6
+8	10.3	84.3
1/4	10.2	84.4
4	10.0	84.6
+8	10.4	84.4
1/4	10.3	84.3
+5	10.4	84.2
+8	10.6	84.0
cb	10.5	84.1

Franklin St

73

6+00	94.63	
5+6+4	10.0	84.6
+9	9.8	84.8
+14	9.8	84.8
B.L.	9.3	85.3
6+20 ²⁵ (closing) = N.L. 30 th		
S.L.	10.2	84.4
cb top cb	10.47	84.16
gut Pav.	11.10	83.53
1/4 Pav	10.58	84.05
4 Pav	10.33	84.30
1/4 Pav	10.60	84.03
gut Pav	11.12	83.51
cb top cb	10.47	84.16
N.L. (on Swalk)	10.29	84.34
B.M. ^{30th & Franklin} _{NE. CP.}	12.46	82.87
B.M. 1.02	83.19	82.87
0+00 = E.L. 30 th		
N.L. (on Swalk)	0.78	82.41
cb top	1.04	82.5
gut Pav	1.49	81.70
1/4 Pav	1.36	81.83
4 Pav	1.34	81.85
1/4 Pav	1.47	81.72
gut Pav	1.71	81.48
cb top	1.09	82.10

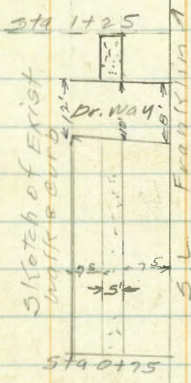
Franklin St.

0+00	83.19.	
S.L. 120 snakes	0.83	82.36
0+05		
SL	1.1	
+18	1.2	
cb	2.3	
+6	2.0	
1/4	2.0	
c	1.9	
1/4	2.0	
+7	2.0	
+8	1.6	
cb	1.3	
+4	1.1	
+14	1.3	
+18	1.1	
N.L.	1.2	
0+33		
N.L.	3.3	
+7	3.5	
+17	3.8	
+16	3.5	
cb	3.8	
+2	4.7	
1/4	4.7	

0+33	83.19
♀	4.7
5 1/4	4.8
+5	4.9
+8	5.2
cb	4.7
+4	4.1
S.L.	3.8
0+66	
S.L.	7.1
+7	7.4
+19	7.4
cb	7.8
+1	8.4
+3	8.4
+4	8.0
1/4	7.8
♀	7.8
1/4	7.6
+9	7.9
cb	7.1
+1	6.6
+14	6.8
N.L.	5.9

Franklin St.

0+75	83.19
N.L.	6.6
+2	7.2
+9	7.5
+19	7.4
cb	8.1
+2	8.8
1/4	8.4
1/2	8.6
+5	8.6
3/4	8.9
+7	9.2
+8	9.4
gut	9.3
cb top cb	9.01
+13	8.7
+15	8.1
S.L.	8.1
0+93 End Exist cb	10.88
1+00 = 1/2 Dr. way	
S.L. (on Dr. way)	10.75
+7 1/2 3' edge 5' walk on Dr. way	11.43
+12 1/2 4' edge 8' walk on Dr. way	11.51
cb br way gut.	12.21
cb 9rd.	12.1
+5	11.6



1+00	83.19
5 1/4	11.3
1/2	10.7
1/4	10.4
+3	10.4
+7	10.8
+9	11.2
cb	10.5
+2	9.4
+12	9.5
+18	9.3
N.L.	8.9
1+25	
N.L.	11.3
+10	11.7
+18	11.5
cb	12.1
+1	12.8
+5	12.5
1/4	12.6
1/2	13.0
3/4	13.7
+5	11.6
+9	12.0
cb	13.4
+5	13.9

Franklin 5+

1400	83.19		
S.L.		14.0	
T.P. 0.38	70.92	14.65	90.54
1450			
N.L.		0.3	
+10		0.9	
+7		0.9	
cb		1.6	
+2		2.4	
+5		2.2	
1/4		2.2	
±		2.9	
1/4		3.5	
+5		3.6	
cb		4.3	
+1		3.7	
S.L.		4.0	
1475			
S.L.		5.7	
+9		5.7	
+18		5.9	
+19		6.4	
cb		6.2	
+4		5.6	
1/4		5.3	
±		4.6	

1475

7092

N/4	4.0
+3	3.9
+8	4.3
cb	3.2
+2	2.8
+8	2.9
N.L.	2.3
2+00	
N.L.	4.0
+4	3.7
+10	4.5
+18	4.7
cb	5.2
+2	6.2
+7	5.6
1/4	5.6
±	6.1
1/4	7.0
cb	7.8
+1	7.8
+2	7.5
+5	7.2
+16	7.3
S.L.	7.7

Franklin St.

2+25

7092

S.L.	8.8
+3	8.9
+5	9.2
+7	8.7
+18	8.9
cb	9.5
1/4	8.8
1/4	7.9
1/4	7.6
+3	7.6
+8	8.0
cb	6.9
+7	6.3
N.L.	5.9

2+65

N.L.	7.9
+3	8.7
+10	9.2
+18	9.0
cb	9.1
+2	10.8
+8	10.3
1/4	10.4
1/4	10.9
1/4	11.6
cb	12.5

2+65

7092

Subt 2	12.0
+13	11.8
+18	12.2
S.L.	12.0
T.P. 3.17	6173 12.36 58.56
3400	

S.L.	5.0
+8	5.0
+16	5.2
+19	5.8
cb	5.7
1/4	4.7
1/4	4.0
1/4	3.3
+5	3.4
cb	4.1
+1	2.8
+3	2.0
+19	2.1
+15	2.3
N.L.	1.4
3+33	

N.L.	3.0
+10	4.3
+17	4.8
+19	4.8

Franklin St

3+33

61.83

Ncb	6.0
+7	5.2
1/4	5.2
±	6.0
1/4	6.8
cb	7.3
+1	7.7
+2	7.3
S.L.	7.0

Tree at 3+54
16' 50" of NL 3" dia

Tree at 3+80
16' 50" of NL 4" dia

3+66

S.L.	8.6
+7	8.6
+13	8.0
+18	8.3
cb	9.4
1/4	9.5
±	7.7
+5	7.4
1/4	7.2
+5	7.3
+8	7.6
cb	7.3
+9	6.0
N.L.	5.8

2' in st. N side
Dr. way at 3+61

5.62

A+00

61.93

N.L.	7.2
+10	7.6
+17	7.0
cb	8.8
1/4	8.6
±	8.9
+4	9.0
1/4	9.6
+9	10.4
cb	9.7
+1	9.4
+12	9.5
S.L.	9.8

Tree at 4+21 5" dia 16' 50" of NL

Tree at 4+92 1" dia 16' 50" of NL

A+33

10' 5	11.6
S.L.	10.4
+10	10.4
+18	10.0
cb	10.6
+2	11.3
1/4	10.4
±	9.9
1/4	9.6
cb	9.6

From
Line of shrubs
A+66 to 5+00
13' 50" of NL

+4
+18 (cont) on p 80

8.5
8.5

1/10/1911
 P.F. 1409
 S. 1409
 9-14-27

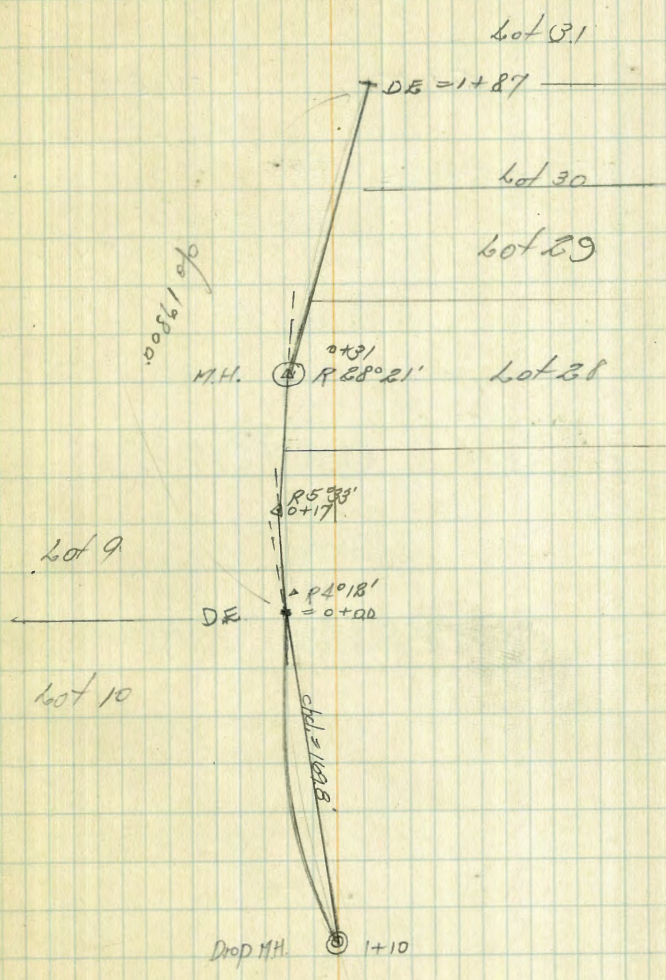
SEWER EXTENSION in B14. E
 South dock Hdd.

00207 Hub at MH + 8.20 = cut on slab	X	
0.08 = Red "	73.78	57.00
1.678 = Red out by/dire		
Flow line of		
DE = 0+00 = Δ	13.76	59.57
+17 = Δ		59.66
+48 = MH (3-46.33)		59.93
0+99.33		60.33
1+40.66		60.73
1+87 DE		61.13
73.22 = X		

59.66	59.93	60.33	60.73	61.13
13.87	13.30	12.95	12.55	12.15
13.87	12.80	12.77	12.71	12.98
70.63	70.29	70.18	70.16	70.22

M.H. 1+10 on flow
 line to north

Location of Sewer
 Block E
 South dock Hdd.



Franklin St.

A+33	61.23	
S.L.		8.0
F.P.	7.55	59.15 10.13 51.60
A+66		
Garage at A+56 on N.L.	5.95	
N.L.		6.3
+10		6.4
cb		6.9
1/4		7.4
1/2		7.7
3/4		7.8
+5		8.2
+9		8.6
cb		8.2
+3		7.3
+7		7.1
+12		9.2
S.L.		9.7
3'S		11.3
10'S		11.5

Line of 7-3" o/v trees
 From 5+20 to 5+94
 17' 5" of N.L.

Continued in Book 1255
Page 1

DIRECTIONS FOR USE OF TABLES

TABLE No. 1.

Distance of slope stake from side or shoulder stake for any width roadway, slope 1 1/2 to 1. If ground is nearly level, the cut or fill at side stake is located by the double entry method in left column and top row. The number in body of table in same row and column gives distance

IMPROVED TABLES
AND
INFORMATION

To find Tangent and External for curve of any other degree, divide by degree of curve and add correction found in column of corrections. Degree of curve with a given T may be found by dividing tangent (or external), opposite T by given tangent (or external). The distance from a point on the tangent to the curve is very nearly the square of the tangent length divided by twice the radius.

287.38

36°47'30" 109800
 12224 658160
 22°23'30" 658160
 7226500

8725960
 36°47'30"
 53°12'30"
 1.66960
 5960
 1001760
 1502640
 834800
 99058160
 89°59'60"
 36°47'30"
 53°12'30"

173
 13
 5.0

19953
 19131
 5.77
 -20 = 11.7
 -25 = 14.1
 -30 = 20.3

287.38
 250.36
 29.

12.79
 3.70
 9.09
 3.59
 12.68

87.57 Mon. Feb 4 Felton 201.99
 10009
 7600138
 205X 36°47'30' 1.32117
 11X4 12096 86
 19431 12096 777702
 19431 12096 1050736
 89°59'60" 113.67062
 10048'30" 104720
 19796 36°47'30" 129
 363 12024 104
 17133 24°23'20" 1.09800
 86
 658800
 878600
 9447800
 1078 29777
 105X1 841
 9 28536
 1.15570
 20
 7309400
 6979
 4620
 22271
 270.91
 123
 88
 75
 13.8
 3.8
 10.0
 105V1
 9882
 689
 170V1
 288
 141.61
 1089
 6.0
 1.0P

105V1
 9951
 204971
 1778
 7270
 1.15570
 20
 7309400
 6979
 4620
 22271
 270.91

105V1
 9882
 689
 170V1
 288
 141.61

H.I.
 9921
 13189
 85.32

99.21 9921
 958 682
 89.63 92.39

ENGINEERING DEPARTMENT,
 SAN DIEGO,
 CALIFORNIA.
 90

9105
 355
 9460
 117
 9343
 578
 99.21
 514
 94.07

8.2
 175
 127.24
 10.29
 11697
 91.11
 218
 8855
 1119
 99.74
 9921
 1114
 88.07
 99.21
 9.00
 90.21