

1218

EASTON

FIELD BOOK

No. 385

ENGINEERING DEPARTMENT.
CITY OF SAN DIEGO.
CALIFORNIA.

Our Leather Bound Engineers Note Books are carried in the following rulings:

- No. 380 LEVEL BOOK. Left and Right Hand Page the same as Left Hand Page of this Book.
- No. 382 FIELD BOOK. Left Hand Page as in this Book, Right Hand Page 4 x 4 to the inch, Center Line Red.
- No. 384 MINING TRANSIT BOOK. Left Hand Page as in this Book, Right Hand Page 8x8 to the inch, Center Line Red.
- No. 385 FIELD BOOK. Left Hand Page as in this Book, Right Hand Page 8 vertical and 4 horizontal lines to the inch, Center Line Red.

We also carry the Note Books listed above, bound in extra strong Fabri-Hide (otherwise the same quality of book), which can be furnished at a somewhat lower price.

In ordering Fabri-Hide covered books, add the letter "F" to catalog number.

THE FREDERICK POST CO.
ENGINEERING and DRAFTING SUPPLIES
IRVING PARK STATION
CHICAGO, ILL.

MICROFILMED
DEC 22 1964

Discontinued 5/22/74 7/10/2014

"Index"

Pages 1 to 9. X sections of Thorn St. from W.
Line of 46th to the W line of 47th St.

Pages 9½ to 23 X Sections of Menlo St.
From the North line of Redwood to the South
Line of Myrtle

Pages 24 to 36 X Sections of 46th Street
From the North Line of Redwood to the
South line of Myrtle

Pages 37 to 41 X sections of Alley Fairmount
Annex #1

Pages 42-45 X sections Alley Block 63.
Park Villas

Pages 46-48 X sections Alley Block 59
Park Villas

Page 49 levels on cb and sidewalk W. side
of 42nd. from N. line Thorn to 150' North

X sec. Mocaulay St. Plum to Capistrano 50

" " Udol St. Evergreen to Locust 61

X sec. Trojan Altadena to 52 67

X. sec. Union N. of Walnut. 76

Discovered 8 pp 74 7/10/20 H.H.

X Sections of Thorn Street from
W. Line of 46th To W Line of 47th Street

B/155
Isa 661
Bliss
10/20/47

B.M.N.Y.
Thorn

	+	X	-	Elev
	1.95	334.91		332.96 ^h
	W Line 46 th			
N		10.8		324.1 ^v
cb		10.7		24.2
1/4		10.7		24.2
E		10.5		24.4
1/4		10.5		24.4
cb		10.5		24.4
S		10.6		24.3 ^v
	W. cb			
S		11.5		23.4 ^v
cb		10.9		24.0
1/4		11.2		23.7
E		11.4		23.5
1/4		11.5		23.4
cb		11.4		23.5
N		11.6		23.3
TP	5.43	327.68	12.66	322.25
N		4.7		23.0
cb		4.7		23.0
1/4		4.4		23.3
E		4.5		23.2
1/4		4.4		23.2
cb		4.2		23.5
S		4.3		23.4

	+	X	-	Elev
		327.68		
		327.7		
	E. Thorn 46 th			
S		5.0		322.7 ^v
cb		4.7		23.0 ^v
1/4		4.9		22.8 ^v
E		4.8		22.9 ^v
1/4		5.0		22.7
cb		5.0		22.7
N		5.4		22.3
	E. 1/4			
N		5.8		21.9
cb		5.5		22.2
1/4		5.4		22.3
E		5.6		22.1
1/4		5.6		22.1
cb		5.3		22.4
S		5.5		22.2 ^v
	E. cb			
S		6.0		21.7 ^v
cb		5.8		21.9
1/4		6.1		21.6
E		6.0		21.7
1/4		5.9		21.8
cb		5.8		21.9
N		6.3		20.4
	E. Line 46 th			
N		7.1		320.6 ^v

+

327.68

E Line 96th Continued

327.7

Elev

cb	6.7	321.0
1/4	6.8	20.9
¢	6.7	21.0 ✓
1/4	7.1	20.6
cb	6.5	21.2
S	6.6	21.1 ✓

- 25 East

S	7.8	19.9 ✓
cb	7.9	19.8
1/4	8.2	19.5
¢	8.4	19.3 ✓
1/4	8.4	19.3
cb	8.8	19.9
N	9.5	18.2 ✓

- 50 East

N	14.0	3 13.7 ✓
cb	13.1	14.6
1/4	12.3	15.4
¢	11.8	15.9 ✓
1/4	10.9	16.8
cb	10.0	17.7
S	10.7	17.0 ✓

TP 5.06 319.67 13.07 314.61

- 75 East 12.7

S	6.6	13.1 ✓
cb	6.7	313.0

319.67

2

+

319.7

Elev

1/4	6.9	312.8
¢	7.4	12.3 ✓
1/4	7.8	11.9
cb	8.4	11.3
N	8.7	311.0 ✓

100 East

N	12.0	07.7 ✓
cb	11.5	08.2
1/4	11.0	08.7
¢	11.2	08.5 ✓
1/4	11.0	08.7
cb	10.7	09.0
S	10.2	309.5 ✓
TP	2.35	309.09
	12.93	306.79

112 East

S	309.1	1.6	307.5 ✓
cb		1.9	07.2
1/4		2.0	07.1
¢		2.3	06.8 ✓
1/4		2.7	06.4
cb		3.0	06.1
N		2.7	06.4 ✓

125 East W line of Alley

N	5.6	03.5 ✓
cb	5.0	04.1 ✓
1/4	7.5	309.6

+ 309.09

Elev

125' East White Alley Continued

309.1

£	3.9	305.2 ✓
1/4	3.5	05.6
cb.	3.4	05.7
S	3.2	05.9 ✓

135' East

S	4.6	04.5 ✓
cb	4.9	04.2
1/4	5.1	04.0
£	5.3	03.8 ✓
1/4	5.9	03.2
cb.	6.3	02.8
N	7.0	02.1 ✓
+10	7.6	301.5
+30	11.2	297.9

145' East E Line of Alley

-30	14.1	295.0
-10	14.0	297.1
N	11.1	298.0 ✓
cb	8.4	300.7
+6	7.6	01.5
1/4	7.3	01.8
£	6.9	02.2 ✓
1/4	6.4	02.7
cb.	6.1	03.0
S	6.0	03.1 ✓

152' East

S	6.8	02.3 ✓
cb.	7.2	01.9
1/4	7.4	01.7
£	8.1	301.0 ✓

+ 309.09

Elev 3

152' East continued

309.1	8.4	300.7
cb.	9.4	299.2
+9	11.6	97.5
N	12.1	97.0 ✓
+14	12.9	96.2
+40	17.0	92.8

170' East

-40	23.1	86.0
-30	23.0	86.1
-10	17.9	91.2
N	16.0	93.1 ✓
cb.	14.4	94.7
1/4	13.1	96.0
£	12.0	97.1 ✓
+5	11.7	97.4
1/4	11.8	97.3
cb.	12.1	97.0
S	11.8	97.3 ✓

T.P. 0.38 296.84 12.63 296.46

180' East

S	2.8	94.0 ✓
+6	2.9	93.9
cb	2.3	94.5 ✓
1/4	2.0	94.8
£	2.2	94.6 ✓
+6	2.6	94.2
1/4	3.6	93.2
cb	4.5	92.3
N	5.9	90.9 ✓
+10	7.8	89.0
+18	9.8	87.0
+30	11.6	85.2

Bliss Levels for Drain Crossing Thorn and Menlo 4
 10/28/27. Sketch of this drain is on page 15 293.7

	296.84	Elev
-30	188 East	286.3
-21	296.8	84.9
-16	11.3	85.1
N	7.7	89.1 ✓
cb	6.7	90.1
1/4	5.7	91.1
¢	5.0	91.8 ✓
+10	2.73	Note 294.11
1/4	4.4	There is a barrier So. Th. So. loca too 92.4 That a fill would Almost cover it
cb.	4.7	92.1
S	4.6	92.2 ✓
	200 East	
S	7.2	89.6 ✓
cb.	7.4	89.4
1/4	7.4	89.4
¢	7.7	89.1 ✓
1/4	8.2	88.6
cb	9.2	87.6
X	10.5	86.3
1/10	12.4	84.4
1/20	12.5	84.3
+30	8.7	88.1
	8.0	88.8
-10	13.0	85.8
N	14.8	82.0 ✓
+9.	15.1	81.7
cb.	14.6	82.2
+4	13.9	82.9
1/4	13.4	82.4
¢	13.7	83.1 ✓
1/4	12.8	84.0
cb.	12.8	84.0
S	12.5	84.3 ✓
+20	12.5	84.3

			Elev
Packed up stuff arrived at P. C. 60	293.79		293.14
0+00		7.9	285.8
0+18		8.1	285.6
0+28		9.2	284.5
0+40		10.1	283.6
0+60 A		11.61	282.1
0+73		12.7	281.0
0+83		12.2	
0+96		13.1	
1+00		14.3	
T.P.	4.37	286.10	281.73
1+11		5.8	
1+22 A		6.92	
1+47 S Line of Thorn		7.2	
1+78		9.4	
1+91		0.4	
1+98 West line of Menlo		9.3	276.8
2+00		9.0	
2+01		10.7	
2+21		13.4	
T.P.	4.90	279.04	273.64
2+38		7.0	
2+59		7.7	
2+76 20 Δ		9.21	
2+90		9.6	
3+03 30 E. line of Redwood		10.9	
3+30 30 Δ		11.94	
3+35		10.6	
3+40		12.0	
3+62		13.2	
3+78		13.8	
T.P.	12.77	290.33	277.56
T.P.	9.63	298.03	288.90
B.M.		4.92	293.11

	T 296.84	- Elev	
	231 East		
-20	13.8	283.0	
S	16.7	80.1 ✓	
cb	16.7	80.1	
1/4	17.8	79.0	
ϕ	17.3	79.5 ✓	
1/9	16.7	80.1	
+9	15.6	81.2	
cb	14.4	82.4	
N	10.3	86.5 ✓	
+15	4.9	91.3	
	2 240 East		
-15	3.1	93.7	
N	6.6	90.8 ✓	
cb	9.4	87.4	
1/4	12.0	84.8	
ϕ	12.5	84.3 ✓	
1/4	14.9	81.9	
cb	16.9	79.9	
+4	17.9	78.9	
S ₁₀	18.0	78.9 ✓	
1.30	17.6	79.2	
	17.9	78.9	
	257 East		
-30	20.3	76.5	
-18	20.1	76.7	
S	15.3	81.5 ✓	
+3	13.4	83.4	
cb	11.4	85.4	
1/4	10.1	86.7	
ϕ	7.6	89.2 ✓	
1/4	5.5	91.3	
cb	3.1	93.7	
+5	1.7	295.1	

	T 296.84	- Elev	
	257 East continued		
			296.2 ✓
			296.7.1
N	0.6		
+10	8.1		
T.P.	4.12	300.55	0.91 296.43
	270 East = W. Line Menlo		
	300.6		
N	1.3		299.3 ✓
cb	3.0		97.6
1/4	5.3		95.3
ϕ	7.7		92.9
+10	8.73	Top 6" East Iron Water Main	291.82
1/4	9.8		90.8
cb	12.5		88.1
S	12.7		87.9 ✓
T.P.	0.12	293.26	7.41 293.19
st 20	293.3		
st 37	14.0		79.3
	19.3		74.0
	W. cb		
-30	12.3		81.0
-10	7.6		85.7
S	5.2		88.1 ✓
+9	3.0		90.3
cb	1.7		91.6
T.P.	11.92	305.15	0.03 293.23
1/4	305.2		
ϕ	11.3		93.9
1/2	8.9		97.3 ✓
1/4	6.9		98.3
cb	5.8		299.4
N	4.4		300.8 ✓

+

305.15

Elev

N	W 1/4 305.2	3.2	302.0 ✓
cb		4.7	300.5
1/4		5.7	299.5
E		7.0	98.2 ✓
1/4		9.1	96.1
cb		11.3	93.2
S		14.0	91.0 ✓

E Thorn + Maple

S		11.9	93.3 ✓
cb		9.1	96.1
1/4		6.9	98.3
E		5.8	299.4 ✓
1/4		4.6	300.6
cb		3.3	01.9
N		2.1	03.1 ✓

E 1/4

N		1.4	03.8 ✓
cb		2.4	02.8
1/4		3.9	01.3
E		5.2	300.0 ✓
1/4		6.3	298.9
cb		7.9	97.3
+5		8.6	96.6
S		10.3	94.9 ✓

E. cb.

S		9.0	296.2 ✓
---	--	-----	---------

+

305.15

Elev

6

cb	305.2	6.9	298.3
1/4		5.4	299.8
E		4.7	300.5 ✓
1/4		3.2	02.0
+10		2.1	03.1
cb		1.8	03.4
N		1.0	04.2 ✓

E Prop Maple

N		0.5	04.7 ✓
cb		1.3	03.9
1/4		2.4	02.8
E		3.7	01.5 ✓
1/4		4.9	300.3
cb		6.2	299.0
S		8.1	97.1 ✓

25' East

S		6.0	299.2 ✓
cb		4.9	300.3
1/4		3.4	01.8
E		2.6	03.2 ✓
1/4		1.3	03.9
cb		0.6	09.6
N		0.1	05.1 ✓

50' East

N		0.9	09.3 ✓
cb		0.8	304.4

305.15

Elev

305.2

1/4	1.1	304.1
1/4	1.6	03.6 ✓
1/4	2.2	03.0
cb	3.1	02.1
S	4.3	00.9 ✓

75' East

S	3.2	02.0 ✓
cb	2.7	02.5
1/4	2.3	02.9
1/4	2.3	02.9 ✓
1/4	2.5	02.7
cb	2.5	02.7
N	2.7	02.5 ✓

100' East

N	9.0	01.2 ✓
cb	4.1	01.1
1/4	4.2	01.0
1/4	4.0	01.2 ✓
1/4	3.9	01.3
cb	4.2	01.0
S	4.2	01.0 ✓

125' East, W. end of Alley

S	5.1	00.1 ✓
cb	5.1	00.1
1/4	4.9	00.3
1/4	5.0	300.2 ✓

305.15

Elev

7

305.2

1/4	5.6	299.6
cb	5.8	99.4
N	6.2	99.0 ✓
N+10	6.6	98.6

145' East, S. end of Alley

1/4	9.4	95.8
N	8.5	96.7 ✓
cb	7.8	97.4
1/4	7.0	98.2
1/4	6.7	98.5 ✓
1/4	6.3	98.9
cb	6.3	98.9
S	6.1	299.1 ✓

T.P.	2.62	302.04	5.73	299.42
BM on Pole S. S. end Alley			1.33	300.71

159' East

S	3.5	298.5 ✓
cb	3.7	98.3
1/4	3.7	98.3
1/4	4.2	97.8 ✓
1/4	4.7	97.3
cb	5.5	96.5
N	6.8	95.2 ✓
N+15	8.2	93.8

170' East

N-15	11.3	290.7
------	------	-------

30204

Elev

170' East

302.0

11.9 290.6 ✓

1/4	N		
cb		9.5	92.5
1/4	1/4	8.8	93.4
cb	+8	7.9	94.1
S	±	7.1	94.9 ✓
	+7	6.3	95.7
S	+10	5.2	96.8
cb	1/4	5.0	97.0
1/4	cb	4.6	97.4
±	S	4.9	97.6 ✓

182' East

cb	S	5.7	96.3 ✓
N	cb	5.9	96.1
	+11	6.4	95.4
N	1/4	6.6	95.4
cb	+4	9.2	92.8
1/4	±	10.9	91.1 ✓
±	1/4	13.2	88.8
1/4	cb	16.0	86.0
cb	N	17.2	84.8 ✓
S	N+15	17.3	84.7

200' East

* Note
Due to great cross fall
the remaining sections are
read from South to North.

S	S	7.2	94.8 ✓
cb	+10	7.7	94.3
1/4	cb	8.6	93.4
±	+7	10.9	291.1

30204

Elev

8

200' East

302.0

12.1 289.9

1/4			
T.P.	12.5	290.77	12.52 289.52
+3		290.8	2.7 88.1
+6			3.6 87.2
+11			3.8 87.0
±			5.9 84.9 ✓
1/4			9.6 81.2
cb			12.3 78.5
N			13.8 77.0 ✓
N+15			14.3 76.5

2.20' East

S		0.9	89.9 ✓
+10		2.5	88.3
cb		2.8	88.0
1/4		8.4	82.4
+7		11.0	79.8
T.P.	6.02	284.14	12.25 278.12
±		284.1	5.8 278.3 ✓
+5			7.9 76.2
1/4			9.8 74.3
cb			13.8 70.3
N			16.3 67.8 ✓
N+15			16.6 67.5

235' East

S		2.0	82.1 ✓
cb		5.4	78.7
+8		7.8	276.3

+ 284.19 Elev

235' East

1/4	1/4	284.1	8.9	275.2	
S	+7		11.2	72.9	S
1/4	¢		13.1	71.0	✓
cb	T.P.	6.38	277.41	13.11	271.03
S	+7	277.4	7.7	69.7	1/4
1/4			9.2	68.2	¢
S	cb		12.2	65.2	T.P. 4.24
cb	N		14.6	62.8	✓ 1/4
1/4	N+20		16.9	60.5	cb
¢	N+40		17.7	59.7	N

250' East

cb	S		3.0	74.4	✓
N	+6		4.0	73.4	S
cb			5.1	72.3	T.P.
N	+6		6.4	71.0	T.P. 12.86
cb	+10		8.5	68.9	BM 11.51
1/4	1/4		9.0	68.4	T.P. 13.02
¢	+10		10.6	66.8	T.P. 9.84
1/4	¢		12.1	65.3	✓ BM
cb	T.P.	6.69	271.53	12.57	264.89
S	+10	271.5	8.9	62.6	
1/4			9.9	61.6	
S	cb		11.8	59.7	✓
cb	N		12.9	58.6	✓
1/4	N+20		14.0	57.5	
¢	N+40		15.2	256.3	

+ 271.53 Elev 9

270' East N. line 47th

		271.5	3.9	267.6	✓
			8.3	73.2	
			10.2	60.3	
			11.5	60.0	
			14.0	57.5	✓
		4.24	265.23	10.59	260.99
			9.6	55.6	
			10.8	54.4	
			10.46	54.7	✓
			12.8	52.4	

on Prop. Hub N.W. Cor

		12.31	277.20	0.90	264.83
		12.12	288.73	0.59	276.61
		12.86	301.10	0.49	288.29
		11.51	312.23	0.32	300.72
		13.02	324.98	0.27	311.96
		9.84	334.68	0.20	324.78
				1.69	332.93

X Sections of Menlo Redwood to Myrtle

	+	π	-	Elev		Elev	10
60.3- 12.0-63 9.0-67.5 Bios 10/25/27	988	305.59		500.71	cb	300.8	292.7
T.P	279	300.76	7.62	297.97	+6		91.7
		N. Line of Redwood.			+7		90.4
		300.8	2.2	298.6 ✓	E		90.4 ✓
cb			3.4	97.4	+2		89.7
1/4			9.3	96.5	+10 on floor House		88.6
E			5.9	94.9 ✓	+20		87.1
1/4			7.4	93.4		75 North	
cb.			8.9	91.9	-20		87.4
E			10.7	90.1 ✓	-2		90.3
E+10. House on floor			11.9	88.9	E		91.4 ✓
		25' N			+4		91.2
E-20			14.9	85.9	+6		92.4
E			10.7	90.1 ✓	cb		93.9
cb			8.9	92.4	1/4		95.7
1/4			6.8	94.0	E		97.0 ✓
E			5.1	95.7 ✓	1/4		97.5
1/4			4.1	96.7	cb		98.3
cb.			3.1	97.7	W		99.2 ✓
W			1.9	98.9 ✓		100' N	
		50' N			W		99.6 ✓
W			1.7	99.1 ✓	cb		98.6
cb.			2.7	98.1	1/4		97.9
1/4			3.8	97.0	E		97.2 ✓
E			4.6	96.2 ✓	1/4		95.8
1/4			5.8	295.0	cb		293.5

30076 Elev

100' North

+8	8.8	292.0
+10	9.7	91.1
E	9.4	91.4 ✓
E+13	House on floor	10.5
	12.5 N	90.3
-20	12.7	88.1
-5	9.6	91.2
E	9.3	91.5 ✓
+4	9.1	91.7
+6	8.3	92.5
cb	7.2	93.6
1/4	5.3	95.5
£	3.9	96.9 ✓
1/4	3.1	97.7
cb	2.7	98.1
W	0.9	99.9 ✓

150' North

W	1.0	99.8 ✓
+2	1.3	99.5
+5	2.0	98.8
cb	2.4	98.4
1/4	3.1	97.7
k	4.2	96.6 ✓
+8	5.9	95.4
1/4	6.1	94.7
cb	7.7	293.1

30076 Elev

175' North

+5	7.9	292.9
E	9.0	91.8 ✓
E+20	12.3	88.5
E-20	10.7	90.1
E-19	House on floor	8.4
E	9.1	91.7 ✓
+5	8.2	92.6
cb	7.7	93.1
1/4	6.0	94.8
£	4.3	96.5 ✓
1/4	2.5	98.3
cb	1.7	299.1
W	0.6	300.2 ✓

200' North

W	1.1	299.7 ✓
cb	2.3	98.5
1/4	3.4	97.4
£	4.8	96.0 ✓
1/4	6.7	94.1
cb	8.0	92.8
E	9.7	91.1 ✓
+20	13.0	87.8

225' North

E-20	13.5	87.3
E	10.1	290.7 ✓

30076 Elev

250' North

+5	7.9	292.9
E	9.0	91.8 ✓
E+20	12.3	88.5
E-20	10.7	90.1
E-19	House on floor	8.4
E	9.1	91.7 ✓
+5	8.2	92.6
cb	7.7	93.1
1/4	6.0	94.8
£	4.3	96.5 ✓
1/4	2.5	98.3
cb	1.7	299.1
W	0.6	300.2 ✓
W	1.1	299.7 ✓
cb	2.3	98.5
1/4	3.4	97.4
£	4.8	96.0 ✓
1/4	6.7	94.1
cb	8.0	92.8
E	9.7	91.1 ✓
+20	13.0	87.8
E-20	13.5	87.3
E	10.1	290.7 ✓

+ T
30076

Elev

cb	300.5	8.8	292.0
1/4		7.2	93.6
E		5.6	95.2 ✓
1/4		3.6	97.2
cb		2.2	98.0
W		1.8	99.0 ✓
250' North			
W		2.5	98.3 ✓
cb		3.9	96.9
1/4		5.4	95.4
E		6.7	94.1 ✓
1/4		8.2	92.6
cb		9.8	91.8
E		11.4	89.4 ✓
E+20		14.5	86.3
275' North			
E-20		15.6	85.2
E		12.8	88.0 ✓
+4		12.0	88.8
+6		11.2	89.6
cb		10.5	90.3
1/4		9.8	91.0
E		8.9	92.4 ✓
1/4		7.0	93.8
cb		5.7	95.1
+8		3.9	296.9

+ T
30076

Elev

12

W	300.5	3.1	297.7 ✓
290' North			
W		4.0	96.8
+3		4.3	96.5
cb		6.3	94.5
1/4		7.8	93.5
E		9.3	91.5 ✓
1/4		10.4	90.4
cb		11.1	89.7
+6		12.0	88.8
+8		13.0	87.8
E		13.1	87.7 ✓
E+20		16.3	84.5
300' North			
E-20		17.2	83.6
E		14.4	86.4 ✓
+5		13.7	87.1
+9		12.9	87.9
cb		12.2	88.6
1/4		11.0	89.8
E		9.3	91.5 ✓
1/4		7.9	92.9
cb		6.5	94.3
W		4.4	96.4 ✓
325' North			
W		5.4	295.4 ✓

	T	↑	-	Elev
		30076		
		325' North		
+6		2998	5.7	295.1
cb			7.3	93.5
1/4			9.2	91.6
E			10.6	90.2 ✓
+3			11.5	89.3
1/4			12.3	88.5
cb			13.4	87.4
+4			14.2	86.6
+7			15.3	85.5
E			15.5	85.3 ✓
E+20			17.7	83.1
TP	688	294.94	12.70	288.06
		350' North		
E-20		294.9	17.8	77.1
E-11			14.9	80.0
E			10.5	84.4 ✓
+8			10.3	84.6
cb			8.1	86.8
1/4			6.9	88.0
+7			6.2	88.7
E			5.7	89.2 ✓
+2			5.0	89.9
cb			2.4	92.5
+7			1.7	93.2
+9			0.8	94.1
W			0.1	294.8 ✓

	T	-	Elev
		294.94	
		350' North	
		-2.0	296.9
		375' North	
		-2.0	96.9
		1.5	93.4 ✓
		3.6	91.3
		5.1	89.8
		5.6	89.3
		7.0	87.9
		7.0	87.9 ✓
		7.9	87.0
		8.0	86.9
		9.9	85.0
		11.4	83.5
		11.6	83.3
		13.3	81.6 ✓
		14.9	80.0
		15.2	79.7
		17.0	77.9
		21.5	73.4
		400' North	
		21.6	73.3
		16.6	78.3
		13.9	81.0 ✓
		12.2	82.7
		10.3	84.6
		8.2	286.7

	+	299.94	-	Elev	
					400' North
+5		299.9	7.5	287.4	
♀			6.7	88.2 ✓	cb
1/4			5.9	89.0	W
cb			4.9	90.0	
W			2.4	92.5 ✓	W
Top-R. bubble wall			0.0	94.9	cb
					1/4
					♀
					1/4
					♀
					1/4
					cb
					E
					E+10
					E+20
					E+30
					T.P.
	3.70	291.45	7.19	287.75	
					425' North
		291.5	25.8	65.7	cb
			18.7	72.8	1/4
			13.2	78.3 ✓	♀
			9.6	71.9	+6
			7.4	84.1	1/4
			5.8	85.7 ✓	cb
			4.0	287.5	W

	+	291.45	-	Elev	
					425' North
		291.5	2.9	288.6	
			0.8	90.7 ✓	
					435' North
			1.3	90.2 ✓	
			3.8	87.7	
			5.2	86.3	
			6.4	85.1 ✓	
			8.2	83.3	
			10.5	81.0	
			13.1	78.4	
			14.6	76.9 ✓	
			20.8	70.7	
			25.8	65.7	
					450' North
			22.0	69.5	
			25.8	65.7	
			21.0	70.0	
			17.9	73.6 ✓	
			13.8	78.7	
			11.6	79.9	
			8.9	82.6 ✓	
			7.4	84.1	
			6.9	84.6	
			4.9	86.6	
			2.3	289.2 ✓	

291.45

15

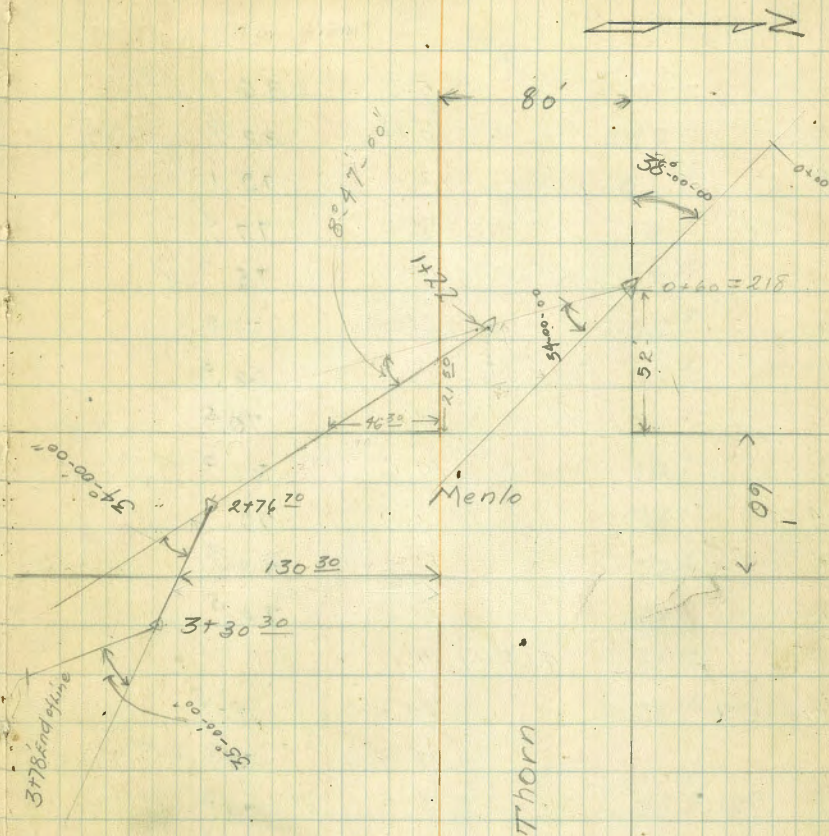
462' North

91.5

W	3.6	287.9 ✓
cb	6.4	85.1
+5	7.4	84.1
1/4	8.8	82.7
+8	11.1	80.4
R	11.8	79.7 ✓
1/4	14.4	77.1
+3	16.0	75.5
cb	17.6	73.9
R	20.5	71.0 ✓
R+7	23.0	68.5
R+13	24.0	67.5
R+23	22.5	69.0

467' North

E-15	21.1	71.4
R-9	23.0	69.5
R	23.0	69.5 ✓
+5	23.0	69.5
cb	21.3	70.2
+6	20.2	71.3
1/4	17.6	73.9
Q	13.9	77.6 ✓
1/4	10.8	80.2
cb	7.4	84.1
W	4.0	287.5 ✓



Note: levels for this drain are on page 4 of this book

29/95

Elev

475' North

91.5

W	5.3	286.2 ✓
cb.	8.6	82.9
1/4	12.4	79.1
+6	14.0	77.5
£	15.8	75.7 ✓
1/4	20.0	71.5
cb	22.6	68.9
+10	21.0	70.5
E	19.6	71.9 ✓
+4	20.9	70.6
+8	18.6	72.9
+15	17.0	74.5

484' No. 4

E-10	19.0	77.5
E	16.0	75.5 ✓
cb.	18.3	73.2
1/4	21.8	69.7
+3.	22.0	69.5
£	18.9	72.6 ✓
+3	16.7	74.8
1/4	15.0	76.5
+5	12.2	79.3
cb	10.5	81.0
+4	8.8	82.7 ✓
W	6.0	285.5 ✓

29/95

Elev

16

7.24

289.03

9.66

281.79

500' North

W	5.9	283.1 ✓
+4	7.6	81.4
cb	10.9	78.1
+2	11.5	77.5
+7	13.5	75.5
1/4	15.2	73.8
+5	18.4	70.6
£	15.3	70.7 ✓
1/4	13.9	75.1
cb	11.5	77.5
+4	10.4	78.6
E	8.0	81.0
E+13	5.0	83.4 ✓

514' North

E	3.4	85.4 ✓
+5	6.0	83.0
+7	7.0	82.0
cb	7.7	81.3
1/4	11.0	78.0
+4	12.3	76.7
£	14.8	74.2 ✓
+5	17.5	71.5
1/4	18.4	70.6
+	16.1	272.9

	+	289.03	-	Elev.
+8		289.0	13.3	275.7
cb			12.7	76.3
W			8.6	80.6
			528 North	
W-15			5.1	83.9
W 12			6.1	92.9
W-1			9.0	80.0
W			10.9	78.1 ✓
cb			14.0	75.0
+3			17.4	71.6
1/4			17.0	72.0
E			12.0	77.0 ✓
1/4			7.6	81.6
cb			9.4	84.6
+7			2.8	86.2
E			0.9	88.1 ✓
TP	9.63	296.80	1.86	287.17
			550' North	
E		296.8	5.7	91.1 ✓
cb			8.1	88.7
1/4			10.7	86.1
+4			12.0	84.8
Q			14.7	82.1 ✓
1/4			17.1	79.7
+2			18.5	78.3
cb			24.5	272.3

	+	296.80	-	Elev.
+2			25.0	271.8
+6			23.5	73.3
+10			22.7	74.1
W			20.0	76.8 ✓
W+25			13.5	83.3
			560' North	
W-30			11.0	85.8
W-13			18.5	78.3
W-1			20.0	76.8
W			22.7	74.1 ✓
+6			23.5	73.3
cb			21.2	75.6
+5			18.8	78.0
1/4			17.0	79.8
+4			15.2	81.6
E			11.9	84.9 ✓
1/4			9.1	87.7
cb			6.1	90.7
+3			5.3	91.5
E			4.2	92.6 ✓
			675	
E			2.2	94.6 ✓
+8			3.8	93.0
cb			4.8	92.0
1/4			7.0	89.8
Q			9.5	287.3 ✓

296.80

Elev

1/4	12.2	284.6
cb	15.0	81.8
+ 8	18.0	78.8
W	18.9	77.9 ✓
+ 1	19.6	77.2
+ 8	20.0	76.8
+ 21	17.6	79.2
+ 30	14.3	82.5

T.P. 11.65 307.89 0.56 296.24

600' North S line Thorn

Taken in the section of Thorn

N line of Thorn Taken in the section of Thorn

25' North

W-20	307.9	9.4	298.5
W-9		7.7	300.2
W		6.1	01.8 ✓
cb		4.6	03.3
1/4		3.8	04.1
E		3.2	04.7
1/4		2.6	05.3
cb		2.4	05.5
E		2.0	05.9 ✓

50' North

E		1.4	06.5 ✓
cb		1.4	06.5
1/4		1.2	306.7

307.89

3018

T.P.	6.55	313.26	11.8	306.71
E		513.3	6.8	306.5
1/4			7.2	06.1
cb			7.7	05.6
W			8.8	04.5 ✓
W+15			10.8	02.5

75' North

W-15			8.1	05.2
W			7.0	06.3
cb			6.5	06.8
1/4			6.1	07.2
E			5.9	07.4
1/4			6.0	07.3
cb			6.1	07.2
E			6.5	06.5 ✓

100' North

E			6.6	06.7 ✓
cb			6.1	07.2
1/4			5.7	07.6
E			5.1	08.2
1/4			5.1	08.2
cb			5.3	08.0
W			5.6	07.7

125' North

W			4.2	09.1
cb			4.2	309.1

	+	X 313.26	-	Elev
1/4		313.3	4.5	308.8
1/4			5.0	08.3
1/4			5.7	07.6
cb			6.3	07.0
E			7.2	06.1 ✓
E+15			8.1	05.2
		150' North		
E-15			8.8	04.5
E			7.2	06.1 ✓
cb			6.5	06.8
1/4			5.4	07.9
E			5.0	08.3
1/4			4.6	08.7
cb			4.0	09.3
W			3.2	10.1 ✓
		181 Residence on East		
		13' out on floor	1.6	05.7
		200' North		
W			2.5	10.8 ✓
cb			3.4	09.9
1/4			3.4	09.9
E			4.1	09.2
1/4			4.9	08.4
cb			5.7	07.6
E			6.8	06.5 ✓
E+15			8.6	304.7

	+	X 313.26	-	Elev
		225' North		
		313.3		
E-15			8.1	305.2
E			7.0	06.3 ✓
cb			5.6	07.7
1/4			4.8	08.5
E			4.1	08.2
1/4			3.5	09.8
cb			3.0	10.3
W			2.5	10.8 ✓
		234' North Residence, 13' Back on East		
		on floor	6.8	06.5
		250' North		
W			1.6	11.7 ✓
cb			2.8	10.5
1/4			3.4	09.9
E			3.9	09.4
1/4			4.8	08.5
cb			5.8	07.5
E			6.8	06.5 ✓
E+15			9.5	03.8
		275' North		
E-15			11.0	02.3
E			8.4	04.9 ✓
cb			6.2	07.1
1/4			5.0	08.3
E			4.1	09.2
E			3.8	309.5

313.26

313.3

1/4	3.2	310.1
cb	2.5	10.8
+10	1.6	11.7
W	0.9	12.4 ✓
300' North		
W	1.7	11.6 ✓
+3	2.2	11.1
cb	3.1	10.2
1/4	3.9	09.4
1/4	5.1	08.2
1/4	6.8	07.5
cb	8.1	05.2
cb+7	9.4	03.9
E	10.4	02.3 ✓
E+8	12.1	301.2
E+25	18.0	295.3
325' North		
E-40	31.5	81.8
E-26	26.3	87.0
E-10	19.0	94.3
E	15.0	298.3 ✓
+10	10.2	303.1
cb	9.5	03.8
1/4	8.0	05.3
1/4	6.6	06.7
1/4	5.1	308.2

313.26

313.3

+5	4.5	308.8
cb	4.1	09.2
W	2.6	10.7 ✓
350' North		
W	3.7	09.6 ✓
cb	5.5	07.8
+3	5.7	07.6
1/4	6.9	06.4
E	8.5	04.8
+7	9.6	03.7
1/4	11.1	302.2
cb	14.3	299.0
E	19.0	94.3 ✓
E+10	24.0	89.3
E+20	29.0	84.3
E+30	32.8	80.5
E+40	37.5	75.8
E+50	41.0	72.3
375' North		
-50	42.5	70.8
-40	38.1	75.2
-30	35.0	78.3
-20	26.5	86.8
E	21.0	92.3 ✓
cb	16.1	297.2
1/4	12.5	300.8

20

	+	π	Elev
		31326	
		375' North	
Q		9.6	303.7
1/4		8.1	05.2
cb		6.8	06.5
W		4.8	08.5 ✓
TP	266	309.92	6.00 307.26
		400' North	
W		309.9 2.5	07.4 ✓
cb		4.3	05.6
1/4		4.5	05.4
1/4		5.7	04.2
Q		8.1	301.8
1/4		10.5	299.4
cb		12.3	97.6
E		17.2	92.7 ✓
E+10		21.0	88.9
E+20		26.7	83.2
E+33		31.5	78.4
		433' North	
E-40		36.6	73.3
E-10		23.4	86.5
E		19.4	90.5 ✓
cb		16.0	93.9
1/4		13.4	296.5
Q		9.0	300.9
1/4		8.2	301.7

	+	π	Elev
		30992	21
		433' North	
		309.9 6.4	303.5
		4.5	05.4 ✓
		450' North	
		5.6	04.3 ✓
		8.6	301.3
		11.4	298.5
		14.1	95.8
		21.1	82.8
		24.1	85.8
		38.1	81.8 ✓
		32.1	77.8
		E+30	74.1
		35.8	
		475' North	
		20' East	69.4
		40.5	71.9 ✓
		38.0	75.1
		cb	34.8
		1/4	30.2
		Q	26.6
		1/4	83.3
		23.0	86.9
		cb	20.3
		89.6	
		12.3	97.0 ✓
		TP	1.3.9 299.26
		12.05	297.87
		500' North	
		97.4 8.6	90.6 ✓
		TP	0.22 287.09
		12.39	286.87
		cb	1.2
			285.9

+
287.09

Elev

287.1

1/4	6.4	280.7
Q	10.1	77.0
1/4	13.5	73.6
cb	15.5	71.6
E	17.0	70.1 ✓
E+15	17.1	70.0

525' North

E1-15	17.4	69.7
E	17.2	69.9 ✓
cb	16.5	70.6
1/4	15.6	71.5
Q	13.9	73.2
1/4	12.2	74.9
cb	8.5	78.6
W	4.9	82.2 ✓

550' North

W	8.3	78.9 ✓
cb	12.2	74.9
1/4	13.7	73.4
Q	15.7	71.4
1/4	16.6	70.5
cb	16.1	71.0
E	16.7	70.4 ✓
E+10	17.0	70.1

568' North

E-15	17.2	274.9
------	------	-------

+
287.09

Elev

22

287.1

E-13	15.2	271.9
E-8	16.6	70.5
E	18.1	69.0 ✓
cb	17.1	70.0
1/4	15.8	71.3
Q	14.3	72.8
1/4	14.7	72.4
cb	14.0	73.1
W	11.6	75.5 ✓

575' North

W	13.1	74.0 ✓
cb	14.3	72.8
1/4	15.2	71.9
+3	16.5	70.6
Q	17.0	70.1
1/4	18.0	69.1
cb	18.0	69.1
+5	18.0	69.1
+8	17.1	70.0
E	17.0	70.1 ✓

600' North

E	10.0	77.1
cb	13.0	74.1
1/4	12.7	74.4
Q	13.2	73.9
1/4	14.2	272.9

	+	∧	-	Elev
		287.09		
ob			14.8	272.3
W			14.3	272.8 ✓
T.P.	1167	298.54	0.22	286.87
T.P.	1161	309.47	0.68	297.86
T.P.	331	311.79	0.99	308.98
			111	300.68 ✓

B.M. Spire in Pole
SW. 1/4 Sec 36 T11N
R12E

X Sections of 46th Redwood to Myrtle 60st
 12 cbs
 9 pts

Bliss 10/27/07	+	x	-	Elev	N West Chaumoun + Thore	+	-	Elev	24
	0.17	333.13		332.96	E		9.2	319.0 ✓	
TP	565	328.23	10.55	322.58		75' North			
		N. Line of Redwood			E		8.6	19.6 ✓	
W		8.9		319.3 ✓	cb		8.6	19.6	
cb		9.0		19.2	1/4		8.3	19.9	
1/4		9.0		19.2	1/4		8.2	20.0 ✓	
1/4		9.2		19.0 ✓	1/4		7.9	20.3	
1/4		9.4		18.8	cb		7.8	20.4	
cb		9.5		18.7	W		7.2	21.0 ✓	
E		9.7		18.5 ✓		100' North			
		25' North			W		6.8	21.4 ✓	
E		9.4		18.8 ✓	cb		7.3	20.9	
cb		9.2		19.0	1/4		7.4	20.8	
1/4		8.7		19.5	1/4		7.2	21.0 ✓	
1/4		8.6		19.6 ✓	1/4		7.6	20.6	
1/4		8.8		19.4	cb		8.1	20.1	
cb		8.6		19.6	E		8.7	19.5 ✓	
W		8.2		20.2 ✓		125' North			
		50' North			E		8.3	19.9 ✓	
W		7.4		20.8 ✓	cb		7.9	20.2	
L10		7.9		20.3	1/4		7.6	20.6	
cb		8.1		20.1	1/4		7.3	20.9 ✓	
1/4		8.1		20.1	1/4		7.0	21.2	
1/4		8.1		20.1 ✓	cb		6.7	21.5	
1/4		8.2		20.0	W		5.8	322.4 ✓	
cb		8.7		319.5					

	+	328.23	-	Elev
		150' North		
W		5.9		322.3 ✓
cb		6.5		21.7
1/4		6.6		21.6
£		6.5		21.7 ✓
1/4		6.8		21.4
cb		7.4		20.8
E		8.3		19.9 ✓
	166			
E		8.1		20.1 ✓
cb		7.6		20.6
1/4		7.2		21.0
£		6.8		21.4 ✓
1/4		6.6		21.6
cb		6.3		21.9
1/4		5.9		22.3
W		5.9		22.3 ✓
	180' North			
W		5.7		22.5 ✓
+8		6.0		22.2
cb		6.3		21.9
1/4		6.6		21.6
£		7.0		21.2 ✓
1/4		7.3		20.9
cb		7.7		20.5
E		8.0		320.2 ✓

	+	328.23	-	Elev
		200		25
E		7.9		320.3 ✓
cb		7.4		20.8
1/4		7.0		21.2
£		6.8		21.4 ✓
1/4		6.5		21.7
cb		6.2		22.0
W		5.7		22.5 ✓
	Walk on East 247' North	7.51		13.1
	250' North			
W		5.6		22.6 ✓
cb		6.0		22.2
1/4		6.2		22.0
£		6.6		21.6 ✓
1/4		6.9		21.3
cb		7.4		20.8
E		7.6		20.6 ✓
	300' North			
E		7.7		20.5 ✓
cb		7.1		21.1
1/4		6.7		21.5
£		6.5		21.7 ✓
1/4		5.9		22.3
cb		5.7		22.5
W		5.0		23.2 ✓
	350' North			
W		4.6		323.6 ✓

	+	32823	-	Elev
				350' North
+7		4.6		323.6
cb.		5.1		23.1
1/4		5.6		22.6
1/2		6.0		22.2 ✓
3/4		6.5		21.7
cb		6.9		21.3
E		7.5		20.7 ✓

				375' North
E		7.3		20.9 ✓
cb		6.5		21.7
1/4		6.2		22.0
1/2		5.7		22.5 ✓
3/4		5.5		22.7
cb		4.9		23.3
W		4.4		23.8 ✓

				400' North
W		4.1		24.1 ✓
cb		4.7		23.5
+4		5.1		23.1
1/4		5.2		23.0
1/2		5.4		22.8 ✓
3/4		6.0		22.2
cb		6.4		21.8 ✓
E		7.2		21.0 ✓

				421 North Motor Driveway on East
	on concrete Driveway	6.92		321.31

	+	32823	-	Elev
				425' North
				7.0
				321.2 ✓
				6.4
				21.8
				5.9
				22.3
				5.2
				23.2 ✓
				5.0
				23.2
				4.9
				23.8
				4.0
				24.2 ✓

				433 Sidenway on West
	on walk	3.74		324.49
				440 Sidenway on East
	on walk	6.85		321.38

				450 North
				3.9
				24.3 ✓
				4.5
				23.7
				5.0
				23.2
				5.4
				22.8 ✓
				5.7
				22.5
				6.1
				22.1
				6.8
				21.9 ✓

				468 North
				6.7
				21.5 ✓
				6.2
				22.0
				5.7
				22.5
				5.3
				22.9 ✓
				4.7
				23.5
				7.1
				324.1

	T	-	Elev
	32823		
	468' North		
W	3.0	325.2	✓
	475' North		
W	3.0	25.2	✓
cb	4.1	24.1	
1/4	4.5	23.7	
1/4	4.2	24.0	
E	4.8	23.4	✓
+3	5.5	22.7	
1/4	5.6	22.6	
cb	6.1	22.1	
E	6.8	21.4	✓
	491' North		
E	6.8	21.4	✓
cb	6.1	22.1	
1/4	5.8	22.4	
1/4	5.5	22.7	
E	5.1	23.1	✓
1/4	4.7	23.5	
cb	4.1	24.1	
W	3.9	24.9	✓
	500' North		
W	3.9	24.8	✓
cb	4.1	24.1	
1/4	4.7	23.2	
E	5.1	23.1	✓
1/4	5.7	22.5	
cb	6.1	322.1	

	T	-	Elev
	32823		27
	560' North		
		6.7	321.5
	550' North		
		6.9	21.3
		6.5	21.7
		5.9	22.3
		5.5	22.7
		5.0	23.2
		4.3	23.9
		3.9	24.3
		3.3	24.9
	TP 624	328.82	565
		322.58	
		575' North	
	W on concrete sidewalk	3.60	25.2
	W on ground	3.7	25.1
	+4	3.9	24.9
	cb	4.9	23.9
	1/4	5.5	23.3
	E	5.9	22.9
	1/4	6.2	22.6
	cb	6.7	22.1
	E	7.5	21.3
		600' S line of Thorn	
		Taken in the X section of Thorn	
		N line of Thorn, Taken in the X section of Thorn	
		25' North	
	E-15	10.3	317.9

328.82

25' North

E	8.9	319.9 ✓
cb	7.9	20.9
1/4	7.2	21.6
Q	6.8	22.0 ✓
1/4	6.1	22.7
cb	5.8	23.0
+5	5.5	23.3
W	4.8	24.8 ✓

50' North

W	5.5	23.3 ✓
cb	6.0	22.8
1/4	6.3	22.5
Q	6.9	21.9 ✓
1/4	7.6	21.2
cb	8.3	20.5
E	9.1	19.7 ✓
E+25	12.5	16.3

75' North

E-25	12.9	16.4
E-10	11.4	17.4
E	9.1	19.7 ✓
+6	7.4	21.4
cb	8.3	20.5
1/4	7.8	21.0
Q	7.4	21.4 ✓
+5	7.0	321.8

328.82

75' North

1/4	6.8	322.8
cb	6.3	22.5
W	5.7	23.1 ✓

85' North

W	5.7	23.1 ✓
cb	6.3	22.5
1/4	6.8	22.0
Q	7.3	21.5 ✓
1/4	7.9	20.9
cb	8.5	20.3
+5	8.5	20.3
E	9.7	19.1 ✓
E+10	11.6	17.2
E+25	12.8	16.0

100' North

E-25	14.8	14.0
E-10	12.0	16.8
E	9.8	19.0 ✓
+5	8.9	19.9
cb	8.7	20.1
1/4	8.0	20.8
Q	7.4	21.4 ✓
1/4	6.8	22.0
cb	6.3	22.5
W	5.7	323.1 ✓

	+	-	Elev
	32882		
	125' North		
W	58		323.0 ¹
cb	65		22.3
1/4	67		22.1
♀	72		21.6 [✓]
1/4	8.1		20.7
cb	9.0		19.8
+5	9.5		19.3
E	10.3		18.5 [✓]
E+3	12.0		16.8
E+25	15.5		13.3
	150' North		
E-25	13.2		15.6
E	10.0		18.8 [✓]
+2	9.7		19.1
+3	10.0		18.8
cb	9.5		19.3
1/4	8.2		20.6
♀	7.3		21.5 [✓]
1/4	6.8		22.0
cb	6.4		22.4
W	5.8		23.0 [✓]
	155' North		
W	5.8		23.0 [✓]
cb	6.5		22.3
1/4	6.8		322.0

	+	-	Elev
	32882		29
	155' North		
♀		7.6	321.2 [✓]
1/4		8.2	20.6
cb		9.4	19.2
E		11.1	17.7 [✓]
E+25		13.7	15.1
	185' North		
E-25		13.6	15.2
E		11.6	17.2 [✓]
cb		10.1	18.7
1/4		8.5	20.3
♀		7.9	20.9 [✓]
1/4		7.2	21.6
+4		6.8	22.0
cb		6.4	22.4
W		5.5	23.3 [✓]
T.P.	3.18	325.56	6.44
			322.38
		200' North	
W		825.6	2.7
			22.9 [✓]
cb			3.6
			22.0
1/4			4.2
			21.4
♀			5.0
			20.6 [✓]
1/4			6.0
			19.6
cb			7.3
			18.3
E			8.4
			17.2 [✓]
E+25			10.4
			315.2

	+	325.56	-	Elev
				225' North
E-25			10.5	315.1
E.			8.9	16.7 ✓
cb			7.9	17.7
1/4			7.5	18.1
♀			6.2	19.4 ✓
1/4			5.0	20.6
cb			4.4	21.6
W			3.5	22.1 ✓
				250' North
W			9.1	21.5 ✓
tc			4.5	21.1
cb			5.2	20.4
+3			5.5	20.1
1/4			6.2	19.4
k			7.0	18.6 ✓
1/4			7.9	17.7
cb			8.3	17.3
E			9.0	16.6 ✓
E+12			9.8	15.8
E+25			16.8	08.8
				275' North
E-25			17.8	07.8
E-9			10.3	15.3
E			9.5	16.1 ✓
cb			8.7	16.9
1/4			8.4	317.2

	+	325.56	-	Elev
				30
				275' North
♀			8.0	317.6 ✓
1/4			6.8	18.8
+5			6.6	19.0
cb			6.0	19.6
W			4.7	20.9 ✓
				300' North
W			4.9	20.1 ✓
cb			5.7	19.9
1/4			6.8	18.8
♀			7.8	17.8 ✓
1/4			8.8	16.8
cb			9.5	16.1
E			10.3	15.3 ✓
E+3			10.8	14.8
E+17			16.1	09.6
E+25			20.8	04.8
E+30			23.4	02.2
				325' North
E-27			22.4	03.2
E-12			14.3	11.3
E-15			12.0	13.6
E			11.3	14.34
cb			9.7	15.9
1/4			8.9	16.7
♀			8.0	17.6 ✓
1/4			6.6	319.0

	+	X	-	Flv
		32556		
cb			5.5	320.1
W			5.6	20.6 ✓
		356	Nov 74	
W			4.5	21.1 ✓
+8			4.9	20.7
cb			5.2	20.4
+3			5.6	20.0
1/4			6.7	18.9
+4			7.3	18.3
♀			7.8	17.8 ✓
1/4			8.5	17.1
cb			9.1	16.5
F3			9.6	16.0
F			10.6	15.0 ✓
F+10			13.9	11.7
F+16			16.8	08.8
F+24			20.1	05.5
		375	North	
F-24			18.9	07.6
F+13			16.4	09.2
F			12.0	13.6 ✓
+4			10.6	15.0
+7			9.4	16.2
cb			8.9	16.7
♀			8.1	17.5 ✓
1/4			7.5	318.1

	+	X	-	Flv
		32556		
1/4			6.6	319.9
cb			5.3	20.3
+4			4.6	21.0
W			4.3	21.3 ✓
		388	North	
W			4.2	21.4 ✓
+8			4.5	21.1
cb			5.1	20.5
1/4			6.4	19.2
♀			7.3	18.3 ✓
1/4			7.8	17.8
cb			9.1	16.5
+2			9.1	16.5
+9			12.2	13.4
F			13.2	12.4 ✓
F+5			14.3	11.3
F+15			14.5	11.1
		392	North	
F-12			19.0	11.6
F-5			14.2	11.4
F			14.0	11.6 ✓
cb			12.4	13.2
+6			8.5	17.1
1/4			7.3	18.3
♀			6.7	18.9 ✓
+3			6.3	319.3

	+	π	-	Elev
		325.56		
cb			4.9	320.6
+2			4.5	21.1
W			4.2	21.4 ✓
		406 North		
+W			4.3	21.3 ✓
cb			4.7	20.9
+4			5.8	19.8
1/4			6.3	19.3
+2			7.1	18.5 ✓
1/4			8.0	17.6
+4			8.6	17.0
+6			11.7	13.9
cb			11.7	13.9
E			11.8	13.8 ✓
E+4			11.5	13.1
E+15			10.5	14.1
		406 North		
E-15			7.8	17.8
E-6			9.1	16.5
E			10.7	14.9 ✓
+8			10.6	15.0
+cb			11.3	14.3
+1/4			8.0	17.6
2			7.1	18.5 ✓
1/4			6.3	19.3
+4			5.9	319.7

	+	π	-	Elev
		325.56		
cb			4.8	320.8
W			4.3	21.3 ✓
		411 North		
W			4.1	21.5 ✓
cb			4.9	20.6
1/4			6.3	19.3
2			6.9	18.7 ✓
+6			7.5	18.1
1/4			10.2	15.4
+2			10.5	15.1
cb			9.7	15.9
+3			9.7	15.9
+9			8.4	17.2
E			8.1	17.5 ✓
E+10			7.6	18.0
		425 North		
E-10			7.0	18.6
E			7.3	18.3 ✓
cb			7.8	17.8
1/4			8.1	17.5
+5			8.0	17.6
2			6.5	19.1 ✓
1/4			6.2	19.4
cb			5.9	20.2
W			4.6	321.0 ✓

32556

429' North

Walk on West 8' Base	2.93	322.7
W	4.8	20.8 ✓
cb	5.5	20.1
1/4	6.2	19.9
k	6.6	19.0 ✓
1/4	6.6	19.0
cb	7.1	18.5
k	7.1	18.5 ✓
E-10	6.3	19.3

455' North

E-10	4.3	21.3
k	5.3	20.3 ✓
cb	6.1	19.5
1/4	6.1	19.5
k	5.8	19.8 ✓
1/4	5.7	19.9
cb	5.6	20.0
W	5.3	20.3 ✓

467' North side walk on East 3.65

475' North

W	5.2	20.4 ✓
+7	5.3	20.3
cb	5.1	20.5
1/4	5.1	20.5
k	5.2	320.4 ✓

32556

33

1/4		5.0	320.6
cb		4.5	21.1
k		3.5	22.1 ✓
T.P	7.79	328.16	5.19

500' North

		<u>328.2</u>	4.7	23.5 ✓
k			5.4	22.8
cb			5.9	22.3
1/4			6.3	21.9 ✓
k			6.4	21.8
1/4			6.2	22.0
cb			6.2	22.0 ✓

515' North

W		5.3	22.9 ✓
cb		5.5	22.7
1/4		5.5	22.7
k		5.4	22.8 ✓
1/4		4.9	23.3
cb		4.2	24.0
+4		3.7	24.5
k		3.7	24.5 ✓

525' North

E-6 Concrete Wall		3.51	24.7
k		3.3	24.9 ✓
cb		3.7	24.5
1/4		4.3	323.9

328.2

¢	4.8	323.4
1/4	4.8	23.4
cb	5.0	23.2
W	5.0	23.2 ✓

556 North

W	3.6	24.6 ✓
cb	3.6	24.6
1/4	3.4	24.8
¢	3.3	24.9 ✓
1/4	3.1	25.1
cb	2.9	25.3
E	2.6	25.6 ✓

E+6 Top Concrete Wall Surrounding
Concrete Curb of court starting at
9490 Ending at 5440

575 North

E-20	5.4	22.8
E	3.2	25.0 ✓
cb	2.3	25.9
1/4	2.4	25.8
¢	2.4	25.8 ✓
1/4	2.4	25.8
cb	2.4	25.8
W	2.3	25.9 ✓

Notes continued on page 34 1/2

34

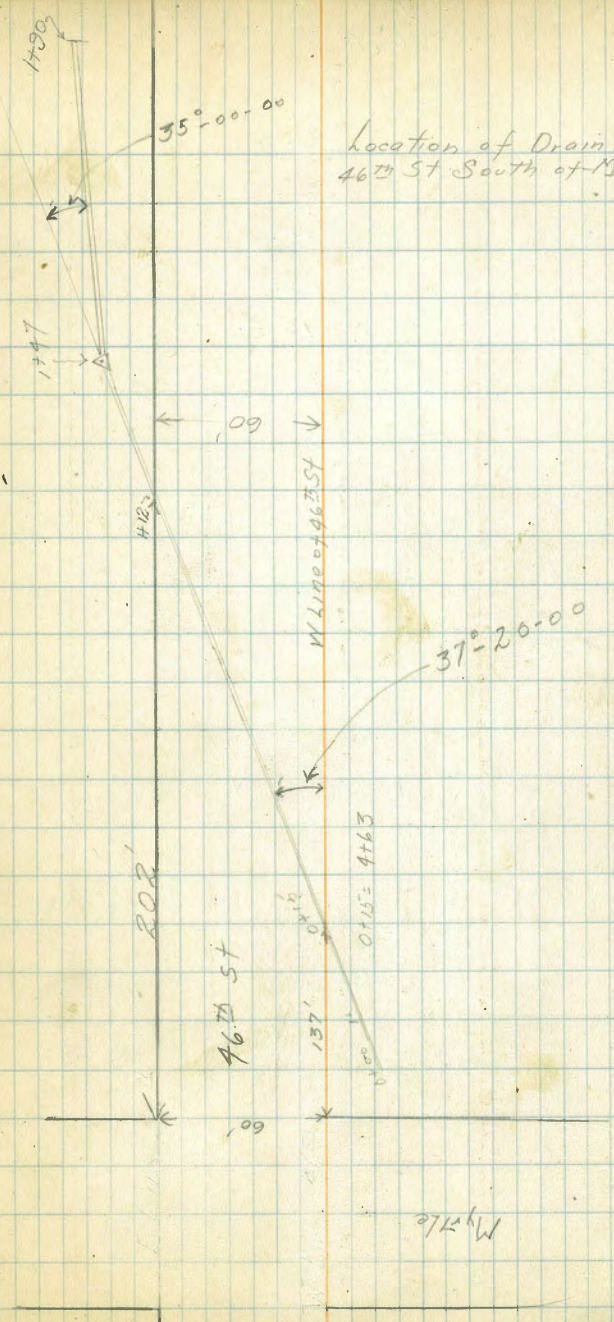
328.2

600' North S. Line of Myrtle

W	1.7	326.5 ✓
cb	1.6	26.6
1/4	1.7	26.5
E	1.8	26.4 ✓
1/4	2.3	25.9
+5	2.5	25.7
cb.	3.0	25.2
E	4.8	23.4 ✓
E+10	6.0	22.9
E+20	7.3	20.9
T.P.	9.89	0.06
BM	2.10	

Levels for Drain

<small>Pick up curb elevation on ground at 455 North</small> 2.3	321.76	319.96	Ground
0+00		1.4	
0+15		2.1	
33		2.3	
0+50		2.8	
0+60		3.2	
0+75		6.3	
0+91		8.1	
1+04		9.1	
1+11		11.4	
1+27		11.3	
1+31		11.3	



Location of Drain across
46th St South of Myrtle

Myrtle

+

π
321.76

Elev

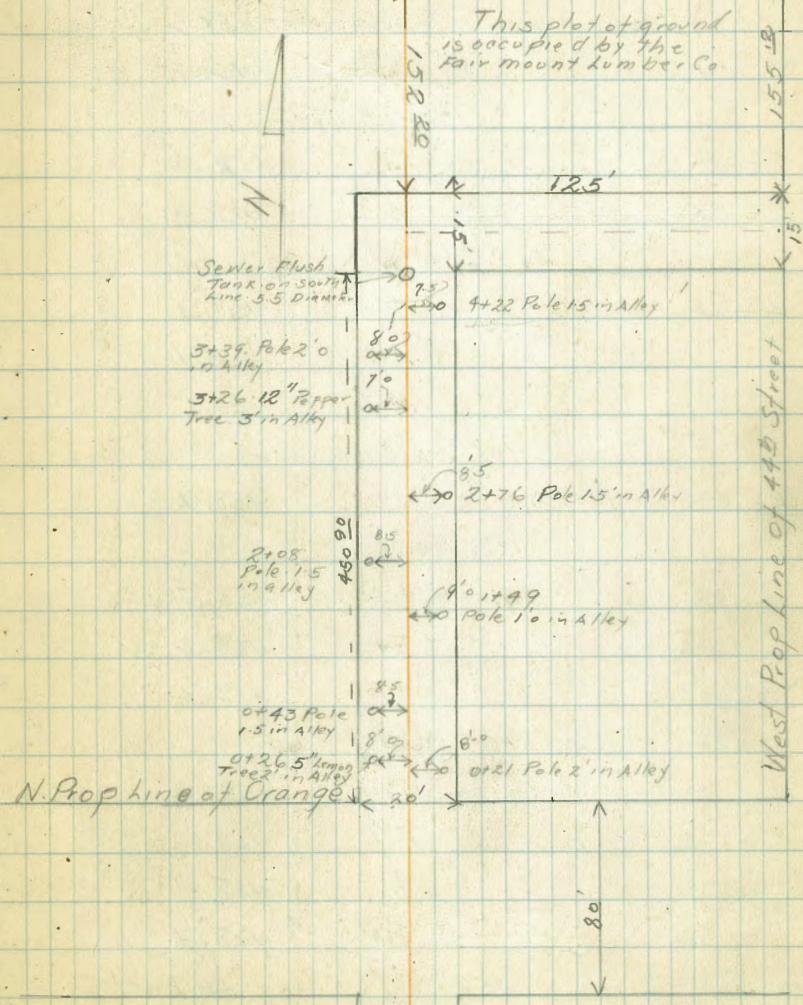
36

1+34		13.0
1+40		15.2
1+97	A	15.7
1+75		18.1
1+90		18.2

X Sections Alley, Fairmount Annex No 1.
 Bliss Between Fairmount & 44th Orange to 950'
 10/18/47 North from 450' North-125' East to 44th Orange
 BM. N.W. 469 363.18 Elev 358.49

N. Line of Orange		
Torch	9.59	458.59
Gutter	4.7	458.5
+3	5.1	458.1
♀	5.1	458.1
W	4.9	458.3
7' North		
W	5.1	458.1
+3	5.3	457.9
♀	4.9	458.3
+7	5.0	458.2
E	4.7	458.5
25' North		
E	9.6	458.6
+3	4.6	458.6
+4	4.8	458.4
♀	4.7	458.5
W	5.0	458.2
45' North		
W	4.8	458.4
♀	4.5	458.7
+8	4.6	458.6
+9	5.2	458.0
E	4.9	458.3

South Prop Line of El Cajon Blvd



This plot of ground is occupied by the Fairmount Lumber Co.

155.18
15
West Prop Line of 44th Street

N. Prop Line of Orange

80'

	+	363.18	-	Elev
		75' North		
E		4.7	3	458.5
W		4.4		458.8
+6		4.6		458.6
W		4.9		458.3
		95' North Garage on East		
		0.5 in Alley Concrete Floor		4.62 458.56
		3.5 Back on West Dirt Floor		4.9 458.3
		100' North		
W		4.9		458.3
E		4.8		458.4
E		4.7		458.5
		106' North Garage on West Dirt Floor		
		3.5 Back on floor		5.0 458.2
		125' North		
E		4.7		458.5
E		5.0		458.2
W		4.9		458.3
		145' North		
W		5.2		458.0
+5		5.1		458.1
E		4.8		458.4
E		4.9		458.3
		159' North Garage on East		
		Concrete floor		4.88 458.30
		0.5 Back lip		5.12 458.06
E		5.2		358.0

	+	363.18	-	Elev
		174' North Concrete Walk		
		1.0 Back on Walk		5.03 458.15
		175' North		
W		5.4		457.8
E		5.4		457.8
+8		5.5		457.7
E		5.3		457.9
		180' North Single Garage on West Dirt floor		
		1.0 Back on floor		5.4 457.8
		193' North Single Garage on West Dirt floor		
		on floor		5.7 457.5
		200' North		
W		5.8		457.4
E		5.6		457.6
+6		5.8		457.4
E		5.6		457.6
		227' North Single Garage on West Dirt floor		
		E		5.8 457.4
		+5		6.2 457.0
		E		6.1 457.1
		W		6.1 457.1
		1.5 Back on floor		6.1 457.1

+

363.18

-

Elev

235 North S. End Dbl Garage Concrete Floor

1.0 Back on floor

6.15

357.03

E

250' North N. End Dbl Garage on West

1.0 Back concrete floor

6.26

356.92

+5

W

6.5

356.7

+4

E

6.5

356.7

W

E

6.5

356.7

260' North Single Garage on East concrete floor

0.2 in alk. on floor

6.93

356.75

+5

275' North

E

6.8

356.4

+5

+6

7.2

356.0

E

E

7.0

356.2

TP.

W

7.0

356.2

292 North Single Garage on West Dirt Floor

2.2 Back on floor

7.4

355.8

+4

300' North

W

7.3

355.9

+4

+2

7.5

355.7

W

E

7.9

355.8

+4.5 on 2" water main

7.53

355.65

W

+5

7.7

355.5

+2

E

7.3

355.9

+4

317 North Single Garage on West Dirt floor

on line on floor

7.6

355.6

E

+

363.18

-

Elev

39

325' No. 7A

7.6

355.6

7.9

355.3

7.8

355.4

7.8

355.4

7.2

356.0

350' No. 7A

7.9

355.3

8.1

355.1

8.2

355.0

8.3

354.9

7.9

355.3

3.38

359.27

7.29

355.89

375 North

4.4

354.9

4.7

354.6

4.4

354.9

4.3

355.0

4.6

354.7

400' North

9.9

354.4

5.0

354.3

4.7

354.6

4.6

354.7

4.8

354.5

T	X	-	Elev
	359.27		
	425 North		
E	4.7		354.6
+5	5.0		354.3
E	4.7		354.6
+7	4.8		354.5
W	5.1		354.2
	450 North S Line of Alley		
W	5.1		354.2
+2	4.9		354.4
+7	Edge Sewer Flush Tank	4.96	354.81
Q	" " "	4.97	354.80
+2	75' E. Edge of Sewer Flush Tank	4.96	354.81
E	5 1/2" diameter	4.7	354.6 ✓
	475.7 S Line of Alley		
E	4.5		354.8
Q	4.8		354.5
+5	4.8		354.5
W	5.0		354.3
	476.5 N Line of Alley		
W	5.2		354.1
+2	4.9		354.4
E	4.8		354.5
E	4.6		354.7
	E. line of N & South Alley = 0' 00" of East West Alley		
S	4.7		354.6
+5	4.7		354.6 ✓
Q	4.6		354.7 ✓

T	X	-	Elev	40
	359.27			
	4.6		354.7	
	25' East			
	4.5		354.8	
	4.4		354.9	
	4.4		354.9	
	50' East			
	4.1		355.2	
	4.1		355.2	
	4.1		355.2	
	75' East			
	3.8		355.5	
	3.9		355.4	
	3.8		355.5	
	85' East			
	3.8		355.5	
	3.7		355.6	
	3.5		355.8	
	3.4		355.9	
	3.5		355.8	
	100' East			
	3.9		355.4	
	3.9		355.4	
	3.7		355.6	
	3.6		355.7 ✓	

+ X Elev
359.27

125' East W. Prop of 44th St

S	3.6	355.7
E	3.6	355.7
N	3.6	355.7

Paving of 44th on Alley line Produced

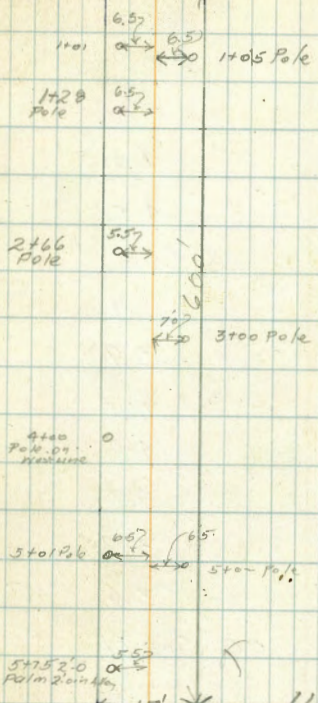
S	9.02	355.25		
E	4.08	355.19		
N	9.10	355.13 ✓		
T.P.	670	362.39	3.58	355.69
B.M.		3.94	358.95	

Yillas Sketch of Alley Block 63 Park

41

0+00 = S. line Wightman

S. line of Wightman ← 15' * 115' →



Landis

X Sections of Alley 63 Park Villas

Bliss Wrightman to landis Between Pershing + 28th

Isa bell Morgan 10/29/27

B. Pl. 9.5W Wrightman Pershing Dr E Top of b

9.98 347.99 338.01

S. Line Wrightman 4.52 343.47 ✓

Gutter 4.81 343.18 ✓ W

E 5.10 342.89 ✓ R

Gutter 4.87 343.12 ✓ E

N Top of b 4.58 343.41 ✓

02 South 3.93 344.56 ✓ E

W-1 on walk 3.9 344.1 ✓ R

W 4.2 343.8 ✓ W

R 4.4 343.6 ✓

+5 4.1 343.9 ✓ W

+6 3.7 344.3 ✓ R

R 3.6 344.4 ✓ E

09 South 3.6 344.4 ✓ R

E 3.7 344.3 ✓ W

R 3.8 344.2 ✓

+5 4.2 343.8 ✓

+6 3.9 344.1 ✓

W 25' South 3.9 344.1 ✓ R

W 3.8 344.2 ✓ R

+2 3.5 344.5 ✓

R 3.8 344.2 ✓

+ - Floor 42

347.99

34' South Single Garage on West Concrete Floor

on line floor 3.62 344.37

50' South 3.3 344.7

3.5 344.5

3.5 344.5

56' South Single Garage on East Concrete Floor

3.8 Back floor 3.38 344.61

3.3 344.7

3.4 344.6

3.3 344.7

75' South 3.4 344.6

3.3 344.7

3.3 344.7

100' South 3.3 344.7

3.3 344.7

3.7 344.3

109' Single Garage on East Div. Floor

15 Back floor 3.6 344.4

125' South 3.4 344.6

3.4 344.6

3.5 344.5

150' South 3.9 344.1 ✓

	+	X	-	Elev
		347.99		
E			3.6	244.4
W			3.4	244.6
		175' South		
W			3.7	244.3
E			3.5	244.5
E			3.4	244.6
		188' South		
E			3.3	244.7
E			3.4	244.6
W			3.2	244.8
T.P.	4.91	349.71	3.19	344.80
		194' South Single Garage on West Concrete floor		
31' Back Floor			5.35	244.36
		205' South		
W			5.4	244.3
E			5.3	244.4
E			5.1	244.6
		214' South Single Garage on East Dirt floor		
8' Back floor			5.1	244.6
		225' South		
E			5.0	244.7
E			5.2	244.5
W			5.3	244.4
		250' South		
W			5.3	244.4
E			5.1	244.6

	X	-	Elev
	349.71		
	250' South		
		5.1	
	265' South Concrete Steps of House on East		
	0.3' Alley - step	3.96	245.75
	269' South		
		5.0	244.7
		5.2	244.5
		5.3	244.4
		5.0	244.7
	280' South		
		5.2	244.5
		5.2	244.5
		5.2	244.5
		5.0	244.7
	298' South		
		5.0	244.7
		5.0	244.5
		5.2	244.5
	305' South		
		5.1	244.6
		5.0	244.7
		4.7	245.0
		4.1	245.6
		4.9	244.8
	317' South		
		4.5	245.2
		4.3	245.4

+ 349.71 Elev

+3		4.8	344.9
N ♀		5.0	344.7
W		4.9	344.8
N	330 South		
♀ W		5.3	344.4
♂ +3.5		5.2	344.5
+5.5		4.8	344.9
E ♀		4.8	344.9
♂ +4		4.7	345.0
W +6		4.3	345.4
W ♀		4.8	444.9 ✓
	339 South Single Garage on West concrete floor		
	0.9 Alley floor	5.52	344.19
	346 South		
N ♀		5.1	344.6
♀ ♀		5.1	344.6
E W		5.1	344.6
	355 South concrete Walk on East		
	1-2 Back Walk	5.13	344.58
	366 South		
E W		5.8	343.9
♀ +3.5		5.6	344.1
W ♀		5.4	344.3
E		5.2	344.5
W		4.9	344.8 ✓

349.71 Elev 44

+5.5		5.5	344.2
♀		5.5	344.2
W		5.9	343.8
	1.0 m. WALK concrete	5.89	343.82
	T.P. 479	349.29	5.21 344.50
		349.29	5.21 344.50
	594 South Single Garage on West concrete floor		
	1.8 Back floor	4.49	344.80
	W	960 South	
		5.6	343.7
	+3	5.9	343.9
	♀	5.1	344.2
	E	4.9	344.4
	418 South concrete Walk		
	E	5.2	344.1
	♀	5.3	344.0
	W	5.3	344.0
	on Walk	5.83	343.76
	437 South		
	W	5.4	343.9
	♀	5.5	343.8
	E	5.4	343.9
	460 South Single Garage on East concrete floor		
	12' Back floor	4.54	344.75
	E	5.2	344.1
	♀	5.5	343.8
	W	5.5	343.8

+ T Elev 349.29

500 South

W	5.5	340.8
Q	5.4	340.9
E	5.2	341.1

509' South Single Garage on West concrete floor

19' Back floor 5.46 340.83

525 South

E	5.2	341.1
E	5.4	340.9
+5 W	5.7	340.6
T.P.	3.85	5.18 341.11

556 South

WALK - 0.5 Back	4.55	341.74
W	4.6	341.7
+3	4.1	345.2
Q	4.1	345.2
E	3.9	345.4

575 South

E	3.9	345.4
+5	4.1	345.2
Q	4.3	345.0
+9.5	4.2	345.1
W	4.7	344.6
+0.5 WALK	4.66	344.63

2'0 Palm 2.5 m alley

+ T Elev 347.96

585 South

0	4.76	340.20
W	4.8	340.2
+3	4.6	340.4
+9.5	5.2	342.8
Q	4.7	340.0
E	4.5	340.5

597 South

E	5.8	342.2
+1	5.8	342.2
+3.5	7.2	340.8
Q	7.1	340.9
+5	7.2	340.8
+6	6.9	341.1
W	5.5	342.5
+0.5 WALK	5.12	342.84

600 S. 514 N Line Lands

No curb on West	7.87	340.09
W on Paving	7.82	340.14
Q	7.67	340.29
Cutter	7.69	340.27
E to P.C.	7.69	340.27
T.P. on B.M. Lands 739	347.17	9.51 339.78
B.M.	7.91	338.03

X Sections Alley Block 54 Park

Villas 111/27

15' Alley

Bliss
BM SW
Brass Plug
at Myrtle

	+	π	-	Elev
	1.24	33/59		330.35
W Topcb			5.79	325.80
Gutter			6.01	325.58
♀			6.36	325.23
Gutter			6.25	325.34
E. Topcb			6.08	325.51
		02' South		
E			4.9	327.2
+3			5.6	326.0
♀			5.9	326.2
+2			5.1	326.5
+4			4.7	326.9
+5			3.9	327.7
W			3.7	327.9
		13' South		
W			3.3	328.3
+6			3.2	328.4
♀			3.5	328.1
+3			3.8	327.8
E			3.8	327.8
		25' South		
E			3.8	327.8
+4			3.7	327.9
♀			3.3	328.3
+3			3.2	328.4
W			3.7	327.9

+ 7 33/59 - Rev 46

35' South

W	3.8	327.8
+5	3.5	328.1
♀	3.6	328.0
E	3.7	327.9
		69' South
E	5.0	326.6
+3	4.7	326.9
♀	4.7	326.9
+5	4.4	327.2
W	4.4	327.2
		84' South
W	4.7	326.9
+4	4.6	327.0
♀	4.7	326.9
+6	5.0	326.6
E	4.9	326.7
		100' South
E	5.0	326.6
♀	5.1	326.5
+4	4.9	326.7
W	4.7	326.9
		110' South
W	4.6	327.0
+3	5.0	326.6
♀	5.2	326.4
E	5.1	326.5

115' South
on East Elev. dirt
floor. s. 326.4
3.4 Back from line
Garage sets North and
South Paralleling the
Alley

	+	π	-	Elev
		331.59		
		125' South		
E		5.7		325.9
Q		5.5		326.1
+3		5.1		326.5
W		5.1		326.5
		150' South		
W		5.5		326.1
+5		6.3		325.3
Q		6.5		325.1
E		6.9		324.7 ✓
T.P.	3.60	328.17	7.02	
		175' South		
E		3.9		324.3
Q		3.6		324.6
+1		3.4		324.8
+2		2.7		325.5
W		2.2		326.0
		200' South		
W		2.4		325.8
+5		2.8		325.4
+6		4.1		324.1
Q		4.2		324.0
E		4.7		323.5
		203' South		
		4.8		323.4
		4.5		323.7
+1		4.3		323.9 ✓

	+	π	-	Elev
		328.17		
		205' South		
+2		3.9		324.3
+4		3.3		324.9
W		3.0		325.2
		205' South		
W		3.6		324.6
+5		3.9		324.3
Q		4.5		323.7
E		4.9		323.3
		211' Single Garage on East Concrete floor		
		11' Back floor	5.02	323.15
		223' South Single Garage on West concrete		
E		5.3		322.9
Q		5.2		323.0
		Concrete lip on roof	3.97	324.20
		235' South		
W		4.6		323.6
+5		5.2		323.0
Q		5.3		322.9
E		5.5		322.7 ✓
		242' South Single Garage on East concrete floor		
		10.6' Back floor	5.31	322.86
		244' South Single Garage on West Concrete floor		
		3.7' Back floor	4.34	323.83
		249' South		
E		5.6		322.6
Q		5.9		322.8

	+	π	-	Elev
		328.17		
+4			5.3	322.9
W			4.9	323.3
		255' South		
W			5.2	323.0
+2			5.5	322.7
♀			5.3	322.9
+5			5.4	322.8
E			5.8	322.4
		275' South		
E			6.1	322.1
♀			6.2	322.0
W			5.8	322.4
		290' South		
W			6.3	321.9
+3			6.7	321.5
♀			6.9	321.3
E			6.8	321.4
		297' South		
E			7.6	320.6
♀			7.7	320.5
+4			7.7	320.5
+6			7.5	320.7
W			7.2	321.0 ✓
		302' South. Pav 189		
W			8.1	319.76

2755 Pa' on West
15.20/lev

Note
cur returns station on
ups

78

♀			8.51	319.66
♀			8.61	319.56
TP	7.79	332.54	3.42	324.75
BM			2.18	330.36

Levels on curb and sidewalk on the West
 Side of 422nd Street from the North Line of Thorn
 to 150' North
 Bliss 11/127

	+	-	Elev
B.M. N. W. ^{W.P. 1/2} Brass Plug ^{1/2}	1.64	323.26	321.62
T.P.	1.37	312.74	12.89 310.37
0+00 N. Line of Thorn - about			12.07
0+14 Beginning of cb.			11.12
0+25			10.34
0+50			9.90
0+75			8.91
1+00			8.03
1+09 on Edge Sidewalk 7.3 Back			7.75
1+25 on cb.			7.41
1+25 on Walk			7.25
1+50 " cb.			6.60
1+50 on Walk			6.47
T.P.	11.84	323.31	0.27 311.47
B.M.		1.70	321.61

Note there are no cbs or sidewalk
 from the West Line of 422nd West to Alley
 on Thorn St.

12/3/27
Moore
Osborn
Cathard

Cross Section of
MACAULAY ST
PLUM to CAPISTRANO

1927
10
25/11

SWBP	12.60	64.86		52.26	Willow Lowell
TP	12.74	77.56	0.02	64.84	
TP	12.88	90.20	0.24	77.34	
TP	12.70	102.67	0.23	89.97	
TP stake hole	5.81	104.92	3.54	99.11	Macaulay N. California

EL PLUM - 70' wide - 8' cbs 8 1/2' 1/2"

N			5.1	99.4	8 1/2' 1/2"
cb			5.6	99.3	
1/4			6.4	98.5	
c			7.3	97.6	
1/4			8.3	96.6	
cb			9.3	95.6	
S			11.8	93.1	

See Maps for
this Sub. for
width of Street

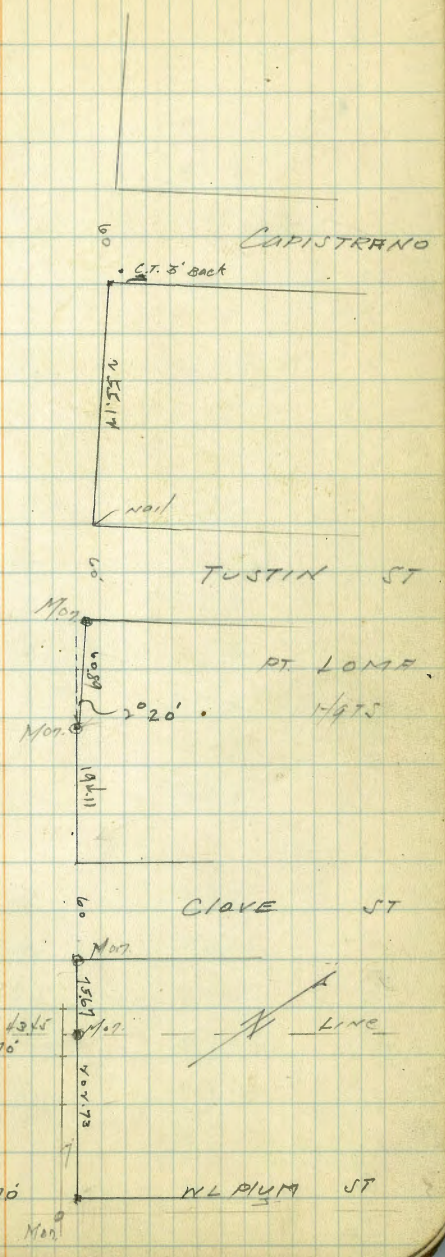
E cb

S			12.4	92.5	
cb			9.6	95.3	
1/4			8.1	96.8	
c			7.2	97.7	
1/4			6.4	98.5	
cb			5.6	99.3	
N			5.8	100.1	

Plotted 7/11/27
by D.C. Milner.

E 1/4

N			5.5	100.4	
cb			5.6	99.3	
1/4			6.4	98.7	
c			8.1	96.8	



10/4/94

1/4		9.1	95.8
cb		10.3	94.6
S		12.3	92.6
	E PLUM		
S		11.9	93.0
cb		10.4	94.5
1/4		9.4	95.5
c		8.4	96.5
1/4		7.2	97.7
cb		5.8	99.1
N		4.5	100.4
	W 1/4		
N		4.6	100.3
cb		5.8	99.1
1/4		7.6	97.3
c		8.8	96.1
1/4		9.4	95.5
cb		10.0	94.9
S		11.6	93.3
	W CB		
S		11.6	93.3
cb		9.9	95.0
1/4		8.8	96.1
c		8.6	96.3
1/4		7.9	97.0
cb		7.1	97.8

10/21/94

Macaulay

51

N		4.9	100.0
	W L PLUM = 0+00		
N		5.5	99.4
cb		7.2	97.7
1/4		7.8	97.1
c		8.4	96.5
1/4		9.0	95.9
cb		10.0	94.9
S		10.6	94.5
	25' N		
S		9.8	95.1
cb		8.4	96.5
1/4		9.0	95.9
c		8.1	96.8
1/4		7.4	97.5
cb		6.8	98.1
N		5.4	99.5
	50' N		
N		5.1	99.8
cb		5.8	99.1
1/4		6.5	98.4
c		7.2	97.7
1/4		7.6	97.3
cb		7.2	97.7
S		8.2	96.7

102.94

	100'w		
S		5.4	99.5
cb		4.9	100.0
+5		3.7	101.2
1/2		4.6	100.3
c		4.4	101.5
1/2		4.6	100.3
cb		4.0	100.9
+2		3.5	101.4
N		3.8	102.1

	150'w		
N		0.5	104.4
+N		0.7	104.2
cb		1.6	103.3
1/2		1.6	103.3
c		1.5	103.4
1/2		1.1	103.8
cb		1.3	103.6
S		2.4	102.7

T.P. 12.40 117.16 0.16 102.76

202.73 W = P. obs line = Last Section - 1 70'

S		8.9	108.3
cb		8.9	108.3
+5		8.9	108.3
+7		9.7	107.5
1/2		9.2	107.8

117.16

Macaulay

SW

C		9.5	107.7
1/2		9.7	107.5
cb		9.7	107.5
+3		8.8	108.4
N		9.0	107.2

202.73 W = PL. = Section 60' wide 10' obs 10' 1/2' from base west

N		9.0	107.2
cb		8.5	108.7
1/2		9.8	107.4
c		9.6	107.6
1/2		9.4	107.8
+5		9.7	107.5
+7		8.8	108.4
cb		8.9	108.3
S		8.6	108.6

250'w

S		4.1	113.1
cb		4.7	112.5
+3		4.8	112.4
+6		6.1	111.1
1/2		5.5	111.7
c		5.1	112.1
1/2		6.0	111.2
+4		4.3	112.9
cb		3.8	113.4
N		3.8	113.8

11716

378.4 W = EL Clove = 60' wide 10' cbs 10' 1/4

N	1.3	115.9
cb	1.7	115.5
1/4	2.6	114.6
c	2.6	114.6
1/4	2.5	114.7
+5	2.8	114.4
+7	1.9	115.3
cb	1.6	115.6
S	1.1	116.1

EC6

S	0.0	117.2
cb	0.5	116.7
+6	1.9	115.3
1/4	1.5	115.7
c	1.5	115.7
1/4	1.6	115.6
cb	0.9	116.3
N	0.6	116.6

T.P. 12.91 129.99 0.08 117.08

E 1/4

N	12.5	117.5
cb	12.8	117.2
1/4	13.2	116.8
c	13.3	116.7
1/4	13.3	116.7

129.99

Mocaulay

c2

1/4 + 4	13.4	116.6
+6	12.8	117.2
cb	12.4	117.8
+8	11.8	118.2
S	10.5	119.5

E clove

S	9.2	120.8
+2	9.6	120.4
cb	11.1	118.9
+4	12.1	117.9
+6	12.6	117.4
1/4	12.2	117.6
c	12.3	117.7
1/4	12.3	117.7
cb	12.3	117.7
N	12.2	117.8

W 1/4

N	11.7	118.3
cb	11.5	118.5
1/4	11.4	118.6
c	11.4	118.6
1/4	11.6	118.4
+3	12.0	118.0
+6	11.2	118.8
cb	10.1	119.9
+8	9.9	120.1
N	8.1	121.9

129.99

w/cb

S	7.3	122.7
+3	9.2	120.8
cb	9.4	120.6
+5	10.3	119.7
+7	11.1	118.9
1/4	10.8	119.2
c	10.6	119.4
1/4	10.7	119.3
cb	11.1	118.9
N	11.4	118.6

w/cb clump = 00

N	10.5	119.5
cb	9.8	120.2
+4	10.6	119.4
1/4	9.7	120.3
c	9.4	120.6
1/4	9.5	120.5
+3	9.7	120.3
+5	8.9	121.1
cb	8.1	121.9
+7	7.6	122.4
S	6.1	123.9

5' w

S	5.4	124.6
+4	7.3	122.7

129.99

Macaulay

54

cb	7.4	122.6
+6	9.0	121.0
1/4	9.1	120.9
c	8.9	121.1
1/4	9.2	120.7 ?
+5	9.8	120.2
cb	8.9	121.1
N	8.4	121.4

50' w

N	3.8	126.2
cb	4.0	126.0
+4	5.0	125.0
1/4	5.1	124.9
c	4.7	125.3
1/4	4.7	125.3
+3	4.6	125.4
+6	3.7	126.3
cb	2.9	127.1
S	1.0	129.0
T.P	120.6	127.68
	0.37	129.60

100' w

S	9.1	133.6
+5	9.1	133.6
+8	10.8	132.7
cb	10.9	131.8
1/4	12.5	130.2

142.68

C		12.4	130.3	
1/4		12.9	129.8	
+6		12.9	129.8	
cb		11.9	130.8	
N		11.7	131.0	
	win			
N		6.9	135.8	
+8		6.6	136.1	
cb		7.5	135.2	
+3		7.6	135.1	
1/4		7.6	135.1	
C		7.2	135.3	
+8		7.6	135.1	
1/4		6.8	135.9	
+2		6.8	135.9	
+9		6.1	136.6	
cb		5.8	136.9	
+4		3.4	139.3	
J		3.6	139.1	
T.P.	13.04	155.68	0.04	142.64
	194.1	^{WAT} angle 2' 20"		
J		11.3	144.4	
+6		11.5	144.2	
cb		12.8	142.9	
+5		14.7	141.0	
1/4		15.2	140.5	

155.68

1900/10/10

55

+2		16.4	139.3
C		16.1	139.6
1/4		16.3	139.4
cb		17.4	138.3
+2		15.3	140.4
N		15.8	139.9
	vert in of Clave		
N		12.9	142.8
+8		12.7	143.0
cb		12.0	141.7
1/4		14.0	141.7
C		13.4	142.3
+7		13.5	141.9
1/4		12.4	143.3
+6		12.0	143.7
cb		9.4	146.3
+4		7.5	148.2
J		7.4	148.3
	255' W = EL TURTLE = 60' wide 10' obs 10' 1/2"		
J		3.3	152.4
+7		2.8	152.9
cb		7.3	148.4
+5		9.6	146.1
+9		9.6	146.1
1/4		10.6	145.1
+2		11.5	144.2

15568

C	11.4	144.3
1/4	11.4	144.3
cb	11.4	144.3
+4	10.4	145.3
N	10.1	145.6

E cb

N	9.2	146.5
cb	10.0	145.7
+5	11.1	144.6
1/4	10.6	145.1
C	10.3	145.4
+6	10.8	144.9
1/4	9.0	146.7
+5	8.9	146.8
+9	6.7	149.0
cb	3.3	152.4
+2	1.7	154.0
S	2.1	153.6

E 1/4

S	1.4	154.3
+9	1.6	154.1
cb	6.5	149.2
+6	8.3	147.4
1/4	9.1	146.6
+4	10.0	145.7
C	9.7	146.0

15568

Macquary is 56
graded 50 wide here

1/4	10.0	145.7
+4	10.2	145.5
+7	9.7	146.0
cb	9.3	146.4
N	8.6	147.1

E TUSTIN

N	8.2	147.5
cb	9.0	146.7
1/4	9.5	146.2
C	9.2	146.5
+7	9.4	146.3
1/4	8.1	147.6
+7	7.0	148.7
cb	6.4	149.3
+1	0.7	155.0
S	0.8	154.9

W 1/4

S	0.5	155.2
+8	0.6	155.1
cb	5.6	150.1
+3	7.4	148.3
1/4	7.9	147.8
+3	8.8	146.9
C	8.7	147.0
1/4	9.1	146.6
cb	8.4	147.3
N	7.0	148.9

155.68

Wcb.

N	6.3	149.4
cb	7.5	148.2
1/4	8.5	147.2
C	8.4	147.3
+8	8.4	147.3
1/4	7.6	148.1
+6	7.0	148.7
cb	4.8	150.9
+4	0.1	155.6
J	0.0	155.7

WL TUSTIN-00

J	0.0	155.7
+8	0.0	155.7
cb	4.9	150.8
+4	6.4	149.3
1/4	7.1	148.6
+3	7.9	147.8
C	8.0	147.7
1/4	8.1	147.6
cb	7.3	148.4
N	6.0	149.7

25'w

N	5.8	149.9 ✓
cb	7.0	148.7
1/4	7.7	148.0

155.68

Macaulay

57

C	7.7	148.0
+7	7.7	148.0
1/4	7.0	148.7
+6	6.5	149.2
cb	5.3	152.4
+4	0.3	155.4
J	0.5	155.2

50'w

J	1.4	154.3
+8	1.4	154.3
cb	2.6	152.1
+3	6.4	149.3
1/4	7.4	148.3
+3	8.3	147.4
C	8.3	147.4
1/4	8.4	147.3
+5	8.6	147.1
cb	7.9	147.8
+2	7.2	148.5
N	6.5	149.2

75'w

N	7.8	147.9
+8	8.6	147.1
cb	9.1	146.6
+5	9.9	145.8
1/4	9.5	146.2

155.68

C	9.5	146.2
+5	10.0	145.7
+8	9.0	146.7
1/4	8.5	147.2
+6	7.9	147.8
cb	5.3	150.4
+3	2.8	152.9
5	2.7	153.0
100' W		
5	4.5	151.2
+8	4.4	151.3
cb	6.4	149.3
+4	9.5	146.2
1/4	9.8	145.9
+4	11.2	144.5
C	10.8	144.9
1/4	11.0	144.7
+6	11.3	144.4
cb	10.3	145.4
+2	9.6	146.1
√	9.2	146.5
120' W		
√	10.9	144.8
cb	11.6	144.1
1/4	12.1	143.6
C	12.2	143.5

155.68

Macaulay

58

+7	12.6	143.1
1/4	11.9	143.8
+7	11.1	144.6
cb	9.4	146.3
+3	6.7	149.6
5	6.5	149.2
150' W		
5	9.4	146.3
+7	9.5	146.2
cb	10.7	145.0
+4	13.2	142.5
1/4	13.0	142.7
+3	14.0	141.7
C	13.8	141.9
1/4	14.0	141.7
cb	13.2	142.5
√	12.5	143.2
T.P.	14.6	143.08
175' W		
√	5.6	140.9
+8	3.7	140.8
cb	4.3	140.1
+4	4.9	139.6
1/4	4.5	140.0
C	4.2	140.3
+8	4.4	140.1

14449

1/4	3.5	141.0
+8	3.3	141.2
cb	3.2	141.3
+2	0.9	143.6
S	0.6	143.9
200'w		
S	2.6	141.9
+8	2.2	142.2
cb	3.5	141.0
+4	4.8	139.7
1/4	5.3	139.2
+3	6.4	138.1
C	6.0	138.5
1/4	6.2	138.3
+6	6.8	137.7
cb	5.6	139.9
N	5.6	139.9
225'w		
N	7.3	137.2
cb	7.6	136.9
+3	8.7	135.2
1/4	7.9	136.4
C	7.7	136.6
+6	8.2	136.3
1/4	7.0	137.5
cb	6.2	138.3

14449

Macaulay

59

cb + 1	4.0	140.5
S	4.1	140.4
255.12 = EL Capistrano - 60' wide 10' cb; 10' 1/4		
S	6.3	138.2
+8	5.8	138.7
cb	8.0	136.5
+3	9.4	135.1
+9	9.4	135.1
1/4	10.8	133.7
C	10.2	134.3
1/4	10.4	134.1
cb	11.0	133.5
N	12.2	132.3
E cb		
N Top corr. curb	12.6	131.88
cb	12.3	132.2
1/4	11.1	133.4
C	10.8	133.7
1/4	10.8	133.7
+3	10.0	134.5
cb	9.6	134.9
+2	6.7	138.8
S	7.2	138.3
E 1/4		
S	7.9	137.6
+8	7.4	138.1

14449

cb		10.0	134.5
+8		10.9	133.6
1/4		11.6	132.9
c		11.5	133.0
1/4		11.8	132.7
cb		12.5	132.0
N		13.2	131.3
T.P.	5.85 137.45	12.89	131.60
	φ Capistrano		
N		6.5	131.0
cb		6.1	131.4
1/4		5.5	132.0
c		5.2	132.3
1/4		4.9	132.6
+8		4.3	133.2
cb		2.5	135.0
+2		1.4	136.1
S		1.9	135.6
	w/1/4		
S		2.7	134.8
+9		2.7	134.8
cb		4.4	133.1
1/4		5.3	132.2
c		5.8	131.7
1/4		6.1	131.4
cb		6.8	130.7

137.45

Macaulay

60

N		7.2	130.2
	w cb		
N	Top cement curb	7.58	129.87
cb		7.5	130.0
1/4		6.6	130.9
c		6.5	131.0
1/4		5.8	131.7
+8		5.8	131.7
cb		5.2	133.3
+1		3.9	133.6
S		4.3	133.2
	w/ Capistrano		
S		5.4	132.1
cb		5.1	132.4
+1		5.9	131.6
1/4		6.2	131.3
c		6.9	130.6
1/4		7.0	130.5
cb		7.0	130.5
N		7.4	130.1
check to 511	Macaulay's Adjustment	4.07	133.08
			133.19
		error	0.11

14/1/77 Moore Cross Section of UDAL ST Evergreen to Locust

70' wide
18' cbs
8 1/2' 1/2"

Willow UDAL

Locust

ST

61

SWOP	2.1	189.28	187.16	UDAL
TP	1.1	177.33	1306	176.44

EL Evergreen.

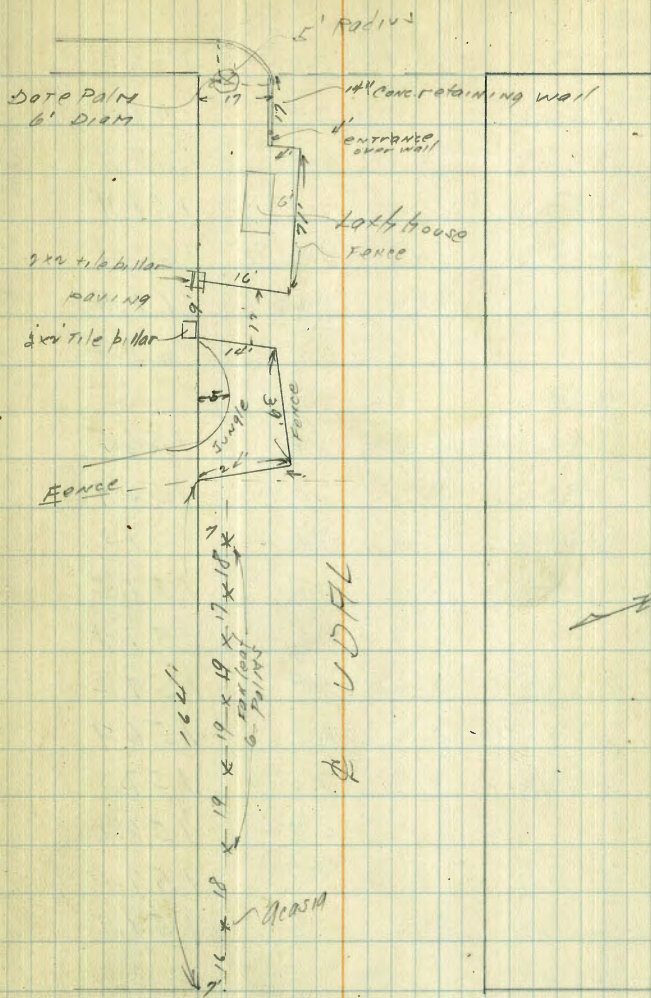
S		5.9	171.4
cb		6.5	170.8
1/4		6.8	170.5
c		7.4	170.1
1/4		7.5	169.8
cb		9.1	168.2
1		10.9	166.4

25'E

1		12.4	163.1	
cb		12.2	165.1	
1/4		11.3	166.0	
c		11.2	166.1	
1/4		10.8	166.5	
cb		11.2	166.1	
+4		11.1	166.2	
+7		10.2	167.1	
S		9.7	167.6	
TP	0.19	164.67	12.85	164.48

50'E

S		0.8	163.9
+3		0.9	163.8
+5		1.8	162.9
+12		2.2	162.5



Evergreen

ST

164.67

±14	3.2	161.5 ✓
cb	2.9	161.8 ✓
1/4	2.8	161.9
c	2.8	161.9
1/2	2.6	162.1
cb	3.3	161.4
N	4.5	160.2
	N'E	
N	8.2	156.5
cb	7.8	156.9
1/4	7.1	157.6
c	7.2	157.5
1/4	7.3	157.4
cb	7.5	157.2
+3	7.8	156.9
+6	7.0	157.7
±12	6.7	158.0
±15	5.7	159.0
S	5.6	159.1
	100'E	
S	10.1	154.6
+4	10.2	154.5
+5	11.1	153.6
+13	11.7	153.0
+15	12.7	152.0
cb	12.4	152.3

164.67

UDFL

62

1/2	12.2	152.5	
c	12.3	152.4	
1/4	12.3	152.4	
cb	12.7	152.0	
N	13.1	151.6	
T.P. 029	152.04	12.94	151.75 ✓
	125'E		
N	5.6	146.4	
cb	5.0	147.0	
1/2	4.5	147.5	
c	4.2	147.8	
1/4	4.0	148.0	
cb	3.9	148.1	
+4	4.0	148.0	
+7	2.9	149.1	
S	1.6	150.4	
	150'E		
S	6.1	145.9	
+10	6.7	145.3	
+13	9.0	143.0	
cb	8.5	143.5	
1/4	8.3	143.7	
c	8.5	143.5	
1/4	8.8	143.2	
cb	9.2	142.6	
N	10.6	141.4	

157.04

	162'E		
N		13.3	138.7
cb		12.5	139.5
1/2		12.3	139.7
c		10.8	141.2
1/2		10.6	141.4
cb		10.2	141.8
S		9.6	142.4
T.P.	279	142.55	142.28
		12.28	139.76

	170'E		
S		1.2	141.3
cb		1.5	141.0
1/4		2.2	140.1
c		2.6	139.9
1/4		4.3	138.2
cb		4.9	137.6
+v		5.3	137.2
+B		11.7	130.8
+15		12.0	130.5
N	W edge of paved drive	17.3	125.2

	175'E		
S	W edge of drive	1.6	140.9
N	at paving	17.3	125.2
+6 Sedge "		17.3	125.2
+8		13.3	129.2

142.55

UDAL

63

	211	13.0	129.5
	+14	10.0	132.5
	cb	9.6	132.9
	1/4	8.4	134.1
	c	7.2	135.1
	1/4	6.7	135.8
	cb	6.0	136.5
	+12	4.2	138.3
	S	3.7	138.8

	203'E		
S		6.2	136.1
cb		5.2	134.3
1/4		8.7	133.8
c		9.5	133.0
1/4		10.2	132.3
cb		11.7	130.8
N		15.0	127.5

	209'E		
N	W edge of paved drive	15.9	126.6

	212'E		
N		15.9	126.6
cb		12.4	130.1
1/2		11.6	130.9
c		10.3	132.2
1/4		10.0	132.5
cb		9.6	132.9

142.55

S		8.2	134.3
	225° E		
S		7.2	135.3
cb		12.4	130.1
1/4		12.4	130.1
C		13.3	129.2
1/4		13.7	128.8
cb		15.0	127.5
+1		14.5	128.0
+8		16.5	126.0
N		16.5	126.0
T.P.	1.30 130.97	12.88	129.67
	250° E		
N		9.0	122.0
+9		8.2	122.8
+13 = S edge of Lath house		7.0	124.0
cb		6.9	124.1
1/4		6.7	124.3
C		6.2	124.8
1/4		5.9	125.1
cb		5.2	125.8
S		4.9	126.1
	270° E + 5' N of ϕ = DATE PALM 3' DIAM.		
	275° E		
S		11.8	119.2
cb		10.9	120.1

130.97

NDAL

64

1/4		10.8	120.2
C		11.1	119.9
1/4		11.6	119.4
cb		11.5	119.5
+3 on lawn		12.9	118.1
N " "		12.8	118.2
T.P.	2.98 121.16	12.79	118.18
	300' E = W of LOCUST		
N		3.8	117.4
+17 Top retaining wall		3.40	117.76
cb foot " "		7.0	114.2
1/4		6.6	114.6
C		6.6	114.6
1/4		7.2	114.0
cb		8.0	113.2
S		9.8	111.4
	318' W = W of cb of LOCUST		
S		10.4	105.8
cb		13.2	108.0
1/4		12.3	108.9
C		11.7	109.5
1/4		11.8	109.4
cb		11.9	109.3
N		11.4	109.8

114.6 check this to center profile please
 114.0 11.40

105.8

107.2

108.6

109.3

108.3

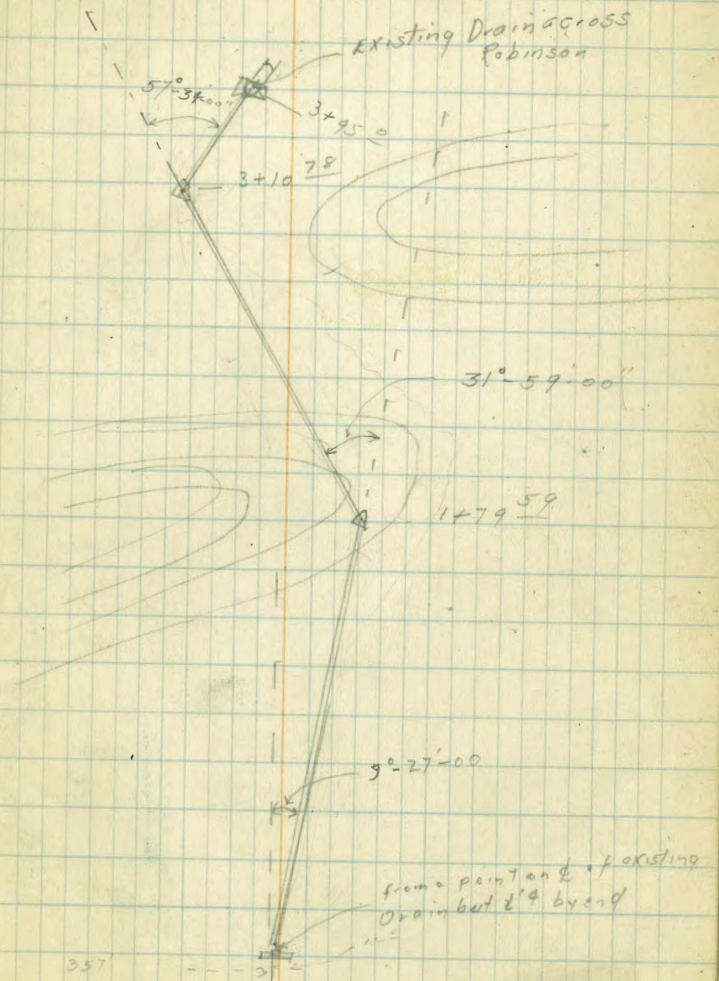
107.9

106.9

B1100
 1/5/8 Location and levels on Proposed Drain
 across Lot 12 Block 2 South of Essex to
 Existing Drain on Robinson

BM, SPIK Pole NW Corner and Park Boulevard	+	x	-	Level
	1.38	311.87		310.49
T.P.	0.68	299.57	12.98	298.89
T.P.	0.57	287.26	12.88	286.69
Chk: check line of existing 16" pipe		277.3 267		287.7 ✓
T.P.		7.5		279.8 ✓
0+18		7.0		280.0 ✓
0+33		8.0		279.3 ✓
0+56		10.5		276.6 ✓
0+80		11.5		275.8 ✓
1+00		11.5		275.8 ✓
H32		12.9		274.4 ✓
1+56		12.9		274.4 ✓
1+79 3/4 A		10.10		277.4 ✓
2+00		11.2		276.1 ✓
T.P.	2.12	277.33	12.95	275.21
2+34		276.6		270.7 ✓
2+70		6.7		270.6 ✓
3+00		8.1		269.4 ✓
3+10.78 A		8.97		268.8 ✓
3+30		8.8		268.5 ✓
3+95 Flowline of existing 16" culvert on Robinson		10.39		267.0 ✓
T.P.	12.80	289.62	0.51	276.82
T.P.	12.92	302.12	0.42	289.20
T.P.	6.45	307.36	1.21	300.91
BM NE CP Babington Park Div.		3.39		303.97

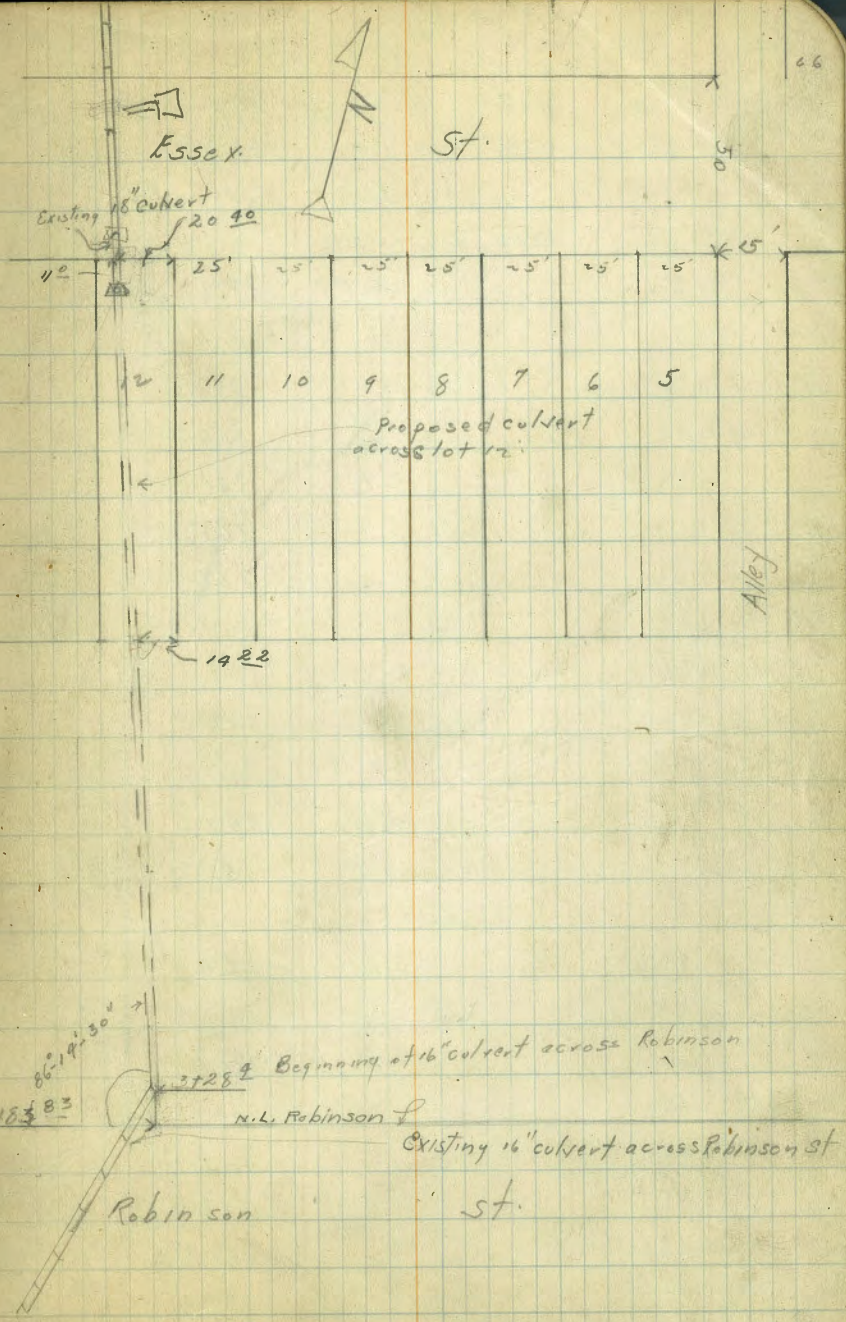
Sketch of line A



Bliss
Isabel
Mo. 1924
15/25
B.M. SPK in file
N.W. Essex St
B.W. Boulevard

Location of "B" Line and Levels for proposed
Drain across Lot 12 Block 2 South of Essex Place

	+	+	-	El. ex.	
	1.38	311.87		310.99	
T.P.	0.68	299.51	12.98	298.89	
T.P.	0.57	287.26	12.88	286.69	
0+00			7.5	277.4	✓
+2			7.5	279.8	✓
0+20			7.0	280.3	✓
0+30			8.5	271.8	✓
0+56			9.8	277.5	✓
0+68			9.3	278.0	✓
1+00			10.5	276.8	✓
1+33			8.7	278.6	✓
1+65			2.2	285.1	✓
1+78			2.5	284	✓
2+00			8.5	271.8	✓
T.P.	2.12	277.33	12.05	275.21	
2+35			7.2	270.6	✓
2+69			6.1	271.2	✓
3+00			7.0	270.3	✓
3+21			8.1	269.4	✓
3+28.9			10.39	267.0	✓
T.P.	12.80	289.62	0.51	276.82	
T.P.	12.92	302.12	0.92	289.20	
T.P.	6.95	307.36	1.1	300.91	
B.M. B.P.W. Robinson St Park & 2nd Ave			3.39	303.97	



2/15/28
 13. M Pop
 1000 S.W.
 El Cap. 5000

X Section of Trojan St. from the W
 line of Altadena to the W line of 52nd
 60' St
 12' cbs
 9' 9.5

36923

67

	+	+	-	Elev			
	8.69	392.14		383.45	N	45	3647
TP	3.22	391.24	4.12	388.02		35' East	
TP	1.06	379.06	13.24	378.00	N	4.9	3643
TP	1.61	369.23	7.44	367.62	+5	6.6	3626
		0 to 100 = E line of Altadena			+7	8.2	3610
N		1.6		367.6	cb	8.2	3610
+6		3.2		366.0	+5	5.8	3634
cb		3.2		366.0	1/4	6.1	3631
1/4		3.7		365.5	1/4	6.5	3627
1/4		4.2		365.0	1/4	6.6	3626
+4		4.0		365.2	+3	6.6	3626
1/4		4.1		365.1	cb	9.8	3594
+2		4.4		364.8	S	12.8	3564
cb		7.8		361.4	S+20	16.9	3523
S		10.6		358.6		50' East	
S+20		13.8		355.4	S-20	17.8	3514
		25' East			S	14.6	3546
S-20		16.2		352.0	cb	10.6	3586
S		12.2		357.0	+5	8.1	3611
cb		9.2		360.0	1/4	7.6	3616
+8		6.2		363.0	1/4	7.5	3617
1/4		6.3		362.9	1/4	7.0	3622
+4		5.6		363.6	+3	7.3	3619
1/4		5.9		363.3	77	8.9	3603
1/4		5.1		364.1	cb	8.3	3609
cb		5.3		363.9	N	5.4	3638

36923

75' East

N	6.4	362.8
+3	8.1	361.1
+7	7.9	360.3
cb	9.7	360.5
+5	9.6	359.6
1/4	8.7	360.5
+7	9.3	359.9
cb	9.0	360.2
1/4	9.5	359.7
+4	9.5	359.7
cb	12.8	356.4
S	16.0	353.2
S-20	19.3	349.9
100' East		
S-20	19.3	349.9
S	16.7	352.5
cb	13.3	355.9
+6	11.5	357.7
1/4	10.8	358.4
cb	10.6	358.6
1/4	10.5	358.7
cb	10.3	358.9
+2	10.4	358.8
+7	9.6	359.6
N	8.1	361.1
T.P.	2.19	360.71
	10.71	358.52

36071

119' East

N	0.9	359.8
+3	2.0	358.7
+7	2.0	358.7
cb	2.6	358.1
+3	3.1	357.6
+8	2.6	358.1
1/4	2.5	358.2
cb	3.3	357.4
1/4	3.0	357.4
+2	3.0	357.4
cb	5.9	354.8
+5	7.0	353.7
S	7.9	352.8
S-20	10.3	350.4
125' So		
S-20	11.0	349.7
S	8.2	352.5
cb	6.8	353.9
+3	5.3	355.4
1/4	5.8	354.9
cb	4.6	352.1
+5	3.7	357.0
1/4	3.6	357.1
cb	3.8	356.9
N	2.5	358.2

360.71 ✓

145' East. E. Line of A164

N	5.3	355.4
cb	7.8	355.9
75	4.6	356.1
1/4	4.8	355.9
6	5.7	355.0
+6	6.4	354.3
1/4	7.2	353.5
cb	9.6	351.1
S	10.0	350.7
Str-o	12.0	348.7

170' East

S-20	15.1	345.6
S	12.8	347.9
cb	13.2	347.5
+2	13.4	347.3
1/4	10.4	350.3
+8	7.6	353.1
6	7.1	353.6
1/4	6.0	354.7
cb	5.7	355.0
+5	5.3	355.4
N	3.8	356.9

189' East

N	5.4	355.3
cb	5.8	354.9
1/4	6.5	354.2

360.71 ✓

69

6	7.5	353.2
+2	7.9	352.8
+4	10.1	350.6
1/4	12.9	347.8
+4	14.6	346.1
cb	15.6	345.1
S	17.0	343.7
Str-o	19.6	341.1

200' East

S-20	17.8	342.9
S	16.1	344.6
cb	13.8	346.9
1/4	8.8	351.9
7.3	7.5	353.2
6	7.2	353.5
7.5	6.7	354.0
1/4	6.4	354.3
cb	5.8	354.9
N	5.9	355.3

225' East

N	6.1	354.6
cb	6.6	354.1
1/4	6.7	354.0
6	6.8	353.9
1/4	7.5	353.2
+5	9.2	351.5

36071 ✓

cb	10.8	349.9
S	11.8	348.9
St 20	14.3	346.4
	247 East	
S-20	14.6	346.1
S	11.5	349.2
cb	10.6	350.1
14	8.0	352.7
E	7.5	353.2
14	7.0	353.7
cb	6.4	354.3
+2	6.9	354.3
+1	6.3	354.4
	270' East W line of 51st	
N	5.3	355.4
+7	6.1	354.6
cb	6.5	354.2
+6	7.9	352.8
14	11.2	349.5
E	8.4	352.3
14	10.1	350.6
cb	10.7	350.0
+5	10.6	350.1
S	12.1	348.6
St 20	15.3	345.4
T.P.	9.05	355.34
	9.92	351.29

35534 ✓

70

No To
The Intersection of Trojan
51st Has been re-sectioned
Previously
E Line of 51st = 00

S-20	12.7	342.6
S	8.0	347.3
cb	5.6	349.7
14	3.9	351.4
E	3.6	351.7
14	3.2	352.1
+5	3.9	351.4
+7	5.5	349.8
cb	5.5	349.8
+2	3.3	352.0
N	1.7	353.6
	11' East	
N	1.4	353.9
+5	3.8	351.5
cb	6.2	349.1
+4	6.2	349.1
+7	7.6	350.7
14	7.4	350.9
+3	3.6	351.7
E	3.7	351.6
14	4.0	351.3
+2	3.9	351.4
cb	5.4	349.9
S	8.2	347.1
St 20	13.5	341.8

35539 ✓

25' East

S-20	+3.1	340.2
S	8.9	346.4
cb	6.3	349.0
+8	4.5	352.8
1/4	9.6	350.7
⊥	4.5	350.8
+6	4.3	351.0
1/4	4.6	350.7
+5	5.5	349.8
+6	7.6	347.7
cb	7.0	348.3
+2	5.6	349.7
+8	4.2	351.1
N	2.1	353.2

45' East

N	2.8	352.5
+8	5.7	349.6
cb	8.8	346.5
+5	8.6	346.7
+6	7.1	348.2
1/4	5.6	349.7
⊥	6.~	349.1
+7	6.5	348.8
1/4	7.0	348.3
+6	9.9	345.4
cb	10.4	344.9

35539 ✓

S	12.8	342.5
S+0	18.3	339.0

60' East

S-20	17.9	337.4
S	14.0	341.9
cb	10.7	344.6
1/4	8.6	346.7
+3	7.8	347.5
⊥	7.3	348.0
+7	6.9	348.4
1/4	7.3	348.0
+8	9.9	345.4
cb	9.8	345.5
+3	7.4	347.9
N	4.3	351.0

75' East

N	5.1	350.2
+2	7.0	348.3
+7	8.~	347.1
+9	10.8	344.5
cb	10.8	344.5
+4	10.4	344.9
+6	9.0	346.3
1/4	8.5	346.8
+4	8.5	346.8
⊥	9.~	346.1

π
35534 ✓

+5	9.5	345.8
1/4	10.3	345.0
06	12.5	342.8
S	15.5	341.8
Stro	19.2	336.1

100' East

S-20	24.0	331.3
S	18.3	337.0
06	14.6	340.7
1/4	12.6	342.7
⊕	11.7	343.6
1/4	11.1	344.2
+8	11.0	344.3
06	12.8	342.5
+4	12.7	342.6
+6	10.1	345.2
N	8.7	346.6

112' East

N	9.9	345.4
+10	15.0	340.3
06	15.1	340.2
+2	12.2	343.1
1/4	12.5	342.8
⊕	13.3	342.0
T.P.	1.96	344.72
12.58		342.76
76	3.4	341.3

π
34472 ✓

1/4	4.5	340.2
06	7.0	337.7
S	10.0	334.7
Stro	14.3	330.4

125' East W. line of Alley

Stro	15.8	328.9
S	11.9	332.8
06	9.6	335.1
+6	8.5	336.2
1/4	7.0	337.7
+7	4.3	340.4
⊕	4.4	340.3
1/4	3.7	341.0
+6	3.5	341.2
+8	5.6	339.1
06	5.6	339.1
+2	3.3	341.4
N	1.2	343.5

145' East E. line of Alley

N	3.3	341.4
+6	4.5	340.2
06	6.3	338.4
+2	6.6	338.1
+3	8.6	336.1
+5	6.6	338.1
1/4	6.9	338.3

399.72 ✓

+6	7.8	336.9
φ	7.9	337.3
1/4	10.0	334.7
cb	13.9	330.8
S	15.2	329.5
St20	17.9	326.8

165 East

S-20	20.2	324.5
S	18.9	326.3
cb	16.2	328.5
1/4	13.4	331.3
φ	10.7	334.0
+2	10.3	334.4
+4	11.5	333.2
1/4	9.7	335.0
+7	9.3	335.4
cb	10.0	334.7
+7	7.7	337.0
N	6.8	337.9

176 East

N	8.8	335.9
+7	10.0	334.7
+9	11.2	333.5
cb	10.7	334.0
1/4	11.0	333.7
+4	11.7	333.0

399.72 ✓

+6	19.5	330.2
φ	12.3	332.4
+9	2.13	334.37
12.98		332.29
+6	2.9	331.5
1/4	5.1	329.3
cb	6.8	327.6
S	9.0	325.4
St20	11.7	322.7

187 East

S-20	14.2	320.2
S	11.0	323.4
cb	8.5	325.9
1/4	6.8	327.6
+9	3.6	329.8
φ	3.1	331.3
1/4	2.1	332.3
cb	2.0	332.4
+2	2.0	332.4
N	0.3	334.1

200 East

N	1.8	332.6
+10	3.1	331.3
cb	3.1	331.3
1/4	3.5	330.9
+7	4.3	330.1
φ	4.8	329.6

38437

+6	8.1	326.3
1/4	9.0	325.4
06	11.4	323.0
S	13.1	321.3
S+20	13.8	320.6
2.13' East		
S-20	14.4	320.0
S	13.6	320.8
cb	13.1	321.3
1/4	11.3	323.1
ϕ	7.1	327.3
+5	5.2	329.2
1/4	4.6	329.8
cb	3.6	330.8
+5	3.6	330.8
N	2.2	332.2
2.35' East		
N	3.3	331.1
+7	6.0	328.4
cb	6.0	328.4
1/4	6.1	328.3
+4	6.9	327.5
ϕ	9.5	324.9
+8	13.5	320.9
1/4	13.5	320.9
cb	13.8	320.6

38437

74

S	14.3	320.1
S+20	14.8	319.6
2.59' East		
S-20	14.9	319.5
S	14.5	319.9
cb	13.7	320.7
1/4	13.3	321.1
ϕ	9.5	324.9
+2	8.7	325.7
1/4	8.7	325.7
+2	9.7	324.7
cb	7.1	327.3
N	4.7	329.7
2.61' East		
N	5.3	329.1
cb	6.9	327.5
1/4	7.9	327.0
1/4	9.9	324.5
+2	11.3	323.1
ϕ	12.4	322.0
1/4	13.0	321.7
cb	13.5	320.9
S	14.0	320.4
S+20	14.9	319.5
2.70' East W line of 2nd		
S-20	14.8	319.6

π
334.37 ✓

25

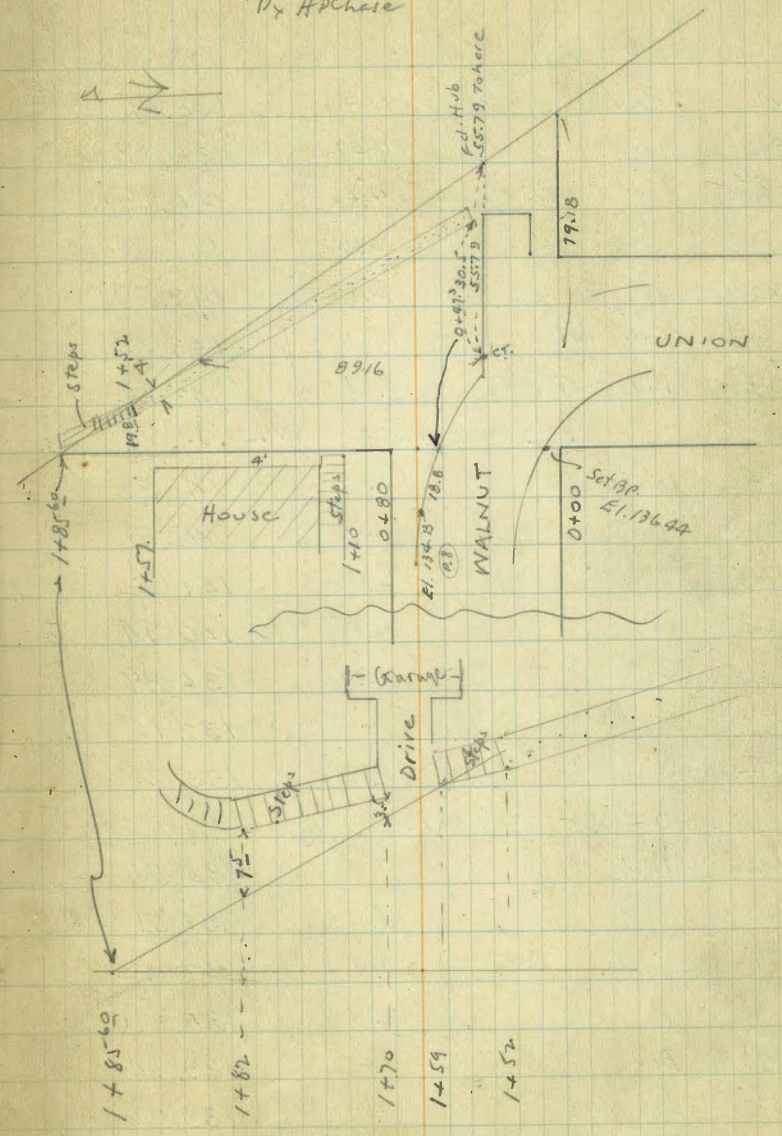
S			13.8	320.6
cb			13.0	321.4
1/4			11.7	322.7
ϕ			10.~	324.2
1/4			7.9	326.5
cb			7.6	327.4
N.			5.8	328.6
T.P.	5.22	330.09	9.55	324.82
N.W. Return Orange 51 st			0.95	329.09
B.M. Pale N.W. Orange 51 st			2.15	327.89
T.P.	0.03	327.92	2.15	327.89
B.M. Spk Pale N.W. 50 th	7.3~	331.97	3.77	324.15
T.P.	12.80	344.26	0.01	331.45
T.P.	12.26	356.47	0.05	344.21
T.P.	12.89	369.31	0.05	356.42
T.P.	11.66	380.90	0.07	369.24
T.P.	6.08	386.51	0.47	380.43
B.M. SW Men Elev 1503			3.12	383.39

386.45
383.39
0.6

X. Sec. Union North of Walnut
 Sections Plussed from West Line to East
 35 BP
 Columbia, Thom

BM.	4.35	158.57	154.32
T.P.	0.09	151.88	678 151.79
TP	450	144.59	11.79 140.09
		0+00	
W.L.		7.4	137.2
+107	S. cb	6.23	138.36
+102	gut	9.93	134.66
+25	Par	5.07	139.52
+335	2 Par	3.97	140.62
+45	N Gut	2.72	141.87
+54	top cb	1.84	142.75
+54		0.98	143.61
+75		0.00	144.59
BC. NE Ret		1.16	143.43
Center NE Ret		1.42	143.17
		0+0860	
+75		0.2	144.4
+52	on N E Ret	1.36	143.23
+52	gutter	2.23	142.36
+40		3.7	140.9
+26	2 Par	5.37	139.22
+15		6.84	137.75
WL	gutter	8.85	135.74
WL	top S. cb	8.7	136.42

Copied from BK 1402.
 P. 6
 7/21/30 Loudon 76
 D. H. Chase



144.59

0+15			
WL	Pav	9.14	135.45
+19	"	6.47	138.12
+35	"	4.46	140.13
+50	"	2.90	141.69
+60.5	"	2.00	142.59
+60.5	PC.NE Ret	1.13	143.46
+74.3	Pav. at Cross Cb	1.37	143.22
	0+28.4 = $\frac{1}{2}$ Pav on WL		
+74.9	Top Cross Cb	1.20	143.39
+74.9	Pav	2.08	142.51
+60	"	2.97	141.62
+45	"	4.25	140.34
+30	"	5.70	138.89
+15	"	7.44	137.15
WL	"	9.34	135.25
	0+36.7 = N curb		
WL	Pav.	9.28	135.31
+10		8.08	136.51
+19.2	L in Nob Pav	7.17	137.42
+19.2	top cb	6.28	138.31
+37.5	Pav.	5.45	139.14
+37.5	top N cb	4.83	139.76
+58	gutt	3.98	140.61
+58	Top N Cb	3.28	141.31
+74.5	Cross cb Pav	2.51	142.08
+74.5	Top cross cb	1.69	142.90

144.59

0+47.3 = N cb on W.L. = Begin Walk on E.			
+83		0.4	144.2
+68.2	Wedge walk	2.74	141.85
+50		4.3	140.3
+25		6.3	138.3
WL	Top N cb	8.44	136.15
WL	gutt	9.30	135.29
	0+75		
WL		8.4	136.2
+6		8.3	136.3
+8		7.5	137.1
+25		6.2	138.4
+40		4.9	139.7
+54.9	W. walk	3.78	140.81
+59.1	E "	3.63	140.96
+60		2.9	141.7
	1+00		
+54.5	on Drive E line	3.48	141.11
+48	E walk	3.75	140.84
+43.2	W "	3.84	140.75
+25		5.3	139.3
+7		6.9	137.7
WL		8.2	136.4
	1+10		
	Step House 2' West	7.50	137.09

144.59

1+25-

WL		6.6	138.0
+5		5.6	139.0
+20		4.6	140.0
+31 ²	W Walk	3.45	141.14
+36	E "	3.34	141.25
+38 ²	EL	3.0	141.6

1+50

+25	E Walk	2.40	142.19
+23	EL-onwalk	2.39	142.20
+20	W Walk	2.41	142.18

+10 2.0 142.6

WL 2.6 142.0

Brass Plug
BM.8.15 136.44 ^{S. cb Walnut}
W. Union

T.P. 11.14 (154.98) 0.75 143.84

1+70

WL 7.7 147.3

+6 7.5 147.5

+8 8.8 146.2

+8² EL 8.8 146.2+12² Bottom Steps 7.34 147.64

+15 8.4 146.6

+25 8.2 146.8

+37 Garage 7.3 147.7

- 1+59 Top Steps 9.04 145.94

- 1+82 ✓ ✓ 1.97 153.01

1+85⁶⁰
Int 2.1 152.9

154.98

BM	035	136.79		136.44
TP			12.90	123.89
N cb Walnut	18 ² W of WL		2.66	134.13
TP	0.44	124.33		123.89
TP	0.77	112.33	12.77	111.56
TP	0.39	100.00	12.72	99.61
TP	0.20	87.31	12.89	87.11
BM	OP. NE India Glenwood.	11.07		86.24
				(86.18)
				79.16

9.60

136.44

141.09

4.76 136.28

T.P. on. Roub

30076

27

719

12

292.57

19

299.94

7.19 T.P.

287.75

ENGINEERING DEPARTMENT,
CITY OF SAN DIEGO,
CALIFORNIA.

289.59

186

29.163

56

70

34

8.4

29

Western add

17

2

338.01

76

13
13
26
15

20273

7567

278.40

86-14-00

86-14-30

172-29