

1219

WAST

FIELD BOOK

No. 3851

MICROFILMED
DEC 22 1964

ENGINEERING DEPARTMENT / T,
CITY OF SAN DIEGO,
CALIFORNIA. 73

Our Leather Bound Engineers Note Books are carried in the following rulings:

- No. 380 LEVEL BOOK. Left and Right Hand Page the same as Left Hand Page of this Book.
- No. 382 FIELD BOOK. Left Hand Page as in this Book, Right Hand Page 4 x 4 to the inch, Center Line Red.
- No. 384 MINING TRANSIT BOOK. Left Hand Page as in this Book, Right Hand Page 8x8 to the inch, Center Line Red.
- No. 385 FIELD BOOK. Left Hand Page as in this Book, Right Hand Page 8 vertical and 4 horizontal lines to the inch, Center Line Red.

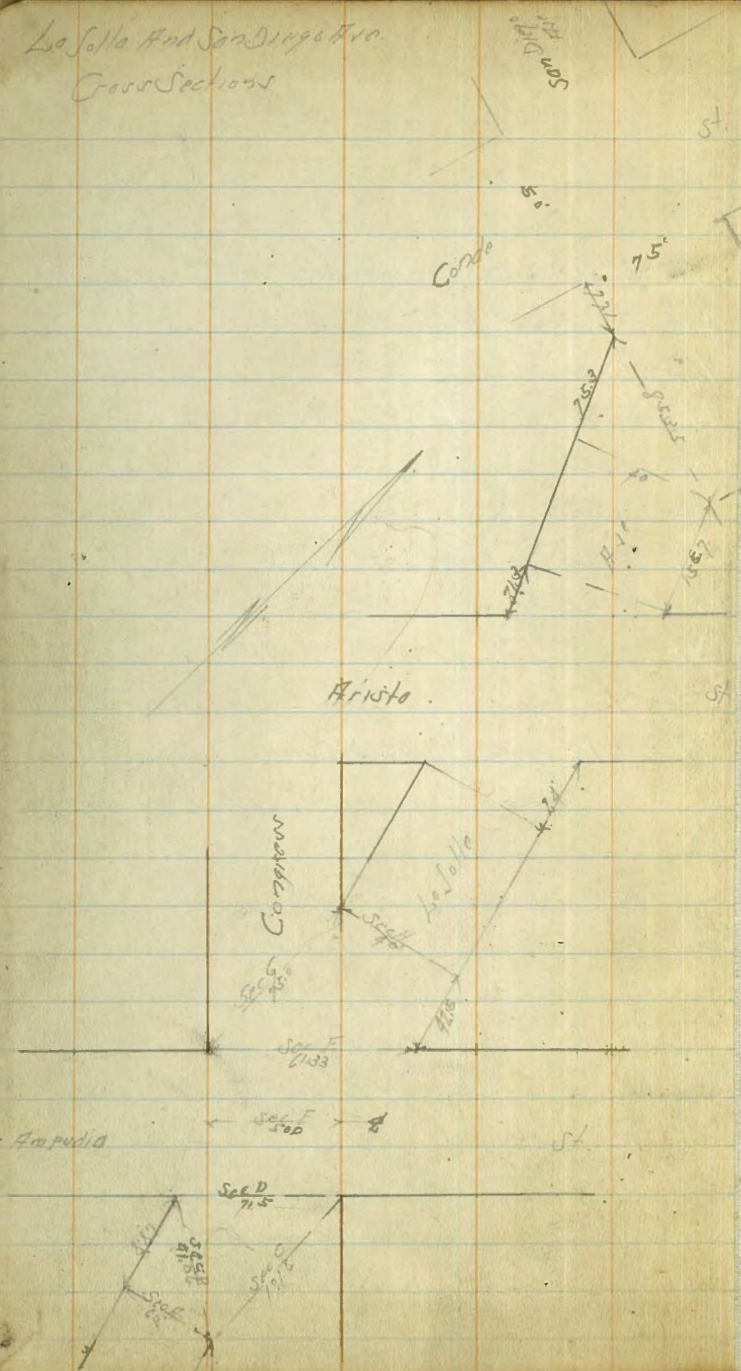
We also carry the Note Books listed above, bound in extra strong Fabri-Hide (otherwise the same quality of book), which can be furnished at a somewhat lower price.

In ordering Fabri-Hide covered books, add the letter "F" to catalog number.

THE FREDERICK POST CO.
ENGINEERING and DRAFTING SUPPLIES
IRVING PARK STATION
CHICAGO, ILL.

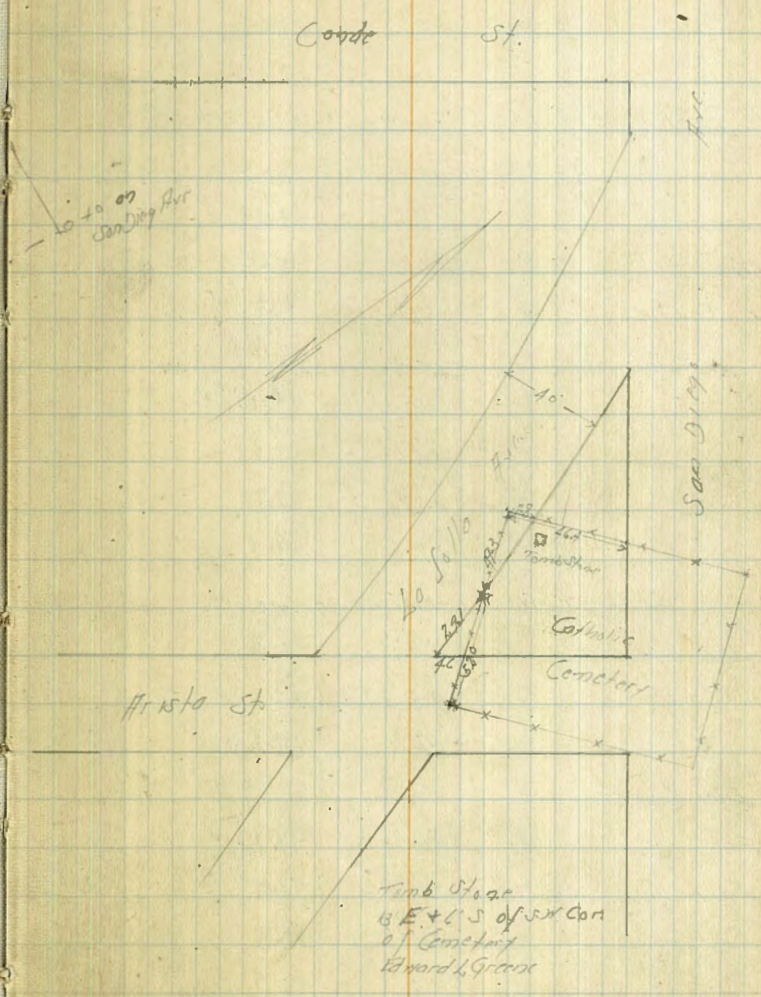
La Jolla Ave. from 170' W. of NL Trias - SD Ave.	1	T
SD Ave. from 162.4' E of EL Conde - Taylor	7	
Taylor from SD Ave + Hickory + 175 ft	26-47	71-73
Alley 26 Univ Hts. Bet. ^{N. Ave & Campus} Madison & Adams	48	
Lot 2-3 Blk 155 Middletown for Fire Dep.	49	
Valle Ave - 30 th to 31 st	56-59	
Martin Ave - 30 th to 31 st	52-55	
Redwood - 30 th East to Bridge	60-70	
WL PL 1122 for proposed drain and 4' easement from alley N and S to Penn. Ave	74	
SD and LA Highway thru Blocks 383		
384-390-391 Location on page.	75	
Grades on SD Ave. - Mason and Wallace	77-78	
Profile a portion of Colhoun	79	
" " " " Mason	80	
" " " " Wallace	81	

La Lolla And San Diego Ave.
Cross Sections



Sketch Showing
Catholic Cemetery
- old Town

1
10-20-17



Los Sillares Carr Sections

60 m side
10' CB
10' q/c

53.14

118.27
Diston
Bliss
Hobby

BM	6.28	36.90	30.68	30.68	S.N. Top of Horizontal Face Diston
TP	12.48	48.93	42.45	36.45	
BM			5.44	43.49	S.N. Top of Horizontal Face Diston
TP	7.26	53.14	52.05	45.88	

1/4 - Edge Paving	6.64	46.5'
1/4 on "	1.54	46.6 ✓
1/4 - Edge "	1.19	46.5 ✓
+ 9	6.3	46.8
cb	5.6	47.5
I	5.0	48.1

0+0 = 170' N of W.L. of T.P. 1 on S
= End Carbs # Paving 40' side

S	4.4	48.74
cb Top	4.88	48.26
Gutter Paving	5.24	49.90 ✓
1/4 "	4.50	47.64
1/4 "	3.99	49.15 ✓
1/4 "	3.96	49.38
cb	3.77	49.37
H	3.2	49.9

Sec B	9.20	48.1
E	5.0	48.1
cb	6.0	49.1
1/4 - Edge Paving	7.25	45.89
1/4 on "	7.37	45.77
1/4 - Edge "	7.79	45.35
cb	8.2	44.3
H = E Impulse	9.7	43.4

50' N - Paving 20' side

H	4.5	48.6
1/4 "	4.5	49.6
cb	4.2	46.9
1/4 - Edge Paving	5.37	47.77 ✓
1/4 on "	5.35	47.79 ✓
1/4 - Edge "	5.66	47.48 ✓
cb	5.5	47.6
S	6.2	46.9

B.M.	13.5	49.74
Sec C	10.16	48.0
S	4.7	48.0
cb	2.0	47.7
1/4 "	2.6	47.1
1/4 "	3.5	46.2
1/4 "	4.0	45.7
cb	4.5	45.2
H = L Impulse on S	5.1	44.6

99.4' N - 50' CA

S	7.5	45.6
cb	7.1	46.0

Sec D - E L Impulse	7.5	44.6
H	5.1	44.6
cb	4.4	45.3

Diston
Bliss
Hobby

49.74

49.74

+5		61	43.6	
1/4		57	44.0	
+3 - Edge Paving		557	44.17	
2	0.9	521	44.48 ✓	
1/4	" "	531	44.43	
+1.1 - E		521	44.43	
Cb		65	43.24	
+2.5 - Conc Cb		620	43.54	
S		629	43.95	
	SECF - g Ampud. a			500 10°Cup 75Qhr
S		70	42.7	
Cb		63	43.4	
+4.2 - Edge Paving		576	43.98	
1/4	0.9	572	43.92	
2	" "	596	43.78 ✓	
1/4	" "	614	43.60	
+3.9 - Edge	" "	628	43.46	
Cb		632	43.4	
7.7		64	43.3	
H		5.9	43.8	
	SECF - r' l Ampud. a			6183 10°Cup 1022Qhr
H		66	43.1	
Cb		69	42.8	
+1.5 - Edge Paving		622	42.92	
1/4	0.9	624	43.00	
2	" "	616	43.08 ✓	
+3.8 - Edge		666	43.08	

1/4		7.0	42.7
Cb		7.8	41.9
S		7.5	42.2
	Sec G		
F		7.5	42.2
Cb		7.2	42.6
1/4		8.3	41.9
2		8.3	41.4
1/4		8.4	41.3
Cb		8.1	41.3
H		8.3	41.4
	Sec H		
S		8.2	41.4
Cb		8.2	41.5
+1.5 - Edge Paving		822	41.52
1/4	0.9	514	41.60
2	" "	805	41.89 ✓
1/4	" "	514	41.60
+2.5 - Edge	" "	819	41.55
Cb		8.6	41.1
7.7		97	42.0
H		81	41.6
	50 H of Sec H		
10		11.8	37.9
3		11.5	38.2
H		10.0	39.7
7.2		9.1	40.6

10°Cup
1135Qhr
75"

10°Cup
40" Wide 75" Qhr

Lo Solla Ave

49.74

40' wide
5' Cbr
75' SW

42.43

4

cb		9.9	39.8
TP	2.35	12.12	9.17
+1.5	Edge Paving		40.29
1/2	on "	2.09	40.33
1/2	" "	2.02	40.40 ✓
1/4	" "	2.07	40.35
+2.5	Edge		40.29
cb		2.2	40.2
5		2.4	40.0
4.4		4.0	38.4
110		4.0	38.4
	100' W		
-7.0		6.9	35.5
-5		6.2	36.2
5		3.6	38.8
cb		0.5	38.9
+0.5	Edge Paving		38.99
1/4	on "	3.34	39.09
1/2	" "	3.28	39.14
1/4	" "	2.35	39.07
+2.5	Edge		38.99
cb		2.2	38.6
+3		2.4	39.0
11		1.8	37.6
+3		5.9	36.5
+10		6.0	36.4

	150' W		
		7.2	35.2
		7.0	35.4
		5.3	37.1
		4.7	32.7
	+1.5 Edge Paving		37.81
	1/4 on "	4.53	37.59
	1/2 " "	4.50	37.9 ✓
	1/4 " "	4.56	37.86
	+2.5 Edge		37.83
	cb	4.5	37.9
	5	5.5	36.9
	1.5	7.1	34.8
	110	8.3	34.1
	100' W		
		9.5	32.9
		9.0	32.4
		9.0	35.4
		5.8	36.4
	+1.5 Edge Paving		36.74
	1/4	5.58	36.84
	1/2	5.49	36.93 ✓
	1/4	5.55	36.87
	+2.5 = Ed		36.80
	cb	5.7	36.7
	+3	5.7	36.2

12.92

N		6.9	35.5
+5		8.5	33.9
+10		8.5	33.9
	250.11		
+0		9.2	33.2
-2		9.2	33.2
N		8.1	34.3
cb		6.1	36.0
+5 - Edge Pavings		6.7	35.65
1/4 " "		6.67	35.5
1/2 " "		6.59	35.83 ✓
1/4 " "		6.64	35.78
+2.5 Edge " "		6.70	35.7
cb		6.5	35.9
S		8.6	33.8
+10		12.7	27.7
+15		13.0	29.4
	288.11: FL Aristo on S		
-15		12.0	29.4
-10		12.0	29.4
S		7.5	32.9
cb		7.8	34.4
+1.5 - Edge Pavings		7.52	34.85
1/4 " "		7.49	34.93
1/2 " "		7.44	34.98 ✓
1/4 " "		7.51	34.91

12.42

+2.5 - Edge Pavings		7.53	34.87
cb		7.4	35.0
+2		7.4	35.0
N		9.0	33.4
+2		9.9	32.5
+10		10.2	32.2
	288.11 on S: FL Aristo 312.11 on N		
-10		9.7	32.7
-3		10.0	32.8
N		8.6	33.4
cb		7.9	34.5
288 Edge Pavings		7.98	34.5
TP 1.46 4011		8.74	32.28
1/4 on Pavings		5.56	34.58
1/2 " "		5.41	34.73 ✓
1/4 " "		5.26	34.78
+2.5 Edge " "		5.37	34.77
cb		5.5	34.6
S		6.9	32.2
+10		10.3	29.8
	2 Aristo		
-20		10.4	29.7
S		6.8	33.2
+2		6.0	34.1
cb		6.0	34.1
+4.6 Edge Pavings		6.61	34.13

Lo Salla A. H.

40.14

1/4	60 Paving	596	34.18
2	" "	603	34.61 ✓
1/2	" "	621	33.93
+27	Edge	625	33.89
cb		592	34.2
H		60	34.1
	H. L. Princta		45.28
H		65	33.6
cb		61	34.0
+58	Edge Paving	664	33.50
1/4	02 "	652	33.62
2	" "	656	33.58 ✓
1/4	" "	658	33.56
+36	Edge Paving	665	33.49
cb		66	34.5
S		70	33.1
+10		105	29.6
	H. L. Princta on N 4.31 of 1st Load		
-10		115	28.6
S		85	31.6
cb		66	33.5
+5	Edge Paving	681	33.33
1/6	02 "	676	33.38
2	" "	666	33.48 ✓
1/4	" "	668	33.46
+25		670	33.44

Notes Reduced
12-27-27
L. P. L.

40.14

cb		71	33.0
N		65	33.6
	50.14		
H		54	34.7
	+32 = Coat Factor		
cb		58	34.3
	+5 = Edge Paving	706	33.08 ✓
1/4	02 "	704	33.10
2	" "	694	33.15 ✓
1/4	" "	704	33.09
+25		707	33.07
cb		71	33.0
+8		74	32.7
S		91	31.0
+10		111	29.0
	100.14		
-10		112	28.9
S		83	31.8
+2		73	32.8
cb		75	32.6
	+52 = Edge Paving	741	32.73
1/4	02 "	735	32.79
2	" "	730	32.84 ✓
1/4	" "	735	32.79
+25	Edge Paving	742	32.72
cb		66	33.5
H		65	33.6

La Solla Ave.

40.14

155.75 W - S. L. S. D. P. Ave. 0.11

H	68	33.3
cb	69	33.2
+5 Edge Parking	762	32.51
1/4 09 "	761	32.53
1/2 " "	763	32.51 ✓
1/4 " "	775	32.39
+25 Edge "	787	32.27
cb	79	32.2
+3	78	32.3
S	89	31.2
+6	115	28.6
+10	115	28.6
155.7 W 0.11 - S. L. S. D. P. Ave. 0.11 231.0 W 0.11 - S. L. S. D. P. Ave. 0.11		
S 41	83	31.8
cb	83	31.8
+9 Edge Parking	847	31.87
1/4 09 "	816	31.98
1/2 " "	787	32.27
1/4 " "	765	32.49
+7 Edge "	763	32.51
cb	74	32.7
H	68	33.3

Sandiego Ave. Cross Sections

7 11-9-27

75' H. H. 12' C. B. 1275 ft

40.14

162.4 E of F. L. Code - 0.10

U	66	33.5
710	69	33.7
cb	522	34.9
1/4	42	35.9
1/2	34	36.7 ✓
1/4	25	37.6
cb	15	38.6
H	0.6	39.5
152' W of 0.10		
H	78	37.3
cb	38	36.3
1/4	46	35.5
1/2	52	34.2 ✓
1/4	66	33.5
+12 Edge Parking	757	32.57
cb 09 "	710	32.54
S "	717	32.27
100' W		
S	85	31.6
+10 Edge Parking	825	31.89
cb 09 "	818	31.96
1/2 " "	775	32.36
+9 " "	774	32.40
1/2	74	32.7 ✓

40.14				31.50			
	1/4		65	33.6	cb	47	31.8
H	cb		62	33.8	1/4	40	32.5
cb	H		52	34.3	+32 Edge Paving	394	32.56
+5	TP	2.02	36.50	5.16	2 07 "	422	32.28
1/4			130.77		1/4 = Edge Paving	479	31.80
2	H		24	33.1	cb	50	31.5
1/4	cb		22	32.7	S	76	28.9
+3.9	1/4		28	32.7		1/4	
cb	+8 Edge Paving		32.2	32.57	S	73	29.2
+3	2 07 "		403	32.47	C	51	31.4
S	1/4 "		112	32.08	1/4	42	31.8
+6	+6 Edge Paving		468	31.82	+2 = Edge Paving	460	31.90
+1.5	cb		42	31.7	2	423	32.27
S	S		49	31.6	+9 = Edge Paving	323	32.57
S		1124 W = Edge Cond	50 W down cut 250%		1/4	40	32.5
cb	S		71	29.4	cb	48	31.7
+9	H		52	31.3	H	41	31.9
1/4	cb		42	31.9		2	
2	1/4 - Edge Paving		467	31.83	H	42	31.8
1/4	2 07 "		118	32.32	cb	51	31.4
+7	+9 = Edge "		395	32.55	1/4	40	32.6
cb	1/4		43	32.2	+28 = Edge Paving	325	32.55
H	cb		45	32.0	2 07 "	421	32.36
	H		41	32.4	+11 Edge "	111	31.86
	cb				1/4	47	31.8
	H		45	32.0	cb	48	31.7

S		7.5	29.0
	W 1/4		
S		7.6	28.9
cb		5.6	30.9
+3		4.9	31.6
1/4		4.7	31.8
+2.8 = Edge Paving		4.63	31.88
1/2 on "		4.33	32.17
+10 Edge		4.04	32.46
1/4		4.0	32.5
cb		5.2	31.2
H		5.0	31.5

W Cb

			Note Existing 12" Conc Pipe
H		5.2	31.3 ^{on W Cb}
cb		5.6	30.9
+5 = N End 12" Conc Pipe		6.19	30.31
1/4		4.1	32.4
+2.8 = Edge Paving		4.15	32.35
1/2 on "		4.35	32.15
+10 Edge		4.68	31.82
1/4		4.8	31.7
+10		5.0	31.5
cb		5.9	30.6
+4.5 = S End 12" Conc Pipe		7.93	28.57
S		7.8	28.7

W L Condr

S		7.9	28.6
		7.3	29.2
cb		6.0	30.5
+3		5.0	31.5
1/4		4.9	31.6
+2.8 = Edge Paving		4.73	31.77
1/2 on "		4.42	32.08 V
+10 Edge		4.22	32.28
1/4		4.3	32.2
cb		5.6	30.9
H		5.2	31.2

150' W of W L Condr

H		5.2	31.3
cb		5.2	31.3
1/4		4.7	31.8
+2.8 Edge Paving		4.65	31.85 (use W 2nd 12" Conc Pipe)
1/2 on "		4.55	31.95 ^{Edge}
+10 Edge		4.65	31.85
1/4		4.8	31.7
+7		5.5	31.0
cb		7.0	29.5
S		7.8	28.7
7			
			100' W
S		7.4	29.1
+7		7.2	29.3
cb		5.7	30.7

+2	35.3	31.2	
1/4	49	31.6	
+2.8 Edge Pav	47.7	31.73	
1/2 on	47.0	31.80	158' N on N6 Conc Walk 4.6
+10 Edge	48.0	31.70	
1/4	48	31.7	
Cb	49	31.6	147' N on N6 Conc Walk 3.51
N	47	31.8	
158' N			
N	38	32.7	
Cb	47	31.2	
1/4	50	31.5	
+2.8 - Edge Pav	49.6	31.54	
1/2 on	48.9	31.66	✓
+10 - Edge Pav	48.9	31.61	
1/4	50	31.5	
Cb	48	31.7	
+1	48	31.7	
+7	66	29.9	
S	69	29.6	
300' N			
S	59	30.6	
Cb	49	31.6	
1/4	51	31.4	
+2.8 - Edge Pav	50.8	31.42	
1/2 on	49.9	31.51	✓

+10 = Edge Pav	50.9	31.41	
1/4	51	31.4	
Cb	46	31.9	
+3	48	32.7	
N	40	33.5	
250' N			
N	27	33.8	
+10	44	33.1	
Cb	46	31.9	
1/4	50	31.5	
+2.8 - Edge Pav	52.1	31.29	
1/2 on	51.0	31.40	✓
+10 Edge	51.9	31.31	
1/4	51	31.4	
Cb	52	31.3	
S	51	30.9	
300' N: Ed. Harvey 50' wide 90' Cb 75' S			
S	55	31.0	Note: S.F. Return in to Cb with E of L. Harvey
Cb top Conc	52.2	30.77	on
1/4	55	31.0	
+2.8 - Edge Pav	52.7	31.13	
1/2	52.2	31.22	✓
+10	53.9	31.11	
1/4	51	31.4	
Cb	44	32.4	
N	52	33.3	

San Diego, R.A.

36.50

TP	789	38.51	588	30.62
		FCb		
H			53	33.2
Ob			62	32.3
1/4			70	31.5
+2.8 = Edge Par			74	31.05
2 on "			78	31.12
+10 Edge "			79	31.02
1/4			74	31.1
Ob			78	30.7
S			80	30.5
		E 1/4		
S			79	30.6
Ob			76	30.9
1/4			75	31.0
+2.8 = Edge Par			75	30.97
2 on "			74	31.06
+10 Edge "			77	31.04
1/4			69	31.6
Ob			61	32.4
H			55	33.0
		B		
H			52	33.3
Ob			57	32.8
1/4			69	31.6
+2.8 = Edge Par			75	31.01

38.5

2 on Par	74	31.06
+10 Edge "	75	30.97
1/4	71	30.9
Ob	75	31.0
S	78	30.7
		W 1/4
S	80	30.5
Ob	75	31.0
1/4	76	30.9
+2.8 = Edge Par	76	30.89
2 on "	75	31.00
+10 Edge "	72	30.76
1/4	74	31.1
Ob	61	32.4
H	55	33.0
		W Cb
H	52	33.2
Ob	61	32.4
1/4	71	31.4
+2.8 = Edge Par	76	30.91
2 on "	75	30.97
+10 Edge "	76	30.90
1/4	76	30.9
Ob	81	30.4
S	80	30.5
		W L Harney

San Diego Flr

38.51

S on Con	7.91	30.60
Cb Top	7.89	30.62
Gutter	8.2	30.3
+5	7.6	30.9
1/4	7.6	30.9
+2.8 = Edge Pav	7.59	30.92
1/2 on "	7.49	31.02 ✓
+1.0 = Edge	7.59	30.92
1/4	7.1	31.4
Cb	5.8	32.7
H	5.1	33.4
	(50 ft of flr)	
H	4.9	33.6
+11	5.4	33.1
Cb	6.3	32.2
1/4	7.5	31.0
+2.8 = Edge Pav	7.80	30.71
1/2 on "	7.71	30.80 ✓
+1.0 = Edge	7.86	30.65
1/4	7.8	30.7
Gutter	8.4	30.1
Cb Top - 1/2 End Ch Wall	8.09	30.42
S	7.9	30.6
	(100 ft)	
S	7.8	30.7
Cb	4.7	30.8

38.51

12

+2	8.2	30.3
1/4	8.0	30.5
+2.8 = Edge Pav	7.98	30.53
1/2 on "	7.97	30.54 ✓
+1.0 = Edge	8.10	30.41
1/4	7.8	30.7
Cb	6.3	32.3
H	5.8	32.7
	(150 ft)	
H	5.1	33.4
Cb	5.5	33.0
+6	5.7	32.8
1/4	7.9	30.6
+2.8 = Edge Pav	8.24	30.17
1/2 on "	8.21	30.30 ✓
+1.0 = Edge	8.24	30.27
1/4	8.2	30.3
+8	8.1	29.9
Cb	7.6	30.9
S	7.7	30.8
	(200 ft)	
S	7.0	30.7
Cb	7.6	30.9
+3	8.7	29.8
1/4	8.5	30.0
+2.8 = Edge Pav	8.51	30.00

San Diego Fl 11

38.51

1/2	on Pav	847	30.04 ✓
+10	Edge	858	29.93
1/4		82	30.3
+8		86	32.9
1/4		82	33.7

250' N

1/4		84	33.1
cb		87	32.8
+5		82	32.3
1/4		86	29.9
+2.8 = Edge Pav		880	29.71
1/2 on "		868	29.83 ✓
+10 Edge "		878	29.73
1/4		88	29.7
+10		90	29.5
cb		76	30.9
S		76	30.9

300' N = EL T-11995 side of 1056 7500

S		85	30.0
cb		82	30.3
+5		86	28.9
1/4		82	29.3
+2.8 = Edge Pav		910	29.41
1/2 on "		898	29.53 ✓
+10 = Edge "		910	29.41
1/4		83	29.2

13

38.51

1/4		91	29.4
cb		86	31.9
N		81	32.4
TP	109	3292	563

506

1/4		87	32.2
cb		82	31.1
+3		89	31.0
+7		85	29.4
1/4		88	29.1
+2.8 = Edge Pav		910	29.32
1/2 on "		851	29.41
+10 = Edge "		911	29.31
1/4		87	29.2
1/2		81	28.8
cb		87	30.2
S		88	30.1

E 1/4

S		82	29.7
cb		88	29.1
+6		81	28.8
1/4		87	29.2
+2.8 = Edge Pav		911	29.21
1/2 on "		852	29.34
+10 = Edge "		912	29.20
1/4		87	29.2

3392

+6	45	29.4
cb	33	30.6
N	1.9	32.0
	2	
N	47	32.2
cb	35	30.4
+8	45	29.4
1/4	11	29.3
+28 - Edge Pav	48	29.1
2	470	29.22
+10 - " "	485	29.07
1/4	49	29.0
+5	52	28.7
cb	48	29.1
S	43	29.6
	N 1/4	
S	44	29.5
cb	47	29.2
+8	54	28.5
1/4	5.0	28.9
+28 - Edge Pav	492	29.00
2	477	29.15
+10 - " "	490	29.02
1/4	42	29.1
+6	49	29.0
cb	325	30.4

3392

N	20	31.9
	N cb	
N	18	32.1
cb	31	30.8
+8	51	28.8
1/4	52	28.7
+28 - Edge Pav	496	28.96
2	499	29.08
+10 - " "	500	28.92
1/4	52	28.7
+5	55	28.4
cb	50	28.9
S	46	29.3
	N 1/4 Typ 1995	
S	45	29.4
cb	46	29.3
12	48	29.1
13	56	28.3
1/4	52	28.1
+28 - Edge Pav	510	28.81
2	501	28.91
+10 - " "	512	28.80
1/4	53	28.6
+3	54	28.5
+8	31	30.8
cb	28	31.1

3392

#	20	31.9
50' W of W.L. of T.M. 1995		
#	13	32.6
+6	35	30.4
cb	37	30.2
+7	44	29.5
+10	62	27.7
1/4	61	27.8
+28 - Edge Pav	600	27.92
2	586	28.06 ✓
+10 " "	600	27.92
1/4	60	27.9
+8	67	27.2
cb	52	28.7
S	52	28.7
100' W		
S	62	27.7
cb	67	27.2
+2	67	27.2
+6	79	26.0
1/4	73	26.6
+22 - Edge Pav	699	26.93
2	684	27.08 ✓
+10 " "	698	26.94
1/4	72	26.7
+15	72	26.7

3396

cb	47	29.1
#	48	29.1
50' W of W.L. of T.M. 1995 = E End of 7' Comp. Ch. Walk		
#	51	28.3
cb	58	28.1
+1	62	27.7
+7	80	25.9
1/4	80	25.9
+28 - Edge Pav	768	25.94
2	786	26.06 ✓
+10 " "	797	25.95
1/4	81	25.8
+8	81	25.1
Gutter	85	25.4
cb Top - E End Ch. Walk 7' Comp.	810	25.82
S	77	25.2
200' W		
S	88	25.1
cb Top	897	24.95
Gutter	95	24.4
1/4	90	24.9
+28 - Edge Pav	898	24.94
2	889	25.03 ✓
+10 " "	896	24.96
1/4	90	24.9
+6	88	25.1

3392

19	7.5	26.4
cb	7.1	26.8
H	6.9	27.0
	2.50	
H	8.2	25.1
cb	8.4	25.5
+5	8.8	25.1
+7	10.0	23.9
1/4	10.1	23.8
+2E - Edge Pav	10.04	23.85
1/2	9.91	24.01 ✓
+10 " "	10.01	23.91
1/4	10.1	23.8
Gutter	10.5	23.4
cb Top	9.98	23.94
S	9.6	24.3
	300' - E. L. Mason From S	50' wide note S.E. return 10
S	11.0	22.9
cb	10.85	23.07
Gutter	11.4	22.5
1/4	11.6	22.9
+2E Edge Pav	11.0	22.9
1/2	10.92	23.05 ✓
+10 " "	10.92	23.00
1/4	10.9	23.0
+6	11.0	22.0

3392

16
11-10-27

cb	9.4	24.5
H	9.2	24.7
H (0.37)	2.593	8.36
	2.5156	
	5.06	
H	1.4	24.3
cb	1.8	24.1
+6	3.1	22.8
1/4	3.2	22.7
+2E - Edge Pav	3.15	22.78
1/2	3.11	22.82
1/10 - Edge "	3.23	22.70
1/4	3.1	22.8
cb	3.5	22.4
S	3.4	22.5
	5.14	
S	1.1	21.8
cb	3.7	22.2
1/4	3.3	22.6
+2E Edge Pav	3.31	22.61
1/2	3.22	22.71
+10 " "	3.32	22.61
1/4	3.2	22.6
+6	3.5	22.4
cb	1.9	24.0
H	1.9	24.0
	1/2 Mason	

S.E. Top 1/4
Mason's Station
1/4

N	22	23.7
cb	22	23.7
+6	25	22.4
1/4	25	22.4
+25 Edge Pav	250	22.43
2	239	22.54
+10 " "	242	22.59
1/4	25	22.4
cb	29	22.0
S	13	21.6
X 1/4		
S	12	21.7
cb	10	21.9
1/4	27	22.2
+28 Edge Paving	260	22.33
2	249	22.44
+10 " "	261	22.32
1/4	25	22.4
+7	27	22.2
cb	27	23.2
N	25	23.4
X cb		
N	22	23.7
cb	30	22.9
+7	41	21.8
1/4	28	22.1

+28 - Edge Pav	272	22.16
2	272	22.21
+10 " "	276	22.17
1/4	29	22.1
cb	40	21.9
S	43	21.6
W L Mason From 5		
S	46	21.3
cb	42	21.7
1/4	40	21.9
+38 - Edge Pav	402	21.91
2	391	22.02 ✓
+10 " "	399	21.94
1/4	40	21.9
+6	42	21.7
cb	33	22.6
N	24	23.5
50' W of W L Mason		
N	24	22.5
+5	41	21.8
cb	41	21.8
1/4	50	20.9
+29 - Edge Pav	509	20.84
2	491	20.95 ✓
+10 " "	511	20.87
1/4	51	20.8
cb	50	20.9

75.93

75.93

S	4.6	21.3	
	75.93 = Mason From N 55' Wide 875 sq ft		10 cbs
S	5.8	20.1	
cb	5.8	20.1	
1/4	6.0	19.9	
+2.8 = Edge Pav	6.0	19.9	
1/2	5.92	20.014	
+10 = " "	6.04	19.89	
1/4	6.0	19.9	
cb	5.6	20.3	
N	5.1	20.8	
	ECb		
N	5.3	20.6	
cb	5.2	20.0	
1/4	6.2	19.7	
+2.8 = Edge Pav	6.25	19.68	
1/2	6.13	19.80	
+10 " "	6.21	19.72	
1/4	6.1	19.8	
cb	6.1	19.8	
S	6.0	19.9	
	E 1/4		
S = Core Stop	5.9	20.0	
cb	6.3	19.6	
1/4	6.2	19.7	
+2.8 = Edge Pav	6.27	19.59	

1/2	6.26	19.67	
+12 = Edge Pav	6.36	19.57	
1/4	6.3	19.6	
cb	6.1	19.8	
N	5.8	20.1	
	1/2 Mason From N		
N	5.8	20.1	
cb	6.0	19.9	
1/4	6.5	19.4	
+6.8 = Edge Pav	6.51	19.42	
1/2	6.42	19.51	
+10 = " "	6.54	19.39	
1/4	6.5	19.4	
cb	6.5	19.4	
S	6.3	19.6	
	N 1/4		
S	6.6	19.3	
1/4	6.8	19.1	
cb	6.7	19.2	
+2.8 = Edge Pav	6.66	19.27	
1/2	6.56	19.37	
+10 = " "	6.66	19.27	
1/4	6.6	19.3	
cb	6.1	19.8	
N	5.6	20.3	
	N Cb		

(Sand) 1090 Ave

25.93

N	57	20.0
Cb	64	19.5
1/4	67	19.2
+28 - Edge Pav	68	19.12
8	68	19.25
+10	67	19.14
1/4	68	19.1
Cb	68	19.1
S	75	18.4
H.L. Mason From N		
S = walk	733	18.60
Cb	71	18.8
1/4	69	19.0
+68 - Edge Pav	69	19.01
8	68	19.12
+10	69	19.02
1/4	68	19.1
Cb	67	19.2
N	62	19.7
+25	62	18.5
-25	74	18.5
+6	82	17.7
Cb	81	17.8
1/4	78	18.1
+28 - Edge Pav	78	18.13
8	77	18.21

84 1558 50
2 1/4
1 1/2
1 1/2
1 1/2

115' - Long
125' of H.L.

25' N - Long
115' of H.L.

25.93

+10 - Edge Pav	77	18.19
1/4	79	18.0
Cb	82	17.7
S	82	17.6
100' N		
S	91	16.8
Cb	89	17.0
1/4	86	17.3
+28 - Edge Pav	84	17.24
8	86	17.30
+10	84	17.24
1/4	86	17.3
Cb	90	16.9
+4	91	16.8
N	84	17.5
+25	87	17.7
180' N		
+35	89	17.0
Cb	95	16.4
1/4	91	16.8
+25 - Edge Pav	92	16.63
8	91	16.78
+15	92	16.70
1/4	92	16.7
Cb	92	16.7
S	90	16.9
TP	84	17.00

131' N - Long
125' of H.L.

212' N
87
8072' N
63

137' N - Long
125' of H.L.

San Diego Ave

20.64

150' W

S
Cb Oldabe House155' W. Longitude
8' S of M.L.

1/4 4.2 16.44

+119 - Edge Par 4.31 16.33

1/2 4.21 16.33 ✓

+118 - " " 4.31 16.33

172' W. Longitude
5' S of M.L.

1/4 " 4.3 16.3

Cb 4.5 16.1

H 3.9 16.7

+125 200' W 8.9 16.8

H 4.6 16.0

172' W. Longitude
8' S of M.L.

Cb 5.2 15.4

+115 - Edge Par 5.19 15.45

1/4 07 " 5.16 15.48

1/2 " " 5.11 15.53

+16 - Edge " 5.20 15.44

1/4 5.2 15.4

Cb Oldabe House

173' W. Longitude
1' S of M.L.

S

2.50' W

S 8.0 12.6

Cb 6.8 13.8

1/4 6.1 14.5

+1013 - Edge Par 6.5 14.49

1/2 02 " 6.09 14.55 ✓

20

20.64

1/4 02 Par 576 14.92

+57 - Edge " 570 14.94

Cb 57 14.9

H 58 15.2

+35 2715 - E.L. of Wallace From N 50' W. dn 14.7

1/2 4' 14.6

Cb 6.0 14.6

+91 - Edge Par 598 14.66

1/4 07 " 6.04 14.60

1/2 " " 6.51 14.13 ✓

+128 - Edge " 6.71 13.93

H 6.7 13.9

Cb 7.1 13.5

S 8.1 12.5

E Cb

S 8.7 11.9

Cb 7.0 13.6

1/4 6.8 13.8

+103 - Edge Par 6.82 13.82

1/2 07 " 6.82 13.92

1/4 " " 6.16 14.48

+10 - Edge " 6.09 14.55

Cb 6.1 14.5

H 5.9 14.7

E 1/4

S 5.9 14.7

San Diego Ave

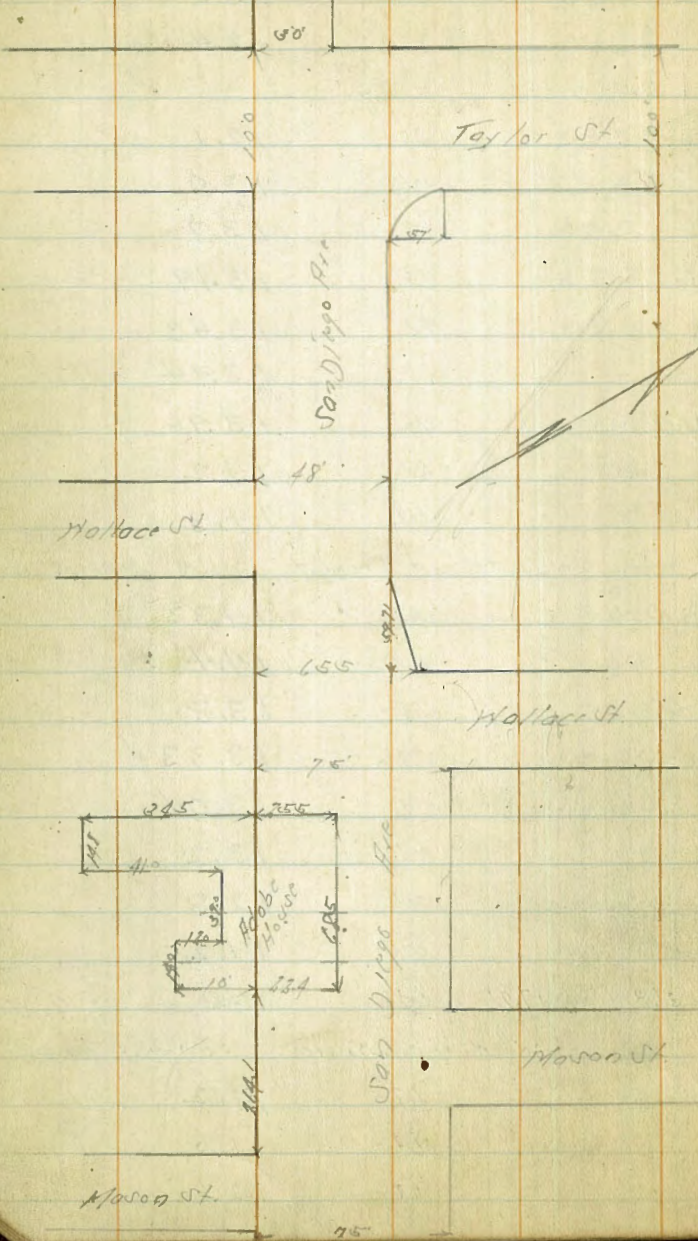
20.64

cb	61	14.5
+96 - Edge Pav	655	14.39
1/2 " "	632	14.32
1/2 " "	687	13.77
1/2 " "	699	13.65
1/2 " "	67	13.9
cb	68	13.7
S	84	12.2
S	82	12.4
cb	61	14.2
1/4	67	13.9
+10.6 - Edge Pav	715	13.49
1/2 " "	700	13.64
1/4 " "	650	14.14
+33 -	641	14.20
cb	63	14.3
1/4	62	14.4
1/4	68	14.4
cb	69	14.2
+11 - Edge Pav	655	14.09
1/4 " "	661	14.03
1/2 " "	715	13.49
+3 - Edge Pav	735	13.29
1/4	68	13.8

20.64

cb	71	13.5
S	82	12.4
1/4 cb		
S	85	12.1
cb	71	13.0
1/4	69	13.7
+9 - Edge Pav	745	13.19
1/2 " "	721	13.43
1/4 " "	670	13.94
1/4 - Edge Pav	668	13.96
cb	61	14.2
1/4	63	14.3
1/4 L. Wallace From St		65.5 wide 138 1/4
1/4 - Conc Walk	631	14.33
cb	62	14.4
1/4 - Edge Pav	68	13.8
1/2 " "	731	13.33 ✓
+46 - Edge Pav	710	13.04
1/4	74	13.2
cb	83	12.3
S	94	11.2
1/4	36.2	17.81
1/4	636	14.68
30 ft of L. Wallace		152.9
S	67	11.2
cb	62	11.6
1/2	53	12.6

21



1791

19.5 = Edge Pav	527	12.62
2	508	12.83
44 = Edge Pav	470	13.21
cb	592	13.99
11 on Walk = 11 End Walk	258	14.33
CRS 14 = E.L. Wallace from S. Sec 48. 1/2 de Front.		
14	45	13.4
+3	47	13.2
cb	54	12.5
+7 = Edge Pav	558	12.33
14	556	12.35
2	552	12.38
+6 = Edge Pav	555	12.36
14	55	12.4
cb	68	11.7
5	69	11.0
S Wallace		
5	66	11.3
cb	61	11.8
14	56	12.3
+1 = Edge	565	12.26
2	572	12.19
14	593	11.99
+07	594	11.97
17	55	12.4
cb	47	13.2

Wallace
1/2 W. H.

17.91

48' Wide From
S. L. of
5' Cb 950' W

A6

13.3

N2 Wallace from S

H			
H	47	13.2	
Cb	47	13.2	
+6	49	13.0	
+6	58	12.1	
1/4	61	11.8	
+15	631	11.60	
2	605	11.86	✓
44	583	12.08	
+2	578	12.13	
Cb	60	11.9	
S	63	11.6	

50' W of N2 Wallace

S	62	11.7	
Cb	65	11.4	
+2	662	11.29	
1/4	683	11.08	
2	727	10.64	✓
+3	727	10.54	
+6	69	11.0	
+8	59	12.2	
1/4	59	12.0	
+5	49	13.0	
Cb	48	13.1	
H	46	13.3	

17.91

100' W

H	47	13.2	
Cb	47	13.2	
+6	48	13.1	
+7	57	12.2	
1/4	59	12.0	
+5	54	12.5	
2 = Edge Pav	815	9.76	✓
1/4	786	10.05	
Cb = Edge Pav	779	10.12	
S	74	10.5	

150' W

S	87	9.2	
Cb = Edge Pav	887	8.94	
1/4	884	8.97	
2 = Edge Pav	887	8.94	✓
+6	70	10.9	
1/4	64	11.5	
+3	51	12.8	
Cb	51	12.8	
H	50	12.9	

170' W

H	54	12.5	
Cb	54	12.4	
1/4	64	11.5	
2 = Edge Pav	932	8.59	✓

17.91

1/4		9.16	8.75
cb - Edge Pin		9.28	8.63
S		9.0	8.9
	200' H		
S		9.5	8.4
cb - Edge Pin		9.74	8.17
1/4		9.61	8.30
S - Edge Pin		9.70	8.21
1/4		8.6	9.3
cb		8.0	9.9
H		9.8	10.1
	225' H		
H		10.2	7.7
cb		10.9	7.0
1/4		9.8	8.1
S - Edge Pin		10.07	7.84 ✓
1/4		10.05	7.86
cb - Edge Pin		10.12	7.79
S		9.9	8.0
TP	288	10.90	9.89
			8.08
	250' H		
S		3.5	7.4
cb - Edge Pin		3.61	7.29
1/4		3.45	7.45
S - Edge Pin		3.58	7.32 ✓
+5		3.4	7.5

10.90

24.

1/4		5.5	5.4
+6		8.9	2.0
cb		7.4	3.5
H		5.5	5.4
+5		5.0	5.9
	275' H		
+5		5.5	5.4
S		7.2	3.0
cb		9.1	4.8
+4		9.0	4.9
+5		7.2	3.7
+8		7.1	3.8
1/4		7.5	5.4
+4		2.9	7.0
S - Edge Pin		3.2	6.92 ✓
1/4		3.26	7.04
cb - Edge Pin		4.05	6.85
S		4.1	6.8
	300' H		
S		4.6	6.3
cb - Edge Pin		4.2	6.64
1/4		4.37	6.53 X
S - " "		4.49	6.41
+5		4.2	6.7
1/4		6.2	4.6
+6		7.9	3.0

200' H - Tree
- 13104 H L

10.90

cb	96	1.3
N	78	3.1
+5	60	4.9
32.5 N		
-8	66	4.7
N	90	1.9
cb	95	1.4
1/4	71	3.8
+1	77	6.2
1/2 - Edge Par	490	6.00 ✓
1/4	481	6.09
cb	492	5.98
S	48	6.1
350 N		
S	52	5.7
F	535	5.55
1/4	534	5.66
1/2	538	5.52 ✓
+5	55	5.4
1/4	76	3.3
cb	98	1.1
N	98	1.1
+1	69	4.0
392.5 N = PC 0.7 N		
-8	82	2.6
1/4	101	0.8

10.90

cb	10.1	0.5
+5	99	1.0
1/4	72	3.7
+2	62	4.6
18.5 = Edge Par	625	4.65
1/2	621	4.69 ✓
1/4	595	4.95
cb - Edge Par	592	4.92 ✓
S	59	5.2
45 N of PC		
S	58	5.1
cb	610	4.80
15 = Edge Par	605	4.85
1/4	620	4.60
1/2	622	4.18 ✓
1/4 - Edge Par	621	4.14
1/4	71	3.8
77	10.5	0.4
cb	10.2	0.7
N	10.2	0.7
+8	81	2.8
56.5 N		
N	78	3.1
cb	72	3.1
+1	10.1	0.8
1/4	98	1.0

= Center Case and 61 Nika 5th 11/21

San Diego Hill

10.90

19			92	1.8	
5			70	3.9	✓
15 - Edge Pav			218	3.72	
1/4			675	4.15	
cb - Edge Pav			612	4.78	
S			57	5.2	
TP	245	855	580	5.10	Top of hill Sand section + Top

Grass Section
Taylor St.
San Diego Hill to Hickory
8.55

1687/11
16285
179/1

2.6
N-N-27
S-10-07
3108
Kenny
Dreher

S.W. San Diego Hill

E			38	5.25	
cb			32	5.3	
1/4			45	4.1	
1/2			62	2.4	✓
1/4			19	1.5	
cb			70	1.6	
1/4			73	1.3	
15 ft - 1/2 San Diego Hill					
1/4			66	2.0	
cb			65	2.1	
1/4			63	2.3	
1/2			46	4.0	
1/4			35	5.1	
+10 - Edge Pav			388	4.67	
cb	07	"	405	4.50	
E	"	"	412	4.43	
1/2 San Diego Hill					
E			53	3.3	
+5 - Edge Pav			500	3.55	
cb			498	3.60	
1/4			451	4.01	
+5 - Edge Pav			470	4.45	
1/2			36	5.0	✓
1/4			64	2.2	
cb			20	1.6	

Taylor St.

8.55

H	7.0	1.6
18' H - Blk of Opening 02E 100' Side		
H	8.0	0.6
Cb	2.9	0.7
+11	2.5	1.1
1/4	4.8	3.9
+3	3.9	4.7
+12 - Edge Pav	4.3	4.32
2	4.15	4.10
1/4	5.33	3.22
+4 - Edge Pav	5.60	2.95
Cb	5.3	3.3
E	7.0	1.6
25' H - EC 02E		
F	7.7	0.9
Cb	7.7	0.9
+10	7.2	1.3
1/4	5.1	3.2
17 = Edge Pav	5.74	3.31
2	4.92	3.62 ✓
+10 = Edge Pav	1.70	3.85
1/4	4.4	4.2
17	7.3	1.3
Cb	7.4	1.2
H	7.7	0.7

100' H

27

8.55

H	7.2	1.4
Cb	8.1	0.5
17	7.5	1.1
1/4	4.8	3.8
+7 - Edge Pav	4.88	3.67
2	4.94	3.61 ✓
+10 - Edge Pav	5.19	3.36
1/4	5.3	3.3
+10	7.7	0.9
Cb	7.8	0.8
F	7.3	1.3
122' H		
F	7.0	1.6
Cb	6.6	2.0
+14	6.1	2.2
1/4	5.0	3.6
+7 - Edge Pav	5.07	3.46
2	4.96	3.63 ✓
+10 - Edge Pav	4.88	3.57
1/4	4.9	3.7
11	7.1	1.5
Cb	7.7	0.9
H	7.7	0.9
127' H		
H	7.3	1.3
Cb	7.4	1.2

Taylor St.

855

+10	70	1.6
"	47	3.9
+7 - Edge Pav	500	3.55
" " "	493	3.62
+10 - Edge "	506	3.49
"	52	3.3
cb	51	3.5
F	53	3.3
	155'H	
F	51	3.5
cb	51	3.5
"	50	3.6
+7 - Edge Pav	497	3.58
"	488	3.73
+10 " "	493	3.62
"	50	3.6
+5	68	1.8
cb	72	1.3
"	72	1.4
	105'H	
"	72	1.4
cb	79	1.7
+12	70	1.6
"	50	3.6
+7 - Edge Pav	488	3.67
"	477	3.78

855

+10 - Edge Pav	491	3.61
"	450	3.6
+10	500	3.6
cb	68	1.8
F	66	2.0
	195'H = 55' Colhoug	70' x 100' X 40' x 100' E
F	61	2.5
cb	63	2.3
"	62	2.4
"	48	3.8
+7 - Edge Pav	483	3.72
"	472	3.83
+10 " "	484	3.71
"	50	3.6
+5	70	1.6
cb	68	1.8
"	71	1.5
TP	571	9.07
	5 CB	381
"	71	2.0
cb	70	2.1
+13	72	1.3
cb	61	3.0
"	55	3.6
+7 - Edge Pav	540	3.67
"	523	3.84

Sections Taken
on Abundations
75' side
100' 65'
125' 04'

907

+10 - Edge Pav.	535	3.72
1/4	54	3.7
+11	55	3.6
cb	62	2.9
14	73	1.8
F	69	2.2
	5 1/4	
F	58	3.6
cb	55	3.6
1/4	51	4.0
+7 - Edge Pav	529	3.78
1/2	514	3.93
+10 " "	523	3.84
1/4	52	3.9
cb	57	3.4
1/4	60	3.1
	1/2 Colburn 0211	
1/4	76	1.5
cb	75	1.5
+12	73	1.8
1/4	52	3.9
+7 - Edge Pav	530	3.77
1/2	511	3.96
+10 " "	528	3.79
1/4	52	3.8
+7	68	2.3

907

cb	60	2.8
F	60	3.1
	1/4	
F	70	2.1
cb	70	2.1
+10	70	2.1
1/4	52	3.9
+7 - Edge Pav	525	3.82
1/2	518	3.95
+10 " "	523	3.84
1/4	52	3.9
1/2	70	2.1
cb	74	1.7
1/4	70	1.8
	HCB	
1/4	70	2.1
cb	68	2.3
+11	70	2.1
cb	51	4.0
+7 - Edge Pav	512	3.90
1/2	506	4.01
+10 " "	519	3.88
cb	51	4.0
+8	75	1.6
cb	64	2.3
F	65	2.6

50 x 20
 1/2" x 1/2" x 1/2" Concl
 1/2" x 1/2" x 1/2" Concl
 1/2" x 1/2" x 1/2" Concl
 Colburn
 Taylor

Taylor St.

9.07

N. L. Calhoun front

E	66	2.9
CB	5.8	3.3
1/4	5.1	4.0
+7 - Edge Pav	5.14	3.93
1/2	5.03	4.04 ✓
1/10	5.11	3.96
1/4	5.1	4.0
1/4	6.7	2.4
CB	6.5	2.6
H	6.4	2.7

50' N of N. L. Calhoun

H	7.1	2.0
CB	6.9	2.2
+11 - Micro Fossil L. Stone	5.5	3.6
1/11	6.4	2.7
1/4	1.8	4.3
+7 - Edge Pav	5.05	4.02
1/2	1.89	4.18 ✓
1/10	5.02	4.05
1/4	4.9	4.2
+13 - Small Tree Area	6.6	2.5
CB	6.8	2.3
1/12	6.6	2.5
E	5.8	3.3

100' N

30

9.07

E	5.8	3.9
+10	7.0	2.1
CB	6.7	2.4
+11 - Micro Fossil		
+9	6.5	2.6
1/4	1.7	4.4
+7 - Edge Pav	1.87	4.20
1/2	1.66	4.41 ✓
+10	1.91	4.16
1/4	1.7	4.4
1/2	6.2	2.9
+6 - Fossil Area	5.3	3.8
CB	6.6	2.5
H	6.4	2.7
	150' N	
H	6.4	2.7
CB	6.3	2.8
1/7	5.9	3.2
+11 - Micro Fossil	4.9	4.2
1/11	6.5	3.1
1/4	4.7	4.4
+9 - Edge Pav	1.70	4.37
1/2	1.55	4.52 ✓
+10	1.67	4.40
1/4	4.5	4.6
1/7	6.6	2.5

Taylor St.

9.07.

+15 - Acacia Tree

cb	70	2.1
+12	62	2.9
F	54	3.7

200 ft

F	51	3.5
cb	61	3.0

+1 - Large Acacia Tree

+8	55	3.6
74	44	4.7
+7 - Edge Pav	455	4.52
2	413	4.64 ✓
+10 - " "	456	4.51

74	41	4.5
+3	62	2.9
+6 - Wire Fence	55	3.6
+2	60	3.1
cb	64	2.7
H	62	2.3

205 ft - S. of Selan St.

H	64	2.7
cb	64	2.7
+8	62	2.9

+11 - End Wire Fence

74	47	4.4
+7 - Edge Pav	444	4.63

517 ft
10 cb's
7.59 ft

3.1

9.07

2	432	4.75 ✓
+10 - Edge Pav	486	4.61
74	41	4.5
+10	45	4.6
cb	47	4.4
F	55	3.6
TP	454	991
	390	687

5 cb

F	50	4.9
cb	52	4.7
74	52	4.7
+7 - Edge Pav	527	4.64
2	516	4.75
+10 - " "	515	4.66
74	55	4.4
+13	57	4.2
cb	60	3.9
H	60	3.9

54 ft

H	57	4.2
cb	57	4.2
74	52	4.6
+7 - Edge Pav	526	4.65
2	515	4.76
+10 - " "	521	4.67
74	51	4.8

NET 200 ft
Susan Taylor
1.20

991

Cb	5.2	4.7
E	5.0	4.9
* Juno		
E	5.1	4.8
Cb	5.1	4.8
1/4	5.0	4.9
+7 - Edge Pav	5.23	4.68
1/2	5.16	4.75
+10 - " "	5.20	4.71
1/4	5.1	4.8
Cb	5.7	4.2
1/4	5.9	4.1
1 1/4		
1/4	5.7	4.2
Cb	5.3	4.6
1/4	5.2	4.7
+7 - Edge Pav	5.01	4.87
1/2	5.11	4.80
+10 - " "	5.16	4.75
1/4	5.1	4.8
Cb	5.2	4.7
E	5.5	4.4
* 1/4 curb		
E	5.55	4.4
Cb	5.5	4.4
1/4	5.2	4.7

991

+7 - Edge Pav	5.15	4.76
1/2	5.12	4.79
+10 - " "	5.18	4.73
1/4	5.3	4.6
Cb	5.2	4.7
1/4	5.6	4.3
H.L. Juno		
1/4	5.5	4.4
Cb	5.4	4.5
1/4	5.9	4.6
+7 - Edge Pav	5.22	4.69
1/2	5.07	4.84
+10 - " "	5.13	4.78
1/4	5.3	4.6
Cb	5.3	4.6
E	5.7	4.2
S.W. of H.L. Juno		
E	5.7	4.2
Cb	5.7	4.2
1/4	5.3	4.6
1/2	6.1	3.8
+10	5.0	4.9
1/4	5.0	4.9
+7 - Edge Pav	5.03	4.88
1/2	4.96	4.95
+10 - " "	5.01	4.90

100' }
 253 }
 Existing 15" Curb
 407 }
 150' }
 Taylor
 15' of H.L. Juno
 Large Bricks
 10" of 6"

991

14	5.0	4.9
+4	5.0	4.9
+10	5.2	4.0
cb	5.8	4.1
14	5.1	4.8

100'N

14	5.2	4.7
cb	5.1	4.8
+10	5.2	4.7
+15	4.7	5.2
14	4.8	5.1

+7 - Edge Pav	4.85	5.06
---------------	------	------

5	4.78	5.14 ✓
---	------	--------

+10	4.85	5.06
-----	------	------

14	4.9	5.0
----	-----	-----

+6	4.9	5.0
----	-----	-----

+10	6.5	3.4
-----	-----	-----

12.1' - Tree
10' N of 14

+12	5.2	4.7
-----	-----	-----

cb	5.4	4.5
----	-----	-----

F	5.5	4.4
---	-----	-----

150'N

F	5.1	4.3
---	-----	-----

cb	5.5	4.4
----	-----	-----

+3	5.3	4.6
----	-----	-----

+6	6.5	3.4
----	-----	-----

+12	4.1	5.3
-----	-----	-----

991

14	4.6	5.3
+7 - Edge Pav	4.68	5.23
5	4.63	5.28
+10 " "	4.67	5.24

10.5' - Tree
19.5' S of 14.

14	4.7	5.2
cb	5.5	4.4
14	5.6	4.3

200'N

14	5.1	4.5
----	-----	-----

cb	5.1	4.8
----	-----	-----

14	4.7	5.2
----	-----	-----

22.7' - Tree
18' N of 14.

+7 - Edge Pav	4.59	5.41
---------------	------	------

5	4.46	5.45 ✓
---	------	--------

+10	4.55	5.36
-----	------	------

14	4.5	5.4
----	-----	-----

22.1' - Tree
10' N of 14.
5.0m

+8	4.7	5.2
----	-----	-----

+11	6.6	3.3
-----	-----	-----

+13	5.1	4.8
-----	-----	-----

cb	5.4	4.5
----	-----	-----

F	4.4	5.0
---	-----	-----

250'N

F	5.3	4.6
---	-----	-----

cb	5.1	4.8
----	-----	-----

+4	5.0	4.9
----	-----	-----

+6	6.4	3.5
----	-----	-----

+12	4.7	5.2
-----	-----	-----

1/4			45	5.4	
+7 - Edge Pav			498	5.43	
1/2			497	5.44 ✓	
+10 - " "			442	5.49	
1/4			46	5.3	219 ft - Gas Pump 14' E of 1/4
cb			48	5.1	
H			44	5.5	
TP	5.85	10.75	451	5.40	
					557 ft 10' cb
H			510	5.8	
cb			52	5.6	
1/4			52	5.6	
+7 - Edge Pav			509	5.66	
1/2			502	5.73	
+10 - Edge			512	5.62	
1/4			51	5.7	
+8			52	5.6	
+12			67	4.1	
+14			56	5.2	
cb			55	5.3	
F			53	5.5	
					556
F			52	5.6	
cb			56	5.2	
+13			56	5.2	
+8			67	4.1	

+10			52	5.6	
1/4			51	5.7	
+7 - Edge Pav			510	5.65	
1/2			500	5.75	
+10 - " "			507	5.68	
1/4			52	5.6	
cb			54	5.4	
H			52	5.5	
					574
H			51	5.4	
cb			54	5.4	
1/4			52	5.6	
+7 - Edge Pav			508	5.67	
1/2			504	5.71	
+10 - " "			508	5.67	
1/4			51	5.7	
+7			52	5.6	
+11			47	4.1	
+15			55	5.3	
cb			56	5.2	
F			52	5.5	
					57
F			51	5.7	
cb			60	4.8	
+cb = TFC					
+9			57	5.1	

10.75

46		4.5	4.3
47		5.0	5.8
46		5.0	5.8
47	= Edge Pav	5.09	5.66
48		5.00	5.75
410		5.17	5.68
44		5.3	5.5
cb		5.4	5.4
H		5.6	5.2
	N 1/4		
H		5.5	5.3
cb		5.6	5.2
44		5.3	5.5
47	= Edge Pav	5.03	5.72
48		4.98	5.77
410		5.05	5.70
44		5.6	5.8
47		5.0	5.8
411		6.6	4.2
413		5.2	5.1
cb		5.7	5.1
F		5.8	5.0
	N 1/4		
F		5.4	5.4
410		6.0	4.8
cb		5.7	5.1

10.75

43		5.6	5.2
47		6.3	4.5
411		5.0	5.6
44		5.0	5.8
47	= Edge Pav	5.0	5.8
48		4.95	5.80
410		5.02	5.73
44		5.2	5.6
cb		5.6	5.2
H		5.8	5.0
	N 1/4 Sunset from H		
H		5.2	5.1
cb		5.2	5.1
46		5.2	5.6
47	= Edge Pav	4.98	5.77
48		4.91	5.84
410		5.01	5.74
44		5.1	5.7
49		4.9	5.9
411		4.8	4.3
415		5.5	5.3
cb		5.6	5.2
48		6.0	4.8
F		5.1	5.7
	50 ft of H L Survey - S. L. Sunset from E 50 ft W		
F		5.9	4.9

10.75

+10	60	4.8
cb	5.8	5.0
+3	5.3	5.5
+6	1.4	4.4
+12	5.0	5.8
1/4	4.7	6.1
+7 - Edge Pin	4.90	5.85
5	4.72	5.97
+10 - " "	4.86	5.89
1/4	5.3	5.6
cb	5.8	5.0
H	5.7	5.1

25% - 1/2 Sunset From E

H	5.6	5.2
cb	5.6	5.2
1/4	5.3	5.6
+7 - Edge Pin	4.81	5.94
5	4.73	6.02
+10 - " "	4.79	5.96
1/4	4.6	6.2
+5	4.7	6.1
+11	6.1	4.7
+13	5.8	5.0
cb	5.9	4.9
E	5.4	5.4

N.W. Sunset From E

10.75

L	5.4	5.4
4.12	5.9	4.9
cb	5.9	4.9
1/4	5.7	5.4
+7	6.2	4.6
+9	4.7	6.1
1/4	4.6	6.2
+7 - Edge Pin	4.71	6.04
5	4.16	6.09
+10 - " "	4.75	6.00
1/4	4.9	5.9
cb	5.3	5.5
H	5.2	5.6

50% of 1/4 of Sunset From E

H	4.7	6.1
cb	5.4	5.4
1/4	4.8	6.0
+7 - Edge Pin	4.52	6.17
5	4.77	6.28
+10 - " "	4.60	6.15
1/4	4.4	6.2
+2	4.6	6.2
+10	5.8	5.0
+15	5.6	5.2
cb	5.6	5.2
E	5.3	5.5

10.75

100 ft

F	5.2	5.5
cb	5.2	5.2
1/4	5.5	5.3
1/2	6.0	4.8
1/3	4.5	6.3
1/4	4.5	6.3
1/2 - Edge Pav	4.48	6.33
1/2	4.36	6.39 ✓
1/10 - " "	4.50	6.25 ✓
1/4	4.6	6.2
cb	5.1	5.7
H	4.7	6.1
150 ft		
W	4.1	6.7
1/2	4.6	6.2
cb	5.0	5.8
1/4	4.5	6.3
1/2 - Edge Pav	4.81	6.49
1/2	4.81	6.54 ✓
1/10 - " "	4.30	6.45 ✓
1/4	4.3	6.5
1/5	4.2	6.6
1/10	5.4	5.4
1/15	4.6	6.2
cb	4.9	5.9

10.75

F	5.1	5.7			
TP	2.49	11.38	1.26	8.89	5.7
200 ft - 1/2 Whitman					
F	5.9	5.5			
cb	5.7	5.7			
1/2	5.7	5.7			
1/4	5.0	6.4			
1/4	4.9	6.5			
1/2 - Edge Pav	4.76	6.62			
1/2	4.68	6.70 ✓			
1/10 - " "	4.77	6.59			
1/4	5.0	6.4			
cb	5.2	6.2			
H	5.2	6.1			
150 ft					
H	5.8	5.6			
cb	5.5	5.9			
1/4	5.0	6.4			
1/2 - Edge Pav	4.71	6.67			
1/2	4.68	6.70			
1/10 - " "	4.76	6.62			
1/4	4.8	6.6			
1/2	5.7	5.7			
cb	5.7	5.7			
F	5.7	5.7			

5.7
Whitman
Taylor5.7
11' cb
7.50 ft

5.14

1138

F	60	5.4
Cb	57	5.7
1/4	49	6.5
+7 = Edge Pav	496	6.62
1/2	467	6.71
+10	476	6.62
1/4	49	6.5
Cb	53	6.1
1/4	54	6.0
L Whitman		
1/4	51	6.0
Cb	52	6.2
1/4	53	6.1
+7 = Edge Pav	474	6.64
1/2	461	6.77
+10	475	6.63
1/4	49	6.5
+13	57	5.7
Cb	57	5.7
F	61	5.3
H 1/4		
F	60	5.4
Cb	58	5.6
1/4	48	6.6
+7 = Edge Pav	475	6.63
1/2	458	6.80

1138

+10 = Edge Pav	470	6.68
1/4	50	6.4
Cb	52	6.2
1/4	54	6.0
H.C.B.		
1/4	50	6.4
Cb	52	6.2
+9	55	5.9
1/4	49	6.5
+7 = Edge Pav	469	6.69
1/2	459	6.79
+10	470	6.68
1/4	479	6.68
+13	59	5.5
Cb	58	5.6
F	59	5.5
H.L. Whitman		
F	56	5.8
Cb	58	5.6
+6	57	5.7
1/4	48	6.6
+7 = Edge Pav	468	6.70
1/2	459	6.79
+10	467	6.71
1/4	50	6.4
+12 = Fanco Bay	51	6.3

73 H - Top
16 H 4.5673 H - Top
16 H 4.56

M	5.1	6.3
	50' N of H.L. Whitman	
M	5.3	6.1
Cl	5.6	6.4
55 - Fence	4.9	6.5
77 - Edge Pav	4.55	6.83
8	4.45	6.93
710	4.54	6.84
74	4.7	6.7
713	5.2	5.5
Cl	5.6	5.8
E	5.3	6.1
	100' N	
E	5.3	6.1
Cl	5.6	5.8
79	5.5	5.9
74	4.6	6.8
77 - Edge Pav	4.80	6.99
8	4.30	7.08 ✓
710	4.41	6.94
74	6.6	6.8
713 - Fence		
Cl	5.1	6.3
712 - Edge Garage		
M	4.9	6.5
	150' N	

15' N - Corner
27' N 27' 12' E
37' N - Suburban
13.2079
09' 14' 31" E
1' 17' 52"
House
25' 19' 04"

M		
Cl		
55 - Fence		
74		
77 - Edge Pav		
8		
710		
71		
78		
Cl		
E		
TP	5.19	12.47
	100' N	
E		
Cl		
710		
74		
77 - Edge Pav		
8		
710		
74		
712 - End Fence		
Cl		
M		
Cl		
M		
Cl		

135' N - Fence
16' 17' 48" E
120' N - 1/2" from
11' 17' 48" E
15' E of H.L.

	5.0	6.4
	4.9	6.5
	4.6	6.8
	4.18	7.20
	4.15	7.23 ✓
	4.26	7.12
	4.4	7.0
	5.2	6.2
	5.2	5.6
	5.2	6.2
	4.10	7.22
	5.6	6.9
	6.0	6.5
	6.0	6.5
	5.4	7.1
	5.20	7.27
	5.06	7.41 ✓
	5.15	7.32
	5.7	6.8
	6.1	6.4
	6.1	6.4
	5.9	6.6
	5.6	6.9

156' N - Palmetto
7' E of H.L.
120' N - Corner
09' 14' 31" E
5.60
122' N - Fence
16' 17' 48" E

220' N - Corner
09' 14' 31" E
21' 17' 00" E
6.06

12.47

1/4		5.3	7.2
+7 = Edge Pav		5.06	7.41
2		4.96	7.55
+10 = " "		5.05	7.42
1/4		5.1	7.4
+13		5.7	6.8
cb		5.4	7.1
F		5.1	7.4
	300 ft = SL Chestnut		
F		4.5	8.0
cb		4.8	7.7
+4		5.3	7.2
1/4		4.8	7.7
+7 = Edge Pav		4.70	7.77
2		4.61	7.86
+10 = " "		4.71	7.76
1/4		5.1	7.4
cb = Lg. Pavers TR		5.4	7.1
H		5.2	7.3
TP	602	14.42	8.49
	SL cb		
H		7.3	7.2
cb		7.4	7.1
1/4		6.9	7.6
+7 = Edge Pav		6.61	7.88
2		6.48	8.01

300 ft = SL
10' cb
7.50 ft

14.47

+10 = Edge Pav		6.52	7.93
1/4		6.5	8.0
cb		7.0	7.5
F		6.8	7.7
	5/4		
F		6.6	7.9
cb		6.2	8.3
1/4		6.2	8.3
+7 = Edge Pav		6.50	7.99
2		6.32	8.10
+10 = " "		6.48	8.01
1/4		6.8	7.7
cb		7.3	7.2
H		7.4	7.1
	2 Chestnut		
H		7.5	7.0
cb		7.4	7.1
1/4		6.8	7.7
+7 = Edge Pav		6.37	8.12
2		6.37	8.12
+10 = " "		6.40	8.09
1/4		6.0	8.5
cb		6.2	8.3
F		6.3	8.2
	1/4		
F		6.5	8.0

Taylor St.

1449

Cb	61	8.4
1/4	60	8.5
+7 - Edge Pav	626	8.23
1/2	614	8.35
+10 - " "	638	8.21
1/4	666	7.9
Cb	74	7.1
1/4	74	7.1
	1/2 Cb	
1/4	75	7.0
Cb	74	7.1
1/4	74	8.1
+7 - Edge Pav	613	8.36
1/2	601	8.48
+10 - " "	611	8.38
1/4	59	8.6
Cb	61	8.4
E	64	8.1
	1/2 Chestnut	
E	63	8.2
+8 - Canal Walk Extends 80 ft	546	9.03
Cb	60	8.5
1/4	57	8.7
+7 - Edge Pav	595	8.54
1/2	582	8.67
+10 - " "	593	8.56

20' = 197 ft
14' E of 197 ft

1449

1/4	63	8.2
Cb	74	7.1
1/4	75	7.0
	50' N of N.E. of Chestnut	
1/4	72	7.3
1/4	71	7.4
Cb	59	8.6
1/5	62	8.3
1/4	70	7.5
1/4	57	8.8
+7 - Edge Pav	509	9.40
1/2	495	9.54
+10 - " "	506	9.43
1/4	55	9.0
Cb	60	8.5
E	59	8.6
	100' N	
E	42	10.3
1/4	50	9.5
Cb	52	9.3
1/4	41	10.4
+7 - Edge Pav	416	10.37
1/2	399	10.50
+10 - " "	410	10.39
1/4	48	9.7
+3	58	8.7

20' N = 197 ft
14' N of 197 ft75' N = 197 ft
14' N of 197 ft

1449

+10	6.2	8.3
+11	5.6	8.9
cb	5.3	9.2
+2	5.6	8.9
+1	6.7	7.8
H	7.0	7.5

12511

H	7.0	7.5
+11	6.6	7.9
+14	5.3	9.2
cb	5.3	9.2
+5	5.2	9.2
+8	5.7	8.8

+14	4.3	10.2
+7 = Edge Pav	3.69	10.80
1/2	3.55	10.94
+10 - "	3.70	10.79

1/4	2.5	11.0
+10	4.4	10.1
cb = Tree	4.1	10.4
E	2.2	12.3

TR	11.23	2211	2.22	14.4
----	-------	------	------	------

15011 = 1/2 Arch Entrance to Camp Court NE of 112

E	8.6	14.2
cb	11.3	11.5
+10	12.0	10.8

2221

1/2	11.7	11.1
+7 = Edge Pav	11.54	11.30
1/2	11.44	11.40
+10 - "	11.55	11.29
1/4	12.0	10.8
cb	12.9	8.9
H	15.1	7.7

17611

H	14.9	7.9
+10	14.6	8.2
cb	12.1	10.4
+5	12.5	10.3
+2	12.2	9.6

1/4	11.9	10.9
+7 = Edge Pav	11.07	11.77

1/2	10.98	11.86
+10 - "	11.08	11.75

1/4	11.1	11.7
+11	11.7	11.6

cb = Tree	10.6	12.2
+12	6.6	16.2

E	6.3	16.5
---	-----	------

22011

E	4.6	18.2
cb	12.8	12.0
1/4	10.7	12.1

2284

+7 - Edge Pav	10.10	12.24
5	10.47	12.37 ✓
+10 - " "	10.61	12.23
1/4	11.3	11.5
+6	12.6	10.2
+10	12.7	10.1
+13	12.0	10.8
cb	12.2	10.6
+6	12.2	9.6
1/4	12.0	9.1

225 H

1/4	11.8	11.0
cb - Tree	11.2	11.6
+9	12.1	10.7
1/4	10.8	12.0
+7 - Edge Pav	10.20	12.6
5	10.05	12.79 ✓
+10 " "	10.20	12.64
1/4	10.3	12.5
+16 - Tree	10.7	12.1
cb	10.7	12.1
+6	5.1	17.7
+8	0.4	22.4
F	0.0	22.8

121

21.29

2.8

20.03

on DE. End
Bridge.

225 H

11-15-27

2129

F		+42	25.5
+13		+2.4	23.7
cb		-1.2	20.1
+9		8.1	13.2
1/4		8.1	13.2
+7 - Edge Pav		8.11	13.18
5		8.00	13.29 ✓
+10 - " "		8.16	13.13
1/4		8.9	12.4
+11		9.7	11.6
cb		9.1	12.2
1/4		9.1	12.2

2135 H - P.C.L. of Pavement

1/4 - Conc Walk	8.70	12.59
+12 - End Conc Walk	8.85	12.44
cb	8.9	12.4
1/4	8.5	12.8
+7 - Edge Pav	7.97	13.32
5	7.74	13.55 ✓
+10 - Edge Pav	7.80	13.49
1/4	7.8	13.5
+6	7.7	13.6
+15	+0.8	22.1
cb	+2.7	24.0
1/4	+6.8	28.1
F	+9.5	28.8

21.5 H =
P. Var to Fred
Entrance to Court
N.E. of W.B.

2/29

215' N of P.C.

to stationing to Bridge

E	+110	32.3
+10	+84	29.7
Cb	+17	22.0
+10	+72	14.1
'14	72	14.1
+7 - Edge Pav	720	14.09
8	738	13.91 ✓
+10 - " "	780	13.49
'14	80	13.3
Cb	85	12.8
"	82	12.6

205' N of P.C. - S.B. Hickory

"	205	12.8
Cb	79	13.4
'14	78	13.5
+7 - Edge Pav	712	13.67
8	717	14.12 ✓
+10 - Edge Pav	680	14.5
'14	65	14.8
+14	51	16.2
Cb	13	20.0
E	+112	32.5

50' N of P.C.

E	+82	29.5
Cb	-72	19.1

see page
-71-

2/29

+10	52	15.6
'14	62	15.0
+7 - Edge Pav	653	14.76
8	706	14.23 ✓
+10 - " "	756	13.73
'14	76	13.7
Cb	28	13.4
"	84	12.9
	75' N	
"	78	13.5
Cb	74	13.9
+7 = Tree		
'14	71	14.2
+7 - Edge Pav	736	13.93
8	699	14.31 ✓
+10 - " "	635	14.94
'14	60	15.3
+10	49	16.4
Cb	28	18.5
+10	40	22.3
E	29.5	30.8
	100' N	
E	0.4	20.9
+9	44	16.9
Cb	49	16.4
+5 - Edge Old Pav	511	16.13

21.29

1/4	as old Pav	574	15.53
+7	- Edge New Pav	622	14.97
2		655	14.74 ✓
+10	- " " " "	693	14.36
1/4		67	14.6
cb		69	14.4
H		76	13.7

18511

H		76	13.7
17		66	14.7
cb		65	14.8
1/4		63	15.0
+7	- Edge Pav	639	14.90
2		619	15.10 ✓
+10	- " New "	590	15.39
1/4	as old Pav	556	15.73
cb	- Edge " "	462	16.67
+12		48	16.5
F		58	15.5

15011

F		41	17.2
+9	- Edge old Pav	403	17.26
cb	on " "	435	16.94
+13	- Edge " "	505	16.24
1/4		49	16.4
+7	- Edge New Pav	512	16.17

21.29

45

2		541	15.88 ✓
+10	- Edge Pav	514	15.65
1/4		55	15.8
cb		48	15.5
+3		40	15.3
+7		72	14.1
H		77	13.6

17511

H		20	14.3
cb		63	15.0
+8		42	16.6
1/4		45	16.8
+7	- Edge New Pav	449	16.80
2		424	16.45 ✓
+10	- " " " "	401	17.28
1/4		41	17.2
+9		45	16.8
+13	- Edge old Pav	439	17.00
cb		410	17.19
+12	- " " " "	341	17.88
F		35	17.8

20011

F	- Edge old Pav	292	18.31
cb		373	17.56
+3	- Edge " "	390	17.39
1/4		33	18.0

21.29

+7 = Edge New Pav.	3.00	18.29
±	3.13	18.16 ✓
+10 = Edge " "	3.39	17.90
1/4	3.4	17.9
+3	3.4	17.9
Cb	5.3	16.0
1/4	6.5	14.7
224.36' 1/4 = EC		
1/4	5.4	15.9
+5	5.0	16.3
Cb	7.7	18.6
1/4	7.5	18.8
+7 = Edge Pav.	7.31	18.98
±	7.25	19.04 ✓
+10 " "	7.07	19.22
1/4	7.4	18.9
Cb - Edge Old Pav.	7.51	18.78
E " " "	7.53	18.76
240' 1/4		
E " " Old Pav.	7.12	19.17
Cb	7.5	18.8
1/4	7.2	19.1
+7 = Edge Pav.	7.13	19.16
±	6.13	19.16 ✓
+10 " " "	7.16	19.13
1/4	7.3	19.0

21.29

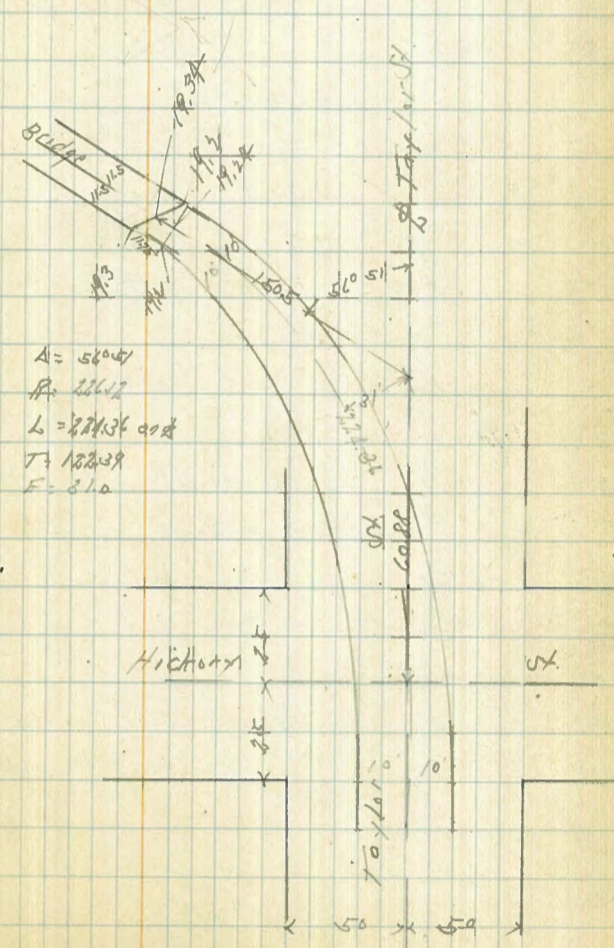
Cb	7.1	19.2		
1/4	1.8	19.5		
2166' 1/4 - S End Bridge 02 Feet				
1/4	1.8	19.4		
Cb	2.2	19.1		
1/4	2.0	19.3		
+7 = Edge Pav.	2.11	19.28		
±	2.05	19.24		
+10 " " "	2.10	19.19		
+13	1.6	19.7		
+13.5	5.6	15.7		
1/4	5.8	15.5		
Cb	6.9	14.4		
E	7.6	13.7		
+10	8.0	13.3		
2583' 1/4 - S End Bridge 02 1/4				
± - S Bridge	1.95	19.34 ✓		
+10 = Edge Pav.	2.01	19.28		
1/4	2.1	19.2		
Cb	4.3	17.0		
1/4	6.4	14.9		
1/4	5.9	15.4		
S.P. SW Cor Bridge				
BM	11.5	20.14		
TP	0.75	12.40	9.64	11.65
TP	1.85	10.76	8.49	8.91
TP	4.13	9.54	5.25	5.41
S.M. Top Hyd Whidson at Taylor.				

957

BM			2.17	6.40	NE Top of Square Tower
TP	10.83	1599	4.38	5.16	
TP	9.87	2511	0.75	15.21	
TP	10.88	3420	1.59	23.57	
BM			2.66	25.82	SE Top of Water Tower
TP BM	6.81	3746	3.55	30.65	8.P. S.W. Horn of R.R.
TP	12.51	4653	2.44	34.02	
BM			3.02	43.51	SW Top of Empire State Bldg.
TP	13.02	5933	0.22	41.31	
TP	11.62	7101	0.00	59.33	
TP	12.49	8371	0.21	70.75	
BM			3.20	90.04	NE BP Central Isl. R.R.

For Taylor St

N.E. Hickory St Page 71



Alley 26 University Heights
 Between North Ave + Campus
 From Madison Ave to Adams Av

11-9-27
 55500

48

BM 635 357.75 351.40

S. Ch. Madison 7.10

F L Alley at Pavilion 595

L " " 594

H " " 591

N. L. Madison

F Top Cb + Pavilion 516

L " at Pav. Hole 513

H " " 493

TP 578 359.00 433 350.40

S. L. Adams

H at N. S. Canal Walk 485

Adams St
 Hot Pav

L Ground 48

F " 47

There is
 a 34" Conc.
 Cross Walk
 S. Side Adams

S. Caroline Adams

F at Top Cb 486

L Ground 535

H on Top Cb 498

TP 415 359.04 431 354.89

BM 316 355.88

VEBP
 Adams St
 355.87

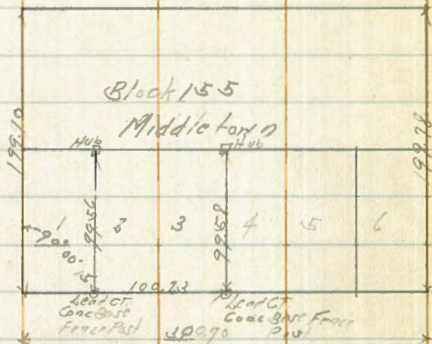
Survey Lot 2-3 Block 155
Middle town

11-15-27
S 55509

49

For Fire Department

India St



Kettner St

VALLE Ave X Sec

12-3-27
mills

30th to 31st

For complete L. Saes. See Page 56.

N.W. 30th & Woolman

B.M.	0.65	88.68	88.03
T.P.	0.29	75.89	75.60

North Side E. end Plat	0.34
S. " " " " "	1.90

S. ch	5.64
N. ch	4.11

N. ch	7.88
S. ch	9.37

S. ch	13.10
N. ch	11.60

T.P.	0.46	63.65	12.70	63.19
------	------	-------	-------	-------

N. ch	3.08
S. ch	4.25

S. ch	8.37
N. ch	6.87

N. ch	7.90
S. ch	9.46

00 = E. line 30th

30th St Paved to E. line
cont'd. & return
th on 30th St
cont'd. & return
th on 30th St

50' E

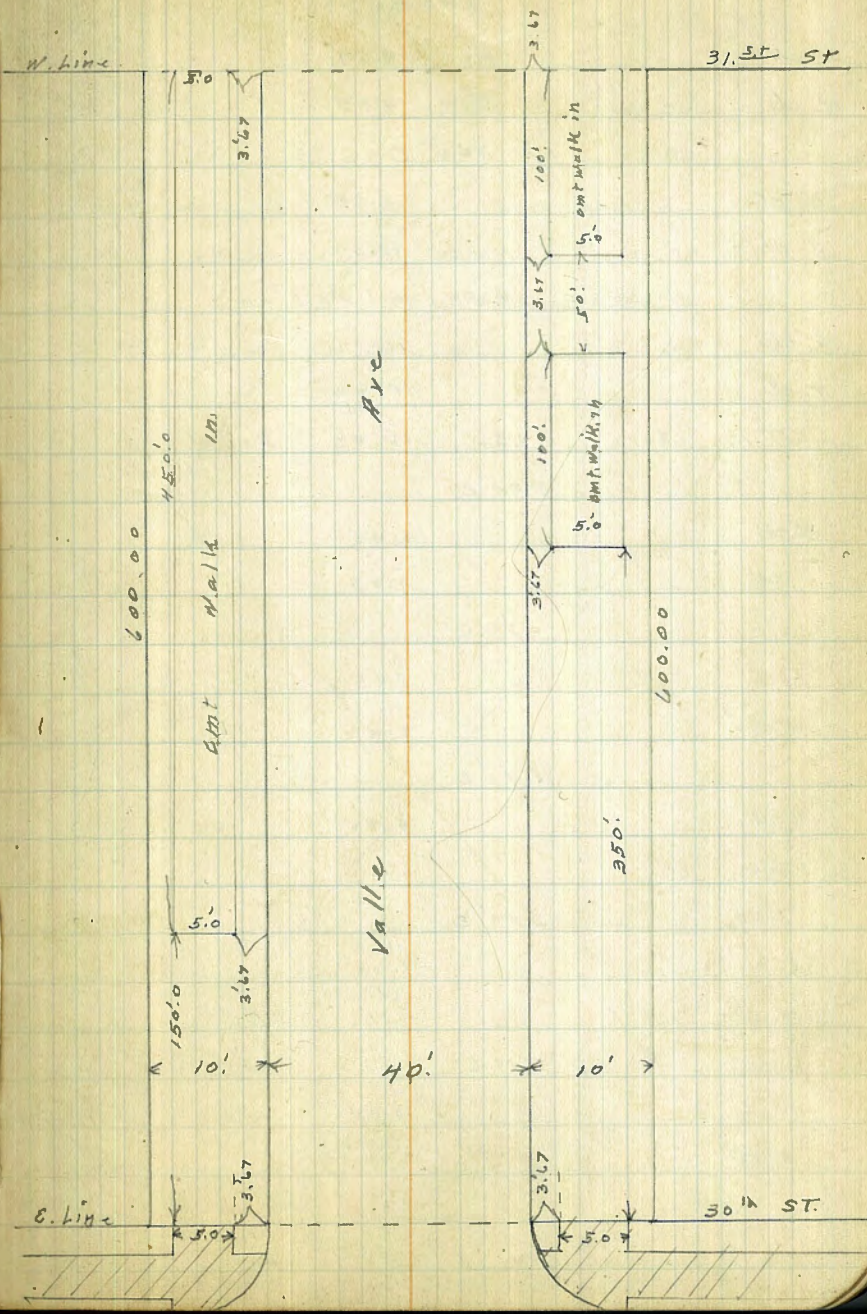
100' E

50' E = W. end of cont. walk on N.

200' E

250' E

270' E



63.65
285'E

S. cl 9.89
N. cl 8.35

300'E

N. cl 8.83 .52
S. cl 10.39 52.26

350'E = N. End eml. walk on S

S. cl 11.72
N. cl 10.23

T.P. 3.72 54.52 12.85 50.80

400'E

N. cl 2.48
S. cl 4.05

450'E

S. cl 5.45
N. cl 4.06

490'E

N. cl 5.22
S. cl 6.62

500'E

S. cl 7.00
N. cl 5.71 48.81

510'E

N. cl 6.44
S. cl 7.92

54.52
550'E

Valley Ave
51

S. cl 11.39
N. cl 9.95 44.57
T.P. 3.51 46.47 11.56 42.96

600'E = W. line 31" st. = E. end eml. cl. + walk

N. cl 6.39 40.08
S. cl 7.85 38.62

T.P. 10.50 52.59 4.38 42.09

MARTIN AVE. X Sec.

12-3-27
mill

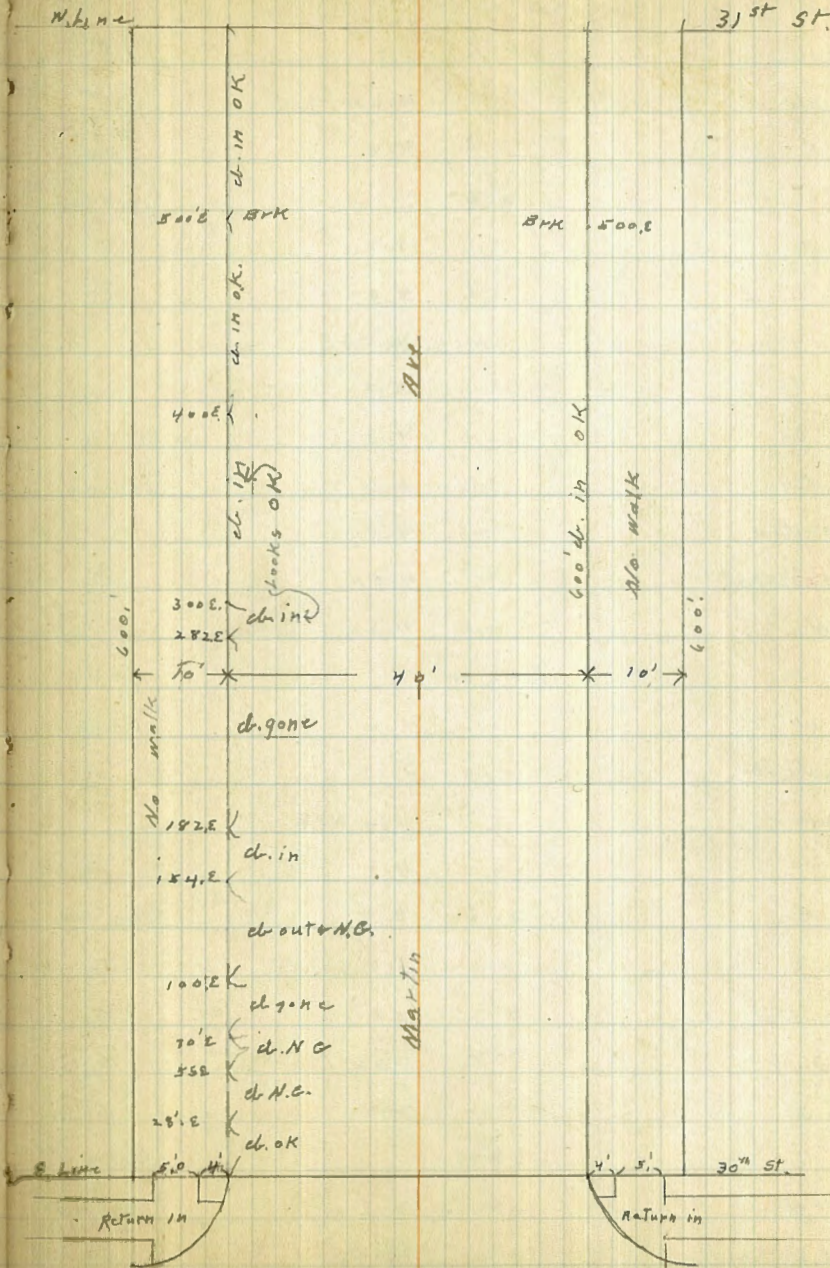
52

30th ST. 4. 31st ST

52.59 Page 51

00 = W. line 31st ST

N. Line	9.9
N. end of gutter	10.43
" "	10.6
" "	10.1
C.	10.0
" "	9.8
gutter	10.0
S. end of	9.95
S. Line	9.0
50' W	
S. line	4.4
+ 3	6.9
S. end of gutter	7.27
" "	8.0
" "	8.1
C.	7.7
" "	8.2
gutter	8.5
N. of	7.77
N.	7.3
100' W BRK	
N.	5.3
N. of	5.05
gutter	6.4
" "	5.4
C.	5.0
" "	5.3



52.59
100' W. (con)

gutter	5.7
S. cl	4.62
+ 5	4.2
S	4.1

150' W

S	3.2
+ 3	3.7
S. emb. cl	3.93

gutter	4.5
--------	-----

"	4.3
---	-----

C	4.3
---	-----

"	4.6
---	-----

gutter	4.9
--------	-----

N. emb. cl	4.60
------------	------

N	4.6
---	-----

200' W

N	4.2
---	-----

N. emb. cl	4.17
------------	------

gutter	4.4
--------	-----

"	4.3
---	-----

C	3.7
---	-----

"	3.8
---	-----

gutter	3.8
--------	-----

S. cl	3.34
-------	------

+ 7	3.0
-----	-----

S	2.8
---	-----

230' W

S	2.7
---	-----

S. emb. cl	2.8
------------	-----

52.59

Mar 27th 1900 53.

gutter	3.2
--------	-----

"	3.1
---	-----

C	3.1
---	-----

"	3.8
---	-----

gutter	3.8
--------	-----

N. emb. cl	3.77
------------	------

N	3.1
---	-----

260' W. BRK

N	3.1
---	-----

N. emb. cl	3.23
------------	------

gutter	3.0
--------	-----

"	3.0
---	-----

C	2.4
---	-----

"	2.4
---	-----

gutter	2.4
--------	-----

emb. cl.	2.24
----------	------

S	2.0
---	-----

300' W

S	0.0
---	-----

emb. cl	0.12
---------	------

gutter	1.0
--------	-----

"	0.6
---	-----

C	0.8
---	-----

"	1.4
---	-----

gutter	1.8
--------	-----

emb. cl	1.27
---------	------

N.	1.3
----	-----

52.59

T.P. 12.69 65.09 0.19 52.40

318' W = 282' E on Plat

N	12.5
ent ch	12.45
gutter	13.5
"4	12.7
E	12.4
"4	12.1
gutter	12.4
ent ch	11.55
S	11.3

350' W

S	9.3
ent ch	9.56
gutter	10.8
"4	10.1
E	10.2
"4	10.7
gutter	11.8
dirt ch gone	10.7
N	10.9

400 W.

N	7.7
dirt ch gone	7.9
gutter	8.6
"4	7.7

65.09

Martin Ave

34

E	7.3
"4	7.2
gutter	7.4
ent ch	6.50
S	6.1

418' W = 187' E on Plat. N. ch of 1st

S	4.8
ent ch	5.32
gutter	6.4
"4	6.0
E	6.1
"4	6.6
gutter	7.8
N. ent ch	6.57
N.	6.6

Tipped

446' W = 154' E on Plat N. ch of 2nd st

N	4.9
N. ent ch	4.90
gutter	5.6
"4	4.8
E	4.4
"4	4.1
gutter	4.8
ent ch	3.68
"4	3.4
S.	2.9

Tipped

65.09
500'W

S	00
emr ch	0.29
gutter	1.3
"y	1.1
c	1.2
"y	1.4
dirt ch gone	1.8
N	1.3
T.P.	10.40 74.43 1.06 64.03

530'W = 70'E on Plat

N	8.9
emr ch N.G.	9.14
gutter	9.3
"y	9.1
c	8.6
"y	8.5
gutter	8.8
emr ch	7.83
+3	7.8
S	7.2

545'W = 55'W on Plat

S	6.6
emr ch	6.88
gutter	7.8
"y	7.6
c	7.7
"y	8.3
gutter	8.7

74.43

55

emr ch N.G.	8.47
"y	8.0
572'W = 24'E on Plat	
N	6.5
emr ch looks O.K.	6.63
gutter	7.0
"y	6.8
c	6.1
"y	6.0
gutter	6.0
emr ch	5.2
S	4.8

600'W = E. Line 30th St 30th St Paved

S	3.3
emr ch	3.42
gutter	4.3
"y	4.2
c	4.3
"y	4.8
gutter	5.4
emr ch	4.90
N	4.7
T.P.	5.94 78.66 1.75 72.68
chk on B.M. N.W. 20+ Log 27	7.74 70.92 = 70.91

VILLE Ave X See
 of Roadway 30th to 31st St
 For Plat See Page 50

12-5-27
 Miller

77.12

56

BM	0.18	88.21	88.03	N.W. 30th Westman
T.P.	0.33	77.12	76.79	
00-2.614- 30th St				
N		1.4	75.7	✓
ent. el.		1.61	75.5	✓
gutter on paving		2.37	74.75	✓
1/4 "		2.31	74.8	✓
1/2 "		2.51	74.6	✓
1/4 "		3.02	74.1	✓
gutter "		3.70	73.4	✓
ent. el.		3.14	74.0	✓
S		3.0	74.1	✓
S		3.8	73.3	✓
ent. el.		3.71	73.4	✓
gutter		4.3	72.5	✓
1/4 "		3.6	73.5	✓
e		3.1	74.0	✓
1/4 "		2.9	74.0	✓
gutter		2.9	74.2	✓
ent. el.		2.24	74.9	✓
+5		2.1	75.0	✓
N		0.9	76.2	✓
N		2.3	74.5	✓
ent. el.		2.69	74.4	✓

Checked against
 E. Sted, track
 30th - 28th
 8'E

14'E

gutter	3.3	73.5	✓
1/4 "	3.4	73.7	✓
e	3.5	73.6	✓
1/4 "	4.1	73.0	✓
gutter	4.8	72.3	✓
ent. el.	4.18	72.9	✓
S	4.2	72.9	✓
50'E			
S	6.7	70.4	✓
ent. el.	6.91	70.3	✓
gutter	7.6	69.5	✓
1/4 "	6.9	70.2	✓
e	6.3	70.8	✓
1/4 "	6.1	71.0	✓
gutter	6.0	71.1	✓
ent. el.	5.38	71.7	✓
N	5.1	72.0	✓
100'E			
N	7.0	69.1	✓
ent. el.	7.12	69.0	✓
gutter	9.8	67.3	✓
1/4 "	9.8	67.3	✓
e	10.0	67.1	✓
1/4 "	10.8	66.3	✓
gutter	11.5	65.6	✓
ent. el.	10.64	66.0	✓
S	10.5	66.6	✓

T.P.	0.76	64.91	12.97	64.15
150' E = W End mt. Walk on N				
S		1.8	63.1	✓
emt. cl.		2.12	62.5	✓
gutter		2.8	62.1	✓
"		2.1	62.8	✓
"		1.5	63.4	✓
"		1.6	63.3	✓
gutter		1.5	63.4	✓
emt. cl.		0.65	64.2	✓
+ 3.67 = S Edgewalk		0.53	64.4	✓
+ 8.47 = N " "		0.38	64.5	✓
N		0.4	64.5	✓
200' E				
N emt. cl.		4.35	60.5	✓
gutter		5.3	59.6	✓
"		5.1	59.5	✓
"		5.4	59.5	✓
"		5.9	59.0	✓
gutter		6.7	58.2	✓
emt. cl.		5.93	59.0	✓
S		5.8	59.1	✓
250' E				
S		9.6	55.3	✓
emt. cl.		9.67	55.2	✓
gutter		10.2	54.7	✓

"		9.4	55.5	✓
"		8.7	56.2	✓
"		8.5	56.4	✓
gutter		9.0	55.9	✓
N. emt. cl.		8.16	56.7	✓
270' E				
N. emt. cl.		9.19	55.7	✓
gutter		9.6	55.3	✓
"		9.6	55.3	✓
"		9.9	55.0	✓
"		10.5 ^{10.5}	54.4	✓
gutter		10.9	54.0	✓
emt. cl.		10.73	54.2	✓
S		10.4	54.5	✓
285' E				
S		11.1	53.8	✓
emt. cl.		11.48	53.7	✓
gutter		11.3	53.6	✓
"		11.3	53.6	✓
"		10.5	54.4	✓
"		10.3	54.6	✓
"		10.2	54.7	✓
N. emt. cl.		9.64	55.3	✓
300' E				
N. emt. cl.		10.12	64.79	✓
gutter		10.6	54.3	✓

44.91.
300'E. (con)

"14		10.7	54.2 ✓
c		11.0	53.9 ✓
"14		11.7	53.7 ✓
gutter		11.9	53.0 ✓
ent cl		11.67	53.24 ✓
s		11.5	53.7 ✓
T.P.	1.52	54.06	12.37
			52.54
3.50'E = W. End ent walk on S			
s		1.8	52.3 ✓
s edge ent walk		1.88	52.2 ✓
N " " "		1.98	52.1 ✓
ent cl		2.12	51.9 ✓
gutter		2.6	51.5 ✓
"14		2.4	51.7 ✓
c		1.6	52.5 ✓
"14		1.4	52.7 ✓
gutter		1.1	53.0 ✓
N. ent cl		0.65	53.4 ✓
400'E			
N. ent cl		2.00	52.1 ✓
gutter		2.6	51.5 ✓
"14		2.4	51.5 ✓
c		2.8	51.3 ✓
"14		3.6	50.5 ✓
gutter		4.2	49.9 ✓
s ent cl		3.88	50.5 ✓

54.04
450'E

Valley Ave 54

s		4.7	49.4 ✓
s. edge ent walk		4.29	49.27 ✓
N " " "		4.95	49.11 ✓
ent cl		4.97	49.09 ✓
gutter		5.8	48.3 ✓
"14		5.0	49.1 ✓
c		4.2	49.9 ✓
"14		4.1	50.0 ✓
gutter		4.3	49.8 ✓
N. ent cl		3.58	50.18 ✓
490'E			
N. ent cl		4.74	49.92 ✓
gutter		5.6	48.5 ✓
"14		5.6	48.5 ✓
c		5.9	48.7 ✓
"14		4.6	47.5 ✓
gutter		7.0	47.1 ✓
ent cl		6.13	47.93 ✓
s		5.2	48.4 ✓
5700'E			
s		4.2	47.9 ✓
s. edge ent walk		6.22	47.84 ✓
N " " "		6.39	47.67 ✓
ent cl		6.53	47.53 ✓
gutter		7.3	46.9 ✓
"14		6.9	47.2 ✓

54.06
500'E (cont)

c	6.4	47.7	✓
"4	6.3	47.8	✓
gutter	6.0	48.1	✓
N emb. ch.	5.23	48.83	✓

510'E

N. emb. ch.	5.96	48.10	✓
gutter	6.5	47.6	✓
"4	7.1	47.0	✓
c	7.0	47.1	✓
"4	7.7	46.4	✓
gutter	8.1	46.0	✓
S emb. ch.	7.91	46.75	✓

550'E

S. emb. ch.	10.91	40.15	✓		
gutter	11.4	42.7	✓		
"4	11.0	43.1	✓		
c	10.5	43.6	✓		
"4	10.5	43.6	✓		
gutter	10.2	43.9	✓		
N emb. ch.	9.48	44.58	✓		
T.P.	7.95	49.12	72.89	41.17	✓

600'E = W. Line 31st St.

N. Line	8.4	40.7	✓
N. edge emb. walk	8.74	40.38	✓
S " " "	8.85	40.27	✓
emb. ch.	9.04	40.68	✓

49.12

Valle Ave 59

gutter	9.1	40.0	✓
"4	9.5	39.6	✓
c	9.6	39.5	✓
"4	10.3	38.8	✓
gutter	9.5	39.6	✓
emb. ch.	10.50	38.6	✓
N. edge emb. walk	10.25	38.87	
S " " "	10.06	39.06	
S. Line	10.0	39.1	

REDWOOD ST 2 Sec.
30th St. East to Bridge

12-5-27
20

313.44
30.2

60

R.M.	11.38	313.44	301.92	SW. 30 th + Redwood
			302.06	
	00 = E. line 30 th St			
S. emt walk	11.23	302.21		
emt. el. return	11.53	301.91	✓	
gutter paxmt	12.37	00.07		
" "	12.00	01.44		
e "	12.00	01.44	✓	
" "	12.13	01.31		
gutter "	12.85	00.59		
emt. el.	11.48	01.96	✓	
N. emt el return	11.45	01.99	✓	
	28' E			
N	10.9	02.5	✓	
+2.5 = N. Edge emt. walk	10.86	02.59		
+7.5 = S " " "	10.94	02.50		
el	10.93	02.51	✓	
gutter	11.5	01.9		
" "	11.4	02.0		
e	11.3	02.1	✓	
" "	11.4	02.0		
gutter	11.5	01.9		
emt. el. Broken here	10.94	02.46	✓	
+2.5 = N. Edge emt walk	10.96	02.48		
+7.5 = S " " "	10.87	02.57		
S.	10.75	302.63	✓	

S	10.7	302.7	
+2.5 = S. edge emt walk	10.83	02.61	
+7.5 = N " " "	10.95	02.49	
+9.85 = emt el	18.09	02.35	
gutter	11.4	02.0	
" "	11.3	02.1	
e	11.3	02.1	
" "	11.3	02.1	
gutter	11.4	02.0	
emt el	10.91	02.53	
+2.5 S. Edge emt walk	10.85	02.59	
+7.5 = N " " "	10.80	02.64	
N	10.9	02.5	
	51' E		
N	11.0	02.4	
+2.5 = N. Edge emt walk	11.15	02.29	
+7.5 = S " " "	11.22	02.22	
emt el	11.10	02.34	
gutter	11.2	02.2	
" "	11.1	02.3	
e	10.9	02.5	
" "	10.9	02.5	
gutter	10.9	02.5	
0.2 S. of ch line = emt el	10.70	02.74	
S. ch line + 2.7 = N. Edge emt walk	10.56	02.88	
" " + 7.7 = " " "	10.51	02.93	
S	11.0	302.4	

313.44
60' E

S	11.3	302.1
+2.3 = S. walk	10.37	03.07
+7.3 = N "	10.45	02.99
0.2 S. of S. of line = S. ent. el.	10.55	02.89
gutter	10.9	02.5
"	10.7	02.7
c	10.7	02.7
"	10.9	02.5
gutter	11.1	02.3
ent. el.	10.67	02.77
+2.5 = S. walk	10.84	02.60
+7.5 = N "	10.80	02.64
N	10.6	02.8
T.P.	7.36	310.14
	70' E.	
N	6.4	03.7
+2.5 = N. walk	6.40	03.74
+7.5 = S. walk	6.72	03.42
0.2 S. of S. of line = N. ent. el.	6.86	03.28
gutter	7.7	02.4
"	7.4	02.7
c	7.2	02.9
"	7.3	02.8
gutter	7.5	02.6
0.2 S. of S. of line = S. el.	7.09	03.05
E. " " " " = N. walk	7.12	302.99

310.14

Redwood.

61

+7.2 = S. walk	7.09	303.05
S	8.7	01.4
	83' E	
S	8.2	01.9
+7.2 = S. walk	6.55	03.59
+7.2 = N. "	6.65	03.49
+9.7 = ent. el.	6.69	03.45
gutter	7.4	02.7
"	7.1	03.0
c	6.9	03.2
"	7.0	03.1
gutter	7.2	02.9
ent. el.	6.23	03.91
+2.5 = S. walk	6.15	03.99
+7.5 = N. "	6.00	04.14
N	6.0	04.1
	92' E	
N	5.7	04.4
+2.5 = N. walk	5.68	04.46
+7.5 = S. "	5.88	04.26
ent. el.	5.87	04.27
gutter	6.8	03.3
"	6.8	03.3
c	6.7	03.4
"	6.9	03.2
gutter	7.1	303.0

310.14

92' E. (con)

0.2 S. of ch. line = amt. cl.	6.45	303. ⁶⁹
+ 2.7 = N. walk	6.48	03. ⁶⁶
+ 2.7 = S. "	6.38	03. ⁷⁶
S	8.8	06. ³

100' E

S	8.3	01. ⁸
+ 2.3 = S. walk	6.16	03. ⁹⁸
+ 7.3 = N. "	6.24	03. ⁸⁶
+ 9.8 = amt. cl.	6.25	03. ⁸⁹
gutter	4.9	03. ²
"	6.7	03. ⁴
c	6.5	03. ⁶
"	6.5	03. ⁶
gutter	6.5	03. ⁶
amt. cl.	5.68	04. ⁴⁶
+ 2.5 = S. walk	5.67	04. ⁴⁷
+ 7.5 = N. "	5.45	04. ⁶⁹
N	5.3	04. ⁸

126.7 E = Alley Ret. on N

N = N. end Ret. curb	4.51	05. ⁶³
amt. cl.	4.84	05. ³⁰
gutter	5.5	04. ⁶
"	5.3	04. ⁸
c	5.4	04. ⁷
"	5.9	04. ²
gutter	6.2	303. ⁹

310.14

Redwood

62

amt. cl.	5.55	304. ⁵⁹
+ 2.9 = N. walk	5.79	04. ³⁵
+ 7.9 = S. "	5.70	04. ⁴⁴
S	8.5	01. ⁹

137' E.

S	6.4	03. ⁷
+ 1.9 = S. walk	6.38	03. ⁸⁶
+ 6.9 = N. "	6.03	04. ¹¹
S + 9.8 = amt. cl. to west	5.58	04. ⁵⁶
S + 9.5 = " " to East	5.67	04. ⁴⁷
gutter	6.1	04. ⁰
"	5.6	04. ⁵
c	5.1	05. ⁰
"	4.9	05. ²
gutter	8.2	04. ⁹
cl. in alley next	4.7	05. ⁴
N	4.0	06. ¹

+ 43.2 E = W. end of walk ch. on N. at E. side of Alley Ret. in

No amt. cl.

N	3.7	06. ⁴
+ 2.5 = N. walk	4.04	06. ¹⁰
+ 7.5 = S. "	4.23	05. ³¹
amt. cl.	4.22	05. ³²
gutter	5.0	05. ¹
"	4.8	05. ³
c	5.0	05. ¹
"	5.5	304. ⁶

310.14

143.2 E con

gutter	6.0	304.1
S. ch + 0.6 = cont. ch.	5.67	04.47
" " + 3.4 = N. walk	5.48	04.46
" " + 8.1 = S. "	6.06	04.08
S	6.0	04.1

143.2 E

S	4.9	05.2
+ 2.2 = S. walk	E 4.86	05.28
+ 7.2 = N. "	W 4.94	05.20
	E 4.82	05.32
	W 4.66	05.48
+ 9.8 = cont. ch	4.78	05.36
gutter	5.4	04.7
"	4.9	05.2
c	4.4	05.7
"	4.2	05.9
gutter	4.4	05.7
cont. ch.	3.81	06.33
+ 2.5 = S. walk	3.73	06.43
+ 7.5 = N. "	3.56	06.58
N	3.2	06.9

175.2 E.

"	3.1	07.0
+ 2.5 = N. walk	3.24	06.90
+ 7.5 = S. "	3.45	06.69
cont. ch	3.47	06.67
gutter	4.1	06.0
"	3.8	306.3

310.14

Redwood

63

c	3.9	306.2
"	4.3	05.8
gutter	4.9	05.2
cont. ch	4.39	05.75
+ 2.5 = N. walk	row + 4.20	05.84
	to East 4.38	05.76
+ 7.5 = S. "	4.18	05.96
S	4.5	05.6

walk Busted

200.1 E

S	3.1	07.0
+ 2.5 = S. walk	3.33	06.81
+ 7.5 = N. "	3.49	06.65
cont. ch	3.66	06.48
gutter	3.9	06.2
"	3.3	06.8
c	3.1	07.0
"	3.1	07.0
gutter	3.3	06.8
cont. ch	2.90	07.24
walk O.K.		

230.1 E.

walk O.K.		
N. cont. ch.	2.15	07.99
gutter	2.5	07.6
"	2.4	07.7
c	2.4	07.7
"	2.6	07.5
gutter	3.3	307.8

31014

230' E. (con)

cmt el	3.03	307. ¹¹
1/2' N. of walk	2.90	07. ²⁴
+ 7.5' S. " "	2.78	07. ³⁶
S	2.6	07. ⁵
B.L. 7.5' E = W. line @ Kim ST. from North		
S	1.8	08. ³
+ 2.5' = S. walk	1.91	09. ²³
+ 7.5' = N. "	1.99	08. ¹⁵
cmt el	2.10	08. ⁰⁴
gutter	2.5	07. ⁶
"	2.0	08. ¹
c	1.8	08. ³
"	1.6	08. ⁵
gutter	1.8	08. ³
cmt el	1.18	08. ³⁶
N. on Rat	0.85	09. ²⁹
W. el		
N. cmt el	1.16	08. ³⁸
N. S. end Parmit on Quins	1.64	08. ⁵⁰
el	1.2	08. ⁹
"	1.4	08. ⁷
c	1.5	08. ⁶
"	1.8	08. ³
gutter	2.3	07. ⁸
S. cmt el	1.96	308. ¹⁸
walk O.K.		

310.14

Redwood

64

W 11/4

S. cmt el	1.90	308. ²⁴
gutter	2.3	07. ⁸
"	1.4	08. ³
c	1.3	08. ⁸
"	1.3	08. ⁸
el	0.9	09. ²
+ 7	0.9	09. ²
N. line on Parmit	1.17	08. ³⁷
E		
N. line on Parmit	0.98	09. ¹⁶
+ 3	0.7	09. ⁴
el	0.9	09. ²
"	1.1	08. ⁰
c	1.3	08. ⁸
"	1.7	08. ⁴
gutter	2.2	07. ⁹
S cmt el	1.84	08. ²⁸
E. 1/4		
S. cmt el	1.93	08. ²¹
gutter	2.2	07. ⁹
"	1.8	08. ³
c	1.4	08. ⁷
"	1.1	09. ⁰
el	0.7	09. ⁴
+ 8	0.7	09. ⁴
N. on Parmit	1.18	308. ³⁶

6.5' wide
1.5' el-s
8.75' 1/4s

310.14

N. on Parrot	1.42	308.72
N. cont. el.	0.93	09.21
el.	1.1	09.0
1/4	1.1	09.0
c	1.5	08.6
1/4	1.9	08.2
gutter	2.3	07.8
cont. el.	2.03	08.11

00 = E. line - G. K. 5T

S. cont. el.	2.13	08.01
gutter	2.8	07.3
1/4	2.2	07.9
c	1.9	08.2
1/4	1.6	08.5
+5	1.2	08.9
gutter	2.1	08.0
N. cont. el.	0.95	09.13

T.P., 0.35 309.78 0.71 309.43

50'E

N. cont. el.	2.27	07.51
gutter	3.1	06.7
1/4	2.9	06.9
c	2.9	06.9
1/4	3.3	06.5
gutter	3.7	06.1
S. cont. el.	3.18	306.60

Redwood.

65

309.78
100'E

S. cont. el.	4.72	305.06
gutter	5.5	04.2
1/4	4.9	05.9
c	4.5	05.3
1/4	4.5	05.3
gutter	4.7	05.1
N. cont. el.	3.91	05.87

150'E

N. cont. el.	5.62	04.16
gutter	6.4	03.4
1/4	6.0	03.8
c	6.1	03.7
1/4	6.3	03.5
gutter	6.7	03.1
S. cont. el.	6.25	03.53

200'E

S. cont. el.	7.71	02.07
gutter	8.1	01.7
1/4	7.7	02.1
c	7.5	02.3
1/4	7.4	02.2
gutter	7.9	01.9
N. cont. el.	7.38	302.40

309.78

2234' E = E. End cnt. walk + incl. on N.

N	7.7	302.8
+ 2.5 = N. walk	8.28	01.50
+ 7.5 = S. "	8.55	01.23
cnt. ch.	8.51	01.27
gutter	8.8	01.0
1/4	8.5	01.3
c	8.5	01.3
1/4	8.7	01.1
gutter	9.1	00.7
S. cnt. ch.	8.70	301.00
00 = 267.6' E. = W. Line = 31' ^{6.5' wide} St. 10' curb on W. to S.		
S. cnt. ch. at W. end Ret	9.79	299.99
S. " " on Return sunk	9.88	99.90
gutter	10.2	299.6
1/4	7.8	300.0
c	9.2	00.6
1/4	9.4	300.4
ch	10.0	299.8
+ 2	9.0	300.8
N.	9.1	300.7
10' E. = W. ch.		
N	9.9	299.9
+ 3	9.4	300.4
+ 9	9.5	300.5
ch	10.4	299.4
1/4	9.7	300.1

309.78

Redwood 64

8	9.5	300.3
4	10.0	299.9
ch	10.3	99.5
S. cnt. ch. Return	9.94	99.82
S. dirt gutter	10.8	99.3
22' E. = W. End of 9.7 at cnt. ch. on N. ^{Standard 8' curb} opening 2.0 shorter than curb ^{1/4 in let.}		
S	10.1	99.7
+ 7	10.0	99.8
ch	10.5	99.3
ch	10.1	299.7
c	9.7	300.1
1/4	10.0	299.8
gutter	10.9	298.9
N. cnt. ch.	9.75	300.03
+ 8	9.6	300.2
N.	10.5	299.8
32' E. = E. End above curb inlet		
N	10.5	299.8
+ 2	9.6	300.2
N. cnt. ch.	9.74	300.04
gutter	10.9	298.9
1/4	10.0	299.8
c	9.7	300.1
1/4	10.1	299.7
ch	11.0	298.8
+ 2	10.2	299.6
S	10.2	299.6

309.78'
00 = E. Line 31st St

S	12.0	297. ⁸
+2	10.1	99. ⁷
+9	10.3	299. ⁵
el	7.5	302. ³
114	10.8	299. ⁰
c	10.0	99. ⁸
14	10.0	99. ⁸
el	10.4	299. ⁴
+3	9.5	300. ³
N	9.5	00. ³

1" c on 9. el = 6" perpendicular 12" Pipe Culvert
The Curp inlet on this Pipe is N. & Tipped over
40' E. of 31st St

N	9.1	00. ⁷
+8	9.4	300. ⁴
el	10.0	299. ⁸
114	9.8	300. ⁰
c	9.9	299. ⁹
14	10.4	99. ⁴
el	10.9	98. ⁹
+3	10.1	99. ⁷
S	10.5	99. ³

62.6 E. of 31st = W. End curp el. + walk on N.

S	10.3	99. ⁵
+8	9.9	99. ⁹
el	10.6	299. ²

309.78'

Redwood

67

14	7.8	300. ⁰	
c	9.3	00. ⁵	
114	9.5	00. ³	
gutter	9.4	00. ⁴	
ent el	8.60	01. ¹⁸	
+4.0 = S. edge ent walk	8.45	01. ³³	
+9.0 = " " " "	8.36	01. ⁴²	
N	8.2	01. ⁶	
T.P. 1.81	303.03	8.56	301.22

113.6 E of 31st = N. End curp walk + el on S.

N ent. el.	1.22	01. ⁸¹
gutter	1.9	07. ¹
114	2.0	01. ⁰
c	2.1	00. ⁹
114	2.2	00. ⁸
gutter	2.9	00. ¹
S. ent el	2.17	00. ⁸⁶
+4.0 = N. edge walk	2.05	00. ⁹⁹
+9.0 = S. " "	1.91	01. ¹²
S	2.2	00. ⁸

122.5 E = W. of return of 15 1/2 Alley to North

S. ent el	2.18	00. ⁸⁵
gutter	2.8	00. ³
114	2.1	00. ⁹
c	2.1	00. ⁹
114	2.0	301. ⁰

303.03
122.5 E. (Con)

gutter	1.8	301.2
N. cont. ch	1.18	01. ⁸⁵
N = N. End Alley Ret	1.01	02. ⁰²
137.5 E = E. Alley Ret		
N = N. End Alley Ret	1.25	01.78 ⁴
cont. ch	1.37	01. ⁶⁶
gutter	2.1	00. ⁹
"4	2.2	00. ⁸
e	2.1	00. ⁹
"4	2.3	00.7
gutter	2.8	00.2
S. cont. ch	2.27	00.76
162.5 E = 100' W. of Herman		
S. cont. ch	2.62	300. ⁴¹
gutter	2.3	299.7
"4	2.9	300. ¹
e	2.6	00.4
"4	2.7	00. ³
gutter	2.6	00.4
N. cont. ch	1.87	01. ⁴⁶
182.5 E = 80' W. of Herman		
N. cont. ch	2.47	300. ⁵⁶
gutter	3.2	299. ⁸
"4	3.2	99. ⁸
e	3.2	99. ⁸
"4	3.4	299. ⁶

303.03

Redwood

68

gutter	3.81	299. ²
S. cont. ch	3.14	99. ⁸³
202.5 E = 60' W. of Herman		
S. cont. ch	3.82	99. ²¹
gutter	4.4	98. ⁶
"4	4.1	98. ³
e	3.81	99. ²
"4	3.9	99. ¹
gutter	4.1	98. ³
N. cont. ch	3.26	99. ⁷⁷
222.5 E = 40' W. of Herman		
N. cont. ch	4.29	98. ⁷⁴
gutter	5.0	98. ⁰
"4	4.9	98. ¹
e	4.7	98. ³
"4	5.0	98. ⁰
gutter	5.4	97. ⁶
"4	4.72	98. ³¹
262.5 E = W. line of Herman <small>68' width 10' chs 1125 ft</small>		
S. cont. ch	6.97	96. ⁰⁶
gutter	7.3	95. ⁷
"4	6.7	96. ³
e	6.7	96. ³
"4	6.8	96. ²
gutter	7.4	95. ⁸
N. cont. ch	7.04	295. ³⁹

303.03

T.P. 1.61 299.33 5.31 297.72

W. ch. of Herman

TopHudt r.e.
Redwoods Herman

N. line N. End ch. ret	3.15	296.18
" " S. " paving	3.86	295.47
ch	3.7	295.6
"4	3.6	295.7
e	3.4	295.9
"4	3.3	296.0
gutter	3.2	295.4
S. end ch	3.47	295.86
W. "4.		
S. end ch.	3.66	295.67
gutter	4.2	295.1
"4	3.7	295.6
e	3.8	295.5
"4	3.7	295.4
ch.	3.9	295.4
N. on Parmit.	3.80	295.53
E		
N. on Parmit	3.89	295.44
ch	4.1	295.2
"4	4.2	295.1
e	4.0	295.3
"4	4.0	295.3
gutter	4.3	295.0
S. end ch.	3.80	295.53

299.33

E. "4

Redwoods

69

S. end ch	4.00	295.33
gutter	4.5	294.8
"4	4.2	295.1
e	4.3	295.0
"4	4.3	295.0
ch	4.2	295.1
N. on Parmit	4.18	295.15
E. ch		
N. on Parmit	4.64	294.65
N. on end ch R.?	4.12	295.14
ch	4.9	294.4
"4	4.6	294.7
e	4.6	294.7
"4	4.5	294.8
gutter	4.8	294.5
S. end ch	4.18	295.15
S. line Herman		
S. end ch	4.29	295.04
gutter	5.0	294.3
"4	4.6	294.7
e	4.7	294.6
"4	4.8	294.5
gutter	5.1	294.2
N. end ch.	4.41	294.92

299.33

50.95 E. of Herman = L pt. in both N. & S ch. Lines

N. curb. at A	4.98	294.35
gutter	5.7	93.6
" "	5.6	93.7
C	5.4	93.9
" "	5.4	93.9
gutter	5.5	93.8
E. curb. at A	4.91	94.42
35' E. of A in case = W. End Bridge		
S. ch	5.44	93.89
gutter on emb. abutment of bridge	5.72	93.56
" " " " " "	5.70	93.63
gutter " " " " " "	5.77	93.56
N. emb. ch.	5.38	93.95

E. End curb Inlet (see Plat)

emb. ch.	5.25	94.09
gutter Lip of intake	6.10	93.23

W. End ch. inlet (see Plat)

emb. ch.	5.10	94.23
gutter Lip of intake	5.99	93.34

T.P. 12.93 311.55 0.71 298.62

T.P. 7.72 319.09 0.18 311.37

check on B.M. N.W. 33rd + Redwood 7.34 311.75 = 311.61

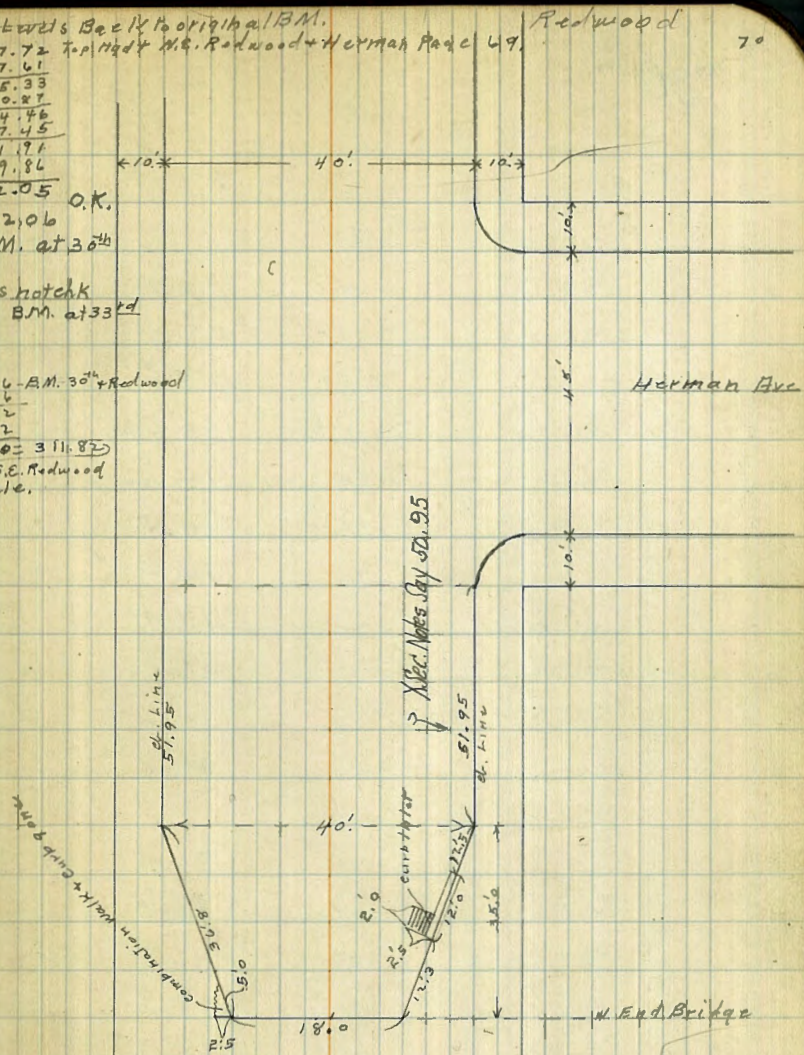
312.00	311.75
311.82	311.61
0.18	0.14

B.M. at 30th + Redwood 150.8 Higher than Redwood + Dale" " " " " " 150.4 " " + 33rd

297.72 Top 173rd + W. Redwood + Herman Page 69
 7.61
 305.33
 0.27
 304.46
 7.45
 311.91
 9.86
 302.05

O.K.
 302.06
 B.M. at 30th
 does hatch
 with B.M. at 33rd

302.06 - B.M. 30th + Redwood
 12.06
 314.12
 2.12
 312.00 = 311.82
 B.M. S.E. Redwood
 + Dale.



Redwood

70

Taylor St Gourd Sections
S.L. Hickory NE

100' side
10' Cb
17' 9" S

S.W. 2nd
Taylor Bridge

BM	212	28.32	2014	
				S.L. Hickory
H		15.6	12.7	Hickory 100' side 10' Cb
Cb		15.0	13.3	
1/4		14.7	13.6	
+15 = Edge Parings		14.62	13.64	
1/2 on "		14.16	14.16	
+8 = Edge "		13.89	14.43	
1/4		13.5	14.8	
+12		12.1	15.9	
Cb		22	26.1	
+13		+16.3	34.6	
F		+15	34.8	
				S.C.H.
F		+61	34.4	
+9		-23	26.0	
Cb		59	22.4	
+10		14.7	16.6	
1/4		12.6	15.7	
+10 = Edge Parings		13.91	14.58	
1/2 on "		13.98	14.33	
+14 = Edge "		14.63	13.69	
1/4		14.5	13.8	
Cb		14.9	13.4	
H		15.0	13.3	

71
18.7.27

28.32

S.L. Hickory

		14.6	13.7
		14.3	14.0
+1 = Hickory Top		14.51	13.81
+16 = Edge Parings		14.98	13.84
1/4 on "		13.64	14.68
+5 = Edge "		13.45	14.87
1/2 "		12.5	15.8
+8		10.0	18.3
+10		6.6	21.7
Cb		0.7	27.6
+9		+23	30.6
F		+22	37.5
			H.C.B.
F		+10.1	38.4
+7		+5.0	33.3
Cb		+1.2	29.5
+6		-0.2	27.4
+10		-2.2	19.4
1/4		14.7	16.6
1/2 = Edge Parings		13.33	14.99
1/4 on "		14.15	14.17
+6 = Edge "		14.34	13.96
Cb		13.9	14.4
H		14.0	14.3
			S.L. Hickory

88.32

N	12.8	14.5
cb	13.8	14.5
+7 = Edge Paring	14.12	14.20
1/2 on	12.82	14.50
+13 = Edge	13.21	15.11
2	12.0	15.3
1/4	11.0	17.3
+13	5.9	22.4
cb	-9.2	28.1
E	+14.9	43.2
+6 = Top Cut	12.25	50.8

25' of H.L. Hickory

E = Top Cut	+27.1	55.9
+3	+16.5	44.8
cb	+6.4	34.7
+3	+5.0	33.3
+6	-2.3	26.0
1/4	-9.3	19.0
+3	11.4	16.9
2 on Old Paring	12.3	16.0
1/4 = Edge Old Paring	13.21	15.28
cb	13.48	14.84
+8 = Edge Old	13.50	14.82
N	12.3	15.0

45' of H.L. Hickory

88.32

N on Paring	12.62	15.70
cb " "	12.65	15.67
+4 = Edge Old Paring	12.60	15.72
1/4 on Old	12.1	16.2
+14 = Edge " "	11.70	16.62
2	11.7	16.6
1/4	11.2	17.2
cb	7.0	24.3
+3	-1.5	26.8
+9	+19.6	47.9
E = Top Cut	22.0	56.3
	56.17	
+15 = Top Cut	+27.1	55.4
-4	+19.8	48.1
E	+18.6	40.9
TP	23.7	23.40
+10	0.0	23.40
TP	1.16	24.52
	3.34	24.06
cb	3.4	21.1
+5	7.2	17.3
1/4	9.0	15.5
2	7.9	16.6
+5 = Edge Old Par.	7.79	16.73
1/4	8.1	16.4
cb	8.4	16.1
+4 = Edge Par	8.49	16.03

24.52

H		842	16.10
	75H		
H		752	17.00
cb		799	16.55
H		774	17.1
+2 - Edge Old Pav.		710	17.12
2		81	16.4
H		88	15.7
cb		59	18.6
F		115	26.0
	100H		
F		114	23.1
+1		40	20.5
cb		15	19.0
+12		87	15.8
H		87	15.8
2		87	15.8
HP	9.18	14.82	885
H		79	16.9
+11 - Edge Old Pav.		713	17.69
cb		762	17.60
H		778	17.04
	125H		
H	on old Pav. on 2	653	18.29
+8	Edge	652	18.30
cb		74	17.4
H		83	16.5

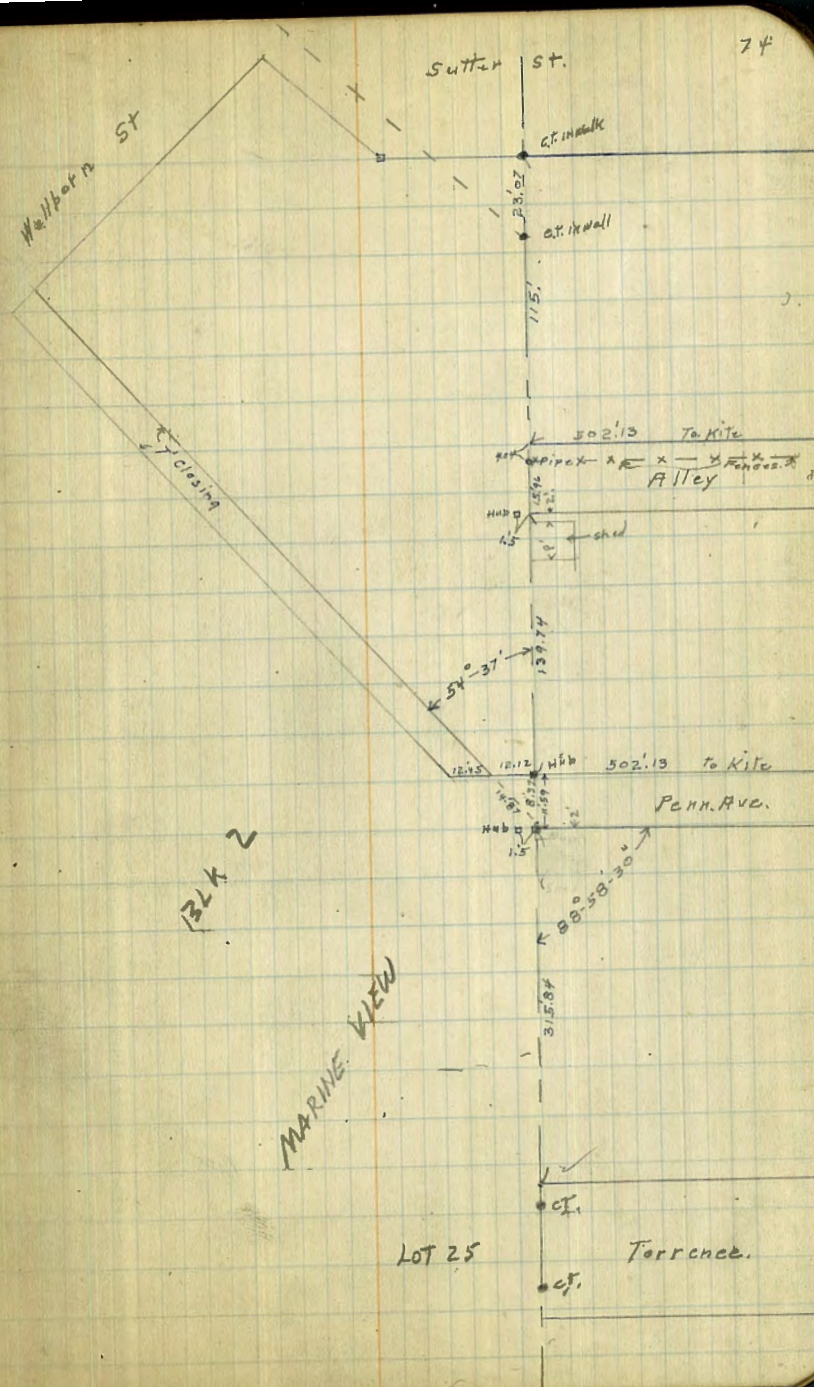
24.82

2		94	15.4
H		95	15.3
cb		87	16.1
+1		73	17.57
F		26	22.2
	150H		
F		64	16.4
+9		94	15.3
cb		100	14.8
H		99	14.9
2		95	15.3
H		70	15.8
cb		86	16.2
H		80	16.8
	175H		
H		96	15.2
cb		98	15.0
H		98	15.0
2		95	15.3
H		96	15.2
cb		105	14.3
+9		106	14.6
F		83	16.5
BN		468	20.4

SW Cor
Bridge

Levels for Proposed Drain & 4' Easement East
of N. Line P.L. 1122 from Alley N. of Penn Ave
South To Penn. Ave

B.M.	6.06	275.44	269.38	N. of Sutter on Middleton Line
N. Line Alley		2.8	272.6	
N. 4' Easement of Improvement		3.6	271.8	
Alley		4.1	271.3	
005 = S. Line of Alley		4.6	270.8	
0+25 S		6.1	269.3	
0+50		6.8	268.6	
0+75		6.6	268.8	
T.P.	3.01	272.18 272.15	269.17 269.14	W. M.B.
1+00		3.0	269.2	
1+25		3.0	269.2	
1+35		3.0	269.2	
1+39.74 N. Line Penn Ave		4.80	267.4	Point



Walker
Rippling
Shawl
Shawl
3-22-28

Location SAN DIEGO + Los Angeles
Highway Thru Blks. As per sketch.

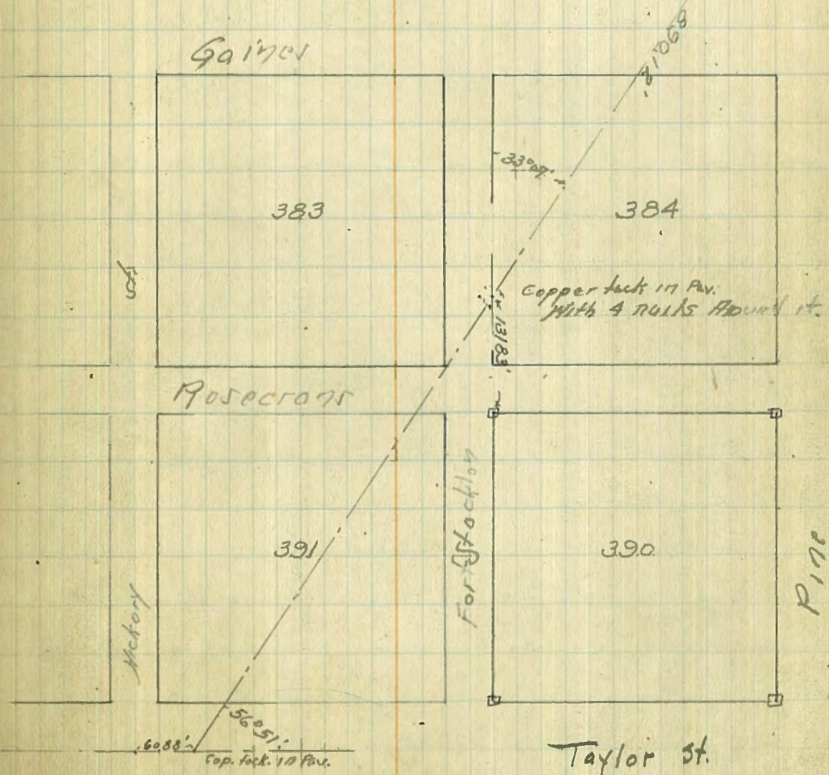
75

{ \square = 2" x 2" Redwood hubs & Highway

7°24'30"

4 Nail Around Copper tack.
Nail on Intersection in Pav.

Los Angeles + San Diego Highway



Survey to locate lines of Torrence St.
 W. of Renard Way. - 2-7+50

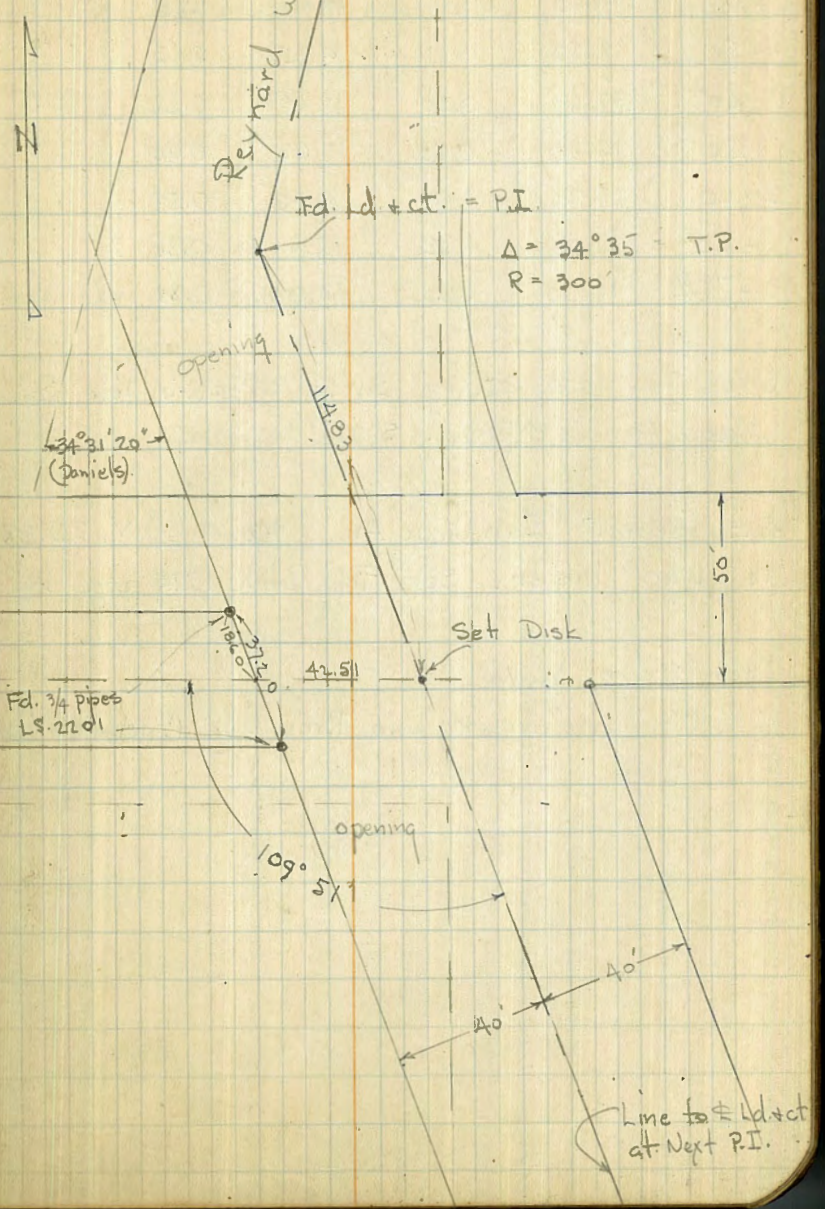
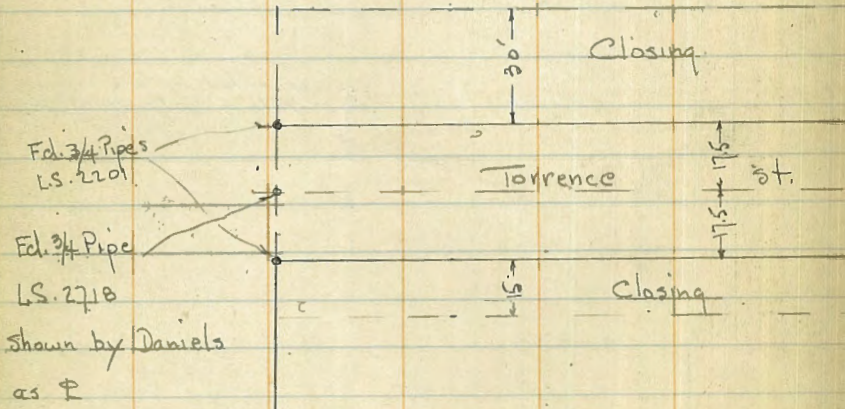
4195
 W.O. 20008

INDEXED
 W.K.
FEB 8 1950

Osborne
 Hatch
 Shepard

Refer to Survey by Daniels
 in 1940 -
 T.P. Sheet 451

C.E.L. of Marine View



Grades on N Side SAN DIEGO AVE. between
Mason and Wallace Streets

STA.	Est. Grade	Curb C	Property Est. Grade	C
0+00	19.40	0.81	19.96	1.30
+50	18.53	0.41	19.05	0.63
1+00	17.67	0.30	18.14	0.56
+50	16.80	0.60	17.23	0.90
2+00	15.93	1.01	16.32	0.53
+50	15.06	1.32	15.41	0.80
3+76 ⁵⁰	14.60	1.60	14.93	0.88

Used for B.M. 22.599 SW. R.R. Spk. in Pole San
Diego Ave. & Mason. Should be 21.350

SE Hydrant San Diego Ave. & Mason B.M. 25.58
is 1.30' higher. See Field Book 1219 page 19

Javn Str. & Wallace

SE. Cor. inside Property Line Brass Plug Concrete Mon.

JAEGER }
Bailey } April 5th 1918
Claret }

77

SE. Cor. Washington Square

SW. Corner Washington Square.

22.599	14.415	22.599 B.M.
21.350	+ 7.89	+ 1.61
1.249	19.305	24.209
	- 1.170	- 7.11
	18.135	17.099
	+ 7.20	+ 4.61
	25.335	21.709
	- 3.985	- 5.80
	21.350	15.909
		14.415
		1.494

14.415

Calhoun St

From 100' E of Mason to 100'
W. of Wallace 4/28/28

S Prop Line Elev	E Elev	N Prop Line Elev
0+00	26.5	28.0
0+50	24.7	25.7
1+00	23.3	24.2
1+55	21.6	22.6
2+00	20.0	20.7
2+50	19.5	19.7
3+00	17.2	18.6
+	16.0	17.0
4+00	14.9	15.7
4+15	14.2	15.3
4+5	13.4	14.2
5+00	13.6	13.5
450.11	13.5	12.8
6+00.11	13.5	11.8
+	12.5	10.9
7+00	11.3	10.1

These are capped levels not grades M.B.

Plotted 4/30/28

T.G.H.

E Prop Line Mason St
W. " " " "

E Prop Line Wallace St on South
W. " " " " "

E Prop Line Wallace St on North
W. " " " " "

M.B.

Mason St Levels

From S.D. Aveto
100' N of Calhoun

4/28/28

W Prop. Line Elev	E Elev.	E Prop. Line Elev.
0+00 19.05	19.40	19.87
+42.63 20.1	20.5	21.4
1+00 20.6	21.2	22.2
150 21.1	22.0	22.9
+72.63 21.4	22.2	23.3
+97.63 21.9	22.5	23.2
2+50 23.7	23.7	23.9
3+00 24.7	24.7	24.6

S Prop Line Calhoun St
 E Calhoun St.

Plotted 4/28/28
 T.G.H.

Wallace St Levels

From S.D. Ave. to

81

Calhoun St.

4/28/28

	E. Prop Line Elev.	Elev.	W Prop. Line Elev.
0+00	14.66	14.37	14.74
+34.69	14.3	14.7	14.6
+50	14.4	14.5	14.6
1+00	14.2	14.1	14.6
+50	13.8	13.7	14.7
+64.69	13.4	13.6	14.3

N Edge Paving S.D. Ave.

N Prop Line " " "

S. Prop Line Calhoun St.

Plotted 4/30/28

T.G.H.

ENGINEERING DEPARTMENT,
CITY OF SAN DIEGO,
CALIFORNIA.

Grade book 110 - out
T.P. Book 2 - out
T.P. Book 5 - out
~~F.B. 1219 - out~~

350	7.79	8.75	75
3.86	8.12	4	60
7.16	15.82	35.00	135
3.58	7.91		

7.16	3.77	12.89
7.61	4.33	8.48
14.77	8.10	1.15
8.51	4.05	1.23
		7.92

290	188	78.46
2676	65	70.91
22.4	123	7.75
9.7		
3.21		

65.00	89.60
32.10	39.07
32.9	50.53
95.5	
32.9	
62.6	
60.	
122.5	
15	
137.5	
25.	
162.5	
4.13	
406	
7	

881.03
0.65
881.68
13.05
75.60
0.29
75.89
12.78
63.11
0.46
63.65
12.85
50.80
3.72
54.52
11.56
42.96
3.51
46.47
4.35
42.12
10.50
51.59
0.19
52.40
12.64
65.09
1.06
64.03

36.8
24.5
12.3