

1239

MICROFILMED

DEC 22 1964

ENGINEERING DEPARTMENT
CITY OF SAN DIEGO,
CALIFORNIA.

No. 380 7/15/20-44

ENGINEERING DEPARTMENT
CITY OF SAN DIEGO,
CALIFORNIA.

Our Leather Bound Engineers Note Books are carried in the following rulings:

- No. 380 LEVEL BOOK. Left and Right Hand Page the same as Left Hand Page of this Book.
- No. 382 FIELD BOOK. Left Hand Page as in this Book, Right Hand Page 4 x 4 to the inch, Center Line Red.
- No. 384 MINING TRANSIT BOOK. Left Hand Page as in this Book, Right Hand Page 8x8 to the inch, Center Line Red.
- No. 385 FIELD BOOK. Left Hand Page as in this Book, Right Hand Page 8 vertical and 4 horizontal lines to the inch, Center Line Red.

We also carry the Note Books listed above, bound in extra strong Fabri-Hide (otherwise the same quality of book), which can be furnished at a somewhat lower price.

In ordering Fabri-Hide covered books, add the letter "F" to catalog number.

THE FREDERICK POST CO.
ENGINEERING and DRAFTING SUPPLIES
IRVING PARK STATION
CHICAGO, ILL.

X	63 rd St. imperial to Bach -	1 - 22
"	Brooklin - 62 nd to 66 th	23 - 46
"	Klauber - Bach to 69 th	47 - 78
	Levels for Water Tank - Lots 42-60	79

No. 2 in 10 pp 80 7/5/20-11/11

63rd St. Cross Sections
Imperial to Bach

60' wide
10' cbs
10' qts

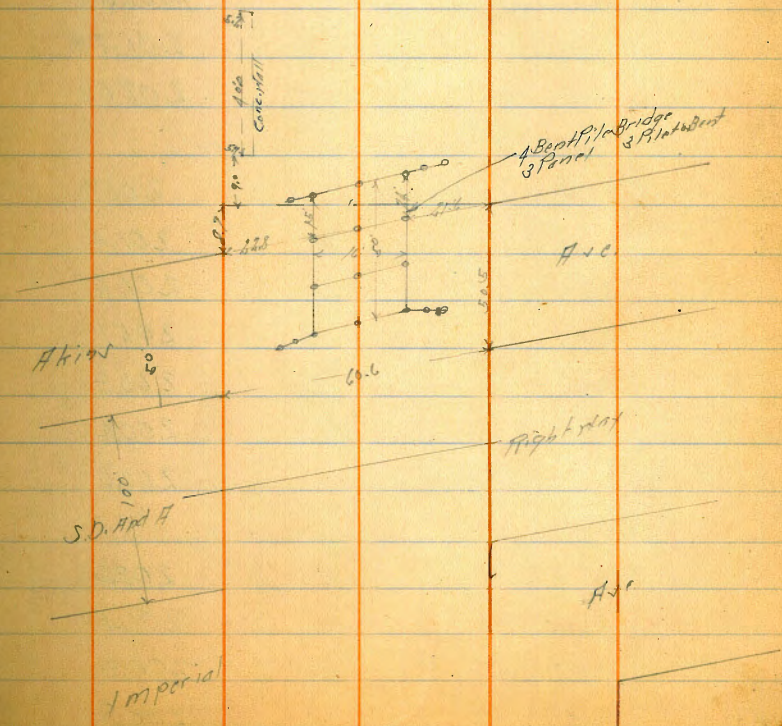
B.M.	12.92	200.48		187.56	HT RR Sp. 1 skins + 62'
TP	10.50	210.70	0.26	200.22	
TP	6.03	212.34'	3.41	207.31	SET up H. 10'
B.M.			0.86	212.98	Imperial 10.50'
N.L. Imperial on Diagonal Col.					
F			68	206.5	
cb			68	206.5	
1/4			69	206.4	
2			72	206.1	
15			75	205.8	
1/4			56	207.7	
cb			53	208.0	
1/4			52	208.1	
30' N of N.L. Imperial on Diagonal Col.					
1/4			76	205.7	
cb			79	205.4	
15			85	204.8	
1/4			98	203.5	
2			103	203.0	
1/4			102	201.1	
cb			98	203.5	
F			84	204.9	
10' N					
F			106	202.7	
cb			106	202.7	

Plotted
3-20-1928
C.B.H.

2-11-28
S. 100
K. 100
D. 100

B.M. 0.64 213.62 212.98
E.L. 5.32 208.30
W.L. 6.34 207.28

This height has been lowered
Now Elev = 212.62 (C.B.H. 3-18-46)
ENG'G DEPARTMENT,
SAN DIEGO,
CALIFORNIA.



213.34

1/4	11.4	201.9
1/2	11.5	204.8
1/4	13.0	200.3
cb	13.1	200.2
H	13.3	200.0

50'H = 2 S.A.H.P.P.

H on Top Rail	12.50	200.84
cb	12.31	201.03
1/4	12.15	201.19
1/2	11.91	201.43
1/4	11.70	201.64
cb	11.56	201.78
F	11.32	202.02

60'H on Diagonal 60.6

F	12.0	201.3
cb	11.9	201.4
1/4	12.1	201.7
1/2	12.2	201.1
1/4	12.4	200.9
cb	12.9	200.4
H	13.3	200.0

63'H on Diagonal 60.6

H	11.2	202.0
cb	11.9	201.4
1/4	12.4	200.9
1/2	12.4	200.9

213.34

1/4	12.2	201.1
cb	12.4	200.7
F	11.2	201.5

78'H on Diagonal 60.6

F	11.1	202.1
cb	12.2	200.0
1/4	13.4	199.9
1/2	13.3	200.0
1/4	13.5	199.8
cb	12.6	200.7
H	11.7	201.6

0.89

201.12 130.5 200.29

90'H on Diagonal 60.6

H	6.6	194.6
cb	4.7	196.5
1/4	1.6	199.6
1/2	1.7	199.5
1/4	1.8	199.4
cb	1.8	199.4
F	0.3	200.9

100'H = S.L. Atkins on Diagonal 60.6

F	2.3	198.9
cb	3.4	197.8
1/4	1.9	199.3
1/2	2.4	198.8
1/4	3.0	198.2

Atkins
50.00 mile
10.10 Ch
1979/80

201.18

cb	69	1943
N	87	1925
+10	94	191.8
+20	112	190.0
K of S. L. H. Inc		
-20	123	188.9
N	121	189.1
cb	113	199.9
1/4	46	196.6
+5	26	197.6
2	27	197.5
1/4	23	198.9
cb	23	197.9
+5	57	196.0
F	53	195.9
+10	53	198.0
S. C. B.		
-10	57	195.5
F	66	194.6
cb	45	196.7
1/4	26	198.6
2	30	198.2
+7	30	198.2
1/4	49	196.3
cb	98	191.4
N	121	189.1

201.18

+20	122	188.0
S. L. H. Inc		
-20	120	188.2
N	132	188.0
cb	133	187.9
1/4	125	188.7
12	123	188.9
24.5 = S. L. H. Inc	24	197.8
2	3.1	197.6
1/4	28	198.4
cb	57	195.5
F	76	193.6
+10	68	194.4
S. H. H. Inc		
-10	83	192.9
F	87	192.5
cb	79	193.3
1/4 = S. L. H. Inc	26	197.6
+20	135	187.7
2	135	187.7
1/4	136	187.6
cb	135	187.7
N	132	188.0
+20	129	188.3
S. L. H. Inc		
-20	129	188.3

201.18

H	13.0	188.2
cb	13.3	187.9
1/4	13.2	187.4
1/2	13.8	187.4
1/4	13.8	187.4
cb	14.5	186.7
F	14.5	186.7
+20	13.8	187.4

1cb

-20	13.1	188.1
F	13.2	188.0
cb	13.1	188.1
1/4	13.2	188.0
1/2	13.0	188.2
1/4	13.2	188.4
cb	13.3	188.9
H	13.3	188.9
+30	13.2	188.3

H. Akins on Didgeed Co. 5

-20	12.5	188.7
H	12.1	189.1
cb	12.2	189.0
1/4	11.8	189.4
1/2	11.6	189.6
1/4	11.3	189.9
cb	11.4	189.8

01.2

F	11.3	189.9
+20	11.2	189.4

H. Akins on S 87th of 1/4 and

Co. 5 side

-20	11.8	189.4
F	11.2	189.9
cb	11.3	189.9
1/4	11.2	190.0
1/2	11.1	190.0

1/4	11.2	189.3
cb	12.5	188.7
H	12.4	188.8
+1	8.1	193.1
+20	10.0	191.2

5/2

-10	9.8	191.4
H	9.6	191.6
cb	9.2	191.9
1/4	6.7	194.5

+1	12.3	188.9
1/2	11.9	189.3
1/4	11.5	189.7

cb	10.8	190.4
F	10.8	190.4
+20	11.2	190.0

204

-20	10.5	190.7
-----	------	-------

201.18

-10	10.9	1903
F	11.8	1894
cb	11.0	1902
1/4	11.4	1898
11 = 1st Cor. 95. on Floor	8.7	1975
1/2	9.1	1971
+8	9.3	1969
1/4	5.9	195.3
cb	9.6	191.6
+13 on Top Cox Wall	6.9	1942.8
X	9.4	191.8
+10	9.7	191.5
-10	9.9	191.3
X	9.8	191.4
cb	9.9	191.3
1/4	7.5	193.7
+3	6.3	194.9
1/2	5.9	195.3
1/4	6.0	194.2
cb	8.6	192.6
F	8.2	192.0
+10	8.5	192.7
+20	10.1	191.1
TP	8.6	192.5

35' N

552 192.57

50' N

25' N - 1st. Paper Trail
15' E of N. 6

↓

198.04

-10	5.0	193.0
F	5.0	193.0
cb	5.1	192.9
+3	5.4	192.6
1/4	4.6	193.4
1/2	4.4	193.6
1/4	5.2	192.8
cb	6.6	191.4
11	6.8	191.2
+10	7.0	191.0
-10	6.8	191.2
X	6.7	191.3
+5 = 1st Floor	6.3	191.7
cb	6.2	191.8
1/4	5.6	192.4
1/2	5.1	192.6
cb	5.5	192.5
F	5.9	192.6
+10	5.3	192.7
-10	5.6	192.4
F	5.7	192.3
cb	5.9	192.1
1/4	5.8	192.2

75' N

100' N

1980f

2		56	1924
4		58	1922
cb		54	1926
+6	-N.P.C.		
H		60	1920
7.0		63	1917
	1850 N		
-10		71	1934
H		71	1936
+4.5	-N.P.C. Fence		
cb		51	1929
7/8		53	1927
2		53	1927
7/8		53	1928
cb		53	1928
F		47	1933
+10		47	1933
	205 N		
-10		40	1940
F		46	1934
cb		45	1935
7/8		48	1932
2		48	1932
7/8		47	1933
cb		47	1933

+5.5 - N.P.C. Fence

1924

1922

1926

1920

1917

1934

1936

1929

1927

1927

1928

1928

1933

1933

1940

1934

1935

1932

1932

1933

1933

172 N = Lg. Prop. Trac
9' N of E.L.248 N = Lg. Prop. Trac
10' N of E.L.237 N = Lg. Prop. Trac
10' N of E.L.2.6.28
5:00
8:50
10:00on Top Water
85' Post
305' N on E

1980f

H		50	1920
+10		51	1919
TP	423	202.71	026
		250 N	197.72
H		93	1934
cb		87	1940
7/8		84	1943
2		87	1940
7/8		86	1941
cb		85	1942
F		85	1942
	200 N		
F		77	1950
cb		75	1952
7/8		74	1953
2		73	1944
7/8		77	1950
cb		77	1950
H		83	1944
	250 N		
H		65	1962
cb		66	1961
7/8		60	1967
2		59	1968
7/8		60	1967
cb		62	1965

63rd St

202.71

375' N

100' N

1233

125' N

66

15

45

45

52

49

49

50

44

40

08

10

12

24

22

23

29

20

16

16

079

92

94

100

196.1

198.2

198.2

198.2

197.5

197.8

197.8

197.7

198.3

198.7

201.9

202.7

201.5

200.3

200.5

200.4

199.8

200.7

201.1

201.1

201.92

205.0

204.9

204.3

303' N on FL
Garage Dirt Fine
56 197.1

214.25

150' N

175' N

46

4

6

2

75

06

11

11

11

06

45

15

14

2

4

4

4

45

06

1

1

1

06

16

17

12

2

11.2

10.6

10.0

10.2

87

87

84

51

52

51

61

58

59

65

66

66

60

58

51

18

18

19

22

21

3.0

27

203.1

203.7

204.3

204.1

205.6

205.6

205.9

209.2

209.1

209.2

208.2

208.5

208.4

207.8

207.7

208.3

208.5

208.9

212.5

212.4

212.1

210.7

211.3

211.6

7

134' N on FL
Circ Walk
283 = 206.42

145' N - Pepper Tree
NE of 226

21125

F	74		81	211.7
	74		83	211.0
F	76		82	212.1
cb	cb		83	212.0
77	7		80	212.3
+8	7P	1307	040	21385
74		560N		
8	H		120	214.9
74	76		119	215.0
cb	cb		115	215.4
H	74		115	215.4
	76		125	214.4
H	74		120	214.9
cb	8		119	215.0
74	74		119	215.0
8	74		121	214.8
74	75		118	215.7
74	cb		108	216.1
+5	F		107	216.2
cb		575N		
F	F		68	220.1
7P	cb		73	219.6
	76		75	219.4
F	77		82	218.7
cb	74		86	218.3
75	8		83	218.6

22692

74			85	218.4
75			91	218.8
77			82	218.7
cb			83	218.6
75			87	218.2
78			87	218.2
H			94	217.5
		550N		
			58	221.1
			51	221.5
			56	221.3
			51	221.8
			50	221.9
			58	221.1
			51	221.8
			41	222.3
			45	222.1
			47	222.2
			39	223.0
			35	223.4
			38	224.1
		575N		
			0.0	226.9
			0.0	226.9
			0.6	226.3
			1.4	225.5

22692

1/1	1.3	2 25.6
2	1.3	2 25.6
1/1	1.9	2 25.0
+5	2.9	2 24.0
+6	1.9	2 25.0
cb	2.1	2 24.8
+5	2.3	2 24.6
W.	2.2	2 24.7
TP	12.92	239.14
	076	226.16

600 N

N	10.9	2 28.2
cb	11.0	2 28.1
+5	11.3	2 27.8
+6	12.0	2 27.1
1/1	11.2	2 27.9
2 2	10.6	2 28.5
1/1	10.8	2 28.3
+3	10.7	2 28.4
+4	10.0	2 29.1
cb	9.6	2 29.5
EF	8.5	2 30.6

675 N

F	6.1	2 33.1
+6	6.9	2 32.8
cb	7.0	2 32.1
+6	7.3	2 31.8

607 N - 232.95
325.00677 N - 232.95
615 = 232.95

23914

+7	7.8	2 31.3
1/1	8.2	2 30.9
2	7.8	2 31.3
1/1	8.1	2 30.7
+3	7.0	2 29.9
+5	8.1	2 30.7
cb	8.1	2 30.7
N	8.5	2 30.6

650 N

N	5.1	2 33.9
cb	5.2	2 33.9
+6	4.9	2 34.2
+7	5.7	2 33.4
1/1	5.1	2 34.0
2	4.1	2 34.7
1/1	4.1	2 34.7
1/1	4.1	2 35.0
+6	2.5	2 35.6
cb	3.1	2 36.0
F - Dist Drive	3.3	2 36.3
TP	12.77	251.4
	017	232.97

675 N

F	12.3	2 39.4
cb	12.2	2 39.5
+3	12.8	2 38.9
+6	12.8	2 38.9

251.74

17	128	2 37.9
14	121	2 38.1
14	121	2 38.1
14	140	2 37.7
14	151	2 36.6
16	139	2 37.8
cb	140	2 37.7
11	145	2 37.2

700

11	107	2 41.0
15	100	2 41.7
cb	100	2 41.7
15	99	2 41.8
16	110	2 40.7
14	100	2 41.7
14	99	2 41.8
14	101	2 41.6
+3	104	2 41.3
14	91	2 42.3
cb	90	2 42.7
1	98	2 42.5

72511

1	63	2 45.4
cb	62	2 45.5
17	63	2 45.4
+8	72	2 44.5

251.74

14	69	2 44.9
14	68	2 44.9
14	70	2 44.7
14	75	2 44.2
14	69	2 44.8
cb	69	2 44.8
11	65	2 45.2

7504

11	65	2 48.2
15	39	2 47.8
cb	48	2 47.9
15	37	2 48.0
18	45	2 47.2
14	43	2 47.4
14	39	2 47.8
14	41	2 47.6
13	41	2 47.3
14	47	2 48.0
cb	35	2 48.2
1	35	2 48.2

77511

1	07	2 51.0
cb	03	2 51.4
16	06	2 51.1
17	16	2 50.1
14	12	2 50.5

26470

27718

W		0.6	2641		+5		5.8	2714
cb		0.8	2638	✓	cb	S	5.3	271.9
+5		1.5	2632	9027 - Olive Tree 10/11/51	+8		6.4	2708
+6		2.0	2627		1/4		6.4	2708
1/4		1.7	2630		1/2		6.4	2708
1/2		1.1	2636		1/4		7.0	269.2
1/4		1.2	2634		+5		7.2	2690
+3		2.0	2627		cb		7.2	2700
+1		1.2	2635		F		7.3	269.9
cb		1.1	2636		BM	10.1	5.77	271.1
F		1.3	2634					
TP	12.13	27718	26155					
	925H							
F		11.5	2657	926H - Olive Tree 10/11/51			11.0	271.0
cb		10.8	2664	✓	cb		11.1	2709
+6		10.9	2663		1/4		10.7	2713
+7		11.7	2655		1/2		10.0	2720
1/4		11.0	2662	947 - Olive Tree 11/11/51	1/4		10.0	2720
1/2		10.6	2666	✓	+5		10.0	2720
1/4		10.9	2665	947 - Olive Tree Cone 07	cb		9.5	272.5
+3		11.0	2662	120 27038	1/4		9.5	272.8
+5		10.3	2669					
cb		9.7	2675					
1/4		9.5	2677					
	968H - S.L. Bractiva			Bractiva 60/10/51 10/10/51 10/20/51				
1/4		5.4	2718				8.9	273.1
							8.9	273.2
							8.9	273.6
							9.0	273.0
							9.4	272.6

SETOP 1/12
Bractiva not used

294.69

294.69

N	129	281.8
cb	124	282.3
1/4	118	282.9
8	111	283.1
1/4	118	282.9
+6	124	282.3
+7	116	283.1
cb	119	282.8
F	119	282.8

F	55	289.2
125'H		
	21	292.6
	20	292.7
	20	292.7
	27	292.0
	22	292.5
	21	292.3
	30	291.7

75'H

F - Care Drive	94.6	285.23 ✓
cb	91	285.6
1/4	88	285.9
8	88	285.9
1/4	90	285.7
cb	102	284.5
N	107	284.0

	23	291.6
	25	291.8
cb	42	290.5
N	52	289.5
TP	016	294.53
	142	292.8
	128	294.2

125'

35703

150'H

100'H

N	82	286.5
cb	71	287.6
1/4	65	288.5
8	58	288.9
1/4	55	289.2
+4	59	288.8
+5	53	289.4
cb	51	289.1

	18	295.4
	14	295.5
	8	295.6
	14	295.7
	13	295.4
	14	296.4
	10.6	296.4
	10.6	296.4
	10.6	296.4

175'

313.23

Z	86	305.0
H	82	305.0
+1	88	305.0
+6	89	304.3
cb	92	304.0
H	115	301.6

275.1

H	112	302.0
cb	92	304.0
+7	75	305.7
H	77	305.5
Z	75	305.7
H	78	305.4
+3	70	306.2
cb	81	310.1
F	1.3	310.9

300.1

F	15	311.7
cb	32	310.0
+7	73	305.9
H	76	305.6
Z	75	305.7
H	78	305.4
+3	77	305.5
+5	85	304.7
cb	92	304.0

313.23

H	112	302.1
cb	32.50	
H	120	301.2
cb	101	303.1
+5	89	304.3
H	80	305.2

H	80	305.2
Z	78	305.4
H	79	305.3
+2	72	305.0
cb	34	309.8
F	21	311.1

350.1

F	26	310.6
cb	42	309.0
+5	76	305.6
H	84	304.8
Z	83	304.9
H	87	304.5
+2	85	304.7
+4	96	303.6
cb	109	302.3
H	126	300.6
H	133	299.9
cb	116	302.0

313.23

17	9.5	3 03.7
14	9.8	3 03.4
8	9.0	3 04.2
1/4	9.2	3 04.0
+5	8.5	3 04.7
cb	5.1	3 07.8
F	4.1	3 09.1
100 ft		
F	5.3	3 07.9
cb	6.1	3 06.8
+5	9.1	3 03.6
1/4	10.6	3 03.0
2	9.9	3 03.3
1/4	10.5	3 02.7
cb	11.5	3 01.7
1/4	13.7	2 99.5
43.56 ft - S.W. Munderlin Pk		
11	15.4	2 97.8
cb	14.0	2 99.2
1/4	12.8	3 00.3
2	11.5	3 01.7
1/4	11.6	3 01.6
+6	10.9	3 02.3
cb	7.9	3 05.3
F	6.9	3 06.3

5 ft of S.W. Munderlin

313.23

F	7.0	3 05.2
cb	8.1	3 05.1
+5	10.9	3 02.3
1/4	11.7	3 01.5
2	11.9	3 01.3
1/4	10.12	3 03.11
cb	3.5	3 00.2
cb	4.6	2 99.1
1/4	6.2	2 97.5
S.C.B.		
1/4 - End Corb Top	6.29	2 97.43 ✓
cb	5.7	2 98.0
1/4	4.8	2 99.5
2	2.8	3 00.9
1/4	2.4	3 01.3
cb	1.7	3 02.0
F	1.0	3 02.7
S.W.		
F	1.1	3 02.6
cb	2.1	3 01.6
1/4	3.2	3 00.5
2	3.7	3 00.0
1/4	4.4	2 99.3
cb	5.3	2 98.4
1/4	6.5	2 97.2

SETop Hyd.
Munderlin Pk
303.19

8

303.72

H	15	297.2
cb	57	298.3
1/4	48	298.9
1/2	42	299.5
1/4	51	300.1
cb	22	301.5
F	10	302.7
1 1/4		
F	15	302.2
cb	32	300.5
1/4	45	299.2
1/2	49	298.8
1/4	54	298.3
cb	61	297.6
H	71	296.6

1 1/2 cb

H Top Findings	68	296.96 ✓
cb	17	297.0
1/4	62	297.5
1/2	51	298.1
1/4	52	298.5
cb	37	300.0
F	15	302.2

1 1/2 Stunden

F Forest about	23	301.4
cb	11	299.3

303.72

1/4	61	297.6
1/2	64	297.3
1/4	62	296.9
cb	64	297.3
H	76	296.1
10' of 1/2 Stunden		
15	160	287.7
H	137	290.0
cb	118	291.9
1/4	74	295.3
1/2	72	295.5
1/4	69	296.8
cb	57	298.0
15	42	299.5
F	61	300.1

1 1/2 H

F	61	299.1
15	49	298.8
cb	67	297.0
1/4	79	295.8
1/2	80	295.7
1/4	82	295.5
cb	128	290.9
H	128	290.9
15	176	286.1

1
 28' of 1/2 H
 Con. 10' 1/2
 4.38 299.40

63rd St.

30372

2	85	295.2
1/4	88	294.9
cb	96	294.1
F	86	295.1
+10	68	296.9
125'N		
-15	71	296.6
F	81	294.6
cb	82	295.4
1/4	75	296.2
2	75	296.2
1/4	76	296.1
cb	77	296.0
1/4	82	295.4
+10	82	294.9
150'N		
1/4	65	297.2
cb	62	297.5
1/4	61	297.6
2	55	298.2
1/4	52	298.5
cb	46	299.1
F	49	298.8
+15	61	297.6
-175'N		
-15	15	292.2

30

30372

F	11	302.6
cb	13	302.4
1/4	25	301.2
2	26	301.1
1/4	24	301.3
cb	23	300.4
1/4	38	299.9
1/4	1197	311.45
200'N		
1/4	119	302.6
cb	108	303.7
1/4	109	303.6
2	100	304.5
1/4	101	304.4
cb	84	306.1
F	78	306.6
225'N		
F	24	311.1
cb	39	310.6
+3	42	310.5
1/4	66	307.9
2	63	308.2
1/4	72	307.3
cb	72	307.3
1/4	84	306.1

250'N

NALP... 160'N
N.L.P. ...
... E.C. ...

181'N ...
Cond Milk
12.55 300.90

Brooklyn Ave
62nd to 66th St

60th St
10 Cbs
10 Qts

SF Top Hat
Brooklyn + 63rd

250.46

73
6-7-28
5155
8155
Kenny

Plotted - 9-27-28
CBH

12 62nd

Landy
60th St
10 Cbs
10 Qts

62nd St

10 Cb

F 1/4

BM	112	27383		27141	S	86	41.9
TP	056	26183	1256	26127	cb	75	43.0
TP	159	25046	1296	24827	1/4	72	43.3
					1/2	68	43.7
S			6.3	442	1/4	64	44.1
cb			5.2	45.3	1/4	62	43.6
1/4			4.6	45.9	N	43	46.2
1/2			4.6	45.9	1.5	47	47.8
1/4			3.8	46.7			
1/4			1.3	46.2	-15	40	46.5
cb			2.5	48.0	N	52	45.3
N			1.7	48.8	cb	62	44.2
					1/6	79	42.6
-10			2.1	48.4	1/4	75	43.0
N			2.9	47.6	1/2	78	42.7
cb			4.0	46.5	1/4	86	41.9
1.5			5.3	45.2	cb	101	40.4
1/4			5.2	45.3	S	10.9	39.6
1/2			5.1	44.9	1.5	11.9	38.6
1/4			5.6	44.9			
cb			6.6	43.9	-15	13.0	37.5
S			7.1	43.4	S	11.9	38.6
1.5			8.1	42.4	cb	10.8	39.7
					1/4	9.6	40.9
-15			9.3	40.2	1/2	8.5	42.0

Brooklyn Ave

250.46

2	7.3	43.2
1/4	6.9	43.6
cb	6.8	43.7
N	6.7	43.8
+15	5.9	44.6

50' F

-10	1.4	49.1
N	2.0	48.5
cb	2.1	48.1
+1	2.5	48.0
1/4	3.5	47.0
2	4.0	46.5
1/1	4.6	45.9
cb	5.2	45.3
S	5.7	44.8
+10	6.3	44.2

70' F

-10	2.8	47.7
S	2.1	48.1
cb	2.1	48.4
1/4	2.1	48.4
2	1.7	48.8
1/1	1.4	49.1
+3	1.9	48.6
cb	0.8	50.3

JP

12.65

262.11

103

219.43

263.11

N	10.9	51.2
+10	10.0	52.1
100' F		
-10	7.9	54.2
N	8.7	54.4

cb	9.2	52.9
-25	10.5	51.6
1/1	10.4	51.7
+3	10.0	52.1
2	10.2	51.9
1/4	10.7	51.4
cb	10.9	51.2
S	11.9	50.2
+10	12.2	49.9

120' F

-10	10.3	51.8
S	10.0	52.1
cb	9.4	52.7
1/4	8.8	53.3
2	8.1	53.7
1/4	8.5	52.6
+3	8.7	53.4
+7	7.7	54.4
cb	7.5	54.6
N	6.7	55.4

150' F

N	4.7	57.4
---	-----	------

25

262.11

cb	53	56.8
+3	59	56.7
+8	69	55.2
1/4	67	55.4
1/2	66	55.5
1/4	70	55.1
+1	75	54.6
cb	76	54.5
S	78	54.9
175.5		
S	60	56.1
+6	55	56.6
cb	62	55.9
1/4	48	57.3
1/2	48	57.3
1/4	49	57.2
cb	37	58.4
N	30	59.1
200.5		
N	28	61.3
cb	14	60.7
+5	20	60.1
+7	30	59.1
1/4	26	59.5
1/2	26	59.5
1/4	31	59.0

262.11

75		39	58.2	
cb		37	58.4	
S	Fence 10.22 St.	39	58.2	
TP	1272	2746.7	014	2619.5
	↓	225.5		
S	Fence 10.22 St.	148	59.9	
cb		143	60.4	
+6		142	60.5	
1/4		132	61.5	
1/2		131	61.6	
1/4		129	61.8	
+3		133	61.4	
cb		121	62.6	
N		116	63.5	
250.5				
N		87	66.0	
cb		94	65.3	
76		110	63.7	
1/4		106	64.1	
1/2		105	64.2	
1/4		109	63.8	
cb		126	62.7	
S	Fence 10.22 St.	126	62.1	
275.5				
v		107	64.0	
cb		102	64.5	

↓
280.5 on St.
A Garage Oil Pool
108 263.9

279467

1/4	92	65.5
2	85	66.2
1/4	82	66.4
cb	75	67.2
H	66	68.1

300' E

H	41	70.6
cb	48	69.9
+6	61	68.6
1/4	58	68.9
2	58	68.9
1/4	63	68.4
+5	72	67.4
cb	76	67.1
S	83	66.4

Fence line

320' E

S	58	68.9
cb	48	69.9
1/4	32	71.4
2	30	71.7
1/4	29	71.8
cb	21	72.6
H	11	73.6
TP	802	27943
	286	27111

250'

H	27	76.7
---	----	------

27943

cb	30	76.4
17	47	74.5
1/4	48	74.6
2	57	74.2
1/4	61	73.3

cb	78	71.6
S	85	71.9

375' E - N 2 1/2 S 1/4

S	74	72.0
cb	64	71.8
1/4	51	74.3
2	41	75.3
1/4	32	76.1
cb	17	77.7
H	12	78.1

Fence line section
See 63rd St.

FL 63rd St

H	20	77.4
cb	25	75.9
1/4	53	74.1
2	61	73.3
1/4	74	72.0
cb	85	70.9
S	95	69.9

50' E of FL 63rd St

S	109	68.5
cb	101	79.3

Brooklyn Ave

279.43

74	91	70.3
+5	80	71.4
2	77	71.7
74	78	72.2
+3	74	72.0
cb	57	73.7
H	15	74.9

100°F

H	65	72.9
cb	72	72.2
+8	93	70.1
74	92	70.2
2	91	70.0
+8	98	69.6
74	105	68.9
+5	113	68.1
cb	113	68.1
S	122	67.2

150°F

S	135	65.9
cb	130	66.4
74	123	67.1
+6	116	68.4
2	109	68.5
74	106	68.8
+3	110	68.4

29

277.13

cb	92	70.2
H	83	71.1
TP	114	272.53
	11.34	268.39

200°F

H	2.5	70.0
cb	3.3	69.2
74	1.3	68.2
2	4.5	68.0
74	5.8	66.7
cb	6.6	65.9
S	7.9	64.6

250°F

S	7.4	65.1
cb	6.4	66.1
74	5.9	66.6
2	5.0	67.5
74	4.9	67.6
+6	4.8	67.7
cb	3.8	68.7
H	2.7	69.8

300°F

H	3.0	69.5
cb	2.1	68.9
+3	4.5	68.0
74	4.5	68.0
2	4.7	67.8

27252

1/4		50	675
cb		59	666
S		66	659
	333' E		
S		61	664
cb		62	663
1/4		51	674
z		46	679
1/4		43	682
+5		45	680
cb		32	683
H		28	697
	366' - NW 1/4 Stark St.		
H		26	699
cb		29	696
+5		48	683
1/4		42	683
z		46	679
1/4		49	676
cb		55	670
S		63	662
BN	090	27239	104
	HC5		
S		60	664
cb		56	668
1/4		50	674

27239

29

		41	680
		40	684
		39	685
		26	698
		22	702
	H 1/4		
		24	700
		27	697
		26	688
		39	685
		43	681
		51	673
		60	664
		68	656
	z Stark		
		66	658
		58	666
		50	674
		43	681
		39	685
		32	682
		23	701
		24	700
		32	692
		39	685

313' E - Palatine
95' H 1/4310' E - Palatine
95' H 1/4Stark
60' H 1/4
16' cb
10' Q 1/4

NW 1/4

Brooklyn at Stark

27239

2	42	68.2
1/4	50	67.4
cb	59	66.5
S	67	65.7
FCB		
S	62	66.1
cb	62	66.2
1/4	57	67.2
2	42	68.2
1/4	39	68.5
cb	32	69.2
1/4	22	70.2
EL Stork		
1/4	22	70.2
cb	20	69.4
1/4	41	68.3
2	45	67.9
1/4	53	67.1
cb	59	66.5
S	64	66.0
25 F of EL Stork		
S	65	65.9
cb	60	66.4
1/4	57	67.0
2	50	67.4
1/4	43	68.1

27239

cb	34	69.0
1/4	26	69.8
50 F		
1/4	27	69.7
cb	37	68.7
1/4	44	68.0
2	48	67.6
1/4	58	66.6
cb	61	66.3
S	71	65.3
75 F		
S	77	64.7
cb	70	65.4
1/4	63	66.1
2	51	67.3
1/4	52	67.2
cb	48	68.1
1/4	34	68.0
100 F		
1/4 on Carel's	302	69.37 ↓
Ground	40	68.4
cb	52	67.2
1/4	60	66.4
2	64	66.0
2	76	64.8
cb	82	64.2

1
49 F - Palm
11 F of 52

27239

S		88	636
	125°F		
S		105	61.9
cb		94	62.0
1/4		86	63.8
+5		76	64.8
1/2		73	65.1
1/4		71	65.3
cb		65	65.9
H		59	66.5
	150°F		
H		78	64.6
cb		85	63.9
1/4		91	63.3
1/2		97	62.7
+5		98	62.6
1/4		105	61.9
cb		109	61.5
S		115	60.9
	175°F		
S		112	57.2
cb		120	
1/4		123	60.1
1/2		115	60.9
1/4		110	61.4
cb		102	62.2

115°F - Palm Tree
117°F - ASD.

27239

H		99	62.5
	200°F		
H		118	60.6
cb		128	59.6
TP	0.88	264.17 ⁰⁹	86.8
1/4		65	58.6
1/2		58	58.3
1/4		63	57.8
cb		70	57.1
S		74	56.7
+15		92	54.8
	225°F		
		124	51.7
S		108	53.3
cb		79	54.2
1/4		93	54.8
1/2		87	55.9
1/4		80	56.1
cb		67	57.4
H		56	58.5
	250°F		
H		75	56.6
cb		85	55.6
+2		86	55.5
+5		96	54.5
1/4		102	53.7

180°F - Palm Tree
117°F - ASD.Mail France Co.
175°F - ASD.

.09
26414

2	11.2	528
1/1	12.4	51.7
cb	13.3	50.8
S	14.6	49.5
+15	15.6	48.5
P	12.15	251.97
	275 E	
-15	9.9	45.1
S	8.9	46.7
cb	7.0	48.0
1/1	4.9	50.1
2	4.6	50.8
1/1	3.3	51.7
+5	3.2	51.8
cb	1.6	53.4
N	0.1	54.9
	300 E - Large Pepper Tree 10' S of N1 ↓	
N	2.1	52.9
cb	2.8	52.2
+5	4.4	50.6
1/1	1.6	50.4
2	5.4	49.6
1/1	7.1	47.8
cb	9.0	46.0
S	10.5	44.5
+15	12.5	41.5

351 4.95
255.00

275 E
Large Pepper Tree
11' S of N1

375 E - Large Pepper Tree
10' S of N1

4.95

255.00

325 E - Large Pepper Tree 10' S of N1 ↓		
	15.3	39.7
	12.3	42.7
	10.8	44.2
	9.0	46.0
	7.1	47.9
	6.0	49.0
	5.5	49.5
	3.9	51.1
	3.0	52.0
	350 E - Small Pepper Tree 10' S of N1 ↓	
	4.9	50.1
	5.0	50.0
	7.3	47.7
	8.0	47.0
	8.7	46.3
	10.5	44.5
	12.0	43.0
	12.6	41.4
	16.6	38.4
375 E - Large Pepper Tree 10' S of N1 ↓		
	18.9	36.1
	15.5	39.5
	14.3	40.7
	12.7	42.3
	11.1	43.9

Brooklyn, Fla

4.95
255.00

1/4		10.5	44.5
+5		10.3	44.7
cb		8.8	46.8
N		8.0	47.0
TP	0.19	243.8 ³ 1281	242.6 ⁴
	401.4 E - N. L. 61 th St.		
N		0.5	43.0
cb		1.0	42.1
1/4		1.8	42.3
1/2		2.4	40.7
1/4		3.9	39.2
cb		5.2	37.9
S		6.4	36.7
+20		8.9	34.2
	4 61 th St.		
-30		11.1	32.0
-15		9.6	33.5
S		8.8	34.9
cb		6.9	36.2
1/4		6.0	37.1
1/2		5.0	38.1
1/4		4.4	38.7
cb		3.4	39.7
N		3.0	40.1
-10		2.1	41.0

22 61th St.

61th St.
30th St.

3
243.18

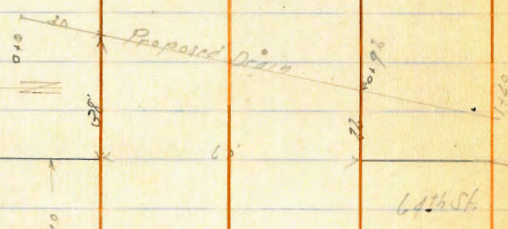
-10		4.1	38.9
N		5.2	37.9
cb		6.0	37.1
1/4		7.0	36.1
1/2		7.4	35.7
1/4		8.5	34.6
cb		9.5	33.6
S		10.8	32.9
+10		12.1	31.0
+20		13.1	30.0
+30		12.4	30.7
TP	2.08	235.71 ⁶⁶ 9.55	233.63 ⁵⁸
	20 th E of E. 61 th St.		
-10		10.5	25.2
-20		10.0	25.7
S		8.9	26.8
cb		7.8	27.9
1/4		6.2	29.5
1/2		4.1	31.6
1/4		3.2	32.5
cb		2.7	33.0
N		1.3	34.4
+15		0.2	35.5
	32 nd E		
-20		2.5	33.2
N		1.3	31.4

00 118th West
S.E. Cor. Prop.
Brooklyn, Fla

33

66
23571

cb	58	29.9
1/4	67	29.0
1/2	75	28.2
3/4	81	27.6
cb	90	26.7
S	85	27.2
+10	82	27.4
+20	82	28.5
+40	71	28.6



Levels For Proposed Drain Fort of 1845

0 + 0 - 100' W of N.E. Brooklyn	6.0	29.7
+10	6.9	28.8
+20	6.1	29.6
+30 - N.E. Brooklyn	6.2	29.5

66
23571

+50	69	28.8
+75	82	27.5
+92 - S.E. Brooklyn	89	26.8
+110	92	26.5
+130	106	25.1
+140	112	24.5

10' E of E.A. of 1845

-20	59	30.9
-15	67	29.0
S	65	28.2
cb	68	28.9
1/4	78	27.9
1/2	82	27.5
3/4	78	27.9
cb	69	28.8
N	64	29.3
+30	57	30.0

100'

-30	52	30.5
N	57	30.0
cb	54	30.3
1/4	50	30.7
1/2	34	32.3
3/4	26	33.1
cb	12	34.1

Brookly 4/4

.66

23571

S			12	34.5
115			0.7	35.0
125			0.4	35.3
TP	1267	24827	0.11	35.55
	75 F			
-15			6.1	42.2
S			6.1	42.2
cb			5.9	42.6
1/4			5.5	42.8
1/2			6.4	41.9
1/4			7.6	40.7
cb			9.1	39.2
H			9.9	38.4
+15			10.0	38.3
	100 F			
-20			8.1	45.2
H			1.4	46.8
cb			0.8	47.5
TP	1253	24737	0.83	47.87
1/4			11.3	49.1
1/2			11.0	49.4
1/4			10.7	49.7
cb			10.5	49.9
S			10.4	50.0
115			11.5	50.9

125 F

.37

26042

-15				4.1	56.3
S				3.1	57.0
cb				2.8	57.6
1/4				2.7	57.7
1/2				2.5	57.9
1/4				2.5	57.9
cb				2.4	58.0
H				2.4	57.0
+20				1.0	56.4
TP	1287	27301	0.23	56.19	
	150 F				
-10				10.5	62.5
H				10.0	63.0
cb				10.1	62.9
1/4				10.5	62.5
1/2				10.6	62.4
1/4				10.7	62.3
cb				10.9	62.1
S				11.1	61.4
110				11.8	61.2
	175 F				
-10				8.5	64.5
S				7.9	65.1
cb				7.5	65.5
1/4				7.3	65.7
1/2				6.8	66.2

.01
27206

1/4	66.6
cb	67.8
N	68.0
1/2	68.2

188E

1/4	69.7
cb	69.8
1/4	68.9
1/2	67.5
1/4	66.8
cb	66.5
S	66.5

1980E - ML Cypress Lane from S

S	67.4
cb	67.7
1/4	66.0
1/2	69.6
1/4	69.7
cb	70.0
N	69.5

485 27340^{.35}

1/2	69.5
3/4	70.0

N cb

N	69.0
cb	69.1
1/4	70.0

.09
27614

1/2	69.9
1/4	70.6
cb	70.1
S	69.1

1/4

S	69.8
cb	70.2
1/4	70.0
1/2	69.2
1/4	69.1
cb	68.9
N	70.1

1/2

1/2	70.9
cb	70.4
1/4	69.9
1/2	69.3
1/4	68.8
cb	69.6
S	69.9

1/4

S	69.3
cb	68.8
1/4	68.8
1/2	69.5
1/4	70.1

Cypress Lane
5759 N 1st
1150 Old
2.63975

Brooklyn Ave
21577

.09
876.17

cb	57	70.4
N	48	71.3
	E cb	
H	35	72.6
+5	36	72.5
cb	50	71.1
1/4	55	70.6
1/2	56	70.5
1/4	61	70.0
cb	69	69.2
S	70	69.1
	E.L. Cypress land	
S	68	69.3
cb	61	70.0
1/4	58	70.3
1/2	54	70.1
1/4	54	70.7
cb	48	71.3
+5	33	72.8
H	33	72.8
	50' E of E.L. Cypress land	
H	29	73.2
+5	30	73.1
+8	47	71.4
cb	49	71.2
1/4	52	70.9

34' E of E.L. Cypress
small part tree
15' of H.L.18' E of S. Tree
15' of H.L..09
876.17

1/2	52	70.9
1/4	57	70.4
cb	58	70.3
S	61	70.0
	100' E	
S	64	69.7
cb	60	70.1
1/4	55	70.6
1/2	52	70.9
1/4	49	71.2
cb	47	71.4
1/2	44	71.7
+5	28	73.3
H	27	73.4
	150' E	
H	23	72.8
+5	37	72.4
cb	48	71.3
1/4	52	70.9
1/2	52	70.9
1/4	53	70.8
cb	54	70.7
S	60	70.1
	180' E	
S	92	68.9
cb	61	69.5

60' E - Large Tree
15' of H.L.72' E - Small Tree
15' of H.L.100' E - Small Tree
15' of H.L.132' E of H.L.
= Bottom Corner Step
4.5' x 4.5'
272 273.86166' E - Small Tree
15' of H.L.

.09
27614

1/4	64	697
2	62	699
1/4	59	702
cb	58	703
+5	41	720
H	41	721

206.25 F - H.L. 65th St

H	44	71.7
+6	49	71.2
cb	70	69.1
1/4	74	68.7
2	75	68.6
1/4	81	68.0
cb	75	68.6
S	81	68.0

H cb

S	84	67.7
cb	87	67.4
1/4	85	67.6
2	80	68.1
1/4	78	68.3
cb	81	68.0
+5	52	67.9
H	50	71.1

5' E of Wcb

H	81	68.0
---	----	------

65th St
taken 65th St
Frankl.
10' C.W.
10' O.H..09
27614

cb	82	67.9
1/4	82	67.9
2	83	67.8
1/4	88	67.3
cb	94	66.7
S	100	66.1

H 1/4

S	89	66.2
cb	95	66.6
1/4	91	67.0
2	87	67.4
1/4	85	67.6
cb	83	67.8
H	82	67.9

2' of 65 - 2' of 16' Strip of Paving

H	82.95	67.96
cb	83.5	67.74
1/4	86.1	67.48
2	82.6	67.23
1/4	90.9	67.00
cb	93.5	66.74
S	96.4	66.45
S	101	66.08
cb	98	66.3
1/4	92	66.8

.09
87619

2	90	67.1
1/4	87	67.4
cb	85	67.6
H	89	67.7

E Cb = E L of 65th From S

H	81	68.0
cb	87	67.4
1/4	93	66.8
2	93	66.8
1/4	95	66.6
cb	99	66.2
S	108	65.9

E L of 65th From N

S	107	65.4
cb	103	65.8
1/4	99	66.2
2	98	66.3
1/4	103	65.8
+5	94	66.7
cb	98	66.9
H	87	67.4

50 F of FL 65th From N

H	123	63.8
cb	125	63.6
1/4	122	62.9
2	125	62.6

.09
87619

1/4	125	62.6
cb	125	62.6
S	125	62.6
H	127	62.7

100 F

S	120	60.1
cb	121	60.0
1/4	121	60.0
2	129	60.2
1/4	129	60.2
+5	122	59.9
cb	123	60.8
H	118	61.3

150 F

H	122	59.9
cb	126	59.5
1/4	122	58.9
2	122	58.9
1/4	122	57.9
cb	129	57.2
S	161	57.0

200 F

S	169	56.2
cb	166	56.5
1/4	157	57.4
2	148	58.3

Hail Pit
35 F of FL 65th
07.5 C/L 101

.13
27318

1/4	147	58.4
cb	128	59.3
H	125	60.6
215 E - Proposed Drain if necessary		
H	120	61.1
+5	128	60.8
cb	128	59.3
+5	146	58.5
1/4	146	58.5
1/2	146	58.5
1/4	160	57.1
cb	167	56.4
S	182	54.9
+20	222	50.9
238 E		
-10	178	55.3
S	164	56.7
cb	162	56.9
1/4	154	57.7
1/2	143	58.8
1/4	142	58.9
+5	163	58.8
cb	135	59.6
H	122	60.9
250 E		
H	117	61.4

.13
27318

cb	123	59.8
1/4	129	59.2
1/2	145	58.6
1/4	152	57.9
cb	158	57.3
S	161	57.0
+10	166	56.5
280 E		
-10	142	58.9
S	131	60.0
cb	125	60.6
1/4	124	60.7
1/2	127	60.4
1/4	122	60.9
cb	121	61.0
H	115	61.6
315 E		
H	99	63.2
cb	103	62.8
1/4	108	62.3
1/2	108	62.3
1/4	115	61.6
cb	122	60.9
S	121	60.5
+10	129	60.2

333 E

.13
27218

-10	11.1	61.7
5	10.7	62.7
cb	10.2	62.9
1/4	10.7	62.4
1/2	10.3	62.8
1/4	10.1	63.0
cb	9.6	63.5
11	9.3	63.9
360 F		
11	7.2	65.9
cb	7.5	65.6
1/4	8.3	64.8
1/2	8.3	64.8
1/4	9.1	64.0
cb	9.1	63.7
5	9.5	63.6
+10	10.1	63.0
375 F		
-10	8.5	64.6
5	8.3	64.8
cb	7.6	65.5
1/4	8.2	64.9
1/2	7.1	65.7
1/4	7.1	66.0
cb	6.1	66.5
11	5.8	67.3

.13
27218

100 F		
11	11	68.5
cb	5.5	67.6
1/4	5.6	67.5
1/2	5.8	67.3
1/4	6.6	66.5
cb	7.5	65.6
5	8.1	65.0
+10	8.9	64.2
125 F		
-10	9.5	63.6
5	8.8	64.3
cb	7.7	65.4
1/4	6.8	66.3
1/2	5.4	67.7
1/4	4.1	69.0
cb	3.6	70.5
11	1.5	71.6
150 F		
11	3.1	70.0
cb	1.8	68.3
1/4	6.0	67.1
1/2	7.0	66.1
1/4	7.9	65.2
cb	8.8	64.3
5	10.0	63.1

.13
273.18

410		112	61.9
	175E		
-10		127	60.4
S		118	61.3
cb		108	62.3
1/4		96	63.5
1/2		86	64.5
1/4		78	65.3
cb		71	66.0
75		64	66.7
H		59	67.2
	500E		
H		84	64.7
cb		94	63.7
1/4		102	62.9
1/2		114	61.7
1/4		126	60.5
cb		141	59.0
S		157	57.4
+10		167	56.4
TP	141	1277	36
	261.82		260.71
	525E		
-10		133	48.5
-10		91	52.7
S		72	54.6
cb		61	55.7

.77
261.82

42

1/4		5.3	56.5
1/2		4.3	57.5
1/4		3.5	58.3
cb		2.7	59.1
H		0.9	60.9
	531E		
H		38	58.0
cb		44	57.4
1/4		46	57.2
1/2		54	56.4
1/4		66	54.2
cb		78	54.0
S		97	52.1
+20		171	44.7
+40		249	36.9
	550E		
-40		310	29.8
-30 - The Slope of the Main Fl. is 6		318	30.0
-15		366	38.2
S		452	46.6
cb		522	49.5
1/4		58	52.0
1/2		82	53.6
1/4		76	54.2
cb		68	55.0
H		64	55.4

.77
261.85

+10	6.0	55.8
	56.0 F	
-10	7.1	54.4
H	8.2	53.6
Cb	8.7	53.1
1/4	8.8	53.6
S	10.7	51.1
+15	11.5	50.3
1/4	12.9	48.9
Cb	16.7	45.1
S	19.7	42.1
+15	21.0	37.8
+25 - Top Slope Bottom March	31.6	30.2
+40	31.8	30.0

573 F

-40	30.9	30.9
-30	30.6	31.2
+15	31.5	30.0
-10 - Top Slope Bottom March	31.7	30.1
-8	33.6	33.2
S	37.5	34.0
Cb	39.5	38.3
1/4	40.5	41.3
S	46.2	45.6
1/4	48.8	49.0

.77
261.82

Cb	11.2	50.5
H	10.2	51.6
+15	10.2	51.6
TP	0.22	249.99 250.07
	580 F	12.40 217.42 .37
-15	0.2	49.8
H	0.4	49.6
Cb	1.3	48.7
1/4	3.1	46.9
S	6.1	43.9
1/4	11.5	38.5
Cb	15.6	34.4
+15	18.8	31.2
S - Top Slope	20.3	29.7
+15	20.5	29.5
+20	19.8	30.2
+40	19.1	30.6
	600 F	
-25	19.0	31.0
S	18.4	31.7
+15	20.2	29.8
Cb	20.0	30.0
1/4	20.2	29.8
+2	19.8	30.2
+3	17.0	33.0
S	15.8	34.2

94
23977

M.C.B.

-20	113	38.6
H	62	33.7
12	64	33.5
13	75	32.4
cb	81	31.8
14	84	31.5
15	85	31.4
16	79	32.5
cb	73	32.6
S	83	31.6
17	107	29.2
16	107	29.2
17	80	31.9
180	84	31.7
-20	78	32.1
-1	88	31.7
-3	100	29.9
S	103	29.6
cb	78	32.1
14	78	32.1
15	73	32.6
14	85	31.4
cb	79	32.0
H	81	31.8

14

94
23977

17	73	32.6
18	61	33.8
120	41	35.8
15	76	32.3
H	76	32.3
cb	71	32.8
15	84	31.5
14	80	31.9
15	73	32.6
14	81	31.8
cb	91	30.8
15	84	31.5
S	87	31.2
15	77	32.2
115	74	32.5
-10	72	32.7
S	75	32.4
cb	72	32.7
14	70	32.0
15	68	33.7
14	59	34.0
cb	58	34.1
H	57	35.2
115	69	33.0

F 14

Brooklyn Ave.

.94
23999

+80		77	32.2
	ECB		
-10		52	34.7
H		55	34.4
cb		59	34.2
1/4		62	33.7
8		58	34.1
1/4		73	32.6
cb		73	32.6
S		74	32.5
+10		69	33.0

FL 66th St.

-10		60	33.9
S		70	32.9
cb		71	32.8
1/4		72	32.7
8		70	32.9
1/4		64	33.5
cb		58	34.1
H		55	34.4
+10		53	34.6

FL 66th St
FL Anderson

on Diagonal 66th

H		75	32.4
cb		77	32.2
1/4		69	33.0
8		68	33.1

22

.94
23999

1/4		70	32.9
cb		69	33.0
S		70	32.9
BM		116	78 23883

NW Nail
Brooklyn + 66th St

Levels For Proposed Drain 66th St + Brooklyn

010		77	
115 - 112 Brooklyn Ave		81	
150		84	
110		99	
130		10.5	

TP	1227	251.87	0.39	239.60
TP	1290	264.60	0.17	251.70
TP	-702	270.76	0.86	263.74
BM			1.89	82 268.27

SW Nail
Brooklyn + 66th St
23883

Klauber St Cross Sections
Back to 69th St.

60' H/d
10' C/b
10' C/l

331.96

47
2.11.28
S.W. 100
H. 100

BM	1294	281.82		268.88
TP	1291	294.67	0.06	284.76
TP	1288	307.38	0.17	294.50
TP	1289	319.90	0.37	307.01
BM			496	314.94
		N.L. Back on Diagonal		77.51
N			48	15.1
Cb			28	17.1
1/4			25	17.4
1/2			0.1	19.8
3/4			0.0	319.0
Cb			0.8	19.1
TP	1276	331.96	0.70	319.20 ✓
+2			111	20.9
E			11.0	21.0
		N.L. Back on E		
		25% of N.L. Back on E		
E			11.0	21.0
Cb			111	20.9
+2			124	19.6
1/4			112	320.8
1/2			112	20.8
+5			111	20.9
1/4			121	19.9
Cb			132	18.8
N			139	18.1

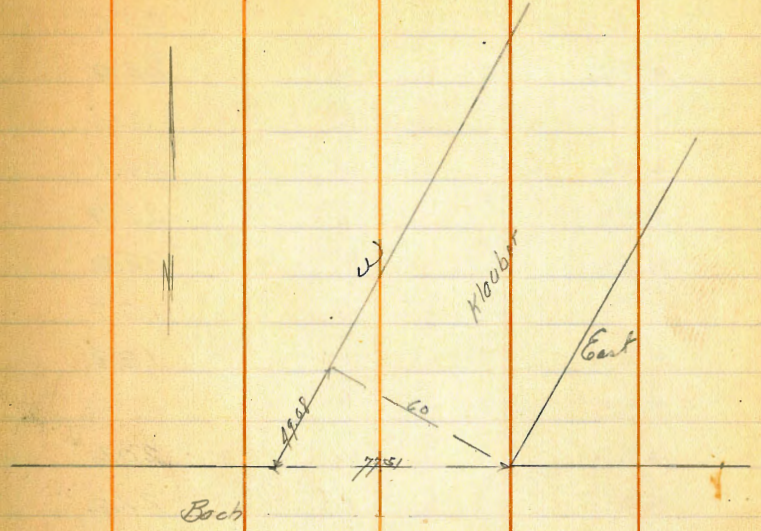
Plotted
3-24-1928
C.B.H.

S.W. Nails
Brookly at 65th St

110. Guard Walk

15.9

16.6



25% of N.L. Back on E

-10	14.9	17.1
N	12.9	19.1
+6	12.5	19.5
Cb	11.2	20.8
1/4	10.4	21.6
1/2	9.8	22.2
1/4	10.0	322.0
+7	11.3	20.7
+9	9.0	23.0
Cb	9.0	23.0
E	9.1	22.9
E	6.5	25.5

20.7

cb		61	25.9
+1		64	25.6
+3		90	23.0
1/4		82	323.8
1/2		79	24.1
1/4		82	23.7
cb		98	22.2
N		122	19.7
+10		137	18.3
	100M		
-10		114	20.6
N		98	22.2
cb		81	23.9
+7		70	25.0
1/4		58	26.2
1/2		51	26.9
1/4		50	227.0
+5		52	26.8
+8		81	28.9
cb		32	28.8
F		30	29.0
TP	14.92	34102	0.86
	150M		33110
F		114	32.6
cb		122	31.7
+3		122	31.7

+5		145	29.5
1/4		141	329.9
1/2		142	29.8
1/4		152	27.7
cb		166	27.4
N		188	25.2
+10		208	23.2
	175M		
-10		193	24.7
N		173	26.7
cb		156	28.4
1/4		125	30.5
1/2		127	31.3
1/4		123	331.7
cb		114	32.6
F - Dirt Drive		103	33.7 ✓
	200M		
F		77	36.3
cb		86	35.9
1/2		88	35.2
+5		114	32.6
1/4		107	333.3
1/2		111	32.9
1/4		125	31.5
cb		141	29.9
N		164	27.6

Klauber St.

344.02

+10	18.9	25.1
	335.874	30.214
-10	17.1	26.6
H	14.2	29.2
cb	12.1	31.6
1/4	10.9	33.6
2	8.8	35.2
1/4	8.2	335.7
15	8.7	35.3
17	6.8	37.2
cb	6.1	37.9
F	5.2	38.8
	1/2 Hreo St.	
F	4.3	39.7
cb	5.1	38.9
H	5.2	38.8
1/4	7.9	36.1
1/4	7.2	336.8
2	7.6	36.4
1/4	9.2	34.8
cb	10.6	33.4
H	12.9	31.1
+10	14.2	27.8
	1/2 Hreo St.	
-10	15.2	28.8
H	16.9	31.1

344.02

49

cb	9.6	34.4
1/4	8.0	36.0
2	6.7	37.3
1/4	6.1	337.9
1/4	6.8	37.2
1/8	4.0	40.0
cb	3.9	40.1
F	3.2	40.8
	50' of H.L. H. 10	
F	2.0	44.0
cb	0.5	43.5
10	1.0	43.0
15	0.1	40.9
1/4	2.3	341.7
2	2.6	41.4
1/4	1.2	39.8
cb	5.9	38.1
H	7.9	36.1
+10	9.9	34.1
	75' H	
-10	7.2	36.8
H	4.9	39.1
cb	3.3	40.7
4	2.1	41.9
2	0.9	43.1
1/4	0.7	343.3

Klauber St.

347.02

+5		1.3	43.7
TP	1287	356.53	343.66
+8		11.9	44.6
cb		11.8	44.7
F		11.3	45.2
	1007		
F		9.7	46.8
cb		10.1	46.1
+2		10.3	46.2
+4		12.0	44.5
1/4		11.2	345.3
8		11.2	45.3
+2		11.2	45.3
+4		10.6	45.9
1/4		11.3	45.2
cb		12.1	44.4
H		13.7	42.8
+10		11.0	40.5
	1507		
-10		8.7	47.8
H		8.1	48.4
cb		7.5	49.0
1/4		6.1	50.1
+5		5.8	50.7
+8		6.6	49.9
8		6.9	49.8

356.53

50

1/4		7.0	349.5
1/4		7.2	49.3
1/2		5.2	51.7
cb		6.1	50.4
+5		5.1	51.1
F		5.1	51.1
	2007		
F		0.3	56.2
cb		1.2	55.3
+3		1.1	55.1
+7		0.1	53.4
1/4		2.2	353.7
8		2.6	53.9
1/4		3.0	53.5
cb		3.9	52.6
H		4.6	51.9
+10		5.4	51.1
	2507		
-10		1.7	54.8
H		0.9	55.6
cb		0.1	56.4
TP	1295	367.13	356.18
1/4		11.2	57.3
8		11.1	57.7
1/4		11.9	357.2
+2		12.2	56.9

36913

+5	7.5	59.6	
cb	9.8	59.3	
F	8.9	60.2	
	300' N		
F	1.3	64.8	
cb	6.0	63.1	331' N of H.L. = Brick Wall
+2	6.6	62.5	214 359.99
+5	8.0	66.1	
1/4	7.1	362.0	
8	7.5	61.6	
1/4	8.5	60.6	
cb	9.9	59.7	
H	10.5	58.6	
+10	11.2	57.9	
	350' N		
+0	8.8	60.3	
H	7.7	61.4	
cb	6.3	62.8	
+7	6.3	62.8	
1/4	5.3	63.8	
2	4.5	64.6	
1/4	4.8	364.3	
+1	5.3	63.8	
+5	3.0	66.1	
cb	2.4	67.7	
F	0.6	68.5	

36913

TP	9.80	377.41	1.97	367.66
	400' N			
F			5.2	72.3
cb			7.1	70.4
+5			7.8	69.7
1/4			11.0	366.5
8			10.1	67.4
1/4			10.8	66.7
+5			12.6	64.9
cb			12.9	64.6
H			14.7	62.8
+10			15.4	62.1
	450' N			
+0			14.0	63.5
H			12.6	64.9
cb			12.8	66.7
1/4			8.2	69.3
8			8.0	69.5
+7			8.8	68.7
1/4			6.6	370.9
2			4.4	73.0
cb			3.3	74.2
F			1.6	75.9
	500' N			
F			0.0	77.5
cb			2.8	74.7

374' N. Papp. Tr.
9.5' of 22.

Klauber St.

✓
877.46

+5	89	73.7
1/4	12	371.2
+1	73	70.2
1/2	71	70.4
1/4	71	70.1
cb	106	66.9
N	121	65.4
+10	127	63.8
-10	133	64.2
N	118	65.7
cb	100	67.5
1/4	82	69.3
+4	66	70.9
1/2	64	71.1
1/4	69	370.6
+2	66	70.9
+5	43	73.2
cb	31	74.4
F	01	77.4
TP	584	371.62
F	71	75.7
cb	94	73.7
+4	111	72.0
1/4	114	371.7

550H

1152

883.14

600H

✓
883.14

1/2	116	71.5
+3	115	71.6
1/4	141	69.0
cb	152	67.3
N	171	66.0
+10	186	64.5
-10	183	64.8
N	169	66.2
cb	158	67.3
1/4	141	69.0
1/2	116	71.5
1/4	111	372.0
cb	101	73.0
1/2	95	73.6
+8	77	75.4
F	71	76.0
F	88	74.3
cb	100	73.1
1/4	110	372.1
1/2	115	71.6
+2	114	71.7
1/4	142	68.9
cb	159	67.2
N	171	66.0

611H

615H

52

+10		18.5	64.6
	650' N		
-10		12.4	65.7
H		16.6	66.5
cb		16.2	66.9
1/4		14.1	68.7
+3		13.2	70.1
1/2		10.7	72.4
1/4		10.0	373.1
cb		10.1	73.0
F		8.1	74.5
	700' N		
F		6.5	76.6
cb		8.9	74.2
+3		9.4	73.7
1/4		8.5	374.6
1/2		9.4	73.7
+8		11.0	72.1
1/4		13.0	70.1
cb		13.5	69.6
H		15.0	68.1
+10		15.9	67.2
	725' N		
-10		13.5	69.6
H		12.9	70.2
cb		11.8	71.3

1/4		11.5	71.6
1/2		7.4	75.7
1/4		7.5	375.6
cb		8.1	74.7
F		5.1	78.0
	750' N		
F		3.4	79.7
+8		1.3	76.8
cb		6.2	76.9
1/4		6.1	377.0
1/2		6.5	76.6
1/4		7.7	75.4
cb		9.2	73.9
H		10.2	72.9
+10		11.0	72.1
	775' N		
-10		9.4	74.7
H		8.1	75.0
cb		6.8	76.3
1/4		6.2	76.9
+7		5.2	77.9
+9		7.0	76.1
1/2		5.5	77.6
1/4		4.4	378.7
cb		4.2	78.9
+4		4.4	78.7

Waubesa St.

✓
38.14

+7	1.6	81.5
F	1.4	81.7
800' N		
F	0.0	83.1
+2	0.4	82.7
+6	2.1	80.7
cb	2.1	81.0
1/4	2.1	38 1.0
2	2.5	80.6
+3	5.2	77.9
+4	3.2	79.9
1/4	3.6	79.5
cb	4.5	78.6
H	5.2	77.9
110 - Dirt Drive	6.5	76.6
825' N		
H	3.0	80.1
cb	2.0	81.1
1/4	1.2	81.9
+1	0.0	83.1
+8	1.9	81.2
2	0.8	82.3
1/4	0.1	383.0
cb	0.0	83.1
+2	0.3	82.9
TP	0.53	382.1

8.93

391.54

0.53

382.1

↓
793 N - Fig Tree
1'E of M.L.

↓
809 N - Fig Tree
5'E of M.L.

↓
823 N - Fig Tree
8.5'E of M.L.

+8

F

F

+1

+4

cb

1/4

2

+2

+5

1/4

cb

H

H

cb

1/4

+4

+7

2

1/4

cb

+3

F

✓
391.54

6.6

6.1

4.9

5.1

7.2

6.6

6.7

6.6

8.1

6.8

7.7

9.3

9.3

7.4

6.8

6.2

5.0

6.3

5.2

5.1

5.3

5.2

3.55

84.9

85.4

86.6

86.4

84.3

84.9

384.8

84.9

83.4

84.7

83.8

83.2

82.2

84.1

84.7

85.3

86.5

85.2

86.3

386.1

86.2

86.3

88.0

54

↓
845 N - Fig Tree
10'E of M.L.

850' N

875' N

900' N

Klauber St.

391.51

F	2.7	88.5
cb	4.2	87.3
1/4	4.2	387.3
2	4.1	87.4
4	4.1	87.4
4	5.2	86.3
4	3.5	88.0
1/4	4.1	87.1
cb	4.6	86.9
H	5.0	86.5

927' = A on N = Sec A

H	2.3	89.2
cb	3.5	88.0
1/4	3.3	88.2
2	3.2	88.3
1/4	5.3	388.3
cb	3.3	88.2
4	4.9	88.6
F	3.2	88.3

738

395.2
A on N = Sec B
SE 1/4 of 100' = 1/4 Bithorn on Div. 67.50

F	10.0	85.3
cb	8.2	86.4
1/4	7.9	387.4
2	6.7	88.6
1/4	6.5	88.8

Note: Pat. N. 2.
900' N
8800



WCB	7.3	88.0
H	6.0	89.3
400' = Sec C SE 1/4 of 100' of 100' = 1/4 Bithorn		
H	6.0	89.3
cb	7.1	88.2
1/4	6.4	88.9
2	6.1	89.2
1/4	6.1	389.2
cb	6.9	88.4
F	8.3	87.0
25' of Sec C		
F	6.9	88.6

396.2
395.06
132.75

39529

cb	61	89.2
1/4	52	390.1
1/2	55	89.8
1/4	56	89.7
cb	63	89.0
H	55	89.8
50%		
H	51	89.9
cb	54	89.9
1/4	42	90.7
1/2	45	90.8
1/4	41	390.9
cb	51	90.2
F	57	89.6
75%		
F	42	91.1
cb	26	91.7
1/4	31	392.2
1/4	41	90.2
1/2	35	91.8
1/4	36	91.7
cb	44	90.9
H	46	90.7
87% = E.L. of B. Haro		
H	39	91.4
cb	37	91.6

39529

1/2	39	91.4
1/4	20	92.3
1/2	21	92.5
1/4	25	391.8
1/2	26	92.7
cb	20	92.3
F	32	92.0
100%		
F	20	93.3
cb	18	93.5
1/2	20	93.3
1/4	28	392.5
1/2	22	93.1
1/4	23	93.0
1/2	24	91.9
cb	29	92.4
H	25	91.8
15%		
1/2	019	395.10
150%		
H	12.5	95.5
cb	12.5	95.5
1/2	13.0	95.0
1/2	12.2	95.8
1/4	12.3	95.7
1/2	13.1	95.9
1/4	12.8	395.2

Klauber St.

✓
10802

11	116	96.4
cb	116	96.4
F	113	96.7
	200'H	
F	83	99.7
cb	85	99.5
+9	87	99.3
1/4	96	392.4
1/2	90	99.0
1/4	93	98.7
+3	105	97.5
+6	91	98.9
cb	94	98.6
H	88	99.2
	250'H	
H	46	03.4
cb	50	03.0
+5	49	03.1
+9	62	01.8
1/4	54	02.6
1/2	53	02.7
1/4	58	402.2
+1	42	03.8
cb	48	03.2
F	49	03.1

300'H

10802

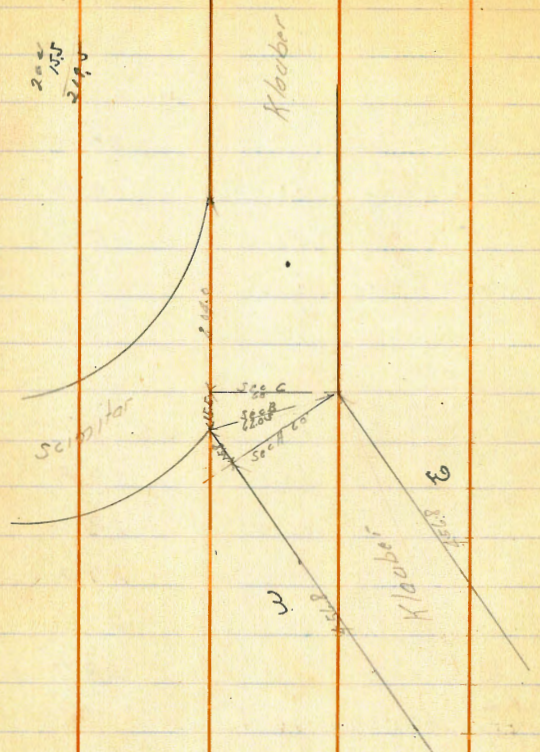
17

F		0.5	07.5	
FP	1237	✓ 420.34	0.05	407.97
cb			11.5	08.8
+9			11.3	09.0
1/4			13.4	406.9
1/2			13.7	07.6
1/4			12.9	07.4
+3			12.3	08.0
cb			11.6	08.7
H			11.2	09.1
		325'H		
H			8.5	11.8
cb			9.9	10.4
1/4			10.3	10.0
1/2			10.3	10.0
1/4			11.2	409.1
H			9.7	10.6
cb			10.5	09.8
F			11.0	09.3
		250'H		
F			8.3	12.0
cb			8.2	12.0
+9			7.1	13.2
1/4			8.2	412.1
1/2			7.6	12.7
1/4			7.6	12.7

	42037			
cb		55	14.8	
H		42	16.1	
	3757			
H		11	19.2	
cb		24	17.9	
1/4		41	16.2	
2		45	15.8	
+8		52	15.1	
1/4		10	416.3	
cb		52	15.1	
F		59	14.4	
	4007			
F		41	16.2	
cb		24	17.9	
1/4		15	418.8	
H		27	17.6	
2		20	18.3	
1/4		15	18.8	
+3		04	19.9	
TP	123	13189	0.86	419.48 *
cb		110	20.8	
H		100	21.8	
	4257			
H		71	24.7	
cb		84	23.4	
+7		93	22.5	

		108	21.0
		111	20.7
		121	419.7
		118	20.0
		138	18.0
		154	16.4
	1568 ¹¹ - Δ on E - Sect A		
		121	18.7
		107	21.1
		97	422.1
		90	22.8
		86	23.2
		60	25.8
		42	27.6
		31	28.7
	Δ on F 1587 on N - Sec B	62.05 on D 109	
		103	30.5
		54	28.4
		54	26.4
		32	23.6
		86	23.2
		96	422.2
		106	20.2
		131	18.7
	Δ on F 1551 of Sec B on N - Sec C		
		131	18.7

200
155
240
472.2



cb	104	21.4
1/4	96	422.2
2	85	23.3
1/4	73	24.5
+5	56	26.2
cb	44	27.4
H	23	29.5
26% of Sec C		
H	24	28.4
cb	63	25.5

1/4	74	24.4
2	80	23.8
+5	85	23.8
1/4	99	421.9
cb	110	20.8
F	132	18.6
+10	156	16.2
50%		
-10	186	13.2
F	161	15.7
cb	132	18.6
1/4	113	+20.5
2	87	423.1
+1	67	25.1
1/4	66	25.2
cb	59	25.9
H	50	26.8
75%		
H	46	27.2
cb	55	26.3
1/4	64	25.4
2	76	22.2
1/4	119	419.9
+5	133	18.5
cb	136	18.2
F	165	15.3

Klauber St.

431.83

110		19.3	12.5
	100°N		
-10		19.2	12.6
F		17.3	14.5
cb		13.7	18.1
+5		13.6	18.2
1/4		11.5	420.3
1/2		9.2	22.6
1/4		5.6	26.2
cb		5.0	26.8
H		4.8	27.0
	125°N		
H		3.8	28.0
+1		4.2	27.6
cb		4.2	27.6
1/4		5.0	26.8
1/2		9.0	22.8
1/4		11.4	420.4
1/4		12.1	19.7
+5		13.2	18.6
cb		14.5	18.3
H		13.8	18.0
+5		14.8	17.0
F		11.8	15.0
+15		8.2	11.4

150°N

60

431.83

-15		18.0	13.8
F		14.7	17.1
+3		13.2	18.6
cb		13.0	18.8
+3		11.9	19.9
1/4		9.8	422.0
1/2		9.5	24.3
+6		11.1	27.4
1/4		3.7	28.1
cb		3.7	28.1
H		3.7	28.1
+5		1.6	30.2
H		0.2	31.6
TP	125°N	143.1	16.0
	175°N		430.23
H		9.4	33.7
cb		11.2	31.9
+5		14.7	28.4
1/4		14.1	29.0
1/2		13.8	29.3
1/4		17.5	425.6
+5		19.3	23.8
cb		22.0	21.1
F		12.8	19.3
+15		25.5	17.6

204°N - N.L. Scipitor

44311

-15	25.0	18.1
-5	23.8	19.3
F	21.8	21.3
cb	19.7	23.4
1/4	16.5	426.6
+8	13.4	29.7
8	13.2	29.9
1/4	13.9	29.2
+5	9.7	33.4
cb	8.5	34.6
H	6.2	36.9
22511		
H	4.5	38.6
cb	6.8	36.3
1/4	7.0	34.1
+5	13.3	29.8
8	12.7	30.4
1/4	13.0	430.1
cb	17.6	25.5
+6	18.7	24.4
F	20.2	22.8
+5	22.6	20.5
+15	24.8	18.9
24011 - S Edge of House on E. side of		
-15	23.0	20.1
-3	21.5	21.6

44311

19.0	24.1
16.4	26.7
12.5	430.6
12.7	30.4
12.6	30.5
8.4	34.7
6.7	37.4
2.8	40.3
44411	
2.8	40.3
5.7	37.4
8.4	34.7
12.1	30.5
12.7	30.4
12.5	430.6
15.1	28.0
15.2	27.9
25111	
15.4	27.7
14.8	28.3
12.1	31.0
12.2	430.9
12.6	30.5
12.4	30.7
8.1	35.0
4.9	38.2

61

24711 on E. side
Cone Walk
15.0 28.1

Klauber St.

	44311	
H	20	41.1
	25711	
H	20	41.1
cb	19	38.2
1/4	81	35.0
+5	124	30.7
1/2	125	30.6
1/4	124	430.9
+3	121	31.0
+5	137	29.4
cb	141	28.5
F	176	25.5
+10	199	23.2
	27511	
-10	175	25.6
F	158	27.3
77	117	28.4
19	121	30.0
cb	127	30.4
+5	112	31.9
1/4	116	431.5
1/2	120	31.1
+3	92	34.9
1/4	66	36.5
cb	26	39.5
H	14	41.7

	44311	
	30011	
H	0.9	42.2
cb	3.9	39.2
1/4	7.0	36.1
+5	84	34.7
1/2	117	31.4
1/4	111	432.0
+5	111	32.0
cb	132	29.9
F	155	27.6
+10	176	25.5
TP	044	44181
	32411	
-10	159	25.9
F	13.9	27.9
cb	116	30.2
+6	94	32.4
1/4	97	432.1
1/2	10.0	31.8
+8	10.0	31.8
+6	72	34.6
1/4	62	35.6
cb	31	38.7
H	06	41.2
	35011	
H	26	39.2

62

Klauber St.

441.51

cb	52	36.6
1/4	77	34.1
13	80	33.8
17	102	31.6
2	100	31.8
1/4	98	432.0
14	95	32.3
cb	118	30.0
F	139	27.9
+10	156	26.2
37511		
-10	160	25.8
F	142	27.6
cb	123	29.6
17	95	32.3
1/4	100	431.8
2	99	31.9
1/4	94	32.4
13	78	34.0
cb	62	34.9
H	54	36.4
1007		
H	70	34.8
cb	85	33.3
1/4	107	31.1
2	103	31.5

22
3.8.28

441.81

1/4	102	431.6
cb	122	29.6
F	143	27.5
+10	163	25.5
1257		
-10	164	25.4
F	152	26.6
cb	101	28.7
1/4	110	430.8
2	111	30.7
1/4	117	30.1
cb	95	32.3
H	78	34.0
1507		
H	117	30.1
cb	119	29.9
1/4	125	28.3
2	125	29.3
1/4	125	429.3
cb	138	28.0
F	146	27.2
+10	169	24.9
4757		
-10	184	23.4
F	167	24.9
cb	153	26.5

441.81

1/4		14.5	427.3
8		14.3	27.5
1/4		14.3	27.5
18		14.5	27.3
cb		13.2	28.6
7.8		12.8	29.0
H		12.7	29.1
TP	0.37	429.00	13.18
	500.71		428.63
H		1.5	27.5
18		1.6	27.4
cb		3.0	26.0
+3		3.9	25.1
1/4		3.3	25.7
8		3.2	25.8
1/4		3.8	425.2
cb		5.0	24.0
F		6.2	22.8
+10		7.7	21.3
	525.71		
-10		9.1	19.9
F		7.2	21.7
cb		5.7	23.3
1/4		5.3	423.7
8		5.2	23.8
1/4		5.0	24.0

487.00

47		5.3	23.7
cb		4.7	24.3
+8		3.9	25.1
H		4.0	25.0
	550.71		
H		5.9	23.1
cb		5.8	23.2
+3		6.9	22.1
1/4		6.1	22.6
8		6.7	22.3
1/4		6.5	422.5
cb		6.7	22.3
F		8.3	20.7
+10		10.2	18.8
	575.71		
-10		11.2	17.8
F		10.1	18.9
cb		9.2	19.8
1/4		8.2	420.8
8		7.9	21.1
1/4		7.7	21.3
+6		8.1	20.9
cb		7.1	21.9
H		7.2	21.8
	600.71		
H		8.8	20.2

Kloubert St.

429.00

cb	88	20.2	
1/4	89	20.1	↓
1/2	89	20.1	115 ft on E. h. Cone Walk
1/4	95	419.5	1077 18.23
cb	10.0	19.0	
F	10.6	18.4	

625 ft

F	121	16.9	
cb	112	17.8	
1/4	10.6	418.4	
1/2	10.0	19.0	
1/4	99	19.1	
+6	10.4	18.6	
cb	9.5	19.5	
H	9.8	19.2	

650 ft

H	10.6	18.4	
cb	10.8	18.2	
+4	11.4	17.6	
1/4	109	18.1	
1/2	110	18.0	
1/4	115	417.5	
cb	12.4	16.6	
F	13.2	15.8	

1.30

417.55

187.5

416.25

675 ft

65

417.25

F	2.5	15.0	↓
cb	2.1	15.4	675 ft on E. h. Cone Walk
1/2	1.2	416.4	3.6 414.95
1/2	0.8	16.8	
1/4	0.6	17.0	
+6	1.2	16.4	
cb	0.0	17.6	
H	0.0	17.6	

700 ft

H	11	16.5	
cb	0.8	16.8	
+4	2.2	15.4	
1/4	1.8	15.8	
1/2	2.1	15.5	
1/4	2.6	415.0	
cb	3.0	14.6	
F - Ground Drive	4.6	13.4	✓

725 ft

F	4.8	12.8	
cb	4.6	13.0	
1/4	3.9	413.7	
1/2	3.5	14.1	
1/4	3.0	14.6	
cb	3.1	14.5	
+3	1.5	16.1	
H	1.8	15.8	

11755

765N

H	81	14.5
+6	84	14.2
cb	41	13.5
+1	48	12.8
1/4	43	13.3
2	46	13.0
1/4	51	412.5
cb	59	11.7
F	59	11.7

775N

F	95	10.1
cb	72	10.4
1/4	64	411.2
2	56	12.0
1/4	54	12.2
+8	59	11.7
cb	55	12.1
+3	46	13.0
H	43	13.3

800N

H	51	12.5
+8	56	12.0
cb	63	11.3
+3	72	10.4
1/4	65	11.1

11755

2	69	10.7
1/4	78	409.8
cb	84	08.2
F	82	08.8

8075 N on 22
Conc Hole
9.44 408.11

850N

F	102	07.4
cb	95	08.1
1/4	88	408.8
2	89	08.7
1/4	90	08.6
+3	93	8.3
cb	69	10.7
H	76	10.0

850N

H	91	08.5
cb	91	08.5
1/4	92	08.4
2	92	08.4
1/4	92	408.4
cb	95	08.1
F	102	06.4

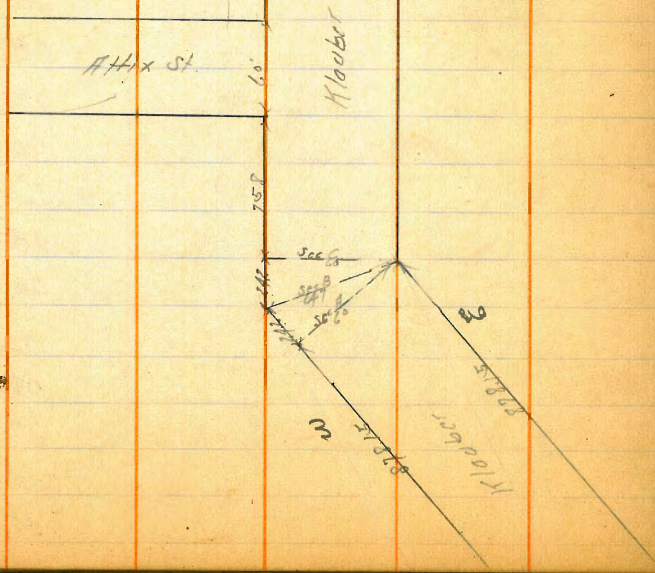
878.5N: A on F Sec 7

F	108	06.8
cb	102	07.3
1/4	104	407.2
2	101	07.5

Klauber St.

41753

1/4		10.4	06.2
cb		10.0	07.6
1/4		10.0	07.6
	Point NW 1/4 of Sec 8	Sec 8 07.019 647	
1/4		11.1	06.5
cb		10.7	06.9
1/4		10.7	06.9
1/2		10.8	06.8
1/4		10.7	406.9
cb		10.9	06.2
E		10.8	06.8
TP	1.57	408.92	10.20



Point NW 1/4 of Sec 8

40892

67

Sec C

E		22	06.7
cb		17	07.2
1/4		24	406.5
1/2		21	06.5
1/4		22	05.7
1/4		21	06.3
cb		29	06.0
1/4		21	05.3
	Point of Sec C		
1/4		5.2	03.7
cb		4.0	04.9
1/4		4.7	04.0
1/4		4.5	04.5
1/2		4.3	04.6
1/4		2.6	405.3
cb		4.2	04.7
E		4.6	04.3
	Point - SW Hix		
E		5.7	03.2
cb		5.2	03.7
1/4		4.2	404.6
1/2		4.7	04.2
1/4		5.2	03.7
cb		5.2	03.7
1/4		6.0	02.9

10892

85877 = Hcb #111

H	64	02.5
cb	56	03.3
1/4	53	03.6
1/2	48	04.1
1/4	45	404.4
cb	51	03.3
F	60	02.9

95877 = 1/4

F	60	02.9
cb	59	03.0
1/4	49	404.0
1/2	50	03.9
1/4	53	03.6
cb	62	02.6
H	77	01.2

105877 = 1/2 #111

H	70	01.9
cb	60	02.9
1/4	55	03.4
1/2	51	03.8
1/4	48	404.1
cb	60	02.9
15	55	03.4
F	64	02.5

115877 = 1/4

40892

F	70	01.9
16	59	03.2
cb	64	02.5
1/4	58	403.7
1/2	54	03.5
1/4	59	03.0
cb	69	02.0
H	79	01.0

185877 = cb

H	65	02.4
cb	60	02.9
1/4	60	02.9
1/2	55	03.4
1/4	54	403.5
cb	61	02.8
F	68	02.1

135877

line of Altix St

F	71	01.8	1377 = South of 12 olive trees
cb	61	02.8	9' E of #12
1/4	58	403.1	
1/2	55	03.4	
1/4	60	02.9	
16	65	02.4	
cb	54	03.5	
16	61	02.3	
H	64	02.5	

15077

40892

N	66	02.3
cb	54	03.5
+5	64	02.5
1/4	60	02.9
1/2	55	03.4
1/2	56	403.3
cb	62	02.7
F	71	01.8

2001

F	73	01.6
cb	62	02.7
+5	66	02.3
1/4	58	403.1
1/2	56	03.3
1/4	58	03.1
+L	62	02.6
cb	52	03.7
N	64	02.5

2501

N	64	02.5
cb	57	03.2
+5	61	02.5
1/4	59	03.0
1/2	51	03.3
1/4	56	403.3
cb	62	05.6

40895

F	75	01.4
203211 = S.L. Higler		
F	76	01.3
cb	65	02.4
1/4	51	403.3
1/2	51	03.8
1/4	50	03.9
+6	53	03.6
cb	41	04.8
N	48	04.1

640

410.11

521

403.71

3370811 = S. Higler

N	44	05.7
cb	43	05.8
+5	61	04.0
1/4	61	04.0
1/2	62	03.8
1/4	67	403.4
cb	77	02.4
F	85	01.6

372.1611 = H.L. Higler

F	92	00.9
cb	95	01.6
1/4	75	402.6
+5	62	03.9
1/2	62	03.9

Pipet Klauber
+ Higler
408.76
Miller

355 N. of
1201 Watson
9 E of D. 6

410.11

1/4		51	04.3
cb		49	05.2
H		35	06.6
	400'N		
H		34	06.7
cb		44	05.7
+8		56	04.5
1/4		58	04.3
1/2		63	03.8
1/4		73	40 2.8
cb		85	01.6
F		90	01.1
	450'N		
F		87	01.4
cb		83	01.8
1/4		67	40 3.4
+5		54	04.7
1/2		57	04.4
1/4		54	04.7
cb		44	05.7
H		32	06.9
	500'N		
H		21	08.0
cb		33	06.8
+5		43	05.8
1/4		45	05.6

385'N = So of
12 Small Trees
7'N of E.L.

410.11

1/2		47	05.4
1/4		51	40 5.0
cb		65	03.6
F		67	03.4
	550'N		
F		32	06.9
cb		34	06.5
1/4		24	40 7.7
1/2		22	07.9
1/4		22	07.9
+1		24	07.7
cb		11	09.0
H		00	10.1
TP	12.63	122.40	0.82
			409.77
	575'N		
H		10.8	11.6
cb		11.2	10.6
17		13.1	09.3
1/4		13.0	09.4
1/2		12.8	09.6
+5		13.3	09.1
17		12.8	09.6
1/4		12.7	40 9.7
cb		13.3	09.1
F		13.5	08.9

600'N

584'N = N of
12 Sm. Trees
7'N of E.L.

422.40

F		101	12.3
cb		99	12.5
1/4		97	412.7
+3		108	11.6
2		102	12.2
1/4		104	12.0
+3		107	11.7
cb		89	14.5
H		81	14.3
	650H		
H		22	18.6
cb		10	18.4
+6		50	17.4
1/4		48	17.6
2		46	17.8
+8		47	17.7
1/4		36	418.8
cb		38	18.6
F		39	18.5
TP	1271	431.40	071 421.68
	700H		
F		90	25.4
cb		91	25.3
1/4		96	424.8
2		105	23.9
1/4		108	23.6

6931100111
Garage Dirt
Floor
11.4 23.0

434.40

cb		109	23.5
H		109	23.5
	710H		
H		98	24.6
cb		97	24.7
1/4		97	24.7
2		94	25.0
1/4		83	426.1
cb		75	26.9
F		65	27.9
	750H		
F		40	30.4
cb		42	30.2
1/4		40	430.4
1/4		53	29.1
2		52	29.2
1/4		59	28.5
cb		64	28.0
H		69	27.5
	800H		
H		51	29.3
cb		55	30.9
1/4		53	31.1
2		53	31.1
+6		51	31.3
1/4		50	432.4

Klouba St.

	43440		
cb		11	33.3
F		0.1	34.3
TP	1110	112.65	285
		8507	431.55
F		59	36.8
cb		75	35.2
1/4		89	433.8
+5		101	32.6
1/2		104	32.3
1/4		103	32.4
cb		108	31.9
1/4		120	30.7
+10		13.6	29.1
	8754		
-10		149	27.8
1/4		136	29.1
cb		119	30.8
1/4		99	32.8
1/2		99	32.8
+5		75	33.2
1/4		70	433.7
cb		78	34.9
F		71	35.6
	9007		
F		54	37.3
cb		63	36.4

72

	442.65		
1/4		89	433.8
+3		104	32.3
1/2		107	32.0
1/4		110	31.7
cb		127	30.0
1/4		141	28.6
+15		161	26.6
	9254	1	
-15		189	23.8
1/4		155	27.2
cb		139	28.8
1/4		106	32.1
1/2		102	32.5
+6		102	32.5
1/4		89	433.8
cb		69	35.8
F		60	36.7
	95824 G.L. Place		
F		52	37.5
cb		62	36.5
1/4		75	435.2
+6		95	33.2
1/2		94	33.3
1/4		94	33.3
cb		109	31.8
1/4		125	30.2

Kloubert St.

446.65

+15		15.9	26.7
	1006M		
-15		11.7	31.0
N		8.7	34.0
cb		7.5	35.2
1/4		7.1	35.6
2		6.8	35.9
7.6		7.1	35.6
1/4		4.5	438.2
cb		4.0	38.7
F		3.0	39.7
	1008M		
F		1.7	41.0
cb		0.3	39.4
1/4		4.5	438.2
+3		5.9	36.8
2		6.1	36.6
1/4		6.4	36.3
cb		7.0	35.7
N		8.2	34.3
+15		10.7	32.0
	1022M: H.L. Phyll		
-15		8.7	34.0
N		7.3	35.4
cb		6.3	36.4
+8		4.8	37.5

442.65

1/4		4.2	38.5
2		3.8	38.9
+8		4.4	38.3
1/4		1.7	441.0
cb		1.2	41.4
F		0.4	42.3
BM	1293	450.82	526
	1056M		
F		5.7	44.6
cb		6.2	44.0
+7		7.5	42.8
1/4		8.1	441.7
+3		10.3	40.0
2		9.7	40.6
1/4		10.0	40.3
cb		11.1	39.2
N		12.2	38.1
+15		13.8	36.5
	1075M		
-10		10.0	40.3
N		9.5	40.8
cb		8.7	41.6
1/4		7.9	42.4
2		7.3	43.0
+8		7.8	42.5
1/4		7.5	442.8

73

3-21-29

 Prop Nos
 of Car
 Kloubert Phyll

1503Z

ts	64	43.9
cb	67	43.6
F	66	43.7

1100N

F	50	45.3
cb	59	44.4
1/4	60	44.3
2	61	44.2
1/4	64	43.9
cb	67	43.6
H	63	44.0

1125N

H	65	43.8
cb	65	43.8
1/4	58	44.5
2	55	44.8
ts	55	44.8
1/4	64	44.59
cb	67	45.6
F	65	45.8

1150N

F	39	46.4
cb	31	47.2
ts	26	47.7
1/4	39	44.4
ts	51	45.2

1503Z

2	50	45.3
1/4	53	45.0
cb	57	44.6
H	51	45.2

1200N

H	46	45.7
cb	41	46.2
1/4	35	46.8
2	34	46.9
ts	39	46.4
1/4	39	44.7.4
cb	30	47.3
F	26	47.7

1225N

F	11	49.2
cb	21	47.9
1/4	20	44.7.3
ts	25	46.8
2	26	47.6
1/4	20	47.3
cb	38	46.5
H	41	46.2

1250N

H	37	46.6
cb	34	46.9
1/4	25	47.8

Klauber St.

150.92

2		25	47.8	1
78		21	47.2	1370 N-TTC 4'E of RL
1/4		21	448.2	✓
cb		22	48.1	1277 N-TTC 4'E of RL
F		23	48.0	

1300 N

F		08	49.5	
cb		16	48.7	
19		16	48.7	
TP	727	155.85	177	448.58
1/4		75	448.2	
11		77	48.2	✓
2		74	48.5	1217 N of RL Cane Walk
1/4		76	48.3	766 448.23
cb		83	47.6	
H		84	47.5	

1285 N-TTC 4'E of RL

H		79	48.0	
cb		79	48.0	
1/4		73	48.6	
2:		70	48.9	
1/4		69	449.0	
cb		70	48.9	
F		63	49.6	

1250 N

F		65	49.4	
---	--	----	------	--

155.95

cb		67	49.2	
77		61	49.8	✓
1/4		69	449.0	1254 N-TTC 4'E of RL
2		68	49.1	
1/4		73	48.6	
cb		77	48.2	
H		78	48.1	

1315 N

H		77	48.2	
cb		74	48.5	
1/4		71	48.8	
2		69	49.0	
1/4		68	449.1	
13		61	49.8	
cb		57	50.2	
F		58	50.1	

1375 N

F		51	50.5	
cb		51	50.8	
13		55	50.4	
1/4		66	449.3	
1/4		69	49.0	
1/4		71	48.8	
cb		66	49.3	
H		71	48.8	

1400 N

Klouber St.

155.95

N	68	49.1
cb	65	49.4
1/4	64	49.5
1/2	63	49.6
1/4	65	449.4
+1	65	49.4
cb	63	49.6
F	59	50.0

1425N

F	50	50.9
cb	60	49.9
1/4	59	450.0
+1	65	49.4
1/2	57	49.2
1/4	58	50.1
cb	61	49.8
N	63	49.6

1450N

N	62	49.7
cb	61	49.8
1/4	60	49.9
1/2	57	50.2
1/4	60	449.9
cb	59	50.0
F	58	50.1

1480N

76

155.85

F	49	51.0
cb	54	50.5
1/4	58	450.1
1/2	57	50.2
1/4	60	49.9
cb	64	49.6
N	62	49.7

1500N

N	67	49.2
cb	60	49.9
1/4	59	50.0
1/2	60	49.9
1/4	63	449.6
+3	50	50.9
cb	54	50.5
F	57	50.2

1525N

F	66	49.3
cb	59	50.0
+9	53	50.6
1/4	68	449.1
1/2	66	49.3
1/4	68	49.1
cb	71	48.5
N	70	48.6

1550N

Klober-St.

455.85

N	72	48.7
cb	72	48.6
1/4	78	48.1
1/2	77	48.2
1/4	79	448.0
+1	74	48.5
cb	71	48.8
F	70	48.9

1575'H - Small Obs. Tree 85' E of H.L. ✓

F	72	48.7
cb	77	48.2
77	77	48.2
1/4	87	447.2
1/2	83	47.6
1/4	84	47.5
cb	81	47.8
N	90	46.9

1600'H

N	104	45.5
cb	99	46.0
1/4	93	46.6
1/2	90	46.9
1/4	96	446.3
1/4	80	47.9
cb	85	47.4
F	87	47.2

455.85

1625'H

F	95	46.4
cb	93	46.6
77	92	46.7
1/4	112	444.7
1/2	105	45.4
1/4	105	45.4
cb	110	44.9
N	118	44.1

1625'H - So. of
L. 100' - 0.116
100' - 0.116
100' - 0.116

N	107	42.2
cb	122	43.6
1/4	123	43.6
1/2	126	43.3
1/4	122	442.7
+2	111	44.8
cb	112	44.6
F	114	44.5

116 4496 - 1305

1675'H

F	90	42.9
cb	91	42.9
+6	91	42.9
+8	65	40.5
1/2	65	440.5
1/2	62	40.7

27

44696

1/4	5.9	41.1
cb	7.1	39.9
H	7.7	39.3
1700'H		
-15	12.1	34.9
H	11.4	35.6
cb	10.2	36.8
+7	9.7	37.3
1/4	9.2	37.8
+3	8.3	38.7
1/2	8.1	38.4
1/4	8.1	438.6
1/1	8.3	38.7
+4	6.5	40.5
cb	5.7	41.3
F	5.4	41.6
110	5.5	41.5

17251

-10	6.8	40.2
F	7.6	39.4
cb	8.0	39.0
+7	8.5	38.5
1/4	9.3	437.7
1/2	9.4	37.6
+8	10.0	37.0
1/4	10.8	36.2

44696

cb	12.6	34.4
H	12.5	33.5
+15	15.0	32.0
17407H S.L. Zeller		
-15	16.2	30.8
H	14.4	32.6
cb	13.5	33.5
+6	13.1	33.4
1/4	11.0	36.0
+5	9.5	37.5
1/2	9.6	37.4
1/4	9.6	437.4
cb	9.0	37.0
F	7.9	39.1
+10	7.3	39.7

Coat Book No. 1259 Page 1.

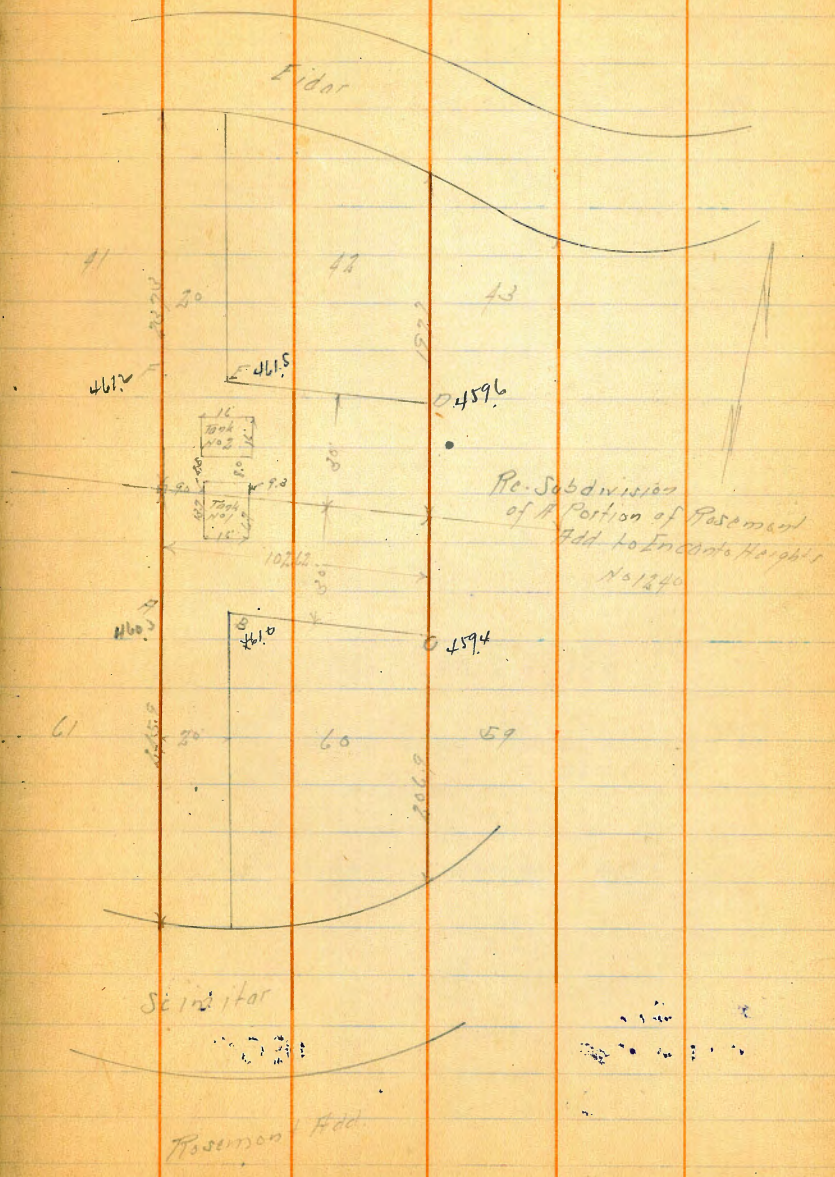
Location and Levels of Existing Water Tanks
 on Lots 42-60 in Re-Sub of Roseman Add.

BM	1174	404.86		393.12
TP	1206	417.87	0.05	404.81
TP	1222	430.71	0.38	417.49
TP	1284	442.42	0.12	430.59
TP	1282	455.72	0.53	442.90
TP	1057	465.95	0.34	455.38
A			5.7	460.3
B			5.0	461.0
C			6.6	459.4
D			6.4	459.6
E			4.5	461.5
F			1.8	461.2
Base of Tank No 1			5.19	460.76
" " " No 2			1.78	461.17
BM			361	462.34

NE 8th Cor
 Seimitor & N. 1000
 1214 Page 2

North NW Post of
 Tank No 2

79
 3-21-28
 S. 1057
 B. 1057
 Y. 1057



ENGINEERING DEPARTMENT,
 CITY OF SAN DIEGO,
 CALIFORNIA.

$268.88 = \text{S.M. Nails in Bl. Boxes } 65^{\text{th}}$
 $\frac{12.17}{271.05}$
 $\frac{0.89}{280.68 = \text{TP}}$
 $\frac{12.80}{293.48 = \text{T}}$
 $\frac{1.65}{291.33 = \text{TR}}$
 $\frac{6.75}{298.08 = \text{T}}$
 $\frac{3.68}{274.40 = \text{S.M. Nails in Bl. Boxes } 65^{\text{th}}}$

No Good

$\frac{0.00}{0.69 = \text{T}}$
 $\frac{300.00}{299.31 = \text{T}}$
 $\frac{0.69}{300.00}$
 $\frac{0.69}{300.69 = \text{T}}$
 $\frac{12.91}{287.78 = \text{T}}$
 $\frac{0.55}{288.36}$
 $\frac{300}{287.86}$
 $\frac{27.19}{270.21}$

17.36
 $\frac{77}{13.15}$
 $\frac{24.40}{268.88} = \text{S.M. at Back } 65^{\text{th}}$
 $\frac{2.52}{265.2} = \text{Higher than S.M. Mundenlin}$
 Nail in Pole 75' E of line 65th
 is 24.79 lower than S.M. at 65th + Mundenlin.
 $\frac{5031}{26401}$
 $\frac{319.39}{269.55} = \text{S.M. NE } 65^{\text{th}}$

$\frac{1315}{761}$
 $\frac{554}{26401}$
 $\frac{26955}{269.55} = \text{S.M. NE } 65^{\text{th}}$
 26 Brookly.