

1245

MASTIS

FIELD BOOK

No. 385 F

46-42' 30" L

ENGINEERING DEPARTMENT
CITY OF SAN DIEGO,
CALIFORNIA.

MICROFILMED

DEC 22 1964

No. 385 App 77 7/14/20 AA

Our Leather Bound Engineers Note Books are carried in the following rulings:

- No. 380 LEVEL BOOK. Left and Right Hand Page the same as Left Hand Page of this Book.
- No. 382 FIELD BOOK. Left Hand Page as in this Book, Right Hand Page 4 x 4 to the inch, Center Line Red.
- No. 384 MINING TRANSIT BOOK. Left Hand Page as in this Book, Right Hand Page 8x8 to the inch, Center Line Red.
- No. 385 FIELD BOOK. Left Hand Page as in this Book, Right Hand Page 8 vertical and 4 horizontal lines to the inch, Center Line Red.

We also carry the Note Books listed above, bound in extra strong Fabri-Hide (otherwise the same quality of book), which can be furnished at a somewhat lower price.

In ordering Fabri-Hide covered books, add the letter "F" to catalog number.

THE FREDERICK POST CO.
ENGINEERING and DRAFTING SUPPLIES
IRVING PARK STATION
CHICAGO, ILL.

No. 1115 opp 77 7/14/20 H.A.

Bench El. Normal Hts. Sewer Extension	1
Topographical " " " "	2
South of Adams	51
A- line.	55
" " levels	57

x sec. BANCROFT ST. Univ. Ave. TO Lincoln	60
" " Alley Blk 108 - Central Park #195	68

BENCH MARKS
For Normal Hts. Sewer Ext

Mike
Rappaport
show
date 5-23-28

31102 Mountain View Dr + 35th St	4.09	399.51	395.42	on Rock in Vacant Lot South of Yellow House NW. BR 3525 + Millshire Dr.
TP	1.59	394.18	6.92	392.59
TP	8.64	394.18	8.64	385.54
TP	6.55	399.14	1.59	392.59
TP	4.78	397.66	4.26	394.88
Chk. on SW BR 111 View 1329 (Note: HZ corrected)			4.25	395.41
opt	4.25	399.67		395.42
TP	2.13	396.11	5.69	393.98
TP	1.38	385.61	11.88	384.23
Left. BM on stadium station			12.39	373.22
TP	10.07	394.30	1.38	384.23
TP	0.84	390.42	4.72	389.58
Left. BM Nail to 4" x 4" Guard Rail			7.24	381.18
TP	6.13	395.71	0.84	389.58
TP	5.73	398.34	3.10	392.61
TP Brass Plug	4.54	396.03	6.85	391.49
BM SW Copley Mt View Dr			4.97	391.06
TP	0.70	390.07	6.66	389.27
TP	1.02	378.15	12.94	372.13
TP	4.15	369.41	12.89	365.26
Left. BM on 2" Iron Pipe			6.13	363.28
on Stub East of House			3690 ft	12.98
TP	10.58	372.31	7.68	361.73
TP	19.5	363.53	10.73	361.58
Left. Brass Plug 39th Circle Drive			6.58	356.95

SE. BR Mt View
Sidney Pl
NW of Sidney Pl
on Note of
Canyon
NE BR EUGENE
RAYMOND
End Eugene Pl
NE Copley St
Mt View Dr
Approx 250'
East of end
of Copley St
Across St from
Random 4897 on

36353

1.

TP 0.86	354.33	10.06	353.47
Left. Stub End 39th St. on Note of Canyon		10.15	343.48
TP 10.37	353.85	10.85	343.48
TP 10.53	364.14	0.24	353.61
Chk. on SW BR 39th Circle Dr Note: error 0.02 dropped + 8% used		7.21	356.93
	364.16		356.95
TP 11.27	365.94	9.49	354.67
TP 7.68	371.25	2.37	363.57
Chk. on SE BR Adams + 39th		0.44	370.81
			370.87 - BM
			0.06
0.44	371.31		370.87
100' N.W.L. Adams on 39th			
Left. BM. in Stub		6.26	365.05
SE Cor. 39th & Adams			
on N.E.L. Termination of Circle Dr.			

go slab north
of Park Stucco
House on E. side
Circle Dr.

Parker, Phoenix
 Replinger & Co.
 Show Me
 3-23-28

TOPOGRAPHICAL SURVEY
 For NORMAL HEIGHTS SEWER Extension

Stations	Dist.	AZIMUTH	Vert. Δ	Horiz. Dist.	Elev.
	121	317°16'	-2°33'	118	364.1
	173	294°43'	-14°42'	162	341.6
	132	268°0'	-19°05'	119	332.1
	27	286°39'	-25°37'	83	373.2
	12	339°20'	-3°47'	13	383.3
	29	49°53'	-0°04'	30	384.1
Back of House	57	179°33'	+1°02'	58	385.1
	92	179°46'	+0°31'	93	384.9
	85	190°36'	-0°11'	86	383.8
	86	206°26'	-8°07'	85	372.00
	155	253°12'	-18°0'	141	338.30
(32)	264	207°07'	-4°08'	262	365.1
	300	214°09'	-2°28'	300	371.10
	288	209°27'	-1°04'	289	378.7
	281	202°23'	-0°16'	282	382.8
	290	194°03'	-0°15'	291	382.8
	380	207°41'	-1°34'	380	373.9
	358	203°	-0°39'	359	380.0
	380	196°20'	-0°33'	381	379.8

-10.0 ✓
 -42.5 ✓
 -52.0 ✓
 -10.9 ✓
 -0.8 ✓
 0.0 ✓
 +1.0 ✓
 +0.8 ✓
 -0.3 ✓
 -12.1 ✓
 -45.8 ✓
 -19.0 ✓
 -13.0 ✓
 -5.4 ✓
 -7.3 ✓
 -1.3 ✓
 -10.2 ✓
 -4.1 ✓
 -4.30 ✓
 3.6 ✓

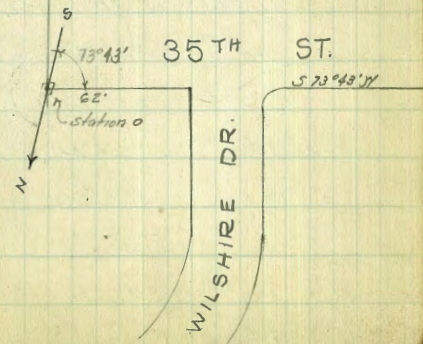
□ 0

READINGS From □ 0

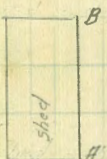
Note: READINGS Are From Bottom of Page to top

Note: Azimuths taken from South
 Astronomically
 Inst. Const. = 1.25
 Stadia " = 100.5
 = Stadia Stations
 385.54 = N.Y. 82
 385
 389.39

MAGNETIC N 89° 0' W



Stations	Dist	Bzimuth	Vert. Δ	Horz. Dist	Eliv.
	166'	326°47'	-10°42'	162	352.3 ✓ -30.2 ✓
	90'	299°00'	-18°10'	82	355.5 ✓ -23.7 ✓
B	70'	299°00'	-15°45'	84	358.8 ✓ -32.8 ✓
	97'	275°77'	-21°00'	86	349.7 ✓ -29.0 ✓
	92'	275°17'	-19°19'	83	353.5 ✓ -22.8 ✓
H	76'	277°31'	-18°16'	69	359.7 ✓ -24.2 ✓
	76'	276°05'	-19°30'	68	358.3 ✓ -19.6 ✓
	62'	268°01'	-19°10'	56	362.9 ✓ +1.3 ✓
	20'	198°20'	+3°28'	21	383.8 ✓ +3.9 ✓
	98'	143°52'	+2°15'	99	386.4 ✓ +3.2 ✓
floor Elev	80'	174°06'	+2°15'	81	385.7 ✓ +0.9 ✓
Gauge	83'	200°56'	+0°37'	84	383.4 ✓ -3.2 ✓
	98'	207°27'	-1°50'	99	379.3 ✓ -2.4 ✓
	118'	210°34'	-1°09'	119	380.1 ✓ -11.8 ✓
	122'	218°29'	-5°32'	122	370.7 ✓ -27.3 ✓
	141'	231°50'	-11°26'	136	355.2 ✓ +1.7 384.2 ✓
□ 0	313'	166°13'	+18°30'	314	384.1 ✓
READINGS FROM STA. □ 1					
□ 1	314'				-1.7 382.4 ✓
	+1" = 100' unit	346°13'	-0°19'	315	382.5 ✓ -33.6 ✓
	315'				350.5 ✓ -5.8 ✓
	265'	310°23'	-7°19'	262	378.3 ✓ 0.0 ✓
	230'	324°44'	-1°28'	231	384.1 ✓ +1.6 ✓
	220'	332°29'	0°00'	221	385.7 ✓ +0.6 ✓
East end of E. of House	220'	342°24'	+0°25'	221	384.7 ✓ -1.7 ✓
	100'	348°16'	+0°21'	101	382.4 ✓
	100'	340°40'	-1°00'	101	382.4 ✓



□ 1

N

Stations	DIST.	Azimuth	Vert. Δ	Hor. Dist	Elev.
	312'	85°56'	-1°38'	313	-8.9 373.6 ✓
	334'	87°52'	+1°02'	335	+6.1 388.6 ✓
	268'	91°21'	-5°07'	267	-23.8 358.7 ✓
	296'	82°57'	-4°28'	295	-23.2 359.3 ✓
	290'	101°17'	+0°32'	291	+2.7 385.2 ✓
	288'	78°04'	-18°04'	261	-85.0 297.5 ✓
	300'	111°57'	+0°39'	301	+3.4 385.9 ✓
	260'	79°13'	-11°34'	252	-51.2 331.3 ✓
	262'	70°01'	-15°00'	246	-66.0 316.5 ✓
	234'	117°51'	+0°55'	235	+3.8 386.3 ✓
	202'	102°05'	+0°33'	203	+2.0 384.5 ✓
	250'	62°52'	-19°08'	223	-77.5 305.0 ✓
	202'	85°35'	-8°10'	198	-21.6 353.9 ✓
	172'	59°33'	-28°28'	133	-72.5 310.0 ✓
	120'	103°04'	-12°12'	116	-24.9 357.6 ✓
	220'	42°24'	-29°53'	166	-95.5 287.0 ✓
	132'	124°23'	+1°22'	133	+3.2 385.7 ✓
	164'	131°31'	+1°30'	165	+4.3 386.8 ✓
	244'	19°48'	-31°11'	179	-108.5 274.00 ✓
	66'	356°07'	-26°25'	53	-26.7 355.8 ✓
	26'	10°31'	-27°43'	21	-11.1 371.4 ✓
	26'	125°23'	+3°37'	27	+1.7 384.2 ✓
	62'	164°00'	+2°54'	63	+3.2 385.7 ✓
	13'	164°36'	+6°20'	13	+1.5 384.0 ✓
	50'	321°07'	-20°36'	45	-16.8 365.7 ✓

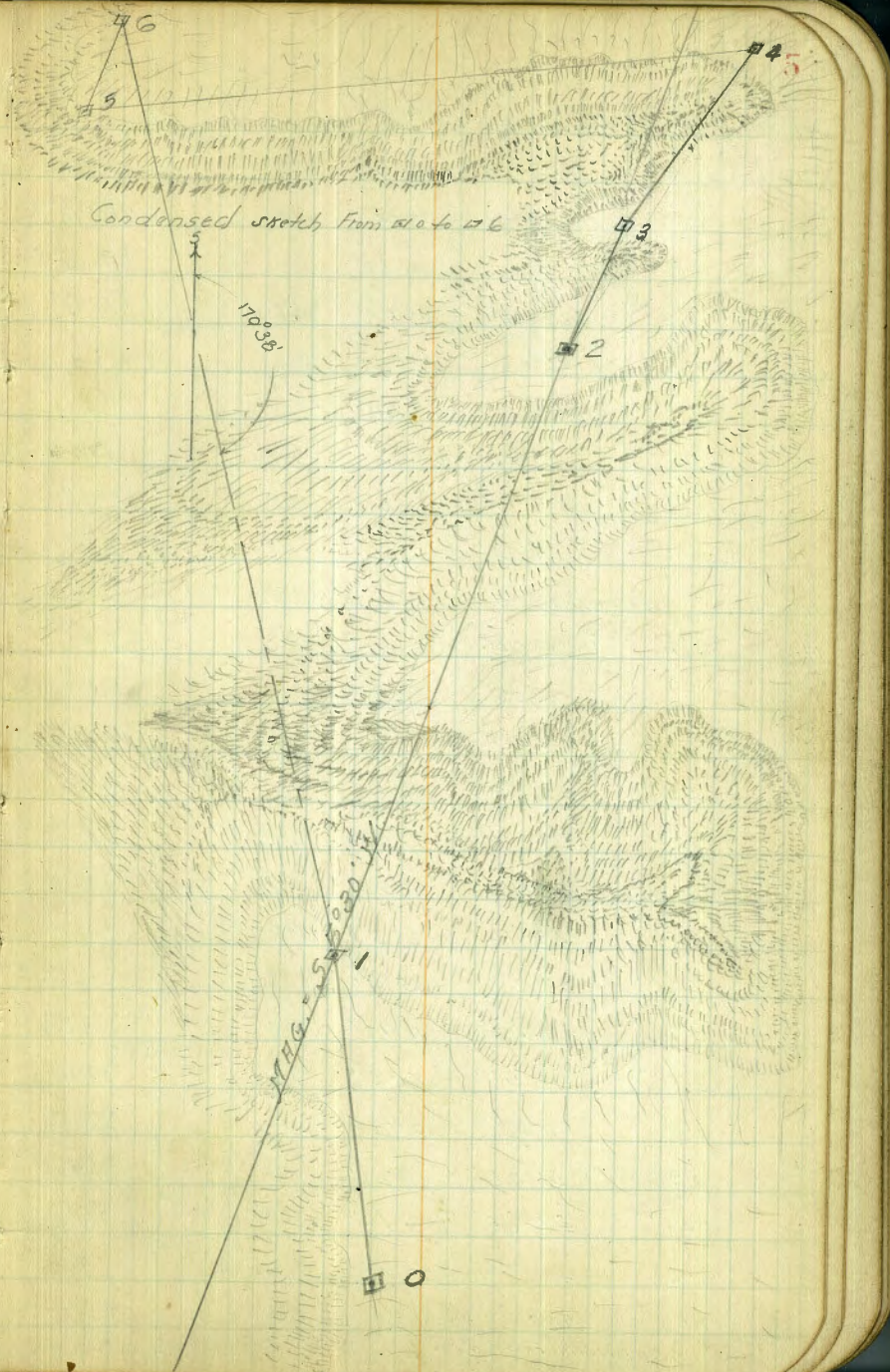
READINGS From #1 Elev. 382.5

MAG. S 58° 20' W

N

Station	Dist.	Azimuth	Vert. Δ	Horz. Dist.	Elev.
	275	46°06'	-5°50'	273	-27.9 354.6 ✓
	355'	52°56'	-1°18'	355	-8.1 374.4 ✓
	254'	50°04'	-11°16'	245	-49.5 334.0 ✓
	320'	55°10'	-4°33'	320	-25.5 357.0 ✓
	250'	46°50'	-11°04'	242	-47.5 335.0 ✓
	314'	52°28'	-4°20'	313	-23.7 358.8 ✓
	295'	50°55'	-16°08'	273	-79.0 303.5 ✓
	230'	44°02'	-18°22'	207	-69.0 313.5 ✓
	300'	75°10'	-7°39'	297	-39.7 342.8 ✓
	256'	61°07'	-6°24'	254	-28.5 354.0 ✓
	290'	56°49'	-8°00'	285	-40.0 342.5 ✓
	380'	63°05'	-1°15'	380	-8.3 374.2 ✓
	296'	62°16'	-9°58'	282	-49.6 332.9 ✓
	350'	70°07'	-3°30'	350	-21.4 361.1 ✓
	360'	65°54'	-3°56'	360	-24.7 357.8 ✓
	280'	69°58'	-13°09'	266	-62.5 320.0 ✓
	360'	61°13'	-4°55'	358	-30.8 351.7 ✓
	320'	65°16'	-7°48'	315	-43.2 339.3 ✓
	310'	59°49'	-5°34'	307	-30.0 352.5 ✓
	339'	65°19'	-6°10'	336	-36.3 346.2 ✓
	330'	68°33'	-5°23'	329	-31.0 351.5 ✓
	375'	53°36'	+0°26'	376	+2.8 385.3 ✓
	396'	58°41'	+0°42'	397	+4.8 387.3 ✓
	312'	77°57'	-5°26'	311	-29.5 353.0 ✓
	404'	71°03'	+0°58'	404	+6.8 389.3 ✓

READINGS FROM ID 1 ELEV 382.5

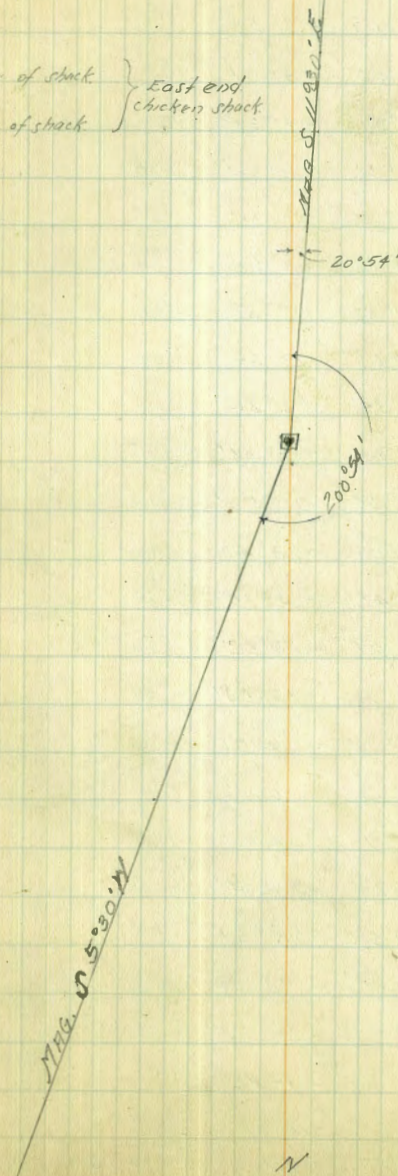


Station	Dist.	Azimuth	Vert. Δ	Horz. Dist	Elev.
	279'	178°25'	-5°27'	278	-26.5 349.2 ✓
	440'	247°33'	-14°34'	413	-107.0 268.7 ✓
	310'	175°26'	-0°58'	310	-5.2 370.5 ✓
	305'	170°19'	-0°58'	305	-5.2 370.5 ✓
	470'	246°45'	-12°00'	450	-88.2 287.5 ✓
	319'	170°22'	+1°24'	319	+7.8 383.5 ✓
	450'	231°42'	-6°30'	445	-50.6 325.1 ✓
	490'	225°12'	-4°05'	487	-34.8 340.9 ✓
□ 1	597' +1' = constant 598'	200°54'	+0°38'	598	+6.6 382.3

READINGS From station □ 2 Elev. 370.7

□ 2	596' +1.5 = constant 597'	20°54'	-0°39'	597	-6.8 375.7 ✓
	330'	22°35'	-11°09'	318	-62.8 319.7 ✓
	395'	5°45'	-18°32'	356	-119.5 263.0 ✓
	440'	359°43'	-20°31'	386	-144.5 238.0 ✓
	330'	27°55'	-17°57'	298	-96.8 285.7 ✓
	310'	35°15'	-5°55'	307	-31.5 351.0 ✓
	274	43°16'	-2°57'	294	-15.1 367.4 ✓
(51)	250'	33°35'	-15°45'	233	-65.6 316.9 ✓
	320'	43°40'	-1°12'	320	-6.7 375.8 ✓
	275'	37°52'	-7°00'	272	-33.4 349.1 ✓
	380'	57°42'	-0°28'	381	-3.1 379.4 ✓
	350'	51°25'	-1°20'	350	-8.2 374.3 ✓
	348'	49°04'	+0°16'	349	+1.6 384.1 ✓
	310'	45°06'	-2°10'	310	-11.7 370.8 ✓
	370'	52°	+0°28'	371	+3.0 385.5 ✓

READINGS From station □ 1 Elev. 382.5



Station	Dist.	Azimuth	Vert. Δ	Horiz. Dist.	Elev.
B	189'	123°03'	+4°55'	189	+16.2 391.9 ✓
	185'	124°36'	+3°53'	185	+12.6 388.3 ✓
	190'	126°40'	+3°07'	190	+10.4 386.1 ✓
H	194'	126°33'	+4°33'	194	+15.4 391.1 ✓
	220'	133°50'	+3°30'	220	+13.5 389.2 ✓
	248'	137°22'	+3°30'	247	+15.2 390.9 ✓
	275'	144°12'	+2°52'	275	+13.8 389.5 ✓
	290'	148°33'	+2°27'	290	+12.4 388.1 ✓
	595'	277°05'	-12°54'	560	-139.0 236.7 ✓
	310'	156°34'	+2°26'	310	+13.2 388.9 ✓
	325'	161°13'	+2°07'	325	+17.0 387.7 ✓
	314'	166°54'	+1°52'	314	+10.2 385.9 ✓
	508'	268°03'	-2°40'	446	-167.0 207.7 ✓
	265'	171°47'	-4°15'	264	-19.6 256.1 ✓
	610'	267°09'	-18°42'	550	-194.0 181.7 ✓
	700'	270°26'	-15°54'	648	-185.0 190.7 ✓
	221'	162°24'	-14°56'	212	-55.1 320.6 ✓
	800'	264°28'	-16°0'	740	-212.0 163.7 ✓
	212'	190°17'	-24°10'	177	-79.4 296.3 ✓
	690'	264°20'	-17°34'	628	-199.0 176.7 ✓
	230'	199°53'	-25°51'	187	-91.0 284.7 ✓
	510'	250°31'	-12°53'	485	-111.5 264.2 ✓
	248'	192°09'	-16°55'	238	-67.5 306.2 ✓
	263'	183°47'	-9°40'	256	-43.6 332.1 ✓
	400'	234°36'	-14°03'	378	-94.5 281.2 ✓

READINGS FROM station #2 Elev 375.7

S.E. Cor Garage B

N.E. Cor Garage Approx. 2.0' A

South East Cor Garage About 1' below Floor Elev.

Approx. E. Ward Road

Bottom Canyon

Mag. is 11°30' E

N

Station	Station	Dist.	Azimuth	Vert. Δ	Horiz. Dist.	Elev.
B		84'	46°52'	+9°35'	83	+13.9 389.6 ✓
		75'	44°35'	+8°33'	74	+11.1 386.8 ✓
		78'	48°25'	+11°0'	76	+14.3 390.5 ✓
H		424'	301°06'	-6°08'	420	+45.2 330.5 ✓
		62'	55°15'	+9°22'	61	+10.1 385.8 ✓
		66'	57°0'	+12°25'	64	+15.1 390.8 ✓
		404'	307°52'	-5°57'	400	-41.7 334.0 ✓
		54'	77°02'	+12°26'	52	+11.5 387.2 ✓
		72'	87°50'	+11°30'	70	+14.3 390.0 ✓
		404'	314°23'	-5°00'	402	-35.2 340.5 ✓
		95'	105°14'	+8°30'	94	+14.0 389.7 ✓
		128'	92°55'	+7°42'	127	+17.1 392.8 ✓
		120'	101°09'	+7°42'	119	+16.1 391.8 ✓
		400'	323°47'	-2°53'	400	-20.2 355.5 ✓
		126'	118°44'	+7°02'	125	+15.4 391.1 ✓
		160'	116°0'	+6°18'	159	+17.6 393.3 ✓
		450'	324°49'	+0°18'	451	+2.4 378.1 ✓
		138'	116°0'	+6°30'	137	+15.7 391.4 ✓
		463'	320°0'	+0°10'	464	+1.3 377.0 ✓
		135'	121°30'	+1°40'	135	+3.9 374.6 ✓
		141'	121°41'	0°0'	142	0.0 375.7 ✓
		500'	310°28'	-0°54'	500	-7.9 367.8 ✓
		154'	121°53'	+1°0'	155	+2.7 378.4 ✓
		490'	302°39'	-3°50'	487	-32.7 343.0 ✓
		168'	123°10'	+3°10'	168	+9.3 385.0 ✓

READINGS FROM #2 Elev. 375.7

MFB = 5 11° 30' E

SE. Cor. Cal. House Floor Elev. = Ground Elev.

N. E. Cor. House " " = 1' Higher

= SE. Cor. House. Floor of House 1.5' Higher B₁

H.
= N.E. Cor. House Bottom of Framework on Ground. Floor 7.0' Higher

Station	Dist.	Azimuth	Vert. Δ	Horz. dist.	Elev.
	93'	2°46'	-16°55'	86	349.5
	328'	324°10'	-13°40'	311	300.6
	82'	3°31'	-16°50'	76	352.7 ✓
	75'	353°0'	-24°42'	63	346.9 ✓
	80'	352°37'	-22°17'	70	347.4 ✓
	332'	320°22'	-12°07'	318	307.6 ✓
	83'	355°20'	-19°48'	74	348.9 ✓
	332'	315°18'	-12°18'	318	306.2 ✓
	72'	0°39'	-17°47'	66	354.5 ✓
	345'	309°0'	-14°55'	323	289.7 ✓
	64'	358°23'	-25°07'	53	350.7 ✓
	63'	1°42'	-20°50'	56	354.4 ✓
	354'	305°34'	-12°57'	337	298.2 ✓
	50'	0°03'	-27°37'	40	354.8 ✓
	368'	301°57'	-10°50'	356	307.7 ✓
	40'	31°32'	-12°15'	39	367.2 ✓
	373'	296°44'	-10°07'	382	307.7 ✓
	130'	290°45'	-11°0'	415	294.9 ✓
	53'	33°0'	-5°04'	54	371.0 ✓
	68'	30°18'	-0°25'	69	375.2 ✓
	450'	307°20'	-3°13'	449	350.4 ✓
	86'	29°03'	-2°18'	87	372.2 ✓
	112'	28°57'	-1°08'	113	373.5 ✓
	103'	33°44'	-1°40'	104	372.7 ✓
	124'	45°46'	+8°24'	122	393.8 ✓
Readings from # 2					Elev 375.7

Mar. 11, 1930. 5

Station	Dist.	Azimuth	Vert. Δ	Horiz. Dist.	Elev.
					-53.6
118'	323°19'	-32°22'	85	322.10	-49.5
112'	314°30'	-30°47'	83	326.2	-100.0
272'	323°24'	-28°27'	212	278.7	-40.7
30'	317°47'	-31°55'	65	335.0	-45.7
100'	324°05'	-32°00'	72	330.0	-42.5
36'	332°12'	-30°48'	71	333.2	-40.4
97'	335°30'	-27°49'	76	335.3	-36.2
98'	343°38'	-23°30'	83	339.5	-39.5
115'	342°0'	-21°30'	101	336.2	-45.5
130'	345°0'	-22°0'	113	330.2	-52.5
167'	348°25'	-19°26'	150	323.2	-39.0
150'	354°52'	-15°53'	140	335.9	-122.2
290'	313°24'	-28°33'	224	253.5	-28.0
135'	01°36'	-12°10'	130	347.7	-91.5
308'	322°00'	-18°09'	277	294.2	-84.5
300'	326°22'	-17°05'	288	291.2	-24.7
137'	12°32'	-10°31'	133	351.0	-25.3
122'	5°14'	-12°18'	118	350.4	-80.5
300'	338°22'	-16°10'	274	295.2	-30.6
120'	1°04'	-15°15'	112	345.1	-63.0
310'	338°0'	-11°55'	298	312.7	-35.1
120'	0°17'	-17°43'	110	340.6	-59.6
310'	330°02'	-12°34'	296	316.1	-37.0
110'	1°0'	-18°50'	99	341.7	-66.0
318'	323°0'	-12°10'	305	309.7	

READINGS FROM #2 Elev. 375.7

W.H.G. 5/11/06

N

Station	Dist	Azimuth	Vert. Δ	Horz. Dist	Elev.
					-0.6
	420'	327°27'	-0°05'	421	-27.5 375.1 ✓
	100'	155°20'	-16°30'	93	+3.2 348.2 ✓
	434'	328°19'	+0°25'	435	-27.6 378.9 ✓
	76'	153°23'	-21°51'	66	-7.3 348.1 ✓
	418'	332°05'	-1°0'	418	+6.0 368.4 ✓
	418'	337°04'	+0°49'	419	-19.0 391.7 ✓
	59'	135°16'	-19°25'	53	+12.4 356.7 ✓
	430'	337°09'	+1°39'	430	0.0 388.1 ✓
	430'	332°27'	0°0'	431	-13.4 375.7 ✓
	55'	127°32'	-14°17'	52	-7.2 362.3 ✓
	400'	335°41'	-1°02'	400	-6.2 368.5 ✓
	35'	120°30'	-10°05'	35	-15.5 369.5 ✓
	410'	330°43'	-2°10'	410	-5.7 360.2 ✓
	15'	210°55'	-22°45'	14	-5.4 370.0 ✓
	15'	299°10'	-21°11'	14	-33.8 370.3 ✓
	374'	328°32'	-5°12'	372	-23.4 341.9 ✓
	64'	273°25'	-23°05'	55	-35.8 352.3 ✓
	102'	274°0'	-22°0'	89	-34.0 339.9 ✓
	348'	339°33'	-5°37'	346	-68.0 341.7 ✓
	164'	301°14'	-27°38'	129	-44.5 307.7 ✓
	330'	334°46'	-7°49'	325	-89.5 331.2 ✓
	205'	316°22'	-30°15'	154	-27.6 286.2 ✓
	240'	317°55'	-28°25'	186	-43.3 288.1 ✓
	115'	292°30'	-24°11'	87	-52.2 332.4 ✓
	122'	328°45'	-29°06'	94	323.5 ✓

Readings from 172 Elev. 375.7

MAG = 5 11 30 E

N

Station	Dist.	Azimuth	Vert. A	Horiz. Dist.	Elev.
134'	125°08'	-2°56'	134	-6.9	368.8 ✓
265'	150°55'	-1°27'	266	-6.7	369.0 ✓
135'	120°0'	+3°45'	135	+8.9	388.6 ✓
275'	150°44'	-0°50'	276	-4.0	371.7 ✓
280'	151°48'	-0°18'	281	-1.5	374.2 ✓
114'	113°0'	-1°34'	115	-3.1	372.6 ✓
287'	149°50'	+1°10'	288	+5.9	381.6 ✓
120'	115°47'	+1°34'	121	+3.3	379.0 ✓
286'	157°17'	0°0'	287	+0	375.7 ✓
128'	120°18'	+1°28'	129	+3.3	379.0 ✓
275'	156°26'	-2°11'	275	-10.8	364.9 ✓
120'	125°16'	-4°10'	120	-8.8	366.9 ✓
275'	159°05'	-1°34'	276	-7.5	368.2 ✓
110'	124°11'	-17°0'	102	-31.0	344.7 ✓
277'	163°0'	-1°50'	277	-8.9	366.8 ✓
95'	124°20'	-4°39'	95	-7.8	367.9 ✓
245'	166°02'	-6°55'	243	-29.4	346.3 ✓
58'	98°39'	-1°22'	59	-1.4	374.3 ✓
79'	111°05'	-0°40'	80	-0.9	374.8 ✓
95'	113°02'	+1°05'	96	+6.8	382.5 ✓
88'	120°30'	-1°50'	89	-2.8	372.9 ✓
88'	131°15'	-6°55'	89	-10.6	365.1 ✓
418"	339°25'	+1°02'	419	+7.6	383.3 ✓
428'	339°46'	+1°40'	428	+12.5	388.2 ✓
440'	333°54'	+1°25'	441	+10.9	386.6 ✓

~~~~~

MAG. 0.11920' E

gt. Base of 6" Luc. Tree 40' tall

READINGS FROM #2 ELEV. 375.7

N

| stations                        | Dist.    | Azimuth  | Vert. A | Horiz. Dist. | Elev.   |
|---------------------------------|----------|----------|---------|--------------|---------|
|                                 |          |          |         |              | +6.5 ✓  |
| 270'                            | 147° 10' | +1° 22'  | 271     | 382.2 ✓      | -76.8 ✓ |
| 182'                            | 181° 55' | -28° 30' | 141     | 298.9 ✓      | +5.9 ✓  |
| 258'                            | 143° 25' | +1° 18'  | 259     | 381.6 ✓      | -43.3 ✓ |
| 180'                            | 162° 33' | -14° 15' | 170     | 332.4 ✓      | -57.0 ✓ |
| 221'                            | 165° 57' | -15° 27' | 206     | 318.7 ✓      | -0.9 ✓  |
| 239'                            | 143° 0'  | -0° 13'  | 240     | 374.8 ✓      | -45.8 ✓ |
| 230'                            | 165° 56' | -11° 38' | 223     | 329.9 ✓      | +2.3 ✓  |
| 225'                            | 138° 30' | +0° 35'  | 226     | 378.0 ✓      | +4.7 ✓  |
| 200'                            | 132° 30' | +1° 20'  | 201     | 380.4 ✓      | -71.1 ✓ |
| 242'                            | 159° 07' | -17° 55' | 231     | 304.6 ✓      | +4.0 ✓  |
| 205'                            | 137° 20' | +1° 06'  | 206     | 379.7 ✓      | -31.2 ✓ |
| 225'                            | 157° 20' | -8° 0'   | 222     | 344.5 ✓      | -7.1 ✓  |
| 187'                            | 134° 05' | -2° 10'  | 187     | 368.6 ✓      | -35.4 ✓ |
| 220'                            | 157° 06' | -9° 20'  | 215     | 340.3 ✓      | -2.2 ✓  |
| 186'                            | 131° 42' | -0° 40'  | 187     | 373.5 ✓      | -21.8 ✓ |
| 185'                            | 148° 45' | -6° 47'  | 184     | 353.9 ✓      | -11.6 ✓ |
| 195'                            | 144° 47' | -3° 23'  | 195     | 364.1 ✓      | -0.7 ✓  |
| 178'                            | 128° 23' | -0° 14'  | 179     | 375.0 ✓      | -9.2 ✓  |
| 214'                            | 143° 49' | -2° 27'  | 214     | 366.5 ✓      | -2.3 ✓  |
| 160'                            | 127° 17' | -0° 49'  | 161     | 373.4 ✓      | -20.7 ✓ |
| 225'                            | 150° 30' | -5° 18'  | 224     | 355.0 ✓      | -6.5 ✓  |
| 154'                            | 127° 15' | -2° 23'  | 154     | 369.2 ✓      | -18.6 ✓ |
| 255'                            | 154° 0'  | -4° 10'  | 254     | 357.1 ✓      | -10.2 ✓ |
| 146'                            | 126° 41' | -4° 0'   | 146     | 365.5 ✓      | -15.7 ✓ |
| 262'                            | 156° 45' | -3° 25'  | 262     | 360.0 ✓      |         |
| READINGS: From 19.2 Elev. 375.7 |          |          |         |              |         |

MAY 5 11 00 A.M.

N



| Station                      | Dist. | Azimuth | Vert. Δ | Horiz. Dist. | Elev.   |
|------------------------------|-------|---------|---------|--------------|---------|
|                              | 96'   | 45°55'  | -0°17'  | 97           | 348.2 ✓ |
|                              | 108'  | 33°52'  | -1°15'  | 109          | 346.3 ✓ |
|                              | 126'  | 43°30'  | +2°15'  | 126          | 353.7 ✓ |
|                              | 116'  | 50°43'  | +5°50'  | 116          | 360.5 ✓ |
|                              | 33'   | 46°30'  | -9°25'  | 33           | 343.2 ✓ |
|                              | 137'  | +58°40' | +11°12' | 134          | 374.9 ✓ |
|                              | 30'   | 85°0'   | +7°12'  | 30           | 387.2 ✓ |
|                              | 159'  | 57°24'  | +15°05' | 149          | 388.9 ✓ |
|                              | 60'   | 81°0'   | +5°10'  | 60           | 354.2 ✓ |
|                              | 146'  | 78°25'  | +17°0'  | 134          | 389.7 ✓ |
|                              | 128'  | 110°50' | +21°09' | 112          | 392.0 ✓ |
|                              | 88'   | 79°11'  | +6°20'  | 88           | 358.5 ✓ |
| E                            | 154'  | 91°48'  | +17°16' | 143          | 392.7 ✓ |
| D                            | 132'  | 87°19'  | +19°35' | 118          | 390.7 ✓ |
|                              | 104'  | 87°19'  | +13°08' | 99           | 371.9 ✓ |
| C                            | 132'  | 88°05'  | +16°0'  | 123          | 384.0 ✓ |
|                              | 82'   | 106°22' | +19°0'  | 74           | 374.2 ✓ |
| B                            | 121'  | 84°25'  | +17°42' | 111          | 394.0 ✓ |
|                              | 60'   | 107°48' | +29°12' | 54           | 367.7 ✓ |
| A                            | 105'  | 111°16' | +20°57' | 92           | 384.0 ✓ |
| □ 2                          | 132'  | 183°44' | +11°59' | 126          | 375.5 ✓ |
| READINGS From □ 3            |       |         |         |              |         |
| □ 3                          | 132'  | 3°44'   | -11°59' | 127          | 348.7 ✓ |
|                              | 156'  | 745°38' | -14°50' | 146          | 336.9 ✓ |
|                              | 290'  | 158°11' | +0°33'  | 291          | 378.5 ✓ |
| READINGS From □ 2 Elev 375.7 |       |         |         |              |         |

S.E. Cor. of Back of House + Elev. of Wall

on top of Ret. Wall

on top of Ret. Wall

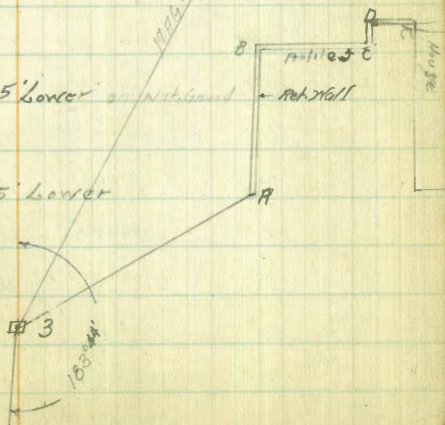
Top Cor. Ret. Wall bottom is 11.5' lower on Ret. Wall

Top is level with Ret. Ground

N.E. Top Ret. Wall Bottom is 6.5' Lower

Mag. S 22° 00' W

Mag. S 22° 30' W



| Station | Dist.   | Azimuth | Vert. Δ | Horiz. Dist | Elev.   |
|---------|---------|---------|---------|-------------|---------|
| 258'    | 44°15'  | +5°40'  | 257     | +25.5       | 374.2 ✓ |
| 272'    | 51°10'  | +8°55'  | 267     | +41.9       | 390.6 ✓ |
| 260'    | 54°0'   | +9°40'  | 254     | +43.2       | 391.9 ✓ |
| 270'    | 39°43'  | +2°30'  | 271     | +11.8       | 360.5 ✓ |
| 245'    | 53°28'  | +8°47'  | 240     | +37.1       | 385.8 ✓ |
| 243'    | 40°16'  | +2°26'  | 244     | +10.3       | 359.0 ✓ |
| 220'    | 43°0'   | +2°05'  | 221     | +8.0        | 356.7 ✓ |
| 220'    | 49°44'  | +5°30'  | 220     | +21.1       | 369.8 ✓ |
| 197'    | 42°43'  | +1°29'  | 198     | +5.2        | 353.9 ✓ |
| 187'    | 52°30'  | +7°32'  | 185     | +24.4       | 373.1 ✓ |
| 195'    | 45°30'  | +3°08'  | 195     | +10.8       | 359.5 ✓ |
| 176'    | 58°46'  | +9°40'  | 172     | +29.3       | 378.0 ✓ |
| 168'    | 44°55'  | +2°07'  | 169     | +6.2        | 354.9 ✓ |
| 200'    | 57°31'  | +10°50' | 194     | +37.0       | 385.7 ✓ |
| 214     | 60°47'  | +11°55' | 206     | +43.5       | 392.2 ✓ |
| 134'    | 45°40'  | +3°04'  | 134     | +7.2        | 355.9 ✓ |
| 192'    | 63°30'  | +12°37' | 184     | +41.0       | 389.7 ✓ |
| 134'    | 35°24'  | -1°57'  | 135     | -4.6        | 344.1 ✓ |
| 144'    | 17°37'  | -11°20' | 140     | -28.0       | 370.7 ✓ |
| 58'     | 321°12' | -29°30' | 45      | -25.2       | 323.5 ✓ |
| 145'    | 347°50' | -26°15' | 118     | -58.0       | 290.7 ✓ |
| 53'     | 270°39' | -36°0'  | 35      | -25.7       | 323.0 ✓ |
| 111'    | 10°22'  | -16°38' | 103     | -30.7       | 318.0 ✓ |
| 110'    | 24°37'  | -6°04'  | 110     | -11.7       | 337.0 ✓ |
| 60'     | 54°0'   | -11°0'  | 59      | -11.4       | 337.3 ✓ |

Readings from #3 Elev. 3487

Mag. S 72° 30' W

| Station | Dist.  | Azimuth | Vert. A | Mag. Dist. | Elev. |                                                          |
|---------|--------|---------|---------|------------|-------|----------------------------------------------------------|
| 326'    | 29°28' | +4°16'  | 325     | +24.3      | 373.0 | Top Cobble Wall                                          |
| 318'    | 25°10' | +3°18'  | 318     | +18.4      | 367.1 | Bottom of Wall                                           |
| 318'    | 25°10' | +4°0'   | 317     | +22.2      | 370.9 | on top Wall                                              |
| 325     | 31°43' | +4°08'  | 324     | +23.5      | 372.2 | W end Cobble Wall                                        |
| 310'    | 22°30' | +4°15'  | 309     | +23.0      | 371.7 | Bottom of Wall                                           |
| 310'    | 22°30' | +5°10'  | 308     | +27.9      | 376.6 | on top of Wall                                           |
| 345'    | 29°19' | +5°17'  | 343     | +31.6      | 380.3 | N.W. Cor. of Back. of House on Lioncey Cor. Wall         |
| 345'    | 29°19' | +6°15'  | 343     | +37.4      | 386.1 | N.W. Cor. of Back. of House on Cor. Wall                 |
| 330'    | 28°43' | +4°27'  | 330     | +25.6      | 374.3 | on Cobble stone Wall E end                               |
| 332'    | 35°41' | +5°27'  | 330     | +31.5      | 380.2 | on Cor. Cobble stone Wall base of Wall 1.5' lower. W end |
| 338'    | 30°20' | +5°20'  | 335     | +31.3      | 380.0 |                                                          |
| 343'    | 30°24' | +5°17'  | 341     | +31.5      | 380.2 | Bottom of Wall Cor.                                      |
| 343'    | 30°24' | +6°17'  | 341     | +37.4      | 386.1 | on top Wall Cor.                                         |
| 346'    | 34°50' | +7°24'  | 343     | +44.4      | 393.1 | " " " Cor.                                               |
| 353'    | 30°16' | +6°12'  | 350     | +37.9      | 386.6 | on top of lower Wall                                     |
| 353'    | 30°16' | +7°15'  | 350     | +44.2      | 392.9 | on top of Wall                                           |
| 356'    | 34°19' | +6°12'  | 353     | +38.3      | 387.0 | = Bottom of Wall                                         |
| 356'    | 34°19' | +7°16'  | 353     | +44.7      | 393.4 | top Ret. Wall                                            |
| 340'    | 34°39' | +6°22'  | 337     | +37.5      | 386.2 | top Ret. Wall                                            |
| 340'    | 34°39' | +5°30'  | 337     | +32.5      | 381.2 | Bottom Ret. Wall                                         |
| 355'    | 36°49' | +6°20'  | 352     | +39.0      | 387.7 |                                                          |
| 355'    | 36°49' | +7°0'   | 352     | +43.0      | 391.7 | top cor. Ret. Wall                                       |
| 345'    | 38°15' | +6°05'  | 342     | +36.5      | 385.2 | at Base of Wall                                          |
| 345'    | 38°15' | +7°10'  | 342     | +42.8      | 391.5 | on top N.W. Cor. Ret. Wall                               |
| 330'    | 36°56' | +5°30'  | 328     | +31.6      | 380.3 |                                                          |

Mag. S 22° 30' W

READING From #3 Elev. 3487

| Station | Dist   | Azimuth | vert Δ | Horiz. dist | Elev. |          |
|---------|--------|---------|--------|-------------|-------|----------|
|         |        |         |        |             | +25.3 |          |
| 302'    | 8°46'  | +4°48'  | 302    |             | -13.0 | 374.00 ✓ |
| 270'    | 30°22' | -2°45'  | 270    |             | +40.4 | 335.7 ✓  |
| 325'    | 7°15'  | +7°10'  | 321    |             | +42.5 | 389.1 ✓  |
| 336'    | 7°47'  | +7°18'  | 333    |             | -0.3  | 391.2 ✓  |
| 286'    | 32°32' | -0°04'  | 287    |             | +37.5 | 349.4 ✓  |
| 335'    | 11°0'  | +6°26'  | 333    |             | +41.6 | 386.2 ✓  |
| 335'    | 11°0'  | +7°10'  | 333    |             | +37.5 | 390.3 ✓  |
| 336'    | 16°22' | +6°25'  | 333    |             | +42.0 | 386.2 ✓  |
| 336'    | 16°22' | +7°13'  | 333    |             | +12.4 | 390.7 ✓  |
| 293'    | 19°54' | +2°25'  | 294    |             | +9.4  | 361.1 ✓  |
| 303'    | 27°15' | +1°46'  | 304    |             | +12.4 | 358.1 ✓  |
| 303'    | 27°15' | +2°20'  | 304    |             | +27.0 | 361.1 ✓  |
| 314'    | 9°11'  | +4°51'  | 314    |             | +35.1 | 375.7 ✓  |
| 314'    | 9°11'  | +6°26'  | 314    |             | +9.5  | 383.8 ✓  |
| 300'    | 34°37' | +1°48'  | 300    |             | +11.5 | 358.2 ✓  |
| 300'    | 34°37' | +2°12'  | 300    |             | +36.5 | 360.2 ✓  |
| 323'    | 16°36' | +6°31'  | 320    |             | +14.8 | 385.2 ✓  |
| 310'    | 34°05' | +2°43'  | 310    |             | +23.4 | 363.5 ✓  |
| 320'    | 34°31' | +4°11'  | 320    |             | +16.6 | 372.1 ✓  |
| 305'    | 18°30' | +3°06'  | 305    |             | +20.2 | 365.3 ✓  |
| 305'    | 18°30' | +3°48'  | 305    |             | +32.5 | 368.9 ✓  |
| 311'    | 18°30' | +6°     | 309    |             | +21.7 | 381.2 ✓  |
| 310'    | 18°30' | +4°0'   | 309    |             | +21.3 | 370.4 ✓  |
| 312'    | 22°30' | +3°55'  | 312    |             | +20.4 | 370.0 ✓  |
| 326'    | 29°28' | +3°35'  | 326    |             |       | 369.1 ✓  |

READINGS From □ 3 Elev 3487

North edge street side walk on top.

East end Cobble on Bot.

" " " " top

West Cobble Wall on bottom

West Cobble Wall on top.

East end Ret. Wall on top. Bottom 2.0' lower

Bottom Ret. Wall

Top of Ret. Wall

Bottom Con. Ret. Wall

Top Con. Ret. Wall

Top Ret. Wall

Bot. " " } Cobble  
+ Con.

Top Con. Wall Bot. 9.5' lower.

Bottom Cobble Wall E. end

Top East end Cobble Wall

NE. Cor. House Basement Floor Elev.

NE. Cor. House at Bottom of Wall

Top Cobble Wall ———— Cookoo

Bottom Wall

MAG S 22° 30' W

| Station | Dist.   | Bearing | Vert. Δ | Horiz. Dist. | Elev.   |
|---------|---------|---------|---------|--------------|---------|
| 290'    | 352°0'  | +3°17'  | 240     | +16.6        | 365.3 ✓ |
| 292'    | 348°34' | +5°0'   | 291     | +25.5        | 374.2 ✓ |
| 230'    | 340°0'  | -4°33'  | 230     | -18.3        | 330.4 ✓ |
| 330'    | 339°10' | +6°57'  | 326     | +39.7        | 388.4 ✓ |
| 322'    | 344°09' | +5°45'  | 320     | +32.2        | 380.9 ✓ |
| 320'    | 349°20' | +6°53'  | 317     | +38.2        | 386.9 ✓ |
| 230'    | 346°30' | -2°31'  | 231     | -10.1        | 338.6 ✓ |
| 227'    | 351°47' | -3°42'  | 227     | -14.7        | 334.0 ✓ |
| 320'    | 349°20' | +7°12'  | 316     | +39.9        | 388.6 ✓ |
| 325'    | 351°32' | +6°41'  | 323     | +37.7        | 386.4 ✓ |
| 335'    | 356°32' | +7°07'  | 330     | +41.2        | 389.9 ✓ |
| 320'    | 356°02' | +1°54'  | 319     | +17.3        | 376.0 ✓ |
| 284'    | 357°05' | +1°20'  | 285     | +6.6         | 355.3 ✓ |
| 227'    | 357°0'  | -5°16'  | 226     | -20.9        | 327.8 ✓ |
| 285'    | 2°45'   | +1°40'  | 286     | +9.3         | 357.0 ✓ |
| 300'    | 14°38'  | +3°30'  | 300     | +18.4        | 367.1 ✓ |
| 226'    | 5°0'    | -3°10'  | 226     | -12.5        | 336.2 ✓ |
| 262'    | 18°15'  | -1°0'   | 263     | -4.6         | 344.1 ✓ |
| 222'    | 11°09'  | -3°20'  | 222     | -13.0        | 335.7 ✓ |
| 225'    | 18°20'  | -5°15'  | 224     | -20.6        | 328.1 ✓ |
| 240'    | 5°09'   | -1°20'  | 241     | -5.6         | 343.1 ✓ |
| 258'    | 8°57'   | +0°40'  | 259     | +3.1         | 351.8 ✓ |
| 238'    | 25°37'  | -6°0'   | 237     | -24.8        | 323.9 ✓ |
| 274'    | 8°57'   | +2°35'  | 274     | +12.4        | 361.1 ✓ |
| 263'    | 27°40'  | -3°54'  | 263     | -17.9        | 330.8 ✓ |

BEADINGS From Sta 3 Elev. 348.7

Bottom of wall =  
 East end Con. Ret. Wall on top Ground Same Elev.  
 Bott. Con Ret. Wall  
 Top. W. end Con Ret. Wall  
 N.E. Cor. House on Ground  
 S.W. Cor. of House on Ground (Back.)  
 N.W. Cor. House on Ground. Floor is 14.0' Higher

MAG. 5 22°20' W



Station Dist. Azimuth Vert. Δ Mag. dist Elev.

READINGS FROM □ 6 Elev. 373.7 + 6.1

|     |      |         |         |     |               |
|-----|------|---------|---------|-----|---------------|
| □ 6 | 85   | 18°34'  | 4°02'   | 85  | 373.2         |
|     | 156' | 311°25' | -20°0'  | 139 | -50.9 316.3 ✓ |
|     | 119' | 289°15' | -21°30' | 104 | -40.9 326.3 ✓ |
|     | 127' | 347°35' | -12°30' | 122 | -27.0 340.2 ✓ |
|     | 132' | 329°32' | -16°30' | 122 | -36.2 331.0 ✓ |
|     | 92'  | 358°0'  | -6°53'  | 89  | -11.1 356.1 ✓ |
|     | 131' | 271°05' | -23°35' | 113 | -49.5 317.7 ✓ |
|     | 65'  | 346°08' | -10°04' | 64  | -11.4 355.8 ✓ |
|     | 50'  | 260°26' | -22°34' | 44  | -18.1 349.1 ✓ |
|     | 40'  | 215°30' | -19°16' | 36  | -12.7 354.5 ✓ |
|     | 35'  | 0°36'   | +2°50'  | 36  | +1.8 369.0 ✓  |
|     | 73'  | 11°42'  | +3°30'  | 74  | +4.5 371.7 ✓  |
|     | 132' | 24°54'  | +3°04'  | 132 | +7.2 374.4 ✓  |
|     | 116' | 233°11' | -23°0'  | 99  | -42.0 325.2 ✓ |
|     | 160' | 39°52'  | +4°50'  | 160 | +13.5 380.7 ✓ |
|     | 115' | 47°16'  | +5°33'  | 115 | +11.2 378.4 ✓ |
|     | 115' | 214°34' | -20°0'  | 102 | -37.2 330.0 ✓ |
|     | 102' | 74°43'  | +3°12'  | 102 | +9.3 376.5 ✓  |
|     | 85'  |         | +4°02'  | 86  | +6.1 373.2 ✓  |
| □ 5 | 626' | 83°55'  | +2°16'  | 626 | +24.7 391.8 ✓ |

on End of curb N side Sydney Pl.

chk. on <sup>Stub</sup> NW N.E. of Sydney Pl. (Page 1) Elev. 373.77 Error = 0.26'

READINGS FROM □ 5 Elev. = 367.00 } 367.7 = Correction

|     |      |         |         |     |               |
|-----|------|---------|---------|-----|---------------|
| □ 5 | 626' | 263°55' | -2°16'  | 626 | -24.7 367.0 ✓ |
|     | 98'  |         | +1°19'  | 99  | +23.3 374.0 ✓ |
|     | 70'  | 229°0'  | -33°23' | 50  | -32.7 359.0 ✓ |

READINGS FROM □ 4 E

S.E. BR. Sydney Pl. + Mt. View Dr. PAGE 1



| Station | Dist | Azimuth | Vert. $\Delta$ | Horiz. dist | Elev             |
|---------|------|---------|----------------|-------------|------------------|
|         | 144' | 322°11' | -23°47'        | 121         | -33.5<br>319.7 ✓ |
|         | 200' | 313°30' | -25°50'        | 163         | -78.8<br>294.4 ✓ |
|         | 158' | 333°19' | -18°45'        | 143         | -49.5<br>323.7 ✓ |
|         | 133' | 345°56' | -14°53'        | 125         | -33.3<br>339.9 ✓ |
|         | 118' | 342°56' | -16°30'        | 109         | -34.1<br>339.1 ✓ |
|         | 118' | 343°0'  | -15°33'        | 111         | -20.7<br>342.5 ✓ |
|         | 88'  | 341°56' | -21°21'        | 77          | -30.2<br>343.0 ✓ |
|         | 88'  | 342°0'  | -20°08'        | 77          | -78.7<br>344.5 ✓ |
|         | 72'  | 357°40' | -17°0'         | 67          | -20.4<br>352.8 ✓ |
|         | 72'  | 357°43' | -14°49'        | 67          | -18.0<br>355.2 ✓ |
|         | 101' | 355°09' | -11°55'        | 98          | -20.6<br>352.6 ✓ |
|         | 101' | 355°06' | -10°17'        | 98          | -17.9<br>355.3 ✓ |
|         | 143' | 297°42' | -28°13'        | 111         | -60.0<br>313.2 ✓ |
|         | 100' | 346°25' | -15°55'        | 87          | -27.1<br>345.1 ✓ |
|         | 110' | 294°17' | -25°09'        | 92          | -42.7<br>330.5 ✓ |
|         | 133' | 346°0'  | -14°0'         | 126         | -31.5<br>341.7 ✓ |
|         | 128' | 355°56' | -10°25'        | 125         | -22.2<br>351.0 ✓ |
|         | 98'  | 320°0'  | -27°35'        | 78          | -40.6<br>332.6 ✓ |
|         | 128' | 0°0'    | -8°43'         | 126         | -19.3<br>353.9 ✓ |
|         | 71'  | 332°56' | -25°45'        | 59          | -28.2<br>345.0 ✓ |
|         | 58'  | 356°30' | -21°30'        | 51          | -20.1<br>353.1 ✓ |
|         | 100' | 5°26'   | -5°35'         | 100         | -9.8<br>363.4 ✓  |
|         | 51'  | 23°37'  | -4°6'          | 52          | -3.7<br>369.5 ✓  |
|         | 122' | 6°20'   | +5°10'         | 122         | -11.0<br>362.2 ✓ |
| □ 6     | 85'  | 198°34' | +3°59'         | 86          | +6.0<br>379.2 ✓  |

READINGS FROM □ 6 Elev. 373.2

Bottom Cobble Stone Wall B

Bottom " " " "

Top " " " "

Bottom " " " "

Top " " " "

Bottom Cobble Stone Wall

Top " " " "

Bot " " " "

Top " " " "

Top Cobble Wall B

Pepper tree 1' dia. base

N edge chicken house - wire pen

Base of 15' dia. Pepper tree

South edge chicken house - wire pen



| Station | Dist.   | Azimuth | Vert. A | Horz Dist | Elev.   |
|---------|---------|---------|---------|-----------|---------|
| 403'    | 348°17' | -5°16'  | 404     | -16.5     | 356.7 ✓ |
| 420'    | 340°58' | -5°37'  | 421     | -19.2     | 354.0 ✓ |
| 432'    | 334°0'  | -3°0'   | 432     | -23.2     | 350.0 ✓ |
| 347'    | 342°13' | -9°52'  | 398     | -58.8     | 314.4 ✓ |
| 464'    | 332°38' | -2°30'  | 465     | -20.3     | 352.9 ✓ |
| 460'    | 327°40' | -4°23'  | 458     | -35.1     | 338.1 ✓ |
| 440'    | 321°55' | -6°12'  | 435     | -47.3     | 325.9 ✓ |
| 410'    | 329°02' | -6°10'  | 406     | -43.9     | 329.3 ✓ |
| 365'    | 325°0'  | -11°29' | 352     | -71.4     | 301.8 ✓ |
| 390'    | 334°50' | -06°00' | 386     | -40.6     | 332.6 ✓ |
| 385'    | 319°02' | -10°35' | 373     | -69.8     | 303.4 ✓ |
| 420'    | 315°20' | -10°30' | 407     | -75.4     | 297.8 ✓ |
| 380'    | 350°0'  | -4°45'  | 378     | -31.5     | 341.7 ✓ |
| 420'    | 306°41' | -1°16'  | 395     | -101.0    | 272.2 ✓ |
| 360'    | 356°30' | -5°05'  | 358     | -31.8     | 341.4 ✓ |
| 390'    | 310°07' | -13°20' | 370     | -87.5     | 285.7 ✓ |
| 325'    | 355°30' | -10°20' | 315     | -57.5     | 315.7 ✓ |
| 395'    | 305°30' | -15°51' | 366     | -104.0    | 269.2 ✓ |
| 330'    | 316°0'  | -13°10' | 313     | -73.5     | 299.7 ✓ |
| 322'    | 337°0'  | -14°37' | 303     | -79.0     | 294.2 ✓ |
| 340'    | 310°0'  | -23°55' | 285     | -126.0    | 247.2 ✓ |
| 325'    | 310°0'  | -26°    | 263     | -128.3    | 244.9 ✓ |
| 322'    | 331°0'  | -17°30' | 292     | -92.2     | 281.0 ✓ |
| 300'    | 331°0'  | -19°15' | 267     | -93.5     | 279.7 ✓ |
| 170'    | 323°47' | -22°0'  | 147     | -59.3     | 313.9 ✓ |

READINGS FROM #6 E/W 3732

| Station | Dist. | Azimuth | Vert. Δ | Mag. dist. | Elev    |                                                                      |
|---------|-------|---------|---------|------------|---------|----------------------------------------------------------------------|
|         | 360'  | 149°40' | -0°29'  | 361        | 367.9 ✓ | at base of Euc tree 1 dia 50" tall                                   |
|         |       |         |         |            | -30     |                                                                      |
|         | 352'  | 126°47' | -0°22'  | 353        | 368.6 ✓ |                                                                      |
|         |       |         |         |            | -2.3    |                                                                      |
|         | 328'  | 142°49' | -1°03'  | 329        | 364.9 ✓ |                                                                      |
|         |       |         |         |            | -6.0    |                                                                      |
|         | 350'  | 129°03' | -1°08'  | 349        | 364.0 ✓ |                                                                      |
|         |       |         |         |            | -6.9    |                                                                      |
|         | 358'  | 129°0'  | -0°10'  | 359        | 369.9 ✓ | = S.E. Cor House }<br>= N.E. Cor House }                             |
|         |       |         |         |            | -1.0    |                                                                      |
|         | 367'  | 133°36' | +0°15'  | 368        | 369.3 ✓ |                                                                      |
|         |       |         |         |            | -1.6    |                                                                      |
|         | 370'  | 142°08' | +1°00'  | 371        | 377.4 ✓ |                                                                      |
|         |       |         |         |            | +6.5    |                                                                      |
|         | 370'  | 142°08' | +1°14'  | 371        | 378.9 ✓ | = N.E. Cor Cal. House = top Cobble Wall }<br>= S.E. Cor Cal. House } |
|         |       |         |         |            | +8.0    |                                                                      |
|         | 360'  | 140°37' | +0°10'  | 361        | 371.9 ✓ |                                                                      |
|         |       |         |         |            | +1.0    |                                                                      |
|         | 378'  | 136°45' | +0°30'  | 379        | 374.2 ✓ | = S.W. Cor Cal. House }<br>Bottom Cobble Wall.                       |
|         |       |         |         |            | +3.3    |                                                                      |
|         | 367'  | 146°55' | +0°25'  | 368        | 373.6 ✓ |                                                                      |
|         |       |         |         |            | +2.7    |                                                                      |
|         | 368'  | 146°55' | +1°0'   | 369        | 377.3 ✓ | top " "                                                              |
|         |       |         |         |            | +6.4    |                                                                      |
|         | 395'  | 131°40' | +2°06'  | 395        | 385.4 ✓ |                                                                      |
|         |       |         |         |            | +14.5   |                                                                      |
|         | 391'  | 150°11' | +1°15'  | 392        | 379.4 ✓ | S.W. Cor House                                                       |
|         |       |         |         |            | +6.5    |                                                                      |
|         | 380'  | 153°27' | +0°05'  | 381        | 371.3 ✓ | S.E. Cor House                                                       |
|         |       |         |         |            | +0.4    |                                                                      |
|         | 412'  | 159°58' | +0°40'  | 413        | 375.7 ✓ | N.E. Cor House                                                       |
|         |       |         |         |            | +4.8    |                                                                      |
| □ 6     | 480'  | 162°59' | +0°17'  | 481        | 373.3 ✓ |                                                                      |
|         |       |         |         |            | +2.4    |                                                                      |

READINGS FROM □ 7 Elevation - 370.9

|     |      |         |        |     |         |  |
|-----|------|---------|--------|-----|---------|--|
| □ 7 | 480' |         |        |     | -2.2 ✓  |  |
|     | 481' | 342°59' | -0°16' | 481 | 370.9 ✓ |  |
|     |      |         |        |     | -0.8    |  |
|     | 448' | 350°37' | -0°06' | 449 | 377.4 ✓ |  |
|     |      |         |        |     | -17.8   |  |
|     | 380' | 358°25' | -2°41' | 380 | 355.4 ✓ |  |
|     |      |         |        |     | -4.5    |  |
|     | 450' | 345°0'  | -0°34' | 451 | 368.7 ✓ |  |
|     |      |         |        |     | -8.5    |  |
|     | 440' | 345°0'  | -1°10' | 441 | 364.7 ✓ |  |
|     |      |         |        |     | -13.5   |  |
|     | 407' | 351°12' | -1°54' | 408 | 359.7 ✓ |  |
|     |      |         |        |     | -15.3   |  |
|     | 452' | 336°56' | -1°56' | 453 | 357.9 ✓ |  |

READINGS FROM □ 6 Elev. 373.2

| Station | Dist.   | Azimuth | Vert. a | Mag. dist. | Elev  |                                 |
|---------|---------|---------|---------|------------|-------|---------------------------------|
| 305'    | 134°47' | -5°50'  | 304     | -30.9      | 340.0 |                                 |
| 273'    | 125°20' | -3°28'  | 271     | -26.0      | 344.9 |                                 |
| 270'    | 121°23' | -3°08'  | 270     | -14.8      | 356.1 |                                 |
| 250'    | 137°0'  | 15°0    | 234     | -62.8      | 308.1 |                                 |
| 285     | 134°40' | -9°10'  | 278     | -45.0      | 325.9 |                                 |
| 285'    | 136°30' | -9°10'  | 278     | -45.0      | 325.9 |                                 |
| 263'    | 117°10' | -2°18'  | 263     | -10.6      | 360.3 | = Cypress tree                  |
| 330'    | 161°28' | -6°52'  | 327     | -39.3      | 331.6 |                                 |
| 315'    | 159°26' | -6°28'  | 314     | -38.5      | 335.4 |                                 |
| 298'    | 156°12' | -8°32'  | 292     | -43.9      | 327.0 |                                 |
| 292'    | 145°26' | -5°50'  | 290     | -24.6      | 341.3 |                                 |
| 286'    | 141°23' | -6°27'  | 283     | -32.0      | 338.9 |                                 |
| 163'    | 106°55' | +0°20'  | 164     | +11.0      | 371.9 |                                 |
| 302'    | 139°30' | -5°30'  | 301     | -28.9      | 342.0 |                                 |
| 315'    | 137°44' | -5°08'  | 314     | -28.3      | 342.6 |                                 |
| 322'    | 142°01' | -1°52'  | 323     | -4.9       | 366.0 |                                 |
| 210'    | 109°47' | +0°20'  | 211     | +1.2       | 372.1 |                                 |
| 314'    | 144°19' | -3°07'  | 314     | -17.1      | 353.8 |                                 |
| 260'    | 107°40' | +2°25'  | 260     | +11.0      | 381.9 |                                 |
| 302'    | 115°37' | +2°30'  | 302     | +13.2      | 384.1 | = Cypress tree 6" dia. 25' tall |
| 334'    | 116°0'  | +2°33'  | 334     | +14.9      | 385.8 |                                 |
| 340'    | 152°56' | -3°28'  | 339     | -20.6      | 350.3 |                                 |
| 345'    | 119°40' | +2°33'  | 345     | +15.4      | 386.3 | = NE Cor. House #               |
| 350'    | 154°15' | -2°24'  | 350     | -14.7      | 356.2 |                                 |
| 348'    | 122°33' | +1°12'  | 349     | +7.3       | 378.2 | = E of Back of House #          |

READINGS from #7 Elev. 370.9

| Station | Dist. | Azimuth<br>Vert. | Vert. $\Delta$ | Horiz. dist. | Elev.                    |
|---------|-------|------------------|----------------|--------------|--------------------------|
|         | 171'  | 158°35'          | +0°36'         | 172          | 375.4 <sup>+1.8</sup> ✓  |
|         | 201'  | 171°17'          | -0°28'         | 202          | 372.0 <sup>-1.6</sup> ✓  |
|         | 228'  | 166°57'          | +0°08'         | 229          | 374.1 <sup>+0.5</sup> ✓  |
|         | 237'  | 178°19'          | -1°30'         | 238          | 367.4 <sup>-6.2</sup> ✓  |
|         | 265'  | 183°30'          | -2°51'         | 265          | 360.4 <sup>-13.2</sup> ✓ |
| □ 7     | 249'  | 172°09'          | -0°40'         | 250          | 370.7 <sup>-2.9</sup> ✓  |

READINGS FROM □ 8 Elevation = 373.6

|     |       |         |        |     |                               |
|-----|-------|---------|--------|-----|-------------------------------|
| □ 8 | 248.5 |         |        |     | 373.6 <sup>+1.9</sup>         |
|     | 249   | 352°02' | +0°40' | 250 | 373.6 <sup>581.40</sup> ✓     |
|     | 176'  |         | +3°24' |     | 381.8 <sup>0.22</sup> - Error |
|     | 78'   | 80°25'  | +4°12' | 78  | 376.7 <sup>+5.8</sup> ✓       |
|     | 177'  | 95°16'  | +3°26' | 177 | 381.5 <sup>+10.6</sup> ✓      |
|     | 224'  | 125°30' | -6°13' | 223 | 346.4 <sup>-24.5</sup> ✓      |
|     | 168'  | 105°34' | +0°22' | 169 | 372.0 <sup>+1.1</sup> ✓       |
|     | 170'  | 108°50' | 0°0'   | 171 | 370.9 <sup>40</sup> ✓         |
|     | 209'  | 109°37' | +0°15' | 210 | 371.8 <sup>+0.9</sup> ✓       |
|     | 206'  | 106°30' | +1°05' | 207 | 374.8 <sup>+3.9</sup> ✓       |
|     | 333'  | 119°40' | +1°46' | 334 | 381.2 <sup>+10.3</sup> ✓      |
|     | 320'  | 121°15' | -2°30' | 320 | 356.9 <sup>+14.0</sup> ✓      |
|     | 318   | 122°13' | -0°25' | 319 | 368.6 <sup>-2.3</sup> ✓       |
|     | 324'  | 124°25' | -0°38' | 325 | 367.3 <sup>-3.6</sup> ✓       |
|     | 340'  | 138°23' | -2°28' | 340 | 356.2 <sup>-14.7</sup> ✓      |
|     | 335'  | 133°26' | -2°24' | 335 | 356.8 <sup>-14.1</sup> ✓      |
|     | 300'  | 124°15' | -6°0'  | 297 | 339.6 <sup>-31.3</sup> ✓      |
|     | 320'  | 129°26' | -3°33' | 320 | 351.0 <sup>-19.9</sup> ✓      |
|     | 308'  | 125°13' | -2°25' | 308 | 357.9 <sup>-13.0</sup> ✓      |

READINGS FROM □ 7 Elevation = 370.9

373.6 = Elev by Station

Corrected Elev.

chk on 814.

SE Cor. Chicken Shop

NE " " "

NW " " "

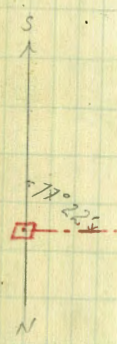
SW Cor. Chicken Shop

| Station | Dist.   | Bearing | Vert. A | Mag. dist. | Elev.   |
|---------|---------|---------|---------|------------|---------|
| 163'    | 191°30' | -13°20' | 155     | -36.7      | 336.9 ✓ |
| 85'     | 157°51' | -6°0'   | 85      | -9.0       | 364.6 ✓ |
| 190'    | 196°37' | -12°08' | 183     | -36.3      | 337.3 ✓ |
| 220'    | 200°17' | -12°32' | 211     | -47.0      | 326.6 ✓ |
| 65'     | 166°32' | -16°0'  | 61      | -17.5      | 356.1 ✓ |
| 235'    | 201°26' | -11°17' | 227     | -45.2      | 329.4 ✓ |
| 68'     | 152°25' | -8°0'   | 67      | -9.5       | 364.1 ✓ |
| 255'    | 200°34' | -9°30'  | 249     | -44.7      | 331.9 ✓ |
| 61'     | 146°37' | -4°48'  | 64      | -5.4       | 368.2 ✓ |
| 275'    | 201°08' | -11°0'  | 266     | -51.7      | 321.9 ✓ |
| 50'     | 163°35' | -12°57' | 48      | -11.2      | 362.4 ✓ |
| 47'     | 196°15' | -17°38' | 44      | -13.9      | 359.7 ✓ |
| 275'    | 205°27' | -13°04' | 261     | -60.6      | 313.0 ✓ |
| 41'     | 259°25' | -17°50' | 38      | -9.1       | 364.5 ✓ |
| 64'     | 302°53' | -14°10' | 61      | -15.2      | 358.4 ✓ |
| 295'    | 210°08' | -14°37' | 277     | -72.2      | 301.4 ✓ |
| 85'     | 330°08' | -10°25' | 83      | -15.2      | 358.4 ✓ |
| 45'     | 322°34' | -8°35'  | 45      | -6.8       | 366.8 ✓ |
| 365'    | 205°08' | -11°26' | 352     | -71.0      | 302.6 ✓ |
| 78'     | 130°44' | +0°56'  | 79      | +1.3       | 374.9 ✓ |
| 400'    | 205°43' | -12°0'  | 383     | -81.5      | 292.1 ✓ |
| 128'    | 146°10' | +1°14'  | 129     | +2.8       | 376.4 ✓ |
| 208'    | 130°42' | +2°07'  | 208     | +7.7       | 381.3 ✓ |
| 308'    | 199°35' | -8°54'  | 302     | -42.2      | 331.4 ✓ |
| 213'    | 145°13' | +1°25'  | 214     | +5.3       | 378.9 ✓ |

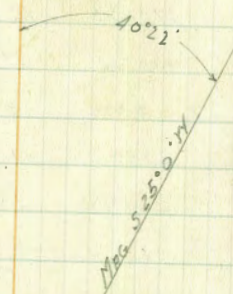
READINGS FROM #8 ELEV = 373.6

| Station                                     | Dist. | Azimuth | Vert. Δ | Horz. Dist. | Elev.          |
|---------------------------------------------|-------|---------|---------|-------------|----------------|
|                                             | 228'  | 341°07' | +1°0'   | 229         | +4.0 352.1 ✓   |
|                                             | 212'  | 345°17' | +1°04'  | 213         | +4.0 352.1 ✓   |
|                                             | 32'   | 296°25' | -24°25' | 27          | -12.4 335.7 ✓  |
|                                             | 184'  | 353°24' | +1°14'  | 185         | +4.0 352.1 ✓   |
|                                             | 43'   | 254°52' | -19°37' | 39          | -13.9 334.2 ✓  |
|                                             | 167'  | 355°09' | -2°22'  | 168         | -6.9 341.2 ✓   |
|                                             | 38'   | 189°22' | -21°43' | 34          | -13.4 334.7 ✓  |
|                                             | 165'  | 0°16'   | -2°0'   | 166         | -5.8 342.3 ✓   |
|                                             | 25'   | 151°32' | -10°50' | 25          | -4.8 343.3 ✓   |
|                                             | 123'  | 3°13'   | -3°21'  | 124         | -7.3 340.8 ✓   |
|                                             | 40'   | 128°58' | -3°09'  | 41          | -2.25 345.85 ✓ |
|                                             | 118'  | 18°14'  | -1°20'  | 119         | -2.8 345.3 ✓   |
|                                             | 80'   | 110°17' | +3°03'  | 81          | +4.3 352.4 ✓   |
| □ 8                                         | 112'  | 77°22'  | +13°26' | 107         | +25.5 373.6 ✓  |
| <b>READINGS From Aux. □ 8 Elev. - 348.1</b> |       |         |         |             |                |
| □ 9                                         | 257'  |         |         |             | -8.4 365.2 ✓   |
| Auxiliary Station □ 8                       | 258'  | 40°22'  | -1°52'  | 258         | -25.5 348.1 ✓  |
|                                             | 113'  | 257°52' | -13°23' | 107         | -19.6 354.0 ✓  |
|                                             | 255'  | 190°30' | -4°24'  | 255         | -18.5 355.1 ✓  |
|                                             | 204'  | 186°19' | -5°12'  | 204         | -13.7 360.4 ✓  |
|                                             | 185'  | 180°43' | -4°05'  | 185         | -18.6 355.0 ✓  |
|                                             | 168'  | 170°41' | -6°22'  | 167         | -26.6 347.0 ✓  |
|                                             | 160'  | 174°32' | -9°39'  | 156         | -23.7 349.9 ✓  |
|                                             | 135'  | 169°67' | -10°09' | 132         | -18.4 355.2 ✓  |
|                                             | 87'   | 172°12' | -12°25' | 84          | -32.1 341.5 ✓  |
|                                             | 152'  | 176°30' | -17°28' | 145         |                |

READINGS FROM □ 8 Elev. 373.6



Aux. 8



□ 8 this sketch duplicated from P-25 to show location of Aux. □ 8

Note: detail of Traverse from Station □ 6 to □ 8 on Page 41

| Station | Dist.   | Mag. $\mu$ | Vert. $\Delta$ | Horiz. Dist. | Elev.  |
|---------|---------|------------|----------------|--------------|--------|
|         |         |            |                |              | -42.8  |
| 98'     | 336°38' | -30°02'    | 74             | 305.3 ✓      | -30.5  |
| 330'    | 330°20' | -5°19'     | 328            | 317.6 ✓      | -17.3  |
| 150'    | 317°17' | -31°35'    | 110            | 280.8 ✓      | -40.6  |
| 360'    | 328°06' | -6°30'     | 255            | 307.5 ✓      | -56.8  |
| 160'    | 325°35' | -22°30'    | 137            | 291.3 ✓      | -87.6  |
| 430'    | 318°55' | -12°05'    | 412            | 260.5 ✓      | -42.6  |
| 167'    | 331°0'  | -15°15'    | 156            | 305.5 ✓      | -25.3  |
| 180'    | 338°0'  | -8°07'     | 172            | 322.8 ✓      | -28.7  |
| 164'    | 339°55' | -10°10'    | 160            | 319.4 ✓      | -128.3 |
| 335'    | 294°50' | -24°53'    | 277            | 219.8 ✓      | -24.1  |
| 164'    | 348°45' | -8°30'     | 161            | 324.0 ✓      | -22.7  |
| 130'    | 351°05' | -10°12'    | 127            | 325.4 ✓      | -19.6  |
| 112'    | 366°0'  | -9°43'     | 115            | 328.5 ✓      | -74.5  |
| 262'    | 310°30' | -17°16'    | 239            | 273.6 ✓      | -2.3   |
| 104'    | 27°13'  | -7°15'     | 105            | 345.9 ✓      | -58.5  |
| 228'    | 314°0'  | -15°20'    | 213            | 289.6 ✓      | -18.1  |
| 102'    | 12°0'   | -10°15'    | 100            | 330.0 ✓      | -34.8  |
| 220'    | 324°20' | -9°10'     | 215            | 313.3 ✓      | -36.5  |
| 255     | 324°45' | -8°17'     | 250            | 311.6 ✓      | -17.9  |
| 40'     | 344°30' | -30°21'    | 30             | 330.2 ✓      | -29.9  |
| 268'    | 328°48' | -6°26'     | 265            | 318.2 ✓      | -4.2   |
| 55'     | 28°0'   | -4°20'     | 56             | 343.9 ✓      | -13.2  |
| 230'    | 332°45' | -30°17'    | 230            | 334.9 ✓      | +4.1   |
| 39'     | 50°14'  | +7°0'      | 32             | 352.2 ✓      |        |

READING FROM AUX. D.B. Elev. 3481

= West edge Ward. Road

| Station | Dist.      | Azimuth  | Vert. Δ | Horiz. Dist. | Elev.            |
|---------|------------|----------|---------|--------------|------------------|
|         | 235'       | 213°07'  | -9°18'  | 234          | -17.6<br>347.6 ✓ |
|         | 238'       | 213°07'  | +1°05'  | 239          | +4.5<br>369.7 ✓  |
|         | 227'       | 218°10'  | -8°45'  | 227          | -14.9<br>350.3 ✓ |
|         | 230'       | 218°10'  | +2°45'  | 231          | +3.0<br>368.2 ✓  |
|         | 217'       | 221°20'  | -3°55'  | 217          | -14.9<br>350.3 ✓ |
|         | 218'       | 221°20'  | +0°28'  | 219          | +1.8<br>367.0 ✓  |
|         | 211'       | 228°30'  | -3°35'  | 211          | -13.2<br>352.0 ✓ |
|         | 212'       | 228°30'  | -0°10'  | 213          | -0.5<br>364.7 ✓  |
|         | 209'       | 235°35'  | -3°45'  | 209          | -15.7<br>351.5 ✓ |
|         | 215'       | 235°35'  | -0°52'  | 216          | -3.3<br>361.9 ✓  |
|         | 148'       | 246°15'  | -7°25'  | 147          | -19.0<br>346.2 ✓ |
|         | 202'       | 247°50'  | -5°38'  | 202          | -19.9<br>345.3 ✓ |
|         | 146'       | 255°50'  | -6°23'  | 145          | -16.1<br>349.1 ✓ |
|         | 52'        | 308°05'  | -28°0'  | 41           | -19.9<br>345.3 ✓ |
|         | 274'       | 265°00'  | -5°20'  | 272          | -25.5<br>339.7 ✓ |
|         | 180'       | 265°00'  | -10°0'  | 175          | -31.0<br>334.2 ✓ |
|         | 80'        | 289°10'  | -17°55' | 73           | -23.6<br>341.6 ✓ |
|         | 168'       | 286°50'  | -14°30' | 158          | -40.9<br>324.3 ✓ |
|         | 128'       | 296°0'   | 17°30'  | 117          | -37.0<br>328.2 ✓ |
|         | 215'       | 299°49'  | -11°24' | 207          | -41.8<br>323.4 ✓ |
|         | 148'       | 305°12'  | -15°35' | 138          | -38.5<br>326.7 ✓ |
|         | 285'       | 288°25'  | -6°0'   | 283          | -29.7<br>335.5 ✓ |
|         | 377        | 284°20'  | -3°13'  | 376          | -21.3<br>343.9 ✓ |
| □ 8     | 257 = Mean | 220° 21' | +1° 52' | 258          | +8.4<br>373.4 ✓  |

READINGS From # 9 Elev. 365.2



| Station | Dist.   | Azimuth | Vert. A. | H. Dist. | Elev.   |
|---------|---------|---------|----------|----------|---------|
| 207'    | 126°32' | -0°10'  | 208      | -0.5     | 364.7 ✓ |
| 124'    | 176°16' | -2°35'  | 175      | -5.6     | 359.6 ✓ |
| 186'    | 186°35' | -1°32'  | 187      | -5.0     | 360.2 ✓ |
| 224'    | 113°55' | -1°45'  | 225      | -6.9     | 358.3 ✓ |
| 165'    | 142°05' | -1°40'  | 166      | -4.8     | 360.4 ✓ |
| 197'    | 142°06' | +0°07'  | 198      | +0.3     | 365.5 ✓ |
| 240'    | 124°12' | +2°23'  | 242      | +10.0    | 375.2 ✓ |
| 228'    | 124°20' | +2°37'  | 228      | +10.4    | 375.6 ✓ |
| 232'    | 127°56' | +3°49'  | 232      | +15.5    | 380.7 ✓ |
| 222'    | 141°50' | +2°25'  | 222      | +9.4     | 374.6 ✓ |
| 247'    | 141°05' | +4°30'  | 246      | +19.4    | 384.6 ✓ |
| 305'    | 159°07' | +3°56'  | 305      | +21.0    | 386.2 ✓ |
| 275'    | 159°07' | +1°50'  | 276      | +8.8     | 374.0 ✓ |
| 248'    | 159°07' | +1°18'  | 249      | +5.7     | 370.9 ✓ |
| 220'    | 159°07' | -0°45'  | 221      | -2.9     | 362.3 ✓ |
| 212     | 174°20' | +0°0'   | 213      | +0.0     | 365.2 ✓ |
| 238'    | 174°20' | +4°03'  | 238      | +17.6    | 382.8 ✓ |
| 211'    | 182°55' | -0°39'  | 212      | -2.4     | 362.8 ✓ |
| 231'    | 182°55' | +3°48'  | 230      | +15.4    | 380.6 ✓ |
| 223'    | 199°10' | -3°55'  | 223      | -15.9    | 349.3 ✓ |
| 226'    | 198°20' | +2°46'  | 227      | +11.0    | 376.2 ✓ |
| 252'    | 202°15' | -4°12'  | 252      | -18.5    | 346.7 ✓ |
| 254'    | 202°15' | +2°10'  | 252      | +9.6     | 374.8 ✓ |
| 230'    | 206°55' | -4°12'  | 230      | -16.9    | 355.6 ✓ |
| 232'    | 206°55' | +1°36'  | 233      | +6.5     | 348.3 ✓ |
|         |         |         |          |          | 371.7 ✓ |

READINGS From Sta 9 Elev. 365.2

S.W. Cor. Shed on Ground

S.E. " " " "

N.E. Cor. Shed. Floor Elev.

=  $\frac{1}{2}$  on End of Side Walk on South Side Eugene Pl.

| Station | Dist.   | Azimuth | Vert. A | Horiz. Dist. | Elev.   |
|---------|---------|---------|---------|--------------|---------|
| 470'    | 342°21' | -0°56'  | 471     | -7.7         | 357.5 ✓ |
| 418'    | 353°20' | -0°22'  | 419     | -2.7         | 362.5 ✓ |
| 460'    | 339°28' | -1°57'  | 460     | -15.7        | 349.5 ✓ |
| 360'    | 344°44' | -5°24'  | 358     | -33.9        | 331.3 ✓ |
| 530'    | 330°10' | -2°21'  | 530     | -21.7        | 343.5 ✓ |
| 345'    | 331°36' | -12°32' | 330     | -76.5        | 288.7 ✓ |
| 530'    | 318°05' | -7°23'  | 525     | -67.8        | 297.4 ✓ |
| 320'    | 325°35' | -18°16' | 288     | -95.5        | 269.7 ✓ |
| 230'    | 355°54' | -22°50' | 197     | -83.0        | 282.2 ✓ |
| 595'    | 308°45' | -12°14' | 568     | -123.5       | 246.7 ✓ |
| 810'    | 23°11'  | -23°40' | 177     | -77.5        | 287.7 ✓ |
| 375'    | 121°18' | +1°30'  | 376     | +9.8         | 375.0 ✓ |
| 330'    | 123°52' | +2°17'  | 330     | +13.2        | 378.4 ✓ |
| 370'    | 116°05' | -1°17'  | 371     | -8.3         | 356.9 ✓ |
| 320'    | 116°27' | -1°30'  | 321     | -8.4         | 356.8 ✓ |
| 287'    | 123°20' | +2°17'  | 287     | +11.5        | 376.7 ✓ |
| 283'    | 115°35' | -1°27'  | 284     | -7.2         | 358.0 ✓ |
| 58'     | 197°30' | -20°55' | 51      | -19.6        | 345.6 ✓ |
| 117'    | 189°15' | -9°10'  | 115     | -18.6        | 346.6 ✓ |
| 18'     | 326°35' | -12°42' | 18      | -4.1         | 361.1 ✓ |
| 180'    | 195°0'  | -5°35'  | 179     | -17.6        | 347.6 ✓ |
| 64'     | 92°23'  | -5°20'  | 64      | -6.0         | 359.2 ✓ |
| 38'     | 159°36' | -10°45' | 38      | -7.2         | 358.0 ✓ |
| 152'    | 128°40' | -0°10'  | 153     | -0.4         | 364.8 ✓ |
| 80'     | 174°34' | -6°37'  | 80      | -9.3         | 355.9 ✓ |

READINGS from D 9 Elev = 365.2

| Station | Dist.   | Mag. Dist. | Vert. Δ | Mag. Dist. | Elev.   |
|---------|---------|------------|---------|------------|---------|
| 520     | 47° 25' | +1° 42'    | 521     | +15.4      | 380.6 ✓ |
| 268     | 52° 30' | -9° 20'    | 262     | -43.1      | 322.1 ✓ |
| 543     | 54° 57' | +1° 26'    | 543     | +13.6      | 378.8 ✓ |
| 237     | 47° 52' | -11° 47'   | 229     | -47.6      | 317.6 ✓ |
| 315     | 47° 27' | -6° 25'    | 313     | -36.0      | 329.2 ✓ |
| 534     | 50° 42' | +1° 25'    | 534     | +13.2      | 378.4 ✓ |
| 508     | 48° 57' | +0° 08'    | 509     | +1.2       | 366.4 ✓ |
| 480     | 47° 33' | +0° 22'    | 481     | +3.1       | 367.3 ✓ |
| 450     | 49° 11' | -2° 44'    | 449     | -21.4      | 343.8 ✓ |
| 440     | 44° 56' | -1° 35'    | 440     | -12.2      | 353.0 ✓ |
| 390     | 47° 40' | -5° 22'    | 388     | -31.8      | 333.4 ✓ |
| 397     | 42° 33' | -3° 17'    | 396     | -22.7      | 342.5 ✓ |
| 292     | 38° 40' | -11° 30'   | 282     | -57.2      | 308.0 ✓ |
| 365     | 39° 02' | -05° 45'   | 362     | -34.5      | 328.7 ✓ |
| 245     | 32° 50' | -16° 10'   | 227     | -65.9      | 299.3 ✓ |
| 320     | 35° 26' | -7° 47'    | 315     | -43.0      | 322.2 ✓ |
| 248     | 24° 45' | -12° 21'   | 237     | -52.0      | 313.2 ✓ |
| 335     | 14° 47' | -1° 07'    | 336     | -6.5       | 358.7 ✓ |
| 250     | 14° 27' | -10° 53'   | 242     | -46.3      | 318.9 ✓ |
| 267     | 0° 11'  | -11° 20'   | 257     | -51.6      | 313.6 ✓ |
| 418     | 16° 43' | +1° 35'    | 419     | +11.6      | 376.8 ✓ |
| 300     | 6° 48'  | -4° 46'    | 299     | -24.9      | 340.3 ✓ |
| 370     | 6° 03'  | 0° 0'      | 371     | 0.0        | 365.2 ✓ |
| 490     | 34° 35' | +0° 04'    | 491     | +0.5       | 365.7 ✓ |
| 438     | 6° 09'  | +1° 10'    | 439     | +8.9       | 374.1 ✓ |

READINGSTATION 5 Elev 365.2

| Station                | Dist.  | Azimuth | Vert. $\Delta$ | Horiz. dist. | Elev.   |
|------------------------|--------|---------|----------------|--------------|---------|
| 472'                   | 89°50' | +1°35'  | 473            | +13.1        | 378.3 ✓ |
| 445'                   | 85°0'  | +1°53'  | 445            | +14.6        | 379.8 ✓ |
| 450'                   | 77°52' | +1°55'  | 450            | +15.1        | 380.3 ✓ |
| 450'                   | 69°35' | +1°40'  | 450            | +13.1        | 378.3 ✓ |
| 450'                   | 71°30' | +1°40'  | 450            | +13.1        | 378.3 ✓ |
| 404'                   | 72°57' | -0°35'  | 405            | -4.1         | 361.1 ✓ |
| 395'                   | 75°18' | -1°16'  | 395            | -8.7         | 356.5 ✓ |
| 345'                   | 73°08' | -3°07'  | 344            | -18.8        | 346.4 ✓ |
| 325'                   | 75°33' | -6°06'  | 323            | -34.5        | 330.7 ✓ |
| 262'                   | 75°50' | -10°12' | 255            | -46.0        | 319.2 ✓ |
| 390'                   | 34°30' | -2°08'  | 390            | -14.6        | 350.6 ✓ |
| 265'                   | 62°10' | -6°56'  | 263            | -31.9        | 333.3 ✓ |
| 415                    | 24°06' | +1°24'  | 415            | +10.2        | 375.4 ✓ |
| 226                    | 60°55' | -11°36' | 227            | -46.6        | 318.6 ✓ |
| 445'                   | 31°35' | +1°24'  | 445            | +10.9        | 376.1 ✓ |
| 500'                   | 27°10' | +2°0'   | 500            | +17.5        | 382.7 ✓ |
| 275'                   | 72°05' | -7°50'  | 272            | -37.2        | 328.0 ✓ |
| 490'                   | 35°55' | +1°57'  | 490            | +16.7        | 381.9 ✓ |
| 445'                   | 38°15' | +1°08'  | 446            | +8.8         | 374.0 ✓ |
| 315'                   | 71°30' | -3°18'  | 314            | -18.2        | 347.0 ✓ |
| 490'                   | 43°25' | +1°24'  | 490            | +12.0        | 377.2 ✓ |
| 325'                   | 66°10' | -12°05' | 326            | -6.2         | 359.0 ✓ |
| 480'                   | 46°30' | +1°10'  | 480            | +9.8         | 375.0 ✓ |
| 335'                   | 58°0'  | -0°04'  | 336            | -0.4         | 364.8 ✓ |
| 297'                   | 55°0'  | -3°11'  | 297            | -16.5        | 348.7 ✓ |
| READINGS From # 9 Elev |        |         |                |              | 3652    |

N.E. Co. chicken pen (R)

= S.E. Co. chicken pen wire (R)

| Station | Dist. | Bearing | Vert. A | Horz. Dist. | Elev. |                               |
|---------|-------|---------|---------|-------------|-------|-------------------------------|
|         | 300'  | 206°05' | -5°30'  | 199         | 355.1 | SE Cor. Cobble Wall at Base   |
|         | 201   | 206°05' | -9°05'  | 201         | 359.9 | SE Cor. Cobble Wall on top    |
|         | 213   | 206°03' | -2°26'  | 214         | 365.1 | SE Cor. Cobble Wall on Bottom |
|         | 214'  | 206°03' | -2°01'  | 214         | 366.8 | SE Cor. Cobble Wall on top    |
|         | 221'  | 205°45' | -7°50'  | 222         | 367.1 | SE Cor. Cobble Wall at Base   |
|         | 222'  | 205°45' | -0°25'  | 222         | 372.7 | SE Cor. Cobble Wall on top    |
| □ 9     | 426'  | 268°10' | -1°16'  | 427         | 364.9 |                               |

READINGS From Aux. □ 9 Elev. 374.3

|           |                        |         |        |     |       |  |
|-----------|------------------------|---------|--------|-----|-------|--|
| □ 10      | <sup>350</sup><br>351' | 29°58'  | -2°30' | 350 | 349.9 |  |
| □ Aux. 9A | <sup>426</sup><br>427' | 88°10'  | +1°15' | 427 | 374.3 |  |
|           | 608'                   | 29°58'  | +1°10' | 608 | 375.6 |  |
|           | 470'                   | 103°25' | -4°0'  | 468 | 332.5 |  |
|           | 560'                   | 96°30'  | +1°45' | 560 | 382.3 |  |
|           | 480'                   | 100°0'  | -1°45' | 480 | 350.8 |  |
|           | 500'                   | 97°05'  | -0°06' | 501 | 364.3 |  |
|           | 444'                   | 98°0'   | -2°20' | 444 | 347.1 |  |
|           | 530'                   | 93°48'  | +1°42' | 530 | 381.0 |  |
|           | 390'                   | 95°40'  | 3°20'  | 389 | 342.5 |  |
|           | 355'                   | 96°57'  | -5°47' | 353 | 329.6 |  |
|           | 500'                   | 88°31'  | +2°20' | 500 | 385.6 |  |
|           | 310'                   | 89°20'  | -8°0'  | 304 | 322.4 |  |
|           | 342'                   | 84°13'  | -5°07' | 340 | 334.7 |  |
|           | 360'                   | 80°35'  | -9°35' | 359 | 342.7 |  |
|           | 370'                   | 85°28'  | -1°46' | 370 | 353.8 |  |
|           | 405'                   | 85°12'  | +0°40' | 406 | 369.9 |  |

READINGS From □ 9 Elev. 365.2

| Station | Dist.   | Bearing | Vert. Δ | Horiz. dist. | Elev. |
|---------|---------|---------|---------|--------------|-------|
| 370'    | 135°32' | -2°20'  | 370     | -15.1        | 359.2 |
| 310'    | 164°11' | 2°30'   | 310     | 13.6         | 360.7 |
| 275'    | 165°10' | -0°36'  | 276     | -2.9         | 371.4 |
| 247'    | 157°56' | -4°40'  | 247     | -20.1        | 354.2 |
| 180'    | 161°15' | -13°43' | 171     | -41.7        | 332.6 |
| 230'    | 169°38' | -1°05'  | 229     | -16.4        | 357.9 |
| 156'    | 229°35' | -24°40' | 130     | -59.5        | 314.8 |
| 255'    | 171°35' | -0°33'  | 256     | -2.5         | 371.8 |
| 176'    | 248°0'  | -23°20' | 149     | -64.4        | 309.9 |
| 205'    | 267°0'  | -20°35' | 181     | -67.9        | 306.4 |
| 270'    | 277°53' | -15°20' | 252     | -69.0        | 305.3 |
| 255'    | 265°27' | -14°30' | 240     | -62.1        | 312.2 |
| 217'    | 261°40' | -16°53' | 200     | -60.9        | 313.4 |
| 222'    | 194°38' | -1°25'  | 222     | -5.5         | 368.8 |
| 222'    | 194°38' | -0°22'  | 222     | -1.4         | 372.9 |
| 217'    | 194°12' | -2°07'  | 217     | -8.1         | 366.2 |
| 217'    | 194°12' | -1°35'  | 217     | -6.0         | 368.3 |
| 200'    | 193°22' | -1°47'  | 200     | -16.7        | 357.6 |
| 200'    | 193°22' | -4°0'   | 200     | -14.0        | 360.3 |
| 330'    | 283°50' | -1°06'  | 311     | -78.1        | 296.2 |
| 182'    | 192°07' | -9°09'  | 178     | -28.7        | 345.6 |
| 182'    | 192°17' | -8°25'  | 178     | -26.5        | 347.8 |
| 181'    | 206°30' | -9°40'  | 177     | -30.1        | 344.2 |
| 182'    | 206°30' | -8°15'  | 177     | -16.8        | 347.5 |
| 1030'   | 286°50' | -7°50'  | 1000    | -138.0       | 236.3 |

READINGS FROM AX 97 ELEV. = 374.3

= SW. Cor. chicken shed B

SW. Bottom Cobble Wall

" " Top " Wall = SE Cor. of chicken shed

SW. Bottom Cobble Wall

SW. Top Cobble Wall

SW. Bottom Cobble Wall

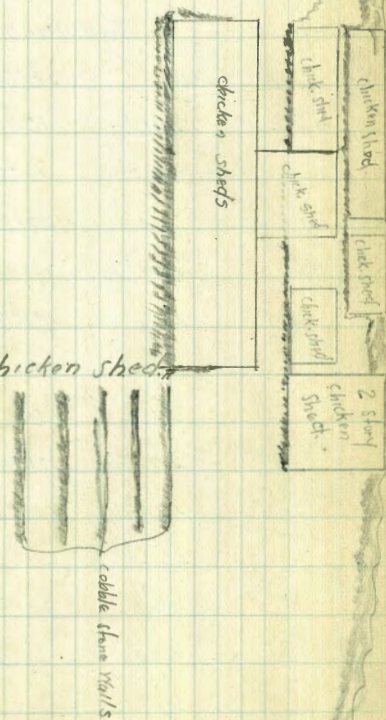
SW. Top Cobble Wall

SW. Bottom Wall

SW. Top Cobble Wall

SE. Base Cobble Wall

SE. Top Cobble Wall



| Station                                       | Dist. | Bearing | Vert. A  | Mag. dist. | Elev.   |
|-----------------------------------------------|-------|---------|----------|------------|---------|
|                                               | 109'  | 306°05' | -9°55'   | 107        | -18.6 ✓ |
|                                               | 75'   | 310°47' | -11°17'  | 73         | -14.6 ✓ |
|                                               | 70'   | 334°09' | -7°42'   | 71         | -2.1 ✓  |
|                                               | 95'   | 337°14' | 0°0'     | 96         | 386.3 ✓ |
|                                               | 32'   | 352°22' | -15°02'  | 31         | -8.3 ✓  |
|                                               | 28'   | 37°32'  | -3°20'   | 29         | -1.7 ✓  |
| Aux. 9A                                       | 554   |         |          |            | -11.8 ✓ |
| Aux. 9A                                       | 555'  | 308°24' | M=-1°13' | 555        | 374.5 ✓ |
| READINGS From E. Aux. 9B Elev. = 381.3 = Mean |       |         |          |            |         |
| Aux. 9B                                       | 559   |         |          |            | +11.9 ✓ |
| Aux. 9B                                       | 551   | 128°24' | +1°14'   | 551        | 386.1 ✓ |
|                                               | 296'  | 158°15' | +0°46'   | 297        | +4.0 ✓  |
|                                               | 388'  | 134°30' | -7°55'   | 388        | -13.0 ✓ |
|                                               | 320'  | 151°20' | +0°52'   | 321        | +4.9 ✓  |
|                                               | 400'  | 138°55' | +0°17'   | 401        | +2.0 ✓  |
|                                               | 410'  | 137°45' | +0°17'   | 411        | +2.0 ✓  |
|                                               | 420'  | 139°30' | +1°44'   | 420        | +12.8 ✓ |
|                                               | 345'  | 150°40' | +1°41'   | 345        | +10.2 ✓ |
|                                               | 420'  | 136°45' | +0°55'   | 421        | +6.8 ✓  |
|                                               | 430'  | 135°30' | +1°05'   | 430        | +8.1 ✓  |
|                                               | 460'  | 135°35' | +1°28'   | 460        | +11.8 ✓ |
|                                               | 268'  | 217°39' | +2°08'   | 268        | +9.7 ✓  |
|                                               | 520'  | 129°56' | +1°05'   | 520        | +9.8 ✓  |
|                                               | 520'  | 128°25' | +0°28'   | 521        | +4.2 ✓  |
|                                               | 550'  | 128°20' | +1°12'   | 550        | +11.6 ✓ |
|                                               | 287'  | 174°35' | +2°15'   | 287        | +11.3 ✓ |
|                                               | 390'  | 143°35' | +2°0'    | 390        | +13.6 ✓ |

S.E. Cor. chicken shed C

SW Cor. chicken shed C

S.E. Cor. chicken shed

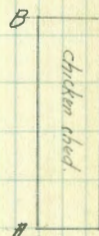
SW Cor. chicken shed

S.E. Cor. chicken shed

SW Cor. chicken shed

S.E. Cor. #

SW Cor. chicken shed B



| Station | Dist.                  | Azimuth | Vert. A | Horiz. dist. | Elev.            |
|---------|------------------------|---------|---------|--------------|------------------|
|         | 213'                   | 101°37' | +2°47'  | 213          | +10.3<br>360.2 ✓ |
|         | 308'                   | 97°24'  | +6°14'  | 305          | +33.3<br>383.2 ✓ |
|         | 238'                   | 92°02'  | +1°02'  | 239          | +4.3<br>354.2 ✓  |
|         | 238'                   | 94°00'  | ⑦1°02'  | 239          | +4.3<br>354.2 ✓  |
|         | 214'                   | 92°35'  | +0°52'  | 215          | +7.0<br>356.9 ✓  |
|         | 282'                   | 108°23' | +6°33'  | 279          | +32.2<br>382.1 ✓ |
|         | 224'                   | 98°06'  | +0°56'  | 225          | +7.6<br>357.5 ✓  |
|         | 231'                   | 106°05' | +6°10'  | 229          | +24.8<br>374.7 ✓ |
|         | 210'                   | 92°50'  | -0°57'  | 211          | -7.2<br>342.7 ✓  |
|         | 221'                   | 120°03' | -6°28'  | 219          | -24.9<br>325.0 ✓ |
|         | 176'                   | 96°47'  | -1°48'  | 177          | -5.5<br>344.4 ✓  |
|         | 183'                   | 104°04' | -1°45'  | 184          | -5.6<br>344.3 ✓  |
|         | 188'                   | 127°14' | +5°36'  | 187          | +13.4<br>368.3 ✓ |
|         | 176'                   | 132°16' | +5°23'  | 175          | +16.5<br>366.4 ✓ |
|         | 161'                   | 105°52' | -5°0'   | 161          | -14.0<br>335.9 ✓ |
| □ 9     | <sup>359</sup><br>351' | 209°58' | +2°31'  | 350          | +15.4<br>365.3 ✓ |

READINGS FROM □ 10 Elev = 349.9

|      |         |        |     |                  |                                                 |
|------|---------|--------|-----|------------------|-------------------------------------------------|
| 384' | 304°18' | -4°17' | 383 | -28.7<br>357.6 ✓ |                                                 |
| 320' | 315°22' | -0°18' | 321 | -1.7<br>384.6 ✓  | At base of Euc. tree 1' dia. on edge of canyon  |
| 336' | 315°07' | -0°07' | 331 | -0.7<br>385.6 ✓  | At base of Euc. tree 15' dia. on edge of canyon |
| 360' | 297°30' | -7°33' | 354 | +47.0<br>339.3 ✓ |                                                 |
| 128  | 327°33' | -0°15' | 129 | -0.6<br>385.7 ✓  |                                                 |
| 150' | 299°27' | -9°04' | 147 | -23.5<br>362.8 ✓ |                                                 |
| 103  | 322°30' | -4°43' | 103 | -8.3<br>378.0 ✓  |                                                 |
| 118' | 298°07' | -6°40' | 117 | -13.7<br>372.6 ✓ |                                                 |

READINGS FROM □ 9B Elev 386.3



| Station | Dist. | Azimuth | Vert. A | Horiz. dist. | Elev.                  |
|---------|-------|---------|---------|--------------|------------------------|
|         | 680'  | 352°18' | -4°40'  | 678          | -55.2<br>288.5 ✓       |
| 874     | 517'  | 329°31' | -0°06'  | 518          | -0.9<br>342.8 ✓        |
|         | 450   |         |         |              | -0.13                  |
|         | 451'  | 324°32' | -0°01'  | 451          | 349.5 chks.<br>-91.5 ✓ |
|         | 470'  | 346°    | -11°26' | 452          | -91.0<br>252.7 ✓       |
|         | 467'  | 347°30' | -11°26' | 450          | -9.5<br>252.7 ✓        |
|         | 405   | 322°40' | -1°20'  | 405          | -53.1<br>334.2 ✓       |
|         | 355'  | 312°30' | -8°41'  | 347          | -85.9<br>290.6 ✓       |
|         | 322'  | 303°26' | -15°30' | 309          | -50.1<br>257.8 ✓       |
|         | 400'  | 358°05' | -7°15'  | 295          | -109.0<br>293.6 ✓      |
|         | 440'  | 299°46' | -14°47' | 412          | -10.6<br>234.7 ✓       |
|         | 430'  | 6°30'   | -1°25'  | 430          | -114.5<br>333.1 ✓      |
|         | 346'  | 296°06' | -20°34' | 303          | +21<br>229.2 ✓         |
|         | 420'  | 12°45'  | +0°17'  | 421          | -100.8<br>345.8 ✓      |
|         | 320'  | 332°26' | -19°26' | 286          | -100.0<br>242.9 ✓      |
|         | 347'  | 337°32' | -17°31' | 316          | -100.0<br>243.7 ✓      |
|         | 347'  | 342°43' | -17°31' | 316          | +62<br>243.7 ✓         |
| □10     | 578   |         |         |              |                        |
|         | 579   | 68°58'  | +0°37'  | 579          | 344.9                  |

= 1/2 open Trough Stone Culvert  
should be 343.48 see 874's on Page 1

West edge of Ford Road

| Station | Dist. | Azimuth | Vert. A | Horiz. dist. | Elev.            |
|---------|-------|---------|---------|--------------|------------------|
| □11     | 578   |         |         |              | -6.2             |
|         | 579'  | 248°58' | -0°37'  | 579          | 343.7<br>-20.6 ✓ |
|         | 109'  | 148°25' | -11°0'  | 106          | -6.7<br>329.3 ✓  |
|         | 154'  | 117°0'  | -2°30'  | 154          | +14.3<br>343.2 ✓ |
|         | 245   | 97°35'  | +3°20'  | 245          | +18.9<br>364.2 ✓ |
|         | 276'  | 91°51'  | +3°56'  | 276          | +27.6<br>368.8 ✓ |
|         | 270'  | 88°38'  | +5°53'  | 268          | +1.8<br>377.5 ✓  |
|         | 184'  | 107°0'  | +0°33'  | 185          | 351.7 ✓          |

NE Gr. House at Base. Floor Elev. 80' Higher  
SE House at Base

READINGS FROM □10 Elev. 349.9

| Station        | Dist.                 | Azimuth | Vert. A | Horz. dist. | Elev                           |
|----------------|-----------------------|---------|---------|-------------|--------------------------------|
|                |                       |         |         |             | -21.7                          |
| 60'            | 182°45'               | -22°38' | 52      |             | 322.0                          |
|                |                       |         |         |             | -20.4                          |
| 54'            | 239°37'               | -24°0'  | 46      |             | 323.3                          |
|                |                       |         |         |             | +23.6                          |
| 380'           | 141°32'               | +3°33'  | 379     |             | 367.3                          |
|                |                       |         |         |             | +14.1                          |
| 300'           | 141°43'               | +8°41'  | 300     |             | 357.8                          |
|                |                       |         |         |             | -14.4                          |
| 254'           | 173°39'               | -3°14'  | 254     |             | 329.3                          |
|                |                       |         |         |             | +9.0                           |
| 280'           | 353°50'               | +1°50'  | 280     |             | 352.7                          |
|                |                       |         |         |             | +8.2                           |
| 297'           | 359°0'                | +1°35'  | 297     |             | 351.9                          |
|                |                       |         |         |             | -40.1                          |
| 235'           | 183°05'               | -9°56'  | 221     |             | 303.6                          |
|                |                       |         |         |             | +17.4                          |
| 360'           | 7°10'                 | +2°46'  | 360     |             | 361.1                          |
|                |                       |         |         |             | +17.2                          |
| 340'           | 4°30'                 | +2°53'  | 340     |             | 360.9                          |
|                |                       |         |         |             | -14.8                          |
| 275'           | 7°0'                  | +3°05'  | 275     |             | 328.9                          |
|                |                       |         |         |             | -58.5                          |
| 602'           | 188°16'               | -5°35'  | 598     |             | 285.7                          |
|                |                       |         |         |             | -56.8                          |
| 700'           | 192°55'               | -4°38'  | 697     |             | 286.9                          |
|                |                       |         |         |             | -21.5                          |
| 698'           | 186°52'               | -1°46'  | 698     |             | 322.2                          |
| <sup>699</sup> |                       |         |         |             |                                |
| □ 11           | 691'                  | 182°04' | 0°0'    | 691         | 343.7 ✓                        |
|                |                       |         |         |             |                                |
|                |                       |         |         |             | READINGS From □ 12 Elev. 343.7 |
|                |                       |         |         |             |                                |
| □ 12           | <sup>689</sup><br>690 | 2°04'   | 0°0'    | 690         | 343.7                          |
|                |                       |         |         |             | +33                            |
| Top Canyon     | 680'                  | 337°05' | +0°16'  | 681         | 346.9 ✓                        |
|                |                       |         |         |             | -66.6                          |
| Bottom Canyon  | 724'                  | 350°54' | -4°53'  | 720         | 282.1 ✓                        |
|                |                       |         |         |             | +0.3                           |
| Top Canyon     | 600'                  | 334°21' | +0°02'  | 601         | 344.0 ✓                        |
|                |                       |         |         |             |                                |
|                |                       |         |         |             | READINGS From □ 11 Elev. 343.7 |

NE. Gr. House = Ground Elev. at Base }

NW. " " " " " " }

NW. Gr. House Ground Elev. at Base }

NE " " " " " }

| Station     | Dist. | Defl. $\angle$ | Vert. $\Delta$ | Horiz. dist. | Elev.    |
|-------------|-------|----------------|----------------|--------------|----------|
| $\Delta$ 12 |       |                |                |              | 343.7    |
|             | 295'  | 14°44'-L       | -0°18'         | 295'         | 342.2    |
|             | 300'  | 2°21'-L        | -8°02'         | 294.15       | 302.2    |
|             | 400'  | 13°00'-R       | -14°38'        | 374.48       | 245.9    |
|             | 315'  | 24°41'-R       | -17°29'        | 286.56       | 253.4    |
|             | 210'  | 14°33'-R       | -19°57'        | 185.56       | 276.4    |
|             | 184'  | 9°48'-L        | -16°37'        | 168.95       | 293.28   |
|             | 195'  | 33°42'-L       | -12°50'        | 185.39       | 301.46   |
|             | 278'  | 56°51'-L       | -14°24'        | 260.82       | 276.73   |
|             | 302'  | 54°13'-L       | -0°38'         | 301.97       | 340.35   |
|             | 335'  | 47°24'-L       | +3°05'         | 334.03       | 361.69   |
|             | 370'  | 41°26'-L       | +3°42'         | 368.45       | 367.53   |
|             | 350'  | 51°26'-L       | +3°16'         | 348.88       | 364.61 ✓ |
|             | 329'  | 30°41'-R       | -14°01'        | 309.79       | 266.42   |
|             | 345'  | 34°16'-R       | -10°16'        | 334.03       | 283.19   |
|             | 350'  | 37°20'-R       | -6°43'         | 345.24       | 303.06   |
|             | 370'  | 41°32'-R       | -3°11'         | 368.85       | 323.17   |
|             | 380'  | 45°47'-R       | -0°07'         | 380.00       | 342.94   |
|             | 435'  | 39°33'-R       | +0°01'         | 435.00       | 343.83   |
|             | 338'  | 58°20'-R       | +0°41'         | 337.97       | 347.72   |
|             | 335'  | 70°12'-R       | +1°02'         | 334.80       | 349.73   |
|             | 320'  | 74°17'-R       | +0°57'         | 319.90       | 349.01   |
|             | 315'  | 77°30'-R       | +0°50'         | 314.94       | 348.23   |
|             | 286'  | 84°35'-R       | +0°30'         | 285.97       | 346.18   |

Fore Sight to STA. 11 Defl.  $\angle$  R or L.

Bottom of Canyon

Bottom of Culvert

Fence Corner

STA. # 13

Culvert

"

"

"

"

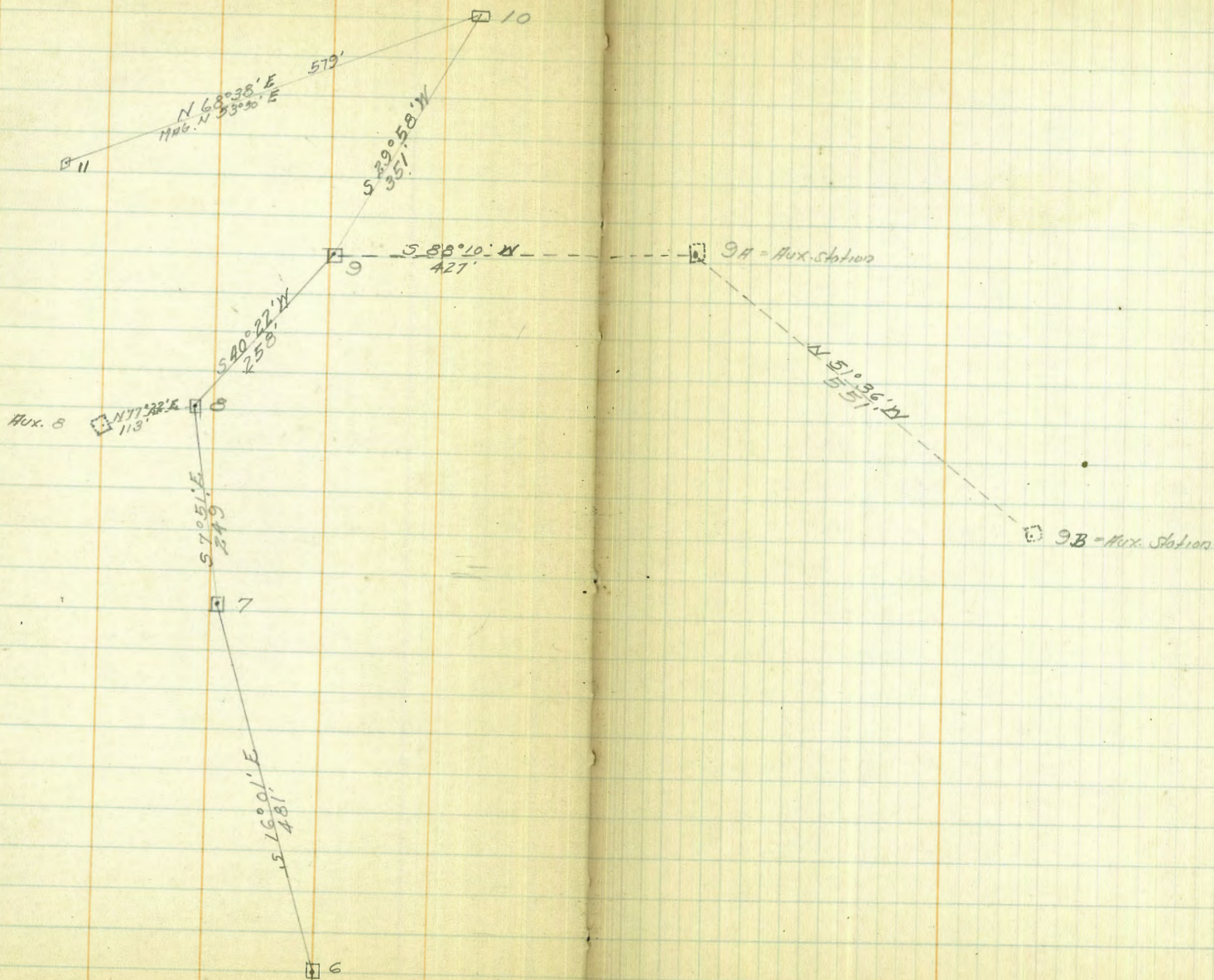
STA.

Corner of House }

"

"

"



| STA. | Dist.     | Defl. & | Vert. & | Hor. Dist. | Elev.                                |  |
|------|-----------|---------|---------|------------|--------------------------------------|--|
| 300' | 86°26'-R  | +0°58'  | 299.91  | 348.77     | Corner of House }                    |  |
| 305' | 91°22'-R  | +1°12'  | 304.88  | 350.07     | " " " }                              |  |
| 310' | 95°26'-R  | +1°29'  | 309.78  | 351.73     | " " " }                              |  |
| 314' | 99°35'-R  | +1°51'  | 313.69  | 353.84     | " " " }                              |  |
| 295' | 102°30'-R | +1°22'  | 294.87  | 350.72     | " " " Garage }                       |  |
| 300' | 104°40'-R | +1°30'  | 299.79  | 351.56     | " " " }                              |  |
| 305' | 107°40'-R | +1°35'  | 304.75  | 351.98     | " " " }                              |  |
| 360' | 116°03'-R | +1°39'  | 359.71  | 354.07     | Corner of House (Gray)               |  |
| 368' | 117°57'-R | +1°31'  | 367.74  | 353.69     | " " " Garage (Gray)                  |  |
| 424' | 120°51'-R | +1°38'  | 423.66  | 355.78     | " " " White House                    |  |
| 430' | 123°20'-R | +1°43'  | 429.61  | 356.60     | " " " Brown House }                  |  |
| 430' | 127°38'-R | +1°43'  | 429.61  | 356.60     | " " " " " }                          |  |
| 405' | 130°33'-R | +1°30'  | 404.72  | 354.31     | " " " " " Red Roof }                 |  |
| 400' | 134°21'-R | +1°35'  | 399.72  | 354.74     | " " " " " " " }                      |  |
| 410' | 139°16'-R | +2°00'  | 409.51  | 358.01     | Center of Gray House with green Roof |  |
| 252' | 150°16'-R | -0°23'  | 252.00  | 342.01     | Top of Cobble Stone Terrace          |  |
| 245' | 150°02'-R | -1°15'  | 244.78  | 338.36     | " " " " " "                          |  |
| 240' | 149°45'-R | -1°53'  | 239.93  | 335.81     | " " " " " "                          |  |
| 230' | 149°30'-R | -3°19'  | 229.24  | 330.41     | " " " " " "                          |  |
| 217' | 151°27'-R | -5°47'  | 214.71  | 321.94     | " " " " " "                          |  |
| 180' | 150°32'-R | -13°49' | 169.72  | 301.96     | " " " " " "                          |  |
| 169' | 137°24'-R | -18°43' | 151.59  | 292.39     | " " " " " "                          |  |
| 167' | 133°49'-R | -20°37' | 146.29  | 288.66     | Bottom of Canyon                     |  |
| 185' | 160°55'-R | -17°34' | 168.15  | 290.48     | " " " "                              |  |

| STA.        | Dist. | Defl. $\angle$ | Vert. $\angle$ | Hor. Dist. | Elev.  |
|-------------|-------|----------------|----------------|------------|--------|
|             | 210'  | 118°31'-R      | -11.23'        | 201.82     | 303.09 |
|             | 250'  | 119°25'-R      | -5°50'         | 247.42     | 318.43 |
|             | 278'  | 117°30'-R      | -1°23'         | 227.97     | 336.83 |
|             | 306'  | 115°21'-R      | +1°28'         | 299.79     | 351.38 |
|             | 122'  | 135°20'-R      | -22°53'        | 103.55     | 300.05 |
|             | 88'   | 136°08'-R      | -22°33'        | 75.06      | 312.53 |
|             | 56'   | 136°29'-R      | -20°33'        | 49.05      | 325.39 |
| $\Delta$ 14 | 276'  | 28°48'-R       | -3°33'         | 274.95     | 359.48 |
|             | 196'  | 37°53'-R       | -18°04'        | 177.14     | 301.70 |
|             | 104'  | 61°36'-R       | -26°34'        | 83.20      | 317.88 |
|             | 83'   | 114°54'-R      | -30°24'        | 61.74      | 323.25 |
|             | 100'  | 168°59'-R      | -13°25'        | 94.63      | 336.91 |
|             | 135'  | 189°02'-R      | -5°02'         | 133.96     | 347.68 |
|             | 183'  | 199°19'-R      | 0°00'          | 183        | 348.38 |
|             | 210'  | 213°57'-R      | -0°26'         | 209.98     | 357.88 |
|             | 241'  | 215°55'-R      | +1°29'         | 240.83     | 365.72 |
|             | 255'  | 211°45'-R      | +1°49'         | 254.75     | 367.56 |
|             | 265'  | 207°38'-R      | +2°03'         | 264.66     | 368.94 |
|             | 268'  | 206°39'-R      | +2°12'         | 267.60     | 369.77 |
|             | 295'  | 197°27'-R      | +2°48'         | 294.29     | 373.87 |
|             | 278'  | 194°42'-R      | +2°59'         | 277.25     | 373.93 |
|             | 268'  | 192°16'-R      | +2°52'         | 264.34     | 372.70 |
|             | 244'  | 187°50'-R      | +2°45'         | 243.44     | 371.17 |
|             | 240'  | 183°04'-R      |                |            |        |
|             | 225'  | 178°08'-R      | +2°26'         | 243.57     | 369.66 |

Side Hill

" "

" "

Top

" "

" "

" "

Back Sight at  $\Delta$  12, Defl.  $\angle$  R & L

Bottom of Canyon

" "

" "

" "

" "

" "

Center of House

Corner of "

Yellow Chicken Coop

" " "

Corner of House }

" " " }

" " " }

" " " }

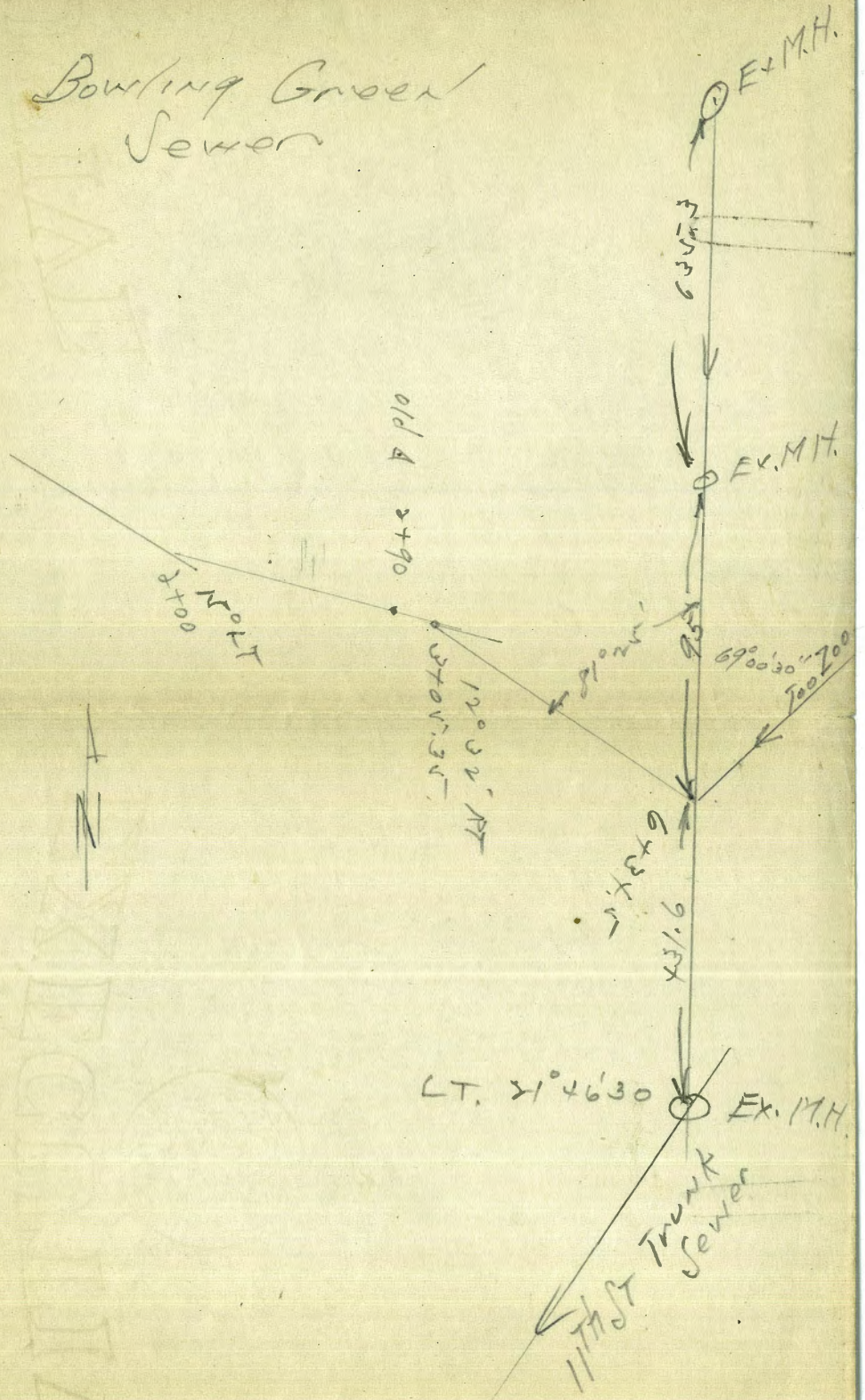
" " " Stucco }

" " " " } Add 4' to Dist.

Doubling Green Sewer

|                            |      |        |       |            |             |
|----------------------------|------|--------|-------|------------|-------------|
| ST 6                       |      |        |       |            |             |
| 2+90                       | 0.57 | 177.45 |       | 176.86     | T.P.        |
| 3+05.3 = New A<br>12.32 RT |      |        | 5.20  | 172.3      |             |
| +19 & cobble drain         |      |        | 8.6   | 168.9      |             |
| +50                        |      |        | 10.8  | 166.7      |             |
| 4                          |      |        | 14.2  | 163.3      |             |
| T.P.                       | 0.57 | 165.21 | 12.81 | 164.64     |             |
| 4+50                       |      |        | 7.9   | 157.3      |             |
| T.P.                       | 0.20 | 152.52 | 12.89 | 152.32     |             |
| 5                          |      |        | 3.6   | 148.9      |             |
| +35                        |      |        | 11.0  | 141.5      |             |
| T.P.                       | 2.31 | 142.27 | 12.56 | 139.96     |             |
| 5+46 W.L. Rd               |      |        | 4.8   | 137.5      |             |
| +75 FL "                   |      |        | 4.9   | 137.4      |             |
| 6                          |      |        | 7.0   | 135.3      |             |
| 6+34.5 EX. Trunk<br>Sewer  |      |        | 6.6   | 135.7      |             |
| "                          | "    |        |       | FL. 128.30 |             |
| "                          | "    |        |       | " 129.30   |             |
| 0+00                       |      |        |       |            |             |
|                            |      |        |       |            | line to Zoo |

# Bowling Green Sewer





| Station | Dist.     | Defl. $\Delta$ | Vert. $\Delta$ | Mag. Dist. | Elev. |
|---------|-----------|----------------|----------------|------------|-------|
| 213'    | 165°48'-R | +1°55'         | 212.77         | 366.59     |       |
| 208'    | 160°51'-R | +1°24'         | 207.88         | 364.55     |       |
| 255'    | 148°02'-R | +3°22'         | 254.13         | 374.42     |       |
| 237'    | 150°04'-R | +1°49'         | 236.76         | 366.99     |       |
| 228'    | 145°32'-R | +1°45'         | 227.80         | 366.43     |       |
| 241'    | 141°06'-R | +2°40'         | 240.47         | 370.69     |       |
| 196'    | 127°08'-R | +1°39'         | 195.84         | 362.24     |       |
| 195'    | 124°30'-R | +1°12'         | 194.92         | 361.46     |       |
| 177'    | 124°18'-R | +1°12'         | 176.83         | 361.30     |       |
| 168'    | 116°57'-R | +1°53'         | 167.92         | 365.11     |       |
| 156'    | 112°03'-R | +0°25'         | 156.00         | 360.62     |       |
| 151'    | 99°29'-R  | +0°06'         | 151.00         | 359.73     |       |
| 155'    | 82°43'-R  | -3°15'         | 154.50         | 350.71     |       |
| 171'    | 76°15'-R  | -2°28'         | 170.68         | 352.13     |       |
| 200'    | 66°45'-R  | ?              |                | 341.82     |       |
| 101'    | 143°50'-R | -10°14'        | 97.81          | 341.83     |       |
| 108'    | 151°32'-R | -7°54'         | 105.96         | 344.78     |       |
| 844'    | 236°49'-R | +2°30'         |                |            |       |
|         | 235°30'-R | +2°45'         |                |            |       |
| 490'    | 232°40'-R | +2°40'         | 488.92         | 382.26     |       |
| 235'    | 228°32'-R | +2°00'         | 234.72         | 367.68     |       |
| 108'    | 215°39'-R | -0°03'         | 108.00         | 359.38     |       |
| 15'     | 18°35'-L  | -0°48'         | 15.00          | 359.27     |       |
| 68'     | 11°34'-L  | +0°20'         | 68.00          | 359.87     |       |

Corner White House }  
 " " " }  
 " Brown " }  
 " " Garage }  
 " " " }  
 " " House }  
 " Gray Bungalow }  
 " " " }  
 " Lath House }  
 " " " }  
 " White House }  
 " " " }  
 " Gray Bungalow }  
 " " " }  
 " Brown House }  
 " of Shed }  
 " " " }  
 Intersection of Collier &  
 Curb S.E.  
 " " }  
 " " }  
 " " }  
 " " }  
 " " }

| Station | Dist. | Defl. &   | Vert. Δ | Mag. Dist. | Elev.  |                               |
|---------|-------|-----------|---------|------------|--------|-------------------------------|
|         | 145'  | 26°52'-L  | +1°12'  | 144.94     | 362.51 | SE: Curb                      |
|         | 194'  | 40°28'-L  | +1°15'  | 193.90     | 363.71 | SE: Curb                      |
|         | 200'  | 33°41'-L  | +1°05'  | 199.94     | 363.26 | Corner White House            |
|         | 220'  | 29°45'-L  |         | 220'       | 362.70 | " " "                         |
|         | 185'  | 23°12'-L  | +1°00'  | 184.94     | 362.70 | " Brown Stucco                |
|         | 160'  | 21°50'-L  | +0°54'  | 159.97     | 361.99 | " " "                         |
|         | 166'  | 10°37'-L  |         |            | 355.48 | " " "                         |
| Δ 13    |       |           |         |            | 363.28 | Back Sight to Δ 12. & R. & L. |
|         | 254'  | 37°39'-R  | +0°32'  | 254        | 365.66 | Curb                          |
|         | 255'  | 77°25'-R  | +3°05'  | 255        | 377.08 | "                             |
|         | 206'  | 86°22'-R  | -0°23'  | 206        | 361.90 | Corner of House               |
|         | 221'  | 91°46'-R  | +1°32'  |            | 369.23 | " " }                         |
|         | 240'  | 93°01'-R  | ?       |            |        | " Garage }                    |
|         | 250'  | 93°20'-R  | +2°33'  |            | 374.68 | " Brown Shingle #.            |
|         | 270'  | 98°50'-R  | +2°43'  |            | 376.08 | " " "                         |
|         | 338'  | 109°26'-R | +3°07'  |            | 381.53 | " White House                 |
|         | 340'  | 111°25'-R | "       |            | 379.48 | " "                           |
|         | 340'  | 114°53'-R | +2°41'  |            | 379.48 | " Garage                      |
|         | 440'  | 126°19'-R | +1°52'  |            | 377.88 | Foot of Berm                  |
|         | 540'  | 125°03'-R | +2°30'  |            | 387.08 | End of Canyon                 |
|         | 355'  | 127°22'-R | +1°12'  |            | 370.83 | " " "                         |
|         | 415'  | 135°20'-R | +1°56'  |            | 377.53 | Foot of Berm                  |
|         | 136'  | 122°23'-R | -3°42'  |            | 354.58 |                               |

| Station | Dist. | Defl. $\Delta$ | Vert. $\Delta$ | Horiz. Dist. | Elev.  |
|---------|-------|----------------|----------------|--------------|--------|
|         | 84'   | 172°15'-R      | -8°05'         |              | 351.68 |
|         | 43'   | 239°04'-R      | +7°40'         |              | 368.82 |
|         | 109'  | 221°46'-R      | +2°05'         |              | 367.23 |
|         | 133'  | 200°48'-R      | +3°06'         |              | 370.48 |
|         | 193'  | 171°49'-R      | +4°46'         |              | 379.48 |
|         | 300'  | 141°38'-R      | +3°28'         |              | 381.78 |
| # 10    |       |                |                |              | 343.48 |
|         | 35'   | 83°42'-R       | -0°23'         |              | 343.24 |
|         | 122'  | 107°53'-R      | +0°30'         |              | 344.53 |
|         | 210'  | 107°46'-R      | +0°59'         |              | 347.10 |
|         | 270'  | 108°34'-R      | +0°58'         |              | 348.09 |
|         | 280'  | 105°04'-R      | -1°02'         |              | 338.38 |
|         | 430'  | 103°47'-R      | +0°25'         |              | 346.66 |
|         | 420'  | 100°34'-R      | -1°20'         |              | 333.60 |
|         | 321'  | 109°05'-R      | +1°22'         |              | 351.12 |
|         | 102'  | 126°02'-R      | +0°18'         |              | 344.02 |
|         | 161'  | 117°50'-R      | +0°59'         |              | 346.26 |
|         | 262'  | 121°13'-R      |                |              |        |
|         | 275'  | 114°22'-R      | +1°26'         |              | 350.43 |
|         | 400'  | 121°55'-R      | +1°42'         |              | 355.58 |
| # 15    | 604'  | 101°14'-R      | +0°55'         |              | 353.14 |
| # 16    | 73'   | 77°11'-R       | +4°17'         |              | 358.58 |
| # 17    | 230'  | 73°43'-R       | -0°13'         |              | 359.45 |

Middle of Borrow Pit

Edge " " "

" " " "

" " " "

" " " "

" " " "

Bad Sight to STA. 12, R. &amp; L.

Curb

"

"

" opposite

" "

d Street

Intersection of Circle & 39<sup>th</sup>

| Station | Dist. | Azimuth | Vert. Δ | Horz. Dist | Elev. |
|---------|-------|---------|---------|------------|-------|
|---------|-------|---------|---------|------------|-------|

|      |  |          |  |  |  |
|------|--|----------|--|--|--|
| Δ 10 |  | 64°36'-L |  |  |  |
|------|--|----------|--|--|--|

|  |      |  |  |  |  |
|--|------|--|--|--|--|
|  | 255' |  |  |  |  |
|--|------|--|--|--|--|

|   |  |          |  |  |  |
|---|--|----------|--|--|--|
| Δ |  | 20°25'-R |  |  |  |
|---|--|----------|--|--|--|

|  |      |  |  |  |  |
|--|------|--|--|--|--|
|  | 213' |  |  |  |  |
|--|------|--|--|--|--|

|      |  |          |  |  |  |
|------|--|----------|--|--|--|
| Δ 17 |  | 63°31'-L |  |  |  |
|------|--|----------|--|--|--|

|  |      |  |  |  |  |
|--|------|--|--|--|--|
|  | 228' |  |  |  |  |
|--|------|--|--|--|--|

|      |  |          |  |  |  |
|------|--|----------|--|--|--|
| Δ 10 |  | 78°46'-L |  |  |  |
|------|--|----------|--|--|--|

|  |     |  |  |  |  |
|--|-----|--|--|--|--|
|  | 73' |  |  |  |  |
|--|-----|--|--|--|--|

|      |  |          |  |  |  |
|------|--|----------|--|--|--|
| Δ 15 |  | 77°08'-L |  |  |  |
|------|--|----------|--|--|--|

|  |      |  |  |  |  |
|--|------|--|--|--|--|
|  | 604' |  |  |  |  |
|--|------|--|--|--|--|

|      |  |  |  |  |  |
|------|--|--|--|--|--|
| Δ 10 |  |  |  |  |  |
|------|--|--|--|--|--|

|      |  |  |  |  |        |
|------|--|--|--|--|--------|
| Δ 16 |  |  |  |  | 357.29 |
|------|--|--|--|--|--------|

|      |      |          |  |  |        |
|------|------|----------|--|--|--------|
| Δ 18 | 145' | 52°12'-R |  |  | 359.49 |
|------|------|----------|--|--|--------|

|      |  |  |  |  |  |
|------|--|--|--|--|--|
| Δ 16 |  |  |  |  |  |
|------|--|--|--|--|--|

|      |      |          |        |  |        |
|------|------|----------|--------|--|--------|
| Δ 19 | 471' | 26°43'-L | -1°10' |  | 347.68 |
|------|------|----------|--------|--|--------|

|      |      |          |        |  |  |
|------|------|----------|--------|--|--|
| Δ 20 | 874' | 25°08'-R | -0°06' |  |  |
|------|------|----------|--------|--|--|

|      |  |  |  |  |        |
|------|--|--|--|--|--------|
| Δ 19 |  |  |  |  | 347.68 |
|------|--|--|--|--|--------|

|  |      |         |        |  |        |
|--|------|---------|--------|--|--------|
|  | 385' | 3°40'-R | -0°20' |  | 345.40 |
|--|------|---------|--------|--|--------|

|  |      |         |        |  |        |
|--|------|---------|--------|--|--------|
|  | 390' | 4°37'-R | +0°17' |  | 349.63 |
|--|------|---------|--------|--|--------|

|  |      |         |        |  |        |
|--|------|---------|--------|--|--------|
|  | 395' | 5°16'-R | +0°16' |  | 349.55 |
|--|------|---------|--------|--|--------|

|  |      |         |        |  |        |
|--|------|---------|--------|--|--------|
|  | 415' | 7°06'-R | +0°25' |  | 350.73 |
|--|------|---------|--------|--|--------|

|  |      |         |        |  |        |
|--|------|---------|--------|--|--------|
|  | 423' | 7°09'-R | +0°41' |  | 352.78 |
|--|------|---------|--------|--|--------|

362.58

5.15

363.73

2.95

360.78

S. 15

47

ForeSight To STA. 12

Back Sight To Δ 17

Fore Sight to Δ 16 R & L

White House with Red Roof

" "

" "

" "

| Station | Dist.    | Azimuth | Vert. Δ | Mag. Dist. | Elev.  |                                              |
|---------|----------|---------|---------|------------|--------|----------------------------------------------|
| 445'    | 8°26'-R  | +1°06'  |         |            | 355.53 | White House with Green Roof }<br>" " " " " } |
| 470'    | 10°14'-R | +0°26'  |         |            | 351.28 | " " " " " }                                  |
| 473'    | 10°55'-R | +0°48'  |         |            | 354.38 | " " " Gray " }                               |
| 490'    | 11°50'-R | +0°41'  |         |            | 353.58 | " " " " " }                                  |
| 515'    | 15°14'-R | +0°12'  |         |            | 349.68 | Gray Garage                                  |
| 520'    | 15°44'-R | +0°22'  |         |            | 351.38 | " "                                          |
| 950'    | 36°10'-R |         |         |            |        | Δ 10                                         |
| 946'    | 38°18'-R | -0°55'  |         |            | 332.48 | Side Hill                                    |
| 905'    | 39°53'-R | -2°09'  |         |            | 313.68 | " "                                          |
| 858'    | 41°35'-R | -4°25'  |         |            | 281.68 | " "                                          |
| 852'    | 43°20'-R | -5°50'  |         |            | 262.18 | " "                                          |
| 837'    | 45°13'-R | -7°14'  |         |            | 243.68 | ☩ Road                                       |
| 520'    | 35°37'-R | -9°51'  |         |            | 259.68 | ☩ "                                          |
| 365'    | 28°53'-R | -12°46' |         |            | 269.18 | ☩ "                                          |
| 256'    | 10°28'-L | -15°40' |         |            | 280.68 | ☩ "                                          |
| 296'    | 4°11'-L  | -10°15' |         |            | 285.68 | Side Hill                                    |
| 320'    | 2°05'-L  | -6°02'  |         |            | 313.68 | " "                                          |
| 354'    | 3°02'-L  | -2°30'  |         |            | 334.58 | " "                                          |
| 360'    | 12°20'-L | +0°14'  |         |            | 349.15 | Corner Pink House }<br>" " " " }             |
| 368'    | 15°39'-L | +0°47'  |         |            | 352.76 | " " " " }                                    |
| 370'    | 16°22'-L | +0°47'  |         |            | 352.80 | " " Garage }                                 |
| 375'    | 18°07'-L | +0°52'  |         |            | 353.40 | " " " " }                                    |
| 388'    | 22°14'-L | +1°00'  |         |            | 354.58 | " White House with green Roof }              |
| 410'    | 24°47'-L | +1°12'  |         |            | 356.38 | " " " " }                                    |
| 415'    | 36°35'-L | -0°38'  |         |            | 343.07 | Δ 21                                         |

$$\begin{array}{r} 13 \\ 4.48 \\ \hline 8.58 \end{array}$$

$$\begin{array}{r} 1300 \\ 463 \\ \hline 837 \end{array}$$

| Station     | Dist. | Azimuth  | Vert. $\Delta$ | Horz. Dist. | Elev   |                                                            |
|-------------|-------|----------|----------------|-------------|--------|------------------------------------------------------------|
|             | 370'  | 39°49'-L | -2°32'         |             | 331.18 | Side Hill                                                  |
|             | 360'  | 43°37'-L | -4°57'         |             | 316.68 | " "                                                        |
|             | 362'  | 48°26'-L | -7°25'         |             | 301.18 | " "                                                        |
|             | 380'  | 56°58'-L | -8°30'         |             | 291.68 | ⊥ Road                                                     |
|             | 430'  | 57°24'-L | -5°12'         |             | 308.68 | Side Hill                                                  |
|             | 460'  | 57°04'-L | -1°40'         |             | 334.08 | " "                                                        |
|             | 490'  | 58°16'-L | -1°15'         |             | 336.98 | " "                                                        |
|             | 550'  | 58°50'-L | +0°41'         |             | 354.33 | " "                                                        |
| $\Delta$ 21 | 415'  |          | +0°32'         |             | 343.82 | Back Sight to 219, 2 R 2 L                                 |
|             | 228'  | 64°15'-L | +3°01'         |             | 356.22 | Corner White House }<br>" " " }<br>" " " }<br>" " " } + 4' |
|             | 230'  | 58°11'-L | +3°08'         |             | 356.57 |                                                            |
|             | 206'  | 49°01'-L | +2°35'         |             | 352.92 |                                                            |
|             | 225'  | 44°44'-L | +3°10'         |             | 356.32 | " Brown " } + 4'                                           |
|             | 235'  | 39°59'-L | +2°32'         |             | 354.32 | " " " }<br>" " " }                                         |
|             | 179'  | 46°12'-L | -0°58'         |             | 340.78 | Side Hill                                                  |
|             | 143'  | 42°49'-L | -7°47'         |             | 324.42 | " "                                                        |
|             | 121'  | 72°50'-L | -22°32'        | 107.50      | 301.07 | " "                                                        |
|             | 110'  | 73°14'-L | -27°57'        | 94.00       | 298.32 | Bottom of Canyon                                           |
|             | 240'  | 21°29'-L | -3°40'         |             | 328.32 | " " "                                                      |
|             | 326'  | 17°35'-L | -0°20'         |             | 342.02 | " " " - 4.4'                                               |
|             | 400'  | 13°27'-L | +3°16'         |             | 366.82 | ⊥ Street                                                   |
|             | 345'  | 12°14'-L | +3°37'         |             | 365.82 | Term                                                       |
|             | 310'  | 6°01'-L  | +3°58'         |             | 365.52 | Corner of Gray House with red Roof                         |
|             | 106'  | 16°15'-R | +3°46'         |             | 350.72 | Side Hill                                                  |

| Station | Dist. | Azimuth   | Vert. A | Horiz. Dist. | Elev.  |                            |
|---------|-------|-----------|---------|--------------|--------|----------------------------|
| Δ 13    |       | 20°55'-L  | +4°14'  |              | 363.28 | Back Sight To Δ 12 R & L   |
|         | 236'  |           |         | 234.73       |        |                            |
| Δ 22    |       |           | -4°14'  |              | 380.65 | Reversed R & L             |
|         | 130'  | 141°21'-R | -3°30'  |              | 372.65 | Edge of Bluff              |
|         | 131'  | 122°32'-R | -3°58'  |              | 371.55 |                            |
|         | 100'  | 80°09'-R  | -3°09'  |              | 375.16 |                            |
|         | 124'  | 30°40'-R  | -1°23'  |              | 377.65 | Fence                      |
|         | 82'   | 3°00'-L   | +1°40'  |              | 383.05 | "                          |
|         | 84'   | 41°25'-L  | +0°34'  |              | 381.49 | Guard Fence on Copley Ave. |
|         | 103'  | 60°22'-L  | +0°14'  |              | 381.07 | " " " " "                  |
|         | 210'  | 38°41'-L  | ?       |              |        | Curb on Copley Ave.        |
|         | 235'  | 46°27'-L  | +1°37'  |              | 387.35 | Born Top                   |
|         | 284'  | 56°20'-L  | +1°49'  |              | 389.80 | " Top                      |
|         | 270'  | 60°47'-L  | -0°47'  |              | 376.95 | " Foot                     |
|         | 363'  | 50°13'-L  | +1°29'  |              | 390.25 |                            |
|         | 420'  | 39°26'-L  | +1°26'  |              | 39.35  |                            |

| Sta. | Dist. | Defl. $\times$ | Vort. $\times$ | Hor. Dist. | Elevation |
|------|-------|----------------|----------------|------------|-----------|
| 23   |       | 90°05'-R       |                |            | 370.78    |
|      | 400'  |                |                |            |           |
| 24   |       |                |                |            | 370.90    |
| 23   |       | 34°45'-R       | -2°02'         |            |           |
|      | 580'  |                |                |            |           |
| 25   |       |                |                |            | 350.54    |
|      | 305'  | 24°50'-R       | +2°30'         |            | 364.04    |
|      | 270'  | 13°25'-R       | +2°00'         |            | 360.09    |
|      | 330'  | 2°49'-L        | +1°30'         |            | 359.24    |
|      | 380'  | 13°22'-L       | +2°15'         |            | 365.54    |
|      | 194'  | 15°10'-L       | -3°16'         |            | 339.34    |
|      | 220'  | 14°46'-L       | -1°08'         |            | 346.16    |
|      | 249'  | 6°42'-L        | -2°28'         |            | 339.74    |
|      | 310'  | 13°10'-L       | -0°14'         |            | 349.27    |
|      | 320'  | 19°30'-L       | +1°37'         |            | 359.69    |
|      | 400'  | 20°01'-L       | +2°25'         |            | 367.64    |
|      | 440'  | 25°58'-L       | +2°20'         |            | 368.74    |
|      | 450'  | 30°12'-L       | +2°29'         |            | 370.29    |
|      | 460'  | 36°28'-L       | +2°30'         |            | 370.84    |
|      | 490'  | 44°28'-L       | +2°29'         |            | 372.04    |
|      | 500'  | 53°03'-L       | +2°07'         |            | 369.14    |
|      | 540'  | 60°16'-L       | +1°45'         |            | 367.29    |

SE. Cor. 39<sup>th</sup> Adams (Property Lines)  
 Fore Sight East along Prop. Line,  $\times$  Right  
 Along East Line of 39<sup>th</sup>

|  |  |  |  |  |            |
|--|--|--|--|--|------------|
|  |  |  |  |  | BM. 356.95 |
|  |  |  |  |  | + 8.70     |
|  |  |  |  |  | 365.65     |
|  |  |  |  |  | - 2.49     |
|  |  |  |  |  | 363.16     |
|  |  |  |  |  | + 6.59     |
|  |  |  |  |  | 369.75     |
|  |  |  |  |  | - .99      |
|  |  |  |  |  | 368.76     |
|  |  |  |  |  | + 7.24     |
|  |  |  |  |  | 376.00     |
|  |  |  |  |  | - 5.22     |
|  |  |  |  |  | 370.78     |
|  |  |  |  |  | 376.53     |
|  |  |  |  |  | 376.00     |
|  |  |  |  |  | - 5.10     |
|  |  |  |  |  | 370.90     |
|  |  |  |  |  | 376.00     |
|  |  |  |  |  | - 12.70    |
|  |  |  |  |  | 363.30     |
|  |  |  |  |  | + 1.33     |
|  |  |  |  |  | 364.63     |
|  |  |  |  |  | - 13.25    |
|  |  |  |  |  | 351.38     |
|  |  |  |  |  | + 4.31     |
|  |  |  |  |  | 355.69     |
|  |  |  |  |  | - 5.15     |
|  |  |  |  |  | 350.54     |

Edge of Canyon

Edge of Bluff

N End of Tippet

S " " "

376.22 Sta. 23

370.90 Sta. 24

350.54 Sta. 25



| STA | Dist. | Defl. $\times$ | Vert. $\pm$ | Hor. Dist. | Elevation |                                  |
|-----|-------|----------------|-------------|------------|-----------|----------------------------------|
| 25  | 482'  |                |             |            | 350.54    | Foresight at $\Delta$ 24, R & L. |
|     | 307'  | 75°37'-R       | +0°20'      |            | 352.34    |                                  |
|     | 270'  | 79°34'-R       | -2°45'      |            | 337.44    |                                  |
|     | 255'  | 81°03'-R       | -5°44'      |            | 324.74    | On Trail                         |
|     | 230'  | 79°30'-R       | -6°47'      |            | 323.24    | " "                              |
|     | 188'  | 76°44'-R       | -12°55'     | 178.00     | 309.54    | Bottom of Canyon                 |
|     | 95'   | 68°00'-R       | -19°09'     | 85.00      | 321.24    | On Edge of Road                  |
|     | 103'  | 67°55'-R       | -21°09'     | 90.5       | 315.54    | Bottom of Canyon                 |
|     | 74'   | 9°15'-R        | -22°15'     | 67.00      | 324.54    | On Edge of Road                  |
|     | 114'  | 28°00'-L       | -12°14'     | 110.00     | 326.54    | " " " "                          |
|     | 200'  | 37°27'-L       | -5°45'      |            | 329.74    | " " " "                          |
|     | 283'  | 38°31'-L       | -3°25'      |            | 333.54    | " " " "                          |
|     | 305'  | 34°30'-L       | -3°59'      |            | 329.24    | Bottom of Canyon                 |
|     | 305'  | 32°18'-L       | -3°00'      |            | 334.44    |                                  |
|     | 256'  | 30°19'-L       | -2°43'      |            | 338.24    |                                  |
|     | 235'  | 15°48'-L       | -3°22'      |            | 336.74    |                                  |
|     | 164'  | 8°22'-L        | -5°23'      |            | 335.04    |                                  |
|     | 136'  | 14°51'-R       | -8°28'      |            | 330.74    |                                  |
|     | 177'  | 41°00'-R       | -5°51'      |            | 332.24    |                                  |
|     | 215'  | 21°18'-R       | -2°56'      |            | 339.79    |                                  |
|     | 260'  | 10°35'-R       | -1°14'      |            | 344.89    |                                  |
|     | 260'  | 11°05'-L       | -2°17'      |            | 336.04    |                                  |
|     | 380'  | 22°07'-L       | -3°32'      |            | 327.04    |                                  |
|     | 300'  | 19°04'-L       | -2°47'      |            | 335.84    |                                  |

| STA. | Dist.          | Defl. $\angle$                         | Vert. $\angle$                        | Hor. Dist. | Elev.              |
|------|----------------|----------------------------------------|---------------------------------------|------------|--------------------|
|      | 205            | $7^{\circ}53'-L$                       | $-3^{\circ}43'$                       |            | 336.54             |
|      | 192            | $11^{\circ}00'-R$                      | $-6^{\circ}45'$                       |            | 327.54             |
|      | 182            | $10^{\circ}39'-R$                      | $-3^{\circ}56'$                       |            | 338.04             |
|      | 290            | $8^{\circ}30'-R$                       | $-3^{\circ}52'$                       |            | 330.54             |
|      | <del>300</del> | <del><math>0^{\circ}58'-L</math></del> | <del><math>-2^{\circ}30'</math></del> |            |                    |
|      | 288            | $6^{\circ}02'-R$                       | $-1^{\circ}05'$                       |            | 345.04             |
|      | 360            | $7^{\circ}00'-L$                       | $-2^{\circ}07'$                       |            | 337.29             |
|      | 410            | $6^{\circ}08'-L$                       | $-2^{\circ}26'$                       |            | 333.04             |
|      | 475            | $9^{\circ}20'-L$                       | $-1^{\circ}27'$                       |            | 338.34             |
|      | 450            | $0^{\circ}21'-L$                       | $-1^{\circ}51'$                       |            | 335.79             |
|      | 420            | $14^{\circ}10'-R$                      | $-2^{\circ}10'$                       |            | 334.44             |
|      | 390            | $17^{\circ}05'-R$                      | $-2^{\circ}14'$                       |            | 335.04             |
| 26   | 595            | $19^{\circ}27'-L$                      |                                       |            |                    |
| 24   |                | $12^{\circ}53'-R$                      |                                       |            |                    |
|      | 211            |                                        |                                       |            |                    |
| 20   |                |                                        |                                       |            | 365.90             |
|      | 89             | $69^{\circ}50'-R$                      | $-17^{\circ}34'$                      | 80.50      | 340.30             |
|      | 135            | $75^{\circ}19'-R$                      | $-12^{\circ}49'$                      | 127.00     | 336.40             |
|      | 180            | $63^{\circ}10'-R$                      | $-8^{\circ}59'$                       | 177.00     | 337.90             |
|      | 234            | $75^{\circ}00'-R$                      | $-7^{\circ}57'$                       | 230.00     | 333.40             |
|      | 285            | $74^{\circ}20'-R$                      | $-6^{\circ}08'$                       | 280.00     | 335.40             |
|      | 132            | $109^{\circ}20'-R$                     | $-10^{\circ}35'$                      | 127.00     | 335.90             |
|      | 154            | $109^{\circ}15'-R$                     | $-8^{\circ}36'$                       | 150.00     | 342.90             |
|      | 192            | $117^{\circ}35'-R$                     | $-0^{\circ}23'$                       |            | 364.6 $\checkmark$ |

Backsight To 4 23

Backsight To 4 24

At Road

Road

Other Side

Curb on Street

3) 135<sup>+</sup> = .45  
15

| STA. | Dist. | Defl. &          | Vert. & | Hor. Dist. | Elev.  |                |
|------|-------|------------------|---------|------------|--------|----------------|
|      | 221'  | 125°45'-R-0°07'  |         |            | 365.45 | Curb on STREET |
|      | 170'  | 125°50'-R-0°50'  |         |            | 363.45 | " " "          |
|      | 111'  | 137°00'-R-11°26' |         | 107'       | 344.25 | Road           |
|      | 127'  | 150°45'-R-11°06' |         | 123'       | 341.90 | Canyon         |
|      | 157'  | 177°20'-R-9°01'  |         | 152'       | 341.60 | "              |
|      | 276'  | 180°00'-R-3°19'  |         |            | 349.70 | "              |
|      | 340'  | 177°15'-R-0°31'  |         |            | 362.70 | "              |
|      | 300'  | 189°10'-R-0°30'  |         |            | 363.25 | White House    |
|      | 228'  | 207°30'-R+0°23'  |         |            | 367.45 | House          |
|      | 206'  | 203°30'-R-0°07'  |         |            | 365.48 | "              |
|      | 180'  | 202°30'-R-2°06'  |         |            | 359.20 |                |
| Δ 27 | 113'  | 207°25'-R-7°50'  |         | 110.90     | 350.64 | Edge of Road   |
|      | 47'   | 107°00'-R+1°03'  |         |            | 351.51 | " " "          |
|      | 82'   | 82°39'-R+2°03'   |         |            | 353.23 | " " "          |
|      | 225'  | 84°47'-R+3°33'   |         |            | 364.64 |                |
|      | 231'  | 79°25'-R+3°39'   |         |            | 366.14 |                |
|      | 185'  | 51°10'-R+2°20'   |         |            | 358.24 |                |

Water  
Supply  
Station  
5-11-28

Location Proposed Sewer  
for Normal Hts. Extension  
"A" Line  
Levels on P-57

stations

18.25  
46.0  
200.10  
86.64  
43.70  
13.24  
0+00

7+60  $\Delta$  L 33°10'  
7+14 = P.O.T.  
5+14 =  $\overset{R}{\Delta}$  104°20'  
4+27.32 = P.O.T.  
3+83.42  $\Delta$  L 29°17'  
2+43.78  $\Delta$  R 13°57'  
0+00  $\Delta$  L 145°10'

346.5 331.65

345.1 332.25

340.0

{ Elev = 338.83 }

7+60  $\square$  L 33°10'

{ Elev = 346.5 }

7+14  $\square$  P.O.T.

{ Elev = 345.16 }

5+14  $\square$  =  $\Delta$  R 104°20'

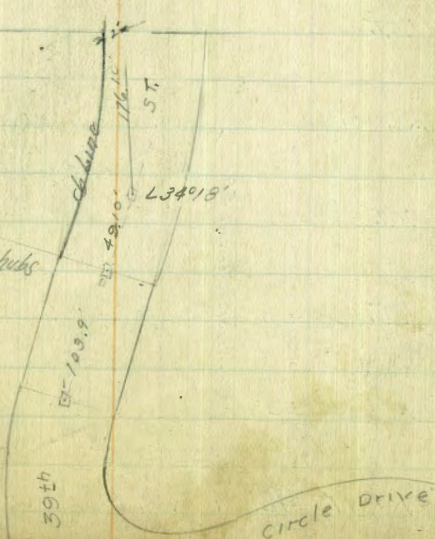
4+27.32  $\square$  = P.O.T. 4+27.32

3+83.42  $\square$  L 29°17'

2+43.78  $\square$  R 13°57'

0+00  $\square$  = L 145°10'

$\square$  = 2" x 2" Redwood hubs



19 + 24.84 =  $\frac{1}{2}$  Copley = 2. Pump Station

-  $\Delta 60^{\circ}46'$   
18 + 70.46 = Intersection with S.W. Copley

18 + 45.35 = P.O.T.

17 + 84.20 =  $\Delta R 85^{\circ}47'$

16 + 54.84 =  $\Delta R 23^{\circ}53'$

15 + 30.89 = P.O.T.

-13 + 28.24 =  $\Delta L 107^{\circ}30'$   
13 + 35 change

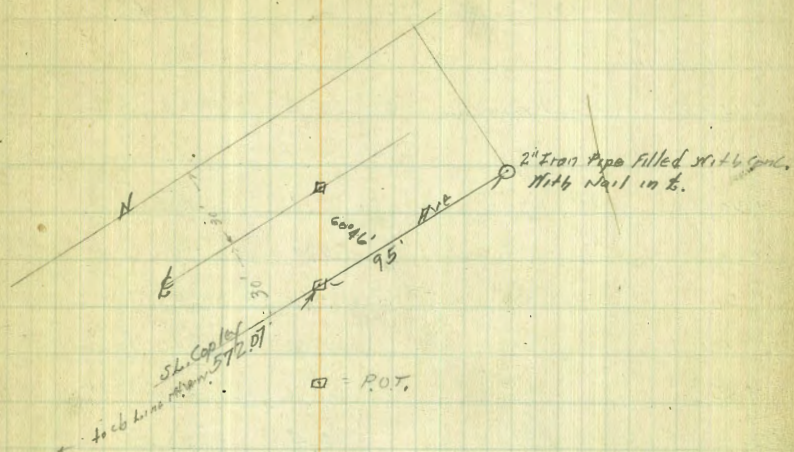
12 + 72.97 = P.O.T.

10 + 69.37 = P.O.T.

10 + 15.81 =  $\Delta R 32^{\circ}52'$

9 + 42.35 =  $\Delta R 117^{\circ}42'$

changed Sec Pipe 5.9



Elev. 335.91

Elev. 334.66

Elev. 336.56

Elev. 344.23

Elev.

Elev. 342.20

$\square$  = P.O.T.

$\square$   $R 85^{\circ}47'$

$\square$   $R 23^{\circ}53'$

$\square$  = P.O.T.

$\square$   $\Delta L 107^{\circ}30'$

$\square$  = P.O.T.

$\square$  = P.O.T.

$\square$  =  $\Delta R 32^{\circ}52'$

$\square$  =  $\Delta R 117^{\circ}42'$

Yetter  
 Ruppinger  
 Shaw  
 3003-14-28

Levels for "A" Line Normal Hts. Sewer  
 Location Page 55-56  
 Est.

| Station                           | 5.19 | 348.67 | 343.48 |
|-----------------------------------|------|--------|--------|
| 0+00 on hub                       | 3.56 | 345.11 |        |
| +14 = 1/2 open culvert floor line | 5.6  | 343.1  |        |
| +21                               | 2.9  | 345.8  |        |
| +50                               | 3.1  | 345.6  |        |
| 1+00                              | 3.1  | 345.6  |        |
| +50                               | 5.0  | 343.7  |        |
| +70                               | 5.8  | 342.9  |        |
| +85                               | 7.6  | 341.1  |        |
| 2+00                              | 6.4  | 342.3  |        |
| +43.78 = A.F. 13257 on hub        | 5.19 | 343.48 |        |
| +75                               | 4.3  | 344.4  |        |
| 3+00                              | 5.9  | 342.8  |        |
| +50                               | 4.7  | 344.0  |        |
| +83.42 = Δ 1.29° 17' on hub       | 8.01 | 340.66 |        |
| 4+00                              | 5.5  | 343.2  |        |
| +27.32 = P.O.T. on hub            | 1.89 | 346.78 |        |
| +66                               | 4.9  | 343.8  |        |
| +81                               | 6.7  | 342.0  |        |
| 5+00                              | 8.7  | 340.0  |        |
| +14 = Δ F 104° 20' on hub         | 3.58 | 345.09 |        |
| +90                               | 8.4  | 340.3  |        |
| +95                               | 11.0 | 337.7  |        |
| +80                               | 10.5 | 338.2  |        |
| 6+25                              | 7.5  | 341.2  |        |

814.00 on hub  
 on site of line  
 End 39.25 Page 7

348.67

57

|                               |      |        |
|-------------------------------|------|--------|
| 6+36                          | 6.9  | 341.8  |
| +37                           | 5.3  | 343.4  |
| +45                           | 5.3  | 343.4  |
| +46                           | 2.8  | 345.9  |
| 7+14 on hub = P.O.T.          | 2.16 | 346.51 |
| +25                           | 3.0  | 345.7  |
| +31                           | 2.3  | 346.4  |
| +35                           | 5.7  | 343.0  |
| +42                           | 6.1  | 342.6  |
| +43                           | 8.1  | 340.6  |
| +50                           | 8.1  | 340.6  |
| +51                           | 11.7 | 337.0  |
| +56                           | 11.5 | 337.2  |
| +57                           | 9.5  | 339.2  |
| 7+60 = Δ 4.33° 10' on hub     | 9.90 | 338.77 |
| +90                           | 8.5  | 340.2  |
| 8+00                          | 10.7 | 338.0  |
| +50                           | 9.7  | 339.0  |
| 5' N 42° E 8450               | 12.0 | 336.7  |
| 9+00                          | 7.2  | 341.5  |
| +10                           | 7.3  | 341.4  |
| +18                           | 10.5 | 338.2  |
| 9+42.35 = Δ R 117° 42' on hub | 6.54 | 342.13 |
| +54                           | 10.0 | 338.7  |
| +78                           | 18.6 | 330.1  |
| +84 = Lost Point              | 22.3 | 326.4  |

Normal Hts Sewer Ext.  
{ Levels }

348.67

|                                                 |       |        |
|-------------------------------------------------|-------|--------|
| 9+92                                            | 21.2  | 327.5  |
| 10+00                                           | 19.1  | 329.6  |
| +15.81 = $\Delta R 32^{\circ} 54'$ on hub.      | 12.97 | 335.70 |
| +20                                             | 13.1  | 335.6  |
| +21                                             | 16.1  | 332.6  |
| +26                                             | 14.0  | 334.7  |
| +27                                             | 11.4  | 337.3  |
| +40                                             | 8.6   | 340.1  |
| +50                                             | 6.5   | 342.2  |
| +69.37 = P.O.T. on hubs                         | 6.33  | 342.34 |
| 11+0.6                                          | 8.0   | 340.7  |
| +50                                             | 15.7  | 333.0  |
| +75                                             | 14.4  | 334.3  |
| 12+00                                           | 11.7  | 337.0  |
| +25                                             | 9.6   | 339.1  |
| +50                                             | 6.0   | 342.7  |
| +58                                             | 3.5   | 345.2  |
| 12+72.07 = P.O.T. hub                           | 2.6   | 346.1  |
| 13+00                                           | 6.2   | 342.5  |
| +23                                             | 9.6   | 339.1  |
| ✓ 13+28.26 = $\Delta L 107^{\circ} 30'$ on hub. | 12.11 | 336.56 |
| +50                                             | 8.9   | 339.7  |
| 14+00                                           | 7.8   | 340.8  |
| T.P.                                            | 5.77  | 346.74 |
| +50                                             | 8.6   | 338.1  |

Ref. to  
Nearest bench

346.74

58

|                                                |        |               |
|------------------------------------------------|--------|---------------|
| 15+00                                          | 11.9   | 334.8         |
| +30.89 = P.O.T. on hub.                        | 8.79   | 337.95        |
| +50                                            | 10.9   | 338.8         |
| 16+00                                          | 13.0   | 333.7         |
| +54.84 = $\Delta R 23^{\circ} 53'$ on hub.     | 12.08  | 334.66        |
| 17+00                                          | 12.5   | 334.2         |
| +50                                            | 9.8    | 336.9         |
| +84 = $\Delta R 25^{\circ} 47'$ on hub.        | 10.93  | 335.81        |
| +94                                            | 14.7   | 332.0         |
| 18+02                                          | 14.3   | 332.4         |
| 18+14                                          | 9.2    | 337.5         |
| T.P. 12.84                                     | 358.94 | 0.64          |
| 18+40                                          | 6.2    | 352.7         |
| +45.35 = P.O.T. on hub                         | 5.90   | 353.44        |
| 18+90.46 = Intersection sh. copy               | 6.08   | 351.86        |
| 19+24.84 = sh. copy = $\Delta$ Pump station    | 7.44   | 351.50        |
| T.P. 8.24                                      | 364.46 | 2.72          |
| End copy of<br>chk. on BM, 2" Iron Pipe Page 1 | 1.17   | 363.27        |
|                                                |        | 363.28 = B.M. |
|                                                |        | 0.01 = Error  |

Water  
Supply  
Show  
Brooks  
8/27/28

RE-Location Sewer Normal Hrs. Ext.  
 Est. Sta. 9+42.35 and Sta. 13+28.26 on Page 56

SM on hub  
 Station 11+25 Page 51

Levels For New Location Est. Above Station

|                            |        |              |
|----------------------------|--------|--------------|
| 2.89                       | 345.02 | 342.13 - 87' |
| 9+60                       | 7.4    | 337.6        |
| +75                        | 13.5   | 331.5        |
| 9+81                       | 16.7   | 328.8        |
| +83                        | 18.7   | 326.8        |
| +85                        | 17.0   | 328.0        |
| +95                        | 16.0   | 329.0        |
| 10+04                      | 12.9   | 332.1        |
| 10+14.66 = $\Delta$ on hub | 6.83   | 338.19       |
| 10+29                      | 3.1    | 341.9        |
| +32                        | 4.4    | 340.6        |
| +35                        | 0.0    | 345.02       |

Levels cont. on opp. Page

Location

- 13+35.0 =  $\Delta$  Rt. 109° 01' 30"
- 12+79.0 = P.O.T.
- 10+82.41 = P.O.T.
- 10+14.66 =  $\Delta$  Rt. 43° 33'
- 9+42.35 =  $\Delta$  Rt. 108° 33' see Page 56

34502

59

|                         |             |        |
|-------------------------|-------------|--------|
| T.P. 591                | 350.45 0.48 | 344.54 |
| 10+50                   | 4.0         | 346.4  |
| +82.41 = P.O.T. on hub  | 2.80        | 347.6  |
| 11+00                   | 4.0         | 346.4  |
| +25                     | 7.6         | 342.8  |
| +50                     | 13.9        | 336.5  |
| 12+00                   | 12.1        | 338.0  |
| +25                     | 9.9         | 340.5  |
| +50                     | 8.4         | 342.0  |
| +79 = P.O.T. on hub     | 3.61        | 346.84 |
| 13+05                   | 7.0         | 343.4  |
| +27                     | 9.8         | 340.6  |
| = 13+28.26 Page 56      |             |        |
| 13+35 = $\Delta$ on hub | 13.87       | 336.58 |



7-11-28

X-section Banner St

J.C. Bliss University Ave to Lincoln

Dracbert Ave.

40' Roadway

Rainier

10' 1/4 S

B.M. S.E. BR Boundary & University

331.30

9.52

Σ 340.82

0+00 = A Line University Ave

E Tpcb 4.84 336.0

Gutter 5.35 335.5

1/4 4.58 336.2

¢ 3.81 337.0

1/4 3.23

Gutter 2.75 338.1

W Tpcb 1.92 338.9

0+25

W Tpcb 2.38 338.4

G 3.4

1/4 3.6

¢ 3.9 336.9

1/4 4.7

G 5.6

E Tpcb 4.98 335.1

0+50

E Tpcb 5.18 335.6

G 5.7

1/4 5.0

¢ 4.2

1/4 3.9

60

Σ 340.82

G 3.7

W Tpcb 2.76 338.1

0+75

W Tpcb 3.14 337.7

G 4.2

1/4 4.2

¢ 4.4

1/4 5.2

G 5.9

E Tpcb 5.37 335.5

1+00

E Tpcb 5.60 335.2

G 6.0

1/4 5.4

¢ 4.7

1/4 4.5

G 4.6

W Tpcb 3.55 337.3

0+92

Driveway in west cb 4.04

1+25

W Tpcb 4.89 336.7

G 5.1

1/4 4.9

¢ 5.0

π 340.82

|                     |      |        |
|---------------------|------|--------|
| 1/4                 | 5.7  |        |
| G                   | 6.3  |        |
| E T <sub>p</sub> cb | 5.65 | 335.2  |
|                     | 1450 |        |
| E T <sub>p</sub> cb | 5.81 | 335.0  |
| G                   | 6.5  |        |
| 1/4                 | 5.9  |        |
| ♀                   | 5.5  |        |
| 1/4                 | 5.3  |        |
| G                   | 5.5  |        |
| W T <sub>p</sub> cb | 4.51 | 336.3  |
|                     | 1475 |        |
| W T <sub>p</sub> cb | 4.85 | 336.0  |
| Grating Cbinlet     | 5.78 | 335.04 |
| 1/4                 | 5.6  |        |
| ♀                   | 5.6  |        |
| 1/4                 | 6.0  |        |
| Grating Cb in let   | 6.79 | 334.13 |
| E T <sub>p</sub> cb | 5.77 | 335.1  |
|                     | 1460 |        |
| Driveway in East cb | 6.28 |        |
|                     | 2400 |        |
| E T <sub>p</sub> cb | 5.32 | 335.5  |
| G                   | 5.7  |        |
| 1/4                 | 5.5  |        |

π 340.82

cl

|                        |      |       |
|------------------------|------|-------|
| ♀                      | 5.1  |       |
| 1/4                    | 5.1  |       |
| G                      | 5.3  |       |
| W T <sub>p</sub> cb    | 4.49 | 336.3 |
|                        | 2404 |       |
| Driveway in East cb    | 5.70 |       |
|                        | 2425 |       |
| W T <sub>p</sub> cb    | 4.01 | 336.4 |
| G                      | 4.9  |       |
| 1/4                    | 4.7  |       |
| ♀                      | 4.7  |       |
| 1/4                    | 5.2  |       |
| G                      | 5.4  |       |
| East T <sub>p</sub> cb | 4.90 | 335.9 |
|                        | 2450 |       |
| E T <sub>p</sub> cb    | 4.43 | 336.4 |
| G                      | 5.1  |       |
| 1/4                    | 4.7  |       |
| ♀                      | 4.7  |       |
| 1/4                    | 4.2  |       |
| G                      | 4.5  |       |
| W T <sub>p</sub> cb    | 3.50 | 337.3 |
|                        | 2468 |       |
| Driveway in West cb    | 3.77 |       |

π 340.82

2+75

|                  |      |       |
|------------------|------|-------|
| W Tpcb           | 206  | 337.8 |
| G                | 3.9  |       |
| 114              | 3.8  |       |
| ♀                | 3.8  |       |
| 114              | 4.3  |       |
| G                | 4.4  |       |
| E cb in Driveway | 4.26 | 336.4 |

3+00

|                    |      |       |
|--------------------|------|-------|
| ETpcb              | 3.54 | 337.3 |
| G                  | 4.3  |       |
| 114                | 3.8  |       |
| ♀                  | 3.2  |       |
| → M.H. On Flowline | 8.08 |       |
| 114                | 3.3  |       |
| G                  | 3.7  |       |
| W Tpcb             | 2.67 | 338.2 |

3+25

|        |      |       |
|--------|------|-------|
| W Tpcb | 2.29 | 338.5 |
| G      | 3.4  |       |
| 114    | 3.0  |       |
| ♀      | 2.9  |       |
| 114    | 3.4  |       |
| G      | 4.0  |       |
| W Tpcb | 3.16 | 337.7 |

π 340.82

62

T.P.

-2.93 337.89

+7.85

π 345.74

3+50

|        |      |       |
|--------|------|-------|
| ETpcb  | 7.68 | 338.1 |
| G      | 8.6  |       |
| 114    | 7.9  |       |
| ♀      | 7.3  |       |
| 114    | 7.3  |       |
| G      | 7.8  |       |
| W Tpcb | 6.78 | 339.0 |

3+55

Driveway in Westcb

7.49

3+75

|        |      |       |
|--------|------|-------|
| W Tpcb | 6.41 | 339.3 |
| G      | 7.2  |       |
| 114    | 7.0  |       |
| ♀      | 6.9  |       |
| 114    | 7.5  |       |
| G      | 8.1  |       |
| W Tpcb | 7.19 | 338.5 |

4+00

|       |      |       |
|-------|------|-------|
| ETpcb | 6.70 | 339.0 |
| G     | 7.6  |       |
| 114   | 7.1  |       |

345.74

|        |      |       |
|--------|------|-------|
| £      | 6.5  |       |
| 1/4    | 6.5  |       |
| G      | 6.8  |       |
| W Tpcb | 5.98 | 339.8 |

4+25

|        |      |       |
|--------|------|-------|
| W Tpcb | 5.57 | 340.2 |
|--------|------|-------|

|   |     |  |
|---|-----|--|
| G | 6.3 |  |
|---|-----|--|

|     |     |  |
|-----|-----|--|
| 1/4 | 6.0 |  |
|-----|-----|--|

|   |     |  |
|---|-----|--|
| £ | 5.9 |  |
|---|-----|--|

|     |     |  |
|-----|-----|--|
| 1/4 | 6.5 |  |
|-----|-----|--|

|   |     |  |
|---|-----|--|
| G | 7.1 |  |
|---|-----|--|

|       |      |       |
|-------|------|-------|
| ETpcb | 6.30 | 339.4 |
|-------|------|-------|

4+66 = B.C. on East Side <sup>see</sup> sketch

|       |      |       |
|-------|------|-------|
| ETpcb | 5.57 | 340.2 |
|-------|------|-------|

|   |     |  |
|---|-----|--|
| G | 6.2 |  |
|---|-----|--|

|     |     |  |
|-----|-----|--|
| 1/4 | 5.7 |  |
|-----|-----|--|

|   |     |  |
|---|-----|--|
| £ | 5.1 |  |
|---|-----|--|

|     |     |  |
|-----|-----|--|
| 1/4 | 5.3 |  |
|-----|-----|--|

|   |     |  |
|---|-----|--|
| G | 5.9 |  |
|---|-----|--|

|        |      |       |
|--------|------|-------|
| W Tpcb | 4.86 | 340.9 |
|--------|------|-------|

4+75

|        |      |       |
|--------|------|-------|
| W Tpcb | 4.75 | 341.0 |
|--------|------|-------|

|   |     |  |
|---|-----|--|
| G | 5.7 |  |
|---|-----|--|

|     |     |  |
|-----|-----|--|
| 1/4 | 5.2 |  |
|-----|-----|--|

|   |     |  |
|---|-----|--|
| £ | 4.9 |  |
|---|-----|--|

63

North Line Lincoln

cb

paired to here

Lincoln

cb

South Line Lincoln

Note. West cb Line of Bancroft is used as

a base line up to South Line Lincoln.

West Prop line is used thereafter.

West Line Bancroft

cb

Bancroft

cb line

East Line Bancroft

West Line Bancroft

cb

paired to here

4+80

4+75

4+66

6.5

13.5

0+00

University

Ave

BANCROFT

cb

Ave

Boundary

cb line

West Line Bancroft

π 345.74

|                         |        |       |        |
|-------------------------|--------|-------|--------|
| 1/4                     | 5.5    |       |        |
| Cb                      | 6.1    |       |        |
| E - Gutter              | 6.0    |       |        |
| E Tpcb                  | 5.52   | 340.~ |        |
|                         | 4+80   |       |        |
| West Line Boundary Tpcb | 5.53   | 340.2 |        |
| G                       | 6.0    |       |        |
| HZE Line Bancraft       | 6.0    |       |        |
| Cb                      | 6.0    |       |        |
| 1/4                     | 5.4    |       |        |
| ⊕                       | 4.8    |       |        |
| 1/4                     | 5.1    |       |        |
| G                       | 5.4    |       |        |
| W Tpcb                  | 4.62   | 341.1 |        |
| T.P                     |        | -2.23 | 343.51 |
|                         | + 2.37 |       |        |

π 345.88  
5+00

|              |      |       |  |
|--------------|------|-------|--|
| West Tpcb    | 4.52 | 341.2 |  |
| G            | 5.2  |       |  |
| 1/4          | 5.0  |       |  |
| ⊕            | 4.7  |       |  |
| 1/4          | 5.3  |       |  |
| Cb           | 5.5  |       |  |
| E - Bancraft | 5.6  |       |  |

π 345.88

54

|                               |      |  |  |
|-------------------------------|------|--|--|
| +10                           | 6.0  |  |  |
| +20                           | 6.0  |  |  |
| +30                           | 5.7  |  |  |
| +40                           | 6.0  |  |  |
| +50                           | 6.7  |  |  |
| +5.75 = E caline Boundary     | 7.3  |  |  |
| Tpcb                          | 6.12 |  |  |
|                               | 5+25 |  |  |
| +50.4 = East cb Boundary Tpcb | 5.72 |  |  |
| G                             | 6.4  |  |  |
| +40                           | 6.1  |  |  |
| +30                           | 5.6  |  |  |
| +20                           | 5.5  |  |  |
| +10                           | 5.8  |  |  |
| E - Bancraft                  | 5.4  |  |  |

|        |      |       |  |
|--------|------|-------|--|
| Cb     | 5.0  |       |  |
| 1/4    | 4.7  |       |  |
| ⊕      | 4.3  |       |  |
| 1/4    | 4.6  |       |  |
| G      | 4.6  |       |  |
| W Tpcb | 4.06 | 341.8 |  |

5+50

|        |      |       |  |
|--------|------|-------|--|
| W Tpcb | 3.69 | 342.2 |  |
| G      | 4.2  |       |  |
| 1/4    | 4.2  |       |  |

T. 345.88 <sup>4.14</sup>

|                               |       |
|-------------------------------|-------|
| Q                             | 43    |
| 1/4                           | 44    |
| cb                            | 48    |
| E. Bancroft                   | 54    |
| +10                           | 52    |
| +20                           | 51    |
| +30                           | 54    |
| +40                           | 63    |
| +43 = E. cb Boundary - Cutter | 65    |
| Tpcb                          | 5.45  |
| 5+54                          |       |
| Drift way, west of Bancroft   | 4.14  |
| 5+75                          |       |
| +36 = E. cb Boundary - Tpcb   | 5.12  |
| G                             | 59    |
| +30                           | 57    |
| +20                           | 51    |
| +10                           | 48    |
| E. Bancroft                   | 49    |
| cb                            | 49    |
| 1/4                           | 43    |
| Q                             | 40    |
| 1/4                           | 38    |
| G                             | 40    |
| W Tpcb                        | 37.5  |
|                               | 342.6 |

T. 345.88

65

5+97 = South Line Lincoln - <sup>80' wide</sup>  
<sub>14' cb</sub>  
<sub>13' 1/4</sub>  
 343.0

|                                                   |      |            |
|---------------------------------------------------|------|------------|
| W Tpcb                                            | 2.88 | 343.0      |
| G                                                 | 3.5  |            |
| 1/4                                               | 3.5  |            |
| Q                                                 | 4.0  |            |
| 1/4                                               | 4.4  |            |
| cb                                                | 4.6  |            |
| E. Bancroft                                       | 4.7  |            |
| +10                                               | 4.8  |            |
| +20                                               | 5.2  |            |
| +30 = E. cb Boundary - G                          | 5.6  |            |
| Tpcb                                              | 4.90 | See sketch |
| South cb Lincoln                                  |      | ↓          |
| +95.5 = Paving Line on Lincoln at Intersection of |      |            |
| Bancroft, Lincoln + Boundary &                    | 5.59 |            |
| Tpcb                                              | 49.3 |            |
| +90                                               | 5.3  |            |
| +80                                               | 5.0  |            |
| +70                                               | 4.8  |            |
| E. Bancroft                                       | 4.5  |            |
| cb                                                | 4.3  |            |
| 1/4                                               | 4.2  |            |
| Q                                                 | 3.8  |            |
| 1/4                                               | 3.7  |            |
| cb                                                | 3.4  |            |
| West Line Bancroft G                              | 3.99 |            |
| Tpcb                                              | 2.85 | 343.0      |

345.88

South 1/4 Lincoln

|               |      |
|---------------|------|
| W - Paring    | 3.12 |
| cb            | 3.2  |
| 1/4           | 3.5  |
| ♀             | 3.8  |
| 1/4           | 4.2  |
| cb            | 4.4  |
| E             | 4.5  |
| +10           | 4.7  |
| +20           | 4.9  |
| +31.6 Paring  | 5.12 |
| ♀ Lincoln     |      |
| +28 - Paring  | 4.92 |
| +20           | 4.7  |
| +10           | 4.7  |
| E - B         | 4.4  |
| cb            | 4.2  |
| 1/4           | 4.0  |
| ♀             | 3.6  |
| 1/4           | 3.5  |
| cb            | 3.2  |
| W - Paring    | 3.10 |
| N 1/4 Lincoln |      |
| W - Paring    | 3.25 |
| cb            | 3.4  |
| 1/4           | 3.6  |

66

345.88

|                                             |      |
|---------------------------------------------|------|
|                                             | 3.9  |
|                                             | 4.1  |
|                                             | 4.4  |
|                                             | 4.6  |
|                                             | 4.7  |
|                                             | 4.8  |
| +24.5 Paring                                | 4.94 |
| N cb Lincoln                                |      |
| +21 Paring                                  | 5.25 |
| Tapob                                       | 4.57 |
| +11 = E cb Bancroft + Northog               |      |
| Lincoln                                     | 5.2  |
| E + inc Bancroft                            | 5.0  |
| cb                                          | 4.7  |
| 1/4                                         | 4.5  |
| ♀ = west obline Bancroft N. eg <sub>1</sub> | 4.4  |
| 1/4                                         | 4.1  |
| +4 = End return                             | 4.1  |
| Tapob                                       | 3.08 |
| cb                                          | 3.9  |
| Tapob                                       | 3.04 |
| W - G - Paring                              | 3.61 |
| Tapob                                       | 2.97 |





10-18-28 X section Alley Block 108 Central  
 J.C. Bliss Park - 20' wide  
 Drebert  
 Mattoon

B.M. SW B.P. 32nd + 4 Sts

77.05

+ 3.20

T 80.25

West Line 32nd + 400 - Paved

|           |      |       |
|-----------|------|-------|
| N T.P. cb | 5.67 | 74.58 |
| G         | 5.94 | 74.31 |
| Q         | 6.52 | 73.73 |
| G         | 6.51 | 73.74 |
| S T.P. cb | 6.29 | 73.96 |

Note: There is a small retaining wall on the West Line of 32nd that extends 4.5 into Alley from south line. From the end of the wall to 0+53 there is a board fence and a shed also 4.5 in the alley from S line.

1+15

|       |      |      |
|-------|------|------|
| S     | 5.0  | 75.3 |
| Q     | 5.2  | 75.1 |
| N     | 4.9  | 75.4 |
|       | 0+50 |      |
| N     | 4.1  | 76.2 |
| + 5   | 4.8  | 75.5 |
| Q     | 4.7  | 75.6 |
| + 5.5 | 4.0  | 76.3 |
| S     | 4.1  | 76.2 |

Plotted 10-24-28 - C.B.H.  
 Yardage 11-14-28 J.C.

T 80.25

68

0+57

Q 12' Garage -  
 Shot on concrete apron on N Line 4.10

76.15

T.P.

- 3.91 76.34

+ 5.69

T 82.03

0+70 = Q 12' Garage on South side

Shot on concrete apron 0.8' S of S line 5.59

76.44

0+75

|     |      |      |
|-----|------|------|
| S   | 5.6  | 76.4 |
| Q   | 6.0  | 76.0 |
| + 8 | 5.9  | 76.1 |
| N   | 5.4  | 76.6 |
|     | 1+00 |      |
| N   | 5.4  | 76.6 |
| Q   | 5.7  | 76.3 |
| S   | 5.2  | 76.8 |

1+01 to 1+24 - 23' Double Garage on North side

Shot on East end concrete apron on N line 5.21

76.82

" " West " " " " " " 5.08

76.95

1+25

|   |     |      |
|---|-----|------|
| S | 5.3 | 76.7 |
| Q | 5.7 | 76.3 |
| N | 5.2 | 76.8 |

82.03

1450

|   |     |      |
|---|-----|------|
| N | 5.2 | 76.8 |
| ☿ | 5.4 | 76.6 |
| S | 5.4 | 76.6 |

1452 - 10' Garage at North Line

Shot on dirt floor 5.2 76.8

1475

|   |     |      |
|---|-----|------|
| S | 4.9 | 77.1 |
| ☿ | 5.7 | 76.3 |
| N | 5.0 | 77.0 |

2400

|   |     |      |
|---|-----|------|
| N | 5.5 | 76.5 |
| ☿ | 5.4 | 76.6 |
| S | 5.0 | 77.0 |

2425

|   |     |      |
|---|-----|------|
| S | 5.2 | 76.8 |
| ☿ | 5.3 | 76.7 |
| N | 5.4 | 76.6 |

2433 - 18" Pepper Tree - 3.5' in alley from South Line

2450

|   |     |      |
|---|-----|------|
| N | 5.5 | 76.5 |
| ☿ | 5.3 | 76.7 |
| S | 5.5 | 76.5 |

2475

|   |     |      |
|---|-----|------|
| S | 5.5 | 76.5 |
| ☿ | 5.4 | 76.6 |

Note - From Sta 1425 to 2496 there is a line of fences 2' in the alley on the South side.

82.03

|   |     |      |
|---|-----|------|
| N | 5.6 | 76.4 |
|---|-----|------|

3400

|   |     |      |
|---|-----|------|
| N | 5.4 | 76.6 |
| ☿ | 5.2 | 76.8 |
| S | 5.4 | 76.6 |

2497 - 8" Pepper tree 1' in Alley from South Line ✓

T.P. 5.41 76.62

45.71

82.33

3403 to 3421 - 18' Double Garage on South side

Shot on East end concrete apron 2.5' S of South line 5.72 ✓ 76.61

" " West " " " " " " 5.74 ✓ 76.59

3407 to 3425 - 18' Double Garage on North side

Shot on dirt floor at 4' N of North line 5.7 ✓ 76.6

3425

|   |     |      |
|---|-----|------|
| S | 5.6 | 76.7 |
| ☿ | 5.7 | 76.6 |
| N | 5.9 | 76.4 |

3450

|   |     |      |
|---|-----|------|
| N | 5.7 | 76.6 |
| ☿ | 5.7 | 76.6 |
| S | 5.9 | 76.4 |

3475

|   |     |      |
|---|-----|------|
| S | 5.8 | 76.5 |
| ☿ | 5.8 | 76.5 |
| N | 5.9 | 76.4 |

782.33

3486 to 4400 - 14' Double Garage 5.5' South

of South Line.

Shot on dirt floor at  $\frac{1}{2}$  5.6 76.7 ✓

4400

N 5.8 76.5

$\frac{1}{2}$  5.7 76.6

S 5.7 76.6

4425

S 5.6 76.7

$\frac{1}{2}$  5.6 76.7

N 5.5 76.8

4427 to 4443 - 16' Double Garage 9' N of North Line

Shot on dirt floor at  $\frac{1}{2}$  5.1 77.2 ✓

4450

N 5.1 77.2

$\frac{1}{2}$  5.4 76.9

S 5.5 76.8

4453  $\frac{1}{2}$  Concrete walk 0.2' N of North Line

4.99 77.34

4475

S 4.8 77.5

$\frac{1}{2}$  5.2 77.1

N 5.1 77.2

4475 to 5425 string of 4 garages 1' South of South Line at East end and 0.2' South of South Line at West end

Note. All electric poles on South side of Alley are from 2' to 3.5' in the Alley.

782.33

4480  $\frac{1}{2}$  Garage Concrete floor 4.70 77.63 ✓

4492  $\frac{1}{2}$  2nd " " 4.55 77.78 ✓

5406  $\frac{1}{2}$  3rd " " 4.28 78.05 ✓

5420 " 4th " dirt " 4.4 77.9 ✓

4490 to 5411 - 21' Double Garage 0.3 North of North Line

Shot on dirt floor at  $\frac{1}{2}$  4.8 77.5 ✓

5400

N 4.8 77.5

$\frac{1}{2}$  4.7 77.6

S 4.6 77.7

5425

S 4.3 78.0

$\frac{1}{2}$  4.7 77.6

N 4.6 77.7

5450

N 4.7 77.6

$\frac{1}{2}$  4.4 77.9

S 4.3 78.0

5475

S 4.4 77.9

$\frac{1}{2}$  4.6 77.7

N 4.4 77.9

82.33

71

5793

|   |     |      |
|---|-----|------|
| 4 | 4.3 | 78.0 |
| 4 | 4.4 | 77.9 |
| 5 | 4.5 | 72.8 |

6101 = East Line 31<sup>st</sup> St

|       |      |      |
|-------|------|------|
| ST    | 5.00 | 77.3 |
| G     | 5.0  | 77.3 |
| 4     | 4.8  | 77.5 |
| G     | 5.0  | 77.3 |
| ATpob | 5.10 | 77.2 |

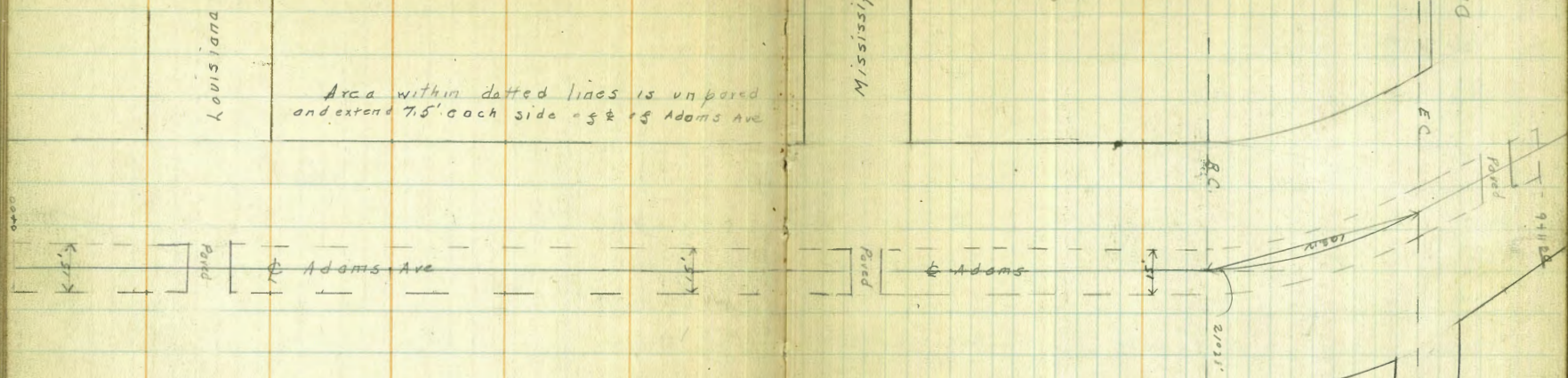
T.P. -5.68 76.65

+5.42 82.07

B.M. N.E.B.P. 31<sup>st</sup> & Imperial -4.57 77.50

10-19-28  
 J.C. Bliss  
 Drebert  
 Mattoon

Location of edge of present  
 paving on Adams Ave - Alabama to  
 West end of Texas Street Bridge



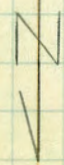
Area within dotted lines is unpaved  
 and extends 7.5' each side of Adams Ave

Note - Unpaved area widens to 162'  
 in center of curve - 8.1' on each  
 side of &

Panorama Drive

- 0+00 = Beginning of unpaved area at West end of Texas St. Bridge
- 0+64 = East line Louisiana
- 0+95 = East line paved strip at Louisiana
- 1+13 = West " " "
- 1+44 = West line Louisiana
- 4+43<sup>00</sup> = East line Mississippi
- 4+74 = East line paved strip at Mississippi
- 4+94 = West " " "
- 5+23<sup>00</sup> = West line Mississippi
- 7+35 = Beginning of curve
- 8+45<sup>00</sup> = End of curve
- 8+73<sup>00</sup> = East line paved strip at Alabama
- 8+94<sup>00</sup> = West " " "
- 9+11<sup>00</sup> = West unpaved strip at Alabama

Note - Stationing is along Adams Ave.



Alabama 72

Edwards Drive

10-28-29  
 J. C. Bliss  
 Lynn Drebert  
 Chuck Roney

X-section Alley Block I Altadena  
 Between Felton & Gregory from Redwood  
 to Thorn. 15' wide

B.M. N.W. B.P. Gregory & Thorn 318.01

610

X 32411

S.L. Thorn = 0+90. Existing Paving

|        |      |          |
|--------|------|----------|
| E Tpcb | 5.25 | 318.86 - |
| G      | 5.31 | 318.80 ✓ |
| E      | 5.48 | 318.63 ✓ |
| G      | 5.39 | 318.72 ✓ |
| W Tpcb | 5.18 | 318.93 ✓ |

0+25

|   |     |       |
|---|-----|-------|
| W | 5.4 | 318.7 |
| E | 5.1 | 319.0 |
| E | 5.4 | 318.7 |

0+50

|   |     |       |
|---|-----|-------|
| E | 5.8 | 318.9 |
| E | 5.6 | 318.5 |
| W | 5.6 | 318.5 |

0+58

E 7' Concrete drive at W.L. 5.64 318.47 ✓

0+75

|                              |      |          |
|------------------------------|------|----------|
| W                            | 5.9  | 318.2    |
| E                            | 5.9  | 318.2    |
| E                            | 6.1  | 318.0    |
| Out 0.4' 1/4" Concrete Abren | 6.02 | 318.09 ✓ |

X 32411

75

0+88

1/2" 11' Concrete Garage Abren 3.5' Back E.L.  
 North end 6.22 317.89 ✓  
 South " 6.21 317.90

1+00

Out 6' - 1/2" 12' Concrete Abren E.L.  
 North end 6.4 317.70  
 South " 6.37 317.74  
 E 6.4 317.7  
 E 6.3 317.8  
 W 6.0 318.1

1+25

W 6.2 317.9  
 E 6.3 317.8  
 E 6.3 317.8

1+30

1/2" 20' Concrete Abren 1.5' Back E.L.  
 North end 6.26 317.85  
 South " 6.30 317.81 ✓

1+50

E 6.6 317.5  
 E 6.6 317.5  
 W 6.6 317.5

Plotted 10/29/29

T 324.11

1475

|   |     |       |
|---|-----|-------|
| N | 6.7 | 317.4 |
| E | 6.8 | 317.3 |
| E | 6.9 | 317.2 |

2400

|      |      |        |
|------|------|--------|
| E    | 7.0  | 317.1  |
| E    | 7.0  | 317.1  |
| N    | 6.8  | 317.3  |
| T.P. | 7.00 | 317.11 |

+384

T 320.95

2425

|   |     |       |
|---|-----|-------|
| N | 3.8 | 317.1 |
| E | 4.0 | 316.9 |
| E | 4.0 | 316.9 |

2450

|   |     |       |
|---|-----|-------|
| E | 4.1 | 316.8 |
| E | 4.1 | 16.8  |
| N | 4.1 | 16.8  |

2475

|   |     |       |
|---|-----|-------|
| N | 4.2 | 16.7  |
| E | 4.1 | 16.8  |
| E | 4.4 | 316.5 |

T 320.95

76

3400

|   |     |       |
|---|-----|-------|
| E | 4.3 | 316.6 |
| E | 4.2 | 316.7 |
| N | 4.6 | 316.3 |

3425

|   |     |       |
|---|-----|-------|
| N | 4.7 | 316.2 |
| E | 4.3 | 316.6 |
| E | 4.6 | 316.3 |

3450

|   |     |       |
|---|-----|-------|
| E | 4.9 | 316.0 |
| E | 4.9 | 316.2 |
| N | 4.7 | 316.2 |

3475

|   |     |       |
|---|-----|-------|
| N | 4.9 | 316.0 |
| E | 4.9 | 316.0 |
| E | 4.8 | 316.1 |

4400

|   |     |       |
|---|-----|-------|
| E | 4.9 | 316.0 |
| E | 5.1 | 315.8 |
| N | 5.2 | 315.7 |

4425

|   |     |       |
|---|-----|-------|
| N | 5.2 | 315.7 |
| E | 5.1 | 315.8 |
| E | 5.3 | 315.6 |

T 320.95

4+50

|   |     |       |
|---|-----|-------|
| E | 5.5 | 315.4 |
| ☿ | 5.2 | 315.7 |
| W | 5.3 | 315.6 |

4+75

|   |     |       |
|---|-----|-------|
| W | 5.7 | 315.2 |
| ☿ | 5.5 | 315.4 |
| E | 5.9 | 315.0 |

5+00

|   |     |       |
|---|-----|-------|
| E | 6.1 | 314.8 |
| ☿ | 6.1 | 314.8 |
| W | 6.2 | 314.7 |

5+25

|   |     |       |
|---|-----|-------|
| W | 6.4 | 314.5 |
| ☿ | 6.4 | 314.5 |
| E | 6.3 | 314.6 |

Out 5.5 ☿ 8' Concrete Apron 6.58 314.37 ✓

5+50

|   |     |       |
|---|-----|-------|
| E | 6.7 | 314.2 |
| ☿ | 6.8 | 314.1 |
| W | 6.5 | 314.4 |

5+88 - Existing curb

|        |      |        |
|--------|------|--------|
| W Tpcb | 6.70 | 314.25 |
| G      | 7.1  | 313.8  |
| ☿      | 7.3  | 313.6  |
| G      | 7.3  | 313.6  |

T 320.95

77

|        |      |        |
|--------|------|--------|
| E Tpcb | 6.85 | 314.10 |
|--------|------|--------|

6+00 = N.L. Redwood - Existing paving

|        |      |        |
|--------|------|--------|
| E Tpcb | 7.34 | 313.61 |
|--------|------|--------|

|   |      |        |
|---|------|--------|
| G | 7.67 | 313.28 |
|---|------|--------|

|   |      |        |
|---|------|--------|
| ☿ | 7.84 | 313.11 |
|---|------|--------|

|   |      |        |
|---|------|--------|
| G | 7.36 | 313.59 |
|---|------|--------|

|        |      |        |
|--------|------|--------|
| W Tpcb | 7.06 | 313.89 |
|--------|------|--------|

|      |      |        |
|------|------|--------|
| T.P. | 8.11 | 312.84 |
|------|------|--------|

+6.21 319.05

|                                 |        |        |
|---------------------------------|--------|--------|
| B.M. N.W.D. R. Redwood + Felton | - 6.01 | 313.04 |
|---------------------------------|--------|--------|

Correct 313.01

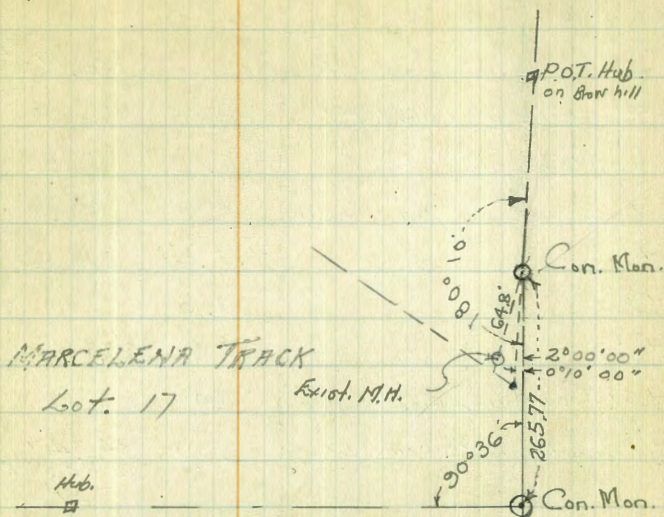


Levels on Existing M.H.  
as shown on opposite page.

|             |        |        |              |
|-------------|--------|--------|--------------|
|             |        |        | 8' on stub   |
| 11.27       | 339.37 | 328.10 | 5' 47.0 + 00 |
| on Rim M.H. |        | 3.02   | 336.35       |
| " Flow line |        | 9.55   | 329.82       |

6478

78

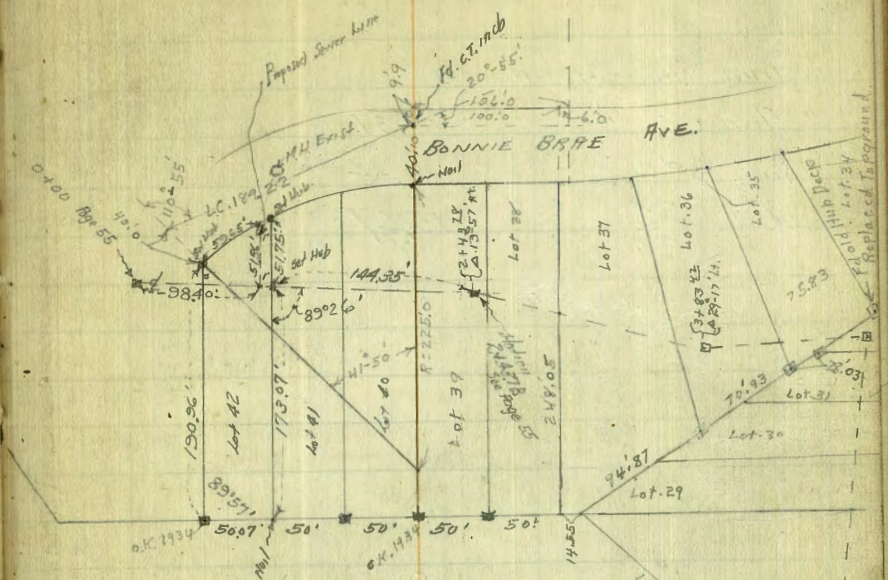


REDLANDS GARDENS

Walker  
Bliss  
Dredger  
8-18-30

LEVELS FOR PROPOSED SEWER  
1' North of North line Lot 41  
IN BONNIE BRRE.

|                                     |       |        |                      |                           |
|-------------------------------------|-------|--------|----------------------|---------------------------|
|                                     | 8.29  | 353.40 | 345.11               | BM on 0+00<br>Hub Page 55 |
| 0-3440' = Flow line Bush M.H.       | 15.09 | 338.37 |                      |                           |
| 0+00 on Paving Stake                | 6.35  | 346.45 |                      |                           |
| +0.5 = Apparent End End. Pipe       | 6.0   | 347.4  |                      |                           |
| +0.6                                | 3.0   | 350.4  |                      |                           |
| +2.0                                | 3.0   | 350.4  |                      |                           |
| +3.5                                | 4.9   | 348.5  |                      |                           |
| +5.136 on Paving Stake 2' from end  | 7.80  | 345.60 |                      |                           |
| Chk. on S. Hub 2' at 43.70 on P. 57 | 9.93  | 343.47 | 343.48 = Elev. P. 57 |                           |
|                                     |       |        | 0.01 = Error.        |                           |

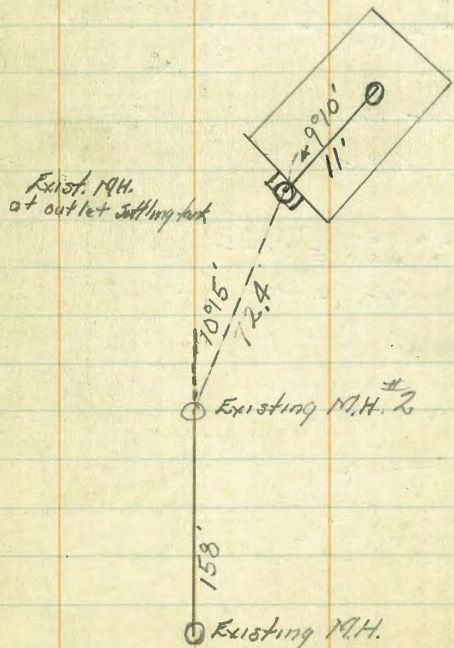


LOCATION Proposed Sewer  
1' North of North line Lot 41  
DETAIL



LEVELS on M.H. at  
Settling Tank West College Hwy

on Rim M.H. outlet settling tank 8.88  
 " Floor " " " 15.37  
 " Rim " #2 8.84  
 " Floor " #2 15.47



IMPROVED TABLES  
 AND  
 INFORMATION

To find Tangent External for curve of any other degree, divide degree of curve and add connection found in column of connections. Degree of curve with which I may be found by dividing tangent (or external) by given tangent, (or external). The distance from a point on the tangent to the curve is very nearly the square of the tangent length divided by twice the radius.

99.03  
 360  
 264  
 96  
 395  
 85  
 1775  
 3160  
 33575  
 3692  
 3726  
 888  
 646  
 1537  
 1580  
 72 X 5  
 72235  
 1014.80

TABLE X.  
MIDDLE ORDINATES OF RAILS  
Length of Rail (feet)

| C<br>o / | R<br>Feet | 30<br>Inch | 28<br>Inch | 26<br>Inch | 24<br>Inch | 22<br>Inch | 20<br>Inch | C<br>o | R<br>Feet | 30<br>Inch | 28<br>Inch | 26<br>Inch | 24<br>Inch | 22<br>Inch | 20<br>Inch |
|----------|-----------|------------|------------|------------|------------|------------|------------|--------|-----------|------------|------------|------------|------------|------------|------------|
| 0-20     | 17189     | .08        | .07        | .06        | .05        | .04        | .03        | 8      | 716.8     | 1.88       | 1.64       | 1.42       | 1.20       | 1.01       | .84        |
| 0-40     | 8594      | .16        | .14        | .12        | .10        | .08        | .07        | 9      | 637.3     | 2.12       | 1.84       | 1.60       | 1.35       | 1.14       | .94        |
| 1-0      | 5730      | .24        | .20        | .18        | .15        | .13        | .10        | 10     | 573.7     | 2.36       | 2.05       | 1.78       | 1.50       | 1.27       | 1.04       |
| 1-20     | 4297      | .31        | .27        | .23        | .20        | .17        | .13        | 11     | 521.7     | 2.59       | 2.26       | 1.95       | 1.65       | 1.39       | 1.15       |
| 1-40     | 3438      | .39        | .34        | .29        | .25        | .21        | .17        | 12     | 478.3     | 3.83       | 2.47       | 2.15       | 1.81       | 1.54       | 1.26       |
| 2-0      | 2865      | .47        | .41        | .35        | .30        | .25        | .20        | 13     | 441.7     | 3.05       | 2.66       | 2.30       | 1.96       | 1.66       | 1.36       |
| 2-20     | 2456      | .55        | .48        | .41        | .35        | .29        | .23        | 14     | 410.3     | 3.30       | 2.87       | 2.48       | 2.10       | 1.78       | 1.46       |
| 2-40     | 2149      | .63        | .55        | .47        | .40        | .33        | .27        | 15     | 383.1     | 3.54       | 3.08       | 2.68       | 2.26       | 1.91       | 1.57       |
| 3-0      | 1910      | .71        | .62        | .53        | .45        | .38        | .31        | 16     | 359.3     | 3.76       | 3.28       | 2.83       | 2.40       | 2.04       | 1.67       |
| 3-20     | 1719      | .78        | .68        | .59        | .50        | .42        | .35        | 17     | 338.3     | 4.00       | 3.48       | 3.02       | 2.57       | 2.16       | 1.78       |
| 3-40     | 1563      | .86        | .75        | .65        | .55        | .46        | .38        | 18     | 319.6     | 4.21       | 3.67       | 3.18       | 2.70       | 2.28       | 1.87       |
| 4-0      | 1433      | .94        | .82        | .71        | .60        | .50        | .42        | 19     | 302.9     | 4.45       | 3.89       | 3.36       | 2.86       | 2.41       | 1.98       |
| 4-20     | 1323      | 1.02       | .89        | .77        | .65        | .55        | .45        | 20     | 287.9     | 4.70       | 4.09       | 3.55       | 3.00       | 2.54       | 2.09       |
| 4-40     | 1228      | 1.10       | .96        | .83        | .70        | .59        | .48        | 22     | 262.0     | 5.16       | 4.44       | 3.84       | 3.30       | 2.80       | 2.29       |
| 5        | 1146      | 1.18       | 1.03       | .89        | .75        | .63        | .52        | 24     | 240.5     | 5.64       | 4.92       | 4.20       | 3.59       | 3.04       | 2.50       |
| 6        | 955.3     | 1.41       | 1.23       | 1.06       | .90        | .76        | .62        | 26     | 222.3     | 6.07       | 5.29       | 4.58       | 3.88       | 3.29       | 2.70       |
| 7        | 819.0     | 1.65       | 1.44       | 1.24       | 1.05       | .89        | .73        |        |           |            |            |            |            |            |            |

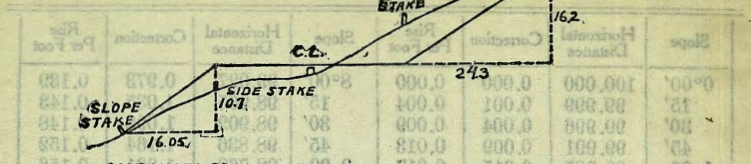
TABLE XI.  
SHORT RADIUS CURVES

| Radius<br>Feet | Chord<br>Feet | Central<br>Angle | Deflection<br>Angle | Deflection<br>for 1 Foot |
|----------------|---------------|------------------|---------------------|--------------------------|
| 35             | 10            | 16-26            | 8-13                | 49.3                     |
| 45             | 10            | 12-46            | 6-23                | 38.3                     |
| 50             | 15            | 17-16            | 8-38                | 34.5                     |
| 60             | 15            | 14-22            | 7-11                | 28.8                     |
| 75             | 15            | 11-30            | 5-45                | 23.0                     |
| 100            | 20            | 11-30            | 5-45                | 17.3                     |
| 120            | 20            | 9-34             | 4-47                | 14.3                     |
| 150            | 20            | 7-39             | 3-49                | 11.5                     |
| 190            | 25            | 7-32             | 3-46                | 9.15                     |
| 200            | 25            | 7-10             | 3-35                | 8.6                      |
| 225            | 25            | 6-25             | 3-12                | 7.7                      |
| 240            | 25            | 5-58             | 2-59                | 7.2                      |
| 250            | 25            | 5-44             | 2-52                | 6.9                      |
| 275            | 25            | 5-12             | 2-36                | 6.2                      |
| 288            | 50            | 9-58             | 4-59                | 6.0                      |
| 300            | 50            | 9-32             | 4-46                | 5.7                      |
| 350            | 50            | 8-12             | 4-06                | 4.9                      |
| 376            | 50            | 7-40             | 3-50                | 4.6                      |
| 400            | 50            | 7-10             | 3-35                | 4.3                      |
| 410            | 50            | 7-00             | 3-30                | 4.2                      |

To find length of curve divide angle from P. C. to P. T. by central angle of chord, and multiply by length of chord.

SEWER IN NORMAL HEIGHTS & BONNIE BRAE.

| FIELD STATION                                        | NOTES STATION    | ALIGNMENT BOOK | PAGE     | LEVELS BOOK | PAGE  |
|------------------------------------------------------|------------------|----------------|----------|-------------|-------|
| SECTION NORTH OF COPLEY AVE.                         |                  |                |          |             |       |
| 0+00                                                 | 5+20             | 1404           | 1-2      | 1404        | 15-16 |
| 5+20                                                 | 7+83.71          | 1404           | 34       | 1404        | 34    |
| EQUATION $7+83.71 = 7+53.89$                         |                  |                |          |             |       |
| 7+53.89                                              | 18+36.61         | 1404           | 2-4      | 1404        | 16-22 |
| 18+36.61                                             | 56+71.86         | 1404           | 35-42    | 1404        | 44-58 |
| 56+71.86                                             | 58+03.93         | 1429           | 62       | 1429        | 63    |
| EUGENE PLACE LINE                                    |                  |                |          |             |       |
| 0+00                                                 | 0+88.14=31+75.85 | 1429           | 64       | 1429        | 66    |
| SECTION SOUTH OF COPLEY AVE                          |                  |                |          |             |       |
| 0-34.4                                               | 0+51.36          | 1245           | 79       | 1245        | 79    |
| EQUATION $0+51.36 = 0+98.4$                          |                  |                |          |             |       |
| 0+98.4                                               | 9+42.35          | 1245           | 55       | 1245        | 57    |
| 9+42.35                                              | 13+35            | 1245           | 59       | 1245        | 59    |
| EQUATION $13+35 = 13+28.26$                          |                  |                |          |             |       |
| 13+28.26                                             | 19+24.84         | 1245           | 56       | 1245        | 58    |
| LINE TO SERVE LOTS 16 TO 19, RESUB. V.L. 165 TO 184. |                  |                |          |             |       |
| 9+42.35=0+00                                         | 2+75             | 1404           | 69       | 1404        | 69    |
| LINE TO SERVE ALEXIA PL. & COLLIER AVE.              |                  |                |          |             |       |
| 0+00                                                 | 7+24.3           | 1429           | 67       | 1429        | 69    |
| 1+18.46=0+00                                         | 0+55.6=10+14.66  | 1429           | 67       | 1429        | 69    |
| COPLEY AVE - GRAVITY & PRESSURE LINES.               |                  |                |          |             |       |
| 0+00 = PUMP                                          | 6+13.6           | 1404           | 60       | 1404        | 68    |
| DRAWINGS                                             |                  |                |          |             |       |
|                                                      | ALIGNMENT        | PROFILE        | R. of W. | Pump Ho     |       |
| NORTH OF COPLEY                                      | 5179-L           | 5181-L         | 5183-L   | 815D        |       |
| SOUTH OF COPLEY                                      | 5180-L           | 5182-L         | 5184-L   | 815D        |       |



DISTANCES FROM SIDE STAKES FOR CROSS-SECTIONING.

SLOPE 1/62 TO 1. ROADWAY OF ANY WIDTH.

|    | 0     | .1    | .2    | .3    | .4    | .5    | .6    | .7    | .8    | .9    |    |
|----|-------|-------|-------|-------|-------|-------|-------|-------|-------|-------|----|
| 0  | 0 00  | 0 15  | 0 30  | 0 45  | 0 60  | 0 75  | 0 90  | 1 05  | 1 20  | 1 35  | 0  |
| 1  | 1 50  | 1 65  | 1 80  | 1 95  | 2 10  | 2 25  | 2 40  | 2 55  | 2 70  | 2 85  | 1  |
| 2  | 3 00  | 3 15  | 3 30  | 3 45  | 3 60  | 3 75  | 3 90  | 4 05  | 4 20  | 4 35  | 2  |
| 3  | 4 50  | 4 65  | 4 80  | 4 95  | 5 10  | 5 25  | 5 40  | 5 55  | 5 70  | 5 85  | 3  |
| 4  | 6 00  | 6 15  | 6 30  | 6 45  | 6 60  | 6 75  | 6 90  | 7 05  | 7 20  | 7 35  | 4  |
| 5  | 7 50  | 7 65  | 7 80  | 7 95  | 8 10  | 8 25  | 8 40  | 8 55  | 8 70  | 8 85  | 5  |
| 6  | 9 00  | 9 15  | 9 30  | 9 45  | 9 60  | 9 75  | 9 90  | 10 05 | 10 20 | 10 35 | 6  |
| 7  | 10 50 | 10 65 | 10 80 | 10 95 | 11 10 | 11 25 | 11 40 | 11 55 | 11 70 | 11 85 | 7  |
| 8  | 12 00 | 12 15 | 12 30 | 12 45 | 12 60 | 12 75 | 12 90 | 13 05 | 13 20 | 13 35 | 8  |
| 9  | 13 50 | 13 65 | 13 80 | 13 95 | 14 10 | 14 25 | 14 40 | 14 55 | 14 70 | 14 85 | 9  |
| 10 | 15 00 | 15 15 | 15 30 | 15 45 | 15 60 | 15 75 | 15 90 | 16 05 | 16 20 | 16 35 | 10 |
| 11 | 16 50 | 16 65 | 16 80 | 16 95 | 17 10 | 17 25 | 17 40 | 17 55 | 17 70 | 17 85 | 11 |
| 12 | 18 00 | 18 15 | 18 30 | 18 45 | 18 60 | 18 75 | 18 90 | 19 05 | 19 20 | 19 35 | 12 |
| 13 | 19 50 | 19 65 | 19 80 | 19 95 | 20 10 | 20 25 | 20 40 | 20 55 | 20 70 | 20 85 | 13 |
| 14 | 21 00 | 21 15 | 21 30 | 21 45 | 21 60 | 21 75 | 21 90 | 22 05 | 22 20 | 22 35 | 14 |
| 15 | 22 50 | 22 65 | 22 80 | 22 95 | 23 10 | 23 25 | 23 40 | 23 55 | 23 70 | 23 85 | 15 |
| 16 | 24 00 | 24 15 | 24 30 | 24 45 | 24 60 | 24 75 | 24 90 | 25 05 | 25 20 | 25 35 | 16 |
| 17 | 25 50 | 25 65 | 25 80 | 25 95 | 26 10 | 26 25 | 26 40 | 26 55 | 26 70 | 26 85 | 17 |
| 18 | 27 00 | 27 15 | 27 30 | 27 45 | 27 60 | 27 75 | 27 90 | 28 05 | 28 20 | 28 35 | 18 |
| 19 | 28 50 | 28 65 | 28 80 | 28 95 | 29 10 | 29 25 | 29 40 | 29 55 | 29 70 | 29 85 | 19 |
| 20 | 30 00 | 30 15 | 30 30 | 30 45 | 30 60 | 30 75 | 30 90 | 31 05 | 31 20 | 31 35 | 20 |
| 21 | 31 50 | 31 65 | 31 80 | 31 95 | 32 10 | 32 25 | 32 40 | 32 55 | 32 70 | 32 85 | 21 |
| 22 | 33 00 | 33 15 | 33 30 | 33 45 | 33 60 | 33 75 | 33 90 | 34 05 | 34 20 | 34 35 | 22 |
| 23 | 34 50 | 34 65 | 34 80 | 34 95 | 35 10 | 35 25 | 35 40 | 35 55 | 35 70 | 35 85 | 23 |
| 24 | 36 00 | 36 15 | 36 30 | 36 45 | 36 60 | 36 75 | 36 90 | 37 05 | 37 20 | 37 35 | 24 |
| 25 | 37 50 | 37 65 | 37 80 | 37 95 | 38 10 | 38 25 | 38 40 | 38 55 | 38 70 | 38 85 | 25 |
| 26 | 39 00 | 39 15 | 39 30 | 39 45 | 39 60 | 39 75 | 39 90 | 40 05 | 40 20 | 40 35 | 26 |
| 27 | 40 50 | 40 65 | 40 80 | 40 95 | 41 10 | 41 25 | 41 40 | 41 55 | 41 70 | 41 85 | 27 |
| 28 | 42 00 | 42 15 | 42 30 | 42 45 | 42 60 | 42 75 | 42 90 | 43 05 | 43 20 | 43 35 | 28 |
| 29 | 43 50 | 43 65 | 43 80 | 43 95 | 44 10 | 44 25 | 44 40 | 44 55 | 44 70 | 44 85 | 29 |
| 30 | 45 00 | 45 15 | 45 30 | 45 45 | 45 60 | 45 75 | 45 90 | 46 05 | 46 20 | 46 35 | 30 |
| 31 | 46 50 | 46 65 | 46 80 | 46 95 | 47 10 | 47 25 | 47 40 | 47 55 | 47 70 | 47 85 | 31 |
| 32 | 48 00 | 48 15 | 48 30 | 48 45 | 48 60 | 48 75 | 48 90 | 49 05 | 49 20 | 49 35 | 32 |
| 33 | 49 50 | 49 65 | 49 80 | 49 95 | 50 10 | 50 25 | 50 40 | 50 55 | 50 70 | 50 85 | 33 |
| 34 | 51 00 | 51 15 | 51 30 | 51 45 | 51 60 | 51 75 | 51 90 | 52 05 | 52 20 | 52 35 | 34 |
| 35 | 52 50 | 52 65 | 52 80 | 52 95 | 53 10 | 53 25 | 53 40 | 53 55 | 53 70 | 53 85 | 35 |
| 36 | 54 00 | 54 15 | 54 30 | 54 45 | 54 60 | 54 75 | 54 90 | 55 05 | 55 20 | 55 35 | 36 |
| 37 | 55 50 | 55 65 | 55 80 | 55 95 | 56 10 | 56 25 | 56 40 | 56 55 | 56 70 | 56 85 | 37 |
| 38 | 57 00 | 57 15 | 57 30 | 57 45 | 57 60 | 57 75 | 57 90 | 58 05 | 58 20 | 58 35 | 38 |
| 39 | 58 50 | 58 65 | 58 80 | 58 95 | 59 10 | 59 25 | 59 40 | 59 55 | 59 70 | 59 85 | 39 |
| 40 | 60 00 | 60 15 | 60 30 | 60 45 | 60 60 | 60 75 | 60 90 | 61 05 | 61 20 | 61 35 | 40 |
| 41 | 61 50 | 61 65 | 61 80 | 61 95 | 62 10 | 62 25 | 62 40 | 62 55 | 62 70 | 62 85 | 41 |
| 42 | 63 00 | 63 15 | 63 30 | 63 45 | 63 60 | 63 75 | 63 90 | 64 05 | 64 20 | 64 35 | 42 |
| 43 | 64 50 | 64 65 | 64 80 | 64 95 | 65 10 | 65 25 | 65 40 | 65 55 | 65 70 | 65 85 | 43 |
| 44 | 66 00 | 66 15 | 66 30 | 66 45 | 66 60 | 66 75 | 66 90 | 67 05 | 67 20 | 67 35 | 44 |
| 45 | 67 50 | 67 65 | 67 80 | 67 95 | 68 10 | 68 25 | 68 40 | 68 55 | 68 70 | 68 85 | 45 |
| 46 | 69 00 | 69 15 | 69 30 | 69 45 | 69 60 | 69 75 | 69 90 | 70 05 | 70 20 | 70 35 | 46 |
| 47 | 70 50 | 70 65 | 70 80 | 70 95 | 71 10 | 71 25 | 71 40 | 71 55 | 71 70 | 71 85 | 47 |
| 48 | 72 00 | 72 15 | 72 30 | 72 45 | 72 60 | 72 75 | 72 90 | 73 05 | 73 20 | 73 35 | 48 |
| 49 | 73 50 | 73 65 | 73 80 | 73 95 | 74 10 | 74 25 | 74 40 | 74 55 | 74 70 | 74 85 | 49 |
| 50 | 75 00 | 75 15 | 75 30 | 75 45 | 75 60 | 75 75 | 75 90 | 76 05 | 76 20 | 76 35 | 50 |

Computed by L. Leland Locke.

230  
 98  
 1540  
 2070  
 22520  
 23  
 3713  
 373.6  
 616  
 220  
 176

328.10-8.M.  
11.27

7972  
69.78  
79376  
19844  
79376  
59532  
4212

ENGINEERING DEPARTMENT  
CITY OF CALIFORNIA  
SAN DIEGO

338

Taylor & Juan SE Toply. 6.28  
& Whitman SE " 8.66

328.10-8.M.  
11.27+

302 - 33635  
955 = Floor

473  
487  
95.5

389 V  
53  
3847

573  
141  
137

□ 1 N 50° 30' E

□ 2  
350° 38'  
180  
170° 38'

88.70  
180  
26.6

□ 3 N 22° 30' E

□ 4 N 69° 0' E

354.00  
216.01  
83.59  
369.7  
59.5  
315.5

70.2  
81  
35.0  
56.6  
596.70

343° 59'  
180  
163° 59'

34502  
928  
4

248.55  
180  
619.58

72.01  
982.35  
10.466  
17.75  
1087.11

1240  
147  
1387  
350.4  
336.58

□ 7 S 23° 30' E □ 8

□ 9 29° 58' 350' -2° 30' □ 10  
S 14° 34' W

□ 9 426 88° 40' 41° 15' 572.30' W □ 10

□ 9a N 67° 0' W □ 9b

□ 10 578 248° 58' -0° 37' N 54° 0' E □ 11

□ 11 670 53° 40' E □ 12

□ 11 515 130° 38' +30' 11 65° 30' W □ 13

