

1254

1954

LEVEL 200M

W. 380P

ENGINEERING DEPARTMENT
CITY OF SAN DIEGO,
CALIFORNIA.

Our Leather Bound Engineers Note Books are carried in the following rulings:

- No. 380 LEVEL BOOK. Left and Right Hand Page the same as Left Hand Page of this Book.
- No. 382 FIELD BOOK. Left Hand Page as in this Book, Right Hand Page 4 x 4 to the inch, Center Line Red.
- No. 384 MINING TRANSIT BOOK. Left Hand Page as in this Book, Right Hand Page 8x8 to the inch, Center Line Red.
- No. 385 FIELD BOOK. Left Hand Page as in this Book, Right Hand Page 8 vertical and 4 horizontal lines to the inch, Center Line Red.

We also carry the Note Books listed above, bound in extra strong Fabri-Hide (otherwise the same quality of book), which can be furnished at a somewhat lower price.

In ordering Fabri-Hide covered books, add the letter "F" to catalog number.

THE FREDERICK POST CO.
ENGINEERING and DRAFTING SUPPLIES
IRVING PARK STATION
CHICAGO, ILL.

MICROFILMED

JUL 22 1964

See App 80 7/19/64

36th St.

Chatsworth

X sec. Vancouver Ave

11

Myrtle

Nile - Vancouver

35

11

Quince

Nile to Haller

57

11

Redwood

Nile to Haller

60 + 77

11

Haller

200' N of Quince
to 400' South

68

El Cajon to Adams 1-24

Voltaire to Villa Dr. 25-34

Myrtle to South
of Quince

37

16th

0

7

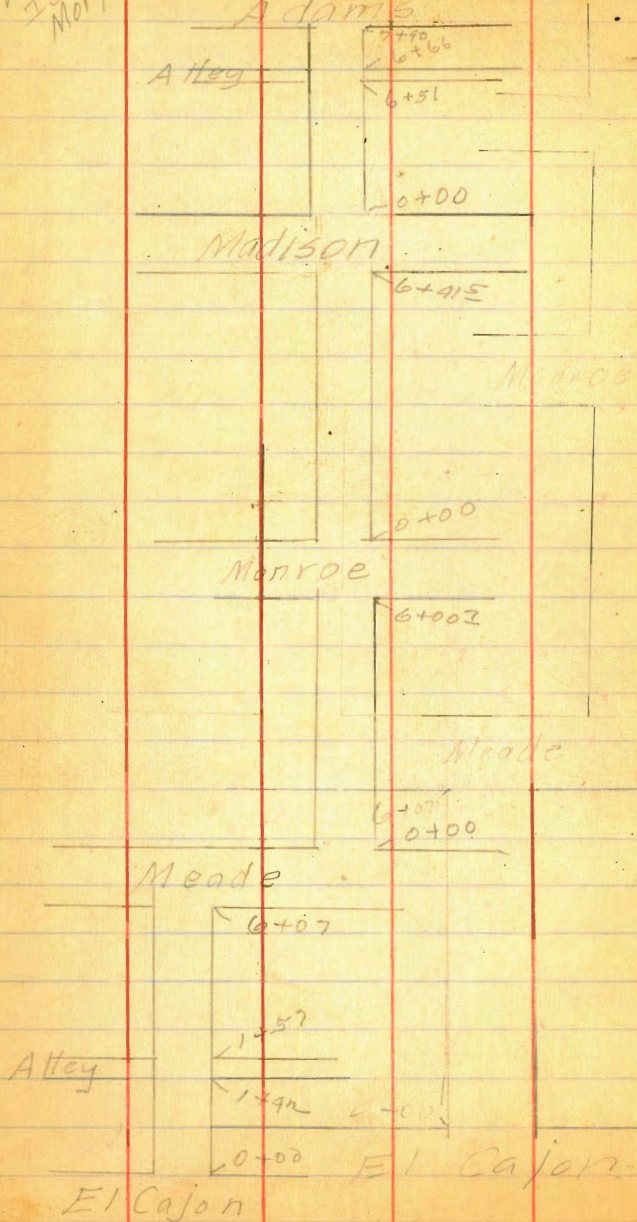
7

2

64

May 22 28
Loudon
Isbell
Morgan

Gross-section 36th
Adams



From El Cajon to Adams

1

	BM	685	394.79	377.94	BRSW El Cajon 36 th
	0+00 = N.L.		El Cajon		
Web		6.23	378.56	378.50	
Gut		6.72	378.07		
1/4		6.49	378.30		
+		6.39	378.40		
1/4		6.68	378.11		
Gut		7.09	377.70		
Ecb		6.57	378.22	378.20	
0+05					
Ecb		6.54	378.25	378.27	
Gut		7.0			
1/4		6.3			
+		6.1			
1/4		6.3			
Gut		6.7			
Web		6.19	378.60	378.57	
0+25					
Web		5.91	378.88	378.84	
Gut		6.7			
1/4		6.1			
+6		6.0			
+		5.9			
1/4		6.2			
Gut		6.8			
Ecb		6.21	378.58	378.54	

Red Figures are established grades

	384.79		
0+50			
Ecb	5.82	378.97	378.88
Gut	6.5		
1/4	5.9		
⊕	5.7		
1/4	5.9		
Gut	6.5		
Wob	5.61	379.18	379.18
0+75			
Web	5.30	379.49	379.53
Gut	6.0		
1/4	5.5		
⊕	5.3		
1/4	5.4		
+3	5.6		
Gut	6.3		
Ecb	5.52	379.27	379.23
1+00			
Ecb	5.11	379.68	379.57
Gut	5.8		
+5	5.3		
1/4	5.1		
⊕	4.9		
1/4	5.2		
Gut	5.8		

1+00	384.79		
Web	4.93	379.86	379.87
1+25			
Web	4.58	380.21	380.21
Gut	5.4		
1/4	4.8		
⊕	4.6		
1/4	4.8		
Gut	5.6		
Ecb	4.86	379.93	379.91
1+42 = S.L. Alley			
E.L. (alley cb)	4.32	380.47	
Ecb	4.69	380.10	380.14
Gut	5.3		
1/4	4.6		
⊕	4.3		
1/4	4.5		
Gut	5.0		
Web	4.36	380.43	380.44
W.L. (alley cb)	3.97	380.82	
1+57 = N.L. alley			
W.L. (alley cb)	3.87		
Web	4.10	380.69	380.65
Gut	4.8		
1/4	4.3		
⊕	4.1		

1+57	38477		
E/A	4.3		
Gut	5.0		
Ecb	4.40	380.39	380.35
E.C. (alleg ob)	4.13	380.66	
1+75			
Ecb	4.15	380.64	380.59
Gut	4.8		
1/4	4.1		
♀	3.9		
1/4	4.0		
Gut	4.6		
Web	3.90	380.89	380.89
2+00			
web	3.53	381.26	381.23
Gut	4.5		
+5	3.8		
1/4	3.6		
♀	3.5		
+6	3.6		
1/4	3.8		
Gut	4.5		
Ecb	3.75	381.04	380.93

2+25	38477		
Ecb	3.47	381.32	381.27
Gut	4.1		
1/4	3.4		
♀	3.1		
1/4	3.3		
+4	3.5		
Gut	3.8		
Web	3.06	381.73	381.57
2+50			
Web	2.73	382.06	381.92
Gut	3.4		
1/4	3.1		
♀	2.8		
+5	2.9		
1/4	3.1		
+5	3.5		
Gut	4.0		
Ecb	3.10	381.69	381.62
2+75			
Ecb	2.75	382.04	381.96
Gut	3.3		
+5	3.0		
1/4	2.7		
♀	2.5		

2+75	384.79	2		
W/A		2.7		
Get.		3.2		
Wcb		2.50	382.29	382.26
3+00				
Wcb		2.05	382.74	382.60
Get		2.8		
+5		2.4		
1/4		2.2		
¢		2.1		
+6		2.2		
1/4		2.4		
Get		3.0		
Ecb		2.44	382.35	382.30
3+25				
Ecb		2.07	382.72	382.64
Get		2.7		
1/4		2.0		
+6		1.6		
¢		1.7		
1/4		1.9		
Get		2.4		
Wcb		1.67	383.12	383.12

3+50	384.79			
Wcb		1.31	383.48	383.29
Get.		1.9		
1/4		1.6		
+6		1.4		
¢		1.4		
+4		1.4		
1/4		1.6		
Get		2.4		
Ecb		1.71	383.08	382.98
T.P	74.7	1.40	383.37	
3+75				
Ecb		7.45	383.41	383.32
Get		8.0		
+5		7.5		
1/4		7.3		
¢		7.1		
1/4		7.3		
Get		7.8		
Wcb		7.13	383.73	383.67
H+00				
Wcb		6.87	383.99	383.97
Get		7.5		
1/4		7.0		
¢		6.8		
+9		7.0		

A+00	390.86		
E/A	7.1		
Gut	7.8		
Ecb	7.15	383.71	383.67
H+25			
Ecb	6.81	384.05	383.97
Gut	7.3		
1/4	6.8		
+7	6.5		
£	6.7		
1/4	6.7		
Gut	7.1		
Web	6.48	384.38	384.31
H+50			
Web	6.10	384.76	384.65
Gut	6.7		
1/4	6.4		
+6	6.2		
£	6.3		
1/4	6.4		
Gut	7.1		
Ecb	6.47	384.39	384.35
A+75			
Ecb	6.12	384.74	384.69
Gut	6.7		

H+75	390.86		
E/A	6.1		
£	5.9		
+7	6.0		
1/4	6.1		
Gut	6.5		
Web	5.80	385.06	384.99
5+00			
web	5.58	385.28	385.33
Gut	6.3		
1/4	5.8		
£	5.6		
+3	5.6		
1/4	5.8		
Gut	6.3		
Ecb	5.80	385.06	385.03
5+25			
Ecb	5.53	385.33	385.38
Gut	6.1		
1/4	5.5		
£	5.2		
1/4	5.4		
+5	5.5		
Gut	6.0		
Web	5.25	385.61	385.68

5750	390.86		
Web	4.90	385.96	386.02
Gut	5.6		
1/4	5.0		
¢	4.9		
1/4	5.0		
Gut.	5.8		
Ecb	5.18	385.68	385.72
5775			
Ecb	4.79	386.07	386.06
Gut	5.5		
1/4	4.9		
¢	4.7		
1/4	4.7		
7.7	5.0		
Gut.	5.3		
Web	4.58	386.28	386.36
6700			
Web	4.22	386.64	386.70
Gut	4.7		
1/4	4.3		
+6	4.1		
¢	4.2		
1/4	4.5		
Gut	5.0		
Ecb	4.62	386.24	386.40

390.86

6707 = S L Meade

Ecb	4.49	386.37	386.50
Gut	4.8		
+6	4.5		
1/4	4.4		
¢	4.0		
+5	4.0		
1/4 Ecb	4.1		
+7	4.3		
Gut	4.6		
Web	4.03	386.83	386.80
T.P	6.75	385.99	
0700 = N.L Meade	4.67	386.19	
Web	6.75	385.99	386.00
Gut	7.5		
+1	6.6		
1/4	6.9		
¢	6.8		
1/4	7.0		
+3	7.1		
+8	7.1		
Gut.	7.8		
Ecb	7.06	385.68	385.70

	392.74			
	392.94			
0+25				
Ecb	6.90	385.84	385.82	
Gut	7.8			
1/4	6.9			
⊕	6.8			
1/4	6.9			
Gut	7.3			
Web	6.62	386.12	386.12	
0+50				
Web	6.47	386.27	386.25	
Gut	7.5			
1/4	6.8			
⊕	6.6			
1/4	6.9			
Gut	7.6			
Ecb	6.85	385.89	385.95	
0+75				
Ecb	6.75	385.99	386.07	
Gut	7.5			
1/4	6.8			
⊕	6.6			
1/4	6.7			
Gut	7.1			
Web	6.38	386.36	386.37	

	392.74			
	392.94			
1+00				
Web	6.18	386.56	386.50	
Gut	6.9			
1/4	6.6			
⊕	6.4			
1/4	6.7			
Gut	7.4			
Ecb	6.53	386.21	386.20	
1+25				
Ecb	6.45	386.29	386.32	
Gut	7.2			
1/4	6.6			
⊕	6.3			
1/4	6.4			
Gut	6.7			
Web	6.03	386.71	386.62	
1+50				
Web	6.00	386.74	386.75	
Gut	6.7			
1/4	6.3			
⊕	6.1			
1/4	6.4			
Gut	7.0			
Ecb	6.29	386.45	386.45	

	392.74 392.94		
1475			
Ecb	6.11	386.63	386.57
Gut	6.8		
1/4	6.3		
⊕	6.0		
1/4	6.2		
Gut	6.6		
Web	5.83	386.91	386.87
2+00			
Web	5.76	386.98	387.00
Gut	6.4		
1/4	6.1		
⊕	5.9		
1/4	6.1		
Gut	6.8		
Ecb	6.06	386.68	386.70
2+85			
Ecb	5.90	386.84	386.82
Gut	6.6		
1/4	6.0		
⊕	5.80		
1/4	5.8		
Gut	6.3		
Web	5.50	387.24	387.12

	392.74 392.94		
2+50			
Web	5.43	387.31	387.25
Gut	6.0		
1/4	5.8		
⊕	5.6		
1/4	5.6		
Gut	6.1		
Ecb	5.44	387.30	386.95
2+75			
Ecb	5.57	387.17	387.07
Gut	6.2		
1/4	5.8		
⊕	5.5		
1/4	5.6		
Gut	6.0		
Web	5.30	387.44	387.37
3+00			
Web	5.19	387.61	387.50
Gut	5.8		
1/4	5.5		
⊕	5.4		
1/4	5.6		
Gut	6.0		
Ecb	5.46	387.28	387.20

	392.74		
	392.94		
3+25			
Ecb	5.32	387.42	387.32
Gut	5.9		
1/4	5.5		
⊕	5.2		
1/4	5.4		
Gut	5.7		
Web	5.10	387.64	387.62
3+50			
Web	4.92	387.82	387.75
Gut	5.7		
1/4	5.3		
⊕	5.1		
1/4	5.3		
Gut	5.8		
Ecb	5.15	387.59	387.45
3+75			
Ecb	5.15	387.59	387.57
Gut	5.5		
1/4	5.3		
⊕	5.0		
1/4	5.2		
Gut	5.5		
Web	4.79	387.95	387.87

	392.74		
	392.94		
4+00			
Web	4.75	387.99	388.00
Gut	5.3		
1/4	5.0		
⊕	4.8		
1/4	5.1		
Gut	5.6		
Ecb	5.03	387.71	387.70
4+25			
Ecb	4.80	387.94	387.82
Gut	5.6		
1/4	4.9		
⊕	4.7		
1/4	4.9		
Gut	5.2		
Web	4.60	388.14	388.12
4+50			
Web	4.48	388.26	388.25
Gut	5.2		
1/4	4.7		
⊕	4.6		
1/4	4.7		
Gut	5.2		
Ecb	4.65	388.09	387.95

	392.74		
4+75	392.94		
Ecb	4.48	388.26	388.07
Gut	5.1		
1/4	4.7		
⊕	4.6		
1/4	4.6		
Gut	4.9		
Web	4.34	388.40	388.37
5+00			
Web	4.08	388.66	388.50
Gut	4.7		
1/4	4.5		
⊕	4.4		
1/4	4.5		
Gut	5.0		
Ecb	4.36	388.38	388.20
5+25			
Ecb	4.25	388.49	388.32
Gut	4.9		
1/4	4.4		
⊕	4.2		
1/4	4.3		
Gut	4.6		
Web	4.00	388.74	388.62

	392.74		
5+50	392.94		
Web	3.89	388.85	388.75
Gut	4.6		
1/4	4.2		
⊕	4.0		
1/4	4.3		
Gut	4.7		
Ecb	4.10	388.64	388.45
5+75			
Ecb	3.93	388.81	388.57
Gut	4.6		
1/4	4.1		
⊕	4.0		
1/4	4.0		
Gut	4.5		
Web	3.90	388.84	388.87
6+00 Z = S.L. Monroe			
Web	3.65	389.09	389.00
Gut	4.3		
+2	3.9		
1/4	3.9		
⊕	3.8		
1/4	3.8		
Gut	4.1		
Ecb	3.80	388.94	388.70

		392.74	
		392.94	
		394.00	389.02
T.P.	4.98	394.20	3.72 389.22
S	Intesection	36 th & Monroe	
S-cb	line Monroe		
E.L.	top cb	5.15	389.85
Gut	(E.L)	5.5	
Ecb		5.4	
1/4		5.0	
4		4.9	
1/4		5.0	
+ +2		5.1	
+5		4.8	
Web		5.1	
W.L.	Gut.	5.3	
W.L.	top cb	4.79	389.21
5 1/2	line Monroe		
W.L.		4.9	
cb		4.9	
1/4		4.9	
4		4.8	
1/4		4.9	
cb		5.0	
E.L		5.3	

11

		394.00
4	Monroe	394.20
E.L.		5.1
cb		4.9
1/4		4.8
4		4.7
1/4		4.7
cb		4.7
W.L.		4.6
N/A	line Monroe	
W.L.		4.7
+5		4.6
cb		4.6
1/4		4.6
4		4.6
1/4		4.7
cb		4.8
E.L.		5.0
N cb	line Monroe	
E.L.	top cb (Ground)	4.20
	same	
+10		5.3
cb		5.1
1/4		4.8
4		4.7
1/4		4.8
cb		5.1

394.00
394.20

Nob line Monroe

W.L. Gut 4.9

W.L. top cb 4.87

0+00 = NL Monroe

Web 4.99 389.01 389.00

Gut 5.4

+1 4.9

1/4 5.0

£ 4.9

1/4 5.1

+4 5.2

+8 5.0

Gut 5.7

Ecb 4.99 389.01 388.70

0+25

Ecb 5.05 388.95 388.75

Gut 5.8

1/4 5.3

£ 5.1

1/4 5.1

Gut 5.3

Web 4.84 389.16 389.16

0+50

Web 4.74

Gut 5.4

394.00

0+50

W 1/4 5.2

£ 5.1

1/4 5.3

Gut 5.6

Ecb 4.97 389.03 388.80

0+75

Ecb 5.01 388.99 388.85

Gut 5.7

1/4 5.2

£ 4.9

1/4 5.0

Gut 5.2

Web 4.68 389.32 389.23

1+00

Web 4.70 389.30 389.31

Gut 5.1

1/4 5.0

£ 4.9

1/4 5.2

Gut 5.6

Ecb 4.99 389.01 388.90

394.00

1+25			
Ecb	4.98	389.02	388.95
Gut	5.5		
1/4	5.1		
⊕	4.9		
1/4	5.0		
Gut	4.9		
Web	4.58	389.42	389.39
1+50			
Web	4.45	389.55	389.47
Gut	5.0		
1/4	4.9		
⊕	4.8		
1/4	5.0		
Gut	5.7		
Ecb	4.89	389.11	389.00
1+75			
Ecb	4.94	389.06	389.05
Gut	5.7		
1/4	4.9		
⊕	4.7		
1/4	4.8		
Gut	5.0		
Web	4.36	389.64	389.55

13

394.00

2+00			
Web	4.30	389.70	389.62
Gut	4.9		
1/4	4.7		
⊕	4.5		
1/4	5.0		
Gut	5.4		
Ecb	4.92	389.08	389.10
2+25			
Ecb	4.76	389.24	389.16
Gut	5.5		
1/4	4.9		
⊕	4.6		
1/4	4.8		
Gut	4.7		
Web	4.23	389.77	389.70
2+50			
Web	4.17	389.83	389.78
Gut	4.8		
1/4	4.7		
⊕	4.6		
1/4	4.8		
Gut	5.2		
Ecb	4.75	389.25	389.21

	394.00					394.00		
2+75						394.20		
Feb	4.65	389.35	389.26	Web		3.94	390.06	390.09
Gut	5.2			Gut		4.5		
1/4	4.8			1/4		4.4		
±	4.6			±		4.3		
1/4	4.6			1/4		4.7		
Gut	4.7			Gut		5.1		
Web	4.22	389.78	389.86	Feb		4.55	389.45	389.41
3+00				3+75				
Web	4.12	389.88	389.93	Feb		4.51	389.49	389.46
Gut	4.7			Gut		5.2		
1/4	4.5			1/4		4.6		
±	4.4			±		4.3		
1/4	4.7			1/4		4.2		
Gut	5.1			Gut		4.3		
Feb	4.59	389.41	389.31	Web		3.80	390.20	390.17
3+25				4+00				
Feb	4.53	389.47	389.36	Web		3.75	390.25	390.25
Gut	5.2			Gut		4.1		
1/4	4.8			1/4		4.2		
±	4.4			±		4.2		
1/4	4.4			1/4		4.5		
Gut	4.6			Gut		4.9		
Web	4.08	389.92	390.01	Feb		4.43	389.57	389.57
				T.R	6.39	396.31	389.92	
						396.51	390.12	
						4.08		

	396.31				396.31			
4+25	396.51				396.51			
Web	5.88	390.43	390.32	5+00		6.52	389.79	389.71
Gut	6.4			Ecb		7.1		
1/4	6.4			Gut		6.5		
£	6.6			1/4		6.2		
1/4	6.8			+6		6.2		
+2	6.9			£		6.2		
Gut	7.3			1/4		6.3		
Ecb	6.73	389.58	389.56	Gut		5.66	390.65	390.56
4+50				Web				
Ecb	6.71	389.60	389.61	5+25				
Gut	7.3			Web		5.62	390.69	390.64
1/4	6.7			Gut		6.2		
£	6.4			1/4		6.2		
1/4	6.4			£		6.1		
Gut	6.4			+3		6.2		
Web	5.78	390.53	390.40	1/4		6.5		
4+75				Gut		6.7		
Web	5.77	390.54	390.48	Ecb		6.39	389.92	389.76
Gut	6.4			5+50				
1/4	6.3			Ecb		6.48	389.83	389.81
£	6.3			Gut		6.8		
1/4	6.6			1/4		6.4		
Gut	7.3			£		6.1		
Ecb	6.61	389.70	389.66	1/4		6.2		
				Gut		6.2		
				Web		5.56	390.75	390.71

396.31
396.51

5+75			
wcb	5.57	390.74	390.79
Gut	6.2		
1/4	6.0		
⊕	6.0		
1/4	6.4		
Gut	6.7		
Ecb	6.39	389.92	389.86
6+00			
Ecb	6.34	389.97	389.91
Gut	6.9		
1/4	6.4		
⊕	6.0		
1/4	6.0		
Gut	6.2		
wcb	5.52	390.79	390.87
6+25			
wcb	5.42	390.89	390.95
Gut	6.2		
1/4	5.9		
⊕	5.9		
1/4	6.3		
Gut	6.8		
Ecb	6.28	390.03	389.97

396.31
396.51

6+415 = S.L. Madison			
Ecb	6.24	390.07	390.00
Gut	6.5		
1/4	6.1		
⊕	5.8		
1/4	5.7		
Gut	5.8		
wcb	5.24	391.07	391.00
Intersection 36 th & Madison			
Sch line Madison			
WL top cb	5.24		
WL gutter	5.1		
+7	5.2		
+10	5.4		
wcb	5.3		
1/4	5.4		
⊕	5.6		
1/4	5.8		
Ecb	6.1		
+3	6.1		
+5	6.1		
E.L.	6.1		
E.L top cb	6.20		

396.31
396.51

5/4 line Madison

E.L.	6.3
cb	5.9
1/4	5.7
±	5.5
1/4	5.3
cb	5.2
+8	5.3
w.L.	5.2

± Madison

w.L.	5.1
cb	5.1
1/4	5.3
±	5.4
1/4	5.5
cb	5.9
E.L.	6.1

1 N 1/4 line Madison

E.L.	6.2
cb	5.8
1/4	5.6
±	5.4
1/4	5.3
cb	5.2
w.L.	5.3

396.31
396.51

Ncb line Madison

w.L. top cb	5.30
w.L. Gut	5.3
+9	5.6
cb	5.5
1/4	5.4
±	5.5
1/4	5.7
±b.	6.2
+2	6.5
+5	6.3

E.L. Gut	6.6
E.L. top cb	6.37

0+00 = NL Madison

E cb	6.28	390.03	390.00
Gut	6.5		
1/4	6.2		
±	5.8		
1/4	5.8		
Gut	5.9		
Web	5.37	390.94	391.00
0+25			
Web	5.50	390.81	390.91
Gut	6.2		
1/4	6.0		

10
Check Line to N.L. Meade
West Curb of 36th St.

B.P.S.W.
El Cajon-36th

7.84

377.94

385.76

7.40

2.39

383.37

391.27

5.17

386.10

N.W. cor.
Meade-36"

5.07

386.20

	396.31		
0+25	396.51		
♀	6.0		
E/A	6.4		
Gut	6.8		
Ecb	6.35	389.96	389.93
0+50			
Ecb	6.39	389.92	389.85
Gut	7.1		
1/4	6.4		
♀	6.0		
1/4	6.0		
Gut	6.4		
Web	5.56	390.75	390.81
0+75			
Web	5.65	390.66	390.72
Gut	6.3		
1/4	6.1		
♀	6.1		
1/4	6.5		
Gut	7.0		
Ecb	6.53	389.78	389.78
1+00			
Ecb	6.52	389.79	389.71
Gut	7.0		
1/4	6.6		

	396.31		
1+00	396.51		
♀	6.2		
N/A	6.2		
Gut	6.3		
Web	5.73	390.58	390.62
T.P.	4.13	394.40	390.27
		394.60	390.47
1+25			
Web	3.91	390.49	390.53
Gut	4.5		
1/4	4.4		
♀	4.3		
1/4	4.6		
Gut	5.4		
Ecb	4.65	389.75	389.64
1+50			
Ecb	4.77	389.63	389.56
Gut	5.3		
1/4	4.7		
♀	4.4		
1/4	4.3		
Gut	4.6		
Web	3.98	390.42	390.43

		394.40	
		394.60	
1775			
Wcb	4.10	390.30	390.34
Gut	4.7		
1/4	4.4		
¢	4.4		
1/4	4.7		
Gut	5.3		
Ecb	4.94	389.46	389.49
2+00			
Ecb	5.00	389.40	389.42
Gut	5.3		
1/4	4.9		
¢	4.5		
1/4	4.5		
Gut	4.7		
Wcb	4.16	390.24	390.24
2+25			
Wcb	4.26	390.14	390.15
Gut	4.8		
1/4	4.6		
¢	4.6		
1/4	5.0		
Gut	5.5		
Ecb	5.06	389.44	389.34

		394.40	
		394.60	
2+50			
Ecb			
Gut	5.15	389.25	389.27
1/4	5.5		
¢	5.2		
1/4	4.6		
1/4	4.7		
Gut	4.8		
Wcb	4.30	390.10	390.05
2+75			
Wcb	4.49	389.91	389.96
Gut	4.7		
1/4	4.7		
¢	4.7		
1/4	5.2		
+5	5.5		
Gut	5.5		
Ecb	5.24	389.16	389.20
3+00			
Ecb	5.40	389.00	389.13
Gut	5.6		
1/4	5.4		
¢	5.0		
+5	4.9		
1/4	5.0		
Gut	4.8		
Wcb	4.54	389.86	389.86

394.40

3+25			
Web	4.69	389.71	389.77
Gut	5.2		
1/4	4.9		
±	5.0		
1/4	5.4		
Gut	5.7		
Ecb	5.35	389.05	389.05
3+50			
Ecb	5.36	389.04	388.98
Gut	5.7		
1/4	5.4		
±	5.1		
1/4	5.0		
+4	5.1		
Gut	5.4		
Web	4.85	389.55	389.67
3+75			
Web	5.00	389.40	389.58
Gut	5.6		
1/4	5.2		
±+A	5.2		
±	5.2		
1/4	5.5		
Gut	5.8		
Ecb	5.46	388.94	388.91

394.40

4+00			
Ecb	5.56	388.84	388.84
Gut	6.1		
1/4	5.6		
±	5.2		
1/4	5.3		
+5	5.4		
Gut	5.6		
Web	5.02	389.38	389.48
4+25			
Web	5.11	389.29	389.39
Gut	5.7		
1/4	5.4		
±	5.3		
1/4	5.6		
Gut	6.0		
Ecb	5.50	388.90	388.76
4+50			
Ecb	5.66	388.74	388.69
Gut	6.1		
1/4	5.7		
±	5.4		
1/4	5.5		
+4	5.6		
Gut	5.9		
Web	5.20	389.20	389.29

392.93

6+25			
Wcb	4.25	388.68	388.63
Gut	4.8		
1/4	4.5		
⊕	4.4		
1/4	4.7		
Gut	5.3		
Ecb	4.63	388.30	388.18
6+51 = S.L. Alley			
E.L-10 ⁶ alley cb	4.62	388.31	
Ecb	4.55	388.18	388.10
Gut	5.3		
1/4	4.9		
⊕	4.4		
1/4	4.7		
Gut	4.7		
Wcb	4.34	388.59	388.53
+10 ⁶ Alley cb	4.09		
6+66 = N.L. Alley			
E.L-10 ⁶ Alley cb	4.21		
Wcb	4.51	388.42	388.47
Gut	4.8		
+7	4.6		
1/4	4.5		
⊕	4.5		

Alley curbs
extend 10⁶ from
curb 110⁸
E 12' from cb line

23

392.93

6+66			
E 1/4	4.8		
Gut	5.3		
Ecb	4.79	388.14	388.06
+10 ⁶ Alley cb	4.69		
6+75			
Ecb	4.88	388.05	388.03
Gut	5.3		
1/4	4.9		
⊕	4.6		
1/4	4.5		
+5	4.9		
Gut	4.9		
Wcb	4.48	388.45	388.44
7+00			
Wcb	4.64	388.29	388.34
Gut	5.0		
1/4	4.7		
⊕	4.7		
1/4	5.1		
Gut	5.5		
Ecb	4.92	388.01	387.96

392.93

7+25			
Ecb	4.97	387.96	387.89
Gut	5.5		
1/4	5.0		
⊕	4.7		
1/4	4.8		
Gut	5.3		
Web	4.75	388.18	388.25
7+50			
Web	4.85	388.08	388.15
Gut	5.4		
1/4	4.9		
⊕	4.7		
1/4	5.1		
Gut	5.7		
Ecb	5.05	387.88	387.88
7+75			
Ecb	5.06	387.87	387.74
Gut	5.8		
1/4	5.1		
⊕	4.9		
1/4	5.0		
Gut	5.6		
Web	4.92	388.01	388.06

392.93

393.13

7+90 = S.L Adams			
Web	4.92	388.01	388.00
Gut PaV	5.48		
1/4 PaV	5.14		
⊕ PaV	5.04		
1/4 PaV	5.32		
Gut PaV	5.75		
Ecb	5.03	387.90	387.70
B.M Nail Polo S.W	4.21	388.92	Adams 836
T.P	5.43	394.16	4.40 388.73
B.M	3.89	390.07	BP SE. Adams & Wilson
		390.27	
		(390.07)	

24

0+00	126.62		
EL. +10 Ground	8.8	117.8	
+20	8.4	118.2	
+21	8.3	118.3	
#25 Edg. Pav	8.32	118.30	
± Pav	8.19	118.43	
0+06			
EL.	5.2	121.4	
+2	6.4	120.4	
+5	7.0	119.6	
+8	8.3	118.3	
+13	8.2	118.9	
+17	8.4	118.2	
+21	7.9	118.7	
+25 E. edg. Pav	7.96	118.66	
+35 ±	7.85	118.77	
0+11			
EL.	6.3	120.3	
+8	7.7	118.9	
+12	8.2	118.4	
+20	7.6	119.0	
+25 Edg Pav.	7.77	118.85	
+35 ±	7.62	119.00	

26

0+20	126.62		
EL.	3.2	123.4	
+3	4.5	122.1	
+8	4.5	122.1	
+14	7.3	119.3	
+21	7.2	119.4	
+25 Edg. Pav.	7.37	119.25	
+35 ±	7.25	119.37	
0+31			
EL.	3.1	123.5	
+3	4.1	122.5	
+5	3.9	122.7	
+10	6.1	120.5	
+15	6.4	120.2	
+17	7.0	119.6	
+25 E. edg. Pav.	6.96	119.66	
+35 ±	6.80	119.82	
0+41			
EL.	4.1	122.5	
+5	4.4	122.2	
+7	4.4	122.2	
+17	6.3	120.3	
+20	6.6	120.0	
+25 E. edg. Pav.	6.46	120.16	
+35 ±	6.36	120.26	

0+50	126.62		
E.L.		3.2	123.4
+6		3.5	123.1
+11		5.2	121.4
+12		6.2	120.4
+19		6.3	120.3
+23		5.9	120.7
+25 E. edg. Pav.		6.03	120.59
+35 d		5.96	120.66
0+64			
E.L.		3.8	122.8
+11		5.1	121.5
+12		6.0	120.6
+15		5.6	121.0
+19		5.3	121.3
+25 E. edg. Pav.		5.45	121.17
+35 d		5.33	121.29
0+70			
E.L.		4.0	122.6
+10		4.8	121.8
+12		5.7	120.9
+15		5.3	121.3
+25 E. edg. Pav.		5.14	121.48
+35 d		5.06	121.56

1+00	126.62		
E.L.		3.1	123.5
+8		3.7	122.9
+11		4.8	121.8
+12		4.7	121.9
+15		3.9	122.7
+25 E. edg. Pav.		3.89	122.73
+35 d		3.79	122.83
1+25			
E.L.		2.1	124.5
+9		2.5	124.1
+11		3.7	122.9
+13		3.6	123.0
+15		2.8	123.8
+23		2.6	124.0
+25 E. edg. Pav.		2.85	123.77
+35 d		2.70	123.92
Section B			
E.L.		5.3	121.3
+1		6.6	120.0
+5		7.7	118.9
Ecb top cb		8.15	118.47
gvt.		8.9	117.7
+11		8.2	118.4
E/L		8.3	118.3

Section B		126.62	
E ₄ +2.5	Eedg Pav.	8.34	118.28
±		8.27	118.35
W/A		8.59	118.03
Wcb		9.00	117.62
+11	gut	9.64	116.98
+11	top cb = N ^o 6	9.19	117.43
N ^o 7		6.72	119.90
N ^o 5	top cb	9.85	116.77
N ^o 5	gutter	10.35	116.27

0+00 = E.O. NW. Return		126.62	
Scb		11.42	115.20
gut		12.02	114.60
1/4		11.06	115.56
±		10.58	116.04
1/4		10.50	116.12
gut		10.63	115.99
Ncb		19.69	116.93
0+25			
Ncb		11.21	115.41
gut		12.09	114.53
+3		12.71	113.91
+5		11.91	114.71
+8	Eedg Pav.	11.84	114.78

Curb & Gutter E/O ground		126.62	
NW. Return			
N ^o 1 cb		3.98	122.64
gut		4.68	121.94
N ^o 2 cb		5.46	121.22
gut		6.27	120.35
N ^o 3 cb		6.86	119.76
gut		7.79	118.83
N ^o 4 cb		8.21	118.41
gut		9.21	117.91

0+25		126.62	
N/A		11.79	114.83
±		11.83	114.79
1/4		12.27	114.35
gut		12.95	113.67
Scb		12.36	114.26
T.P.	024	114.43	12.38
0+50			
Scb		1.37	113.11
gut		2.10	112.38
1/4		1.15	113.33
+3		0.96	113.52
±		0.86	113.62
+10	Eedg Pav.	0.92	113.56

114.48

0+50			
N 1/4	0.9	113.58	
+6	1.8	112.68	
+7	1.5	113.0	
+10	2.8	111.7	
+11	1.5	113.0	
gut	1.4	113.1	
Ncb	2.81	113.67	
0+75			
Ncb	2.86	111.62	
gut	3.1	111.4	
+3	3.4	111.1	
+4	4.5	110.0	
+5	3.3	111.2	
+8	3.5	111.0	
1/4	3.2	111.3	
+2 1/2 Ncdg Pav.	2.89	111.59	
¢	2.78	111.70	
1/4	2.98	111.56	
gut	3.87	110.61	
Scb	3.14	111.34	
1+00			
Scb	5.12	109.36	
gut	5.88	108.60	
1/4	5.14	109.34	

110

114.48

¢	4.88	109.60	
+10 Ncdg Pav	4.96	109.52	
1/4	5.1	109.4	
+4	5.6	108.9	
+9	5.4	109.1	
+9 ⁵	6.5	108.0	
+10 ⁵	6.4	108.1	
+11	5.3	109.2	
gut	5.2	109.3	
Ncb	4.92	109.56	
+25			
Ncb	6.96	107.52	
gut	7.3	107.2	
+2	7.5	107.0	
+3	8.9	105.6	
+5	7.5	107.0	
+8	7.4	107.1	
+9	7.7	106.8	
1/4	7.3	107.2	
+2 ⁵ Ncdg Pav.	7.03	107.45	
¢	6.92	107.56	
1/4	7.15	107.33	
gut	7.83	106.65	
Scb	7.07	107.41	

29

1+50	114.48		
Scb	9.02	105.46	
gut	9.78	104.70	
1/4	9.21	105.27	
♀	8.93	105.55	
+10 Nedg Pav.	9.02	105.46	
1/4	9.2	105.3	
+4	9.8	104.7	
+6	9.5	105.0	
+8	9.9	104.6	
+9	11.7	102.8	
+10	11.8	102.7	
+12	9.3	105.2	
gut	9.3	105.2	
Ncb	9.01	105.47	
1+75			
Ncb	11.04	103.44	
gut	11.4	103.44	
+3	13.2	101.3	
+5	13.3	101.2	
+6	11.5	103.0	
+9	11.8	102.7	
1/4	11.4	103.1	
+25 Nedg Pav.	11.06	103.42	
♀	11.04	103.44	

1+75	114.48		
5/4	11.27	103.21	
gut	11.84	102.64	
Scb	11.05	103.43	
2+00			
Scb 0.75	102.26	12.97	101.51
gut		1.59	100.67
1/4		1.12	101.14
♀		0.88	101.38
+10 Nedg Pav.		0.93	101.33
1/4		1.1	101.2
+4		1.6	100.7
+5		1.4	100.9
+7		1.4	100.9
+8		2.3	100.0
+10		2.5	99.8
+11		1.3	101.0
gut		1.2	101.1
Ncb		0.86	101.40
2+25			
Ncb		2.94	99.32
gut		2.6	99.7
+3		2.0	100.3
+5		3.3	99.0
+6		4.2	98.1

2+25	102.26		
Neb +7		4.2	98.1
+8		3.4	98.9
+11		3.5	99.8
1/4		3.2	99.1
+25 Nedg. Pav.		2.98	99.28
⊕		2.93	99.33
1/4		3.17	99.09
gut		5.61	98.65
Scb		2.80	99.46
2+50			
Scb		4.55	97.71
gut		5.35	96.91
1/4		5.10	97.16
⊕		4.97	97.29
+10 Nedg. Pav.		5.05	97.21
1/4		5.2	97.1
+4		5.9	96.4
+8		5.1	97.2
+10		3.8	98.5
gut		4.5	97.8
Neb		4.80	97.46

102.26

31

2+65 = B.C. Return into Villa Dr.			
Neb		5.67	96.59
gut		5.7	96.6
+4		4.6	97.7
+7		5.9	96.4
+10		6.6	95.7
1/4		6.6	95.7
+25 Nedg. Pav.		5.86	96.80
⊕		5.79	96.47
1/4		5.98	96.48
Scb on Pav.		6.20	96.06
+05 gut		6.16	96.10
+05 tob cb on return		5.30	96.96
2+56 ⊕ = B.C. SE Return into Villa Dr.			
Scb		4.91	97.35
gut		5.73	96.53
tob cb at Int. S.L. Voltaire With S.E. return.		5.96	96.30
3+00			
S.L.		7.6	94.7
+6 Sedg. Pav.		7.67	94.59
Scb		8.10	94.16
1/4		7.61	94.65
⊕		7.26	95.00
+10 Nedg. Pav.		7.20	95.06
1/4		7.41	94.85

10.2.26

3+00			
N/4+3	8.0	94.5	
+7	7.9	94.4	
+11°	6.9	95.4	
Ncb	7.1	95.2	
+3	8.0	94.3	
+6	7.7	94.6	
+6 top cb. N.E. return.	7.35	94.91	
3+23			
N.L.	9.4	92.9	
+8	9.0	93.3	
Ncb	8.3	94.0	
+6	9.7	92.6	
+8	9.1	93.2	
1/4	8.4	93.9	
+25 Nedg Pav.	8.16	94.10	
£	6.24	94.02	
1/4	8.68	93.58	
Seb	8.97	93.29	
+4 Sedg Pav.	8.67	93.59	
	8.4	93.9	
3+46			
5/4	9.1	93.2	
+6 Sedg Pav	9.85	92.41	
Seb	10.01	92.25	

10.2.26

3+46			
5/4	9.55	92.71	
£	9.25	93.01	
+10 Nedg Pav.	9.18	93.08	
1/4	9.2	93.06	
+5	10.4	92.1	
+7	11.7	90.6	
+8	10.5	91.8	
Ncb	9.2	93.1	
+3	9.1	93.2	
+6	9.9	92.4	
N.L.	10.2	92.1	
3+62			
N.L.	10.3	92.0	
Ncb	12.5	89.8	
+2	12.0	90.3	
+4	12.1	90.2	
+7	10.9	91.3	
1/4	10.3	92.0	
+25 Nedg Pav	9.89	92.37	
£	9.92	92.34	
1/4	10.13	92.13	
Seb	10.70	91.56	
+4 Sedg Pav.	10.58	91.68	
+7	9.3	93.0	

32

102.26

3+62			
S.L.		9.4	92.9
3+77			
S.L.		10.0	92.3
+5		10.3	92.0
Scb	Sodg Pav	11.30	90.96
1/4		10.69	91.57
±		10.52	91.74
+10	N edg. Pav.	10.59	91.67
1/4		10.8	91.5
+4		11.9	90.4
+6		13.0	89.3
+7		12.1	90.2
Ncb		10.4	89.9
+6		9.9	92.4
N.L		10.3	92.0
3+80			
N.L		10.7	91.6
+5		10.3	92.0
Ncb		10.7	91.6
+3		11.0	91.3
+7		12.1	90.2
+8		13.1	89.2
+9		12.0	90.3
1/4		11.3	91.0

33

3+80			
1/4+25	Nedg Pav	10.70	91.56
±		10.66	91.60
+10	Nedg Pav	10.84	91.42
1/4		10.9	91.4
+6		11.1	91.2
+7		11.5	90.8
+8		10.9	91.4
Scb		9.7	92.6
S.L		10.1	92.2

top cb at Int. of			
N.L. Voltaire with N.W. return	11.08	91.18	
top cb at Int. N.L. Voltaire			
with N.E. return.	7.65	94.61	
B.M. Beginning.	6.06	96.20	



May 23-28
Loc. 102, Mormon
Tribal

Gutter Elers N side Valtaira
bet. Catalina & Mendocino.

Sec Book
1268 p. 23.

Stk Pole
S.E.

T.P.	9.37	72.15	62.78	
0 + 00 = Sec A		11.80	60.35	
50' W		11.01	61.14	
100' W		10.16	61.99	
140' W		8.90	63.25	
160' W		8.22	63.93	
200 W		6.87	65.28	
250 W		5.20	66.95	
300 W		3.58	68.57	
3543 W		1.71	70.44	
T.P.	7.64	78.69	71.05	
50' W of Sec B		6.59	72.10	
100' W of Sec B		4.99	73.90	
141' W of Sec B		3.56	75.11	end of cb.

60 wide
10' els
10' 1/2

Myrtle Ave X Sec Nile to Vancouver

7-26-28
Miller

B.M. BP	6.25	322.87		316.62
T.P. B.M. BP	4.41	318.98	8.30	314.57

N.E. Myrtle
& Boundary
S.E. Myrtle
Nile

318.98

35

00 = E. line Nile St.

60.E

Plotted - 8-15-1928. C.B.H.

R.E

100.E

150.E

S	4.1	314.9
cl	4.42	14.56
1/4	4.5	14.5
C	4.1	14.9
1/4	4.1	14.9
cl	3.89	15.09
N	3.7	15.3
N	2.9	16.1
cl	3.2	15.8
1/4	3.9	15.1
C	3.9	15.1
1/4	4.3	14.7
cl	4.4	14.6
+2	3.6	15.4
+6	3.1	15.9
S	3.1	15.9
S	3.2	15.8
cl	3.2	15.8
1/4	3.7	15.3
C	3.8	15.2
1/4	3.5	15.5

ent. cl. ret

ent. cl. Ret

cl

N

N

cl

1/4

C

1/4

cl

S

S

cl

1/4

C

1/4

cl

N

N

cl

1/4

C

1/4

cl

S

3.5 315.5

3.1 315.9

3.9 15.1

4.0 15.0

4.1 14.9

4.4 14.6

4.4 14.6

4.3 14.7

4.0 15.0

4.8 14.2

4.7 14.3

4.5 14.5

4.7 14.3

4.7 14.3

4.5 14.5

4.1 14.9

4.0 15.0

4.3 14.7

4.5 14.5

4.4 14.2

4.8 14.2

5.0 14.0

5.0 14.0

318.98

Myrtle

36

200' E.

S	5.4	13.6
cl	5.2	13.8
"4	5.1	13.9
C	5.0	14.0
"4	4.8	14.2
cl	4.4	14.6
N	4.0	15.0

250' E.

N	4.6	14.4
cl	4.6	14.4
"4	4.8	14.2
C	5.2	13.2
"4	5.2	13.2
cl	5.4	13.6
S	5.5	13.5

300' E. = W Line Van couver

S	5.6	13.4		
cl	5.5	13.5		
"4	5.4	13.6		
C	5.3	13.2		
"4	4.8	14.2		
cl	5.0	14.0		
N	4.9	14.1		
T.P.	3.18	317.34	4.82	314.16

80' wide
14' chs
13' 1/2 s.

Vancouver ST X Sec.
from canyon N. of Myrtle to R.O.W. S. of Quince

7-24-24
mills

317.34

37

H.I. 317.34 page 36

150' N. of New N. line Myrtle

12' W. of W. line

W. line

126' N. of N. line Myrtle

5' W. of W. line

W. line

W. ch

105' N. of N. line Myrtle

W. 1/4

W. ch

+3

+5

100' N. of N. line Myrtle

W. line

+2' E

W. ch

+2 E

W. 1/4

E

70' N. of N. line Myrtle

E. 1/4

E

+9' W

1/4

+7

Platted 8-15-20 - C.B.H.

4.1 313.2

9.7 302.6

4.3 13.0

4.5 12.8

10.3 307.0

9.3 308.0

4.6 312.7

3.5 13.8

3.4 12.9

3.5 13.8

4.5 12.8

4.5 12.8

4.5 12.8

8.3 309.0

12.0 305.3

11.6 305.7

7.5 309.5

4.6 12.7

4.4 12.9

4.4 12.9

Top canyon

Top canyon

Top canyon

Top Canyon

Top canyon

+9

ch

W

W

ch

W 1/4

+2

+4

E

+3

1/4

E. ch

E.

ch

1/4

E

1/4

ch

W.

W

ch

1/4

E

3.5 13.8

3.3 14.0

3.0 14.3

45' N. of N. line Myrtle

2.7 14.6

3.1 14.2

3.8 13.5

3.9 13.4

4.7 12.6

4.6 12.7

4.8 12.5

8.3 309.0

13.0 304.3

25' N. of New N. line Myrtle

13.0 304.3

5.6 11.7

4.9 12.4

4.5 12.8

3.7 13.6

3.1 14.2

2.7 14.6

New N. line Myrtle 60' wide 10' chs 10' 1/2 s

3.3 14.0

3.4 13.9

3.7 13.6

4.1 13.2

Top canyon

Top Canyon

317.34
N. Line Myrtle. (con)

E 1/4	4.7	12.6	
cl	5.6	11.7	
+10	5.5	11.8	Top Canyon
E. Line	7.2	10.1	
+10	11.9	305.4	
N. cl			
E-17	12.6	304.7	
E	6.0	11.3	
+2	5.5	11.8	Top Canyon
cl	5.4	11.9	
1/4	4.5	12.8	
C	4.1	13.2	
1/4	3.6	13.7	
cl	3.4	13.9	
W	3.4	13.9	
			N. 1/4
W	3.2	14.1	
cl	3.5	13.8	
1/4	3.8	13.5	
C	4.2	13.1	
1/4	4.7	12.6	
cl	5.2	12.1	
+10	5.5	11.8	Top canyon
E	6.4	10.9	
+17	10.6	306.7	

317.34
E Myrtle.

E-20	12.3	305.0	
-6	6.8	310.5	
E	6.3	311.0	
+3	5.5	11.8	Top
cl	5.1	12.2	
1/4	4.6	12.7	
C	4.2	13.1	
1/4	3.9	13.4	
cl	3.7	13.6	
W	3.6	13.7	
			S. 1/4
W	3.7	13.6	
cl	3.7	13.6	
1/4	3.9	13.4	
C	4.2	13.1	
1/4	4.6	12.7	
cl	5.1	12.2	
E	5.6	11.7	
+8	7.4	309.9	Top canyon
+20	12.0	305.3	
			S. cl.
-20	12.0	305.3	
-8	5.3	12.0	Top
E	4.7	12.6	
+5	3.8	13.5	
+10	5.1	12.2	

Vancouver SF

38

317.34

S. dr (cont)

cl	5.2	12.1
"4	4.8	12.5
e	4.3	13.0
"4	4.0	13.3
cl	3.6	13.2
w	3.8	13.5

0100 = New S. line of Myrtle

w.	4.0	13.3
cl	3.7	13.6
"4	4.0	13.3
e	4.4	12.9
"4	4.7	12.6
cl	4.7	12.6
+11	4.1	13.2
e.	4.7	12.6
+10	5.2	12.1
+20	11.7	308.6

15' S. of Myrtle

e	5.4	11.9
cl	5.3	12.0
"4	4.8	12.5
e	4.4	12.9
"4	4.2	13.1
cl	4.2	13.1
w	4.0	13.3

Top canyon

w.	4.2	13.1
cl	4.3	13.0
"4	4.6	12.7
e	4.7	12.6
"4	4.9	12.4
cl	5.3	12.0
e	6.2	11.1

100's

e	6.2	11.1
cl	5.6	11.7
"4	5.3	12.0
e	5.0	12.3
"4	4.7	12.6
cl	4.7	12.6
w	4.5	12.8

150's

w	5.2	12.1
cl	5.2	12.1
"4	5.1	12.2
e	5.2	12.1
"4	5.4	11.9
cl	5.7	11.6
w.	6.2	11.1

200's

w	6.0	11.3
cl	5.6	11.7

Van couver ST

39

317.34
200' S. of Murtle con.

W. 1/4		5.6	11.7	
E		5.5	11.8	
1/4		5.4	11.9	
cl		5.4	11.9	
E		5.3	12.0	
T.P.	5.53	317.24	5.63	311.71 ✓
		250' S		
E		5.7	11.5	
cl		5.7	11.5	
1/4		5.7	11.5	
E		5.7	11.5	
1/4		5.7	11.5	
cl		5.9	11.3	
W		5.9	11.3	
		300' S		
W		6.2	11.0	
cl		6.4	10.8	
1/4		6.1	11.1	
E		6.1	11.1	
1/4		5.8	11.3	
cl		5.6	11.6	
E		5.9	11.3	
		350' S		
E		6.0	11.2	
cl		6.1	11.1	
1/4		6.1	11.1	

317.24

Vancouver St

40

C	6.0	311.2
1/4	6.4	10.8
cl	6.6	10.6
W	6.6	10.6
	400' S	
W	6.8	10.4
cl	6.9	10.3
1/4	6.6	10.6
C	6.5	10.7
1/4	6.5	10.7
cl	6.3	10.9
E	6.1	11.1
	450' S	
E	6.7	10.5
cl	6.8	10.3
1/4	6.9	10.3
C	6.9	10.3
1/4	7.2	10.0
cl	7.2	10.0
W	7.1	10.1
	500' S	
W	7.7	309.5
cl	7.6	09.6
1/4	7.3	09.9
C	7.3	09.9
1/4	6.8	310.4

		317.24		
		500' S. (con)		
E. cl		7.1	10.1	
E		7.1	10.1	
T.P.	1.65	311.57	7.32	309.92
		550' S.		
E		1.5	10.1	
cl		1.6	10.0	
"4		1.6	10.0	
e		1.8	09.8	
"4		2.1	09.5	
cl		2.2	09.4	
W		2.3	09.3	
		600' S.		
W		2.5	09.1	
cl		2.7	08.9	
"4		3.1	08.5	
e		2.9	08.7	
"4		3.0	08.6	
cl		2.3	09.3	
e		2.0	09.6	
		610' S. = N.L. line Thorn St.		
E		2.3	09.3	
E. emb. cl. ret.		2.61	308.92	
+1		3.2	08.4	
"4		3.3	08.3	
e		3.6	08.0	
"4		3.7	07.9	

Intersection paved.

		311.57		
		+12		
W. emb. cl. ret.		3.6	308.0	
W		2.86	308.71	
		2.7	08.9	
		Vancouver from } 60' wide		
		Thorn St. } 10' chgs		
		10' chgs		
W.		3.3	08.3	
emb. cl.		3.48	08.09	
+1		4.2	07.4	
"4		4.1	07.5	
e		4.0	07.6	
"4		4.2	07.4	
+9		4.2	07.4	
emb. cl.		3.00	08.6	
e		3.0	08.6	
		50' S.		
E		3.5	08.1	
cl		3.6	08.0	
"4		3.7	07.9	
e		3.7	07.9	
"4		3.8	07.8	
cl		3.7	07.7	
W		3.6	08.0	
		100' S.		
W		4.3	07.3	
cl		4.3	07.3	
"4		4.4	07.2	
e		4.3	07.3	

311.57 100's. (EON)

E. 1/4	4.6	07.0
cb	4.3	07.3
E	4.3	07.3

150's

E	5.0	06.6
cb	5.1	06.5
1/4	5.1	06.5
e	5.0	06.6
1/4	5.1	06.5
cb	4.6	07.0
W	4.7	06.9

200's

W	5.5	06.1
cb	5.4	06.2
1/4	5.7	05.9
e	5.7	05.9
1/4	5.9	05.7
cb	5.7	05.9
E	5.8	05.8

250's

E	6.8	04.8
cb	6.7	04.9
1/4	6.5	05.1
e	6.2	05.4
1/4	4.2	05.4
cb	5.9	05.7

311.57

W	6.0	05.6
---	-----	------

300's

W	6.5	05.1
cb	6.5	05.1
1/4	6.7	04.9
e	6.9	04.7
1/4	7.1	04.5
cb	7.1	04.5
E	7.5	04.1

350's

E	7.7	03.8
cb	7.5	04.1
1/4	7.4	04.2
e	7.3	04.3
1/4	7.3	04.3
cb	7.0	04.6
W	7.0	04.6

400's

W	7.6	04.0
cb	7.4	04.0
1/4	7.5	04.1
e	7.6	04.0
1/4	8.1	03.5
cb	8.3	03.3
E	8.3	02.3

Van Courver St.

42

311.57 450's

E			9.2	02.4
cl			8.9	02.7
"4			8.8	02.7
e			8.4	03.2
"4			8.2	02.4
cl			7.9	03.2
W			8.0	02.6
T.P	2.40	305.79	8.8	303.39
			500's.	
W			2.5	03.3
cl			2.6	03.2
"4			2.9	02.9
C			2.9	02.9
"4			3.3	02.5
cl.			3.5	02.3
E			3.9	01.9
+5			4.1	01.7
			550's	
-5			4.5	01.3
E			4.4	01.4
cl			4.0	01.5
"4			3.6	02.2
e			3.4	02.4
"4			3.2	02.6
cl			2.9	02.9
W			2.9	02.9

305.79

600's.

W			3.5	02.3
cl			3.5	02.3
"4			3.7	02.1
e			3.8	02.0
"4			4.0	01.8
cl			4.2	01.6
E			4.5	01.3
+5			4.7	01.1
			620's = New N. Line Redwood	0.1
E			4.6	01.2
cl			4.3	01.5
"4			4.2	01.6
e			3.9	01.9
"4			3.9	01.9
cl			3.7	02.1
W			3.7	02.1
			N. cl	
W			3.9	01.9
cl			3.9	01.9
"4			4.0	01.8
e			4.1	01.7
"4			4.3	01.5
cl			4.4	01.4
E			4.6	01.2

Van couver St.

43

305.79

N. 1/4

E	4.6	01.2
cl	4.4	01.4
1/4	4.3	01.5
c	4.2	01.6
1/4	4.1	01.7
cl	4.0	01.8
W	4.1	01.7
	⊕ Redwood	
W	4.1	01.7
cl	4.1	01.7
1/4	4.2	01.6
c	4.3	01.5
1/4	4.5	01.3
cl	4.6	01.2
E	4.7	01.1
	5. 1/4	
E	4.9	00.9
cl	4.6	01.2
1/4	4.6	01.2
c	4.3	01.5
1/4	4.3	01.5
cl	4.2	01.6
W	4.2	01.6
	5. cl	
W	4.3	01.5
cl	4.4	01.2

Vancouver St.

305.79

44

1/4	4.6	01.2
c	4.4	01.4
1/4	4.6	01.2
cl	4.7	01.1
E	4.9	00.9
	oo = New. S. Line Redwood.	
E	4.9	00.9
cl	4.7	01.1
1/4	4.7	01.1
c	4.5	01.3
1/4	4.6	01.2
cl	4.3	01.5
W	4.45	301.34
	50.5,	SW. Blk Cor. 301.35 From Thornt. N. & A.P.
W	5.1	00.7
cl	4.8	01.0
1/4	5.1	00.7
c	5.0	00.8
1/4	5.3	00.5
cl	5.2	00.6
E	5.3	00.8
	100's	
E	5.8	300.00
cl	5.8	00.0
1/4	5.8	00.3
c	5.5	00.3

305.79

100's (con)

W	14	5.7	00.1
cl		5.5	00.3
W		5.4	00.4

150's

W		6.3	99.5
cl		6.2	99.6
"	4	6.4	99.4
e		6.2	99.6
"	4	6.4	99.4
cl		6.3	99.5
E		6.3	99.5

200's

E		7.0	98.8
cl		6.9	98.9
"	4	6.9	98.9
e		6.8	99.0
"	4	6.8	99.0
cl		6.7	99.1
W		6.8	99.0

250's

W		7.6	98.2
cl		7.5	98.3
"	4	7.8	98.0
e		7.5	98.3
"	4	7.7	98.1
d		7.4	98.4

Van COVER ST.

305.79

45

E.			7.6	98.2
T.P.	1.38	299.70	7.47	298.32

300's

E			1.9	97.8
d			1.9	97.8
"	4		2.1	97.6
e			2.1	97.6
"	4		2.1	97.6
cl			2.1	97.6
W			2.1	97.6

350's

W			2.7	97.0
cl			2.8	96.9
"	4		2.8	96.9
e			2.7	97.0
"	4		2.8	96.9
cl			2.5	97.2
E			2.6	97.1

400's

E			3.1	96.6
cl			3.1	96.6
"	4		3.2	96.5
e			3.2	96.5
"	4		3.5	96.2
cl			3.2	96.5
W			3.2	96.5

299.70

450's

W	3.9	95.8
dr	3.9	95.8
"4	4.2	95.5
E	3.9	95.8
"4	4.0	95.7
dr	3.7	96.0
E	3.6	96.1

500's

E	4.3	95.4
dr	4.4	95.3
"4	4.6	95.8
E	4.5	95.2
"4	4.9	94.8
dr	4.6	95.1
W	4.7	95.0

550's

W	5.5	94.2
dr	5.2	94.5
"4	5.4	94.3
E	5.3	94.4
"4	5.2	94.5
dr	4.9	94.8
E	4.6	95.1

600's

E	5.4	94.3
dr	5.7	94.0

Vancouver ST.

299.70

46

"4	6.0	93.7
E	6.2	93.5
"4	6.4	93.3
dr	6.2	93.8
W	6.1	93.6

620's = New N. Line Quince

W	6.6	93.1
dr	6.6	93.1
"4	6.6	93.1
E	6.6	93.1
"4	6.6	93.1
dr	6.3	93.4
E	5.9	93.8

N. dr

E	6.2	93.5
dr	6.4	93.3
"4	6.5	93.2
E	6.7	93.0
"4	6.9	92.8
dr	6.7	93.0
W	6.8	92.9

dr. "4

W	7.1	92.6
dr	6.7	93.0
"4	6.9	92.8
E	6.8	92.9

	299.70		
	N. 1/4 (EOR)		
E 1/4	6.8	92.9	
cl	6.8	92.9	
E	6.5	93.2	
	£ Quince		
E	6.8	92.9	
cl	7.0	92.7	
1/4	7.0	92.7	
E	6.9	92.8	
1/4	6.9	92.8	
cl	6.6	93.1	
W	7.0	92.2	
	S. 1/4		
W	7.3	92.4	
cl	6.8	92.9	
1/4	6.4	92.9	
E	7.1	92.6	
1/4	7.2	92.5	
cl	7.3	92.4	
E	7.2	92.5	
	S. cl		
E	7.3	92.4	
cl	7.6	92.1	
1/4	7.3	92.4	
E	7.3	92.4	
1/4	7.2	92.5	
cl	7.6	92.1	

Top M.H.

	299.70		Vancouver ST
			47
W		7.5	92.2
	oo = New. S. Line Quince		
W		7.7	92.0
cl		7.7	92.0
1/4		7.6	92.1
E		7.9	91.8
1/4		7.8	91.9
cl		7.9	91.8
E		7.6	92.1
T.P.	1.00	293.12	292.12
		50' S,	
E		2.4	90.2
cl		2.4	90.7
1/4		2.2	90.9
E		2.0	91.1
1/4		2.1	91.0
cl		2.0	91.1
W		2.0	91.1
		100' S	
W		3.2	89.9
cl		2.9	90.2
1/4		3.2	89.9
E		3.1	90.0
1/4		2.8	90.3
cl		3.3	89.8
E		3.4	89.7

S.E. BIK Cor Quince
& Vancouver

293.12

125'S

E	4.0	89.1
cl	4.1	89.0
"4	3.9	89.3
e	3.7	89.4
"4	3.5	89.6
cl	3.4	89.7
w	3.6	89.5

150'S

w	4.2	88.9
cl	4.0	89.1
"4	4.0	89.1
e	4.0	89.1
"4	4.7	88.4
cl	5.3	87.8
e	5.3	87.8

175'S

-5	6.6	86.5
e	4.8	86.3
cl	6.7	86.4
"4	5.8	87.3
e	5.1	88.0
"4	4.3	88.8
cl	4.3	88.8
w	4.5	88.6

293.12

200'S

w	5.1	88.0	
cl	4.7	88.4	
"4	4.6	88.5	
e	5.5	87.6	
"4	7.3	86.8	
cl	8.5	84.6	
+7	10.3	82.8	wash
e	9.6	83.5	
+5	8.6	84.5	

225'S

-10	9.8	83.3	
e	13.0	80.1	wash
cl	10.5	82.6	
"4	8.6	84.5	
e	6.7	86.9	
"4	4.9	88.2	
cl	5.0	88.1	
w	5.3	87.8	

250'S

w	5.4	82.7	
cl	5.3	82.8	
"4	5.3	82.8	
+8	5.8	82.3	
e	7.1	86.0	
"4	9.7	83.4	
cl	13.2	79.9	

Vancouver

48

293.12		250's. (con)				293.12		Vancouver	
									49
E		16.5	76.6	Wash	14		17.7	75.4	
+15		11.7	81.4		e		13.1	80.0	
	275's				14		8.8	84.3	
-15		15.1	78.0		+3		7.8	85.3	
-2		20.0	73.1	Wash	cl		7.3	85.8	
E		19.0	74.1		W		7.3	85.8	
cl		15.8	77.3						
14		12.0	81.1		W		8.1	85.0	
e		8.3	84.8		cl		8.5	84.6	
14		4.1	87.0		+5		9.2	83.9	
cl		5.9	82.2		14		11.3	81.8	
W		6.2	80.9		e		14.0	77.1	
	300's				14		20.2	72.9	
W		6.7	86.4		cl		25.2	66.9	
cl		6.5	86.6		E		31.0	62.1	
14		7.2	85.9		+3		33.5	59.4	Wash.
e		11.5	81.6		+5		31.3	61.8	
14		15.5	77.6		+20		21.8	71.3	
cl		19.5	73.6						
+6		21.7	71.4		-20		25.0	68.1	
E		24.0	69.1	Wash	E		37.12	56.00	Wash
+15		17.5	75.6		cl		29.3	63.8	
	325's				14		24.4	68.7	
-20		18.0	75.1		e		19.1	74.0	
E		28.4	64.7	Wash	14		14.8	88.3	
cl		22.1	71.0		cl		10.5	82.6	

293.12

375 S. con

W			9.1	84.0
		400' S.		
W			10.7	82.4
T.P.	0.72	281.14	12.70	280.42
cl			2.6	78.5
'14			7.3	73.8
c			12.1	69.0
'14			16.7	64.4
cl.			21.8	59.3
E			27.6	53.5
+25			14.0	67.1

+25.5

-25			13.3	62.8
E			29.1	52.0
+5			31.0	50.1
cl			29.7	51.4
'14			23.1	58.0
c			17.9	63.2
'14			12.6	68.5
cl.			7.8	73.3
W			2.4	78.3

464' S = Hub on W. apparatus Line R. of W.

N-10			10.0	71.1
W.			16.0	65.1
cl			20.4	60.7
'14			25.7	55.4

281.14

Vancouver St

50

c			30.5	50.6
'14			34.7	46.4
+3			36.2	44.9
d			36.0	45.1
E			31.7	49.9
+23			17.7	63.4
T.P.	12.80	292.94	1.10	280.04
T.P.			0.72	292.12 = 292.12

wash

60' wide
10' elev
10' 1/4

Quince ST. X Sec
Nile To

Haller

8-3-28
miller

245.23

51

Point	Quince	ST. X	Sec	Haller	Page	Dist	Elev
T.P.	1.50	293.62		292.12	50	N	277.9
T.P.	4.07	285.23		281.16		N	278.2
		15' W. of W. line of Nile st				N	278.61 cont. elev.
15' S. of S. line Quince		21.0		264.2		N	278.2
5 "		19.8		265.4		N	279.1
cb		19.2		266.0		N	278.4
1/4		18.2		267.0		N	277.8
e		18.0		267.2		N	277.6
1/4		16.4		268.8		N	277.1
cb		16.3		268.9		N	277.3
N line Quince		15.0		270.2		N	277.5
		W. line Nile st				N	277.8
						N	278.6
						N	279.1
						N	279.0
						N	278.3
						N	278.9
						N	279.0
						N	279.0
						N	278.7
						N	278.2
						N	277.9
						N	277.6

B-16-28
 C.B.H.
 400 ft planes
 Plotted
 W. elev.

W. Nile st

E. 1/4

285.23

E. cl

S	6.6	278.6
cl	6.0	279.2
1/4	6.1	279.1
e	5.1	280.1
1/4	4.2	281.0
cl	4.6	281.2
N	5.51	279.72 cont. cl

E. Line Nile St = 0+00

N	5.3	279.9
cl	1.9	283.3
1/4	2.5	282.7
e	2.8	282.4
1/4	3.4	281.8
cl	3.9	281.3
+7	4.3	280.9
S	6.2	279.0

1.2

S	4.0	281.2
cl	3.5	281.7
1/4	3.1	282.1
e	2.6	282.6
1/4	2.4	282.8
cl	1.4	283.8
N	1.4	283.8

285.23

Quince St

52

25'E.

N	0.3	284.9
cl	0.6	284.6
1/4	1.0	284.2
e	1.4	283.8
1/4	1.7	283.5
cl	2.1	283.1
S	2.7	282.5

38'E.

S	4.0	281.2
cl	3.4	281.8
1/4	2.4	282.8
e	1.7	283.5
1/4	1.2	284.0
cl	0.8	284.4
N	0.5	284.7

45'E.

N	1.9	283.3
cl	2.1	283.1
1/4	2.5	282.7
e	3.3	281.9
1/4	3.9	281.3
cl	4.4	280.8
S	4.7	280.5

65'E.

S-15

S

14.1	271.1
13.6	271.6

285.23

65' E. (con)

s. el	12.0	273.2
"4	8.8	276.4
e	8.0	277.2
"4	6.4	278.8
el	5.6	279.6
N	5.4	279.8

75' E

N-10	7.9	277.3
N	7.6	277.6
el	8.3	276.9
"4	9.8	275.4
e	11.9	273.3
"4	13.1	272.1
el	17.0	268.2
S	19.7	265.5
+20	21.0	264.2

83' E

S-40	28.6	256.6
S	25.1	260.1
el	22.0	263.2
"4	16.6	268.6
e	15.0	270.2
"4	13.5	271.7
el	12.0	273.2
N	11.1	274.1
+15	11.7	273.5
+25	9.6	275.6

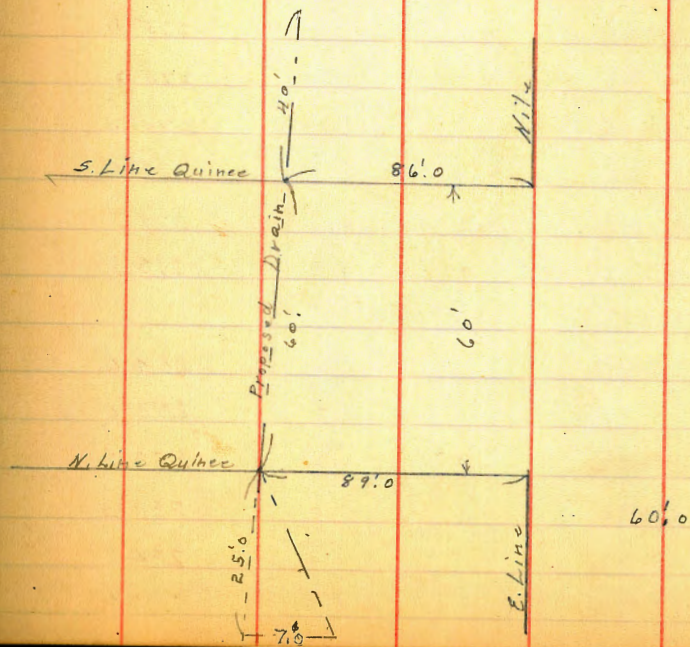
Quince

53

Culvert Quince St
East of Nile

N 285.23

40' S of S. Line Quince	28.6
15' S " " " "	24.5
" " " " " "	24.0
10' N " " " " "	20.6
20' " " " " " "	19.0
30' " " " " " = ϕ	18.5
40' " " " " " "	16.1
50' " " " " " "	14.1
60' " " " " " = M Line Δ	13.7
25' N. of N. Line Quince	10.3



285.23
91.8. of E. Line Nile

N-20	8.6	276.6
N	13.9	271.3
cl	15.0	270.2
1/4	16.7	268.5
C	17.9	267.3
1/4	17.2	268.0
cl	17.0	268.2
S	19.0	266.2
+40	24.5	260.7
	105'E	
S-20	14.4	270.8
S	11.0	274.2
cl	10.2	275.0
1/4	10.1	275.1
E	10.0	275.2
1/4	10.0	275.2
cl	9.3	275.9
N	8.1	277.1
+10	6.3	278.9
	125'E	
N	1.2	284.0
cl	1.7	283.5
1/4	2.3	282.9
C	2.0	283.2
1/4	3.0	282.2
cl	3.5	281.7

Quince St

54

285.23

S	4.7	280.5
+10	5.9	279.3
	145'E	
-10	3.6	281.6
S	1.8	283.7
cl	1.1	284.1
1/4	0.5	284.7
T.P.	10.75	295.55
C	0.43	284.80
	9.6	286.0
1/4	9.3	286.3
cl	9.3	286.3
N	8.7	286.9
	170'E	
N	7.3	288.3
cl	7.8	287.8
1/4	8.5	287.1
C	8.5	287.1
1/4	9.7	285.9
cl	10.2	285.4
S	11.1	284.5
160'E & Quince	10.60	284.95 Top M.H.
	200'E	
S	9.4	285.2
cl	8.8	286.8
1/4	8.5	287.1
C	7.7	287.9

295.55
200' E. (con)

N. 14	7.5	288.1
cb	6.9	288.7
N	6.5	289.1

250' E

N	4.4	291.2
cb	4.7	290.9
14	5.1	290.5
c	5.1	290.5
14	5.6	290.0
cb	6.06	289.49
S	6.5	289.1

295' E.

S	3.8	291.8
cb	3.8	291.8
14	4.0	291.6
c	3.1	292.5
14	3.1	292.5
cb	2.9	292.6
N	2.6	293.0

320' E. = W. Line Vancouver St

N	2.4	293.2
cb	2.6	293.0
14	2.8	292.8
c	2.8	292.8
14	3.1	292.5
cb	3.3	292.3

295.55

Quince St

55

S	3.5	292.1
---	-----	-------

Intersection Taken Vancouver

T.P.	6.48	298.60	3.43	292.12	S.S. Quince Huba Vancouver
------	------	--------	------	--------	-------------------------------

00 = E. Line Vancouver

S	6.5	292.1
cb	6.2	292.4
14	6.1	292.5
c	5.6	293.0
14	5.4	293.2
cb	5.1	293.5
N	4.8	293.8

35' E.

N	4.1	294.5
cb	4.3	294.3
14	4.5	294.1
c	4.5	294.1
14	4.9	293.7
cb	5.0	293.6
S	5.2	293.4

65' E.

S	4.7	293.9
cb	4.6	294.0
14	4.5	294.1
c	4.3	294.3
14	4.3	294.3
cb	4.0	294.6
N	3.7	294.9

298.60
100' E. of Vancouver

N	4.0	294.6
cl	4.1	294.5
"4	4.3	294.3
c	4.2	294.4
"4	4.6	294.0
cl	4.5	294.1
S	4.6	294.0
135' E.		
S	4.7	293.9
cl	4.6	294.0
"4	4.5	294.1
c	4.2	294.4
"4	4.3	294.3
cl	4.2	294.4
N	3.9	294.7
165' E.		
N	4.5	294.1
cl	4.6	294.0
"4	4.7	293.9
c	4.6	294.0
"4	4.9	293.7
cl	5.0	293.6
S	5.1	293.5
200' E.		
S	6.0	292.6
cl	6.0	292.6

298.60

Quince

56

"4	5.9	292.7
c	5.6	293.0
"4	5.6	293.0
cl	5.6	293.0
N	5.4	293.2
250' E.		
N	7.3	291.3
cl	7.3	291.3
"4	7.4	291.2
c	7.5	291.1
"4	7.9	290.7
cl	7.9	290.7
S	8.0	290.6
300' E.		
S	10.4	288.2
cl	10.2	288.4
"4	10.3	288.3
c	10.0	288.6
"4	10.2	288.4
cl	9.8	288.8
N	9.7	288.9
320' E. = New W. Line Haller		
N	12.3	286.3
cl	12.4	286.2
"4	12.5	286.1
c	12.9	285.7

60' wide
10' cl-s
10' 4fs

298.60
320' E. (COH) = W. line Haller

S. 1/4		12.5	286.1
cl		12.5	286.1
S		12.6	286.0
T.P.	0.21	285.89	12.92 285.68
		W. cl	
S.		1.9	284.0
cl		1.3	284.6
1/4		2.0	283.9
C		1.8	284.1
1/4		1.7	284.2
cl		1.4	284.5
N		1.1	284.8
		8.E. of W. cl.	
N.		2.2	283.7
cl		2.2	283.7
1/4		3.4	282.5
1/4		2.6	283.3
C		2.8	283.1
1/4		3.1	282.8
cl		4.0	281.9
1/4		3.1	282.8
S		3.2	282.7
		W. 1/4	
S		4.4	281.5
cl		4.1	281.8
1/4		3.8	282.6

Quince St

285.89

57

e		3.2	282.7
1/4		3.0	282.9
cl		3.5	282.4
N		3.5	282.4
		W. Haller	
N		3.7	282.2
cl		3.8	282.1
1/4		4.1	281.8
C		4.2	281.7
1/4		4.7	281.2
cl		4.7	281.2
S.		4.8	281.1
		E. 1/4	
- 10		7.1	278.8
S		6.6	279.3
cl		6.4	279.5
1/4		6.2	279.7
C		6.1	279.8
1/4		6.2	279.7
cl		6.0	279.9
N		5.7	279.2
10		5.7	279.2
		E. cl	
- 10		6.8	279.1
N		7.0	278.9
cl		7.8	278.1
1/4		7.6	278.3

285.89
E. elev. con

273.26

C		8.0	277.9
S 1/4		8.0	277.9
el		8.6	276.3
S		8.4	277.3
+10		8.7	277.2
	00 = E. Line Haller St		
-10		11.1	274.8
S		11.0	274.9
el		10.8	275.1
1/4		10.6	275.3
E		10.4	275.5
1/4		10.2	275.7
el		9.8	276.1
N		9.4	276.5
+10		9.2	276.7
	6' E. of E. Line Haller		
N. Line Quince		9.14	276.73
T.P.	0.22	273.26	12.85 273.04
	27' E. of E. Line Haller		
N. Line		0.60	272.66
N		1.5	271.8
el		1.7	271.6
1/4		2.0	271.3
E		1.8	271.5
1/4		2.3	271.0
el		3.0	270.3

S		3.6	269.7
+10		4.0	269.3
	50' E		
-10		10.1	263.2
S		9.5	263.8
el		8.4	264.5
1/4		8.5	264.0
E		8.2	265.1
1/4		7.8	265.5
el		7.4	265.9
N		7.0	266.3 ground
N. Line		5.62	267.64 Top cm Foundation of House ✓
	57' 7" E. = E. Line House on N		
N. Line		6.86	266.40 Top cm Foundation of House ✓
	66' E.		
-10		8.6	264.7
N		9.6	263.7
el		10.0	263.3
1/4		10.5	262.8
E		10.5	262.8
1/4		10.5	262.8
el		12.1	261.2
S		12.5	260.8
+10		12.3	261.0
T.P.	2.88	263.34	12.80 260.46

243.34

85'E

- 10		8.30	255.0
S		8.0	255.3
cl		7.5	255.8
114		6.9	256.4
e		6.5	256.8
114		6.2	257.1
cl		5.9	257.4
N		5.3	258.0
+10		4.9	257.4

105' E. on N }
 95' E on S } Top of Bank section on diagonal

- 10		9.1	254.2
N		8.8	254.5
cl		10.3	253.0
114		9.1	254.2
e		9.3	254.0
114		9.4	253.9
cl		9.6	253.7
S		9.6	253.7
+10		9.6	253.7

T.P. 12.68 273.14 2.88 260.46

T.P. 12.89 285.68 0.35 272.79

T.P. 13.06 298.57 0.17 285.51

CHK on BM Page 55 8.13 300.25 6.44 292.13 = 292.12

T.P. 5.79 304.68 1.36 298.89

60' wide
10' chg

Redwood St X Sec
Nile To Haller Then some

8-7-28
Miller

304.68

60

S	00 = π 304.68 E. Line Nile St	12.0	292.7	"4	9.3	295.4
cm. ch		12.15	292.53	ch	9.0	295.7
+1		12.5	292.2	N	9.0	295.7
"4		12.7	292.0		50' E	
C		12.5	292.2	N	8.2	296.5
"4		12.6	292.1	ch	8.4	296.3
+9		11.9	292.8	"4	8.7	296.0
N cm. ch		11.21	293.47	C	8.5	296.2
N		11.1	293.6	"4	8.5	296.2
	2' E			+5	8.9	295.8
N		9.9	294.8	ch	8.6	296.1
ch		10.0	294.7	S	9.0	295.7
+2		11.8	292.9		100' E	
"4		11.7	293.0	S	7.1	297.6
C		11.6	293.1	ch	6.8	297.9
"4		11.8	292.9	+6	7.1	297.6
+6		12.2	292.5	"4	6.7	298.0
+8		10.7	294.0	C	6.5	298.2
ch		10.6	294.1	"4	6.7	298.0
S		10.7	294.0	ch	6.3	298.4
	25' E			N	6.2	298.5
S		9.8	294.9		150' E	
ch		9.6	295.1	N	4.5	300.2
+5		9.8	294.9	ch	4.6	300.1
"4		9.6	295.1	"4	5.1	300.6
C		9.3	296.4	C	5.0	300.7

Plotted 8/16/28

304.68
150' E. (con)

S. 14	5.3	299.4
cl	5.3	299.4
S	5.5	299.2
	200' E	
S	4.4	300.3
cl	4.4	300.3
14	4.4	300.3
e	3.8	300.9
14	4.0	300.7
cl	3.8	300.9
N	3.6	301.1
	250' E	
N.	3.0	301.7
cl	3.0	301.7
14	3.5	301.2
e	3.5	301.2
14	3.7	301.0
cl	3.7	301.0
S	3.8	300.9
	300' E	
S	3.3	301.4
cl	3.3	301.4
14	3.4	301.3
e	3.1	301.6
14	3.0	301.7
cl	3.0	301.7

304.68

Redwood ST.

61

N	2.7	302.0
	320' E = W. Line Vancouver	
N	2.7	302.0
cl	2.4	301.9
14	3.0	301.7
e	3.0	301.7
14	3.2	301.5
cl	3.3	301.4
S. on Blk. Cor.	0.97	302.31
	3.32	301.36 = 301.34 Page 44
	Intersection Taken on Vancouver St	
	00 = E. line Vancouver	
S	1.5	300.8
cl	1.5	300.8
14	1.5	300.8
e	1.4	300.9
14	1.2	301.1
cl	1.2	301.1
N	1.1	301.2
	25' E.	
N	2.1	300.2
cl	2.1	300.2
14	2.1	300.2
e	2.1	300.2
14	2.1	300.2
cl	2.2	300.1
S	2.3	300.0

See Page 74
This book
has notes on
north side
for 25' E.

	302.31		
	50' E		
S		2.7	299.6
cl		3.6	298.7
1/4		3.8	298.5
C		3.8	298.5
1/4		3.7	298.6
cl		3.7	298.6
N		3.6	298.7
	24' E		
N		5.5	296.8
cl		5.3	297.0
1/4		5.4	296.9
e		5.0	297.3
1/4		4.5	297.8
cl		4.4	297.9
S		4.0	298.3
	72' E		
S		4.9	297.4
cl		5.3	297.0
1/4		8.9	293.4
e		8.6	293.7
1/4		7.8	294.5
cl		7.4	294.9
N		8.3	294.0
+5		8.2	294.1
	78' E		
-10		10.4	291.9

	302.31		
N		10.1	292.2
cl		9.6	292.7
1/4		9.7	292.6
C		10.6	291.7
1/4		10.9	291.4
cl		10.6	291.7
S		10.1	291.2
+7		9.1	292.2
	93' E		
-15		16.7	285.6
S		16.3	286.0
cl		18.5	283.8
1/4		17.5	284.8
C		16.1	286.2
1/4		15.6	286.7
cl		15.3	287.0
N		16.4	285.9
+15		17.0	285.3
	106' E		
N-40		23.0	279.3 Wash
N-20		24.8	277.5 Wash
N		24.4	277.5
cl		24.4	277.9
1/4		21.6	280.7
e		23.0	279.3
1/4		25.8	276.5

302.31

106'E (cont)

S. db	27.3	275.0
S	24.4	277.5
+25	20.4	281.9
	111'E	
-27	24.0	278.3
S	29.0	273.3
db	29.6	272.7
"4	27.3	275.0
e	26.0	276.3
"4	25.6	276.7
db	26.0	276.3 wash
N	25.3	277.0 wash
+15	23.0	279.3
+30	22.0	280.3
	120'E	
-20	18.5	283.8
N	21.0	281.3
db	24.0	278.3
"4	24.5	275.8
e	27.6	274.7
"4	27.6	274.7
db	28.0	274.3
S	32.0	270.3
+30	28.2	274.1
+40	26.6	275.7

302.31

137'E

Redwood St
63

-60	35.0	267.3 wash
-15	29.6	272.7
S.	23.6	278.7
db	20.4	281.5
"4	19.1	283.2
e	18.5	283.8
"4	17.7	284.6
db	16.0	286.3
N	14.6	287.7
+15	12.2	290.1
	155'E	
-5	6.8	295.5
N	8.0	294.3
db	8.6	293.7
"4	9.1	293.2
e	10.5	291.8
"4	12.1	290.2
db	14.4	287.9
S	16.2	286.1
+25	22.0	280.3
	160'E	
-25	20.8	281.5
S	16.0	286.3
db	14.0	288.3
"4	12.3	290.0
e on top M.H	9.6	292.7 <small>no yardage</small>

	302.31			
	220'	E. (con)		
c		4.0	298.3	
"4		4.3	298.0	
cl		4.4	297.9	
s		4.4	297.9	
T.P.	8.36	306.29	4.38	297.93

	270'	E.		
s		7.4	298.9	
d		7.0	299.4	
"4		6.7	299.6	
e		6.4	299.9	
"4		6.4	299.9	
cl		6.0	300.3	
N		5.8	300.6	

320' E = W. Line Haller

60' wide
10' cl
10' "4's

N		4.1	302.2	
d		4.4	301.9	
"4		4.2	301.4	
e		5.0	301.3	
"4		5.4	300.9	
cl		5.5	300.8	
s		5.9	300.4	

W. cl.

s		5.7	300.6	
d		5.4	300.9	
"4		5.2	301.1	
c		4.7	301.6	

	306.29		
"4		4.6	301.7
cl		4.2	302.1
N		4.0	302.3
	W. "4		
N		3.9	302.4

cl		4.2	302.1
"4		4.4	301.9
e		4.6	301.7
"4		4.8	301.5
cl		5.3	301.0
s		5.7	300.6

E. Haller

s		5.4	300.9
cl		4.7	301.6
"4		4.6	301.7
e		4.4	301.7
"4		4.3	302.0
cl		3.9	302.4
N		3.6	302.7

E. "4

N		3.5	302.8
cl		3.5	302.8
"4		4.3	302.0
e		4.6	301.7
"4		4.6	301.7
cl		4.7	301.6
s		5.2	301.1

306.29

E. cl

S	5.5	300.8
cl	5.2	301.1
1/4	4.9	301.4
e	4.6	301.7
1/4	4.3	302.0
cl	4.0	302.3
N	3.8	302.5

00 = E. L. in the Haller

N	3.7	302.6
cl	4.0	302.3
1/4	4.3	302.0
e	4.6	301.7
1/4	5.0	301.3
cl	5.2	301.1
S	5.6	300.7

25' E

S	6.06	300.23
cl	5.6	300.7
1/4	5.2	301.1
e	4.9	301.4
1/4	4.5	301.8
cl	4.1	302.2
N	3.9	302.4

50' E

N	4.5	301.8
cl	5.0	301.3

306.29

Redwood St

66

1/4	5.3	301.0
e	6.0	300.3
1/4	6.6	299.7
cl	7.1	299.2
S	7.8	298.5

90' E

S	12.0	294.3
cl	10.9	295.4
1/4	10.4	296.9
e	10.0	296.3
1/4	9.4	296.9
cl	8.5	297.8
N	8.0	298.3

0.82 294.09 13.02 293.27

140' E

N	2.8	291.3
cl	3.2	290.9
1/4	4.0	290.1
e	4.3	289.8
1/4	4.7	289.4
cl	5.4	288.7
S	6.3	287.8

160' E

S	10.3	283.8
cl	9.3	284.8
1/4	8.3	285.8

294.09

160'E (con)

c			7.8	286.3
y			7.0	287.1
ch			6.5	287.6
N			5.7	288.4
			190'E.	
N			73.3	280.8
ch			13.8	280.3
'4			14.5	279.6
c			15.1	279.0
'4			15.6	278.5
ch			16.3	277.8
S			17.4	276.7
T.P.	10.27	304.57	0.49	293.60
chk on B.M.			3.23	301.34

SW BIKER

Redwood + Yanco per

11-4-29
millerAdditional X Sec. Redwood St
E. of Haller

Redwood St

67

HI 278.91

205'E. of Haller.

5-10

5

ch

'4

ch

'4

ch

N

N

ch

'4

ch

'4

ch

S

5.5

4.6

4.1

3.5

3.1

2.5

2.3

2.1

7.5

7.5

8.2

9.0

10.3

11.3

12.6

274.3

275.8

276.8

271.4

269.9

266.3

see Page 76. for culvert levels

Haller St. X sec.

8-23-28
miller

286.86

68

BM.	5.92	298.04	292.12	SE. Quince Hub + Vancouver	114	8.7	782
TP	0.52	286.86	14.70	N.W. 1/4 Cor Quince + Haller	c	9.2	777
		200' N. of N. Line		Quince	+5	9.1	779
W.			11.5	75.4	+7	10.3	766
cb			12.4	74.5	14	10.5	764
+6			12.3	74.6	cb	11.5	754
14			13.4	73.1	e	11.9	750
c			15.5	71.4	+15	15.0	719
14			17.2	69.7		125' N	
cb			18.5	68.4	-10	12.4	74.5
e			21.1	65.8	e	11.2	75.7
+15			25.2	61.7	cb	10.0	76.9
		175' N			14	8.6	783
-15			18.0	68.9	+5	7.3	796
e			15.6	71.3	c	6.8	80.1
cb			14.3	72.6	14	6.5	804
14			13.0	73.9	+2	6.5	804
c			11.3	75.6	+3	5.7	81.2
14			10.9	76.0	cb	5.1	81.8
cb			9.6	77.3	W	4.1	82.8
W			8.5	78.4		100' N	
		150' N			W	2.5	84.4
W			5.7	81.2	cb	3.7	83.2
cb			6.6	80.3	+9	4.8	82.1
+6			7.0	79.9	14	5.8	81.1
+7			8.5	78.4	c	5.4	81.5

Plotted
8-27-28
T.G.H.

	286.86 100' N. (con)	
C + 4	5.5	814
E 1/4	6.3	80.6
cl	8.3	80.6
E	10.2	76.7
+ 10	11.7	75.2
	75' N.	
- 10	11.4	75.5
E	9.6	77.3
cl	7.8	79.1
1/4	6.3	80.6
E	4.8	82.1
1/4	4.8	82.1
+ 1	3.8	83.1
cl	2.6	84.2
W	1.3	85.6
	50' N	
W	0.5	86.4
cl	1.9	85.0
1/4	3.4	83.5
+ 1	4.4	82.5
E	4.6	82.3
1/4	5.9	81.0
cl	7.3	79.6
E	9.7	77.2
+ 10	11.4	75.5

	286.86	Halter	
	25' N of N. Line Quinceast		69
E - 10	11.5	75.4	on N. side of house
E - 6 = N.E. cor. House	10.15	76.7	Top cent. foundation
E - 6 = N.E. . . .	11.0	75.9	ground
E	10.0	76.9	
+ 8	7.8	79.1	
cl	7.4	79.5	
1/4	6.06	80.8	
E	4.7	82.2	
+ 9	4.4	82.5	
1/4	3.3	83.6	
cl	1.9	85.0	
W	0.4	86.5	
	N. Line Quinceast		
W	0.6	286.3	
cl	2.1	284.8	
+ 8	3.2	283.7	
1/4	4.5	282.4	
E	4.7	282.2	
1/4	6.7	280.2	
cl	8.0	278.9	
E	10.4	276.5	
	Elev of floor of House	9.4	

286.86
S. Line Quince

e	12.0	274.9
d	9.6	277.3
"4	7.6	279.3
e	5.8	281.1
"4	5.4	281.5
+2	4.2	282.7
ch	2.9	284.0
W	0.9	286.0
	50' 5"	
w	1.6	853
ch	4.0	82.9
+8	5.3	81.6
"4	6.6	80.3
e	6.8	80.1
"4	8.7	80.2
ch	10.7	76.2
e	13.1	73.8
+15	16.5	70.4
	100' 5"	
-15	17.3	69.6
e	13.6	73.3
ch	11.7	75.2
"4	9.4	77.5
e	7.4	79.5
"14	7.2	79.7
+3	6.9	80.0

286.86

+5	4.8	82.1	
ch	3.6	83.3	
W	2.2	84.7	
	105' 5"		
W	2.3	84.6	
ch	3.6	83.3	
+5	4.9	82.0	
+7	7.0	79.9	
"4	7.2	79.7	
e	7.5	79.4	
"4	9.3	77.6	
ch	11.5	75.4	
+1	12.9	74.0	
e	13.3	73.6	
+5.8 = N. W. Cox House	12.9	74.0	ground
" = " " " "	11.9	75.0	Top Foundation
. From 1+11. to 1+23 amt Porch 1.8' Back of line			
Top of Porch	11.9		
1+27 = S. Line House			
	131' 5"		
e-5.8	13.6	73.3	Top step of stairs into cellar
e	13.2	73.7	
ch	12.6	74.1	
+2	10.8	76.1	
"4	9.4	77.5	
e	8.0	78.9	

286.86

131'S. (20H)

W 1/4	7.7	79.2
+3	4.9	82.0
cl	3.5	83.4
W	2.0	84.9
	142'S.	
W	1.8	85.1
cl	3.4	83.5
+7	5.0	81.9
1/4	7.5	79.4
e	7.8	79.1
1/4	8.6	78.3
cl	10.2	76.7
e	12.0	74.9
+13.4 = Front of garage	13.1	73.8
	155'S.	
-13.4 = " " "	13.1	73.8
e	12.3	74.6
cl	10.2	76.7
1/4	8.7	78.2
e	7.8	79.1
1/4	7.5	79.4
+3	4.8	82.1
cl	3.2	83.7
W	2.0	84.9

286.86

165'S

W	2.0	74.9
cl	3.1	83.8
+7	4.0	82.3
1/4	7.6	79.3
e	7.9	79.0
+3	8.0	78.9
1/4	9.6	77.3
cl	11.6	75.3
e	13.5	73.4
+13	17.0	69.9
	190'S	
-15	16.7	70.2
E (3)	12.4	74.5
cl	10.5	76.4
1/4	9.4	77.5
+5	8.6	78.3
+7	7.5	79.4
e	7.3	79.6
+7	7.0	79.9
1/4	4.8	82.1
cl	3.0	83.9
W	2.0	84.9
T.P	2.30	286.60
	2.56	284.30

Halter

71

286.60

220' S.

w	2.0	84.6
cl	2.8	838
14	3.7	829
+2	5.5	811
e	5.5	811
+2	5.5	811
14	8.5	781
cl	10.2	764
e	11.9	747
+10	13.6	730

260' S.

-10	11.4	752
e	9.5	771
cl	7.3	793
14	4.7	819
+4	3.7	829
e	3.6	830
+8	3.6	830
14	2.9	837
cl	2.2	844
+8	2.0	846
w	0.6	860

300' S.

w	0.6	860
+2	1.7	849
cl	2.0	846

286.60

Haller

72

14	2.2	844
+3	2.8	838
e	2.6	840
+6	2.4	842
14	3.6	830
cl	5.5	81.1
e	7.2	79.4
+10	9.5	77.1

325' S.

-10	9.7	76.9
e	7.2	79.4
cl	5.2	81.4
14	3.6	830
+4	2.5	84.1
e	2.7	839
+7	3.0	83.6
14	2.5	84.1
cl	2.2	844
+8	2.1	84.5
w	1.2	85.4

350' S.

w	1.8	84.8
+2	3.0	83.6
cl	2.9	837
14	3.2	834
+2	3.6	83.0

386.60

350's (eoh)

c	3.5	831
+6	3.2	837
1/4	4.3	823
cb	6.3	803
c	8.1	785
+10	10.4	762
375's		
-10	12.5	741
E	10.1	765
d	8.1	785
1/4	6.6	800
+4	5.0	816
c	5.1	815
1/4	4.9	817
cb	3.7	827
+8	3.8	829
w	2.8	839
400's		
w	4.8	818
cb	5.2	814
+8	6.0	806
1/4	7.4	792
c	7.8	788
+7	8.0	786
1/4	9.2	774
d	10.9	757

286.60

Haller

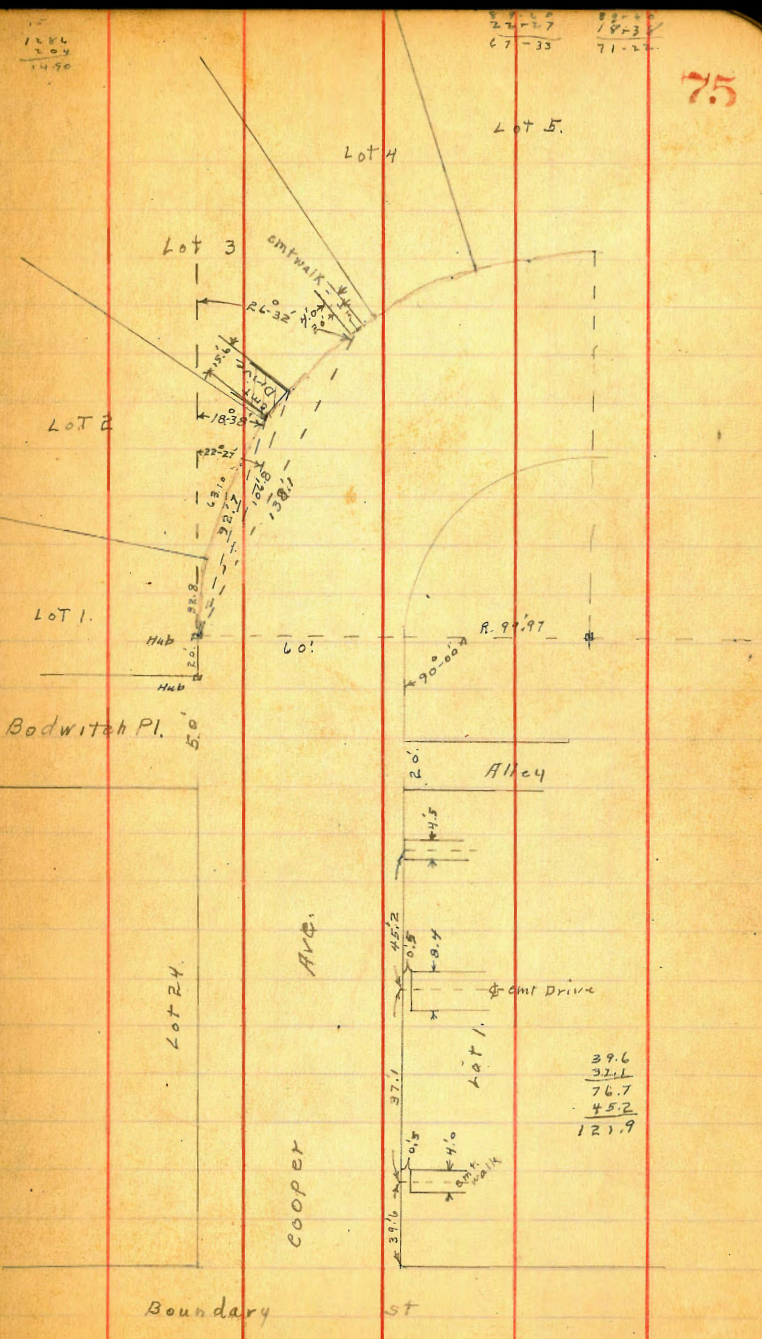
73

E	12.6	74.0
+10	15.0	71.6
430's		
-10	18.0	68.6
E	16.6	70.0
cb	15.1	71.5
1/4	13.7	72.9
+2	12.6	740
c	12.4	742
1/4	12.1	745
+1	11.2	754
cb	10.4	762
w	9.6	770
T.P.	0.17	273.81
460's		
w	1.7	721
cb	2.1	717
+8	2.8	710
1/4	3.5	703
c	4.1	697
+8	4.2	696
1/4	5.2	686
cb	5.9	679
E	6.5	673
+10	7.5	663

273.81 12.96 273.64

6-19-29 Levels on Walks & Drives on
miller Cooper Ave. East of Boundary St

BM. B.P.	4.87	304.25	299.38	N.E. COOPER & Boundary
cont. Cor. of Drive & Garage on Lot 3				
Chd. 92.7	L 18° 36'	from P.C. Hub	15.27	288.98
on E. Cor. above Drive				
Chd. 106.8	L 22° 27'	from P.C. Hub	15.24	289.01
on E. Walk on Lot 3				
Chd. 138.1	L 26° 32'	from P.C. Hub	14.70	289.35
E. End. Cor. at S.E. Cor. Boundary & Cooper	3.80	300.45		
at S. of Cooper				
on E. cont. Walk 39.6 E. of Boundary St	2.17	302.08		
at S. of Cooper				
at cont. Drive 76.7 E. of Boundary St	2.51	301.74		
on S. line Cooper				
at cont. Walk 121.9 E. of Boundary St	4.10	300.15		



75

Levels for Culvert R.M. of S. curb line
of Redwood from Elmer Haller East
to Bottom of Lane. 11-4-29
mils.

B.M.	4.05	304.65		300.60	6159-24
00 = E. line Haller			3.5		
0+40			4.5		
0+85			8.8		
1+15			12.4		
T.P.	0.04	291.55	13.14	291.51	
1+40			2.8		
T.P.	0.36	278.91	13.00	278.55	
1+90			1.1	277.8	
2+05			4.0		
2+25			11.0		
T.P.	0.28	266.43	12.76	266.15	
2+54			9.3	257.1	
T.P.	0.55	253.86	13.12	253.31	
T.P.	0.14	240.89	13.11	240.75	
2+58			4.0	244.9	
2+78			7.4	233.5	
2+98			9.0		
3+05			6.6		
3+07			2.8		
3+26			7.3		
3+37			12.5		
T.P.	0.66	228.57	12.98	227.91	
3+75			9.2		
T.P.	0.15	215.79	12.93	215.64	

215.79
304.05
4.07
B.P. P.M. 299.98
5 M Redwood & Vancouver
76

					3+97	4.8	
					4+08	7.2	
					4+37	16.3	
					4+50	16.3	
					4+58	19.2	Bridge
					4+65	19.5	Bottom Wash
							& Wash
See Page 67 for Additional X See							
Continued from Page 74							
Redwood St. X See. Vancouver East							
304.05							
10' E. of Vancouver (con)							
					N. 44	3.2	300.8
					el	3.2	300.8
					N.	3.2	300.8
					25' E		
					N	3.6	300.4
					el	3.9	300.1
					14	3.6	300.4
					4	3.9	300.2
							No change South
					50' E		
					4	5.6	298.5
					N. 44	5.5	298.6
					el	4.9	299.1
					N	4.4	299.6

continued Page 77.

See Pg 61
this book for
notes on Sun 74

No change South

Redwood St. X Sec Continued from Page 76.

304.05

64' E of Vancouver.

N.	4.8	299.2		5.1/4
cb	2.0	298.0		±
+4	6.9	297.1	original ground	1/4
1/4	7.1	296.9		cb
±	6.7	297.3	No change to S	N.

72' E

±	10.3	293.7	No change to S	N
1/4	9.5	294.5		cb
cb	9.1	294.9		1/4
N	5.2	298.8		±

78' E

N	5.2	298.8		5.1/4
cb	11.3	292.7		±
1/4	11.4	292.6		N. 1/4
±	12.3	291.7	No change to S.	+ 5 original ground.

93' E

±	17.8	286.2	No change to S	N
1/4	17.3	286.7		
cb	11.0	293.0		N-
N	5.5	298.5		N.

106' E

N	6.2	297.8		cb
cb	13.1	290.9		1/4
1/4	20.2	283.8		±
+4 original ground	23.2	280.8		
±	24.7	279.3	No change to S.	

304.05

111' E

29.0	275.0	No change to S.
26.2	277.8	
20.5	283.5	
13.6	290.4	
7.5	296.5	

120' E

7.0	297.0	
13.4	290.6	
19.9	284.1	
27.0	277.0	
29.3	274.7	no change to S.

137' E

20.2	283.5	No change to S.
19.4	284.6	
18.2	285.8	
14.8	289.2	
8.2	295.8	

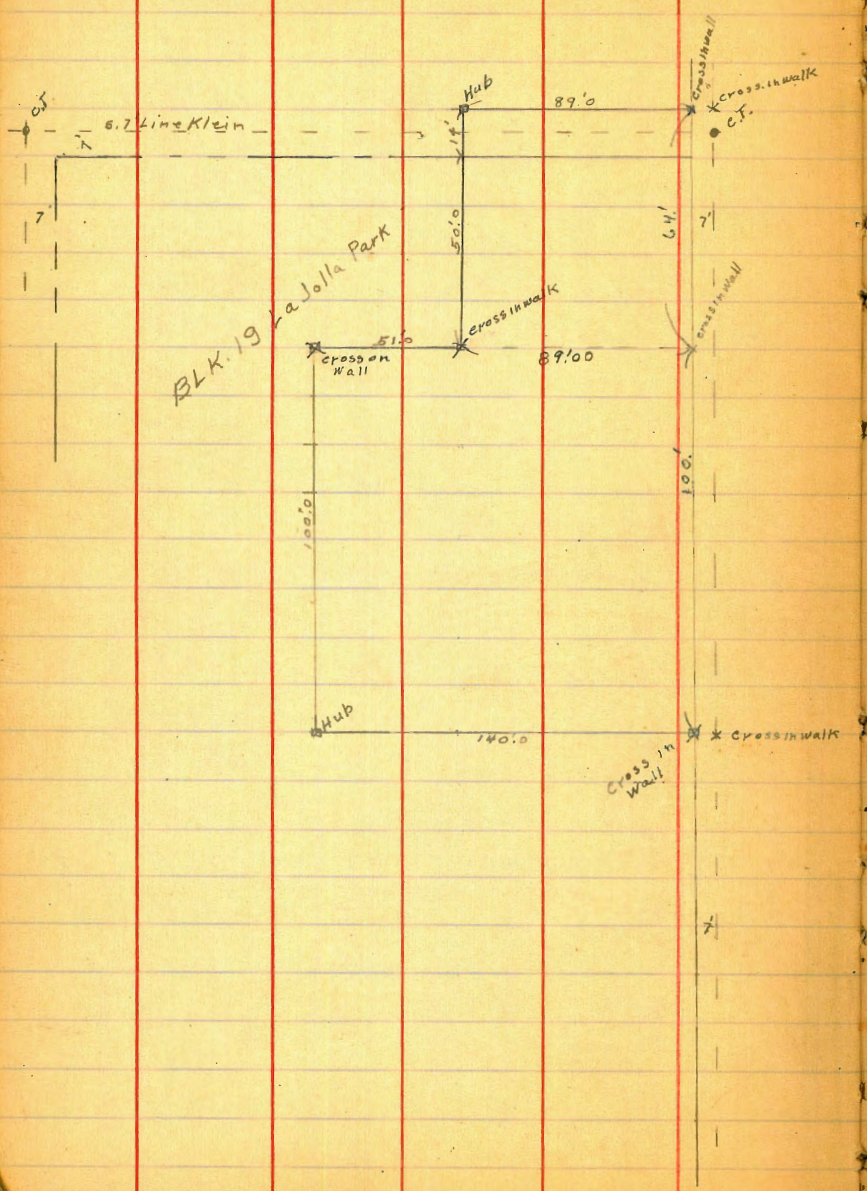
155' E

8.5	295.5	
9.7	294.3	
10.3	293.7	
10.8	293.2	
12.2	291.8	

No. More change.

Survey of Lots 21-22-23-24 8-10-28
 Miller
 + E. 89' of Lots 25 + 26 BLK 19 La Jolla Park
 Also E. 89' of the S. 1/4 of Klein St Bet Couvrie + Draper

78



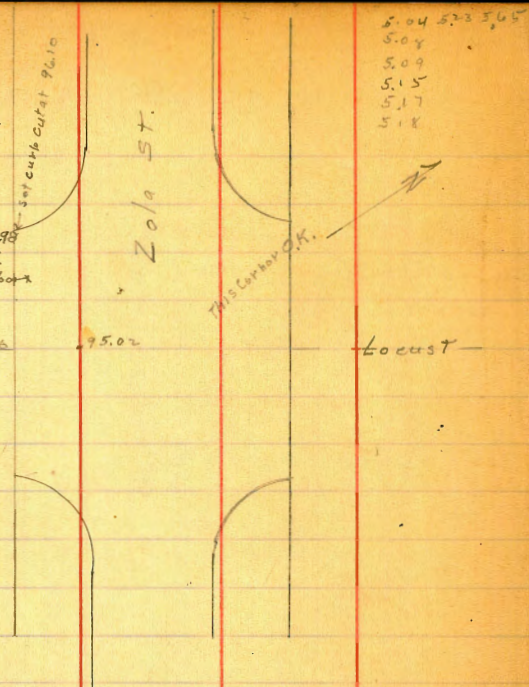
Gutter Levels Zola & Aleott 8-8-28
maller.

79

4.02 3.98 3.92 3.98
93.98 3.96

Σ 100.00 Assumed

00' d	3.90	4.00
00' gutter	36.10	
5' on gutter	4.50	
10' " "	4.58	
15' " "	4.98	
20' " "	95.02	

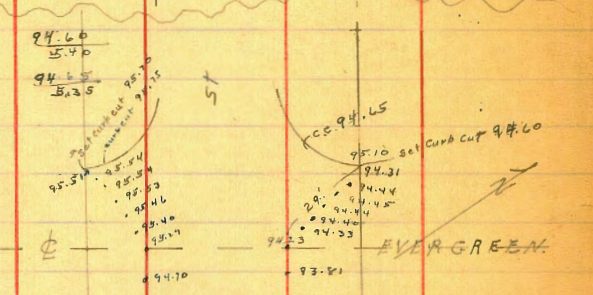


5.04 5.23 5.45
5.04
5.09
5.15
5.17
5.18

N. Cor

Σ 100.00 Assumed

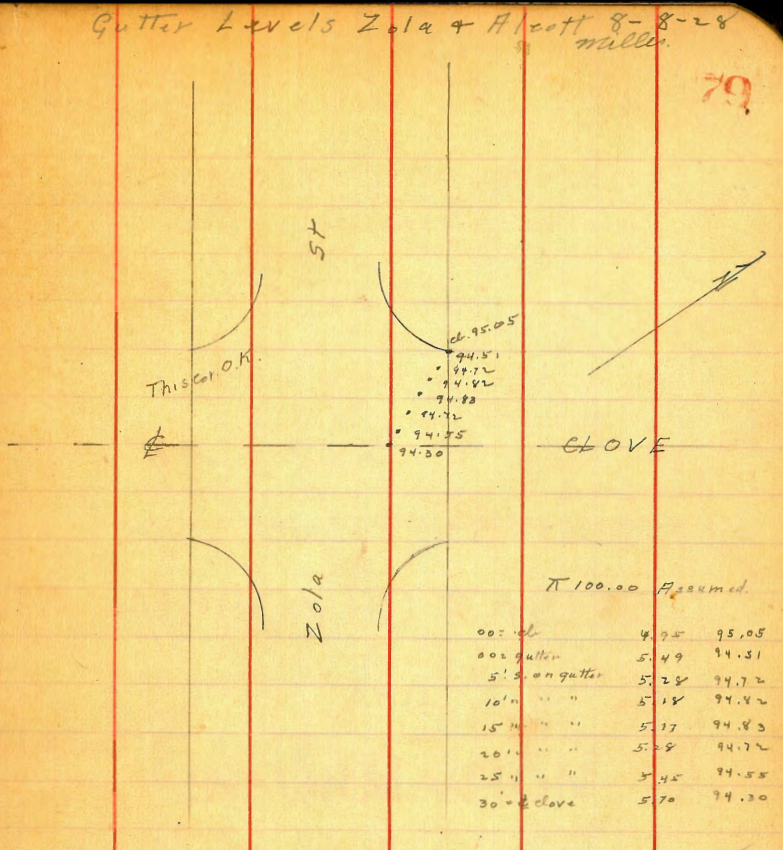
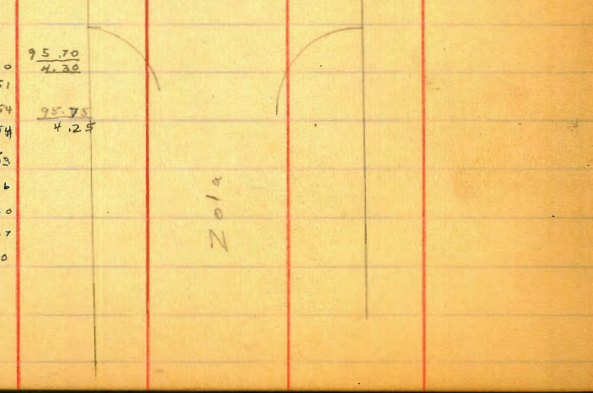
00' Top curb	4.90	95.10
00' gutter	5.42	94.31
5' on gutter	5.56	94.44
10' " "	5.55	94.45
15' " "	5.54	94.44
20' " "	5.60	94.40
25' " "	5.67	94.33
29' " "	5.77	94.23
40' " "	6.19	93.81



W. Cor

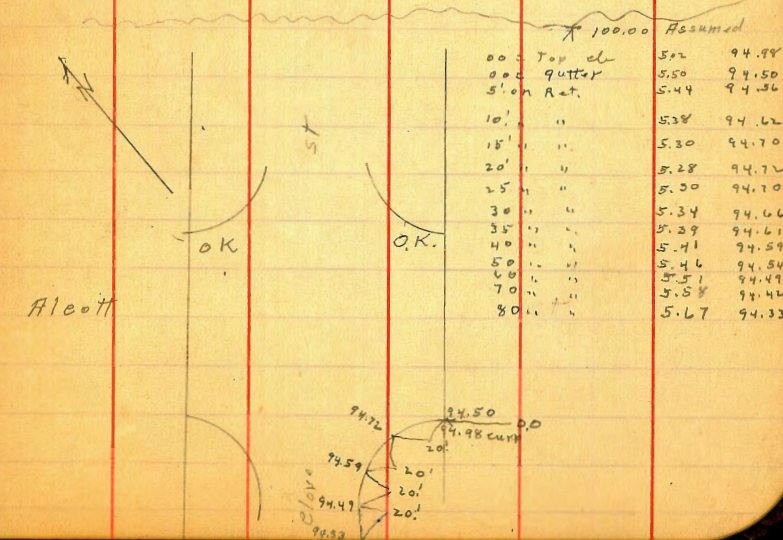
Σ 100.00 Assumed

00' d	3.70	95.30
00' gutter	4.49	95.51
5' on gutter	4.46	95.54
10' " "	4.46	95.54
15' " "	4.47	95.53
20' " "	4.54	95.46
25' " "	4.60	95.40
29' " "	4.73	95.27
40' " "	5.20	94.70



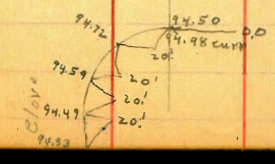
Σ 100.00 Assumed

00' d	4.95	95.05
00' gutter	5.49	94.31
5' on gutter	5.28	94.72
10' " "	5.18	94.42
15' " "	5.17	94.83
20' " "	5.28	94.72
25' " "	5.45	94.55
30' d clove	5.70	94.30



Σ 100.00 Assumed

00' Top d	5.2	94.88
00' gutter	5.50	94.50
5' on Ret.	5.44	94.36
10' " "	5.38	94.62
15' " "	5.30	94.70
20' " "	5.28	94.72
25' " "	5.30	94.70
30' " "	5.34	94.66
35' " "	5.29	94.61
40' " "	5.41	94.59
50' " "	5.46	94.54
60' " "	5.51	94.49
70' " "	5.58	94.42
80' " "	5.67	94.33



DIRECTIONS FOR USE OF TABLES

TABLE No. 1

Distance of slope stake from side or shoulder stake for any width roadway, slope 1 1/2 to 1. If ground is nearly level, the cut or fill at side stake is located by the double entry method in left column and top row. The number in body

of table in same row and column gives distance from side stake to slope stake. If ground is not

IMPROVED TABLES
AND
INFORMATION

to cut or fill and find distance in table. Set up rod at this point and line of sight should cut target.

TABLE No. 2

To find Tangent and External for curve of any other degree, divide by degree of curve and add correction found in column of corrections.

Degree of curve with a given L may be found by dividing tangent (or external), opposite L by given tangent (or external).

The distance from a point on the tangent to the curve is very nearly the square of the tangent length divided by twice the radius.

4.0 3.98 3.92 3.84

1.00
0.50
0.25
0.10
0.05
0.02
0.01

1.00
0.50
0.25
0.10
0.05
0.02
0.01

8.24

7.99
4.98

ENGINEERING DEPARTMENT
CITY OF
CALIFORNIA

8.27
0.28
7.99
5.30

291.14
7.11
298.25
12.01
296.34
12.00
298.34
6.34
291.96
294.25
6.33
291.87

E.
10
26
50
64
72
78
93
104
111
120
137
155

4.37
301.35 SW. Blk. Cor. Vancover & Redwood
284.34 L. 6780
284.80

305.72
7.22
298.50
2.37
300.87
9.73
291.14
0.26
291.40
11.75
292.69 BM. B.P. McQuinn & Wife
1.09
289.78
0.39
290.39
12.71
293.10
0.87
293.97
11.14
304.25
4.87
299.38 BM. B.P. McBoundary & Cooper
2.64
302.02
6.65
395.37
9.36
304.73
0.01
304.72
6.40
311.52
6.47
305.05 BM. B.P. McPalm & Bancroft
305.04

291.12
284.79