

1255

FIELD BOOK

No. 380F

No. 200 8/11/64 7/11/64  
ENGINEERING DEPARTMENT,  
SAN DIEGO.  
CITY OF CALIFORNIA.

MICROFILMED

DEC 22 1964

ENGINEERING DEPARTMENT,  
CITY OF SAN DIEGO,  
CALIFORNIA.

Our Leather Bound Engineers Note Books are carried in the following rulings:

- No. 380 LEVEL BOOK. Left and Right Hand Page the same as Left Hand Page of this Book.
- No. 382 FIELD BOOK. Left Hand Page as in this Book, Right Hand Page 4 x 4 to the inch, Center Line Red.
- No. 384 MINING TRANSIT BOOK. Left Hand Page as in this Book, Right Hand Page 8x8 to the inch, Center Line Red.
- No. 385 FIELD BOOK. Left Hand Page as in this Book, Right Hand Page 8 vertical and 4 horizontal lines to the inch, Center Line Red.

We also carry the Note Books listed above, bound in extra strong Fabri-Hide (otherwise the same quality of book), which can be furnished at a somewhat lower price.

In ordering Fabri-Hide covered books, add the letter "F" to catalog number.

**THE FREDERICK POST CO.**  
*ENGINEERING and DRAFTING SUPPLIES*  
IRVING PARK STATION  
CHICAGO, ILL.

INDEX		Page
Franklin St. X section		1-4
Beardsley St. X section		A-22
Location of storm drain outfall		
Foot of Crosby St.		23-24
Grade Stakes Alley <sup>Park Villas</sup> BK 59		24-25
Cliff Place X section		26-29
X Sec. Cherokee Ave. Adams to Mt. View		41-42
X Sec. Flora Place - Mt. View to End.		38-40
X Sec. Florida Street. University to Adams		43-
Alley 76 U.H.		35

No. 200 877 800 7/1/1911

Cross-section Franklin St From  
28<sup>th</sup> to 31<sup>st</sup> Cont From Book 1213 **1**  
P80

4+74	59.15	
10 <sup>s</sup>		12.9
5.6		11.9
+7		11.4
+13		7.5
+17		7.3
cb		8.7
1/4		7.9
1/4		7.7
1/4		7.4
cb		7.0
+2		6.6
+10		6.0
N.L.		6.1
Walk at 4+79 1' wide	5.57	
4+79		
N.L.		5.8
+10		6.0
cb		7.0
1/4		7.4
1/4		7.6
1/4		7.9
+5		8.3
+8		8.8
cb		8.2
+3		7.2

## Franklin St.

A+79	59.15
Sob+9	8.7
+11	10.2
S.L.	12.2
1's	8.3
5's	9.0
10's	11.7
A+8A	
12's	12.8
3's	8.6
S.L.	8.3
+6	8.7
+12	8.5
+14	7.6
+18	7.4
cb	8.6
+1	8.9
+5	8.3
1/4	7.9
ϕ	7.6
1/4	7.3
cb	6.9
+10	5.9
N.L.	5.8

5400	59.15
N.L.	5.3
+10	5.6
+17	5.8
cb	6.6
1/4	6.8
ϕ	7.2
1/4	7.7
+7	8.1
cb	8.4
+1	8.0
+8	7.2
+15	7.9
S.L.	8.0
2's	8.0
13's	13.5
5+19	11.9
20's	11.9
7's	6.8
S.L.	7.0
+5	7.6
+18	7.3
cb	7.9
+3	7.4
1/4	7.0
ϕ	6.4

## Franklin St.

5+19

59.15

4+5	6.1
1/4	6.1
+8	5.8
cb	5.4
+2	5.1
+16	4.9
N.L.	4.5

5+46

N.L.	3.2
+9	3.8
+18	3.8
cb	4.1
+5	4.6
1/4	4.6
+4	4.6
4	4.9
1/4	5.7
+8	6.4
cb	6.9
+1	6.9
+2	6.2
+15	6.5
S.L.	6.3

5+67

59.15

S.L.	5.2
+10	5.6
+18	5.0
+19	6.0
cb	6.0
+4	5.1
1/4	4.9
4	4.0
+5	3.8
+8	3.6
cb	2.8
+8	2.4
N.L.	2.2
Dr. way at 5+53 on N.L.	2.48
Stops at 5+79 on N.L.	2.24
6+00Z = W.L. 31st St.	
N.L.	0.5
+9	1.0
+15	1.0
cb	1.8
+2	2.1
1/4	2.3
4	3.1
1/4	3.4
+8	4.0

3

Franklin St.

6+007

59.15

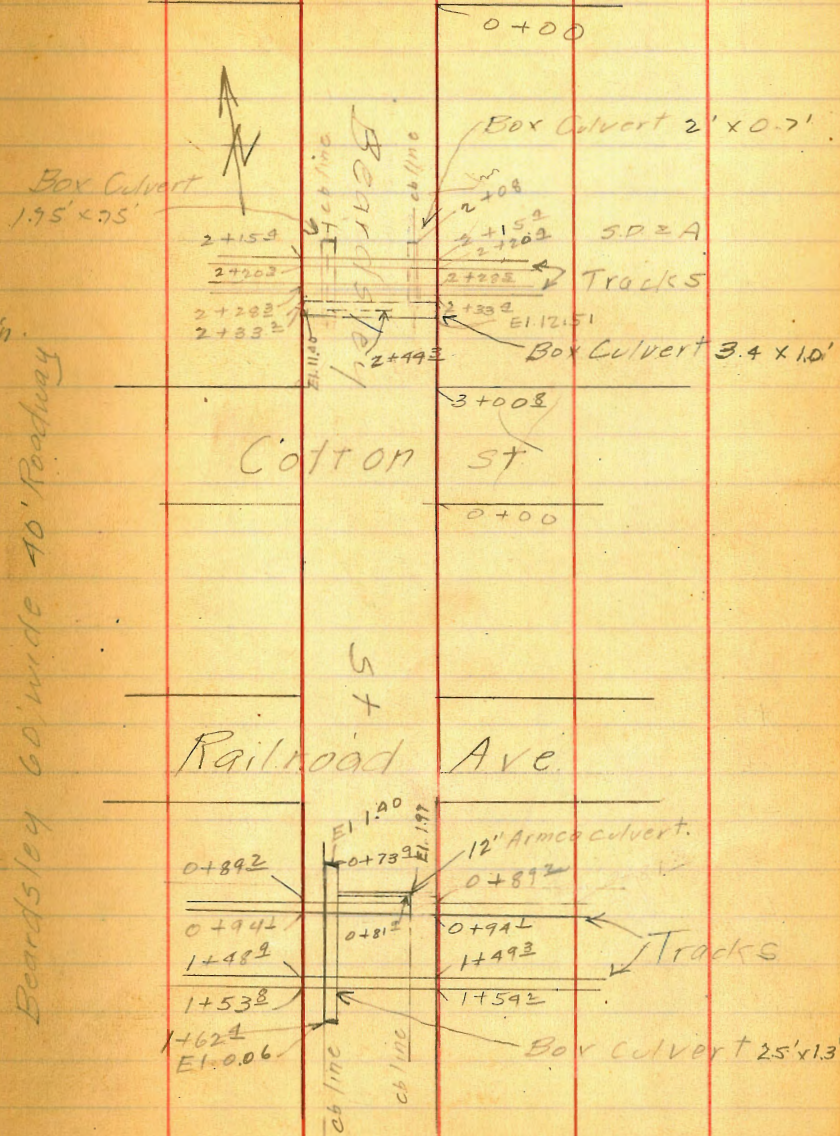
Scb.			4.1	
+1			3.6	
+15			4.0	
S.L.			3.3	
T.P	13.02	71.86	0.31	58.84
T.P	12.36	84.19	0.03	71.83
B.M.			2.03	82.16

BP NE  
30' E Franklin

Beardsley 60' wide 40' Roadway

Main St.

4



Sketch of tracks & culverts on Beardsley St.

May 28-28  
 Gordon  
 Label  
 Morgan.

Cross-section Beardsley St. From Main to the Bay.

Sto	+	M.1	-	E.1	0+15	25.42
B.M	1.27	37.18		35.91	W.L	5.6 19.8
	0.95	25.42	12.61	24.57	+8	5.7 19.7
0+00					cb	6.0 19.4
W.L on (S. walk)		5.23		20.19	+2	6.6 18.8
cb top cb		5.29		20.13	+7	6.8 18.6
90+		6.2		19.2	4	6.5 18.9
1/4		6.3		19.1	+5	6.6 18.8
1/2		6.3		19.1	4	6.4 19.0
3/4		6.6		18.8	1/4	6.4 19.0
90+		6.3		19.1	+4	6.7 18.7
E cb top cb		5.43		19.99	+8	6.1 19.3
EL (OR sidewalk)		5.29		20.13	cb	6.9 18.5
0+01					+2	5.6 19.8
EL		5.3		20.1	EL	5.5 19.9
#8		5.5		19.9	0+50	
cb		5.9		19.5	EL	6.3 19.1
+1		6.1		19.3	+8	6.5 18.9
1/4		6.4		19.0	+9	7.7 17.7
1/2		6.5		18.9	cb	7.2 18.2
3/4		6.3		19.1	+7	7.3 18.1
+9		6.3		19.1	1/4	7.2 18.2
cb		6.2		19.2	+4	7.1 18.3
+4		5.2		20.2	+8	7.3 18.1
W.L		5.4		20.0	4	7.2 18.2
					1/4	7.3 18.1
					+6	7.8 17.6

Plotted June 12-28  
 L.B.H.



## Beardsley st

0+50	25.42		
W <sub>9</sub> +8		7.7	17.7
cb		6.8	18.6
+1		6.6	18.8
w.L.		6.4	19.0
0+80		6.9	18.5
w.L.		7.3	18.1
cb		8.4	17.0
+3			
1/4		7.9	17.5
E		7.8	17.6
+3		7.9	17.5
1/4		7.5	17.9
+2		7.3	18.1
+5		7.8	17.6
+8		6.0	17.4
+9		8.4	17.0
cb		7.7	17.7
+1		6.9	18.5
E.L.		7.1	18.3
1+00			
E.L.		7.6	17.8
+3		7.6	17.8
+9		7.3	18.1
cb		7.7	17.7

1+00

25.42

6

Ecb+1	8.7	16.7
+2	8.8	16.6
+3	8.3	17.1
1/4	8.3	17.1
E	8.3	17.1
1/4	8.5	16.9
+5	8.8	16.6
+8	8.7	16.7
cb	7.7	17.7
+4	7.7	17.7
w.L.	7.4	18.0
1+50		
w.L.	9.1	16.3
+2	9.0	16.4
cb	8.9	16.5
+3	9.4	16.0
1/4	9.2	16.2
E	9.2	16.2
+2	9.3	16.1
+5	9.2	16.2
1/4	9.2	16.2
+4	9.0	16.4
+7	9.8	15.6
+8	9.6	15.8
cb	9.0	16.4

## Beardsley St.

1+50	25.42		
E.L.	8.9	16.5	
1+95			
E.L.	9.3	16.1	
+6	9.4	16.0	
+8	11.3	14.1	
cb	12.0	13.4	
+1	11.4	14.0	
+2	10.3	15.1	
1/4	10.3	15.1	
2	10.4	15.0	
1/4	10.6	14.8	
+6	10.7	14.5	
+7	10.6	14.8	
cb	10.4	15.0	
+3	9.7	15.7	
w.L.	9.5	15.9	
2+00			
w.L.	10.1	15.3	
+4	10.4	15.0	
+8	10.2	15.2	
+9	10.6	14.8	
cb	12.0	13.4	
+2	12.2	13.2	
+2	10.8	14.6	
+8	10.6	14.8	

2+00

25.42

7

w/4		10.7	14.7
+7		10.5	14.9
2		10.5	14.9
1/4		10.4	15.0
+7		10.5	14.9
cb		12.0	13.4
+2		11.8	13.6
+3		9.6	15.8
+7		9.8	15.6
E.L.		9.6	15.8
T.P.	3.53	18.82	10.13
2+08			
E.L.		3.7	15.1
+7		4.0	14.8
cb		5.6	13.2
F.L. of culvert		5.90	12.92
top of culvert.		4.65	14.17
+5		4.0	14.8
1/4		4.1	14.7
2		4.1	14.7
1/4		4.1	14.7
+8		4.1	14.7
cb		6.0	12.8
F.L. of Culvert		6.09	12.73
top of Culvert.		4.86	13.96
+3		4.5	14.3

Beardley St.

2+08

18.82

W.L.	4.8	14.0
2+15 <sup>#</sup> on rail		
W.L.	4.49	14.35
cb	4.45	14.37
1/4	4.71	14.41
⊕	4.36	14.46
1/4	4.30	14.52
cb	4.27	14.55
E.L.	4.20	14.62

2+90<sup>#</sup> on rail

E.L.	4.19	14.63
⊕	4.35	14.47
W.L.	4.51	14.31

2+285<sup>#</sup> on rail

W.L.	4.42	14.40
cb	4.32	14.50
1/4	4.22	14.60
⊕	4.18	14.64
1/4	4.13	14.69
cb	4.10	14.72
E.L.	4.08	14.74

2+33<sup>#</sup> on rail

E.L.	4.13	14.69
⊕	4.25	14.57
W.L.	4.46	14.36

2+40

18.82

8

W.L.	4.9	14.1
+5	4.4	14.4
cb	4.5	14.3
1/4	4.5	14.3
⊕	4.5	14.3
1/4	4.3	14.5
cb	4.3	14.5
E.L.	4.1	14.7

2+44<sup>#</sup> Culvert

3'E End Culvert (F.L.)	6.31	12.51
top End Culvert.	5.02	13.80
W.L. wood Culvert F.L.	7.42	11.40
top wood Culvert	6.10	12.72

2+50

E.L.	4.4	14.4
cb	4.5	14.3
+6	4.8	14.0
1/4	4.8	14.0
⊕	4.8	14.0
1/4	4.7	14.1
cb	4.6	14.2
W.L.	3.6	15.2

## Beardsley St.

13.62

3+002 = N.L. Colton

W.L.	5.2	13.6
+8	5.0	13.8
cb	5.2	13.6
+5	5.7	13.1
1/4	5.4	13.4
+5	5.2	13.6
±	5.4	13.4
1/4	5.5	13.3
cb	6.2	12.6
+7	6.5	12.3
E.L.	6.3	12.5

Intersection Colton &amp; Beardsley

Colton 80' wide 52' Roadway

N cb line Colton

E.L.	6.6	12.2
cb	6.0	12.8
1/4	5.7	13.1
±	5.6	13.2
+4	5.5	13.3
1/4	5.6	13.2
+6	5.9	12.9
cb	6.0	12.8
+4	6.1	12.7
+6	5.9	12.9
W.L.	5.9	12.9

13.62

N 1/4 line Colton

W.L.	6.5	12.3
+4	6.4	12.4
cb	6.1	12.7
1/4	6.0	12.8
±	5.8	13.0
1/4	5.9	12.9
cb	6.3	12.5
E.L.	6.7	12.1

± Colton

E.L.	7.0	11.8
cb	6.6	12.2
1/4	6.1	12.7
+3	6.1	12.7
±	6.2	12.6
1/4	6.4	12.4
cb	6.2	12.6
W.L.	6.4	12.4

S 1/4 line Colton

W.L.	6.8	12.0
cb	6.4	12.4
+5	6.5	12.3
1/4	6.4	12.4
±	6.3	12.5
+2	6.2	12.6
+5	6.4	12.4
1/4	6.4	12.4

9

## Beardsley St.

1882

## S/A line Colton

E/A +5	6.4	12.4
cb	6.6	12.2
+5	6.8	12.0
E.L.	7.2	11.6
S cb line Colton		
E.L.	7.0	11.8
cb	6.6	12.2
+3	6.5	12.3
+6	6.6	12.2
1/4	6.5	12.3
+5	6.7	12.1
+8	6.6	12.2
2	6.6	12.2
1/4	6.8	12.0
+4	7.1	11.7
+5	7.0	11.8
+6	6.5	12.3
+8	6.2	12.6
cb	6.3	12.5
w.L.	6.9	11.9

1882

## 0+00 = S.L. Colton

w.L.	6.8	12.0
+5	7.2	11.6
cb	7.4	11.4
+3	7.1	11.7
+4	7.5	11.3
+7	7.6	11.2
1/4	7.3	11.5
+8	6.9	11.9
2	6.9	11.9
+6	6.8	12.0
1/4	6.4	12.4
+1	6.3	12.5
+3	6.3	12.5
+7	6.5	12.3
cb	6.6	12.2
+3	6.6	12.2
E.L.	7.5	11.3
0+06 = Nord track on W. Side		
E.L.	6.7	12.1
+8	6.9	11.9
cb	6.7	12.1
+5 top rail	6.20	12.62
1/4 top rail	6.00	12.82
1/4 ground	6.3	12.5
+5	7.0	11.8

10

Beardsley St.

0406	18.82		
±	7.0	11.8	
+7	7.3	11.5	
¼	7.5	11.3	
+3	7.8	11.0	
+8	7.7	11.1	
cb	7.7	11.1	
+9	7.6	11.2	
w.l.	7.0	11.8	
0+50			
w.l.	8.4	10.4	
+5	8.8	10.0	
cb	8.3	10.5	
+4	8.4	10.4	
+7	8.7	10.1	
¼	8.5	10.3	
+3	8.3	10.5	
+7	8.3	10.5	
±	8.1	10.7	
+3	7.8	10.0	
+6	7.8	10.0	
¼	7.4	11.4	
+3	7.1	11.7	
cb	7.2	11.6	
cb top rail	6.60	12.22	
+5 top rail	6.77	11.05	
+6	7.6	11.2	

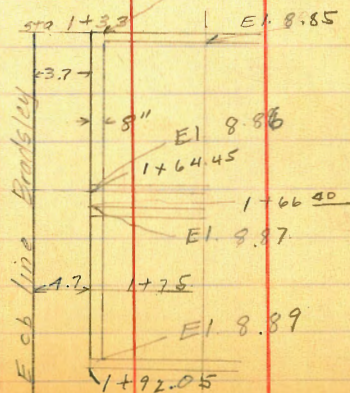
0+50 18.82

Ecb+8	7.8	11.0	
E.L.	8.2	10.6	
T.P. 0.63	10.26	9.19	9.63
1+00			
E.L.	0.4	9.9	
cb	0.5	9.8	
¼	0.7	9.6	
+4	0.9	9.4	
±	0.7	9.6	
¼	1.2	9.1	
+3	1.6	8.7	
+6	1.5	8.8	
+8	1.3	9.0	
cb	1.2	9.1	
+5	1.2	9.1	
w.l.	1.3	9.0	
N.W. cor. of vat	1.41	8.85	

11

3.45  
3.3  
64.45  
1.85  
66.40  
25.65  
92.05

Sketch of  
Vats on E. Side  
Beardsley be-  
tween Colton &  
Railroad.



## Beardsley St.

10.26

Sw ear vat	1.40	8.86
N.W ear vat	1.39	8.87
Sw ear vat	1.37	8.89
1+37		
w.l.	1.6	8.7
+6	2.0	8.3
cb	2.2	7.9
+3	2.4	7.9
+5	2.6	7.7
1/4	2.2	7.1
♀	1.5	6.8
+5	1.6	8.7
1/4	1.3	9.0
+4	1.0	9.3
+6	1.0	9.3
cb	0.8	9.5
+32 edg vat.	1.5	8.8
1+75		
EL+52 edg vat.	2.8	7.5
cb	3.0	7.3
1/4	3.0	7.3
♀	3.0	7.3
+5	2.8	7.5
+8	3.0	7.3
1/4	3.2	7.1

1+75

10.26

W/A+5		3.6	6.7
cb		3.0	7.3
w.l.		1.8	8.5
T.P	1.71	11.34	2.34
2+00			2.63
EL		4.7	6.6
+7		4.7	6.6
cb		4.8	6.5
1/4		4.7	6.6
+5		4.7	6.6
♀		4.7	6.6
+5		4.6	6.7
1/4		4.9	6.4
+4		5.2	6.1
+6		5.4	5.9
cb		4.9	6.4
+5		3.8	7.5
w.l.		3.5	7.8
2+34			
w.l.		4.2	2.1
+3		4.2	7.1
cb		5.1	6.2
+8		5.7	5.6
1/4		5.7	5.6
♀		5.2	6.1

12

Beardsley St.

2+34

11.34

E 1/4	5.4	5.9
+5	5.2	6.1
cb	5.2	6.1
+5	5.3	6.0
E.L.	5.2	6.1

2+83

E.L.	5.4	5.9
+5	6.2	5.1
cb	6.3	5.0
1/4	6.2	5.1
+4	6.1	5.2
±	5.6	5.7
+6	6.4	4.9
1/4	6.6	4.7
+3	6.8	4.5
+4	6.5	4.8
+7	6.5	4.8
cb	5.9	5.4
w.L.	5.3	6.0

3+00<sup>3</sup> = N.L. Railroad Ave.  
11.34

13

w.L.	5.3	6.0
cb	5.8	5.5
+5	6.8	4.5
1/4	6.8	4.5
+8	6.0	5.3
±	5.7	5.6
1/4	6.2	5.1
cb	6.3	5.0
+3	6.6	4.7
+4	6.0	5.3
E.L.	5.6	5.7

M.H. on ± 2.5 s of N.L. Railroad 5.57 5.77

Intersection Railroad & Beardsley

Railroad 80' wide 52' Roadway

Sec. 7'S of N.L. R.R.

E.L.	5.4	5.9
+5	5.6	5.7
cb	6.0	5.3
+5	6.3	5.0
1/4	6.3	5.0
+5	6.2	5.1
±	5.8	5.5
+5	6.3	5.0
1/4	6.8	4.5
+3	7.1	4.2



## Beardsley St.

11-34

Sec 7' S. of N.L. R.R.

cb	6.1	5.2
+6	5.5	5.8
w.L.	5.4	5.9
N. cb line R.R.		
w.L.	5.3	6.0
cb	6.3	5.0
+7	7.1	4.2
1/4	6.8	4.5
+6	6.3	5.0
±	6.1	5.2
+3	6.1	5.2
1/4	6.3	5.0
+6	6.5	4.8
cb	5.9	5.4
+5	5.5	5.8
E.L.	5.4	5.9
N'4 line R.R.		
E.L.	7.3	4.0
+5	7.3	4.0
cb	7.0	4.3
+5	6.6	4.7
+7	6.7	4.6
1/4	6.5	4.8
+5	6.5	4.8
±	6.6	4.7

N'4 line R.R. 11-34

14

±+5	6.6	4.7
1/4	7.0	4.3
+3	7.3	4.0
cb	6.7	4.6
w.L.	5.8	5.5
± RR		
w.L.	5.9	5.4
+5	6.4	4.9
cb	6.6	4.7
+9	7.4	3.9
1/4	7.3	4.0
+6	6.9	4.4
±	6.9	4.4
+3	7.0	4.3
+6	6.6	4.7
1/4	6.5	4.8
+6	6.8	4.5
cb	7.1	4.2
+3	7.0	4.3
E.L.	6.9	4.4

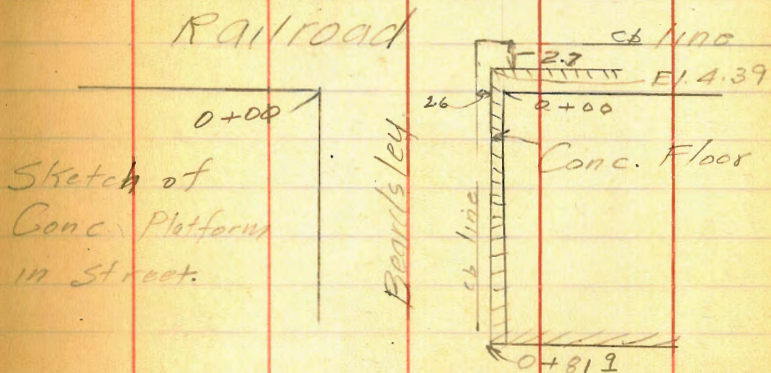
Beardsley St.

S/A line		1134 R.R.	
E.L.		6.3	5.0
+4		7.2	4.1
cb		7.2	4.1
+8		6.6	4.7
1/4		6.6	4.7
+4		6.8	4.5
±		7.1	4.2
+5		7.2	4.1
1/4		7.6	3.7
+2		7.7	3.6
cb		7.0	4.3
w.L.		6.1	5.2

Scb line RR			
w.L.		6.7	4.6
cb		7.5	3.8
+4		7.4	3.9
1/4		7.9	3.4
+4		7.5	3.8
±		7.5	3.8
+7		7.1	4.2
1/4		7.1	4.2
+3		6.7	4.6
cb		6.7	4.6
+4		6.8	4.5
E.L.		6.4	4.9

1134

15



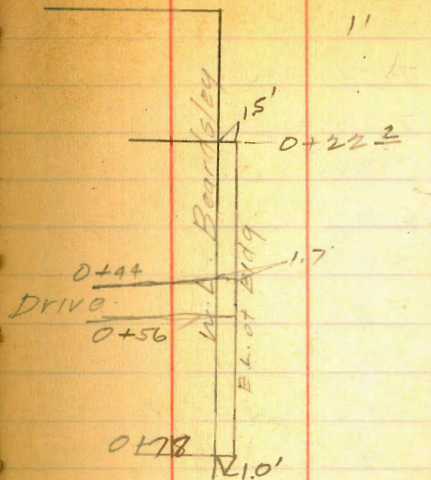
11.34

0+00 = S.L. Railroad.		11.34	
E.L. on conc floor		6.95	4.39
+75 w. edge conc floor		7.25	4.09
cb		7.32	4.02
+3		7.0	4.3
+6		7.2	4.1
1/4		7.0	4.3
±		7.1	4.2
+5		7.5	3.8
1/4		7.6	3.7
+5		8.1	3.2
cb		7.6	3.7
w.L.		7.5	3.8
		7.6	3.7

Beardsley St

0+13	11.34		
w.l.		7.5	3.8
cb		7.6	3.7
+7		7.8	3.5
1/4		8.2	3.1
+5		7.7	3.6
±		7.7	3.6
+5		7.4	3.9
1/4		7.4	3.9
+5		7.4	3.9
cb		7.7	3.6
+2.5 wedge conc floor		7.69	3.65
E.L. on conc.		7.73	3.61
0+22			
E.L. on conc		7.56	3.78
+7.6 wedge conc.		7.65	3.69
cb		7.5	3.9
1/4		7.5	3.8
±		7.7	3.6
+4		7.8	3.5
+8		8.2	3.1
1/4		8.0	3.3
+3		7.7	3.6
cb		7.6	3.7
w.l.		7.7	3.6

Railroad



Sketch of Building  
in street on W.L

	11.34		
floor E.L. of Bldg	0+222	7.00	4.34
0+44			
w.l.		7.5	3.8
cb		7.4	3.9
+8		7.6	3.7
1/4		7.8	3.5
+3		8.3	3.0
±		7.8	3.5
+5		7.6	3.7
1/4		7.6	3.7
+6		7.4	3.9
cb		7.7	3.6
+2.5 wedge conc.		7.68	3.66
E.L. on conc.		7.57	3.77

## Beardsley St.

0+56		11:34	
E.L.	on Conc	7.59	3.75
+7 <sup>±</sup>	Wedg Conc	7.77	3.57
cb		7.8	3.5
+3		8.0	3.3
+5		7.7	3.6
1/4		7.8	3.5
+2		7.7	3.6
+5		7.8	3.5
⊥		7.7	3.6
+7		8.1	3.2
+9		8.3	3.0
1/4		8.1	3.2
+6		7.8	3.5
cb		7.9	3.4
W.L.		7.8	3.5
0+78			
W.L.		8.3	3.0
cb		8.1	3.2
1/4		8.1	3.2
⊥		7.7	3.6
1/4		7.7	3.6
+7		7.7	3.6
cb		8.4	2.9
+2 <sup>±</sup>	Wedg Conc.	7.97	3.37
E.L.	on Conc	7.68	3.66

		11:34		17
T.P.	5.20	8.77	7.77	3.57
0+73 <sup>±</sup>	FL Culvert		7.37	1.40
	top Culvert		5.80	2.97
0+81 <sup>±</sup>				
W.L.			5.3	3.5
cb			5.4	3.4
1/4			5.3	3.5
⊥			5.0	3.8
+5			5.1	3.7
+7			4.9	3.9
1/4			5.0	3.8
+7			5.1	3.7
+9			5.4	3.4
cb	FL of Culvert		6.80	1.97
cb	ground.		6.4	2.4
+2 <sup>±</sup>	Wedg Conc		5.51	3.26
E.L.	on Conc		5.19	3.58
0+87				
E.L.			5.4	3.4
cb			5.5	3.3
+3			4.9	3.9
1/4			4.9	3.9
+5			5.0	3.8
⊥			4.9	3.9
+5			5.3	3.5

## Beardsley St

0+87	8.77		
w 1/4		5.3	3.5
cb		5.4	3.4
w.L.		5.4	3.4
0+89 <sup>2</sup> on rail			
w.L.		4.92	3.85
cb		4.92	3.85
1/4		5.01	3.76
+		4.96	3.81
1/4		4.97	3.80
cb		4.95	3.82
0+99 <sup>2</sup> on rail			
cb		4.87	3.90
+		4.90	3.87
w.L.		4.89	3.88
1+00			
w.L.		5.6	3.2
cb		5.4	3.4
1/4		5.3	3.5
+1		5.4	3.4
+8		5.0	3.8
+		5.0	3.8
+5		5.2	3.6
1/4		5.0	3.8
+5		5.0	3.8
cb		5.4	3.4
E.L.		5.5	3.3

1+24	8.77		
E.L.		5.6	3.2
cb		5.4	3.4
+3		5.6	3.2
+		5.6	3.2
+3		5.5	3.3
+		5.7	2.9
+5		6.0	2.8
1/4		5.8	3.0
cb		5.6	3.2
w.L.		5.8	3.0
1+44			
w.L.		6.4	2.4
cb		6.1	2.7
1/4		5.7	3.1
+7		5.7	3.1
+		5.5	3.3
1/4		5.2	3.6
+8		5.2	3.6
cb		5.2	3.6
E.L.		5.6	3.2
1+48 <sup>2</sup> on rail			
E.L.		5.00	3.77
+		5.21	3.56
w.L.		5.40	3.37

## Beardsley St.

877

1+53<sup>3</sup> on rail

w.l.	5.29	3.48
cb	5.23	3.54
1/4	5.18	3.59
±	5.15	3.62
1/4	5.09	3.65
cb	5.01	3.76
E.L.	4.98	3.79

1+60

E.L.	5.7	3.1
cb	5.3	3.5
+5	5.2	3.6
1/4	5.2	3.6
±	5.3	3.5

M.H. on ±

1/4	5.06	3.71
1/4	6.0	2.8
+3	6.1	2.7
cb	6.7	2.1
+9	6.1	2.7
w.l.	6.1	2.7

1+62<sup>2</sup>

web FL Culvert	8.71	0.06
top culvert	7.35	1.42

1+66

877

19

w.l.	7.3	1.5
+5	7.3	1.5
+9	7.9	0.9
cb	8.7	0.1
+3	8.8	0.0
+4	7.7	1.1
+9	6.1	2.7
1/4	6.0	2.8
±	5.4	3.4
+2	5.4	3.4
+7	5.6	3.2
1/4	5.5	3.3
+9	5.4	3.4
cb	5.5	3.3
+5	5.9	2.9
E.L.	6.0	2.8

1+80

E.L.	6.4	2.4
cb	6.7	2.1
1/4	6.3	2.5
+3	6.6	2.2
+5	6.4	2.4
+9	6.5	2.3
±	7.1	1.7
+5	8.5	0.3

## Bardsley St

1+80	8.77		
w 1/4		8.4	0.4
+8		8.4	0.4
cb		8.8	0.0
w.L.		8.6	0.2
T.P.	2.42	4.45	6.74
2+10			2.03
w.L.		4.2	0.3
cb		4.1	0.4
1/4		3.9	0.6
+5		3.8	0.7
ϕ		3.3	1.2
+8		2.5	2.0
1/4		2.5	2.0
+7		2.7	1.8
cb		2.4	2.1
E.L.		2.6	1.9
2+28			
E.L.		2.3	2.2
+8		2.2	2.3
cb		2.5	2.0
+1		2.7	1.8
+2		3.5	1.0
1/4		2.8	1.7
+5		3.7	0.8
ϕ		3.0	1.5

2+28

4.45

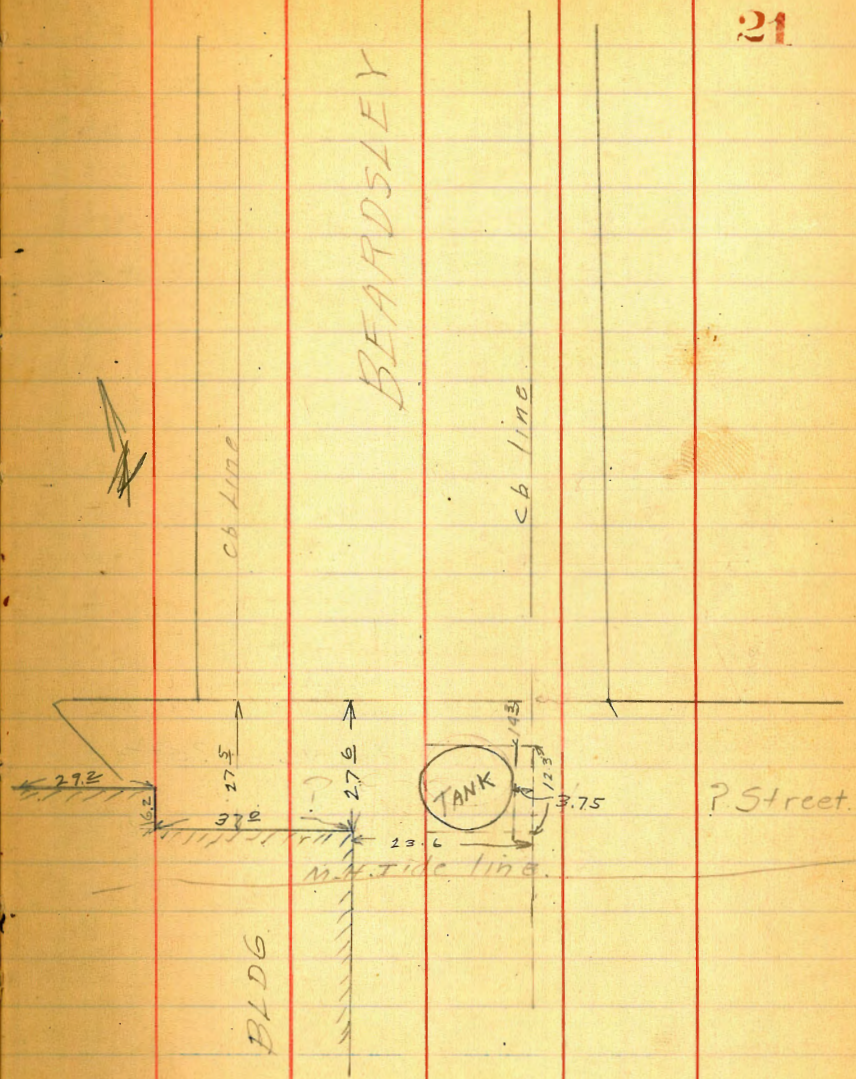
20

w 1/4		3.2	1.3
cb		3.4	1.1
+5		3.4	1.1
w.L.		3.3	1.2
2+59			
w.L.		5.6	-1.1
cb		5.4	-0.9
1/4		5.3	-0.8
ϕ		4.4	0.1
+8		4.2	0.3
1/4		4.2	0.3
+5		4.3	0.2
cb		4.0	0.5
E.L.		3.4	1.1
3+00 = N.L. of ? St.			
E.L.		4.0	0.5
cb		4.1	0.4
+6		4.5	0.0
+9		4.3	0.2
1/4		4.3	0.2
ϕ		5.2	-0.7
+7		5.5	-1.0
1/4		5.5	-1.0
cb		5.5	-1.0
w.L.		5.6	-1.1

Beardsley St

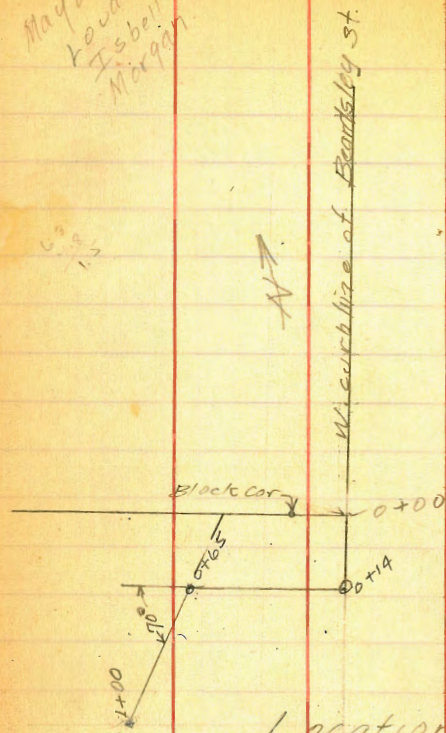
N. cb line	4.45 ? st.	(ra'cb)	
W.L.		5.7	-1.2
+6		5.4	-0.9
cb		5.4	-0.9
+8		5.7	-1.2
1/4		5.7	-1.2
+5		5.6	-1.1
¢		5.4	-0.9
+6		4.8	-0.3
1/4		4.5	0.0
+7		4.6	-0.1
cb		4.5	0.0
+4		4.1	0.4
E.L.		4.1	0.4
B.M. <i>ss side Beardsley</i> Top fire plug		0.16	4.29
B.M.	4.83.	9.12	4.29
T.P.	11.32	20.21	0.23
T.P.	10.31	30.42	0.10
T.P.	8.75	38.70	0.47
B.M. Beginning		2.81	35.89 (35.91)

237  
154  
143





May 28-28  
Rowdon  
Isbell  
Morgan



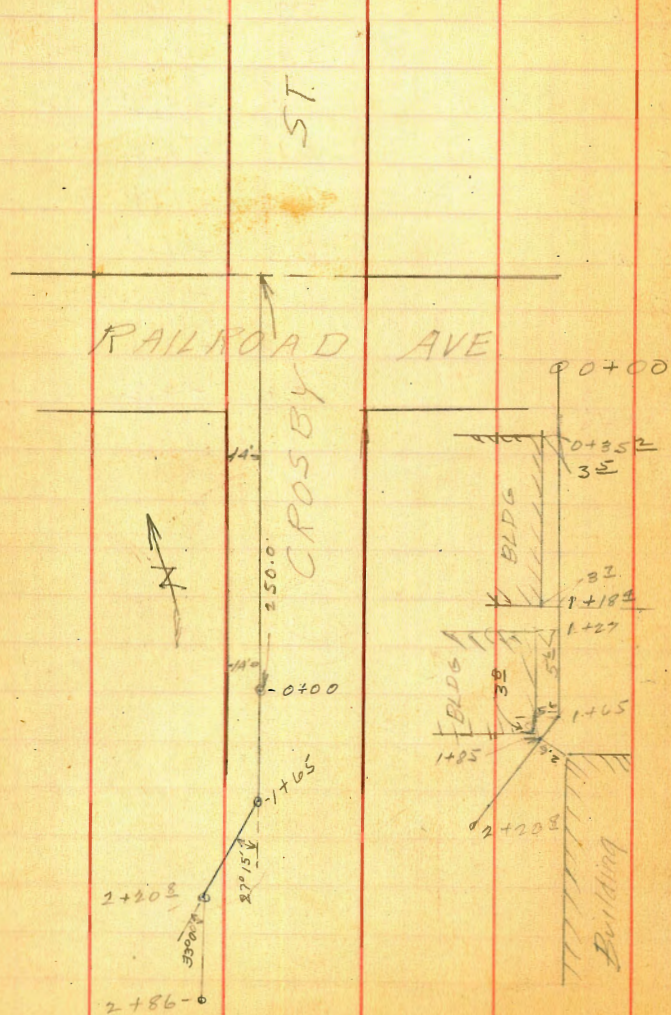
Location Storm Drain  
Outfall. From N.E. of ? St to Bay.

### Profile of Storm Drain Outfall.

Sta	+	H.I.	-	El.	22
BM	0.45	4.74		4.29	
0+00			5.8	-1.1	
0+14	L		5.7	-1.0	
0+35			5.9	-1.2	
0+44			5.9	-1.2	
0+55			6.1	-1.4	
0+60			6.5	-1.8	
0+65	L		6.3	-1.6	
0+75			6.9	-2.2	
0+80			7.8	-3.1	
1+00	= end.		8.9	-4.2	

May 20-28  
 London  
 Morgan  
 Tobell

LOCATION OF STORM DRAIN  
 OUTFALL AT FOOT OF CROSBY ST.



PROFILE OF STORM DRAIN OUTFALL  
 FOOT OF CROSBY ST.

Sta	+	H.I	-	E.I.
	1.93	22.06		20.13
	2.92	12.48	12.50	9.56
	4.08	9.67	6.89	5.59
0+00			4.6	5.1
0+02			4.3	5.4
0+20			4.6	5.1
0+30			4.4	5.2
+45			4.8	4.9
1+00			5.4	4.3
1+13			5.6	4.1
1+25			6.3	3.4
1+50			6.8	2.9
1+65			7.2	2.5
1+74			7.6	2.1
T.P.	4.33	7.03	6.97	2.70
1+85			5.1	1.9
1+90			7.5	-0.5
1+95			5.2	1.8
2+04			5.1	1.9
2+09			7.9	-0.9
2+15			8.4	-1.4
2+20			8.4	-1.4
2+27			8.4	-1.4
2+41			9.7	-2.7
2+48			9.7	-2.7

23

cb. sv.  
 Main & Bardsley

Profile storm drain

703

2+53		10.0	-3.0
2+60		10.0	-3.0
2+71		10.6	-3.6
2+86	end	11.1	-4.1
B.M. Nail in Pile	30' S. of Shell Dock Foot Crosby	4.01	3.02

24

Grade stakes Alley Bldg 54  
Park Killas.

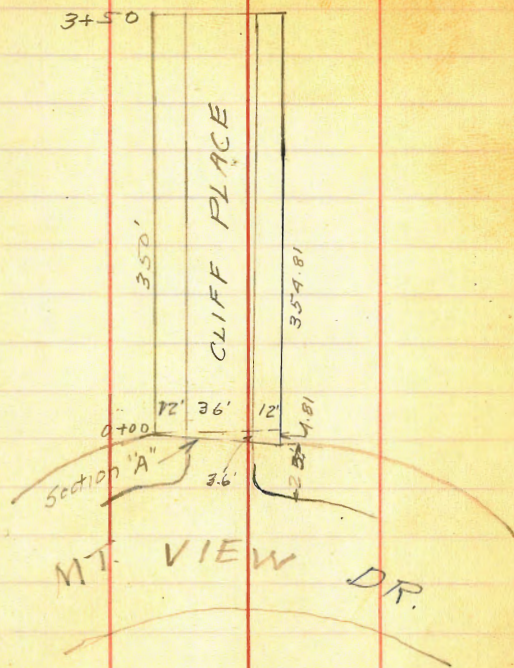
May 29-28

Loudon  
Isbell  
Morgan.

Sta	+ H.1	=	EI.	Grade	C or F.
3+01 E	6.78	332.12		325.34	325.34
W			6.55	325.59	325.60
2+81 E			4.29	327.83	326.40 C 1.43
W			4.19	327.93	326.60 C 1.33
2+61 W			4.49	327.63	327.28 C 0.43
E			4.52	327.60	327.2 C 0.40
2+41 E			5.32	326.80	327.10 F 0.30
W			5.07	327.05	327.10 F 0.05
2+10 W			5.12	327.00	326.46 C 0.54
E			5.82	326.30	326.29 F 0.09
1+60 E			6.98	325.14	325.26 F 0.12
W			5.53	326.59	325.44 C 1.15
1+10 W			6.55	325.57	324.42 C 1.15
E			8.50	323.62	324.13 F 0.51
0+60 E			9.65	322.47	323.00 F 0.53
W			8.50	323.62	323.40 C 0.22
T.P. W 464		327.45	9.31	322.81	

Sta	+	H.I	-	E.I	Grade	Coeff
		327.45				
0+90 W		4.60	322.85	322.70		C 0.15
E		4.97	322.48	322.30		C 0.18
0+20 E		5.82	321.63	321.10		C 0.53
W		4.84	322.61	321.50		C 0.11
0+00 W		7.72	319.73			
0+00 E		7.92	319.53			

Cross-section of Cliff Place



3.6  
May 29-28  
Louden  
Zobel  
Merrin.

Cross-section Cliff Place

26

B.M.	3.56	395.94		392.38	B.R. SW 392.38 Mt View
T.P.	6.98	397.41	5.41	390.53	
B.M.	2.52	397.27	2.66	394.75	B.R. N.E. Cliff PL. 2 Mt View

Section "A"

Web			2.92	394.35
gut			3.2	394.1
1/4			3.1	394.2
+5			2.9	394.4
±			3.0	394.3
1/4			3.2	394.1
gut			3.4	393.9
Ecb			2.62	394.65
0+00	SL			
Ecb			2.69	394.58
gut			3.5	393.8
+6			3.3	394.0
1/4			3.2	394.1
+6			3.0	394.3
±			3.0	394.3
+5			2.9	394.4
1/4			3.1	394.2
gut			3.5	393.8
Web			2.95	394.32

cb ch against Profile 7-25-28 G.B.H.

## Cliff Pl.

0+25	397.27		
wcb	3.12	394.15	
gut	4.0	393.3	
1/4	3.4	393.9	
+5	3.2	394.1	
♀	3.3	394.0	
+5	3.4	393.9	
1/4	3.5	393.8	
gut	3.9	393.4	
Ecb	3.06	394.24	
0+50			
Ecb	3.30	393.97	
gut	3.9	393.4	
1/4	3.6	393.7	
+6	3.5	393.8	
♀	3.5	393.8	
+7	3.6	393.7	
1/4	3.7	393.6	
+6	4.2	393.1	
gut	4.4	392.9	
wcb	3.44	393.83	

0+75	397.27		27
wcb	3.79	393.49	
gut	4.6	392.7	
1/4	4.0	393.3	
♀	3.6	393.7	
1/4	3.8	393.5	
gut	4.2	393.1	
Ecb	3.71	393.52	
1+00			
Ecb	4.04	393.23	
gut	4.5	392.8	
1/4	4.2	393.1	
+6	3.9	393.4	
♀	3.9	393.4	
+3	4.0	393.3	
1/4	4.3	393.0	
gut	4.9	392.4	
wcb	4.11	393.16	
1+25			
wcb	4.39	392.88	
gut	5.4	391.9	
1/4	4.6	392.7	
♀	4.5	392.8	
+4	4.4	392.9	
1/4	4.7	392.6	
+4	4.9	392.4	
gut	5.1	392.2	

## Cliff. Pl.

1+25	392.27	
Ecb	4.41	392.86
1+50		
Ecb	4.69	392.58
gut	5.5	391.8
1/4	5.0	392.3
+7	4.6	392.7
+	4.7	392.6
+4	4.7	392.6
1/4	4.9	392.4
gut	5.6	391.7
Wcb	4.67	392.60
1+75		
Wcb	5.01	392.26
gut	5.8	391.5
1/4	5.3	392.0
+6	4.9	392.4
+	4.8	392.5
+4	4.8	392.5
1/4	5.2	392.1
gut	5.8	391.5
Ecb	5.03	392.24
2+00		
Ecb	5.30	391.97
gut	6.1	391.2
1/4	5.5	391.8

2+00	397.27	
Ecb +6	5.1	392.2
+	5.2	392.1
+3	5.2	392.1
1/4	5.5	391.8
gut	6.0	391.3
Wcb	5.30	391.97
2+25		
Wcb	5.56	391.71
gut	6.1	391.2
1/4	5.7	391.6
+6	5.5	391.8
+	5.4	391.9
+4	5.4	391.9
1/4	5.7	391.6
gut	6.0	391.3
Ecb	5.65	391.62
2+50		
Ecb	6.06	391.21
gut	6.1	391.2
+4	6.3	391.0
1/4	5.8	391.5
+5	5.5	391.8
+	5.6	391.7
+3	5.7	391.6
1/4	6.1	391.2
gut	6.6	390.7

## Cliff Pl.

2+50	397.27		
Web	5.92	391.35	
2+75			
Web	6.20	391.07	
gut	6.8	390.5	
1/4	6.4	390.9	
+5	6.1	391.2	
♀	6.0	391.3	
1/4	6.5	390.8	
+5	6.8	390.5	
gut	7.1	390.2	
Ecb	6.85	390.92	
3+00			
Ecb	6.72	390.55	
gut	7.4	389.9	
1/4	7.0	390.3	
+6	6.6	390.7	
♀	6.5	390.8	
+4	6.5	390.8	
1/4	6.7	390.6	
gut	7.0	390.3	
Web	6.53	390.74	

3+25	397.27		
Web	6.77	390.50	
gut	7.0	390.3	
+5	7.1	390.2	
1/4	6.9	390.4	
+6	6.8	390.5	
♀	6.8	390.5	
+3	6.9	390.4	
1/4	7.3	390.0	
gut	7.7	389.6	
Ecb	7.02	390.25	
3+50 = End.			
Ecb	7.37	389.90	
gut	7.7	389.6	
1/4	7.4	389.9	
+5	7.1	390.2	
♀	7.0	390.3	
+4	6.9	390.4	
1/4	6.7	390.4	
+7	7.3	390.0	
gut	7.1	390.2	
Web	7.00	390.3	
BM	1.88	396.63	394.75
T.B	6.03	396.18	6.48 390.15
BM	Beginning		3.85 392.33



N 81166  
 Duermitt  
 Jacobson  
 Krennen  
 8/8/12  
 BM SW BP  
 Hawks Mt View Dr

X. Sections of Floral Place  
 Normal Heights from Mt View Drive to 968 SW  
 36' Roadway  
 3/195

	+	42	-	Elev
	595	399.96		394.01
		0+00		
E Top cb		505		394.91
G		5.8		
1/4		5.5		
E		5.0		
1/4		5.4		
G		5.8		
W Top cb		501		394.95
		0+85		
N Top		5.22		394.74
G		6.0		
1/4		5.6		
E		5.1		
1/4		5.6		
G		6.1		
E Top cb		520		394.76
		0+50		
E Top cb		534		394.62
G		6.3		
1/4		5.7		
1/4		5.0		
1/4		5.6		
G		5.9		
W Top cb		525		394.71

	+	π	-	Elev
		399.96		30
			0+75	
N Top cb			5.37	394.59
G			5.8	
1/4			5.6	
1/4			5.1	
1/4			5.7	
G			6.1	
E Top cb			5.91	394.55
			1+00	
E Top cb			5.95	394.51
G			6.3	
1/4			5.9	
1/4			5.4	
1/4			5.6	
G			6.1	
W Top cb			5.55	394.41
			1+25	
W Top cb			5.58	394.38
G			6.2	
1/4			5.8	
1/4			5.7	
1/4			5.9	
G			6.2	
T.P.	3.93	398.02	5.87	394.09
E top cb			3.68	394.34

\* Note These Notes continued page 38 this Book

7/3/17  
Moore

Levels for proposed Culvert at  
North end of Cliff Place

STAB	HT	EIV.	Top EAST CURB at end of H.
002's end of CURB	1.45	391.35	389.90
0+26	1.74		389.6
0+36	1.3		390.7
0+36	3.8		387.6
0+52	18.4		373.0
T.P.	0.92	377.57	12.86 378.49
0+56	13.2		365.4
T.P.	0.13	364.95	12.75 364.82
0+73	13.4		351.6
0+92	20.4		344.6

31



7/14/17  
Moore

Cross Section of Shirley Place 34' wide  
4.5' curbs

SEBP	6.5N	343.87	337.54	
Top North cb of Monroe on W. Shirley				
00 = NL Monroe				
E Top cem		4.74	339.12	
cb " "		4.86	339.01	
gut		5.1	338.5	
C		5.2	338.5	
gut		5.8	338.1	
cb		5.9	338.6	
W		5.2	338.7	
0 + 50				
W		4.8	339.1	
cb		4.9	339.0	
gut		5.3	338.6	
C		4.9	339.0	
gut		5.2	338.7	
cb Top cem		4.64	339.23	
E " "		4.50	339.4	
+100				
E Top cem		4.28	339.59	
cb " "		4.39	339.48	
gut		4.8	339.1	
C		4.6	339.3	
gut		5.2	338.7	
cb		4.7	338.2	
W		4.5	338.4	

Plotted 7-9-28 - CBVH

Paved

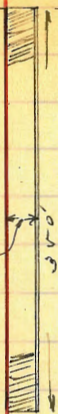
32

Madison

Monroe  
Louisiana  
PC of Future  
Return

EXISTING  
Sidewalk & curb  
Contiguous

4.50



Place

W

Shirley

Place

EXISTING  
Sidewalk + CURB  
5.0' CONTIGUOUS

Radius (?)

NL Monroe

EX. Sidewalk

" CURB

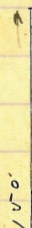
1.34

EX. Sidewalk

" CURB

4.67

5.0



343.87

1+50 = end sidewalk and curb on east

W		4.0	339.7
cb		4.3	339.6
gut		4.8	339.1
C		4.4	339.5
gut		4.6	339.3
cb	Top cem.	4.1W	339.75
E	" "	3.9	339.95
	2+00		
E		4.0	339.9
cb		4.1	339.8
gut		4.8	339.1
C		4.1	339.8
gut		4.5	339.4
cb		4.0	339.9
W		3.9	340.0
	2+50		
W		3.7	340.2
cb		3.8	340.1
gut		4.3	339.6
C		3.9	340.0
gut		4.4	339.5
cb		3.8	340.1
E		3.6	340.3
	3+91 = M.H.R.M		
C		3.4	340.42

343.87

Stickley own

33

3+00

E		3.4	340.5	
cb		3.5	340.4	
gut		4.3	339.6	
C		3.5	340.4	
gut		4.0	339.9	
cb		3.5	340.4	
W		3.4	340.5	
	3+50 = beginning of sidewalk & curb on west			
W	Top cem	3.0	340.9	
cb	" "	3.09	340.86	
gut		3.8	340.1	
C		3.3	340.6	
gut		3.7	340.2	
cb		3.7	340.7	
E		3.1	340.8	
TP	3.50	348.9	3.45	340.4
	4+00 = break in grade on west			
E		7.7	341.2	
cb		7.9	341.0	
gut		8.5	340.4	
C		8.1	340.8	
gut		8.5	340.4	
cb	Top cem	7.8	341.10	
W	" "	7.7	341.22	

348.94

4450			
w	Top cem	6.98	341.94
cb	" "	7.08	340.84
gut		8.0	340.9
C		7.4	341.5
gut		7.8	341.1
cb		7.3	341.6
E		7.1	341.8
5400			
E		6.2	342.7
cb		6.4	342.5
gut		7.3	341.6
C		6.6	342.3
gut		7.3	341.6
cb	Top cem	6.34	342.58
w	" "	6.19	342.73
5450			
w	Top cem	5.46	343.46
cb	" "	5.54	343.40
gut		6.6	342.3
C		5.9	343.0
gut		6.5	342.4
cb		5.7	343.2
E		5.5	343.4

348.94

Shirley Ann Pl

14

6400 = SL Madison			
E	Top cem.	4.51	344.34
cb	" "	4.63	344.29
gut	on paving	5.31	343.61
C	" "	5.32	343.60
gut	" "	5.54	343.37
cb	Top cem	4.75	344.17
w	" "	4.65	344.27
cb to BM	Madison Texas	ngt	<u>345.98</u>
			<u>346.03</u>
			0.05 error

Moore  
7/3/28 Cross Section of Alley Bk. 76 Univ. Hgts. 20' wide

S.E. D.P. 0.80 344.40 343.60 Meade + Georgia  
T.P. 9.47 343.14 10.73 333.67

00 = N.L. Meade

E. Top Curbs 11.52 331.62  
C 10.1 333.0  
W. Top Curbs 8.47 334.67

0+02 Base of Retaining Wall on West

W. 8.4 334.7  
C. 9.6 333.5  
E. 9.6 333.5

0+08

F. 8.5 334.6  
C. 8.8 334.3  
W 7.8 335.3

0+23 end of retaining Wall on West. 0.50 in Alley 3.5 High

Bottom of Foundation 6.8 336.3  
W. 6.4 336.7  
C 7.8 335.3  
E. 8.7 334.4  
+ 10 10.8 332.3

0+51 = 2 single garage 5' back dirt floor on West ✓

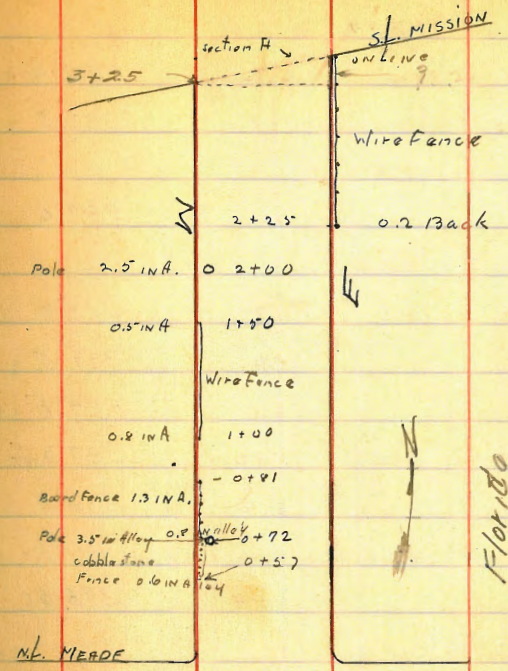
Level Floor 5.8 337.3

0+56 = <sup>cem</sup> 3 Wing Wall s edge of Garage E, 1.55' Back ✓

- 10 10.2 332.9  
Top cem Wing Wall 6.05 337.09  
E 6.5 336.6

Plotted 7-27-28  
G.B.H.

Georgia



343.14

C	6.2	336.9
W	5.8	337.3
+6.5 = E of single garage on East		✓
Level dirt floor	6.1	337.0
+7.5 wing Wall N. edge of garage on E.		✓
W	4.7	338.4
C	5.6	337.5
E	6.1	337.0
wing Wall o.p. back	5.80	337.34
+5	8.9	334.2
+8.1 South edge of Con. Apron on garage on West. 1.1 in A.		
W. Top Corn	4.54	338.60
+9.0 = E double garage on West		
Con. Floor	3.68	339.46
+9.8 N. edge Con Apron 0.5 in A.		
W. Top Corn	4.45	338.69
C	4.3	338.8
+6	4.6	338.5
E	6.9	336.2
+5	7.7	335.4
+2.8 = S edge of double garage Facing North 1.2 Back		
-1	6.7	336.4
E	5.9	337.2
+5	4.5	338.6
C	3.2	339.9

36

W	343.14	2.6	340.5
+4.3 = N. edge garage opening North 1.5 Back on East ✓			
W		1.9	341.2
C		2.9	340.2
+6		3.4	339.7
E		5.7	337.4
+2		7.3	335.8
+6 = E West opening Level Floor		7.3	335.8 ✓
+7.9			
-10		6.2	336.9
E.		4.6	338.5
+6		3.3	339.8
C		2.5	340.6
W		1.5	341.6
+0.5 = E single garage 0.3 N.A. on W. ✓			
dirt floor W.		1.0	342.1
C		2.0	341.1
+7		2.2	340.9
E		2.8	340.3
+10		5.2	337.9
T.P.	6.23	347.51	1.86 341.28
+4.0			
-10		7.2	340.3
E		6.7	340.8
C		5.6	341.9
W		4.5	343.0

347.57

2+72 = s. edge of private cem. sidewalk on East 1.2 Back

W.	4.5	343.0
C	5.2	342.3
E	5.9	341.6
+1.2 Top of Cement	5.54	341.97

2+300 =  $\phi$  Manhole

Top of lid	4.65	342.86
Flow line	17.93	329.58

3+10 = N. edge of private walk

-1.1 Top of cem	5.15	342.36
E	5.2	342.3
C	4.7	342.8
W	3.8	343.7

3+25 = on West = st. Mission

W.	4.0	343.5
C	4.9	342.6
E	5.2	342.3

Section A

E.	4.9	342.6
C	5.1	342.4
W	4.0	343.5

SL

W. Top Curb	11.78	335.73
C	12.4	335.1
E Top Curb	13.45	334.06

347.57

T.P. 4.81 349.31 3.01 344.50

D.M. 5.73 343.58 0.02 IN Error



6/8/28.

## X. Sections of Floral place

Continued from page 30.

+

39802

1+50

E/W

E Top cb	377	394.25 ✓
G	4.5	
1/4	3.9	
1/4	3.4	
1/4	3.9	
G	4.2	
W Top cb	376	394.26 ✓
	1+75	
W Top cb	387	394.15 ✓
G	4.3	
1/4	4.0	
1/4	3.6	
1/4	4.2	
G	4.7	
E Top cb	3.88	394.14 ✓
	2+00	
	4.08	393.94 ✓
	5.0	
1/4	4.6	
1/4	3.9	
1/4	3.9	
1/3	4.0	
1/4	4.3	
E	4.6	
W Top cb	3.97	394.05 ✓

398.00

2+25

W Top cb	490	393.62 ✓
G	5.0	
1/4	4.6	
1/4	4.2	
1/4	4.2	
1/4	4.3	
1/4	4.7	
G	5.4	
E Top cb	4.40	393.62 ✓
	2+50	
E Top cb	4.83	393.19 ✓
G	5.8	
1/4	5.0	
1/4	4.6	
1/4	4.4	
1/4	4.6	
1/4	4.9	
1/4	5.5	
W Top cb	476	393.26 ✓
	2+75	
W Top cb	519	392.88 ✓
G	5.8	
1/4	5.4	
1/4	4.8	
1/4	5.4	

38

398.00

G	6.1
E Top cb	5.27
3700	
E Top cb	5.66
G	6.4
1/4	5.8
1/2	5.2
1/4	5.1
1/4	5.7
G	6.2
W Top cb	5.50
3725	
W Top cb	5.95
G	6.7
1/4	6.1
1/2	5.4
1/2	5.4
1/4	6.2
2b	6.8
E Top cb	6.02
3750	
E	6.4
G	7.1
1/4	6.6
1/2	5.8
1/2	5.7

392.75  
392.36

W Top cb  
W Top cb  
G  
1/4  
1/2  
1/4  
G  
E Top cb

392.52  
392.07

392.00  
391.60

15  
1/4  
G  
W Top cb  
W Top cb  
G  
1/4  
1/2  
1/2  
1/4  
G  
W Top cb  
W Top cb  
G  
1/4  
1/2

398.00

6.0
6.5
7.2
6.38
3775
6.69
7.5
7.1
6.6
6.5
7.0
7.5
6.78
4700
7.12
7.7
7.3
7.2
7.5
8.0
7.05
4725
7.49
8.1
7.8
7.6

39

391.64

391.33

391.24

390.90

390.97

390.53

T  
39802

40

1/4			7.8	
E			8.3	
E Top cb			7.61	390.41 ✓
		9+50		
E Top cb			8.07	389.95 ✓
E			8.7	
1/4			8.1	
E			8.0	
1/4			8.0	
E			8.5	
W Top cb			7.90	390.12 ✓
		9+68 50		
W Top cb			8.16	389.86 ✓
E			8.8	
1/4			8.5	
E			8.6	
1/4			8.7	
1/6			9.1	
E			8.8	
E Top cb			8.31	389.71 ✓
Rod on floor of Dwelling			5.89	392.13
44' Beyond End of St				
Rod on 1st step			8.39	389.63
T.P.	4.91	399.73 ✓	3.20	394.82
check on starting B.M			5.72	394.01

Bliss  
Durrill  
Robson  
Kiernan  
B.M.S.E.B.P.  
Adams, Cherokee

X Sections of Cherokee Street  
Normal Heights from the N Line of Adams to  
the S Line of Mt. View Drive

+ 433 390.11 Elev 385.78

at 00 N Line of Adams

on paving this 35 62

E Topcb	9.01	386.10 ↓
G	9.50	385.61 ↓
1/4	9.03	
1/2	3.85	386.26
3/4	3.98	
G	9.21	385.90 ↓
W Topcb	3.50	386.61 ↓

at 10

W Topcb	Auto Driveway	4.14	385.99 ↓
G		4.1	
1/4		3.9	
1/2		3.8	
3/4		4.0	
G		4.7	
E Topcb		4.09	386.02 ↓

at 53

E Topcb	36 62	9.43	385.68 ↓
G		5.2	
1/4		4.5	
1/2		4.2	
3/4		4.9	
1/2		4.6	
G		4.5	
W Topcb		3.97	386.14 ↓

W Topcb

G

1/2

1/4

1/2

1/4

G

E Topcb

G

1/4

1/2

1/4

1/2

G

W Topcb

W

G

1/4

1/2

1/4

G

E Topcb

at 00

439

385.72

5.0

5.1

4.8

4.6

4.8

5.4

4.82

385.29 ↓

at 5 S Line of Alley

4.85

385.26 ↓

5.5

4.9

4.7

4.7

4.9

5.1

4.65

385.46 ↓

at 90 N Line

4.71

385.40 ↓

5.3

4.9

4.8

5.2

5.8

5.06

385.05 ↓

M



Bliss  
Overmit  
Jacobson  
Kernan  
9/28/48  
BM SW 8P  
Univ of Florida

X Sections of Florida Street  
University to Adams  
+ H.I. - Elev 601st  
28920 28920 28708 10cbs  
10 1/4s

0400 N. line of University on Par. 149

E Topcb	4.27	284.93	285.00
G	4.72	284.48	
1/4	3.67	285.53	
1/4	2.80	286.40	
1/4	2.32	286.88	
G	2.05	287.15	
W Topcb	1.29	287.91	288.00
	0407		
W Topcb	1.85	287.35	287.42
G	2.3	286.9	
1/4	2.9	286.3	
1/4	3.4	285.8	
1/4	4.0	285.2	
G	4.9	284.3	
E Topcb	4.77	284.43	284.49
	0425		
E Topcb	6.07	283.13	283.17
G	6.7	282.5	
1/4	5.8	283.4	
1/4	4.9	284.3	
1/4	4.3	284.9	
G	4.0	285.2	
W Topcb	3.33	285.87	285.93

Page figured 1/29/29

28920

NTopcb	5.38	283.82	283.87
G	6.3	282.9	
1/4	6.3	282.9	
1/4	6.9	282.3	
1/4	7.7	281.5	
G	8.7	280.5	
E Topcb	1.90	281.30	281.34
	0475		
E Topcb	9.70	279.50	279.50
G	10.5	278.7	
1/4	9.6	279.60	
1/4	9.2	280.0	
1/4	8.9	280.3	
1/4	8.4	280.8	
G	8.3	280.9	
W Topcb	7.40	281.80	281.39
	1400		
W Topcb	9.5	279.68	279.73
G	10.2	279.0	
1/4	10.5	278.7	
1/4	10.9	278.3	
1/4	11.2	278.0	
1/4	11.6	277.6	
G	12.2	277.0	
E Topcb	11.53	277.67	277.67
T.P.	2.04	278.94	1280
		276.40	

43

278.44

1425

B. Topcb	2.68	275.76	275.83
G	3.6	274.8	
E 1/4	2.6	275.8	
G 1/2	2.1	276.3	
1/4	1.8	276.6	
2 G	1.6	276.8	
1/2 W. Topcb	0.74	277.70	277.25
G	1450		
1/2 W. Topcb	2.87	275.57	275.19
G	3.8	274.6	
W 1/4	3.9	274.5	
G 1/2	4.1	274.3	
1/4	4.5	273.9	
2 G	5.1	273.3	
1/2 E Topcb	4.54	273.90	274.00
G	1475		
B Topcb E	6.44	272.00	272.17
G	6.8	271.6	
B 1/4	6.5	271.9	
G 1/2	6.1	272.3	
1/4	6.1	272.3	
G	5.8	272.6	
W Topcb	4.97	273.47	273.12
G	2400		
Topcb W	7.09	271.35	271.05
G	7.9	270.5	

278.44

	8.0	270.4	44
	8.0	270.4	
	8.5	269.9	
	8.9	269.5	
E Topcb	8.93	270.01	270.33
	2725		
Topcb	10.39	268.05	268.50
G	10.9	267.5	
1/4	10.4	268.0	
1/2	10.0	268.4	
1/4	9.9	268.5	
G	10.3	268.1	
W Topcb	9.13	267.31	268.99
	2750		
W Topcb	11.15	267.29	267.33
G	12.1	266.3	
1/4	11.9	266.5	
1/2	11.9	266.5	
1/4	12.2	266.2	
G	12.6	265.8	
E Topcb + T.P.	0.88	267.24	266.36
	2775		266.67
E Topcb	2.60	264.64	264.83
G	2.9	264.3	
1/4	3.0	264.2	
1/2	2.7	264.5	

#I.  
267.29

1/4	2.7	264.5	
G	2.8	264.4	
W Topcb	2.05	265.19	265.27
	3+00		
Topcb W	9.17	263.07	263.20
G	9.7	262.5	
1/4	9.6	262.6	
⊕	9.9	262.8	
1/4	9.7	262.5	
G	9.9	262.3	
E Topcb	9.30	262.94	263.00
	3+09 <sup>50</sup>	server hole bot st.	
Red on rim	4.69	262.55	
Red on flow line	17.21	250.03	
	3+20		
E Topcb	5.71	261.53	261.60
G	6.5	260.7	
1/4	5.8	261.4	
⊕	5.6	261.6	
1/4	5.9	261.3	
G	6.4	260.8	
W Topcb	5.8~	261.42	261.60
	3+40		
Topcb W	6.63	260.61	260.80
G	7.3	259.9	
1/4	6.7	260.5	

π  
267.29

⊕	6.5	260.7	45
1/4	6.7	260.5	
G	7.3	259.9	
E Topcb	6.59	260.65	260.80
	3+60		
E Topcb	6.98	260.26	260.40
G	7.6	259.6	
1/4	7.2	260.0	
⊕	7.0	260.2	
1/4	7.2	260.0	
G	7.5	259.7	
	6.99	260.25	260.40
	3+79	⊕ catch Basins	
W Topcb	7.06	260.18	260.30
⊕ other on rim catch Basin	7.97	259.27	
1/4	7.4	259.8	
⊕	7.0	260.0	
1/4	7.5	259.7	
G Rim catch Basin	7.93	259.31	
E Topcb	7.03	260.21	260.30

3+79



Sketch showing size and local req. of catch Basins in Florida. N. of Univ. Edge of Box is 0.50 from face of cb





π  
267.29  
4400

E Topcb	6.91	260.33	260.40
G	7.2	260.0	
1/4	7.1	260.1	
⊕	7.0	260.2	
1/4	7.3	259.9	
G	7.6	259.6	
W Topcb	6.94	260.30	260.40

4450

W Topcb	6.52	260.72	260.80
G	6.8	260.4	
1/4	6.9	260.3	
⊕	6.7	260.5	
1/4	6.7	260.5	
G	7.0	260.2	
E Topcb	6.59	260.70	260.80

5700

E Topcb	6.07	261.17	261.20
G	6.3	260.9	
1/4	6.4	260.8	
⊕	6.4	260.8	
1/4	6.6	260.6	
G	6.7	260.5	
W Topcb	6.07	261.17	261.20
T.P.	6.07	261.17	

5750

W Topcb	6.25	261.59	261.60
---------	------	--------	--------

π  
267.84

G	7.1	260.7	
1/4	6.9	260.9	
⊕	6.6	261.2	
1/4	6.6	261.2	
G	6.7	261.1	
E Topcb	6.32	261.52	261.60

6400 Shine of Lincoln  
<sup>50st</sup>  
<sup>20°cb</sup>  
<sup>10 1/2</sup>

E Topcb	5.94	261.90	262.00
G	6.2	261.6	
1/4	6.1	261.7	
⊕	6.1	261.7	
1/4	6.6	261.2	
G	6.6	261.2	
W Topcb	5.91	261.93	262.00

6714. cb. on West

W on Topcb	5.92	261.92	
W on Ground	5.9	261.9	
cb	6.3	261.5	
1/4	6.4	261.4	
⊕	6.0	261.8	
1/4	5.9	261.9	
G	6.2	261.6	
E Topcb du Robin	5.69	262.15	

6720. cb. on E

E on Topcb	5.58	262.26	
E on Porphy	5.80	262.04	

46

26789

cb	61	261.7
1/4	5.8	262.0
2	5.9	261.9
1/4	6.4	261.4
cb	63	261.5
W	5.8	262.0
	6730	
W	5.3	262.5
cb	6.4	261.4
1/4	6.2	261.6
2	5.7	262.1
1/4	5.8	262.0
cb	5.7	262.1
E on Paving	5.90	262.44
	6740	2 of Lincoln
E on Paving	5.19	262.65
cb	5.9	262.4
1/4	5.5	262.3
2 Rim of Mn. Hole	5.20	262.64
Pod. on flow L140	11.70	256.14
1/4	6.4	261.4
cb	6.2	261.6
W	5.3	262.5
	6750	
W	5.0	262.8
cb	6.0	261.8

26784

1/4	6.0	261.8
2	5.9	262.4
1/4	5.3	262.5
cb	5.9	262.4
E on Paving	5.10	262.8
	6760	cb line on E
E Topcb	4.83	263.01
E on Paving	5.10	262.74
cb	5.4	262.4
1/4	5.2	262.6
2	5.3	262.5
1/4	5.8	262.0
cb	6.0	261.8
+1	5.4	262.4
W	5.3	262.5
	6766	cb Lincoln West
W on Topcb	4.96	262.88
NonGreen d	5.3	262.5
+9	5.2	262.6
cb	6.0	261.8
1/4	5.9	261.9
2	5.2	262.6
1/4	5.2	262.6
2	5.3	262.5
Topcb ch Return	4.89	262.95

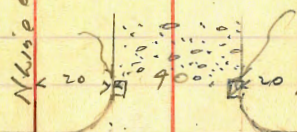
47

26784

6780 = N line of Lincoln = 00

E Cb	9.91	262.93	263.00
G	5.2	262.6	
1/4	5.0	262.8	
1/4	5.2	262.8	
1/4	5.7	262.1	
G	5.5	262.3	
N Top cb	4.80	263.04	263.00
T.P.	9.03	272.10	4.77

N line of Lincoln



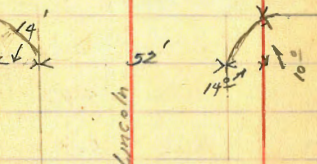
Note  
ca 64 basins  
on Lincoln  
are angled abt of 45-90  
to the horizontal

Note  
20 cbs on East  
side of Florida

Sketch of the  
Intersection of Lincoln  
& Florida

senior Mr. Hahn  
for Hon. line 5/15 see Notes page 97

6750 = 00



Note  
19 cbs on West  
side of Florida

N line of Lincoln = 00

0+15

W. Top Cb	9.76	263.34	263.35
G	9.5	262.6	
1/4	9.7	262.4	
1/4	9.9	262.7	
1/4	9.1	263.0	
G	9.9	262.7	

T  
272.10

E. Top Cb	8.87	263.23	263.32
0+25			
E. Top Cb	8.65	263.45	263.54
G	9.2	262.9	
1/4	8.9	263.2	
1/4	9.5	262.6	
1/4	9.9	262.7	
G	9.3	262.8	
W. Top Cb	8.58	263.52	263.58
0+50			
W. Top Cb	7.98	264.12	
G	8.7	263.4	
1/4	9.1	263.0	
1/4	8.7	263.4	
1/4	8.7	263.4	
G	8.5	263.6	
E. Top Cb	8.13	263.97	264.08
1+00			
E. Top Cb	7.04	265.06	265.17
G	7.7	264.4	
1/4	7.7	264.4	
1/4	7.6	264.5	
1/4	7.8	264.3	
G	7.5	264.6	
W. Top Cb	6.81	265.29	265.33

18

272.10  
1+50

W. Top Cb	5.68	266.42	266.50
G	6.0	265.3	
1/4	6.6	265.5	
1/4	6.7	265.7	
1/4	6.9	265.2	
G	6.6	265.5	
E. Top Cb	5.92	266.18	266.25
	2+00		
E. Top Cb	4.85	267.25	267.33
G	6.0	266.1	
1/4	5.6	266.5	
1/4	5.2	266.9	
1/4	5.4	266.7	
G	5.3	266.8	
W. Top Cb	4.45	267.65	267.67
	2+20		
W. Top Cb	4.03	268.07	268.13
G	4.8	267.3	
1/4	4.9	267.2	
1/4	4.8	267.3	
1/4	5.3	266.8	
G	5.6	266.5	
E. Top Cb	4.45	267.65	267.77
	2+50		
E. Top Cb	3.79	268.31	268.42
G	4.5	267.60	

272.10

49

1/4	4.1	268.0	
1/4	4.0	268.1	
1/4	4.1	268.0	
G	4.0	268.1	
W. Top Cb	3.33	268.77	268.83
	3+00		
W. Top Cb	2.14	269.96	270.00
G	2.9	269.2	
1/4	3.0	269.1	
1/4	2.8	269.3	
1/4	3.0	269.1	
G	3.3	268.8	
E. Top Cb	2.71	269.39	269.50
	3+50		
E. Top Cb	1.63	270.47	270.58
G	2.4	269.7	
1/4	1.9	270.3	
1/4	1.8	270.3	
1/4	1.5	270.6	
G	1.8	270.3	
W. Top Cb	0.99	271.11	271.17
TP.	11.25	282.63	271.38
	4+00		
W. Top Cb	10.44	272.19	272.33
G	11.2	271.4	
1/4	11.1	271.5	

282.63

♀	11.1	271.5	
1/4	11.2	271.4	
G	11.5	271.1	
E. Top Cb.	11.06	271.57	271.67
	4+30		
E. Top Cb.	9.93	272.70	272.75
G	10.3	272.3	
1/4	10.0	272.6	
♀	10.0	272.6	
1/4	10.0	272.6	
G	10.1	272.5	
W. Top Cb.	9.35	273.28	273.50
	5+00		
W. Top Cb.	8.18	274.45	274.66
G	8.8	273.8	
1/4	8.9	273.7	
♀	9.1	273.5	
1/4	9.0	273.6	
G	9.9	273.7	
E. Top Cb.	8.98	273.65	273.84
	5+50		
E. Top Cb.	7.88	274.75	274.92
G	8.1	274.6	
1/4	8.1	274.6	
♀	7.9	274.7	
1/4	7.7	274.9	

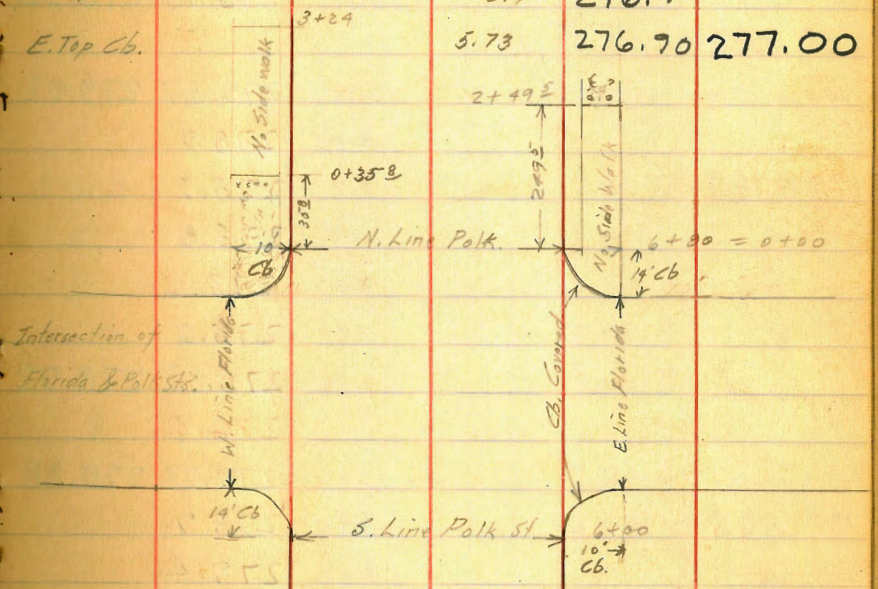
282.63

50

G	7.8	274.8	
W. Top Cb.	6.90	275.73	275.83
	6+00	South Line Park St.	
W. Top Cb.	5.75	276.88	277.00
G	6.5	276.1	
1/4	6.4	276.2	
♀	6.7	275.9	
1/4	7.2	275.4	
G	7.4	275.2	
E. Top Cb.	6.77	275.86	276.00
	6+14		
E. Top Cb.	6.70	275.93	
On Ground	6.8	275.8	
G	7.0	275.6	
1/4	7.2	275.4	
♀	6.5	276.1	
1/4	6.4	276.2	
G	6.2	276.4	
W. Top Cb.	5.66	276.77	
On Ground	5.6	277.0	
	6+27		
W. Line	5.1	277.5	
G	5.8	276.8	
1/4	6.2	276.4	
♀	6.4	276.2	
1/4	7.1	275.5	

G	6.8	275.8
E. Line	7.1	275.5
	6+40	Polk St.
E. Line	6.4	276.2
G	6.4	276.2
1/4	6.9	275.7
¢	6.1	276.5
1/4	6.0	276.6
G	5.9	276.7
W. Line	5.1	277.5
	6+53	
W. Line	5.2	277.4
G	5.9	276.7
1/4	5.8	276.8
¢	6.0	276.6
1/4	6.4	276.2
G	6.1	276.5
E. Line	6.2	276.4
	6+66	
E. Top Cb.	5.73	276.90
Ground.	5.8	276.8
G.	5.9	276.7
1/4	6.1	276.5
¢	5.8	276.8
1/4	5.7	276.9
G	5.6	277.0

N. Top Return	4.65	277.98
Ground	4.7	277.9
	6+80	N. Line Polk St. = 0+00
W. Top Cb.	4.66	277.97 278.00
G	5.1	277.5
1/4	5.5	277.1
¢	5.6	277.0
1/4	6.0	276.6
G	5.7	276.9
E. Top Cb.	5.73	276.90 277.00



Side Walk out on West side of Florida St. from Sta. 0+35B to Sta. 3+24

Side Walk out on East side of Florida St from Sta. 0+00 (N. Line Polk St.) to Sta. 2+49E

H.I.  
282.63

0+50

E. Top Cb.	4.76	277.87	277.96
G	5.2	277.4	
1/4	5.2	277.4	
£	4.7	277.9	
1/4	4.5	278.1	
+5	4.4	278.2	
G	4.7	277.9	
W. Top Cb.	3.75	278.88	278.96
	1+00		
W. Top Cb.	2.76	279.87	279.92
G	3.7	278.9	
1/4	3.7	278.9	
£	3.7	278.9	
1/4	4.1	278.6	
G	4.6	278.0	
E. Top Cb.	3.78	278.85	278.92
	1+50		
E. Top Cb.	2.91	279.72	279.88
G	3.7	278.7	
1/4	3.2	279.4	
£	2.7	279.9	
1/4	2.9	279.7	
+5	2.7	279.9	
G	2.8	279.8	
W. Top Cb.	1.78	280.85	280.88

H.I.  
282.63

2+00

W. Top Cb.		0.90	281.73	281.83
G		1.8	280.8	
1/4		2.1	280.5	
+5		1.6	281.0	
£		1.7	280.9	
+05		1.8	280.8	
1/4		2.2	280.4	
G		2.9	279.7	
E. Top Cb.		1.93	280.70	280.83
T.P.	11.98	291.98	2.13	280.50
		2+50		
E. Top Cb.		10.20	281.78	281.79
G		10.9	281.1	
1/4		10.6	281.4	
+05		10.6	281.4	
£		10.2	281.8	
1/4		10.1	281.9	
G		10.6	281.4	
W. Top Cb.		9.28	282.70	282.79
		3+00		
W. Top Cb.		8.27	283.71	283.75
G		9.3	282.7	
1/4		9.2	282.8	
£ Rim Mottle		8.69	283.29	
Flow Line Sewer		12.82	279.16	

291.98

1/4	9.6	282.4	
G	10.0	282.0	
E. Top Cb.	9.23	282.75	282.75
	3+50		
E. Top Cb.	8.28	283.70	283.71
G	8.8	283.2	
1/4	8.6	283.4	
±	8.1	283.9	
+07	8.2	283.8	
1/4	8.3	283.7	
G	8.4	283.6	
W. Top Cb.	7.32	284.66	284.71
	4+00		
W. Top Cb.	6.33	285.65	285.67
G	7.0	285.0	
1/4	7.4	284.6	
±	7.2	284.8	
1/4	7.7	284.3	
G	7.7	284.3	
E. Top Cb.	7.34	284.64	284.67
	4+50		
E. Top Cb.	6.36	285.62	285.62
G	6.5	285.5	
1/4	6.8	285.2	
±	6.2	285.8	
1/4	6.3	285.7	

G	6.1	285.9	53
W. Top Cb.	5.38	286.60	286.62
	5+00		
W. Top Cb.	4.36	287.62	287.58
G	5.6	286.4	
1/4	5.1	286.9	
±	5.3	286.7	
+07	5.8	286.2	
1/4	6.0	286.0	
G	6.2	285.8	
E. Top Cb.	5.36	286.62	286.58
	5+50		
E. Top Cb.	4.45	287.53	287.54
G	5.1	286.7	
1/4	4.9	287.1	
+03	4.8	287.2	
±	4.3	287.7	
1/4	4.4	287.6	
G	4.5	287.5	
W. Top Cb.	3.45	288.53	288.54
	6+00		
W. Top Cb.	5. Line Howard St.		
	2.51	289.47	289.50
G	3.3	288.7	
1/4	3.3	288.7	
±	3.3	288.7	
1/4	4.0	288.0	

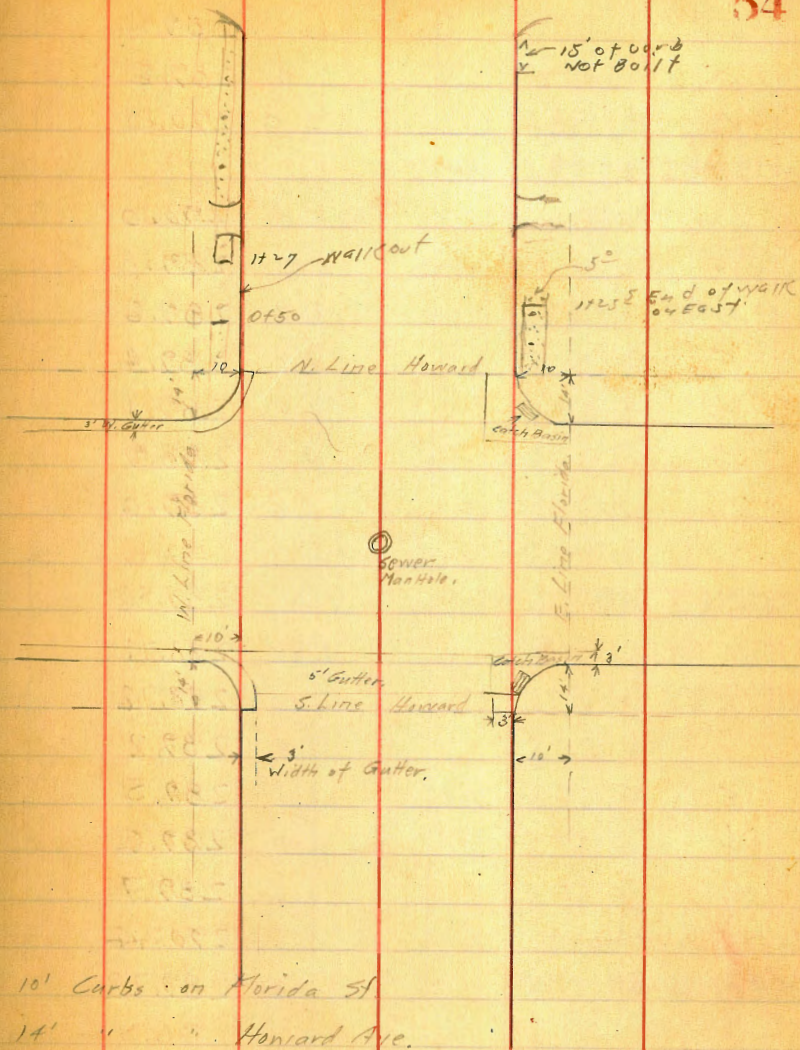


291.98

G	4.1	287.9	
E Top Cb.	3.47	288.51	288.50
	6+14		
E Line - Top Cb	3.47	288.51	
Gutter - Top Catch Basin	4.29	287.69	
G	4.1	287.9	
1/4	3.7	288.3	
1/2	3.3	288.7	
3/4	3.1	288.9	
G	3.1	288.9	
W Line Top Cb	2.48	289.50	
Ground.	2.8	289.2	
	6+27		
W Line	2.4	289.6	
G	2.6	289.4	
1/4	2.9	289.1	
1/2	3.1	288.9	
3/4	3.3	288.7	
G	3.6	288.4	
E Line	3.6	288.4	
	6+40		
E Line	3.1	288.9	
G	3.2	288.8	
1/4	3.0	289.0	
1/2	2.51	289.47	
Rim Sewer ManHole			
Flow Line Sewer.	4.88	287.10	

El Cajon Blvd

54



291.98

1/4		2.6	289.4
G		2.4	289.6
W. Line		2.0	290.0
	6+58		
W. Line		2.0	290.0
G		2.2	289.8
1/4		2.4	289.6
1/4		2.6	289.4
1/4		2.9	289.1
G		3.1	288.9
E. Line		3.0	289.0
	6+66		
E. Line - Top Cb.		2.46	289.52
Catch Basin		3.27	288.71
G		3.26	288.72
1/4		2.8	289.2
1/4		2.5	289.5
1/4		2.4	289.6
G		2.3	289.7
W. Line - Top Cb.		1.52	290.46
Gutter: on W. Line		2.26	289.72
	6+80		
Top W. Cb.	N. Line Howard - 0+00	1.47	290.51 290.50
G		2.32	289.66
+ 0.3		2.21	289.77
1/4		2.2	289.8

291.98

1/4		2.2	289.8
1/4		2.4	289.6
G		3.40	288.58
E. Top Cb.		2.46	289.52 289.50
T.P.	11.18	302.48	0.68 291.30
	0+50		No Side Walk West Side from Sta. 0+50 +0
E. Top Cb.		11.57	290.91 290.91
G		12.1	290.4
1/4		11.7	290.8
1/4		11.3	291.2
1/4		11.3	291.2
G		11.7	290.8
W. Top Cb.		10.50	291.98 292.00
	1+00		
W. Top Cb.		9.03	293.45 293.50
G		10.3	292.2
1/4		9.8	292.7
1/4		9.9	292.6
1/4		10.4	292.1
G		10.8	291.7
E. Top Cb.		10.13	292.35 292.32
	1+50		
E. Top Cb.		8.76	293.72 293.73
G		9.2	293.3
1/4		7.0	293.5
1/4		8.4	294.1

55

302.48

1/4	8.5	294.0	
G	8.4	294.1	
W. Top Cb.	7.54	294.94	295.00
1477	S. Line Alley		
W. Line Top Cb	6.45	296.03	295.80
Ground	6.7	295.8	
G	8.9	293.6	
1/4	7.6	294.9	
1/4	7.8	294.7	
1/4	8.4	294.1	
G	8.5	294.0	
E. Line Top Cb	7.77	294.71	294.49
Ground	7.8	294.7	
1497	N. Line Alley		
E. Line Top Cb.	7.29	295.19	295.05
Ground	7.7	294.8	
G	7.9	294.6	
1/4	7.8	294.7	
1/4	7.2	295.3	
1/4	7.1	295.4	
G	7.4	295.1	
W. Line Top Cb.	5.89	296.59	296.40
Ground	6.0	296.5	
2+80			
W. Top Cb	6.03	296.45	296.49
G	7.4	295.1	

302.48

1/4	7.0	295.5	55
1/4	7.1	295.4	
1/4	7.7	294.8	
G	7.8	294.7	
F. Top Cb	7.35	295.13	295.14
2+50			
E. Top Cb	6.08	296.40	296.55
G	6.3	296.2	
1/4	6.9	296.6	
1/4	5.7	296.8	
1/4	5.5	297.0	
G	5.7	296.8	
W. Top Cb	4.53	297.93	297.99
2+75			
W. Top Cb.	3.88	298.60	298.74
G	5.0	297.5	
1/4	4.8	297.7	
1/4	4.9	297.6	
1/4	5.4	297.1	
G	5.6	296.9	
E. Top Cb.	5.36	297.12	297.25
3+00			
E. Top Cb.	4.62	297.86	297.96
G	4.9	297.6	
1/4	4.2	298.3	
1/4	4.1	298.4	

1/4		4.0	298.5	
G		4.1	298.4	
W. Top Cb.		3.10	299.38	299.49
	3+102	Cb. on East ends here.		
W. Top Cb.		2.78	299.70	299.81
G		3.8	298.7	
1/4		3.6	298.9	
1/4		3.8	298.7	
1/4		3.9	298.6	
G		4.6	297.9	
E. Top Cb.		4.49	297.99	298.26
E. Line		4.1	298.4	
	3+235			
E. Line		3.6	298.9	
E. Cb.		3.6	298.9	
G		3.8	298.7	
1/4		3.5	299.0	
1/4		3.3	299.2	
1/4		2.9	299.6	
G		3.2	299.3	
W. Top Cb.		2.29	300.19	300.24
	3+37	S. Line El Cajon Ave.		
W. Top Cb.		1.88	300.60	300.60
G		2.70	299.78	
1/4		2.63	299.85	
1/4		2.78	299.70	

		302.48		
1/4		3.32	299.16	57
G		4.05	298.43	
E. Top Cb.		3.57	298.97	299.00
E. Line		3.1	299.4	
TR	7.59	308.50	1.87	300.61
		N. Line of El Cajon = 00		300.65
	on paving			
E. Top Cb.		7.84	300.66	300.60
G		8.37	300.13	
1/4		7.57	300.93	
1/4		7.07	301.43	
1/4		6.81	301.69	
G		6.96	301.54	
W. Top Cb.		6.29	302.21	302.20
	0+15			
W. Top Cb.		6.10	302.40	302.40
G		7.0	301.5	
1/4		6.7	301.8	
1/4		7.0	301.5	
1/4		7.4	301.1	
G		8.0	300.5	
E. Top Cb.		7.66	300.84	300.81
	0+50			
E. Top Cb.		7.17	301.33	301.30
G		7.4	301.1	
1/4		7.2	301.3	
1/4		6.6	301.9	

T 50  
308.90

1/4	6.4	302.1	
G	6.9	301.6	
W Top cb	5.64	302.86	302.85
	11.00		
Top cb W	4.82	303.54	303.50
G	6.1	302.4	
1/4	6.0	302.5	
E	6.1	302.4	
1/4	6.7	301.8	
G	7.0	301.5	
E Top cb	6.93	302.07	302.00

1140 South line of Alley

cb. Return on Prop	5.67	302.83	
Prop	5.9	302.6	
cb	5.88	302.62	302.56
G	6.4	302.1	
1/4	6.4	302.1	
E	5.3	303.2	
1/4	5.5	303.0	
G	5.2	303.3	
W Top cb	4.45	304.05	304.02
Top cb on Prop	4.28	304.22	
Prop	3.9	304.6	

1147 5<sup>th</sup> Series Mn. Hole

Seventh Hole Rim	5.09	303.41	
P. N. Mine	11.90	297.10	

T 50  
308.90

1150 N. Line of Alley

W on Ground	3.70	304.80	58
W Top cb on Prop	4.08	304.42	
W Top cb	4.23	304.27	304.15
G	5.0	303.5	
1/4	5.3	303.2	
E	5.4	303.1	
1/4	6.3	302.2	
G	6.4	302.1	
E Top cb	5.67	302.83	302.70
E Top cb on Prop End	5.56	302.94	
Prop on G round	6.0	302.5	

2100

E Top cb	5.06	303.44	303.40
G	5.9	302.6	
1/4	5.5	303.0	
1/6	4.7	303.8	
E	4.2	303.9	
1/4	4.4	304.1	
G	4.5	304.0	
W Top cb	3.67	304.83	304.80

2150

W Top cb	3.02	305.48	305.45
G	4.2	304.3	
1/4	3.9	304.6	
E	3.9	304.6	
1/4	3.9	304.6	

7 50  
308.70

1/4	4.7	303.8	
G	5.0	303.5	
E Topcb	4.37	304.13	304.10
	3+00		
E Top Cb.	3.74	304.76	304.80
G	4.3	304.2	
1/4	4.0	304.5	
+6	3.3	305.2	
E	3.3	305.2	
1/4	3.2	305.3	
G	3.4	305.1	
W Topcb	2.91	306.09	306.10
	3+50		
W Topcb	1.75	306.75	306.75
G	2.8	305.7	
1/4	2.6	305.9	
E	2.6	305.9	
+5	2.8	305.7	
1/4	3.4	305.1	
G	3.7	304.8	
E Topcb	3.04	305.46	305.50
	4+00		
E Topcb	2.34	306.16	306.20
G	3.0	305.5	
1/4	2.8	305.7	
+6	2.2	306.3	

7 50  
308.70

2			2.0	306.5	59
1/4			2.1	306.4	
G			2.2	306.3	
W Topcb			1.16	307.39	307.40
TP	7.27	315.16	1.16	307.29	
	4+50	(4+00)			
W Topcb			7.16	308.00	308.05
G			8.0	307.2	
1/4			8.0	307.2	
E			8.2	307.0	
+3			8.3	306.9	
1/4			8.9	306.3	
G			8.8	306.4	
E Topcb			8.29	306.87	306.90
	5+00	(4+50)			
Topcb E			7.60	307.56	307.60
G			8.4	306.8	
1/4			7.9	307.3	
E			7.4	307.8	
1/4			7.5	307.7	
G			7.2	308.0	
W Topcb			6.47	308.69	308.70
	5+50	(5+00)			
W Topcb			5.79	309.37	309.35
G			6.3	308.9	
1/4			6.8	308.4	

315 16

¢	6.6	308.6	
+5	6.8	308.4	
1/4	7.2	308.0	
+9	7.6	307.6	
¢	7.3	307.9	
E Top cb	6.89	308.32	308.30
	6700 S. line of Meado <sup>80st</sup>		
B Top cb	6.09	309.12	309.00
G	7.0	308.2	
1/4	6.6	308.6	
+5	6.1	309.1	
¢	5.9	309.3	
1/4	5.9	309.3	
G	5.9	309.3	
N Top cb	5.14	310.02	310.00
TP <small>S.R. Top N. of Meado + Florida</small>	5.94	317.30	3.80
		5.6	311.36 ✓
E on Top cb	8.31	308.99	
E on Ground	9.0	308.3	
cb	8.9	308.4	
+6	8.8	308.5	
1/4	8.5	308.8	
¢	8.0	309.3	
1/4	7.8	309.5	
cb	7.6	309.7	
N on Ground	7.2	310.1	

317 30

Wed on Top cb	7.28	310.02
S 1/4		
N	7.0	310.3
cb	7.5	309.8
1/4	7.7	309.6
¢	7.8	309.5
1/4	8.3	309.0
cb	8.9	308.9
E	8.3	309.0
E	8.2	309.3
cb	8.3	309.0
1/4	8.1	309.2
¢	7.6	309.7
1/4	7.5	309.8
cb	7.3	310.0
N	6.6	310.7
N 1/4		
N	6.2	311.1
cb	7.0	310.3
1/4	7.9	309.9
¢	7.8	309.7
1/4	7.9	309.4
cb	8.0	309.3
E	8.0	309.3

60

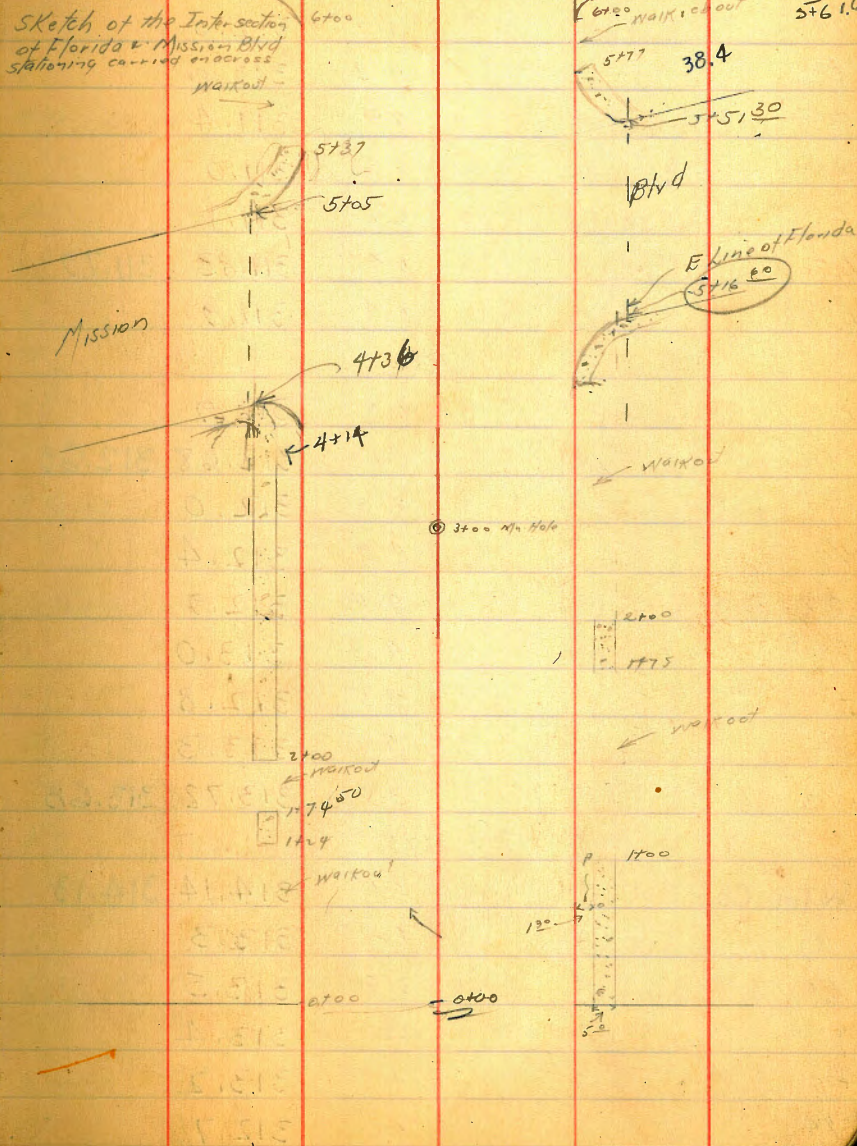
↑  
31730

N.C.B

E on Ground	80	309.30	
E on Top cb	737	309.93	
cb	80	309.3	
1/4	7.9	309.4	
1/4	7.9	309.9	
cb	7.2	310.1	
Ground on West	63	311.0	
Top cb on West	629	311.01	
	N Line of Meade = 00		
W.T. pcb	630	311.00	311.00
E	71	310.3	
1/4	7.2	310.1	
1/4	7.1	310.2	
G	7.8	309.5	
E Top cb	729	310.01	310.00
	0150		
E Top cb	6.35	310.95	310.90
G	6.7	310.6	
1/5	6.8	310.5	
1/4	6.8	310.5	
1/4	6.3	311.0	
1/4	6.2	311.1	
G	6.5	310.8	
W. Top cb	592	311.88	311.89

Monroe

Sketch of the Intersection  
of Florida & Mission Blvd  
stationary carried across





317.30

1400

W Topcb	4.50	312.80	312.79
G	5.3	312.0	
1/4	5.3	312.0	
¢	5.3	312.0	
1/4	5.9	311.4	
+5	6.3	311.0	
G	6.2	311.1	
E Topcb	5.47	311.83	311.79
E	5.4	311.9	
1450			
E	4.4	312.9	
E Topcb	4.62	312.68	312.69
G	5.3	312.0	
1/4	4.9	312.4	
¢	4.4	312.9	
1/4	4.3	313.0	
+5	4.5	312.8	
G	4.0	313.3	
W Topcb	3.58	313.72	313.68
1475			
W Top Cb	3.16	314.14	314.13
G	4.0	313.3	
1/4	3.8	313.5	
¢	3.9	313.4	
+5	4.1	313.2	
1/4	4.6	312.7	

317.30

32

G	4.7	312.6	
E Topcb	4.15	313.15	313.14
E	4.0	313.3	
2400			
E Topcb	3.66	313.64	313.58
G	4.5	312.8	
1/4	4.1	313.2	
+5	3.6	313.7	
¢	3.4	313.9	
1/4	3.4	313.9	
+6	3.7	313.6	
G	3.7	313.6	
W Topcb	2.69	314.61	314.57
2425			
W Topcb	2.23	315.07	315.02
G	3.0	314.3	
+5	3.1	314.2	
1/4	2.9	314.4	
¢	3.0	314.3	
+4	3.4	313.9	
1/4	3.8	313.5	
G	3.6	313.7	
E Topcb	3.22	314.08	314.03
2450			
E Topcb	2.79	314.51	314.48
G	3.1	314.2	

π  
317.30

1/4		3.1	314.2	
+6		2.8	314.5	
⊕		2.5	314.8	
1/4		2.5	314.8	
G		2.7	314.6	
W Top cb		1.75	315.55	315.47
	3+00			
W Top cb		0.8	316.48	316.36
G		1.5	315.8	
+5		1.6	315.7	
1/4		1.4	315.9	
⊕	on Rim of Mn. Hub. on Floor line of Mn. Hub.	1.46 7.26	315.84 310.04	
1/4		1.8	315.50	
G		2.5	314.8	
E		1.90	315.40	315.38
T.P	760	323.58	315.98	1.32
		3+50		
W Top cb		6.19	317.39	317.25
G		6.7	316.9	
1/4		6.9	316.7	
⊕		7.0	316.6	
1/4		7.3	316.3	
G		7.8	315.8	
E Top cb		7.24	316.34	316.27
	4+00			
E Top cb		6.33	317.25	317.17

π  
323.58

63

G		7.1	316.5	
1/4		6.7	316.9	
⊕		6.1	317.5	
1/4		6.0	317.6	
G		5.9	317.7	
W Top cb		5.29	318.29	318.15
	9+14 P.C. of Cb Radius on West			
W Top cb		5.22	318.36	318.40
G		5.6	318.0	
1/4		5.7	317.9	
⊕		5.9	317.7	
1/4		6.4	317.2	
G		6.7	316.9	
E Top cb		6.05	317.53	317.42
	9+36 P.I. of Prop line on S.W. Cor.			
E Top cb		5.68	317.90	317.81
G		6.3	317.3	
1/4		5.8	317.8	
R		5.5	318.1	
1/4		5.1	318.5	
cb		4.9	318.7	
W		4.1	319.5	
Top cb		3.68	319.90	
	4+50			
W		3.7	317.9	
cb		4.5	319.1	

323.58

1/4	49	318.7
1/4	54	318.2
1/4	58	317.8
E	62	317.4
E Topcb	5.54	318.04

475

E Topcb	of Radius 2° of cb line	506	318.52
cb		58	317.8
1/4		54	318.2
1/4		5.1	318.5
1/4		46	319.0
1/4		44	319.2
cb		39	319.7
N		3.2	320.4

5100

N	3.3	320.3
cb	3.5	320.1
1/4	3.9	319.7
1/4	4.3	319.3
1/4	4.7	318.9
cb	5.0	318.6
E	5.2	318.4

5116 60 E Line of Florida  
Crosses S Line of Mission Blvd  
at cb see sketch page 61

E Topcb

487 318.71

323.58

5105  
NW Topcb West Line of Florida  
Tah. Sect. cb. Return on NW 290

64

E	48	318.8
cb	48	318.8
1/4	48	318.8
1/4	4.4	319.2

1/4	4.1	319.5
1/4	3.8	319.8
E	3.9	319.7
1/10 Topcb	3.30	320.28

5137.50

W CB	328	320.30
E	3.9	319.7
1/4	3.9	319.7
1/4	4.0	319.6
1/4	4.3	319.3
cb	4.7	318.9
E	4.7	318.9

5150

E	4.6	319.0
cb	4.5	319.1
1/4	4.1	319.5
1/4	3.7	319.9
1/4	3.8	319.8
E	4.0	319.6
N Topcb	3.26	320.32

cb Radius on  
NW cor Mission Blvd Florida

32358

5751 <sup>30</sup>

E Top Cb	389	319.74	
W Top Cb	291	320.67	
G	36	320.0	
1/4	33	320.3	
1/4	3.3	320.3	
1/4	3.8	319.8	
G	4~	319.4	
E Top Cb	379	319.79	
E Top Cb	355	320.03	320.00
G	3.7	319.9	
1/4	3.4	320.2	
1/4	3.0	320.6	
1/4	3.0	320.6	
G	3.1	320.5	
W Top Cb	251	321.07	321.00
W on Top Cb	244	321.14	
1 Ground	23	321.3	
cb	27	320.9	
1/4	28	320.8	
E	3.0	320.6	
1/4	3.1	320.5	
cb	35	320.1	

32358

65

E on Ground	3.6	320.0	
E on Top Cb	3.57	320.01	
E	3.3	320.3	
cb	3.3	320.3	
1/4	3.0	320.6	
1/4	2.8	320.8	
1/4	2.6	321.0	
cb	2.9	321.2	
1/4	2.1	321.5	
1/4	1.7	321.9	
cb	2.1	321.5	
1/4	2.4	321.2	
1/4	2.56	321.02	
1/4	6.43	317.15	
1/4	3.0	320.6	
cb	3.2	320.4	
E	3.0	320.6	
E	2.8	320.8	
cb	3.1	320.5	
1/4	2.8	320.8	
1/4	2.5	321.1	
1/4	2.4	321.2	
cb	2.1	321.5	
1/4	1.8	321.8	

Where East  
Line of Florida intersects on  
Mission Ave. sec 36 T4N  
R15E Corner

5777 PC of cb Radius sec sketch

80°st

6400 S Line of Monroe

on Run of M/Hok 1500 ft  
of Monroe  
on Flow line of Multiple

5 1/4

1/4

N 1/4

32358

N.C.G

W on Ground	17	321.9	
W on Topcb	153	322.05	
Cb	21	321.5	
1/4	21	321.5	
E	23	321.3	
1/4	26	321.0	
Cb	31	320.5	
E on Ground	30	320.6	
E on Topcb	257	321.01	
N Line of Monroe = 00			
E Top Cb	254	321.04	321.00
G	30	320.6	
1/4	25	321.1	
1/4	21	321.5	
1/4	21	321.5	
G	20	321.6	
W Topcb	198	322.10	322.00
T.P.	759	330.30	087 322.71
0150			
W Topcb	759	322.71	322.67
G	84	321.9	
1/4	8~	322.1	
E	83	322.0	
1/4	89	321.4	
E	91	321.2	
E Topcb	861	321.69	321.67

33030

1700

66

E Topcb	789	322.41	322.33
E	85	321.8	
1/4	83	322.0	
1/4	76	322.7	
1/4	77	322.6	
E	81	322.2	
W Topcb	690	323.40	323.33
1750			
W Topcb	624	324.06	324.00
E	74	322.9	
1/4	71	323.2	
1/4	70	323.3	
1/4	76	322.7	
E	80	322.3	
E Topcb	731	322.99	323.00
2700			
E Topcb	664	323.66	323.67
E	72	323.1	
1/4	70	323.3	
1/4	63	324.0	
E	68	323.5	
W Topcb	556	324.74	324.67
2750			
W Topcb	492	325.36	325.33
E	38	324.5	

↑  
330.30

1/4	5.6	324.7	
2	5.6	324.7	
+6	5.9	324.4	
1/4	6.2	324.1	
+5	6.5	323.8	
G	6.6	323.7	
E Topcb	5.89	324.41	324.33
	3+00		
E Topcb	5.31	324.99	325.00
G	5.9	324.4	
+6	6.2	324.1	
1/4	5.8	324.5	
+5	5.3	325.0	
2	5.0	325.3	
1/4	4.9	325.4	
G	5.4	324.9	
N Topcb	4.29	326.01	326.00
	3+50		
N Topcb	3.59	326.71	326.67
2	4.7	325.6	
1/4	4.3	326.0	
2	4.3	326.0	
+5	4.5	325.8	
1/4	4.9	325.4	
+5	5.2	325.1	
G	5.2	325.1	

↑  
330.30

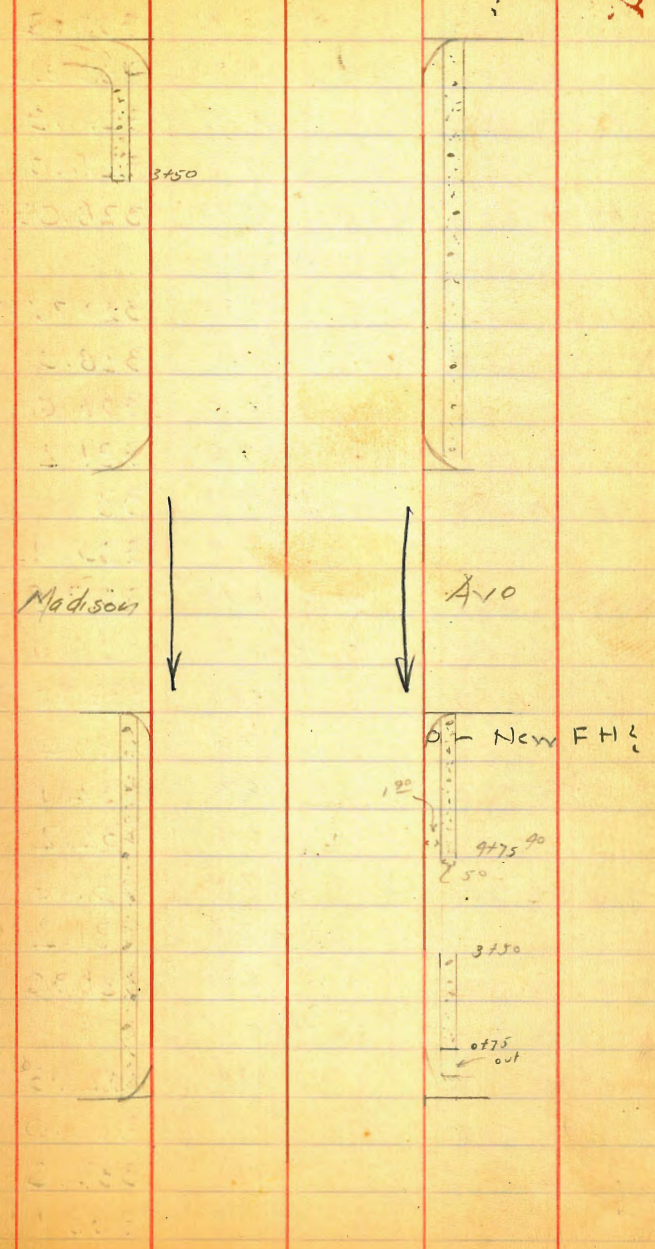
L Topcb	4.57	325.73	325.67
	9+00		
E Topcb	3.93	326.37	326.33
G	4.6	325.7	
+7	4.6	325.7	
1/4	4.2	326.1	
+5	3.8	326.5	
2	3.6	326.7	
1/4	3.6	326.7	
G	4.2	326.1	
N Topcb	2.93	327.37	327.33
	9+50		
N Topcb	2.27	328.03	328.00
G	3.3	327.0	
1/4	2.9	327.4	
2	2.9	327.4	
+3	3.1	327.2	
+6	3.1	327.2	
1/4	3.5	326.8	
+5	4.0	326.3	
G	4.1	326.2	
E Topcb	3.27	327.03	327.00
	5+00		
E Topcb	2.57	327.73	327.66
G	3.3	327.0	
1/4	3.2	327.1	

67

330.30

T5		2.5	327.8	
E		2.9	327.9	
1/4		2.3	328.0	
G		2.3	328.0	
Topcb		1.61	328.69	328.66
	5750			
W Topcb		0.94	329.36	329.33
G		1.7	328.6	
1/4		1.7	328.6	
E		1.8	328.5	
T5		2.0	328.3	
1/4		2.2	328.1	
G		2.5	327.8	
E Topcb		1.92	328.38	328.33
TP	10.39	338.77	1.92	328.38 ✓
	on paving	6400 S Line of Madison		
E Topcb		9.76	329.01	329.00
G		10.37	328.40	
1/4		9.85	328.92	
E		9.50	329.27	
1/4		9.38	329.39	
G		9.45	329.32	
W Topcb		8.75	330.02	330.00
		N Line of Madison = 00		
W CB		7.74	331.03	331.00
G		8.38	330.39	

Adams Ave



338.77

1/4	8.95	330.32	
¢	8.55	330.22	
1/4	8.84	329.93	
G	9.38	329.39	
E Topcb	8.74	330.03	330.00
	of 50		
E Topcb	7.80	330.97	330.95
E	8.5	330.3	
1/4	8.0	330.8	
¢	7.6	331.2	
1/4	7.7	331.1	
G	7.9	330.9	
W Topcb	6.79	331.98	331.95
	1100		
W Topcb	5.82	332.95	332.90
G	7.0	331.8	
1/4	6.7	332.1	
¢	6.6	332.2	
1/4	7.2	331.6	
G	7.6	331.2	
E Topcb	6.81	331.96	331.90
	1150		
E Topcb	5.84	332.93	332.85
¢	6.8	332.0	
1/4	6.2	332.6	
¢	5.7	333.1	

338.77

69

1/4	5.7	333.1	
¢	6.0	332.8	
W Topcb	7.84	333.93	333.85
	2100		
W Topcb	3.86	334.91	334.80
G	5.0	333.8	
1/4	7.7	334.1	
¢	4.6	334.2	X
1/4	5.2	333.6	
G	5.9	332.9	
E Topcb	7.8	333.95	333.80
	2150		
E Topcb	3.91	334.86	334.78
G	5.0	333.8	
1/4	4.2	334.6	
¢	3.7	335.1	
1/4	3.7	335.1	
G	4.1	334.7	
W Topcb	2.93	335.84	335.78
	3100		
W Topcb	1.95	336.82	336.76
G	3.2	335.6	
1/4	2.8	336.0	
¢	2.8	336.0	
1/4	3.4	335.4	
¢	3.8	335.0	



↑  
338.77

E Top cb 2.93 335.84 335.76

3450

E Top cb 1.95 336.82 336.74

G 3.0 335.8

1/4 2.9 336.4

2 1.9 336.9

1/4 1.8 337.0

G 2.0 336.8

W Top cb 0.99 337.78 337.74

T.P. 520 342.98 ✓ 0.99 337.78 ✓

4100

W Top cb 4.21 338.77 338.72

G 5.3 337.7

1/4 5.0 338.0

2 5.0 338.0

+2 5.0 338.0

1/4 5.5 337.5

G 6.2 336.8

E Top cb 5.21 337.77 337.72

4457

E Top cb 4.23 338.75 338.83

G 4.9 338.1

1/4 4.3 338.7

2 3.9 339.1

1/4 3.8 339.2

cb 4.0 339.0

↑  
342.98

W Top cb

3.11 339.87 339.83

4455<sup>50</sup> Skize of Adams

W Top cb

2.93 340.05 340.00

G

3.58 339.40

1/4

3.38 339.60

2

3.50 339.48

1/4

3.94 339.04

G

4.97 338.51

E Top cb

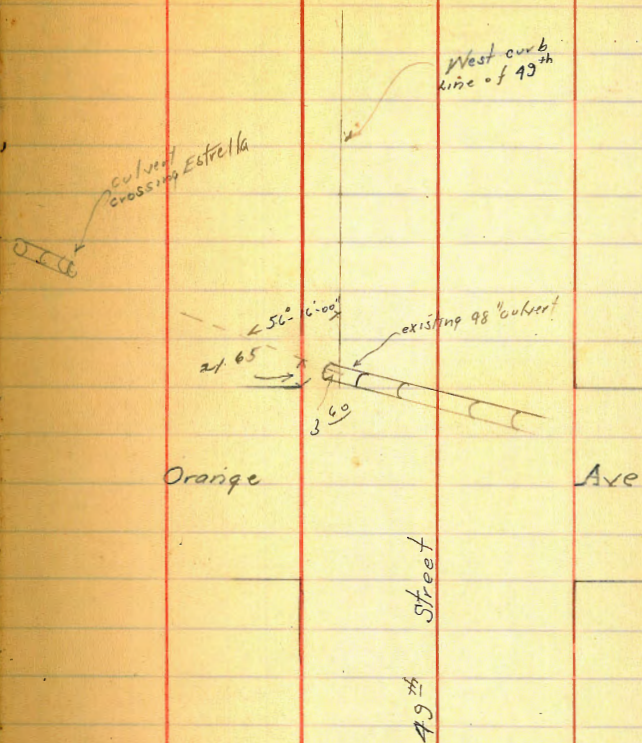
4.03 338.95 339.00

check out on BM SWBP Adams Florida

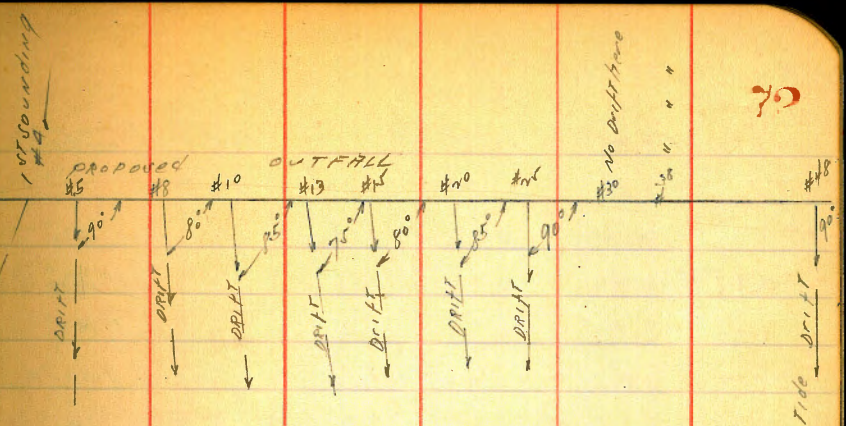
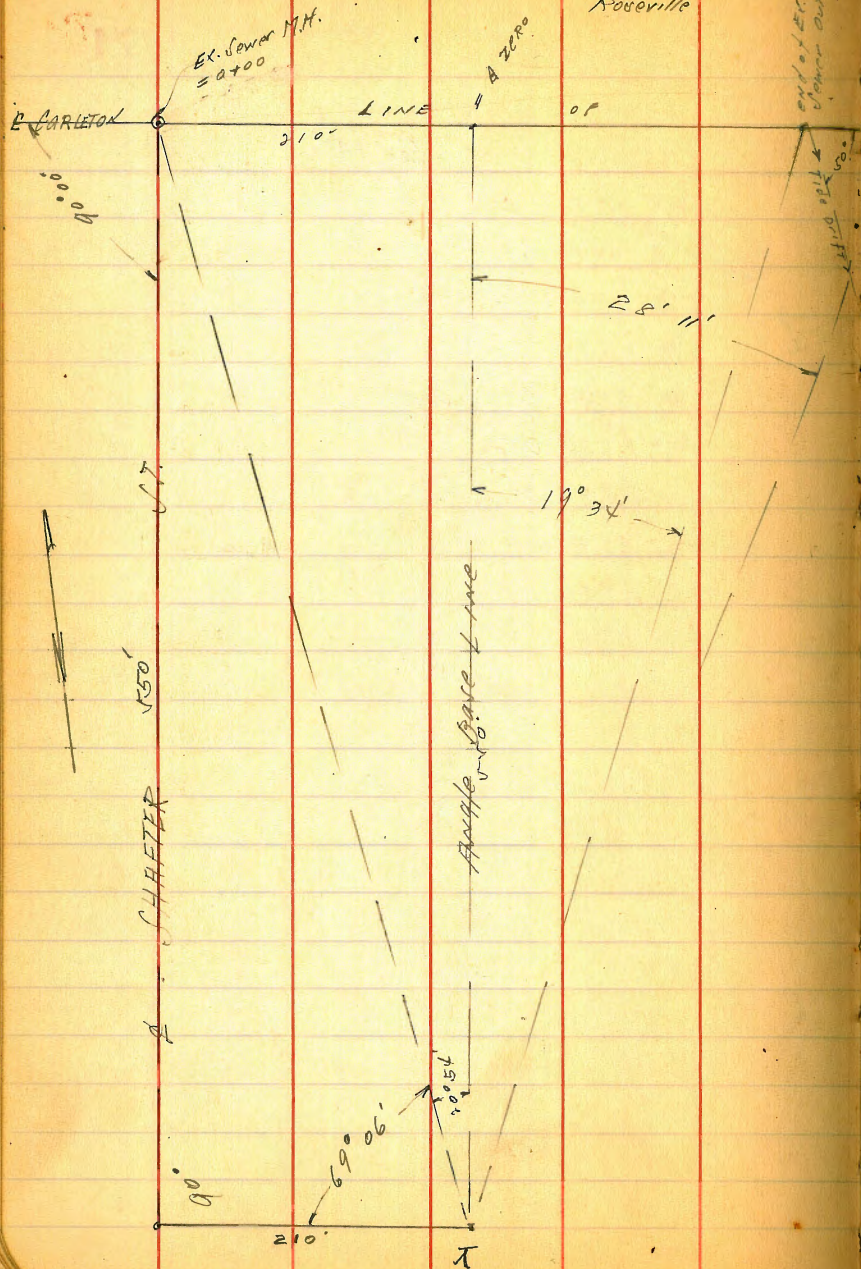
2.85 340.13 ✓

(340.10)

Levels for culvert 49 <sup>th</sup> x Orange from existing culvert N.W. Cor.				
North Westerly				
3 MSE Church St. Orange Estrella	2.15	350.60		348.45
TP.	1.11	339.56	12.15	338.45
TP.	3.21	329.59	13.18	326.38
0+00			8.81	320.78
0+11. crosses Prof			8.3	321.3
0+17			8.2	321.4
0+28			7.8	321.8
0+32			6.2	323.4
0+38			5.8	323.8
0+42			6.6	323.0
0+50			5.9	323.7
0+60			6.0	323.6
0+67			7.4	322.2
TP.	11.30	346.93	0.96	329.13
TP.	11.84	350.29	1.98	338.45
check B.N.			1.83	346.46



SEWER OUTFALL ON CARLETON ST.  
Roseville



NW. WIND. ebb tide  
 Sketch - levels & soundings  
 for proposed sewer outfall  
 foot of Carleton St. - Roseville  
 Chas. Kelley  
 Moore  
 Disbark 11/3/28  
 Colquhoun  
 Pearce

11/9/28 19000	Levels for Vemar Outfall Foot of Colorado St., Boulder							Soundings		
SUBD	0.74	15.27	14.54	Successors Corrected	53° 15'	A # 12		8.0	14.5	65
T.P.	0.59	4.24	11.62		54° 37'	A # 13		10.0	16.5	
T.P.	0.06	0.17	4.13		55° 54'	A # 14		10.5	17.0	
Ex. 194.2 & 7.52 of 1900			4.86	Flowline	56° 56'	A # 15		12.0	18.5	
0+00		0.91		RIM	58° 44'	A # 16		13.0	19.5	
0+02		0.1		ground	60° 37'	A # 17		14.0	20.5	
0+20		3.7		"	62° 51'	A # 18		15.0	21.5	
0+25		2.6		"	66° 58'	A # 19		15.5	22.0	
0+61		1.1		"	69° 00'	A # 20		16.0	22.5	5.00
0+86		2.4		"	70° 25'	A # 21		16.5	23.5	
1+00		5.5		"	72° 18'	A # 22		17.0	24.0	Center of Secondary channel
1+50		6.9		"	73° 49'	A # 23		16.5	23.5	
2+10 - A zero base line		7.7	-7.5	"	74° 31'	A # 24		15.5	22.5	
10° 25' A # 1		11.1	-10.9	"	74° 44'	A # 25		15.0	22.0	
14° 44' A # 2		12.0	-11.8	"	75° 26'	A # 26		14.5	21.5	
19° 34' A # 3 = end present outfall		6.33	-6.16	Flowline	76° 01'	A # 27		14.0	21.0	
" " " " " "		12.6	-12.4	ground	76° 03'	A # 28		13.0	20.0	
E.I. of WATER (TIDE) 10:40 AM		6.63	-6.46	beginning of sounding	76° 18'	A # 29		12.5	19.5	
28° 11' A # 4 = 1 <sup>st</sup> sounding		5.0	11.5	All minus 6.50	76° 36'	A # 30		12.0	19.0	
32° 53' A # 5 2 <sup>nd</sup> "		4.5	11.0		76° 47'	A # 31		11.0	18.0	
36° 29' A # 6 etc.		4.0	10.5		76° 50'	A # 32		10.0	17.0	
40° 37' A # 7		5.0	11.5		76° 56'	A # 33		9.0	16.0	
44° 21' A # 8		5.0	11.5		76° 59'	A # 34		8.0	15.0	
47° 20' A # 9		5.5	12.0		77° 05'	A # 35		7.0	14.0	
49° 17' A # 10		6.5	13.0		77° 16'	A # 36		4.0	11.0	
50° 58' A # 11		7.0	13.5		77° 24'	A # 37		3.0	10.0	

0.17

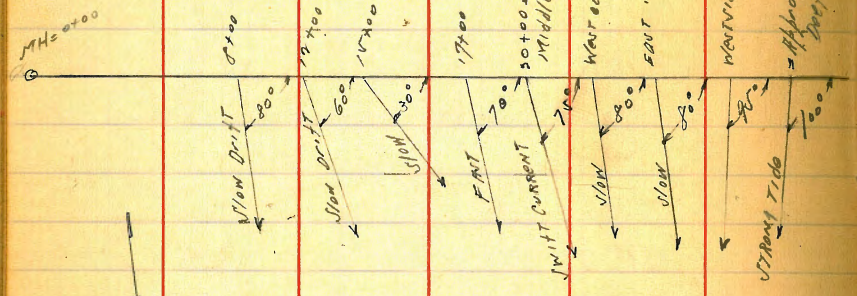
Soundings

77° 38'	A # 38		2.0	9.5	7.50 Center Bar
77° 57'	A # 39		3.0	10.5	
78° 24'	A # 40	✓	4.0	11.5	
78° 34'	A # 41		11.5	19.0	edge mark drawn
78° 50'	A # 42		12.5	20.0	
78° 46'	A # 41	Not here			mistraken signal
78° 50'	A # 43	Too far north of line	15.0		
79° 03'	# 44		18.0	25.5	
79° 15'	# 45		21.5	29.0	
79° 16'	# 46		25.5	33.0	
79° 34'	# 47		30.0	37.5	
80° 35'	# 48	Strong Tide	45.0	52.5	last shot 12.00
El. Tide WATER	12:12 P.M.		7.93		

74

DIRECTION of DRIFT of TIDE  
 at Proposed Location of Carleton St  
 Sewer Outfall - Roseville.  
 Kelley Moore 10:00 A.M. to 11:00 A.M.

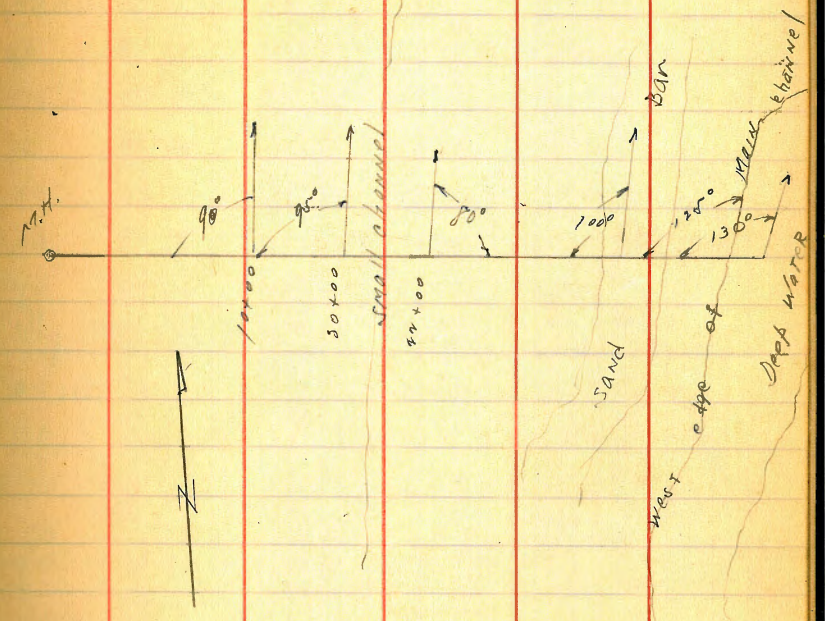
Tide High and going out  
 Light NW wind



Direction of Drift of Tide CARLETON ST  
 OUTFALL  
 Kelley Moore 11/19/28 10:00 A.M. to 11:00 A.M.

75

Very light NE wind  
 " slow incoming tide



Observations on Tidal Drift at Carleton St Outfall.

Low Tide AT 10:50 A.M.

646.24

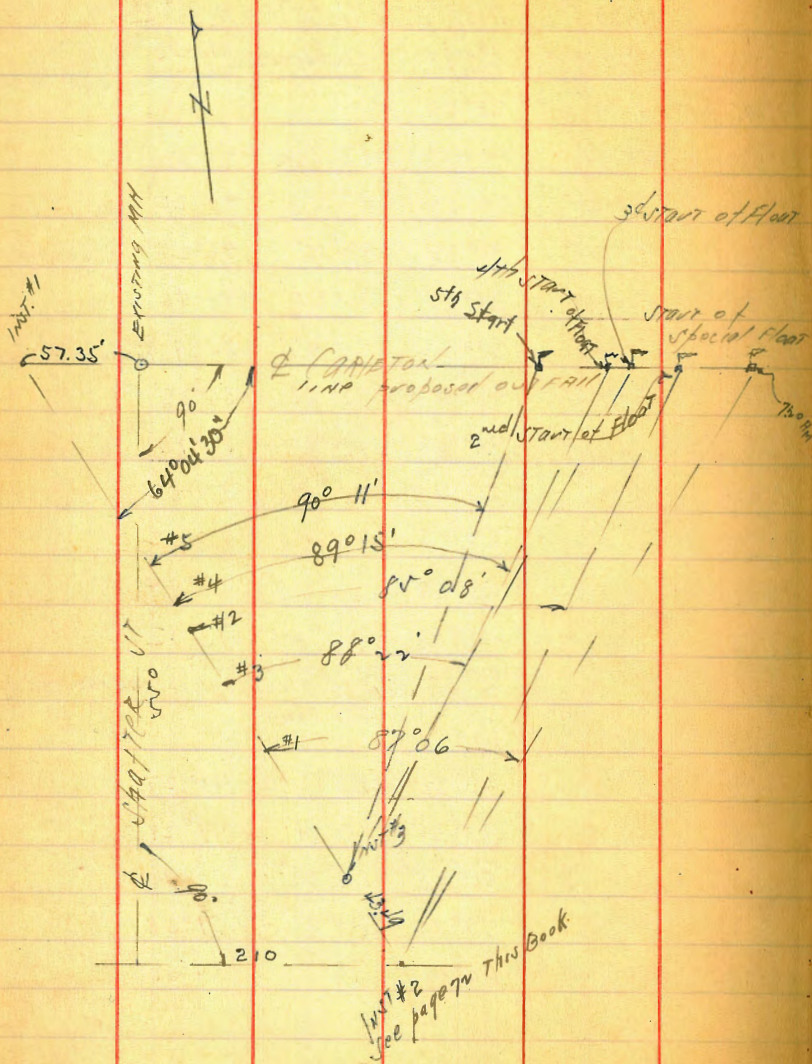


Wed. Nov 21, 1928

TIME	YELLOW FLOAT		RED FLOAT		Remarks
	INST. #1	INST. #2	INST. #1	INST. #2	
10:40 A.M.	83° 15' 30"	28° 09'			Light N N Wind
10:50	85° 44'	Not visible	* 83° 15' 30"		
11:00	85° 00'	30° 23'	83° 15' 30"	43° 20'	
11:10	85° 34'	31° 32'	80° 36'	46° 28'	Wind changed to light SW.
11:20	84° 59'	34° 34'	78° 25'	49° 46'	
11:30	83° 38'	37° 02'	75° 47'	52° 39'	Destroyer passing inbound in channel.
11:40	80° 06'	41° 40'	72° 55'	56° 35'	
11:50	76° 03'	46° 38'	72° 38'	57° 13'	
12:00	70° 30'	52° 42'	71° 56'	59° 02'	
12:10	66° 25'	59° 05'	71° 20'	63° 02'	
12:20	61° 17'	68° 28'	68° 59'	68° 44'	
12:30	59° 58'	72° 26'	67° 46'	73° 12'	
12:43 PM	83° 15' 30"	29° 13'			Red float went on across Main Channel. Took both floats back to approximate starting place and released again. Colquhoun
2:50	76° 00'	35° 22'	83° 15' 30"	41° 27'	
3:00	68° 50'	43° 34'	80° 14'	47° 21'	
3:10	64° 33'	51° 55'	81° 08'	50° 10'	
3:20	63° 51'	57° 30'	81° 36'	51° 58'	
3:30	65° 00'	60° 19'	79° 58'	54° 50'	

C. Shafter

Observations of Tidal Drift Carleton 07  
 Mon 11/26/28



TIME	Special float	INST #1 Osborne Rel. recording	INST #2 Moore Moore recording	NO WIND
7:22 AM		64° 17'	87° 06'	
7:30		65° 58'	88° 14'	
7:40	1st START of float	65° 48'	90° 39'	Tide turning to go out
7:45		65° 18'	92° 58'	
7:50		64° 30'	94° 35'	
8:00		63° 26'	97° 16'	
8:10		59° 57'	101° 45'	
8:20		54° 22'	108° 18'	
8:28		46° 11'	117° 53'	
	2nd START of special float			
8:41		63° 14'	85° 08'	
8:45		50° 12'	99° 44'	
8:49		34° 19'	122° 33'	
8:52:15		24° 27'	139° 38'	
	3rd START of float			
	N.G.		88° 22'	
			110° 12'	97 17?
			121° 30'	5:00?
			147° 08'	
	4th START			N.W. Wind starting
9:52		64° 04' 30"	89° 15'	
9:56		46° 15'	109° 43'	
10:00:50		26° 35'	139° 57'	



10:03:30 17°42'

10:05 13°26'

INST #3

153°43'

160°13'

78

5th start

SLIGHT N.W. BREEZE

10:16:30 64°04'30"

90°11'

10:20:30 47°45'

108°55'

10:22:30 39°46'

120°05'

10:25:45 27°48'

138°04'

10:28:30 18°27'

152°50'

10:29:45 14°20'

159°17'

Wed. Nov 21 - 1928 10:40AM - 3:30PM.

Mon. Nov 26 - 1928 7:20AM - 10:30PM.

(21)

10-11 - NW - 6

11-12 - " - 5

12-1 - " - 8

1-2 - " - 6

2-3 - " - 6

3-4 - " - 5

(26)

7-8 - N - 1

8-9 - " - 2

9-10 - " - 4

9:50 to NW

10-11 - NW - 7

79

Levels on SW. Return Arthur + Mt View

BM SW 8P  
Arthur +

491

4

993

W

988

C

58

DIRECTIONS FOR USE OF TABLES

TABLE No. 1.

Distance of slope stake from side or shoulder stake for any width roadway, slope 1 1/2 to 1. If ground is nearly level, the cut or fill at side stake is located by the double entry method in left column and top row. The number in body

of table in same row and column gives distance from side stake to slope stake. If ground is not

level, the side stake and slope stake, lower target by the amount if cut, elevate if fill. Add this amount to cut or fill and find distance in table. Set up rod at this point and line of sight should cut target. If ground is not level, treatment necessary.

TABLE No. 2.

To find Tangent and External for curve of any other degree, divide by degree of curve and add correction found in column of corrections. Degree of curve with a given L may be found by dividing tangent (or external), opposite L by given tangent (or external).

The distance from a point on the tangent to the curve is very nearly the square of the tangent length divided by twice the radius.

Texas SE WX6.09  
Mad.

48 2 3.77

Univ + Florida S.W. ~ 87.08

Ala. N.W. 265.96

Adams + Florida S.W. B.P. 390.10

Florida + El Cajon 300.65

Pascadena + Colorado SWBP 1.45

ENGINEERING DEPARTMENT,  
CITrus UNIVERSITY, SAN DIEGO,  
CALIFORNIA.