

1259

ENGINEERING DEPARTMENT,  
CITY OF SAN DIEGO,  
CALIFORNIA.

Our Leather Bound Engineers Note Books are carried in the following rulings:

- No. 380 LEVEL BOOK. Left and Right Hand Page the same as Left Hand Page of this Book.
- No. 382 FIELD BOOK. Left Hand Page as in this Book, Right Hand Page 4 x 4 to the inch, Center Line Red.
- No. 384 MINING TRANSIT BOOK. Left Hand Page as in this Book, Right Hand Page 8x8 to the inch, Center Line Red.
- No. 385 FIELD BOOK. Left Hand Page as in this Book, Right Hand Page 8 vertical and 4 horizontal lines to the inch, Center Line Red.

We also carry the Note Books listed above, bound in extra strong Fabri-Hide (otherwise the same quality of book), which can be furnished at a somewhat lower price.

In ordering Fabri-Hide covered books, add the letter "F" to catalog number.

**THE FREDERICK POST CO.**  
*ENGINEERING and DRAFTING SUPPLIES*  
IRVING PARK STATION  
CHICAGO, ILL.

MICROFILMED

DEC 22 1964

1259

1259  
1259

This is a copy of 7/7/64

Field Books -

1687/29 - Bunch  
has

T.P.B.K. 12/32, 33, 36

Loggins has

Klauber. Cont from Book 1239	1-6
Lot 2 Rosemont Add. for Water Tank	7-9
Wunderlin Ave. from 60 <sup>th</sup> - 65 <sup>th</sup>	10-28
65 <sup>th</sup> Imperial Ave. to Bach	29-44
Toyon Way from 65 <sup>th</sup> - Sage W	45-48.
Johnson Ave 10 <sup>th</sup> - Lincoln Ave	57-66
X sec.	

1259/ ?

Klauber St Cross Sections

446.96 Ford From 1239

10' 10' 10'

17687

Plotted 3-29-1928  
CBM

-10	76	439.4	Turn Drains on Keller St
F	80	439.0	
cb	86	438.4	
1/4	95	437.5	
1/2	96	437.4	
+5	99	437.1	
1/4	112	435.8	
+5	122	434.1	
cb	133	433.7	
N	142	432.1	
+20	171	429.9	

17807

-20	160	431.0
N	147	432.3
cb	126	434.4
1/4	110	436.0
+5	92	437.8
1/2	73	437.7
1/4	93	437.7
cb	85	438.5
F	77	438.3
+10	67	440.3

18084 - N. Keller St

-10	55	441.5
F	62	440.8

446.96

1  
3-21-28  
S. Keller  
9155  
Koozgy

cb	76	439.8
1/2	78	439.2
1/4	87	438.3
1/2	85	438.5
1/4	88	438.2
cb	99	437.1
N	113	435.7
+20	133	433.7
BN	150	430.3

18257

-20	110	436.0
N	99	437.1
cb	85	438.5
1/4	72	439.8
1/2	75	439.5
1/4	74	439.6
+5	75	439.5
+6	57	441.3
cb	58	441.2
F	52	441.8
+10	47	442.3

18574

-10	32	443.8
F	42	443.8
cb	32	443.8
+8	40	444.0

	1875	1875	1875
19		50	4420
1/4		50	4420
1/2		51	4419
1/4		53	4417
cb		58	4412
H		65	4405
+10		75	4395
	1875		
-15		43	4427
H		61	4439
cb		26	4444
1/4		23	4447
1/2		24	4446
1/4		26	4444
1/4		34	4466
cb		03	4467
F		04	4466
+10		07	4463
T.P.	12.51	159.13	0.34
	1900		
F		113	4479
cb		110	4481
+9		105	4486
1/4		120	4471
1/2		119	4472
1/4		121	4470

	1925	1925
cb	12.1	4467
H	12.5	4466
	1925	
H	10.4	4487
cb	10.2	4489
1/4	9.9	4492
1/2	9.7	4494
1/4	10.0	4491
1/2	9.1	4500
cb	9.4	4497
F	9.5	4496
	1950	
F	6.8	4523
cb	6.9	4522
1/2	7.2	451.9
1/4	8.6	450.5
1/2	8.1	451.0
1/4	8.2	450.9
cb	8.4	450.7
H	8.0	451.1
	1975	
H	5.8	4533
cb	5.9	4532
1/2	6.8	452.3
1/4	6.7	452.4
1/2	6.1	452.3

1981 H = large  
 population  
 9/2 of 194

15913

1/4	49	4523
1/2	50	4541
cb	52	4539
F	50	4541
20067		
F	38	4553
cb	44	4547
+8	47	4544
1/4	55	4536
1/2	52	4539
1/4	51	4540
cb	54	4537
H	49	4542
20257		
H	41	4550
cb	43	4548
1/4	41	4550
1/2	39	4552
1/4	44	4547
+5	34	4547
cb	33	4548
F	37	4564
20507		
F	18	4573
cb	20	4571
17	20	4571

15913

1/4	21	456.3		
1/2	24	456.7		
1/4	25	456.6		
1/2	33	455.8		
cb	31	456.0		
H	32	455.9		
20757				
H	16	457.5		
cb	20	457.1		
1/4	17	457.4		
1/2	15	457.6		
1/4	13	457.8		
cb	07	458.4		
F	01	459.0		
TP	1060	16966	0.07	459.01
21007				
F			96	460.1
cb			98	459.9
1/2			98	459.9
1/4			110	458.7
1/2			109	458.8
1/4			112	458.4
cb			110	456.7
H			110	457.7
21257				
H			97	460.0

20567-29  
Poppitt  
9541X1

46966

cb	90	460.7
AS	91	460.6
1/4	92	459.8
1/2	98	459.9
1/4	101	458.3
+5	90	460.7
cb	83	461.4
F	75	462.2
21507		
F	74	462.3
cb	81	461.3
+8	89	460.8
1/4	96	460.1
1/2	90	460.7
1/4	89	460.8
+5	84	461.3
cb	86	461.1
H	95	460.2
21757		
X	93	460.4
cb	86	461.1
1/4	79	461.8
1/2	92	462.5
1/4	82	461.5
+1	65	463.2
cb	59	463.8

46966

F	61	463.3
22007		
F	59	463.8
cb	63	463.4
+8	63	463.4
1/4	69	462.8
1/2	58	463.9
1/4	61	463.6
cb	66	463.1
H	75	462.2
22257		
X	60	463.7
cb	67	463.0
1/4	63	463.4
1/2	54	464.3
1/4	61	463.6
+3	53	464.4
cb	49	464.8
F	40	465.7
22507		
F	48	464.9
cb	50	464.7
+6	46	465.2
+8	55	464.2
1/4	58	464.5
1/2	47	465.0

Klauber St.

469.66

1/4	5.3	464.4
cb	6.0	463.7
1/4	6.3	463.4
2275'N		
1/4	3.5	466.2
cb	3.8	465.9
1/4	5.0	464.7
1/2	4.7	465.0
1/4	5.1	464.6
+2	5.1	464.6
+5	4.0	465.7
cb	3.9	465.8
F	3.8	465.9
2300'N		
F	3.2	466.5
cb	3.4	466.3
+9	3.7	466.0
1/4	4.6	465.1
1/2	4.6	465.1
1/4	5.1	464.6
cb	4.8	464.9
1/4	4.9	464.8
2325'N		
1/4	5.1	464.6
cb	5.0	464.7
1/4	5.0	464.7

5

469.66

1/4	4.5	465.2
cb	4.1	464.9
1/4	3.5	466.2
cb	3.2	466.5
F	3.1	466.3
2350'N		
F	5.3	464.4
cb	5.1	464.3
1/4	5.0	464.7
1/4	5.1	464.3
1/2	4.6	465.1
1/4	4.7	465.0
cb	4.8	464.8
1/4	4.8	465.5
2375'N		
1/4	5.7	464.0
cb	5.6	464.1
1/4	5.8	463.9
1/2	6.0	463.7
+6	6.6	463.1
1/4	6.4	463.3
cb	7.1	462.3
F	7.0	462.7
+10	7.7	462.0
2400'N		
+0	11.0	458.7



469.66

F		10.3	459.4
cb		9.3	460.4
1/4		8.8	460.9
1/2		8.0	461.7
1/4		8.0	461.7
cb		7.2	462.5
H		5.9	463.8
	2115'N		
H		9.0	460.7
cb		9.7	460.0
1/4		10.9	458.8
1/2		11.4	458.3
1/4		12.2	457.5
cb		12.8	456.9
F		14.3	455.5
+10		15.1	454.6
TP	500	412.76	1190 457.76
	2115'N		
-15		11.50	451.3
F		9.9	452.9
cb		8.8	454.0
1/4		7.7	455.1
1/2		6.4	456.4
1/4		5.7	457.1
+5		5.2	457.6
cb		4.1	458.7

462.76

H		3.3	458.5
	2413.3'N - S.L. 69 <sup>th</sup> St. From E		
H		4.2	458.6
cb		4.7	458.1
+5		6.2	456.5
1/4		6.6	456.2
1/2		7.2	455.6
+5		7.5	455.3
1/4		8.7	454.1
cb		9.7	453.1
F		11.1	451.7
	2413.3'N - S.L. 69 <sup>th</sup> St. 070149 7724		
	2507.12'N - S.L. 69 <sup>th</sup> St. 070149 7724		
			cb 12.89 94 12.89
F		11.1	451.7
+8		10.4	452.4
cb		11.2	451.6
1/4		10.3	451.5
1/2		8.0	454.8
1/4		7.7	455.1
cb		7.0	455.8
+5		6.1	456.4
+6		5.7	457.1
H		5.0	457.8
1/4		4.9	457.83
			next Blk Car Klauber - 469 <sup>th</sup> 457.90

Cross Section Lot 2 Rosemont Hill  
For Proposed Water Tank

BN	8.84	372.32	363.48
	106.7		
F	190		353.4
+2.5	16.0		351.4
+5.0	12.7		359.7
+7.5	11.2		361.2
+103.9 = H	8.9		363.5
25' N of S1 Lot 2			
H	29		369.5
+7	5.2		367.2
+15	5.1		367.3
+24	3.1		369.3
+30	6.9		365.5
+50	7.7		364.7
+68	9.2		363.2
+75	11.3		361.1
+104.3 F	14.6		357.8
45' N			
F	11.0		361.4
+10	10.5		361.9
+20	7.3		363.1
TP	11.94	384.19	372.25
+35	11.6		372.6
+50	11.1		373.1
+65	10.0		374.2

on Map No  
Cor Garage  
1211 Page 1

10.43  
31.5  
13.58

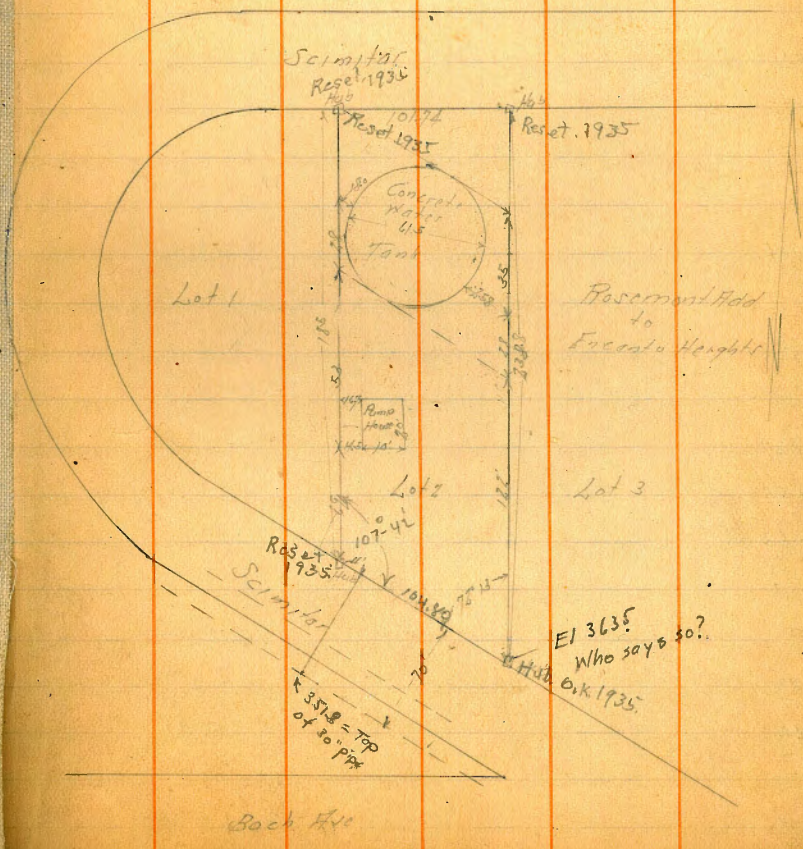
Fl. El. 372.50

13.58 377.08  
C 0.72  
C 3.46  
C 2.61  
C 0.48

363.5  
.75  
364.25  
12.55  
351.70 362.50  
3.86 373.22  
1.12 375.96  
1.97 375.11  
4.10 372.98

2.25  
5.00  
8.15  
10.00

S.M. Cor-  
M.W. ✓  
M.E. ✓  
S.E. ✓



Frank B...

	+75	122	372.0
B	+85	132	371.0
	11042-W	122	372.0
F	75V		
	H	45	379.7
+6	+13 - H Edge Pump Hs	70	377.2
+7	+17 - Floor of Pump Hs	857	375.32
100	+30	70	377.2
	+40	81	381.1
H	+48	65	377.7
+7	+75	60	378.2
+11	+80	63	377.9
+12	+92	125	371.7
+13	+102-E	170	367.2
+15	100V		
+16	F	120	372.2
+7	+8	102	374.0
+1	+27	28	380.4
	+55	30	381.2
	+63	29	383.3
	+73	33	380.9
	TP 1202 39530	091	383.25
TP	+97	27	372.6
	11044-W	100	385.3
	125V		
+16	H	49	390.4

	+9	23	386.0
	+36 - H Edge Conc Tank	98	385.5
	Top Conc	128	393.02
	+65 - F Edge Conc Tank	98	385.5
	+85	121	382.9
	+95	167	378.6
	+106-F	172	378.1
	150V		
F		104	384.9
	+18 - F Edge Tank	84	386.9
	+78 - H Edge "	82	387.1
	+97	77	387.6
	11048-H	08	394.5
TP	1276 10710	116	394.14
	125V		
H		58	401.3
+8		93	397.8
+13		170	390.1
	+10 H Edge Tank	186	388.5
	+89 - F Edge "	182	488.9
	+95	183	388.8
	+105-F	157	391.4
	185V - H 6.6 6.9 2.0 2.0		
F		132	393.9
+10		126	394.5
+11		161	390.7

407.10

+23 = Edge Tank	172	389.9
+50 = " "	171	390.0
+63	169	390.2
+74	148	392.3
+82	57	401.4
+105 = H	40	403.1

185' of oil

200' of = Top Cot # of Tank

H	40	403.1
+25	50	402.1
+50	57	401.4
+75	61	401.0
+82	66	400.5
+102 = F	87	398.4

185' of oil

228' of = H &amp; L of 2

F	18	405.3
+25	13	407.8
+45	15	407.6
+50	29	404.2
+75	37	403.4
+101.74 = H	40	403.1

TP	0.01	394.16	12.75	394.15
TP	0.24	381.58	12.21	381.34
TP	0.87	372.41	12.04	369.54
BM			8.80	363.61

Car Garage  
363.43

Wanderline Ave

Cross Sections

lots to 65/1st

Existing 8' cb  
3.5' gutter  
5' walk  
Between 60' 183' 10' 91'  
Except where noted

60' wide  
10' cb  
10' 91'  
New Posts  
Wanderline  
lots 65/1st

271.41

271.41  
51007  
Bliss  
Kemp  
10

BM	011	2777.5	2777.4
	FL 60th		
S		3.2	274.0
cb Existing		4.05	2737.0
Gutter "		4.66	2730.9
1/4		4.1	2737
1/2		5.7	274.1
3/4		3.4	274.4
Gutter Existing		3.56	2741.9
cb "		3.96	274.89
H		3.1	275.7
	56' E of FL 60th St		
H		7.9	269.9
cb Existing		8.15	2696.0
Gutter		8.25	268.80
1/4		8.5	269.3
1/2		8.4	269.4
3/4		9.0	268.8
Gutter Existing		9.70	268.05
cb		9.02	268.73
S		9.0	268.8
	90'		
S		11.5	265.3
cb Existing		12.81	264.94
TP	575	271.41	13.09

Gutter Existing	7.10	264.31
1/4	6.5	264.9
1/2	5.8	265.6
3/4	5.7	265.7
Gutter Existing	6.32	265.09
cb	5.51	265.90
H	4.9	266.5
	130' E	
H	7.5	263.9
cb Existing	8.22	263.19
Gutter	9.05	262.36
1/4	8.5	262.9
1/2	8.6	262.8
3/4	9.1	262.3
Gutter Existing	9.85	261.56
cb	9.22	262.18
S	9.2	262.2
	120' E	
S	10.7	260.7
cb Existing	10.80	260.61
Gutter	11.42	259.98
1/4	10.8	260.6
1/2	10.2	261.1
3/4	10.2	261.2
Gutter Existing	10.62	260.78
cb	9.81	261.57

150' E of Fed Walkway

27141

N	93	262.1
	210°F	
N	10.3	261.1
Cb Existing	10.31	261.05
Gutter	11.19	260.22
1/4	10.1	260.8
2	10.1	260.8
1/4	11.5	259.9
Gutter Existing	12.32	258.09
Cb	11.1	259.95
S	11.8	259.6
	250°F	
S	11.5	259.9
Cb Existing	11.22	260.19
Gutter	11.87	259.54
1/4	11.3	260.1
2	10.6	260.8
1/4	10.4	261.0
Gutter Existing	10.96	260.47
Cb	10.33	261.18
N	7.1	261.8
	290°F	
N	8.2	262.2
Cb Existing	9.10	262.31
Gutter	9.90	261.51
1/4	7.4	262.0

No. 1014  
3rd Floor  
1504 270  
005

270 E - MEH  
Walk 005

27141

2	9.5	261.9
1/4	10.1	261.3
Gutter Existing	10.69	260.72
Cb	10.03	261.38
S	10.0	261.4
	330°F	
S	7.8	263.6
Cb Existing	7.70	263.71
Gutter	8.36	263.05
1/4	7.7	263.7
2	7.1	264.3
1/4	7.0	264.4
Gutter Existing	7.47	263.94
Cb	6.68	264.73
N	6.2	265.2
	270°F	
N	3.0	268.4
Cb Existing	3.17	268.24
Gutter	3.98	267.43
1/4	3.6	267.8
2	3.6	267.8
1/4	4.0	267.4
Gutter Existing	4.71	266.63
Cb	4.15	266.26
S	4.1	267.3
	290°F	

271.91

S		1.0	269.6	
Cb Existing		1.91	269.45	
Gutter "		2.58	268.83	
1/4		2.0	269.4	
1/2		1.3	270.1	
1/4		1.4	270.0	
Gutter Existing		1.77	269.64	
Cb "		0.99	270.42	
N		0.6	270.8	
TP	12.69	284.04	0.04	271.97
		415' F		
N		6.3	277.8	
Cb Existing		7.09	276.97	
Gutter "		7.94	276.12	
1/4		7.1	276.5	
1/2		7.4	276.7	
1/4		8.0	276.1	
Gutter Existing		8.61	275.35	
Cb "		7.99	276.06	
S		7.7	276.4	
		500' F		
S		1.4	282.7	
Cb Existing		1.43	282.63	
Gutter "		2.04	282.02	
1/4		1.6	282.5	
1/2		1.0	283.1	

284.01

12

1/4		1.0	283.1	
Gutter Existing		1.10	282.66	
Cb "		0.54	283.52	
N		0.1	284.0	
TP	12.94	296.76	0.24	283.82
		520' F		
N		10.7	286.1	
Cb Existing		11.25	285.51	
Gutter "		12.09	284.67	
1/4		11.7	285.1	
1/2		11.8	285.0	
1/4		12.4	284.4	
Gutter Existing		12.83	283.93	
Cb "		12.16	284.60	
S		12.3	284.5	
		540' F		
S		10.7	286.1	
Cb Existing		10.72	286.03	
Gutter "		11.41	285.35	
1/4		10.9	285.9	
1/2		10.3	286.5	
1/4		10.3	286.5	
Gutter Existing		10.64	286.12	
Cb "		9.77	286.99	
N		9.5	287.3	
		585' F		

29676

H	71	2897
cb Frisking	741	2893.5
Gutter	822	288.54
1/4	78	289.0
2	78	289.0
1/4	83	288.5
Gutter Frisking	9.08	287.76
cb	8.34	288.42
S	8.3	288.5
	135°E	
S	57	291.1
cb Frisking	600	290.76
Gutter	661	290.15
1/4	6.0	290.76
2	5.9	291.4
1/4	5.9	291.4
Gutter Frisking	585	290.91
cb	5.00	291.76
H	47	292.1
	675°E	
H	82	294.5
cb Frisking	265	294.11
Gutter	319	293.27
1/4	31	293.7
2	30	293.8
1/4	31	293.2

29676

13

Gutter Frisking	4.32	29244
cb	3.14	293.12
S	3.7	293.1
	720°E	
S	13	295.5
cb Frisking	132	29544
Gutter	158	29478
1/4	15	295.3
2	10	295.8
1/4	10	295.8
Gutter	116	295.70
cb	0.31	296.45
H	0.0	296.8
TP	721 305.39 0.62	296.13
	770°E	
H	71	298.2
cb Frisking	741	297.93
Gutter	819	296.15
1/4	78	297.5
2	78	297.5
1/4	84	296.9
Gutter Frisking	910	296.24
cb	833	297.01
S	84	296.9
	820°E	
S	69	298.4



30534

Cb Existing	700	298.34
Gutter	7.67	297.67
"	7.1	298.2
L	6.4	298.9
"	6.3	299.0
Gutter Existing	6.82	298.52
Cb	5.96	299.38
H	5.5	299.8
855 F		
H	4.6	300.7
Cb Existing	5.04	300.30
Gutter	5.90	299.54
"	5.5	299.8
L	5.6	299.7
"	6.0	299.3
Gutter Existing	6.67	298.67
Cb	6.08	299.31
S	6.0	299.3
870 F		
S	4.8	300.5
Cb Existing	5.05	300.29
Gutter	5.70	299.64
"	5.2	300.1
L	4.8	300.5
"	4.6	300.7
Gutter Existing	5.01	300.33

30534

14

Cb Existing	4.16	301.28
H	3.7	301.6
935 F		
H	3.4	301.9
Cb Existing	3.82	301.52
Gutter	4.57	300.77
"	4.1	301.2
L	4.2	301.1
"	4.9	300.4
Gutter Existing	5.48	299.86
Cb	4.84	300.51
S	4.4	300.9
970 F		
S	5.6	299.7
Cb Existing	5.82	299.52
Gutter	6.52	298.81
"	5.9	299.4
L	5.5	299.8
"	5.3	300.0
Gutter Existing	5.92	299.42
Cb	5.13	300.21
H	4.6	300.7
1010 F		
H	7.5	297.8
Cb Existing	7.80	297.54
Gutter	8.62	296.72

67

30534

1/4		81	2972
1/2		81	2972
1/4		82	2966
Gutter Fashings		95°	295.84
cb		883	296.51
S		83	297.0
TP	0.91	2926° <sup>.57</sup>	292.6 <sup>6</sup>
	1265F		
S		18	291.8
cb Fashings		208	291.49
Gutter		290	291.77
1/4		20	291.6
1/2		15	292.1
1/4		15	292.1
Gutter Fashings		194	291.53
cb		105	292.52
H		89	292.7
	1120F		East End Walk on S side
H		61	287.5
cb Fashings		608	287.49
Gutter		690	286.57
1/4		65	287.1
1/2		66	287.0
1/4		82	286.4
Gutter Fashings		780	285.77
cb		718	285.49

57  
2936°

15

S		70	286.6
	1160F		
S		99	283.7
cb Fashings		1024	283.33
Gutter		1086	282.71
1/4		102	283.4
1/2		96	284.0
1/4		96	284.0
Gutter Fashings		998	283.59
cb		920	284.37
H		94	284.2
	1200F		
H		110	282.6
cb Fashings		1110	282.47
Gutter		1190	281.67
1/4		114	282.2
1/2		115	282.1
1/4		120	281.6
Gutter Fashings		1278	280.79
cb		1218	281.45
S		119	281.7
	1240F		
S		1260	280.97
cb Fashings		1293	280.54
TP	978	290.08 <sup>.05</sup>	281.30 <sup>.27</sup>
Gutter Fashings		10.06	279.99

05  
29008

1/4	94	280.6
1/2	98	281.2
1/4	88	281.2
Gutter Fading	916	280.89
cb	840	281.65
H	81	282.0
12905		
H	87	281.4
cb Fading	815	281.40
Gutter "	947	280.58
1/4	91	281.0
1/2	91	281.0
1/4	97	280.4
Gutter Fading	1037	279.73
cb	968	280.37
S	97	280.4
13905		
S	98	280.3
cb Fading	929	280.07
Gutter "	1060	279.45
1/4	100	280.1
1/2	94	280.7
1/4	94	280.7
Gutter Fading	949	280.36
cb	888	281.17
H	86	281.5

05  
29008

16

13855		
H	90	281.0
cb Fading	915	280.90
Gutter "	997	280.06
1/4	95	280.6
1/2	96	280.5
1/4	103	279.8
Gutter Fading	1026	279.15
cb	1020	279.85
S	100	280.1
14205		
S	89	280.2
cb Fading	1034	279.71
Gutter "	1118	278.87
1/4	103	279.7
1/2	96	280.4
1/4	97	280.3
Gutter Fading	1016	279.83
cb	969	280.87
H	90	281.0
14705		
H	86	281.4
cb Fading	870	281.35
Gutter "	951	280.54
1/4	90	281.0
1/2	88	281.3

1/4		94	280.7
Gutter Fasting		10.07	279.98
cb		9.38	280.77
S		9.7	280.3
	1510F		
S		6.8	283.2
cb Fasting		6.96	283.09
Gutter		7.65	283.40
1/4		7.0	283.0
1/2		6.1	283.6
1/4		6.6	283.4
Gutter Fasting		7.12	282.93
cb		6.32	283.73
H		6.7	283.8
	1550F		
H		2.3	287.7
cb Fasting		2.29	287.77
Gutter		3.08	286.97
1/4		2.5	287.5
1/2		2.1	288.0
1/4		2.6	287.4
Gutter Fasting		3.14	286.91
cb		2.50	287.55
S		2.3	287.7
TP	1305	0.47	289.4

1580F

.63  
302.66

58  
289.4

1530 F - End  
of Halk on  
H Side

S		10.0	292.6
cb Fasting		10.30	292.33
Gutter		11.00	291.63
1/4		10.4	292.2
1/2		10.3	292.3
1/4		10.6	292.0
Gutter Fasting		11.31	291.32
cb		10.51	292.12
H		10.2	292.4
	1621 TP - N 4	6.6	296.0
H		6.6	296.0
cb Fasting		5.86	296.77
Gutter		6.67	295.94
1/4		6.0	296.6
1/2		5.6	297.0
1/4		5.1	297.2
Gutter Fasting		6.02	296.61
cb		5.30	297.33
S		5.1	297.5
TP	843	5.80	296.5 <sup>3</sup>
8N		2.22	303.0 <sup>4</sup>

.26  
305.29

296.5<sup>3</sup>

303.0<sup>4</sup>

For Inter Section  
See 1310F

SE Top 417  
Hunderling 1305  
3021 from 1305

Hundredth Ave

3021  
10060  
10065

SE 1/4 of 1/4  
Hundredth Ave

BN	986	312.96	3021
		FL 63 <sup>rd</sup>	
S		66	3063
+5		70	305.9
+7		93	303.6
cb		101	302.8
1/4		102	302.7
1/2		102	302.7
1/4		104	302.5
cb		108	302.1
N		115	301.4
		SE 1/4 of FL 63 <sup>rd</sup> N	
N		75	305.4
cb		72	305.7
1/4		18	306.1
1/2		14	306.5
1/4		63	306.6
+5		71	305.8
cb		73	305.6
+6		76	305.3
+6		46	308.3
5		46	308.3
		150 <sup>ft</sup>	
S		20	310.9
+5		30	310.9

312.96

18  
312.96

18	45	308.4	
cb	46	308.3	
1/4	39	309.0	
1/2	36	309.3	
1/4	41	308.8	
cb	40	308.9	
N	41	308.8	
		75 <sup>ft</sup>	
N	19	311.0	
cb	18	311.1	
1/4	15	311.4	
1/2	09	312.0	
1/4	08	312.1	
cb	12	311.7	
70	10.51	312.78	
15		313.4	
S		313.7	
		100 <sup>ft</sup>	
S		74	315.9
cb		74	315.9
+8		85	314.8
1/2		86	314.7
1/2		85	314.8
1/4		85	314.5
cb		84	313.9
N		81	313.7

51.5<sup>ft</sup> Earth  
= Conc. Wall  
25<sup>ft</sup>

32349

125'E

H	47	316.6
cb	63	317.0
1/4	64	316.9
1/2	61	317.2
1/4	65	316.8
cb	61	317.2
S	59	317.4

150'E

S	19	318.4
cb	12	319.1
1/4	13	319.0
1/2	10	319.3
1/4	14	318.9
cb	16	318.7
H	15	318.8

175'E

H	22	321.1
cb	27	320.6
1/4	23	320.0
1/2	23	320.0
1/4	27	319.6
cb	42	319.1
S	49	318.4

200'E

S	51	317.5
---	----	-------

32329

19

cb	51	318.2
1/4	45	318.8
1/2	35	319.8
1/4	32	320.1
cb	24	321.2
H	12	322.0

225'E

H	14	321.9
cb	12	321.1
1/4	35	319.8
1/2	38	319.5
1/4	42	318.4
cb	57	319.6
S	66	316.7

250'E

S	77	315.6
cb	67	316.6
1/4	59	317.4
1/2	47	318.6
1/4	45	318.8
cb	31	320.2
H	22	321.1

275'E

H	29	320.4
cb	45	318.8
1/4	58	317.5

204'E = 1st Tree  
45 of H.2.

323.39

L		62	3170
1/4		74	3159
cb		83	3150
S		90	3143
	300' E		
S Fence 1/2		10.0	3133
cb		92	3141
1/4		86	3147
L		77	3146
1/4		73	3160
cb		64	3169
H		48	3185
	325' E		
H	1/2	62	3170
cb		77	3156
1/4		86	3147
L		90	3143
1/4		98	3135
cb		106	3127
S Fence 1/2		111	3122
	358' E		
S Fence 1/2		123	3110
cb		118	3119
1/4		107	3126
L		96	3137
1/4		91	3142

323.29

20

cb		80	3153
H	Fence 70' 1/2	71	3162
	375' E		
H	Fence 70' 1/2	74	3159
cb		85	3148
1/4		95	3138
1/4		96	3137
L		99	3134
1/4		111	3122
cb		122	3111
S	Fence 15' 1/2	132	3101
	400' E		
S	Fence 20' 1/2	123	3100
cb		123	3110
1/4		116	3121
L		100	3133
1/4		98	3135
cb		89	3144
H	Fence 70' 1/2	80	3153
	425' E		
H	Fence 70' 1/2	88	3145
cb		95	3138
1/4		102	3131
L		102	3130
1/4		115	3118
cb		129	3104

323.37

S	Fence 20 in St	✓	141	308.2
TP	346	314.17	12.58	310.71
	450.5			
S	Fence 20 in St		57	308.5
cb			45	309.7
1/4			32	311.0
1/2			19	312.3
1/4			18	312.4
cb			0.8	313.4
H			0.0	314.2
	475.5			
H	Fence 7 in St		16	312.6
cb			23	311.9
1/4			36	310.6
1/2			43	309.9
1/4			56	308.6
cb			70	307.2
S	Fence 3 in St		78	306.4
	1998.1 - H.L. S. Co. out			
S	End Fence		104	303.8
cb			99	304.3
1/4			89	305.3
1/2			76	306.6
1/4			73	306.9
cb			64	307.8
H	End Fence		65	307.7

314.17

	530.8 F - H.L. Water Co. out			
H			11.5	302.7
cb			17.0	302.2
1/4			12.0	306.2
1/2			12.2	306.0
1/4			13.1	300.6
cb			14.3	299.9
S			14.9	299.3
1/10			15.1	299.1
TP	0.80	302.64	12.33	301.84
	550.5			
1/10			6.0	296.6
S			5.5	297.1
cb			4.6	298.0
1/4			5.1	297.5
1/2			4.4	297.2
1/4			4.0	298.6
cb			2.9	298.9
H			3.4	299.2
1/10			3.8	298.8
	568.3 F - H.L. Water Co. out			
1/10			5.8	296.8
H			5.8	296.8
cb			5.5	297.1
1/4			5.8	296.8
S			6.4	296.2



292.64

1/2	71	295.5
cb	75	295.1
S	80	294.6
1/10	81	294.5
598.75 = FL Math Co. 02.5		
-10	112	291.4
S	107	291.9
cb	106	292.0
1/4	102	292.4
1/2	97	292.9
1/4	102	292.4
cb	101	292.5
11	96	293.0
1/10	95	293.1
625 F		
-10	112	291.4
11	121	291.5
cb	127	289.9
1/4	122	289.7
1/2	127	289.9
1/4	133	289.3
cb	127	289.7
S	137	288.7
1/10	137	288.9
TP	134	291.71
	137	290.17

650 F

291.71

-10	53	286.7
S	55	286.2
cb	54	286.3
1/4	54	286.3
1/2	47	287.0
1/4	42	286.8
cb	45	287.2
11	39	287.8
1/10	36	288.1
675 F		
-10	74	284.3
11	69	284.8
cb	69	284.8
1/6	81	283.6
1/4	77	284.0
1/2	78	283.9
1/4	80	283.7
cb	82	283.4
S	83	283.4
1/10	85	283.2
700 F		
-10	112	280.5
S	117	280.0
cb	121	279.6
1/4	123	279.4
1/2	118	279.9

29171

1/4		11.9	2798
cb		11.8	279.9
H		11.9	279.8
+10		9.5	2822
	72.5 F		
-10		9.0	2827
H		10.6	281.1
cb		12.5	2792
TP	4.09	13.19	2785.2
1/4		11.9	277.7
1/2		12	276.4
1/4		7.4	275.2
+5		9.0	273.6
cb		9.0	273.6
S		9.1	273.5
+15		9.0	273.6
	75.5 F		
-20		12.5	270.1
S		10.5	272.1
cb		8.8	273.8
1/4		7.1	275.5
1/2		5.1	277.5
1/4		7.0	278.6
cb		8.0	279.6
H		2.0	280.6
+15		0.3	282.3

29211

	77.5 F		
-15		1.7	280.9
H		1.7	279.9
cb		3.6	279.0
1/4		4.5	278.1
1/2		5.1	277.5
1/4		6.3	276.3
cb		7.6	275.0
S		9.6	273.4
120		12.1	269.5
	80.5 F		
-20		16.0	268.6
S		10.0	272.6
cb		8.6	274.0
1/4		7.6	275.0
1/2		6.4	276.2
1/4		5.9	276.7
cb		4.8	277.8
H		4.5	278.1
+15		4.1	278.5
	82.5 F		
-15		7.6	275.0
H		8.4	274.2
cb		9.0	273.6
1/4		9.3	273.3
1/2		9.8	273.8

		28261		
42			10.8	271.8
cb			11.6	271.0
5			12.8	269.8
+20			15.9	266.7
TP	247	172.69	12.21	270.10
	856.5			
-20			8.0	264.7
5			6.4	266.3
cb			7.0	266.7
14			5.1	267.6
5			4.8	267.9
14			4.3	268.4
cb			4.1	268.6
11			3.6	269.1
+15			3.6	269.1
	875.5			
-20			10.5	262.2
11			11.2	261.5
cb			11.4	261.3
14			11.3	261.4
5			11.1	261.6
14			10.8	261.9
cb			10.6	262.1
5			10.5	262.2
+20			11.0	261.7
TP	0.23	259.94	12.98	259.71

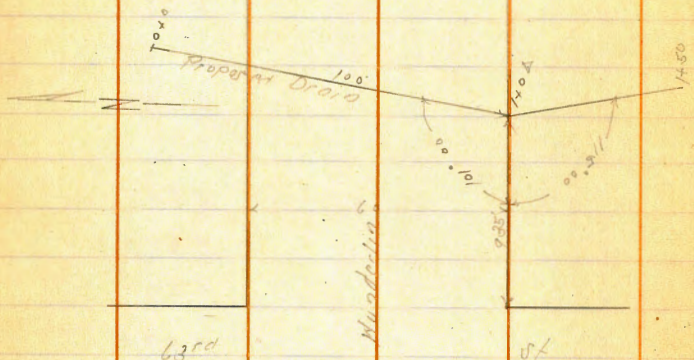
		259.94		
			9.005	
-25			2.4	257.5
5			3.8	256.1
cb			4.3	255.6
14			4.5	255.4
5			4.1	255.5
14			4.2	255.7
cb			3.9	256.0
11			3.2	256.7
+25			1.8	258.1
	925.5			
-25			5.2	254.7
11			7.7	252.2
cb			9.3	250.6
14			10.2	249.7
5			11.2	248.7
14			12.1	247.8
cb			12.0	247.9
5			11.5	248.4
+25			9.6	250.3
	938.5			
-35			11.8	248.1
5			15.1	244.8
cb			14.3	245.6
14			14.3	245.1
5			15.8	244.1

15994

11	154	244.5
+5	132	246.7
cb	126	247.3
H	10.9	249.0
+30	77	252.2

65th

St



63rd

Wunderlin Ave

St

Levels For Proposed Drain

0+0	117	248.2
+35	125	247.4
+50	132	246.7
+75	132	246.7
+90	144	245.5
+100 = A	147	245.2
+25	163	243.6
+50	171	242.8

St. Wunderlin

25994

-30	119	248.0
11	122	247.7
cb	116	248.3
1/4	10.5	249.4
1/4	9.9	250.0
1/4	10.4	249.5
cb	115	248.4
5	127	247.2
+10	167	243.2

965E

-35	140	245.9
5	85	241.4
cb	78	242.1
1/4	68	243.1
1/4	65	243.4
1/4	61	243.8
cb	56	244.3
H	50	254.9
+30	62	253.7

975E

-30	25	257.4
H	30	256.9
cb	36	256.3
1/4	40	255.9
1/4	45	255.4

25994

1/4		5.5	254.4
cb		6.3	253.6
S		7.1	252.8
+30		11.9	248.9
	1000'F		
-30		6.4	253.5
S		4.0	255.9
cb		3.1	256.8
1/4		1.8	258.1
2		0.1	259.3
TP	11.26	270.73	259.47
1/4		10.2	260.5
cb		9.8	260.9
N		8.4	262.3
+35		7.5	263.2
	1025'F		
-20		2.3	268.4
N		3.3	267.4
cb		4.3	266.4
1/4		4.7	266.0
2		5.4	264.3
1/4		6.4	264.3
cb		8.2	262.5
S		8.7	262.0
+30		11.3	259.4

1250'F

27073

-10		3.4	267.3
S		1.9	268.8
cb		1.4	269.3
1/4		1.2	269.5
2		0.5	270.2
TP	12.4	283.19	270.53
1/4		12.2	270.9
cb		11.6	271.5
N		11.4	271.7
+30		10.8	272.3
	1075'F		
-15		5.3	277.8
N		6.6	276.5
cb		6.9	276.2
1/4		7.0	276.1
2		7.7	275.4
1/4		8.1	275.0
cb		8.4	274.7
S		8.7	274.4
+30		10.0	273.1
	1100'F		
-20		5.5	277.6
S		4.6	278.5
cb		3.8	279.3
1/4		3.3	279.8
2		2.6	280.5

21319

1/4			28	2807
cb			22	2809
H			19	2812
710			27	2809
TP	10.5P	29371	001	28313
	11.25P			
H			21	2846
cb			10.0	2837
1/4			10.1	2836
1/2			9.1	2843
1/4			9.3	2844
cb			10.2	2835
S			11.0	2827
710			11.8	2819
	11.32P			
S			9.1	2846
cb			9.1	2846
1/4			9.0	2847
1/2			8.9	2848
1/4			9.2	2845
cb			9.3	2844
H			8.7	2850
	11.50P			
H			6.6	2871
cb			7.0	2867
1/4			7.4	2863

29371

1/2			7.1	2861
1/4			7.9	2858
cb			8.2	2855
S			8.5	2852
	11.5P			
S			7.0	2859
cb			7.5	2862
1/4			7.1	2866
1/2			6.5	2872
1/4			5.9	2878
cb			5.1	2886
H			4.9	2894
	11.00P			
H			2.8	2909
cb			1.1	2896
1/4			4.8	2889
1/2			5.6	2881
1/4			6.2	2875
cb			6.9	2868
S			7.4	2863
	11.55P			
S			7.0	2867
cb			6.4	2873
1/4			5.9	2878
1/2			5.3	2884
1/4			4.1	2883

29371

cb	33	290.4
N	20	291.7
	1250.5	
N	17	292.0
cb	27	291.0
1/4	38	289.9
1/4	46	289.1
1/4	53	288.4
cb	51	287.9
S	65	287.2
	1375.5	
S	63	287.4
cb	53	288.4
1/4	50	288.7
1/4	17	289.5
1/4	35	290.2
cb	22	291.5
N	60	291.7
	1300.5	
N	60	291.7
cb	17	290.8
1/4	38	289.9
1/4	41	289.6
1/4	49	288.8
cb	55	288.2
S	61	287.6

29371

	1321.5	291.5
S	60	287.7
cb	56	288.1
1/4	51	288.6
1/4	42	289.5
1/4	35	290.2
cb	20	290.7
N	25	291.2
BM	5AS	288.6
TP	0.18	284.8
BM	13.01	280.70
	13.41	287.7

5N Nails  
Mundorin Fee

5N Nails  
Brighton Fee

65th St Cross Sections  
Imperial to Bach

50' wide to Ch. Brooklyn  
5' ch  
109th

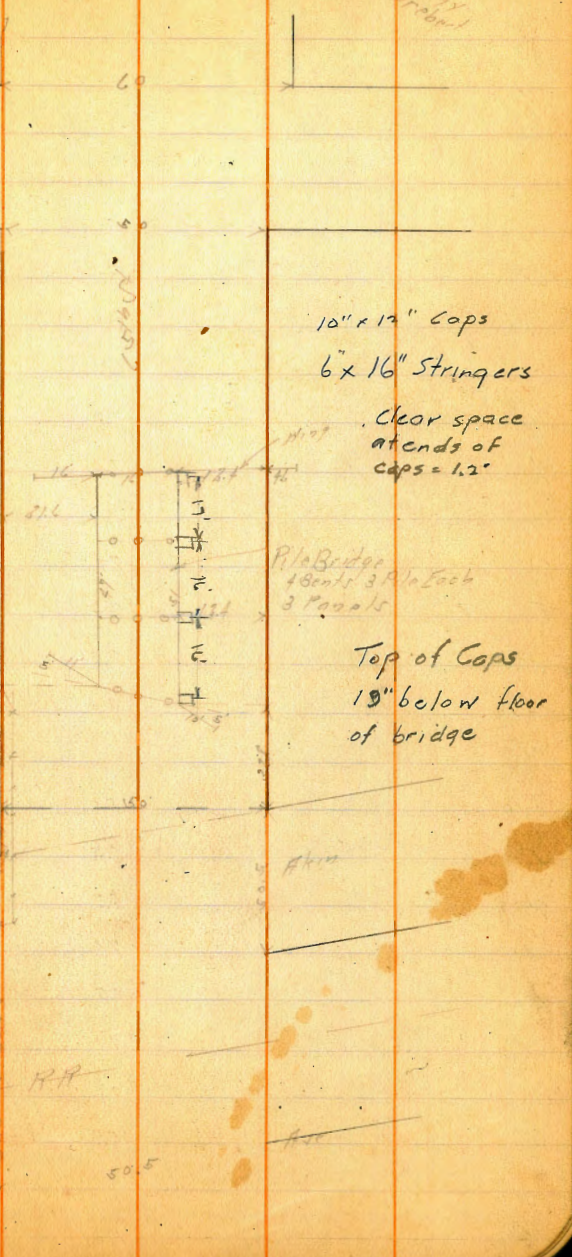
From H.L. Plus to H.L. Brooklyn  
20' Strip of Building 20' Strip is  
40' E of H.L.

29  
3.26  
5.10  
8.17  
10.94  
13.61  
16.28

BM	1115	224.76	223.61	NEOPK
BM			223.86	SE of Bach Imperial to Bach
				50' wide
-10		50	219.8	
E		51	219.6	
cb		51	219.6	
1/4		51	219.6	
1/2		49	219.9	
3/4		49	219.9	
cb		53	219.5	
H		48	220.0	
				50' wide
H		50	219.8	
cb		52	219.6	
1/4		60	218.8	
1/2		59	218.9	
3/4		60	218.8	
cb		57	218.9	
E		56	219.2	
110		67	218.1	
				50' wide
-10		75	215.6	
E		78	217.0	
cb		74	217.4	
1/4		71	217.7	

Platted - A-2-1028  
C.B.H.

Brooklyn



10" x 12" Caps  
6" x 16" Stringers

Clear space  
at ends of  
caps = 1.2'

P/A Bridge  
4 Beams 3 P/A Each  
3 Panels

Top of Caps  
19" below floor  
of bridge

S.O.P. R.R.



22476

d	67	218.2
1/4	67	218.1
cb	59	218.9
N	18	2200

50.5 N. d.

N on Top Rail	754	217.22
Group cl	77	217.1

cb	72	212.1
----	----	-------

1/4	75	217.3
-----	----	-------

d	74	217.4
---	----	-------

1/4	73	217.5
-----	----	-------

cb	71	217.4
----	----	-------

F	75	217.3
---	----	-------

on Top Rail	726	217.50
-------------	-----	--------

+10	79	217.5
-----	----	-------

60 N

-10	83	216.5
-----	----	-------

F	85	216.3
---	----	-------

cb	82	216.6
----	----	-------

1/4	71	217.4
-----	----	-------

d	75	217.3
---	----	-------

1/4	81	216.7
-----	----	-------

cb	88	216.0
----	----	-------

N	88	216.0
---	----	-------

70 N

-10	128	214.0
-----	-----	-------

50.5 N. d.

22476

30

N	181	212.7
---	-----	-------

cb	99	214.9
----	----	-------

1/4	77	217.1
-----	----	-------

d	76	217.2
---	----	-------

1/4	76	217.2
-----	----	-------

cb	79	216.9
----	----	-------

F	85	216.3
---	----	-------

+10	114	212.4
-----	-----	-------

90 N

-10	120	212.8
-----	-----	-------

-5	113	212.5
----	-----	-------

F	71	215.7
---	----	-------

cb	82	216.6
----	----	-------

1/4	81	216.7
-----	----	-------

d	80	216.8
---	----	-------

1/4	80	216.8
-----	----	-------

cb	96	215.2
----	----	-------

N	108	214.0
---	-----	-------

+5	102	212.5
----	-----	-------

+10	131	211.7
-----	-----	-------

101 N. d. S. L. R. 110

-10	124	212.4
-----	-----	-------

N	105	214.3
---	-----	-------

cb	98	215.0
----	----	-------

1/4	84	216.4
-----	----	-------

d	81	216.7
---	----	-------

50.5 N. d.

22476

1/4	81	216.7
83	81	216.7 ✓
F	90	215.8
110	117	213.1
+20	121	212.7
	115.1	50.5 N. d.
-20	121	212.7
-8	118	213.0
F	92	215.6
cb	82	216.6
1/4	83	216.5
2	83	216.5
1/4	86	216.2
cb	99	214.9
H	106	214.2
115	127	212.1
	126.2 N. of 8th	50.5 N. d.
-15	126	212.2
H	133	211.5
cb	120	211.8
1/4	89	215.9
2	84	216.4
1/4	84	216.4
cb	83	216.5
F	102	214.6
+5	118	213.0

22476

+20	121	212.7
	151.5 N. of 11th	50.5 N. d.
-20	123	212.5
F	107	214.1
cb	89	215.9 ✓
1/4	88	216.0
2	88	216.0
+7	90	215.0
1/4	101	214.7
cb	125	210.3
H	140	210.8
+15	143	210.5
	11.2 N. on E	
	72 N. of N. L. A. on E	50.5 N. d.
-15	143	210.5
H	140	210.8
cb	135	211.3
1/4	101	214.7
+3	90	215.8
2	82	215.9
1/4	87	216.1
cb	88	216.0 ✓
F	107	214.1
+20	123	212.5
115	121.67	883 215.93
	20 N. of N. L. A. on E	
-20	98	211.9

-5	11.0	210.7
F	8.5	213.2
cb	6.1	215.3
1/4	5.8	215.9
1/2	5.8	215.9
1/4	6.8	214.9
cb	9.7	212.0
H	10.5	211.2
+15	10.6	211.1

31/1

-15	10.5	211.2
H	10.6	211.1
cb	9.1	212.3
1/4	6.8	214.9
1/2	5.0	215.8
1/4	5.8	215.9
+2. SF Condridge 027 Fluv	5.8	215.9

+2	11.8	210.9
cb	13.8	208.9
F	12.1	208.9
+20	12.6	209.1

37/1

-20	13.0	208.7
F	13.3	208.4
cb	13.5	208.2
1/4	13.8	207.9

13.8	207.9
14.2	206.5
8.2	212.4
8.5	213.2
9.3	212.4
10.2	211.5
10.6	211.1
10.5	211.2
10.8	210.9

18/1

15.6	206.1
15.6	206.1
14.8	206.9
11.4	206.3
14.0	207.7
13.8	207.9
13.7	208.0
13.8	207.9

50/1

13.9	207.8
13.7	208.0
13.8	207.9
14.0	207.7
14.1	207.3
14.8	206.9
15.1	205.1
13.1	207.6

221.67

+2	117	210.3
120	125	209.2
	114	
-80	148	206.9
H	146	207.1
cb	146	207.1
1/4	143	207.4
1/2	142	207.5
1/4	141	207.6
cb	140	208.0 -
F	137	208.0
+5	120	209.7
+20	114	210.3
	831	
-60	112	210.5
F	139	208.8
cb	119	209.8 -
1/4	130	208.7
1/2	130	208.7
1/4	150	206.7
cb	149	206.8
H	149	206.8
+80	149	206.8
	84 N. End Bridge	
-60	149	206.8
H	144	207.3

221.67

33

cb	140	207.7
1/4	87	213.0
+6	56	216.1
1/2 on Pass Bridge	58	215.83
1/4	55	216.2
+3	51	216.6
cb	76	214.1
F	77	212.0
+7	118	209.9
+50	114	210.3
	891	
-70	109	210.8
-7	119	209.8
F	95	212.2
cb	67	215.0
+7	53	216.4
1/4	54	216.3
1/2	55	215.2
+5	57	216.0
1/4	77	214.0
cb	115	210.2
H	121	209.6
+7	125	209.2
+10	131	208.1
+60	144	207.5
	1151	

-20	116	210.1
H	112	210.5
cb	107	211.0
+3	102	211.4
1/4	51	216.6
+3	39	217.8
1/2 on Pacific	988	217.79
1/4	384	217.83
cb	41	217.6
F	78	213.9
+7	108	210.9
+20	112	210.5

1388454 Toyon on F

-20	89	212.8
F	59	215.8
cb	32	218.5
+2	2.5	219.2
1/4 on Pacific	227	219.43
1/2	623	219.44
1/4	29	218.8
cb	90	212.7
H	96	212.1
+20	10.4	211.3

1488454 scb

-20	97	212.0
H	92	212.4

cb	87	213.0
1/4	127	219.0
1/2 on Pacific	195	219.72
1/4	190	219.77
cb	220	219.47
F	31	218.6
+20	57	216.0

1568454 Toyon

-20	8.9	217.8
F	20	219.7
cb	16	220.1
1/4 on Pacific	101	220.66
1/2	104	220.3

1/4	17	220.0
cb	76	214.1
H	81	213.6
+20	91	212.3

1688454 scb

-20	88	212.9
H	96	214.1
cb	68	214.9
1/4	1.3	220.4
+3	02	221.5

1/2 on Pacific	024	221.43
1/4	018	221.49
cb	08	220.9

221.67

F		16	220.1
+20		3.3	218.4
TP	1195	232.95	221.00
		173.87 = 176.7307	
-15		139	219.0
F		137	220.2
cb		119	221.1 ✓
1/4 on Passings		1107	221.2
1/2		1114	221.81
1/8		119	221.0
1/4		130	219.9
cb		175	215.4
1/4		186	214.3
1/20		191	213.8
		181.7	
-10		161	216.8
1/4		141	218.8
cb		147	219.2
1/4		114	220.5
1/2 on Passings		1056	222.39
1/4		1060	222.35
cb		111	221.8 ✓
F		133	220.7
+10		130	219.9
		500.7	
-10		114	221.5

137.95

F		109	222.0
cb		98	223.1 ✓
1/4 on Passings		925	223.70
1/2		931	223.64
+8		96	223.3
1/4		106	222.3
cb		139	219.0
1/4		142	218.5
+10		145	218.4
		225.7	
-10		127	220.2
1/4		124	220.5
cb		110	221.9
1/2		108	222.1
1/4		87	224.2
1/2 on Passings		755	225.40
1/4		754	225.41
cb		77	225.2 ✓
F		87	224.2
+10		79	225.0
		225.7	
-10		46	228.3
F		54	227.5
cb		55	227.4 ✓
1/4 on Passings		513	227.33
1/2		511	227.34

221.7 = Conc. Wall  
221.6  
1253 = 22042

231.95

1/4		12	226.7
cb		80	224.9
1/4		84	224.5
1/2		120	220.9
1/10		122	220.7
	375.11		
-10		85	227.4
1/4		96	228.3
cb		93	228.6
1/4		89	229.0
1/2	of Parings	84	229.55
1/4	" "	84.5	229.50
cb		85	229.4
F		82	229.7
1/10		16	231.4
TP	12.33	244.90	232.37
	375.11	= 52 Cypresst Lant	
-10		104	234.3
F		117	233.0
cb		122	232.5
1/4	of Parings	134.0	231.30
1/2	" "	133.8	231.32
1/4		132	231.5
cb		136	231.1
1/4		140	230.7
1/10		141	230.6

244.70

375.11

-10		121	232.6
1/4		112	233.4
cb		109	233.8
1/4		111	233.6
1/2	of Parings	107.7	233.93
1/4	" "	107.8	233.91
cb		107	234.0
F		102	234.5
1/10		88	234.9
	350.11		
-10		74	237.3
F		84	236.3
cb		72	235.5
1/4	of Parings	862	236.08
1/2	" "	864	236.06
1/4		91	235.6
cb		87	236.0
1/4		88	235.9
	375.11		
1/4		67	238.0
cb		64	238.3
1/4		71	237.6
1/2	of Parings	668	238.08
1/4		664	238.06
cb		70	237.7

24470

F		1.5	238.2
+10		1.9	239.8
	3965 N. H. Spruce Loop		
-10		2.1	241.6
F		4.5	241.2
Cb		4.9	239.8
1/4 on Parings		4.82	239.88
1/2 " "		4.82	239.88
1/4		5.2	239.5
+3		5.1	239.7
H		4.4	240.3
Cb		4.5	240.2
H		4.5	240.2
	425 N		
H		1.2	243.4
Cb		1.5	243.2
+6		1.6	243.1
1/4		2.1	241.6
1/2 on Parings		2.43	242.27
1/4 " "		2.44	242.26
Cb		3.5	242.2
F		2.1	242.6
+10		1.4	243.3
JP	1279	259.49	0.00
	463 N		24470
-10		1.15	246.0
F		1.7	245.8

25748

37

Cb		12.7	244.8
1/4 on Parings		14.31	245.11
1/2 " "		13.86	245.13
1/4		12.1	244.9
1.5		10.9	246.7
Cb		10.6	246.9
H		10.4	247.1
	415 N		
H		10.3	247.2
Cb		10.2	247.3
+5		10.5	247.0
1/4		12.1	245.4
1/2 on Parings		11.91	245.55
1/4 " "		12.04	245.45
+9		12.2	246.7
Cb		12.3	245.2
F		10.9	246.6
+10		9.5	248.0
	500 N		
-10		6.3	251.2
F		1.7	250.8
Cb		9.1	248.4
+5		10.3	247.2
1/4 on Parings		9.30	248.19
1/2 " "		9.61	248.23
1/4		9.1	247.9



257.47

15		81	249.4
03		80	249.5
H		78	249.7
	55511		
H		55	252.0
03		55	252.0
15		56	251.9
14		77	249.8
1/2 on Parings		736	250.13
14		748	250.01
17		84	249.1
06		77	249.8
F		59	252.1
710		48	252.7
	55011		
-10		28	254.7
F		32	254.3
06		55	252.0
13		64	251.1
1/4 on Parings		543	252.06
1/2 " "		538	252.11
14		57	251.8
15		36	253.9
06		35	254.0
H		34	254.1

57511

257.47

38

H		10	256.5	
06		12	256.3	
15		15	256.0	
17		25	254.0	
11		37	253.8	
1/2 on Parings		348	254.01	
14		355	253.94	
17		40	253.5	
06		33	254.2	
13		15	256.0	
F		13	256.2	
110		0.6	256.9	
TP	13.03	217.60	0.92	256.57
	60011			
-10		11.4		258.2
F		11.9		257.7
06		13.9		255.7
12		14.5		255.1
1/4 on Parings		13.71		255.89
1/2 " "		13.71		255.89
14		14.1		255.2
13		14.2		255.4
15		15.3		257.3
06		12.2		257.4
H		12.2		257.4

62511

26960

N	99	259.7
cb	101	259.5
+5	101	259.5
+7	120	257.6
14	120	257.6
1/2 on Pavina	1178	257.82
1/4 " "	1181	257.79
+8	125	257.1
cb	119	257.7
F	103	259.3
+10	98	259.8
	150 N	
-10	95	261.1
F	87	260.9
78	87	260.9
cb	100	259.6
78	107	258.9
1/4 on Pavina	994	259.66
1/2 " "	988	259.72
1/4	105	259.1
+5	84	261.2
cb	84	261.2
N	82	261.4
	175 N	
N	14	263.2
cb	15	263.1

16960

39

+5	18	262.8
14	85	261.1
1/2 on Pavina	840	261.20
1/4 " "	841	261.19
03	87	260.9
F	80	261.6
710	73	262.3
	700 N	
-10	63	263.3
F	62	263.4
cb	64	263.2
72	75	262.1
1/4 on Pavina	681	262.79
1/2 " "	680	262.80
18	75	262.1
14	69	262.7
+5	52	264.3
cb	47	264.9
N	45	265.1
	725 F	
N	34	266.2
cb	33	266.3
+8	37	265.9
14	52	264.3
23	59	263.7
1/2 on Pavina	519	264.41

6516 SL

219.60

1/4 on Paving		527	264.38
+P		57	263.9
cb		51	264.5
F		49	264.7
+10		51	264.5
	757.3' = S.L. Brooklyn		
-10		41	265.5
F		25	266.1
cb		38	265.8
1/4 on Paving		315	266.45
L		312	266.47
+P		39	265.7
1/4		34	266.2
+5		20	267.6
cb		18	267.8
H		16	268.0
BN		0.78	268.8
TP	0.55	259.42	256.57
TP	0.43	245.12	244.69
TP	0.07	232.42	232.25
TP	1.14	222.12	220.98
BN		8.51	218.11

54' Nails  
Brooklyn + 15' H  
2288115 sp  
17' H + 125' H  
218  
2280-18

6516 SL

Brooklyn to Barb Co. H. D.  
10' C. B.  
10' O. H.

40

BN	7.84	276.75	268.88	54' Nails Brooklyn + 15' H
				N.L. Brooklyn
				N. End 10' Strip of Paving
H			48	271.9
+5			52	271.5
cb			81	268.6
1/4			88	267.9
L	on End of Paving		87.5	267.97
1/4			87	267.8
cb			87	268.0
L			89	267.8
	50' N of N.L. of Brooklyn			
F			82	268.5
cb			73	269.4
1/4			69	269.8
L			64	270.3
1/4			64	270.3
+6			70	269.7
cb			46	272.1
H			41	272.6
	100'			
H			17	275.0
cb			32	273.5
+5			18	271.9
1/4			40	272.6
L			44	272.3

54' Nails  
Brooklyn + 15' H12' N of N.L. Brooklyn  
Paper Tie  
E of N.L.27' Large Tree  
E of N.L.65' Large Tree  
E of N.L.57' Large Tree  
E of N.L.

276.78

1/4		49	271.8
cb		57	271.0
F		64	270.3
	150' N		
F		46	272.5
cb		30	273.7
1/4		26	274.1
1/2		22	274.5
1/4		25	274.2
+5		27	274.0
cb		29	276.0
H		21	276.6
TP	11.48	287.99	276.51
	175' N		
H	- Conc Walk to School	109	277.6
cb		110	277.0
+4		118	276.2
+8		131	274.9
1/4		126	275.4
1/2		124	275.6
+9		132	274.8
1/4		124	275.6
cb		126	275.4
F		129	275.1
	200' N		
F		117	276.3

112' N - Top of Tree  
7' E of EL

103' N - Top of Tree  
7' E of EL

225' N - Top of Tree  
277.7

287.99

cb		113	276.7
1/4		113	276.7
1/2		113	276.7
1/4		112	276.6
+1		119	276.1
+8		102	277.7
cb		102	277.8
H		99	278.1
	250' N		
H		82	279.7
cb		81	279.9
+6		94	278.6
1/4		89	279.1
1/2		83	279.7
1/4		88	279.7
cb		83	279.7
F		83	279.7
	300' N		
F		65	281.5
cb		63	281.7
+7		73	280.7
1/4		70	281.0
1/2		61	281.9
1/4		65	281.5
+4		66	281.4
cb		55	282.5

261' N - Top of Tree  
9' E of EL

283' N - Top of Tree  
8' E of EL

250' N - Top of Tree  
6' E of EL

257' N - Top of Tree  
8' E of EL

277' N - Top of Tree  
10' N of EL

303' N - Top of Tree  
9' E of EL

322' N - Top of Tree  
10' N of EL

352' N - Top of Tree  
9' N of EL

28777

H		52	2828
	350 ft		
H		35	2845
cb		59	2841
1/4		44	2836
2		43	2837
1/4		47	2833
cb		44	2836
F		46	2834

400 ft

F		25	2855
cb		22	2860
1/4		27	2853
2		23	2857
1/4		26	2854
cb		18	2862
H		17	2863

1350 ft - 56 Handwritten

H		02	2878
cb		01	2879
1/4		09	2871
2		08	2872
1/4		12	2861
cb		04	2876
F		10	2870

1132

2990 ft

285

28777

60 ft  
100 ft  
100 ft

8 ft

1038

28878

5 ft  
Handwritten 15  
28877

1156 - 5' cb

F			113	287.8
cb			117	287.4
1/4			114	286.6
2			113	287.8
1/4			115	287.6
cb			112	287.9
H			107	288.4

1156 ft - 5' Handwritten

H			94	289.7
cb			89	290.2
25			110	288.1
1/4			108	288.9
2			102	288.9
1/4			109	288.1
cb			104	288.7
F			108	288.3

1156 ft - 5' Handwritten

F			99	289.2
cb			96	289.5
1/4			98	289.7
2			92	289.9
1/4			90	290.1
cb			82	290.9
H			83	290.8

29906

1956 - N. L. Woodcock

H	27	291.4
cb	28	291.3
H	81	290.5
H	87	290.4
H	95	289.5
cb	91	289.7
F	93	289.8
550' N		
F	75	291.6
cb	73	291.8
H	72	291.8
H	66	292.5
H	66	292.5
cb	63	292.8
H	61	293.0
600' N		
H	38	295.3
cb	41	295.0
H	43	294.8
H	42	294.9
H	50	294.0
cb	12	294.3
F	51	294.0
650' N		
F	20	297.1

509' N - Tree  
9'E of N.L.511' N - Large Tree  
10' N of N.L.513' N - Tree  
9'E of N.L.515' N - Large Tree  
10' N of N.L.517' N - Tree  
9'E of N.L.519' N - Tree  
9'E of N.L.521' N - Large Tree  
10' N of N.L.

600' = 293.06

574' N - Tree  
9'E of N.L.586' N - Large Tree  
10' N of N.L.587' N - Tree  
9'E of N.L.613' N - Large Tree  
10' N of N.L.637' N - Large Tree  
9' N of N.L.

29906

43

cb	20	297.1
H	22	296.8
H	18	297.3
H	20	297.1
cb	17	297.4
H	17	297.4
1276' 311.78 204 299.06		
700' N		
H	115	300.3
cb	117	300.1
H	122	299.5
H	120	299.8
H	117	300.1
H	121	299.7
H	125	299.3
cb	119	300.4
F	115	300.3
750' N		
F	78	304.0
cb	77	304.1
H	75	302.7
H	88	303.0
H	84	303.4
H	91	302.7
H	92	302.6
cb	85	303.3

H		89	302.9	
	800' N			
H		56	306.2	
cb		50	306.8	
+5		59	305.9	
1/4		56	306.2	
1/2		50	306.8	
1/4		56	306.2	
+5		60	305.8	
+7		42	307.5	
cb		44	307.4	
F		40	307.8	
	850' N			
F		44	310.7	
cb		47	310.1	
+5		25	309.3	
1/4		22	309.6	
1/2		21	309.7	
1/4		26	309.2	
+5		29	308.9	
cb		24	309.4	
H		27	309.1	
TP	864	319.54	088	310.80
	900' N			
H		72	312.2	
cb		70	312.5	

+5		78	311.7	
1/4		70	312.5	
1/2		66	312.9	
1/4		68	312.7	
+5		68	312.7	
cb		56	313.9	
F		50	314.5	
	931.571' S of 800' N			
F		29	316.6	
cb		31	316.4	
+5		45	315.0	
1/4		43	315.2	
1/2		43	315.2	
1/4		50	314.5	
cb		52	314.3	
H		56	313.9	
TP	027	206.82	1301	206.59
TP	112	295.85	1259	294.23
BM			708	288.77

917' N of 800' N  
10' E of 1/4

S. W. Hill  
Hundred 129.65'

Topog. Map  
Cross Sections  
6516 to Sogor. Sta.

35 M. Sta.  
5' Cont.  
6516/9

45

B.M.	8.84	222.15	213.11
	E.L. of 6516		
-15		81	214.4
S		64	216.1
cb		40	218.5
1/4		22	219.3
S		24	220.1
1/4		23	220.2
cb		24	220.2
H		22	220.3
	10' E of E.L. of 6516		
H		27	219.6
cb		22	219.3
1/4		26	218.9
S		28	218.7
1/4		27	217.8
cb		62	216.2
S		81	214.4
710		115	211.0
450		130	210.5
	25' E		
-20		48	210.7
S		98	212.7
cb		75	215.0
1/4		52	216.7

Plotted - A-2-1928  
A.B.H.

222.45  
213.11  
219.3

8	50	217.5
1/4	48	217.7
cb	42	218.2
H	28	218.7
	5437 E - H.L. Water Right on S	
H	42	217.7
cb	58	216.7
1/4	66	215.9
S	74	215.1
1/4	76	214.9
cb	83	214.2
S	91	213.4
715	102	212.2
	7114 E - H.L. Water Right on S	
-15	98	212.7
S	92	213.2
cb	89	213.6
1/4	85	214.0
S	82	214.3
1/4	79	214.6
cb	68	215.7
H	54	217.1
	9714 E - E.L. Water Right on S	
H	75	215.0
cb	89	214.6
1/4	91	213.4



Toyon Way

222.45

2	89	213.6
1/4	89	213.6
cs	89	213.5
S	87	213.8
1/10	90	213.5

125°F

S	86	213.9
cb	88	213.7
1/4	88	213.7
2	93	213.2
1/4	92	213.3
cb	91	213.4
1/4	87	213.8

150°F

1/4	87	213.8
cb	87	213.7
1/4	90	213.5
2	88	213.7
1/4	87	213.8
cb	88	213.7
S	84	214.1

175°F

S	86	213.9
cb	85	214.0
1/4	86	213.9
2	85	214.0

222.45

1/4	86	213.9
cb	84	214.1
1/4	83	214.2

200°F

1/4	80	214.5
cb	81	214.4
1/4	81	214.4
2	82	214.3
1/4	84	214.1
cb	84	214.1
S	83	214.2

225°F

S	78	214.7
cb	76	214.9
1/4	81	214.4
2	80	214.5
1/4	76	214.9
cb	75	215.0
1/4	69	215.6

250°F

1/4	66	216.9
cb	64	216.1
1/4	72	215.3
2	74	215.1
1/4	78	214.7
cb	71	215.1

Toyon Way

22245

2752

3005

325 A

3585 - P.C. 15 Pool

S	74	215.1
S	68	215.7
cb	68	215.7
1/4	69	215.6
1/2	69	215.7
1/4	67	215.8
cb	58	216.7
H	54	217.1
H	54	217.1
cb	57	216.8
1/4	62	216.3
1/2	64	216.1
1/4	66	215.9
cb	63	216.2
S	64	216.1
S	60	216.5
cb	57	216.8
1/4	62	216.3
1/2	60	216.5
1/4	58	216.7
cb	57	216.8
H	50	217.5

22245

47

3241 F - H. L. Sage Way Prod. No.

3848 F

3895 F - Bottom of Wash Friend

H	42	217.7
cb	54	217.1
1/4	54	217.1
1/2	54	217.1
1/4	50	217.5
cb	50	217.5
S	51	217.4
S	51	217.4
cb	49	217.6
1/4	49	217.6
1/2	49	217.6
1/4	51	217.4
cb	52	217.3
H	50	217.5
H	50	217.5
cb	53	217.2
1/4	57	216.9
1/2	59	216.6
1/4	60	216.5
cb	59	216.7
S	59	216.6
S	7.5	215.0
cb	7.5	215.0

Toyo No

222.45

48

74	72	215.3
74	69	215.6
74	69	215.6
cb	71	215.4
N	71	215.4
409RF - EL of Sage-Hay Prod. S.		
N	52	217.3
cb	53	217.2
74	53	217.2
74	52	217.3
74	49	217.6
cb	50	217.5
F	50	217.5

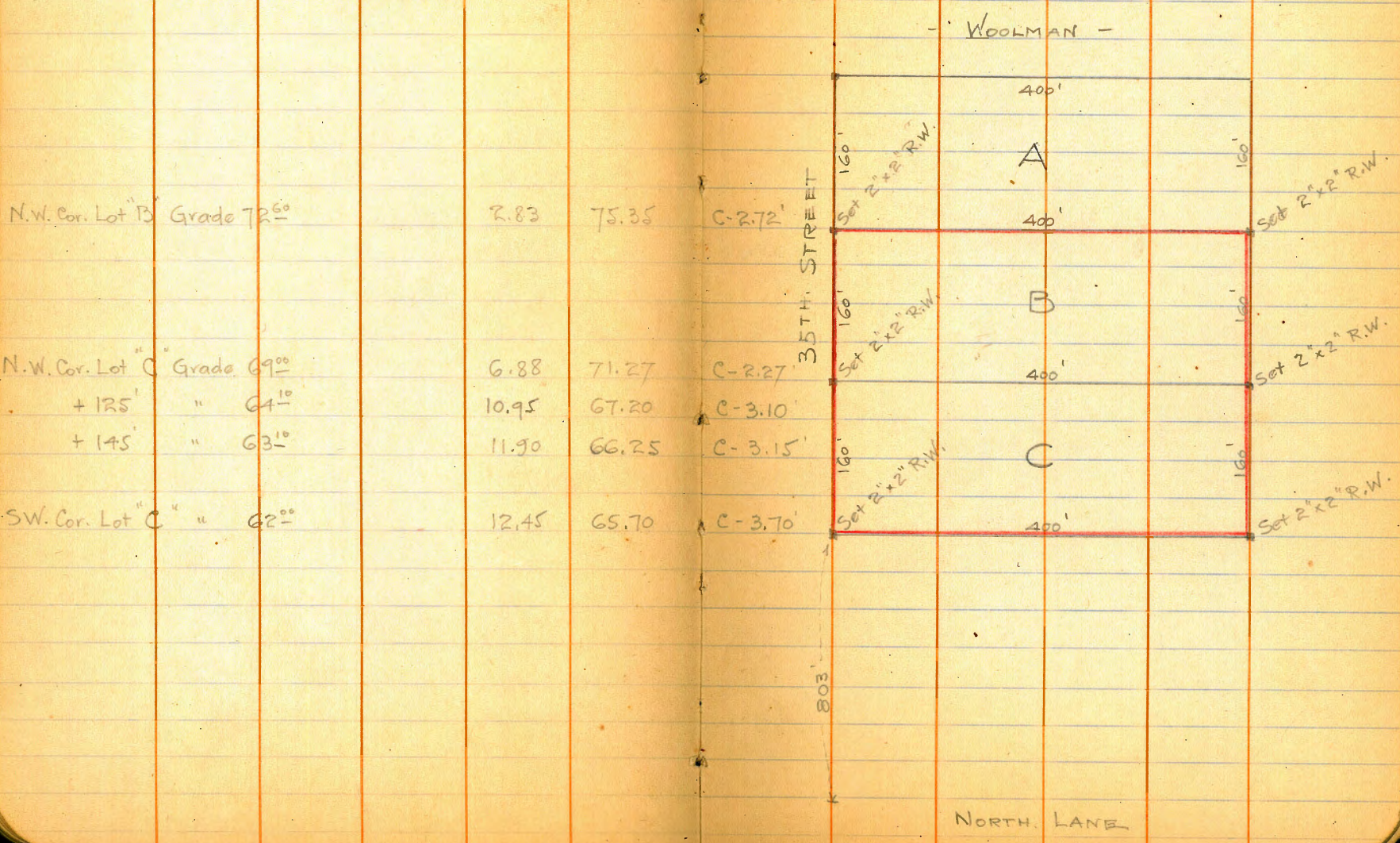
SURVEY OF THE West 400 feet  
of Lots "B" & "C" Blk 14  
Central Homestead

JAEGER } May 8<sup>th</sup> 1928  
Bailey }  
Clavett }

49

STA.	+	H.I.	-	Elev.
				66.00
	12.15	78.15		

SE. Curb 35<sup>th</sup> & Woolman



X-Section Redwood bet. Central & 4<sup>th</sup> St  
including both intersections.

Alley Blk. 125 - Betw. Redwood & 75' N of Redwood

STA.	+	H.I.	-	Elev.
				330.04
	0.26	330.30		
T.P.			12.84	317.46
	1.24	318.70		
T.P.			13.00	305.70
	1.25	306.95		
T.P.			5.38	301.57
	3.21	305.38		
T.P.			13.00	292.38
	✓ 13.20	305.58		
T.P.			0.09	305.49
	✓ 8.51	314.00		
T.P.			0.28	313.72
	✓ 8.55	322.27		
T.P.			1.26	321.01
	✓ 8.98	329.99		
T.P.			2.59	327.40
	✓ 5.09	333.09		
			2.84	330.15

JAEGER } May 9<sup>th</sup> 1928  
Bailey  
claret }

BM. NW. Cor. Dwight & Central.

Near intersection Redwood & Central

On Curb on W.L. 41<sup>st</sup>

" " W.L. 41<sup>st</sup>

B.M. N.W. Cor. Myrtle & 41<sup>st</sup>

B.M. NW. Cor. Dwight & 41<sup>st</sup> 330.55

Do not use these notes for dog

Redwood St. betw. W.L. Central & E.L. 41st.  
80' Street, 14' Sidewalks, 52' betw. Curbs.

306.12

51

STA.	+	H.I.	-	Elev.	STA.	+	H.I.	-	Elev.
				301.57	0+40	ϕ Central			
	4.55	306.12			S.P.			1.9	304.2
0+00					C			2.1	304.0
N.P.			2.10	304.02	S 1/4			2.3	303.8
C			1.9	304.2	ϕ			2.7	303.4
N 1/4			1.5	304.6	N 1/4			4.10	302.02
ϕ			1.3	304.8	C			5.7	300.4
S 1/4			1.2	304.9	N.P.			7.0	299.1
C			1.5	304.6	0+53				
S.P.			1.5	304.6	N.P.			7.7	298.4
0+14					C			5.2	300.9
S.P.			2.0	304.1	N 1/4			3.5	302.6
C			1.8	304.3	ϕ			3.2	302.9
S 1/4			1.7	304.4	S 1/4			2.8	303.3
ϕ			1.7	304.4	C			2.5	303.6
N 1/4			1.8	304.3	S.P.			2.0	304.1
C			4.3	301.8	0+66				
N.P.			7.4	298.7	S.P.			2.6	303.5
0+27					C			3.0	303.1
N.P.			7.5	298.6	S 1/4			3.4	302.7
C			5.5	301.6	ϕ			3.8	302.3
N 1/4			3.0	303.1	N 1/4			4.4	301.7
ϕ			2.0	304.1	C			5.4	300.7
S 1/4			2.0	304.1	N.P.			7.7	298.4
C			1.8	304.3					
S.P.			1.8	304.3					

N.C.

STA.	+	H.I.	-	Elev.
0+80				
N.P.			7.6	2985
C			6.5	299.6
N <sup>1</sup> / <sub>4</sub>			5.2	3009
ϕ			4.6	3015
S <sup>1</sup> / <sub>4</sub>			3.9	3022
C			3.6	3025
S.P.			3.3	3028
1+05				
S.P.			5.3	3008
C			6.1	300.0
S <sup>1</sup> / <sub>4</sub>			7.3	2988
ϕ			8.8	2973
N <sup>1</sup> / <sub>4</sub>			10.6	295.5
C			12.2	293.9
N.P.			14.4	291.7
T.P.			13.14	292.98
	5.5v	✓ 298.50		
1+30				
N.P.			12.0	286.5
C			9.5	289.0
N <sup>1</sup> / <sub>4</sub>			7.0	291.5
ϕ			4.8	293.7
S <sup>1</sup> / <sub>4</sub>			3.0	295.5
C			1.6	296.9
S.P.			0.5	298.0

STA.	+	H.I.	-	Elev.
1+55				
S.P.			3.6	294.9
C			5.0	293.5
S <sup>1</sup> / <sub>4</sub>			7.2	291.3
ϕ			9.7	288.8
N <sup>1</sup> / <sub>4</sub>			11.8	286.7
C			14.8	283.7
N.P.			18.2	280.3
T.P.			12.95	285.55
	6.61	✓ 292.16		
1+80				
N.P.			17.9	274.3
C			14.5	277.7
N <sup>1</sup> / <sub>4</sub>			10.2	282.0
ϕ			6.7	285.5
S <sup>1</sup> / <sub>4</sub>			4.6	287.6
C			2.35	289.81
S.P.			0.05	292.01
2+00				
S.P.			4.25	287.91
C			6.55	285.61
S <sup>1</sup> / <sub>4</sub>			9.55	282.61
ϕ			13.0	279.2
N <sup>1</sup> / <sub>4</sub>			17.2	275.0
C			20.7	271.5
N.P.			23.5	268.7

STA.		+	H.I.	-	Elev.	STA.		+	H.I.	-	Elev.
	T.P.			12.94	279.22		T.P.			12.53	273.85
		7.10	286.38					3.34	277.19		
2+20	W. L. Alley					2+75					
	S.L.			1.45	284.93		S.P.			1.1	276.1
	C			4.15	282.23		C			5.6	271.6
	S $\frac{1}{4}$			7.6	278.8		S $\frac{1}{4}$			9.1	268.1
	¢			11.9	274.5		¢			14.4	262.8
	N $\frac{1}{4}$			16.1	270.3		N $\frac{1}{4}$			18.3	258.9
	c			21.4	265.0		C			15.3	261.9
	N.P.			25.0	261.4		N.P.			10.0	267.2
2+30	¢ Alley					3+00					
	N.P.			24.1	262.3		N.P.			5.2	272.0
+ 2.7	Top Mark hole			23.91	262.47		C			12.45	264.74
	C			24.5	261.9		N $\frac{1}{4}$			17.3	259.8
	N $\frac{1}{4}$			17.8	268.6		¢			19.3	257.9
	¢			14.1	272.3		S $\frac{1}{4}$			18.6	258.6
	S $\frac{1}{4}$			9.7	276.7		C			14.3	252.9
	C			6.0	280.4		S.P.			8.25	268.94
	S.P.			2.9	283.5	3+25					
2+40	East Line Alley						S.P.			14.3	252.9
	S.P.			4.7	281.7		C			20.9	256.8
	C			8.15	278.23		S $\frac{1}{4}$			19.7	257.5
	S $\frac{1}{4}$			12.25	274.13		¢			16.1	261.1
	¢			16.4	270.0		N $\frac{1}{4}$			11.5	265.7
	N $\frac{1}{4}$			22.6	263.8		C			7.1	270.1
	C			26.9	259.5		N.P.			2.45	274.74
	N.P.			22.0	263.8						



STA.	+	H.I.	-	Elev.
	T.P.		0.98	276.21
	1.00	277.21		
3+50				
N.P.			0.0	277.2
C			5.2	272.0
N <sup>1</sup> / <sub>4</sub>			11.3	265.9
	T.P.		13.0	264.21
	0.4	264.61		
¢			2.10	262.51
S <sup>1</sup> / <sub>4</sub>			5.5	259.1
C			8.6	256.0
S.P.			9.3	255.3
3+75				
S.P.			9.2	255.4
C			5.7	258.9
	T.P.		0.60	264.01
	10.50	274.51		
S <sup>1</sup> / <sub>4</sub>			11.80	262.71
¢			7.6	266.9
	T.P.		0.0	274.51
	11.20	285.71		
N <sup>1</sup> / <sub>4</sub>			12.4	273.3
C			7.2	278.5
N.P.			2.0	283.7
	T.P.		0.50	285.21

STA.	+	H.I.	-	Elev.
	T.P. on W.C. 41 <sup>st</sup>	See Page 50		292.38
	0.15	292.53	Instr.	
	See T.P. opp. Page		7.34	285.19
3+80	W.L. 41 <sup>st</sup> Str.			
	N.P. on Concrete Side Walk		6.07	286.66
	C		11.5	281.0
	N <sup>1</sup> / <sub>4</sub>		14.8	277.7
	¢ T.P.		26.3	266.23
	0.60	266.83	Hand Level	
	S <sup>1</sup> / <sub>4</sub>		5.7	261.1
	C		9.9	256.9
	S.P.		13.1	253.7
3+94				
	S.P.		9.3	257.5
	C		5.5	261.3
	S <sup>1</sup> / <sub>4</sub> T.P.		0.6	266.23
	13.25	279.48	Hand Level	
	¢		5.3	274.2
	N <sup>1</sup> / <sub>4</sub>		3.0	276.5
		292.53	Instr.	
	C		8.2	284.3
	N.L. Top of Concrete Curb		6.21	286.32

292.53

55

STA.	+	H.I.	-	Elev.
4+07				
N.L.			6.6	286.5
C			6.75	285.78
N $\frac{1}{4}$			8.90	283.63
☒			11.65	280.88
T.P.			13.00	280.53
Hand Level	1.00	281.53		
S $\frac{1}{4}$			5.1	275.4
C			11.5	269.0
S.L.			16.6	264.9
4+20	Center Line	41 <sup>st</sup> Street		
S.L.			14.2	266.9
C			9.2	
S $\frac{1}{4}$			2.1	
		292.53 Instr.		
☒			9.1	283.4
N $\frac{1}{4}$			6.3	286.2
C			6.0	286.5
N.L.			5.8	286.7
4+33				
N.L.			5.9	286.6
C			5.7	286.8
N $\frac{1}{4}$			5.5	287.0
☒			7.7	284.8
S $\frac{1}{4}$ T.P.			11.6	280.93

STA.	+	H.I.	-	Elev.
Hand Level	0.20	281.13		
C			5.9	275.2
S.P.			11.4	269.7
4+46				
S.P.			9.3	271.8
C			5.2	275.9
S $\frac{1}{4}$			1.4	279.7
☒	Instr.	292.53	10.5	282.0
N $\frac{1}{4}$			8.0	284.5
C			6.1	286.4
N.P.	Concr. Curb on 41 <sup>st</sup>		6.18	286.95
4+60	E.L.	41 <sup>st</sup>		
N.P.	Concr. Walk on 41 <sup>st</sup>		5.89	286.64
C			2.60	289.93
N $\frac{1}{4}$			5.0	287.5
☒			8.0	284.5
S $\frac{1}{4}$ T.P.			11.10	281.43
Hand Level	0.90	282.33		
C			4.30	278.03
S.P.			8.40	273.93

Alley BIK. 125 75 north of N.L. Redwood.

56

STA.		+	H.I.	-	Elev.
0+00	= 2+30	¢	Redwood		
	B.M.				262.47
		13.00	275.47		
0+65					
	W.L.			11.50	263.97
	¢			8.00	267.47
	E.L.	T.P.		1.50	273.97
		8.5	282.47		
0+90					
	E.L.			2.9	279.6
	¢			7.8	274.7
	W.L.			11.5	271.0
	T.P.			2.20	280.27
		9.0	289.27		
1+15					
	W.L.			9.5	279.5
	¢			8.4	280.9
	E.L.			4.8	284.5

Plotted 5-14-28

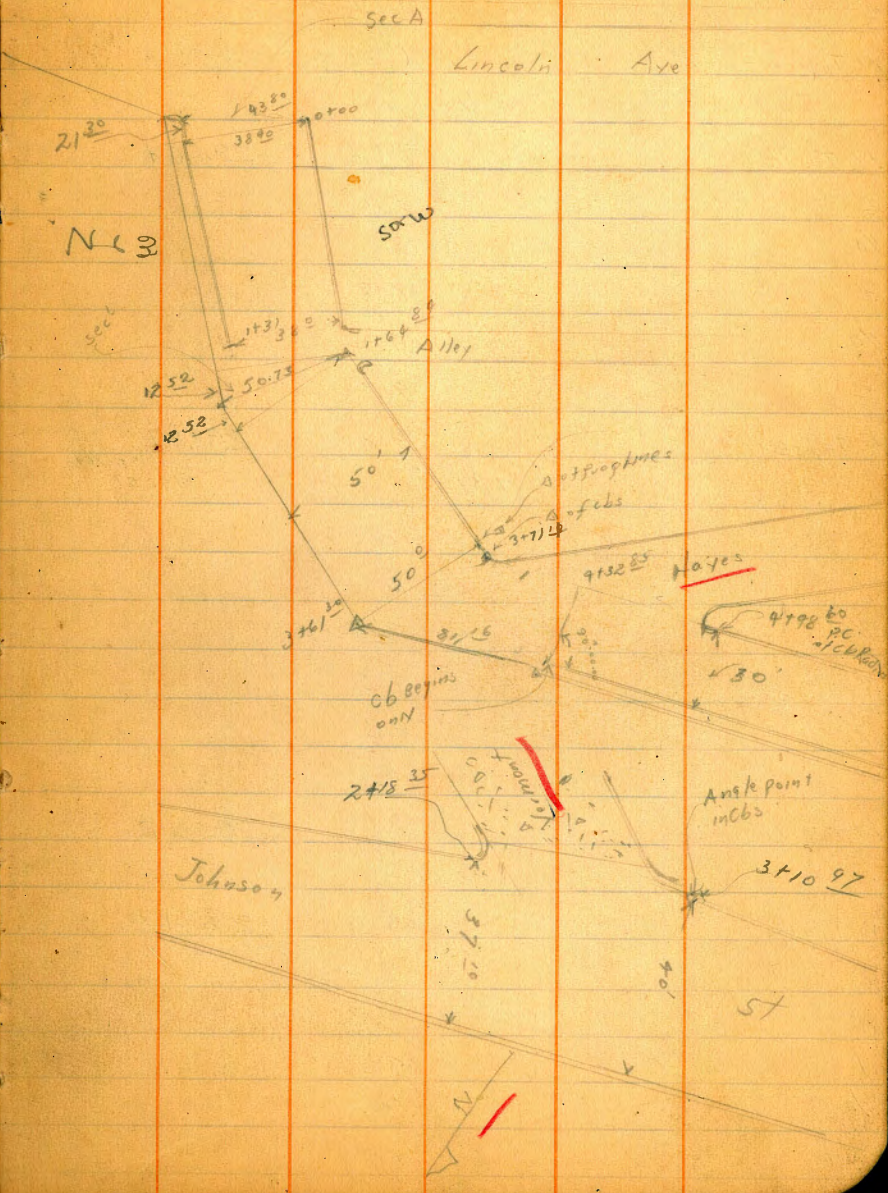
Top of Manhole on Redwood & Alley, see Page 53

Bliss Overmit Holbeck 5/1/28  
 BM SW B.P. Richmond's Hendricks  
 X Sections Johnson Street Univ Hts from the N line of Lincoln to Elev

			Elev
	2.42	300.90	298.48
T.P.	1.60	302.31	0.19
set BM S.E. Top Johnson Lincoln			3.13
		Sec A	299.18
			43.80 on paving
E Top cb		9.36	297.95
G		5.14	297.17
1/4		4.79	297.52
1/2		4.76	297.55
3/4		5.01	297.30
E		5.60	296.71
W Top cb		5.15	297.16
			38.40
		04.00	
W Top		5.60	296.71
1/4		5.1	
1/2		5.2	
3/4		5.5	
G		5.8	
E Top cb		5.19	297.12
		50' N	
E Top cb		7.13	295.18
G		7.9	
1/4		7.6	
1/2		7.1	
3/4		7.1	

Cb. elevations checked on Profile - 5-28-28 - C.B.H.

Sketch of Johnson Street with Stationing & sections taken  
 Note From 4+98.00 to 3+10.97 Roadway is variable



302.31

50' N

+5	7.2	
G	6.9	
XI Topcb	6.32	295.99

100' N

IV Topcb	7.67	294.64
C	8.2	
1/4	8.8	
1/4	8.8	
1/4	9.2	
G	9.7	
E Topcb	9.00	293.31

131

end Cl on E. see sketch Page 57

	10.29	
	10.3	
1/4	9.9	
1/4	9.5	
1/4	9.5	
G	9.2	
VI Topcb	8.62	293.69

190 N

VI Topcb	8.82	293.49
G	9.2	
1/4	9.6	
1/4	9.5	
1/4	10.1	
cb	10.4	

302.31

58

E		10.2	
TP	40-	296.19	10.14
		1164 <sup>84</sup>	292.17
			$\Delta$ on West $28^{\circ}56'00''$ L

E		9.9
cb		9.6
1/4		9.9
1/4		3.9
1/4		3.7
1/4		3.8
+3		3.2
VI		2.7

Sec. 1

split triangle

		3.8
1/4		3.8
1/4		9.0
1/4		9.5
cb		9.5
E		4.3
		84

1164

60' 57"  
10' 06"  
10' 19"

E		4.2
+8		9.2
cb		9.7
1/4		9.6
1/4		9.0
+6		3.8
1/4		3.9

π  
29619

20.2 2 f

π  
29619

59

cb 3.8  
 170 Topcb on N Side of Alley  
 3.9  
 2700  
 W. Topcb 3.38 292.81  
 E 4.2  
 1/4 4.1  
 1/4 4.0  
 1/4 4.5  
 +7 5.0  
 cb 5.1  
 +3 4.4  
 E 4.4  
 2750  
 E 4.4  
 +8 4.6  
 cb 5.2  
 1/4 4.6  
 1/4 4.2  
 1/4 4.4  
 E 4.3  
 W To 3.65 292.54  
 3700  
 S Topcb 3.91 292.28  
 G 4.6

1/4 4.6  
 1/4 4.5  
 1/4 4.9  
 cb 5.3  
 +3 4.7  
 N 4.6  
 3750  
 N 4.7  
 +8 4.8  
 cb 5.5  
 1/4 5.0  
 1/4 4.5  
 1/4 4.7  
 G 4.9  
 S Topcb 4.5 292.04  
 361 30 Δ on N <sup>scas catch</sup>  
 S Topcb 4.4 292.05  
 C 5.0  
 1/4 4.6  
 1/4 4.5  
 1/4 5.2  
 78 5.6  
 cb 4.9  
 N 4.5  
 3770 Δ in cb on South  
 N 4.7

296.19

5.17 c.B  
9.08  
9.13

+3	4.7
cb	4.9
+3	5.7
1/4	5.3
ϕ	4.6
1/4	4.7
G	5.1
S Top cb	4.17
	3+93.50
S	4.8
cb	4.5
1/4	4.4
ϕ	4.5
1/4	5.2
+6	5.5
cb	5.1
N	4.6
	4+32.85
N Top cb	5.21
G	5.8
1/4	5.3
ϕ	4.7
1/4	4.4
cb	3.9
S	3.6

29202  
520

380

29098

296.19

60

	9+56
S	4.0
cb	4.3
1/4	4.5
ϕ	4.6
1/4	5.3
G	5.6
N Top cb	5.08
	9+79
N Top cb	4.89
G	5.5
1/4	4.9
ϕ	4.3
1/4	4.2
cb	4.1
S	4.1
	Red Readings around Ck. Return on N. Side of Hayes & S. Line Johnson
S	3.21
ϕ	3.23
	292.98
	292.96

291.11  
39.12

291.30

292.98

292.96

296.19

30' Roadway

175' N. of the N. line of the

297.06

39<sup>70</sup>

61

4786 = 00

S Topcb 3.21 292.98

G 4.1

1/4 4.2

1/4 4.1

1/4 4.9

E 5.3

N Topcb 4.77 291.42

4750

N Topcb 4.34 291.75

G 4.9

1/4 4.6

E 3.9

1/4 3.8

G 3.7

S Topcb 2.96 293.23

1700

S Topcb 2.75 293.44

G 3.4

1/4 3.5

E 3.4

1/4 4.1

G 4.6

T.P. 3.63 297.06 2.76 293.43

N Topcb 4.90 292.16

1750

N Topcb 4.48 292.58

E 5.1

1/4 4.7

E 4.1

1/4 4.1

E 3.9

S Topcb 3.91 293.65

2700

S Topcb 3.18 293.88

G 4.0

1/4 3.9

E 3.8

1/4 4.3

+5 4.8

E 4.9

N Topcb 4.12 292.94

2718

35 PCCub on 37

N Topcb 4.12 292.94

G 4.8

1/4 4.3

E 3.8

1/4 3.9

E 4.0

S Topcb 3.06 294.00

S Topcb 0.90 297.18 0.78 296.28

2730 35

S Topcb 3.87



29718

cb	4.0		
1/4	3.9		
ϕ	4.0		
1/4	4.6		
G	4.9		
N Top cb	4.33	29285	
	2744 <sup>35</sup>	480 9 1/4	
N	4.96		
G	5.1		
1/4	4.6		
ϕ	4.1		
1/4	3.9		
cb	3.8		
s. on Paving	3.55		
	2759 <sup>15</sup>	4860	9.25 1/4
S	3.59		
cb	3.7		
1/4	3.7		
ϕ	4.0		
1/4	4.5		
G	5.2		
N Top cb	4.54	292.64	
	2773 <sup>65</sup>	7920	
N Top	4.66	292.52	
G	5.4		
1/4	4.7		

29718

62

ϕ	4.0		
1/4	3.8		
cb	4.0		
S. on Paving	4.01		
	2788 <sup>5</sup>		50' 10 1/4
S. on Paving	4.71		
1/4	4.4		
1/4	4.1		
ϕ	4.2		
1/4	4.9		
G	5.6		
N Top cb	4.78	29240	
	3110 <sup>97</sup> = 00	CB 5.0 on the line of Vermont 40' Roadway	
N Top cb	4.98	29220	
G	5.7		
1/4	5.2		
ϕ	4.6		
1/4	4.8		
G	5.0		
S	4.23	292.95	
	6750		
S	4.59	292.59	
G	5.2		
1/4	5.1		
ϕ	5.1		
1/4	5.5		

297.18

G 5.9  
N.Topcb 5.39 291.89

1+00

N.Topcb 5.79 291.39

G 6.4

1/4 6.1

1/4 5.5

1/4 5.6

G 5.8

S.Topcb 5.01 292.17

1+42 PC.

curve 5' pc-75 R.  
Δ 35° 40' 00" Tan. 83.82

S.Topcb 5.36 291.82

G 6.2

1/4 6.0

1/4 6.0

+5 6.1

1/4 6.5

G 6.9

N.Topcb 6.25 290.93

Sec 1

N.Topcb 4.99 290.19

G 7.3

1/4 6.7

+5 6.3

1/4 6.2

1/4 6.3

297.18

63

G 6.9  
S.Topcb 5.64 291.54

Sec 2

S.Topcb 5.92 291.26

G 6.6

1/4 6.6

1/4 6.4

+5 6.5

1/4 6.9

G 7.7

N.Topcb 6.85 290.33

Sec 3

N.Topcb 7.10 290.08

G 8.1

1/4 7.2

+5 6.6

1/4 6.6

1/4 6.9

G 7.1

S.Topcb 6.18 291.00

Sec 4

S.Topcb 6.96 290.22

G 7.1

1/4 7.2

1/4 7.0

+5 7.2

↑  
297.18

1/4	7.5	
G	8.0	
N. Top cb	7.50	289.68

Sec 5 P.T. = 00

N. Top cb	7.91	289.27
-----------	------	--------

G	8.6	
---	-----	--

1/4	8.0	
-----	-----	--

1/4	7.6	
-----	-----	--

1/4	7.3	
-----	-----	--

G	7.6	
---	-----	--

S Top cb	6.77	290.41
----------	------	--------

T.P.	1.71	292.18	6.71	290.47
------	------	--------	------	--------

0.50

S Top cb	2.14	290.04
----------	------	--------

G	3.0	
---	-----	--

1/4	2.9	
-----	-----	--

1/4	2.9	
-----	-----	--

1/4	3.5	
-----	-----	--

+5	3.9	
----	-----	--

G	4.0	
---	-----	--

N Top cb	3.38	288.80
----------	------	--------

1.00

N Top cb	3.79	288.39
----------	------	--------

G	4.5	
---	-----	--

1/4	3.9	
-----	-----	--

1/4	3.2	
-----	-----	--

↑  
292.18

64

1/4	3.3	
-----	-----	--

G	3.6	
---	-----	--

S Top	2.61	289.57
-------	------	--------

1750

S Top cb	3.00	289.18
----------	------	--------

G	3.9	
---	-----	--

1/4	3.5	
-----	-----	--

1/4	3.5	
-----	-----	--

+3	3.6	
----	-----	--

1/4	4.2	
-----	-----	--

G	4.7	
---	-----	--

N Top cb	4.15	288.03
----------	------	--------

2.00

N Top cb	4.58	287.60
----------	------	--------

G	5.0	
---	-----	--

1/4	4.9	
-----	-----	--

1/4	4.1	
-----	-----	--

+5	4.1	
----	-----	--

1/4	4.2	
-----	-----	--

G	4.4	
---	-----	--

S Top cb	3.97	288.71
----------	------	--------

2150

S Top cb	3.87	288.31
----------	------	--------

G	4.9	
---	-----	--

1/4	4.6	
-----	-----	--

1/4	4.8	
-----	-----	--

292.18

1/4	5.3	
G	5.9	
N Topcb	4.90	287.28
	2486	see sketch
N Topcb	5.06	287.12
E	5.9	
+5	5.8	
1/4	5.8	
1/4	5.3	
1/4	4.9	
G	5.0	
S Topcb	4.16	288.02
	2496 <sup>50</sup>	
S Topcb	4.54	287.64
G	5.0	
1/4	5.1	
1/4	5.3	
1/4	5.7	
cb	6.2	
N Topcb	5.59	286.59
	3106 <sup>75</sup>	
N	5.76	
G	6.8	
1/4	6.0	
1/4	5.6	
1/4	5.9	

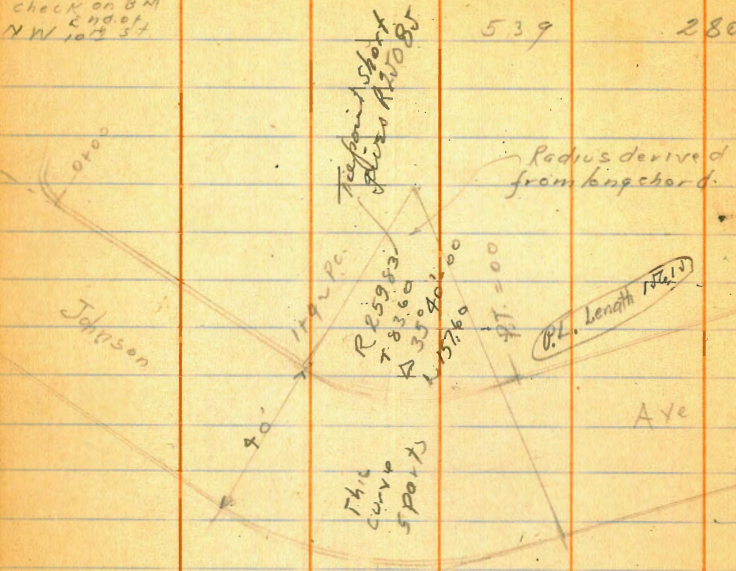
292.18

65

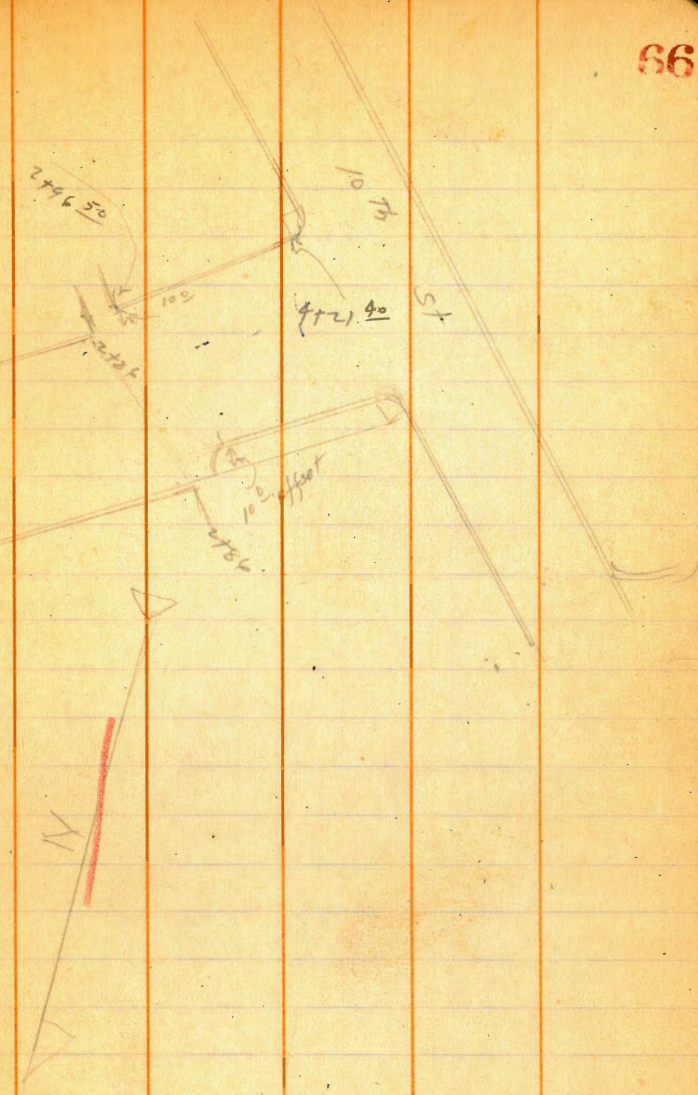
G	5.6	
S Topcb	4.9	287.26
	3150	
S Topcb	6.39	285.74
G	7.1	
1/4	6.8	
1/4	6.9	
1/4	7.5	
G	8.1	
N Topcb	7.31	284.87
	4100	
N Topcb	8.93	285.25 <sup>3</sup>
G	9.9	
1/4	9.0	
1/4	8.9	
1/4	8.3	
G	8.7	
S Topcb	7.97	284.21
	4114 <sup>40</sup>	Exline of 16 <sup>75</sup>
S Top	8.71	283.47
G	9.2	
1/4	8.9	
1/4	9.0	
1/4	9.6	
G	10.1	
N Topcb	9.65	282.53

↑  
29218

T.P.	3.91	286.36	973	282.45
check on BM			539	280.91
NW 10 57				



66



7-26-28  
 50.8155  
 Flood  
 Recorder

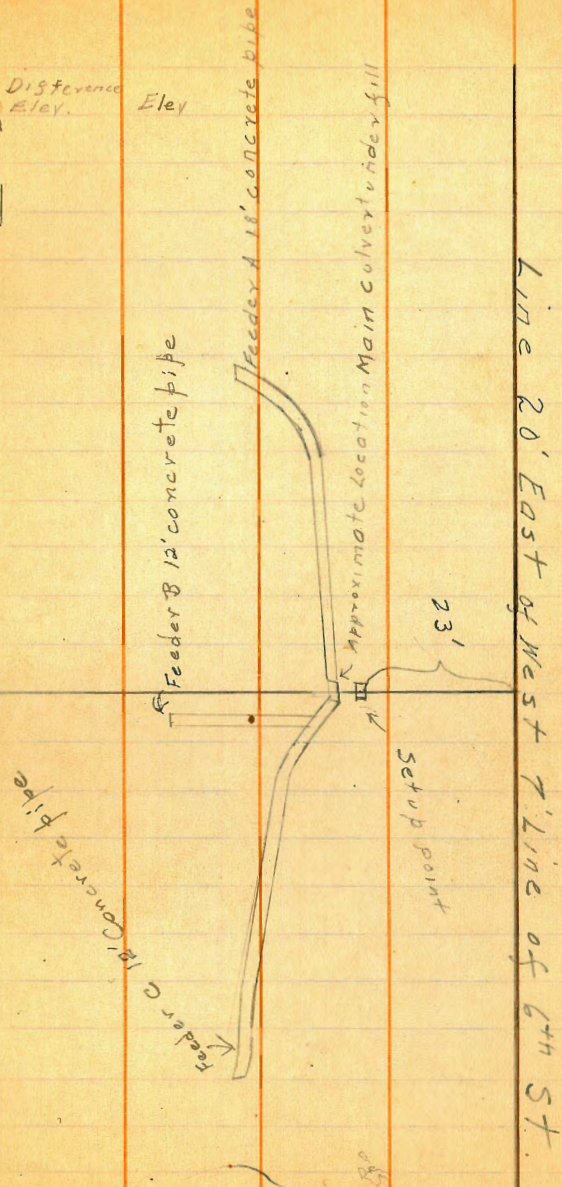
Location of Culvert  
 Feeders at 6<sup>th</sup> + Brookes

Sta.	Note. All horizontal angles off $\perp$ Brookes Ave Horiz. Angle	H.h.	Dist.	Level	Vertical on Top of Pipe	Corrected Vert. L	Distance Elev.	Elev
End Feeder A	50° 17' R	278.83	100'	0° 0'	- 20° 0'	- 20° 0'		
End Feeder B	17° 26' L		89'	0° 0'	- 14° 47'	- 14° 47'		
End Feeder C	62° 24' L		205'	0° 0'	- 2° 50'	- 2° 50'		

$\perp$  Brookes Ave

Level Notes

N.W. B.R. Pennsylvania + 6 <sup>th</sup> St		286.86
+3.52		
	290.38	-12.75
+1.20		277.63
	278.83	



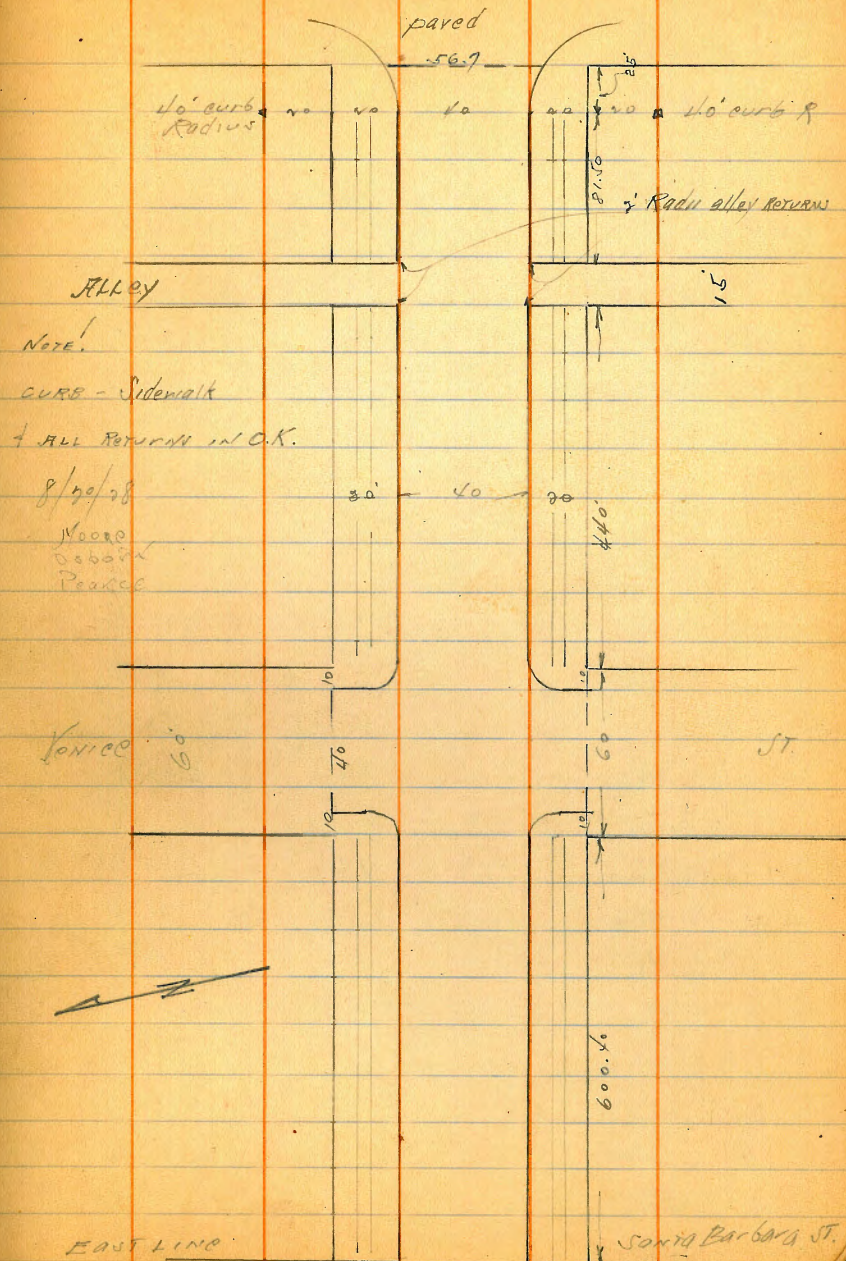
Cross Sections of Coronado Ave  
E.L. of Santa Barbara to W.L. Catalina Blvd.

10' = 1/4"

SWOP	St	243.68	240.17	Santa Barbara Reconco
E.L. (22) - ?				
S cb	Top int	5.5	239.33	
gut		5.2	38.5	
1/4		4.5	39.2	
C		4.2	239.5	
1/4		4.2	39.5	
gut		4.4	39.3	
N cb	Top cmt	2.58	239.80	
0 + 50				
N cb	cmt	4.79	238.89	
gut		5.2	38.3	
1/4		5.3	38.4	
C		5.1	238.6	
1/4		5.5	38.2	
gut		6.1	37.6	
S cb	cmt	5.25	238.43	
+ 700				
S cb	cmt	6.15	237.53	
gut		6.9	36.8	
1/4		6.3	37.4	
C		6.1	237.6	
1/4		6.4	37.3	
gut		6.3	37.4	
N cb	cmt	5.67	238.01	

Catalina

Blvd 68



243.68

1+50		
Ncb CMT	6.58	237.10
gut	7.3	36.4
1/4	7.1	36.6
C	7.0	236.7
1/4	7.4	36.3
gut	7.8	35.9
Ncb CMT	7.05	236.63
2+00		
Ncb CMT	7.89	235.79
gut	8.7	35.0
1/4	8.1	35.6
C	7.9	235.8
1/4	8.0	35.7
gut	8.7	35.5
Ncb CMT	7.50	236.16
2+00		
Ncb CMT	7.94	235.74
gut	8.7	35.0
1/4	8.2	35.3
C	8.3	235.4
1/4	8.6	35.1
gut	8.9	34.8
Sob CMT	8.23	235.35
2+00		
Sob CMT	8.75	234.93

243.68

Coronado

69

gut	9.3	234.4
1/4	8.9	34.8
C	8.6	235.1
1/4	8.6	35.1
gut	9.0	34.7
Ncb CMT	8.40	235.28
2+00		
Ncb CMT	8.50	234.88
gut	9.3	34.4
1/4	9.1	34.6
C	9.1	234.6
1/4	9.3	34.4
gut	9.6	34.1
Sob CMT	9.01	234.67
3+00		
Sob CMT	9.30	234.36
gut	9.9	33.8
1/4	9.5	34.2
C	9.3	234.4
1/4	9.5	34.2
gut	9.4	34.3
Ncb CMT	9.00	234.68
3+00		
Ncb CMT	9.43	234.25
gut	9.9	33.8
1/4	9.7	34.0



243.68

C	9.6	234.1
1/4	9.9	33.8
gut	10.6	33.1
S cb cmt	9.69	233.99
4+100		
S cb cmt	10.07	233.66
gut	11.1	32.6
1/4	10.6	33.1
c	10.3	233.4
1/4	10.4	33.3
gut	10.6	33.1
N cb cmt	9.87	233.81
T.P.	217	236.20
4+25	9.65	234.03
N cb cmt.	2.57	233.63
gut	3.3	32.9
1/4	3.5	32.7
c	3.4	232.8
1/4	3.6	32.6
gut	3.7	32.5
sub. cmt.	2.70	233.50
4+50		
S cb. cmt	2.91	233.29
gut	3.7	33.5
1/4	4.0	32.2
c	4.0	232.2

236.20

Coronado 70

1/4	4.3	31.9
gut	2.2	32.5
N. cb cmt.	2.92	233.23
4+75		
N. cb cmt	3.61	232.59
gut	4.3	31.9
1/4	4.8	31.7
c	4.5	231.7
1/4	4.5	31.7
gut	4.2	32.0
S cb. cmt	3.39	232.81
5+60		
S cb cmt	4.10	232.10
gut	4.2	31.5
1/4	5.0	31.2
c	5.1	231.1
1/4	5.4	30.8
gut	5.2	31.0
N. cb cmt	4.35	231.85
5+50		
N. cb cmt	6.44	229.76
gut	7.3	28.9
1/4	7.3	28.9
c	6.9	229.3
1/4	6.9	29.3
gut	6.7	29.5

236.20

S cb. cmt.	5.91	230.29
6+00 = W.L. Venice = 60' wide		<sup>10' curbs</sup> 10' 1/2 x 5
S cb cmt.	7.56	228.64
gut	8.4	227.8
4	8.5	27.7
c	8.5	227.7
4	9.1	27.1
gut	9.2	227.0
N. cb cmt	8.56	227.64
W. cb. Venice		
N.L. cmt.	8.97	227.23
gut	9.6	226.6
cb	9.6	26.6
4	9.4	26.8
c	8.9	227.3
4	8.8	27.4
cb	8.8	27.4
gut	8.6	227.6
S.L. cmt.	7.96	228.24
W. 4		
S.L.	8.9	227.3
cb	9.2	27.0
4	9.3	26.9
c	9.3	226.9
4	9.5	26.7
cb.	9.8	26.4

236.20

71

N.L.	9.9	226.3
C - Venice		
N.L.	10.4	225.8
cb	10.1	26.1
4	9.9	26.3
c	9.7	226.5
4	9.8	26.4
cb	9.9	26.3
S.L.	9.2	227.0
E. 4		
S.L.	9.9	226.3
cb	10.1	26.1
4	10.3	25.9
c	10.4	225.8
4	10.3	25.9
cb	10.5	25.7
N.L.	10.8	225.4
E cb		
N.L. cmt	11.02	225.18
gut	11.1	225.1
cb	11.0	25.2
4	11.0	25.2
c	10.9	225.3
4	11.0	25.2
cb	10.8	25.4
gut	10.5	225.7

236.20

S.L. cmt		9.91	226.29
E.L Venice			
S cb cmt.		10.39	225.81
gut		11.1	25.1
+2		11.2	25.0
+3		12.1	24.1
+5		11.7	24.5
$\frac{1}{4}$		11.6	24.6
+5		12.0	24.2
+6		12.9	23.3
+9		12.9	23.3
C		11.8	224.4
$\frac{1}{4}$		11.7	24.5
+4		12.1	24.1
+5		13.2	23.0
+6		11.5	24.7
gut		11.5	24.7
N cb. cmt		11.42	224.78
T.P.	0.76	224.71	12.25
			223.95
0+50			
N cb cmt		2.44	222.29
gut		2.7	22.0
+3		3.1	21.6
+5		4.4	20.3
$\frac{1}{4}$		2.7	22.0
C		2.7	222.0

224.71

72

+1		3.8	220.9
+4		3.8	20.9
+5		2.8	21.9
$\frac{1}{4}$		2.6	22.1
+3		3.2	21.5
+5		2.0	22.7
gut.		1.9	22.8
S cb cmt		1.42	223.29
0+25			
scb cmt		2.74	221.97
gut		3.3	21.4
+5		3.8	20.9
+6		5.0	19.7
$\frac{1}{4}$		3.7	21.0
+3		4.2	20.5
+4		5.1	19.6
+7		5.1	19.6
C		4.2	220.5
$\frac{1}{4}$		4.2	20.5
+3		5.6	19.1
+5		4.5	20.2
gut		4.3	20.4
scb cmt		3.74	220.97
100			
scb cmt		5.25	219.46
gut		5.9	18.8

224.71

+4	6.0	218.7
+5	7.2	17.5
$\frac{1}{4}$	5.7	19.0
C	5.6	219.1
+1	5.7	19.0
+2	6.9	17.8
+4	6.8	17.9
+5	5.7	19.0
$\frac{1}{4}$	5.5	19.3
+3	5.7	19.0
+4	6.5	18.2
+6	5.4	19.3
gut	5.0	19.7
Sub amt	4.30	220.41
$\frac{1}{4}$		
Sub amt	6.02	218.69
gut	6.7	18.0
+5	7.3	17.4
+6	8.3	16.4
+8	7.3	17.4
$\frac{1}{4}$	7.2	17.5
+5	7.5	17.2
+6	8.3	16.4
+8	7.4	17.3
C	7.2	217.5
$\frac{1}{4}$	7.3	17.4

224.71

Donor do

73

+5	8.8	15.9
gut	7.1	17.6
Sub amt	20.2	217.69
$\frac{1}{4}$		
Sub amt	9.09	215.62
gut	9.5	15.2
+5	10.4	14.3
$\frac{1}{4}$	9.3	15.4
C	9.0	215.7
+2	9.1	15.6
+3	9.9	14.8
+5	9.3	15.4
$\frac{1}{4}$	8.9	15.8
+5	9.8	14.9
gut	8.6	16.1
Sub amt	8.13	216.58
T.P.	0.36	217.07
$\frac{1}{4}$	13.05	211.66
$\frac{1}{4}$		
Sub amt	+0.05	212.07
gut	0.5	11.5
+5	1.0	11.0
$\frac{1}{4}$	0.6	11.4
C	0.5	211.5
$\frac{1}{4}$	1.3	10.7
gut	1.2	10.8
Sub amt	0.82	211.20

217.07

2+50		
Net amt	5.55	206.57
qvt	5.8	6.2
+2	5.8	6.2
+3	7.8	4.2
+6	7.4	4.6
+7	5.7	6.3
1/4	5.6	6.4
C	5.3	206.7
1/4	5.4	6.8
+3	6.6	5.4
+5	6.8	5.2
+8	4.8	7.2
qvt	4.8	7.2
Net amt	4.57	207.45
3+00		
Net amt	8.94	203.08
qvt	8.9	3.1
+3	9.3	2.7
+4	10.8	1.2
+7	10.4	1.6
1/4	9.8	2.2
C	9.8	202.2
1/4	10.1	1.9
+2	11.4	0.6
+4	11.4	200.6

217.07

Baronade

74

+5	10.9	1.1
qvt	10.4	1.6
Net amt	9.93	202.09
3+00		
Net amt	12.2	199.8
qvt	12.6	99.4
+3	12.6	99.4
+4	13.7	98.3
+7	12.5	99.5
1/4	12.1	99.9
C	12.0	200.0
1/4	11.9	200.1
+3	12.1	199.9
+5	12.9	199.1
+6	11.8	200.2
qvt	11.2	200.8
Net amt	11.16	200.86
TP: 0.76	199.88	199.10
3+50		
Net amt	13.1	198.57
qvt	1.6	98.3
+5	2.1	97.8
+6	3.0	96.9
+7	3.1	96.8
1/4	2.0	97.9
C	2.0	197.9

199.88

1/2	2.3	97.6
+x	3.9	96.0
gut	2.6	97.3
N ob count	2.25	197.63
3+75		
N ob count	4.57	195.31
gut	4.9	95.0
+x	5.7	94.2
+y	5.6	94.3
1/4	4.7	95.2
c	4.3	195.6
1/2	4.3	95.6
+z	5.3	94.6
+y	4.5	95.4
gut	3.9	96.0
S ob count	3.56	196.32
4+00		
S ob count	6.01	193.87
gut	6.3	93.6
+z	6.5	93.4
+6	7.6	92.3
+8	6.9	93.0
1/4	6.9	93.0
c	7.0	192.9
1/2	7.5	92.4
+5	8.9	91.0

199.88

75

gut	7.6	192.3
N ob count	7.05	192.83
4+05		
N ob count	9.91	189.97
gut	10.4	89.5
+4	11.3	88.6
1/2	10.2	89.7
c	9.8	190.1
1/2	9.8	90.1
+3	10.0	89.9
+4	10.8	89.1
+6	9.5	90.4
gut	9.2	90.7
S ob count	8.84	191.04
4+40 = wt alloy 15' wide		
SL top return	10.43	189.45
gut	10.8	89.1
S ob count	10.97	189.11
gut	11.5	88.4
+5	11.5	87.5
+6	12.4	88.4
+7	11.5	88.3
1/2	11.6	88.2
c	11.7	188.2
1/4	12.1	87.8
+5	13.0	86.9

199.88

qut	12.2	87.5
Nob amt	11.65	188.23
NL top return	11.50	188.38
NL qut	12.1	87.8
T.P. 0.88 187.74	12.04	186.86
4+55 = EL alloy		
NL top alloy return	7.41	186.33
qut	1.8	89
Nob amt	1.66	186.08
qut	2.0	85.7
+1	3.4	84.3
+5	5.2	82.5
+8	2.1	85.3
1/4	2.3	85.4
e	1.8	185.9
1/4	1.6	86.1
+5	2.0	85.7
+6	3.0	84.7
+7	3.0	84.7
+8	1.8	85.9
qut	1.2	86.5
Sob amt	0.74	187.00
NL top alloy return	0.78	187.46
qut	0.5	87.2
5+00		
Sob amt	6.65	181.09

187.74

Coronado 76

S qut	6.9	180.8
+5	7.6	80.0
+6	8.6	79.1
1/4	7.2	80.5
e	7.4	180.3
1/4	7.7	80.0
+7	8.0	79.7
+5	11.0	76.7
+7	8.4	79.3
qut	7.8	79.9
Nob amt	7.69	180.05
T.P. 3.05 178.79	12.00	175.74
5+36.5 = PC of curb return		
Nob amt	3.63	175.16
qut	3.6	75.2
+4	4.3	74.5
1/4	3.6	75.2
e	3.3	175.5
1/4	2.9	75.9
+3	3.0	75.8
+5	4.1	74.7
+8	3.1	75.7
qut	2.9	75.9
Sob amt	2.62	176.17
5+61.5 = wL Carolina Blvd		
Sob amt	5.61	173.18

17879

gut	on paving	6.32	172 47
1/4	" "	6.27	72 52
C	" "	6.44	172 35
1/4	" "	6.78	72 01
gut	" "	7.36	71 43
N cb	omit	6.58	172 21
check to Jones BM		11.13	167.66
SW Santa Cruz + Carolina		167.42	diff.

BM<sup>s</sup> on Santa Barbara do not check with  
 " in Ocean Beach or Roseville.

check this stationing to map please

Coronado

77



Sewer Levels Thorn. St. 12-8-28  
 From Vine to Glenwood Miller

78

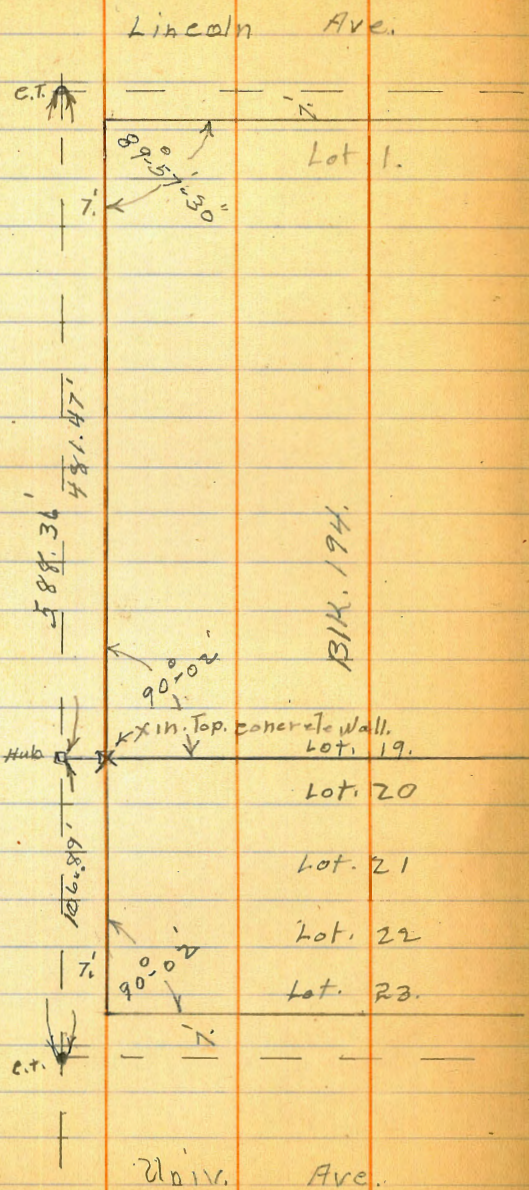
T.P.	4.06	132.76		128.70	G Book 141	
00 = M.H. 6 $\frac{1}{2}$ Vine						
0+36 Bxk		5.2	127.6	ground $\frac{1}{2}$	grade = 124.00	
0+42 = N. End	sewer constructed 12-4-28	9.96	122.80	Flow Line	grade = 122.80	end pipe
0+42		6.4	126.4	ground at d.		
0+75		5.8	122.0	" "		
0+97		3.5	129.3	" "		
1+20		7.8	125.0	" "		
1+38		14.5	118.3	" "	Top Bank	
T.P.	0.24	120.60	12.40	120.36		
1+39		16.2	104.4	" "	Bottom Bank	
1+67 = M.H. 4	Glenwood & State	17.5	103.1	" "	grade = 96.70	

Survey Lot. 19 BIK. 194 U.H.

9-7-35

Muller  
Walter  
Bliss.

79



107.45  
16J-

212.45  
134.7

77.75

130  
30  
130

290  
245  
45

125.2  
112.5

# IMPROVED TABLES AND INFORMATION

To find Tangent and External for curve of any other degree, divide by degree of curve and add correction found in column of corrections. Degree of curve with a given I may be found by dividing tangent (or external), opposite I by given tangent (or external). The distance from a point on the tangent to the curve is very nearly the square of the tangent length divided by twice the radius.

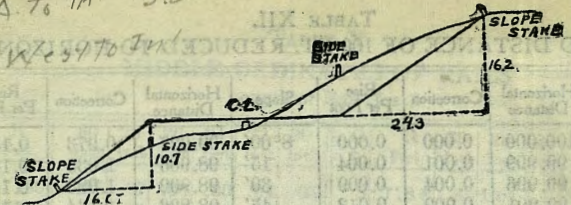
Distance of slope stake from side or shoulder stake for any width of way, slope 1 $\frac{1}{2}$  to 1. If ground is nearly level, the cut or fill at side stake is located by the double entry method in the table in same row and column as the distance from side stake to slope stake. If ground is not level, the correction is found in the table. Add this amount if cut, else if fill. Add this amount to cut or fill and find in table. Set up rod at this point and line of sight should cut target. necessary.

closed.

TABLE I.

134.7  
50.0  
77.75  
562.45

Split Angle 1.30  
 S.A. to in 3.5  
 4.2W 2.47 to 2.47



DISTANCES FROM SIDE STAKES FOR CROSS-SECTIONING.  
 SLOPE 1 1/4 TO 1. ROADWAY OF ANY WIDTH.

	0	.1	.2	.3	.4	.5	.6	.7	.8	.9	
0	0.00	0.15	0.30	0.45	0.60	0.75	0.90	1.05	1.20	1.35	0
1	1.50	1.65	1.80	1.95	2.10	2.25	2.40	2.55	2.70	2.85	1
2	3.00	3.15	3.30	3.45	3.60	3.75	3.90	4.05	4.20	4.35	2
3	4.50	4.65	4.80	4.95	5.10	5.25	5.40	5.55	5.70	5.85	3
4	6.00	6.15	6.30	6.45	6.60	6.75	6.90	7.05	7.20	7.35	4
5	7.50	7.65	7.80	7.95	8.10	8.25	8.40	8.55	8.70	8.85	5
6	9.00	9.15	9.30	9.45	9.60	9.75	9.90	10.05	10.20	10.35	6
7	10.50	10.65	10.80	10.95	11.10	11.25	11.40	11.55	11.70	11.85	7
8	12.00	12.15	12.30	12.45	12.60	12.75	12.90	13.05	13.20	13.35	8
9	13.50	13.65	13.80	13.95	14.10	14.25	14.40	14.55	14.70	14.85	9
10	15.00	15.15	15.30	15.45	15.60	15.75	15.90	16.05	16.20	16.35	10
11	16.50	16.65	16.80	16.95	17.10	17.25	17.40	17.55	17.70	17.85	11
12	18.00	18.15	18.30	18.45	18.60	18.75	18.90	19.05	19.20	19.35	12
13	19.50	19.65	19.80	19.95	20.10	20.25	20.40	20.55	20.70	20.85	13
14	21.00	21.15	21.30	21.45	21.60	21.75	21.90	22.05	22.20	22.35	14
15	22.50	22.65	22.80	22.95	23.10	23.25	23.40	23.55	23.70	23.85	15
16	24.00	24.15	24.30	24.45	24.60	24.75	24.90	25.05	25.20	25.35	16
17	25.50	25.65	25.80	25.95	26.10	26.25	26.40	26.55	26.70	26.85	17
18	27.00	27.15	27.30	27.45	27.60	27.75	27.90	28.05	28.20	28.35	18
19	28.50	28.65	28.80	28.95	29.10	29.25	29.40	29.55	29.70	29.85	19
20	30.00	30.15	30.30	30.45	30.60	30.75	30.90	31.05	31.20	31.35	20
21	31.50	31.65	31.80	31.95	32.10	32.25	32.40	32.55	32.70	32.85	21
22	33.00	33.15	33.30	33.45	33.60	33.75	33.90	34.05	34.20	34.35	22
23	34.50	34.65	34.80	34.95	35.10	35.25	35.40	35.55	35.70	35.85	23
24	36.00	36.15	36.30	36.45	36.60	36.75	36.90	37.05	37.20	37.35	24
25	37.50	37.65	37.80	37.95	38.10	38.25	38.40	38.55	38.70	38.85	25
26	39.00	39.15	39.30	39.45	39.60	39.75	39.90	40.05	40.20	40.35	26
27	40.50	40.65	40.80	40.95	41.10	41.25	41.40	41.55	41.70	41.85	27
28	42.00	42.15	42.30	42.45	42.60	42.75	42.90	43.05	43.20	43.35	28
29	43.50	43.65	43.80	43.95	44.10	44.25	44.40	44.55	44.70	44.85	29
30	45.00	45.15	45.30	45.45	45.60	45.75	45.90	46.05	46.20	46.35	30
31	46.50	46.65	46.80	46.95	47.10	47.25	47.40	47.55	47.70	47.85	31
32	48.00	48.15	48.30	48.45	48.60	48.75	48.90	49.05	49.20	49.35	32
33	49.50	49.65	49.80	49.95	50.10	50.25	50.40	50.55	50.70	50.85	33
34	51.00	51.15	51.30	51.45	51.60	51.75	51.90	52.05	52.20	52.35	34
35	52.50	52.65	52.80	52.95	53.10	53.25	53.40	53.55	53.70	53.85	35
36	54.00	54.15	54.30	54.45	54.60	54.75	54.90	55.05	55.20	55.35	36
37	55.50	55.65	55.80	55.95	56.10	56.25	56.40	56.55	56.70	56.85	37
38	57.00	57.15	57.30	57.45	57.60	57.75	57.90	58.05	58.20	58.35	38
39	58.50	58.65	58.80	58.95	59.10	59.25	59.40	59.55	59.70	59.85	39
40	60.00	60.15	60.30	60.45	60.60	60.75	60.90	61.05	61.20	61.35	40
41	61.50	61.65	61.80	61.95	62.10	62.25	62.40	62.55	62.70	62.85	41
42	63.00	63.15	63.30	63.45	63.60	63.75	63.90	64.05	64.20	64.35	42
43	64.50	64.65	64.80	64.95	65.10	65.25	65.40	65.55	65.70	65.85	43
44	66.00	66.15	66.30	66.45	66.60	66.75	66.90	67.05	67.20	67.35	44
45	67.50	67.65	67.80	67.95	68.10	68.25	68.40	68.55	68.70	68.85	45
46	69.00	69.15	69.30	69.45	69.60	69.75	69.90	70.05	70.20	70.35	46
47	70.50	70.65	70.80	70.95	71.10	71.25	71.40	71.55	71.70	71.85	47
48	72.00	72.15	72.30	72.45	72.60	72.75	72.90	73.05	73.20	73.35	48
49	73.50	73.65	73.80	73.95	74.10	74.25	74.40	74.55	74.70	74.85	49
50	75.00	75.15	75.30	75.45	75.60	75.75	75.90	76.05	76.20	76.35	50

Computed by L. Leland Locke.

67.30  
 64.80  
 2.46  
 12° 43' - 00

82.50  
 17.50 power

ENGINEERING DEPARTMENT,  
 CITY OF SAN DIEGO,  
 CALIFORNIA.

4732.85  
 66.12  
 5794.00

56.7  
 536.50  
 454  
 81.50  
 88  
 106.40

1727.50  
 371.10  
 4498.60



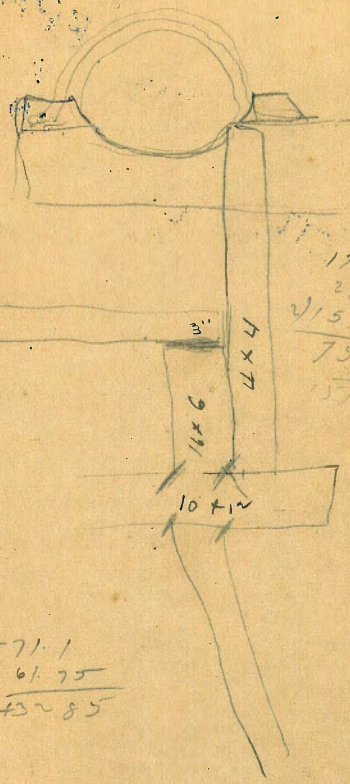
60 57.40 282.49 200' A  
 28-49  
 25-50 A\*1  
 119.06  
 105.70  
 40°  
 57.88  
 120° 91'-30' A\*\*

2 125° 35'

47.30  
 2195

4.0  
 3771.7  
 22.4  
 3793.5

55.30  
 218.35  
 273.65  
 3771.1  
 61.75  
 4432.85



1739.73  
 570  
 1745.43  
 3.40  
 1742.03

179-60.00  
 28.50-00  
 151.10.00  
 75.35  
 157.10

75.3