

1260
Reynard Hills

REYNARD
HILLS.

EUGENE DIETZGEN CO.

DRAWING MATERIALS, MATHEMATICAL and
SURVEYING INSTRUMENTS

Chicago New York San Francisco New Orleans Pittsburg Toronto

Distances from Center of Roadway for Cross-Sectioning
Roadway 16 feet wide. Side Slopes 1 on 1.
For Single Track Embankment.

	0	.1	.2	.3	.4	.5	.6	.7	.8	.9	H
1	8.1	8.2	8.3	8.4	8.5	8.6	8.7	8.8	8.9	0	
2	9.1	9.2	9.3	9.4	9.5	9.6	9.7	9.8	9.9	1	
3	10.1	10.2	10.3	10.4	10.5	10.6	10.7	10.8	10.9	2	
4	11.1	11.2	11.3	11.4	11.5	11.6	11.7	11.8	11.9	3	
5	12.1	12.2	12.3	12.4	12.5	12.6	12.7	12.8	12.9	4	
6	13.1	13.2	13.3	13.4	13.5	13.6	13.7	13.8	13.9	5	
7	14.1	14.2	14.3	14.4	14.5	14.6	14.7	14.8	14.9	6	
8	15.1	15.2	15.3	15.4	15.5	15.6	15.7	15.8	15.9	7	
9	16.1	16.2	16.3	16.4	16.5	16.6	16.7	16.8	16.9	8	
10	17.1	17.2	17.3	17.4	17.5	17.6	17.7	17.8	17.9	9	
11	18.1	18.2	18.3	18.4	18.5	18.6	18.7	18.8	18.9	10	
12	19.1	19.2	19.3	19.4	19.5	19.6	19.7	19.8	19.9	11	
13	20.1	20.2	20.3	20.4	20.5	20.6	20.7	20.8	20.9	12	
14	21.1	21.2	21.3	21.4	21.5	21.6	21.7	21.8	21.9	13	
15	22.1	22.2	22.3	22.4	22.5	22.6	22.7	22.8	22.9	14	
16	23.1	23.2	23.3	23.4	23.5	23.6	23.7	23.8	23.9	15	
17	24.1	24.2	24.3	24.4	24.5	24.6	24.7	24.8	24.9	16	
18	25.1	25.2	25.3	25.4	25.5	25.6	25.7	25.8	25.9	17	
19	26.1	26.2	26.3	26.4	26.5	26.6	26.7	26.8	26.9	18	
20	27.1	27.2	27.3	27.4	27.5	27.6	27.7	27.8	27.9	19	
21	28.1	28.2	28.3	28.4	28.5	28.6	28.7	28.8	28.9	20	
22	29.1	29.2	29.3	29.4	29.5	29.6	29.7	29.8	29.9	21	
23	30.1	30.2	30.3	30.4	30.5	30.6	30.7	30.8	30.9	22	
24	31.1	31.2	31.3	31.4	31.5	31.6	31.7	31.8	31.9	23	
25	32.1	32.2	32.3	32.4	32.5	32.6	32.7	32.8	32.9	24	
26	33.1	33.2	33.3	33.4	33.5	33.6	33.7	33.8	33.9	25	
27	34.1	34.2	34.3	34.4	34.5	34.6	34.7	34.8	34.9	26	
28	35.1	35.2	35.3	35.4	35.5	35.6	35.7	35.8	35.9	27	
29	36.1	36.2	36.3	36.4	36.5	36.6	36.7	36.8	36.9	28	
30	37.1	37.2	37.3	37.4	37.5	37.6	37.7	37.8	37.9	29	
31	38.1	38.2	38.3	38.4	38.5	38.6	38.7	38.8	38.9	30	
32	39.1	39.2	39.3	39.4	39.5	39.6	39.7	39.8	39.9	31	
33	40.1	40.2	40.3	40.4	40.5	40.6	40.7	40.8	40.9	32	
34	41.1	41.2	41.3	41.4	41.5	41.6	41.7	41.8	41.9	33	
35	42.1	42.2	42.3	42.4	42.5	42.6	42.7	42.8	42.9	34	
36	43.1	43.2	43.3	43.4	43.5	43.6	43.7	43.8	43.9	35	
37	44.1	44.2	44.3	44.4	44.5	44.6	44.7	44.8	44.9	36	
38	45.1	45.2	45.3	45.4	45.5	45.6	45.7	45.8	45.9	37	
39	46.1	46.2	46.3	46.4	46.5	46.6	46.7	46.8	46.9	38	
40	47.1	47.2	47.3	47.4	47.5	47.6	47.7	47.8	47.9	39	
41	48.0	48.1	48.2	48.3	48.4	48.5	48.6	48.7	48.8	40	

Example—If point is 22.6 ft. above grade, how far should it be from center line to be a slope stake point? Ans. from Table 30.6. For same slopes but other widths of roadbed, correct above figures by one-half difference in width of roadbed; thus in example above, for 20 ft. roadbed distance will be $30.6 + (20 - 16) \div 2$ or 2 ft. added to 30.6 = 32.6. For slopes of 1 on 1½ see inside of back cover.
Copyright, 1914, by Eugene Dietzgen Co.

TOM J. ALLEN B.S.
CIVIL AND MUNICIPAL ENGINEER

SAN DIEGO, CALIF.

809 G STREET
SAN DIEGO, CALIF.

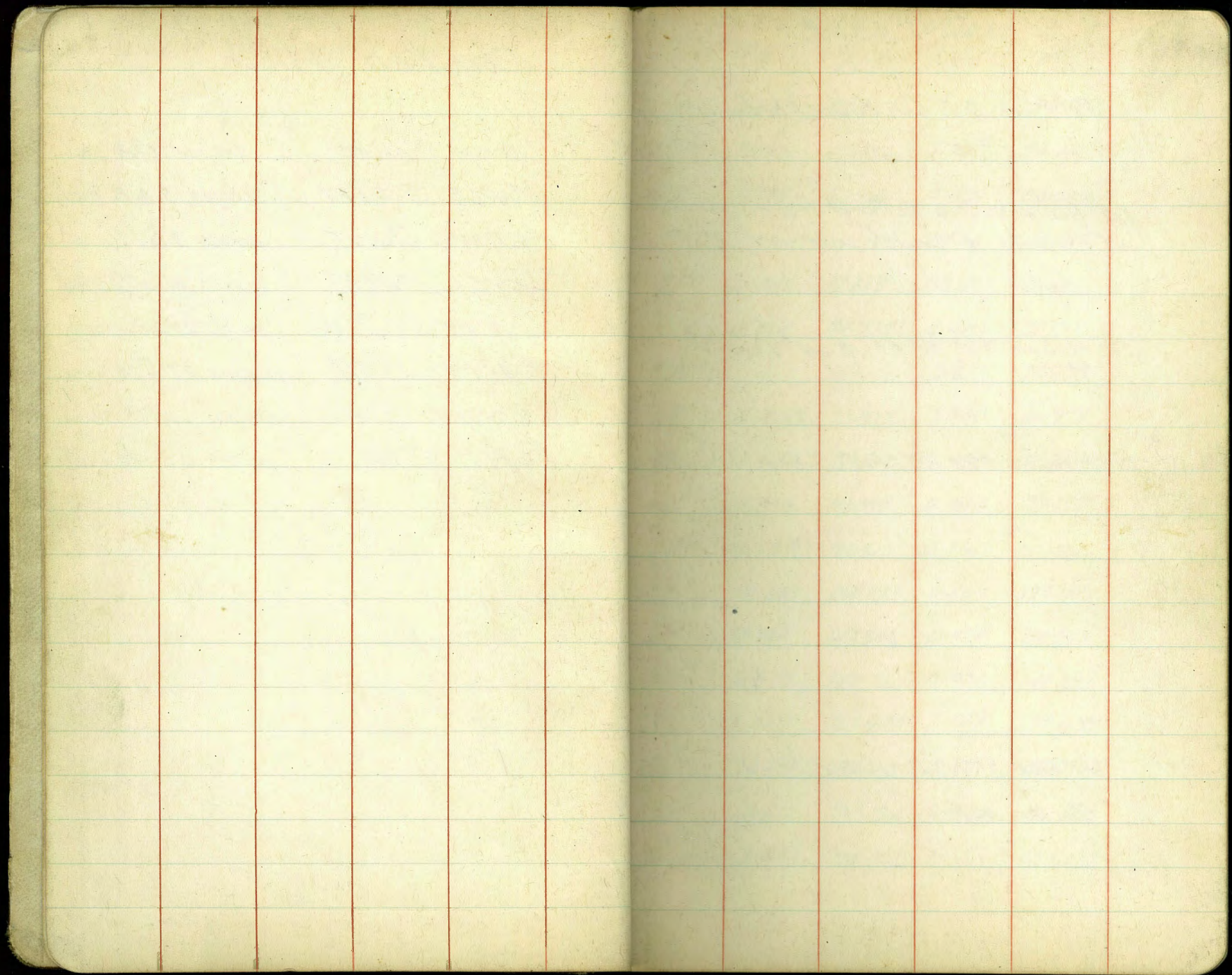
1-705-473

cryster

60.565
2.531
63.096
521
62.575
11.129
73.704
050
73.684
10.566
84.250
12.502
71.748
1.368
73.116
901
71.215
9.967
82.182
7.543
74.639

REYNARD HILLS

BENCH MARKS	pages 1 to 3 incl.
MAPLE STREET	pages 5 to 8 incl.
ARROYO DRIVE	pages 9 to 13 incl.
DOVE STREET.	pages 14 to 22 incl.
CURLEW STR.	pages 23 to 26 incl.
PALM STR.	pages 27 to 28 incl.
REDWOOD STR.	pages 29 to 30 incl.
EAGLE STR.	pages 31 to 40 incl.



Br. Plug. S.E. Cor. Laurel & India

BENCH MARKS
+ H.I. - Elev
2.623 57.323 54.700

T.P. 7.068 61.484 2.907 54.416

2x2" Hub on W. Side Reynard Way at junction
of Asphaltic & Concrete pavement

T.P. 3.983 62.046 3.421 58.068

BM^{#1} 1.481 60.565

T.P. 11.442 72.273 1.215 60.831

2x2 Hub on S. prod of E of Dove St

T.P. 12.514 84.305 0.482 71.791

BM^{#2} 9.617 74.688

T.P. 12.848 93.823 3.330 80.975

out
spike in Euc. tree 100' N. of N. End Arroyo D.

T.P.
BM^{#3} 7.030 99.268 1.585 92.238

T.P. 11.788 110.995 0.061 99.207

T.P. 12.285 122.919 0.561 110.434

T.P. 12.683 134.793 0.609 122.110

T.P. 12.963 147.302 0.454 134.339

T.P. 12.879 160.160 0.021 147.281

T.P. 4.809 163.448 1.521 158.639

2x2" Hub 25' N. of N.W. Cor. of
Curlew & Palm.

BM^{#4} 12.915 173.006 3.357 160.091

T.P. 12.684 185.184 0.506 172.500

13.080 198.107 0.157 185.027

	+	H.I.	-	Elev	
		198.107			
	T.P.	13.042	210.597	0.552	197.555
		12.548	223.084	0.061	210.536
On 7' pt at N.W. Cor Spruce & Carlew	T.P.				
	BM [#] 5	0.313	220.456	2.941	220.143
	T.P.	0.389	208.585	12.260	208.196
	T.P.	0.055	195.991	12.649	195.936
Top I.P. at N.E. Cor Spruce & Dove St.	T.P.				
	BM [#] 5 $\frac{1}{2}$	0.800	183.771	13.020	182.971
	T.P.	0.234	171.257	12.748	171.023
	T.P.	0.952	159.449	12.760	158.497
2x2' 25' N.W. of N.W. Cor Dove & Red.	T.P.				
	BM [#] 6	2.334	150.495	11.288	148.161
	T.P.	1.572	140.225	11.842	138.653
	T.P.	1.023	128.387	12.861	127.364
2x2' at Eagle & Spruce. 25' E of	T.P.				
E property line of Eagle.	BM [#] 7	0.528	124.667	4.248	124.139 ✓
	T.P.	0.111	112.190	12.588	112.079
	T.P.	0.748	100.118	12.820	99.370
Top Curb on West Side Raymond Way	BM [#] 8			8.888	91.230
at angle point (at spruce)	T.P.	0.895	88.695	12.318	87.800
" " " "	T.P.				
	BM [#] 9	0.362	76.565	12.492	76.203

Top of Curb at Angle pt. W. side
Reynard Way

	+	H.I.	-	Elev.
		76.565		
B.M. #10			9.461	67.104
T.P.	0.178	63.653	13.090	63.475
T.P.	4.932	59.237	9.348	54.305
T.P.	4.472	62.596	1.113	58.124
T.P.	1.702	58.260	6.038	56.558
			3.462	54.798
				54.700
		check.		.098

North

Sta.				
0+00	$\frac{44}{50}$	$\frac{38}{20}$	$\frac{36}{15}$	
	57.3	57.9	58.1	
0+14	$\frac{43}{40}$	$\frac{37}{30}$	$\frac{40}{20}$	$\frac{56}{15}$
	57.4	58.0	57.7	56.1
0+27.50	$\frac{8.5}{40}$	$\frac{10.9}{30}$	$\frac{10.1}{20}$	$\frac{11.0}{15}$
	53.2	50.8	51.6	50.7
0+50	$\frac{12.5}{40}$	$\frac{13.3}{30}$	$\frac{14.3}{20}$	$\frac{14.3}{15}$
T.P.	49.2	48.4	47.4	47.4
0+75	$\frac{19.3}{40}$	$\frac{18.5}{30}$	$\frac{18.5}{20}$	$\frac{18.6}{15}$
	47.9	48.7	48.7	48.6
1+00	$\frac{17.4}{35}$	$\frac{14.0}{33}$	$\frac{15.4}{20}$	$\frac{15.4}{15}$
	49.8	53.2	51.8	52.3
1+08	$\frac{17.0}{40}$	$\frac{11.3}{36}$	$\frac{11.8}{20}$	$\frac{10.5}{15}$
	50.2	55.9	55.4	56.7
1+25	$\frac{20}{47}$	$\frac{10.0}{39}$	$\frac{9.9}{30}$	$\frac{9.6}{20}$
	47.2	57.2	57.3	57.4
1+50	$\frac{23.5}{45}$	$\frac{23.5}{38}$	$\frac{7.4}{33}$	$\frac{6.0}{20}$
	43.7	43.7	59.8	61.2

MAPLE STREET
South

5

±	+	H.I.	-	Elev
8M. #1	1.18	61.74		60.56
$\frac{34}{0}$	$\frac{2.9}{15}$	$\frac{2.3}{20}$	$\frac{2.0}{30}$	
58.3	59.3	59.4	59.7	
$\frac{41}{0}$	$\frac{5.5}{6}$	$\frac{2.7}{15}$	$\frac{2.4}{20}$	$\frac{19}{37}$
57.6	56.2	59.0	59.3	59.8
$\frac{10.3}{0}$	$\frac{6.5}{7}$	$\frac{4.8}{15}$	$\frac{2.5}{20}$	$\frac{1.2}{36}$
51.4	53.2	56.9	59.2	60.5
$\frac{13.5}{0}$	$\frac{4.5}{15}$	$\frac{2.0}{20}$	$\frac{1.1}{36}$	
48.2	57.2	59.7	60.6	
$\frac{16.5}{0}$	$\frac{6.0}{15}$	$\frac{3.0}{20}$	$\frac{5.6}{36}$	60.56
50.7	61.2	64.2	61.6	
$\frac{10.7}{0}$	$\frac{4.4}{10}$	$\frac{4.7}{15}$	$\frac{4.6}{20}$	$\frac{4.7}{32}$
56.5	62.8	62.5	62.6	62.5
$\frac{9.6}{0}$	$\frac{3.1}{11}$	$\frac{4.2}{15}$	$\frac{3.2}{20}$	$\frac{4.9}{33}$
60.6	64.1	63.0	64.0	62.3
$\frac{3.4}{0}$	$\frac{2.7}{15}$	$\frac{4.0}{20}$	$\frac{4.7}{31}$	
63.8	64.5	63.2	62.5	
$\frac{25}{0}$	$\frac{2.9}{12}$	$\frac{3.2}{15}$	$\frac{3.2}{20}$	$\frac{4.1}{30}$
57.7	64.3	64.0	64.0	63.1

Sta	North								South		Elev	6	
	$\frac{23.5}{17.5}$	$\frac{24}{4.6}$	$\frac{+1.8}{30}$	$\frac{+2.1}{20}$	$\frac{+1.8}{15}$	$\frac{+1.9}{12}$	$\frac{4.5}{6.0}$	$\frac{7.8}{0}$	$\frac{9.0}{8.0}$	H.I			-
	43.7	64.8	69.0	69.3	69.0	69.1	62.7	59.4	58.2	67.15	61.0	64.1	63.3
1+85		$\frac{+3.0}{40}$	$\frac{+3.8}{30}$	$\frac{+4.0}{20}$	$\frac{+3.5}{15}$	$\frac{+3.4}{9}$	$\frac{3.4}{0}$	$\frac{7.5}{9}$	$\frac{6.9}{15}$		$\frac{5.0}{20}$	$\frac{3.5}{28}$	
		70.2	71.0	71.2	70.7	70.6	63.8	59.7	60.3		62.2	63.7	
T.P.								13.06	78.38		1.83	65.32	
1+92		$\frac{9.3}{40}$	$\frac{7.6}{30}$	$\frac{7.1}{20}$	$\frac{7.0}{15}$	$\frac{7.0}{15}$	$\frac{2.0}{0}$	$\frac{5.3}{15}$	$\frac{1.9}{20}$		$\frac{4.9}{25}$	$\frac{8.5}{30}$	$\frac{14.5}{35}$
		69.1	70.8	71.3	71.4	71.4	71.4	73.1	73.5		73.5	69.9	63.9
2+25		$\frac{7.5}{40}$	$\frac{5.4}{30}$	$\frac{3.9}{20}$	$\frac{3.3}{15}$	$\frac{3.3}{15}$	$\frac{3.5}{0}$	$\frac{2.9}{11}$	$\frac{1.5}{15}$		$\frac{0}{20}$	$\frac{+0.4}{30}$	$\frac{+1.2}{40}$
		70.9	73.0	74.5	75.1	74.9	75.5	76.9	76.9		78.4	78.8	79.6
2+50		$\frac{8.3}{40}$	$\frac{1.9}{30}$	$\frac{3.1}{20}$	$\frac{2.4}{15}$	$\frac{2.4}{15}$	$\frac{0.9}{0}$	$\frac{+0.9}{15}$	$\frac{+1.2}{20}$		$\frac{+1.3}{28}$	$\frac{+3.2}{33}$	$\frac{+4.0}{40}$
		70.1	73.5	75.3	76.0	77.5	79.3	79.6	79.6		79.7	81.6	82.4
T.P.								6.89	85.11		0.16	78.22	
2+75		$\frac{15.3}{40}$	$\frac{13.0}{30}$	$\frac{10.2}{20}$	$\frac{9.2}{15}$	$\frac{6.7}{7}$	$\frac{6.1}{0}$	$\frac{4.5}{15}$	$\frac{2.7}{20}$		$\frac{2.3}{30}$	$\frac{1.5}{40}$	
		69.8	72.1	74.9	75.9	78.4	79.0	80.6	82.4		82.8	83.6	
3+00		$\frac{17.6}{40}$	$\frac{15.4}{30}$	$\frac{13.0}{20}$	$\frac{11.8}{15}$	$\frac{11.8}{15}$	$\frac{9.0}{0}$	$\frac{5.6}{15}$	$\frac{4.3}{20}$		$\frac{2.8}{30}$	$\frac{2.0}{40}$	
		67.5	69.7	72.1	73.3	76.1	79.5	80.8	80.8		82.3	83.1	
T.P.								2.39	77.32		10.18	74.93	
3+50		$\frac{17.5}{40}$	$\frac{16.5}{38}$	$\frac{15.4}{30}$	$\frac{12.4}{20}$	$\frac{10.2}{15}$	$\frac{6.7}{0}$	$\frac{3.2}{15}$	$\frac{1.2}{20}$		$\frac{+1.6}{30}$	$\frac{+4.7}{40}$	
		59.8	60.8	61.9	64.9	67.1	70.6	74.1	76.1		78.9	82.1	

Sta	North						±	South			Elev	7
								+	H.I.	-		
T.P.												
3+65	$\frac{11.1}{70}$ $\frac{189}{37}$	$\frac{188}{30}$	$\frac{11.3}{27}$	$\frac{10.4}{20}$	$\frac{10.0}{15}$	$\frac{7.0}{0}$	$\frac{7.01}{0}$	$\frac{2.4}{8}$	$\frac{71.80}{15}$	$\frac{12.53}{20}$	$\frac{64.79}{28}$	$\frac{+6.5}{35}$
	60.7 52.9	53.0	60.5	61.4 ✓	61.8	64.8 ✓	69.4	71.3	72.1	73.8	78.3	
3+88	$\frac{10.1}{30}$ $\frac{11.0}{20}$ $\frac{12.3}{15}$ $\frac{10.7}{14}$	$\frac{17.7}{12}$	$\frac{16.4}{7}$	$\frac{11.8}{3}$	$\frac{10.6}{0}$	$\frac{4.9}{14}$	$\frac{4.9}{15}$	$\frac{4.7}{15}$	$\frac{4.2}{20}$	$\frac{2.2}{26}$	$\frac{+1.4}{35}$	
	67.2 66.3 66.5 66.6	59.6	60.9	65.5	66.7	72.4	72.6	73.4	75.1	78.7		
	60.8 61.0	61.1	54.1	55.4	60.0	61.2	60.9	67.1	67.6			
3+90	$\frac{6.8}{40}$	$\frac{9.4}{30}$	$\frac{11.2}{20}$	$\frac{11.1}{15}$	$\frac{10.8}{0}$	$\frac{4.8}{15}$	$\frac{4.2}{20}$	$\frac{+0.9}{35}$				
	70.5	67.9	66.1	66.2	66.5	72.5	73.1	78.2				
		60.6	60.7	61.0	67.0	67.6	67.6					
4+25	$\frac{3.5}{37}$	$\frac{7.3}{27}$	$\frac{7.7}{20}$	$\frac{7.9}{15}$	$\frac{8.9}{0}$	$\frac{9.8}{3}$	$\frac{10.4}{15}$	$\frac{8.7}{20}$	$\frac{5.3}{26}$	$\frac{4.2}{31}$		
	73.8	70.0	69.6	69.4	68.4	67.5	66.9	68.6	72.0	73.1		
		64.1	63.9	62.9	62.0	61.4	62.1					
4+58	$\frac{0.3}{30}$	$\frac{1.8}{25}$	$\frac{5.1}{20}$	$\frac{6.2}{18}$	$\frac{6.5}{15}$	$\frac{7.5}{0}$	$\frac{7.6}{15}$	$\frac{7.6}{20}$	$\frac{9.0}{23}$ $\frac{9.0}{25}$	$\frac{7.4}{27}$ $\frac{6.2}{34}$		
	77.0	75.5	72.2	71.1	70.8	69.8	69.7	69.7	68.3	68.3	69.9	71.1
		66.7	65.6	65.3	64.3	64.2	64.2					
4+63		$\frac{6.0}{35}$	$\frac{6.1}{20}$	$\frac{6.5}{15}$	$\frac{7.1}{0}$	$\frac{7.1}{15}$	$\frac{7.3}{20}$	$\frac{7.5}{29}$	$\frac{6.0}{34}$			
		71.3	71.2	70.8	69.9	69.9	70.0	69.8	71.3			
		65.7	65.3	64.4	64.4	64.5						
4+75	$\frac{1.0}{35}$	$\frac{1.4}{22}$	$\frac{3.8}{20}$	$\frac{6.2}{15}$	$\frac{6.8}{0}$	$\frac{6.7}{15}$	$\frac{6.9}{20}$	$\frac{6.7}{35}$	$\frac{4.8}{41}$			
	76.3	75.9	73.5	71.7	70.5	70.6	70.4	70.6	72.5			
		68.0	65.6	65.0	65.1	64.9						
4+95		$\frac{0.2}{35}$	$\frac{0.3}{20}$	$\frac{1.3}{15}$	$\frac{6.7}{0}$	$\frac{5.7}{5}$	$\frac{6.5}{15}$	$\frac{6.1}{20}$	$\frac{6.0}{35}$			
		77.1	77.0	76.8	70.6	71.6	70.8	71.2	71.3			
		71.5	70.5	65.6	66.1	65.3	65.7					
5+00	$\frac{5.5}{35}$	$\frac{6.1}{20}$	$\frac{6.1}{15}$	$\frac{6.8}{8}$	$\frac{5.0}{0}$	$\frac{6.4}{15}$	$\frac{6.1}{20}$	$\frac{5.6}{35}$				
	71.8	71.2	71.2	70.5	72.3	70.9	71.2	71.7				
		65.7	65.7	65.0	66.8	66.4	65.7					

Sta	North					South				
	+	-	H.I.	-	Elev	+	-	H.I.	-	Elev
			71.80 1732							
5+08	$\frac{22}{35}$ 75.1	$\frac{+04}{20}$ 77.7 72.2	$\frac{02}{15}$ 77.1 71.6	$\frac{3.7}{0}$ 73.6 68.1	$\frac{5.6}{9}$ 71.7 66.2	$\frac{5.7}{15}$ 71.6 66.1	$\frac{6.1}{20}$ 71.2 65.7	$\frac{5.4}{35}$ 71.9		
T.P.					7.40	77.87	1.33	70.47		
5+40	$\frac{03}{40}$ 77.6	$\frac{1.4}{35}$ 76.5	$\frac{30}{20}$ 74.9	$\frac{3.6}{15}$ 74.3	$\frac{5.4}{9}$ 72.5	$\frac{6.6}{9}$ 71.3	$\frac{11.0}{15}$ 66.9	$\frac{11.4}{20}$ 66.5	$\frac{11.1}{35}$ 66.8	
5+50.04 Det.	$\frac{+2.0}{35}$ 79.9	$\frac{22}{20}$ 75.7	$\frac{3.4}{15}$ 74.5	$\frac{5.2}{9}$ 72.7	$\frac{7.0}{0}$ 70.9	$\frac{11.0}{15}$ 66.9	$\frac{11.1}{20}$ 66.8	$\frac{11.3}{35}$ 66.6		
5+75		$\frac{+3.8}{35}$ 81.7	$\frac{1.3}{20}$ 76.6	$\frac{3.1}{15}$ 74.8	$\frac{6.7}{0}$ 71.2	$\frac{10.8}{15}$ 67.1	$\frac{10.8}{20}$ 67.1	$\frac{10.5}{35}$ 67.4		
6+00	$\frac{+3.8}{35}$ 81.7	$\frac{+1.1}{30}$ 79.0	$\frac{0.1}{20}$ 77.8	$\frac{2.9}{15}$ 75.0	$\frac{8.6}{0}$ 69.3	$\frac{9.8}{5}$ 68.1	$\frac{7.9}{15}$ 70.0	$\frac{10.3}{20}$ 67.6	$\frac{10.0}{35}$ 67.9	
6+25	$\frac{+3.7}{35}$ 81.6	$\frac{+1.4}{30}$ 79.1	$\frac{1.2}{20}$ 76.7	$\frac{2.8}{15}$ 75.1	$\frac{8.4}{0}$ 69.5	$\frac{1.2}{15}$ 73.7	$\frac{8.4}{20}$ 69.5	$\frac{9.6}{30}$ 68.3	$\frac{9.4}{35}$ 68.5	
6+50	$\frac{+5.0}{35}$ 82.9	$\frac{+2.7}{30}$ 80.6	$\frac{+0.7}{20}$ 78.6	$\frac{1.6}{15}$ 76.3	$\frac{5.7}{0}$ 72.2	$\frac{7.8}{9}$ 70.1	$\frac{6.4}{13}$ 71.5	$\frac{7.5}{15}$ 70.4	$\frac{9.2}{20}$ 68.7	$\frac{8.3}{35}$ 69.6
6+75	$\frac{+5.0}{35}$ 82.9	$\frac{+2.5}{28}$ 80.4	$\frac{+1.0}{20}$ 78.9	$\frac{2}{15}$ 77.9	$\frac{3.5}{0}$ 74.4	$\frac{8.4}{11}$ 69.5	$\frac{8.4}{15}$ 69.5	$\frac{8.5}{20}$ 69.4	$\frac{8.8}{27}$ 69.1	$\frac{8.6}{35}$ 69.3
7+02.88	$\frac{+3.5}{35}$ 81.4	$\frac{+0.6}{20}$ 78.5	$\frac{0.4}{15}$ 77.5	$\frac{3.5}{5}$ 74.4	$\frac{6.7}{0}$ 71.2	$\frac{8.3}{3}$ 69.6	$\frac{0.5}{15}$ 77.4	$\frac{+1.3}{20}$ 79.2	$\frac{+4.2}{30}$ 82.1	$\frac{+5.2}{35}$ 83.1
check on B.M. 2.							321	74.66		

Sta	North						DRIVE		South				Elev.				
							E	+	H.I.		-						
B.M. #3							0.82		9306				92.24				
0400	$\frac{+7.0}{35}$	$\frac{0.4}{20}$	$\frac{1.1}{18}$	$\frac{3.8}{15}$	$\frac{3.7}{7}$	$\frac{6.9}{5}$	$\frac{8.5}{0}$	$\frac{8.5}{3}$	$\frac{4.4}{4}$	$\frac{4.5}{15}$	$\frac{4.5}{20}$	$\frac{4.4}{35}$					
	100.1	92.7	92.0	89.3	89.4	86.2	84.6	84.6	88.7	88.6	88.6	88.7					
0455.80	$\frac{+3.5}{35}$	$\frac{1.5}{25}$	$\frac{2.9}{20}$	$\frac{3.8}{18}$	$\frac{5.5}{17}$	$\frac{5.5}{9}$	$\frac{5.4}{4}$	$\frac{6.1}{3}$	$\frac{10.0}{0}$	$\frac{10.5}{2}$	$\frac{6.1}{5}$	$\frac{6.3}{10}$	$\frac{7.9}{12}$	$\frac{9.8}{15}$	$\frac{10.6}{20}$	$\frac{10.6}{25}$	$\frac{6.5}{35}$
	96.6	91.6	90.2	89.3	87.6	87.7	87.0	83.1	82.6	82.6	87.0	86.8	83.2	83.3	82.5	82.5	86.6
0475	$\frac{+3.2}{35}$	$\frac{+2.0}{33}$	$\frac{2.7}{20}$	$\frac{4.5}{15}$	$\frac{6.0}{12}$	$\frac{6.6}{7}$	$\frac{6.6}{0}$	$\frac{6.9}{3}$	$\frac{10.2}{6}$	$\frac{11.4}{15}$	$\frac{11.4}{20}$	$\frac{7.3}{22}$	$\frac{7.2}{35}$				
	96.3	95.1	90.4	88.6	87.1	86.5	86.2	82.9	81.7	81.7	85.8	85.9					
1416.60	$\frac{+1.9}{35}$	$\frac{3.0}{24}$	$\frac{3.8}{20}$	$\frac{5.4}{15}$	$\frac{6.2}{14}$	$\frac{6.2}{6}$	$\frac{7.4}{3}$	$\frac{7.8}{0}$	$\frac{7.8}{3}$	$\frac{10.2}{7}$	$\frac{11.6}{12}$	$\frac{8.2}{15}$	$\frac{8.5}{20}$	$\frac{11.7}{23}$	$\frac{12.5}{30}$	$\frac{10.4}{35}$	
	95.0	90.1	89.3	87.7	86.9	86.7	85.7	85.3	85.3	82.9	81.5	84.9	84.6	81.4	80.6	82.7	
1450			$\frac{1.4}{35}$	$\frac{6.8}{20}$	$\frac{7.9}{15}$	$\frac{9.4}{0}$	$\frac{9.9}{15}$	$\frac{10.1}{20}$	$\frac{10.0}{25}$	$\frac{13.4}{28}$	$\frac{13.1}{33}$	$\frac{10.0}{35}$					
			91.7	86.3	85.2	83.7	83.2	83.0	83.1	79.7	80.0	83.1					
1490	$\frac{1.1}{35}$	$\frac{7.7}{25}$	$\frac{8.0}{20}$	$\frac{8.9}{15}$	$\frac{10.4}{13}$	$\frac{11.3}{2}$	$\frac{13.4}{0}$	$\frac{14.1}{10}$	$\frac{12.2}{12}$	$\frac{11.7}{15}$	$\frac{11.6}{20}$	$\frac{11.2}{35}$					
	89.0	85.4	85.1	84.2	82.7	81.8	79.7	79.0	80.9	81.4	81.5	81.9					
2+10	$\frac{5.0}{35}$	$\frac{8.0}{28}$	$\frac{8.6}{20}$	$\frac{10.1}{15}$	$\frac{12.1}{14}$	$\frac{12.0}{2}$	$\frac{14.3}{1}$	$\frac{14.3}{0}$	$\frac{13.7}{11}$	$\frac{12.3}{12}$	$\frac{11.6}{15}$	$\frac{11.5}{20}$	$\frac{11.3}{35}$				
	88.1	85.1	84.5	83.0	81.0	81.1	78.8	79.4	80.8	81.5	81.6	81.8					
2+20		$\frac{6.9}{35}$	$\frac{9.9}{20}$	$\frac{11.0}{16}$	$\frac{13.6}{15}$	$\frac{14.0}{0}$	$\frac{14.0}{9}$	$\frac{12.2}{11}$	$\frac{12.2}{15}$	$\frac{11.5}{20}$	$\frac{11.5}{35}$						
		86.2	83.2	82.1	79.5	79.1	79.1	80.9	80.9	81.6	81.6						
T.P.								4.15	85.31	11.90	81.16						
2437	$\frac{+1.2}{35}$	$\frac{6.4}{30}$	$\frac{6.7}{20}$	$\frac{6.9}{15}$	$\frac{6.8}{7.5}$	$\frac{6.8}{0}$	$\frac{6.3}{4}$	$\frac{4.4}{5}$	$\frac{4.4}{15}$	$\frac{4.0}{20}$	$\frac{3.7}{35}$						
	86.5	78.9	78.6	78.4	78.5	79.0	80.9	80.9	81.3	81.6							

Sta	North					South					Elev	10
	+	-	+	-	+	+	-	+	-			
								85.31				
2+39	$\frac{+1.4}{35}$ 86.7	$\frac{6.6}{33}$ 78.7	$\frac{7.0}{20}$ 78.3	$\frac{7.0}{15}$ 78.3	$\frac{6.3}{70}$ 79.0	$\frac{4.3}{0}$ 81.0	$\frac{4.5}{11}$ 80.8	$\frac{1.4}{15}$ 80.9	$\frac{4.1}{20}$ 81.2	$\frac{3.8}{35}$ 81.5		
2+50	$\frac{+3.0}{36}$ 88.3	$\frac{7.5}{31}$ 77.8	$\frac{6.8}{20}$ 78.5	$\frac{6.7}{15}$ 78.6	$\frac{6.6}{4}$ 78.7	$\frac{3.3}{2}$ 82.0	$\frac{3.8}{0}$ 81.5	$\frac{4.9}{4}$ 80.4	$\frac{4.8}{15}$ 80.5	$\frac{4.3}{20}$ 81.0	$\frac{4.1}{35}$ 81.2	
3+00	$\frac{7.0}{35}$ 78.3	$\frac{8.2}{27}$ 77.1	$\frac{7.6}{15}$ 77.7	$\frac{7.6}{15}$ 77.7	$\frac{7.2}{4}$ 77.4	$\frac{6.6}{0}$ 78.7	$\frac{6.6}{15}$ 78.7	$\frac{4.9}{20}$ 80.4	$\frac{3.2}{24}$ 82.1	$\frac{3.2}{31}$ 82.1	$\frac{2.0}{35}$ 83.3	
3+50			$\frac{8.9}{35}$ 76.4	$\frac{9.2}{20}$ 76.1	$\frac{8.9}{15}$ 76.4	$\frac{8.9}{0}$ 76.4	$\frac{8.6}{9}$ 76.7	$\frac{6.0}{15}$ 79.3	$\frac{5.4}{20}$ 79.9	$\frac{5.3}{30}$ 80.0	$\frac{3.5}{32}$ 81.8	$\frac{2.7}{35}$ 82.6
T.P.							5.27	81.97	8.61	76.70		
4+00			$\frac{5.5}{35}$ 76.5	$\frac{6.3}{20}$ 75.7	$\frac{6.0}{15}$ 76.0	$\frac{6.9}{0}$ 75.1	$\frac{5.6}{12}$ 76.4	$\frac{5.1}{15}$ 76.9	$\frac{4.2}{20}$ 77.8	$\frac{3.3}{30}$ 78.7	$\frac{2.4}{25}$ 79.6	
4+50			$\frac{7.0}{35}$ 75.0	$\frac{7.2}{20}$ 74.8	$\frac{7.3}{15}$ 74.7	$\frac{8.6}{0}$ 73.4	$\frac{8.3}{9}$ 73.7	$\frac{6.7}{15}$ 75.3	$\frac{5.8}{20}$ 76.2	$\frac{4.2}{34}$ 77.8	$\frac{2.8}{35}$ 79.2	
5+00		$\frac{7.6}{35}$ 74.4	$\frac{8.0}{20}$ 74.0	$\frac{8.4}{15}$ 73.6	$\frac{9.3}{10}$ 72.7	$\frac{8.8}{0}$ 73.2	$\frac{7.9}{15}$ 74.1	$\frac{6.0}{20}$ 76.0	$\frac{6.3}{30}$ 75.7	$\frac{4.0}{35}$ 78.0		
T.P.							9.16	81.88	9.25	72.72		
5+31.91			$\frac{8.0}{35}$ 73.9	$\frac{8.5}{20}$ 73.4	$\frac{8.2}{15}$ 73.7	$\frac{9.5}{0}$ 72.4	$\frac{7.6}{15}$ 74.3	$\frac{7.3}{20}$ 74.6	$\frac{7.4}{24}$ 74.5	$\frac{3.1}{35}$ 78.8		

Sta.	North						South				Elev.		
							±	+	H.I.	-			
6+00			$\frac{9.8}{35}$	$\frac{9.3}{20}$	$\frac{9.4}{15}$	$\frac{9.6}{0}$	$\frac{9.9}{15}$	$\frac{9.5}{20}$	$\frac{20}{27}$	$\frac{5.8}{35}$			
			72.1	72.6	72.5	72.3	72.0	72.4	72.9	76.1			
6+24.89			$\frac{9.8}{35}$	$\frac{10.0}{20}$	$\frac{9.7}{15}$	$\frac{10.5}{0}$	$\frac{10.4}{15}$	$\frac{10.4}{20}$	$\frac{8.8}{35}$	$\frac{35}{35}$			
			72.1	71.9	72.2	71.4	71.5	71.5	71.4				
6+66.12		$\frac{8.0}{35}$	$\frac{10.6}{27}$	$\frac{11.0}{20}$	$\frac{11.6}{15}$	$\frac{11.0}{0}$	$\frac{10.7}{15}$	$\frac{11.0}{20}$	$\frac{10.5}{25}$	$\frac{11.9}{27}$	$\frac{11.7}{35}$		
		73.9	71.3	70.9	70.3	70.9	71.2	70.9	71.4	70.0	70.2		
T.P.							813	82.03	7.98	73.90			
7+05	$\frac{10.7}{35}$	$\frac{0.2}{25}$	$\frac{1.6}{23}$	$\frac{1.5}{20}$	$\frac{6.0}{15}$	$\frac{11.5}{0}$	$\frac{11.7}{15}$	$\frac{11.8}{20}$	$\frac{12.0}{35}$				
	82.7	81.8	80.4	80.5	76.0	70.5	70.3	70.2	70.0				
7+25	$\frac{4.6}{35}$	$\frac{2.7}{31}$	$\frac{5.6}{28}$	$\frac{2.8}{27}$	$\frac{2.7}{20}$	$\frac{3.1}{16}$	$\frac{2.1}{15}$	$\frac{2.4}{0}$	$\frac{11.3}{15}$	$\frac{12.1}{20}$	$\frac{12.2}{35}$		
	77.4	79.3	76.4	77.2	79.3	78.9	79.9	79.6	70.7	69.9	69.8		
7+32.25	$\frac{2.9}{35}$	$\frac{4.1}{20}$	$\frac{5.3}{18}$	$\frac{4.1}{15}$	$\frac{4.6}{10}$	$\frac{6.6}{8}$	$\frac{7.0}{4}$	$\frac{4.8}{3}$	$\frac{4.8}{0}$	$\frac{4.5}{15}$	$\frac{4.6}{20}$	$\frac{5.2}{32}$	$\frac{5.9}{35}$
	79.1	77.9	76.7	77.9	77.4	75.4	85.0 15.0	77.2	77.2	77.5	77.4	76.8	76.1
7+75		$\frac{12.7}{35}$	$\frac{10.3}{20}$	$\frac{7.6}{15}$	$\frac{7.6}{10}$	$\frac{5.9}{10}$	$\frac{5.9}{0}$	$\frac{7.0}{15}$	$\frac{7.3}{20}$	$\frac{7.8}{30}$	$\frac{8.9}{31}$	$\frac{7.6}{35}$	
		69.3	71.7	74.4	76.1	76.1	76.1	75.0	74.7	74.2	73.1	74.4	
7+81		$\frac{14.4}{35}$	$\frac{14.6}{25}$	$\frac{12.8}{20}$	$\frac{11.4}{15}$	$\frac{6.4}{0}$	$\frac{6.9}{15}$	$\frac{7.2}{20}$	$\frac{8.0}{35}$				
		67.6	67.4	69.2	70.6	75.6	75.1	74.8	74.0				
T.P.							1.28	70.75	12.56	69.47			

North

South

12

56

±

+

H.I.

-

Elev.

7+92

31	31	33
35	20	15
67.7	67.7	67.5

33	+0.3	+2.2	13.7	+3.0
0	15	20	25	35
67.5	71.1	73.0	74.5	73.8

8+00

32	33	34
35	20	15
67.6	67.5	67.4

36	38	40	04
0	15	20	35
67.2	67.0	66.8	70.4

8+50

57	56	58
35	20	15
65.1	65.2	65.0

57	67	74	11.2	14.0	14.7
0	15	20	23	30	35
65.1	64.1	67.4	59.6	56.8	56.1
		63.4			

8+80

12.9	80	77	78
35	24	20	15
57.9	62.8	63.1	63.0

77	77	77	15.7	16.7	16.7
0	15	20	22	30	35
63.1	62.9	63.1	55.1	54.1	54.1

9+00

150	13.8	10.5	22
35	25	20	15
55.8	57.0	60.3	61.6

90	89	87	8.6	14.6	15.6
0	15	20	25	26	35
61.8	61.9	62.1	62.2	56.2	55.2

T.P.

2.03	60.45	12.33	58.42
------	-------	-------	-------

9+40

48	50	42
35	20	15
55.7	55.5	56.3

2.8	1.6	0.8	0.7	2.3
0	15	20	34	35
57.7	58.9	59.7	59.8	58.2

9+50

44	46	45
35	20	15
56.1	55.9	56.0

3.4	2.3	1.4	1.0
0	15	20	35
57.1	58.2	59.1	59.5

10+00

50	44	42
35	20	15
55.5	56.1	56.3

4.5	4.7	5.0	5.3
0	15	20	35
56.0	55.8	55.5	55.2

10+39.71

48	47	45
35	20	15
55.7	55.8	56.0

4.9	4.7	5.0	9.1	11.3
0	15	20	25	35
55.6	55.8	55.5	51.4	49.2

North

South

13

510

±

+

H.I.

-

Elev

10+75

50	48	46
35	20	13
55.5	55.7	55.9

49	53	49	43
0	15	20	35
55.6	55.2	55.6	56.2

60.45

11+03.70

53	55	55	56
0	15	20	35
55.2	55.0	55.0	54.9

11+02.38

51	49	53	52
50	35	20	15
55.4	55.6	55.2	55.3

53	52	54	58	59
0	15	20	35	50
55.2	55.3	55.1	54.7	54.6

+0.1 60.55

check on B.M. #1 reading of +0. (Approx)

Note: Sec of sta 11+0238 taken on
the E. property line of Reynard Way

Sta

East				
3+90	$\frac{9.9}{35}$ 148.2	$\frac{10.2}{30}$ 147.9	$\frac{10.9}{20}$ 147.2	$\frac{11.0}{15}$ 147.1

West	H.I	-	Elev
158.13	$\frac{11.4}{0}$ 146.7	$\frac{11.8}{15}$ 146.3	$\frac{10.6}{20}$ 147.5
			$\frac{11.0}{26}$ 147.1
			$\frac{11.1}{35}$ 147.0

T.P. = B.M. #6

4+00	$\frac{2.5}{35}$ 147.4	$\frac{3.0}{20}$ 146.9	$\frac{3.7}{15}$ 146.2	
------	---------------------------	---------------------------	---------------------------	--

	$\frac{4.1}{0}$ 145.8	$\frac{5.4}{15}$ 144.5	$\frac{5.8}{20}$ 144.1	$\frac{9.98}{26}$ 143.9	$\frac{148.15}{35}$ 143.0
--	--------------------------	---------------------------	---------------------------	----------------------------	------------------------------

4+30	$\frac{10.8}{45}$ 139.1	$\frac{10.6}{35}$ 139.3	$\frac{9.3}{30}$ 140.6	$\frac{4.9}{23}$ 145.0	$\frac{4.6}{20}$ 145.3	$\frac{5.1}{15}$ 144.8
------	----------------------------	----------------------------	---------------------------	---------------------------	---------------------------	---------------------------

	$\frac{5.0}{0}$ 144.9	$\frac{5.9}{15}$ 144.0	$\frac{6.5}{20}$ 143.4	$\frac{7.8}{40}$ 142.1
--	--------------------------	---------------------------	---------------------------	---------------------------

4+40	$\frac{18.0}{50}$ 131.9	$\frac{6.2}{23}$ 143.7	$\frac{5.9}{20}$ 144.0	$\frac{6.0}{15}$ 143.9
------	----------------------------	---------------------------	---------------------------	---------------------------

	$\frac{7.2}{0}$ 142.7	$\frac{12.0}{15}$ 137.9	$\frac{12.7}{20}$ 137.2	$\frac{14.5}{40}$ 145.4
--	--------------------------	----------------------------	----------------------------	----------------------------

4+65	$\frac{20.6}{60}$ 129.3	$\frac{19.8}{42}$ 130.1	$\frac{8.7}{26}$ 141.2	$\frac{7.6}{20}$ 142.3	$\frac{7.4}{15}$ 142.5	$\frac{7.5}{4}$ 142.4
------	----------------------------	----------------------------	---------------------------	---------------------------	---------------------------	--------------------------

	$\frac{9.6}{0}$ 140.3	$\frac{20.2}{15}$ 129.7	$\frac{23.1}{20}$ 126.8	$\frac{32.7}{40}$ 117.2	$\frac{34.4}{50}$ 115.5	$\frac{32.0}{70}$ 117.9
--	--------------------------	----------------------------	----------------------------	----------------------------	----------------------------	----------------------------

4+82	$\frac{18.8}{48}$ 131.1	$\frac{18.8}{45}$ 131.1	$\frac{18.2}{35}$ 131.7	$\frac{8.7}{25}$ 141.2	$\frac{7.9}{20}$ 142.0	$\frac{7.9}{15}$ 142.0
------	----------------------------	----------------------------	----------------------------	---------------------------	---------------------------	---------------------------

	$\frac{8.1}{0}$ 141.8			
--	--------------------------	--	--	--

4+89	$\frac{18.3}{47}$ 131.6	$\frac{18.0}{40}$ 131.9	$\frac{15.8}{35}$ 134.1	$\frac{12.5}{20}$ 137.4	$\frac{10.7}{15}$ 139.2	$\frac{10.1}{10}$ 139.8	$\frac{7.9}{9}$ 142.0
------	----------------------------	----------------------------	----------------------------	----------------------------	----------------------------	----------------------------	--------------------------

	$\frac{9.5}{0}$ 140.4			
--	--------------------------	--	--	--

OMITTED

4+92	$\frac{17.7}{40}$ 132.2	$\frac{17.8}{37}$ 132.1	$\frac{8.3}{24}$ 141.6	$\frac{7.9}{20}$ 142.0	$\frac{7.9}{15}$ 142.1
------	----------------------------	----------------------------	---------------------------	---------------------------	---------------------------

	$\frac{9.3}{0}$ 140.6			
--	--------------------------	--	--	--

5+00	$\frac{14.1}{40}$ 135.8	$\frac{16.6}{35}$ 133.3	$\frac{16.8}{33}$ 133.1	$\frac{8.3}{23}$ 141.6	$\frac{8.0}{20}$ 141.9	$\frac{8.0}{15}$ 141.9
------	----------------------------	----------------------------	----------------------------	---------------------------	---------------------------	---------------------------

	$\frac{8.5}{0}$ 141.4	$\frac{18.2}{15}$ 131.7	$\frac{21.2}{20}$ 128.7	$\frac{32.3}{39}$ 117.6	$\frac{37.6}{70}$ 112.3
--	--------------------------	----------------------------	----------------------------	----------------------------	----------------------------

Sta	East					West					Elev	16
	+	-	+	-	+	-	+	-	+	-		
5+25												
			$\frac{5.0}{40}$	$\frac{7.4}{20}$	$\frac{7.5}{15}$	$\frac{9.1}{0}$	$\frac{8.7}{3}$	$\frac{16.2}{15}$	18.8	23.3	23.5	
			144.9	142.5	142.4	140.8	141.2	133.7	131.1	126.6	126.4	
5+50	+2.8	2.5	$\frac{5.1}{26}$	$\frac{5.4}{20}$	$\frac{5.8}{15}$	$\frac{6.5}{0}$	$\frac{6.9}{8}$	$\frac{9.8}{15}$	11.6	15.8		
	152.7	147.4	144.8	144.5	144.1	143.4	143.0	140.1	138.3	134.1		
5+75	$\frac{+5.1}{40}$	$\frac{+3.7}{30}$	$\frac{2.4}{20}$	$\frac{3.6}{19}$	$\frac{4.1}{15}$	$\frac{4.3}{0}$	$\frac{5.0}{15}$	$\frac{5.4}{20}$	9.2			
	156.0	153.6	147.5	146.3	145.8	145.6	144.9	145.5	140.7			
6+00	$\frac{+8.7}{40}$	$\frac{+6.4}{30}$	$\frac{1.0}{20}$	$\frac{2.4}{18}$	$\frac{2.9}{15}$	$\frac{2.7}{0}$	$\frac{3.3}{15}$	$\frac{3.1}{20}$	1.9	4.4		
	158.6	156.3	148.9	147.5	147.0	147.2	146.6	146.8	148.0	145.5		
T.P.												
6+50		$\frac{+7.0}{40}$	$\frac{+5.2}{31}$	$\frac{3.2}{20}$	$\frac{3.7}{15}$	$\frac{4.3}{0}$	$\frac{4.8}{15}$	$\frac{5.1}{20}$	5.2	3.9	6.2	
		160.0	158.2	149.8	149.3	148.7	148.2	147.9	147.8	149.1	146.8	
7+00		$\frac{+7.0}{40}$	$\frac{+4.0}{28}$	$\frac{2.6}{20}$	$\frac{4.4}{15}$	$\frac{5.2}{0}$	$\frac{5.9}{15}$	$\frac{6.1}{20}$	8.2			
		160.0	157.0	150.4	148.6	147.8	147.1	146.9	144.8			
7+50		$\frac{+6.3}{40}$	$\frac{+2.7}{25}$	$\frac{3.7}{20}$	$\frac{6.1}{15}$	$\frac{7.3}{0}$	$\frac{8.0}{15}$	$\frac{8.0}{20}$	11.6			
		159.3	155.7	149.3	146.9	145.7	145.0	145.0	141.4			
8+00		$\frac{+5.0}{40}$	$\frac{+1.8}{28}$	$\frac{5.5}{20}$	$\frac{7.0}{15}$	$\frac{8.0}{0}$	$\frac{8.5}{15}$	$\frac{8.2}{20}$	12.4	13.5		
		158.0	154.8	147.5	146.0	145.0	144.5	144.8	140.6	139.5		
8+50		$\frac{+2.1}{40}$	$\frac{0.5}{28}$	$\frac{7.2}{20}$	$\frac{8.0}{15}$	$\frac{8.6}{0}$	$\frac{9.1}{15}$	$\frac{8.6}{20}$	9.1	11.6	13.6	
		155.1	152.5	145.8	145.0	144.4	143.9	144.4	143.9	141.4	139.4	

Sta.	East					±	+	West		Elev	17
								H.I	-		
								153.04			
T.P.							1.76	145.63	9.17	143.87	
9+00	+6.5 40 152.1	+3.0 28 148.6	1.4 20 142.2	1.9 15 143.7	2.2 0 143.4	2.7 15 142.9	2.4 20 143.2	2.5 27 143.1	8.0 37 147.6	8.8 40 136.8	
9+50	+6.1 40 151.7	+2.8 28 148.4	2.7 20 142.9	3.3 15 142.3	3.4 0 142.2	3.6 15 142.0	3.5 20 142.1	3.6 28 142.0	10.2 38 135.4	10.6 40 135.0	
10+00	+6.1 40 151.7	+4.2 28 149.8	3.6 20 142.0	4.2 15 141.4	4.3 0 141.3	4.7 15 140.9	4.4 20 141.2	4.4 28 141.2	10.7 40 134.9		
10+50	+4.0 40 149.6	+0.9 27 146.5	4.1 25 141.5	4.9 20 140.7	5.4 15 140.2	5.5 0 140.1	5.8 15 139.8	5.6 20 140.0	5.4 27 140.2	10.9 36 134.7	11.4 40 134.2
11+00	+1.8 40 147.4	1.3 27 144.3	5.2 25 140.4	6.5 20 139.1	7.2 15 138.9	6.7 0 138.9	6.7 15 138.9	6.7 20 138.9	7.0 27 138.6	12.2 37 133.4	12.7 40 132.9
11+71	15.4 40 130.2	13.1 34 132.5	8.3 25 137.3	8.3 20 137.3	8.4 15 137.2	8.3 0 137.3	8.0 15 137.6	7.9 20 137.7	7.0 26 138.6	4.0 29 141.6	2.1 40 143.5
11+81.49			7.0 40 138.6	7.8 20 137.8	7.9 15 137.7	8.4 0 137.2	8.5 15 137.1	8.6 20 137.0	8.6 24 137.0	15.0 37 130.6	15.2 40 130.4
T.P.							10.92	151.86	4.69	140.94	

Sta	East					±	+	West		Elev.	18		
	H.I	-	-	-	-			H.I	-				
								151.86					
14+00	$\frac{2.2}{40}$ 147.7	$\frac{3.8}{20}$ 148.1	$\frac{4.0}{17}$ 147.9	$\frac{5.1}{16}$ 146.8	$\frac{5.1}{15}$ 146.8	$\frac{4.9}{0}$ 147.0	$\frac{6.1}{15}$ 145.8	$\frac{6.0}{20}$ 145.9	$\frac{7.8}{40}$ 147.1				
14+06		$\frac{1.8}{40}$ 150.1	$\frac{3.6}{20}$ 148.3	$\frac{4.1}{15}$ 147.8	$\frac{4.1}{13}$ 147.8	$\frac{5.2}{12}$ 146.7	$\frac{4.9}{0}$ 147.0	$\frac{5.9}{15}$ 146.0	$\frac{5.5}{20}$ 146.4	$\frac{7.0}{40}$ 144.9			
14+07	$\frac{0.6}{40}$ 151.3	$\frac{1.8}{20}$ 150.1	$\frac{3.5}{18}$ 148.4	$\frac{4.0}{15}$ 147.9	$\frac{4.1}{11}$ 147.8	$\frac{5.2}{10}$ 146.7	$\frac{4.9}{0}$ 147.0	$\frac{6.5}{10}$ 145.4	$\frac{6.0}{15}$ 145.9	$\frac{4.8}{20}$ 147.1	$\frac{4.2}{24}$ 147.7	$\frac{5.5}{40}$ 146.4	
14+25		$\frac{1.8}{40}$ 150.1	$\frac{2.5}{20}$ 149.4	$\frac{4.0}{17}$ 147.9	$\frac{4.7}{15}$ 147.2	$\frac{5.9}{0}$ 146.0	$\frac{6.1}{15}$ 145.8	$\frac{6.1}{20}$ 145.8	$\frac{4.8}{22}$ 147.1	$\frac{6.3}{40}$ 145.6			
14+50		$\frac{2.2}{40}$ 149.7	$\frac{3.9}{20}$ 148.0	$\frac{5.2}{18}$ 146.7	$\frac{5.4}{15}$ 146.5	$\frac{6.4}{0}$ 145.5	$\frac{6.7}{15}$ 145.2	$\frac{6.6}{20}$ 145.3	$\frac{5.9}{23}$ 146.0	$\frac{7.2}{40}$ 144.7			
T.P.							1.51	145.17	8.20	143.66			
15+00	$\frac{10.1}{40}$ 145.3	$\frac{10.7}{21}$ 145.9	$\frac{10.2}{20}$ 145.4	$\frac{0.8}{15}$ 144.4	$\frac{1.7}{8}$ 142.5	$\frac{1.7}{0}$ 142.5	$\frac{2.0}{6}$ 143.2	$\frac{2.6}{10}$ 142.6	$\frac{1.8}{15}$ 143.4	$\frac{1.5}{20}$ 143.7	$\frac{0.6}{21}$ 144.6	$\frac{2.4}{40}$ 142.8	
15+50	$\frac{3.8}{40}$ 141.4	$\frac{2.7}{30}$ 142.5	$\frac{3.3}{20}$ 141.9	$\frac{3.6}{15}$ 141.6	$\frac{4.2}{9}$ 141.0	$\frac{4.0}{0}$ 141.2	$\frac{4.2}{7}$ 141.0	$\frac{5.1}{10}$ 140.1	$\frac{4.1}{13}$ 141.1	$\frac{3.9}{15}$ 141.3	$\frac{3.2}{20}$ 142.0	$\frac{3.1}{21}$ 142.1	$\frac{3.6}{40}$ 141.6
16+00	$\frac{8.0}{40}$ 137.0	$\frac{6.0}{20}$ 139.2	$\frac{6.1}{15}$ 139.1	$\frac{6.5}{14}$ 138.7	$\frac{7.2}{9}$ 138.0	$\frac{6.6}{0}$ 138.6	$\frac{7.3}{10}$ 137.9	$\frac{6.5}{14}$ 138.7	$\frac{5.7}{20}$ 139.5	$\frac{4.1}{22}$ 141.1	$\frac{4.8}{40}$ 140.4		
16+50		$\frac{12.2}{40}$ 133.0	$\frac{9.0}{20}$ 136.2	$\frac{9.2}{15}$ 136.0	$\frac{10.0}{9}$ 135.2	$\frac{9.8}{0}$ 135.4	$\frac{10.4}{10}$ 134.8	$\frac{9.4}{15}$ 135.8	$\frac{9.0}{20}$ 136.2	$\frac{7.3}{23}$ 137.9	$\frac{7.2}{40}$ 138.0		

sta	East					±	West	Elev					19
							H.I.	-					
16+85	14.8 40 130.4	11.1 20 134.1	11.2 15 134.0	11.7 13 133.5	12.0 9 133.2	11.7 0 133.5	12.8 9 132.4	145.17 11.7 15 133.5	11.5 20 133.7	9.4 23 135.8	8.8 40 136.4		
T.P.							2.19	134.72	12.64	132.53			
17+00	5.7 40 129.0	2.0 20 132.7	1.5 15 133.2	1.7 12 133.0	2.2 8 132.5	1.8 0 132.9	2.7 15 132.0	1.8 17 132.9	1.8 20 132.9	1.3 24 133.4	+0.6 26 135.3	+1.0 40 135.7	
17+50		14.8 40 119.9	10.7 30 124.0	6.3 20 128.4	5.9 15 128.8	4.3 0 130.4	4.9 7 129.8	4.9 15 129.8	4.7 20 130.0	5.4 28 129.3	4.6 31 130.1	4.1 38 130.6	1.6 40 133.1
18+00		15.6 40 119.1	10.5 29 124.2	7.3 20 125.4	8.7 15 126.0	6.9 0 127.8	7.4 15 127.3	7.4 20 127.3	8.5 31 126.2	7.3 35 127.4	7.1 40 127.6		
18+50	14.9 40 119.8	12.5 20 122.2	11.5 15 123.2	11.0 11 123.7	9.7 7 125.0	9.5 0 125.2	9.8 15 124.9	10.2 20 124.5	9.4 26 125.3	8.4 34 126.3	6.0 35 128.7	6.0 40 128.7	
T.P.							5.30	127.64	12.38	122.34			
B.M. #11 on Iron pin at Lot stake "39-41"								7.42		120.22			
19+00	8.1 40 119.5	5.1 20 122.5	5.2 15 122.4	5.8 12 121.8	5.4 0 122.2	5.1 10 123.5	4.6 11 123.0	4.5 15 123.1	3.9 20 123.7	1.8 23 125.8	0.5 40 127.1		
19+18.4		7.7 40 119.9	6.0 20 121.6	6.7 17 120.9	6.4 15 121.2	5.9 0 121.7	5.4 4 122.2	5.0 15 122.6	4.8 20 122.8	4.1 40 123.5			
19+50	7.6 40 120.0	7.6 20 120.0	8.6 15 119.0	8.5 11 119.1	7.5 8 120.1	7.0 0 120.6	7.8 6 119.8	6.8 9 120.8	7.1 15 120.5	7.7 20 119.9	7.0 24 120.6	7.1 40 120.5	

5/10

East

8.9	8.7	9.1	10.3	10.8	10.4	9.1
19+75	40	20	17	15	13	7
118.7	118.7	118.5	117.3	116.8	117.2	118.5

T.P.

0	1.0	1.8	2.0	3.2	3.2	3.5
40	26	20	15	11	7	7
119.2	118.2	117.4	117.2	116.0	115.7	115.7

20+50

4.3	4.0	6.0	6.3	6.1	7.2	8.2
40	23	20	15	13	11	0
114.9	115.2	113.2	112.9	113.1	112.0	111.0

T.P.

2.1	1.0	2.5	2.6	2.5	4.4	3.5	5.1
40	25	20	15	14	12	10	2
108.0	111.1	107.6	107.5	107.6	105.7	106.6	105.0

21+50

9.2	5.6	7.6	8.0	7.8	7.8	8.3
40	24	20	15	12	10	8
100.9	104.5	102.5	102.1	102.3	100.3	101.8

T.P.

11.0	2.0	2.1	2.0	2.8	3.3	3.4
40	20	15	8	0	15	20
88.3	97.3	97.2	97.3	96.5	96.0	95.9

22+50

21.8	16.0	11.6	8.2	7.7	9.2	8.0	8.7
40	20	15	9.0	0	3	6	15
77.5	83.3	87.7	91.1	91.6	90.1	91.3	90.6

T.P.

West

20

HI	-	Elev
127.64		
9.1	9.1	8.3
20	23	35
118.5	118.5	119.3

3.93	119.22	12.35	115.29
2.8	3.0	3.0	3.0
18	20	28	30
116.4	116.2	116.2	118.2

7.7	7.5	6.8	6.8	3.7	4.8
6	15	20	26	29	40
111.5	111.7	112.4	112.4	115.5	114.4

3.08	110.11	12.19	107.03
3.6	3.0	2.2	2.0
13	15	24	27
106.5	107.1	107.6	107.9

9.4	9.4	8.8	9.0	8.4	8.0	7.7	2.7	5.3
0	7	9	15	17	20	27	30	40
100.7	100.7	101.3	101.1	101.7	102.1	102.4	107.4	104.8

1.77	99.34	12.54	97.57
3.3	3.4	2.4	1.9
15	20	23	32
96.5	96.0	95.9	96.9

7.7	9.2	8.0	8.7	9.7	9.5	8.5	8.5
0	3	6	15	20	30	33	40
91.6	90.1	91.3	90.6	89.6	89.8	90.8	90.8

2/3 88.51 12.96 86.38

East

West

sta

±

+

H.I.

-

Elev.

88.51

22+95.64

2.1	2.0	5.2	4.0	3.0	3.0	4.4	3.0	3.9
0	3	4	10	13	15	20	22	26
86.4	86.5	83.3	84.5	85.5	85.5	84.1	85.5	84.6

" "

15.8	14.4	10.9	3.2	3.2	2.5	2.4
40	20	15	28	38	39	40
72.7	74.1	77.6	85.3	85.3	86.0	86.1

23+31.09

17.3	17.0	15.9	13.8	12.4	6.8	5.3	5.4	6.3	6.6	6.7	8.3	9.4	6.7	7.5	7.0
40	20	15	11	5	0	4	12	14	15	17	20	25	26	29	40
71.2	71.5	72.6	74.7	76.1	81.7	83.2	83.1	82.2	81.9	81.8	80.2	79.1	81.8	81.0	81.5

T.P.

3.53 79.61 12.43 76.08

23+61

8.4	9.0	9.0	2.0	0	+0.6	0	1.2	1.5	2.2	1.6
40	20	15	0	15	78	27	29	37	37	40
71.2	70.6	70.6	70.6	79.6	80.2	79.6	78.4	78.1	77.4	78.0

23+95.16

9.3	8.0	8.6	9.1	9.5	9.7	9.5	9.0	1.7	2.0
40	30	20	15	0	15	20	23	36	40
70.3	71.6	71.0	70.5	70.1	69.9	70.1	70.6	77.9	77.6

T.P.

10.43 80.20 9.84 69.77

24+20.16

5.1	9.7	11.0	10.2	9.7	10.5	10.4	10.5	9.3
40	27	20	17	15	0	15	20	40
75.1	70.5	69.2	70.0	70.5	69.7	69.8	69.7	70.9

24+50

0	5.7	8.7	8.9	10.6	11.3	11.1	11.0	11.0
40	20	15	8	3	0	15	20	40
80.2	74.5	71.5	71.3	69.6	68.9	69.1	69.2	69.2

24+75

+7.4	+1.6	0.2	6.3	9.8	10.5	9.6	11.1	11.1
40	20	15	0	8	15	20	22	40
87.6	81.8	80.0	73.9	70.4	69.7	70.6	69.1	69.1

East

West

22

sta	East			West			Elev.				
	+	-	+	+	-	H.I.	-				
25+00	+9.6 40 89.8	+4.2 20 84.4	+3.0 15 83.2	2.4 0 77.8	3.9 6 76.3	9.3 15 70.9	10.3 20 69.9	9.8 25 70.4	8.7 27 71.5	11.7 35 68.5	11.5 40 68.7
25+25	+10.0 40 90.2	+4.7 20 84.9	+3.2 15 83.4	1.9 0 78.3	6.4 12 73.8	9.0 14 71.2	9.4 15 70.8	10.6 20 69.6	9.0 25 71.2	10.6 40 69.6	
25+50	+8.7 40 88.9	+3.4 20 83.6	+1.9 15 82.1	2.7 0 77.5	10.4 15 69.8	11.4 20 68.8	9.0 24 71.2	9.7 40 70.5			
25+70.16 ✓	+3.1 40 83.3	1.5 20 78.7	2.2 15 78.0	4.2 6 76.0	8.3 0 71.9	11.6 15 68.6	10.4 20 69.8	7.8 27 72.4	9.1 32 71.7	9.1 40 71.1	
25+87	0 40 80.2	4.1 20 76.1	4.7 15 75.5	7.3 0 72.9	8.7 3 71.5	9.8 15 70.4	13.0 18 67.2	13.6 25 66.6	8.6 30 71.6	9.2 40 71.0	
25+95.16 P.V.	3.2 40 77.0	5.6 20 74.6	6.3 15 73.9	7.6 0 72.6	8.4 13 71.8	11.6 15 68.6	14.2 20 66.0	8.3 30 71.9	8.3 40 71.9		
26+35.16	13.2 40 67.0	13.5 20 66.7	13.5 15 66.7	14.3 0 65.9	14.5 15 65.7	14.6 20 65.6	14.8 40 65.4				

check on B.M. # 2

5.38 74.82

		East CURLEW				STREET West				Elev
						±	HI	-		
510	B.M. N ^o 5									
0+00		0.90 40 223.50	1.19 26 223.27	1.88 26 222.52	2.10 13 222.30	2.67 0 221.73	3.59 13 220.81	4.77 26 219.63	4.31 26 220.09	220.14 3.96 220.44
0+40			1.04 40 223.36	1.69 26 222.71	2.27 13 222.13	2.95 0 221.45	4.25 13 220.15	6.45 26 217.95	8.72 40 215.68	
0+80	118 40	1.92 26 222.22	2.22 26 222.18	2.17 19.5 222.23	2.35 13 222.05	3/2 6.5 221.28	3.78 0 220.62	3.27 0 221.13	5.5 40 218.9	
1+00		2.4 40 222.0	3.08 27 221.32	3.7 26 220.7	4.2 13 220.2	5.1 0 219.3	4.71 0 219.69	4.72 10 219.68		
1+50		7.0 40 217.4	7.35 26 217.05	7.9 26 216.5	8.2 13 216.2	8.72 0 215.68	8.04 10 216.36			Driveway at E.
T.P.							2.28	215.36	11.32	213.08
1+844		0.7 40 214.7	1.26 26 214.10	1.8 26 213.6	1.9 13 213.5	2.0 0 213.4	1.63 0 213.73	1.29 10 214.07		End curb on West
2+30	+4.0 50	3.1 40 219.4	3.80 26 217.56	4.1 26 211.3	4.2 13 211.2	4.3 0 211.1	3.6 10 211.8	8.6 15 206.8	" " " East	
3+00	+2.6 50	3.5 40 218.0	4.5 32 211.9	5.6 30 209.8	5.2 20 210.2	5.2 15 210.2	4.5 10 210.9	12.2 20 203.2		
3+50	+2.1 50	10.2 40 217.5	4.6 40 210.8	5.8 20 209.6	5.8 15 209.6	5.5 0 209.7	5.2 10 210.2	13.5 20 201.9		

23
 Azim 15'E
 WA 10'W
 EA 40'E
 Sta 0 to 3+80

	East						West						Elev.			
4400	35 41	52 40	56 30	6.5 29	6.9 20	6.6 15	6.9 0	6.0 12	215.36 17.2 30							
	211.9	212	209.8	208.9	208.5	208.8	208.5	209.4	198.2							
T.P.								2.91	210.59	7.68			207.68			
4450	+3.0 50	+29 41	1.1 40	1.5 32	3.0 28	3.5 20	3.5 15	3.6 0	4.2 6	3.5 15	3.1 20	11.8 41	12.7 50			
	213.6	213.5	209.5	209.1	207.6	207.1	207.1	207.0	206.4	207.1	207.5	198.8	197.9			
4460	+19.8 50	+19.4 44	1.2 40	1.8 35	4.1 29	4.0 20	3.8 15	4.1 0	4.6 6	4.1 7	3.8 15	3.7 20	6.8 50			
	221.4	220.0	209.4	208.8	206.5	206.6	206.8	206.5	206.0	206.5	206.8	206.9	203.8			
5450	+150 50	+14.0 40	8.7 27	10.0 20	10.7 15	11.3 0	11.6 11	10.1 15	10.2 20	10.0 24	9.0 27	10.3 50				
	225.6	224.6	201.9	200.6	189.9 199.9	199.3	199.0	200.5	200.4	200.6	201.6	200.3				
T.P.									1.25	198.80	13.04		197.55			
6425			2.1 50	4.1 20	4.4 15	5.1 13	5.2 0	5.5 12	4.7 13	4.1 15	4.2 20	4.2 25	3.3 26	+27 50		
			196.7	194.7	194.4	193.7	193.6	193.3	194.1	194.7	194.6	194.6	195.5	201.5		
6450		152 50	5.7 30	5.7 20	6.2 15	6.9 0	6.4 15	6.1 20	6.0 32			+2.8 50				
		183.6	193.1	193.1	192.6	191.9	192.4	192.7	192.8			201.6				
7400	20.4 50	15.7 42	13 35	8.9 28	9.5 20	9.6 17	10.7 15	10.7 0	11.0 15	10.2 17	10.0 20	9.5 27	6.7 34	+4.2 40	+5.1 50	
	178.4	183.1	197.5	189.9	189.3	189.2	188.1	188.1	187.8	188.6	188.8	189.3	191.1	203.0	203.9	
T.P.									2.58	188.94	12.44		186.36			
7450	19.8 50	3.4 24	3.5 20	3.6 15	4.4 13	6.1 10	3.7 6	4.7 0	3.7 15	4.4 16	3.3 17	2.8 27	0.1 29	+0.4 31	+13.9 38	+120 50
	162.1	183.5	185.4	185.3	184.5	182.8	185.2	184.1	185.2	184.5	185.6	186.1	187.0	187.3	202.8	200.9

24
 A. 4 5'E
 W. 20'W
 E. 30'E
 Sta. 4460 to 4460

Sta.	East							West							Elev	25 Add OK 25'E 25'W	
	+	-	-	-	-	-	-	+	-	-	-	-	-				
8+00	$\frac{25.0}{50}$ 163.9	$\frac{5.0}{20}$ 183.9	$\frac{5.0}{15}$ 183.9	$\frac{7.0}{9}$ 179.9	$\frac{7.3}{7}$ 181.6	$\frac{7.5}{0}$ 181.4	$\frac{7.7}{15}$ 181.2	$\frac{8.3}{16}$ 180.6	$\frac{6.8}{19}$ 182.1	$\frac{6.1}{27}$ 182.8	$\frac{9.1}{32}$ 198.0	$\frac{+8.7}{50}$ 197.6					
8+25	$\frac{23.5}{50}$ 165.4	$\frac{6.5}{20}$ 182.4	$\frac{5.5}{15}$ 183.4	$\frac{9.0}{10}$ 179.9	$\frac{9.2}{0}$ 179.7	$\frac{10.0}{15}$ 178.9	$\frac{10.4}{18}$ 178.5	$\frac{9.3}{20}$ 177.6	$\frac{8.2}{29}$ 180.7	$\frac{+6.0}{32}$ 194.9	$\frac{+5.0}{50}$ 193.9						
8+50	$\frac{16.7}{50}$ 172.2	$\frac{3.9}{28}$ 185.0	$\frac{4.5}{22}$ 184.4	$\frac{9.4}{20}$ 179.5	$\frac{10.1}{15}$ 178.8	$\frac{9.1}{2}$ 179.8	$\frac{6.6}{0}$ 182.3	$\frac{5.3}{2}$ 183.6	$\frac{11.7}{5}$ 177.2	$\frac{13.4}{15}$ 175.5	$\frac{12.9}{17}$ 176.0	$\frac{13.4}{18}$ 175.5	$\frac{11.4}{20}$ 177.5	$\frac{10.0}{30}$ 178.9	$\frac{+3.0}{34}$ 179.9	$\frac{+2.3}{50}$ 191.2	
8+59	$\frac{12.0}{50}$ 176.9	$\frac{3.8}{31}$ 185.1	$\frac{7.1}{29}$ 181.8	$\frac{8.0}{23}$ 180.9	$\frac{9.6}{20}$ 179.3	$\frac{10.4}{15}$ 178.5	$\frac{9.4}{6}$ 179.5	$\frac{0}{0}$ 188.9	$\frac{+1.5}{2}$ 190.4	$\frac{11.4}{5}$ 177.5	$\frac{13.1}{7}$ 175.8	$\frac{12.7}{7}$ 176.2	$\frac{11.7}{20}$ 177.2	$\frac{10.2}{30}$ 178.7	$\frac{+2.2}{34}$ 179.1	$\frac{+1.2}{50}$ 190.1	
9+00	$\frac{9.4}{50}$ 179.5	$\frac{4.9}{30}$ 184.0	$\frac{10.6}{24}$ 178.3	$\frac{10.9}{20}$ 177.7	$\frac{11.2}{15}$ 178.3	$\frac{10.6}{7}$ 182.0	$\frac{6.9}{4}$ 184.9	$\frac{4.0}{3}$ 185.9	$\frac{3.0}{3}$ 186.3	$\frac{2.6}{0}$ 185.7	$\frac{3.2}{3}$ 173.8	$\frac{15.1}{15}$ 172.5	$\frac{16.4}{20}$ 174.9	$\frac{14.0}{22}$ 175.2	$\frac{13.7}{31}$ 185.6	$\frac{3.3}{36}$ 185.0	$\frac{3.9}{50}$ 185.0
T.P.									4.44	180.66	12.72	176.22					
9+25	$\frac{4.0}{50}$ 176.7	$\frac{1.1}{27}$ 179.6	$\frac{4.0}{24}$ 176.7	$\frac{4.1}{20}$ 176.6	$\frac{3.4}{16}$ 177.3	$\frac{2.6}{15}$ 178.1	$\frac{1.3}{7}$ 179.4	$\frac{+2.3}{0}$ 183.0	$\frac{0}{4}$ 180.7	$\frac{8.8}{6}$ 171.9	$\frac{10.7}{15}$ 172.0	$\frac{9.5}{20}$ 171.2	$\frac{8.1}{24}$ 172.6	$\frac{7.6}{30}$ 173.1	$\frac{+0.8}{33}$ 181.5	$\frac{+0.6}{50}$ 181.3	
9+50	$\frac{6.8}{50}$ 173.9	$\frac{4.0}{28}$ 176.7	$\frac{5.5}{25}$ 175.2	$\frac{4.4}{20}$ 176.3	$\frac{3.4}{15}$ 177.3	$\frac{2.8}{0}$ 177.9	$\frac{3.5}{3}$ 177.2	$\frac{10.2}{6}$ 172.5	$\frac{11.5}{15}$ 169.2	$\frac{11.5}{20}$ 169.2	$\frac{9.5}{30}$ 171.2	$\frac{3.1}{35}$ 177.6	$\frac{3.6}{50}$ 177.1				
10+00			$\frac{17.5}{50}$ 163.2	$\frac{13.5}{20}$ 167.2	$\frac{13.0}{15}$ 167.7	$\frac{11.9}{0}$ 168.8	$\frac{11.8}{1}$ 168.9	$\frac{13.2}{5}$ 166.9	$\frac{14.6}{15}$ 166.1	$\frac{14.7}{20}$ 166.0	$\frac{13.7}{21}$ 167.0	$\frac{13.7}{30}$ 167.0	$\frac{12.0}{35}$ 170.7	$\frac{9.8}{50}$ 170.9			
T.P.								1.29	169.97	11.98	168.68						

Sta	East.				±	+	West.				Elev.
							H.I	-			
10+50	15.1 50 154.9	11.0 20 159.0	9.8 15 160.2	6.9 0 163.1	8.0 15 162.0	169.97 161.4	8.6 17 163.0	7.0 20 162.8	7.2 35 164.1	5.2 50 164.8	
11+00	23.0 50 147.0	16.6 20 153.4	14.3 15 155.7	10.3 2 159.7	10.6 0 159.4	11.8 15 159.2	10.8 20 159.2	10.3 33 159.7	10.1 50 159.9		
T.P						2.59	160.11	12.45	157.52		
11+20	16.0 50 144.1	11.6 20 148.5	10.0 15 150.1	2.3 2 157.8	2.3 0 157.8	3.1 13 157.0	2.8 16 157.3	2.2 20 157.9	1.9 32 158.2	1.3 50 158.8	
11+62.45 NPL PALM	26.3 50 133.8	6.5 20 153.6	5.0 15 155.1	3.0 10 157.1	3.6 0 156.5	6.0 15 154.1	5.7 20 154.4	4.9 22 155.2	7.2 50 152.9		
12+02.45	33.1 50 127.0	12.9 20 147.2	9.8 15 150.3	4.5 4 155.6	4.9 0 155.2	5.4 15 154.7	5.6 20 154.5	6.7 50 153.4			
check on B.M. 4								0.00	160.11		

PL 20' E
36' W 26

Sta

North

PALM

STREET

South

27

B.M. # 4

T.P

0+00

12.6	13.0	13.1	133	139	14.0	14.5		
40	20	15	0	15	20	40		
137.4	137.0	136.9	136.7	136.1	136.0	135.5		

0+20

12.6	12.7	12.7	134	13.7	13.8	14.5		
40	20	15	0	15	20	40		
137.4	137.3	137.3	136.6	136.3	136.2	135.5		

0+45

11.8	12.2	12.5	13.0	14.1	13.3	13.3		
40	20	15	0	15	20	40		
138.2	137.8	137.5	137.0	135.9	136.7	136.7		

0+46

8.0	8.6	11.5	12.1	12.2	13.0	13.6	13.0	12.3	11.1	11.1
40	32	27	20	15	0	15	20	30	31	40
142.0	141.4	138.5	137.9	137.8	137.0	136.4	137.0	137.7	138.9	138.9

1+00

0.5	0.9	9.2	10.1	9.4	9.6	8.4	8.5	7.7	6.0	6.0
40	34	20	15	0	13	15	20	26	29	40
149.5	149.1	140.8	139.9	140.6	140.4	141.6	141.5	142.3	146.0	146.0

1+43

46.8	46.3	35	47	4.9	6.6	5.7	5.7	4.5	4.5	3.8	2.4	3.0
40	30	26	20	15	13	12	0	17	20	28	29	40
156.8	156.3	146.5	145.3	145.1	143.4	144.3	144.3	145.5	145.5	146.2	147.6	147.0

1+45.49

5.7	5.2	4.3	4.9	4.2
0	13	15	20	40
154.3	144.8	145.7	145.6	145.8
144.3				

1+85.49

10.0	9.7	0.5	1.6	1.6	4.8	4.3	2.2	3.2	2.1	2.0	2.1
40	32	26	20	15	11	10	0	15	17	20	40
160.0	159.7	149.5	148.4	148.4	145.2	145.7	147.8	146.8	147.7	148.0	147.9

1+87.0

2.2	3.2	2.0	1.8	1.5	0	0.6
0	15	16	20	25	26	40
147.8	146.8	148.0	148.2	148.5	150.0	149.4

sta

North.

South

28

±

+

H.I.

-

Elev

150.00

Sta	North						South					
	±	+	H.I.	-	Elev		±	+	H.I.	-	Elev	
T.P.								12.73	161.22	151	148.49	
2+10.49	2.0	2.3	8.8	10.6	11.0	11.8	11.8	11.4	11.1	11.0	11.3	
	<u>40</u>	<u>31</u>	<u>26</u>	<u>20</u>	<u>16</u>	<u>15</u>	<u>0</u>	<u>15</u>	<u>20</u>	<u>25</u>	<u>28</u>	
	1592	1589	152.4	150.6	150.2	149.4	149.4	149.8	150.1	150.2	151.2	
	5.6	6.6	7.6	7.9	7.6	9.3	9.0	8.4	8.0	8.1	5.8	
2+50.40	<u>40</u>	<u>30</u>	<u>28</u>	<u>20</u>	<u>15</u>	<u>14</u>	<u>0</u>	<u>15</u>	<u>20</u>	<u>27</u>	<u>34</u>	
	155.6	154.6	153.6	153.3	153.6	151.9	152.0	152.8	153.2	153.1	155.4	
											9.6	
											<u>40</u>	
											151.6	

check on BM #4

1.22 160.00

Sta	North				REDWOOD STREET.			South		Elev	29			
	+	-	-	-	-	+	H.I.	-	-					
B.M. #6							0.92	149.08✓		148.16				
T.P.							2.18	138.93✓	12.33	136.75✓				
1401.11			$\frac{18.6}{40}$	$\frac{16.7}{20}$	$\frac{16.5}{15}$	$\frac{14.6}{0}$	$\frac{14.3}{15}$	$\frac{14.5}{20}$	$\frac{14.7}{40}$					
			120.3	122.2	122.4	124.3	124.6	124.4	124.2					
1412.0			$\frac{10.9}{40}$	$\frac{10.2}{20}$	$\frac{9.8}{15}$	$\frac{10.2}{0}$	$\frac{10.9}{15}$	$\frac{11.2}{20}$	$\frac{12.6}{40}$					
			128.0	128.7	129.1	128.7	128.0	127.7	126.3					
1441.11			$\frac{8.9}{40}$	$\frac{8.9}{20}$	$\frac{9.1}{15}$	$\frac{9.3}{0}$	$\frac{9.0}{15}$	$\frac{8.3}{20}$	$\frac{8.5}{34}$	$\frac{7.5}{36}$	$\frac{8.0}{40}$			
			130.0	130.0	129.5	129.6	129.9	130.6	130.4	131.4	130.9			
1443.0		$\frac{5.4}{40}$	$\frac{5.6}{23}$	$\frac{8.8}{20}$	$\frac{9.1}{15}$	"	"	"	"	"	"			
			133.5	133.3	130.1	129.5	129.6	129.9	130.6	130.4	131.4			
1463.13		$\frac{0.0}{40}$	$\frac{0.7}{21}$	$\frac{5.0}{20}$	$\frac{7.5}{20}$	$\frac{8.1}{0}$	$\frac{7.6}{15}$	$\frac{5.6}{20}$	$\frac{6.4}{40}$					
			138.9	138.2	133.9	131.4	130.8	131.3	133.3	132.5				
2400		$\frac{+3.3}{40}$	$\frac{+3.0}{22}$	$\frac{3.4}{20}$	$\frac{5.2}{15}$	$\frac{5.8}{0}$	$\frac{5.9}{15}$	$\frac{4.1}{20}$	$\frac{6.1}{40}$					
			142.2	141.9	135.5	133.7	133.1	133.0	134.8	132.8				
2450	$\frac{+7.7}{40}$	$\frac{+6.4}{21}$	$\frac{0}{20}$	$\frac{1.8}{15}$	$\frac{2.3}{1}$	$\frac{3.3}{0}$	$\frac{2.5}{2}$	$\frac{2.3}{15}$	$\frac{2.3}{20}$	$\frac{4.7}{37}$	$\frac{5.7}{40}$			
			146.6	145.3	138.9	137.1	136.6	135.6	136.4	136.6	136.6			
T.P.								13.16	149.91✓	2.18	136.75✓			
2497		$\frac{1.6}{40}$	$\frac{3.4}{27}$	$\frac{8.6}{20}$	$\frac{9.9}{15}$	$\frac{10.1}{0}$	$\frac{10.8}{15}$	$\frac{13.6}{20}$	$\frac{16.7}{28}$	$\frac{19.2}{29}$	$\frac{21.4}{31}$	$\frac{22.7}{47}$	$\frac{24.5}{50}$	
			148.3	146.5	141.3	140.0	139.8	139.1	136.3	133.2	130.7	128.5	127.2	125.4

Sta	North				±	+	South	Elev				
							H.I.					30
3+02					10.7 0	10.5 5	149.91 ✓ 13.5 15	21.6 20	22.7 28	24.6 29	23.0 30	
"	1.8 40	2.6 32	8.6 20	9.6 15	139.2 24.0 35	139.4 26.0 40	131.4 31.5 50	128.3	127.2	125.3	126.9	
3+09	148.1	147.3	141.3	140.3	125.9	123.9	118.4					
"	1.5 40	2.9 30	8.5 20	9.3 15	10.1 0	15.3 5	15.0 9	10.2 13	11.2 15	15.8 20		
3+25	148.4	147.0	141.4	140.6	139.8	134.6	134.9	139.7	138.7	134.1		
"	1.9 40	3.0 30	8.2 20	8.7 15	23.2 30	23.8 32	30.2 34	31.3 40	28.6 42	30.5 50		
3+36!!	148.0	146.9	141.7	141.2	126.7	126.1	119.7	118.6	121.3	119.4		
"	1.4 40	3.4 27	7.8 20	8.3 15	8.5 0	8.1 10	12.5 15	16.1 20	22.5 30	29.0 40	33.6 50	
3+61.11	148.5	146.5	142.1	141.6	141.4	140.8	137.4	133.8	127.4	120.9	116.3	
"	0.6 40	2.6 28	6.0 20	6.5 15	8.3 0	8.7 11	11.4 15	16.2 20	34.1 50			
3+61.11	148.5	146.5	142.1	141.6	141.6	141.2	138.5	133.7	115.8			
"	0.6 40	2.6 28	6.0 20	6.5 15	6.7 0	6.6 10	11.0 15	14.6 20	21.0 30	20.5 50		
3+61.11	149.3	147.3	143.9	143.4	143.2	143.3	138.9	135.3	128.9	129.4		

check on B.M. # 6

1.74 143.17

Sta	East					EAGLE STREET					West		Elev
	+	+	+	+	+	+	+	H.I.	-	-	-		
B.M. #8								11.81		103.04✓			91.23✓
0+44.55	taken on E.P. Reynard Way					$\frac{3.9}{60}$	$\frac{3.4}{0}$	$\frac{5.6}{60}$					
						99.6	99.6	97.4					
0+44.55	$\frac{+111}{40}$	$\frac{+20}{20}$	$\frac{+41}{17}$	$\frac{+3.8}{15}$	$\frac{+10}{7}$	$\frac{0.2}{4}$	$\frac{3.4}{0}$	$\frac{5.7}{11}$	$\frac{6.7}{12}$				
	114.1	110.0	107.1	106.8	104.0	102.1	99.6	97.3	96.3				
0+55			$\frac{+12.1}{40}$	$\frac{+23}{20}$	$\frac{+5.1}{15}$	$\frac{+2.8}{13}$	$\frac{+0.8}{0}$	$\frac{3.2}{8}$	$\frac{5.4}{15}$	$\frac{5.9}{16}$	$\frac{7.0}{16}$		
			115.1	110.3	108.1	105.8	103.8	99.1	97.6	97.1	96.0		
1+00				$\frac{+15.0}{40}$	$\frac{+8.8}{20}$	$\frac{+4.3}{15}$	$\frac{0.2}{0}$	$\frac{3.8}{15}$	$\frac{4.4}{16}$	$\frac{4.9}{20}$	$\frac{6.1}{40}$		
				118.0	111.8	107.3	102.8	99.2	98.6	98.1	96.9		
1+31	$\frac{+15.0}{15}$	$\frac{+3.1}{12}$	$\frac{+2.0}{9}$	$\frac{0.7}{5}$	$\frac{2.6}{3}$	$\frac{2.9}{0}$							
	108.0	106.1	105.0	102.3	100.4	100.1							
"		$\frac{+17.2}{40}$	$\frac{+12.5}{25}$	$\frac{+11.1}{20}$	$\frac{+8.2}{18}$		$\frac{3.4}{7}$	$\frac{2.5}{12}$	$\frac{4.1}{15}$	$\frac{4.6}{20}$	$\frac{6.0}{40}$		
		120.2	115.5	114.1	111.2		99.6	100.5	98.9	98.4	97.0		
1+37	$\frac{+9.1}{18}$	$\frac{+6.4}{15}$	$\frac{+2.0}{12}$	$\frac{2.4}{10}$	$\frac{2.5}{7}$	$\frac{0.4}{0}$	$\frac{2.4}{2}$	$\frac{2.8}{7}$	$\frac{0.6}{11}$	$\frac{2.7}{15}$	$\frac{4.2}{20}$	$\frac{5.4}{40}$	
	112.1	109.4	105.0	100.6	100.5	102.6	100.6	100.2	102.4	100.3	98.8	97.6	
				$\frac{+18.3}{40}$	$\frac{+12.0}{20}$								
					115.0								
T.P							11.20	112.37✓	187	101.17✓			

East.

West.

sta	East.						West.				Elev		
	+	-	+	-	+	-	+	-	+	-	+	-	
112.4									112.37 ^v				
1439	$\frac{2.1}{18}$	$\frac{6.2}{15}$	$\frac{3.1}{11}$	$\frac{3.3}{7}$	$\frac{5.9}{5}$	$\frac{5.2}{3}$	$\frac{7.5}{0}$	$\frac{8.3}{6}$	$\frac{7.5}{8}$	$\frac{10.0}{13}$	$\frac{13.3}{15}$	$\frac{13.7}{20}$	$\frac{15.1}{40}$
	110.3	106.2	109.3	109.1	106.5	107.2	104.9	104.1	102.9	102.4	99.1	98.7	97.3
"				$\frac{+7.0}{40}$	$\frac{+2.7}{25}$	$\frac{1.0}{20}$							
				119.4	115.1	111.4							
1450	$\frac{+9.2}{40}$	$\frac{+2.1}{20}$	$\frac{2.0}{15}$	$\frac{3.3}{14}$	$\frac{1.9}{10}$	$\frac{2.1}{4}$	$\frac{3.4}{0}$	$\frac{7.8}{15}$	$\frac{12.4}{20}$	$\frac{14.5}{40}$			
	121.6	114.5	110.4	109.1	110.5	110.3	109.3	109.0	104.6	100.0	97.9		
T.P. 121.9									11.54	121.86 ^v	2.05	110.32 ^v	
2409	$\frac{1.8}{40}$	$\frac{5.4}{24}$	$\frac{7.5}{20}$	$\frac{8.2}{17}$	$\frac{7.8}{15}$		$\frac{7.5}{0}$	$\frac{9.4}{5}$	$\frac{13.3}{7}$	$\frac{12.0}{9}$	$\frac{14.1}{15}$	$\frac{15.5}{20}$	$\frac{18.4}{24}$
	120.1	116.5	114.4	113.7	114.1	114.4	112.5	108.6	109.9	107.8	106.4	103.5	
" "							$\frac{17.8}{20}$	$\frac{16.1}{326}$	$\frac{18.6}{38}$	$\frac{20.2}{40}$			
							104.1	105.8	103.3	101.7			
2411		$\frac{1.1}{40}$	$\frac{5.6}{23}$	$\frac{8.7}{20}$	$\frac{7.8}{13}$	$\frac{7.5}{4}$	$\frac{18.0}{0}$	$\frac{17.5}{7}$	$\frac{15.2}{7}$	$\frac{15.9}{14}$	$\frac{17.2}{15}$	$\frac{18.0}{20}$	$\frac{18.5}{25}$
		120.8	116.3	113.2	114.1	114.4	103.9	104.4	106.7	106.0	104.7	103.9	103.4
" "							$\frac{22.4}{31}$	$\frac{20.8}{35}$	$\frac{18.4}{36}$	$\frac{21.0}{40}$			
							101.5	101.1	103.5	100.9			
2418	$\frac{2.1}{40}$	$\frac{5.2}{25}$	$\frac{7.3}{20}$	$\frac{6.7}{15}$	$\frac{8.1}{8}$	$\frac{13.0}{8}$	$\frac{14.4}{3}$	$\frac{10.3}{0}$	$\frac{10.8}{3}$	$\frac{17.3}{7}$	$\frac{18.7}{15}$	$\frac{19.1}{20}$	$\frac{22.1}{40}$
	119.8	116.7	114.6	115.2	113.8	108.9	107.5	111.6	111.1	104.6	103.2	102.8	99.8
2423	$\frac{1.7}{40}$		$\frac{6.1}{20}$	$\frac{6.3}{15}$	$\frac{8.6}{13}$	$\frac{8.6}{11}$	$\frac{6.3}{10}$	$\frac{6.5}{0}$	$\frac{12.9}{15}$	$\frac{14.0}{20}$	$\frac{18.5}{40}$		
	120.2		115.8	115.6	113.3	113.3	115.6	115.4	109.0	107.9	103.4		

East

West

33

	East				West				Flex		
					±	+	H I	-			
510											
121.9							121.86				
2+40	$\frac{1.4}{40}$	$\frac{43}{24}$	$\frac{4.6}{20}$	$\frac{4.6}{15}$	$\frac{5.3}{0}$	$\frac{6.5}{5}$	$\frac{10.8}{12}$	$\frac{11.9}{15}$	$\frac{13.8}{20}$	$\frac{18.0}{40}$	
	120.5	117.6	117.3	117.3	116.6	115.4	111.1	110.0	108.1	103.9	
2+70	$\frac{+3.2}{40}$	$\frac{0.9}{22}$	$\frac{3.5}{20}$	$\frac{3.7}{15}$	$\frac{3.2}{0}$	$\frac{3.3}{5}$	$\frac{7.9}{15}$	$\frac{9.7}{20}$	$\frac{15.0}{40}$		
	125.1	121.0	118.4	118.2	118.7	118.6	114.0	112.2	106.9		
7.P 131.4											
3+00	$\frac{1.0}{40}$	$\frac{5.9}{20}$	$\frac{10.3}{18}$	$\frac{10.7}{15}$	$\frac{11.1}{11}$	$\frac{10.1}{0}$	11.12	131.40	1.58	120.28	
	130.4	125.6	121.1	120.7	120.3	121.3	121.6	116.9	115.8	108.4	
3+50	$\frac{+1.8}{40}$	$\frac{1.9}{25}$	$\frac{2.0}{20}$	$\frac{8.5}{17}$	$\frac{8.8}{15}$	$\frac{7.7}{0}$	$\frac{7.4}{5}$	$\frac{11.0}{15}$	$\frac{12.5}{20}$	$\frac{14.0}{30}$	$\frac{17.8}{40}$
	133.2	129.5	124.4	122.9	122.6	123.7	124.0	120.4	118.9	117.4	113.6
4+00	$\frac{+3.5}{40}$	$\frac{1.2}{23}$	$\frac{5.8}{20}$	$\frac{6.7}{15}$	$\frac{6.0}{0}$	$\frac{6.0}{5}$	$\frac{11.3}{15}$	$\frac{13.1}{20}$	$\frac{15.1}{27}$	$\frac{19.6}{40}$	
	134.9	130.2	125.6	124.7	125.4	125.4	120.1	118.3	116.3	111.8	
4+50	$\frac{+5.3}{40}$	$\frac{+1.7}{29}$	$\frac{4.5}{20}$	$\frac{5.0}{15}$	$\frac{4.6}{0}$	$\frac{4.9}{5}$	$\frac{11.8}{15}$	$\frac{14.4}{20}$	$\frac{21.0}{40}$		
	136.7	133.1	126.9	126.4	126.8	126.5	119.6	117.0	110.4		
5+00	$\frac{+5.0}{40}$	$\frac{+1.2}{25}$	$\frac{2.9}{20}$	$\frac{4.0}{15}$	$\frac{3.8}{0}$	$\frac{3.8}{6}$	$\frac{9.0}{15}$	$\frac{11.7}{20}$	$\frac{14.5}{28}$	$\frac{16.2}{30}$	$\frac{21.2}{40}$
	136.4	132.6	128.5	127.4	127.6	127.6	122.4	119.7	116.9	115.2	110.2
5+55.75	$\frac{+6.2}{40}$	$\frac{+2.0}{27}$	$\frac{1.1}{20}$	$\frac{2.8}{15}$	$\frac{2.8}{0}$	$\frac{3.5}{8}$	$\frac{8.1}{15}$	$\frac{11.0}{20}$	$\frac{19.0}{40}$		
	137.6	133.4	130.3	128.6	128.6	127.9	123.3	120.4	112.4		

East

West

sta

±

+

H.I

-

Elev

5+80.77

+ 5.2
40

+ 1.5
20

1.1
20

2.2
15

2.5
0

3.5
10

6.4
15

9.5
20

18.5
40

136.6

132.9

130.3

129.2

128.9

127.9

125.0

121.9

112.9

5+82.77

+ 0.6
40

1.5
20

2.2
15

2.5
0

"

"

"

"

132.0

129.9

129.2

128.9

127.9

125.0

121.9

112.9

6+20.77

+ 1.2
40

0.8
20

1.3
15

2.8
0

4.9
15

7.0
20

14.8
40

132.6

130.6

130.1

128.6

126.5

124.4

116.6

check on B.M. # 7

7.30

124.10

124.14

Sta	East			EAGLE			STE		West			Elev
							±	+	H.I.	-		
BM #9 81.6								11.36	87.56✓			76.20
10+00				$\frac{46}{60}$			$\frac{59}{0}$	$\frac{80}{60}$				
				83.0			81.7	79.6				
10+02				$\frac{+44}{50}$			$\frac{31}{0}$	$\frac{3.5}{6}$	$\frac{64}{6}$	$\frac{5.3}{17}$	$\frac{3.3}{24}$	$\frac{43}{50}$
				92.0			84.5	84.1	81.2	82.3	84.3	83.3
T.P. 96A								10.50	96.43✓	1.63		85.93✓
10+27.77				$\frac{2.3}{40}$	$\frac{6.3}{20}$	$\frac{7.7}{15}$	$\frac{76}{0}$	$\frac{99}{6}$	$\frac{93}{7}$	$\frac{8.6}{15}$	$\frac{8.5}{20}$	$\frac{8.4}{40}$
				94.1	90.1	88.7	86.8	86.5	87.1	87.8	87.9	88.0
10+49				$\frac{3.7}{40}$	$\frac{5.7}{32}$	$\frac{6.7}{20}$	$\frac{70}{15}$	$\frac{6.6}{0}$	$\frac{6.5}{15}$	$\frac{6.9}{20}$	$\frac{9.6}{40}$	
				92.7	90.7	89.7	89.8	89.9	89.5	86.8		
T.P. 108.2								12.24	108.24✓	0.43		96.00✓
10+92.66				$\frac{+1.1}{40}$	$\frac{2.3}{20}$	$\frac{4.1}{15}$	$\frac{78}{0}$	$\frac{12.3}{15}$	$\frac{13.6}{20}$	$\frac{20.0}{40}$		
				109.3	105.9	104.1	100.4	95.9	94.6	88.2		
11+25.40	$\frac{+6.6}{35}$	$\frac{+5.6}{25}$	$\frac{+1.2}{20}$	$\frac{+0.3}{20}$	$\frac{1.1}{15}$	$\frac{3.5}{7}$	$\frac{46}{4}$	$\frac{58}{0}$	$\frac{12.5}{15}$	$\frac{14.0}{20}$	$\frac{21.0}{40}$	
	114.8	113.8	109.4	108.5	107.1	104.7	103.6	102.4	95.7	94.2	87.2	
11+50	$\frac{+8.5}{40}$	$\frac{+6.3}{30}$	$\frac{+2.4}{20}$	$\frac{+0.5}{15}$	$\frac{3.4}{3}$		$\frac{4.6}{0}$	$\frac{9.1}{10}$	$\frac{11.3}{15}$	$\frac{13.0}{20}$	$\frac{19.5}{40}$	
	116.7	114.5	110.6	108.7	104.8		103.6	99.1	96.9	95.2	88.7	
T.P.								11.17	119.02✓	0.39		107.85✓

Sta	East				±	+	West		Elev.	
	H.I.	-	H.I.	-						
119.0										
11+75	$\frac{1.7}{40}$	$\frac{3.1}{27}$	$\frac{5.2}{20}$	$\frac{6.8}{15}$	$\frac{11.7}{0}$	$\frac{17.8}{15}$	$\frac{21.0}{20}$	$\frac{27.2}{40}$		
	117.3	115.9	113.1	112.2	107.3	101.2	98.0	91.8		
12+00	$\frac{+2.0}{40}$	$\frac{3.3}{20}$	$\frac{5.9}{15}$	$\frac{7.4}{4}$	$\frac{8.9}{0}$	$\frac{15.2}{15}$	$\frac{17.2}{20}$	$\frac{23.3}{40}$		
	121.0	115.7	113.1	111.6	110.1	103.8	101.8	95.7		
12+39.57		$\frac{+3.6}{40}$	$\frac{0.3}{20}$	$\frac{1.4}{15}$	$\frac{5.0}{0}$	$\frac{8.4}{13}$	$\frac{10.6}{15}$	$\frac{12.0}{20}$	$\frac{15.5}{40}$	
		122.6	118.7	117.6	114.0	110.6	108.4	107.0	103.5	
12+75		$\frac{+2.1}{40}$	$\frac{2.2}{20}$	$\frac{3.9}{15}$	$\frac{7.2}{0}$	$\frac{11.5}{15}$	$\frac{13.1}{20}$	$\frac{15.5}{30}$	$\frac{15.4}{40}$	
		121.1	116.8	115.1	111.8	107.5	105.9	103.5	103.6	
13+00		$\frac{0.4}{40}$	$\frac{5.1}{20}$	$\frac{5.9}{15}$	$\frac{10.9}{0}$	$\frac{13.3}{15}$	$\frac{13.7}{20}$	$\frac{12.6}{40}$		
		118.6	113.9	113.1	108.1	105.7	105.3	106.4		
13+25		$\frac{+4.4}{40}$	$\frac{4.6}{20}$	$\frac{5.8}{15}$	$\frac{9.1}{0}$	$\frac{10.2}{15}$	$\frac{10.8}{20}$	$\frac{10.9}{40}$		
		123.4	114.4	113.2	109.9	108.8	108.2	108.1		
13+50		$\frac{+2.8}{40}$	$\frac{10.6}{20}$	$\frac{0.9}{15}$	$\frac{5.0}{0}$	$\frac{8.8}{15}$	$\frac{9.0}{20}$	$\frac{10.1}{40}$		
		121.8	119.6	118.1	114.0	110.2	110.0	108.9		
T.P. 122.00						405	121.98✓	1.09	117.93✓	
13+75	$\frac{+3.3}{42}$	$\frac{1.1}{35}$	$\frac{2.1}{20}$	$\frac{2.6}{15}$	$\frac{4.4}{0}$	$\frac{5.0}{3}$	$\frac{9.0}{10}$	$\frac{10.0}{15}$	$\frac{10.1}{20}$	$\frac{12.4}{40}$
	125.3	120.9	119.9	119.4	117.6	117.0	113.0	112.0	111.9	109.6

Sta	East					±	+	H.I.	West	Elev	37
122.0								121.98 [✓]			
14+00	$\frac{+4.1}{40}$	$\frac{+2.1}{30}$	$\frac{1.7}{28}$	$\frac{2.6}{20}$	$\frac{4.6}{15}$	$\frac{3.4}{0}$	$\frac{3.7}{5}$	$\frac{7.2}{15}$	$\frac{8.5}{20}$	$\frac{11.6}{40}$	
	126.1	124.1	120.3	119.4	117.4	118.6	118.3	114.8	113.5	110.4	
14+42.97			$\frac{+2.4}{40}$	$\frac{1.3}{20}$	$\frac{3.4}{15}$	$\frac{4.6}{0}$	$\frac{4.9}{15}$	$\frac{8.6}{20}$	$\frac{13.0}{40}$		
			124.4	120.7	118.6	117.4	117.1	113.4	109.0		
15+00			$\frac{+2.2}{40}$	$\frac{1.9}{20}$	$\frac{4.6}{15}$	$\frac{5.3}{0}$	$\frac{6.2}{15}$	$\frac{2.1}{20}$	$\frac{10.0}{24}$	$\frac{14.0}{40}$	
			124.2	120.1	117.4	116.7	115.8	112.9	112.0	108.0	
15+50		$\frac{+2.2}{40}$	$\frac{0.2}{20}$	$\frac{2.0}{15}$	$\frac{5.0}{12}$	$\frac{6.1}{0}$	$\frac{6.6}{15}$	$\frac{8.0}{20}$	$\frac{9.8}{26}$	$\frac{14.0}{40}$	
		124.2	121.8	120.0	117.0	115.9	115.4	114.0	112.2	108.0	
16+00		$\frac{+1.5}{40}$	$\frac{1.7}{20}$	$\frac{3.5}{15}$	$\frac{6.1}{11}$	$\frac{6.7}{0}$	$\frac{7.4}{15}$	$\frac{7.9}{20}$	$\frac{11.0}{31}$	$\frac{13.1}{40}$	
		123.5	120.3	118.5	115.9	115.3	114.6	114.1	111.0	108.9	
TP 119.8							620	119.83 [✓]	835	113.63 [✓]	
16+50	$\frac{+2.2}{40}$	$\frac{0.3}{20}$	$\frac{1.2}{15}$	$\frac{2.6}{11}$	$\frac{5.6}{7}$	$\frac{6.3}{0}$	$\frac{7.0}{15}$	$\frac{6.8}{20}$	$\frac{7.0}{24}$	$\frac{10.6}{35}$	$\frac{11.5}{40}$
	122.0	119.5	118.6	117.2	114.2	113.5	112.8	113.0	112.8	109.2	108.3
17+00	$\frac{+1.7}{40}$	$\frac{1.5}{20}$	$\frac{2.5}{15}$	$\frac{4.1}{9}$	$\frac{7.1}{5}$	$\frac{7.5}{0}$	$\frac{8.2}{15}$	$\frac{8.3}{20}$	$\frac{8.8}{26}$	$\frac{11.6}{33}$	$\frac{13.5}{40}$
	121.5	118.3	117.3	115.7	112.7	112.3	111.6	111.5	111.0	108.2	106.3
17+50		$\frac{0}{40}$	$\frac{3.5}{20}$	$\frac{4.5}{15}$	$\frac{6.4}{5}$	$\frac{8.7}{0}$	$\frac{9.8}{15}$	$\frac{9.9}{20}$	$\frac{10.2}{30}$	$\frac{13.6}{40}$	
		119.8	116.8	115.3	113.4	111.1	110.0	109.9	109.6	106.2	

Sta.	East				West				Elev.	38		
	$\frac{04}{40}$	$\frac{38}{20}$	$\frac{49}{15}$	$\frac{65}{5}$	$\frac{89}{0}$	$\frac{10.1}{3}$	$\frac{10.7}{15}$	$\frac{11.6}{20}$				
18+00	119.4	116.0	114.9	113.3	110.9	109.7	109.1	108.2	108.3	105.3		
18+50	118.8	115.5	114.3	112.2	110.8	108.2	107.8	107.4	106.8	104.3		
19+00		$\frac{1.7}{40}$	$\frac{4.6}{20}$	$\frac{6.3}{15}$	$\frac{10.1}{0}$	$\frac{10.3}{3}$	$\frac{13.6}{8}$	$\frac{14.3}{20}$	$\frac{15.4}{24}$	$\frac{14.4}{31}$	$\frac{14.7}{36}$	$\frac{16.6}{40}$
T.P.		118.1	115.2	113.5	109.7	109.5	106.2	105.5	104.4	105.4	105.1	103.2
19+50		$\frac{+1.6}{40}$	$\frac{2.4}{20}$	$\frac{3.8}{15}$	$\frac{7.1}{0}$	$\frac{8.7}{6}$	$\frac{11.2}{8}$	$\frac{12.5}{15}$	$\frac{12.8}{20}$	$\frac{14.1}{31}$	$\frac{13.5}{34}$	$\frac{13.7}{40}$
20+00		118.2	114.2	112.8	109.5	107.9	105.4	104.1	103.8	102.5	103.1	102.9
20+15.39		$\frac{1.0}{40}$	$\frac{4.0}{20}$	$\frac{5.7}{15}$	$\frac{9.3}{0}$	$\frac{13.0}{15}$	$\frac{14.5}{20}$	$\frac{18.2}{40}$				
20+6.2		115.6	112.6	110.9	107.3	103.6	102.1	98.4				
20+6.5		$\frac{0.2}{40}$	$\frac{5.6}{20}$	$\frac{6.7}{15}$	$\frac{10.1}{0}$	$\frac{13.6}{15}$	$\frac{14.7}{20}$	$\frac{20.2}{40}$				
		116.4	111.0	109.9	106.5	103.0	101.9	96.4				
		$\frac{0.7}{40}$	$\frac{5.3}{20}$	$\frac{7.7}{15}$	$\frac{11.7}{0}$	$\frac{15.3}{15}$	$\frac{16.5}{20}$	$\frac{21.3}{40}$				
		115.9	111.3	108.9	105.2	101.3	100.1	95.3				
		$\frac{0.7}{40}$	$\frac{5.5}{22}$	$\frac{10.6}{20}$	$\frac{11.8}{15}$	$\frac{16.2}{0}$	$\frac{17.5}{15}$	$\frac{19.0}{20}$	$\frac{25.7}{40}$			
		115.9	111.1	106.0	104.8	100.4	99.1	97.6	90.9			

1983 ✓

7.2 116.55 ✓ 10.40 109.43 ✓

1

Sta	East					West				Elev
	±	+	H.I.	-						
116.6										
20+69	$\frac{0.3}{40}$	$\frac{4.8}{23}$	$\frac{10.6}{20}$	$\frac{11.4}{17}$	$\frac{6.5}{15}$	$\frac{10.8}{0}$	$\frac{16.0}{15}$	$\frac{16.6}{20}$	$\frac{21.6}{40}$	
	116.3	111.8	106.0	105.2	110.1	105.8	100.6	100.0	95.0	
20+75	$\frac{0.7}{40}$	$\frac{3.3}{30}$	$\frac{11.0}{27}$	$\frac{10.7}{20}$	$\frac{5.5}{19}$	$\frac{6.4}{15}$	$\frac{10.6}{0}$	$\frac{14.7}{15}$	$\frac{15.3}{20}$	$\frac{21.6}{40}$
	115.9	113.3	105.5	105.9	111.1	110.2	106.0	101.9	101.3	95.0
20+77			$\frac{0.3}{40}$	$\frac{5.3}{20}$	$\frac{6.9}{15}$	$\frac{10.6}{0}$	$\frac{14.7}{15}$	$\frac{15.3}{20}$	$\frac{21.6}{40}$	
			116.3	111.3	109.7	106.0	101.9	101.3	95.0	
21+00			$\frac{+3.1}{40}$	$\frac{4.4}{20}$	$\frac{5.2}{15}$	$\frac{9.5}{0}$	$\frac{13.9}{15}$	$\frac{17.2}{20}$	$\frac{22.0}{40}$	
			119.7	112.2	111.2	107.1	102.7	99.4	94.6	
21+25			$\frac{+5.7}{40}$	$\frac{+1.4}{20}$	$\frac{1.4}{15}$	$\frac{6.9}{0}$	$\frac{11.6}{15}$	$\frac{12.7}{20}$	$\frac{19.6}{40}$	
			122.3	118.0	114.2	109.7	105.0	103.9	97.0	
T.P. 1254							11.10	125.43	222	114.33
21+50			$\frac{1.6}{40}$	$\frac{4.9}{20}$	$\frac{6.6}{15}$	$\frac{11.1}{0}$	$\frac{16.0}{15}$	$\frac{18.3}{20}$	$\frac{24.3}{40}$	
			123.8	120.5	118.8	114.3	109.4	107.1	101.1	
21+75			$\frac{2.1}{40}$	$\frac{2.5}{20}$	$\frac{3.1}{15}$	$\frac{7.1}{0}$	$\frac{11.6}{15}$	$\frac{14.1}{20}$	$\frac{18.8}{40}$	
			123.3	122.9	122.3	118.0	113.8	111.3	106.6	
22+00		$\frac{3.3}{40}$	$\frac{2.4}{38}$	$\frac{2.8}{20}$	$\frac{3.1}{15}$	$\frac{3.7}{0}$	$\frac{6.0}{15}$	$\frac{7.1}{20}$	$\frac{12.0}{40}$	
	122.1	123.0	122.6	122.3	121.7	119.4	118.3	113.4		

Sta	East				±		West		Elev		40	
125.4												
22+12.29	$\frac{29}{40}$	$\frac{27}{33}$	$\frac{35}{32}$	$\frac{29}{31}$	$\frac{35}{20}$	$\frac{33}{15}$	$\frac{37}{0}$	$\frac{45}{15}$	$\frac{5.5}{20}$	$\frac{9.4}{40}$		
	122.5	122.7	121.9	122.5	121.9	122.1	121.7	120.9	119.9	116.0		
22+35.99			$\frac{24}{40}$	$\frac{39}{20}$	$\frac{43}{18}$	$\frac{36}{15}$	$\frac{47}{0}$	$\frac{5.1}{15}$	$\frac{5.3}{20}$	$\frac{5.5}{27}$	$\frac{5.1}{31}$	$\frac{5.7}{40}$
			123.0	121.5	121.1	121.8	120.7	120.3	120.1	119.9	120.3	119.7

check on B.M. #11 see page 19

525 12018 ✓

510 North (Palm St) ALLEY South 41
 + H.I. - Elev

B.M. # 4 1.13 161.22 ✓ 160.09 ✓
 T.P. 0.99 148.54 ✓ 12.67 148.55 ✓
 T.P. 140.2 2.67 140.23 ✓ 11.98 137.56 ✓

2+29.88 $\frac{3.3}{10}$ 136.9 $\frac{3.5}{0}$ 136.7 $\frac{3.9}{10}$ 136.3 $\frac{4.1}{20}$ 136.1 $\frac{4.2}{30}$ 136.0

2+22 $\frac{3.5}{10}$ 136.7 $\frac{3.7}{0}$ 136.5 $\frac{3.8}{10}$ 136.4 $\frac{4.1}{20}$ 136.1 $\frac{4.4}{30}$ 135.8

2+13 $\frac{9.2}{10}$ 131.0 $\frac{8.5}{0}$ 131.7 $\frac{8.6}{10}$ 131.6 $\frac{8.8}{20}$ 131.4 $\frac{9.2}{30}$ 131.0

T.P. 122.9 0.52 127.89 ✓ 12.86 127.37 ✓

1+50 $\frac{7.9}{10}$ 120.0 $\frac{8.0}{0}$ 119.9 $\frac{8.3}{10}$ 119.6 $\frac{8.9}{20}$ 119.0 $\frac{9.5}{30}$ 118.4

1+39.07 $\frac{9.8}{10}$ 118.1 $\frac{9.8}{0}$ 118.1 $\frac{10.0}{10}$ 117.9 $\frac{10.6}{20}$ 117.3 $\frac{10.9}{30}$ 117.0

1+27 $\frac{11.8}{10}$ 116.1 $\frac{12.7}{0}$ 115.8 $\frac{12.5}{10}$ 115.4 $\frac{13.0}{20}$ 114.9 $\frac{13.0}{30}$ 114.9

T.P. 1.10 117.15 11.84 116.05 ✓

Sta	North			±	+	South	-	Elev			
117.1						117.15					
1+22			$\frac{4.5}{10}$	$\frac{4.6}{0}$	$\frac{4.6}{10}$	$\frac{4.8}{20}$	$\frac{4.9}{30}$				
			112.6	112.5	112.5	112.3	112.2				
0+96.55			$\frac{5.5}{10}$	$\frac{5.2}{0}$	$\frac{6.0}{10}$	$\frac{6.5}{20}$	$\frac{7.0}{30}$				
			111.6	111.2	111.1	110.6	110.1				
0+90.0			$\frac{6.0}{10}$	$\frac{6.3}{0}$	$\frac{6.3}{10}$	$\frac{6.7}{20}$	$\frac{6.9}{30}$				
			111.1	110.8	110.8	110.4	110.2				
0+80			$\frac{10.0}{10}$	$\frac{10.1}{0}$	$\frac{10.6}{10}$	$\frac{10.4}{20}$	$\frac{10.6}{30}$				
			107.1	107.0	106.5	106.7	106.9				
T.P					1.72	106.56	12.31	104.84			
0+43			$\frac{6.9}{10}$	$\frac{7.0}{0}$	$\frac{6.4}{10}$	$\frac{6.5}{20}$	$\frac{6.3}{30}$				
			99.7	99.6	100.2	100.1	100.3				
0+42		$\frac{7.4}{10}$	$\frac{7.1}{1}$	$\frac{12.6}{0}$	$\frac{12.5}{8}$	$\frac{6.8}{10}$	$\frac{6.9}{20}$	$\frac{6.8}{30}$			
		99.2	99.5	94.0	94.1	99.8	99.7	99.8			
0+32			$\frac{20}{10}$	$\frac{20}{0}$	$\frac{20.2}{2}$	$\frac{19.3}{9}$	$\frac{8.7}{10}$	$\frac{8.6}{20}$	$\frac{7.9}{30}$		
			97.6	97.6	86.4	87.3	97.9	98.0	98.7		
0+16		$\frac{80}{13}$	$\frac{22.0}{10}$	$\frac{24.5}{0}$	$\frac{26.5}{3}$	$\frac{27.0}{5}$	$\frac{22.7}{7}$	$\frac{21.0}{10}$	$\frac{10.2}{15}$	$\frac{22}{20}$	$\frac{9.1}{30}$
		98.6	84.6	82.1	80.1	79.6	83.9	85.6	96.9	96.7	97.5

sta	North		±		+		South		Elev
							H.I	-	
0102	at Rts to d	$\frac{30.0}{10}$	$\frac{30.2}{5}$	$\frac{33.7}{0}$	$\frac{30.2}{10}$	106.56	$\frac{30.2}{20}$	$\frac{30.0}{30}$	
		76.6	76.4	72.9	76.4	76.4	76.4	76.6	
0100	along RWA		$\frac{37.1}{10}$	$\frac{38.2}{0}$	$\frac{37.6}{10}$		$\frac{38.8}{20}$	$\frac{39.8}{30}$	
			67.5	68.4	69.0	67.8	67.8	66.8	

Note: Line of stationing is along the Northerly Line of Alley

$$\frac{4}{14} = \frac{2}{7}$$

North

(Redwood St.)

ALLEY

South

50

B.M.#3

±

+

H.I

-

Elev.

12.77

104.00 ✓

91.23 ✓

0+00

 $\frac{19.3}{10}$ $\frac{19.6}{0}$ $\frac{18.8}{10}$ $\frac{19.3}{20}$ $\frac{18.3}{30}$

84.7

84.4

85.2

84.7

85.7

0+15

 $\frac{16.4}{10}$ $\frac{16.2}{0}$ $\frac{16.0}{10}$ $\frac{15.9}{20}$ $\frac{15.2}{30}$

87.6

87.8

88.0

88.1

88.8

0+27

 $\frac{16.3}{10}$ $\frac{16.8}{5}$ $\frac{16.5}{0}$ $\frac{14.7}{10}$ $\frac{12.7}{20}$ $\frac{12.0}{30}$

87.7

87.2

87.5

89.3

91.3

92.0

0+77

 $\frac{+7.6}{10}$ $\frac{+9.9}{0}$ $\frac{+22.2}{10}$ $\frac{+20.1}{20}$ $\frac{+15.0}{30}$

111.6

113.9

126.2

124.1

119.0

1+01.11

 $\frac{+20.4}{10}$ $\frac{+20.6}{0}$ $\frac{+21.0}{10}$ $\frac{21.2}{20}$ $\frac{21.4}{30}$

124.4

124.6

125.0

125.2

125.4

Note. Line of stationing is along
the Northerly of Alley

REYNARD

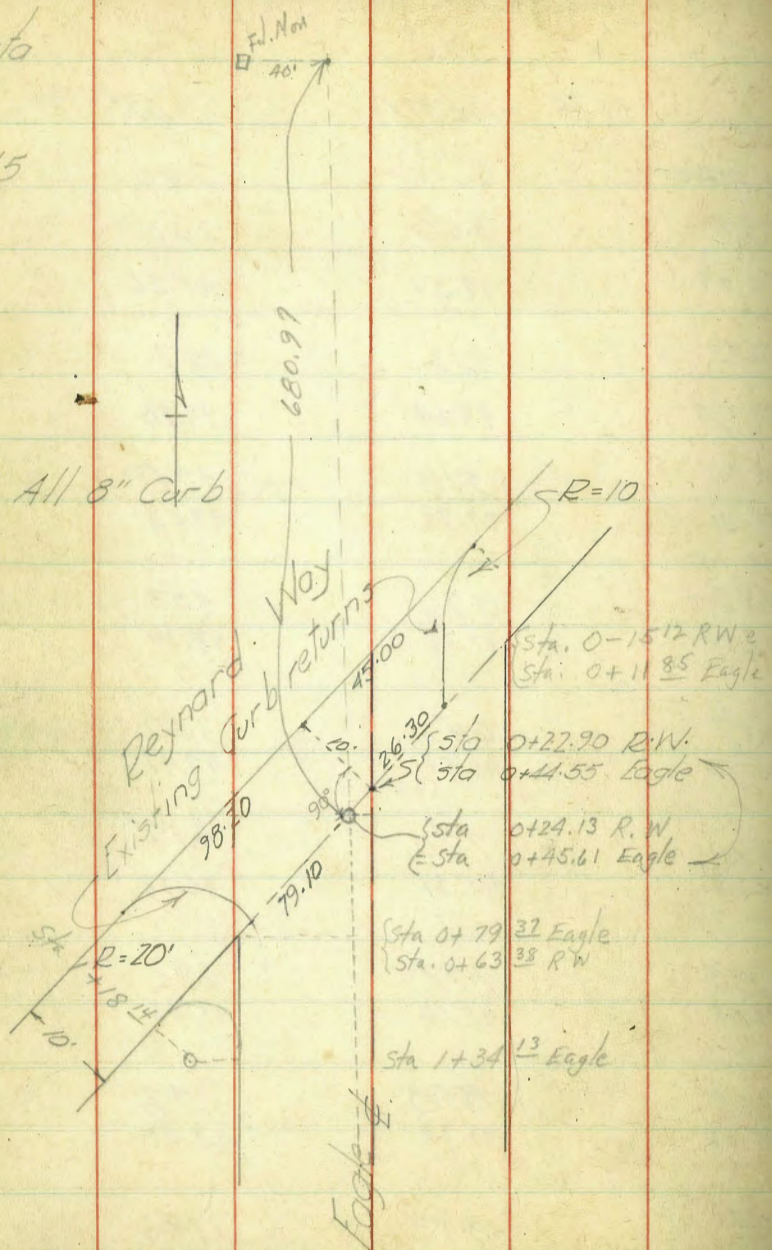
WAY (intersection of Eagle.)

45

Sta		±	+ HI	-	Elev
5/0					
	BM No. 8		11.74	102.97✓	91.23✓
		Top pave.		Gutter	Curb
0-75		2.88		3.66	2.61
		100.09		99.31	100.36
0-50		3.53		4.33	3.27
		99.44		98.64	99.10
0-22	P.C. return	4.21		5.18	3.94
		98.26		97.79	99.03
0+00		4.79		5.76	4.83
		98.18		97.21	98.14
0+22.90		5.47		6.46	5.50
		97.50		96.51	97.47
0+50		6.21		7.20	6.19
		96.76		95.77	96.78
0+75		6.89		7.97	6.92
		96.08		95.00	96.05
1+00		7.59		8.58	7.56
		95.38		94.39	95.41
1+20	P.C. return	8.17		8.97	7.90
		94.80		94.00	95.07

sta

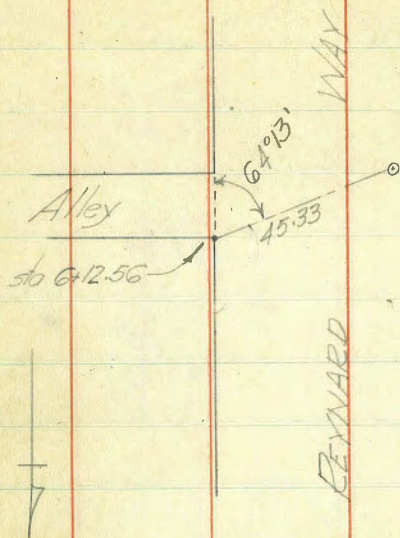
1+45



Top pave	Gutter	Curb
+	HI.	Key
	102.97	
8.94	9.63	8.68
94.03	93.34	94.29
End of Ret. (East)		4.23
		98.74
" " " (West)		7.24
		95.73

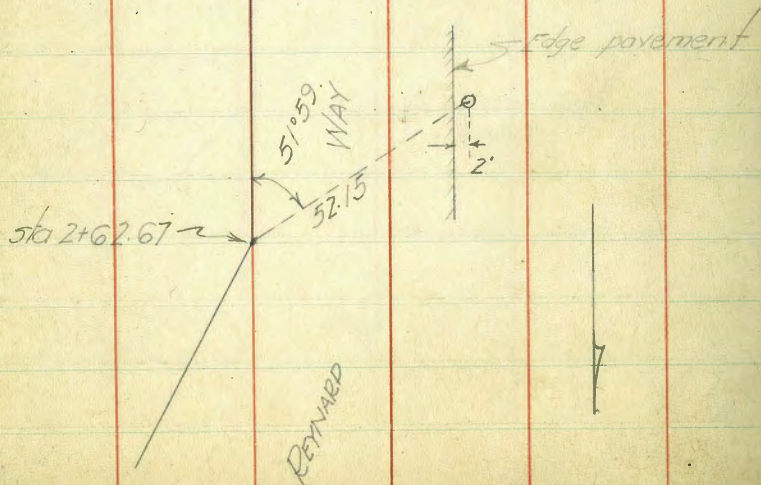
REYNARD

Tie to Sewer M.H.



10" or 12" Sewer Main

Tie to Sewer M.H.



WAY

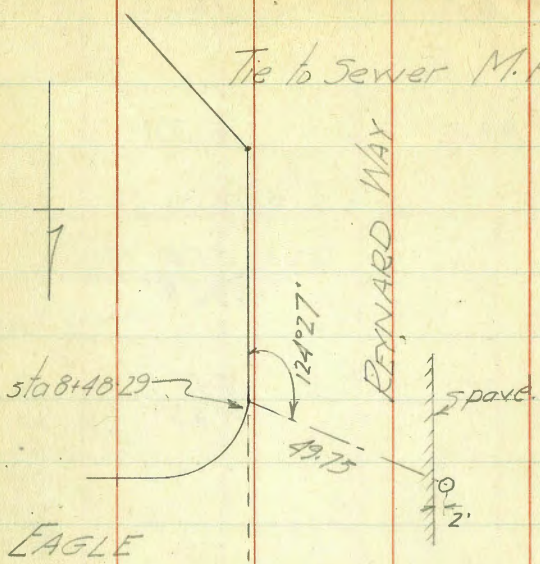
	+	H.I.	-	Elev
BM. 49				
	13.22	89.42 ✓		76.20 ✓
Rim				5.64
				83.78
Flow Line				10.19
				79.23

BM. 8

	5.26	96.49 ✓		91.23 ✓
Rim				5.77
				90.72
Flow Line				10.15
				86.34

56

REYNARD



7+25
 7+58.22
 7+75
 8+00
 8+25

WAY

	+	H.I.	-	Elev
B.M. 9	9.32	85.52		76.20
				5.30
				80.22

Could not remove cover.

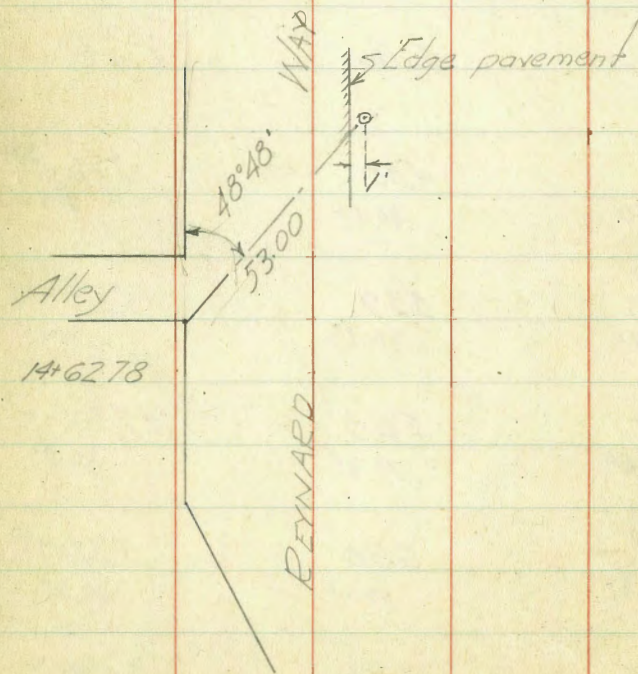
top pave	Gutter	Curb
4.02 81.50	4.80 80.72	3.76 81.76
4.68 80.84	5.39 80.13	4.38 81.14
5.03 80.49	5.68 79.84	4.73 80.79
5.51 80.01	6.30 79.22	5.21 80.31
6.01 79.51	6.71 78.81	5.69 79.83

510

8+48.29

8+75

Tie to Sewer M.H.

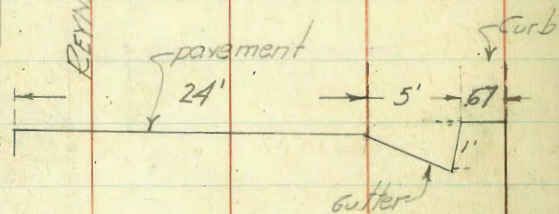


top pave. +	H.I.	Gutter -	Elev.	Curb 9
	85.52			
6.50	79.02	7.21	78.31	6.17 79.35
7.10	78.42	7.79	78.13	6.74 78.76

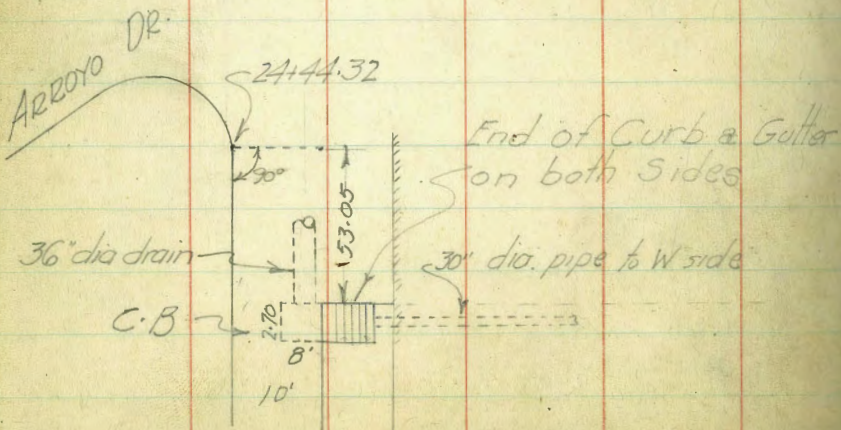
BM. 10	3.96	71.06	67.10	
Rim			5.48	
			65.58	
Flow Line			11.78	
			59.28	

510

Tieto Sewer M.H.



TYPICAL CROSS SECTION

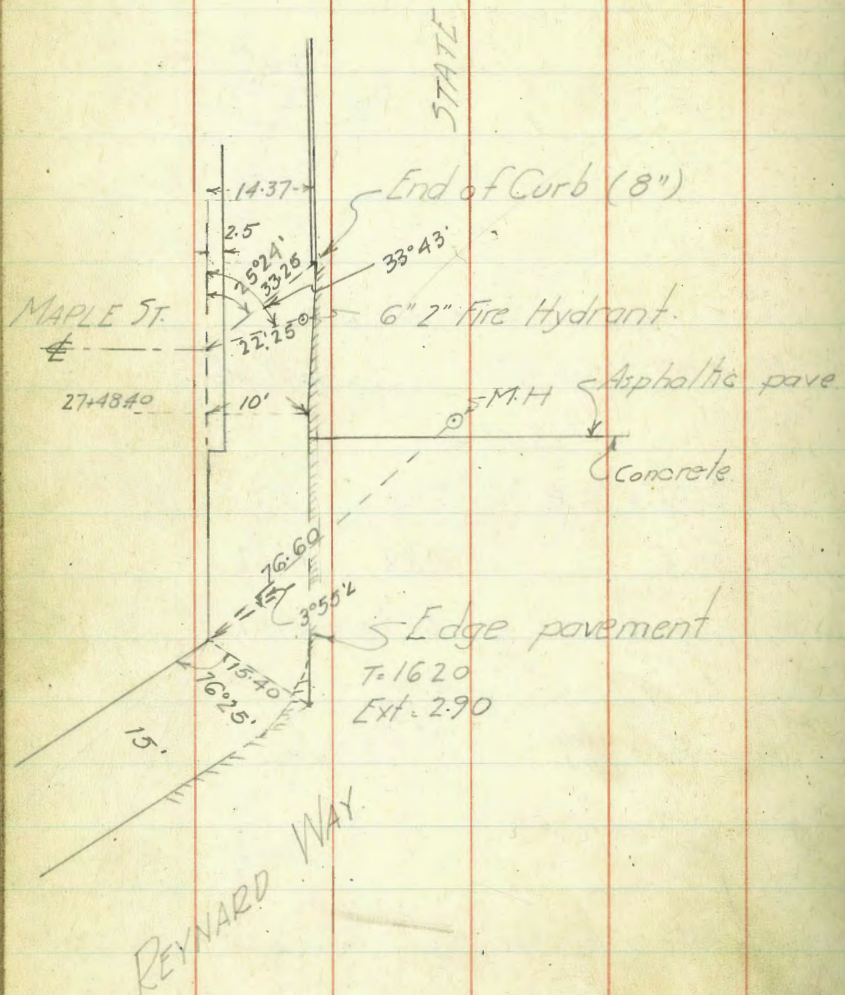


50

	+	H.I.	-	Elev
BM #1	5.58	66.14		60.56
Rim				8.06 58.08
Flow Line				14.86 51.28
BM #1	0.87	61.43		60.56
Top of Curb at C.B.			9.36	52.07
Gutter " "			10.82	50.61
Top pavement "			9.76	51.67
Flow Line			14.80	46.63
Top pavement (W)			9.24	

REYNARD

WAY



	+	H.I.	-	Elev
B.M. #1	0.72	61.28		60.56

Rim			3.05	58.23
-----	--	--	------	-------

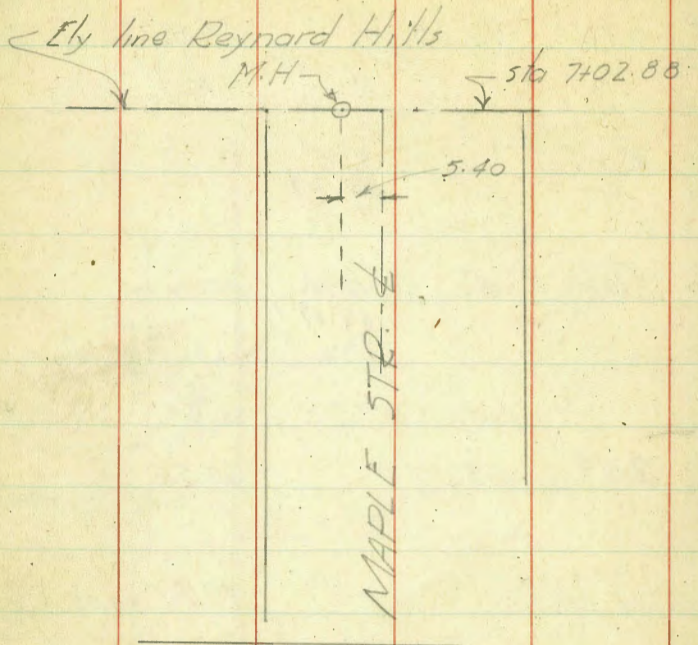
Flow line			12.11	49.17
-----------	--	--	-------	-------

	2.44	63.00		60.56
--	------	-------	--	-------

Top Curb at end.			49.5	58.05
------------------	--	--	------	-------

Gutter " "			5.36	57.64
------------	--	--	------	-------

Tie to M.H.



+	H.I.	-	Elev
10.88	85.57		74.69

Rim 10.68
74.89

74.89
58.7"
75 A7

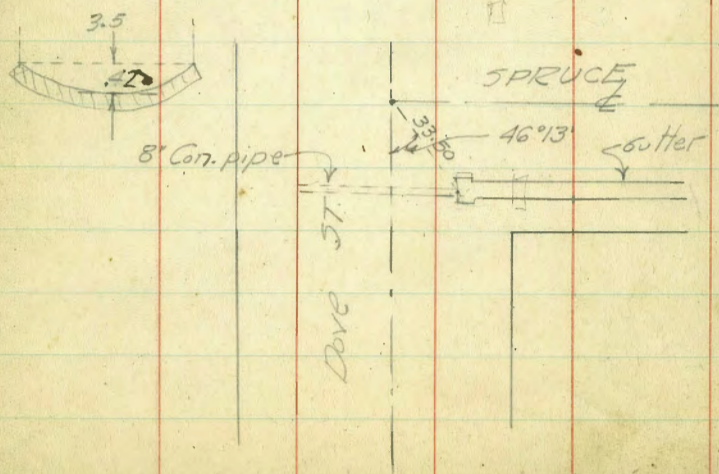
Flow Line 15.68
69.89

3.22 186.19 182.97

Top of C.B. 4.47
181.72

Flow Line 5.61
180.58

Tie to Culvert etc. at Dove & Spruce.

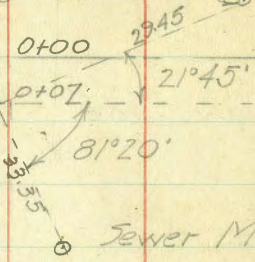


Top of C.B. 4.47
181.72

Flow Line 5.61
180.58



6" 2 Way Fire Hyd.



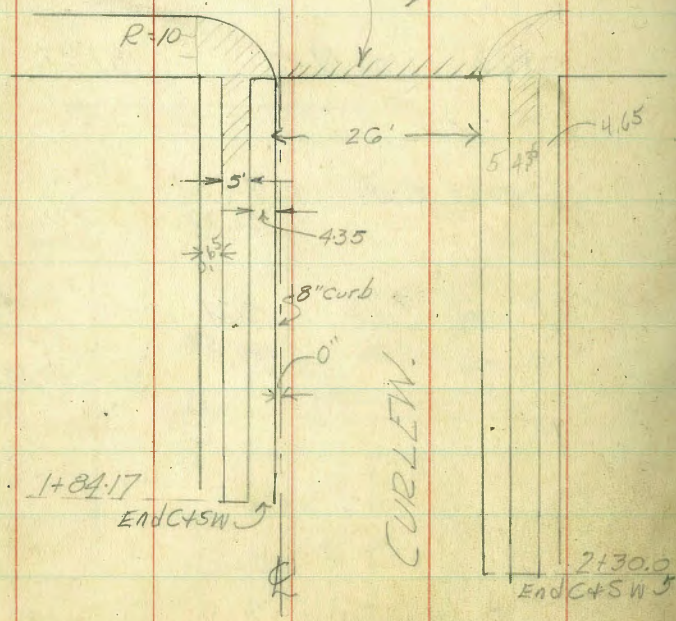
SPRUCE

Jewett M.H.

Edge of pavement
Asphaltic Top & Con. Base

R=10

R=10



9.35
9.95
36
14.70

1+84.17

End C+SW

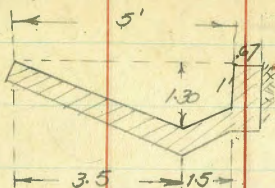
2+30.0
End C+SW

	+	HI.	-	Elev
BM#5	6.27	226.41		220.14

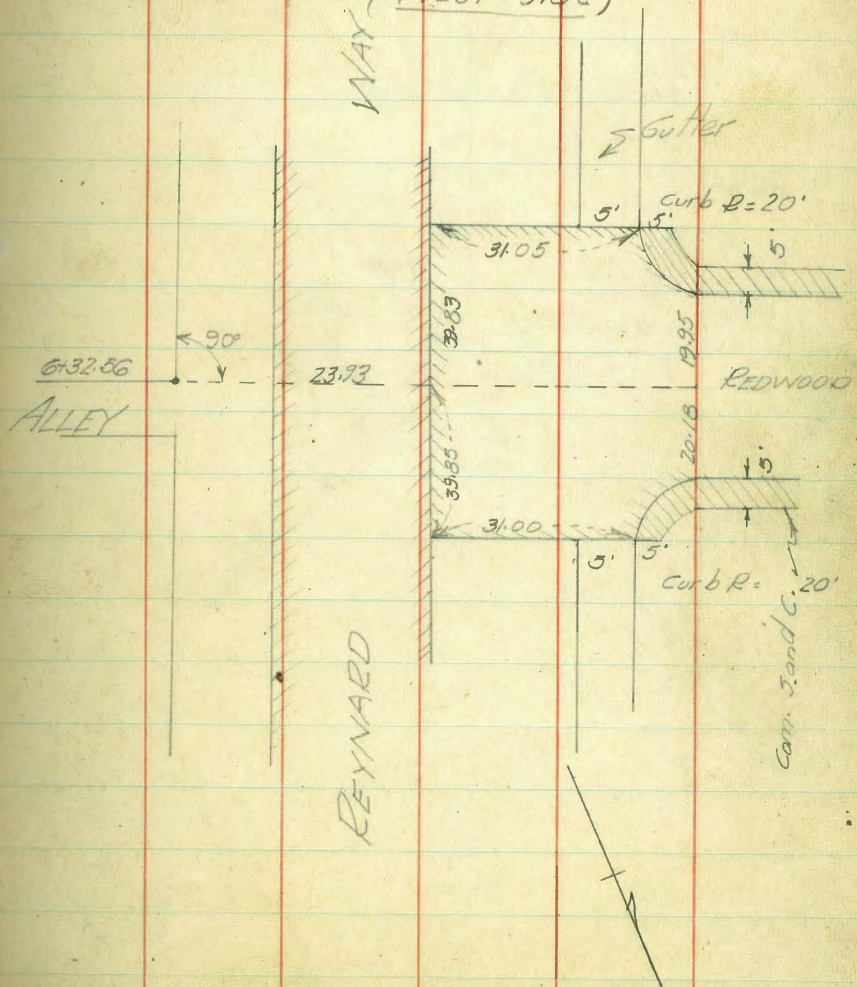
Rim 4.56
221.85

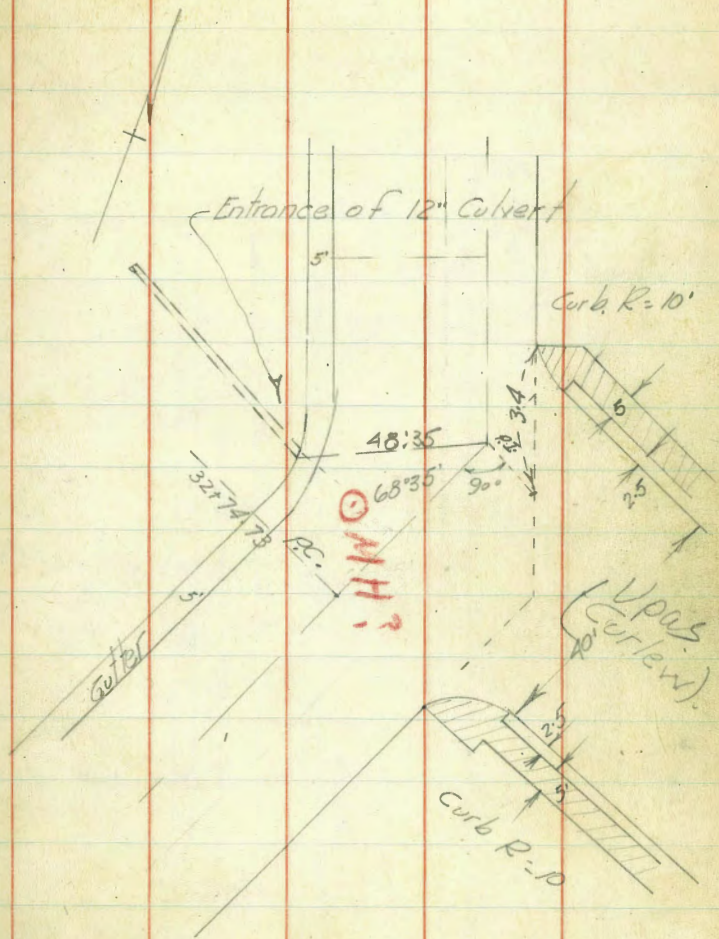
Flow Line 21.61
204.80

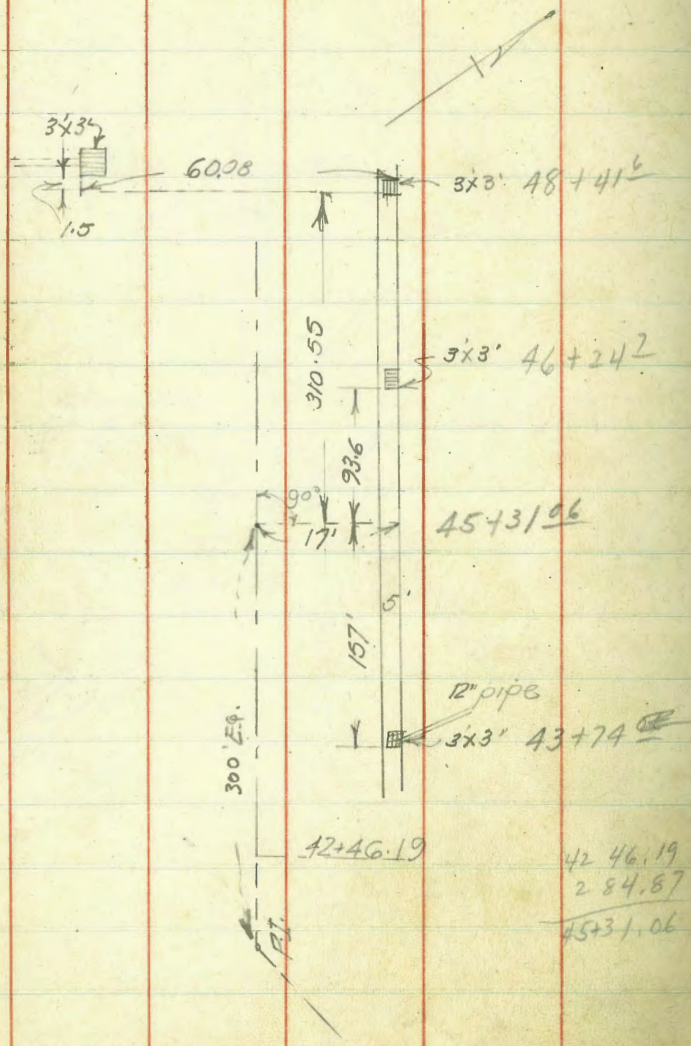
Note: Gutter on west side Reynard way in poor shape at the intersection of the North & South Pl's of Redwood owing to different sections of gutter at these points



TYPICAL CROSS SECTION OF GUTTER (West side)

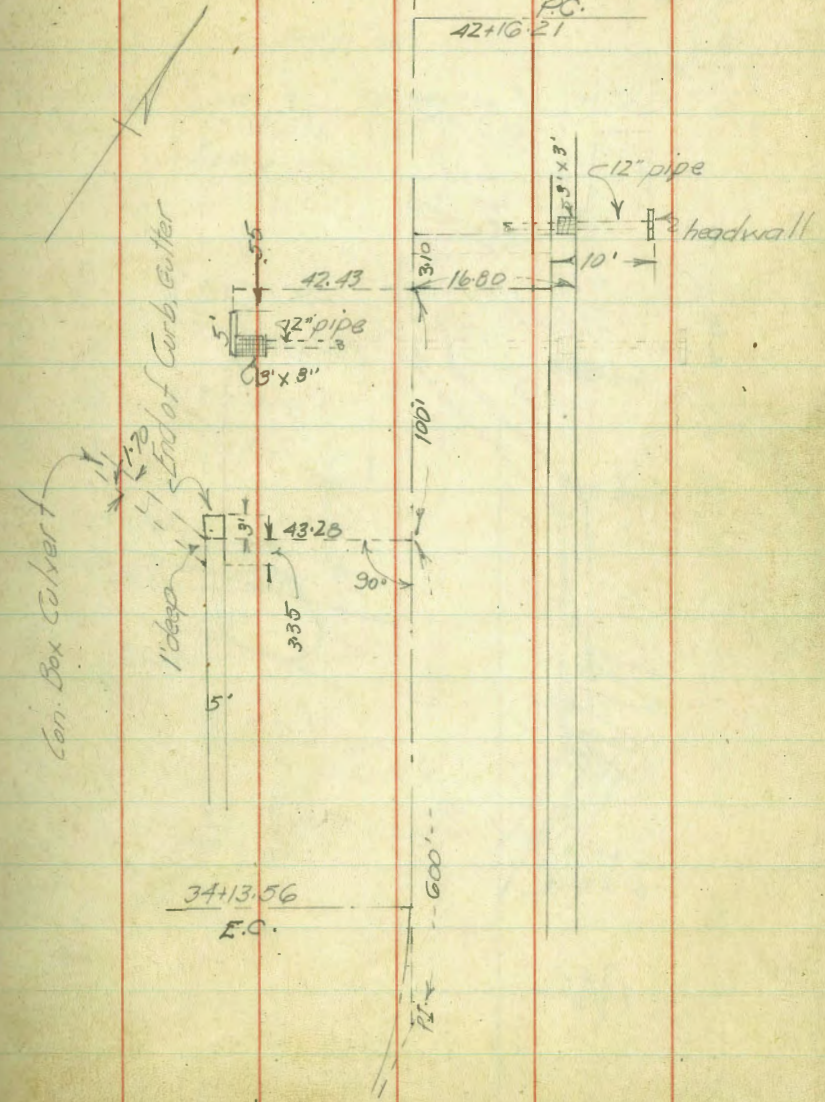




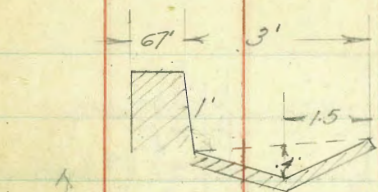


$42\ 46.19$
 $2\ 84.87$

 $45\ 31.06$



$34\ 13.56$
 E.C.



TYPICAL SECTION OF GUTTER,
(West side)

↑
↓
↑
↓
↑

Flow 247.5
grade 2%

Carb 248.0

Carb 247.9

C 248.1

C 247.44

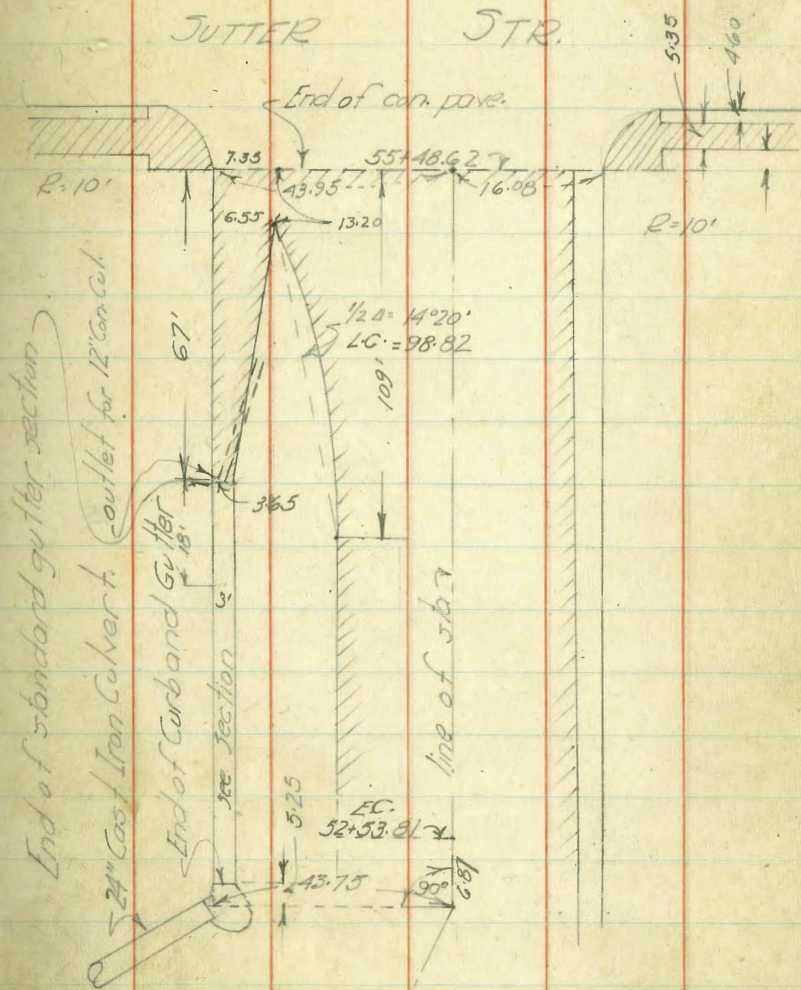
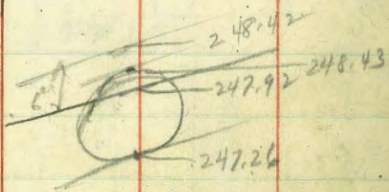
C 247.92

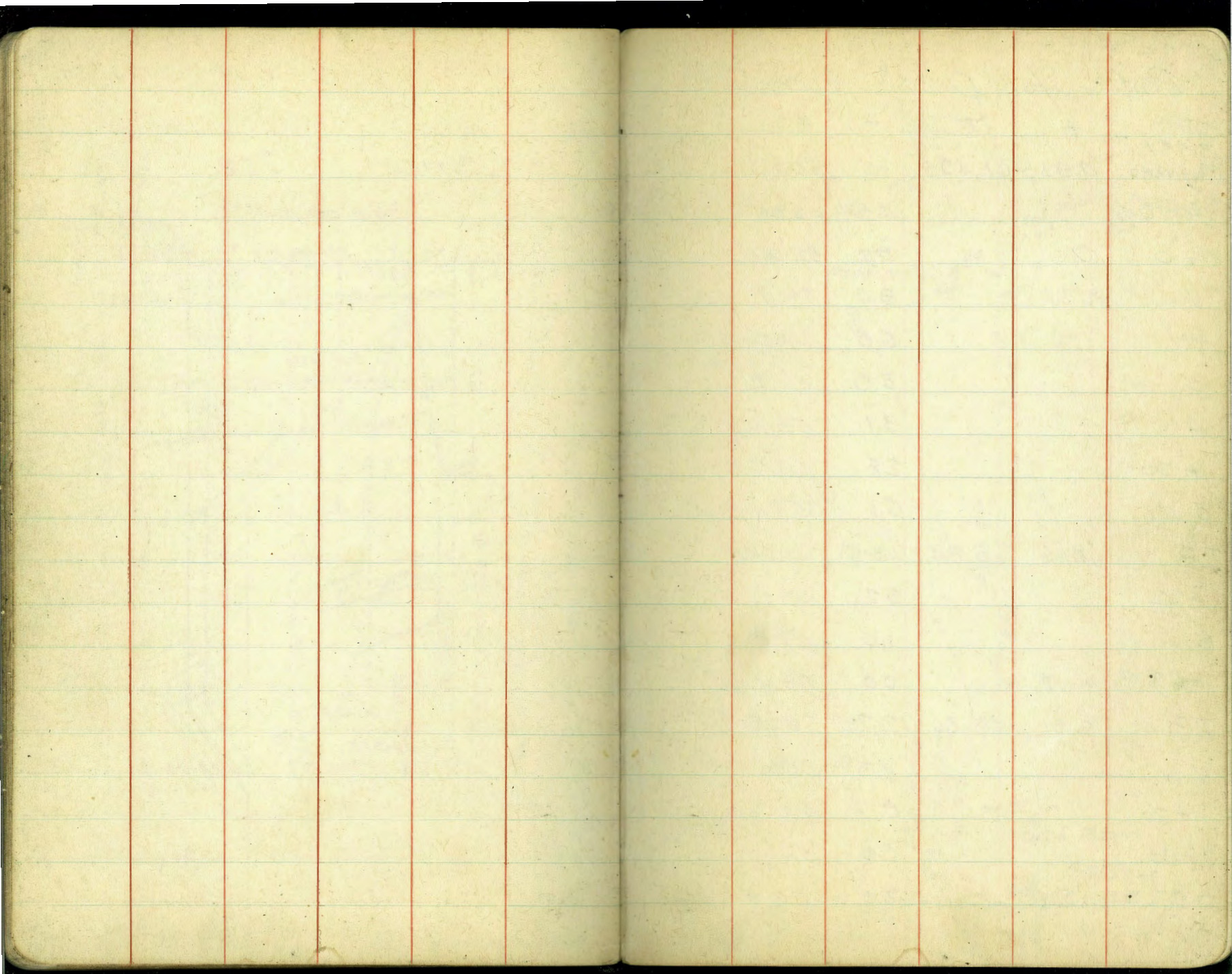
C 247.26

C 247.91

G 247.26

247.2

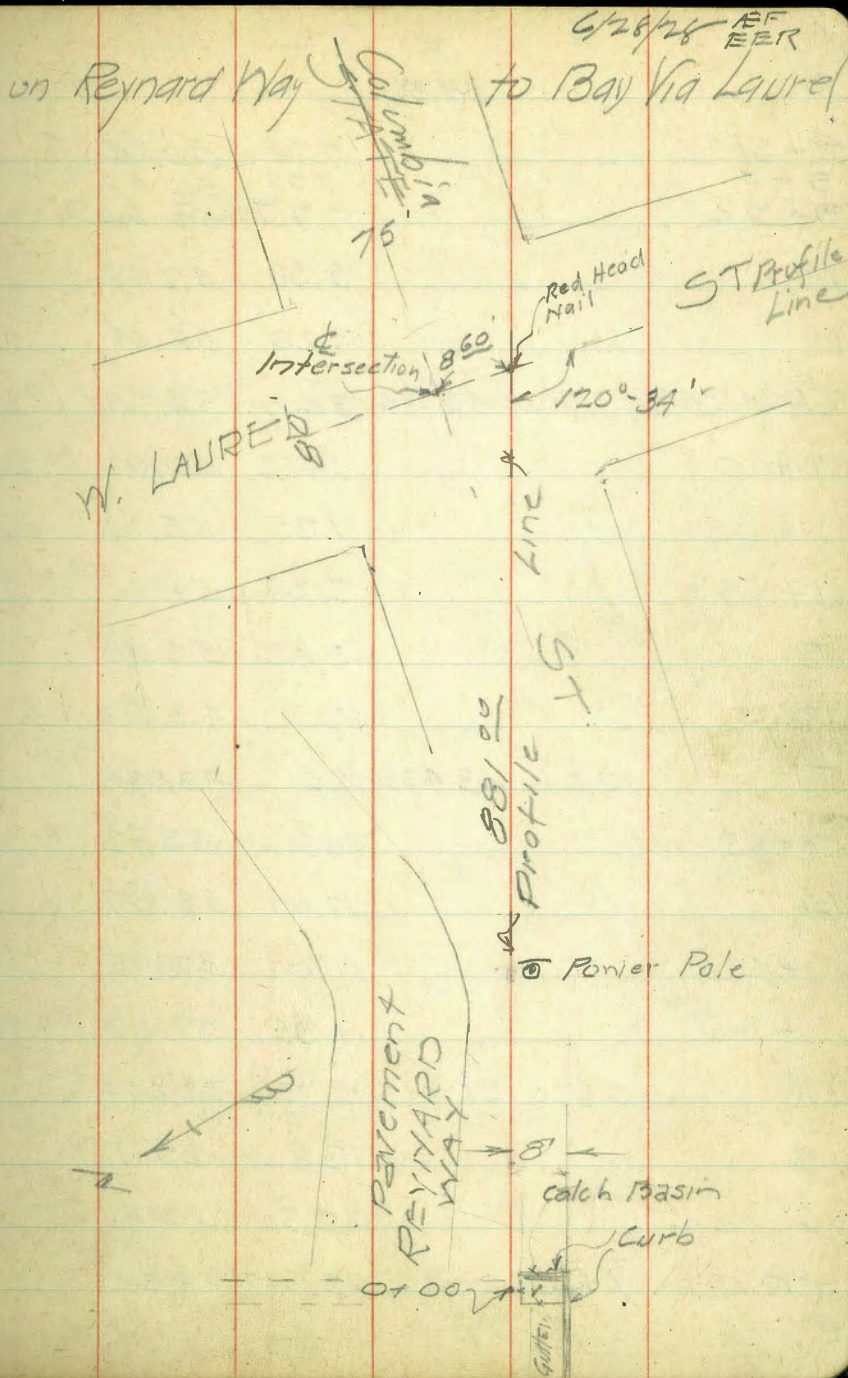




Profile for Drain from C.B

STA	+	π	-	EL
BM #1				
REYNARD	0.930	61.495		60.565
Invert Curb			14.54	46.95
0+0			9.2	52.3
1			8.4	53.1
2			6.6	54.9
3			5.3	56.2
4			3.1	58.4
+90			2.8	58.7
5			6.1	55.4
T.P.	8.66	68.84	1.315	60.180
+22			5.2	63.6
6			1.0	67.8
+65			9.0	59.8
T.P.	2.31	58.36	12.79	56.05
7			7.3	51.0
+70			0.7	49.6
+80			2.2	56.1
+7+56+				
8 - JPL E Side State			3.3	55.0

11.000



	+	⌊	-	E1
		58.36		
8+81 Δ			7.74	50.62
9+0			7.76	50.40
9+92			7.75	50.61
10			5.38	52.98
11			3.28	55.08
TP & BM	1.72	56.45	3.63	54.73
11+10+			1.42	55.03
11+45+			1.35	55.10
11+85+			2.34	54.11
12			3.42	53.03
13			12.52	43.93
TP	0.04	43.978	12.512	43.938
13+85			10.26	33.72
14			11.01	32.97
+25			11.02	32.95
+65 ⁶⁰			11.95	32.03
TP	0.670	31.913	12.735	31.243
15			2.8	29.1
16			12.5	19.4
TP	1.426	20.797	12.542	19.371
	2.136		3.7789	

in gutter
WPL State

BM SE Cor Laurel & India 54.700

EPL India

⊕ "

WPL "

E-PL Kettner Blvd

⊕ " "

WPL " "

Sta	+	T	-	EI
16		20797		
16+86+			4.89	15.91 ✓
17			5.2	15.6
18			9.0	11.8
19			11.7	9.1
20			12.4	8.4
T.P.	0638	10215	11.220	9.577
21			3.3	6.9
+75			5.0	5.2
+80			10.6	-0.4
22			11.6	-1.4
23			11.6	-1.4
24			9.3	0.3
25			5.9	4.3
T.P.	3143	7.428	5.930	4.285
+67			4.5	2.9
			10.282	-2.854 ✓
26			11.7	-4.3

26+06 on pile 1st Lt of line

16+35	R/W Line			
16+60	R Calif.			
17+35	R and R/W line			
⊕	Main Track	Santa Fe Ry		Top rail Elev
19+05	High Tide Line			
19+35	R Atlantic			
20+35	R Atlantic			
21+43	SE Ln	Belt		10282 9.33f
22+43	SW Ln	"		0.944
				10282 7.428 2.854
24+73	SE Ln	Harbor St.		
26+50	Bulk Head line	+ S line Laurel		
	BM on Pile	Called	- 3.01	

B.M. on 6th pile from end, new bulk head, EI 8.866
at about Sta 33 = 0.154

	+	∧	-	E1
Check Back		2.338	7.428	
	10.980	15.178	5.140	4.138
	12.515	27.080	0.613	14.565
	12.495	38.467	1.108	25.972
	12.497	50.826	0.138	38.329
	8.670	59.240	0.256	50.570

BMI		2.600	56.64	
	57.157	2.855		

	+ 47.302		
	10.282	+0 BMI -3.01	
	57.584		
	54.73		
	- 2.854	✓	

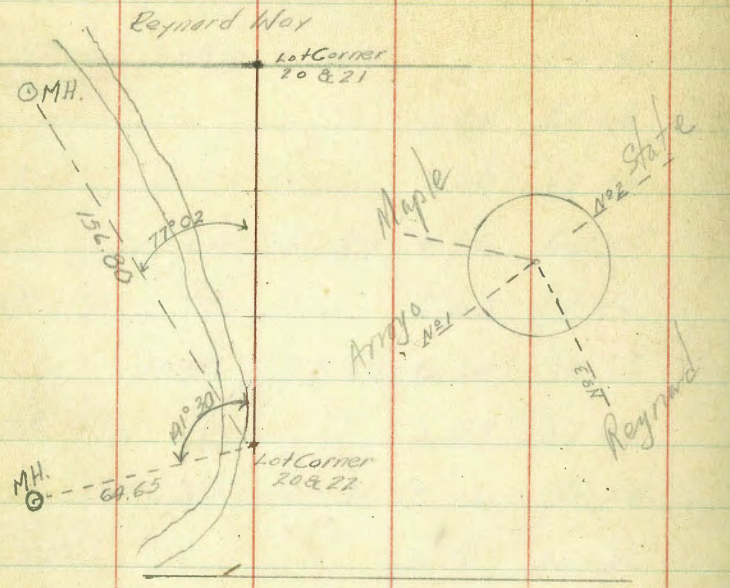
India 5+ BMI

38.47
359
34.88
57.157
9.855
+ 47.302
56.64
9.34
47.302
10.282
57.584
54.73
- 2.854 ✓

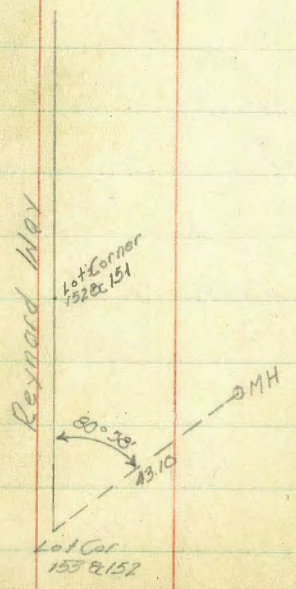
Profile for Storm Drain

		⌈	195	Elev.
B.M. No 10 Lot Corner	1.95	69.10		67.15
45 & 44			8.04	61.06
+ 73			7.10	62.00
T.P.	12.04	80.89	0.75	68.85
+ 45			6.43	84.46
T.P.	11.95	92.50	0.34	80.55
+ 73			5.09	87.41
T.P.	10.57	102.31	0.76	91.74
Lot Corner 45 & 44			1.75	100.56

Tie to Sewer M.H.



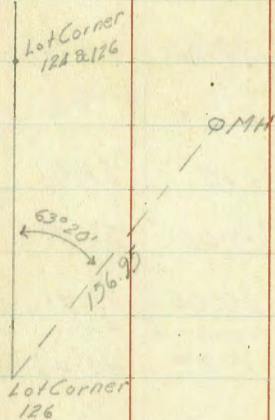
		π	Elev.
BM #1	320	63.765	60.565
Rim Flow Line		13.30	50.46
		23.50	40.26
Rim Flow #1 Line		1.15	62.61
Flow #2 Line		7.05	56.71
Flow #3 Line		20.05	43.71
		15.29	48.47



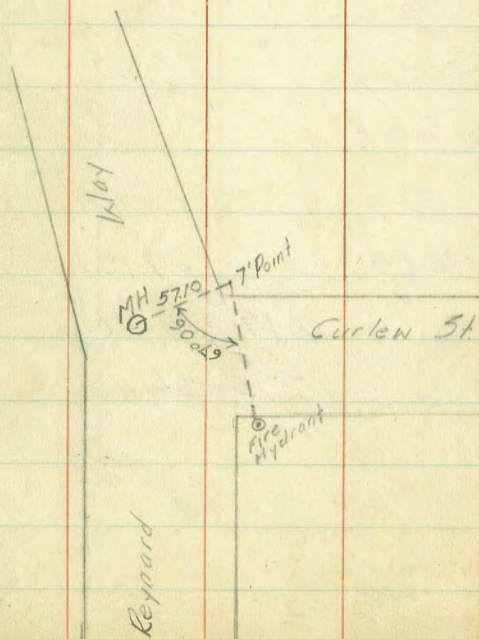
		π	Elev.
BM #10	955	76.65	67.104
Rim Flow Line		5.19	71.46
		10.75	66.40

57.10

Tie to Sewer MH



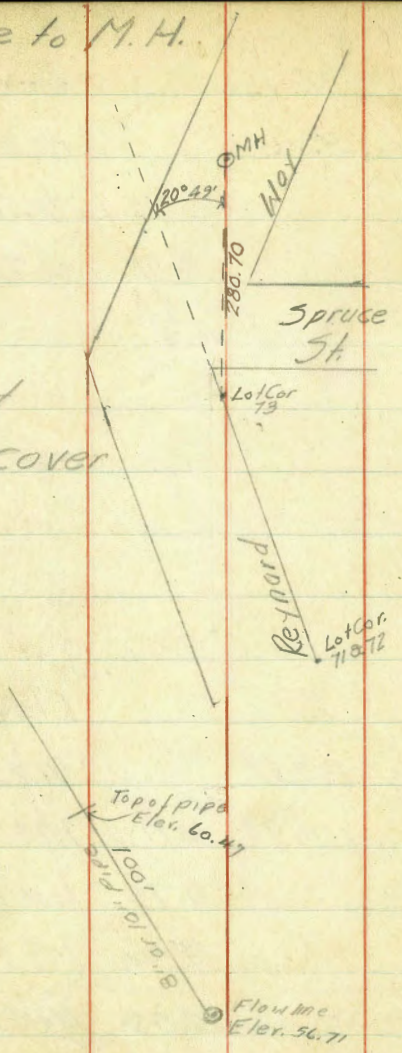
		π	Elev
BM#3	3.41	95.64	92.238
Rim		4.05	91.59
Flow Line		9.92	85.72



		π	Elev
BM#	12.65	103.88	91.23
	11.16	114.93	0.11 103.77
Rim		0.79	114.14
Flow Line		9.54	105.39
BM 7 ft Curlew St Reynard		0.08	114.85

Tie to M.H.

Could not
remove cover



		↑	Elev
B.M. #8	10.42	101.65	91.23
Rim		2.54	99.11

City ties to MH's

MH FL 45.00
33.75

↑ & Nutmeg

& Union

FB 810

FL Dist Location

40.0

141.9

43.0

228.65

45.0

224.8

51.0

272.25

54.0

165.7

56.4

142.25

59.0

264.0

66.0

430.0

75.0

120.0

77.5

405.0

86.0

326.3

√94.0

291.0

1102.0

Center Union; 33.75' N & Nutmeg

220.17 to MH #3
Lot line betw. Union & Horton

& Olive

& Horton, abandoned 1915?

15' NW & Eagle

& Eagle bot canyon

lot line bet Eagle & Falcon

805' S & Upas + on lot line

129.17' S & Thom

& Eagle 161.831 & Thom

CURLEW CANYON

√105.0 259.7

113.0 182.3

117.0 251.2

125.0 314.0

133.89 262.6

142.0 240.1

155.0 375.25

& Upas 140' E & Eagle

& Dove

bot canyon near walnut

MH angle

Center alley Bet. Mission & Brooks produced

" " Bet Mission & Market.

FB 9-

204.7 & Curlew & & Spruce

205.22 PC 1430 2.8' W of curb

1452 E of Curlew 102' S of SA Spruce

FB 824 for Arroyo line see next page

810

829 Arroyo line

REYNARD WAY

(ca 15' NW corner of Eagle)

(MH. Center Eagle & Bottom of canyon)

MH. 1st Line Bet Eagle & Falcon

MH. Canyon Line near East.

MH. Line from Falcon

Bet Eagle

& Eagle

Summer Line
Booth & 29 Anoyo Line

FL	Dist	Location
57.00	0+00	M.H. center of Union 145' N of Maple
64.00	2+81.15	M.H. center of Hartford 111.6' S of Dava
66.00	4+97.8	M.H. Lot Line bet Dava & Curlew
76.00	8+82.5	M.H. center of Curlew 223.02' S of Olive
85.00	9+99.6	M.H. Lot Line bet Curlew & Brant
94.00	12+89.4	M.H. Lot Line bet Curlew & Brant
105.00	15+47.1	M.H. E of Brant

ARROTO

FB 400 Level

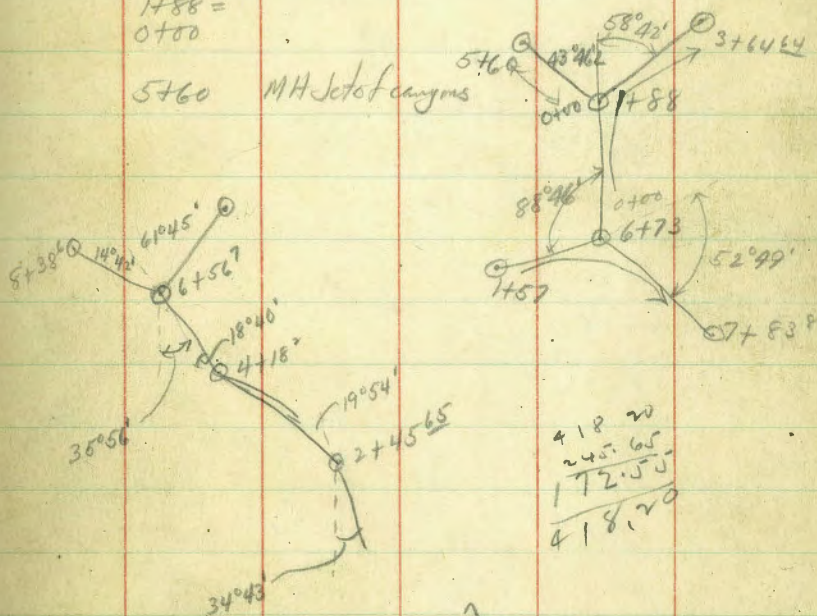
105.25	51+97.5 = 0+00	MH & Upas 140' E of Eagle 67°19' L
115.00	2+45.65	MH & Eagle 19°54' L
120.00	4+18.2	MH 140' E Falcon 18°40' R
127.00	6+56.7	MH & Falcon 14°42' L
133.00	8+38.6	MH 1°12' L?
136.73	10+15.4	MH & Goldfinch 54°27' R 49°27' R
140.00	11+70.6	DMH & Brookes + Goldfinch 38°29' L
142.00		
153.00	14+13.8 =7+53.8	MH & Alley bet. Brookes + Mission 9°57' L
157.00	6+73	MH - set other line
205.00	1+57	MH 57°55' R
240.00	0+00	MH & Jackson N. of Brookes

Page 24

Dist.	Location	FB 400 Level
157.00	6+73 = 0+00	X
169.00	1+88 MH	58°42' R
3+66.4	MH & Alley bet. Market + Mission	27°11' L
5+93	MH & Market	23°40' L
7+70.27	MH & Alley	94°36' L

1488 =
0+00

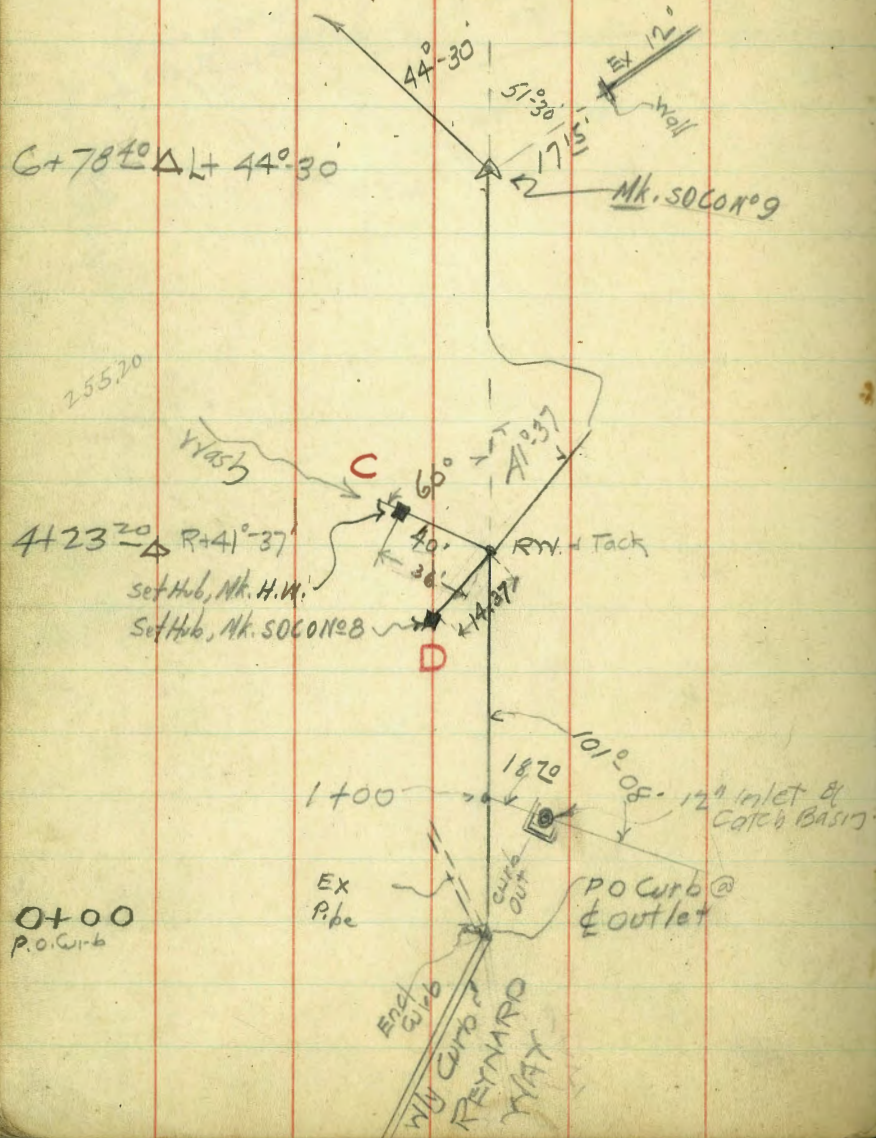
5+60 MH set of caryons



418.20
245.65
172.55
418.20

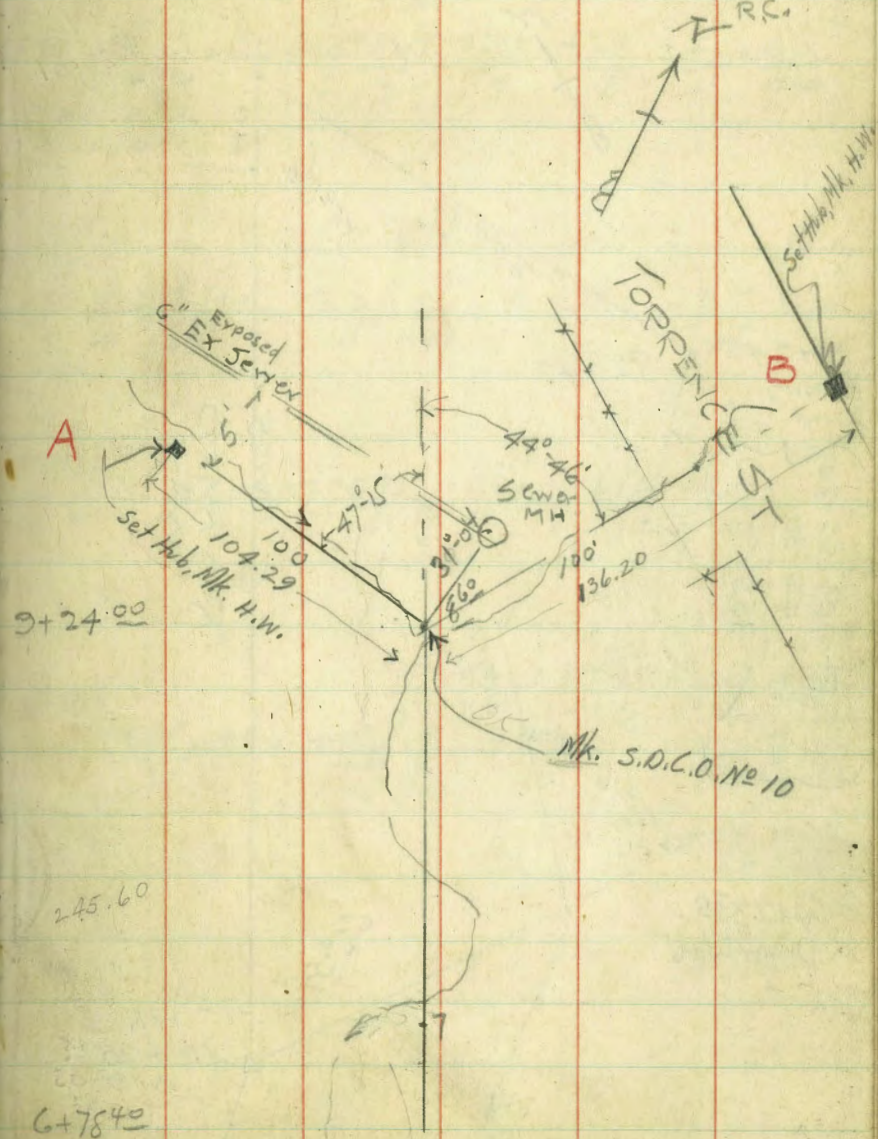
656.7
238.5

Prelim Loc + Profile Reynard
Way, Goldfinch Torrence Sts

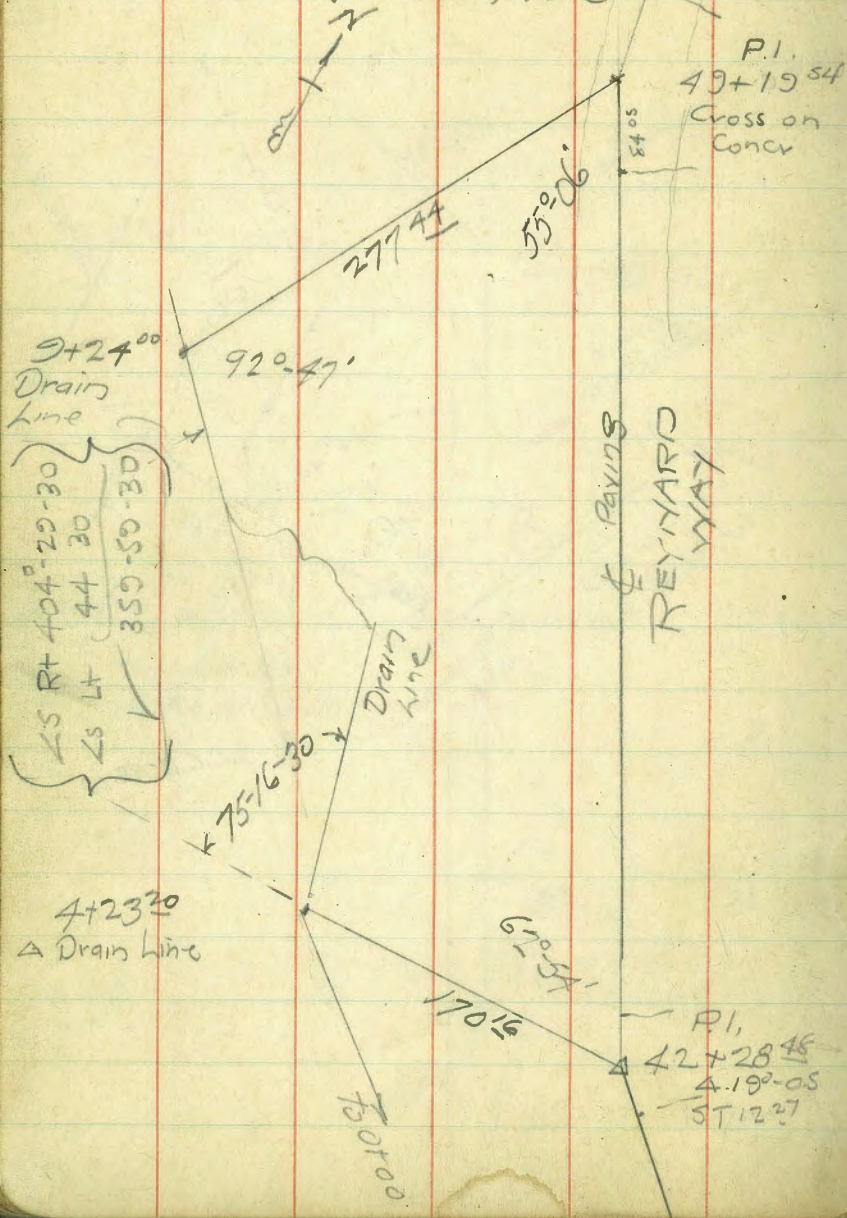


AUG 20/24

AEP
RER
R.C.



Tie Reynard Way &
to Drain Prelim Line



X Sects on H V Locations

Sol

A (see 1 page back)

Noly

$$\begin{array}{cccccc} +8.7 & +5.6 & +4.0 & -0.3 & +0.4 & +2.2 & +4.0 & +6.0 \\ \hline 15 & 5 & 3 & 4 & 8 & 11 & 20 \end{array}$$

B

$$\begin{array}{cccccc} -24 & -26 & -4.7 & -46 & -23 & (0) & +20 & +3.8 \\ \hline 18 & 16 & 12 & 10 & 10 & \text{Hub} & 10 & 20 \end{array} \text{ Ely}$$

+1.7
30
Soly

Nily

$$\begin{array}{cccccc} +5.0 & +0.7 & -0.2 & -0.1 & +0.4 & +1.8 & +6.2 \\ \hline 20 & 10 & 8 & 4 & 5 & 10 & 20 \end{array} \text{ Hub}$$

D R+ to Back line to 0+00

NELY

$$\begin{array}{cccccc} +8.5 & +4.6 & +0.7 & +0.4 & 0.0 & -1.3 & -1.7 & -1.6 \\ \hline 30 & 10 & 10 & 10 & 15 & 17 & 20 & 25 \end{array} \text{ Hub}$$

$$\begin{array}{cc} +0.4 & +0.5 \\ \hline 28 & 40 \end{array}$$

Toe 1/2-1
fill

PROFILE FOR CULVERT

Sta.	+	-	Elev
BM	11 19	126 040	114 85
P	12 625	137 742	0 923 125 117
0+00		6 33	131 41
0+00		4 75	132 99
P	11 656	148 152	1 246 136 496
1+00		8 90	139 25
1+10		11 10	137 05
		11 90	136 25
1+90		7 80	140 35
1+93		3 60	144 55
2+00		3 0	145 15
2+15		3 20	144 95
2+20		5 10	143 0
P	9 302	156 584	0 87 147 282
2+90		15 50	141 1
2+95		10 40	146 2
3+00		10 40	146 2
3+90		9 50	147 1
3+93		11 80	144 8
	<u>+44.773</u>	<u>-3.049</u>	

REYNARD WAY

Aug. 20, 1978
 AE Franklin R.
 EE Roadier Rd. ch.
 Roland Currench, Nts.

7' Pt. Carlew & Reynard Way

Invert of Outlet @ 0+00

Top of curb

Bottom of Inlet = 1+00 18 20 RT

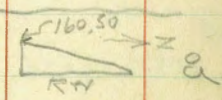
Station	+	π	-	Elev
4100		✓	156 584	11 70 144.9
4103				9 70 146.9
4123.20				9 57 147.00
4123.20 (40' Lt)				6 10 150.5
5100				7 90 148.7
5190				3 50 153.1
5194				6 40 150.2
6100				7 10 149.5
P	12 310	168 009	0 915	155 669
6178.40				11 30 156.7
6178.40				11 12 156.89
7100				11 00 157.01
7107				11 20 156.8
7110				14 60 153.4
7150				14 70 153.3
7160				11 60 156.4
8100				8 90 159.1
9100				9 10 156.9
9124				10 20 157.8

[36' up, cross section, page
40' up wash to left @ Δ 4123.20]

Flow Line
12" outlet 17.15 to Rt. @ Δ 6178.40

Sta	+	-	Elev
942A (100' Fl)	168.009	0.90	167.1
942A (100' R.L.)		6.00	162.0
B.M.		6.37	<u>161.69</u>
P	1.108	161.047	8.07 159.939
P	0.467	148.448	13.066 147.981
P	1.164	136.924	12.688 135.76
Chk. 0+00			3.85
P	1.627	125.796	12.755 124.169
B.M.		10.88	114.916

Cut Levels Gold Finch



	12.72	145.71		<u>132.99</u>
			(6.78)	<u>138.93</u>
P	13.05	158.44	0.32	145.39
P	10.02	167.22	1.24	157.20
			10.12	157.10
			(4.32)	<u>162.90</u>

(104.29' up, X-section, page)
 100' up wash to left @ Δ 942A (West)
 136.20' up, X-section, page)
 100' up wash to right @ Δ 942A (North)
 Top of sewer M.H. @ 942A 8.60 North

Top of Curb
 7' Pt. Curlew & Reynard Way

Reynard Way Fill Area
 P.O. Curb 0+00 of Drain
 " " NW Cor. C.B. Curb #187

9/3/29
 R.F.
 W.H.

S.W. Cor Fill Area Gr 160.50 Fill 34
 F.H. A (162.08)

*
 +61.473
 -61.413
 0.060
 Error

Levels Lindbergh Field
for S.F. Spur Elev. \checkmark - Elev

B.M.	11 575	8 565		- 3 01
P.	7 24	13 785	2 02	6 545
S.F. Spur			2 78	11 005
S.F. Spur	5 50	16 725	2 56	11 225
			1 09	15 635
P	1 51	8 195	10 04	6 685
B.M.			11 27	- 3 075

(Sewer MH buried.)

Levels on Dike top of Sheet Piling

old sta. 26	6 88	3 87		- 3 01
+09 @ Piling			8 0	- 1 1
+00 toe			8 6	- 4 7
27			10 0	- 6 1
+00 toe			7 7	- 3 8
28 on dike			4 2	- 0 3
+AS Lon Dike			4 2	- 0 3
29			4 3	- 0 4
30			4 6	- 0 7
31			4 2	- 0 3
32			4 3	- 0 4
33			3 98	- 0 1
33+41			4 23	- 0 36

On pile Elev. - 3.01

W. Rail 10' from N #

E. Rail " " " "

(wire) E Main track A.T.&S.F. Ry. West 15.635
Top 10' Elev

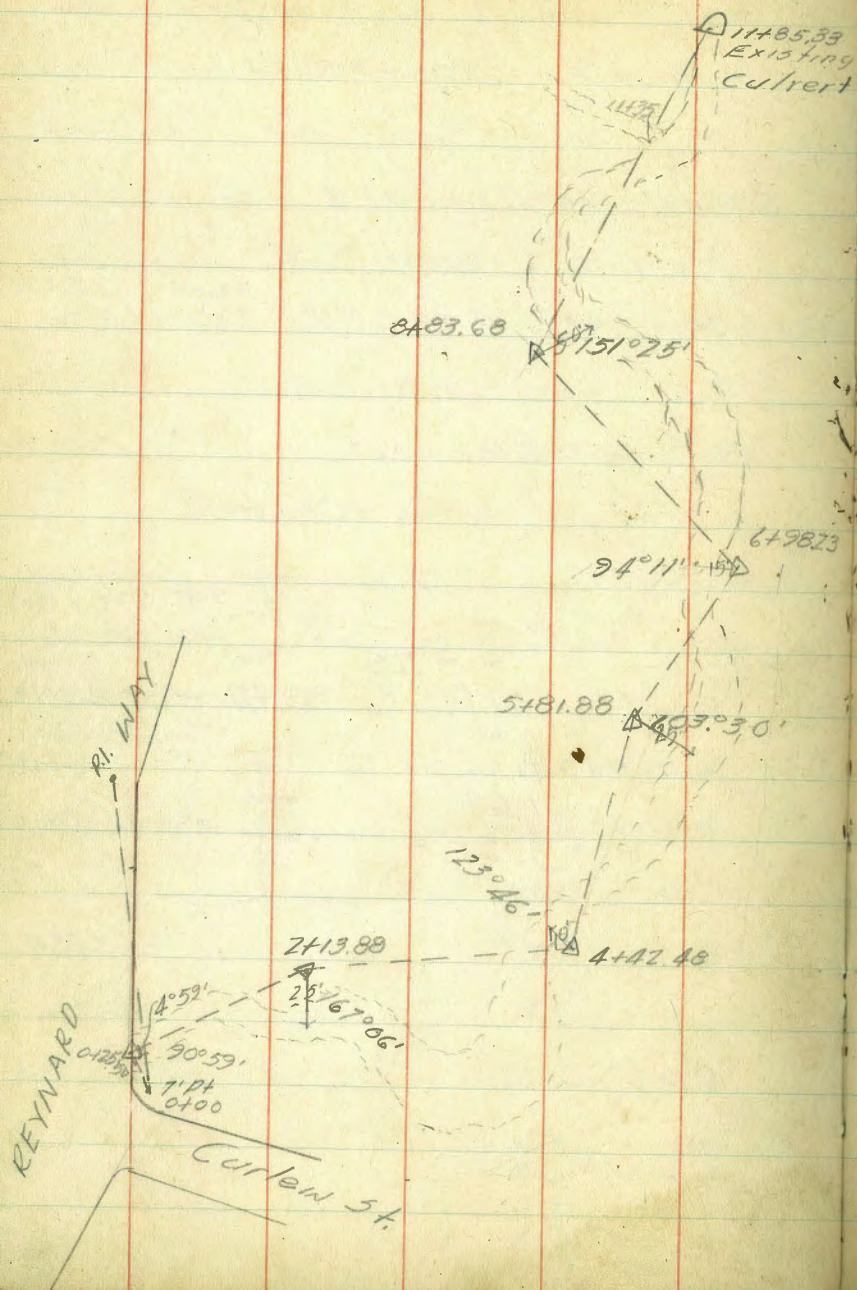
On pile Elev. - 3.01

Sept 19/28 BM
E pile from
W End
Blk Hd
- 2.65

+ 3.25
3.87
- 2.31
TP 1.56
1.69
H.I. = 3.25 =



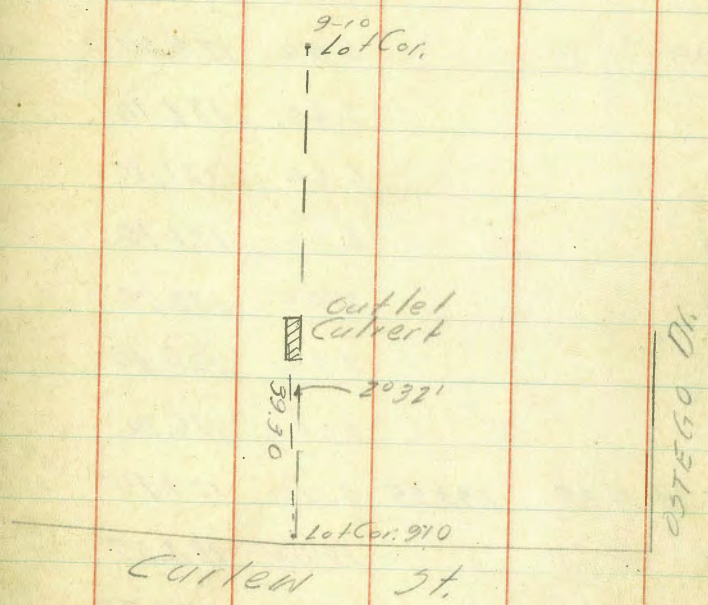
LOCATION & PROFILE



STORM DRAIN - CURLEW CANYON

Sept. 27, 1928
R. Curren
E. Rodier.

Tie to Existing Culvert outlet
Curlew Canyon



B.M.	+	A	-	Elev.
7' Point	12.85	127.70		114.85
0+25.50			12.60	115.10
0+75			12.20	115.50
1+25			11.10	116.60
1+30			11.00	116.70
1+34			8.50	119.20
1+84			6.40	121.30
2+13.88			3.30	124.40
2+65			3.60	124.10
3+15			6.60	121.10
3+65			6.00	121.70
4+15			5.00	122.70
4+37			2.30	125.40
4+38			1.00	126.70
4+42.38	11.85	139.55	0.00	127.70
4+92			15.00	124.55
5+42			15.80	123.75
5+52			15.60	123.95
5+62			9.90	129.65

7' pt. Reynard Way & Curken El. 114.85

pt. on curb Reynard Way.

	+	π	-	Elev
5467		139.55	2.40	130.15
5472			6.40	133.15
5481.88			5.90	133.65
5492			6.50	133.05
5497			9.20	130.35
6402			9.60	129.95
6412			13.30	126.25
6462			11.90	127.65
6498.23	9.10	142.45	6.20	133.35
7408			9.60	132.85
7413			15.60	126.85
7448			12.60	129.85
7498			9.60	132.85
8448			5.10	137.35
8483.68			3.90	138.55
9433			10.70	131.75
9483			5.60	136.85
P	7.40	147.00	2.85	139.60
10413			10.40	136.60

	+	π	-	Elev
10418		147.00	12.90	134.10
10423			10.60	136.40
10435			9.00	138.00
10485			5.50	141.50
11435			4.8	142.20
11445			8.6	138.40
11455			6.2	140.80
11475			4.3	142.70
11476			6.0	141.00
11480			8.0	139.00
11485.33			4.3	142.70 =

Flow line of existing culvert

74.69
10.88
85.57

91.23
5.76
96.99

2

2

2

2

91.23
11.74
102.97

91.23
12.77
104.00

76.20
13.22
89.42

76.20
9.32
85.52

60.56
5.88
66.44

74
875
954

67.10
39.0
71.06

60.56
7.22
67.78

220.14
6.25
226.39

60.56
0.87
61.43

13.30
17.05
4.75
26.1

182.97
3.22
186.19

114.93
0.8
114.85

60.56
24.0
84.56

91.23
12.65
103.88

114.93
9.54
105.39

25+35.16
169.056
24+66.13

24+20.16
169.056
189.216

103.77
11.16
114.93
79
114.14

300.96
160
460.96

23+95.16
169.03
15+64.19

26.135.16
33+95.16
240.00

26+35.16
25+70.16
.6500

25+70.16
24+20.16
150.00

23+95.16

25+96.

~~24+35.16~~

12+02.95

1+36.59
54.71
0781.88

2+40.00
105.87

1+39.13

900.
280
11+80

.8/
3)245

