

1265

LISTS

FIELD BOOK

1935

MICROFILMED

DEL 22 1964

ENGINEERING DEPARTMENT,
CITY OF CALIFORNIA,
SAN DIEGO.

Our Leather Bound Engineers Note Books are carried in the following rulings:

- No. 380 LEVEL BOOK. Left and Right Hand Page the same as Left Hand Page of this Book.
- No. 382 FIELD BOOK. Left Hand Page as in this Book, Right Hand Page 4 x 4 to the inch, Center Line Red.
- No. 384 MINING TRANSIT BOOK. Left Hand Page as in this Book, Right Hand Page 8x8 to the inch, Center Line Red.
- No. 385 FIELD BOOK. Left Hand Page as in this Book, Right Hand Page 8 vertical and 4 horizontal lines to the inch, Center Line Red.

We also carry the Note Books listed above, bound in extra strong Fabri-Hide (otherwise the same quality of book), which can be furnished at a somewhat lower price.

In ordering Fabri-Hide covered books, add the letter "F" to catalog number.

THE FREDERICK POST CO.
ENGINEERING and DRAFTING SUPPLIES
IRVING PARK STATION
CHICAGO, ILL.



53 56 W
N30° 04' 00" E
10'-00"

x Sec. Seaside	Voltaire to Castelar.	1
" " Green	Seaside - Mendocino	8
" " Bolings	Green - Voltaire	17
" " Soto	Voltaire - Green	21933
" " Etivanda	" - Castelar	25
" " Emeline	Beryl - Malden	38
" " Colina	Manmouth - Los Altos Rd	41
" " Fern Glen	La Jolla to Monte Vista	50
" " 40th St	Woolman -	58
Alley 27.	Normal Heights	66
Polk Park Blvd to Georgia		69
x Sec Alley 416	S. Chollas	72
" " Pluto	Main to Filbert	75
Ties Nile, Vancouver, Thorn, Redwood, Coince		80

Bliss
Duermit
Halbeck
6
SM NNW 87
Erouder + Voltaire

X Sections of Seaside Street
Ocean Beach from the N. Line of Voltaire
to S line of Castelar

	7.34	51.85	44.54
T.P.	1.46	50.06	48.60
of 00 N. line of Voltaire			
W		1.4	48.7
Topcb		1.50	48.56
Gutter		2.01	48.05
1/4		1.97	48.59
1/4		0.98	49.08
1/4		0.86	49.20
Gutter		0.86	49.20
Topcb		0.18	49.88
E		0.0	50.1
E		0.1	50.1
cb		0.9	49.2
+4		1.3	48.8
1/4		1.3	48.8
E		1.5	48.6
+6		1.5	48.6
1/4		1.7	48.4
+7		2.0	48.1
cb		1.9	48.2
W		1.9	48.2
cb		2.6	47.5
cb		2.2	47.9

do to enstine. it to do this see Bedding for

information

Platted 7-31-28 C.B.H.

+30

50.06

39

1

1/4		2.4	
1/4		2.2	47.9
1/4		2.1	
cb		1.8	
E		0.2	49.9
0.39 Walk on East			
on Lino.	ctk	0.12	49.84
		0.51	
E		0.7	49.4
+6		2.0	
cb		2.2	
1/4		2.5	
1/4		2.6	47.5
1/4		2.9	
+5		2.7	
cb		2.8	
N		3.2	46.9
0.55			
W		3.3	46.8
cb		3.0	
+3		2.6	
1/4		3.0	
1/4		2.8	47.3
1/4		2.6	
+5		2.2	
cb		2.3	

π
50.06

π.
50.06

2

E	2.5	47.6
	0+75	Garage on West
	4' Back floor	3.7
	0+90	46.4
E	3.3	46.8
cb	3.2	
+6	3.8	
1/4	3.7	
ϕ	3.6	46.5
1/4	3.9	
cb	3.9	
W	4.0	46.1
	1100	
W	4.3	45.8
cb	4.2	
1/4	4.2	
ϕ	3.9	46.2
1/4	3.9	
cb	4.2	1126 4.67
F	4.2	45.9
	125	
E	4.7	45.4
cb	4.7	
1/4	4.9	
+7	4.5	
ϕ	4.5	45.6

1/4	4.9	
cb	4.8	
+3	5.1	
W	5.1	45.0'
	1160	
W	5.5	44.6
cb	5.8	
1/4	5.8	
ϕ	5.4	44.7
1/4	5.9	
cb	5.7	
E	5.8	44.3
	2100	
E	6.9	43.2
cb	6.7	
1/4	6.7	
ϕ	6.2	43.9
1/4	6.4	
+8	6.4	
cb	6.1	
W	5.9	44.2
T.P. 3.99	46.85	6.70
	43.36	
	2130	
W	2.9	44.0
cb	3.4	
1/4	3.5	

4685

£	3.5	43.4
1/4	3.8	
cb	3.9	
E	4.0	42.9

2320 40% Driveway on East

on line	ctv	3.98	42.87
		2160	

E	4.8	42.1
---	-----	------

cb	4.7	
----	-----	--

1/4	4.4	
-----	-----	--

£	3.9	43.0
---	-----	------

1/4	3.8	
-----	-----	--

cb	3.6	
----	-----	--

W	3.3	43.6
---	-----	------

2461 Walk on East

on line	ctv	4.61	42.24	✓
---------	-----	------	-------	---

		2480	43.71	✓
--	--	------	-------	---

W	3.4	43.5
---	-----	------

cb	3.6	
----	-----	--

£ 3 Top ex 1-9 cb	3.97	43.38
-------------------	------	-------

1/4	4.0	
-----	-----	--

£	4.0	42.9
---	-----	------

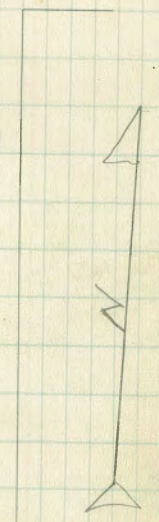
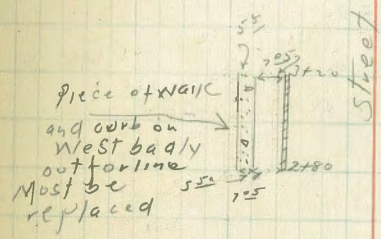
1/4	4.8	
-----	-----	--

cb	4.8	
----	-----	--

E	4.9	42.0
---	-----	------

Green st

Sketch of
Sea Side St.
Voltaire to Green



Voltaire Street

96.85

3720

E	5.2	41.7
cb	5.1	
1/4	5.1	
+7	4.2	
ϕ	4.2	
1/4	4.3	42.7
cb	3.9	
+2	3.6	
N	3.4	43.5

3750

N	4.0	42.9
cb	4.4	
1/4	4.5	
ϕ	4.6	42.3
76	5.2	
1/4	5.2	
cb	5.2	
E	5.2	41.6

4100

E	5.6	41.3
cb	5.0	
1/4	5.9	
ϕ	4.7	42.2
1/4	4.7	
+7	4.7	
cb	4.2	
N	3.8	43.1

96.85

4750

N	4.8	42.1
cb	4.8	
1/4	5.0	
ϕ	5.2	41.7
1/4	5.6	
cb	5.8	
E	5.8	41.1

4780 N. Line of Green

E	5.8	41.1
cb	5.7	
1/4	5.6	
ϕ	5.2	41.7
+6	4.9	
1/4	5.1	
cb	4.7	
N	4.6	42.3

TP 579

4620 5.84

41.01

0400 = N. Line of Green St 50' st 100' 7.5%

N Top cb	4.84	41.96
G	5.6	
1/4	5.2	
ϕ	4.8	42.0
1/4	4.9	
G	5.2	
E Top cb	4.31	42.49

0+50

E Topcb	9.61	42.19
G	5.2	
1/4	5.3	
1/2	5.2	41.6
1/4	5.4	
G	5.8	
Topcb	5.19	41.61

1+00 Skine of Alley on West

W	5.93	41.37
G	5.9	
1/4	5.7	
1/2	5.9	41.4
1/4	5.4	
G	5.5	
E Topcb	9.82	41.98

1+15 N. Line Alley

N Topcb Alley Return	5.38	41.42
1+50		
E Topcb	4.9	41.9
G	5.8	
1/4	5.6	
1/2	5.6	41.2
1/4	5.8	
G	6.1	
N Topcb	5.48	41.32

2+00

W-cb	5.7	41.1
G	6.4	
1/4	6.0	
1/2	5.6	41.2
1/4	5.6	
G	6.0	
E Topcb	5.10	41.70

2+15 4 5

E Topcb	5.15	41.65
G	5.8	
1/4	5.7	
1/2	5.6	41.2
1/4	5.9	
G	6.5	
N Topcb	5.79	41.01

2+40 9 1/2 Lark Spur

W	6.1	40.7
G	5.9	
1/4	5.7	
1/2	5.5	41.3
1/4	5.7	
G	5.9	
E Topcb	5.17	41.63
T.P. 5.17	5.17	

2+65 9 N Line of Lark Spur

E Topcb	5.1	41.7
---------	-----	------

4680

G	5.9	
1/4	5.7	
1/4	5.9	41.4
1/4	5.8	
G	6.4	
N Topcb	5.64	41.16
	3100	
N Topcb	5.37	41.43
G	6.1	
1/4	5.7	
1/4	5.4	41.4
1/4	5.5	
G	5.7	
E Topcb	4.79	42.01
	3150	
E Topcb	4.7	42.1
G	5.3	
1/4	5.1	
1/4	4.9	41.9
1/4	5.3	
G	5.8	
W Topcb	4.96	41.84
	3465 S. Line Alley	
Cb.	4.75	42.05
	3470 N Line Alley	
N Topcb	4.63	42.17

4680

W Topcb	9.50	42.30
G	5.3	
1/4	4.9	
1/4	4.7	42.1
1/4	4.8	
G	5.2	
E Topcb	9.3	42.5
	9.50	
E Topcb	3.86	42.94
C	4.7	
1/4	4.4	
1/4	4.3	42.5
1/4	4.4	
G	4.8	
W Topcb	4.01	42.79
	9.80 ⁵⁰	S. Line of
W Topcb	3.67	43.13
E	4.6	
1/4	4.1	
1/4	3.9	42.9
1/4	4.1	
G	4.2	
E Topcb	3.64	43.16
507 BM SW Track Cachila + Seaside	3.68	

7

Bliss
Doornik
Holbeck
B.M. 344 P. 6
S. side
of S. side Green

Sketch
Page 17 X Sections
Green Street Ocean
Beach from the E. line of Sea side
to the W. line of Mendocino Elev

60' 1st
10' CBS
10/95

	3.02	46.89		43.87	
			0100	see sketch	
N	3.9			43.0	
Top ob	4.15			42.74	
G	4.7				
1/4	4.3				
ϕ	4.1			42.8	
1/4	3.7				
cb	3.3				
S	3.1			43.8	
			0135		
S	3.8			43.1	
+5	4.1				
cb	3.6				
+3	3.1				
+5	3.7				
1/4	4.0				
ϕ	4.3			42.6	
1/4	4.3				
cb	4.1				
N	4.0			42.9	
			0170		
N	4.4			42.5	
cb	4.4				
1/4	4.8				
ϕ	5.0			41.9	

doberstine is doing this st.
 information. See Reading
 7-31-20 - C.B.H.
 Plotted

H.I.
46.89

8

1/4	4.9	
+3	4.7	
+5	4.2	
cb	4.3	
S	4.5	42.4
		E. Seaside
S	5.2	41.7
cb	4.9	
1/4	5.1	
ϕ	5.1	41.8
ϕ Mn Hole	4.98	41.91
1/4	5.2	
cb	5.2	
N	4.8	42.1
		E. line Seaside = 00
N	5.7	41.2
cb	5.6	
+2	4.8	
1/4	5.4	
ϕ	5.6	41.3
1/4	5.7	
cb	5.8	
S	5.9	41.0
		0150
S	7.0	39.9
cb	6.8	

H.I.
96.89

19	6.7	
2	6.8	40.1
1/4	6.7	
cb	6.9	
+5	6.9	
+6	6.3	
N	6.2	40.7
	0.80	
N	7.2	39.7
+7	7.5	
cb	7.3	
1/4	7.2	
2	7.3	39.6
1/4	7.1	
cb	6.9	
S	7.1	39.8
	1.00	
S	7.1	39.8
cb	7.0	
1/4	7.2	
2	7.4	39.5
1/4	7.3	
cb	7.5	
N	7.3	39.6
	6.57	
	1740. W. line of Etivanda	
X	7.6	39.3

H.I.
96.89

9

cb	7.9	
19	7.9	
2	7.3	39.6
1/4	7.2	
cb	7.3	
S	6.9	40.0
	2	
S	6.5	40.4
cb	7.0	
+6	6.8	
1/4	6.9	
2	7.0	39.9
1/4	7.1	
cb	7.2	
N	7.3	39.6
	2	
	2+17	
N	6.9	40.0
cb	7.0	
1/4	6.8	
2	6.7	40.2
1/4	6.8	
cb	6.6	
S	6.2	40.7
	2	
	2+22	
S	6.2	40.7
cb	6.6	

H.I.
96.89

1/4	6.7		
6	6.5	404	N
1/4	6.7		cb
+6	6.8		1/4
+8	7.0		6
cb	6.4		+9
N	6.3	406	1/4
		^{60st} W line of E Line of Etivanda - Etivanda	cb
N	6.3	406	S
+9	6.2		
cb	6.4		S
1/4	6.5		cb
6	6.4	405	1/4
1/4	6.4		6
cb	6.3		1/4
S	6.1	408	cb
		W line + 24	N
S	6.0	409	
cb	5.7		N
1/4	5.7		cb
6	5.6	413	+3
1/4	5.6		+5
+6	5.7		1/4
cb	5.9		6
N	5.9	410	1/4
			cb

H.I.
96.89

10

	6			5.8	41.1
				5.7	
				5.5	
				5.4	41.5
				5.4	
				4.8	
				4.9	
				5.6	41.3
					E Line of Etivanda = 00
				4.9	42.0
				4.3	
				3.9	
				4.1	42.8
				4.4	
				4.4	
				5.1	41.8
					0+25
				4.5	42.4
				4.3	
				4.0	
				3.4	
				3.2	
				2.9	44.0
				2.9	
				3.1	

HJ.
46.89

S	3.0	43.9
	0x50	
S	1.1	45.8
+5	1.7	
cb	1.4	
1/4	1.8	
2	1.6	45.3
1/4	1.9	
+5	2.2	
+7	2.8	
cb	3.0	
N	3.3	43.6

0x68 Single Garage North

7.6 Back Porch floor dr 2.9 44.0

0x75

N	1.8	45.1
cb	1.4	
+3	1.3	
+5	0.7	
T.P	12.97	58.86
1/4	1.00	95.89
2	12.3	
1/4	12.1	46.8
1/4	12.1	
+1	12.1	
+2	11.5	
cb	11.3	

HJ
58.86

11

S	11.1	47.8
	1x00	
S	9.1	49.8
cb	9.5	
+9	9.9	
1/4	10.4	
+3	10.2	
2	10.4	48.5
1/4	10.7	
cb	11.3	
N	12.0	46.9
	1x25	
N	10.3	48.6
cb	9.5	
1/4	8.9	
2	8.7	50.2
+8	8.3	
1/4	8.6	
+1	8.1	
cb	7.6	
S	7.3	51.6
	1x50	
S	5.2	53.7
+6	6.0	
cb	6.1	
+8	6.2	

HZ
58.86

HZ
58.86

12

1/4	6.6		cb	3.2	
ϕ	6.6	52.3	N	3.5	55.4
1/4	6.9		TP 12.97	70.67 1.16	57.10
cb	7.3			N cb	
N	8.~	50.7	N	15.0	55.7
	1+73		+5	19.5	
N	6.2	52.7	cb	14.1	
cb	5.6		1/4	13.9	
+5	5.5		ϕ	13.2	57.6
1/4	5.2		1/4	12.9	
ϕ	4.6	54.3	cb	13.0	
+5	4.6		S	12.6	58.1
1/4	4.9			W 1/4	
+1	4.9		S	11.7	59.0
cb	4.0		cb	12.1	
+5	3.8		1/4	12.1	
+7	3.0		ϕ	12.5	58.2
S	3.0	55.9	1/4	12.8	
	2400 W. line of Soto		cb	13.3	
S	0.8	58.1	N	14.1	56.6
+2	1.1			ϕ	
+7	2.1		N	13.2	57.5
cb	2.4		cb	12.5	
1/4	1.8		1/4	12.0	
ϕ	2.3	56.6	ϕ	11.7	59.0
1/4	2.7		1/4	11.5	

H.I.
70.67

cb	11.3	
s	11.2	59.5
	E 1/4	
s	10.6	60.1
cb	10.8	
1/4	10.8	
ϕ	10.8	59.9
1/4	11.2	
cb	11.8	
+5	12.2	
N	12.7	58.0
	E cb	
N	11.9	59.3
+5	11.9	
cb	11.9	
1/4	10.8	
ϕ	10.1	60.6
1/4	10.1	
cb	10.4	
s	10.3	60.4
	9.0	61.7
+9	9.1	
cb	9.5	
+5	9.7	
1/4	9.3	

H.I.
70.67

13

ϕ	9.2	61.5
1/4	10.0	
+3	10.9	
cb	10.6	
+5	10.6	
+6	10.4	
N	10.8	59.9
	of 27	
N	8.9	62.3
+9	8.1	
cb	8.5	
1/4	7.8	
ϕ	7.3	63.4
1/4	7.9	
cb	7.5	
+2	6.9	
s	6.5	64.2
	of 50	
s	9.7	66.0
+7	5.1	
cb	5.9	
1/4	5.8	
ϕ	5.6	65.1
1/4	6.1	
cb	6.9	
+2	6.9	

70.67

N		6.4	64.3
TP	12.72	72.53	10.86
		+75	59.81
N		7.2	65.3
cb		6.9	
1/4		6.4	
2		5.9	66.6
1/4		5.8	
cb		5.7	
+2		5.7	
+3		5.4	
S		5.1	67.4
		11.00	
S		2.8	69.7
cb		3.9	
+8		4.4	
1/4		4.4	
2		4.3	68.2
1/4		4.9	
cb		5.5	
+4		5.8	
+6		5.2	
N		5.8	66.7
		11.50	
N		3.0	69.5
cb		2.3	

72.53

14

1/4		1.8	
2		1.7	70.8
1/4		1.7	
+8		2.2	
cb		1.8	
TP	7.34	77.66	2.21
			70.32
+4		6.3	
S		6.1	71.6
		11.80	
S		4.5	73.1
+5		4.8	
cb		5.1	
1/4		5.2	
2		5.2	72.5
1/4		5.2	
+3		5.2	
+5		5.8	
cb		6.1	
N		6.6	71.1
		21.00	Wline of Bolinas St
			60.57 10.63 10.14
N		6.1	71.6
cb		5.3	
+5		5.0	
1/4		5.0	
+5		4.6	
2		4.6	73.1

HI
7766

1/4	4.6	
cb	4.4	
S	4.2	73.5
	W cb	
S	4.3	73.4
cb	4.4	
1/4	4.3	
⊥	4.4	73.3
+7	4.5	
1/4	4.8	
cb	5.4	
N	6.0	71.7
	W 1/4	
N	5.7	72.0
cb	5.3	
1/4	4.6	
⊥	4.3	73.4
1/4	4.0	
cb	4.1	
S	4.2	73.5
	⊥	
S	3.7	74.0
cb	3.8	
1/4	4.0	
⊥	4.3	73.4
1/4	4.6	

HI
7766

15

cb	5.1	
N	5.5	72.2
	E 1/4	
N	5.2	72.5
cb	5.0	
1/4	4.6	
⊥	4.4	73.3
1/4	4.2	
cb	4.0	
S	4.0	73.7
	E cb	
S	4.3	73.4
cb	4.4	
1/4	4.5	
⊥	4.5	73.2
1/4	4.9	
+1	5.0	
+2	4.3	
cb	4.2	
N	4.2	73.5
	E line	
N	4.5	73.2
cb	4.4	
+8	4.5	
+9	5.5	
1/4	5.4	

HJ
77.66

k	5.1	72.6
1/4	4.9	
cb	5.0	
S	4.4	73.3
	0+5.0	
S	6.9	70.8
cb	7.3	
1/4	7.3	
k	7.3	70.4
1/4	7.2	
+1	5.4	
cb	5.2	
N	5.2	72.5
	0+6.8	
N	5.5	72.2
cb	5.6	
+9 Top	5.7	
+9 Bottom	7.9	
1/4	7.9	
k	8.0	69.7
1/4	7.9	
cb	8.1	
S	7.6	70.1
	1+0.5	W-Line
S	10.1	67.6
cb	9.9	

HJ
77.66

16

1/4	9.6	
k	9.3	68.4
+7	9.6	
+9	7.4	
1/4	7.4	
cb	7.6	
N	6.9	70.8
Set 3 E. Top Curd	4.10	73.56
Bottoms + Green		

BM 55 Top Curb
Bolinas + Green

X. Sections of Bolinas Street from the
S Line of Green Street to the North line
of Voltaire H.I.

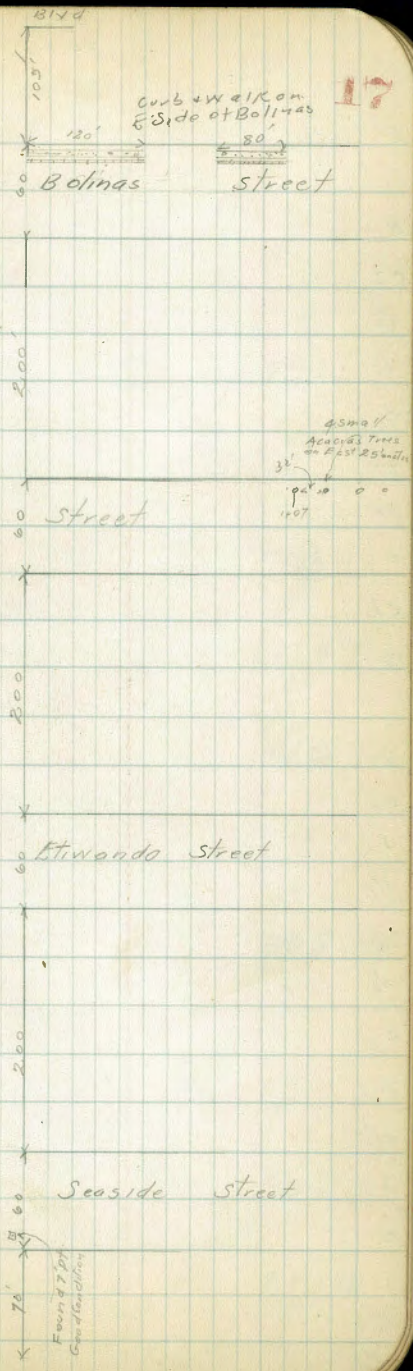
1.32 89.88 Eto 7356 60'5t
10' cbs
10'4s

0+00 = S Line of Green

W	4.4	73.51
cb	11.5	
1/4	11.5	
1/2	11.0	73.9
3/4	11.3	
G	11.5	
E Topcb	11.32	73.56
	0+50	
E Topcb	9.96	74.92
E	10.9	
1/4	10.2	
1/2	9.9	75.0
3/4	10.2	
+8	10.5	
cb	10.2	
W	9.8	75.1
	1+00	
W	8.3	76.6
cb	8.7	
+2	9.0	
1/4	8.8	
1/2	8.4	76.5
3/4	8.9	
G	8.9	

Platted 7-16-28 - 504

Mendocino 014d



Seaside St

H.I.
84.88

H.I.
84.58

18

E Topcb	8.51	76.37
	1720	
E	7.6	77.3
E Topcb	7.99	76.89
G	8.3	
1/4	8.3	
2	7.9	77.0
+5	7.9	
1/4	8.2	
+8	8.6	
cb	8.2	
W	7.7	77.2
	1750	
W	7.0	77.9
cb	7.4	
+2	7.8	
1/4	7.6	
2	7.2	77.7
1/4	7.6	
+3	7.8	
+9	7.5	
cb	7.2	
+5	6.9	
E	6.9	78.0
	2100	
5	5.5	79.4

+9	5.6	
cb	5.8	
+1	6.0	
+7	6.4	
1/4	6.3	
2	5.8	79.1
1/4	6.2	
+5	6.5	
cb	6.1	
W	5.6	79.3
	2116 Walk on West	
on line	ctr	9.78
	2150	80.10
W	3.9	81.0
+9	4.2	
cb	5.1	
1/4	4.9	
2	4.4	80.5
1/4	4.9	
+3	5.0	
+9	4.7	
cb	4.4	
E	4.3	80.6
	21615 Walk on West	
on line	ctr	3.78
		81.10

H.Z.
84.88

2779.60 Carbon East

E	3.6	81.3
Topcb	3.97	81.41
G	4.0	
+7	4.2	
1/4	4.1	
♀	3.5	81.4
+3	3.5	
1/4	4.0	
CB	4.3	
+4	3.7	
W	3.6	81.3
	3+00	
W	3.2	81.7
CB	3.5	
+4	3.8	
1/4	3.6	
♀	3.1	81.8
1/4	3.6	
G	3.7	
E Topcb	2.95	81.93
	3+50	
E Topcb	1.51	83.37
	2.3	
1/4	2.2	
♀	1.8	83.1
1/4	2.2	

H.Z.
84.88

19

+5	2.5	
CB	2.2	
+4	1.8	
W	1.7	83.2
	3760 N Line of Alley + End of Carbon East	
W	1.5	83.4
+5	1.6	
CB	1.9	
+5	2.2	
1/4	1.9	
♀	1.6	83.3
1/4	2.0	
G	2.0	
Top CB	1.85	83.03
+3	1.3	
E	1.4	
TP	7.27	90.95
	1.20	83.68
	3775 S Line of Alley	
E	7.5	83.5
+1	7.1	
CB	7.4	
+2	7.9	
1/4	7.7	
♀	7.2	83.8
1/4	7.7	
+5	7.9	

7
90.95

cb	7.9	
+3	7.1	
W	6.9	84.1
	4+100	
W	6.5	84.5
+8	6.5	
cb	6.8	
+5	6.8	
1/4	7.0	
1/4	6.6	84.4
1/4	7.0	
+6	7.2	
cb	6.6	
E	6.0	85.0
	4+45 Sewer Mn Hole +	
4 Street	Rim	5.30
		85.65
	4+50	
E	4.8	86.2
cb	5.0	
+5	5.6	
1/4	5.9	
1/4	5.2	85.8
1/4	5.6	
+5	5.7	
cb	5.5	
+3	5.1	

7
90.95

20

W	5.0	86.0
	4+76	
W	4.5	86.5
cb	4.8	
1/4	4.8	
1/4	4.5	86.5
1/4	4.8	
+5	4.9	
cb	4.3	
1/5	4.4	86.6
	4+80 N. Line of Vellair	
E	3.8	
Top cb	4.04	86.91
G	4.57	
1/4	4.32	
1/4	4.36	86.59
1/4	4.54	
G	4.97	
W Top cb	4.35	86.60
W	4.2	
T.P.	3.02	85.68
30' 8M. Set NE 7' to Vellair	Safe	82.66
		79.00

Bliss
Duermit
Holbeck
6/1/23
B.M. N.E. of track
Voltaire & Soto

X Sections of Soto Street, Ocean
Beach from the N. line of Voltaire to the
N. line of H2 Green - Elev

H.I.
82.04

21

3.04 82.04 79.00

0+00 = N line of Voltaire

E 2.8
E Top cb 3.02 79.02

G 3.79
1/4 4.09
E 4.53 77.51

1/4 5.13
E 5.88
W Top cb 5.31 76.73

W 5.2
0+05
W 5.1 76.9

cb 5.0
1/4 4.8
E 4.2 77.8

1/4 3.8
+6 3.6
cb 2.4
E 1.8 80.2

0+50
E 3.1 78.9

cb 4.2
+2 4.5
1/4 4.8
E 5.4 76.6

1/4 6.0
cb 6.2
W 6.6

0+70
W 7.2 74.8

cb 7.1
1/4 6.6
E 6.0 76.0

+0 5.6
1/4 5.5
cb 5.0

+5 4.0
E 3.7 78.3

1+00
E 4.5 77.5

+2 5.0
+6 5.2
cb 6.0

1/4 6.3
E 6.8 75.2

+6 7.4
1/4 7.5

cb 7.8
W 8.2 73.8

1+50
W 9.8 72.2

Plotted 7-16-28 C.B.H.

H.I.
82.04

cb	9.3	
1/4	9.0	
¢	8.2	73.8
+5	7.9	
1/4	8.0	
cb	7.5	
+5	6.9	
K	6.8	75.2

1756 Walk on East & steps

on line	ctr	6.59	75.45
---------	-----	------	-------

1779 Walk on West

on line	ctr	10.12	71.92
---------	-----	-------	-------

2700

E	7.4	74.6
---	-----	------

cb	8.3	
----	-----	--

+1	8.6	
----	-----	--

1/4	9.0	
-----	-----	--

¢	9.5	72.5
---	-----	------

1/4	10.3	
-----	------	--

+5	10.1	
----	------	--

cb	10.4	
----	------	--

W	11.0	71.0
---	------	------

2725

K	11.8	70.2
---	------	------

+5	11.3	
----	------	--

cb	11.3	
----	------	--

H.I.
82.04

22

+6	10.8	
1/4	11.1	
¢	10.1	71.9
1/4	9.8	
+9	9.7	
cb	9.5	
E	8.5	73.5

2745 Auto Driveway on West

on line	ctr	12.46	69.58
---------	-----	-------	-------

2750

E	9.6	72.4
---	-----	------

cb	10.5	
----	------	--

1/4	10.7	
-----	------	--

¢	11.0	71.0
---	------	------

1/4	11.8	
-----	------	--

cb	12.0	
----	------	--

+4	12.3	
----	------	--

T.P.	3.33	72.91	12.46	69.58
------	------	-------	-------	-------

3700

W	5.5	67.4
---	-----	------

cb	5.0	
----	-----	--

+6	9.6	
----	-----	--

1/4	5.1	
-----	-----	--

+1	9.6	
----	-----	--

¢	9.0	68.9
---	-----	------

1/4	3.9	
-----	-----	--

H.I.
72.91

cb	3.6	
+4	2.9	
+8.	2.7	
E	1.5	71.4
	3+50	
E	4.8	68.1
+7	5.1	
+8	5.7	
cb	5.8	
1/4	5.5	
E	6.2	66.7
1/4	7.1	
+2	6.6	
cb	7.0	
W	7.4	65.5
	3+96	
W	9.7	63.2
+7	9.9	
cb	9.6	
1/4	9.0	
+5	9.5	
E	8.7	64.2
+4	8.0	
1/4	7.7	
cb	7.7	
+4	7.9	

H.I.
92.91

23

+5	7.1	
E	7.1	65.8
	9+00	
E	7.3	65.6
+5	7.3	
+6	8.1	
cb	8.0	
1/4	8.0	
+7	8.3	
E	8.8	64.1
+5	9.6	
1/4	9.2	
cb	10.4	
W	10.6	61.3
	9+16 Walk on West	
on line	10.91	62.00
	4+33. Auto Driveway	
on line. ctr	11.56	61.35
	4+37. Auto Driveway	
on line ctr	11.56	61.35
	4+43	
W	12.3	60.6
cb	11.7	
1/4	11.9	
+2	11.7	
E	11.3	61.6

HJ
72.91

1/4			10.8	
cb			10.6	
+2			10.0	
E			9.7	63.2
			9+50	
E			10.1	62.8
+8			10.4	
+9			11.0	
cb			11.2	
1/4			11.2	
ϕ			11.9	61.0
1/4			12.1	
cb			12.6	
W			12.8	60.1
T.P.	2.89	65.48	10.32	62.59
			9+80	
E			3.9	61.6
+7			4.5	
+8			5.0	
cb			5.2	
1/4			5.5	
ϕ			6.1	59.4
1/4			6.5	
cb			7.6	
+4			7.7	
+6			7.2	

T
65.98

24

W
H.P. Pop
H.C.
T.P.

7.1
58.4
5.69
59.79

for X sections N of Green Street see
Page 33 This Book.

B/155
Overmount
Volbeck
4/25/18
at top of
Guizot + Voltaire

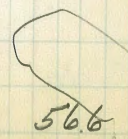
X Sections of Etivanda street
from the N line of Voltaire to the
S line of Castelar

#1
65.33

25

Plotted 7-17-28 - CBA

	0.98	74.93	-	73.45			
T.P.	1.65	65.33	10.75	63.68	1/4	4.9	
		0+00 N line of Voltaire			1/4	4.7	60.6
E		0.8		64.5	cb	5.7	
Top cb		1.65		63.08	W	5.4	599
G		2.43				0+50	
1/4		2.69			W	7.2	58.1
1/4		2.93		62.40	cb	7.0	
1/4		3.53			1/4	6.5	
G		4.37			E	6.1	592
W Top cb		3.86		61.57	1/4	6.3	
W		3.5			cb	5.8	
		0+10				+5.5	
W		4.7		60.6	+6	3.4	
cb		4.5			E	3.1	622
1/4		4.0				0+75	
1/4		3.6		61.7	E	4.7	60.6
1/4		3.3			+3	4.8	
+9		3.0			+9	7.1	
cb		1.6			cb	7.2	
E		1.0		64.3	1/4	7.6	
		0+25			1/4	7.2	58.1
E		2.3		63.0	1/4	7.9	
+5		2.8			+5	8.6	
+6		4.2			cb	8.9	
cb		4.7			W	8.7	56.6



#1
6533

1100

W	10.0	55.3
cb	10.3	
+1	10.6	
1/4	9.2	
E	8.5	56.8
1/4	8.9	
cb	8.5	
+2	8.5	
78	6.9	
E	6.3	59.0
	1+2.5	
E	7.8	57.5
+3	8.0	
+5	8.9	
cb	9.7	
1/4	10.1	
E	9.9	55.4
1/4	10.7	
+3	11.5	
+9	11.7	
cb	11.4	
W	11.3	54.0
	1+5.0	
W	13.0	52.3
cb	13.1	
+9	12.9	

#2
6533

26

1/4	12.1	
+5	11.5	
E	11.4	53.9
+6	11.1	
1/4	11.3	
cb	10.9	
+5	9.6	
E	9.3	56.0
TP	0.20	56.14
		9.42
		5.5.91
	1+2.3 WALK on East	2.100
	Rod 0.72	
E		2.6
cb		2.5
+5		7.0
+8		9.8
1/4		9.7
E		9.9
1/4		5.1
cb		5.9
W		6.5
		49.6
	2+2.5	
W		8.2
cb		8.0
+3		7.8
1/4		6.6
E		6.6
1/4		6.3
		49.5

H.I.
56.11

t2	6.2	
cb	4.9	
E	5.0	51.1
	2+50	
E	5.4	50.7
+3	6.3	
cb	6.7	
+5	7.0	
t7	7.8	
1/4	7.8	
⊘	7.9	48.2
1/4	7.9	
+3	8.1	
+7	9.2	
cb	9.2	
W	9.5	46.6
	2+80	
W	10.8	45.3
cb	10.7	
1/4	9.7	
+3	9.9	
⊘	9.2	46.9
1/4	9.2	
+3	9.2	
+7	8.5	
cb	8.4	

H.I.
56.11

27

+3	8.2	
E	6.7	49.4
	3+00	
E	7.9	48.7
+2	8.8	
cb	9.0	
+5	9.9	
+7	10.1	
1/4	10.1	
E	10.2	45.9
+4	10.2	
1/4	10.9	
cb	11.4	
W	11.6	44.5
	3+50	
W	13.2	42.9
cb	13.2	
+4	13.3	
1/4	12.8	
⊘	12.9	43.7
1/4	11.9	
+4	12.0	
+5	11.3	
cb	11.0	
+8	10.7	
E	9.8	46.3

H.I.
56.11

TP	1.92	46.79	11.29	49.87
			4+00	
E			2.6	44.2
+4			3.5	
cb			3.7	
+6			4.3	
1/4			4.4	
£			4.7	42.1
+7			4.9	
1/4			5.4	
12			5.8	
cb			5.9	
N			5.7	41.1
			4+35	
N			6.3	40.5
cb			6.2	
1/4			5.9	
£			5.8	41.0
1/4			5.4	
12			5.5	
+5			5.0	
cb			4.6	
+6			4.5	
E			3.9	42.9
			4+43	
E			4.0	42.8

H.I.
46.79

28

+3			4.8	
cb			5.1	
+6			5.2	
+8			5.8	
1/4			5.7	
£			6.0	40.8
1/4			6.2	
cb			5.9	
N			6.0	40.8
			4+80	S. line of Green
N			6.1	40.7
cb			6.0	
+2			6.2	
1/4			6.1	
£			5.5	41.3
1/4			5.5	
cb			5.3	
E			4.7	42.1
TP	2.12	44.96	4.95	42.34
			N line of Green = 00	
E			4.0	40.5
+9			4.1	
cb			4.3	
+3			4.6	
1/4			4.8	
£			4.9	39.6

44.46

1/4		5.0	
cb		5.2	
W		5.2	39.3
	0750		
W		5.3	39.2
cb		5.1	
1/4		5.3	
ϕ		5.2	39.3
1/4		5.1	
cb		5.1	
E		5.0	39.5
	0756 Auto Driveway on E		
on line	ctr	4.72	39.74
	0761 Auto Driveway on E		
on line	ctr	4.70	40.76
	0782 Sidewalk on East		
on line	ctr	4.62	39.84
	1700		
E		4.9	39.6
cb		5.0	
1/4		5.2	
ϕ		5.2	39.3
1/4		5.2	
cb		5.2	
W		5.0	39.5

44.46

29

	1432 Auto Driveway on West		
1 Back	ctr	4.63	39.83
	1437 Auto Driveway on West		
1 Back	ctr	4.65	39.81
	1450		
W		4.6	39.9
cb		4.7	
1/4		4.9	
ϕ		5.0	39.5
1/4		5.1	
cb		5.0	
E		5.0	39.0
	1459 Auto Driveway on East		
on line	ctr	4.78	39.68
	1475 Walk on West		
on line	ctr	4.49	39.97
	2400		
W		4.7	39.8
cb		4.7	
1/4		5.1	
ϕ		5.0	38.5
1/4		5.2	
cb		5.2	
E		5.3	39.2
	2409 Auto Driveway on West		
on line		4.32	40.14

H I
44.46

2731: Walk on West

online	ctr		
		4.58	39.88
		2750	
W		4.8	39.7
cb		5.1	
1/4		5.4	
ctr		5.4	39.1
1/4		5.5	
cb		5.6	
E		5.6	38.9
		2780	
E		5.6	38.9
cb		5.6	
1/4		5.5	
E		5.4	39.1
1/4		5.4	
cb		5.0	
W		4.6	39.9
		3700	
W		5.0	39.5
cb		5.1	
1/4		5.4	
E		5.6	38.9
1/4		5.6	
cb		5.3	
E		5.6	38.9

H I
44.46

3735 Walk on West

30

online

ctr: 4.81

39.65

online	ctr		
		3750	
E		5.7	38.8
cb		5.5	
1/4		5.6	
ctr		5.5	39.0
1/4		5.6	
cb		5.2	
W		5.1	39.4
TP	4.24	44.05	4.65
		3775	39.81
W		4.7	39.3
cb		5.1	
1/4		5.0	
E		5.0	39.0
1/4		5.3	
cb		5.3	
E		5.2	38.8
		4700	
E		5.1	38.9
78		5.1	
cb		5.4	
1/4		5.0	
E		4.8	39.2
1/4		4.7	
cb		4.5	

7
44.05

W	4.4	39.6
	9+50	
W	4.0	40.0
cb	4.4	
+9	4.6	
1/4	4.2	
ϕ	4.9	39.6
1/4	4.9	
cb	5.2	
E	5.6	38.4
	9+75	
E	5.3	38.7
cb	5.1	
1/4	4.9	
ϕ	4.4	39.6
1/4	4.2	
+7	4.5	
cb	4.3	
N	4.0	40.0
	5+00	
W	4.0	40.0
cb	4.2	
1/4	4.5	
ϕ	4.7	39.3
1/4	5.1	
cb	5.3	

H.I.
44.05

31

E	5.2	38.8
	5+50	
E	6.3	37.7
cb	6.4	
+4	6.2	
1/4	6.5	
ϕ	5.6	38.4
1/4	5.5	
cb	5.7	
+5	4.9	
W	4.6	39.4
	5+58	
N	5.1	38.9
+5	5.8	
cb	6.0	
1/4	5.9	
ϕ	6.1	38.0
1/4	6.5	
cb	6.8	
E	6.4	37.1
	5+50	
E	8.5	35.5
cb	7.8	
1/4	8.3	
ϕ	7.8	36.2
+5	7.7	

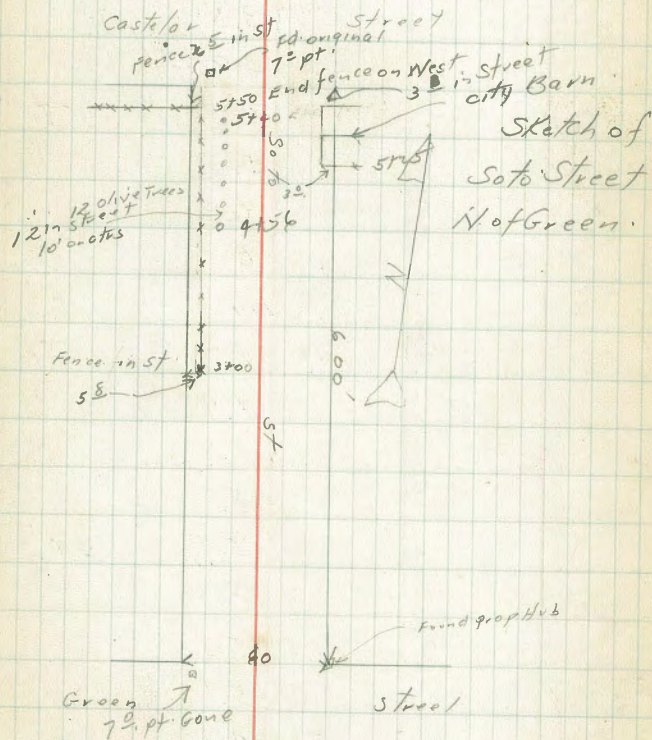
H.I.
99.05

1/4	7.0	
cb	6.5	
W	6.5	37.5
	5+84	
W	6.4	37.6
+2	7.3	
cb	7.6	
1/4	7.5	
E	8.5	35.5
1/4	8.6	
cb	8.3	
+5	8.4	
E	8.7	35.3
	5+98	
E	10.0	34.0
cb	10.3	
+1/4	9.8	
E	8.9	35.1
1/4	8.1	
+5	7.4	
W	7.4	
cb	7.6	
+8	7.9	36.1
W	6+00 S. line of Castelar	
W	8.1	35.9
cb	8.0	

H
99.05

32

1/4	8.8	
E	8.8	35.2
1/4	10.0	
cb	10.6	
E	10.7	33.3
check on B.M. N. on SW Castelar	7.44	36.61



Bliss
Durrmit
Holbock
Jacobson
6/26/28
3MN6 Prop/Hub
GreenTato

Xsections of Soto Street
Ocean Beach from the North side of Green
to the S. line of Castelar. continued from page 24.

H.I.
61.84

33

2.05 61.84 59.79

Plotted 7-17-28 - CBH

		0160		
E		2.1	59.7	
cb		2.7		
12		2.7		
+4		3.6		
1/4		3.8		
+4		3.9		
2		4.4	57.4	
1/4		5.3		
cb		6.3		
W		6.7	55.1	
		0117		
W		8.2	53.6	
cb		7.4		
1/4		6.3		
+3		5.9		
2		5.5	56.3	
+5		5.0		
1/4		5.3		
+4		5.1		
+5		4.3		
cb		3.9		
E		3.0	58.8	
		0125		
E		4.1	57.7	

cb	4.6	
+5	5.1	
+7	5.9	
1/4	5.7	
+9	5.5	
2	6.2	55.6
1/4	6.8	
cb	7.7	
W	8.4	53.4
	0139	
W	8.4	53.4
cb	7.8	
1/4	7.1	
2	6.7	55.1
1/4	6.5	
+3	6.5	
+5	5.3	
cb	4.9	
E	3.8	58.0
	0150	
E	5.2	56.6
cb	5.9	
+5	6.1	
+6	6.9	
1/4	7.1	
2	7.3	57.5

HZ
6/84

1/4	7.6	
cb	8.6	
W	9.1	52.7
	+7.5	
W	10.3	51.5
cb	9.7	
1/4	8.9	
E	8.7	53.1
1/4	8.4	
+2	8.3	
+3	7.7	
cb	7.1	
E	6.1	55.7
	14.00	
E	7.9	53.9
cb	8.5	
+7	8.9	
+8	9.5	
1/4	9.6	
E	10.0	51.8
1/4	10.1	
cb	10.9	
W	11.5	50.3
	14.25	
W	11.8	50.0
cb	12.0	

A
6/84

34

1/4	11.2	
+6	11.5	
E	11.3	50.5
1/4	10.8	
+5	10.1	
cb	9.8	
E	9.1	52.7
	14.50	
E	10.5	51.3
cb	11.1	
1/4	11.9	
E	12.9	48.9
1/4	12.8	
cb	13.3	
W	14.2	47.6
TP	2.31	51.27
		12.88
		48.96
	14.75	
W	4.4	46.9
+5	4.0	
cb	3.9	
1/4	3.7	
E	3.5	47.8
+8	3.2	
+9	2.5	
1/4	2.5	
cb	2.5	

H.I.
5/27

+5	2.3	
E	1.2	50.1
	1+85	
E	1.7	49.6
+2	2.0	
+5	3.1	
cb	3.1	
1/4	3.5	
+2	3.9	
⊕	4.0	47.3
1/4	4.3	
cb	4.3	
+4	5.1	
W	5.5	45.8
	2+00	
W	5.8	45.5
cb	5.4	
1/4	5.3	
⊕	4.9	46.4
+7	4.8	
1/4	4.3	
cb	4.0	
E	3.8	47.5
	2+35	
E	5.0	46.3
cb	6.0	

H.I.
5/27

35

1/4	6.5	
⊕	7.2	44.1
1/4	7.4	
cb	7.4	
W	7.4	43.9
	2+67	
W	9.7	41.6
cb	8.9	
1/4	9.0	
⊕	9.0	42.3
1/4	8.2	
cb	7.8	
+3	7.6	
+9	4.6	
E	4.6	46.7
	2+70	
E	7.7	43.6
cb	8.1	
1/4	8.4	
⊕	9.3	42.0
1/4	9.3	
cb	9.2	
W	10.0	41.3
	3+00. Fourteen West 5.8 14 street	
W	10.9	40.4
cb	10.8	

H.I.
51.27

1/4		10.7	
ϕ		10.7	40.6
1/4		10.3	
lv		9.9	
cb		9.6	
E		9.1	42.1
		3+25	
E		10.4	40.9
cb		10.8	
1/4		10.8	
+7		1.8	
ϕ		11.8	39.5
1/4		11.6	
+3		11.4	
cb		11.8	
W		11.9	39.4
		3+75	
W.		13.5	37.8
cb		13.5	
1/4		13.2	
ϕ		13.4	37.9
+8		13.4	
1/4		13.2	
cb		12.8	
E		12.3	39.0
T.P.	114	39.99	12.44
			38.83

39.99

4+54 Beg 15
Row of Olive Trees
13.6 on the 3rd line

36

	4+00	
E	2.7	37.6
cb	2.7	
1/4	2.8	
ϕ	3.0	37.0
1/4	2.6	
cb	2.7	
W	2.7	37.3
	9+10	
W	3.4	36.6
cb	3.7	
1/4	3.5	
ϕ	3.1	36.9
1/4	3.1	
cb	3.0	
E	2.7	37.3
	4+44	
E	4.0	36.0
cb	3.9	
1/4	4.0	
ϕ	3.8	36.2
1/4	4.0	
cb	3.9	
W	3.9	36.1
	4+60	
W	4.3	35.7
cb	4.2	

39.99

5748 Endo+Oliva
Trees 142.
39.99

5750 and fence on
West 2.575 Street

37

1/4	4.4	
+5	4.7	
¢	4.7	353
1/4	4.6	
cb	4.5	
E	4.4	35.6
5700 5705 City Barn 30 15 Street See sketch page 32 in this book		
E	5.5	34.5
cb	5.4	
1/4	5.3	
¢	5.0	350
+3	5.3	
1/4	5.1	
cb	4.9	
W	4.8	35.2
5725		
W	5.4	34.6
cb	5.5	
1/4	5.7	
+4	5.8	
¢	5.8	34.2
1/4	5.9	
cb	6.1	
E	6.1	33.9
5750		
E	6.4	33.6

cb	6.5	
1/4	6.5	
¢	6.6	33.4
1/4	6.5	
TP	4.68	38.51
cb	6.16	33.83
W	4.4	
W	4.2	34.3
5775		
W	5.3	33.2
cb	5.6	
1/4	5.7	
¢	5.8	32.5
1/4	5.8	
cb	5.6	
E	5.3	33.2
6700 S. Line of Castlar		
E	6.6	31.9
cb	6.6	
1/4	6.5	
¢	6.7	31.8
1/4	6.9	
cb	6.9	
+7	7.1	
W	6.8	31.7
TP 6.01 4272 180 36.71		
check on BM SAN Castelar + Etivando 6.04 36.68		
36.01 0.07		

7-21-28
J.C. Bliss
Flood
Rauner

X section Emeline St (Pacific Beach)
North Line of Beryl to South Line
of Malden

50' wide
10' cbs
7.5 7/45

π 175.13

38

B. M. N. E. 7 Tack Lampert + Beryl 162.09
+ 13.04

cb 5.0

w 4.2

170.9

π 175.13

1400

0+00 - North Line Beryl

w 0.9

174.2

E 10.7

164.4

cb 1.3

cb 10.2

1/4 1.4

1/4 10.2

♀ 1.4

173.7

♀ 10.1

165.0

1/4 1.5

1/4 9.9

cb 1.5

cb 9.1

E 1.5

173.6

w 7.9

167.2

T.P.

- 0.24 174.89

0+10

+ 13.17

w 7.3

167.8

π 188.06

cb 8.0

F 1430

1/4 8.6

E 12.5

175.5

♀ 8.5

166.6

cb 11.4

1/4 8.8

1/4 11.1

cb 8.6

♀ 11.2

176.8

E 8.2

166.9

1/4 11.0

0+50

cb 10.8

E 4.8

170.3

w 11.1

177.0

cb 5.0

1470

1/4 5.1

w 5.9

182.2

♀ 5.1

170.0

cb 6.4

1/4 5.1

1/4 7.0

Plotted 9-18-28 - C.B.M.

π 188.06

1+70 ctd.

♀	7.4	180.7
1/4	7.3	
E b.	7.4	
E	8.3	179.8

2+00

E	6.8	181.3
cb	6.1	
1/4	5.6	
♀	5.7	182.4
1/4	5.6	
cb	4.8	
W	4.4	183.7

2+50

W	2.9	185.2
cb	3.3	
1/4	3.8	
♀	3.5	184.6
1/4	3.6	
cb	3.9	
E	4.2	183.9

3+00

E	2.2	185.9
cb	2.0	
1/4	2.3	
♀	2.2	185.9

π 188.06

39

1/4	1.9	
cb	2.3	
W	1.5	186.6
T P		-0.60 187.46

413.23

π 200.69
3+50

W	12.4	188.3
cb	12.3	
1/4	12.3	
♀	12.1	188.0
1/4	12.9	
cb	12.3	
E	12.5	188.2

4+00

E	9.9	190.8
cb	9.8	
1/4	10.2	
♀	10.0	190.7
1/4	9.6	
cb	9.1	
W	9.4	191.3

4+50

W	6.4	193.3
cb	6.8	

π 200.69

4150 ctd

1/4	7.0	
£	7.1	193.6
1/4	7.4	
cb	7.4	
E	7.2	193.5
	5+00	
E	5.0	195.7
cb	4.2	
1/4	4.4	
£	4.4	196.3
1/4	3.8	
cb	3.2	
W	2.5	197.2
T.P.		-134 199.35

+362

 π 202.97
5145⁴⁰ South Lime Malden

W	0.90	202.07
cb	1.7	
1/4	2.3	
£	2.8	200.2
1/4	3.8	
cb	4.1	
E	4.1	198.9

Check-back to B.M.

202.97

T.P.

-12.82 190.15

+0.85 191.0

T.P.

-12.69 178.31

+0.47 178.78

T.P.

- 8.28 170.50

+0.53 171.03

- 8.96 162.07

B.M. N.E. 7' Tack Lament + Beryll 162.09

On S.W. Block corner Emeline + Malden

7-23-28
 J.C. Bliss
 Flood
 Router

X Section Colina St. Monmouth
 Drive to Los Altos Road 50' wide
 10' cbs
 7.5' / 4.5'

B.M. Monmouth & Colina - Spikem fence post 176.14

+1270 ✓ 189.94

T.P. -425 184.59

+1287

π 197.46 ✓

Section along North Line Monmouth

W 4.1 193.4

Cb 3.6

1/4 3.0

£ 2.5 195.0

1/4 2.3

Cb 2.1

E 2.2 195.3

0+00

E 2.2 195.3

Cb 1.6

1/4 1.1

£ 0.8 196.7

1/4 0.5

Cb 0.4

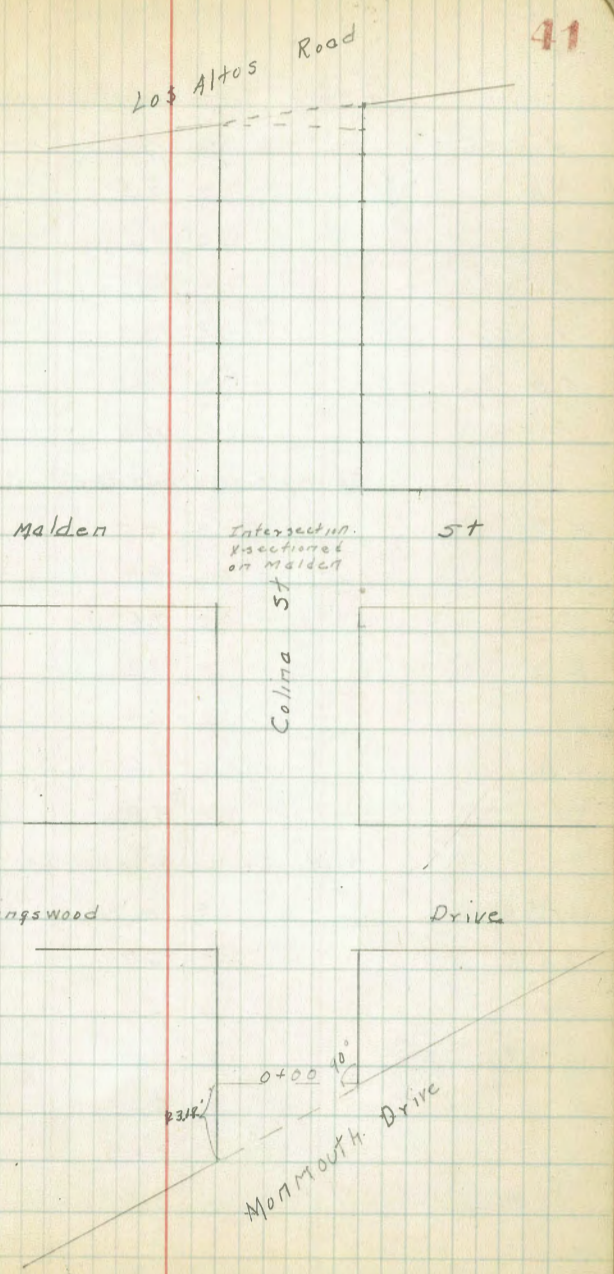
W 0.2 197.3

T.P. -0.30 197.16

+1246

π 209.62 ✓

Plotted 9-18-28 - C.B.H.



π 209.620+25²⁰ South Line Collingswood Drive

W	7.7	201.9
Cb	8.5	
1/4	8.5	
£	9.4	200.2
1/4	10.0	
Cb	10.3	
E	11.2	198.4

South Cb Collingswood

E	9.7	199.9
Cb	8.4	
1/4	7.6	
£	7.2	202.4
1/4	6.8	
Cb	6.6	
W	5.8	203.8

South 1/4 Collingswood

W	4.4	205.2
Cb	5.4	
1/4	5.5	
£	5.9	203.7
1/4	6.2	
Cb	6.9	
E	8.3	201.3

 π 209.62

42

£ Collingswood

E	6.6	203.0
Cb	5.5	
1/4	5.0	
£	4.5	205.1
1/4	3.8	
Cb	4.0	
W	3.3	206.3

North 1/4 Collingswood

W	2.1	207.5
Cb	2.5	
1/4	2.2	
£	2.1	207.5
1/4	3.1	
Cb	3.5	
E	4.0	205.6

North Cb Collingswood

E	3.6	206.0
Cb	2.7	
1/4	2.1	
£	1.6	208.0
1/4	1.4	
Cb	1.4	
W	1.1	208.5

T.P.

- 0.49 209.13

+12.50

H. 221.63

π 2 21.63

North Line Collingswood = 0700

W	121	209.5
Cb	125	
1/4	126	
♀	130	208.6
1/4	135	
Cb	140	
E	140	207.6
Out 10	144	
	0730	
Out 10	11.7	
E	10.4	210.2
Cb	9.3	
1/4	8.4	
♀	7.7	213.9
1/4	7.3	
Cb	7.8	
W	7.5	214.1
	0760	
W - Concrete step on line	327	218.30
Cb	3.5	
1/4	3.6	
+3	3.2	
♀	4.1	217.5
1/4	4.8	
Cb	6.1	

π 221.63

43

E	7.5	214.1
Out 10	8.3	
T.P.		- 0.50 221.13
	+ 9.07	
	π 230.20	
	1700	
Out 10	12.7	
E	11.6	218.6
Cb	10.7	
1/4	9.1	
♀	8.6	221.6
1/4	8.2	
Cb	8.5	
W	8.1	222.1
	1735	
W	4.9	225.3
Cb	5.0	
1/4	5.2	
♀	5.2	225.0
1/4	5.5	
Cb	5.8	
E	7.4	222.8
Out 10	7.4	

π 230.20

1450 - South Line Malden St

Out 10	4.7	
E	4.3	225.9
cb	3.6	
1/4	3.2	
♀	2.9	227.3
1/4	3.1	
cb	3.5	
W	3.4	226.8
T.P.		-3.25 226.95

+12.18

π 239.13

0+00 = North Line Malden

W	3.7	235.4
cb	4.2	
1/4	4.5	
♀	4.2	234.9
1/4	4.4	
cb	4.3	
E	4.3	234.8
T.P.		-0.17 238.96

+12.79

π 251.75

0+75
12.6

239.1

E	12.6	
cb	12.1	
1/4	11.5	

π 251.75

44

♀	11.6	240.2
1/4	11.2	
cb	11.0	
W	10.7	241.1

0+50

W	7.1	244.7
cb	7.3	
1/4	7.5	
♀	7.9	243.9
1/4	8.3	
cb	8.8	
E	9.4	242.4

0+75

E	6.2	245.6
cb	6.1	
1/4	6.2	
1/4	5.2	
♀	5.1	246.7
1/4	4.4	
cb	4.2	
W	3.6	248.2

1+00

W	1.6	250.2
cb	2.2	
1/4	1.9	

π 251.75

♀	24	249.4
1/4	29	
cb	33	
E	34	248.4
T.P.		-0.18 251.57

+1303

π 264.60

1+25

E	13.3	251.3
cb	13.0	
1/4	13.3	
♀	12.4	252.2
1/4	12.1	
cb	12.0	
W	11.5	253.1

1+50

W	81	256.5
cb	8.2	
1/4	8.4	
♀	8.8	255.8
1/4	9.1	
cb	9.7	
E	9.7	255.4

π 264.60

45

1+75

E	5.0	
cb	5.4	259.2
1/4	4.9	
♀	5.0	259.6
1/4	4.7	
cb	4.9	
W	4.9	259.7

1+89.95 - South Line Los Altos Road on West

W	3.0	261.6
cb	3.0	
1/4	2.7	
♀	2.8	261.8
1/4	2.7	
cb	3.0	
E	2.6	262.0

Section from 2+03¹⁵ on East to 1+89²⁵ on West = South Line Los Altos Road.

E	0.7	263.9
cb	1.1	
1/4	1.4	
♀	1.5	263.1
1/4	2.1	
cb	2.5	
W	3.0	261.6

π 264.60

+

HI

-

EI

B.M. -2.14 262.46 S.W. Spike in pole Los Altos Road + Colina St.

T.P. -13.03 251.57

+0.08 251.65

-13.12 238.53

+0.00 238.53

-13.04 225.49

+0.15 225.64

-8

B.M. -8.44 217.20 S.W. Spikes in pole Malden + Kendall

T.P. -12.92 212.72

+0.59 213.31

-11.16 202.15 S.W. Cor Emeline + Malden

202.01

7-23-28
J.C. Bliss
Flood
Roamer

X-section Fern Glen St. (La Jolla)
from La Jolla Blvd. to Monte Vista

Sections taken as indicated in sketch

B.M. S.E. B.P. La Jolla Blvd + Westbourne Ave	79.01	La Jolla	90.5	Blvd
+ 0.05	79.06		0.05	
T.P.	-7.80	71.26		
+ 2.39	73.65			

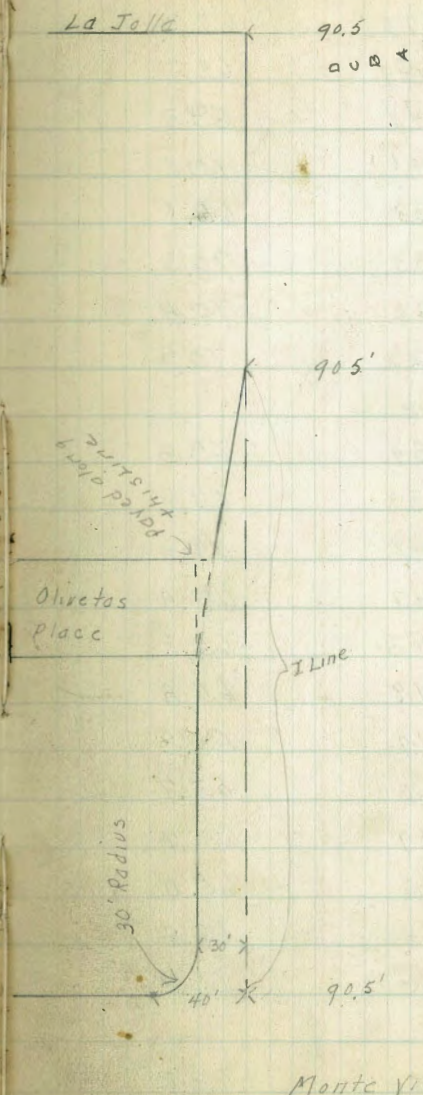
Section along west edge of pavement on

La Jolla Blvd which is 12' from Property line

N	2.95	70.70
L=N+45.25	2.57	71.08
S	2.25	71.40
0+00 = West Line La Jolla Blvd		
S.	2.4	71.2
A ¹⁰	2.5	71.1
B ¹⁰	2.6	71.0
C ¹⁰	2.5	71.1
D ¹⁰	3.1	70.6
E	3.4	70.3
F	2.5	71.1
G	5.3	68.3
H	4.9	68.7
N	3.0	70.7

0+25

N	3.9	69.8
+5	4.5	69.1
H	7.1	66.5
G	7.9	65.7



Note - The 90.5' section of the roadway is divided into 9 parts of 10.05' each. Everything North of the 90.5 section is divided into parts of 10' each. The different sections are denoted by letters, start in 179 with A for the first section North of the South Line.



T 73.65

+7	23	67.3
F	49	68.7
E	44	69.3
D	41	69.6
C	38	69.8
B	33	70.3
A	28	70.8
S	28	70.9

0+50

S	39	69.8
A	38	69.8
B	40	69.6
C	42	69.4
+6	43	69.3
+7	7.8	65.8
D	7.9	65.8
E	8.0	65.7
F	7.9	65.7
G	8.6	65.0
H	4.8	68.8
N	4.5	69.2

0+75

N	5.5	68.2
H	5.5	68.2
+5	6.0	67.6

T 73.65

51

G	6.9	66.7
F	9.5	64.1
E	10.0	63.7
D	5.7	68.0
C	5.2	68.4
B	4.6	69.0
A	4.6	69.0
S	4.6	69.1

1+05

S	5.5	68.2
A	5.6	68.0
B	5.7	67.9
C	5.9	67.7
D	6.6	67.0
+5	7.5	66.2
E	7.3	64.3
+5	11.3	61.3
F	11.4	62.2
G	10.6	63.0
H	8.5	65.1
N	7.3	66.4

1+25

N	8.4	65.3
+4=I	9.2	64.5
H	11.5	62.1

π 73.65

G	124	61.2
+5	126	61.0
+6	111	62.5
F	97	63.9
E	71	66.6
D	64	67.3
C	63	67.3
B	62	67.4
A	61	67.5
S	61	67.6

1+50

S	67	67.0
A	69	66.7
B	68	66.8
C	72	65.4
D	70	66.7
E	74	66.3
F	78	65.8
G	101	63.5
+5	131	60.5
H	142	59.4
+2	143	59.3
I	114	62.3
+9=N	92	64.5

 π 73.65

52

1+75

N	10.0	63.7
+4=J	10.9	62.7
I	13.0	60.7
H	16.5	57.1
G	12.5	61.1
+5	9.9	63.7
F	10.1	63.5
E	9.4	64.3
D	8.7	65.0
C	8.5	65.1
B	7.6	66.0
A	7.6	66.0
S	7.7	66.0
TP		-8.78 64.87

+ 0.7710

 π 65.64

2+10 - East Line Olivetas Place

S	0.9	64.7
A	0.8	64.8
B	1.0	64.6
C	1.3	64.3
D	3.5	62.1
E	4.1	61.5
F	3.7	61.9
G	4.0	61.6

T 65.64

H	10.1	55.5
I	5.8	59.8
J	3.1	62.5
K	2.9	62.7
+1=N	2.8	62.8
	East cb	Olivetos Place = 2+20
7' out from N Line of Fern Glen		
Top cb	3.70	61.94
Gutter	4.47	61.17
N=K+1	3.9	61.7
K	3.9	61.7
J	3.6	62.0
I	3.6	62.0
+5	3.5	62.1
H	9.5	56.1
G	7.2	58.4
F	4.8	61.8
E	4.7	60.9
D	3.8	61.8
C	1.8	63.8
B	1.3	64.3
A	1.0	64.6
S	1.2	64.4

T 65.64

53

± Olivetos Place = 2+30

S	1.5	64.1
A	1.4	64.2
B	1.6	64.0
C	2.2	63.4
D Top M.H.	4.23	60.91
Flwline	14.91	50.73
+3	6.6	59.0
E	7.7	57.9
F	9.8	55.8
G	10.8	54.8
H	5.5	60.1
+4	2.9	62.7
I	3.4	62.2
J	3.7	61.9
K	4.4	61.2
K+6=N	4.6	61.0
Out 4 - On pavement	4.55	61.09
	West cb Olivetos Place = 2+40	
Out 2' Top cb	4.21	61.43
Gutter	4.78	60.86
N=K+8	4.6	61.0
K	4.5	61.1
J	4.3	61.3
I	4.0	61.6
+5	4.0	61.6

$\pi 65.64$

H	6.0	59.6
G	10.2	55.4
+ 5	11.2	54.4
+ 7	10.3	55.3
F	8.4	57.2
E	6.0	59.6
D	4.3	61.3
C	2.6	63.0
+ 5	2.0	63.6
B	2.1	63.5
A	1.8	63.8
S	1.9	63.7

West Line Olivetas Place = 2+50

S	2.2	63.4
A	2.4	63.2
B	2.6	63.0
C	2.6	63.0
D	3.2	62.4
+ 5	3.4	62.2
E	4.6	61.0
F	11.6	54.0
+ 5	12.1	53.5
G	8.5	57.1
H	5.4	60.2
#5	4.6	61.0

 $\pi 65.64$

54

I ^{90.5}	4.3	61.3
J ¹¹⁰	4.6	61.0
K ¹⁰⁰ ⁸⁰ ^{120.5}	4.6	61.0
N	4.6	61.0

2+75

N	4.4	61.2
K	4.4	61.2
J	4.6	61.0
I	4.9	60.7
+ 5	5.7	59.9
H	2.4	58.2
+ 5	8.5	57.1
G	9.7	55.9
+ 5	14.2	51.4
F	13.1	52.5
+ 5	11.1	54.5
E	4.5	61.1
+ 5	3.4	62.2
D	4.0	61.6
C	3.4	62.2
B	3.4	62.2
A	3.2	62.4
S	3.1	62.5

$\pi 65.64$

3400

S	3.9	61.7
A	4.1	61.5
B	4.3	61.3
C	4.7	60.9
D	5.9	59.7
+7	6.1	59.5
E	7.4	58.2
+5	8.8	56.8
+8	9.4	56.2
F	12.4	53.2
+2	14.8	50.8
+5	16.0	49.6
G	12.3	53.3
+5	10.7	54.9
H	8.9	56.7
+5	8.1	57.5
I	5.1	60.5
J	5.4	60.2
K	4.9	60.7
N	4.8	60.8
T.P. Nail in Anchorage at Sta 3450	-5.79	59.85
+169		
	$\pi 61.54$	
	3425	
N	2.4	59.1
K	2.4	59.1
J	3.0	58.5

 $\pi 61.54$

55

+5	2.1	59.4
I	3.7	57.8
H	6.6	54.9
G	10.0	51.5
+5	10.5	51.0
+7	13.3	48.2
F	13.0	48.5
+5	6.6	54.9
E	5.0	56.5
D	4.0	57.5
C	2.3	59.2
B	2.0	59.5
A	1.0	60.5
S	0.4	61.1
	3450	
S	1.7	59.8
A	3.4	58.1
B	4.0	57.5
C	4.4	57.1
D	6.5	55.0
E	8.1	53.4
F	11.7	49.8
+5	13.9	47.6
G	9.4	52.1
H	5.8	55.7

$\bar{x} 61.54$

I	58	55.7
+5	47	56.8
J	46	56.9
K	47	56.8
N	46	56.9
3+65		
N	61	55.4
K	60	55.5
J	58	55.7
+5	56	55.9
I	64	55.7
H	77	53.8
+5	75	54.0
G	95	52.0
F	144	47.1
E	11.6	49.9
+5	9.0	52.5
D	8.7	52.8
C	7.5	54.0
B	6.7	54.8
A	4.8	56.7
+5	2.8	58.7
S	2.4	59.1
3+75		
S	2.5	59.0

 $\bar{x} 61.54$

56

A	3.3	58.2
B	5.4	56.1
C	8.5	53.0
D	10.9	50.6
E	12.7	48.8
+5	14.5	47.0
F	12.7	48.8
G	9.7	51.8
H	8.7	52.8
+2	7.4	54.1
I	6.9	54.6
J	6.8	54.7
K	7.0	54.5
N	6.9	54.6
4+00		
N	9.2	52.3
K	9.5	52.0
J	9.6	51.9
I	10.6	50.9
H	12.0	49.5
G	13.0	47.5
F	14.1	47.4
+3	18.0	43.5
+5	15.0	46.5
E	10.5	51.0

π 61.54

+5	9.8	51.7
D	9.0	52.5
C	4.9	56.6
B	4.0	57.5
A	3.8	57.7
S	2.9	58.6
4430		
S	3.5	58.0
A	4.5	57.0
B	4.9	56.6
C	5.2	56.3
D	5.9	55.6
E	6.2	55.3
F	7.1	54.4
+5	8.7	52.8
G	9.6	51.9
H	13.4	48.1
+7	15.1	46.4
+8	17.9	43.6
I	19.1	42.4
+5	17.7	43.8
+6	15.5	46.0
J	15.4	46.1
K	12.8	48.7
N	10.5	51.0

π 61.54

57

4460 = East Line Monte Vista

Out 11	15.1	46.4
E.C. = Out 10	19.8	41.7
+4	20.6	40.9
N	16.9	44.6
K	16.8	44.7
J	16.1	45.4
I	11.4	50.1
+3	10.1	51.4
H	9.6	51.9
G	9.8	51.7
F	9.5	52.0
E	9.1	52.4
D	7.8	53.7
C	6.9	54.6
B	6.3	55.2
A	4.8	56.7
S	4.5	57.0
S.W. B.P. Belvedere + Monte Vista		
	-2.02	59.57
		59.52

7-24-28
 J.C. Bliss
 Flood
 Recorder

X-section of 40th St. between
 South Line of Woolman & South Line
 of T
 60' wide
 18' cbs
 10' 1/4 s

Note - New fill between
 Woolman & Tack

T 82.48

58

B.M. N.W. 7' Tack Woolman & 40th 82.18

+ 0.30

W T 82.48

0+00 = South Line Woolman

W	1.5	81.0
cb Top	2.4	80.04
Gutter-paved	3.2	
1/4 "	3.36	
2 "	3.51	78.97
1/4 "	3.90	
Gutter "	4.51	
cb-Top	4.02	78.46
E	4.4	78.1
	0+15	
E	4.5	78.0
cb	4.5	
1/4	4.0	
2	3.4	79.1
1/4	3.1	
cb	2.6	
W	3.1	79.4
	0+50	
W	7.7	74.8
+5	7.5	
cb	5.0	

Plotted 7-27-28 - CBH

1/4	5.4	
2	5.5	77.0
1/4	5.6	
cb	5.6	
+6	5.2	
E	7.3	75.2
Out 10	11.0	
	1+00	
Out 10	13.4	
E	10.5	72.0
+6	8.4	
cb	8.4	
1/4	8.0	
2	7.7	74.8
1/4	7.5	
cb	7.1	
+3	7.5	
W	11.4	71.1
	1+03 ±	18' Concrete culvert on West ✓
on flowline	11.22	71.26
	1+40 ±	18' Concrete culvert on East
on flowline	14.35	68.13
	1+50	
W	8.2	74.3
cb	8.2	

π 82.48

1/4	8.2	
♀	8.2	74.3
1/4	8.3	
cb	8.7	
E	12.7	69.8
Out 10	14.8	
	2+00	
Out 10	14.3	
E	13.2	69.3
cb	8.6	
1/4	7.8	
♀	7.8	74.7
1/4	7.7	
cb	7.7	
+ 8	7.8	
W	6.4	76.1
	2+50	
W	6.7	75.8
cb	7.0	
1/4	7.2	
♀	7.3	75.2
1/4	7.4	
cb	7.7	
E	12.0	70.5
Out 10	13.1	

π 82.48

2+85 = North Line Teak St

63' Wide
11/25
10.25/13

59

Out 10	9.6	
E	8.1	74.4
♀	7.0	
1/4	7.2	
♀	7.2	74.3
1/4	6.9	
cb	6.4	
W	5.8	76.6
	North cb Teak	
W	6.4	76.1
cb	6.6	
1/4	6.8	
♀	7.3	75.2
1/4	7.4	
cb	7.2	
E	7.8	74.7
Out 10	9.6	
	North 1/4 Teak	
Out 10	9.2	
E	8.1	74.4
cb	7.1	
1/4	7.4	
♀	7.1	75.4
1/4	7.1	
cb	7.0	

$\pi 82.48$

W	67	75.8
♀ Teak		
W	6.8	75.7
Cb	7.2	
1/4	7.4	
♀	7.4	75.1
1/4	7.4	
♀	7.1	
CE 10	7.6	74.9
Out 10	8.9	
South 1/4 Teak		
Out 10	8.9	
E	7.4	75.1
Cb	7.0	
1/4	7.2	
♀	7.2	75.3
1/4	7.2	
Cb	7.2	
W	6.8	75.7
South Cb Teak		
W	7.2	75.3
Cb	7.4	
1/4	7.1	
♀	7.3	75.2
1/4	7.2	

 $\pi 82.48$

60

Cb	7.0	
E	7.4	75.1
Out 10	9.0	
South Line Teak - 0+00		
Out 10	9.0	
E	7.5	75.0
Cb	7.0	
1/4	7.2	
♀	7.1	75.4
1/4	7.0	
Cb	7.0	
W	6.3	76.2
at 25		
W	3.8	78.7
Cb	4.9	
1/4	5.2	
♀	5.5	77.0
1/4	5.5	
Cb	6.1	
E	7.7	74.8
Out 10	9.3	
at 50		
Out 10	9.8	
E	8.5	74.0
Cb	7.8	

π 82.48

1/4	7.1	
♀	6.7	75.8
1/4	6.4	
Cb	5.7	
W	5.3	77.2
T.P.		-7.23 75.25

+0.44

π 75.69

1700

W	0.9	74.8
Cb	2.2	
1/4	3.1	
♀	3.3	72.4
1/4	3.6	
Cb	4.4	
E	5.1	70.6
Out 10	5.3	

1750

Out 10	9.6	
E	8.9	66.8
Cb	8.1	
1/4	7.2	
♀	6.6	69.1
1/4	6.0	
Cb	5.0	
W	4.1	71.6

π 75.69

61

1775

W	5.5	70.2
Cb	5.9	
1/4	6.9	
H	7.5	
♀	7.6	68.1
1/4	8.3	
Cb	9.0	
E	9.4	66.3
Out 10	10.1	

2+10

Out 10	10.6	
E	10.3	65.4
Cb	9.8	
1/4	9.6	
♀	8.8	66.9
1/4	8.6	
T2	7.6	
Cb	6.9	
W	5.5	70.2

2+12⁵⁰ = North line S Street

50' wide

10' CbS

75 1/2 S

W	9.2	66.5
Cb	9.0	
1/4	8.8	
♀	9.0	66.7
1/4	9.7	

π 75.69

cb	10.0	
E	10.3	65.4
Out 10	10.5	
North cb - 5 st.		
Out 10	10.9	
cb	10.4	65.3
cb	10.6	
1/4	10.6	
¢	10.4	65.3
1/4	10.2	
cb	9.8	
Gutter	10.2	
W-Top cb	9.00	66.69
N 1/4 5 st.		
W	10.4	65.3
cb	10.5	
1/4	10.4	
¢	10.5	65.2
1/4	10.9	
cb	11.1	
E	11.0	64.7
Out 10	11.2	
¢ 5 st		
Out 10	11.3	
E	11.2	64.5

 π 75.69

62

cb	11.5	
1/4	11.4	
¢	11.4	64.3
1/4	11.0	
cb	10.7	
W	10.7	65.0
South 1/4 5 st		
W	10.9	64.8
cb	11.0	
1/4	11.2	
¢	11.4	64.3
1/4	11.6	
cb	11.9	
E	11.6	64.1
Out 10	11.7	
South cb 5 st.		
Out 10	12.1	
E	11.7	64.0
cb	11.5	
1/4	11.5	
¢	11.5	64.2
1/4	11.3	
cb	11.3	
Gutter	11.0	
W Top cb	10.00	65.69

π 75.69

South Line 5 st. = 0+00

W	9.6	66.1	
cb	10.5		
1/4	11.1		
♀	11.4	64.3	
1/4	11.4		
cb	11.7		
E	12.4	63.3	
Out 10	12.7		
T.P		-12.19	63.50

+ 2.32

π 65.82

Note - Beginning at station 0+03 on the East side there is an 18' x 20.5' Garage that extends 13.5' into the st from the East line of 40th.

0+50

40 out	5.8	
E	5.7	60.1
cb	4.9	
1/4	4.0	
♀	4.2	61.6
1/4	3.6	
cb	3.1	
W	2.6	63.2

π 65.82

53

0+75

W	3.7	62.1
cb	4.5	
1/4	5.8	
♀	5.5	60.3
1/4	5.8	
cb	6.4	
E	7.0	58.8
Out 10	7.0	

1+00

Out 10	8.0	
E	8.0	57.8
cb	7.7	
1/4	7.3	
♀	7.2	58.6
1/4	7.3	
cb	6.9	
W	5.9	59.9

1+30 sidewalk to prop line a West side ↓

On Walk 7.88 57.94

1+50

W	9.7	56.1
cb	9.9	
1/4	9.8	
♀	9.7	56.1
1/4	9.7	

T 6582

cb	10.0	
E	10.0	55.8
2+00		
E	12.3	53.5
cb	12.0	
1/4	11.9	
¢	12.1	53.7
1/4	12.5	
cb	12.4	
W	12.4	53.4
T.P		-12.40 53.42

+344

T 5686

2+12

W	3.7	53.1
cb	4.0	
1/4	4.4	
¢	4.0	52.8
1/4	3.5	
cb	3.5	
E	3.7	53.1
2+14 North Line T St ✓		
E	3.7	53.1
cb	3.5	
1/4	3.4	

50" wide
11" cb's
7.5" 1/4's

T 56.86

64

¢	3.9	53.0
1/4	5.3	
cb	5.6	
W	6.1	50.8
North cb T St		
W	6.8	50.0
cb	6.8	
1/4	5.7	
¢	4.9	52.0
1/4	4.0	
cb	3.5	
E	3.7	53.2

North 1/4 T St

E	3.8	53.0
cb	4.1	
1/4	4.6	
¢	5.1	51.8
1/4	5.7	
cb	7.2	
W	7.2	49.6

¢ T St

On flowline M.H. at west prop		
	11.82	45.04 ✓
W	7.0	49.9
cb	6.5	
1/4	6.0	

T 56.86

Q	57	51.2
1/4	53	
cb	4.8	
E	46	52.3
South 1/4 T st		
E	52	51.7
cb	55	
1/4	60	
Q	62	50.7
1/4	63	
cb	7.0	
W	75	49.4
South cb T st		
W	76	49.3
cb	7.0	
1/4	64	
Q	65	50.4
1/4	65	
cb	61	
E	58	51.0
South lime T st		
E	66	50.3
cb	59	
1/4	63	
Q	65	50.4

T 56.86

65

1/4	6.5	
cb	7.0	
W	7.0	499
T.P.		- 0.38 56.48
	+12.34	68.92
T.P.		-1.16 67.66
	+8.19	75.85
		- 5.72 70.13
	B.M N.W. 25' Tic 40 th +5	70.01

15' wide X 300' Alley BIK 27 Normal Hts. 8-17-28 Miller

E+W. Alley 34th To Hawley N. of Ham Ave

397.99

56

B.M.	5.80	395.05	389.25	SW Adams T 34 th	S	5.1	392.9
T.P.	7.74	397.99	4.80	390.25	S+Z	5.2	392.8 floor
		00 = E. line 34 th ST					
				133.25 E = W. line N+S. Alley			
S		7.36	390.63	Pavement	S	5.1	392.9
C		7.68	390.37	"	C	5.1	392.9
N		7.51	390.48	"	N	5.0	393.0
	10' E						
N		5.9	392.1	Fence 0.3 in Alley	N	4.9	393.1
+3		6.6	391.4		C	4.5	393.5
C		6.6	391.4		S	4.9	393.1 Fence 0.4 in Alley
S		6.2	391.8	Fence 0.5 in Alley			
	20' E						
S		6.1	391.9	Fence 0.5 in Alley	C	4.5	393.5
C		6.2	391.8		N	4.4	393.6
N		6.0	392.0	Fence 0.3 in Alley			
	60' E						
N		5.8	392.2	Fences 0.8	C	4.3	393.7
C		5.6	392.4		S	4.3	393.7 Fence 0.6 in Alley
S		5.6	392.4	Fence 0.6 in Alley			
	100' E						
S		5.5	392.5	Fence 0.4 in Alley	S	4.1	393.9 Fence 0.7 in Alley
C		5.5	392.5		C	4.2	393.8
N		5.5	392.5		N	4.3	393.7
	127' E						
		garage on S. dist	floor 7' Back				
		112' " N Wood	" on line				
N		5.1	392.9	floor	N	4.0	394.0
C		5.2	392.8		C	3.8	394.2
					S	3.8	394.2 Fence 0.4 in Alley

Plotted - 8-21-28 - C.B.H.

175' E

200' E

212' E E: E end Fence on S

397.99

235'E.

S	3.8	394.2
E	4.0	394.0
N	3.9	394.1

260'E

N	4.1	393.9
E	4.3	393.7
S	4.1	393.9

281.8 E = W. Line Hawley (281.3 Map)

S	5.2	392.8
E	5.2	392.8
N	5.0	393.0

1.2 E. of W. Line Hawley = Wood Pavment.

N	5.0	392.83	pavmt.
E	5.20	392.79	"
S	5.20	392.79	"

Alley BIK 27 N. H.

X Sec. N & S. Alley

397.99

67

00 = N. Line E & W. Alley

W	5.0	393.0
E	5.0	393.0
E	4.4	393.2

Bet 0 to 0 + 24.5 N. Wooden Garage on W. side in Alley
35' N

E	5.0	393.0
E	4.9	393.1
W	5.1	392.9

50' N

W	5.0	393.0
E	4.4	393.6
E	4.9	393.1

59' N. garage on W. dirt floor 0.7 in Alley ✓

E	4.8	393.2
E	4.8	393.2
W	5.1	392.9 floor

80' N

W	5.0	393.0
E	5.0	393.0
E	4.9	393.1

100' N

E	4.6	393.4
E	4.3	393.7
N	4.7	393.3

397.99
108' N

W	4.8	393.2
C	4.8	393.2
E	4.8	393.2

130' N

E	4.1	393.9
C	4.3	393.7
W	4.2	393.8

157' N. garage on W. dirt floor 4' back ✓

W	3.6	394.4 floor
W	3.8	394.2
C	3.8	394.2
E	4.1	393.9

200' N

E	3.1	394.9
E	3.2	394.8
W	2.9	395.1

225' N

W	2.7	395.3
C	2.8	395.2
E	2.7	395.3

250' N

E	2.4	395.6
C	2.3	395.7
W	2.5	395.5

Allen BIK 27 N. H.

397.99
280' N

W	3.6	394.4
C	3.8	394.2
E	3.8	394.2

297' N

E	5.1	392.9
C	5.3	392.7
W	5.1	392.9

300' N = S. Line Collier

W	5.7	392.3
C	6.0	392.0
E	5.7	392.3

1.5 N. of S. Line Collier = S. Edge emb. walk. S. of walk
no Alley Returns

E	6.26	391.73 emb. of Ret
W	6.26	391.73 " " "

5/2/29
London

X sec Polk st from Georgia
to Park Blvd

All cbs & walks in excepting Alley ret. & eb
on E side Alley on South. 52' Rdway.

B.P. NW Georgia & Polk

BM. 5.40 342A1 337.01

0+00 = W.L. Georgia

Ncb 5.48 336.98

gut Pav 5.96 336.45

'A " 5.70 336.71

± " 5.56 336.85

'A " 5.69 336.72

gut " 5.90 336.51

Scb 5.38 337.08

0+25

Scb 5.22 337.12

gut 5.7 336.7

'A 5.7 336.7

± 5.4 337.0

'A 5.5 336.9

+9 5.4 337.0

gut 5.9 336.5

Ncb 5.23 336.18

Polk
342.41

69

0+50

Ncb 5.40 337.31

gut 5.4 337.0

+4 5.1 337.3

'A 5.6 336.8

± 5.4 337.0

+2 5.3 337.1

'A 5.7 336.7

gut 5.6 336.8

Scb 5.08 337.33

0+75

Scb 4.98 337.43

gut 5.5 336.9

'A 5.6 336.8

± 5.3 337.1

'A 5.4 337.0

gut 5.4 337.0

Ncb 4.91 337.50

1+00

Ncb 4.82 337.59

gut 5.3 337.1

'A 5.3 337.1

± 5.2 337.2

'A 5.4 337.0

gut 5.4 337.0

Scb 4.75 337.66

Polk
34241

1+38 = End eb on South		
Seb	4.71	337.70
1+40 = EL Alley		
SL - Alley Pav	4.38	338.03
+10	4.7	337.7
eb	5.1	337.3
+7	5.3	337.1
	5.2	337.2
±	5.0	337.4
¼	5.0	337.4
gut	4.9	337.5
Neb	4.37	338.04
NL - Alley Pav	4.43	337.98
NL - top Alley eb	4.22	338.19
1+60 = NL Alley		
NL - Alley Pav	4.31	338.10
NL - top Alley eb	3.97	338.44
Neb	4.22	338.19
gut	4.7	337.7
¼	5.0	337.4
±	4.9	337.5
¼	5.0	337.4
gut	4.9	337.5
Seb	4.57	337.84
SL - top Alley eb	4.23	338.18
SL - Alley Pav	4.26	338.15

Polk W
34241

70

2+00		
Seb	4.65	337.76
gut	5.2	337.2
¼	5.0	337.4
±	4.7	337.7
¼	4.9	337.5
gut	4.8	337.6
Neb	3.90	338.51
2+25		
Neb	3.71	338.70
gut	4.7	337.7
¼	4.6	337.8
±	4.6	337.8
¼	4.7	337.7
gut	4.7	337.7
Seb	4.14	338.27
2+50		
Seb	4.00	338.41
gut	4.6	337.8
¼	4.6	337.8
±	4.5	337.9
¼	4.5	337.9
+5	4.2	338.2
gut	4.4	338.0
Neb	3.41	339.00

PO 1C
34241

2+75

Neb	3.30	339.11
gut	4.1	338.3
1/4	4.2	338.2
1/2	4.0	338.4
1/4	4.2	338.2
gut	4.5	337.9
Seb	3.90	338.51

3+00 = EL. Park Blvd.

Seb	3.85	338.56
gut	4.46	337.95
1/4	3.77	338.64
1/2	3.48	338.93
1/4	3.50	338.91
gut	3.81	338.60
Neb	3.09	339.42

20' wide
 2.42270
 191.35
 251.31
 5.52
 78.90
 191.35
 251.31

X 300 Alley BIK 216 S. Chollas.
 3rd to Plu to Bet Main + Filbert.

6-3-29
 Miller

S.W. 32nd +
 Main

B.M. Men	2.60	41.19	38.59
T.P.	2.90	36.36	7.73
		33.46	

E. line = 32nd Stop Diagonal 25.52 wide

N		2.4	34.0
E		3.1	33.5
S		3.4	33.0
C+O		3.4	33.0
S		3.4	33.0
C		2.7	33.7
N		2.4	34.0

{ 15.90 E. on N. line Alley }
 { E. line 32nd + S. W. " } at 40°-00' to Alley

Plotted 6-4-29 C.B.H.

	5'. E.		
N		2.4	34.0
E		2.8	33.6
S		2.7	33.7
	30'. E.		
S		3.4	33.0
C		3.4	33.0
N		3.3	33.1
	60'. E.		
N		4.5	31.9
E		4.4	32.0
S		4.3	32.1

From B7's. to G.W.S. House on S. 0.4 in Alley at 57.5-1.0 in Alley at G.W.S.

Plumbing extends 0.6 More in Alley

36.36

84.5 W. End. garage on S. 1.8 Back dirt floor 72

- 1.8	5.2	31.2 floor
S	5.2	31.2
C	5.3	31.1
N	5.5	30.9

113'. E = S. End. above garage 1.8 Back dirt floor

N	6.2	30.2
C	6.0	30.4
S	6.2	30.2
+ 1.8	6.2	30.2 floor

123'. E. garage on S. line Wood floor

S	5.5	30.9 wood floor
S	6.5	29.9 ground
E	6.4	30.0
N	6.4	30.0

135'. E.

N	7.1	29.3
C	7.4	29.0
S	7.5	28.9

162'. E.

S	11.1	25.3
C	11.0	25.4
N	10.0	26.4

168'. E.

N	11.0	25.4
C	12.1	24.3
S	13.4	23.0

36.36

T.P.	0.28	24.31	12.33	24.63
S			1.6	22.7
C			1.0	23.3
N			0.5	23.8

200'E

-10			9.7	14.6
-3			9.5	14.8
-2			5.8	18.5
N			5.8	18.5
C			6.1	18.2
S			6.6	17.7
+5			7.0	17.3

T.P.	0.25	11.72	12.84	11.47
------	------	-------	-------	-------

230'E

S-10			1.7	10.0
S			1.7	10.0
C			1.9	9.8
N			2.3	9.4
+10			2.0	9.7

255'E

-10			8.5	3.2
N			7.6	4.1
e			6.3	5.4
3			4.6	7.1
+2			2.5	9.2
+10			2.5	9.2

Alley BIK 216 S. Chollas

73

11.72

265'E

S-10			0.0	11.7
S-2			0.0	11.7
S			1.3	10.4
C			7.3	4.4
N			8.7	3.0
+10			10.0	1.7

280'E

-10			11.1	0.6
N			8.6	3.1
C			7.7	4.0
+5			5.6	6.1
S			0.1	11.6
+5			0.2	11.5

300'E

S			2.3	9.4
C			6.3	5.4
N			10.3	1.4
+10			11.1	0.6

320'E

N-10			13.2	-4.5
-5			12.7	-1.0
N			10.5	1.2
C			7.0	4.7
S			6.5	5.2
+1			4.5	7.2

11.72
330' E

S-1		4.5	7.2
S		7.0	4.7
T.P.	1.70	2.65	10.79
C		1.9	0.7
N		3.8	-1.2
+10		4.6	-2.0

347' E

-10		5.0	-2.4
N		4.4	-1.8
C		4.1	-1.5
S		3.8	-1.2
+10		0.9	1.7

375' E

-10		4.6	-2.0
S		4.5	-1.9
C		4.5	-1.9
N		5.0	-2.4
+10		4.9	-2.3

392.5 E on ϕ = ϕ 30" Cont. Sewer Pipe

ϕ on top ^{24"} _{30"} Sewer Pipe

		4.31	-1.68
	400.5		
-10		3.9	-1.3
N		3.9	-1.3
C		4.4	-1.8
S		4.7	-1.8
+10		4.4	-1.8

2.63

Alley BIK R14. S. Chollas

438' E - W. Line Pluto ST

74

-10		4.3	-1.7
S		3.9	-1.3
C		4.0	-1.4
N		4.0	-1.4
+10		4.0	-1.4

-467' E. = W. Bank Slough.

-10		3.4	-0.8
N Line Alley		3.8	-1.2
ϕ Alley Produced		3.8	-1.2
S		3.6	-1.0
+10		3.5	-0.9

T.P.	12.81	15.20	0.24	2.39
T.P.	13.15	27.97	0.38	14.82
T.P.	12.15	39.94	0.18	27.79
chk on original BM.			133	38.61 = 38.59

60' wide
10' chs
12' bas.

Pluto St X Sec 32nd to Filbert.

6-5-29
miller

T.P. 0.16 14.98 14.82 Page 74

40' N of S Line of Main St on E Pavment.

W	8.45	6.53
cl 10'	8.76	6.22
14	9.06	5.92
10	9.33	5.65
14	9.25	5.63
cl	9.50	5.48
E	9.58	5.40

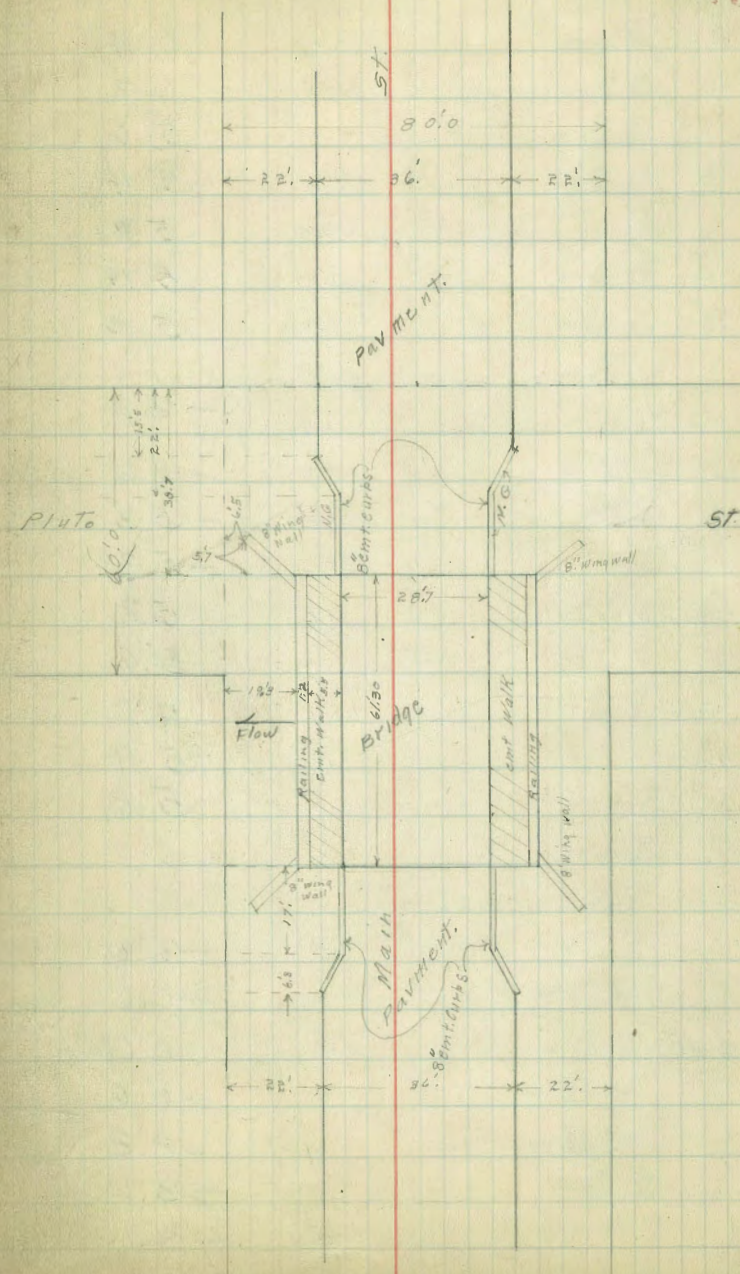
Plotted G-6-29 EAB.

26' N. of 4' line Main

E	9.94	5.04 gutter pavmt on Bridge
E	9.54	5.44 curb wall on Bridge
cl	9.44	5.54
cl	9.82	5.16 gutter pavmt on Bridge
14	9.65	5.33
14	9.27	5.71 curb wall on Bridge
cl	9.61	5.37 pavmt. 4' W.C.
14	9.36	5.62
cl	9.02	5.96
W	8.67	6.31

22' N. of S. Line Main = S. Edge Pavmt.

W	8.87	6.11
cl	9.16	5.82
75.5' = W. end of ch.	9.30	5.68 edge pavmt at end of ch.
45.5' = " " " "	8.94	6.02



14.98

20.5 No of S. line Main = S. Edge 5.5 cm t. walk on Bridge

4.02

Pulo St

76

W		8.6	6.4
cb		8.8	6.2
1/4		9.4	5.6
1/2		9.6	5.4
1/4		9.07	5.91
cb		9.19	5.79
E		9.28	5.70
19.3 No of S. line Main = S. Side Bridge Railing			
E-20		21.6	-6.6
E		20.6	-5.6
cb		20.3	-5.3
1/4		20.3	-5.3
+1 Top Wing wall		9.8	-5.2
1/2		10.4	4.6
1/4		10.4	4.2
cb		9.1	5.9
W ₁		9.4	5.6
T.P.	1.79	4.02	12.75
			2.23
6.5 No of S. line Main			
W-10		4.4	-0.4
W		4.6	-0.6
cb		4.0	0.00
1/4		4.6	-0.6
1/2		6.2	-2.2
+20 Top emb wing wall		7.1	-3.1
+4		7.7	-3.7

1/4		8.6	-4.6
cb		9.2	-5.2
E		9.8	-5.8
+20		10.4	-6.4
00 = S. line Main ST			
-20		10.5	-6.5
E		10.0	-6.0
cb		9.2	-5.2
1/4		8.5	-4.5
1/2		6.4	-2.4
+2		5.0	-1.0
1/4		5.0	-1.0
cb		4.1	-0.1
W		4.6	-0.6
1/10		4.9	-0.9
50'S.			
-10		5.8	-1.8
W		5.2	-1.2
cb		4.7	-0.7
1/4		4.2	-0.2
+5		4.9	-0.9
+8		7.0	-3.0
E		7.4	-3.4
1/4		8.8	-4.8
cb		9.2	-5.2
E		9.7	-5.7
+20		10.6	-6.6

4.02
100' S

E-20	10.8	-6.8 ^{in slough}
E	9.9	-5.9 ^{" "}
cl	9.2	-5.2 ^{" "}
14y	8.8	-4.8 ^{" "}
+8	8.4	-4.4 ^{" "}
±	5.0	-1.0
14	4.6	-0.6
cl	5.2	-1.2
W	5.5	-1.5
+10	5.8	-1.8

150' S. of A11-4

W	5.4	-1.4
cl	5.4	-1.4
14	5.0	-1.0
±	5.0	-1.0
+2	9.0	-5.0 ^{in slough}
14	9.8	-5.8 ^{" "}
cl	9.8	5.8 ^{" "}
E	10.3	-6.3 ^{" "}
+20	10.9	-6.9 ^{" "}

200' S.

-20	10.4	-6.4 ^{" "}
-10	10.9	-6.9 ^{" "}
E	10.6	-6.6 ^{" "}
cl	10.4	-6.4 ^{" "}
14	10.1	-6.1 ^{" "}

4.02

Pluto St

77

+3	8.8	-4.8 ^{in slough}
+5	5.5	-1.5
±	5.2	-1.2
14	5.2	-1.2
cl	5.5	-1.5
W	6.1	-2.1
+10	6.2	-2.2

250' S.

-10	7.1	-3.1
W	7.0	-3.0
cl	6.4	-2.19
14	6.0	-2.0
±	5.5	-1.5
+2	6.0	-2.0
+5	9.9	-5.9 ^{in slough}
14	10.4	-6.4 ^{" "}
cl	10.4	-6.4 ^{" "}
E	10.7	-6.7 ^{" "}
+10	11.0	-7.0 ^{" "}
+20	10.6	-6.6 ^{" "}

300' S = N. line Filbert

580' wide
14' cl-s
12' 1/2

+18	9.0	-5.0 ^{" "}
-13	10.7	-6.7 ^{" "}
E	11.0	-7.0 ^{" "}
cl	10.8	-6.8 ^{" "}
14	10.5	-6.5 ^{" "}

4.02
N. line Filbert (con)

♀	10.5	-6.5	in slough
"4	8.2	-4.2	" "
+2	6.5	-2.5	
ch	6.2	-2.2	
W	6.2	-2.2	
	N. ch.		
W	6.7	-2.7	
ch	6.7	-2.7	
+5	7.1	-3.1	
"4	8.9	-4.9	in slough
♀	10.5	-6.5	" "
"4	10.7	-6.7	" "
ch	10.8	-6.8	" "
E	11.0	-7.0	" "
+12	10.7	-6.7	" "
+15	6.4	2.4	E. Bank
	N. "4		
-12	6.3	-2.3	E. Bank
-10	10.6	-6.6	in slough
E	11.0	-7.0	" "
ch	10.8	-6.8	" "
"4	10.7	-6.7	" "
♀	10.1	-6.1	" "
"4	9.5	-5.5	" "
+6	8.1	-4.1	" "
+7	6.7	-2.7	

4.02

Pluto st

78

ch	6.3	-2.3	
W	6.6	-2.6	
	♀ Filbert.		
W	7.1	-3.1	
ch	8.6	-4.6	slough
"4	10.0	-6.0	" "
♀	10.6	-6.6	" "
"4	10.7	-6.7	" "
ch	11.0	-7.0	" "
E	10.9	-6.9	" "
+8	10.7	-6.7	" "
+10	6.4	-2.4	Bank
	S. "4		
-10	6.6	-2.6	E. Bank
-8	9.2	-5.2	in slough
E	10.7	-6.7	" "
ch	11.0	-7.0	" "
"4	10.7	-6.7	" "
♀	10.7	-6.7	" "
"4	10.3	-6.3	" "
ch	8.5	-4.5	" "
+6	6.5	-2.5	W. Bank
W	6.7	-2.7	

H. or
S. ch line

Pluto St

Boundary ST Tie Pts.

79

W		6.2	-2.2
ch		9.0	-5.0 in slough
"		10.5	-6.5 " "
±		10.7	-6.7 " "
"		10.7	-6.7 " "
ch		11.1	-7.1 " "
E		11.1	-7.1 " "
+7		9.0	-5.0 " "
+8		6.2	-2.2 E. Bank

S Line Filbert.

-8		6.5	-2.5 E. Bank
-6		9.5	-5.5 in slough
E		11.1	-7.1 " "
ch		11.2	-7.2 " "
"		10.7	-6.7 " "
±		10.7	-6.7 " "
"		10.5	-6.5 " "
ch		9.1	-5.1 " "
W		6.2	-2.2 W. Bank

T.P. 12.76 14.99 1.79 2.23

chk. 0.17 14.82 = 14.82

ST.

7'

C.T.

Thorn

ST

ST.

7'

7'

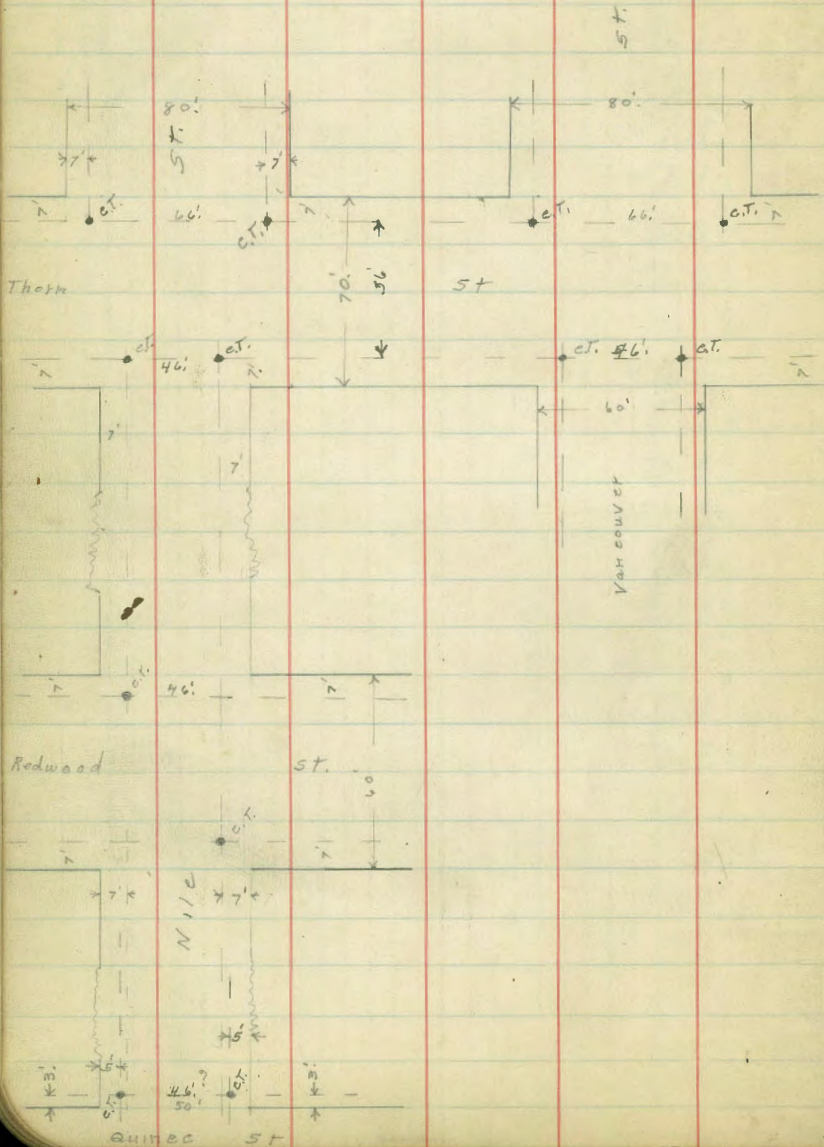
Boundary

46'

Rehwood St.

Replaced Tie PIs
Nile + Vancouver.

Plotted



DIRECTIONS FOR USE OF TABLES

TABLE No. 1

Distance of slope stake from side or shoulder stake for any width roadway, slope 1% to 1%. If ground is nearly level, the cut or fill at side stake is located by the double entry method in left column and top row. The number in body

of table in same row and column gives distance from side stake to slope stake. If ground is not

level, the side stake and slope stake, lower target by this amount if cut, elevate if fill. Add this amount

to cut or fill and find distance in table. Set up rod at this point and line of sight should cut

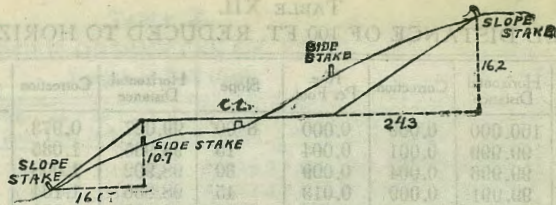
target.
 necessary.

TABLE No. 2

To find Tangent and External for curve of any other degree, divide by degree of curve and add correction found in column of corrections.

Degree of curve with a given I may be found by dividing tangent, (or external), opposite I by given tangent, (or external).

The distance from a point on the tangent to the curve is very nearly the square of the tangent length divided by twice the radius.



DISTANCES FROM SIDE STAKES FOR CROSS-SECTIONING.

SLOPE 1 1/2 TO 1. ROADWAY OF ANY WIDTH.

	0	.1	.2	.3	.4	.5	.6	.7	.8	.9	
0	0 00	0 15	0 30	0 45	0 60	0 75	0 90	1 05	1 20	1 35	0
1	1 50	1 65	1 80	1 95	2 10	2 25	2 40	2 55	2 70	2 85	1
2	3 00	3 15	3 30	3 45	3 60	3 75	3 90	4 05	4 20	4 35	2
3	4 50	4 65	4 80	4 95	5 10	5 25	5 40	5 55	5 70	5 85	3
4	6 00	6 15	6 30	6 45	6 60	6 75	6 90	7 05	7 20	7 35	4
5	7 50	7 65	7 80	7 95	8 10	8 25	8 40	8 55	8 70	8 85	5
6	9 00	9 15	9 30	9 45	9 60	9 75	9 90	10 05	10 20	10 35	6
7	10 50	10 65	10 80	10 95	11 10	11 25	11 40	11 55	11 70	11 85	7
8	12 00	12 15	12 30	12 45	12 60	12 75	12 90	13 05	13 20	13 35	8
9	13 50	13 65	13 80	13 95	14 10	14 25	14 40	14 55	14 70	14 85	9
10	15 00	15 15	15 30	15 45	15 60	15 75	15 90	16 05	16 20	16 35	10
11	16 50	16 65	16 80	16 95	17 10	17 25	17 40	17 55	17 70	17 85	11
12	18 00	18 15	18 30	18 45	18 60	18 75	18 90	19 05	19 20	19 35	12
13	19 50	19 65	19 80	19 95	20 10	20 25	20 40	20 55	20 70	20 85	13
14	21 00	21 15	21 30	21 45	21 60	21 75	21 90	22 05	22 20	22 35	14
15	22 50	22 65	22 80	22 95	23 10	23 25	23 40	23 55	23 70	23 85	15
16	24 00	24 15	24 30	24 45	24 60	24 75	24 90	25 05	25 20	25 35	16
17	25 50	25 65	25 80	25 95	26 10	26 25	26 40	26 55	26 70	26 85	17
18	27 00	27 15	27 30	27 45	27 60	27 75	27 90	28 05	28 20	28 35	18
19	28 50	28 65	28 80	28 95	29 10	29 25	29 40	29 55	29 70	29 85	19
20	30 00	30 15	30 30	30 45	30 60	30 75	30 90	31 05	31 20	31 35	20
21	31 50	31 65	31 80	31 95	32 10	32 25	32 40	32 55	32 70	32 85	21
22	33 00	33 15	33 30	33 45	33 60	33 75	33 90	34 05	34 20	34 35	22
23	34 50	34 65	34 80	34 95	35 10	35 25	35 40	35 55	35 70	35 85	23
24	36 00	36 15	36 30	36 45	36 60	36 75	36 90	37 05	37 20	37 35	24
25	37 50	37 65	37 80	37 95	38 10	38 25	38 40	38 55	38 70	38 85	25
26	39 00	39 15	39 30	39 45	39 60	39 75	39 90	40 05	40 20	40 35	26
27	40 50	40 65	40 80	40 95	41 10	41 25	41 40	41 55	41 70	41 85	27
28	42 00	42 15	42 30	42 45	42 60	42 75	42 90	43 05	43 20	43 35	28
29	43 50	43 65	43 80	43 95	44 10	44 25	44 40	44 55	44 70	44 85	29
30	45 00	45 15	45 30	45 45	45 60	45 75	45 90	46 05	46 20	46 35	30
31	46 50	46 65	46 80	46 95	47 10	47 25	47 40	47 55	47 70	47 85	31
32	48 00	48 15	48 30	48 45	48 60	48 75	48 90	49 05	49 20	49 35	32
33	49 50	49 65	49 80	49 95	50 10	50 25	50 40	50 55	50 70	50 85	33
34	51 00	51 15	51 30	51 45	51 60	51 75	51 90	52 05	52 20	52 35	34
35	52 50	52 65	52 80	52 95	53 10	53 25	53 40	53 55	53 70	53 85	35
36	54 00	54 15	54 30	54 45	54 60	54 75	54 90	55 05	55 20	55 35	36
37	55 50	55 65	55 80	55 95	56 10	56 25	56 40	56 55	56 70	56 85	37
38	57 00	57 15	57 30	57 45	57 60	57 75	57 90	58 05	58 20	58 35	38
39	58 50	58 65	58 80	58 95	59 10	59 25	59 40	59 55	59 70	59 85	39
40	60 00	60 15	60 30	60 45	60 60	60 75	60 90	61 05	61 20	61 35	40
41	61 50	61 65	61 80	61 95	62 10	62 25	62 40	62 55	62 70	62 85	41
42	63 00	63 15	63 30	63 45	63 60	63 75	63 90	64 05	64 20	64 35	42
43	64 50	64 65	64 80	64 95	65 10	65 25	65 40	65 55	65 70	65 85	43
44	66 00	66 15	66 30	66 45	66 60	66 75	66 90	67 05	67 20	67 35	44
45	67 50	67 65	67 80	67 95	68 10	68 25	68 40	68 55	68 70	68 85	45
46	69 00	69 15	69 30	69 45	69 60	69 75	69 90	70 05	70 20	70 35	46
47	70 50	70 65	70 80	70 95	71 10	71 25	71 40	71 55	71 70	71 85	47
48	72 00	72 15	72 30	72 45	72 60	72 75	72 90	73 05	73 20	73 35	48
49	73 50	73 65	73 80	73 95	74 10	74 25	74 40	74 55	74 70	74 85	49
50	75 00	75 15	75 30	75 45	75 60	75 75	75 90	76 05	76 20	76 35	50

Computed by L. Leland Locke.

177
175
1733

ENGINEERING DEPARTMENT,
 SAN DIEGO,
 CITY OF CALIFORNIA.

Main

216

320d

So. Chollas.

Filbert

883 NE 7th St. Soto y Voltaire
 Guizot St. Top H.

9.54
 14
 23.54

41.01
 533
 968.9
 302
 4387

36
 22
 22
 80

29 36

4
 37
 28.7
 364

36
 5
 28

1.55
 1.2
 2.7
 19.3
 1.5
 26.0
 14.5
 6.5

19.5

27
 77
 143