

1266

POSTS

---

FIELD BOOK

No. 385 F

---

MICROFILMED

DEC 22 1964

Our Leather Bound Engineers Note Books are carried in the following rulings:

- No. 380 LEVEL BOOK. Left and Right Hand Page the same as Left Hand Page of this Book.
- No. 382 FIELD BOOK. Left Hand Page as in this Book, Right Hand Page 4 x 4 to the inch, Center Line Red.
- No. 384 MINING TRANSIT BOOK. Left Hand Page as in this Book, Right Hand Page 8x8 to the inch, Center Line Red.
- No. 385 FIELD BOOK. Left Hand Page as in this Book, Right Hand Page 8 vertical and 4 horizontal lines to the inch, Center Line Red.

We also carry the Note Books listed above, bound in extra strong Fabri-Hide (otherwise the same quality of book), which can be furnished at a somewhat lower price.

In ordering Fabri-Hide covered books, add the letter "F" to catalog number.

**THE FREDERICK POST CO.**  
*ENGINEERING and DRAFTING SUPPLIES*  
IRVING PARK STATION  
CHICAGO, ILL.

INDEX

Page

X Sec. Alleys BIKs A & B Redland Garden  
 " Froude from Coronado to Green 34  
 " Alley Bl. 113 EW. Morses Sub. 70

Alleys in Redland Gardens from Page 1 to 15  
 Orange Ave. from 54th to East 15-25  
 55th St. " Orange to South End 26-33  
 /

X Sec. Alleys Bkgs A & B  
 Redland Gardens.

NW 50 & El Cajon  
 SW 100 Cor. 1700.

E-W Alley from 55th to El Cerrito.

B.M.	12.03	414.09		402.06
T.P.	12.24	426.69	0.24	413.85
T.P.	4.38	422.77	8.30	418.39
O.M.	SE Allen Hub on 55th N of El Cajon	5.78		416.99
0+00 = EL	55th			

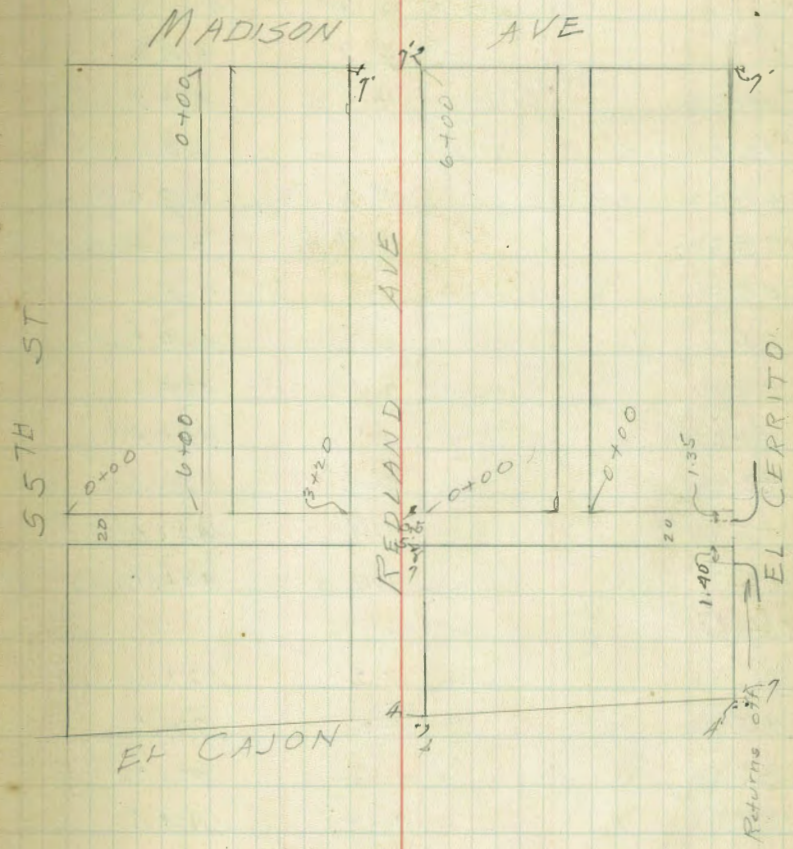
10' S		8.6	413.2
S.L.		5.8	417.0
+2		5.3	417.5
↓		4.2	418.6
+5		4.0	418.8
N.L.		3.5	419.3
0+18			
N.L.		3.2	419.6
+5		3.2	419.6
+8		3.9	418.9
↓		4.0	417.8
+7		5.0	416.8
S.L.		5.4	416.4
10' S		7.9	414.9
0+40			
10' S		6.9	415.9
6' S		6.2	416.6
S.L.		5.6	417.2
+2		5.6	417.2
+5		5.2	417.6
↓		4.3	418.5
N.L.		3.6	419.2

Plotted 8-10-28 C.B.H.

Jun 29-28

Louise  
 Isbell  
 Morgan

1



0+52	422.77		
N.L.		3.2	419.6
±		3.9	418.9
+2		4.1	418.7
+6		4.2	418.6
S.L.		4.2	418.6
10'S		4.9	417.9
0+75			
S.L.		2.7	420.1
+2		2.8	420.0
±		2.2	420.4
±3		2.2	420.6
+5		1.8	421.0
N.L.		1.7	421.1
0+87			
N.L.		1.2	421.6
+5		1.2	421.6
±		1.6	421.2
+7		2.0	420.8
S.L.		2.0	420.8
1+00			
S.L.		0.8	422.0
+2		0.8	422.0
+6		0.9	421.9
±		0.7	421.1
+5		0.8	422.0
N.L.		0.6	422.2

422.77		
T.P. 12 24	435.51	0.10
1+25		422.67
N.L.	11.5	424.0
+6	11.8	423.7
±	11.7	423.8
+5	11.7	423.8
S.L.	11.6	423.9
1+37		
S.L.	10.6	424.9
±	10.5	425.0
+5	10.7	424.8
N.L.	10.4	424.1
1+50 = w.L. N-S Alley		
N.L.	9.6	425.9
+4	9.5	426.0
±	9.7	425.8
+2	9.7	425.8
S.L.	9.5	426.0
1+60 = ± N-S Alley		
S.L.	8.8	426.7
+4	8.9	426.6
±	8.6	426.9
+3	8.5	427.0
N.L.	8.6	426.9

1+90	435.51		
N.L.	7.9	427.6	
+5	8.0	427.5	
⊕	7.9	427.6	
+5	8.1	427.4	
S.L.	8.1	427.4	
1+91			
S.L.	6.5	429.0	
+8	6.2	429.3	
⊕	6.3	429.2	
N.L.	5.8	429.7	
2+00			
N.L.	5.1	430.4	
+5	5.3	430.2	
⊕	5.7	429.8	
+4	5.6	429.9	
S.L.	5.8	429.7	
2+18			
S.L.	4.7	430.8	
+6	4.8	430.7	
⊕	4.7	430.8	
+3	4.6	430.9	
+7	4.1	431.4	
N.L.	4.0	431.5	

2+27	435.51		
N.L.	3.3	432.2	
+8	3.8	431.7	
⊕	3.7	431.8	
+3	3.7	431.6	
S.L.	3.6	431.9	
2+18 = ⊕ Sing garage	15'5" Conc floor		
	4.56	430.95	
2+32 = ⊕ Sing garage	15'5" Conc floor		
	3.25	432.26	
2+45			
S.L.	2.4	433.1	
+5	2.6	432.9	
⊕	2.5	433.0	
+3	2.6	432.9	
+5	2.2	433.3	
N.L.	1.9	433.6	
2+60			
N.L.	0.5	435.0	
+3	1.0	434.5	
⊕	1.4	434.1	
+6	1.6	433.9	
S.L.	1.4	434.1	
T.P. 1288	447.72	0.47	435.04

2+92	442.92		
2 S.L.	11.5	436.4	
+5	11.8	436.1	
⊕	11.6	436.3	
+5	11.5	436.4	
N.L.	11.3	436.6	
3+00			
N.L.	10.0	437.9	
+6	10.4	437.5	
+8	10.3	437.6	
⊕	10.6	437.3	
+7	10.5	437.4	
+7	10.5	437.4	
S.L.	10.7	437.2	
3+11			
S.L.	9.7	438.2	
+6	9.7	438.2	
+7	9.4	438.5	
⊕	9.4	438.5	
+7	9.6	438.3	
+4	9.4	438.5	
N.L.	9.1	438.8	
3+20 = W.L. Redland			
N.L.	8.4	439.5	
+7	9.0	438.9	
⊕	8.8	439.1	
+1	8.8	439.1	

3+20	447.92		
⊕+4	9.0	438.9	
S.L.	9.0	438.9	
SE Alley Hub on B.M. Redland N. of El Cajon	6.48	441.44	
0+00 = EL Redland 56 <sup>th</sup> St.			
S.L.	6.5	441.4	
+5	6.6	441.3	
⊕	6.6	441.3	
+5	6.2	441.7	
N.L.	6.0	441.9	
0+25			
N.L.	4.1	443.8	
+3	4.1	443.8	
+4	3.8	444.1	
⊕	4.0	443.9	
+7	4.1	443.8	
S.L.	4.3	443.6	
0+50			
S.L.	1.7	446.2	
+3	1.4	446.5	
⊕	1.2	446.7	
+2	1.3	446.6	
+4	1.0	446.9	
+7	1.2	446.7	
N.L.	1.1	446.8	

Plotted 8-10-28

G.B.H.

	447.92		
T.P. 12.40	460.03	0.29	447.83
0+63			
N.L.		11.8	448.2
+6		11.8	448.2
⊕		11.6	448.4
+8		11.7	448.3
S.L.		12.0	448.0
0+80			
S.L.		10.3	449.7
+6		10.0	450.0
⊕		10.1	449.1
+4		10.2	449.8
N.L.		10.0	450.0
1+00			
N.L.		8.7	451.3
⊕		9.0	451.0
S.L.		9.4	450.6
1+25			
S.L.		7.1	452.9
⊕		6.8	453.2
N.L.		6.6	453.4
1+50 = w.l. N-s Alley			
N.L.		5.3	454.7
+5		5.4	454.6
+7		5.7	454.3
⊕		5.7	454.3

1+50	460.03	
S.L.	5.9	454.1
1+70 = EL N-s Alley		
S.L.	5.0	455.0
⊕	4.8	455.2
N.L.	4.2	455.8
NE ANcy Hub Int Alleys B.M. between Redland & El Cerrito	4.18	455.85
2+00		
N.L.	3.0	457.0
⊕	3.1	456.9
+5	3.3	456.7
S.L.	3.3	456.7
2+20		
S.L.	2.6	457.4
⊕	2.3	457.7
N.L.	1.8	458.2
2+35		
N.L.	0.9	459.1
+3	1.2	458.8
+8	1.2	458.8
⊕	1.0	459.0
+5	1.1	458.9
S.L.	1.3	458.7



2+50	460.03		
S.L.		0.5	459.5
+5		0.2	459.8
⊕		0.2	459.8
N.L.		0.1	459.9
T.P. 6.58	466.53	0.08	459.95
2+70			
N.L.		5.0	461.5
+6		5.1	461.4
⊕		5.2	461.3
+6		5.3	461.2
S.L.		5.5	461.0
2+90			
S.L.		4.5	462.0
+5		4.3	462.2
⊕		4.2	462.3
N.L.		4.2	462.3
3+00			
N.L.		3.9	462.6
⊕		4.1	462.4
+7		4.2	462.3
S.L.		4.3	462.2
3+19			
S.L.		3.9	462.6
⊕		3.7	462.8
N.L.		3.4	463.1

3+21	466.53		
N.L.		3.6	462.9
⊕		3.9	462.6
+8		4.1	462.4
S.L.		4.6	461.9
3+2229			= W.L. El Carrito.
top S.cb		5.23	461.30
S.L. Pav.		5.39	461.14
⊕ Pav.		5.22	461.31
N.L. Pav		5.15	461.38
top N.cb		4.98	461.55
W.cb / inc E			
top N.cb		4.98	461.55
cut at N.L.		5.59	460.94
⊕		5.74	460.79
cut at S.L.		5.89	460.64
top S.cb		5.37	461.16

N-S Alley between El Cerrito  
and Redland 0+00 = N.L. E.W. Alley

56th St.  
466.53

0+00		
w.L.	11.8	454.7
±	11.2	455.3
E.L.	10.7	455.8
0+25		
E.L.	10.5	456.0
±	10.8	455.7
+6	10.8	455.7
w.L.	10.6	455.9
0+50		
w.L.	11.0	455.5
+6	10.7	455.8
±	10.5	456.0
+5	10.6	455.9
E.L.	10.3	456.2
0+75		
E.L.	9.8	456.7
+6	10.1	455.4
±	10.2	456.3
w.L.	10.9	455.6
1+00		
w.L.	10.3	456.2
±	9.4	457.1
+4	9.3	457.2
E.L.	8.9	457.6

1+25	466.53	
E.L.	8.0	458.5
+7	8.6	457.9
±	8.8	457.7
+6	9.3	457.2
w.L.	9.7	456.8
1+50		
w.L.	8.8	457.7
+5	8.9	457.6
±	8.6	457.9
E.L.	8.5	458.0
1+75		
E.L.	7.3	459.2
+5	7.7	458.8
+7	7.7	458.8
±	8.0	458.5
+6	9.6	457.9
w.L.	9.0	457.5
2+00		
w.L.	8.5	458.0
±	8.0	458.5
+8	7.5	459.0
E.L.	7.8	458.7

0	2+25	466.53		
w	E.L.		7.6	458.9
	⊕		7.9	458.6
	w.L.		8.4	458.1
0	2+50			
	w.L.		7.2	458.3
	⊕		7.7	458.8
	+6		7.8	458.7
w	E.L.		7.3	459.2
0	2+75			
w	E.L.		7.0	459.5
	+3		7.6	458.9
	⊕		7.3	459.2
	+5		7.8	458.7
E	w.L.		8.0	458.5
0	T.P. 213	461.37	7.29	459.24
E	3+00			
	w.L.		2.7	458.7
	⊕		2.6	458.8
w	E.L.		2.0	459.4
1	3+25			
w	E.L.		1.9	459.5
	⊕		2.0	458.4
	+3		2.3	459.1
E	+7		2.3	459.1
	⊕		2.6	458.8
	w.L.		3.1	458.3

8

3+50	461.37		
w.L.		3.6	457.8
⊕		3.1	458.3
+6		3.1	458.3
+7		2.7	458.7
E.L.		2.6	458.8
3+75			
E.L.		3.5	457.9
+4		3.7	457.7
+8		3.4	458.0
⊕		3.5	457.9
w.L.		3.8	457.6
3+86			
w.L.		3.9	457.5
+7		4.1	457.3
⊕		3.6	457.8
+6		4.1	457.3
E		3.7	457.7
4.000			
E.L.		3.6	457.8
+4		4.2	457.2
+8		4.1	457.3
⊕		4.3	457.1
w.L.		4.9	456.5

461.37

4+25		
w.L.	5.6	455.8
♀	5.1	456.3
+6	4.8	456.6
+7	4.5	456.9
E.L.	4.4	457.0
4+45		
E.L.	4.8	456.6
+4	5.3	456.1
♀	5.5	455.9
+3	5.2	455.7
w.L.	6.1	455.3
4+65		
w.L.	6.6	454.8
+5	5.9	455.5
♀	5.7	455.7
+2	5.7	455.7
+5	6.0	455.4
+8	5.5	455.9
E.L.	5.5	455.9
4+90		
E.L.	6.3	455.1
+5	6.8	454.6
♀	7.1	454.3
+5	7.3	454.1
w.L.	7.6	453.8

5+00

461.37

w.L.	8.2	453.2
+5	7.9	453.5
♀	7.2	454.2
+6	7.0	454.4
E.L.	6.6	454.8
5+22		
E.L.	7.1	454.3
+4	7.4	454.0
♀	7.3	454.1
w.L.	8.7	452.7
5+43		
w.L.	9.3	452.1
+3	8.9	452.5
♀	8.5	452.9
+3	8.5	452.9
E.L.	7.9	453.5
5+63		
E.L.	7.8	453.6
+6	8.3	453.1
+8	8.0	453.4
♀	8.1	453.3
w.L.	9.2	452.2

5+75

461.37

w.L.	9.3	452.1
+3	9.1	452.3
⊕	8.6	452.8
+2	8.2	453.2
+5	8.3	453.1
+7	7.9	453.5
E.L.	7.8	453.6

6+00 = s.L. Madison

E.L.	7.6	453.8
+3	7.5	453.9
+5	8.1	453.3
+8	7.7	453.7
⊕	7.9	453.5
+5	8.2	453.2
w.L.	8.2	453.2

T.P. 1.23 449.90 12.70 448.67

T.P. 0.55 437.79 12.66 437.24

0+00 = s.L. Madison

10

0+00

437.79

E.L.	1.0	436.8
+4	1.3	436.5
+8	1.4	436.4
⊕	1.5	436.3
+3	1.8	436.0
+5	1.8	436.0
w.L.	2.6	435.2

0+25

w.L.	4.3	433.5
⊕	3.7	434.1
+5	3.3	434.5
E.L.	2.7	435.1

0+45

E.L.	4.2	433.6
⊕	5.1	432.7
+7	5.3	432.5
w.L.	6.0	431.8

0+75

w.L.	8.0	429.8
+5	7.1	430.7
⊕	7.0	430.8
+3	6.7	431.1
E.L.	5.9	431.9

0+90	437.79		
E.L.		6.6	431.2
+3		7.0	430.8
±		7.8	430.0
+5		7.8	430.0
w.L.		8.8	429.0
1+00			
w.L.		9.6	428.2
+6		8.4	429.4
±		8.1	429.7
+4		7.9	429.9
E.L.		7.2	430.6
1+10			
10'E		7.4	430.4
E.L.		8.6	429.2
+6		9.3	428.5
+8		8.8	429.0
±		9.3	428.5
w.L.		11.0	426.8
10'W		12.3	425.5
T.P.	0.60	425.83	12.56
			425.23
1+35			
10'E		2.2	423.6
E.L.		3.1	422.7
±		3.7	422.1
+5		3.1	422.7
+7		4.0	421.8

1+35	425.83		
w.L.		4.0	421.8
10'W		4.6	421.2
1+45			
10'W		9.2	416.6
w.L.		8.1	417.7
±		7.0	418.8
E.L.		6.8	419.0
10'E		6.1	419.7
1+60			
10'E		12.2	413.6
E.L.		12.1	413.7
±		13.5	412.3
w.L.		14.2	411.6
10'W		14.7	411.1
1+65			
10'W		11.2	414.6
w.L.		10.9	414.9
±		9.8	416.0
E.L.		8.2	417.6
8'E		7.7	418.1
12'E		8.7	417.1
1+73			
10'E		4.1	421.7
3'E		4.0	421.8
E.L.		5.1	420.7

1+73	425.83		
EL+5		6.3	419.5
⊕		7.0	418.8
W.L.		8.3	417.5
10'W		7.9	417.9
T.P.	11.87	432.58	5.12 420.71
1+90			
10'W		10.2	422.4
W.L.		9.9	422.7
+6		9.3	423.3
⊕		10.0	422.6
+6		9.8	422.8
EL		9.2	422.4
10'E		7.3	422.3
2+00			
10'E		8.3	424.3
EL		8.3	424.3
⊕		7.6	425.0
W.L.		7.7	424.9
10'W		7.1	425.5
2+25			
W.L.		2.4	430.2
⊕		2.6	430.0
EL		2.4	430.2
T.P.	4.99	436.27	1.30 431.28

2+40	436.27		
EL		4.3	432.0
+5		4.4	431.9
⊕		4.2	432.1
W.L.		4.7	431.6
2+60			
W.L.		4.5	431.8
+5		4.4	431.9
⊕		4.0	432.3
+4		4.0	432.3
EL		4.0	432.3
2+85			
EL		3.9	432.4
⊕		4.2	432.1
W.L.		4.5	431.8
3+00			
W.L.		4.8	431.5
+7		4.4	431.9
⊕		4.3	432.0
EL		3.7	432.6
3+25			
EL		4.0	432.3
+4		4.3	432.0
⊕		4.4	431.9
+5		4.7	431.6
W.L.		4.9	431.4

3+50

436.27

w.L.	5.0	431.3
+7	5.0	431.3
±	4.6	431.7
+7	4.5	431.8
E.L.	4.1	432.2

3+75

E.L.	4.2	432.1
+5	4.8	431.5
±	4.8	431.5
+5	5.0	431.3
w.L.	4.6	431.7

4+00

w.L.	5.5	430.8
+5	5.2	431.1
±	5.1	431.2
+3	5.2	431.1
+7	4.8	431.5
E.L.	4.6	431.7

4+25

E.L.	5.0	431.3
+5	5.4	430.9
+6	5.7	430.6
+8	5.4	430.9
±	5.6	430.7
+4	6.0	430.3
+6	5.8	430.5

4+25

436.27

w.L.	6.0	430.3
4+31 = ± Sing. garage	3.8' w. earth floor	✓
	6.3	430.0
4+42 = ± Sing. garage	38' w. earth floor	✓
	6.4	429.9

4+50

w.L.	6.3	430.0
+5	6.2	430.1
±	5.7	430.6
+3	5.6	430.7
+5	5.8	430.5
+7	5.4	430.9
E.L.	5.1	431.2

4+75

E.L.	5.6	430.7
+5	6.0	430.3
±	6.2	430.1
w.L.	6.9	429.4

5+00

w.L.	7.4	428.9
+6	6.8	429.5
±	6.7	429.6
+4	6.7	429.6
E.L.	6.1	430.2



5+25

436.27

E.L.	6.5	429.8
+5	7.5	428.8
±	7.4	428.9
w.L.	7.9	428.4

5+50

w.L.	9.2	427.1
±	8.2	428.1
+5	8.0	428.3
E.L.	7.4	428.9

5+75

E.L.	7.8	428.5
+3	8.2	428.1
±	8.6	427.7
w.L.	9.7	426.6

6+00 = N.L. E-W Alley

w.L.	10.5	425.8
+6	10.0	426.3
±	9.4	426.9
+7	9.1	427.2
E.L.	8.8	427.5

T.P. 4.37 428.64 12.00 424.27

B.M. 11.69 428.68 11.69 416.95

B.M. 11.69 428.68 11.69 416.99

T.P. 0.93 417.52 12.09 416.59

T.P. 2.30 409.25 9.97 407.55

7.81 402.04

B.M. 1.55  
Set B.P. NW. El Cajon  
B.M. @ 55th St.

425.54

3.24

T.P. 12.66 437.99 0.21

T.P. 12.69 450.35 0.43

T.P. 10.47 460.10 0.64

B.M.  
Set B.P. NW. El Cajon  
B.M. @ El Carrizo.

4.29

2.68

417.00

416.99

422.31

422.30

425.33

437.56

449.61

455.82

457.42

X Sec. Orange Ave. from E.L. 54<sup>th</sup> to East  
40' wide

Secs taken 30' Roadway 5' cbs

50' tie out  
N.W. Orange  
E 54<sup>th</sup>

End.

B.M.	0.70	367.99	367.29	0-56	367.99	
0-15 = E. Edg Pav. on 54 <sup>th</sup>				1/4		5.0
S.L. Pav		3.46	364.53	cb		5.4
cb Pav		3.71	364.28	N.L.		5.5
1/4		4.09	363.90	0+00 = E.L. 54 <sup>th</sup>		
±		4.42	363.57	N.L.		5.5
1/4		4.80	363.19	+2		5.9
cb		5.15	362.84	cb		5.7
N.L.		5.37	362.62	1/4		5.3
0-08				±		4.9
N.L.		5.5	362.5	+4		4.7
cb		5.3	362.7	1/4		4.5
1/4		4.9	363.1	+3		4.3
±		4.6	363.4	+4		4.7
1/4		4.2	363.8	+5		6.8
+3		4.2	363.8	+6		6.7
cb		3.8	364.2	cb		4.5
S.L.		3.5	364.5	S.L.		3.8
0-56				0+10		
S.L.		3.7		S.L.		4.7
cb		5.5		cb		4.9
+1 tot (inside) 15" culvert		5.75		+1		5.0
+1		6.6		+1 <sup>3</sup>		7.5
+2		6.1		+2		7.5
+4		4.2		+3 <sup>4</sup>		5.1
1/4		4.4		1/4		5.4
±		4.7		±		5.7
						362.6
						362.3

367.99

0+10		
1/4	5.8	
+4	5.8	
cb	6.0	
+3	6.3	
N.L.	5.9	362.1
0+21		
N.L.	6.2	361.8
+2	6.3	
+3	6.7	
cb	6.5	
1/4	6.3	
±	6.0	362.0
+4	6.0	
+5	6.2	
+6	7.6	
+7	7.5	
1/4	6.2	361.8
+5	5.6	
cb	5.4	
S.L.	5.1	362.9

367.99

16

0+32		
S.L.	5.6	362.4
cb	5.7	
+4	6.0	
1/4	6.5	361.5
+0 <sup>±</sup>	7.6	
+1 <sup>±</sup>	7.5	
+2	6.5	
±	6.5	361.5
1/4	6.6	
+7	6.3	
cb	6.6	
N.L.	7.1	360.9
0+85		
N.L.	8.5	359.5
cb	8.1	
+1	7.9	
+5	7.3	
1/4	7.4	
±	7.4	360.6
1/4	7.8	360.2
+2 <sup>±</sup>	7.8	
+4 <sup>±</sup>	7.0	
cb	6.7	
S.L.	6.5	361.5

1+00		367.99
S.L.	6.5	361.5
cb	6.9	
+4	7.2	
+5	7.8	
1/4	8.0	360.0
+2 <sup>5</sup>	7.8	
+6 <sup>5</sup>	6.9	
⊕	7.0	361.0
+4	6.9	
1/4	7.3	
+2 <sup>5</sup>	7.2	
+4	7.8	
cb	8.1	
N.L.	8.2	359.8
1+30		
N.L.	8.4	359.6
+1	7.8	
+2	8.2	
+4	8.0	
cb	8.6	
+2	8.6	
+4	7.3	
+6	7.0	
1/4	7.1	360.7
+2	6.7	
+7	6.8	

		2.2 2.5 2.7			
				7.4 5.7 1.7	17
1+30		367.99			
⊕			6.6	361.4	
+4			8.0		
1/4			8.1	359.9	
+3			7.7		
+5			7.3		
cb			7.1		
S.L.			6.6	361.4	
1+60					
S.L.			6.4	361.6	
cb			6.7		
+3			7.0		
+5			7.7		
1/4			7.9	360.3	
+5			7.3		
⊕			7.5	360.5	
+3			7.3		
1/4			7.3	360.7	
+3			7.5		
+7			8.1		
cb			8.1		
+1			7.8		
+4			8.0		
N.L.			8.3	359.7	

	367.99	
2+00		
N.L.	7.7	360.3
+1	7.5	
cb	7.4	
$\frac{1}{4}$	7.0	361.0
+3	7.1	
+5	6.8	
$\frac{1}{2}$	7.0	361.00
+3	6.9	
+6	7.2	
$\frac{1}{4}$	7.1	360.9
+25	6.9	
cb	6.2	
S.L.	6.2	361.8
2+35		
SL.	5.7	362.3
cb	5.6	
+5	6.1	
$\frac{1}{4}$	6.8	361.2
+3	6.5	
$\frac{1}{2}$	6.4	361.6
+3	6.7	
+5	6.6	
$\frac{1}{4}$	6.6	361.4
+5	6.7	
+7	7.0	
cb	7.0	

	367.99	
2+35		
N.L.	6.6	361.4
T.P. 5.81	367.51	6.29
2+70		361.70
SL.	5.0	362.5
cb	5.0	
+2	5.2	
$\frac{1}{4}$	5.8	361.7
+3	5.5	
+5	5.7	
$\frac{1}{2}$	5.5	362.0
+3	5.7	
+4	5.9	
+5	5.7	
$\frac{1}{4}$	5.6	361.7
cb	6.1	
N.L.	6.5	361.0
3+00		
N.L.	6.2	361.3
+1	5.8	
cb	5.4	
$\frac{1}{4}$	5.2	362.5
+2	5.3	
+3	5.5	
+7	5.1	
$\frac{1}{2}$	5.2	362.3
+3	5.4	

367.51

3700		
¢+4	5.2	
¼	5.4	362.1
+25	5.2	
+4	4.8	
cb	4.5	
s.l.	4.5	363.8
3+20		
s.l.	4.3	363.2
cb	4.5	
+4	4.6	
¼	5.0	362.5
+3	4.8	
+5	5.1	
¢	4.7	362.8
+5	5.1	
¼	4.9	
+5	4.8	
cb	5.0	
+3	5.0	
+4	4.7	
N.L.	4.9	362.6

367.51

19

3+60		
N.L.	4.0	363.5
cb	4.1	
+1	4.1	
+3	3.7	
¼	3.8	
+3	3.7	
+6	4.1	
¢	4.0	363.5
+2	4.1	
+5	3.7	
¼	3.8	363.7
+1	3.9	
+3	3.1	
cb	3.2	
s.l.	3.0	364.5
3+85 = u.l. 55th		
s.l.	1.9	365.6
cb	2.4	
+5	2.3	
¼	2.5	365.0
+5	2.2	
¢	2.4	365.1
¼	2.4	
+4	2.5	
cb	2.9	
N.L.	3.2	364.3

367.51

4+00 = E 55th

N.L.	2.4	365.1
cb	2.3	
+3	1.9	
1/4	1.9	
E	1.9	365.6
1/4	1.7	365.8
cb	1.3	
S.L.	1.4	366.1
4+15 = E.L. 55th		
S.L.	0.2	367.3
cb	0.6	
1/4	1.0	366.5
+5	1.1	
E	1.4	366.1
+4	1.6	
1/4	1.4	
+4	1.3	
cb	1.4	
N.L.	1.7	365.8
T.P. 1270	379.53	0.68 366.83
Mail Pole N side B.M. Orange 90'E of 55th	6.85	372.68

20

4+45 379.53

N.L.	12.4	367.1
cb	12.1	
+5	12.2	
+6	12.5	
1/4	12.3	
+35	12.4	
E	12.0	367.5
+3	11.6	
1/4	11.5	368.0
cb	11.4	
S.L.	11.1	368.4
4+60		
S.L.	10.4	369.1
cb	10.6	
1/4	10.7	
+3	10.9	
E	11.4	368.1
+4	11.5	
+5	11.7	
1/4	11.3	
+6	11.5	
cb	11.3	
N.L.	11.1	368.4

4+90	379.53		
N.L.	9.2	370.3	
cb	9.1		
1/4	9.0		
+3	8.9		
+6	9.2		
±	9.1	370.4	
+6	9.0		
1/4	9.2		
+5	9.2		
cb	9.3		
+2	9.2		
+3	8.9		
S.L.	8.8	370.7	
5+00			
S.L.	8.1	371.4	
cb	8.3		
1/4	8.4		
±	8.4	371.1	
1/4	8.3		
cb	8.2		
+3	8.1		
N.L.	8.4	371.1	

5+27	377.53		
N.L.	6.2	373.3	
cb	6.3		
1/4	6.1		
+3	6.2		
+4	6.5		
+6	6.2		
±	6.4	373.1	
+1	6.2		
1/4	5.7		
+5	5.3		
cb	5.3		
S.L.	5.3	374.2	
5+50			
S.L.	3.5	376.0	
cb	3.7		
1/4	4.0		
±	4.3	375.2	
+2	4.4		
+3	4.7		
+4	4.4		
1/4	4.3		
cb	4.4		
N.L.	4.2	375.3	
T.P. 12.88	391.63	0.78	378.75



July 2-28  
London

22

5+85	391.63	
N.L	12.5	379.1
cb	12.5	
+5	12.7	
1/4	12.6	
+2	12.4	
+3	12.6	
♀	12.3	379.3
+3	12.1	
+5	11.8	
1/4	11.5	
cb	11.3	
S.L.	11.3	380.2
6+00		
S.L.	9.8	381.8
cb	9.8	
1/4	10.1	
♀	10.3	381.3
+6	10.5	
1/4	10.7	
+5	11.1	
cb	10.9	
+2	10.8	
N.L	10.8	380.8

6+36	391.63	
N.L	6.3	385.3
cb	6.2	
1/4	6.6	
+5	6.0	
♀	6.0	385.6
+5	5.8	
1/4	5.8	
cb	5.8	
S.L.	6.0	385.6
6+51		
S.L.	4.3	387.3
cb	4.4	
1/4	4.4	
♀	4.4	387.2
1/4	4.5	
cb	4.6	
N.L	4.6	387.0
6+75		
N.L.	2.6	389.6
cb	2.2	
1/4	2.3	
+3	2.1	
♀	2.2	389.4
1/4	2.2	
cb	2.1	
S.L.	2.1	389.5

		391.63		
T.P.	12.42	403.19	0.87	390.76
7+00				
N.L.			11.5	391.7
cb			11.5	
1/4			11.9	
+3			11.0	
+5			11.7	
±			11.0	392.2
+3			11.7	
1/4			11.1	
cb			10.9	
S.L.			11.1	392.1
7+11				
S.L.			10.3	392.9
cb			10.1	
1/4			10.0	
+6			9.9	
±			10.1	393.1
+2			10.3	
+4			10.1	
1/4			10.3	
cb			10.5	
N.L.			10.5	392.7

7+42		403.18		
N.L.			7.6	390.6
cb			7.6	
+3			7.6	
+5			7.8	
1/4			7.7	
+4			7.7	
±			7.7	395.5
+6			7.8	
1/4			7.9	
cb			7.9	
S.L.			7.8	395.4
7+72				
S.L.			4.9	398.3
cb			4.5	
+3			4.6	
1/4			4.6	
±			4.4	398.8
+2			4.5	
1/4			4.4	
cb			4.5	
N.L.			4.4	398.8

7+82	403.19		
N.L.		3.1	400.1
cb		3.4	
+5		3.6	
1/4		3.4	
⊕		3.5	399.6
+2		3.8	
+3		3.6	
1/4		3.6	
+3		3.5	
cb		3.4	
S.L.		4.0	399.2
8+10			
S.L.		2.5	400.7
cb		2.2	
+4		2.2	
1/4		1.7	
+2		1.3	
⊕		1.2	402.0
1/4		1.0	
cb		0.5	
N.L.		0.4	402.8
T.P.	12.77 415.88	0.07	403.11

8+36	415.88		
S.L.		11.1	404.8
cb		10.5	
1/4		9.8	
⊕		9.5	406.4
1/4		9.4	
cb		9.2	
N.L.		8.9	407.0
8+50			
N.L.		6.6	409.3
+3		6.8	
cb		7.1	
1/4		7.8	
⊕		8.2	407.7
1/4		8.6	
+5		9.2	
cb		9.6	
S.L.		10.3	405.6
8+79			
S.L.		8.3	407.6
cb		7.2	
+4		6.4	
1/4		6.1	
⊕		5.4	400.5
1/4		4.5	
cb		3.7	
N.L.		3.0	412.9

8+92	415.88	
N.L.	2.1	413.8
cb	3.2	
+2	3.7	
1/4	4.4	
£	5.1	410.8
1/4	5.8	
cb	7.0	
S.L.	8.2	407.7
9+00		
S.L.	8.4	407.5
+3	7.9	
cb	7.2	
1/4	5.9	
£	5.2	410.7
+5	4.7	
1/4	4.5	
+2	4.1	
cb	3.3	
+1	2.8	
N.L.	1.9	414.0

9+28	415.88	
N.L.	4.7	411.2
+4	4.9	
cb	5.2	
+3	5.8	
1/4	6.1	
£	6.8	409.1
1/4	7.4	
+3	7.8	
+5	8.4	
cb	9.0	
S.L.	9.7	406.2
9+50		
S.L.	11.7	404.2
cb	11.2	
1/4	10.1	
£	9.4	406.5
1/4	8.9	
+5	8.7	
cb	8.2	
+1	7.9	
N.L.	7.5	408.4

9+70 = End 415.88

N.L			9.9	406.0	
cb			11.0		
+6			11.7		
1/4			11.7		
±			11.9	404.0	
1/4			12.2		
cb			13.1		
S.L			13.6	402.3	
T.P	0.61	403.72	12.77	403.11	
T.P.	0.11	391.19	12.64	391.08	
T.P	1.13	379.68	12.64	379.55	
B.M.			6.98	372.70	372.68

Y Sec. 55<sup>th</sup> from Orange to S End.

30' wide 5' cbs 5' 45.

379.68

0+00 = 3L Orange

EL	12.4	367.3
cb	12.7	
1/4	13.0	366.7
±	13.3	366.4
1/4	13.8	
cb	14.5	
+2	14.4	
+4E	14.5	
W.L.	14.1	365.6
0+25		
W.L.	13.0	366.7
+3	12.9	
+4	13.4	
cb	13.0	
1/4	12.6	
±	12.4	367.3
+1	12.2	
+3	12.3	
1/4	12.4	367.3
+2	12.2	
cb	12.0	
EL	12.0	367.7

0+70	379.68		
E.L.	10.9	368.8	
+3	10.9		
+4	11.2		
cb	11.2		
1/4	11.1	368.6	
+3	11.0		
d	11.0	368.7	
1/4	11.5		
+1	11.6		
cb	12.2		
+2	11.6		
w.L	11.9	367.8	
1+00			
w.L	11.4	368.3	
+4	11.3		
cb	11.6		
+4	11.1		
1/4	11.1		
d	10.8	368.9	
1/4	10.6	369.1	
cb	10.7		
E.L	10.4	369.3	

1+30	379.68		
E.L	9.9	369.8	
cb	10.2		
1/4	10.2	369.5	
d	10.3	369.4	
+4	10.8		
1/4	10.6		
+1	10.6		
+2	10.9		
cb	11.2		
+2	10.7		
w.L	10.8	368.9	
1+55			
w.L	10.3	369.4	
+3	10.1		
cb	10.6		
1/4	10.1		
d	10.0	369.7	
1/4	9.9	369.8	
cb	9.7		
E.L	9.4	370.3	

2+00

379.68

E.L.	8.2	371.5
+4	8.4	
cb	8.7	
+1	8.8	
+4	8.6	
1/4	8.7	371.0
+1	8.8	
+4	8.5	
E	8.7	371.0
+2	8.8	
1/4	8.9	
cb	9.7	
+2	9.1	
w.L.	9.2	370.5
2+40		
w.L.	7.4	372.3
+3	7.3	
+4	6.2	
cb	8.4	
1/4	7.6	
+1	7.4	
E	7.3	372.4
+1	7.1	
1/4	7.2	372.5
cb	7.3	
E.L.	7.1	372.6

2+70

379.68

28

E.L.	5.9	373.8
cb	5.7	
1/4	5.5	374.2
+4	5.7	
E	5.8	373.9
+1	6.0	
1/4	6.0	
+1	6.3	
cb	6.7	
+2	5.8	
w.L.	6.0	373.7
3+00		
w.L.	3.9	375.8
+3	3.5	
cb	4.5	
+1	4.7	
1/4	4.3	
E	3.9	375.8
1/4	3.8	375.9
cb	4.0	
E.L.	4.3	375.4

379.68

3+50

E.L.	2.8	376.9
+3	2.7	
cb	2.1	
1/4	2.1	377.7
↓	2.2	377.5
+1	2.5	
1/4	2.3	
+1	2.5	
+4	2.6	
cb	2.1	
+1	1.7	
w.L.	1.3	378.4
3+75		
w.L.	0.8	378.9
+3	0.9	
cb	1.3	
+2	2.0	
1/4	1.9	
+2	1.6	
↓	1.6	378.1
+1	1.5	
1/4	1.5	378.2
cb	1.6	
+3	2.2	
E.L.	2.4	377.3

29

4+00

379.48

E.L.	2.2	377.5	
+3	2.0		
cb	1.5		
1/4	1.2	378.5	
+2	1.4		
↓	1.2	378.5	
+2	1.4		
1/4	1.3		
+4	1.7		
cb	1.0		
w.L.	0.2	379.5	
T.P. 2.24	381.21	0.61	379.07
4+25			
w.L.	1.6	379.7	
+2	1.7		
+3	2.3		
cb	2.5		
+1	3.1		
1/4	2.9		
+3	2.9		
↓	2.9	378.6	
+3	2.9		
1/4	2.7	378.6	
+4	2.9		
cb	3.3		
E.L.	3.9	377.4	



4+50

381.31

E.L.	4.2	377.1
+4	3.7	
cb	3.3	
1/4	2.8	378.5
+4	2.7	
⊕	2.8	378.5
+3	3.0	
1/4	3.0	
+4	3.0	
cb	2.5	
+1	2.1	
w.l.	1.7	379.6
4+55		
w.l.	1.6	379.7
+3	1.9	
cb	2.6	
+1	3.2	
1/4	3.2	
⊕	3.0	378.3
1/4	3.0	378.3
+3	3.3	
cb	4.0	
E.L.	4.5	376.8

5+00

381.31

E.L.	4.8	376.5
+4	4.6	
cb	4.1	
+2	3.6	
1/4	3.6	377.7
⊕	3.6	377.7
1/4	3.7	
+4	3.9	
cb	3.0	
+4	2.2	
w.l.	1.8	379.5
5+25		
w.l.	2.5	378.8
+3	3.0	
cb	3.7	
+1	4.4	
1/4	4.3	377.0
+3	4.5	
⊕	4.2	377.1
+4	4.5	
1/4	4.4	
+3	4.6	
cb	5.2	
E.L.	6.0	375.3

381.31  
 5+30  
 E.L. 6.5 374.8  
 +4 6.3  
 cb 5.5  
~~1/4~~  
 5.1 376.2  
 +2 5.3  
~~1/4~~  
 5.1 376.2  
 +2 5.4  
~~1/4~~  
 5.2  
 +3 5.4  
 cb 4.1  
 w.L. 3.2 378.1  
 5+75  
 w.L. 4.3 377.0  
 +3 4.8  
 cb 5.3  
 +1 6.5  
~~1/4~~  
 6.2  
 +3 6.4  
~~1/4~~  
 6.2 375.1  
 +3 6.4  
~~1/4~~  
 6.2 375.1  
 +4 6.5  
 cb 7.0  
 +3 7.7  
 E.L. 7.9 373.4

381.31 31  
 6+00  
 E.L. 8.5 372.8  
 +3 7.9  
 cb 7.5  
~~1/4~~  
 7.4 373.9  
~~1/4~~  
 7.4 373.9  
~~1/4~~  
 7.5  
 +4 7.7  
 cb 6.3  
 w.L. 5.6 375.7  
 6+25  
 w.L. 7.1 374.2  
 cb 7.9  
 +1 9.1  
~~1/4~~  
 9.1 372.2  
 +3 9.2  
~~1/4~~  
 9.2 372.5  
 +3 8.9  
~~1/4~~  
 8.6  
 cb 8.5  
 +4 9.1  
 E.L. 9.7 371.6

381.31

6+50

E.L.	10.6	370.7
cb	9.9	
+1	10.1	
1/4	10.0	371.3
⊕	10.3	371.0
+2	10.5	
1/4	10.3	
+2	10.7	
+4	10.7	
cb	10.1	
+1	9.4	
w.L.	8.7	372.6

6+75

w.L.	10.5	370.8
+3	10.8	
cb	11.2	
+1	12.1	
1/4	11.8	
+2	12.0	
+3	11.8	
⊕	11.7	369.6
1/4	11.5	369.8
cb	11.5	
+2	12.0	
E.L.	12.2	369.1

12.7

3.7

32

7+00

381.31

E.L.	12.6	368.7
cb	12.6	
1/4	12.8	368.5
+3	13.2	
⊕	13.0	368.3
+3	13.4	
1/4	13.1	
+4	13.5	
cb	12.7	
+1	12.4	
w.L.	12.5	368.8
7+11		
w.L.	13.4	366.9
cb	13.9	
+1	14.3	
+3	14.2	
1/4	13.7	
+4	14.0	
⊕	13.8	367.5
+1	13.5	
+4	13.7	
1/4	13.6	367.7
cb	13.1	
E.L.	13.1	368.2

381.31

7+24 = E.P.D

E.L.			14.1	367.2	
cb			14.0		
1/4			14.2	367.1	
+1			14.0		
+4			14.1		
±			14.0	367.3	
+1			13.8		
1/4			14.2		
cb			14.8		
+3			15.3		
w.l.			15.2	366.1	
T.P.	1.05	381.95	0.41	380.90	
T.P.	0.32	370.43	11.84	370.11	
B.M. Beginning			3.10	367.33	367.27
B.M.	2.20	369.49		367.29	
T.P.	8.64	366.53	11.60	357.89	
T.P.	12.96	379.42	0.07	366.46	
T.P.	13.10	392.32	0.20	379.22	
T.P.	12.89	405.08	0.13	392.19	
T.P.	5.35	407.12	3.31	401.77	
B.M.	Cor Mon NW El Cajon & 54th		5.25	401.87	402.06

El. for B.M. at 54th & Orange (Set by Walker)  
is 0.19 off of B.M.s on El Cajon.

STA	+	H.I.	-	Elev.
NE. Mon. Del Monte & Freude				139.31
	12.06	151.37		
T.P.			0.04	151.33
	12.76	164.09		
T.P.			0.72	163.37
	12.95	176.32		
T.P.			0.47	175.85
	10.26	186.11 ✓		

Freude 60' wide, 12' curbs, 9' Quarters

0+00	N. L. Coronado			
	E. L.	5.2		180.9
	E. Curb	5.8		180.3
	E 1/4	5.6		180.5
	¢	6.0		180.1
	W 1/4	6.3		179.5
	W. Curb	6.7		179.4
	W. L.	6.9		179.2
0+13				
	W. L.	13.0		173.1
	W. Curb	11.7		174.4
	W 1/4	9.3		176.8
	¢	6.6		179.5
	E 1/4	5.8		180.3
	E. Curb	5.8		180.3

JAEGER } July 26<sup>th</sup> 1928.  
Bailey }  
Clarent }  
STA

186.11

34

STA	+	H.I.	-	Elev.
E. L.			5.5	180.6
+ 11'			5.6	180.5
+ 24'			8.7	178.4
0+50				
+ 26'			9.4	176.7
E. L.			6.9	179.2
E. Curb			4.9	181.2
E 1/4 T.P.			1.20	184.91
Hand Level	10.00			194.91
¢			6.6	188.3
W 1/4			5.8	189.1
W. Curb			6.4	188.5
+ 10'			7.3	187.6
W. L.			9.0	185.9
+ 25'			10.9	184.0
0+70				
+ 30'			6.0	188.9
W. L.			3.5	191.4
W. Curb			3.5	191.4
+ 3.0'			3.0	191.9
W 1/4			6.2	188.7
+ 6'			7.7	186.2
¢			8.0	186.9
E 1/4			8.9	186.0
E. Curb			8.0	186.9

STA		19491		Elev.
	+	H.I.	-	
E.L.			11.8	183.1
+10'	Instr.	186.11 ✓	6.3	179.8
+25'			7.3	178.8
1+00				
+25'			6.1	180.0
E.L.			4.7	181.4
	T.P.		4.2	181.91
	Hand Level	12.0		193.91
E. Curb			10.6	183.3
E 1/4			6.1	187.8
⊕			3.0	190.9
W 1/4			3.1	190.8
W. Curb			4.3	189.6
W.L.			5.7	188.2
+10'			6.7	187.2
+25'			11.7	182.2
1+22				
+25'			19.4	174.5
W.L.			9.8	184.1
+7.0'			6.3	187.6
W. Curb			6.0	187.9
W 1/4			5.6	188.3
⊕			4.2	189.1
E 1/4			4.3	189.6
E. Curb			6.5	187.4

STA		193.91		Elev.
	+	H.I.	-	
+8'			11.7	182.2
	Instr.	186.11 ✓		
E.L.			4.7	181.4
+18'			5.4	180.7
+24'			7.4	178.7
	T.P.		10.25	175.86
		1.05		176.91 ✓
1+50	S.L. Alley			175.86
	Hand Level	12.80		188.66
+25'			11.4	177.3
+18'			10.0	178.7
E.L.			3.4	185.3
E. Curb			5.5	183.2
E 1/4			8.5	180.2
⊕			11.0	177.7
W 1/4			13.2	175.5
W. Curb			16.5	172.2
W.L.			17.4	171.3
+15'			20.0	168.7
1+60	⊕ Alley			176.91 ✓
+15'			10.5	166.4
W.L.			8.6	168.3
W. Curb			7.6	169.3
W 1/4			6.6	170.3
⊕			4.4	172.5

STA		+	H.I.	-	Elev.	STA.		+	H.I.	-	Elev.
E 1/4	T.P.			0.9	176.00	E. Curb				5.3	171.6
	Hand Level	7.3	183.30			E.L.				4.8	172.1
E. Curb				4.5	178.8	+26				3.1	173.8
+5'				2.8	180.5	+50				15.2	161.7
E.L.				4.6	178.7		T.P.			12.71	164.20
+13'				7.1	176.2			0.45	164.65 ✓		
+40'				4.4	178.9	2+50					
	Inst.		176.91 ✓			+50				7.40	157.25
1+77							T.P.			0.45	164.20
+30'				1.10	175.8		Hand Level	6.00	170.20		
E.L.				2.7	174.2	E.L.				4.40	165.8
E. Curb				4.0	172.9	E. Curb				4.4	165.8
E 1/4				5.6	171.3	E 1/4				5.0	165.2
⊕				6.4	170.5	⊕				5.7	164.5
W 1/4				7.3	169.6	W 1/4				6.6	163.6
W. Curb				7.9	169.0	W. Curb				7.7	162.5
W.L.				8.8	168.1	W.L.				9.6	160.6
+15'				9.5	167.4	+15'				12.0	158.2
2+00									164.65 ✓		
+25'				8.6	168.3	2+60					
W.L.				8.2	168.7	+15				7.9	156.7
W. Curb				7.6	169.3	E.L.				4.5	160.1
W 1/4				7.0	169.9	+7'				1.0	163.7
⊕				6.4	170.5	E. Curb				1.6	163.1
E 1/4				5.8	171.1	E 1/4				2.7	162.0

164.65

STA	+	H.I.	-	Elev
¢			3.1	161.5
W 1/4			3.5	161.2
W. Curb			5.0	159.7
W. L.			6.2	158.4
+15'			10.1	154.6
2+92				
+15'			4.2	160.5
E. L.			10.0	154.6
+7'			11.3	153.4
E. Curb			9.7	155.0
E 1/4			10.8	153.9
¢			10.0	154.6
W 1/4			10.3	154.4
W. Curb			11.5	153.2
W. L.			12.8	151.8
+15'			15.0	149.7
3+00				
+15'			16.3	148.4
W. L.			14.2	150.4
W. Curb			13.0	151.7
W 1/4			11.7	153.0
¢			12.7	152.0
E 1/4			11.8	152.9
E. Curb			11.8	152.9
E. L.			7.6	157.0

164.65

37

STA	+	H.I.	-	Elev
+15'			3.5	161.2
3+10 S. L. Santa Cruz				
+15'			5.5	159.2
E. L.			8.3	156.3
E. Curb			12.0	152.7
E 1/4			14.8	149.9
¢			15.1	149.5
W 1/4			16.1	148.6
W. Curb			16.0	148.7
W. L.			16.3	148.3
+15'			16.5	148.2
3+26				
+18'			18.8	145.9
W. L.			20.9	143.7
W. Curb			21.1	143.6
W 1/4			19.6	145.1
¢			17.4	147.2
E 1/4			15.6	149.1
E. Curb			11.0	153.7
E. L.			9.5	155.1
+15'			8.4	156.3
T.P.			13.10	151.55
	1.53	153.08 ✓		
3+30 S. Curb Santa Cruz				
Hand Level	6.60	158.15		



STA	+	158.15 H.I.	-	Elev.
+15'			2.7	155.5
E.L.			3.6	154.6
E. Curb			6.2	152.0
+7'	Instr.	153.08	2.3 ✓	150.8
E 1/4			3.7	149.4
+3'			5.2	147.9
⊕			6.0	147.1
W 1/4			8.0	145.1
W. Curb			9.7	143.4
W.L.			11.4	141.7
+15'			12.2	140.9
+30'			7.2	145.9
3+40 S 1/4 Santa Cruz				
+15'			1.4	151.7
E.L.			4.0	149.1
E. Curb			2.8	150.3
E 1/4			4.0	149.1
⊕			4.6	148.5
W 1/4			3.6	149.5
W. Curb			4.3	148.8
W.L.			5.0	148.1
+15'			6.0	147.1
3+50 ⊕ Santa Cruz				
+15'			5.5	147.6
W.L.			4.5	148.6

STA	+	153.08 H.I.	-	Elev.
W. Curb			3.8	149.3
W 1/4			3.3	149.8
⊕			3.0	150.1
E 1/4			2.4	150.7
E. Curb			1.9	151.2
E.L.			1.3	151.8
+15'			0.1	153.0
3+60 N 1/4 Santa Cruz				
+15'			0.7	152.4
E.L.			1.9	151.2
E. Curb			2.3	150.8
E 1/4			2.6	150.5
⊕			3.2	149.9
W 1/4			3.8	149.3
W. Curb			5.7	147.4
W.L.			5.0	148.1
+15'			7.8	145.3
3+70 N. Curb Santa Cruz				
+15'			9.0	144.1
+8'			7.0	146.1
+3'			9.8	143.3
W.L.			9.2	143.9
+7'			5.1	148.0
W. Curb			4.6	148.5
W 1/4			4.6	148.5

153.08

STA	+	H.I.	-	Elev.
ϕ			5.2	147.9
E 1/4			5.0	148.1
E. Curb			4.4	148.7
E.L.			3.1	150.0
+15'			1.5	151.6
3+90 = 0+00	N.L.	Santa Cruz.		
+15'			13.5	139.6
W.L.			11.3	141.8
W. Curb			6.0	147.1
W 1/4			7.8	145.3
ϕ			8.3	144.8
E 1/4			8.8	144.3
E. Curb			6.2	146.9
E.L.			4.4	148.7
+20'			2.0	151.1
0+44				
+23'			7.1	146.0
+18'			11.1	142.0
+13'			11.4	141.7
E.L.			10.7	142.4
+7'			8.2	144.9
E. Curb			8.2	144.9
E 1/4			9.2	143.9
ϕ			11.0	142.1
W 1/4			11.3	141.8

153.08

39

STA	+	H.I.	-	Elev.
W. Curb			12.8	140.3
W.L.			13.6	139.5
+15'			15.7	137.4
0+50				
+15'			16.0	137.1
W.L.			13.8	139.3
W. Curb			12.7	140.4
W 1/4			11.7	141.4
ϕ			10.7	142.4
E 1/4			9.3	143.8
+6'			9.0	144.1
E. Curb			12.3	140.8
E.L.			12.2	140.9
+9'			11.6	141.5
+13'			8.4	144.7
T.P.			10.41	142.67
	2.99	145.66		
0+70				
+15'			8.2	137.5
+12'			9.2	136.5
W.L.			9.1	136.6
W. Curb			8.5	137.2
W 1/4			7.9	137.8
ϕ			7.6	138.1
E 1/4			6.7	139.0

STA	+	H.I.	-	Elev.
		145.66		
E. Curb			3.0	142.7
E.L.			3.0	142.7
			1.70	143.96
Hand Level	7.0	150.96		
+15'			5.6	145.4
1+00				
+15'			6.0	145.0
E.L.			7.0	143.9
	Instr.	145.66 ✓		
E. Curb			2.7	143.0
E 1/4			3.3	142.4
ϕ			4.8	140.9
W 1/4			4.5	141.2
W. Curb			6.5	139.2
W.L.			7.5	138.2
+15'			9.0	136.7
1+40	S.L. Alley			
+15'			9.9	135.8
W.L.			8.9	136.8
W. Curb			7.6	138.1
W 1/4			5.8	139.9
ϕ			6.2	138.5
E 1/4			4.8	140.9
E. Curb			4.3	141.4
E.L.			4.2	141.5

STA	+	H.I.	-	Elev.
		145.66		
				40
			3.3	142.4
+20'			7.1	138.6
+30'				
1+50	ϕ Alley			
+16'			8.7	137.0
+9'			4.5	141.2
E.L.			4.5	141.2
E. Curb			5.0	140.7
E 1/4			5.3	140.4
ϕ Top Sewer M.H.			5.89	139.77
W 1/4			7.1	138.6
W. Curb			7.6	138.1
W.L.			8.6	137.1
+15'			9.9	135.8
1+60	N.L. Alley			
+15'			10.2	135.5
W.L.			8.7	137.0
W. Curb			7.4	137.3
W 1/4			6.4	138.3
ϕ			5.8	139.9
E 1/4			5.6	140.1
E. Curb			5.0	140.7
E.L.			4.8	140.9
+6'			5.2	140.5
+16'			9.3	136.4

145.66

STA	+	H.I.	-	Elev.
1+76				
+15'			3.4	1423
+5'			4.3	1414
E.L.			9.0	1367
+7'			12.3	1334
E. Curb			14.0	1317
+1'			10.0	1357
E 1/4			6.7	1390
ϕ			6.9	1388
W 1/4			7.7	1380
W. Curb			7.8	1379
W.L.			8.8	1369
+15'			10.0	1357
2+00				
+15'			10.8	1349
W.L.			8.7	1370
W. Curb			8.1	1376
W 1/4			8.6	1371
ϕ			8.6	1371
+5'			7.3	1384
E 1/4			14.7	1310
+6'			13.5	1322
E. Curb			11.4	1343
+7'			7.0	1387
E.L.			6.1	1396

145.66

STA	+	H.I.	-	Elev.
+15'			5.1	1406
2+31				
+15'			8.2	1375
E.L.			8.4	1373
+7'			8.4	1373
E. Curb			9.5	1362
E 1/4			12.0	1337
ϕ			16.3	1294
W 1/4			16.2	1295
+5'			10.9	1348
W. Curb			10.10	13556
W.L.			11.40	134.3
+15'			12.7	133.0
T.P.			11.76	133.90
	7.65	141.55		
2+55				
+15'			11.3	1303
+3			10.3	1313
W.L.			14.4	127.2
+7'			15.4	126.2
W. Curb			14.9	126.7
W 1/4			11.4	1302
+6'			7.7	133.9
ϕ			7.6	134.0
E 1/4			6.8	1348

141.55

STA	+	H.I.	-	Elev.
E. Curb			5.2	136.4
E.L.			3.6	138.0
+15'			1.8	139.8
2+81				
+15'			2.2	139.4
E.L.			4.0	137.6
E. Curb			5.6	136.0
E 1/4			6.8	134.8
☉			7.5	134.1
W 1/4			8.2	133.4
W. Curb			9.4	132.2
W.L.			12.6	129.0
+15'			17.7	123.9
T.P.	BM. 139.31		2.22	139.33 ✓
				139.31 ✓
	1.86	141.17		
3+00	S.L. Del Monte			
W.L.			11.1	130.1
W. Curb			9.0	132.2
W 1/4			8.1	133.1
☉			6.0	135.2
E 1/4			4.5	136.7
E. Curb			2.8	138.4
E.L.			2.0	139.2
+15'			1.3	139.9

141.17

42

STA	+	H.I.	-	Elev.
3+20	S. Curb Del Monte			
W.L. Curb Top			11.90	129.27
" Bot. (Pavement)			12.51	128.66
W. Curb			10.5	130.7
W 1/4			9.5	131.7
☉			6.8	134.4
E 1/4			5.9	135.3
E. Curb			4.4	136.8
E.L.			3.2	138.0
+15'			2.0	139.2
3+30	S 1/4 Del Monte			
W.L. Pavement			12.04	129.1
W. Curb			10.7	130.5
W 1/4			9.7	131.5
☉			7.4	133.8
E 1/4			5.6	135.6
E. Curb			4.2	137.0
E.L.			3.1	138.1
+15'			1.8	139.4
3+40	☉ Del Monte			
W.L. Pavement			11.89	129.28
W. Curb			11.0	130.2
W 1/4			9.5	131.7
☉			7.1	134.1
E 1/4			5.4	135.8

141.17

STA	+	H.I.	-	Elev.
E. Curb			4.2	137.0
E.L.			2.9	138.3
+15'			1.0	140.2
3+50	N 1/4 Del Monte			
W.L. Pavement			11.79	129.38
W. Curb			10.7	131.5
W 1/4			9.4	131.8
±			6.9	134.3
E 1/4			5.0	136.2
E. Curb			4.0	137.2
E.L.			2.1	139.1
+15'			0.5	140.7
3+60	N. Cub Del Monte			
W.L. Curb	Top		11.01	130.16
	Bot (Pavement)		11.83	129.34
W. Curb			10.0	131.2
W 1/4			9.1	132.1
±			6.2	135.0
E 1/4			6.2	135.0
E. Curb			4.7	136.5
E.L.			4.9	136.3
+15'			0.8	140.4
3+80 = 0+00	N.L. Del Monte			
+15'			11.2	130.0
W.L.			9.5	131.7

141.17

43

STA	+	H.I.	-	Elev.
W. Curb			8.2	133.0
W 1/4			6.9	134.3
±			6.3	134.9
E 1/4			5.4	135.8
E. Curb			4.8	136.4
E.L.			2.4	138.8
+15'			0.4	140.8
0+14				
+25'			0.8	140.4
E.L.			3.6	137.6
E. Curb			4.0	137.2
E 1/4			5.2	136.0
±			7.3	133.9
W 1/4			6.6	134.6
W. Curb			7.1	134.1
W.L.			9.1	132.1
+15'			10.4	130.8
0+50				
+15'			9.4	131.8
W.L.			8.4	132.8
W. Curb			7.9	133.3
W 1/4			7.5	133.7
±			6.6	134.6
E 1/4			4.9	136.3
E. Curb			9.2	132.0

141.17

STA	+	H.I.	-	Elev.
			7.7	133.5
			5.0	136.2
			2.7	138.5
0+76				
			3.1	138.1
			4.4	136.8
			5.8	135.4
			8.1	133.1
			6.5	134.7
			7.8	133.4
			7.8	133.4
			8.9	132.3
			9.6	131.6
1+00				
			10.9	130.3
			8.9	132.3
			7.8	133.4
			7.6	133.6
			8.4	132.8
			6.6	134.6
			5.4	135.8
			4.4	136.8
			3.2	138.0
1+40				
			2.6	138.6

141.17

44

STA	+	H.I.	-	Elev.
			4.3	136.9
			5.3	135.9
			6.5	134.7
			7.6	133.6
			8.4	132.8
			9.1	132.1
			10.3	130.9
			12.0	129.2
1+50				
			12.7	128.5
			10.0	131.2
			8.9	132.3
			7.8	133.4
			6.8	134.4
			6.0	135.2
			5.5	135.7
			4.3	136.9
			2.7	138.5
1+60				
			2.7	138.5
			4.3	136.9
			5.4	135.8
			6.4	134.8
			7.4	133.8
			8.7	132.5

14117

144.08

STA	+	H.I.	-	Elev.
W. Curb			9.9	131.3
W. L.			11.8	129.4
+15'			14.0	127.2
T.P.			0.92	140.25 ✓
	3.83	144.08		
2+00				
15'			5.3	138.8
E.L.			7.1	137.0
E. Curb			8.4	135.7
E 1/4			10.2	133.9
¢			10.8	133.3
W 1/4			11.3	132.8
W. Curb			12.4	131.7
W. L.			14.8	129.3
+15'			18.4	125.7
+25'			18.5	125.6
2+31				
+15'			15.3	128.8
W. L.			14.7	129.4
W. Curb			15.0	129.1
W 1/4			14.4	129.7
¢			11.9	132.2
E 1/4			10.9	133.2
E. Curb			8.9	135.2
E. L.			7.8	136.3

STA	+	H.I.	-	Elev.
+20'			1.1	143.0
2+50				
+16'			0.8	143.3
E. L.			6.0	138.1
E. Curb			8.4	135.7
E 1/4			10.2	133.9
¢			11.0	133.1
W 1/4			12.0	132.1
W. Curb			11.8	132.3
W. L.			10.7	133.4
+15'			12.2	131.9
3+00 S. L. Naragansett				
W. L.			5.4	138.7
W. Curb Top			4.96	139.12
" Bot. Pavement			5.48	138.60
W 1/4			4.95	140.13
¢			4.47	139.61
E 1/4			4.34	139.74
E. Curb Bot			4.45	139.63
" Top			3.83	140.25
E. L.			2.0	142.1
3+80 = 0+00 N. L. Naragansett				
E. L.			0.4	143.7
E. Cub Top			0.98	143.10
" Bot. Pavement			1.69	142.39

Naragansett is paved



STA	+	H.I.	-	Elev.
		144.08		
E 1/4	Pavement		1.69	142.39
¢	"		1.91	142.17
W 1/4	"		2.2	141.9
W. Curb	Bot. Pavement		2.55	141.43
"	Top		1.95	142.13
W. L.			3.5	140.6
	T.P. sec 19. 45			140.25
	12.35	152.60		
0+03				
+15			0.3	152.3
E. L.			1.5	151.1
E. Curb			2.5	150.1
E 1/4			3.4	149.2
¢			4.1	148.5
W 1/4			4.8	147.8
W. Curb			5.9	146.7
W. L.			6.9	145.7
+15'			7.8	144.8
	T.P.		0.48	152.12
	12.86	164.98 ✓		
0+50				
+25			7.9	157.1
E. L.			10.0	155.0
E. Curb			11.0	154.0
E 1/4			11.8	153.2

STA	+	H.I.	-	Elev.
		164.98		
		165.00		
		46		
¢			12.7	152.3
W 1/4			13.9	151.1
W. Curb			15.3	149.7
W. L.			15.8	149.2
+25'			19.0	146.0
1+00				
+25'			15.0	150.0
W. L.			12.0	153.0
W. Curb			11.0	154.0
W 1/4			10.0	155.0
¢			8.0	157.0
E 1/4			7.2	157.8
E. Curb			6.2	158.8
E. L.			5.4	159.6
+25'			3.2	161.8
1+40	S. L. Alley			
+25'			1.3	153.7
E. L.			4.1	160.9
E. Curb			5.0	160.0
E 1/4			5.6	159.4
¢			6.2	158.8
W 1/4			7.5	157.5
W. Curb			8.6	156.4
W. L.			10.5	154.5
+25'			14.2	150.8

STA.		16498	16500	
	+	H.I.	-	Elev.
1+50	⊥ Alley			
+25'			2.2	162.8
E.L.			4.5	160.5
E. Curb			5.4	159.6
E 1/4			6.1	158.9
⊥			6.0	159.0
W 1/4			7.1	157.9
W. Curb			8.3	156.7
W.L.			10.0	155.0
+25'			14.8	150.2
1+60	N.L. Alley			
+25'			0.0	165.0
E.L.			3.1	161.9
E. Curb			5.3	159.7
E 1/4			6.3	158.7
⊥			6.3	158.7
W 1/4			7.1	157.9
W. Curb			8.2	156.8
W.L.			9.6	155.4
+25'			13.2	151.8
2+00				
+25'			14.7	150.3
W.L.			10.8	154.2
W. Curb			10.0	155.0
W 1/4			9.3	155.7

STA.		16498	16500	47
	+	H.I.	-	Elev.
			9.2	155.8
			11.3	153.7
			8.5	156.5
			3.4	161.6
			0.7	164.28
			6.30	170.58
			5.4	165.2
			6.5	164.1
			8.0	162.6
				Instrument 164.98 ✓
			7.1	157.9
			12.8	152.2
			14.5	150.5
			14.5	150.5
			14.7	150.3
			13.5	151.5
			14.3	150.7
			19.0	146.0
			12.65	152.33
			0.57	152.90 ✓
				2+68
			6.7	146.2
			6.0	146.9
			12.0	140.9

152.90

166.10

48

STA	+	H.I.	-	Elev.
+4			13.2	139.7
W. Curb			8.0	144.9
W 1/4			6.8	146.1
¢			3.8	149.1
E 1/4			3.9	149.0
E. Curb			3.4	149.5
T.P.			0.0	152.90
Hand Level	13.20	166.10		
E.L.			10.2	155.9
+6'			6.8	159.3
+25'			4.3	161.8
2+88		152.90		
+25'		42.0	10.9	155.2
+11'		36.2	16.7	149.4
W.L.		38.6	14.3	151.8
+7'		43.4	9.5	157.6
W. Curb		44.0	8.9	157.2
W 1/4		42.8	10.1	156.0
¢		46.2	6.7	159.4
E 1/4		47.6	5.3	160.8
E. Curb		47.4	5.5	160.6
E.L.		45.4	7.5	158.6
+25'		48.4	4.5	161.6

what HI

Niagara is Paved

STA	+	H.I.	-	Elev.
2+99		152.90		
+25'		47.8	5.1	161.0
E.L.		46.8	6.1	160.0
E. Curb		46.9	6.0	160.1
E 1/4		46.8	6.1	160.0
¢		47.0	5.9	160.2
W 1/4		43.2	9.7	156.4
W. Curb		40.0	12.9	153.2
W.L.		38.0	14.9	151.2
+13'		34.6	18.3	147.8
+25'		40.2	12.7	153.4
T.P.			12.39	140.51
		3.59		144.10 ✓
3+00		S.L. Niagara		
W.L.			7.1	136.0
W. Curb Top			7.50	136.60
Bottom (Pavement)			8.14	135.96
W 1/4			7.82	136.28
¢			7.47	136.63
E 1/4			7.30	136.80
E. Curb Bott.			7.21	136.89
Top			6.51	137.59
E.L.			6.32	137.78

STA.	+	H.I.	-	Elev.
3+80 = 0+00		144.10		
		N.L. Niagara		
E.L.			10.15	133.95
E. Curb Top			10.83	133.27
✓ Bott. Pavement			11.48	132.62
E 1/4			11.56	132.54
¢			11.66	132.44
W 1/4			12.08	132.02
W. Curb Bott.			12.65	131.45
✓ Top			12.04	132.06
W.L.			11.86	132.24
0+00				
+6'			0.4	143.7
+2'	NE. Mon.	142.75	1.39	142.71
	"	"		142.75
		1.39	144.14 ✓	
E.L.			2.0	142.1
E. Curb			5.8	138.3
E 1/4			9.5	134.6
¢			11.6	132.5
W 1/4			12.0	132.1
W. Curb			12.2	131.9
W.L.			12.2	131.9
+15'			13.1	131.0
	T.P.		13.01	131.13
		7.36	138.49 ✓	

STA.	+	H.I.	-	Elev.
0+50		138.49		
+15'			12.0	126.5
W.L.			10.7	127.8
W. Curb			10.5	128.0
W 1/4			9.7	128.8
¢			9.0	129.5
+6'			7.8	130.7
E 1/4			9.4	129.1
+3'			11.2	127.3
+6'			5.4	133.1
E. Curb			5.1	133.4
E.L.			3.2	135.3
+15'			0.8	137.7
+15'			7.6	130.9
E.L.			9.9	128.6
E. Curb			10.9	127.6
+5'			11.7	126.8
E 1/4			15.5	123.0
¢			14.4	124.1
W 1/4			14.9	123.6
W. Curb			15.8	122.7
W.L.			16.3	122.2
+15'			17.4	121.1
	T.P.		12.54	125.95

STA		+	H.I.	-	Elev.	STA		+	H.I.	-	Elev.
		3.21	129.16 ✓						129.16		
1+40	S.L. Alley										
+15'				16.8	112.4	W 1/4				11.2	118.0
W.L.				14.9	114.3	¢				10.5	119.7
W. Curb				12.8	116.4	E 1/4				9.8	119.4
W 1/4				9.9	119.3	E. Curb				7.9	121.3
¢				9.2	120.0	E.L.				5.6	123.6
E 1/4				8.4	120.8	+15'				3.2	126.0
E. Curb				6.9	123.3	T.P.				12.19	116.97
E.L.				5.1	124.1		8.11		125.08 ✓		
+15'				3.4	125.8	2+00					
1+50	¢ Alley					+15'				1.6	123.5
+15'				3.1	126.1	E.L.				4.1	121.0
E.L.				5.4	123.8	E. Curb				7.6	117.5
E. Curb				7.5	121.7	E 1/2				8.1	117.0
E 1/4				9.0	120.2	¢				9.7	115.4
¢				9.8	119.4	W 1/4				10.5	114.6
W 1/4				10.3	118.9	W. Curb				12.6	112.5
W. Curb				13.6	115.6	W.L.				14.3	110.8
W.L.				15.5	113.7	+15'				15.8	109.3
+15'				17.2	112.0	2+50					
1+60	N.L. Alley					+15'				18.0	107.1
+15'				17.4	111.8	W.L.				16.2	108.9
W.L.				16.0	113.2	W. Curb				14.1	111.0
W. Curb				13.7	115.5	W 1/4				14.3	110.8
						¢				13.2	111.9
						E 1/4				12.1	113.0

125.08

STA	+	H.I.	-	Elev.
E. Curb			9.4	116.7
E. L.			6.5	118.6
+15'			4.4	120.7
2+97				
+15'			10.3	114.8
E. L.			11.5	113.6
T.P.			10.57	114.51
	1.22	115.73	✓	
E. Curb			7.4	108.3
E 1/4			7.8	107.9
¢			8.55	107.2
W 1/4			9.05	106.68
W. Curb			9.05	106.68
W. L.			9.55	106.2
+15'			11.10	104.63
3+00	S. L.	Newport		
+15'			11.5	104.2
W. L.			9.55	106.18
W. Curb Top			9.15	106.58
✓ Bot. (Parapet)			9.75	105.98
W 1/4			9.31	106.42
¢			8.93	106.80
E 1/4			8.92	106.81
E. Curb Bot.			8.96	106.77
✓ Top			8.16	107.57

Newport is Pared.

51

115.73

STA	+	H.I.	-	Elev.
E. L.			7.75	107.98
+15'			6.55	109.18
3+80 = 0+00	N. L.	Newport		
+15'			12.4	103.3
W. L.			11.5	104.2
W. Curb Top			11.07	104.66
✓ Bot. (Parapet)			11.74	103.99
W 1/4	"		11.39	104.34
¢	"		11.15	104.58
E 1/4	"		11.19	104.54
E. Curb Bot.	"		11.30	104.43
✓ Top			10.63	105.10
E. L.			8.6	107.1
+15'			7.25	108.48
0+02				
+15'			5.85	109.88
E. L.			7.75	108.0
E. Curb			8.85	106.88
E 1/4			9.05	106.78
¢			10.45	105.2
W 1/4			10.95	104.78
W. Curb			10.6	105.1
W. L.			10.9	104.8

115.73

STA	+	H.I.	-	Elev.
0+50				
+15'			11.45	104.28
W.L.			10.80	104.9
W. Curb			11.6	104.1
W $\frac{1}{4}$			12.3	103.4
¢			12.3	103.4
E $\frac{1}{4}$			12.15	103.58
E. Curb			11.65	104.1
E.L.			11.25	104.5
+15'			9.8	105.9
T.P.	see Pg. 51			114.51
	0.00	114.51		
T.P.			12.14	102.37
	2.56	104.93		
1+00				
+15'			0.35	104.58
E.L.			1.8	103.1
E. Curb			2.55	102.4
E $\frac{1}{4}$			3.7	101.2
¢			4.55	100.4
W $\frac{1}{4}$			5.0	99.9
W. Curb			5.3	99.6
W.L.			6.3	98.6
+15'			7.5	97.4

104.93

52

STA	+	H.I.	-	Elev.
1+40	S.L. Alley			
+15'			8.7	96.2
W.L.			7.15	97.8
W. Curb			6.6	98.3
W $\frac{1}{4}$			6.0	98.9
¢			5.3	99.6
E $\frac{1}{4}$			4.4	100.5
E. Curb			3.25	101.68
E.L.			2.25	102.7
+15'			1.10	103.83
1+50	¢ Alley			
+15'			1.25	103.68
E.L.			2.85	102.1
E. Curb			3.8	101.1
E $\frac{1}{4}$			4.5	100.4
¢			5.3	99.6
W $\frac{1}{4}$			6.15	98.78
W. Curb			6.75	98.18
W.L.			8.05	96.9
+15'			9.1	95.8
1+60	N.L. Alley			
+15'			9.9	95.0
W.L.			7.9	97.0
W. Curb			7.1	97.8
W $\frac{1}{4}$			6.6	98.3

104.93

STA	+	H.I.	-	Elev.
¢			5.8	99.1
E 1/4			4.9	100.0
E. Curb			4.1	100.8
E. L.			3.05	101.9
+ 15'			1.4	103.5
2+00				
+ 15'			1.3	103.6
E. L.			3.3	101.6
E. Curb			4.65	100.28
E 1/4			5.85	99.08
¢			6.8	98.1
W 1/4			7.4	97.5
W. Curb			7.9	97.0
W. L.			9.0	95.9
+ 15'			11.2	93.7
2+50				
+ 15'			10.9	94.0
W. L.			9.2	95.7
W. Curb			7.7	97.2
W 1/4			7.25	97.68
¢			6.8	98.1
E 1/4			5.95	98.98
E. Curb			5.35	99.58
E. L.			2.9	102.0
+ 15'			0.0	104.9

104.93

53

STA	+	H.I.	-	Elev.
2+98			1.55	
+ 15'			1.55	103.38
E. L.			2.7	102.2
E. Curb			4.2	100.7
E 1/4			8.05	96.88
¢			8.4	96.5
W 1/4			8.7	96.2
W. Curb			8.35	96.58
W. L.			9.35	95.5
+ 6'			10.0	94.9
T.P.			8.93	96.00
G. 13		102.13 ✓		
3+00				
S. L. Santa Monica				
+ 15'				
E. L.			3.85	98.3
E. Curb Top			5.04	97.09
✓ Bot. Pavement			5.78	96.35
E 1/4			5.75	96.38
¢			5.88	96.25
W 1/4			6.16	95.97
W. Curb Bot.			6.72	95.41
✓ Top			6.23	95.90
W. L.			6.50	95.63
+ 15'				

Santa Monica is Paved



102.13

102.13

STA	+	H.I.	-	Elev.
3+80 = 0+00		N.L. Santa Monica		
+15'				
W.L.			7.2	94.9
W. Curb Top			7.10	95.03
✓ Bottom (Pavement)			7.63	94.50
W 1/4		"	7.17	94.96
¢		"	6.86	95.27
E 1/4		"	6.84	95.29
E. Curb Bott.		"	6.88	95.25
✓ Top			6.13	96.00
E.L.			5.10	97.0
+15'				
0+06				
+15'			1.6	100.5
E.L.			3.4	98.7
E. Curb			6.05	96.08
E 1/4			6.7	95.4
¢			7.15	95.0
W 1/4			7.15	95.0
W. Curb			7.0	95.1
W.L.			7.0	95.1
+15'			9.65	92.5
0+50				
+15'			10.2	91.9
W.L.			9.0	93.1

STA	+	H.I.	-	Elev.
W. Curb			7.9	94.2
W 1/4			7.25	95.0
¢			6.8	95.3
E 1/4			6.55	95.6
E. Curb			4.8	97.3
E.L.			2.8	99.3
+15'			0.45	101.7
+00				
+15'			3.1	99.0
E.L.			4.5	97.6
E. Curb			6.8	95.3
E 1/4			8.35	93.8
¢			8.6	93.5
W 1/4			9.25	92.9
W. Curb			10.2	91.9
W.L.			11.55	90.6
+15'			12.55	89.5
+40 S.L. Alley				
+15'			15.3	86.9
W.L.			14.0	88.1
W. Curb			13.1	89.0
W 1/4			12.4	89.7
¢			11.9	91.2
E 1/4			10.8	91.3
E. Curb			10.25	91.8

102.13

STA	+	H.I.	-	Elev.
			9.2	929
	+15'		8.2	939
1+50	⊥ Alleg			
	+15'		9.0	931
	E.L.		9.5	926
	E. Curb		10.2	919
	E 1/4		10.8	913
	⊥		11.35	908
	W 1/4		12.2	899
	W. Curb		13.0	891
	W.L.		13.8	883
	+15'		14.7	874
1+60	N.L. Alley			
	+15'		14.8	873
	W.L.		14.2	879
	W. Curb		13.15	8898
	W 1/4		12.4	897
	⊥		11.7	904
	E 1/4		11.2	909
	E. Curb		10.65	9148
	E.L.		9.4	927
	+15'		8.9	932
2+00				
	+15'		8.1	940
	E.L.		11.3	908

102.13

55

STA	+	H.I.	-	Elev.
			11.75	9038
	E. Curb			
	E 1/4		12.1	900
	⊥		12.7	894
	W 1/4		13.7	884
	W. Curb		14.5	876
	W.L.		14.9	872
	+15'		15.9	862
2+50				
	+15'		15.4	867
	W.L.		12.75	894
	W. Curb		10.9	912
	W. 1/4		9.5	926
	⊥		8.6	935
	E 1/4		8.2	939
	E. Curb		7.55	9458
	E.L.		7.2	949
	+15'		6.2	959
2+99				
	+15'		2.9	992
	E.L.		4.2	979
	E. Curb		4.85	9728
	E 1/4		5.4	967
	⊥		6.8	953
	W 1/4		7.85	9428
	W. Curb		8.4	937

10213

STA	+	H.I.	-	Elev.
W.L.			9.6	92.5
+15'			11.35	90.78
T.P.			11.53	90.60
	7.20	97.80		
3+00	S.L. Saratoga			
W.L.			7.7	90.1
W. Curb Top			7.69	90.11
✓ Bott. Pavement			8.35	89.45
W <sup>1</sup> / <sub>4</sub>			7.87	89.93
¢			7.45	90.35
E <sup>1</sup> / <sub>4</sub>			7.28	90.52
E. Curb Bott			7.24	90.56
✓ Top			6.50	91.30
E.L.			5.45	92.3
3+80 = 0+00	N.L. Saratoga			
E.L.			6.80	91.0
E. Curb Top			8.18	89.62
✓ Bott. Pavement			8.92	88.88
E <sup>1</sup> / <sub>4</sub>			8.86	88.94
¢			8.99	88.81
W <sup>1</sup> / <sub>4</sub>			9.34	88.46
W. Curb Bott			9.84	87.96
✓ Top			9.17	88.63
W.L.			9.65	88.15

97.80

56

STA	+	H.I.	-	Elev.
0+05				
+15'			10.7	87.1
W.L.			9.1	88.7
W. Curb			7.5	90.3
W <sup>1</sup> / <sub>4</sub>			6.7	91.1
¢			5.55	92.3
E <sup>1</sup> / <sub>4</sub>			3.8	94.0
E. Curb			1.5	96.3
E.L.			0.5	97.3
+15'				
0+50				
+15'				
E.L.			1.45	96.4
E. Curb			2.2	95.6
E <sup>1</sup> / <sub>4</sub>			3.65	94.15
¢			4.6	93.2
W <sup>1</sup> / <sub>4</sub>			5.65	92.15
W. Curb			5.6	92.2
W.L.			6.85	91.0
+15'			9.2	88.6
1+00				
+15'			10.35	87.45
W.L.			9.25	88.6
W. Curb			7.8	90.0
W <sup>1</sup> / <sub>4</sub>			7.35	90.45

STA		+	H.I.	-	Elev.
			97.80		
				6.4	91.4
				5.3	92.5
				4.3	93.5
				3.5	94.3
				+15'	
1+40	S.L. Alley				
				+15'	
				E.L.	8.7 89.1
				E. Curb	8.45 89.35
				E 1/4	8.65 89.15
				¢	8.9 88.9
				W 1/4	9.55 88.25
				W. Curb	9.8 88.0
				W.L.	10.6 87.2
				+15'	11.85 85.95
	T.P.			10.54	87.26
		3.03	90.29		
Fd. Copp. Tack in Pole	SW. Froude Cape May	80.74	9.46		80.83
					80.74
		9.46	90.20		
1+50	¢ Alley				
				+15'	
				4.5	85.7
				3.5	86.7
				2.8	87.4
				2.65	87.55

STA		+	H.I.	-	Elev.
			90.20		
				2.33	87.87
				2.2	88.0
				2.3	87.9
				2.5	87.7
				+15'	
1+60	N.L. Alley				
				+15'	
				E.L.	2.75 87.5
				E. Curb	3.25 86.95
				E 1/4	3.1 87.1
				¢	3.15 87.0
				W 1/4	3.7 86.5
				W. Curb	3.4 86.8
				W.L.	4.0 86.2
				+15'	4.7 85.5
				+15'	
				9.5	80.7
				8.95	81.3
				7.1	83.1
				7.1	83.1
				6.8	83.4
				6.5	83.7
				E. Curb	5.5 84.7
				E.L.	3.9 86.3
				+15'	2.45 87.75



82.63

STA	+	H.I.	-	Elev.
Φ			6.70	75.93
E 1/4			3.50	79.13
E.C.			2.70	79.93
E.L.			1.20	81.4
0+50				
E.L.			3.30	79.3
E.C.			5.00	77.63
E. 1/4			5.9	76.7
Φ			6.5	76.1
W. 1/4			6.8	75.8
W.C.			6.7	75.9
W.L.			8.9	73.7
1+00				
W.L.			10.9	91.7
W.C. Curb			9.8	72.8
W 1/4			9.6	72.0
Φ			9.3	73.3
E 1/4			8.7	73.9
E. Curb			7.6	74.0
E.L.			6.2	76.4
1+40	S.L. Alley			
E.L.			10.0	72.6
E. Curb			10.7	71.9
E 1/4			11.1	71.5
Φ			11.8	70.8

82.63

59

STA	+	H.I.	-	Elev.
W 1/4			12.1	70.5
W. Curb			12.5	70.1
W.L.			13.1	69.5
T.P.			12.85	69.78
	2.96	72.74		
1+50	Φ Alley			
W.L.			4.1	68.6
W. Curb			3.6	69.0
W 1/4			3.0	69.6
Φ Top of Manhole			2.21	70.53
E 1/4			2.4	70.2
E. Curb			1.2	71.4
E.L.			0.7	72.0
1+60	N.L. Alley			
E.L.			1.4	71.3
E. Curb			2.0	70.6
E 1/4			2.6	70.0
Φ			3.1	69.6
W 1/4			3.3	69.4
W. Curb			4.0	68.7
W.L.			4.0	68.7
2+00				
W.L.			6.4	66.3
W. Curb			5.9	66.7
W 1/4			5.7	66.9

STA	+	H.I.	-	Elev.
		72.74	5.5	67.2
¢			5.1	67.6
E. Curb			4.4	68.3
E.L.			3.4	69.3
2+50				
E.L.			6.0	66.7
E. Curb			6.6	66.1
E 1/4			7.5	65.2
¢			7.9	64.8
W 1/4			8.0	64.7
W. Curb			8.0	64.7
W.L.			8.3	64.4
2+94				
W.L.			10.8	61.9
W. Curb			11.4	61.3
W 1/4			11.7	61.0
¢			11.4	61.3
E 1/4			11.2	61.5
E. Curb			9.9	62.8
E.L.			8.7	64.0
T.P.			12.11	60.63
	3.70	64.33 ✓		
3+00	S.L. Brighton			
W.L.			3.3	61.0
W. Curb Top			3.78	60.55

STA	+	H.I.	-	Elev.
		64.33		
		60		
			4.37	59.96
W. Curb Bot. Pavement			3.93	60.40
W 1/4			3.60	60.70
¢			3.58	60.75
E 1/4			3.59	60.74
E. Curb Bot.			2.76	61.57
✓ Top			2.40	61.93
E.L.				
<u>Beginning of Froude 60' wide, 10' S.W. &amp; 10' Quarters</u>				
3+60 = 0+00. = N.L. Brighton				
			3.0	61.3
E.L.			3.76	60.57
E. Curb Top			4.60	59.73
" Bottom Pavement			4.49	59.84
E 1/4			4.48	59.9
¢			4.92	59.41
W 1/4			5.35	58.98
W. Curb Bot.			4.75	59.58
✓ Top.			4.60	59.7
W.L.				
0+50			6.3	58.0
W.L.			6.3	58.0
W. Curb			6.5	57.8
W 1/4				
¢			6.3	58.0
E 1/4			6.0	58.3
E. Curb			5.3	59.0

6433

STA.	+	H.I.	-	Elev
			5.3	59.0
1+00 <sup>50</sup>	S.L. Alley			
			7.7	56.6
			8.4	55.9
			8.3	56.0
			8.5	55.8
			8.8	55.5
			8.1	56.2
			8.5	55.8
1+08	¢ Alley			
			8.5	55.8
			8.7	55.6
			9.2	55.1
	¢ Top of Manhole		8.70	55.63
			8.6	55.7
			8.7	55.6
			8.2	56.1
1+15 <sup>50</sup>	N.L. Alley			
			7.6	56.7
			8.7	55.6
			9.1	54.2
			9.2	55.1
			9.3	55.0
			7.9	56.4
			8.2	56.1

Long Branch Ave.  
is paved.

64,33

61

STA.	+	H.I.	-	Elev.
1+50			10.5	53.8
	W.L.		10.3	54.0
	W. Curb		10.4	53.9
	W <sup>1</sup> / <sub>4</sub>		10.5	53.8
	¢		10.2	54.1
	E <sup>1</sup> / <sub>4</sub>		9.8	54.5
	E. Curb		9.6	54.7
	E.L.			
			11.0	53.3
			11.4	52.9
			12.5	51.8
			12.9	51.4
			13.0	51.3
			12.96	51.37
		2.80	54.17 ✓	
		+5'	2.80	51.37
		+7'	1.20	52.97
			0.9	53.3
			2.1	52.1
		2+15 <sup>60</sup>		
	S.L. Long Branch Ave.		3.6	50.6
			3.46	50.71
		+7.5'	4.12	50.05
		✓ ✓	3.84	50.33
		W <sup>1</sup> / <sub>4</sub>		



5417

62

STA	+	H.I.	-	El.
¢	Pavement		3.60	506
E/4	"		3.41	50.76
+12.5' E. Curb Bot.	"		3.30	5087
✓ Top			2.62	5155
E.L.			2.4	518
R+65 <sup>60</sup> = 0+00	N.L. Long Branch Ave.			
E.L.			3.3	509
+7.5' E. Curb Top			3.56	5061
✓ Bot.	Pavement		4.29	4988
E/4	"		4.55	4962
¢	"		4.71	4946
W/4	"		4.90	4927
+12.5' W. Curb Bot.	"		5.34	4873
✓ Top			4.67	4950
W.L.			4.65	4942
0+50				
E.L.			3.9	503
E. Curb			4.7	495
E/4			5.1	491
¢			5.5	487
W/4			5.4	488
W. Curb			4.8	494
W.L.			5.3	489

STA	+	H.I.	-	Elev.
1+00 <sup>20</sup>	S.L. Alley			
W.L.			6.3	47.9
W. Curb			5.2	490
W/4			6.0	482
¢			5.8	484
E/4			5.8	484
E. Curb			5.5	48.7
E.L.			4.8	494
1+07 <sup>20</sup>	¢ Alley			
E.L.			5.1	491
E. Curb			5.7	48.5
E/4			5.9	483
¢ Top of Manhole			5.86	483.1
W/4			6.3	47.9
W. Curb			6.9	47.3
W.L.			7.4	468
1+15 <sup>20</sup>	N.L. Alley			
W.L.			6.9	47.3
W. Curb			6.1	48.1
W/4			6.4	47.8
¢			5.9	48.3
E/4			5.9	48.3
E. Curb			5.4	48.8
E.L.			5.2	49.0

54.17

STA	+	H.l.	-	Elev.
1+50				
E.L.			5.4	48.8
E. Curb			5.9	48.3
E 1/4			6.0	48.2
☼			6.2	48.0
W 1/4			6.3	47.9
W. Curb			6.3	47.9
W.L.			6.6	47.6
2+00				
W.L.			6.7	47.5
W. Curb			6.4	47.8
W 1/4			6.8	47.4
☼			6.6	47.6
E 1/4			6.2	48.0
E. Curb			6.0	48.2
E.L.			5.8	48.4
T.P.			7.12	47.05
	4.16	51.21		
2+15 <sup>40</sup>	S.L.	Muir		
W.L.			3.89	47.32
W. Curb Top			4.15	47.06
✓ Bott. Pavement			4.76	46.45
W 1/4			4.25	46.96
☼			3.84	47.37
E 1/4			3.83	47.38

63

51.21

STA	+	H.l.	-	Elev.
E. Curb Bott. Pavement			3.89	47.32
✓ Top			3.17	48.04
E.L.			2.88	48.33
2+65 <sup>10</sup> = 0+00	N.L.	Muir		
E.L.			2.75	48.46
E. Curb Top			3.15	48.06
✓ Bott. Pavement			3.91	47.30
E 1/4			3.91	47.30
☼			3.98	47.23
W 1/4			4.30	46.91
W. Curb Bott.			4.72	46.49
✓ Top			4.18	47.03
W.L.			3.89	47.32
0+50				
W.L.			4.1	47.1
W. Curb			3.9	47.3
W 1/4			4.1	47.1
☼			4.1	47.1
E 1/4			4.2	47.0
E. Curb			3.9	47.3
E.L.			3.5	47.7
1+00 <sup>10</sup>	S.L.	Alley		
E.L.			4.1	47.1
E. Curb			4.2	47.0
E 1/4			4.7	46.5

51.21

STA	+	H.I.	-	Elev.
ϕ			4.5	46.7
W 1/4			4.6	46.6
W. Curb			4.7	46.5
W.L.			4.7	46.5
1+07 <sup>60</sup>	ϕ	Alley		
W.L.			4.9	46.3
W. Curb			4.9	46.3
W 1/4			4.7	46.5
ϕ		Top of Manhole	4.44	46.77
E 1/4			4.8	46.4
E Curb			4.4	46.8
E.L.			4.3	46.9
1+15 <sup>10</sup>		N.L. Alley		
E.L.			4.3	46.9
E. Curb			4.5	46.7
E 1/4			4.8	46.4
ϕ			4.7	46.5
W 1/4			4.8	46.4
W. Curb			4.8	46.4
W.L.			5.0	46.2
1+50				
W.L.			5.2	46.0
W. Curb			5.1	46.1
W 1/4			5.3	45.9
ϕ			5.2	46.0

64

51.21

STA	+	H.I.	-	Elev.
E 1/4			5.2	46.0
E. Curb			5.1	46.1
E.L.			4.7	46.5
2+00		S.L. Voltaire		
E.L.			4.89	46.32
E. Curb Top			5.22	45.99
✓		Bot. Pavement	5.99	45.22
E 1/4		"	5.82	45.39
ϕ		"	5.75	45.46
W 1/4		"	5.90	45.31
W. Curb Bott.		"	6.14	45.07
✓		Top	5.69	45.57
W.L.			5.30	45.91
N.W. B.P.		44.54	6.65	44.56
(Brass Plug gone, only hole in Curb left.)				
"		"	"	44.54
		4.87	49.41	
T.P.			4.32	45.09
		2.60	47.69 ✓	
0+00		N.L. Voltaire		
W. Curb Top			3.17	44.52
✓		Bot. Pavement	3.71	43.88
W 1/4		"	3.27	44.42
ϕ		"	3.06	44.63

47.69

STA	+	H.I.	-	Elev.
E <sup>1</sup> / <sub>4</sub>	Pavement		3.13	44.56
E Curb Bott.	"		3.33	44.36
✓ Top			2.64	45.05
<u>STATIONING on Top of Curb on W.L. of FROUDE ONLY</u>				
0+50			3.60	44.09
+82 <sup>50</sup>			3.90	43.79
+94			3.99	43.70
+99	S.L. Alley		3.93	43.76
✓	Ret. on Property Line		3.80	43.89
1+14 <sup>40</sup>	" " " "		3.96	43.73
✓	S.L. Alley		4.14	43.55
1+50			4.51	43.18
2+00			5.0	42.7
+14	S.L. Lotus		5.1	42.6
+24	S. Curb Lotus		5.12	42.57
+54	N. " Lotus		5.53	42.16
+64	N.L. Lotus		5.58	42.11
3+00			5.94	41.75
+50			6.37	41.32
+64	S.L. Alley		6.45	41.24
3+79	N.L. "		6.67	41.02
4+00			6.77	40.92
+50			7.37	40.32
+79	S.L. Green		7.58	40.11
+89	N. Curb "		7.58	40.11

47.69

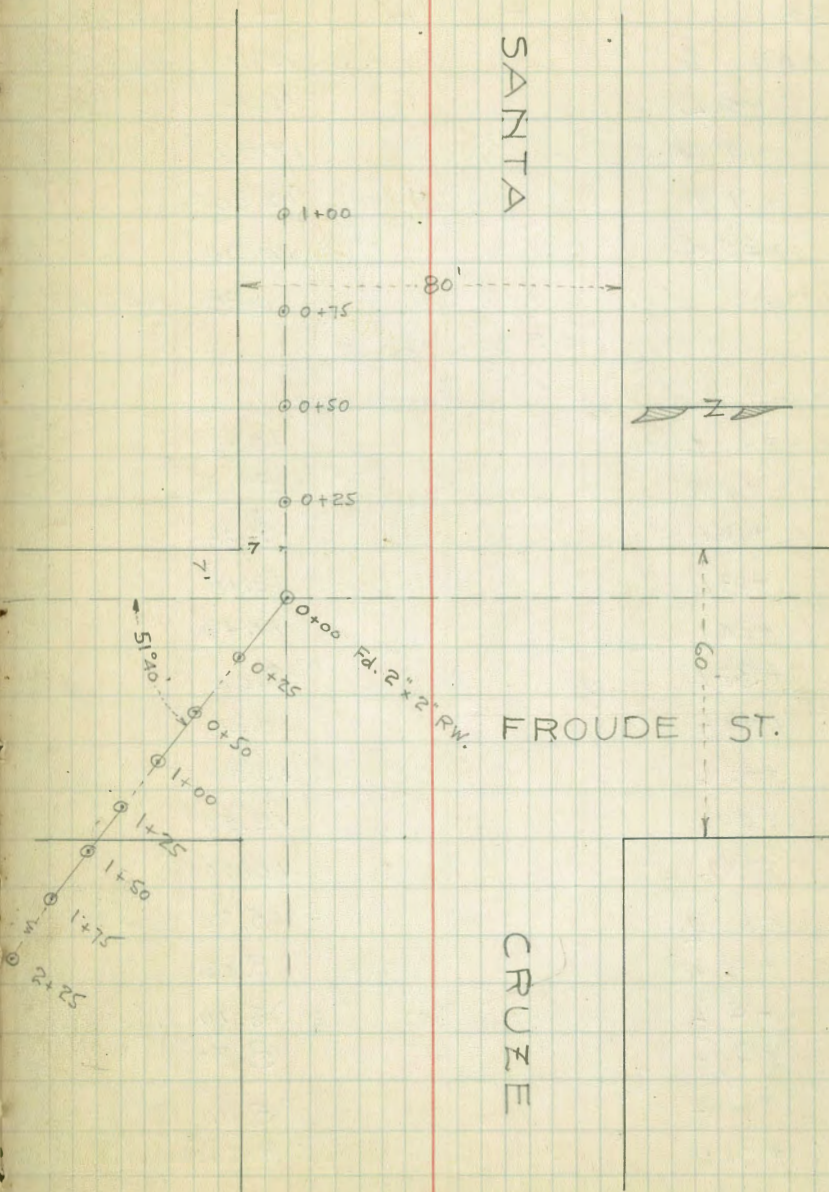
65

STA	+	H.I.	-	Elev.
<u>STATIONING on Top of Curb on E.L. of Froude only</u>				
0+17 = 0+00	W.L. of Froude		2.83	44.86
+50			3.15	44.54
1+00			3.54	44.15
+50			3.78	43.91
2+00			3.91	43.78
+37 <sup>50</sup>			4.16	43.53
+50			4.31	43.38
+73 <sup>70</sup>			4.52	43.17
+85 <sup>30</sup>			4.65	43.04
3+00			4.83	42.86
+50			5.49	42.20
+60 <sup>70</sup>			5.60	42.09
+73			5.71	41.98
4+00			6.04	41.65
+50	S.L. Green		6.53	41.16
+60	S. Curb "		6.54	41.15

X- Sections for Culvert on Froude & Santa Cruze.

STA	+	H.I.	-	Elev.
B.M. Mon. N.E. Cor. Froude & Del Monte				139.31
	13.20	152.51		
Line running West from 0+00				
0+00	℄		5.90	(46.61)
+5	L		4.50	
+7	R		7.80	
+18	R		8.40	
+31	R		3.10	
0+25	℄		6.10	
+5	L		5.70	
+12	R		6.40	
+15	R		12.40	
+18	R		12.30	
+24	R		5.60	
0+50	℄		10.10	
+5	L		9.30	
+11	R		11.20	
+16	R		14.50	
+25	R		8.00	
0+75	℄		13.20	
+5	L		13.00	
+6	R		14.20	
+9	R		16.30	
+11	R		14.10	
+25	R		10.50	

Offsets from Sta. on ℄ all on Right angles



Sta	+	H.I.	-	Elev
1700	Q		15.10	
+5	L		15.10	
+5	R		17.80	
+9	R		15.30	
+25	R		12.90	
T.P.			0.28	152.23
	9.30	161.53		

Line running S.E from 0+00

0+25	Q		10.10
+5	R		8.10
+10	R		6.90
+13	L		12.10
+24	L		11.40
+32	L		9.00
+40	L		10.20
+45	L		13.30
+50	L		12.50
+55	L		10.00
0+50	Q		5.70
+10	R		3.00
+6	L		6.10
+9	L		8.30
+11	L		6.00
+32	L		2.70

Sta	+	H.I.	-	Elev
0+75	☒		6.70	
+10	R		1.40	
+6	L		6.30	
+19	L		0.6	
T.P.			0.22	161.31
		9.26	170.57	
+32	L		7.30	
1+00	☒		10.80	
+10	R		6.30	
+10	L		12.90	
+14	L		14.40	
+30	L		6.70	
1+25	☒		9.50	
+10	R		4.20	
+9	L		13.30	
+13	L		9.70	
+25	L		7.80	
1+50	☒		8.00	
+20	R		10.10	
+13	L		5.50	
+25	L		2.10	
T.P.			1.02	169.55
		11.86	181.41	
1+75	☒		9.60	
+20	R		8.80	

Sta	+	H.I.	-	Elev
+30 R			9.00	
+45 R			17.00	
+13 L			3.10	
	Hand Level			
+18 L	2.80	184.21	0.00	184.21
	Instrument 181.41			
2+00 $\dot{c}$			8.50	
+20 R			8.50	
+46 R			1.00	
+5 L			7.80	
+23 L			0.00	
2+25 $\dot{c}$			7.20	
+23 R			7.20	
+40 R			5.00	
+50 R			0.10	
+13 L			6.40	
+27 L			0.00	



X - Sections Alley - Bl. 113 - E.W. Morse's Sub  
betw. G & Market from 31st to 32nd

JAEGER } Aug. 4<sup>th</sup> 1928  
Clavert }  
Bailey }

100.40

70

STA	+	H.I.	-	Elev.	STA	+	H.I.	-	Elev.
NE. Curb Market & 31st on Market	8.91	111.77 ✓		102.86 ✓					
0+00	E.L. 3 105				2+50				
S. Curb Top			1.75	110.02	N.L.			4.7	95.7
✓ Bott.			2.1	109.7	☒			5.2	95.2
☒			1.5	110.3	S.L.			5.0	95.4
N. Curb Top			0.37	111.40	3+00				
✓ Bott.			0.9	110.9	S.L.			7.6	92.8
0+50					☒			7.5	92.9
N.L.			1.3	110.5	N.L.			6.6	93.8
☒			2.4	109.4	3+06 <sup>50</sup>				
S.L.			3.8	108.0	+6' ☒ Garage, Dirt Floor ✓			7.0	93.4
1+00					N.L.			7.0	93.4
S.L.			5.3	106.5	☒			8.0	92.4
☒			4.5	107.3	S.L.			7.6	92.8
N.L.			3.1	108.9	+2' " "			7.6	92.8
1+50					3+50				
N.L.			7.3	104.5	S.L.			10.1	90.3
☒			8.3	103.5	☒			10.0	90.4
S.L.			8.4	103.4	N.L.			8.5	91.9
T.P.			11.93	99.84	T.P.			10.94	89.46
	0.56	100.40 ✓				2.29	91.75 ✓		
2+00									
S.L.			1.5	98.8					

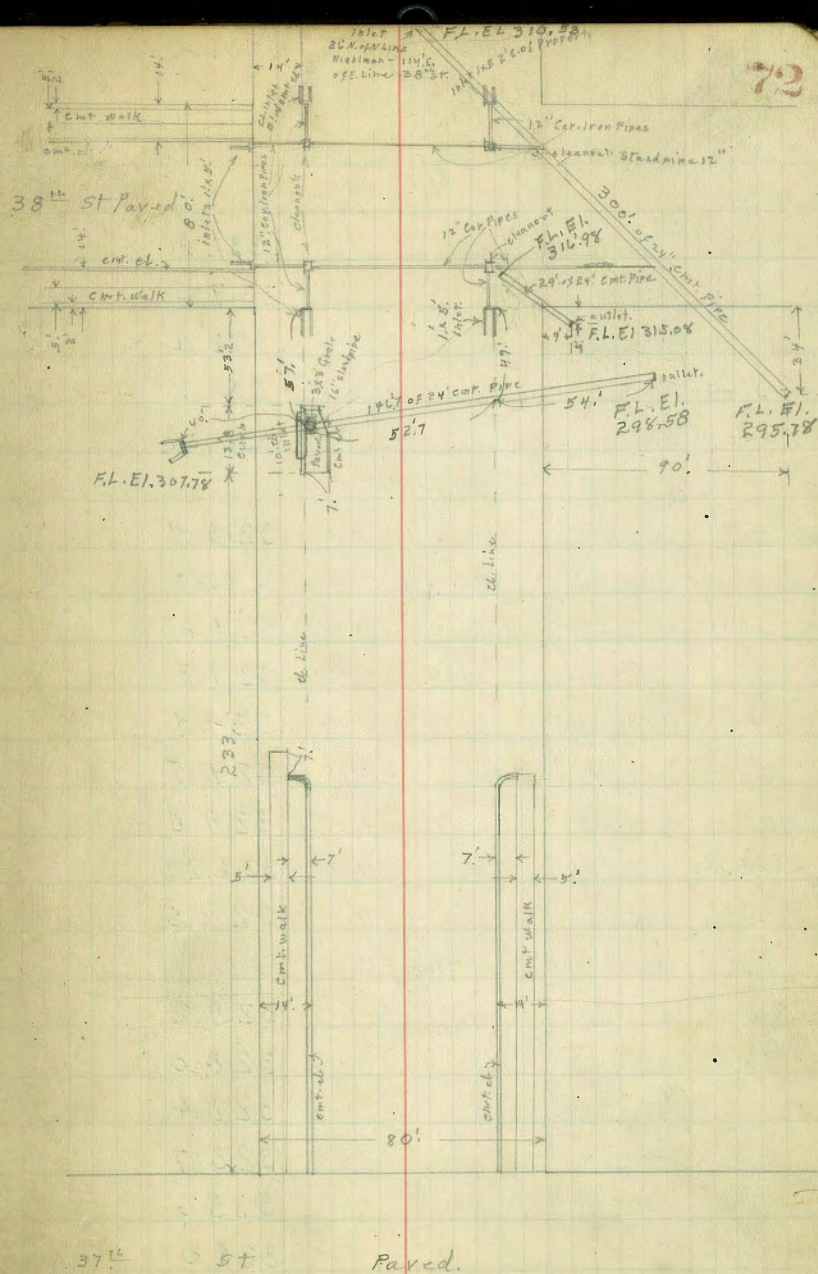
Plotted 9-12-28 - C.B.H.  
 Yardage 9-27-28 I.G.H.



Nightman St X Sec  
37th to 38th

15 M. B.P	2.36	341.18	338.82
00 = E. line 37th St			
N. emb. ch	2.84	338.34	
gutter parmt	3.55	337.63	
1/4 "	3.08	338.10	
1/4 "	2.94	338.24	
1/4 "	3.11	338.07	
gutter "	3.58	337.60	
S. emb. ch	3.17	338.07	
15' E			
S. emb. ch	4.03	337.15	
gutter	4.5	336.7	
1/4 "	3.7	337.5	
1/4 "	3.5	337.7	
1/4 "	3.6	337.6	
gutter	4.3	336.9	
N. emb. ch	3.74	337.44	
50' E			
N. emb. ch	5.90	335.28	
gutter	6.4	334.8	
1/4 "	5.9	335.3	
1/4 "	5.8	335.4	
1/4 "	6.0	335.2	
gutter	6.7	334.5	
S. emb. ch	6.28	334.90	

N.W. 37th  
& Nightman



341.18

100' E. of 37<sup>th</sup> St.

S. emb. ch.	9.46	331.72
gutter	9.8	331.4
"4	9.1	332.1
±	8.8	332.4
"4	8.8	332.4
gutter	9.5	331.7
N. emb. ch.	8.97	332.21

140' E. = W. Line Alley

N.	11.3	329.9
S. emb. ch.	11.52	329.66
gutter	11.6	329.6
"4	11.4	329.8
±	11.3	329.9
"4	11.7	329.5
gutter	12.0	329.2
S. emb. ch.	11.90	329.28
S.	11.7	329.5

160' E. = E. Line Alley

S	13.0	328.2
ch	13.2	328.0
"4	12.8	328.4
e	12.5	328.7
"4	12.6	328.6
+12	13.2	328.0
ch	12.3	328.9
N.	12.6	328.6

341.18

Wightman

73

T.P. 0.08 328.05 13.21 327.97

195' E

N	1.2	326.9
ch	1.7	326.4
+1	2.3	325.8
"4	1.7	326.4
e	1.6	326.5
"4	1.9	326.2
ch	2.8	325.3
+2	2.0	326.1
S	2.1	326.0

233' E. = W. End. ch. inlet on N. ch.

S	4.4	323.7
+11	4.5	323.6
ch	5.1	323.0
"4	4.2	323.9
e	4.0	324.1
"4	4.3	323.8
+6	4.26	323.79
+7	5.25	322.80
gutter pavement.	5.50	322.55
W. End emb. ch.	4.57	323.48
N.	4.1	324.0

Topwing wall  
on spillway  
paving

328.05

R.H. 8' C = E. End, d. inlet on N. d.

N.	4.9	323.2	
E. End ent. el.	5.40	322.65	Use this for yardage to E.
gutter pavnt at d. inlet	6.40	321.65	No yardage
+4 on pavnt of spillway	6.20	321.85	" " use this for yardage to E.
+5. Top W. hq wall	5.17	322.88	
"4	4.9	323.2	
±	5.3	322.8	
"4	5.3	322.8	
el.	5.9	322.2	
+3	5.3	322.8	
S.	5.4	322.7	
			R 60' E
S	5.9	322.2	
+11	6.1	322.0	
el.	6.7	321.4	
"4	6.1	322.0	
±	5.8	322.3	
"4	6.1	322.0	
el.	6.6	321.5	
N	6.1	321.0	
			300' E. = W. Line 38 <sup>th</sup> St.
N	8.2	319.9	
el. dirt for yardage	8.4	319.7	
ent. el. No "	9.42	318.63	
flowline 12" pipe inlet	10.55	317.50	no yardage
"4	8.4	319.7	

328.05

Wightman. ST.

74

±	8.5	319.6	
"4	8.7	319.4	
Flowline 12" pipe inlet	10.43	317.62	no yardage
S ent. el.	9.23	318.82	
+3	8.0	320.1	
S line	7.5	320.6	
+50'S	8.5	319.6	
T.P. R.M. BP. 4.86	324.58	8.33	319.72 = Wightman. N.W. 38 <sup>th</sup> St. 319.70
			W. el. 38 <sup>th</sup> St
N-6 = N. End. inlet	5.53	319.05	gutter pavnt
N-13 Flowline inlet	6.15	318.43	
N-0.4 = S. End ent. el.	5.07	319.51	
el. Top cleanout grate	5.5	319.1	
" F.L. "	6.85	317.73	
"4	5.7	318.9	
±	5.5	319.1	
"4	6.0	318.6	
el. Top cleanout grate	6.8	317.8	
el. F.L. "	8.8	315.8	
+3 Top winn wall	5.2	319.4	
S	4.8	319.8	
+50	5.5	319.1	

32458

W. 1/4 38<sup>th</sup> St

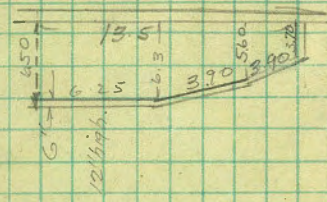
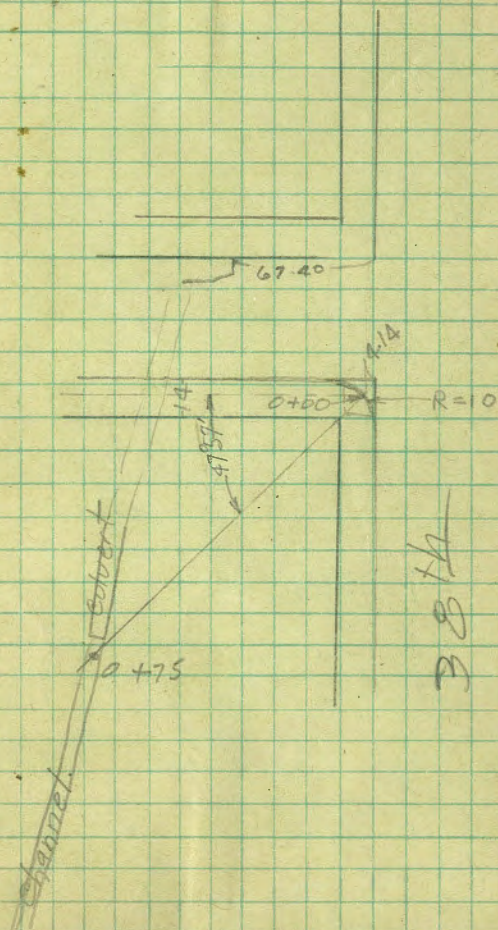
S-50'	6.2	318.4
S	5.7	318.9
ch	6.0	318.6
+5	6.4	318.2
1/4	5.8	318.8
0	5.3	319.3
1/4	5.1	319.5
ch	4.8	319.8
N. on S. end Parmit	4.88	319.70
E. 38 <sup>th</sup>		
N. on S. end parmit	4.60	319.98
ch	4.7	319.9
1/4	4.9	319.7
0 on M.H.	4.85	319.73
1/4	5.7	318.9
+7	6.1	318.5
ch	5.9	318.7
S	5.5	319.1
+50	5.9	318.7
E. 1/4		
S-50	5.8	318.8
S	5.8	318.8
ch	6.0	318.6
1/4	5.7	318.9
0	5.1	319.5
1/4	4.9	319.7

32458

Highman

75

ch	4.5	320.1
N. on S. End Parmit	4.51	320.07
E. ch. 38 <sup>th</sup> St		
N. S. End Inlet gutter parmit	4.87	319.71
N. line F.L. 12" Pipe	5.48	319.10
N. S. End. cont. ch.	4.38	320.20
ch. Top cleanout grate	4.65	319.93
ch F.L. "	6.05	318.53
1/4	4.8	319.8
0	5.0	319.6
1/4	5.5	319.1
ch. Top cleanout grate	6.21	318.37
ch. F.L. "	7.6	317.0
S	5.8	318.8
+50	5.6	319.0
00 = E. line 38 <sup>th</sup> St		
-50	4.9	319.7
S	5.9	318.7
ch	5.7	318.9
R. E. of above = cont. ch. at inlet	6.11	318.47 no yardage
" " " = F.L. inlet.	7.37	317.21
1/4	5.4	319.2
0	4.5	320.1
1/4	4.5	320.1
cont. ch. at inlet	4.50	320.08
F.L. "	5.70	318.88
N.	4.0	320.6



Wightman

El. Pipe line 313.20 - Bottom of Pipe

B.M.	4.86	H.I.	324.52		319.66
0+00		5-0		319.5	
0+18		3-8		320.7	
0+26		8-0		316.5	
+27		11-4		313.1	
+47		19-1		305.4	
+70		24-1		300.4	
+75	bottom ditch	26-6		297.9	

193.14  
89.64  
103.50

233  
160  
73  
314  
76.14  
13.50  
89.64

324.58

50' E.

N		1.3	323.3	
cl		2.0	322.6	
+1		2.7	321.9	
1/4		2.6	322.0	
⊕		2.2	322.4	
1/4		2.7	321.9	
+12		2.9	321.7	
cl		2.0	322.6	
S		1.8	322.8	
T.P.	12.86	337.11	0.33	324.25

100' E

S		10.8	326.3
cl		11.6	325.5
+1		12.1	325.0
1/4		11.5	325.6
⊕		11.2	325.9
1/4		11.7	325.4
+12		12.4	324.7
cl		11.9	325.2
N		11.7	325.4

140' E. = W. Line Alley

N		8.6	328.5
cl		8.9	328.2
+1		9.2	327.9
1/4		8.7	328.4
⊕		8.6	328.5

337.11

Wightman St.

76

1/4		8.9	328.2
+12		9.3	327.8
cl		8.8	328.3
S		8.2	328.9

160' E = E. Line Alley

S. on S. end Alley cl return		7.38	329.73	
S. ent. cl		7.58	329.53	
gutter		8.0	329.1	
1/4		7.8	329.3	
⊕		7.4	329.7	
1/4		7.6	329.5	
gutter		7.6	329.5	
N. ent. cl		6.97	330.14	
N. of rvt		7.3	329.8	
N. on N. end. ent. Alley cl. return		6.84	320.27	
T.P.	8.39	340.23	5.27	331.84 ✓
chk. on original B.M.		1.41	338.82	



50' wide  
10' elev.  
7.5' hys.

Torrence St. X Section  
Eagle St West.

11-6-79  
Mullis.

263.46

25' W.

77

B.M.	0.44	260.47	260.03
T.P. = B.M. = B.P. 510		259.60	5.97 254.50
T.P. = B.M. = B.P.	6.50	263.46	2.64 256.96
00 = N. Line Eagle St			
N. Line		6.1	257.36
+ 2.5 = N. edge N. End emb walk		6.31	257.15
+ 7.5 = S. " " " "		6.45	257.01
N. emb. cl. N. End.		6.55	256.91
gutter Pavmt.		7.08	256.38
" " "		6.72	256.74
♀ " "		6.53	256.93
♂ " "		6.56	256.90
gutter " "		6.67	256.79
S. emb. cl. N. End.		5.99	257.47
+ 2.5 = N. edge N. End. emb. walk		5.91	257.55
+ 7.5 = S. " " " "		5.77	257.69
S. Line		5.5	257.91

Top Hudt SE.  
Sutter Eagle  
N. W. Eagle  
+ Pennsylvania  
N. W. Eagle  
+ Torrence.

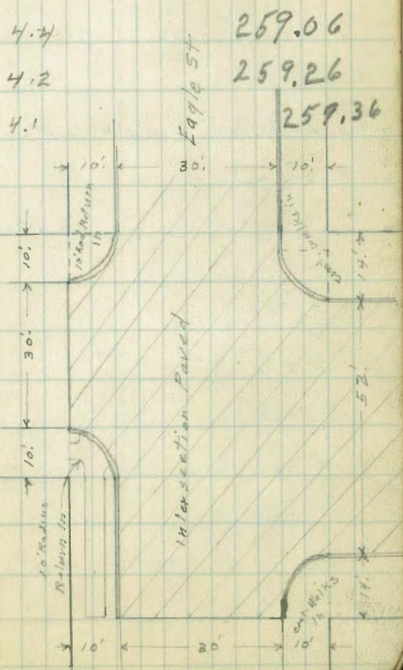
N.  
cl  
1/4  
♀  
♂  
1/4  
S.  
S  
cl  
N

4.5	258.96
4.6	258.86
5.0	258.46
5.2	258.26
4.8	258.66
4.7	258.76
4.8	258.66
60' W.	
4.2	259.26
4.3	259.16
4.6	258.86
4.5	258.96
4.7	259.06
4.2	259.26
4.1	259.36

4. W.

S	5.0	258.46
cl	4.8	258.66
+ 2	4.9	258.56
1/4	6.2	257.26
♀	6.0	257.46
1/4	5.8	257.66
cl	5.6	257.86
N	4.9	258.56

Torrence ST



263.46

100' W.

N.	3.9	259.56
ch	4.2	259.26
1/4	4.4	259.06
1/4	4.1	259.36
1/4	4.1	259.36
ch	4.0	259.46
S	4.0	259.46

147.2 W.

S	4.8	258.66
ch	5.0	258.46
1/4	5.0	258.46
1/4	5.1	258.36
1/4	4.9	258.56
ch	4.6	258.86
+9.5 ft S. End. L. Walk to N.	4.14	259.32
N on walls	4.1	259.36

172' W.

N.	4.7	258.76
ch	5.2	258.26
1/4	5.4	258.06
1/4	5.4	258.06
1/4	5.6	257.86
ch	5.6	257.86
S	5.6	257.86

263.46

Torrance St.

78

180' W.

S	5.9	257.56
ch	5.8	257.66
1/4	5.9	257.56
1/4	5.7	257.76
1/4	6.1	257.36
ch	7.4	256.06
N	7.5	255.96
+5	8.0	255.46

190' W.

N - 15	16.3	247.16
N	15.2	248.26
ch	14.0	249.06
1/4	11.1	252.36
1/4	9.7	253.76
1/4	8.1	255.36
ch	7.1	256.36
S	7.3	256.16
+5	7.0	256.46

200' W.

S - 10.	11.4	252.06
S	11.3	252.16
ch.	11.1	252.36
1/4	13.3	250.16
T.R	0.56	251.17
1/4	12.85	250.61
1/4	2.2	248.97
1/4	4.4	246.77

251.17

200' W. (con)

N. elev.	6.7	244.47
N.	8.0	243.17
N+20	8.0	243.17

Torrence St.

79

Levels for Culvert 2' N. of S. Curb Line  
Torrence St. from 172' W. of W. Line Eagle St  
West to Bottom of Wash.

H.I. 213.46

1+72	W of W Line Eagle	5.0		
1+80		5.8		
1+90		7.2		
2+00		11.1		
T.P.	0.56	251.17	12.85	250.61
2+15			5.9	
T.P.	0.21	238.69	12.69	238.48
2+58			14.2	
T.P.	0.41	226.27	12.83	225.86
2+64			7.1	
2+65			13.5	
T.P.	0.76	213.97	13.06	213.21
2+89			2.1	
3+00	Bottom Wash.		10.0	
T.P.	11.49	213.21	12.25	201.72
Set B.M. B.P.	Torrence Produced from East.		12.47	200.74
				opposite Elev. Pole # 36.00
T.P.	12.99	225.79	0.41	212.80
T.P.	12.97	238.52	0.24	225.55
T.P.	12.97	251.36	0.13	238.39
T.P.	9.16	259.85	0.67	250.69
CHK on B.M. N.B.	Goldfinch + Suller		2.86	256.99 = 256.99

DIRECTIONS FOR USE OF TABLES

TABLE No. 1.

Distance of slope stake from side or shoulder stake for any width roadway, slope 1 1/2 to 1. If ground is nearly level, the cut or fill at side stake is located by the double entry method in left column and top row. The number in body

of table in same row and column gives distance from side stake to slope stake. If ground is not

the side stake and slope stake, lower target by this amount if cut, elevate if fill. Add this amount to cut or fill and find distance in table. Set up rod at this point, and line of sight should cut target.

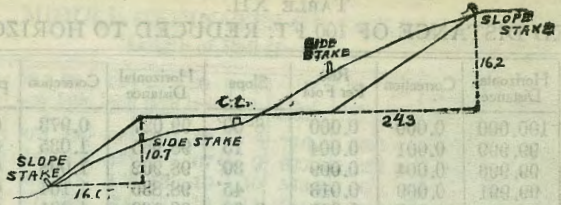
necessary.

TABLE No. 2.

To find Tangent and External for curve of any other degree, divide by degree of curve and add correction found in column of corrections.

Degree of curve with a given  $L$  may be found by dividing tangent (or external), opposite  $L$  by given tangent (or external).

The distance from a point on the tangent to the curve is very nearly the square of the tangent length divided by twice the radius.



DISTANCES FROM SIDE STAKES FOR CROSS-SECTIONING.

SLOPE 1½ TO 1. ROADWAY OF ANY WIDTH.

	0	.1	.2	.3	.4	.5	.6	.7	.8	.9	
0	0 00	0 15	0 30	0 45	0 60	0 75	0 90	1 05	1 20	1 35	0
1	1 50	1 65	1 80	1 95	2 10	2 25	2 40	2 55	2 70	2 85	1
2	3 00	3 15	3 30	3 45	3 60	3 75	3 90	4 05	4 20	4 35	2
3	4 50	4 65	4 80	4 95	5 10	5 25	5 40	5 55	5 70	5 85	3
4	6 00	6 15	6 30	6 45	6 60	6 75	6 90	7 05	7 20	7 35	4
5	7 50	7 65	7 80	7 95	8 10	8 25	8 40	8 55	8 70	8 85	5
6	9 00	9 15	9 30	9 45	9 60	9 75	9 90	10 05	10 20	10 35	6
7	10 50	10 65	10 80	10 95	11 10	11 25	11 40	11 55	11 70	11 85	7
8	12 00	12 15	12 30	12 45	12 60	12 75	12 90	13 05	13 20	13 35	8
9	13 50	13 65	13 80	13 95	14 10	14 25	14 40	14 55	14 70	14 85	9
10	15 00	15 15	15 30	15 45	15 60	15 75	15 90	16 05	16 20	16 35	10
11	16 50	16 65	16 80	16 95	17 10	17 25	17 40	17 55	17 70	17 85	11
12	18 00	18 15	18 30	18 45	18 60	18 75	18 90	19 05	19 20	19 35	12
13	19 50	19 65	19 80	19 95	20 10	20 25	20 40	20 55	20 70	20 85	13
14	21 00	21 15	21 30	21 45	21 60	21 75	21 90	22 05	22 20	22 35	14
15	22 50	22 65	22 80	22 95	23 10	23 25	23 40	23 55	23 70	23 85	15
16	24 00	24 15	24 30	24 45	24 60	24 75	24 90	25 05	25 20	25 35	16
17	25 50	25 65	25 80	25 95	26 10	26 25	26 40	26 55	26 70	26 85	17
18	27 00	27 15	27 30	27 45	27 60	27 75	27 90	28 05	28 20	28 35	18
19	28 50	28 65	28 80	28 95	29 10	29 25	29 40	29 55	29 70	29 85	19
20	30 00	30 15	30 30	30 45	30 60	30 75	30 90	31 05	31 20	31 35	20
21	31 50	31 65	31 80	31 95	32 10	32 25	32 40	32 55	32 70	32 85	21
22	33 00	33 15	33 30	33 45	33 60	33 75	33 90	34 05	34 20	34 35	22
23	34 50	34 65	34 80	34 95	35 10	35 25	35 40	35 55	35 70	35 85	23
24	36 00	36 15	36 30	36 45	36 60	36 75	36 90	37 05	37 20	37 35	24
25	37 50	37 65	37 80	37 95	38 10	38 25	38 40	38 55	38 70	38 85	25
26	39 00	39 15	39 30	39 45	39 60	39 75	39 90	40 05	40 20	40 35	26
27	40 50	40 65	40 80	40 95	41 10	41 25	41 40	41 55	41 70	41 85	27
28	42 00	42 15	42 30	42 45	42 60	42 75	42 90	43 05	43 20	43 35	28
29	43 50	43 65	43 80	43 95	44 10	44 25	44 40	44 55	44 70	44 85	29
30	45 00	45 15	45 30	45 45	45 60	45 75	45 90	46 05	46 20	46 35	30
31	46 50	46 65	46 80	46 95	47 10	47 25	47 40	47 55	47 70	47 85	31
32	48 00	48 15	48 30	48 45	48 60	48 75	48 90	49 05	49 20	49 35	32
33	49 50	49 65	49 80	49 95	50 10	50 25	50 40	50 55	50 70	50 85	33
34	51 00	51 15	51 30	51 45	51 60	51 75	51 90	52 05	52 20	52 35	34
35	52 50	52 65	52 80	52 95	53 10	53 25	53 40	53 55	53 70	53 85	35
36	54 00	54 15	54 30	54 45	54 60	54 75	54 90	55 05	55 20	55 35	36
37	55 50	55 65	55 80	55 95	56 10	56 25	56 40	56 55	56 70	56 85	37
38	57 00	57 15	57 30	57 45	57 60	57 75	57 90	58 05	58 20	58 35	38
39	58 50	58 65	58 80	58 95	59 10	59 25	59 40	59 55	59 70	59 85	39
40	60 00	60 15	60 30	60 45	60 60	60 75	60 90	61 05	61 20	61 35	40
41	61 50	61 65	61 80	61 95	62 10	62 25	62 40	62 55	62 70	62 85	41
42	63 00	63 15	63 30	63 45	63 60	63 75	63 90	64 05	64 20	64 35	42
43	64 50	64 65	64 80	64 95	65 10	65 25	65 40	65 55	65 70	65 85	43
44	66 00	66 15	66 30	66 45	66 60	66 75	66 90	67 05	67 20	67 35	44
45	67 50	67 65	67 80	67 95	68 10	68 25	68 40	68 55	68 70	68 85	45
46	69 00	69 15	69 30	69 45	69 60	69 75	69 90	70 05	70 20	70 35	46
47	70 50	70 65	70 80	70 95	71 10	71 25	71 40	71 55	71 70	71 85	47
48	72 00	72 15	72 30	72 45	72 60	72 75	72 90	73 05	73 20	73 35	48
49	73 50	73 65	73 80	73 95	74 10	74 25	74 40	74 55	74 70	74 85	49
50	75 00	75 15	75 30	75 45	75 60	75 75	75 90	76 05	76 20	76 35	50

Computed by L. Leland Locke.



83  
98

To find

259.85 256.99  
2.86