

1267

PASTY

---

FIELD BOOK

No. 3357

---

ENGINEERING DEPARTMENT,  
CITY OF <sup>12-6</sup> SAN DIEGO,  
CALIFORNIA.

Our Leather Bound Engineers Note Books are carried in the following rulings:

- No. 380 LEVEL BOOK. Left and Right Hand Page the same as Left Hand Page of this Book.
- No. 382 FIELD BOOK. Left Hand Page as in this Book, Right Hand Page 4 x 4 to the inch, Center Line Red.
- No. 384 MINING TRANSIT BOOK. Left Hand Page as in this Book, Right Hand Page 8x8 to the inch, Center Line Red.
- No. 385 FIELD BOOK. Left Hand Page as in this Book, Right Hand Page 8 vertical and 4 horizontal lines to the inch, Center Line Red.

We also carry the Note Books listed above, bound in extra strong Fabri-Hide (otherwise the same quality of book), which can be furnished at a somewhat lower price.

In ordering Fabri-Hide covered books, add the letter "F" to catalog number.

**THE FREDERICK POST CO.**

*ENGINEERING and DRAFTING SUPPLIES*

IRVING PARK STATION

CHICAGO, ILL.

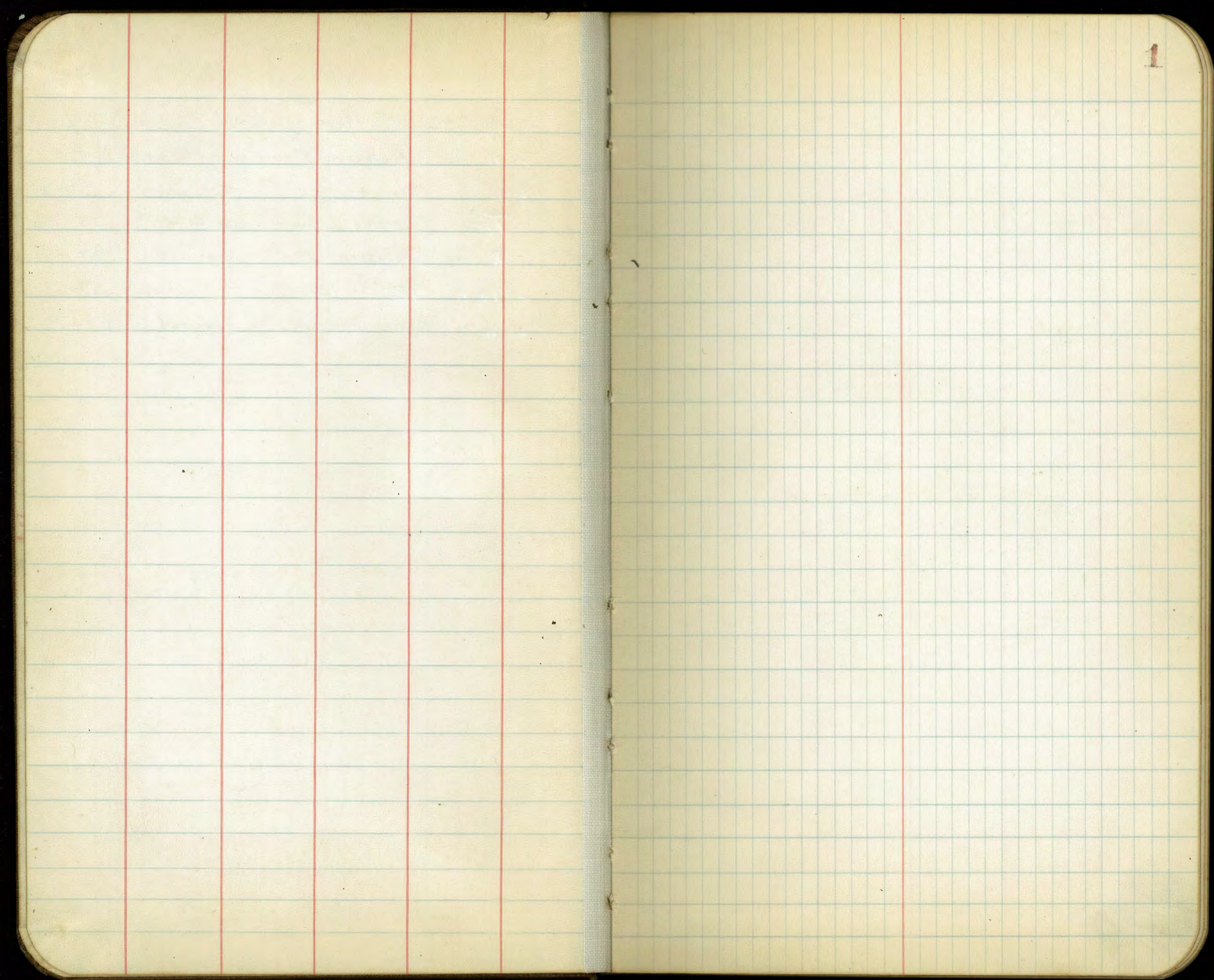
MICROFILMED

DEC 22 1964

*Disinfectant 7/5/20*

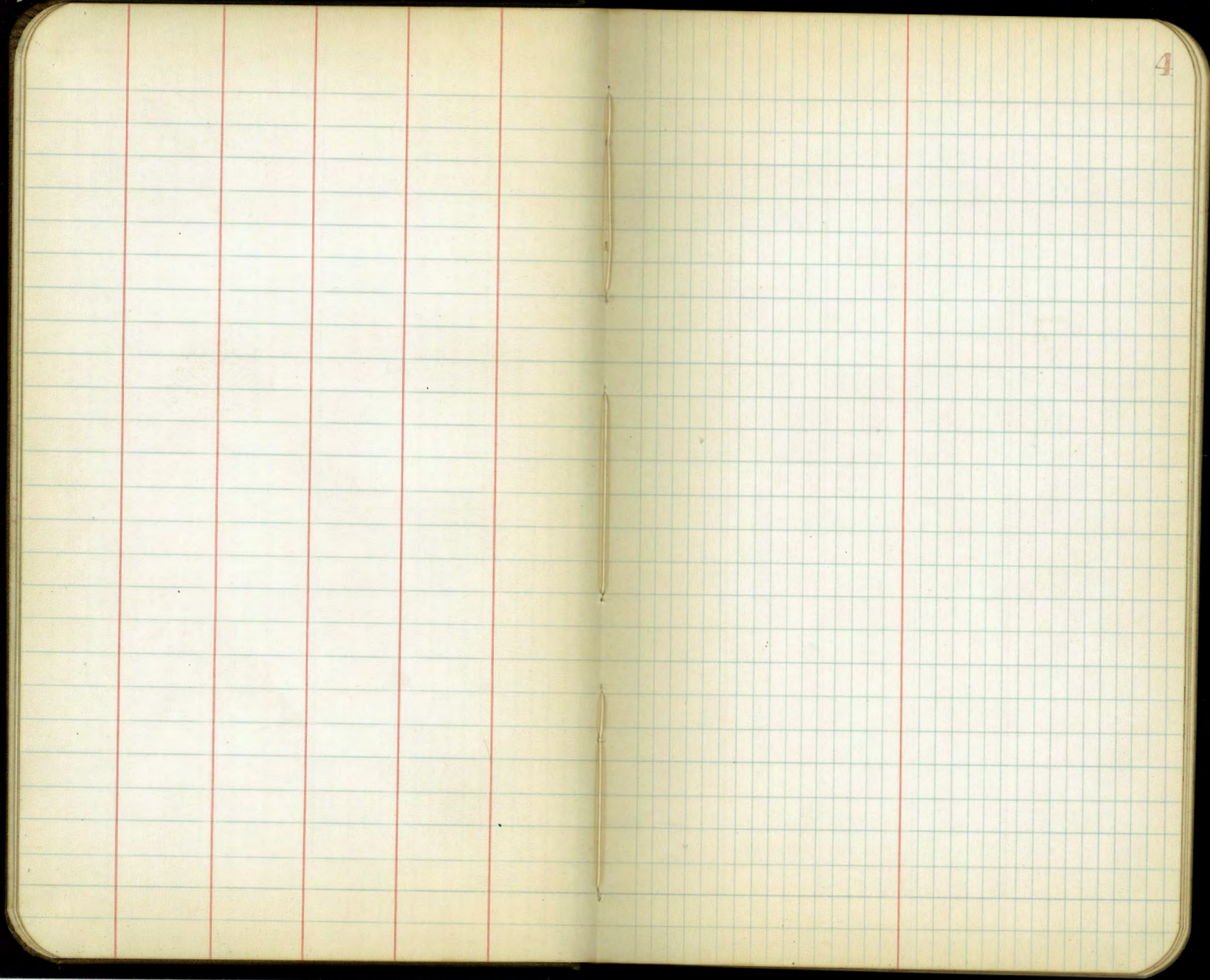
Disinfectant 577-80 N.H. 7/5/20

X Sec	Colton Dewey - Spisbee	1-29
✓ " "	Anthony Division - Marine View	25-26
✓ " "	Marine View 40 <sup>th</sup> - Osborn	27-34
	Ties Division & Marine View & 40 <sup>th</sup>	35-36
X Sec	Division Natl - Highland	37-59
✓ " "	42 <sup>nd</sup> Epsilon - Division	59-68
✓ " "	Novelty Ave 40 <sup>th</sup> - Highland	69-79













7-9-28  
 J.C. Bliss  
 Flood  
 Runway

Cross section Colton Ave  
 West Line of Dewey to West  
 Line of Sigbee  
 80' ST  
 14' CbS  
 12' Quarters

17.96

B.M. spike in white R.R. Post N.W. cor. Colton & Crosby

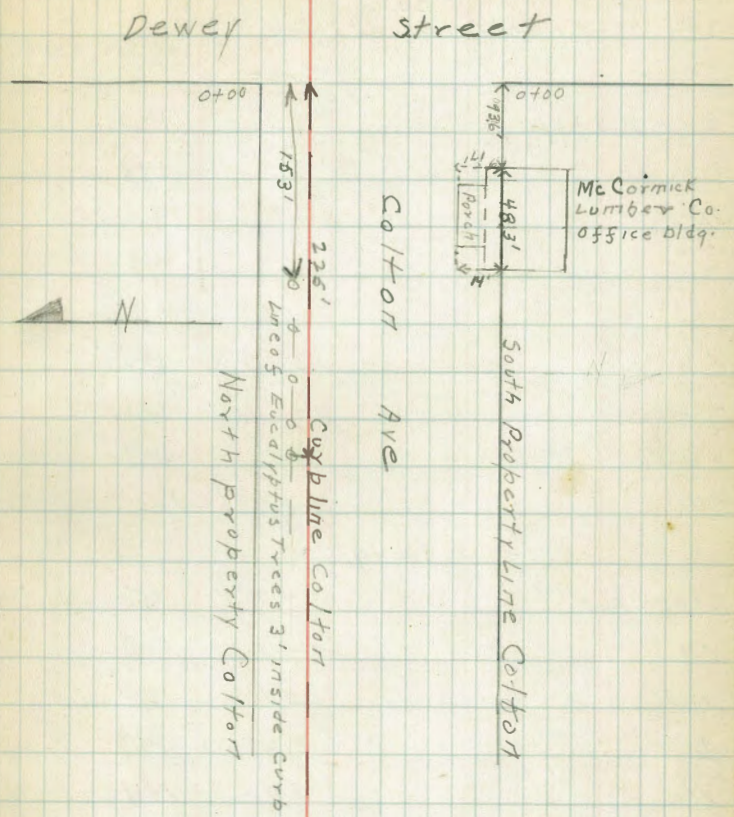
Sta	+ H.I.	- E.I.
	2.27 20.23	
West Dewey & North Colton otee	3.4	16.8
+3	4.2	16.0
Cb	3.8	16.4
1/4	4.2	16.0
±	3.9	16.3
1/4	4.6	15.6
Cb	4.7	15.5
West Dewey - South Colton	4.7	15.5
+50 S Prop	5.6	14.6
Cb	5.0	15.2
1/4	4.9	15.3
±	4.5	15.7
1/4	4.5	15.7
Cb	4.4	15.8
+9	4.8	15.4
N. Prop.	3.3	16.9
East end at 93.60, McCormick Lumber Co. Office 6.40 in St. } See sketch		
1+00 N. Prop	4.7	16.0
+5	5.2	15.0
Cb	5.2	15.0
1/4	5.2	15.0
±	5.0	15.2

7-23-28  
 T.G.H.  
 Plotted

Sta	+	H.L.	-	E.I.
		20.23		
1/4			5.0	15.2
Cb			5.2	15.0
S. Prop			5.8	14.4
1412.5	East End	Porch Lumber Co office 17' in st.		
1438.90	West end	porch 14' in st.		
1441.90	West end	office bldg. 6' in st.		
1750	S. Prop	6.8		13.4
Cb		6.1		14.1
1/4		5.9		14.3
1/4		5.2		15.0
Cb		5.5		14.7
+3	Eucalyptus tree	4.3	18" diameter	
N. Prop.		4.4		15.8
1784	Eucalyptus tree	4.3	18" diam.	7' in st.
2100	N. Prop	4.6		15.6
+11		4.6	Eucalyptus	12" Diameter
Cb		5.2		15.0
1/4		5.8		14.4
1/4		5.6		14.6
1/4		6.4		13.8
Cb		6.4		13.8
S Prop		6.4		13.8

See sketch

See sketch



Sta.	+	H.I.	-	E.I.
2+11	Eucalyptus	20.23	8" Tree	} See sketch
2+25	"	20"	Tree.	
2+50	S. prep		6.2	14.0
Cb			6.2	14.0
1/4			6.1	14.1
φ			5.4	14.8
1/4			5.5	14.7
Cb			5.5	14.7
+2			5.1	15.1
X Prep			5.3	14.9
T.P.			-5.48	14.75
	5.74	20.49		
3+00N Prep			4.7	15.8
Cb			5.7	14.8
1/4			5.5	15.0
φ			5.6	14.9
1/4			6.4	14.1
Cb			6.6	13.9
S. Prep			6.6	13.9
3+50 S			6.1	14.4
Cb			6.1	14.4
1/4			6.1	14.4
φ			5.4	15.1
1/4			5.7	14.8
Cb			5.8	14.7

Sta	T	H.L.	-	E.L.
		20.49		
N Prep			5.2	15.3
4+00 N Prep			4.1	16.4
Cb			5.5	15.0
1/4			5.2	15.3
±			5.2	15.3
1/4			5.7	14.8
Cb			5.9	14.6
S Prep			5.9	14.6
4+30			6.0	14.5
Cb			5.6	14.9
1/4			5.5	15.0
±			4.9	15.6
1/4			5.0	15.5
Cb			5.5	15.0
+5			4.2	16.3
N Prep			3.8	17.2
5+00			3.6	16.9
Cb			5.6	14.9
+5			5.5	15.0
1/4			5.2	15.3
±			5.1	15.4
1/4			5.6	14.9
Cb			5.9	14.6
S Prep			5.8	14.7

20.49

5750	6.3	142
cb	59	146
1/4	58	147
♀	56	149
1/4	56	149
cb	56	149
+2	5.2	153
N Prep	54	151
6700 N. Prop East Line Crosby	54	151
+13	5.5	150
cb	61	144
1/4	59	146
♀	61	144
1/4	65	140
Gutter	68	137
cb concrete	66.5	138
S. Prop East Line Crosby	6.3	142
Intersection Crosby + Colton - Crosby 60' wide		
10' Curbs + 10' 1/4" on Crosby		
S. Prop Colton - cb Crosby	6.63	139
Gutter	72	133
cb	72	133
1/4	69	136
♀	66	139

Sta	H.L.	-	E1
	2049		
1/4		65	140
Cb		64	141
N Prop		62	143
1/4 C		58	147
Cb		60	145
1/4		62	143
E		64	141
1/4		65	140
Cb		67	139
S. Prop		69	136
E Crosby S. Prop Colton		67	138
Cb		65	140
1/4		64	141
E		62	143
1/4		59	146
Cb		56	149
N Prop		55	150
1/4 Crosby N. Prop Colton		57	148
Cb		59	146
1/4		61	144
E		64	141
1/2		66	139
Cb		69	136
S Prop		72	133

STC	+	H.I.	-	E.I.
		20.49		
Cb Crosby	S. Prop Colton T.P. cb gutter		6.61 7.6	13.9 12.9
Cb			7.3	13.2
114			7.0	13.5
±			6.7	13.8
114			6.7	13.8
Cb			6.4	14.1
N Prop			6.2	14.3
N. Prop Colton - West Crosby			5.1	15.4
Cb			5.7	14.8
114			6.1	14.7
±			6.2	14.3
114			6.3	14.2
Cb Concrete	gutter		6.7 6.66	13.9 13.8
S. Prop			6.4	14.1
0750 S. Prop			5.5	15.0
Cb			5.8	14.7
114			5.7	14.8
±			5.7	14.8
114			5.4	15.1
Cb			5.1	15.4
N Prop			4.9	15.6
T.P.	+4.45	20.15	-4.79	15.70

Sta	+	H.L.	-	E.I.
		2015		
1400 N Prop			4.1	16.1
cb			4.7	15.5
114			4.8	15.4
♀			5.1	15.1
114			5.1	15.1
cb			5.1	15.1
S Prop			5.1	15.1
1450 S Prop			5.3	14.9
cb			5.5	14.7
114			5.3	14.9
♀			5.0	15.2
114			4.9	15.3
cb			5.0	15.2
N Prop			3.9	16.3
2400 N Prop			4.6	15.6
+ 10			4.8	15.4
cb			5.5	14.7
114			5.5	14.7
♀			5.7	14.5
114			6.0	14.2
cb			6.1	14.1
S Prop			5.5	15.0



Sta	+	H.L.	-	E.I.
		2016		
2750 S. Prop.			64	138
cb			66	136
1/4			65	137
¢			64	138
1/4			64	139
cb			65	137
N Prop			54	148
3700 N. Prop			54	148
+5			53	149
+8			63	139
cb			64	138
1/4			68	134
¢			68	134
1/4			70	132
cb			72	130
S Prop			73	129
3750 S. Prop			74	128
cb			72	130
1/4			71	131
¢			70	132
1/4			71	131
cb			73	129
N Prop			61	141

Sta	+	H.I.	-	E.I.
		20.15		
4400 N Prop.			6.1	14.1
cb			6.8	13.4
1/4			6.9	13.3
£			7.3	12.9
1/4			7.2	13.0
cb			7.4	12.8
S Prop.			7.3	12.9
4450			7.8	12.4
cb			7.9	12.3
1/4			7.9	12.3
£			7.9	12.3
1/4			7.7	12.5
cb			7.4	12.8
N Prop.			7.2	13.0
5400 N Prop.			7.8	12.4
cb			8.2	12.0
1/4			8.5	11.7
£			8.7	11.5
1/4			8.6	11.6
cb			8.6	11.6
S Prop.			8.5	11.7
5450 S Prop.			9.0	11.2
cb			9.1	11.1
1/4			9.0	11.2

Sta	+	HI	-	EI
		20.18		
5150			8.6	11.6
1/4			8.6	11.1
cb			8.7	11.5
N Prop			8.2	12.0
T.P. S.E. Top Hydrant Colton + Beardsley			5.91	14.24
	3.87	18.11		
N. Prop Colton - East Prop Beardsley			5.8	12.3
cb			6.1	12.0
1/4			6.2	11.9
5			6.4	11.7
1/4			6.7	11.4
cb			6.6	11.5
S. Prop Colton - East Prop Beardsley			6.8	11.3
Intersection Colton + Beardsley. Beardsley 60' wide. 10' cbs - 10' 1/4"				
cb Beardsley S. Prop Colton			6.0	12.1
cb			6.0	12.1
1/4			6.0	12.1
5			6.1	12.0
1/4			5.8	12.3
cb			5.5	12.6
N Prop			5.7	12.1
N. Prop Colton - 1/4 Beardsley			5.1	13.0
cb			5.2	12.9
1/4			5.4	12.7

Sta	+	H.I.	-	EI
		18.11		
♀ Colton - 1/4 Beardsley			5.6	12.5
1/4			5.8	12.3
cb			5.9	12.2
S Prop			5.8	12.3
S. prop Colton & Beardsley			6.3	11.8
cb			5.9	12.2
1/4			5.7	12.4
♀			5.5	12.6
1/4			5.3	12.8
cb			5.0	13.1
N. Prop			4.8	13.3
N. Prop Colton w/4 Beardsley			4.7	13.4
cb			5.1	13.0
1/4			5.4	12.7
♀			5.8	12.3
1/4			5.9	12.2
cb			6.2	11.9
S Prop			6.9	11.2
S. Prop Colton w. cb Beardsley			6.8	11.3
cb			5.7	12.4
1/4			5.9	12.2
♀			5.6	12.5
1/4			5.5	12.6
cb			5.4	12.7
N Prop			5.8	12.3

Sta	+	H.I.	-	E.I.
		1811		
N. Prop Colton-West Beardsley			4.6	13.5
cb			5.3	12.8
1/4			5.9	12.2
E			5.9	12.2
1/4			6.1	12.0
cb			6.3	11.8
S. Prop.			6.3	11.8
0720 - S. Prop.			7.8	10.3
cb			7.6	10.5
1/4			7.2	10.9
Φ			6.5	11.6
1/4			6.1	12.0
cb			5.2	12.9
N. Prop.			5.0	13.1
0750 - N. Prop.			4.2	13.9
cb			5.1	13.0
1/4			5.5	12.6
Φ			5.7	12.4
1/4			6.5	11.6
cb			7.1	11.0
S. Prop.			7.8	10.3
1400 - S. Prop.			7.1	11.0
cb			6.4	11.7
1/4			5.6	12.5

Sta	+	H.I.	-	EI
	18.11			
£ Colton 1700			4.6	13.5
1/4			3.8	14.3
Cb			3.6	14.5
N. Prop			3.6	14.5
1750 N. Prop			3.4	14.7
Cb			3.4	14.7
1/4			3.9	14.2
£			4.3	13.8
1/4			5.4	12.7
Cb			6.7	11.4
S. Prop			7.1	11.0
1785 S. Prop			7.2	10.9
Cb			7.0	11.1
1/4			6.6	11.5
£			5.8	12.3
1/4			5.5	12.6
Cb			4.8	13.2
N. Prop			4.0	14.1
2750 N. Prop			4.4	13.7
Cb			5.6	12.5
1/4			5.5	12.6
£			6.4	11.7
1/4			6.6	11.5
Cb			6.8	11.3

Sta	+	H.L.	-	E1
		18.11		
S. Prop	2150		6.9	11.2
T.P.			5.90	12.21
	4.37	16.58		
3400 S. Prop.			6.0	10.6
cb			5.8	10.8
1/4			5.4	11.2
ϕ			5.1	11.5
1/4			4.4	12.2
cb			4.1	12.5
1/4			2.8	13.8
N. Prop			2.5	14.1
3150 N Prop.			4.3	12.3
cb			5.2	11.4
1/4			5.4	11.2
ϕ			5.9	10.7
1/4			6.4	10.2
cb			6.9	9.7
S. Prop			6.6	10.0
4400 S. Prop			7.5	9.1
cb			7.3	9.3
1/4			7.1	9.5
ϕ			6.7	9.9
1/4			6.4	10.2
cb			6.4	10.2

Sta	H.I.	-	E1
	16.58		
N Prop. #100		5.0	11.6
4+50 N. Prop.		7.0	9.6
cb		7.8	8.8
1/4		7.6	9.0
£		7.5	9.1
1/4		7.9	8.7
cb		8.1	8.5
S. Prop		8.3	8.2
T.P		-8.42	8.16
	+3.98	12.14	
5+100-S. Prop.		4.5	7.2
cb		4.4	7.7
1/4		4.2	7.9
£		4.2	7.9
1/4		4.0	8.1
cb		4.1	8.0
N. Prop		2.6	9.5
5+50-N. Prop		3.3	8.8
cb		4.5	7.6
1/4		4.9	7.2
£		4.6	7.5
1/4		4.8	7.3
cb		4.9	7.2
S. Prop		5.0	7.1



Sta	+	H.I.	-	E1
		1214		
6+02 S Prop. Colton-East Prop. Sigsbee			6.7	5.4
cb			6.1	6.0
1/4			5.6	6.5
E			5.5	6.6
1/4			5.3	6.8
cb			5.2	6.9
N Prop. Colton-East Prop. Sigsbee			5.0	7.1
Intersection Colton & Sigsbee - Sigsbee 66' wide - 10' cbs - 10' 1/4"				
N Prop. Colton-Cb Sigsbee			5.1	7.0
cb			5.2	6.9
1/4			5.5	6.6
E			5.8	6.3
1/4			6.1	6.0
cb			6.5	5.6
S Prop.			6.9	5.2
S Prop. Colton-East 1/4 Sigsbee			6.7	5.7
cb			6.6	5.5
1/4			6.1	6.0
E			5.8	6.3
1/4			5.3	6.8
cb			5.0	7.1
N Prop.			5.0	7.1

Sta	+	H.I.	-	E.I.
		1214		
N Prop. Colton & Sigsbee			4.9	7.2
cb			5.2	6.9
1/4			5.5	6.6
⊕			6.1	6.0
1/4			6.6	5.5
cb			7.2	4.9
S Prop.			7.4	4.7
S Prop. Colton W. 1/4 Sigsbee			8.0	4.1
cb			7.5	4.6
1/4			7.3	4.9
⊕			6.7	5.4
1/4			6.0	6.1
cb			5.5	6.6
N. Prop.			5.0	7.1
N Prop. Colton - West Cb. Sigsbee			5.2	6.9
cb			6.1	6.0
1/4			7.1	5.0
⊕			7.8	4.3
1/4			7.8	4.2
cb			8.4	3.7
S. Prop.			9.0	3.1
S Prop Colton - West Prop Sigsbee			9.8	2.3
C.b.			9.4	2.7
1/4			9.0	3.1

Sta	+	H.I.	-	EI
		12.14		
¢			8.3	3.8
44			7.6	4.5
cb.			6.8	5.3
N.P. prop Colton - West Prop. Sigsbee			5.6	6.5

T.P. 1.59 10.55

6.93 17.48

2.85 14.63 - 14.77 B.M. North Bolt-head of S.E. Hydrant Main + Sigsbee

7/40/28

J.C. Bliss  
Sim Flood  
"Chuck" Hauser

X Section Anthony Drive

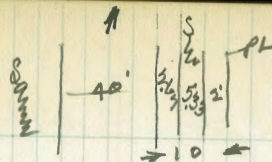
North Line of Division to South

Line of Marineview. 60' wide  
10' cbs. 10' 1/2'

46.81

B.M. Division + 40th

Sta	+	H.I.	-	Rod	EI
	0.77	47.58			
T.P.			680		40.78
	+6.18	46.96			
0+00 - North Line of Division - West Line Anthony			6.1		40.8
Cb - concrete			6.61		40.35
Gutter			6.8		40.1
1/4			6.7		40.2
1/2			6.1		40.8
3/4			6.2		40.7
Gutter			6.1		40.8
Cb - Concrete			5.62		41.34
East Prop. line			5.3		41.6
0+50 East Prop - concrete drive			4.43		42.53
Cb - concrete drive on cb line			5.39		41.57
1/4			5.3		41.6
1/2			5.0		41.9
3/4			5.5		41.4
Cb			5.7		41.2
West Prop.			5.4		41.5
0+69.3	10' Garage		5.15		41.81
0+93.6	6.5' Drive way on West side of st.		4.63		42.33

Plotted 7-25-28  
C.B.H.

25

Note - Sidewalk in fair condition is in on both sides of Anthony Drive between Division + Marineview. It runs on a straight grade between ends of curb, which is in to property line at both intersections. 10' Radius combination returns at both intersections.

Concrete apron starts at 0+43 and is 9' wide

Shoat concrete sidewalk in front of garage, ✓  
" " " " on drive way

Sta	+	H.L.	-	Red	El.
1400		46.96			
1400-West Line				3.6	43.3
Cb				4.9	42.0
1/4				4.5	42.4
¢				3.8	43.1
1/4				4.2	42.7
Cb.				3.9	43.0
East Line				3.2	43.7
1450-East Line				2.3	44.6
Cb				3.7	43.2
1/4				3.2	43.7
¢				3.0	43.9
1/4				3.5	43.4
Cb				3.7	43.2
West Line				2.5	44.4
1470 - West Line Anthony - South Line Marine View				2.7	44.7
Cb - concrete				2.82	44.14
gutter				3.4	43.5
1/4				3.2	43.7
¢				2.7	44.2
1/4				3.0	43.9
gutter				3.6	43.3
Cb concrete				2.85	44.11
East Line Anthony - South Line Marine View				2.3	44.6
T.P. on S.E. Corb Marine + Anthony				2.83	44.13

7-10-28

Xsection Marine View Avenue  
from West Line of 40<sup>th</sup> to East Line  
of Osborn

80' wide  
14' cbs  
13' 1/4 S

44.13

T.P. S.E. curb Marineview + Anthony Drive

Sta	+	Ht.	-	Rad	EI
	+5.03	49.16			

Note

Section from P.C. N.W. return to P.C. S.W. return

Sidewalk in fair condition extends  
from 40<sup>th</sup> st to about 40 ft

S		4.9	44.3
+3		5.9	43.3
Sidewalk		5.92	43.24
Cb-concrete		5.94	43.22
gutter		6.7	42.5
1/4		6.6	42.6
1/4		6.1	43.0
1/4		6.8	42.4
gutter		7.7	41.5
cb concrete		7.40	41.76
N		6.8	42.3

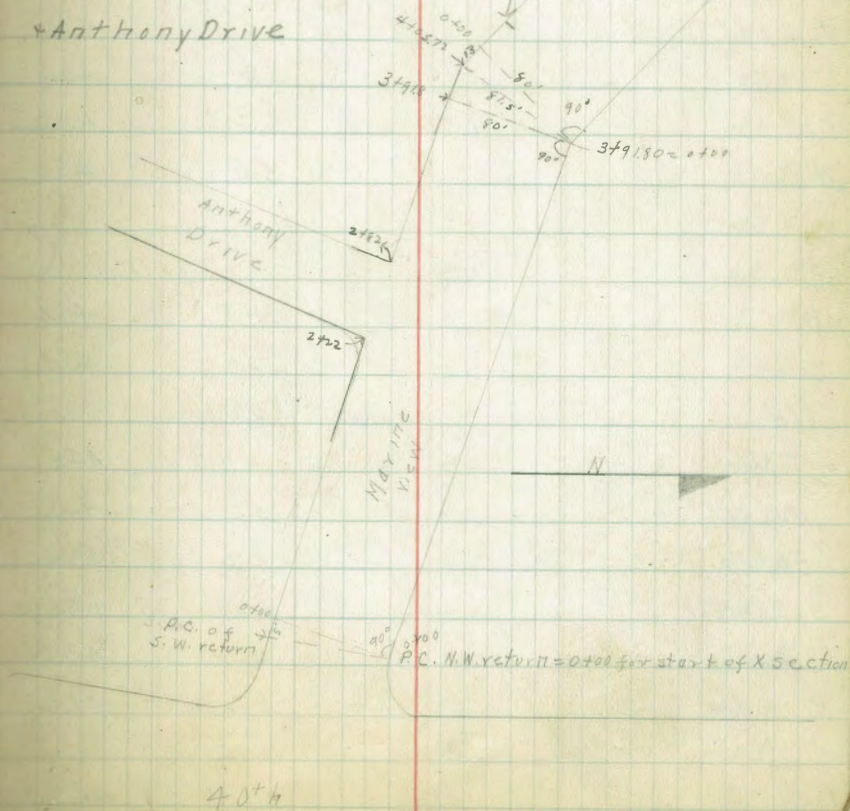
beyond the angle point on the  
south side of Marineview  
only. 10' Radius, combination  
returns at Marineview  
+ Anthony Drive

End of Sidewalk

Plated 7-25-28 - CBH

0+00

N		6.8	42.3
cb concrete		7.40	41.76
gutter		7.7	41.5
1/4		6.8	42.4
1/4		6.1	43.0
1/4		6.6	42.6
Cb		6.5	42.7
Sidewalk		5.91	43.25



40<sup>th</sup>

∩ 49.16

cb+10	57	43.5
S	4.6	44.5
	6+50	
S	5.1	44.0
+3	5.7	43.5
sidewalk	5.79	43.37
cb	6.1	43.1
1/4	5.7	43.5
£	5.5	43.6
1/4	5.8	43.4
cb	6.2	43.0
N	5.6	43.5
	1+00	
N	4.7	44.4
cb	5.8	43.3
1/4	5.6	43.5
£	4.7	44.4
1/4	5.6	43.6
cb	6.2	43.0
sidewalk	5.62	43.54
cb+10	6.3	43.9
S	4.9	44.3
	1+50	
S	5.1	44.1

∩ 49.16

28

sidewalk	5.26	43.90
cb	5.9	43.3
1/4	5.3	43.8
£	4.8	44.3
1/4	5.3	43.8
cb	5.4	43.8
N	4.2	45.0
	2+00	
N	3.9	45.2
cb	4.9	44.2
1/4	4.8	44.3
£	4.3	44.8
1/4	5.0	44.2
cb	5.5	43.7
sidewalk	4.99	44.17
S	4.3	44.8
	2+22 East Line Anthony Drive	
S	4.5	44.7
cb concrete	4.96	44.20
gutter	5.4	43.8
1/4	4.9	44.3
£	4.3	44.8
1/4	4.6	44.5
cb	4.6	44.5
N	3.9	45.2

π 49/16

2+32 - Cb Anthony Drive

N	3.6	45.5
Cb	4.5	44.7
1/4	4.6	44.6
£	4.2	44.9
1/4	4.6	44.6
cb	5.4	43.7
S	5.7	43.4

2+42 - 1/4 Anthony Drive

S	5.0	44.1
cb	5.0	44.1
1/4	4.6	44.6
£	4.2	45.0
1/4	4.5	44.7
cb	4.4	44.7
N	3.7	45.4

2+50 Concrete Walk 1' North of N Prop. Line

3.43 45.73

2+52 £ Anthony Drive

N	3.8	45.3
cb	4.5	44.7
1/4	4.6	44.6
£	4.2	45.0
1/4	4.4	44.7
cb	4.7	44.5
S	4.9	44.2

π 49/16

2+62 West 1/4 Anthony Drive

S	5.4	43.7
cb	5.1	44.1
1/4	4.6	44.6
£	4.2	45.0
1/4	4.5	44.7
cb	4.7	44.5
N	3.8	45.3

2+72 West Cb Anthony Drive

N	4.0	45.2
cb	4.5	44.6
1/4	4.5	44.6
£	4.3	44.8
1/4	4.7	44.5
cb	5.4	43.8
S	5.5	43.6

2+82 West Line Anthony Drive

S	4.2	45.0
£	4.7	44.5
cb concrete	4.99	44.17
gutter	5.4	43.7
1/4	4.8	44.4
£	4.4	44.7
1/4	4.6	44.6
cb	5.0	44.2
£	4.2	45.0
N	3.8	45.3



π 49.16

3+00

N	3.6	45.5
cb	4.6	44.5
1/4	4.6	44.6
£	4.4	44.7
1/4	4.8	44.4
cb	5.5	43.7
sidewalk	5.01	44.15
cb + 10	4.9	44.3
S	4.1	45.1

3+27 Concrete steps 0.5 North of N. Prop line

Shot on lower step 40.4 45.02

3+50

S	5.1	44.1
sidewalk	5.48	43.68
cb	6.0	43.2
1/4	5.1	44.1
£	4.8	44.3
1/4	5.3	43.9
cb	5.4	43.7
N	4.7	44.4

T.P.

+1.47

46.61

-402 45.14

π 46.61

30

3+91.8 Angle Point in Marine View

N	2.7	43.9
cb	3.1	43.5
+2	3.8	42.8
1/4	3.3	43.3
£	2.9	43.7
1/4	3.1	43.5
cb	4.1	42.5
+2	3.4	43.2
sidewalk	3.40	43.21
S	2.9	43.7

Section from 391.8 on North 40.5.7 on South-Angle Pt to Angle Pt.

S	3.6	43.0
sidewalk	3.48	43.13
cb	4.3	42.3
1/4	3.4	43.2
£	3.0	43.6
1/4	3.4	43.2
cb	3.8	42.8
+2	3.0	43.6
N	2.7	43.9

0+00 - See sketch 3 pages back

N	2.7	43.9
cb	3.1	43.5
+2	4.0	42.6
1/4	3.5	43.1

46.61

0+00

¢	3.2	43.4
1/4	3.4	43.2
cb	4.4	42.2
sidewalk	3.61	43.00
S	3.8	42.8

0+26.20 End of sidewalk

S	3.9	42.7
sidewalk	3.85	42.76
cb	4.4	42.2
1/4	3.7	42.9
¢	3.6	43.0
1/4	3.6	43.0
cb	3.3	43.3
N	3.3	43.3

0+45 Sidewalk that extends 4' into st from South

Prop line. Shot on Prop line 3.63 42.98 ✓

0+50

N	3.4	43.2
cb	3.7	42.9
1/4	3.7	42.9
¢	3.7	42.9
1/4	3.8	42.8
cb	4.4	41.2
S	3.8	42.8

46.61

Concrete  
0+66<sub>N</sub> Driveway that extends 4' into

31

st. from South Prop. line. 3.90 42.71  
1+00

S	4.1	42.5
cb	4.6	42.0
1/4	4.0	42.6
¢	3.8	42.8
1/4	3.7	42.9
cb	4.0	42.6

on N Prop.  
1+33 Concrete Driveway 2.29 44.32  
1+50

N	2.5	44.1
+10	2.9	43.7
cb	3.8	42.8

1/4	4.0	42.6
¢	4.0	42.6
1/4	4.1	42.5

cb	4.9	41.7
+2	3.6	43.0
S	3.4	43.2

1+61 Sidewalk on N Prop. 2.38 44.23  
2+00

S	5.9	40.7
+10	5.7	40.9
cb	6.7	39.9

Σ 46.61

2+00

1/4	6.4	40.2
¢	5.8	40.8
1/4	6.0	40.6
cb	6.1	40.5
+4	4.4	42.2
N	3.5	43.1

2+50

N	7.5	39.1
+11	8.3	38.3
cb	9.3	37.3
1/4	9.1	37.5
¢	9.0	37.6
1/4	9.2	37.4
cb	10.0	36.6
+2	10.0	36.6
+3	9.2	37.4
S	9.4	37.2

2+66

S	10.5	36.1
cb	10.7	35.9
1/4	10.1	36.5
¢	9.8	36.8
1/4	10.1	36.5
cb	10.4	36.2
N	10.5	36.1

Σ 46.61

2+78 Concrete driveway that extends 2.3' into street from N. Propline 11.00 35.60

3+00

N	11.8	34.8
cb	12.2	34.4
1/4	12.4	34.2
¢	12.0	34.6
+7	11.5	35.1
1/4	12.1	34.5
cb	12.7	33.9
S	12.1	34.5

T.P. -12.67 33.94

+0.19

Σ 34.13

3+50

S	1.4	32.7
+10	1.4	32.7
cb	2.1	32.0
1/4	2.3	31.8
¢	2.0	32.1
1/4	2.4	31.7
cb	2.6	31.5
N	2.8	31.3

3+73

Out 15	7.0	27.1
N	4.0	30.1

T 34.13

3+73

Cb	3.7	30.4
1/4	3.3	30.8
♀	3.2	30.9
1/4	3.4	30.7
Cb	2.8	31.3
S	1.5	32.6

4+00

S	2.5	31.6
Cb	3.9	30.2
1/4	4.4	29.7
♀	4.8	29.3
1/4	5.1	29.0
Cb	5.8	28.3
+5	6.4	27.7
N	10.5	23.6
Out 20	15.3	18.8

4+31

Out 20	19.4	15.7
N	16.8	17.3
Cb	10.0	24.1
+3	8.8	25.3
1/4	7.3	26.8
♀	6.7	27.4
1/4	6.6	27.5
Cb	6.5	27.6
S	4.5	29.6

T 34.13

33

4+50

S	4.7	29.4
+2	5.7	28.4
Cb	7.2	26.9
1/4	7.5	26.6
♀	7.8	26.3
1/4	8.6	25.5
+7	9.5	24.6
Cb	12.6	21.5
N	18.5	15.6
Out 20	20.9	13.2

4+68

Out 20	22.1	12.0
N	18.5	15.6
+3	18.3	15.8
Cb	13.0	21.1
+6	11.0	23.1
1/4	10.6	23.5
♀	9.2	24.9
1/4	8.8	25.3
Cb	8.9	25.2
+10	6.7	27.4
S	4.8	29.3

Section from 4+77.3 on North to 4+76.46 on South =

East Line of Osborn.

S	6.3	27.8
---	-----	------

π 34.13

East Line Osborn ctd.

cb	90	25.1
14	96	24.5
4	102	23.9
14	123	21.8
cb	147	19.4
N	182	15.9
Out 20	223	11.8

T.P. S.E. Top Hydrant Osborn + Max. inc. view

-758 26.55

S.E. B.P. National + Division

-10.40 23.73

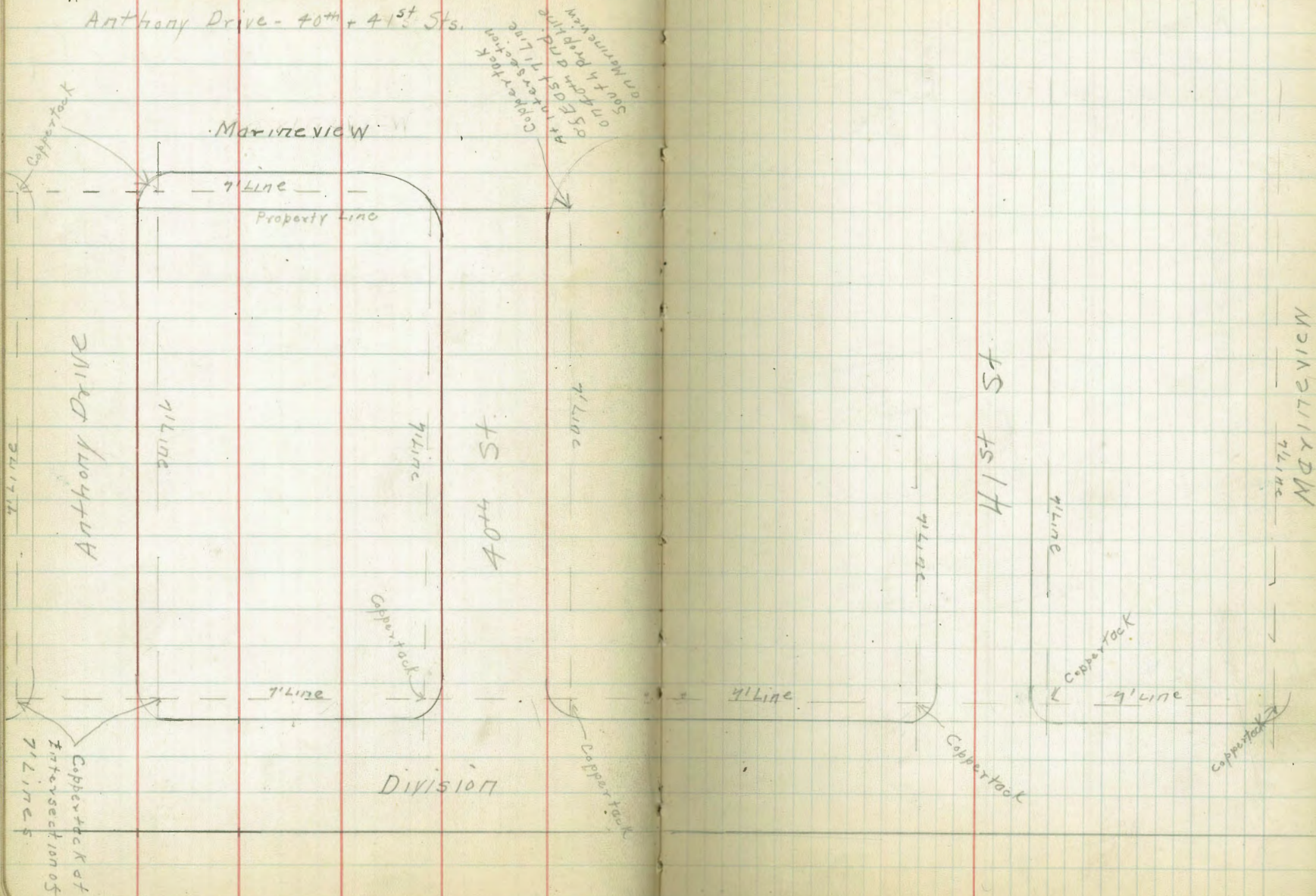
23.75

34

7-11-28  
J.C. Bliss  
Jim Flood  
"Chuck" Rowley

Ties on Division - Marine View

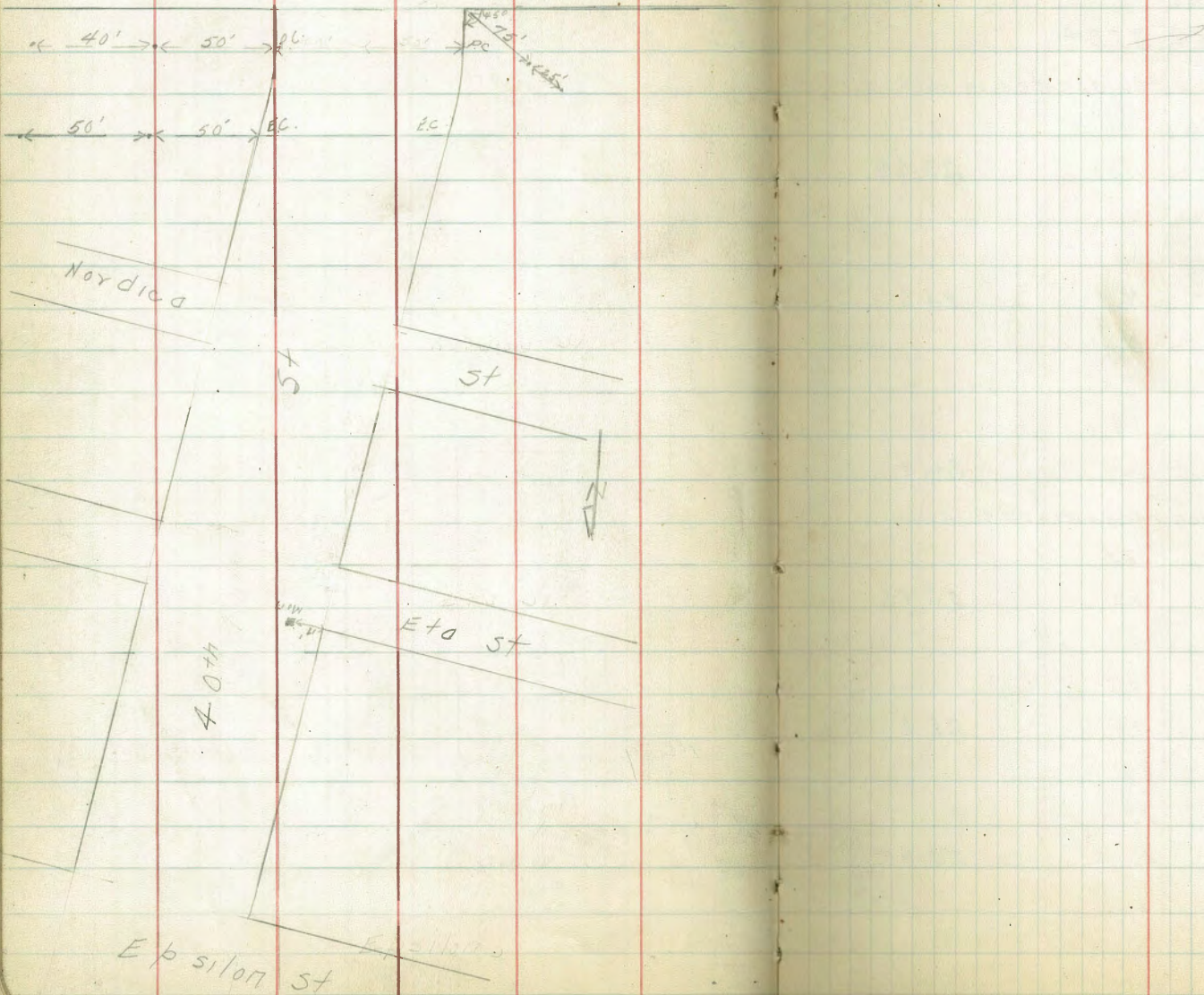
Anthony Drive - 40<sup>th</sup> + 41<sup>st</sup> Sts.



Ties on 4<sup>th</sup> Street

Division

Street



7-12-28

J.C. Bliss

Jim Flood

Chuck Rounner

X section of Division St from

National Ave (National City) to Highland

Ave. 14' Cbs 13' 1/4" on S.D. side

16' cbs 12' 1/4" on N.C. side

National

37

S.E.B.P. Division + National

2373

+ 11.31

N 35.04

Station 0+00 as noted in sketch

S	11.1	
cb-concrete	11.36	23.68
gutter	11.3	
1/4	10.7	
£	10.4	24.6
1/4	10.6	
cb	10.0	
+12	9.8	
N	8.7	26.3
0+44 Beginning of sidewalk on N. (S.D. side)		
N	8.5	
sidewalk	8.91	26.13
cb	8.9	
1/4	9.3	
£	9.4	25.6
1/4	9.9	
cb	10.1	
sidewalk	10.09	24.95
S	10.7	

Division

National City side

San Diego side

Note - 4' sidewalk on  
on Southside of Division.  
5.5' sidewalk in on North  
side. Sidewalk shots  
when indicated are on  
inside edge of walk.  
Inside edge of sidewalk on  
South N.C. side is 0.5' back  
of face of curb. On North or  
S.D. side inside edge of  
sidewalk is 4.5' back of  
face of curb.

N



π 3504

1400

S	9.0	
sidewalk	8.34	26.70
cb	8.3	
1/4	8.5	
£	7.8	27.2
1/4	8.1	
cb	8.4	
sidewalk	7.32	27.72
N	7.2	

1450

N	5.4	
S.W.	5.12	29.32
cb	6.4	
1/4	6.6	
£	6.1	28.9
1/4	6.8	
cb	6.8	
S.W.	6.80	28.24
S.	7.1	

2400 West Line Alberta Court on N.C. side

S	4.5	
S.W.	5.08	29.96
cb	5.1	
1/4	4.6	
£	4.3	30.7

π 3504

38

1/4	5.1	
cb	4.1	
S.W.	4.00	31.04
cb+10	4.0	
N	3.2	

2406 Beginning of 60' stretch of existing curb on N. side  
 station end of curb 3.79 31.25

2420 E. Line of Alberta Court on N.C. side

N	2.2	
1/4	3.3	
sb. concrete	3.28	31.76
gutter	3.6	
1/4	4.0	
£	3.7	31.3
1/4	3.9	
cb	4.40	
S.W.	4.40	30.64
S	4.1	

2450

S	3.1	
S.W.	3.46	31.58
1/4	2.8	
£	2.6	32.4
1/4	2.7	
gutter	2.8	

π 35.04

2+50 c+d

Cb - concrete	246	32.58
+10	24	
N	0.9	
2+66 End of 5' stretch of Cb on N.		
Shot on end of cb.	1.99	33.05
T.P.	-1.42	33.62

+10.83

π 44.45

3+00

N	8.9	
+4	10.3	
S.W.	10.24	34.21
Cb	10.4	
1/4	10.8	
⊕	10.2	34.2
1/4	10.4	
Cb	11.2	
S.W.	11.20	33.25
S	10.6	
3+50		
S	9.6	
SW	9.74	34.71
1/4	9.3	
⊕	9.1	35.4
1/4	9.1	

π 44.45

39

+10	10.0	
Cb	9.0	
S.W.	8.78	35.67
N	8.6	
4+00		
N	6.8	
SW	7.22	37.23
Cb	7.4	
+3	8.2	
1/4	7.7	
⊕	7.7	36.7
1/4	8.0	
Cb	8.3	
S.W.	8.26	36.19
S	8.6	
4+20 West Line Balsam Drive on N.S. side		
S	8.0	
S.W.	7.65	36.80
Cb	7.7	
1/4	7.4	
⊕	7.1	37.3
1/4	7.1	
+10	8.0	
Cb	7.0	
S.W.	6.65	37.80

π 44.45

cb+10	6.5	
N	5.5	
44 40 East Line Balsanz Drive M.C. side		
N	5.8	
S.W	6.36	38.09
cb	6.8	
+5	7.4	
1/4	6.6	
£	6.5	38.0
1/4	6.9	
cb	7.27	37.18
S	7.1	
5700		
S	6.0	
S.W	6.26	38.19
cb	6.3	
1/4	5.3	
£	5.2	39.3
1/4	5.5	
+9	6.5	
cb	5.8	
S.W	5.36	39.09
cb+10	5.3	
N	4.2	

π 44.45

40

5750

N	3.8	
1/4	4.6	
S.W.	4.70	40.75
cb	5.0	
+3	5.5	
1/4	5.0	
£	4.7	39.7
1/4	4.9	
cb	5.3	
S.W.	5.40	39.05
S	5.2	
6700 <sup>80</sup> West Line Anthony Drive		
S	4.5	
S.W	4.57	39.88
cb	4.6	
1/4	4.5	
£	4.0	40.4
1/4	4.2	
gutter	4.6	
cb-concrete	4.05	40.40
N	3.6	
W Cb Anthony - 10' cbs 10' 1/4's on Anthony		
N	4.5	40.0
cb	4.5	
1/4	4.1	

T 44.45

¢	4.0	40.4
1/4	4.4	
cb	4.5	
S.W	4.44	40.01
S	4.4	
West 1/4 Anthony		
S	4.1	
S.W	4.27	40.18
cb	4.3	
1/4	4.2	
¢	3.8	40.6
1/4	3.8	
cb	4.3	
N	4.3	40.2
¢ Anthony		
N	3.5	41.0
cb	4.0	
1/4	3.7	
¢	3.6	40.8
1/4	4.0	
cb	4.1	
S.W.	4.06	40.39
S	3.9	

T 44.45

41

East 1/4 Anthony also West Line Cannon Drive on N.S. side

S	3.9	
S.W	3.91	40.54
cb	4.0	
1/4	3.8	
¢	3.4	41.1
1/4	3.5	
cb	4.0	
N	3.7	40.7
East cb Anthony		
N	3.4	41.0
cb	3.9	
1/4	3.5	
¢	3.3	41.1
1/4	3.5	
cb	3.8	
S	3.5	41.0
East Line Anthony - at 00		
S	3.5	
S.W	3.45	41.00
cb	3.5	
1/4	3.5	
¢	3.2	41.2
1/4	3.4	
gutter	3.6	
cb concrete	3.20	41.25
N	2.8	

π 44.45

0+50

N	2.0	
S.W.	2.18	42.27
CB	2.6	
+2	3.3	
1/4	2.3	
¢	2.2	42.2
1/4	2.2	
CB	2.6	
S.W.	2.56	41.89
S	2.4	

T.P.		-2.18	42.27
------	--	-------	-------

+7.10

π 49.37

1+00

S	6.3	
S.W.	6.69	42.68
CB	6.7	
1/4	6.3	
¢	6.4	43.0
1/4	6.5	
+7	7.2	
CB	6.7	
S.W.	6.38	42.99
N	6.2	

π 49.37

42

1+50

N	5.5	
S.W.	5.62	43.75
CB	6.1	
1/4	6.0	
¢	5.7	43.7
1/4	5.7	
CB	6.0	
S.W.	5.91	43.46
S	5.6	

2+00 - West Line Dahlia Drive on N.E. side

S	4.9	
S.W.	5.0	44.3
	5.1	
1/4	5.1	
¢	5.0	44.3
1/4	5.1	
4g	5.7	
CB	5.0	
S.W.	4.97	44.45
N	4.5	

2+20 East Line Dahlia Drive on N.E. side

N	4.4	
S.W.	4.58	44.79
CB	5.0	
1/4	4.6	

π 49.37

ϕ	4.6	44.8
1/4	4.8	
cb	4.8	
S.W.	4.72	44.65
S	4.7	

2+50 West Line 40<sup>th</sup> St. 10' cbs. 10' 1/4 on 40<sup>th</sup>

S	4.2	
S.W.	4.2	45.11
cb	4.3	
1/4	4.4	
ϕ	4.1	45.3
1/4	4.2	
gutter	4.6	
cb-concrete	4.28	45.09
N	4.1	

W West cb 40<sup>th</sup>

N. To cb	4.24	45.13
X gutter	5.0	
cb	4.6	
1/4	4.1	
ϕ	4.0	45.4
1/4	4.2	
cb	4.6	
S.W.	4.05	45.32
	3.9	

π 49.37

43

West 1/4 40<sup>th</sup>

S	3.4	
S.W.	3.80	45.57
cb	3.9	
1/4	4.0	
ϕ	3.6	45.8
1/4	4.0	
cb	4.3	
N	4.5	44.9

ϕ 40<sup>th</sup>

N	4.3	45.1
cb	4.0	
1/4	4.0	
ϕ	3.4	46.0
1/4	3.9	
cb	3.7	
S.W.	3.62	45.75
S	3.3	

East 1/4 40<sup>th</sup>

S	3.2	
S.W.	3.56	45.81
cb	3.6	
1/4	3.7	
ϕ	3.4	46.0
1/4	3.8	
cb	4.0	
N	4.4	45.0

T 4937

East Cb 40<sup>th</sup>

N. Tpcb	3.35	46.02
N gutter	4.3	
Cb	4.0	
1/4	3.5	
£	3.3	46.1
1/4	3.6	
cb	3.4	
S.W.	3.32	46.05
S	3.1	

East Line 40<sup>th</sup> - 0+00.

S	3.0	
S.W	3.20	46.17
cb	3.3	
1/4	3.5	
£	3.1	46.3
1/4	3.4	
gutter	3.7	
cb-concrete	3.26	46.11
N	3.1	

check on B.M. N.E. Spike 40<sup>th</sup> + Division #681  
- 2.60 - 46.77

B.M. #681 DIVISION 40<sup>th</sup>  
12.59  
59.70

T 5940

44

0+50

N	12.6	
SW.	12.47	46.93
Cb	12.7	
1/4	12.4	
£	12.1	47.3
1/4	12.5	
cb	12.4	
SW	12.34	47.06
S	12.3	

1+09 West Line Elm Drive

S	11.2	
SW.	11.17	48.23
cb	11.2	
1/4	10.7	
£	10.3	49.1
1/4	10.6	
cb	11.2	
SW.	11.15	48.25
N	10.7	

1+29 East Line Elm Drive

N	9.4	
SW.	9.80	49.60
cb	10.1	
+3	10.5	
1/4	9.8	

Σ 5940

1+29 ctd

£	9.3	50.1
1/4	10.0	
cb	10.6	
S.W.	10.53	48.07
S	10.8	

1+50

S	8.5	
S.W.	9.12	50.28
cb	9.2	
1/4	8.7	
£	8.3	51.1
1/4	8.7	
+8	9.3	
cb	8.7	
S.W.	8.33	51.07
N	8.0	

2+00

N	4.4	
S.W.	4.50	54.90
cb	4.7	
+3	5.4	
1/4	5.1	
£	4.7	54.7
1/4	5.3	
cb	5.1	

Σ 5940

45

S.W.	56.7	53.73
S	5.4	

2+30 - East Line #1<sup>st</sup> St.

S	3.2	
S.W.	35.0	55.90

cb	3.6	
1/4	3.3	

£	2.9	56.5
---	-----	------

1/4	2.8	
-----	-----	--

+9	3.2	
----	-----	--

gutter	3.5	
--------	-----	--

cb-concrete	2.15	57.25
-------------	------	-------

N	1.7	
---	-----	--

West cb #1<sup>st</sup> St - 10' obs + 10' 1/45

N Trcb	1.48	57.92
--------	------	-------

N gutter	2.0	
----------	-----	--

cb	2.4	
----	-----	--

1/4	2.0	
-----	-----	--

£	2.7	57.2
---	-----	------

1/4	2.4	
-----	-----	--

cb	2.7	
----	-----	--

S.W.	26.8	56.72
------	------	-------

S	2.7	
---	-----	--



π 59.40

West 1/4 41st St.

S	1.7	
S.W.	1.95	57.45
cb	2.0	
1/4	1.8	
♀	1.6	57.9
1/4	1.4	
cb	1.7	
N	1.5	57.9
♀ 41st St.		
N	0.7	58.7
cb	1.1	
1/4	0.8	
♀	1.0	58.4
1/4	0.9	
cb	1.4	
S.W.	1.31	58.09
S.	1.1	
T.P.		-0.12 59.28

+ 13.13

π 72.41

East 1/4 41st

S	13.3	
S.W.	13.66	58.75
cb	13.7	
1/4	13.2	

π 72.41

46

♀	13.2	59.2
1/4	13.3	
cb	13.5	
N	14.0	58.4
East curb 41st		
N Top cb	13.28	59.13
N gutter	13.3	
cb	13.4	
1/4	12.6	
♀	12.5	59.9
1/4	12.5	
cb	12.9	
SW	17.90	59.51
S	12.5	
East Line 41st = 0+00		
S	11.8	
SW	17.28	60.13
cb	12.3	
1/4	12.0	
♀	12.0	60.4
1/4	12.4	
fs	12.8	
gutter	12.8	
cb-concrete	13.04	59.37
N	12.5	

π 72.41

T.P. N. E. Iron Pin at Black Cor - 1304 59.37  
 0+02<sup>40</sup> West Line D Ave. N.C. Side  
 Section same as 0+00 - East Line 41st

T.P. +1306 ✓ 59.37

π 72.43

0+07<sup>40</sup> West Cb D Ave N.C. side

N 122  
 SW. 1260 59.83

cb 125

1/4 121

¢ 11.6 60.8

1/4 11.4

cb 11.95

S to cb. 11.99 60.44

S. cb cut 12.70

0+17<sup>40</sup> West 1/4 D Ave.

S 12.0 60.4

cb 11.1

1/4 10.4

¢ 11.0 61.4

1/4 11.6

cb 11.8

SW. 11.92 60.51

N 11.4

π 72.43

47

0+27<sup>40</sup> ¢ D Ave

N 10.9 61.21

SW. 11.22

cb 11.6

1/4 11.1

¢ 10.3 62.1

1/4 10.2

cb 10.8

S 11.1 61.3

0+37<sup>40</sup> East 1/4 D Ave

S 10.6 61.8

cb 10.2

1/4 9.7

¢ 9.7 62.7

1/4 10.7

cb 11.1

SW. 10.56 61.87

N 10.2

0+47<sup>40</sup> East Cb D Ave

N 9.6 62.49

SW. 9.94

cb 10.5

1/4 10.0

¢ 9.2 63.2

1/4 9.2

cb 9.8

72.43

Eastcb D Ave old

S Tp Cb	9.48	62.95
S cb cut	9.88	
at 52 <sup>nd</sup> East Line D Ave		
S	9.0	
Cb-concrete	9.50	62.93
gutter	9.5	
1/4	9.0	
¢	8.8	63.6
1/4	9.6	
Cb	10.2	
sw.	9.53	62.90
N	9.3	

Note - From D Ave East the inside edge of the sidewalk on the N.C. side is 9' back of face of curb.

1+00

N	5.4	
sw.	6.23	66.20
cb	7.3	
1/4	6.8	
¢	5.8	66.6
1/4	5.8	
Cb	6.0	
sw.	6.05	66.38
S	5.5	

72.43

48

1+50

S	2.0	
sw.	2.59	69.85
cb	2.1	
1/4	2.0	
¢	2.2	70.2
1/4	3.1	
cb	3.2	
sw.	2.74	69.69
N	1.8	
TP		-0.7676 71.67
		+7.40
	79.07	

1+93

N	5.8	
sw.	6.40	72.67
cb	7.4	
1/4	6.6	
¢	6.1	73.0
1/4	5.9	
cb	6.7	
sw.	6.29	72.78
S	6.7	
		2+30 West Line Marineview Ave.
S	4.6	
sw.	5.16	73.91

Note - End of sidewalk on S.D. side

79.07

## West Line Marine View ctd

cb	5.5	
1/4	4.7	
£	4.9	74.2
1/4	5.9	
Gutter	6.2	
cb-concrete	5.37	73.70
N	5.3	

## West cb Marine View

N to cb.	5.34	73.73
N gutter	6.1	
cb	6.2	
1/4	5.8	
£	4.7	74.3
1/4	4.6	
cb	5.2	
s.w.	5.20	73.87
S	4.2	

## West 1/4 Marine View

S	4.2	74.8
cb	4.7	
1/4	4.4	
£	4.4	74.7
1/4	5.5	
cb	6.2	
N	6.2	72.9

Note - cb + 3 is West Line of  
Alley - sidewalk out across  
Alley.

N 79.07

49

## £ Marine View

N	6.0	73.0
cb	6.1	
1/4	5.6	
£	4.6	74.4
1/4	4.3	
+ 11	4.6	
cb	4.2	
S	3.5	75.5

Note - £ Marine View + 3 is East Line of alley

+ beginning sidewalk again.

Shot on edge of sidewalk 3.63 75.44

## East 1/4 Marine View

S	3.3	
sw	3.61	75.46
cb	4.2	
+ 11	4.9	
1/4	4.4	
£	4.6	74.4
1/4	5.5	
cb	6.1	
N	6.2	72.8
East cb Marine View		
N	6.4	72.6
cb	6.0	
1/4	5.4	

79.07

East Cb Marineview ctd.

£	47	74.3
1/4	4.5	
+ 11	4.9	
Cb	4.2	
SW	3.50	75.57
S	2.9	

East Line Marineview - 0+00

S	2.8	
SW	3.40	75.67
Cb	4.1	
+ 1	4.8	
1/4	4.5	
£	4.7	74.3
1/4	5.6	
Cb	6.1	
N	6.1	73.0

0+35

N	7.0	72.0
Cb	6.7	
1/4	5.8	
£	5.2	73.8
1/4	5.0	
+ 11	5.1	
Cb	4.4	
SW	3.60	75.47
S	3.5	

79.07

50

0+50

S	3.2	
SW	3.87	75.20
Cb	4.5	
+ 1	5.5	
1/4	5.3	
£	5.3	74.7
1/4	6.1	
Cb	7.2	
N	8.6	70.5

0+75

N	12.3	66.7
Cb	9.0	
1/4	7.6	
+ 5	6.5	
£	5.9	73.1
1/4	5.9	
+ 11	5.9	
Cb	5.0	
SW	4.28	74.79
S	3.6	

1+11

Note - End of sidewalk N.C. side

S	4.6	
SW	4.72	74.35
Cb	6.0	
1/4	6.3	

π 7907

	411 ctd	
£	6.2	72.9
1/4	9.2	
cb	13.7	
N	16.3	62.7
	1+25	
N	18.5	60.6
cb	16.0	
1/4	12.7	
£	8.0	71.1
+5	6.2	
1/4	6.4	
cb	6.0	
S	5.8	73.3
	1+50	
S	5.2	73.9
cb	5.9	
1/4	6.6	
£	10.3	78.8
1/4	13.4	
cb	17.0	58.0
N	21.1	
	1+75	
N	22.2	46.9
cb	18.7	
1/4	15.0	

π 7907

51

	1475 ctd	
£	11.5	67.6
1/4	7.4	
+6	6.7	
cb	6.7	
S	5.3	73.8
	2+00	
S	6.6	72.5
cb	7.7	
+8	7.8	
1/4	10.0	
£	13.1	66.0
1/4	17.2	
cb	19.5	
N	23.4	55.7
Out 15	28.0	
Out 30	32.3	
	2+25	
Out 30	34.0	
Out 15	30.5	
N	26.2	42.9
cb	22.4	
1/4	19.1	
£	17.2	61.9
1/4	13.1	
+8	9.8	

$\pi$  79.07

- 10.60

68.47

cb	9.3	
S	8.5	60.0
T.P.	Spike in tree N.C. side st 2+50	68.47
	+0.17	

$\pi$  68.64

2+50

S	2.6	68.0
cb	2.1	
1/4	5.1	
Φ	9.1	59.5
1/4	12.1	
cb	15.4	
N	18.4	50.2
15 out	21.8	
30 out	24.9	
	2+75	
30 out	28.1	
15 out	25.2	
N	21.8	46.8
cb	19.0	
1/4	16.1	
Φ	13.1	55.5
+10	11.1	
1/4	10.0	
+6	7.3	
cb	6.7	

$\pi$  68.64

52

+5	6.7	
S	3.9	64.7
	2+96 <sup>40</sup> West Line 42nd st - 60' st	
S	5.7	62.9
+7	8.3	
cb	9.0	
+3	9.9	
1/4	13.4	
+8	14.8	
Φ	16.1	52.5
1/4	18.9	
cb	21.7	
N	24.6	44.0
15 out	27.0	
30 out	30.2	
	Φ 42nd st	
N	28.7	39.9
cb	25.3	
1/4	22.4	
Φ	19.9	48.7
1/4	16.7	
cb	13.4	
S	9.8	58.8
T.P.		-1270 55.9.4
	+0.19	56.13

$\pi$  56.13

East Line 42nd-0400

S	0.0	56.1
cb	4.5	51.5
1/4	7.7	48.4
¢	10.3	45.8
1/4	13.0	43.1
cb	16.2	39.9
N	19.5	36.6
out 15	21.8	35.3
out 30	23.9	32.2
	0+50	
out 30	27.0	29.1
out 15	24.7	31.4
N	23.1	33.0
cb	21.1	35.0
1/4	18.6	37.5
¢	15.2	40.9
1/4	12.2	43.9
cb	9.4	46.7
S	4.2	51.0
	0+75	
S	5.3	50.8
cb	10.8	45.3
1/4	14.8	41.3
¢	17.3	38.8
1/4	19.8	36.3

 $\pi$  56.13

53

cb	22.1	34.0
N	24.3	31.8
out 15	25.9	30.2
out 30	28.1	28.0
	1+00	
out 30	27.5	28.6
out 15	26.1	30.0
N	24.7	31.4
cb	22.1	34.0
1/4	19.4	36.7
¢	17.4	38.7
+ 4	15.2	40.9
1/4	14.6	41.5
cb	10.2	45.9
S	4.6	51.5
	1+25	
S	2.9	53.2
cb	8.6	47.5
+5	9.9	46.2
+10	12.2	43.9
1/4	12.6	43.5
f9	14.1	42.0
¢	16.2	39.9
1/4	18.5	37.6
cb	21.6	34.5



$\pi$  56.13

N	24.8	31.3
Out 15	26.4	29.7
Out 30	28.6	27.5
	1750	
Out 30	27.7	28.4
Out 15	26.6	29.5
N	24.8	31.3
cb	21.1	35.0
1/4	17.8	38.3
+10	14.4	41.7
¢	13.1	43.0
1/4	9.9	46.2
+ 8	6.5	49.6
cb	5.4	50.7
5	0.2	55.9
T.P.		-3.23 52.90

+ 9.65

 $\pi$  62.55

1775

S	32	59.4
cb	82	54.4
1/4	120	50.6
¢	16.1	46.5
+ 3	18.8	43.8
1/4	21.4	41.2

 $\pi$  62.55

54

cb	24.5	38.1
N	30.0	32.6
Out 15	32.4	30.2
Out 30	34.1	28.5
	2400	
Out 30	31.9	30.7
Out 15	29.9	32.7
N	27.3	35.3
cb	23.0	39.6
1/4	17.8	44.8
+ 8	15.7	46.9
¢	12.8	49.8
+ 5	11.3	50.3
1/4	9.2	53.4
cb	6.1	56.5
5	1.4	60.2

2+25

S	4.3	57.4
cb	6.8	55.8
1/4	9.1	53.5
¢	11.8	50.8
+ 8	15.5	47.1
1/4	16.6	46.0
cb	20.4	42.2
N	24.5	38.1

T 62.55

2+25 ctd.

Out 15 286 340

Out 30 321 305

2+50

Out 30 314 312

Out 15 280 346

N 240 386

cb 208 418

1/4 171 445

+11 145 481

¢ 141 485

+5 126 500

1/4 116 510

cb 101 525

S 76 550

T.P. -12.45 -50.10

+0.18

T 50.28

3+00

S 10 493

cb 28 475

1/4 44 459

¢ 63 440

1/4 81 422

cb 97 406

N 13.3 37.0

T 50.28

55

3+00 ctd

Out 15 175 328

Out 30 223 280

3+25

Out 30 232 271

Out 15 217 286

N 175 328

cb 138 365

1/4 114 389

¢ 99 404

1/4 79 424

cb 64 439

S 45 458

3+50

S 74 429

cb 91 402

1/4 104 399

¢ 128 375

1/4 152 351

cb 179 324

N 207 296

Out 15 235 268

3+75

Out 10 238 265

N 225 278

cb 209 294

$\pi$  50.28

3475 ctd

1/4	174	32.9
+12	16.0	34.3
¢	14.1	36.2
1/4	13.0	37.3
cb	12.2	38.1
S	10.4	39.9
T.P.	2.02	-11.96 38.32

 $\pi$  40.34

4400

S	3.3	37.0
cb	4.1	36.2
1/4	4.9	35.4
+10	6.0	34.3
¢	8.1	32.2
1/4	10.0	30.3
cb	11.6	28.7
N	13.3	27.0
Out 10	13.6	26.7
	4450	
Out 10	13.0	27.3
N	12.8	27.5
cb	11.5	28.8
1/4	10.6	29.7
¢	9.1	30.2
+ 6	7.9	32.4

 $\pi$  4034

56

1/4	6.9	33.4
cb	6.4	33.9
S	5.7	34.6
	5700	
S	5.2	35.1
cb	5.7	34.6
1/4	6.5	33.8
+10	7.1	33.2
¢	8.5	31.8
+2	9.2	31.1
1/4	10.1	30.2
cb	11.0	29.3
N	12.0	28.3
Out 10	12.4	27.9
	5750	
Out 10	11.0	28.7
N	10.9	29.4
cb	9.6	31.7
1/4	8.3	32.0
¢	7.0	33.3
+4	5.9	34.4
1/4	5.2	35.1
cb	4.6	35.7
S	3.9	36.4

π 4034

6+00

S	32	37.1
Cb	38	36.5
1/4	43	36.0
45	48	35.5
+ 8	68	33.5
£	69	33.4
1/4	81	32.2
Cb	86	31.7
N	98	30.5
Out 10	106	29.7

6+53

Out 10	95	30.8
N	88	31.5
Cb	73	33.0
1/4	67	33.6
£	58	34.5
1/4	44	35.9
Cb	34	36.9
S	26	37.7

6+60 West Line Highland Ave

S	25	37.8
Cb concrete	381	36.53
Gutter paved	467	35.67
1/4 - paved	524	35.10
£ - paved	595	34.39

Note - Division St. is paved to West Line on South half.

57

π 40,34

1/4	7.2	33.1
Cb	8.1	32.2
N	9.0	32.3
Out 10	9.4	30.9
Cb Highland - 16'		
Out 10	8.5	31.8
N	8.1	32.2
Cb	7.4	32.9
1/4	6.8	33.5
£-Paved	6.21	34.13
1/4 "	5.52	34.82
Cb	4.81	35.53
S "	3.81	36.53
STP Cb	3.20	37.14

Section along West Line Paving on Highland

which is 28<sup>40</sup> from Prop. of North Line Division + 30<sup>30</sup> on £ Division

S	3.12	37.22
Cb	4.16	36.18
1/4	4.92	35.42
£	5.52	34.82
1/4	6.34	34.00
Cb	7.08	33.26
N	7.75	32.59

Check back to B.M.

58

+ CHH 6 - Elev

40.34 1.18 39.16

12.57 51.73

0.53 51.20

12.56 63.76

0.71 63.55

10.96 74.51

B.M. 0.78 73.735

Check on B.M. N.W. Marineview & Division + 73.75

7-16-28  
 J.C. Bliss  
 Jim Flood  
 Chuck Rouner

X section of 4th St. from  
 the South Line of Epsilon St. to  
 the North Line of Division St.  
 60' wide  
 10' curbs + 1/4s

Σ 50.91

59

Σ 51.49 from B.M. at Balboa School

0+00 - South Line Epsilon St.

W	6.9	50.6	W	5.3	45.6
cb	7.2		+5	7.4	
1/4	7.3		cb	7.9	
¢	7.6	49.9	1/4	7.8	
1/4	7.5	50.0	¢	8.0	42.9
Gutter	7.7		1/4	8.6	42.3
cb concrete	7.7	49.78	cb	9.9	
E	7.8		E	10.0	40.9
	0+15		E	12.2	38.7
E	14.4	43.1	+5	11.6	
cb-¢ 24" Culvert under Epsilon			cb	10.2	
St. shot on flowline	15.36	42.19 ✓	+3	9.8	
cb	15.4		1/4	9.9	41.0
1/4	13.3		¢	10.0	40.9
¢	13.4	44.1	1/4	10.1	
1/4	13.6		cb	10.2	
cb	13.4		+7	9.3	
+5	13.0		W	4.7	46.7
W	11.5	46.0		1+50	
T.P.		-12.23 45.26	W	8.6	42.3
	45.65	50.91	+5	12.0	
			cb	12.6	
			1/4	12.6	
			¢	12.3	38.6

C.B.H.

Plotted 24-28

π 50.91

1+30 ctd.

Φ - Shot on flowline of M.H.	20.26	30.65	#E
1/4	13.1	37.8	cb
cb	13.9		1/4
E	14.8	36.1	Φ
T.P.		-12.98 37.93	1/4

+0.47

π 38.40

2+00

E	5.7	32.7	W
cb	4.8		cb
1/4	4.8	33.6	1/4
Φ	4.5	33.9	Φ
1/4	3.9		1/4
cb	3.9		cb
+5	3.0		E
+6	0.8		
W	0.4	38.0	E

2+50

W	3.3	35.1	cb
cb	3.7		1/4
1/4	6.7		Φ
Φ	7.7	30.7	1/4
1/4	7.6	30.8	cb
cb	7.7		W
E	8.1	30.3	

π 38.40

60

3+00 North Line Eta St.

20' St

9.5	27.9
9.5	
10.2	28.2
10.2	28.2
10.2	
10.0	
8.8	29.6

N. cb Eta St.

10.6	27.8
10.7	
10.6	
10.6	27.8
10.4	28.0
9.8	
8.8	29.6

N 1/4 Eta

8.5	29.9
9.9	
10.4	28.0
10.8	27.6
10.9	
11.2	
11.1	27.3

$\pi$  38.40

Eta

W	11.4	27.0
cb	11.4	
1/4	11.3	
E	10.6	27.8
Shot on flowline of M.H. at		
Intersection Eta x 42nd	15.90	22.50
1/4	10.5	27.9
cb	9.6	
E	8.1	30.3
South 1/4 Eta		
E	8.2	30.2
cb	9.7	
1/4	10.3	26.1
E	10.7	27.7
1/4	11.8	
cb	12.0	
W	11.5	26.9
South cb Eta		
W	12.5	25.9
cb	12.3	
1/4	11.8	
+2	14.1	
+6	11.3	
E	11.3	27.1
1/4	10.8	27.6

 $\pi$  38.40

61

cb	10.8	
E	8.9	29.5
South cb Eta + 2 = 10.0		
E	9.0	29.4
cb	10.4	
1/4	10.9	27.5
E	11.4	27.0
+6	11.3	
+8	14.1	
1/4	12.0	
+5	12.2	
+6	13.7	
cb	14.0	
W	13.9	24.5
South line Eta = 0 + 0.0		
W	12.7	25.7
+6	12.6	
cb	14.1	
+3	14.5	
+5	12.6	
1/4	12.8	
+1	14.3	
+3	14.2	
+7	12.2	
E	12.0	26.4



π 38.40

1/4	11.5	26.9
cb	11.1	
E	10.0	28.4
T.P		-12.13 26.27

12.98

✓  
π 29.25  
0+25

E	22	27.0
cb	21	
1/4	31	26.2
£	38	25.4
+5	40	
+7	5.6	
1/4	4.5	
+6	4.5	
+7	5.4	
cb	5.4	
+3	5.1	
+4	4.4	
W	4.4	24.9

0+50

W	4.9	23.5
+6	4.8	
cb	5.5	
+3	4.9	

π 29.25

62

1/4	5.2	
£	4.9	24.3
1/4	5.3	24.0
cb	5.0	
E	5.1	24.2

1+00

E	6.6	22.7
cb	6.6	
1/4	6.6	22.7
£	6.2	23.1
1/4	6.1	
cb	6.0	
W	6.2	23.1

1+50

W	6.9	22.3
cb	6.7	
1/4	6.7	
£	6.8	22.4
1/4	6.8	22.4
cb	6.8	
F	6.8	22.5

2+50

E	6.5	22.8
cb	6.9	
1/4	7.0	22.3

$\pi$  29.25

63

Q	6.9	22.4
1/4	6.6	
cb	6.4	
W	6.6	22.7

2 + 50 - North Line of Nordica

W	7.1	22.2
+ 6	6.8	
cb	8.3	
+ 8	8.3	
1/4	7.4	
+ 2	6.7	

Q	6.8	22.5
1/4	6.8	22.5
cb	7.0	
E	6.3	23.0

TP - Nail in West Timber of  
Bridge Nordica & 42nd

-5.30 23.94

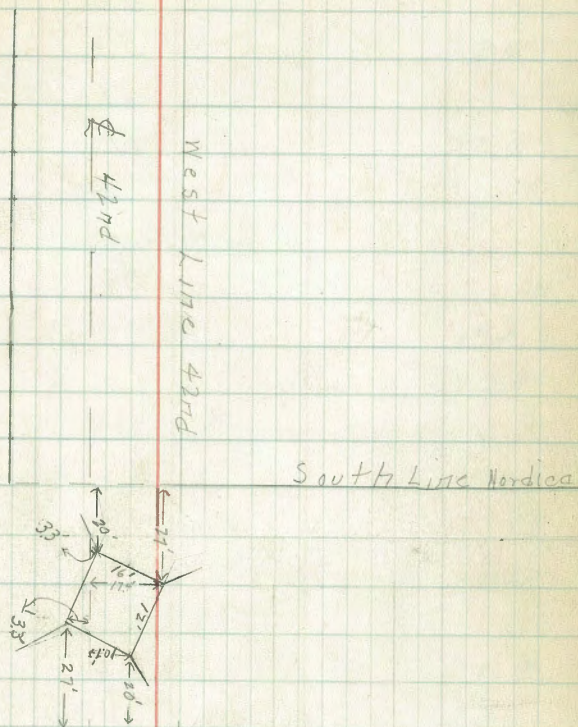
+ 3.71

 $\pi$  27.65

N. cb Nordica

E	5.1	22.5
cb	5.2	
1/4	4.9	22.7
Q	4.6	23.0

Sketch of bridge at 42nd &amp; Nordica



T 27.65

1/4	5.0	
+2	5.2	
+5	6.8	
cb	7.1	
W	7.0	20.7
N. 1/4 Nordica		
W	7.2	20.4
cb	7.4	
+9	6.9	
1/4 Edge of bridge	3.82	
¢	3.8	23.8
1/4	4.2	23.4
+5	4.8	
cb	6.7	
E	6.2	21.4
¢ Nordica		
E	8.4	19.2
cb	8.4	
1/4	8.9	18.7
+8	9.5	
¢-Top of bridge	3.77	23.93
1/4 " " "	3.80	
+6 " " "	3.86	
+7	8.6	
cb	7.7	

T 27.65

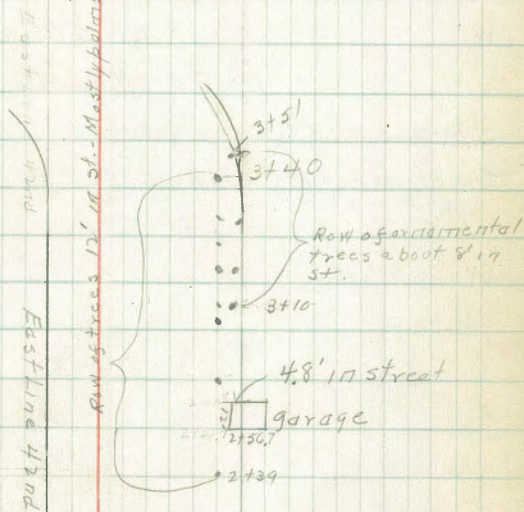
64

+6	4.6	
W	4.7	23.0
S 1/4 Nordica		
W	5.1	22.6
cb	4.4	
1/4	3.8	
+7	3.7	
¢	8.2	19.4
1/4	7.5	20.1
cb	6.7	
E	7.1	20.6
S 1/4 +3		
E	5.0	22.6
cb	4.8	
1/4	5.3	22.3
¢	7.4	20.2
+3	4.3	
1/4	4.1	
cb	4.4	
W	5.2	22.4
S cb Nordica		
W	5.3	22.3
cb	4.6	
1/4	4.2	
+8	4.4	

№ 27.65

42	6.4	21.2
43	5.1	
1/4	4.7	23.0
cb	4.5	
E	4.6	23.0
South Line Nordica = 0+00		
E	4.7	23.0
cb	4.7	
1/4	4.8	22.8
2	6.1	21.6
42	5.2	
1/4	5.0	
cb	5.3	
W	5.4	22.2
0+50		
W	5.1	22.6
cb	5.3	
1/4	5.3	
2	5.2	22.4
1/4	5.1	
cb	5.0	
E	4.9	22.7
1+00		
E	4.8	22.9
cb	4.8	

65



South Line Nordica

0+00

π 27.65

1+00ctd

1/4	4.7	
♀	5.0	22.6
1/4	5.0	
cb	5.2	
W	5.0	22.6

1+30- Man Hole in ♀ 05427d

Shot on glowline which

turns west at this point  
on rim of MH.

11.07  
4.95

16.58  
22.70

1+50

W	5.1	22.6
cb	5.1	
1/4	5.1	
♀	5.3	22.3
1/4	5.1	
cb	4.6	
E	4.6	23.0

2+00

E	4.5	23.1
cb	5.0	
1/4	5.1	
♀	5.0	22.6
1/4	5.1	
cb	5.1	
W	4.9	22.7

π 27.65

66

2+50

W	5.0	22.6
cb	5.0	
1/4	5.0	
♀	5.0	22.6
1/4	5.0	
cb	4.9	
E	4.6	23.0

2+56.7 garage in street-see sketch ✓

Shot on dirt floor at 2622.39

TP -3.51 24.14

+1.97

π 36.11

3+00

E	12.1	24.0
cb	12.5	
15	12.5	
1/4	11.6	
♀	10.3	25.8
1/4	10.2	
cb	9.7	
W	9.4	26.7

3+31 P.C. North end of curve

West-Shot on sidewalk 7.08 29.03 ✓

+08 End of sidewalk 7.18

cb 7.5

$\pi$  36.11

3+31 ctd

1/4	8.5	
E	8.6	27.5
1/4	9.4	
Cb	10.7	
E	10.7	25.4

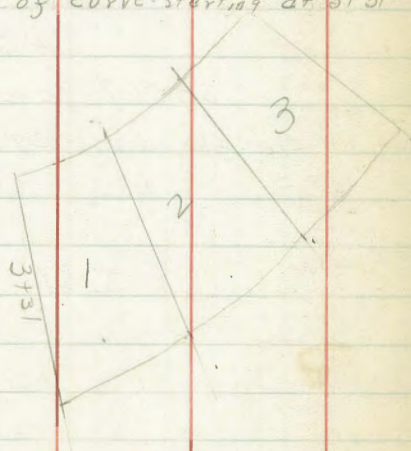
X section of curve starting at 3+31

Radius =

4 =

Length of long chords  
of sections = 33'

Length of short  
chords of sections = 26.7'



Section between parts 1+2

E	9.3	26.8
Cb	9.1	
1/4	8.6	
E	7.6	28.5
1/4	7.3	
Cb	6.3	
W	5.6	30.5

$\pi$  36.11

37

Section between parts 2+3

W	2.3	33.8
Cb	2.8	
1/4	3.7	
E	4.3	31.8
1/4	5.3	
Cb	6.0	
E	6.9	29.2

T.P.

+8.78

-0.07. 36.04

$\pi$  44.82

Section at end of curve = 0+00

E	13.2	31.6
Cb	12.7	
1/4	11.2	
E	10.2	34.6
1/4	9.1	
Cb	8.2	
W	7.1	37.7

at 31.96 - North Line Division

W	0.9	43.9
Cb	2.2	
1/4	3.5	
E	4.8	40.0
1/4	6.2	
Cb	7.5	

744.82

68

E		8.6	36.2
T.P			-0.64 - 44.18

+12.89 57.07

TP			-0.25 56.82
----	--	--	-------------

12.11 68.93

B.M. Spike in tree - Division + 42nd		0.43	68.50
		→	68.47

7-19-28  
 J.C. Bliss  
 Rauner  
 Mattson

X section Nordica Ave from  
 East Line 40<sup>th</sup> to Highland Ave  
 60' wide - 10' cbs - 10' 1/4s

π 22.02

69

B.M. 40<sup>th</sup> + Nordica 20.44  
 + 1.58

π 22.02

0+00 East Line 40<sup>th</sup>

N-ON concrete walk 32' 18.8

1N st. starting at 100 and  
 extending 18' East 4.72

N+3.2 inside edge of walk 4.91 17.11

cb 5.1

1/4 5.6

⊕ 5.7 16.3

1/4 6.3

cb 6.2

S 6.1 15.9

0+18 - End of sidewalk on North side

Shot on inside edge of walk 4.83 17.19 +

0+50

S 5.8 16.2

cb 6.4

1/4 5.9

R 6.0 16.0

1/4 5.8

cb 5.6

N 4.9 17.1

Plotted 7-25-28  
 C.B.H.

1+00

N 5.7 16.3

cb 5.7

1/4 5.9

⊕ 5.9 16.1

1/4 6.1

cb 6.2

S 5.6 16.4

1+50

S 5.5 16.5

cb 5.9

1/4 6.0

⊕ 5.6 16.4

1/4 5.8

cb 5.5

N 5.2 16.8

2+00

N 4.9 17.1

cb 5.6

1/4 5.7

R 5.4 16.6

1/4 5.8

1/5 6.0

cb 4.9

S 4.8 17.2



TRR.02

2+50

S	45	17.6
cb	47	
+2	56	
1/4	57	
⊥ Top M.H.	5.1	16.9
Flowline M.H.	10.35	11.67
1/4	56	
cb	56	
+5	45	
N	43	17.7
r.p.		-5.41 16.61

+567

TRR.28

3+00

N	52	16.1
cb	60	
1/4	58	
⊥	58	16.5
1/4	59	
cb	60	
S	54	16.9

3+05

S	59	16.4
cb	59	
1/4	57	

TRR.28

70

⊥	57	16.6
1/4	56	
cb	61	
N	53	17.0
⊥ 3+15		
N	51	17.2
cb	56	
1/4	54	
⊥	55	16.8
1/4	58	
cb	70	
S	81	14.2

3+32. West edge bridge

S	63	16.0
+5	67	
+7	91	
cb	96	
1/4	77	
+7	81	
+8 south edge bridge	465	
⊥	47	17.6
1/4	46	
cb	54	
N	51	17.2

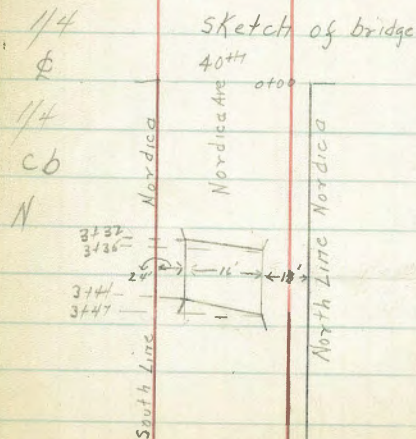
22.28

344 East edge bridge

N	8.2	14.1
cb	8.4	
+8	9.5	
1/4 N. edge bridge	5.2	
ϕ	5.0	17.3
+5 S. edge bridge	4.8	
+6	8.3	
1/4	8.0	
cb	8.1	
+1	5.9	
S	5.9	16.4

3457

S	5.1	16.6
cb	5.9	
1/4	5.0	
ϕ	4.6	17.7
1/4	4.7	
cb	6.3	
N	6.1	16.2



22.28

71

4+00

N	4.2	18.1
cb	4.6	
1/4	4.7	
ϕ	5.1	17.2
1/4	5.5	
cb	5.3	
S	5.1	17.2

4+50

S	4.4	17.9
cb	4.9	
1/4	5.1	
ϕ	4.9	17.4
1/4	4.7	
cb	4.3	
N	3.9	18.4

5+0827 West Line 41st

N	3.5	18.8
cb	4.3	
1/4	4.7	
ϕ	4.8	17.5
1/4	4.6	
cb	4.6	
S	4.0	18.3

122.28

West cb 41st

S	4.2	18.1
cb	4.3	
1/4	4.7	
¢	4.7	17.6
1/4	4.7	
cb	4.3	
N	3.4	18.9

West 1/4 41st

N	3.3	19.0
cb	4.1	
1/4	4.7	
¢	4.6	12.7
1/4	4.6	
cb	4.0	
S	4.4	12.9

¢ 41st

S	4.4	17.9
cb	4.0	
1/4	4.5	
¢	4.2	18.1
¢ Top M.H	4.03	18.25
E low time	9.50	12.78
1/4	4.5	
cb	4.5	
N	3.5	18.8

122.28

12

East 1/4 41st

N	3.0	19.3
cb	4.1	
1/4	4.6	
¢	4.3	18.0
1/4	4.5	
cb	4.4	
S	4.2	18.1

East cb 41st

S	4.1	18.2
cb	4.3	
1/4	4.5	
¢	4.3	18.0
1/4	4.5	
cb	4.2	
N	3.1	19.2

East Line 41st = 0400

N	3.4	18.9
cb	4.0	
1/4	4.5	
¢	4.2	18.1
1/4	4.4	
cb	4.3	
S	4.1	18.2

π 22.28

73

0+50

Trees on Nordica  
41st

S	34	18.9
Cb	39	
1/4	41	
♀	36	18.7
1/4	41	
Cb	38	
N	32	19.1

0+85 - Sidewalk to property  
on south side

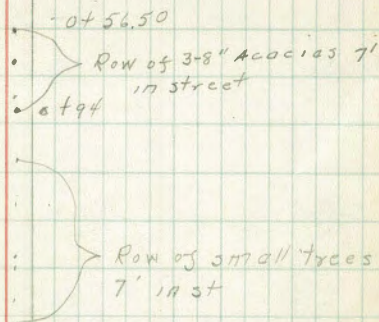
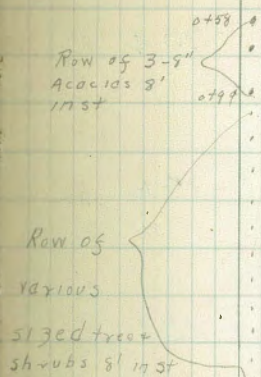
1+00

N	31	19.2
Cb	33	
1/4	36	
♀	33	19.0
1/4	34	
Cb	36	
S	32	19.1
T.P.		-2.64 19.64

+6.00 π 25.64

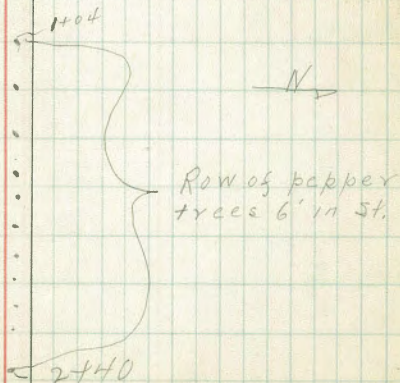
1+50

S	62	19.4
Cb	64	
1/4	60	
♀	64	19.2
1/4	65	



42nd

0+00



$\pi$  2564

cb	60	
N	55	20.1
2+00		
N	52	20.4
cb	52	
1/4	64	
£	60	19.6
1/4	56	
cb	61	
S	61	19.5
2+50		
S	57	19.9
cb	59	
1/4	54	
£	53	20.3
1/4	61	
cb	54	
N	50	20.6
3+00		
N	52	20.4
cb	54	
1/4	53	
£	48	20.8
£ Top MH.	5.00	20.64 ✓
Flowline	11.4	17.50 ✓
1/4	49	

 $\pi$  2564

74

cb	50	
S	49	20.7
3+50		
S	41	21.5
cb	49	
1/4	41	
£	53	20.3
1/4	55	
cb	47	
N	44	21.2
4+00		
N	37	21.9
cb	44	
1/4	49	
£	48	20.8
1/4	47	
cb	47	
S	46	21.0
4+50		
S	38	21.8
cb	42	
1/4	48	
£	44	21.2
1/4	43	
cb	40	

2564

75

+3	31	
N	36	220
+5	63	

5+00

N	32	224
cb	34	
1/4	44	
Q	43	213
1/4	43	
cb	39	
S	38	218

5+50

S	38	218
cb	36	
1/4	44	
Q	40	216
1/4	38	
cb	32	
N	29	227

6+ West Line 42nd

N	33	223
+7	40	
+8	48	
cb	41	
+7	56	

1/4	52	
+78	25	
Q	25	23.1

1/4	30	
cb	31	
S	31	22.5

B.M. West Timber Bridge

Nordica + 42nd -1.70 23.94

+7.56

31.50  
31.60

0+00 - East Line 42nd 23.1

S	8.4	
cb	8.2	
+8	8.2	
1/4	9.3	
+2	10.9	
Q	12.0	19.5
43	12.1	
+5	9.5	
1/4	8.5	
cb	8.9	
N	8.7	22.8

0+50 23.1

N	8.4	
cb	8.7	
1/4	8.8	
Q	9.8	21.7
1/4	9.5	
+5	12.1	
cb	11.8	
+9	7.9	

S 7.9 23.6

S	8.3	23.2
cb	8.0	

50  
 $\pi$  31.60

1/4	8.1	
£	8.0	23.5
1/4	7.6	
cb	7.5	
N	7.4	
		24.1

1+50

N	4.5	27.0
---	-----	------

cb	5.0	
----	-----	--

1/4	5.5	
-----	-----	--

£	5.4	26.1
---	-----	------

1/4	5.4	
-----	-----	--

cb	6.0	
----	-----	--

S	6.4	25.1
---	-----	------

2+00

S	5.2	26.3
---	-----	------

cb	4.7	
----	-----	--

1/4	4.1	
-----	-----	--

£	3.5	28.0
---	-----	------

1/4	3.5	
-----	-----	--

cb	2.7	
----	-----	--

N	2.1	
		29.4

T.P. +7.24

50  
 $\pi$  37.73

N	2+50	
cb	5.0	32.0

1/4	5.7	
-----	-----	--

£	6.7	
---	-----	--

1/4	7.0	30.0
-----	-----	------

cb	7.6	
----	-----	--

S	8.0	
---	-----	--

S	8.6	
		28.4

3+00

S	6.0	31.0
---	-----	------

cb	4.9	
----	-----	--

53  
 $\pi$  37.73

76

1/4	4.1	
£	3.9	33.1
1/4	3.9	
48	3.3	
cb	2.5	
N	2.0	
		35.0

3+50

N	1.0	36.0
---	-----	------

45	1.6	
----	-----	--

cb	3.0	
----	-----	--

41	4.0	
----	-----	--

1/4	4.2	
-----	-----	--

£	4.9	32.1
---	-----	------

1/4	5.0	
-----	-----	--

cb	7.4	
----	-----	--

S	8.8	28.2
---	-----	------

Out 10	9.9	
--------	-----	--

3+72.83

Out 10	11.2	
--------	------	--

S	10.4	26.6
---	------	------

cb	8.7	
----	-----	--

1/4	7.4	
-----	-----	--

45	6.5	
----	-----	--

£	6.3	30.7
---	-----	------

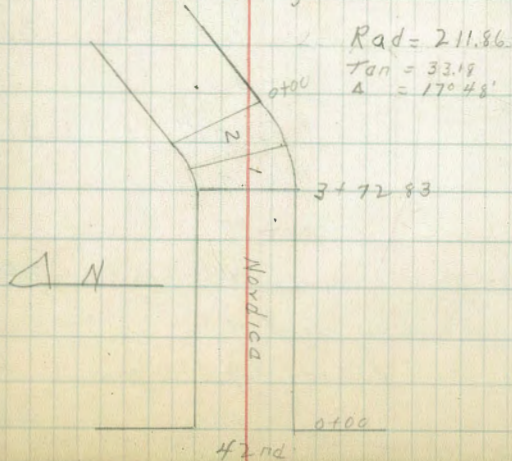
1/4	5.9	
-----	-----	--

cb	5.2	
----	-----	--

43	3.4	
----	-----	--

N	2.6	
		34.4

Sketch of curve



$\bar{X} 37.3^{.03}$

Section between Parts 1 & 2

N	4.8	32.2
cb	6.8	
1/4	7.4	
♀	7.6	29.4
1/4	8.5	
cb	9.7	
S	10.8	26.2
Out 10	11.0	

End of curve = 0+00

Out 10	10.5	
S	10.8	26.2
cb	9.9	
1/4	8.5	
♀	8.0	29.0
1/4	7.3	
cb	6.7	
N	5.4	31.6
	0+50	
N	5.7	31.3
cb	7.0	
1/4	8.1	
♀	8.4	28.6
1/4	9.0	
cb	9.7	
S	10.1	26.9

$\bar{X} 37.3^{.03}$

77

Out 7	10.0	
Out 10	11.5	
	1+00	
Out 10	11.4	
S	10.7	26.3
cb	9.4	
1/4	8.9	
♀	8.9	28.1
1/4	8.8	
cb	8.1	
N	7.3	29.7

East Line Highland Ave 1+37.87 on  
South Line Nordic + 1+40 on North Line

N	6.5	30.5
cb	6.2	
1/4	6.7	
♀	6.9	30.1
1/4	7.4	
cb	8.4	
S	8.7	28.3
Out 10	9.2	

Section along West-edge of  
pavement on Highland, Edge of pavement  
is 12 ft from property line of Highland

over



~~37.73~~<sup>03</sup>

18

S	5.92	31.11
cb	5.92	
1/4	5.80	
¢	5.68	31.35
1/4	5.53	
cb	5.41	
N	5.25	31.78

B.M. Nail in Bridge Nordica + 42nd  $\rightarrow 23.94$   
 $- 13.18 \rightarrow 23.85$



DIRECTIONS FOR USE OF TABLES

TABLE No. 1.

Distance of slope stake from side or shoulder stake for any width roadway, slope 1 1/2 to 1. If ground is nearly level, the cut or fill at side stake is located by the double entry method in left column and top row. The number in body

of table in same row and column gives distance from side stake to slope stake. If ground is not

**IMPROVED TABLES**  
**AND**  
**INFORMATION**

TABLE No. 2.

To find Tangent and External for curve of any other degree, divide by degree of curve and add connection found in column of connection.

Degree of curve with a given  $L$  may be found by dividing tangent (or external), opposite  $L$  by given tangent (or external).

The distance from a point on the tangent to the curve is very nearly the square of the tangent length divided by twice the radius.

ENGINEERING DEPARTMENT,  
CITY OF SAN DIEGO,  
CALIFORNIA.

1007  
37.13  
13.18  
23.95

141.90  
93.6  
48.3