

1268

PASTS

LEVEL BOOK

No. 380F

ENGINEERING DEPARTMENT,
CITY OF SAN DIEGO,
CALIFORNIA.

Our Leather Bound Engineers Note Books are carried in the following rulings:

- No. 380 LEVEL BOOK. Left and Right Hand Page the same as Left Hand Page of this Book.
- No. 382 FIELD BOOK. Left Hand Page as in this Book, Right Hand Page 4 x 4 to the inch, Center Line Red.
- No. 384 MINING TRANSIT BOOK. Left Hand Page as in this Book, Right Hand Page 8x8 to the inch, Center Line Red.
- No. 385 FIELD BOOK. Left Hand Page as in this Book, Right Hand Page 8 vertical and 4 horizontal lines to the inch, Center Line Red.

We also carry the Note Books listed above, bound in extra strong Fabri-Hide (otherwise the same quality of book), which can be furnished at a somewhat lower price.

In ordering Fabri-Hide covered books, add the letter "F" to catalog number.

THE FREDERICK POST CO.
ENGINEERING and DRAFTING SUPPLIES
IRVING PARK STATION
CHICAGO, ILL.

MICROFILMED

DEC 22 1964

Div. order to pp 169 7/6/30 MA

Disc index to pp 167 7/5/30 JHA

Index. Pacific Beach X Section

Pages.

- 2-27 ^{Ave} Oliver ~~St~~ W Line of Dunes to W Line of Homes 1
- 28-38 Dawes N Line of Pacific to S Line of Reed
- 40-68 * Pacific W Line of Dawes to W Line of Haines
- 70-75 * Fanuel N Line of Pacific to S Line of Reed
- 76-81 Events " " " " to " " " Reed
- 82-101 * Gresham S Line of Reed to N Line of Estrella Place
- 102-111 Estrella from W Line of Frontera to Bay
- 112-118 La Palma W Line of Gresham to E Line of Fanuel
- 120-133 Alley Blk 35 Parish Loomis 26 to 27 - Blvd to
- 134-139 " " 14 Terol to Polk to Orange
- 140-145 Triggs from Juan to Sunset Blvd
- 146-150 Alley Blk 5 City Hts Annex No 1
- 151-160 Einwood Pingle To Mission Hills Blvd

Bliss 11/14/45
 Jacobson
 K. O. nan
 BM NW-BP
 Garnett Dunes

X Sections Over Street Pacific
 Beach From the W line of Dunes to W line of Haines
 Elev 80' St
 20' CBS
 10' 1/4's

	+	+	-	Elev
TP	2.33	34.87		32.54
TP	1.90	28.97	7.80	27.07
TP	2.50	24.39	7.08	21.89
TP	1.46	16.24	9.61	14.73
50' BM, S side of line of dunes at base of TP	2.10	<u>9.98</u>	8.86	7.38

W. line of Dunes

N		5.8	3.1	
+4		6.4		
N Top cb		6.55	1.93	
G		7.12		
1/4		6.86		
8		6.85	2.6	
1/4		7.18	2.30	
8		7.74		
Stop cb		7.09	2.39	
S		7.0		
		W Line + 15		
S		7.3	2.7	
+18		6.9		
cb		8.1		
+5		7.1		
1/4		7.0	2.5	
8		6.8	2.7	
1/4		6.7		
cb		6.6		
N		6.0	3.5	

Plotter 4-27-28
 T.G.H.

Dimensions 169' x 169'

#I
 9.98
 W.C.S.

N	6.7	2.8
cb	6.7	2.8
1/4	6.7	2
8	6.7	2.8
1/4	6.8	2.7
+5	7.1	
+7	8.0	
cb	8.1	
S	8.3	1.2
	W 1/4	
S	7.3	2.2
cb	7.0	
1/4	6.7	2.8
8	6.5	3.0
1/4	6.9	
cb	6.3	
N	6.4	3.3
	8	
N	5.9	3.6
cb	6.2	
1/4	6.2	
8	6.1	3.4
1/4	6.3	3.2
cb	6.5	
S	6.8	2.7

4

HI
998

S	6.8	27
cb	6.9	
1/4	6.6	2.9
⊗	6.2	3.3
1/4	6.2	
cb	6.4	
N	6.1	3.7

E 1/4 + 5

N	5.6	3.9
cb	5.8	
1/4	6.0	
⊗	6.2	3.3
1/4	6.2	3.3
cb	6.5	
S	6.6	2.9

E cb

S	6.1	3.4
cb	5.7	
1/4	5.1	4.4
⊗	5.4	4.1
1/4	5.4	
cb	4.8	
N	4.8	4.7

E Line of Dams = 00

N	7.6	4.9
cb	5.1	

HI
9981402
3.95

5

1/4	5.1	
⊗	5.5	4.0
1/4	5.4	4.1
cb	6.1	
S	6.1	3.4

0750

S	6.4	3.1
cb	6.0	
1/4	5.6	3.9
⊗	5.7	3.8
1/4	5.5	
cb	4.9	
N	4.6	4.9

1400

N	4.2	5.3
cb	4.9	
1/4	5.2	
⊗	5.4	4.1
1/4	5.4	4.1
cb	5.6	
S	6.0	3.5

1406. Walkon North

on line

ctr 3.95

1439

S	5.9	3.6
cb	5.6	

H.I.
998

1/4	5.3	4.2
¢	5.1	4.4
1/4	5.0	
cb	4.7	
N	4.4	5.1

1750

N	4.0	5.5
cb	4.4	
1/4	4.4	
¢	4.7	4.8
1/4	4.9	4.6
cb	5.1	
S	5.5	4.0

1770⁵⁰ Walkon North3rd in street ¢ 3.36

2700

S	4.7	4.8
cb	4.5	
1/4	4.1	5.4
¢	4.0	5.5
1/4	3.9	
cb	3.9	
7/10	3.8	
N	3.3	6.2

2730

N	2.3	7.2
---	-----	-----

H.I.
998

cb	2.8	
1/4	3.2	
¢	3.4	6.1
1/4	3.4	6.1
cb	3.6	
S	3.8	5.7

2750

S	3.5	6.0
cb	3.2	
1/4	2.9	6.6
¢	2.8	6.7
1/4	2.6	
cb	2.5	
N	1.8	7.7

2781 Walkon North

3rd in street ¢ 0.75

7/10	7.94	16.67	0.75	8.73
------	------	-------	------	------

3700

N	7.9	8.8
cb	8.7	8.0
1/4	8.8	7.9
¢	9.0	7.7
1/4	9.0	7.7
cb	9.1	
S	9.3	7.4

3717 Walkon North "over"

H.I.
16-67

4° in street 7.36

3150

S	8.1	9.6
cb	7.7	
1/4	7.7	9.0
1/4	7.8	9.1
1/4	7.5	
cb	7.4	
N	6.9	9.8

3165

N	6.0	10.7
cb	6.7	
1/4	6.7	
1/4	6.7	10.0
1/4	6.8	9.9
cb	6.8	
S	7.2	9.5

3182 ±° Walk on North

3.5 in street etc 5.84

4160 (4100)?

S	6.6	10.1
cb	6.6	
1/4	6.3	10.4
1/4	6.5	10.2
1/4	6.1	
cb	6.0	

H.I.
16-67

5.9 10.8

4108

N	5.2	11.5
cb	5.5	
1/4	5.4	
1/4	5.9	10.8
1/4	5.7	11.0
cb	5.9	
S	6.0	10.7

4150

S	5.6	11.1
cb	5.3	
1/4	4.9	11.8
1/4	5.1	11.6
1/4	4.6	
cb	4.7	
N	4.6	12.1

5100 W line of trees

6000
2000
10/100

N	3.8	12.9
cb	3.6	
1/4	3.5	
1/4	4.2	12.5
1/4	4.0	12.7
cb	4.3	
S	4.4	12.3

H.I.
16.67
W. cb

S	4.1	
cb	3.9	
1/4	3.4	13.3
ϕ	3.5	
1/4	2.8	
cb	2.9	
N	3.1	
	W 1/4	
N	2.7	
cb	2.9	
1/4	2.9	
ϕ	3.2	
1/4	3.2	13.5
cb.	3.6	
S	3.7	
	ϕ	
S	3.5	13.2
cb	3.6	
1/4	3.1	13.6
ϕ	3.2	13.5
1/4	2.7	
cb	2.9	
N	2.5	14.2
	E 1/4	
N	2.3	
cb	2.5	

H.I.
16.67

1/4	2.5	
ϕ	3.0	
1/4	2.8	13.9
cb	3.3	
S	3.3	
	E 1/4 (cb)?	
S	3.2	
cb	3.2	
1/4	2.7	14.0
ϕ	2.8	
1/4	2.3	
cb	2.3	
N	2.1	
	E line of Exerts = 00	
N	1.6	15.1
cb	2.0	
1/4	1.7	
ϕ	2.2	14.5
1/4	2.3	14.4
cb	2.6	
S	2.7	14.0
	Set 8MSW Prop Hub	
	4.37	12.30
	0+50	
S	2.0	14.7
cb	1.4	
1/4	1.3	15.4

T
 16.67

¢			1.4	15.3
1/4			0.7	
cb			0.9	
N			0.7	16.0
T.P	8.99	23.99	1.2	15.45
			0.82	
N			7.3	16.6
cb			7.4	
1/4			7.2	
¢			7.6	16.3
1/4			7.4	16.5
cb			7.5	
S			8.1	15.8
			14.00	
S			8.0	15.9
cb			7.8	
1/4			7.5	16.4
¢			7.8	16.1
1/4			6.9	
cb			7.1	
N			7.0	16.9
			14.50	
N			6.1	17.8
cb			6.3	
1/4			6.6	
¢			6.8	17.1

 HZ
 23.99

1/4			6.8	17.1
cb			7.0	
S			7.3	16.6
			24.00	
S			6.8	17.1
cb			6.5	
1/4			6.2	17.7
¢			6.0	17.9
1/4			6.1	
cb			5.7	
N			5.4	18.5
			24.50	
N			5.0	18.9
cb			5.3	
1/4			5.5	
¢			5.6	18.3
1/4			5.9	18.0
cb			5.8	
S			6.0	17.9
			34.00	
S			5.7	18.2
cb			5.0	
1/4			4.8	19.1
¢			5.2	18.7
1/4			5.2	
cb			5.1	

HI
23.99

r	4.6	
N	4.3	19.6
	3.50	
N	3.6	20.3
cb	4.1	
1/4	4.3	
⊕	4.3	19.6
1/4	4.4	19.5
cb	4.7	
S	5.1	18.8
	4.100	
S	4.9	19.0
cb	4.5	
1/4	4.3	19.6
⊕	4.1	19.8
1/4	4.0	
cb	3.7	
N	3.4	20.5
	4.50	
N	3.0	20.9
cb	3.2	
1/4	3.3	
⊕	3.5	20.4
1/4	4.0	19.9
cb	4.0	
S	4.4	19.5

HI
23.9480.57
20.165
10.145

5700 W Line of Level 10/14/5		
S	4.1	19.8
cb	3.5	
1/4	3.1	20.8
⊕	2.8	21.1
1/4	2.8	
cb	2.6	
N	2.4	21.5
	W cb	
N	2.1	
cb	2.4	
1/4	2.6	
⊕	2.7	
1/4	3.1	20.8
cb	3.1	
S	3.5	
	4.25	19.69
	W 1/4	
S	3.3	
cb	2.9	
1/4	2.8	21.1
⊕	2.6	
1/4	2.4	
cb	2.4	
N	2.0	
	⊕	
N	1.9	22.0

H.Z.
23.99

+	cb		2.1	
	1/4		2.2	
N	ϕ		2.4	21.5
	1/4		2.7	21.2
N	cb		2.8	
cb	S		3.3	20.6
1/4		E 1/4		
ϕ	S		3.4	20.5
1/4				
cb	cb		2.6	
S	1/4		2.6	21.3
	ϕ		2.3	21.6
1/4			2.1	
S				
cb	cb		2.0	
1/4	N		1.7	22.2
ϕ		E cb		
1/4	N		1.3	22.6
cb	cb		1.5	
N	1/4		1.8	
	ϕ		2.0	21.9
1/4			2.5	21.4
N	cb		2.5	
cb	S		3.0	20.9
1/4				
ϕ		E line of Fanuel = 00		
1/4	S		2.5	21.4
cb	cb		2.0	
S	1/4		1.9	22.0

H.Z.
23.99

ϕ			1.6	22.5
1/4			1.6	
cb			1.6	
N			1.2	22.7
T.P.	10.72	32.99	1.72	22.22
			0.50	
N			9.7	23.2
cb			10.0	
1/4			9.9	23.0
ϕ			10.2	22.7
1/4			10.6	22.3
cb			10.8	
S			11.2	21.7
			1.00	
S			10.3	22.6
cb			9.7	
1/4			9.7	23.2
ϕ			9.6	23.3
1/4			9.4	
cb			9.2	
N			9.0	23.9
			1.50	
N			8.2	24.7
cb			8.3	
1/4			8.2	
ϕ			8.5	24.4

H.I.
32.99

1/4	85	24.4
cb	8.6	
S	89	24.0
	2100	
S	7.8	25.1
cb	7.3	
1/4	7.1	25.8
Φ	7.1	25.8
1/4	7.0	
cb	7.0	
N	7.1	25.8
	2450	
N	6.2	26.7
cb	5.8	
1/4	6.0	
Φ	6.2	26.7
1/4	6.3	26.6
cb	6.3	
S	7.0	25.9
	3700	
S	6.9	26.5
cb	6.0	
1/4	5.6	27.3
Φ	5.6	27.3
1/4	5.9	
cb	5.3	

H.I.
32.94

N	5.3	27.6
	3750	
N	9.9	28.0
cb	9.8	
1/4	5.2	
Φ	5.9	27.5
1/4	5.6	27.3
cb	5.9	
S	6.3	26.6
	4400	
S	6.6	26.3
cb	6.0	
1/4	5.7	27.2
Φ	5.7	27.2
1/4	5.6	
cb	4.9	
N	5.1	27.8
	4150	
N	5.4	27.5
cb	5.4	
1/4	6.2	
Φ	6.1	26.8
1/4	6.0	26.7
cb	6.5	
S	6.8	26.1

H.I.
32.94

5700 W Line of Gresham

80'st
20 cbs
10 1/4s

S			7.3	25.6	
cb			6.8		
1/4			6.7	26.2	
ϕ			6.5	26.4	
1/4			6.7		
cb			6.1		
N			5.8	27.1	
TP	Nail in pole of East Cl	12.22	38.85	6.31	26.63
			W cb		
N			11.5	27.4	
cb			12.4		
1/4			12.6		
ϕ			12.8	26.1	
1/4			12.4	26.5	
cb			12.7		
S			13.3	25.6	
			N 1/4		
S			13.8	25.1	
cb			13.3		
1/4			13.0	25.9	
ϕ			12.8	26.1	
1/4			12.7		
cb			12.5		
N			12.3	26.6	
			ϕ		
N			12.2	26.7	

H.I.
32.85

cb			12.6		
1/4			12.6		
ϕ			12.8	26.1	
1/4			13.0		
cb			13.2	25.7	
S			13.4	25.5	
			E 1/4		
S			13.6	25.3	
cb			13.3		
1/4			13.2	25.7	
ϕ			13.0	25.9	
1/4			12.9		
cb			12.8		
N			12.1	26.8	
			E cb		
N			12.6	26.3	
cb			12.7		
1/4			12.8		
ϕ			13.1	25.8	
1/4			13.0	25.9	
cb			13.2		
S			13.3	25.6	
			E Line of Gresham = 00		
S			13.8	25.1	
cb			13.3		
1/4			13.2	25.7	

2	12.9	260
1/4	12.9	
cb	13.1	
N	12.6	263
	0+50	
N	12.7	262
cb	13.3	
1/4	13.2	
2	13.3	256
1/4	13.4	
cb	13.5	
S	14.1	24.8
	1+00	
S	13.4	258
cb	13.4	
1/4	13.3	
2	13.0	25.9
1/4	13.1	
cb	13.3	
N	12.6	263
	1+36	
N	12.1	268
cb	12.9	
1/4	12.6	
2	12.8	261
1/4	12.9	

cb	13.3	
S	13.4	25.5
	1+50	
S	12.9	260
cb	12.9	
1/4	12.8	
2	12.5	264
1/4	12.3	
cb	12.4	
N	11.7	27.2
	2+00	
N	10.5	28.4
+15	10.8	
cb	11.1	
1/4	10.9	
2	10.9	28.0
1/4	11.2	
cb	10.9	
S	11.1	27.8
	2+29	
S	9.6	29.3
cb	9.7	
1/4	9.5	
2	9.4	29.5
1/4	9.3	
cb	9.6	
+5	9.3	

24

#1.
3885

N	9.2	29.7
	2+50	
N	8.0	30.9
+15	8.1	
cb	8.4	
1/4	8.0	
ϕ	8.2	30.7
1/4	8.1	
cb	8.0	
S	8.3	30.6
	3+00	
S	4.5	34.4
cb	4.6	
1/4	4.3	
ϕ	4.1	34.8
1/4	4.0	
cb	4.3	
+5	4.0	
N	3.8	35.1
	3+25	
N	1.9	37.0
+15	2.3	
cb	2.7	
1/4	2.4	
ϕ	2.3	36.6
1/4	2.7	

+

+
3885

Elev

25

			cb		2.9	
			S		2.6	36.3
			TP	10.11	97.41	1.55
					3+50	37.30
			S		10.0	37.4
			cb		9.7	
			1/4		9.8	
			ϕ		9.6	37.8
			1/4		9.5	
			cb		9.5	
			+10		8.9	
			N		9.1	38.3
					4+00	
			N		6.5	40.9
			+10		6.3	
			+15		6.8	
			cb		7.3	
			1/4		7.0	
			ϕ		7.2	40.2
			1/4		7.3	
			cb		7.5	
			S		7.4	40.0
					4+50	
			S		5.6	41.8
			cb		5.7	
			1/4		5.5	

HZ.
47.91

z		5.4	420
1/4		5.4	
06		5.6	
+5		5.1	
+10		4.6	
N		4.6	428

5100 W. Line of Haines

N		3.8	436
+10		3.6	
+15		4.1	
06		4.5	
1/4		4.4	
z		4.3	431
1/4		4.3	
06		4.2	

S.		4.3	431
Set B.M.			
5 Nails in pole			
S.W. Haines to base		279	44.62

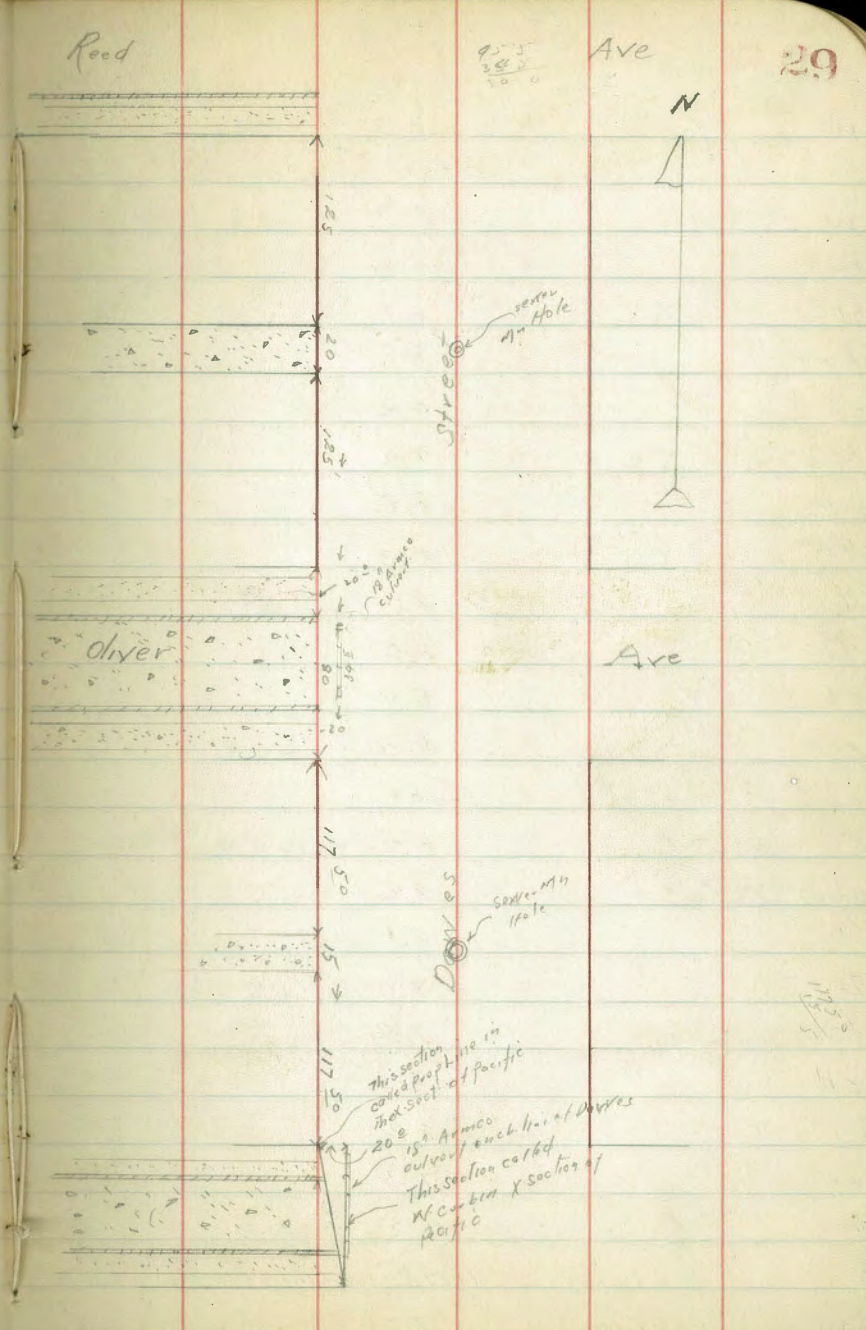
J.P.	10.38	56.91	0.88	46.53
Check on B.M.				
4 Nails in pole				
W. line of Ingleton			963	47.28
				47.36
				0.08 low

Bliss
 Jan 1898
 1/2 section
 1/4 section
 B.M. 3 Nails in
 Pole 5' above ground
 on Dunes between
 50' B.M. 3 Nails
 in Pole 5' W Pacific
 & Dunes

X Sections of Dunes Street
 Pacific Beach from the N Line of Pacific
 to the S. line of Reed Ave
 H 2 - 8.62
 E 1/4 - 7.38
 80' St
 20' chs
 10' 1/2 as

		H 2	E 1/4
		8.52	0.10
	at 00 N. line of Pacific		
W		7.9	0.7
+15		8.4	
+18		9.2	
+19		10.0	
cb		10.0	
+3		9.8	
+4		9.0	
1/4		8.7	
2		8.7	-0.1
1/4		9.0	
cb		9.6	
6		9.7	-1.1
	at 15		
E		9.6	-1.0
cb		9.9	
1/4		9.2	
2		8.8	-0.2
1/4		8.6	
+5		9.0	
+7		9.8	
cb		10.0	
+2		8.6	
+5		8.2	

82-12-4
 TGI
 12/10/12



W	7.8	+0.8
	0.50	
W	7.7	0.9
+14	8.0	
+14	8.7	
+14	9.2	
cb	9.2	
+3	9.3	
+4	8.7	
1/4	8.3	
ϕ	8.2	0.4
1/4	8.6	
cb	8.9	
E	9.0	-0.4
	1.00	
E	8.2	+0.4
cb	8.2	
1/4	8.1	
ϕ	8.0	+1.6
1/4	7.9	
cb	8.3	
+3	8.3	
+5	7.3	
W	7.3	+1.3
	1.17	5° Skine of Alley
W on paving	7.62	1.0

+15	7.8	
+17	8.1	
cb	8.1	
1/4	7.9	
ϕ	7.6	1.0
1/4	7.5	
cb	7.8	
E	7.9	0.7
	1.25	ϕ Alley
E	7.7	0.9
cb	7.7	
+2	7.9	
+3	7.5	
1/4	7.4	
ϕ	7.3	1.3
ϕ on Rim of Mn Hole	7.10	1.5 Top M.H.
Flowline of Sewer Mn Hole	12.16	-3.5 Fl. Sewer
1/4	7.6	
+3	7.9	
+4	8.5	
cb	8.4	
+5	8.3	
+12	7.6	
+14	7.7	
W on ϕ concrete alley	7.86	0.76

H.I.
8.62

1+32 50 N. Line of d/ly

W on concrete		7.60	1.0
+15	1	7.3	
+17		7.8	
cb		7.9	
1/4		7.7	
ϕ		7.4	1.2
1/4		7.7	
+5		8.1	
cb		7.8	
E		7.9	0.7
	1+50		
E		7.4	1.2
cb		7.3	
+2		7.4	
+3		7.9	
+7		8.0	
1/4		7.7	
ϕ		7.4	1.2
1/4		7.7	
+3		7.9	
cb		7.9	
+2		7.6	
+5		6.7	
W		6.7	1.9
	1+75		
W		6.2	2.4

H.I.
8.62

+15		6.5	
+17		7.7	
cb		7.6	
+7		7.6	
1/4		7.4	
ϕ		7.0	1.6
1/4		7.1	
+5		7.5	
+7		7.4	
cb		6.6	
+10		6.9	
E		7.1	1.7
	2+00		
E		6.2	2.4
cb		6.2	
+3		7.0	
+7		6.9	
1/4		6.6	
ϕ		6.5	2.1
+5		6.7	
1/4		7.2	
+5		7.6	
cb		7.6	
+0		7.2	
+5		6.5	
W		6.2	2.4

H.I.
8.62

2+50 S. Line of Oliver

W	6.1	2.5
+15	6.1	
+18	6.8	
cb	7.3	
+5	7.3	
1/4	7.5	
¢	6.0	2.6
1/4	6.0	
+5	6.2	
cb	5.2	
E	5.2	3.4

N. Line of Oliver = 00

E	3.8	4.8
cb	4.0	
+4	4.9	
1/4	5.3	
¢	5.1	3.5
1/4	5.4	
cb	5.9	
+5	5.1	
VY	4.8	3.8

0+50

W	3.6	5.0
+15	3.6	
+16	4.2	
cb	4.4	

#2
8.62

1/4	4.4	
¢	4.0	4.6
1/4	4.3	
+7	3.9	
cb	3.0	
E	2.7	5.9

1+00

E	1.4	7.2
+15	1.6	
cb	2.0	
+3	3.0	
1/4	3.3	
¢	3.0	5.6
1/4	3.4	
cb	3.4	
+6	3.0	
W	2.8	5.8

546 12.84 12.4 7.38

1+25 S. Line of Alley

W on edge concrete Alley	6.68	6.1	6.1
cb	6.2		
+2	6.7		
1/4	7.0		
¢	6.5	6.3	
1/4	6.6		
+6	6.1		

H.I.
12.89

cb	5.2		+10
+6	5.1		E
+8	5.4		
E	5.5	7.3	E
	1+35	Sewer Mn Hole & Down	cb
Pod. on Rim	5.83	2.0 Top	+3
Pod. on floor 114e	10.75	2.1 FL. Sewer	1/4
	1+35	of alley	E
Pod on ctr alley	6.46		1/4
	1+95	N line of alley	cb
E	5.4	7.4	+3
cb	5.8		+7
1/4	6.2		W
E	6.0	6.8	
1/4	6.4		W
cb	6.4		cb
W on edge paving	6.4~	6.4	1/4
	1+50		E
W	5.9	6.9	1/4
cb	6.3		+8
1/4	6.4		cb
E	5.8	2.0	+10
+2	6.2		E
1/4	6.2		
cb	5.8		E
+3	5.4		+10

H.I.
12.89

	5.0	
	5.2	7.6
	2+00	
	4.2	8.6
	4.4	
	5.3	
	5.2	
	5.0	7.8
	5.0	
	5.3	
	5.4	
	5.0	
	5.0	7.8
	2+50	
	4.1	9.7
	4.3	
	4.2	
	3.9	8.9
	4.4	
	4.2	
	3.4	
	3.0	
	3.2	9.6
	2+62	
	3.0	9.8
	2.9	

H.I.
12-89

cb	3.1	
+3	3.7	
1/4	4.0	
¢	3.8	9.0
1/4	4.1	
cb	4.1	
W	4.3	8.5

2770 S Line of Reed.

W	3.5	9.3
+13	3.6	
cb	4.2	
1/4	4.0	
¢	3.7	9.1
1/9	3.9	
+7	3.6	
cb	3.1	
+10	2.6	
E	3.0	9.8

Rod on End of curb W line of

Darves S line of Reed. 3.43 9.1

check on starting BM 5.46 7.38

Bliss
 20
 7/11/14
 B.M. SW
 4 nails in pole
 Pacific + Daves

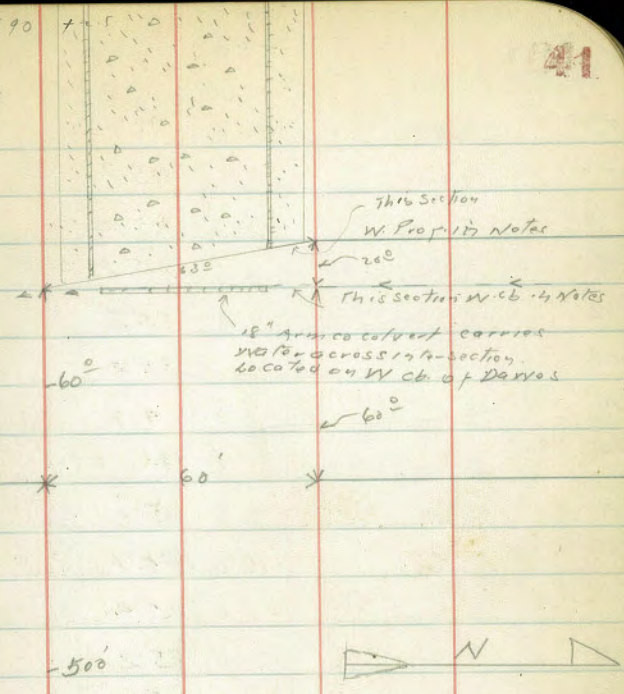
X Sections Pacific Ave from
 the W line of Daves to the W line
 of Haines
 480 990 0.10 60' st
 12' cbs
 9' hts

W Line of Daves on Paring 63'

S	5.7	-0.8
S Top cb	5.07	-0.17
G	5.80	-0.9
1/4	5.45	-0.6
1/2	5.28	-0.4
1/4	5.35	-0.5
G	5.61	-0.8
N Top cb	5.05	-0.15
+7	4.8	0.1
N	4.2	0.7
wcb.		
N	5.3	-0.4
+11 flowline armco culvert	6.81	-1.91
+11.5 Top	4.9	0.0
cb	5.0	-0.1
1/4	5.0	-0.1
1/2	5.0	-0.1
1/4	5.4	-0.5
cb	5.4	-0.5
S.	5.8	-0.9
w/4		
S	5.9	-1.0
1/2	6.6	-1.7
cb	6.2	-1.3

5.90

Sketch of Pacific
 + Daves
 showing sections
 taken



Note Everts
 seems to be closed
 90° on South side
 of Pacific

Everts

Street
 -80°

π
 4.90

+3	6.1	-1.3
+5	5.7	-0.8
1/4	5.4	-0.5
¢	5.2	-0.3
1/4	5.2	-0.3
cb	5.2	-0.3
N	4.9	0.0
	¢	
N	5.0	-0.1
cb	5.1	-0.2
1/4	5.4	-0.5
¢	5.2	-0.3
1/4	5.6	-0.7
cb	5.6	-0.7
S	5.8	-0.9
	E 1/4	
S	6.1	-1.2
cb	5.9	-1.0
1/4	5.8	-0.9
¢	5.5	-0.6
1/4	5.6	-0.7
cb	5.4	-0.5
N	5.2	-0.3
	E cb	
N	5.9	-1.0
cb	5.9	-1.0

 π
 4.90

1/4	6.1	-1.2
¢	5.8	-0.9
1/4	6.2	-1.3
cb	6.0	-1.1
S	6.1	-1.2
	E line of Daxies = 0.0	
S	6.2	-1.3
cb	6.1	-1.2
1/4	6.3	-1.4
¢	5.9	-1.0
1/4	6.2	-1.3
cb	6.0	-1.1
N	6.0	-1.1
	0.20	
N	5.9	-1.0
cb	6.1	-1.2
1/4	5.7	-0.8
¢	5.5	-0.6
1/4	6.2	-1.3
cb	6.1	-1.2
S	6.3	-1.4
	0.150	
S	6.4	-1.5
cb	6.2	-1.3
1/4	6.1	-1.2
¢	5.3	-1.4

7
490

+4	55	-06	N
1/4	59	-1.0	
+3	62	-1.3	N
+4	6.0	-1.1	cb
cb	5.8	-09	+2
N	5.9	-1.0	+4
	1400		1/4
N	56	-07	⊕
cb	56	-07	1/4
+3	57	-08	cb
+5	62	-1.3	S
1/4	6.0	-1.1	
⊕	58	-09	S
+5	58	-09	+10
1/4	62	-1.3	cb
cb	61	-1.2	1/4
S	62	-1.3	⊕
	1750		1/4
S	57	-08	+5
cb	59	-1.0	+6
1/4	55	-0.6	cb
⊕	59	-0.5	N
1/4	59	-0.5	
+2	55	-0.6	N
+6	4.9	0.0	+10
cb	4.7	0.2	cb

HI
9.90

	9.8	0.1	
	2400		
	37	1.2	
	40	0.9	
	40	0.9	
	4.8	0.1	
	4.5	0.4	
	4.3	0.6	
	4.6	0.3	
	4.7	0.2	
	4.9	0.0	
	2450		
	3.7	1.2	
	3.4	1.5	
	4.0	0.9	
	3.4	1.5	
	3.1	1.8	
	3.0	1.9	
	3.3	1.6	
	2.7	2.2	
	2.5	2.4	
	2.3	2.6	
	3400		
	1.1	3.8	
	1.4	3.5	
	1.6	3.3	

t3		2.9	2.5
1/4		2.0	2.9
¢		2.0	2.9
1/4		2.3	2.6
cb		3.0	1.9
t1		2.9	2.5
S		2.8	2.1
T.P.	8.58	11.71	177
		3150	3.13
S		8.5	3.2
cb		8.3	3.4
t1		8.8	7.9
1/4		8.3	3.4
¢		8.0	3.7
1/4		7.9	3.8
t7		8.2	3.5
cb		7.3	4.4
N		6.7	5.0
		9100	
N		5.9	5.8
cb		6.4	5.3
+-		6.9	4.8
1/4		6.8	4.9
¢		6.8	4.9
1/4		7.2	4.5
cb		7.5	4.2

t1		6.9	4.8
S		7.2	4.5
		4150	
S		6.1	5.6
cb		5.8	5.9
t1		6.7	5.0
1/4		6.0	5.7
¢		5.7	6.0
1/4		5.6	6.1
t7		5.8	5.9
cb		5.1	6.6
N		4.8	6.9
		5100	W. line of level
N		3.0	8.7
cb		3.9	7.8
t2		4.6	7.1
1/4		4.9	7.3
¢		4.4	7.3
1/4		4.9	7.3
cb		5.1	6.6
t1		4.5	7.2
S		4.7	7.0
		WCB	
S		4.9	7.3
t11		4.1	7.6
cb		5.0	6.7

80'57
20'065
10'445

1/4	9.0	77
¢	4.0	77
1/4	4.0	77
+7	4.2	75
cb	3.5	8.2
N	3.1	86
	N 1/4	
N	2.8	89
cb	3.2	85
+2	4.1	76
1/4	3.8	7.9
¢	3.7	80
1/4	3.7	80
cb	4.2	7.5
S	4.1	76
	¢	
S	3.8	79
cb	4.2	75
1/4	3.4	83
¢	3.4	83
1/4	3.5	82
+7	3.8	79
cb	3.0	87
N	2.6	9.1
	E 1/4	
	2.9	9.3

	2.7	90
+2	3.8	81
1/4	3.3	84
¢	3.1	86
1/4	3.2	85
cb	4.1	76
+3	4.1	7.6
+9	3.5	82
S	3.9	7.8
	EC6	
S	3.8	7.9
+8	3.9	83
cb	3.9	7.8
1/4	3.1	8.6
¢	3.0	8.7
1/4	3.2	8.5
+7	3.2	8.5
cb	2.5	9.2
N	2.4	9.3
	E	
	1.9	9.8
cb	2.2	9.5
+2	2.9	88
1/4	2.7	90
¢	2.7	90
1/4	3.0	87

cb			3.4	8.3
S.			3.4	8.3
Set 3M SE P. 1000, 2 vents + Pacific			3.39	8.32
TP.	809	16.41	3.39	8.32
		0750		
S			7.4	9.0
+11			7.2	9.2
cb			8.0	8.4
+3			7.3	9.1
1/4			7.2	9.2
¢			6.9	9.5
1/4			6.9	9.5
+7			7.1	9.4
cb			6.4	10.0
N			5.9	10.5
		1100		
N			5.5	10.9
cb			5.9	10.5
+2			6.7	9.7
1/4			6.4	10.0
¢			6.5	9.9
1/4			6.8	9.6
cb			7.4	9.0
+2			6.9	9.5
S			7.1	9.3

S			6.9	9.5
cb			6.7	9.7
1/4			6.5	9.9
¢			6.1	10.3
1/4			6.1	10.3
+7			6.4	10.0
cb			5.4	11.0
N			5.4	11.0
		2100		
N			4.6	11.8
cb			5.1	11.3
+2			5.8	10.6
1/4			5.6	10.8
¢			5.6	10.8
1/4			5.9	10.5
cb			6.1	10.3
S			6.2	10.2
		2150		
S			5.5	10.9
cb			5.2	11.2
+3			5.7	10.7
+8			5.3	11.1
1/4			5.2	11.2
¢			5.0	11.4
1/4			5.0	11.4
+7.			5.0	11.4

cb	4.~	12.2
N	4.0	12.4
	3+00	
N	3.7	12.7
cb	4.2	12.2
+2	4.8	11.6
1/4	4.6	11.8
¢	4.8	11.6
1/4	5.0	11.4
cb	5.1	11.3
S	5.3	11.1
	3+50	
S	4.9	11.5
cb	4.6	11.8
1/4	4.7	11.7
¢	4.6	11.8
1/4	4.3	12.1
+7	4.4	12.0
cb	4.2	12.2
N	3.9	13.0
	4+00	
N	3.1	13.3
cb	3.3	13.1
+2	4.~	12.2
+5	3.8	12.6
1/4	3.8	12.6

¢	9.0	12.4
1/4	4.1	12.3
cb	4.1	12.3
S	4.2	12.2
	4+50	
S	3.2	13.2
cb	3.2	13.2
1/4	3.0	13.4
¢	2.7	13.7
1/4	2.6	13.8
+7	3.0	13.4
cb	2.0	14.4
N	2.2	14.2
	5+00 West line of Fossil	80.57 2.00 10.45
N	1.3	15.1
cb	1.4	15.0
+2	1.9	14.5
1/4	1.7	14.7
¢	1.9	14.5
1/4	2.1	14.3
cb	2.2	14.2
S	2.2	14.2
	10.97	25.03
	2.35	14.06
	Ncb	
S	10.5	14.5
cb	10.5	14.5

HJ.
25.03

1/4		10.3	14.7
ϕ		10.1	14.9
1/4		9.9	15.1
+7		10.1	14.9
cb		9.3	15.8
N		9.3	15.8
	w 1/4		
N		9.3	15.8
cb		9.3	15.8
+2		10.0	15.0
1/4		9.7	15.3
ϕ		10.0	15.0
1/4		10.1	14.9
cb		10.9	14.6
s		10.3	14.7
	ϕ		
s		10.2	14.8
cb		10.3	14.7
1/4		10.1	14.9
ϕ		10.0	14.0
1/4		9.6	15.4
cb		9.7	15.3
+2		9.2	15.8
ix		9.1	15.9
	E 1/4		
N		8.9	16.1

HJ.
25.03

cb		9.5	15.5
1/4		9.9	15.6
ϕ		9.7	15.3
1/4		9.9	15.1
cb		10.2	14.8
s		10.3	14.7
	E cb		
s		9.8	15.2
cb		10.1	14.9
1/4		9.7	15.3
ϕ		9.5	15.5
1/4		9.2	15.8
cb		9.4	15.6
+2		8.8	16.2
N		8.7	16.3
	E line of Farvel = 00		
		8.3	16.7
		8.4	16.6
+10		9.4	15.6
cb		9.4	15.6
1/4		8.9	16.1
ϕ		9.2	15.8
1/4		9.4	15.6
cb		9.6	15.4
+2		9.3	15.7
s		9.6	15.4

H.I.
25.03

0150

S	8.9	16.1
cb	8.5	16.5
+2	8.9	16.1
1/4	8.6	16.4
¢	8.1	16.9
1/4	8.0	17.0
cb	8.0	17.0
+3	7.3	17.7
N	7.2	17.8

0168 Walk on North

2nd in street ¢ 6.56 18.47

0193 Walk on North

2nd in street 6.11 18.92

1400

N	6.2	18.8
cb	6.8	18.2
1/4	7.2	17.8
¢	7.5	17.5
1/4	7.7	17.3
cb	8.0	17.0
S	8.2	16.8

1450

S	7.6	17.4
cb	7.2	17.8
1/4	7.1	17.9
¢	6.8	18.2

H.I.
25.03

1/4	6.6	18.4
cb	6.4	18.6
+2	5.5	19.5
N	5.4	19.6

2400

N	4.4	20.6
+10	4.9	20.1
cb	6.1	18.9
1/4	6.0	19.0
¢	6.2	18.8
1/4	6.6	18.4
cb	6.6	18.4
S	7.3	17.7

2450

S	6.6	18.4
cb	6.0	19.0
1/4	6.0	19.0
¢	5.8	19.2
1/4	5.5	19.5
cb	5.3	19.7
+2	4.1	20.9
+4	4.1	20.9
N	4.2	20.8

3400

N	3.8	21.2
+8	3.9	21.1
+10	4.9	20.1
cb	4.9	20.1

H2-
25.03

1/4	5.2	19.8
¢	5.5	19.5
1/4	5.9	19.1
cb	6.0	19.0
S	6.4	18.6
	3+50	
S	6.2	18.8
cb	5.6	19.4
1/4	5.6	19.4
¢	5.2	19.8
1/4	4.9	20.1
cb	4.7	20.3
+2	4.7	20.3
+2 Top	3.8	21.2
N	3.7	21.3
	4+00	
N	3.7	21.3
+10 Top	3.4	21.6
+10 Bottom	4.4	20.6
cb	4.4	20.6
1/4	4.7	20.3
¢	4.9	20.1
1/4	5.2	19.8
cb	5.3	19.7
S	5.9	19.1

X
25.03

	4+50	
S	5.7	19.3
cb	5.0	20.0
1/4	5.0	20.0
¢	4.7	20.3
1/4	4.6	20.4
cb	4.2	20.8
+2 Bottom	4.2	20.8
+2 Top	3.2	21.8
N	3.3	21.7
	5+00 W line of Gresham ^{50' 50' 50'} 10' 1/2	
N	3.2	21.8
+10 Top	3.2	21.8
+10 Bottom	4.0	21.0
cb	4.0	21.0
1/4	4.3	20.7
¢	4.3	20.7
1/4	4.6	20.4
cb	4.6	20.4
S	4.8	20.2
	4.65	20.38
T.P.	8.61	28.99
	4.65	20.38
	WCB	
S	8.3	20.7
cb	8.3	20.7
1/4	8.3	20.7
¢	8.1	20.9

H.I.
28.99

1/4	8.1	20.9
cb	7.8	21.2
1/2 Bottom	7.7	21.3
1/2 Top	7.1	21.9
N	6.8	22.2
	N 1/4	
N	7.3	21.7
cb	7.6	21.4
1/4	7.9	21.1
ϕ	7.9	21.1
1/4	8.0	21.0
cb	8.2	20.8
S	8.2	20.8
	ϕ	
S	7.5	21.5
cb	7.4	21.6
1/4	7.4	21.6
ϕ	7.4	21.6
1/4	7.6	21.4
cb	7.9	21.6
N	6.7	23.3
	E 1/4	
N	7.0	22.0
cb	7.3	21.7
1/4	7.4	21.6
ϕ	7.2	21.8

H.I.
28.99

1900

1/4	7.1	21.9
cb	7.4	21.6
S	7.4	21.6
	Ecb	
S	7.0	22.0
cb	6.9	22.1
1/4	7.1	21.9
ϕ	7.1	21.9
1/4	7.3	21.7
cb	7.4	21.6
N	6.9	22.6
	E Line of Gresham = 00	
N	6.1	22.9
+10	6.2	22.8
cb	6.6	22.4
1/4	6.8	22.2
ϕ	6.7	22.3
1/4	6.6	22.4
cb	6.5	22.5
S	6.9	22.6
	0.50	
S	5.9	23.6
cb	5.3	23.7
1/4	5.5	23.5
ϕ	5.9	23.6
1/4	5.5	23.5

cb	5.5	23.5
t ₂	9.9	24.1
N	5.2	23.8

0.51 Concrete Walk on South

on line 3 wide ct

1700

N	4.3	24.7
t ₁₀	4.1	24.9
cb	4.8	24.2
1/4	4.7	24.3
ϕ	4.5	24.5
1/4	4.5	24.5
t ₆	4.9	24.1
t ₇	4.3	24.7
cb	4.3	24.7
S	4.4	24.6
	1450	
S	3.1	25.9
cb	3.2	25.8
t ₃	3.0	26.0
t ₄	3.8	25.2
1/4	3.3	25.7
ϕ	3.2	25.8
1/4	3.4	25.6
cb	3.4	25.6
t ₂	2.8	26.2

N	3.1	25.9
	1787 Garage on South	
	on line Diff floor ct	2.1
		26.9

2400

N	1.1	27.9
t ₁₀	1.0	28.0
cb	1.3	27.7
1/4	1.5	27.5
ϕ	1.4	27.6
1/4	1.5	27.5
cb	1.2	27.8
S	1.1	28.9
	12011 in foot West Garage 12.08	39.81
	1.26	27.73

2100⁵⁵ volume of (front era)59 1/2
100 lbs
10 1/2

S	10.9	28.9
cb	10.8	29.0
1/4	11.1	28.7
ϕ	11.1	28.7
1/4	11.2	28.6
cb	11.0	28.8
t ₃	10.8	29.0
N	10.9	28.9
	Ncb	
N	10.1	29.7
t ₈	10.0	29.8
cb	10.6	29.2

c/4	10.5	29.3
1/4	10.5	29.3
1/4	10.6	29.2
+6	10.7	29.1
+7	10.1	29.1
cb	10.3	29.5
1/5	10.2	29.6
+	W 1/4	
0.5	9.6	30.2
+9	9.8	30.0
cb	10.4	29.4
+4	10.6	29.2
+6	10.1	29.7
1/4	10.1	29.7
0/4	10.0	29.8
3/4	10.0	29.8
cb	10.0	29.8
+2	10.0	29.8
+3	9.2	30.6
+N	9.6	30.2
+	4	
1/11	8.9	30.9
+9	8.8	31.0
+10	9.5	30.3
cb	9.5	30.3
+1/4	9.9	30.4

9.4	30.4
9.4	30.4
9.5	30.3
9.8	30.0
9.6	30.2
E 1/4	
8.7	31.1
8.8	31.0
8.9	30.9
8.9	30.9
8.9	30.9
9.0	30.8
8.9	30.9
8.9	31.4
8.3	31.5
Ecb	
7.9	31.9
8.1	31.7
8.2	31.6
8.3	31.5
8.2	31.6
8.2	31.6
8.2	31.6
2180 ¹⁵ = E Line of	
7.2	32.6
7.1	32.7

T
39.81

1/4	7.5	323
¢	7.4	324
1/4	7.6	322
cb	7.3	325
N	7.9	324
3700		
N	6.1	337
cb	6.4	334
1/4	6.4	334
¢	6.2	336
1/4	6.3	335
cb	6.1	337
S	6.0	338
3720		
S	4.6	352
cb	4.9	349
1/4	4.9	349
¢	4.9	349
1/4	5.1	347
cb	5.0	348
N	5.2	346
3750		
N	3.2	366
cb	3.0	368
1/4	3.0	368
¢	3.1	367

T
39.81

1/4	2.9	369
cb	3.0	368
S	2.6	372
3775		
S	1.4	384
cb	1.0	388
1/4	1.3	385
¢	1.4	384
1/4	1.4	384
cb	1.4	384
N	2.0	378
T.P.	12.49	51.87
4400		
N	12.2	39.6
cb	11.9	400
1/4	11.8	401
¢	11.9	400
1/4	11.5	404
cb	11.4	405
S	11.2	407
4750		
S	6.6	453
cb	6.9	450
1/4	7.2	447
¢	7.5	444
1/4	7.6	443

cb	7.9	44.0
----	-----	------

N	8.5	43.4
---	-----	------

5700 W Line of Haines

N	3.6	48.3
---	-----	------

cb	2.8	49.1
----	-----	------

1/4	2.3	49.6
-----	-----	------

1/4	2.1	49.8
-----	-----	------

1/4	1.7	40.2
-----	-----	------

cb	1.4	40.5
----	-----	------

S	1.2	40.7
---	-----	------

Check on BM	7.37	44.60
-------------	------	-------

5 Nails in Pole	7.37	44.50
-----------------	------	-------

SVY Oliver Haines		0.10
-------------------	--	------

Bliss
Jacobson
7/14/28
B.M.S.W. Prop.
Hub Fanuel & Pacific

X Sections of Fanuel Street
Beach from the N. Line of Pacific to the
Sumo of Reed

Pacific
to the
Sumo of
Reed
20' x 6.5
10

23.60

071

9.54

23.60

14.06

E

1115

5.5

18.1

0100 N. Line of Pacific

cb

5.7

W

8.3

15.3

1/4

6.0

cb

7.9

E

5.9

17.7

1/4

7.9

1/4

6.0

E

7.7

15.9

cb

6.4

1/4

7.6

W

6.7

16.9

cb

7.4

14.35

E

6.9

16.7

W

6.2

17.4

0150

cb

6.0

E

6.4

17.2

1/4

5.6

cb

6.6

E

5.6

18.0

1/4

7.1

1/4

5.7

E

7.1

16.5

cb

5.4

1/4

7.2

E

5.0

18.6

cb

7.5

14.50

W

7.9

15.7

E

4.6

19.0

1100

cb

5.1

W

6.9

16.7

1/4

5.4

cb

6.6

E

5.3

18.3

1/4

6.3

1/4

5.3

E

6.1

17.5

cb

5.6

1/4

6.2

W

5.9

17.7

cb

5.9

2100

E

5.7

17.9

W

4.8

18.8

cb

4.6

972

H.I.
23.60

1/4			4.3	
\$			4.2	19.4
1/4			4.3	
cb			4.0	
E			3.7	19.9
		2+50		
E			2.6	21.0
cb			2.8	
1/4			3.0	
\$			3.1	20.5
1/4			3.1	
cb			3.3	
W			3.9	19.7
<small>check on 8M SW RP fence + Oliver</small>			3.99	19.61
TP	9.06	28.67	3.99	19.61 ^{0.03}
			N. line of Oliver = 00	
W			7.4	21.3
cb			7.0	
1/4			6.8	
\$			6.8	21.9
1/4			6.6	
cb			6.1	
E			6.1	22.6
		0+20		
E			5.9	23.3
cb			5.7	

H.I.
28.67

973

1/4			6.2	
\$			6.3	22.4
1/4			6.2	
cb			6.7	
W			6.7	22.0
		0+50		
W			6.9	22.3
cb			6.4	
1/4			6.3	
\$			5.9	22.8
1/4			5.7	
73			5.1	
cb			5.1	
E			4.9	23.8
		1+00		
E			4.3	24.4
cb			4.7	
1/4			5.2	
\$			5.2	23.5
1/4			5.2	
cb			5.5	
W			5.6	23.1
		1+5 S line of Alley		
W			5.9	23.3
cb			5.2	
1/4			5.1	

ϕ	5.0	23.7
1/4	5.0	
cb	4.4	
E	4.1	24.6
	1+45	
E	3.9	24.7
cb	4.4	
1/4	4.7	
ϕ	4.8	23.9
1/4	4.7	
cb	5.1	
W	5.2	23.5
	2+00	
W	4.2	24.5
cb	4.1	
1/4	4.0	
ϕ	3.8	24.9
1/4	3.8	
cb	3.5	
E	3.2	25.5
	2+50	
E	2.5	26.2
cb	2.6	
1/4	3.0	
ϕ	3.0	25.7
1/4	3.2	

cb	3.5	
W	3.5	25.2
	2+70	
W	3.4	25.3
cb	2.8	
1/4	2.7	
ϕ	2.7	26.0
1/4	2.6	
cb	2.5	
E	2.2	26.5
	check on BM SWAP Oliver + 100.01	19.69 19.61 0.08 ✓
	4.06	

Bliss
 Jackson
 7/17/18
 BM 3 E Prop Co
 Everts Pacific

X. Sections of Everts St. Pacific Beach
 from the N. Line of Pacific to the S. Line of Reed

+ H.I. Elev

8.81 17.13 8.32

0100 N. Line of Pacific

W	8.7	8.4	E
cb	8.5	8.6	cb
1/4	8.3		1/4
1/2	8.1	9.0	1/2
3/4	7.9		3/4
cb	7.8		cb
E	7.5	9.6	E

0150

E	6.9	10.7	W
cb	7.1		cb
1/4	7.3		1/4
1/2	7.7	9.4	1/2
3/4	7.9		3/4
cb	8.1		cb
W	8.5	8.6	W

1100

W	7.7	9.4	E
cb	7.2		cb
1/4	7.1		1/4
1/2	7.0	10.1	1/2
3/4	6.9		3/4
cb	6.7		cb
E	6.0	11.1	E

Plotted 7-28-28
T.S.H.

H.I.
17.13

115 S. Line of Alley
5.7 11.4

1/2	6.1		1/2
3/4	6.3		3/4
cb	6.6	10.5	cb
1/4	6.8		1/4
1/2	7.0		1/2
3/4	7.6	9.5	3/4

1135 N. Line of Alley

W	7.4	9.7	W
cb	7.0		cb
1/4	6.7		1/4
1/2	6.5	10.6	1/2
3/4	6.3		3/4
cb	6.1		cb
E	5.4	11.7	E

1150

E	5.0	12.1	E
cb	5.7		cb
1/4	5.8		1/4
1/2	6.1	11.0	1/2
3/4	6.3		3/4
cb	6.6		cb
W	6.9	10.2	W

1170

W	6.5	10.6	W
cb	6.4		cb

1177

H.Z.
17.13

1/4			5.9	
£			5.6	11.5
1/4			5.5	
cb			5.2	
E			4.~	12.9
		2100		
E			4.0	13.1
cb			4.3	
1/4			4.7	
£			5.0	12.1
1/4			5.3	
cb			5.7	
W			6.1	11.0
check on BM				12.30
SW Propylid			4.95	12.18
6 rods + Oliver				0.12
		2150		
W			4.9	13.2
cb			4.6	
1/4			4.2	
£			4.1	13.0
1/4			3.8	
cb			3.8	
E			3.2	13.9
TP	631	20 91	2.53	14.60
			N line o. f. Oliver = 00	
E			5.9	15.0
cb			6.4	

H.Z.
20.91

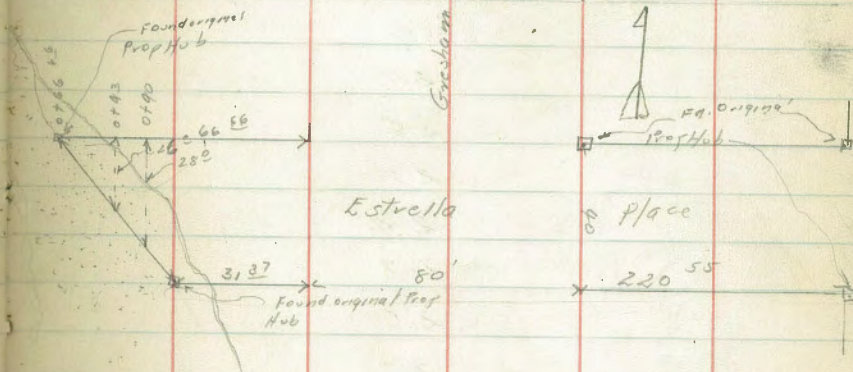
1/4			6.6	
£			7.0	13.9
1/4			7.0	
cb			7.4	
W			8.1	12.8
		0150		
W			6.9	14.0
cb			6.5	
1/4			6.6	
£			6.2	14.7
1/4			6.1	
cb			6.0	
E			5.2	15.7
		1100		
E			4.8	16.1
cb			5.6	
1/4			5.5	
£			5.6	15.3
1/4			5.9	
cb			5.8	
W			6.5	14.4
		1125 S. Line of Allex		
W			6.1	14.8
cb			5.7	
1/4			5.7	
£			5.4	15.5

H.Z.
20.91

1/4	5.2	
cb	5.2	
E	4.7	16.2
	1745 N-Line of Alley	
E	4.6	16.3
cb	5.2	
1/4	5.4	
E	5.5	15.4
1/4	5.6	
cb	5.7	
W	5.9	15.0
	2100	
W	4.9	16.0
cb	4.4	
1/4	4.5	
E	4.1	16.8
1/4	4.2	
cb	4.0	
E	3.7	17.2
	2135	
E	3.4	17.5
cb	3.8	
1/4	3.7	
E	3.8	17.1
1/4	3.9	
cb	4.0	

H.Z.
20.91

W	4.1	16.8
	2170 S-Line of Road	
W	3.4	17.5
cb	3.3	
1/4	3.3	
E	3.1	17.8
1/4	3.1	
cb	3.1	
E	2.9	18.0
	8.72	12.19

check on E.M.
SW Prop H-6
olive, 45 years

Bliss Jackson
 7/17/28
 B.M. Spike in
 Fence post S.E.
 Oliver + Goshaw

X Sections of Gresham Street Pacific
 Beach from the S. line of Reed to the N. line
 of Estrella. H.I. - Elev

	H.I.	Elev
694	33.07	26.63
0100 S. line of Reed		
W	0.9	32.2
cb	1.0	
1/4	1.8	
2	1.6	31.5
1/4	1.8	
+9	2.6	
cb	1.7	
E	1.6	31.5
0137 ⁵ Walk on East		
online	cb	2.52
0150		
E	2.7	30.4
cb	2.8	
1/4	2.7	
2	2.4	30.7
1/4	2.7	
+5	2.6	
cb	2.2	
W	1.8	31.3
1100		
W	2.7	30.1
cb	3.0	
+3	3.2	
+5	3.7	

Plotted
 7-27-28
 T.G.H.

H.I.
 33.07

83

1/4	3.6	
2	3.2	29.9
+9	3.2	
1/4	3.6	
2	3.7	
+7	4.2	
+8	3.7	
cb	3.7	
E	3.6	29.5
1125 N. line of Alley		
E	4.1	29.0
cb	4.1	
+2	4.5	
+5	4.5	
1/4	4.1	
2	3.7	29.4
1/4	4.1	
+5	4.1	
+6	3.8	
cb	3.6	
W	3.2	29.9
1145		
W	3.8	29.3
cb	3.9	
+3	4.1	
+5	4.9	

1/4	4.6	
+3	4.3	
ϕ	4.4	28.7
+8	4.8	
cb	4.3	
E	4.6	28.5
	2+00	
E	5.5	27.6
cb	5.2	
+2	5.9	
1/4	5.4	
ϕ	5.3	27.8
1/4	5.6	
+5	5.5	
+5	4.9	
cb	4.9	
W	4.9	28.2
	2+50	
W	5.6	27.5
cb	5.7	
+2	5.7	
+3	6.3	
1/4	6.4	
ϕ	6.1	27.0
1/4	6.1	
+2	6.4	

+9	6.6	
cb	6.3	
E	6.4	26.9
	2+70 N. line of Oliver	
E	6.8	26.3
cb	6.9	
1/4	6.5	26.6
ϕ	6.4	26.7
1/4	6.6	
+5	6.4	
+7	6.0	
cb	5.8	
W	5.9	27.2
	S. line of Oliver = 00	
W	7.3	25.8
cb	7.7	
+4	7.6	
+5	7.9	
1/4	7.9	
ϕ	7.7	25.1
1/4	7.9	25.2
+8	8.0	
cb	7.6	
E	8.1	25.0
	0+50	
E	8.7	24.4

cb	8.2	
+2	8.6	
1/4	8.6	24.5
+6	8.2	24.9
+	8.2	24.9
1/4	8.6	
+6	8.6	
+7	8.4	
cb	8.4	
W	8.1	25.0

1700

W	8.8	24.3
cb	8.9	
+3	8.9	
+4	9.3	
1/4	9.3	
+	8.9	24.2
+5	8.9	
1/4	9.3	23.8
+7	9.2	
+8	8.8	
cb	8.8	
E	9.1	24.0

1.52

25.67

8.92

24.15

14.15 N line of Alley

2.0

23.7

E

cb	1.8	
1/4	2.1	23.6
+6	1.8	
+	1.6	24.1
+5	2.0	
1/4	2.2	
+5	2.1	
+6	1.9	
cb	1.7	
W	1.6	24.1

1435 S line of alley

W	1.9	23.8
cb	2.0	
+3	1.9	
+5	2.4	
1/4	2.4	
+7	2.2	
+	2.0	23.7
+7	2.1	
1/4	2.4	23.3
+7	2.2	
cb	1.9	
E	2.0	23.7

1750

E

2.3

23.4

cb

1.9

H.I.
25.67

c	+3	2.9	
+	1/4	2.5	23.2
+	+3	2.5	
+	+7	2.2	
+	+	2.0	23.7
+	+5	2.4	
+	1/4	2.6	
+	+6	2.6	
+	+7	2.3	
W	cb	2.2	
W	W	2.1	23.6
		2+00	
W	W	3.2	22.5
+	cb	3.0	
+	+3	3.0	
+	+9	3.7	
1/2	1/4	3.4	
+	+	2.9	22.8
+	1/4	3.1	22.6
+	+7	3.0	
+	cb	2.4	
+	+10	2.7	
+	E	2.7	23.0
		2+150 N. line of Pacific	
+	E	2.7	23.0
+	cb	2.8	

H.I.
25.67

	+2	3.5	
	1/4	3.7	22.0
	+	3.4	22.3
	1/4	3.9	
	+5	3.9	
	+6	3.6	
	cb	3.4	
	W	3.6	22.1
		3.24	20.43
		S. line of Pacific = 00	
	W	5.0	20.7
	cb	4.9	
	1/4	4.8	
	+	4.2	21.5
	1/4	4.1	21.6
	cb	3.7	
	E	3.1	22.6
		0+50	
	E	3.1	22.6
	+10	3.3	
	cb	4.0	
	1/4	4.5	21.2
	+	4.6	21.1
	+2	4.9	
	1/4	5.2	
	+7	5.6	
	cb	5.4	

W	5.9	19.8
	0+75	
W	6.3	19.4
+cb	5.6	
+3	6.0	
1/4	5.6	
+5	5.1	
ϕ	4.7	21.0
1/4	4.6	21.1
cb	4.2	
+3	4.0	
E	3.4	22.3
	1+00	
E	3.2	22.5
cb	4.2	
1/4	4.6	21.1
ϕ	4.6	21.1
+2	4.8	
+7	5.3	
1/4	5.5	
+8	6.0	
cb	5.9	
W	6.5	19.2
W+10	7.5	
	1+50	
W-10	8.2	

W	7.2	18.5
cb	6.2	
+2	6.4	
1/4	6.0	
+6	5.3	
ϕ	5.0	20.7
1/4	4.9	20.8
+8	4.6	
cb	4.1	
E	4.3	21.4
	2+00	
E	3.2	22.5
cb	4.1	
+3	4.6	
1/4	4.8	20.9
ϕ	4.0	21.7
+4	5.1	
+7	5.6	
1/4	5.8	
cb	6.4	
W	6.4	18.8
W+10	7.9	
T.P.	319	25.94
	2.92	22.75
	2+50	
W-10	7.9	
W	7.0	18.9

cb	6.1	
#2	6.1	
1/4	5.6	
#3	5.9	
#5	5.1	
⊕	4.9	21.0
1/4	4.9	21.0
#6	4.5	
#7	4.2	
cb	4.1	
E	3.6	22.3
	2+85	
E	3.6	22.3
cb	4.1	
#3	4.4	
1/4	4.6	21.3
⊕	4.7	21.2
#5	4.8	
1/4	5.2	
#7	5.7	
cb	5.5	
W	6.5	19.4
W+10	7.5	
	3+00 N side of La Palma	<small>800ft 20/25 10/10</small>
W-10	6.7	
W	5.9	20.0

cb	5.3	
#2	5.7	
1/4	5.2	
#7	4.6	
⊕	4.5	21.4
1/4	4.6	21.3
#7	4.3	
cb	4.0	
E	3.6	22.3
	N cb	
E	3.6	22.3
cb	3.9	
#3	4.4	
1/4	4.4	21.5
⊕	4.5	21.1
#3	4.5	
1/4	5.1	
#9	5.7	
cb	5.3	
N	5.0	20.9
	N 1/4	
W	5.2	20.7
cb	5.1	
#2	5.6	
1/4	5.0	
⊕	4.9	21.5

1/4	4.4	21.5
+6	4.5	
+7	4.1	
cb	4.0	
E	3.9	22.0
	4	
E	3.9	22.0
cb	4.1	
+5	4.5	
1/4	4.5	21.4
4	4.4	21.5
1/4	4.8	
+9	5.5	
cb	5.1	
YY	5.6	20.3
	s/4	
W	5.4	20.5
cb	5.0	
+1	5.4	
1/4	4.8	
4	4.4	21.5
1/4	4.5	21.4
+6	4.6	
+7	4.1	
cb	4.0	
E	3.7	22.2

5cb

E	3.9	22.0
cb	4.1	
+3	4.1	
+4	4.7	
1/4	4.7	21.2
4	4.5	21.4
1/4	4.9	
+9	5.4	
cb	5.0	
W	5.5	20.4
	S line of La Palma = 00	
W	5.4	20.5
cb	5.0	
+1	5.4	
1/4	5.0	
4	4.6	21.3
1/4	4.7	21.2
+6	4.7	
+8	4.3	
cb	4.3	
E	4.3	21.6
	4.0 6	21.88
	0 + 5 0	
E	4.8	21.1
cb	4.8	
+3	4.7	

Set BM SE
of 20' line of
of 20' line of 44
from 9-20-10, 1916

+4	5.2	
1/4	5.3	20.6
¢	5.1	20.8
1/4	5.4	
cb	5.8	
+1	5.2	
W	5.2	20.7
	1400	
W	5.9	20.0
+8	5.8	
cb	6.4	
1/4	6.0	
¢	5.7	20.2
1/4	5.9	20.0
+7	5.7	
+8	5.4	
cb	5.4	
E	5.5	20.4
	1750	
E	6.2	19.7
cb	6.5	
1/4	6.9	19.0
¢	6.7	19.2
1/4	7.0	
cb	7.3	
+2	6.6	

W	7.0	18.9
	2400	
W	7.9	18.0
+18	7.9	
cb	8.3	
1/4	8.0	
¢	7.7	18.2
1/4	7.8	18.1
cb	8.0	
+1	7.6	
E	7.3	18.6
TP	1.09	2008 6.95 18.99
		2150
E	2.7	17.4
cb	2.7	
+2	2.9	
+4	3.1	
1/4	2.9	17.2
¢	2.8	17.3
1/4	3.0	
cb	3.3	
+3	3.4	
+4	2.9	
W	3.1	17.0
	(300)?	
W	3.8	16.3

+15	41	
+16	44	
cb	44	
1/4	42	
¢	40	16.1
1/4	42	15.9
+8	43	
+9	3.9	
cb	3.9	
E	38	16.3
	3150	
E	5.3	14.8
cb	5.3	
+3	5.3	
+4	5.8	
1/4	5.6	14.5
¢	5.2	14.9
1/4	5.5	
cb	5.7	
+3	5.9	
+4	5.3	
W	5.3	14.8
	4400	
W	6.7	13.4
+15	6.7	
+16	7.1	

cb	7.1	
1/4	6.8	
17	6.3	
¢	7.3	12.8
1/4	6.8	13.3
+6	7.1	
+7	6.7	
cb	6.8	
E	6.7	13.4
	4150	
E	7.9	12.2
cb	8.1	
1/4	8.2	11.9
¢	7.8	12.3
1/4	8.3	
cb	8.6	
1/2	8.6	
+3	8.0	
W	8.1	12.0
	4455	Single Garage on West
	ctr	7.95
	4464	Single Garage on West
	ctr	8.04
	5400	
W	9.1	11.0
+17	9.1	

7
20.08

+18			9.9	
cb			9.9	
1/4			9.5	
⊕			9.2	10.9
1/4			9.5	10.6
cb			9.5	
E			9.3	10.8
			5+50	
E			10.4	9.7
cb			10.8	
1/4			11.0	9.1
⊕			10.6	9.5
1/4			10.8	
cb			10.8	
W			10.4	9.7
T.P	2.71	12.11	10.68	9.70
			6+00	
W			3.7	8.4
+13			3.6	
+17			4.3	
cb			4.2	
1/4			4.1	
⊕			3.8	8.3
1/4			4.0	8.1
cb			4.2	
+1			3.9	

7
12.11

			E		3.8	8.3
					6+40	
			E		9.8	7.3
			cb		9.9	
			+1		5.3	
			1/4		5.0	
			⊕		4.8	7.3
			1/4		4.9	
			cb		5.1	
			+3		5.1	
			+5		4.8	
			W		4.5	7.6
					6+80	N Line of Estrella
			W		5.3	6.8
			+14		5.4	
			+17		6.1	
			cb		6.0	
			1/4		5.8	
			⊕		5.5	6.6
			1/4		5.8	6.3
			+4		6.2	
			cb		6.0	
			+5		6.0	
			+7		5.6	
			E		5.6	6.5
					3.65	6.46

307 PM NE
prop. Est. do
Gresham

Bliss
 Dec 1890
 7/17/28
 BM NE Prop
 No 6 Estrella
 + Gresham

X Sections of Estrella Street Pacific
 Beach from the W Line of Frontera West
 to Bay
 +
 964

NZ
 11.10

Elev
 696

90'5"
 10'6"
 5 1/4"

W. Line of Frontera = 00

N		0.7	104	S
cb		1.1		cb
1/4		1.1		1/4
1/2		1.2	99	cb
1/4		1.3		N
cb		1.4		
S		1.8	93	N
Set BM NW Estrella's Frontera		0.80	10.30	cb
		0+35		1/4
S		2.6	85	1/2
cb		2.6		1/4
1/4		2.5		cb
1/2		2.5	86	S
1/4		2.9		
cb		2.3		S
N		2.0	91	cb
		0+41		1/4
N		2.5	86	1/2
cb		2.9		1/4
1/4		2.9		cb
1/2		3.1	80	N
1/4		3.1		
cb		3.2		N
S		3.4	77	cb

7-30-28
 T.G.H.
 7/10/28

H.I.
 410

0+50

3.2	7.9
3.1	
3.0	
3.2	7.9
3.0	
2.8	
2.5	8.6
0+85	
3.0	8.1
3.2	
3.3	
3.4	7.7
3.5	
3.6	
3.9	7.2
0+90	
4.6	6.5
4.0	
4.0	
3.9	7.2
3.8	
3.6	
3.5	7.6
1+00	
3.8	7.3
4.1	

1021

1961

H.Z.
11.10

1/4	4.2	
1/2	4.2	6.9
1/4	4.2	
cb	4.4	
S	4.5	6.6
	1450	
S	5.3	5.8
cb	5.1	
1/4	5.1	
1/2	5.0	6.1
1/4	4.7	
cb	4.7	
N	4.5	6.6
	2100	
N	4.7	6.4
cb	4.9	
1/4	4.9	
1/2	5.1	6.0
1/4	5.1	
cb	5.2	
S	5.4	5.7
	2720 ⁵⁵	E Line of Gresham
S	5.3	5.8
cb	5.3	
1/4	5.2	
1/2	5.0	6.1

8057
20' cbs
10 195H.Z.
11.10

1961

1/2	4.9	
cb	4.9	
N	4.7	6.4
	E cb	
N	4.9	6.2
cb	5.0	
1/4	4.9	
1/2	5.0	6.1
1/4	5.1	
cb	5.2	
S	5.5	5.6
	E cb + 4	
S	5.6	5.5
cb	5.6	
1/4	5.6	
1/2	5.6	
1/4	5.4	
cb	5.4	
N	5.1	
	E 1/4	
N	4.8	
cb	5.1	
1/4	5.2	
1/2	5.2	
1/4	5.3	
cb	5.4	

4 I.
11.10

S	5.5	
ϕ		
S	5.9	5.7
cb	5.2	
1/4	5.0	
ϕ	4.9	6.2
1/4	4.8	
cb	4.7	
N	4.6	6.5
	W 1/4	
N	4.7	6.4
cb	4.9	
1/4	5.0	
ϕ	5.1	
1/4	5.1	
cb	5.2	
S	5.3	
	W cb	
S	5.0	6.1
+1	5.1	
+2	5.5	
cb	5.2	
1/4	5.3	
ϕ	5.2	5.9
1/4	5.1	
cb	5.0	

4 Z
11.10

N	4.9	6.2
	W cb + 2	
N	4.9	
cb	5.0	
1/4	5.0	
ϕ	5.1	
1/4	5.2	
cb	5.2	
+8	5.2	
+9	5.1	
S	5.0	
	W cb + 5	
S	4.7	6.4
cb Top	4.8	
cb bottom	5.4	
1/4	5.1	
ϕ	5.0	6.1
1/4	5.0	
+4	5.0	
cb	4.6	
N	4.5	6.6
	W cb + 13	
N	4.3	6.8
cb	4.5	
+1	4.9	
1/4	4.9	

H.I.
11/10

ϕ		5.0	6.1
1/4		5.0	
cb bottom		5.3	
cb Top		4.7	6.4
S		5.1	6.0
S+2		5.6	
+3		8.4	
+10		9.4	
+12		12.7	
+15		12.9	
TP	4.44	10.90	9.64 6.96
		W. line of Gves barn = 00	
S-20		13.8	-2.9
S-10		13.3	
S-4		12.5	-1.6
S-2		10.2	
S		6.3	+4.6
+9		5.5	
cb		4.8	
1/4		4.8	
ϕ		4.7	6.2
1/4		4.5	
+4		4.7	
cb		4.2	
N		4.1	6.8

H.I.
10/90

		0105	
N		4.0	6.9
cb		4.1	
+1		4.5	
1/4		4.4	
ϕ		4.6	6.3
+3		4.7	
1/4		5.5	
+3		6.0	
+4		6.8	
cb		7.2	
+5		8.8	
S		11.3	-0.4
+1		12.9	
+10		18.6	
+20		13.8	
		0115	
S-20		14.2	-3.3
S		13.7	-2.8
+5		13.3	
+6		11.7	
cb		9.6	
+3		8.1	
+4		6.4	
1/4		6.2	
+2		5.7	
+3		4.6	

H.I
10.90

110

£	4.6	6.3
1/4	4.5	
+4	4.6	
cb	4.0	
N	4.0	6.9
	0+25	
N	3.9	7.0
cb	4.1	
+1	4.3	
1/4	4.3	
£	5.0	5.9
+1	5.2	
1/4	9.4	
+2	10.9	
+3	13.2	
cb	13.5	
S	14.2	-3.3
S+10	14.8	
	0731	27. End of Street on South
S-	15.2	
S	17.8	-3.9
cb	14.2	
1/4	12.5	
+1	10.6	
£	9.3	+1.6
+3	7.6	

H.I
10.90

111

1/4		5.8
+2		4.4
cb		4.1
N		3.8
	0+40	7.1
		See Sketch Page 81
N		4.1
+2		4.1
+5		6.1
cb		13.6
1/4		14.2
£		14.2
1/4		14.2
+3 = S. Line	See Sketch Page 81 This book	14.6
	0+93	N
cb +4 = S line		14.3
1/4		14.2
£		14.2
1/4		14.0
cb		13.8
N		13.8
	0+66	66 End of Street on North
N		14.1
TP	8.25	15.62
TP	8.53	25.35
	check on BM 4 Mark in Pole S.E. La Palma & Freshman	1.80
		3.41
		21.94
		✓ 88
		0.06 ✓

Bliss
Jacobson
Kiernan
7/10/28
8M. 4 nails in
Pole 5 E. Gresham
La Palma

X Sections of La Palma Street
Pacific Beach from the W Line of Gresham
to the E Line of Fonuel

50' st
20' cbs
10' 1/2 s

H.I.
24.53

1131

Plotted 7-30-28
T.S.H.

Station	Dist	Elev	Notes	Dist	Elev	Notes
	265	24.53				
		21.88		1/4		5.7
			0100 W Line of Gresham	ϕ		5.6
N	4.5	20.0		1/4		5.3
+11	3.8			06		4.9
06	3.7			S		4.5
1/4	3.9					20.0
ϕ	4.2	20.3			0142	
1/4	4.0			S		5.1
						19.4
06	4.0			+15		4.9
S	4.0			06		5.2
	4.0	20.5		1/4		5.9
			0115			6.3
S	4.1	20.4		+7		6.3
06	4.5			ϕ		6.3
1/4	4.7			1/4		6.5
ϕ	4.6	19.9		06		6.6
+8	4.4			N		7.6
1/4	4.2					16.9
+7	4.1				0152	
06	4.3			N		8.9
+12	5.1					15.6
N	5.7	18.8		+12		8.6
				06		8.9
			0121	1/4		8.0
N	6.9	17.6		ϕ		7.5
+7	6.5			1/4		7.1
+10	6.2			06		6.9
06	5.8			S		6.2
						18.3
					0175	
				S		7.5
						17.0

cb	8.2	
+7	8.5	
1/4	8.8	
¢	9.3	15.2
1/4	9.8	
cb	10.0	
N	10.3	14.2
	0.90	
N	11.6	12.9
cb	11.2	
+2	11.2	
+6	10.9	
1/4	10.9	
¢	10.8	13.7
1/4	10.9	
cb	10.1	
S	9.2	15.3
	1.00	
S	10.0	14.5
+10	10.7	
cb	11.1	
1/4	11.4	
¢	11.8	12.7
1/4	12.1	
cb	12.0	
N	12.3	12.2

	1108	
N	12.9	11.6
cb	12.7	
1/4	12.9	
¢	12.3	12.2
1/4	12.0	
cb	11.6	
S	10.5	14.0
T.P	0.97	13.83
	4.67	12.86
	14.5	
S	1.3	12.5
cb	1.6	
1/4	1.9	
¢	2.1	11.7
+6	2.2	
1/4	2.5	
cb	2.6	
N	3.1	10.7
	14.50	
N	4.3	9.5
cb	4.0	
1/4	3.4	
¢	3.2	10.6
+2	2.6	
1/4	2.9	
cb	2.7	
S	2.8	11.0

1470

S	3.6	10.2
cb	3.7	
1/4	9.0	
ϕ	4.2	9.6
1/4	9.6	
cb	5.2	
N	5.1	9.7
	2400	
N	5.6	8.2
cb	5.8	
1/4	6.0	
ϕ	6.0	7.8
1/4	6.1	
cb	6.2	
S	5.9	7.9
	2750	
S	7.6	6.2
cb	7.4	
1/4	7.1	
ϕ	7.0	6.8
1/4	6.9	
cb	6.6	
N	6.2	7.6
	3100	
N	6.2	7.6
cb	6.9	

1/4	7.1	
ϕ	7.9	6.4
1/4	7.6	
cb	7.8	
+10	8.1	
S	8.3	5.5
+10	8.9	
3-10	3150	
S	8.7	
	8.4	5.4
+10	8.2	
cb	7.9	
1/4	7.7	
+5	7.5	
ϕ	7.3	6.5
1/4	7.1	
cb	6.9	
N	6.2	7.6
	9400	
N	6.2	7.6
cb	6.6	
1/4	6.8	
ϕ	7.0	6.8
1/4	7.4	
cb	7.7	
S	8.3	5.5
+10	8.5	

HI
13.83

4150

S-10	8.2	
S	8.2	5.6
cb	7.8	
1/4	7.3	
1/2	7.1	6.7
1/4	6.8	
cb	6.7	
N	6.0	7.8

5100 E. line of Fanuel

N	6.0	7.8
cb	6.6	
1/4	6.9	
1/2	7.2	6.6
1/4	7.2	
cb	7.7	
S	8.4	5.4

TP	10.99	17.01	7.31	6.52
----	-------	-------	------	------

check on
BM S.W. Property, Faneuil Pacific

2.83	14.18
	14.06
	0.12 ✓

1200 X- Section Alleys in Bl. 35 Parish & Loomis
 Alleys are 20' wide

STA	+	H.I.	-	Elev.
NW. B.P. "E" & 26 th				188.01
x- Section Alley	140'	East of 26 th Street.		
	1.58	189.59	✓	
		12.73		176.86
	0.29	177.15	✓	
		9.44		167.71
	4.40	172.11	✓	
0+00		N.L. "E" Street		
		W.L. Pavement	4.12	167.99
		☼ "	5.30	166.81
		E.L. "	6.50	165.61
0+25		E.L. Top of Conc. Drain	7.00	165.11
		☼	5.90	166.21
		W.L.	4.90	167.21
0+62		W.L.	4.70	167.41
		☼	5.9	166.2
		E.L. Top of Conc. Drain	6.88	165.23
+35		Top of Retain Wall	6.07	166.04
1+03		Ground Floor House	6.37	165.74
		E.L.	6.50	165.61
		☼	5.70	166.41
		W.L.	4.70	167.41

Garage
 P.C. 1143-28
 Robt B. Mackey
 Plotted 8-31-28

STA	+	H.I.	-	Elev.
1+25				
		W.L.	4.2	167.91
		☼	4.9	167.2
		E.L.	5.9	166.2
1+40 ¹⁹		S.L. Alley E & W		
		E.L.	6.3	165.7
		☼	4.7	167.4
		W.L.	4.1	168.0
1+50 ¹⁹		☼ Alley E & W		
		W.L.	3.7	168.4
		☼	4.5	167.6
		E.L.	5.8	166.3
1+60 ¹⁹		N.L. Alley E & W		
		E.L.	6.4	165.7
		☼	3.8	168.3
		W.L.	3.3	168.7
1+64 ⁰⁰		☼ Garage on West L.		
		+12 Concrete Floor	1.94	170.17
		W.L.	3.20	168.91
		☼	3.60	168.51
		E.L.	6.50	165.61
1+93 ⁰⁰		☼ Garage on W.L.		
		E.L.	6.8	165.3
		☼	3.4	168.7
		W.L.	3.5	168.6

Jaeger }
 Barley } Aug. 24th 1928
 Clarent }

1201

STA	+	H.I.	-	Elev.	STA	+	H.I.	-	Elev.
	+ 8'	Dirt Floor	3.10	169.01	3+00 ³⁸	S.L.	Broadway		
2+00						E.L.		9.8	173.6
		W.L.	3.2	168.9		⊕		9.5	173.9
		⊕	3.4	168.7		W.L.		7.3	174.1
		E.L.	7.0	165.11	3+04 ⁵⁸	S. Edge S.W. on Broadway			
2+25						W.L.		5.58	177.80
		E.L.	8.0	169.11		⊕		6.45	176.93
		⊕	6.9	165.2		E.L.		7.19	176.19
		W.L.	5.2	166.8			Alley E & W		
2+50					0+00	E.L. Alley 140' East 26 th Str			159.84 ✓
		W.L.	6.0	166.1			2.07	161.91 ✓	
		⊕	7.4	169.7	0+25				
		E.L.	8.4	163.7		N.L.		0.5	161.4
2+71	⊕	Garage on W.L. in Basement of Apartment House				⊕		0.4	161.5
		E.L.	8.3	163.8		S.L.		0.8	161.1
		⊕	7.2	167.9	0+50				156.1
		W.L.	5.7	166.4		S.L.		5.8	156.1
	+ 1.5	Dirt Floor	5.35	166.76		⊕		6.0	155.9
2+90						N.L.		5.5	156.4
		W.L.	1.70	170.4	0+75				
		⊕	2.90	169.21		N.L.		9.5	152.4
		E.L.	3.20	165.91		⊕		10.2	151.7
		T.P. on Alley E & W	12.27	159.84 ✓		S.L.		10.1	151.7
		T.P.	0.12	171.99		T.P.		12.10	149.81 ✓
			11.39	183.38 ✓			0.81	150.62 ✓	

STA	+	H.I.	-	Elev.	STA	+	H.I.	-	Elev.
1+11	⊕ Garage on S.L.				2+00				
	S.L. Conc. Floor		5.2	145.9				3.6	147.0
	⊕		4.8	145.7				3.4	147.2
	N.L.		4.5	146.1				2.8	147.5
1+20								1.60	149.02
	N.L.		4.8	145.7		11.38	160.40 ✓		
	⊕		5.3	145.3	2+25				
	S.L.		5.3	145.3				9.6	150.9
1+32								9.3	151.1
	S.L.		7.7	142.9				9.6	150.7
	⊕		7.5	143.1	2+41	⊕ Double Garage on N.L. Alley			
	N.L.		7.5	143.1				7.2	153.2
1+50								6.7	153.7
	N.L.		8.0	142.6				6.2	154.2
	⊕		8.3	142.3				5.7	154.7
	S.L.		8.6	142.0	2+60	+9' Dirt Floor ✓			
1+65								3.1	157.3
	S.L.		8.3	142.9				3.2	157.2
	⊕		8.2	142.4				3.3	157.1
	N.L.		7.1	143.5				0.65	159.75 ✓
1+73						6.93	166.68 ✓		
	N.L.		5.5	145.1	2+80 ²⁵	W.L. Alley 440 25' E. of 26 th Str.			
	⊕		5.2	145.4				6.0	160.7
	S.L.		6.8	149.7				5.8	160.9
								5.3	161.4

1371

166.68

STA	+	H.I.	-	Elev.
Alley S to N 440.25 E. of 26 th Str.				
0+00		N.L. "E" ST.		
		W.L. Curb Top	13.53	153.15
	✓	Bot.	13.62	153.06
+9.5		Top Conc. Ret. Wall	11.76	154.92
	⊕		11.98	154.70
		E.L. Curb Bot.	10.38	156.30
	✓	Top	9.81	156.87
0+18 ⁷⁰		E.L.	8.0	157.7
+3.5			9.1	157.6
+5.5			10.7	156.0
	⊕	Top M.H.	10.98	155.70
+9.4		Top Conc. Retain. Wall ↓	10.92	155.76
		W.L. Bot. Conc. Drain	13.30	153.37
0+25		W.L. " " "	13.14	153.54
+0.6'		Top Conc. Ret. Wall ↓	10.70	155.97
	⊕		10.8	155.9
+5.5			10.5	156.2
+7.0			8.9	157.8
		E.L.	8.2	157.5

Plotted 5-4-26 W.D.S.

1372

STA	+	H.I.	-	Elev.
0+50				
		E.L.	7.2	159.5
		+6'	9.6	157.1
		⊕	9.9	156.8
+9.2		Top Conc. Ret. Wall	9.47	157.21
		W.L. Bot. Conc. Drain	12.12	154.56
0+66		⊕ Garage E.L. Alley		
		W.L. Top Conc. Ret. Wall ✓	9.91	156.77
		+1'	9.03	157.65
		⊕	9.10	157.57
		E.L.	8.0	157.7
		+1' Dirt Floor ✓	8.0	157.7
1+00				
		E.L.	2.6	164.1
		+6'	4.5	162.2
		+7'	6.2	160.5
		⊕	6.3	160.4
		+5'	6.4	160.3
		+9'	7.6	159.1
		W.L. Top Conc. Ret. Wall ✓	8.19	158.79
1+25				
		W.L.	10.10	156.57
		+0.8' Top Conc. Ret. Wall	5.89	160.79
		+1.1'	6.20	160.47
		+4.0'	4.80	161.87

STA	+	H.I.	-	Elev.
ϕ			4.9	161.8
+2.5			5.0	161.7
E.L.			1.5	165.2
1+40 ¹⁷	S.L. Alley	E & W		
E.L.			0.5	166.2
+7'			2.8	163.9
+8'			4.3	162.4
ϕ			4.3	162.4
+6'			4.2	162.5
+8.5'	Bot. Conc. Ret. Wall		5.5	161.2
	Top Conc. Ret. Wall		4.06	162.62
W.L.	" " " "		4.70	161.98
1+50 ¹⁷	ϕ Alley	E & W		
W.L.			5.7	161.0
+2.5'			5.2	161.5
+5'			3.5	163.2
ϕ			3.9	162.8
+3'			3.6	163.1
+5'			2.5	164.2
E.L.			0.9	165.1
1+60 ¹⁷	N.L. Alley	E & W		
E.L.			1.0	165.7
+7'			3.1	163.6
ϕ			3.1	163.6
+7'			3.2	163.5

STA	+	H.I.	-	Elev.
+8.5			5.0	161.7
W.L.			5.7	161.0
T.P.			2.74	163.94
	11.26	175.20		
1+70	ϕ Garage on	E.L.		
+5.2'	Concr. Floor		8.96	166.24
+2.7'	End Con. Apron		9.55	165.65
E.L.			10.0	165.2
ϕ			11.3	163.9
+5'			11.5	163.7
+8'			13.1	162.1
W.L.			13.8	161.4
1+87	ϕ Double Garage on	E.L.		
W.L.			11.6	163.6
ϕ			11.0	164.0
E.L.			9.5	165.1
+2.5'	End Conc. Apron		8.92	166.28
+5.4'	Conc. Floor		8.65	166.55
2+06	ϕ Garage on	E.L.		
+7'	Dirt Floor		8.78	166.42
E.L.			9.1	166.1
ϕ			9.9	165.2
W.L.			10.2	165.0

STA	+	H.I.	-	Elev.
2+15				
E.L.			8.3	166.9
☼			9.4	165.8
W.L.			9.8	165.4
+6'			12.3	162.9
2+17				
+6'			1.5	173.7
E.L.			3.3	171.9
+3'			8.0	167.2
+5'			9.0	166.2
☼			9.3	165.9
W.L.			9.4	165.8
+6'			12.1	163.1
2+25				
+7'			11.6	163.6
W.L.			8.2	167.0
☼			8.5	166.7
+3'			8.1	167.1
E.L.			2.7	172.5
+3'			0.8	179.1
+6'			0.7	174.5

STA	+	H.I.	-	Elev.
T.P.			1.92	173.28 ✓
	7.19	180.47 ✓		
2+50				
+6'			12.8	167.7
W.L.			10.4	170.1
☼			9.9	170.6
+4'			9.9	170.6
E.L.			5.6	174.9
+3'			4.4	176.1
+5'			4.1	176.4
2+75				
+5'			1.5	179.0
E.L.			2.1	177.4
+6'			6.7	173.8
☼			6.5	174.0
W.L.			6.5	174.0
+5'			6.8	173.7
3+00 ³⁵				
S.L. Paradway				
W.L. Curb Top			2.91	177.56
✓ Bottom			2.96	177.51
☼			2.72	177.75
E.L. ✓ Bottom			1.92	177.55
✓ Top			1.38	179.09
T.P.			0.36	180.11 ✓

STA	+	H.I.	-	Elev.
	11.68	191.79 ✓		
B.P. S.W. Broadway & 26 th	188.98	2.76	189.03	
	7.56	196.59		
B.P. N.W. Broadway & "E"	188.01	8.54	188.05	

X - Section Alley Polk, 14, Teralta
August 25th 1928.

STA	+	H.I.	-	Elev.
SW. B.P. El Cajon & 40 th	2.66	368.71 ✓		366.05
SE. Curb 40 th & Orange on N.C. Orange				
Top		4.91		363.80 ✓
Bot.		5.34		365.37
SW. Curb Central & Orange on N.C. Orange				
Top		5.11		363.60
Bot.		5.86		362.85
T.P.		10.22		358.49
	4.17	362.66 ✓		
NE. Curb 40 th & Polk on N.C. Polk				
Top		4.23		358.43 ✓
Bot.		4.70		357.96
NW. Curb Central & Polk on N.C. Polk				
Top		5.59		357.07
Bot.		6.15		356.51
N Curb Line Polk				
E. Curb Top		4.87		357.79
✓ Bot.		5.50		357.16
W. " Top		4.89		357.77
✓ Bot.		5.50		357.16
0400				
W.L.		4.75		357.91
φ		5.17		357.49
E.L.		4.77		357.89

Plotted - 9-4-28 -
C.B.H.
Yardage 9-26-28
T.G.H.

STA	+	H.L.	-	Elev.
0+38	φ	Double Garage on E.L. Alley		
+25'		Conc. Floor ✓	3.93	357.73
+0.5'		Edge Apron	4.14	357.52
E.L.			4.20	357.46
φ			3.90	357.76
W.L.			4.30	357.36
0+60	φ	Garage on E.L. Alley		
W.L.			3.80	357.76
φ			4.10	357.56
E.L.			4.0	357.76
+25'		Conc. Floor	3.8	357.9
0+92	φ	Garage on E.L. Alley		
+2'		Conc. Floor ✓	3.43	369.23
E.L.			3.70	359.0
φ			3.50	359.2
W.L.			3.70	359.0
1+10	φ	Garage on E.L. Alley		
W.L.			3.50	359.16
φ			3.60	359.06
E.L.			3.30	359.36
+1.5'		Conc. Floor ✓	3.13	359.53
1+23	φ	Garage on E.L. Alley		
1.5'		Conc. Floor ✓	3.11	359.55
E.L.			3.30	359.33
φ			3.40	359.26

STA	+	H.L.	-	Elev.
		W.L.		3.1
1+58	φ	Single Garage on E.L. Alley		
W.L.			2.3	360.4
φ			2.7	360.0
+9.5'		E. Edge Conc. Apron	2.20	360.46
E.L. On Apron			2.18	360.48
+1.4'		Conc. Floor ↓	2.08	360.57
T.P.			2.22	360.44
			7.43	367.87 ✓
1+82				
E.L.			7.3	360.6
φ			7.3	360.6
W.L.			6.9	361.0
2+07	φ	Garage on W.L. Alley		
+0.8'		Conc. Floor ✓	6.53	361.34
W.L.			6.60	361.29
φ			7.2	360.7
E.L.			6.8	361.1
2+41	φ	Double Garage on W.L. Alley		
E.L.			6.2	361.7
φ			6.3	361.6
W.L. Conc. Floor			5.69	362.17
2+62	φ	Double Garage on E.L. Alley		
W.L.			5.9	362.0
φ			5.8	362.1

STA	+	H.I.	-	Elev.
E.L.	W. Edge Conc. Apron		5.5v	362.35
+3.3	Conc. Floor		5.4v	362.45
3+00				
E.L.			5.2v	362.7
φ			5.4	362.5
W.L.			5.3	362.6
3+56	φ Garage on E.L. Alley			
+7'	Conc. Floor		4.24	363.63
W.L.			4.3	363.6
φ			4.4	363.5
E.L.			5.2	362.7
3+93	φ Garage on W.L. Alley			
E.L.			4.5	363.4
φ			4.2v	363.7
W.L.			4.1	363.8
+7.5'	Conc. Floor		4.04	363.73
T.P.			4.14	363.73
		5.14	368.87	✓
4+69	φ Garage on E.L. Alley			
W.L.			4.5	364.4
φ			4.5	364.4
E.L.			4.8	364.1
+5.5	Dirt Floor		5.0	363.9

STA	+	H.I.	-	Elev.
4+8v	φ Double Garage on W.L. & Single on E.L. Alley			
+5.5	Dirt Floor		4.9	364.0
E.L.			4.7	364.2
φ			4.5	364.4
W.L.			4.5	364.4
+4.7'	Conc. Floor		4.41	364.46
5+27	φ Double Garage on W.L. Alley			
+5.7'	Conc. Floor		4.34	364.53
W.L.			4.5	364.4
φ			4.2	364.7
E.L.			4.4	364.5
5+75	S.L. Orange			
E.L.	Curb Top		4.95	363.92
✓	Both.		5.10	363.77
φ			4.8	364.1
W.L.	Curb Top		5.0	363.9
✓	Both.		5.0	363.9
5+89	S. Curb Line Orange			
W.	Curb Top		5.18	363.69
✓	Both. (Dirt)		5.05	363.82
φ			5.10	363.77
E.	Curb Both.		5.21	363.66
✓	Top		5.21	363.66
T.P.			5.06	363.81

138 X-Section Twiggs from Juan to Sunset
50' wide, 10' SW. & 7.5 Quarters

JAEGER }
Bailey } Aug. 27th 1928
Clavert }

139

STA	+	+	H.I.	-	Elev.
SE. Cor. Juan & Wallace	Conc.	Mon.			14.42
		9.79	24.21		
1	T.P.			0.22	23.99
		12.68	36.67		
	T.P.			0.12	36.55
		12.48	49.00		
	T.P.			1.39	47.61
		9.22	56.83		
0+00	N.L.	Juan			
	E.L.			3.50	53.33
	E. Curb			4.20	52.63
	+4'			4.9	51.9
	+7'			7.5	49.3
	E 1/4			7.5	49.3
	☐			7.9	47.9
	W 1/4			8.3	47.5
	W. Curb			8.6	47.2
	W.L.			9.4	47.4
0+25					
	W.L.			10.0	46.7
	W. Curb			9.0	47.8
	W 1/4			8.4	47.4
	☐			8.4	47.4
	E 1/4			7.6	49.2
	+4'			7.3	49.5

STA	+	H.I.	-	Elev.
	+6'		6.0	50.7
	W. Curb		5.5	51.3
	E W.L.		4.2	52.6
	0+50			
	E W.L.		4.6	52.2
	+5'		6.8	50.0
	W. Curb		7.5	49.3
	W 1/4		8.3	47.5
	☐		9.0	47.8
	E 1/4		9.4	47.4
	+3'		9.3	47.5
	E. Curb		13.1	43.7
	W. E.L.		14.5	42.3
	0+75			
	+5'		11.7	45.1
	W. E.L.		14.0	42.8
	E. Curb		13.7	43.1
	E 1/4		11.5	45.3
	☐		11.7	45.7
	+6'		8.1	48.7
	E 1/4		8.1	47.7
	E. Curb		8.4	47.4
	E.L.		7.6	49.2

Plotted 9-4-28 - CBH.

112

68.62

STA	+	H.I.	-	Elev.
W 1/4			10.5	58.1
+3'			9.3	59.3
☼			9.3	59.3
E 1/4			8.1	60.5
E. Curb			8.5	60.1
E.L.			8.3	60.3
+5'			8.4	60.2
T.P.			0.55	68.07 ✓
	12.93	81.00 ✓		
2+00				
+5'			10.8	70.2
E.L.			10.7	70.3
E. Curb			10.6	70.4
E 1/4			11.0	69.4
+3'			11.6	69.4
+5'			13.9	67.1
☼			14.3	66.7
W 1/4			13.8	67.2
+2'			13.6	67.4
W. Curb			16.0	65.0
+5'			17.0	64.0
W.L.			15.3	65.7
+5'			12.2	
2+25				
+9'			6.6	75.0

81.00

113

STA	+	H.I.	-	Elev.
W.L.			10.2	70.8
+5'			10.7	70.3
W. Curb			8.6	72.4
W 1/4			5.0	76.0
+4'			6.4	74.6
☼			6.6	74.4
E 1/4			5.3	75.7
+2'			2.7	78.3
E. Curb			2.7	78.3
E.L.			1.9	79.1
+5'			1.7	79.3
2+50				
T.P.			0.57	80.43
	10.17	90.60 ✓		
+5'			7.2	83.4
E.L.			7.5	83.1
E. Curb			9.8	80.8
+4'			10.0	80.6
E 1/4			9.4	81.2
+2'			9.0	81.6
+3'			10.3	80.3
☼			10.8	79.8
+4'			11.3	79.3
W 1/4			12.7	77.9
+3'			13.9	76.7

9060

STA	+	H.I.	-	Elev.
W. Curb			12.5	78.1
+3			11.6	79.0
W.L.			11.6	79.0
+5'			11.5	79.1
2+75				
+5'			8.6	82.0
W.L.			8.0	82.6
W. Curb			7.1	83.5
W ¹ / ₄			6.6	84.0
⊕			7.0	83.6
E ¹ / ₄			5.7	84.9
E Curb			5.0	85.6
+2'			4.9	85.7
E.L.			6.5	84.1
+5'			4.3	86.3
3+00		S.L. Sunset		
+5'			0.3	90.3
E.L.			0.8	89.8
E. Curb			2.1	88.5
E ¹ / ₄			2.1	88.5
⊕			2.4	88.2
W ¹ / ₄			3.2	87.4
W. Curb			4.3	86.3
+1'			4.4	86.2
+5'			13.0	77.6

9060

STA	+	H.I.	-	Elev.
W.L.			14.0	76.6
+5'			12.8	77.8
+10'			14.4	76.2
+15'			8.4	82.2
3+26 ⁶⁰		⊕ Sunset		
⊕		Top M.H.	0.19	90.41

118 X- Section Alley Blk. 5, City Hts. Annex #1
 Alley 20' wide

JAEGER }
 Bailey } August 27th 1928
 Claret }

112

STA	+	H.I.	-	Elev.
NW. B.P. Wightman & 44 th				354.71
	2.68	357.39		
NE. Curb Wightman & 44 th on N. Curb Line				
Top		3.14		354.25
Bottom		4.20		353.19
NW. Curb Wightman & Highland on N. Curb Line				
Top		6.58		350.81
Bottom		7.15		350.24
+14' N. Curb Line Wightman				
E. Curb Top			4.88	352.51
✓ Bottom			5.60	351.79
☒			5.40	352.0
W. Curb Top			4.68	352.71
✓ Bottom			5.20	352.2
0+00				
W.L. Curb Top			4.44	353.0
✓ Bottom (higher)			4.10	353.29
☒			4.2	353.2
E.L. Curb Top			4.71	352.68
✓ Bottom (higher)			4.40	352.99
0+50				
E.L.			3.70	353.7
☒			3.9	353.5
+5'			3.9	353.5

Garage 9-20-28
 154
 Plotted 8-5-28 C.B.H.

STA	+	H.I.	-	Elev.
W.L.			2.6	354.8
1+06 ☒ Garage on E.L.				
W.L.			3.7	353.7
☒			4.1	353.3
E.L.			4.0	353.4
+4.5 Dirt Floor			4.0	353.4
1+23 ☒ Double Garage on W.L.				
E.L.			4.4	353.0
☒			4.2	353.2
W.L.			4.0	353.4
+4' Dirt Floor			4.0	353.4
1+95				
T.P.			4.00	353.39
	5.15	358.54		
W.L.			5.2	353.3
☒			5.3	353.2
E.L.			4.9	353.6
2+40 ³⁰ ☒ Garage on W.L.				
E.L.			4.7	353.8
☒ Top of Manhole			5.17	353.37
W.L.			4.9	353.6
+3.8' Conc. Floor			4.75	353.79

358.54

STA		+	H.I.	-	Elev.
2+94	☒ Garage on W.L. & E.L.				
	+5.8 Dirt Floor	↓		3.7	354.8
	W.L.			4.0	354.5
	☒			4.7	353.8
	E.L.			4.7	353.8
	+1' Dirt Floor	↓		4.5	354.0
3+44	☒ Garage on E.L. & W.L.				
	T.P.			4.05	354.49
		5.72	360.21	✓	
	+8' Conc. Floor	↓		5.55	354.66
	E.L.			6.0	354.2
	☒			5.9	354.3
	W.L.			5.7	354.5
	+0.7' E. Edge Conc. Apron			5.69	354.52
	+2.5' Conc. Floor	↓		5.59	354.62
3+57	☒ Garage on E.L.				
	W.L.			5.5	354.7
	☒			5.6	354.6
	+7'			5.3	354.9
	E.L.			5.8	354.4
	+5.5' Dirt Floor	↓		5.5'	354.7
4+00					
	E.L.			5.3	354.9
	☒			5.1	355.1
	W.L.			4.6	355.6

360.21

STA		+	H.I.	-	Elev.
4+36	☒ Double Garage on E.L.				
	+2.3' Conc. Floor	↓		4.67	355.54
	E.L. Conc. Apron			4.94	355.27
	☒			4.70	355.51
4+39	☒ Double Garage on W.L.				
	☒			4.7	355.5
	W.L.			4.5	355.7
	+1.6' E. Edge Apron			4.35	355.86
	+6.5 Conc. Floor	↓		4.14	356.07
4+74	☒ Garage on E.L.				
	0.3' Dirt Floor	↓		4.4	355.8
	E.L.			4.4	355.8
	☒			4.4	355.8
	W.L.			4.4	355.8
5+00					
	W.L.			4.1	356.1
	☒			4.1	356.1
	E.L.			3.8	356.4
5+50	T.P.			3.61	356.60
		2.76	359.36	✓	
	E.L.			3.5	355.9
	+4'			2.9	356.5
	☒			2.8	356.6
	W.L.			2.7	356.7

359.36

STA	+	H.I.	-	Elev.
5+86				
W.L.			3.1	356.3
☼			3.0	356.4
E.L.			3.7	355.7
6+00	S.L. University			
E. Curb Top			4.36	355.00
✓ Bott.			4.41	354.95
☼			4.47	354.89
W. ✓ Bott.			4.13	355.23
✓ Top			3.89	355.47
6+15	S. Curb Line University			
W. Curb Top			4.28	355.08
✓ Bott.			5.00	354.4
☼			5.16	354.20
E. ✓ Bott.			5.33	354.03
✓ Top			4.78	354.58
SW. Curb University & Highland				
S. Curb Top			6.76	352.70
✓ Bott.			7.55	351.81
SE. Curb University & 44th				
S. Curb Top			3.20	356.16
✓ Bott.			3.79	355.57
T.P.			2.96	356.40
	5.84	362.24		
NW. B.P. Fairmont & University				
	359.74		2.49	359.75

X - Section Linwood fr. Pringle to Mission Hills Pkwy. 50' wide, 10' SW., 7.5' quarters 8/28/28. JAEGER

STA	+	H.I.	-	Elev.
SW. B.P. Pringle & Kettner in Wall				
	12.38	111.60		✓
T.P.			0.09	111.51
	13.11	124.62		✓
T.P.			0.53	124.09
	12.35	136.44		✓
T.P.			0.21	136.23
	13.16	149.39		✓
T.P.			0.00	149.39
	13.19	162.58		✓
T.P.			0.72	161.86
	9.67	171.53		✓
0+00	N. L. Pringle			
W.L. Side Walk		8.35		163.18
W. Curb Top		8.47		163.06
✓ Bott. Pavement		8.91		162.62
W/4		7.74		
☼		6.59		164.94
E/4		5.82		
E. Curb Bott.		5.38		166.15
✓ Top		4.64		166.89
E.L. Side Walk		4.19		167.34
0+07 ⁸⁵	Beginning of Apron on E.L.			
E.L. on Driveway		4.28		167.25
+6'		4.54		166.99

Plotted
9-4-28
G.B.H.

STA	+	H.I.	-	Elev.
.+10'	W. Edge of Apron		5.35	166.18
E 1/4			5.50	
☐			6.3	165.2
W 1/4			7.1	
W. Curb			7.5	
W. L.			8.0	163.5
0+38 ²⁵	End of Apron on E.L.			
W. L.			8.4	163.1
W. Curb			8.1	
W 1/4			7.8	
☐			7.2	164.3
E 1/4			6.3	
+7 1/2'			5.4	166.1
+4'			4.69	166.84
E. L.			4.37	167.16
0+50	End of S.W.			
E. L.			3.0	168.5
+1'			4.47	
+6'			4.71	
E. Curb			5.1	
E 1/4			6.3	
☐			7.6	163.9
W 1/4			8.2	
W. Curb			8.4	
W. L.			8.6	162.9

STA	+	H.I.	-	Elev.
0+75				
W. L.			9.9	161.6
W. Curb			9.6	
W 1/4			8.7	
☐			8.2	163.3
E 1/4			6.8	
E. Curb			5.8	
E. L.			3.8	167.7
1+00				
E. L.			4.1	167.4
E. Curb			5.6	
E 1/4			6.8	
+3.5'			7.4	
☐			8.7	162.8
W 1/4			9.0	
W. Curb			10.5	
W. L.			11.3	160.2
T.P.			10.15	161.38
	6.83	168.21		
1+25				
+10'			10.4	
W. L.			9.1	159.1
W. Curb			7.7	
W 1/4			6.0	
☐			5.4	162.8

STA	+	H.I.	-	Elev.
E'4			4.2	
E. Curb			2.8	
E.L.			1.3	166.9
+10'			0.0	
1+50				
+10'			0.0	
E.L.			1.7	166.5
E. Curb			2.8	
E'4			3.9	
Φ			4.5	163.7
W'4			6.3	
W. Curb			7.7	
W.L.			9.1	159.1
+10'			10.4	
1+75				
+10'			11.7	
W.L.			10.3	157.9
W. Curb			8.9	
W'4			7.0	
Φ			4.4	163.8
E'4			4.4	
E. Curb			3.9	
E.L.			2.9	165.3
+1.5 Bot. of Ret. Wall			2.8	
+3.0 Top		✓	0.97	167.24

STA	+	H.I.	-	Elev.
+10'			0.6	
2+00				
+10'			1.2	
E.L.			3.3	164.9
E. Curb			4.5	
E'4			4.8	
Φ			4.9	163.3
W'4			8.2	
W. Curb			9.8	
W.L.			11.3	156.9
+10'			12.7	
2+18				
+10'			14.0	
W.L.			12.3	155.9
W. Curb			11.0	
W'4			9.6	
+2.5'			9.2	
Φ			6.7	161.5
+4'			5.0	
E'4			5.0	
E. Curb			6.3	
E.L.			4.7	163.5
+16'			1.4	
2+25				
+10'			1.9	

156

168.21

STA	+	H.I.	-	Elev.
E.L.			5.8	162.4
E. Curb			7.1	
E 1/4			7.8	
☐			9.4	158.8
W 1/4			10.3	
W. Curb			11.5	
W.L.			12.9	155.3
+10'			14.2	
T.P.			13.18	155.03

1.05 156.08 ✓

2+50

10'			5.5	150.6
W.L.			4.6	151.5
W. Curb			3.7	
W 1/4			2.8	
☐			2.4	153.7
E 1/4			1.9	
E. Curb			1.3	
E.L.			0.7	155.4
+10'			0.0	

2+75

10'			6.8	
E.L.			8.3	147.8
E. Curb			9.7	
E 1/4			10.4	

156.08

157

STA	+	H.I.	-	Elev.
☐			10.6	145.5
W 1/4			10.7	
W. Curb			10.8	
W.L.			11.6	144.5
+10'			12.7	
T.P.	0.19	143.38 ✓	12.89	143.19
2+92				
+10'			5.1	
W.L.			4.7	138.7
W. Curb			4.9	
W 1/4			4.7	
☐			4.2	139.2
E 1/4			3.9	
E. Curb			3.3	
E.L.			2.1	141.3
+10'			0.5	
3+00				
+10'			3.2	
E.L.			4.1	139.3
E. Curb			4.5	
E 1/4			4.4	
☐			5.5	137.9
W 1/4			7.0	
W. Curb			7.5	
W.L.			7.8	135.6

158

STA	+	H.I.	-	Elev.
		143.38		
+10'			7.6	
T.P.	0.92	132.19 ✓	12.11	131.27
3+25				
+10'			6.8	125.4
W.L.			6.4	125.8
W. Curb			6.2	
W 1/4			5.7	
¢			4.4	127.8
E 1/4			3.1	
E. Curb			2.5	
E.L.			1.7	130.5
+10'			0.3	
3+50				
S.L. Mission Hills Blvd.				
+10'			13.0	
E.L.			11.4	120.8
E. Curb			11.3	
E 1/4			12.2	
¢			13.3	118.9
W 1/4			13.7	
W. Curb			14.8	
W.L.			16.7	115.5
+10'			17.1	
T.P.	0.37	119.59 ✓	12.97	119.22
3+75				
+10'			13.7	

119.59

159

STA	+	H.I.	-	Elev.
		119.59		
W.L.			12.9	106.7
W. Curb			11.4	
W 1/4			9.7	
¢			8.6	111.0
E 1/4			8.3	
E. Curb			9.5	
+7' T.P.			10.9	108.69
Hand Level	1.10	109.79		
+8'			5.0	
E.L.			6.0	103.8
+8'			8.1	
+9'			12.0	
+10'			11.5	
3+93				
+10'			10.0	
E.L.			12.7	97.1
+5'			12.5	
+7'			11.0	
+7.5'			7.4	
E. Curb			6.6	
E 1/4			6.2	
¢			6.6	103.2
Inst.		119.59 ✓		
T.P.	5.18	111.66 ✓	13.11	106.48
W 1/4			9.1	

111.66

STA	+	H.I.	-	Elev.
W. Curb			10.1	
W.L.			11.2	100.5
+10'			12.0	
4+05 ¹⁰	Bottom of Canyon			
+10'			14.2	
W.L.			13.0	98.7
W. Curb			12.0	
W/4			11.5	
¢ Top Man Hole		✓	11.27	100.39
E/4			12.1	
E. Curb			15.2	
E.L.			13.0	98.7
+10'			11.7	
T.P.	2.01	105.08 ✓	8.59	103.07
T.P.			13.05	92.03
	9.64	101.67 ✓		
SW. B.P. in Wall Pringle & Kettner	99.22	2.47	99.20 ✓	

DIRECTIONS FOR USE OF TABLES

TABLE No. 1.

Distance of slope stake from side or shoulder stake for any width roadway, slope 1% to 1. If ground is nearly level, the cut or fill at side stake is located by the double entry method in left column and top row. The number in body of table in same row and column gives distance from side stake to slope stake. If ground is not nearly level, the amount of cut, elevation of fill. Add this amount to cut or fill and find distance in table. Set up rod at this point, and line of sight should cut target. (See also Table No. 2.)

IMPROVED TABLES AND INFORMATION

TABLE No. 2.

To find Tangent and External for curve of any other degree, divide by degree of curve and add correction found in column of corrections. Degree of curve with a given L may be found by dividing tangent (or external), opposite L by given tangent (or external). The distance from a point on the tangent to the curve is very nearly the square of the tangent length divided by twice the radius.

3 + 07.38
 2.80
 3 + 04.58

160
 280.25
 440

322
 60
 40
 140
 9.79
 24.21
 - 0.22
 23.99
 + 12.68
 36.67
 0.12
 36.55
 + 12.45
 49.00
 - 1.39
 47.61
 + 9.22
 56.83
 0.76
 56.07
 12.55
 68.62
 - 0.55
 68.07
 12.93
 81.00
 - 0.57
 80.43

ENGINEERING DEPARTMENT
 CITY OF CALIFORNIA SAN DIEGO, N. I.

554.71
 2.68
 357.39
 4.00
 353.39
 5.15
 358.54
 4.05
 354.49
 + 5.72
 360.21
 3.61
 356.60
 2.76
 359.36
 - 2.96
 356.40
 5.84
 362.24
 2.49
 359.75

Ingham & Oliver
 47.36
 20.
 39.6
 59.6
 49.19

99.22 131.27 ✓ 119.59
 + 12.38 + 0.92 10.90
 111.60 132.19 ✓ 108.69
 - 0.09 12.97 1.10
 111.51 ✓ 119.22 ✓ 109.79
 + 13.11 + 0.37
 124.62 ✓ 119.59 ✓
 - 0.53 - 13.17
 124.09 106.48 ✓
 + 12.35 + 5.18
 136.44 111.66 ✓
 - 0.21 - 8.59
 136.23 103.07 ✓
 + 13.16 + 2.01
 149.39 105.08 ✓
 + 13.19 - 13.05
 162.58 ✓ 92.03 ✓ 120
 - 0.72 + 9.64 5
 161.86 ✓ 101.67 ✓
 + 9.67 12.47
 171.53 ✓ 89.20
 - 10.15
 161.38 ✓
 6.83
 168.21 x
 13.18
 155.03 x
 1.05
 156.08 ✓
 - 12.89
 143.19 x
 0.19
 143.38 ✓
 12.11
 131.27 ✓