

1269

PASTS

LEVEL BOOK

No. 380 F



15  
MICROFILMED

DEC 22 1964

ENGINEERING DEPARTMENT,  
CITY OF SAN DIEGO,  
CALIFORNIA.

Our Leather Bound Engineers Note Books are carried in the following rulings:

- No. 380 LEVEL BOOK. Left and Right Hand Page the same as Left Hand Page of this Book.
- No. 382 FIELD BOOK. Left Hand Page as in this Book, Right Hand Page 4 x 4 to the inch, Center Line Red.
- No. 384 MINING TRANSIT BOOK. Left Hand Page as in this Book, Right Hand Page 8x8 to the inch, Center Line Red.
- No. 385 FIELD BOOK. Left Hand Page as in this Book, Right Hand Page 8 vertical and 4 horizontal lines to the inch, Center Line Red.

We also carry the Note Books listed above, bound in extra strong Fabri-Hide (otherwise the same quality of book), which can be furnished at a somewhat lower price.

In ordering Fabri-Hide covered books, add the letter "F" to catalog number.

THE FREDERICK POST CO.  
ENGINEERING and DRAFTING SUPPLIES  
IRVING PARK STATION  
CHICAGO, ILL.



	from	To	Page	1
Imperial	Stork	66	1 - 14	
Woodman	Imperial	Madrone	15 - 25	
66 <sup>th</sup>	"	"	26 - 31	
Madrone	66 <sup>th</sup>	Ritchey	32 - 46	
"B"	Lemon Grove Blvd	14	47 - 60	
A3 <sup>d</sup>	B	C	61 - 67	
X. Sec.	Lemon Grove Blvd.		71 -	



7-30-28

J. C. Bliss

Flood  
RaunerX-section Imperial Ave  
from East Line Stark St.

To East Line 6th St.

60' wide

10' cbs

10' 1/2"

B.M. NW. R.R. Spike in pole 62<sup>nd</sup> + A in 187.56

+13.13 200.69

T.P. -1.08 199.61

11.80 201.41

-3.53 2078.8

+8.37

T 216.25

0+00 - see sketch page 3

N 7.7 208.6

Cb 7.0 209.3

1/4 - Paving 6.55 209.70

2 6.42 209.83

1/4 6.49 209.76

+1 6.49 209.76

Cb 6.0 210.3

S 5.7 210.6

S - on work 4.36 211.89

Cb 4.8 211.5

+3 &amp; Paving 5.33 210.92

1/4 5.33 210.90

2 5.26 210.99

1/4 5.33 210.92

Cb 6.0 210.3

N 6.6 209.7

Plotted 8-11-28 - C.B.H.

0+50

T 216.25

2

0+64 will be 13-39.

0+64 - Beginning concrete cb on South

which is from South Prop Line

N 6.3 210.0

Cb 5.6 210.7

1/4 Paving 5.03 211.22

2 4.93 211.32

1/4 5.00 211.25

+1 - 4 4.94 211.31

Cb - existing 4.26 211.99

Cb - on work 4.20 212.05

S - 4.04 212.21

1+00

S - on work 3.22 213.03

Cb 3.32 212.93

+3 - Cb - existing 3.43 212.82

G 4.07 212.18

1/4 4.16 212.10

2 4.04 212.21

1/4 4.12 212.13

Cb 4.5 211.8

N 5.0 211.3

1+50

N 3.8 212.5

Cb 3.2 213.1

1/4 2.90 213.35

2 2.84 213.41



216.25

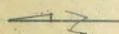
3

1/4	290	213.35
+7=G	255	213.70
+7=Cb existing	211	214.14
Cb - on walk	198	214.27
S - on walk	178	214.47
	240.0	
S - on walk	0.55	215.70
Cb on walk	0.72	215.53
+3.	0.81	215.44
	1.56	214.69
1/4	1.76	214.49
2	1.65	214.60
1/4	1.72	214.53
Cb	2.3	214.0
N	2.9	213.4
T.P.		-190 214.35

+982

	224.19	
	2450	
N	99	214.2
Cb	9.2	215.0
1/4	8.51	215.66
2	8.44	215.73
1/4	8.48	215.69
+7G	8.26	215.91

Note - Imperial cross  
pared with 18' strip  
the North edge running  
along the North 1/4  
of the st. where  
there are existing  
curbs the street  
is pared to meet  
them



65<sup>th</sup>

Note All sections  
are taken at  
right angles  
to Imperial Ave.  
Shot on sidewalk  
are on inside  
edge and are  
denoted S.W.

See F.B. 1546 P. 42

Imperial Ave

66<sup>th</sup>

65<sup>th</sup>

(N. Line H.Kins. St.  
m. 1-13-38)

(S. Line Imperial)

210'

East Line Street

90° 240



224.17

+7-cb existing	7.55	216.62
S	7.1	217.1
3+00		
S	5.78	218.39
+13-cb existing	6.18	217.99
G	7.06	217.11
1/4	7.31	216.86
¢	7.27	216.90
1/4	7.43	216.74
cb	7.9	216.3
N	8.2	216.0
3+50		
N	6.8	217.4
cb	6.5	217.7
1/4	6.18	217.99
¢	6.00	218.17
1/4	6.03	218.14
+7 G	5.73	218.44
-cb existing	4.70	219.47
S	4.34	219.83
3+61 mile 3-13-34		
3+64 End of existing cb on South		
S	3.8	220.4
+13-cb existing	4.40	219.77
G	5.19	218.98
1/4	5.70	218.47

224.17

4

¢	5.68	218.49
1/4	5.88	218.29
cb	6.4	217.8
N	6.4	217.8
4+00		
N	5.8	218.4
cb	5.6	218.6
1/4 - hedge paving	5.08	219.09
¢	4.95	219.22
+8 - s. edge paving	5.08	219.09
1/4	5.2	219.0
+6	5.0	219.2
+8	3.7	220.5
cb	3.5	220.7
+13 - Edge of sidewalk on south	3.31	220.86
S	2.9	221.3
4+36		
S	2.2	222.0
+8.7 - S.W.	2.81	221.36
cb	3.0	221.2
+2	3.2	221.0
+3	4.2	220.0
1/4	4.7	219.5
+2	4.67	219.50
¢	4.57	219.60



T 224.17

1/4		4.71	219.46
cb		5.1	219.1
N		5.6	218.6
	4+86		
N		4.8	219.4
cb		4.7	219.5
1/4	Pay	4.17	220.00
R	"	4.04	220.17
+8	"	4.19	219.98
1/4		4.3	219.9
+5		4.0	220.2
+8		2.8	221.4
cb		2.5	221.7
+1.3 - S.W.		2.31	221.86
S		1.9	222.3
	5+36		
S		1.5	222.7
+8.7 - S.W.		1.84	222.33
cb		1.7	222.3
+2		2.2	222.0
+5		3.2	221.0
1/4		3.7	220.5
+2		3.68	220.49
Q		3.58	220.49
1/4		3.73	220.44

T 224.17

5

cb		4.2	220.0
N		4.8	219.4
	5+86		
N		3.7	220.5
cb		3.2	221.0
1/4	North edge paving	3.19	220.98
Q		3.03	221.14
+8	South edge paving	3.15	221.02
1/4		3.2	221.0
+6		2.7	221.5
+7		1.4	222.8
cb		1.3	222.9
+1.3 S.W.		1.15	223.02
S		1.2	223.0
	6+36		
S		0.3	223.9
+8.7 - S.W.		0.71	223.46
cb		0.8	223.4
+2		0.9	223.3
+5		2.4	221.8
1/4		2.8	221.4
+2	Pay	2.62	221.55
Q	"	2.48	221.69
1/4	"	2.60	221.57
cb		2.8	221.4



T 224.1

N 3.2 221.0  
T.P. -2.57 221.60

+4.88

T 226.48

6+86

N 5.4 221.1  
cb 5.0 221.5  
1/4 4.9 221.99  
2 4.34 222.14  
+8 4.41 222.07  
1/4 4.5 222.0  
+6 4.3 222.2  
+8 2.6 223.9  
cb 2.4 224.1  
+1.3-SW 2.53 223.95  
S 2.2 224.3

7+36

S 2.2 224.3  
+8.7-S.W. 2.60 223.88  
cb 2.7 223.8  
+2 Pav 2.7 223.8  
+5 4.6 221.9  
1/4 4.6 221.9  
+2 Pav 4.51 221.97  
2 4.54 221.94

T 226.48

6

1/4 Pav. 4.64 221.84  
cb 5.2 221.3  
N 5.7 220.8

7+86

N 5.8 220.7  
cb 5.3 221.2  
1/4 North edge paving 5.03 221.45  
2 4.85 221.63  
+8 South edge paving 5.03 221.45  
1/4 5.1 221.4  
+4 5.0 221.5  
+8 3.1 223.4  
cb 3.0 223.5  
+1.3-SW 2.84 223.64  
S 2.5 224.0

8+16 E men 1-18-38

8+18 - Start of existing cb on South

end of existing walk

S 2.8 223.7  
+8.7 walk 3.10 223.38  
+10 3.0 223.5  
+1.3-existing cb 4.68 221.60  
G 5.29 221.19  
1/4 5.33 221.15  
2 5.15 221.33  
1/4 5.28 221.20



T 226.48

Cb	5.6	220.9
N	5.8	220.7
8+36		
N	5.3	221.2
Cb	5.7	220.8
1/4	5.40	221.08
£	5.29	221.19
1/4	5.35	221.13
+7-G	5.35	221.13
+7-exist cb.	4.70	221.78
S	4.6	221.9

Note - 13' combination walk starts at 8+65<sup>20</sup> on South

8+84<sup>20</sup> = West Line 65<sup>th</sup> North of Imperial

S-on walk	4.55	221.93
+13 cb-existing	5.01	221.47
G	5.66	220.82
1/4	5.67	220.81
£	5.60	220.78
1/4	5.74	220.64
Cb	6.3	220.2
N	6.5	220.0

- 5.34 221.14

T 223.95

T 225.95

7

West cb 65<sup>th</sup> N of Imp

N	6.4	219.5
Cb	5.5	220.4
1/4	5.22	220.73
£	5.08	220.87
1/4	5.18	220.77
+7-G	5.14	220.81
+7-Cb	4.52	221.43
S-on walk	4.27	221.68

West 1/4 65<sup>th</sup> N of Imperial

S	4.01	221.64
+13-cb-existing	4.56	221.39
£	5.17	220.78
1/4	5.17	220.78
£	5.11	220.84
1/4	5.25	220.70
Cb	5.5	220.5
N	6.1	219.8

£ 65<sup>th</sup> N of Imp

N	6.2	219.7
Cb	5.5	220.4
1/4	5.30	220.65
£	5.13	220.82
1/4	5.15	220.80
+7-G	5.18	220.77
+7-cb-existing	4.58	221.37

+481



T 225.95

S - On walk

432 221.63

(106.5 miles 1-13-34)

Imp.

E 65<sup>th</sup> N. of Imp. + 5 = West Line of 65<sup>th</sup> South of S.

S	4.34	221.61
+13 = cb existing	4.60	221.35
G	5.16	220.79
1/4	5.14	220.81
2	5.16	220.79
1/4	5.35	220.60
cb	5.5	220.4
N	6.1	219.8

West cb 65<sup>th</sup> S of Imperial

N	6.2	219.7
cb	5.7	220.2
1/4	5.35	220.60
2	5.21	220.74
1/4	5.16	220.79
cb	5.08	220.89
S - Gutter	4.85	221.10
S - Top cb	4.51	221.44

West 1/4 65<sup>th</sup> S of Imperial

S	4.74	221.21
9/10	4.90	221.05
1/4	5.17	220.78
2	5.24	220.71
1/4	5.36	220.59

T 225.95

8

cb	5.6	220.3
N	6.2	219.7

E 65<sup>th</sup> - S of Imperial

N	6.3	219.6
cb	5.5	220.4
1/4	5.32	220.63
2	5.26	220.69
1/4	5.19	220.76
cb	4.90	221.05
S	4.62	221.33

East 1/4 - 65<sup>th</sup> S of Imp.

S	4.84	221.11
cb	5.06	220.89
1/4	5.25	220.70
2	5.26	220.69
1/4	5.36	220.59
cb	5.5	220.4
N	6.2	219.7

East cb - 65<sup>th</sup> S of Imperial

N	6.1	219.8
cb	5.3	220.6
1/4	5.39	220.56
2	5.29	220.66
1/4	5.28	220.67
cb	5.23	220.72



22595

S-Gutter	498	220.97
S Tr cb	454	221.41
East Line 65 <sup>th</sup> - South of Imperial = 0+00		
S on walk	440	221.55
+13 - Tr cb - existing	466	221.29 m. 14
+13 Gutter	534	220.61
1/4	530	220.65
E	530	220.65
1/4	540	220.55
cb	54	220.5
N	57	220.2
0+50		
N	51	220.8
cb	52	220.7
1/4	542	220.53
E	531	220.64
1/4	530	220.65
+7-G	552	220.43
+7 - cb - existing	490	221.05
S	46	221.3
76 0+72 <sup>50</sup> - End existing cb on South		
S	44	221.5
+13 - cb - existing	508	220.87 m. 10
E	572	220.23
1/4	553	220.42

22595

9

E	538	220.57
1/4	548	220.47
cb	52	220.7
N	54	220.5
1+00		
N	55	220.4
cb	54	220.5
1/4 N edge paving	545	220.50
E	536	220.59
+8 - S edge paving	541	220.54
1/4	55	220.4
+6	56	220.3
+7	46	221.3
cb	45	221.4 m. 20
+2 - Edge 4' sidewalk	468	221.27
S	45	221.4
1+18		
S	49	221.0
+8 - S.W.	497	220.98
cb	50	220.9
+2	52	220.7
+3	58	220.1
1/4	56	220.3
+2 S edge paving	546	220.49
E	537	220.58



225.95

1/4	N. edge paving	5.57	22038
cb		5.6	2203
#5		5.3	2206
N		6.9	219.0
out 10		9.5	216.4
	1+50		
out 10		9.3	216.6
N		8.3	217.6
cb		6.6	219.3
1/4	N. edge paving	5.65	22030
£		5.52	22043
+8	S. edge paving	5.52	22043
1/4		5.6	2203
+7		5.9	220.0
+8		5.4	2205
cb		5.1	2208 220.86
+2-S.W.		5.21	22074
5		5.3	2206
	2+00		
3		5.2	2207
+8-S.W.		5.20	22075
cb		5.3	2206 220.86
+4		6.1	2198
1/4		5.8	2201
+2		5.65	22030

225.95

10

£		5.56	22039
1/4	✓	5.70	22025
+5		5.8	2201
cb		6.6	219.3
N		7.6	218.3
out 10		8.0	217.9
T.R.		-5.74	220.21

46.04

226.25

(2 + 28) Miller 6-18-36

2+25 - Grating on catch basin on

South 13' cb line. Grating 7.00 219.25

2+50

out 10		9.2	217.0
N		8.3	218.0
cb		6.2	220.1
1/4	✓	5.86	22039
£		5.68	22057
+8	✓	5.90	22035
1/4		6.1	2202
+6		6.5	219.6
cb		6.0	2203
+2-S.W.		5.75	22050
5		5.1	221.2



π 226.25

3+00

S	4.8	221.5
+8-S.W	5.60	220.65
cb	5.5	220.6 <u>220.40</u>
+5	6.3	220.0
1/4	5.8	220.5
+2	5.64	220.61
£	5.47	220.78
1/4	5.73	220.52
cb	6.4	219.8
+5	8.6	217.7
N	9.4	216.8
out 10	10.2	216.1

3+50

out 10	10.5	216.7
N	9.8	216.5
cb	6.8	219.5
+5	5.5	220.8
1/4	5.52	220.73
£	5.45	220.80
+8	5.53	220.72
1/4	5.8	220.5
+6	6.0	220.3
cb	5.2	220.7 <u>220.3</u>
+2-S.W	5.70	220.35
S	4.8	221.5

π 226.25

4+00

S	4.6	221.7
+8-S.W	4.80	221.45
cb	5.1	221.2 <u>221.4</u>
1/4	5.2	221.1
+2	5.30	220.95
£	5.20	221.05
1/4	5.35	220.90
+5	5.5	220.6
cb	7.2	219.1
N	7.1	219.2
out 10	7.7	216.6

4+50

out 10	9.8	216.5
N	8.4	217.9
cb	5.9	220.3
+5	4.8	221.5
1/4	4.92	221.33
£	4.78	221.47
+8	4.92	221.33
1/4	4.9	221.4
+5	4.9	221.4
cb	3.8	222.5
+2-S.W	3.60	222.65
S	3.2	223.1



$\pi 226.25$

4+85 65 min 58.

60' wide  
10' 000 4 1/2

4+83<sup>20</sup> = W. Line 66<sup>th</sup> S of Imperial

Side walk comes to West prop. line on South side

S	2.3	224.0
+8 - S.W.	2.80	223.45
cb	2.8	223.5
+5	4.4	221.9
1/4	4.4	221.9
+2	4.61	221.64
2	4.27	221.98
1/4	4.38	221.81
+5	4.5	221.8
cb	6.0	220.3
N	8.5	217.8
OUT 10	9.7	216.6

West cb. of 66<sup>th</sup> S of Imperial

OUT 10	8.9	217.4
N	8.4	217.9
+5	7.5	218.8
cb	5.3	221.0
+5	4.1	222.2
1/4	4.16	222.09
2	4.04	222.21
+8	4.14	222.11
1/4	4.1	222.2
+7	4.2	222.1
cb	3.1	223.2

$\pi 220.25$

12

S 23 224.0

66<sup>th</sup> S of Imperial

S	2.9	223.4
cb	3.5	222.8
1/4	3.6	222.7
+2	3.73	222.52
2	3.64	222.61
1/4	3.75	222.50
+5	3.6	222.7
cb	4.1	222.2
N	7.3	219.0
OUT 10	8.5	217.8

East cb - 66<sup>th</sup> South of Imperial

OUT 10	6.9	219.4
N	5.9	220.4
cb	2.9	223.4
1/4	3.31	222.94
2	3.16	223.09
+8	2.33	222.92
1/4	3.5	222.8
+5	3.7	222.6
T.P.	1.1	-3.38 222.87

+8.58  $\pi 231.45$

cb	6.1	225.4
+5	6.2	225.3



231.45

S	6.7	224.8
East Line of 66 <sup>th</sup> S of Imperial 20100		
S	6.0	225.5
+8-S.W.	6.78	224.67
cb	5.9	225.6
+5-	8.9	222.6
1/4	8.6	222.9
+2	8.33	223.12
2	8.21	223.24
1/4	8.32	223.13
+5	8.4	223.1
cb	7.9	223.5
N	9.9	221.6
Out 10	10.7	220.8
0+50		
Out 10	9.9	221.6
N	9.1	222.3
cb	7.5	224.0
1/4	7.29	224.16
2	7.22	224.23
+8	7.32	224.13
1/4	7.6	223.8
+5	7.7	223.8
cb	5.4	226.1
+2-S.W.	5.77	225.68

231.45

13

S	5.3	226.2
0+80 <sup>27</sup> West Line 66 <sup>th</sup> N of Imperial		
S	4.7	226.8
+8-S.W.	5.18	226.27
cb	5.2	226.3
+6	7.3	224.2
1/4	6.7	224.8
+2	6.67	224.78
2	6.60	224.85
1/4	6.63	224.82
cb	7.1	224.4
N	7.8	223.7
Out 10	8.5	223.0
W cb		
Out 10	8.2	223.3
N	7.3	224.2
cb	7.0	224.5
1/4	6.50	224.95
2	6.42	225.03
+8	6.45	225.00
1/4	6.6	224.9
+4	7.1	224.4
cb	6.2	226.3
+2-S.W.	4.98	226.47
S	4.7	226.8



231.45

East line 66<sup>th</sup> N of Imperial

S	4.7	226.8
+8-S.W.	4.82	226.63
Cb	4.9	226.6
+4	5.2	226.3
+7	7.2	224.3
+4	6.7	224.8
+2	6.26	225.19
£	6.17	225.28
+4	6.27	225.18
Cb	6.7	224.8
N	7.4	224.1
Out 10	8.0	223.5

East ab 66<sup>th</sup> N of Imperial

Out 10	7.4	224.1
N	7.0	224.5
Cb	6.3	225.2
+4	6.06	225.39
£	6.00	225.45
+8	6.06	225.39
+4	6.5	224.8
+3	6.9	224.6
+6	4.5	227.0
Cb	4.5	227.0
+2 S.W.	4.65	226.80
S	4.3	227.2

231.45

East line 66<sup>th</sup> N of Imperial

S	4.0	227.5
+8-S.W.	4.36	227.09
Cb	4.1	227.3
+8	6.6	224.9
+4	6.3	225.2
+2	5.83	225.62
£	5.76	225.69
+4	5.80	225.65
Cb	6.1	225.4
N	6.7	224.8
Out 10	7.3	224.2

B.M. S.W. RR spike in pole 66<sup>th</sup> + Akin

-10.76

220.56

220.69



7-31-28  
S.E. Bliss  
Flood  
Rover

X-section Woodman Ave (Encaanto)  
Imperial to 400 ft. South of Madrone  
60' wide  
10' cbs  
10' 4.5

T 239.82

15

B. M. S.W. spike in pole 66" x 4" 220.56  
+10.76 231.32

T.P. - 0.99 230.33  
+9.49

T 239.82

Section along South edge of parking on Imperial  
which is 22' from the South property line of Imperial

W 11.15 228.67  
cb 11.10 228.72  
E 11.03 228.79  
cb 10.93 228.89  
E 10.87 228.95

Section along South Line Imperial

E 6.4 233.4  
cb 6.8 233.0  
+3 9.8 230.0  
1/4 9.2 230.6  
E 9.5 230.3  
1/4 9.8 230.0  
+8 8.6 231.2  
cb 8.6 231.2  
W 8.6 231.2

0+00 = 9.0° off East Line of Woodman from  
S.E. cor. of Woodman & Imperial

W 6.8 233.1  
cb 8.1 231.7  
1/4 9.1 230.7  
E 9.0 230.8  
1/4 9.1 230.7  
+6 9.5 230.3  
cb 6.9 232.9  
E 6.4 233.4  
0+21  
E 4.0 235.8  
cb 5.6 234.2  
1/4 7.0 232.8  
E 7.1 232.7  
1/4 6.9 232.9  
+4 6.9 232.9  
+5 6.0 233.8  
cb 6.1 233.8  
+5 6.0 233.8  
W 4.7 235.1  
0+46  
W 0.7 239.1  
+7 3.2 236.6  
cb 3.6 236.2  
1/4 4.6 235.2  
E 4.6 235.2

Plotted 8-13-28 - C.B.H.



$\pi$  239.82

1/4	4.6	235.2
cb	4.6	235.2
E	4.6	235.2
T P	-1.83	237.99

+1201

$\pi$  = 248.00

0+91

E	12.9	235.1
cb	11.5	236.5
1/4	11.2	236.8
E	10.8	237.2
1/4	11.1	236.9
cb	9.9	238.1
+5	9.7	238.3
W	6.3	241.7

0+81

W	5.7	242.3
+8	9.5	238.5
cb	9.7	238.3
1/4	10.5	237.5
E	10.4	237.6
+8	10.4	237.6
1/4	11.2	236.8
cb	15.5	232.5
+3	18.3	229.7

$\pi$  248.00

16

E	17.1	228.9
Out 10	20.2	227.8
Out 15	15.7	232.3
0+96		

Out 10	12.2	235.8
E	14.1	233.9
cb	14.2	233.8
+5	14.3	233.7
1/4	7.4	240.6
+2	10.2	237.8
E	9.8	238.2
1/4	9.7	238.3
cb	9.1	238.9
+5	8.7	239.3
W	5.2	242.8

121

W	4.5	243.5
+3	7.4	240.6
cb	8.1	239.9
1/4	9.4	238.6
E	8.6	239.4
1/4	8.6	239.4
cb	13.1	234.9
E	13.2	234.8
Out 10	13.3	234.7



248.00

1746

Out 10	12.9	235.1
E	11.8	236.2
cb	10.1	237.9
1/4	7.5	240.5
E	7.5	240.5
1/4	8.5	239.5
+5	7.1	240.9
cb	6.8	241.2
+5	6.1	241.9
W	4.0	244.0

1771

W	0.2	247.8
+6	5.0	243.0
cb	5.3	242.7
+6	5.6	242.4
1/4	6.7	241.3
E	6.1	241.9
1/4	6.1	241.9
cb	9.4	238.6
+5	12.4	235.6
E	12.6	235.4
Out 10	11.9	236.1

1796

Out 5	8.2	239.8
E	10.7	237.3

248.00

17

+5	11.9	236.1
cb	11.6	236.4
+5	11.5	236.5
1/4	7.8	240.2
+5	4.7	243.3
E	4.9	243.1
1/4	5.4	242.6
+5	4.5	243.5
cb	4.2	243.8

+4 - On lower step of 8' set of concrete steps

+2 pillars that extend 6' into st. 385 244.15

T.P.

-4.12 243.88

+88.3

252.91

2+21

W	4.8	247.9
+5	7.7	245.0
cb	8.0	244.7
+5	9.0	243.7
1/4	8.7	244.0
E	8.5	244.2
+5	8.7	244.0
1/4	12.5	240.2
cb	15.8	236.9
E	12.0	240.7



π 252.71

2+46

E	9.4	243.3
+5	10.3	242.4
cb	12.0	240.7
+5	15.4	237.3
1/4	13.3	239.4
q	7.6	245.1
1/4	7.7	245.0
+5	7.9	244.8
cb	7.0	245.7
+6	6.6	246.1
W	3.3	249.4

2+71

W	5.1	247.6
cb	6.0	246.7
1/4	6.5	246.2
q	6.7	246.0
+5	6.9	245.8
1/4	10.0	242.7
+5	13.4	239.3
cb	14.0	238.7
E	8.3	244.4

2+74-18' Garage 1' Back of West Property

Shot on concrete floor 4.98 247.73

π 252.71

2+96

E	7.4	245.3
cb	11.0	241.7
+5	13.0	239.7
1/4	8.4	244.3
+5	5.3	247.4
q	5.4	245.3
1/4	5.6	247.1
cb	4.9	247.8
W	4.0	248.7

3+21

W	1.8	250.9
cb	3.3	249.4
1/4	4.2	248.5
q	3.9	248.8
+3	3.7	249.0
1/4	6.8	245.9
+5	11.8	240.9
cb	11.2	241.5
E	8.6	244.1

3+46

Out 5	8.6	244.1
E	9.3	243.4
cb	10.0	242.7
1/4	5.5	247.2
+7	2.2	250.5



π 252.71

£	24	250.3
114	28	249.9
Cb	25	250.2
+6	1.0	251.7
W	0.0	252.7

T.P. -1.02 251.69

+12.78

π 264.47

3+71

W	8.4	256.1
+5	11.5	253.0
Cb	13.0	251.5
114	12.9	251.6
£	12.6	251.9
+4	12.8	251.7
114	17.0	247.5
Cb	21.4	243.1
E	17.3	247.2

3+96

Out 5	15.6	248.9
E	19.1	245.4
Cb	20.2	244.3
+5	14.9	249.6
114	13.0	251.5
+4	10.5	254.0

π 264.47

£	10.6	253.9
114	11.1	253.4
Cb	11.4	253.1
W	6.8	257.7

4+21

W	4.0	260.5
Cb	8.2	256.3
11	10.1	254.4
12	9.0	255.5

114	8.9	255.6
£	8.5	256.0

+5	8.5	256.0
114	11.2	253.3

Cb	13.9	250.6
+5	17.9	246.6

E	19.3	245.2
Out 5	17.5	247.0

4+46

E	16.9	247.6
+5	18.7	245.8

Cb	13.9	250.6
114	9.0	255.5

+5	6.6	257.9
£	6.5	258.0

114	7.0	257.5
-----	-----	-------



T 264.47

+6	7.2	257.3
+7	7.9	256.6
cb	5.5	259.0
+5	5.1	259.4
W	2.8	261.7
4+71		
W	1.1	263.4
cb	4.2	260.3
+2	6.4	258.1
+5	5.6	258.9
1/4	5.4	259.1
2	5.1	259.4
+5	5.1	259.4
1/4	8.4	256.1
cb	10.8	253.7
+5	12.2	252.3
E	15.8	248.7
Out 3	17.3	247.2
Out 10	11.8	252.7
4+96		
E	13.6	250.9
+5	14.6	249.9
cb	12.3	252.2
1/4	7.2	257.3
+7	3.5	261.0

T 264.47

20

2	3.6	260.9
1/4	4.0	260.5
+8	4.3	260.2
+9	4.7	259.8
cb	2.6	261.9
+5	2.4	262.1
W	0.0	264.5

- 2.56 261.91

+7.64

T 269.55

5+26<sup>th</sup> = B.C.

W	4.4	265.2
cb	6.6	263.0
+1	7.8	261.8
1/4	7.4	262.1
2	7.2	262.4
+2	7.0	262.6
1/4	11.4	258.2
cb	13.8	245.8
E	18.3	251.3
Out 5	15.9	253.7

T.P. Spike in pole on East side 1951

- 5.92 263.63



B.M. Spike in Pole Near E.C. on Eastside 263.63

+6.10

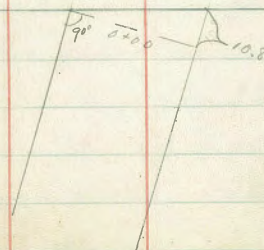
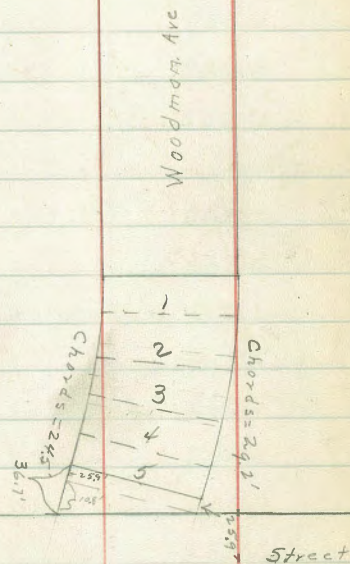
269.73

Section between Parts 1+2 of curve

E	13.6	256.1
+6	17.0	252.7
cb	14.1	255.6
1/4	11.0	258.7
2	6.7	263.0
1/4	6.7	263.0
cb	7.3	262.4
+1	6.0	263.7
w	5.1	264.6

Section between Parts 2+3 of curve

w	5.0	265.7
cb	5.6	264.1
+1	6.6	263.1
1/4	6.1	263.6
2	6.1	263.6
1/4	10.0	259.7
+8	10.8	258.9
cb	13.7	256.0
+6	11.9	257.8
+8	10.6	258.1
E	10.2	259.5





269.73

section between Parts 3 & 4 of curve

E	8.7	261.0
cb	9.3	260.4
1/4	8.7	261.0
2	5.7	264.0
1/4	5.5	264.2
+8	5.9	263.8
cb	4.9	264.8
+7	4.4	265.3
W	3.0	266.7

Section between Parts 4 & 5 of curve

W	2.6	267.1
cb	4.1	265.6
+5	5.5	264.2
1/4	5.1	264.6
2	4.7	265.0
+2	4.7	265.0
1/4	2.3	262.4
cb	2.8	261.9
E	7.9	261.8

Section along E.C. = 0.00

E	6.4	263.3
cb	6.1	263.6
1/4	5.5	264.2
+5	4.0	265.7

269.73

22

2	4.0	265.7
1/4	4.8	264.9
+2	5.0	264.7
+3	4.0	265.7
cb	3.1	266.6
+5	2.8	266.9
W	0.0	269.7

0+25.9 - See sketch - Page 21-

W	0.7	269.0
cb	2.1	267.6
+5	2.6	267.1
1/4	4.1	265.6
2	3.2	266.5
+6	3.2	266.5
1/4	4.5	265.2
cb	4.7	265.0
E	4.4	265.3

Section along North Line Madrone St

E	4.4	265.3
cb	4.6	265.1
1/4	4.4	265.3
+4	3.1	266.6
2	3.0	266.7
1/4	3.8	265.9
+3	2.6	267.1



$\pi$  269.73

cb	17	269.6
+7	0.9	268.8
W	0.0	
T.P.		-all 269.62

+11.44

$\pi$  281.06

Sect along South Line Madrone

W	9.2	271.8
cb	11.2	269.8
1/4	12.1	269.0
2	11.8	269.2
1/4	12.0	269.0
cb	12.3	268.7
E	11.6	269.4

0+00 → See Sketch Page 21 - This book

E	10.7	270.3
+3	11.9	269.1
cb	12.1	269.0
1/4	11.8	269.2
2	11.6	269.4
1/4	11.8	269.2
cb	10.9	270.1
W	9.0	272.0

$\pi$  281.06

23

0+39

W	6.2	274.9
+3	7.6	273.4
cb	8.3	272.7
1/4	9.2	271.8

1/4	10.0	271.0
2	9.5	271.5
1/4	10.0	271.0

cb	10.4	270.6
+6	10.4	270.6
E	8.8	272.2

0+89

E	7.1	274.0
+7	9.3	271.7
cb	8.7	272.3

1/4	6.8	274.2
2	5.9	275.1
1/4	6.4	274.6

+3	5.7	275.3
+7	6.2	274.8
cb	4.8	276.2

+7	4.0	277.0
W	1.4	279.6



T 281.06

1789

W	0.1	280.9
+5	1.4	279.6
c6	1.7	279.3
+3	2.8	278.2
+9	3.0	278.0
1/4	4.1	276.9
£	2.9	278.1
1/4	3.6	277.4
c6	6.0	275.0
E	4.5	276.5
T.P.	-1.40	279.66

+1311

T 292.77

1789

I		
E	12.0	280.8
+5	12.7	280.1
c6	16.3	276.5
+4	13.1	279.7
1/4	12.9	279.9
£	12.8	280.0
1/4	13.3	279.5
c6	12.6	280.2
+4	11.4	280.4
+8	11.2	281.6
W	8.4	284.4

T 292.77

2739

W	8.6	284.2
+8	9.7	283.1
c6	10.7	282.1
1/4	10.3	282.5
+1	11.0	281.8
£	10.4	282.4
+7	11.0	281.8
+8	10.2	282.6
1/4	10.2	282.6
c6	10.3	282.5
+2	12.1	280.7
+5	10.1	282.7
E	9.6	283.2

2789

E	6.5	286.3
+5	7.0	285.8
+7	9.5	283.3
c6	7.2	285.6
1/4	7.4	285.4
+3	8.2	284.6
£	7.9	284.9
1/4	8.4	283.4
c6	7.8	285.0
+3	6.7	286.1
+8	6.5	286.3

24



292.77

W	4.8	288.0
3+39		
W	1.3	291.5
cb	3.7	289.1
1/4	4.9	287.9
+1	5.9	286.9
2	5.0	287.8
+8	5.6	287.2
1/4	5.0	287.8
cb	4.5	288.3
+3	6.1	286.7
+6	4.5	288.3
E	4.1	288.7
3+75		
E	2.4	290.4
+3	2.6	290.2
+5	4.1	288.7
cb	2.8	290.0
1/4	2.9	289.9
+1	3.5	289.3
2	3.0	289.8
1/4	4.0	288.8
+1	3.0	289.8
cb	1.8	291.0
W	0.3	292.5

292.77

25

4+00

W	+1.4	294.2
+5	0.0	292.8
cb	0.0	292.8
1/4	1.7	291.1
2	1.0	291.8
+8	1.7	291.1
1/4	1.2	291.6
cb	1.7	291.1
E	1.2	291.6
T.P.		-1293 277.84
+0.24	280.08	
S.M. S.W. Spike in pole Woodmen + Medicine		273.94
	-620	273.88



8-2-28

J.C. Bliss

Flood

Router

X section 66<sup>th</sup> St. from  
Imperial to Madrone - 60' wide

10' cbs

10' 1/4 S

T 2 41.20

26

B.M. S.W. R.R. Spike in Pole 66<sup>th</sup> + Akin

220.56

W

12.4

228.8

+10.70

cb

12.7

228.5

T 231.26

1/4

13.1

228.1

Section along South Line of Imperial Ave

E

12.8

228.4

W

7.5

223.8

1/4

12.4

228.8

cb

7.4

223.9

cb

12.6

228.6

1/4

8.1

223.2

+1

12.8

228.4

E

8.1

223.2

+3

12.0

228.2

+9

7.9

223.4

E

11.8

229.4

1/4

7.1

224.2

0+68

cb

6.2

225.1

E

9.9

231.3

E

5.4

225.9

+4

9.9

231.3

0+00 = 90° off West Line 66<sup>th</sup> from S.W. Corner

+5

10.8

230.4

E

3.8

227.5

cb

10.4

230.8

+3

5.2

226.1

1/4

10.6

230.6

cb

5.7

225.6

E

11.1

230.1

+8

6.3

225.0

1/4

11.1

230.1

1/4

7.6

223.7

cb

10.3

230.9

E

7.5

223.8

W

10.7

230.5

1/4

7.6

223.7

1+00

cb

7.2

224.1

W

7.4

233.8

W

7.5

223.6

cb

7.2

234.0

T.P.

-0.63 2306.3

1/4

7.5

233.7

+10.57

E

7.0

234.2

241.20

1/4

6.2

235.0



T 241.20

Cb	5.8	235.4	
E	5.4	235.8	
	1+30		
E	1.0	240.2	
Cb	1.2	240.0	
+5	0.8	240.6	
1/4	1.6	239.6	
£	2.0	239.2	
1/4	2.5	238.7	
Cb	3.2	238.0	
W	3.9	237.3	
T.P.		-0.11	241.09

+12.38

T 253.47

1+45

W	13.5	240.0	
Cb	13.3	240.2	
1/4	12.5	241.0	
£	11.4	242.1	
+5	10.3	243.2	
1/4	10.6	242.9	
Cb	11.0	242.5	
+7	10.9	242.6	
E	9.0	244.5	

T 253.47

27

1+53

E	6.9	246.6	
+5	7.6	245.9	
+7	9.1	244.4	
Cb	9.5	244.0	
1/4	9.4	244.1	
£	9.5	244.0	
1/4	9.7	243.8	
Cb	9.5	244.0	
W	9.4	244.1	

1+64

W	9.4	244.1	
+5	7.4	246.1	
Cb	7.2	246.3	
1/4	6.4	247.1	
+6	5.1	248.4	
£	6.7	246.8	
1/4	7.2	246.3	
+1	5.9	247.6	
Cb	5.5	248.0	
E	4.4	249.1	

1+70

E	2.7	250.8	
Cb	3.9	249.6	
1/4	3.5	250.0	
+4	6.2	247.3	



π 253.47

Q	6.4	247.1
1/4	5.8	247.7
cb	5.1	248.4
W	4.7	248.8

1+87

W	3.7	249.8
cb	3.0	250.5
1/4	0.3	253.2

TP

-0.18 253.29

+1250

π 265.79

Q	11.1	254.7
1/4	11.4	254.4
cb	11.2	254.6
E	9.7	256.1

1+95

E	7.2	258.6
cb	8.1	257.7
1/4	8.0	257.7

Q	7.5	258.3
---	-----	-------

1/4	7.6	258.2
-----	-----	-------

cb	8.7	257.1
----	-----	-------

W	10.0	255.8
---	------	-------

π 265.79

28

2+10

W	2.3	263.5
cb	1.6	264.2
1/4	1.9	263.9
Q	2.4	263.4

1/4	2.5	263.3
-----	-----	-------

cb	2.1	263.7
----	-----	-------

E	1.8	264.0
---	-----	-------

TP	-1.11	264.68
----	-------	--------

+1237

π 277.05

2+25

E	6.6	270.4
---	-----	-------

cb	7.0	270.0
----	-----	-------

1/4	6.8	271.2
-----	-----	-------

Q	7.3	269.7
---	-----	-------

1/4	7.0	270.0
-----	-----	-------

cb	6.1	271.0
----	-----	-------

W	6.0	271.0
---	-----	-------

TP	-0.35	276.70
----	-------	--------

+1278

π 289.48

2+45

W	12.2	277.3
---	------	-------

cb	12.2	277.3
----	------	-------

1/4	11.2	278.3
-----	------	-------



T 289.48

£	10.3	279.2
1/4	9.8	279.7
cb	9.4	280.1
E	8.9	280.6

2+60

E	2.0	287.5
cb	3.2	286.3
1/4	2.1	287.4
£	2.4	287.1
1/4	3.6	285.9
cb	5.4	284.1
W	7.9	281.6

T.P. -0.21 289.27

+12.57

T 301.84

2+75

W	13.0	288.6
cb	12.1	289.7
1/4	11.4	289.4
£	11.0	290.8
1/4	10.7	291.1
cb	10.6	291.2
E	9.8	292.0

T 301.84

3+00

E	3.1	298.7
cb	2.5	299.3
1/4	2.5	299.3
£	2.8	299.0
1/4	3.1	298.7
cb	3.2	298.6
W	4.3	297.5

West side - sta 3+10

T.P. Spike in Telephone pole

+12.56

T 314.07

3+25

W	10.6	303.5
cb	10.0	304.1
1/4	9.8	304.3
£	10.1	304.0
1/4	10.3	303.8
cb	10.4	303.7
E	11.0	303.1

3+50

E	7.1	307.0
cb	6.6	307.5
1/4	6.2	307.9
£	5.8	308.3
1/4	5.4	308.7
cb	4.7	309.4

29



π 314.07

W 46 309.5  
 TP 0.11 313.96

+12.82

π 326.78

3475

W 11.3 315.5  
 cb 11.2 315.6  
 1/4 11.4 315.4  
 £ 11.4 315.4  
 1/4 12.8 314.0  
 cb 14.6 312.2  
 E 16.2 310.6

4400

E 11.1 315.7  
 cb 9.9 316.9  
 1/4 8.5 318.3  
 £ 7.6 319.2  
 1/4 6.9 319.9  
 cb 5.0 321.8  
 W 4.2 322.6

4125

W 2.2 324.6  
 cb 2.3 324.5  
 1/4 3.1 323.7  
 £ 4.3 322.5

π 326.78

30

1/4 5.3 321.5  
 cb 6.4 320.4  
 E 8.1 318.7

4450

E 6.6 320.2  
 cb 5.4 321.4  
 1/4 4.0 322.8  
 £ 2.5 324.3  
 1/4 1.1 325.7  
 cb 0.2 326.6  
 W 0.0 326.8

TP

-0.49 326.29

+8.60

π 334.89

4475

W 6.9 327.9  
 W 7.2 327.7  
 cb 8.2 326.7  
 1/4 9.6 325.3  
 £ 10.7 324.2  
 1/4 11.8 323.1  
 cb 13.1 321.8

5400

£ 10.4 324.5  
 cb 9.4 325.5



T 334.89

1/4	7.8	327.1
+5	6.6	328.3
¢	6.4	328.5
1/4	6.4	328.5
cb	6.0	328.9
W	6.0	328.9

5+25

W		
W	4.3	330.6
cb	4.5	330.4
1/4	4.0	330.9
¢	3.6	331.3
1/4	4.1	330.8
cb	6.0	328.9
+4	7.4	327.5
E	8.0	326.9

TP

-331 331.58

+12.91

5+50

T 344.49

5+50

E	15.7	328.8
+5	15.6	328.9
cb	13.8	330.7
1/4	12.6	331.9
¢	12.5	332.0

T 344.49

31

1/4	12.7	331.8
cb	12.1	332.4
W	11.5	333.0
	5+75	
W	9.5	335.0
cb	10.2	333.3
1/4	11.1	333.4
¢	11.2	333.3
1/4	11.1	333.4
cb	11.0	333.5
E	11.9	332.6

Section along North Line of

Madrone = 6 to 9.5 on West + 6 to 11.5 on the East

E	8.8	335.7
cb	9.0	335.5
1/4	8.8	335.7
¢	7.8	336.7
1/4	6.8	337.7
cb	5.8	338.7
W	5.2	339.3

Set B.M. S.W. spike in pole 66<sup>th</sup> + Madrone

Check later on Madrone

- 0.01 344.48



8-3-28  
J.C. Bliss  
Flood  
Raumer

X section of Madrone St.  
from 65<sup>th</sup> to Ritchie. 50' wide  
10' cbs  
7.5' 1/45

B.M. S.W. Spike in pole 66<sup>th</sup> & Madrone 344.48  
+294

π 347.42

West Line 65<sup>th</sup> St

50' wide  
10' cbs  
7.5' 1/45

S 7.7 339.7

Cb 7.9 339.5

14 8.1 339.3

£ 9.0 338.4

14 10.1 337.9

Cb 11.3 336.1

A 12.6 334.8

T.P. -13.11 334.31

+451

π 338.82

West cb 65<sup>th</sup> St.

N 7.6 331.2

Cb 6.3 332.5

14 5.0 333.8

£ 4.2 334.6

14 3.6 335.2

Cb 3.0 335.8

S 1.8 337.0

£ 65<sup>th</sup>

S 8.0 330.8

Cb 8.6 330.2

finished  
£ = average.

π 338.82

32

14 9.0 329.8

£ 9.5 329.3

14 10.5 328.3

Cb 11.2 327.6

N 12.0 326.8

T.P. -13.22 325.60

+175

π 227.35

East cb 65<sup>th</sup>

N 4.2 323.2

Cb 3.4 324.0

14 2.8 324.6

£ 2.8 324.6

14 2.5 324.9

Cb 2.0 325.4

S 1.2 326.2

East Line 65<sup>th</sup> = 4480

S 4.4 323.0

Cb 5.1 322.4

14 5.2 322.2

£ 5.2 322.2

14 5.3 322.1

Cb 5.5 321.9

N 6.0 321.4

Yardage  
fr Woodman to 66  
Y.B. 12-19 343

Plotted 8-14-28  
G.B.H.



3  
T 227.35

4+65

N	10.5	316.9
cb	9.7	317.7
1/4	9.5	317.9
¢	9.3	318.1
1/4	9.0	318.4
cb	8.8	318.6
S	8.5	318.9
T.P.		-12.91 214.44

+0.56

T 315.00

4+50

S	1.0	314.0
cb	1.4	313.6
1/4	1.7	313.3
¢	1.8	313.2
1/4	2.2	312.8
cb	2.1	312.9
N	3.1	311.9

4+25

N	10.9	304.1
cb	10.1	304.9
1/4	9.4	305.6
¢	9.0	306.0
1/4	9.0	306.0
cb	8.6	306.4

T 315.00

33

S	7.7	307.3
		-12.78 302.22

+0.20

T 302.42  
4+10

S	1.6	300.8
45	2.0	300.4
cb	6.8	295.6
1/4	3.5	298.9
¢	4.0	298.4
1/4	4.5	297.9
cb	5.3	297.1
N	5.8	296.6

3+75

N	11.7	290.7
cb	10.9	291.5
1/4	10.1	292.3
¢	12.4	290.0
46	12.4	290.0
1/4	8.5	293.9
cb	7.8	294.6
S	6.8	295.6

3+50

00+15	9.2	293.2
S	10.8	291.6
cb	12.6	289.8



π 302.42

1/4	13.2	289.2
2	13.4	289.0
1/4	17.2	285.2
cb	17.8	284.6
+5	15.7	286.7
N	15.9	286.5
Out 15	17.8	284.6
3+3.5		
Out 15	24.6	277.8
N	20.7	281.7
cb	19.8	282.6
+3	18.2	284.2
1/4	17.7	284.7
2	17.3	285.1
1/4	17.0	285.4
cb	16.1	286.3
S	15.3	287.1
Out 15	12.2	290.2
3+2.5		
Out 15	10.3	292.1
S	11.2	291.2
cb	12.3	290.1
1/4	13.3	289.1
2	14.2	288.2
1/4	15.0	286.4

π 302.42

34

cb	15.3	287.1
N	16.4	286.0
Out 15	18.5	283.9
2+9.0		
Out 15	11.6	290.8
N	10.3	292.1
cb	9.5	292.9
1/4	9.4	293.0
2	8.5	293.9
1/4	7.3	295.1
cb	6.1	296.3
S	4.8	297.6
Out 15	2.7	299.7
TP		-0.55 301.87
+12.34		
π 314.21		
2+6.0		
Out 15	8.8	305.4
S	10.7	303.3
cb	11.9	302.3
1/4	13.0	301.2
2	14.4	299.8
1/4	15.9	298.3
cb	16.4	297.8
N	17.1	297.1
Out 15	19.3	294.9



$\pi 314.21$ 

2+40

N	9.8	304.4
cb	9.5	304.7
1/4	9.0	305.2
£	7.6	306.6
1/4	6.1	308.1
cb	4.9	309.3
S	3.4	310.8
T.P.	-0.24	313.97

+12.91

 $\pi 326.88$ 

2+15

S	7.8	319.1
cb	9.5	317.4
1/4	11.5	315.4
£	13.0	313.9
1/4	13.7	313.2
cb	14.4	312.5
N	15.9	311.0

1+90

N	7.3	319.6
cb	5.3	321.6
1/4	3.9	323.0
£	3.6	323.3
1/4	3.7	323.2
cb	3.3	323.6

 $\pi 326.88$ 

35

S	1.7	325.2
T.P.	-0.44	326.44

+13.03

 $\pi 339.47$ 

1+75

S	11.5	328.0
cb	12.6	325.9
1/4	13.3	326.2
£	13.9	325.6
1/4	14.3	325.2
cb	14.3	325.2
N	14.6	324.9

1+50

N	9.8	329.7
cb	9.3	330.2
1/4	9.1	330.4
£	8.5	331.0
1/4	8.2	331.3
cb	7.8	331.7
S	7.0	332.5

1+25

S	1.6	337.9
cb	3.3	336.2
1/4	3.7	335.6
£	4.3	335.2



T 339.47

1/4	.45	335.0
cb	.43	335.2
N	.49	334.6
T.P.	-1.99	337.48

+10.96

T 348.44  
1+00

N	12.3	336.1
cb	11.3	337.1
1/4	10.7	337.7
2	9.4	339.0
1/4	8.4	340.0
cb	7.8	340.6
S	6.4	342.0

0+75

S	2.5	345.9
cb	3.8	344.6
1/4	5.6	342.8
2	7.5	340.9
1/4	8.4	340.0
cb	9.0	339.4
N	10.0	338.4

0+50

N	8.8	339.6
cb	7.6	340.8
1/4	6.7	341.7

T 348.44

36

2	5.9	342.5
1/4	4.8	343.6
cb	3.8	344.6
S	2.7	345.7

0+25

S	2.1	346.3
cb	4.0	344.4
1/4	4.7	343.7
2	5.0	343.4
1/4	5.4	343.0
cb	6.3	342.1
N	8.5	339.9

0+00 = West line 66<sup>th</sup> St

N	9.2	339.2
cb	8.4	340.0
1/4	7.5	340.9
2	6.5	341.9
1/4	5.6	342.8
cb	4.5	343.9
S	2.9	345.5

B.M. S.W. spike 66<sup>th</sup> & Madrone -397 344.47

- 344.48

West cb 66<sup>th</sup>

S	2.7	345.7
cb	4.5	343.9



π. 348.44

1/4	6.0	342.4
£	7.0	341.4
1/4	7.7	340.7
cb	8.7	339.7
N	9.8	338.6

West 1/4 66<sup>th</sup> St.

N	10.6	337.8
cb	9.0	339.4
1/4	8.2	340.2
£	7.4	341.0
1/4	6.3	342.1
cb	5.1	343.3
S	3.5	344.9

£ 66<sup>th</sup> St.

S	4.9	343.5
cb	5.9	342.5
1/4	7.3	341.1
£	8.4	340.0
1/4	9.6	338.8
cb	10.7	337.7
N	12.2	336.2

E 1/4 66<sup>th</sup>

N	12.4	335.5
cb	11.8	336.6
1/4	10.8	337.6

π 348.44

37

£	9.6	338.8
1/4	8.2	340.2
cb	6.8	341.6
S	5.9	342.5

East cb 66<sup>th</sup>

S	7.5	340.9
cb	8.1	340.3
1/4	8.9	339.5
£	10.4	338.0
1/4	11.3	337.1
cb	11.8	336.6
N	13.0	335.4

East Line 66<sup>th</sup> = 4 + 64.60

N	12.7	335.7
cb	12.3	336.1
1/4	11.4	337.0
£	11.0	337.4
1/4	10.2	338.2
cb	9.4	339.0
S	8.2	340.2

4 + 51.60

S	8.5	339.9
cb	9.8	338.6
1/4	10.3	338.1
£	10.6	337.8



T 348.44

1/4	12.2	336.2	
cb	12.3	336.1	
N	13.2	335.2	
4+38 <sup>60</sup>			
N	15.3	333.1	
cb	14.5	333.9	
1/4	13.3	335.1	
£	12.5	335.9	
1/4	11.7	336.7	
cb	10.4	338.0	
S	8.6	339.8	
T.P.		-1305 335.39	

+2.66

T 338.05

4+13<sup>60</sup>

S	1.4	337.6	
cb	2.2	335.8	
1/4	3.6	334.4	
£	5.5	332.5	
1/4	6.9	331.1	
cb	7.0	331.0	
N	7.6	330.4	

3+88<sup>60</sup>

N	9.9	328.1	
cb	9.2	328.8	

38

T 338.05

1/4	9.1	328.9	
+5	8.9	329.1	
£	8.0	330.0	
1/4	7.0	331.0	
cb	6.1	331.9	
S	4.8	333.2	
3+63 <sup>60</sup>			
S	8.3	329.7	
cb	9.0	329.0	
1/4	9.8	328.2	
£	11.9	326.1	
1/4	11.4	326.6	
cb	11.3	326.7	
N	12.0	326.0	

3+38<sup>60</sup>

N	15.7	322.3	
cb	15.1	322.9	
1/4	15.0	323.0	
£	14.9	323.1	
1/4	14.8	323.2	
+1	13.7	324.3	
cb	12.7	325.3	
S	11.7	326.8	

-12.83 225.22

4.040



✓  
T 325.62

3+12<sup>60</sup>

N	8.1	317.5
cb	8.6	317.0
1/4	7.8	317.8
£	5.0	320.6
1/4	4.9	320.7
cb	3.7	321.9
S	2.0	323.6
T.P. Top of fence post. Northside 2185 - 6.56 219.06		
+7.68		

✓  
T 326.74

2+88<sup>60</sup>

S	3.0	323.7
cb	5.1	321.6
1/4	6.8	319.9
£	7.0	319.7
1/4	8.8	317.9
cb	11.1	315.6
N	12.9	313.8
Out 20	15.3	311.4

2+43<sup>60</sup>

Out 20	16.3	310.4
N	12.0	314.7
cb	10.2	315.5
1/4	8.8	317.9
£	8.1	318.6

174  
T 326.74

39

1/4	6.7	320.0
cb	5.8	320.9
S	2.4	324.3
2+38 <sup>60</sup>		
S	3.1	323.6
cb	4.8	321.9
1/4	7.3	319.4
£	7.8	318.9
1/4	10.3	316.4
cb	11.6	315.1
N	13.1	313.6
Out 20	17.4	309.3

2+13<sup>60</sup>

Out 20	19.1	307.6
N	15.6	311.1
cb	13.5	313.2
1/4	12.0	314.7
£	9.4	317.3
1/4	8.6	318.1
cb	7.8	318.9
S	5.6	321.1

1+88<sup>60</sup>

S	7.9	318.8
cb	9.8	316.9
1/4	10.9	315.8



π 326.74

£	11.8	314.9
1/4	13.4	313.3
cb	15.1	311.6
N	17.4	309.3
Out 20	20.2	306.5

1+63<sup>60</sup>

Out 20	20.8	305.9
N	19.1	307.6
cb	17.6	309.1
1/4	15.9	310.8
£	14.0	312.7
1/4	13.2	313.5
cb	12.9	313.8
S	11.5	315.2

TP - 12.85 213.89

+0.24

π 314.13

1+38<sup>60</sup>

S	3.6	310.5
cb	4.6	309.5
1/4	5.4	308.7
£	6.0	308.1
1/4	6.8	307.3
cb	7.6	306.5
N	8.1	306.0

π 314.13

40

Out 20	9.2	304.9
--------	-----	-------

1+13<sup>60</sup>

N	9.7	304.4
cb	9.3	304.8
1/4	9.4	304.7
£	9.6	304.5
1/4	9.4	304.7
cb	9.4	304.7
S	9.1	305.0

0+88<sup>60</sup>

S	14.8	299.3
cb	15.2	298.9
1/4	15.1	299.0
£	14.6	299.5
1/4	13.9	300.2
cb	13.4	300.7
N	13.4	300.7

TP

+0.04

π 301.13

0+63<sup>60</sup>

N	7.2	293.9
cb	7.2	293.9
1/4	7.6	293.5
£	8.2	292.9

1304 201.09



301.13

1/4	8.3	292.8
cb	8.9	292.2
S	9.0	292.1

0+38.60

S	16.1	285.0
cb	15.9	285.2
1/4	15.7	285.4
\$	15.5	285.6
1/4	14.5	286.6
cb	14.4	286.7
N	14.6	286.5

T.P. -12.78 288.35

+0.18

288.53

0+13.50

N	10.0	278.5
cb	9.9	278.6
1/4	10.2	278.3
\$	10.6	277.9
1/4	10.2	278.3
cb	9.4	279.1
S	10.2	278.3

T.P. -12.80 275.73

+0.24

275.77

Dist. 40

41

B.M. S.W. Spike Madrone + Woodman -208 273.89

273.94

0+00

276.00

S	1.6	274.4
cb	1.8	274.2
1/4	2.4	273.6
\$	2.6	273.4
1/4	3.5	272.5
cb	3.7	272.3
N	3.4	272.6

section along West Line Woodman Ave.

N	4.6	271.4
cb	5.2	270.8
1/4	5.6	269.4
\$	5.6	269.4
1/4	5.1	270.9
1/3	5.0	271.0
cb	3.2	272.8
S	1.6	274.4

Page 48.

West cb Woodman - Note - Detail of intersection sketch.

S	5.8	270.2
cb	6.6	269.4
1/4	7.2	268.8
\$	7.5	268.5
1/4	7.1	268.9



275.97

276.00

cb	7.5	268.5
N	8.0	268.0

West 1/4 Woodman Arc

N	10.1	265.9
cb	9.4	266.6
1/4	8.9	267.1
E	8.1	267.9
1/4	7.6	268.4
cb	7.4	268.6
S	7.1	268.9

E Woodman Arc

S	6.8	269.2
cb	7.3	268.7
1/4	7.7	268.3
E	8.1	267.9
1/4	8.5	267.4
cb	7.0	267.0
N	9.3	266.7

East 1/4 Woodman Arc

N	10.7	265.3
cb	10.2	265.8
1/4	9.5	266.5
E	8.2	267.8
1/4	7.7	268.3
cb	7.5	268.5

275.97

276.00

42

S	6.9	269.1
---	-----	-------

East cb Woodman Arc

S	7.3	268.7
cb	7.7	268.3
1/4	8.0	268.0
E	8.6	267.4
1/4	9.5	266.5
cb	10.1	265.9
N	10.8	265.2

East Line Woodman Arc

N	10.7	265.3
cb	9.7	266.3
1/4	9.0	267.0
E	7.9	268.1
1/4	7.4	268.6
cb	7.2	268.8
S	6.6	269.4

3495.60 = See sketch page 46

S	4.8	271.2
cb	6.1	270.9
1/4	6.6	269.4
E	7.4	268.6
1/4	8.4	267.6
cb	9.0	267.0
N	10.7	265.3



275.97

	3+75	267.9
Out 15	8.1	
N	7.1	268.9
Cb	6.3	269.7
1/4	5.4	270.6
L	4.3	271.7
1/4	3.8	272.2
Cb	3.0	273.0
S	1.4	274.6

-0.18 275.79

+13.04

288.83

	3+50	
S	9.4	279.4
Cb	10.7	278.1
1/4	12.3	276.5
L	12.9	275.9
1/4	13.7	275.1
Cb	14.4	274.4
N	15.8	273.0
Out 15	16.7	272.1
	3+25	
Out 15	13.4	275.4
N	11.6	277.2
Cb	9.6	279.2
1/4	8.0	280.8
L	7.7	281.1
1/4	7.6	281.2
Cb	6.3	282.5

288.83

43

+3	44	284.4
5	36	285.2
TP	-430	288.53
	+12.30	
	288.83	
	3+00	
S	11.2	289.6
+7	11.6	289.2
Cb	13.9	286.9
1/4	14.6	286.2
L	15.2	285.6
+5	15.0	285.8
1/4	15.8	285.0
Cb	17.5	283.3
N	19.2	281.6
Out 15	20.7	280.1
	2+75	
Out 15	14.5	286.3
N	13.3	287.5
Cb	12.6	288.2
1/4	11.0	289.8
L	10.9	289.9
1/4	10.0	290.8
Cb	8.9	291.9
+3	6.2	294.6
5	6.0	293.8



T 300.83

2+50

S	26	298.2
+7	3.4	296.4
cb	50	295.8
1/4	6.2	294.6
£	6.4	293.4
1/4	6.7	294.1
cb	8.3	292.5
N	9.7	291.1

2+25

N	5.4	295.4
cb	4.2	296.6
1/4	2.8	298.0
£	2.0	298.8
1/4	1.4	299.4
cb	0.6	300.2

TR

-0.55 300.28

+12.98

T 313.26

+2	11.3	302.0
5	10.3	303.0

2+00

S	6.7	306.6
+8	7.6	305.7
cb	8.9	304.4
1/4	9.7	303.6

T 313.26

44

£	9.9	303.4
1/4	10.5	302.8
cb	11.5	301.8
N	13.3	300.0

1+75

N	10.2	303.1
cb	8.8	304.5
1/4	7.5	305.8
£	6.9	306.4
1/4	6.5	306.8
cb	5.2	308.1
S	4.0	309.3

1+50

S	2.0	311.3
cb	3.6	309.7
1/4	4.5	308.8
£	4.6	308.7
1/4	5.0	308.3
cb	6.0	307.3
N	6.1	306.4

1+25

N	3.2	310.1
cb	2.4	310.9
1/4	2.1	311.2
£	1.8	311.5



313.26

1/4	1.4	311.9
cb	0.6	313.7
S	0.0	313.3
TP	-0.05	313.21

+12.42

325.63

1400

S	9.5	316.1
cb	10.2	315.4
1/4	10.7	314.9
2	11.6	314.0
1/4	11.8	313.8
cb	12.2	313.4
N	12.9	312.7

0+15

N	10.3	315.3
cb	9.9	315.7
1/4	9.3	316.3
2	8.6	317.0
1/4	8.0	317.6
cb	7.6	318.0
S	6.7	318.9

0+50

S	4.5	321.1
---	-----	-------

325.63

45

cb	5.1	320.5
1/4	5.5	320.1
2	6.0	319.6
1/4	6.6	319.0
cb	7.0	318.6
N	7.5	318.1

0+25

N	4.6	321.0
cb	4.2	321.4
1/4	4.0	321.6
2	3.5	322.1
1/4	3.1	322.5
cb	2.9	322.7
S	2.4	323.2

0+100 - See sketch pg 46

S	12	324.4
cb	1.8	323.8
1/4	2.0	323.6
2	2.3	323.3
1/4	2.5	323.1
cb	3.0	322.6
N	3.3	322.3

Section along Westline Ritchie

N	3.4	322.2
cb	2.8	322.8



T 32563

46

1/4	2.5	323.1
Q	2.2	323.4
1/4	1.8	323.8
cb	1.7	323.9
S	0.9	325.7

Q Ritchie

S	0.4	325.2
cb	1.2	324.4
1/4	1.6	324.0
Q	1.8	323.8
1/4	2.3	323.3
cb	2.6	323.0
N	3.0	322.6

East Line Ritchie

N	3.2	322.4
cb	2.7	322.9
1/4	2.4	323.2
Q	2.0	323.6
1/4	1.4	324.2
cb	1.2	324.4
S	0.4	325.2

-13.23 312.40

-13.08 297.90

+2.63 313.03

+2.02 299.97

65"

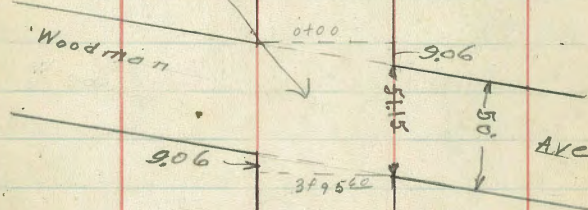
st.

Madrone

1/8 66" st

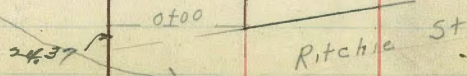
Note

Sections at intersection of Woodman + Madrone are taken parallel to line of Woodman



Note

Sections at Ritchie and Madrone are taken parallel to line of Ritchie St.





TP

+ 0.30

287.35

TP

+ 2.03

T 299.97

-1292

287.05

T 276.67

B.M. S.W. Spike in pole Madroño Woodman

-275

273.92

273.94

8-6-28

J.C. Bliss

Flood

Rouner

Clavert

X-section of B St. from Lemon Grove

Blvd. to 44th St.

50' wide

10' c65

7.5' 1/43

47

B.M. Mon. at intersection of E of B St. + North

Line of Lemon Grove Blvd.

87.13

+1216

T 99.29

Section at intersection of South Line of

B and South edge of parking on Lemon - 89,

Grove Blvd - see sketch page 48 - this Book

A

11.4

87.9

+8 - North Edge Parking

11.45

87.84

C0

11.42

87.87

1/4

11.28

88.01

k

11.18

88.11

1/4

11.20

88.09

C6

11.29

88.00

S - Edge Parking

11.44

87.85

at 00 = 90° from South Line of B St.

at intersection of South Line Lemon

Grove Blvd + South Line B St.

5

9.5

89.7

+5

10.9

88.4

Ck

11.2

88.1

1/4

11.7

87.6

+3 - South Edge Parking

11.31

87.98

k

11.18

88.11

1/4

11.08

88.21



T 99.29

Cb	10.97	88.32
N-ON Paving	11.02	88.27

0+53 = Intersection North Line

B st & South edge paving on Lemon Grove Blvd

N-Edge Paving	10.84	88.45
---------------	-------	-------

4.5	11.7	87.6
-----	------	------

Cb	10.4	88.9
----	------	------

11.4	10.6	88.7
------	------	------

2	10.1	89.2
---	------	------

11.2	9.5	89.8
------	-----	------

Cb	9.3	90.0
----	-----	------

5	7.3	92.0
---	-----	------

0+75

5	6.3	93.0
---	-----	------

4.8	8.2	91.1
-----	-----	------

Cb	8.6	90.7
----	-----	------

11.4	8.9	90.4
------	-----	------

2	9.2	89.7
---	-----	------

11.2	9.8	89.5
------	-----	------

Cb	9.9	89.4
----	-----	------

N	10.3	89.0
---	------	------

1+00

N	9.3	90.0
---	-----	------

Cb	9.3	90.0
----	-----	------

11.4	9.1	90.2
------	-----	------

48

South Edge Paving on Lemon Grove Blvd

31' 0+00 53'

B Street

43rd

5th

44th

5th



799.29

£	91	902
+4	72	921
1/4	72	921
cb	66	927
S	6.0	933

1+25

S	4.8	945
cb	5.5	937
1/4	6.0	933
£	6.3	933
1/4	8.3	91.0
cb	9.2	90.1
N	9.1	901

1+50

N	9.5	89.8
cb	8.3	91.0
1/4	7.1	92.2
£	6.2	93.1
1/4	5.0	94.3
cb	4.1	95.2
S	3.2	96.1

1+75

S	1.8	97.5
cb	24	96.9
1/4	32	96.1

799.29

49

£	4.1	95.2
1/4	5.3	94.0
cb	7.0	92.3
N	9.0	90.3

2+00

Out 10	9.2	90.1
N	6.9	92.4
cb	5.2	94.1
1/4	4.2	95.1
£	3.6	95.7
1/4	3.2	96.1
cb	2.8	97.5
S	2.3	97.0

2+25

S	1.5	97.8
cb	2.1	97.2
1/4	2.4	96.9
£	2.7	96.6
1/4	3.4	95.9
cb	4.0	94.8
N	6.3	93.0
Out 10	8.4	90.9

2+50

Out 10	5.2	94.1
N	3.8	95.5



99.29

cb	2.8	96.5
1/4	2.4	96.9
k	2.0	97.3
1/4	1.6	97.7
cb	0.9	98.4
S	0.3	99.0
T.F.	-1.03	98.26
+12.35 2+75		
27110.61		
S	9.6	101.0
cb	10.8	99.8
1/4	11.4	99.2
k	12.2	99.4
1/4	13.0	97.6
cb	13.5	97.1
N	14.3	96.3
0v+10	15.4	95.2
3+00		
0v+10	14.3	96.3
N	13.4	97.2
cb	12.5	98.1
1/4	11.6	99.0
k	11.7	99.9
1/4	10.4	100.2
cb	9.8	100.8

110.61

50

S	8.7	101.9
3+25		
S	6.4	104.2
cb	7.7	102.9
1/4	8.7	101.9
k	9.4	101.2
1/4	9.9	100.7
cb	10.7	99.9
N	11.4	98.2
0v+10	12.1	98.5
3+50		
0v+10	9.3	101.3
N	8.3	102.3
cb	7.5	103.1
1/4	7.0	103.6
k	6.4	104.2
1/4	5.2	105.4
cb	4.1	106.5
S	2.9	107.7
T.F.	-0.77	109.84
+11.72		
1121.56		
3+75		
S	10.0	111.6
cb	10.6	111.0



121.56

1/4	11.2	110.4
\$	11.8	109.8
1/4	13.0	108.6
cb	14.2	107.4
N	15.8	105.8
Out 10	16.5	105.1

4+00

Out 10	8.8	112.8
N	7.1	114.5
cb	6.0	115.6
1/4	5.2	116.4
\$	4.4	117.2
1/4	2.5	119.1
cb	2.4	119.2
S	2.8	118.8

TF

\*12.84

132.93

4+12

S	10.8	122.1
cb	10.5	122.4
1/4	10.7	122.2
\$	11.2	121.7
1/4	12.0	120.9

132.93

51

cb	12.8	120.1
N	14.2	118.7
Out 10	13.5	119.4

4+50

Out 10	12.2	120.7
N	11.4	121.5
cb	10.3	122.6
1/4	7.4	123.5
\$	9.1	123.8
1/4	8.5	124.4
cb	8.8	124.1
S	9.0	123.9

5+00

S	6.0	126.9
cb	7.1	125.8
1/4	7.2	125.7
\$	7.7	125.2
1/4	7.5	125.4
cb	8.0	124.9
N	8.8	124.1
Out 10	9.4	123.5

5+50

Out 10	7.5	124.4
N	7.1	125.8
cb	6.9	126.0



132.93

1/4	6.9	126.0
¢	6.3	126.6
1/4	5.8	127.1
cb	5.4	127.5
S	3.8	129.1

6+00

S	3.0	129.9
cb	4.1	128.8
1/4	4.3	128.6
¢	4.8	128.1
1/4	5.3	127.6
cb	5.5	126.4
N	6.1	126.8
Out 10	6.1	126.8

6+50

Out 10	5.1	127.0
N	4.6	128.3
cb	4.3	128.6
1/4	4.1	128.8
¢	3.6	129.3
1/4	2.7	130.2
cb	2.8	130.1
S	1.3	131.6

T.P.

-0.35 132.58

+1298

145.56

52

145.56

7+00

S	10.2	135.4
18	12.1	133.5
cb	13.4	132.2
1/4	14.0	131.6
¢	15.3	130.3
1/4	16.1	129.5
cb	16.5	129.1
N	16.9	128.7
Out 10	17.2	128.4

7+25

Out 10	16.6	129.0
N	16.3	129.3
cb	15.6	130.0
1/4	14.9	130.7
¢	14.1	131.5
1/4	12.8	133.0
cb	12.2	133.4
+3	11.1	134.5
S	10.1	135.5

7+50

S	7.3	138.3
cb	9.3	136.3
+3	10.7	134.9
1/4	9.8	135.8
¢	11.0	134.6
1/4	13.0	132.6



145.56

cb	13.6	132.0
N	144	131.2
Out 10	15.4	130.2
7+75		
Out 10	13.8	131.8
N	12.5	133.1
cb	11.1	134.5
1/4	9.4	136.2
¢	8.6	137.0
1/4	7.5	138.1
+6	8.7	136.9
cb	6.4	138.2
S	5.8	139.8
8+00		
S	1.0	144.6
cb	4.3	141.3
1/4	4.7	140.9
¢	5.8	139.8
1/4	7.1	138.5
cb	8.1	137.5
N	9.9	135.7
Out 10	10.9	134.7
8+25		
Out 10	8.9	136.7
N	7.0	138.6

145.56

53

cb	5.6	140.0
1/4	4.8	140.8
¢	3.4	142.2
1/4	2.0	143.6
cb	2.5	143.1
+3	0.8	144.8
S	0.0	145.6
TP	-0.60	144.96
+12.36		
157.32		
8+50		
S	6.9	150.4
cb	10.4	146.9
1/4	11.3	146.0
¢	13.8	143.5
1/4	15.2	142.1
cb	16.5	140.8
N	17.3	140.0
Out 10	18.9	138.4
8+75		
Out 10	17.5	139.8
N	15.9	141.4
cb	13.9	143.4
1/4	11.9	145.4
¢	9.6	147.7



157.32

1/4	7.4	149.9
CB	8.1	149.2
+3	6.0	151.3
S	4.5	152.8

8+90

S	3.0	154.3
+7	4.5	152.8
CB	6.8	150.5
1/4	5.4	151.9
£	6.2	151.1
1/4	8.8	148.5
CB	11.1	146.2
N	13.5	143.8
0v+10	15.9	141.4

9+10

0v+10	14.0	143.3
N	11.9	145.4
CB	10.2	147.1
1/4	9.0	148.3
£	6.9	150.4
1/4	4.6	152.7
CB	4.4	152.9
S	1.8	155.5

9+40

S	0.6	156.7
---	-----	-------

54

157.32

CB	2.2	155.1
1/4	2.2	155.1
£	2.8	154.5
1/4	4.0	153.3
CB	5.6	151.7
N	8.3	149.0
0v+10	10.8	146.5

9+75

0v+10	8.0	149.3
N	6.2	151.1
CB	3.6	153.7
1/4	2.1	155.2
£	1.0	156.3
1/4	0.7	156.6

T.F.

+9.79

166.39

CB	7.7	156.7
S	7.5	158.9
10+00		
S	6.3	160.1
CB	8.8	157.6
1/4	9.0	157.4
£	10.4	156.0
1/4	11.4	155.0



T 166.39

cb	12.4	154.0
N	14.3	152.1
Out 10	15.6	150.8
	10+35	
Out 10	12.0	154.4
N	11.8	154.6
cb	10.8	155.6
1/4	9.6	156.8
E	8.2	158.2
1/4	7.4	159.0
cb	7.1	159.3
+1	4.7	161.7
S	3.3	163.1
	10+75	
S	3.7	162.7
cb	5.7	160.7
1/4	6.2	160.2
E	7.2	159.2
1/4	9.0	157.4
cb	9.6	156.8
N	10.7	156.7
Out 10	11.8	154.6
	10+95	
Out 10	11.8	154.6
N	10.5	155.9

T 166.39

55

cb	9.5	156.9
1/4	8.5	157.9
E	6.5	159.9
1/4	5.4	161.0
cb	4.8	161.6
+2	2.9	163.5
S	2.3	164.1
	11+20.36 = West line 43rd	150' wide 10' cbs 7.5' 1/4s
S	4.4	162.0
cb	5.9	160.4
1/4	6.1	160.3
E	6.5	159.9
1/4	7.7	158.7
cb	9.2	157.2
N	10.4	156.0
Out 10	11.8	154.6
	West cb 43rd	
Out 10	11.9	154.4
N	10.3	156.1
cb	8.3	158.1
1/4	7.0	159.4
E	6.5	159.9
1/4	6.3	160.1
cb	6.0	160.4
S	4.7	161.7



166.39

43rd

S	47	161.7
cb	6.0	160.4
1/4	6.6	159.8
2	7.3	159.1
1/4	8.3	158.1
cb	9.1	157.3
N	10.7	155.7
Out 10	11.8	154.6

East cb 43rd

Out 10	12.2	154.2
N	10.7	155.7
cb	9.6	156.8
1/4	9.0	157.4
2	8.2	158.2
1/4	7.1	159.4
cb	7.0	159.4
S	5.3	161.1

East Line 43rd = 0+00

S	5.5	160.9
29	5.7	160.7
cb	7.3	159.1
1/4	7.3	159.1
2	7.8	158.6
1/4	9.2	157.2
cb	9.3	157.1

166.39

56

N	10.0	156.4
Out 10	11.6	154.8

0+25

Out 70	12.8	153.6
N	12.4	154.0

cb	11.6	154.8
1/4	10.7	155.7

2	9.4	157.0
1/4	8.9	157.5

cb	9.0	157.4
S	7.2	159.2

0+50

S	8.7	157.7
cb	10.5	155.9

1/4	10.8	155.6
2	11.4	155.0

1/4	12.1	154.3
cb	12.9	153.5

N	13.6	152.8
Out 10	14.0	152.4

0+75

Out 10	14.7	151.7
N	14.9	151.5

cb	14.0	152.4
1/4	13.4	153.0



166.39

£	13.1	153.3
1/4	12.6	153.8
cb	12.3	154.1
#3	10.2	156.2
S	9.1	157.3
	1400	
S	11.9	154.5
cb	13.3	153.1
1/4	13.3	153.1
£	14.2	152.2
1/4	14.2	152.2
cb	14.7	151.7
N	17.1	149.4
Out+10	21.6	144.8
	1425	
Out+10	15.0	151.4
N	14.7	151.7
cb	15.9	150.5
1/4	17.1	149.4
£	15.7	150.7
1/4	13.3	153.1
cb	13.6	152.8
S	12.6	153.8
	1750	
S	12.8	153.6

166.39

57

cb	12.9	153.5
1/4	12.6	153.8
£	13.0	153.4
1/4	12.6	153.8
cb	12.6	153.8
N	12.8	153.6
Out+10	13.7	152.7
	1475	
Out+10	10.8	155.6
N	9.2	157.2
cb	8.6	157.8
1/4	8.7	157.7
£	9.2	157.2
1/4	9.7	156.7
cb	9.4	157.0
S	8.5	157.9
	2400	
S	6.5	159.9
cb	7.7	158.7
1/4	7.9	158.5
£	8.1	157.3
1/4	8.0	158.4
cb	8.1	158.3
N	8.9	157.5
Out+10	9.8	156.6



$\pi$  166.39

2+25

00+10	10.4	156.0
N	9.5	156.9
cb	8.9	157.5
1/4	8.0	158.4
k	7.1	159.3
1/4	6.3	160.1
cb	6.1	160.3
S	5.3	161.1

2+50

S	3.1	163.3
cb	4.8	161.6
1/4	4.8	161.6
k	5.8	160.6
1/4	6.1	160.3
cb	6.2	160.2
N	7.4	159.0
00+10	8.2	158.2

2+75

00+10	7.8	158.6
N	7.0	159.4
cb	5.6	160.8
1/4	4.6	161.8
k	4.1	162.3
1/4	3.5	162.8
cb	3.4	163.0

$\pi$  166.39

58

S	2.5	163.9
3+00		
S	0.2	166.2
cb	2.0	164.4
1/4	1.6	164.8
k	2.2	164.2
1/4	2.6	163.8
cb	3.0	163.4
N	4.8	161.6
00+10	5.4	161.0

3+25

00+10	3.0	163.4
N	2.9	163.5
cb	2.7	163.7
1/4	1.6	164.8
k	0.4	166.0

T.P.

B.M. S.W. Black corner Bx 43rd

B.M. on Men 55' East of 43rd on B.

on T.P. + 1265

$\pi$  178.84

1/4	12.0	166.8
cb	11.7	167.1
S	9.8	169.0
3+50		
S	7.2	171.6



178.84

cb	8.9	169.9
1/4	9.1	169.7
2	9.7	168.9
1/4	10.8	168.0
cb	12.4	166.4
N	14.4	164.4
Out 10	15.3	163.5

3+75

Out 10	12.5	166.3
N	11.4	167.4
cb	9.4	169.4
1/4	9.0	169.8
2	8.3	170.5
1/4	7.1	171.7
cb	6.5	172.3
S	4.9	173.9

4+00

S	3.6	175.2
cb	5.2	173.6
1/4	5.8	173.0
2	6.6	172.2
1/4	7.8	171.0
cb	8.6	170.2
N	9.9	168.9
Out 10	11.4	167.4

178.84

59

4+25

Out 10	10.8	168.0
N	9.2	169.6
cb	8.0	170.8
1/4	7.0	171.8
2	5.5	173.3
1/4	5.3	173.5
cb	5.2	173.6
1/3	3.9	174.9
S	3.0	175.8

4+46.05 = West Line 44+47

5'0" wide  
10'0" wide  
7'0" wide

S	3.0	175.8
1/8	4.0	174.8
cb	5.0	173.8
1/4	5.3	173.5
2	5.5	173.3
1/4	6.1	172.7
cb	7.8	171.0
N	10.2	168.6
Out 10	12.1	166.7

West cb 44+47

Out 10	12.8	166.0
N	11.1	167.7
cb	9.0	169.8
1/4	7.6	171.2
2	6.0	172.8
1/4	5.5	173.3



$\pi 178.84$

Cb	49	173.9
S	34	175.4
£	44 <sup>th</sup>	
S	39	174.9
Cb	4.6	174.2
1/4	5.6	173.2
£	6.3	172.5
1/4	8.1	170.7
Cb	9.4	169.4
N	11.2	167.6
Out 10	13.0	165.8

East Cb 44<sup>th</sup>

Out 10	9.5	169.3
N	10.7	168.1
+5	10.7	178.1
Cb	9.5	169.3
1/4	8.7	170.1
£	6.7	172.1
1/4	5.3	173.5
Cb	5.2	173.6
S	4.3	174.5

East Line 44<sup>th</sup>

S	4.5	174.3
Cb	4.9	173.5
1/4	5.0	173.8

$\pi 178.84$

60

£	6.4	172.4
1/4	8.5	170.3
Cb	9.7	169.1
N	7.9	170.9
Out 10	6.6	172.2
T.P.		-12.67 166.17
	+0.31	166.48
B.M. S.W. Black corner Hub 43rd & B		-4.55
		→ 161.93
		→ 161.95



8-7-28 X-section 43rd Street from B to C  
 J.C. Bliss  
 Flood  
 Raven  
 Clavert

5.0' wide  
 10' cbs.  
 7.5/45

B.M. J.W. Black corner hub 43rd + B.

161.95

+ 13.12

$\pi 175.07$

0+00 = South line of B St.

W	13.1	162.0
Cb	13.3	161.8
1/4	13.3	161.8
E	13.4	161.7
1/4	13.8	161.9
Cb	13.9	161.2
E	14.3	160.8

0+25

E	11.8	163.3
Cb	11.4	163.7
1/4	10.8	164.3
E	10.0	165.1
1/4	10.2	164.9
Cb	10.0	165.1
W	9.6	165.5

0+50

W	6.0	169.1
Cb	7.0	168.1
1/4	6.7	168.4
E	5.3	169.8
1/4	6.7	168.4

Plotted 8-17-28 CBH

$\pi 175.07$

61

Cb	7.0	168.1
+1	6.2	168.9
E	6.7	168.4

0+75

E	4.5	170.6
Cb	4.0	171.1
1/4	3.6	171.5
E	3.2	171.9
1/4	3.0	172.1
Cb	3.2	171.9
+1	2.5	172.6
W	2.4	172.7

TF

- 0.87 174.20

+ 12.69

$\pi 186.89$

1+00

W	10.5	176.4
Cb	11.1	175.8
+1	11.9	175.0
1/4	11.6	175.3
E	11.4	175.5
1/4	11.4	175.5
Cb	11.7	175.2
E	12.1	174.8



8-7-28 X-section 43rd Street from B to C  
 J.C. Bliss  
 Fred  
 Raven  
 Clavert

5.0' wide  
 10' cbs.  
 7.5' / 45

B.M. J. W. Black corner hdb 43rd + B.

161.95

Cb

+ 13.12

+ 1

$\pi 175.07$

E

0+00 = South line of B St.

W	13.1	162.0
Cb	13.3	161.8
1/4	13.3	161.8
E	13.4	161.7
1/4	13.8	161.3
Cb	13.9	161.2
E	14.3	160.8
0+25		
E	11.8	163.3
Cb	11.4	163.7
1/4	10.8	164.3
E	10.0	165.1
1/4	10.2	164.9
Cb	10.0	165.1
W	9.6	165.5
0+50		
W	6.0	169.1
Cb	7.0	168.1
1/4	6.7	168.4
E	5.3	169.8
1/4	6.7	168.4

Plotted 8-17-28 CBH

Travels to 1160 - B41

Shore of sandbag on B St  
 known floor

FB 1269  
 Adj. by Levine 18.16

20

11.7

12.1

174.0



186.89

1+25

E	10.3	176.6
Cb	9.2	177.7
1/4	8.7	178.2
E	8.2	178.7
1/4	8.5	178.4
Cb	8.8	178.1
+1	8.0	178.9
W	7.3	179.6

1+50

W	2.6	184.3
+9	3.2	183.7
Cb	4.1	182.8
1/4	4.0	182.9
E	4.2	182.7
1/4	5.1	181.8
Cb	6.2	180.7
E	7.1	179.8

T.P.

+12.34

199.09

1+75

Out 15	16.6	182.5
E	15.4	183.7
Cb	15.0	184.1
1/4	14.1	185.0

199.09

62

E	12.9	186.2
1/4	12.8	186.3
Cb	12.9	186.2
+1	12.1	187.0
W	11.8	187.3

2+00

W	8.6	190.5
+8	9.2	189.9
Cb	9.9	189.2
1/4	10.2	188.9

E	10.5	188.6
1/4	11.5	187.6
Cb	12.2	186.9
E	13.0	186.1
Out 15	14.6	184.5

2+25

Out 15	11.9	187.2
E	10.2	188.9
Cb	9.4	189.7

1/4	8.8	190.3
E	8.1	191.0
1/4	7.4	191.7

Cb	7.3	191.8
+1	6.5	192.6
W	5.9	193.2



199.09

2+50

W	3.0	196.1
cb	4.0	195.1
+1	4.7	194.4
1/4	4.9	194.2
2	5.4	193.7
1/4	6.3	192.8
cb	7.1	192.0
E	7.4	191.7
Out 15	9.1	190.0

2+75

Out 15	7.6	191.5
E	6.2	192.9
cb	5.3	193.8
1/4	4.2	194.9
2	3.4	195.7
1/4	2.8	196.3
cb	2.2	196.4
+1	1.9	197.2
W	1.2	197.9

T.P. Top of fence post East side Sta 2490 -4.98 194.11

+122.4

206.35

3+00

W	5.9	200.5
+8	7.0	199.4

20635

cb	8.1	198.3
1/4	8.5	197.9
2	8.9	197.5
1/4	9.9	196.5
cb	10.5	195.9
E	11.4	195.0
Out 15	13.1	193.3

3+25

Out 15	11.9	194.5
E	10.4	195.0
cb	9.2	197.2
1/4	8.5	197.9
2	7.2	199.2
1/4	6.6	199.8
cb	5.7	200.7
+2	4.7	201.7
W	3.7	202.7

3+50

W	3.9	202.5
cb	5.3	201.1
1/4	5.4	201.0
2	5.6	200.8
1/4	6.4	200.0
cb	7.5	198.9
E	8.3	198.1



206.35

Out 15	10.0	196.4
	4+00	
Out 15	7.8	198.6
E	6.7	199.7
cb	6.2	200.2
1/4	5.4	201.0
1/2	5.0	201.4
1/4	4.7	201.7
cb	4.4	202.0
W	3.5	202.9
	4+50	
W	5.5	200.9
cb	5.2	201.2
1/4	5.2	201.2
1/2	5.3	201.1
1/4	5.6	200.9
cb	6.3	200.1
E	6.3	200.1
	5+00	
E	7.9	198.5
cb	8.2	198.2
1/4	7.8	198.6
1/2	7.7	198.7
1/4	7.4	198.0
cb	7.7	198.7

206.35

61

W	8.0	198.4
	5+50	
W	10.4	196.0
cb	10.3	196.1
1/4	9.7	196.7
1/2	10.0	196.4
1/4	10.1	196.3
cb	10.0	196.4
E	9.5	196.9
	5+85	
E	11.2	195.2
cb	11.6	194.8
1/4	11.6	194.8
1/2	11.5	194.9
1/4	11.2	195.2
cb	12.1	194.3
W	12.2	194.2
	6+19 <sup>24</sup> - North Line C.	
W	13.4	193.0
cb	13.4	193.0
1/4	13.1	193.3
1/2	13.3	193.1
1/4	13.4	193.0
cb	13.0	193.4
E	12.5	193.9



$\pi 206.35$

T.P

+3.68

-11.60 194.75

$\pi 198.43$

North cb C St.

E	5.4	193.0
cb	5.7	192.7
1/4	5.8	192.6
1/4	5.9	192.5
1/4	5.9	192.5
cb	6.1	192.3
W	6.4	192.0

1/4 C St.

W	6.8	191.6
cb	6.6	191.8
1/4	6.4	192.0
1/4	6.5	191.9
1/4	6.2	192.2
cb	6.1	192.3
E	6.0	192.4

South cb C St.

E	6.8	191.6
cb	7.2	191.2
1/4	7.1	191.3
1/4	7.3	191.1
1/4	7.3	191.1

$\pi 198.43$

85

cb

7.7

190.7

W

8.1

190.3

South Line C St

W

8.3

190.1

cb

8.2

190.2

1/4

7.9

190.5

1/4

7.7

190.7

1/4

7.7

190.7

cb

7.5

190.9

E

7.2

191.2

B.M. S.W. Spike 43rd + C

-6.92

191.51

T.P.

-0.05

198.38

+4.32

202.70

T.P.

-12.96

189.74

+0.20

189.94

T.P.

-12.65

177.29

+0.11

177.40

T.P.

-13.18

164.22

+0.29

164.51

B.M. S.W. Black Canyon Hrb B+43rd

-2.64

161.87

T.P.

-13.01

151.50

+0.35

151.85

T.P.

-13.15

138.70

+0.32

139.02

T.P.

13.20

125.82



12582

+009 125.91

T.P.

-12.81 113.10

+007 113.17

T.P.

-13.19 99.98

+002 100.00

-12.90 87.10

Mon at Intersection of B St and North Line Lemon

8713 ← Grove Blvd.



8-7-29  
J.C. Bliss  
Flood  
Raumey  
claret

# Targeted Level Line Along Broadway

Extension from 33rd + F to Lemon Grove  
Blvd + B St.

67

B.M. N.E. Mon 33rd + F Sts. 89.58

Sta	+	H.I.	-	Elev
-----	---	------	---	------

	0.07	89.65		
--	------	-------	--	--

TR			12.60	77.05
----	--	--	-------	-------

	1.02	78.07		
--	------	-------	--	--

TP			12.56	65.51
----	--	--	-------	-------

	5.90	71.41		
--	------	-------	--	--

TP			8.41	63.00
----	--	--	------	-------

	0.95	60.16		
--	------	-------	--	--

TP			5.70	54.46
----	--	--	------	-------

	5.64	60.15		
--	------	-------	--	--

B.M.			1.07	59.08
------	--	--	------	-------

	9.08	68.16		
--	------	-------	--	--

			2.19	65.97
--	--	--	------	-------

	11.91	77.88		
--	-------	-------	--	--

			1.09	76.79
--	--	--	------	-------

	11.21	88.00		
--	-------	-------	--	--

			0.34	87.66
--	--	--	------	-------

	10.90	98.56		
--	-------	-------	--	--

			11.43	87.13
--	--	--	-------	-------

Check Back from Mon.

on Mon.	13.00	100.13		
---------	-------	--------	--	--

TP			12.65	87.48
----	--	--	-------	-------

S.E. Top Fire Plug 34<sup>th</sup> + Broadway Extension

S.E. Top Fire Plug 35<sup>th</sup> + Broadway Ext.

Spike in Pole #D31916T - First Pole on North

Side of Broadway Ext. East of Bridge Near 35<sup>th</sup>

St

Mon. Intersection of B St. and North Line Lemon  
Grove Blvd.



Sto	+	H.I.	-	Elev.
	0.64	88.12		87.48
T.P.			12.67	75.45
	0.75	76.20		
T.P.			11.61	64.59
	1.23	65.82		
B.M.			6.89	58.93
	0.78	59.71		
B.M.			5.40	54.31
T.P.			6.97	52.74
	13.10	65.84		
T.P.			0.90	64.94
	13.18	78.12		
T.P.			0.52	77.60
	12.79	90.39		
B.M.			0.96	89.43

Pole # D 31910T. spike

S.E. Top Hydrant 35<sup>th</sup> + Broadway EXT.

N.E. Monument 33rd + F

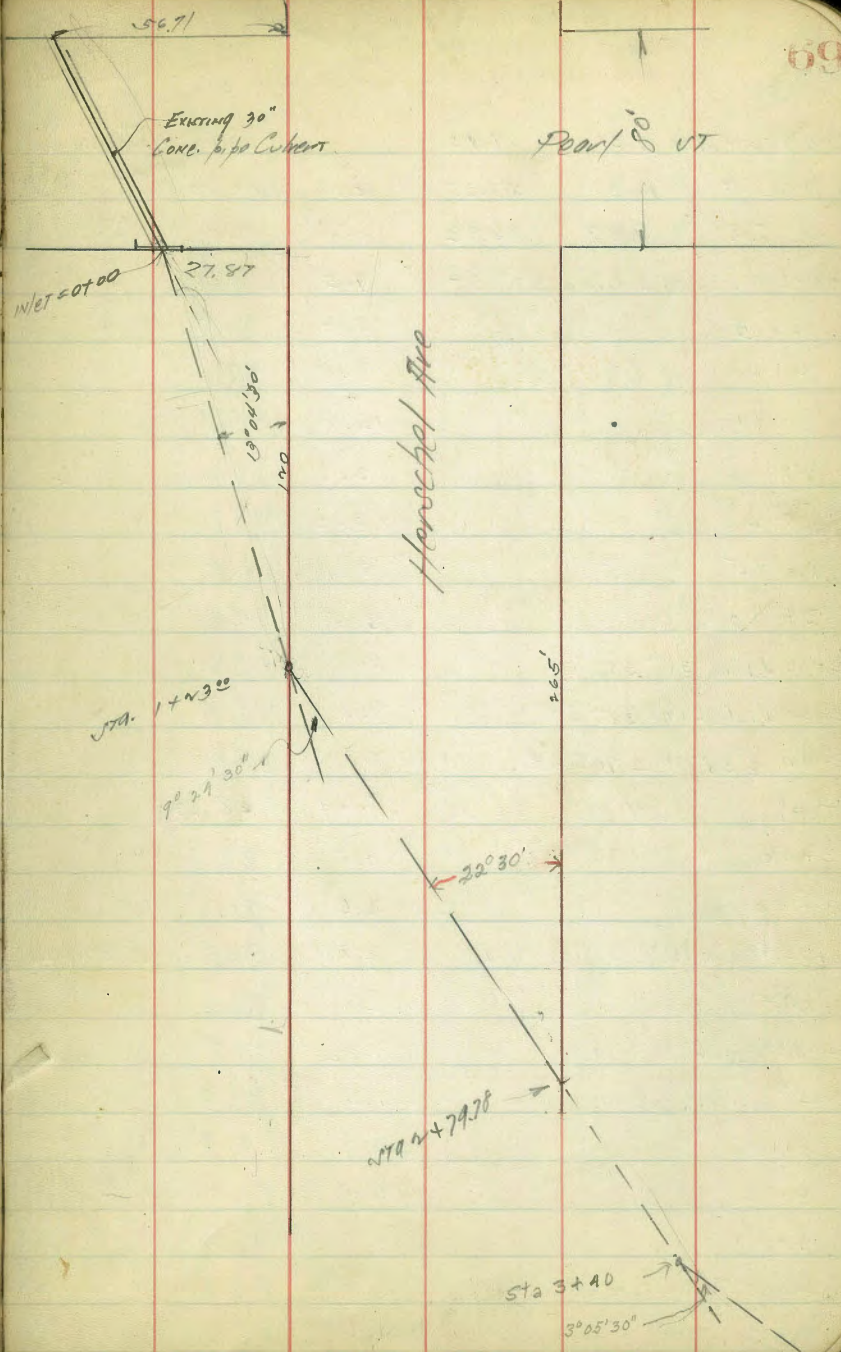
-P.C.  
1280



Levels for Drain on Herschel  
So. of Pearl

BM	+	T	-	Elev.	
Fluoline Existing Culvert on Pearl N.L.	5.51	120.56		115.45	SE. Girard + Pearl
Headwall	"	"	N.L.	5.82	
T. P.	"	"	S.L.	4.54	
0+00	"	"	S.L.	10.06	110.50
0+45	"	"		8.5	112.1
0+80	"	"		7.6	113.0
1+23 = A	approx. level for 20' each side	6.6		114.0	Wilke Herschel
1+60	"	"	12'	5.5	115.3
2+00	"	"	"	1.7	118.9
T. P.	12.95	131.89	1.63	118.93	
2+40		2' lower 20' W. 2' higher 20 E	12.40	119.5	
2+79.78 = E.L. Herschel		Level 20' W. 1' higher 20 E	12.5	119.4	
3+40 = A	approx level 20' each side	10.9		121.0	
4+00	"	20' "	9.1	122.8	
4+52 = Fence Line	approx level 20' each side	7.7		124.5	
5+00	approx level 35' East 15' West	5.6		126.3	
5+50	"	30' each way	2.9	129.0	

Low land rapidly widens from station  
on continuance of line indicated for 100 feet at  
approx rate of grade shown





Sewer Levels in Alley Bet Trak.  
 + S. Sta. 37<sup>th</sup> To 38<sup>th</sup> + E 38<sup>th</sup> St  
 S. to BIKI Sierra Park Thence East

3-22-29  
 Miller

92.56  
 70  
 92.6

BM. Top Hydt.	11.51	74.93	63.42
T.P.	12.57	87.37	0.13
T.P.	9.98	96.92	0.43
90° = 390' E. of E. line 37 <sup>th</sup> St	4.5	92.4	
0+15 E. L. A.	6.0	90.9	
0+40	9.8	87.1	
0+70	12.8	84.1	
1+00	13.7	83.2	
1+20	13.0	83.9	
1+75	7.1	89.8	
2+00	6.5	90.4	
2+10 W. line 38 <sup>th</sup> St	8.1	88.8	
2+20 W. d. Line 38 <sup>th</sup> St	9.0	87.9	
2+40 E 38 <sup>th</sup> St $\angle$ 90° 00' RT.	8.7	88.2	
T.P.	4.33	92.56	8.69
3+00		3.5	89.1
3+50		2.6	90.0
3+75 E. BIKI Sierra Park	2.1	90.5	
3+75 E. gutter	2.4	90.2	
3+95 E. d. 38 <sup>th</sup> St.	1.82	90.8	
4+05 E. d. line 38 <sup>th</sup> St.	1.6	91.0	
4+18	2.3	90.3	
4+23	1.4	91.2	
4+29	1.9	90.7	
4+35 E. 30' E. of 38 <sup>th</sup> St	3.8	88.8	
4+38	4.2	88.4	

S.E. 37<sup>th</sup> &  
 Ocean View Blvd

96.9

92.6

$\angle$  90° 00' L.

4+44	3.0	89.6
4+50	6.1	86.5
4+60	7.8	84.8
4+70	9.1	
4+90	11.3	
5+00	11.8	80.8
T.P. BM B.P.	7.76	97.73
ch. BM Top Hydt	1.52	96.21 = 96.21

N.W. 5<sup>th</sup> St  
 + 38<sup>th</sup>  
 S.E. 5<sup>th</sup> St  
 + 38<sup>th</sup>



5/6/29  
London

X sec Lemon Grove Blvd 400'  
Each way from Bst.  
80'st 14' cbs 52' RWay.

Mon NL LG Blvd  
+ Bot.

71

B.M.	1276	99.87	87.13
------	------	-------	-------

0+00

5.4		0.0	99.9
-----	--	-----	------

+12		0.7	99.2
-----	--	-----	------

cb		27	97.2
----	--	----	------

42	4.7	95.2
----	-----	------

+8	S. Paul	4.23	95.66
----	---------	------	-------

1/4		4.30	95.59
-----	--	------	-------

4.51	95.38
------	-------

14		4.95	94.94
----	--	------	-------

+5	N Pav	517	94.72
----	-------	-----	-------

+9			56	94.3
----	--	--	----	------

e6		3.1	96.8
----	--	-----	------

NL		4.1	95.8
----	--	-----	------

 $0 + 50$ 

NL		3.5	96.4
----	--	-----	------

6			3.0	96.9
---	--	--	-----	------

+4		6.6	93.3
----	--	-----	------

+8	N. Par	6.21	93.68
----	--------	------	-------

1/4		6.09	93.80
-----	--	------	-------

4		581	94.08
---	--	-----	-------

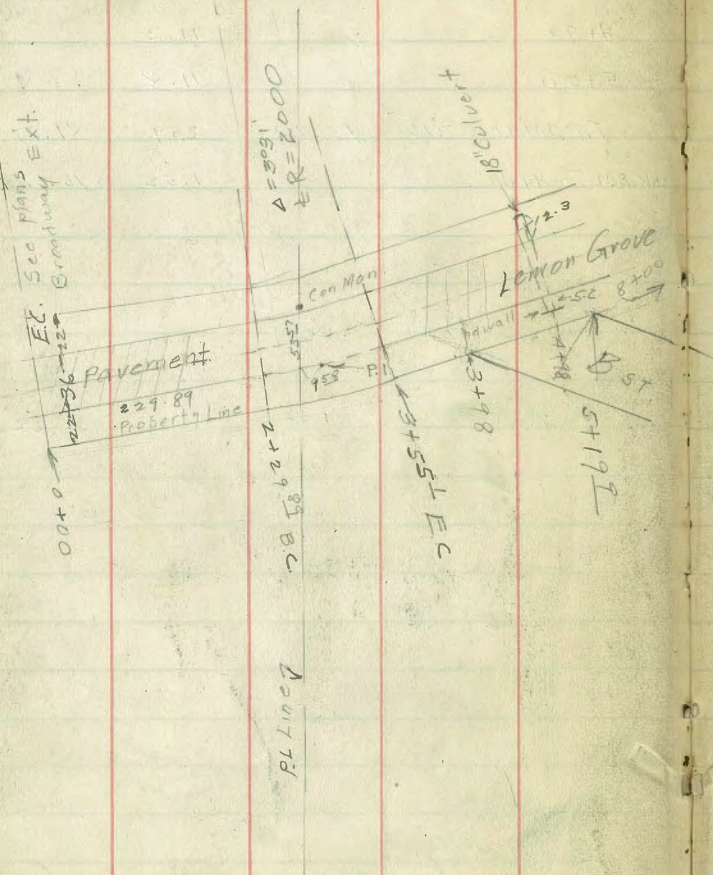
1/4		562	94.27
-----	--	-----	-------

+5	5 Per	5.59	94.30
----	-------	------	-------

+12		57	94.2
-----	--	----	------

cb			1.4	98.5
----	--	--	-----	------

5.L.	0.9	99.0
------	-----	------





1+00	99.89		
S.L.	1.1	98.8	
cb	1.6	98.3	
+8	7.5	92.4	
+8 S Pav	7.21	92.68	
1/4	7.15	92.74	
4	6.98	92.91	
1/4	7.18	92.71	
+5 N Pav	7.28	92.61	
cb	7.51	92.38	
N.L.	9.1	90.8	
1+50			
N.L.	14.2	85.7	
+7	13.7	86.2	
cb	9.7	90.2	
+8	8.0	91.9	
+8 N Pav	8.64	91.25	
1/4	8.50	91.39	
4	8.23	91.66	
1/4	8.40	91.49	
+5 S Pav	8.48	91.41	
+10	8.7	91.2	
cb	3.9	96.0	
+3	1.8	98.1	
S.L.	+0.3	100.2	
T.P	2.73	93.12	9.50 90.37

2+00	93.12		
S.L.	+1.5	94.6	
+8	3.2	89.9	
cb	2.9	90.2	
+8 S Pav	2.87	90.25	
1/4	2.78	90.34	
4	2.59	90.53	
1/4	2.92	90.20	
+5 N Pav	3.03	90.09	
+10	2.4	90.7	
cb	4.1	89.0	
+8	8.9	84.2	
N.L.	9.4	83.7	
2+50			
N.L.	10.4	82.7	
+7	9.5	83.6	
cb	4.4	88.7	
+8 N Pav	4.09	89.03	
4	3.72	89.40	
1/4	3.93	89.19	
+5 S Pav	4.02	89.10	
cb	4.2	88.9	
+10	4.3	88.8	
S.L.	2.0	91.1	



93.12

3+00

SL		+3.1	96.2
+10		1.9	91.2
cb		4.8	88.3
+8	S Pav	4.76	88.36
1/4		4.66	88.46
1/4		4.48	88.64
1/4		4.72	88.40
+5	N Pav	4.84	88.28
cb		5.1	88.0
+6		8.1	83.0
N.L.		9.1	84.0

3+50

N.L.		6.2	86.9
cb		5.4	87.7
+8	N Pav	5.34	87.78
1/4		5.16	87.96
1/4		4.97	88.15
1/4		5.18	87.94
+5	S Pav	5.25	87.87
+12		5.3	87.8
cb		1.5	91.6
S.L.		+5.6	98.7

93.12

3+98 = W.L. B st. on South.

SL		1.7	91.4
+5		4.5	88.6
cb		5.1	88.0
+8	S Pav	5.20	87.92
1/4		5.08	88.04
1/4		4.87	88.25
1/4		5.08	88.04
+5	N Pav	5.15	88.97
cb		5.3	87.8
N.L.		5.4	87.7

A+58.2 = 4 B.

N.L.		4.7	88.4
cb		4.7	88.4
+8	N Pav	4.70	88.42
1/4		4.60	88.52
1/4		4.42	88.70
1/4		4.60	88.52
+5	S Pav	4.70	88.42
cb		4.4	88.7
SL		3.9	89.2

Culvert at A+98

FL send	7.32	85.80
top of wall	4.32	88.80
FL N end.	7.67	85.45



Lemon Grove

93.12

5+19.9 = EL. B on South.

S.L.		3.5	89.6
cb		4.2	88.9
+8	SPav	4.20	88.92
1/4		4.06	89.06
1/4		3.82	89.30
1/4		3.99	89.13
+5	N Pav	4.08	89.04
cb		4.3	88.8
N.L.		4.5	88.6

5+50

N.L.		3.8	89.3
cb		4.0	89.1
+8	N Pav	3.78	89.34
1/4		3.65	89.47
1/4		3.46	89.66
1/4		3.77	89.35
+5	SPav	3.84	89.28
cb		3.9	89.2
S.L.		3.6	89.5

6+00

S.L.		3.9	89.2
cb		3.6	89.5
+8	SPav	3.45	89.67
1/4		3.32	89.80
1/4		3.08	90.04
1/4		3.26	89.86
+5	N Pav	3.39	89.73
cb		3.8	89.3
N.L.		3.2	89.9

7+00

N.L.		1.7	91.4
cb		1.3	91.8
+8	N Pav	2.51	90.61
1/4		2.50	90.62
1/4		2.25	90.87
1/4		2.49	90.63
+5	SPav	2.59	90.53
cb		2.9	90.2
S.L.		3.5	89.6



8+00

93.12

SL		29	90.2
eb		2.3	90.8
+8	SPaw	2.02	90.10
1/4		1.90	91.22
1/4		1.65	91.47
1/4		1.76	91.36
+5	N Paw	1.88	91.24
eb		1.0	92.1
N.L		1.0	92.1
BM. Beg.		599	87.13









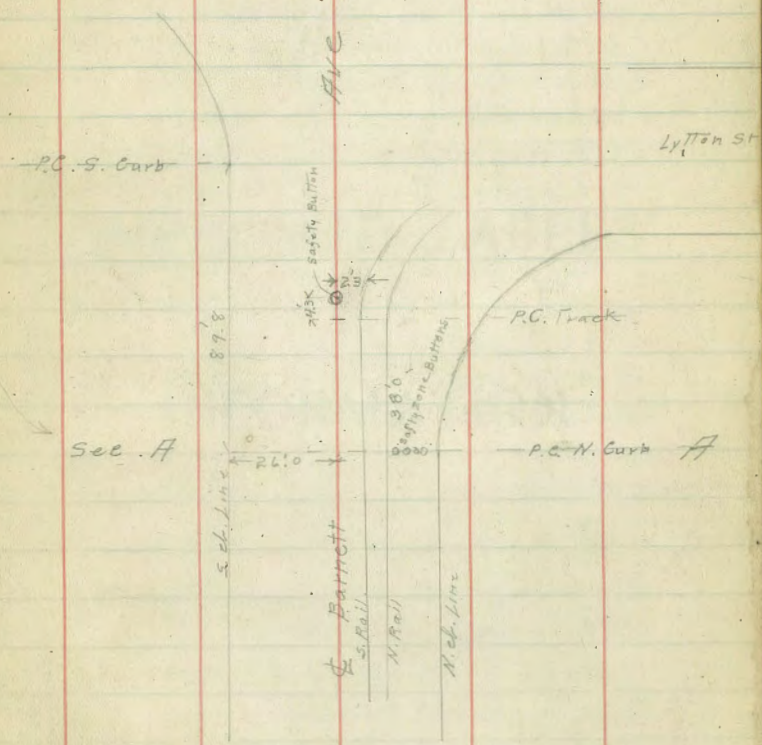
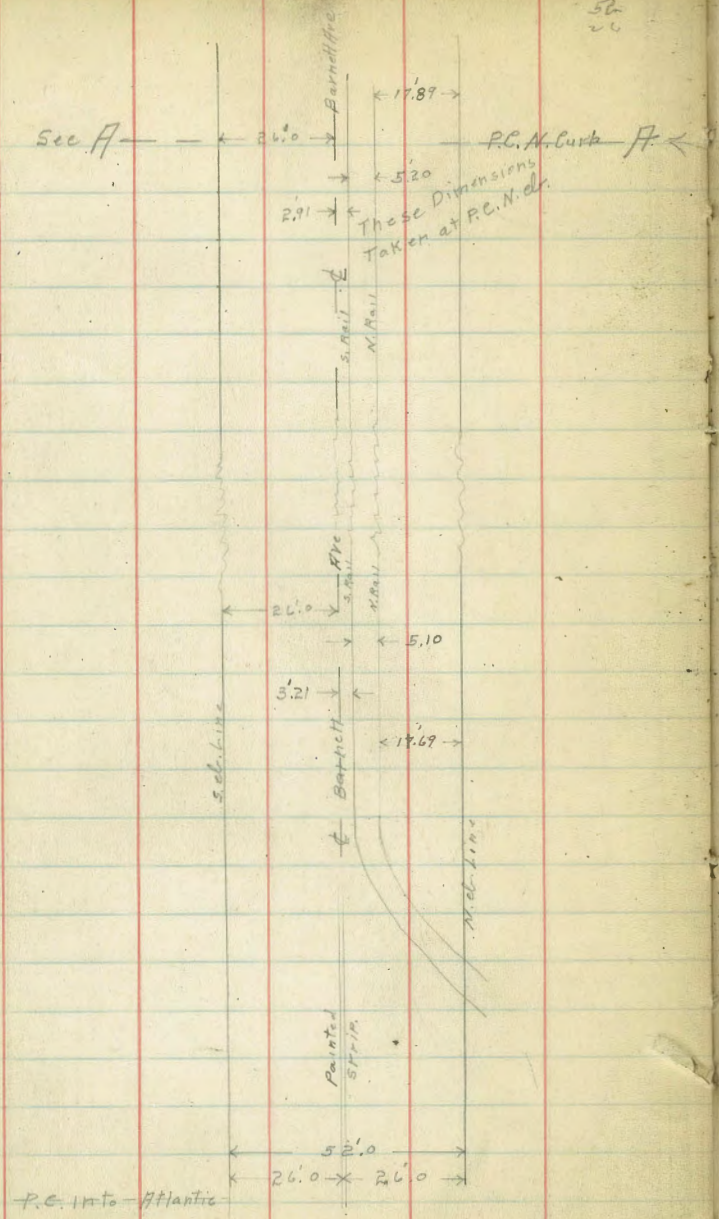


*unpublished*











S.W. Cor James & Locust will not drain  
 S.W. " James & Rosecrans " " "

## DIRECTIONS FOR USE OF TABLES

TABLE No. 1

Distance of slope stake from side or shoulder stake for any width roadway, slope  $1\frac{1}{2}$  to 1. If ground is nearly level, the cut or fill at side stake is located by the double entry method in left column and top row. The number in body

of table in same row and column gives distance

from side stake to slope stake. If ground is not

level, the distance is found by adding the

side stake and slope stake, lower larger by this

amount if cut, elevation if fill. Add this amount

to cut or fill and find distance in table. Set up

rod at this point and line of sight should cut

target.

necessary.

TABLE No. 2

To find Tangent and External for curve of

any other degree, divide by degree of curve and

add correction found in column of corrections.

Degree of curve with a given  $L$  may be found

by dividing tangent, (or external), opposite  $L$  by

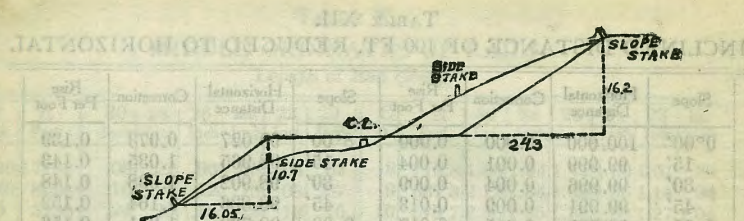
given tangent, (or external).

The distance from a point on the tangent to

the curve is very nearly the square of the tangent

length divided by twice the radius.





# DISTANCES FROM SIDE STAKES FOR CROSS-SECTIONING.

SLOPE 1 1/2 TO 1. ROADWAY OF ANY WIDTH.

	0	.1	.2	.3	.4	.5	.6	.7	.8	.9	
0	0.00	0.15	0.30	0.45	0.60	0.75	0.90	1.05	1.20	1.35	0
1	1.50	1.65	1.80	1.95	2.10	2.25	2.40	2.55	2.70	2.85	1
2	3.00	3.15	3.30	3.45	3.60	3.75	3.90	4.05	4.20	4.35	2
3	4.50	4.65	4.80	4.95	5.10	5.25	5.40	5.55	5.70	5.85	3
4	6.00	6.15	6.30	6.45	6.60	6.75	6.90	7.05	7.20	7.35	4
5	7.50	7.65	7.80	7.95	8.10	8.25	8.40	8.55	8.70	8.85	5
6	9.00	9.15	9.30	9.45	9.60	9.75	9.90	10.05	10.20	10.35	6
7	10.50	10.65	10.80	10.95	11.10	11.25	11.40	11.55	11.70	11.85	7
8	12.00	12.15	12.30	12.45	12.60	12.75	12.90	13.05	13.20	13.35	8
9	13.50	13.65	13.80	13.95	14.10	14.25	14.40	14.55	14.70	14.85	9
10	15.00	15.15	15.30	15.45	15.60	15.75	15.90	16.05	16.20	16.35	10
11	16.50	16.65	16.80	16.95	17.10	17.25	17.40	17.55	17.70	17.85	11
12	18.00	18.15	18.30	18.45	18.60	18.75	18.90	19.05	19.20	19.35	12
13	19.50	19.65	19.80	19.95	20.10	20.25	20.40	20.55	20.70	20.85	13
14	21.00	21.15	21.30	21.45	21.60	21.75	21.90	22.05	22.20	22.35	14
15	22.50	22.65	22.80	22.95	23.10	23.25	23.40	23.55	23.70	23.85	15
16	24.00	24.15	24.30	24.45	24.60	24.75	24.90	25.05	25.20	25.35	16
17	25.50	25.65	25.80	25.95	26.10	26.25	26.40	26.55	26.70	26.85	17
18	27.00	27.15	27.30	27.45	27.60	27.75	27.90	28.05	28.20	28.35	18
19	28.50	28.65	28.80	28.95	29.10	29.25	29.40	29.55	29.70	29.85	19
20	30.00	30.15	30.30	30.45	30.60	30.75	30.90	31.05	31.20	31.35	20
21	31.50	31.65	31.80	31.95	32.10	32.25	32.40	32.55	32.70	32.85	21
22	33.00	33.15	33.30	33.45	33.60	33.75	33.90	34.05	34.20	34.35	22
23	34.50	34.65	34.80	34.95	35.10	35.25	35.40	35.55	35.70	35.85	23
24	36.00	36.15	36.30	36.45	36.60	36.75	36.90	37.05	37.20	37.35	24
25	37.50	37.65	37.80	37.95	38.10	38.25	38.40	38.55	38.70	38.85	25
26	39.00	39.15	39.30	39.45	39.60	39.75	39.90	40.05	40.20	40.35	26
27	40.50	40.65	40.80	40.95	41.10	41.25	41.40	41.55	41.70	41.85	27
28	42.00	42.15	42.30	42.45	42.60	42.75	42.90	43.05	43.20	43.35	28
29	43.50	43.65	43.80	43.95	44.10	44.25	44.40	44.55	44.70	44.85	29
30	45.00	45.15	45.30	45.45	45.60	45.75	45.90	46.05	46.20	46.35	30
31	46.50	46.65	46.80	46.95	47.10	47.25	47.40	47.55	47.70	47.85	31
32	48.00	48.15	48.30	48.45	48.60	48.75	48.90	49.05	49.20	49.35	32
33	49.50	49.65	49.80	49.95	50.10	50.25	50.40	50.55	50.70	50.85	33
34	51.00	51.15	51.30	51.45	51.60	51.75	51.90	52.05	52.20	52.35	34
35	52.50	52.65	52.80	52.95	53.10	53.25	53.40	53.55	53.70	53.85	35
36	54.00	54.15	54.30	54.45	54.60	54.75	54.90	55.05	55.20	55.35	36
37	55.50	55.65	55.80	55.95	56.10	56.25	56.40	56.55	56.70	56.85	37
38	57.00	57.15	57.30	57.45	57.60	57.75	57.90	58.05	58.20	58.35	38
39	58.50	58.65	58.80	58.95	59.10	59.25	59.40	59.55	59.70	59.85	39
40	60.00	60.15	60.30	60.45	60.60	60.75	60.90	61.05	61.20	61.35	40
41	61.50	61.65	61.80	61.95	62.10	62.25	62.40	62.55	62.70	62.85	41
42	63.00	63.15	63.30	63.45	63.60	63.75	63.90	64.05	64.20	64.35	42
43	64.50	64.65	64.80	64.95	65.10	65.25	65.40	65.55	65.70	65.85	43
44	66.00	66.15	66.30	66.45	66.60	66.75	66.90	67.05	67.20	67.35	44
45	67.50	67.65	67.80	67.95	68.10	68.25	68.40	68.55	68.70	68.85	45
46	69.00	69.15	69.30	69.45	69.60	69.75	69.90	70.05	70.20	70.35	46
47	70.50	70.65	70.80	70.95	71.10	71.25	71.40	71.55	71.70	71.85	47
48	72.00	72.15	72.30	72.45	72.60	72.75	72.90	73.05	73.20	73.35	48
49	73.50	73.65	73.80	73.95	74.10	74.25	74.40	74.55	74.70	74.85	49
50	75.00	75.15	75.30	75.45	75.60	75.75	75.90	76.05	76.20	76.35	50

Computed by L. Leland Locke.

802  
9736  
223  
1120.36



ENGINEERING DEPARTMENT,  
CITY OF SAN DIEGO.  
CALIFORNIA.

59 08  
4.6 77  

---

1231