

1273

PLATE

BOOK

No. 380 F

ENGINEERING DEPARTMENT,
CITY OF SAN DIEGO,
CALIFORNIA.

Our Leather Bound Engineers Note Books are carried in the following rulings:

- No. 380 LEVEL BOOK. Left and Right Hand Page the same as Left Hand Page of this Book.
- No. 382 FIELD BOOK. Left Hand Page as in this Book, Right Hand Page 4 x 4 to the inch, Center Line Red.
- No. 384 MINING TRANSIT BOOK. Left Hand Page as in this Book, Right Hand Page 8x8 to the inch, Center Line Red.
- No. 385 FIELD BOOK. Left Hand Page as in this Book, Right Hand Page 8 vertical and 4 horizontal lines to the inch, Center Line Red.

We also carry the Note Books listed above, bound in extra strong Fabri-Hide (otherwise the same quality of book), which can be furnished at a somewhat lower price.

In ordering Fabri-Hide covered books, add the letter "F" to catalog number.

THE FREDERICK POST CO.
ENGINEERING and DRAFTING SUPPLIES
IRVING PARK STATION
CHICAGO, ILL.

MICROFILMED
1964

"B" ST.	32 - 34	1 to 25
Broadway	32 - 34	25 - 37
"E" ST.	32 - 33	37 - 43
Lemon Grove Blvd	33 - 34	43 - 49
Benesch	33 - 34	49 - 53
Return. Evergreen & Dumas		54 - 55
" Evergreen & Curtis		56 - 56
" Locust & Curtis		57 -
" Locust & Dumas		58
" Evergreen & Browning		60
" Browning & Locust		61
POE. St. Chatsworth to Loretta Dr		63 - 69
Gutter Levels Kettner Blvd		70
X sec. Russ Blvd. 11 th to 12 th		71

8-31-28 X-section B St-32nd

J.C. Bliss to 34th 80' wide
Drebert 14' cbs
Rauher 13' 44s

Σ 189.52

1

B.M. NW B.P. 31st and B 206.74 cb
+8.12 214.86 14
-12.79 202.07 ♀
+0.46 202.53 14
-13.29 189.24 cb
+0.28 N

9.0 180.5
8.0 181.5
8.5 181.0
8.2 181.3
8.0 181.5
8.4 181.1
12.2 177.3

Σ 189.52

West line 32nd 10' cbs - 10' 44s

♀ 32nd

S 6.8 182.7
cb 8.3 181.2
14 7.9 181.6
♀ 7.6 181.9
14 7.0 182.5
cb 6.6 182.9
N 5.4 184.1

Out 15 15.2 174.3
N 10.3 179.2
+5 8.9 180.6
cb 8.1 181.4
14 8.4 181.1
♀ 8.7 180.8
14 8.7 180.8
cb 9.5 180.0
S 9.9 179.7

Plotted 9-14-28 C.B.H.

cb 32nd

N 7.6 181.9
cb 7.4 182.1
14 7.9 181.6
♀ 8.2 181.3
14 8.4 181.1
cb 9.0 180.5
S 8.6 180.9
W 14 32nd
S 9.3 180.2

East 14 32nd

S 10.5 179.0
cb 9.9 179.6
14 9.3 180.2
♀ 8.1 181.4
14 8.9 180.6
cb 9.7 179.8
+8 11.0 178.5

T 189.52

T 180.03

2

N 13.1 176.4
 Out 15 17.4 172.1
 -10.54 178.98

cb 16.0 164.0
 1/4 11.3 168.7
 + 8 7.2 172.8

+1.05

T 180.03
 East Curb 32nd

Out 15 10.9 169.1
 N 6.2 173.8
 cb 2.1 177.9
 1/4 0.4 179.6
 & 0.0 180.0
 1/4 0.0 180.0
 cb 1.1 178.9
 S 1.4 178.6

¢ 7.7 172.3
 1/4 2.9 177.1
 cb 1.5 178.5
 S 2.0 178.0

0+38

East Prop. 32nd = 0+00

S 1.7 178.3
 cb 1.4 178.6
 1/4 0.8 179.2
 & 1.5 178.5
 1/4 2.0 178.0
 +5 4.9 175.1
 cb 5.7 174.3
 +5 3.8 176.2
 N 9.2 180.8

S 4.8 175.2
 +10 3.1 176.9
 cb 4.8 175.2
 1/4 8.6 171.4
 +3 6.6 173.4

0+50

Out 20 13.9 166.1

¢ 11.0 169.0
 1/4 14.5 165.5
 +9 19.2 160.8
 cb 20.4 159.6
 N 22.8 157.2
 Out 20 25.8 154.2

0+25

Out 20 21.4 158.6
 N 18.5 161.5

Out 20 27.0 153.0
 N 26.0 154.0
 cb 23.8 156.2
 1/4 23.0 157.0
 & 19.0 161.0

π 180.03

π 155.03

3

14	146	165.4
17	11.9	168.1
cb	12.0	168.0
S	7.7	172.3
T.P.		-12.78 167.25

14	10.5	144.5
cb	9.5	145.5
S	7.2	- 147.8
T.P.		-132.4 141.79

+0.25

+0.19

π 167.50

π 141.98

1+25

0+75

S	9.6	157.9
cb	11.5	156.0
14	12.7	154.8
φ	14.6	152.9
14	16.1	151.4
cb	17.9	149.6
N	18.9	148.6
Out 20	20.0	147.5
T.P.		-12.73 134.77

S	4.8	137.2
cb	5.9	136.1
14	6.9	135.1
φ	7.5	134.5
14	7.8	134.2
cb	8.2	133.8
N	9.0	133.0
Out 20	9.0	133.0

1+50

+0.26

π 155.03

1+00

Out 20	14.2	140.8
N	13.9	141.1
cb	12.5	142.5
14	11.3	143.7
φ	11.0	144.0

Out 20	16.0	126.0
N	15.2	126.8
cb	14.0	128.0
14	13.5	128.5
φ	12.4	129.6
14	12.0	130.0
cb	11.6	130.4
S	9.8	132.2

T 141.98

T 129.63

T.P

-1259. 12939

+0.24

T 129.63

1+75

S	2.2	127.4
cb	3.2	126.4
14	4.8	124.8
¢	5.3	124.3
14	6.1	123.5
cb	7.4	122.2
N	8.7	120.9
Out 20	11.1	118.5
2+00		
Out 20	15.0	114.6
N	14.4	115.2
cb	11.1	118.5
14	9.6	120.0
¢	8.8	120.8
14	8.4	121.2
cb	8.1	121.5
S	8.1	121.5
2+25		
S	12.7	116.9
cb	13.0	116.6
14	13.2	116.4

¢	13.1	116.5
+5	13.2	116.4
14	17.7	111.9
cb	17.7	111.9
N	16.7	112.9
Out 20	16.2	113.4
2+50		
Out 20	15.3	114.3
N	16.8	112.8
cb	17.4	112.2
14	17.8	111.8
+11	17.8	109.8
¢	17.7	111.9
14	17.0	112.6
cb	16.3	113.3
S	15.8	113.8
Out 15	15.7	113.9
2+75		
Out 15	18.0	111.6
S	18.3	111.3
cb	18.6	111.0
14	19.1	110.5
¢	19.7	109.9
+10	21.1	108.5
¢	19.6	110.0

T 12963

1/4	180	111.6
cb	17.7	111.9
N	15.4	114.2
Out 20	13.1	

Line of levels for culvert in Natural Drain
Beginning at 2+50 on North Line of B and
Crossing South Line at 3+05

0+00 In bottom of drain	18.7
0+08 on bank of drain	16.3
0+25 North Line B St.	17.1
0+50	18.1
0+73 on bank of drain	19.8
0+75 In bottom of drain	21.3
1+00 " " "	21.9
1+25 South Line B St.	23.0
1+50 In bottom of drain	23.5

3+00

Out 20	10.6	119.0
N	13.0	116.6
cb	14.0	115.6
1/4	15.6	114.0
¢	16.4	113.2
1/4	18.5	111.1
cb	12.8	109.8

T 12963

5

+7	20.6	109.0
+9	22.8	106.8
5	23.0	106.6
Out 2	20.7	108.9
Out 15	20.0	109.6

3+25

Out 15	17.5	112.1
5	13.5	116.1
cb	10.5	119.1
1/4	10.8	118.8
¢	11.2	118.4
1/4	10.3	119.3
cb	9.8	119.8
N	8.4	121.2
Out 15	5.8	123.8

3+50

N	1.9	127.7
cb	4.2	125.4
1/4	5.2	124.4
¢	5.4	124.2
1/4	5.6	121.0
cb	6.0	123.6
5	8.5	121.1
Out 15	11.1	118.5

129.63

3+75

Out 15 72 122.4

X 9 48 124.8

cb 3.1 126.5

1/4 2.3 127.3

¢ 1.5 128.1

T.P. -1.62 128.01

+11.25

139.26

1/4 10.0 129.3

cb 9.0 130.3

N 8.0 131.3

4+100

N 5.2 134.1

cb 6.0 133.3

1/4 6.8 132.5

¢ 7.8 131.5

1/4 8.8 130.5

cb 9.8 129.5

5 11.1 128.2

Out 10 12.5 126.8

4+75

Out 10.2 129.1

5 8.7 130.6

cb 7.3 132.0

1/4 6.4 132.9

139.26

6

¢ 5.3 134.0

1/4 4.7 134.6

cb 4.3 135.0

N 3.5 135.8

4+50

N 4.5 134.8

cb 5.7 133.6

1/4 6.3 133.0

¢ 6.1 133.2

1/4 6.5 132.8

cb 7.1 132.2

5 9.5 129.8

Out 10 11.8 127.5

4+75

Out 20 12.4 120.9

5 15.3 124.0

cb 12.2 127.1

1/4 10.8 128.5

¢ 11.3 128.0

1/4 11.4 127.9

cb 10.8 128.5

N 9.9 129.4

Out 10 8.7 130.6

T.P. -11.88 127.38

4+27 128.65

T 128.65

5700

Out 15	0.3	128.3
N	1.9	126.7
cb	3.0	125.7
1/4	4.1	124.6
¢	6.1	122.6
1/4	7.9	120.7
cb	8.4	120.3
S	10.1	118.6
Out 10	10.9	117.7
Out 20	13.7	115.0

5705

Out 20	12.2	116.5
S	12.3	116.4
cb	11.5	117.2
1/4	9.8	118.9
¢	7.8	120.9
1/4	5.3	123.5
cb	3.8	124.9
A	2.5	126.2
Out 15	1.0	127.7

5718

Out 15	1.7	127.0
N	3.6	125.1
cb	5.3	123.4
1/4	7.5	121.2

T 128.65

7

1/8	8.8	119.9
¢	8.3	120.4
1/4	6.8	121.9
cb	7.3	121.4
S	7.4	121.3
Out 15	7.5	121.2

5742

Out 10	7.1	126.6
S	1.8	126.9
cb	1.5	127.2
1/4	1.3	127.4
¢	0.8	128.9
1/4	3.0	125.7
cb	5.8	122.9
1/5	7.5	121.2
N	6.9	121.7
Out 20	6.0	122.7

T.P

-0.68 124.97

+1305

T 141.02

5775

Out 15	12.2	128.8
N	11.4	129.6
cb	9.5	132.5
1/4	8.0	133.0

T 141.02

Q	7.6	133.4
1/4	7.8	133.2
cb	7.8	133.2
S	7.6	133.4
6+00 = West Line 33rd		
S	5.4	135.6
cb	5.2	135.8
1/4	5.2	135.8
Q	4.9	136.1
1/4	5.2	135.8
cb	5.7	135.3
N	5.8	135.2
T.P.	0.16	140.86

+12.69

T 153.55

0+00 = East Line 33rd

N	10.5	143.0
cb	10.0	143.6
1/4	9.5	144.1
Q	8.8	144.8
1/4	8.8	144.8
cb	9.6	144.0
S	8.6	145.0

0+25

S 5.4 148.2

T 153.55

8

cb	5.4	148.2
1/4	5.6	148.0
Q	6.6	147.0
1/4	7.1	146.5
cb	6.8	146.8
N	7.3	146.3
0+50		
N	4.8	148.8
cb	4.0	149.6
1/4	3.9	149.7
Q	3.8	149.8
1/4	3.5	150.1
cb	3.5	150.1
S	3.8	149.8

0+75

S	1.5	152.1
cb	1.2	152.4
1/4	1.6	152.0
Q	1.3	152.3
1/4	1.4	152.2
cb	1.2	152.3
N	1.4	152.2

T.P.

-0.38 153.17

+12.92

T 166.09

T 166.09

1400

N	11.9	154.1
cb	11.9	154.1
1/4	11.4	154.7
¢	11.0	155.1
1/4	11.9	154.1
cb	12.0	154.1
S	12.6	153.5

1450

S	7.8	158.3
cb	7.4	158.7
1/4	7.3	158.8
¢	7.2	158.9
1/4	7.2	158.9
cb	7.3	158.8
N	7.0	159.1

2400

N	0.2	165.9
cb	0.0	166.1
1/4	0.8	165.3
¢	0.7	165.4
1/4	1.0	165.1
cb	0.6	165.5
S	0.8	165.3

T.P. Pipe Patch Corner 1490

+12.37

✓
177.30

-116 164.93

T.P.

+8.07

T 177.30

2425

S	7.8	169.5
cb	7.5	169.8
1/4	7.4	169.9
¢	6.6	170.7
1/4	6.7	170.6
cb	6.9	170.4
N	6.4	170.9

2450

N	2.7	174.6
cb	3.1	174.2
1/4	3.6	173.7
¢	4.0	173.3
1/4	4.4	172.9
cb	4.8	172.5
S	5.0	172.3

2475

S	2.7	174.6
cb	2.3	175.0
1/4	1.7	175.6
¢	1.2	176.1
1/4	0.6	176.7
cb	0.2	177.1
N	0.0	177.3

-0.05 177.25

✓
T 185.32

185.32

3400

N	6.0	179.3
cb	6.6	178.7
1/4	7.2	178.1
♀	7.9	177.5
1/4	8.5	176.8
cb	8.8	176.5
S	9.4	175.9

3425

S	8.3	177.0
cb	7.1	178.2
1/4	6.5	178.8
♀	6.1	179.2
1/4	5.5	179.8
cb	4.8	180.5
N	4.3	181.0

3450

N	3.1	182.2
cb	3.7	181.6
1/4	4.3	181.0
♀	5.1	180.2
1/4	5.6	179.7
cb	6.5	178.8
S	7.5	177.8

3475

S	6.5	178.8
---	-----	-------

10

185.32

cb	5.7	179.6
1/4	4.7	180.6
♀	4.2	181.1
1/4	3.2	182.1
cb	3.6	181.7
N	1.9	183.4

4400

N	0.9	184.4
cb	1.8	183.5
1/4	2.5	182.8
♀	3.3	182.0
1/4	4.4	180.9
cb	5.2	180.1
S	6.1	179.2

4425

S	5.4	179.9
cb	5.2	180.1
1/4	4.1	181.2
♀	3.3	182.0
1/4	2.4	182.9
cb	1.5	183.8
N	0.8	184.5

4450

N	1.3	184.0
cb	2.3	183.0

T 185.32

1/4	3.3	182.0
¢	3.7	181.6
1/4	4.4	180.9
cb	5.1	180.2
S	6.4	178.9
4+75		
S	5.9	179.4
cb	5.2	180.1
1/4	4.5	180.8
¢	3.6	181.7
1/4	2.8	182.5
cb	2.0	182.3
N	1.2	184.1
5+00		
N	1.0	184.3
cb	1.5	183.8
1/4	2.3	183.0
¢	3.3	182.0
1/4	3.8	182.5
cb	4.4	180.9
S	5.3	180.0
5+25		
S	4.7	180.6
cb	3.7	181.6
1/4	3.1	182.2

T 185.32

11

¢	3.1	182.2
1/4	1.5	183.8
cb	1.0	184.3
N	0.5	184.8
5+50		
N	0.0	185.3
cb	0.7	184.6
1/4	1.2	184.1
¢	1.5	183.8
1/4	2.5	182.8
cb	3.0	182.3
S	4.0	181.3
5+75		
S	4.2	181.1
cb	3.4	181.9
1/4	2.6	182.7
¢	2.0	183.3
1/4	1.5	183.8
cb	0.9	184.4
N	0.2	185.1
6+00 = West Line 34"		
N	2.5	182.8
cb	3.2	182.1
1/4	3.8	181.5
¢	4.7	180.6

60' wide
10' cbs
10' #45

∑ 185.32

114	5.3	180.0
cb	5.9	179.4
S	6.8	178.5

West cb 34th

S	8.9	176.4
cb	7.9	177.4
114	7.2	178.1
£	6.8	178.5
114	5.5	179.8
cb	4.9	180.4
N	4.1	181.2

£ 34th

N	6.6	178.7
cb	7.2	178.1
114	8.2	177.1
£	8.7	176.6
114	9.5	175.8
cb	10.6	174.7
S	11.6	173.7

T.P. - 114 173.91

+5.92

∑ 179.83

East cb 34th

S	9.4	170.4
cb	7.7	172.1

∑ 179.83

114	6.7	173.1
£	5.7	174.1
114	5.0	174.8
cb	4.0	175.8
N	3.7	176.1

East Line 34th

N	3.4	176.4
cb	5.5	174.3
114	6.5	173.3
£	7.9	171.9
114	7.1	170.7
cb	10.2	169.6
S	11.9	167.9

T.P. - 13.16 166.67

+0.23 166.90

-12.26 153.64

+0.69 154.33

-12.72 141.61

+368 145.29

B.M. N.E. Mon. 34th + C - 7.40 137.89

137.88

9-4-28

X section C St. 32nd

J.C. Bliss
Northern
Drebert
Rauner

+0 34th

80' wide
14' cbs
13' 1/45

Σ 178.50

B.M. S.W. Mon. 32nd + C.

177.78

+0.72

Σ 178.50

West Line 32nd, +

60' wide
10' cbs
11' 1/45

N- } Existing Return on N.W. Cor
T.C.B.

3.55

174.95

3.67

174.83

3.9

3.6

1.9

2.2

1.2

1.9

2.5

3.9

West Cb 32nd

3.9

3.0

2.4

2.3

2.2

2.1

3.8

4.1

3.64

177.3

174.6

174.6

176.2

174.4

174.86

N

cb

+1

1/4

¢

1/4

cb

S

S

S

cb

1/4

¢

1/2

cb

N

N

cb

1/4

¢

1/4

cb

S

5.3

5.2

3.9

3.6

3.0

3.1

3.4

4.1

4.5

4.7

4.4

4.4

4.7

4.9

5.8

5.8

6.1

6.2

6.3

5.1

5.2

5.9

6.1

173.2

175.5

174.4

174.0

174.1

172.7

172.4

173.4

172.4

West 1/4 32nd

¢ 32nd.

East 1/4 32nd

Plotted 9-15-28 G.B.H.

* 178.50

East cb 32nd

S	6.7	171.8
cb	7.4	
114	7.8	
♀	6.3	172.2
+5	7.6	
114	7.0	
cb	6.7	
N	7.6	170.9

East Line 32nd = 0+00

N	8.5	170.0
cb	7.6	
114	7.7	
♀	8.5	170.0
14	9.4	
cb	9.2	
S	9.2	169.3

0+25

S	11.5	167.0
cb	11.1	
114	11.6	
♀	12.1	166.4
114	13.3	
cb	13.6	
+9	13.5	
N	12.0	166.5

π 178.50

14

0+5	10.0	-12.78	165.72
0+10	10.1		

+1.32

π 167.04

0+50

N	5.6	161.4
cb	5.5	

114	4.9	
-----	-----	--

♀	4.0	163.0
---	-----	-------

114	3.4	
-----	-----	--

cb	2.4	
----	-----	--

S	1.4	165.6
---	-----	-------

0+75

S	3.6	163.4
---	-----	-------

cb	5.3	
----	-----	--

114	5.4	
-----	-----	--

♀	7.0	160.0
---	-----	-------

114	7.7	
-----	-----	--

cb	8.5	
----	-----	--

N	8.8	158.2
---	-----	-------

0+15	9.5	
------	-----	--

1+00

0+15	13.9	
------	------	--

N	13.3	153.7
---	------	-------

Σ 167.04

cb	12.1	
114	10.2	
♀	8.8	158.2
114	8.0	
cb	6.8	
S	5.8	161.2
	142.5	
S	8.0	159.0
cb	8.9	
f 7	8.5	
114	10.2	
♀	11.9	155.1
114	14.6	
cb	17.2	
N	20.0	147.0
Out 15	21.2	
	145.0	
Out 25	30.0	
N	24.6	142.4
cb	19.2	
114	16.2	
♀	13.1	153.3
114	11.4	
cb	11.4	
S	10.4	156.6

Σ 162.04

15

S	12.9	154.1
T.P.		-12.94 154.10
	+0.28	
	Σ 154.38	
cb	1.6	152.8
114	3.3	
♀	5.1	149.3
114	6.7	
cb	8.3	
N	12.1	142.3
Out 25	20.6	
	2+00	
Out 25	22.6	131.8
N	15.2	139.2
cb	13.2	
114	11.1	
♀	9.0	145.4
114	8.1	
cb	6.8	
S	5.4	149.0
	2+25	
S	9.6	144.8
cb	12.0	
T.P.		-12.78 141.60
	0.32	
	Σ 141.92	

✓
T 141.92

1/2	0.5	
¢	1.6	140.3
1/4	3.5	
cb	5.0	
N	70	134.9
Out 25	11.5	
	2+50	
Out 25	14.6	127.3
N	12.6	129.3
cb	10.0	
1/4	8.8	
¢	6.8	135.1
1/4	5.8	
cb	4.1	
S	2.5	139.4
	2+75	
S	8.0	133.1
cb	10.0	
1/4	11.4	
¢	12.0	129.9
1/4	13.0	
cb	14.6	
N	16.6	124.3
Out 25	18.3	

T 141.92

16

3+00

Out 25	22.5	
N	21.4	120.5
cb	20.6	
1/4	19.5	
¢	17.8	124.1
1/4	16.6	
cb	15.5	
S	14.2	127.7
T.P.		-12.78 129.14
	+0.12	
	T 129.26	
	3+25	
S	7.7	121.6
cb	7.3	
1/4	11.5	
¢	13.1	116.2
1/4	14.0	
cb	14.	
N	14.3	115.0
Out 25	16.2	
	3+50	
Out 20	21.4	
N	21.6	107.7
cb	21.1	
1/4	20.9	

129.26

♀	19.6	109.7
1/4	18.0	
cb	14.8	
S	13.4	115.9
T.P		-13.4 116.12

+0.10

116.22

3175

S	7.5	108.7
cb	10.2	
1/4	11.1	
♀	11.5	104.7
1/4	11.6	
cb	11.6	
N	11.7	104.5
Out 20	11.0	
	4100	
Out 20	13.3	
N	13.4	102.8
cb	13.9	
1/4	14.1	
♀	14.9	101.3
1/4	14.7	
cb	15.0	
S	15.0	101.2

116.22

17

Out 20	13.4	
	4125	
Out 20	17.0	
S	15.9	100.3
cb	15.5	
1/4	15.2	
♀	15.1	101.1
1/4	14.5	
cb	14.1	
N	13.7	102.5
Out 20	12.0	

Line of levels for culvert in natural drain that crosses North line of C at 4110 and south line at

4125	
0+00	14.9
0+20 = N. line C st.	15.7
0+50	15.3
0+75	15.5
1+04 = South line C st.	16.3
1+25	17.0

4137

Out 20	16.2	
S	15.9	100.3

T 11622

cb	15.6	
1/4	15.3	
¢	15.2	101.0
1/4	14.7	
cb	13.7	
N	13.3	102.9
Out 20	12.6	
	4+50	
Out 20	7.5	
N	8.5	107.7
cb	9.7	
1/4	10.2	
¢	11.5	104.7
1/4	12.6	
cb	14.8	
5	15.6	100.6
Out 20	16.3	
	4+75	
Out 20	15.8	
5	12.3	103.9
cb	9.4	
1/4	6.9	
¢	5.7	110.5
1/4	4.9	
cb	3.5	

T 116.27

18

1	2.3	113.9
Out 20	1.9	
	5+00	
N	0.0	116.2
cb	0.5	
1/4	1.3	
¢	2.8	113.4
1/4	4.7	
cb	7.6	
5	9.8	106.4
Out 20	11.5	
	5+25	
Out 20	6.1	
5	5.7	110.5
cb	4.3	
1/4	2.5	
¢	11	115.1
T.M.		- 0.17 116.05
	13.00	
	T 129.05	
1/4	11.8	
cb	10.2	
N	9.1	120.0
	5+50	
N	8.3	120.8

129.05

cb	98	
114	11.3	
¢	124	116.7
114	13.5	
cb	15.2	
S	15.2	113.9
Out 20	158	

5475

Out 20	13.9	
S	13.2	115.9
cb	12.7	
114	11.8	
¢	11.0	118.1
114	9.9	
cb	7.1	
N	7.6	121.5

6400 - West Line 33rd

N	7.6	121.5
cb	8.6	
114	8.9	
¢	9.6	119.5
114	10.5	
cb	11.0	
S	11.6	117.5

129.05

19

East Line 33rd - 0+00

\$	7.2	121.9
cb	5.9	
114	4.9	
¢	4.0	125.1
114	3.3	
cb	3.0	
N	3.0	126.1
T.P		101 128.04

41330

141.34

0+25

N	14.9	129.4
cb	12.6	
114	13.1	
¢	13.7	127.6
114	14.7	
cb	15.6	
S	16.9	124.4

0+50

Out 10	16.5	
S	15.5	125.8
cb	13.8	
114	17.8	
¢	12.1	129.2
114	10.9	

115
π 141.34

cb	10.1	
N	8.9	132.4
	0+75	
N	6.0	135.3
cb	7.3	
114	8.4	
£	9.6	131.7
114	10.2	
cb	12.0	
S	13.4	127.9
Out 10	14.6	
	1+00	
Out 15	13.8	
S	12.0	129.3
cb	10.5	
114	8.8	
£	7.7	133.6
114	5.9	
cb	4.5	
N	3.3	138.0
	1+25	
N	1.3	140.0
cb	2.6	
114	4.2	
£	6.1	135.2

20

π 141.34

114	2.6	
cb	9.0	
S	10.9	130.4
Out 20	12.8	
	1+50	
Out 20	12.0	
S	10.6	130.7
cb	8.3	
114	6.6	
£	4.7	136.6
114	2.8	
cb	0.6	
T.P		-0.4 140.0
	+13.20	
	π 154.10	
N	11.7	142.4
	1+75	
N	11.0	143.1
cb	12.8	
114	14.4	
£	16.2	137.9
114	18.0	
cb	20.3	
S	21.7	132.4
Out 20	23.2	

π 154.10

2+00

Out 20	23.5	
S	21.7	132.4
cb	19.5	
114	17.5	
⊕	15.1	39.0
114	13.7	
cb	11.8	
π	9.9	144.2

2+25

N	8.5	145.6
cb	10.6	
114	12.4	
⊕	14.2	139.9
114	16.4	
cb	18.6	
S	20.6	133.5
Out 20	23.6	

2+50

Out 20	21.8	
S	19.4	134.7
cb	17.4	
114	15.1	
⊕	13.2	140.9
114	11.2	

π 154.10

21

cb	9.1	
N	7.3	156.8
	2+75	

N	5.4	148.7
cb	7.7	
114	9.7	
⊕	11.0	143.1
114	12.9	
cb	14.9	
S	17.4	136.7

Out 20

21.6

3+00

Out 20	20.3	
S	16.8	137.3
cb	14.0	
114	11.2	
⊕	9.3	144.8
114	7.1	
cb	4.8	

N	2.4	151.7
---	-----	-------

3+50

N	0.3	153.8
cb	2.7	
114	5.2	
⊕	8.1	146.0

T 154.10

114	10.2	
cb	12.8	
S	15.3	138.8
Out 20	19.0	
	3+75	
Out 20	18.9	
S	14.9	139.3
cb	12.8	
114	10.5	
£	8.1	146.0
114	5.7	
cb	2.6	
N	0.0	154.1
	4+00	
N	0.2	153.9
cb	2.9	
114	7.0	
£	9.0	145.1
114	11.1	
cb	13.5	
S	16.0	138.1
Out 20	19.1	
	4+25	
Out 20	20.2	
S	17.9	136.2

22

T 154.10

cb	15.0	
114	12.0	
£	9.7	144.4
114	7.2	
cb	4.6	
N	2.6	151.5
	4+25	
N	5.0	149.1 ✓
cb	6.9	
114	9.3	
£	11.4	142.7
114	13.2	
cb	15.3	
S	17.9	136.2
Out 20	20.8	
	4+50	
Out 20	21.2	
S	18.6	135.5
cb	16.5	
114	14.4	
£	13.3	140.8
114	12.0	
cb	10.0	
N	8.1	146.0

154.10

475

X	10.3	143.8
cb	12.2	
114	13.3	
¢	15.0	139.1
114	16.3	
cb	18.0	
S	19.6	134.5
Out 20	22.9	

5700

Out 20	25.2	
S	22.3	131.8
cb	20.1	
114	18.4	
¢	17.1	137.0
114	15.9	
cb	14.6	
N	12.6	141.5
T.P.		-12.77 146.33

+ 0.30

X 141.63

5725

X	1.5	140.1
cb	3.1	
114	4.9	
¢	6.6	135.0

141.63

23

114	8.1	
cb	9.8	
S	11.4	130.2
Out 20	14.0	

5750

Out 20	16.1	
S	13.9	127.7
cb	12.4	
114	11.0	
¢	9.9	131.7
114	8.3	
cb	6.9	
N	5.1	136.5

5775

Out 15	9.2	
N	11.1	130.5
cb	11.7	
114	12.3	
¢	13.6	128.0
114	14.8	
cb	16.2	
S	12.4	124.2
Out 20	19.3	

6700 - West Line 34th

Out 20	22.6	
--------	------	--

T 141.63

S	21.4	120.2
cb	19.1	
1/4	18.0	
¢	16.2	125.4
1/4	14.3	
cb	12.3	
N	10.5	131.1

Levels in natural drain crossing North line
of C at 5+85 & South Line 6+00.

0+00	9.6	132.03
0+20 North Line	12.3	129.33
0+40	14.4	127.23
0+60	17.1	124.53
0+80	19.1	122.23
1+00 South Line	21.6	120.03
1+20	22.6	119.03

West cb 34th

0+20	22.3	
S	19.9	121.7
cb	17.6	
1/4	15.6	
¢	13.8	127.8
1/4	12.0	

T 141.63

24

cb	10.5	
1/4	8.3	133.3
West 1/4 34 th		
X	6.9	134.7
cb	9.4	
1/4	11.0	
¢	13.0	128.6
1/4	14.3	
cb	16.5	
S	18.8	122.8
¢ 34 th		
S	18.4	123.2
cb	16.1	
1/4	14.0	
¢	12.1	129.5
1/4	11.1	
cb	9.3	
X	7.5	134.1
East 1/4 34 th		
N	5.5	136.1
cb	7.5	
1/4	9.5	
¢	11.0	130.6
1/4	12.6	
cb	14.4	

141.63

S	16.6	125.0
East cb 34 th		
S	15.9	125.7
cb	13.6	
1/4	11.7	
¢	10.1	131.5
1/4	7.7	
cb	6.1	
N	5.0	136.6
East line 34 th		
N	3.9	137.7
cb	5.6	
1/4	7.1	
¢	9.0	132.6
1/4	10.5	
cd	12.6	
S	14.6	127.0
B.M. N.E. Mon 34 th + c	-3.70	137.93
		137.88

9-5-28 X-section Broadway - 32nd
 J.C. Bliss to 34th St. 80' wide
 Drebert 14' cbs
 Rouner 13' 1/2

25

B.M. S.W. Mon 32nd + c	177.78	177.78
+ 0.13	177.91	
+ 0.71		
T 166.35		
West Line 32nd		
N	3.2	163.1
cb	4.3	162.0
1/4	5.0	
¢	5.4	161.0
1/4	6.1	
cb	6.4	
S	7.4	159.0
West cb 32nd		
S	8.3	158.1
cb	7.5	
1/4	8.6	
¢	7.3	159.1
1/4	6.1	
cb	6.1	
N	5.1	161.3
West 1/4 32nd		
N	6.4	160.0
cb	7.4	
1/4	8.4	

Plotted 9-17-28 - GEN

T 166.35

¢	9.4	157.0
14	10.6	
cb	12.3	
S	12.3	153.1
	¢ 32nd	
S	-17.1	149.9
cb	15.4	
14	13.0	
¢	10.7	155.7
14	9.5	
cb	8.9	
N	8.2	158.2
M.H. at Intersection of ¢S of 32nd & Broadway.		
Shot on Flowline	18.15	148.20
	East 14 32nd	
N	10.7	155.7
cb	11.7	
14	12.7	
¢	13.7	152.7
14	14.4	
cb	15.7	
S	16.4	150.0
	East cb + 2	
S	16.8	149.6
cb	15.5	

166.35

26

14	14.5	
¢	13.3	153.1
14	12.0	
cb	11.1	
N	10.4	156.0
T.P.		-12.89 153.46
	1022	
	T 153.68	
	East Line 32nd 0+00	
N	0.0	153.7
cb	1.3	
14	1.7	
¢	3.1	150.6
14	3.8	
cb	4.6	
S	6.0	147.7
	0+25	
S	13.2	140.5
cb	11.3	
14	10.6	
¢	10.6	143.1
14	8.7	
cb	6.7	
N	5.7	148.0
T.P.		-13.14 140.54
	10.00	
	T 140.54	

140.54

0450

N	0.6	139.9
cb	1.9	
14	2.8	
£	3.1	137.4
14	3.7	
cb	5.1	
S	6.3	134.2
Out 15	9.4	

0475

Out 15	12.9	
S	12.0	128.5
cb	10.5	
14	10.3	
£	9.7	130.8
14	7.6	
cb	5.9	
N	5.2	135.3

1400

N	7.8	132.7
cb	9.6	
14	11.2	
£	11.7	128.8
14	12.8	
cb	14.0	
S	16.3	124.2

140.54

27

Out 15	17.6	
1425		
Out 15	27.4	
S	20.4	120.1
cb	18.5	
14	16.2	
£	14.6	125.9
14	11.3	
cb	8.8	
N	6.4	134.1

1450

N	4.5	136.0
cb	6.6	
14	8.1	
£	10.3	130.2
14	13.1	
cb	15.7	
S	19.3	121.2
Out 15	22.4	

1475

Out 15	21.8	
S	18.8	121.7
cb	15.7	
14	13.0	
£	10.8	129.7

Σ 140.54

1/4	8.0	
cb	5.6	
N	2.9	137.6
Σ 140.1		
N	1.8	138.7
cb	4.5	
1/4	7.4	
φ	10.6	129.9
1/4	13.4	
cb	14.8	
S	17.0	123.5
Out 15	20.2	

Note - At station 2+18 on the south 1/4 line of Broadway there is an air valve for 30" water main that runs along Broadway

Σ 2+25		
Out 15	20.2	
S	17.8	122.7
cb	16.3	
1/4	13.9	
φ	11.1	129.5
1/4	7.8	
cb	4.6	
N	2.2	138.3

28

Σ 140.54

Σ 2+50		
N	4.6	135.9
cb	8.1	
1/4	10.8	
φ	13.0	127.5
1/4	14.4	
cb	17.9	
S	19.6	120.9
Out 15	22.5	
Σ 2+75		
Out 15	23.3	
S	21.4	119.1
φ 10	20.7	
cb	19.5	
1/4	16.9	
φ	15.6	124.9
1/4	12.8	
cb	10.9	
N	7.8	132.7
Σ 3+00		
N	10.9	129.6
cb	13.3	
T.P		-12.93 127.60
Σ 3+25		
Σ 127.66		
1/4	2.2	

π 127.66

¢	4.6	123.1
14	6.2	
cb	8.2	
+2	9.5	
S	10.3	117.4
Out 15	12.3	
3+25		
Out 15	15.1	
S	13.2	114.5
+12	12.1	
cb	10.6	
14	8.8	
¢	7.5	120.2
14	5.6	
cb	3.3	
N	1.0	126.7
3+50		
N	4.9	122.8
cb	7.2	
14	8.8	
¢	11.3	116.4
14	12.7	
+6	13.0	
+9	14.9	
cb	15.5	

π 127.66

29

S	16.7	111.5
Out 10	15.5	
T.P.		-126.1
	0.30	115.05 ⁶
π 115.35 ⁶		
3+75		
Out 10	6.3	
S	6.4	109.0
cb	6.0	
+6	5.3	
+8	4.0	
114	3.5	
¢	2.6	112.8
14	1.1	
cb	0.0	
N	2.0	113.4
4+00		
Out 30	14.0	
N	11.6	103.8
cb	9.5	
14	8.3	
¢	8.8	106.6
14	11.3	
cb	12.2	
S	11.8	103.6

π 115.35

Out 15.	12.7	-13.22	102.13 ⁴
005			
	π 102.18 ⁹		
	4+25		
	6.5		
Out 15			
S	5.0	97.2	
cb	3.5		
+ 8 - Shot on Tapog, exposed 30"	39.5		
1/4	4.4		
+4	2.8		
♀	3.3	98.9	
1/4	4.4		
cb	5.3		
N	5.1	97.1	
Out 20	6.1		
	ff 50		
Out 30	8.0		
N	7.3	92.9	
cb	7.1		
1/4	7.3		
♀	7.0	93.2	
1/4	8.8		
cb	8.6		
S	10.6	91.6	
15 out	11.6		

π 102.18

30

4+75

Out 20	11.9		
S	12.1	90.1	
+10	10.5		
cb	10.2		
1/4	9.4		
♀	10.2	92.0	
1/4	9.4		
cb	7.0		
N	8.7	93.3	
Out 20	8.5		
T.P.		-5.32	96.86 ⁷
	+8.05		
	π 104.91 ²		
	5+00		
Out 20	11.5		
N	11.1	93.0	
cb	11.9		
1/4	12.5		
♀	12.2	92.2	
1/4	13.6		
+2 ON Tap 30" Water Main	13.64	91.29	
cb	13.8		
S	14.6	90.3	
Out 20	15.0		
	5+25		
Out 20	15.1		

T 104.91

S	14.5	90.4
cb	14.1	
+6	13.9	
+11	11.7	
114	11.5	
+3	12.9	
⊥	12.6	92.3
114	12.5	
cb	12.2	
N	12.1	92.8
Out 20	11.8	

5+50

out 20	7.1	
N	8.3	96.6
cb	9.0	
114	9.2	
⊥	10.4	94.5
114	18.6	
+2 - 07 top 30" water main	9.08	95.94
+4	10.6	
cb	11.6	
S	12.0	92.9
Out 20	11.7	

5+75

Out 20

9.4

T 104.91

31

S	3.4	101.5
cb	2.8	
114	4.0	
+6	3.1	
⊥	3.8	101.1
114	1.7	
cb	1.9	
N	2.1	102.8
Out 20	1.7	
T.P.		-0.14

6.91

T 111.69

5+85

Out 15.	6.5	
N	6.9	104.8
cb	5.5	
114	5.7	
⊥	6.5	105.2
114	7.9	
+6	7.1	
cb	6.5	
S	6.7	105.0
Out 15	6.9	

6+10 = West line 33rd

S

5.3

106.4

111.68

cb	5.6	
114	5.5	
£	5.4	106.3
114	5.2	
cb	4.9	
N	4.8	106.9

B. M. N. W. Mon 33rd & Broadway -5.03 106.65⁶
 → 106.55

+5.03

111.58

East Line 33rd = 0700

N	3.7	107.9
cb	3.7	
114	4.2	
£	5.1	106.5
114	5.6	
+6	5.1	
cb	5.8	
S	6.1	105.5
0+25		
S	5.9	105.7
cb	5.2	
+7	4.5	
114	5.0	
£	4.3	107.3

111.58

32

114	4.0	
cb	3.6	
N	3.0	108.6

Note. Exposed air valve for 30' watermain at
 10+30 and 25' from South Line of Broadway

0+50

N	3.6	108.0
cb	4.2	
114	4.5	
£	4.8	106.8
114	5.1	
cb	5.3	
S	5.8	105.8

Note - At 0+55 to 0+76 on south side there is
 a concrete double garage

Shot on dirt floor 6.10 105.48

0+75

S	7.0	104.6
cb	6.3	
114	6.2	
£	6.0	105.6
114	5.5	
cb	5.5	
N	4.7	106.9

111.58

1+00

A	5.1	106.5
CB	6.0	
114	6.3	
Q	7.2	104.4
114	6.9	
16	6.7	
CB	7.0	
S	8.1	103.5

1+25

S	8.3	103.3
CB	7.4	
114	7.0	
Q	7.0	104.6
45	8.0	
114	5.9	
CB	6.0	
N	5.4	106.2

1+50

N	6.0	105.6
CB	6.2	
114	6.0	
48	6.4	
Q	6.9	104.7
114	7.2	
CB	7.7	
S	7.8	103.8

111.58

1+75

S	7.9	103.7
110	7.6	
CB	7.3	
114	7.7	
Q	7.7	103.9
46	7.0	
114	6.6	
CB	6.6	
N	6.1	104.9

2+00

N	8.0	103.6
CB	7.9	
114	7.6	
Q	8.8	102.8
114	8.0	
CB	7.7	
S	2.8	103.8

2+25

S	8.1	103.5
CB	8.1	
114	8.9	
Q	9.1	101.9
114	9.9	
CB	9.0	
N	9.1	102.5

33

T 111.58

T.P.

+ 3.49

- 9.41 102.17

T 115.66

2+50

N	3.0	102.7
cb	3.6	
14	4.2	
♀	4.3	101.4
14	3.6	
+7	3.0	
cb	2.9	
S	3.0	102.7
2+75		
S	3.2	102.5
cb	3.5	
14	4.0	
♀	4.7	101.0
14	5.0	
cb	3.7	
+10	3.3	
N	1.8	103.9

Note - Beginning at station 2+85 on
the north side of Broadway and extending to
2+50 there is a row of 5' 20" Pepper trees
10' from the North line of Broadway

T 105.66

34

3+00

N	2.5	103.2
+3	3.8	
cb	4.2	
14	5.1	
♀	4.7	101.0
14	4.5	
cb	4.0	
S	3.8	101.9
3+25		
S	3.9	101.8
cb	4.3	
14	4.8	
♀	5.2	100.5
14	5.2	
cb	4.6	
+11	3.9	
N	2.4	103.3
Note M.H. at 3+30 on Q Broadway		
Shot on Flankline	12.00	89.66
3+50		
N	3.5	102.2
cb	4.5	
14	5.3	
♀	4.9	100.8
14	5.6	
cb	5.1	

T 105.66

S	4.7	101.0
3+75		
S	5.0	100.7
cb	5.4	
1/4	5.5	
⊥	5.3	100.4
1/4	5.2	
cb	4.5	
N	4.0	101.7
4+00		
N	3.6	102.1
cb	3.7	
1/4	4.7	
⊥	5.2	100.5
1/4	5.7	
cb	5.5	
S	5.8	99.9
4+25		
S	6.4	99.3
cb	5.7	
1/4	5.7	
⊥	4.7	101.0
1/4	4.3	
cb	3.7	
N	3.8	101.9

T 105.66

35

4+50

N	4.5	101.2
cb	4.1	
1/4	4.7	
⊥	4.4	101.3
1/4	5.5	
cb	5.9	
S	6.6	99.1
4+75		
S	6.7	99.0
cb	6.3	
1/4	6.1	
⊥	5.1	100.6
1/4	5.7	
cb	5.0	
N	5.0	100.7
5+00		
N	5.8	99.9
cb	5.9	
1/4	6.6	
⊥	6.4	99.3
1/4	7.0	
cb	7.3	
S	7.6	98.1

π 10566

5425

S	9.0	96.7
cb	8.5	
114	7.8	
¢	7.2	98.5
114	7.3	
cb	6.6	
N	6.2	99.5

5450

N	6.1	99.6
cb	6.6	
114	7.0	
¢	7.2	98.5
114	8.6	
cb	9.0	
S	10.0	95.7

5475

S	10.0	95.7
cb	7.1	
114	8.3	
¢	7.6	98.1
114	7.2	
cb	6.4	
N	6.0	99.7

8.1

π 10566

36

60' wide
10' c b 3
10' 114's

6+100 = West Line 34th

N	6.0	99.7
cb	7.1	
114	7.8	
¢	7.8	97.9
114	8.6	
cb	9.5	
S	10.6	95.1

West c.b. 34th

S	10.7	95.0
cb	9.7	
114	9.2	
¢	7.8	97.9
114	8.0	
cb	7.0	
N	6.3	99.4

¢ 34th

N	6.5	99.2
cb	7.2	
114	8.0	
¢	8.6	97.1
114	7.9	
cb	10.4	
S	12.3	93.4

Note - M/H at intersection of ¢s of Broadway & 34th

Shot on Flowline 15.17 89.89

T 10566

East cb 34th

S	13.2	92.5
cb	11.3	
1/4	9.7	
¢	9.1	96.6
1/4	7.9	
cb	7.6	
N	6.9	98.8

East Line 34th

N	6.8	98.9
cb	8.2	
1/4	8.2	
¢	9.3	96.4
1/4	10.3	
cb	12.0	
S	14.2	90.5

B.M. N. E. Mon 34th + Brdway -6.32 → 99.34
 → 99.26

9-6-28
 J.C. Bliss
 Probert
 Rouner

X section Est 32nd to
 33rd

80' wide
 14' cbs
 13' 1/45

37

B.M. S.W. Mon. 32nd + F		94.16
+11.99	106.15	
T.P.		-1.27
+8.21		

T 113.09

West Line 32nd

S	7.0	106.1
cb	5.5	
1/4	3.5	
¢	3.1	110.0
1/4	2.5	
cb	1.8	
N	0.2	112.9

West cb. 32nd

N	0.0	113.1
cb	1.3	
1/4	2.4	
¢	3.4	109.7
1/4	4.4	
cb	5.6	
S	6.8	106.3

West 1/4 + 3 32nd

S	7.0	106.1
cb	5.9	
1/4	4.9	

Plotted 9-17-28 - C.B.H.

π 113.09

⊕	3.8	109.3
1/4	2.9	
cb	1.6	
N	0.3	112.8
⊕ 32nd		
N	2.1	111.0
cb	3.8	
1/4	5.0	
⊕	5.8	107.3
1/4	7.2	
cb	8.3	
S	9.0	104.1
East 1/4 32nd		
S	10.9	102.2
cb	9.4	
1/4	8.2	
⊕	6.8	106.3
1/4	5.9	
cb	5.0	
N	5.2	107.9
East cb 32nd		
N	5.6	107.5
cb	6.8	
1/4	8.0	
⊕	8.9	104.2

π 113.09

38

1/4	9.9	
cb	10.5	
S	11.3	101.8
East Line 32nd = 0+00		
S	12.2	100.9
cb	11.6	
1/4	11.0	
⊕	10.1	103.0
1/4	9.2	
cb	8.2	
N	6.2	106.9
0+25		
N	9.4	103.7
cb	11.6	
1/4	12.4	
⊕	13.1	100.0
1/4	13.8	
cb	14.4	
S	15.2	97.9
0+10	16.0	
+ 174		
* 101.56		
0+50		
- 13.27		99.82
0+10	5.7	

$\bar{\pi}$ 101.56

S	6.0	95.6
cb	5.8	
1/4	5.1	
♀	4.3	97.3
1/4	3.4	
cb	2.5	
N	0.0	101.6
	0+7.5	
N	2.8	98.8
cb	4.7	
1/4	6.4	
♀	6.9	94.7
1/4	7.6	
cb	7.6	
S	7.5	94.1
Out 10	7.5	
	1+00	
Out 10	9.0	
S	8.9	92.7
cb	9.1	
1/4	9.3	
♀	8.9	92.7
1/4	7.9	
cb	6.9	
N	5.9	95.7

 $\bar{\pi}$ 101.56

39

Note - concrete drive to North line at

0+80 - On drive	3.49	98.07 ✓
	1+25	
N	6.9	94.7
cb	8.0	
1/4	8.9	
♀	10.1	91.5
1/4	10.2	
cb	10.6	
B	11.0	90.6
Out 10	10.7	
	1+50	
Out 10	12.0	
S	12.1	89.5
cb	11.7	
1/4	11.4	
♀	10.6	91.0
1/4	10.4	
cb	9.1	
N	8.4	93.2
	1+75	
N	8.6	93.0
cb	9.7	
1/4	10.9	
♀	11.8	89.8
1/4	12.6	

π 101.56

cb	13.2	
S	13.9	87.7
Out 10	13.7	
	2+00	
Out 10	15.0	
S	13.6	88.0
cb	13.5	
14	12.2	
£	11.5	90.1
14	10.5	
cb	9.7	
N	8.6	93.0
	2+25	
N	8.7	92.9
cb	9.6	
14	10.5	
£	11.1	90.5
14	12.0	
cb	13.5	
S	15.0	86.6
Out 10	16.0	
	2+50	
Out 10	17.5	
S	12.5	85.1
cb	15.0	

40

π 101.56

14	13.9	
£	12.6	89.0
14	11.5	
cb	10.7	
N	10.2	91.4
T.P		-13.00 88.56
	+16+	
	π 90.20	
	2+75	
N	13	88.9
cb	1.9	
14	2.8	
£	3.7	87.5
14	4.5	
cb	5.9	
S	7.3	82.9
Out 10	7.5	
	3+00	
Out 10	8.3	
S	7.5	82.7
cb	5.7	
14	4.5	
£	4.0	86.2
14	4.0	
cb	4.0	

π 90.20

N	4.3	85.9
Out 10	5.0	
	3+25	
Out 15	9.3	
N	8.8	81.4
cb	5.3	
1/4	4.3	
£	5.4	84.8
1/4	6.9	
cb	8.7	
S	10.8	79.4
Out 15	11.5	
	3+50	
Out 15	12.0	
S	12.0	78.2
cb	11.9	
1/4	10.5	
f 11	10.1	
£	8.0	88.2
1/4	6.3	
f 4	6.4	
f 5	11.0	
cb	10.3	
N	9.6	80.6
Out 15	9.4	

π 90.20

41

	3+63	
Out 20	9.3	
N	9.9	80.3
cb	9.8	
f 7	11.0	
1/4	10.0	
£	10.7	79.5
1/4	11.1	
cb	12.0	
S	11.1	79.1
Out 20	11.2	
	4+00	
Out 20	12.0	
S	12.0	78.2
cb	10.7	
1/4	10.7	
£	10.5	79.7
1/4	10.3	
cb	10.1	
N	9.6	80.6
Out 20	9.4	
	4+22	
Out 15	7.7	
N	7.9	82.3
cb	8.8	
1/4	9.8	

Σ 90.20

£	10.9	79.3
114	4.1	
cb	11.2	
S	7.4	80.8
Out 10	8.0	
T.P		-203 88.17

+ 840

Σ 96.57

4450

S	5.3	91.3
cb	7.5	
114	5.6	
114	6.6	
£	6.8	89.8
114	7.4	
cb	8.8	
N	10.2	86.4
Out 10	9.5	

4463

N	3.1	93.5
cb	2.5	
114	2.1	
£	3.0	93.6
114	3.9	
cb	4.2	

Σ 96.57

42

S	4.1	92.5
5+00		
S	4.0	92.6
cb	2.6	
114	2.2	
£	1.4	95.2
114	1.3	
cb	1.2	
N	0.8	95.8

5+25

N	2.2	94.4
cb	2.0	
114	2.1	
£	2.5	94.1
114	3.2	
cb	4.0	
S	4.4	92.2

Note: 16" Acacia tree at 5+30 - 10' S of T.P.
South line of E

5+50

S	5.4	91.2
cb	5.0	
114	4.2	
+5 - Top Exposed at Water Main	4.0	
£	3.9	92.1

96.57

14	3.6	
cb	3.8	
N	3.5	931
5725		
N	4.3	923
cb	4.3	
14	4.5	
1/4	5.2	914
1/4	5.5	
cb	5.8	
S	5.7	909
Note - 12" Olive Tree at station 5190		
10' from South line of E		
6+00 = West line 33rd		
S	6.0	906
cb	5.7	
14	5.4	
1/4	5.4	91.2
1/4	5.2	
cb	5.2	
N	4.8	91.8
T.P.		-3.66 92.91
+1.78	94.69	
B.M. N.E. Mon 33rd + F	-5.10	89.59
		89.58

9-7-28 X section Lemon Grove Blvd.
 J.C. Bliss 33rd to 34th 70' wide
 Drebert 10' ebs
 Rauner 12 1/2' 1/4s

43

B.M. N.E. Mon. 33rd + F Sts. 89.58
 +7.65

97.23

East line 33rd = 0+00

S	5.2	920
cb	4.9	
1/2	6.2	
1/4	5.8	
1/4	5.0	922
1/4	5.2	
1/5	5.5	
1/6	4.6	
cb	4.7	
1	4.8	924
0+25		
A	4.2	93.0
cb	4.2	
1/4	4.6	
1/4	5.1	921
1/4	5.5	
1/9	5.6	
cb	5.0	
S	4.9	923
0+50		
S	4.4	92.8

Sec 44rd
 Platted 9-17-20 C.B.H.

11
π 97.23

cb	4.8	
+3	5.8	
114	5.0	
⊕	5.0	92.2
114	4.4	
4.5	4.6	
cb	3.2	
N	3.4	93.8
	0+15	
N	3.0	94.2
cb	3.2	
+3	4.0	
114	4.0	
⊕	4.9	92.3
114	4.7	
+7	5.6	
cb	4.7	
S	4.7	92.5
	1+05	
S	4.7	92.5
cb	4.5	
+3	4.8	
114	4.6	
⊕	4.5	92.7
114	3.3	
cb	2.9	

π 97.23

44

N	2.2	95.0
	1+08	
N	1.0	96.2
+7	1.7	
cb	2.7	
114	3.2	
⊕	4.6	92.6
114	4.7	
+9	4.6	
cb	4.4	
S	4.7	92.5
	1+25	
S	4.5	92.7
cb	4.5	
+3	4.9	
114	4.5	
⊕	4.6	92.6
114	3.3	
cb	1.8	
N	1.2	96.0
	1+50	
N	1.2	96.0
cb	1.9	
+2	2.9	
114	3.3	

197.23

¢	4.8	92.4
114	4.8	
+ 9	5.2	
cb	4.9	
5	4.9	92.3
1475		
5	5.5	91.7
cb	5.4	
+ 3	5.6	
114	5.0	
¢	5.3	91.9
114	3.8	
+ 4	3.6	
49	1.9	
cb	1.8	
1	1.5	95.7
2400		
N	2.0	95.2
cb	2.3	
114	4.3	
¢	6.5	90.7
114	6.5	
cb	6.8	
5	6.5	90.7

197.23

45

2425		
S	8.2	89.0
cb	8.2	
114	7.9	
¢	8.2	89.0
114	5.9	
cb	1.2	
1	0.9	96.3
2450		
N	1.5	95.7
cb	1.9	
114	6.6	
¢6	9.4	
¢	9.7	87.5
114	7.8	
+ 8	10.1	
cb	9.3	
5	9.4	87.8
2475		
5	11.0	86.2
cb	11.4	
114	11.3	
¢	11.2	86.0
114	9.1	
cb	2.7	
N	2.4	94.8

Σ 97.23

3+00

N	3.2	9.40
cb	3.8	
+3	4.1	
114	9.1	
+1	11.0	
κ	13.3	83.9
114	13.1	
48	13.6	
cb	13.2	
S	13.3	83.9

3+25

S	14.9	82.3
cb	14.5	
114	14.9	
κ	14.9	82.3
114	14.0	
12	13.0	
+3	10.0	
cb	7.6	
N	5.9	91.3
T.P.		-10.78 86.45

+0.11

Σ 86.56

3+50

N	0.0	86.6
cb	1.5	

Σ 96.56

46

114	5.0	
κ	5.4	81.2
114	5.5	
cb	5.5	
+5	5.7	
S	7.7	78.9
Out 10	11.9	
Out 20	12.5	
Note M.H. at Sta. 3+30 on κ L. G. Blvd		
Shot on Flowline	12.40	74.16

3+53

Out 10	12.9	
S	12.0	74.6
cb	5.8	
114	5.8	
κ	5.8	80.8
114	5.1	
cb	3.8	
N	2.8	83.8
3+75		
N	6.8	79.8
cb	7.2	
114	7.0	
κ	7.5	79.1
114	7.5	

T 86.56

+ 7	7.8	
cb	10.0	
\$	13.4	73.2
Out 10	14.3	
	4+00	
Out 10	15.7	
S	15.0	71.6
cb	12.6	
+ 5	9.4	
114	9.4	
\$	9.3	77.3
114	10.0	
cb	10.7	
N	10.8	75.8
	4+25	
N	13.0	73.6
cb	12.1	
114	11.8	
\$	11.0	75.6
114	11.0	
+ 7	11.4	
cb	14.1	
+ 3	15.8	
S	16.5	70.1
Out 10	17.1	

T 86.56

47

T.P

+ 0.23

-12.21 74.35

	T 74.58	
	4+50	
Out 10	5.5	
S	4.9	69.7
cb	3.7	
+ 5	14	
114	1.0	
\$	0.8	73.8
114	1.5	
cb	2.5	
N	2.8	71.8
	4+75	
N	4.0	70.6
cb	4.1	
114	2.7	
\$	2.2	72.4
114	2.5	
+ 5	2.6	
cb	4.9	
S	6.0	68.6
Out 10	6.2	

74.58

5+00

Out 10	6.7	
S	6.4	68.2
+5	6.0	
cb	4.6	
1/4	4.0	
£	3.8	70.8
1/4	3.9	
cb	4.1	
N	4.6	70.0
5+25		
N	5.4	69.2
cb	5.3	
1/4	5.8	
£	5.7	68.9
1/4	6.2	
1/4	6.5	
+5	5.4	
cb	5.6	
S	6.8	67.8
5+50		
S	7.3	67.3
cb	6.9	
+5	6.7	
+7	7.8	
1/4	8.0	

48

74.58

£	7.7	66.9
1/4	7.4	
cb	6.7	
N	6.5	68.1
5.67		
N	7.6	67.0
cb	7.8	
1/4	7.1	
£	7.4	65.2
1/4	7.7	
£3	7.8	
+5	9.0	
cb	7.8	
S	8.0	66.6
5+74		
S	8.6	66.0
+5	8.8	
cb	11.9	
1/4	11.0	
£	10.2	64.4
1/4	9.9	
cb	8.0	
N	7.6	67.0
5+75 = Existing Return + Payment on Sully		
N	7.7	66.9

T 74.58

Cb	8.0	
1/4	9.8	
♀	10.2	64.4
1/4	11.1	
G	12.53	62.05
Top	11.91	62.67
S	12.0	62.6

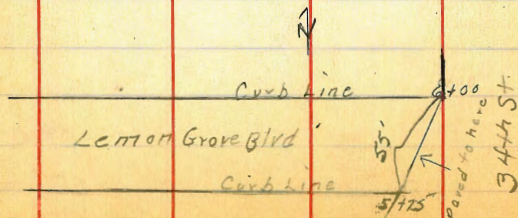
Section along pavement from 5775 on

South to 6+00 on North - See sketch - this page

S	12.0	✓
Top	11.91	✓
Gutter	12.53	✓
1/4	11.96	
♀	11.72	62.86
1/4	11.85	
Gutter	12.24	62.84
Top	11.69	62.89
A	10.7	63.9

B.M. S.E. Top Midvant Lemon Grove Blvd + 34th - 11.56

63.02
63.04



9-7-28 Cross-section Benesch Ave
J.C. Bliss
Drebert from 33rd to 34th St.
Rauner Divided as shown in sketch on Page 50

49

B.M. N.E. Mon. 33rd + P. 89.58

+ 9.91

T 99.55

0+00 = East Line 33rd St.

N	3.4	96.2
A	4.1	
B	4.6	
C	5.2	
D	6.4	
+7=5	5.3	94.3
	0+25	
S	4.3	95.3
+7.25=D	4.2	
C	4.2	
B	3.9	
A	3.6	
N	3.1	96.5
	0+50	
N	2.5	97.1
A	2.8	
B	3.5	
C	3.4	
D	4.0	
+7.5=5	4.2	95.4

Plotted 9-17-28 - C.B.H.

T 74.58

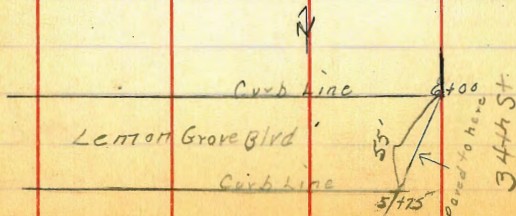
Cb	80	
1/4	9.8	
♀	10.2	64.4
1/4	11.1	
G	12.53	62.05
Top	11.91	62.67
S	12.0	62.6

Section along pavement from 5775 on

South to 6+00 on North - See sketch - this page

S	12.0	✓
Top	11.91	✓
Gutter	12.53	✓
1/4	11.96	
♀	11.72	62.86
1/4	11.85	
Gutter	12.24	62.84
Top	11.69	62.89
A	10.7	63.9

B.M. S.E. Top Midway Lemon Grove Blvd + 34th -11.56 → 63.02
 ↘ 63.04



9-7-28 Cross-section Benesch Ave
 J.C. Bliss
 Drebert from 33rd to 34th St.
 Rauner Divided as shown in sketch on Page 50

49

B.M. N.E. Mon. 33rd & P. 89.58

+9.97

T 99.55

0+00 = East Line 33rd St.

N	3.4	96.2
A	4.1	
B	4.6	
C	5.2	
D	6.4	
+7 = S	5.3	94.3
	0+25	
S	4.3	95.3
+7.25 = D	4.2	
C	4.2	
B	3.9	
A	3.6	
N	3.1	96.5
	0+50	
N	2.5	97.1
A	2.8	
B	3.5	
C	3.4	
D	4.0	
+7.5 = S	4.7	95.4

Plotted 9-17-28 - C.B.H.

Σ 99.55

0+75

S	3.7	95.9
+7.75 = D	3.4	
C	2.9	
B	2.9	
A	2.9	
N	2.4	97.2

1+00

N	1.6	98.0
A	1.9	
B	2.3	
C	2.2	
D	2.3	
+8 = S	2.6	97.0

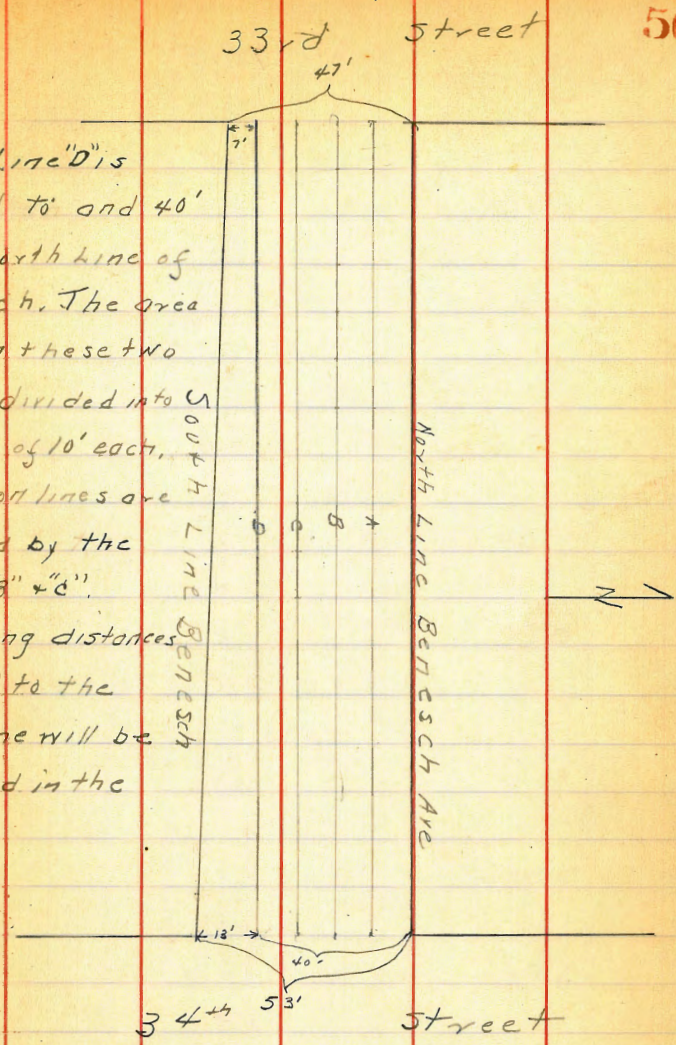
1+25

S	1.6	98.0
+8.25 = D	1.4	
C	1.3	
B	1.4	
A	1.0	
N	0.8	98.8

1+50

N	0.1	99.5
A	0.0	
B	0.5	
C	0.5	

Note. Line "D" is parallel to and 40' from North line of Benesch. The area between these two lines is divided into 4 parts of 10' each. The division lines are indicated by the letters "A", "B" & "C". The varying distances from "D" to the South line will be indicated in the notes.



799.55

D	0.6	
+85=S	0.7	989
T.P.		-0.06 99.49

+157

7101.06

1+75

S	2.0	99.1
+8.75=D	1.2	
C	0.9	
B	0.7	
A	0.5	
N	0.4	100.7

2+00

A	0.0	101.1
A	0.4	
B	0.1	
C	0.5	
D	0.9	
+3	1.7	
+9=S	2.0	99.1

2+25

S	1.9	99.2
+9.25=D	1.4	
C	0.7	
B	0.6	

51

101.06

A	0.2	
N	0.1	101.0
		2+50

N	0.5	100.6
A	0.7	
B	0.8	
C	1.1	
D	1.6	
+9.5=S	2.0	99.1

2+75

S	2.1	99.0
+9.25=D	2.3	
C	1.8	
B	1.4	
A	1.2	
N	0.6	100.5

3+00

N	1.5	99.6
A	1.9	
B	2.2	
C	2.7	
D	3.1	
+10=S	3.4	97.7

on south line

Note - Beginning at 345_N and extending to 345_S there is a garage with four stalls.

π 101.06

Shot on concrete apron at 3+15 on
 South Line 392 97.14 ✓
 Shot on concrete apron at 3+50 4.81 96.25 ✓
 3+25
 S: Concrete apron of garage 408 96.98
 +10.25=D 4.2
 +5 3.5
 C 3.5
 B 3.5
 A 2.9
 N 2.4 987
 3+50
 N 3.5 97.6
 A 3.9
 B 4.8
 C 4.8
 D 5.1
 +10.5=S 4.8 96.3
 3+75
 S 6.2 94.9
 +10.75=D 6.6
 C 6.4
 B 5.7
 A 5.0
 N 4.8 96.3

N
 A
 B
 C
 D
 +11.5
 Out 15
 S
 +11.5=D
 C
 B
 A
 N
 T.P
 +10.57
 N
 A
 B
 C
 D
 +5
 +11.5=S
 Out 10

π 101.06

52

4+00
 5.7 95.4
 6.2
 7.5
 8.6
 9.0
 9.3 91.8
 4+25
 16.3 84.8
 14.3
 12.9
 11.9
 10.7
 8.9
 7.8 93.3
 -12.94 88.12
 +10.57
 π 88.69
 +15.0 0.4 88.3
 1.3
 1.9
 2.5
 3.2
 3.8
 3.5 83.2
 6.5

88.69

4+75

S	67.	820
+11.75=D	5.0	
C	4.8	
B	4.5	
A	3.2	
N	2.0	86.7

5+00

N	2.0	86.7
A	3.8	
B	5.2	

C	6.2	
D	6.4	
+12=5	7.4	81.3

5+25

S	8.2	80.5
+12.25=D	7.6	
C	7.6	
B	6.6	
A	5.7	
N	4.4	84.3

5+50

N	6.3	82.4
A	7.3	
B	8.0	
C	8.9	

T 88.69

53

D	9.4	
+175=S	10.1	78.6

5+75

S	10.9	77.8
+17.75=D	10.3	
C	9.7	
B	8.5	
A	8.0	
N	6.8	81.9

6+00=West Line 34th

N	7.3	81.4
A	8.3	
B	9.2	
C	10.5	
D	11.0	
+13=5	11.9	76.8

T.P.

-11.82 - Low

T.P.

-0.50 - 88.19

+12.74 100.93

B.M. N.E. Corn 34th & Broadway -1.71 → 99.22

→ 99.26

9-8-28

J.C. Bliss Levels ground returns at
 Drebert Evergreen & Dumas.
 Ravner Intersection Pared

B.M. N.W. B.P. Evergreen & Dumas

77.83

+3.15

Σ 80.98

S.W. Return - 43' Radius

West End return	3.43	77.55
Gutter	3.98	77.00
+5 -Tp	3.56	77.42
G	4.15	76.83
+10 -Tp	3.68	77.30
G	4.33	76.65
+15 -Tp	3.85	77.13
G	4.49	76.49
+20 -Tp	3.96	77.02
G	4.56	76.42
+25 -Tp	3.99	76.99
G	4.63	76.35
+30 -Tp	4.00	76.98
G	4.67	76.31
+35 -Tp	4.03	76.95
G	4.65	76.33
+40 -Tp	3.99	76.99
G	4.59	76.39

Evergreen only
 Return to Southline

Σ 80.98

54

N.W. Return

West end return -Tp	3.25	77.73
G	3.76	77.22
+ 8.5 -Tp	3.77	77.21
G	4.28	76.70
+17 -Tp	4.29	76.69
G	4.77	76.21
+ 25.5 -Tp	4.79	76.19
G	5.20	75.78
+ 3.4.0 -Tp	5.04	75.94
G	5.53	75.45
+ 42.5 Tp - End paving	5.31	75.67
G	5.83	75.15
+ 51.0 Tp	5.67	75.31
G - concrete	6.20	74.78
+ 59.5 Tp	5.94	75.04
G	6.50	74.48
+ 68 = North End return	6.32	74.66
G	6.89	74.10
N.E. Return		
East end return Tp	7.70	73.28
G	8.21	72.77
+ 8.5 -Tp	7.78	73.69
G	7.77	73.21
+17.0 -Tp	6.99	73.99
G	7.47	73.51
+ 25.5 Tp	6.69	74.29
G	7.20	73.78
+ 34.0 Tp	6.54	74.44
G	7.05	73.93

7 80.98

+41.0 - Tp End paving	6.51	74.49
G	201.	73.97
+51.0 Tp	6.46	74.52
Concrete gutter	7.04	73.94
+59.5 Tp	6.62	74.36
Gutti.	7.28	73.80
+68 = Next 1/2 end return Tp.	6.87	74.11
G	7.46	73.52
S.E. Return		
East end return Tp	7.77	73.21
G	8.38	72.60
+85.0 Tp -	7.32	73.64
G	7.86	73.12
+17.0 Tp	6.85	74.13
G	7.38	73.60
+25.5 Tp	6.38	74.60
G	6.89	74.09
+34.0 Tp	5.92	75.04
G	6.50	74.48
+41.0 Tp = End paving	5.47	75.51
G	6.21	74.77
+51.0 Tp	4.93	76.05
G - Concrete	5.66	75.32
+59.5 - Tp	4.42	76.56
G	5.15	75.83

55

+68.0 - Tp 3.84 77.14

G 4.57

Levels around returns
at Evergreen & Curtis

B.M.	S. W. B.P.	Evergreen & Curtis	95.41
	+1.58	S.W. Return	
4' west of West end return	1.63	95.36	
G	2.42	94.57	
+9-Tp	2.26	94.73	
G	3.10	93.89	
+18-Tp	2.93	94.06	
G	3.76	93.23	
+27-Tp	3.52	93.97	
G	4.33	92.88	
+36-Tp	4.11	92.85	
G	4.72	92.27	
+46-Tp = South End return	4.18	92.81	
G	4.85	92.14	
	S.E. Return		
East end return-Tp	7.20	89.79	
G	7.97	89.02	
+7-Tp	6.67	90.32	
G	7.45	89.54	
+14-Tp	6.24	90.75	
G	7.03	89.96	
+21-Tp	5.81	91.18	
G	6.63	90.36	
+28-Tp	5.48	91.51	
G	6.29	90.70	

96.99

56

+35-Tp	5.23	91.76
G	6.00	90.99
+42-Tp - South end return	5.06	91.93
G	5.90	91.09
	N.W. Return	
West end return-Tp		
G		
+7 Tp	3.05	92.94
G	3.78	93.21
+14 Tp	3.64	93.35
G	4.35	92.64
+21 Tp	4.17	92.82
G	4.85	92.14
+28 Tp	4.61	92.38
G	5.28	91.71
+35 Tp	4.89	92.10
G	5.64	91.35
+42 Tp - North end return	5.07	91.92
G	5.84	91.15
	5.28	91.71
	6.02	90.97

T 96.99

N.E Return

East end return Tp	818	88.87
G	889	88.10
+ 8.5 - Tp	252	89.47
G	822	88.77
+ 12 - Tp	691	90.08
G	763	89.36
+ 25.5 Tp	643	90.56
G	712	89.87
+ 34.0 Tp	626	90.73
G	690	90.09
+ 42.2 Tp	635	90.64
G	686	90.13
+ 51.0 Tp	685	90.14
G	750	89.49
+ 59.5 - Tp	737	89.62
G	804	88.95
+ 68 Tp - North end return	812	88.87
G	881	88.18

57

Levels around returns at
Locust + Curtis

B.M. S. W. B.P. Curtis + Locust 69.32

+182 T 71.14

N.W. Return - Top curb

West end	2.97	68.17
+ 8.5	3.56	67.58
+ 17	4.14	67.00
+ 25.5	4.57	66.57
+ 34	4.91	66.23
+ 42.5	5.28	65.86
+ 51	5.67	65.47
+ 59.5	6.14	65.00
+ 68 - North end return	6.73	64.41

S.W. Return

West end	1.93	69.21
+ 7	2.53	68.61
+ 14	3.12	68.02
+ 21	3.50	67.64
+ 28	3.92	67.22
+ 35	4.12	67.02
+ 42 - South end	4.05	67.09

S.E. Return

South end	5.12	66.02
+ 7	5.16	65.98
+ 14	5.30	65.84
+ 21	5.62	65.52

7114

+28	6.10	65.04
+35	6.60	64.54
+42 = East end	2.07	64.07
N.E. Return		
East end	7.95	63.19
+7	7.43	63.71
+14	7.00	64.14
+21	6.49	64.65
+26	6.25	64.89
+35	6.17	64.97
+42 = North end	6.27	64.87

Levels around returns at

Locust + Dumas π 58.62

S.E. Return

East end	7.05	51.57
+7	6.93	51.69
+14	6.79	51.83
+21	6.68	51.94
+28	6.46	52.16
+35	6.25	52.37
+42 = South end	6.08	52.54

π 58.62

58

S.W. Return

South end	3.97	54.65
+8.5	4.29	54.33
+17	4.58	54.04
+25.5	4.68	53.94
+34	4.74	53.62
+42.5	4.59	54.03
+51	4.43	54.19
+59.5	4.24	54.38
+68 = West end	3.77	54.85

54.88

N.W. Return

West end	3.82	54.80
+8.5	4.22	54.40
+17	4.63	53.99
+25.5	4.91	53.71
+34	5.15	53.47
+42.5	5.32	53.30
+51.0	5.32	53.30
+59.5	5.23	53.39
+68.0 = North end	4.93	53.69

N.E. Return

North end	5.70	52.72
+8.5	6.05	52.57
+17.0	6.20	52.42
+25.5	6.43	52.19
+34	6.63	51.99

+42.2		6.88	51.74
+51		7.17	51.47
+59.5		7.37	51.25
+62 = East end		7.37	51.25
T.P.	58.62	-0.78	57.84
+12.88	70.72		
		-0.89	69.83
+110.7	80.90		
N.W.B.P. Evergreen & Dumas		-3.02	77.83

B.M. S.W.B.P. Evergreen & Curtis			95.41
	+7.69	103.10	
T.P.			-2.95 100.15
T.P.			-12.34 91.76
	+12.62	← 112.77	
T.P. N.E. End return Browning & Evergreen	-5.37		107.40
	+0.24	← 91.20	
T.P. 20' west of West end S.W. Return	-1.95		79.05

Levels around returns
at Evergreen & Browning

Note - Returns are to Prop. Lines
of Browning.

60

B.M. N.E. End return Browning & Evergreen 107.40

5.77

112.17
112.17

N.E. Return

North end return

5.79 106.38

Gutter

6.32 105.85

+7

6.52 105.62

G

7.01 105.16

+14

7.26 104.91

G

7.74 104.43

+21

7.86 104.31

G

8.38 103.79

+28

8.52 103.65

G

9.01 103.16

+35

9.22 102.95

G

9.69 102.48

+42 = East end return

10.02 102.15

G

10.54 101.63

S.E. Return

East end return

9.83 102.34

G

10.42 101.75

+7

9.18 103.09

G

9.62 102.55

+14

8.45 103.72

G

8.86 103.31

112.17

+21

7.15 104.42

G

8.14 104.03

+28

7.06 105.11

G

7.49 104.68

+35

6.34 105.84

G

6.78 105.39

+42 = South end return

5.57 106.60

G

6.08 106.09

S.W. Return

South end return

4.80 107.69

G

4.95 107.22

+7

4.05 108.12

G

4.62 107.55

+14

3.63 108.54

G

4.12 108.08

+21

3.16 109.01

G

3.68 108.49

+28

2.70 109.47

G

3.20 108.99

+35

2.12 110.05

G

2.65 109.52

+42 = West end return

1.55 110.62

G

2.08 110.09

112.17

N. W. Return

West end return	1.63	110.54
G	2.10	110.07
+7	2.06	110.11
G	2.56	109.61
+14	2.56	109.61
G	3.11	109.06
+21	3.06	109.11
G	3.65	108.52
+28	3.58	108.59
G	4.12	108.05
+35	4.08	108.09
G	4.62	107.55
+42 = North end return	4.58	107.59
G	5.05	107.12

Levels around returns
at Browning & Locust

61

Returns end of Prop. line of Browning

B.M. S.W. End return Browning & Locust 79.05

+0.44

79.49

N.W. Return

West end return	2.60	76.89
G	3.08	76.41
+7	3.25	76.24
G	3.80	75.69
+14	3.92	75.57
G	4.48	75.01
+21	4.68	74.87
G	5.35	74.14
+28	5.45	74.04
G	6.04	73.45
+35	6.11	73.38
G	6.68	72.81
+42 = North end return	6.84	72.65
G	7.30	72.19

N.E. Return

North end return	7.96	71.53
G	8.43	71.06
+7	8.63	70.86
G	9.17	70.32
+14	9.30	70.19
G	9.80	69.69

79.49

+21	1000	69.49
G	10.51	68.98
+28	10.79	68.70
G	11.28	68.21
+35	11.53	67.96
G	12.03	67.46
+42 = East end return	12.28	67.41
G	12.80	66.69

S. E. Return

East end return	12.36	67.13
G	12.85	66.64
+7	11.54	67.95
G	12.02	67.47
+14	10.74	68.75
G	11.22	68.27
+21	9.98	69.51
G	10.47	69.02
+28	9.30	70.19
G	9.71	69.78
+35	8.55	70.94
G	9.09	70.40
+42 = South end return	7.98	71.51
G	8.45	71.04

79.49

62

S. W. Return

South end return	6.30	73.19
G	6.80	72.69
+7	5.83	73.66
G	6.38	73.11
+14	5.33	74.16
G	5.83	73.66
+21	4.63	74.86
G	5.23	74.26
+28	4.02	75.47
G	4.54	74.98
+35	3.30	76.19
G	3.77	75.72
+42 = West end return	2.60	76.89
G	3.09	76.40

9-11-28
J.C. Bliss
Dreibert
Reuner

X-section Pac St. (Beranda Drive)
from Chatsworth Blvd to
La Cresta Drive. 40' Roadway
10' 1/4's

Note: Asphalt Gutter in poor condition
on both sides of street

63

B.M. S.W. B.R. Chatsworth & Wawona Drive 86.44

+324 9018

0+00 = West Line Chatsworth Blvd

S. Tpcb	11.11	79.07
114	11.4	78.8
£	11.1	79.1
114	11.8	78.4
N. Tpcb	12.11	78.07
0+05 - End of Gutter Drain		
N. Tpcb	11.96	78.22
Grating	12.69	77.49
114	11.7	78.5
£	10.9	79.3
114	11.1	79.1
Grating	12.00	78.18
S. Tpcb	10.86	79.32
0+30		
S. Tpcb	9.46	80.72
Gutter	10.2	80.0
114	9.8	80.4
£	9.8	80.4
114	10.2	80.0
G	11.1	79.1
N. Tpcb	10.38	79.80

Plotted 9-18-28 - C.B.H.

Yardage figured 1/20/29 H.C.H.

N. Tpcb	8.63	81.55
G	9.5	80.7
114	8.6	81.6
£	8.2	82.0
114	8.4	81.8
G	8.7	81.5
S. Tpcb	7.73	82.45

0+90.22 North - 0+89.64 South = Beginning Curve

S. Tpcb	5.80	84.30
G	6.7	83.5
114	6.6	83.6
£	6.5	83.7
114	7.0	83.2
G	7.4	82.8
N. Tpcb	6.88	83.30

Curve Divided into 3 equal parts.

R = 110' Δ 52°46' for outside of curve

R = 50 Δ 52°46' " inside " "

Section between Parts 1 & 2

N. Tpcb	5.50	84.68
G	6.2	84.0
114	5.6	84.6
£	5.0	85.2
114	5.2	85.0
G	5.6	84.6

T 90.18

S. T p cb	4.79	85.39
Section between Parts 2+3		
East T p cb	3.58	86.60
G	4.5	85.7
1/4	4.0	86.2
¢	3.8	86.4
1/4	4.3	85.9
G	4.5	85.7
West T p cb	4.01	86.07

E.C. = 0+00

West T p cb	2.68	87.50
G	3.2	87.0
1/4	3.0	87.2
¢	2.7	87.5
1/4	3.1	87.1
G	3.6	86.6
E. T p cb	2.63	87.55

0+25

E T p cb	1.68	88.50
G	2.6	87.6
1/4	2.2	88.0
¢	1.7	88.5
1/4	2.0	88.2
G	2.2	88.2
W T p cb	1.79	88.39

T 90.18

64

0+50

W T p cb	0.93	89.25
G	1.2	89.0
1/4	1.2	89.1
¢	0.8	89.4
1/4	0.1	90.1
G	1.4	89.8
E T p cb	0.79	89.39
T.P.		-0.37 89.81

+12.67

T 10248

0+75

E. T p cb	12.10	90.38
G	12.7	89.8
1/4	12.4	90.1
¢	12.1	90.4
1/4	12.4	90.1
G	12.8	89.7
W T p cb	12.02	90.46

1+00

W T p cb	11.06	91.42
G	11.7	90.8
1/4	11.4	91.1
¢	11.1	91.4
1/4	11.3	91.2
G	11.8	90.9
E T p cb	11.04	91.44

102.48

1425

ETpcb	10.04	92.44
G	10.8	91.7
1/4	10.2	92.3
k	10.0	92.5
1/4	10.4	92.1
G	10.8	91.7
WTPcb	10.02	92.46

1450

WTPcb	9.06	93.42
G	9.8	92.7
1/4	9.4	93.1
k	9.1	93.4
1/4	9.2	93.3
G	9.8	92.7
ETpcb	9.06	93.42

1475

ETpcb	8.11	94.37
G	8.5	94.0
1/4	8.1	94.4
k	8.0	94.5
1/4	8.4	94.1
G	8.9	93.6
WTPcb	8.09	94.39

Drive way in cab at 1490

8.45

65

102.48

2+00

WTPcb	7.14	95.34
G	8.0	94.5
1/4	7.3	95.2
k	7.0	95.5
1/4	7.2	95.3
G	7.7	94.8
ETpcb	7.07	95.41

2+25

ETpcb	6.05	96.43
G	6.7	95.8
1/4	6.2	96.3
k	6.1	96.5
1/4	6.3	96.2
G	7.0	95.5
WTPcb	6.17	96.41

2+50

WTPcb	5.07	97.41
G	6.0	96.5
1/4	5.4	97.1
k	5.1	97.4
1/4	5.2	97.3
G	5.6	96.9
ETpcb	4.97	97.51

102.48

275

ETpcb	3.93	98 55
G	4.6	97 9
114	4.3	98 2
£	4.2	98.3
114	4.5	98 0
G	4.9	97 6
W Tpcb	4.10	98 98

300

W Tpcb	3.14	99 34
G	3.9	98 6
114	3.6	98 9
£	3.1	99 4
114	3.3	99 2
G	3.7	98 8
ETpcb	2.95	99 53

325

ETpcb	2.04	100 44
G	2.8	99 7
114	2.2	100 3
£	2.2	100.3
114	2.4	100 1
G	2.6	99 9
W Tpcb	2.07	100 41

102.48

3450

W Tpcb	1.05	101 43
G	1.5	101 0
114	1.3	101 2
£	1.1	101.4
114	1.2	101 3
G	1.7	100 8
ETpcb	1.00	101 5

T.P.

-0.00 102.48

+12.29

114.77

375

ETpcb	12.12	102 58
G	12.5	102 3
114	12.4	102 4
£	12.3	102 5
114	12.6	102 2
G	12.8	102 0
W Tpcb	12.25	102 52

400

W Tpcb	11.10	103 67
G	11.8	103 0
114	11.3	103 5
£	11.1	103 7
114	11.3	103 5
G	11.6	103 2
ETpcb	11.08	103 69

66

π 114.77

4+25

ETpcb	9.60	105.77
G	102	104 6
114	9.8	105 0
£	9.8	105 0
114	10.1	104 7
G	103	104 5
WTpcb	9.61	105.16

4+50

WTpcb	7.62	107.15
G	84	106 4
114	8.3	106 5
£	8.0	106 8
114	7.9	106 9
G	8.5	106 3
ETpcb	7.64	107.13

4+75

ETpcb	5.03	109.74
G	5.9	108 9
114	5.9	108 9
£	5.7	109.1
114	6.0	108 8
G	6.0	108 8
WTpcb	5.15	109.62

Drive way 17 Westcb 4+91

3.88

π 114.77

67

5+00

WTpcb	2.35	112 42
G	3.1	111 7
114	2.9	111 9
£	3.1	111 7
114	3.1	111 7
G	3.1	111 7
ETpcb	2.22	112 55
T.P.		-0.46 114.31

+ 13.17

π 127.48

5+25

ETpcb	12.14	115.34
G	13.0	114 5
114	13.1	114 4
£	12.9	114.6
114	12.9	114 6
G	13.0	114 5
WTpcb	12.26	115.22

5+50

WTpcb	9.55	117.99
G	10.4	117 2
114	10.1	117 4
£	10.0	117.5
114	10.2	117 3
G	10.2	117 3

127.48

68

E Tpcb 9.33 118.15

5+75

E Tpcb 6.52 120.96

G 7.3 120.2

1/4 7.5 120.0

2 7.3 120.2

1/4 7.3 120.2

G 7.9 119.6

W Tpcb 8.00 120.48

6+00

W Tpcb 4.11 123.37

G 5.0 122.5

1/4 4.6 122.9

2 4.4 123.1

1/4 4.7 122.8

G 4.5 123.0

E Tpcb 3.70 123.78

6+20 = B.C. of return on West side

E Tpcb 1.57 125.91

G 2.6 124.9

1/4 2.5 125.0

2 2.4 125.1

1/4 2.6 124.9

G 3.0 124.5

W Tpcb 2.04 125.44

La Cresta Drive

Paved

6+40 N. end 5.7' La Cresta 6+44
6+38 45'

6+20

P.O.C.

127.48.

69

6458 = B.C. Return on East side

W T p cb	018	127.30
G	0.7	126.8
+5 W Cb line	04	127.1
14	0.2	127.3
E	0.3	127.2
14	0.6	126.9
G	0.7	126.8
T.P.		-1.00 126.48

+9.44

135.92

E T p ob See sketch 868 815 127.77

Section along North Prop line La Cresta

Drive which is paved. 6444 on West side 6448 on East

E T p cb	7.38	128.54
G	7.96	127.96
+3 = West cb line Pce	7.79	127.9
14	7.82	128.1
E	7.89	128.03
14	7.97	128.0
West cb line Pce	8.21	127.7
+10 E	8.69	127.23
W. T p ob	8.05	127.87

B.M. N.W.B.P. Wayana & La Cresta -4.82 → 131.10

→ 131.14

Y/O/Ker
Rippling
Rocky
No. 11-1-20

Gutter LEVELS
EAST Side Kettner Blvd.
Bet. Vine + Walnut St.

44.01

70

Station	3.95	44.01	40.06	NE. 7' Jack. Vine + Kettner
0+00 on Paving	4.94	39.07	.39	
+10 "	4.95	39.06	.10	
+20 "	4.91	39.10	.12	
+30 "	4.93	39.08	.15	
+40 "	4.89	39.12	.17	
+50 "	4.85	39.16	.20	
+60 "	4.81	39.20	.22	
+70 "	4.76	39.25	.25	
+75 = South edge Inlet on Paving	4.83	39.16		
+76.5 = Inlet on top of Grading	4.92	39.09		
+78.0 = North edge Inlet on top Paving	4.83	39.18		
+80 = on Paving	4.79	39.22	.28	
+90 "	4.77	39.24	.30	
+100 "	4.72	39.29	.33	
+110 "	4.68	39.33	.35	
+120 "	4.64	39.37	.37	
+130 "	4.57	39.44		
+140 "	4.51	39.50		
+150 "	4.48	39.53		
+160 "	4.40	39.61		
+170 "	4.35	39.66		
+180 "	4.31	39.70		
+190 "	4.23	39.78		

Station	2+00 on Paving	4.16	39.85
+10 "	4.12 <td>39.89 <td></td> </td>	39.89 <td></td>	
+20 "	4.06 <td>39.95 <td></td> </td>	39.95 <td></td>	
+30 "	4.01 <td>40.00 <td></td> </td>	40.00 <td></td>	
+40 "	3.97 <td>40.04 <td></td> </td>	40.04 <td></td>	
+50 "	3.88 <td>40.13 <td></td> </td>	40.13 <td></td>	
+60 "	3.85 <td>40.16 <td></td> </td>	40.16 <td></td>	
+70 "	3.80 <td>40.21 <td></td> </td>	40.21 <td></td>	
+80 "	3.75 <td>40.26 <td></td> </td>	40.26 <td></td>	
+90 "	3.71 <td>40.30 <td></td> </td>	40.30 <td></td>	
3+00 = S'ly Line Walnut	3.62 <td>40.39 <td></td> </td>	40.39 <td></td>	

cht. on S.M. SE. 7' Jack Walnut + Kettner Blvd. 2.71 46.30
Bench 41.29 → 46.29 = 8M.
0.01 = Error.

Plotted 11-2-28
T.G. Howley

Cross Section Ross Blvd.

12th to 11th St.

Capitol
10' CB
10' gts.

Not located
so Cont' ch.

44-28-71
S. 28
M. 11th
Kinney

BM	1107	11654 ML 12th St.	10547
5		68	109.7
cb		63	110.2
"4		56	110.9
2		48	111.7
"4		41	112.4
cb		37	112.8
t3		33	113.2
H		29	114.1
		15' N of ML 12th	
H		28	113.7
t3		42	112.3
cb		48	112.2
"4		50	111.5
2		58	110.7
"4		65	110.0
cb		73	109.2
S		75	109.0
		25' N	
S		85	108.0
cb		80	108.5
"4		74	109.1
2		66	109.9
"4		58	110.7
"8		50	111.5

Yardage, figured to these Notes.
11-28-28 - G.M.H.

BM	11654 ML 12th St.	11654	12th St.
3			
3			
30			
1174			
cb		55	1110
t9		56	1109
H		41	112.4
H		82	108.3
cb		87	107.8
"4		87	107.8
2		92	107.3
"4		101	106.4
cb		110	105.5
S		115	105.0
S		120	104.5
cb		124	103.1
"4		127	103.8

Ross Blvd.

4 Story Brick
Building

Flv. Pd. 113.22

36' N on St.
Bottom of Window

965

45' N on St.
Bottom of Window

52' N on St.
Bottom of Window

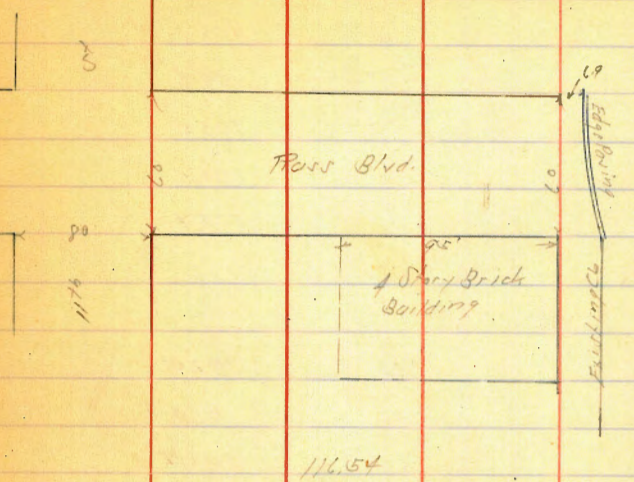
1155

45' N on St.
Bottom of Window

1155

50' N

75' N



116.54

115.11

2		121	104.4	77' W on S.L. 30' from top of window
1/2		117	104.8	124.1
cb		115	105.0	
+5		120	104.5	
H		112	105.3	
TP	179	105.42	129.1	103.63
		95' W		
H	3	34	102.0	
+7		35	101.9	
cb		30	102.4	
1/4		39	102.5	
2		33	102.1	
1/4		37	101.7	
cb		45	100.9	
S		63	99.2	
+1 - Conc Walk		69.6	98.46	
		100' W		
S on Top Conc Wall		55.7	99.85	
Ground		84	97.0	
cb		53	100.1	
1/1		47	100.7	
2		39	101.5	
1/4		36	101.8	
cb		36	101.8	
H		39	101.5	

H		47	100.7
cb		49	100.5
1/4		56	99.8
2		63	99.1
1/4		71	98.3
cb		78	97.6
+5		84	97.0
+7		91	96.3
S		93	96.1
		117' W	
S - East End Conc Walk		112.5	95.17
+3 - Top Conc Wall		93.5	96.07
cb		86	96.8
1/4		77	97.7
2		70	98.4
1/4		65	98.9
cb		58	99.6
H		54	100.0
		124' W	
H		67	98.7
cb		78	97.6
1/4		80	97.4
2		85	96.9
1/4		93	96.1
cb		105	94.9

Revs Blvd.

105.43

95.40

73

+5		10.1	95.0
+8 = Conc Walk		11.2	94.40
S " "		10.90	94.52
TP	2.34	95.40	123.6
	16.87		93.06
S = Conc Walk		3.56	91.84
+2 " "		3.56	91.84
Cb		2.6	92.8
1/4		2.7	92.7
1/2		2.0	93.4
1/4		1.4	94.0
Cb		1.5	93.9
+5		0.9	94.5
N		0.5	94.9

Cb		7.1	88.3
1/4		7.5	87.9
1/2		6.7	88.7
1/4		6.5	88.9
Cb		6.2	89.2
N		6.4	89.0
	200' - FL 11/16/11		
N		7.1	88.3
Cb		7.3	88.1
1/4		7.3	88.1
1/2		7.6	87.8
1/4		8.2	87.2
Cb		8.2	87.2
S		9.0	86.4

178.7

FCB

N		4.7	90.7
Cb		3.7	91.7
+5		3.1	92.0
1/4		3.9	91.5
1/2		4.8	90.6
1/4		5.3	90.1
Cb		5.0	90.4
+7 = 02 Conc Walk		5.42	90.00
S " "		5.27	90.05

S on End Cb		10.28	85.02
Gutter on Pav.		11.21	84.19
+2		10.4	85.0
Cb		10.3	85.1
1/4		9.8	85.6
1/2		9.3	86.1
1/4		9.2	86.2
Cb		9.0	86.4
N		9.0	86.4

195.7

5' N of FCB

S		7.3	88.1
---	--	-----	------

N		9.5	85.9
---	--	-----	------

cb	97	85.7
1/4	101	85.3
1/2	106	84.8
1/4	110	84.4
cb	106	84.8
S on Paving	1118	84.22
S of FCB		
S on Pav	1127	84.19
cb	114	84.0
1/4	118	83.6
1/2	120	83.4
1/4	122	83.2
cb	123	83.1
N	124	83.0
E 1/4		
N	120	83.4
cb	118	83.6
1/4	118	83.6
1/2	116	83.8
1/4	115	83.9
cb	112	84.2
S on Pav	1126	84.14
1/2 111452		
S on Pav	1179	83.61
cb	118	83.6
1/4	120	83.4

1/2	120	83.4
1/4	121	83.3
cb	122	83.2
N	123	83.1
H 1/4		
N	126	82.8
cb	125	82.9
1/4	124	83.0
1/2	123	83.1
1/4	122	83.2
cb	121	83.3
S on Paving	1215	82.75
Hcb		
S Top cb	1277	82.41
Gutter on Pav	1266	81.74
cb	128	82.6
1/4	127	82.7
1/2	120	82.4
1/4	124	82.0
cb	122	82.2
N	122	82.2
H 1/2 111452		
N	130	82.4
cb	127	82.7
1/4	120	82.4
1/2	120	82.4

How Blvd.

75

95.40

14			121	82.3	
C6			137	81.7	
J			138	81.6	
TP	141	95.95	11.01	82.89	
TP	586	91.00	0.71	85.11	
BN			132	89.08	11118P P + 91111 8901

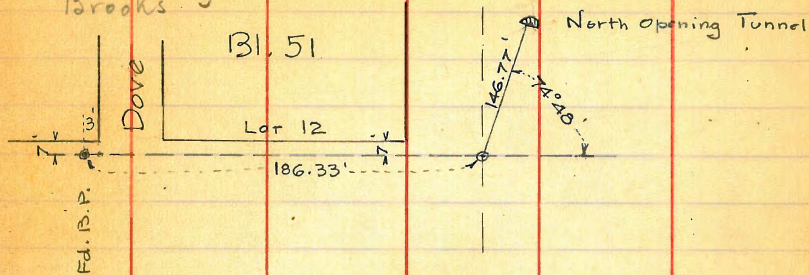
Location of Tunnel on Washington
& Dove and University & Dove.

JAEGER }
Bailey }
Clarent }
Brooks }

Dec. 21st 1928.

892

76

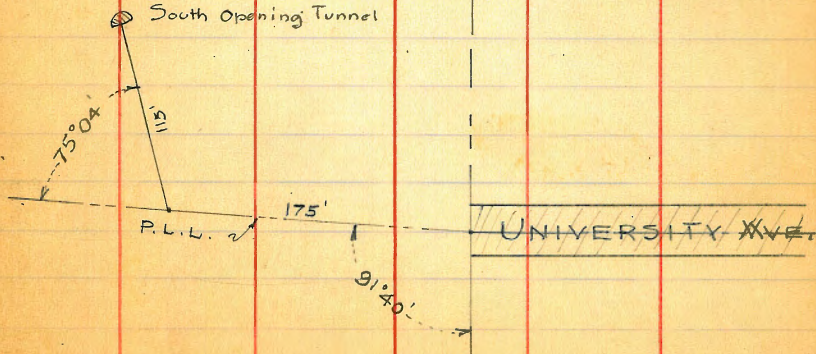


334

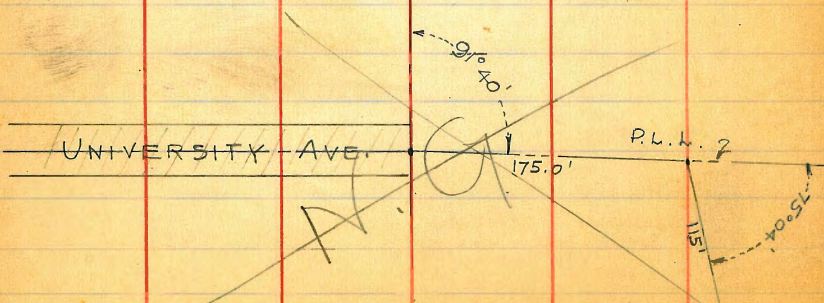
1029

P.L.L. 2

South Opening Tunnel



South Opening of Tunnel



78

DIRECTIONS FOR USE OF TABLES

TABLE No. 1.

Distance of slope stake from side or shoulder stake for any width roadway, slope $1\frac{1}{2}$ to 1. If ground is nearly level, the cut or fill at side stake is located by the double entry method in left column and top row. The number in body

IMPROVED TABLES

AND

INFORMATION

TABLE No. 2.

To find Tangent and External for curve of any other degree, divide by degree of curve and add correction found in column of corrections. Degree of curve with a given L may be found by dividing tangent (or external), opposite L by given tangent (or external). The distance from a point on the tangent to the curve is very nearly the square of the tangent length divided by twice the radius.

480
33
5/13

ENGINEERING DEPARTMENT,
SAN DIEGO,
CITY OF CALIFORNIA.

26.23
50

55
93.72
26.28

195.00

2282

2282

120
43640
2282
273840

8
21909
5333
3 16574
5558

4444

120
88860
4444
533200

8884
017248

2282
200
456400

8
36512
8888
3 27624
92

4444
200
888800

1079
85
1267