

1275

POSTS

LEVEL BOOK

No. 330

ENGINEERING DEPARTMENT,
CITY OF SAN DIEGO,
CALIFORNIA.

Our Leather Bound Engineers Note Books are carried in the following rulings:

- No. 380 LEVEL BOOK. Left and Right Hand Page the same as Left Hand Page of this Book.
- No. 382 FIELD BOOK. Left Hand Page as in this Book, Right Hand Page 4 x 4 to the inch, Center Line Red.
- No. 384 MINING TRANSIT BOOK. Left Hand Page as in this Book, Right Hand Page 8x8 to the inch, Center Line Red.
- No. 385 FIELD BOOK. Left Hand Page as in this Book, Right Hand Page 8 vertical and 4 horizontal lines to the inch, Center Line Red.

We also carry the Note Books listed above, bound in extra strong Fabri-Hide (otherwise the same quality of book), which can be furnished at a somewhat lower price.

In ordering Fabri-Hide covered books, add the letter "F" to catalog number.

THE FREDERICK POST CO.
ENGINEERING and DRAFTING SUPPLIES
IRVING PARK STATION
CHICAGO, ILL.

MICROFILMED

DEC 22 1964

This indexed by 62 7/2/64

This index is for 7/22/2011

Index

Aliso	Soto - Sea Side	3-8
Clovis	Park - Temecula	8-20
Camulos	" "	21-27
Mentone	Clovis - Fomosa	28-37
Mentalvo	Clovis - Wells	37-50
Formosa	Park to Temecula	51-55

Alley Block 133 University Hts ^{Van Buren} & Tyler 70-73
X Sec. 52nd St. EICAJON TO ORANGE 73-58

X-Section Aliso St. from E.L. Soto St. to
E.L. SEA SIDE ST. 60' wide, 10'SW. 10' Quarters

JAEGER }
Bailey }
Clarett } Sept. 7th 1928
Brooks }
Mattoon }

3

STA	+	H.I.	-	Elev.	STA	+	H.I.	-	Elev.
Mon. SW. Cor. Castellar & Etiwanda				36.71					28.83
	5.00	41.71				12.44	41.27		
B.M. SW. Cor. Bl. Loma Alta # 2			12.88	28.83 ✓	T.P.			0.05	41.22
T.P.			2.08	39.63		9.03	50.25 ✓		
	9.53	49.16			0+10	E.L. Soto			
T.P.			0.68	48.48	S.L.			9.6	40.7
	13.17	61.65			S. Curb			9.0	41.3
B.M. SE. Cor. BIK. 30 Loma Alta # 2			2.01	59.64	S 1/4 T.P.			8.6	41.65
	8.42	68.06			Hand Level	7.0	48.65		
B.M. SE. Cor. BIK. 29 Loma Alta # 2			8.29	59.77 ✓	⊥			6.7	42.0
	1.28	61.05			N 1/4			6.6	
T.P.			12.00	49.05	N. Curb			6.5	
	0.84	49.89			N.L.			6.1	42.6
B.M. NE Cor. BIK. 29 Loma Alta # 2			7.54	42.35 ✓	0+60	W.L. Soto			
T.P.			12.95	36.94	N.L. T.P.			4.3	44.35
	0.83	37.77				9.2	59.55		
T.P.			12.20	25.57	N. Curb			9.6	
	0.37	25.94			N 1/4			9.7	
T.P.			12.83	13.11	⊥			9.8	43.8
	0.98	14.09			S 1/4			10.2	
B.M. NE Cor. BIK 26 Loma Alta # 2			9.31	4.78	S. Curb			10.5	
					S.L.			10.9	42.7
					1+00				
					S.L.			9.0	44.6
					S. Curb	Instr.	50.25 ✓	5.2	

50.25

STA	+	H.I.	-	Elev.
S 1/4			5.0	
¢			4.8	45.5
N 1/4			4.6	
N. Curb			4.5	
N. L.			4.3	46.0

1+50

N. L.			2.9	47.4
N. Curb			3.2	
N. 1/4			3.3	
¢			3.5	46.8
S 1/4			3.8	
S. Curb			4.1	
S. L.			4.3	46.0

2+00

S. L.			3.4	46.9
S. Curb			3.3	
S 1/4			3.1	
¢			2.9	47.4
N 1/4 T.P.			2.7	47.55
N. Curb Hand level	5.9	53.45	5.8	
N. L.			5.7	47.8

2+50

N. L.			6.2	47.3
N. Curb			6.0	

Instr. 50.25 ✓

50.25

4

STA	+	H.I.	-	Elev.
N 1/4			3.7	
¢			3.6	46.7
S 1/4			3.7	
S. Curb			3.8	
S. L.			3.8	46.5

3+00

S. L.			5.0	45.3
S. Curb			4.9	
S 1/4			4.9	
¢			4.8	45.5
N 1/4			4.8	
N. Curb			4.7	
N. L.			4.7	45.6

3+30 E. L. Ettiwanda

N. L.			6.3	44.0
N. Curb			6.1	
N 1/4			6.2	
¢			6.1	44.2
S 1/4			6.2	
S. Curb			6.3	
S. L.			6.8	43.5
T.P.			12.59	37.06

3.39 41.00 ✓

3+90 W. L. Ettiwanda

+20

7.6

41.00

5

STA	+	H.I.	-	Elev.	STA	+	H.I.	-	Elev.
S.L.			3.3	377	Instr.	41.00			
S.Curb			1.3		¢			14.0	270
S/4			1.1		N/4			10.2	
¢			0.9	401	N.Curb			8.0	
N/4			0.6		N.L.			6.8	342
N.Curb			0.5		+3'			5.6	
N.L.			0.7	403	+20'			5.1	
+20'			1.0		4+75				
4+25					+20'			6.8	
+20'			3.4		N.L.			11.0	30.0
N.L.			3.2	378	+2'			11.1	
N.Curb			3.3		N.Curb			13.4	
N/4			4.1		T.P.			13.0	28.00
¢			5.3	357	Hand Level	0.3	28.3		
S/4			7.7		N/4			3.4	
S.Curb			11.4		¢			6.0	22.0
S.L.			13.6	274	S/4			7.9	
+20'			19.2		S.Curb			11.7	
4+50					S.L.			16.7	11.6
T.P.			13.0	28.00	T.P.			13.0	15.30
Hand Level	0.0	28.00				0.0	15.3		
+20'			15.0		+35'			16.1	
S.L.			9.1	189	+45'	Shore line		18.4	
S.Curb			5.6						
S/4			3.4						

STA	+	15.3 H.I.	-	Elev.	STA	+	16.1 H.I.	-	Elev.
4+82 ³⁹	E.L. West Point	Loma Blvd.			S 1/4			4.1	
+40	Shoreline		17.8		S. Curb			7.6	
+30			15.4		S.L.			11.8	43
S.L.			5.8	9.5	+13'			16.4	
S. Curb T.P.			0.0	15.3	+30' Shore Line			19.0	
	13.0	28.3			5+25				
S 1/4			10.3		+12' Shore Line			19.0	
¢			7.8	21.5	S.L.			17.0	-09
N 1/4			4.8		S. Curb			15.0	
N. Curb			2.5		S 1/4			11.3	
	Instr.	41.00 ✓			¢			8.5	76
N.L.			12.2	28.8	N 1/4			5.0	
+5'			11.7						
+20'			8.2						
5+00									
+20'			11.0						
+11'			13.2	27.80	N. Curb			15.7	
Hand Level	0.2	28.00			N.L.			12.5	177
+10'			1.2		+10'			8.4	
+5'			1.0		+12'			7.7	
N.L.			2.9	25.1	+17'			7.7	
N. Curb			4.9		+18'			6.3	
N 1/4			9.9		+20'			5.4	
¢ T.P.			13.0	15.0	5+43 ⁴⁹	E.L. Opening		5.6	
	1.10	16.1			+30'			6.1	
					+26'				

30.24

7

STA	+	H.I.	-	Elev.	STA	+	H.I.	-	Elev.
+25			7.5		T.P.			0.2	4.73
+22			8.0		13.0	17.73			
+21			9.9		N.L.			11.7	6.0
+15			9.7		+10			7.5	
N.L.			16.8	13.4	+20			1.0	
T.P.			13.0	17.24	Instr.	30.24 ✓			
Hand Level	0.10	17.34						12.79	17.45
N. Curb			7.3		0.16	17.61 ✓			
+5'			8.5		5+75				
+7'			11.1		+20'			6.3	
N 1/4			12.1		+15'			10.6	
+5' T.P.			13.1	4.33	T.P.			12.51	5.10
	0.6	4.93				0.36	5.46		
☐			3.5	1.4	N.L.			3.5	2.0
+5'			5.2		N. Curb			7.5	
S 1/4			6.2		N 1/4 Shore Line			9.4	
S. Curb			7.4		☐			10.0	-4.5
S.L. Shore Line			8.2	-3.3	S 1/4			10.1	
5+62 ³⁹ W.L. West Pt. Loma Blvd.					S. Curb			10.2	
S.L.			9.0	-4.1	S.L.			10.2	-4.7
S. Curb			9.0		5+94 ⁰³ W.L. Opening				
S 1/4			9.0		S.L.			10.2	-4.7
☐ Shore Line			8.3	-3.4	S. Curb			10.1	
N 1/4			6.4		S 1/4			10.1	
cN. Curb			2.7		☐			10.1	-4.6

546

STA	+	H.I.	-	Elev.
N $\frac{1}{4}$			10.0	
+5' Shore Line			10.0	
N. Curb			9.4	
N.L.			8.4	-2.9
+10'			6.5	
+20'			0.7	
6+60 NW. Cor. BIK. ④		W $\frac{1}{2}$ of NW $\frac{1}{4}$ Lot 206		
+40'			8.7	
N.L.			10.0	-4.5
N. Curb			10.0	
N $\frac{1}{4}$			10.0	
¢			10.0	-4.5
S $\frac{1}{4}$			10.0	
S. Curb			10.0	
S.L.			10.0	-4.5

Clovis from Park to N.L. Temecula
60' wide, 10' S.W. 10' Quarters

81

STA	+	H.I.	-	Elev.
B.M. SE Cor. BIK. 30, Loma Alta # 2			12.54	72.18
0+00 N.L. Park				
+5'				12.9
W.L.				12.4
W. Curb				9.3
W $\frac{1}{4}$				8.9
¢				9.2
E $\frac{1}{4}$				9.4
+3'				7.0
E. Curb				6.0
E.L.				5.1
+5'				4.2
0+50				
+5'				2.6
E.L.				3.7
E. Curb				4.9
+8'				5.9
E $\frac{1}{4}$				9.4
¢				9.1
W $\frac{1}{4}$				8.7
W. Curb.				9.1
W.L.				11.6
+5'				12.2

Plotted 9-19-28 CBH

59.64

59.8

63.0

67.1

68.5

63.1

60.6

72.18

STA	+	H.t.	-	Elev.
1+00				
+5'			12.2	
W.L.			11.6	606
W. Curb			9.8	
W $\frac{1}{4}$			9.5	
☒			9.2	630
E $\frac{1}{4}$			9.2	
+2'			8.4	
+3'			6.5	
+6'			4.8	
E. Curb			4.1	
E.L.			2.9	693
+5'			2.4	
1+19				
+5'			2.5	
E.L.			3.2	690
E. Curb			4.7	
+5'			6.5	
+6'			8.9	
E $\frac{1}{4}$			9.1	
☒			9.6	626
W $\frac{1}{4}$			10.1	
W. Curb			10.9	
W.L.			12.3	59.9
+5'			12.3	

72.18

9

STA	+	H.t.	-	Elev.
1+20 ⁷⁰	S.L.	Montalvo		
+5'			12.6	
W.L.			12.2	600
W. Curb			10.9	
W $\frac{1}{4}$			10.1	
☒			9.6	626
E $\frac{1}{4}$			9.1	
+3'			9.3	
E. Curb			7.5	
E.L.			6.8	654
+5'			6.8	
1+80 ⁷⁰	N.L.	Montalvo		
+5'			6.1	
E.L.			6.5	657
E. Curb			9.1	
E $\frac{1}{4}$			8.5	
☒			9.4	628
W $\frac{1}{4}$			9.9	
W. Curb			10.7	
W.L.			11.8	604
+5'			12.2	
1+85				
+5'			11.8	
W.L.			11.4	608
W. Curb			10.9	

72/18

STA	+	H.I.	-	Elev.
W 1/4			9.8	
¢			9.4	628
+8'			9.0	
E 1/4			6.9	
+6'			5.2	
E. Curb			4.3	
E.L.			3.2	690
+5'			2.6	
2+00				
+5'			2.5	
E.L.			3.1	691
E. Curb			4.4	
+9'			5.5	
E 1/4			6.5	
+2'			9.0	
¢			9.2	630
W 1/4			9.7	
W. Curb			9.8	
W.L.			10.8	619
+5'			11.2	
2+50				
+5'			10.8	
W.L.			10.3	619
W. Curb			9.5	
W 1/4			9.2	

72/18

10

STA	+	H.I.	-	Elev.
¢			9.0	632
+9'			9.2	
E 1/4			6.9	
+3'			5.3	
E. Curb			4.5	
E.L.			3.3	689
+5'			2.6	
3+05 ⁷⁰				S.L. Alley
+5'			3.5	
E.L.			3.9	683
E. Curb			4.5	
+7'			5.5	
+8'			7.9	
E 1/4			8.3	
¢			8.9	633
W 1/4			9.2	
W. Curb			9.2	
W.L.			10.3	619
+5'			10.8	
3+07				
+5'			10.9	
W.L.			10.2	620
W. Curb			9.1	
W 1/4			9.1	
¢			8.9	633

72.18

STA	+	H.I.	-	Elev.
E 1/4			8.3	
E. Curb			6.2	
E.L.			4.5	67.7
+5'			4.2	
3+13 ²⁰ ♀	Alley			
+5'			4.3	
E.L.			4.6	67.6
E. Curb			6.1	
E 1/4			8.0	
♀			8.9	63.3
W 1/4			9.2	
W. Curb			9.2	
W.L.			10.2	62.0
+5'			10.7	
3+16				
+5'			10.7	
W.L.			10.2	62.0
W. Curb			9.4	
W 1/4			9.2	
♀			8.9	63.3
E 1/4			8.5	
+9'			6.3	
E. Curb			4.6	
E.L.			4.2	68.0
+5'			3.8	

72.18

11

STA	+	H.I.	-	Elev.
3+20 ⁷⁰	N. L. Alley			
+5'			3.8	
E.L.			4.1	68.1
E. Curb			4.2	
+2'			5.0	
+4'			7.6	
E 1/4			8.6	
♀			8.8	63.4
W 1/4			9.3	
W. Curb			9.2	
W.L.			10.2	62.0
+5'			10.6	
3+50				
+5'			10.9	
W.L.			10.4	61.8
W. Curb			9.5	
W 1/4			9.3	
♀			8.7	63.5
E 1/4			8.8	
+5'			7.9	
+9'			5.7	
E. Curb			5.6	
E.L.			4.7	67.3
+5'			4.2	

68.74

STA	T.P.	+	H.I.	-	Elev.	STA	+	H.I.	-	Elev.
		1.72	68.74 ✓	5.16	67.02	5+05 ⁷⁰	N.L. Mentone		3.5	
4+00						+5'			5.3	
+5'				2.3		E.L.			5.5	632
E.L.				2.5	66.2	E.Curb			6.0	
+8'				3.2		+7'			6.2	
+9'				5.0		E 1/4			8.1	
E.Curb				5.2		∅			7.7	61.0
E 1/4				5.8		W 1/4			8.0	
∅				5.4	63.3	W.Curb			8.0	
W 1/4				6.0		W.L.			8.98	59.76 -
W.Curb				6.4		+5'			8.9	
W.L.				7.2	61.5	5+50				
+5'				7.5		+5'			9.8	
4+45 ⁷⁰	S.L. Mentone					W.L.			9.6	59.1
+5'				7.9		W.Curb			9.2	
W.L.				7.6	61.1	+5'			9.0	
W.Curb				7.3		+6'			9.9	
W 1/4				6.9		W 1/4			9.6	
∅				6.3	62.4	∅			9.1	59.6
E 1/4				6.8		E 1/4			9.5	
+7'				6.1		+1'			9.4	
+8'				4.5		+3'			7.8	
E.Curb				4.4		E.Curb			7.4	
E.L.				3.7	65.0	E.L.			7.2	61.5

68.74

57.91

13

STA	+	H.I.	-	Elev.	STA	+	H.I.	-	Elev.
			7.0					1.0	
6+00								0.7	57.2
+5'			9.3		+5'			0.5	
E.L.			9.6	591	6+38 ²⁰	⊕ Alley			
E. Curb			10.0		+5'			1.1	
+7'			10.5		E.L.			1.5	56.4
+9'			11.8		E. Curb			1.8	
E 1/4			11.8		+7'			2.1	
⊕			11.5	57.2	E 1/4			3.5	
W 1/4			12.0		⊕			3.1	54.8
+2'			11.3		W 1/4			3.6	
W. Curb			11.5		+5'			2.6	
W.L.			11.9	56.8	W. Curb			2.7	
+5'			11.9		W.L.			3.3	54.6
6+30 ²⁰	S.L. Alley				+5'			3.5	
	T.P.		13.05	55.69	6+45 ²⁰	N.L. Alley			
	2.22	57.91 ✓			+5'			3.9	
+5'			2.8		W.L.			3.8	54.1
W.L.			2.6	55.3	W. Curb			3.6	
W. Curb			2.1		W 1/4			4.4	
+7'			2.4		⊕			3.6	54.3
W 1/4			3.1		E 1/4			4.2	
⊕			2.6	55.3	+1'			4.2	
E 1/4			3.1		+2'			2.5	
+3'			1.2		E. Curb			2.2	

57.91

57.91

14

STA	+	H.I.	-	Elev.	STA	+	H.I.	-	Elev.
E.L.			2.0	55.9	+4			12.4	
+5'			1.8		E. Curb			12.3	
7+00					E.L.			12.1	45.8
+5'			6.8		+5'			12.4	
E.L.			6.8	51.1	T.P.			12.59	45.32
E. Curb			7.1			0.44	45.76 ✓		
+8'			7.6		7+70 ⁷⁰				
+9'			9.0		S.L. Temecula				
E 1/4			8.9		+5'			2.5	
⊕			8.5	49.4	E.L.			2.2	43.5
W 1/4			8.9		E. Curb			1.8	
+4'			7.8		+4			1.7	
W. Curb			8.0		+5'			2.4	
W. L.			8.3	49.6	E 1/4			2.2	
+5'			8.2		⊕			2.2	43.6
7+50					W 1/4			3.1	
+5'			12.9		W. Curb			3.1	
W. L.			12.7	45.2	W. L.			3.40	42.4
W. Curb			12.5		+5'			3.4	42.36 ✓
+7'			12.6		Temecula from W.L. Clovis to E.L. Famosa				
W 1/4			13.4		60' wide, 10' S.W. 10' Quarters				
+7'			12.7		0+00				
⊕			12.9	45.0	W. L. Clovis				
E 1/4			13.2		S.L.			3.4	42.3
+3'			13.1		S. Curb			4.5	
					S 1/4			4.7	
					⊕			4.7	41.0

Tamecula St.
45.76

Tameculo St.
45.76

15

Plotted 9-20-28 C.B.H.

STA	+	H.I.	-	Elev.
			5.3	
			5.6	
			5.8	400
			7.3	
0+10	W. Curb	Cloris		
			7.3	
			5.5	403
			5.3	
			5.1	
			4.7	411
			4.6	
			4.5	
			3.2	426
			2.4	
			2.0	
0+20	W. 1/4	Cloris		
			2.7	
			3.0	427
			3.7	
			4.2	
			4.6	412
			4.7	
			5.0	
			5.8	400
			7.2	

STA	+	H.I.	-	Elev.
0+30	☐	Cloris		
			7.4	
			6.2	39.6
			4.6	
			4.2	
			4.2	41.6
			3.8	
			3.0	
			2.1	43.7
			1.7	
0+40	E. 1/4	Cloris		
			2.0	
			2.2	43.6
			2.8	
			3.3	
			3.8	42.0
			4.3	
			5.1	
			6.8	39.0
			7.7	
0+50	E. Curb	Cloris		
			7.7	
			7.4	38.4
			6.4	
			5.5	

45.76

STA	+	H.I.	-	Elev.
ϕ			4.2	41.6
S 1/4			3.8	
S. Curb			3.5	
S.L.			1.9	43.9
+5'			1.5	
0+60	E.L. Cloris =		0+00	
+5'			1.6	
S.L.			2.5	43.3
S. Curb			3.6	
S 1/4			4.3	
ϕ			4.6	41.2
N 1/4			5.8	
N. Curb			6.6	
N.L.			7.4	38.4
+5'			7.8	
0+50				
+5'			8.0	
N.L.			7.5	38.3
N. Curb			6.7	
N 1/4			6.0	
ϕ			5.0	40.8
S 1/4			4.8	
S. Curb			4.3	
+4'			4.0	
+5'			3.4	

45.76

16

STA	+	H.I.	-	Elev.
S.L.			2.3	43.5
+5'			1.7	
1+00				
+5'			2.2	
S.L.			2.3	43.5
+2'			2.7	
+7'			5.2	
S. Curb			5.5	
S 1/4			5.3	
ϕ			5.6	40.2
N 1/4			6.4	
N. Curb			7.5	
N.L.			7.9	37.9
+5'			8.2	
1+50				
+5'			9.1	
N.L.			8.4	37.4
N. Curb			8.0	
N 1/4			7.4	
ϕ			6.4	39.4
S 1/4			6.3	
+3'			5.0	
S. Curb			4.7	
S.L.			3.5	42.3
+5'			3.3	

45.76

STA	+	H.I.	-	Elev.
2+00				
+5'			4.6	
S.L.			4.7	41.1
S. Curb			6.4	
+6'			6.8	
S 1/4			7.7	
⊕			7.9	37.9
N 1/4			8.5	
N. Curb			9.2	
N.L.			9.3	36.5
+5'			10.3	
2+50				
+5'			12.2	
N.L.			11.8	34.0
N. Curb			11.2	
N 1/4			10.5	
⊕			9.8	36.0
S 1/4			9.8	
+5'			8.5	
S. Curb			8.5	
S.L.			7.7	38.1
+5'			7.5	
T.P.			7.59	38.17
	0.61	38.78	✓	

38.78

17

STA	+	H.I.	-	Elev.
3+00				
+5'			3.4	
S.L.			3.6	35.2
S. Curb			4.2	
S 1/4			5.7	
⊕			5.7	33.1
N 1/4			6.3	
N. Curb			6.7	
N.L.			7.3	31.5
+5'			7.7	
3+50				
+5'			10.0	
N.L.			9.8	29.0
N. Curb			9.6	
N 1/4			9.3	
+5'			8.6	
⊕			8.5	30.3
S 1/4			9.0	
+5'			7.7	
S. Curb			7.7	
S.L.			6.8	32.0
+5'			6.7	
4+00				
+5'			9.8	
S.L.			10.0	28.8

38.78

STA	+	H.I.	-	Elev.
S. Curb			10.5	
+5'			10.7	
+9'			11.6	
S' 1/4			11.6	
☒			11.4	27.4
N' 1/4			12.2	
N. Curb			12.3	
N.L.			12.3	26.5
+5'			12.5	
T.P.			12.30	26.48

0.75 27.23 ✓

4+50

+5'			3.3	23.9
N.L.			3.1	24.1
N. Curb			2.8	
+8'			2.8	
N' 1/4			4.2	
☒			3.7	23.5
S' 1/4			3.7	
+2'			2.1	
S. Curb			1.7	
S.L.			1.4	25.8
+5'			1.2	

5+00

+5' 6.8

27.23

18

STA	+	H.I.	-	Elev.
S.L.			6.8	204
S. Curb			7.2	
+8'			7.2	
S' 1/4			9.3	
☒			8.7	18.5
+8'			9.0	
N' 1/4			7.7	
+1'			6.8	
N. Curb			6.5	
N.L.			6.3	209
+5'			6.3	

5+50

STA	+	H.I.	-	Elev.
T.P.			12.67	14.56
	0.42	14.98 ✓		
+5'			0.5	
N.L.			1.1	13.9
N. Curb			2.4	
N' 1/4			3.2	
☒			3.3	11.7
S' 1/4			3.5	
+6'			4.5	
S. Curb			4.5	
S.L.			4.2	10.8
+5'			4.2	

14.98

STA	+	H.I.	500 -	Elev.
6+00 ⁶³		W.L. Camolus		
+5'			10.0	
S.L.			10.17	4.81 ✓
S. Curb			10.0	
+6'			8.3	
S'4			8.0	
⊕			8.0	7.0
N'4			8.6	
N. Curb			8.3	
N.L.			7.1	7.9
+5'			6.4	
6+10 ⁶³		W. Curb Camolus		
+5'			8.0	
N.L.			8.6	6.4
N. Curb			9.7	
N'4			9.1	
⊕			8.6	5.4
S'4			8.7	
+6'			8.9	
S. Curb			9.8	
+3'			10.5	4.5
S.L.			10.1	4.9
+5'			9.7	

14.98

19

STA	+	H.I.	-	Elev.
6+20 ⁶³		W'4 Camolus		
+5'			8.9	
S.L.			9.0	6.0
S. Curb			9.1	
S'4			9.2	
⊕			9.4	5.6
N'4			9.5	
N. Curb			9.8	
N.L.			10.1	4.9
+5'			10.0	
6+30 ⁶³		⊕ Camolus		
+5'			9.6	
N.L.			9.7	5.3
N. Curb			9.8	
N'4			9.9	
⊕			9.8	5.2
S'4			9.7	
S. Curb			9.3	
S.L.			9.3	5.7
+5'			9.0	
6+35 ⁶³				
+5'			9.1	
S.L.			9.7	5.3
S. Curb			9.6	
S'4			10.0	

14.98

STA	+	H.I.	-	Elev.
¢			10.0	5.0
N 1/4			10.2	
N. Curb			10.0	
N.L.			9.8	5.2
+5'			9.6	
6+43 ⁶²				
+5'			11.5	
N.L.			12.2	2.8
N. Curb			13.2	
N 1/4			13.5	
¢			13.8	1.2
S 1/4			14.0	
S. Curb			13.9	
S.L.			13.6	1.4
+5'			13.6	
T.P.			12.80	2.18
	2.34	4.52 ✓		
6+50 ⁶²				
E. Curb Camolus				
+5'			4.0	
S.L.			3.8	0.7
S. Curb			4.6	
S 1/4			4.9	
¢			4.5	0.0
N 1/4			4.3	
N. Curb			3.6	

4.52

20

STA	+	H.I.	-	Elev.
N.L.			2.9	1.6
+5'			2.2	
6+60 ⁶²				
E.L. Camolus				
+5'			3.3	
N.L.			3.7	0.8
N. Curb			4.5	
N 1/4			4.8	
¢			5.4	-0.9
S 1/4			5.7	
S. Curb			5.3	
S.L.			5.2	-0.7
+5'			5.0	
7+47 ⁸²				
W.L. Famosa				
S.L.			8.4	-3.9
S. Curb			8.4	
S 1/4			8.4	
¢			8.4	-3.9
N 1/4			8.4	
N. Curb			8.0	
7+05 ⁸²			7.2	-2.7
N.L.				
P.M. SE. Cor. Blk. 30, Loma Alta ± 2				59.64 ✓
	13.17	72.81		
T.P.			8.88	63.93
	7.67	71.60 ✓		

Camulos from N.L. Park to S.L. Temecula
60' wide, 10' SW. 10' Quarters.

STA	+	H.I.	-	Elev.
0+00	N.L. Park	71.60		
+5'			2.2	
W.L.			2.1	69.5
W. Curb			2.8	
W ¹ / ₄			3.8	
⊕			3.6	680
E ¹ / ₄			4.3	
E. Curb			4.6	
E.L.			5.3	65.3
+5'			5.6	
0+50				
+5'			7.8	
E.L.			7.5	641
E. Curb			6.9	
E ¹ / ₄			6.5	
⊕			5.9	65.7
W ¹ / ₄			6.2	
+2'			5.3	
W. Curb			5.0	
W.L.			4.6	670
+5'			4.5	
1+00				
+5'			6.8	
W.L.			6.7	64.9
W. Curb			7.1	

Plotted 9-20-28 - C.B.H.

71.60

21

STA	+	H.I.	-	Elev.	
+9'				7.8	
W ¹ / ₄				8.7	
⊕				8.7	62.9
E ¹ / ₄				9.2	
E. Curb				9.5	
E.L.				10.2	61.4
+5'				10.4	
1+19 ⁵⁰	S.L. Montalvo				
+5'				11.4	
E.L.				11.2	60.4
E. Curb				10.7	
E ¹ / ₄				9.9	
⊕				9.7	61.9
W ¹ / ₄				9.5	
+2'				8.7	
W. Curb				8.2	
W.L.				8.2	63.4
+5'				8.2	
1+79 ⁵⁰	N.L. Montalvo				
+5'				11.3	
W.L.				11.7	59.9
W. Curb				11.6	
+3'				11.8	
W ¹ / ₄				13.2	
⊕				12.7	58.9

71.60

60.45

22

STA	+	H.I.	-	Elev.
E/4			13.4	
E. Curb			13.5	
E.L.			14.0	576
+5'			14.2	
T.P.			12.14	59.46
	0.99	60.45		
2+00				
+5'			4.5	
E.L.			4.3	562
E. Curb			3.9	
E/4			3.6	
¢			2.6	57.9
W/4			3.2	
+1'			2.0	
W. Curb			0.9	
W.L.			0.5	600
+5'			0.2	
2+50				
+5'			3.4	57.1
W.L.			3.5	57.0
W. Curb			4.2	
+7'			4.7	
+9'			5.9	
W/4			5.9	
¢			5.5	55.0

STA	+	H.I.	-	Elev.
E/4			6.5	
E. Curb			6.9	
E.L.			7.1	534
+5'			7.4	
3+04 ⁵⁰				
S.L. Alley				
+5'			10.7	
E.L.			10.5	500
E. Curb			10.0	
E/4			9.7	
¢			9.0	515
W/4			9.2	
+3'			8.7	
+4'			7.6	
W. Curb			7.5	
W.L.			7.0	535
+5'			6.6	
3+12 ⁰⁰				
¢ Alley				
+5'			7.3	
W.L.			7.6	529
W. Curb			8.3	
W/4			9.6	
¢			9.5	51.0
E/4			10.2	
E. Curb			10.2	
E.L.			10.9	49.6

60.45

23

STA	+	H.I.	-	Elev.	STA	+	H.I.	-	Elev.
			11.1					12.84	47.61
3+19 ⁵⁰	N.L.	Alley				0.03	47.64 ✓		
+5'			11.3		4+00			0.6	
E.L.			11.0	49.5	+5'			0.9	46.7
E.Curb			10.6		W.L.			1.3	
+8'			10.1		W.Curb			1.7	
E 1/4			10.5		+7'			3.3	
⊕			9.9	506	W 1/4			2.8	44.8
W 1/4			10.0		⊕			3.2	
+2			9.0		E 1/4			3.0	
W.Curb			8.4		+3'			3.5	
W.L.			7.8	527	E.Curb			4.0	43.6
+5'			7.6		E.L.			4.3	
3+50					+5'				
+5'			9.5		4+44 ⁵⁰	S.L.	Mentone		
W.L.			10.0	505	+5'			8.7	
W.Curb			10.6		E.L.			8.4	39.2
+8			11.0		E.Curb			8.1	
W 1/4			12.2		E 1/4			7.8	
⊕			11.8	48.7	⊕			7.4	40.2
E 1/4			12.1		W 1/4			7.7	
+3'			11.8		+1'			6.7	
E.Curb			12.5		W.Curb			6.0	
E.L.			13.0	47.5	4+44 ⁶⁸	W.L.		5.5	42.1
+5'			13.3		+5'			5.1	

47.64

STA	+	H.I.	-	Elev.
5+04 ⁶⁸	N.L.	Mentona		
+5'			11.6	
W.L.			11.8	358
W. Curb			12.0	
+8'			12.3	
W ¹ / ₄			13.1	
+2'			13.8	
☉			13.3	34.3
E ¹ / ₄			13.9	
+3'			13.3	
E. Curb			13.6	
5+04 ⁵⁰	E.L.		14.1	33.5
+5'			14.1	
T.P.			13.25	34.39
	0.34	34.73		
5+50				
+5'			2.7	
W.L.			2.7	32.0
W. Curb			3.3	
+8'			4.1	
W ¹ / ₄			5.6	
☉			4.9	29.8
+9'			5.4	
E ¹ / ₄			4.4	
E. Curb			4.7	

34.73

24

STA	+	H.I.	-	Elev.
E.L.			4.9	29.8
+5'			4.8	
6+00				
+5'			8.2	
E.L.			8.2	26.5
E. Curb			7.9	
+7'			7.6	
E ¹ / ₄			9.4	
☉			9.0	25.7
+8'			9.3	
+9'			10.7	
W ¹ / ₄			10.8	
+2'			7.1	
W. Curb			6.9	
W.L.			6.4	28.3
+5'			6.4	
6+29 ⁶⁸	S.L.	All eg		
+5'			8.3	
W.L.			8.4	26.3
W. Curb			8.5	
+8'			9.0	
W ¹ / ₄			12.8	
+2'			11.4	
☉			11.3	23.4
+7'			11.7	

34.73

STA	+	H.I.	-	Elev.
E 1/4			12.3	
+2'			9.7	
E. Curb			9.6	
G+29 ⁵⁰ E.L.			9.8	24.9
+5'			9.9	
G+37 ⁰⁰ ϕ Alley				
+5'			10.5	
E.L.			16.5	24.2
E. Curb			10.3	
+9'			10.3	
E 1/4			13.0	
ϕ			12.0	22.7
+7'			12.4	
W 1/4			14.2	
+2'			9.5	
W. Curb			9.3	
G+37 ¹⁸ W.L.			8.9	25.8
+5'			8.7	
G+44 ⁶⁸ N.L. Alley				
+5'			9.2	
W.L.			9.3	25.4
W. Curb			9.8	
+9'			10.3	
W 1/4			14.3	
+2'			13.2	

34.73

25

STA	+	H.I.	-	Elev.
ϕ			12.7	22.0
+8'			13.2	
+9'			14.7	
E 1/4			11.7	
+2'			10.7	
E. Curb			11.0	
G+44 ⁵⁰ E.L.			11.0	23.7
+5'			11.0	
T.P.			12.85	21.88
B+C0	3.74	25.62		
G+60				
+5'			3.5	
E.L.			3.8	21.8
E. Curb			4.4	
+9'			3.5	
+11'			6.2	
ϕ			5.5	21.1
+6'			5.7	
+8'			8.4	
E 1/4			3.7	
E. Curb			2.9	
E.L.			1.9	23.7
+5'			1.5	
T.P.			12.74	12.88
	0.33	13.21		

13.21

13.21

26

STA.	+	H.I.	-	Elev.	STA.	+	H.I.	-	Elev.
7+00					W.L.			7.2	6.0
+5'			1.0		+5'			6.7	
W.L.			1.6	11.6	7+69 ⁷⁰ W.L.			} S.L. Temecula. See pg. 19	
W. Curb			1.8		7+69 ⁵⁰ E.L.				
+5'			0.6		B.M. NE. Cor. B.K. 76, Loma Alta #2			8.41	4.80 ✓
W 1/4			0.3						4.78 ✓
⊕			0.4	12.8	8+29 ⁷⁰ W.L.			} N.L. Temecula. See pg. 19	
+6'			0.3		8+29 ⁵⁰ E.L.				
E 1/4			2.5		8+50			13.21 ✓	
+6'			4.8		+5'			1.9	
E. Curb			5.2		W.L.			2.4	10.8
+3'			4.6		W. Curb			3.7	
E.L.			4.5	8.7	+8'			4.9	
+5'			4.5		W 1/4			7.2	
7+50					⊕			7.2	6.0
+5'			13.8		E 1/4			7.7	
E.L.			13.65	-0.4	E. Curb			9.3	
E. Curb			12.4		E.L.			10.8	2.4
+8'			11.0		+5'			11.1	
E 1/4			9.9		8+92 ³⁰ Intersection W.L. Famoso & E.L. Camulos				
+6'			6.8		+5'			6.9	
⊕			6.5	6.7	E.L.			6.0	7.2
W 1/4			6.7		E. Curb			4.5	
+3'			7.4		E 1/4			4.1	
W. Curb			7.0		⊕			4.4	8.8

STA	+	13.21	-	Elev.
+7'			5.0	
W ¹ / ₄			2.2	
+2'			0.0	
T.P.			0.43	12.78
	T.47	20.25 ✓		
W. Curb			5.1	
W.L.			3.5	16.8
+5'			3.1	
9+00				
+5'			3.1	
W.L.			3.3	17.0
W. Curb			4.6	
+8'			6.2	
W ¹ / ₄			9.4	
+3'			11.6	
☐			11.1	9.2
E ¹ / ₄			10.6	
E. Curb			11.0	
W.L. Famosa				
9+25				
+5'			3.0	
W.L.			3.2	17.1
+17'			4.4	
+25'			9.8	
+35'			9.2	

STA	+	20.25	-	Elev.
W.L. Famosa			9.2	
9+54 ⁷⁰	S.L. Alley			
+5'			4.0	
W.L.			4.0	16.3
+16'			4.3	
W.L. Famosa			4.3	16.0
9+62 ²⁹	☐ Alley			
+5'			4.0	
W.L.			4.3	16.0
W.L. Famosa			4.6	
9+69 ⁷⁰	N.L. Alley			
+5'			4.2	
W.L.			4.5	15.8
W.L. Famosa			4.7	15.6
9+76 ⁵⁰	Intersection W.L. Camulos & W.L. Famoso			
+5'			4.7	
W.L.			4.7	15.6

Mentone from W.L. Clovis to W.L. Famosa

60' wide, 10' S.W., 10' Quarters

70.82

28

Plotted 9-19-28 - C.B.H.

STA	+	H.I.	-	Elev.
B.M. SE. Cor. Blk 29, Loma Alta #2				59.77
0+00	W.L. Clovis	11.05	70.82 ✓	
+5'			10.9	
N.L.			11.05	59.77
N. Curb			10.9	
N 1/4			10.8	
☐			10.5	60.9
S 1/4			16.7	60.1
S. Curb			10.4	
S.L.			9.9	60.9
+5'			9.8	
0+10	W. Curb Clovis			
+5'			9.2	
S.L.			9.5	61.3
S. Curb			10.2	
S 1/4			10.1	60.7
☐			10.0	60.8
N 1/4			10.2	
N. Curb			10.3	
N.L.			10.1	60.7
+5'			10.4	
0+20	W 1/4 Clovis			
+5'			10.4	
N.L.			11.1	59.7

STA	+	H.I.	-	Elev.
N. Curb			9.9	
N 1/4			9.7	
☐			9.5	61.3
S 1/4			9.2	61.6
S. Curb			9.2	
S.L.			9.1	61.7
+5'			8.7	
0+30	☐ Clovis			
+5'			8.2	
S.L.			8.3	62.5
S. Curb			8.6	
S 1/4			8.9	61.9
☐			9.1	61.7
N 1/4			9.4	
N. Curb			9.6	
N.L.			9.9	60.9
+5'			10.0	
0+40	E 1/4 Clovis			
+5'			10.3	
N.L.			10.1	60.7
N. Curb			9.8	
N 1/4			9.6	
☐			9.2	61.6
S 1/4			9.1	61.7
S. Curb			8.9	

70.82

STA	+	H.I.	-	Elev.
S.L.			8.8	620
+5'			8.6	
0+43				
+5'			8.4	
S.L.			8.8	620
S.Curb			8.8	
S $\frac{1}{4}$			9.1	617
⊕			9.0	618
N $\frac{1}{4}$			9.4	
+3'			8.3	
N.Curb			8.2	
N.L.			8.2	626
+5'			8.6	
0+50	E. Curb	Cloris		
+5'			8.2	
N.L.			8.1	627
N.Curb			7.7	
+7'			7.4	
N $\frac{1}{4}$			8.9	
⊕			8.4	624
S $\frac{1}{4}$			8.2	626
S.Curb.			8.4	
S.L.			8.0	628
+5'			8.4	

70.82

29
Elev.

STA	+	H.I.	-	Elev.
0+60	E.L. Cloris	= 0+00		
+5'			5.7	
S.L.			5.9	64.9
+3'			5.9	
+5'			7.1	
S.Curb			7.5	
S $\frac{1}{4}$			7.6	63.2
⊕			7.2	63.6
N $\frac{1}{4}$			7.9	
+3'			7.0	
N.Curb			7.2	
N.L.			7.7	63.1
+5'			7.7	
0+50				
+5'			6.3	
N.L.			6.0	64.8
N.Curb			5.8	
+3'			5.6	
N $\frac{1}{4}$			5.9	
⊕			4.9	65.9
S $\frac{1}{4}$			5.4	65.4
+1'			4.3	
S.Curb			3.9	
S.L.			3.7	67.1
+5'			3.7	

70.82

STA	+	H.I.	-	Elev.
1+00				
+5'			3.1	
S.L.			3.2	67.6
S. Curb			3.8	
+9'			4.3	
S $\frac{1}{4}$			5.0	65.8
⊕			4.7	66.1
N $\frac{1}{4}$			5.8	
+3'			5.5	
N. Curb.			5.6	
N.L.			5.9	64.9
+5'			6.3	

1+50

+5'			7.8	
N.L.			7.7	63.1
N. Curb			7.2	
+3'			6.9	
N $\frac{1}{4}$			7.2	
⊕			6.0	64.8
S $\frac{1}{4}$			6.8	64.0
+2'			5.6	
S. Curb			5.1	
S.L.			4.3	66.5
+5'			4.2	

70.82

STA	+	H.I.	-	Elev.
2+00				
+5'			7.0	
S.L.			7.2	63.6
S. Curb			7.8	
+8'			8.0	
S $\frac{1}{4}$			9.2	61.6
⊕			8.7	62.1
N $\frac{1}{4}$			9.7	
+2'			9.3	
N. Curb			10.0	
N.L.			10.3	60.5
+5'			10.4	

2+50

+5'			13.3	
N.L.			12.9	57.9
N. Curb			12.6	
+8'			12.3	
N $\frac{1}{4}$			12.7	
⊕			11.5	59.3
S $\frac{1}{4}$			12.0	58.8
+4'			11.1	
S. Curb			10.7	
S.L.			9.9	60.9
+5'			9.6	

30
Elev.

70.82

STA

+

H.I.

-

Elev.

T.P.

0.88

59.15 ✓

12.55

58.27

59.15

STA

+

H.I.

-

Elev.

31'

+5'
4+00

5.2

+5'

8.1

S.L.

8.2

51.0

S. Curb

9.4

+8'

10.2

S 1/4

11.7

47.5

☐

11.0

48.2

N 1/4

12.4

N. Curb

12.9

N.L.

13.1

46.1

+5'

13.5

4+50

+5'

17.0

N.L.

16.3

42.9

N. Curb

15.3

N 1/4

15.0

☐

13.3

45.9

S 1/4

13.9

45.9

+2'

12.3

S. Curb

11.6

S.L.

10.6

48.6

+5'

10.1

T.P.

12.76

46.39

2.27

48.66 ✓

1.7

1.7

57.5

2.6

3.0

4.3

54.9

3.4

55.7

4.6

4.4

5.0

5.0

54.2

5.3

9.7

9.4

49.8

8.9

8.5

8.7

7.5

51.7

8.0

51.2

6.7

6.0

5.3

53.9

48.66

STA	+	H.I.	-	Elev.
5+00				
+5'			1.1	
S.L.			1.3	47.4
S. Curb			2.6	
+8'			3.4	
+9'			4.6	
S ¹ / ₄			5.0	43.7
⊕			4.6	44.1
+5'			5.1	
N ¹ / ₄			6.0	
+2			5.7	
N. Curb			6.5	
N.L.			7.2	41.5
+5'			8.1	
5+50				
+5'			10.4	
N.L.			9.9	38.8
N. Curb			9.0	
+8'			8.3	
N ¹ / ₄			8.4	
⊕			6.9	41.8
S ¹ / ₄			7.0	41.7
+3'			5.4	
S. Curb			4.5	
S.L.			3.4	45.4

48.66

32

STA	+	H.I.	-	Elev.
+5'			2.9	
6+00				
W.L. Camulos				
+5'			6.0	
S.L. T.P.			6.50	42.16
S. Curb			7.5	
+6'			8.6	
+8'			9.3	
S ¹ / ₄			9.6	39.1
⊕			9.7	39.0
N ¹ / ₄			10.8	
N. Curb			11.8	
N.L.			12.8	35.9
+5'			13.2	
		1.10	43.26	✓
6+10				
W. Curb Camulos				
+5'			1.0	
S.L.			1.7	41.6
S. Curb			2.6	
+5'			3.4	
S ¹ / ₄			4.7	38.6
⊕			5.2	38.1
N ¹ / ₄			6.2	
N. Curb			7.1	
N.L.			7.6	35.7
+5'			8.0	

STA	+	43.26	-	Elev.
6+18				
+5'			8.4	
N.L.			7.9	35.4
N. Curb			7.3	
N ¹ / ₄			7.1	
☐			5.9	37.4
S ¹ / ₄			5.6	37.7
+5'			5.0	
+7'			3.6	
S. Curb			3.3	
S.L.			2.3	41.0
+5'			1.6	
6+20 ⁵⁰	W ¹ / ₄	Camulos		
+5'			2.8	
S.L.			3.3	40.0
S. Curb			4.3	
S ¹ / ₄			5.3	38.0
☐			6.0	37.3
N ¹ / ₄			7.3	
N. Curb			8.2	
N.L.			9.4	33.9
+5'			10.2	
6+30 ⁵⁰	☐	Camulos		
+5'			9.5	
N.L.			8.9	34.4

STA	+	43.26	-	Elev.
N. Curb			8.0	
N ¹ / ₄			7.0	
☐			6.0	37.3
S ¹ / ₄			5.1	38.2
S. Curb			4.0	
S.L.			3.0	40.3
+5'			2.4	
6+40 ⁵⁰	E ¹ / ₄	Camulos		
+5'			2.8	
S.L.			3.4	39.9
S. Curb			4.4	
S ¹ / ₄			5.8	37.5
☐			6.2	37.1
N ¹ / ₄			7.2	
N. Curb			8.3	
N.L.			9.3	34.0
+5'			9.7	
6+50 ⁵⁰	E. Curb	Camulos.		
+5'			9.9	
N.L.			9.2	34.1
N. Curb			8.3	
+8'			7.7	
N ¹ / ₄			8.0	
☐			7.1	36.2
S ¹ / ₄			6.7	36.6

43.26

STA	+	H.I.	-	Elev.
			6.8	
+2'			5.2	
+4'			4.5	
S. Curb			3.6	397
S.L.			3.0	
+5'			3.6	
6+60 ⁵⁰	E.L.	Camulos	4.0	39.3
+5'			5.3	
S.L.			5.8	
S. Curb			7.5	
+8'			7.5	35.8
+9'			7.6	35.7
S 1/4			8.6	
Φ			8.0	
N 1/4			8.7	
+3'			9.7	33.6
N. Curb			10.2	
N.L.			12.1	
+5'			11.7	31.6
7+00			11.1	
+5'			10.5	
N.L.			11.2	
N. Curb			10.2	33.1
N 1/4				
+1'				
Φ				

43.26

34

STA	+	H.I.	-	Elev.
S 1/4			10.2	33.1
+1'			10.5	
+3'			8.5	
S. Curb			7.6	
S.L.			6.2	
+5'			5.8	37.5
7+50			12.1	
+5'			12.8	30.5
S.L.			13.3	
S. Curb			14.0	
+6'			16.0	
+7'			16.0	27.3
S 1/4			15.5	27.8
Φ			15.8	
+8'			15.0	
N 1/4			15.2	
N. Curb			15.9	27.4
N.L.			16.2	
+5'			12.42	30.84
T.D.				
	0.68	31.52		
8+00			11.4	
+5'			11.0	20.5
N.L.			10.7	
N. Curb				

31.52

STA	+	H.I.	-	Elev.
N/4			9.4	
+2'			10.0	
¢			9.7	21.8
S/4			9.8	21.7
+2'			9.8	
+4'			8.3	
S.Curb			7.6	
S.L.			6.7	24.8
+5'			6.1	
T.P.			11.85	19.67
	2.83	22.50 ✓		
8+25				
+25'			10.8	
+15'			10.2	
+5'			9.9	
N.L.			9.5	13.0
N.Curb			8.5	
N/4			4.8	
+4'			3.3	
¢			2.9	19.6
S/4			2.9	19.6
+4'			3.0	
+6'			2.0	
N.Curb			1.5	
N.L.			0.3	22.2

22.50

35

STA	+	H.I.	-	Elev.
+5'			0.0	
8+50				
+5'			0.4	
S.L.			1.3	21.2
S.Curb			2.8	
+2'			4.1	
S/4			4.2	18.3
¢			4.4	18.1
+5'			4.5	
N/4			8.0	
+5'			10.4	
N.Curb			12.2	
N.L.			16.0	6.5
T.P.			13.0	9.50
Hand Level	0.40	9.90		
+10'			7.4	
+20'			9.4	
+30'			10.9	
+50'			13.0	
8+83				
+20'			13.0	
+10'			11.0	
N.L.			5.9	4.0
N.Curb			1.9	
N/4			9.7	
Instr.	22.50 ✓			

STA	+	H.I.	-	Elev.
		22.50		
¢			4.9	17.6
S 1/4			4.6	17.9
S. Curb			4.7	
+5'			4.6	
+8'			2.4	
S.L.			2.1	20.4
+5'			1.8	
9+00				
+5'			2.4	
+3'			2.7	
+2'			3.0	
S.L.			4.2	18.3
+2'			5.1	
S. Curb			4.9	
S 1/4			4.9	17.6
+7'			5.5	
¢			7.0	15.5
N 1/4			14.0	
T.P.			13.0	9.50
Hand Level	0.2	9.70		
N. Curb			5.7	
N.L.			11.2	-1.5
+5' Shore Line			13.1	

Mentone		9.70		
STA	+	H.I.	-	Elev.
9+16				
+5' In Bay			13.1	
N.L. Shore Line			13.1	-3.4
N. Curb			9.5	
N 1/4			4.9	
¢			0.0	9.7
S 1/4 Instr.	22.50 ✓		7.8	14.7
+5'			5.4	
S. Curb			5.5	
S.L.			5.1	17.4
+5'			5.0	
T.P.			12.40	10.10
	1.59	11.69 ✓		
9+35 ²⁰ W.L. Famosa				
+5'			0.3	11.39
S.L.			1.3	10.4
S. Curb			3.5	8.2
S 1/4			6.6	5.1
¢			9.0	2.7
N 1/4			13.0	-1.3
N. Curb Shore Line			15.3	-3.6
N.L. In Bay			15.7	-4.0
9+78 ²⁰ W.L. Famosa				
N.L. In Bay			15.7	-4.0
N. Curb Shore Line			15.7	-4.0

11.69

STA	+	H.I.	-	Elev.
N/4	Shore Line		15.7	
⊕	"	"	15.7	-4.0
S/4	"	"	15.7	
S.Curb	"	"	15.7	
S.L.	"	"	15.7	-3.5

X- Section Montalvo from W.L. Cloris to W.L. Wells
60' wide, 10' S.W., 10' quarters

P.M. SE. Cor. Blk. 30, Loma Alta # 2
12.48 72.12 ✓

0+00	W.L. Cloris			
N.L.			11.8	603
N.Curb			12.2	
N/4			11.8	
⊕			12.1	600
S/4			12.2	599
S.Curb			12.3	
S.L.			12.2	599
0+10	W.Curb Cloris			
S.L.			11.1	610
S.Curb			11.3	
S/4			11.2	609
⊕			11.2	60.9
N/4			11.3	

Plotted 9-20-28 C.B.H.

Montalvo

72.12

37

STA	+	H.I.	-	Elev.
N.Curb			10.9	
N.L.			10.6	61.5
0+20	W/4 Cloris			
N.L.			9.7	62.4
N.Curb			10.0	
N/4			10.5	
⊕			10.3	61.8
S/4			10.5	61.6
S.Curb			10.6	
S.L.			10.1	61.0
0+30	⊕ Cloris			
S.L.			9.5	62.6
S.Curb			9.7	
S/4			9.8	62.3
⊕			9.6	62.5
N/4			9.7	
N.Curb			9.5	
N.L.			9.3	62.8
0+40	E/4 Cloris			
N.L.			8.7	63.4
N.Curb			9.3	
N/4			9.5	
⊕			9.1	63.0
S/4			9.2	62.9
S.Curb			9.3	

72.12

72.12

38

STA	+	H.I.	-	Elev.	STA	+	H.I.	-	Elev.
S.L.			9.0	63.1	0+60	E.L. Clovis	= 0+00		
0+45					+5'			2.8	
+5'			9.0		+1'			3.1	
S.L.			8.7	63.4	S.L.			6.6	65.5
S. Curb			9.1		+5'			8.6	
S 1/4			9.1	63.0	S. Curb			8.7	
¢			8.9	63.2	S 1/4			8.6	63.5
N 1/4			9.3		¢			8.3	63.8
N. Curb			9.0		N 1/4			8.5	
+2'			8.1		N. Curb			7.7	
N.L.			7.3	64.8	N.L.			6.7	65.4
+5'			4.8		+1'			6.3	
0+50	E. Curb Clovis				+5'			2.8	
+5'			4.2			T.P.		2.39	69.73
N.L.			7.3	64.8			10.09	79.82 ✓	
N. Curb			8.2		0+50				
N 1/4			9.2		+5'			5.6	
¢			8.7	63.4	+1'			5.9	
S 1/4			9.0	63.1	N.L.			10.8	69.0
S. Curb			9.0		N. Curb			11.9	
S.L.			8.4	63.7	N 1/4			12.8	
+1'			4.2		¢			12.9	66.9
+5'			3.8		S 1/4			13.0	66.8
					S. Curb			12.7	
					+6'			12.6	

STA	+	79.82	-	Elev.
S.H.			11.1	68.7
+1'			5.7	
+5'			5.3	
1+00				
+5'			3.8	
S.H.			4.5	75.3
+2'			8.4	
S.Curb			9.4	
+7'			9.6	
+8'			10.4	
S $\frac{1}{4}$			10.3	69.5
☒			10.1	69.7
N $\frac{1}{4}$			10.2	
N.Curb			9.4	
+5'			8.6	
N.L.			6.8	73.0
+2'			3.6	
+5'			3.6	
1+50				
+5'			4.3	
+3'			4.2	
N.L.			6.3	73.5
+3'			7.9	
N.Curb			7.9	
N $\frac{1}{4}$			8.5	

STA	+	79.82	-	Elev.
☒			8.6	71.2
S $\frac{1}{4}$			8.8	71.0
+2'			8.2	
S.Curb			8.0	
S.L.			5.7	74.1
+5'			3.3	
2+00				
+5'			5.9	
S.L.			8.3	71.5
S.Curb			8.4	
S $\frac{1}{4}$			8.7	71.1
☒			8.6	71.2
N $\frac{1}{4}$			8.8	
N.Curb			8.9	
N.L.			8.0	71.8
+5'			6.8	
2+50				
+5'			9.0	
N.L.			9.3	70.5
N.Curb			10.2	
N $\frac{1}{4}$			10.3	
☒			10.2	69.6
S $\frac{1}{4}$			10.5	69.3
S.Curb			10.0	
S.L.			9.3	70.5

7982

STA	+	H.I.	-	Elev.
+5'			8.6	
3+00				
+5'			11.1	
S.L.			11.4	68.4
S.Curb			12.1	
S 1/4			12.5	67.3
☼			12.4	67.4
N 1/4			12.6	
N.Curb			12.5	
N.L.			11.8	68.0
+5'			12.0	
T.P.			12.39	67.43
	1.36	68.79 ✓		
3+50				
+5'			3.4	
N.L.			2.9	65.9
N.Curb			2.9	
N 1/4			3.3	
☼			3.2	65.6
S 1/4			3.4	65.4
+2'			2.6	
S.Curb			2.7	
S.L.			2.2	66.6
+5'			1.8	

68.79

STA	+	H.I.	-	Elev.
4+00				
+5'			2.7	
S.L.			3.0	65.8
S.Curb			3.7	
S 1/4			4.2	64.6
☼			4.0	64.8
N 1/4			4.2	
N.Curb			4.3	
N.L.			4.6	64.2
+5'			4.6	
4+50				
+5'			5.2	
N.L.			5.3	63.5
N.Curb			5.2	
N 1/4			5.2	
☼			4.8	64.0
S 1/4			4.8	64.0
S.Curb			4.1	
S.L.			3.1	65.7
+5'			2.6	
5+00				
+5'			2.9	
S.L.			3.5	65.3
S.Curb			4.4	
+8'			4.8	

STA	+	H.I.	-	Elev.
		68.79		
S 1/4			5.5	63.3
¢			5.3	63.5
N 1/4			5.6	
N. Curb			5.7	
N.L.			5.8	63.0
+5'			5.8	
5+50				
+5'			6.7	
N.L.			6.6	62.2
N. Curb			6.6	
N 1/4			6.2	
¢			6.2	62.6
S 1/4			6.3	62.5
+3'			5.4	
S. Curb			5.3	
+7'			4.6	
S.L.			3.7	65.1
+5'			3.4	
T.P.			7.11	61.68
	3.69	65.37		
6+00 ²⁸		W.L. Camulos		
+5'			1.50	
S.L.			2.0	63.4
S. Curb			2.7	
+8'			3.2	

STA	+	H.I.	-	Elev.
		65.37		
S 1/4			4.2	61.2
¢			4.2	61.2
N 1/4			4.1	
N. Curb			4.6	
N.L.			5.4	60.0
+5'			5.3	
6+10 ²⁸		W. Curb Camulos		
N.L.			5.4	60.0
N. Curb			5.1	
+8'			4.5	
N 1/4			5.1	
¢			4.4	61.0
S 1/4			4.2	61.2
+5'			4.4	
+7'			2.9	
S. Curb			2.6	
S.L.			2.0	63.4
6+18				
S.L.			2.5	62.9
+2'			2.7	
+4'			3.8	
S. Curb			4.1	
S 1/4			4.1	61.3
¢			4.6	60.8
N 1/4			5.7	

65.37

STA	+	H.I.	-	Elev.
N. Curb			5.5	
N.L.			5.8	596
6+20 ²⁸	W ¹ / ₄	Camulos		
N.L.			7.0	584
N. Curb			6.4	
N ¹ / ₄			5.8	
⊕			4.8	606
S ¹ / ₄			4.0	617
S. Curb			4.0	
S.L.			3.4	620
6+30 ²⁸	⊕	Camulos		
S.L.			3.5	619
S. Curb			3.7	
S ¹ / ₄			4.3	61.1
⊕			4.9	60.5
N ¹ / ₄			5.7	
N. Curb			6.2	
N.L.			6.6	588
6+40 ²⁸	E ¹ / ₄	Camulos		
N.L.			7.2	58.2
N. Curb			6.6	
N ¹ / ₄			6.3	
⊕			5.5	59.9
S ¹ / ₄			5.3	60.1
S. Curb			4.4	

65.37

42

STA	+	H.I.	-	Elev.
S.L.			3.7	61.7
6+50 ²⁸	E. Curb	Camulos		
S.L.			4.4	61.0
S. Curb			4.9	
+8'			5.3	
S ¹ / ₄			6.3	59.1
⊕			6.3	59.1
N ¹ / ₄			6.9	
+3'			6.5	
N. Curb			6.8	
N.L.			7.4	58.0
6+60 ²⁸	E.L.	Camulos		
+5'			8.7	
N.L.			7.9	57.5
N. Curb			7.5	
+8'			7.3	
N ¹ / ₄			7.9	
⊕			6.8	58.6
S ¹ / ₄			6.8	58.6
+2'			6.0	
S. Curb			5.6	
S.L.			5.0	60.4
+5'			4.6	

65.37

43

STA	+	H.I.	-	Elev.
7+00				
+5'			7.4	
S.L.			7.6	57.8
S. Curb			8.3	
S $\frac{1}{4}$			8.7	56.7
+1'			9.7	
☼			9.4	56.0
N $\frac{1}{4}$			10.6	
+2'			10.0	
N. Curb			10.4	
N.L.			10.2	55.2
+5'			10.5	
7+50				
+5'			13.8	
N.L.			13.3	52.1
N. Curb			13.1	
+8'			12.7	
N $\frac{1}{4}$			13.2	
☼			12.3	53.1
S $\frac{1}{4}$			12.6	52.8
+2'			11.4	
S. Curb			11.0	
S.L.			10.1	55.3
+5'			9.8	
T.P.			12.39	52.98

STA	+	H.I.	-	Elev.
8+00	0.89	53.87		
+5'			4.7	
N.L.			4.4	48.5
N. Curb			4.2	
+8'			4.1	
N $\frac{1}{4}$			4.5	
☼			3.8	50.1
+9'			4.3	
S $\frac{1}{4}$			2.7	51.2
S. Curb			2.0	
S.L.			1.6	52.3
+5'			1.0	
8+50				
+5'			3.7	
S.L.			3.9	50.0
S. Curb			4.7	
+8'			5.5	
S $\frac{1}{4}$			7.5	46.4
☼			7.3	46.6
N $\frac{1}{4}$			8.0	
+2'			7.1	
N. Curb			7.4	
N.L.			8.8	45.1
+5'			9.6	

5387

STA	+	H.I.	-	Elev.
9+00				
+5'			16.7	
N.L.			16.6	37.3
N. Curb			15.0	
+5'			13.1	
N $\frac{1}{4}$			12.8	
☐			11.8	42.1
+8'			12.0	
S $\frac{1}{4}$			10.7	43.2
+1'			9.4	
S. Curb			8.2	
S.L.			7.2	46.7
+5'			6.7	
T.P.			12.51	41.36

1.52 42.88 ✓

9+50				
+5'			0.0	
S.L.			1.2	41.7
S. Curb			2.9	
+8'			4.4	
S $\frac{1}{4}$			5.6	37.3
☐			6.0	36.9
N $\frac{1}{4}$			6.7	
N. Curb			8.2	
N.L.			9.7	33.2

4288

44

STA	+	H.I.	-	Elev.
+5'			9.7	
10+00				
+5'			14.6	
N.L.			14.0	289
N. Curb			12.6	
N $\frac{1}{4}$			11.1	
☐			10.4	32.5
S $\frac{1}{4}$			11.2	31.7
+2'			8.8	
S. Curb			8.0	
S.L.			6.9	36.0
+5'			6.2	
10+50				
+5'			10.9	
S.L.			11.1	31.8
S. Curb			12.2	
+8'			12.9	
T.P.			12.67	30.21
	0.83	31.04 ✓		
S $\frac{1}{4}$			3.3	27.7
☐			2.8	28.2
N $\frac{1}{4}$			3.5	
N. Curb			4.5	
N.L.			6.8	24.2
+25'			10.4	

31.04

STA	+	H.I.	-	Elev.
10+85				
+25'			17.1	
+15'			14.4	
N.L.			10.4	20.6
N. Curb			6.3	
N 1/4			5.5	
¢			5.5	25.5
S 1/4			5.1	25.9
S. Curb			5.0	
+2'			4.0	
S.L.			3.7	27.3
+5'			3.6	
11+00				
+5'			5.8	
S.L.			6.0	25.0
S. Curb			5.6	
S 1/4			6.0	25.0
¢			6.5	24.5
+6'			6.9	
N 1/4			8.4	
N. Curb			10.8	
T.P.			13.0	18.04
Hand Level	0.50	18.45		
N.L.			2.0	16.5
+25'			8.0	

18.54

45

STA	+	H.I.	-	Elev.
11+25				
+25'			14.0	
N.L.			10.7	7.8
N. Curb			7.9	
N 1/4			4.8	
¢			2.7	15.8
S 1/4			0.7	17.8
Instr.	31.04	✓		
S. Curb			10.3	
S.L.			9.2	21.8
+5'			9.0	
T.P.			12.30	18.74
	0.56	19.30	✓	
11+50				
+10'			3.3	
S.L.			5.7	13.6
S. Curb			8.2	
S 1/4			11.0	8.3
¢			13.9	5.4
N 1/4			15.9	
N. Curb			17.4	
N.L.			19.3	0.0
T.P.			13.0	6.30
Hand Level	1.0	7.30		
+40' Shore line			10.7	

STA	+	H.I.	-	Elev.
11+65 ⁹⁸	SE. Cor. Blk 22	7.30	W.L. Famosa	
+5'	Shore Line		10.6	
N.L.			9.8	-2.5
N. Curb			9.5	
N ¹ / ₄			9.5	
⊕			8.5	-1.2
+3'			8.1	
S ¹ / ₄			5.3	2.0
S. Curb			2.8	
S.L.	Instr.	19.30 ✓	11.7	7.6
+30			2.4	
11+86 ⁰⁸	NE. Cor. Blk. 23		W.L. Famosa	
T.P.			12.38	6.92
	0.56	7.48 ✓		
S.L.			6.3	1.2
+7'			10.1	
S. Curb	Shore Line		10.6	
S ¹ / ₄	Bay		11.2	-3.7
⊕	"		11.2	-3.7
11+96 ⁰⁸	W. Curb Famosa		11.2	-3.7
⊕	Bay		11.2	-3.7
S ¹ / ₄	"		11.3	
S. Curb	"		11.3	
S.L.	Shore Line		10.8	-3.3

STA	+	H.I.	-	Elev.
12+08 ⁵⁸	W ¹ / ₄ Famosa	7.48		46
S.L.	Bay		11.2	-3.7
S. Curb	"		11.2	
S ¹ / ₄	"		11.2	-3.7
⊕	"		11.2	-3.7
12+21 ⁰⁵	⊕ Famosa		11.7	-4.2
12+33 ⁵⁸	E ¹ / ₄ "		11.9	
12+46 ⁰⁸	E. Curb "		11.8	
12+51 ⁸⁰	E.L. Famosa N. of Montalvo		11.7	-4.2
12+56 ⁰⁸	E.L. " S. " "		11.7	-4.2
13+00	⊕		11.7	-4.2
13+98	Shore Line			
+5'	"		10.8	
S.L.	"		11.0	-3.5
S. Curb	"		10.6	
S ¹ / ₄	"		9.5	-2.0
⊕	"		9.2	-1.7
N ¹ / ₄	"		8.9	
N. Curb	"		8.2	
N.L.	"		8.6	-1.1
+5'	"		10.4	
	T.P.		0.29	7.19
14+25		12.71	19.90 ✓	
+10'			10.9	
N.L.			11.1	8.8

STA	+	H.I.	-	Elev
		19.90		
N. Curb			12.0	
N ¹ / ₄			13.8	
☼			15.0	4.9
S ¹ / ₄			15.5	4.4
S. Curb			16.3	
S.L.			16.7	3.2
+10'			17.0	
14+50				
+10'			8.4	
S.L.			8.4	11.5
S. Curb			8.0	
S ¹ / ₄			8.0	11.9
☼			7.5	12.4
N ¹ / ₄			6.5	
N. Curb			5.6	
N.L.			5.0	14.9
+10'			5.3	
T.I.P.			0.74	19.16
	11.01	30.17 ✓		
14+81 ⁵⁰	W.L.	Loleta		
+10'			13.0	
N.L.			11.6	18.6
N. Curb			10.7	
N ¹ / ₄			9.8	
☼			10.0	20.2

STA	+	H.I.	-	Elev.
		30.17		
S ¹ / ₄			9.8	20.4
S. Curb			9.8	
S.L.			11.2	19.0
+10'			12.9	
14+91 ⁵⁰	W. Curb	Loleta		
+10'			12.0	
S.L.			10.2	20.0
S. Curb			9.2	
S ¹ / ₄			9.1	21.1
☼			9.4	20.8
N ¹ / ₄			9.8	
N. Curb			10.5	
N.L.			11.4	18.8
+10'			12.4	
15+01 ⁵⁰	W ¹ / ₄	Loleta		
+10'			11.9	
N.L.			11.1	19.1
N. Curb			9.8	
N ¹ / ₄			9.2	
☼			8.7	21.5
S ¹ / ₄			8.2	21.9
S. Curb			8.0	
S.L.			8.9	21.3
+10'			10.2	

30.17

STA	+	H.I.	-	Elev.
15+11 ⁵⁰	☒	Loleta		
+10'			8.5	
S.L.			8.2	22.0
S. Curb			6.9	
S ¹ / ₄			7.4	22.8
☒			8.2	22.0
N ¹ / ₄			8.4	
N. Curb			9.1	
N.L.			10.9	19.3
+10'			11.9	
15+21 ⁵⁰	E ¹ / ₄	Loleta		
+10'			12.4	
N.L.			11.1	19.1
N. Curb			9.6	
N ¹ / ₄			8.3	
☒			7.8	22.4
S ¹ / ₄			6.8	23.4
S. Curb			6.6	
S.L.			6.3	23.9
+10'			6.7	
15+31 ⁵⁰	E. Curb	Loleta		
+10'			5.1	
S.L.			5.5	24.7
S. Curb			6.0	
S ¹ / ₄			7.0	23.2

30.17

48

STA	+	H.I.	-	Elev.
☒			8.3	21.9
N ¹ / ₄			9.0	
N. Curb			10.3	
N.L.			11.9	18.3
+10'			14.0	
15+41 ⁵⁰	E.L.	Loleta		
+10'			15.3	
N.L.			13.0	17.2
N. Curb			11.1	
N ¹ / ₄			10.1	
☒			8.3	21.9
S ¹ / ₄			6.5	23.7
S. Curb			5.3	
S.L.			4.8	25.4
+10'			4.4	
16+00				
+10'			3.3	
S.L.			3.8	26.4
S. Curb			5.0	
S ¹ / ₄			7.3	22.9
☒			9.8	20.4
N ¹ / ₄			12.8	
T.P.			13.0	17.17
Hand Levels	0.40	17.57		
N. Curb			3.3	

STA	+	H.I.	-	Elev.	STA	+	H.I.	-	Elev.
N.L.			7.9	9.7	16+66 ⁵⁰	W.L. Alley			
+15'			15.0		N.H. Bag			21.7	-4.0
16+25					+5' Shore Line			20.7	
+10' Shore Line			21.0		N.Curb			19.9	
N.L.			16.4	1.1	N $\frac{1}{4}$			16.6	
N.Curb			10.4		☐			9.5	8.3
N $\frac{1}{4}$			5.1		S $\frac{1}{4}$			3.8	14.0
☐			0.3	17.6	+7'			2.7	
	Inst.	30.17 ✓			S.Curb			1.0	
S $\frac{1}{4}$			9.9	20.3	S.L.	Instr.	30.17 ✓	8.7	21.5
S.Curb			6.9		+10'			6.6	
S.L.			5.3	24.9	T.P.			12.61	17.56
+10'			5.5			0.91	18.47 ✓		
16+50					16+81 ⁵⁰	E.L. Alley			
+10'			5.5		+10'			0.8	
S.L.			7.8	22.4	S.L.			1.5	17.0
S.Curb			10.6		+5'			3.4	
T.P.			13.0	17.17	+7'			4.6	
Hand Level	0.60	17.77			S.Curb			5.1	
S $\frac{1}{4}$			1.7	16.1	+4'			5.2	
☐			6.5	12.3	S $\frac{1}{4}$			8.9	9.6
N $\frac{1}{4}$			11.5		☐			13.2	5.3
N.Curb.			16.5		T.P.			13.0	5.47
+5' Shore Line			20.7		Hand Level	1.60	7.07		
N.L. Bag			21.7	-4.0	N $\frac{1}{4}$ Shore Line			9.50	

7.07

8.42

50

STA	+	H.H.	-	Elev.	STA	+	H.H.	-	Elev.
	N. Curb	Bay	10.6		17+75.				
	N.L.	"	10.6	-2.9	N.L.	Bay		12.0	-3.6
17+00					N. Curb	"		12.0	
	N.L.	Bay	10.6	-2.9	N 1/4	"		11.8	
	N. Curb	"	10.6		☐	"		11.7	-3.3
	N 1/4	Shore Line	9.5		S 1/4	"		11.7	-3.3
	☐		6.7	0.4	S. Curb	"		11.7	
+5'			5.5		S.L.	"		11.3	-2.9
S 1/4			3.5	3.6	+25'	Shore Line		10.6	
S. Curb	Instr.	18.47 ✓	10.6		18+06.50	W.L. Wells			
+6'			7.4		+35'	Shore Line		11.0	
S.L.			6.7	11.8	S.L.	Bay		11.5	-3.1
+10'			5.6		S. Curb	"		11.6	
17+25.	T.P.		10.96	7.51	S 1/4	"		11.7	-3.3
		0.91	8.42 ✓		☐	"		11.7	-3.3
+10'			1.1		N 1/4	"		11.7	
+4'			1.7	6.7	N. Curb	"		11.7	
S.L.			4.8	3.6	N.L.	"		11.7	-3.3
S. Curb			8.5						
S 1/4			10.0	-1.6					
☐	Shore Line		10.9	-2.5					
N 1/4	Bay		11.7						
N. Curb	"		12.0						
N.L.	"		12.0	-3.6					

Famosa from N.L. Park to N.L. Tomecula

70' wide, 10' S.W. 12.50 Quarters,

6.34

51

STA		+	H.I.	-	Elev.	STA	+	H.I.	-	Elev.
	T.P.	See Page	46		7.19 ✓	0+50				
		10.15	17.34 ✓			+10'	Shore Line		9.0	
0+00	N.L. Park					E.L.			7.9	-1.6
+5'	Shore Line		20.2			E. Curb			7.2	
E.L.			19.5	-22		+4'			6.9	
E. Curb			18.2			+6'			5.9	
E 1/4			15.6			E 1/4			3.5	
☒			12.6	4.7		☒	Inst.	17.34 -	11.2	6.1
W 1/4			10.0			W 1/4			8.2	
W. Curb			6.7			W. Curb			6.2	
W.L.			4.5	12.8		W.L.			4.1	13.2
+5'			3.0			+5'			3.0	
0+25						0+75				
+5'			4.0			+5'			1.5	
W.L.			5.7	11.6		W.L.			2.7	14.6
W. Curb			6.8			W. Curb			6.2	
W 1/4			9.4			W 1/4			10.1	
☒			11.8	5.5		☒	Hand Level	6.34	3.2	3.1
T.P.			13.0	4.34		+6'			5.0	
Hand Level	2.0	6.34				+9'			7.0	
E 1/4			3.6			E 1/4			7.1	
E. Curb			6.3			E. Curb			8.0	
E.L.			8.0	-1.7		E.L.	Shore Line		9.7	-3.4
+15'	Shore Line		9.0							

Plotted 9-19-28 - CBH

STA		+	6.34	-	Elev.
			H.I.		
1+00					
E.L.	Bay			10.6	-4.3
E. Curb				10.6	
E 1/4	Shore Line			9.8	
⊕	"			9.0	-2.7
W 1/4				7.0	
W. Curb				1.1	
W.L.	Instr.	17.34 ✓		8.6	-8.7
+5'				6.0	
	T.P.			12.99	4.35
		0.51	4.86 ✓		
1+18 ⁵⁰	S.L. Montalvo				
+5'				1.1	
W.L.				3.8	1.1
+5'	Shore Line			7.5	
W. Curb	Bay			8.1	
W 1/4	"			8.6	
⊕				8.7	-3.8
E 1/4				8.8	
E. Curb				8.9	
1+26	E.L.			8.9	-4.0
0+00	N.L. Montalvo				
E.L.	Bay			9.1	-4.2
E. Curb	"			9.1	

STA		+	4.86	-	Elev.
			H.I.		
	E 1/4 Bay			9.0	
	⊕ "			8.9	-4.0
	W 1/4 "			8.9	
	W. Curb "			8.9	-4.0
	W.L. Shore Line			7.5	-2.6
	+5'			6.7	
0+50					
	+5'			6.0	
	W.L.			6.8	-19
	W. Curb Shore Line			8.2	
	W 1/4 Bay			8.9	
	⊕ "			8.9	-4.0
	E 1/4 "			8.9	
	E. Curb "			8.9	-4.0
	E.L. "			8.9	
1+00					
	E.L. "			9.0	-4.1
	E. Curb "			9.0	
	E 1/4 "			9.0	
	⊕ "			9.0	-4.1
	W 1/4 "			9.0	
	W. Curb Shore Line			8.7	
	W.L.			8.7	-2.8
	+5'			5.6	
	T.P.			8.21	-3.35

STA	+	H.I.	-	Elev.	STA	+	H.I.	-	Elev.
	11.56	+ 8.21 ✓							
1+78 ⁰⁸	S.L. Alley				E 1/4 Bay			12.4	
+15'	Shore Line, on S.L. Alley		12.0		E. Curb "			12.4	
W.L. Bay			12.4	-4.2	E.L. "			12.4	-4.2
W. Curb "			12.4		E.L. "			12.3	-4.1
W 1/4 "			12.4		E. Curb "			12.3	
☐ "			12.4	-4.2	E 1/4 "			12.3	
E 1/4 "			12.4		☐ "			12.3	-4.1
E. Curb "			12.4		W 1/4 "			12.4	
E.L. "			12.4	-4.2	W. Curb "			12.4	
1+96 ⁴⁷	N.L. Alley				W.L. "			12.5	-4.3
E.L. "			12.4	-4.2	+25' Shore Line			12.3	
E. Curb "			12.4		3+49 ⁷⁹ S.L. Mentone				
E 1/4 "			12.4		+5' on S.L. "			10.9	-2.7
☐ "			12.4	-4.2	W.L. Shore Line			11.8	-3.6
W 1/4 "			12.4		W. Curb Bay			12.2	
W. Curb "			12.4		W 1/4 "			12.2	
W.L. "			12.4	-4.2	☐ "			12.2	-4.0
+20' Shore Line, on N.L. Alley			12.0		E 1/4 "			12.2	
2+50					E. Curb "			12.2	
+25' Shore Line			12.0		E.L. "			12.2	-4.0
W.L. Bay			12.5	-4.3	3+86 ⁵⁹ ☐ Mentone				
W. Curb			12.5		E.L. Bay			12.2	-4.0
W 1/4			12.4		E. Curb "			12.2	
☐			12.4	-4.2	E 1/4 "			12.2	

8.21

STA	+	H.I.	-	Elev.
♀	Bay		12.2	-4.0
W/a	"		12.2	
W. Curb	"		12.2	
W.L.	"		12.2	-4.0
+20'	Shore Line		12.0	
4+23 ²⁸	N.L. Mentone			
+25'	Shore Line on N.L. Mentone	11.9		
W.L.	Bay		12.3	-4.1
W. Curb	"		12.3	
W/a	"		12.3	
♀	"		12.3	-4.1
E/a	"		12.3	
E. Curb	"		12.3	
E.L.	"		12.3	-4.1
S+00				
E.L.	"		12.3	-4.1
E. Curb	"		12.3	
E/a	"		12.3	
♀	"		12.3	-4.1
W/a	"		12.2	
W. Curb	"		12.3	
W.L.	"		12.2	-4.0
+35'	Shore Line		11.0	

8.21

54

STA	+	H.I.	-	Elev.
5+76 ⁵³	S.L. Alley			
+5'	Shore Line		11.6	
W.L.	Bay		12.3	-4.1
W. Curb	"		12.3	
W/a	"		12.3	
♀	"		12.3	-4.1
E/a	"		12.3	
E. Curb	"		12.3	
E.L.	"		12.3	-4.1
5+94 ⁹²	N.L. Alley			
E.L.	Bay		12.3	-4.1
E. Curb	"		12.3	
E/a	"		12.3	
♀	"		12.3	-4.1
W/a	"		12.3	
W. Curb	"		12.3	
W.L.	Shore Line		12.2	-4.0
+5'			10.8	
6+50				
+5'			8.6	
W.L.			9.8	-1.6
W. Curb			11.1	
+5'	Shore Line		12.0	
W/a	Bay		12.3	
♀	"		12.3	-4.1

821

STA	+	H.I.	-	Elev.
E 1/4 Bay			12.3	
E. Curb "			12.3	
E.L. "			12.3	-4.1
T.P.			11.71	-3.50
	17.23	8.73 ✓		

7+00

E.L.	Bay	12.7	-40
E. Curb	"	12.7	
E 1/4	"	12.7	
¢	"	12.7	-40
W 1/4	"	12.7	
W. Curb	Shore Line	12.4	
W.L.		10.3	-1.6
+S		7.6	

7+23 41 S.L. Temecula

W.L.		12.7	-40
W. Curb		12.7	
W 1/4		12.7	
¢		12.7	-40
E 1/4		12.7	
E. Curb		12.7	
E.L.		12.7	-40

7+96 90 N.L. Temecula

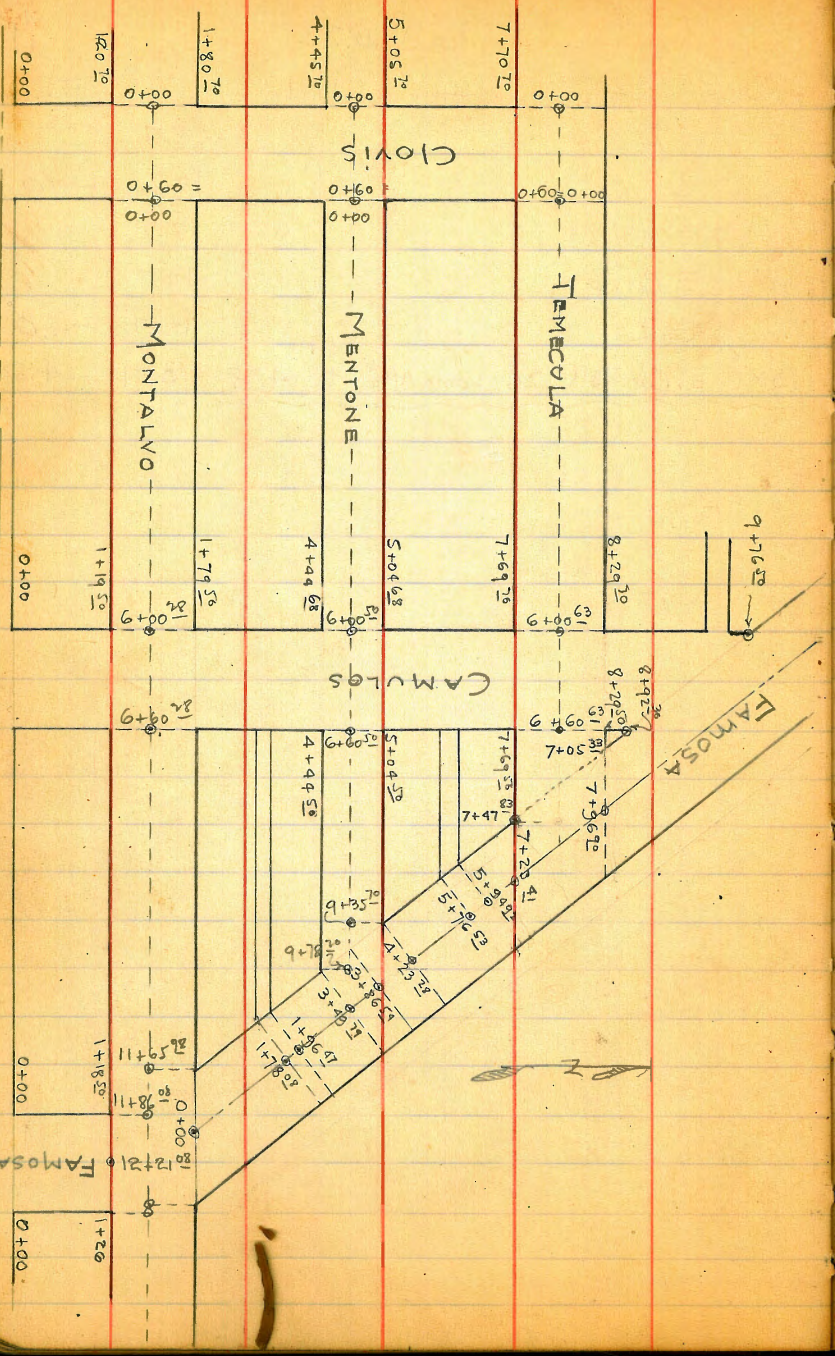
W.L.	Shore Line	11.5	-28
W. Curb		12.4	

873

55

STA	+	H.I.	-	Elev.
W 1/4			12.7	
¢			12.7	-40
E 1/4			12.7	
E. Curb			12.7	
E.L.			12.7	-40
P.M. NE. Cor. BIK. 26 Loma Alta		2 4.78	3.91	4.82

CITY PARK



10-22-28

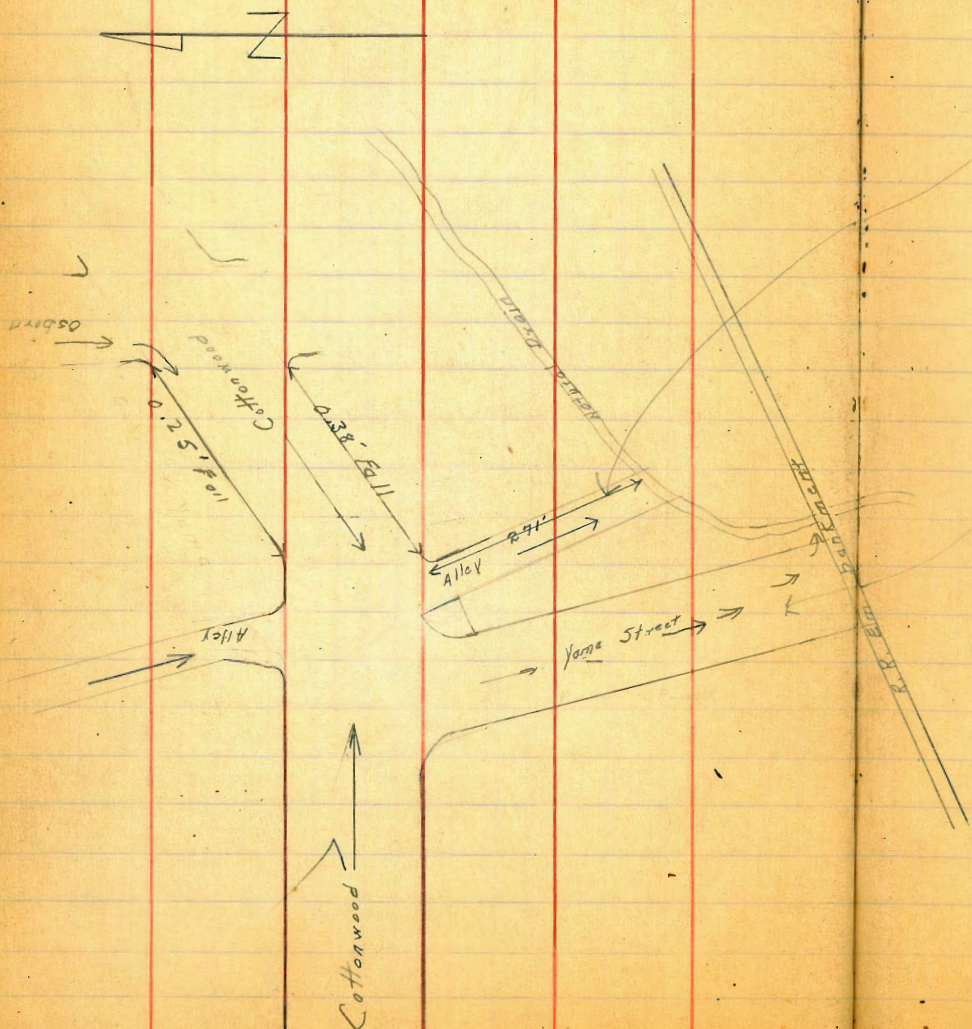
J.C. Bliss

Drebert

Rauner

Yama and Cottonwood Drainage

57



→ This alley is level from Cottonwood to edge of Natural Drain. Water could be drained directly into Natural Drain down Alley.

→ Yama has a fall of 1.6' from Cottonwood to foot of Railroad Embankment. Water could be drained off to East side into Natural Drain

X section 52nd St.
El Cajon to Orange ct & 52nd
Page 81

Σ 330.84

0+70

Out 15	9.1	321.7
E.L.	9.0	321.8
E	9.3	321.5
cb	9.4	321.4
♀	9.7	321.1
cb	10.7	320.1
W	11.5	319.3
Out 15	12.4	318.4

1+00

Out 15	11.3	319.5
W	10.6	320.2
cb	10.2	320.6
+10	8.5	322.3
♀	8.3	322.5
cb	7.8	323.0
E	7.9	322.9
E.L.	8.2	322.6
Out 15	7.6	323.2

1+25

Out 15	5.0	325.8
E.L.	6.0	324.8
E	6.2	324.6
cb	6.1	324.7
♀	5.8	325.0

Cont. from Page 81.

Plotted 10-25-28 - CBH

Σ 330.84

58

cb	7.4	323.4
W	8.7	322.1
Out 15	10.2	320.6
1+50		
Out 15	8.2	322.6
W	5.5	325.3
cb	4.1	326.7
♀	3.3	327.5
cb	2.8	328.0
E	2.3	328.5
E.L.	1.1	329.7

T.P.

0.40 330.44

+13.07

Σ 343.51

1+75

E.L.	7.4	336.1
E	8.9	334.6
cb	12.2	331.3
♀	12.4	331.1
cb	13.0	330.5
W	13.2	330.3
Out 15	17.8	326.7

2+00

Out 15	15.3	328.2
W	10.6	332.9

T 343.51

cb	9.6	333.9
¢	8.5	335.0
+10	8.9	334.6
cb	6.6	336.9
E	4.7	338.8
E.L.	1.4	342.1

2+25

E.L.	+4.4	347.9
E	+0.6	344.1
cb	2.2	341.3
+5	4.3	339.2
¢	5.0	338.5
cb	5.5	338.0
W	6.6	336.9
0+15	11.0	332.5

2+50

0+15	8.8	334.7
W	3.4	340.1
cb	2.2	341.3
+3	1.5	342.0
¢	1.2	342.3
+10	0.9	342.6

T.P. -0.32 343.19

+13.14 356.33

5²nd

356.33

cb	110	345.3
E	7.5	348.8
E.L.	4.2	352.1
	247.5	
E.L.	0.1	356.2
E	3.5	352.8
cb	6.0	350.3
+S	8.6	347.7
♀	9.6	346.7
cb	10.6	345.7
W	12.2	344.1
Out 15	16.2	340.1
	3400	
Out 15	13.1	343.2
W	8.4	347.9
cb	6.5	349.8
♀	5.8	350.5
H10	5.4	350.9
cb	1.8	354.5
E	0.0	356.3
E.L.	+7.5	360.8
	347.5	
E.L.	+7.2	363.5
E	+2.8	359.1
cb	+1.1	357.4

356.33

60

+S	1.3	355.0
♀	1.5	354.8
cb	1.7	354.4
W	3.5	352.8
Out 15	7.9	348.4
	3150	
Out 15	3.3	353.0
T.P.		-0.10 356.23
	+12.84	
	369.07	
W	11.8	357.3
cb	10.6	358.5
♀	7.8	359.3
H10	9.6	359.5
cb	6.7	362.4
E	5.0	364.1
E.L.	1.9	367.2
	347.5	
E.L.	+6.1	375.2
E	+0.2	369.3
cb	1.4	367.7
+S	5.1	364.0
♀	5.3	363.8
cb	5.6	363.5
W	7.3	361.8

T 369.07

Out 15	12.1	357.0
	+400	
Out 15	8.5	360.6
W	1.3	367.8
cb	0.1	369.0
T.P.		-0.14 368.88

+12.91

T 381.79

£	12.4	369.4
710	11.3	370.5
cb	2.0	374.8
E	6.0	375.8
E.L.	2.6	379.2
	+425	
E.L.	+0.5	382.3
E	2.4	379.4
cb	3.8	378.0
+5	6.6	375.2
£	8.0	373.8
cb	2.6	373.8
W	10.2	371.6
Out 15	15.0	366.8
	+450	
Out 15	2.0	372.8
W	6.2	375.6

T 381.79

61

cb	3.6	378.2
£	4.2	377.6
+10	3.2	378.6
cb	0.8	381.0
E	40.2	382.0
E.L.	2.4	379.4
T.P.		-0.95 380.84

+5.75

T 386.59

	+475	
E.L.	1.8	384.8
E	3.5	383.1
cb	4.7	381.9
£	5.8	380.8
cb	6.2	380.4
W	6.5	380.1
Out 15	2.4	377.2
	+500	
W	5.0	381.6
cb	5.1	381.5
£	4.7	381.9
cb	4.5	382.1
E	3.3	383.3
E.L.	1.8	384.8

T 386.59

5+25

E.L.	1.6	385.0
E	2.7	383.9
cb	3.8	382.8
£	4.2	382.4
cb	4.8	381.8
W	4.5	382.1

5+53

W	5.1	381.5
cb	5.6	381.0
£	5.0	381.6
cb	3.7	382.9
E	2.9	383.6
E.L.	1.3	385.3

5+57 = N.L. East Dog Orange

E.L.	5.6	381.0
E	6.6	380.0
£b	6.6	380.0
£b	7.1	379.5
cb	7.4	379.2
W	7.4	379.2

B.M. S.W.B.P 52nd + Orange - 8.88 377.71
 → 377.64

Cross Section Alley Block 133 Ugly Hts.
From Tyler to Van Buren Bet. Storyland &
Cleveland

Sec Sketch Page 69

312.087 for Est. G. 204

BM	0.91	312.93	312.02
TP	7.19	309.81	10.31 302.62
		0-5.5 = Nob. of Tyler	
E on Pav		7.52	302.29
L "		7.78	302.03
M "		8.10	301.71
		0.10 = 1/4 Tyler	
M Top cb		0+15 - 7.32 S. of N.L. Tyler St.	7.32 302.49
Gutter on Paving		7.35	302.46
L "		7.60	302.21
Gutter "		7.18	302.63
E Top cb		6.71	303.10
		0+15	
E		6.4	303.4
L		6.5	303.3
M		6.4	303.4
		0+56	
-2 = Sty Conc Apron		5.58	304.23
M		5.7	304.1
L		5.9	303.9
E		5.6	304.2
+5 = Sty Conc Apron		5.10	304.71
		0+66	
E-6.3 = Sty Garage Conc Floor		5.10	304.71

Red. & Plat. on profile 2236 11/28-31/28

Elevations to be raised .06' to est. based

used for established grade

Indexed
C.S.K.

20' x 40'

309.81

	0+70		
M-4 = 1/4 Conc Apron		5.59	304.22
M-3.8 = 1/4 Garage Conc Floor		5.49	304.32
E-1.4 = 1/4 Garage Conc Floor		5.20	304.61
		0+80	
E-1.4 = 1/4 Garage Conc Floor		5.20	304.61
E-1.4 = Sty		4.90	304.91
		0+90	
E-1.8 = 1/4 Garage Conc Floor		4.90	304.91
		0+100	
E		4.8	305.0
L		5.0	304.8
M		4.7	305.1
		1+04	
M-2.5 = Sty Garage Conc Apron		4.26	305.55
17.5 of M-2 = 1/4 Port. on Pav			
		1+20	
M-0.4 = 1/4 Conc Apron		4.23	305.58
M-2 = 1/4 Garage Conc Floor		4.18	305.63
		1+34	
M-1.4 = Sty Garage Conc Floor		3.97	305.84
E-2.4 = Sty Dir. Gar. Dirt Floor		3.7	306.1
		1+46	
-0.2 = 1/4 Garage Conc Floor		3.95	305.86
M		4.1	305.7

Rains on Elev. of 8' Alt

Nov 27-39
C.S.K.
Osborne

63

		309.81	
♂	4.1	305.4	
F	3.6	306.2	
	1+50		
E-46 = Nly Do. Garage Dirt	3.5	306.3	
	1+56		
0.5' N of EL = Sly Small Shed			
	1+64		
N-5 = Sly 3 Car Garage Dirt Floor	3.1	306.7	
	1+76		
N+0.7 = Sly Conc. Apron	3.59	306.22	
N-3.3 = Ely 3 Car Garage Conc Floor	3.13	306.68	
	1+75		
0.3' N of EL = Nly Small Shed			
	1+79		
E+0.4 = Sly Garage Dirt F	2.4	307.4	
	1+91		
N-1.4 = Nly 3 Car Garage	3.09	306.72	
N+0.9 = Nly Conc. Apron	3.41	306.40	
	2+0		
F	2.4	307.4	
♂	2.7	307.1	
N	2.8	307.0	
	2+12		
E-4.8 = Nly 4 Garage Dirt Floor	2.1	307.7	
NL = Sly House			

Raise all elevations of back

		309.81	
	2+22		
N+1.1 = Nly House			
	2+35		
1.3' E of NL = Nly Porch Pl			
	2+40		
N	2.0	307.8	
♂	1.9	307.9	
F	1.1	308.7	
	2+56		
E = Sly Garage Dirt Floor	0.7	309.1	
	2+69		
E-1.9 = Nly Garage Dirt Floor	0.4	309.4	
N	5.46	313.90	1.87
	2+85		
F	4.3	309.6	
+1 = Tree Stump 1.5' Dia			
♂	5.0	308.9	
N	5.1	308.8	
	2+10		
E-5.5 = 1/2 Garage Dirt Floor	3.3	310.6	
	2+40		
-5	5.6	308.3	
N	5.2	308.7	
♂	4.7	309.2	
F	3.7	310.2	

Raise all elevations of back

313.90

3761

E+17 = Sly Garage Dirt Floor 3.6 310.3

3771

E+0.3 = Wly Floor Garage 3.6 310.3

3794

2.2 E of W.L. = Wly Post Pole

410

-1.6 = Sly Do. Garage Dirt F 3.0 310.9

F 3.2 310.7

S 4.2 309.6

W 5.0 308.9

+5 5.7 308.2

4117

E-43 = Wly Do. Garage D.F 2.5 311.4

4126

E-5A = S Garage Dirt Floor 2.1 311.8

4143

W+0.8 = Ely Bay Window

4150

-5 4.8 309.1

W 4.4 309.5

S 3.8 310.1

F 2.5 311.4

Raise all Elev. to 6' to ch

313.90

4728° = Δ 8° 26' 14"

F 2.4 311.5

+8 2.2 311.7

S 0.2 Rim Mt. Conc 0.87 313.03

+2 2.5 311.4

+7.4 = Wire Fence

W 3.5 310.4

+5 4.0 309.9

TP 10.23 321.54 2.59 311.31

4175

E-7.2 = Sly Do. Garage Conc Floor 8.80 312.74

4192

-1.0 = S Garage Conc Floor 10.80 310.74

W 10.8 310.7

S 9.7 311.8

F 9.6 311.9

+5.2 = Conc Walk 6' Wide 8.86 312.68

+7.0 = Wly Do. Gar. Conc Floor 8.76 312.78

5121

4' E of W.L. = Wly Post Pole

5130

F 7.7 313.8

S 8.9 312.6

W 10.4 311.1

+1.5 = S Garage Dirt Floor 10.2 311.3

Raise all elevations to 6' to ch

32154		
5140		
F-5.5 = 2' Garage Dnt Floor	5.7	315.8
5163		
-5	7.3	314.2
W	6.0	315.5
2	5.8	315.7
F	4.8	316.7
+4.5 = 2' Do Garage D.F.	4.2	317.3
5175		
W+0.2 = 5 1/2' Fence Conc. Post	4.70	316.84
5191		
F	1.8	319.7
+2	3.8	317.7
2	4.0	317.5
+8.4 = 2' 4" Conc. Slab	4.26	317.28
W = Top Conc. Wall	4.18	317.36
6118		
W Top Conc. Wall	3.90	317.64
2	3.4	318.1
+8	2.7	318.8
F	0.8	320.7
6122.8 = 5 1/2' Van Buren		
F Top cb	1.62	319.92
Gutter on Pav	2.12	319.42
2	3.22	318.31

Raise all elevation 102 2' ab - Est. Grade BM

32154		
Gutter on Pav	3.89	317.65
W Top cb	3.84	317.70
6126.8 = 5' 6" Van Buren		
W on Pav 12.9	4.56	316.98
2	3.57	317.97
F	2.83	319.21
TP	12.82	333.35
TP	7.14	329.57
BM		

1.01 320.53
0.92 322.43
2.68 326.89

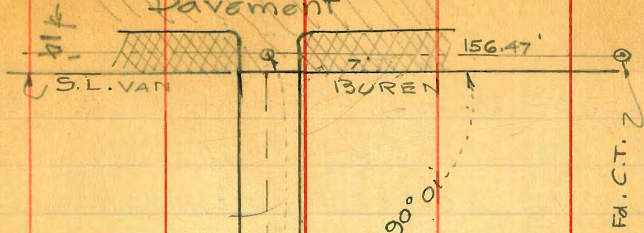
S.F. BP
Van Buren
Cleveland
336.95

67

VAN BUREN AVE.

69

Pavement



8°26'

157.00'

4+72.80

29'

465.48'

98°04'

N.L. TYLER

10' Closed

7.32' 153.25'

SIDE WALK

Pavement

TYLER AVE.

Fd. 2' x 2' R.W.

Chm D. Curbs 1/2

X-Section Alley BIK 133 University Hts.
20' wide

STA	+	H.I.	-	Elev.
B.M. SE. B.P. Van Buren & Cleveland				336.95
	0.76	337.71		
N.E. curb BIK 133 S. Curb Line (Top)			2.72	
of Van Buren Ave (Bottom)			3.25	
T.P.			13.10	324.61
	1.56	326.17		
T.P.			12.18	313.99
	1.12	315.11		
SE curb BIK 133 N. Curb Line (Top)			5.09	
of Tyler St (Bottom)			5.85	
T.P.			11.06	304.05
	4.25	308.30 ✓		
S.W. curb of BIK 133 N. Curb Line (Top)			10.82	297.48
of Tyler (Bottom)			11.42	296.88
+5.6' N. Curb Tyler				
W. Curb Top			5.88	302.42
✓ Bott.			6.53	301.77
⊕			6.17	302.13
E. Curb Top			5.17	303.13
✓ Bott.			5.88	302.42
0+00 N.L. Tyler				
E. Curb Top			5.07	303.23
✓ Bott.			5.53	302.77
⊕			6.01	302.29

Plotted 9-21-28
C.B.H.

JAEGER
Bailey }
Clavert } Dept. 1928
Brooks }
Mattoon } 308.30

	+	H.I.	-	Elev.
W. Curb Dott.			5.84	302.48
✓ Top			5.72	302.58
0+63 ⊕ Single Garage on E.W.				
+5.8' Conc. Floor			3.54	304.76
+5' Edge of Apron			3.68	304.62
E.W.			3.9	304.4
⊕			4.0	304.3
W.W.			3.9	304.4
0+74 ⊕ Single Garage on E.W.				
W.W.			3.4	304.9
⊕			3.8	304.5
E.W.			3.8	304.5
+1.5' Conc. Floor			3.59	304.71 ✓
0+86 ⊕ Single Garage on E.W.				
+1.8' Conc. Floor			3.28	305.02
E.W.			3.58	304.7
⊕			3.6	304.7
W.W.			3.3	305.0
1+10 ⊕ Double Garage on W.W.				
+3.4' Conc. Floor			2.54	305.76
+1.9' Edge of Apron			2.60	305.70
W.W.			2.7	305.6
⊕			3.2	305.1
E.W.			3.0	305.3

308.30

STA	+	H.I.	-	Elev.
1+81	Single Garage on W.L.			
	E.L.		6.2	307.1
	⊕		1.7	306.6
	W.L.		2.0	306.3
	+0.8' Dirt Floor		2.0	306.3
	T.P.		1.49	306.81
		6.69		313.50 ✓
1+86	Double Garage on E.L.			
	W.L.		7.1	306.4
	⊕		6.8	306.7
	E.L. Dirt Floor		6.0	307.5
2+03	Double Garage on E.L.			
	+3.4' Dirt Floor		5.8	307.7
	E.L.		5.9	307.6
	⊕		6.3	307.2
	W.L.		6.4	307.1
2+63	Single Garage on E.L.			
	+0.8' Dirt Floor		4.3	309.2
	E.L.		4.3	309.2
	⊕		4.8	308.7
	W.L.		5.0	308.5
3+11	Single Garage on E.L.			
	W.L.		4.8	308.7
	⊕		4.4	309.1
	E.L.		3.0	310.5

313.50

71

STA	+	H.I.	-	Elev.
	+5.5'			
	Dirt Floor		2.7	310.8
3+67	Single Garage on E.L.			
	E.L. Inside Garage		3.0	310.5
	+1' W.L. Garage, Dirt Floor		3.0	310.5
	⊕		4.7	308.8
	W.L.		5.0	308.5
4+10	Double Garage on E.L.			
	W.L.		4.6	308.9
	⊕		4.6	308.9
	E.L.		2.7	310.8
	+3.7' Dirt Floor		2.2	311.3
4+27	Single Garage on E.L.			
	+5' Dirt Floor		1.4	312.1
	E.L.		2.2	311.3
	+6'		3.5	
	⊕		3.8	309.7
	W.L.		4.0	308.5
	T.P.		3.26	310.24
		11.01		321.25 ✓
4+72 ⁸⁰	Angle Point			
	E.L.		9.6	311.7
	+9'		9.6	311.7
	⊕ Top of Manhole		8.16	313.09
	+0.9' Center Manhole		8.16	

STA	+	H.I.	-	Elev.
		321.25		
+2.5'			9.5	
W.L.			10.6	310.7
4+83	☒	Double Garage on	E.L.	
W.L.			10.6	310.7
☒			10.0	311.3
E.L.			9.4	311.9
+7'		Dirt Floor	8.6	312.7 ↓
5+30	☒	Single Garage on	W.L.	
+5'			4.8	
E.L.			7.0	314.3
+5'			8.5	
☒			8.6	312.7
+7'			9.6	
W.L.			9.8	311.5
+2'		Dirt Floor	9.8	311.5
5+39				
W.L.			8.5	312.8
+3'			8.3	
+7'			7.4	
☒			7.5	313.8
E.L.			5.9	315.4
+5'			4.5	

STA	+	H.I.	-	Elev.
		321.25		
5+63	☒	Double Garage on	E.L.	
+4.8		Dirt Floor	3.6	317.7 ↓
E.L.			4.0	317.3
☒			4.7	316.6
+5'			5.0	
+9'			5.7	
W.L.			6.8	314.5
5+78	☒	Single Garage on	E.L.	
W.L.			4.5	316.8
☒			3.8	317.5
E.L.			2.3	319.0
+4.5'		Conc. Floor	1.84	319.41 ↓
6+15				
E.L.			0.6	320.7
+1'			1.3	
☒			2.1	319.2
W.L.			2.4	318.9
6+23		S.L. Van Buren.		
W. Curb Top			3.48	317.77
✓ Bot.			3.52	317.73
☒			2.87	318.38
E. Curb Bot.			1.66	319.59
✓ Top			1.25	320.00

STA	+	H.I.	-	Elev
6+37	S. Curb Line	Van Buren		321.25
	E. Curb Top		1.4v	319.83
	✓ Bot.		1.9v	319.33
	⊕		3.1v	318.13
	W. Curb Top		3.86	317.39
	✓ Bot.		4.26	316.99
	T.P.		1.19	320.06 ✓
	T.P.		13.06	308.19
		1.80		309.99 ✓
NW. Curb	Blk. 133 on S. Curb	Van Buren		
	Curb Top		7.95	302.04
	✓ Bot.		8.33	301.66
				320.06 ✓
		12.96		333.0v
	T.P.		1.11	331.91
		7.76		339.67
B.M.	336.95		2.60	337.07

10-23-28 X section 52nd - El Cajon
 J.C. Bliss
 Dreber to Orange - Varying width - 77.8 at 73
 Reuner } El Cajon to 59.26 at Orange. Width
 increases approximately 20 each
 25' station. X-sectioned as a 40' st.
 from West Line with pluses to East Line
 5' cbs 30' Roadway
 B.M. Nail in pole 52nd & El Cajon 375.81
 +0.72 X 376.51
 Section along paving on El Cajon
 West Top cb 2.04 374.47
 Gutter 2.45 374.06
 ⊕ 2.30 374.21
 G 2.66 373.85
 E Top cb 2.13 374.38
 0+00 = 90° off West Line at S.W. Cor. 52nd & El Cajon
 E.L. 4.5 372.0
 E 3.0 373.5
 cb 2.3 374.2
 ⊕ 2.4 374.1
 cb 2.4 374.1
 W 2.0 374.5
 0+25
 W 2.6 373.9
 cb 2.9 373.6
 ⊕ 2.0 374.5
 cb 11.6 364.9
 E 4.5 361.5
 E.L. 17.7 358.8

Plotted 10-25-28.
GPH

60 St
12' cb

T 376.51

1450

Out 15	19.5	357.0
E.L.	16.0	360.5
E	13.3	363.2
cb	12.2	364.3
♀	5.0	371.5
cb	5.2	371.3
+1	6.6	369.9
w	7.7	368.8

0475

w	7.0	369.5
cb	7.6	368.9
♀	7.7	368.8
+8	7.8	368.7
Eb	10.8	365.7
E	12.2	364.3
E.L.	15.6	360.9
Out 15	18.8	357.7

1400

Out 15	19.8	356.7
E.L.	16.0	360.5
E	14.3	362.2
cb	12.3	364.2
+7	10.6	365.9
♀	10.5	366.0
+10	10.1	366.4

T 376.51

74

cb	7.8	368.7
w	6.9	369.6

1425

w	8.6	367.9
cb	7.4	367.1
+7	13.7	362.8
♀	13.6	362.9
+10	13.7	362.8

cb

E	16.0	360.5
E.L.	17.8	358.7
E.L.	19.3	357.2
Out 15	21.2	355.3

1450

Out 15	23.5	353.0
E.L.	20.3	356.2
E	19.0	357.5
cb	17.6	358.9
+10	14.4	362.1

♀

+10

cb

w

w

cb

1475

w	9.3	367.2
cb	10.7	365.8

376.51

+5	13.7	362.8
♀	14.4	362.1
+10	15.0	361.5
cb	16.7	359.8
E	18.8	357.9
E.L.	21.0	355.5
Out 15	24.5	352.0
	2+00	
Out 15	23.7	352.8
E.L.	20.4	356.1
E	18.5	358.0
cb	16.7	359.8
+7	15.0	361.5
♀	14.5	362.0
+10	14.6	361.9
cb	10.7	365.8
W	10.4	366.1
	2+75	
W	11.2	365.3
T.P.		-12.67 363.84
	+388	
	367.72	
+1	4.6	363.1
cb	5.5	362.2
♀	6.1	361.6

367.72

75

cb	8.3	359.4
E	10.3	357.4
E.L.	11.7	356.0
Out 15	15.8	351.9
	2+50	
Out 15	15.4	352.3
E.L.	12.5	355.2
E	11.1	356.6
cb	9.9	357.8
♀	7.1	360.6
cb	6.3	361.4
W	6.0	361.7
	2+75	
W	4.7	363.0
+2	6.6	361.1
cb	6.7	361.0
♀	7.3	360.4
+8	7.8	359.9
cb	10.4	357.3
E	11.5	356.2
E.L.	14.2	353.5
Out 15	15.0	352.7
	3+00	
Out 15	15.4	352.3
E.L.	13.3	353.4

367.72

E	12.3	355.4
cb	10.4	357.3
+5	8.3	359.4
♀	2.7	360.0
cb	6.6	361.1
w	5.5	362.2
3+25		
w	4.2	363.5
cb	6.2	361.5
♀	7.6	360.1
+10	8.3	359.4
cb	10.4	357.3
E	12.1	355.6
E.L.	15.3	352.4
Out 15	16.4	351.3
3+50		
Out 15	18.3	349.4
E.L.	16.1	351.6
E	11.5	356.2
cb	9.0	358.7
+5	7.3	360.4
♀	7.3	360.4
+10	7.0	360.7
cb	4.3	363.4
w	2.5	365.2

367.72

76

3+75

w	1.4	366.3
cb	3.6	364.1
+3	6.0	361.7
♀	6.3	361.4
♀10	6.7	361.0
cb	7.0	358.7
E	11.0	356.7
E.L.	14.6	353.1
Out 15	18.5	349.2
4+00		
Out 15	17.7	350.5
E.L.	13.4	354.3
E	10.3	357.4
cb	8.0	359.7
+5	5.7	362.0
♀	5.5	362.2
+10	5.3	362.4
cb	2.3	365.4
w	+0.3	368.0
4+25		
w	+1.0	368.7
cb	1.1	366.6
+5	4.1	363.6
♀	5.0	362.7
♀11	5.4	362.3

367.72

cb	7.4	360.3
E	9.0	358.7
E.L.	12.1	355.6
Out 15	15.5	352.2
	+50	
Out 15	12.8	352.9
E.L.	11.5	356.2
E	7.7	360.0
cb	7.0	360.7
+3	5.0	362.7
+	7.3	363.4
# 8	3.6	364.1
cb	0.0	367.7
w	+2.3	370.0
	+75	
w	+3.2	370.9
cb	+2.1	369.8
+6	2.5	365.2
+	3.5	364.2
+ 12	7.4	363.3
cb	5.3	362.4
E	6.3	361.4
E.L.	10.6	357.1
Out 15	14.9	352.8

367.72

77

5+00

Out 15	13.9	353.8
E.L.	10.9	356.8
E	5.8	361.9
cb	4.4	363.3
+	3.0	364.7
+ 8	2.3	365.4
cb	+2.2	369.9
w	+3.1	370.8
	5+25	
w	+2.6	370.3
cb	+1.1	368.8
+7	2.8	364.9
+	3.6	364.1
cb	4.5	363.2
E	6.1	361.6
E.L.	10.3	357.4
Out 15	14.7	353.0
	5+50	
Out 15	16.7	351.0
E.L.	12.8	354.9
E	8.2	359.5
cb	6.3	361.4
+	6.2	361.5
+ 5	6.8	360.9
+	1.1	366.6

π 367.72

cb	+0.3	368.0
W	+1.0	368.7
	5 +7.5	
W	2.4	365.3
cb	7.0	363.7
+8	9.0	358.7
♀	8.8	358.9
cb	9.0	358.7
E	10.2	357.5
E.L.	14.3	353.4
Out 15	18.9	348.8
	6 +0.0	
Out 15	21.5	346.2
E.L.	18.0	349.7
E	14.3	353.4
cb	13.0	354.7
♀	13.9	353.8
+10	13.9	353.8
+13	9.0	358.7
cb	8.5	359.2
W	7.4	360.3
T.P.		-12.98 357.74
+0.88		
	π 355.57	
W	1.0	354.6

π 355.57

78

6 +2.5

cb	1.8	353.8
+3	2.5	353.1
+6	6.8	348.8
+12	5.7	349.9
♀	5.3	350.3
cb	5.7	349.9
E	7.5	348.1
E.L.	10.2	345.4
Out 15	12.4	343.2
	6 +5.0	
Out 15	15.1	340.5
E.L.	13.1	342.5
E	11.4	344.2
cb	9.9	345.7
♀	9.1	346.5
+7	10.2	345.4
cb	5.8	349.8
W	5.0	350.6
	6 +7.5	
W	9.8	345.7
cb	10.5	345.1
+7	13.2	342.4
♀	13.2	342.4
T.P.		-12.78 342.79
+0.35		
	343.17	

T 34314

cb	0.6	342.5
E	2.2	340.9
E.L.	3.6	339.5
Out 15	5.5	337.6
	7+00	
Out 15	8.6	334.5
E.L.	7.0	336.1
E	6.4	336.7
cb	5.2	337.9
£	4.6	338.5
+10	4.5	338.6
cb	3.5	339.6
W	2.8	340.3
	7+25	
W	7.2	335.9
cb	7.5	335.6
+6	8.6	334.5
£	8.7	334.4
cb	9.5	333.6
E	10.2	332.9
E.L.	10.8	332.3
Out 15	11.6	331.5
	7+50	
Out 15	15.0	328.1
E.L.	13.4	329.7

T 343.14

79

E	13.3	329.8
cb	12.7	330.4
£	11.9	331.2
cb	11.4	331.7
W	11.0	332.1
T.P.		-12.87 330.27
	+0.57	
	T 330.84	
	7+13 = N.L. Trojor	60' wide
		11.22
W	2.2	328.6
cb	2.2	328.6
£	2.5	328.3
cb	2.8	328.0
E	3.8	327.0
E.L.	3.8	327.0
Out 15	5.0	325.8
	N. cb Trojor	
Out 15	5.7	325.1
E.L.	4.4	326.4
E	4.7	326.1
cb	4.2	326.6
£	3.5	327.3
cb	2.9	327.9
W	2.9	327.9

T 330.84

♀ Trojan

W	7.2	323.6
cb	6.2	324.6
+10	5.2	325.6
♀	5.1	325.7
+10	5.3	325.5
cb	6.2	324.6
E	6.3	324.5
E.L.	6.4	324.4
Out 15	7.5	323.3

5 cb Trojan

Out 15	7.1	321.7
E.L.	8.3	322.5
E	8.0	322.8
cb	8.0	322.8
+4	8.1	322.7
+8	6.8	324.0
♀	6.4	324.4
+7	7.0	323.8
cb	10.0	320.8
W	10.2	320.6

5.2 Trojan = 0+00

W	10.5	320.3
cb	10.4	320.4
♀	7.5	323.3
+10	7.5	323.3

T 330.84

80

cb	8.7	322.1
E	8.9	321.9
E.L.	9.0	321.8
Out 15	9.5	321.3
0+25		
Out 15	9.9	320.9
E.L.	7.3	321.5
E	7.9	320.9
cb	10.1	319.7
+2	10.1	319.7
+7	8.5	322.3
♀	8.7	322.1
+5	10.3	320.5
cb	11.2	319.6
W	11.5	319.3
Out 15	11.6	319.2
0+38		
Out 15	11.0	319.8
W	11.3	319.5
cb	11.6	319.2
+7	11.3	319.5
♀	9.1	321.7
+10	9.3	321.5
cb	10.5	320.3
E	10.9	319.9

7330.84

E.L.	12.2	318.6
Out 15	11.5	319.3
	0+45	
Out 15	12.3	318.5
E.L.	12.6	318.2
E	12.6	318.2
cb	12.1	318.7
£	12.3	318.5
+5	10.2	320.6
+10	11.5	319.3
cb	11.5	319.3
W	11.7	319.1
Out 15	11.7	319.1
	0+58	
Out 15	15.7	315.1
W	15.1	315.7
cb	14.4	315.4
£	13.5	317.3
+10	12.2	318.6
cb	10.7	320.1
E	10.5	320.3
E.L.	9.1	321.7
Out 15	9.4	321.4

Continued Page 58 this book

81

DIRECTIONS FOR USE OF TABLES

TABLE No. 1.

Distance of slope stake from side or shoulder stake for any width roadway, slope 1 1/2 to 1. If ground is nearly level, the cut or fill at side stake is located by the double entry method in left column and top row. The number in body

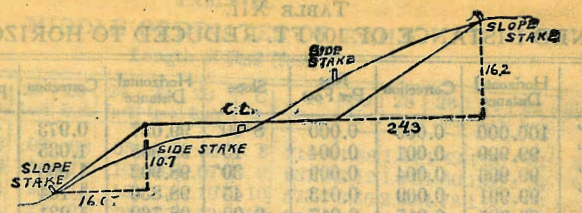
IMPROVED TABLES

AND

INFORMATION

To find Tangent and External for curve of any other degree, divide by degree of curve and add correction found in column of corrections. Degree of curve with a given L may be found by dividing tangent (or external), opposite L by given tangent (or external). The distance from a point on the tangent to the curve is very nearly the square of the tangent length divided by twice the radius.

INCLINING OF PLANT REDUCED TO HORIZONTAL



DISTANCES FROM SIDE STAKES FOR CROSS-SECTIONING.

SLOPE 1 1/2 TO 1. ROADWAY OF ANY WIDTH.

	0	.1	.2	.3	.4	.5	.6	.7	.8	.9	
0	0.00	0.15	0.30	0.45	0.60	0.75	0.90	1.05	1.20	1.35	0
1	1.50	1.65	1.80	1.95	2.10	2.25	2.40	2.55	2.70	2.85	1
2	3.00	3.15	3.30	3.45	3.60	3.75	3.90	4.05	4.20	4.35	2
3	4.50	4.65	4.80	4.95	5.10	5.25	5.40	5.55	5.70	5.85	3
4	6.00	6.15	6.30	6.45	6.60	6.75	6.90	7.05	7.20	7.35	4
5	7.50	7.65	7.80	7.95	8.10	8.25	8.40	8.55	8.70	8.85	5
6	9.00	9.15	9.30	9.45	9.60	9.75	9.90	10.05	10.20	10.35	6
7	10.50	10.65	10.80	10.95	11.10	11.25	11.40	11.55	11.70	11.85	7
8	12.00	12.15	12.30	12.45	12.60	12.75	12.90	13.05	13.20	13.35	8
9	13.50	13.65	13.80	13.95	14.10	14.25	14.40	14.55	14.70	14.85	9
10	15.00	15.15	15.30	15.45	15.60	15.75	15.90	16.05	16.20	16.35	10
11	16.50	16.65	16.80	16.95	17.10	17.25	17.40	17.55	17.70	17.85	11
12	18.00	18.15	18.30	18.45	18.60	18.75	18.90	19.05	19.20	19.35	12
13	19.50	19.65	19.80	19.95	20.10	20.25	20.40	20.55	20.70	20.85	13
14	21.00	21.15	21.30	21.45	21.60	21.75	21.90	22.05	22.20	22.35	14
15	22.50	22.65	22.80	22.95	23.10	23.25	23.40	23.55	23.70	23.85	15
16	24.00	24.15	24.30	24.45	24.60	24.75	24.90	25.05	25.20	25.35	16
17	25.50	25.65	25.80	25.95	26.10	26.25	26.40	26.55	26.70	26.85	17
18	27.00	27.15	27.30	27.45	27.60	27.75	27.90	28.05	28.20	28.35	18
19	28.50	28.65	28.80	28.95	29.10	29.25	29.40	29.55	29.70	29.85	19
20	30.00	30.15	30.30	30.45	30.60	30.75	30.90	31.05	31.20	31.35	20
21	31.50	31.65	31.80	31.95	32.10	32.25	32.40	32.55	32.70	32.85	21
22	33.00	33.15	33.30	33.45	33.60	33.75	33.90	34.05	34.20	34.35	22
23	34.50	34.65	34.80	34.95	35.10	35.25	35.40	35.55	35.70	35.85	23
24	36.00	36.15	36.30	36.45	36.60	36.75	36.90	37.05	37.20	37.35	24
25	37.50	37.65	37.80	37.95	38.10	38.25	38.40	38.55	38.70	38.85	25
26	39.00	39.15	39.30	39.45	39.60	39.75	39.90	40.05	40.20	40.35	26
27	40.50	40.65	40.80	40.95	41.10	41.25	41.40	41.55	41.70	41.85	27
28	42.00	42.15	42.30	42.45	42.60	42.75	42.90	43.05	43.20	43.35	28
29	43.50	43.65	43.80	43.95	44.10	44.25	44.40	44.55	44.70	44.85	29
30	45.00	45.15	45.30	45.45	45.60	45.75	45.90	46.05	46.20	46.35	30
31	46.50	46.65	46.80	46.95	47.10	47.25	47.40	47.55	47.70	47.85	31
32	48.00	48.15	48.30	48.45	48.60	48.75	48.90	49.05	49.20	49.35	32
33	49.50	49.65	49.80	49.95	50.10	50.25	50.40	50.55	50.70	50.85	33
34	51.00	51.15	51.30	51.45	51.60	51.75	51.90	52.05	52.20	52.35	34
35	52.50	52.65	52.80	52.95	53.10	53.25	53.40	53.55	53.70	53.85	35
36	54.00	54.15	54.30	54.45	54.60	54.75	54.90	55.05	55.20	55.35	36
37	55.50	55.65	55.80	55.95	56.10	56.25	56.40	56.55	56.70	56.85	37
38	57.00	57.15	57.30	57.45	57.60	57.75	57.90	58.05	58.20	58.35	38
39	58.50	58.65	58.80	58.95	59.10	59.25	59.40	59.55	59.70	59.85	39
40	60.00	60.15	60.30	60.45	60.60	60.75	60.90	61.05	61.20	61.35	40
41	61.50	61.65	61.80	61.95	62.10	62.25	62.40	62.55	62.70	62.85	41
42	63.00	63.15	63.30	63.45	63.60	63.75	63.90	64.05	64.20	64.35	42
43	64.50	64.65	64.80	64.95	65.10	65.25	65.40	65.55	65.70	65.85	43
44	66.00	66.15	66.30	66.45	66.60	66.75	66.90	67.05	67.20	67.35	44
45	67.50	67.65	67.80	67.95	68.10	68.25	68.40	68.55	68.70	68.85	45
46	69.00	69.15	69.30	69.45	69.60	69.75	69.90	70.05	70.20	70.35	46
47	70.50	70.65	70.80	70.95	71.10	71.25	71.40	71.55	71.70	71.85	47
48	72.00	72.15	72.30	72.45	72.60	72.75	72.90	73.05	73.20	73.35	48
49	73.50	73.65	73.80	73.95	74.10	74.25	74.40	74.55	74.70	74.85	49
50	75.00	75.15	75.30	75.45	75.60	75.75	75.90	76.05	76.20	76.35	50

Computed by L. Leland Locke.

4 + 23.28
 3 + 49.79

 2 73.49
 36.75
 3 49.79

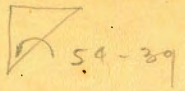
 3 + 86.54

7 + 96.90
 73.49

 7 + 23.41

To find

15' $\sin 54-39 = \frac{15}{x}$



ENGINEERING DEPARTMENT,
CITY OF SAN DIEGO, CALIFORNIA.

$x = \frac{1500000}{81563} + 81563 = 8.39$

$6000000 : 81563 = 73.56$

290590
244689

459010
407815

511950
489378

225720

$12500000 : 81563 = 153.2$

434370
407815

265550
244689

208610

7.19	6.94 ✓	311.06.08
10.15	0.56	321.25
17.34 ✓	7.48 ✓	13.06
- 12.99	0.29	308.19
4.35	7.19 ✓	1.80
0.51	12.71	309.99
4.86	29.90	
- 8.21	- 0.74	
- 3.35	19.16	
11.56	11.01	
+ 8.21	30.17	
- 11.71	- 12.61	
- 3.50	17.56 ✓	
+ 12.23	0.91	
8.73	18.47	
3.91	10.96	
4.82	7.51	11.20
	0.91	7.48
	8.42	- 3.72

336.95	308.30
+ 76	1.49
337.71	306.81
- 13.10	6.69
324.61	313.50
+ 1.56	3.26
326.17	310.24
- 12.18	11.01
313.99	321.25
+ 1.12	- 1.19
315.11	320.06
- 11.06	12.96
304.05	333.02
+ 4.25	1.11
308.30	334.13