

1291-A

RAM

FIELD BOOK

No. 3807

ENGINEERING DEPARTMENT,
CITY OF SAN DIEGO,
CALIFORNIA.

Our Leather Bound Engineers Note Books are carried in the following rulings:

- No. 380 LEVEL BOOK. Left and Right Hand Page the same as Left Hand Page of this Book.
- No. 382 FIELD BOOK. Left Hand Page as in this Book, Right Hand Page 4 x 4 to the inch, Center Line Red.
- No. 384 MINING TRANSIT BOOK. Left Hand Page as in this Book, Right Hand Page 8x8 to the inch, Center Line Red.
- No. 385 FIELD BOOK. Left Hand Page as in this Book, Right Hand Page 8 vertical and 4 horizontal lines to the inch, Center Line Red.

We also carry the Note Books listed above, bound in extra strong Fabri-Hide (otherwise the same quality of book), which can be furnished at a somewhat lower price.

In ordering Fabri-Hide covered books, add the letter "F" to catalog number.

THE FREDERICK POST CO.
ENGINEERING and DRAFTING SUPPLIES
IRVING PARK STATION
CHICAGO, ILL.

MICROFILMED

DEC 22 1964

*This index book is
AA 02/11/64
CC 02/11/64
CC 02/11/64*

x Sec.	MASON	Juan to Calhoun	1
" "	CALHOUN	Mason - Twiggs	13
" "	WALLACE	Juan to Calhoun	18
" "	CALHOUN	Wallace to Taylor	21
" "	SUNSET	" " "	29
" "	WHITMAN	" " "	35
" "	JACKSON	Whitman Chestnut	43
" "	CHESTNUT	Taylor - Jackson	48
" "	TWIGGS	San Diego Ave Calhoun	53
" "	"	- Juan to "	56
" "	NIGHTMAN	Herman - 32nd	60
" "	EAST ST.	Woolman to Imperial	61
" "	Alley Bk 36	City Heights	73

AA 22/116
 Waddy Johnson

X sec. Mason St from SL
 Juan to Calhoun. 25' st. Plus 1' from
 4' sec 2 ♀

B.M.	7.43	31.32	23.87	SW-RR Juan St
0+00 = SL	Juan St			
W.L.		5.9	25.4	
+5		5.5	25.8	
♀		4.9	26.4	
+7		4.7	26.6	
E.L.		4.5	26.8	
0+11				
E.L.		4.7	26.6	
+4		4.6	26.7	
♀		5.2	26.1	
+10		6.0	25.3	
W.L.		5.7	25.6	
0+45				
W.L.		5.6	25.7	
+3		5.6	25.7	
+5		5.7	25.4	
♀		5.4	25.9	
+10		4.8	26.5	
E.L.		4.9	26.4	

Plotted 11-19-28 C.B.H.

Oct 29-28
 London

0+50	31.32		
E.L.		5.1	26.2
♀		5.3	26.0
+7		5.7	25.6
W.L.		5.6	25.7
0+75			
W.L.		5.3	26.0
+5		5.7	25.6
♀		5.2	26.1
+7		5.2	26.1
E.L.		5.3	26.0
1+00			
E.L.		5.4	25.9
+8		5.3	26.0
♀		5.3	26.0
+8		5.7	25.6
W.L.		5.3	26.0
1+25			
W.L.		5.6	25.7
+5		5.9	25.4
♀		5.7	25.6
+11		5.7	25.6
E.L.		5.3	26.0

1+50

31.32

FL	5.1	26.2
+2	6.2	25.1
±	6.2	25.1
+3	6.0	25.3
+10	6.2	25.1
W.L.	6.1	25.2

1+75

W.L.	6.5	24.8
+4	6.8	24.5
+10	6.6	24.7
±	6.7	24.6
+10	6.9	24.4
+10 ⁵	6.2	25.1
+11 ⁵	5.9	25.4
FL	5.6	25.7

Bldg in street to Bldg. Calhoun.

2+00

EL	6.2	25.1
+2 Bldg.	6.5	24.8
+3	6.6	24.7
+3	7.2	24.1
±	7.2	24.1
+3	7.0	24.3
W.L.	7.2	24.1

2+25

31.32

W.L.	7.8	23.5
+11	7.5	23.8
±	7.5	23.8
+8	7.6	23.7
+8	7.1	24.2
+9 Bldg	7.0	24.3
EL	6.3	25.0

= N.L. Calhoun (on ±) Sec on N.L. Calhoun

EL	6.7	24.6
+1 Bldg	7.4	23.9
+7	7.8	23.5
+8	8.3	23.0
±	8.0	23.3
+3	7.8	23.5
+7	8.0	23.3
+11	8.5	22.8
W.L.	8.5	22.8

X sec Mason St From N.L. Javn to
S.L. Whitman.
50' St. 10' cbs 30' Roadway.

31.32			0+50			31.32		
0+00					EL	7.7		23.6
FL	5.7	25.6	cb		7.8			
+7	5.7		1/4		7.7			
cb	5.8	25.5	±		7.7		23.6	
1/4	6.1		+4		8.3			
±	6.4	24.9	1/4		9.0			
+4	6.1		+5		8.9			
+7	7.1		cb		9.2			
1/4	7.1		wL		9.4		21.9	
cb	7.2		0+75					
wL	7.5	23.8	wL		10.4		20.9	
0+25			+3		10.0			
wL	8.6	22.7	cb		10.0			
+3	8.3		+2		9.9			
cb	8.2		+3		9.6			
1/4	8.0		1/4		9.3			
+2	7.2		+7		8.8			
+7	7.1		±		8.5		22.8	
±	6.8	24.5	1/4		8.3			
+2	7.0		cb		8.2			
1/4	7.0		EL		8.3		23.0	
cb	6.9							
EL	6.8	24.5						

Plotted 11-19-28 - CBH

1400	31.32	
EL.	8.5	22.8
cb	8.3	
1/4	8.5	
+5	8.8	
+7	8.7	
↓	9.0	22.3
+1	9.2	
1/4	9.7	
cb	10.2	
wL.	10.3	21.0
6.2'w wood floor floor double garage	10.0	20.3 ✓
1425		
8w	12.0	
wL.	11.8	19.5
cb	10.7	
+3	10.7	
+3	9.6	
+3		
1/4	9.6	
+4	9.6	
+5	8.5	22.8
+2	8.5	
+3	8.7	
1/4	8.5	
+5	8.3	
cb	8.4	

4

1425	31.32	
EL.	8.5	22.8
1450		
EL.	8.3	23.0
cb	8.3	
1/4	8.3	
+3	8.4	
↓	9.3	22.0
+2	8.9	
+5	9.7	
1/4	9.6	
+5	10.7	
cb	10.7	
wL.	11.7	19.6
12w	12.5	
T.P. 12.84	35.77	8.39 22.93
1475		
10w	16.3	
wL.	16.0	19.8
cb	15.3	
+1	15.3	
+2	14.0	
1/4	13.9	
↓	13.4	22.4
1/4	13.3	
+2	13.0	
+7	12.9	

1 + 75	35.77	
cb	13.1	
+7	12.7	
+8	12.4	
E.L.	12.6	23.2
1 + 88		
E.L.	13.1	22.7
+2	12.9	
+3	13.2	
+6	13.2	
cb	13.4	
+1	13.2	
+7	13.2	
1/4	14.6	
+2	15.4	
±	15.8	20.0
+0 ±	14.5	
+3	15.0	
1/4	16.2	
+3	15.6	
cb	15.7	
+5	15.3	
w.L.	15.8	20.0
10W	16.9	

1 + 90	35.77	5
10W	16.9	
w.L.	16.0	19.8
cb	16.0	
+5	16.6	
1/4 =	16.0	
±	15.6	20.2
+5	15.2	
1/4	13.3	
+5	13.2	
cb	13.4	
+3	13.2	
+7	13.1	
+8	12.9	
E.L.	13.1	22.7
2 + 100		
E.L.	13.1	22.7
+2	13.0	
+3	13.4	
cb	13.5	
+4	13.2	
+3	14.9	
±	16.5	19.3
+5	15.2	
1/4	15.7	
cb	16.7	

2+00	35.77		
w.l.	17.0	18.8	
10w	17.2		
2+08			
10w	17.1		
w.l.	17.1	18.7	
cb	16.4		
+5	15.9		
'A	14.8		
+	13.7	22.1	
+5	13.1		
'A	13.3		
cb	13.5		
+3	13.3		
+7	13.3		
+8	13.0		
EL	13.1	22.7	
2+25			
EL	13.1	22.7	
+2	12.9		
+3	13.1		
cb	13.2		
'A	13.2		
+4	13.2		
5	13.0		
+	13.7	22.1	

2+25	35.77		
+	14.7		
+3	16.7		
'A	16.8		
cb	17.0		
w.l.	17.1	18.7	
10w	17.3		
2+50			
10w	18.2		
w.l.	17.7	18.1	
cb	16.9		
'A	15.3		
+2	14.9		
+	12.6	23.2	
'A	12.4		
cb	12.5		
+7	12.5		
+8	12.3		
EL	12.2	23.6	

2+75	35.77	
EL	9.9	25.9
+2	11.4	
cb	11.1	
1/4	10.9	
±	11.1	24.7
+1	10.9	
+4	10.6	
1/4	11.2	
+3	12.4	
cb	14.5	
+7	17.1	
w.L	17.2	18.6
4w	17.2	
7w	18.9	
15w	19.0	
3+00 = SL	Sunset.	
15w	19.3	
w.L	16.7	19.1
cb	14.5	
+5	13.0	
1/4	11.4	
+7	9.1	
±	9.3	26.5
1/4	9.4	
cb	9.9	

3+00	35.77	
cb+7	10.0	
EL	7.4	28.4
3+25 = ±	Sunset	
EL	5.8	30.0
+5	7.2	
cb	7.5	
+6	8.0	
1/4	7.9	
+5	8.0	
±	8.5	27.3
± top M.H.	8.98	26.79
1/4	11.3	
cb	13.0	
+5	13.2	
w.L	14.3	21.5
20w	16.8	
3+41		
20w	16.9	
w.L	14.0	21.8
+1	14.9	
+2	13.4	
+5	12.5	
cb	11.2	
1/4	9.3	
+2	8.4	

3+41 35.77
¢ 6.4 28.4

1/4 6.6
+5 6.6
cb 6.3
+6 5.7
+9 6.9
EL 5.8 30.0

3+47
EL 5.4 29.4

+1 6.6
+4 5.2
cb 5.8
+3 6.1
1/4 6.0
¢ 5.8 30.0

+1 5.8
+6 7.7
1/4 10.4
+1 11.3
cb 12.6
+5 12.3

w.L. 13.0 22.8
10w 14.0
25w 17.8

3+50 NL 35.77 8
26w 18.3

10w 12.6
w.L. 11.6 24.2

cb 10.2
1/4 8.1

+5 6.4
¢ 5.4 30.4

1/4 5.7
+5 5.8

cb 5.6
+6 5.1

+8 6.0
EL 5.1 30.7

3+75
EL 2.2 33.6

+2 4.2
+5 4.2

+6 3.4
cb 3.4

+4 3.5
1/4 3.4

¢ 3.1 32.7
+1 3.0

1/4 4.8
+5 5.6

+6 6.1

3+75		35.77		
cb		6.4		
+3		6.6		
w.L.		8.4	27.4	
15w		9.7		
4+00				
15w		8.0		
w.L.		6.2	29.6	
cb		4.9		
+2		4.1		
1/4		3.1		
+3		2.5		
+7		1.0		
±		0.9	34.9	
1/4		0.7		
cb		0.8		
+4		0.9		
+6		2.2		
EL		+2.9	38.7	
T.P.	11.89	47.51	0.15	35.62

4+25		47.51		9
E.L.		5.8	41.7	
+4		11.4		
+6		9.7		
+8		9.8		
cb		9.7		
1/4		9.5		
±		9.8	37.7	
+3		10.0		
1/4		11.5		
+5		12.8		
cb		13.9		
w.L.		16.5	31.0	
15w		19.3		
4+50				
15w		18.8		
w.L.		13.4	34.1	
cb		11.0		
1/4		8.9		
+3		7.2		
±		7.0	40.5	
1/4		6.8		
cb		7.0		
+3		7.0		
+4		9.2		
+7		9.0		
E.L.		2.6	44.9	

4475

47.51

EL	1.3	46.2
+5	4.1	
+6	7.3	
+8	7.2	
+9	4.2	
eb	4.2	
1/4	4.0	
E	4.2	43.3
+6	4.4	
1/4	5.8	
+3	7.1	
+5	7.4	
eb	8.2	
w.L	10.9	36.6
15W	14.2	
T.P	12.27	159.62
	0.16	47.35

5400

59.62

15W	21.6	
w.L	18.5	41.1
+8	17.1	
eb	16.4	
1/4	13.9	
E	13.8	45.8
1/4	13.9	
+6	13.9	
eb	12.7	
+2	14.1	
+3	17.7	
+7	13.1	
+9	12.6	
E.L.	11.1	48.5
5+25		
EL	9.6	50.0
+4	10.6	
+7	15.4	
+9	12.0	
eb	11.9	
1/4	11.8	
E	11.6	48.0
1/4	11.9	
+2	11.9	

10

5+25	59.62	
+cb	13.5	
+1	14.0	
w.L	18.1	43.5
15'w	18.1	
5+50		
15'w	16.3	
w.L	13.7	45.9
cb	12.0	
+2	11.1	
1/4	10.3	
+	9.8	49.8
1/4	9.8	
cb	10.0	
+1	10.0	
+2	13.9	
+4	10.2	
+6	9.8	
+7	9.0	
E.L.	8.3	51.3

5+67	59.62	
E.L	11.6	48.0
+4	8.9	
cb	8.9	
1/4	8.6	
+	9.2	50.4
1/4	10.6	
cb	11.6	
+4	12.2	
w.L	13.4	46.2
15'w	15.2	
5+75		
15'w	13.2	
8'w	13.2	
w.L	12.5	47.1
+8	11.5	
cb	10.8	
+1	10.5	
1/4	10.3	
+	9.2	50.4
+5	8.5	
1/4	8.4	
+6	8.1	
cb	8.2	
+4	8.4	
E.L	8.4	51.2

5+90

59.62

10W

11.6

wL

11.1

48.5

cb

10.5

+3

10.1

1/4

9.7

+

9.0

50.6

+4

8.4

1/4

8.2

+4

7.6

cb

7.5

E.L.

7.0

52.6

6+25

E.L.

5.7

53.9

cb

7.1

1/4

7.7

+4

8.2

+

9.0

50.6

1/4

9.5

cb

10.0

wL

10.3

49.3

12W

10.7

6+45

59.62

10W

10.2

wL

10.3

49.3

cb

10.0

+1

8.0

1/4

4.6

+1

4.1

+

4.1

55.5

1/4

2.0

+3

0.3

cb

0.7

+5

+0.5

E.L.

+1.6

61.2

6+49⁸² = S.L. Whitman

E.L.

+4.0

63.6

+5

+4.0

cb

+2.8

1/4

+0.3

+4

1.2

+

1.5

58.1

1/4

3.3

+4

3.5

+6

4.0

cb

4.5

wL

7.0

52.6

12.W

8.2

12

X Sec. Calhoun From E.L. Mason
to W.L. Twiggs. 40' st 5' cbs 30' Rdway. **13**

		59.62		
T.P.	0.25	46.65	13.02	46.60
T.P.	0.09	34.01	12.73	33.92
T.P.	0.96	22.29	12.68	21.33
B.M.			3.75	18.54
B.M.	2.37	18.10	11.56	10.73
M.E. J. Jones Wallace				
B.M.			4.11	13.99
T.P.	9.47	26.93	0.64	19.46
B.M. Beginning			3.03	23.90

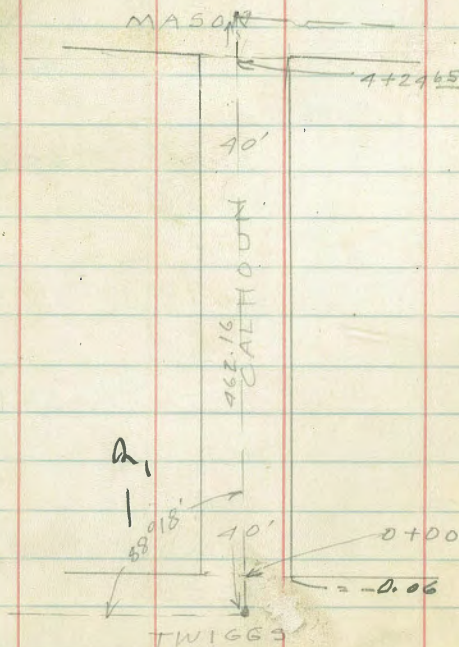
Hub SE
Wrightson
& Wallace
Post 180 ul.
Wallace Met
Sp. Stone

Hub R.R. Simpson's Turn

B.M.	5.67	129.56		23.89
T.P.	9.26	32.33	6.49	23.07
A+2465 (on ϕ) = E.L. Mason Sec on E.L. Mason.				

N.L.		7.4		24.19
Sunset	+3 Bldg	7.4		
	+4	8.4		
	cb	8.7		
	1/4	9.1		
	ϕ	9.3		23.0
	1/4	9.4		
	+4	9.1		
	cb	9.2		
	+2	9.4		
	S.L.	9.3		23.0
A+00				
	S.L.	8.5		23.8
	+3	8.4		
	+4	8.6		
	cb	8.3		
	+5	8.4		
	1/4	8.6		
	ϕ	8.5		23.8
	1/4	8.0		
	cb	7.5		
	+3 Bldg	6.6		
	N.L.	5.8		26.5

Plotted 11-17-20 - C.B.H.



Oct 31-28
London

3+75

32.33

N.L.	5.2	27.1
+2 Bldg	5.7	
+3	5.5	
+4	6.0	
cb	6.1	
1/4	6.5	
±	7.0	24.7
+2	7.8	
1/4	7.7	
+3	7.4	
+5	7.5	
cb	7.7	
+1	7.5	
S.L.	7.7	24.6
3+50		
S.L.	6.8	25.5
cb	7.1	
+5	6.6	
1/4	6.7	
±	6.2	26.1
1/4	5.7	
+4	5.1	
cb	5.1	
+3 Bldg	5.1	
N.L.	4.6	27.7

3+25

32.33

N.L.	4.7	27.6
+2 Bldg	4.7	
cb	4.3	
+5	4.3	
1/4	4.5	
±	5.2	27.1
1/4	5.6	
+3	5.5	
+6	5.9	
cb	5.6	
S.L.	6.0	26.3
3+00		
S.L.	5.2	27.1
cb	5.4	
+1	5.1	
+6	5.2	
1/4	4.9	
+5	4.6	
+6	4.1	
±	4.0	28.3
+6	3.7	
1/4	3.3	
cb	3.3	
+4 fence	3.2	
N.L.	2.7	29.4

2+75

32.33

NL	1.5	30.8
+2	1.8	
cb	2.1	
1/4	2.9	
+6	3.2	
±	3.1	29.2
1/4	4.1	
+1	4.0	
+6	3.9	
cb	4.2	
SL	4.4	27.9
2+50		
S.L.	3.6	28.7
cb	3.2	
1/4	3.2	
+4	3.2	
±	2.8	29.5
1/4	2.4	
cb	1.9	
NL	1.2	31.1

2+25

32.33

15

NL	0.7	31.6
cb	1.4	
+3	1.3	
1/4	1.7	
+5	1.9	
±	2.2	30.1
+3	2.3	
1/4	2.4	
cb	2.8	
S.L.	3.0	29.3
2+00		
SL	1.2	31.1
+1	1.2	
cb	1.8	
+3	2.1	
1/4	1.8	
+2	1.6	
±	1.6	30.7
+4	1.2	
1/4	0.6	
M.H. at 1785 10' soft ±		
T.P.	7.94	38.53
+3	6.0	
+5	5.9	
cb	6.1	
NL	6.1	32.4

1475

38.53

N.L.	5.0	335
cb	5.2	
+5	5.4	
1/4	6.0	
+3	6.9	
4	7.1	31.4
+6	7.6	
1/4	8.1	
+5	7.8	
+6	7.1	
cb	6.9	
S.L.	6.2	32.1
1450		
S.L.	5.7	32.8
cb	6.1	
+2	6.8	
+3	7.1	
1/4	7.4	
4	7.1	31.4
+3	6.9	
+4	6.5	
1/4	5.9	
+3	5.4	
cb	4.8	
N.L.	4.5	34.0

1425

38.53

16

N.L.	3.7	34.8
cb	4.6	
+3	5.1	
1/4	5.2	
+2	5.4	
+5	6.4	
4	6.7	31.8
+5	6.9	
+6	7.1	
1/4	7.0	
+5	6.6	
cb	6.2	
S.L.	5.8	32.7
1400		
S.L.	3.9	34.6
+3	4.1	
cb	4.8	
+2	5.2	
1/4	6.2	
+3	5.9	
4	5.8	32.7
+4	5.4	
+6	4.6	
1/4	4.5	
+5	3.8	
N.L.	3.2	35.3

0+75	38.53	
N.L.	2.5	36.0
cb	2.7	
+3	3.0	
1/4	3.8	
+5	4.8	
±	5.1	33.4
+2	5.0	
+6	5.5	
1/4	5.5	
+5	3.8	
cb	3.8	
S.L.	3.5	35.0
0+50		
S.L.	2.9	35.6
cb	3.1	
+1	3.2	
1/4	4.6	
+1	4.9	
±	4.6	33.9
+5	4.0	
+6	3.2	
1/4	3.1	
+3	2.4	
cb	1.7	
N.L.	1.5	37.0

17

0+25	38.53	
N.L.	0.5	38.0
cb	1.1	
1/4	2.3	
+3	3.5	
+6	3.8	
±	4.5	34.0
+3	4.0	
1/4	4.0	
cb	2.3	
S.L.	2.1	36.4
0+00 (on ±)	= M.L. Twiggs See on mt Twiggs	
S.L.	1.6	36.9
cb	1.8	
+3	1.9	
1/4	2.9	
+3	3.4	
+6	3.5	
±	3.7	34.8
+1	3.8	
+3	3.1	
+5	2.8	
1/4	1.4	
cb	0.9	
N.L.	0.4	38.1
B.M. Nail Pole	0.28	138.25

3m Cathoon
Twiggs

		38.53			
T.P.	2.87	28.38	13.04	25.49	
T.P.	6.81	31.14	4.05	124.33	
B.M.	Beginning		7.25	23.89	
LEVELS FROM B.M. to B.M. on sw. Juan					
B.M.	5.28	11.32		6.04	
B.M.	3.20	9.75	4.57	6.75	
T.P.	2.81	13.61	4.95	4.80	
B.M.			6.87	6.74	
B.M.	12.35	25.63	0.33	13.28	
B.M.			1.74	23.89	
T.P.	0.41	18.21	7.83	17.80	
T.P.	2.94	9.31	11.84	6.37	
B.M.			5.99	3.32	
T.P.	5.91	10.89	4.33	4.98	
T.P.	4.32	11.53	3.68	7.21	
B.M.	Beginning		5.54	5.99 (6.04)	

B.M. on Mac Inada B.
 Nail Pole SE Juan & Wallace
 Hub R.P. SE Juan & Mason

Mason.
 sw. Taylor
 & Chestnut.
 Nail Pole
 SE Taylor &
 Whitman.

X sec Wallace st From SL Juan
 to N.L. Calhoun st
 50' st 10' cbs 30' rdway
 B.M. 4.31 17.59 13.28

0+00 = SL Juan.				
w.L.		5.9		11.7
cb		6.1		
1/4		5.9		
1/2		5.8		11.8
3/4		5.5		
+6		5.3		
cb		5.3		
E.L.		5.2		12.4
0+05				
E.L.		5.0		12.6
cb		5.4		
1/4		5.7		
1/2		5.8		11.8
3/4		6.0		
+5		5.5		
cb		5.4		
+2		5.3		
w.L.		5.3		12.3
0+25				
w.L.		5.3		12.3
+5		5.4		
cb		5.1		
+2		4.9		
1/4		5.1		

Plotted 11-20-28 - C.B.H.

0+25

1759

± 5.7 11.9

1/4 5.8

cb 6.0

+1 5.8

+7 5.6

E.L. 5.3 12.3

0+50

E.L. 5.0 12.6

+1 5.5

+5 5.8

+9 5.8

cb 6.1

1/4 5.9

± 5.5 12.1

1/4 4.7

+3 5.2

cb 5.0

w.L. 5.1 12.5

Pebble tree
2' dia.

0+75

1759

w.L. 5.1 12.5

cb 5.1

1/4 5.1

+3 5.2

± 5.8 11.8

1/4 6.1

cb 6.0

+1 5.9

+7 5.9

E.L. 5.0 12.6

1+00

E.L. 5.0 12.6

cb 6.1

1/4 6.0

± 5.8 11.8

1/4 5.3

cb 4.9

w.L. 5.1 12.5

1+25

w.L. 5.2 12.4

+7 5.1

cb 5.2

1/4 5.6

± 6.0 11.6

1/4 6.0

cb 5.6

19

Pebble tree 32' dia
9' 0+84 13' 11' st or West

1725

17.57

cb+1

5.3

E.C.

5.3

12.3

TP 6.07

17.92

5.74

11.85

1750

E.C.

5.8

12.1

cb

6.1

+5

6.0

1/4

6.1

+3

6.2

E

6.2

11.7

1/4

6.2

cb

6.1

+5

5.8

w.c.

5.7

12.2

1775

w.c.

5.6

12.3

+6

5.9

cb

6.1

1/4

6.1

+6

6.1

E

6.3

11.6

1/4

6.1

cb

6.2

E.C.

6.0

11.9

2700

17.92

E.C.

5.0

12.9

+1

5.6

+3

6.0

cb

6.2

1/4

6.2

E

6.1

11.8

1/4

6.1

cb

6.1

+7

6.0

w.c.

5.7

12.2

2725

w.c.

5.6

12.3

+2

5.9

cb

5.9

1/4

5.9

E

5.9

12.0

1/4

5.9

+3

6.0

cb

5.7

+4

5.6

+7

5.4

E.C.

4.8

13.1

20

2+50	17.92		
EL	4.3	13.6	
+2	5.2		
cb	5.2		
+4	5.4		
1A	5.9		
+	5.7	12.2	
+5	5.7		
1A	5.8		
cb	6.0		
+5	6.1		
+6	6.4		
WL	5.6	12.3	
2+55 ¹⁵ = NL Calhoun.			
WL	6.3	11.6	
+2	6.4		
+5	6.2		
cb	6.1		
1A	5.9		
+6	5.6		
+	5.6	12.3	
1A	5.8		
+3	5.9		
cb	5.5		
+1	5.4		
EL	5.3	12.6	

X 500 Calhoun St. From W.L. Wallace on South to E.L. Taylor.
50' st 10' cb 5 30' Rdway.

21

	17.92		
-118 ⁹² = WL Wallace on South.			
SL	4.2	13.7	
cb	4.6		
+5	5.2		
1A	5.0		
+	4.6	13.9	
1A	4.1		
cb	4.4		
+2	4.2		
NL	3.8	14.1	
-100			
NL	4.6	13.3	
+8	4.6		
cb	4.8		
1A	4.4		
+	4.9	13.0	
1A	5.3		
cb	4.6		
SL	3.6	14.3	
-75			
SL	4.3	13.6	
cb	5.0		
1A	5.3		
+	5.3	12.6	
1A	5.0		

Plotted 11-12-28-C.B.H.

-75	17.92		
eb	5.3		
+5	4.9		
N.L.	4.5	13.4	
-50 = EL Wallace on North.			
N.L.	5.5	12.4	
+5	5.5		
+7	5.8		
cb	5.7		
1/4	5.1		
+3	5.3		
±	5.6	12.3	
1/4	5.4		
cb	5.4		
+7	4.3		
SL	4.3	13.6	
-25 = ± Wallace on North.			
SL	4.1	13.8	
+8	4.4		
cb	5.6		
+7	6.1		
1/4	6.6		
±	6.0	11.9	
+4	5.5		
1/4	5.5		
cb	5.9		
+6	5.6		

22

-25	17.92	5851	
N.L.	5.6	12.3	
0+00 = WL Wallace on North.			
N.L.	6.2	11.7	
+7	6.9		
cb	6.8		
1/4	6.4		
+5	6.3		
±	6.6	11.3	
+4	7.0		
1/4	7.0		
+1	7.3		
+2	6.8		
+6	6.6		
cb	5.8		
+2	4.8		
SL	4.4	13.5	
0+25			
SL	4.9	13.0	
+8	5.3		
cb	6.6		
+3	7.5		
1/4	7.8		
+3	7.8		
+4	7.4		
±	7.2	10.7	

0+25	17.92		
±3	7.1		
1/4	7.2		
cb	7.6		
+1	7.7		
+8	6.9		
N.L.	6.1	11.8	
0+50			
N.L.	6.7	11.2	
+3	7.8		
cb	8.1		
1/4	7.7		
+3	7.7		
±	8.0	9.9	
+6	8.0		
+6 ^E	8.7		
1/4	8.1		
+7	7.7		
cb	7.2		
+2	5.8		
+8	5.4		
S.L.	5.1	12.8	

0+75	17.92		23
S.L.	5.9	12.0	
+8	6.3		
cb	7.5		
+3	8.2		
1/4	8.5		
+4	9.0		
+3 ^E	8.6		
±	8.6	9.3	
1/4	8.2		
cb	6.4		
+4	8.5		
N.L.	7.4	10.5	
1+00			
N.L.	7.8	10.1	
+5	8.3		
+8	8.9		
cb	8.9		
1/4	8.7		
±	9.1	8.8	
+4	9.3		
1/4	8.9		
+4	8.8		
cb	8.1		
+3	7.0		
S.L.	6.4	11.5	

1+10

17.92

SL	7.1	10.8
+8	7.0	
cb	7.6	
+2	8.7	
1/4	9.0	
+6	9.2	
+	9.2	8.7
+4	9.1	
1/4	8.9	
cb	9.1	
+5	9.1	
+6	8.2	
NL	7.8	10.1
1+17		
NL	8.0	9.9
+9	9.2	
cb	9.2	
1/4	9.0	
+3	9.0	
+	9.2	8.7
+4	9.3	
+5	9.1	
1/4	8.9	
cb	8.5	
SL	7.6	10.3

1+25

17.92

SL	7.4	10.5
cb	8.4	
1/4	9.2	
+	9.4	8.5
1/4	9.0	
+3	9.1	
cb	9.2	
+6	8.6	
NL	8.0	9.9
1+50		
NL	9.0	8.9
+8	9.2	
cb	9.4	
1/4	9.6	
M.H. 5' Noft at 1+55	9.55	8.37
+3	9.5	
+	9.7	8.2
1/4	9.5	
+2	9.5	
cb	9.1	
SL	8.4	9.5

24

1+71	17.92		
S.L	8.6	9.3	
+3	9.1		
cb	9.4		
1/4	9.7		
+4	10.1		
⊕	10.2	2.7	
1/4	10.3		
+5	10.4		
cb	10.8		
+3	11.4		
N.L.	11.3	6.6	
1782			
N.L.	12.1	5.8	
cb	11.0		
+2	10.5		
1/4	10.6		
+5	10.8		
⊕	10.7	7.2	
+4	10.5		
1/4	10.7		
cb	11.7		
+5	11.6		
S.L	12.3	5.6	

1+91	17.92	25
S.L	12.8	5.1
+5	12.2	
cb	12.2	
1/4	11.6	
+3	11.6	
+5	12.9	
⊕	10.9	7.0
+3	11.1	
1/4	10.7	
cb	10.0	
+2	9.8	
N.L.	10.1	7.8
T.P. 169	8.66	10.95
2+02		6.97
N.L.	2.2	6.5
+3	1.0	
cb	0.8	
+5	1.5	
1/4	1.7	
+5	2.1	
⊕	2.0	6.7
1/4	2.7	
cb	3.6	
+9	3.7	
S.L	4.0	4.7

2+11	8.66		
3L	4.5	4.2	
+1	4.3		
cb	4.0		
1/4	3.0		
+6	2.7		
⊕	2.4	6.3	
1/4	1.9		
+2.5	1.9		
+7	3.3		
cb	3.4		
NL	4.6	4.1	
2+25			
NL	4.9	3.8	
+6	4.7		
cb	4.0		
+5	2.2		
1/4	2.2		
⊕	2.5	6.2	
+2	3.0		
+3	2.8		
1/4	3.3		
cb	4.3		
+5	5.0		
3L	5.1	3.6	

2+50	8.66		26
3L	5.6		3.1
cb	5.2		
1/4	4.6		
+5	3.1		
⊕	3.1		5.6
1/4	2.7		
+3	2.8		
cb	5.1		
+5	5.9		
NL	5.7		3.0
2+75			
NL	5.2		3.5
cb	4.9		
+4	3.6		
1/4	3.5		
⊕	3.6		5.1
+2	3.7		
+5	4.5		
1/4	4.6		
cb	5.2		
3L	5.5		3.2

3700

8.66

S.L.	6.3	2.4
cb	5.7	
1/4	5.0	
+3	4.6	
+5	4.1	
+	4.2	4.5
1/4	4.0	
+3	4.1	
+5	4.7	
cb	4.9	
+5	5.1	
NL	4.9	3.8
3725		
NL	5.7	3.0
+5	5.5	
cb	5.4	
+4	4.6	
1/4	4.5	
+	4.4	4.3
+3	4.4	
+4	5.1	
1/4	5.2	
cb	5.9	
S.L.	6.3	2.4

3750

8.66

27

S.L.	6.5	2.2
cb	6.4	
1/4	6.2	
+3	5.7	
+7	4.5	
+	4.6	4.1
1/4	4.6	
+4	4.7	
cb	5.5	
+2	5.9	
+8	5.9	
NL	5.7	3.0
3775		
NL	5.4	3.3
+6	6.1	
cb	6.0	
+2	5.1	
1/4	4.7	
+	4.8	3.9
+2	4.7	
+3	5.2	
1/4	6.1	
cb	6.2	
+5	6.5	
S.L.	6.6	2.1

4400 - 866

S.L.	6.9	1.8
cb	6.4	
1/4	6.2	
±	4.8	3.9
1/4	5.0	
+6	5.2	
cb	5.8	
+2	6.4	
+7	6.4	
N.L.	6.1	2.6
A+25 ³⁵ = EL. Taylor.		
N.L.	6.1	2.6
+5	5.5	
cb	5.4	
1/4	5.2	
±	5.0	3.7
+3	6.1	
1/4	6.7	
+5	6.6	
1/4	6.1	
cb	6.1	
+2	6.9	
+5	7.0	
S.L.	7.0	1.7

4450 866

28

S.L.	5.8	2.9
cb	5.5	
1/4	5.1	
±	4.7	4.0
1/4	5.1	
M.H. at 4+50 5' N. of ±	4.86	3.80
+6	5.5	
cb	5.8	
N.L.	6.2	2.5
A+65 ³⁵ = EL. Pavement Sec on EL Pav.		
N.L.	5.00	3.66
cb	5.00	
1/4	4.99	
±	5.07	3.59
1/4	5.10	
cb	5.09	
S.L.	5.16	3.50
Taylor & Colburn B.M. Nail Pole Sw.	5.28	3.38

X sec. Sunset Blvd. From W.L. Wallace
to Pavement on Taylor. 50' at 10' chs 30' along.

Nov 2-28
1911
1911
1911

29

B.M. 0.14 10.87 10.73 sw. 10' across. 3' d.
top post 10.87

0+00 = W.L. Wallace

S.L.	2.6	8.3
+3	2.6	
+8	3.4	
cb	4.1	
+1	4.0	
+3	3.1	
+4.5	3.0	
1A	3.6	
+1	3.5	
±	3.7	7.2
+5	1.7	
1A	1.7	
cb	1.5	
N.L.	1.3	9.6
0+30		
N.L.	2.0	8.9
cb	2.4	
1A	2.3	
±	4.6	6.9
+4	4.4	
1A	4.5	
+1	4.5	
+5	3.3	
cb	3.7	
+1.5	4.5	

Plotted - 11-22-28 C.B.H.

cb + 4	3.7	
+ 8	3.1	
S.L.	3.2	7.7
0 + 60		
S.L.	3.5	7.4
+2	3.5	
+4	3.9	
+5.5	3.9	
+6	4.6	
+8	4.5	
+7	4.0	
cb	3.8	
+4	4.5	
1A	4.7	
±	4.9	6.0
1A	2.3	
cb	2.8	
N.L.	2.4	8.5
0 + 90		
N.L.	2.7	8.2
cb	2.5	
1A	2.8	
+5	5.2	
±	5.4	5.5
+4	5.2	
1A	5.3	

0+90	10.87		
1/4+2	5.2		
+5	4.2		
cb	4.2		
+1	4.7		
+3	4.9		
+4	4.2		
S.L.	4.1	6.8	
1+20			
S.L.	4.4	6.5	
+6	4.4		
+6 ⁵	5.1		
+8	5.0		
+9	4.4		
cb	4.4		
+2	4.2		
+6	5.4		
1/4	5.4		
+5	5.3		
+	5.4	5.5	
+2	5.4		
1/4	2.6		
cb	2.9		
N.L.	3.0	7.9	

1+50	10.87		30
N.L.	3.0		7.9
cb	3.3		
1/4	2.8		
+6	5.5		
+	5.6		5.3
+4	5.5		
1/4	5.6		
+5	5.1		
cb	4.1		
+2 ⁵	4.6		
+3	5.3		
+5	5.3		
+6	4.6		
S.L.	4.7		6.2
1+80			
S.L.	4.8		6.1
+8	4.7		
+9	4.3		
cb	4.8		
+4	5.5		
1/4	5.8		
+4	5.7		
+	5.6		5.3
+5	5.6		
1/4	3.7		
cb	3.0		

1+80

10.87

N.L.	2.5	8.4
2+10		
N.L.	3.2	7.7
cb	2.6	
1/4	2.9	
+5	5.6	
⊕	5.6	5.3
+3	6.1	
+5	5.7	
1/4	5.7	
+3	5.5	
+6	5.5	
cb	4.5	
+1 ⁵	4.0	
+3	5.1	
+6	5.3	
SL	5.0	5.9
2+40		
SL	5.1	5.8
+3	5.0	
+5	5.8	
+6	5.7	
+9	4.1	
cb	4.2	
+1 ⁵	4.3	

2+40

10.87

31

1/4	5.2	
+5	5.5	
⊕	5.2	5.7
+5	5.5	
1/4	4.2	
+2	2.9	
cb	2.4	
N.L.	2.8	8.1
MH at 2+42 ⁵ 1's. of ⊕	5.21	5.66
2+70		
N.L.	2.3	8.6
⊕	2.9	
1/4	3.5	
+4	5.7	
+6	5.5	
⊕	5.9	5.0
+4	5.9	
1/4	5.5	
+3	4.6	
+6	4.3	
cb	5.4	
+2	6.2	
+4 ⁵	6.5	
+5	5.6	
SL	5.1	5.8

3+00

1087

s.l.	5.7	5.2
+9	5.6	
cb	6.1	
+1	7.0	
+2	6.9	
+5	5.1	
1/4	5.0	
+3	6.0	
±	6.1	4.8
+4	5.9	
1/4	3.8	
cb	3.4	
N.L.	3.4	7.5
3+30		
N.L.	3.5	7.4
cb	3.1	
1/4	4.2	
±	5.6	5.3
+4	5.9	
+6	6.3	
1/4	6.3	
+2	5.8	
cb	5.9	
+6	6.0	
s.l.	5.4	5.5

3+60

1087

32

s.l.	5.8	5.1
+3	5.9	
+4	6.4	
+8	6.2	
+9	5.9	
cb	5.8	
1/4	5.6	
±	5.6	5.3
1/4	5.8	
+4	5.4	
cb	4.0	
N.L.	3.0	7.9
3+90		
N.L.	3.4	7.5
+6	5.5	
+7	6.6	
cb	5.5	
1/4	5.8	
±	5.9	5.0
1/4	6.1	
+6	5.6	
cb	6.0	
+5	6.2	
+7	5.5	
+9	5.6	
s.l.	4.9	6.0

4+20	10.87		
S.L.		4.9	6.0
+1		5.2	
+7		5.9	
cb		5.6	
1/4		5.7	
+3		5.6	
♀		5.4	5.5
+5		5.6	
1/4		5.4	
cb		5.4	
+1		7.0	
+2		7.0	
+5		4.5	
N.L.		2.1	8.8
T.P.	4.70	10.38	5.68
4+35			
N.L.		5.1	5.3
+3		4.4	
+6		5.0	
+7		6.5	
+9		6.4	
cb		4.9	
1/4		5.0	
+2		5.2	
+5		4.8	

33

4+35	10.38		
♀		4.8	5.6
+2		4.8	
+4		5.4	
1/4		5.1	
cb		5.0	
+3		5.6	
+7		5.1	
+8		4.8	
S.L.		4.8	5.6
4+80			
S.L.		4.9	5.5
+3		4.9	
+5		5.9	
+8		5.9	
cb		5.6	
+4		5.8	
1/4		5.3	
+2		5.2	
+5		5.4	
♀		5.3	5.1
1/4		5.2	
+3		5.2	
+5		6.0	
cb		5.0	
+1		4.4	
+3		5.0	

4480

10.38

N.L.	5.1	5.3
5+00 = E.L. Taylor.		
N.L.	4.8	5.6
cb	4.6	
1A	4.9	
⊕	5.2	5.2
1A	5.5	
+4	6.0	
cb	5.0	
+5	5.4	
S.L.	5.7	4.7
5+15		
S.L.	5.7	4.7
+5	5.6	
cb	5.7	
+3	6.0	
1A	5.9	
+3	5.7	
⊕	5.3	5.1
+2	5.7	
1A	5.7	
cb	5.6	
N.L.	5.7	4.7
M.H. on ⊕ at 5+25	4.75	5.63

5+30

10.38

34

N.L.	4.6	5.8
cb	4.5	
1A	4.5	
⊕	4.5	5.9
1A	4.6	
cb	4.6	
S.L.	4.7	5.7
5+40 ² = E.L. Pav.		
S.L.	4.70	5.68
cb	4.62	
1A	4.60	
⊕	4.59	5.79
1A	4.57	
cb	4.55	
N.L.	4.51	5.87
Nail Pole = E. Whitman & Taylor.		
BM	3.65	6.73 (6.75)

X sec. Whitman St. From E.L. Parson
Taylor to Wallace
50' St. 10' cbs 30' Rdway.
B.M. 392 10.67 6.75

Nov 2-28
London

5+40⁴⁰ = E.L. Parson Taylor.

4+80 10.67

N.L. 5.0 56

S.L. 4.21 6.46

+5 5.2

cb 4.20

cb 5.3

1/4 4.22

1/4 5.4

± 4.23 6.44

± 5.5 51

1/4 4.22

1/4 5.6

cb 4.15

+5 5.3

N.L. 4.11 6.56

cb 5.3

5+30

S.L. 5.0 56

N.L. 4.4 6.2

4+50

cb 4.4

S.L. 5.6 5.0

1/4 4.4

cb 5.5

± 4.5 6.1

1/4 5.5

1/4 4.3

± 5.6 5.0

cb 4.3

1/4 5.5

S.L. 4.3 6.3

cb 5.5

1/4 4+5+25 4.5 N. of E 4.64 6.03 ✓

+7 5.2

5+00 = E.L. Taylor.

N.L. 5.0 56

S.L. 5.3 5.3

4+20

+7 5.1

N.L. 5.2 54

cb 5.4

+3 5.2

1/4 5.4

cb 5.6

± 5.3 5.3

1/4 5.6

1/4 5.2

± 5.5 51

cb 5.2

1/4 5.7

N.L. 5.1 5.5

+4 5.5

Plotted 11-19-28 C.B.H.

4+20	10.67		
cb	5.4		
S.L.	6.0	4.6	
3+90			
S.L.	5.0	5.6	
+2.	6.2		
cb	5.5		
1/4	5.7		
+3	5.9		
+	5.7	4.9	
1/4	5.5		
cb	5.2		
N.L.	5.0	5.6	
T.P. 343	11.26	2.84	7.83
3+60			
N.L.	5.8	5.5	
cb	5.9		
1/4	6.0		
+	5.8	5.5	
+3	6.0		
1/4	6.1		
cb	6.1		
S.L.	5.4	5.9	

3+30	11.26		
S.L.	5.0	6.3	
+7	6.8		
cb	6.4		
+5	6.4		
1/4	6.1		
+5	6.1		
+	6.3	5.0	
+3	6.4		
1/4	5.8		
+2	5.4		
cb	5.3		
+5	5.1		
N.L.	5.2	6.1	
3+00			
N.L.	4.9	6.4	
+4	4.9		
+8	5.4		
cb	5.2		
+5	5.2		
1/4	5.5		
+	5.5	5.8	
+5	5.8		
1/4	5.8		
+3	5.8		
cb	5.3		
+2	6.1		

3+00	11.26		
cb+L	5.1		
S.L.	5.3	6.0	
2+70			
S.L.	4.1	7.2	
+4	4.8		
+7	5.5		
eb	5.4		
1/4	5.2		
+5	5.5		
+	5.8	5.5	
+3	6.0		
1/4	5.8		
+2	5.3		
+5	5.5		
eb	5.3		
+6	5.0		
N.L.	4.3	7.0	
Mt at 2+476 point	5.07	6.19 ✓	
2+40			
N.L.	4.6	6.7	
+7	5.4		
eb	5.3		
+2	5.5		
+5	5.2		
1/4	5.4		

2+40	11.26		37
1/4+4	5.4		
+	5.1	6.2	
1/4	5.3		
eb	5.7		
+3	5.1		
S.L.	4.8	6.5	
2+10			
S.L.	3.9	7.4	
+2	4.6		
+6	4.7		
+9	5.8		
eb	5.3		
+1	5.1		
1/4	5.0		
+	5.3	6.0	
+4	5.8		
1/4	5.7		
cb	5.6		
+2	5.8		
+5	5.5		
N.L.	5.2	6.1	

2+02

11.26

N.L.	5.3	6.0
+6	5.5	
+8	5.7	
cb	5.5	
+3	5.6	
1/4	5.5	
⊕	5.0	6.3
1/4	5.0	
+4	5.1	
cb	3.4	
SL	3.3	8.0
1+80		
S.L.	2.9	8.4
+5	3.3	
cb	5.0	
1/4	5.3	
⊕	5.2	6.1
+5	5.6	
1/4	5.6	
+2	5.8	
cb	5.8	
N.L.	5.3	6.0

1+50

11.26

39

N.L.	5.2	6.1
+2	5.5	
+5	5.4	
cb	5.7	
+2	5.5	
1/4	5.7	
+4	5.8	
⊕	5.8	5.5
1/4	5.7	
+6	5.7	
cb	4.9	
+4	2.8	
SL	3.0	8.3
1+20		
S.L.	3.4	7.9
cb	3.9	
+4	5.9	
1/4	5.7	
⊕	5.5	5.8
1/4	5.3	
+5	5.1	
cb	5.2	
+5	4.8	
N.L.	4.7	6.6

0+90

11.26

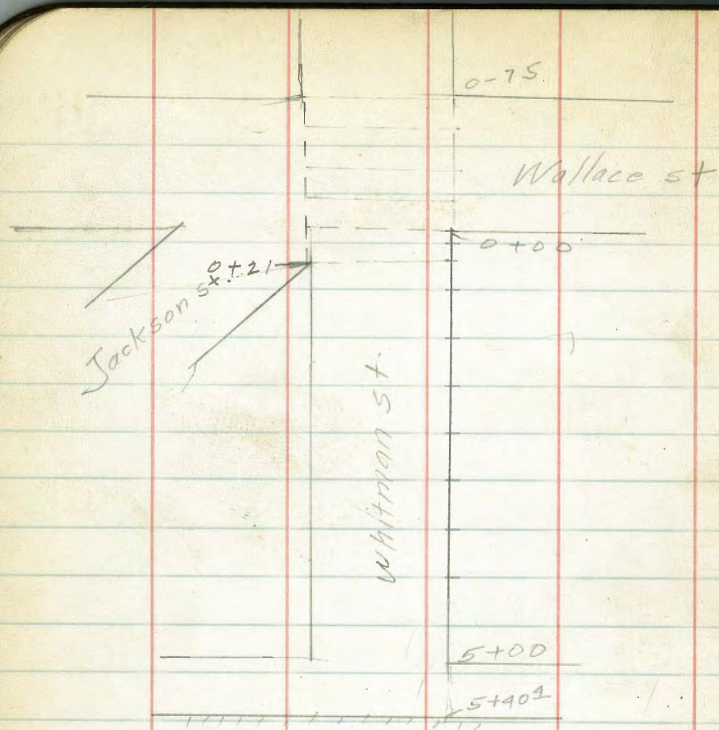
N.L.	3.1	82
+7	3.2	
cb	3.5	
1/4	4.0	
±	4.4	69
1/4	4.8	
cb	4.6	
+4	2.4	
S.L.	2.3	9.0
0+60		
S.L.	3.1	8.2
+1	3.7	
cb	3.5	
1/4	2.9	
±	2.1	9.2
+2	1.9	
1/4	1.7	
cb	1.7	
+5	1.5	
N.L.	0.9	10.4

0+50

11.26

39

N.L.		0.2	11.1
+4		0.7	
+7		0.6	
cb		0.9	
+5		1.4	
1/4		1.4	
+5		1.2	
±		1.3	10.0
+15		1.3	
+5		1.9	
1/4		2.1	
cb		2.7	
+5		2.7	
+9		2.9	
S.L.		2.5	8.8
T.P.	12.96	23.37	0.95 10.31
0+35			
S.L.		12.2	11.1
+4		13.6	
+7		13.2	
cb		13.3	
1/4		13.2	
+4		13.0	
±		12.9	10.4
+5		12.7	



40

0+35	23.27	
'4	12.2	
+6	11.4	
cb	11.4	
+3	11.2	
N.L.	11.0	13.3
0+21		
N.L.	10.2	13.1
+6	10.3	
+9	10.1	
cb	10.2	
'4	10.7	
±	11.5	11.8
+4	11.4	
'4	11.6	
cb	11.9	
+5	11.6	
S.L.	12.1	11.2
0+00 = w.L. Wallace		
S.L.	10.3	12.0
+3	10.3	
cb	9.6	
'4	9.5	
+4	9.6	
±	9.7	13.6
+6	9.8	

D + 00

2327

1/4	9.7	
+5	9.4	
cb	8.7	
N.L.	5.6	17.7
0-09	5.7	
N.L.	5.7	17.6
cb	5.7	
1/4	7.5	
+	8.9	14.4
1/4	9.1	
+5	8.9	
cb	9.0	
+4	9.0	
+9	9.7	
SL	9.7	13.6
0-20		
SL	7.9	15.4
+8	7.8	
cb	8.0	
1/4	7.2	
+	5.8	17.5
1/4	5.7	
cb	5.6	
N.L.	5.5	18.8

0-28

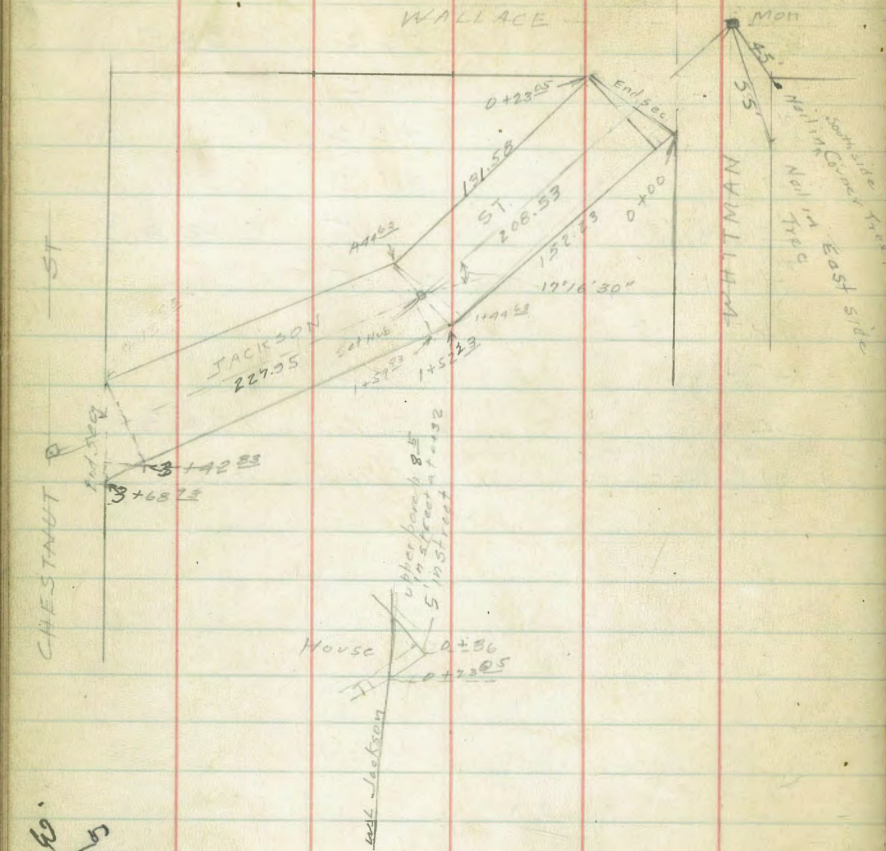
2327

41

N.L.	5.3	18.0
cb	5.3	
1/4	5.4	
+	5.5	17.8
1/4	5.9	
cb	6.3	
SL	6.9	16.4
0-37	Σ = + Wallace	
SL	6.7	16.6
cb	6.0	
1/4	5.5	
+	5.3	18.0
1/4	5.3	
+3	5.2	
cb	4.7	
+3	4.6	
+5	3.6	
N.L.	2.7	20.6

	23.27	
0-45		
N.L.	+0.7	24.0
+4	1.2	
cb	2.3	
1/4	4.0	
+	4.9	18.4
1/4	5.5	
cb	5.8	
S.L.	6.4	16.9
0-60		
S.L.	4.5	18.8
+5	4.5	
cb	4.0	
1/4	3.5	
+	2.3	21.0
+5	0.6	
1/4	0.5	
cb	+0.2	
+5	+1.0	
N.L.	+2.0	25.3

	23.27	
0-75		
N.L.	+6.2	29.5
+6	+5.5	
cb	+3.2	
1/4	+1.0	
+	0.5	22.8
1/4	1.5	
cb	1.9	
+7	2.2	
S.L.	3.0	20.3
pub SE. Whitman & Wallace	4.65	18.62
B.M.		



Nov 3-28
London
X Sec Jackson St. From
Whitman to Chestnut
50' St 10' bs 30' Rdway

43

BM.	841	26.75	131.35	18.54
End sec	0+00 on W.	= 0+23.5	on E.	
EL.		2.5		24.4
+9		5.4		
cb		7.0		
+15		8.9		
1/4		9.5		
±		9.6		17.3
1/4		9.4		
+3		9.6		
+35		11.0		
+55		11.3		
+6		13.1		
cb		13.4		
w.L.		13.9		13.0
0+23.05				
w.L.		13.4		13.5
cb		13.3		
+6		13.1		
+15	fine	10.7		
+6		9.3		
1/4		9.5		
±		9.7		17.2
1/4		9.6		
+6		9.0		
cb		6.5		

Plotted 11-19-28 - CBH

Hub SE
Whitman
Wallace

3.5
2.5

Jackson

0+23 ^S	2695		
cb+3		4.7	
E.L.		2.5	24.4
0+60			
E.L.		4.0	22.9
+8		6.5	
cb		9.5	
+3		10.1	
1/4		10.2	
±		10.2	16.7
1/4		10.0	
+2 fence		9.8	
+2 ^S		11.2	
+4		11.8	
+5 ^S		13.4	
cb.		13.9	
w.L.		14.0	12.9
0+90			
w.L.		15.0	11.9
cb		14.8	
+3		14.3	
+3 ^E		11.4	
+5		11.3	
+5 ^S		9.9	
1/4		10.2	
±		10.5	16.4

Jackson

44

0+90	2695			
1/4			10.5	
+5			10.4	
+6 ^S			10.1	
cb			6.7	
E.L.			3.8	23.1
1+30				
E.L.			3.5	23.4
+7			7.1	
cb			10.7	
+2			11.1	
1/4			11.2	
±			11.0	15.9
1/4			10.7	
+1 fence			10.4	
+1 ^E			11.7	
+4			14.7	
cb			15.4	
+6 ^E			14.7	
+3			16.9	
w.L.			16.9	19.0

shad. 165 in street. 13 in 16
1+19. +0/+52

2695

1+44⁶³ = E on East.

w.L.	17.0	99
+3	17.0	
+3 ^S	15.8	
cb	15.8	
+3	15.7	
+6	13.5	
+6 ^S	12.0	
1/4	11.4	
±	11.6	15.3
1/4	11.8	
+6	11.9	
cb	11.5	
+2	11.4	
+3	9.4	
+8	4.9	
E.L.	3.6	23.3
1+52 ²³ = 1+44 ⁶³ diag. Sec.		
EL	3.6	23.3
+2	4.8	
+8	9.6	
+8 ^S	11.2	
cb	11.8	
1/4	11.8	
±	11.7	15.2
+6	11.6	

diag Sec 26.95

1/4	11.6	
+2 fence	12.1	
+2 ^S	13.8	
+5	15.8	
cb	15.8	
+6 ^S	15.8	
w.L.	17.0	99
1+59 ⁸³ = 1+44 ⁶³		
w.L.	16.4	10.5
+1	16.0	
cb	15.7	
+2	15.7	
+4 ^S	12.6	
+5	12.4	
1/4	11.4	
+1	11.7	
±	11.8	15.1
1/4	11.9	
cb	11.9	
+2	11.0	
+2 ^S	9.6	
+7	5.1	
E.L.	3.6	23.3

45

1+90	26.95		
EL	3.0	23.9	
+4	5.6		
cb	10.5		
+15	10.9		
+2	12.0		
+4	12.5		
1/4	12.5		
±	12.3	14.6	
1/4	12.3		
+3	12.2		
+4 fence	11.8		
+45	12.9		
cb	14.2		
+2	15.7		
w.L.	16.3	10.6	
2+18			
w.L.	16.5	10.4	
+5	16.8		
cb N end fence	14.0		
+2	12.3		
+3	12.7		
1/4	12.7		
±	12.8	14.1	
1/4	12.8		
+1	12.7		

40

2+18	26.95		
cb		9.3	
E.L.		5.7	21.2
T.P.	9.38	23.99	12.34 14.61
2+23			
EL		0.4	23.6
cb		6.1	
+1		7.6	
+3		8.3	
+4		9.2	
1/4		9.8	
±		9.8	13.2
1/4		9.7	
+5		9.6	
cb		10.3	
w.L.		11.3	12.7
w.L.		11.0	13.0
cb		10.4	
1/4		10.1	
±		9.9	14.1
1/4		9.7	
+2		9.7	
cb		7.4	
+8		1.2	
E.L.		0.0	24.0

2 + 80

23.99

EL 4.2 19.8

+5 8.7

cb 9.5

1/4 9.7

+ 9.9 14.1

1/4 10.0

cb 10.4

+5 11.0

WL 12.6 11.4

3 + 10

WL 13.0 11.0

cb 11.1

+5 10.4

1/4 10.1

+ 9.8 14.2

1/4 9.3

cb 8.9

EL 8.3 15.7

Jackson.

47

3 + 42 ⁸³ = 34 chestnut on East.
23.99

EL 6.6 17.4

+6 7.2

cb 8.0

1/4 9.7

+ 10.3 13.7

1/4 10.6

cb 11.1

+8 11.6

WL 12.2 11.8

End sac 3 + 68 ²³ = 3 + 42 ⁸³

WL 12.5 11.5

cb 11.6

1/4 10.9

+ 10.6 13.4

1/4 10.0

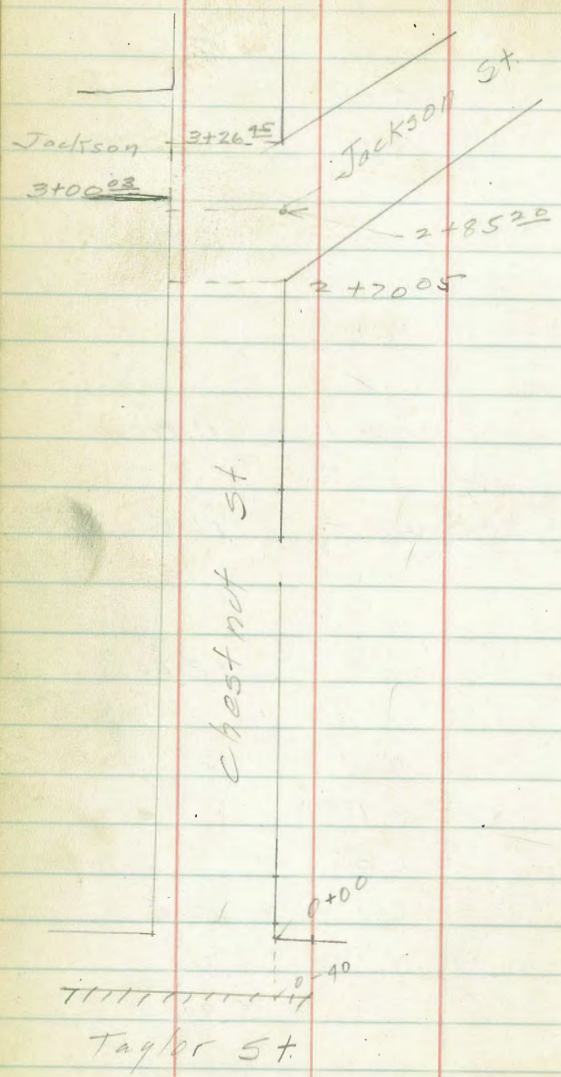
+2 9.8

cb 8.1

+6 6.7

EL 6.6 17.4

TPx 1.07 13.87 11.17 12.82
con No. 3 SW chestnut & Taylor.
B.M. 7.92 5.97



X Sec Chestnut St From EL
 Pav on Taylor to EL Jackson on South
 50' st 10' cbs 30' Rdway. 48

BM	8.30	19.34	6.04
0-AD	- EL Pav on Taylor		
NL		5.92	8.42
cb		6.15	
1/4		6.30	
E		6.46	7.88
1/4		6.53	
cb		6.60	
SL		6.76	7.58
0-38			
SL		6.8	7.5
cb		6.5	
1/4		6.4	
+		6.3	8.0
1/4		6.1	
cb		6.0	
NL		5.9	8.4
0-20			
NL		5.9	8.4
cb		6.1	
1/4		6.1	
+		6.2	8.1
1/4		6.2	
+4		6.5	
cb		6.7	
+5		7.1	

Plotted 11-22-28 - C.B.H.

0-20	14.34		
S.L.		7.1	7.2
0-17			
S.L.		6.6	7.7
+6		6.5	
+8		7.0	
cb		6.8	
1/4		6.3	
+		6.2	8.1
1/4		6.1	
cb		6.1	
N.L.		5.9	8.4
0+00 = EL. Taylor			
N.L. sidewalk		5.35	8.99
N.L.		6.3	8.0
+8		6.6	
cb		6.4	
1/4		6.5	
+		6.4	7.9
1/4		6.5	
cb		6.9	
+1		6.9	
+3		6.6	
S.L.		6.6	7.7

0+30	14.34		
S.L.		6.3	8.0
cb		6.7	
1/4		6.6	
+		6.4	7.9
1/4		6.4	
cb		6.6	
+2		6.3	
N.L.		6.1	8.2
0+60			
N.L.		6.1	8.2
cb		6.3	
1/4		6.3	
+		6.3	8.0
1/4		6.4	
+6		6.5	
cb		6.4	
+4		6.1	
S.L.		6.4	7.9
0+90			
S.L.		6.1	8.2
+7		5.9	
cb		6.2	
1/4		6.2	
+		6.2	8.1
1/4		6.2	
cb		6.1	

0+90

14.34

N.L.	5.6	8.7
1+20		
N.L.	5.5	8.8
cb	5.9	
1/4	5.9	
+	5.9	8.4
1/4	5.9	
+	6.1	8.2
+2	5.7	
+8	5.9	
S.L.	6.2	8.1
1+35 = un. Alley		
S.L.	5.6	8.7
+6	5.5	
cb	5.7	
+1	5.9	
1/4	5.7	
+	5.7	8.6
1/4	5.6	
cb	5.7	
+8	5.3	
N.L.	4.9	9.4

14.34

1+50 = EL Alley

N.L.	4.8	9.5
+2	5.1	
cb	5.6	
1/4	5.4	
+2	5.4	
+	5.4	8.9
1/4	5.6	
+4	5.7	
+6	5.5	
cb	5.4	
+4	5.3	
S.L.	5.6	8.7
1+80		
S.L.	4.8	9.5
+3	4.6	
+5	4.7	
cb	4.9	
+5	5.3	
1/4	5.1	
+4	4.8	
+	4.8	9.5
1/4	4.8	
cb	4.9	
+7	4.7	
N.L.	3.5	10.8

	1434		
2+10			
N.L.	2.2	12.1	
+2	3.6		
+5	4.2		
cb	4.1		
1A	4.0		
+	4.1	10.2	
1A	4.5		
cb	4.4		
+6	4.0		
S.L.	4.6	9.7	
2+40			
S.L.	4.2	10.1	
+4	3.7		
cb	3.7		
+3	3.9		
1A	3.7		
+6	3.3		
+	3.2	11.1	
1A	3.2		
cb	2.9		
+1	3.1		
+4	2.6		
+6	1.6		
N.L.	1.0	13.3	

				51
2+70	$\frac{05}{14.3d} =$	mt. Jackson on South.		
N.L.		+0.6	14.9	
cb		0.1.		
+3		0.3		
+6		1.6		
1A		1.7		
+4		1.8		
+		2.2	12.1	
1A		2.1		
cb		2.3		
+4		2.4		
S.L.		3.2	11.1	
2+85 ²⁰	$=$	mt. Jackson on South.		
S.L.		1.5	12.8	
cb		1.4		
1A		1.5		
+4		1.6		
+5		1.1		
+		1.2	13.1	
+5		0.7		
1A		0.3		
M.H. at 2+64 ⁵ on E		8.91	20.94	2.31
				12.03
+3		6.3	12.03	
cb		6.0		
N.L.		5.5	15.4	

3+02

2094

NL	2.8	18.1
cb	4.4	
1/4	5.3	
♀	6.2	14.7
1/4	6.6	
cb	7.2	
SL	7.2	13.7

3+00⁰³ = W.L. Jackson on North

SL	7.3	13.6
cb	7.3	
1/4	6.9	
♀	6.4	14.5
1/4	5.8	
cb	4.8	
NL	3.7	17.2

3+13

NL	+2.0	22.9
cb	+0.8	
1/4	0.7	
♀	2.5	18.4
1/4	3.6	
cb	4.2	
+5	4.8	
SL	4.8	16.1

3+19

2094

SL	3.3	17.6
cb	2.1	
1/4	1.0	
♀	0.2	20.7
1/4	+0.6	
cb	+1.1	
NL	+2.1	23.0

3+26¹⁵ = E.L. Jackson on South

NL	+2.1	23.0
cb	+1.1	
1/4	+0.4	
♀	0.4	20.5
1/4	1.2	
cb	2.1	
SL	3.2	17.7
T.P.x	8.08	12.86

Nov 5-25
London

X Sec Twigg's st from S.L. Calhoun
to Pav. on San Diego
50' st 10' cbs 80' Rdung.

53

B.M.	A17	42.42	38.25	Nail Pole sw Calhoun Twigg's
0+00	(on E)	S.L. Calhoun Secor S.L. Calhoun		
E.L.		4.7	37.7	
cb		4.8		
1/4		5.0		
+		5.0	37.4	
1/4		4.9		
cb		5.2		
wL		5.5	36.9	
0+09				
wL		5.5	36.9	
+6		5.0		
cb		5.1		
1/4		4.9		
+		5.2	37.2	
1/4		5.0		
cb		4.6		
+8		4.6		
E.L.		4.7	37.7	

Plotted 11-17-28 - C.B.H.

0+30	42.42		
E.L.		5.3	37.1
+9		5.7	
cb		5.7	
1/4		5.8	
+		5.8	36.6
1/4		6.1	
cb		6.0	
+8		5.9	
wL		6.2	36.2
0+60			
wL		7.1	35.3
+2		6.8	
cb		7.0	
1/4		7.0	
+		6.9	35.5
1/4		6.6	
+5		6.8	
cb		6.7	
E.L.		6.4	36.0

0+90

42.42

E.L	7.5	34.9
cb	7.6	
+3	7.8	
1/4	7.5	
⊕	7.7	34.7
1/4	7.7	
cb	7.9	
+4	7.7	
+8	7.2	
w.L	7.1	35.3

1+20

w.L	8.1	34.3
cb	8.8	
1/4	8.7	
⊕	8.6	33.8
1/4	8.8	
cb	8.8	
E.L	8.6	33.8

1+50

42.42

E.L	9.4	33.0
cb	9.5	
+6	9.4	
1/4	9.5	
⊕	9.4	33.0
1/4	9.5	
+4	9.4	
cb	9.6	
+5	9.3	
w.L	8.8	33.6
1+63 ⁶ = N.L. San Diego.		
w.L	10.2	32.2
cb	10.5	
1/4	10.7	
+5	10.3	
⊕	10.4	32.0
+4	10.2	
1/4	10.5	
cb	10.3	
E.L	10.3	32.1

54

1+80	42.42		
EL	11.0	31.4	
+7	11.1		
cb	11.9		
+4	12.9		
1A	12.6		
+5	12.4		
⊕	12.6	29.8	
+2	12.5		
1A	12.9		
+3	12.8		
+5	12.9		
cb	12.3		
+4	11.5		
w.L.	11.7	30.7	
1+84			
w.L.	14.0	28.4	
cb	13.8		
1A	13.5		
⊕	13.3	29.1	
1A	13.1		
cb	13.4		
EL	13.4	29.0	

4242

55

1+91² = NL Pav on San Diego.

EL	13.18	29.24
cb	13.29	
1A	13.39	
⊕	13.49	28.93
1A	13.47	
cb	13.62	
w.L.	13.78	28.64

Nov. 5-28 X sec. Twigg's St From Calhoun
to Javn. 50' st. 10' cbs 30' Rdway.

B.M.	12.49	50.74	38.25
0-30			
wL.		14.6	36.1
cb		14.4	
1/4		14.1	
+5		13.8	
±		13.8	36.9
1/4		14.0	
cb		13.9	
EL.		13.6	37.1

0-20 = ± Calhoun

EL		14.6	36.1
cb		14.5	
+6		14.4	
1/4		13.9	
±		13.6	37.1
+3		13.6	
1/4		14.3	
+3		14.6	
+5		15.3	
cb		15.4	
wL		16.0	34.7

Plotted 11-19-1928 - G.B.H.

0-14	50.74		56
wL.		14.1	36.6
cb		13.9	
1/4		13.9	
+3		13.1	
±		13.1	37.6
+2		12.9	
1/4		13.1	
cb		13.8	
EL		13.9	36.8
0+00 = XL Calhoun			
EL		11.1	39.6
cb		11.2	
+2		11.5	
1/4		11.3	
+5		11.0	
±		11.4	39.3
+3		11.4	
1/4		11.7	
cb		12.0	
wL		12.5	38.2

0+30

50.74

w.L.

10.4

40.3

+2

10.0

cb

10.1

1/4

10.1

+5

9.6

±

9.7

41.0

+3

9.4

1/4

9.6

+5

10.1

cb

10.0

E.L.

9.2

41.5

0+60

E.L.

7.1

43.6

+5

7.5

cb

7.3

+4

7.6

1/4

7.3

+5

7.2

±

7.5

43.2

+3

7.4

1/4

8.2

+4

8.6

cb

8.7

+5

8.5

+8

8.4

w.L.

9.1

41.6

0+90

50.74

57

w.L.

7.3

43.4

+4

6.8

cb

6.8

1/4

6.6

±

5.9

44.8

+2

5.5

1/4

5.5

+5

5.7

cb

5.4

E.L.

5.0

45.7

1+20

E.L.

3.7

47.5

cb

3.7

1/4

3.9

+4

3.8

±

4.2

46.5

+2

4.1

1/4

4.7

cb

5.0

+5

5.2

w.L.

5.9

44.8

1+50	50.74		
w.L.	3.4	47.3	
+4	3.4		
c.b	3.1		
1/4	2.7		
+5	2.3		
⊕	2.4	48.3	
+4	1.8		
1/4	1.5		
+5	1.3		
c.b	1.5		
E.L.	1.1	49.6	
T.P. 7.72	57.67	0.79	49.95
1+80			
E.L.	6.0	51.7	
c.b	6.3		
+3	6.7		
1/4	6.8		
+4	6.8		
⊕	7.2	50.5	
1/4	7.7		
c.b	8.1		
+6	8.3		
w.L.	8.7	49.0	

58

2+10	57.67		
w.L.	7.1	50.6	
+5	6.6		
c.b	6.4		
1/4	6.1		
⊕	5.5	52.2	
+2	5.2		
1/4	5.0		
c.b.	4.5		
+5	3.9		
E.L.	3.7	54.0	
2+31			
E.L.	2.7	55.0	
c.b	3.3		
1/4	3.9		
+5	4.5		
⊕	4.7	53.0	
1/4	5.9		
c.b	6.7		
+3	6.1		
+6	5.9		
w.L.	6.5	51.2	

Twigg's.

57.67

2 + 41 ⁵ = 52. Jaun.

w.L. 6.4 57.9

+5 6.2

eb. 8.6

+5 8.6

1/4 7.8

+5 6.6

± 6.2 57.5

+2 4.6

1/4 3.7

eb 3.0

E.L. 2.3 55.4

TP 149 47.70 11.46 46.21

B.M. Beginning 9.45 38.25

50

Walker
Rupling
Lock
Job # 11-26-28

X. Section Roadway NIGHTMAN 39.5' Right
Bet. Herman and 32nd

	H.I.		BM. SE top of Nightman Herman
524	354.21	348.97	
EL. Herman Ave = 0100			
S Gut. on Pav	571	348.50	
" 1/2 "	528	348.93	
" 1/2 "	517	349.04	
N 1/2 "	512	349.09	
N Gut. "	517	349.04	
N Gut.	57	348.7	
1/2 "	59	348.3	
1/2 "	59	348.3	
1/2 "	61	349.1	
S Gut.	64	347.8	
S "	64	347.8	
1/2 "	64	347.8	
1/2 "	60	348.2	
1/2 "	60	348.2	
N Gut.	61	349.1	
" "	65	347.7	
1/2 "	63	347.9	
1/2 "	63	347.9	
1/2 "	67	347.5	
S Gut.	69	347.3	

4090 figured
0425
0150
1400

T.L.
Boat 17-34

1+50	S Gut.	7.3 346.9
	1/2 "	7.1 347.1
	1/2 "	6.9 347.3
	1/2 "	7.0 347.2
	N Gut.	6.9 347.3
	" "	7.6 346.6
	1/2 "	7.4 346.8
	1/2 "	7.3 346.9
	1/2 "	7.7 346.5
	S Gut.	7.8 346.4
	S "	8.4 345.8
	1/2 "	8.1 346.1
	1/2 "	7.7 346.5
	1/2 "	7.8 346.4
	N Gut.	8.1 346.1
	N Gut. on Pav.	7.90 346.31
	1/2 "	7.63 346.58
	1/2 "	7.57 346.64
	1/2 "	7.87 346.34
	S " " "	8.29 345.92
	chk. on SW top cb.	7.71 346.50

2+66.5 = H.I. 345.92

check
345.93
346.52

11/25/28

X Section of EAST st

from Wolman to Imperial

60' st.
10' curbs
1.0' $\frac{1}{2}$ "
Elev.

moore
by Osborne
Colquhoun
Pierce

104.60

61

	+	H.L.	-				
Sw. B.F.	0.54	117.03		116.49	cb.	4.9	
	0.68	104.60	13.11	103.92	B.L.	4.2	100.4
							1+00
North edge of strip paving on Ocean View Blvd.					E.L.	4.8	99.8
M.L. on header board		4.71		99.89	cb	4.9	
f		4.02		100.58	+3	5.7	
E.L.		3.27		101.33	$\frac{1}{4}$	5.8	
0+60 = N.L. Ocean View Blvd.					e	5.9	98.7
E.L.		3.0		101.6	$\frac{1}{4}$	6.6	
cb		3.1			cb	6.5	
+4		3.3			w.L.	6.4	98.2
+6		3.8					1+35
$\frac{1}{4}$		3.9			w.L.	7.3	97.3
f		3.7		100.9	cb	6.8	
$\frac{1}{4}$		4.2			$\frac{1}{4}$	6.8	
+6		4.3			e	6.5	98.1
+8		4.0			$\frac{1}{4}$	6.4	
cb		4.0			+5	6.2	
w.L.		3.9		100.7	+7	5.5	
0+50					cb	5.3	
w.L.		5.3		99.3	E.L.	5.0	99.6
cb		5.3					1+70
$\frac{1}{4}$		5.4			E.L.	5.4	98.2
f		5.4		99.2	cb.	5.5	
$\frac{1}{4}$		5.2			+3	5.8	
+8		5.3			+6	6.6	

104.60

f	7.0	
r	7.5	97.1
f	8.1	
cb	8.9	
W.L.	8.5	96.1
1+90		
W.L.	9.4	95.2
cb	9.5	
f	9.3	
r	8.7	95.9
f	8.4	
+6	7.8	
cb	6.1	
E.L.	5.7	98.9
2+04		
E.L.	5.4	99.2
cb	6.3	
+5	9.0	
f	9.0	
r	9.2	95.4
f	10.4	
cb	12.0	
W.L.	13.1	91.5
2+13		
W.L.	12.1	92.5
cb	12.0	

104.60

62

f	10.3	
r	9.4	95.2
f	9.2	
cb	9.8	
E.L.	8.5	96.1
2+25		
	9.9	
E.L.		94.7
cb	10.2	
f	9.5	
r	9.4	95.2
f	9.5	
cb	9.5	
W.L.	9.0	95.6
2+35		
W.L.	6.9	97.7
cb	7.6	
f	9.0	
r	9.0	95.6
f	9.4	
cb	9.5	
E.L.	9.6	95.0
2+55		
E.L.	9.1	95.5
cb	8.9	
f	8.5	

104.60

r	7.9	96.7
f	7.6	
cb	6.3	
w.l.	6.3	98.3
2+20		
w.l.	5.7	98.9
cb	5.4	
f	7.2	
r	7.6	97.0
f	7.8	
+4	7.6	
+7	6.5	
cb	6.8	
E.L.	6.9	97.7
3+00		
E.L.	6.0	98.6
cb	6.1	
+3	6.2	
+7	7.5	
f	7.6	
r	7.5	97.1
f	7.2	
cb	5.7	
w.l.	5.4	99.2
3+25		
w.l.	5.7	98.9

104.60

63

+5	5.9	
cb	6.8	
f	8.1	
r	7.7	96.9
f	7.5	
cb	5.0	
E.L.	3.7	100.9
3+52		
E.L.	4.6	100.0
cb	5.3	
+5	5.9	
f	7.5	
r	7.7	96.9
f	8.5	
cb	7.4	
w.l.	6.9	97.7
3+68		
w.l.	12.5	92.1
cb	10.4	
+3	9.6	
f	9.4	
r	8.4	96.2
f	7.9	
+6	5.2	
cb	4.9	
E.L.	4.4	100.2

T.P.	662-	100.64	10.58	94.02
	3+85			
E.L.			1.4	99.2
cb			1.8	
+3			2.5	
+5			3.9	
$\frac{1}{4}$			5.3	
e			5.7	94.9
$\frac{1}{4}$			6.9	
+6			7.4	
cb			8.8	
w.l.			13.0	87.6
+15			15.5	
+20			14.4	
	3+93			
-15			13.3	
-5			15.7	
w.l.			14.0	86.6
cb			9.8	
+6			7.3	
$\frac{1}{4}$			7.4	
e			6.6	94.0
$\frac{1}{4}$			6.2	
+1			5.7	
+5			5.3	
+7			4.0	

	100.64	
cb.	7.3	
E.L.	2.4	98.2
	4+00	
E.L.	4.9	95.7
cb	5.2	
+3	5.7	
$\frac{1}{4}$	6.9	
e	7.3	93.3
$\frac{1}{4}$	7.7	
+4	7.7	
cb	11.1	
w.l.	14.4	86.2
+10	13.2	
	4.09	
-5	12.6	
w.l.	13.9	86.7
+7	13.9	
cb	11.4	
+6	8.2	
$\frac{1}{4}$	8.1	
e	7.9	92.7
$\frac{1}{4}$	7.8	
cb	7.3	
E.L.	6.6	94.0
+5	6.2	
	++20	

100.64

-5	7.9	
E.L.	8.2	92.4
cb	9.0	
+	8.3	
E	8.1	92.5
+	8.4	
+3	8.6	
cb	11.9	
+1	13.2	
+6	13.7	
+8	12.2	
W.L.	12.0	88.6
+5	11.4	
4+27		
-5	11.2	
W.L.	11.5	89.1
+4	11.9	
+5	13.9	
+7	13.9	
+8	11.6	
cb	11.6	
+8	8.9	
+	8.8	
E	8.2	92.4
+	8.2	
cb	8.7	

100.64

65

E.L.	8.4	92.2
+5	7.9	
4+43		
-5	6.4	
E.L.	7.3	93.3
cb	8.1	
+	8.2	
E	8.3	92.3
+	8.6	
+2	8.9	
+7	10.9	
cb	11.3	
W.L.	11.2	89.4
+5	11.0	
4+57		
-5	17.3	
W.L.	11.7	88.9
cb	11.2	
+5	8.5	
+	7.8	
E	7.7	92.9
+	7.5	
+3	7.3	
cb	5.6	
E.L.	3.7	96.9
4+72		

100.64

E.L.	1.5	99.1
+1	1.5	
cb	3.3	
+4	3.6	
+5	5.8	
$\frac{1}{4}$	6.3	
e	6.6	94.0
$\frac{1}{4}$	6.9	
+5	7.4	
cb	9.8	
w.l.	11.0	89.6
+5	11.4	
4+92		
-5	9.8	
w.l.	9.2	91.4
cb	7.5	
+5	6.2	
$\frac{1}{4}$	5.9	
e	5.8	94.8
$\frac{1}{4}$	5.4	
+3	5.1	
+6	2.5	
cb	2.1	
E.L.	0.8	99.8
5+17		
E.L.	0.7	99.9

100.64

+3	1.7	99
cb	2.5	
+6	4.6	
$\frac{1}{4}$	5.1	
e	5.0	95.6
$\frac{1}{4}$	5.2	
cb	6.5	
w.l.	8.4	92.2
+5	11.2	
5+40		
-5	9.3	
w.l.	8.4	92.2
cb	6.2	
+5	5.8	
$\frac{1}{4}$	5.1	
e	4.7	95.9
$\frac{1}{4}$	4.6	
+3	4.4	
+6	2.3	
cb	2.1	
E.L.	1.2	99.4
5+60		
E.L.	1.4	99.2
cb	2.1	
+4	2.4	
+6	3.6	

100.64

+	4.3	
P	4.4	96.2
$\frac{1}{4}$	4.9	
+5	5.5	
cb	7.5	
w.l.	8.4	92.2
+5	8.8	
5+80		
-5	7.9	
w.l.	7.6	93.0
cb	6.7	
+6	5.0	
$\frac{1}{4}$	4.5	
P	4.3	96.3
$\frac{1}{4}$	4.4	
+6	3.3	
cb	2.5	
E.L.	1.4	99.2
5+90		
-5	3.7	
E.L.	3.7	96.9
cb	4.2	
$\frac{1}{4}$	4.4	
P	4.1	96.5
$\frac{1}{4}$	4.2	
+4	4.9	

100.64

67

+8	6.7	
cb	6.2	
w.l.	7.2	93.4
+5	7.7	
6+06.85 = South line of Franklin st. = 60' st. 10' cb. 10' $\frac{1}{4}$		
-5	6.0	
w.l.	6.8	93.8
cb	6.2	
+5	4.5	
$\frac{1}{4}$	4.0	
P	3.8	96.8
$\frac{1}{4}$	3.8	
cb	4.5	
E.L.	4.1	96.5
+5	3.9	
6' north		
-5	4.0	
E.L.	3.8	96.8
cb	4.1	
$\frac{1}{4}$	3.5	
P	3.6	97.0
$\frac{1}{4}$	3.7	
+5	4.1	
cb	5.6	
w.l.	5.1	95.5
+5	4.1	

T.P.	8.14	108.74	0.04	100.60
S cb line of Franklinst.				
-5		11.0		
W.L.		11.7	97.0	
cb		12.4		
+6		11.5		
$\frac{1}{4}$		11.5		
e		11.5	97.2	
$\frac{1}{4}$		11.5		
cb		11.8		
E.L.		11.8	96.9	
+5		12.0		
S $\frac{1}{4}$				
E.L.		10.0	98.7	
cb		10.4		
$\frac{1}{4}$		10.7		
e		10.7	98.0	
$\frac{1}{4}$		10.3		
cb		9.8		
W.L.		9.4	99.3	
E Franklin				
W.L.		9.4	99.3	
cb		9.6		
$\frac{1}{4}$		9.8		
e		10.0	98.7	
$\frac{1}{4}$		10.0		

108.74

68

cb		10.0		
E.L.		9.9	98.8	
N. $\frac{1}{4}$				
E.L.		9.7	99.0	
cb		9.6		
$\frac{1}{4}$		9.7		
e		9.5	99.2	
$\frac{1}{4}$		9.4		
cb		9.0		
W.L.		9.1	99.6	
N. cb. line				
W.L.		7.9	100.8	
+6		8.4		
+7		8.8		
cb		8.8		
$\frac{1}{4}$		8.8		
e		9.2	99.5	
$\frac{1}{4}$		9.2		
+5		8.8		
cb		8.0		
E.L.		7.8	100.9	
0+00 = North line of Franklin.				
E.L.		7.1	101.6	
cb		7.7	101.0	
$\frac{1}{4}$		8.3	100.4	
e		8.5	100.2	

108.74

ft	8.3	100.4
cb	8.0	100.7
W.L.	11.4	97.3
0+10		
W.L.	7.0	101.7
cb	7.6	101.1
‡	8.1	100.6
‡	7.9	100.8
‡	7.6	101.1
cb	7.3	101.4
E.L.	6.6	102.1
0+50		
E.L.	5.4	103.3
cb	5.7	103.0
‡	6.1	102.6
‡	6.3	102.4
‡	6.4	102.3
cb	6.2	102.5
W.L.	6.2	102.5
1+00		
W.L.	5.2	103.5
cb	5.1	103.6
‡	5.0	103.7
‡	4.9	103.8
‡	4.7	104.0
cb	4.9	103.8

Plotted Yardage figured 11-30-1928

C.B.H.

108.74

E.L.	4.4	104.3
1+50		
E.L.	3.5	105.2
cb	4.0	104.7
‡	4.2	104.5
‡	4.1	104.6
‡	4.3	104.4
cb	4.8	103.9
W.L.	4.2	104.5
2+00		
W.L.	3.6	105.1
cb	4.0	104.7
‡	3.7	105.0
‡	3.4	105.3
‡	3.4	105.3
‡	2.7	106.0
cb	2.8	105.9
E.L.	2.8	105.9
2+50		
E.L.	2.4	106.3
cb	3.0	105.7
‡	3.1	105.6
‡	3.3	105.4
‡	3.6	105.1
cb	3.5	105.2
W.L.	3.4	105.3

69

108.74

3+00

W.L.	3.6	1051
cb	3.6	1051
+	3.7	1050
e	3.4	1053
+	2.7	1060
+)	3.5	1052
cb	3.3	1054
E.L.	2.7	1060

3+50

E.L.	3.4	105.3
cb	3.6	1051
+	3.5	1052
e	3.9	104.8
+	4.0	104.7
cb	4.2	103.9
W.L.	5.1	103.6

4+00

W.L.	5.6	103.1
cb	5.1	103.6
+	4.6	104.1
e	4.4	104.3
+	4.0	104.7
cb	4.0	104.7
E.L.	3.6	105.1

4+50

108.74

70

E.L.	4.3	1044
cb	4.6	1041
+	4.2	1039
e	5.0	1037
+	5.3	1034
+	5.4	1033
cb	6.2	1025
W.L.	6.4	1023

5+00

W.L.	5.7	1030
cb	5.6	1031
+	5.6	1031
e	5.3	1034
+	5.3	1034
cb	5.3	1034
E.L.	4.7	1040

5+50

E.L.	5.0	1037
cb	5.2	1035
+4	5.3	1034
+6	5.2	1029
+	5.5	103.2
e	6.0	1027
+	6.3	1024
cb	5.2	1029
W.L.	5.7	103.0

108.74

71

5+95

W.L.	6.5	102.2
cb	7.2	101.5
f	7.2	101.5
f	7.1	101.6
+5	6.4	102.3
f	6.3	102.4
cb	6.9	101.8
EL	6.7	102.0

6+06.2 = South line of Imperial =

EL	6.9	101.8
cb	6.9	101.8
f	6.4	102.3
+3	6.4	102.3
f	7.2	101.5
f	7.6	101.1
cb	7.8	100.9
W.L.	7.5	101.2

How far is these sections apart

South edge of Strip paving on Imperial

WL	EL. on header	7.89	100.85
	f	7.04	101.70
EL	W.L.	6.11	102.63

T.P. 10.59 117.71 1.62 107.12

1.20 116.51 on starting bench .02 in error

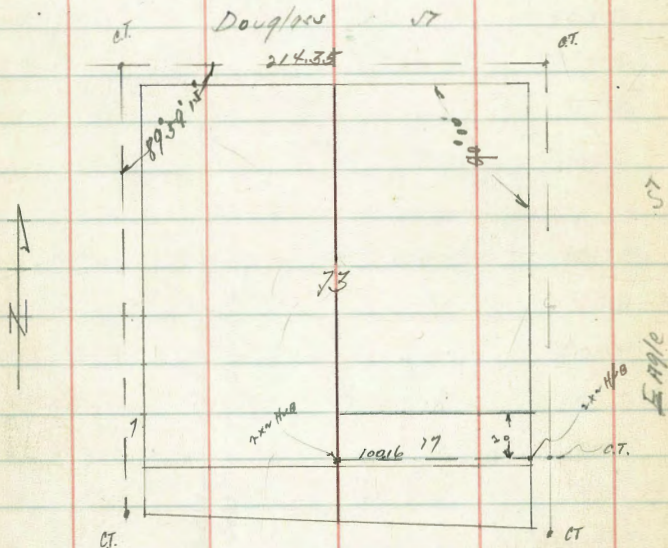
12/1/78

Moore
Osborn
Colquhoun
Pearce

SURVEY of South 20' of Lot 17 B1K 23

Arnold & Coates

72



12-18-28 X-section Alley Block 36-City
 J.C. Bliss Heights - Univ. to Park - between 37th & Cherokee
 Drebert 20' wide
 Butler

B.M. N.W.S.P. 37th & University

352.09

+ 8.10

T 360.19

North Gutter line University

E 6.53 353.66
 S 6.34 353.85
 W 6.17 354.02

N.L. Univer. S.T. = 0+00

W To cb. + paving flush 5.35 354.84

S 5.90 354.29

E To cb. + paving flush 5.87 354.32

0+25

E 5.8 354.4

S 5.4 354.8

W 5.1 355.1

0+50

W 4.9 355.3

S 5.3 354.9

E 5.8 354.2

0+75

E 5.2 355.0

+3 4.6 355.6

S 4.6 355.6

W 4.5 355.7

Plotted
1/20/28

T 360.19

0+95

± 12' Garage 6' W of W.L. 360.3

Dirt floor 4.1 356.1

1+00

W 4.0 356.2

± 4.4 355.8

E 4.6 355.6

1+10

± 8' Garage 4' E of E.L.

Wood floor 4.50 355.7

1+25

E 3.9 356.3

± 3.4 356.8

W 3.5 356.7

1+50

W 2.8 357.4

S 2.9 357.3

E 3.3 356.9

1+56

± 8' Garage 2.5 E of E.L.

Dirt floor 2.9 357.3

1+66

± 8' Garage 2.5 E of E.L.

Dirt floor 3.1 357.1

1+75

E 2.6 357.6

73

Σ 360.19

☿ 2.3 357.9
 W 2.3 357.9

1492

☿ 18' Concrete Garage Apron on W.L.

Shot at ☿ 1.93 358.26

2400

W 1.7 358.3
 ☿ 1.8 358.4
 E 1.7 358.5

T.P. -1.70 358.49

+675

Σ 365.24

Note - On East side of alley from sta 498 to 3403 there is a concrete fence foundation 0.5' in alley

2409

☿ 25' Concrete Garage Apron 0.2' W of W.L.

Shot at ☿ 6.65 358.59

2424

E - South end 16' Concrete Driveway Apron that extends 2' into alley from E.L.

☿ 6.60 358.64

☿ 6.7 358.5

W 6.2 359.0

Σ 365.24

2440

North end of Driveway Apron 6.55 358.69

2450

W 6.3 358.9

☿ 6.5 358.7

E - on Concrete fence foundation 6.44 358.10

2457

Shot on Telephone M.H. on E side ^{of alley} 7.22 358.02

2425

E - Fence foundation 6.35 358.89

☿ 6.6 358.6

W 6.6 358.6

3400

W 6.4 358.8

☿ 6.3 358.9

E - Fence foundation 6.17 359.07

3425

E 6.4 358.8

☿ 6.5 358.7

W 6.2 359.0

3440

☿ 8' Concrete Garage Apron 1' W of W.L.

Shot at ☿ 5.99 359.25

3450

W 5.9 359.3

☿ 6.2 359.0

∑ 365.24

E	6.3	358.9
	3775	
E	5.6	359.6
£	5.7	359.5
W	5.3	359.9
	4400	
W	5.1	360.1
£	5.3	359.9
E	5.3	359.9
	4425	
E	4.7	360.5
£	4.9	360.3
W	4.5	360.7
	4430	
£ 8' Garage 0.3' in Alley from W.L.		
Dirt floor	4.4	360.8
	4434	
£ 8' Garage 1.5' E of E.L.		
Concrete floor	4.48	360.76
	4450	
W	4.4	360.8
£	4.4	360.8
E	4.6	360.6
	4471	

£ 8' Garage 0.8' in alley from W.L.

∑ 365.24

75

Dirt floor	4.3	360.9
	4475	
E	4.3	360.9
£	4.3	360.9
W	4.3	360.9
	4483	
£ 10' Concrete Apron 0.3' in Alley from W.L.		
Shot at £	3.75	361.49
	5400	
W	3.7	361.5
£	3.8	361.4
E	4.0	361.2
	5425	
E	4.1	361.1
£	3.6	361.6
W	3.8	361.4
	5450	
W	3.5	361.7
£	3.6	361.6
E	3.8	361.4
	5475	
E	3.4	361.8
£	3.2	362.0
W	3.1	362.1

365.24

5493 S.A. Polk

NW, cb.	2.8	362.4
E	3.05	362.2
E	3.2	362.0

640020 = S.A. Polk

E Tp. cb.	3.42	361.82
G	3.62	361.62
E	3.80	361.44
G	3.25	361.99
W Tp. cb.	3.05	362.19

S. Gutter Line Polk

W	3.72	361.52
E	3.88	361.36
E	4.02	361.22
T.P.	-4.25	360.99

+3.20 364.19

B.M. N.W. B.P. University + Cherokee -6.62 357.57
→ 357.64

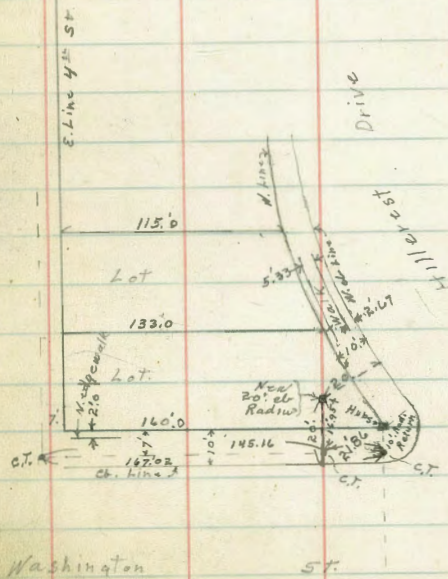
Location of New Return
at N.W. Cor. Washington St + Hillcrest Drive

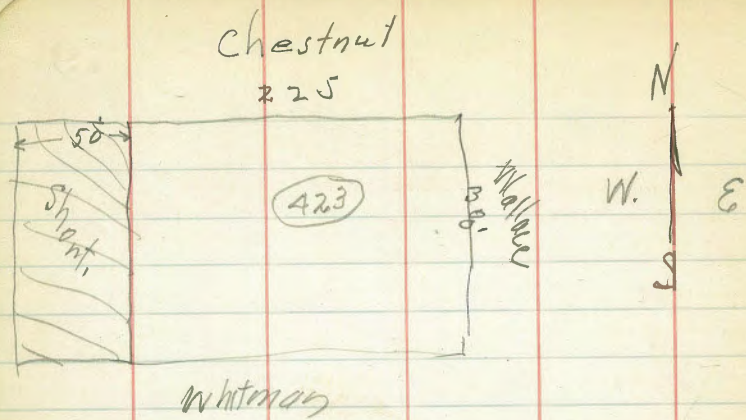
4-24-39
Miller

77

N.W. Washington
+ Hillcrest Drive

B.M.	6.65	294.61	287.96
138.16 E. of E. line of 4 th St = P.C. Proposed 20' Radius Return.			
N. ent. ch		6.58	
gutter Pavmt.		7.25	
160' E. of E. line of 4 th St = B.I.K. Cor. = P.C. Existing 10' Rad. Return			
N. ent. ch		6.66	
gutter Pavmt.		7.37	
170' E. of 4 th St. = P.I. N. Line Washington + existing 10' Rad. Return			
N. ch. line		7.50	
N. prop line Top ent. ch, Ret		6.70	
" " " gutter pavmt.		7.41	
N. End of existing 10' Rad. Return			
Top ent. ch		6.66	
gutter Pavmt.		7.42	
N. End. Proposed, 20' Radius Return			
Top ent. ch		6.86	
gutter Pavmt.		7.60	
185' E. of E. line of 4 th St.			
N. prop line of Washington		7.57	
N. ch. " " "		7.96	
200' E. of E. line of 4 th St.			
N. prop line of Washington		7.90	
N. ch " " "		8.37	





DIRECTIONS FOR USE OF TABLES

TABLE No. 1.

Distance of slope stake from side or shoulder stake for any width roadway, slope 1% to 1%. If ground is nearly level, the cut or fill at side stake is located by the double entry method in left column and top row. The number in body

of table in same row and column gives distance from side stake to slope stake. If ground is not

IMPROVED TABLES
AND
INFORMATION

TABLE No. 2.

To find Tangent and External for curve of any other degree, divide by degree of curve and add correction found in column of correction. Degree of curve with a given L may be found by dividing tangent (or external), opposite L by given tangent (or external). The distance from a point on the tangent to the curve is very nearly the square of the tangent length divided by twice the radius.

ENGINEERING DEPARTMENT,
CITY OF SAN DIEGO,
CALIFORNIA.

(X. Section Heightman)
bet 22nd & Hermit

56

5165
13
7
106
97