

1296

LEVEL BOOK

No. 380 F

ENGINEERING DEPARTMENT
CITY OF SAN DIEGO,
CALIFORNIA.

Our Leather Bound Engineers Note Books are carried in the following rulings:

- No. 380 LEVEL BOOK. Left and Right Hand Page the same as Left Hand Page of this Book.
- No. 382 FIELD BOOK. Left Hand Page as in this Book, Right Hand Page 4 x 4 to the inch, Center Line Red.
- No. 384 MINING TRANSIT BOOK. Left Hand Page as in this Book, Right Hand Page 8x8 to the inch, Center Line Red.
- No. 385 FIELD BOOK. Left Hand Page as in this Book, Right Hand Page 8 vertical and 4 horizontal lines to the inch, Center Line Red.

We also carry the Note Books listed above, bound in extra strong Fabri-Hide (otherwise the same quality of book), which can be furnished at a somewhat lower price.

In ordering Fabri-Hide covered books, add the letter "F" to catalog number.

THE FREDERICK POST CO.
ENGINEERING and DRAFTING SUPPLIES
IRVING PARK STATION
CHICAGO, ILL.

Bermuda Air

Santa Barbara Sta. 3/11/62

3444 University - 349.47

5 W 5th & Wightman N.W. 810 - 337.42

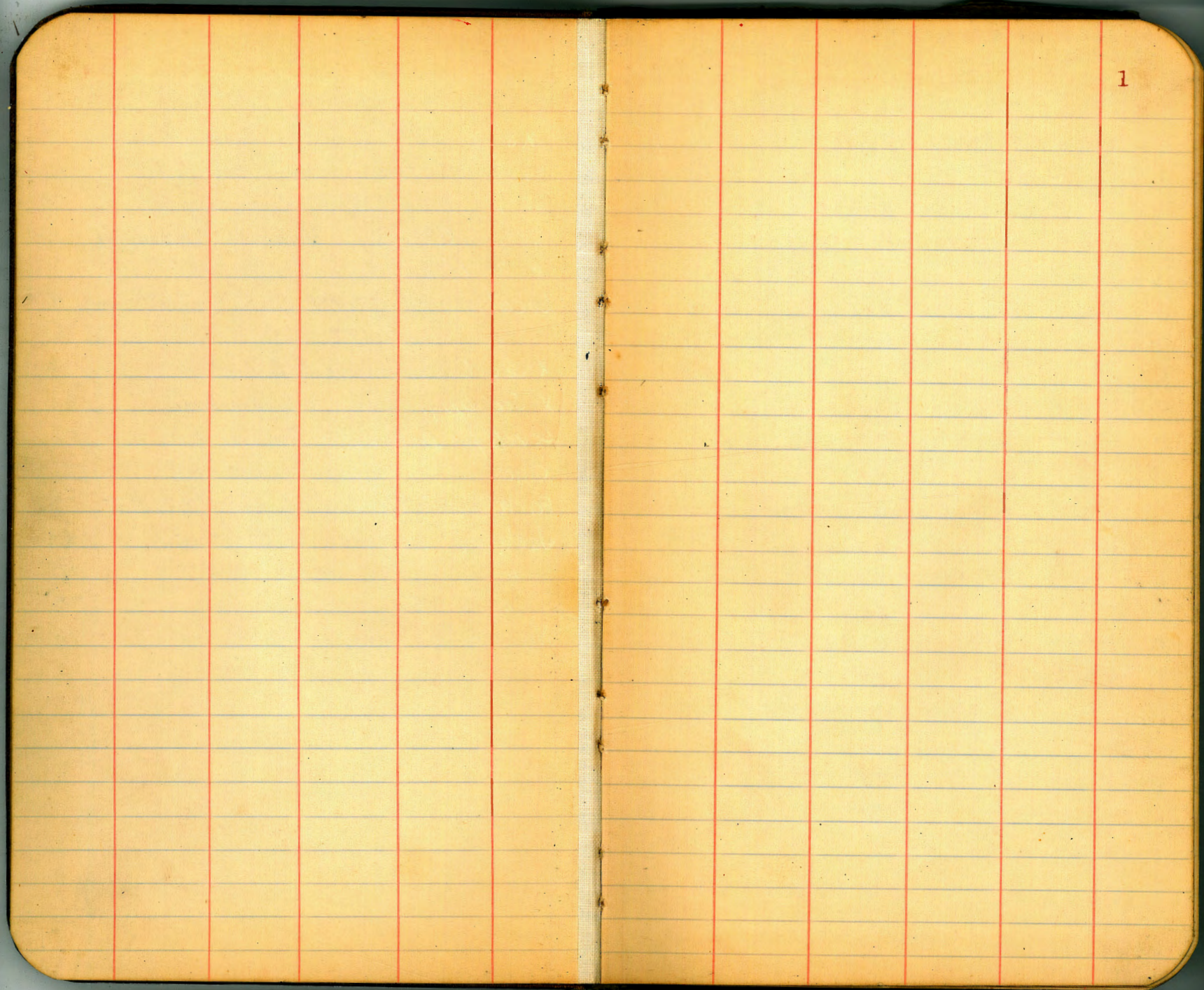
17.14

MICROFILMED

DEC 22 1964

This subject is 711.44

X sec. 33 rd St. from National to Boston	2
" " Boston " 32-34	10
" " Alley Bk 10 University Hts	20
" " 6 th St. University to Washington	23
" " Meade Ave. (Boundary-44 th)	30
Location of Sewer in 9 th St (10 th -Brooks)	45
X Sec. Alley 192 City Hts	48
X. Sec. Castle Euclid to S. End	52
X. Sec. Dwight " to Lantana Drive	60
Levels for Drain Lot 9. Farhaven Acres	59
Chestnut. Taylor to Jackson	66
Park Road in Presidio Park off of Chestnut St	69
Jackson. Whitman to Chestnut	72
" " Sketch "	77
" " " "	78
Meade St. line of D.M.'s	79



11-8-28 X-section 33rd Street
 J.C. Bliss
 Drebert National to Boston
 Rouvier
 60' Wide - 10' cbs - 10' 7/4s

Profile #669 } No record in office of this bench
 SW cor. 11.75

Σ 13.03

2

B. M. S.W.B.P. 33rd + National	11.64	♀	9.1	3.9
+1.39		1/4	8.7	
Σ 13.03		cb	9.0	
J.L. 33rd = 0+00 - Paved		E	9.2	3.8
WTp cb	1.66			
	11.37		0+50	
G	2.25	E	9.9	3.1
1/4	2.42	cb	10.7	
♀	2.77	1/4	10.3	
1/4	3.74	♀	9.6	3.4
G	4.32	1/4	9.3	
E Tpcb	3.89	cb	9.8	
0+25		W	10.1	2.9
0+15	9.7			
E	6.8	W	10.4	2.6
cb	4.8	cb	10.3	
1/4	3.1	1/4	19.0	
♀	2.7	♀	17.3	- 4.3
1/4	2.5	1/4	18.1	
cb	6.2	cb	18.4	
W	8.5	E	19.4	- 6.4
0+15	9.9			
0+35			0+85	
W	9.6	E	18.5	- 5.5
cb	9.8	cb	17.8	
1/4	9.3	1/4	17.1	
		♀	18.1	- 5.1

Plotted 11-28-28 - GBH

T 13.03

1/4	19.8	
cb	18.5	
W	12.6	0.4
	14.00	
W	15.0	-2.0
cb	18.0	
1/4	17.0	
♀	14.7	-1.7
1/4	13.9	
cb	14.6	
E	14.6	-1.6

Note - shot on 24" sewer outfall

that runs down 33rd.

Shot on Top of pipe at 0+60 11.71 1.22

	11.25	
E	10.8	2.2
cb	11.0	
1/4	12.5	
♀	13.6	-0.6
1/4	13.4	
cb	13.4	
W	20.0	-7.0
0+10	20.0	

T 13.03

3

1450

Out 15	18.0	
Out 10	18.0	
W	13.5	-0.5
cb	13.4	
1/4	13.4	
♀	13.2	-0.2
Top sewer outfall at 1450	11.77	1.26
1/4	11.2	
cb	10.7	
E	10.6	2.4
T.P		-7.95 3.08

+1.90

T 7.98

1475

E	2.0	3.0
cb	2.4	
1/4	2.3	
♀	2.6	2.4
1/4	3.1	
1/4	5.5	
cb	5.7	
W	6.0	-1.0
0+10	6.8	

π 4.98

2+00

00+10	10.5	
W	10.0	-5.0
#6	9.4	
+7	6.6	
cb	5.4	
-1/4	3.0	
£	2.7	2.3
1/4	2.3	
cb	2.3	
E	2.1	2.9
2+25		
E	2.1	2.9
cb	2.4	
1/4	3.5	
£	2.7	2.3
1/4	3.5	
+7	7.3	
cb	9.8	
W	10.4	-5.4
00+10	6.0	
2+50		
W	6.4	-1.4
+3	2.4	
cb	10.1	
1/4	7.4	

π 4.98

4

£	3.1	1.9
1/4	3.1	
cb	2.5	
E	2.7	2.3
2+75		
E	2.5	2.5
cb	2.5	
1/4	3.9	
#7	7.8	
£	10.3	-5.3
1/4	10.5	
+3	10.1	
+5	6.2	
cb	5.6	
W	6.0	-1.0
3+00 = N.L. Newton		
W	5.3	-0.3
cb	5.5	
1/4	6.9	
+2	7.3	
+4	9.8	
£	10.9	-5.9
+5	10.0	
+8	6.0	
1/4	5.7	

T 4.98

+8	29	
cb	2.7	
E	2.5	2.5
N cb	Newton	
E	2.5	2.5
cb	2.9	
1/4	5.8	
+5	9.5	
¢	11.0	-6.0
+6	9.4	
1/4	5.7	
cb	5.3	
w.	4.4	0.6
¢	Newton	
w	4.5	0.5
cb	4.6	
+5	5.2	
+7	8.7	
1/4	9.4	
+5	10.2	
¢	10.6	-5.6
+5	9.2	
+7	6.5	
1/4	6.0	
cb	4.0	

T 4.98

5

+3	16	
E	2.5	2.5
T.P		-2.02 2.96
	+3.27	
	T 6.23	
S. cb	Newton	
E	3.9	2.3
cb	4.0	
+5	6.1	
1/4	6.6	
+2	7.1	
+5	10.9	
¢	11.4	-5.2
1/4	11.8	
+2	10.7	
+5	6.1	
cb.	5.5	
w	5.6	0.6
	S.L. Newton = 0.400	
w	5.6	0.6
cb	5.8	
+5	6.7	
+1	11.7	
1/4	11.5	
¢	11.1	4.9

π 6.23

+5	11.6	
1/4	5.8	
cb	4.0	
E	4.2	1.8

0+25

E	3.6	2.6
cb	4.7	
1/4	4.9	
+4	5.6	

♀	11.5	-5.3
---	------	------

1/4	11.4	
-----	------	--

+6	10.7	
----	------	--

cb	6.2	
----	-----	--

W	5.5	0.7
---	-----	-----

0+50

W	6.0	0.2
---	-----	-----

+5	7.2	
----	-----	--

+7	11.2	
----	------	--

cb	11.4	
----	------	--

1/4	11.1	
-----	------	--

+7	11.0	
----	------	--

♀	5.5	0.7
---	-----	-----

1/4	4.6	
-----	-----	--

cb	3.8	
----	-----	--

E	3.4	2.8
---	-----	-----

π 6.23

6

0+75

E	3.8	2.4
cb	3.4	
1/4	4.2	
♀	4.7	1.5

+4	5.3	
----	-----	--

1/4	11.3	
-----	------	--

cb	11.3	
----	------	--

+8	10.7	
----	------	--

W	6.0	0.2
---	-----	-----

1+00

0+5	6.0	
-----	-----	--

W	11.4	-5.2
---	------	------

cb	11.4	
----	------	--

+5	11.0	
----	------	--

1/4	5.8	
-----	-----	--

+3	4.5	
----	-----	--

♀	4.1	2.1
---	-----	-----

1/4	3.5	
-----	-----	--

cb	3.4	
----	-----	--

E	3.8	2.4
---	-----	-----

1+25

E	4.0	2.2
---	-----	-----

cb	4.0	
----	-----	--

1/4	3.5	
-----	-----	--

♀	4.1	2.1
---	-----	-----

T 6.23

14	4.4	
14	5.4	
+8	11.3	
cb	11.4	
W	11.5	-5.3
Out 5	11.3	
Out 10	6.1	
	14.50	
W	11.6	-4.6
cb	11.2	

Station top of 8" sewer that enters

outfall at this section 7.0

+3	7.2	
+6	6.6	
1/4	4.6	
♀	4.1	2.1
1/4	3.4	
cb	4.2	
E	4.2	2.0
	14.75	
E	4.3	1.9
cb	4.3	
1/4	4.1	
♀	4.2	2.0
1/4	4.8	

T. G. 23

7

cb	7.2	
+2	8.0	
+5	11.5	
W	12.4	-6.2
	2+00	
W	11.1	-4.9
+5	10.6	
cb	7.9	
1/4	4.7	
♀	3.7	2.5
1/4	4.4	
cb	4.5	
E	4.4	1.8
T.P		-3.77 2.46
	+2.21	
	T 4.67	
	2+25	
E	2.7	2.0
cb	2.7	
1/4	2.5	
♀	2.2	2.5
1/4	2.5	
+4	2.8	
+6	5.7	
cb	7.5	

T 4.67

W.	92	-4.5
	2+50	
W	96	-4.9
+5	96	
cb	73	
+5	29	
14	26	
£	25	2.2
14	26	
cb	26	
F	25	2.2
	2+75	
E	26	2.1
cb	27	
14	26	
£	27	2.0
14	31	
+6	39	
cb	25	
+5	96	
W	96	-4.9
	2+00 = N L Boston	
W	97	-5.0
+5	51	
cb	40	

T 4.67

8

114	40	
£	33	1.4
14	29	
cb	27	
E	26	2.1
	N cb Boston	
E	30	1.7
cb	29	
14	30	
£	39	0.8
14	40	
cb	39	
+6	41	
W	8.4	-3.7
	£ Boston	
W	79	-3.2
+3	44	
cb	36	
14	35	
£	38	0.9
14	37	
cb	35	
E	31	1.6

T 4.67

S 1/4 Boston

E	3.8	0.9
cb	3.9	
1/4	3.9	
♀	4.1	0.6
1/4	4.4	
cb	3.6	
+7	5.0	
w	8.5	-3.8

S 1/4 +5

w	8.8	-4.1
cb	7.6	

Station top 24" sewer outfall

	4.70	
1/4	5.9	
♀	3.8	0.9
1/4	5.4	
cb	3.8	
E	4.0	0.7

S. 1/4 Boston

E	3.3	1.4
cb	3.5	
1/4	5.0	
♀	8.0	-3.3
1/4	8.9	
cb	9.2	

4.67

9

w	9.7	-5.0
B.M. Top of first exposed bell on		
SEWER North side Boston	-4.37	0.30

11-9-28
J.C. Bliss
Drebest
Rauner

X-section Boston Ave 32nd to 34th
80' wide 14' cb 13' 1/4 s

B.M. N.E.B.P. 31st & Boston

51.40

71.73 52.91

T.P.

-10.81 42.10

+8.42

\bar{x} 50.52

EL. 32nd = 0+00

S	10.0	40.5
Top Cb	10.40	40.12
G	11.2	
1/4	12.5	
♀	10.4	40.1
1/4	10.0	
G	9.6	
Top Cb	9.53	40.99
N	9.4	41.1
	0+05	
N	7.1	43.4
cb	7.1	
+10	7.7	
1/4	10.1	
♀	10.5	40.0
1/4	10.6	
cb	10.7	
S	10.0	40.5

Plotted 12-4-28 - CBH

Profile 515

\bar{x} 50.52

10

0+25

J	11.2	39.3
cb	11.8	
1/4	10.8	
♀	10.5	40.0
1/4	10.4	
+5	7.7	
cb	7.3	
N	7.3	43.2
	0+50	
A	8.5	42.0
cb	9.3	
1/4	10.4	
♀	10.8	39.7
1/4	10.9	
cb	11.0	
S	11.4	39.1
	0+75	
S	11.1	39.4
cb	11.1	
1/4	11.0	
♀	11.5	39.0
1/4	11.0	
+5	12.5	
cb	11.9	
N	11.9	38.6

750.52

Note - From 0700 to 1100 there are several large trees 13' in the street from the N.L.

Note - At sta 0791 an 18" storm drain crosses Boston. Its entrance is 19' from the N.L. of Boston and has a 3.5' x 3.5' Main Wall together with 2 tapering wing walls that measure 9.5' between tips.

Shot on fhvline at entrance 13.40

1400

N	12.2	38.3
cb	13.0	
+4	13.0	
+10	11.2	
1/4	11.2	
£	11.5	39.0
1/4	11.4	
cb	11.4	
5	11.5	39.0
1425		
5	11.8	38.7
cb	11.5	
1/4	11.5	
£	11.9	38.6

750.52

11

1/4	11.0	
cb	10.8	
N	10.5	40.0
1450		
N	6.9	43.6
cb	7.0	
1/4	7.1	
£	7.3	43.2
+8	7.1	
1/4	12.8	
cb	10.9	
5	11.6	38.9
1475		
5	11.1	39.4
cb	10.5	
1/4	10.3	
+3	6.0	
£	5.7	44.8
1/4	5.3	
cb	5.0	
N	4.8	45.7
2400		
N	3.8	46.7
cb	4.2	
1/4	4.5	

T 50.52

♀	4.9	45.6
+10	5.2	
1/4	9.0	
cb	9.3	
S	10.3	40.2
	2+25	
S	9.2	41.3
cb	8.5	
+8	8.8	
1/4	3.9	
♀	3.8	46.7
1/4	3.5	
cb	3.1	
N	3.2	47.3

Note - From sta. 2+00 to 2+75 there is a row of ornamental shrubs 5' in the st. from the N.L.

	2+50	
N	2.5	48.0
cb	2.8	
1/4	2.9	
♀	3.0	47.5
1/4	2.9	
+7	7.3	
cb	7.8	

T 50.52

12

S	8.7	41.8
	2+55	
S	3.3	47.2
cb	3.0	
1/4	2.7	
♀	2.9	47.6
1/4	2.6	
cb	2.6	
N	2.3	48.2
	2+75	
N	2.0	48.5
cb	2.2	
1/4	2.2	
♀	2.2	48.3
1/4	2.2	
cb	2.4	
S	2.6	47.9
	3+25	
S	1.3	49.2
cb	1.2	
1/4	1.2	
♀	1.3	49.2
1/4	1.3	
cb	1.3	
N	1.3	49.2

$\pi 50.52$

3+50

N	17	48.8
cb	16	
1/4	16	
♀	16	48.9
1/4	15	
cb	14	
S	14	49.1

3+75

S	20	48.5
cb	20	
1/4	21	
♀	24	48.1
1/4	22	
cb	22	
N	25	48.0

Note - 3+75 to 4+50 - Three

large pepper trees 11' in the st. front
the N.E.

4+00

N	34	47.1
cb	33	
1/4	33	
♀	33	47.2
1/4	32	
cb	30	
S	32	47.3

 $\pi 50.52$

13

4+25

S	53	45.0
cb	52	
1/4	49	
♀	49	45.6
1/4	49	
cb	52	
N	52	45.3

4+40

N	86	41.9
cb	86	
1/4	80	
♀	70	43.5
1/4	70	
cb	77	
S	85	42.0

T.P.

-12.36 38.16

+0.09

 $\pi 38.25$

4+54

S	15	36.8
cb	0.7	
1/4	0.8	
♀	0.4	37.9
1/4	3.1	
cb	3.5	

38.25

38.25

14

A 4.0 34.2

S 7.3 31.0

4459

T.P.

-12.55 25.70

N 3.4 34.9

+0.04

+10 Top West Rail Car Tract 3.79 34.46

25.74

cb 4.7

5+00

1/2 5.2

S 5.8 19.9

¢ 5.7 32.6

cb 5.8

1/4 6.0

1/4 5.1

cb 5.5

¢ 5.0 20.7

S 5.8 32.5

1/4 5.8

4469

cb 6.8

S 6.5 31.8

N 6.8 18.9

cb 6.0

5+22

+4 Top East Rail Car Tract 5.09 33.16

N 13.1 12.6

¢ 5.3 33.0

cb 12.6

1/4 4.9

1/4 13.2

cb 4.8

E 14.9 10.8

A 4.9 33.4

1/4 15.0

4476

cb 15.0

N 9.7 28.6

S 15.2 10.5

cb 9.1

T.P.

-12.93 12.81

1/4 7.9

+0.37

¢ 6.7 31.6

23.18

1/4 6.0

cb 6.7

π 1318

5+32

S	5.8	7.4
cb	5.7	
1/4	5.5	
+8	5.9	
♀	9.3	3.9
1/4	10.0	
cb	9.7	
N	10.4	2.8
out 15	11.5	

5+50

N	13.1	-0.7
cb	13.4	
1/4	13.1	
♀	12.4	0.8
1/4	11.3	
cb	10.0	
S	9.3	3.9

5+60

S	10.8	2.4
cb	10.9	
1/4	12.0	
+5	12.4	
+6	16.4	
♀	16.0	-2.8
1/4	15.0	

π 1318

15

cb	13.9	
N	12.6	0.6
	5+75	
N	16.1	-2.9
cb	17.6	
1/4	18.0	
♀	17.7	-4.5
1/4	17.3	
+7	17.0	
cb	12.7	
+6	11.4	
S	11.4	1.8

5+90

S	12.5	0.7
+10	13.1	
cb	14.5	
+3	14.5	
+5	17.6	
1/4	17.5	
♀	17.4	-4.2
1/4	17.4	
cb	17.2	
N	17.3	-4.1

5+92

N	17.2	-4.0
---	------	------

13.18

cb	17.3	
1/4	17.4	
¢	17.7	-4.5
1/4	17.6	
cb	17.9	
S	18.0	-4.8

6+00 = W.L. 33rd

S	18.3	-5.1
cb	17.6	
1/4	17.1	
¢	16.4	-3.2
1/4	16.7	
cb	16.9	
N	18.2	-5.0

B.M. Tp North Bellog sewer Outfall -12.91 70.27
 + 4.59 π 4.86 70.30

E.L. 33rd = 0+00

N	2.7	2.1
cb	3.0	
1/4	3.0	
¢	3.3	1.5
1/4	3.7	
cb	3.7	
S	3.4	1.4

 π 4.86

16

0+50

S	3.6	1.2
cb	3.4	
1/4	3.7	
¢	3.7	1.1
1/4	4.0	
cb	4.3	
N	4.1	0.7

1+00

N	4.7	0.1
cb	4.7	
1/4	4.6	
¢	4.0	0.8
1/4	3.9	
cb	3.9	
S	3.6	1.2

1+50

S	4.4	0.4
cb	4.7	
1/4	4.7	
¢	4.8	0.0
1/4	4.9	
cb	5.0	
N	5.0	-0.2

2+00

N	5.4	-0.6
---	-----	------

T 486

♀	5.4	-0.6
S	5.4	-0.6
	2+50	
S	5.7 ₆	-0.9
♀	5.6	-0.8
N	5.6	-0.8
T.P.	5+00	-5.59 <u>-0.73</u>

+5.21 7A0

K+4.90

3+00

N	5.5	-1.0
♀	5.5	-1.0
S	5.6	-1.1
	3+50	
S	5.5	-1.0
♀	5.4	-0.9
N	5.3	-0.8

A+00

N	5.0	-0.5
♀	5.2	-0.7
S	5.3	-0.8

A+50

S	4.9	-0.4
♀	4.8	-0.3
N	4.2	0.3

T 148

17

5+00

N	4.2	0.3
♀	4.2	0.3
S	4.3	0.2
	5+50	
S	5.2	-0.7
♀	5.0	-0.5
N	5.0	-0.5

5+80

N	6.0	-1.5
♀	6.1	-1.6
S	6.3	-1.8

5+90

S	5.9	-1.4
cb	5.4	-0.9
1/4	5.5	-1.0
♀	5.3	-0.8
1/4	5.2	-0.7
cb	5.3	-0.8
N	5.2	-0.7

5+96

N	2.6	1.9
cb	2.6	
1/4	2.6	
♀	2.8	1.7
1/4	2.8	

7 4.48

cb	3.1	
S	3.7	0.8
	6+00 = W.L. 34 th	60' wide 10' cbs 10' 1/4s
S	2.7	1.8
cb	2.8	
1/4	2.7	
♀	2.6	1.9
1/4	2.5	
cb	2.4	
A	2.3	2.2
	W cb 34 th	
N	2.7	1.8
cb	2.7	
1/4	2.6	
♀	2.8	1.7
1/4	2.7	
cb	2.4	
S	2.8	1.7
	W cb 34 th + 2	
S	3.0	1.5
cb	2.6	
1/4	2.6	
♀	3.0	1.5
1/4	3.0	
cb	3.0	

7 4.48

18

N	2.7	1.8
	W 1/4 34 th	
N	5.2	-0.7
cb	5.2	
1/4	5.2	
♀	5.1	-0.6
1/4	5.0	
cb	5.4	
♀	6.0	-1.5
	♀ 34 th	
S	5.6	-1.1
cb	5.5	
1/4	5.6	
♀	5.7	-1.2
1/4	5.6	
cb	5.6	
N	5.7	-1.2
	E cb 34 th	
N	5.4	-0.9
cb	5.4	
1/4	5.5	
♀	5.4	-0.9
1/4	5.4	
cb	5.2	
S	5.2	-0.7

74.48

E.L. 34th

S	5.0	-0.5
cb	5.2	
1/4	5.2	
♀	5.2	-0.7
1/4	5.0	
cb	5.1	
N	5.4	-0.9

B.M. Nail in West end Wooden College ^{34th Boston} 45° -0.02

45.10 5.08

-2.52 2.76

5.87 8.63

B.M. S.E. B.P. 34th & National -1.13 → 76.90

6.82

+3.94 10.76

-4.09 6.67

+6.91 13.58

B.M. S.W. B.P. 33rd & National 1.97 → 11.61

11.64

Additional Notes Alley Block 10 19
University Hts.

B.M. S.E. B.P. Madison & Ohio 388.93

+5.56

734.49

Shots in Gutter along N cb Line Madison
at Alley Block 10.

W 5.65 388.84

♀ 5.61 388.88

E 5.56 388.93

11-10-28 X-section Alley Block 10
 J.C. Bliss University Hts. Boundary - OHIO
 Drebert Madison-Adams 20' wide
 Rauer

B.M. 5.E B.P. Madison x Ohio 38893

+5.21

Σ 394.14

N.L. Madison = 0+00

W Tpcb	4.44	389.70
G	4.76	389.38
♀	4.91	389.23
G	4.63	389.51
E Tpcb	4.22	389.92
	0+25	
E	4.5	389.6
♀	4.6	389.5
W	4.6	389.5
	0+50	
W	4.6	389.5
♀	4.3	389.8
E	4.0	390.1
	0+75	
E	4.3	389.8
♀	4.5	389.6
W	4.7	389.4
	1+00	
W	4.0	390.1
♀	4.4	389.7
E	4.7	389.4

Plotted 11-30-28 - C.B.H.

12-29-28
 Yardage BA 12-28
 Kenleron

profile = 3890

Σ 394.14

20

	1+25	
E	4.4	389.7
♀	4.2	389.9
W	4.4	389.7
	1+50	
W	4.5	389.6
♀	4.8	389.3
E	4.5	389.6
	1+75	
E	4.5	389.6
♀	4.5	389.6
W	4.3	389.8
	2+00	
W	4.2	389.9
♀	4.1	390.0
E	4.2	389.9
T.P.		-3.99 390.15
	+5.40	
	Σ 395.55	
	2+25	
E	5.6	390.0
♀	5.5	390.0
W	5.2	390.4
	2+50	
W	5.4	390.2
E	5.2	390.4

π 395.55

E - Dirt floor 12' Garage 0.4' in Alley 5.4 390.2 ✓

2+75

E 5.1 390.5

♀ 5.3 390.3

W 5.4 390.2

3+00

W 5.1 390.5

♀ 5.1 390.5

E 5.0 390.6

3+25

E 5.1 390.5

♀ 4.7 390.9

W 5.0 390.6

3+50

W 4.7 390.9

♀ 5.0 390.6

E 4.7 390.9

3+75

E 4.7 390.9

♀ 4.9 390.7

W 4.7 390.9

4+00

W 4.8 390.8

♀ 4.9 390.7

E 5.1 390.5

 π 395.55

21

4+30

Out 2 - Dirt floor 11' Garage 4.9 390.7 ✓

E 4.9 390.7

♀ 4.7 390.9

W 4.5 391.1

4+50

W 4.5 391.1

♀ 4.8 390.8

E 4.7 390.9

4+64 = ♀ 16' Garage 3.5' W of West line ✓

Shot on dirt floor 4.3 391.3

4+75

E 4.7 390.9

♀ 4.6 391.0

W 4.7 390.9

5+00

W 5.2 390.4

+4 4.3 391.3

♀ 4.7 390.9

E 4.7 390.9

5+25

E 4.7 390.9

♀ 4.5 391.1

W 4.4 391.2

5+50

W 4.4 391.2

T 395.55

22

4 4.6 391.0

E 4.6 391.0

5475

E 4.6 391.0

4 4.3 391.3

W 4.1 391.5

5499.3 = S.L. Adams

W. Tp. ob 4.22 391.33

4 4.22 390.83

4 4.66 390.89

E 4.75 390.80

0043 Gutter 4.75 390.80

Tp. ob. End. ^{sl.} return on Boundary 4.36 391.19

B.M. S.E. B.P. Boundary & Adams -447 391.08

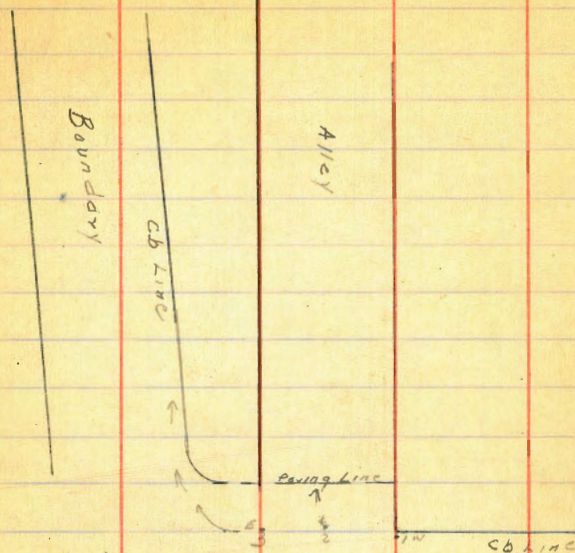
T.P. -587 389.68

44.21

393.89

B.M. S.E. B.P. Ohio & Madison -5.01 388.88

388.93



Adams

Tp. ob. end sw. Return on Boundary

391.19

+4.78

T 395.97

Shots on South Gutter Line of Adams & Alley

1-W 5.26 390.71

2-4 5.20 390.77

2-E 5.31 390.66

11-13-28 X-section 6th Street
 J.C. Bliss University Ave to Washington
 Drebert 60.94 wide at University
 Kauer 58.20 " " Washington

Σ 285.29 23

X-sectioned with a 40' roadway - 20' each side of
 Street narrows 0.49 each 100' from
 University to Washington - see sketch - Pg. 24 ✓

B.M. N.W. B.P. 5th + University 289.94
 + 2.37 292.31
 T.P. - 7.02 285.29
 0.00

W-on sidewalk 2.18 283.11
 cb 2.9 282.4
 1/4 7.8 280.5
 ♀ 5.0 280.3
 1/4 4.8 280.5
 cb 4.5 280.8
 E 4.5 280.8

Σ 285.29

N.L. University on paving - Roadway is 42' wide

N Tp cb 1.23 284.06
 6-Tp catch basin grating 2.24 283.05
 1/4 2.15 283.14
 ♀ 2.35 282.94
 1/4 2.82 282.47
 E Gutter + cb flush 3.20 282.09
 Catch basin grating of Footeb 3.60 281.69

E 5.0 280.3
 cb 5.3 280.0
 1/4 6.0 279.3
 ♀ 6.1 279.2
 + 8-Tp 30" x 24" Toilet Grating 6.15 279.16
 1/4 5.0 280.3
 + 5 3.1 282.2
 cb 3.1 282.2
 W 2.7 282.6

0+25

E 3.7 281.6
 cb 3.7 281.6
 1/4 3.8 281.5
 ♀ 3.9 281.4
 1/4 3.6 281.7
 cb 2.7 282.6
 + 5 2.0 283.3
 W-on sidewalk 1.77 284.52

1+60
 W 3.5 281.8
 cb 3.6 281.7
 1/4 4.3 281.0
 + 4 6.4 278.9
 ♀ 7.0 278.3
 1/4 7.1 278.2
 cb 6.4 278.9

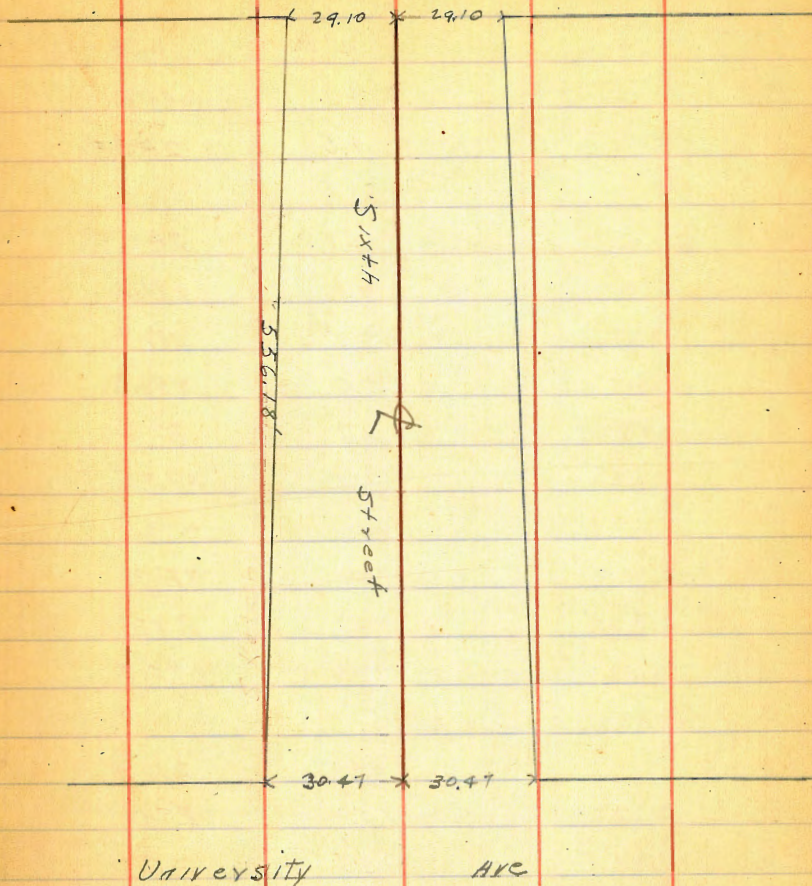
Plotted 12-5-28
 C.B.H.

285.29

E	6.6	278.7
	1425	
E	7.6	277.7
cb	8.0	277.3
1/4	8.5	276.8
♀	8.9	276.4
+ 5	8.2	277.1
1/4	7.7	280.6
cb	2.9	281.4
w	4.2	281.1
	1450	
w	4.9	280.9
cb	4.0	281.3
1/4	4.1	280.6
78	10.0	275.3
♀	10.0	275.3
1/4	10.4	274.9
cb	10.2	275.1
E	9.5	275.8
	1475	
E	11.1	273.6
cb	11.8	273.5
1/4	12.1	273.2
♀	11.0	274.3
1/4	5.6	279.7

Washington

24



π 285.29

+2	4.4	280.9
cb	4.1	281.2
W	4.5	280.8
2+00		
W	4.1	280.6
cb	4.1	281.2
14	4.9	280.4
+2	5.0	280.3
£	8.7	276.6
+5	11.8	273.5
14	13.2	272.1
cb	13.6	271.7
E	13.3	272.0
Out 10	12.6	272.7
2+25		
Out 10	14.9	270.4
E	15.2	270.1
cb	15.3	270.0
+5	14.4	270.9
14	10.5	274.8
+5	8.0	277.5
£	6.2	279.1
14	5.1	280.2
cb	4.8	280.5
W	4.8	280.5

π 285.29

25

T.P.	-5.01	280.78
+4.45		
π 284.73		
2+50		
W	4.2	280.5
cb	4.1	280.6
14	4.4	280.3
E	4.7	280.0
+8	5.7	279.0
14	10.7	274.0
+7	13.0	271.7
cb	15.5	269.2
+5	16.7	268.0
E	16.6	268.1
Out 10	16.3	268.4
2+75		
Out 10	18.3	266.4
E	18.6	266.1
+5	18.4	266.3
cb	14.5	270.2
14	8.2	276.5
+2	5.0	279.7
£	4.6	280.1
14	4.2	280.5
cb	3.8	280.9

T 284.73

W	3.7	281.0
W+00		
W	3.3	281.4
cb	3.8	280.9
1/4	4.1	280.6
♀	4.2	280.5
1/4	4.6	280.1
1/2	4.8	279.9
cb	10.8	273.9
1/6	18.4	266.3
E	19.6	265.1
Out 10	19.9	264.8
	3+25	
Out 10	21.9	262.8
Out 5	22.0	262.7
E	19.3	265.4
cb	5.5	279.2
1/5	4.3	280.4
1/4	3.8	280.9
♀	3.8	280.9
1/4	3.6	281.1
cb	3.4	281.3
W	2.8	281.9

T 284.73

26

3+50

W	2.1	282.6
cb	2.2	282.5
1/4	3.0	281.7
♀	3.5	281.2
1/4	3.5	281.2
cb	5.2	279.5
1/2	5.5	279.2
E	14.8	269.9
Out 10	23.5	261.2
Out 20	22.8	262.9
	3+62	
Out 20	23.6	261.1
Out 12	23.8	260.9
E	8.2	276.5
cb	4.7	280.0
1/4	3.5	281.2
♀	3.4	281.3
1/4	2.8	281.9
cb	1.8	282.9
W	1.6	283.1
	3+75	
W	1.5	283.2
cb	1.5	283.2
1/4	2.9	281.8
♀	3.4	281.3

π 284.73

1/4	40	280.7
cb	53	279.4
+8	8.5	276.2
E - on edge high bank	9.5	275.2

4400

Out 4 - Edge bank	10.1	274.6
E	8.4	276.3

cb	53	279.4
----	----	-------

1/4	44	280.3
-----	----	-------

♀	3.5	281.2
---	-----	-------

1/4	2.7	281.8
-----	-----	-------

cb	2.1	282.6
----	-----	-------

W	1.6	283.1
---	-----	-------

4425

W	1.9	282.8
---	-----	-------

cb	2.7	282.0
----	-----	-------

1/4	3.1	281.6
-----	-----	-------

♀	3.6	281.1
---	-----	-------

1/4	4.1	280.6
-----	-----	-------

cb	6.4	278.3
----	-----	-------

+6	8.8	275.9
----	-----	-------

E	11.5	273.2
---	------	-------

Out 10	17.0	267.7
--------	------	-------

π 284.73

27

4450

E	6.7	278.0
---	-----	-------

cb	5.0	279.7
----	-----	-------

1/4	4.0	280.7
-----	-----	-------

♀	3.3	281.4
---	-----	-------

1/4	3.0	281.7
-----	-----	-------

cb	2.4	282.3
----	-----	-------

W	2.1	282.6
---	-----	-------

4475

W	2.1	282.6
---	-----	-------

cb	2.4	282.3
----	-----	-------

1/4	2.7	282.0
-----	-----	-------

♀	3.1	281.6
---	-----	-------

1/4	3.3	281.4
-----	-----	-------

cb	3.5	281.2
----	-----	-------

E	3.8	280.9
---	-----	-------

5400

E	3.0	281.7
---	-----	-------

cb	2.8	281.9
----	-----	-------

1/4	2.8	281.9
-----	-----	-------

♀	2.7	282.0
---	-----	-------

1/4	2.5	282.2
-----	-----	-------

cb	2.3	282.4
----	-----	-------

W	2.0	282.7
---	-----	-------

π 284.73

5+25

W	2.4	282.3
cb	2.4	282.3
1/4	2.3	282.4
⊕	2.5	282.2
1/4	2.7	282.0
cb	2.7	282.0
E	2.6	282.1

5+56¹⁸ = S.L. Washington 60' wide
10' obs 145

E	2.6	282.1
cb	2.3	282.4
1/4	2.5	282.2
⊕	2.4	282.3
1/4	2.5	282.2
cb	2.2	282.5
W	2.2	282.5

5 cb Washington

W	2.2	282.5
cb	2.2	282.5
1/4	2.5	282.2
⊕	2.5	282.2
1/4	2.7	282.0
cb	2.6	282.1
E	2.6	282.1

π 284.73

28

⊕ Washington

E	2.7	282.0
cb	2.8	281.9
1/4	2.8	281.9
⊕	2.8	281.9
1/4	2.8	281.9
cb	2.7	282.0
W	2.8	281.9

N cb Washington

W-Tpcb	4.24	280.49
Gutter	4.8	279.9
7.5	4.7	280.0
7.8	3.1	281.6
cb	3.2	281.6
1/4	3.1	281.6
⊕	3.0	281.7
1/4	2.8	281.9
cb	2.3	282.4
E	2.5	282.2

N.L. Washington

E	2.5	282.2
cb	2.6	282.1
1/4	3.1	281.6
⊕	2.9	281.8
1/4	2.8	281.9
cb	2.6	282.1

284.73

29

+5	51	279.6
W	9.8	380.9
T.P		-2.51 282.16

+4.35 286.51

B.M. S.W. B.P. 5th + Washington - 2.52 283.99
→ 284.02

Meads Ave Carb Levels
Boundary to 44th St.

12-11-28
mills.

NW. Iowa
+ Meads

B.M.	2.37	385.59	383.22
			E. line Boundary 59' on diagonal
N. cmt. cl.		2.84	382.73
N. gutter Pavmt		3.51	382.08
N. '4		3.07	
⊕		3.09	
S. '4		3.43	
S. gutter		3.74	
S. cmt. cl.		3.23	382.36
3.3 E. on S } 20.5 E " N }			W. line Iowa produced from N. { 50' wide 10' cl-s 7.5 " 4s
S. cmt. cl.		3.27	
N. cmt. cl.		3.15	382.44
			W. cl.
N. line cmt. cl.		3.10	
			W. gutter
N. line pavmt		3.61	
			W. '4
N. " "		3.30	
			⊕
N. " "		3.30	
			E. '4
N. " "		3.54	
			E. gutter
N. " "		4.04	
			E. curb
N. " cmt. cl.		3.50	

385.59

oo = E. line Iowa produced S.

Meads
55.5 Rdw.

30

N. cmt. cl.	3.50
S. " "	3.70
	50'. E.
S. cmt. cl.	4.04
N. " "	3.85
	100'. E.
N. cmt. cl.	4.21
S. " "	4.36
	125'. E. = W. line Alley on W.
10.5 N. of N. cl. = end Alley Rt	4.03
N. cmt. cl.	4.33
	128.3 E = W. line Alley on S
10.5 S. of S. cl. = end Alley Rt	4.28
S. cmt. cl.	4.56
	140'. E. = E. line Alley on N.
10.5 N. of N. cl. = end Alley Rt	4.15
N. cmt. cl.	4.45
	143.3 E = E. line Alley on S.
10.5 S. of S. cl. = end Alley Rt	4.50
S. cmt. cl.	4.70
	200'. E.
S. cmt. cl.	5.22
N. " "	4.77

385.59
265' E = W. line 32nd St 60' wide Paved. Meade 55.7 Rd

N. cnt. ch.		5.20
N. gutter pavmt		5.81
N "4	"	5.66
⊥	"	5.75
S. "4	"	5.88
S. gutter	"	5.96
S. cnt. ch.		5.45
00 = E. line 32 nd Meade 55.5 Rd W.		
S. cnt. ch.		5.66
S. gutter pavmt		6.09
S. "4	"	5.87
⊥	"	5.80
N "4	"	5.77
N gutter	"	5.97
N. cnt. ch.		5.34
60' E		
N. cnt. ch.		6.06
S. " "		6.34
125' E = W. line Alley on N. North on S.		
S. cnt. ch.		7.12
N. " "		6.68
10.4 N of N ch = N. end Alley Ret		6.39
140' E = E. line Alley		
10.4 N. of N ch = end Alley ret		6.73
N. cnt. ch.		6.90
S. " "		7.33

Meade

385.59

31

T.P. 3.75 381.66 7.68 377.91

200' E.

S. cnt. ch. 4.12

N " " 3.74

265' E. on N } = W. line Bancroft. Meade 55.8 at 90°
246.8 E " S

262' E. on N } = W. End Paving on diagonal 57'
249.8 E " "

N. cnt. ch. 4.34

N. gutter pavmt 5.04

N "4 " 4.81

⊥ " 4.81

S. "4 " 5.03

S. gutter " 5.17

S. cnt. ch. 4.63

3' E. of E. line Bancroft. from S. on S. ch. Meade } = E. edge Pavmt. 57' on diagonal
3' W " E. " " " " " } 56.6 at 90°

S. cnt. ch. 4.81

S. gutter pavmt 5.33

S. "4 " 5.07

⊥ " 4.97

N "4 " 4.92

N gutter " 4.91

N. cnt. ch. 4.38

00 = E. line Bancroft produced from N.

N. cnt. ch. 4.39

S. " " 4.84

381.66
50' E. of Bathcroft

s. ent. cl.	4.54			
N. " "	4.24			
	100' E.			
N. ent. cl.	3.84			
S. " "	4.41			
Meade 55.6 Rdw	153' E = W. line Mechanic St. on N. Mechanic	20' wide 12' chs		
s. ent. cl.	4.32			
N. " "	3.66			
	W. of Mechanic			
N. line ent. cl.	3.62			
	E. of Mechanic			
N. line ent. cl.	3.30			
	00 = E. line Mechanic			
N. ent. cl.	3.30			
S. " "	3.96			
	50' E.			
s. ent. cl.	3.75			
N. ent. cl.	3.21			
T.P.	5.43	383.65	3.44	378.22
	100' E			
N. ent. cl.	5.00			
S. " "	5.65			
	150' E			
s. ent. cl.	5.41			
N. ent. cl.	5.05			

383.65
200' E.

Meade

32

N. ent. cl.	4.94			
S. ent. cl.	5.32			
33 rd { 80' wide 12' chs	255' E = W. line 33 rd St.			Meade 55.5 Rdw.
s. ent. cl.	5.18			
S. gutter Pavmt.	5.71			
S. " "	5.60			
⊥ " "	5.52			
N. " "	5.44			
N. gutter " "	5.45			
N. ent. cl.	4.77	378.88		
	00 = E. line 33 rd			Meade 55.8 Rdw.
N. ent. cl.	4.72			
N. gutter pavmt	5.40			
N. " "	5.38			
⊥ " "	5.45			
S. " "	5.53			
S. gutter " "	5.55			
s. ent. cl.	5.09			
	50' E			
s. ent. cl.	4.57			
N. " "	4.33			
	100' E			
N. ent. cl.	3.93			
S. " "	3.98			

383.65

123' E. of 33rd = W. line Alley on S. None on N.

10.5 s. ops. ch - End Alley Ret 3.70
 S. cnt. ch 3.84
 N. cnt. ch 3.71

143' E. = E. line Alley on S.

N. cnt. ch 3.46
 S. cnt. ch 3.63

10.5 S. of S. ch. = End Alley Ret 3.52

200' E.

S. cnt. ch 3.25
 N. cnt. ch 2.86

251' E. on N }
 265' E. on S } = W. line Felton Meade 55.6 Rdw. at 90°

N. cnt. ch 2.84
 S " " 2.59

T.P., 6.05 387.30 2.40 381.25

B.M. NW 34th Meade.

Felton to S 35.6 Rdw. 60' ST. - Felton to N. 80' wide 55.7 Rdw.

W. ch. Felton

S. line Meade cnt. ch 6.27
 N " " " " 6.04

E. ch. Felton

N. line Meade cnt. ch 5.89
 S " " " " 5.96

E. line Felton

S. cnt. ch 5.91
 N. cnt. ch 5.83

Meade.

33

387.30

E. line Felton on N. } 00 at 90° to Meade
 5.5 E of " " " 5 }

N. cnt. ch 5.83
 S. cnt. ch 5.83

60' E.

S. cnt. ch 5.23
 N " " 5.24

117' E. = W. line Alley on S. None on N.

N. cnt. ch 4.68
 S. " " 4.74

10.5 s. of s. ch. - End Alley Ret. 4.44

137' E. = E. line Alley on S.

S. of s. ch. = End Alley Ret. 4.12
 S. cnt. ch 4.38

N. cnt. ch 4.46

200' E

N. cnt. ch 3.85
 S. " " 3.88

257.5 E. on S

251' E. on N

W. line 34th

Meade 55.5 at 90°

S. cnt. ch 3.30
 N. " " 3.42

W. ch. 34th

N. line Meade cnt. ch 3.19
 S. " " " " 3.26

34th to N. 80' wide 55.6 Rdw.34th to S. 60' wide 36.7 Rdw.

T.P. 6.40 390.52

3.18

384.12

B.M. NW 34th + Meade.

390.52
W. cl. 34th

N. line Meade cnt. cl.	5.75
S. " " " "	5.95
E. line 34 th	
S. cnt. cl.	5.81
N. " "	5.80
11. E. of " " " " S } = 00 at 90°00 Meade 55.3 Rdw	
N. cnt. cl.	5.80
S. " "	5.71
60'.E.	
S. cnt. cl.	5.14
N. " "	5.36
112.5 E = W. line Alley on S Note on N.	
N. cnt. cl.	4.70
S. " "	4.75
10.5 S. of S. cl = end Alley Ret.	4.48
132.5 E = E. line Alley on S	
10.5 S. of S. cl = end Alley Ret	4.34
S. cnt. cl.	4.58
N. " "	4.50
200'.E.	
N. cnt. cl.	3.60
S. " "	4.01
254.8 E. on S } 250. E " N } W. line Swift Meade 55.6 Rdw.	
S. cnt. cl.	3.38
N. " "	3.30

Meade
34

390.52
W. cl. Swift.

N. line Meade cnt. cl.	3.27
S. " " " "	3.42
E. cl. Swift	
S. line Meade cnt. cl.	2.85
N. " " " "	2.64
Swift to N. 80' wide 55.6 Rdw - to S. 60' wide 36' Rdw	
E. line Swift. Meade 55.5 Rdw.	
N. cnt. cl.	2.74
S. " "	2.91
14.7 E. of " " " " S } = 00 = 90°00 E. line Swift on N	
S. cnt. cl.	2.93
N. " "	2.74
I.P. 4.09 391.21 3.40 387.12	
60'.E.	
N. cnt. cl.	3.64
S. " "	3.98
108'.E = W. line Alley on S. Note on N.	
10.5 S. of S. cl = end Alley Ret	3.98
S. cnt. cl.	4.22
N. " "	3.91
127.7 E. = E. line Alley on S.	
N. cnt. cl.	4.03
S. " "	4.39
10.5 S. of S. cl = end Alley Ret.	4.15

391.21
190' E. of Swift.

s. cmt. cl. 4.63
N. " " 4.32
250' E = W. line 35th St Paved Meade 55.6 Rdw

N. cmt. cl. 4.45
N. gutter Pavmt 4.84
N. " " 4.87
" " 4.84
S. " " 4.97
S. gutter " 5.30
S. cmt. cl. 4.89
35th St 80' wide 55.5 Rdw
" = E. line 35th Meade 55.7 Rdw.

S. cmt. cl. 4.87
S. gutter Pavmt. 5.45
S. " " 5.06
" " 4.80
N. " " 4.69
N. gutter " 4.95
N. cmt. cl. 4.44

T.P. BM. 4.91 391.72 4.40 386.81 N.W. 35th Meade
60' E

N. cmt. cl. 4.86
S. " " 5.16

391.72

125' E = W. line Alley on S. None on N

Meade
35

10.5 S. of S. cl. = end Alley Ret 4.75
S. cmt. cl. 5.05
N. " " 4.58

140' E. = E. line Alley on S.

N. cmt. cl. 4.50
S. " " 4.90
10.5 S. of S. cl. = end Alley Ret 4.61

200' E

S. cmt. cl. 4.60
N. cmt. cl. 4.12

265' E = W. line Wilson Ave on S Meade 55.6 Rdw.

N. cmt. cl. 3.87
S. " " 4.41

277' E = W. cl. Wilson on S.

S. line cmt. cl. 4.44
N. gutter
S. line Pavmt 5.14

286' E = W. " "

S. line Pavmt. 4.77
286.7 E = W. line Alley on N.

N. cmt. cl. 4.02
10.5 N. of N. cl. = end Alley Ret 3.72

295' E = E. line Wilson

S. line Pavmt 4.50

391.72
301.7 E = E. Line Alley on N

N. ent. cl. 4.02

10.5 N. of N. cl = End Alley Ret 3.80

304' E = E. '14 Wilson

S. Line Pavmt 4.58

313' E = E. gutter Wilson

S. Line pavmt 4.72

313' E = E. cl. Wilson

S. Line ent. cl. 4.14

325' E = E. Line Wilson on S. Mead = 55.5 Rdw

S. ent. cl. 3.98

N. " " 3.97

375' E

N. ent. cl. 3.89

S. ent. cl. 4.20

401.7 E = W. Line Wilson on N Mead = 55.5 Rdw

S. ent. cl. 4.35

N. ent. cl. 3.65

413.7 E = W. cl

N. Line ent. cl. 3.86

" " gutter pavmt 3.89

422.7 E = W. '14

N. Line Pavmt 3.61

425.1 E = W. Line Alley on S.

S. ent. cl. 4.25

10.5 S. of S. cl = end Alley Ret. 3.92

391.72
431.7 E = E. Wilson to N

N. Line Pavmt. 3.55

440.1 E = E. Line Alley on S

S. ent. cl. 4.32

10.5 S. of S. cl = End Alley Ret. 4.21

440.7 E = E. '14

N. Line pavmt 3.58

449.7 E = E. cl.

N. Line gutter Pavmt. 4.11

" " ent. cl. 3.60

461.7 E = E. Line Wilson to N. Mead = 55.6 Rdw

N. ent. cl. 3.67

S. " " T.P. on B.M. 287 391.07 4.45 3.52 388.20 NW. Wilson & Mead

510.1 E.

S. ent. cl. 3.98

N. ent. cl. 3.48

565.1 E = W. Line 36th on S Mead = 55.6 Rdw

N. ent. cl. 3.72

S. " " 4.05

577.1 E = W. cl.

S. Line ent. cl. 4.24

586.6 E = W. Line Alley on N

N. ent. cl. 3.88

10.6 N. of N. cl = End Alley Ret. 3.58

601.6 E = S. Line Alley on N

N. ent. cl. 4.06

10.5 N. of N. cl = End Alley Ret. 3.74

Mead

36

391.07

613' E = E. ch. 36th St

S. line cmt. ch. 4.73

625' E = E. line 36th St. on S.

S. cmt. ch. 4.54

N. cmt. ch. 4.14

675' E.

N. cmt. ch. 4.49

S. " " 4.81

726.5 E = W. line 36th on N

S. cmt. ch. 4.95 386.12

N. " " 4.81 386.26

738.5 E = W. ch.

N. line cmt. ch. 4.92

750' E = W. line Alley on S

S. cmt. ch. 5.15

10.5 S. of S. ch = End Alley Ret 4.83

765' E = E. line Alley on S

S. cmt. ch. 5.06

10.5 S. of S. ch = End Alley Ret. 4.84

774.5 E = E. ch.

N. line cmt. ch. 5.24

786.5 E = E. line 36th on N

N. cmt. ch. 5.16

S. " " 5.30

391.07

840' E.

S. cmt. ch. 5.72

N. " " 5.64

890' E. = W. line Cherokee on S.

N. cmt. ch. 5.92

S. " " 5.84

902' E = W. ch.

S. line cmt. ch. 5.95

911.3 E = W. line Alley on N

N. cmt. ch. 5.96

10.5 N. of N. ch = End Alley Ret 5.87

926.3 E = E. line Alley on N.

N. cmt. ch. 6.18

10.5 N. of ch = End Alley Ret 6.00

938' E = E. ch.

S. line cmt. ch. 6.36

950' E = E. line Cherokee on S.

S. cmt. ch. 6.26

N. " " 6.28

1000' E

N. cmt. ch. 6.45

S. " " 6.77

1052' E = W. line Cherokee on N

S. cmt. ch. 7.32

N. " " 6.83

1064' E = W. ch.

N. line cmt. ch. 1.54 385.68 6.93

Meade

37

MWM cmt. +
Cherokee
384.16

1075.4 E. = W. Line Alley on S.		
S. ent. cl.	2.20	
20.5 S. of S. cl. = End Ret	1.85	
1090. E = E. Line Alley on S.		
S. ent. cl.	2.21	
16.5 S. of cl. = End ret	2.01	
1100. E. = E. cl		
N. Line ent. cl.	2.00	
1114. E = E. Line Cherokee on N Meads 55.7 Rdw		
N. ent. cl.	1.95	
S. " "	2.49	
460 1160. E.		
S. ent. cl.	3.13	
N. " "	2.69	
1215 E = W. Line 37 th on S		
N. ent. cl.	3.41	
S. " "	3.54	
1227 E = W. cl 37 th on S.		
S. Line ent. cl. ret.	3.60	
1237 E = W. Line Alley on N		
N. ent. cl.	3.70	
4 N. cl.		
10.4 N. = N end cl. ret.	3.46	
1253 E = E. Line Alley on N		
N. ent. cl.	3.90	
10.5 N. of N. cl. = N end cl. Ret	3.66	
1283 E = E. cl 37 th on S		
S. Line ent. cl. ret	4.98	580.70

385.64		
1295 E = E. Line 37 th on S		
S. ent. cl.	5.10	
N. " "	4.45	
1350. E.		
N. ent. cl.	5.06	
S. " "	5.77	
1377 E. = W. Line 37 th on N		
S. ent. cl.	6.16	
N. " "	5.30	
1389 E = W. cl 37 th on N		
N. Line ent. cl.	5.36	80.37
1420.3 E = W. Line Alley on S		
S. ent. cl.	6.54	
10.4 S. of S. cl. = End Alley ret	6.35	
1425. E. = E. cl. 37 th on N		
N. Line ent. cl.	5.77	379.91
1435. E = E. Line Alley on S.		
S. ent. cl.	6.96	
10.5 S. of S. cl. = End Alley Ret	6.79	
1437 E = E. Line 37 th on N		
N. ent. cl.	6.85	
S. " "	6.99	
1500. E.		
S. ent. cl.	7.86	
N. " "	7.03	

60' wide 12' ch-s } McClinton
 385.68
 1560' E = W. Line McClinton N+S. Meade 55.7' Rdw

N. cont. ch	8.39	
S. " "	8.77	
W. ch - McClinton		
S. Line cont. ch	8.87	376.81
N. " " "	8.33	377.35
T.P. B.M. B.P. 2.51	379.89	8.30 377.38
E. ch. McClinton		
N. Line cont. ch	3.39	376.50
S. " " "	3.60	376.29
00 = E. Line McClinton		
S. cont. ch	3.68	
N. " "	3.37	
60' E		
N. cont. ch	3.83	
S. " "	4.43	
125' E = W. Line Alley		
32.5' S. of S. ch = End Alley Ret	4.61	
S. cont. ch	4.97	
N. " "	4.37	
14' N. of N. ch = N. End Alley Ret	4.13	
140' E = E. Line Alley		
14' N. of N. ch = End Alley Ret	4.33	
N. cont. ch	4.63	
S. cont. ch	5.23	
14' S. of S. ch = End Alley Ret	4.95	

379.89
 200' E
 Meade Ave
 39

P (265' E = W. Line 38th St.)
 38th St L' Wide
 266' E = W. Edge Pavmt on 38th

S. cont. ch	5.90	
N. " "	5.02	
N.W. Meade + McClinton 377.40		
N. cont. ch	5.47	
gutter P avmt	6.15	
N. " "	6.21	
ch	6.35	
S. " "	6.73	
S. gutter	7.12	
S. cont. ch	6.51	
00 = E. Line 38 th Paving L' E of Line		
S. cont. ch	7.05	
S. gutter Pavmt	7.64	
S. " "	7.18	
ch	6.84	
N. " "	6.74	
N. gutter	6.81	
N. cont. ch	6.10	
60' E.		
N. cont. ch	7.01	
S. " "	7.76	
chk B.M. B.P.	5.51	
T.P. 2.95	374.63	8.21 374.68
N.W. Meade + 38 th St 374.38 = 374.43		

374.63

125' E = W. Line Alley

14' S. of S. el = End Alley Ret	3.24
S. cont. el	3.50
N. " "	2.67
14' N. of N. el = end Alley Ret	2.52

140' E = E. Line Alley

14 N. of N. el = end Alley Ret	2.72
N. cont. el	3.02
S. " "	3.72
14' S. of S. el = end Alley Ret	3.62

200' E.

S. cont. el	4.60
N. " "	3.99

265' E = W. Line 39th St.

N. cont. el	5.02
gutter pavmt.	5.62
" "	5.52
⊥	5.41
" "	5.59
gutter	6.10
S. cont. el	5.46

CHK B.M. B.P. 4.88

00 = E. Line 39th St.

S. cont. el	5.71
gutter pavmt.	6.31
" "	5.78
⊥	5.54

369.75

369.76

Meade 51.9 Rd W

374.63

Meade Ave

40

" "	pavmt.	5.56
gutter	"	5.74
N. cont. el		5.11

60' E

N. cont. el	5.18
S. " "	5.95

125' E = W. Line Alley

S. Line Alley Ret	6.06
S. cont. el	6.17
N. " "	5.06

N. Line end Alley Ret 4.65

140' E = E. Line Alley

N. Line Alley Ret	4.67
N. cont. el	5.02
S. " "	6.24

S. Line Alley Ret 6.01

T.P. 5.63 373.98 6.28 368.35

200' E.

S. cont. el	5.77
N. " "	4.09

265' E = W. Line 40th St.

N. cont. el	4.27
N. gutter pavmt	4.87
N " "	5.01
⊥	5.30
S. " "	5.82

Meade 51.6 Rd W

373.98

4.09

S. gutter Parmt 6.50

S. cnt. cl 6.00

00 = E. Line 40th

S. cnt. cl 5.81

S. gutter Parmt 6.28

S. '14 " 5.79

" " 5.27

N. '14 " 5.02

N. gutter " 4.94

N. cnt. cl. 4.30

chk on B.M., B.P. 4.09

60' E

N. cnt. cl. 4.41

S. " " 5.56

125' E. = W. Line Alley

S. Line cnt. cl. Alley Ret 5.10

S. cnt. cl 5.36

N. " " 4.44

N. Line cnt. cl. Alley Ret 4.12

N. on S. End. Alley Parmt 4.22

132' 5' E = E. Alley

N. Line Parmt 4.45

140' E = E. Line Alley

N. Line Parmt 4.31

" " cnt. cl. Alley Ret 4.19

N. cnt. cl 4.49

Meade 51.7 Adv

NW. 40th
& Meade
369.89 = 369.873

369.89

369.873

Alley Paved to N

364.00 Central

Meade Ave

373.98

41

S. cnt. cl 5.15

S. Line Alley Ret 4.75

200' E

S. cnt. cl 5.47

N. " " 4.85

T.P. - B.M. - B.P. 3.89

N. cnt. cl 3.82

gutter parmt. 4.52

'14 " 4.35

" " 4.31

'14 " 4.39

gutter " 4.71

S. cnt. cl 4.15

00 = E. Line Central.

2' 3" S. of S. cl. Line = S. cnt. cl 4.83

367.71

gutter parmt. 5.48

'14 " 4.78

" " 4.45

'14 " 4.64

gutter " 4.71

N. cnt. cl. 4.11

Novelk on cl on N. B-t Central 4.41st

" " " " " S " " & E. Line Alley

372.54

140' 5" E = Line Alley

5' walk
7' from cl.

S. line Alley Ret.

4.13

S. ent. cl.

4.38

Walk to cl. in on S. from E. line Alley 75' East

215' E = E. End walk to cl. obs

5' walk
7' S. of curb

S. ent. cl.

4.54

263.5 E = W. line 41st St.

Meads Rd

3.2 S. of S. cl. line = S. ent. cl.

4.71

367.83

gutter parmt

5.58

1/4

5.21

e

5.05

1/4

5.15

gutter

5.41

N. ent. cl.

4.95

367.59

T.P. B.M. - B.P.

3.85

371.59

4.80

367.74

N.W. 41st
+ Meads

00 = E. line 41st St.

Meads Rd

367.76

N. ent. cl.

3.78

gutter parmt.

4.54

1/4

3.99

e

3.73

1/4

3.64

gutter

3.94

Top ent. cl.

S. cl. E.W. of E. line 41st E. of Ret. gone

3.34

368.25

125' E = W. line Alley

Paved to N

N. line - parmt. No Alley Ret.

4.93

132.5 E = E. Alley

N. line Alley parmt.

5.20

371.59

Meads Ave

140' E = E. Line Alley

42

N. line Alley parmt.

4.92

5' S = N. End Alley Ret.

4.44

15' S = N. ent. cl.

4.69

No walls or cl. on S. But 40' + Marlborough

" " " " " N. " 40' + E. Line of Alley

Walk to cl. in from E. line Alley to Marlborough on N.W. 5' from cl.

200' E

N. ent. cl.

5.26

245' E = W. line Marlborough

Meads Rd

N. ent. cl.

5.59

gutter parmt

6.18

1/4

5.64

e

5.38

1/4

5.42

gutter

5.88

S. ent. cl.

5.47

T.P. B.M. - B.P.

3.61

369.65

5.55

00 = E. line Marlborough

S. ent. cl.

3.66

gutter parmt

4.17

1/4

3.72

e

3.72

1/4

3.96

gutter

4.42

N. ent. cl.

3.61

366.12

N.W. Meads

366.04 = + Marlborough

Meads Rd

Copeland parcel to S.

368.96

Meads 50' Rdw. 250' E = W. Line Copeland. 60' wide
10' chs
40' Rdw

S. cnt. ch			4.73	
	2.5' E. of W. line = W. End ch. Ret on N			
W. cnt. ch. Ret			4.62	
	10' E. of W. line = W. ch.			
S. line cnt. ch			4.72	
" " gutter pavmt.			5.32	
N. line cnt. ch			4.52	
	40. E = W. 1/4			
S. line Pavmt.			5.03	
	35' E. = ch			
S. line Pavmt			4.91	
	40. E = E. 1/4			
S. line Pavmt.			4.98	
	50' E. = E. ch.			
S. line gutter pavmt			5.22	
" " cnt. ch			4.77	
	60' E. = E. Line Copeland			
S. cnt. ch			4.74	368.72
chk B.M. - B.P.			4.49	364.47 = 364.52
				N.W. Meads + Copeland
T.P.	1.79	365.21	5.54	363.42
	E. curb line Van Dyke			
S. line Meads on N. end cnt. ch			6.43	358.78
T.P.	4.08	356.83	12.46	352.75
T.P.	5.25	355.31	6.77	350.06
chk on R.M. spk Pole			4.84	350.47 = 350.47
				S.W. Meads + Fairmont

355.31

Meads Ave

44

W. ch. Fairmont

S. line cnt. ch			5.59	
" " gutter Pavmt			6.27	
	W. 1/4			
S. line N. End Pavmt			5.82	
	ch			
S. line N. End Pavmt			5.60	
	E. 1/4			
S. line N. End Pavmt			5.86	
	E. ch.			
S. line N. End cnt. ch			6.26	
S. line N. End Pavmt			5.61	
	W. Line 44 th St.			
S. cnt. ch			3.53	
N. " "			3.05	
	10' E. = W. ch 44 th St			
N. line cnt. ch			2.95	
S. " " "			3.45	
	50' E. of W. line = E. ch. 44 th St			No Meads on E. of 44 th
S. line Meads produced East. cnt. ch			2.65	
N. " " "			2.39	
T.P. - B.M. - B.P.	7.07	359.47	2.91	352.40 = 352.43 + Meads S.W. 1/4
T.P. - B.M. - B.P.			4.76	354.71 = 354.72 + El Cajon

Copeland paved to S.

368.96
 Meade 50' Rdw. 250' E = W. Line Copeland. 60' W. du
 10' E. S
 40' Rdw

S. cnt. el 4.73

2.5' E. of W. line = W. End el. Ret on N

Went. el. Ret 4.62

10' E. of W. line = W. el.

S. line cnt. el 4.72

" " gutter pavmt. 5.32
 N. line cnt. el 4.52

20.0' E = W. line

S. line Pavmt. 5.03

35' E. = E

S. line Pavmt 4.91

40.0' E = E. line

S. line Pavmt. 4.98

50' E. = E. el.

S. line gutter pavmt 5.22

" " cnt. el 4.77

60' E. = E. Line Copeland

S. cnt. el 4.74

chk B.M. - B.P. 4.49

T.P. 1.79 363.21 5.54 363.42

E. curb line Van Dyke

S. line Meade on N. end cnt. el 6.43 358.78

T.P. 4.08 356.83 12.46 352.75

T.P. 5.25 355.31 6.77 350.06

chk on B.M. spk Pole 4.84

364.72 N.W. Meade
 + Copeland
 364.52

352.47 = 350.47
 + Fairmont

355.31 Meade Ave

W. el. Fairmont

S. line cnt. el 5.59

" " gutter Pavmt 6.27

W. line

S. line N. End Pavmt 5.82

S. line N. End pavmt 5.60

E. line

S. line N. End Pavmt 5.86

E. el.

S. line N. End cnt. el 6.26

S. line N. End pavmt 5.61

W. line 44th St.

S. cnt. el 3.53

N. " " 3.05

10' E. = N. el 44th St

N. line cnt. el 2.95

S. " " " 3.45

50' G. of W. line = E. el. 44th St No Meade on E. of 44th

S. line Meade produced East. cnt. el 2.65

N. " " " " " 2.39

T.P. - B.M. - B.P. 7.07 359.47 2.91 352.40 = 352.48 + Meade
 S.W. 44th

T.P. - B.M. - B.P. 4.76 354.71 = 354.72 + El. Van Dyke

Walker
McHugh
Lecky
McHoon
2/20/59

CURB levels on 45th St.
El Cajon + Meade Ave

	3.68	354.16	350.48
	S end cb Inlet = 0+00		
N top cb	7.77	346.39	
E " "	7.54	346.62	
	0+20		
E	7.35	346.81	
	0+40		
E	7.36	346.80	
	0+60		
E	7.37	346.85	
	0+80		
E	7.25	346.91	
	1+00		
E	7.31	346.85	
	1+08.75 = End New cb. to be const. on N		
E	7.31	346.85	
N	7.57	346.60	
	1+20		
N	7.40	346.76	} cb to come out on E
E	7.31	346.85	
N	7.39	346.87	
	1+46		
E	7.40	346.76	
	1+60		
E	7.35	346.81	
N	7.16	347.00	

354.16

1+80

	6.98	347.18
	BM 55 45th + Meade N top cb	
T.P.	4.28	354.76
	1+76.8 = beginning Exist cb. on E	
E top cb.	7.88	346.88
E " Walk	7.81	346.95
	2+00	
E top cb.	7.75	347.01
N " "	7.40	347.36
	2+26.5 = Bk.	
N top cb.	7.11	347.65
E " Walk	7.46	347.30
	2+40	
E top cb.	7.34	347.42
N " "	6.78	347.98
	2+60	
N " "	6.06	348.70
E " "	6.65	348.11
	2+78 = End Walk on E	
E Top Walk	6.01	348.75
" " cb.	6.08	348.68
	2+80	
N top cb.	6.38	349.38
	3+00	
N " "	4.66	350.10
E " "	5.46	349.30

35476

	3+20		
E top cb.		4.94	349.82
N " cb		3.97	350.79
	3+27 = beg. Exist. Walk on NY		
N top cb.		3.75	351.01
" " Walk		3.67	351.09
	3+40		
" " cb.		3.26	351.50
E " "		4.38	350.38
	3+60		
E " "		3.72	351.04
N " "		2.51	352.25
	3+80		
N " "		1.79	352.97
E " "		3.02	351.74
	4+00		
E " "		2.38	352.38
N " "		1.12	353.64
TP	6.61	360.25	4.12 353.64
	4+20 = End Exist. Walk on NY		
N top Walk		5.29	354.56
" " cb.		5.74	354.51
E " "		2.16	353.09
	4+60		
E top cb.		6.04	354.21
N " "		4.55	355.70

35625

47

	4+80		
N cb.		3.89	356.36
E "		5.44	354.81
	5+00		
E "		4.84	355.41
N "		3.40	356.85
	5+26.8 = N.L. E/Cu/1000		
N "		2.78	357.47
E "		4.14	356.11

3-23-29 X-section Alley Block 192. City Hts. -
 J.C. Bliss University to Wightman - between 34th & 35th
 Robert 20' wide
 Sawyer

University

B.M. N.W. C.P. - 34th & tracks
 +7.43 H.I. 357.10

C.B. levels - 5' on line University 34th to Alley

E.L. 34 th = 0+00 - Top of	12.84	344.76
Gutter	12.55	344.45
0+25 - Top of	10.87	346.23
G	11.22	345.88
0+50 - Top of	9.31	347.79
G	9.70	347.40
0+80 - E.C.	8.07	349.03
G	8.40	348.70
1+05 - Top of	6.45	350.65
G	6.86	350.24
1+30 - Top of	5.86	351.24
G	6.15	350.95
1+55 - Top of	5.07	352.03
G	5.35	351.75
1+65 - E.C. - Top of	4.78	352.32
G	5.06	352.04
1+84.5 - End alley return - Top of	4.28	352.82
G	4.50	352.60

Section in gutter on sub line University

W	4.43	352.67
E	4.06	353.04
E	3.67	353.43

Plotted 3/26/29

OK

H.I. 357.10

48

S.L. University = 0+00 Alley Paved to S.L.

Exc & Paving Flush	3.30	353.80
♀	3.83	353.27
W - ob & paving flush	3.97	353.13
	0+15	
W	2.5	354.6
♀	2.5	354.6
+5	2.4	354.7
+6	1.8	355.3
E	1.5	355.6
	0+25	
E	1.7	355.4
♀	2.3	354.8
W	2.5	354.6
	0+43	
♀ 14" Concrete Grade Above 2" in Alley	2.35	354.75
	0+50	
W	2.4	354.7
♀	2.0	355.1
E Concrete Step Above 2" in Alley	1.98	355.12
S.P. - Corner Step - E side of 50	-1.55	355.55
	+0.70	
	H.I. 355.95	
	0+75	
E	0.9	355.1

H.I. 355.95

♀		0.6	355.4
W		0.8	355.2
	0+77		
♀ 1.5' Concrete walk at E.L.		0.88	355.07
	0+90		
♀ 17.5' Concrete Garage Floor at E.L.		0.84	355.11
	1400 = North end Concrete Garage Apron 0.2' in Alley from E.L.		
W		0.9	355.1
♀		1.0	355.0
E - Concrete Garage Apron		1.03	354.92
	1425		
E - Concrete Garage Apron		1.25	354.70
♀		1.2	354.8
W		1.3	354.7
	1435 = ♀ 20' Double Garage		
5' Back W.L. - Dirt Floor		1.2	354.8
	1447		
South end Apron that began at 1400		1.71	354.24
	1455		
♀ 11' Garage Apron 0.5' Back E.L.		2.13	353.82
E		2.2	353.8
♀		2.6	353.4
W		3.2	352.8
	1472		
♀ 3' Concrete walk 0.4' Back E.L.		3.37	352.58

H.I. 355.95

49

	1475		
W		4.2	351.8
♀		3.5	352.5
E		3.3	352.7
	1493		
	From E.L.		
♀ 10' Concrete Garage Apron 0.3' in Alley		3.67	352.28
	2+00		
E - ♀ 5' Concrete Walk 0.3' in Alley from E.L.		3.67	352.28
♀		4.3	351.7
W		5.0	351.0
	2+25		
W		6.0	350.0
♀		5.1	350.9
E		4.7	351.3
	2+35		
♀ 5' Concrete Walk 1' in Alley from E.L.		4.67	351.28
	2+50		
E		5.3	350.7
♀		5.7	350.3
W		6.1	349.4
	2+58		
♀ 10' Garage Apron Concrete 1' Back E.L.		5.44	350.51
	2+75		
W		8.8	347.2
♀		8.1	347.9
E		7.2	348.8

H.I. 355.95

3400

E	8.9	347.1
♀	9.9	346.1
W	10.4	345.6

3425

W	12.4	343.6
♀	11.9	344.1
E	11.3	344.7
Back 3' ♀ 8' Garage Dirt Floor	11.3	344.7

3450

E	12.7	343.3
T.P.		-12.26 342.99

+ 0.21

H.I. 343.80 ✓

♀	1.5	342.3
W	2.1	341.6

3475

W	3.5	340.3
♀	3.5	340.3
E	2.8	341.0

3495

♀ 10' Garage 2' Back E.L. - Dirt Floor	3.5	340.3
--	-----	-------

4100

E	3.6	340.2
+4	4.6	339.2
E	5.0	338.8

H.I. 343.80

50

W	5.3	338.5
---	-----	-------

4+20

at W.L.

♀ 10' Concrete Entrance to A.M. Dairy Barn	6.98	336.82
--	------	--------

4+25

W	7.3	336.5
♀	7.5	336.3
E	6.5	337.3

4+50

E	8.0	335.8
+3	8.5	335.3
♀	8.7	335.1
W	8.6	335.2

4475

W	9.6	334.2
♀	9.6	334.2
E	9.8	334.0

4476

E	9.4	334.4
♀	9.6	334.2
+5	11.7	332.1

W	12.0	331.8
---	------	-------

00410

T.P.

	12.0	331.8
--	------	-------

110.13 333.67

+349

336.86 ✓

H. 336.86

	495	
Out 10	7.8	329.1
W	6.7	330.2
£	5.2	331.7
+6	3.0	333.9
E	2.6	334.3
	5+00	
E	3.2	333.7
£	5.9	331.0
W	6.3	330.6
Out 10	8.0	328.9
	5+25	
Out 10	9.5	327.4
W	8.1	328.8
£	6.8	330.1
+4	6.3	330.6
E	4.1	332.8
	5+50	
E	7.5	329.4
£	8.6	328.3
W	9.7	327.2
Out 10	10.5	326.9
	5+75	
Out 10	11.7	325.2
W	11.5	325.4
£	9.3	327.6

H. 336.86

51

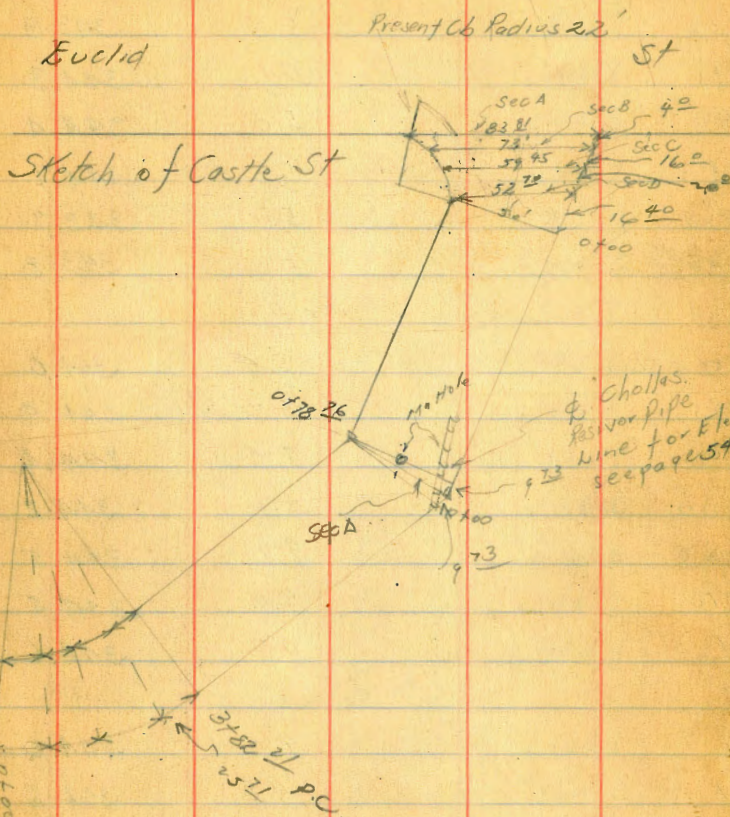
E	7.8	329.1	
	6+01 = A.L. Wightman		
E	9.2	327.7	
+4	10.0	326.9	
£	10.0	326.9	
W	10.8	326.1	
Out 10	11.4	325.5	
T.P.		-5.77	331.075
	4921	340.28	
B.M.N.W.B.P. Wightman & S		-2.72	337.56
		Sisson's Bench Book	337.42
	41302	350.58	
T.P.		-0.94	349.64
	410.28	359.92	
		-1.43	358.49
	4065	359.14	
B.M.N.W.B.P. 34 th + University		-9.62	349.52
		Correct	349.47
			over 0.05

Bill Bliss
Joe Duermit
J. Jacobsen
P. Kiernan
1919

X. Section Castle Street from
the E. Line of Euclid to South End.

				NE B.P. Montana	Euclid
BM	7.54	348.00		340.96	
TP	6.85	349.38	5.47	342.53	
				83.81	
			Sec A	Sec sketch	
N		6.0		343.4	
+45 Top N 66		6.49		342.92	
G		7.03		342.38	
+20		7.06		342.35	
+41.2 d		7.42		341.99	
+66 20 Gutter		8.56		340.85	
+66 20 Stop Cb		8.09		341.32	
+88 1/2		7.9		341.5	
			Sec B 9°		
-73 S Line		5.6		343.8	
-60		5.6		343.8	
-50		6.0		343.4	
-40		6.0		343.4	
-36		6.9		342.5	
-20		6.9		342.5	
-15		6.5		342.9	
-13		5.2		344.2	
-10		5.2		344.2	
N		4.6		344.8	
			Sec C 16°		
N		4.8		344.6	
+10		4.6		344.8	

Plotted 5-1-29-CBA



	HI	-	Elev
	399.41		
+15		5.0	344.4
+20		5.7	343.7
+30		5.5	343.9
+35		5.1	344.3
+40		5.0	344.4
+53		5.3	344.1
+55		5.7	343.7
+59 ⁴⁵ s		5.6	343.8
		Sec'd.	5.2
-52.9 slm		5.4	344.0
-45		5.0	344.4
-40		5.0	344.4
-30		5.2	344.2
-20		4.9	344.5
-10		4.9	344.5
N		4.8	344.6
		new seeskote	0.70
N		4.6	344.8
cb		4.8	344.6
1/4		4.7	344.7
ϕ		4.9	344.5
1/4		4.9	344.5
cb		5.0	344.4
S		5.4	344.0
		at 25	
S		4.6	344.8

	HI	-	
	399.41		
		+ 16.7	15 d. 4
		Tree 04 N	28 m. 22
		cb line	53
cb		4.8	344.6
1/4		4.8	344.6
ϕ		4.8	344.6
1/4		4.6	344.8
cb		4.6	344.8
N		4.7	344.7
		at 50	
N		4.8	344.6
cb		4.6	344.8
+5		4.3	345.1
1/4		4.3	345.1
ϕ		4.7	344.7
1/4		4.9	344.5
cb		5.0	344.4
+5		4.7	344.7
S		5.0	344.4
		at 78 ²⁶ Δ	0.5
S		5.3	344.1
cb		5.3	344.1
1/4		5.1	344.3
+3		4.7	344.7
ϕ		4.6	344.8
1/4		4.7	344.7
+3		4.6	344.8
cb		4.2	345.2
+4		4.2	245.2

HZ
349.41

+6	4.6	344.8	
N	4.7	344.7	
	9.3	50.9	
	Sec 1	on North	
N	4.3	345.1	
cb	4.2	345.2	
1/4	4.7	344.7	
1/4	4.8	344.6	
1/4	5.1	344.3	
cb	5.3	344.1	
S	5.3	344.1	
	07.00	see sketch	
S	5.3	344.1	
cb	5.2	344.2	
+5	5.2	344.2	
1/4	4.9	344.5	
+4	4.7	344.7	
1/4	4.6	344.8	
1/4	4.7	344.7	
cb	4.4	345.0	
+5	4.4	345.0	
N	4.2	345.2	
	07.00	Bell of Chollas Valley	
	see sketch	6.42	342.99
	Water Main for location		
	Mn Hole for location	see sketch	
Rim	47.2	344.69	
flor. Line	15.57	333.84	

1085
47.2
15.57

T
HZ
349.41

	07.25	
N	9.4	345.0
+5	4.7	344.7
cb	4.9	344.5
1/4	4.7	344.7
1/4	4.7	344.7
1/4	4.6	344.8
1/4	5.2	344.2
cb	5.3	344.1
S	5.4	344.0
	07.50	
S	5.6	343.8
cb	5.2	344.2
1/4	5.1	344.3
1/4	4.9	344.5
1/4	4.9	344.5
1/4	5.1	344.3
cb	5.1	344.3
N	4.7	344.7
	07.75	
N	4.6	344.8
1/4	4.6	344.8
cb	5.0	344.4
+4	5.0	344.4
1/4	4.9	344.5
+5	4.9	344.5

349.38
6.45
342.93

54

H.I.
399.41

ϕ	5.2	344.2
1/4	5.7	343.7
cb	5.9	343.5
N	5.8	343.6
	1400	
N	6.1	343.3
cb	5.8	343.6
1/4	5.8	343.6
ϕ	5.1	344.3
1/4	5.2	344.2
+3	5.4	344.0
cb	5.2	344.2
N	4.7	344.7
	1425	
N	5.0	344.4
cb	5.6	343.8
1/4	5.9	344.0
+3	5.3	344.1
ϕ	5.3	344.1
+4	5.5	343.9
1/4	5.7	343.7
cb	5.7	343.7
+5	5.8	343.6
N	6.3	343.1
	1450	
N	6.6	342.8

+ H.I.
399.41

- Elev

55

cb	6.0	343.4
1/4	5.6	343.8
+3	5.5	343.9
+5	5.2	344.2
ϕ	5.2	344.2
1/4	5.3	344.1
1/4	5.6	343.8
+5	5.9	343.5
cb	5.8	343.6
+5	5.4	344.0
N	5.2	344.2
	1475	
N	5.3	344.1
+5	5.3	344.1
cb	6.0	343.4
+5	6.1	343.3
1/4	6.0	343.4
ϕ	5.5	343.9
+5	5.9	343.5
1/4	6.2	343.2
cb	6.2	343.2
ϕ	6.3	343.1
	2100	
S	6.6	342.8
cb	6.7	342.7
1/4	6.7	342.7

HZ
349.41

t5	6.0	343.4
ϕ	5.9	343.5
1/4	6.2	432
cb	6.2	432
N	5.6	343.8
	2125	
N	5.9	343.5
t7	6.1	433
cb	6.5	429
t3	6.7	427
1/4	6.4	430
t3	6.1	433
ϕ	6.2	343.2
t4	6.3	431
1/4	6.8	426
cb	7.0	424
S	6.8	342.6
	2150	
S	7.1	342.3
cb	7.2	422
1/4	7.0	424
t5	6.5	429
ϕ	6.3	343.1
1/4	6.7	427
cb	6.9	425
t5	6.5	429

HZ
349.91

56

N	6.4	343.0
	2175	
N	6.9	342.5
t7	6.9	425
cb	7.2	422
1/4	7.1	423
ϕ	6.7	242.7
t5	6.8	426
1/4	6.9	425
cb	7.2	422
S	7.3	242.1
T.P.	2.63	345.13
	3100	6.91
S	3.5	342.50
cb	3.2	341.6
1/4	3.2	41.9
t4	2.7	41.9
ϕ	2.7	42.4
1/4	3.0	242.4
cb	3.3	42.1
t3	2.9	41.8
N	2.7	42.2
	3125	2.7
N	3.4	242.4
t7	3.4	241.7
cb	3.8	41.7
		41.3

	H.I.	Elev
	395.13	
1/4	3.7	341.7
+4	3.4	41.7
ϕ	3.3	341.8
+5	3.4	41.7
1/4	3.8	41.3
cb	4.0	41.1
N	4.1	341.0
	3750	
5	4.7	340.4
cb	4.5	40.6
1/4	4.2	40.9
+3	3.9	41.2
ϕ	3.9	341.2
1/4	4.3	40.8
cb	4.2	40.9
+3	3.7	41.4
N	3.6	341.5
	3782 ²¹ pc	4. parts 25.71 N
N	4.2	340.9
cb	4.5	40.6
1/4	4.6	40.5
ϕ	4.5	340.6
+5	4.4	40.7
1/4	4.8	40.3
cb	5.1	40.0
+3	4.9	40.2

	H.I.	Elev
	395.13	
		57
N	4.4	340.7
	Sec 1	
N	5.2	339.9
cb	5.3	39.8
1/2	5.6	39.5
1/4	5.3	39.8
+3	5.0	40.1
ϕ	5.0	340.1
+3	5.0	40.1
1/4	5.0	40.1
cb	4.8	40.3
E	4.6	340.5
	Sec 2	
E	4.9	340.2
cb	5.3	39.8
1/4	5.3	39.8
	Rim Man Hole	5.09
	Flow Line	9.36
+3	5.2	39.9
ϕ	5.5	339.6
1/4	5.7	39.4
cb	5.9	39.2
N	5.7	339.4
	Sec 3	
N	6.2	338.9
cb	6.2	38.9

+

H.Z.
395.13

1/4	6.0	391
Φ	5.6	3395
1/4	5.8	393
cb	6.1	390
E	6.0	3391
Sec 4 P.C. = 00		
E	6.5	3386
tb	6.6	385
cb	6.4	387
1/4	6.1	390
Φ	5.9	3392
1/4	6.2	389
cb	6.2	389
W	6.5	3386
0725		
W	7.1	3380
cb	7.1	380
1/4	7.1	380
Φ	6.8	3383
1/4	7.2	379
cb	7.2	379
E	7.1	3380
0726 Walk on East		
online 2 ^o walk	6.98	338.15
0750		
E	7.9	337.2

+

H.Z.
345.13

58

cb	7.9	372
1/4	7.9	372
Φ	8.1	3370
1/4	8.2	369
cb	8.1	370
W	8.1	337.0
0774.46		
W	9.1	3360
cb	8.3	368
1/4	9.0	36.1
1/4	9.0	36.1
tb	8.8	363
Φ	8.5	3366
1/4	8.5	366
cb	8.6	365
E	8.5	3366
Sec A of 74 ⁴⁶ B = 0782 ¹² W 81 ²		
E	8.5	3366
cb	8.8	363
1/4	8.8	363
Φ	8.7	336.4
1/4	8.6	365
cb	8.6	365
1/4	8.7	364
W	9.1	336.0
Set BM	4.45	340.68
W. p.c. = 1 Curve		

	+	H.I. 345.13				
T.P.	1.60	336.42	10.31	334.82	used this T.P. for elevations levels	
Set BM	11.38	344.16	3.64	332.78	N.W.B.P. Dwight +	Euclid
T.P.	9.52	347.47	1.21	342.95	N.E.B.P.	
check out on BM			7.04	340.43	Lantana	+ Euclid
			7.52	340.46		
				0.03	error	

Levels for Proposed Drain from
the Southerly End of Castle Street to Dwight St
Across Lot 4, Fairhaven Acres 2° N of Lolline

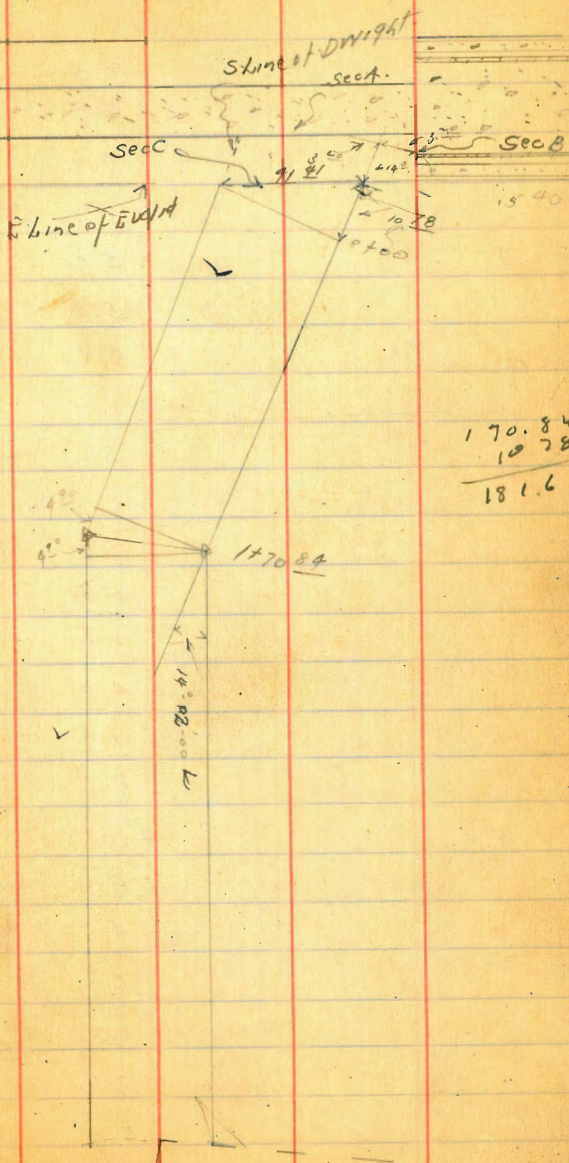
	5.56	340.38		334.82	T.P. 390 Terpage
0+00	Name of Fairhaven Acres	3.8		336.6	
0+25		4.5		335.9	
0+40		5.3		335.1	
0+50		5.3		335.1	
0+75		5.8		334.6	
0+80		5.8		334.6	
1+00		5.8		334.6	
1+02	N. of Lolline	5.8		334.6	
1+05	of Dwight St	6.7		333.7	
		5.56		334.82	

Bill Bliss
4/16/29

X-Section, Dwight St. from
the E line of Euclid to the W line of
Lantana Drive

BM	494	337.74	332.80	NWBP Dwight - Euclid
		Sec A	Along paving on Euclid	
N		5.34	332.40	
+10		5.91		
+20		5.48	332.26	
+30		5.48		
+41 S line		5.56	332.18	
		Sec B		
N Topcb	on paving	4.95	332.79	
G		5.42	332.32	
		Sec C	41.91	
N		4.4	333.3	
+10		4.8		
+20		4.8	332.9	
+30		4.9		
+35		4.8		
S		5.1	332.6	
		400		
S		5.1	332.6	
ob		4.8		
+4		4.9		
4		5.0	332.7	
+5		5.1		
+4		4.9		
ob		4.8		

Plotted 5/2-29 - C.B.H.



170.84
10.78

181.62

	+	HZ. 337.74	-	E/ey
N			4.9	333.3
			0.25	
N			4.3	333.4
cb			4.7	
1/4			4.9	
ϕ			4.8	332.9
1/4			5.0	
cb			5.1	
S			5.2	332.5
			0.50	
S			5.6	332.1
cb			5.6	
1/4			5.3	
ϕ			4.9	332.8
1/4			4.9	
+4			4.9	
cb			4.5	
N			4.1	333.6
			0.75	
N			4.3	333.4
cb			4.7	
+3			5.1	
1/4			5.1	
ϕ			5.0	332.7
1/4			5.3	
cb			5.7	

	+	HZ. 337.74	-	E/ey	61
S			5.7	332.0	
			1.00		
S			6.0	331.7	
			6.1		
			5.7		
			5.2	332.5	
			5.3		
			5.2		
			4.6		
			4.6	333.1	
			1.25		
			4.6	333.1	
			4.8		
			5.2		
			5.5		
			5.6		
			5.5	332.2	
			5.8		
			6.3		
			6.9	331.3	
			1.50		
			6.5	331.2	
			6.4		
			6.2		
			5.7		
			5.7	332.0	

+	HZ 337.74	-	E/Ex
1/4		5.9	
15		5.8	
cb		5.3	
t2		4.7	
N		4.7	333.0
		1770 ⁸⁴ Δ	19°02'00L
N		5.0	332.7
t3		5.2	
cb		5.7	
t1		6.0	
1/4		6.1	
Φ		5.9	331.8
1/4		6.4	
cb		6.4	
S		6.6	331.1
		Sec 1 40 ²⁹	
S		6.6	331.1
cb		6.4	
1/4		6.5	
Φ		5.9	331.8
1/4		6.0	
t7		6.1	
cb		5.6	
t2		5.2	
N		5.0	332.7
		Sec 2 = 00	see also t6

+	HZ 337.74	-	62
N		5.0	332.7
t3		5.3	
cb		5.6	
t1		6.0	
1/4		6.1	
Φ		5.9	331.8
1/4		6.4	
cb		6.4	
S		6.6	331.1
		ot 25	
S		6.4	331.3
cb		6.3	
1/4		6.5	
Φ		6.0	331.7
1/4		6.2	
t5		5.8	
cb		4.7	
t1		4.4	
N		4.5	333.2
T.P.	4.65	336.66	573 332.01
		ot 50	
N		3.4	333.2
cb		3.6	
t4		4.8	
1/4		4.8	
t3		4.8	

HZ.
336.66

ϕ	4.6	332.0
1/4	5.1	
t6	5.3	
cb	5.1	
t1	5.1	
45	4.8	331.8
	0775	
S	4.7	332.0
cb	4.8	
t1	5.1	
1/4	4.7	
t4	4.3	
ϕ	4.2	332.4
t4	4.4	
1/4	4.2	
t2	4.2	
cb	3.5	
N	3.0	333.6
	1400	
N	2.8	333.8
cb	3.0	
t3	3.7	
1/4	3.9	
ϕ	3.8	332.8
1/4	4.2	
t6	4.7	

HZ.
336.66

63

cb	4.6	
S	4.5	332.1
	H25	
S	3.9	332.7
t3	3.9	
cb	4.4	
1/4	4.3	
ϕ	3.8	332.8
1/4	3.9	
t4	3.8	
cb	3.0	
t1	2.4	
N	2.1	334.5
	1750	
N	2.5	134.1
cb	3.3	
t2	3.7	
1/4	3.8	
ϕ	3.7	332.9
1/4	4.1	
cb	4.1	
S	4.1	332.5
	1751 Walk on North	
	216	334.50
	1764 Auto Dixenway	
	2.45	334.21 ✓

2.5 Back

online

HI
33666 ✓

1x69. Auto Driveway on East

online	2.50	334.16	S
	1+75		+5
S	3.7	332.9	+3
cb	4.0		1/4
1/4	4.0		2
2	3.8	332.8	1/4
+5	3.9		+4
1/4	4.0		cb
+5	3.9		N
cb	3.4		
N	2.6	334.0	N

1x86. Walk on N. ✓

2 ⁸ back 2 ⁰ wide 2	2.32	334.34	+3
	2+00		cb
N	2.8	333.8	+2
cb	3.6		1/4
+2	3.9		2
1/4	4.2		1/4
2	4.0	332.6	+4
1/4	4.3		cb
+6	4.3		S
cb	4.2		
S	3.7	332.9	S

2x05 Walk on South

1.2 back 2 ⁰ wide 2	3.96	332.70 ✓	+3
			cb
			1/4

HI
33666

64

2+25

4.1	332.5
4.3	
4.6	
4.4	
4.2	332.4
4.3	
4.2	
4.0	
3.4	333.2

2+50

3.3	333.3
3.5	
4.0	
4.5	
4.7	
4.6	332.0
5.1	
5.2	
4.8	
4.3	332.3

2+25

4.8	331.8
4.7	
5.3	
5.8	

H.I.
336.66

¢	5.3	331.3	
1/4	5.8		
+4	5.8		
cb	9.9		
+2	4.1		
N	4.0	332.6	
	31.00		
N	4.1	332.5	
+1	4.2		
cb	6.0		
+2	6.6		
+6	6.6		
1/4	6.4		
¢	6.3	330.9	
1/4	6.7		
+3	6.8		
cb	6.4		
S	5.8	330.8	
	31.05	Auto de xerox on S	
online	¢ 6.40	330.26 ✓	
	31.25		
S	8.0	328.6	
cb	8.0		
1/4	8.0		
¢	7.5	329.1	
1/4	7.3		

H.I.
336.66

65

	7.4		
	6.6		
	5.3		
	5.0	331.6	
	31.50		
	6.3	330.3	
	6.6		
	7.9		
	9.2		
	10.1		
	10.1	326.5	
	10.9		
	11.3		
	11.5	325.1	
	31.57		
	12.9	323.7	
	12.3		
	12.3		
	12.0		
	11.1	325.5	
	10.5		
	9.6		
	8.9		
	7.4		
	6.9	329.7	

HZ
336.66
Sec A. 3157.0 S = 3162.0 N

+41 N Line 7.6 329.0

-38 8.1

-35 10.2

+30 10.9

-24 11.7

-20 11.6 325.0

-10 12.7

-4 12.9

S 12.8 323.8

Sec B. ⁴⁴² 3157.0 S = 3175.28 N

S 12.8 323.8

+6 12.6

+7 13.2

+10 13.3

+20 12.9 323.7

+25 12.5

+30 12.1

+37 11.6

+40 10.5

+42 9.6

+44 ⁸⁰N 9.1 327.6

TP. 540 337.59 447 332.19

check out on starting BM. 9.79 332.80

7-6-29 X-section Chestnut-Taylor to E.L.
J.C. Bliss Jackson on S.L. Chestnut
Dr. Robert 50' wide - 10' cbs - 30' Roadway
Parker

66

B.M. S.E.B.P. Chestnut-Taylor 7.82

+6.12

X 1394

E.L. Taylor = 0.400 - Pared

S 5.7 8.0

TP cb 5.76 7.98 1

G 6.62 7.92

F 6.22 7.72

G 6.15 7.79

TP cb 5.48 8.46 1

N 5.4 8.5

0.425

N 5.7 8.2

cb 5.7 8.2

TV 6.0 7.9

F 5.7 8.2

cb 6.4 7.5

+1 5.9 8.0

S 5.8 8.1

0.450

S 5.4 8.5

+9. 5.6 8.3

cb 6.0 7.9

F 5.4 8.5

+13 5.7 8.2

T 13.94

cb	5.4	8.5
N	5.5	8.4
0475		
N	5.2	8.7
cb	5.1	8.8
+v	5.3	8.6
f	5.1	8.8
+14	5.8	8.1
cb	5.1	8.8
S	5.4	8.5
1400		
S	5.0	8.9
cb	4.9	9.0
t	5.3	8.6
f	4.7	9.2
+13	4.9	9.0
cb	4.6	9.3
N	5.1	8.8
1425		
N	4.4	9.5
cb	4.2	9.7
+7	4.7	9.2
f	4.2	9.7
+14	4.8	9.1
cb	4.3	9.6

T 13.94

67

S	4.6	9.3
1450		
S	4.1	9.8
cb	3.8	10.1
+1	4.0	9.9
d	3.5	10.4
+13	4.1	9.8
cb	3.5	10.4
N	4.0	9.9
1475		
N	2.9	11.0
+7	2.7	11.2
+8	3.1	10.8
cb	3.1	10.8
f	3.0	10.9
+14	3.7	10.2
cb	3.4	10.5
S	3.5	10.4
2400		
S	3.0	10.9
cb	2.6	11.3
+1	3.0	10.9
f	2.1	11.8
cb	1.8	12.1
N	1.5	12.4

1394

2+25

N	0.0	13.9
cb	0.4	13.5
f	1.1	12.8
cb	2.0	11.9
S	2.0	11.9

2+50

S	1.6	12.3
cb	0.7	13.2
f	0.1	13.8
T.P		-0.51 13.43

41038

23.81

cb	9.0	14.8
N	8	15.7

2+75

N	6.8	17.0
cb	7.3	16.5
f	8.4	15.4
cb	9.4	14.4
S	9.7	14.1

3+00

S	8.8	15.0
cb	8.8	15.0
f	8.4	15.4
cb	7.8	16.0

2381

68

N	6.3	17.5
---	-----	------

3+12

N	3.6	20.2
cb	5.0	18.8
f	6.4	17.4
cb	7.7	16.1
S	8.8	15.0

3+26⁴⁵ - E.L. Jackson on S.W. Chestnut - Lovdens Notes

S	6.7	17.1
cb	5.7	18.1
f	4.1	19.7
cb	2.1	21.7
N	1.0	22.8

B.M. on pole S.W. on Jackson Chestnut - 6.75

T.P. -12.42 11.39

+226 13.65

B.M. S.E. B.P. Chestnut + Taylor	-5.82	7.83
Correct		7.82

8-1-29
 C. Bliss
 Drebert
 Roney
 X-section Chestnut from B.C. at
 1147 from S.W. Taylor to E.C. about 20'
 West of Wall at Entrance to Presidio Hills Park

50' wide 10' cbs - 30' Roadway

B.M. S.E. B.P. Chestnut & Taylor

7.82

+11.48

T 19.30

1147-B.C. - $\Delta 138^{\circ}00'$ - R. 135' - ϕ

Divided into 13 Equal Parts

W	9.9	94
cb	9.6	97
ϕ	9.0	103
cb	9.1	102
E	9.5	9.8
1		
E	9.1	102
cb	8.4	109
ϕ	8.2	111
cb	8.7	106
W	8.7	106
2		
W	8.0	113
cb	7.4	119
ϕ	7.1	122
cb	7.5	11.8
E	7.6	11.7

Plotted 11/18-29 - C.B.H.

Note - E = Inside of Curve
 W = Outside of Curve

T 19.30

69

3		
Out 10	6.7	12.6
E	7.0	12.3
cb	5.8	13.5
ϕ	5.5	13.8
cb	5.7	13.6
W	5.9	13.4
4		
W	3.5	15.8
cb	3.4	15.9
ϕ	3.4	15.9
cb	3.7	15.6
E	5.3	14.0
Out 10	5.5	13.8
5		
Out 10	4.0	15.3
E	3.4	15.9
cb	1.3	18.0
ϕ	0.7	18.6
cb	0.7	18.6
W	0.8	18.5

B.M. Nails in Pole N.W. Chestnut & Jackson - 348 15.82
 T.P.

+11.10 30.28

-0.12 19.18

π 30.28

6

W	10.1	20.2
+4	9.4	20.9
cb	9.0	21.3
♀	8.8	21.5
cb	9.4	20.9
E	12.0	18.3
Out 5	13.7	16.6
Out 10	13.8	16.5

7

Out 10	12.1	18.2
E	9.8	20.5
cb	6.4	23.9
♀	5.9	24.4
+10	6.0	24.3
+13	6.7	23.6
cb	5.9	24.3
W	3.9	26.4

8

W	11.2	31.5
cb	1.2	29.0
+6	3.0	27.3
+10	2.5	27.8
♀	2.5	27.8
cb	3.5	26.8
E	7.1	29.2

 π 30.28

70

Out 10	9.7	20.6
Out 15	10.3	20.0
	9	
Out 15	7.5	22.8
Out 10	7.2	23.1
E	3.6	26.7
cb	0.6	29.7
T.P		-0.24 30.04

+11.88

 π 4.92

♀	11.1	30.8
+10	10.8	31.1
cb	9.9	32.0
+7	7.9	34.0
W-Base Cut	7.3	34.6
	10	
W-Top Bank	12.6	44.5
+4	0.4	41.5
+5-Base cut	5.9	36.0
+8	7.3	34.6
cb	7.5	34.4
+3	8.6	33.3
+6	8.0	33.9
♀	8.5	33.4
cb	9.7	32.2

T 41.92

E	13.3	28.6
Out 5	15.2	26.7
Out 10	15.3	26.6
	11	
Out 10	12.8	29.1
E	11.0	30.9
cb	6.8	35.1
¢	5.6	36.3
+10	5.6	36.3
+13	6.2	35.7
cb	5.1	36.8
+4	4.8	37.1
+5 - Top Bank	+0.4	42.3
W	+3.2	45.1
	12	
W	+2.7	44.6
+5 - Top Bank	+1.0	42.9
cb - Base	2.4	39.5
+3	3.5	38.4
+5	2.7	39.2
¢	2.9	39.0
cb	3.9	38.0
E	7.5	34.4
Out 10	9.6	32.3

T 41.92

71

F.C.

Out 10	5.5	36.4
E	2.3	39.6
+6	0.8	41.1
cb	0.8	41.1
¢	0.1	41.8
T.P.		-0.13 41.79
	+6.64	T 48.43
+10	6.3	42.1
+13	7.0	41.4
cb	5.9	42.5
W	2.9	45.5
B.M. Stub at Base South Alvar		
Entrance to Presidio Park		
T.P.		-2.38 46.05
		-13.15 35.28
	+0.21	35.49
T.P.		-13.23 22.26
	+0.35	22.61
B.M. N.W. Mark in Pale Jackson + Chestnut		
		-6.74 15.87
		Correct 15.82

π 2667

0450

S	18	24.9
cb	5.9	20.8
+v-Base cut	8.0	18.7
⊥	8.7	18.0
+10	8.8	17.9
cb	11.1	15.6
N	12.5	14.2

0456- Beginning of fence

on Northside- For levels inside fence see
Koudeis Notes- Book 129/A- Pages- 43-47

0475

N cb + 5 = fence	8.8	17.9
⊥	9.0	16.7
+13-Base cut	8.7	18.0
cb	6.4	20.3
S	2.7	24.0

1400

S	2.7	24.0
cb	5.7	21.0
+1-Base cut	9.0	17.7
⊥	9.3	17.4
+9- Fence	9.1	17.6

1425

Fence	9.2	17.5
+9=⊥	9.6	17.1

π 2667

73

+14	9.2	17.5
cb	5.5	21.2
S	3.8	22.9

1450

S	3.7	23.0
+9	6.0	20.7
cb - Base cut	9.5	17.2
⊥	9.9	16.8
+9- Fence	9.6	17.1

1475

Fence	9.7	17.0
+9=⊥	10.3	16.4
cb-Base cut	10.1	16.6
+2	6.8	19.9
S	3.3	23.4

2408.53- L Point- see sketch

S	3.9	22.8
cb	9.3	17.4
+1- Base cut	10.9	15.8
⊥	11.2	15.5
+9- Fence	11.1	15.6

0400- L Pt. See sketch

Fence	11.2	15.5
+9=⊥	11.0	15.7
+13-Base cut	10.7	16.0

π 26.67

cb	9.0	17.7	
S	4.0	22.7	
	0+25		
S	2.9	24.8	
cb	8.4	18.3	
+4-Base cut	11.4	15.3	
¢	11.6	15.1	
+10=Fence	11.4	15.3	
	0+50		
Fence	11.7	15.0	
+12=¢	11.9	14.8	
+13-Base cut	11.8	14.9	
cb	9.7	17.0	
S	3.3	23.4	
T.P.		-11.85	14.82
	+ 9.83	24.65	
Note Fence ends at about 0+40			
	0+75		
S	0.4	24.2	
cb	6.3	18.3	
+5-Base cut	9.6	15.0	
¢	10.0	14.6	
cb	10.5	14.1	
N	11.5	13.1	
	1+00		
N	11.5	13.1	

 π 24.65

74

cb	10.7	14.0	
¢	10.2	14.4	
cb-Base cut	9.7	15.0	
S	4.6	20.1	
	1+25		
S	6.4	18.3	
+4-Base cut	9.2	15.5	
cb	9.9	14.7	
¢	10.2	14.4	
cb	10.5	14.1	
N	12.0	12.6	
	1+39= P.C. Curve on North side		
N	12.4	12.3	
cb	10.4	14.3	
¢	10.2	14.5	
cb	9.8	15.7	
S	9.1	15.6	
	1+50		
S	8.8	15.9	
cb	9.5	15.2	
¢	10.1	14.6	
cb	10.4	14.2	
N- on curve	12.3	12.3	

π 2465

1475

Out 13-07 Curve

N	11.0	213.7
cb	10.8	213.9
♀	10.2	14.5
♂	9.9	14.8
+5	10.1	14.5
cb	9.4	15.3
S	8.1	16.6

1488 = W.L. Chestnut on South

S	8.0	16.7
cb	9.5	15.2
♀	9.8	14.9
cb	10.1	14.5
N	10.8	13.9

Section along W.L. Chestnut from 1488 on

S.L. to 2415 on N.H.

N	10.7	14.0
cb	10.0	14.7
♀	9.5	15.2
+13	10.3	14.4
cb	9.7	14.5
S	7.8	16.9

π 2465

75

Profile on Proposed curve

- See sketch
Page 12
Divided into
7 parts

8c	12.5	12.2
1	12.0	12.7
2	12.4	12.3
3	12.3	12.4
4	12.5	12.2
5	12.8	11.9
6	14.1	10.6
EC	14.4	10.3

B.M. N.W. Nails Chestnut & Jackson -880 15.85
Correct 15.82

For ground covered in
X-section see Print Next Page

Solid Red Line denotes
X-section Taken
Dotted Red Line Show
existing grading

notes

show



76

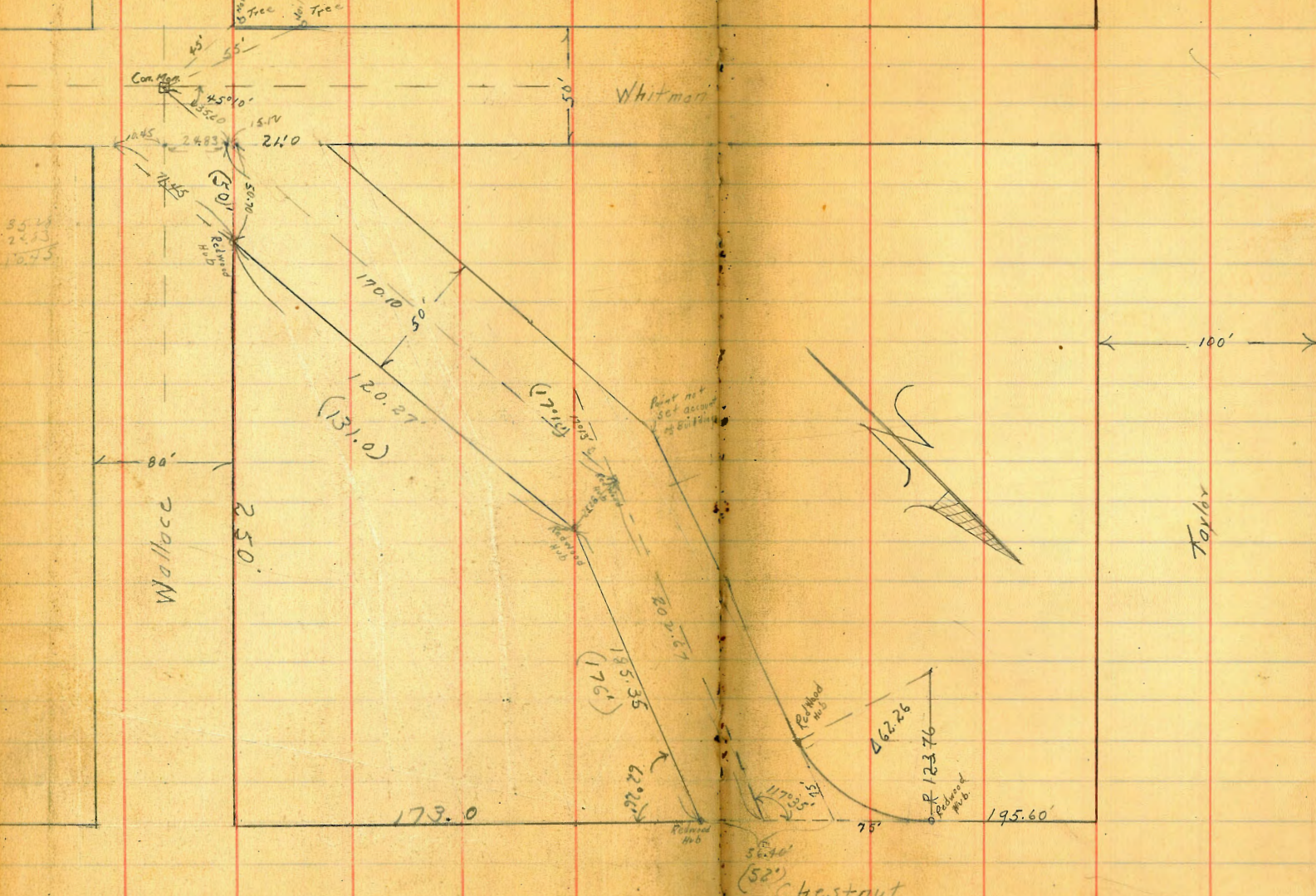
77

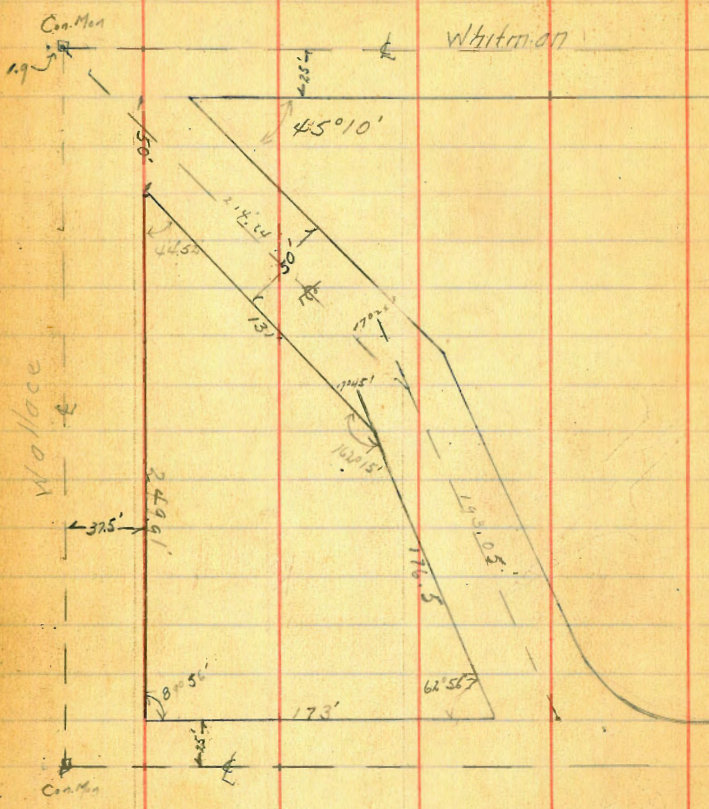
→

8-8-29
J.C. Bliss
Drebert
Rooder

Survey of
Not to Scale

Jackson Street





Mead St B.M.s.

indexed
C.S.R.

Miller K.J.

	385.59				
B.M. B.P. N.W. Iowa to N+Meade	3.06	382.53	=	382.67	
	385.59				
B.M. B.P. N.W. 32 nd + Meade	5.18	380.41	=	380.52	
	381.66				
B.M. B.P. N.W. Bancroft Meade	4.30	377.36	=	377.49	
	383.65				
B.M. B.P. N.W. 33 rd + Meade	4.69	379.94	=	379.05	
	383.65				
B.M. B.P. N.W. Felton, + Meade	2.40	381.25	=	281.37	
TP.	3.77	381.20		4.22	377.43
S.W. 32 nd					
B.M. B.P. + El Cajon.	8.17	382.32		7.05	374.15 = 374.25
S.W. 34 th					
B.M. B.P. El Cajon	7.60	386.46		3.46	378.86 = 378.92
N.W. 34 th					
B.M. B.P. Meade	3.14	287.30		2.34	384.12
N.W. Felton + Meade				6.05	381.25 C.M.
N.W. 35 th					
B.M. B.P. + Meade				4.40	386.81 = 386.817
N.W. Wilson					
B.M. B.P. + Meade				3.52	388.20
N.W. Cherokee					
B.M. B.P. + Meade				6.93	384.14 = 384.167

Meade Ave Beach Levels
39th St. to Iowa St

April 16-47
S. W. 32nd
Meade
Wade
4/16/47

79

B.M.	6.86	376.61		369.75	N.W. B.P. Meade + 39 th Page 40
B.M.	5.92	380.22	2.31	374.30	N.W. B.P. Meade + 38 th 374.38
B.M.	8.33	385.62	2.93	377.29	N.W. B.P. Meade + Wade + 38 th 377.38
B.M.	6.44	390.68	1.38	384.24	N.W. B.P. Meade + Cherokee 384.14 P. 47
TP	5.66	392.67	3.67	387.01	
B.M.	4.22	392.69	4.20	388.47	N.W. B.P. Meade + Wade 388.20
TP	4.63	392.09	5.23	387.46	
B.M.	5.49	392.66	4.92	387.17	N.W. B.P. Meade + 35 th 386.31 Page 35
TP	4.03	390.81	5.88	386.78	
B.M.	3.14	387.38	6.57	384.24	N.W. B.P. Meade + 34 th 384.12
B.M.	3.64	384.88	6.14	381.24	N.W. B.P. Meade + Felton 381.25
B.M.	5.02	384.05	5.85	379.03	N.W. B.P. Meade + 33 rd 378.96
TP	4.29	382.46	5.88	378.17	
B.M.	6.12	383.56	5.02	377.44	N.W. B.P. Meade + Bancroft 377.86
B.M.	6.15	386.61	3.10	380.46	N.W. B.P. Meade + 32 nd 380.41
B.M.			3.90	382.71	N.W. B.P. Meade + Iowa St. 382.55

B.M. S.W. Pole

	4.69	355.16	350.47	
<u>N Line</u>				
0+00		5.11	350.04	349.31
0+50.3		5.02	350.14	349.04
1+00.6		3.47	351.67	348.76
1+50.9		2.29	352.87	348.48
2+01.2		4.12	351.04	348.20
<u>S. Line</u>				
0+00 = P.C. (C. 0.58)		4.88	350.28	349.70
0+44.37		3.45	351.71	349.50
0+88.7		2.69	352.47	349.30
1+33.11		1.23	353.93	349.10
1+77.5		2.62	352.54	348.90
T.P.	0.16	351.03	4.29	350.87
2+21.8		0.03	352.00	348.70
2+66.2 = E.L.		4.87	346.16	348.50
B.M. on Pipeline Support.		11.52	339.51	

DIRECTIONS FOR USE OF TABLES

TABLE No. 1.

Distance of slope stake from side or shoulder stake for any width roadway, slope 1/2 to 1/4. If ground is nearly level, the cut or fill at stake is located by the double entry method in left column and top row. The number in body of table in same row and column gives distance from side stake to slope stake. If ground is not nearly level, lower target by the amount if cut, elevation if fill. Add this amount to cut or fill and distance in table. Set target at this point and line of sight should cut target.

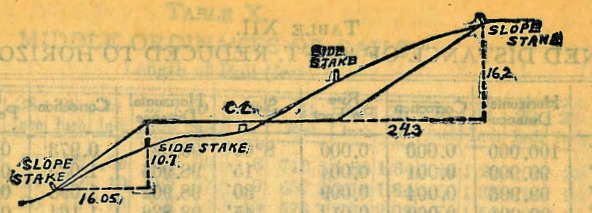
TABLE No. 2.

To find Tangent and External for curve of any other degree, divide by degree of curve and add connection found in column of connections. Degree of curve with a given L may be found by dividing tangent (or external), opposite L by given tangent (or external).

The distance from a point on the tangent to the curve is very nearly the square of the tangent length divided by twice the radius.

IMPROVED TABLES AND INFORMATION

3553
6000
24.07



DISTANCES FROM SIDE STAKES FOR CROSS-SECTIONING.

Slope 1 1/2 to 1. Roadway of ANY WIDTH.

	0	.1	.2	.3	.4	.5	.6	.7	.8	.9	
0	0.00	0.15	0.30	0.45	0.60	0.75	0.90	1.05	1.20	1.35	0
1	1.50	1.65	1.80	1.95	2.10	2.25	2.40	2.55	2.70	2.85	1
2	3.00	3.15	3.30	3.45	3.60	3.75	3.90	4.05	4.20	4.35	2
3	4.50	4.65	4.80	4.95	5.10	5.25	5.40	5.55	5.70	5.85	3
4	6.00	6.15	6.30	6.45	6.60	6.75	6.90	7.05	7.20	7.35	4
5	7.50	7.65	7.80	7.95	8.10	8.25	8.40	8.55	8.70	8.85	5
6	9.00	9.15	9.30	9.45	9.60	9.75	9.90	10.05	10.20	10.35	6
7	10.50	10.65	10.80	10.95	11.10	11.25	11.40	11.55	11.70	11.85	7
8	12.00	12.15	12.30	12.45	12.60	12.75	12.90	13.05	13.20	13.35	8
9	13.50	13.65	13.80	13.95	14.10	14.25	14.40	14.55	14.70	14.85	9
10	15.00	15.15	15.30	15.45	15.60	15.75	15.90	16.05	16.20	16.35	10
11	16.50	16.65	16.80	16.95	17.10	17.25	17.40	17.55	17.70	17.85	11
12	18.00	18.15	18.30	18.45	18.60	18.75	18.90	19.05	19.20	19.35	12
13	19.50	19.65	19.80	19.95	20.10	20.25	20.40	20.55	20.70	20.85	13
14	21.00	21.15	21.30	21.45	21.60	21.75	21.90	22.05	22.20	22.35	14
15	22.50	22.65	22.80	22.95	23.10	23.25	23.40	23.55	23.70	23.85	15
16	24.00	24.15	24.30	24.45	24.60	24.75	24.90	25.05	25.20	25.35	16
17	25.50	25.65	25.80	25.95	26.10	26.25	26.40	26.55	26.70	26.85	17
18	27.00	27.15	27.30	27.45	27.60	27.75	27.90	28.05	28.20	28.35	18
19	28.50	28.65	28.80	28.95	29.10	29.25	29.40	29.55	29.70	29.85	19
20	30.00	30.15	30.30	30.45	30.60	30.75	30.90	31.05	31.20	31.35	20
21	31.50	31.65	31.80	31.95	32.10	32.25	32.40	32.55	32.70	32.85	21
22	33.00	33.15	33.30	33.45	33.60	33.75	33.90	34.05	34.20	34.35	22
23	34.50	34.65	34.80	34.95	35.10	35.25	35.40	35.55	35.70	35.85	23
24	36.00	36.15	36.30	36.45	36.60	36.75	36.90	37.05	37.20	37.35	24
25	37.50	37.65	37.80	37.95	38.10	38.25	38.40	38.55	38.70	38.85	25
26	39.00	39.15	39.30	39.45	39.60	39.75	39.90	40.05	40.20	40.35	26
27	40.50	40.65	40.80	40.95	41.10	41.25	41.40	41.55	41.70	41.85	27
28	42.00	42.15	42.30	42.45	42.60	42.75	42.90	43.05	43.20	43.35	28
29	43.50	43.65	43.80	43.95	44.10	44.25	44.40	44.55	44.70	44.85	29
30	45.00	45.15	45.30	45.45	45.60	45.75	45.90	46.05	46.20	46.35	30
31	46.50	46.65	46.80	46.95	47.10	47.25	47.40	47.55	47.70	47.85	31
32	48.00	48.15	48.30	48.45	48.60	48.75	48.90	49.05	49.20	49.35	32
33	49.50	49.65	49.80	49.95	50.10	50.25	50.40	50.55	50.70	50.85	33
34	51.00	51.15	51.30	51.45	51.60	51.75	51.90	52.05	52.20	52.35	34
35	52.50	52.65	52.80	52.95	53.10	53.25	53.40	53.55	53.70	53.85	35
36	54.00	54.15	54.30	54.45	54.60	54.75	54.90	55.05	55.20	55.35	36
37	55.50	55.65	55.80	55.95	56.10	56.25	56.40	56.55	56.70	56.85	37
38	57.00	57.15	57.30	57.45	57.60	57.75	57.90	58.05	58.20	58.35	38
39	58.50	58.65	58.80	58.95	59.10	59.25	59.40	59.55	59.70	59.85	39
40	60.00	60.15	60.30	60.45	60.60	60.75	60.90	61.05	61.20	61.35	40
41	61.50	61.65	61.80	61.95	62.10	62.25	62.40	62.55	62.70	62.85	41
42	63.00	63.15	63.30	63.45	63.60	63.75	63.90	64.05	64.20	64.35	42
43	64.50	64.65	64.80	64.95	65.10	65.25	65.40	65.55	65.70	65.85	43
44	66.00	66.15	66.30	66.45	66.60	66.75	66.90	67.05	67.20	67.35	44
45	67.50	67.65	67.80	67.95	68.10	68.25	68.40	68.55	68.70	68.85	45
46	69.00	69.15	69.30	69.45	69.60	69.75	69.90	70.05	70.20	70.35	46
47	70.50	70.65	70.80	70.95	71.10	71.25	71.40	71.55	71.70	71.85	47
48	72.00	72.15	72.30	72.45	72.60	72.75	72.90	73.05	73.20	73.35	48
49	73.50	73.65	73.80	73.95	74.10	74.25	74.40	74.55	74.70	74.85	49
50	75.00	75.15	75.30	75.45	75.60	75.75	75.90	76.05	76.20	76.35	50

Computed by L. Leland Locke.

10.00
6.12

76.12
0.51

15.61
-10.38

25.99
12.42

13.57
2.26

15.83
5.82

10.01

89° 56'
44° 52'
62° 56'

197 44'

359 00
197 44

162 16

To find

247.52
 51.83
 742.56
 198016
 24752
 123760
 128289616

180
 94
 274

ENGINEERING DEPARTMENT
 CITY OF SAN DIEGO
 CALIFORNIA

89.57
 45.10
 197.33
 17.16

247.52
 256
 526
 526
 760
 28289512

62057
 125.58
 12552

2418
 28412
 287130
 281125
 2100

38166
 3100
 377.06

385.59
 3.06
 382.53

4.41

367
 371
 714
 711
 712

340
 40
 2796
 3.98
 786.5
 53.5
 840.0

374.15
 7.14
 381.33
 2.44
 378.85

1425
 341.2
 274.25
 6.95
 177
 63
 241

8956
 44052
 6651
 20144

664

1220
 358.60
 20144
 158.16

407

22.44

Lantana + Euclid NEBP 39096

1666
 125
 428

56.40
 40.00

403
 3.40
 0.63

143.96
 7876
 67.20
 980
 56.40
 56.40

528
 403 +
 1.25

4.03
 331
 0.72

