

1297

1297

LEVEL BOOK

No. 380F

1268
ENGINEERING DEPARTMENT,
CITY OF SAN DIEGO,
CALIFORNIA.

Our Leather Bound Engineers Note Books are carried in the following rulings:

- No. 380 LEVEL BOOK. Left and Right Hand Page the same as Left Hand Page of this Book.
- No. 382 FIELD BOOK. Left Hand Page as in this Book, Right Hand Page 4 x 4 to the inch, Center Line Red.
- No. 384 MINING TRANSIT BOOK. Left Hand Page as in this Book, Right Hand Page 8x8 to the inch, Center Line Red.
- No. 385 FIELD BOOK. Left Hand Page as in this Book, Right Hand Page 8 vertical and 4 horizontal lines to the inch, Center Line Red.

We also carry the Note Books listed above, bound in extra strong Fabri-Hide (otherwise the same quality of book), which can be furnished at a somewhat lower price.

In ordering Fabri-Hide covered books, add the letter "F" to catalog number.

THE FREDERICK POST CO.
ENGINEERING and DRAFTING SUPPLIES
IRVING PARK STATION
CHICAGO, ILL.

MICROFILMED

DEC 22 1964

INDEX

	Page
X sec. Alley Block 5 Crittendens Add.	2
" " Meade Ave. Park Blvd to Louisiana	5
" " 51 st St. EICAJON - 200' South	11
" " Santa Cruz Santa Barbara to 21 st Termination	12
" " Alley 96 MANNASSET Schiller sub of PL 1157	39
" " Opening of 33 rd St from B St to A St.	44
Sewer in Blk 7, Rosville Hts & Akron St	49
Curb Elev. Venice St. Coronado to Del Monte	50
Jutter St. Pringle to East of Keating	52
Alley 104 Central Park	59
Bush St. Goldfinch to East end	62

Levels for Stucco House
to be Moved 10-1-41.
See P. 69

h.T.

North
Line
House

Baseline

RT.

ground at Cor.

on stub
5th Cor.

STUB
N.W. Cor.

0 + 28.2 = W.K. House

$\frac{9.5}{47}$ $\frac{7.2}{42.2}$
274.21 276.51

$\frac{6.99}{42.2}$ $\frac{6.0}{39}$ $\frac{5.7}{36.2}$ $\frac{5.6}{30}$ $\frac{5.3}{20}$ $\frac{5.1}{10}$ 4.73 $\frac{4.50}{279.21}$
276.72 277.71 278.01 278.11 278.41 278.61 278.98

0 + 21.15

$\frac{9.3}{47}$ $\frac{8.5}{43}$
274.41 275.21

$\frac{7.3}{42.2}$ $\frac{6.2}{40}$ $\frac{5.6}{36.2}$ $\frac{5.5}{30}$ $\frac{5.3}{20}$ $\frac{5.1}{10}$ 4.5
276.41 277.51 278.11 278.21 278.41 278.61 279.21

0 + 14.10

$\frac{9.1}{47}$
274.61

$\frac{6.3}{42.2}$ $\frac{5.8}{40}$ $\frac{5.5}{36.2}$ $\frac{5.4}{30}$ $\frac{5.2}{20}$ $\frac{5.0}{10}$ 4.4
277.41 277.91 278.21 278.31 278.51 278.71 279.31

0 + 07.05

$\frac{8.4}{47}$
275.31

$\frac{6.0}{42.2}$ $\frac{5.8}{41}$ $\frac{5.6}{36.2}$ $\frac{5.4}{30}$ $\frac{5.1}{20}$ $\frac{4.9}{10}$ 4.3
277.71 277.91 278.11 278.31 278.61 278.81 279.41

2400 = F.K. House

$\frac{8.2}{47}$
275.51

$\frac{6.2}{42.2}$ $\frac{5.7}{41}$ $\frac{5.4}{36.2}$ $\frac{5.2}{30}$ $\frac{5.1}{20}$ $\frac{4.7}{10}$ 4.25 $\frac{4.90}{279.71}$
277.51 278.01 278.11 278.51 278.61 279.01 279.46
STUB
N.E. Cor.

7.P. 2.89 283.71 7.02 280.82 10th
SEBP 5.83 287.84 282.01 Robinson

283.71
HI

50th edge
7' Cor. Drive

11-14-28 X-section Alley Block 5
 J.C. Bliss Crittendens Add. - 6th - 7th and
 Drebert Robinson to University 20' wide
 Raurer

T 285.80
~~285.78~~

2

ck by Profile

B.M. N.W. B.P. Sixth & Robinson 285.51

+0.29 .80

T 285.78

N.W. Robinson - Paved = 0+00

0+90 - 10' Garage East side

W Tp. cb 4.71 281.09
 G 5.06 280.74
 ♀ 5.31 280.49
 G 5.72 280.58
 E Tp. cb 5.09 280.71

Shot at ♀ of concrete apron in alley 4.92 280.88 ✓

1+00

E . 4.5 281.3
 +1.5 5.4 280.4
 ♀ 4.5 281.3
 +8.5 5.3 280.5
 +9 4.6 281.2
 W 4.5 281.3

1+20
 ♀ 12' Garage 0.6' in alley from EL

On concrete floor 4.74 281.06 ✓

1+25

W 4.6 281.2
 +1 5.2 280.6
 ♀ 4.5 281.3
 +7 5.1 280.7
 E 4.7 281.1

E 4.7 281.1

♀ 4.5 281.3

W 4.7 281.1

0+50

1+50

0+67 = 3' Walk 1' in alley from EL

07 EL 4.64 281.16

+2 5.0 280.8

1+70 ♀ 16' Garage 1' in Alley from EL
 E-concrete floor garage 6.40 280.99 ✓

Plotted 11-27-28 - C.B.H.

T.P. -4.50 281.28³⁰

+6.09
 T 281.3³⁹

T 281.37⁹

♀	6.3	2811
W	6.5	2809
	2+11	
W	6.0	2814
♀	6.0	2814
E-♀ 16' Double Garage 0.3' in Alley Concrete floor 6.06		281.33 ✓
	2+30	
E	6.2	281.2
♀	6.0	2814
W-♀ 16' Double Garage - Dirt + floor 6.1		281.3 ✓
	2+50	
Out 4' ♀ 8' Garage - Concrete floor 5.46		281.93 ✓
W	6.0	2814
♀	6.0	2814
E-♀ 14' Garage 0.5' in alley Concrete floor 6.19		281.20 ✓
	2+59	
♀ 8' Garage 4' W of W.L. Concrete floor 5.44		281.95 ✓
	2+68	
♀ 8' Garage 4' W of W.L. Concrete floor 5.45		281.94 ✓
	2+75	
E	5.9	281.5
♀	5.8	281.6
W	5.7	281.7

T 281.37⁹

3

	2+88	
♀ 12' Garage at E.L. Concrete floor 5.65		281.74 ✓
	3+00	
W	5.4	2820
♀	5.5	281.9
E	4.9	282.5
	3+25	
E	4.8	282.6
♀	5.1	282.3
W	4.8	282.6
	3+31	
4.7' E of ♀ Telephone Co. Man hole		
Shot on Top Man hole 4.78		282.61 ✓
	3+35	
♀ 18' Double Garage at E.L. Wood floor 5.38		282.01 ✓
	3+50	
W	4.6	282.8
♀	4.7	282.7
E	4.8	282.6
	3+75	
E	4.0	283.4
♀	4.3	283.1
W	4.3	283.1
	4+00	
W	4.0	283.4
E	4.3	283.0

T 287.3⁹X

4

E 3.9 283.5

4125

E 3.9 283.5

♀ 3.9 283.5 ?

W

444.6 = S.L. University

W - cb + paving flush 324 284.15

♀ 345 283.94

E - cb + paving flush 330 284.09

T.P. -3.37 284.02

4123 288.23⁵

T.P. -4.08 284.15⁷

+5.24 289.39⁴¹

B.M. N.W. B.P. 8th + University -4.96 284.43⁵

284.43

B.M. N.W. B.P. 6th + Robinson 285.51

+0.80

T 286.31

shots in gutter along A cb line Robinson

alley Block 5 Crittendens Add.

W 5.96 280.35

♀ 6.17 280.14

E 6.46 279.85

11-15-28 Curb levels - Meade Ave - Park Blvd.
 J.C. Bliss to Louisiana 80' Wide
 Drebert 14' cbs
 Rauner 13' 1/4"

B.M. N.W.B.P. Meade + Park Blvd. 342.01
 +5.36

347.37

Section along paving on E.L. Park Blvd from S cb line of Meade to Sub Line Mission Ave which is 13/4' N of N cb line of Meade

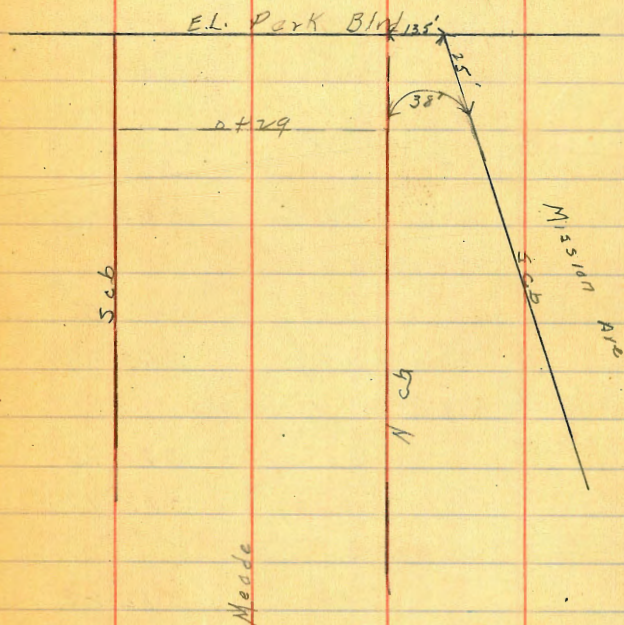
E.L. Park Blvd = 0+00

Sub + Paving finish

Flowline 5' x 2' Culvert around S.E. Return

E.L. Park	7.83	339.54
0+05	7.31	340.06
1/4	6.52	340.85
1/2	6.18	341.19
3/4	5.80	341.57
Sub	5.55	341.82
Intersection E.L. Park + Sub Mission	5.27	342.10
End of return on Mission		
Cb	4.80	342.57
G	5.26	342.11
1/2 N.E. Return	4.60	342.77
	0+29	
N	4.52	342.85
S	6.50	340.87

Cb Plotted 11-28-28 - C.B.A.



T 347.37

0+50

S 6.25 341 12

N 4.33 343 04

0+75

N 4.14 343 23

S 5.24 341 43

1+00

S 5.56 341 81

N 3.90 343 47

1+25

N 3.66 343 71

S 5.22 342 15

1+50

S 4.85 342 52

N 3.40 343 97

1+70 = W.L. 10' Alley on South

N 3.17 344 20

S 4.60 342 77

1+80 = E.L. Alley

S 4.49 342 88

N 3.14 344 23

2+00

N 2.85 344 52

S 4.27 343 10

2+25

S 3.16 343 61

T 347.37

6

N 2.66 344 71

2+50

N 2.37 345 00

S 3.53 343 84

2+75

S 3.23 344 14

N 2.30 345 07

3+00 = W.L. Georgia - Paved

N 1.83 345 54

G 2.45 344 92

1/4 2.23 345 14

1/4 2.27 345 10

1/4 2.63 345 74

G 3.45 343 92

S 2.85 344 52

E.L. Georgia = 0+00 -

S 3.84 343 53

G 4.48 342 89

1/4 3.76 343 61

1/4 3.40 343 97

1/4 3.29 344 08

G 3.36 344 01

N 2.85 344 52

0+25

N 4.13 343 24

π 347.37

S	5.15	342.22
	0+50	
S	6.45	340.92
N	5.45	341.92
	0+75	
N	7.15	340.22
S	8.10	339.27
	1+00	
S	10.23	337.14
N	9.20	338.17
	1+40 = W.L. Alley	
N	13.20	334.17
T.O		-12.29 335.08
	+0.01	

π 335.09

S	2.07	333.02
	1+60 = E.L. Alley	
S	4.88	330.21
N	3.91	331.18
	2+00	
N	7.21	325.88
S	10.12	324.97
T.O		-12.38 322.11
	+0.48	323.19

π 323.19

7

	2+25	
S	1.72	321.47
N	0.71	322.48
	2+50	
N	4.19	319.00
S	5.00	318.19
	2+75	
S	8.43	314.76
N	7.47	315.72
	3+10 = W.L. Florida	
N	12.18	311.01
£ N.W. Return	12.22	310.97
M.L. Meade	12.20	310.99
S	13.17	310.02
£ S.W. Return	13.16	310.03
S.L. Meade	13.15	310.04
T.P.		-11.80 311.39
	4+42	
	π 316.31	
	E.L. Florida = 0+00	
S	7.29	309.02
£ S.E. Return	7.20	309.11
S.L. Meade	7.16	309.15

π 316.31

N	6.34	309.97
± N.E. Return	6.32	309.99
N.L. Meade	6.28	310.03

0+25

N	6.22	310.09
S	7.18	309.13

0+50

S	6.87	309.44
N	5.91	310.40

0+75

N	5.78	310.59
S	6.76	309.55

1+00

S	6.50	309.81
N	5.43	310.88

1+25

N	5.15	311.16
S	6.22	310.09

1+50 = W.L. Alley

S	6.00	310.31
N	4.94	311.37

1+75 = E.L. Alley

N	3.96	312.35
S	5.01	311.30

π 316.31

8

2+00

S	3.68	312.63
N	2.73	313.58

2+25

N	1.55	314.76
S	2.52	313.79

2+50

S	1.32	314.99
N	0.26	316.05

T.P.

-0.26 316.05

+1303

π 329.08

2+75

N	11.96	317.12
S	12.90	316.18

3+10 = W.L. Alabama - Paved

S	11.24	317.84
E	11.62	317.46

44	11.10	317.98
----	-------	--------

E	10.84	318.24
---	-------	--------

44	10.76	318.32
----	-------	--------

E	10.76	318.32
---	-------	--------

N	10.24	318.84
---	-------	--------

E.L. Alabama = 0+00

N	9.08	320.00
---	------	--------

E	9.67	319.41
---	------	--------

44	9.55	319.53
----	------	--------

π 329.08

Q	9.63	319.45
44	9.94	319.14
G	10.66	318.42
S	10.00	319.02
	0.25	
S	8.59	320.49
A	7.73	321.35
	0.50	
N	6.12	322.96
S	7.14	321.94
	0.75	
S	5.70	323.38
N	4.80	324.28
	1.00	
N	3.32	325.76
S	4.86	324.72
	1.40 - W.L. Alley	
S	1.98	327.10
N	0.99	328.09
	1.60 - E.L. Alley	
N	0.14	328.94
S	1.02	328.06
T.P		- 0.53 328.55
	9.67	338.22

π 338.22

9

	24.00	
S	8.86	329.36
N	8.06	330.16
	2.25	
A	7.50	330.72
S	8.21	330.01
	2.50	
S	7.51	330.71
N	6.90	331.32
	2.75	
N	6.33	331.89
S	6.86	331.36
	3.00 - W.L. Mississippi	
S	6.20	332.02
Q	S.W. Return	6.19 332.03
	S.L. Meade	6.20 332.02
N		5.74 332.48
Q	N.W. Return	5.74 332.48
	N.L. Meade	5.72 332.50
	E.L. Mississippi	2.00
N		5.25 332.97
	S.N.E. Return	5.21 333.01
	N.L. Meade	5.19 333.03

Σ 338.22

S	5.67	332.55
♀ S.E. Retorn	5.64	332.58
S.L. Meade	5.68	332.54
0425		
S	5.60	332.62
N	5.17	333.05
0450		
N	5.05	333.17
S	5.55	332.67
0475		
S	5.49	332.73
N	4.96	333.26
1400		
N	4.92	333.30
S	5.42	332.80
1440 = W.L. Alley		
S	5.16	333.06
N	4.74	333.48
1460 = E.L. Alley		
N	4.70	333.52
S	5.12	333.10
2400		
S	5.06	333.16
N	4.60	333.62

Σ 338.22

10

2425		
N	4.50	333.72
S	5.01	333.21
2450		
S	4.92	333.30
N	4.44	333.78
2475		
N	4.39	333.83
S	4.91	333.31
3400 = W.L. Louisiana - Pared		
S	4.74	333.48
G	5.32	332.90
H	4.96	333.26
♀	4.69	333.53
H	4.65	333.57
G	4.90	333.32
N	4.26	333.96
B.M. S.E. B.P. Meade + Louisiana - 5.45		
		332.77
		332.70

11-15-28 Curb levels on 51st from
 J.C. Bliss El Cajon to 200' south of E Cajon
 Drebert 51st Roadway
 Panner

393.61

11

B.M. S.W. 8.P 51st + El Cajon

387.17

+ 6.44

T 393.61

Section along S.W. El Cajon Paved

W	628	387.33
G	202	386.59
114	699	386.62
4	204	386.57
114	738	386.29
G	760	386.01
E	698	386.62

B.M. Wagon

W

4.65 388.96

E

5.36 388.25

1450

E

5.36 388.25

W

4.56 389.05

1475

W

4.54 389.07

E

5.37 388.24

2400

E

5.29 388.32

W

4.68 388.93

See station

2' South on Ecb line

6.95 386.66

W 5.92 387.69

E 6.62 386.99

E 6.18 387.43

W 5.57 388.04

W 5.10 388.51

E 5.79 387.82

E 5.42 388.19

W 4.70 388.91

Notes worth less
see page 72
Book

cb line

51st

cb line

El Cajon

→

Feb 20-27 X sec Santa Cruz St. From Santa Barbara
 Ladder to Ely Termination
 80' st 14' cbs 52' Rtlway to Venice
 Walks 2 cbs. in.

12

B.M. 2 33 257.74 O.K. 255.41
 B.P.S.W.
 Santa Barbara
 & Santa Cruz

w. L. Santa Barbara

S.L. 2 0 255.7
 cb 2 34 255.40 -
 got 3 0 254.7
 'A 2 5 255.2
 † 2 2 255.5
 'A 2 2 255.5
 got 2 4 255.3
 cb 1 65 256.09 -
 N.L. 1 4 256.3

Plotted (2-26-28)
 A.C.L.

w. c. b. Santa Bar

N.L. top cb 1 62 256.12
 N.L. got 2 5 255.2
 cb 2 2 255.5
 'A 2 2 255.5
 † 2 2 255.5
 'A 2 7 255.0
 cb 3 2 254.5
 S.L. got 3 5 254.2
 S.L. top cb 2 45 255.29

Santa Cruz

257.74

w/1/4 Santa Bar.

S.L.	3.4	254.3
eb	2.9	254.8
1/4	2.5	255.2
E	2.3	255.4
1/4	2.2	255.5
cb	2.2	255.5
N.L.	2.4	255.3

E Santa Bar.

N.L.	2.7	255.0
cb	2.3	255.4
1/4	2.3	255.4
E	2.4	255.3
1/4	2.6	255.1
cb	3.0	254.7
S.L.	3.4	254.3

E 1/4 Santa Bar.

S.L.	3.8	253.9
cb	3.2	254.5
1/4	2.7	255.0
E	2.5	255.2
1/4	2.5	255.2
cb	2.6	255.1
N.L.	3.0	254.7

Santa Cruz

257.74

E cb Santa Bar.

N.L.	gut	3.2	254.5
N.L.	top cb	2.64	255.10
cb		2.7	255.0
1/4		2.6	255.1
E		2.7	255.0
1/4		2.9	254.8
cb		3.6	254.1
S.L.	gut	4.2	253.5
S.L.	top cb	3.51	254.23

E.L. Santa Bar. = 0+00

S cb		3.54	254.20
gut		4.2	253.5
1/4		3.4	254.3
E		3.0	254.7
1/4		3.0	254.7
gut		3.3	254.4
N cb		2.52	255.22

0+50

N cb		6.23	251.51
gut		6.9	250.8
1/4		6.5	251.2
E		6.3	251.4
1/4		6.6	251.1
gut		7.5	250.2
S cb		6.97	250.77

13

Santa Cruz

Santa Cruz

14

0+95 257.74

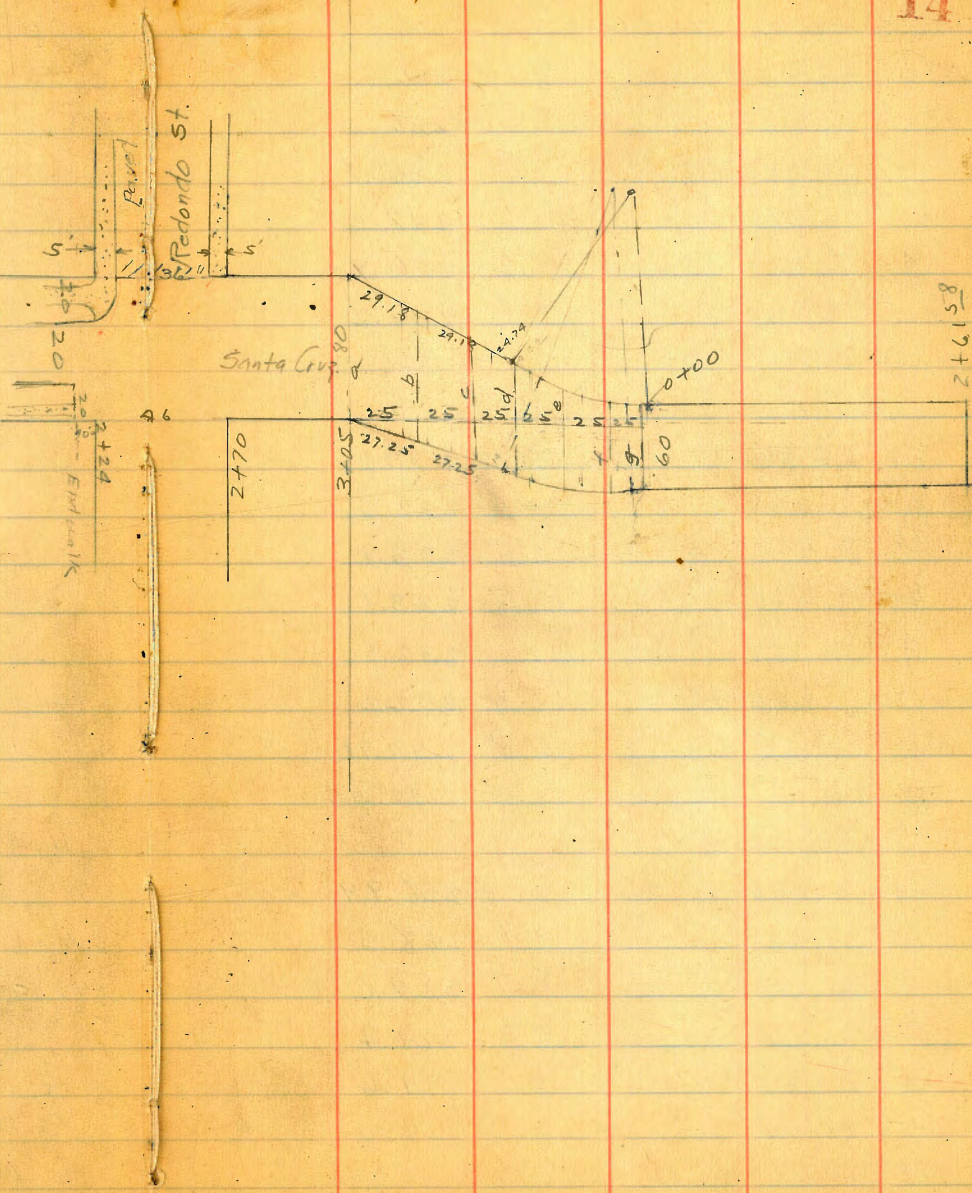
Scb	10.09	247.65
gut	10.7	247.0
1/4	10.2	247.5
±	9.8	247.9
1/4	9.9	247.8
gut	10.4	247.3
Ncb	9.65	248.09
T.P.	0.33	245.60
12.47	245.27	

1+50

Ncb	1.56	244.04
gut	2.1	243.5
1/4	1.9	243.7
±	1.6	244.0
1/4	1.9	243.7
gut	2.6	243.0
Scb	1.85	243.75

2+00

Scb	5.37	240.21
gut	5.8	239.8
+6	5.8	239.8
1/4	5.3	240.3
±	5.1	240.5
1/4	5.2	240.4
gut	5.7	239.9
Ncb	5.33	240.27



Santa Cruz

2+50	245.60		
Neb		9.10	236.50
gut		9.6	236.0
1/4		8.9	236.7
+		8.6	237.0
1/4		8.8	236.8
gut		9.4	236.2
Seb		8.82	236.78

3+00

Seb		12.32	233.28
gut		13.1	232.5
1/4		12.5	233.1
+		12.5	233.1
1/4		12.8	232.8
gut		13.4	232.2
Neb		12.89	232.71
TP	0.18	232.73	13.05 232.55 ✓

3+50

Neb		3.74	228.99
gut		4.4	228.3
1/4		3.7	229.0
+		3.3	229.4
1/4		3.1	229.6
gut		3.7	229.0
Seb		2.93	229.80

Santa Cruz

4+00	232.73		
Seb		6.37	226.34
gut		6.8	225.9
1/4		6.3	226.4
+		6.4	226.3
1/4		6.9	225.8
gut		7.8	224.9
Neb		7.37	225.36

4+50

Neb		9.41	223.32
gut		10.0	222.7
1/4		9.2	223.5
+		8.6	224.1
1/4		8.4	224.3
gut		9.0	223.7
Seb		8.20	224.53

5+00

Seb		9.92	222.81
gut		10.9	221.8
1/4		10.2	222.5
+		10.4	222.3
1/4		11.2	221.5
gut		12.2	220.5
Neb		11.44	221.29
TP	1.12	221.15	12.70 220.03

15

Santa Cruz

Santa Cruz

221.15

5750

221.15

Neb	1.88	219.27
gut	2.8	218.4
1/4	1.4	219.8
+	0.6	220.6
1/4	0.4	220.8
gut	1.0	220.2
Sob	0.09	221.06

6+00E = W.L. Venice

Sob	1.85	219.30
gut	2.6	218.6
1/4	2.4	218.8
+	2.5	218.7
1/4	3.3	217.9
gut	4.2	217.0
Neb	3.90	217.25

Venice 60' wide 10' ebs ad Rdway

Seds for 52' Rdway to E 1/4 Venice. Hence
2' ebs & ad Rdway walks ebs in to
Catalina

Web Venice.

NL	top eb	4.30	216.85
NL	gut	4.9	216.3
eb		4.5	216.7
1/4		3.9	217.3
+		3.1	218.1
1/4		2.8	218.4
eb		2.8	218.4
S.L.	gut	2.4	218.8
S.L.	top eb	1.47	219.68
	W/A Venice		
S.L.		2.4	218.8
eb		2.8	218.4
1/4		3.2	218.0
+		3.6	217.6
1/4		4.3	216.9
eb		4.6	216.6
NL		4.7	216.5
	* Venice		
NL		5.0	216.2
eb		5.0	216.2
1/4		4.6	216.6
+		4.0	217.2
1/4		3.7	217.5
gut		3.3	217.9
S.L.		2.6	218.6

16

Santa Cruz

Santa Cruz

221.15

221.15

E/A

Venice

0+00

SL		3.5	217.7	
cb		4.0	217.2	
1/4		4.5	216.7	
1/2		4.6	216.6	
1/4		5.2	216.0	
cb		5.6	215.6	
NL		5.7	216.5	215.5

+7
got
Ncb

6.2	215.0
5.8	215.4
5.87	215.26

0+50

E cb Venice

NL	7ob cb	6.27	214.88	
NL	got	5.8	215.4	
cb		6.1	215.1	
1/4		5.4	215.8	
1/2		5.2	216.0	
1/4		4.9	216.3	
cb		4.5	216.7	
SL	got	3.8	217.4	
SL	7ob cb	3.45	217.70	

Ncb
got
+6
+7
+8

8.09	213.06
8.3	212.9
8.6	212.6
9.3	211.9
8.5	212.7
8.4	212.8
7.5	213.7
7.3	213.9
6.9	214.3
7.1	214.1
6.2	215.0
6.07	215.08

EL Venice = 0+00

+7
+8
1/4
+5
1/2
+5
got
Scb

Plotted: (From Venice to Redondo) 2/26/28 A.C.L.

Scb		3.94	217.21	
got		4.1	217.1	
+6		4.8	216.4	
1/4		4.8	216.4	
1/2		5.2	216.0	
1/4		6.3	214.9	
+1		7.2	214.0	
+2		6.1	215.1	

1+00
Scb
got
+7
1/4

8.69	212.46
8.9	212.3
10.3	210.9
9.9	211.3
10.0	211.2
10.4	210.8
11.2	210.0
11.7	209.5
10.6	210.6

1 +00	221.15		
Neb		10.63	210.52
1. +50			
Neb		19.13	208.02
gut		13.2	208.0
+5		14.1	207.1
+6		14.9	206.3
+7		14.0	207.2
1/4		13.0	208.2
±		12.7	208.5
1/2		12.6	208.6
+3		13.0	208.2
gut		11.8	209.4
Seb		11.46	209.69
T.P. 0.39	208.58	12.96	208.19
2 +00			
Seb		1.71	206.87
gut		2.0	206.6
+7		3.3	205.3
1/4		2.7	205.9
±		3.0	205.6
+8		3.4	205.2
1/2		3.8	204.6
+2		4.3	204.3
gut		3.7	204.9
Neb		3.70	204.88

2 +25	208.58		
Neb		5.36	203.22
gut		5.5	203.1
+5		6.0	202.6
+8		5.3	203.3
1/4		5.2	203.4
±		4.6	204.0
1/2		4.4	204.2
+3		4.8	203.8
+6		4.5	204.1
gut		3.7	204.9
Seb		3.37	205.21
2 +50			
Seb		5.56	203.02
gut		6.0	202.6
+6		7.1	201.5
1/4		6.8	201.8
±		6.7	201.9
1/2		7.7	200.9
+3		7.8	200.8
+4		8.6	200.0
+5		8.0	200.6
gut		7.8	200.8
Neb		7.70	200.88

Santa Cruz

2475

208.58

Neb	10.64	197.94
put	10.3	198.3
+7	11.4	197.2
+9	10.9	197.7
14	10.7	197.9
45	10.0	198.6
+	9.7	198.9
+5	9.5	199.1
14	9.7	198.9
+3	10.3	198.3
put	9.0	199.6
Seb	8.66	199.92

3400

Seb	12.18	196.40
put	12.6	196.0
+5	13.2	195.4
14	13.0	195.6
+	13.2	195.4
14	14.1	194.5
+3	14.8	193.8
+5	14.2	194.4
put	13.3	195.3
T.P.	0.16	195.81
Neb	1.47	194.32

Santa Cruz

3410

195.81

19

Neb	3.06	192.75
put	2.9	192.9
+6	3.3	192.5
+7	5.5	190.3
14	5.1	190.7
+1	4.8	191.0
+1	2.8	193.0
+	1.9	193.9
+5	1.7	194.1
14	1.8	194.0
+5	2.4	193.4
put	1.2	194.6
Seb	0.97	194.84

3450

Seb	6.97	188.84
put	7.2	188.6
+7	8.0	187.8
14	7.9	187.9
+	8.2	187.6
14	9.6	186.2
+1	9.8	186.0
+2	12.1	183.7
+3	10.1	185.7
put	9.1	186.7
Neb	9.08	186.73
T.P.	0.03	182.90
	0.25	183.72

4400

182.90

Neb	3.41	179.49
gut	3.4	179.5
+3	3.6	179.3
+5	4.4	178.5
+7	3.4	179.5
1/4	3.1	179.8
+6	2.6	180.3
±	2.5	180.4
1/4	2.3	180.6
+3	2.2	180.7
+5	3.1	180.8?
+8	1.8	181.1
gut	1.8	181.1
Seb	1.41	181. ⁴⁹ ₁₁

A+41 = m.L. Alleg

S.L. top Alleg eb	6.02	176.88
S.L. grid	6.7	176.2
Seb	6.30	176.60
gut	6.9	176.0
+3	6.9	176.0
+5	8.0	174.9
+8	7.2	175.7
1/4	7.2	175.7
±	7.4	175.5
1/4	8.0	174.9

A+41

182.90

+4	8.4	174.5
+5	10.1	172.8
+6	8.5	174.4
gut	8.7	174.2
Neb	8.30	174.60
N.L. top Alleg eb	8.09	174.81
N.L. grid	8.8	174.1
A+56 = E.L. Alleg		
N.L. top Alleg eb	9.56	173.34
N.L. grid	9.5	173.4
Neb	9.71	173.19
gut	10.1	172.8
+4	10.6	172.3
+5	12.3	170.6
+6	10.1	172.8
1/4	9.6	173.3
±	8.8	174.1
1/4	8.6	174.3
+3	9.2	173.7
+4	11.3	171.6
+5	9.2	173.7
gut	8.4	174.5
Seb	7.77	175.13
S.L. top Alleg eb	7.42	175.48
S.L. grid	7.5	175.4

5+00 182.90

Scb		11.76	171.14	
gut		12.1	170.8	
+4		13.0	169.9	
+5		14.4	168.5	
4		12.6	170.3	
4		13.2	169.7	
4		13.4	169.5	
+4		14.2	168.7	
+5		16.1	166.8	
+6		14.4	168.5	
T.P	0.14	169.98	13.06	169.84
gut		0.7	169.3	
Ncb		0.76	169.22	

5+20

Ncb		2.53	167.45
gut		2.8	167.2
+4		3.25	166.8
+5		4.1	165.9
+7		2.7	167.3
4		2.7	167.3
+5		2.8	167.2
4		2.3	167.7
4		1.8	168.2
+4		2.4	167.6
+5		3.3	166.7
+6		2.5	167.5

169.98

+7		2.5	167.5
+8		1.3	168.7
gut		1.0	169.0
Scb		0.76	169.22
5+40 = B.C. rats to Catalina			
Scb		2.29	167.69
gut		3.0	167.0
+2		4.0	166.0
4		4.0	166.0
4		4.2	165.8
4		4.5	165.5
gut		4.7	165.3
Ncb		4.29	165.69

5+63 = WL Catalina

NL +13	to be checked	5.90	164.08
✓	gut	6.53	163.45
Ncb	Par	6.16	163.82
4	✓	5.71	164.27
4	✓	5.29	164.69
4	✓	4.97	165.01
Scb	✓	4.78	165.20
+8 ^E	gut at ret	4.75	165.23
+8 ^E	top on ret	4.10	165.88
B.M	B.P. ² Santa Cruz SW Catalina	2.40	167.58
B.M	9.15	176.73	167.58

80' wide from EL Catalina to Refondo - 20' obs
90' Rdway. Obs & walk 5 m.

176.73

0+00 = EL Catalina

S.L.+11	lobcb on ret.	12.19	164.54
S.L.+11	gut at ret	12.87	163.86
cb	Pav.	12.76	163.97
1/4	✓	12.73	164.00
1/4	✓	12.75	163.98
1/4	✓	12.91	163.82
cb	✓	13.15	163.58
+6	gut at ret.	13.34	163.39
+6	lobcb on ret.	12.71	164.02

0+25³ = E.C. rets. from Catalina

Ncb		11.77	164.96
gut		12.2	164.5
1/4		12.0	164.7
1/4		11.4	165.3
1/4		11.3	165.4
+5		11.0	165.7
+7		11.5	165.2
gut		10.5	166.2
Seb		10.20	166.53

0+50

176.73

22

Seb		8.33	168.40
gut		8.5	168.2
+2		8.3	168.4
+3		9.2	167.5
1/4		9.1	167.6
1/4		9.5	167.2
1/4		9.9	166.8
+2		10.1	166.6
+2		11.4	165.3
+3		11.4	165.3
+4		10.1	166.6
+6		10.3	166.4
+7		11.3	165.4
+8		11.3	165.4
+9		10.6	166.1
gut		10.6	166.1
Ncb		10.15	166.58

0+75			
Ncb		8.13	168.60
gut		8.1	168.6
+2		8.3	168.4
+4		10.5	166.2
+5		8.4	168.3
1/4		8.0	168.7
+3		8.1	168.6

0+75	176.73		
±	7.5	169.2	
+8	7.1	169.6	
1/4	7.2	169.5	
+6	7.3	169.4	
+8	6.7	170.0	
+9	7.1	169.6	
gut	7.1	169.6	
5cb	6.42	170.31	
1+10 = w.c. Alley			
S.L. tob Alley cb	3.50	173.23	
S.L. grad	3.5	173.2	
cb tob cb	3.91	172.82	
gut	4.3	172.4	
+3	3.7	172.8	
+4	4.7	172.0	
1/4	4.5	172.2	
±	4.9	171.8	
+5	5.0	171.7	
1/4	5.4	171.3	
+4	5.6	171.1	
+4	7.2	169.5	
+6	7.2	169.5	
gut	5.6	171.1	
Web	5.45	171.28	
N.L. tob Alley cb	5.05	171.68	
N.L. grad	4.7	172.0	

176.73

23

1+25 = E.L. Alley			
N.L. tob Alley cb	3.88	172.85	
N.L. grad	3.3	173.4	
cb	4.14	172.59	
gut	4.1	172.6	
+3	4.6	172.1	
+4	5.5	171.2	
+5	4.5	172.2	
+8	4.3	172.4	
1/4	3.7	173.0	
+2	4.2	172.5	
±	3.7	173.0	
1/4	3.6	173.1	
+6	3.7	173.0	
+7	2.9	173.8	
gut	3.6	173.1	
cb	2.63	174.10	
S.L. tob Alley cb	2.44	174.29	
S.L. grad	2.5	174.2	

Santa Cruz

1+50	176.73		
Seb	0.77	175.96	
gut	0.9	175.8	
+5	1.5	175.2	
1/4	1.5	175.2	
+8	1.6	175.1	
±	1.8	174.9	
+7	2.0	174.7	
1/4	1.5	175.2	
+2	2.5	174.2	
+5	2.7	174.0	
+6	3.5	173.2	
+7	2.7	174.0	
gut	2.4	174.3	
Neb	2.23	174.50	
1+75			
Neb	0.23	176.50	
gut	0.5	176.2	
+3	0.4	176.3	
+4	1.0	175.1	
+5	1.6	175.1	
+6	0.5	176.2	
1/4	+0.6	177.3	
+2	0.2	176.5	
T.P.	12.81	189.36	0.18 176.55

Santa Cruz

1+75	189.36		
±		12.5	176.9
+7		12.3	177.1
1/4		12.4	177.0
+7		12.5	176.9
+8		11.8	177.6
gut		12.0	177.4
Seb.		11.60	177.76
2+06 ⁶ = BC NW ret to Redondo			
Seb		9.20	180.16
gut		9.8	179.6
+2		9.5	179.9
+3		10.1	179.3
1/4		10.0	179.4
±		10.2	179.2
+9		10.6	178.8
1/4		10.3	179.1
+3		10.7	178.7
+4		12.0	177.4
+5		10.8	178.6
gut		10.8	178.6
Neb		10.33	179.03

24

189.36

2 + 2.4 = w.L. Redondo

NL	back walk	7.76	181.60
+13 ²	top cb on rat	9.80	180.56
+13	gut at rat	8.8	180.6
+17		9.1	180.3
cb		10.6	178.8
+2		10.6	178.8
+3		9.2	180.2
1/4		9.2	180.2
±		9.0	180.4
1/4		9.0	180.4
+6		9.0	180.4
+7		8.4	181.0
+8		8.7	180.7
cb		8.8	180.6
S.L.		8.2	181.2
2 + 2.9 = wcb Redondo			
S.L.		8.1	181.3
cb		8.4	181.0
+2		8.4	181.0
1/4		8.6	180.8
±		8.7	180.5
1/4		8.7	180.5
+7		8.8	180.6
cb		8.9	180.5
+6		8.8	180.6
+7		10.2	179.2

Plotted: (From Venice to Redondo)
n/w/2
A.C.K.

2 + 2.9

189.36

+13		8.8	180.6
N.L.	gut Pav	8.43	180.93
N.L.	top cb	7.74	181.62
2 + 4.9 = ± Redondo			
N.L.	Pav	7.59	181.77
+5		7.5	181.9
+10		7.9	181.5
cb		8.0	181.4
1/4		7.7	181.7
±		7.6	181.8
1/4		7.6	181.8
cb		7.4	182.0
S.L.		6.9	182.5
2 + 6.5 = Ecb Redondo			
S.L.		3.4	186.0
+6		4.9	184.5
+10		5.5	183.9
+12		6.4	183.0
+14		6.4	183.0
+15		5.3	184.1
cb		5.1	184.3
+4		4.8	184.6
1/4		5.1	184.3
±		5.6	183.8
1/4		6.4	183.0

Santa Cruz

189.36

2+65

cb	6.8	182.6
N.L. gut Pan	7.54	181.82
N.L. top cb	6.89	182.47

2+70 = E.L. Redondo

N.L.	6.8	182.6
cb	6.1	183.3
+6	5.7	183.7
1/4	6.0	183.4
+8	4.8	184.6
±	4.7	184.7
1/4	4.4	185.0
+5	4.5	184.9
cb	5.0	184.4
+2	5.0	184.4
+4	6.2	183.2
+7	6.1	183.3
+9	4.8	184.6
#18	2.4	187.0
S.L.	2.2	187.2

Plotted (2-26-28)
A.G.L.

Santa Cruz

26

2+86

189.36

S.L.	40.2	189.2
+6	1.0	188.4
+15	3.1	186.3
cb	3.7	185.7
+1	3.8	185.6
+2	4.7	184.7
+4	4.7	185.7
+6	3.9	185.5
+9	3.9	185.5
+9	4.9	184.5
1/4	4.9	184.5
+9	4.3	185.1
±	3.6	185.8
+7	4.2	185.2
1/4	3.9	185.5
+3	3.7	185.7
cb	3.8	185.6
+7	4.0	185.4
+13	3.4	186.0
N.L.	2.2	187.2
T.P.	1290	20206 020 189.16

202.06

202.06

3+05 = sec 9 (see P 14)

Sec c

N.L.	13.3	188.8
+5	14.5	187.6
cb	14.8	187.3
'A	14.8	187.3
±	15.2	186.9
'A	14.8	187.3
cb	14.6	187.5
+17	12.7	189.4
SL	11.6	190.5

N.L.	10.8	191.3
+9	10.6	191.5
+10	11.0	191.1
+15	11.2	190.9
+18	11.1	191.0
+26	11.3	190.8
+34	11.2	190.9
+35 [±]	11.2	190.9
+47	11.4	190.7
+53	11.8	190.3
+54	11.1	191.0
+71 [±] S.L.	9.5	192.6

Sec b

Sec d

SL	10.7	191.2
+7	12.5	189.6
+25	12.8	189.3
+28	12.7	189.4
+37 [±]	12.9	189.2
+47	12.8	189.3
+57	13.4	188.7
+65	12.5	189.6
+72	13.1	189.0
+75 [±] A.L.	12.8	189.3

SL	7.7	194.4
+10	8.0	194.1
+20	9.0	193.1
+30	8.7	193.4
+33 [±]	9.0	193.1
+49	9.1	193.0
+53	9.9	192.2
+54	9.1	193.0
+57	9.2	192.9
+59	8.9	193.2
+65	8.8	193.3
+67 [±] A.L.	8.5	193.6

Santa Cruz

Sec C 202.06

N.L.	6.3	195.8
+7	6.1	196.0
+13	7.1	195.0
+15	6.7	195.4
+21	6.9	195.2
+312 $\frac{1}{2}$	6.4	195.7
+40	6.5	195.6
+50	6.4	195.7
+53	6.3	195.8
+55	5.8	196.3
+63 $\frac{1}{2}$ S.L.	5.3	196.8

Sec f

S.L.	3.0	199.1
+10	3.0	199.1
+12	3.8	198.3
+20	3.9	198.2
+26	3.8	198.3
+30 $\frac{1}{2}$	3.9	198.2
+45	4.2	197.9
+52	3.9	198.2
+54	3.3	198.8
+61 N.L.	3.2	198.9
T.P. 12.80 213.52	1.34	200.72

Santa Cruz

21354

28

Sec g (60' long) 10' cb 10' R. Hwy

N.L.	11.3	202.2
+3	12.2	201.3
cb	12.5	201.0
+2	13.7	199.8
+3	13.1	200.4
+8	13.7	199.8
$\frac{1}{4}$	13.3	200.2
$\frac{1}{2}$	13.0	200.5
$\frac{1}{4}$	13.2	200.3
+3	13.6	199.9
+5	13.5	200.0
+9	13.6	199.9
cb	13.2	200.3
+1	12.9	200.6
S.L.	13.0	200.5
0+00 - BC. cv on North		
S.L.	11.8	201.7
+3	12.6	200.9
cb	12.6	200.9
+6	13.3	200.2
$\frac{1}{4}$	12.8	200.7
$\frac{1}{2}$	12.4	201.1
+5	12.5	201.0
$\frac{1}{4}$	12.9	200.6
+3	13.2	200.3
+4	12.8	200.7

Santa Cruz

213.52

0+00

eb	12.7	200.8
+1	12.2	201.3
+7	11.9	201.6
N.L.	11.1	202.4

0+25

N.L.	9.3	204.2
+3	10.8	202.7
+4	10.5	203.0
eb	10.4	203.1
+1	10.7	202.6
+5	10.8	202.7
+6	11.4	202.1
+7	10.7	202.6
1/4	10.7	202.8
E	10.3	203.2
1/4	10.9	202.6
+5	11.4	202.1
+6	10.9	202.6
eb	10.7	202.6
+1	10.3	203.2
+7	10.4	203.1
+9	9.8	203.7
S.L.	8.7	204.8

Santa Cruz

213.52

0+50

S.L.	7.0	206.5
+1	7.7	205.8
eb	8.6	204.9
+2	9.1	204.4
+5	9.4	204.1
1/4	9.0	204.5
E	8.6	204.9
1/4	8.8	204.7
+4	8.8	204.7
+5	9.3	204.2
+9	8.9	204.6
eb	8.4	205.1
+6	8.5	205.0
+8	8.0	205.5
N.L.	7.3	206.2

1+00

N.L.	3.7	209.8
+9	4.2	209.3
eb	4.6	208.9
+8	5.0	208.5
+9	4.7	208.8
1/4	4.9	208.6
E	4.6	208.9
1/4	5.0	208.5
eb	5.1	208.4
+1	4.4	209.1

29

Santa Cruz

1+00	213.52		
+8		3.6	209.9
S.L.		2.9	210.6
1+50			
S.L.		0.2	213.3
+6		1.1	212.4
eb		1.1	212.4
+2		1.7	211.8
1/4		1.2	212.3
+		0.9	212.6
1/4		0.9	212.6
+3		0.9	212.6
+4		1.7	211.8
+5		1.0	212.5
+8		1.3	212.2
+9		2.0	201.5
eb		0.4	213.1
+6		0.3	213.2
NL		0.0	213.5
T.P.	13.09	226.59	0.02 213.50

Santa Cruz

30

1+75	226.59		
NL		11.3	215.3
eb		11.6	215.0
+1		12.8	213.8
+2		12.3	214.3
1/4		12.2	214.4
+1		12.5	214.1
+9		12.1	214.5
+		12.3	214.3
1/4		12.6	214.0
+8		12.9	213.7
+9		13.2	213.4
eb		12.5	214.1
+1		12.4	214.2
S.L.		12.2	214.4
2+00			
S.L.		10.5	216.1
+9		10.2	216.4
eb		11.0	215.6
1/4		10.7	215.9
+		10.3	216.3
1/4		10.2	216.4
+9		10.3	216.3
eb		9.7	216.9
NL		9.0	217.6

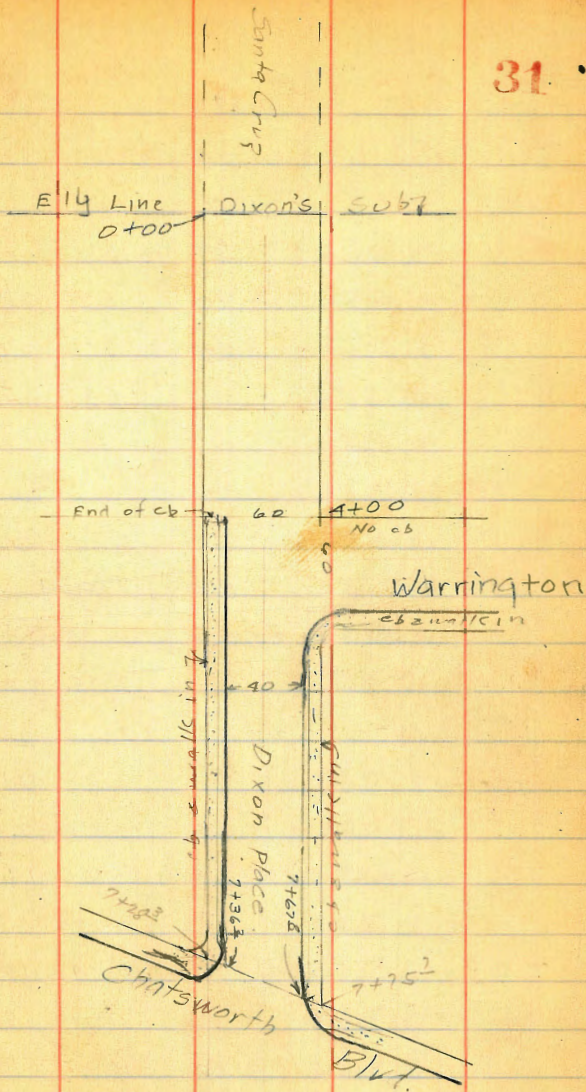
Santa Cruz

2+35	226.59		
N.L.		6.7	219.9
cb		7.1	219.5
+1		8.1	218.5
1/4		8.0	218.6
+		7.8	218.8
1/4		8.4	218.2
cb		8.7	217.9
+4		8.3	218.3
S.L.		8.4	218.2

2+61.58 = E'ly Line Dixon's Sub

S.L.		5.8	220.8
+7		5.7	220.9
cb		6.3	220.3
1/4		5.9	220.7
+		5.4	221.2
1/4		5.5	221.1
+9		5.6	221.0
cb		4.7	221.7
+1		4.9	221.7
N.L.		5.0	221.6

T.P.	Nail in Pole 0.46	225.68	1.37	225.22
T.P.	0.21	213.70	12.19	213.49
T.P.	0.40	201.25	12.85	200.85
T.P.	0.29	188.66	12.88	188.37
T.P.	13.06	201.27	0.45	188.81



Levels for correction of P. 192

T.P.		201.27		
T.P.	13.01	214.24	0.04	201.23
T.P.	12.62	226.87	0.24	214.00
T.P.	13.09	239.53	0.18	226.44
T.P.	12.99	252.30	0.22	239.31
T.P.	8.67	260.80	0.79	251.51
B.M.	B29.		4.83	255.37 (255.41)
BM	4.83	260.24		255.41
T.P.	0.72	247.88	13.08	247.16
2+50s			11.10	236.78 ✓
T.P.	0.35	235.45	12.78	235.10
T.P.x			2.93	232.52 ✓
T.P.	0.72	223.59	12.58	222.87
0+00s			4.32	219.27 ✓
T.P.	0.25	211.15	12.69	210.90
T.P.	0.20	198.69	12.66	198.49
3+00s			2.33	196.36 ✓
T.P.	0.19	186.19	12.69	186.00
4+00s			4.71	181.48 X 181.71
T.P.	0.51	173.68	13.02	173.17
B.M.	B.P. 3W. Catalina = Santa Cruz		6.12	167.56
T.P.	10.45	183.68	0.45	173.23
T.P.	7.96	190.45	11.9	182.49
T.P.x			2.08	188.37

Feb 21-29 London.
 X Sec of Production of Santa-Cruz Ave to Dixon Pl. Thence on Dixon Pl. to Chatsworth. 32

T.P.	447	229.67		225.22
0+00 =	Ely Line Dixon's Sub			
0+25				
SL		7.7		222.0
cb		7.4		222.3
+3		7.4		222.3
1/4		7.1		222.6
±		6.7		223.0
1/4		6.7		223.0
+8		6.9		222.8
eb		6.1		223.6
+2		6.0		223.7
N.L.		5.5		224.2
0+50				
N.L.		2.5		227.2
+4		2.8		226.9
+3		3.5		226.2
cb		4.2		225.5
+6		4.7		225.0
1/4		4.7		225.0
±		4.9		224.8
1/4		5.1		224.6
+7		5.5		224.2
eb		5.1		224.6
SL		4.7		224.8

(See P. 31)

229.69

0+75

SL	2.4	227.3
+2	3.1	226.6
cb	3.6	226.1
1/4	3.6	226.1
1/4	3.4	226.3
1/4	3.3	226.4
eb	2.9	226.8
+1	2.0	227.7
NL	0.3	229.4

1+00

NL	10.5	230.2
+1	1.0	228.7
+5	1.1	228.6
+9	2.0	227.7
eb	2.7	227.0
1/4	2.9	226.8
1/4	2.9	226.8
1/4	3.0	226.7
+6	3.2	226.5
cb	2.7	227.0
SL	1.2	228.5

229.69

1+25

SL	1.0	228.7
+3	1.5	228.2
cb	3.1	226.6
+2	3.4	226.3
1/4	2.9	226.8
1/4	2.7	227.0
1/4	2.8	226.9
cb	2.9	226.8
+5	2.3	227.4
+9	2.1	227.6
NL	1.1	228.6

1+50

NL	2.7	227.0
+6	2.6	227.1
cb	3.2	226.5
1/4	3.2	226.5
1/4	3.0	226.7
1/4	3.3	226.4
+5	3.8	225.9
cb	3.8	225.9
+1	3.2	226.5
SL	1.5	228.2

33

229.69

1+75		
SL	2.5	227.2
+9	3.7	226.0
cb	4.3	225.4
+4	4.4	225.3
1/4	3.9	225.8
±	3.7	226.0
1/4	3.9	225.8
cb	3.8	225.9
NL	3.8	225.9
2+00		
NL	5.5	224.2
cb	5.1	224.6
1/4	4.8	224.9
±	4.6	225.1
1/4	4.7	225.0
cb	4.9	224.8
SL	4.6	225.1
2+25		
SL	6.0	223.7
+3	5.8	223.9
cb	6.1	223.6
+6	6.2	223.5
1/4	5.9	223.8
±	5.9	223.8
1/4	6.2	223.5

229.69

34

2+25		
cb	6.5	223.2
NL	6.4	223.3
2+50		
NL	7.3	222.4
cb	7.8	221.9
+1	8.2	221.5
1/4	7.5	222.2
±	7.2	222.5
1/4	7.3	222.4
cb	7.5	222.2
+2	7.4	222.3
+5	7.0	222.7
SL	7.1	222.6
2+75		
SL	8.1	221.6
cb	8.7	221.0
1/4	8.7	221.0
±	8.6	221.1
1/4	9.0	220.7
cb	8.9	220.8
NL	8.6	221.1

229.69

3+00

N.L.	9.1	220.6
+5	9.9	219.8
cb	10.5	219.2
1/4	10.3	219.4
+	10.0	219.7
1/4	10.3	219.4
+5	10.5	219.2
cb	9.7	220.0
+5	9.7	220.0
S.L.	8.9	220.8

3+25

S.L.	9.3	220.4
cb	11.3	218.4
+6	12.2	217.5
1/4	11.9	217.8
+	11.6	218.1
1/4	11.9	217.8
+8	12.2	217.5
cb	12.0	217.7
+6	11.5	218.2
N.L.	10.0	219.7

3+50

229.69

N.L.	11.8	217.9
+3	12.9	216.8
cb	13.8	215.9
+2	14.4	215.3
1/4	13.8	215.9
+	13.7	216.0
1/4	13.8	215.9
cb	13.2	216.5
+2	12.8	216.9
S.L.	10.4	219.3

T.P. 0.18 217.86

12.01 217.68

3+75

S.L.	1.2	216.7
+1	3.2	214.7
cb	3.5	214.4
1/4	4.3	213.6
+	4.0	213.9
1/4	4.3	213.6
+5	4.5	213.4
cb	4.2	213.7
N.L.	3.0	214.9

35

4+00 = W.L. Warrington.
217.86

NL	5.9	212.0
cb	6.3	211.6
1/4	6.0	211.9
±	5.8	212.1
1/4	5.9	212.0
cb 9rd	6.0	211.9
cb top cb	5.55	212.31
SL	5.2	212.6

4+30 = ± Warrington.

Scb	6.58	211.28
gut	7.2	210.7
1/4	7.1	210.8
±	7.2	210.7
1/4	7.3	210.6
cb	7.5	210.4
N.L.	7.2	210.7

4+50 = Feb Warrington

24 ⁵ N top cb End ret	7.02	210.84
N.L.	8.2	209.7
cb	8.5	209.4
1/4	8.1	209.8
±	8.0	209.9
1/4	7.9	210.0
gut	8.0	209.9
Scb	7.22	210.64

Diron Pl

217.86

4+60 = E.L. Warrington

Scb	7.57	210.35
gut	8.4	209.5
1/4	8.5	209.4
±	8.5	209.4
1/4	8.6	209.3
+3	8.9	209.0
cb	8.9	209.0
+1	8.4	209.5
NL	8.6	209.3
0 ⁶ N gut	8.6	209.3
0 ⁶ N top cb on ret.	7.74	210.12

4+85 = End NW. ret.

Ncb	9.62	208.24
gut	10.2	207.7
+5	10.1	207.8
1/4	10.2	207.7
±	10.0	207.9
1/4	10.1	207.8
+6	10.4	207.5
gut	10.3	207.6
Scb	9.51	208.35

36

Dixon Pl.

5+20	217.86		
Seb		12.32	205.54
gut		13.0	204.9
1/4		12.8	205.1
+		12.4	205.5
1/4		12.7	205.2
+5		13.0	204.9
gut		13.0	204.9
Ncb		12.31	205.55
T.P.	0.62	205.47	13.01 204.85
5+60			
Ncb		2.94	202.53
gut		3.7	201.8
+5		3.6	201.9
1/4		3.3	202.2
+		3.0	202.5
1/4		3.2	202.3
+5		3.6	201.9
gut		3.6	201.9
Seb		2.93	202.54

Dixon Pl.

5+90	205.47		
Seb		4.75	200.72
gut		5.6	199.9
+2		6.2	199.3
1/4		5.2	200.3
+		5.0	200.5
1/4		5.3	200.2
+5		5.7	199.8
gut		5.6	199.9
Ncb		4.90	200.57
6+20			
Ncb		6.74	198.73
gut		7.5	198.0
+5		8.0	197.5
1/4		7.3	198.2
+		6.9	198.6
1/4		7.1	198.4
+6		7.7	197.8
+8		7.7	197.8
gut		7.4	198.1
Seb		6.45	199.02

37

Dixon Pl.

205.47

6+50

Scb	8.01	197.46
qut	8.6	196.9
1/4	8.7	196.8
+5	8.5	197.0
+	8.5	197.0
1/4	9.3	196.2
+5	9.5	196.0
+6	9.1	196.4
qut	9.2	196.3
Neb	9.47	196.98
6+80 ^s = ec. sw ret.		
Neb	10.39	195.08
qut	11.1	194.4
1/4	11.1	194.4
+	10.2	195.3
1/4	9.9	195.6
qut	10.1	195.4
Scb	9.30	196.17

Dixon Pl.

(7+28^s on south = 7+75^s on North)

End. Sec 205.47 (on w. (eastward)) 38

23 ^s tabcb on ret.	9.57	196.90
qut	10.1	195.4
15 ^s	9.9	195.6
S.L. (Prod)	10.7	194.8
cb	11.3	194.2
1/4	12.3	193.2
+	13.0	192.5
1/4	12.8	192.7
+3	14.6	190.9
qut	15.0	190.5
Neb	14.73	190.74
T.P. 12.72	217.87	0.32 205.15
T.P. 12.98	230.67	0.18 217.69
T.P. Xul Pole (Begin)	5.44	225.23

Xsec Alley B110 96 M=J Feb 23-20
20' wide Mannaseet Shilla Louden.

Alley B110 96 M=J

39

B.P. NW
Newton & Dewey
BM

OK

	0.89	32.84	31.95
Ecb line Dewey (Commercial gutter)			
S.L.	out	5.61	27.23
±	✓	5.49	27.35
N.L.	✓	5.31	27.53
0+00 = F.L. Dewey			
N.L.	ray	5.03	27.81
±	✓	5.36	27.48
S.L.	✓	5.34	27.50
0+08			
S.L.		5.4	27.4
+7		5.0	27.8
±		5.3	27.5
+7		5.1	27.7
+6		5.3	27.5
N.L.		5.0	27.8
0+25			
N.L.		4.5	28.3
+4		5.6	27.2
+7		5.6	27.2
±		5.9	26.9
+3		5.2	27.6
+6		5.1	27.7
S.L.		5.6	27.2

Plotted 2-25-29 G.B.H.

0+45	32.84	
Door 0 ² South	5.16	27.68 ✓
S.L.	5.7	27.1
+3	5.8	27.0
+6	5.3	27.5
±	5.5	27.3
+4	5.6	27.2
N.L.	5.3	27.5
0+75		
N.L.	5.1	27.7
+8	5.8	27.0
±	5.6	27.2
+4	5.6	27.2
S.L.	5.7	27.1
0+80		
Wide court (conc) on SL	5.78	27.06 ✓
1+00		
S.L. Conc Court	5.84	27.00 ✓
+8	5.2	27.6
±	5.3	27.5
+7	5.2	27.6
N.L.	5.0	27.8
1+20		
S.L. End Conc Court	5.54	27.00 ✓

1+25	32.84		
N.L.	4.7	28.1	
+4	5.0	27.8	
+7	5.0	27.8	
±	5.0	27.8	
+3	5.1	27.7	
+7	5.4	27.4	
S.L.	5.2	27.6	

0+50			
S.L.	5.1	27.7	
+5	5.2	27.6	
±	5.2	27.6	
+2	5.0	27.8	
N.L. (bridge in Alley)	4.8	28.0	
T.P. 4.89	32.77	4.96	27.88

1+51			
N.L. Floor warehouse (wood)	3.98	28.79	✓

1+75			
N.L. Floor warehouse	4.6	28.2	
+6	5.0	27.8	
±	5.0	27.8	
+5	5.2	27.6	
S.L.	5.0	27.8	

2+00	32.77		
S.L.	5.2	27.6	
+6	5.1	27.7	
±	4.9	27.9	
+8	4.2	28.6	
N.L. floor warehouse (earth)	4.4	28.4	✓
2+11			
N.L. floor warehouse (earth)	4.4	28.4	✓
2+25			
N.L. floor warehouse (earth)	4.3	28.5	✓
+2	4.4	28.4	
+5	4.9	27.9	
±	5.0	27.8	
+4	5.1	27.7	
S.L.	5.2	27.6	
2+45 = E end warehouse on North			✓
N.L. floor warehouse	4.4	27.4	
2+50			
S.L.	5.2	27.6	
+3	5.3	27.5	
+8	5.0	27.8	
±	5.0	27.8	
+3	4.9	27.9	
+8	5.1	27.7	
N.L.	4.7	28.1	

(Cont. floor of warehouse on South 1+20 to 2+45 is same level as remainder S.L.)

Alley B/R 96 N 2 J

32.77

2+70 M.H.

top	4.28	28.49 ✓
FL	8.42	24.35 ✓
2+75		
N.L.	4.7	28.1
+2	5.0	27.8
+4	4.8	28.0
±	4.7	28.1
+6	5.2	27.6
S.L.	4.9	27.9

2+95

± garage on S.L. (Panc.)	4.54	28.23 ✓
--------------------------	------	---------

3+00

S.L.	4.6	28.2
+5	4.7	28.1
±	4.5	28.3
+3	4.5	28.3
+6	4.8	28.0
N.L.	4.5	28.3

3+14

± garage on N.L. (earth floor)	4.5	28.3 ✓
--------------------------------	-----	--------

Alley B/R 96 N 2 J

32.77

3+25

N.L.	4.2	28.6
+6	4.4	28.2
±	4.4	28.4
+2	4.4	28.4
+5	4.6	28.2
S.L.	4.6	28.2

3+44

± garage on S.L. (earth floor)	4.5	28.3 ✓
--------------------------------	-----	--------

3+50

S.L.	4.4	28.4
+6	4.1	28.7
+8	4.3	28.5
±	4.1	28.7
+4	4.3	28.5
+6	4.5	28.3
N.L.	4.0	28.8

3+57

S.L. ± garage (earth floor)	4.1	28.7
-----------------------------	-----	------

4+00

N.L. (fence 2.6 in)	3.3	29.5
+3	3.3	29.5
+4	3.6	29.2
+7	3.7	29.1
±	3.6	29.2
+4	3.6	29.2
S.L. (fence 2.6 in)	3.7	29.1

41

1+06	32.77		
garage 0 ² in on N.	3.3	29.5	✓
1+38			
garage 0 ⁵ in on S.	3.2	29.6	✓
T.P. 6 02	36.54	2.25	30.52
1+50			
S.L.	6.7	29.8	
+5	6.5	30.0	
+	6.4	30.1	
+2	6.5	30.0	
N.L.	6.0	30.5	
1+86			
garage 0 ⁰ S. 0 ² in.	6.2	30.3	✓
5+06			
N.L.	5.2	31.3	
+	5.6	30.9	
+6	5.9	30.6	
S.L.	5.7	30.8	
5+25			
S.L.	5.0	31.5	
+3	5.1	31.4	
+4	5.5	31.0	
+7	5.2	31.3	
+	5.1	31.4	
+3	5.0	31.5	
+6	5.1	31.4	
+7	4.7	31.8	

42

5+25	36.54		
N.L.	4.7	31.8	
5+50			
N.L.	4.2	32.3	
+4	4.5	32.0	
+6	4.4	32.1	
+	4.5	32.0	
+4	4.6	31.9	
+6	4.8	31.7	
+8	4.4	32.1	
S.L.	4.5	32.0	
5+56			
garage 0 ⁰ S. 0 ² in.	3.7	32.6	✓
5+61 - MH on E.			
top	4.08	32.46	✓
F.L.	11.03	25.51	✓
5+63			
garage 0 ⁰ S. 0 ² in.	4.4	32.1	✓
5+80			
S.L.	4.1	32.4	
+3	4.2	32.3	
+5	4.0	32.5	
+	3.8	32.7	
+6	3.8	32.7	
+8	3.4	33.1	
N.L.	3.2	33.3	

3654

6+00.8 = W.L. Evans

N.L. top Alley cb	3.51	33 01		
N.L. grd.	3.5	33 0		
+3	3.8	32.7		
+7	3.8	32.7		
±	4.1	32.4		
+4	4.1	32.4		
S.L. grd.	4.2	32.3		
S.L. top cb	4.15	32.39		
Web line Evans.				
S.L. top cb	4.41	32.13		
S.L. grd.	4.5	32 0		
±	4.2	32.3		
N.L. grd.	3.8	32.7		
N.L. top cb	3.76	32.78		
T.P. 8.21	40.13	4.62	31.92	31
Siv. Newton B.M. 2 Evans		2.69	37.44	(37.40)

Crosby

95

Main.

Dewey

96

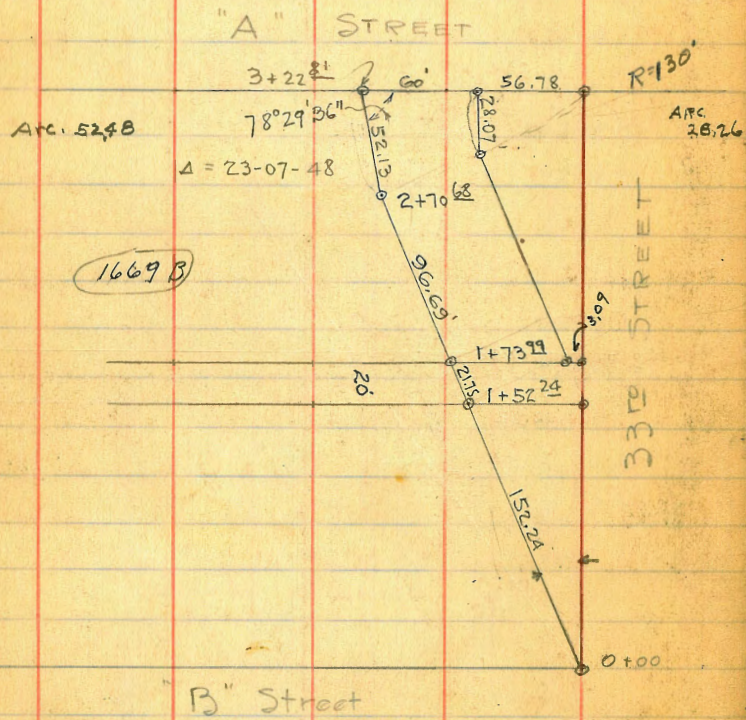
Evans

97

Newton

X-Section Opening of 33rd between
"B" and "A" Streets. 60', 10' SW. 10' Quart.

STA + H.I. - Elev.



JAEGER, Bailey } May 8th 1928.
Clarett Brooks }

STA + H.I. - Elev. ⁴⁴

STA	+	H.I.	-	Elev.
B.M. NW. Mon. 33 rd & Broadway				106.55
	12.25	118.80 ✓		
T.P.			0.85	117.95
	13.16	131.11 ✓		
T.P.			0.05	131.06
	13.01	144.07 ✓		
T.P.			5.03	139.04 ✓
	8.71	147.75 ✓		
0+00				N.L. "B" St.
+25			1.5	
E.L. 33 rd			4.6	143.1
E. Curb			5.5	
E 1/4			6.4	
¢			7.1	140.6
W 1/2			8.3	
W. Curb			10.4	
W. W.			12.4	135.3
T.P.			13.0	134.75
Handlevel	0.0	134.75		
+25			4.7	
0+00				Right Angle with W.L. 33 rd
W.L. Instr.	147.75	12.4		135.3
W. Curb		10.6		
W 1/2		8.9		
¢		7.6		140.1

Plotted 5-13-29
G.D.H.

STA	+	H.I.	-	Elev.
		147.75		
E/d			6.8	
E. Curb			6.1	
E.L.			5.2	142.5
+25'			2.5	
0+25				
+25'			3.6	
E.L.			7.3	140.4
E. Curb			8.9	
E/d			10.1	
⊕			10.6	137.1
W/d			11.9	
W. Curb			13.1	
T.P.			13.0	134.75
Hand Level	0.0	134.75		
W.L.			1.8	133.0
+25'			7.0	
0+50				
+25'			7.9	126.9
W.L.			5.4	129.4
W. Curb	Instr.	147.75 ✓	17.2	
W/d			14.8	
⊕			14.5	133.3
E/d			12.2	
E. Curb			10.4	
E.L.			8.8	139.0

STA	+	H.I.	-	Elev.
				45
+25'			5.3	
T.P.			10.25	137.50
	4.09	141.59 ✓		
0+75				
+25'			0.0	
E.L.			2.8	138.8
E. Curb			4.5	
E/d			6.8	
⊕			8.9	132.7
W/d			12.2	
W. Curb			15.6	
W.L.			16.0	125.6
+13'			16.8	124.8
+25'			16.7	124.9
1+00				
+25'			8.4	133.2
W.L.			11.5	130.1
W. Curb			11.9	
W/d			14.6	
⊕			12.2	129.4
E/d			9.4	
E. Curb			7.3	
E.L.			5.4	136.2
+25'			2.2	137.4

141.59

Sta	+	H.I.	-	Elev.
1+25				
+25'			4.2	136.4
+22'			6.1	
+22'			10.2	
E.L.			11.7	129.9
+3'			8.1	
+5' G' North Top Manhole			6.61	134.98
E. Curb			8.1	
E 1/4			8.9	
¢			11.1	130.6
+3'			11.9	
+5'			15.5	
W 1/4			11.4	
W. Curb			10.0	
W.L.			8.7	132.9
+25'			5.5	
1+25 ²⁴ S.L. Alley				
+25' On S.L. Alley			1.7	
W.L.			4.0	137.6
W. Curb Right angles with W.L.			5.4	
W 1/4			7.0	
¢			11.1	130.5
+5'			11.5	
+6'			9.7	
E 1/4			8.1	

141.59

46

Sta	+	H.I.	-	Elev.
E. Curb			5.9	
E.L.			4.3	137.3
+25'			1.9	139.7
1+73 ⁹⁹ N.D. Alley				
T.P.			0.13	141.46
	6.00	147.46	✓	
+25'			4.5	
+14'			4.4	
E.L.			6.5	141.0
E. Curb			10.3	
E 1/4			14.6	
+3'			17.0	
¢			13.3	134.2
W 1/4			10.4	
W. Curb			9.4	
W.L.			8.0	139.5
+25' on N.L. Alley			5.0	
2+00				
+25'			2.8	
W.L.			5.1	142.4
W. Curb			7.1	
W 1/4			9.4	
¢			11.3	136.2
E 1/4			15.5	
E. Curb			9.3	

147.46

Sta	+	H.I.	-	Elev.
E.L.			5.1	142.4
+25'			0.5	
2+25				
+25'		add to H.I.	+1.5	
E.L.			2.3	145.2
E. Curb			7.8	
+4'			10.0	
+7'			13.1	
E 1/4			10.6	
¢			9.5	1380
W 1/4			7.4	
W. Curb			5.6	
W.L.			3.2	144.3
+25'			0.0	
T.P.			1.15	146.31
	10.53	156.84 ✓		
2+70 ⁶⁸				
+25'			5.5	
W.L.			8.2	148.6
W. Curb			10.6	
W 1/4			13.5	
¢			15.9	1409
E 1/4			18.2	
E. Curb			13.2	
E.L.			10.7	146.1

156.84

Sta	+	H.I.	-	Elev.
+25'			4.9	
2+96				
+25'			4.8	
E.L.			11.4	145.4
E. Curb			14.9	
+6'			17.3	
E 1/4			15.4	
¢			13.9	1429
W 1/4			10.4	
W. Curb			8.6	
W.L.			7.0	149.8
+25'			4.2	
3+22 ⁸¹				
S.L. "A" Street				
+25'			2.1	
W.L.			5.2	151.6
W. Curb			6.9	
W 1/4			8.6	
				146.31 ✓
	10.52	156.83 ✓		
¢			10.9	1459
E 1/4			13.6	
+7'			16.2	
E. Curb			13.3	
E.L.			10.3	146.5
+25'			5.2	

STA	+	H.I.	-	Elev.
T.P.			0.96	155.87
	12.61	168.48 ✓		
T.P.			0.07	168.41
	12.89	181.30 ✓		
T.P.			0.18	181.12
	13.11	194.23 ✓		
			1.42	192.81
				194.85

32M. Mon. NE. 33rd & Ash

STA	+	H.I.	-	Elev.
				48

Location of Existing 6" Sewer
 From M.H. O.G. S. of E. Trumbull St
 Thence S. to & Alley Bk 7.
 Roseville Hts. Thence W.
 To D.E. ✓

10.75
 3.20
 3.05
 17.00

1322
 9.6
 1226

49

B.M. B.P. 12.76 168.27 ✓

156.11 S.E. AKRON + TRUMBULL

Top 6" Sewer Pipe at Y in AKRON O.G. S. & Alley 10.60

158.27

Flow line D.M.H. AKRON + TRUMBULL 17.00

151.87

line to S.

J.P. 12.42 179.96 177.85 1.33

167.54

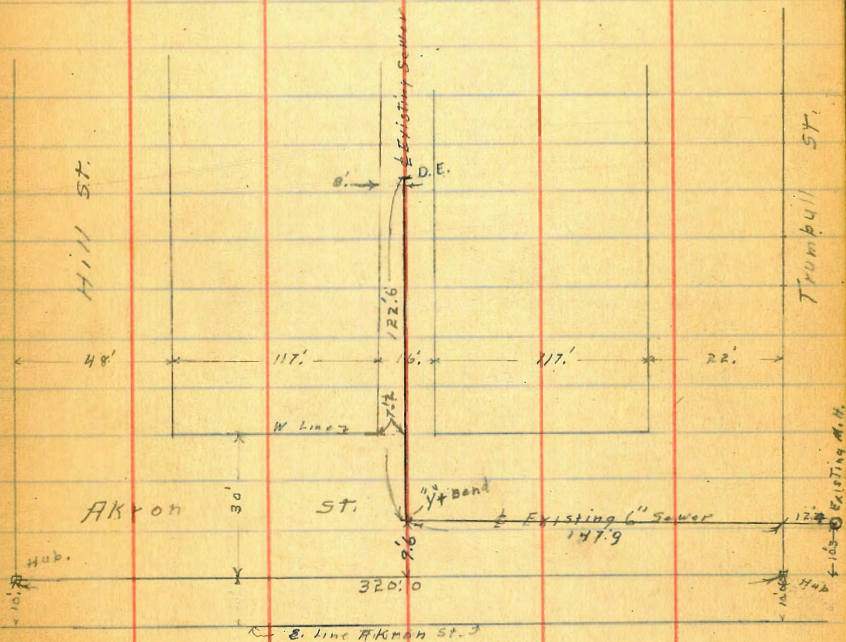
167.43

Top 6" Pipe at D.E. 122.6 W. of Y & Bend in AKRON 7.90

170.96

& Alley

BK 7
 Roseville Hts



60' wide
10' ch's

Curb Elevations Varice St
Coronado To Del Monte

6-12-29
miller

229.31

50

B.M. 0.23 240.40 240.17

s.W. Coronado
+ Santa Barbara

w. ch

4.56 224.75

T.P. 1.62 229.31 12.71 227.69

80' wide
20' ch's

W. Line

4.30 225.01

S. Line Coronado

160' N. = N. Allen R-Turn

N. ch. 1.04 228.27

N. Line

4.88 224.43

E. ch. 3.00 226.31

w. ch

5.24 224.07

20' N = S. ch. Line Coronado

E. ch

7.20 222.11

E. Line 3.44 225.83

E. Line

7.00 222.31

W. " 0.66 228.65

180' N

60' N = N. ch. Line Coronado

E. ch

7.78 221.53

W. Line 1.64 227.67

w. ch

5.74 223.57

E. Line 4.50 224.81

200' N

80' N = N. Line Coronado

W. ch

6.38 222.93

E. ch. 4.11 225.20

E. ch

8.39 220.92

W. ch. 2.05 227.26

250' N

50' N

E. ch

9.97 219.34

w. ch 2.96 226.35

w. ch

7.96 221.35

E. ch 4.95 224.36

T.P.

0.66 220.05 9.92 219.39

100' N

300' W = S. Line Santa Cruz 80' wide

E. ch 5.43 223.48

w. ch

0.24 219.77

w. ch 3.85 225.46

E. ch

2.24 217.81

120' N

14' N = ch. line to W.

w. ch 4.21 225.10

N. Line

0.66 219.39

E. ch 6.21 223.10

20' N = ch. line to E

140' N = S. Allen Return

E. Line

2.75 219.30

E. Line 6.52 222.79

E. ch. 6.42 222.69

Plotted 6-14-1929
C.F.H.

220.05
 60' N. = N. cl. line to E

E. line	4.70	215.35
W. line	2.67	217.38
E. cl	5.07	214.98
W. cl	3.09	216.96
W. cl	3.85	216.20
E. cl	5.87	214.18
E. cl	6.69	213.36
W. cl	4.60	215.45
W. line	4.94	215.11
W. cl	5.15	214.90
E. cl	7.23	212.82
E. line	7.13	212.92
E. line	7.41	212.64
E. cl	7.56	212.49
W. cl	5.52	214.53
W. line	5.29	214.76
W. cl	6.14	213.91
E. cl	8.20	211.85

80' N. = N. line Santa Cruz = 0.0
 50' N
 100' N.
 140' N. = S. Alley Return
 160' N. = N. Alley Return
 200' N.

220.05 Verice
 250' N

E. cl	8.29	211.06
W. cl	6.49	213.16
W. cl	7.59	212.46
E. cl	9.76	210.29
W. line	7.59	212.46
E. line	10.03	210.02
E. line	10.07	209.98
W. line	7.40	212.65
W. cl	7.53	212.52
E. cl	9.73	210.32 = 237.49
T.P.	12.71	230.14
T.P.	12.25	242.13
E. cl	4.40	237.53 = 237.49

300' N. = S. line Del Monte 80' wide
 14' N. = S. cl line to W.
 20' N. = S. cl line to E.
 60' N. = N. cl. line to E.
 66' N. = N. cl. line to W.
 95.7' N. = N. Endent. cl. on W.
 80' N. = N. line Del Monte
 ch. on RM. N. E. Santa Barbara & Del Monte

51

Gutter ST 2. Sec Pringle South 10-29-29
muller

252.49

52

B.M.	0.27	265.34	↓ 265.07	New Pringle & Washington	T.P.	0.06	239.28	13.27	239.22
T.P.	0.27	252.49	13.12	252.22			200' E.		
	174.7 E.	7 1/2 line Pringle	{ E. end ont walk & curbs N. Face N. & S. curb		5-5			1.5	237.8
S. line			10.3	242.2	S.			5.2	234.1
+2 = S. edge walk			10.80	241.69	cb.			11.2	228.1
+7 = ont. cb.			10.94	241.55	1/4			7.6	231.7
gutter s. end 6' cb. inlet			11.80	240.69	♀			11.1	228.2
S. 1/4 gutter parvt			11.72	240.77	1/4			13.0	226.3
" " ont. cb.			10.90	241.59	T.P.	1.40	227.88	12.80	226.48
to gutter parvt			11.51	240.98	cb.			2.7	225.2
to ont. cb.			10.87	241.62	N.			6.4	221.5
1/4 gutter parvt			11.40	241.09	+20			13.8	214.1
1/4 ont. cb.			10.76	241.73					
N. cb. gutter parvt.			11.37	241.12			215' E.		
N. ont. cb.			10.72	241.77	-20			21.8	206.1
+5 = N. edge walk			10.65	241.84	N.			12.1	215.8
+12 = N. line			14.4	238.1	cb.			9.5	218.4
+20			25.0	227.5	1/4			7.9	220.0
	180' E.	From this section Notes for regular 50' st - 10' cb's - 7 1/2' 1/4's			♀			6.0	221.9
-20			27.2	225.3	1/4			5.5	222.4
N.			17.0	235.5	cb.			1.8	226.1
cb.			12.9	239.6	S.			0.7	227.2
1/4			11.4	241.1	+10			0.0	227.9
♀			11.0	241.5			230' E.		
1/4			11.0	241.5	-10			6.6	221.3
cb.			17.5	241.0	S.			8.4	219.5
S.			10.6	241.9	cb.			9.0	218.9

227.88

230. E Coh

S. 14			10.2	217.7
Φ			11.2	216.7
14			14.0	213.9
T.P.	0.42	215.38	12.92	214.96
cb			5.6	209.8
N			7.1	208.3
+20			15.8	199.6
		250.8.		
-20			25.5	189.9
N			18.0	197.4
cb			14.2	201.2
14			10.5	204.9
Φ			10.4	205.0
14			11.1	204.3
cb			8.3	207.1
5			6.8	208.6
+10			2.3	213.1
		275.8.		
-15			8.3	207.1
T.P.	0.32	202.89	12.81	202.57
5.			2.8	200.1
cb			7.6	195.3
14			11.8	191.1
Φ			14.2	188.7
14			15.2	187.7
cb			17.0	185.9

Sutter St.

202.89

53

N			19.0	183.9
+15			24.1	178.8 Wash.
+25			20.6	182.3
		285.8		
-20			22.0	180.9
-10			26.8	176.1 Wash.
N.			24.0	178.9
cb			20.8	182.1
14			18.8	184.1
Φ			16.8	186.1
14			14.5	188.4
cb			10.0	192.9
5			5.2	197.7
+10			2.6	200.3
		300' E = W. line Keating		
-15			7.7	195.2
T.P.	0.14	190.28	12.75	190.14
5.			1.2	189.1
cb			3.1	187.2
14			5.5	184.8
Φ			11.3	179.0
14			14.0	176.3
cb			17.2	173.1
N			17.7	172.6 Wash.
+15			10.3	180.0

190.28
W. cl

N	15.8	174.5
+9	20.4	169.9 Wash.
cl	19.7	170.6
34	18.1	172.2
♀	12.0	178.3
14	8.7	181.6
cl	7.8	182.5
S	6.3	184.0
	W 14	
S.	9.0	181.3
cl	11.6	178.7
14	12.4	177.9
♀	15.0	175.3
14	20.4	169.9
+3	21.1	169.2
+5	22.5	167.8 Wash
cl	20.6	169.7
N.	15.5	174.8
	♀ Keating	
N.	16.5	173.8
cl	21.6	168.7
+6	23.3	167.0
14	22.8	167.5
♀	19.7	170.6
14	17.0	173.3
cl.	15.7	174.6

190.28

SUTTER.

S	11.5	178.8	54
	E 14		
S.	14.6	175.7	
cl	18.9	171.4	
14	20.9	169.4	
♀	23.2	167.1	
14	24.2	166 Wash.	
cl	21.0	169.3	
N.	16.9	173.4	
	E. cl.		
N.	13.0	177.3	
cl.	18.8	171.5	
14	23.3	167.0	
♀	26.1	164 Wash	
14	25.3	165.0	
cl	22.4	167.9	
S.	18.8	171.5	
	oo = E. line Keating		
S	23.7	166.6	
cl.	27.1	163.2	
+4	28.1	162.2 Wash.	
14	27.2	163.1	
♀	24.2	166.1	
14	20.0	170.3	
cl	14.6	175.7	
N	9.7	180.6	

190.28
12' E. of Keating

N	7.9	187.4	
cb.	12.6	177.7	
'4	17.0	177.7	
⊕	21.2	169.17	
'4	25.0	165.3	
cb	28.1	167.2	
S.	29.3	161.0	Wash.
+35	19.7	170.6	
	25' E.		
S-40	22.0	168.3	
S-20	32.0	158.3	Wash
S.	29.0	161.3	
cb.	24.8	165.5	
'4	21.5	168.8	
⊕	17.8	172.5	
'4	13.4	176.9	
cb	10.6	179.7	
N	6.6	183.7	
+10	1.5	188.8	
	50' S.		
-5	+2.2	192.5	
N	+1.0	191.3	
cb	2.0	188.3	
'4	7.4	187.9	
⊕	11.0	179.3	
'4	15.0	175.3	

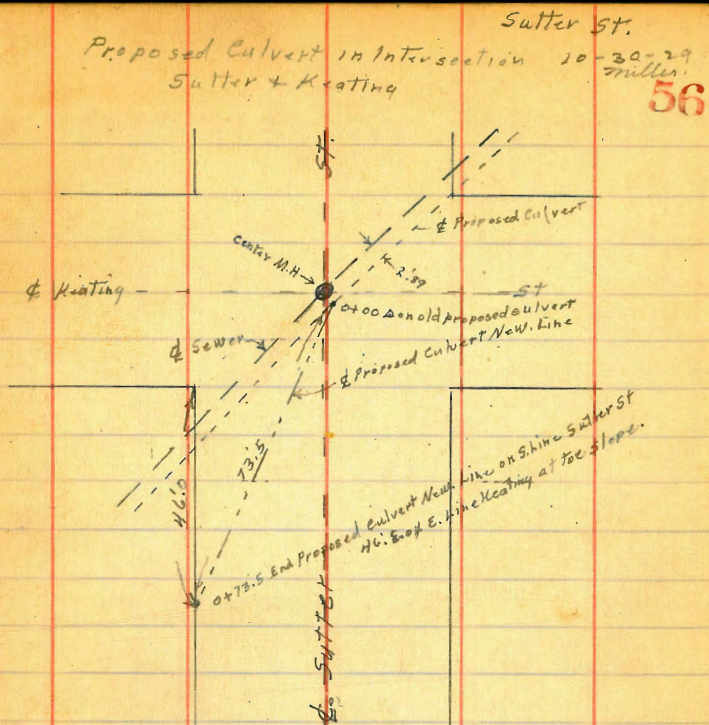
190.28

Sutter St.

55

cb	20.2	170.1	
S.	25.7	164.6	
+20	35.8	154.5	Wash.
+50	29.5	160.8	
	75' E.		
-60	34.2	156.1	
-45	38.5	151.8	Wash
S.	21.0	169.3	
cb	13.4	176.9	
'4	10.7	179.6	
⊕	6.7	183.6	
'4	3.0	187.3	
cb	0.2	190.1	
N	+2.0	192.3	
+5	+3.0	193.3	
	100' E.		
-5	+1.0	191.3	
N.	0.0	190.3	
cb.	1.7	188.6	
'4	3.7	186.6	
⊕	6.5	183.8	
'4	9.2	182.1	
cb	12.5	178.8	
S.	16.4	173.9	
+15	25.2	115.1	

		190.28		
		125' E. of Keating		
S-20			26.1	
S			17.2	
cb			14.3	
1/4			12.3	
±			7.0	183.3
1/4			8.7	
cb			6.2	
N			3.0	
		140' E.		
N.			9.0	
cb			11.0	
1/4			12.6	
±			14.0	176.3
T.P.	0.15	177.69	12.74	177.54
1/4			3.5	
cb			5.7	
S			9.3	
+10			12.4	
		142' E.		
-20			27.1	
S			22.0	
cb			18.9	
1/4			16.3	
±			15.0	167.7
1/4			11.8	
cb			10.2	
N			5.3	



Levels on Proposed Culvert New Line
H.T. 190.28

0+00	Don old line		
0+15	Proposed Culvert 2.99 E. of Proposed M.H.	21.3	169.0
0+30		27.2	163.1
0+40		27.0	163.3
0+50		26.7	163.6
0+65		26.0	164.3
0+73.5		25.8	164.5
0+73.5	S. line Sutter 46' E. of E. line Keating at toe slope	26.3	164.0

		177.69		
T.P.	0.38	165.35	12.72	164.97
		190' E.		
-10			3.9	
N			7.7	
cl			10.6	
4			12.6	
±			14.1	151.3
T.P.	0.34	152.97	12.72	152.63
14			3.0	
cl			4.9	
S			7.5	
+20			11.7	
		215' E.		
-30			15.8	
-20			18.5	Wash
S			15.1	
cl			12.3	
14			10.6	
±			8.2	144.8
14			5.8	
cl			4.5	
N			2.3	
		225' E.		
N			4.8	
cl			7.5	
14			9.2	

		152.97		Sutter
±			11.1	171.9
14			13.5	57
cl			15.1	
S			18.0	Wash.
+20			14.2	
T.P.	5.45	147.30	11.12	141.85
		235' E.		
-20			4.4	
S			7.8	
cl			9.0	
14			10.2	
±			11.4	135.9
14			8.6	
cl			5.7	
N			2.2	
		244' E.		
N			5.0	
cl			8.4	
+4			11.1	Wash
14			10.0	
± Top M.H			8.6	138.7
± Ft. M.H			15.03	137.27
14			8.3	
cl			6.4	
S			5.3	
+10			3.1	

6.43
8.00
15.03

147.30

260'E.

-10		+1.9	149.2
S		+1.7	149.0
cb		1.4	
"		3.5	
♀		4.9	
"		6.4	
+4		7.6	
cb		10.0	
N.		6.7	
+10		4.7	

Wash

chk. on M.H.	F.L.	1207 7419 BIX 79	Additional		
T.P.	12.90	159.57	0.63	146.67	128.23
T.P.	11.82	170.81	0.58	158.99	
T.P.	12.72	183.42	0.18	170.63	
T.P.	12.31	195.71	0.02	183.40	
T.P.	11.35	206.21	0.85	194.86	
T.P.	12.91	218.75	0.37	205.84	
T.P.	12.87	231.07	0.55	218.20	
T.P.	12.31	242.87	0.51	230.56	
T.P.	12.24	254.97	0.14	242.73	
T.P.	12.23	267.15	0.05	254.92	
			2.03	265.12 = 265.07	

original BM.

58

9.82
9.25
19.07

11-18-29 X-section Alley Block 104 - Central Park

J.C. Bliss W.L. 31st to 150' West of 31st.

Drebert
Rauner 20' Wide

79.59

59

B.M. N.E.S.P. 31st + Imperial

77.51

8' Garage 1' in alley from N.W. Dist. Flr 5.4

74.2

+2.08

0+57

79.59

W.L. 31st = 0+00

S

5.9

73.7

E

5.6

74.0

N

5.7

73.9

N 4.8 74.8

E 5.1 74.5

G-on Ground 5.1 74.5

about 4.63 74.96

S to existing return 4.27 75.32

0+25

N

6.0

73.6

E

6.0

73.6

S

5.7

73.9

S 5.0 74.6

E 4.7 74.9

N 5.3 74.3

S

6.2

73.4

E

5.7

73.9

N

6.3

73.3

0+36

8' Garage 1.2' in Alley from N.W. Dist. Flr 5.4

74.2

N

6.4

73.2

0+40

14' Concrete entrance to Soda Works

E

5.7

73.9

S

6.0

73.6

East end 4.44 75.15

West 4.38 75.21

0+46

10' Garage 0.9' in alley from N.W. Dist. Flr 5.6

74.0

0+50

N 5.5 74.1

E 5.3 74.3

S 5.5 74.1

1+50

N

6.4

73.2

E

5.7

73.9

S

6.0

73.6

20' wide X Sec Alley BIK 104 Central Park
 Bet. Imperial + Commercial - 31st St to 30th St

12-6-27
 Mills.

79.12
 122' W. - Cor. I Culvert 12" Full. dirt 60

N.E. 31st
 + Imperial

BM.	B.P.	1.61	79.12	77.51
W. cb. line 31 st				
3' W. of Alley Pavmt. grade		4.35		74.77
3' S " " " "		4.55		74.57
00 = W. line 31 st St				
S. - Top cont. cb. Return		3.82		75.30
S. dirt		4.7		74.4
⊥ "		4.6		74.5
N "		4.2		74.9
N. - Top cont. cb. Return		3.64		75.52
From 23' W to 29' W. offset on House on N. 0.7 in Alley				
40' W.				
⊥ Double garage on N. dirt floor 1.0 in Alley		5.1		74.0
+1		4.5		74.6
⊥		4.8		74.3
S. dirt		4.5		74.6
S. cont. floor in Soda Works ⊥ Door		3.95		75.17
60' W.				
S		5.1		74.0
⊥		5.0		74.1
+9. Front. garage dirt floor		5.0		74.1
100' W				
N		5.6		73.5
⊥		5.4		73.7
S		5.5		73.6

N

5.8

73.3

N + 4/3

Top N. End 12" Pipe

5.2

73.9

⊥

5.3

73.8

+ 6.8

" S " " "

5.5

73.6

S

5.5

73.6

140' W

S

5.6

73.5

⊥

5.4

73.7

N

5.6

73.5 1

204' W. garage on S. dirt floor 1.0 in Alley

N

5.4

73.7

⊥

5.2

73.9

+9. Front. garage

5.1

74.0

221' W garage on S. dirt floor 1.0 in Alley

S + 1. front.

5.4

73.7

⊥

5.3

73.8

N

5.7

73.4

260' W

N

5.4

73.7

⊥

5.3

73.8

S

5.4

73.7

T.P.

4.51

78.36

5.27

73.85

300' W

S

4.5

73.9

⊥

4.6

73.8

N

4.6

73.9

78.36

345' W garage on S. dirt floor 0.5 in Alley

N	4.6	73.8
E	4.5	73.9
+ 9.5 front garage	4.9	73.5

355' W garage on S. Wood floor 0.6 in Alley

S + 0.6 Front garage	4.8	73.6
E	4.6	73.8
N	4.6	73.8

380' W

N	4.4	74.0
E	4.3	74.1
S	4.7	73.7

From 385' W to 401' W. emb. wall chicken House

on S. 0.7 in Alley.

400' W

S	5.0	73.4
E	4.6	73.8
N	4.4	74.0

4.50' W

N	4.4	74.0
E	4.6	73.8
S	4.7	73.7

From 450' W to 4.60' W Shed on S. 0.5 in Alley

From 450' W West Board Fence on N. 0.5 in Alley

78.36

Alley Bldg 104 Central Park.

500' W

61

S	4.8	73.6
E	4.5	73.9
N	4.5	73.9

543' W garage on N. emb. floor 0.5 in Alley

N. + 0.5 Front garage	3.70	74.7	emb. floor
+ 4.5	3.8	74.6	
E	3.7	74.7	
S	3.8	74.6	

565' W

S	3.9	74.5
E	3.6	74.8
N	3.7	74.7

600' W = E. line 30th St.

N emb. eb	4.24	74.10
N parmt	4.34	74.02
N dirt	4.3	74.06
E parmt. + dirt	4.75	73.61
S. " " "	4.54	73.82
S. emb. eb	4.52	73.84

E. ch. line 30th St.

S. gutter parmt	5.23	73.13		
E " "	4.99	73.37		
N. " "	4.92	73.44		
T.P.	5.24	79.02	4.58	73.78

chk BM

4.05	74.97	N.W. 30 th & Imperial 74.97
------	-------	----------------------------------------------

1-30-30

X-sections of Bush Street.

J. C. Bliss
Drebert
Rauner
Clarex

E.L. Gold Finch to Easterly Termination
50' wide 10' cbs - 7/4 1/45

T 260.22

B.M. N.E.B.P. Bush & Goldfinch 260.00
0.22

T 260.22

E.L. Gold Finch = 0+00 - Existing Paving

N Tpcb	0.22	260.00	-
G	0.89	259.33	/
1/4	0.94	259.28	
1/4	0.95	259.27	/
1/4	1.20	259.02	/
G	1.44	258.78	✓
S Tpcb	0.89	259.33	✓

0+25

S Tpcb	2.93	257.29	
G	3.6	256.6	
1/4	3.4	256.8	
1/4	3.1	257.1	
1/4	3.0	257.2	
G	2.9	257.3	
N Tpcb	2.35	257.87	

0+50

N Tpcb	4.43	255.79	
G	5.1	255.1	
1/4	5.0	255.2	
1/4	5.1	255.1	
1/4	5.4	254.8	

Plotted 2-3-30 CBH

G	57	254.5
S Tpcb	5.01	255.21
0+75		
S Tpcb	7.10	253.12
G	7.7	252.5
1/4	7.4	252.8
1/4	7.2	253.0
1/4	7.1	253.1
G	7.0	253.12
N Tpcb	} Driveway	

1+00 = Beginning 3' Concrete Gutter on South

N Tpcb	8.5	251.57
G	9.4	250.8
1/4	9.2	251.0
1/4	9.3	250.9
1/4	9.5	250.7
Edge Gutter	9.57	250.65
G	9.27	250.45
S Tpcb	9.09	251.13

1+25

S Tpcb	11.19	249.03
G	11.90	248.32
Edge gutter	11.63	248.59
1/4	11.5	248.7
1/4	11.3	248.9

π 260.22

1/4	11.3	248.9
G	11.5	248.7
N Tpcb	10.77	249.45
T.P.		1323 246.99

+0.31

π 247.30

1+50

N Tpcb		
G	Drive way	
	0.44	246.86
1/4	0.4	246.9
¢	0.6	246.7
1/4	0.7	246.6
Edge Gutter	0.77	246.53
G	1.07	246.26
S Tpcb	0.30	247.00

1+75

S Tpcb	2.33	244.97
G	2.98	244.32
Edge Gutter	2.80	244.50
1/4	2.7	244.6
¢	2.7	244.6
1/4	2.7	244.6
G	2.6	244.7
N Tpcb	2.10	245.20

π 247.30

63

2+00

N Tpcb	4.19	243.11
G	4.7	242.6
1/4	4.7	242.6
¢	4.6	242.7
1/4	4.7	242.6
Edge Gutter	4.79	242.51
G	5.00	242.30
S Tpcb	4.29	243.01

2+25

S Tpcb	6.33	240.97
G	6.97	240.33
Edge Gutter	6.75	240.55
1/4	6.7	240.6
¢	6.6	240.7
1/4	6.8	240.5
G	6.9	240.4
N Tpcb	6.24	241.06

2+50

N Tpcb	8.35	238.95
G	8.8	238.5
1/4	8.8	238.5
¢	8.6	238.7
1/4	8.6	238.7
Edge Gutter	8.78	238.52
G	8.97	238.43
S Tpcb	8.24	239.06

π 247.30

2+25 = End existing curb & walk on North

S Tpcb	10.29	237.01	
G	10.95	236.35	
Edge Gutter	10.75	236.55	
1/4	10.8	236.5	
♀	10.8	236.5	
1/4	11.0	236.3	
G	11.1	236.2	
N Tpcb	10.50	236.80	
N	10.6	236.7	
	3+00		
N	12.9	234.4	
cb	13.6	233.7	
1/4	13.1	234.2	
♀	12.9	234.4	
1/4	12.7	234.6	
Edge Gutter	12.65	234.65	
G	12.83	234.47	
S Tpcb	12.16	235.14	
T.P.		13.21	234.09
0.67			

π 234.76

3+25

S Tpcb	1.63	233.13
G	2.27	232.49
Edge Gutter	2.10	232.66

π 234.76

64

1/4	2.3	232.4
♀	2.3	232.4
1/4	2.4	232.3
cb	2.4	232.3
N	2.2	232.5
Existing 5' walk on South ends at 3+27		
3+50		
2800K N.L. on Wooden Porch House	3.1	231.6
N	4.0	230.7
cb	3.6	231.1
1/4	3.4	231.3
♀	3.3	231.4
1/4	3.4	231.3
Edge Gutter	4.21	230.55
G	4.31	230.45
S Tpcb	3.61	231.15

3+58.5 = End existing curb on South

S	3.6	231.1
S Tpcb	4.77	229.99 ^{230.49}
G	4.92	229.84
Edge gutter	4.72	230.04

234.76
230.49

T 234.76

3+64

S	4.1	230.6
cb	4.0	230.7
1/4	4.2	230.5
1/2	4.0	230.7
1/4	4.8	230.0
cb	4.4	230.3
N	4.4	230.3

3+75

N	9.2	225.5
cb	8.0	226.7
H	9.2	225.5
1/4	9.8	225.0
1/2	7.3	227.4
1/2	7.1	227.6
1/4	6.5	228.2
cb	5.5	229.2
S	4.8	230.0

Filled with Trash

Note - From 3+80 to East End of Street
the South Half of the Street contains numerous
Large Eucalyptus trees just scattered about.

4+00

S	6.2	228.5
1/5	8.1	226.6
cb	9.3	225.4

65

T.P. 234.76 -9.95 224.81

+0.30

T 225.11

1/4	1.4	223.7
1/2	8.5	216.6
1/4	8.7	216.4
cb	9.7	215.4
1/2	7.3	217.8
N	7.1	218.0
Out 10	7.3	217.8
4+11		
Out 10	10.2	214.9
N	11.2	213.9
1/8	11.1	214.0
cb	12.9	212.2
1/4	10.7	214.4
1/2	8.9	216.2
1/4	4.2	220.9
cb	7.3	223.8
S	4.2.3	227.4

T 225.11

4+25

S	0.0	225.1
cb	4.1	221.0
1/4	7.3	217.8
♀	10.8	214.3
1/4	12.3	212.8
+4	14.1	211.0
cb	13.1	212.0
N	13.4	211.7
Out 10	12.2	212.9
4+50		
Out 10	15.2	209.9
N	16.1	209.0
cb	15.7	209.4
+3	16.1	209.0
1/4	14.6	210.5
♀	10.8	214.3
1/4	7.4	217.7
cb	3.8	221.3
+3	2.6	222.5
+7	2.4	222.7
S	(+0.3)	225.4

T 225.11

4+64.18 = Easterly Termination Bush St.

66

S	1.0	224.1
+3	4.0	221.1
cb	5.2	219.9
1/4	8.3	216.8
♀	10.8	214.3
1/4	14.9	210.2
+4	16.6	208.5
cb	16.7	208.4
+5	17.4	207.7
N	17.1	208.0
Out 10	16.4	208.7
T.P.		-0.19 224.92
	+12.07	236.99
T.P.		-0.06 236.93
	+12.45	249.38
T.P.		-0.26 249.12
	+11.31	260.43
B.M.N.E.B.P. Gold Finch + Bush		0.43 260.00
		Correct 260.00

x sec of portion
Summit Pt. Avalon Mts.

indexed
c.s.K.

17000
2-6-35

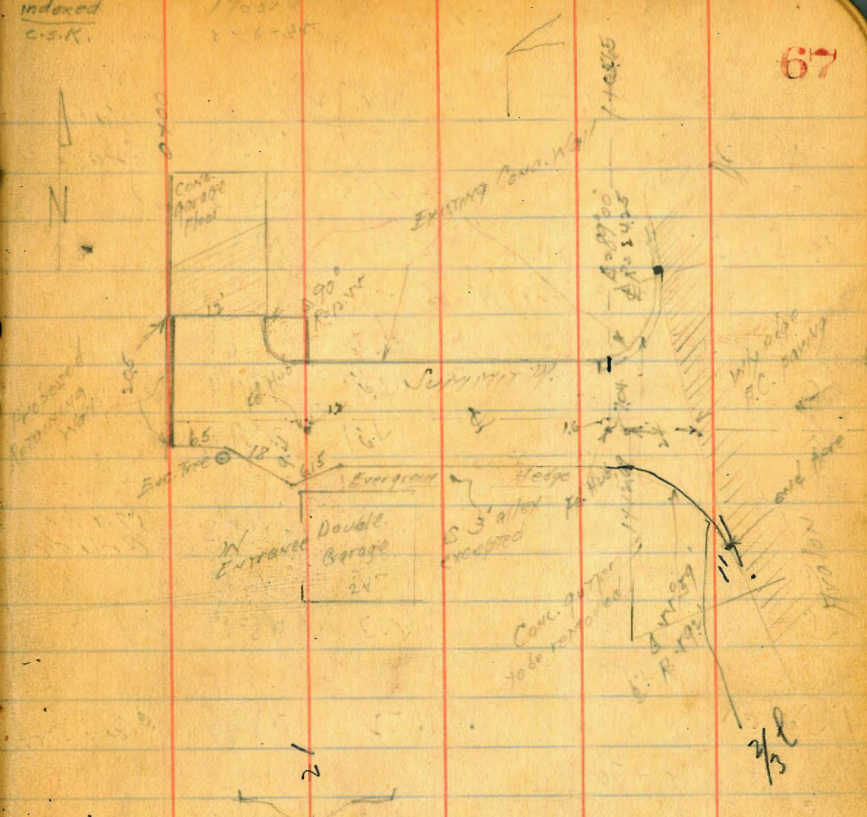
Arched opening 2' wide, excepting 5'

Barr	641	254.48	248.07	NE 80°
Hawk	8.46	262.72	254.26	Summit Avalon

0+0 -3

262.72 ✓

SSE		6.0	256.7	✓
e		6.2	256.5	✓
WNW		5.6	257.1	✓
SENE				
	0+0			
WSE		4.8	258.17	✓
SENE		5.0	256.9	✓
e		5.5	257.2	✓
e		5.8	257.2	✓
SSE		5.4	257.3	✓
	0+0			
WSE		4.6	258.1	✓
	0+12			
4.7 S of E		4.7	258.0	✓
e		4.5	258.2	✓
N		4.6	258.1	✓
WSE		4.02	256.10	✓
	0+23.9			
N		4.8	257.9	✓
e		4.7	258.0	✓
9.6 S of E		4.7	258.0	✓
WSE		5.4	257.3	✓



262.74

07255 PC. W

262.72

N		4.9	√57.8	✓ Make Grade
E		4.7	√58.0	✓
8x5 of E		4.6	√58.1	✓
	0428 beg. wind			
B		4.6	√58.1	✓
C		4.8	√57.9	✓
N		4.9	√57.8	✓
	0750			
N		5.4	√59.3	✓ Make to grade
B		5.4	√59.3	✓
S		5.3	√57.4	✓
	0755			
9 S of E		5.2	√57.5	✓ Clear up
	0750			
E		6.2	√56.5	✓
C		6.2	√56.5	✓
N		6.4	√56.3	✓ Make to
	0790			
N		7.6	√55.1	✓ Make grade
C		7.6	√55.1	✓
S		7.7	√55.0	✓
	1405.65 PC. W			
B		8.8	√53.9	✓
C		8.7	√53.9	✓
N		8.8	√53.9	✓ grade

262.74

262.72

68

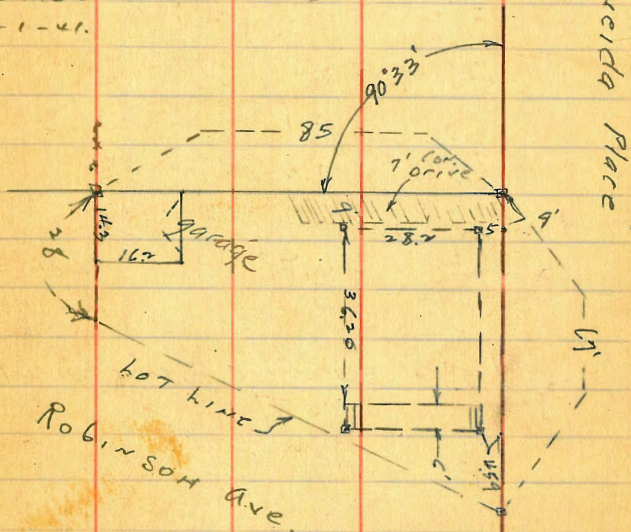
N		1418.24	715.21		10.0	√52.7	✓	grade
N		2.21	1421.04	256.47	8.26	254.26		
			1424.76		<u>256.47</u>			
N					4.58	√51.89	✓	grade
		1442.76						
N			1434.31		5.27	√51.20	✓	grade p...
N					5.59	√50.88	✓	
		1412.69						
C					2.1	√53.4	✓	
S					3.2	√53.3	✓	
		1451.25						edge par
S					4.70	√51.69	✓	on par.
		1436.69						edge par...
					4.77	251.90		

Survey Lots Block 3
La Conyado Villa Tract

Location of Stucco House
to be Moved by City

Indexed
LM

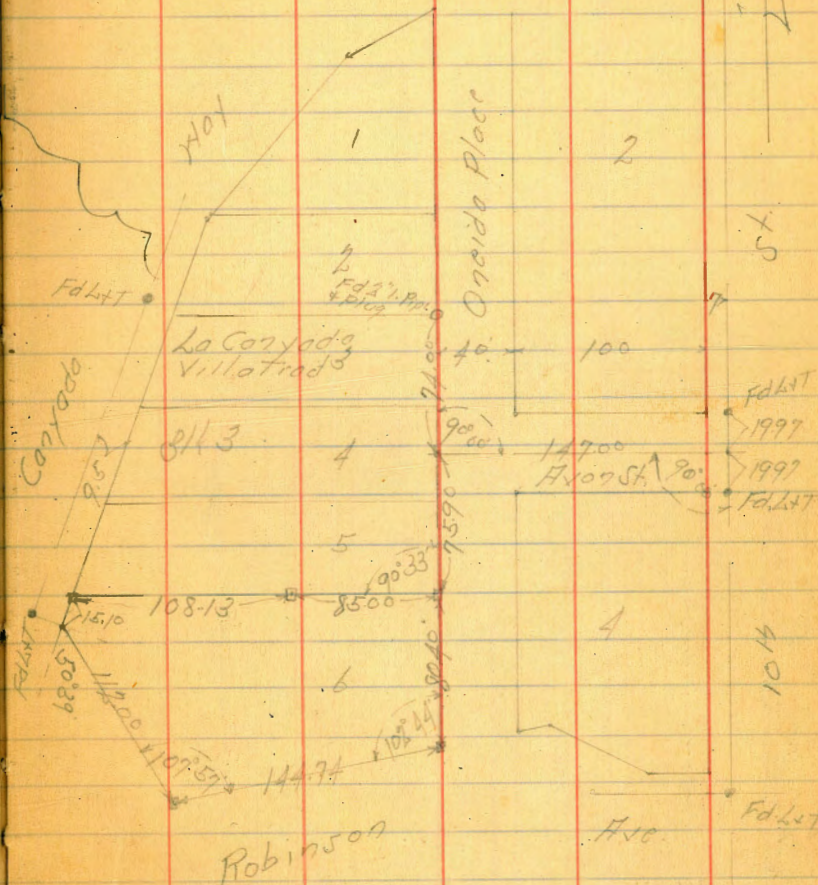
Moore Set 4 Corners
Rand Suelmac
of house
10-1-41.



See P 1 for add. Levels

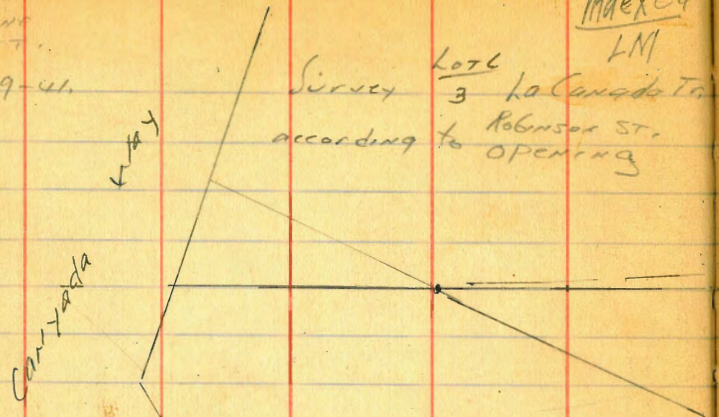
June 28 41
S. 5889
Hort 4007
Moore
H. 1619

□ = HUST Set

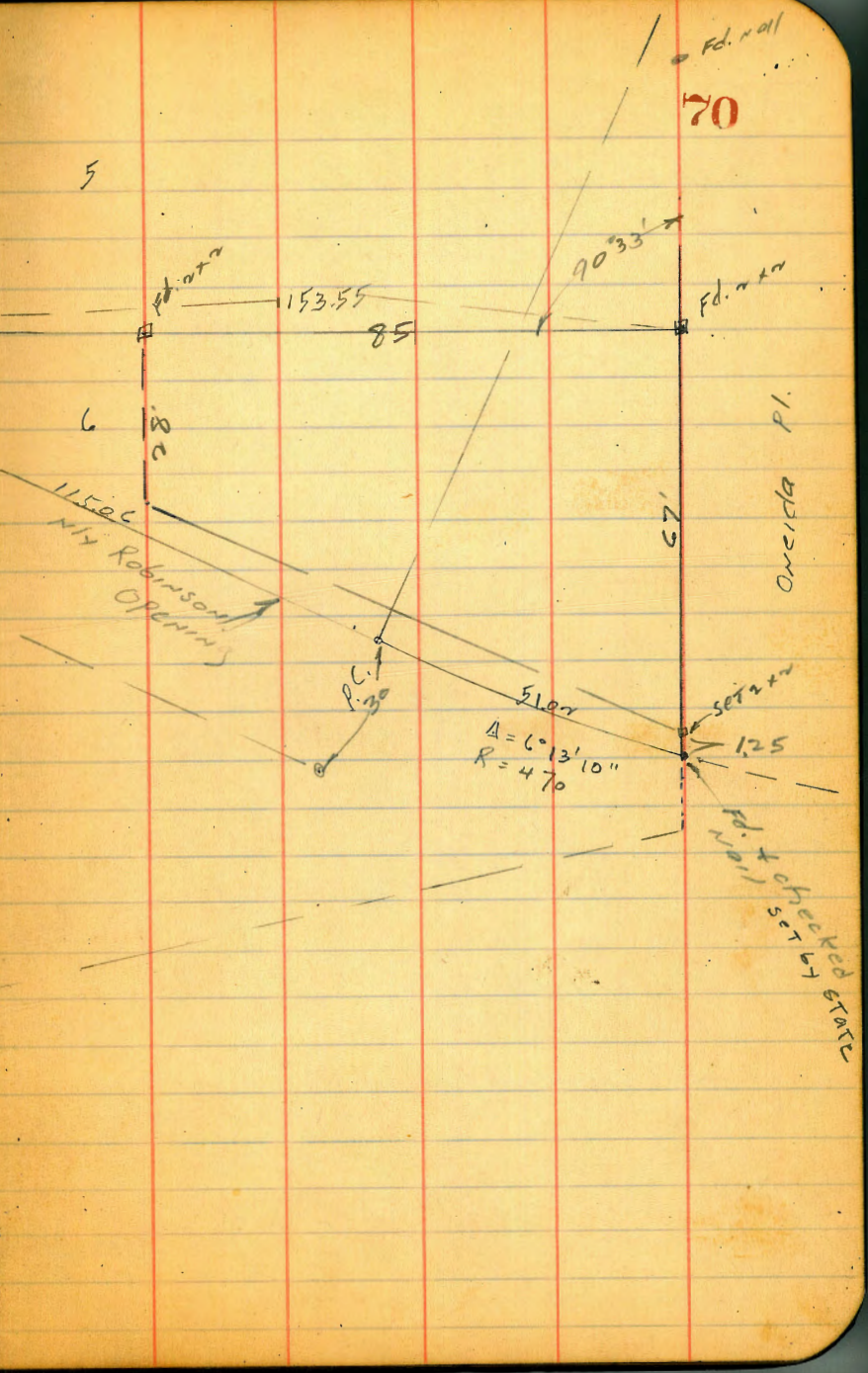
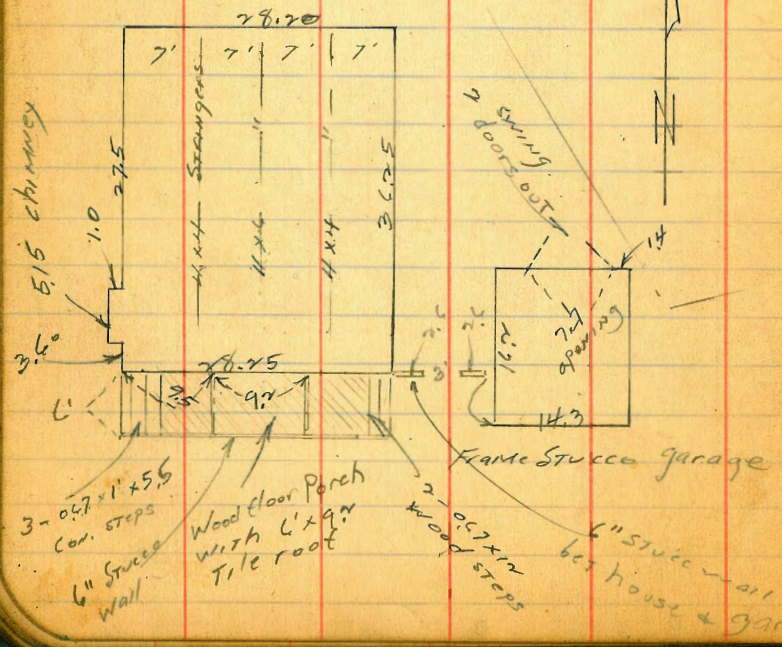


Moore
Osborne
Covert
7-19-41.

Indexed
LM
Survey ^{Lot 6} 3 to Canada Tr.
according to Robinson St.
opening



Pl. of Stucco house
& garage to be
Moved



Moore
Osborn
Covert

Indexed
LM

71

7-19-44 Levels for Contours
on Lot 6 La Canyada Villa Tr.
Blk 3

N.L. Lot 6 =
Baseline

0+85
282.01 = B.M.
5.64
287.65
6.76
1-11-44. 280.89
3.80
284.69 = H.I.

left

5.5
28
5.4

0+70
3.79
280.90 = El. Foundation

6.3
57
5.0
31
5.0

0+42.5
3.12
281.57 = El. Porch floor

9.0
50
approx. P.C.
on N.L. Rob.
opening
5.6
49
4.9
37
4.0

0+25
5.36
279.33 = El. Corn. drive at
E. edge Porch door

9.5
59
5.9
50
4.9
40
4.0

284.69
4.90
279.79

0+00 = N.L. Oneida Pl.

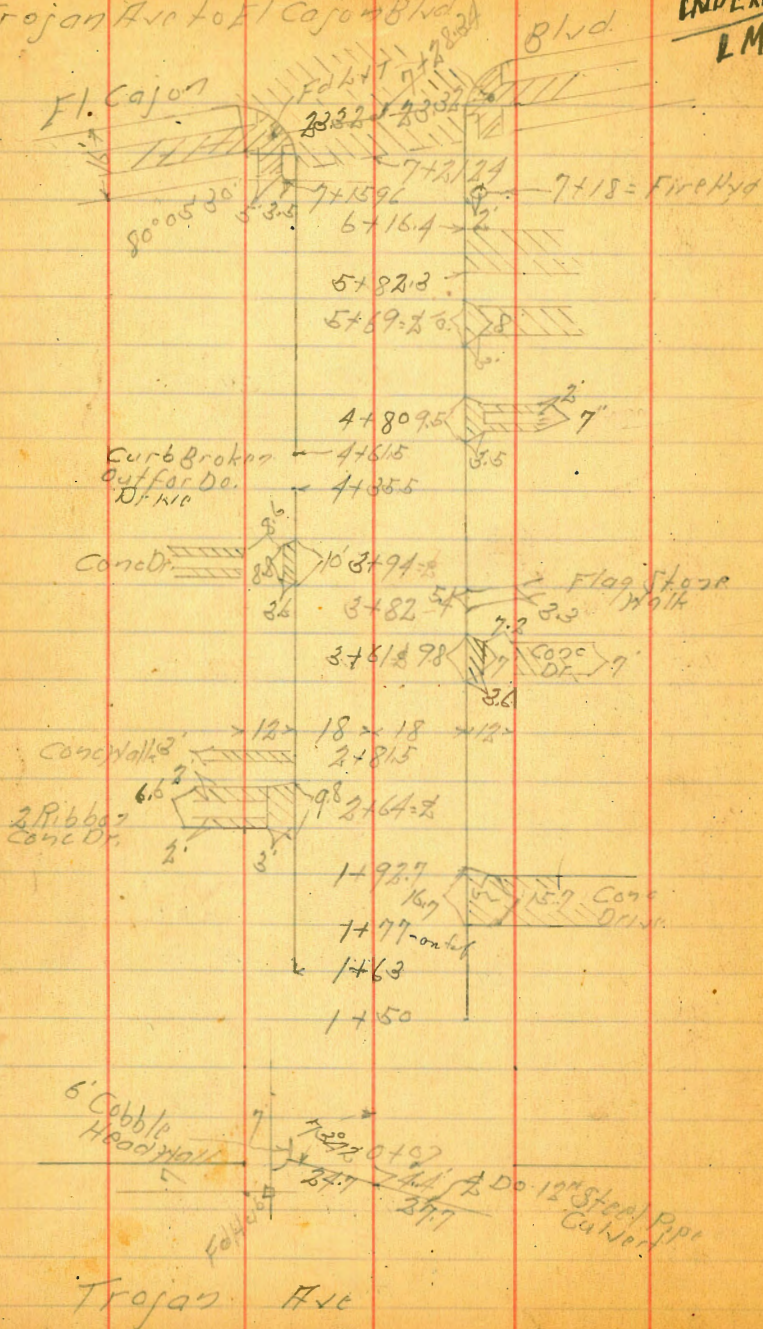
11.4
67
4.8
48
279.77
3.3
276.47

T.P. 1.75 283.07 5.80 281.37
SEBP 5.11 287.17 282.01 Robinson
+ 10.74

283.07
5
H.I.

Cross Section 51
Trojan Ave to El Cajon Blvd

INDEXED
LM



Aug-20-41
S. 5507
Northey
M Moore

72

See F.B. 2021-66

Cross Section 5th St.
Trojan Ave to El Cajon Blvd

TP 12.28 374.62 0.02 366.34

0+25

0+05'

0+0 = HL Trojan Ave

0-044 = 2 Double 12" Steel Pipe Culvert

TP 7.87 362.36 12.30 354.49

TP 0.42 366.79 12.13 366.37

BM 2.39 378.50 376.11

N.M. RP
Trojan
581.45

Plotted to Scale 8-28-41 CMH

St. N	St. S	St. E	73
360.8	356.8	357.7	359.8
16	56	47	38
30	23	18	10
358.4	354.1	355.5	353.3
40	79	69	88
30	22	18	20
354.3	354.6	355.8	355.5
8.1	7.8	7.4	8.0
30	18	17	18
357.23	353.39	350.03	350.03
7.13	8.97	13.33	13.33
24.7	24.7	27.7	27.7
Top Cobble	Flow line	Flow	Flow
Wall			
		362.36	

1+77

1+69 = SlyCb 00 Lt

1+50 = SlyCb 02 Rt

1+25

TP 12.28 386.63 0.27 374.35

1+0

0+75

0+50

374.62

36574	3702	3719	3714	3714	3716	3710	3745	3744	3752
9.2 30	1.1 30	2.7 26	2.4 18	2.5 17	2.5 19	2.6 14	0.1 18	0.2 30	1.2 34
3643	3682	3722	3711	3714	3721	3716	3745	3744	3752
10.3 25	6.2 25	6.7 18	8.1 17	8.2 17	8.2 17	8.0 19	0.1 18	0.2 30	1.2 34
3634	3679	3679	3671	3679	3673	3669	369.2	3696	3731
11.2 20	7.5 25	7.5 18	7.5 17	6.7 17	6.7 19	7.7 14	5.4 18	6.5 30	1.5 34
3613	3632	3632	3632	3630	3630	3638	3611	3617	3644
10.3 18	11.4 9	11.4 19	11.4 19	11.6 19	11.6 19	10.8 18	10.5 23	11.7 26	10.2 30
381.9	3783	376.2	375.2	375.8	376.1	375.7	375.1	377.0	379.1
4.7 30	8.3 30	10.4 18	11.4 16	10.8 9	10.5 10	10.9 9	11.4 15	9.6 18	9.0 30
382.24	379.7	378.5	379.0	379.1	378.8	378.4	379.30	379.6	380.5
4.4 18	6.9 20	8.1 18	7.6 19	7.5 15	7.8 18	7.8 18	7.3 18	7.0 30	6.1 35
381.3	381.0	381.07	381.07	381.07	381.07	381.07	381.07	381.07	381.07
5.3 18	5.3 18	5.3 18	5.3 18	5.3 18	5.3 18	5.3 18	5.3 18	5.3 18	5.3 18
381.6	381.1	380.8	381.50	382.09	381.6	381.1	380.8	381.50	382.09
7.1 50	5.5 18	5.8 18	5.1 18	4.5 18	4.5 18	4.5 18	4.5 18	4.5 18	4.5 18

74

5/10/57

370

27815

2761 2.66 2 Ribbon Cond. 2' Ribbon 0.211

TP 6.44 392.99 0.08 386.55

2750

2725

17927

38663

75

3874 6.56 380	3874.8 5.51 179	3866 6.4 179	3872 5.8 9	3875 5.5	3870 6.0 69	3861 6.9 88	38702 5.97 183 56	3872 5.8 60
3873 6.57 380	38716 5.83 18.56	3866 6.4 18	3867 6.3 9	3870 6.0	3865 6.5 9	3857 7.3 18	386.62 6.57 183 56	3864 6.6 60
38670 6.29 300.00	3867 6.3 210.00							
3878 6.0 380	3879 0.69 18.56	3873 1.3 18	3878 0.9 9	3878 0.8	387 1.9 9	384 1.7 18	38798 0.65 183.56	3879 0.7 60
387 6.3 380	3879 1.4 18.56	3843 2.3 18.56	3847 1.9 9	3848 1.8	384 2.1 9	3842 2.4 18	38501 1.6 184.56	3849 1.7 60
388 6.3 380	3824 1.5 18.56	3823 3.6 18.56	3820 3.6 9	3829 3.7 60	3824 4.2 19	382 4.5 18.56	38283 2.96 182.56	38283 3.80 30.111
				38663				

TP 5.30 393.22 5.07 387.92

5+0

4+80 = 2 7' 2 Ribbar Conc Di 2 Ribbar on Pt

4+50

4+0

3+82

3+51.5 opp 4" Conc Pipe in cb on Lt

3+50

392.99

388.5
1.5
30

388.42
4.57
18=cb

388.0
5.0
18

388.2
1.8
9

388.5
4.5
9

388.1
1.9
9

387.5
5.5
18

387.92
5.07
18=cb

388.1
4.9
30

388.08
4.9
21=cb

388.11
4.88
30 on Conc Di

388.3
4.7
30

387.9
5.18
18

388.1
4.9
9

388.0
4.7
9

387.9
5.4
9

387.4
5.6
18

387.96
5.03
18=cb

387.8
5.2
30

388.5
1.5
30

388.8
4.9
18

387.8
5.2
17.8

388.0
5.0
9

388.0
5.0
9

387.7
5.3
9

387.4
5.6
18

387.86
5.05
18=cb

387.8
5.2
30

388.06
4.93
18=cb

388.09
4.90
30 on Flag
Steel Walk

387.00

5.99
1.8

387.9
5.1
30

388.07
4.9
17.2=cb

387.3
5.7
17.2=cb

387.6
5.4
9

388.0
5.0
9

387.7
5.3
9

387.0
6.0
18=cb

387.87
5.19
18=cb

387.6
5.4
30

392.99

5/51 St.

6+50

6+16.4 = 1/4 Conc on Rt.

6+0

5+823 = 1/4 Conc on Rt.

5+69 = 1/2 Conc Drive on Rt.

5+50

39322

3885

4.7
60

38793

5.22
178-cb

3871

5.78

3874

5.8
9

3873

5.9
9

3870

6.2
9

3867

6.5
18

38735

5.87
183-cb

3878

5.4
60

3887

4.5
60

38848

4.74
178-cb

3881

5.1
178

3885

4.8
9

3885

4.7
9

3882

5.0
9

38740

5.82
183-cb

38789

5.33
18-cb

38822

5.60
30-1/4 Conc

38803

5.19
21 on Dr.

38828

4.94
43 on Dr.

3888

4.4
60

3887

4.63
149-cb

3885

5.1
149-cb

3883

4.9
9

3886

4.6
9

3881

5.1
9

3875

5.7
18-cb

38789

5.33
18-cb

3882

5.0
60

77

Rt

Lt

Lt

39322

B.M

8.82

383.14

S.W.B.P
El Cajon
504457
383.15

B.M

5.17

391.96 643

386.79

S.W.B.P
El Cajon
5131

7+37.47 - S.Cb Line El Cajon on Diagonal

7+21.24 = S.L El Cajon Blvd on Diagonal

7+14

970

393.22

W
L

Z

W
RT

78

386.79

386.17

386.17

386.77

385.72

385.53

386.20

643

7.05

7.05

7.24

7.50

7.69

7.02

21-Cb EC

21-Gutter

18.2

18.3

21-Gutter

21-Gutter

21-Cb EC

387.1

386.92

386.22

386.27

386.20

385.86

385.73

386.22

386.5

61

630

7.00

6.95

7.07

7.36

7.49

7.00

6.7

30

18-26

18-60

9.13

9.13

9.13

9.13

18.3

30

388.7

388.4

386.96

386.3

386.2

386.2

386.2

385.7

386.27

387.7

387.2

4.5

4.8

6.26

6.9

7.0

7.0

7.0

7.5

6.98

5.5

6.0

30

22

17.8

17.8

7.0

7.0

7.0

18

18-60

22

30

388.5

387.2

387.13

386.9

386.5

386.5

386.4

386.7

385.5

387.5

387.1

4.7

5.0

6.09

6.8

6.7

6.7

6.8

7.3

6.7

5.7

6.1

30

21

17.8

17.8

6.7

6.7

6.8

17.8

17.8

22

30

30

21

17.8

17.8

6.7

6.7

6.8

17.8

17.8

22

30

30

21

17.8

17.8

6.7

6.7

6.8

17.8

17.8

22

30

57th St. Additional Levels

Sept. 3-41

Lt

L

Rt

79

270

38385
4.67
18-c6

38331
5.17
18-c6

1765

38625
7.30
18-c6

38643
8.09
18-c6

B.M.

9-22

38852

37930

Topc607
Rt 1450

38852

2 + 70 ⁶⁸
 52.13
 3 + 22.81

ENGINEERING DEPARTMENT,
 CITY OF SAN DIEGO,
 CALIFORNIA.

33 or Ash

106.55 ✓
 + 12.25
 118.80 ✓
 - 0.85
 117.95 ✓
 + 13.16
 131.11 ✓
 - 0.05
 131.06 ✓
 13.01
 144.07 ✓
 - 5.02
 139.04 ✓
 8.71
 147.75 ✓
 - 10.25
 137.50 ✓
 + 4.09
 141.59 ✓
 - 0.13
 141.46 ✓
 + 6.00
 147.46 ✓
 - 1.15
 146.31 ✓
 10.53
 156.84 ✓

146.31 ✓
 10.52
 156.83 ✓
 0.96
 155.87 ✓
 12.61
 168.48 ✓
 - 0.07
 168.41 ✓
 14.89
 181.30 ✓
 - 0.18
 181.12 ✓
 + 13.11
 194.23 ✓
 1.42
 192.81

229.31
 1.03
 228.28
 S.W. Cora Venice
 220.05
 7.55
 212.50
 S.W. Del Monte
 + Venice
 2
 153.00
 4.0
 149.0

13 | 95
 7