

1304

Rose Cañon

CITY OF SAN DIEGO CALIFORNIA  
ENGINEERING DEPARTMENT

Our Leather Bound Engineers Note Books are carried in the following rulings:

- No. 380 LEVEL BOOK. Left and Right Hand Page the same as Left Hand Page of this Book.
- No. 382 FIELD BOOK. Left Hand Page as in this Book, Right Hand Page 4 x 4 to the inch, Center Line Red.
- No. 384 MINING TRANSIT BOOK. Left Hand Page as in this Book, Right Hand Page 8x8 to the inch, Center Line Red.
- No. 385 FIELD BOOK. Left Hand Page as in this Book, Right Hand Page 8 vertical and 4 horizontal lines to the inch, Center Line Red.

We also carry the Note Books listed above, bound in extra strong Fabri-Hide (otherwise the same quality of book), which can be furnished at a somewhat lower price.

In ordering Fabri-Hide covered books, add the letter "F" to catalog number.

**THE FREDERICK POST CO.**  
ENGINEERING and DRAFTING SUPPLIES  
IRVING PARK STATION  
CHICAGO, ILL.

MICROFILMED

Dec 2 1964

No. 385 topped 7/1/20 XX

170  
171  
172  
173  
174  
175  
176  
177  
178  
179  
180

X Sec. "G" St. 25# to 260' East. - 67  
" " Alley. S.L. "G" to N.L. Market 71

5  
05  
45  
45  
25  
25  
65  
35  
45  
55  
5  
55  
5  
5  
5  
5  
5  
5  
5  
5

Cont from B. 1303 Pg 43.

X- Section Proposed Rose Cañon  
Road from Sta. 220+36<sup>13</sup> P.R.C.  
to Sta. 281+04<sup>19</sup> (End of Alignment)

STA	+	H.I.	-	Elev.
B.M. # 17	1.30	244.02		242.72
T.P.			12.43	231.59
	0.86	232.45 ✓		
T.P.			13.0	219.45
HandLevel	0.00	219.45		
		220+36 <sup>13</sup> P.R.C.		
			9.4	210.05
100-R			1.0	212.85
23-R		Instr. 232.45 ✓		
♀			11.6	220.81
23-L			9.0	223.45
26-L			8.8	223.65
40-L			10.4	222.05
54-L East Edge Ex. Road			5.5	226.95
78-L West " "			5.8	226.65
93-L			3.8	228.65
94-L			2.0	230.45
T.P.			1.10	231.35
HandLevel	13.0	244.35		
127-L			6.8	237.55
150-L			0.0	244.35
		Instr. 232.45 ✓		
T.P.			0.00	232.45
HandLevel	13.0	245.45		

JAEGER }  
Bailey } Dec. 17<sup>th</sup> 1928.  
Clarett }  
Brooks }

1

STA	+	H.I.	-	Elev.
✓	220+86 <sup>13</sup>	245.75		
175-L			4.3	241.15
155-L			13.4	232.05
110-L			16.0	229.45
106-L			12.0	233.45
90-L		Instr. 232.45 ✓	1.20	231.25
84-L West Edge Ex. Road			6.30	226.25
61-L East " " "			4.80	227.65
40-L			6.1	226.35
23-L			8.0	224.45
♀			10.9	221.55
T.P.			13.0	219.45
HandLevel	0.0	219.45		
23-R			0.9	218.55
100-R			8.2	211.25
		221+36 <sup>14</sup>		
100-R			9.1	210.35
23-R			1.5	212.95
♀		Instr. 232.45 ✓	12.2	220.25
23-L			9.4	223.25
67-L East Edge Ex. Road			5.0	227.45
89-L West " " "			5.8	226.65
93-L			0.6	231.85
T.P.			0.0	232.45

STA	+	H.I.	-	Elev.	STA	+	H.I.	-	Elev.
	Hand Level	13.0	245.45		100-			0.4	232.05
150'-L			6.6	238.85		T.P.		0.0	232.45
	T.P.		0.0	245.45		Hand Level	13.0	245.45	
	5.0	250.45			135-L			1.4	244.05
	221 + 86 <sup>15</sup>					T.P.		0.0	245.45
150-L			1.1	249.35		6.0	251.45		
102-L	Instr.	232.45 ✓	0.4	232.05	150-L			1.3	250.15
100-L			2.6	229.85 x		222 + 86 <sup>17</sup>			
95-L	West Edge Ex. Road		5.5	226.75	150-L			1.3	250.15
75-L	East " " "		5.0	227.45		T.P.		13.0	238.45 245.45
65-L			10.4	222.05		0.0	238.45 245.45		
	T.P.		13.0	219.45	100-L			4.5	233.95
	Hand Level	0.0	219.45			Instr.	232.45 ✓		
23-L			0.6	219.95	95-L	West Edge Ex. Road		5.1	227.35
⊕			3.6	215.85	74-L	East " " "		4.8	227.65
23-R			4.9	214.55	46-L			17.5	214.95
100-R			11.1	208.35		T.P.		12.40	220.05
	222 + 36 <sup>16</sup>					1.25	221.30 ✓		
100-R			12.5	206.95	23-L			9.7	211.6
23-R			8.8	210.65	⊕			11.9	209.4
⊕			6.9	212.55	23-R			13.6	207.7
23-L			4.7	214.75	100-R			15.8	205.5
60-L	Instr.	232.45 ✓	14.3	218.15		223 + 36 <sup>18</sup>			
77-L	East Edge Ex. Rd.		4.9	227.55	100-R			15.6	205.7
94-L	West " " "		5.3	227.15	23-R			14.7	206.6

STA	+	H.I.	-	Elev.
¢		221.30	14.3	207.0
23-L			13.3	208.0
52-L			8.4	202.9
T.P.			0.0	221.30
HandLevel	13.0	234.30		
75-L East Edge Ex. Road			7.0	227.3
100-L West " " "			7.0	227.3
110-L			3.0	231.1
T.P.			0.0	234.30
	9.0	243.30		
125-L			7.0	236.3
x		223 + 86 <sup>19</sup>		
125-L			5.4	237.9
100-L			11.8	231.5
T.P.			13.0	230.30
	2.0	232.80		
90-L West Edge Ex. Road			4.5	227.8
65-L East " " "			5.1	227.2
Instr.		221.30 ✓		
23-L			11.4	209.9
13-L			14.0	207.3
¢			14.6	206.7
23-R			15.1	206.2
100-R			15.1	206.2

STA	+	H.I.	-	Elev.
x		224 + 36 <sup>20</sup>		
100-R			14.8	206.5
23-R			14.1	207.2
10-R			13.8	207.5
¢			11.2	210.1
23-L			4.5	216.8
T.P.			0.0	221.30
HandLevel	13.0	234.30		
46-L East Edge Ex. Rd.			6.7	227.6
75-L West " " "			6.5	227.8
T.P.			0.0	234.30
	13.0	247.30		
82-L			13.2	234.1
100-L			6.9	240.4
x		224 + 86 <sup>21</sup>		
75-L			6.0	241.3
55-L			10.7	236.6
T.P.			11.0	236.30
	0.0	236.30		
45-L West Edge Ex. Rd			7.9	228.4
23-L East " " "			6.8	229.5
Instr.		221.30 ✓		
¢			0.0	221.3
23-R			6.4	214.9
48-R			13.8	207.5

37130

STA	+	H.I.	-	Elev.
100-R			14.2	207.1
x	225 + 36 <sup>22</sup>			
100-R			14.2	207.1
57-R			13.7	207.6
23-R			1.3	220.0
T.P.			3.41	217.89
	4.03	221.92 ✓		
T.P.			0.0	221.92
Hand Level	13.0	234.92 ✓		
⊥ East Edge Exist. Rd.			6.3	228.62
23-L West			6.8	228.12
T.P.			0.0	234.92
	13.0	247.92 ✓		
40-L			6.6	241.32
T.P.			2.0	245.92 ✓
	10.0	255.92 ✓		
75-L	← 225 + 86 <sup>23</sup>		4.0	251.52
x 75-L			2.0	253.92
T.P.			13.0	242.92 ✓
	0.0	242.92 ✓		
23-L			4.5	239.42
13-L West Edge Ex. Rd.			14.0	229.92
⊥			13.6	229.32
9-R East			13.3	229.62
Instr.		221.92 ✓		

4

STA	+	H.I.	-	Elev.
23-R			0.0	221.92
57-R			12.7	209.22
100-R			12.8	209.12
	226 + 36 <sup>24</sup>			
100-R			13.5	208.42
72-R			12.9	209.02
23-R			0.8	221.12
T.P.			0.0	221.92
Hand Level	13.0	234.92		
12-R East Edge Ex. Rd.			6.3	228.62
⊥			6.7	228.22
10-L West			7.0	227.92
14-L			3.5	231.42
23-L			0.6	234.32
T.P.			0.0	234.92
	13.0	247.92		
T.P.			0.0	247.92
	10.0	257.92		
100-L			2.0	255.92
	226 + 86 <sup>25</sup>			
100-L			8.2	249.72
T.P.			13.0	244.92
	0.00	244.92		
23-L T.P.			13.0	231.92
	1.00	232.92		

STA	+	H.I.	-	Elev.	STA	+	H.I.	-	Elev.
5-L	West Edge Ex. Rd		5.3	227.62	68-L	T.P.		13.0	245.92
♀			5.3	227.62		0.0	245.92		
17-R	East " " "		5.0	227.92	23-L			12.3	233.62
23-R			10.0	222.92		T.P.		13.0	232.92
	Instr.	221.92 ✓				1.0	233.92		
71-R			9.7	212.22	♀			4.9	229.02
75-R			14.3	209.62	4-R	West Edge Ex. Rd.		5.1	228.82
100-R			13.1	208.82	23-R			5.0	228.92
	227 + 36 <sup>26</sup>				27-R	Edge " " "		4.8	229.12
100-R			14.5	209.42		Instr.	221.92 ✓		
77-R			14.0	209.92	40-R			1.60	210.32
35-R			2.8	219.12	78-R			9.2	212.72
	T.P.		0.0	221.92	85-R			11.3	210.62
	Hand Level 13.0	234.92			100-R			12.1	209.82
23-R			7.2	221.72		228 + 36 <sup>28</sup>			
21-R	East Edge Ex. Rd.		5.7	229.22	100-R			11.8	210.12
♀	West " " "		5.8	229.12	87-R			11.7	210.22
	T.P.		0.0	234.92	83-R			9.9	212.02
	13.0	247.92			50-R	T.P.		0.0	221.92
23-L			10.3	237.62		Hand Level 13.0	234.92		
63-L	T.P.		0.0	247.92	37-R	East Edge Ex. Rd.		5.3	229.62
	11.0	258.92			23-R			5.6	229.32
100-L			1.3	257.62	13-R	West " " "		5.7	229.22
	227 + 86 <sup>27</sup>					T.P.		0.0	234.92
100-L			4.5	254.42		13.0	247.92		



STA	+	H.I.	-	Elev.
☿			11.6	236.32
23-L			5.5	242.42
T.P.			0.0	247.92
	13.0	260.92		
100-L			4.7	256.22
	Instr.	221.92 ✓		
T.P.			2.95	218.97
	11.35	230.32 ✓		
T.P.			13.0	217.32
Hand Level	0.00	217.32		
	228 + 86 <sup>29</sup>			
100-R			7.3	210.03
88-R			6.9	210.12
	Instr.	230.32 ✓		
60-R			10.4	219.92
43-R T.D. East Edge Ex. Rd.			0.0	230.32
Hand Level	13.00	243.32		
23-R West Edge Ex. Rd.			14.0	229.32
20-R			9.2	234.12
T.P.			0.0	243.32
	13.00	256.32		
☿			9.1	247.22
T.P.			0.0	256.32
	13.0	269.32		
23-L			12.2	257.12

STA	+	H.I.	-	Elev.
T.P.			1.0	268.32
	13.0	281.32		
55-L			11.4	269.92
80-L			3.2	278.12
100-L			1.0	280.32
T.P.			0.0	281.32
	13.0	294.32		
T.P.			0.0	294.32
	2.0	296.32		
	229 + 36 <sup>30</sup>			
100-L			1.1	295.22
70-L			3.7	292.62
60-L			7.3	289.02
T.P.			13.0	283.32
	0.0	283.32		
T.P.			13.0	270.32
	0.0	270.32		
23-L			1.4	268.92
T.P.			13.0	257.32
	0.0	257.32		
☿			4.3	253.02
(33) 22-R			17.6	239.72
	Instr.	230.32 ✓		
30-R West Edge Ex. Rd.			0.5	229.82
50-R East " " "			0.0	230.32

STA	+	H.I.	-	Elev.
60-R			8.3	222.02
87-R			19.3	211.02
100-R			20.3	210.02
T.P.			4.97	225.35
	11.17	236.5v ✓	-	
T.P.			13.0	223.5v
Hand Level	0.0	223.5v		
	229 + 86 <u>31</u>			
100-R			12.3	211.22
85-R			11.2	212.32
70-R			4.0	219.52
	Instr.	236.5v ✓		
50-R	East Edge Ex. Rd.		5.5	231.02
28-R	West " " "		6.0	230.52
T.P.			0.0	236.5v
Hand Level	13.0	249.5v		
26-R			5.4	244.12
23-R			4.2	245.32
T.P.			0.0	249.5v
	13.0	262.5v		
ϕ			5.4	257.12
T.P.			0.0	262.5v
	13.0	275.5v		
23-L			3.7	271.82
T.P.			0.0	275.5v

STA	+	H.I.	-	Elev.
	13.0	288.5v		
T.P.			0.0	288.5v
	13.0	301.5v		
70-L			4.8	296.72
100-L			0.5	301.02
	230 + 36 <u>3v</u>			
100-L			0.3	301.22
T.P.			13.0	288.5v
	0.0	288.5v		
T.P.			13.0	275.5v
	0.0	275.5v		
23-L	T.P.		13.0	262.5v
	0.0	262.5v		
ϕ			11.6	250.92
T.P.			13.0	249.5v
	0.0	249.5v		
23-R			9.0	240.52
	Instr.	236.5v ✓		
27-R	West Edge Ex. Rd.		5.1	231.42
48-R	East " " "		4.8	231.72
60-R	T.P.		13.0	223.5v
	Hand Level	0.0	223.5v	
75-R			10.5	213.02
100-R			11.3	212.22

STA	+	H.I.	-	Elev.
	230 + 86 <sup>32</sup>			
100-R		235.22	10.6	212.92
70-R			8.3	215.22
50-R			1.5	222.02
	Instr. 11.25	236.52 ✓	7.55	228.97
40-R	T.P. East Edge Ex. Rd.	240.22 ✓	7.8	232.42
23-R			8.0	232.22
20-R	West " " "		7.8	232.42
	T.P.		0.0	240.22
	HandLevel	13.00		253.22
	T.P.		0.0	253.22
		13.00		266.22
6-R			17.0	249.22
⊕			13.2	253.02
23-L			1.2	265.02
	T.P.		0.0	266.22
		13.0		279.22
	T.P.		0.0	279.22
		13.0		292.22
	T.P.		0.0	292.22
		13.0		305.22
100-L			2.7	302.52
		231 + 36 <sup>33</sup>		
100-L			6.7	298.52
	T.P.		13.0	292.22

STA	+	H.I.	-	Elev.
	0.0	292.22		
	T.P.		13.0	279.22
	0.0	279.22		
	T.P.		13.0	266.22
	0.0	266.22		
23-L			1.8	264.42
⊕			13.1	253.12
	Instr.	240.22 ✓		
5-R	West Edge Ex. Rd.		7.8	232.42
23-R			6.0	234.22
26-R	East " " "		6.2	234.02
	T.P.		13.0	227.22
	HandLevel	0.0		227.22
46-R			7.0	220.22
55-R			9.5	217.72
100-R			14.0	213.22
		231 + 86 <sup>34</sup>		
100-R			13.0	214.22
50-R			11.0	216.22
	Inst.	240.22 ✓		
23-R	East Edge Ex. Rd.		5.3	234.92
2-R	West " " "		5.8	234.42
⊕	T.P.		0.0	240.22
	HandLevel	13.0		253.22
9-L			3.3	249.92

STA	+	H.I.	-	Elev.
T.P.			0.0	253.22
	13.0	266.22		
23-L			10.3	255.92
T.P.			0.0	266.22
	13.0	279.22		
T.P.			0.0	279.22
	13.0	292.22		
100-L			3.5	288.72
	232 + 36 <sup>35</sup>			
100-L			10.0	282.22
T.P.			13.0	279.22
	0.0	279.22		
T.P.			13.0	266.22
	0.0	266.22		
T.P.			13.0	253.22
	0.0	253.22		
23-L			2.9	250.32
13-L			7.0	246.22
	Instr.	240.22		
♀ West Edge Ex. Rd.			4.6	235.62
17-R East " " "			4.1	236.12
23-R			9.4	230.82
T.P.			13.0	227.22
HandLevel	0.0	227.22		
45-R			8.2	219.02

STA	+	H.I.	-	Elev.
100-R		227.22	10.8	216.42
	232 + 86 <sup>36</sup>			
100-R			8.8	218.42
40-R			6.5	220.72
	Instr.	240.22		
23-R			10.1	230.12
15-R East Edge Ex. Rd.			3.4	236.82
♀			4.0	236.22
5-L West " " "			4.1	236.12
T.P.			0.0	240.22
HandLevel	13.0	253.22		
15-L			9.1	244.12
23-L			3.5	249.22
T.P.			0.0	253.22
	13.0	266.22		
T.P.			0.0	266.22
	13.0	279.22		
100-L			0.3	278.92
	233 + 36 <sup>37</sup>			
100-L			4.3	274.92
T.P.			13.0	266.22
	0.0	266.22		
T.P.			13.0	253.22
	0.0	253.22		
23-L			6.3	246.92

STA	+	H.I.	-	Elev.	STA	+	H.I.	-	Elev.
13-L			9.8	243.42	T.P.			0.69	266.65
	Instr.	240.22	✓			11.83	272.48	✓	
7-L	West Edge Ex. Rd.		3.5	236.72	B.M. # 18	269.68		2.86	269.62
¢			3.0	237.22	T.P.			0.0	272.48
14-R	East " " "		3.0	237.22	Hand Level	5.0	277.48		
23-R			10.4	229.82	100-L			3.5	273.98
27-R	T.P.		13.0	227.22	B.M. # 18				269.68
	Hand Level	0.0	227.22			4.34	274.02	✓	
45-R			4.5	222.72	x		234+00		
100-R			6.1	226.12	100-L			3.2	270.82
	E.C.	233+59	98		T.P.			13.0	261.02
100-R			5.4	221.82	Hand Level	0.0	261.02		
46-R			3.2	224.02	50-L			4.9	256.12
30-R			0.0	227.22	23-L	T.P.		13.0	248.02
	Instr.	240.22	✓			0.0	248.02		
23-R			9.0	231.22	12-L			3.4	244.62
15-R	East Edge Ex. Rd.		2.4	237.82	5-L	West Edge Ex. Rd.		10.4	237.62
¢			2.8	237.42	¢			10.0	238.02
6-L	West " " "		3.1	237.12	17-R	East " " "		8.8	239.22
	T.P.		0.71	239.51	23-R	T.P.		13.0	235.02
		10.49	250.00	✓		0.0	235.02		
13-L			7.2	242.8	50-R			8.6	226.42
23-L			4.0	246.0	100-R			9.7	225.32
	T.P.		0.69	249.31		234+50			
		12.03	261.34	✓	100-R			8.1	226.92

STA	+	H.I.	-	Elev.
50-R		235.02	5.4	229.62
45-R			5.4	229.62
36-R			1.4	233.62
T.P.			0.0	235.00
	13.0	248.00		
29-R			11.0	236.02
23-R			8.8	239.22
20-R	East Edge Ex. Rd.		7.9	240.12
⊕			9.0	239.02
4-L	West " " "		9.3	238.72
15-L			0.9	247.12
T.P.			0.0	248.00
	13.0	261.00		
23-L			12.4	248.62
50-L			5.6	255.42
	Instr.	274.00	✓	
100-L			5.8	269.22
	235+00			
T.P.			1.63	272.39
	10.20	282.59	✓	
100-L			8.3	274.29
T.P.			13.0	269.59
Handlevel	0.0	269.59		
50-L			12.0	257.59
T.P.			13.0	256.59

STA	+	H.I.	-	Elev.
	0.0	256.59		
23-L			7.6	248.99
12-L			11.3	245.29
T.P.			13.0	243.59
	0.0	243.59		
4-L	West Edge Ex. Rd.		4.0	239.59
⊕			4.0	239.59
17-R	East " " "		3.9	239.69
23-R			9.0	234.59
26-R			10.4	233.19
50-R			10.7	232.89
100-R			15.0	228.59
	B.C.	235+31	99	
100-R			13.3	230.29
50-R			9.8	233.79
23-R			8.2	235.39
16-R	East Edge Ex. Rd		3.4	240.19
⊕			3.6	239.99
6-L	West " " "		3.3	240.29
T.P.			0.0	243.59
	13.0	256.59		
16-L			8.2	248.39
23-L			5.4	251.19
T.P.			0.0	256.59
	13.0	269.59		

STA	+	H.I.	-	Elev.	STA	+	H.I.	-	Elev.
50-L			7.8	261.79	12-R	East Edge Ex. Rd.	<sup>243.59</sup>	1.8	241.79
	Inst.	282.59	✓		ϕ			2.3	241.29
100-L			2.7	279.89	11-L	West " " "		3.0	240.59
		235 + 81 <sup>94</sup>			15-L	T.P.		0.0	243.59
100-L			8.0	274.59			13.0	256.59	
	T.P.		13.0	269.59	23-L			12.0	244.59
	Hand Level	0.0	269.59		50-L			9.0	247.59
50-L			9.1	260.49	100-L			0.6	255.99
	T.P.		13.0	256.59			236 + 81 <sup>94</sup>		
		0.0	256.59		100-L			3.3	253.29
23-L			6.4	250.19	50-L			8.7	247.89
12-L			10.5	246.09	23-L			11.3	245.29
	T.P.		13.0	243.59	16-L			12.2	244.39
		0.0	243.59			T.P.		13.0	243.59
8-L	West Edge Ex. Rd.		3.4	240.19			0.0	243.59	
ϕ			3.2	240.39	14-L	West Edge Ex. Rd.		2.3	241.29
4-R	East " " "		3.1	240.49	ϕ			1.6	241.99
19-R			5.4	238.19	8-R	East " " "		1.2	242.39
23-R			5.4	238.19	10-R			0.6	242.99
50-R			8.3	235.29	15-R			1.8	241.79
100-R			12.5	231.09	23-R			2.4	241.19
		236 + 31 <sup>94</sup>			50-R			5.7	237.89
100-R			10.8	232.79	100-R			9.3	234.21
50-R			6.5	237.09			237 + 31 <sup>95</sup>		
23-R			3.8	239.79	100-R			8.5	235.09

STA	+	H.I.	-	Elev.	STA	+	H.I.	-	Elev.
50-R		243.59	4.8	238.79	☺		244.59	2.0	242.59
23-R			2.4	241.19	4-R	East Edge Ex. Rd.		1.6	242.99
8-R	T.P.		0.0	243.59	6-R			0.9	243.69
	13.0	256.59			10-R			2.4	242.19
5-R	East Edge Ex. Rd.		13.0	243.59	23-R			3.7	240.89
☺			13.3	243.29	50-R			6.3	239.29
16-L	West " " "		14.2	242.39	100-R			10.2	234.39
17-L			11.0	245.59	x	238 + 31 <sup>95</sup>			
23-L			10.3	246.29	100-R			11.5	233.09
50-L			7.9	248.69	50-R			7.5	237.09
100-L			4.0	252.59	23-R			5.5	239.09
	237 + 81 <sup>95</sup>				13-R			4.5	240.09
	Instr.	282.59 ✓			T.P.			0.0	244.59
B.M. # 19	276.73		5.87	276.72		13.0	257.59		
			13.0	269.59	6-R			13.5	244.09
	Hand Level	0.0	269.59		5-R	East Edge Ex. Rd.		14.4	243.19
100-L			6.1	263.49	☺			15.0	242.59
	T.P.		13.0	256.59	12-L	West " " "		15.3	242.29
	0.0	256.59			23-L			7.3	250.29
50-L			4.5	252.09	T.P.			0.0	257.59
23-L			10.6	245.99		13.0	270.59		
18-L			11.3	245.29	50-L			11.2	259.39
	T.P.		13.0	243.59		Instr.	282.59 ✓		
	1.0	244.59			100-L			7.0	275.59
15-L	West Edge Ex. Rd.		2.5	242.09	x	238 + 8 <sup>96</sup>			



STA.	+	H.I.	-	Elev.	STA.	+	H.I.	-	Elev.
100-L			0.0	282.59	T.P.			0.0	249.44
	T.P.		13.07	269.52	Hand Level	13.0	262.44		
	0.10	269.62	✓		18-L			11.0	251.44
50-L			8.2	261.42	23-L			8.8	253.64
	T.P.		12.15	257.47	T.P.			0.0	262.44
	0.07	257.54	✓			13.0	275.44		
23-L			5.9	251.64	50-L			12.4	263.04
21-L			6.5	251.04	T.P.			0.0	275.44
	T.P.		12.05	245.49		13.0	288.44		
	3.95	249.44	✓		100-L			1.4	287.04
10-L	West Edge Ex. Rd.		6.3	243.14		240+00			
¢			6.3	243.14	100-L			2.4	286.04
8-R	East " " "		5.8	243.64	T.P.			13.0	275.44
17-R			11.3	238.14		6.0	275.44		
50-R			14.1	235.34	50-L			13.3	262.14
100-R		2394	17.0	232.44	T.P.			13.0	262.44
x	E.C.	238 + 37	<sup>23</sup>			0.0	262.44		
100-R			19.2	230.24	23-L			10.4	252.04
50-R			15.7	233.74	Instr.	249.44	✓		
23-R			13.0	236.44	13-L	West Edge Ex. Rd.		5.0	244.44
21-R			12.7	236.74	¢			4.6	244.84
10-R	East Edge Ex. Rd.		5.2	244.24	9-R	East " " "		4.6	244.84
¢			5.6	243.84	10-R			4.3	245.14
8-L	West " " "		5.5	243.94	23-R			13.5	235.94
9-L			4.5	244.94	T.P.			13.0	236.44

STA	+	H.I.	-	Elev.
	Hand Level 0.0	236.44		
50-R			3.2	233.24
106-R			7.3	227.14
	240 + 50			
100-R			8.3	228.14
50-R			5.2	231.24
28-R			1.8	234.64
	Instr. 249.44 ✓			
23-R			12.2	237.24
8-R	East Edge of Ex. Rd		3.5	245.94
⊕			3.9	245.54
13-L	West " " "		4.1	245.34
15-L			2.2	247.24
	T.P.		0.0	249.44
	Hand Level 13.0	262.44		
23-L			11.2	251.24
	T.P.		0.0	262.44
	13.0	275.44		
50-L			11.8	263.64
	T.P.		0.0	275.44
	13.0	288.44		
100-L			4.0	284.44
	Instr. 249.44 ✓			
	T.P.		0.24	249.20

STA	+	H.I.	-	Elev.
	2.50	251.70 ✓		
	241 + 00			
	T.P.		13.0	238.70
	Hand Level 0.0	238.70		
80-R			9.2	229.5
50-R			7.3	231.4
28-R			5.0	233.7
23-R			1.9	236.8
	Instr. 251.70 ✓			
10-R	West Edge Ex. Rd.		5.0	246.7
⊕			5.4	246.3
10-L	East " " "		5.6	246.1
	T.P.		0.0	251.70
	Hand Level 13.0	264.70		
23-L			11.6	253.1
50-L			1.8	262.9
	T.P.		0.0	264.70
	13.0	277.70		
80-L			2.0	275.7
	241 + 50			
	T.P.		0.0	277.70
	13.0	290.70		
80-L			6.9	283.8
	T.P.		13.0	277.70
	0.0	277.70		

STA	+	H.I.	-	Elev.	STA	+	H.I.	-	Elev.
50-L		277.70	7.1	270.6		13.0	277.70		
	T.P.		13.0	264.70	50-L			6.6	271.1
	0.0	264.70				T.P.		0.0	277.70
23-L			4.9	259.8		8.0	285.70		
15-L			9.6	253.1	80-L			4.3	281.4
	Instr.	251.70 ✓				242 + 50			
10-L	West Edge Ex. Rd.		4.7	247.0	80-L			3.0	282.7
⊕			4.2	247.5		T.P.		13.0	272.70
12-R	East " " "		3.7	248.0		1.0	273.70		
23-R			11.9	239.8	50-L			2.8	270.9
30-R			15.2	236.5	23-L			13.3	260.4
50-R			17.8	233.9	16-L			17.5	256.2
80-R			20.2	231.5		Instr.	251.70 ✓		
	242 + 00				10-L	West Edge Ex. Rd		2.6	249.1
80-R			10.6	235.1	⊕			2.2	249.5
50-R			13.4	238.3	12-R	East " " "		1.0	250.7
25-R			10.8	240.9	23-R			4.8	246.9
23-R			9.8	241.9	50-R			9.2	242.5
12-R	East Edge Ex. Rd		2.5	249.2	80-R			12.8	238.9
⊕			3.0	248.7		243 + 00			
9-L	West " " "		3.5	248.2	80-R			9.7	242.0
11-L	T.P.		0.0	251.70	50-R			7.0	244.7
	Hand Level	13.0	264.70		23-R			3.3	249.4
23-L			5.8	258.9	17-R			2.5	249.2
33-L	T.P.		0.0	264.70	12-R	East Edge Ex. Rd.		0.0	251.7

STA	+	H.I.	-	Elev.	STA	+	H.I.	-	Elev.
	T.P.		2.03	249.67	18-R			8.1	249.97
	8.40	258.07	✓		23-R			8.7	249.37
¢			7.7	250.37	50-R			11.0	247.07
9-L	West Edge Ex. Rd.		8.1	249.97	80-R			13.8	244.27
15-L			1.8	252.27		B.C. 243 + 82	<u>23</u>		
	T.P.		0.0	258.07	80-R			11.9	246.17
	Hand Level	13.0	271.07		50-R			9.4	248.67
23-L			11.8	259.27	23-R			7.0	251.07
50-L	T.P.		3.4	267.67	18-R			6.4	257.67
	13.0	280.67			13-R	East Edge Ex. Rd.		4.9	253.17
80-L			6.7	273.97	¢			6.5	251.57
	243 + 50				11-L	West " " "		6.3	251.77
	T.P.		0.0	280.67	T.P.			0.0	258.07
	4.0	284.67			Hand Level	13.0	271.07		
80-L			1.8	282.87	23-L			10.0	261.07
50-L			14.5	272.17	50-L	T.P.		0.0	271.07
	T.P.		13.0	271.67		11.0	282.07		
	0.0	271.67			80-L			0.0	282.07
30-L			7.0	264.67		244 + 32	<u>23</u>		
23-L			11.8	259.87	80-L			10.3	271.27
	Instr.	258.07	✓		50-L			20.4	261.67
10-L			4.8	253.27	35-L			22.0	260.07
9-L	West Edge Ex. Rd.		7.0	251.07		Instr.	258.07	✓	
¢			6.9	251.17	23-L			5.3	252.77
14-R	East " " "		5.6	252.47	15-L			5.4	252.67

STA	+	H.I.	-	Elev.	STA	+	H.I.	-	Elev.
10-L	West Edge Ex. Rd.		6.0	252.07	50-L			12.6	271.47
⊕			5.8	252.27	T.P.			13.0	271.07
15-R	East " "		4.7	253.37		0.0	271.07		
23-R			9.2	248.87	23-L			10.0	261.07
25-R			9.6	248.47	Instr.	258.07	✓		
37-R			5.1	252.97	13-L			1.4	256.67
50-R			6.6	257.47	10-L	West Edge Ex. Rd.		4.7	253.37
80-R			9.0	249.07	⊕			4.7	253.37
	244 + 82 <sup>23</sup>				10-R	East " "		3.3	254.77
80-R			10.7	247.37	21-R			5.3	252.77
50-R			8.0	258.07	23-R			6.1	251.97
23-R			5.2	252.87	50-R			9.3	248.77
15-R	East Edge Ex. Rd.		4.2	253.87	80-R			11.9	246.17
⊕			5.1	252.97	E.C.	245 + 87 <sup>31</sup>			
10-L	West " "		5.3	252.77	80-R			15.3	242.77
14-L			1.4	256.67	50-R			11.3	246.77
23-L	T.P.		0.0	258.07	23-R			7.4	248.67
	Hand Level	13.0	271.07	16-R				5.3	252.77
50-L			9.7	261.37	7-R	East Edge Ex. Rd.		3.0	253.07
80-L			5.8	265.27	⊕			4.0	254.07
	245 + 32 <sup>23</sup>				10-L	West " "		4.0	254.07
	T.P.		0.0	271.07	T.P.			0.0	258.07
	13.0	284.07			Hand Level	13.0	271.07		
80-L			2.2	286.87	18-L			9.9	261.17
71-L			4.2	279.87	23-L			8.6	262.47

STA	+	H.I.	-	Elev.	STA	+	H.I.	-	Elev.
50-L			0.6	270.47	23-R			10.8	247.27
	T.P.		0.0	271.07	12-R	East Edge Ex. Rd.		2.3	255.77
		13.0	284.07		⊕			2.7	255.37
80-L			0.8	293.27	10-L	West " " "		3.0	255.07
	T.P.		5.0	279.07		T.P.		0.95	257.12
		6.50	285.57			4.21	261.33	✓	
		246+50				T.P.		0.0	261.33
80-L			0.0	285.57	Handlevel	13.0	274.33		
50-L			10.5	275.07	23-L			11.4	262.93
	T.P.		13.0	272.57		T.P.		0.0	274.33
		0.0	274.57			13.0	287.33		
23-L			7.7	264.87	50-L			8.5	278.93
16-L			9.6	262.97	80-L	T.P.		0.0	287.33
		Instr.	258.07	✓		7.0	294.33		
10-L	West Edge Ex. Rd		3.8	254.27		247+50			
⊕			3.4	254.67		T.P.		6.0	288.33
14-R	East " " "		3.2	254.87		5.00	293.33		
23-R			10.7	247.37	80-L			0.0	293.33
28-R			12.6	145.47	50-L			11.4	281.93
50-R			15.7	142.37		T.P.		13.0	280.33
80-R			18.3	139.77		0.0	280.33		
		247+00			23-L			10.5	269.83
80-R			17.4	140.67	17-L			13.1	267.23
50-R			15.8	142.27		Instr.	261.33	✓	
29-R			13.6	144.47	8-L	West Edge Ex. Rd.		5.9	253.93

STA	+	H.I.	-	Elev.
¢		261.33	5.1	256.23
13-R	East Edge of Ex. Rd.		4.5	256.83
18-R			8.9	252.43
23-R			10.8	250.53
26-R			13.5	247.83
50-R			14.8	246.53
80-R			17.5	240.83
	248+00			
80-R			13.8	247.53
50-R			10.0	251.33
23-R			6.3	255.03
17-R			4.8	256.53
15-R	East Edge Ex. Rd.		3.3	258.03
¢			4.4	256.93
7-L	West " " "		4.7	256.163
	T.P.		0.0	261.33
	Hand Level	13.0	274.33	
23-L			4.5	269.83
	T.P.		0.0	274.33
		13.0	287.33	
50-L			7.5	279.83
	T.P.		0.0	287.33
		4.3	291.63	
80-L			0.0	291.63

STA	+	H.I.	-	Elev.
	248+30			
	T.P.		13.0	278.63
	0.0	278.63		
80-L			3.8	274.83
50-L			9.5	269.13
23-L			14.6	264.03
	Instr.	261.33	✓	
10-L			1.3	260.03
8-L	West Edge Ex. Rd.		4.5	256.83
¢			3.8	257.53
13-R	East Edge " "		2.4	258.93
20-R			3.5	257.83
23-R			4.4	256.93
50-R			8.4	252.93
80-R			12.6	248.73
	P.C. 248+40 <sup>58</sup>			
80-R			12.3	249.03
50-R			8.0	253.33
23-R			4.2	257.13
20-R			3.0	258.133
13-R	East Edge of Rd.		2.0	259.33
¢			3.4	257.93
8-L	West " " "		3.6	257.73
10-L	T.P.		0.0	261.33
	Hand Level	13.00	274.33	

STA	+	H.I.	-	Elev.
23-L		274.33	8.8	265.53
50-L			5.0	269.33
64-L			3.0	271.33
	T.P.		0.0	274.33
	13.0	287.33		
80-L			9.1	278.23
	248 + 90 <sup>58</sup>			
80-L			2.2	285.13
50-L			14.5	272.83
	T.P.		13.0	274.33
	0.0	274.33		
23-L			7.0	267.33
18-L			8.2	266.13
	Instr.	261.33 ✓		
8-L	West Edge ex. Rd.		3.0	258.33
⊕			2.8	258.53
13-R	East " " "		1.6	259.73
23-R			3.7	257.63
50-R			7.5	253.83
80-R			10.9	250.43
	249 + 40 <sup>60</sup>			
80-R			10.0	251.33
50-R			6.5	254.83
23-R			3.2	258.13
8-R	East Edge Ex. Rd.		1.0	260.33

STA	+	H.I.	-	Elev.
⊕			2.2	259.13
12-L	West Edge Ex. Rd.		2.6	258.73
	T.P.		0.0	261.33
	Hand Level	13.0	274.33	
18-L			7.8	256.53
23-L			6.0	268.33
	T.P.		0.0	274.33
	13.0	287.33		
50-L			10.0	277.23
80-L			0.0	287.33
	T.P.		13.0	274.33
	0.0	274.33		
	T.P.		3.5	270.83
	5.2	276.03		
	249 + 66			
80-L			0.0	276.03
50-L			5.6	270.43
23-L			12.3	263.73
	Instr.	261.33 ✓		
15-L	West Edge Ex. Rd.		2.4	258.93
⊕			1.8	259.53
4-R			1.6	259.73
8-R	East Edge Ex. Rd.		0.4	260.93
23-R			2.5	258.83
50-R			5.8	253.53



STA	+	H.I.	-	Elev.	STA	+	H.I.	-	Elev.
80-R			9.3	252.03	8-L	East Edge Ex. Rd.	267.13	6.9	260.23
	250+40 <sup>62</sup>				♀			9.8	257.33
80-R			8.9	252.14	23-R			11.5	255.63
50-R			5.6	255.73	50-R			13.4	253.73
23-R			2.8	257.53	80-R			16.3	250.83
♀			0.7	260.63		251+40 <sup>64</sup>			
5-L	East Edge Ex. Rd.		1.0	260.33	80-R			18.2	248.93
	T.P.		0.37	260.96	50-R			16.7	250.43
	6.17	267.13 ✓			23-R			15.5	251.63
23-L			6.6	260.53	♀			13.3	253.83
28-L	West Edge Ex. Rd.		6.4	260.73	10-L	East Edge Ex. Rd.		7.0	260.13
	T.P.		0.0	267.13	23-L			6.6	260.53
	Hand Level	13.0	280.13 ✓		35-L	West " " "		7.0	260.13
30-L			15.3	264.83	50-L	T.P.		0.0	267.13
50-L			14.0	266.13		Hand Level	13.0	280.13	
80-L			5.3	274.83	80-L			0.0	280.13
	250+90					251+75			
	T.P.		0.0	280.13	80-L			5.0	275.13
	7.0	287.13				Instr.	267.13 ✓		
80-L			0.0	287.13	50-L			1.8	265.33
50-L			13.7	273.43	29-L	West Edge Ex. Rd.		6.5	260.63
41-L			17.7	129.43	23-L			6.7	260.43
	Instr.	267.13 ✓			5-L	East " " "		7.0	260.13
31-L	West Edge Ex. Rd.		6.6	260.53	♀			10.9	256.23
23-L			6.5	260.63		T.P.		13.0	254.13

STA	+	H.I.	-	Elev.	STA	+	H.I.	-	Elev.
	Hand Level	0.0	254.13		80-L			0.0	293.73
8-R			3.0	251.13	50-L			8.1	285.63
23-R			6.8	247.33	33-L			14.2	279.53
50-R			6.6	247.53	Instr.	267.13	✓		
80-R			8.4	245.73	T.P.			4.92	262.21
	252+40 <sup>66</sup>					6.51	268.72	✓	
80-R			11.7	242.43	23-L			4.1	264.62
50-R			10.6	243.53	17-L	West Edge Ex Rd.		7.7	261.02
40-R			9.0	245.13	⊕			7.2	261.52
	Instr.	267.13	✓		10-R	East " " "		7.0	261.72
23-R			15.1	252.03	23-R			12.1	256.82
5-R	East Edge Ex. Rd.		6.0	261.13	T.P.			13.0	255.72
⊕			6.2	260.93	Hand Level	0.0	255.72		
18-L	West " " "		7.0	260.13	50-R			9.0	246.72
	T.P.		0.0	267.13	60-R			13.5	242.22
	Hand Level	13.0	280.13		80-R			16.6	239.12
23-L			12.0	268.13		253+40 <sup>68</sup>			
28-L			4.6	275.53	80-R			15.0	240.72
	T.P.		0.0	280.13	60-R			12.4	243.32
	13.0	293.13			50-R			9.8	245.92
50-L			9.2	293.93	35-R			4.6	251.12
80-L			0.0	293.13	23-R			2.7	253.02
	252+90 <sup>67</sup>				Instr.	268.72	✓		
	T.P.		2.0	291.13	10-R			12.0	256.72
	2.6	293.73			⊕			6.2	262.52

STA	+	H.I.	-	Elev.
2-L	East Edge Ex. Rd.		6.5	262.22
23-L	West " " "		7.0	261.72
27-L	T.P.		0.0	268.72
	Hand Level	13.0		291.72
50-L			5.2	276.52
	T.P.		0.0	281.72
		4.60		286.32
80-L			0.0	286.32
	E.C. 253+92 <sup>53</sup>			
	Instr. 268.72 ✓			
80-L			3.6	265.12
50-L			5.6	263.12
46-L	West Edge Ex. Rd.		5.9	262.82
23-L			5.9	262.82
13-L	East " " "		6.2	262.52
⊕			15.2	253.52
	T.P.		13.0	255.72
	Hand Level	0.0		255.72
23-R			5.5	250.22
50-R			10.5	245.12
80-R			14.8	240.92
	254+20			
80-R			16.0	239.72
50-R			10.9	244.82
23-R			6.9	249.52

STA	+	H.I.	-	Elev.
⊕			2.3	253.42
	Instr. 268.72 ✓			
13-L	East Edge Ex. Rd.		5.5	263.22
23-L			5.4	263.32
38-L	West " " "		5.0	263.72
50-L			4.8	263.92
80-L			2.7	266.02
	T.P.		0.0	268.72
	Hand Level	9.8		278.52
	254+50			
80-L			0.0	278.52
50-L			7.4	271.12
	Instr. 268.72 ✓			
35-L	West Edge Ex. Rd.		3.9	264.82
23-L			4.3	264.42
10-L	East " " "		4.6	264.12
⊕			11.5	257.22
	T.P.		13.0	255.72
	Hand Level	0.0		255.72
23-R			6.3	249.42
50-R			12.0	243.72
80-R			17.8	237.92
	255+00			
80-R			13.8	241.92
50-R			5.4	250.32

STA	+	H.I.	-	Elev.	STA	+	H.I.	-	Elev.
	Instr.	268.72	✓				263.92		
23-R			12.3	256.42	50-R			7.9	256.02
8-R			7.9	260.82	80-R			16.5	247.42
⊕ East Edge Ex. Rd.			2.5	266.22		256+00			
23-L West " " "			2.8	265.92	80-R			10.7	253.22
T.P.			0.0	268.72	50-R			3.5	260.42
Hand Level	13.0	281.72			Instr.	276.92	✓		
31-L			9.8	271.92	23-R			9.8	267.12
50-L			4.1	277.62	10-R East Edge Ex. Rd.			4.0	272.92
T.P.			0.0	281.72	⊕			4.2	272.72
12.8	294.52				13-L West " " "			4.7	272.22
80-L			7.2	285.32	T.P.			0.0	276.92
255+50					Hand Level	13.0	289.92	-	
80-L			0.0	294.52	20-L			10.2	279.72
50-L			9.6	284.92	23-L			9.3	280.62
23-L			16.8	277.72	50-L			1.5	280.42
Instr.	268.72	✓			T.P.			0.0	289.92
T.P.			1.00	267.72	80-L		11.20	301.12	✓
q.v.o	276.92	✓			B.C.	256+62 <sup>31</sup>		3.7	297.42
15-L West Edge Ex. Rd.			7.6	269.32	80-L			0.0	301.12
⊕			7.0	269.92	50-L			9.5	291.62
7-R East " " "			6.5	270.42	T.P.			13.0	288.12
23-R			12.4	264.52	0.0	288.12			
T.P.			13.0	263.92	23-L			5.1	283.02
Hand Level	0.0	263.92			20-L			5.9	282.22

STA	+	H.I.	-	Elev.
	Instr.	276.92 ✓		
11-L	West Edge Ex. Rd.		0.2	276.72
⊕			0.0	276.92
12-R	East " " "		0.2	276.72
23-R			5.3	271.62
50-R			11.6	265.32
80-R			18.3	258.62
	257 + 12 <sup>31</sup>			
80-R			15.3	261.62
50-R			7.9	269.02
23-R			1.0	275.92
	T.P.		0.59	276.33
	10.45	286.78 ✓		
13-R	East Edge Ex. Rd.		6.7	280.08
⊕			6.3	280.48
10-L	West " " "		7.1	279.68
20-L	T.P.		0.0	286.78
	Hand Level	13.0		299.78
23-L			12.9	286.88
50-L			5.6	294.18
	T.P.		0.0	299.78
	6.0	305.78		
80-L			3.9	301.88
	257 + 62 <sup>31</sup>			
80-L			0.0	305.78

26

STA	+	H.I.	-	Elev.
50-L		305.78	6.5	299.28
23-L			13.5	292.25
15-L			15.4	290.38
	Instr.	286.78 ✓		
12-L	West Edge Ex. Rd.		3.1	283.68
⊕			2.6	284.18
16-R	East " " "		3.1	283.68
23-R			8.5	278.28
39-R			11.2	275.58
50-R			11.7	275.08
80-R			21.2	265.58
	258 + 12 <sup>31</sup>			
80-R			16.8	269.98
50-R			8.3	278.48
27-R			4.2	282.58
23-R			2.5	284.28
18-R	East Edge Ex. Rd.		0.0	286.78
	T.P.		0.1	286.68
	10.27	296.95 ✓		
⊕			9.0	287.95
7-L	West Edge Ex. Rd.		9.4	287.55
11-L			4.1	292.85
23-L			1.4	295.55
	T.P.		0.0	296.95
	13.0	309.95		

STA	+	H.I.	-	Elev.	STA	+	H.I.	-	Elev.
44-L		309.95	9.5	300.45	18-R	East Edge Ex. Rd.		1.4	295.55
50-L			6.8	303.15	☼			1.5	295.45
80-L			2.4	307.55	5-L	West " " "		2.0	294.95
	258 + 62 <sup>32</sup>				10-L			1.1	295.85
80-L			0.8	309.15		T.P.		0.0	296.95
50-L			5.5	304.45		Handlevel	13.0	309.95	
23-L			10.8	299.15	11-L			10.6	299.35
12-L			12.3	297.65	23-L			9.0	300.95
	Instr.	296.95 ✓			50-L			4.7	305.25
3-L	West Edge Ex. Rd.		5.7	291.25	80-L			0.2	309.75
☼			5.6	291.35		259 + 62 <sup>32</sup>			
21-R	East " " "		5.2	291.75		T.P.		0.0	309.95
23-R			4.7	292.25		2.0	311.95		
30-R			8.0	288.95	80-L			0.7	311.25
50-R			12.4	284.55	50-L			4.3	307.65
60-R			16.4	280.15	29-L			7.2	304.75
80-R			19.5	277.45	23-L			9.2	302.75
	259 + 12 <sup>32</sup>				14-L	West Edge Ex. Rd.		13.5	298.45
80-R			16.0	280.95		Instr.	296.95 ✓		
65-R			11.8	285.15		T.P.		0.43	296.52
50-R			11.0	285.95		10.60	307.12 ✓		
46-R			10.1	286.85	☼			8.1	299.02
40-R			5.8	291.15	9-R			8.4	298.72
29-R			3.5	293.45	10-R	East Edge Ex. Rd.		8.2	298.92
23-R			2.5	294.45	17-R			12.1	295.02

STA	+	H.I.	-	Elev.	STA	+	H.I.	-	Elev.
23-R			12.9	294.22					
	T.P.		13.0	294.12	30-L	West Edge Ex. Rd.		1.5	305.62
	Hand Level	0.0	294.12		23-L			1.7	305.42
50-R			3.5	290.62	5-L	East " " "		1.6	305.52
80-R			11.5	282.62	☒			2.4	304.72
		260 + 12.33			23-R			5.6	301.52
80-R			8.3	281.82	50-R			10.9	296.22
	Inst.	307.12	✓		80-R			14.8	292.32
50-R			15.3	291.82		T.P.		2.77	304.35
23-R			9.0	298.12			12.46	316.81	
16-R			7.3	299.92	B.M. # 21		315.90	0.89	315.92
☒	East Edge Ex. Rd.		5.0	302.12					
20-L	West " " "		5.3	301.52					
23-L			4.2	302.92					
28-L			3.6	303.52					
30-L			1.3	305.62					
	T.P.		0.0	307.12					
	Hand Level	10.0	317.12						
50-L			7.8	309.32					
80-L			3.4	313.72					
		260 + 62.33							
80-L			1.2	315.92					
50-L			5.6	311.52					
34-L			8.4	308.72					

See Book 1303. Page 44.

X sec for Bridge from 5+00 (Newline) to  
8+50 Rose Canyon Road.

Feb 20-20  
London

T.P. 5.02

29

STA	+			5+40	20.20	H.I.	
B.M.	0.89	20.20	19.31	100R		4.3	159
				50R		4.9	153
				±		5.4	148
				6L		5.5	147
				10L		7.1	13.1
				11L		7.7	12.5
				33L		7.9	12.3
				35L		6.9	13.3
				59L		7.2	13.0
				69L		8.0	12.2
				85L		10.1	10.1
				97L		12.9	7.3
				T.P. 4.87	20.05	5.02	15.18
				5+50			
				100L		6.4	13.6
				80L		4.3	11.7
				60L		8.7	11.3
				58L		12.7	7.3
				55L		12.3	7.7
				35L		12.5	7.5
				33L		9.2	10.8
				9L		7.6	12.4
				9L		7.6	12.4
				±		8.7	11.3
				50R		8.3	11.7
				100R		7.6	12.4

5-44 of Rowland  
USCGS B.M.



5+60

20.05

Elev.

5L	5.2	148
⊕	5.4	146
11R	5.5	145
15R	4.8	152
41R	4.8	152
100R	3.8	162
5+80		
100R	4.4	156
55R	4.9	151
40R	5.5	145
20R	4.9	151
⊕	4.9	151
4L	4.8	152
13L	8.4	116
13L	9.2	108
32L	9.2	108
33L	8.6	114
35L	8.1	111
48L	7.7	123
58L	9.2	108
70L	12.6	74
95L ⊕ channel	12.4	76
125L	12.3	77
136L	8.3	117
150L	7.3	147

5+90

20.05

Hills

122L	8.5	115
112L	12.2	78
85L ⊕ channel	12.8	72
45L	12.4	76
32L	9.8	102
10L	9.3	107
⊕	5.2	148
31R	4.6	154
60R	5.4	146
71R	4.9	151
87R	4.8	152
6+05		
92R	4.9	151
86R	5.0	150
60R	5.3	147
35R	4.4	156
11R	5.6	144
⊕	10.9	91
15L	9.9	101
33L	10.3	97
35L	12.0	80
60L	12.9	71
83L	12.3	77
93L	7.9	121
103L	6.3	137

+0.5  
44

+0.4

30

6+20		20.05	20.4	
100L			6.2	138
85L			10.0	10.0
77L			12.4	76
55L	abrox & channel		13.0	70
36L			12.6	7x
32L			10.7	93
16L			10.6	94
13L			12.5	75
5L			11.0	90
±			10.9	91
18R			10.2	98
32R			4.7	153
50R			5.2	148
66R			4.2	158
90R			5.4	146
6+40		(19.1)		
T.P	4.83	19.08	5.80	14.25
100R			3.2	15.9
72R			3.8	153
45R			3.6	155
37R			11.3	078
±	abrox & channel		11.6	75
5L			12.1	70
7L			11.1	80

6+40		19.08		
11L			11.3	78
15L			9.6	95
33L			9.5	96
34L			10.5	86
60L			11.1	80
69L			7.1	120
89L			5.2	139
100L			7.1	120
6+60				
100L			7.1	120
40L			8.0	111
35L			9.1	100
15L			9.3	98
±			11.1	80
24R	abrox & channel		11.2	79
50R			11.1	80
72R			9.2	99
97R			3.7	154
100R			3.7	154

6+80	19.09		
100R	10.9	82	
40R	11.1	80	
20R	9.8	93	
♀	7.7	114	
12L	7.8	113	
12L	8.8	103	
34L	8.6	105	
36L	6.9	122	
100L	8.1	110	
7+00			
140L	7.6	115	
100L	9.0	101	
87L	9.0	101	
77L	8.2	109	
60L	8.5	106	
52L	7.4	117	
35L	7.2	119	
34L	8.4	107	
10L	8.0	111	
9L	6.8	123	
♀	6.4	127	
15R	5.7	134	
32R	5.2	139	
42R	10.6	85	
100R	11.0	81	

7+15	19.08		
100R	10.9	82	
80R	11.0	81	
75R	9.4	107	
58R	8.2	109	
48R	3.3	158	
30R	5.3	138	
22R	4.7	144	
10.R	6.7	124	
5R	6.0	131	
♀	6.0	131	
3L	6.8	123	
9L	7.5	116	
34L	8.4	107	
70L	9.2	90	
100L	8.0	111	
7+30			
105L	6.3	128	
85L	6.8	123	
50L	8.8	103	
40L	8.2	109	
32L	8.4	107	
10L	7.5	116	
♀	8.8	103	
10R	6.6	125	

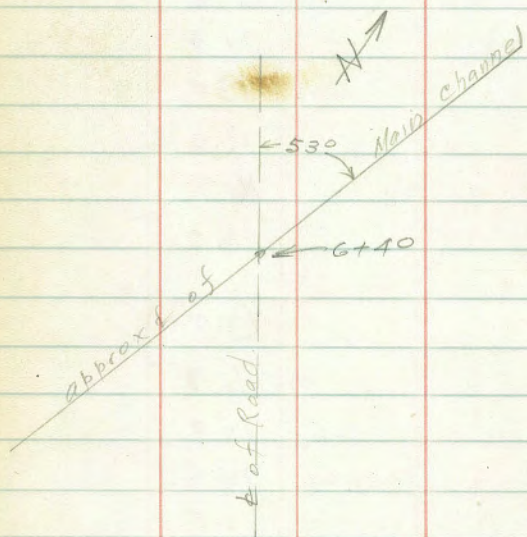
	7+30	19.08		
18R			7.8	113
28R			4.5	146
39R			3.9	152
43R			3.0	161
57R			3.1	160
67R			8.5	106
71R			8.6	105
92R			10.9	82
100R			10.9	82

	7+60			
T.P.	6.06	17.82	7.32	11.76
100R			1.4	164
55R			1.7	161
36R			16.4	117
25R			8.7	91
7R			7.5	103
⊕			5.8	120
30L			6.7	111
46L			6.5	113
59L			4.2	136
100L			4.6	137

	8+00	17.82		
100L			4.6	137
70L			4.6	137
50L			5.9	119
41L			4.0	138
37L			5.2	126
24L			6.1	117
⊕			6.2	116
20R			6.5	113
30R			4.1	137
54R			8.8	90
79R			1.1	167
100R			1.8	160

	8+50			
100R			4.6	137
78R			6.5	113
64R			3.6	147
53R			3.4	144
49R			5.3	125
40R			6.8	110
30R			5.4	124
22R			7.8	100
12R			6.8	110
4R			4.3	135
⊕			4.5	133

8+50	17.82		
30L	5.5	173	
34L	4.8	130	
46L	5.4	174	
100L	3.5	148	
T.P. (Previous Notes)	3.58	14.24	(14.27)



X-Section from New STA. B.C. 213+27.91

Sta	+	H.I.	-	Elev.
B.M. # 16				249.80
	4.03	253.83		
T.P.			11.91	241.92
	1.51	243.43 ✓		
	213+27.95 B.C.			
+75'-L			6.5	
+50'-L			8.5	
+25'-L			7.0	
+23'-L			7.4	
+15'-L			8.7	
+7'-L			10.4	
+4'+L			13.2	
T.P.	Hand Level		13.0	230.43
	0.00	230.43		
☒ W. Edge Ex. Rd.			1.2	
+15'-R			0.8	
+22' E. " "			0.8	
+23'-R			0.3	
+25'-R			0.7	
+30'-R			3.7	
+34'-R			5.1	
+50'-R			6.6	
+75'-R			9.0	

JAEGER  
Bailey, Brooks } March 5<sup>th</sup> 1929  
Clarett

35

STA	+	H.I.	-	Elev.
	213+58			18" Culvert
75-R			9.8	
50-R			7.3	
25-R	E. Edge Ex. Rd.		0.8	
23-R			0.9	
15-R			1.0	
2'-R			0.6	
	Instr.	243.43 ✓		
☒			13.5	
5-L			13.0	
15-L			11.5	
23-L			11.0	
25-L			10.9	
50-L			4.0	
T.P.			0.0	243.43
Hand Level	13.0	256.43		
75-L			4.7	
T.P.			0.00	256.43
	11.40	267.83		
	214+00			
75-L			5.5	
50-L	T.P.		13.0	254.83
	0.00	254.83		
50-L			1.4	
25-L			9.5	

STA	+	H.I.	-	Elev.
23-L			10.2	
15-L			13.1	
	Instr.	243.43 ✓		
5-L			4.8	
	T.P.		10.98	232.45
		0.95	233.40 ✓	
¢			3.4	
3-R	W. Edge Ex. Rd.		4.8	
15-R			4.7	
23-R			4.5	
24-R	E. " "		4.5	
25-R			4.0	
35-R			9.3	
50-R			10.4	
75-R			11.8	
		214 + 15		
75-R			13.8	
50-R			12.0	
36-R			10.4	
25-R			4.5	
23-R			4.2	
22-R	E. Edge Ex. Rd.		4.7	
15-R			4.8	
2-R	W. " " "		5.2	
¢			4.4	

Void

STA	+	H.I.	-	Elev.
	T.P.		0.00	233.40
	Hand Level	13.0	246.40	
6-L			7.4	
15-L			5.4	
23-L			1.5	
25-L			0.7	
	T.P.		0.00	246.40
		13.0	259.40	
50-L			3.9	
	T.P.		0.00	259.40
		10.40	269.80	
75-L			4.5	
		215 + 00		
75-L			11.7	
	T.P.		13.0	256.80
		0.00	256.80	
50-L			8.2	
25-L			18.2	
23-L			18.6	
15-L			21.3	
				233.40 ✓
3-L			2.1	
¢	W. Edge Ex. Rd.		5.6	
15-R			5.9	
23-R	E. " " "		5.6	

Void

STA	+	H.I.	-	Elev.
25-R			6.7	
32-R			12.0	
50-R			13.9	
75-R			15.3	
	215 + 45			
75-R			14.2	
50-R			11.7	
25-R			8.6	
23-R			7.0	
20-R	E. Edge Ex. Rd.		6.2	
15-R			6.2	
ϕ			6.3	
3-L	W. " "		6.2	
15-L			2.7	
23-L			0.2	
	T.P.		0.0	233.40
	Handlevel	13.0	246.40	
25-L			13.0	
50-L			5.0	
	T.P.		0.0	246.40
		13.0	259.40	
75-L			7.6	
	215 + 67			
75-L			3.3	
	T.P.		13.0	246.40

STA	+	H.I.	-	Elev.
	0.00	246.40		
50-L			0.0	
25-L			9.9	
23-L			10.6	
	Instr.	233.40	✓	
15-L			1.2	
7-L			4.2	
3-L	W. Edge Ex. Rd.		6.5	
ϕ			6.4	
15-R			6.0	
18-R	E. " " "		6.0	
23-R			6.5	
25-R			8.2	
27-R			8.7	
50-R			11.5	
75-R			14.2	
	T.P.		4.49	228.91
		4.16	233.07	✓
	216 + 00			18" Culvert
75-R			14.3	
50-R			11.0	
30-R			9.0	
25-R			7.5	
23-R			6.8	
15-R	E. Edge Ex. Rd.		5.9	



STA	+	H.I.	-	Elev.
ϕ			6.2	
7-L	W. Edge Ex. Rd.		5.9	
8-L	W. Edge Ex. Rd.		4.8	
	T.P.		0.00	233.07
	Hand Level	13.00	246.07	
15-L	Hand Level	13.0	246.07	
23-L			17.6	
25-L			17.6	
50-L			16.0	
75-L			8.6	
	216+30			
	T.P.		0.0	246.07
	13.0	259.07		
75-L			3.5	
50-L			12.0	
	T.P.		13.0	246.07
	0.00	246.07		
25-L			9.0	
23-L			10.0	
17-L			12.6	
	Instr.	233.07		
15-L			2.0	
8-L			4.5	
5-L	W. Edge Ex. Rd.		6.7	
ϕ			6.7	

STA	+	H.I.	-	Elev.
15-R	E. Edge Ex. Rd.		6.7	
23-R			8.7	
25-R			9.4	
50-R			13.0	
75-R			15.2	
	217+00			
75-R			19.4	
50-R			17.3	
25-R			16.3	
23-R			16.3	
15-R			15.4	
10-R			14.4	
ϕ	E. Edge Ex. Rd.		7.8	
15-L			7.8	
20-L	W. "		7.5	
23-L			4.8	
25-L			4.3	
27-L			1.0	
	T.P.		0.0	233.07
	Hand Level	13.0	246.07	
50-L			5.6	
	T.P.		0.0	246.07
	13.0	259.07		
75-L			8.2	

STA	+	H.I.	-	Elev.	STA	+	H.I.	-	Elev.
	217+55	14" Existing Culvert			⊕			4.0	
75-L			17.1		Instr.	233.07 ✓			
	Instr.	233.07 ✓			5-L			15.1	
50-L			4.1		15-L	E. Edge Ex. Rd.		8.0	
33-L	W. Edge Ex. Rd.		8.4		23-L			7.5	
25-L			7.7		25-L			7.5	
23-L			7.6		36-L	W. " " "		7.9	
15-L			7.9		43-L			0.6	
10-L	E. " " "		8.2		T.P.		0.0	233.07	
⊕			16.0		Handlevel	13.0	246.07		
7-R			19.0		50-L			11.0	
	T.P.		13.0	220.07	75-L			2.3	
Handlevel	0.00	220.07				219+00			
15-R			7.5		75-L			7.5	
23-R			7.6		Instr.	233.07 ✓			
25-R			8.0		50-L			2.0	
50-R			8.0		47-L			2.8	
75-R			9.0		43-L	W. Edge Ex. Rd.		7.4	
	218+00				25-L			6.5	
75-R			11.3		23-L			6.4	
50-R			9.9		22-L	E. " " "		6.3	
25-R			8.1		15-L			9.4	
23-R			7.9		⊕			12.0	
15-R			7.2		T.P.		13.0	220.07	
7-R			6.0		Handlevel	0.00	220.07		

STA	+	H.I.	-	Elev
15-R			1.0	
23-R			2.0	
25-R			2.3	
50-R			5.8	
75-R			8.0	
	319 + 30			
75-R			7.6	
50-R			4.4	
25-R			1.0	
23-R			0.9	
	Instr.	233.07	✓	
	T.P.		11.19	221.88

10.75 232.13 ✓

15-R			12.0	
£			9.6	
15-L			7.2	
20-L	E. Edge Ex. Rd.		4.7	
73-L			5.0	
75-L			5.1	
43-L	W. " " "		6.0	
50-L			1.3	
	T.P.		0.0	232.13

Hand Level 13.0 245.13

75-L 12.0

O.K. from this Sta. on

40

STA	+	H.I.	-	Elev
219 + 68.83 = 219 + 83 <sup>76</sup> E.C.				
75-L				13.0
	Instr.	232.13	✓	
69-L			0.2	231.9
68-L			1.9	230.2
50-L	W. Edge Ex. Rd.		5.5	226.6
25-L	E. " " "		4.5	227.6
23-L			5.3	226.8
21-L			7.0	225.1
15-L			8.2	223.9
£			10.3	221.8
	T.P.		13.0	219.13

Hand Level 0.00 219.13

15-R			0.0	219.1
23-R			1.0	218.1
25-R			1.1	218.0
50-R			4.1	215.0
75-R			6.7	212.4

220 + 00

75-R			4.8	214.3
50-R			4.6	214.5
	T.P.		0.0	219.13

10.00 229.13

25-R			11.6	217.5
23-R			10.0	219.1

STA	+	H.I.	-	Elev.
15-R			9.0	220.1
♀			7.5	221.6
15-L			5.7	223.4
23-L			4.5	224.6
25-L	E. Edge Ex. Rd.		2.4	226.7
	Instr.	232.13 ✓		
50-L	W. " " "		5.8	226.3
68-L			2.3	229.8
69-L			1.1	231.0
75-L			0.0	232.1
	220+10			
75-L			0.4	231.7
71-L			1.4	230.7
70-L			2.7	229.4
54-L	W. Edge Ex. Rd.		5.5	226.6
50-L			5.4	226.7
30-L	E. " " "		4.6	227.5
27-L			6.4	225.7
25-L			7.0	225.1
23-L			7.3	224.8
	T.P.		8.0	224.13
	1.0	225.13		
15-L			1.0	224.1
8-L			1.9	223.2
7-L			3.0	222.1

STA	+	H.I.	-	Elev.
♀			4.0	221.1
15-R			5.6	219.5
19-R			5.2	219.9
22-R			3.8	221.3
23-R			3.8	221.3
25-R			3.9	221.2
50-R			7.0	218.1
75-R			9.1	216.0
	220+60	18" Culvert		
75-R			8.2	216.9
50-R			6.0	219.1
25-R			3.0	222.1
23-R			3.0	222.1
15-R			2.1	223.0
♀			0.0	225.1
	Instr.	232.13 ✓		
15-L			6.4	225.7
23-L			5.7	226.4
25-L			5.6	226.5
35-L	E. Edge Ex. Rd.		4.7	227.4
50-L			5.2	226.9
56-L	W. " " "		5.2	226.9
60-L	E. End Ex. Culvert		6.3	225.8
75-L			7.0	225.1
	T.P.		0.30	231.83

STA	+	H.I.	-	Elev.
	12.71	244.54		
			1.83	242.71
				242.72
	2.56	245.28 ✓		
	221 + 00			
75-L			11.3	234.0
	T.P.		13.0	232.78
	Hand Level	0.0		232.78
63-L			0.0	232.3
59-L	W. Edge Ex. Rd		6.0	226.3
50-L			5.4	226.9
36-L	E. " " "		4.5	227.8
25-L			5.1	227.2
23-L			5.2	227.1
15-L			5.5	226.8
☺			6.8	225.5
15-R			8.8	223.5
23-R			10.0	222.3
25-R			10.2	222.1
50-R			13.0	219.3
75-R			15.5	216.8
	221 + 37 49 B.C.			
75-R			16.5	215.8
50-R			14.2	218.1
25-R			12.0	220.3

STA	+	H.I.	-	Elev.
23-R			11.8	220.5
15-R			10.0	222.3
☺			9.2	223.1
15-L			7.5	224.8
23-L			6.8	225.5
25-L			6.5	225.8
42-L	E. Edge Ex. Rd		4.8	227.5
50-L			5.0	227.3
62-L	W. " " "		5.5	226.8
66-L			1.5	230.8
	Inst. 245.28			
75-L			13.4	231.9
	222+00			
75-L			12.6	232.7
	T.P.		13.0	232.78
	Hand Level	0.0		232.78
66-L	W. Edge Ex. Rd		5.3	227.0
50-L			5.0	227.3
46-L	E. " " "		4.9	227.4
37-L			11.0	221.3
25-L			12.1	220.2
23-L			12.3	220.0
15-L	T.P.		13.0	219.28
	0.0	219.28		
☺			1.4	217.9

STA	+	H.I.	-	Elev.
15-R			3.0	216.3
23-R			3.9	215.4
25-R			4.3	215.0
50-R			5.9	213.4
75-R			7.2	212.1
	222+50			
75-R			10.4	208.9
50-R			9.3	210.0
25-R			7.9	211.4
23-R			7.8	211.5
15-R			7.0	212.3
☺			5.7	213.6
15-L			4.0	215.3
23-L			3.2	216.1
25-L			3.0	216.3
T.P.			0.0	219.28
	13.0	232.28		
43-L			10.2	222.1
50-L E. Edge Ex. Rd.			4.4	227.9
75-L W. " " "			4.8	227.5
75-L			2.2	230.1
	Instr.	245.28		
			11.94	233.34
	5.48	238.82		
	223+00			

STA	+	H.I.	-	Elev.
75-L			10.2	228.6
71-L W. Edge Ex. Rd.			11.9	226.9
50-L E. " " "			11.2	227.6
T.P.			13.0	225.82
Hand Level	0.0	225.82		
38-L			6.4	219.4
25-L			10.7	215.1
23-L			11.5	214.3
T.P.			13.0	212.82
	0.0	212.82		
15-L			0.7	212.1
☺			2.1	210.7
15-R			3.2	209.6
23-R			3.9	208.9
25-R			4.0	208.8
50-R			5.3	207.5
75-R			5.9	206.9
	223+50			
75-R			6.0	206.8
50-R			6.0	206.8
25-R			5.5	207.3
23-R			5.5	207.3
15-R			5.5	207.3
☺			4.9	207.9
15-L			2.3	210.5

STA	+	H.I.	-	Elev.
T.P.			0.0	212.82
	13.0	225.82		
23-L			12.4	213.4
25-L			12.2	213.6
29-L			10.9	214.9
	Instr.	238.82		
48-L	E. Edge Ex. Rd		11.2	227.6
50-L			11.2	227.6
75-L	W. " " "		11.0	227.8
	224+00			
75-L			2.5	236.3
63-L			5.5	233.3
59-L	W. " " "		10.9	227.9
50-L			11.2	227.6
35-L	E. " " "		11.3	227.5
	T.P.		13.0	225.82
	Hand Level	0.0	225.82	
25-L			3.6	222.2
23-L			4.3	221.5
15-L			7.6	218.2
☉	T.P.		13.0	212.82
	0.0	212.82		
15-R			4.9	207.9
23-R			5.7	207.1
25-R			5.7	207.1

STA	+	H.I.	-	Elev.
50-R			6.0	206.8
75-R			6.1	206.7
	224+50			
75-R			5.6	207.2
50-R			4.6	208.2
40-R			3.3	209.5
	T.P.		0.0	212.82
	13.0	225.82		
25-R			10.8	215.0
23-R			10.2	215.6
15-R			7.7	218.1
☉			3.4	222.4
	Instr.	238.82		
10-L	E. Edge Ex. Rd.		10.8	228.0
15-L			10.6	228.2
23-L			10.8	228.0
25-L			11.0	227.8
33-L	W. " " "		11.0	227.8
42-L			4.1	234.7
50-L			1.6	237.2
	T.P.		0.0	238.82
	Hand Level	13.0	251.82	
75-L			7.6	244.2
	225+00			
75-L			0.0	251.8

STA	+	H.I.	-	Elev.
50-L			5.5	246.3
25-L			13.0	238.8
	Instr.	238.8 <sup>v</sup>		
23-L			2.0	236.8
15-L			10.8	228.0
11-L	W. Edge Ex. Rd.		11.0	227.8
☒			10.6	228.2
13-R	E. " " "		9.8	229.0
15-R			10.9	227.9
	T.P.		13.0	225.8 <sup>v</sup>
	Hand Level	0.0	225.8 <sup>v</sup>	
23-R			1.9	223.9
25-R			2.7	223.1
50-R			10.7	215.1
75-R			18.0	207.8
	225 + 50			
75-R			14.3	211.5
50-R			6.3	219.5
36-R			2.0	223.8
	Instr.	238.8 <sup>v</sup>		
25-R	E. Edge Ex. Rd.		10.2	228.6
23-R			10.3	228.5
	T.P.		10.07	228.75
	4.20	232.95 <sup>v</sup>		
15-R			4.6	228.4

STA	+	H.I.	-	Elev.
2-R	W. Edge Ex. Rd.		4.5	228.4
☒			3.2 <sup>v</sup>	229.8
2-L			3.0	229.9
	T.P.		0.0	232.95
	Hand Level	13.0	245.95	
10-L			6.9	239.1
15-L			5.2 <sup>v</sup>	240.7
23-L			2.3	243.7
25-L			1.9	244.0
	T.P.		0.0	245.95
		13.0	258.95	
50-L			7.0	252.0
75-L			0.0	258.9
	226 + 00			
75-L			0.0	258.9
50-L			7.2 <sup>v</sup>	251.8
	T.P.		13.0	245.95
		0.0	245.95	
25-L			1.0	245.0 <sup>1</sup>
23-L			1.6	244.3
15-L			4.1	241.9
☒			9.2 <sup>v</sup>	236.7 <sup>v</sup>
2-R			9.8	236.2
	Instr.	232.95 <sup>-</sup>		
8-R	W. Edge Ex. Rd.		4.6	228.4



STA	+	H.I.	-	Elev.
15-R			4.7	228.2
23-R			4.5	228.5
25-R			4.4	228.5
31-R	E. Edge Ex. Rd.		4.5	228.5
36-R			7.7	225.2
50-R			14.1	220.9
75-R			20.4	212.5
	226+50			
75-R			18.1	214.9
50-R			13.4	219.5
45-R			11.7	221.3
34-R	E. Edge Ex. Rd.		4.6	228.3
25-R			4.6	228.4
23-R			4.6	228.3
15-R			4.7	228.3
14-R	W. " " "		4.7	228.2
⊕			2.8	230.2
	T.P.		0.0	232.95
	Hand Level	13.0	245.95	
15-L			14.0	234.0
23-L			9.6	236.3
25-L			8.9	237.1
50-L			2.4	243.5
	T.P.		0.0	245.95
	16.7	252.65		

46

STA	+	H.I.	-	Elev.
75-L			0.0	252.6
	227+00			
75-L			4.2	248.5
50-L			9.6	243.0
	T.P.		13.0	239.65
	0.0	239.65		
75-L			0.5	239.2
23-L			0.9	238.7
15-L			2.5	237.2
⊕			7.0	232.6
	Instr.	232.95		
15-R	W. Edge Ex. Rd.		4.7	228.3
23-R			4.6	228.3
25-R			4.6	228.4
36-R	E. " " "		4.2	228.7
50-R			14.0	219.0
75-R			19.6	213.3
	227+50			
75-R			18.4	214.6
55-R			13.5	219.4
50-R			11.0	222.0
40-R	E. Edge Ex. Rd.		4.6	228.3
25-R			4.3	228.7
23-R			4.3	228.6
18-R	W. " " "		4.1	228.9

STA	+	H.I.	-	Elev.
15-R			3.6	229.3
⊕ T.P.			0.0	232.95
Hand Level	13.0	245.95		
15-L			6.9	239.1
23-L			3.5	242.4
25-L			2.9	243.1
T.P.			0.0	245.95
	13.0	258.95		
50-L			7.8	251.2
75-L			1.4	257.5
	228+00			
75-L			6.4	252.6
50-L T.P.			13.0	245.95
	0.0	245.95		
25-L			6.7	239.3 ✓
23-L			7.0	238.9
15-L			9.0	237.0
⊕			11.9	234.0 ✓
	Inst.	234.95 ✓		
15-R			1.7	231.3
22-R W. Edge Ex. Rd.			4.0	228.9
23-R			4.2	228.8
25-R			4.2	228.7
46-R E. " " "			4.0	229.0
50-R			6.7	226.2 ✓

47

STA	+	H.I.	-	Elev.
60-R			12.7	220.3
75-R			16.8	216.1
	229+00			
75-R			12.1	220.9
60-R E. Edge Ex. Rd.			3.1	229.8
50-R			3.2	229.8
42-R W. " " "			3.5	229.4
T.P.			1.72	231.23
	4.93	236.16 ✓		
40-R			2.3	233.9
T.P.			0.0	236.16
	Hand Level	13.0	249.16	
25-R			5.0	244.2
23-R			3.7	245.5
20-R			2.9	246.3
15-R			1.2	248.0
T.P.			0.0	249.16
	13.0	262.16		
⊕			4.6	257.6
T.P.			0.0	262.16
	13.0	275.16		
15-L			6.7	268.5
23-L			2.7	272.5
25-L			2.1	273.1
T.P.			0.0	275.16

STA	+	H.I.	-	Elev.	STA	+	H.I.	-	Elev.
	13.0	288.16			65-R E. Edge Ex. Rd.			5.8	230.4
50-L			3.8	284.4	75-R			13.4	222.8
T.P.			0.0	288.16		230+00			
	13.0	301.16			75-R			14.8	221.4
75-L			10.0	291.2	57-R E. " " "			4.3	231.9
	229+50.				50-R			4.6	231.6 ✓
75-L			2.2	299.0	37-R W. " " "			5.0	231.2
50-L			7.0	294.2	T.P.			0.0	236.16
T.P.			13.0	288.16	Hand Level	13.0	249.16		
	0.0	288.16			25-R			6.3	242.9 ✓
25-L			6.2	282.0	23-R			5.5	243.7
23-L			7.3	280.9	15-R			0.8	248.4
15-L			12.4	275.8	T.P.			0.0	249.16
T.P.			13.0	275.16		13.0	262.16		
	0.0	275.16			♀			4.5	257.7 ✓
♀			11.3	263.9	T.P.			0.0	262.16
T.P.			13.0	262.16		13.0	275.16		
	0.0	262.16			15-L			10.2	265.0
15-R			9.3	252.9	23-L			5.7	269.5
23-R			13.3	248.9	25-L			4.6	270.6 ✓
25-R			14.7	247.5	T.P.			0.0	275.16
30-R			16.8	245.4		13.0	288.16		
	Instr.	236.16 ✓			50-L			3.5	284.7
40-R W. Edge Ex. Rd.			5.9	230.3	T.P.			0.0	288.16
50-R			5.8	230.4		13.0	301.16		

STA	+	H.I.	-	Elev.
75-L			6.1	295.1
	230 + 20			
75-L			11.0	290.2
	T.P.		13.0	288.16
	0.0	288.16		
50-L			10.1	278.1
	T.P.		13.0	275.16
	0.0	275.16		
25-L			10.2	265.0
23-L			10.9	264.3
	T.P.		13.0	262.16
	0.0	262.16		
15-L			2.1	260.1
⊕			9.3	252.9
15-R			16.0	246.2
	T.P.		13.0	249.16
	0.0	249.16		
17-R			4.8	244.4
23-R			11.6	237.6
25-R			13.6	236.2
	Instr.	236.16		
31-R	W. Edge Ex. Rd.		4.8	231.4
50-R			4.6	231.6
52-R	E. " " "		4.6	231.6
65-R			14.0	222.2

STA	+	H.I.	-	Elev.
75-R			18.6	217.6
	230 + 50			
75-R			20.5	215.7
50-R			7.5	228.7
47-R	E. Edge Ex. Rd.		4.5	231.7
28-R	W " " "		4.2	232.0
25-R	T.P.		0.0	236.16
	HandLevel	13.0	249.16	
23-R			11.3	237.9
18-R			5.0	244.2
15-R			3.9	245.3
	T.P.		0.0	249.16
	13.0	262.16		
⊕			8.2	254.0
	T.P.		0.0	262.16
	13.0	275.16		
15-L			4.6	270.6
23-L			8.2	267.0
25-L			7.5	267.7
	T.P.		0.0	275.16
	13.0	288.16		
50-L			7.9	280.3
	T.P.		0.0	288.16
	13.0	301.16		
75-L			10.5	290.7

✓

STA	+	H.I.	-	Elev.
	231+00			
75-L			10.0	291.2
T.P.			13.0	288.16
	0.0	288.16		
50-L			7.6	280.6
T.P.			13.0	275.16
	0.0	275.16		
25-L			7.3	267.9
23-L			7.9	267.3
15-L			11.4	263.8
T.P.			13.0	262.16
	0.0	262.16		
φ			6.0	256.2
7-R			9.3	252.9
	Instr.	236.16 ✓		
15-R	W. Edge Ex. Rd.		3.3	232.9
23-R			2.9	233.3
25-R			2.9	233.3
38-R	E. " " "		3.0	233.2
50-R			12.5	223.7
65-R			19.8	216.4
75-R			21.8	214.4
T.P.			13.0	223.16
Hand Level	0.0	223.16		

✓

50

STA	+	H.I.	-	Elev.
	231+50			
75-R			8.2	215.0
63-R			7.4	215.8
50-R			2.0	221.2
	Instr.	236.16 ✓		
18-R	E. Edge Ex. Rd.		1.4	234.8
15-R			1.4	234.8
13-R			1.4	234.8
15-R	W. " " "		1.4	234.8
7-R			1.9	234.3
T.P.			0.0	236.16
Hand Level	13.0	249.16		
φ			1.2	248.0
T.P.			0.0	249.16
	13.0	262.16		
15-L			5.9	256.3
23-L			1.4	260.8
25-L			0.7	261.5
T.P.			0.0	262.16
	13.0	275.16		
50-L			2.4	272.8
T.P.			0.0	275.16
	13.0	288.16		
75-L			4.2	284.0
	Instr.	236.16 ✓		
T.P.			8.23	227.93

✓	STA	+	H.I.	-	Elev.	STA	+	H.I.	-	✓	Elev.
		11.67	239.60	✓		T.P.			13.0		226.60
		232	+00			Hand Level	0.0	226.60			
	T.P.			0.0	239.60	50-R			8.7		217.9 ✓
	Hand Level	13.0	252.60			75-R			9.4		217.2
	T.P.			0.0	252.60		233	+00			
		13.0	265.60			75-R			4.9		221.7
	T.P.			0.0	265.60	50-R			3.7		222.9
		13.0	278.60			35-R			3.8		222.8
75-L				9.5	269.1	37-R			1.7		224.9
	T.P.			13.0	265.60	25-R			0.4		226.2
		0.0	265.60				Inst.	239.60	✓		
50-L				6.8	258.8	23-R			12.8		226.8
	T.P.			13.0	252.60	15-R			7.7		231.9
		0.0	252.60			7-R	E. Edge Ex. Rd.		2.4		237.2
25-L				2.0	250.6 ✓	¢			2.5		237.1
23-L				2.8	249.8	13-L	W. " " "		2.6		237.0
15-L				5.2	247.4	15-L	T.P.		0.0		239.60
8-L				8.7	243.9		Hand Level	13.0	252.60		
		Inst.	239.60	✓		23-L			9.7		242.9
2-L	W. Edge Ex. Rd.			3.8	235.8	25-L			8.9		243.7
¢				4.2	235.4 ✓		T.P.		0.0		252.60
15-R				4.3	235.3		13.0	265.60			
19-R	E. " " "			4.3	235.3	50-L			11.5		254.1
23-R				7.3	232.3	75-L			1.7		263.9
25-R				8.5	231.1 ✓						

STA	+	H.I.	-	Elev.
	234+00			
75-L			7.0	258.6
T.P.			13.0	252.60
	0.0	252.60		
50-L			0.3	252.3
25-L			6.8	245.8
23-L			8.0	244.6
	Instr.	239.60	✓	
T.P.			0.08	239.52
	12.22	251.74		
T.P.			0.08	251.66
	12.68	264.34		
T.P.			0.29	264.05
	8.67	272.72		
B.M. #18	269.68		3.04	269.68
T.P.			11.96	260.76
	1.18	261.94		
T.P.			12.86	249.08
	1.42	250.50	✓	
16-L	W. Edge Ex. Rd.		12.6	237.9
15-L			14.6	237.9
⊕			11.5	239.0
6-R	E. " " "		11.5	239.0
T.P.			13.0	237.50
Hand Level	0.0	237.50		

STA	+	H.I.	-	Elev.
15-R			3.8	233.7
23-R			5.9	231.6
75-R			6.4	231.1
34-R			7.7	229.8
35-R			10.6	226.9
50-R			10.4	227.1
75-R			11.7	225.8
	235+00			
75-R			9.0	228.5
50-R			7.4	230.1
25-R			4.0	233.5
23-R			4.0	233.5
15-R			3.1	234.4
4-R			3.0	234.5
	Instr.	250.50	✓	
⊕			13.3	237.2
3-L	E. Edge Ex. Rd.		11.1	239.4
15-L			10.9	239.6
23-L	W. " " "		11.3	239.2
25-L			9.7	240.8
33-L			4.0	246.5
			0.0	250.50
	Hand Level	13.0	263.50	
50-L			11.0	252.5
75-L			1.1	262.4

STA	+	H.I.	-	Elev.
	235+50			
75-L			0.0	263.5
50-L			10.4	253.1
	Instr.	250.50 ✓		
32-L			4.6	245.9
28-L	W. Edge Ex. Rd.		10.5	240.0
25-L			10.6	239.9
23-L			10.6	239.9
15-L			10.2	240.3
7-L	E. " " "		10.2	240.3
4-L			14.8	237.7
⊕			13.4	237.1
15-R			14.3	236.2
23-R			15.6	234.9
25-R			15.6	234.9
50-R			18.3	232.2
75-R			20.3	230.2
	236+00			
75-R			18.8	231.7
50-R			17.3	233.2
25-R			14.3	236.2
23-R			14.3	236.2
15-R			13.1	237.4
⊕			11.4	239.1
8-L			11.2	239.3

STA	+	H.I.	-	Elev.
13-L	E. Edge Ex. Rd.		9.2	241.3
15-L			9.2	241.3
23-L			9.6	240.9
25-L			9.6	240.9 ✓
	T.P.		9.28	241.22
	6.40	247.62 ✓		
35-L	W. Edge Ex. Rd.		6.7	240.9
50-L			2.4	245.2
	T.P.		0.0	247.62
	HandLevel	13.0	260.62	
75-L			13.2	247.4
	237+00			
	Instr.	247.62 ✓		
	T.P.		0.0	247.62
	HandLevel	7.0	254.62	
75-L			6.2	248.4
50-L			8.5	246.1
	Instr.	247.62 ✓		
44-L			2.5	245.1
42-L	W. Edge Ex. Rd.		6.1	241.5
25-L			5.4	242.2
23-L			5.4	242.2
21-L	E. " " "		5.1	242.5
15-L			5.4	242.2
⊕			7.3	240.3



STA	+	H.I.	-	Elev.
15-R			8.6	239.0
73-R			9.4	238.2
75-R			9.4	238.2
50-R			11.4	236.2
75-R			15.0	232.6
	237+50			
75-R			12.7	234.9
50-R			10.8	236.8
75-R			8.9	238.7
73-R			8.8	238.8
15-R			8.8	238.8
Φ			6.6	241.0
15-L			15.2	232.4
23-L	E. Edge Ex. Rd.		4.5	243.1
75-L			4.6	243.0
43-L	W. " " "		5.4	242.2
45-L			4.6	245.0
50-L			2.1	245.5
	T.P.		0.0	247.6
	Hand Level	13.0	260.6	
75-L			11.9	248.7
	238+00			
75-L			1.9	258.7
50-L			9.5	251.1

STA	+	H.I.	-	Elev.
	Instr.	247.6		✓
39-L	W. Edge Ex. Rd.		5.1	242.5
75-L			4.7	242.9
23-L			4.7	242.9
21-L	E. " " "		4.4	243.2
15-L			5.9	241.7
Φ			8.2	239.4
15-R			9.7	237.9
23-R			10.2	237.4
25-R			10.2	237.4
50-R			12.2	235.4
75-R			14.1	233.5
	239+00			
75-R			16.9	230.7
50-R			15.0	232.6
25-R			13.2	234.4
23-R			13.2	234.4
15-R			12.5	235.1
Φ			10.8	236.8
3-L			10.2	237.4
13-L	E. Edge Ex. Rd.		3.4	244.2
15-L			3.6	244.0
23-L			4.2	243.4
75-L			4.2	243.4
34-L	W. " " "		3.7	243.9

STA	+	H.I.	-	Elev.
			0.0	247.62
	Hand Level	13.0	260.62	
40-L			10.2	250.4
50-L			6.6	254.0
	T.P.		0.0	260.62
		13.0	273.62	
75-L			11.0	262.6
		240+00		
75-L			6.3	267.3
	T.P.		13.0	260.62
		0.0	260.62	
50-L			5.0	255.6
35-L			10.2	250.4
	Instr.		247.62	
29-L	W. Edge Ex. Rd.		3.0	244.6
25-L			3.0	244.6
23-L			3.0	244.6
15-L			2.7	244.9
7-L	E. " " "		2.7	244.9
	T.P.		2.66	244.96
		8.55	253.51	
⊕			13.2	240.3
	T.P.		13.0	240.51
	Hand Level	0.0	240.51	
9-R			5.1	235.4

STA	+	H.I.	-	Elev.
15-R			5.7	234.8
23-R			6.6	233.9
25-R			6.8	233.7
50-R			9.2	231.3
75-R			11.0	229.5
		241+00		
75-R			10.0	230.5
50-R			8.6	231.9
25-R			6.5	234.0
23-R			6.3	234.2
15-R			2.3	238.2
	Instr.		253.51	
⊕	E. Edge Ex. Rd.		6.6	246.9
15-L			7.2	246.3
19-L	W. " " "		6.9	246.6
23-L	T.P.		0.0	253.51
	Hand Level	13.0	266.51	
25-L			12.2	254.3
50-L			1.6	264.9
	T.P.		6.0	266.51
		13.00	279.51	
75-L			5.5	274.0
		242+00		
75-L			0.0	279.5
50-L			8.0	271.5

55

Sta	+	H.I.	-	Elev.
	T.P.		13.0	266.51
	0.0	266.51		
25-L			5.9	260.61
23-L			6.8	259.7
21-L			7.9	258.6
	Inst.	253.51	✓	
15-L			1.4	252.1
12-L	W. Edge Ex. Rd.		5.0	248.5
☒			4.6	248.91
8-R	E. " " "		4.5	249.0
15-R			7.3	246.2
20-R			9.8	243.7
23-R			10.5	243.0
25-R			10.8	242.71
50-R			13.4	240.1
75-R			15.9	237.6
	242 + 50			
75-R			12.9	241.1
50-R			9.2	244.3
25-R			5.3	248.21
23-R			5.0	248.5
21-R			4.8	248.7
20-R			3.5	250.0
15-R			2.3	251.2
11-R	E. Edge Ex. Rd.		3.2	250.3

Sta	+	H.I.	-	Elev.
			3.8	249.71
8-L	W. Edge Ex. Rd.		4.2	249.3
	T.P.		0.0	253.51
	Hand level	13.0	266.51	✓
15-L			11.3	255.2
23-L			7.7	258.8
25-L			7.0	259.51
	T.P.		0.0	266.51
		13.0	279.51	
50-L			9.4	270.1
75-L			0.0	279.5
	T.P.		13.0	266.51
		4.0	270.51	
	242 + 74			
75-L			0.0	270.5
50-L			5.8	264.7
25-L			12.0	258.51
23-L			12.6	257.9
15-L			14.3	256.2
	Inst.	253.51	✓	
7-L	W. Edge Ex. Rd.		3.2	250.3
☒			3.6	249.91
13-R	E. " " "		2.8	250.7
15-R			1.9	251.6
20-R			4.3	249.2

STA	+	H.I.	-	Elev.
23-R			4.6	248.9
25-R			4.8	248.7
50-R			8.3	245.2
75-R			11.1	242.4
	243+00			
75-R			9.5	244.0
50-R			7.8	245.7
25-R			4.6	248.9
23-R			3.8	249.7
15-R			1.5	252.0
14-R	E. Edge Ex. Rd.		2.3	251.2
	T.P.		0.00	253.51
	5.02	258.53	✓	
⊕			8.0	250.5
4-L	W. Edge Ex. Rd.		8.1	250.4
5-L			6.3	252.2
	T.P.		0.0	
	Hand Level	13.00		271.53
15-L			14.3	259.2
13-L			9.2	262.3
25-L			8.5	263.0
	T.P.		0.0	271.53
	13.0	284.53		
50-L			10.5	274.0
75-L			1.9	282.6

STA	+	H.I.	-	Elev.
	243+65			
75-L			3.0	281.5
50-L			10.2	274.3
	T.P.		13.0	271.53
	0.0	271.53		
25-L			6.0	265.5
23-L			5.3	266.2
15-L			10.6	260.9
	Instr.	258.53	✓	
7-L			1.0	257.5
⊕	W. Edge Ex. Rd.		7.1	251.4
15-LR			6.5	252.0
18-L	E. " " "		6.3	252.2
23-L			5.3	253.2
25-L			6.0	252.5
50-L			8.9	249.6
75-L			11.0	247.5
	244+00			
75-LR			9.0	249.5
50-L			6.5	252.0
25-L			4.9	253.6
23-L			4.8	253.7
22-L	E. Edge Ex. Rd.		6.0	252.5
15-L			6.3	252.2
3-L	W. " " "		6.5	252.0

57

✓

STA	+	H.I.	-	Elev.
⊕			4.3	254.2
4-L			1.4	257.1
15-L	T.P.		0.0	258.53
	Hand Level	13.0		271.53
23-L			11.1	260.4
25-L			10.6	260.9
50-L			4.4	267.1
75-L	T.P.		0.0	271.53
		13.0		284.53
75-L			10.4	274.1
		244+13		
75-L	T.P.		13.0	271.53
		0.0		271.53
50-L			6.5	265.0
25-L			11.8	259.7
23-L			12.0	259.5
20-L			12.3	259.2
	Instr.	258.53	✓	
15-L			3.5	255.0
4-L			7.3	251.2
3-L			5.9	252.6
⊕			5.4	253.1
3-R	W. Edge Ex. Rd.		6.2	252.3
15-R			6.2	252.3
22-R	E " " "		5.7	252.8

258.53

✓

58

STA	+	H.I.	-	Elev.
23-R			5.0	253.5
25-R			4.9	253.6
29-R			5.5	253.0
40-R			12.0	246.5
50-R			12.8	245.7
75-R			15.4	243.1
		244+28		
75-R			8.0	250.5
50-R			5.1	253.4
32-R			5.5	253.0
25-R			4.7	253.8
23-R	E. Edge Ex. Rd.		5.5	253.0
15-R			6.0	252.5
4-R	W. " " "		6.3	252.2
⊕			2.6	255.9
	T.P.		0.0	258.53
	Hand Level	13.0		271.53
3-L			14.0	257.5
8-L			13.3	258.2
15-L			17.8	253.7
23-L			17.0	254.5
25-L			17.0	254.5
50-L			14.3	257.2
75-L			11.6	259.9

✓ STA	+	H.I.	-	Elev
	244+40	271.53		
75-L			6.5	265.0
50-L			8.9	262.6
25-L			11.7	259.8
23-L			11.9	259.6
15-L			12.7	258.8
5-L			13.2	258.3
	Instr.	258.53 ✓		
¢			1.8	256.7
6-R	W. Edge Ex. Rd		6.0	252.5
15-R			5.8	252.7
23-R			5.5	253.0
25-R	E. " " "		5.4	253.1
34-R			5.0	253.5
50-R			5.8	252.7
75-R			8.3	250.2
	244+70 <sup>85</sup> B.C.			
75-R			9.0	249.5
50-R			6.5	252.0
27-R	E. Edge Ex. Rd		4.7	253.8
25-R			5.3	253.2
23-R			5.3	253.2
15-R			5.5	253.0
8-R	W. " " "		5.5	253.0
4-R			1.7	256.8

✓ STA	+	H.I.	-	Elev
		258.53		
¢			1.1	257.4
T.P.			0.0	258.53
Hand Level	13.0	271.53		
15-L			12.2	259.3
23-L			11.0	260.5
25-L			10.8	260.7
50-L			8.0	263.5
75-L			4.2	267.3
	245+00			
75-L			0.0	271.5
50-L			2.6	268.9
25-L			5.7	265.8
23-L			6.2	265.3
15-L			8.0	263.5
	Instr.	258.53 ✓		
¢			0.5	258.0
6-R			2.0	256.5
10-R	W. Edge Ex. Rd.		5.1	253.4
15-R			5.4	253.1
23-R			5.2	253.3
25-R			5.2	253.3
30-R	E. " " "		4.7	253.8
50-R			6.9	251.6
75-R			9.5	249.0

258.53

STA	+	H.I.	-	Elev.	STA	+	H.I.	-	Elev. 60
	245+20					0.0	271.53		
75-R			10.1	248.4	25-L			4.1	267.4
50-R			7.0	251.5	23-L			4.5	267.0
33-R	E. Edge Ex. Rd.		4.5	254.0	15-L			8.4	263.1
25-R			5.1	253.4	☺			14.2	257.3
23-R			5.0	253.5		Inst.	258.53		
15-R			5.2	253.3	14-R			3.0	255.5
14-R	W. " " "		5.0	253.5	15-R	W. Edge Ex. Rd.		4.6	253.9
8-R			1.4	257.1	23-R			4.5	254.0
	T.P.		0.0	258.53	25-R			4.4	254.1
	Hand Level	13.0	271.53		37-R	E " " "		4.0	254.5
☺			10.8	260.7	50-R			8.2	250.3
15-L			4.5	267.0	75-R			13.2	245.3
25-L	T.P.		0.0	271.53		246+50			
	13.0	284.53			75-R			15.7	242.8
50-L			3.4	281.1	60-R			14.2	244.3
75-L			0.3	284.7	50-R			5.0	253.5
	T.P.		0.0	284.53	44-R	E. Edge Ex. Rd.		3.4	255.1
	13.0	297.53			25-R	W. " " "		4.1	254.4
	246+00				23-R			1.9	256.6
75-L			6.7	290.8		T.P.		0.0	258.53
	T.P.		13.0	284.53		Hand Level	13.0	271.53	
	0.0	284.53			17-R			7.2	264.3
50-L			5.2	279.3	15-R			6.7	264.8
	T.P.		13.0	271.53	☺			0.2	271.3

STA	+	H.I.	-	Elev.	STA	+	H.I.	-	Elev.
			0.0		21-R			11.4	260.1
	13.0	284.53				Instr. 258.53 ✓			
15-L			6.7	277.8	23-R			1.1	257.4
23-L			3.0	281.5	25-R	W. Edge Ex. Rd.		2.9	255.6
25-L			2.6	281.9	48-R	E. " " "		2.9	255.6
			0.0	284.53	50-R			3.6	254.9
	13.0	297.53			62-R			12.6	245.9
50-L			6.2	291.3	75-R			14.6	243.9
			0.0	297.53		247+50			
	13.0	310.53			75-R			8.7	249.8
75-L			10.4	300.1	57-R			5.4	253.1
	247+00				50-R	E. Edge Ex. Rd.		1.8	256.7
75-L			3.0	307.5	T.P.			1.99	256.54
			13.0	297.53		8.19 264.73 ✓			
	0.0	297.53			29-R	W. Edge Ex. Rd.		8.2	256.5
50-L			1.4	296.1	T.P.			0.0	264.73
			13.0	284.53	Hand Level	13.0 277.73			
	0.0	284.53			25-R			13.8	263.9
25-L			2.2	282.3	23-R			12.2	265.4
23-L			3.1	281.4	15-R			7.9	269.8
15-L			7.5	277.0	T.P.			0.0	277.73
			13.0	271.53		13.0 290.73			
	0.0	271.53			⊕			12.0	278.7
⊕			1.5	270.0	15-L			5.0	285.7
15-R			8.7	262.8	23-L			2.0	288.7



✓		Inst. 264.73 ✓		
STA	+	H.I.	-	Elev.
25-L			1.7	289.0
	T.P.		0.0	290.73
	13.0	303.73		
50-L			4.0	299.7
	T.P.		0.0	303.73
	13.0	316.73		
75-L			4.5	312.2
	247 + 76			
75-L			0.7	316.0
50-L			13.3	303.4
	T.P.		13.0	303.73
	0.0	303.73		
25-L			13.7	290.0
	T.P.		13.0	290.73
	0.0	290.73		
23-L			2.0	288.7
15-L			6.5	284.2
	T.P.		13.0	277.73
	0.0	277.73		
⊕			1.7	276.0
15-R			10.3	267.4
	Inst. 264.73 ✓			
23-R			3.0	261.7
25-R			4.7	260.0
29-R	W. Edge Ex. Rd.		8.2	256.5

	Inst. 264.73	✓		
STA	+	H.I.	-	Elev.
47-R	E. Edge Ex. Rd.		7.4	257.3
50-R			7.0	257.7
55-R			9.2	255.5
75-R			12.7	252.0
	248 + 00			
75-R			11.4	253.3
56-R			8.6	256.1
50-R			6.7	258.0
45-R	E. " " "		6.8	257.9
26-R	W. " " "		7.8	256.9
25-R			6.8	257.9
23-R			6.2	258.5
	T.P.		0.0	264.73
	Hand Level 13.0	277.73		
15-R			15.2	262.5
⊕			10.5	267.2
15-L			7.8	269.9
23-L			6.0	271.7
25-L			5.8	271.9
50-L			2.2	275.5
	T.P.		0.0	277.73
	13.0	290.73		
75-L			10.2	280.5
	248 + 50			
	T.P.		0.0	290.73

62

STA	+	H.I.	-	Elev.
	13.0	303.73		
75-L			9.0	294.7
58-L			11.0	292.7
T.P.			13.0	290.73
	0.0	290.73		
50-L			3.0	287.7
45-L			11.4	279.3
T.P.			13.0	277.73
	0.0	277.73		
25-L			6.1	271.6
23-L			7.0	270.7
15-L			9.7	268.0
⊕			11.7	266.0
15-R			13.3	264.4
	Inst.	264.73		
23-R			4.0	260.7
25-R	W. Edge Ex. Rd.		6.7	258.0
42-R	E. " " "		5.8	258.9
50-R			6.0	258.7
75-R			9.7	255.0
	249+00			
75-R			9.3	255.4
50-R			6.4	258.3
39-R	E. Edge Ex. Rd.		5.4	259.3
25-R			6.0	258.7

STA	+	H.I.	-	Elev.
23-R			6.0	258.7
21-R	W. Edge Ex. Rd.		5.9	258.8
20-R			4.3	260.4
15-R	T.P.		0.0	264.73
	Hand Level	13.0		277.73
⊕			8.9	268.8
15-L			3.3	274.4
T.P.			0.0	277.73
	13.0	290.73		
23-L			12.5	278.2
25-L			11.9	278.8
50-L			1.9	288.8
T.P.			0.0	290.73
	13.0	303.73		
75-L			3.6	300.1
	249+50			
75-L			12.7	291.0
T.P.			13.0	290.73
	9.0	290.73		
50-L			7.6	283.1
T.P.			13.0	277.73
	0.0	277.73		
25-L			3.9	273.8
23-L			4.3	273.4
15-L			7.0	270.7

STA		+	H.I.	-	Elev.
☺				12.2	265.5 ✓
					Instr. 264.73 ✓
11-R				3.8	260.9
13-R	W. Edge Ex. Rd.			5.7	259.0
15-R				5.6	259.1
23-R				5.3	259.4
25-R				5.3	259.4 ✓
33-R	E " " "			4.7	260.0
50-R				5.4	259.3
75-R				8.3	256.4
					250 + 00
75-R				8.0	256.7
50-R				5.5	259.2
25-R	E " " "			4.4	260.3
23-R				4.6	260.1
15-R				4.8	259.9
5-R	W. " " "			5.1	259.5
	T.P.			1.95	262.78

This section  
is duplicated  
in Book #1327  
Page 20

X-Section on Spur of S.F.R.R. at Altas Brickyard  
for Alignment Sec F.B. 1325, pg. 60

STA		+	H.I.	-	Elev.	STA		+	H.I.	-	Elev.
B.M. # 11					116.93	5+50	W.			10.38	111.40
		4.85	121.78				E.			10.44	111.34
0+00	W. Rail			0.70	131.08	6+00	W.			10.48	111.30
	E. "			0.71	131.07		E.			10.45	111.33
+50	W. "			1.36	120.42						
	E. "			1.42	120.36	On W. Rail Main Line opp. Sta. 157+00				5.69	116.14
1+00	W. "			2.03	119.75	" " " 158+00				4.69	117.09
	E. "			2.05	119.73	" " " 159+00				3.48	118.30
1+50	W. "			2.91	118.87						
	E. "			2.68	119.10						
2+00	W. "			3.64	118.14						
	E. "			3.46	119.32						
+50	W. "			4.94	116.84						
	E. "			4.78	117.00						
3+00	W. "			5.96	115.92						
	E. "			5.75	116.03						
+50	W. "			6.87	114.91						
	E. "			6.71	115.07						
4+00	W. "			8.17	113.61						
	E. "			8.03	113.75						
4+50	W. "			9.26	112.52						
	E. "			9.12	112.66						
5+00	W. "			9.85	111.93						
	E. "			9.83	111.95						

65

STA

+

H.I.

-

Elev.

STA

+

H.I.

-

Elev. <sup>66</sup><sub>(27)</sub>

Walker  
Plus  
Dreber.  
4-25-31

ROSS SECTION

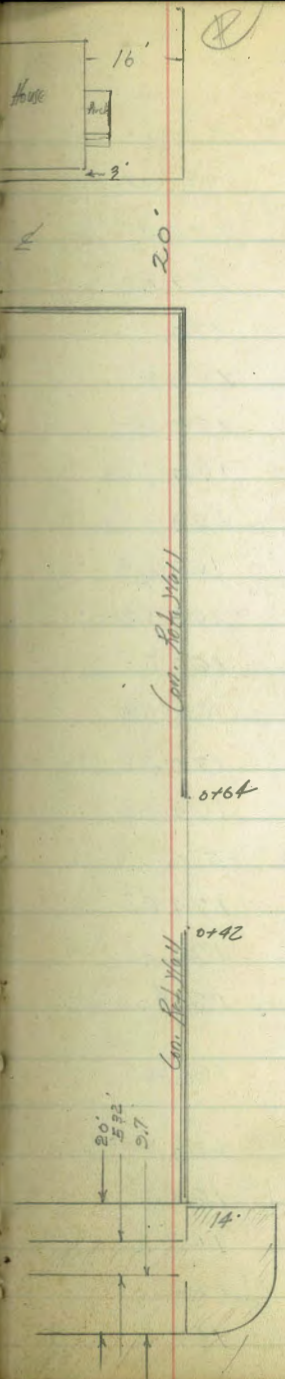
G-St. 80' Wide 14' Chs. 13' 1/2  
From E.L. 25TH ST  
to a point 260' East E.L. 25TH ST.  
NW 8P

2.30 174.38 172.18 G-st. + 25TH St.

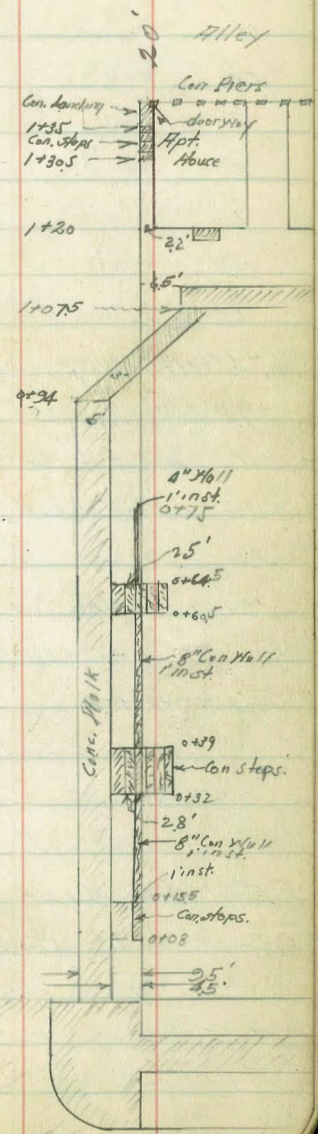
E.L. 25TH ST. = 0 + 00

N on top Walk	1.20	172.48	✓
N top cb.	2.18	172.20	✓
N " Paviny	2.80	171.50	✓
N 1/2 on "	3.24	171.14	
E " "	3.68	170.70	✓
S 1/2 " "	4.15	170.23	
S Gut. on "	4.86	169.52	✓
S top cb.	4.55	169.83	✓
S. on top Walk	4.11	170.27	✓
0 + 15.			
S on step	3.52	170.86	✓
+1 " "	3.52	170.86	✓
+1.1 " Walk	3.98	170.40	✓
+4.5 " "	4.26	170.12	
+9.5 " "	4.39	169.99	
+11	3.7	170.7	
cb.	3.7	170.7	
1/4	3.1	171.3	
E	3.0	171.4	
4	2.6	171.8	
cb.	3.0	171.4	
N	1.8	172.6	
+ 0.3 on Con Ret. Wall	1.29	173.09	✓

Plotted.



25TH ST.



0+39			
N - 0.5' on top Cen. Wall	0.43	173.95	
N	3.1	171.3	
cb.	3.4	171.0	
$\frac{1}{2}$	3.7	170.7	
$\frac{1}{2}$	4.1	170.3	
$\frac{1}{2}$	4.2	170.2	
cb.	4.9	169.5	
+3	5.1	169.3	
+4.5 = N edge Walk	5.93	168.45 ✓	
+9.5 = " " "	5.85	168.53 ✓	
+11.2 = bottom of step	5.40	168.98	
+11.2 on top of step	4.80	169.58	
S " " "	3.56	170.82 ✓	
0+39 on top Cen. Wall on south	4.49	169.89 ✓	
0+42 = End Cen. Ret. Wall on North. 9.5' Back.			✓
on top wall	0.33	174.05 ✓	
" Bottom of Footing	4.0	170.38 ✓	
0+50 = Storage on North	6.0	168.4 ✓	dit Floor
0+60.5			
End of Ret. Wall at West edge of Cen. steps	5.93	168.45	
South on top of Cen. step	5.64	168.74 ✓	
+25 " Bottom of bottom steps	7.33	167.05	
+45 " S edge Walk	7.37	167.01 ✓	
+9.5 " " " "	7.40	166.98 ✓	
cb.	7.2	167.2	

$\frac{1}{2}$	6.3	168.1	
$\frac{1}{2}$	6.3	168.1	
$\frac{1}{2}$	5.1	168.3	
cb.	4.7	169.7	
N	5.2	169.2	
0+64 = Beginning Cen. Wall on North.			Footing .95 inst. top .5' Back.
on top Wall	1.80	172.58 ✓	
" Bottom of Footing	7.4	167.0 ✓	
South on top 1" Cen. Wall	6.37	168.01 ✓	
0+75 " " " "	7.48	167.90 ✓	
0+92 Note of Walk Cont. East. Cut off here.			
- 0.5' on top Wall	5.00	169.88 ✓	
N Not on Footing	9.0	165.4	
cb.	8.6	165.8	
$\frac{1}{2}$	9.6	164.8	
$\frac{1}{2}$	9.9	164.5	
$\frac{1}{2}$	9.7	164.7	
cb.	10.1	164.3	
+4.5 = N edge Walk.	10.47	163.91 ✓	
+9.5 = " " "	10.32	164.06 ✓	
S	9.9	164.5	
0+94			
South edge Walk	10.46	163.92 ✓	
N " " "	10.61	163.77 ✓	
+0.75 on Walk	10.43	163.93 ✓	6.5 S.S.S.
+1.20 = N edge 1st House on South			

- 2.2' on top Cen Wall of House	9.20	165.18 ✓
- 2' " Ground.	11.3	163.1
S	11.3	163.1
cb.	11.7	162.7
$\frac{1}{4}$	12.7	161.7
$\frac{1}{2}$	13.3	161.1
$\frac{3}{4}$	14.6	159.8
cb.	12.4	162.0
N	12.3	162.1
N + 0.5' on top Cen Wall	8.50	165.58 ✓
(1 + 0.7 " " Cen Step 15" inst.	10.37	164.01 ✓
T.P. 0.26 162.35	12.29	161.39
1 + 30.5 = beginning Cen steps on South		
- 0.5' on top Cen Wall	+ 2.75	165.10 ✓
N	2.3	160.0
+ 10'	1.9	160.4
cb.	2.8	159.5
+ 5'	3.8	158.5
$\frac{3}{4}$	3.5	158.8
$\frac{1}{2}$	2.4	160.0
$\frac{1}{4}$	2.5	159.9
cb.	0.9	161.5
S	1.7	160.7
+ 0.2' on top Cen step	1.72	160.63 ✓
1 + 3.5 = " " " Landing in front of door.	2.22	158.13 ✓
1 + 40.26 = S.H. Alley.		

S - 0.2' on top Cen landing	4.28	157.07 ✓
S	7.9	154.5
cb.	6.5	155.9
$\frac{1}{4}$	4.8	157.6
$\frac{1}{2}$	4.9	157.5
$\frac{3}{4}$	4.9	157.5
cb.	5.6	156.8
+ 9	4.8	157.6
N	4.8	157.6
N on Bottom Footing	6.0	156.4 (Cen Wall) ✓
N + 0.8' top Wall	+ 1.40	163.75 ✓
1 + 50.26 = S.H. Alley.		
N	6.8	155.6
cb.	6.2	156.2
$\frac{1}{4}$	6.2	156.2
$\frac{1}{2}$	7.2	155.2
$\frac{3}{4}$	8.0	154.4
cb.	9.7	152.7
S	10.9	151.4
1 + 60.26 = S.H. Alley		
S	12.2	150.2
cb.	9.6	152.8
$\frac{1}{4}$	8.1	154.3
$\frac{1}{2}$	7.1	155.3
$\frac{3}{4}$	8.2	154.2
cb.	8.3	154.1



N		7.9	154.5
	1+75		
N-9' on Wooden Porch to House		5.60	156.75 ✓
N-9' to Ground		9.2	153.2 ✓
N		9.6	152.8
cb		11.2	151.2
4		10.3	152.1
2		9.6	152.8
4		10.3	152.1
cb.		11.6	150.8
+7'		14.7	147.7
5		15.6	146.8
+15'		16.5	145.9
	1+90		
-15'		19.5	142.9
-5		18.1	144.3
cb.		15.5	146.9
4		14.9	147.5
+10		10.5	151.9
6		10.5	151.9
4		12.5	149.9
cb		15.7	146.7
+13		12.1	150.3
N		11.4	151.0
+15' at Main body of house on Ground		11.0	151.4 ✓
TP	0.82	151.06	12.11 150.24

	2+07		
-16' at Main body of house		1.8	149.3 on Ground ✓
N		3.0	148.1
+5'		4.4	146.7
cb.		4.4	146.7
4		4.3	146.8
4		5.3	145.8
4		6.8	144.3
cb.		8.6	142.5
5		10.0	140.1
+15'		11.3	139.8
2+09-2 Palm 2.5' Back of cb.		4.7	146.4 5' High ✓
+15" Pepper tree 25' " " "		5.5	145.6 5" dia. ✓
34" Fir " " " " "		8.7	142.4 6" dia. ✓
	2+25		
5-15'		13.2	137.9
5		11.9	139.2
cb.		11.3	139.8
4		9.8	141.3
8		7.9	143.2
4		7.2	143.9
cb.		7.0	144.1
N		5.9	145.2
+2		4.8	146.3
+16'		4.8	146.3
	2+60		

N-15'	8.0	143.1
N-5	8.0	143.1
N	11.0	140.1
6.	11.9	139.2
7	13.7	137.4
6	14.7	136.4
4	16.3	134.8
6.	17.5	133.6
5	19.0	132.1
+15'	20.1	131.0

2	5.4	148.5
E	7.1	146.8
+10	9.9	144.6
-10'	8.6	145.3
E	7.2	146.7
2	5.7	148.2
+8'	3.5	150.4
N	0.0	153.9

1700

TP 3.65 153.89 0.82 150.24  
 \* Alley Bk 23  
 Broad & Chase Cross Section 20' Alley Page 67  
 From S.W. G-st to N.W. Market St.  
 0700 = S.W. G-st.

N	153.89 + 1.0	154.9
+8	2.2	151.7
2	2.4	151.5
E	3.6	150.3
-10'	9.6	144.3
E	6.8	147.1
+4'	5.8	148.1
2	4.6	149.3
N	1.6	152.3

N	1.7	152.2
+7'	5.1	148.8
2	6.6	147.3
E	7.8	146.1
+10'	10.3	143.6

1760 = S.W. Alley on E

0750  
 0782 = South end Apt. House on N of Back

N	0.8	153.1
---	-----	-------

1760 = S.W. Alley on E	11.6	142.9
E	8.8	145.1
2	7.3	146.6
N	4.2	149.7
2700	5.1	148.8
+5	8.1	145.8
2	9.1	144.8
E	9.9	144.0
+10	12.0	141.9

2150

-10	7.2	146.2
E	8.1	145.8
L	7.9	146.0
+8	7.5	146.4
M	5.0	148.9
-0.26 <sup>3</sup> +0.1 = N.L. Market		
M top cb	6.49	147.50
M-0.26 on M Gutter on	7.00	146.89
L	7.57	146.32
+2.74 gutter at cb face	7.77	146.22
+3.74 on top cb	7.67	146.32
T.P	12.37	163.33
	2.93	150.96

3 nails in Pole 10E 57' S.S. 1/4 S.

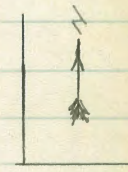
CROSS SECTION 20' ALLEY P-67

From N.L. G-st. to S.L. F-st.

N.L. G-st. = 0+00

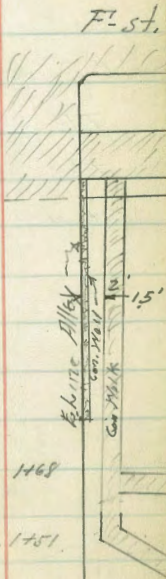
-0.5' N.L. on Footing Con Ret. Wall	7.0	156.3
N.L. Nat'l Ground.	6.1	157.2
N.L. - 1.0' on top Wall	+0.75	164.08
L	7.8	155.5
E	9.0	154.3
0+16 = South edge House on East G-st. Erite 3' Back		
0+140 = " " " 8.0	8.0	155.3
-3' of House	8.0	155.3
E	7.7	155.6

L	7.7	155.6
+6	7.5	155.8
M	4.7	158.6
+0.3 at Wall	4.7	158.6
at 68 = South end 7 Garages on East 3.2' Back.		
M at Wall	4.7	158.6
+4	6.6	156.7
L	7.1	156.2
E	7.5	155.8
+9.2 on Conc. Ribbon	7.3	156.0
1+00 = North end Con Wall on West.		
-9.2' on Conc Ribbon	6.40	156.93
E	5.9	157.4
L	5.5	157.8
+6	4.2	159.1
M	1.5	161.8
+0.3 on Bottom of Footing	4.8	158.5
+0.8' top Wall	+1.40	164.73
1+22 = North end of 6th Garage on East.		
-0.7' of Fence	+1.1	164.4
M	+1.1	164.4
+5.0'	3.0	160.3
L	4.0	159.3
E	4.7	158.6
E on Con Apron South end	5.37	159.96
+9.2' " " "	5.50	157.83
+9.2' " " M "	5.89	157.44



1+40 - South line of Alley on East.			
-10'		6.2	157.1
E on top con Foundation		2.65	160.68
" " Ground		3.9	159.9
L		3.2	160.1
+4		2.6	160.7
M		+1.0	164.3
TP	6.41	167.57	2.17
	1+50 - E Alley on East	3.7	163.9
M		6.7	160.9
+6		7.2	160.4
L		8.0	159.6
E		9.2	158.4
+10		12.0	155.6
+25		16.8	150.8
+50		20.0	147.6
+75		23.7	143.9
+100'		29.3	138.3
+125'		29.3	138.3
+130' on Rim MH.	Sewer	32.7	134.9
+150'		33.0	134.6
+175'		31.0	136.6
+200' E. E. N. x South Alley.			
1+60 - N. Alley on E.			
-10'		8.9	159.3
E		8.1	159.5
L		6.9	160.7

+5		6.6	161.0
M		4.0	163.6
	2+00		
M		3.0	164.6
+5'		5.9	162.2
L		5.7	161.9
E		6.1	161.5
+2		7.0	160.6
+5		7.5	160.1
	2+40		
-5		7.0	160.6
-1		6.3	161.3
E		5.2	162.4
L		5.2	162.4
M		4.0	163.6
1+51 on Con. Walk on E.		4.98	162.59
+56 " " " "		2.53	164.04
+68 " " " "		3.41	164.16
+68 " " " " Gauge floor on M 2' back.		2.67	
1+77 - E Gauge on M			
-2' on Con. Floor		2.50	165.27
M		3.1	164.5
L		3.7	163.9
E		4.1	163.6
E on top Con. Wall		4.00	163.57
+0.5' on E edge Wall on ground		4.93	162.64
+1.5' on Con. Walk		5.00	162.57



1487 = Bth. 10 Walk on East

-15' on Con Walk	6.70	160.87
-0.5	6.7	160.87
E " " Wall	5.01	162.56
E	5.3	162.3
E	4.8	162.8
+5	4.5	163.1
W	2.9	164.7

3401 ± = Sh. First

M on G.	5.62	161.95
" " Facing	6.02	161.55
E " "	6.89	160.68
E " "	7.94	159.63
E " top G.	7.84	159.73
T.P. 12.2A 177.54	2.27	165.30
T.P. 670 183.83	0.41	177.13
chk. NY. 8PF + 254	3.93	180.40

180.40 - 2M  
0.00 = Error





77







230.32  
- 13.00  
-----  
217.32

260 + 06  
247 + 50  
-----  
1250

249 0  
270  
-----  
2  
280.92  
11.20  
-----  
301.12  
13  
-----  
288.12

ENGINEERING DEPARTMENT,  
CITY OF SAN DIEGO,  
CALIFORNIA.

249.80  
+ 4.03  
-----  
253.83 ✓  
- 11.91  
-----  
241.92 ✓  
+ 1.51  
-----  
243.43 ✓  
- 10.98  
-----  
232.45 ✓  
+ 0.95  
-----  
233.40 ✓  
- 4.49  
-----  
228.91 ✓  
+ 4.16  
-----  
233.07 ✓  
- 11.19  
-----  
221.88 ✓  
10.25  
-----  
232.13  
- 0.30  
-----  
231.83 ✓  
14.71  
-----  
244.54 ✓  
1.83  
-----  
242.72 ✓  
+ 2.56  
-----  
245.28  
11.94  
-----  
233.34  
5.48  
-----  
238.82  
- 10.07  
-----  
228.75 ✓  
4.20  
-----  
232.95 ✓

232.95  
- 1.72  
-----  
231.23 ✓  
4.93  
-----  
236.16 ✓  
- 8.23  
-----  
227.93 ✓  
+ 11.67  
-----  
239.60 ✓  
- 10.08  
-----  
239.52  
+ 12.22  
-----  
251.74  
- 0.08  
-----  
251.66  
12.68  
-----  
264.34 ✓  
- 0.29  
-----  
264.05  
+ 8.67  
-----  
272.72  
3.04  
-----  
269.68 ✓

244.96  
8.55  
-----  
253.51  
+ 5.02  
-----  
258.53 ✓  
- 1.99  
-----  
256.54 ✓  
+ 8.19  
-----  
264.73 ✓  
- 1.95  
-----  
262.78 ✓

233  
178  
81  
97  
48  
127  
15  
17  
28  
0722 on 420

236.16 ✓  
- 8.23  
-----  
227.93 ✓  
+ 11.67  
-----  
239.60 ✓  
- 10.08  
-----  
239.52  
+ 12.22  
-----  
251.74  
- 0.08  
-----  
251.66  
12.68  
-----  
264.34 ✓  
- 0.29  
-----  
264.05  
+ 8.67  
-----  
272.72  
3.04  
-----  
269.68 ✓

239.60 ✓  
- 10.08  
-----  
239.52  
+ 12.22  
-----  
251.74  
- 0.08  
-----  
251.66  
12.68  
-----  
264.34 ✓  
- 0.29  
-----  
264.05  
+ 8.67  
-----  
272.72  
3.04  
-----  
269.68 ✓

251.74  
- 0.08  
-----  
251.66  
12.68  
-----  
264.34 ✓  
- 0.29  
-----  
264.05  
+ 8.67  
-----  
272.72  
3.04  
-----  
269.68 ✓

264.34 ✓  
- 0.29  
-----  
264.05  
+ 8.67  
-----  
272.72  
3.04  
-----  
269.68 ✓

272.72  
3.04  
-----  
269.68 ✓

272.72  
- 11.96  
-----  
260.76  
1.18  
-----  
261.94  
- 12.86  
-----  
249.08 ✓  
1.42  
-----  
250.50 ✓  
- 9.28  
-----  
241.22 ✓  
6.40  
-----  
247.62 ✓  
- 2.66  
-----  
244.96 ✓

260.76  
1.18  
-----  
261.94  
- 12.86  
-----  
249.08 ✓  
1.42  
-----  
250.50 ✓  
- 9.28  
-----  
241.22 ✓  
6.40  
-----  
247.62 ✓  
- 2.66  
-----  
244.96 ✓

261.94  
- 12.86  
-----  
249.08 ✓  
1.42  
-----  
250.50 ✓  
- 9.28  
-----  
241.22 ✓  
6.40  
-----  
247.62 ✓  
- 2.66  
-----  
244.96 ✓

249.08 ✓  
1.42  
-----  
250.50 ✓  
- 9.28  
-----  
241.22 ✓  
6.40  
-----  
247.62 ✓  
- 2.66  
-----  
244.96 ✓