

1305

1954

1305

No. 380 F

This includes 77 of 207 no 214

MICROFILMED

DEC 22 1964

Our Leather Bound Engineers Note Books are carried in the following rulings:

- No. 380 LEVEL BOOK. Left and Right Hand Page the same as Left Hand Page of this Book.
- No. 382 FIELD BOOK. Left Hand Page as in this Book, Right Hand Page 4 x 4 to the inch, Center Line Red.
- No. 384 MINING TRANSIT BOOK. Left Hand Page as in this Book, Right Hand Page 8x8 to the inch, Center Line Red.
- No. 385 FIELD BOOK. Left Hand Page as in this Book, Right Hand Page 8 vertical and 4 horizontal lines to the inch, Center Line Red.

We also carry the Note Books listed above, bound in extra strong Fabri-Hide (otherwise the same quality of book), which can be furnished at a somewhat lower price.

In ordering Fabri-Hide covered books, add the letter "F" to catalog number.

THE FREDERICK POST CO.

ENGINEERING and DRAFTING SUPPLIES

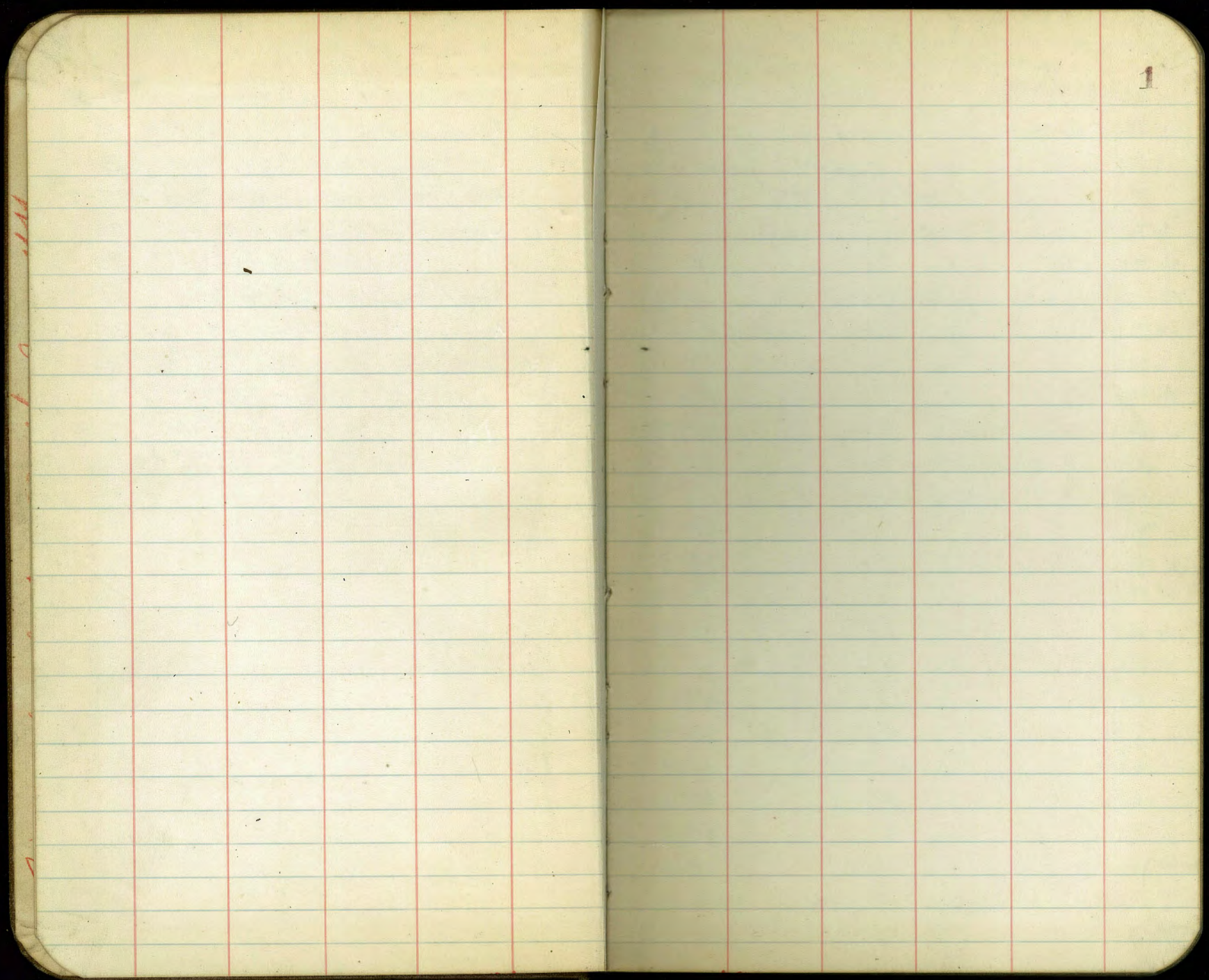
IRVING PARK STATION

CHICAGO, ILL.

This index is top 77 of no 24

Index

X Sec Brookes - 5th to Albatross	2-13
Check on BM "	14
Curb levels Brookes - 3rd to Front	15-16
X Sec Franklin Ave - 30th to 32nd	17-29
Culvert 32nd - Boston to Main	22
" Franklin - 30th to 31st	30
X Sec Alley, Blk 18, Lincoln Park	31-34
X Section Howard St Park Blvd to Oregon	35-59
X Sec Alley Blk 2 City Hts	Univ. to Wightman 4 th to Central 61
" " " 3 Fairmount	Univ. to Wightman Menlo 7 47 th 64
" " NUTMEG	29 th to W.L. Alley - 68
" " Clayton St.	Handcock to California. 71



1

12-22-28
 J.C. Bliss
 Drebert
 Rouner

X-section Brooks Ave - 5th
 to Albatross - 35' Roadway
 8.75' / 45

T 286.34
 286.27

2

G.M. N.W. B.P.	5 th & Brooks	279.91	G	6.6	279.74
+6.36		279.98	N. Tpcb	5.93	280.41
	286.34 (Correct X)			0.15	
	T 286.27 (Correct Elev)				
W.L.	5 th = 0400:		N. Concrete Drive up	6.50	280.04
5-Tpcb & Paving Flush	6.53	279.81	G	6.5	280.04
Flowline 18' Gutter Culvert Box	7.59	278.75	1/4	6.1	280.24
1/4	6.40	279.94	1/4	5.9	280.44
1/4	6.50	279.84	1/4	6.0	280.34
1/4	6.52	279.82	G	6.5	279.84
N-Tpcb & Paving Flush	6.52	279.82	5 Tpcb	5.62	280.72
Flowline 18' Gutter Culvert Box	7.66	278.68		1.00	
	0+25		5 Tpcb	5.31	281.03
N-Tpcb	6.20	280.14	G	6.2	280.14
G	6.8	279.54	1/4	5.8	280.54
1/4	6.5	279.84	1/4	5.6	280.74
1/4	6.6	279.74	1/4	5.9	280.44
1/4	6.7	279.64	G	6.2	280.14
G	6.8	279.54	N Tpcb	5.28	281.06
5 Tpcb	6.26	280.08			
	0+50		Alley Paving at N.L. Brooks	1 + 3.5 = E.L. Alley	
5 Tpcb	5.95	280.39	N.Tpcb	4.61	281.73
G	6.6	279.74		4.88	281.46
1/4	6.4	279.94	G	5.6	280.74
1/4	6.3	280.04	1/4	5.4	280.94
1/4	6.5	279.84	1/4	5.2	281.44
			1/4	5.4	280.94
			G	5.7	280.64

286.27³⁴

STpcb	4.89	281.45
Alley Paving at S.L. Brooks	4.47	281.87
	1.50 = W.L. Alley	
Alley Paving at S.L. Brooks	4.44	281.90
STpcb	4.64	281.70
Gutter	5.6	280.74
1/4	5.2	281.44
♀	5.0	281.34
1/4	5.2	281.44
G	5.3	281.04
1 Tpcb	4.68	281.66
Alley Paving N.L. Brooks	4.50	281.84
	1.75	
N Tpcb	4.36	281.98
G	5.2	281.44
1/4	4.9	281.44
♀	4.7	281.64
1/4	4.8	281.54
G	5.4	280.94
STpcb	4.38	281.96
	2.00	
STpcb	4.04	282.30
G	4.9	281.44
1/4	4.6	281.74
♀	4.4	281.94

286.27³⁴

3

	1/4	4.6	281.74
	G	4.7	281.64
	N-Concrete Driveway	4.74	281.60
		2.75	
	N Tpcb	3.78	282.56
	G	4.6	281.74
	1/4	4.3	282.04
	♀	4.2	282.14
	1/4	4.3	282.04
	G	4.8	281.54
	STpcb	3.76	282.58
		2.50	
	STpcb	3.45	282.89
	G	4.3	282.04
	1/4	3.9	282.44
	♀	3.9	282.44
	1/4	3.9	282.44
	G	4.2	282.14
	1 Tpcb	3.52	282.82
		2.85 = E.L. 4 th St - Paved	
	N Tpcb	3.06	283.28
	G	3.52	282.82
	1/4	3.07	283.27
	♀	3.04	283.30
	1/4	3.07	283.27

286.27³⁴

G	3.50	282.84
STpob	3.05	283.29
W.L. 4 th = 0400 - Paved		
STpob	3.10	283.24
G	3.60	282.74
1/4	3.12	283.22
¢	2.98	283.36
1/4	3.13	283.21
G	3.53	282.81
NTpob	3.13	283.21

B.M. N.W. B.P. 4th & Brookes - 3.12 283.15

+ 2.13

Correct N 285.39
285.28

Correct E 283.26

NTpob	0425 2.66	282.73
G	3.3	282.09
1/4	3.2	282.19
¢	3.0	282.39
1/4	3.1	282.29
G	3.5	281.89
STpob	2.54	282.85
0450		
STpob	2.90	282.49
G	3.9	281.49
1/4	3.6	281.79
¢	3.5	281.89

285.28³⁹

4

1/4	3.7	281.69
¢	3.6	281.79
NTpob	3.06	282.33
Note - From sta 0400 to 0422.30 on North side of street - curb is in bad condition and should be replaced		
0475		
NTpob	3.55	281.84
G	4.0	281.39
1/4	4.1	281.29
¢	3.7	281.69
1/4	3.7	281.69
G	4.1	281.29
STpob	3.32	282.07

1400

5 - Concrete Driveway	4.24	281.15
G	4.3	281.09
1/4	4.2	281.19
¢	4.2	281.19
1/4	4.5	280.89
G	4.7	280.69
NTpob	4.06	281.33

Note - Sta 1412 to 1426 on North side curb in bad condition

π 285³⁹28

1+35 = E.L. Alley

Alley Parking N.L. Brookes	4.90	280.49
Tp cb at N.L. "	4.50	280.89
N Tpcb	4.71	280.69
G	4.9	280.49
1/4	5.0	280.39
¢	4.7	280.69
1/4	4.9	280.49
G	5.2	280.19
STpcb	4.29	281.09
Alley paving at S.L. Brookes	3.80	281.59

1+50 = N.L. Alley

Alley Parking at S.L. Brookes	4.03	281.36
S Tpcb	4.50	280.89
G	5.2	280.19
1/4	5.2	280.19
¢	5.0	280.39
1/4	5.3	280.09
G	5.5	279.89
N Tpcb	5.09	280.30
Alley cb at N.L. Brookes	4.73	280.66
" paving "	5.06	280.33

1+75

N Tpcb	5.52	279.87
G	6.4	278.99
1/4	5.8	279.59

π 285³⁹28

5

¢	5.6	279.79
1/4	5.5	279.89
G	5.7	279.69
STpcb	4.89	280.50
2+00		
STpcb	5.17	280.22
G	6.1	279.29
1/4	6.1	279.29
¢	6.1	279.29
1/4	6.5	278.89
G	6.8	278.59
N Tpcb	6.03	279.36
2+25		
N Tpcb	6.51	278.88
G	7.2	278.19
1/4	6.9	278.49
¢	6.6	278.79
1/4	6.4	278.99
G	6.4	278.99
S Concrete Driveway	6.31	279.08

2+50

STpcb	6.07	279.32
G	7.0	278.39
1/4	6.9	278.49
¢	7.0	278.39

T 285.28³⁹

1/4	7.2	278.19
G	2.5	277.89
N Tpcb	7.01	278.38
2+95 = E.L. 3rd Street. Pared		
N Tpcb	7.66	277.73
G	8.14	277.25
1/4	7.57	277.90
¢	7.26	278.19
1/4	7.30	278.09
G	7.38	278.01
S Tpcb	6.68	278.71
B.M. N.W. B.P. 3rd + Breaker	8.24	277.15
+ 0.66	(Correct N) 277.83	277.04
	1 277.70	(Correct E) 277.17
W.L. 3rd Street = 0+00		
S Tpcb	+ 0.43	278.26
G	0.17	277.66
1/4	0.18	277.65
¢	0.33	277.50
1/4	0.78	277.05
G	1.32	276.51
N Tpcb	0.62	277.21
	0+25	
1 Tpcb	1.74	276.09
G	2.1	275.73

T 277.70⁹³

6

1/4	2.1	275.73
¢	1.8	276.03
1/4	1.9	275.93
G	1.7	276.13
S Tpcb	0.80	277.03
0+50		
S Tpcb	1.98	275.85
G	2.9	274.93
1/4	2.9	274.93
¢	2.9	274.93
1/4	3.2	274.63
G	3.3	274.53
N Tpcb	2.77	275.06
0+75		
1 Tpcb	3.88	273.95
G	4.3	273.53
1/4	4.2	273.63
¢	3.9	273.93
1/4	4.2	273.63
G	3.9	273.93
S Tpcb	3.08	274.75
1+00		
S Tpcb	4.26	273.51
G	5.2	272.63
1/4	4.9	272.93

7

83
T 277.70

♀	5.2	272.63
1/4	5.2	272.63
G	5.4	272.43
N Tpcb	4.94	272.89
1+35 = E.L. Alley		
N.L. Brookes	6.1	271.73
N Tpcb	6.48	271.35
G	7.1	270.73
1/4	6.8	271.03
♀	6.5	271.33
1/4	6.6	271.23
G	6.5	271.33
S Tpcb	5.90	271.93
Alley Parving S.L. Brookes	5.54	272.29
1+50 = W.L. Alley		
Alley Parving S.L. Brookes	6.17	271.66
S Tpcb	6.70	271.13
G	7.4	270.43
1/4	7.5	270.33
♀	7.4	270.43
1/4	7.7	270.13
G	7.9	269.93
N Tpcb	6.95	270.88
N.L. Brookes	6.9	270.93

83
T 277.70

1475

N Tpcb	8.21	269.62
G	8.8	269.03
1/4	8.8	269.03
♀	8.6	269.23
1/4	8.6	269.23
G	8.6	269.23
S Tpcb	7.85	269.98
2+00		
S Tpcb	8.98	268.85
G	9.6	268.23
1/4	9.8	268.03
♀	9.7	268.13
1/4	10.0	267.83
G	9.8	268.03
N Tpcb	9.36	268.47
2+25		
N Tpcb	10.44	267.39
G	11.1	266.73
1/4	11.1	266.73
♀	10.9	266.93
1/4	11.0	266.83
G	11.0	266.93
S Tpcb	10.20	267.63

8

83
 T 277.70

2+50

5 T p cb	11.38	266.45
G	12.0	265.83
1/4	11.9	265.93
¢	11.8	266.03
1/4	12.3	265.53
G	12.0	265.83
N T p cb	11.58	266.25

T.P. 264.94
 264.81

+ 0.80
 Correct K. see P. 15
 265.69

T 265.61

2+85 = E.L. 1st Street

N T p cb	0.93	264.76
G	1.70	263.99
1/4	1.28	264.41
¢	1.08	264.61
1/4	1.24	264.15
G	1.88	263.81
5 T p cb	0.94	264.75

W.L. First 0+00

5 T p cb	2.00	263.69
G	2.79	262.90
1/4	2.35	263.34
¢	2.19	263.50
1/4	2.35	263.34
G	2.76	262.93

69
 T 265.61

9

5 T p cb	2.23	263.46
0+25		
1 T p cb	3.27	262.12
G	3.8	261.89
1/4	3.2	262.49
¢	3.1	262.59
1/4	3.4	262.29
G	3.4	262.29

5 T p cb 2.86 262.83

0+50

5 T p cb	3.74	261.95
G	4.2	261.49
1/4	3.9	261.79
¢	4.0	261.69
1/4	4.3	261.39
G	4.5	261.19
N T p cb	3.88	261.81

0+75

N T p cb	4.62	261.07
G	5.4	260.29
1/4	5.0	260.69
¢	4.8	260.89
1/4	4.8	260.89
G	5.1	260.59
5 T p cb - Driveway	5.04	260.65

69
 T 265.61

1400

S Tpcb	5.31	260.38
G	6.0	259.69
1/4	5.6	260.09
¢	5.6	260.09
1/4	5.7	259.99
G	6.2	259.49
N Tpcb	5.30	260.39

1430 - E L Alley

N Tpcb	6.23	259.46
G	7.1	258.59
1/4	6.6	259.09
¢	6.4	259.29
1/4	6.6	259.09
G	7.0	258.69
S Tpcb	6.20	259.49
Alley Paving S.L. Brakes	6.02	259.67

1445

Alley Paving S.L. Brakes		
S Tpcb	6.45	259.24
G	6.78	258.91
1/4	7.4	258.29
¢	7.0	258.64
1/4	7.1	258.59
G	7.6	258.09
N Tpcb	6.60	259.09

69
 T 265.61

10

Note: Sta. 1445 to 1484 on North side -
 curb is in very bad condition and should be
 replaced.

1475

N Tpcb	7.08	258.61
G	8.3	257.39
1/4	7.9	257.79
¢	7.9	257.79
1/4	8.2	257.49
G	8.6	257.09
S Tpcb	7.71	257.98

2400

S Tpcb	8.53	257.16
G	9.4	256.29
1/4	8.8	256.89
¢	8.5	257.19
1/4	8.9	256.79
G	9.1	256.59
N Tpcb	8.46	257.23

2425

N Tpcb	9.27	256.42
G	10.1	255.59
1/4	9.7	255.99
¢	9.4	256.29
1/4	9.1	255.99

69
T 265.61

G	10.0	255.69
S Tp cb	9.38	256.31
	2+50	
S Tp cb	10.20	255.49
G	10.6	255.09
1/4	10.5	255.19
♀	10.4	255.29
1/4	10.6	255.09
G	10.7	254.99
N Tp cb	10.12	255.57
	2+75 = E.L. Front = Parod	
N Tp cb	10.95	255.74
G	11.56	254.13
1/4	11.23	254.45
♀	11.07	254.62
1/4	11.22	254.47
G	11.60	254.09
S Tp cb	10.96	254.73
B.M. N.W. B.R. Front + Br. res		
	+ 0.69	252.89
	correct El. See R. 1	252.89
	correct T = 253.47	252.89
	T 253.40	
	N.L. Front = 04.00	
S Tp cb	0.20	253.27
G	0.80	252.69
1/4	0.60	252.89

47
T 253.40

11

♀	0.50	252.97
1/4	0.70	252.77
G	1.15	252.32
N Tp cb	0.71	252.76
	0+25	
N Tp cb	1.25	252.22
G	1.6	251.87
1/4	1.5	251.97
♀	1.7	252.27
1/4	1.7	252.27
G	1.8	251.67
S Tp cb	0.65	252.82
	0+50	
S Tp cb	1.08	252.39
G	2.2	251.27
1/4	1.8	251.67
♀	1.6	251.87
1/4	2.1	251.37
G	2.4	251.07
N Tp cb	1.82	251.65
	0+75	
N Tp cb	2.37	251.10
G	3.0	250.47
1/4	2.6	250.87
♀	2.2	251.27

47
 T 253.40

1/4	2.2	251.27
G	2.5	250.97
S T p cb	1.60	251.87
	1.00	
S T p cb	2.10	251.37
G	2.9	250.57
1/4	2.6	250.87
♀	2.7	250.77
1/4	3.1	250.37
G	3.7	249.77
N T p cb	2.90	250.57
	1+30 = E.L. Alley	
N T p cb	3.50	249.97
G	4.1	249.37
1/4	3.7	249.77
♀	3.3	250.17
1/4	3.1	250.37
G	3.3	250.17
S T p cb	2.68	250.79
S.L. Brookes Alley Paving	2.33	251.14
	1+45 = W.L. Alley	
S.L. Brookes Alley Paving	2.62	250.85
S T p cb	3.00	250.47
G	3.6	249.87
1/4	3.6	249.87

47
 T 253.40

12

	3.6	249.87
1/4	4.2	249.27
G	4.4	249.07
N T p cb	3.76	249.71
	1+75	
N T p cb	4.53	248.94
G	5.5	247.97
1/4	4.8	248.67
♀	4.4	249.07
1/4	4.4	249.07
G	4.6	248.87
S T p cb	3.58	249.87
	Note - From Sta 1445 to Sta 1450 on South	
	Side cb has been pushed out of line by tree	
	roots	
	2+00	
S T p cb	4.02	249.45
G	5.0	248.47
1/4	4.9	248.57
♀	4.8	248.67
1/4	5.5	247.97
G	5.8	247.67
N T p cb	5.11	248.36

⁴⁷
π 253.40

2+25

N T _p cb	5.65	247.82
G	6.1	247.37
1/4	5.7	247.77
1/4	5.2	248.27
1/4	5.2	248.27
G	5.3	248.17
S T _p cb	4.64	248.83

2+50

S T _p cb	5.10	248.37
G	6.0	247.47
1/3	5.2	248.27
1/4	5.4	248.07
1/4	5.8	247.67
1/4	6.1	247.37
G	6.4	247.07
N T _p cb	6.18	247.29

2+75

N T _p cb. broken off at 2169	6.54	246.93
G at 2+75 - Flowline of Culvert	8.00	245.47
+3	7.1	246.37
1/4	6.5	246.97
1/4	6.1	247.37
1/4	6.5	246.97
G	6.6	246.87
S T _p cb	5.20	247.87

⁴⁷
π 253.40

13

2+60

Flowline 16" Culvert with 30" x 36" Box		
	7.37	246.10
Shot on edge concrete box	5.82	247.65

Jan 11-20
London.
Check on BM's in vicinity of
Brookes St. & 5th Ave.

Rec.

BM	7.81	291.79		283.98	293.78	
TP	2.11	287.43	6.47	285.32		
BM			4.67	282.76	282.87	
TP	0.99	275.27	12.65	274.78		
BM			6.44	268.83	268.82	
TP	1.03	263.71	12.59	262.68		
TP	4.77	259.17	9.31	259.40		
BM			8.33	250.84	250.90	
TP	2.87	260.71	1.33	257.84		
BM			7.93	252.78	252.90	
TP	11.69	271.47	0.93	259.78		
TP	12.03	283.31	0.19	271.28		
BM			6.14	277.19	277.27	
TP	5.63	286.89	2.05	281.26		
BM			3.63	283.26	283.32	
BM			6.44	279.98	279.91	
BM			2.44	283.98		
BM	5.09	285.07		279.98		
BM	7.19	289.57	2.69	282.35	283.41	
			7.23	282.34		
			7.70	281.87		
BM			4.21	285.36	285.36	

5th & Walnut

BM	5.55	289.53		283.78		
			2.24	287.29		
			2.78	286.75		
			5.59	283.94		
			5.02	284.51		
BM	6.21	290.19		283.98		
TP	5.18	290.27	5.10	285.09		
BM			5.40	284.87	284.91	
			5.99	284.78		
			5.43	284.84		
BM	0.65	285.64	5.28	284.99	284.99	
BM	4.19	283.53	6.30	279.34		
BM			8.71	279.82	274.92	
TP	0.67	271.41	12.79	270.74		
TP	2.87	261.36	12.92	258.49		
BM			6.49	254.87	255.00	
BM			3.94	257.42	257.51	
TP	12.18	273.48	0.06	261.30		
TP	11.11	284.86	0.46	273.02		
BM			6.02	278.84	278.90	
TP	5.11	289.06	0.91	283.95		
BM			4.06	285.00		
BM			7.41	284.00		

14

Rec.

Jan 16-29
London

Curb levels on Brookes Ave.
3rd to Front.

BM:	1.67	278.84	277.77	3rd & Brookes
	0+00 = w.L.	3rd		
Ncb	1.66	277.18		
Scb	0.59	278.25		
	0+25			
Scb	1.80	277.04		
Ncb	2.74	276.10		
	0+50			
Ncb	3.79	275.05		
Scb	2.98	275.86		
	0+75			
Scb	4.09	274.75		
Ncb	4.89	273.95		
	1+00			
Ncb	5.99	272.85		
Scb	5.28	273.56		
	1+35			
	Alley			
Scb	6.93	271.91		
Ncb	7.50	271.34		
	1+50 ²			
	Alley			
Ncb	7.94	270.90		
Scb	7.73	271.11		
	1+54 ²			
Ncb	8.30	270.54		

3rd & Brookes

1+75	278.84			
Scb	8.89	269.95		
Ncb	9.25	269.59		
	2+00			
Ncb	10.38	268.46		
Scb	10.04	268.80		
	2+25			
Scb	11.22	267.62		
Ncb	11.46	267.38		
	2+50			
Ncb	12.60	266.24		
Scb	12.40	266.44		
T.P.	1.39	267.25	13.08	265.86
	2+85 ² = EL	1st		
Scb	2.38	264.77		
Ncb	2.39	264.76		
	0+00 = w.L.	1st		
Ncb	3.68	263.47		
Scb	3.48	263.67		
	0+25			
Scb	4.33	262.82		
Ncb	4.73	262.42		
	0+48			
Ncb	5.31	261.84		
Scb	5.21	261.94		

0+80	267.15		
Scb	6.24	260.91	
Ncb	6.24	260.91	
1+00			
Ncb	6.76	260.39	
Scb	6.77	260.38	
1+29.6 Alley			
Scb	7.67	259.48	
Ncb	7.68	259.47	
1+44.2 Alley			
Ncb	8.08	259.07	
Scb	8.22	258.93	
1+50			
Scb	8.38	258.77	
Ncb	8.59	258.86	
1+84			
Ncb	9.43	257.72	
Scb	9.49	257.66	
2+00			
Scb	9.99	257.16	
Ncb	9.92	257.23	
2+25			
Ncb	10.72	256.43	
Scb	10.86	256.29	
2+50			
Scb	11.67	255.48	
Ncb	11.58	255.57	

Note: Curb broken
and ruined on North
from 1+50 to 1+84

267.15			
2+74.9 = E.L. Front			
Ncb	12.41	254.74	
Scb	12.43	254.72	
T.P. 7 20. 261.92	12.43	254.72	
Front = Brookes B.M.	9.14	252.98	

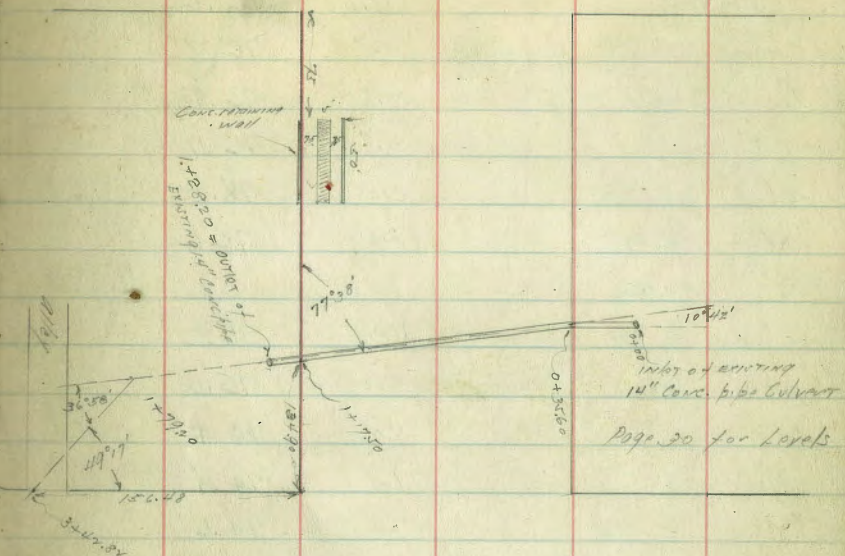
2/1/29 Cross Section of Franklin 80' wide
 Moore 30th to 22nd 20' curbs
 10' 1/2"

Full Returns Here

NO. SP	0.08	88.11	88.03	Wooden 0+77
E.L. 30th = 0400				
S Top conc return		5.80	82.31	
cb " " curb		6.04	82.07	
gUT on comparing		6.67	81.44	
1/4 " " "		6.43	81.68	
c " " "		6.20	81.81	
1/4 " " "		6.34	81.77	
gUT " " "		6.44	81.67	
cb Top conc curb		5.99	82.12	
N " " return		5.72	82.39	
T.P. 049	81.55	7.03	81.08	
0+25				
c/		1.1	80.5	
cb		1.5	80.1	
gUT		2.5	79.1	
1/4		2.4	79.4	
c		2.4	79.2	
1/4		2.6	79.0	
gUT		2.9	78.7	
cb		1.9	79.7	
S		1.4	80.2	
0+50				
S		4.1	77.5	
cb		4.2	77.4	
gUT		5.7	76.4	

3074

VT 17



Page 20 for Levels

4787
 3428
 859

32nd

VT

	11.55		
S 1/4	5.0	76.6	
C	5.8	76.8	
1/4	4.7	76.9	
gut	4.9	76.7	
cb	3.6	78.0	
N	3.0	78.6	
	0+25		
N	5.4	76.2	
cb	6.0	75.6	
gut	7.2	74.4	
1/4	6.8	74.8	
C	7.0	74.6	
1/4	7.3	74.3	
gut	8.0	73.6	
cb	7.40	74.15	✓
S	6.6	75.0	
S	5.79	75.76	✓
	7+25		
S	10.0	71.53	✓
S L	14.2	69.4	
cb	12.63	68.92	✓
gut	12.4	69.2	
1/4	12.0	69.6	
C	11.4	70.2	
1/4	11.0	70.6	
gut	11.3	70.3	

beginning of curb
and sidewalk
+ wall

	8/15	Franklin Elev.	18
cb	10.0	71.6	
N	9.6	72.0	
T.P.	201	72.31	11.25
	70.30		
	Sta. 1+51	beginning Cem. Retaining Wall on N. side of street	
Top Wall		0.27	72.04
N.L.		1.9	70.4
cb		2.6	69.7
gut		3.9	68.4
1/4		3.7	68.6
1/4		4.2	68.1
1/4		5.0	67.3
gut		5.8	66.5
cb		5.2	67.1
S.L.		5.8	66.5
	Sta. 1+71	1/2 cent steps on North	
		on steps 2.29	70.02 ✓
	Sta. 2+00		
S.L.		8.8	63.5
cb		8.8	63.5
gut		9.4	62.9
S 1/4		8.5	63.8
CL		7.5	64.8
1/4		7.1	65.2
gut		7.7	64.6
cb		6.2	66.1
N.L.		5.5	66.8

72.31

+

-

Elev

Sta. 2+26 End of Cem. Ret. Wall on North

Top of Wall 0.5 in Street	5.34	66.97	✓
N.L.	7.4	64.9	
Cb	7.9	64.4	
got.	9.6	62.7	
1/4	9.1	63.2	
2	9.7	62.9	
1/4	10.3	62.0	
got	11.3	61.0	
Cb.	11.2	61.1	
S.L.	10.3	62.0	

Sta. 2+31

S.L.	10.4	61.9	
Cb	10.6	61.7	
got.	11.3	61.0	
1/4	10.6	61.7	
2	9.6	62.7	
1/4	9.5	62.8	
got	10.1	62.2	
Cb.	8.1	64.2	
+16	7.9	64.4	
N.L.	6.6	65.7	
+7	3.8	68.5	

Franklin St.

19

72.31

+

-

Elev.

Sta. 2+75

N.L. - 6	6.6	65.7	
N.L.	9.2	63.1	
+3	10.7	61.6	
Cb.	11.2	61.1	
got.	12.9	59.4	
1/4	12.5	59.8	
2	13.0	59.3	
1/4	13.6	58.7	
got.	15.3	57.0	
Cb.	14.2	58.1	
S.L.	14.5	57.8	
T.P.	0.19	59.94	13.86
			59.15

Sta 3+00

S.L.	3.3	56.6	
Cb.	3.5	56.4	
got.	4.1	55.8	
1/4	3.0	56.9	
2	2.7	57.7	
1/4	1.5	58.4	
got	2.3	57.6	
Cb.	0.1	59.5	
+17.	0.2	59.7	
N.L.	1.1	61.0	
+4	4.4	64.3	

1133 Rods

	+	+	-	Elev
		59.94		
N.L. - 4	+ Rod.			62.6
	2.7			
N.L.			1.0	58.9
+ 7			1.8	58.1
cb.			2.0	57.9
gut.			3.7	56.2
1/4			3.0	56.9
1/4			3.7	56.2
1/4			4.6	55.3
gut & cb			5.2	54.7
cb + 5			5.0	54.9
S.L.			4.7	55.2
3+50 Beginning Line of Arcs 185.25 Centers 3' inside				
S.L.			6.2	53.7
+ 15			6.2	53.7
cb. & gut			6.7	53.2
1/4			5.9	54.0
1/4			5.1	54.8
1/4			4.8	55.1
gut			5.1	54.8
cb			3.6	56.3
+ 16			3.6	56.3
N.L.			2.1	57.8
N.L. + 4	+ Rod.			60.8
	0.1			

	+	+	-	Elev	20
		59.94			
N.L. on Cmt Drive			3.92	56.02	✓
+ 11			4.2	55.7	
cb & gut			5.6	54.3	✓
1/4			5.3	54.6	
1/4			5.7	54.2	
1/4			6.6	53.3	
gut			7.0	52.9	
cb.			6.4	53.5	
S.L.			6.6	53.3	
3+75					
S.L.			7.7	52.7	
cb.			6.5	53.4	
gut.			7.3	52.6	
1/4			7.0	52.9	
1/4			6.2	53.7	
1/4			5.9	54.0	
gut			5.3	54.6	
cb.			5.3	54.6	
+ 7			4.1	55.8	
N.L.			4.4	55.5	
4+00					
N.L.			5.5	54.4	
cb.			5.5	54.4	
gut			7.0	52.9	
1/4			6.9	53.0	

	+	57.94 T	-	Elev.
¢			7.0	52.9
1/4			7.6	52.3
got			7.7	52.2
Cb.			7.4	52.5
S.L.			7.7	52.2
+10			8.3	51.6
	4+25			
S.L.-10			8.2	51.7
S.L.			7.4	52.5
Cb.			8.0	51.9
got			8.9	51.0
1/4			8.4	51.5
¢			7.8	52.1
1/4			7.7	52.2
got.			7.8	52.1
Cb.			6.6	53.3
N.L.			6.3	53.6
T.P.	558	57.61	7.91	52.03
1	4+42			
N.L.			4.5	53.1
Cb.			5.3	52.3
got			5.7	51.9
1/4			5.8	51.8
¢			5.9	51.7
1/4			6.4	51.2

	+	57.61 T	-	Franklin St. Elev.
got			6.9	50.7
Cb			5.6	52.0
+10			4.3	51.3
+15			4.8	52.8
S.L.			4.9	52.7
	4+50			
SL-15			4.7	52.9
SL			6.8	50.8
+8			7.0	50.6
17			5.5	52.1
Cb			7.0	50.6
got			7.0	50.6
1/4			6.4	51.2
¢			6.0	51.6
1/4			5.9	51.7
got			5.8	51.8
Cb.			5.1	52.5
N.L.			4.7	52.9
	sta 4+65			
N.L.			4.8	52.8
Cb.			5.2	52.4
got.			5.9	51.9
1/4			6.0	51.6
¢			6.2	51.4
1/4			6.4	51.2

Cont. on P. 13 this Book

12-24-28 Levels & Location for Culvert
 J. C. Bliss
 Drebert 32nd Between Boston & Main.

22

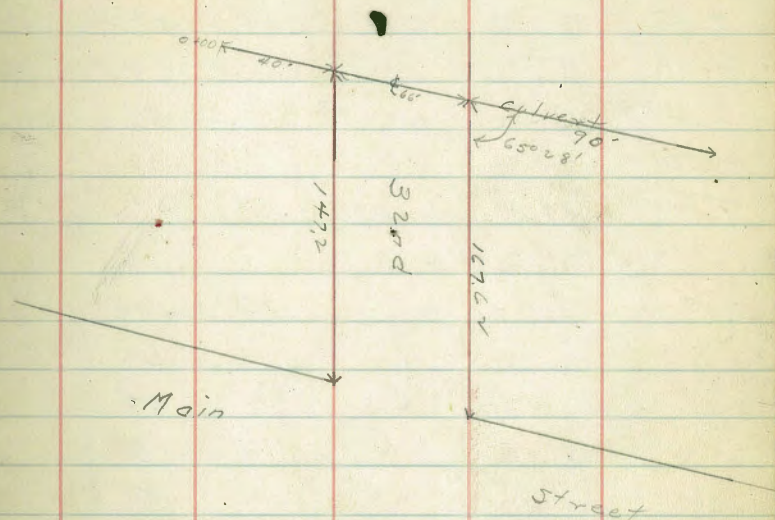
B.M. S.W. Corn 32nd & Main 38.59

+3.27

+41.86

0+00	1.42	27.66
0+18 - Top Slope	12.9	28.96
0+38 - Top "	2.0	39.86
0+40 = W.L. 32nd	2.0	39.86
0+51.1 - Top cb	1.91	39.95
Gutter	2.7	39.16
0+65 = Top West Pail	2.32	39.52
0+81.7 " East "	2.56	39.30
0+95.4 = Gutter	3.8	38.06
Top cb	3.1	38.76
1+06 = E.L. 32nd	2.7	39.16
1+22 = Top Rubbish Heap	3.0	38.86
1+40 - On " "	11.1	30.76
1+60 " " "	13.2	28.66
1+83 - Top Rubbish Heap	23.5	18.36
1+96	24.0	17.86

Note - It would be very difficult to determine the true toe of slope as a great amount of rubbish has been dumped over the fill.



Sta	+ 57.61 4+65 Cont	-	Elev.
S. gutter		7.0	50.6
cb		6.2	51.4
+ 5		5.6	52.0
+ 10		7.2	50.4
S.L.		8.5	49.1
+ 10		9.7	47.9
T.P.	10.0W	6 v. 0.5	52.03
	4+77		
- 15		13.7	48.3
- 20		11.3	50.7
S		13.8	48.2
+ 10		11.6	50.4
cb		10.2	51.8
gut		11.1	50.9
1/4		10.9	51.1
c		10.5	51.5
1/4		10.3	51.7
gut		9.9	52.1
cb		9.3	52.7
N. & 2 wide walk		8.54	53.51 ✓
	4+80		
N		8.6	53.4
cb		9.4	52.8
gut		9.9	52.1
1/4		10.4	51.8

5. Bolt on Water Meter Sta 4+65 on the North

	62.05	Franklin St.	
		10.5	51.5
		10.9	51.1
		11.0	51.0
		10.3	51.7
		11.4	50.6
		10.4	51.6
		10.1	51.9
	5+47	beginning of wall on west	
		10.2	51.8
		10.4	51.6
		10.0	52.0
		9.4	52.6
		9.1	52.9
		8.9	53.1
		8.2	53.8
		7.7	54.3
		6.75	55.30 ✓
	5+45	end of wall to west	beginning of wall to east
		5.56	56.49 ✓
		4.9	57.96 ✓
		6.2	55.8
		6.8	55.2
		7.5	54.5
		7.6	54.4
		7.7	54.3
		8.6	53.4

62.05

Squt	9.5	52.5
cb	10.2	51.8
+3	9.3	52.7
S	9.0	52.8
+7	7.8	54.2

5+53 $\frac{1}{2}$ of Conc Drive

e.w. wide

N 5+42 56.63 ✓

5+81.5

S	7.5	54.5
+17	7.3	54.7
+17.5	8.5	53.5
cb	9.1	52.9
qut	7.9	54.1
1/4	7.2	54.8
c	6.3	55.7
1/4	6.1	55.9
qut	6.0	56.0
cb	4.9	57.1
N ground	4.3	57.7
N $\frac{1}{2}$ wide conc stairway	4.18	57.87 ✓
6+00 = w/h. 91.0 T = 60' wide 10' cbs 10' 1/4"		
N end of wall Top	0.75	61.30 ✓
N on ground	3.4	58.6
cb	4.1	57.9
qut	5.1	56.9
1/4	5.4	56.6

62.05

Franklin

24

c	5.8	56.2
1/4	6.5	55.5
qut	7.3	54.7
cb	6.5	55.5
S	6.7	55.3
W cb		
S	6.7	55.3
cb	6.3	55.7
1/4	5.9	56.1
c	5.5	56.5
1/4	5.3	56.7
cb	4.9	57.1
+5	4.2	57.8
N	3.3	58.7
W 1/4		
N	3.7	58.3
cb	4.3	57.7
qut	4.9	57.1
1/4	5.0	57.0
c	5.1	56.9
1/4	5.4	56.6
cb	5.9	56.1
S	6.2	55.8
E		
S	6.4	55.6
cb	5.1	56.9

62.05

1/4		4.8	57.2
c		4.4	57.6
1/4		4.2	57.8
cb		3.9	58.1
N		4.2	57.8
	E 1/4		
N		4.3	57.7
cb		4.6	57.4
1/4		4.5	57.5
c		4.5	57.5
1/4		4.5	57.5
cb		4.9	57.1
S		5.5	56.5
	E cb		
S		5.4	56.6
cb		4.8	57.2
1/4		4.5	57.5
c		4.2	57.8
1/4		4.2	57.8
+5		4.1	57.9
cb		3.7	58.3
N		3.2	58.8
	EL 510500		
N	beginning of well	1.5 above ground	62.9 ✓
N	ground	0.6	61.4
cb		2.0	60.0

62.05

Franklin

N gut		2.5	59.5
1/4		3.6	58.4
c		3.7	58.3
1/4		4.1	57.9
gut		4.6	57.4
cb		4.2	57.8
S		4.5	57.5
T.P.	86m	70.67	0.00
	0+20		
S		10.6	60.1
cb		11.0	59.7
gut		11.6	59.1
1/4		10.9	59.8
c		9.8	60.9
1/4		9.3	61.4
gut		9.5	61.2
cb		8.5	62.2
+3		7.7	63.0
N		7.0	63.7
N	Top cement step	6.76	63.91 3' wide. ✓
	0+50		
N	Top wall	4.8	65.85 ✓
N		5.6	65.1 ✓
+18		6.0	64.7
cb		7.0	63.7
gut		8.0	62.7
1/4		7.6	63.1

70.67

c	8.2	62.5	
1/4	9.2	61.5	
gut	9.9	60.8	
cb	9.1	61.6	
S	9.2	61.4	
0 x 78.5			
S	7.6	63.1	
cb	7.8	62.9	
gut	8.2	62.3	
1/4	7.7	63.0	
c	6.7	64.0	
1/4	6.2	64.5	
gut	6.5	64.2	
cb	5.8	64.9	
+w	4.8	65.9	
N	4.5	66.2	
N	3.76	66.91	3' wide
1 x 00 beginning sidewalk & curb on South			
N	2.28	68.39	
N	3.1	67.6	
+17	3.9	66.8	
cb	4.6	66.1	
gut	5.8	64.9	
1/4	5.0	65.7	
c	5.4	65.3	
1/4	6.5	64.2	

70.67

Franklin

gut	7.3	63.4	
cb	Top cem curb	66.5	64.02 ✓
S		6.1	64.6
1 x 25			
S		4.9	65.9
cb	Top cem cb	5.72	64.95 ✓
gut		6.3	64.4
1/4		5.3	65.4
c		4.2	66.5
1/4		3.8	66.9
gut		4.4	64.3
cb		5.2	67.5
+w		2.8	67.9
N	on ground	2.3	68.4
N	2' cem stop	1.76	68.91 3' wide ✓
1 x 50			
N	End of wall on North	0.98	69.69 Top ✓
N	on ground	1.5	69.2
+17		2.0	68.7
cb		3.0	67.7
gut		3.7	67.0
1/4		3.2	67.5
c		3.4	67.3
1/4		4.7	66.0
gut		5.3	65.4
cb	Top cem cb	4.96	65.71 ✓
S		4.2	66.5

70.67

1473.5			
S	4.3	66.4	
cb Top cem cb	4.53	66.14	✓
gut	4.8	65.9	
1/4	4.8	66.4	
c	5.1	67.16	
1/4	2.6	68.1	
gut	3.0	67.7	
cb	2.5	68.2	
+3	1.7	69.0	
N	1.1	69.6	
N 2 cem walk	0.83	69.84	26 wide ✓
2+00			
N	0.4	70.3	
cb	1.6	69.1	
gut	2.4	68.3	
1/4	2.3	68.4	
c	2.7	68.0	
1/4	3.9	66.8	
gut	4.6	66.1	
cb Top cem	4.09	66.58	✓
S	3.8	66.9	
2+50			
S	2.7	68.0	
cb Top cem cb	3.26	67.41	✓
gut	3.6	67.1	

70.67

Franklin

1/4		2.9	67.8
0		1.9	68.8
1/4		1.6	69.1
gut		1.6	69.1
cb		1.0	69.7
+18		0.2	70.5
N		+1.5	72.2
TP	6.00	76.35	0.32
			70.35
	2+75 end of sidewalk on south		
N		5.1	71.3
+3		5.6	70.8
cb		6.0	70.4
gut		7.0	69.4
1/4		6.9	69.5
c		7.3	69.1
1/4		8.3	68.1
gut		9.0	67.4
cb Top cem		8.53	67.82
S		7.9	68.5
2+00			
S		7.9	68.5
cb		8.1	68.3
gut		8.6	67.8
1/4		8.1	68.3
c		7.0	69.4
1/4		6.7	69.7

76.35

quT	7.0	69.4
cb	6.0	70.4
N	5.5	70.9
3+50		
N	5.2	71.2
cb	5.7	70.7
quT	6.2	69.8
1/4	6.5	69.9
c	6.7	69.7
1/4	7.5	68.9
quT	8.1	68.3
cb	7.5	68.9
S	7.4	69.0
4+00		
S	6.4	70.2
cb	6.4	70.0
quT	7.2	69.2
1/4	6.4	70.1
c	5.7	70.7
1/4	5.6	70.8
quT	5.8	70.6
cb	5.1	71.3
N	4.0	72.4
4+50		
N	3.5	72.9
cb	4.0	72.4

76.35

Franklin

quT	5.2	71.2	3
1/4	4.8	71.6	
c	4.7	71.7	
1/4	5.6	70.8	
quT	6.4	70.2	
cb	5.6	70.8	
S	5.4	71.0	
4+77			
S	5.1	71.3	
cb	5.3	71.1	
quT	5.9	70.5	
1/4	5.4	71.0	
c	4.5	71.9	
1/4	4.4	72.0	
quT	4.7	71.7	
cb	4.1	72.3	
N	3.4	73.0	
N	2.7	73.08	✓
2 cent walk 1/4 wide 4+00			
N	3.0	73.4	
cb	3.6	72.8	
quT	4.5	71.9	
1/4	4.1	72.3	
c	4.3	72.1	
1/4	5.2	71.2	
quT	5.5	70.9	
cb	4.9	71.5	
S	5.4	71.9	

7635

STW0

S		3.7	72.7
cb		4.0	72.4
qut		4.8	71.6
1/4		4.2	72.2
c		3.6	72.8
1/4		3.6	72.8
qut		3.8	72.6
cb		3.0	73.4
N		2.5	73.9

6+00 = wt 3rd

N		1.8	74.6
cb	Top cem return	2.20	74.15 ✓
qut		3.2	73.2
1/4		2.9	73.5
c		2.8	73.6
1/4		3.4	73.0
qut		3.7	72.7
cb	Top cem return	3.20	73.15 ✓

S 2.8 73.6

check to BM North, Dist top Hgt 1.00 75.35 75.22
 TP 1.13 76.48 1.00 75.35 0.13 error

76.48
 1.00
 75.48
 1.00
 74.48
 1.00
 73.48
 1.00
 72.48
 1.00
 71.48
 1.00
 70.48
 1.00
 69.48
 1.00
 68.48
 1.00
 67.48
 1.00
 66.48
 1.00
 65.48
 1.00
 64.48
 1.00
 63.48
 1.00
 62.48
 1.00
 61.48
 1.00
 60.48
 1.00
 59.48
 1.00
 58.48
 1.00
 57.48
 1.00
 56.48
 1.00
 55.48
 1.00
 54.48
 1.00
 53.48
 1.00
 52.48
 1.00
 51.48
 1.00
 50.48
 1.00
 49.48
 1.00
 48.48
 1.00
 47.48
 1.00
 46.48
 1.00
 45.48
 1.00
 44.48
 1.00
 43.48
 1.00
 42.48
 1.00
 41.48
 1.00
 40.48
 1.00
 39.48
 1.00
 38.48
 1.00
 37.48
 1.00
 36.48
 1.00
 35.48
 1.00
 34.48
 1.00
 33.48
 1.00
 32.48
 1.00
 31.48
 1.00
 30.48
 1.00
 29.48
 1.00
 28.48
 1.00
 27.48
 1.00
 26.48
 1.00
 25.48
 1.00
 24.48
 1.00
 23.48
 1.00
 22.48
 1.00
 21.48
 1.00
 20.48
 1.00
 19.48
 1.00
 18.48
 1.00
 17.48
 1.00
 16.48
 1.00
 15.48
 1.00
 14.48
 1.00
 13.48
 1.00
 12.48
 1.00
 11.48
 1.00
 10.48
 1.00
 9.48
 1.00
 8.48
 1.00
 7.48
 1.00
 6.48
 1.00
 5.48
 1.00
 4.48
 1.00
 3.48
 1.00
 2.48
 1.00
 1.48
 1.00
 0.48
 1.00
 -0.48
 1.00
 -1.48
 1.00
 -2.48
 1.00
 -3.48
 1.00
 -4.48
 1.00
 -5.48
 1.00
 -6.48
 1.00
 -7.48
 1.00
 -8.48
 1.00
 -9.48
 1.00
 -10.48
 1.00
 -11.48
 1.00
 -12.48
 1.00
 -13.48
 1.00
 -14.48
 1.00
 -15.48
 1.00
 -16.48
 1.00
 -17.48
 1.00
 -18.48
 1.00
 -19.48
 1.00
 -20.48
 1.00
 -21.48
 1.00
 -22.48
 1.00
 -23.48
 1.00
 -24.48
 1.00
 -25.48
 1.00
 -26.48
 1.00
 -27.48
 1.00
 -28.48
 1.00
 -29.48
 1.00
 -30.48
 1.00
 -31.48
 1.00
 -32.48
 1.00
 -33.48
 1.00
 -34.48
 1.00
 -35.48
 1.00
 -36.48
 1.00
 -37.48
 1.00
 -38.48
 1.00
 -39.48
 1.00
 -40.48
 1.00
 -41.48
 1.00
 -42.48
 1.00
 -43.48
 1.00
 -44.48
 1.00
 -45.48
 1.00
 -46.48
 1.00
 -47.48
 1.00
 -48.48
 1.00
 -49.48
 1.00
 -50.48
 1.00
 -51.48
 1.00
 -52.48
 1.00
 -53.48
 1.00
 -54.48
 1.00
 -55.48
 1.00
 -56.48
 1.00
 -57.48
 1.00
 -58.48
 1.00
 -59.48
 1.00
 -60.48
 1.00
 -61.48
 1.00
 -62.48
 1.00
 -63.48
 1.00
 -64.48
 1.00
 -65.48
 1.00
 -66.48
 1.00
 -67.48
 1.00
 -68.48
 1.00
 -69.48
 1.00
 -70.48
 1.00
 -71.48
 1.00
 -72.48
 1.00
 -73.48
 1.00
 -74.48
 1.00
 -75.48
 1.00
 -76.48
 1.00
 -77.48
 1.00
 -78.48
 1.00
 -79.48
 1.00
 -80.48
 1.00
 -81.48
 1.00
 -82.48
 1.00
 -83.48
 1.00
 -84.48
 1.00
 -85.48
 1.00
 -86.48
 1.00
 -87.48
 1.00
 -88.48
 1.00
 -89.48
 1.00
 -90.48
 1.00
 -91.48
 1.00
 -92.48
 1.00
 -93.48
 1.00
 -94.48
 1.00
 -95.48
 1.00
 -96.48
 1.00
 -97.48
 1.00
 -98.48
 1.00
 -99.48
 1.00
 -100.48
 1.00

Franklin

Should be rebuilt



Franklin

South same as North return

Levels for Culvert on Franklin Hwy
Between 30th & 31st

30

	W.V. 6	V.V. 59	V.V. 03	T.P.
00 - inlet of 14" corr. pipe		6.84	48.75	Flowline
1 + 28.20 = outlet "		9.56	46.03	"
1 + 79.20 =		9.9	45.7	
2 + 30		10.6	45.0	
2 + 80		12.4	43.2	
T.P.	6.51	50.70	11.40	44.19
3 + 95		7.6	43.1	
3 + 28.20 = inlet of 14" corr. pipe		6.8	43.9	
3 + 150		5.2	45.5	
3 + 73		5.0	47.7	
3 + 92		6.5	44.2	
4 + 28.74 = inlet of 14" corr. pipe		7.39	43.31	Culvert

See page 17 This Book for sketch

X Sec. Alley Blk 18 Lincoln Park

Bet L. + Imperial - 25th + 26th

2-14-29
mills

N.E. 25th St
+ Imperial.

B.M. B.P. 5.76 64.70 58.94

N. + S. Alley

00 = N. Line Imperial Ave.

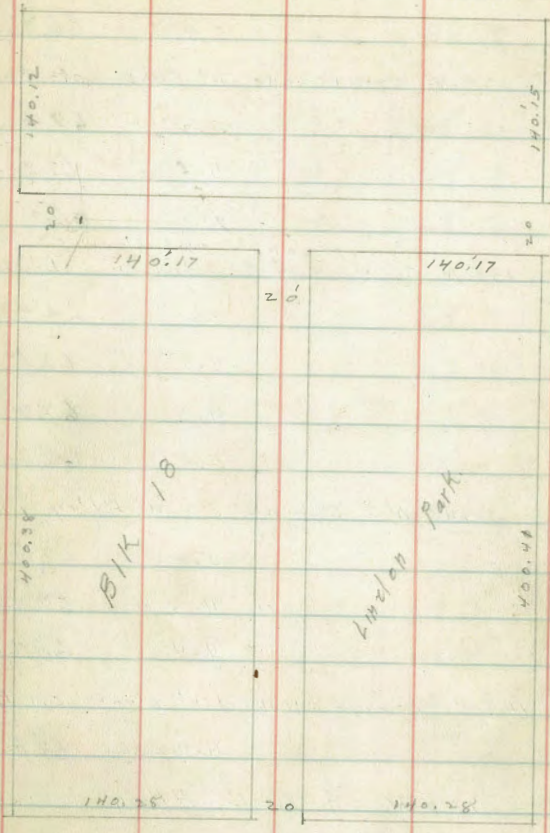
W. on center	4.27	60.41	Bmt. Bldg 0.28 in Alley
N. + 0.45 = Face of Alley Curb	4.24	60.44	on payment
C	4.52	60.18	" "
E.	4.10	60.60	" "
E + 0.45 = Face of Alley Curb	4.05	60.65	d.
15' N			
E	1.4	63.3	
C	2.1	62.6	
W.	1.4	63.3	Part Building 0.20 in Alley
T.P.	8.78	72.52	0.96 63.74
35' N			
N	7.8	64.7	Bldg 0.1 in Alley
C	8.2	64.3	
E	7.8	64.7	
50' N = N. End of Bldg. on W. Line Alley			
65' N			
E	6.4	66.1	
C	6.2	66.3	
W	5.9	66.6	
80' N			
W	5.9	66.6	
C	5.7	66.8	
E	5.5	67.0	

Plotted 2/15/29
S.B. Hughes

24th
Alley Blk 13 Lincoln Park

31

25th ST



26th ST

Chas
Alley Blk 43 Hensleys Subdivision

29th

72.52
100' N

E		5.2	67.3	
E		5.6	66.9	
W		5.8	66.7	
	125' N. garage on W. dirt floor		0.3 Back	
W		5.2	67.3	floor ↓
E		5.1	67.4	
E		4.5	68.0	
	135' N { garage on W. dirt floor 0.3 Back		6' "	
E-W		3.6	68.9	floor ↓
E		4.5	68.0	
E		4.8	67.7	
W		5.0	67.5	floor ↓
	140' N. = S. Line E-W Alley			
W		5.0	67.5	
E		4.8	67.7	
E		4.4	68.1	
	145' N. garage on W. dirt floor		0.1 Back	
W		4.9	67.6	floor ↓
	150' N. = E-W Alley			
E		4.5	68.0	
E		4.9	67.6	Top M.H. ↓
W		4.8	67.7	
	155' N garage on W. dirt floor on line			
W		4.7	67.8	floor ↓

Alley BIK 18 Lincoln Park

72.52
160' N = N. Line E-W Alley

33

W		4.4	68.1	
E		4.5	68.0	
E		4.3	68.2	
	185' N			
E		3.9	68.6	
E		4.2	68.3	
W		4.3	68.2	
	208' N & Double garage on dirt floor on line			↓
W		3.8	68.7	floor
E		3.8	68.7	
E		3.7	68.8	
	210.5 N. = 2.5 Walk 1.4 E. of E. line			
E-1.4		2.76	69.76	0.1 cont. walk ↓
	230' N			
E		3.4	69.1	
E		3.7	68.8	
W		3.5	69.0	
	256' N. garage on W. dirt floor		0.5 Back	↓
N		3.8	68.7	floor
E		4.0	68.5	
E		3.5	69.0	
	292' N.			
E		4.4	68.1	
E		5.0	67.5	
W		4.8	67.7	

72.52

300' N = S. Line L. 5'

W	5.26	67.26	emt. cl.
W	5.35	67.17	parmt.
C	5.57	66.95	parmt.
+9.63 Face of Alley curb	5.18	67.34	parmt.
E	4.89	67.63	Topent. cl.

E + W. Alley

00 = E. Line N = S. Alley

N	4.3	68.2	
C	4.5	68.0	
S	4.4	68.1	

43' E. Garage on S. dirt floor 0.3 in Alley ↓

S	3.3	69.2	
C	3.4	69.1	
N	3.2	69.3	

75' E. garage on N. dirt floor 0.6 Back ↓

N	2.6	69.9	
C	2.8	69.7	
S	2.7	69.8	

81' E. garage on S. Wood floor 3.2 Back ↓

S-3.2	2.6	69.9	floor
-------	-----	------	-------

105' E. garage on S. dirt floor 2.3 Back

S	3.0	69.5	floor
C	2.6	69.9	
N.	2.9	69.6	

Alley Blk 18, Linden Park

33

72.52

144' E. { garage on N. dirt floor 1/2 Back ↓	N	2.5	700	floor
" " S " " 5'0 " "	C	2.7	698	
" " S " " " " "	S	3.0	695	same floor

181' E. garage on N. dirt floor 95' Back ↓

S	2.6	69.9	
C	2.7	69.8	
N.	2.7	69.8	floor

195' E. { garage on N. dirt floor 0.6 Back ↓
" " S. " " 0.8 in Alley ↓

N.	2.9	69.6	floor
C	2.8	69.7	
S	2.7	69.8	floor

205' E. garage on N. dirt floor 0.5 Back ↓

N.	2.8	69.7	floor
----	-----	------	-------

FROM 207' E. To 248' E. Slab shed on S. { 1.3 in Alley N. end ↓
" " " " " " 1.4 " " E. " ↓

230' E

S	2.8	69.7	
C	2.5	70.0	
N.	2.7	69.8	
T.P.	3.93	73.73	2.72 69.80

251' E. = N. End 5 garages on N. cmt. floors 4.8 Back ↓

N-4.8	3.05	70.08	floor
N	4.0	69.7	
C	4.1	69.6	
S	4.0	69.7	

73.73

301 E. = { E. end of above 5 garages. on N. 4.8 Back
 W " " 3 garages on S. dirt floors 1.9 Back

S-1.9	5.0	68.7	floor
S	5.0	68.7	
E	4.8	68.9	
+6	4.8	68.9	
N	4.1	69.6	
N+4.8	3.79	69.94	floor

307 E garage on N. dirt floor 5.2 Back

N-5.2	4.00	69.73	floor
-------	------	-------	-------

329 E. = E. end 3 garages on S. dirt floors 2.0 Back

N	5.0	68.7	
E	5.0	68.7	
S	5.4	68.3	floor

370.5 E = Sewer M.H

S	5.3	68.4	
E	5.4	68.3	Top M.H.
N	5.2	68.5	

396 E

N	5.3	68.4	
+2	5.6	68.1	
+3	6.3	67.4	
C	6.6	67.1	
+7	6.7	67.0	
S	6.1	67.6	

T.P.	4.97	71.81	6.89	66.84
------	------	-------	------	-------

Alley B1K18 Lincoln Park

71.81

400.5 E. = W. Line 26th St

34

D.S. of S. Line = Face of Alley Curb	4.97	66.84	el
S.	5.03	66.78	Paymt.
C	5.26	66.55	"
C+9.8 = Face of Alley el	4.87	66.94	"
N.	4.50	67.31	Top el.
ch Kon B.M.	7.88	63.93 = 63.92	N.H. 26 th + Imperial.

Bill Bliss
 Joe Duermitt
 J. Jacobszoon
 P. Kiernan
 March 4, 1927
 B.M. El Cajon +
 Park Blvd. N.N.B.P.

X Section Howard Street from
 the East Line of Park Blvd to the W Line
 of Oregon St.

	HI	Elev
1.56	344.41	392.85
TP	3.10	344.15
		3.36
		341.05
		0+00 E line Park Blvd
N Topcb		4.16
G		4.83
1/4		4.38
1/4		4.18
G		4.39
G		4.86
S Topcb		4.31
		0+25
S Topcb		5.92
G		6.75
+3 Edge Gutter		6.64
1/4		6.0
1/4		5.7
1/4		6.0
+10 Edge		6.62
G		6.69
N Topcb		5.89
		0+50
N Topcb		7.52
G		8.32
+3		8.21
1/4		7.8

CB Plotted from Book 1262-66
 X Sec. Note used in this book for yardage

	HI	Elev
	344.15	35
		7.9
		7.6
		8.22
		8.34
		7.52
		1+00
		10.63
		11.97
		11.33
		10.9
		10.6
		10.8
		11.58
		11.68
		10.83
		12.2
	332.52	12.85
		331.30
		1+40 W line of 4 1/2'
		1.79
		2.64
		2.67
		2.1
		1.8
		1.6
		1.7
		1.98
		2.12

	HI	-	Elev
	332.52		
S. Top cb		1.32	331.20
Sk. on Ground		2.00	330.52
S. Top cb on line		1.20	331.32
	1150	1/4 Alley	
S. on Pav. on Grd line		2.75	329.77
1/2 Edge Gutter		2.77	329.75
cb		2.83	329.79
+3		2.67	329.85
1/4		2.3	330.2
1/2		2.2	330.3
+4		2.3	330.2
1/4		2.7	329.8
+10		3.33	328.19
G. on cb line		3.35	329.17
	1160	Edge of Alley	
N. Top cb		3.28	329.24
G		4.02	328.50
+3		3.95	328.57
1/4		3.3	329.2
+7		3.0	329.5
1/2		3.0	329.5
1/4		2.9	329.6
+10		3.49	329.03
G		3.57	328.95
S. Top cb		2.8	329.70
S. Prop. line on Gnd		2.72	329.80

	HI	-	Elev
	332.52		
			36
S. Top cb		2.67	329.85
		2.00	
S. Top cb		5.17	327.35
G		6.00	326.52
+3		5.92	326.60
1/4		5.6	326.9
1/2		5.5	327.0
+6		5.6	326.9
1/4		5.9	326.6
+10		6.63	325.89
G		6.79	325.78
N. Top cb		5.92	326.60
	2150		
N. Top cb		9.25	323.27
G		10.06	321.46
+3		9.93	322.59
1/4		9.2	323.3
+7		9.0	323.5
1/2		8.9	323.6
+9		9.0	323.5
+10		9.11	323.41
G		9.22	323.30
S. Top cb		8.90	324.12
	3100 ⁵⁰		
			This section of paving ground is the same
S. Top cb		11.59	320.93
G		12.31	320.21

	+	HI 332.52	-	Elev	
1/4			12.03	320.49	
⊕			12.14	320.38	N Topcb
1/4			12.52	320.00	G
G			13.12	319.40	+3
N Topcb			12.57	319.95	+10
EP			12.44		1/4
TP ^{on 8M NW 1/4 Georgia}	1.59	321.44	12.67	319.85	⊕
			0100. E line G = Sec A		1/4
N Topcb	This Section on Paving		3.14	317.30	+5
G			4.00	317.44	+7
1/4			3.31	318.13	+10
⊕			2.95	318.49	G
1/4			2.79	318.65	S Topcb
G			2.93	318.51	
S Topcb			2.16	319.28	S Topcb
			0101 E = 00 04 N Page 57 ^{See sketch}		G
S Topcb			2.23	319.21	+3
G			2.96	318.48	+6
+3			2.89	318.55	1/4
1/4			2.9	318.5	⊕
⊕			2.0	319.4	11
1/4			3.4	318.0	1/4
+10			4.02	317.42	+10
G			4.00	317.44	G
N Topcb			3.14	318.30	N Topcb Auto Driveway

	+	HI 321.44	-	Elev	
					37
					0105
					3.65
					317.79
					4.43
					317.01
					4.35
					317.09
					3.8
					317.6
					3.7
					317.7
					3.3
					318.1
					3.4
					318.0
					3.4
					318.0
					3.0
					318.4
					3.46
					317.98
					3.54
					317.90
					2.78
					318.66
					0125
					5.04
					316.40
					5.83
					315.61
					5.71
					315.73
					5.4
					316.0
					5.6
					315.8
					5.8
					315.6
					5.9
					315.5
					6.1
					315.3
					6.78
					314.66
					6.83
					314.61
					6.60
					315.84

	H.I.	-	5/64
	321.44		
	0+50		
N Topcb	8.79		312.65
G	9.61		311.83
+3	9.56		311.88
1/4	9.1		312.3
φ	8.7		312.7
1/4	8.4		313.0
+6	8.2		313.2
+10	8.52		312.92
G	8.68		312.76
S Topcb	7.88		313.56
	0+75		
S Topcb	10.73		310.71
G	11.50		309.94
+3	11.37		310.07
+5	11.1		310.3
1/4	11.4		310.0
φ	11.5		309.9
1/4	11.9		309.5
+10	12.37		309.07
G	12.47		308.97
N Topcb	11.62		309.82
TP.	0.85	309.46	12.83
			308.61
		1+00	
N Topcb	2.34		307.12
G	3.14		306.32
+3	3.02		306.44

	H.I.	-	5/64
	309.46		
			38
		2.3	307.2
		2.2	307.3
		2.0	307.5
		1.7	307.8
		1.8	307.7
		1.96	307.50
		2.12	307.34
		1.39	308.07
	1+40	N. L. Alley	
		5.2	304.3
		4.83	304.63
		4.90	304.56
		5.82	303.64
		5.78	303.68
		5.5	304.0
		5.6	303.9
		5.8	303.7
		6.3	303.2
		6.70	302.76
		6.80	302.66
		5.95	303.51
		6.0	303.5
		5.85	303.61
	1+50	φ Alley	
		6.9	302.6
		7.62	301.84

	HZ	Elev
	309.96	
G	7.26	301.70
t3	7.6~	301.84
1/4	7.2	302.3
ϕ	6.65	302.81
1/4	6.5	303.0
t7	6.4	303.1
t10 Edge	6.64	302.82
G	6.79	302.67
t~	6.70	302.76
S	6.3	303.2
	1160 E line of Alley	
Sea Ground	7.0	302.5
Sea Topcb	6.78	302.68
Topcb	6.98	302.48
G	7.72	301.74
t3	7.56	301.90
t5	7.3	302.2
1/4	7.3	302.2
ϕ	7.5	302.0
1/4	8.1	301.4
t10	8.54	300.92
G	8.7~	300.74
N Topcb	7.95	301.51
Non Ground	7.7	301.8
Non Topcb	7.63	301.83

	HZ	Elev
	309.96	
	1175	359
	9.24	300.22
N Topcb	10.06	299.40
G	9.95	299.51
t3	9.4	300.1
1/4	8.8	300.7
ϕ	8.7	300.8
1/4	8.6	300.9
t8	8.91	300.55
t10 Edge G	9.07	300.39
G	8.25	301.21
	2100	
S Topcb	10.92	298.54
S Topcb Distance	11.1	298.35
G	10.99	298.47
t3	10.7	298.8
t5	10.8	298.7
1/4	11.0	298.5
ϕ	11.2	298.3
1/4	11.95	297.51
t10	12.2~	297.24
G	11.33	298.13
N Topcb	0.59	297.26
TP	12.79	296.67
	2150	
N Topcb	2.64	294.62
G	3.93	293.83

	HI 297.26	-	Elev
t3		3.35	293.91
1/4		3.2	294.1
ϕ		3.1	294.2
1/4		2.9	294.4
t10 Edge		3.04	294.22
G		3.19	294.05
S Topcb		2.90	294.86
		2.75	
S Topcb Auto driveway		5.19	292.07
G		5.32	291.94
t3		5.21	292.03
1/4		5.1	292.2
ϕ		5.1	292.2
1/4		5.1	292.2
t10 Edge Cutoff		5.08	292.18
G		5.18	292.08
N Topcb		4.37	292.89
		3+10 W. line of Florida	
		This Intersection X sectioned on X sec of Florida	
N Topcb		6.72	290.54
G		7.47	289.79
t3		7.42	289.84
1/4		7.1	290.2
ϕ		7.2	290.0
1/4		7.6	289.7
t10	on ground	8.0	289.3
t10	in concrete	8.38	288.88
G		8.97	288.79

	HI 297.26	-	Elev
		7.72	289.54
S Topcb check BM NNBP Florida		6.66	290.60
			290.59 0.01 error
		E line of Florida = 00	
S Topcb		8.71	288.55
G		9.52	287.74
t3 Edge Cutoff		9.35	287.91
t3 Ground		9.1	288.2
1/4		8.8	288.5
ϕ		8.4	288.9
1/4		8.2	289.1
t10		8.39	288.87
t10 Ground		8.1	289.2
G		8.46	288.80
N Topcb		7.66	289.60
		0.25	
N Topcb		7.35	289.91
G		8.3	289.0
1/4		8.1	289.2
ϕ		8.2	289.1
1/4		8.5	288.8
G		9.1	288.2
S Topcb		8.65	289.61
		0.50	
S Topcb		8.55	288.71
G		9.4	287.9

	+	HI	-	Elev		+	HI	-	Elev
		297.26					295.78		
									41
1/4			8.4	288.9	None on Ground			5.3	290.5
ϕ			8.1	289.2	" " on Topcb			4.94	290.84
1/4			8.1	289.2				11.55	See sketch page 57 Inlet on gutter line on South
G			8.2	289.1	Flowline of 36" Pipe			11.27	284.51
N. Topcb			7.28	289.98				17.60	to Alley
		11.00						5.5	290.3
N. Topcb			6.91	290.35	cb			5.7	290.1
G			7.6	289.7	1/4			5.5	290.3
1/4			7.6	289.7	ϕ			5.6	290.2
ϕ			7.7	289.6	1/4			6.2	289.6
1/4			8.2	289.1	1.9			7.0	288.8
G			8.8	288.5	G			7.0	288.8
S. Topcb			8.71	288.55	So on Ground			6.7	289.1
TP	5.73	295.78	7.21	290.05	36" Corrugated Pipe 5' long			11.88	283.90
			14.95	cb. Inlet on North	Top Headwall 8' long			7.84	287.94
				Flowline of Corrugated Pipe. 10.26				17.70	
			11.50	Within of Alley	So on Ground			6.7	289.1
S. Line on Ground			6.5	289.3	So on Topcb			6.97	289.31
S. Line on Topcb			5.97	289.81	cb			6.40	289.38
S. Topcb			6.22	289.56	G			7.0	288.8
G			6.9	288.9	1.3			6.9	288.9
1/4			6.2	289.6	1/4			6.1	289.7
ϕ			5.7	290.1	ϕ			5.5	290.3
1/4			5.6	290.2	1/4			5.4	290.4
G			5.7	290.1	G			5.7	290.1
N. Topcb			5.13	290.65	N. Topcb			4.8	290.96

72" L of Pipe +	HI 295.78	-	Elev
Non Ground		5.1	290.7
N on Topcb		4.59	291.19
		2+00	
N Topcb		4.64	291.14
G		5.6	290.2
1/4		5.2	290.6
ϕ		5.3	290.5
1/4		5.8	290.0
+10		6.7	289.1
G		6.9	288.9
S Topcb		6.26	289.52
		2+50	
S Topcb		6.04	289.74
G		6.6	289.2
+7		6.3	289.5
1/4		5.8	290.0
+4		5.4	290.4
ϕ		5.2	290.6
1/4		4.9	290.9
G		5.0	290.8
N Topcb		4.18	291.60
		3+00	
N Topcb		3.87	291.91
G		4.9	290.9
+5		4.7	291.1
1/4		4.7	291.1

	HI 295.78	-	Elev
		5.0	290.8
		5.4	290.4
		5.6	290.2
		6.1	289.7
		6.3	289.5
		5.77	290.01
		3+10 W Line of Alabama	
		5.71	290.07
		6.42	289.36
		5.49	290.29
		4.84	290.94
		4.57	291.21
		4.51	291.27
		3.70	292.08
		E Line of Alabama = 00	
		2.68	293.10
		3.50	292.28
		3.44	292.34
		3.72	292.06
		4.37	291.41
		5.22	290.56
		4.62	291.16
		0+05	
		4.29	291.49
		4.8	291.0
		4.6	291.2

42

on paying
Ground same

on paying

	+	HZ 295.78	-	Elev
1/4			3.8	292 0
ϕ			3.4	292 4
1/4			3.1	292 7
G			3.0	292 8
N Topcb			2.33	293 45
			0.75	
N Topcb			0.70	295 08
G			1.6	294 2
1/4			1.9	293 9
ϕ			2.0	293 8
1/4			2.2	293 6
+9			2.9	293 9
G			3.1	292 7
S Topcb			2.54	293 24
T.P.	10.92	305.87	0.83	294 95
			0.50	
S Topcb			10.57	295 30
E			11.3	294 5
+3			11.3	294 5
1/4			10.5	295 3
+5			10.0	295 8
ϕ			9.8	296 1
1/4			9.9	296 0
G			9.9	296 0
N Topcb			8.85	297 02
			1.00	

	+	HZ 305.87	-	Elev
				43
				1100
N Topcb			9.91	300 96
G			5.9	300 0
+8			6.1	299 8
1/4			5.9	300 0
ϕ			6.1	299 8
1/4			6.2	299 7
1/4			6.6	299 3
+11			7.3	298 6
G			7.4	298 5
S Topcb			6.98	299 39
			11.90	W. Line of Alley
S Line on G			2.9	303 0
S " on Topcb			2.94	302 93
S Topcb			3.22	302 65
G			3.9	302 0
+3			3.9	302 0
1/4			3.3	302 6
+9			2.9	303 0
ϕ			2.7	303 2
1/4			2.5	303 4
+9			2.8	303 1
G			2.6	303 3
N Topcb			1.78	304 09
N on Ground			1.7	304 2
N on Topcb			1.32	304 55
			11.50	ϕ Alley
N Line			0.7	305 2

	t	HZ	-	Elev		t	HZ	-	Elev
		305.87					316.51		44
							2100		
G			1.8	304.1					
+9			2.1	303.8	N		17.59		308.92
+9			1.7	304.2	E		8.5		308.0
G 1/4			1.7	304.2	+6		8.5		308.0
Φ			1.68	304.19	1/4		8.4		308.1
1/4			2.5	303.4	+3		8.3		308.2
N +10			3.0	302.9	Φ		8.5		308.0
G			3.0	302.9	+4		8.6		307.9
+12			2.7	303.2	1/4		9.0		307.5
S Line			2.5	303.4	17		9.5		307.0
		1160 E Line of A1/4			E		9.8		306.7
S Line on Ground			1.8	304.1	S Topcb		8.84		307.67
G S Line on Topcb			1.23	304.64			2150		
S S Topcb			1.39	304.48	S Topcb		4.69		311.82
T G			2.3	303.6	E		5.7		310.8
+3			2.2	303.7	+9		5.9		311.1
S 1/4			1.7	304.2	1/4		5.1		311.4
E +9			1.2	304.7	+4		4.9		311.6
+Φ			1.1	304.8	E		4.6		311.9
1/4			0.8	305.1	1/4		4.3		312.2
+8			1.3	304.6	E		4.3		312.2
Φ			1.3	304.6	N Topcb		3.99		313.02
TP	11.03	316.51	0.39	305.48	TP	9.27	324.50	1.28	315.23
E N Topcb			10.55	305.96	N		3100	W. Line of Mississippi	317.2
N on Ground			10.3	306.2			7.3		317.2
N on Topcb			10.34	306.17			7.99		317.01
							88		315.7

+ HI 32450 - E/e+

1/4	9.0	315.5
φ	9.1	315.4
1/4	9.4	315.1
G	9.6	314.9
S Top cb	8.57	315.93
S	8.8	315.7
	W cb	
S	9.2	315.3
cb	9.0	315.5
1/4	8.7	315.6
φ	8.6	315.9
1/4	8.4	315.1
cb	8.4	316.1
N Top	7.9	316.6
N Bottom	8.3	316.2
	W 1/4	
N	7.5	317.0
S	7.7	316.8
1/4	7.8	316.7
φ	7.9	316.6
1/4	8.2	316.3
cb	8.3	316.2
S	8.6	315.9
	φ	
S	7.7	316.8
N cb	7.5	317.0
1/4	7.3	317.2

+ HI 324.50 - E/e+ 45

φ	7.1	317.4
1/4	7.0	317.5
cb	6.8	317.7
N	6.6	317.9
	E 1/4	
N	6.2	318.3
cb	6.3	318.2
1/4	6.6	317.9
φ	6.7	317.8
1/4	6.9	317.6
cb	6.9	317.6
S	7.1	317.4
	E cb	
S on Ground	7.3	317.2
S on Top cb	6.52	317.98
cb	7.2	317.3
1/4	6.8	317.7
φ	6.6	317.9
1/4	6.5	318.0
cb	6.6	317.9
N on Ground	6.5	318.0
N on Top cb	5.37	319.13
	E line of	= 00
N Top cb	5.46	319.10
G	6.2	318.3
1/4	5.8	318.7

	H.I.	-	Elev
	324.50		
±		5.8	318.7
1/4		6.1	318.4
+5		6.4	318.1
#10		6.9	317.6
G		7.0	317.5
S Top cb		6.45	318.05
	0.50		
S Top cb		4.32	320.18
G		5.2	319.3
+2		5.2	319.3
1/4		4.3	320.2
±		3.9	320.6
1/4		3.9	320.6
G		4.3	320.2
N Top cb		3.43	321.07
	1.00		
N Top cb		1.46	323.04
G		2.2	322.3
1/4		1.8	322.7
±		1.9	322.6
1/4		2.2	322.3
+11		2.9	321.6
G		2.9	321.6
S Top cb		2.14	322.36
	1.40 N. line alley		
Sox Ground		0.9	323.6

	H.I.	-	Elev
	324.50		
			46
Son Top cb		0.38	324.12
S Top cb		0.59	323.91
G		1.4	323.1
+2		1.4	323.1
1/4		0.5	324.0
±		0.2	324.3
1/4		0.3	324.2
G		0.8	323.7
TP	10.10	333.92	0.68 323.82
N Top cb		9.30	324.62
Non Ground		9.7	324.2
N line on top cb		9.07	324.85
	4.50	± A/lex	
N		9.1	324.8
+12		9.5	324.4
G		9.8	324.1
1/4		9.3	324.6
±		9.2	324.7
1/4		9.5	324.4
±		10.2	323.7
1/4		10.3	323.6
+4		9.9	324.0
S		9.9	324.0
	1.60		
		8.66	324.26
Sox Ground		9.2	324.7

	H.I.	-	Elev
	333.92		
+8	9.7		324.2
G	10.0		323.9
Topcb	8.90		325.02
+2	9.9		324.0
1/4	9.2		324.7
Φ	8.8		325.1
1/4	8.9		325.0
G	9.3		324.6
N Topcb	8.25		325.67
N. line on ground	8.7		325.2
N. 1/4 on Topcb	8.21		325.71
	2700		
N Top	6.79		327.13
G	7.8		326.1
1/4	7.4		326.5
Φ	7.2		326.7
1/4	7.5		326.4
+6	7.7		326.2
+11	8.1		325.8
G	8.2		325.7
S Topcb	7.2		326.70
	2750		
S Topcb	5.09		328.88
G	5.9		328.0
+7	5.4		328.5
1/4	5.1		328.8

	H.I.	-	Elev
	333.92		47
		9.9	328.0
		5.2	328.7
		5.8	328.1
		9.87	329.05
		2795	
		3.04	330.88
		3.9	330.0
		3.5	330.4
		3.1	330.8
		3.3	330.6
		3.5	330.4
		3.8	330.1
		3.03	330.89
		3700 W. line Louisiana	
		2.84	331.08
		3.53	330.39
		3.15	330.77
		3.06	330.86
		3.17	330.75
		3.52	330.40
		2.84	331.08
		E. line Louisiana = 00	
		2.86	331.06
		3.56	330.36
		3.30	330.62
		3.38	330.54

	+	#I. 333.92	-	E/ev
1/4			3.73	330.19
G			4.91	329.51
S Topcb			3.85	330.07
			0705	
S Topcb			4.29	329.63
G			4.8	329.1
+4			4.6	329.3
1/4			4.1	329.8
Q			3.7	330.2
1/4			3.7	330.2
G			4.1	329.8
N Topcb			3.33	330.59
			0725	
N Topcb			5.22	328.70
G			6.2	327.7
1/4			5.4	328.5
Q			5.3	328.6
1/4			5.8	328.1
+1-			6.7	327.2
G			6.8	327.1
S Topcb			5.99	327.93
			0750	
S Topcb			8.03	325.89
G			8.9	325.0
+2			8.8	325.1
1/4			8.0	325.9

	+	M.I. 333.92	-	E/ev
			7.6	326.3
1/4			7.6	326.3
G			8.4	325.5
N Topcb			7.58	326.34
			0725	
N Topcb Auto Drive way			10.51	323.41
G			10.6	323.3
1/4			10.3	323.6
Q			10.2	323.7
1/4			10.3	323.6
+11			11.1	322.8
G			11.0	322.9
S Topcb			10.23	323.69
T.P.	1.30	323.34	11.88	322.04
			1700	
S Topcb Auto Drive way			2.37	320.97
G			2.5	320.8
+2			2.5	320.8
1/4			1.9	321.4
Q			1.8	321.5
1/4			2.1	321.2
+11			2.7	320.6
G			2.6	320.7
N Topcb			1.76	321.58

HI
323.34 - Elev

1190 W Line Alley

Non Topcb	5.08	317.26
" " Ground	6.0	317.3
+12 N Edge Concrete Gutter	6.34	317.00
N Topcb	5.32	318.02
Gutter	6.38	316.95
+3	6.49	317.20
1/4	5.6	317.7
⊥	5.3	318.0
1/4	5.5	317.8
+10 Edge	5.91	317.43
G	6.0~	317.82
S Topcb	5.05	318.29
+2 S Edge Gutter	5.89	317.45
San Ground	5.8	318.3
San Top cb	4.76	318.58

1150 E Alley

S.	6.2	317.1
+11 Edge Gutter	6.69	316.65
G	6.89	316.45
+3 Edge	6.67	316.67
1/4	6.1	317.2
⊥	5.78	317.56
1/4	6.4	316.9
+10 Edge	7.09	316.25
G	7.15	316.19

HI
323.34 - Elev

49

7.04	316.30	
+8	6.6	316.7
N	6.7	316.6
1160		
Non Ground	7.3	316.0
Non Topcb	6.54	316.80
+12	7.77	315.57
N Topcb	7.02	316.32
G	7.82	315.52
+3 edge	7.66	315.68
1/4	7.1	316.2
⊥	6.6	316.7
1/4	6.8	316.5
+10 edge	7.24	316.10
G	7.39	315.95
S Topcb	6.56	316.78
+2	7.3~	316.02
+9	6.7	316.6
San Ground	6.3	317.0
" " Topcb	6.28	317.06
1175		
S Topcb	7.18	316.16
G	8.01	315.33
+3 edge	7.85	315.49
1/4	7.5	315.8
⊥	7.3	316.0

+ HZ
32334

1/4	7.8	315.5
+10 Edge	8.34	315.00
G	8.52	314.82
N Topcb	7.63	315.71
	2100	
N Topcb Driveway	8.88	314.46
G	9.08	314.26
+3	8.89	314.45
1/4	8.3	315.0
Φ	7.9	315.4
1/4	8.0	315.3
+10	8.38	314.96
G	8.60	314.74
S Topcb	7.80	315.54
	2125	
S Topcb Auto Driveway	8.59	314.75
Gutter	8.69	314.65
+3	8.53	314.81
1/4	8.2	315.1
Φ	8.2	315.1
1/4	8.5	314.8
+10	8.85	314.49
G	9.11	314.23
N Topcb	8.28	315.06
	2150	
N Topcb	8.66	314.68

+ HZ
32334

Elor

50

G	8.92	314.42
+3	8.76	314.57
1/4	8.3	315.0
Φ	7.9	315.4
1/4	7.9	315.4
+9	8.2	315.1
+10	8.5	314.82
G	8.80	314.54
S Topcb	7.82	315.58
	2175	
	7.57	315.77
G	8.58	314.76
+3	8.35	314.99
+5	8.0	315.3
1/4	7.7	315.6
Φ	7.6	315.7
1/4	8.0	315.3
+10 Edge	8.50	314.84
G	8.67	314.67
N Topcb	7.70	315.64
	2195	
N Topcb	7.32	316.02
G	8.52	314.82
+3 & Top	8.26	315.08
Top	7.81	315.53
1/4	7.5	315.8

	+	HZ 323.34	-	Elev
ϕ			7.2	316.1
1/4			7.3	316.0
+10 Top			7.6	315.7
+10 Bottom			8.29	315.10
G			8.50	314.84
S Top cb			7.32	316.02
			3+00. Wline Texas	
S Top cb			7.28	316.06
G			7.50	315.84
+1.5 Bottom			7.26	316.08
+ Top			7.28	316.06
1/4			7.23	316.11
ϕ			7.18	316.16
1/4			7.27	316.07
+11 Top			7.34	316.0
+11 Bottom			8.45	314.89
G			8.50	314.84
N Top cb			7.27	316.07
check on on 50 of Texas	11.06	329.18	5.22	318.12
			Eline Texas = 00	
N Top cb			11.20	317.98
G			12.39	316.79
+2 Bottom			12.36	316.82
+2 Top			11.26	317.92
1/4			11.20	317.98
ϕ			11.14	318.04

	+	HZ 329.18	-	Elev
1/4			11.20	317.98
+11.5 Top			11.20	317.98
+11.5 Bottom			12.26	316.92
G			12.30	316.88
S Top cb			11.13	318.05
			0+05	
S Top cb			10.99	318.19
G			12.08	317.10
+1.5			12.10	317.08
+2			11.9	317.8
1/4			11.0	318.2
ϕ			11.0	318.2
1/4			11.1	318.1
+10			11.9	317.8
+11			12.09	317.09
G			12.11	317.07
N Top cb			11.01	318.17
			0+50	
N Top cb			9.23	319.95
G			9.9	319.3
+2			10.0	319.2
+5			9.7	319.5
1/4			9.7	319.5
ϕ			9.4	319.8
1/4			9.6	319.6
17.			9.9	319.3

	+	H.I. 329.18	-	Elev
E			10.1	319.1
S Topcb			9.23	319.95
			0.80. Cb.	¹⁴³⁷ sees sketch Page 57
S Topcb	Driveway		8.78	320.40
E			8.8	320.4
+3			8.8	320.4
1/4			8.5	320.7
Φ			8.2	321.0
1/4			8.5	320.7
E			8.8	320.4
N Topcb			8.06	321.12
			14.40 W L Alley	
N on Ground			5.3	323.9
N on Topcb			5.27	323.91
N Topcb			5.61	323.57
E			6.7	322.5
+2			6.6	322.6
+5			6.3	322.9
1/4			6.0	323.2
Φ			5.7	323.5
1/4			6.1	323.1
+2			6.7	322.5
E			6.7	322.5
S Topcb			5.73	323.45
+6			6.0	323.2
S on Ground			5.3	323.7

	+	H.I. 329.18	-	Elev
				52
S on Topcb			5.55	323.63
			14.50 E Alley	
S			5.4	323.8
+5			5.6	323.6
E			6.3	322.9
+2			6.4	322.8
1/4			5.7	323.5
Φ			5.19	323.99
1/4			5.7	323.5
+11			6.0	323.2
E			6.0	323.2
N			5.2	324.0
			14.60 E Line Alley	
N on Ground			4.7	324.5
N on Topcb			4.22	324.96
E			5.5	323.7
N Topcb			4.62	324.56
+2			5.7	323.5
1/4			5.2	324.0
Φ			5.0	324.2
1/4			5.3	323.9
E			6.0	323.2
S Topcb			4.94	324.24
S on Ground			5.2	324.0
S on Topcb			4.77	324.41

	+	HI 329.18	-	5/101
			1195.06	Broke
N Topcb			3.97	325.71
			2700	
S Topcb			3.57	325.61
G			9.3	324.9
+2			4.4	324.8
1/4			3.7	325.5
1/4			3.9	325.8
1/4			3.7	325.5
+10			4.1	325.1
G			4.2	325.0
cb-out				
			2750	
cb-out				
G			2.0	327.2
+4			2.1	327.1
1/4			1.6	327.6
1/4			1.5	327.1
1/4			1.7	327.5
+11			2.4	326.8
G			2.4	326.8
S Topcb			1.59	327.59
TP	11.10	339.83	0.45	328.73
check BM S.E. BP Arizona			8.34	331.49
				331.51
				0.02

	+	HI 339.83	-	5°
			3100	W Line of Arizona
S Topcb			10.36	
G			5.98	11.03
1/4				10.45
1/4				10.13
G				10.24
N Topcb				10.61
				9.82
				5 Line of Arizona = 00
N Topcb			7.80	332.03
G			8.52	331.31
1/4			8.06	331.77
1/4			7.96	331.87
G			8.25	331.58
S Topcb			8.92	330.91
			8.35	331.48
			0105	
S Topcb			7.88	331.95
G			8.3	331.53
+4			8.0	331.8
1/4			7.9	331.9
1/4			7.7	332.1
1/4			7.7	332.1
G			7.9	331.9
N Topcb			7.37	332.46

	+	H.I. 339.83	-	Elev
			0125	
N Topcb			5.48	334.35
G			6.2	333.6
+5			6.3	333.5
1/4			6.0	333.8
Φ			5.9	333.9
1/4			6.2	333.6
+5			6.4	333.4
G			6.7	333.1
S Topcb			6.08	333.75
			0150	
S Topcb			3.78	336.05
G			4.3	335.5
+4			4.4	335.4
1/4			3.9	335.9
Φ			3.5	336.3
1/4			3.6	336.2
+6			3.9	335.9
G			3.8	336.0
N Topcb			3.08	336.75
			1100	
TP	1270	351.63	0.90	338.93
			1100	
N Topcb			10.26	341.37
G			11.2	340.4
+6			11.1	340.5
1/4			10.6	341.0

	+	H.I. 351.63	-	Elev
				54
Φ			10.6	341.03
1/4			11.1	340.5
+10			11.7	339.9
G			11.9	339.7
S Topcb			11.03	340.60
			1140	W Line Alley
S Line on Ground			7.5	344.1
S " " Topcb			6.87	344.76
+10			7.5	344.1
S Topcb			7.34	344.29
G			7.8	343.8
+2			8.2	343.4
+8			7.7	343.9
1/4			7.4	344.2
Φ			6.9	344.7
1/4			7.0	344.6
+7			7.3	344.3
G			7.2	344.4
N Topcb			6.50	345.13
N on Ground			6.6	345.0
" " Topcb			6.25	345.38
			1150	W Alley
N			5.5	346.1
cb			6.2	345.4
+6			6.4	345.2
1/4			6.1	345.5

	H.I.	-	Elev
	351.63		
2		5.8	345.8
1/4		6.5	345.1
+8		7.1	344.5
G		7.1	344.5
S.		6.9	344.7
		11.60 E Line	
Soa Ground		6.0	345.6
n on Topcb		5.02	346.61
S Topcb		5.30	346.33
G		6.2	345.4
+7		6.2	345.4
1/4		5.6	346.0
2		5.1	346.5
1/4		5.2	346.4
+7		5.6	346.0
G		5.9	346.2
N Topcb		4.44	347.19
N on Ground		4.7	346.9
" on Topcb		4.2	347.41
		2.00	
N Topcb		0.84	350.79
G		1.5	350.1
+7		1.6	350.0
1/4		1.3	350.3
2		1.3	350.3
1/4		1.8	349.8

	H.I.	-	Elev
	351.63		
+9		2.3	349.3
G		2.3	349.3
S Topcb		1.78	349.85
T.P.	12.84	363.85	0.62
		2+2.5	
S Topcb		11.72	339.91
G	363.9	363.85	12.3
+4		12.9	351.5
1/4		11.8	352.1
2		11.3	352.6
1/4		11.3	352.6
+8		11.6	352.3
G		11.5	352.4
N Topcb Auto Driveway		11.34	352.56
		2+5.0	
N Topcb		8.38	355.47
G		9.2	354.7
+5		9.2	354.7
1/4		8.8	355.1
2		8.9	355.0
1/4		9.5	354.4
+9		10.1	353.8
G		10.1	353.8
S Topcb		9.98	354.37
		2+7.5	
S Topcb		7.16	356.69

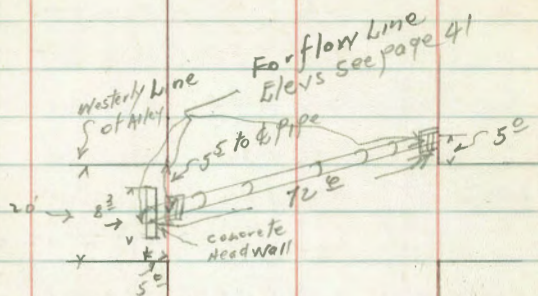
55

	+	HZ 36385	-	Elev
G			8.0	355.9
1/5			7.8	356.1
1/4			7.1	356.8
1/4			6.5	357.4
1/4			6.5	357.4
78			7.0	356.9
S G			6.8	357.1
N Top cb			5.97	357.88
S			2+95	
N Top cb			4.13	359.78
G			4.9	359.0
1/7			4.8	359.1
1/4			4.6	359.3
1/4			4.5	359.4
1/4			5.2	358.7
1/6			5.7	358.2
G			6.1	357.8
N S Top cb			5.34	358.51
"			3+00 ⁵⁰ rx line of Hamilton	
S Top			4.77	359.08
H G			5.93	358.92
G 1/4			4.76	359.09
1/4			4.27	359.58
1/4			4.21	359.64
G			4.22	359.63
N Top cb			3.52	360.33

	+	HZ 36385	-	Elev
				E Line Hamilton = 00
N Top cb			0.37	363.48
G			1.06	362.79
1/4			1.15	362.70
1/4			1.41	362.44
1/4			1.78	362.07
G			2.94	361.41
S Top cb			1.72	362.13
check BVM SW 727K Hamilton			3.76	360.09
			0+05	360.70 0 of error
S Top cb			1.98	362.37
G			2.0	361.9
1/4			1.3	362.6
1/4			0.8	363.1
1/4			0.7	363.2
G			0.9	363.0
N Top cb			0.17	363.68
T.P.	11.11	374.74	0.22	363.63
			0+50	
N Top cb			9.04	365.70
G			10.0	364.74
1/4			9.5	365.2
1/4			9.7	365.0
1/4			10.1	365.6
G			11.0	363.7
S Top cb			10.21	364.53

Florida

St.



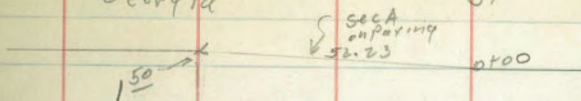
Alabama

St.

Georgia

St

57



Texas

St

0100
Location City Barns
1080

This (crete) should to be
replaced out for
line & grade

1137 Alley return
can be salvaged

1760
This stretch can be
saved

1795 Break in cb.
has settled
should be replaced
out for line & grade

2000 2495
50 strip can be
saved

Arizona

St

H.I.
374.74

1100

S Top cb	7.20	366.94
G	8.7	366.0
1/4	7.9	366.8
⊕	7.5	367.2
1/4	7.5	367.2
G	7.8	366.9
N Top cb	6.77	367.97
1190		
N. L	5.2	369.5
N Top Cb	4.8	369.92
N Top cb	5.18	369.56
G	6.0	368.7
1/4	5.8	368.9
⊕	5.6	366.7
1/4	6.2	368.5
G	6.8	367.9
S Top cb	6.00	368.74
S on Ground	5.8	368.9
S on Top cb	5.66	369.08
1150 ⊕ Alley		
S	5.9	369.3
1/10	6.1	368.6
G	6.4	368.3
1/4	5.8	368.9
⊕	5.3	369.4
1/4	5.50	369.2

+

H.I.
374.74

58

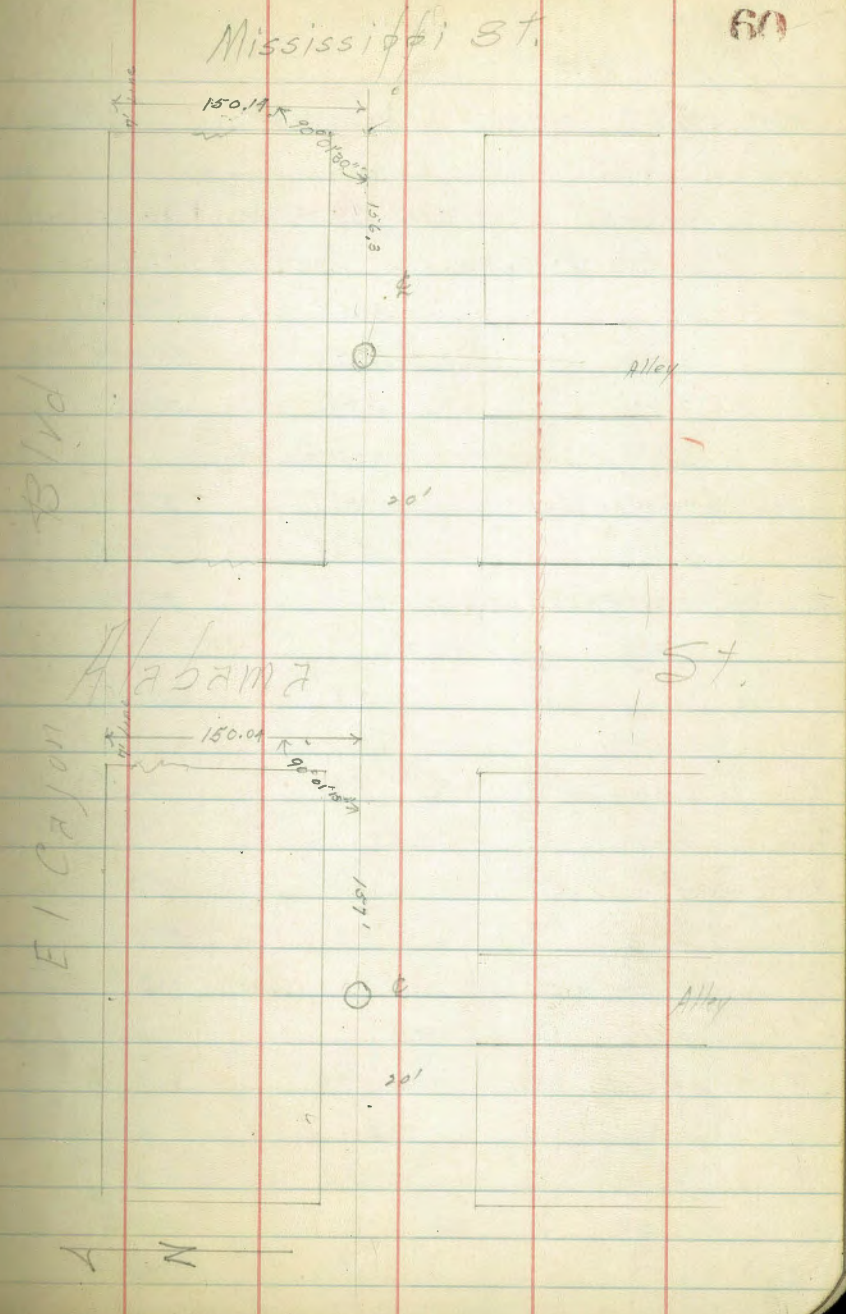
G	5.7	369.0
12	5.4	369.3
N	4.7	370.0
1160		
N on G	4.05	370.69
N on Ground	4.8	369.9
G	5.3	369.4
N Top cb	4.30	370.44
15	5.5	369.2
14	5.1	369.6
⊕	5.0	369.7
1/4	5.3	369.4
G	5.9	368.8
S Top cb	4.96	369.78
S on Ground	5.2	369.5
S on Top cb	4.73	370.01
2100		
S Top cb	3.77	370.97
G	4.7	370.0
1/4	4.0	370.7
⊕	3.7	371.0
1/4	3.9	370.8
15	4.1	370.6
G	3.9	370.8
N Top cb	3.79	370.95

	HZ	Elev
	374.74	
	2+50	
N Top Cb	1.90	372.84
G	2.6	372.1
1/4	2.6	372.1
1/4	2.3	372.4
ϕ	2.3	372.4
1/4	2.6	372.1
G	3.0	371.7
S Top Cb	2.18	372.56
	2+95	
S Top Cb	0.79	373.95
G	1.5	373.2
1/4	1.2	373.5
ϕ	1.0	373.7
1/4	1.2	373.5
G	1.6	373.1
N Top Cb	0.83	373.91
	3+00	
N Top Cb	0.71	374.03
G	1.38	373.36
1/4	0.97	373.77
ϕ	0.84	373.90
1/4	0.97	373.77
G	1.32	373.42
S Top Cb	0.64	374.05
Set BM SW 7 ² TK Oregon Howard	0.60	374.14

	HZ	Elev
	374.74	
TP	9.10	367.78
Check out on BM SW 7 ² TK Howard	11.06	363.68
	7.70	360.08
		360.10

3/31/29 Survey of Sewer in Alley S. of El Cajon
W. of Mississippi for Haler

	+	x	-	Elev	Mississippi W. of El Cajon
B.M. N.E. Tack	6.34	625.50		319.16	
Top of 6' pipe on W. of Mississippi			9.02	316.48	
Top of Co. N. Line of Alley W. of Mississippi			6.20	319.30	
" " " S. " " " " " "			4.90	319.10	
B.M.			5.34		



6-18-29 X-section Alley Block 52.
 J.C. Bliss City Apts. - University to Wightman - between
 Robert 41st + Central. 20' Wide
 Carter

H.L. 357.70

41
 69 61

B.M. N.W.B.P. University + Central 351.93
 45.77

0+90
 10' Garage 0.3' in Alley from E.L. - Garage also has 2x13
 concrete apron projecting into alley.

H.L. 357.70
 South Gutter line University

Concrete floor of garage at E.L. 5.30 352.40
 Edge apron 5.35 352.35

W 5.53 352.17
 ♀ 5.52 352.18
 E 5.43 352.27

1+00
 E 5.1 352.6
 ♀ 5.2 352.5
 W 5.1 352.6

S.L. University = 0+00 - Raved.

E Top of Gutter Flush 4.89 352.81
 ♀ 5.05 352.65
 W Top of Gutter Flush 4.86 352.84

9+25
 W 6.1 351.6
 ♀ 5.4 352.3
 E 5.4 352.3

Plotted 6-21-29 EAB

0+25
 W 4.8 352.9
 ♀ 4.4 353.3
 E 4.8 352.9

1+50
 E 5.7 352.0
 ♀ 5.7 352.0
 W 6.2 351.5

0+50
 E 5.0 352.7
 ♀ 4.8 352.9
 W 4.8 352.9

1+75
 W 6.2 351.5
 ♀ 6.0 351.7
 E 6.2 351.5

0+75
 ♀ 13' Garage 2.5' Back E.L. Concrete floor 4.70 353.00

2+00
 E 6.3 351.4
 ♀ 6.2 351.5
 W 6.5 351.2

W 5.2 352.5
 ♀ 5.2 352.5
 E 4.9 352.8

T.P. - 6.00'

	71.90		351.70
		H.1. 35360	
		2+20	
438' Double Garage 8' Back E.L. North edge dirt floor	2.1		351.5
South edge dirt floor	2.8		350.8
		2+25	
W	2.9		350.7
4	2.5		351.1
E	2.4		351.2
		2+22	
49' Garage 4' Back E.L. Dirt Floor	2.9		350.7
		2+50	
E	2.7		350.9
4	2.8		350.8
W	3.0		350.6
		2+75	
W	3.2		350.4
4	3.3		350.3
E	3.6		350.0
		2+88	
422' Double Garage 7' Back E.L. N edge dirt floor	3.5		350.1
S edge dirt floor	3.8		349.8
		3+00	
E	3.8		349.8
4	3.6		350.0

		3405	3.9	349.7
48' Garage 7' Back E.L. Dirt Floor			3.6	350.0
		3+15		
48' Garage 3' Back E.L. Dirt Floor			3.7	349.9
		3+25		
W			4.1	349.5
4			4.0	349.6
E			3.9	349.7
		3+50		
E			4.2	349.4
4			4.4	349.2
W			4.1	349.5
		3+55		
48' Garage 3' Back E.L. Wood Floor			3.9	349.70
		3+75		
W			4.5	349.1
4			4.6	349.0
E			4.4	349.2
		4+00		
E			4.7	348.9
4			5.0	348.6
W			4.9	348.7

H.I. 353.66

4409

⊥ 8' Garage 8' Back W.h. Concrete Floor	5.25	348.35
---	------	--------

4412

⊥ 8' Garage at E.L. Concrete Floor	4.30	349.30
------------------------------------	------	--------

4425

W	5.5	348.1
---	-----	-------

⊥	5.3	348.3
---	-----	-------

E	5.3	348.3
---	-----	-------

4450

E	6.0	347.6
---	-----	-------

⊥	6.0	347.6
---	-----	-------

W	6.0	347.6
---	-----	-------

T.P.		-692 346.68
------	--	-------------

+1.70

H.I. 348.38

4468

⊥ 8' Garage 9' Back W.h. Concrete Floor	1.73	346.65
---	------	--------

4475

W	1.7	346.7
---	-----	-------

⊥	1.6	346.8
---	-----	-------

E	1.5	346.9
---	-----	-------

4485

⊥ 8' Garage 9' Back W.h. Concrete Floor	2.42	345.96
---	------	--------

5400

E	2.0	346.4
---	-----	-------

⊥	2.5	345.9
---	-----	-------

H.I. 348.38

63

N	2.5	345.9
---	-----	-------

5407

⊥ 8' Garage 9' Back W.h. Concrete Floor	3.16	345.22
---	------	--------

5418

⊥ 8' Garage at E.L. Dirt Floor	2.6	345.8
--------------------------------	-----	-------

5425

N	4.1	344.3
---	-----	-------

⊥	3.5	344.9
---	-----	-------

E	3.0	345.4
---	-----	-------

5446

⊥ 8' Garage 8' Back E.L. Dirt Floor	3.9	344.5
-------------------------------------	-----	-------

5450

E	4.4	344.0
---	-----	-------

⊥	5.1	343.3
---	-----	-------

W	5.2	343.2
---	-----	-------

5475

N	7.0	341.4
---	-----	-------

⊥	7.0	341.4
---	-----	-------

+5	6.4	342.0
----	-----	-------

E	5.2	343.2
---	-----	-------

6400 = H.L. Wightman

E To existing return	9.12	339.26
----------------------	------	--------

⊥	9.1	339.3
---	-----	-------

E	9.0	339.4
---	-----	-------

⊥	8.9	339.5
---	-----	-------

N To existing return	8.82	339.56
----------------------	------	--------

Drainage Control toward 41st

6-19-29 X-section Alley Block 14 - Fairmount
 J.C. Bliss + Blocks Mt. View University to Wightman
 Drebert Between Menlo 425th - 20' wide
 Raney

64

T.P. -804 340.34
 +783 348.17
 B.M.N.W.S.P. Central + Wightman -4.75 343.42
 T.P. -086 347.31
 +847 355.78
 B.M.N.W.S.P. University + Central -3.87 351.91
 Correct 351.93

51 N.W.S.P. 47th + University 341.55
 4283 346.38
 South Gutter University
 E 5.29 341.09
 S 5.23 341.15
 W 5.18 341.20
 52 University - 100 - Paved
 N Top ch 4.48 341.90
 S 4.76 341.62
 E 5.04 341.34
 W 4.84 341.54
 E Top ch 4.58 341.80
 0+25
 E 3.6 342.8
 S 3.8 342.6
 W 3.4 343.0
 0+30
 S 3' Concrete door sill at E.L. 349 342.89
 0+50
 N 3.3 343.1
 S 3.4 343.0
 E 3.2 343.2
 S Concrete door sill 3.17 343.21
 0+67
 S 3' Concrete door sill 3.15 343.25

Plotted 6-22-29 I.A.B.

H.I. 346.38

0+75

E 3.1 343.3

S 3.3 343.1

W 2.8 343.6

0+93 = 9' Concrete Wall at EL.

North edge 3.74 342.64

South edge 3.70 342.68

1+00

W 2.3 344.1

S 2.4 344.0

E 2.2 344.2

1+25

E 1.6 344.8

S 1.6 344.8

W 1.8 344.6

1+50

W 0.7 345.7

S 1.1 345.3

E 0.8 345.6

S.P. -0.54 345.84

+7.39

H.I. 353.23

1+75

E 7.3 345.9

S 7.2 346.0

W 7.4 345.8

H.I. 353.23

65

1+95

2' Garage Apron at W.L. Concrete 7.24 345.99

2+00

W 7.2 346.0

S 7.1 346.1

E 7.1 346.1

2+25

E 7.1 346.1

S 7.2 346.0

N 7.3 345.9

2+50

W 6.9 346.3

S 7.2 346.0

E 7.3 345.9

2+75

E 7.0 346.2

S 6.9 346.3

W 7.1 346.1

3+00

N 6.7 346.5

S 6.6 346.6

E 7.0 346.2

3+20

2' Garage at EL. Dir + Floor 6.5 346.7

3+25

E 6.4 346.8

H. 1. 353. 23

E	5.9	347.3
W	6.4	346.8

3+50

W	5.4	347.8
E	5.4	347.8
E	6.0	347.2

3+55

E 8' Garage 10' Back W.L. Dirt Floor	5.5	347.7
--------------------------------------	-----	-------

3+60

E 8' Garage 3' Back E.H. Dirt Floor	6.1	347.1
-------------------------------------	-----	-------

3+75

E	5.8	347.4
E	5.2	348.0
W	5.5	347.7

3+85

E 18' Double Garage at Walk - Concrete Floor - 2' Concrete Apron in Alley		
---	--	--

North edge Floor	4.93	348.30
" " Apron	5.29	347.94
South edge Floor	4.90	348.33
" " Apron	5.32	347.91

4+00

W	5.3	347.9
E	5.1	348.1
E	5.6	347.6

H. 1. 353. 23

66

4+18

E 8' Garage with ^{2'} concrete Apron at W.L.	4.66	348.57
On Floor of Garage	4.27	348.96

4+25

E	5.0	348.2
E	4.8	348.4
N	4.6	348.6

4+30

E 8' Garage 2' Back W.L. Concrete Floor	4.48	348.75
---	------	--------

4+50

W	4.3	348.9
E	4.4	348.8
E	5.1	348.1

T.P.		-4.39	348.84
------	--	-------	--------

554

H. 1. 354. 38

4+68

E 8' Garage 8' Back E.H. - Concrete Floor	6.51	348.07
---	------	--------

4+75

E	6.0	348.4
E	5.3	349.1
W	5.2	349.2

4+86 = E 16' Double Garage 3.5' Back E.L. - Concrete Floor

North edge floor	6.12	348.26
South " "	6.07	348.31

H.1.35438

5400

N	5.0	349.4
E	4.8	349.6
E	5.2	349.2

step = 1/2 16' Double Garage 3.5' Back E.L. Concrete Floor

North edge floor 5.32 349.06

South " " 5.27 349.11

5425

E	5.0	349.4
E	4.7	349.7
W	4.9	349.5

5440

1/2 8' Garage 6' Back W.L. Dirt Floor 5.3 349.1

5450

W	5.5	348.9
E	5.1	349.3
E	5.6	348.8

5462

1/2 5' Concrete Base slab at E.L. 5.41 348.97

5475

E	6.4	348.6
E	6.3	348.1
W	6.4	348.0

6400.8 = N.L. Wrightman

W-Top existing cb 7.35 347.03

G 7.7 346.7

A.1.354.38

67

E	7.7	346.7
G	7.7	346.7
E-Top existing cb	7.47	346.91
T.P.	-8.32	346.06

+1.40 347.46

B.M. N.W. B.P. University + Menlo 4.32 343.14

Correct 343.07

Error 0.05

X Section Nutmeg St.

W.L. 29th St to W.L. Alley

+ office = 298.96
 299.92
 290.92
 298.96
 289.76 279.15

Section A See Station

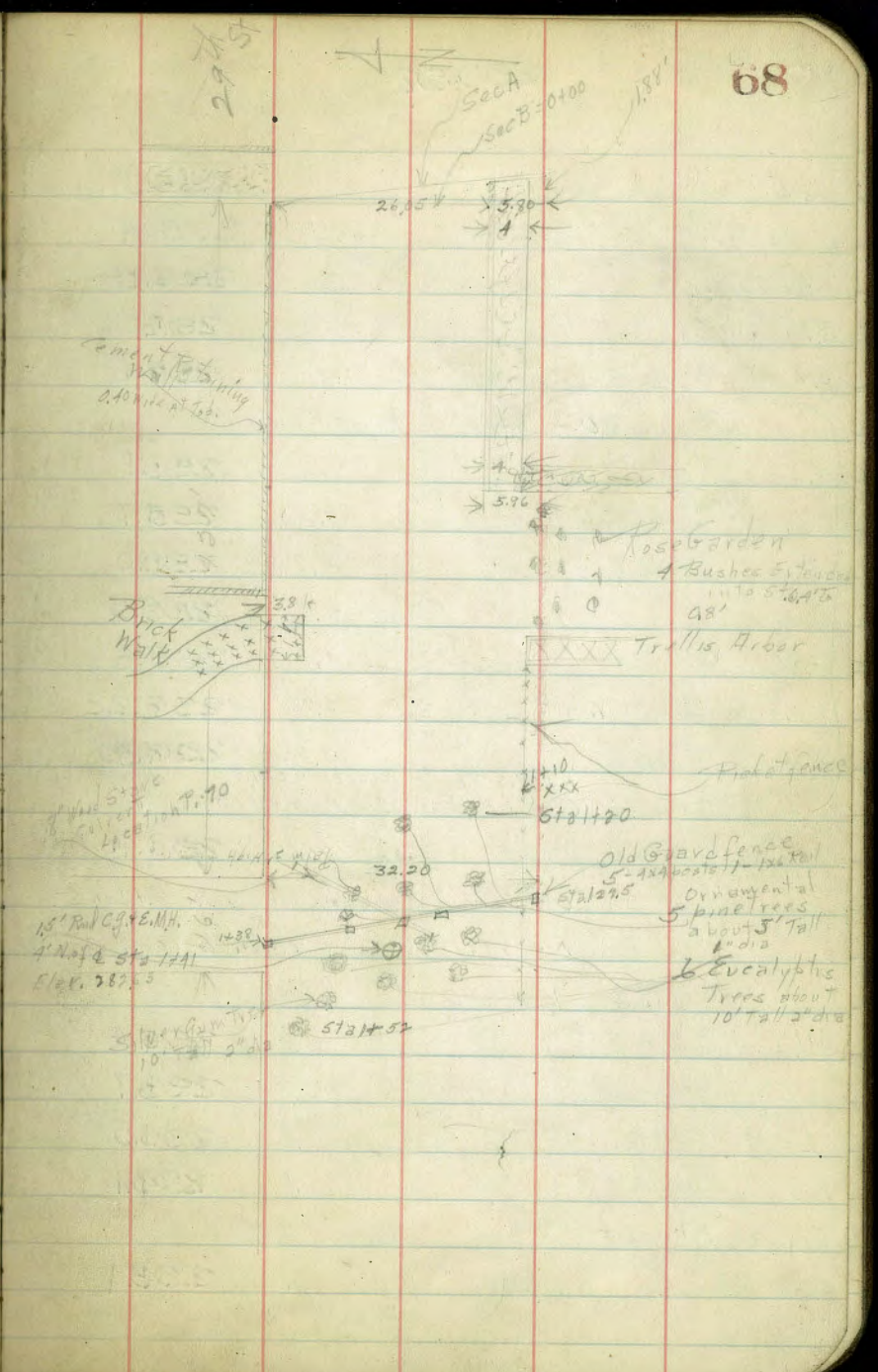
N.L. Top Retaining Wall	0.52	299.40
N.L. Bottom of Wall	0.7	299.2
N.L. + 4	1.2	298.7
cb	1.5	298.4
±	1.8	298.1
s.gutter	2.4	297.5
Top Cb	1.82	298.10
S.L.	2.1	297.8

Section B = 0+00

S.L.	2.0	297.9
scb.	1.87	298.05
cut	2.3	297.6
±	1.8	298.1
+ 10	1.7	298.2
cb	1.4	298.5
+ 1	1.2	298.7
N.L.	0.7	299.2
Top Wall	0.52	299.40

0+52 = End of Cut Wn South

Top Wall	1.30	298.62
N.L.	3.1	296.8
+ 4	3.3	296.6
cb	10	295.9



	+	-	
g.L.		4.0	295.9
S gutter		4.5	295.4
SCb Top		3.76	296.16
B.L. on Walk		3.60	296.32
S.L. Ground		4.3	295.0
	0 + 70.4	q Brick Walk on N	
S.L.		4.8	295.1
Cb.		5.2	294.7
q		4.9	295.0
Cb.		4.4	295.5
+ 1		4.1	295.8
+ 1.2 on Brick Walk	see Sketch	3.70	296.22
N.L. " "		3.53	296.39
	0 + 71.5	Trellis Arbor on S. 1.9 in St.	
	0 + 64	End of Retaining Wall on N	
Top Wall		1.46	298.40
	0 + 75	1" Melliodora Tree on N. 0.40 in St.	
	0 + 87	1" Gum Tree on N. 0.20 in St.	
	1 + 00		
N.L.		5.3	294.6
Cb		6.2	293.7
q		6.1	293.5
Cb		6.8	293.1
Fence 1.7 in St			
S.L.		6.5	293.4

	+	-	
	1 + 10.4	= End of Picket Fence on S. 1.6 in St.	
	1 + 21.8	= 1" Eucalyptus Tree on N. 1.8 in St.	
		294.98	298.16
T.P.	1.02	290.43	299.16
	0.96		
	1 + 27	= E. Line Alley on N.	
S.L.		8.5	291.5
Cb.		8.5	291.5
q		7.3	292.7
Cb		6.5	293.5
N.L.		6.8	293.2
	1 + 43	= W.L. Alley	
N.L.		8.1	291.9
N.Cb.		8.7	291.3
q		10.0	290.0
SCb.		11.9	288.1
S.L.		14.1	285.0
		292.26	290.08
T.P.	2.18	289.26	287.05
	1 + 58		
S.L.		10.1	282.2
SCb		8.8	283.5
q		6.2	286.1
N.Cb		5.4	288.9
N.L.		3.1	289.2
	1 + 65		
SCb		12.1	280.2
	1 + 70		
SCb.		21.1	271.2

Sketch for Proposed Drain

~~288.26~~
292.26

T.P. + 9.95 T 300.03 - 2.18 Elev 290.88
281.88

Sta 1+20

N.Cb. = inlet of 8" Wood Stave Culvert 7.63 292.40

Sta 1+33

N.Cb. + 14 = outlet of 8" Wood Stave Culvert 9.12 290.61

T.P. 1.06 289.99 = B.M. 3972

Notes for Outlets W. & S.

T.P. 1.14 300.4 B.M. 3972

T.P. 0.31 - 288.90 11.81 289.59

1+43 = W.L. 17/10/04

S.L. + 15 8.4 280.5

S.L. + 25 14.5 274.4

1+58

S.L. + 12 11.4 277.5

+ 25 17.4 271.5

+ 40 22.4 266.7

1+63

S.L. + 40 25.0 263.9

+ 25 21.2 267.7

+ 15 14.6 274.3

S.L. 8.6 280.3

Φ 4.2 284.7

N.L. 5.4 284.5

+ 15 0.0 298.9

- 13 + 1
288.90

70

1+69 0.3 288.6
3.2 285.7

C.L. 12.3 276.6

S.L. 14.2 274.7

+ 15 17.5 271.4

+ 25 20.4 268.5

+ 40 25.8 263.1

1+93 41.8 247.1
38 255.9

S.L. - 50
S.L. - 38

S.L. + 13 31.7 257.7

S.L. 35.6 263.3

Φ 17.1 271.8

N.L. + 15 7.6 281.3
3.9 285.0

24.30

N.L. - 15
N.L. 1.4 247.1
4.9 255.9

Φ 12.1 263.3

S.L. 15.1 266.7

+ 12 13.0 263.9

+ 25 15.5 261.5

+ 35 15.9 260.9

T.P. 12.63 0.31

T.P. 2.26 B.M. 3972

Clayton St. Cross Section
Hancock to California

80' wide
11' cb
13' qtz

Clayton St.
Moore 10700
to Hospital

BM	10.41	60.18	49.77	
		Sec A - N. L. California	Sec Page 72	
H		0.0	60.2	
cb Top Easting		0.10	60.08 ✓	
Gutter on Pav 199		0.87	59.31 ✓	
14.2 S of cb 02		1.28	58.90	
22.5 S of cb - Edge Pav 199		1.80	58.38	
		Sec B		
S = S Edge Pav 199		1.80	58.38	
13' H		2.0	58.2	
26' H - Gutter		2.4	57.8	
Top cb		1.71	58.47 ✓	
H		1.4	58.8	
		26.9' H of Sec B		
H		5.0	55.2	
cb Top		5.25	54.93 ✓	
Gutter		6.0	54.2	
13' S of cb		5.5	54.7	
26' S - Edge Pav		4.92	55.26	
		53.8' H of Sec B		
Edge Pav		8.16	52.02	
13' H		8.9	51.3	
26' H - Gutter		9.7	50.3	
cb 19 Drive Pav		9.53	50.65 ✓	
H		8.3	51.9	

Plotted - 1-6-30
CCH

60.18

80.7' H of Sec B - F. L. Moore

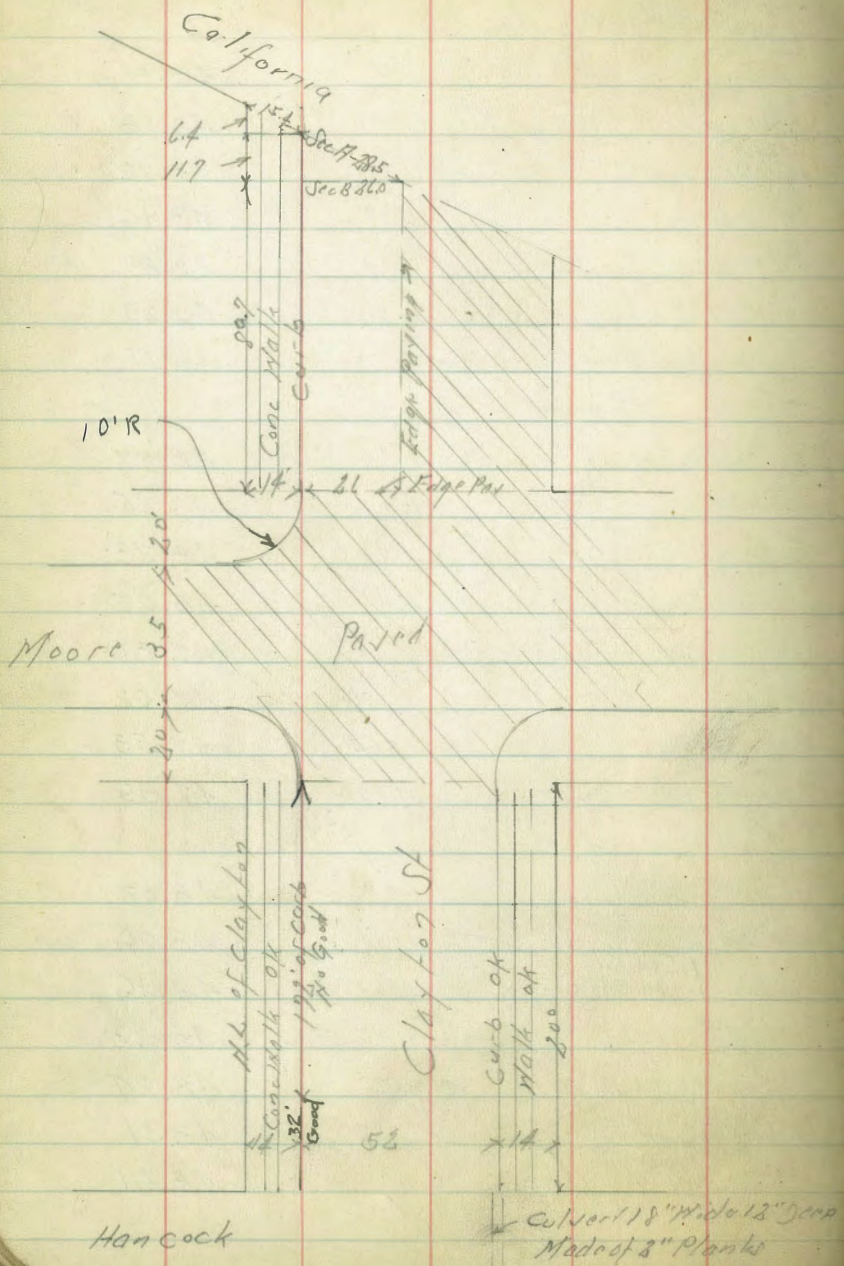
1-3-30
D. S. 71
McHugh
Hartman
Perrin

H	11.4	48.8
cb Top	12.10	48.08 ✓
Gutter on Pav	12.41	47.72 ✓
13' S of cb	11.71	48.46
26' S " " - Edge Pav	11.29	48.89 ✓
39' S " " " "	10.90	49.29
52' S " " " "	10.67	49.51
		80' wide 11' cb 13' qtz
S on Pav 199	11.41	48.77
cb " " "	11.73	48.45
H " " "	11.90	48.28
S " " "	12.13	48.05
H " " "	12.38	47.80
cb " " "	12.56	47.62
H " " "	12.65	47.53
Top cb	12.19	47.99
		of Moore
H on Pav 199	12.16	48.02
cb " " "	12.12	48.06
H " " "	12.02	48.16
S " " "	11.95	48.23
H " " "	11.94	48.24
cb " " "	11.87	48.31
S " " "	11.57	48.61

Clayton St.

6018

72



N. Cb of Moore

S	as Pav 129	11.94	48.24
Cb	"	11.98	48.20
1/4	"	11.92	48.26
1/2	"	11.93	48.25
1/4	"	12.08	48.10
Cb	"	12.37	47.81
N	"	12.60	47.58
N	Top Cb	12.13	48.05

N. L. Moore

N		12.1	48.0
Cb Top		12.34	47.84 ✓
Gutter as Pav 129		12.65	47.53 ✓
1/4		12.15	48.03
1/2		11.86	48.32 ✓
1/4		11.88	48.30
Gutter		12.23	47.95 ✓
Cb Top		11.66	48.52 ✓
S		11.2	49.0
T	0.59 11.84	12.93	47.25

2.5' W of N. L. Moore

S		1.5	46.3
Cb Top of Ground		1.13	46.22 ✓
1/4		2.4	45.4
1/2		2.2	45.6
1/4		1.9	45.9

Clayton St.

4784

1/4	22	45.6
7/7	3.0	44.8
7/10	4.2	43.6
Cb out	25	45.3
74.5 - Edge Walk	194	45.90 ✓
N	19	45.9
50 ft of W. Wall		
11	4.0	43.8
79.5 - Edge Walk	418	43.66
Cb out	49	42.9
73	5.6	42.2
76	5.0	42.8
74	4.6	43.2
72	4.3	43.5
74	4.4	43.4
Gutter	45	43.3
Cb Top	393	43.91 ✓
5	3.7	44.1
75 ft		
5	6.0	41.8
Cb 12 Drive Way + Gutter	685	40.99 ✓
74	6.7	41.1
75	6.6	41.2
74	6.9	40.9
76	7.2	40.6
710	8.2	39.6

17.84

73

Cb	6.6	41.2
74.5 Edge Walk	650	41.34 ✓
11	7.0	40.8
100 ft		
11	8.1	39.2
79.5 - Edge Walk	870	39.14 ✓
Cb out	9.4	38.4
73	10.1	37.7
74	9.1	38.7
72	8.9	38.9
74	9.1	38.7
75	9.9	37.9
78	8.1	39.2
Cb Top + Ground	859	39.25 ✓
5	8.4	39.4
125 ft		
5	10.6	37.2
Cb Top	1088	36.96 ✓
Gutter	11.1	36.2
74	11.2	36.6
72	11.3	36.6
74	11.3	36.5
Cb out	11.7	36.1
74.5 - Edge Walk	1103	36.81 ✓
11	10.9	36.9
150 ft		

Clayton St.

4784

N		132	34.6
TP	510	1276	35.08
+9.5 - Edge Walk		5.53	34.65 ✓
Cb out		6.2	34.0
1/4		6.0	34.2
1/2		5.8	34.4
3/4		5.9	34.3
Gutter		6.2	34.0
Cb Top		5.51	34.67 ✓
S		5.4	34.8
	175' W		
S		7.5	32.8
Cb Top		7.86	32.32 ✓
Gutter		8.4	31.8
1.5		8.0	32.2
1/4		8.0	32.2
1/2		8.1	32.1
3/4		8.2	32.0
Gutter		8.3	31.9
Cb Top ok		7.88	32.30 ✓
+4.5 - Edge Walk		7.81	32.37 ✓
N		7.6	32.6
	200' W = E.L. of Hancock		
N		9.7	30.5
+9.5 - Edge Walk		10.00	30.18
Cb. Top OK		10.08	30.10

40.18

74

Cb Ground	18.0	30.2
1/4	9.8	30.4
1/2	9.4	30.8
3/4	9.1	31.1
100' W	9.2	31.0
Gutter - Fly Line	12.15	28.03
Cb Top	10.10	30.08 ✓
S	9.3	30.9
	285' W of E.L. Hancock - E Tail of S.D. Elec. Dist.	
S Top Rail	10.25	29.43
1/2 " "	11.07	29.11
N " "	11.21	28.97
BM	1.51	38.67

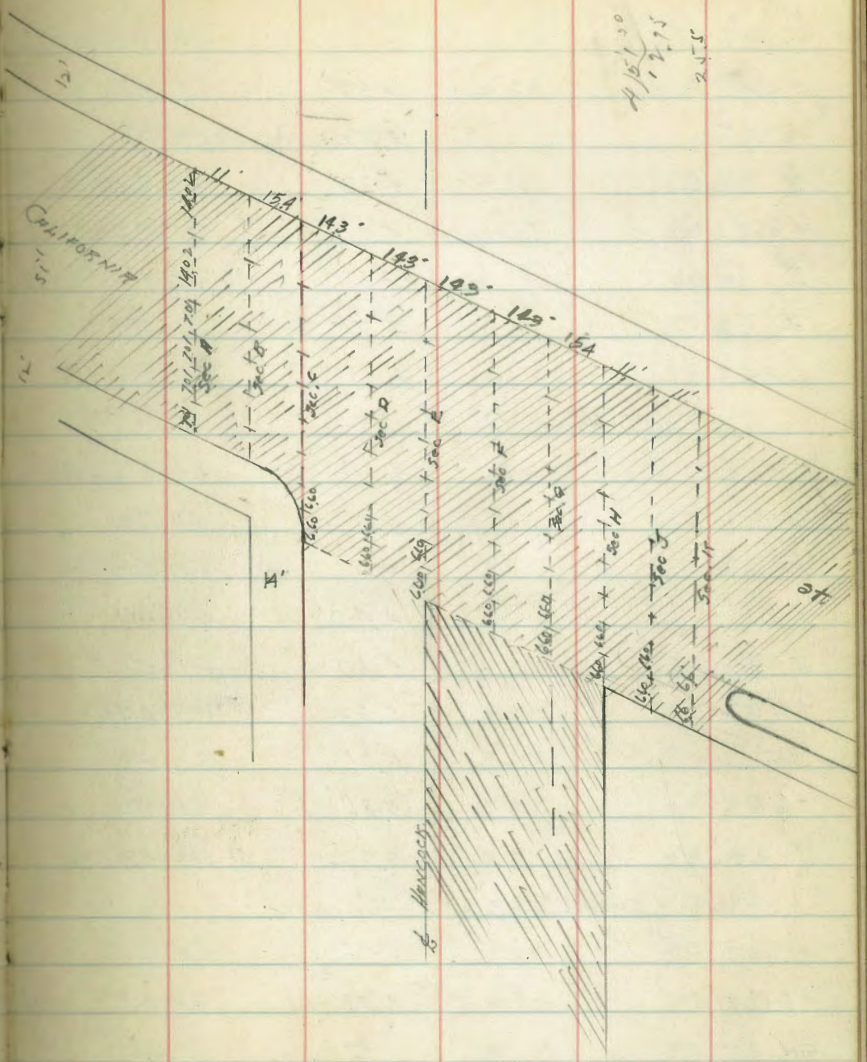
S.D. Top Rail
Hancock
38.67

Ylakov.
 Mrs. Blis
 Diebert
 Nahton.
 8-6-30

CROSS SECTION OF EXISTING PAVING
 Intersection HANLOCK And CALIFORNIA Sts.

	4.77	64.80	60.03
Section A			
1/2 top cb.	4.27	60.53	
" Gut. on Pav.	4.71	60.09	
+ 7.01	4.12	60.68	
1/4	3.66	61.14	
+ 7.01	3.34	61.46	
1/2	3.22	61.58	
5/8	3.14	61.66	
1" Gut.	3.29	61.51	
1 1/2 top cb.	2.58	62.22	
Section B			
1" "	2.78	62.02	
" Gut.	3.54	61.26	
1/4	3.38	61.42	
1/2	3.49	61.31	
+ 7.01	3.62	61.18	
1 1/2	3.95	60.85	
+ 7.01	4.45	60.35	
Gut.	5.04	59.76	
1 1/2 top cb.	4.59	60.21	
Section C			
1 1/2 on cb.	4.75	60.05	
" " " Gut.	5.49	59.31	

BP clayton (then
 in walk
 to Eng. Hospital)
 N.Y. B.P.
 Clayton and
 California



4.151.30
 1.21.15
 2.15.15

C.B.H.
 2/8-30
 reduced

+66	546	59.34
M Gut.	543	59.37
+701	489	59.91
$\frac{1}{2}$	437	60.43
+701	403	60.77
$\frac{1}{2}$	388	60.92
$\frac{1}{4}$	371	61.09
E Gut.	385	60.95

Section D

E Gut.	4.14	60.66
$\frac{1}{4}$	4.02	60.78
$\frac{1}{2}$	4.22	60.58
+701	4.40	60.40
$\frac{1}{4}$	4.79	60.01
+701	5.33	59.47
M Gut.	5.91	58.89
+66	5.86	58.94
M	5.92	58.88

Section E = Hancock.

M	6.44	58.36
+66	6.35	58.45
Gut.	6.37	58.43
+701	5.72	59.08
$\frac{1}{4}$	5.15	59.65
+701	4.78	60.02
$\frac{1}{2}$	4.54	60.26

$\frac{1}{2}$	4.30	60.50
E Gut.	4.51	60.29

SECTION F

E Gut.	4.82	59.98
E $\frac{1}{4}$	4.65	60.15
$\frac{1}{2}$	4.72	60.01
+701	5.11	59.69
$\frac{1}{2}$	5.61	59.19
+701	6.19	58.61
M Gut.	6.84	57.96
+66	6.92	57.88
M	7.15	57.65

Sec G

M	8.02	56.78
+66	7.63	57.17
Gut.	7.29	57.51
+701	6.61	58.19
$\frac{1}{4}$	5.97	58.83
+701	5.47	59.33
$\frac{1}{2}$	5.08	59.72
$\frac{1}{4}$	4.90	59.90
E Gut.	5.10	59.70

Sec H

E Gut.	5.35	59.45
$\frac{1}{4}$	5.23	59.57
$\frac{1}{2}$	5.45	59.35

6480

+7.0'	584	58.96
$\frac{1}{2}$	637	58.43
+7.0'	705	57.75
Gut.	781	56.99
+6.6'	772	57.08
M	815	56.65

Section J

-10 on Pacing	898	55.82
M	827	56.53
+6.6	789	56.91
Gut.	794	56.86
+7.0'	724	57.56
$\frac{1}{2}$	658	58.22
+7.0'	607	58.73
$\frac{1}{2}$	569	59.11
$\frac{1}{2}$ 1' W on Rim MH.	570	59.10
E. $\frac{1}{2}$	548	59.32
E. Gut.	555	59.25

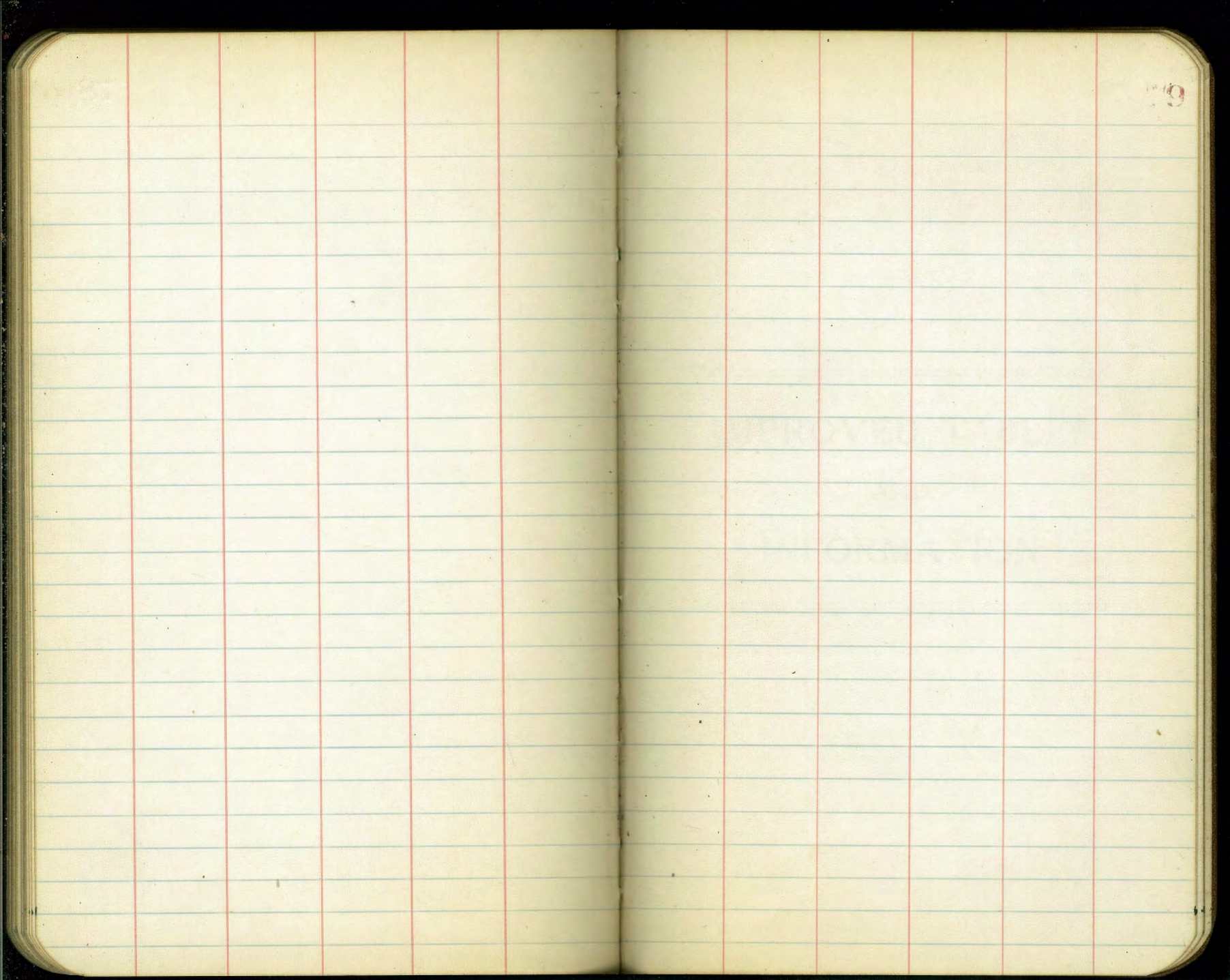
Sec 15

E ₂ Top cb	498	59.82
E ₂ Gut.	575	59.05
$\frac{1}{2}$	567	59.13
$\frac{1}{2}$	533	58.87
+7.0'	628	58.52
$\frac{1}{2}$	683	57.97
+7.0'	743	57.37

6480

77

Gut.	8.13	56.67
+6.6	8.26	56.54
M	8.74	56.06
+10' on Pacing	9.37	55.43



5th
 upas _____ 284.908
 Walnut _____ 283.984
 Penn _____ 282.410
 + + Brookes NW _____ 279.910

4th

upas _____ 284.990
 Walnut _____ 287.392
 Brookes _____ 283.322
 Penn _____ 285.355

Brookes

3rd _____ 277.274
 1st _____ 263.700
 Front _____ 252.897

Walnut

Front _____ 250.899
 1st _____ 268.822
 3rd _____ 282.871

279.91
 6.36
 286.27
 312
 283.15
 2.13
 285.28
 8.24
 277.04

0.66
 277.70
 12.89
 264.81
 80
 265.61
 12.92
 252.71
 69
 40

351.93
 5.77
 357.70
 6.00
 351.70
 1.90
 353.60
 6.97
 346.68
 1.70
 348.38
 8.04
 340.34
 7.83
 348.17
 4.75
 343.42

Georgia NW 8P 319.85
 Florida " " " 290.59
 Texas SE 8P 318.09
 Ariz " 10 331.51
 Idaho 373.01
 Ohio SE 8P 364.47
 Illinois SE " 361.01
 Hamil SW 7th 360.10