

1321

PLANNING

LEVEL BOOK

No. 380 F

1321

ENGINEERING DEPARTMENT,
CITY OF SAN DIEGO,
CALIFORNIA.

Our Leather Bound Engineers Note Books are carried in the following rulings:

- No. 380 LEVEL BOOK. Left and Right Hand Page the same as Left Hand Page of this Book.
- No. 382 FIELD BOOK. Left Hand Page as in this Book, Right Hand Page 4 x 4 to the inch, Center Line Red.
- No. 384 MINING TRANSIT BOOK. Left Hand Page as in this Book, Right Hand Page 8x8 to the inch, Center Line Red.
- No. 385 FIELD BOOK. Left Hand Page as in this Book, Right Hand Page 8 vertical and 4 horizontal lines to the inch, Center Line Red.

We also carry the Note Books listed above, bound in extra strong Fabri-Hide (otherwise the same quality of book), which can be furnished at a somewhat lower price.

In ordering Fabri-Hide covered books, add the letter "F" to catalog number.

THE FREDERICK POST CO.
ENGINEERING and DRAFTING SUPPLIES.
IRVING PARK STATION
CHICAGO, ILL.

MICROFILMED
DEC 23 1964

1321

Index

1321

Page

28th st X Sec. C. St. to Ocean View Blvd 2

Marcy St. 28th to 29th 50

Imperial, No 10th St. 36th to 40th 54

Alley Blk 1 Normal Hts. 34th Mt. View Dr 63

Bear Drive Dove Court to inspection 71

1851

1011

60' wide
10' elev
10' 445

28th St X Sec
C St to OceanView Blvd

2-25-29
miles

177.60

2

N.E. C
+28th St

B.M. B.P.	1.62	177.60	175.98	+1	5.9	171.7
	00 = S. Line	C. St		14	5.5	172.1
E. emb. walk	2.20	175.40	✓	c	5.4	172.2
emb. cl	2.58	175.02		14	6.0	171.6
gutter pavnt	3.25	174.35		+9	6.7	170.9
14 "	3.22	174.38		cl	6.4	171.2
e "	3.20	174.30		+6	6.1	171.5
14 "	3.65	173.95		w	5.0	172.6
gutter "	7.13	173.47				
emb. cl	3.61	173.99		w	6.3	171.3
W. No emb. walk Ret. on S.W. Cor	3.4	174.20		cl	7.1	170.5
	10's			+1	7.4	170.2
w	3.1	174.5		14	6.6	171.0
cl	4.1	173.5	✓	e	6.0	171.6
+2	4.4	173.2		14	6.1	171.5
14	4.1	173.5		+9	6.3	171.3
c	3.6	174.0		cl	5.3	172.3
14	3.7	173.9		+7	5.3	172.3
+9	3.7	173.9		e	4.3	173.3
cl	3.2	174.4				
+8	2.9	174.7		e	6.7	170.9
e	1.5	176.1		cl	7.3	170.3
	50's			+1	8.4	169.2
e	3.9	173.7		14	7.9	169.7
+4	4.9	172.7	✓	c	7.9	169.7
cl	4.9	172.7		14	8.6	169.0

60's

100's

177.60 100's (cont)

W 14+8	9.5	168.1	e		
dr	177.6	8.6	169.0	14	
H 9	8.5	169.1	+7		
W	9.6	168.0	dr		
T.P.	2.33	168.80	11.13	164.47	+8
+15	11.2	157.6	W		
+25	11.2	157.6	+14		
	151.5		+25		
W-25	13.3	155.5			
-11	168.8	13.0	155.8	-25	
W	3.6	165.2	-17		
+3	2.3	166.5	W		
+9.8 = M.H.	2.01	166.79	+1		
dr	2.1	166.7	dr		
+3	2.8	166.0	+3		
114	2.4	166.4	14		
e	1.7	167.1	e		
114	1.5	167.3	14		
+9	1.9	166.9	+9		
dr	0.9	167.9	dr		
E	0.6	168.2	E		
	200's				
E	3.4	165.4	E		
dr	3.5	165.3	dr		
+1	4.5	164.3	+1		
14	3.9	164.9	14		

168.80

28TH ST

3

4.0	164.8
7.8	164.0
5.4	163.4
4.7	164.1
5.0	163.8
6.0	162.8
16.0	152.8
15.3	153.5
245's	
18.0	150.8
18.0	150.8
7.6	161.2
6.6	162.2
6.7	162.1
7.6	161.2
7.1	161.7
6.3	162.5
6.1	162.7
6.5	162.3
5.4	163.4
5.1	163.7
255's	
5.5	163.3
5.9	162.9
7.1	161.7
6.5	162.3

168.80

25 5' S (con)

✓ c	6.8	162.0
"y	7.5	161.3
+7	7.8	161.0
cl	7.2	161.6
w	7.2	161.6
+5	7.5	161.3
301' S = N. Line Broadway Paved.		
w	8.5	160.3
cmt cl	8.67	160.13
gutter Pavmt.	9.16	159.64
"y "	8.72	160.08
✓ c "	8.31	160.49
"y "	8.26	160.54
gutter "	8.42	160.38
cmt cl No yardage	7.63	161.17
cl. yardage to N	7.9	160.9
E.	6.9	161.9

Returns at 152 E. SW + N. E. Cors. for 5' walk R. S from curb.

00 = S. Line Broadway

E	8.5	160.3
cmt cl	8.62	160.18
gutter Pavmt	9.30	159.50
"y "	9.33	159.47
✓ c "	9.45	159.35
"y "	9.72	159.07
gutter "	10.23	158.57

168.80

28th ST.

4

cmt. cl	9.85	158.95
w.	9.6	159.2
5' S.		
w	9.6	159.2
cl	9.9	158.9
"y	9.7	159.1
✓ c	9.5	159.3
"y	9.3	159.5
+6	9.4	159.4
+7	8.4	160.4
cl	8.4	160.4
E	8.5	160.3
20' S.		
E	8.7	160.1
cl	9.1	159.7
+2	9.4	159.4
+3	9.9	158.9
✓ "y	9.5	159.3
c	9.7	159.1
"y	10.0	158.8
cl	9.8	159.0
w	9.3	159.5
40' S.		
w	10.2	158.6
cl	10.3	158.5
"y	10.2	158.6

168.80
40'S. (con)

✓ c 9.7 159.1
 1/4 9.6 159.2
 +8 10.0 158.8
 ch 9.3 159.5
 E. 8.7 160.1

70'S

E 8.2 160.6
 ch 9.1 159.7
 +1 9.4 159.0
 1/4 9.6 159.2
 ✓ c 9.9 158.9
 1/4 10.3 158.5
 ch 10.3 158.5
 W 10.2 158.6

100'S

W 10.3 158.5
 ch 10.6 158.2
 1/4 10.4 158.4
 ✓ c 9.9 158.9
 1/4 9.6 159.2
 +9 9.6 159.2
 ch 9.2 159.6
 E 8.1 160.7

150'S

E 8.1 160.7
 ch 9.1 159.7

168.80

+1 9.8 159.0
 1/4 9.9 158.9
 ✓ c 10.3 158.5
 1/4 10.7 158.1
 ch 10.6 158.2
 W. 10.4 158.4

T.P. 1.84 160.46 10.18 158.62

175'S

W 160.5 2.5 158.0
 ch 2.6 157.9
 +7 2.9 157.6
 ✓ 1/4 2.5 158.0
 c 1.9 158.6
 1/4 1.6 158.9
 +8 1.6 158.9
 ch 0.8 159.7
 E +0.3 160.2

212'S = N. Line E. ST on W. ^{100' wide}
_{10' ch's}
_{10' ch's}

E 0.6 159.9
 ch 1.5 159.0
 +2 2.0 158.5
 1/4 2.0 158.5
 ✓ c 2.1 158.4
 1/4 2.8 157.7
 +7 3.3 157.2
 ch 2.6 157.9

284 ST.

5

160.46

N. Wine E. St (cont)

N	2.7	1578
N. E. end cont. ch	(60.5)	2.85 15761
W. dirt gutter	3.5	1570
+9	2.9	1576
ch	3.3	1572
+2	3.5	1570
"4	2.7	1578
✓ e	2.1	1584
"4	2.0	1585
+9	2.1	1584
ch	1.6	1589
E	0.6	1599

5' cont. walk on N & S. of E. St. to W. spaced 2.8' from ch.

N. "4

E	0.5	1600
+5	1.4	1591
ch	1.6	1589
+2	2.3	1582
"4	2.1	1584
✓ e	2.1	1584
"4	2.6	1579
ch	3.2	1573
W	4.1	1564

160.46

E. St on W

W.	4.0	156.5 ⁶
ch	3.10	15736 Top M.H.
"4	(60.5)	2.5 1580
e	2.2	1583
✓ "4	2.2	1583
+9	2.4	1581
ch	2.0	1585
E.	0.9	1596
	5. "4	
E	0.9	1596
ch	1.8	1587
+1	2.5	1580
✓ "4	2.3	1582
e	2.2	1583
"4	2.5	1580
ch	3.2	1573
W	4.1	1564
	5. ch.	
W. dirt gutter	4.3	1562
W. E. End cont. ch.	2.21	15825
ch	3.6	1569
"4	2.7	1578
✓ e	2.3	1582
"4	2.3	1582
+9	2.2	1579
ch	2.0	1585
E.	1.1	1594

28th St.

160.46

272'S. of BdW. = S. line E. St on W.

E	0.9	159.6	
+5	1.6	158.9	
cl	1.9	158.6	
+1	2.7	157.8	
"4	2.4	158.1	
c	2.4	158.1	
"4	2.8	157.7	
cl	2.9	157.6	
W.	3.3	157.2	
			360 wide 10' els 10' 1/2
			Return to on N.E. + S.E. C. 25
W.	3.4	157.1	
cl	2.9	157.6	
+6	2.6	157.9	
+6	3.0	157.5	
"4	2.8	157.7	
c	2.6	157.9	
"4	2.5	158.0	
+9	2.4	158.1	
emt. cl	2.18	158.28	
E	1.6	158.9	
	N. cl		
E. emt. cl. + dirt	2.05	158.44	
E. dirt	1.7	158.8	
cl	2.0	158.5	
"4	2.4	158.1	
c	2.7	157.8	

160.46

28th St.

32	3.0	157.5	
+4	3.1	157.4	
+5	2.6	157.9	
cl	3.1	157.4	
W	3.6	156.9	
			N. "4
W	3.7	156.8	
cl	3.3	157.2	
+5	2.8	157.7	
+6	3.3	157.2	
"4	3.2	157.3	
c	2.9	157.6	
"4	2.6	157.9	
cl	2.1	158.4	
E	1.7	158.8	
			⊕ E. St. on E.
E	1.6	158.9	
cl	2.3	158.2	
"4	2.7	157.8	
c	3.0	157.5	
"4	3.4	157.1	
cl	3.3	157.2	
W	3.6	156.9	
+5	3.6	156.9	

160.46
S. 1/4.

W-30	20.0	1405
W	5.0	1555
+2	3.6	1569
cb	3.4	1571
+5	3.7	1568
1/4	3.5	1570
c	3.1	1574
1/4	2.9	1576
cb	2.6	1579
E	2.2	1583

S. cb.

E cont. cb + dirt	2.47	15799
cb	2.9	1576
1/4	3.0	1575
c	3.2	1573
1/4	3.8	1567
+5	4.0	1565
cb	3.5	1570
+8	4.0	1565
W	5.8	1547
+25	21.0	1395
+40	27.5	1330

00 = New S. line E. St. on E.

W-40	27.5	1330
W-25	21.4	1381
W	5.4	1551

160.46

8

+2	3.9	1566
cb	3.9	1566
+4	4.5	1560
1/4	4.0	1565
c	3.2	1573
1/4	3.4	1571
+9	3.3	1572
E cont. cb	2.57	15789

cont. Walk + cb. in one. to S.

10's = old line E. St. on E. = BTK on cb.

E. cont. cb	2.56	15790
gutter	3.7	1568
1/4	3.7	1568
c	3.6	1569
1/4	4.3	1562
+7	4.8	1557
cb	3.9	1566
+7	4.0	1565
W	5.8	1547
+26	23.0	1375
+40	27.6	1329

60's

W-25	23.0	1375
W-10	16.7	1438
W	8.5	1520
+1	7.9	1526

160.46

60' s. of S. Line E. St. on E.

W. ch	7.7	1528
+ 2	8.6	1519
1/4	7.8	1527
c	7.2	1533
1/4	7.5	1530
gutter	7.4	1531
E. ent. ch	6.50	1540
10' s. of New S. Line E. St on E. = 55' End ent ch + walk on E E. Line - Treat St. = 8' 5" 1/2		
E. Line	8.7	1518
S. End. ent. ch	10.45	15001
+ 0.2 = gutter	11.4	1491
1/4	10.9	1496
c	10.9	1496
1/4	11.4	1491
+ 9.8 = gutter	12.1	1484
N. End 10' radius Burkk Ret on Top ent. ch	11.18	14928. walk
W	11.4	1491
+ 5.	12.1	1484
120' s. = N. ch		14
W. ent. ch	11.73	14873
W. ent. gutter	12.71	14775
ch	12.5	1480
1/4	12.0	1485
c	11.6	1489
1/4	11.5	1490

160.46

28th ST

+ 9	12.3	1482
ch	11.1	1494
E	9.3	1512
128.5 N. 1/4		
E	10.0	1505
ch	11.6	1489
+ 1	12.7	1478
1/4	12.1	1484
c	12.2	1483
1/4	12.5	1480
ch	12.6	1479
W	12.9	1476
137' s. = E Treat.		
W	13.2	1473
ch	13.0	1475
1/4	13.0	1475
c	12.7	1478
1/4	12.7	1478
+ 9	13.1	1474
ch	12.1	1484
+ 7	10.6	1499
E	9.3	1512
145.55 = S, 1/4		
E	9.8	1507
ch	12.6	1479
T.P.	10.08	149.14
	11.40	149.06

9

149.14

S. 114 Treat (con)

E. ch 41	2.6	146.5
14	1.9	147.8
e	1.9	147.2
14	2.1	147.0
ch	2.1	147.0
W	2.5	146.6

154.5 = S. ch

W. ent. gutter	3.10	146.0
Top ent. ch	2.20	146.90
ch	2.6	146.5
14	2.5	146.6
e	2.5	146.6
14	2.5	146.6
+9	3.2	145.9
ch	1.5	147.6
E.	+1.7	150.8

7.7 161.7 S = N. End ch + Walk on E

E	0.0	149.1
ent. ch.	2.02	147.08

164.5 = S. line Treat.

E	0.4	148.7
ent. ch	2.15	146.99
gutter	3.7	145.4
14	3.1	146.0
e	3.1	146.0

149.14

28th ST

10

14	3.1	146.0
+6	3.6	145.5
gutter	2.8	146.3
ent. ch	2.12	147.08
W	2.2	146.9

2.11.5 S = S. end ent. ch + Walk on E. Walk covered.

W.	5.5	143.6
ch	5.7	143.4
+2	7.3	141.8
14	6.3	142.8
e	5.8	143.3
14	6.0	143.1
gutter	6.6	142.5
ent. ch.	5.35	143.79
E.	3.7	145.4

235.5

E	3.6	145.6
+7	6.3	142.8
ch	7.1	142.0
+1	8.8	140.3
14	8.0	141.1
e	7.6	141.5
14	8.2	140.9
+9	8.9	140.2
ch	7.6	141.5
W	7.3	141.8

149.14
R.L.O's.

w	9.3	1398
ch	9.3	1398
+2	10.5	1386
"4	9.8	1393
c	9.6	1395
"4	9.4	1395
+2	10.1	1390
ch	9.5	1396
e	5.5	1436
311.5 = N. Line F. ST on R { 80' wide 13' obs 145		
e	10.6	1385
ch	12.2	1369
"4	12.6	1365
c	12.7	1364
"4	13.2	1359
ch	13.3	1358
w	12.9	1362
T.P.	1.67	137.87
N. ch.		
w	2.1	1358
ch	2.2	1357
"4	2.5	1354
c	2.1	1358
"4	1.8	1364
ch	1.6	1363
e	0.9	1370

137.87
N. "4

e	1.1	1368
ch	1.9	1360
"4	2.3	1356
c	2.6	1353
"4	3.0	1349
ch	2.8	1351
w	2.4	1355
F. ST.		
w	2.7	1352
ch	2.8	1351
"4	3.5	1354
c	3.0	1349
"4	2.6	1353
ch	2.3	1356
c	1.7	1362
S. "4		
e	2.5	1354
ch	3.0	1349
"4	3.1	1348
c	3.1	1348
"4	3.8	1341
+4	4.0	1339
ch	3.4	1345
w	3.0	1349

28th ST.

11

137.9

137.87
S.cb

(137.9)

137.87

28th ST.

12

W	3.5	1344	+2	4.5	1334
cl	4.0	1339	+8	4.6	3339
+4	4.5	1334	E	3.4	1345
"4	4.1	1338		75'S = N. End. emb. cl + walk on E, walk covered	
E	3.5	1344	E	3.8	1341
"4	3.5	1344	+4	5.0	1309
cl	3.2	1347	emb. cl	5.35	1305R
E	2.8	1351	gutter	7.0	1309
	00'S. line F. ST. on E		"4	6.5	1314
E	2.2	1357	E	6.4	1315
cl	3.3	1346	"4	6.8	1311
+1	3.9	1340	+5	7.2	1307
"4	3.8	1341	cl	6.7	1312
E	3.8	1341	W	6.6	1313
"4	4.5	1334		125'S.	
+5	4.6	1333	W	8.1	1298
cl	4.2	1337	cl	8.5	1294
W	3.9	1340	+5	8.9	1290
	50'S		"4	8.4	1295.
W	5.6	1323	E	7.9	1300
cl	5.7	1322	"4	7.9	1300
+5	6.4	1315	gutter	8.7	1292
"4	6.1	1315	emb. cl	6.88	13099
E	5.5	1324	+6	6.2	1317
"4	5.7	1322	E	5.2	1327
cl	6.1	1318			

137.87
175' S = S. End: ent. ch. + walk on E walk covered

E	1379	8.0	1299
ent. ch.		8.52	12935
gutter		10.1	1278
14		9.8	1281
C		9.6	1283
14		10.1	1278
+6		11.0	1269
ch		10.4	1275
W		10.0	1279
	200'S		
W		11.2	1267
ch		11.3	1266
+3		12.1	1258
14		11.3	1266
C		10.6	1273
14		10.6	1273
+9		11.1	1268
ch		10.8	1271
+5		10.1	1278
E.		7.8	1301
	220'S		
E		7.9	1300
+4		7.8	1281
+8		10.1	1278
ch		11.5	1264
+1		12.1	1258

137.87

1379

14		
e		
14		
+6		
ch		
W		
	250'S	
W.		
ch.		
+3		
14		
C		
14		
+5		
ch		
+1		
+7		
C		
	280'S	
E		
+3		
+9		
ch		
14		
C		
T.P.	1.23	126.00

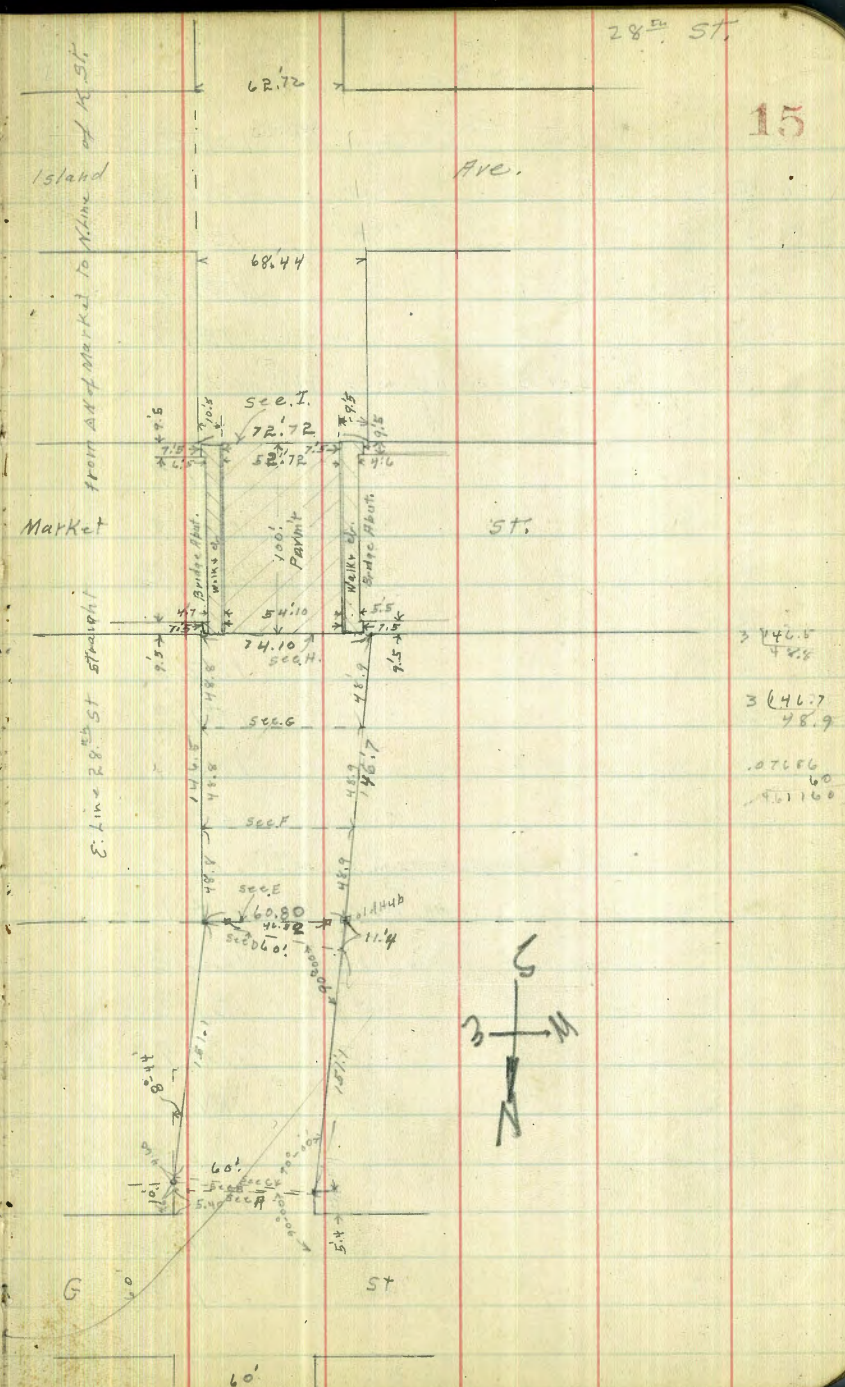
28th ST.

13

11.1	1268
11.3	1266
11.9	1260
12.8	1251
12.2	1257
11.8	1261
12.0	1249
13.2	1247
13.6	1243
13.1	1248
12.3	1256
12.2	1257
12.3	1256
13.0	1249
11.9	1260
11.0	1269
9.7	1282
11.2	1267
12.1	1258
12.6	1253
13.4	1245
13.3	1246
13.4	1245
13.10	124.77

126.00 280'S. (com)			126.00 N. 1/4			28 th ST	
W. 1/4	2.2	1238	W. parmt	3.68	1223E	14	
cl	2.4	1236	cl	3.6	1224		
W.	2.3	1237	1/4	3.5	1225		
310'S = N. Line G. St. paved to W. Returns 1/2 on N. Mt. SW.			E	3.1	1229		
60' wide - 10' elev. - 10' 1/4 g			1/4	2.9	1231		
W	2.9	1231	+8	3.2	1228		
ent. cl	126.0	3.06	12294	cl	2.5	1235	
gutter		3.4	1226	E	1.9	1241	
1/4		3.2	1228	G ST			
E		2.6	1234	E	2.1	1231	
1/4		2.4	1236	cl	2.6	1233	
+8		2.6	1234	+2	3.3	1227	
cl		2.1	1239	1/4	3.1	1229	
+4		1.6	1244	E	3.4	1226	
E		1.0	1250	1/4	3.8	1222	
N. cl. G. St.			cl	3.8	1222		
E		1.6	1244	W. parmt.	3.73	12227.	
cl		2.3	1237	S. 1/4			
1/4		2.9	1231	W. parmt	4.07	12191	
1/4		2.6	1234	cl	4.2	1218	
E		2.8	1232	1/4	4.1	1219	
1/4		3.3	1227	E	3.6	1224	
cl		3.6	1224	1/4	3.3	1227	
W. ent. cl		3.15	12285	+8	3.6	1224	
W. gutter parmt		3.76	12224	cl	3.1	1229	
			E	2.3	1237		

	126.00			
	S. d.			
E	3.0	123.0		
el	3.3	122.7		
+2	3.8	122.2		
1/4	3.5	122.5		
l	3.8	122.2		
1/4	4.4	121.6		
el	4.7	121.3		
W. gutter parmt.	4.63	121.37		
W. curv. el.	4.10	121.90		
	oo = S. line G. St.			
W.	4.0	122.0		
curv. el.	4.20	121.80		
gutter	5.2	120.8		
1/4	4.8	121.2		
l	4.1	121.9		
1/4	3.4	122.2		
+8	4.2	121.8		
el	3.9	122.1		
+4	3.3	122.7		
E	2.9	123.1		
T.P. Mon B.M.	0.10	123.35	2.25	123.75 - 123.79
				32.28' 46
				4 G St
	Sec A = 51.45 of S. line G. St. = 90° from A on N. line 60 wide			
E	123.9	0.7	123.2	
+8		1.0	122.9	
el		2.1	121.8	
1/4		1.8	122.1	



15

28th ST

62.72

62.44

3446.5

3646.7

30766

457160

123.85

Sec A (Con)

123.9

123.85

20's. of Sec. C

28th ST

2.1	121.8	W-25	123.9	13.6	110.316
W 1/4	2.7	121.2	W-17	13.6	110.3
+6	3.5	120.4	W	3.5	120.4
ch	2.2	121.7	+1	3.0	120.9
W	2.2	121.7	+8	3.1	120.8
Sec B = A on W. + E. split Top L			ch	4.0	119.9
W	2.2	121.7	+5	4.9	119.0
ch	2.2	121.7	+8	4.0	119.9
+4	3.5	120.4	1/4	3.7	120.2
1/4	2.7	121.2	c	3.2	120.7
c	2.2	121.7	1/4	3.0	120.9
1/4	1.9	122.0	+9	4.0	119.9
ch	2.1	121.8	ch	3.1	120.8
+2	1.0	122.9	+3	2.2	121.7
E	0.6	123.3	E	1.8	122.1
Sec C = 90° from Line to S. from A on W. line			60's. of Sec. C.		
E	0.8	123.1	E	4.2	119.7
+8	1.1	122.8	+9	4.7	119.2
ch	2.3	121.6	ch	5.6	118.3
1/4	2.0	121.9	1/4	5.0	118.9
c	2.3	121.6	c	5.0	118.9
1/4	2.9	121.0	1/4	5.3	118.6
+6	3.6	120.3	+5	6.7	117.2
ch	2.3	121.6	ch	5.2	118.7
W	2.2	121.7	+8	5.1	118.8
			W	5.8	118.1

123.85

60's. of sec. E. (cont)

W+15	13.7	110 R	+2
W+25	14.5	109.4	+9
	100's. of sec. E.		W
W-25	14.5	109.4	+10
W-12	14.4	109.5	+20
W	7.5	116.4	
+1	6.9	117.0	-20
+8	7.0	116.9	-10
cl	7.5	116.4	W
+5	9.1	114.8	cl
+7	7.8	116.1	+6
14	7.2	116.7	14
c	7.0	116.9	c
14	7.1	116.9	14
cl	7.7	116.2	cl
+4	6.6	117.3	+3
E	6.3	117.6	E.

151.1 S. of sec. G. = sec. D. 90° from A on E. line.

Don E. line	9.1	114.8	E
+5	9.2	114.7	cl.
cl	10.0	113.9	+2
14	10.0	113.9	14
c	9.8	114.1	c
14	10.0	113.9	14
+5	10.8	113.1	+5
cl	9.7	114.2	cl

123.85

28.5 ST

	9.4	113.5	17
	9.2	113.7	
	9.7	113.2	
	15.5	108.4	
	15.8	108.1	
Sec. E = A on E. & W. on Pueblo line 60.8 wide			
	14.7	109.2	
	14.4	109.5	
	10.0	113.9	
	10.0	113.9	
	11.0	112.9	
	10.4	113.5	
	10.0	113.9	
	10.1	113.8	
	10.2	113.7	
	9.4	114.5	
	9.1	114.8	

Sec. F. See Plat.

65.4 W. side
10.2 cl
11.25 145

	11.5	112.4	
	12.1	111.8	
	12.8	111.1	
	12.7	111.2	
	12.3	111.6	
	12.7	111.2	
	13.5	110.4	
	12.9	111.0	

123.85
Sec. F. (Con)

W. ch. + 2	12.1	111 8	
N	12.1	111 8	
T.P.	1.37	112.38	12.84 111.01
Sec. G. sec. Plat			$\left\{ \begin{array}{l} 70' \text{ wide} \\ 10' \text{ ch.} \\ 2.145' \end{array} \right.$
W	112.4	3.1	109 3
ch		3.3	109 1
ly		3.4	109 0
c		3.3	109 1
ly		3.4	109 0
ch		3.2	109 2
E		2.0	110 4
Sec. H = N. Line Market			$\left\{ \begin{array}{l} 74.10 \text{ wide} \\ 10' \text{ ch.} \\ 13.52' \end{array} \right.$
E. Line dirt	3.9		108 5
E + 2.5 = S. edge walk covered with dirt	5.28		107 10 <small>ch. mt. walk</small> No yardage
E. line + 10' = S. ch. mt. ch.	5.38		107 0
gutter N. End pavmt.	6.07		106 31
" " " "	5.70		106 68
c " " "	5.54		106 84
" " " "	5.70		106 68
gutter " " "	6.02		106 36
W. ch. mt. ch.	5.34		107 00
+ 7.5 = W. edge walk covered with dirt	5.36		107 03 <small>ch. mt. walk</small> No yardage
W. ch. + 10' = N. Line on dirt	4.3		108 13

112.38

28th ST.

00 = Sec. I. = S. Line Market $\left\{ \begin{array}{l} 72.77 \text{ wide} \\ 10' \text{ ch.} \\ 13.18' \end{array} \right.$

18

N. Line	5.5		106.9	ent. walk
+ 2.0 = W. Edge walk covered with dirt	6.27		106.11	N. yardage
+ 9.5 = ent. ch.	6.40		105.98	
gutter S. end pavmt.	7.25		105.13	
" " " "	6.64		105.74	
c " " "	6.49		105.89	
" " " "	6.65		105.73	
gutter " " "	7.12		105.26	
ent. ch.	6.28		106.10	
+ 7.0 = S. edge walk covered with dirt	6.07		106.31	ent. walk No yardage
E. Line = 10.5 E. of S. ch. mt. ch.	5.4		107.0	
T.P.	1.68	107.78	6.28	106.10

N.B. ch. mt. curbs & Pavmt at S. Line Market ST are correct width but don't fit properly lines, being 0.5' too far West.

25.5

E	107.8	1.7	106 1	Here
ch		2.3	105 5	///
+ 2		3.3	104 5	
ly		2.5	105 3	
c		2.4	105 4	
"		2.7	105 1	
+ 11		3.0	104 8	
ch		2.4	105 4	
W		2.0	105 8	

107.78

75' S. of Marked

107.8

w	3.2	1046
d	3.7	1041
+4	4.4	1034
"4	3.4	1040
e	3.5	1043
"4	3.6	1042
+12	3.6	1042
el	3.1	1047
e	2.4	1054

100'S

e	3.0	1048
d	4.3	1035
+2	5.3	1025
"4	4.2	1036
e	4.0	1038
"4	4.4	1034
+11	5.0	1028
el	4.3	1035
w	4.1	1037

140'S = N. Line Alley on W.

w	4.9	1029
el	5.3	1025
+3	5.8	1020
"4	5.4	1024
e	5.0	1028
"4	5.2	1026

107.78

28th St.

19

+11	(1078) 6.3	101.5
d	4.8	1030
e	3.1	1047
e	3.6	1042
d	5.2	1026
+2	6.6	1012
"4	5.6	1022
e	5.4	1024
"4	5.8	1020
+10	6.2	1016
w. ent. el. N. end of Alley ret.	5.47	10231
w. line on ent. el. Alley ret.	5.28	10250

200'S

w. ent. el.	6.47	10131
gutter	6.8	1010
+6	7.2	1006
"4	6.7	1011
e	6.3	1015
"4	6.4	1014
+11	7.2	1006
el	5.8	1020
e	4.5	1033

160'S = S. Line Alley on S. el + Walk 110' from W. to Island
5' Walk 3' from el.

107.78

250'.S.

107.8

e	5.4	1024
+5	6.8	1010
ch	7.0	1008
+2	7.8	1000
1/4	7.4	1004
e	7.4	1004
1/4	7.8	1008
+9	8.5	993
gutter	8.0	998
w. ent. cl.	7.60	10018

275'.S.

w. ent. cl.	8.12	9966
gutter	8.6	992
+5	8.9	989
1/4	8.2	998
e	7.9	999
1/4	8.0	998
+10	8.2	996
ch	7.4	1004
+6	7.2	1006
e.	5.0	1028

290'.S.

e	4.5	1033
ch	7.2	1006
+2	8.4	994
1/4	8.2	996

107.78

28th St

107.8

20

e	8.2	996
1/4	8.6	992
+8	9.4	984
gutter	8.2	991
w. ent. cl.	8.48	9930
gutter on N. end grating at E. of 1st St	9.77	9901 - 98.01
1/4	8.9	989
1/4	8.5	993
e	8.2	996
1/4	8.3	995
+8	8.5	994
ch	7.8	1000
e	6.6	1012

28th St 62' wide at N. line - 62.72 wide at S. line of Island.

N. line on diagonal bet. NW & SW. Cor's.

N. cl.		
e	8.0	998
ch	8.6	992
1/4	8.6	992
e	8.5	993
1/4	8.9	989
ch	9.5	983
w. ent. cl.	8.73	9905
w. d. of gutter	9.2	986

107.78

N. 1/4

w	9.4	98 4
cl	9.6	98 R
1/4	9.2	98 6
c	8.8	99 0
1/4	8.8	99 0
cl	8.8	99 0
E	8.6	99 R

± Island Ave

e	8.5	99 3
cl	8.9	98 9
1/4	9.0	98 8
e	8.6L	99.12 Top M.H
1/4	9.3	98.5
cl	9.8	98.0
w	9.6	98.2

S. 1/4

w	9.9	97.9
cl	10.2	97.6
1/4	9.7	98.1
c	9.3	98.5
1/4	9.2	98.6
cl	9.3	98.5
E	9.1	98.7

S. cl

E dirt gutter	use for yardage to N	9.6	98.2
E " cl	" " " " S	8.8	99.0

107.78

28th ST.271
98.13

21

cl	9.8	98 0
1/4	9.2	98 6
c	9.6	98 R
1/4	9.9	97 9
cl	10.5	97 3
W. dirt gutter	10.4	97 4
W. cont. cl	9.62	98 16

80 = S. line - Island Ave

28th ST271
98.13
101.05
101.45

W. cont. cl	9.73	98 05
gutter on quality of cl. in let.	10.74	97 07
1/4	10.2	97 6
c	9.7	98 1
1/4	9.4	98 4
+ 8	10.0	97 8
cl	9.1	98 7
E.	8.1	99 7

chk on BM BP.

T.P. 2.03 98.00 11.81 95.97

cont. walk + d. including return in from Island to 25 1/2 S. 5' walk curb

48.5 S.	48.5 S.		
E	0.0	98.0	
cl	98.0	0.8	97 R
+ 5	2.3	95.7	
1/4	1.4	96 6	
c	1.5	96 5	
1/4	1.8	96 R	

S.W. 28th
+ Island
98.03

98.00
48' E S. of Island (con)

W. gutter	2.0	96 0
W. ent. ch. ok. To N. sunk To S. Walk OK	1.55	96 45
	100's	
W. ch. sunk walk OK		
W. gutter	3.9	94 1
"	3.5	94 5
c	3.3	94 7
"	3.1	94 9
+6	4.1	93 9
ch	2.7	95 3
c	2.2	95 8
	119's	
c	2.7	95 3
ch	3.1	94 9
+5	5.0	93 0
"	3.7	94 3
c	4.0	94 0
"	4.2	93 8
gutter	4.6	93 4
W. ent. ch. ok. to S. - N.G. (sunk) to N. walk OK	3.87	94 13
	160's	
W. ent. ch	5.28	92 72
gutter	5.9	92 1
"	5.6	92 4
c	5.3	92 7
"	5.1	92 8

98.00

28th ST.

22

+1	6.1	91 9
+5	6.1	91 9
ch	4.5	93 5
c	4.0	94 0
	200's	
c	5.3	92 7
ch	5.6	92 4
+4	7.8	90 2
+7	7.8	90 2
"	6.5	91 5
c	6.5	91 5
"	7.0	91 0
gutter	7.3	90 7
W. ent. ch	6.59	91 41
	256's = S. End walk + ch. on W.	
W.	8.1	89 9
W. ent. ch	8.42	89 58
gutter	9.1	88 9
"	8.8	89 2
c	8.4	89 6
"	8.3	89 7
+4	8.2	89 8
+7	9.1	88 9
ch	7.6	90 4
c	7.2	90 8

98.00
300.45 = old N. line J. St (closed)

E	8.7	893
cb	9.0	890
+H	10.0	880
1/4	9.5	885
C	9.6	884
1/4	9.9	881
+8	10.1	879
cb	9.3	887
W	9.2	888
340.4 S		
W	9.6	884
cb	9.9	881
+2	10.7	873
1/4	10.5	875
C	10.20	8780 M.H.
1/4	10.2	878
+7	10.6	874
cb	10.1	879
E	9.5	885
375.4 S = N. End Walk + cb: on E. 5' walk 2.5' from cb.		
E	9.6	884
ent. d	9.95	8805
gutter on grating of cb inlet N. end.		
1/4	10.98	8702
1/4	10.8	872
C	10.7	873
1/4	11.0	870

98.00

28th St.

23

+8	11.1	86.9
cb	10.2	878
W	10.4	876
00 = 380.4 S. of S. line Island Ave = S. line J. St. (closed)		
N.	10.4	876
cb	10.4	876
+2	11.2	868
1/4	11.0	870
C	10.8	872
1/4	10.8	872
gutter on send cb. inlet		
E. ent. cb	9.93	8807
T.P.	4.26 91.38	10.88 87.12
23.5 = N. End. cb. inlet on N. ent. cb. in ok for line at S. end. But 0.25 W. of W. cb. line at N. End.		
E. ent. cb.	91.4	3.54 87.84
gutter		
"	"	4.3 87.1
"	"	4.3 87.1
C	"	4.3 87.1
1/4	"	4.6 86.8
gutter dirt use for yardage		
"	"	4.6 86.8
gutter on opening of cb. inlet		
"	"	4.91 86.47
N. ent. cb.		
"	"	4.09 87.29
W. line		
"	"	4.0 87.4
44.5 = S. End cb. inlet ok for cb. line		
W.	"	4.1 87.3
W. ent. cb.		
"	"	4.48 86.90

91.39
44's. (con)

W. gutter on opening of el inlet	5.21	86.18
W. gutter dirt use this for yardage	4.9	86.5
"	4.4	86.6
"	4.5	86.9
"	4.5	86.9
gutter	4.3	87.1
E. cnt. el.	3.65	87.73

100's = N. End. cnt. el. + walk on W. 5' walk 2.5' from el.
36.05 bet. els.

E. cnt. el.	4.13	87.25
gutter	4.9	86.5
"	4.4	86.6
"	4.4	86.6
"	5.0	86.4
gutter	5.3	86.1
W. cnt. el.	4.84	86.54
W. Line	4.4	87.0

150's 35.5 Bet. els

W. cnt. el.	4.95	86.43
gutter	5.3	86.1
"	5.2	86.2
"	5.0	86.4
"	5.1	86.3
gutter	5.3	86.1
E. cnt. el.	4.40	86.98

91.39
200's. 34.7 bet. els.

E. cnt. el.	4.81	86.57
gutter	5.3	86.1
"	5.4	86.0
"	5.3	86.1
"	5.5	85.9
gutter	5.7	85.7
W. cnt. el.	5.16	86.22

250's. 34.1 bet. els.

W. cnt. el.	5.35	86.03
gutter	5.6	85.8
"	5.8	85.6
"	5.5	85.9
"	5.6	85.8
gutter	5.7	85.7
E. cnt. el.	5.17	86.21

300's = N. Line K. ST + N. Line Paymt. 33.2 Bet. els.

E. cnt. el.	5.45	85.94
gutter paymt	6.09	85.27
"	5.66	85.78
"	5.42	85.96
"	5.51	85.87
gutter	6.21	85.17
W. cnt. el.	5.47	85.91
T.P.	2.67	87.03
	7.02	84.36

28th ST.

24

87.03
 S. Line K St. (on Diagonal)
 28th St - 60' wide 10' chs - 10' lvs 5' walks 2.5' from ch.

E. ent. ch	2.15	84.88
gutter part	87.03 2.74	84.29
1/4 "	2.44	84.59
c "	2.26	84.77
1/4 "	2.50	84.53
gutter 1/11	2.98	84.05
W. ent. ch	2.37	84.66
00 = S. line K. on W. 1/2 S. of S. line K. on E. = 90° from line of 28 th St		
33' S of 00.		
2.5 W. of W. ch = E. line walk	2.94	84.09
W. ent. walk ok. N. sunk to S.	3.03	84.00
gutter	3.8	83.2
1/4	3.4	83.6
c	3.1	83.9
1/4	3.3	83.7
gutter	3.6	83.4
E. ent. ch ok.	2.88	84.15
51.5 S. of 00		
2.5 E. of E. ch = W. edge walk	3.15	83.88
E. ent. ch ok. N. sunk to S.	3.27	83.76
gutter	4.2	82.8
1/4	3.6	83.4
c	3.5	83.5
1/4	3.8	83.2
+ 7	4.4	82.6
gutter ch out	3.6	83.4

87.03

+ 2.5 = E. edge walk. OK
 100.5 of 00
 2.5 W. of W. ch = E. line walk
 gutter - ch gone (870)
 + 2
 1/4
 c
 1/4
 gutter ch. gone
 + 2.5 = W. edge walk.
 139.5 S. of 00. 7' = N. Alley Returns N+2.
 139.4 S. of 00
 E. ent. ch. ok
 c. dirt in alley
 E. 2.5 = W. edge walk ent. ch. ok
 E. 2.5 dirt in Alley
 curb gone from E. 2.5 to E. ch.
 E. gutter
 1/4
 c
 1/4
 N. gutter
 W. N. S. from E. edge walk to E. ch.
 2.5 W. of W. ch = E. edge walk Alley ch OK.
 " " " " dirt in Alley
 W. Top ent. ch ok
 W. dirt in Alley

28th St. 25

3.26	83.77
4.30	82.73
5.1	81.9
5.4	81.6
4.8	82.2
4.6	82.4
4.6	82.4
5.1	81.9
4.23	82.80
4.83	82.20
5.2	81.8
4.94	82.09
5.7	81.3
6.1	80.9
5.5	81.5
5.4	81.6
5.4	81.4
6.2	80.8
5.16	81.87
5.7	81.3
4.88	82.15
5.5	81.5

87.03

144' S. of 00 = Alley on W.

w	5.7	81.3
eb	4.3	80.7
1/4	5.6	81.4
e	5.5	81.5
1/4	5.6	81.4
eb	6.0	81.0
e	5.5	81.5
144' S. on W. = S. Alley Ret.		
149.35 " E = Alley on E.		
e	5.6	81.4
eb	6.1	80.9
1/4	5.7	81.3
e	5.5	81.5
1/4	5.8	81.2
gutter - eb gone	6.4	80.6
w. eb + 2.5 = e. edge walk ent. eb. ret. OK.	5.35	81.68
" " " on dirt in Alley	6.0	81.0
w. line ent. eb. ret. OK	5.08	81.95
" " on dirt in Alley	5.6	81.4
159.3 S. of 00 = S. Alley Ret on E.		
2.5 w. of w. eb = e. line walk OK	5.55	81.52
gutter eb gone	6.3	80.7
+ 3	6.7	80.3
1/4	6.0	81.0
e	5.7	81.3
1/4	5.9	81.1
gutter	4.3	80.7

87.03

28th 5K

26

e. ent. eb. OK.	5.43	81.6
+ 2.5 dirt in Alley	5.8	81.3
e. ent. eb. OK	5.21	81.82
e. dirt	5.5	81.5
200' S. of 00.		
2.5 E. of e. eb = V. edge walk OK.	6.13	80.90
e. ent. eb. OK. To N. - N.E. to S.	6.25	80.78
gutter	7.0	80.0
1/4	6.8	80.2
e	6.5	80.5
1/4	6.9	80.1
+ 6	7.5	79.5
gutter - eb gone	7.0	80.0
+ 2.5 = e. edge walk OK.	6.32	80.71
228.5 of 00		
w. eb - 2.5 = e. edge walk OK	6.88	80.15
gutter - eb. gone	7.4	79.6
+ 1	7.8	79.2
1/4	7.3	79.7
e	7.1	79.9
1/4	7.2	79.8
gutter	7.6	79.4
e. ent. eb. OK. To S. - N.E. to W.	6.86	80.17
+ 2.5 = w. edge walk OK.	6.78	80.25

87.03
R.B. S. 07 0.0

E. ent. cl. OK	7.94	79 09
gutter	8.7	78 3
"	8.2	78 8
"	8.0	79 0
"	8.2	78 8
"	8.8	78 2
gutter	8.4	78 6
W. ent. cl. O.K. to S. + N.G. to N.	8.11	78 92
+ 2.5 = E. Edge walk O.K.	7.97	79 06
300.50 of 0.0 OK E } N. Line L. St. Paved. 294.35 " " " W }		
W. ent. cl.	8.40	78 63
W. gutter pavm'ts	9.05	77 98
" "	8.85	78 18
" "	8.67	78 36
" "	8.73	78 80
gutter "	8.48	78 15
E. ent. cl.	8.21	78 82
T.P.	2.95	80.30
	7.64	77.35
curb walk O.K. L to Imperial 00 = S. Line L St		
E. ent. cl.	3.00	77 3
gutter pavm't	80.3	3.67
" "	3.44	76 86
" "	3.32	76 98
" "	3.55	76 75
gutter "	4.07	76 23
W. ent. cl.	3.54	76 76

80.30
50 S.

W. ent. cl.	4.07	76 23
gutter	4.6	75 7
"	4.4	75 9
"	4.0	76 3
"	4.0	76 3
gutter	4.3	76 0
E. ent. cl.	3.56	76 74
100'S		
E. ent. cl.	4.14	76 16
gutter	5.1	75 2
"	4.6	75 7
"	4.6	75 7
"	4.8	75 5
gutter	5.2	75 1
W. ent. cl.	4.66	75 64
140'S = N. Line Alley on E.		
W. ent. cl.	5.09	75 21
gutter	5.9	74 4
"	5.3	75 0
"	5.0	75 3
"	5.1	75 2
gutter	5.4	74 9
E. ent. cl.	4.50	75 8
E. Line - ent. cl. ret.	4.8	75 5
E. Line gutter	4.32	75 98

28th St.

27

89.30

150 S. = Alley on E

e	5.0	753
gutter	5.5	748
"	5.2	751
e	5.2	751
"	5.5	748
gutter	6.0	743
W. ent. cl.	5.21	7509

160' S. = s. line Alley on E.

N. ent. cl.	5.32	7498
gutter	6.1	742
"	5.6	747
e	5.2	751
"	5.3	750
gutter	5.6	747
E. ent. cl.	4.77	7553
E. line ent. cl.	4.55	7575
" " gutter	5.1	752

200' S.

E. ent. cl.	5.17	7513
gutter	6.0	743
"	5.7	746
e	5.6	747
"	6.2	741
gutter	6.5	738
W. ent. cl.	5.74	7456

80.30

250 S

W. ent. cl.	6.32	7398
gutter	7.2	731
"	6.6	737
e	6.1	742
"	6.3	740
gutter	6.3	740
E. ent. cl.	5.71	7459

300' S. = N. line Imperial Ave.

E. ent. cl.	6.22	7408
gutter	7.0	733
"	6.9	734
e	6.7	736
"	7.2	731
gutter	7.5	728
W. ent. cl.	6.90	7340

314' S. = N. line Pavmt

W. line ent. cl.	6.95	7335
" " pavmt	7.73	7257
E. line "	7.66	7264
" " "	7.55	7275
e "	7.43	7287
" " "	7.31	7299
E. line "	7.20	7310
E. line "	7.10	7320
" " ent. cl.	6.27	7403

T, P.

0.18

75.48

5.00

75.30 = 75.29

28th ST.

28

BM. Top Mt. SE. 20' Imperial.

75.48

S. of line Imperial & S. line parvnt.

E. line cont. el.	75.5	2.54	72.94
" " gutter parvnt		3.06	72.42
el.		3.14	72.34
ly		3.27	72.21
e		3.40	72.08
ly		3.41	72.07
el.		3.51	71.97
N. Line gutter "		3.63	71.85
" " cont. el.		3.13	71.35

oo = S. line Imperial

w. cont. el.		3.08	72.40
gutter		4.0	71.5
ly		3.7	71.8
e		3.4	72.1
ly		3.4	72.1
gutter		3.6	71.9
E. cont. el.		2.64	72.84

50' S. on E } = 90° to 28th st
51' S. " W }

E. cont. el.		3.50	71.98
gutter		4.5	71.0
ly		4.2	71.3
e		4.1	71.4
ly		4.3	71.2
gutter		4.9	70.6
w. cont. el.		3.96	71.52

75.48

100' S. on E } = 40° from 28th
101' " W }28th st

29

w. cont. el.		4.78	70.70
gutter	155	5.6	69.9
ly		5.0	70.5
e		4.7	70.8
ly		4.8	70.7
gutter		5.2	70.3
E. cont. el.		4.32	70.16
		5.32	

14.1' S on W }
140' S. on E } = N. Alley Ret on E, see at 90° from 28th

E. line cont. el.		4.76	70.72
" " dirt		5.4	70.1
E. cont. el.		4.97	70.51
gutter		5.9	69.6
ly		5.5	70.0
e		5.5	70.0
ly		5.9	69.6
gutter		4.1	69.4
w. cont. el.		5.44	70.04

151' S on W }
150' S " E } = Alley on E

w. cont. el.		5.60	69.88
gutter		6.4	69.1
ly		6.1	69.4
e		5.6	69.9
ly		5.7	69.8
gutter		6.0	69.5
E		5.6	69.9

160' S. on E } 75.48
 161' S. on W } S.P. by Ret. on E sec at 90° from 28th

E. line ent. ch	5.18	7030
" " dirt	5.6	699
E. ent. ch	75.5	7018
gutter	6.2	693
"	5.9	696
"	5.8	697
"	6.3	692
gutter	6.8	687
W. ent. ch	5.76	6972

200' S on E } at 90° from 28th
 201' S on W }

W. ent. ch	6.47	6901
gutter	7.5	680
"	6.9	686
"	6.4	691
"	6.6	689
gutter	7.1	684
E. ent. ch	6.13	6935

250' S on E } 90° from 28th
 252' S on W }

E. ent. ch	7.00	6848
gutter	7.7	678
"	7.4	681
"	7.3	682
"	7.7	678
gutter	8.1	674
W. ent. ch	7.26	6822
T.P.	4.41	71.73
	8.16	67.32

71.73

28th ST

290' S. on E. = N. end 10' ch. inlet

30

E. ent. ch	71.73	3.94	6779
gutter hip ch. inlet		4.95	6678
	300' S. on N. & E. = N. line N. ST	80' wide 14' ch 13' 1/2	
W. ent. ch		4.21	6752
gutter		5.0	667
"		4.6	67.1
"		4.5	67.2
"		4.6	67.1
gutter on hip at S. end ch. inlet		4.96	6677

S. End. ent. ch. - No. Return on N.E. Cor. 3.94 6779

E. line 3.8 67.9

N.W., S.W., & S.E. Returns with ch. inlets in each 12" ch Face

N. ch

E	4.6	671
ch	4.8	669
"	4.6	67.1
"	4.7	670
"	4.7	670
ch	5.2	665
W. line ent. ch	4.30	674
" " gutter	5.2	665
N. " "		
W	5.0	66.7
ch	4.9	66.8
"	4.7	670
"	4.7	670

71.73

N. 1/4 (con)

E 1/4	4.4	669
el	4.8	669
E	4.6	671

N. St.

E	4.6	671
el	4.7	670
1/4	4.6	671
e	4.7	670
1/4	4.6	671
el	4.7	670
W	4.9	668

S. 1/4

W	5.2	665
el	5.0	667
1/4	4.9	668
e	5.0	667
1/4	5.1	666
el	5.2	665
E	5.2	665

S. el

E. line ext. el	5.12	66.61
" " gutter	4.1	65.6
el	5.8	65.9
1/4	5.3	66.4
e	5.2	66.5
1/4	5.2	66.5

71.73

28th St

w. el	6.0	65.7
W. line ext. el	5.22	66.51
" " gutter	6.0	65.7

S. line N. St.

W. ext. el	5.20	66.5
gutter	6.0	65.7
1/4	5.3	66.4
e	5.3	66.4
1/4	5.2	66.5
gutter	5.7	66.0
E. ext. el	5.05	66.68

50' S. on E } at 90° from 28th St.
51.7 S 11 W

E. ext. el	4.85	66.88
gutter	5.6	66.1
1/4	4.8	66.9
e	4.8	66.9
1/4	4.9	66.8
gutter	5.6	66.1
W. ext. el	4.80	66.93

116' S. on E = P.C. 10' Rad. Bat into valley Place H.W. of N. line

W. ext. el	4.32	67.41
gutter	4.8	66.9
1/4	4.5	67.2
e	4.4	67.3
1/4	4.5	67.2
gutter dirt	5.1	66.6
gutter lip of el. inlet	5.55	66.68
E. ext. el	4.52	67.21

71.73

126' S. on E = N. of Line Valley Place

E. line ent. cl & dirt	4.40	67.33
" " hip cl. inlet no yardage	5.4	66.3
cl	5.2	66.5
"	4.5	67.2
e	4.4	67.3
"	4.5	67.2
gutter	4.8	66.9
W. ent. cl.	4.24	67.49

133' S. on E = N. 1/4

W. ent. cl.	4.15	67.58
gutter	4.8	66.9
"	4.4	67.3
e	4.3	67.4
"	4.5	67.2
cl	4.7	67.0
E	4.2	67.5

140' S. on E = 1/4

e	4.2	67.5
cl	4.7	67.0
"	4.4	67.3
e	4.3	67.4
"	4.4	67.3
gutter	4.6	67.1
W. ent. cl.		

in driveway

71.73

147' S. on E = S. 1/4

W. ent. cl.	4.02	67.71
gutter	4.7	67.0
"	4.3	67.4
e	4.2	67.5
"	4.3	67.4
gutter	4.7	67.0
E. line	4.2	67.5

154' S. on E = S. cl. line Valley Place

E. line ent. cl & gutter	4.31	67.42
cl	4.7	67.0
"	4.3	67.4
e	4.2	67.5
"	4.3	67.4
gutter	4.7	67.0
W. ent. cl.	3.97	67.76

164' S. on E = 4.5. of S. Line Valley Place = P.C. 10' Rad. Ret.

W. ent. cl.	3.92	67.81
gutter	4.7	67.0
"	4.2	67.5
e	4.1	67.6
"	4.3	67.4
gutter	4.8	66.9
E. ent. cl.	4.35	67.38

28th St.

32

71.73
 200' S of N. St. on E } sections at 90° from 28th
 201.75 " " " " " " W

E. ent. cl	4.18	67.55
gutter	4.8	66.9
"	4.1	67.6
c	3.9	67.8
"	4.1	67.6
gutter	4.4	67.3
W. ent. cl.	3.60	68.1
225.35 on E } - N. line Alley on W. 237.05 " " W		
N. line ent. cl + dirt	3.05	68.68
ent. cl	3.25	68.48
gutter	3.9	67.8
"	3.7	68.0
c	3.7	68.0
"	4.0	67.7
E gutter	4.4	67.3
E. ent. cl. in driveway		
250' S on W = E. Alley on W.		
E line	3.93	67.80
gutter	4.5	67.2
"	3.9	67.8
c	3.7	68.0
"	3.7	68.0
gutter	3.8	67.9
W. ent. cl.	2.7 2.7	69.0

71.73

28th St

263' S. on W = N. line Alley on W.

33

N. line ent. cl + dirt	2.73	69.0
gutter	3.7	68.0
"	3.6	68.1
c	3.6	68.1
"	3.8	67.9
gutter	4.5	67.2
E. ent. cl	3.90	67.8
272.5 on W = S. Alley Ret on W. cl. line - 28 th St.		
E. ent. cl	3.86	67.81
gutter	4.6	67.1
"	3.6	68.1
c	3.4	68.3
"	3.4	68.3
gutter	3.8	67.9
W. ent. cl.	3.02	68.71
300' S. on E = N. line Webster Ave { 80' W of E 114' cl. S 12' " "		
W. ent. cl	2.75	68.98
gutter	3.5	68.2
"	3.2	68.5
c	3.2	68.5
"	3.5	68.2
gutter	4.3	67.4
E. ent. cl	3.70	68.0

71.73
N. ch. Webster

E. line ent. ch	3.72	68 01
" " gutter parvmt	4.38	67 35
ch	4.1	67 6
"y	3.3	68.4
e	3.1	68 6
"y	3.1	68 6
gutter	3.2	68 7
W. ent. ch	2.61	69 12

No. 114

W. ent. ch	2.51	69 22
gutter	3.1	68 6
"y	3.0	68 7
e	3.0	68 7
"y	3.2	68 5
ch	3.5	68 2
E. parvmt.	3.91	67 82

4-

E. parvmt	3.59	68 14
ch	3.2	68 5
"y	3.0	68 7
e	2.8	68 9
"y	2.8	68 9
gutter	3.1	68 6
W. ent. ch	2.34	69 39

71.73
S. 114

W. ent. ch	2.18	69 55
gutter	3.0	68 7
"y	2.6	69 1
e	2.5	69 2
"y	3.0	68 7
ch	3.3	68 4
line Ent parvmt	3.62	68 11

S. ch.

line Ent gutter parvmt.	3.80	67 93
E. line ent. ch	3.16	68 57
ch.	3.7	68.0
"y	2.8	68.9
e	2.5	69.2
"y	2.5	69 2
gutter	2.9	68.8
W. ent. ch	2.05	69 68

00 = S. line of Webster Ave on E

W. ent. ch	1.89	69 84
gutter	2.8	68 9
"y	2.4	69 3
e	2.4	69 3
"y	2.8	68 9
gutter	3.8	67 9
E. ent. ch	2.70	69 0

T.P. Top Hndt 6.91 77.94 0.70 71.03

28th St

34

S. E. 28th
& Webster
11.07

77.94

70's. of 00 = 90° from N.W. Cor. 28th + Everett.

E. cnt. eb	77.94	7.80	70 14
gutter		8.4	69 5
"		7.8	70 1
e		7.8	70 1
"		7.8	70 1
gutter		8.2	69 7
W. cnt. eb		7.25	70 59

85's = PE N. of Everett + W. Line 28th St. sec at 90°

W. line cnt. eb		7.29	70 65
" " gutter parmt		7.93	70 01
eb		7.8	70 1
"		7.6	70 3
e		7.4	70 3
"		7.7	70 2
gutter		8.2	69 7
E. cnt. eb		7.56	70 38

98.75 S. = N. 14

sec at 90° -

E. cnt. eb		7.30	70 64
gutter		8.0	69 9
"		7.5	70 4
e		7.3	70 6
"		7.5	70 4
eb		7.6	70 3
W. Line parmt		7.38	70 56

77.94

112.50 S = E Everett

28th St

35

W. parmt.		6.98	70 96
eb		7.2	70 7
"		7.1	70 8
e		7.4	70 5
"		7.4	70 5
gutter		7.7	70 2
E. cnt. eb		7.14	70 80

126.25 S = S. 14 sec at 90° 00

E. cnt. eb		6.86	71 08
gutter		7.6	70 3
"		7.6	70 8
e		6.8	71 1
"		6.8	71 1
eb		6.8	71 1
W. parmt		6.82	71 1R

140.5 = (P.E. S. W. of Everett + W. Line 28th St.)
N. Alley Ret. on E. of 28.

W. line cnt. eb		6.23	71 71
" " parmt		6.88	71 06
eb		6.5	71 4
"		6.6	71 3
e		6.4	71 5
"		6.8	71 1
gutter		7.3	70 6
E. cnt. eb		6.60	71 3
E. line cnt. eb also ground		6.32	71 6R

77.94
150's = $\frac{1}{2}$ Alley on E.

E. line	6.2	717
eb	6.6	713
"4	6.5	714
e	6.10	7184 M.H.
"4	6.5	714
gutter	6.5	714
W. ent. ch. ret.	6.10	7184

157's = 90°00' from S.W. Cor. 28th + Everett.

W. ent. ch.	6.01	7193
gutter	6.5	714
"4	6.4	715
e	6.2	717
"4	6.4	715
eb	6.6	713
E	6.2	717

160's = S. line Alley on E.

E. line ent. ch.	6.01	7193
" " ground	6.3	716
e. ent. ch.	6.20	7174
gutter	6.7	712
"4	6.4	715
e	6.1	718
"4	6.4	715
gutter	6.5	714
W. ent. ch.	5.96	7198

77.94
182's = N.W. Cor. 28th + Sampson Sec at 90°00'

36

W. ent. ch.	5.44	7250
gutter	6.4	715
"4	6.1	718
e	5.9	720
"4	6.2	717
gutter	6.5	714
E. ent. ch.	5.93	7201

197.6's = P.I. N. ch. line Sampson + W. line 28th.

E. ent. ch.	5.67	7227
gutter	6.4	715
"4	6.0	719
e	5.6	723
"4	5.7	722
eb	5.8	721
W. line ent. ch.	5.21	7273
" " parmt.	5.86	7208

213.2 = N. 1/4 Sampson, sec. at 90°00'

W. line parmt.	5.19	7275
eb	5.4	725
"4	5.1	728
e	5.3	726
"4	5.8	721
gutter	6.2	718
E. ent. ch.	5.40	7254

77.94
228.8 S = E. Sampson sec at 90°

E. emb. cl	5.16	72 78
gutter	6.0	71 9
"y	5.5	72 4
c	5.0	72 9
"y	4.7	73 2
cb	4.8	73 1
W. parmt	4.60	73 3

244.4 S = S. 1/4 Sampson produced from W.

W. parmt.	4.13	73 81
cb	4.4	73 5
"y	4.5	73 4
c	4.7	73 2
"y	5.1	72 8
gutter	5.7	72 2
E. emb. cl.	4.88	73 06

260.5 S = S. cl. line Sampson produced from W. sec at 90°

E. emb. cl	4.64	73 30
gutter	5.3	72 6
"y	4.8	73 1
c	4.4	73 5
"y	4.1	73 8
cb	4.2	73 7
W. parmt	3.71	74 23

300.5 S = N. line Clay Ave

W. parmt	2.92	75 02
cb	3.2	74 7

77.94

285 ST

37

"y	3.3	74 6
c	3.7	74 2
"y	4.1	73 8
gutter	4.5	73 4
E. emb. cl	4.01	73 93

314.5 = N. cl. Clay

E. line emb. cl	3.87	74 07
" " parmt.	4.53	73 41
cb	4.0	73 9
"y	3.7	74 2
c	3.3	74 6
"y	3.1	74 8
cb	2.9	75 0
W. parmt	2.70	75 2

327.5 = N. "y

W. parmt	2.56	75 38
cb	2.7	75 2
"y	2.9	75 0
c	3.0	74 9
"y	3.5	74 4
cb	3.7	74 2
E. parmt	3.94	74 0

340.5 = cl. Clay

E. parmt	3.44	74 46
cb	3.5	74 4
"y	3.2	74 7

77.94

340's = 4 Clay (con)

C	2.9	750
W. 1/4	2.6	753
cl	2.5	754
W. parmt.	2.48	7546
353's = S. 1/4 Clay		
W. parmt.	2.48	7546
cl	2.3	756
1/4	2.6	753
C	2.7	753
1/4	3.1	748
cl	3.2	747
E. parmt.	3.44	7450

366's = S. cl. Clay

E. line emt. cl	2.84	7510
" " parmt.	3.48	7446
cl	3.2	747
1/4	3.0	749
C	2.7	752
1/4	2.5	754
W. cl.	2.3	756
W. line parmt.	2.60	753
" " emt. cl	1.93	7601

376's = S. end 10' Rad. Ret.

W. emt. cl Brk. (Not at S. line)	2.10	7584
----------------------------------	------	------

77.94

380's = S. line clay = 00

W. emt. cl	1.96	7598
gutter	2.5	754
1/4	2.4	755
C	2.5	754
1/4	2.7	752
gutter	3.4	745
E. emt. cl Brk	2.96	7498
50's		
E. emt. cl	1.09	7685
gutter	1.9	760
1/4	1.2	767
C	0.8	771
1/4	0.8	771
gutter	1.0	769

W. emt. cl	0.14	7780
------------	------	------

T.P. 12.35 89.74 0.55 77.39

100's

W. emt. cl	89.74	10.08	7966
gutter		10.8	789
1/4		10.7	790
C		10.7	790
1/4		11.2	785
gutter		11.7	780
E. emt. cl		11.03	7871

28th St

38

	89.74		
	140.6 S = N. Line Alley on E.		
E. line ent. ch	9.12	80.62	
" " dirt	89.74	80.1	
" " ent. ch	9.48	80.26	
gutter	10.3	79.4	
" "	9.5	80.2	
" "	9.2	80.5	
" "	9.2	80.5	
gutter	9.4	80.3	
W. ent. ch	8.52	81.22	
	150.6 S = $\frac{1}{2}$ Alley		
W. ent. ch	8.16	81.58	
gutter	8.9	80.8	
" "	8.7	81.0	
" "	8.8	80.9	
" "	9.2	80.5	
gutter	9.8	79.9	
E. line	9.3	80.4	
	169.6 150.6 S = S. Line Alley on E.		
E. line ent. ch	8.30	81.44	
" " dirt	8.8	80.9	
E. ch line gutter	9.5	80.2	
0.7 S. of Above = ent. ch. at Alley Ret	8.56	81.18	(S. Alley Ret at E. end of 150.7 S. of Alley line)
" "	8.9	80.8	
" "	8.5	81.2	
" "	8.3	81.4	
gutter	8.6	81.1	
W. ent. ch	7.78	81.96	

	89.74		28.74 ST
See →	177.7 S. = N.W. Cor 28 th & Franklyn		
	183.5 = P.C. 10' Rad. ch Ret. N.W. Cor. 28 th & Franklyn		39
	= BTK. 12' ch. grade W. & E.		
W. ent. ch	89.74	6.89	82.85
gutter		7.9	81.8
" "		7.6	82.1
" "		7.7	82.0
" "		8.2	81.5
gutter		8.8	80.9
E. ent. ch.		7.85	81.89
	193.5 = P.E. N. ch Franklyn + W. line 28 th (see at 90°)		
E. ent. ch		7.65	82.09
gutter		8.4	81.3
" "		7.9	81.8
" "		7.4	82.3
" "		7.3	82.4
ch		7.4	82.3
W. line gutter		7.4	82.3
" " ent. ch.		6.84	82.90
	210.4 S = N. 1/4		
W.		6.9	82.8
ch		6.9	82.8
" "		6.9	82.8
" "		7.1	82.6
" "		7.6	82.1
gutter		8.0	81.7
E. ent. ch		7.32	82.42

89.74

227.8 S = E Franklyn on W.

E. ent. ch	7.04	82.70
gutter	7.5	82.2
"	7.3	82.4
e	6.8	82.9
"	6.6	83.1
ch	6.5	83.2
w	6.3	83.4

245.2 S = S. "4

w	6.3	83.4
ch	6.2	83.5
"	6.4	83.3
e	6.4	83.3
"	6.8	82.9
gutter	7.3	82.4
E. ent. ch	6.73	83.01

262.6 S = P.I. W. line 28" x S. ch. Line Franklyn on E.
see at 90°-00

E. ent. ch	6.44	83.30
gutter	6.9	82.8
"	6.5	83.2
e	6.2	83.5
"	6.1	83.6
ch	6.2	83.5
W. line gutter	6.2	83.5
w " ent. ch.	5.80	83.94

89.74

240.6 S = S.W. Cor Franklyn + 28th street 90°24th St

40

W. ent. ch	5.63	84.11
gutter	6.2	83.54
"	6.0	83.7
e	5.9	83.8
"	6.1	83.6
gutter	6.6	83.1
E. ent. ch	6.18	83.56

301.4 S = N. Line Franklyn on E.

80' wide
20' ch
10' up.

E. ent. ch	5.85	83.89
gutter	6.3	83.4
"	5.9	83.8
e	5.7	84.0
"	5.8	83.9
gutter	6.0	83.7
W. ent. ch	5.40	84.34

N. ch.

W. ent. ch	5.13	84.61
gutter	5.7	84.0
"	5.5	84.2
e	5.5	84.2
"	5.5	84.2
ch	6.0	83.7
E. line gutter	6.0	83.7
" " ent. ch	5.71	84.03

89.74
N. 1/4 Franklyn on E.

E	5.5	84.2
el	5.7	84.0
1/4	5.4	84.3
e	5.3	84.4
1/4	5.4	84.3
gutter	5.6	84.1
w. ent. el.	4.98	84.76
4		
w. ent. el.	4.87	84.87
gutter	5.4	84.3
1/4	5.2	84.5
e	5.1	84.6
1/4	5.2	84.5
el	5.5	84.2
E	5.0	84.7
E	4.9	84.8
el	5.2	84.5
1/4	5.0	84.7
c	4.9	84.8
1/4	5.1	84.6
gutter	5.3	84.9
w. ent. el.	4.73	85.01
s. el.		
w. ent. el.	4.57	85.15
gutter	5.2	84.5
1/4	4.9	84.8

89.74

28th St

e	4.7	85.0
1/4	4.8	84.9
el	5.1	84.6
e. line ent. el.	4.45	85.29
" " gutter	5.0	84.7
00 = S. Line Franklyn on E.		
E. ent. el.	4.24	85.50
gutter	4.7	85.0
1/4	4.4	85.3
e	4.3	85.4
1/4	4.5	85.2
gutter	5.0	85.7
w. ent. el.	4.24	85.50
80.45 = N. Line Alleg on W.		
w. line ent. el.	2.10	87.64
" " dirt	2.5	87.24
w. ent. el.	2.36	87.38
gutter	3.1	86.6
1/4	2.4	87.1
e	2.3	87.4
1/4	2.5	87.2
gutter	2.4	87.3
e. ent. el.	1.85	87.89

89.74
93.20 S = E Alley on W.

E. ent. cl	1.45	88.29
gutter	2.0	87.7
"	2.2	87.5
c	2.0	87.7
"	2.3	87.4
gutter	2.8	86.9
W.	2.2	87.5

106.05 = S. line Alley on W. line

W. line T.R.	6.18	93.88	2.04	87.70
W. line ent. cl			5.57	88.31
" " dirt		93.88	6.1	87.8
cl			6.7	87.2
"			6.2	87.7
c			5.8	88.1
"			5.9	88.0
gutter			6.0	87.9
E. ent. cl.			5.20	88.7

114.4 S = P.I. W. cl. 28th S. cl. rd. of Alley on W.

E. ent. cl	4.98	88.90
gutter	5.8	88.1
"	5.8	88.1
c	5.6	88.3
"	6.0	87.9
gutter	6.7	87.2
W. ent. cl.	5.65	88.23

93.48
139.6 S = N. line Alley on E.

28th St.

42

W. ent. cl	5.15	88.73	
gutter	93.9	6.2	87.7
"	5.5	88.4	
c	5.0	88.9	
"	5.2	88.7	
gutter	5.2	88.7	
E. ent. cl	4.22	89.66	
E. line ent. cl.	4.03	89.85	
" " dirt	4.3	89.6	

149.6 S = E Alley

E	4.3	89.6
cl	4.9	89.0
"	5.1	88.8
c	4.70	89.18 _{p.M.H.}
"	5.4	88.5
gutter	5.9	88.0
W. ent. cl.	4.91	88.97

159.6 S = S. line Alley on E.

W. ent. cl	4.84	89.04
gutter	3.9	88.0
"	5.3	88.6
c	4.8	89.1
"	5.0	88.9
gutter	4.9	89.0
E. ent. cl	4.21	89.67
E. line ent. cl	3.94	89.94
" " dirt	4.3	89.6

93.88
200.15

E. ent. cl	3.88	90.0
gutter	(93.9) 4.9	89.0
"4	4.6	89.3
c	4.7	89.2
"4	4.8	89.1
gutter	5.3	88.6
W. ent. cl	4.53	89.35
	250.15	
W. ent. cl	4.69	89.69
gutter	5.9	88.0
"4	4.3	89.6
c	4.1	89.8
"4	3.9	90.0
gutter	4.3	89.6
E. ent. cl	3.38	90.50
	288' s. on W } = N. line Pavmt on Ocean View Blvd 300' s. " 2 }	
E. ent. cl	2.84	91.04
gutter pavmt.	3.61	90.27
"4 "	3.54	90.34
c "	3.67	90.21
"4 "	4.00	89.88
gutter "	4.53	89.35
W. ent. cl.	3.29	90.09
chk. on B.M. 8.P. N.E. 28 th + Ocean View Blvd	2.83	91.05 = 91.05

3-5-29
27th St
28th St
29th St

28th St. X Sec Ocean View Blvd to National 28th St
Supplemental to Notes on 28th St Book 1192 Page 34

43

B.M.	1.69	92.74	91.05
	See B. Book 1192, Page 35 = S. line Ocean View Blvd on diagonal from BIK Cor. to BIK Cor. 1.8 N. of Sec. B on E. cl. line } = S. Edge Pavmt. 3.2 N. of Sec. B on W. cl. line }		
E. ent. cl	9.274	2.71	90.03
gutter Pavmt.		3.41	89.33
"4 "		3.13	89.61
c "		2.94	89.80
"4 "		3.00	89.74
gutter "		3.33	89.41
W. ent. cl.		2.70	90.04
	2.8 N. of Sec. B, Book 1192 Page 35, on W. line 28 th St = P.I. W. line 28 th St + ent. cl. Return N. cl. Harrison.		
W. line ent. cl.		7.79	84.95
W. " gutter pavmt.		8.54	84.20
	See B. Book 1192, Page 25, S. cl. Harrison		
W. line ent. cl		9.62	83.12
" " gutter Pavmt.		10.18	82.56 chK
T.P.	0.10	84.15	84.05
	38' N. of N.W. Cor. 28 th + lying at 90° to 28 th		
W		7.7	76.5
cl		7.9	76.3
+3		8.8	75.4
"4		8.6	75.6
c		8.3	75.9
"4		8.3	75.9

O.K. Book 1192

84.15

38. N of Irving (con)

gutter	8.8	75.4	
E. ent. cl	8.10	76.05	N. End ent. cl. walk on E.
E. line	8.0	76.2	
00 = N.W. Cor 28 th + Irving Sec. at 90° from 25 th St			
E. ent. cl	84.2	8.76	75.39
gutter		9.6	74.6
"		8.9	75.3
e		8.8	75.4
"		9.1	75.1
gutter		9.3	74.9
W. ent. cl		9.05	75.10
W. line		8.7	75.5

15.1 S E P.I. cl. Return W. line 28th

W. line ent. cl		9.03	75.12
" " gutter Pavmt.		9.76	74.39
cl		9.4	74.8
"		9.2	75.0
e		9.0	75.2
"		9.1	75.1
gutter		9.7	74.5
E. ent. cl		9.00	75.2

18.3 S = N. line Irving Produced from W.

E. ent. cl		9.12	75.03
gutter		9.8	74.4
"		9.1	75.1
e		9.1	75.1

84.15

28th St.

44

"			9.2	75.0
cl			9.4	74.8
W. pavmt.			9.70	74.95
35.15 S = N. line Irving on W				
W. pavmt			9.70	74.95
cl			9.5	74.7
"			9.5	74.7
e			9.3	74.9
"			9.5	74.7
gutter			10.0	74.2
E. ent. cl			9.34	74.81
52.0 S = E Irving				
E. ent. cl			9.59	74.56
gutter			10.3	73.9
"			9.7	74.5
e			9.5	74.7
"			9.8	74.4
cl			9.8	74.4
W. pavmt.			9.76	74.39
68.85 S = S. line				
W. pavmt			10.21	73.94
cl			10.0	74.2
"			10.0	74.2
e			9.5	74.7
"			10.0	74.2
gutter			10.5	73.7
E. ent. cl			9.94	74.21

84.15

85.70 S = S. ch. Irving

E. ent. ch		10.20	73.95
gutter	84.2	10.8	73.4
"		10.5	73.7
c		10.0	74.2
"		10.2	74.0
ch		10.4	73.8
W. line ent. ch		10.69	73.46
" " gutter, pavmt.		10.10	74.05

00 = 104.0 S = S. line Irving - sec. at. 90° to 28"

W. ent. ch		10.17	73.98
gutter		11.2	73.0
"		10.6	73.6
c		10.5	73.7
"		10.9	73.3
gutter		11.2	73.0
E. ent. ch.		10.48	73.67
T.P.	4.35	77.03	11.47
		25'S	72.68

E. ent. ch		3.86	73.17
gutter	77.03	4.5	72.5
"		4.3	72.7
c		4.1	72.9
"		4.0	73.0
gutter		4.6	72.4
W. ent. ch		3.71	73.29

77.03

50'S

W. ent. ch		4.04	72.99
gutter	77.03	4.8	72.2
"		4.5	72.5
c		4.7	72.3
"		4.7	72.3
gutter		5.2	71.8
E. ent. ch		4.27	72.76

From 50' - To 60'S. ent. walk on W. Busted.

100'S

E. ent. ch		5.15	71.88
gutter		5.7	71.3
"		5.7	71.3
c		5.6	71.4
"		5.4	71.6
gutter		5.5	71.5
W. ent. ch		4.94	72.09

182'S = N. Line Alley on W. No dr. Return

17' from W. line to E. Edge Walk.

W. line drift		6.9	70.1
+ 1.8 = W. edge ent. walk		6.36	70.67
+ 7.2 = E " " also ent. ch		6.42	70.61
ent. ch		6.49	70.54
gutter		7.0	70.0
"		7.0	70.0
c		7.0	70.0
"		7.1	69.9

28th ST

45

77.03

182' S. (con)

gutter	7.4	69 6
E. ent. cl.	6.61	70 42
192' 45" = 1/2 H Alley on W		
E. ent. cl.	6.41	70 22
gutter	7.5	69 5
"	7.1	69 9
e	7.1	69 9
"	7.2	69 8
cl	7.1	69 9
W	7.0	70 0
202' 8" S = S. Line Alley on W. line 28 th		
N. line ent. cl. ret	6.64	70 39
" " dirt	7.1	69 9
cl	7.3	69 7
"	7.3	69 7
e	7.2	69 8
"	7.1	69 9
gutter	7.6	69 4
E. ent. cl.	6.94	70 09
00 = { 208' 0" S. on W } { 209' 5" S. 4 E } } = N. Line Marcey { 60' wide { 10' 0" 2 S { 10' 1/4 S.		
E. ent. cl.	7.02	70.01
gutter	7.7	69.3
"	7.2	69.8
e	7.2	69.8
"	7.4	69.6
gutter	7.4	69.6

See Plat Page 50 for Location of W.C. Retain 28th & Marcey

77.03

28th ST

46

2' W. of W. cl. line = S. Alley ent. cl. Ret.	6.95	70 08
1.0 S. of 00 = P.E. W. cl. line 28 th + S. ent. cl. Alley Ret.		
N. ent. cl.	7.03	70 00
1.6 N. of N. cl. Marcey on N N. cl. Marcey on N.		
W. line ent. cl.	7.00	70 03
" " gutter pavmt	7.69	69 34
cl	7.5	69 5
"	7.6	69 4
e	7.77	69 7 1/2 = m. H.
"	7.4	69 6
cl	7.8	69 2
E. line dirt gutter	7.5	69.5
" " ent. cl.	7.01	70.02
N. "4		
e	7.5	69.5
cl	7.4	69 2
"	7.6	69 4
e	7.5	69 5
"	7.6	69 4
cl	7.4	69 6
W pavmt	7.53	69 50
⊥		
N. pavmt.	7.55	69 48
cl	7.5	69 5
"	7.8	69 2
e	7.7	69 3

77.03

♀ Marcey (cow)

"4	7.9	69.1
el	8.0	69.0
E	7.5	69.5
	S. "4	
E	7.2	69.8
el	8.1	68.9
"4	8.3	68.7
e	7.8	69.2
3' N. of above = M.H.	7.76	69.27
"4	7.9	69.1
el	7.9	69.1
W pavmt.	7.92	69.11
	S. el	
W line gutter pavmt.	8.02	69.01
" " ent. el	8.48	68.55
el	8.2	68.8
"4	8.2	68.8
2	8.1	68.9
"4	8.4	68.6
el	8.2	68.8
E. line dirt gut	7.5	69.5
No Return in an this cor		
00 = S. Line Marcey		
E.	7.6	69.4
N. end ent. el + walk	8.00	69.03
gutter	8.5	68.5
"4	8.4	68.6

77.03

66.02 28th St

47

	8.4	68.6
"4	8.5	68.5
gutter	8.6	68.4
W. ent. el	8.04	68.99
	70.5	
W. ent. el	9.49	67.54
gutter	10.0	67.03
"4	9.8	67.2
E	9.8	67.2
"4	9.8	67.2
gutter	10.1	66.9
E. ent. el	9.44	67.59
	141.5 = N. line Logan Ave	
E. ent. el	10.95	66.08
gutter pavmt	11.75	65.28
"4 "	11.30	65.73
E "	11.46	65.57
"4 "	11.35	65.68
gutter "	11.73	65.30
W. ent. el	10.96	66.07
T.P.B.M.	1.39	67.41
	11.00	66.03 = 66.02
	00 = S. Line Logan Ave	
ment. el	(67.41)	2.46
gutter pavmt		3.15
"4 "		2.83
E "		2.63
		64.95
		64.26
		64.58
		64.78

67.41

00 = S. Lincoln Ave (cont)

"4 pavmt.	2.88	6453
gutter "	3.23	6418
E. ent. cl.	2.45	6496
	50'S	
E. ent. cl.	3.45	6396
gutter	4.1	633
"4	3.7	637
c	4.1	633
"4	4.2	6321
gutter	4.7	627
N. ent. cl.	3.48	6393
	100'S	
W. ent. cl.	4.52	6289
gutter	5.6	618
"4	5.4	620
c	5.2	622
"4	4.7	627
gutter	4.9	625
E. ent. cl.	4.37	6304
	140'S = N. Line Alley	
S. line ent. cl.	4.77	6264
" " Alley Pavmt.	5.17	6224
ent. cl.	5.19	6222
gutter	5.8	616
"4	5.4	620
c	5.7	617

67.41

283 ST.

48

"4	6.0	614
gutter	6.2	612
ent. cl.	5.26	6215
	5.23	6218
+2.67 = E. edge walk = Mend curb		
+8.0 = W. edge walk	5.21	6220
W. line dirt	5.7	617
	150'S = S. Line Alley	
W. line on W. H.	5.73	6168
cl	6.3	611
"4	6.2	612
c	5.8	616
"4	5.6	618
cl	5.9	615
E. line Alley pavmt.	5.58	6183
	160'S = S. line Alley	
E. line Alley pavmt.	5.47	6194
" " ent. cl.	5.37	6204
E. ent. cl.	5.63	6178
gutter	6.2	612
"4	5.9	615
c	6.1	613
"4	6.3	611
gutter	6.7	607
ent. cl.	5.77	6164
+2.67 = E. edge walk	5.66	6175
+8.0 = W. " "	5.56	6185
W. dirt	5.8	616

N. curb from
Here to W. lineThis curb
is
on
the
N. curb

67.41
200's

w. emb. el.	6.44	6097
gutter	7.3	601
"4	6.9	605
c	6.7	607
"4	6.7	607
gutter	7.2	602
E. emb. el.	6.44	6097
	250's	
E. emb. el.	7.42	5999
gutter	8.1	593
"4	7.7	597
c	7.7	597
"4	7.8	596
gutter	8.1	593
w. emb. el.	7.44	5997
	295's = N. end catch basin on E.	
w. emb. el.	8.19	5924
gutter	8.9	585
"4	8.2	592
c	8.1	593
"4	8.2	592
+5	8.3	591
+7.5 = w. edge catch basin	9.18	5823
gutter S. " " "	9.20	5821
E. emb. el.	8.30	5911

67.41
300's = N. line National

265 ST
49

E. emb. el. & pavmt top	Catch basin	8.36	5905
gutter	Flow Line C. B.	9.63	5778
"4	"4 pavmt.	8.53	5888
c	"	8.39	5902
"4	"	8.42	5899
+7	"	8.54	5883
+8.5	N. End, E. side catch Basin	8.94	5847
gutter	west edge catch Basin	8.94	5847
w. emb. el.		8.32	5909
	4's. of N. line on W. side = S. end catch Basin intake		
w. gutter	F. L. Catch Basin	9.01	5840
w. emb. el.		8.30	5911
chk on B.M. N.W. 28 th & Logan.		8.27	59.04 = 59.03

60' wide
10' els.
10' ligs

Marcey St X Sec 28th to 29th

3-6-29
mills

old Hub Lot A BIK. 12
93.46

old Hub Lot N BIK. 12
74.08

old Hub PE.
to Rad.

50

BM. 9.61 75.63 66.02

NW. 28th
+ Logan Ave

00 = E. line 28th St.

29th St

ST

S 6.2 69.4

cb 6.1 69.5

14 5.8 69.8

c 6.1 69.5

14 6.1 69.5

N. el. line 6.1 69.5

+ 1.6 = N. ent. el in gutter 6.1 69.5

Top d. 5.61 70.02

W. N. of N. el. line = ent. el 5.41 70.22

gutter 75.6 6.1 69.5

N. el. line 6.1 69.5

14 5.4 70.2

c 5.5 70.1

+ 5 5.4 70.2

+ 6 4.8 70.8

14 4.6 71.0

cb 5.1 70.5

S 4.9 70.7

68' 2" ent. walk on S. side in st.

S on ent. walk 4.24 71.39

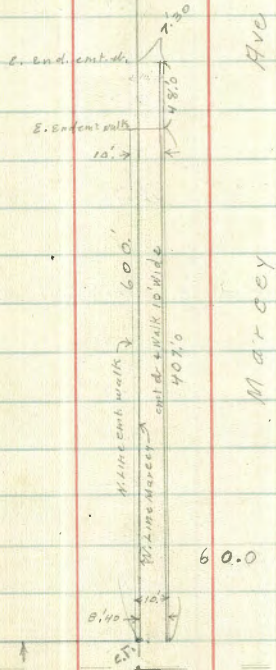
cb 4.4 71.2

14 4.3 71.3

c 4.3 71.3

14 4.4 71.2

Lo Binda Park



28th St

ST

155.60

Logan

Ave

Logan

75.63
68'.E. (con)

N. ch. line	5.2	704
+1.75 = N. emb. el. gutter	5.3	703
" " " Top el.	4.66	7097
100'.E.		
1.8 N. of N. ch. line = N. emb. el.	4.08	7155
gutter	4.6	710
el	4.7	709
"4	3.8	718
e	3.7	719
"4	3.7	719
el	3.8	718
s	3.8	718
140'.E. garage on s. dirt floor 5.0 Back		
s-5	3.8	718
s	3.8	718
el	3.6	720
"4	3.2	724
e	3.2	724
"4	3.4	722
N. ch. line	4.2	714
gutter	4.2	714
1.95 N. of N. ch. line = emb. el.	3.51	7212
T.P.	4.58	77.40
190'.E.		
N. emb. el.	4.52	7280

77.40

200'.E.

2.10 N. of N. ch. line = emb. el.	4.40	7300	
gutter	77.40	5.3	721
N. emb. el.	5.3	721	
"4	4.8	726	
e	4.6	728	
"4	4.5	729	
el	4.6	728	
s	4.5	729	
210'.E.			
N. emb. el.	4.48	729R	
221'.E. = garage on s. dirt floor 0.40 in SF			
s	5.3	721	
el	5.0	724	
"4	4.7	727	
e	4.6	728	
"4	4.6	728	
N. ch. line	5.2	722	
gutter	5.2	722	
2.15 N. of N. ch. line = N. emb. el.	4.52	7288	
270'.E.			
2.23 N. of N. ch. line = emb. el.	4.96	7244	
gutter	5.5	719	
N. ch. line	5.5	719	
"4	4.7	727	
e	4.5	729	
"4	4.7	727	

Marcey Ave

51

77.40

270' E. (on)

cb	5.5	719
S	5.5	719
	315' E = double garage on S. dirt floor on S. Line	
S	6.2	712
cb	5.9	715
1/4	5.5	719
C	5.0	724
1/4	5.2	722
N. ch. line	5.7	717
gutter	5.7	717
	2.4 N. of N. ch. line = cmt. ch.	
	330' E. garage on S. dirt floor on S. line.	
S	6.5	709
	362' E = Triple garage on S. dirt floor 1.0 in st.	
	2.5 N. of N. ch. line = cmt. ch.	
gutter	5.8	716
N. ch. line	5.4	716
1/4	5.1	723
C	5.1	723
1/4	5.6	718
cb	6.3	711
S	6.4	708
	396' E. garage on S. dirt floor 1.0 in st.	
S	6.6	708
cb	6.0	714
1/4	5.4	720

77.40

Marcey Ave

52

C	5.1	723
1/4	5.1	723
N. ch. line	6.0	714
gutter	6.0	714
	2.55 N. of N. ch. line = cmt. ch.	
	407' E = S. End cmt. walk on N.	
	432' E = garage on S. dirt floor 0.8 in st.	
	2.65 N. of N. ch. line = cmt. ch.	
gutter	6.6	708
N. ch. line	6.2	712
1/4	5.3	721
C	5.6	718
1/4	5.8	716
cb	6.0	714
S	6.0	714
	455' E = E. end. cmt. ch. on N.	
S	5.8	716
cb	6.0	714
1/4	6.0	714
C	5.8	716
1/4	5.6	718
N. ch. line	6.2	712
gutter	6.7	707
	2.70 N. of N. ch. line = E. end cmt. ch.	
T.P.	2.58	74.66
		5.32
		72.08
N. line	3.2	715
	(74.7)	

74.66

489' E = garage on S. dirt floor on S. line

N	(74.7)	3.6	711
cb		3.7	710
1/4		3.3	714
c		3.5	712
1/4		3.6	711
cb		3.5	712
S		3.3	714

519' E garage on S. line dirt floor

S		3.8	709
cb		3.6	711
1/4		3.8	709
c		4.0	707
1/4		4.0	707
cb		4.0	707
N		3.9	708

545' E garage on S. line dirt floor

N		4.0	707
cb		4.2	705
1/4		3.9	708
c		4.0	707
+5		4.4	703
1/4		4.0	707
cb		3.9	708
S		4.1	706

74.66

564' E ^{Double} garage on S. dirt floor 0.2 inst.

53

S		4.2	705
cb		4.1	706
1/4		4.1	706
+5		4.5	702
c		4.1	706
1/4		4.0	707
cb		4.3	704
N		3.2	715

600' E = W. line R9th St.

N		3.6	711
+8		3.4	713
cb		4.3	704
1/4		4.3	704
c		4.6	701
+6		5.1	696
+7		4.2	705
1/4		4.3	704
cb. on M.H.		4.11	7055
S		4.6	70 ^{piece on 1/4 in 1/4}

T.P.	2.83	75.31	2.18	72.48
chk. on BM			9.29	66.02 = 66.02

2 Sec. 10' Strip N. of Existing Pavmt.
on Imperial Ave 40th St to 36th St.

4-23-29
miller

127.03

54

BM, Top Hndt	12.25	110.83		This BM NG 98.58	S.E. 38" + Imperial	4.4' N. - Top wall				
T.P.	12.09	122.73	0.19	110.64		8' N. Front New Bldg.		2.9		
T.P., B.M. 39 th Imp.			3.72	119.01	S.E. 39" Imperial	7. W. of W. Line Ada = W. End. New Bldg. 10' N of 00				
RM, BR Church Stop	6.28	107.59		101.31	N.W. 39" 7' G Sts.	N. edge pavmt + 4.4' Face wall		3.48		
T.P.	11.16	118.68	0.07	107.52		" " Top "		3.5		
T.P., B.M.	7.49	125.87	0.30	118.38	S.E. 39" Imperial	10' N.		2.97		
T.P.	3.62	127.03	2.46	123.41		67.8' W. = W. end cmt. wall.		3.01		
		E. Line Ada Ave				N. edge pavmt.				
N. edge Pavmt			3.72			4.4' N. = Face wall		4.57		
5.2' N = S. edge cmt. wall			3.3		ground	4.4' N Top "		4.0		
" "			2.62		Top wall	10' N.		3.33		
8' N Front New Bldg.			2.8				70' W. of 00	3.3		
		10' W. = E. cl. Ada				N. pav				
N. pavmt			3.62			+3		4.59		
4.2' N. = Face cmt. wall			3.3			+6		4.1		
" " Top " "			2.62			+10		3.3		
8' N F			2.8				100' W.	3.1		
		50' W. = W. cl. Ada				N. pavmt				
N. edge pavmt			3.38			+2 N		5.19		
4.4' N. = Face wall			3.2			+5 N		5.0		
" " Top wall			2.83			+10 N		3.4		
8' N Front New Bldg.			3.0			T.P.	1.49	123.12	5.60	121.43
		00 = W. Line Ada Ave 60' wide								
N. edge pavmt.			3.39							
4.4' N Face wall			3.4							

123.12
150' W. of W. line Hda Ave

N. edge parmt.	2.31
+ 2 N	2.0
+ 5	0.2
+ 10	0.1

200' W

N. line parmt	3.33
+ 2 N	3.1
+ 5	1.3
+ 10	1.1

250' W

N. edge parmt	4.35
+ 4 N	4.1
+ 6	2.4
+ 10	2.2

291.5' W = E. line 39th St. 60' wide

N. edge parmt.	5.12
+ 4 N	4.8
+ 6	2.9
+ 10	2.6

50' W. = W. cl. 39th

N. edge parmt.	5.35
+ 4 N	4.7
+ 7	3.5
+ 10	3.0

123.12
00 = W. line 39th St

55

N. edge parmt	5.41
+ 3 N	4.7
+ 7	3.4
+ 10	3.2

50' W

N. edge parmt.	6.53
+ 2 N	5.9
+ 5	3.6
+ 10	3.6

100' W

N. edge parmt.	7.72
+ 2 N	7.4
+ 5	4.4
+ 10	4.5

150' W

N. edge parmt.	8.94
+ 3 N	8.1
+ 6	5.6
+ 10	5.3

190' W

N. edge parmt	10.00
+ 3 N	9.8
+ 5	6.4
+ 10	6.0

123.12
200' N. of 39th St = Brk

N. edge parmt	10.29
+3 N.	9.8
+5	6.7
+10	6.8

210' W.

N. edge parmt.	10.77
+3 N	10.3
+5	7.2
+10	7.2

T.P. 295 113.90 12.17 110.95

250' W

N. edge parmt	3.63
+3 N	3.6
+4	2.2
+10	1.1

275' W.

N. edge parmt.	5.07
+10 N	4.4

310' W.

N. edge parmt.	6.97
+10 N.	6.9

350' W

N. edge parmt.	9.20
+6 N	7.2
+7	10.9
+10	11.3
+15	10.5

113.90
390' W

N. edge parmt.	11.42
+6 N	11.4
+7	14.0
+10	14.5
+15	13.6

edge lawn

400' W. = Brk Grade

N. edge parmt	11.95
+6 N	12.1
+7	14.6
+10	15.0
+15	14.7

edge lawn

410' W

N. edge parmt	12.30
+6 N	12.6
+7	15.0
+10	15.5
+15	15.0

edge lawn

T.P. 3.54 104.62 12.82 101.04

450' W.

N. edge parmt.	4.30
+5 N	4.7
+7	7.4
+10	8.3
+15	8.0

edge lawn

104.62
500' W

N. edge parvt	5.97
+5 N	6.3
+7	9.8
+10	10.4
+15	10.2

550' W

N. edge parvt	7.57
+5 N	7.6
+7	9.0
+10	11.6
+15	11.6

600' W = E. line 38th St. 60' wide

N. edge parvt	9.13
+5 N	8.8
+7	11.8
+10	12.3
+15	12.0

00' W. line 38th St.

N. edge parvt.	9.25
+5	8.2
+7	10.3
+10	11.0
+15	11.0

edge
Lawn

edge lawn

edge lawn

edge lawn

104.62

50' W.

N. edge parvt.	8.91
+5 N	8.8
+10	9.6
+15	10.2

100' W.

N. edge parvt.	8.62
+5 N	8.7
+7	9.7
+10	10.0
+17	10.6

150' W

N. edge parvt.	8.31
+6 N	8.3
+7	10.6
+10	10.8
+17	10.8

200' W.

N. edge parvt.	8.00	96.62
+4	8.2	
+5	7.1	
+7	9.8	
+10	10.2	
+17	10.4	

T.P. 11.98 108.67 7.93 96.69

Imperial Ave.

57

108.67

250' W.

N. Edge parmt.	11.80	26.87
+4	11.7	
+6	10.7	
+7	13.5	
+10	14.4	
+15	14.3	edge lawn

300' W.

N. edge parmt	11.52	
+4	11.4	
+6	11.0	
+7	14.2	
+10	14.6	
+15	14.5	edge lawn

350' W.

N. Edge Parmt.	11.23	
+5	11.4	
+7	11.0	
+8	14.2	
+10	13.8	
+16	13.4	edge lawn

400' W.

N. edge	10.92	
+5	11.2	
+4	10.3	
+7	10.6	
+8	11.3	

108.67

Imperial Ave

58

+10	11.5	
+16	11.7	edge lawn
N. edge Parmt	10.63	
+5	10.8	
+4	9.5	
+10	9.3	
+16	10.1	edge lawn

450' W.

N. edge Parmt.	10.50	
+4	10.7	
+10	10.2	

472' W.

N. edge Parmt.	10.44	
+5	10.7	
+6	8.9	
+10	8.7	

510' W.

N. edge Parmt	10.23	
+7	10.2	
+8	8.8	
+10	9.0	

108.47

5' 25" W = E. End Wall + Fence N. of Pavmt.

25' N. of S. cb = N. edge Pavmt.		10.18		
+ 10.8' N. = S. Face Wall		9.8	ground	
" " = Top wall		9.58		
	550' W			
N. edge Pavmt.		10.05		
+ 10.8 = Wall gr.		10.2	ground	
" " = Top Wall		10.43		
	600' W = E. line 37 th St. 60' wide			
N. edge Pavmt.		9.77		
+ 10.8 Face wall		10.0	ground	
" " Top "		10.17		
	00 = W. line 37 th St.			
N. edge pavmt.		9.73		
+ 5		9.8		
+ 10.8 = Face Wall		10.4		
" " Top "		9.22		
	50' W.			
N. Edge Pavmt		9.93		
+ 10.6 Face Wall		10.2		
" " Top "		9.40		
T.P.	3.69	102.29	10.07	98.60
	100' W			
N. Edge Pavmt.		3.72		
+ 5		3.9		
+ 10.5 = Face Wall		4.5		
" " Top "		2.17		

102.29

Imperial Ave

133' W = offset in wall 10' N. for Entrance

N. edge pavmt.		3.81		59
+ 10.6 = Face wall		4.5	ground	
" " Top "		3.33		
	147' W = $\frac{1}{2}$ Entrance.			
N. edge pavmt		3.84		
+ 10.6		4.8		
+ 16.2 = gate		5.4		
	161' W. = offset in wall for entrance			
N. edge pavmt		3.94		
+ 10.6 Face wall		4.6		
" " Top "		3.33		
	200' W.			
N. Edge Pavmt		4.06		
+ 10.7 Face Wall		4.7		
" " Top "		3.45		
	250' W			
N. edge pavmt.		4.31		
+ 10.6 Face Wall		4.8		
" " Top "		3.97		
	270' W = E. line South Look Ave			
N. edge Pavmt		4.35		
+ 10.6 = Face Wall		4.8		
" " Top Wall		4.04		

102.29
00 = W. line Southlook Ave

N. line Pavmt. 25' N. of S. cl. 4.82

+10.6 Face Wall 5.0

" " Top " 4.17

chk on B.M. BP 4.35

60' W

N. edge Pavmt. 4.92

+10.6 Face wall 4.8

" " Top " 4.19

120' W. Brk grade

N. edge Pavmt. 5.12

+10.7 Face wall 5.3

+10.7 Top " 4.54

140' W. Brk grade

N. edge pavmt 5.30

+10.8 = Face wall 5.5

+10.8 Top wall 4.73

140' W. = Brk grade

N. edge pavmt 5.70

+10.8 Face wall 6.0

10.8 Top " 5.19

180' W Brk grade

N. edge pavmt. 6.37

+10.8 6.5

+10.8 5.79

S.E. Imperial
+ Southlook

102.29
200' W Brk

Imperial Ave

60

N. edge wall 7.09

+10.8 Face wall 7.3

+10.8 Top " 6.47

2+15.24' W = N. End Wall + Fence

N. edge pavmt. 7.58

+10. Face wall 7.9

+11 Top wall 7.11

218.34 W Brk P.C. N. edge pavmt.

N. edge pavmt. 7.67

+10 N. 7.9

240' W. = Brk

N. edge pavmt on curve 8.67

+10' N. at Rt. Δ to Imperial 8.7

270' W. = E. line 36th St.

N. edge Pavmt on Curve 10.76

+10' N. at Rt. Δ to Imperial 11.3

chk on B.M. Top Hudt 6.84

S.E. 36th +

75.45 = 95.44 Imperial

Location of Tracks at
Commercial & 28th Sts.

6-23-29
Miller

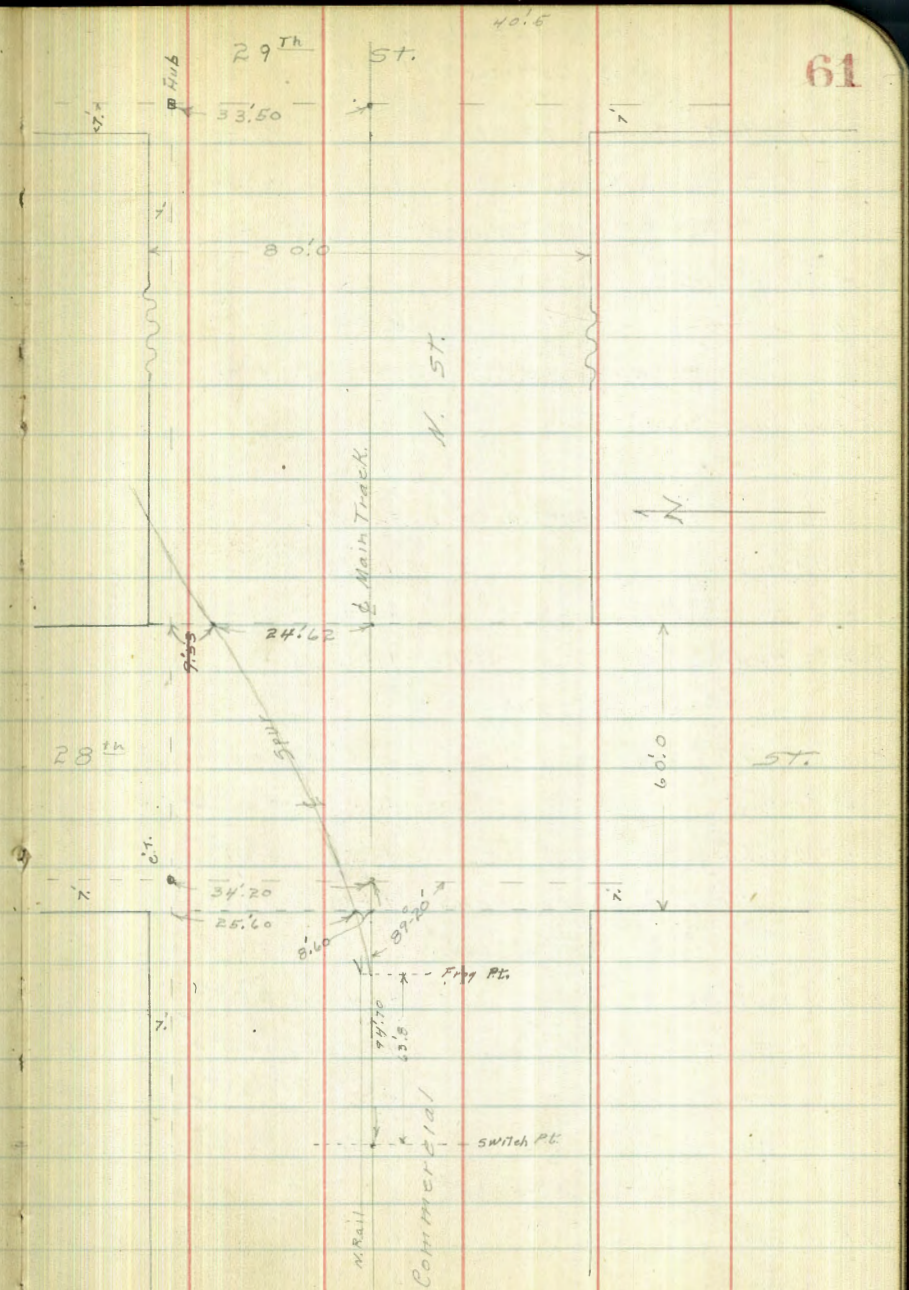
40.5

23' chds on N. Rail of Spur Track

00 = Sm. Teh Pt.

+25 = 1	Def. L = R ^o 15'	from Main Line
+50 = 2	" " = 3 ^o 37'	" " " "
+75 = 3	" " = 4 ^o 56'	" " " "
+100 = 4	" " = 6 ^o 18'	" " " "
+125 = 5	" " = 7 ^o 52'	" " " "
+150 = 6	" " = 9 ^o 28'	" " " "
+175 = 7	" " = 10 ^o 35'	" " " "
2+00 = 8	" " = 11 ^o 00'	" " " "
2+25 = 9	" " = 10 ^o 45'	" " " "
2+50 = 10	" " = 10 ^o 07'	" " " "
2+75 = 11	" " = 9 ^o 24'	" " " "
3+00 = 12	" " = 8 ^o 42'	" " " "

Levels Page 62.



Levels on Rails at R 8th
 Commercial Sts.

6-23-29
 miller

71.64
 ± R 8th St.

62

B.M. Top of Post	0.67	75.97	75.30
T.P.	2.80	71.64	71.13
		200' W. of W. line R 8 th St.	69.84
S. Rail Main Line		5.28	
N " " "		5.30	
		87.7 W. of W. of W. line 28 th St = Switch Pt.	
N. Rail Main Line		4.88	
S " " "		4.92	
		23.7 W. of M. Line 28 th = Frog Pt.	
S. Rail Main Line		4.73	
N " " " Frog.		4.72	
N " Spur		4.71	
		W. Line R 8 th St	
N. Rail Spur	4.73	66.91	
S " "	4.70	66.94	
N " Mainline	4.67	66.97	
S " " "	4.69	66.95	
		W. cl. Line 28 th	
S. Rail Mainline	4.64	67.00	
N " " "	4.69	66.95	
S " Spur	4.71	66.93	
N " "	4.76	66.88	
		W. 1/4 28 th	
N. Rail Spur	4.72		
S " "	4.68		
N " Mainline	4.60		
S " " "	4.64		

55 24th
 Imperial

S. Rail Main Line	4.62	67.02
N " " "	4.58	67.06
S " Spur	4.61	67.03
N " " "	4.65	66.99
		E. 1/4
N. Rail Spur	4.66	
S " " "	4.62	
N " Mainline	4.57	
S " " "	4.59	
		E. cl. Line
S Rail Main Line	4.52	67.12
N " " "	4.54	67.10
S " Spur	4.62	67.02
N " " "	4.65	66.99
		E. Line R 8 th St.
N " Spur	4.45	67.19
S " " "	4.52	67.12
N " Mainline	4.49	67.15
S " " "	4.51	67.13
		100' E. E. Line 28 th St.
S. Rail Main Line	4.17	
N " " "	4.17	
		200' E. E. Line 28 th St
N. Rail Mainline	3.84	
S " " "	3.78	
		chk End of N.E. Cor 28 th Commercial
	3.85	67.79 = 67.79

6-21-1929 X-section Alley Block 1 Normal Hts.
 J.C. Bliss
 Drebert Mt. View to 34th - North of Arthur.
 Roney

H.I. 400.52

63

				0+75			
B.M. N.W.S.P. 34 th + Mt. View		394.96	S		48	395.7	
+5.16	400.12		⊥		43	396.2	
		-5.59	394.53	N		44	396.1
+5.99				1+00			
	H.I. 400.52		N		41	396.4	
West Gutter 34 th			⊥		44	396.1	
N	6.09	394.43	S		48	395.7	
⊥	6.07	394.451		1+25			
S	6.13	394.39	S		41	396.4	
	N.L. 34 th = 0+0 - Paved		⊥		43	396.2	
S-Top cb + Gutter Flush	5.17	395.35	N		42	396.3	
⊥	5.39	395.13		1+50			
N Top cb + Gutter Flush	5.23	395.29	N		40	396.5	
	0+10		⊥		35	397.0	
N	4.4	396.1	S		33	397.2	
⊥	4.4	396.1		1+56			
S	4.6	395.9	⊥ 8' Garage 6' Root S.L. Concrete Floor	3.43		397.09	
	0+25			1+66			
S	4.4	396.1	⊥ 25' Concrete Walk at S.L.	3.37		397.15	
⊥	4.2	396.3		1+67			
N	4.0	396.5	S		36	396.9	
	0+50		⊥		37	396.8	
N	4.1	396.4	N		42	396.3	
⊥	4.2	396.3		1+85			
S	4.3	396.2	N		5.7	394.8	

Plotted 6-23-29 E.A.B.

\$	49	395.6
5	48	395.7

Section between existing returns at Mt. View.

2+00 on North & 2+06 on South.

S-Top cb	6.05	394.47
Gutter	6.1	394.4
\$	6.1	394.4
G	6.1	394.4
North-Top cb	6.04	394.48
B.M. N.E.B.P. Mt View & Arthur	-7.08	393.44
	Correct	393.46

Pluses to actual Prop. Line on Mt. View:

1+87.45 North-	Ch. & ground	394.98	} Hand level RED 9-188
1+93.63 South-	" "	395.01	

Bill Bliss Notes
 Johnny Jacobson &
 Olaf Sommer
 Phil Brooks
 Sept 6 1929

X Section Alley Block 58 Fairmount
 Addition Between 45th + Chamouné Orange + Polk

BM. 495 356.15 351.20 NW8P Chamouné + Orange

0+00 S. Line of Orange

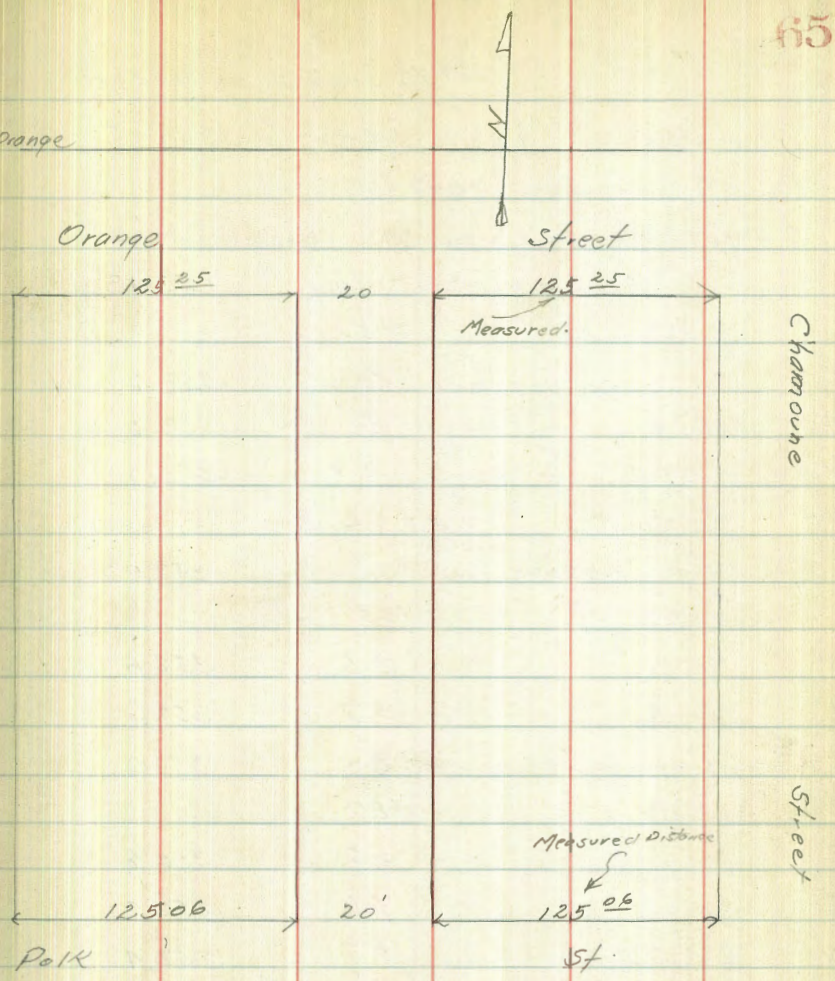
E. Topch	4.40	351.75
G	3.80	352.35
ϕ	4.10	352.05
G	4.3	351.8
W TopCb	4.32	351.83
0+05		
W	3.0	353.1
+H	3.0	353.1
ϕ	3.2	352.9
+S	3.1	353.0
E	2.6	353.5
0+20		
E	2.6	353.5
ϕ	2.5	353.6
+S	2.4	353.7
W	2.7	353.4

Plotted 9-6-29 - G.B.H.

N. End
 0+39 Single Garage on West ✓

Apron 0.9 in Alley 3.00 353.15

0+40		
W	3.0	353.1
ϕ	2.8	353.3
E	3.0	353.1



+ HI - Elev
356.15

0745 Single Garage on East

online 3.00 353.15

0749 E

S. End Single Garage on West. Concrete floor

Apron 0.9 in Alley 3.02 353.13

0752

E 2.9 353.2

Φ 3.1 353.0

W 2.9 353.2

0762 Single Garage on East W

Apron 4.3 Back floor concrete 3.12 353.03

0765

W 3.5 352.6

Φ 3.5 352.6

E 3.2 353.0

0780

E 3.5 352.6

Φ 3.6 352.5

W 3.7 352.4

0795 Single Garage on West

Dirt floor 1.5 in Alley 3.9 352.2

1700

W 3.9 352.2

Φ 3.9 352.2

+8 3.7 352.4

E 3.8 352.3

+ HI - Elev
356.15

66

TP 3.60 355.91 3.84 352.31

1709 Single Garage on East

Concrete Apron 4.2 Back 3.84 352.07

1723

4.0 351.9

4.0 351.9

3.9 352.0

3.6 352.3

3.7 352.2

1735

3.9 352.0

4.1 351.6

4.1 351.8

1742 Single Garage on East

9.3 Back Concrete floor 4.30 351.61

1770

4.2 351.7

4.3 351.6

4.6 351.3

4.5 351.4

1782

4.8 351.1

4.6 351.3

4.6 351.3

	+	HI	-	Elev
		355.91		
		2+00		
E		4.7		351.2
☿		4.9		351.0
+5		5.1		350.8
W		5.2		350.7
		2+09 Single Garage on East		
		6' back concrete floor	4.9	350.99 ✓
		2+13 Single Garage on West		
		on line dirt floor	☿ 5.0	350.9 ✓
		2+15		
W		5.2		350.7
+5		5.4		350.4
☿		5.2		350.7
+5		5.3		350.6
E		5.3		350.6
		2+45 Single Garage on East		
		3.5 Back concrete floor	☿ 5.25	350.66 ✓
E		5.6		350.3
☿		5.3		350.6
+5		5.5		350.4
W		☿ concrete work on line	5.21	350.70 ✓
T.P.	486	355.29	5.48	350.43
		2+65		
W		4.7		350.6
☿		4.9		350.3
E		4.9		350.3

	+	HI	-	Elev
		355.29		
		2+81 Single Garage on East		67 ✓
		6.5 back concrete floor	☿ 4.6	350.67 ✓
		2+90		
		E	5.0	350.3
		+5	4.9	350.7
		☿	4.7	350.6
		+5	4.9	350.4
		W	4.8	350.5
		3+00		
		W	4.8	350.5
		☿	4.8	350.5
		E	5.0	350.3
		3+20		
		E	4.9	350.4
		+5	4.8	350.5
		☿	4.7	350.6
		+5	4.7	350.6
		W	4.7	350.6
		3+32 Single Garage on East		
		1.0 in Alley dirt floor	☿ 4.9	350.4 ✓
		3+50		
		W	4.8	350.5
		+5	4.6	350.7
		☿	4.5	350.8
		E	5.0	350.3

+ H.I. - Elev

355.29

3+70

E	51	350.2
+4	45	350.8
±	46	350.7
+5	46	350.7
W	4.8	350.5

4+00

W	4.2	351.1
+5	4.4	350.9
±	4.6	350.7
+5	4.8	350.5
E	51	350.2

4+25

E	51	350.2
+2	51	350.2
+5	48	350.5
±	4.6	350.7
W	4.5	350.8

4+41 Single Garage on East

4^o Back concrete floor ± 4.65 350.64 ✓

4+50

W	4.2	351.1
W +5	4.2	351.1
±	4.3	351.0
+5	4.6	350.7
E	4.6	350.7

+ H.I. - Elev

355.29

68

4+62.50 Single Garage on East ✓

4^o Back concrete floor 4.5 ~ 350.77

4+67 Single Garage on West ✓

Concrete Apron on line ± 4.13 351.16

4+75

E	4.4	350.9
+5	4.3	351.0
±	4.3	351.0
+5	4.1	351.2
W	3.9	351.4

4+82 Single Garage on East ✓

0.8 in Alky Wood floor ± 4.40 351.89

4+85

W	4.1	351.2
+5	4.2	351.1
±	4.4	350.9
+5	4.4	350.9
E	4.5	350.8

4+95 Single Garage on East ✓

0.5 in alky - ± 4.6 350.7

E 4.6 350.7

± 4.1 351.2

+5 4.1 351.2

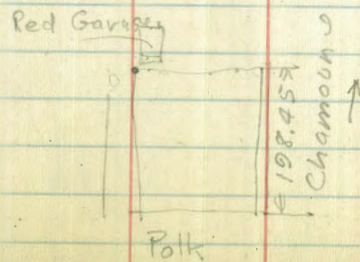
W 3.9 351.4

5+00

W 4.0 351.3

	HZ	Elev
	355.29	
TS	4.0	351.3
☿	4.0	351.3
TS	4.2	351.1
E	4.1	351.2
✓ 5706 N End Single Garage Apron		
on West Side 08.12.41	3.57	351.72
	5.710	
E	4.3	351.0
TS	3.9	351.4
☿	3.7	351.6
TS	3.9	351.4
KI	3.5	351.8
✓ 5713 S End Single Garage Apron		
on West Side 08.12.41	2.49	351.80
	5720	
NY	3.8	351.5
TS	3.9	351.4
☿	3.9	351.4
TS	4.1	351.2
E	4.2	351.1
✓ 5735 Single Garage on East		
Apron 14 Back concrete floor	3.94	351.35
	5740	
E	3.9	351.4
TS	3.8	351.5
☿	3.5	351.8

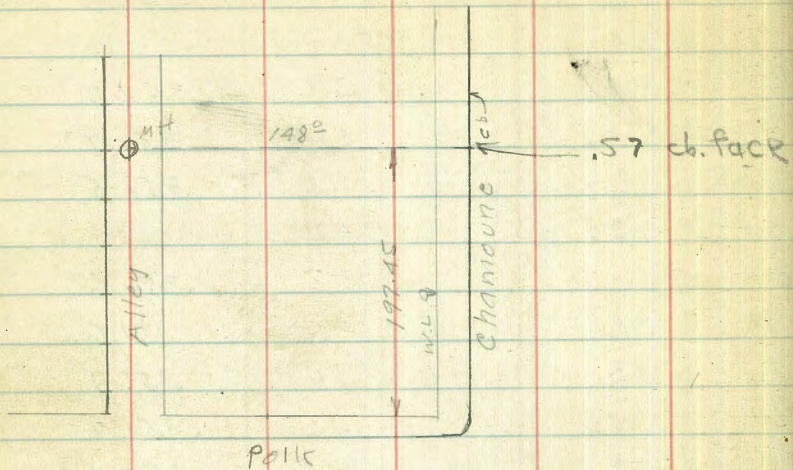
	HZ	Elev
	355.29	
	3.3	352.0
	5753	
	3.1	352.2
	3.6	351.7
	3.8	351.5
	5774	
	3.7	351.6
	3.7	351.6
	3.4	351.9
	3.6	351.7
	2.9	352.4
	5775 ²⁰ N line Polk	
	3.46	351.83
	3.61	351.68
	4.00	351.29
	3.80	351.49
	3.68	351.62
	4.67	356.25
	3.71	351.58
	6.59	349.66



20/9/187
London.

Profile of Line 11 to and 197.45'
North of Polk From Chamoone West
to & of Alley

70



BM	5.60	355.26	349.66	BP, NW Polk & Chamoone
top w. ab chamoone 0+00		5.28	349.98	
0+50		5.2	350.06	
1+00		5.4	349.86	
1+38		5.1	350.16	
top M.H. 1+48		4.40	350.86	
F.L. M.H.		9.30	345.96	

Back Drive Cross Section

Dove Court - West End Line of Lot Closures

BM	7.63	211.12	252.99	11.8
TP	13.5	258.91	703	257.59
BM			1.17	254.47
TP	8.67	241.67	631	252.10
BM			4.34	256.93
TP	3.66	257.97	656	254.71
BM			2.35	255.15

Sec 1 - E. Side Dove Court 30' Wide

S - Top Ch	4.37	253.60
Gutter on Paving	4.92	253.05
1/2	4.83	253.14
6	4.70	253.27
1/2	4.66	253.31
Gutter	4.65	253.32
N - Top Ch	4.33	253.74
Top Wall	3.46	254.51

Plotted 12-3-29
C.B.H.

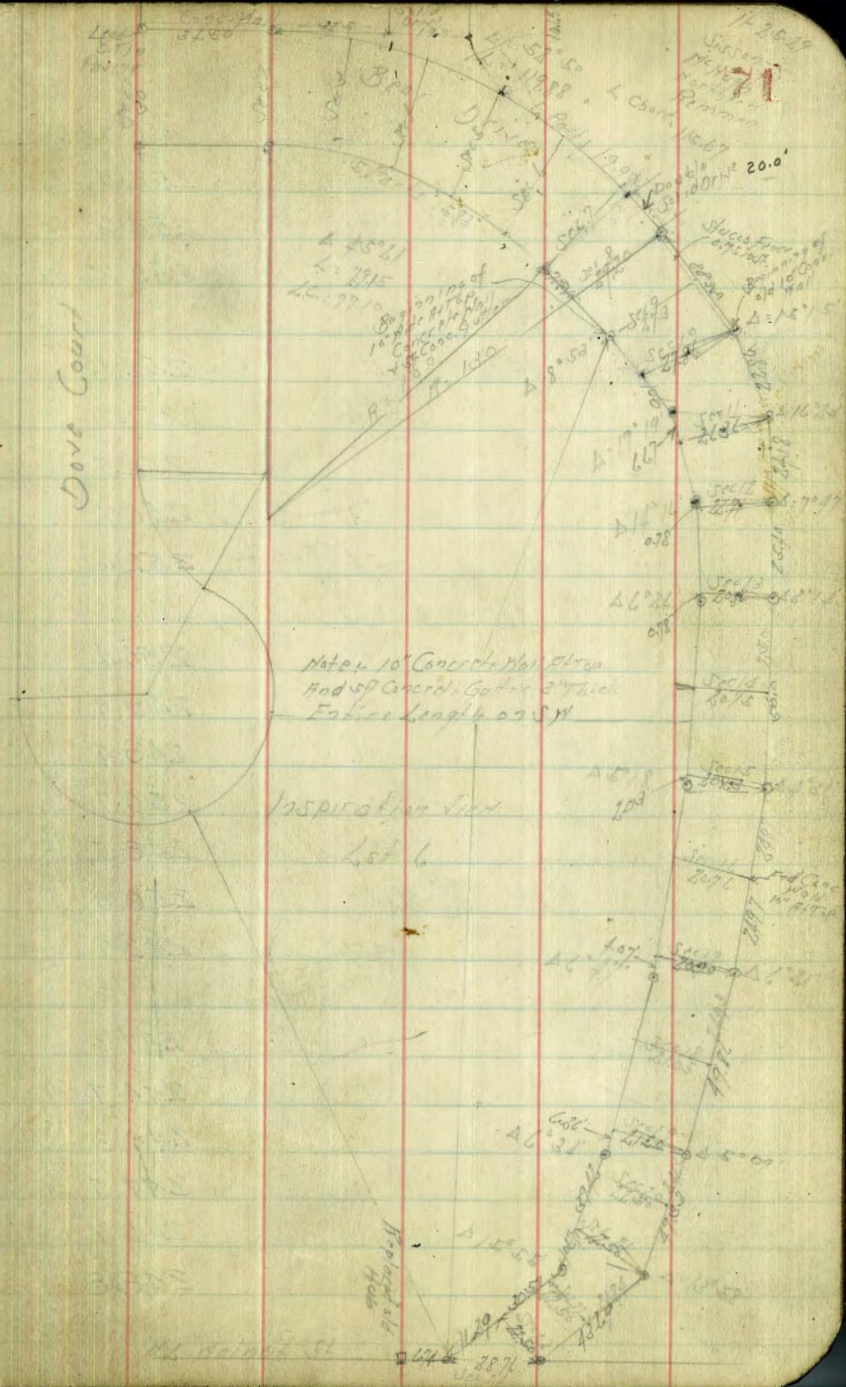
Sec 2 - P.C. 30' Wide

N - Top Wall	4.06	253.93
Ground	5.0	253.0
15.5	5.6	252.4
26.5	5.7	252.3
38.5	4.3	253.7

Sec 3 30' Wide

S	4.5	253.5
4.1	6.3	251.8

Dove Court



257.97

15H	61	251.9
30H	55	252.5
31.4H - Wall on Ground	54	252.6
on Top Wall	46.5	253.32
Sec 4	30 Wide	
-38 - Core Drive	59.1	252.16
H	63	251.7
10S	65	251.5
26S	73	250.7
30S	54	252.6

Sec 5

30 Wide

S	76	250.4
1H	86	249.4
15H	86	249.4
28H	73	250.7
30H	85	249.5
35H	80	250.0
40H	150	243.0

Sec 6

30 Wide

-10	207	237.3
H	133	244.7
3S	97	248.3
15S	105	247.5
26S	103	247.7
30S	97	248.8

Sec 7 - EC on SH 50 Wide - House Foundation

257.97

72

S	115	246.5
15H	119	246.1
27H	113	246.7
30H	143	243.7
40H	216	236.4
EC on SH		
15H of Sec 7 on SH		End of Dr. Drive on SH
H - Core Drive	113.7	246.40
15S	119	246.1
30S	117	246.3

Sec 8 - EC on SH 252 Wide - S End of Dr. Drive on SH

S	131	243.9
15H	132	244.8
27H	167	245.3
29.2H - Core Drive	119.8	245.99
30H on SH	117.4	246.23
30H	203	247.51
30H	124.6	245.51

Sec 9

27.3 Wide

S on Core Drive	29.1	244.60
27.5H - Face of Shallow Foundation	43	243.2
11H	44	243.1
27.3H - 80% of Wall on Gutter	43	243.22
on Top Wall	0.45	247.09

Sec 10

27.86 Wide

H on Ground	23	245.2
15S - Face of Wall	61.6	244.88
on Core Gutter	63.4	241.20

24754		
6.5' E - Edge Gutter	6.29	241.25
15' F	6.4	241.1
27' F	6.1	241.4
27.8' E - Back of Wall	5.39	242.15
Sec 11 26.8' Hide		
-0.9 = Face Wall	7.84	239.70
F	8.4	239.1
12' H	8.6	238.9
20' H = Edge Gutter	8.15	238.89
25' H - Face Wall on Gutter	8.57	238.97
Top Wall	4.98	242.56
26.3' H	4.9	242.6
Sec 12 22.7' Hide		
H	7.4	240.1
0.6' E - Face Wall	7.45	240.09
on Gutter	10.97	236.57
5.1' E - Edge Gutter	11.07	236.47
15' F	11.2	236.3
22.7' F	10.5	237.0
23.1' E - Face Wall	10.18	237.36 ^{237.36}
Sec 13 20.8' Hide		
-0.5 = Face Wall	12.63	234.91
F	13.1	234.4
7' H	13.1	233.9
15' H - Edge Gutter	13.70	233.84
20' H - Face Wall on Gutter	13.68	233.86

24754			73
Top Wall	9.79	237.75	
24.8' H	9.8	237.7	
JP = 20.98	235.11	12.91	234.13
Sec 14 20.75' Hide			
H	0.0	235.6	
11.5' E - Face & Top of Wall	0.11	235.50	
on Gutter	4.00	231.61	
6.15' E - Edge "	4.04	231.57	
12' F	4.0	231.6	
20.75' F	3.6	232.0	
21.55' E - Face & Top Wall	2.96	232.65	
Sec 15 20.65' Hide			
-0.3 = Face & Top Wall	1.91	230.70	
F	5.1	230.0	
7' H	5.9	229.7	
11.9' H - Edge Gutter	5.90	229.71	
19.9' H - Face Wall on Gutter	5.90	229.71	
Top Wall	2.13	233.48	
20.63' H	2.1	233.5	
Sec 16 20.7' Hide			
H	4.1	231.4	
15' E - Face & Top Wall	4.38	231.23	
on Gutter	8.04	227.37	
6.5' E - Edge "	8.14	227.47	
14' F	7.9	227.7	
20.7' E - Face	7.9	227.7	

2356

2176 F - Top End Wall on East	66	229 00
Sec 17	2090 side	
E	10.0	225 76
8 W	10.0	225 76
15 W - Edge	1082	225 58
20 W - Face Wall on Gutter	1002	225 59
Top Wall	626	229 25
20.90 W	63	229 3
Sec 18	1105 W side	
W	84	227 2
18 E - Face & Top Wall	827	226 34
on Gutter	1204	223 57
6 E - Edge Gutter	1204	223 57
14 E	11.9	223 7
21.05 E	12.0	223 6
TP	343	221 78
Sec 19	2120 side	
E	48	222 0
8 W	50	221 8
15 W - Edge Gutter	523	221 55
20 W - Face Wall on Gutter	519	221 59
on Top Wall	1.42	225 35
21.2 W	12	225 6
Sec 20	2250 side	
W	2.7	224 1
2.5 E - Face & Top Wall	2.23	223 45

23678

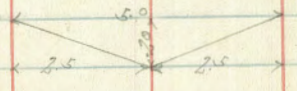
74

on Gutter	7.09	219 69
7.5 E - Edge Gutter	7.11	219 67
14 E	7.3	219 5
22.5 E	6.8	220.0
Sec 21	2250 side	
E	8.6	218 2
8 W	8.7	218 1
11.2 W - Edge Gutter	8.29	217 99
21.2 W - Face on Gutter	8.14	218 14
Top Wall	4.87	221 91
22.5 W	4.2	222 6
Sec 22	2250 side	
W	4.5	222 3
4.0 E - Face & Top Wall	6.02	220 76
9.05 on Gutter	9.90	216 88
Edge Gutter	9.97	216 81
15 E	10.0	216.8
22.5 E	9.8	217.0
Sec 23	2250 side	
E	10.65	216 ¹³ _{on Hub}
8 W	11.1	215.7
13 W - Edge Gutter	10.98	215 80
18 W - Face Wall on Gutter	10.98	215 80
on Top Wall	7.25	219.53
22.50 W	6.4	220.4
Sec 24	2271 side	

226.78

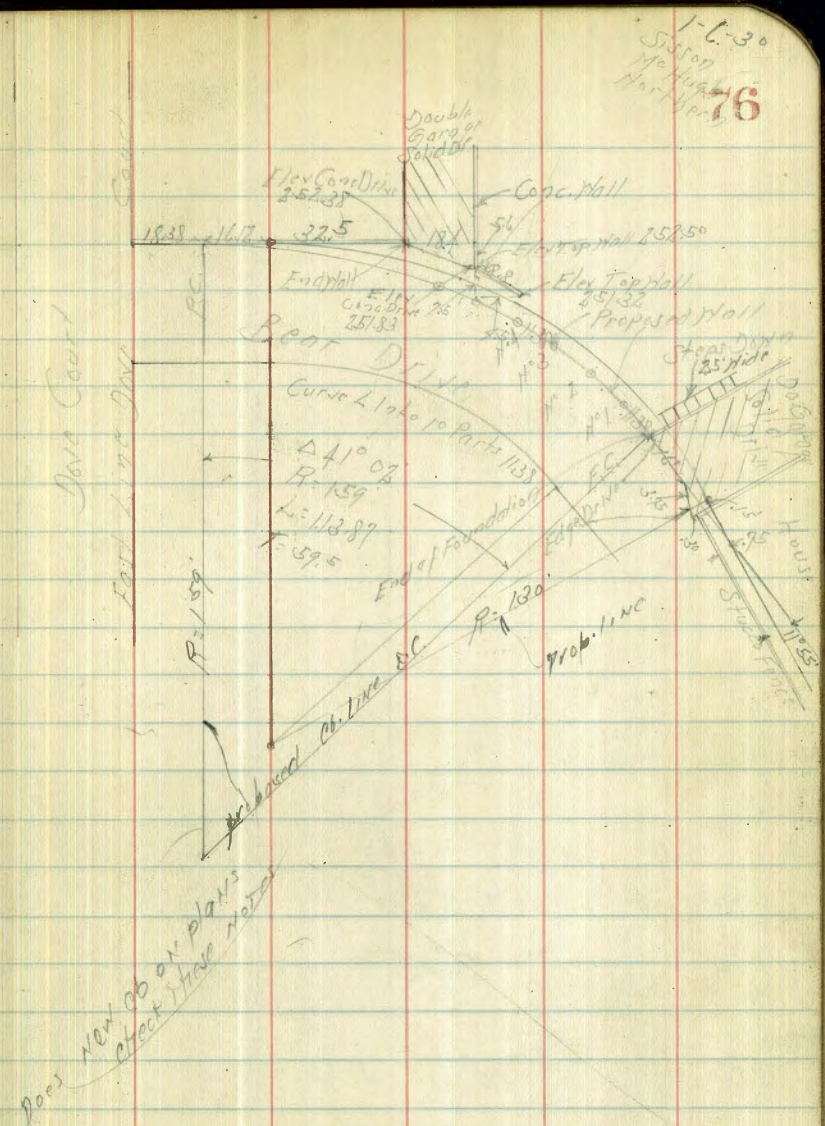
M			7.9	218.9	
57 E - Face of Top Wall			8.00	218.78	
on Gutter			11.61	215.17	
142 E - Edge of Gutter			11.44	215.34	
20 E			11.3	215.5	
28.76 E			10.65	216.13	on Hub
TP	12.65	239.40	0.03	216.75	
TP	12.84	252.17	0.07	239.33	
TP	6.95	258.64	0.48	251.69	
BM			3.00	255.64	3 FT Top of Hub 3 mm O.K. Drive Caut 255.63

Section of Concrete Gutter on West Side Bar Drive
3" x 7" x 1/4"



Bear Drive
Proposed Wall

BM	0.13	255.75	455.03	SETOP HVI SVC DIST. DIST. CL
26.1/1110	F.C.			
26.1/1110	on Conc Wall N End	98	245.91	
5 E of 2		137	242.05	
	11°1			
2 - Dry Wall		84	247.35	
2 E		112	244.55	
8 E		153	240.45	
	11°2			
2		70	248.75	
2 E - Top Dry Wall		68	248.85	
3 E		93	246.45	
8 E		129	242.85	
	11°3			
2		57	250.05	
5 E - Top Dry Wall		61	249.65	
1 E		86	247.15	
10 E		108	244.95	
	11°4			
2		47	251.05	
5 E - Top Conc Wall		399	251.76	
1 E		54	250.35	
10 E		55	250.25	

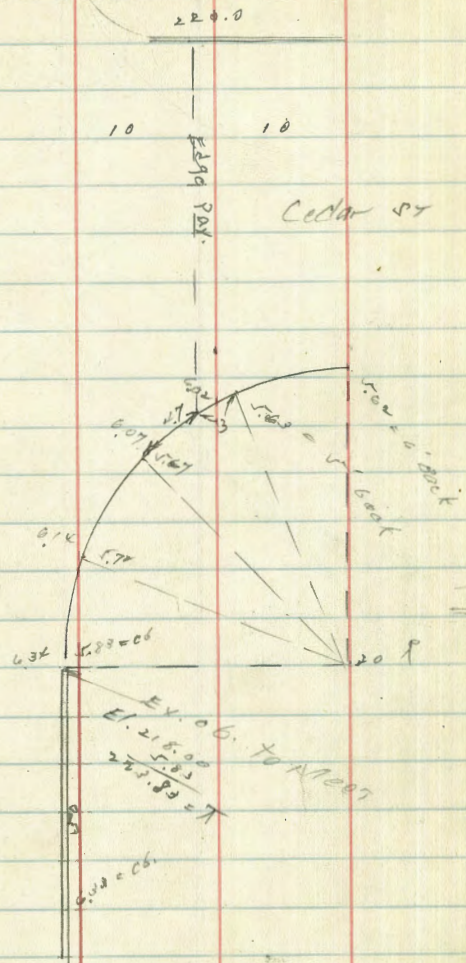


Indexed
C.S. 112

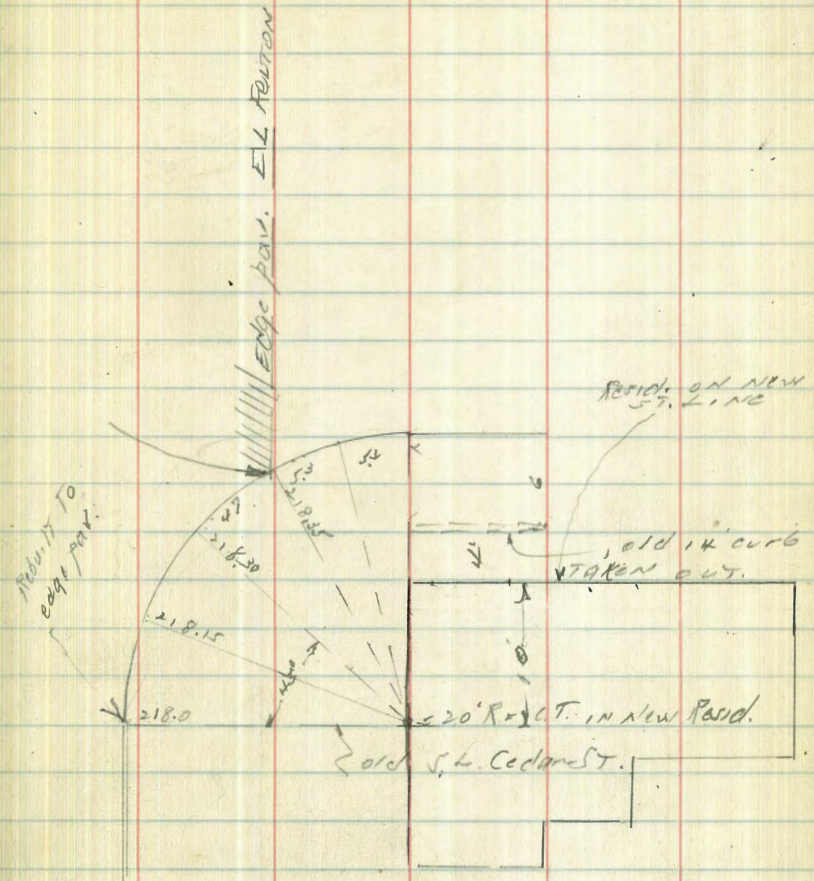
Levels for Prop. Re. Const.
of SE 1/4 Return of Cedar & Felton

Moored
2-2-1893

FELTON



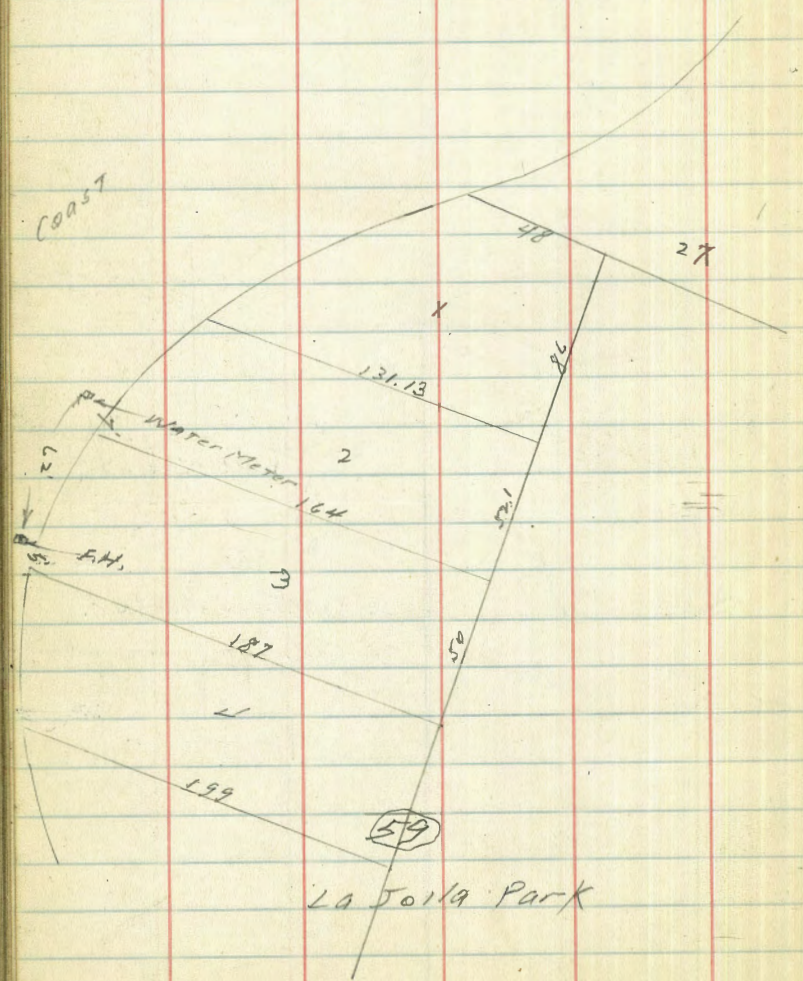
77



Moore
12-1-38.

78

Location of F. Hyd. and
Water Meter on Coast Blvd.
Blvd.



ENGINEERING DEPARTMENT,
CITY OF SAN DIEGO,
CALIFORNIA.

Cedar FULTON NW MON.
21 V. 69

4/15/22 4/15/22 4/15/22
15.6 3.18 13.5
95.44

63.92	NW 26.0 Imperial	448.44	442.72
4.85		12.11	10.68
68.77			
3.33			
65.44		75.51	
10.07		9.02	
75.47		67.46 B.M. B.P. N.W. Evans + Imperial	
0.23		85.51	
75.28		477	
3.87	RM. Top Hndt S.E. 28 th Imperial	30.74 B.M. B.P. N.W. Hensley + Imperial	34.15
79.15			9.58
7.09			24.67
72.06	RM. B.P. S.W. 29 th + Imperial		
5.46			
77.52			
2.55			
74.97	RM. B.P. N.W. 30 th + Imperial		
OK. P.M.			
84.			
14		Fr 80.4 N Alley	469.4
79.		27473.2 25.0 80.4	17.4
15.0		106.0 24	4.56
85.0 ✓		114.4 L 44 4	1.24
83.75		25.2	8.04
98.05 ✓		139.6 N Alley E	92
112.50 ✓		149.69	82.02
13.75		139.6 S Alley E	1.32
126.25 ✓		40.4	82.34
140.00 ✓		200.0	11.03
150.00 ✓		250.0 ✓	72.31
157. ✓		38	25.67
160 ✓		288.0 Par W.	77.98
185	182. ✓	300 Par E	4.21
15.6	181		71.25
200.6 ch	197.6 ✓	34.20	4.57
15.6		25.60	4.59
216.2	213.2 ✓	8.60	9.46
18.6			4.73
231.8	228.8 ✓		
15.6			
847.4	244.4 ✓	193	
15.6		153	
263.0	260.0 ✓	177.7	123.12
47. ✓			4.75
300	300. ✓ day		118.37
50 ✓			
100			
140.6 ✓			
150.6 ✓			
160.6 ✓			
177.7	161.3V		
183	193 ch		
183			
53			
177			