

F338

ASIA

1850-1855

No. 338

MICROFILMED
DEC 23 1964

Our Leather Bound Engineers Note Books are carried in the following rulings:

- No. 380 LEVEL BOOK. Left and Right Hand Page the same as Left Hand Page of this Book.
- No. 382 FIELD BOOK. Left Hand Page as in this Book, Right Hand Page 4 x 4 to the inch, Center Line Red.
- No. 384 MINING TRANSIT BOOK. Left Hand Page as in this Book, Right Hand Page 8x8 to the inch, Center Line Red.
- No. 385 FIELD BOOK. Left Hand Page as in this Book, Right Hand Page 8 vertical and 4 horizontal lines to the inch, Center Line Red.

We also carry the Note Books listed above, bound in extra strong Fabri-Hide (otherwise the same quality of book), which can be furnished at a somewhat lower price.

In ordering Fabri-Hide covered books, add the letter "F" to catalog number.

THE FREDERICK POST CO.
ENGINEERING and DRAFTING SUPPLIES
IRVING PARK STATION
CHICAGO, ILL.

Re. Cross-Section Chatsworth	1-9
✓ ✓ Voltaire	15-20
Ocean Beach Bench Line	9-15
6" water line Del Mar Ave	21-29
✓ ✓ ✓ Orchard	33
✓ ✓ ✓ Coronada	35
4" ✓ ✓ Guizat	37
10" ✓ ✓ Santa Barbara	38
Sewer levels Zola - Parlema Dr.	39-42
✓ ✓ Voltaire	43-46
	47

X-sections Alley Block 3 Blk N Teraita	49	52
X-sec P. Highway Congress to Bridge	53	61
X-sec. Congress Rosecrans to Greenwood	62	64
" " Riley Jefferson to P. Highway	64	66
" " Greenwood ✓ ✓ ✓	67	70
" " Calhoun Greenwood to ✓	71	72
" " Garden Pl. ✓ . Riley	72	73
" " Gaines Jefferson to Pacificity	74	75
Rosecrans Bench Levels	78	
Sunset Cliffs ✓ ✓	79	
Point Loma Ave ✓ ✓	80	

01

Re X section of Chatsworth Blvd

166.90

2

	+	T	-	Elev
S.W.B.P.	7.04	166.90		159.36

Chatsworth
& Alcott

	+	T	-	Elev
E Edge = ± 5				549

0100 = NEly end of Job

±

560 160.80

W.Cb.			6.07	160.33
-------	--	--	------	--------

W. Edge

6.00 160.10

W. gutter			6.65	159.75
-----------	--	--	------	--------

W. gutter

6.28 160.12

+ 10 = Wedge paving			6.19	159.91
---------------------	--	--	------	--------

W. Cb.

5.57 160.83

±			6.11	160.29
---	--	--	------	--------

Sec 4 on Curve

+ 5 = E Edge as Broken out			6.07	160.33
----------------------------	--	--	------	--------

W. Cb.

5.43 160.97

E gutter on print			6.19	159.91
-------------------	--	--	------	--------

W. gutter

6.17 160.23

E Cb.			5.81	160.59
-------	--	--	------	--------

W. Edge

5.84 160.56

Sec 1 on Curve

±

5.40 161.0

E Cb.			5.66	160.74
-------	--	--	------	--------

+ 5 =

E Edge

5.28 161.12

± - 5 = E Edge			5.86	160.59
----------------	--	--	------	--------

E. Cb.

5.28 161.12

±			5.95	160.95
---	--	--	------	--------

Sec 5 on Curve

W. Edge pav.			6.34	160.06
--------------	--	--	------	--------

E Cb

5.11 161.29

W gutter			6.60	159.90
----------	--	--	------	--------

E edge = ± 5

5.11 161.29

W. Cb.			5.84	160.56
--------	--	--	------	--------

±

5.20 161.20

Sec 2 on Curve

W. Edge

5.67 160.73

W. Cb.			5.73	160.67
--------	--	--	------	--------

W. gutter

6.07 160.37

W. gutter			6.19	159.92
-----------	--	--	------	--------

W. Cb.

5.31 161.09

W. Edge			6.19	160.21
---------	--	--	------	--------

Sec 6 on Curve

±			5.79	160.61
---	--	--	------	--------

W. Cb.

5.19 161.21

+ 5 = E Edge			5.68	160.72
--------------	--	--	------	--------

W. gutter

5.89 160.51

E Cb.			5.55	160.85
-------	--	--	------	--------

W. Edge

5.17 160.93

Sec 3 on Curve

±

5.09 161.26

E Cb.			5.41	160.99
-------	--	--	------	--------

E Edge = ± 5

4.97 161.43

E Cb.

4.95 161.15

166.40

+ T - Elev
Sec 7 on Curve

E.Cb.	4.83	161.57
E Edge = ± 5	4.83	161.57
Φ	4.94	161.96
W. Edge	5.34	161.06
W. Gutter	5.76	160.61
W. Cb.	5.01	161.39

Sec 8 on Curve

W. Cb.	4.87	161.53
W. Gutter	5.59	160.81
W. Edge	5.11	161.29
Φ	4.76	161.64
E Edge = ± 5	4.66	161.74
E.Cb.	4.64	161.76

1+60 Sec 9 on Curve = Brk. = P.C. Ret on E

E.Cb.	4.51	161.89
E. Gutter	5.00	161.40
$\frac{1}{4}$	4.13	161.97
Φ	4.55	161.85
W. Edge	4.96	161.44
W. Cb.	4.72	161.68
1+96 =	P.C. of Cb on W.	
W. Cb.	4.31	162.09
W. Edge	4.46	161.94
Φ	4.16	162.24

166.40

+ T - Elev **3**

E $\frac{1}{4}$	4.15	162.25
E.Cb.	4.41	161.99
E.L.	4.88	161.52
2+16		
E.L.	4.52	161.88
E.Cb.	4.02	162.38
$\frac{1}{4}$	3.86	162.54
Φ	3.72	162.68
W. Edge	3.85	162.55
W. Cb.	3.73	162.67

2+96 = P.C. Cb on W.

W. Cb.	3.18	163.12
W. Edge	3.42	162.98
Φ	3.31	162.09
E. Edge	3.50	162.90
E.Cb.	3.02	163.38

T.P. 3.18 166.25 3.33 163.07

3+10.89 = N. line Zolzen W. = E.V.C.

E edge	3.06	163.19
Φ	2.91	163.34
± 5	2.97	163.28
W. Edge	3.06	163.19
W. Cb.	2.91	163.34

Station V.C diagonal

W. Cb. on Curve of Ret	2.61	163.64
------------------------	------	--------

766.25

	+	π	-	Elev
+77.5 = W. Edge			3.01	163.24
+5			2.92	163.33
♀			2.95	163.40
E. Edge			3.01	163.24
Sta 2 on V.C. diagonal				
E Edge			3.04	163.21
♀			2.86	163.39
+5			2.91	163.34
W. Edge			3.01	163.24
+25 = W.Cb = W.L.			2.15	164.10
Sta 3 on V.C. diagonal				
W. Edge			3.18	163.07
+5			3.28	163.17
♀			3.04	163.21
E. Edge			3.22	163.03
Sta 4 on V.C. diagonal				
E Edge			3.44	162.81
♀			3.21	162.98
+5			3.32	162.93
W. Edge			3.41	162.84
Sta 5 on V.C. diagonal				
W. Edge			3.85	162.40
+5			3.74	162.51
♀			3.69	162.57
E Edge			3.86	162.39

166.25

4

	+	π	-	Elev
Sta 6 on V.C. diagonal				
E Edge			4.38	161.87
♀			4.19	162.06
+5			4.22	162.03
W. Edge			4.33	161.92
Sta 7 on V.C. diagonal				
W. Edge			4.98	161.27
+5			4.87	161.38
♀			4.83	161.42
E. Edge			5.05	161.20
Sta. 8 on V.C. Sq with E.L. Sta.				
E Edge			5.98	160.27
♀			5.80	160.45
+5			5.87	160.38
W. Edge			6.03	160.22
W.Cb			5.76	160.49
Sta. 9 on V.C. Sq. with E. Line				
W.Cb.			6.98	159.27
W. Edge			6.92	159.33
+5			6.77	159.48
♀			6.73	159.52
E Edge			6.95	159.30
Sta 10 = E.V.C. Sq with E. Line				
E Edge			7.19	158.26
♀			-2.74	159.51

166.25

157.44

5

+ - Elev

+ 5' 7.78 158.47

W. Edge 7.90 158.35

W. Cb. 8.00 158.25

P. C.

W. Cb. 10.03 156.22

W. Edge = 5' W of ϕ where ϕ unit is to be broken 9.91 156.34 ϕ 9.85 156.46

E. Edge 11.09 156.16

T. P. 0.89 157.44 9.70 156.35 1700 lbs. Wt. at 40.

Sta. 1 on Curve

E. Edge 2.23 155.31

 ϕ 2.09 155.40W. Edge = $\phi + 5$ 2.11 155.33

W. Cb. 2.07 155.39

Sta. 2 on Curve

W. Cb. 2.92 154.77

W. Edge = $\phi - 5$ 3.03 154.41 ϕ 2.98 154.46

E. Edge 3.14 154.30

Sta. 3 on Curve

E. Edge 4.10 153.34

 ϕ 3.89 153.55

+ 5' = W. Edge 3.96 153.48

W. Cb. 3.99 153.47

+ - Elev.

Sta 4 on Curve

W. Cb. 4.90 152.54

W. Edge = $\phi - 5$ 4.90 152.54 ϕ 4.87 152.57

E. Edge 5.05 152.39

Sta 5 on Curve

E. Edge 5.92 151.52

 ϕ 5.78 151.66

+ 5' = W. Edge 5.85 151.59

W. Cb. 5.85 151.59

Sta. 6 on Curve

W. Cb. 6.82 150.62

W. Edge = $\phi - 5$ 6.85 150.59 ϕ 6.78 150.66

E. Edge 6.96 150.48

Sta 7 on Curve

E. Edge 7.87 149.57

 ϕ 7.70 149.74

+ 5' = W. Edge 7.79 149.65

W. Cb. 7.74 149.70

Sta 8 on Curve

W. Cb. 8.67 148.77

W. Edge = $\phi - 5$ 8.73 148.71 ϕ 8.68 148.76

E. Edge 8.82 148.62

	+	-	Elev
Sta 9 on Curve			
E. Edge		9.70	147.74
Φ		9.57	147.87
+5 = W. Edge		9.64	147.80
W. Cb.		9.62	147.82

Sta 10 on Curve			
W. Cb.		10.52	146.92
W. Edge = Φ - 5		10.60	146.84
Φ		10.56	146.88
E. Edge		10.80	146.64

Sta 11 on Curve			
E. Edge		11.59	145.85
Φ		11.36	146.08
+5 = W. Edge		11.39	146.05
W. Cb.		11.39	146.05

Sta 12 on Curve			
W. Cb.		12.27	145.17
W. Edge = Φ - 5		12.19	145.25
Φ		12.18	145.26
E. Edge		12.31	145.13
T. P.	0.85	145.73	12.56 144.88

Sta 13 on Curve			
E. Edge		1.36	144.37
Φ		1.25	144.48
+5 = W. Edge		1.26	144.47
W. Cb.		1.47	144.26

	+	-	Elev
Sta 14 on Curve			
W. Cb.		2.25	143.48
W. Edge = Φ - 5		2.18	143.55
Φ		2.16	143.57
E. Edge		2.21	143.52

Sta 15 on Curve			
E. Edge		3.15	142.58
Φ		3.07	142.66
+5 = W. Edge		3.10	142.63
W. Cb.		3.09	142.64

Sta 16 on Curve			
W. Cb.		4.04	141.69
W. Edge = Φ - 5		4.03	141.70
Φ		4.00	141.73
E. Edge		4.06	141.67

Sta 17 on Curve			
E. Edge		5.07	140.66
Φ		4.99	140.71
+5 = W. Edge		5.02	140.71
W. Cb.		4.98	140.75

Sta 18 on Curve			
W. Cb.		5.94	139.79
W. Edge = Φ - 5		5.96	139.77
Φ		5.94	139.79
E. Edge		6.08	139.65

145.73

+ T - E/PV

Sta 19 on Curve

E Edge	7.00	138.73
☼	6.87	138.86
+5 = W Edge	6.93	138.80
W.Cb.	6.86	138.87

Sta 20

W.Cb.	7.80	137.93
W Edge = ☼-5	7.89	137.84
☼	7.86	137.87
E Edge	7.96	137.77

Sta 21

E Edge	8.86	136.87
☼	8.77	136.96
+5 = W Edge	8.82	136.91
W.Cb.	8.74	136.99

Sta 22

W.Cb.	9.67	136.04
W Edge = ☼-5	9.73	136.00
☼	9.66	136.07
E Edge	9.80	135.93

Sta 23

E Edge	10.69	135.04
☼	10.66	135.07
+5 = W Edge	10.72	135.01
W.Cb.	10.64	135.09

145.73

7

Sta 24 on Curve

W.Cb.	11.58	134.15
W Edge = ☼-5	11.62	134.11
☼	11.60	134.13
E Edge	11.75	133.98

Sta 25

E Edge	12.74	132.99
☼	12.58	133.15
+5 = W Edge	12.62	133.11
W.Cb.	12.54	133.19
T.P.	119	134.67
	12.25	133.48

Sta. 26

W.Cb.	2.38	132.29
W Edge = ☼-5	2.45	132.22
☼	2.40	132.27
E Edge	2.57	132.10

Sta 27

E Edge	3.52	131.25
☼	3.39	131.28
+5 = W Edge	3.44	131.23
W.Cb. on driveway	4.04	130.63

Sta 28

W.Cb.	4.32	130.35
W Edge = ☼-5	4.42	130.25
☼	4.34	130.33
E Edge	4.50	130.17

	+	-	Elev	T.P.	0.78	123.32	12.17	122.50
Sta 29 on Curve				T.P. s.m.r.	6.18	123.02	6.14	116.87 =
				P.C. + 50				
E Edge	E Edge	5.34	129.33	W. Cb. on Return = W. line		1.52	121.5	
Φ	Φ	5.23	129.44	W. Gutter		2.35	120.67	
+5 =	+5 = W. Edge	5.27	129.40	+14 = Cb. line		1.31	121.71	
W. Cb.	W. Cb.	5.20	129.47	+11		0.75	122.27	
Sta 30 = E.C.				Φ		0.57	122.43	
W. Cb.	W. Cb.	6.05	128.62	+10 = E. Edge		0.65	122.37	
W. Edge = Φ = 5	W. Edge = Φ = 5	6.12	128.65	# 75				
Φ	Φ	6.06	128.61	E Edge		1.76	21.26	
E Edge	E Edge	6.23	128.44	Φ		1.62	1.40	
E.C. + 53				+10		1.78	1.24	
E Edge	E Edge	8.16	126.51	+11 = Cb. line		2.04		
Φ	Φ	8.02	126.65	+14 = P. line		2.62		
+5 =	W. Cb.	8.15	126.22	17 00				
E.C. + 106.54 = P.C. Ret on W.				W. line		3.56		
W. Cb.	W. Cb.	10.83	123.84	+14 = Cb. line		3.21		
Φ	Φ	10.11	124.56	+11		2.91	20.11	
W. Edge	E. Edge	10.24	124.43	Φ		2.71	20.31	
+ 25				+10 = E Edge		2.82	20.20	
E Edge	E Edge	11.30	123.37	+ 25				
Φ	Φ	11.17	123.50	E Edge		3.88	19.14	
W. Cb.	W. Cb.	11.99	122.88	Φ		3.75	19.27	
				+10		3.91	19.11	
				+14 Cb. line		4.35		
				+14 W. line		4.98		

 CHATEAUBERT
 VALTOIRE
 116.79 31.00

133.02

1/4	5.78	117.24
Cb line	6.00	117.02
+ 1.5 = gutter	6.02	117.00
N.Cb on Return	5.00	118.00

0 + 70 = P.C. on N.

N.Cb.	6.94	116.98
1/4	6.86	116.16
¢	6.90	116.02
1/4	7.13	115.59
S. gutter	8.40	114.62
S. Cb.	7.78	115.24

0 + 80 = Point of Break in Pymt on S

S. Cb.	8.15	114.87
S. gutter	8.78	114.14
N. Cb.	6.63	116.39

0 + 90

N. Cb.	7.23	113.79
S. Cb.	8.54	114.48

1 + 10

S. Cb.	9.32	113.70
N. Cb.	8.60	114.62

1 + 30

N. Cb.	10.09	112.93
T.P.	1.07	113.27
S. Cb.	0.14	112.63

113.27

10

1 + 60 = End of Break out of Pymt.

S Cb.	3.02	110.35
gutter	3.74	109.53
S. 1/4	3.01	110.26
¢	2.76	110.51
+ 5 = N. Edge as broken out	2.75	110.52
N. Cb.	2.82	110.45

2 + 00.51

N. Cb.	6.13	107.14
¢ - 5 = N. Edge	6.07	107.20
¢	6.03	107.24
S. 1/4	6.30	106.97
S. gutter	6.96	106.31
S. Cb.	6.22	107.05

2 + 50.51

S. Cb.	10.24	103.03
S. gutter	11.08	102.24
S. 1/4	10.91	102.86
¢	10.23	103.04
¢ + 5 = N. Edge	10.30	102.97
N. Cb.	10.22	103.05

T.P.	0.58	101.79
S. Cb.	12.06	101.21

2 + 80.51 = Brk. on N.

N. Cb.	12.1	100.58
¢ - 5 = N. Edge	12.5	100.54
¢	12.0	100.59

101.79

1/4	1.29	100.50
Gutter	1.96	99.83
S.Cb.	1.17	100.62
2 + 93.74 = Brk in Cb on S.		
S.Cb.	2.18	99.61
N.Cb.	2.23	99.56
3 + 100.51 = Brk in Cb on N.		
N.Cb.	2.82	98.97
ϕ - 5 = N Edge	2.88	98.91
ϕ	2.83	98.96
1/4	3.10	98.69
S. gutter	3.55	98.24
S.Cb.	2.78	99.01
3 + 23.74 = P.C. Ret. on S.		
S.Cb.	4.30	97.49
S. gutter	5.12	96.67
1/4	4.82	96.97
ϕ	4.67	97.10
ϕ + 10 = N Edge	4.85	97.14
N.Cb.	4.50	97.29
3 + 10.51 = P.C. Ret. on N.		
N.Cb.	5.35	96.44
N. Edge = ϕ - 10	5.62	96.27
ϕ	5.49	96.30
1/4	5.80	95.99
ϕ line	6.06	95.73
+ 4.2 = gutter	5.85	95.94
Top Cb on Return	5.10	96.69

101.79

11

3 + 48.74		
S Edge = Cb - 4.2	6.15	95.64
Gutter	6.54	95.25
1/4	6.12	95.67
ϕ	5.85	95.94
+ 10 = N Edge	5.83	95.96
3 + 73.74		
N. Edge = ϕ - 10	6.82	94.97
ϕ	6.81	94.88
1/4	7.29	94.50
Gutter	7.74	94.05
+ 4.2 = S. Edge	7.40	94.39
3 + 98.74		
V gutter - 4.2 = S Edge	8.15	93.34
V. gutter	8.76	93.03
1/4	8.32	93.47
ϕ	7.93	93.86
ϕ + 10 = N Edge	7.89	93.90
4 + 23.74		
N. Edge = ϕ - 10	9.02	92.77
ϕ	7.13	92.66
1/4	9.33	92.46
V gutter	7.86	91.93
+ 4.2 = S. Edge	9.73	92.06
4 + 48.80 = W. Line Villa Drive		
S. Edge = Cb line	10.85	90.94

101.79

76.85

12

1/4
 10.30 91.99

10.11 91.68

+10 = N. Edge 10.17 91.62

N.Cb. on Return = Cb + 7.5 10.55 91.24

W.L. Villa Dr + 21.69 = End of Print Left m.

N.Cb. 11.39 90.40

N Edge = 10 11.53 90.26

11.32 90.17

S. Edge = 10 11.41 90.38

T.P.S.W.B.R Villa Dr & Voltaire 5.39 96.40

X sec Voltaire Strip Paving
 from a point 130 ft W of W. Line Wells St
 to W.L. Mendocino

T.P. 3.15 76.85 73.70 = Top of Voltaire

W.L. Wells St 1+30 = 2+70 grade Sta

N.L. + 25 = N. Edge 7.76 69.09

+10 = 7.63 69.27

+10 = S. Edge 7.79 69.06

1+60 = 2+90 grade Sta

S. Edge 7.24 69.61

7.09 69.76

N. Edge 7.24 69.61

2+00 = 2+00 grade Sta

N. Edge 6.53 70.32

6.42 70.43

S. Edge 6.52 70.33

2+40 = 1+60 = EL Wabaska

S. Edge 5.86 70.99

5.72 71.13

N. Edge 5.89 70.96

2+80 = 1+20

N. 5.22 71.63

5.06 71.79

S. 5.26 71.59

2+99 = 1+01 = W.L. Wabaska

S. = N.L. + 38 5.08 71.77

4.99 71.86

N. = N.L. + 33 5.20 71.65

3+52.1 = 0+47.1 = P.C. Wabaska

N = N.L. + 15 5.28 71.57

5.28 71.57

S. = " " 35 5.34 71.51

4+00 = EL SAN Clemente 60' 5" + 10' 0" 10' 1/2"

S. 5.52 71.33

5.50 71.35

N. 5.63 71.22

E of SAN Clemente

N 5.79 71.06

K 5.61 71.24

S 5.60 71.25

E 1/4

S. 5.70 71.15

7685

☿		566	71.19
N		580	71.05
	☿		
N		593	70.92
☿		572	71.13
S		574	71.11
	W 1/4		
S		579	71.06
☿		580	71.05
N		604	70.81
	W. Ob.		
N		611	70.74
☿		586	70.99
S		586	70.99
	W.L. San Clemente = ^{grade} Sta. 10		
S		598	70.87
☿		596	70.89
N		635	70.60
	Sta. 9		
N		716	69.69
☿		683	70.02
S		684	70.01
T.P.	0.53 74.23	315	73.70
	Sta 8		
S		513	69.10
☿		515	69.08
N		551	68.72

74.23

13

	Sta 7.		
N		696	67.77
☿		610	68.13
S		608	68.15
	Sta. 6		
S		701	67.22
☿		712	67.11
N		749	66.74
	Sta. 5		
N		834	65.89
☿		804	66.19
S		795	66.28
	Sta. 4		
S		894	65.29
☿		899	65.29
N		922	65.01
	Sta 3		
N		1021	64.02
☿		995	64.28
S		988	64.35
	Sta. 2		
S		1083	63.48
☿		1089	63.34
N		1113	63.10
	Sta 1.		
N		1206	62.17
☿		1194	62.39

74.23

Sta 1 Cont

S		11.77	62.46	
E Line Catalina ST Rdway ^{12.70 1/5}				
S. Cb. Top		11.93	62.30	
S. Gutter		12.13	61.80	
S. 1/4		12.40	61.83	
£ = S. Edge of Strip Print from W.	^{12.44}		61.79	
N. 1/4		12.63	61.60	
N. Gutter - N. Edge Strip		12.99	61.24	
N. Cb. Top		12.40	61.83	
T.R.S.W. BR	9.38	71.83	11.78	62.45 ^{Voltaire Catalina}
W. Line Catalina On A Between Returns				
N. Cb. Top		10.52	61.31	^{47 Rdway 12.70 1/5}
N. Gutter		11.23	60.60	
N. 1/4		10.69	61.14	
£ = S. Edge Strip to W.		10.49	61.34	
S. 1/4		10.39	61.44	
S. Gutter		10.29	61.54	
S. Cb.		9.74	62.09	
O + 21.55 on S = off W. k on N				
S. Edge = N. Cb. + 21.3		10.43	61.40	56
£		10.71	61.12	26
N. Gutter		11.23	60.60	28
N. Cb.		10.52	61.32	
	+ 50			
N. Cb.		9.94	61.89	
Gutter		10.63	61.20	1.5

74.83

14

£	10.12	61.72	.82
S. = N. Cb. + 19.5	9.86	61.91	2.08
	17 00		
S.	8.92	62.91	63.02
£	9.23	62.60	62.82
Gutter	9.78	62.00	62.3
N. Cb.	9.11	62.72	
1 + 12.46 = Alley line on S.			
N. Cb.	8.80	63.03	
Gut.	9.44	62.39	62.5
£	8.97	62.96	62.96
S.	8.12	63.21	63.26
1 + 42.46 Brk			
S.	7.84	63.99	64.24
£	8.08	63.75	63.90
Gut	8.49	63.35	63.5
N. Cb.	7.83	64.00	
1 + 95.9			
N. Cb.	6.06	65.77	
Gut.	6.69	65.14	.27
£	6.35	65.48	.68
S.	6.14	65.69	.92
2 + 19.3			
S.	4.32	67.51	7.62
£	4.50	67.33	7.41

71.83

gut. 4.89 66.94 729
 N.Cb. 1.32 67.51

3402.7

N.Cb 2.50 69.33
 gut 2.15 68.68 8.81
 ♀ 2.72 69.11 9.17
 S. 2.59 69.24 9.37

3456 = E.L. Mendocino on S.

S. 0.86 70.99 1.11
 ♀ 1.00 70.83 92
 gut 1.33 70.50 70.58
 N.Cb. 2.9 70.04
 T.P. 11.14 91.82 1.15 70.68

A + 09.40 = Brk on S.

N.Cb. 9.06 72.76
 gut. 9.62 72.70
 ♀ 9.30 72.52
 S. 9.19 72.63

A + 60.6

S. = N.Cb + 19.5 7.42 74.40
 ♀ 7.54 74.28
 gut 7.79 74.04
 N.Cb. 7.29 74.54

A + 78.04 A on diagonal between A & S.

N.Cb. 6.73 75.09

81.82

15

gutter 7.26 74.56

♀ = N.Cb + 13 6.83 74.99

S. = N.Cb + 26 6.63 75.19

T.P. 6.73 75.09

A + Mendocino
 C.I. Tr. Aon N

Re X Section
 Chatsworth V.C. in front of School

+ π - Elev.

0+00 = P.K.C.

167.55

E	4.36	3.19
φ	4.18	3.37
W	4.34	3.21
W.C.B. = W/4 + 15	4.10	3.45

Sta 5

W	5.33	2.22
a	5.12	2.43
E	5.26	2.29

Sta 6

Sta 1.

W.C.B. Edge - RR

W.C.B. Edge - RR	3.64	3.91
W	4.30	3.25
C	4.14	3.41
E	4.30	3.25

E	5.84	1.71
a	5.68	1.87
W	5.89	1.66

Sta 2

E	4.39	3.16
a	4.20	3.35
W	4.37	3.18

Sta 7

W.C.B. = Edge - 14

W.C.B. = Edge - 14	5.88	1.67
W	6.62	0.93
a	6.39	1.14
E	6.53	1.02

Sta 3

W	4.56	2.99
a	4.39	3.18
E	4.54	3.01

Sta 8

E	7.32	0.23
C	7.20	0.35
W	7.45	0.10

W.C.B. = Edge + 11

W.C.B. = Edge + 11	7.27	0.28
--------------------	------	------

Sta 4

E	4.83	2.72
a	4.69	2.86
W	4.88	2.67

Sta 9

W.C.B.	8.42	9.13
W	8.34	9.21
C	8.11	9.44
E	8.33	9.22

16755

950

45098N

Sta 2

Sta 10				⊕	7.03	72.05
E	9.35	8.20		1/4	7.11	71.97
c	9.10	8.45		E. Gut	7.38	71.70
W	9.29	8.26		E. cb	6.84	72.29
Web.	9.45	8.10				

Sta 3

E. cb	6.44	72.64
E. Gut	6.89	72.09
1/4	6.70	72.38
⊕	6.60	72.48

Re Section Intersection of
Mendocino & Voltaire

P.C. of Mendocino on E.

75.098N
2.79
77.09

Sta 4

E. cb.	79.08	80.4	71.04	⊕	6.19	72.89
E. gutter		8.59	70.49	1/4	6.30	72.78
1/4		8.29	70.79	E. Gut	6.58	72.50
⊕		8.13	70.95	E. cb.	6.04	73.04

Cb Line Mendocino on E.

Sta 5

⊕	7.80	71.28		E. cb	5.64	3.44
1/4	7.90	71.18		E. Gut	6.17	3.91
gut.	8.20	70.98		1/4	5.87	3.21
E. cb.	7.65	71.43		⊕	5.78	3.30

Sta 1.

Sta 6 - B.C.

E. cb.	7.23	71.25		⊕	5.44	3.64
E. Gut	7.77	71.31		1/4	5.47	3.61
1/4	7.51	71.57		E. Gut	5.69	3.39
⊕	7.45	71.63		E. cb	5.19	3.89

Sta 7

E cb	4.76	4.32
E Gut	5.25	3.80
1/4	5.06	4.02
♀	4.96	4.12
+ 1	5.00	4.08

Sta 8

W cb	4.80	4.28
♀ - 2	4.53	
♀	4.55	4.53
1/4	4.71	4.37
E Gut	4.90	4.18
E cb	4.37	4.71

Sta 9

E cb	4.14	4.94
E Gut	4.63	4.45
1/4	4.40	4.68
♀	4.25	4.83
+ 4	4.30	4.78
W cb	4.49	74.49

Sta 10

W cb	4.25	74.83
E - 2	4.03	4.05
♀	4.00	5.08
1/4	4.14	4.94
E Gut	4.43	74.65
E cb	3.87	5.21

Sta 11

E cb	3.67	5.44
E Gut	4.16	4.42
1/4	3.87	5.21
♀	3.79	5.29
♀ ± 3.5	3.81	5.27
W cb	3.95	5.13

Sta 12

W cb	3.71	5.37
♀ - 5	3.56	5.52
♀	3.57	5.51
1/4	3.64	5.94
E Gut	3.95	5.13
E cb	3.39	75.69

Sta 13

E cb Delay	3.56	75.52
E Gut	3.70	75.38
1/4	3.42	5.66
♀	3.35	5.23
♀ + 5.5	3.41	5.67
W cb	3.49	75.59

Sta 14

710 82.19 Elev 75.09

Sta. 14

w cb	5.59	76.60
W 1/4 + 3	5.81	76.38
Φ	5.51	76.68
E 1/4	5.52	76.67
E Edge Per	5.92	76.87
Edge + 8 = cb cut on E	5.44	76.75

Sta 15

E ob cut = -16 from E Edge	5.09	77.10
E Edge	5.37	76.82
E 1/4	4.98	77.21
Φ	4.89	77.30
N 1/4	5.47	76.72
W cb	4.98	77.21

Sta 16

H ob	4.37	77.82
W 1/4	4.91	77.35
Φ	4.46	77.73
E 1/4	4.50	77.69
E Edge	4.74	77.45
= cb cut on E	5.30	76.89

Sta 17

cb cut on E	6.00	76.19	
E Edge	4.43	77.26	
E 1/4	4.12	78.07	
Φ	4.18	78.01	LOW
W 1/4	4.38	77.81	
W cb	4.15	78.04	

Sta 18

N ob	3.90	78.29
W 1/4	4.09	78.10
Φ	3.90	78.29
E 1/4	4.02	78.17
+ 6 = E Edge	4.21	77.98
E cb	4.15	78.04

Sta 19

E cb	3.81	78.38	
Gutter	4.13	78.06	
E 1/4	3.22	78.47	
Φ	3.73	78.46	LOW
W 1/4	3.82	78.37	
W Edge par.	4.07	78.12	
W cb	3.61	78.68	

Catalina to Mendocino

7.50

69.95

62.95

6

69.95
Sta 5

20

Sta 1

W	843	61.42	61.92 61.63
Φ	852	61.43	61.59
1/4	880	61.14	61.30
E	935	60.50	60.76
cb.	861		

W

7.03

62.92

62.92

63.15

Φ

6.93

63.02

63.16

1/4

7.24

62.71

62.86

E

7.77

62.18

62.34

cb.

7.12

~~62.73~~

Sta 6 Alley F

cb.	858	61.41	
E	915	60.80	60.96
1/4	860	61.35	61.52
Φ	831	61.64	61.83 61.84
W	825		61.70

cb.

6.99

E

7.62

62.33

62.99

1/4

7.02

62.93

63.08

Φ

6.78

63.17

63.33

W

6.84

63.11

63.11

Sta 7 Alley W1

W	804	61.91	61.91 62.12
Φ	790	62.05	62.19
1/4	915	61.80	61.98
E	870	61.25	61.41
cb.	798		

W

5.48

64.47

Φ

6.10

63.85

1/4

6.31

63.64

E

6.75

63.20

cb.

6.11

63.84

Sta 4

cb.	753		
E	817	61.78	61.84
1/4	770	62.35	62.43
Φ	743	62.55	62.70
W	754	62.42	62.43 62.42

Vid 30
 1/2
 1/2
 1/2

Bench Line Cable - Coronado

	+	II	-	Elev	et al	T.P.	160.89	-	Elev	
S.W.B.P.	7.30	257.66		250.36	Santa Barb & Del Mar	T.P.	11.65	171.80	0.74	170.15
N.W. Cb Orchard			5.42	252.24	Plig Gane	S.E. 35' Ties 4' Line	11.12	182.80	0.12	171.68
T.P.	2.77	250.33	10.12	247.54	Orchard & Santa Barb.	S.W.B.P.			8.11	174.69
S.E.B.P.			0.24	250.69		N.E. Man			3.43	179.37
T.P.	0.82	238.21	12.94	237.89		T.P.	12.69	195.27	0.22	182.58
T.P.	1.75	229.14	11.82	226.39		T.P.	12.20	207.14	0.33	194.94
S.W.R.R. Spike in file #9.1498			3.26	224.89	Pescadero & Santa Barb	S.E. 35' Ties 7' Pt.			3.00	204.14
T.P.	0.85	216.30	12.69	215.45		S.W.B.P.				
T.P.	2.04	205.72	12.60	203.68		T.P.	12.34	219.17	1.31	205.83
S.W.B.P.			4.05	200.87	Bermuda & Santa Barb	T.P.	12.09	230.18	0.06	218.11
T.P.	0.48	194.26	1.94	193.78		T.P.	6.47	235.82	0.83	227.35
S.W.B.P.	0.54	182.80	10.00	182.26	Point Loma Ave & Santa Barb	S.E.B.P.			2.65	233.17
T.P.	0.13	170.15	12.78	170.02		N.E. T. Ties 1.55		229.91	8.96	227.36
T.P.	0.29	157.70	12.74	157.41		S.W.B.P.	11.23	227.90	10.84	218.07
T.P.	0.35	146.01	12.04	145.66		T.P.	12.00	240.69	1.21	228.69
T.P.	1.04	134.02	12.03	133.98		N.E.B.P.	10.44	247.75	3.18	237.51
T.P.	1.36	129.71	12.67	122.30		T.P.	11.69	258.99	0.65	247.30
N.W. 7 CT.			9.32	120.39	Point Loma Ave & Guizot St.	S.W.B.P.			3.50	255.49
T.P.	11.95	140.77	0.17	129.92						
S.W.B.P.			7.52	133.25	Bermuda & Guizot	S.W.B.P.	0.54	182.80	10.77	182.26
T.P.	11.67	151.73	0.71	140.06		T.P.	0.12	170.15	12.77	170.03
T.P.	9.13	160.89	0.67	151.06		T.P.	0.12	157.53	12.74	157.41
S.W. 40' Ties 4' Pt			9.40	151.49	Pescadero & Guizot	T.P.	0.21	145.87	11.87	145.66
N.W. Mon			3.34	157.55		T.P.	0.74	134.72	11.89	153.98
S.W.B.P.										

Orchard
&
Guizot

Del Mar
&
Guizot

Coronado
&
Guizot

Santa Cruz
&
Del Monte
&
Guizot

Del Monte
&
Santa Barb.

Santa Cruz
&
Santa Barb.

Point Loma
&
Santa Barb.

134.72

Bench Line Coronado Cable ²² (1)

	+	T	-	Elev
T.P.	8.68	131.03	12.37	122.35
			10.64	120.39
T.P.	11.56	142.02	0.57	150.46
			8.77	133.25
T.P.	12.62	154.36	0.28	141.74
T.P.	8.10	162.27	0.19	156.17
			15.79	151.48
T.P.	12.38	174.76	0.09	162.18
T.P.	10.72	185.41	0.07	174.67
T.P.	12.74	197.11	0.16	185.25
T.P.	12.04	209.16	0.07	197.42
			5.82	204.13
T.P.	12.49	222.35	0.10	209.86
T.P.	12.17	233.97	0.55	221.80
T.P.	2.74	235.89	0.82	233.15
T.P.	1.07	228.42	0.56	227.33
T.P.	11.36	229.40	10.32	218.04
T.P.	12.52	240.92	-1.00	228.40
T.P.	11.53	249.01	3.44	237.48
T.P.	8.39	257.30	0.10	248.90
			1.85	255.15
T.P.	4.65	256.81	11.74	246.16
			10.67	240.14
T.P.			0.42	250.39

	+	T	-	Elev
N.W.B.P.	3.49	53.55		50.96
T.P.			12.83	40.72
	1.59	42.31		
N.W.B.P.			6.11	36.20
T.P.	2.70	36.13	8.88	33.43
N.W. 7H. back			2.90	30.23
T.P.	3.94	33.06	7.01	29.12
N.W. B.P.			4.91	28.15
T.P.	1.87	25.97	8.96	24.10
N.W. 7H. back			4.84	21.13
T.P.	7.22	26.96	6.23	19.74
S.W. Prop. 7H. back			6.84	20.12
T.P.	12.33	^{38.81} 29.76	0.47	^{26.41} 27.43
S.E.			3.14	35.68
B.P.				26.62
T.P.	12.62	^{51.07} 42.01	0.37	^{38.45} 29.39
T.P.	12.61	^{63.60} 54.51	0.08	^{50.99} 41.93
T.P.	12.17	^{75.61} 66.55	0.16	^{63.04} 54.88
S.W. B.P.			10.69	64.92
S.E. B.P.			9.05	55.54
T.P.	12.92	^{85.07} 79.03	0.44	^{66.17} 66.11
T.P.	12.93	^{100.80} 91.74	0.22	^{87.87} 78.81
T.P.			0.22	^{100.58} 91.52

Coronado
& Sunset Cliffs
Delmar
Sunset
orchard
& Sunset
Paso Verde
Sunset
Bermuda
Sunset
Point Loma
Sunset
Ebers
Point Loma
Fraude
Point Loma
Fraude
Point Loma

	+	H.I.	-	Elev		+	H.I.	-	Elev	
	12.41	112.99		100.58		6.83	112.73		105.88	
T.P.	12.07	103.93	0.18	91.52	S.W.	1.74	107.15	7.30	105.47	Ebers
N.W. 7' track		134.98		112.81	7' track					Coronado
		45.82	4.53	120.35	N.W.			1.70	105.45	Ebers
					Mon.					Coronado
T.P.	12.31	137.05	0.14	124.74	T.P.	1.12	95.99	12.30	94.85	
S.W. } T.P.					T.P.	0.58	83.80	12.75	83.22	
B.P. }	1.47	134.69	3.83	133.22	T.P.	0.82	71.79	12.85	70.95	
					T.P.	0.01	58.99	12.79	58.98	
T.P.	0.09	123.12	11.66	123.03	N.W. B.P.			8.92	50.07	Coronado
T.P.	1.95	112.02	12.99	110.13					50.06	Sunset Cliffs
T.P.	0.00	99.30	12.78	99.30					.01	Euro
S.W. }										
B.P. }			4.69	94.61						
T.P.	12.53	111.63	0.22	99.08						
T.P.	12.26	123.74	0.13	111.48	N.W.	1.89	107.34		105.45	Ebers
T.P.	12.77	135.74	0.79	122.95	Mon.	2.74	97.97	12.11	95.23	Coronado
S.W. Fence					T.P.					
POST 3 Nails			9.84	125.86	N.W.			4.50	93.97	Ebers
					7' track					Santa Cruz
T.P.	12.98	148.59	0.11	135.67	N.W.			2.53	95.44	Ebers
T.P.	12.44	160.93	0.12	148.49	Mon					Santa Cruz
S.W. 35' tie to					T.P.	4.91	100.35	3.21	97.14	
line (Extra			3.39	157.52	T.P.	12.70	199.84	0.67	109.17	
space)					T.P.	12.84	122.01	0.44	121.57	
T.P.	12.93	173.32	0.52	160.89	T.P.	12.77	134.34	4.58	129.76	Froude
T.P.	12.94	185.75	0.51	172.88	N.W.					Del Monte
N.W. 34' tie					B.P.					
to of 09' line	0.32	179.60	4.47	179.26	T.P.			0.84	133.50	
					T.P.	12.19	145.69	0.01	145.48	
T.P.	0.65	167.58	12.67	166.93	SW 7' track	12.51	158.20	8.88	149.32	Froude
T.P.	0.38	153.46	12.50	155.08						Santa Cruz
T.P.	0.32	142.88	12.95	142.57	T.P.			0.64	157.56	
T.P.	0.72	131.06	12.49	130.34	T.P.	12.60	170.16	0.07	170.09	
T.P.	0.41	118.76	12.71	118.35	N.W.	12.05	182.14	2.88	179.26	Froude
T.P.			12.88	105.88	3' tie back					Coronado

	+	H.I.	-	Elev		+	T	-	Elev		
NW Mon.	2.23	107.68		105.45	Ebers + Coronado	S.W.B.P.	12.40	194.66	182.26	Floma Ave. Santa Barbara	
TP	0.77	95.75	12.70	94.98		T.P.	12.66	207.06	0.14	194.52	
TP	0.90	84.06	12.59	83.16		S.W.B.P.		6.19	200.89	Santa Barb + Bermuda	
SW 7 tack			3.30	80.76	Ebers + Del Mar	T.P.	12.94	219.73	0.29	206.79	
TP	2.35	75.74	12.62	71.44		T.P.	12.83	232.18	0.38	219.35	
SW 7 tack			6.45	67.34	Ebers + Orchard	SW.R.R. Spike in Pole #71498			7.39	224.89	Santa Barb + Pescadero
TP	0.56	62.14 55.69	12.21	61.58 55.13		T.P.	12.67	244.28	0.57	231.61	
NE BP TR	0.82	57.22 50.77	5.74	49.95 44.00	Ebers + Pescadero	T.P.	12.02	255.93	0.37	243.91	
NE Mon TP	0.51	48.34	9.39	47.93 41.38	Bermuda + Ebers	S.E.B.P.			5.83	250.10	
SE BP TP			12.65	35.28		S.W.B.P.			5.53	250.40	Santa Barb + Del Mar.

1/15/30
 Flood
 gauge
 40119

Ocean Beach Bench Line

Ocean Beach Bench Line

	+	-	Elev	
N.E.B.P.	11.53	248.97	237.44	Santa Barbara 4 Del Monte
T.P.	8.39	257.26	0.10	248.87
S.E.B.P.			0.10	254.13
S.W.B.P.			1.85	255.41
T.P.	4.65	250.97	11.14	246.12
S.W.B.P.			10.67	240.10
S.W.B.P.	5.53	255.88	0.42	250.35
S.E.B.P.			-5.83	250.05
T.P.	0.37	244.23	12.02	243.86
T.P.	8.57	232.13	12.67	231.56
S.W.R.R. Spike	11/20/29 499		7.29	224.84
T.P.	0.38	219.68	12.83	219.30
T.P.	0.29	207.03	12.94	206.74
S.W.B.P.			6.19	200.84
T.P.	0.14	194.61	12.56	194.47
S.W.B.P.	0.54	182.76	12.39	182.22
T.P.	0.12	170.11	12.77	169.99
T.P.	0.12	157.49	12.74	157.37
T.P.	0.21	145.83	11.87	145.62
T.P.	0.74	134.68	11.89	133.94
T.P.	8.68	130.99	12.37	122.31
S.E.B.P.			10.78	120.21
T.P.	11.56	141.98	0.57	130.42
S.W.B.P.			8.77	133.21
T.P.	12.62	154.32	0.28	141.70
	8.10	162.33	0.19	154.13

	+	-	Elev	
				Santa Barbara #8852
			162.33	
			10.79	151.44
			0.09	162.14
			0.07	174.65
			10.72	185.37
			12.74	197.95
			12.04	209.92
			5.83	204.09
			12.49	222.31
			12.17	233.93
			2.74	235.85
			1.09	228.38
			11.36	229.36
			12.52	240.88
			3.44	237.44
			3.48	53.54
			1.59	42.30
			6.12	36.18
			3.67	36.11
			5.90	30.21
			3.94	33.04
			4.91	28.13

N.E.B.P. Completed Circuit

Guizot +
 Pasadero
 Guizot +
 Orchard
 Guizot +
 W. Mar
 Guizot +
 Coronado
 Guizot +
 Santa Cruz
 Guizot +
 W. Monte
 Coronado +
 Sunset Cliffs
 Del Mar +
 Sunset Cliffs
 Orchard +
 Sunset Cliffs
 Pasadero +
 Sunset Cliffs

Ocean Beach Bench Line

Ocean Beach Bench Line

	+	-	Elev			+	-	Elev		
			3804					111.60		
T.P.	187	25.95	8.96	24.08		T.P.	12.26	123.73	0.13	111.47
N.W. 7' CT.			4.84	21.11	Bermuda & Sunset Cliffs	T.P.	12.77	135.71	0.79	122.94
T.P.	7.22	26.94	6.23	19.72		S.W. Cor Fence Post 3 nails			9.86	125.85
S.W. 7' Prop CT.			6.84	20.10	Pt. Loma & Sunset Cliffs	T.P.	12.98	149.58	0.11	135.60
T.P.	12.33	38.80	0.47	26.47		T.P.	12.44	160.90	0.12	148.46
S.E.B.P.			3.14	35.66	Pt. Loma Ave & Ebers	S.W. 25' Tie To 7' pt			3.39	157.07
T.P.	12.62	51.05	0.37	38.43		T.P.	12.93	173.31	0.52	160.38
T.P.	12.61	63.08	0.08	50.97		T.P.	12.94	155.74	0.51	172.80
T.P.	12.17	75.59	0.16	63.42		N.W. 3' Tie Back To 7' Pt. CT.	0.32	179.59	6.47	179.27
S.W.B.P. (Destroyed)			10.69	64.90	Pt. Loma Ave & Froude	T.P.	0.65	167.57	12.67	166.92
S.E.B.P. (Bliss's Corrected Line)			9.05	66.54	Pt. Loma & Froude	T.P.	0.38	155.45	12.50	155.07
T.P.	12.92	88.07	0.44	75.15		T.P.	0.32	142.82	12.45	142.50
T.P.	12.93	100.78	0.22	87.85		T.P.	0.72	131.05	12.49	130.33
T.P.	12.41	112.97	0.22	100.56		T.P.	0.41	118.75	12.71	118.34
T.P.	12.07	124.96	0.18	112.79		T.P.	6.83	112.70	12.88	105.87
S.E.B.P. Check to Preceding Circuit			4.65	120.21	Pt. Loma Ave & Guizot	S.W. 7' Pt. CT.	1.24	107.14	7.30	105.40
F.P.P.	12.31	137.33	0.14	124.72		N.W. Mon			1.70	105.44
S.W.B.P. Check to Preceding Circuit			3.83	133.20	Guizot & Bermuda	T.P.	1.12	95.96	12.30	94.84
	1.49	134.67				T.P.	0.58	83.79	12.75	83.21
T.P.	0.09	123.10	11.66	123.01		T.P.	0.82	71.76	12.85	70.94
T.P.	1.95	112.06	12.99	110.11		T.P.	0.01	58.98	12.79	58.97
T.P.	0.01	99.29	12.78	99.28		Completed Circuit			8.92	50.06
S.W.B.P.			4.69	99.60	Pescadero & Froude					
T.P.	12.53	111.60	0.22	99.07						

Ocean Beach Bench Line

Ocean Beach Bench Line

	+	-	Elev
N.W. Mon	1.89	107.33	105.44
T.P.	3.74	97.96	12.11
S.W. 7' Tack		4.00	93.96
S.W. Mon.	1.92	100.35	2.53
T.P.	12.70	109.84	3.21
T.P.	12.84	122.02	0.66
T.P.	12.77	134.35	0.44
N.W. B.P. set		4.58	129.77
T.P.	12.19	145.70	0.84
T.P.	12.57	158.20	0.01
S.W. 4' Ct.		8.88	149.32
T.P.	12.60	170.17	0.63
T.P.	12.05	182.16	0.06
1/2 Ct. Tie Back S.W. 7' Tack	Check to Circuit P 26		2.88
N.W. Mon	3.23	107.67	105.44
T.P.	0.77	95.74	12.70
T.P.	0.90	94.05	12.59
S.W. 7' Ct.		3.80	90.75
T.P.	2.35	73.78	12.62
S.W. 7' Ct.		6.45	67.33
T.P.	0.56	62.13	12.21
N.E. B.P.	0.77	57.21	5.74
N.E. Mon	0.51	48.33	9.39
S.E. B.P.	Check to Circuit P 26		12.66

	+	-	Elev
Coronado & Ebers	N.W. B.P. set	1065	140.42
	T.P.	12.74	153.08
Santa Cruz & Ebers	S.E. B.P. set		10.41
Santa Cruz & Ebers	T.P.	0.21	141.38
	S.E. B.P. set		2.59
	T.P.	1.46	130.17
	T.P.	0.90	119.15
Del Montet Froude	T.P.	1.75	108.42
	S.W. B.P.		4.10
	S.E. B.P. set	0.21	97.92
Santa Cruz & Froude	S.E. B.P. set	0.25	92.40
	T.P.	3.63	84.33
	S.W. B.P.		8.28
Coronado & Froude	T.P.	3.36	75.09
	T.P.	3.40	65.92
Coronado & Ebers	N.W. B.P.		6.50
	T.P.	1.20	56.01
	S.E. B.P.		3.90
Del Mar & Ebers	S.E. B.P.	4.00	52.16
	N.W. B.P.	2.14	46.81
Orchard & Ebers	T.P.	2.74	36.96
	S.W. B.P.		6.75
Pascadero & Ebers			30.21
Bermuda & Ebers			
14 Lam & Ebers			

Froude & Del Monte
Froude & Narragansett
Froude & Niagara
Froude & Newport
Froude & Santa Monica
Froude & Saratoga
Froude & Cape May
Froude & Brighton
Froude & Long Branch
Froude & Voltaire
Ebers & Voltaire

Ocean Beach Bench Line

	+	T	-	Elev	
S.W. Mon.	1.70	97.13		95.43	Ebers & Santa Cruz
T.P.	1.46	86.60	11.99	85.14	
T.P.	0.01	74.77	11.84	74.76	
S.W. Tack			3.42	71.35	Eberet Del Monte
T.P.	0.27	63.08	11.96	62.81	
T.P.	0.30	51.01	12.37	50.71	
T.P.	0.96	40.28	11.69	39.32	
S.E.B.P. old plug gone set new one			8.19	37.09	Sunset Cliffs & Del Monte
S.E.B.P.	10.32	42.45	8.15	32.13	Sunset Cliffs & Narragansett
T.P.	12.40	34.76	0.09	43.36	
T.P.	12.39	66.34	0.81	58.95	
S.E.B.P.			2.15	64.19	Ebers & Narragansett
T.P.	0.29	59.62	11.01	58.33	
S.E.B.P.			0.39	58.33	Ebers & Niagara
T.P.	0.13	40.80	11.95	43.67	
T.P.	2.90	34.90	11.80	32.00	
N.W.B.P. old plug gone set new one	5.15	31.25	8.80	26.10	Niagara & Sunset Cliffs
T.P.	7.04	34.52	3.77	27.48	
N.W.B.P. old plug gone set new one			9.38	25.14	Newport & Sunset
T.P.	11.98	45.90	0.60	33.92	
S.W.B.P.			2.78	43.12	Ebers & Newport
T.P.	6.32	51.85	0.37	45.53	
S.W. T.C.T.			4.73	47.12	Ebers & Santa Monica
S.E.B.P.			5.67	46.18	Ebers & Saratoga
T.P.	1.25	40.31	12.79	39.06	

Ocean Beach Bench Line

	+	T	-	Elev	
				40.31	
T.P.	2.33	30.46	12.18	28.13	
S.F.B.P.			5.73	24.53	Santa Monica Sunset Cliffs
N.W.B.P.	6.98	32.07	5.37	25.09	Saratoga & Sunset Cliffs
N.W.B.P.			7.96	24.11	Cape May & Sunset Cliffs
T.P.	9.38	40.82	0.60	31.47	
S.W.B.P.			4.33	36.49	Ebers & Cape May
N.E. Mon			3.36	37.46	Ebers & Cape May
N.W.B.P.	3.11	37.72	6.21	34.61	Ebers & Brighton
S.E.B.P.			4.31	33.41	Long Branch
S.E.B.P.	5.46	37.11	6.07	31.65	Ebers & Muir
S.W.B.P.			6.93	30.18	Ebers & Valtaire
Checks from Ebers to Frank Lines					
S.E.B.P.	9.40	41.05		31.65	Ebers & Muir
T.P.	12.69	52.77	0.97	40.08	
S.E.B.P.			4.62	48.15	Frank & Muir
S.E.B.P.	0.63	52.73	0.67	52.10	Frank & Long Branch
T.P.	1.24	41.33	12.64	40.09	
S.E.B.P.			7.92	33.41	Ebers & Long Branch
N.W.B.P.			6.72	34.61	Ebers & Brighton

Ocean Beach Bench Lines

N.W.B.P.	12.505	62.575		50.06	Coronado & Sunset Cliffs	N.W.B.P.	5.12	31.21		26.09	Sunset Cliffs & Niagara
T.P.	12.34	74.44	0.475	62.10		N.W.B.P.	9.80	34.915	609.5	25.115	Sunset Cliffs & Newport
T.P.	12.815	86.425	0.79	73.65		N.W. Top Hyd	Miss 27.43		7.45	27.465	Sunset Cliffs & Newport
T.P.	12.45	97.995	0.92	85.545		T.P.	12.13	45.84	1.505	33.41	
T.P.	10.17	107.94	0.225	97.770		S.W.B.P.	Miss 43.06		2.75	43.09	Ebers & Newport
N.W. Mon.			2.505	105.435	Ebers & Coronado	T.P.	6.07	51.33	0.59	45.24	
T.P.	0.615	97.785	10.77	97.17		S.W.T.G.T.			12.45	47.085	Ebers & Santa Monica
S.W. Mon.			2.35	95.435	Ebers & Santa Cruz	S.E.B.P.	0.215	46.355	5.185	46.145	Ebers & Saratoga
T.P.	0.06	85.20	12.645	85.14		S.W.B.P.	4.30	40.65	9.905	36.45	Ebers & Cape May
T.P.	1.655	75.025	11.83	73.37		N.W.B.P.	3.65	38.215	6.085	34.565	Ebers & Brighton
S.W.T.G.T.			3.66	71.365	Ebers & Del Monte	S.E.B.P.			4.85	33.365	Ebers & Long Branch
T.P.	0.57	65.595	10.00	65.025							
S.E.B.P.			1.405	64.19	Ebers & Narragansett						
S.E.B.P.	0.145	55.365	10.375	55.22	Ebers & Niagara						
T.P.	0.165	44.460	11.07	44.295							
T.P.	2.15	35.04	11.57	32.89							
N.W.B.P.			8.95	26.09	Sunset Cliffs & Niagara						
T.P.	8.345	36.440	6.895	28.145							
S.F.B.P.			4.37	32.12							
T.P.	8.47	42.455	2.505	33.795							
S.E.B.P.			5.355	37.10	Sunset & Del Monte						
T.P.	12.00	54.18	0.275	42.180							
T.P.	8.775	61.885	1.07	53.11							
S.E.B.P.			7.635	54.25	Sunset Cliffs & Santa Cruz						
N.W.B.P.			11.82	50.065	Sunset Cliffs & Coronado						

Water line Pescadero

Station	Description	Reading	Correction	Adjusted Reading	Distance	Notes	Sum	Remarks
0-40	Con to 6x8 Cross							
0+00	W.L. Sunset	23.8	+0.4	24.2	1		24.2	
1		24.5	+0.3	24.8	2		49.0	
2	37.65	25.1	+0.4	25.5	3		74.5	
3		25.8	+0.5	26.3	4		100.8	
4	50's	26.5	+0.3	26.8	5		127.6	
5		27.2	+0.4	27.6	6		155.2	
6	3+00	27.8	+0.7	28.5	7		183.7	
	3+55 = 6x4 C.I.T. South	28.6	+0.5	29.1	8		212.8	
	30' S of T = 4" gate	29.0	+0.2	29.2	9		242.0	
1	50's	29.3	+0.2	29.5	10		271.5	
2	4+55 = 6x6 C.I.T. North	30.9	+0.1	31.0	11		302.5	
	30' N of T = gate	31.0	+0.1	31.1	12		333.6	
	4+90	31.4	+0.2	31.6	13		365.2	
	5+25 = Plug End	31.4	+0.5	31.9	14		407.1	
<hr/>								
0+00	En. Froude Connect.	92.6		92.6				
1		97.2	+0.5	97.7	1		97.7	
4		102.0	+0.7	102.7	4		102.7	
3		106.9	+0.8	107.7	3		107.7	
4		111.7	+0.7	112.4	4		112.4	
5		116.5	+0.6	117.1	5		117.1	
6		121.3	+0.7	122.0	6		122.0	
7		126.1	+0.8	126.9	7		126.9	
8		130.9	+0.9	131.8	8		131.8	

N.W.B.P. Sunset
 28.13
 33.27
 37.45

S.W.B.P. Froude
 + Pescadero
 94.80
 106.70
 106.30
 119.33
 118.87
 121.91
 131.35
 131.24
 123.29
 142.84

9
 10
 11
 12
 13
 14
 15
 16
 17
 18
 19
 20
 21
 22
 23
 24
 25
 26
 27
 28
 29
 30
 31
 32
 33
 34
 35
 36
 37
 38
 39
 40
 41
 42
 43
 44
 45
 46
 47
 48
 49
 50
 51
 52
 53
 54
 55
 56
 57
 58
 59
 60
 61
 62
 63
 64
 65
 66
 67
 68
 69
 70
 71
 72
 73
 74
 75
 76
 77
 78
 79
 80
 81
 82
 83
 84
 85
 86
 87
 88
 89
 90
 91
 92
 93
 94
 95
 96
 97
 98
 99
 100

135.7
 140.5
 145.3
 149.4
 150.0
 151.3
 153.0
 153.7
 158.8
 164.5
 170.1
 175.8
 181.4
 187.1
 192.7
 198.4
 204.0
 209.7
 215.3
 220.1

7.6
 +4.3
 151.44
 151.32
 151.3
 153.0
 153.7
 158.8
 164.5
 170.1
 175.8
 181.4
 187.1
 192.7
 198.4
 204.0
 209.7
 215.3
 220.1

S.E.
 96.80
 S.F.
 156.90
 9.90
 2.90
 Blue
 6.34
 Blue

S.W. 155.44
 14.80
 7.53 24

1" Water Line Del Mar Ave.

33

Station	Description	Value	Calculation	Value	Description	Value	Calculation
0+00	West Line Santa Barbara Gate	246.5	15.8 15.8 +3.0	157.5		169.3	10.8 15.8 +3.7
+40		248.7	10.6 7.4 +3.2	147.06 12.00 172.46	58' U	165.4	14.7 10.0 +4.1
0+80		251.0	8.3 5.1 +3.1	171.86 12.44 171.34		162.8	5.0 1.6 +3.9
1		51.9	2.7 2.7 +3.7	190.54 12.44 202.98	5+84 = R.C. Froude on E.	157.2	5.8 1.6 +3.7
2		52.3	X	202.98 2.85 202.40	+28 = 6x6 C.I. Cross	157.6	
3	20'	52.1	7.2 2.1 +3.1	314.45 12.44 204.09	+38 = R.C. Froude on W.	158.0	9.7 5.1 +3.9
4		51.4	7.1 2.0 +3.3	274.93 12.44 204.09		149.6	15.1 11.2 +3.7
5		50.2	9.1 5.8 +3.3	324.10 8.00 204.09		144.1	8.5 4.7 +3.9
6 = 2+00		48.7	10.4 2.2 +3.3	258.40 12.44 204.09	50' 45"	138.7	13.9 12.2 +1.7
2+40		244.9	14.4 14.4 +3.3	237.40 11.41 248.13		133.2	7.6 4.0 +3.6
1)		38.6	10.9 4.6 +4.6	207.31 8.10 204.09	2x8 BK Measure	127.8	13.0 11.2 +1.8
2		32.3	6.1 6.1 +4.9	250.94 11.41 204.09	2+52 = R.C.	119.9	8.9 6.2 +3.4
3		26.1	13.3 2.2 +4.5	204.09 11.41 204.09		112.0	6.6 2.7 +3.7
4	50'	19.8	6.3 2.4 +4.4	204.09 11.41 204.09		104.1	14.5 10.7 +3.8
5		13.6	12.8 7.6 +3.6	204.09 11.41 204.09		96.2	9.9 6.6 +3.3
6 = 5+00		07.3	2.2 2.2 +3.7	204.09 11.41 204.09		88.3	7.8 6.9 +3.1
5+92 = P.C.		200.8	13.7 13.7 +4.6	F.H.S. E.R.C. 1847 204101 +3.00	6+00 = E.R. Ebers	80.4	3.7 3.1 +3.1
P.C.+38 = E.GUZOT		198.7			0+00 = W.L. "	76.7	7.8 3.8 +3.2
+38 = P.C. = 0+00		196.7	6.2 6.2 +3.0			66.8	7.6 3.7 +3.7
1		192.8	10.6 6.4 +4.2		70's	56.7	6.2 3.2 +3.2
2	52' 4/2	187.4	15.0 15.0 +3.7		1+40 = P.I.C.	54.0	8.7 3.8 +3.8
3		183.6	7.7 4.9 +3.7		+60	52.3	10.6 7.0 +3.6
4		179.7	18.1 8.8 +3.8		1+80 = F.V.C.	46.8	16.7 3.4 +3.4
5	2+92 = R.Y.K.	174.8	4.7 6.2 +4.0		50's	41.3	8.9 5.1 +3.8
1		171.4	7.8 3.8 +4.0		3+20 P.I.C.	39.9	10.3 8.4 +3.9
					+40	38.8	11.4 7.2 +4.2
					+60	37.8	12.4 8.2 +4.2
					+80		

F.H.S. E.R.C. 230
 162.8
 F.H.S. E.R.C. 157.51
 75.72
 152.38
 2.28
 152.61
 1.72
 146.67
 146.67
 11.44
 127.12
 227.80
 12.47
 117.33
 11.24
 12.81
 105.80
 6.20
 106.10
 11.41
 79.04
 12.81
 7.73
 12.14
 83.68
 8.44
 84.08
 204.09
 80.76
 80.76
 97.00
 F.H.S. E.R.C. 11.41
 84.24
 84.04
 73.43
 50.00
 50.00
 12.26
 62.17
 2.71
 62.88
 12.73
 50.15
 8.00
 50.78
 11.77
 38.71
 3.22
 41.72
 5.60
 36.18
 36.18
 30.00

6" Water Line Pal Mar

6" Water Line Orchard

34

4+00 = El. C.	37.3	1.8 +3.5
1	36.2	1.1 +3.5
2 } 505	35.8	0.4 +3.5
3	34.8	1.0 +3.1
4 6700 = El. Sunset Cliffs	33.0	1.8 +3.1
0+00 = W.L. " "	32.3	0.7 +3.9
1	32.8	0.5 +3.2
2	31.8	1.0 +3.4
3	31.6	0.2 +3.2
4	21.40	1.2 +3.3
5	31.10	0.5 +3.4
6	30.9	0.2 +3.2
7 } 525	30.70	0.2 +3.2
8	30.40	0.3 +3.6
9	30.20	0.2 +3.7
10	30.00	0.2 +3.3
11	29.70	0.3 +3.7
12 6400 = El. Cable	29.5	0.2 +3.4
0+00 = W.L. " "	29.5	0.2 +3.6
1	31.2	1.7 +3.6
2 } 455	32.8	1.6 +3.6
3	34.5	1.7 +3.5
4 1+80 = 6x4 C.I.T. South	36.1	1.6 +3.4
1	38.0	1.9 +3.2
2 } 505	39.8	1.8 +3.4
3	41.6	1.8 +3.5
4 3+80 = 6x6 C.I.T. North	43.5	1.9 +3.5

0+00 = W.L. Sunset Cliffs	26.2	11.0 5.0 +3.0
1	27.0	0.8 +3.4
2	27.8	0.8 +3.4
3	28.7	0.9 +3.3
4	29.5	0.8 +3.2
5 } 45.5	30.3	0.8 +3.2
6	31.1	0.8 +3.3
7	31.9	0.8 +3.4
8	32.8	0.9 +3.3
9	33.6	0.8 +3.3
10 4+55 = 6x4 C.I.T. South	34.4	0.8 +3.3
1	35.4	1.0 +3.0
2 } 555 = 6x4 C.I.T. N.	36.3	0.9 +3.0
3 6+20 = 6x4 C.I.T. N	37.3	1.0 +3.2
+40 = W.L. Cable	38.2	0.9 +3.6
1 } 4" } 39.5	39.5	1.3 +3.2
2 } 455	40.7	1.2 +3.3
3 } = Plug End	42.0	1.3 +3.3
4" Water Line Cable		
0+00 = 6x4 C.I.T. in Orchard	37.3	2.2 +3.5
+50 = gate	38.2	0.9 +3.6
1	26.8	1.0 +3.6
2 } 47355	30.4	1.6 +3.9
3 } = 4" C.I.L.	34.0	1.6 +3.0
West Line plug.	34.0	0.2 +3.3

32.1	30.2	37.3
37.17	36.83	38.2
10.2	9.27	40.5
4.8	45.91	41.0
+3.4	8.54	
27.57	3.15	
40.23		
7.05		
33.18		
3.15		
36.03		
3.6		
0.5		
+3.3		
11.5		
3.2		
3.3		
10.0		
7.2		
+3.0		
1.6		
6.3		
+3.0		
1.0		
3.2		
3.2		
5.2		
1.2		
+3.3		
3.9		
2.6		
+1.3		
4.45		
36.8		
7.7		
51		
26		

11.87
 36.13
 37.5
 37.16
 37.0
 37.03
 37.123
 47.26
 Line gate
 37.0
 Line gate
 43.0

32.1
 37.17
 10.2
 4.8
 +3.4
 27.57
 40.23
 7.05
 33.18
 3.15
 36.03
 3.6
 0.5
 +3.3
 11.5
 3.2
 3.3
 10.0
 7.2
 +3.0
 1.6
 6.3
 +3.0
 1.0
 3.2
 3.2
 5.2
 1.2
 +3.3
 3.9
 2.6
 +1.3
 4.45
 36.8
 7.7
 51
 26

6" Water Line Orchard

Station	Description	Reading	Correction	Adjusted Reading	Station	Description	Reading	Correction	Adjusted Reading
0+00	E. Sunset Cliffs	27.2	11.4	38.6	5		117.2	15.7	131.9
1	50s	27.7	10.9	38.6	6	5+92 = P.C. Froude	122.9	10.0	132.9
2	1+00 = Brk	28.2	10.4	38.6		+ 48 = 6x6 Ch. Cross	125.2	8.1	133.3
	+ 40 = "	28.9	9.7	38.6		+ 38 = 0+00 East P.C. Froude	126.5	71.9	158.4
	+ 80 = "	30.1	8.5	38.6					
	2+20 = "	31.8	6.8	38.6					
	+ 60 = "	33.9	4.7	38.6					
	3+00 "	36.6	11.8	48.4					
	+ 40 = "	39.6	10.0	49.6					
1		43.7	14.2	57.9					
2	50s	48.2	8.9	57.1					
3		52.5	5.1	57.6					
4	5+40 = Brk.	56.8	11.9	68.7					
	5+92 = P.C. Ebers	62.2	5.4	67.6					
	6+00 = W.A. "	63.5	12.0	75.5					
	+ 60 = E.L. Ebers	65.7	8.0	73.7					
	Fire Hydrant on SE	70.3	7.4	77.7					
1		74.9	13.4	88.3					
2	56s	79.6	10.0	89.6					
3		84.2	13.2	97.4					
4		88.8	12.7	101.5					
5		2+80 = Brk	94.5	11.4	105.9				
1		100.2	15.9	116.1					
2	5-55s	105.8	13.4	119.2					
3		111.5	10.6	121.8					
4									

S.E.R.C.
 F.H. 12968 3.22
 3.02
 #0.00

B.M. 5001
 501207
 17460
 177.36
 11.72
 5.5
 166.84
 0.60
 8.1
 166.14
 12.7
 183.84
 1.43
 155.23
 17.60
 143.63
 1.75
 145.38
 10.69
 134.69
 0.50
 134.19
 8.6
 125.59
 125.59
 0.05 Error

F.H. S.E.R.C.
 19076 2.00
 20.00

6" Waterline Orchard

5		212.7	107.1 11.2 19.7	300.05 3.04
6	3+40 (Block Sta) = P.V.C.	220.9	6.9 13.0 16.9	203.07 13.06 340.07
	+60	223.6	16.9 18.4	240.96 12.26
	+80	226.2	14.3 11.0 13.3	227.38 217.80 12.20
	4+00	228.4	13.1 9.2 12.7	215.49 21.01 236.50
	+20 = E.V.C.	230.4	10.0 11.1	203.13 203.13
1		235.8	18.6 13.3	191.53 0.00
2	3-60s	241.2	11.9 11.3	191.53 12.18 178.69
3	N.L. Santa Barb Gate	246.6	4.0 14.2	178.91 2.12 176.45

6" Waterline Froudest

0+00 = N.L. Pasadero	93.3	13.3 10.2 14.1	
1	96.6	10.0 13.5	
2	4-40s	99.8	6.8 13.6
3	103.1	18.2 13.7	
4	1+60 = Brk	106.3	11.1 12.2 18.9
1	112.2	5.2 13.4	
2	4-67	118.2	7.7 13.7
3	3+00 = St. Orchard	124.1	8.8 12.8
	+80 = 0+00 = N.L. "	127.1	5.8 13.2 13.8
7	134.2	15.7 12.4 12.8	
2	2-50s	141.3	8.6 11.8 13.7
4	1+00 P.V.C.	141.3	5.1 13.5
	+40	144.1	3.6 13.5
	+60	146.3	13.9 10.4 13.4
	+80	148.1	12.6 13.7
	+80 = E.V.C.	149.5	

6" Waterline Froudest

1	3-40s	151.8	15.0 8.0 23.0	36
2	154.0	9.0 13.0 22.0	SW. 8.1 3M Pas 20010	
3	3+00 = S.L. De Marise	156.3	8.3 7.9	94.60 12.00 106.60
	+80 = 0+00 = N.L. Del May	159.9	1.8 1.5 3.3	2.38 106.00 111.37
1	165.3	4.7 1.7 3.0	117.44 0.90 114.54	
2	40s	170.6	11.0 1.2 12.2	127.06 12.52 138.16
3	1+20 = P.V.C.	176.0	5.6 3.2 8.4	12.31 133.16 132.31
	+40	178.3	8.8 3.4	12.56 149.87 0.14
	+60	179.7	7.4 3.9 11.3	149.73 12.31 162.04
	+80	180.5	2.6 3.2 5.8	162.00 109.84 157.51
	2+00 = E.V.C.	180.5	6.6 3.5 10.1	157.51 12.47 149.98
1	50s	179.4	7.7 3.7 11.4	150.00 149.73 12.84
2	3+00 = S.P.C. Cerenado	178.3	8.8 3.5 12.3	181.57 0.63 180.94
	+70 = N.L. Cerenado	176.6	10.5 2.3 12.8	6.14 187.08 177.27

6" Water Line Coronado

6" Waterline Coronado 50.00

Station	Description	Reading	Correction	Adjusted Reading	Notes	Reading	Correction	Adjusted Reading
0+00	El. Sunset	47.1	10.8 +3.0	179.27		157.7	11.7 +3.2	172.9
+10	Bk.	47.8	3.3 +3.7	181.43	4+80 = P.K.C.	165.2	16.2 +3.2	172.0
1		52.0	13.3 +3.3	185.27		168.3	18.1 +3.0	175.4
2		56.4	8.9 +3.6	187.67	6-305	170.9	10.5 +3.9	176.5
3		60.9	4.4 +3.6	189.72		173.1	8.3 +3.0	178.4
4		65.3	12.2 +3.4	192.07		174.6	2.8 +3.4	180.0
5	48.5	69.7	7.8 +3.4	194.27		175.9	5.5 +3.3	182.5
6		74.1	18.4 +3.4	196.67	6+00 = V.L. Froude	176.6	10.5 +3.5	183.6
7		78.6	8.8 +3.5	198.07	0+00 = El. Froude	178.1	13.7 +3.1	185.3
8		83.0	16.0 +3.6	200.07	0+00 = E.P.C. II	178.0	11.1 +3.8	185.9
9		87.4	11.6 +3.7	201.67	1-52's	180.9	8.6 +3.5	186.0
10		91.8	7.2 +3.8	202.87	2-41's	183.4	6.1 +3.6	187.1
11		96.3	3.4 +3.9	204.27	3+40 = P.K.C.	185.9	4.9 +3.8	188.5
12		100.7	13.6 +4.0	205.67	4-305	188.5	14.7 +4.0	190.1
13	5+92 = P.C. Ebers	101.1	8.8 +4.1	206.47		190.1	13.1 +3.9	191.7
14	6+00 = V.L. Ebers	101.1	6.9 +4.2	207.07	4+20 = E.V.C.	191.7	11.5 +4.0	193.2
15	0+00 = El. Ebers	103.1	11.0 +4.1	208.07		195.9	7.3 +3.7	199.9
16	0+09 = E.P.C. Ebers	103.4	10.0 +4.2	209.07		200.2	15.0 +3.4	204.4
17		108.6	15.3 +4.3	210.37		204.4	11.3 +3.13	208.6
18	15-50.45	113.8	8.0 +4.4	211.37		208.6	2.6 +3.7	212.8
19		119.1	14.3 +4.5	212.67	8-46.55	212.8	1.4 +4.1	217.1
20		124.3	9.1 +4.6	213.67		217.1	10.1 +3.7	221.3
21	2+50 = Bk	129.5	15.4 +4.7	214.67		221.3	5.9 +3.7	225.5
22	3+00 = Bk	135.3	12.0 +4.8	215.67		225.5	10.6 +3.5	229.6
23		142.7	14.8 +4.9	216.67	5+92 = W.P.C. Guizot	225.5	7.1 +3.5	232.1
24		150.2	12.0 +5.0	217.67	6+00 = W.L. Guizot	232.1		

37

BM Froude	172.9
	172.72
	192.01
	170.87
	173.30
	203.17
	205.6
	202.91
	12.83
	315.74
	315.0
	314.97
	13.07
	227.28
	0.40
	226.88
	9.27
	236.17
	3.00
	235.17
	3.00
	238.17

6" Waterline Coronado

2.8 Below Pmt

2427
2000
4871
2427

4" Waterline Guizot

Check these distances on ground. Also elev. on p. 125

0+00 = El Guizot	228.0	18.9 11.1 7.8	
0+08 = E.P.C. "	228.5	7.6 -2.7	KMSER. CHIM 232.44
0+25 = Brk	229.2	12.7 9.0 3.8	233.11 6.50
1 52.675	232.2	9.7 7.3	241.93 0.27
2	235.1	6.8 3.4	241.22 11.41 253.07 242.90
3 1783 = Brk	238.1	3.8 0.9 2.9	242.12 240.10
1740 = P.K.C.	241.6	11.5 8.8 2.7	240.02
60	242.7	10.4 2.2 8.2	
80	243.6	8.7 0.9 7.8	
2400	244.4	7.7 0.2 7.5	
20	245.0		
40	245.4	7.7 0.2 7.5	
60	245.5		
80	245.6	7.5 0.1 7.4	
3400	245.8		
+ 20	244.9	8.2 0.9 7.3	
+ 40	244.1		
4+60 = E.K.C.	243.5	9.8 0.2 9.6	
1. 5-14-21	241.1	12.0 0.4 11.6	
21	238.8	14.3 1.1 13.2	
3. 6+00 = Santa Barbara gate	236.6	16.3 13.2 3.1	

0+00 = 6x4 ch. Santa Cruz		
+ 50 = N.L. Santa Cruz gate	220.0	5.2 2.4 2.8
+ 100	220.8	0.8 1.6 0.8
+ 150 = Brk	221.0	2.2 2.2 4.4
+ 210 = Brk	220.2	5.6 2.6 3.0
+ 270 = Brk	219.4	4.7 3.9 0.8
+ 335 = Brk	217.4	5.1 2.7 2.4
+ 350 = S.L. Del Monte gate	216.1	9.7 2.7 7.0

P.M. Santa Cruz
Del Monte
710820
SW.P.P. 21800
200.8

Flow
to
ground
11/30
3

10" Water Line, Santa Barbara
Cape May to Point Loma Ave.
4' below 1" Cr in F.W.
on 17" Cb face

0+00 = St. Cape May	158.15	15.2 14.0	15727 RM 5 2000 11.24 163.44	2+00	190.63	8.5 11.0 14.0
+50	156.20	12.3 7.7	0.44 149.20 15.27	+50	191.64	7.5 3.6 13.9
1+00	159.35	7.3 4.1	177.17 0.32 179.33	3+00 = N.L. Niagara	192.65	15.4 11.3 4.1
+50	162.45	5.0 4.2	170.10 0.52 189.54 8.2	+80 = S.L. " = 0+00	194.91	13.1 3.7 4.3
2+00	165.55	18.9 10.0 4.3	178.38 3.8 174.10	+50	197.9	10.1 7.5
+50	168.65	10.8 4.3	174.10	1+00	201.0	7.0 4.0 3.0
3+00 = N.L. Saratoga	171.74	7.3 3.7 10.9		+50	204.0	15.3 13.9 1.4
+80 = S.L. " = 0+00	172.95	6.5 3.0 3.0		2+00	207.0	12.3 8.2 4.1
+50	171.83	12.3 3.4 5.5		+50	210.1	9.2 5.1 4.8
1+00 = Brk	162.83	7.3 4.1		3+00 = N.L. Narragansett	213.10	14.0 13.0 1.0
+50 = Brk	186.8	11.3 7.3 4.0		+80 = S.L. " = 0+00	215.16	12.3 8.3 4.0
2+00 = Brk	188.9	9.4 5.2 4.2		+50	218.1	9.4 5.2 4.2
+50	189.80	8.3 4.0 4.3		1+00	221.1	6.4 5.4 1.1
3+00 = N.L. Santa Monica	190.84	7.3 4.0		+50	224.0	14.0 12.0 2.0
+80 = S.L. " " = 0+00	190.19	8.3 4.0 4.0		2+00	227.0	11.3 7.2 4.1
+50	190.1	9.0 5.0 4.0		+50	229.9	8.6 4.0 4.3
1+00	189.4	9.7 5.7 4.0		3+00 = N.L. Del Monte	232.9	5.6 1.3 4.3
+50 = Brk	188.7	10.4 6.3 4.1		+80 = S.L. " " = 0+00	235.1	11.8 7.3 4.5
2+00	188.0	11.1 7.0 4.1		+50	237.8	9.1 5.1 4.0
+50	187.3	11.8 7.7 4.1		1+00	240.4	6.5 3.5 4.0
3+00 = N.L. Newport	186.60	12.5 6.3 4.0		+50 = Brk	243.1	15.2 11.7 3.5
+80 = S.L. " " = 0+00	186.51	13.5 2.6 4.0		2+00	245.6	12.7 8.2 4.5
+50	187.60	11.5 4.0 4.0		+50	248.2	10.6 7.1 3.5
1+00	188.61	10.5 4.4 3.8		3+00 = N.L. Santa Cruz	250.8	7.3 2.3 4.2
+50	189.62	11.5 5.3 4.8		+80 = S.L. " " = 0+00		

10" Water Line Santa Barbara
4' below 1" Cr on Ely 167 Cb face

39
Santa Cruz
RMISERT

2+00	190.63	8.5 11.0 14.0		254.13	
+50	191.64	7.5 3.6 13.9		259.32	
3+00 = N.L. Niagara	192.65	15.4 11.3 4.1		264.46	
+80 = S.L. " = 0+00	194.91	13.1 3.7 4.3		269.86	
+50	197.9	10.1 7.5		275.02	
1+00	201.0	7.0 4.0 3.0		280.17	
+50	204.0	15.3 13.9 1.4		285.32	
2+00	207.0	12.3 8.2 4.1		290.47	
+50	210.1	9.2 5.1 4.8		295.62	
3+00 = N.L. Narragansett	213.10	14.0 13.0 1.0		300.77	
+80 = S.L. " = 0+00	215.16	12.3 8.3 4.0		305.92	
+50	218.1	9.4 5.2 4.2		311.07	
1+00	221.1	6.4 5.4 1.1		316.22	
+50	224.0	14.0 12.0 2.0		321.37	
2+00	227.0	11.3 7.2 4.1		326.52	
+50	229.9	8.6 4.0 4.3		331.67	
3+00 = N.L. Del Monte	232.9	5.6 1.3 4.3		336.82	
+80 = S.L. " " = 0+00	235.1	11.8 7.3 4.5		341.97	
+50	237.8	9.1 5.1 4.0		347.12	
1+00	240.4	6.5 3.5 4.0		352.27	
+50 = Brk	243.1	15.2 11.7 3.5		357.42	
2+00	245.6	12.7 8.2 4.5		362.57	
+50	248.2	10.6 7.1 3.5		367.72	
3+00 = N.L. Santa Cruz	250.8	7.3 2.3 4.2		372.87	
+80 = S.L. " " = 0+00				378.02	

10" Water Line Santa Barbara
1' below pmt @ E 1/4 Hcr. 676 face

0+00 = S.L. Santa Cruz	249.9	7.4 242.5
+ 40	247.7	2.0 245.7
+ 80	245.6	11.7 234.0
1+20	243.4	2.3 241.1
+ 60 = Brk	241.3	5.8 235.3
2+06.67	239.3	1.3 236.6
+ 53.34	237.3	2.9 233.7
3+00 = N.L. Coronado	235.3	11.8 223.5
+ 80 = S.L. " = 0+00	235.0	12.1 222.9
+ 50 = Brk.	235.7	7.2 228.5
4+00 = Brk.	237.0	4.1 232.9
+ 50	238.6	1.5 237.1
2+00	240.8	10.8 229.4
+ 50	241.7	13.5 227.2
3+00 = N.L. Del Mar	243.3	11.8 231.5
+ 80 = S.L. " " = 0+00	245.3	14.2 231.1
+ 46.67	246.4	10.0 236.4
+ 93.34	247.6	8.8 237.6
1+40 = Brk	248.8	9.3 238.5
+ 80	248.2	9.8 238.4
2+00	247.7	10.3 237.4
+ 60	247.2	10.8 236.4
3+00 = N.L. Orchard	246.7	8.0 238.7
+ 80 = S.L. " " = 0+00	245.5	7.9 237.6
+ 50	241.6	3.8 237.8

10" Water Line Santa Barbara
1' below pmt @ E 1/4 Hcr. 676 face **40**

1+00	237.7	8.0 229.7	BM. S.F.B.D. Pt. Loma Ave
+ 50 = Brk	238.9	1.1 237.8	188.53
2+00	239.7	3.7 234.1	11.13
+ 50	236.5	3.3 230.8	0.76
3+00 = N.L. Pascadero	232.88	0.0 230.8	18.69
+ 80 = S.L. " = 0+00	219.88	13.3 207.5	21.18
+ 50	216.57	2.0 205.5	0.83
1+00	213.0	2.9 202.6	21.00
+ 50	209.6	13.2 191.4	11.23
2+00	206.2	10.2 181.2	22.78
+ 50	202.8	2.8 178.4	1.13
3+00 = N.L. Bermuda	199.38	2.4 176.0	24.54
+ 80 = S.L. " " = 0+00	197.88	4.7 171.3	0.61
+ 53.34	195.1	2.8 168.5	24.50
1+04.64	192.3	5.7 162.8	2.00
+ 56.96	189.5	13.2 149.6	24.07
2+09.28	186.7	3.8 145.8	2.00
+ 61.6 = P.C.	183.9	5.0 140.8	24.05
2+84.6 = N.L. Pt. Loma Ave	184.35	11.7 129.1	24.00
+ 40 = N.L. P.rmt.		8.4 120.7	24.00

Santa Barbara Water Line
 Connections to 10" Main

RM record 122
 200.84
 3.27
 204.61

6" Line W. Alley N of Pt Loma				F.H. 5' S. of S.L. Niagara on E.		
W. line	190.0	14.6 12.1 22.5		Cb. grade		Cb.in
6" Line E in Pt Loma Ave				6" Line across, Niagara		
E. line				W.L.		Gate in
F.H. 5' S. of S.L. Bermuda on East				E.L.	195.3	12.7 2.1 12.6
Cb. grade	202.23	23.8 23.8 201.1	29.7 in. 1 124.84 4.03 229.27			
F.H. 5' S. of S.L. Pescadero on East					207.99 10.35 197.64	207.99 8.51 199.48 195.25 192.14 39.42 197.92 198.26 198.28 397.14 198.59 195.5
Cb. grade	229.27 224.16	5.11 5.11 21.0	5.11 21.0			
6" Line West in Pescadero						
W. line	220.1		187.05 3.01 205.06			
F.H. 5' S. of S.L. Orchard on East						
Cb. grade						
6" Line across, Orchard						
W. line	Line in 246.5					
E. line	246.2	8.86 5.00 23.8				
F.H. 5' S. of S.L. Coronado on East						
Cb. grade						
6" Line across, Coronado						
W. L.						Gate in
E. L.						Gate in
F.H. 5' S. of S.L. Del Monte on East						
Cb. grade						Cb.in
6" Line across, Del Monte						
W. L.						Gate in
E. L.	235.0	11.9 8.3 23.6				

Flood
Pence
Ranger
4/3/80 (P)

10" Water line Up to St
India to State

Station	Reading 1	Reading 2	Correction	Adjusted Reading
0+00 = E.L. India	79.3	79.8	0.5	79.3
+55.5	86.6	87.0	0.4	86.2
1+00	94.3	94.8	0.5	93.8
+57.6	101.8	103.5	1.7	100.1
2+10 = W. Columbia	109.3	110.3	1.0	108.3
+55 = W. Columbia	115.8	117.8	2.0	113.8
+44	118.1	117.7	-0.4	118.5
1+88	124.7	124.1	-0.6	125.3
1+32	130.7	130.5	-0.2	130.9
1+76 = W. State	137.0	138.9	1.9	135.1
2+30 = W. State		143.3	6.2	137.1

8.40
115.0
5.45
116.8
4.45
150.0
5.01

Vine of Columbia
SW B.P.
112.44 - 111.25
1.19

120.65
3.70
116.95
4.00
112.95

83.93
12.24
96.67
0.67
96.00
7.8
12.50
108.20
0.1
14.2
108.32
12.02
120.85
1.48
118.97
12.24
131.21
13.27
144.48
3.0
147.48
14.26
13.0
12.40
155.07
1.40
7.2
153.67
3.9
157.57
12.1
145.46
3.4
148.86
5.8
0.6
154.26
11.5
142.76
20.8
7.8
150.54
12.9

5/21/30
 Flood
 Profile
 Show

Sewer Laterals Zola Villa Dr et al

B.M. Top Hydt Zola & Palermo Dr. (Grassie's Grade) **43**
 Book

	+	T	-	Elev	Cut	B.M.	1090	154.11	143.21
#24	✓	154.11		141.4	12.71 2.33 7.533	T.P.	4.90	157.97	1.04 153.07
#64	✓	157.97		150.4	7.57 1.75 7.530	T.P.	1.28	149.14	10.11 147.86
#65	✓			148.4	9.57 2.07 7.506	T.P.	1.07	137.21	13.00 136.14
#66	✓			146.7	11.27 5.87 7.570	T.P.	11.45	147.92	0.74 136.47
#67	✓			141.7	16.27 10.11 7.516	T.P.	12.79	160.25	0.46 147.46
#40	✓	149.14		135.4	12.79 6.89 7.61	T.P.	10.75	169.94	1.06 159.19
#68	✓			135.4	13.74 7.84 7.592	T.P.	3.63	163.58	8.79 161.15
#69	✓	137.21		130.0	7.21 7.21 7.527	B.M.			7.04 156.54 = 156.55 - 9.5 Thisbook
#70	✓		?	126.8	10.41 5.80 7.511				
#71	✓		?	127.6	9.41 4.12 7.510				
#72	✓	147.92		132.7	15.22 9.57 7.525				
#73	✓			141.6	6.32 0.30 7.209				
#74	✓	169.94		155.5	14.44 8.63 7.591				
#75	✓			157.6	12.34 2.84 7.570				
#76	✓			160.8	9.14 3.00 7.72				
Palermo Dr.									
#1	✓	140.18		133.6	6.58 1.46 7.609				133.6 132.7
#2	✓			129.4	10.78 6.18 7.760				
#28	✓			129.1	11.08 8.53 7.553				
#3	✓			126.6	13.88 2.64 7.494				
#22	✓			125.8	14.38 8.23 7.552				
#4	✓			124.7	15.47 10.24 7.754				
#21	✓	131.07		124.0	7.07 1.02 7.517				
#20	✓	131.07		123.6	7.47 1.26 7.908				

153.80
 133.6
 20
 41.400733
 820
 200
 0733
 1466
 1362
 38

	✓	T	Elev	Cot	B.M. Top Hydt Villa Drive Palermo Dr.				
# 5	✓	131.07	123.5	9.57 2.67 +4.90	3.22	98.32		95.10	
# 19	✓		123.4	7.67 0.18 +7.00	T.P.	11.09	108.20	1.19	97.13
# 18	✓		123.0	8.07 2.44 +5.59	T.P.	12.04	119.78	0.46	107.74
# 6	✓		122.8	8.27 2.95 +5.32	T.P.	12.10	131.07	0.81	118.97
# 7	✓		121.5	9.57 2.23 +7.34	T.P.	11.01	140.18	1.90	129.17
# 16	✓		120.1	10.97 3.52 +7.47	T.P.	5.89	144.38	1.49	138.49
# 15	✓	119.78	111.7	8.08 0.31 +7.77	B.M. Hydt. La 29 Palermo Dr.		1.43	143.15	143.21 1.43
# 14	✓		107.1	12.28 5.65 +7.03					144.24 12.10
# 8	✓		106.4	13.38 2.73 +10.65	T.P. on # 50				132.47 1.14
# 9	✓	108.20	100.6	7.60 1.70 +5.90		9.38	103.40		132.63 11.23
# 13	✓	119.78	100.0	19.78 11.40 +8.38		12.50	115.47	0.43	102.97
# 10	✓	108.20	93.4	14.20 7.84 +6.36		12.37	127.08	0.76	114.71
# 12	✓	98.32	88.5	9.81 4.25 +5.07		11.99	137.45	1.62	125.46
# 11	✓		88.3	10.82 6.04 +4.00		12.08	147.98	1.55	135.70
	✓	Lucerne Dr.				8.59	155.19	1.38	146.60
# 15	✓	155.19	142.8	12.39 6.17 +5.72				2.96	152.23
# 26	✓	147.78	138.3	9.88 5.42 +4.26					101.23 4.85
# 39	✓		137.6	10.38 4.82 +5.53					26.38 25.10
# 27	✓		134.1	13.88 8.33 +5.05					0.07
# 38	✓		133.7	12.28 9.48 +2.80					
# 38	✓	137.55	131.5	14.20 5.48 +1.19 +4.76					
# 37	✓		131.1	1.28 1.88 +4.98					
# 29	✓		129.0	8.18 2.27 +5.27					
# 36	✓		128.8	8.15 3.58 +4.57					
# 30	✓		127.8	9.60 3.51 +6.14					

T.P. on # 71 P. 13.

# 35	✓	137.00	120.2	13.20 5.45 +6.80 1.08 1.22 +7.46	147	134.17		132.70
# 34	✓	127.08	121.0	6.08 0.80 +5.28 14.08 6.41 +7.67	0.14	121.47	12.84	121.33
# 31	✓	}	121.0	14.08 6.41 +7.67	0.92	110.31	12.08	109.39
# 32	✓		113.0	14.08 8.72 +5.77	1.88	99.93	12.26	98.05
# 33	✓		101.0				4.89	95.05 = 95.10
		Valla Dr.						
# 51	✓	98.32	86.5	11.82 6.23 +5.59			88.6 5.42 74.02	
# 52	✓	99.93	88.5	11.43 4.40 +7.03 11.33 5.27 +5.42				
# 50	✓		88.6	11.03 4.23 +5.10				94.02
# 53	✓	99.93	88.9	10.53 4.21 +5.42 9.53 4.06 +5.47				
# 54	✓	}	89.6	8.93 3.78 +5.15				
# 49	✓		90.4	16.71 12.26 +4.45				
# 55	✓		91.0	16.41 12.84 +4.07				
# 56	✓	110.31	93.6	13.61 8.56 +5.05				
# 48	✓	}	93.8	12.91 8.31 +4.60				
# 57	✓		96.7	10.21 4.50 +5.71				
# 47	✓		97.4	8.41 5.66 +4.75				
# 58	✓	}	100.1	17.47 12.08 +5.39				
# 46	✓		101.7	15.87 10.73 +5.14				
# 59	✓		121.47	104.0	13.87 8.42 +5.49			
# 45	✓	}	105.6	12.07 7.02 +5.05				
# 60	✓		907.5	109.4	10.77 4.56 +5.21			
# 44	✓		110.7	110.7	9.97 3.18 +7.79			
# 43	✓		113.5					

T.P. on # 50.

# 62 ✓	121.47		115.0	6.47 1.32 +5.12
# 42 ✓	134.17		118.4	15.77 10.98 +4.79
# 63 ✓	}		120.0	14.17 8.58 +5.59
# 41 ✓			123.4	10.77 8.67 +2.10

Water Main 4x201. Plug Kenophon	S.cb. 123.1	N.cb. 125.7	120.0	2.11 6.01 +3.90
---------------------------------	-------------	-------------	-------	-----------------------

" " " " Yonge	S.cb. 128.7	N.cb. 128.7	125.1	2.35 3.85 +1.50
---------------	-------------	-------------	-------	-----------------------

" " " " Zola.	S.cb. 144.2	N.cb. 149.2	141.5	3.05 7.70 +4.65
---------------	-------------	-------------	-------	-----------------------

$$\begin{array}{r} 120.57 \\ 3.54 \\ \hline 124.11 \end{array}$$

$$\begin{array}{r} 129.17 \\ 3.78 \\ \hline 132.95 \end{array}$$

$$\begin{array}{r} 143.21 \\ 5.33 \\ \hline 148.54 \end{array}$$

Flood
Pearce
Northern
Shaw

Sewer Laterals Voltaire - Chatsworth
to Clove

#	+	π	-	Elev	Cut	BM SE BP	+	π	-	Elev
1				102.0	8.89 20.00 28.89					
2				112.7	+ 7.43 9.90 17.33	B.M. Top of Clove Whittier	0.77	188.82		189.00
3				122.8	13.49 13.23 26.72	T.P.	0.94	177.47	12.27	174.89
4				131.2	14.30 14.70 29.00	T.P.	0.99	166.21	12.27	165.22
5				139.4	15.68 18.71 34.39	T.P.	3.00	156.22	12.09	154.12
6				147.5	12.07 14.81 26.88	T.P.	1.82	145.09	12.85	143.27
7				151.4	9.36 13.46 22.82	T.P.	0.32	132.70	12.71	132.38
8				152.8	6.97 14.44 21.41	T.P.	1.95	122.26	12.59	120.11
9				156.8	9.81 14.22 24.03	T.P.	1.24	110.87	12.41	109.65
10				164.6	12.89 5.46 17.75	T.P.	2.40	103.45	9.88	101.01
11				169.4	19.42 11.82 17.40	B.M.			6.81	96.14
12	-		17	173.5	14.64 3.23 18.00	B.M.			3.95	99.50
13	permit taken out			197.7	12.14 7.85 7.10					
14	Location & Grade Changed 4/5/30			102.4	8.49 3.22 15.27	110.90	5.40 2.52 4.88			
15				106.8	15.20 15.70 30.90	102.4				
16				110.3	11.76 7.28 20.04	0 + 00 = W.L. Clove	178.2	5.4 2.4 3.0		180.68 30.7 184.15
17				114.0	11.70 12.09 23.79	0 + 05 = Brk	176.7	7.4 3.7 3.7		180.30 3.84 184.14
18				138.4	17.72 12.12 29.84	- 2 + 05.55	170.6	12.5 2.7 13.2		184.14 3.84 187.98
19				152.7	18.51 9.32 27.83	1 + 52 = P.K.	164.5	9.7 4.3 14.0		173.19 1.00 174.19
20				155.6	12.61 12.27 24.88		162.7	11.5 6.5 18.0		174.20 11.53 185.73
21				159.1	13.49 13.11 26.60	2 3	161.1	13.1 8.2 21.3		
22				164.7	13.79 8.75 22.54	3 10	157.9	14.3 7.5 21.8		
23				169.4	8.09 3.69 11.78	4 + 32 Connect	159.0	15.2 11.3 26.5		
24				173.9	14.94 12.27 27.21					

Water Grades Voltaire to Clove

Chatsworth +
Voltaire
Chatsworth
SE. Voltaire E.
11.48

10" Waterline Palm St
Union to India

0+00 = E.L. India	Gutter Grad	96.5	14.9
+13 = P.C.	101.5	97.5	$\frac{11.58}{13.9}$
+80 = P.V.C.	107.7	103.5	$\frac{10.2}{+3.7}$
1+00	omitted	110.0	$\frac{2.8}{+4.4}$
1+20	112.9	108.7	$\frac{14.0}{2.4}$
2+40.5	120.0	116.0	$\frac{4.6}{18.3}$
2+00 = V.L. Columbia	127.1	123.1	$\frac{4.2}{+7.1}$
0+00 = E.L. Columbia	131.5	127.5	$\frac{11.2}{5.2}$
+50.6	138.8	134.8	$\frac{3.8}{+4.0}$
+101.4	146.2	142.2	$\frac{11.3}{8.7}$
+51.8	153.6	149.6	$\frac{4.6}{+2.6}$
2+09.5 = P.C. State W.	161.0	157.0	$\frac{3.9}{+2.3}$
+70 = P.C. State E.	170.0	166.0	$\frac{8.5}{7.2}$
2+45.5	176.7	172.7	$\frac{4.3}{+11.8}$
0+90 = P.V.C.	183.5	179.8	$\frac{3.7}{6.2}$
1+10	omit	186.3	$\frac{2.8}{+14.0}$
1+30	188.7	184.5	$\frac{20.9}{7.2}$
1+50	omit	190.6	$\frac{13.2}{21.1}$
1+70 = P.V.C.	192.1	187.9	$\frac{4.2}{15.0}$
2+25.5	194.4	190.0	$\frac{4.4}{4.9}$

9930 S.M. N.E. R.R. India & Palm.

12.07
111.37
0.58
110.79
11.23
122.72
0.89
121.84
12.50
134.34
11.1
133.23
12.83
146.06
0.42
145.64
12.40
138.24
5.97
137.13
11.64
128.77
0.38
128.39
12.63
141.02
0.55
140.47
12.57
127.90
191.51
9.20
200.35
2.22
198.13

20' wide X Sec. Alley BIK 3. Sub. Lots 7 to 17.
 BIK N. Tervalta

8-14-31
 Miller,
 Walker,
 Billos.
 N.W. 33rd

BM. BP 4.36 371.02 366.66 9 Orange.

Orange

Ave.

S. curb line Orange

E. curb line	5.14	65.88
E. gutter pavnt.	5.80	65.22
☿ " "	5.98	65.04
N " "	6.13	64.89
W curb line	5.42	65.60
0 ± 00 = S. line Orange		
W. curb line	5.07	65.95
W. pavnt	5.18	65.84
☿ " "	5.41	65.61
E " "	5.02	66.00
E. curb line	4.90	66.12

15' S.

E	4.6	66.4
☿	5.1	65.9
W,	5.1	65.9

45' S

W	5.0	66.0
☿	5.2	65.8
E	5.0	66.0

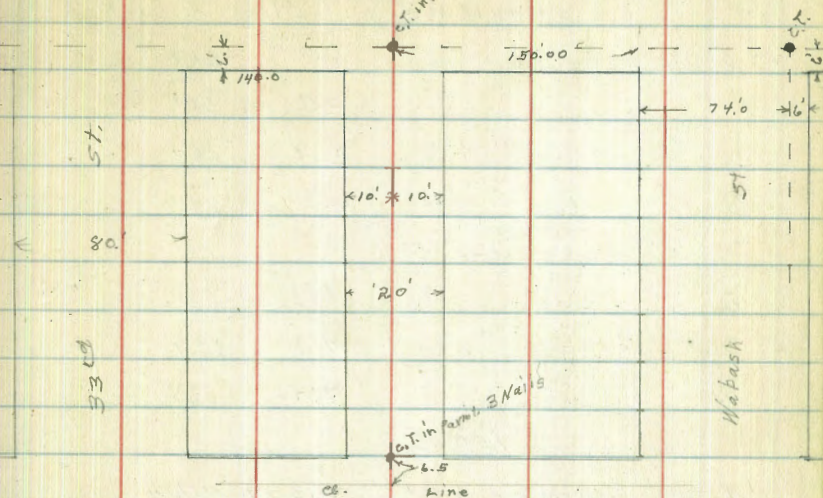
77' S garage on E. dirt floor 9' Back

E-9 floor	5.4	65.6
E	5.4	65.6
☿	5.6	65.4
W	5.5	65.5

Plotted Feb 8-12-31

Polk

Ave



371.02

88' S. garage on W. cmt. floor 8' Back
W. - 1' = E. End cmt. apron. 5.83 65.19

96' S. garage on W. dirt floor 8' Back

W - 8' floor 6.0 65.0

W 5.9 65.1

E 5.9 65.1

E 6.1 64.9

125' S

E 7.4 63.6

E 7.1 63.9

W 7.2 63.8

150' S

N. End. Board. Fence on E. 0.3 in Alley

165' S

W 7.5 63.5

E 7.5 63.5

E 7.5 63.5

193' S

Board Fence on E. on Line

200' S

E 7.8 63.2

E 7.6 63.4

W 7.8 63.2

202' S

S. End. Board. Fence on E. 0.3 Back

371.02

235' S

8.7 62.3

8.9 62.1

8.6 62.4

265' S

8.6 62.4

8.7 62.3

9.0 62.0

300' S

9.2 61.8

9.5 61.5

9.8 61.8

8.8 62.2

9.0 62.0

294' S

M. H. 3.3 N. of E 9.41 361.61 Top. of Cover

T.R. 2.72 364.33 9.41 361.61

320' S

2.8 61.5

2.7 61.6

3.3 61.0

3.1 61.2

335' S

3.5 60.8

3.2 61.1

3.1 61.2

Alley BIK 3. Teratta

50

364.33

341.5.

N-End Board Fence on W. 0.4 in Alley

350.5.

Board Fence on W. on line

371.5. garage on W. ent floor 3' Back

E 3.8 360.5

E 3.9 360.4

W 3.9 360.9

+ 3. floor 3.85 360.48

394. garage on E. dirt floor 6' Back

E-6. floor 4.6 359.7

400.5

W 4.8 359.5

E 4.6 359.7

E 4.6 359.7

435.5

E 4.9 359.4

E 5.1 59.2

W 5.0 59.3

462.5. garage on W. ent. floor 1' Back

W-1 floor 5.32 359.01

W. 5.4 358.9

E 5.3 359.0

E. 5.3 359.0

364.33

Alley BIK. 3. Terminal

477.5 { garage on E. dirt floor 5.5 Back
garage on W. ent. floor 5.3 "

51

E-5.5 floor 5.9 358.4

E 5.6 58.7

E 5.4 58.9

W 5.5 58.8

W+3.5 E. edge ent. apron 5.72 58.61

W+5.3 floor 5.68 58.65

486.5. garage on W. ent floor 5.3 Back

W-5.3 floor. 5.53 58.80

500.5

W 6.3 58.0

E 6.1 58.2

+3 6.1 58.2

E 5.7 58.6

517.55. ent. walk on W. 100' Back

W.-1. on walk. 6.50 57.83

530.5

E 6.4 57.9

+4 6.4 57.9

+7 6.9 57.4

E 6.9 57.4

W 6.8 57.5

557.5

W 7.5 56.8

+5 8.3 56.0

E 8.3 56.0

+3 8.1 56.2

+5 7.5 56.8

E 7.4 56.9

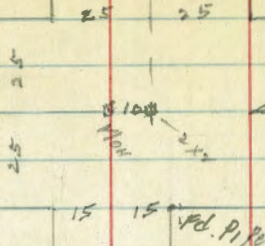
568.1 S. = N. line Polk.

E. cmt. cb	8.70	55.63
E. parmt.	8.86	55.47
Φ. "	9.27	55.06
W. "	9.14	55.19
W. cmt. cb.	8.86	55.47

6.5 s. = N. cb. Line Polk.

10' W. of W. line Alley cmt. cb	9.16	55.19
" " " " gutter parmt.	9.76	54.57
W. line " "	9.69	54.64
" " cmt. cb.	9.09	55.24
Φ. parmt.	9.65	54.68
E. line Alley gutter parmt.	9.60	54.23
" " " cmt. cb.	8.86	55.47
T.P. 8.47 370.60	2.20	362.13
chk on original BM.	3.94	366.66 ✓

Riley



201.81

18370

36.75

20 20

53041

20

1102

1103

52+25.81

51+94.76

51+63.75

40

xsec of Pacific, Gaines
 Riley, Greenwood
 Jefferson, Calhoun
 & Congress

C.S.M.
 1940

Congress

W.P. = 733
 V = 1450
 2072

299.90

San Diego Ave

298.07

26.70

YV 1040

48+6840 E

Gaines

285.22

21.80

47+89.85

Greenwood

47+41.85

47+19.05

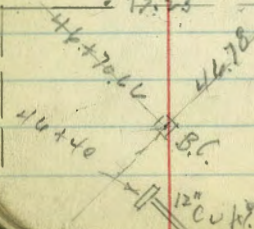
Calhoun

30

20

20

pat



507

2x2

Fd. Pipe

4.41

238.55

San Diego Ave

298.07

26.70

47+89.85

48+6840 E

Greenwood

47+41.85

47+19.05

Calhoun

30

20

20

pat

Greenwood

128.05

299.90

344

25

25

Cathart

182.92

214.87

148.87

25
25

30

20

20

90

42.4

53+71.30

54+13.46

18.37

90.7

31.03

56+60.58

56+29.35

55+98.22

E. Pac.

INDEXED
FFB

7.70

55

X Sec Pacific Hwy
Congress to Bridge

100 wide

SE B.P. Ret. 5.68 10.30

4.62

SAN DIEGO
Taylor

3 NAILS PP. 2.33

7.70

4.92

5.27

SW CONGRS
PACIFIC

43+00

W 4.5

3.2

+50

+20 2.8

3.9

E

5.8

1.9

+30 Par. 3.23

4.47

+10

5.8

1.9

E " 2.91

4.79

+17

3.9

3.8

+20 3.16

4.57

+22

2.9

3.8

+34 3.5

4.2

+30

3.98

3.72

E 3.4

4.3

C

3.72

3.98

+50

E 5.2

2.5

+20

4.01

3.69

+8 5.2

2.5

W

5.0

2.7

+19 3.5

4.2

115+00

+20 3.44

4.26

W

5.2

2.5

C 3.16

4.54

+20

4.8

2.9

+20 3.45

4.25

+30

4.24

3.46

+30 3.9

3.8

C

4.03

3.67

W 4.2

3.5

+20

4.27

3.43

44+00

W 4.2

3.5

+30

4.4

3.3

+10 4.5

3.2

E

5.8

1.9

Notes Red & W. PL. bbt. on Profiles # 10-11
April 12-1940 C.B. Hough

RT
LT

7.70

45+50

E	6.4	1.3
+15	6.0	1.7
+20	4.5	3.2
+30	4.50	3.20
C	4.32	3.38
+20	4.55	3.15
+30	5.1	2.6
W	5.4	2.3

46+00

W	5.4	2.3
+18	5.3	2.4
+30	4.92	2.78
C	4.50	3.20
+20	4.54	3.16
+30	4.9	2.8
+40	6.2	1.4
E	6.9	0.8

46+40 = 90° 12" Con. pipe C/LV.

E+12	FL. OUTLET	8.23	-	0.53
W+20	" INLET	7.77	-	0.07

46+50

E	6.3	1.4
+12	6.1	1.6
+23	4.3	3.4
+30	4.29	3.41

7.70

56

C	4.57	3.13
+20	5.22	2.48
+30	5.7	2.0
W	5.9	1.8
46+70. 66 BC		WT
W	5.9	1.8
+20	5.8	1.9
+30	5.29	2.41
C	4.60	3.10
+20	4.13	3.57
+30	4.3	3.4
+40	5.7	2.0
E	5.5	2.2

47+00

E	6.1	1.6
+20	4.3	3.4
+30	3.90	3.80
C	4.52	3.18
+20	5.32	2.38
+30	5.9	1.8
W	5.8	1.9

47+19.05 90° WITH E & GAINES

W	5.7	2.0
+20	5.7	2.0
+30	5.27	2.43
C	4.41	3.29

+20	3.78	3 92
+30	3.9	3 8
E	5.6	2 1

47+41.85 90° off S.H. Garden Pl.

F	5.3	2 4
+22	3.6	4 3
+30	3.44	4 06
C	4.81	3 39
+20	5.24	2 46
+28	5.6	2 1
W	5.5	2 2

47+89.85 90° N.H. Garden Pl.

W	3.8	3 9
+24	5.3	2 4
+30	5.00	2 70
C	4.10	3 60
+20	3.44	4 26
+28	3.5	3 2
E	5.0	2 7

48+25

E	5.4	2 3
+20	3.6	4 1
+30	3.42	4 28
C	3.97	3 73
+20	4.80	2 90
+27	5.4	2 5

W	3.6	4 1
cap. wire		
T.P. TOP MAN	7.43	10.64
	4.49	3.21

W. R.O.W.
CON. 170X.
E.C.

48+68.46 = E.C.

W	6.9	3 7
+20	8.0	2 6
+30	7.48	3 16
C	6.84	3 82
+20	6.44	4 24
+28	6.6	4 0
E	10.2	0 4

49+100

E	9.2	0 9
+22	6.8	3 8
+30	6.49	4 15
C	6.68	3 96
+20	7.21	3 43
+27	7.8	2 8
+30	7.9	2 7
W	6.8	3 8

49+50

W	7.1	3 5
+23	7.3	3 3
+30	6.82	3 82
C	6.55	4 09

C +20	4.55	4 09
+28	6.7	39
E	7.5	31
50 +00		
E	6.8	38
+22	6.5	41
+30	6.44	4 20
C	6.27	4 37
+20	6.50	4 14
+27	6.9	37
W	7.2	34
+50		
W	7.5	31
+22	6.6	40
+30	6.14	4 50
C	5.90	4 74
+20	6.13	4 51
+28	6.1	4 5
E	4.9	3 7
51 +00		
E	7.0	3 6
+22	5.6	5 0
+30	5.54	5 10
C	5.38	5 26
+20	5.60	5 04
+30	6.0	4 6

W	7.1	3 5
51 + 63.75 opp E. L. Riley		
W	6.75	3.89 on pipe
+20	5.1	5 5
+30	4.84	5 82
C	4.61	6 03
+20	4.85	5 79
+28	5.0	5 6
+35	4.5	4 1
E	4.6	4 0
51 + 94.78 opp E. Riley		
F	6.6	4 0
+15	6.5	4 1
+22	4.7	5 9
+30	4.42	6 22
C	4.20	6 44
+20	4.43	6 21
+30	4.4	6 0
W	5.8	4 8
52 + 25.81 opp W. L. Riley		
W	5.4	5 2
+23	4.4	6 2
+30	3.99	6 65
C	3.75	6 89
+20	3.95	6 69
+28	4.2	6 4

10.64

C + 35	6.1	45
E	5.8	48
52 + 50		
E	4.9	57
+ 23	3.8	68
+ 30	3.58	706
C	3.38	726
+ 20	3.58	706
+ 30	4.1	65
W	4.9	57
53 + 100		
W	4.3	63
+ 23	3.4	72
+ 30	2.88	776
C	2.62	802
+ 20	2.84	780
+ 30	3.1	75
E	5.4	52

T.P. 10.84 14.73 6.75 3.89

PIPE EL RILEY
W.L.PAC.

53 + 29.14 OPP. J.L. CALHOUN

E	9.6	51
+ 17	9.5	52
+ 22	6.8	79
+ 30	6.58	815

14.73

59

C	6.31	842
+ 20	6.52	821
+ 37	6.8	79
W	7.9	68
54 + 71.30 E. CALHOUN		
W	7.6	71
+ 22	6.4	83
+ 30	5.92	881
C	5.70	903
+ 20	5.94	877
+ 28	6.1	86
+ 32	9.6	51
E	9.4	53
54 + 13.46 OPP. N.L. CALHOUN		
E	9.7	50
+ 10	9.5	52
+ 22	5.4	93
+ 30	5.30	943
C	5.11	962
+ 20	5.32	941
+ 27	5.9	88
+ 35	5.2	95
W	9.9	48
+ 50		
W	10.5	42
+ 5	10.0	47

14.73

W +18	5.3	94
+20	4.78	995
C	4.56	1017
+20	4.76	997
+20	5.1	96
+40	9.7	50
E	10.0	47
55+00		
E	9.9	48
+5	10.0	47
+20	4.3	104
+30	4.02	1071
C	3.78	1095
+20	4.01	1072
+32	4.5	102
+42	10.2	45
W	10.2	43
55+50		
W	10.0	47
+8	9.2	53
+20	3.7	90
+30	5.18	1155
C	3.02	1171
+20	3.33	1140
+30	3.2	111
+42	10.2	45

14.73

60

E	55+98.32	opp E L Greenwood
E	10.3	44
+7	10.2	45
+20	2.8	11.9
+30	2.53	1220
C	2.22	1249
+20	2.22	1229
+30	3.1	116
+45	10.1	46
W	10.4	41
56+29.35		
W	56+29.35	opp E "
+20	4.26	1047
+20	2.3	124
+30	1.95	1278
C	1.80	1293
+20	2.07	1266
+28	2.4	123
+42	10.0	47
E	10.0	47
56+60.38		
E	56+60.38	opp N L "
+7	10.2	45
+7	10.2	45
+20	2.1	126
+30	1.59	1314
C	1.36	1337

14.73

420	1.54	13 19
440	1.9	12 8
W	4.4	10.1
57+00		
20 W E	0.94	13 79
C	0.74	13 99
20 E E	0.97	13 76
T.P. 781	22.01	0.53 14.70
57+50		
20 E of E	7.58	14 43
C	7.38	14 63
20 W "	7.60	14 41
58+00		
20 W E	6.70	15.31
C	6.52	15 49
20 E "	6.76	15.25
+50		
20 E E	6.00	16.01
C	5.82	16.19
20 W "	5.99	16 02
59+00		
20 W E	5.24	16 77
C	5.08	16 93
20 E "	5.28	16 73

22.01

59+50		
20 E E	4.50	17.49
C	4.32	17.29
20 W "	4.55	17.40
60+00		
20 W E	3.81	18.20
C	3.65	18.36
20 E E	3.76	18.25
60+41.11 S. end SD River Bridge		
E cb	2.32	19.69 B.P. on E
90T	3.12	18.89
C	2.92	19.09
90T	3.05	18.96
W cb	2.20	19.81
check B.M. S. end RR Bridge		
B.P. abutment	9.31	12.70 12.70

61

Call State for
check on
Bridge Sta.

INDEXED
EPTB

7.83

62

Xsec Congress 50' wide
Rosecrans to Greenwood

B.M. 2.40 7.83 5.27 P.55

S	3.9	39
2+00		
S	4.0	38
C	5.1	27
N	5.0	28

w L Rosecrans 2+00

S	3.9	39
+10	4.7	41
+17	5.1	27
C	4.8	30
N	4.6	32

2+50		
N	5.1	27
C	5.5	23
S	5.1	27

2+50

N	4.7	31
C	5.3	25
+10	5.6	22
+20	3.7	41
S	3.7	41

3+00	EL GAINES	50' wide
S	5.5	23
C	5.1	27
N	5.0	28

Redr Plot on new profile 4-12-40 CPH

1+00

S	3.7	41
+5	3.7	41
+10	5.9	19
C	5.2	26
N	4.7	31

E		
N	4.7	31
C	5.1	27
S	5.0	28

0+0 W L Gaines

1+50

N	4.9	29
C	4.9	29

S	4.7	31
C	5.1	27
N	5.0	28
0+50		
N	4.4	34
C	4.7	31
S	4.3	35

T.P. 4.46 9.19 3.10 4.73 Nail in Pole 0+00

919

	1400		
S	6.2	30	
C	6.2	30	
N	2.0	32	
	1450		
N	6.2	30	
C	6.3	29	
S	5.9	33	
	2+00		
S	5.4	38	
C	5.7	35	
N	5.8	34	
+50	7.6	16	
	2+50		
-50	7.6	16	
N	5.7	35	
C	5.6	36	
S	5.2	40	
	3+00		
	E.L. Riley = 50' wide		
S	5.0	42	
C	4.3	49	
+4	5.2	40	
N	4.9	43	
	9		
N	4.9	43	
C	4.7	45	

919

S	4.5	47	63
	E.L. Riley = 0+0		
S	4.4	48	
C	4.7	45	
N	4.3	49	
	0+50		
N	4.3	49	
C	4.6	46	
+0	4.2	50	
S	4.2	50	
	1+00		
S	4.0	52	
+22	3.9	53	
C	4.4	48	
N	3.8	54	
+60	4.3	49	
+75	7.5	17	
	1+50		
N	3.4	58	
C	3.6	56	
S	3.7	55	
	2+00		
S	3.7	55	
C	3.4	58	
N	3.2	60	
+50	4.0	52	
+75	8.2	10	

9.19

2+50

N	3.5	5.7
C	3.5	5.7
S	3.7	5.5
3+00 = E L Greenwood		
S	3.6	5.6
C	3.6	5.6
N	3.5	5.7

T.P. Congress + Greenwood
Cox. Patch 3.0 6.8

X sec of Riley 50' wide
Jefferson to Pacific

9.19

N L Jefferson = 0+00

W	5.2	4.0
C	5.1	4.1
E	5.1	4.1
0+50		
E	4.8	4.4
C	4.7	4.5
W	4.9	4.3

Redy Plot. on new profile
4-5-1940 G.H.H.

9.19

Riley

64

1+04

W	of CON Drive	4.40	459	↓
+15 Hedge				
C		4.7	45	
E		4.8	44	
1+50				
E		4.4	46	
C		4.8	44	
+10 = Hedge				
W		4.6	46	

2+00

W		4.6	46	
C		4.8	44	
E		4.4	48	
2+50 = 50' S of Congress				
E		4.1	51	
C		4.4	48	
W		4.6	46	

0+25 = 25' N of Congress

W		3.9	53	
+10				
C		4.1	51	
E		5.6	46	
E		5.3	49	
0+50				
E		6.8	24	
C		7.0	22	
W		6.4	28	

9.19

1400
 W 7.9 13
 C 7.9 13
 E 7.8 14

1450
 E-40 8.4 08
 E 8.3 09
 C 8.2 10
 W 8.1 11
 +40 8.4 10

2+20
 W 6.9 23
 C 7.2 20
 E 7.3 19

2+58
 -0.5 Sin. gap 6.5 27
 E 6.5 27
 C 6.2 30
 W 6.0 32

3+00 S W Garden Pl.
 W 6.5 27
 C 6.6 26
 E 6.6 26

3+15 E Garden Pl to RT
 E 7.0 22
 C 6.7 25
 W 6.4 28

9.19

Riley 65

3+25 = E Garden Pl. to LT

W 6.4 28
 C 6.6 26
 E 6.5 27

3+30 N W Garden Pl to RT

E 6.0 32
 C 6.5 27
 W 6.4 28

3+50 = N W Garden Pl. to W. or West.

W 5.9 33
 C 6.4 28
 E 6.3 29

T.P. 3.39 7.58 5.00 4.19
 Top. R.R. Rail
 NE Cor. Riley
 + Garden Pl.

0+00 = N W Garden Pl to West

0+12
 E-5 door sill 4.15 3.43
 0+50
 AUTO CT.

E 4.8 28
 C 4.7 29
 W 4.4 32

1+00

W 4.9 27
 C 4.9 27
 E 4.8 28

1 + 28
 E - 2 top edge porch 3.22 4.36 to auto
 " - 5 door sill 3.05 4.53 ct. ↓

1 + 55
 - 30 5.2 2.4
 E 5.2 2.4
 C 4.9 2.7
 W 5.0 2.6
 + 45 2 4 car gar 4.9 2.7 dirt ↓

1 + 80
 W 4.8¹ 2.8
 C 4.4 3.0
 E 4.6 3.0
 + 20 5.4 2.2

2 + 01.81
 E Top Pipe 2.66 3.92 = P 58 3.89
 C 3.8 3.8 0.03
 + 15 3.5 4.1
 W 2.7 4.9

2 + 40.18 = E Riley + W.L. Pal
 W 2.6 5.0
 C 2.7 4.9

INDEXED
EPB
50' wide

9.84

67

X sec Greenwood
Jefferson to Pacific

X.P. p64 3.66 9.84 4.18

0+00 N.W. Jefferson

E	5.4	42
C	5.9	39
+15	6.0	38
W	4.7	51

0+50

W	4.4	54
+8	5.8	40
C	5.8	45
E	5.2	46

1+00

E	5.1	47
C	5.1	47
+15	5.4	44
W	4.2	56

1+50

W	4.6	52
+10	5.1	47
C	5.2	46
E	5.0	48

2+00

E	4.9	49
---	-----	----

Red. 7 Plot on new profile 4-12-40 C.M.H.

C	5.0	48
+14	5.2	46
+16	4.5	53
W	4.5	53

2+50

W	4.9	49
C	5.0	48
E	4.7	51

0+00 S.W. Congress

E	4.2	56
C	5.1	47
W	4.2	56

E	4.5	53
C	5.1	47
E	4.3	55

0+00 N.W. Congress

E	4.1	57
C	5.2	46
W	4.5	53

0+15

W	5.1	47
+15	4.9	49
+20	6.0	38
C	6.0	38
+10	5.4	44

9.84

C + W	4.2	56
E	4.2	56
0 + 40		
E	9.1	07
C	8.1	17
W	8.9	09
0 + 60		
W	8.2	16
C	8.8	10
+ 10	9.0	08
+ 12	8.2	16
E	8.2	14
1 + 00		
E	8.2	1.6
C	8.3	1.5
W	7.6	2.2
1 + 50		
W	7.5	2.3
C	7.8	2.0
+ 8	7.7	2.1
+ 10	7.1	2.7
E	7.1	2.7
2 + 00		
E	6.5	3.3
+ 18	6.5	3.3
+ 19	2.2	2.6

9.84

68

C	7.2	26
W	4.7	31
2 + 50		
W	6.0	38
C	2.2	26
E	4.7	3.1
3 + 00 SK Garden Pl. 50' wide		
E	6.2	36
C	6.6	32
+ 10	6.5	33
+ 12	6.0	38
W	6.0	38
E		
W	5.7	41
+ 12	5.6	42
+ 14	6.7	31
C	6.7	31
E	6.3	35
0 + 0 N. h. Garden Pl.		
E	6.7	31
C	6.5	33
+ 10	6.4	34
+ 12	6.1	37
W	5.5	43
0 + 50		
W	5.0	48

9.84

C		6.1	37
E		5.6	42
	1+00		
E		5.6	42
+14		5.6	42
+14		6.4	36
C		6.1	37
W		5.2	46

T.P. 8.87 11.86 6.85 2.99

	1+50		
W		7.7	42
C		8.1	38
E		7.7	42
	2+00		
E		8.2	37
C		8.4	35
+12		8.4	35
W		5.2	6.6

	2+50		
W		4.7	72
+13		8.5	34
C		8.5	34
E		8.5	34

11.86

Greenwood

69

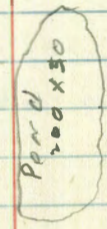
2+99.90 56 Calhoun

E		8.0	39
C		8.5	34
+13		8.7	32
W		4.8	71
	E		
W		5.1	68
+10		8.5	34
C		7.9	40
E		7.1	48

0+0 = 114 Calhoun

E		7.6	43
C		7.0	49
W		7.4	45
+15		8.8	31

+30 east edge water 16.1 of Pond el.



0+50

-10		9.1	28
W		7.7	42
C		6.1	58
		6.1	58
+10		8.0	39
+15		7.8	41
E			

11.86

70

1400

E	7.5	44
+8	7.8	41
+16	3.2	87
C	3.2	87
+12	3.5	84
W	6.0	59
+10	7.5	44

1409.30

-10	6.0	53
W	1.8	101
+8	1.2	107
+12	2.8	91
C	2.5	94
+11	2.1	98
E	2.7	42

142805 = W & Pacific

p 60

C	on 254 Hub	1.30	10.56	10.47
+20		1.0	107	0.09
W		2.5	94	
+10		6.9	50	
	1446.42			
-10		5.7	62	
W		11.6	103	
+7		+0.4	123	
C		+0.3	122	

~~INVESTED~~
BFB

X SEC Calhoun 50' wide
Greenwood to Pac.

11.86

0 + 00 = EL Greenwood

0 + 6

N - 15 Six gar. 7.7 42 dirt ✓

0 + 50

N 6.8 51

C 6.7 52

S 7.1 48

1 + 00

S 6.5 54

C 6.4 55

N 6.8 51

1 + 48.92

N W.L. Pac 6.0 59

C 5.9 60

S 6.4 57

1 + 82.92

S 6.0 59

C = W.L. PAC. 4.7 72

T.P. 375 11.09 4.52 7.34

check to B.M. 2.13 3.96 3.94

P 66

Red. Plot 4-12-40

~~INDEXED~~
E.F.B.

Xsec Garden Pl. 50' wide
Greenwood to Riley

0+00 = E.L. Greenwood

BM.	318	7.37	4.19	Top rail
	0+50			
N		3.8	3.6	
C		4.0	3.4	
S		4.0	3.4	
	1+00			
S		3.9	3.5	
C		3.9	3.5	
N		3.6	3.8	
	1+50			
N		3.2	4.2	
C		3.6	3.8	
S		3.8	3.6	
	2+00			
S		3.9	3.5	
C		3.7	3.7	
N		3.5	3.9	
	2+50			
N		4.1	3.3	
C		3.8	3.6	
S		4.1	3.3	
	3+00			

San Diego Ave.
Reduced & Mottled as
G.B.H.
April 12-1940

See 65

Xsec Garden Pl. 30' wide
Riley to Pac.

E.L. Riley = 0+00

~~INDEXED~~ 72
E.F.B.

	0+13	7.37		
N - 5.5 E do. gar.	3.95		3.42	COM. Fl.
	0+50			
N		4.1		3.3
	+4	3.9		3.5
	+10	4.6		2.8
C		4.6		2.8
S		4.6		2.8
	1+00			
S		4.7		2.7
C		5.2		2.2
N		4.5		2.9
	1+50			
N		4.5		2.9
C		5.2		2.2
S		4.7		2.7
	2+00			
S		4.5		2.9
C		4.8		2.6
N		4.2		3.2
	1+67			
N - 7 do. gar.	4.0		3.37	dict H.
T.P.	5.39	8.16	4.60	2.77

Garden Pt.

816

73

v + 50

N	4.4	38
L	4.9	33
S	5.6	26

v + 99.9 on S + v + 98.02 on N

S	5.2	3.0	W. L. Gaines
C	4.6	38	
N	4.2	40	

check to B.M.

4.93 3.23 3.21

P 57

~~INDEXED~~
EFB

7.99

74

1/5 sec of Gaines 50' wide
Jefferson to Pac.

B.M. 3.26 7.99 4.73

0+00 N. of Jeff.

W 3.8 42
+10 4.1 39
+12 4.8 32
C 4.8 32
E 5.3 27

0+50

E 3.7 43
+12 4.7 33
C 4.8 34
W 4.1 39
+100

W 4.1 39
C 4.1 39
+18 4.2 38
+20 3.4 46
E 3.4 46

1+50

E 3.3 47
+5 3.4 46
+11 4.1 39
C 4.1 39

Red 4 Plot New Profile 4-13-40 CBH

width
Pole. Per

W
E
= 1/2
= 1/2

W 4.6 34
2+00
W 4.0 40
+2 4.7 33
C 4.3 37
+13 3.9 41
+17 3.3 47
E 3.5 45
2+50
E 4.2 37
+5 4.5 35
+7 5.3 27
C 5.1 29
W 4.8 32
3+00 = S.L. Congress
0+00 = N.L. "
1+50
W 5.9 21
C 5.9 21
E 5.6 24
1+00
E 5.9 21
C 6.2 18
W 6.2 18
1+50
W 7.2 08

C	6.7	1.3
E	6.6	1.4

1+75		
- 5 S. edge Cor. fl.	6.06	1.95

E	6.2	1.8
C	7.2	0.8
W	7.0	1.0

2+25

W	6.7	1.3
---	-----	-----

C	6.3	1.7
---	-----	-----

E	6.1	1.9
---	-----	-----

+ 5 Cor. fl.	5.90	2.09
--------------	------	------

2+50

E	6.1	1.9
---	-----	-----

C	7.0	1.0
---	-----	-----

W	6.5	1.5
---	-----	-----

2+99.82 S. h. Garden fl.

W	4.9	3.1
---	-----	-----

C	5.4	2.6
---	-----	-----

+ 8.55 W. L. Pac.	5.8	2.2
-------------------	-----	-----

B. M. S. Resections

Lytton	S.W.B.P.	41.75
James	NWBP	48.80
Homer	NWBP	51.50
Freeman	NWBP	48.82
Dumas	NWBP	48.50
Curtis	SWBP	44.34
Browning	NWBP	37.49
Zola	NWBP	26.47
Xenophon	SWBP	18.07
Whittier	NWBP	12.77
Udal	NWBP	13.92
Tennyson	RR spt RR pole E. side Resections	5.59
Passol	SW 7' Mon	5.24
Poe	SW 7' Mon	5.61
Newell	W.L. Newell & Resections RR spt in RR pole	10.02
McCaulley	SW top Hydrant	12.56
Lowell	SW center return	8.05
Jarvis	RR spt RR pole & Resections W.L. Jarvis	5.15
Hugo	SW 7' Mon	1.59
Carrison	SWBP center return	1.13
Fendon	SW 7' ct.	2.13
Dickens	SW 7' Mon	9.92
Corleton	SWBP	14.53
Byron	SW 7' Mon	18.69
Addison	SW 7' Mon	19.56

Canon Rd	SWBP	20.64
Canon Road Bench		
Evergreen	NW center return	49.50
Willow	NWBP	61.20
East side 20'	from end paving BP in curb	79.92

Chatsworth

James	SEBP	73.93
Homer	SWBP	83.63
Clove + Freeman	SW center return	108.67
Elliot	NEBP	128.22
Dumas	NEBP	145.22
Curtis	SE center return	148.75
Alcott	SWBP	159.30
Zola	NWBP opp F.H.	161.50
Voltaire	SWBP	116.79
Villa Drive	SEBP	99.48
Tennyson	SEBP	96.66
Poe	SEBP	78.21
Wawona	SWBP	86.45
LaCresta Dr	SWBP	118.02
Arlington Dr.	SW Hyd	138.39
Ridge Rd.	SWBP	160.41
Dixon	SWBP	197.67
Catolina	NEBP	201.61

Catalina Blvd

Point Loma Ave SW top hyd	225.17
NWBP	234.62
Varona Pl SWBP	250.82
Santa Barbara NWBP	260.68
Orchard SWBP	196.50
Del Mar SWBP	187.53
Coronado SWBP	172.94
Santa Cruz SWBP	167.56
Del Monte SWBP	160.33
Norrogansett NEBP	157.52
Niagra NWBP	143.42
Bernice Dr SEBP	124.63
Atascadero SEBP	116.85
Alicia Dr SEBP	107.01
Tennyson SEBP	89.86
Udal SEBP	74.69
Voltaire SEBP	62.37

Sunset Cliffs Blvd Line

Voltaire SWBP	25.62
Muir SE top hyd	28.08
Long Branch "	29.04
Cape May NWBP	24.04?
Saratoga "	25.03
Santa Monica SE top hyd	26.97

Newport NW top hyd	27.43
Niagra NWBP	26.04
Norrogansett SEBP	32.10
Del Monte ? lead plug	37.09
Santa Cruz SEBP	54.23
Coronado NWBP	50.06
Del Mar NWBP	36.19
Orchard SE top hyd	32.47
Pescadero NWBP	28.13
Bermuda NWBP	21.11
Pt Loma SW 7' ct (prop)	26.09
Adair SEBP	25.58

Point Loma Ave

Sunset Cliffs SW 7'4" cut	20.09
Ebers SEBP	35.66
Frauda "	66.54
Guizot "	120.17
Santa Barbara "	188.52

- ✓ 6" feed E in Pt Loma Ave
- ✓ 6" " " Alley N of Pt Loma
- ✓ F.H. SE. Bermuda B.
- ✓ F.H. SE Pescadero
- ✓ 6" feed W Pescadero
- F.H. SE. Orchard -
- 6" Feed E & W Orchard
- F.H. SE Coronado
- 6" feed E & W in Coronado
- F.H. SE. Del Monte
- 6" feed E & W Del Monte
- F.H. SE. Niagara
- 6" feed E & W in Niagara

88.8
65.7

23.1
23.1

TABLE No. 1.

31
30
10

70.32
462
7494

79.56
46
8418
462
8880

IMPROVED TABLES AND INFORMATION

TABLE No. 2.

To find Tangent and External for curve of any other degree, divide by degree of curve and add connection found in column of connections.

Degree of curve with a given I may be found by dividing tangent (or external), opposite I by given tangent (or external).

The distance from a point on the tangent to the curve is very nearly the square of the tangent length divided by twice the radius.

1506 Garnet

146.92
9.24
137.68

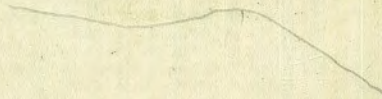
246.92
7.50
239.42
58.85
237.0
475.4
237.8
238.2

28
7
2.1
1.



3 $\frac{1103}{4667}$

131.5



12.70

30
24
27

50.00
+ 3.49
53.50
- 12.83
40.72
+ 1.59
42.31
- 6.11
36.20
42.31
- 8.88
33.43
+ 2.70
36.13
- 5.90
30.23
36.13
- 7.01
29.12
+ 3.94
33.06
- 4.91
28.15
33.06
- 8.96
24.10
+ 4.87
25.97
- 4.84
21.13
25.97
- 6.23
19.74
+ 7.22
26.96
- 6.84
20.12
26.96
+ 6.47
26.49

17.43
+ 2.33
29.76
- 3.14
26.62
29.76
- .37
29.39
+ 12.62
42.01
- .08
41.93
+ 12.61
54.54
- 16
54.38
+ 12.17
66.55
- 44
66.11
+ 12.92
79.03
- .22
78.81
+ 12.93
91.74
- .22
91.52
+ 12.41
103.93
- 18
103.75
+ 12.07
115.82
4.53
111.29

92
80
180
80
152
584
16
600