

1345

LEVEL BOOK

LEVEL BOOK

No. 380 F

1345

MICROFILMED
DEC 23 1964

No. ten to pp. 10 of pp. 100
39.07
25.7
296.07
289.07
14
275.07
1756.98

*Indexed
No.*

Our Leather Bound Engineers Note Books are carried in the following rulings:

- No. 380 LEVEL BOOK. Left and Right Hand Page the same as Left Hand Page of this Book.
- No. 382 FIELD BOOK. Left Hand Page as in this Book, Right Hand Page 4 x 4 to the inch, Center Line Red.
- No. 384 MINING TRANSIT BOOK. Left Hand Page as in this Book, Right Hand Page 8x8 to the inch, Center Line Red.
- No. 385 FIELD BOOK. Left Hand Page as in this Book, Right Hand Page 8 vertical and 4 horizontal lines to the inch, Center Line Red.

We also carry the Note Books listed above, bound in extra strong Fabri-Hide (otherwise the same quality of book), which can be furnished at a somewhat lower price.

In ordering Fabri-Hide covered books, add the letter "F" to catalog number.

THE FREDERICK POST CO.
ENGINEERING and DRAFTING SUPPLIES
IRVING PARK STATION
CHICAGO, ILL.

39.07
25.7
W. Turner & P. P. Co. Chicago Ill

X sec. Alley BIK 330 Choats Add.	1
333 " "	4
329 " "	7
334 " "	10
" " Redwood Central to 40th	15
" " 52nd Univ. to Orange.	21
Ottile Place	33
" " Alley BIK "A" South La Jolla	38
OHIO St. Monroe to Madison	43
MONROE Ave. 30th to Boundary	49
WALTON Place, Ohio East to Alley	55
Alley BIK 60 U.H. Madison to Monroe	56
Alley BIK 29 La Jolla Park ^{Kline} Silverado	59
17th St. Commercial to Logan	61
Storm Drain crossing 17th St.	67
BIK 195 P Beach	69

516129
London.X Sec. Alley
Choates Add.Blocks 329-330
betw Webster & Clay

B.P.N.E. Franklin Ave & 30th

B.M. 1.02 83.10

82.08

T.P. 5.04 78.30

7.84

73.26

E cb line 30th

S.L. top cb 6.66

71.64

S.L. gut 7.16

71.14

± Pav 7.13

71.17

N.L. fut 7.19

71.11

N.L. top cb 6.76

71.54

0+00 = E.L. 30th

N.L. top cb 6.53

71.77

N.L. Pav 6.65

71.65

± Pav 6.93

71.37

S.L. Pav 6.60

71.70

S.L. top cb 6.52

71.78

0+27.

S.L. 5.4

72.9

± 5.3

73.0

N.L. fence 0.2 in. 5.0

73.3

0+50

N.L. fence 1.5 in. 4.6

73.7

± 4.9

73.4

S.L. 5.4

72.9

0+69 = garage 0.5 earth floor

5.5 72.8

Plotted
5-18-29
J.C.

Blk 330

0+75 78.30

S.L. 5.3 73.0

± 5.0 73.3

N.L. fence 2.2 in. 4.9 73.4

1+00

N.L. shed 0.6 in. 5.1 73.2

± 4.9 73.4

S.L. 5.2 73.1

1+15

S.L. 5.1 73.2

± 5.0 73.3

N.L. 5.1 73.2

1+40 = garage 1.2 in on North earth floor

4.8 73.5

1+43 = ± single garage 2.2 South earth floor

4.8 73.5

1+50

S.L. 5.2 73.1

± 5.0 73.3

N.L. shed 0.2 in. 4.7 73.6

1+58 = ± garage 0.2 in on S. conc floor

5.03 73.27

1+75

N.L. fence 0.2 in. 5.0 73.3

± 5.3 73.0

S.L. fence 0.5 in. 5.2 73.1

78.30

1+97 = \pm garage	0 $\frac{1}{2}$ in on N	earth floor	
	4.8	73.5	
2+00			
S.L.	5.0	73.3	
\pm	4.9	73.4	
N.L.	4.7	73.6	
2+10 = \pm garage	0 $\frac{1}{2}$ South	conc. floor	
	4.89	73.41	
2+2.5			
N.L.	4.6	73.7	
\pm	4.9	73.4	
S.L.	5.3	73.0	
2+48 = \pm garage	0 $\frac{2}{3}$ South	earth floor	
	5.1	73.2	
2+50			
S.L.	5.1	73.2	
\pm	5.4	72.9	
N.L.	5.1	73.2	
2+70 = \pm garage	1 $\frac{1}{2}$ South	earth floor	
	5.3	73.0	
2+75			
N.L.	5.3	73.0	
\pm	5.5	72.8	
S.L.	5.2	73.1	
2+92 = \pm garage	0 $\frac{5}{8}$ North	earth floor	
	5.1	73.2	

78.30

2

3+00			
S.L.	5.8	72.5	
\pm	5.6	72.7	
N.L.	5.3	73.0	
3+50			
N.L.	6.2	72.1	
\pm	6.3	72.0	
S.L.	6.7	71.6	
4+00			
S.L.	7.8	70.5	
\pm	7.6	70.7	
N.L.	7.4	70.9	
4+05 = \pm garage	0 $\frac{8}{8}$ North	earth floor	
	7.3	71.0	
4+24 = \pm garage	1 $\frac{0}{8}$ South	earth floor	
	8.1	70.2	
4+25			
N.L.	7.3	71.0	
\pm	7.7	70.6	
S.L.	8.2	70.1	
4+45 = \pm garage	2 $\frac{3}{8}$ South	earth floor	
	8.8	69.5	
4+50			
S.L.	8.8	69.5	
\pm	8.3	70.0	
N.L.	7.7	70.6	

78.30

A+60 = garage	4 ^L North earth floor	7.7	70.6
A+68 = garage	2 ^S South conc. floor	8.45	69.85
A+75			
N.L.		7.7	70.6
±		8.2	70.1
S.L.		8.4	69.9
A+79 = garage	4 ^S North earth floor	7.5	70.8
{	A+96 = wood 3 car garage	0 ^S South bricks floor	
		7.9	70.4
{	5+29 = E end same garage	0 ^L in	
		7.3	71.0
5+00			
S.L.		7.8	70.5
±		7.8	70.5
N.L.		7.4	70.9
5+50			
N.L.		6.0	72.3
±		6.0	72.3
S.L. (fence 0.6 in)		6.2	72.1
5+57 = garage	0 ^S North earth floor	5.1	72.4
5+69 = garage	0 ^S North earth floor	5.3	73.0

78.30

5+74 = garage	1 ^S in South earth floor	4.8	73.5
5+75			
S.L.		4.8	73.5
±		4.8	73.5
N.L.		5.2	73.1
5+90			
N.L.		4.7	73.6
+2		4.6	73.7
+3		5.0	73.3
±		5.0	73.3
+4		4.9	73.4
+6		4.0	74.3
S.L. fence 1 ^S in		4.0	74.3
6+01 ^S = w.L. 3 rd			
S.L. fence 0 ^L in		3.4	74.9
+6		3.2	75.1
+7		4.5	73.8
±		6.1	72.2
+9		6.0	72.3
N.L.		4.7	73.5
TP	10.95	84.33	4.92
			73.38

BK-333

84.33

0+00 = E.L. 3rd st

N.L.	5.4	78.9
±	5.8	79.5
S.L.	6.0	78.3

0+17

S.L.	6.0	78.3
+4	5.5	78.8
±	4.8	79.5
+4	4.6	79.7
N.L.	5.2	79.1

0+50

N.L.	4.0	80.3
+5	4.4	79.9
±	4.1	80.2
S.L.	4.1	80.2

0+56 = ± garage on S.L. conc. floor

4.09 80.27

0+75

S.L.	3.6	80.7
±	3.7	80.6
N.L.	4.0	80.3

0+82 = ± garage on N.L. earth floor

3.8 80.5

0+96 = ± garage on S.L. conc. floor

4.22 80.11

4

1+00

84.33

N.L.	3.5	80.8
±	3.9	80.4
S.L.	4.2	80.1

1+15 = ± garage on North earth floor

4.1

1+18

S.L.	3.8	80.5
±	3.9	80.4
N.L.	4.2	80.1

1+10 = W end 4 car garage on N earth floor

4.1 80.2

1+60 = E end same garage on N.L.

4.5 79.9

1+50

N.L.	4.9	79.4
±	4.5	79.8
S.L.	4.8	79.5

1+71 = ± garage on S.L. conc. floor

5.01 79.32

1+70

S.L.	5.0	79.3
±	4.8	79.5
+2	5.2	79.1
N.L.	4.7	79.6

2+00		84.33	
NL	fence 0 ² in	4.8	79.5
+4		5.1	79.2
±		4.8	79.5
+6		5.4	78.9
S.L.		5.2	79.1
2+25			
S.L.		5.4	78.9
±		5.1	79.2
NL	fence 0 ³ in	4.7	79.6
2+46 = ±	garage 0 ² in on North	1.6	79.7
	earth floor		
2+50			
NL		4.7	79.6
±		4.8	79.5
S.L.		4.9	79.4
2+75			
S.L.		3.7	80.6
±		4.3	80.0
N.L.		4.3	80.0
2+90			
N.L.		3.3	81.0
+7		4.0	80.3
±		3.8	80.5
S.L.		4.3	80.0

3+00		84.33	
S.L.		4.1	80.2
±		3.9	80.4
N.L.	fence 0 ² in	3.0	81.3
3+40			
N.L.	fence 0 ² in	2.3	82.0
+3		3.0	81.3
±		2.7	81.6
S.L.		3.4	80.9
3+53 =	apron 0 ² in alley West double garage 10' North Conc floor		
apron		2.61	81.72
TP	5.38 86.87	2.84	81.49
garage floor		4.56	82.31
3+70 =	E end Same garage		
gar. floor		4.63	82.24
apron		5.39	81.48
3+63 = ±	garage 2 ^o South earth floor		
		6.3	80.6
4+00			
S.L.		5.8	81.1
±		5.4	81.5
N.L.		5.1	81.8

4+50 86.87

NL	4.2	82.7
+2	4.7	82.2
±	4.9	82.0
+5	4.9	82.0
S.L	5.0	81.9

A+60

S.L -	5.4	81.5
+5	4.9	82.0
±	4.9	82.0
+5	4.6	82.3
N.L.	3.7	83.2

A+81 = ± garage 1² North earth floor

	5.3	81.6
--	-----	------

5+00

N.L. fence 0.5 in	5.2	81.7
±	5.4	81.5
+8	5.5	81.4
S.L	6.3	80.6

5+18 = ± garage 2² South earth floor

	6.4	80.5
--	-----	------

5+23

S.L	6.4	80.5
+5	5.4	81.5
±	5.3	81.4
N.L	5.5	81.4

5+30 86.87

NL	5.7	81.2
+4	5.3	81.6
±	5.4	81.5
+6	5.3	81.6
S.L	5.7	81.2

5+40 = ± garage on NL earth floor

	5.7	81.2
--	-----	------

5+50

S.L	5.1	81.8
±	5.0	81.9
+4	5.0	81.9
N.L	5.5	81.4

5+70 MH on ± flush-tank

top	4.63	82.27
-----	------	-------

5+70

N.L	4.7	82.2
±	4.7	82.2
S.L	4.7	82.2

5+95

S.L	4.8	82.1
±	5.2	81.7
N.L	4.9	82.0

86 87
6+00Z = WL 32nd

NL	top cb	4.82	82.05	
NL	grd.	5.2	81.7	
±		5.4	81.5	
+S		5.5	81.4	
SL	grd.	5.2	81.7	
SL	top cb	5.13	81.74	
Web line 32 nd .				
SL		5.41	81.46	
SL	grt	6.0	80.9	
±		5.7	81.2	
NL	grt	5.6	81.3	
NL	top cb	5.00	81.9	
T.P.	0.57	81.96	5.48	81.39
T.P.	top 5 th alley.	6.18	75.78	

5/4/29
London

X 500 Alleys BIKS 333-334
Charles Add. betw Clay & Franklin

Blk 329

B.P. NE
Franklin & 30th

BM	0.58	82.66	82.08
0+00 = EL 30 th			
SL	top cb	5.06	77.60
SL	grt Pav	5.41	77.25
	Pav	5.88	76.78
NL	Pav	5.79	76.87
N.L.	top cb	5.69	76.97
0+07			
NL		6.1	76.6
+6		5.4	77.3
±		5.5	77.2
SL		4.8	77.9
0+25			
SL		5.2	77.5
+3		5.9	76.8
±		6.2	76.5
NL		6.8	75.9
0+50			
NL		7.2	75.5
+6		6.8	75.9
±		7.2	75.5
SL		6.3	76.4
0+56 = ± garage 0 ³ North earth floor			
		7.6	75.1

Plot Xed
5-20-29
X.L.

0+75	82.66		
SL		7.1	75.6
±		7.6	75.1
NL		7.6	75.1

1+05			
NL		8.4	74.3
±		8.0	74.7
S.L.		7.7	75.0

1+30			
SL		9.1	73.6
±		9.3	73.4
NL		9.5	73.2

1+43 = ± garage 1² South earth floor

		10.1	72.4
--	--	------	------

1+50			
NL fence 0 ³ in.		11.4	71.3
+6		11.0	71.7
±		11.4	71.3
S.L.		10.9	71.8

1+75			
S.L.		12.3	70.4
±		12.9	70.8
+3		13.0	69.7
NL		12.7	70.0
TRP	0.32	20.02	12.96
			69.70

2+00	70.02		
NL		2.6	67.4
+4		2.5	67.5
+5		3.0	67.0
±		2.5	67.5
+5		2.6	67.4
S.L. fence 0 ³ in		1.8	68.2
2+ 75 - 2.2 ⁵			
S.L. fence 1 ⁴ in		3.7	66.3
+5		4.7	65.3
±		4.6	65.4
+4		4.9	65.1
+5		4.5	65.5
NL		4.8	65.1

2+50			
NL		7.9	62.1
+5		8.0	62.6
±		7.4	62.6
+2		7.5	62.5
+7		5.9	64.1
+9		5.6	64.4
S.L. fence 1 ⁵ in.		4.6	65.4

2+78	70.02		
S.L. fence 12 in	8.1	61.9	
+3	9.1	60.9	
⊕	8.9	61.1	
N.L.	9.7	60.3	

2+90			
N.L.	11.3	58.7	
+4	12.3	57.7	
⊕	12.6	57.4	
S.L. fence 1 st in	10.2	59.8	
T.P. 2.55	59.72	12.85	57.17

3+10			
S.L. fence 1 st in	3.1	56.6	
+5	3.9	55.8	
⊕	3.8	55.9	
N.L.	3.4	56.3	

3+40			
N.L.	4.2	55.5	
⊕	4.2	55.5	
S.L. fence 1 st in	4.4	55.3	

3+75			
S.L. fence 1 st in	5.4	54.3	
+9	4.4	55.3	
+6	4.9	54.8	
⊕	4.2	55.5	
N.L.	4.2	55.5	

4+00	59.72		
N.L.	4.6	55.1	
⊕	4.2	55.5	
+4	5.5	54.2	
+9	4.7	55.2	
S.L. fence 1 st in	5.7	54.0	
J.M.H. at A+31 on ⊕ top	6.06	53.6	
L.F.L.	14.32	45.40	

4+30			
S.L. fence 2 nd in	7.8	51.9	
+2	7.2	52.5	
+5	8.1	51.6	
⊕	6.1	53.6	
+4	6.4	53.3	
+5	7.0	52.7	
N.L.	6.0	53.7	

4+52			
N.L.	9.3	50.4	
+7	9.9	50.8	
⊕	9.8	49.9	
S.L. shed 1 st in	10.0	49.7	

4+75			
S.L. shed 2 nd in	9.5	50.2	
⊕	9.7	50.0	
N.L.	9.2	50.5	

A+94	59.72		
NL		7.9	51.8
±		8.8	50.9
S.L. fence 1 st in.		8.4	51.3
5+04			
S.L. fence 3 rd in		3.8	55.9
±		4.1	55.6
N.L.		4.5	55.2
5+25			
N.L.		0.2	59.5
±		0.4	59.3
S.L. fence 2 nd in		0.2	59.5
April Pole 3 stps T.P. 1047	70.13	0.06	59.66
5+50			
S.L. fence 1 st in.		7.2	62.9
±		7.6	62.5
N.L.		7.8	62.3
5+67			
N.L.		5.6	64.5
+7		5.5	64.6
±		4.8	65.3
S.L. fence 1 st in.		5.3	64.8

5+80	70.13		
S.L. fence 2 nd in		4.6	65.5
±		4.4	65.7
N.L.		4.2	65.9
6+00 = NL 3 rd st			
N.L.		2.8	67.3
±		2.6	67.5
S.L. fence 1 st in		3.1	67.6
BIK 334			
T.P. 1301	72.67	59.66	
0+00 = E.L. 3 rd st			
N.L.		4.7	68.0
±		5.5	67.2
S.L.		5.9	66.8
0+17			
S.L. fence 2 nd in		5.6	67.1
+1		5.3	67.4
±		5.1	67.6
+6		4.6	68.1
N.L.		4.4	68.3
0+50			
N.L.		4.0	68.7
+2		4.8	68.4
±		4.3	68.4
+9		4.3	68.4
S.L.		4.5	68.2

0+75 72.67

S.L.	3.4	69.3
+4	3.1	69.6
+7	3.5	69.2
±	3.5	69.2
+4	3.6	69.1
N.L. shed 0 ³ in	3.3	69.4

1+00

N.L.	2.4	70.3
+4	2.3	70.4
+6	2.4	70.3
+8	2.7	70.0
±	2.5	70.2
+3	2.2	70.5
S.L.	2.1	70.6

1+25

S.L.	1.9	70.8
+2	1.7	71.0
±	1.4	71.3
+2	1.7	71.0
N.L.	1.1	71.6

1+27 = ± garage on S.L. earth floor

	1.9	70.8
--	-----	------

1+30 = ± garage 3³ North Core floor

	0.67	72.00
--	------	-------

1+50 72.67

N.L.	0.8	71.9
+4	1.1	71.6
+8	0.9	71.8
±	1.0	71.7
+6	1.1	71.6
S.L. fenced 0 ³ in	1.0	71.7

T.P. #68 76.47 0.88 71.79

1+58 = ± garage 2^e south earth floor

	4.6	
--	-----	--

1+75

S.L.	4.3	72.2
+3	4.6	71.9
±	4.6	71.9
+7	4.7	71.8
N.L.	4.3	72.2

2+00

N.L.	3.8	72.7
+3	4.2	72.3
±	4.3	72.2
+6	4.3	72.2
S.L.	4.0	72.5

2+05 = ± garage 0⁸ North earth floor

	3.8	72.7
--	-----	------

2+25 76.47

S.L.	4.3	72.2
+4	4.4	72.1
±	4.2	72.3
+7	4.1	72.4
N.L.	3.7	72.6

2+43 = ± garage of North wood floor.

3.6 72.9

2+50

N.L.	4.0	72.5
+8	4.6	71.9
±	4.5	72.0
+6	5.0	71.5
S.L.	4.6	71.9

2+57 = ± garage 1st South wood floor.

4.6 72.9

2+75

S.L. fence of in.	6.8	69.7
+1	5.6	60.9
+6	5.5	71.0
+8	5.7	70.8
±	5.3	71.2
+3	5.5	71.0
+7	5.3	71.2
N.L.	4.7	71.8

2+95 = ± garage on N.L. earth floor.

5.7 70.8

3+00 76.47

N.L.	5.7	70.8
+6	6.0	70.5
+8	6.3	70.2
±	6.0	70.5
+2	6.4	70.1
+4	6.1	70.4
+8	6.3	70.2
S.L.	7.7	68.8

3+25

S.L. fence of in.	8.2	68.3
+1	7.2	69.3
+5	7.0	69.5
+8	7.1	69.4
±	6.9	69.6
+2	6.9	69.6

N.L. fence of in.

6.1 70.4

3+26 = wood double garage 0th in on North

6.5 70.0

3+46 = Earth same garage 0th in

7.0 69.5

3+50

N.L.	7.3	69.2
+6	7.3	69.2
±	7.4	69.1
+8	7.9	68.6
S.L. fence of in.	8.9	67.6

3+75		
SL fence 0 ² in	9.2	67.3
+2	8.0	68.5
+4	7.5	69.0
+6	7.9	68.6
±	7.5	69.0
+2	7.8	68.7
+6	7.5	69.0
NL Shed. 0 ² in	7.8	68.7
3+80 Eucalyptus tree 0 ² in ^{Dia. = 2'} on South		
A+00		
NL fence 0 ² in	7.6	68.9
+5	7.4	69.1
+7	7.7	68.8
±	7.3	69.2
+2	7.6	68.9
+4	7.5	69.0
+9	7.6	68.9
SL fence 0 ² in	8.6	67.9
A+14 = ± garage 1 ² North Room floor		
	6.69	69.78
A+25		
SL fence 0 ² in	7.6	68.9
+6	7.0	69.5
±	7.1	69.4
+6	7.1	69.4
NL	6.8	69.7

7647		
A+50		
NL	7.3	69.2
+3	7.5	
±	7.5	69.0
+4	7.4	69.1
+9	7.9	68.6
SL fence 0 ² in	8.4	68.1
1+60		
SL fence 0 ² in	8.7	67.8
+6	6.9	69.6
±	6.9	69.6
+4	7.3	68.2
+7	6.9	69.6
NL	7.1	69.4
5+00		
NL	6.0	70.5
+3	6.0	70.5
+5	6.3	70.2
+8	6.1	70.4
±	6.4	70.1
+2	6.3	70.2
+9	7.5	69.0
SL fence 0 ² in	8.0	68.5

5425

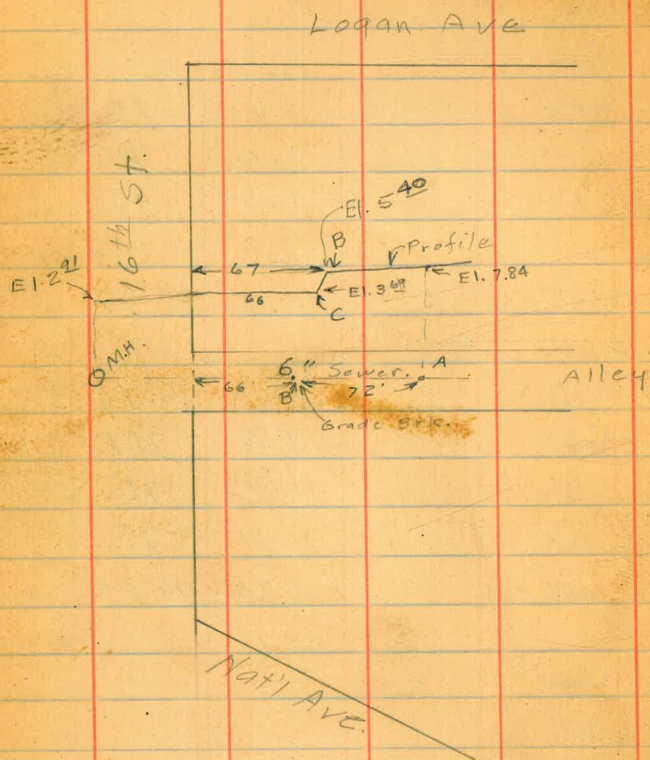
SL. fence 0 ² in	6.4	70.1
+7	5.4	71.1
±	5.4	71.1
NL	4.9	71.6
5443 ± garage 1 ³ South earth floor		
	5.2	71.3
NL	3.3	73.2
+4	3.9	72.6
+6	3.7	72.8
+9	3.7	72.8
±	4.0	72.5
+3	3.8	72.7
SL	4.7	71.8
5470		
SL	2.4	74.1
+6	2.3	74.2
±	2.3	74.2
+3	2.5	74.0
NL	2.0	74.5
5492		
NL	0.8	75.7
+5	0.8	75.7
±	1.1	75.4
+2	1.3	75.2
+5	1.1	75.4

5492 7647 14

SL	1.1	75.4
6401 ³ = NL 32 nd		
SL top eb	0.70	75.77 <small>ck (75.78)</small>
SL grd	1.1	75.4
+5	1.0	75.5
±	1.0	75.5
NL grd	0.8	75.7
NL top eb	0.60	75.87
web 32 nd		
NL top eb	0.71	75.76
NL grd	1.4	75.1
±	1.2	75.3
SL grd	1.4	75.1
SL top eb	1.92	74.55

5/10/29
London.

Location & Elevs on Sewer
in Alley Between Nat'l & Logan South
of 16th St.



BM	831	12.11	3.80
MH. & 16 th F.L.		2.91	7.20
B	FL.	5.40	6.71
C	FL.	3.67	8.42
A	FL.	7.84	4.27

5/10/29
London

5/10/29
London.

X Sec Redwood St From
Central to 40th 80' st. 14' cbs 52' Rdway.

15

Nail Pole NW Redwood & 41st

B.M	1269	303.31		290.62
T.P	803	310.71	0.63	307.68

UP 2.20 from
BM. Set in same
Pole 288.42

0+00 = w.L Central.

N.L	6.7	304.0
cb	6.7	304.0
1/4	6.3	304.4
+	6.0	304.7
1/4	6.1	304.6
cb	6.2	304.5
S.L.	6.3	304.4

0+30

S.L.	5.6	305.1
cb	5.6	305.1
1/4	5.7	305.0
+	5.6	305.1
1/4	5.5	305.2
cb	5.5	305.2
N.L.	5.2	305.5

0+60

N.L.	5.2	305.5
cb	5.1	305.6
1/4	5.1	305.6
+	5.4	305.3
1/4	5.5	305.2
cb	5.7	305.0
S.L.	5.9	304.8

Plotted 5/14-29 GBN

Redwood

	310.71		
0+90			
S.L	54	305.3	
+5	53	305.4	
cb	5.6	305.1	
1/4	59	304.8	
+	5.5	305.2	
1/4	53	305.4	
cb	5.1	305.6	
NL	5.1	305.6	
1+15			
NL	4.9	305.8	
cb	5.3	305.4	
1/4	55	305.2	
+	55	305.2	
1/4	59	304.8	
cb	59	304.8	
S.L	6.0	304.7	
1+40 = EL Alley			
S.L	6.6	304.1	
cb	6.3	304.4	
1/4	6.0	304.7	
+	5.5	305.2	
1/4	5.5	305.2	
cb	5.5	305.2	
NL	5.3	305.4	

Redwood

	310.71		
1+60 = WL Alley - Beginning of walk & cb on North			16
NL top Alley cb	5.44	305.27	
NL 9A	5.5	305.2	
cb top cb	5.80	304.91	
9A	5.8	304.9	
1/4	5.9	304.8	
+	6.2	304.5	
1/4	6.3	304.4	
cb	6.5	304.2	
S.L	6.7	304.0	
1+85			
S.L	6.9	303.8	
cb	6.8	303.9	
1/4	6.6	304.1	
+11	6.5	304.2	
+	6.6	304.1	
1/4	6.3	304.4	
9A	6.2	305.5	
Ncb	6.09	304.62	
2+10			
Ncb	6.46	304.25	
9A	6.5		
1/4	6.6		
+	7.0	303.7	
+2	6.8		
1/4	6.9		
cb	6.9		

Redwood.

2+10	310.71		
+6	6.8		
S.L.	7.1	303.6	
2+40			
SL	7.9	302.8	
cb	7.6		
1/4	7.5		
+12	7.2		
±	7.3	303.4	
1/4	7.0		
+7	6.8		
prt	7.0		
Ncb	6.86	303.85	
2+70			
Ncb	7.28	303.48	
prt	7.7		
+3	7.2		
1/4	7.2		
+11	7.6		
±	7.4	303.5	
1/4	7.7		
cb	7.9		
S.L.	8.1	302.6	

Redwood.

17

310.71			
SL	8.4	302.3	
cb	8.0		
1/4	7.4		
+11	6.9		
±	7.3	303.4	
+1	7.5		
+10	7.1		
1/4	7.2		
+10	7.2		
prt	7.8		
Ncb	7.68	303.03	
TP 1.51	8.81	301.90	
BM. Beq.	12.81	290.60	

Cross Section South Lane + Alley Block
 "H" South Lane

Cont From Page 80

~~5774~~ 61.04

1040

H 92 51.8

Z Fly Lath Fence 93 51.7

S Fly Cypress Hedge 90 52.0

+10 98 51.2

TP 3.10 54.90 924 51.80

10433

S Fly Lath Fence ✓

10445

S + 0.1 Fly Conc. Floor 3.83 51.02 ✓

S 5.7 Fly Garage Conc. Floor 3.80 51.10 ✓

10450

S 3.6 51.3

+0.8 Fly Power Pole ✓

Z 3.5 51.4

H 3.6 51.3

+10 2.9 52.0

10451 Fly 5 Cypress Tree ✓

S Fly 4" Cypress Tree

10470 Fly 5 Cypress Tree ✓

S-02 Fly 6" Cypress Tree

10476

S-80 Fly D.G. Garage Conc. Floor 4.16 50.74 ✓

67.74

10491

H-180 Fly Conc. Floor 3.69 51.21 ✓

H-210 Fly Garage Conc. Floor 3.36 51.44 ✓

10493

S-80 Fly D.G. Garage Conc. Floor 4.12 50.78 ✓

1140

-10 4.5 50.4

H 4.5 50.4

Z 4.9 50.0

S 5.0 49.9

TP 5.62 49.80 10.72 44.18

North + South Alley Block "H"

040 Fly 300 ft

F Topch 8.47 41.33

Z Gutter on Pavmg 8.96 40.84

Z " " 9.63 40.17

H Gutter " " 9.69 40.11

H Cbtap 9.72 40.08

0442

H on Pavmg 5.34 44.46

Z " " 5.58 44.32

F " " 5.26 44.54

0463

F on Pavmg 3.90 45.90

Z " " 4.32 45.48

H " " 4.14 45.66

Reduced by C.F. Brennan
 Plotted by C.F.H. 5-30-41

		49.80	
		0781	
W	07 Pav 199	3.37	46.43
Z	" "	3.58	46.22
F	" "	3.02	46.78
		170 = Wly Pav 199	
F	07 Pav 199	2.56	47.24
Z	" "	3.17	46.63
W	" "	2.76	47.04
		1705	
-10		1.0	48.8
W		1.3	48.5
Z		2.5	47.3
Z		2.4	47.4
F		2.2	47.6
+5		0.0	49.80
TP	6.60 55.03	1.27	48.43
		1730	
F		5.4	49.6
Z		5.5	49.5
Z		5.6	49.4
W		4.7	50.3
+10		5.8	49.2
		1731	
W = Wly Pav 199 + Pav 199			

		55.03	
		1745	
-10		5.6	49.4
W		5.2	49.8
Z		5.1	49.9
F		4.6	50.4
		1770	
-5		3.8	51.2
F		4.6	50.4
Z		4.8	50.2
W		5.0	50.0
+10		5.4	49.6
		270	
-10		6.4	48.6
W		5.0	50.0
Z		4.7	50.3
F		4.3	50.7
+10		3.3	51.8
		2750	
-10		2.4	52.6
-2		2.7	52.3
F		3.9	51.1
Z		4.1	50.6
W		4.6	50.4
+10		6.2	48.8

55.03

2+56

W = My Power Pole

2+65

-10		6.4	48.6
-24		4.8	50.2
+2		5.4	49.6
2		5.0	50.0
+6		4.6	50.4
F		3.9	51.1
+2		2.6	52.4

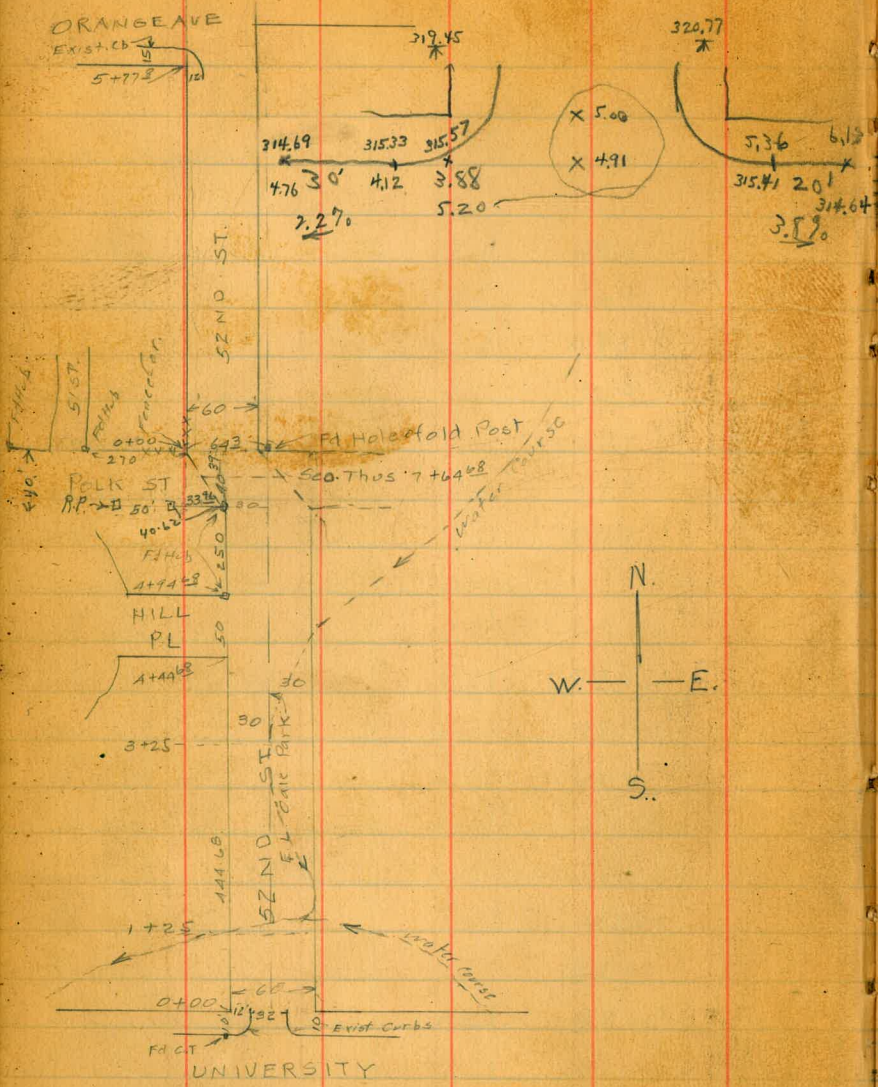
2+75.06 = SA Nautilus

F cb Top		5.70	49.33
F on Paving		6.29	48.74
2 " "		6.83	48.20
W " "		6.82	48.21
W cb Top		6.78	48.25

2+85.06 = SCb Nautilus

W on Paving		7.59	47.47	
2 " "		6.92	48.11	
F " "		6.38	48.65	
TP	11.61	58.96	7.68	47.35
TP	11.31	69.77	0.50	58.46
BM			10.27	59.50

SWRP
26 Nodert
41 No. of 1000
59.57



5/22/29
 X sec 52nd St - Univ. to Orange
 60 wide parallel to present W.L.
 10 cbs to R/Way.

BP N.W.
 UNIV. & 52nd

BM	7.06	322.63	315.57
0+00 = N.L. Univ.			
W.L.		6.7	315.9
cb		6.9	315.7
+2	top Exist cb	6.98	315.65
+4	Int Pav	7.44	315.19
4	Pav	7.13	315.50
+8	E Exist Pav	7.09	315.54
4		7.15	315.48
4		7.52	315.11
+36	Exist pt	7.75	314.88
+36	top Exist cb	7.23	315.40
cb		7.0	315.6
EL		7.4	315.2
0+02			
EL		7.2	315.4
cb		6.2	316.4
4		4.2	318.4
4		2.4	320.2
4		2.3	320.3
cb		2.4	320.2
W.L.		2.1	320.5

Plotted 5/22-29 CBH

52nd

0+08	322.63		
W.L.	1.8	320.8	
cb	1.9	320.7	
1/4	1.9	320.7	
±	2.7	319.9	
1/4	4.3	318.3	
cb	6.4	316.2	
E.L.	7.3	315.3	

0+25

10E	14.4	308.2	
E.L.	18.1	309.5	
cb	10.0	312.6	
1/4	7.0	315.6	
±	3.6	319.0	
1/4	2.6	320.0	
cb	1.8	320.8	
W.L.	2.0	320.6	

0+38

W.L.	8.0	314.6	
cb	8.7	313.9	
1/4	7.8	314.8	
±	11.3	311.3	
1/4	13.1	309.5	
cb	14.3	308.3	
E.L.	16.0	306.6	
10E	17.5	305.1	

52nd

22

0+50	322.63		
15E	21.3	301.3	
E.L.	18.7	303.9	
cb	17.1	305.5	
1/4	16.2	306.4	
±	15.0	307.6	
1/4	13.3	309.3	
cb	11.7	310.9	
W.L.	10.4	312.2	
TP	8.60	310.29	12.94

0+75

W.L.	8.9	301.4	
cb	9.6	300.7	
1/4	10.1	300.2	
±	11.2	299.1	
1/4	12.0	298.3	
cb	12.7	297.6	
E.L.	13.4	296.9	
20E	15.0	295.3	

1+00

25E	16.7	293.6	
E.L.	17.0	293.3	
cb	16.8	293.5	
1/4	17.2	293.1	
±	17.3	293.0	
1/4	17.4	292.9	
cb	18.1	292.2	

52nd

1+00	310.29		
WL		18.5	291.8
20W		18.9	291.4
TP 7.01	304.27	13.03	297.26
1+12			
25W		13.9	290.4
15W		14.7	289.4
WL		15.0	289.3
cb		14.4	289.9
1/4		13.5	290.8
+5		12.9	291.4
±		12.8	291.5
1/4		12.0	292.3
cb		11.8	292.5
EL		11.5	292.8
15E		10.9	293.4
30E		11.0	293.3
1+25			
20E		7.7	296.6
EL		11.8	292.5
+5		12.8	291.5
cb		12.1	292.2
1/4		12.7	291.6
+3		13.9	290.4
±		13.8	290.5
+5		12.9	291.4
1/4		12.7	291.6

52nd

1+25	304.27		
cb		12.7	291.6
WL		12.9	291.4
12W		13.1	291.2
25W		14.8	289.5
1+50			
10W		6.4	297.9
WL		7.2	297.1
cb		8.4	295.9
1/4		9.5	294.8
±		10.5	293.8
1/4		11.3	293.0
+5		12.2	292.1
cb		12.1	292.2
+5		13.4	290.9
EL		11.7	292.6
20E		7.3	297.0
1+75			
30E		5.9	298.4
12E		11.2	293.1
5E		12.1	292.2
EL		11.1	293.2
cb		10.0	294.3
1/4		8.5	295.8
±		7.2	297.1
1/4		5.8	298.5

23

52nd

1+75	30A 27		
cb		4.5	299.8
wL		3.3	301.0
low		1.9	302.4
2+00			
10E		11.0	303.3
wL		0.0	304.3
cb		1.4	302.9
1/4		3.2	301.1
±		4.9	299.4
1/4		7.0	297.3
cb		9.2	295.1
+9		10.3	294.0
E.L.		11.0	293.3
2E		12.1	292.2
6E		10.5	293.8
10E		10.3	294.0
25E		5.3	299.0

2+25			
25E		2.9	301.4
3E		9.0	295.3
E.L.		10.9	293.4
+4		11.0	293.3
cb		8.8	295.5
+5		8.6	295.7
1/4		7.7	296.6

52nd

24

2+25	30A 27		
+7		5.7	298.6
±		4.9	299.4
1/4		2.6	301.7
cb		0.8	303.5
wL		10.8	305.1
2+50			
wL		10.3	304.6
cb		1.7	302.6
1/4		4.1	300.2
±		6.0	298.3
1/4		7.8	296.5
+6		8.6	295.7
+7		10.1	293.2
cb		10.1	293.2
+1		8.5	295.8
E.L.		6.4	297.9
10E		3.9	300.4

2+75			
10E		0.8	303.5
E.L.		3.4	300.9
cb		6.5	297.8
+3		9.8	294.5
+5		9.8	294.5
+6		7.2	297.1
1/4		6.9	297.4

52^m9

2+75	304.27		
±		6.2	298.1
¼		5.0	299.3
cb		3.0	301.3
w.l.		1.1	303.2
T.P. 10.89	312.48	2.68	301.59
3+00			
w.l.		8.6	303.9
cb		10.3	302.2
¼		12.5	300.0
±		15.3	297.2
¼		16.4	296.1
cb		12.8	299.7
E.L.		9.7	302.8
20 E.		7.1	305.4
3+25			
15 E.		6.0	306.5
E.L.		8.8	303.7
cb		11.0	301.5
¼		13.5	299.0
+6		14.7	297.8
+8		15.7	296.8
±		14.7	297.8
¼		12.5	300.0
cb		9.6	302.9
w.l.		8.1	304.4

52^m9

3+50	312.48		
w.l.		7.2	305.3
cb		7.7	304.8
¼		9.9	302.6
±		11.6	300.9
¼		13.3	299.2
+5		13.6	298.9
+7		14.7	297.8
cb		14.7	297.8
+3		14.8	297.7
+4		13.2	299.3
E.L.		11.1	301.4
20 E.		7.1	305.4
3+75			
25 E.		10.2	302.3
10 E.		12.4	300.1
9 E.		13.4	299.1
5 E.		12.4	300.1
E.L.		12.4	300.1
cb		10.9	301.6
¼		9.3	303.2
±		7.8	304.7
¼		6.6	305.9
cb		5.8	306.7
w.l.		5.8	306.7

25

5229

312.48

A+00

w.L	4.6	307.9
cb	4.0	308.5
1/4	3.8	308.7
±	4.5	308.0
1/4	5.8	306.7
cb	7.2	305.3
EL	9.5	303.0
11E	13.3	299.2
25E	9.5	303.0

A+25

28E & water course	11.6	300.9
EL	7.7	304.8
cb	5.1	307.4
1/4	3.8	308.7
±	3.2	309.3
1/4	2.9	309.6
cb	2.9	309.6
w.L	3.2	309.3

5229

312.48

A+44⁶⁸ = SL Ottilie Pl.

w.L	1.7	310.8
cb	1.5	311.0
1/4	1.8	310.7
±	2.2	310.3
1/4	3.4	309.1
cb	4.6	307.9
EL	6.5	306.0
25E & water course	9.6	307.9

A+69⁶⁸ = ± Ottilie Pl.

15E	6.5	306.0
EL	4.7	307.8
cb	3.2	309.3
T.P.	9.55	320.74
1/4	10.1	310.6
±	9.4	311.3
1/4	8.9	311.8
cb	8.8	311.9
w.L	9.0	311.7

A+99⁶⁸ = NL Ottilie Pl.

w.L	8.6	312.1
CB	8.7	312.0
1/4	8.6	312.1
±	7.2	311.5
1/4	9.8	310.9
cb	10.8	309.9
EL	11.9	308.8

26

52nd

A + 9466	320.74	
15E	13.3	307.4
5+25		
15E	11.8	308.9
EL	10.9	309.8
cb	10.3	310.4
1/4	9.8	310.9
⊕	9.1	311.6
1/4	8.7	312.0
cb	8.3	312.4
w.L.	8.2	312.5
Steep of house at 5+16 ^{15' west}	6.37	314.37
BM. Hub NW. 52 nd & Hillie Pl. 842		312.32
5+50		
w.L.	7.7	313.0
cb	7.9	312.8
1/4	8.4	312.3
⊕	8.9	311.8
1/4	9.4	311.3
cb	9.6	311.1
EL	9.9	310.8
15E	10.2	310.5

52nd
320.74

27

5+75		
10E	9.4	311.3
EL	9.0	311.7
cb	8.8	311.9
1/4	8.4	312.3
⊕	8.2	312.5
1/4	7.6	313.1
cb	7.3	313.4
w.L.	7.3	313.4
Steep House at 5+55 ^{15' west}	5.59	315.15
6+00		
w.L.	6.2	314.5
cb	6.2	314.5
1/4	6.5	314.2
⊕	7.1	313.6
1/4	7.6	313.1
cb	8.2	312.5
EL	8.4	312.3
10E	9.0	311.7
240 E ⊕ Water Course.	9.6	311.1

52 nd

6+25	320.74		
10E	7.8	312.9	
F.L.	7.3	313.4	
cb	7.1	313.6	
1/4	6.9	313.8	
±	6.5	314.2	
1/4	6.5	314.2	
cb	6.1	314.6	
w.L.	5.9	314.8	

6+50			
w.L.	4.8	315.9	
cb	5.3	315.4	
1/4	5.9	314.8	
±	5.7	315.0	
1/4	5.8	314.9	
cb	6.2	314.5	
F.L.	6.6	314.1	
10E	6.8	313.9	

6+75			
10E	5.9	314.8	
F.L.	5.9	314.8	
cb	5.9	314.8	
1/4	5.7	315.0	
±	5.4	315.3	
1/4	5.2	315.5	
cb	4.8	315.9	
w.L.	4.4	316.3	

52 nd

28

7+00	320.74		
w.L.	4.2	316.5	
cb	4.5	316.2	
1/4	4.6	316.1	
±	4.7	316.0	
1/4	4.4	316.3	
cb	4.2	316.5	
F.L.	4.1	316.6	

7+44 ⁶⁸	= S.L. Polk		
F.L.	2.9	317.8	
cb	2.7	318.0	
T.P.	12.97	331.51	2.20 318.54
1/4	13.2	318.3	
±	13.1	318.4	
1/4	13.2	318.3	
cb	13.1	318.4	
w.L.	13.4	318.1	

7+64 ⁶⁸	= ± Polk		
w.L.	12.6	318.9	
cb	12.3	319.2	
1/4	12.4	319.1	
±	12.4	319.1	
1/4	12.6	318.9	
cb	12.6	318.9	
F.L.	12.7	318.8	

52nd
0+00 = N.L. Polk

331.51

Row of young trees
0+00 to 1+00 A.E. of
W.L.

EL	11.6	319.9
cb	11.1	320.4
1/4	11.3	320.2
+	11.3	320.2
1/4	11.3	320.2
cb	11.3	320.2
W.L.	11.4	320.1

0+25

W.L.	10.2	321.3
cb	10.2	321.3
1/4	10.2	321.3
+	9.8	321.7
1/4	9.9	321.6
cb	10.0	321.5
EL	9.9	321.6

0+50

EL	7.8	323.7
cb	8.5	323.0
+5	8.1	323.4
1/4	8.1	323.4
+	8.2	323.3
1/4	8.7	322.8
cb	8.7	322.8
W.L.	8.6	322.9

52nd

29

1+00

331.51

W.L.	5.1	326.4
cb	4.9	326.6
+5	5.2	326.3
1/4	4.8	326.7
+	4.4	327.1
1/4	4.5	327.0
+6	4.7	326.8
+7	5.6	325.9
+9	4.5	327.0
cb	4.3	327.2
EL	3.6	327.9
TP 12.84	0.01	344.34

1+50

EL	11.5	332.8
cb	12.0	332.3
1/4	12.3	332.0
+	12.3	332.0
1/4	12.9	331.4
+4	13.1	331.2
cb	12.9	331.4
W.L.	13.3	331.0

52nd

2+00	344.34		
w.L	9.6	334.7	
cb	9.1	335.2	
1/4	8.5	335.8	
+	7.7	336.6	
1/4	7.6	336.7	
cb	7.4	336.9	
E.L	6.5	337.8	
2+25			
E.L	4.8	339.5	
cb	5.4	338.9	
1/4	5.7	338.6	
+	5.9	338.4	
1/4	6.6	337.7	
cb	7.2	337.1	
w.L	7.8	336.5	
2+50			
w.L	5.7	338.6	
cb	5.2	339.1	
1/4	4.7	339.6	
+	4.5	339.8	
1/4	4.1	340.2	
cb	3.7	340.6	
E.L	2.9	341.4	
T.P	12.91	357.21	0.04 344.30

52nd

3+00	357.21		30
E.L	10.4	346.8	
cb	11.0	346.2	
+1/4	11.8	345.4	
1/4	12.1	345.1	
+	12.1	345.1	
1/4	12.5	344.7	
+5	13.2	344.0	
cb	13.3	343.9	
w.L	13.7	343.5	
floor house 15' west. at st 32	11.5	345.7	✓
3+50			
w.L	10.7	346.5	
cb	9.6	347.6	
+8	8.8	348.4	
1/4	8.4	348.8	
+3	7.9	349.3	
+	7.6	349.6	
1/4	7.2	350.0	
+6	7.2	350.0	
cb	6.3	350.9	
E.L	5.2	352.0	

5279

357.21

3+75

EL	3.1	354.1
cb	5.0	352.2
+5	5.8	351.4
1/4	5.9	351.3
1/4	6.0	351.2
1/4	7.5	349.7
cb	8.6	348.6
wL	9.6	347.6
10W	10.7	346.5
A+00.		
15W	10.8	346.4
5W	10.3	346.9
wL	9.6	347.6
cb	8.3	348.9
1/4	7.1	350.1
1/4	6.0	351.2
1/4	5.4	351.8
cb	4.1	353.1
EL	2.2	355.0

5279

357.21

A+25

EL	2.3	354.9
cb	3.1	354.1
1/4	3.5	353.7
1/4	3.3	353.9
1/4	4.9	352.3
cb	6.3	350.9
wL	6.8	350.4
15W	7.3	349.9
A-50		
15W	4.8	352.4
wL	3.9	353.3
cb	3.5	353.7
1/4	0.4	356.8
1/4	0.4	356.8
1/4	0.9	356.3
+5	0.5	356.7
cb	1.2	356.0
TP	12.66	369.79
EL	0.08	357.13
	13.1	356.7

31

A+75		369.79	
EL	10.2	359.6	
+5	10.7	358.9	
cb	10.5	359.3	
1/4	9.5	360.3	
+5	9.9	359.9	
E	9.3	360.5	
1/4	9.4	360.4	
+5	9.9	359.9	
cb	11.5	358.3	
+2	12.5	357.3	
WL	12.7	357.1	

5+00			
WL	7.8	362.0	
+7	7.6	362.2	
cb	6.6	363.2	
+3	5.7	364.1	
1/4	5.6	364.2	
E	5.3	364.5	
1/4	5.8	364.0	
cb	6.9	362.9	
EL	7.1	362.7	

5+25		369.79		32
EL	2.5	367.3		
cb	0.4	369.4		
1/4	0.6	369.2		
E	0.8	369.0		
1/4	0.9	368.9		
+5	1.1	368.7		
cb	0.4	369.4		
T.P	12.12	381.51	0.40	369.39
WL			11.7	369.8
5+50				
WL	5.8	375.7		
+5	5.7	375.8		
cb	8.7	372.8		
1/4	9.6	371.9		
+4	8.2	373.3		
E	7.6	373.9		
1/4	7.5	374.0		
+5	7.6	373.9		
cb	8.1	373.4		
EL	7.9	373.6		
7E	11.1	370.4		

381.57

5+77^B = SL Orange on West.

5E	5.5	376.0	
EL	4.0	377.5	
cb	4.2	377.3	
+4	5.1	376.4	
1/4	4.7	376.8	
±	4.3	377.2	
±	4.6	376.9	
+8 gut	5.1	376.4	
+8 top Exist cb	4.17	377.34	
cb	4.2	377.3	
W.L.	4.3	377.2	
BM SW Orange 2520A B.M.	4.00	377.51 (377.56)	

5/9/29
H.B. NW. O'Hillie = 52

BM 370 316.02

0+00 = WL 52nd

NL
cb

1/4

±

1/4

cb

S.L.

0+25

S.L.

cb

1/4

±

1/4

cb

NL

0+50

NL

cb

1/4

±

1/4

cb

S.L.

S.S.

X sec O'Hillie Place
from 52nd to 51st
50' st 10' cb 30' Rdway.

33

312.32

3.8 312.2

4.0

4.2

4.2 311.8

4.3

4.5

5.2 310.8

6.8 309.2

6.1

5.6

5.2 310.8

4.7

4.1

3.6 312.4

5.0 311.0

5.5

5.9

6.5 309.5

6.9

7.2

7.3 308.7

7.6

Plotted 5-22-29 C.B.H.

Profile of line on P 34

T.P.	352	30078	297.26
0+00	FL pipe	5.07	295.73
0+03 ²	L stream	3.8	297.0
0+25	stream	4.0	296.8
0+26	"	5.6	295.2
0+50		5.5	295.3
2 L	stream	6.1	294.7
0+75		4.9	295.9
10 L	stream	6.6	294.2
1+00		6.8	294.0
11 L	stream	7.5	293.3
1+25		7.0	293.8
6 R	stream	7.5	293.3
1+55 ²	L	7.3	293.5
12 R	stream	7.5	293.3
1+82			
30 R	stream	10.4	290.4
2+00		9.5	291.3
2+05	stream	10.9	289.9
2+22 ³		10.2	290.6
T.P.	270	293.60	9.88 290.90
9 L	stream	4.4	289.2
2+40	L	3.1	290.5
2+50	stream	4.5	289.1
3+00		4.6	289.0
4 R	stream	4.7	288.9

293.60

3+50	stream	5.7	287.9
4+00	stream	6.1	287.5
4+50	"	7.4	286.2
5+00	"	9.1	284.5

35

Slope Dist.	V.A.	Hor. Dist.
-------------	------	------------

575.00

100.00

32.05

100.00

500.00' 6° 47' 496.50'

267.30' 7° 35' 260.01'

493.20' 1° 38' 493.00'

49.36

2105.92

500.00' 6° 20' 496.95'

75.00

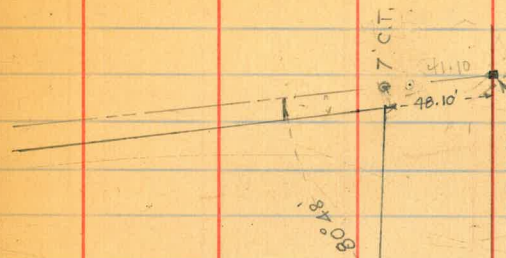
210.00

325.00' 9° 42' 320.35'

487.40' 5° 18' 485.32'

500.00' 0° 15' 497.90'

9.80

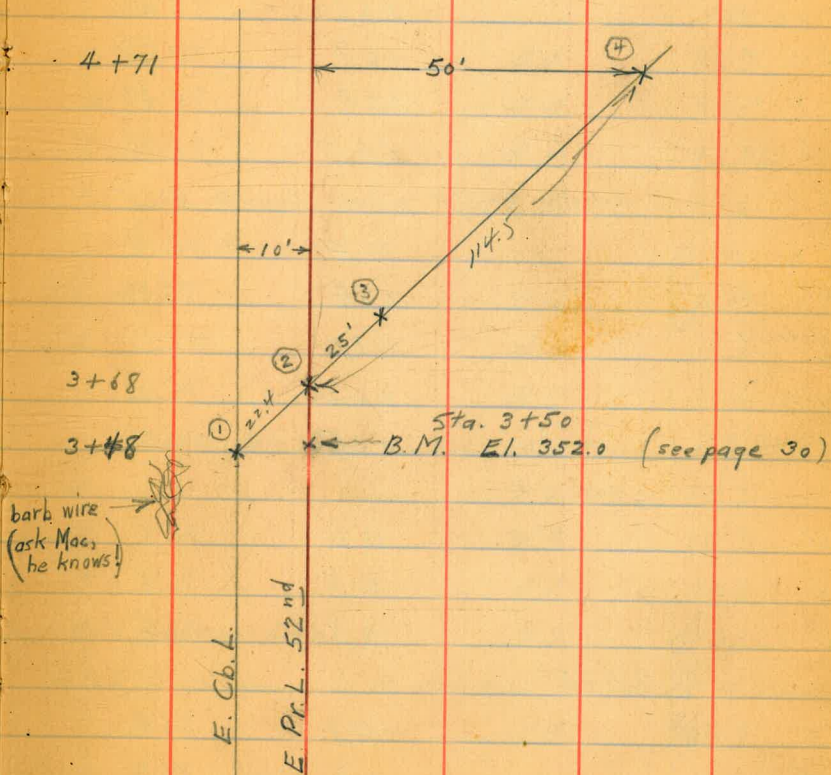


64.30' Fd. Remains of 4x4 1/4 Cor.

Location & Levels for culvert
in 52nd St. bet Polk & University

Reading
Wm McCarthy
8-22-29

	8.4	309.8	301.4	37
1			12.0	297.8
2			11.2	298.6
3			10.5	299.3
4			7.6	302.2



Miller
Bliss
Durbert
6-7-30

CROSS SECTION 15' Alleys in Block A
South Lafayette Bet. North Ave and Ben-Air
Bet. Lafayette Blvd. and Neptune Place

7730

38

Direction	Distance	Elevation	Notes	Direction	Distance	Elevation
			SE. B.P. Blvd. Lafayette Blvd. + 1st St. Burn	S	1.4	75.9
	2.09	81.10			1+00	
T.P.	1.47	77.30		S	3.1	74.2
	5.27	75.83		L	3.0	74.3
	0-10' = MAY cb to end Lafayette Blvd.			N	3.1	74.2
N top ch		1.04	76.26			
" on pav.		1.66	75.64		1+50	
S " "		1.67	75.63	N	4.4	72.9
S " "		1.83	75.47	L	4.4	72.9
S " cb.		1.25	76.05	S	4.6	72.7
	0+00 W/Ly line Lafayette Blvd.			+S	4.7	72.6
S on cb.		1.14	76.16		2+00	
" " Pav.		1.24	76.06	S	5.6	71.7
L " "		1.39	75.91	L	5.8	71.5
N " "		1.22	76.08	N	5.7	71.6
N " cb.		1.05	76.25		2+50 = L Dble. Garage on South dirt Floor	7.5' Back
	0+10			N	7.0	70.3
N		0.6	76.7	L	7.0	70.3
L		0.8	76.5	S	7.1	70.2
S		0.7	76.6	+7.5' = Garage Floor	7.2	70.1
	0+25			2+66 = L Dble. Garage on N dirt Floor 35' Back 18' wide		
S		0.9	76.4	-5.5'	7.4	69.9
L		1.0	76.3		3+00	
N		1.1	76.2	S	8.3	69.0
	0+50			L	8.3	69.0
N		1.8	75.5	N	8.4	68.9
L		1.6	75.7		3+50	

Plotted

7730

N		9.1	68.2	
S		9.3	68.0	
S		9.5	67.8	
	4+00			
S		10.5	66.8	
S		10.6	66.7	
N		10.5	66.8	
		Floor = 10.82	→ 66.48	
3+87.5 = 1/2 Dble Garage on North St. Entrance on Haudilas				
4+50 = 1/2 Dble. Garage on N. dirt Floor 5.5' Back.				
	-5.5' = Garage Floor.	11.6	65.7	
N		11.9	65.4	
S		12.1	65.2	
S		12.1	65.2	
T.P.	127	66.15	12.42	64.88
	5+00			
S		2.0	64.2	
S		2.0	64.2	
N		1.9	64.3	
5+64 = 1/2 Dble. Garage on South dirt Floor.				
N		3.5	62.7	
S		3.4	62.8	
S		3.3	62.9	
	+3.5' = Garage Floor.	3.5	62.7	
	6+00			
S		4.9	61.8	
S		4.6	61.6	

6615

39

N		4.4	61.8
	6+50		
N		5.6	60.6
S		5.5	60.7
S		5.4	60.8
	5174 = 1/2 Con. Porch on South 1' alley 5' wide	5.29	60.86
	7+00		
S		6.6	59.6
S		6.6	59.6
N		7.0	59.2
	7+50		
N		8.5	57.7
S		8.3	57.9
S		8.4	57.8
		9.3	56.9
7+96 = Dble. Garage on N. dirt Floor 5' Back			
	8+00		
S		9.9	56.3
S		9.8	56.4
N		9.7	56.5
		10.17	55.98
8+09 = 1/2 Garage on South Con. Floor 5.5' Back.			
	8+50		
N		11.4	54.8
S		11.4	54.8
S		11.4	54.8
		12.1	54.1
8+60 = 1/2 Dble. Garage on South dirt Floor 5.5' Back.			
	8+80		

6615

S			11.9	54.3
L			12.0	54.2
N			12.5	53.7
7P	1.69	53.07	12.77	53.38
	9+00			
-10			3.6	51.5
N			3.4	51.7
L			3.2	51.9
S			2.6	52.5
+5			2.4	52.7
	9+10			
-10			3.6	51.5
S			4.2	50.9
L			4.2	50.9
N			4.1	51.0
+10			3.8	51.3
	9+30	Note - where should be Cont. at 9+20 if Grade		
-5			3.4	51.7
N			4.0	51.1
L			4.5	50.6
S			5.2	49.9
+10			5.2	49.9
	9+50			
S			2.8	52.3
L			3.1	52.0
N			2.6	52.5

55.07

		2.13	52.94	40
	9+89 = L	Dble. Garage on N. Con. Floor 1' Back. St. Entrance		
		10+00		
N			2.9	52.2
L			3.2	51.9
S			3.1	52.0
	10+45 = L	Garage on South Con. Floor. With Con. Apron.		
	-6' on Garage Floor		3.92	51.15
S	" toe Con. Apron.		2.02	51.05
	10+50			
S			3.6	51.5
L			3.6	51.5
N			3.6	51.5
	10+75 = B.C. Curves on North & South			
N			4.0	51.1
L			3.9	51.2
S			4.1	51.0
	Cross Section North & South Alley			
	0-10 = S ^{cb line}	Nautilus		
E	Apch		5.66	49.41
E	" Pav		6.17	48.90
L	" "		6.87	48.20
N	" "		7.71	47.36
N	" cb.		7.11	48.96
	0+00 = S ^{cb line}	Nautilus		
N	" "		6.72	49.35?
"	" Pav		6.79	48.28

5507

L on Dirt (Passing covered)	5.9	49.2
E on Pav.	6.24	48.83
" top cb.	5.66	49.41
0+03		
E	3.4	51.7
L	5.1	50.0
W	5.2	49.9
0+10		
W	4.5	50.6
L	4.1	51.0
E	3.2	51.9
0+50		
E	3.5	51.6
L	4.3	50.8
W	4.7	50.4
0+70		
W	4.8	50.3
L	4.3	50.8
E	3.6	51.5
0+80		
E	4.1	51.0
L	4.5	50.6
W	4.9	50.2
1+05 = B.C. on East.		
W	4.7	50.4
L	4.3	50.8

5507

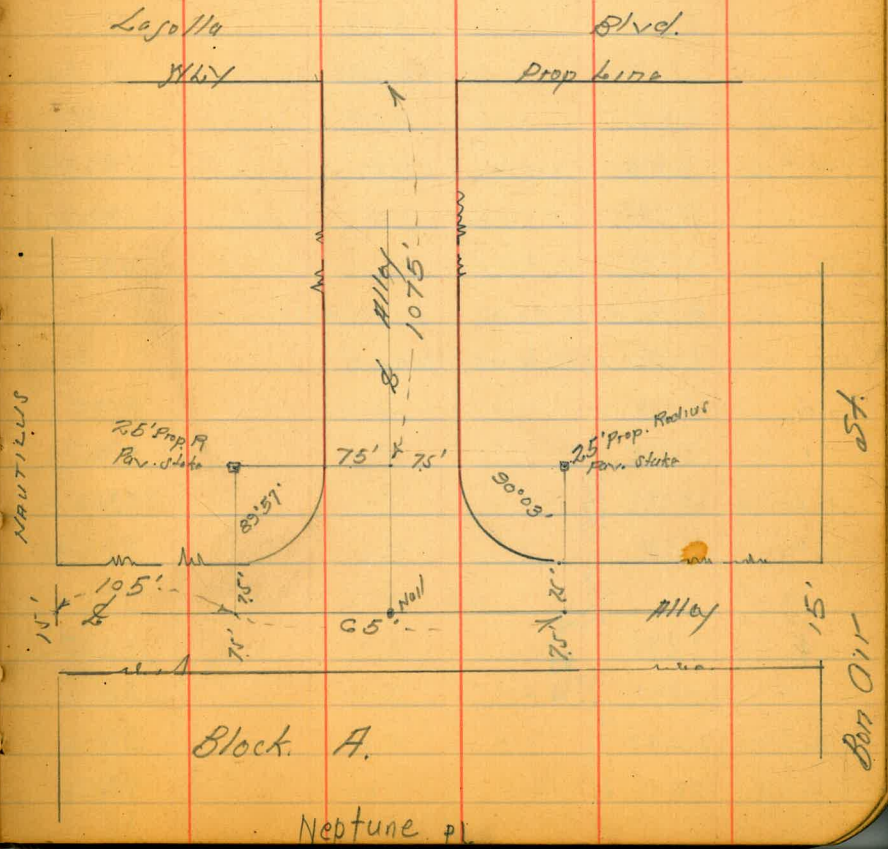
41

E	4.1	51.0
1+37.5 = L E + W Alley		
E	4.8	50.3
L	5.0	50.1
W	5.0	50.1
1+70 = E.C. on East		
W-5	6.2	49.9
W	5.8	49.3
L	5.7	49.4
+5	5.2	49.9
E	5.3	49.8
2+00		
E	6.3	48.8
L	6.8	48.3
W	7.0	48.1
+5	7.1	48.0
2+22		
-5	7.6	47.5
W	7.6	47.5
+5	7.9	47.7
L	7.8	47.3
E	7.4	47.7
2+44		
E	8.5	46.6
L	9.1	46.0
W	9.7	45.4

+3.5' at House (on ground)	10.3	44.8
Z+50		
-3.5' at House	10.3	44.8
N	10.3	44.8
S	10.1	45.0
E	9.3	45.8
Z+61 = Cobble Chimney 0.2' Bulks		
E - 2.5' on Walk	10.00	45.1
E	9.8	45.3
S	10.7	44.4
N + 0.2 at chimney	10.6	44.5
Z+68		
N	10.7	44.4
+4	10.7	44.4
+5	11.8	43.3
S	11.9	43.2
+2	10.8	44.3
E.	10.5	44.6
Z+70		
E	11.6	43.5
+6	12.9	42.2
S	13.7	41.4
+4	13.8	41.3
+4.1'	11.6	43.5
N	11.6	43.5

Z+75 = N.H. Bon Air St.

W top ch.	14.91	40.16		
" " Pav.	14.91	40.16		
S " "	14.82	40.25		
E " "	14.28	40.79		
E " ch.	13.67	41.40		
T.P.	12.67	66.05	1.69	53.38
T.P.	13.88	78.04	0.89	65.16
Chk. SW. BP Lapolla + Bon Air St.	6.06	71.98		



80' wide
20' cbs
10' 11.45

Ohio St X Sec

From End Pavmt. 169' S. of S. Line Monroe Ave
To Madison Ave

7-3-30
Miller
McHugh
Sammesway

389.68

100' S. of Monroe

43

BM.	10.73	389.68	378.95	5E. 30" + Monroe	W	7.2	382.5
	169.0	S. of S. Line Monroe Ave - N. End Pavmt. + emb. walk			W. emb. cl	7.43	382.25
W.		8.2	381.5		gutter	7.9	381.8
+ 7. N. Edge N. end emb. walk		8.32	381.36		+	7.7	382.0
+ 12.33 E. Edge " " "		8.37	381.31		+	7.4	382.3
W. emb. cl		8.61	381.07		"	7.1	382.6
gutter Pavmt N. End		9.31	380.37		gutter	7.1	382.6
" " " "		8.82	380.86		E. emb. cl	6.51	383.17
+		8.47	381.21		+ 10	6.3	383.4
" " " "		8.34	381.34		E	5.4	384.3
gutter " " "		8.48	381.20				
E. emb. cl.		7.74	381.94		E	5.1	384.6
+ 7.50 W. edge N. End emb. walk		7.42	382.26		+ 10	5.6	384.1
+ 12.50 E " " " "		7.35	382.33		E. emb. cl	5.87	383.81
E.		6.6	383.1		gutter	6.3	383.4
(N.B.) 5'-4" Walk on W					"	6.3	383.4
5'-00" Walk on E.					+	6.6	383.1
		135' S. of Monroe			+	6.9	382.8
E		5.8	383.9		"	7.4	382.3
+ 10		7.0	382.7		gutter	6.80	382.88
E. emb. cl		7.12	382.56		W. emb. cl	6.5	383.2
gutter		7.7	382.0		W.		
"		7.7	382.0				
+		8.0	381.7		W.	6.2	383.5
"		8.2	381.5		W. emb. cl	6.43	383.25
gutter		8.5	381.2		gutter	6.8	382.9
W. emb. cl		8.02	381.66		"	6.5	383.2
W.		7.8	381.9				

Plotted 7/12/1930
C.B.H.

60' S. of Monroe

30' S. of Monroe

389.68

30' S. of Monroe (con)

Φ	6.2	383.5
114	5.8	383.9
gutter	5.9	383.8
E. emb. cl.	5.40	384.28
E.	5.1	384.6
	5. Line Monroe Ave	
E	4.5	385.2 ✓
E. emb. cl.	4.84	384.84
gutter	5.4	384.3
114	5.3	384.4
Φ	5.7	384.0
114	6.1	383.6
gutter	6.4	383.3
W. emb. cl.	5.91	383.77
W	5.6	384.1 ✓
	S. cl. line	
W. on W. end emb. cl. Ret.	5.97	383.71 ✓
W ⁱⁿ gutter	6.5	383.2 ✓
W. cl. line	4.0	383.7
114	5.7	384.0
Φ	5.4	384.3
114	5.0	384.7
E. cl. line	5.3	384.4
E. on E. end emb. cl. Ret.	4.87	384.81 ✓
E. in gutter	5.2	384.5 ✓

389.68

S. 114 Monroe

Ohio St. X 300

44

E	4.8	384.9 ✓
E. cl. line	4.9	384.8
114	4.8	384.9
Φ	5.2	384.5
114	5.5	384.2
W. cl. line	5.7	384.0
W	5.8	383.9 ✓
	Φ Monroe	
W	5.6	384.1 ✓
W. cl. line	5.4	384.3
114	5.4	384.3
Φ	5.0	384.7
114	4.5	385.2
E. cl. line	4.7	385.0
E.	4.5	385.2 ✓
	N. 114 Monroe	
E	4.3	385.4 ✓
+10	4.6	385.1
E. cl. line	4.4	385.3
114	4.5	385.2
Φ	4.9	384.8
114	5.2	384.5
W. cl. line	5.3	384.4
W.	5.6	384.1 ✓

389.68

N. of Line - Monroe

W. on W. end emt. el.	5.05	384.63 ✓
W. in gutter	5.6	384.1 ✓
W. of Line	5.5	384.2
"	5.1	384.6
♀	4.7	385.0
"	4.4	385.3
E. of Line	4.5	385.2
E. in gutter	4.4	385.3 ✓
E. on E. end emt. el.	3.79	385.89 ✓

0+00 = N. Line Monroe Ave.

E	3.6	386.1 ✓
E. emt. el	3.79	385.89
gutter	4.3	385.4
"	4.4	385.3
♀	4.6	385.1
"	5.0	384.7
gutter	5.5	384.2
H. emt. el	4.80	384.88
W.	4.6	385.1 ✓

50' N.

W.	4.3	385.4
W. emt. el	4.58	385.10
gutter	4.9	384.8
"	4.5	385.2
♀	4.1	385.6
"	4.0	385.7

389.68

Ohio St. 7 Sec

45

gutter	4.3	385.4
E. emt. el.	3.63	386.05
E	3.2	386.5
	100' N	
E	3.2	386.5
E. emt. el	3.44	386.24
gutter	3.8	385.9
"	3.7	386.0
♀	3.8	385.9
"	4.2	385.5
gutter	4.6	385.1
W. emt. el	4.28	385.40
W	4.0	385.7
	124.5' N. on W. } 125' N. on E. } S. End emt. Walks.	
W.	3.6	386.1
W+7. Wedge S. End emt. walk	3.85	385.83
W+12 E. Edge " " " "	3.98	385.70
W. emt. el.	4.04	385.64
gutter	4.5	385.2
"	4.0	385.7
♀	3.6	386.1
"	3.5	386.2
gutter	3.5	386.2
E. emt. el.	3.19	386.49
+ 8' = Wedge. S. end emt. walk	2.94	386.74
+ 13. = E " " " "	2.90	386.78
E. Line	2.9	386.8

389.68
150' N. ent. walk on E + W

E. ent. eb	2.99	386.69
gutter	3.5	386.2
"	3.4	386.3
☼	3.4	386.3
"	3.9	385.8
gutter	4.3	385.4
W. ent. eb	3.84	385.84

175' N. = N. end cnt. walk on W.

W.	3.2	386.3
W + 7 = W. edge N. End. ent. walk	3.44	386.24
W + 12 = E " " " "	3.48	386.20
W. ent. eb	3.63	386.05
gutter	4.2	385.5
"	3.7	386.0
☼	3.3	386.4
"	3.3	386.4
gutter	3.4	386.3
E. ent. eb	2.90	386.98

T.P. 4.86 391.41 3.13 386.55

212.3 N. = S. Line Walton Pl 25' wide

E. line	4.5	386.9
+ 7. = E. Edge N. End. ent. walk	4.39	387.02
+ 12. = W " " " "	4.44	386.97
E. ent. eb	4.45	386.96
gutter	5.0	386.4
"	4.4	386.6

391.41

☼	4.7	386.7
"	5.1	386.3
gutter	5.7	385.7
W. ent. eb	5.24	386.17
W. line	5.0	386.4

213' N. = S. gutter line of Walton

E. eb line	5.0	386.4
E. line	5.0	386.4

224.8 N. = ☼ Walton Pl.

E. line	4.7	386.7
E. eb line	4.7	386.7
"	4.6	386.8
☼	4.7	386.7
"	5.2	386.2
gutter	5.7	385.7
W. ent. eb	5.14	386.27
W.	5.2	386.2

231.8 N. = S. End. ent. walk on W.

W.	4.9	386.5
+ 7. = W. edge S. end. ent. walk	4.93	386.48
+ 12. = E " " " "	4.95	386.46
W. ent. eb	5.09	386.32

Walk in poor condition Bet. 231.8 N. + 237.3 N.

237' N. = N. gutter line Walton Pl.

E. eb line	4.8	386.6
E. line	4.9	386.5

	391.41		
	400' N. of Monroe.		
E. ent. el.	3.54	387.85	
gutter	4.0	387.4	
"	3.8	387.6	
♀	3.7	387.7	
"	4.1	387.3	
gutter	4.4	387.0	
W. ent. el.	3.88	387.53	

	450' N.		
W. ent. el.	3.49	387.92	
gutter	4.1	387.3	
"	3.6	387.8	
♀	3.4	388.0	
"	3.5	387.9	
gutter	3.7	387.7	
E. ent. el.	3.33	388.08	

	500' N.		
E. ent. el.	3.00	388.41	
gutter	3.5	387.9	
"	3.2	388.2	
♀	3.2	388.2	
"	3.4	388.0	
gutter	3.6	387.8	
W. ent. el.	3.14	388.27	

	391.41	Ohio St 7 Sec.	
	550' N.		48
W. ent. el.	2.82	388.59	
gutter	3.4	388.10	
"	3.2	388.12	
♀	2.9	388.5	
"	3.0	388.14	
gutter	3.3	388.1	
E. ent. el.	2.73	388.68	

	579.5 N. of Monroe = S. line Madison Ave		
E. ent. el.	2.22	389.19	
gutter s. end parmt	3.08	388.33	
" " " "	2.80	388.161	
♀ " " "	2.67	388.74	
" " " "	2.82	388.159	
gutter " " "	3.17	388.24	
W. ent. el.	2.49	388.92	
CHRM S. 2 Ohio + Madison Ave.	2.44	388.97 = 388.93	

80' wide
14' ebs
13' 1/4"

Monroe Ave X Sec
30' to Boundary

7-8-30
Miller
McHugh
J. C. Bliss

5. E. 30'
+ Monroe

388.25
140' E = W line Alley

49

B.M	9.30	388.25	378.95
		oo = E. line 30' S+	
N. emb. cl		8.78	379.47
gutter e. edge pavmt.		9.28	379.96
" " " "		9.10	379.15
" " " "		9.09	379.16
" " " "		9.37	378.88
gutter " " "		9.44	378.59
s. emb. cl		9.22	379.03
	50' E		
s. emb. cl		8.41	379.84
gutter		9.1	379.2
" "		8.5	379.8
" "		8.2	380.1
" "		8.2	380.1
gutter		8.3	380.0
N. emb. cl		7.98	380.37
	100' E		
N. emb. cl		7.00	381.25
gutter		7.5	380.8
" "		7.3	381.0
" "		7.3	381.0
" "		7.6	380.7
gutter		8.1	380.2
s. emb. cl		7.63	380.62

Plotted 7-21-30 CBH

S. line emb. cl	6.83	381.42
" " dirt	6.8	381.5
s. emb. cl	7.03	381.22
gutter	7.4	380.9
" "	7.0	381.3
" "	6.6	381.7
" "	6.7	381.6
gutter	6.8	381.5
N. emb. cl	6.30	381.95
N. line emb. cl	6.08	382.17
" " dirt	6.2	382.1
	100' E = E. line Alley	
like N. emb. cl. & dirt	5.70	382.55
N. emb. cl	5.85	382.40
gutter	6.4	381.9
" "	6.3	382.0
" "	6.3	382.0
" "	6.6	381.7
gutter	7.2	381.1
s. emb. cl	6.62	381.63
s. line emb. cl	6.32	381.93
" " dirt	6.7	381.6

388.25
200' E.

s. emb. cl.	6.04	382 21
gutter	6.5	381 8
"	6.1	382 2
⊥	5.7	382 6
"	5.7	382 6
gutter	5.6	382.7
N. emb. cl.	5.25	383.00
247.2 E = E. End emb. walk + curb on N + S.		
N.	4.0	384.3
+4.5 N. edge E. End emb. walk	4.32	383.93
+9.5 S " " " "	4.38	383 87
N. emb. cl. E. End	4.49	383 76
gutter	4.9	383 3
"	5.1	383 2
⊥	5.0	383 3
"	5.4	382 9
gutter	5.7	382 6
s. emb. cl.	5.33	382 92
+4.5 = N. side E. End emb. walk	5.25	383 00
+9.5 = S. " " " "	5.14	383 11
S.	5.3	383.0
260' E		
S	4.3	384 0
+8	4.4	383 9
S. cl.	5.4	382 9
"	5.2	383.1

388.25

Monroe Ave

⊥	4.4	383 5	50
"	4.4	383 5	
+7	4.5	383 8	
N. cl.	3.8	384 5	
N.	3.7	384 6	
273' E.			
N	3.9	384 4	
cl	4.3	384 0	
"	4.8	383 5	
⊥	4.5	383 8	
"	5.0	383 3	
cl	5.4	382 9	
S	5.2	383 1	
289' E			
S	3.6	384 7	
+7	3.9	384 4	
cl	5.0	383 3	
"	4.8	383 5	
⊥	4.3	384 0	
"	4.5	383 8	
cl	4.4	383 9	
N	3.4	384 9	

388.25
300' E. = W. Line x Ohio St.

N.	3.1	385.1
N. emb. el	3.62	384.63
gutter	4.1	384.1
"4	4.2	384.1
⊕	4.1	384.1
"4	4.3	383.9
gutter	5.1	383.2
S. emb. el	4.54	383.71
S. Line	4.2	384.1
100 = E. Line Ohio		
S	3.0	385.2
emb. el E. End.	3.44	384.81
gutter	3.7	384.5
"4	3.3	384.9
⊕	3.0	385.2
"4	2.8	385.4
gutter	3.0	385.3
emb. el. E. End.	2.36	385.89
N.	2.1	386.1
10' E.		
N	2.1	386.2
el	2.0	386.3
"4	2.3	386.0
⊕	2.4	385.9
"4	2.4	385.9
el	2.6	385.7

388.25

Monroe Ave

S	2.9	385.5	51
50' E			
S	3.1	385.2	
el	2.8	385.5	
"4	2.6	385.7	
⊕	2.5	385.8	
"4	2.2	386.1	
el	1.8	386.5	
N	1.7	386.6	
100' E			
N	2.1	386.2	
el	2.3	386.0	
"4	2.3	386.0	
⊕	2.3	386.0	
"4	2.0	386.3	
el	2.7	385.6	
S	2.6	385.7	
150' E.			
S	2.6	385.7	
el	2.4	385.9	
"4	2.1	386.2	
⊕	2.0	386.3	
"4	2.2	386.1	
el	2.2	386.1	
N	2.2	386.1	

388.25

200' E

N	1.9	3864
el	2.1	3862
"4	2.1	3862
⊥	1.8	3864
"4	2.4	3859
el	2.2	3861
S	2.0	3863

250' E

S	2.4	3859
el	2.4	3859
"4	2.2	3861
⊥	2.0	3863
"4	2.0	3863
el	2.0	3863
N	1.8	3865

T.P.	5.31	391.68	1.88	386.37
	300' E =	W. line	Illinois	{ 80' w. d. 14' el. 13' 1/4

N	5.6	3861
el	4.7	3870
"4	4.9	3868
⊥	5.3	3864
"4	5.6	3861
el	5.4	3863
S	5.8	3859

391.68

W. el

Monroe Ave

52

S	5.6	3861
el	5.6	3861
"4	5.8	3859
⊥	5.8	3859
"4	5.2	3865
el	5.2	3865
N	5.5	3862

W. "4

N	5.4	3863
el	5.6	3861
"4	5.6	3861
⊥	5.4	3863
"4	5.4	3863
el	5.4	3863
S	5.6	3861

⊥

S	4.8	3869
el	4.0	3877
"4	5.4	3863
⊥	5.5	3862
"4	5.4	3863
el	5.4	3863
N	5.1	3866

391.68
E. 1/4

N	5.2	3865
el	5.3	3864
1/4	4.9	3868
el	5.5	3862
1/4	5.2	3865
el	5.0	3867
S	5.3	3864
E. el		
S	5.4	3863
el	5.6	3861
1/4	5.4	3863
el	5.3	3864
1/4	5.2	3865
el	5.1	3866
N	5.1	3866
00 = E. Line Illinois		
N	5.0	3867
el	5.2	3865
1/4	5.3	3864
el	5.5	3862
1/4	5.5	3862
el	5.7	3860
S	5.6	3861

391.68
25' E

S	5.6	3861
#10	5.5	3862
el	5.0	3867
+6	4.3	3874
1/4	4.1	3876
el	5.3	3864
1/4	5.5	3862
el	5.3	3864
N	5.1	3866
50' E		
N	4.1	3876
el	5.4	3863
1/4	5.5	3862
el	5.7	3860
1/4	5.7	3860
el	5.4	3863
S	5.2	3865
100' E		
S	4.9	3868
el	5.2	3865
1/4	5.0	3867
el	4.9	3868
1/4	4.8	3869
el	4.4	3873
N	4.0	3877

Monroe Ave

53

391.68
142.8

N	4.7	387.0
cl	5.1	386.6
"4	4.5	387.2
♀	4.6	387.1
"4	5.1	386.6
cl	5.2	386.5
S	4.8	386.9

149¹⁴ E = W. Line Boundary on N.

S	5.4	386.3
cl	5.3	386.4
"4	5.0	386.7
♀	4.8	386.9
"4	4.5	387.2
cl	5.1	386.6
N.	5.7	386.0

149, 14 E. on N?
17 2.17 E " S } = W. Line Boundary

N	5.7	386.0
cl	5.7	386.0
"4	5.7	386.0
♀	5.7	386.0
"4	5.7	386.0
cl	5.4	386.3
S.	5.4	386.3

391.68

Monroe Ave

2.5 E of W. Line Boundary = W. Line 5' ext. walk

54

S	6.12	385.56
cl	6.10	385.58
"4	6.04	385.64
♀	6.02	385.66
"4	5.84	385.84
cl	5.81	385.87
N	5.73	385.95

10' E. of W. Line Boundary = W. ext. cl. of Boundary

N Line ext. cl. of Boundary	5.85	
N Line gutter pavmt	6.41	
N cl. on ext. cl.	5.95	
N cl. " gutter pavmt.	6.44	385.24
N "4 ext. cl.	6.02	
N "4 gutter pavmt.	6.48	
♀ ext. cl.	6.10	385.58
♀ gutter pavmt.	6.52	385.16
S "4 ext. cl.	6.18	
"4 gutter pavmt	6.57	
S cl. ext. cl.	6.20	
S. cl. gutter pavmt.	6.58	385.10
S. Line ext. cl.	6.24	
S. Line gutter pavmt	6.57	

T.P. 4.74 391.69 4.73 386.75

chk on T.P. Page

5.14 386.55 a.k.

25' wide
Walton Place X See
from E. Line Ohio To Alley

7-8-30
Miller
McHugh
J.C. Bliss

H.F. 391.69 Page 54

00 = E. Line Ohio St.

S.	4.8	3869
7 0.5	5.3	3864
⊕	4.9	3868
N	5.1	3866
+ 0.1 N. of N.G.	4.7	3870
32.6 E		
N - 0.1 emt. cl. to W. N.G.	4.7	3870
N - 0.1 " " 4 E N.G.	5.2	3865
N	5.2	3865
⊕	4.7	3870
S.	5.18	386.51
56. E		
S. Line N. End ^{3'} emt. walk to House	5.18	386.51
60.6 E		
N. Line - 0.7 S. End 3' emt. walk to House	4.85	386.84
65. E		
N - 2 on emt. cl. N.G.	4.9	3868
N	5.1	3866
⊕	4.6	387.1
S. on emt. cl. N.G.	5.2	3865
82. E		
N. Line - 0.7 S. End 2.5 emt. walk to House	4.80	386.89

391.69

100'

55

S. on emt. cl. N.G.	5.2	3865
S + 0.8	5.4	3863
⊕	4.6	3871
N	4.9	3868
120' E		
S. Line on N. End 1.8 emt. walk to House	4.87	386.82
124.2		
N. Line - 0.7 S. End 2.4 emt. walk to House	4.72	386.97
140' E = W. Line 20' Alley		
N emt. cl. N.G.	4.8	3869
⊕	4.8	3869
S. " " " "	4.8	3869
160' E = E. Line Alley		
S	4.8	3869
⊕	4.5	387.2
N	4.3	387.4

Plotted - 7-21-30

X Sec Alley Block 60 Univ. Hts.
Between Ohio & Illinois. Nelson & Monroe produced.

B.M.	11-22	390.17	378.95	S.E. Monroe 530 th
0+00 = N.L. Monroe Produced				
WL		4.2	386.0	
±		4.3	385.9	
EL		4.4	385.8	
0+50				
EL		3.6	386.6	
±		3.7	386.5	
WL		3.8	386.4	
1+00				
WL		3.6	386.6	
±		3.8	386.4	
EL		3.7	386.5	
T.P.	5.58	392.19	3.56	386.61
1+25				
EL		5.7	386.5	
±		5.7	386.5	
WL		5.3	386.9	
1+33 = ± Sing. garage on WL Earth floor ✓				
		5.4	386.8	
1+33 = ± Sing. garage 13.2 E earth floor ✓				
		5.1	387.1	

Plotted 7-22-30
C.B.H.

7-23/30 Loudon.

	1+70	392.19		56
WL		5.4	386.8	
±		5.3	386.9	
EL		5.3	386.9	
1+70 = ± Sing. garage 13' East Earth floor				
		5.3	386.9	
2+00				
EL		5.2	387.0	
±		5.3	386.9	
WL		5.3	386.9	
2+12 ⁵ = S.L. Walton P.I.				
WL		5.4	386.8	
±		5.3	386.9	
EL		5.3	386.9	
2+27 Walk 2.6 in alley				
		4.75	387.44	
2+37 ⁵ N.L. Walton P.I.				
EL		4.7	387.5	
±		4.9	387.3	
WL		5.4	386.8	
2+65				
WL		5.1	387.1	
±		4.8	387.4	
EL		4.7	387.5	
2+90 = ± Sing. garage 6.7' East earth floor ✓				
		4.5	387.7	

392.19

3+00		
E.L.	4.8	387.4
±	4.8	387.4
W.L.	5.1	387.1

3+50		
W.L.	4.6	387.6
±	4.8	387.4
E.L.	4.5	387.7

3+60		
E.L.	4.7	387.5
±	4.3	387.9
W.L.	4.3	387.9

3+59 = S. end Acer garage 1.7' west Conc. floor		
apron 0.3 in alley	4.40	387.79 ✓
floor	4.32	387.87 ✓

3+99 = Nord same garage 1.8 West		
apron 0.2 in alley	4.32	387.87 ✓
floor	4.26	387.93 ✓

57

4+00	392.19	
W.L.	4.3	387.9
±	4.4	387.8
E.L.	4.7	387.5

4+47		
E.L.	4.5	387.7
±	4.4	387.8
W.L.	4.3	387.9

4+50		
W.L.	4.1	388.1
±	3.8	388.4
E.L.	3.7	388.5

5+00		
E.L.	3.7	388.5
±	3.5	388.7
W.L.	3.5	388.7

5+50		
W.L.	3.3	388.9
±	2.9	389.3
E.L.	3.0	389.2

5+99 = SL Madison		
E.L. top cb	2.63	389.56
E.L. Pav	2.93	389.26
± Pav	2.93	389.26
W.L. Pav	2.81	389.38
W.L. top cb	2.60	389.59

392.19

6+13 = 5 eb Madison.

WL	gut		3.26	388.93
WL	top eb		2.87	389.32
E	gut		3.28	388.91
EL	gut.		3.18	389.01
EL	top eb		2.60	389.59
T.P.	3.56	390.14	5.61	386.58
			11.20	378.94

Walker
Bliss
Diebert
10-2-30

CROSS SECTION 20' ALLEY
Block 29 - LAJOLLA PARK
Bet. Herschel and Girard Sts.
From South 1/2 Line Silverado to North 1/2 Line Kline St.

9.420 108.94 99.52
7.40 114.38 1.96 106.98

N.W. 1/4
F.M. 4
Silverado

South cb. Silverado = 0-14'

W on Paving	5.42	108.96
E " "	5.28	109.10
E " "	5.03	109.35

South Line Silverado = 0+00

E on cb.	4.08	110.30
" " Paving	4.39	109.99
E " "	4.67	109.71
W " "	4.64	109.74
W " cb.	4.53	109.85

0+10

W	4.2	110.2
E	4.4	110.0
E	4.4	110.0

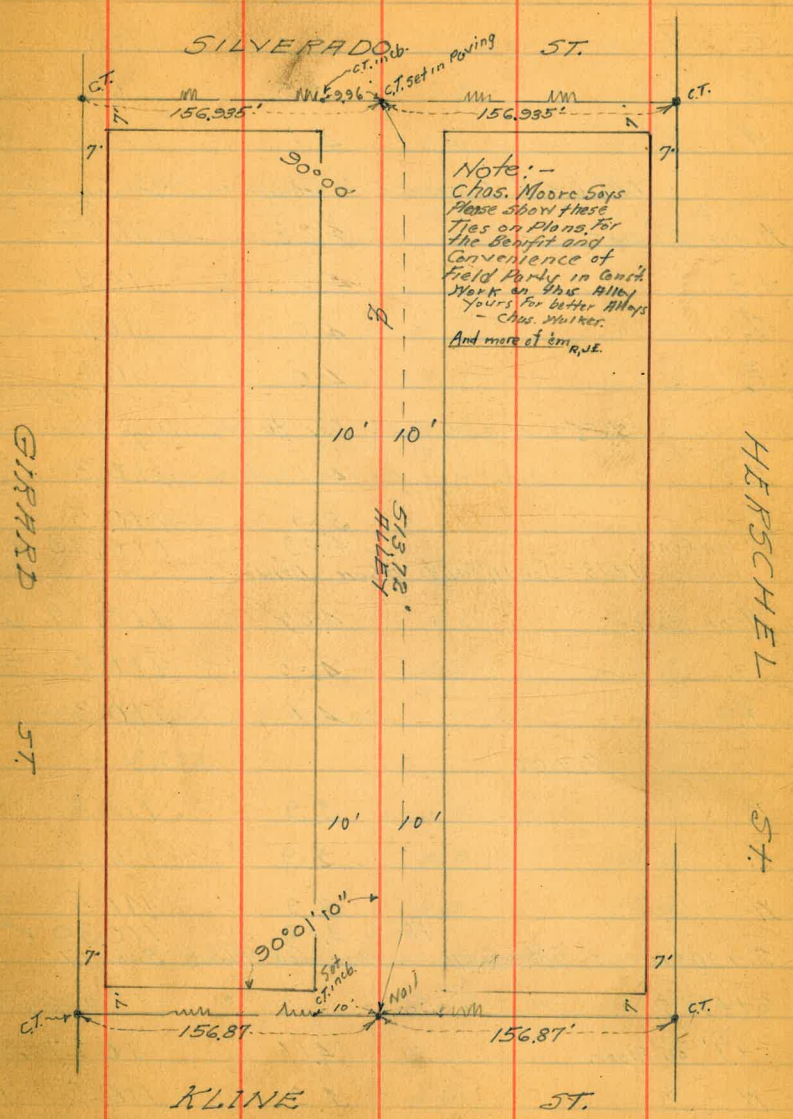
0+50

E	4.2	110.2
E	4.2	110.2
W	4.1	110.3

0+76 = E Entrance to Garage. Con. Floor. on West

W = Floor Elev. on Conc. at time	4.37	110.01
12	4.1	110.3
E	4.1	110.3
E	4.4	110.0

5' Watcher
Floor
at Lower



17th St. X Sec Commercial to Logan

3-16-37
Miller
Sommerberger
Pabst

(C)

85.60

61

Commercial

ST.

16th ST.

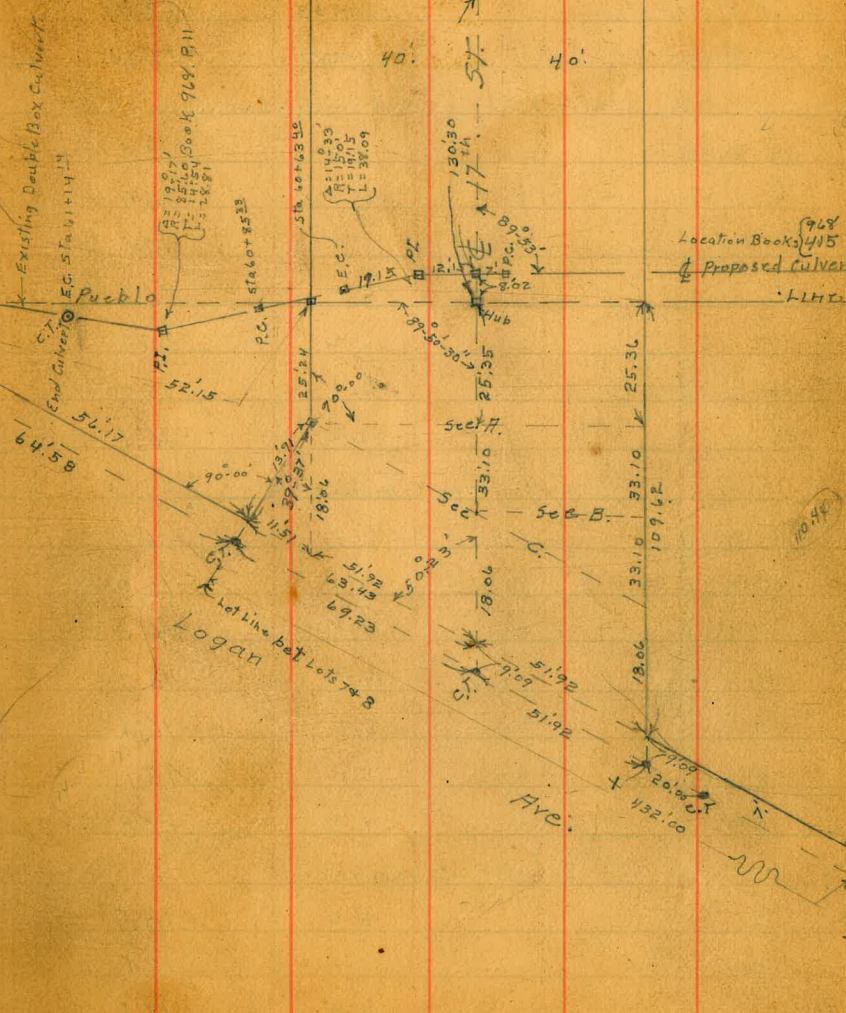
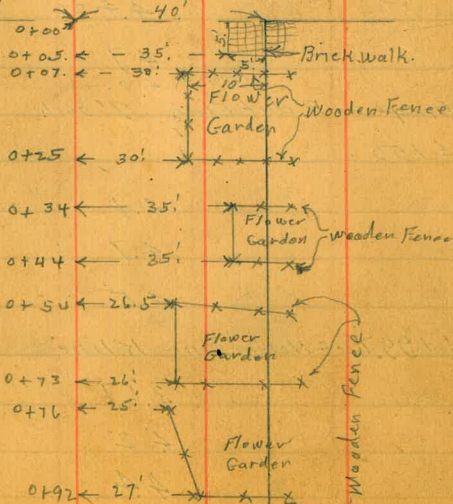
Survey for encroachment
on 17th St. S. of Commercial

6-24-37
Miller
Walker
Bliss

Commercial

Indexed
c.s.K

ST



1040

80' wide
14' dls
13' 1/4"

X Sec 17th St Commercial to Logan

3-17-31
mills
Oshorn
Sommer mfg

Ⓟ

22.07

62

BM. B.P.	3.60	16.12	12.52	N. E. 16 th & Commercial	1/4	4.7	17.4
T.P.	6.78	22.07	0.83	15.29	cb	5.5	16.6
	0.5 S. of E Commercial				W	5.4	16.7
⊥ 17 th St = M.H. Top		4.33	17.74			3.5	
⊥ 17 th St = M.H. F.L.		10.87	11.20		W	2.9	19.2
	14' N. of S. line = S. E. line of Commercial				cb	2.1	20.0
E		4.3	17.8		+11	1.9	20.2
cb		5.5	16.6		1/4	3.9	18.2
1/4		5.8	16.3		⊥	4.1	18.0
⊥		6.0	16.1		1/4	3.2	18.9
1/4		6.2	15.9		+6	3.0	19.1
cb		6.4	15.7		cb	1.5	20.6
W		6.0	16.1		E	1.5	20.6
	6' N. of S. Line Commercial					15.5	
W		6.0	16.1		E	1.2	20.9
cb		6.1	16.0		cb	1.7	20.4
1/4		6.1	16.0		+7	2.6	19.5
⊥		5.9	16.2		1/4	3.0	19.1
1/4		5.7	16.4		⊥	3.0	19.1
cb		5.0	17.1		1/4	2.6	19.5
E		4.3	17.8		cb	2.5	19.6
	00 = S. Line Commercial				W	2.4	19.7
E		3.6	18.5				
cb		5.0	17.1				
1/4		4.3	17.8				
⊥		5.0	17.1				

March 19, 1931. Plotted

22.07

50's

w	2.2	19.9
cl	2.6	19.5
"4	3.2	18.9
φ	2.6	19.5
"4	2.6	19.5
d	2.2	19.9
E	1.5	20.6

75's

E	1.9	20.2
cl	2.8	19.3
"4	3.0	19.1
φ	3.3	18.9
"4	4.6	17.5
cl	5.0	17.1
w	6.2	15.9

95's

w	7.5	14.6
cl	7.5	14.6
"4	7.1	14.0
φ	6.5	15.6
"4	3.6	18.5
cl	2.9	19.2
E	2.6	19.5

22.07

108's

E	3.4	18.7
cl	3.8	18.3
"4	4.9	17.2
φ	7.2	14.9
"4	7.7	14.4
cl	8.5	13.6
w	8.2	13.9

114's

-5	8.5	13.6
w	8.8	13.3
cl	8.9	13.2
"4	8.3	13.8
φ	8.8	13.3
"4	8.4	13.7
cl	8.7	13.4
E	8.7	13.4
+5	8.7	13.4

116's

-15	in wash	11.6	10.5
E	" "	11.7	10.4
cl	" "	11.7	10.4
"4	" "	11.7	10.4
φ	" "	12.0	10.1
"4	" "	9.0	13.1
cl	" "	9.6	12.5
w	" "	9.6	12.5
+5	" "	8.6	13.5

17th st

63

22.07

121'S.

W-5		9.5	12.6
W.		11.3	10.8
cl	in wash	11.9	10.2
"4	" "	12.4	9.7
cl	" "	12.0	10.1
"4	" "	11.9	10.2
cl	" "	11.7	10.4
E	" "	11.7	10.4
+15	" "	11.6	10.5

122'S.

-10		9.1	13.0
E		9.1	13.0
cl.		9.0	13.1
+4.3 M.H. Top ground		9.0	13.1
+4.3 M.H. F.L.		15.7	6.7
+7	in wash	11.6	10.5
"4	" "	11.6	10.5
cl	" "	11.8	10.3
"4	" "	12.3	9.8
cl	" "	12.3	9.8
W.	" "	12.3	9.8
+		11.6	10.5
+		9.7	12.4

22.07

126'S

W-12	in wash	12.5	9.6
W	" "	12.6	9.5
cl	" "	12.1	10.0
"4	" "	12.0	10.1
+2		9.4	12.7
cl		8.9	13.2
"4		8.4	13.7
cl		8.4	13.7
E		8.2	13.9
+5		7.9	14.2

130.30 S. on cl = P.I. cl + Pueblo Line

-5		8.0	14.1
E		8.2	13.9
cl		8.5	13.6
"4		8.3	13.8
cl		8.9	13.2
"4		8.9	13.2
+5		9.5	12.6
+7	in wash	11.3	10.8
cl	" "	11.9	10.2
W	" "	12.5	9.6
+15	" "	13.0	9.1

133'S.

W-5		9.6	12.5
W		9.8	12.3
cl		9.6	12.5

17th St.

64

RR.07
133.5

1/4	9.0	13.1
1/2	9.0	13.1
1/4	8.4	13.7
el	8.8	13.3
E	8.2	13.9
+5	8.1	14.0
147.45		
1.3 E. of 1/2 = M.H Top	8.8	13.3
1.3 E " " " " ground	9.4	12.7
1.3 " " " " " F.L.	15.90	6.17

155.65 S. = Sec. A. = Δ on W. line

E-5	8.9	13.2
E	8.8	13.3
el	9.5	12.6
1/4	9.5	12.6
1/2	9.6	12.5
1/4	9.4	12.7
el	9.3	12.8
W.	9.2	12.9
+5	9.4	12.7

188.75 S. on 1/2 = Sec. B.

1/2	9.6	12.5
E 1/4	9.3	12.8
E. el	9.2	12.9
+4.7 = N side Bldg	9.2	12.9
E	9.2	12.9
+5	9.2	12.9

RR.07

17th St.

T.P. 5.23 18.96 8.34 13.73

65

Sec. C. 103.84 Wide - 18.17 Ets - 16.87 1/4s.

E-5 under house	5.7	13.3
E. " "	5.7	13.3
el " "	6.2	12.8
1/4	5.7	13.3
1/2	6.4	12.6
1/4	6.6	12.4
el	6.3	12.7
W. at Δ on W. line	6.1	12.9

N. E. Line Logan Ave

W = 11.51 W. of W. line 17 th Produced	7.0	12.0
W. line 17 th Produced.	7.0	12.0
el " "	6.7	12.3
1/4 " "	6.0	13.0
1/2 Produced	5.8	13.2
1/4 " "	5.3	13.7
el " "	5.2	13.8
E " "	4.3	14.7

1. S.W. of N.E. Line Logan

E Produced.	4.3	14.7
el " "	4.5	14.5
1/4 " "	4.6	14.4
1/2 " "	5.0	14.0
1/4 " "	5.3	13.7
el " "	5.4	13.6

18.96

W. line 17 th Produced.	5.7	13.3
on lot line bet lots 7 & 8	4.2	12.8
14' S.W. of N.E. line Hogan = curb line		
on lot line bet lots 7 & 8 cont. ch.	6.30	12.66
" " " " " gutter pavnt	6.82	12.16
W. line 17 th St Produced.	4.44	12.40
" " " " " cont. ch.	6.13	12.83
W. ch. " " " "	5.64	13.32
" " " " " gutter pavnt	6.09	12.87
W. "4 " " " "	5.78	13.18
" " " " " cont. ch.	5.37	13.59
♀ " " " " "	5.11	13.85
" " " " " gutter pavnt	5.55	13.41
E. "4 " " " "	5.28	13.68
" " " " " cont. ch.	4.78	14.18
E. ch. " " " "	4.49	14.47
" " " " " gutter pavnt	4.92	14.04
E. line " " " "	4.51	14.45
" " " " " cont. ch.	4.05	14.91

2.5 N.E. of N.E. ch. line Hogan

9' N.W. of W. ch. 17 th Produced = MH.	5.88	13.08 Top.
" " " " " " MH.	12.77	6.19 F.L.
chk Original BM.	6.44	12.52 ✓

17th St

66

X Sec. for Storm Drain Xing 17th St 3-17-31
at P.h. bet Commercial & Hogeb

T.P.	2.27	17.56	15.29	Page 62 TP 1529
	Sta 59+36 ²⁴ P.T. Book 968.P.11			
9.5 N. of ϕ at Board Fence	3.3	14.3		
4 " " "	3.7	13.7		
3 " " " wash	4.9	10.7		
ϕ " "	7.0	10.6		
3.5 " " "	4.9	10.7		
4 " " "	4.3	13.3		
7.6 S. of ϕ at Board Fence	1.4	16.2		
	Sta 59+50			
7.2 S. of ϕ at Board Fence	2.0	15.6		
2 " " "	4.0	13.6		
1 " " " wash	7.2	10.4		
ϕ	7.2	10.4		
4' N. of ϕ	7.1	10.5		
5' " " "	3.7	13.9		
10.8 N. of ϕ at Fence	2.9	14.7		
	Sta 59+75			
12' N. of ϕ at House	11.8	15.8		
5.5 " " "	4.2	13.4		
4.5 " " " wash	7.2	10.4		
ϕ " "	7.2	10.4		
1' S. of ϕ	4.4	13.2		
5' " " "	8.3	14.3		
10' " " "	3.5	14.1		

	17.56	
	Sta 60+04.	
10' S. of ϕ	4.1	13.5
3' " " "	4.0	13.6
ϕ	4.7	12.9
2' N. of ϕ Wash	7.3	10.3
7' " " "	7.3	10.3
8' " " "	4.8	12.8
10' " " "	3.9	13.7
	Sta 60+10 ²⁰ Sewer M.H.	
0.4 S. of ϕ - ctr M.H.	13.1	
" " " " " " "	6.4	
	Sta 60+25 ³² P.C. (S=142.33 LF T=120.0 T=17.15 L=29.09)	
10' N. of ϕ	3.2	14.4
8' " " "	4.0	13.6
6' " " " Wash	7.3	10.3
ϕ " "	7.5	10.1
1' S. of ϕ	4.3	13.3
10' " " "	4.0	13.6
	Sta 60+44 ³⁵ Ctr. Curve	
10' S. of ϕ	4.6	13.0
2.5 " " "	5.1	12.5
1.5 " " " Wash	7.8	9.8
ϕ " "	7.8	9.8
4' N. of ϕ " "	7.8	9.8
5' N " " "	4.7	12.9
10' " " "	3.7	13.9

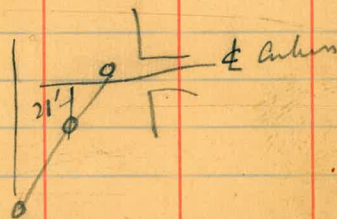
67

17.56
Sta 60+63⁴⁰ P.T.

10' N. of ϕ	5.7	11.9
5' " " " wash	7.7	9.9
9' ϕ " "	7.7	9.9
4' 5' S. of ϕ " "	7.2	10.4
3' 6' " " " "	5.0	12.6
10' " " " "	4.8	12.8
2' Sta 60+85 ³³ P.C.	$\begin{matrix} A = 195.17 \text{ AT.} \\ R = 25.60 \\ T = 14.39 \\ L = 24.84 \end{matrix}$	
4' 10' S. of ϕ .	4.5	13.1
7' 1' " " "	5.0	12.6
ϕ Wash	8.4	9.2
7' 6' N. of ϕ " "	8.4	9.2
10' " " " "	5.0	12.6
1' Sta 60+99 ²³ Etr Curve		
10' N. of ϕ	4.7	12.9
4' 6' " " " wash	8.7	8.9
5' ϕ " "	8.9	8.7
1' 1' S. of ϕ	5.0	12.6
10' " " " "	4.9	12.7
1' Sta 61+07 E. End. cmt apron E. End. Existing Culvert		
5' 10' S. of ϕ	4.8	12.8
4' R.R. " " " Top, E. End. Head wall	5.40	12.16
2' 0' " " " cmt apron	9.33	8.23
1' ϕ " " "	9.33	8.23
5' 7' N. of " " "	9.30	8.26
10' 7.2 N " " Top, E. End. Head wall	5.44	12.12
10' N. of ϕ	5.0	12.6

17.56
Sta 61+14¹⁴ P.T. E. End. Existing Culvert.

ϕ Flow line	9.54	8.02	68
ϕ Top culvert.	5.40	12.16	
CHK T.P. Page 65	3.83	13.73	
Sewer Line at 17 th + P.L. N. of Logan			
T.P. Page 270	17.99	15.29	
122' 4.5' of S. line Commercial			
1' E. of ϕ 17 th	9.54	8.45	Top Existing 12" Sewer



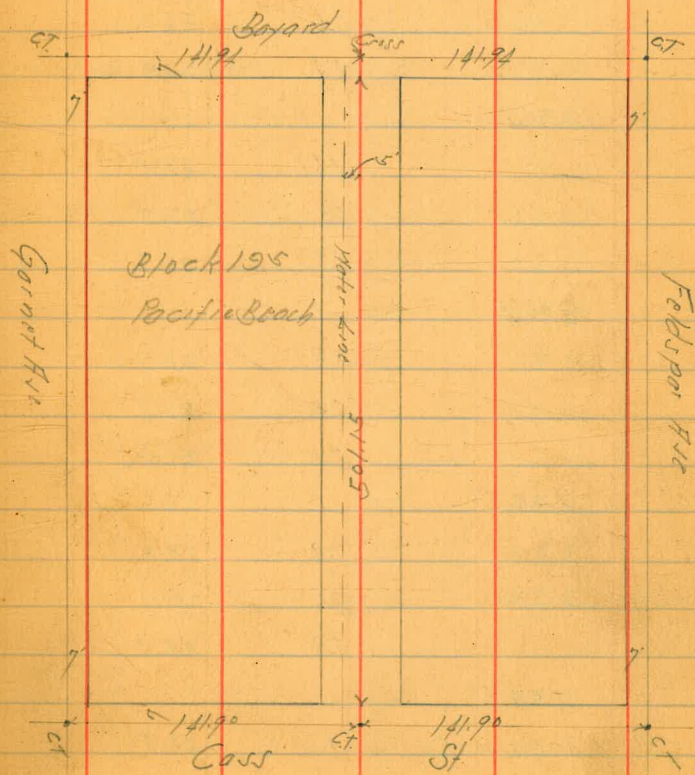
Cross Section Alley Block 195 Pacific Beach
 Between Garnet Ave and Feldspar Ave
 From Bayard to Cass

20' wide

BM	259	3044	2785	SF BP Garnet Ave
	E. Ch of Bayard			
S	07	Pav 129	7.65	22.99
S		"	7.41	23.03
N		"	7.28	23.16
	E.L. Bayard			
N		Top Curb	6.60	23.84
N	07	Pav 129	6.83	23.61
S		"	7.21	23.23
S		"	7.05	23.39
S		Top Curb	6.67	23.77
	35' E of E.L. Bayard			
S		"	5.1	25.3
S		"	5.5	24.9
N		"	5.1	25.3
	70' E of E.L. Bayard			
N		"	4.6	25.8
S		"	4.6	25.8
S		"	4.7	25.7
	100' E			
S		"	4.6	26.4
S		"	4.0	26.4
N		"	4.0	26.4

Plotted 10-6-31 A.E.B.

Sept 20, 1931
 Moore
 69
 5000
 North 100'



3044

150 F

N	3.8	26.6
L	3.8	26.6
S	3.8	26.6

200 F

J	3.8	26.6
L	3.6	26.8
H	3.4	27.0

250 F

H	2.1	27.8
L	3.1	27.3
S	3.7	26.7

300 F

J	3.0	27.4
L	2.5	27.9
H	2.3	28.1

330 F

H	1.9	28.5
L	2.1	28.3
S	2.3	28.1

354 F

-3.5 = Wly 4 Car Garage Conc Floor	2.12	28.32
-1.5 = Edge Conc Apron	2.30	28.14
J	2.4	28.0
L	1.9	28.5
H	1.1	29.3

70

3044

TP	6.34	34.95	1.83	28.61
	372 F			

-2.5 = S Ely 3 Car Garage	5.3	29.7
---------------------------	-----	------

H	6.1	28.9
---	-----	------

L	6.6	28.4
---	-----	------

S	6.9	28.1
---	-----	------

+1.7 = Edge Conc Apron	6.89	28.06
------------------------	------	-------

+3.7 = Floor Conc 4 Car Garage	6.72	28.23
--------------------------------	------	-------

393 F

-3.6 = Ely 4 Car Garage Conc Floor	6.72	28.23
------------------------------------	------	-------

-1.6 = Ely Conc Apron	6.76	28.19
-----------------------	------	-------

J	6.6	28.4
---	-----	------

L	6.5	28.5
---	-----	------

H	6.1	28.9
---	-----	------

400 F

H	6.3	28.7
---	-----	------

L	6.5	28.5
---	-----	------

S	6.4	28.6
---	-----	------

430 F

J	6.4	28.6
---	-----	------

L	6.4	28.6
---	-----	------

H	6.4	28.6
---	-----	------

34.95

451 E

H	61	28.9
L	60	29.0
S = M/L Core Bldg Secondary	62	28.8

480 E

F	52	29.8
L	54	29.6
H	54	29.6

50115 E - M.L. Core St.

H Top Cb + Pav 199	482	30.13
L " "	510	29.85
S Top Cb " "	512	29.83

M Cb Core St

S 07 Pav 199	564	29.31
L " "	544	29.51
H " "	528	29.62
BM	711	27.84

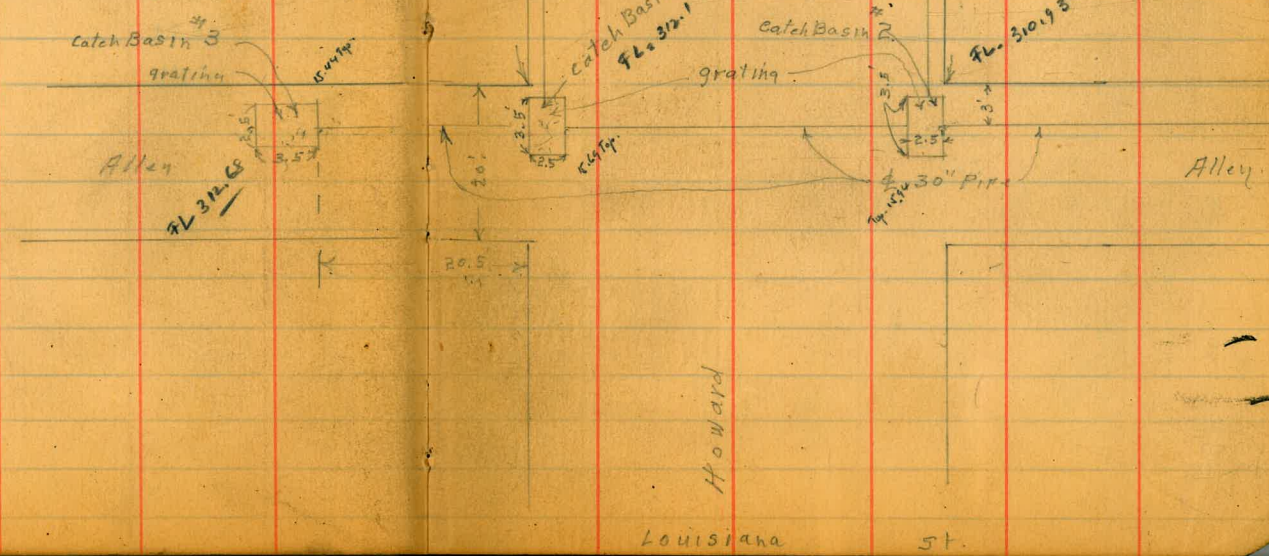
SF BP
Garcia Hwy
27.85

71

8/4/34
Mills
Walker
Bliss

Storm Drains on Howard Ave
bet. Louisiana + Texas.

BM, B.P.	2.49	320.53	318.04	S.E. Texas + Howard
ch. inlet #1 S. side Howard	5.94	314.59	Top. Grating	
" " #1 " " "	8.17	312.36	F.L. outlet	
ch. inlet #2 N. side Howard	6.41	314.12	Top. Grating	
" " #2 " " "	8.41	312.12	F.L. outlet	
Catch Basin #1 N. side Howard	4.84	315.69	Top. Grating	
" " #1 " " "	8.43	312.10	F.L. outlet	
" " #1 " " "	8.42	312.11	F.L. inlet to E.	
Catch Basin #2 S. side Howard	4.59	315.94	Top. Grating	
" " #2 " " "	9.60	310.93	F.L. outlet	
Catch Basin #3 1st Alley N. of Howard	5.09	315.44	Top. grating	
" " #3 " " " "	7.85	312.68	F.L. Outlet	



Texas
ST.
INDEXED
c.s.k.
72

Louisiana ST.

Cross Section South La Jolla Alley Bk H South La Jolla
 Between Nautilus + Bon Air
 La Jolla Blvd + Neptune

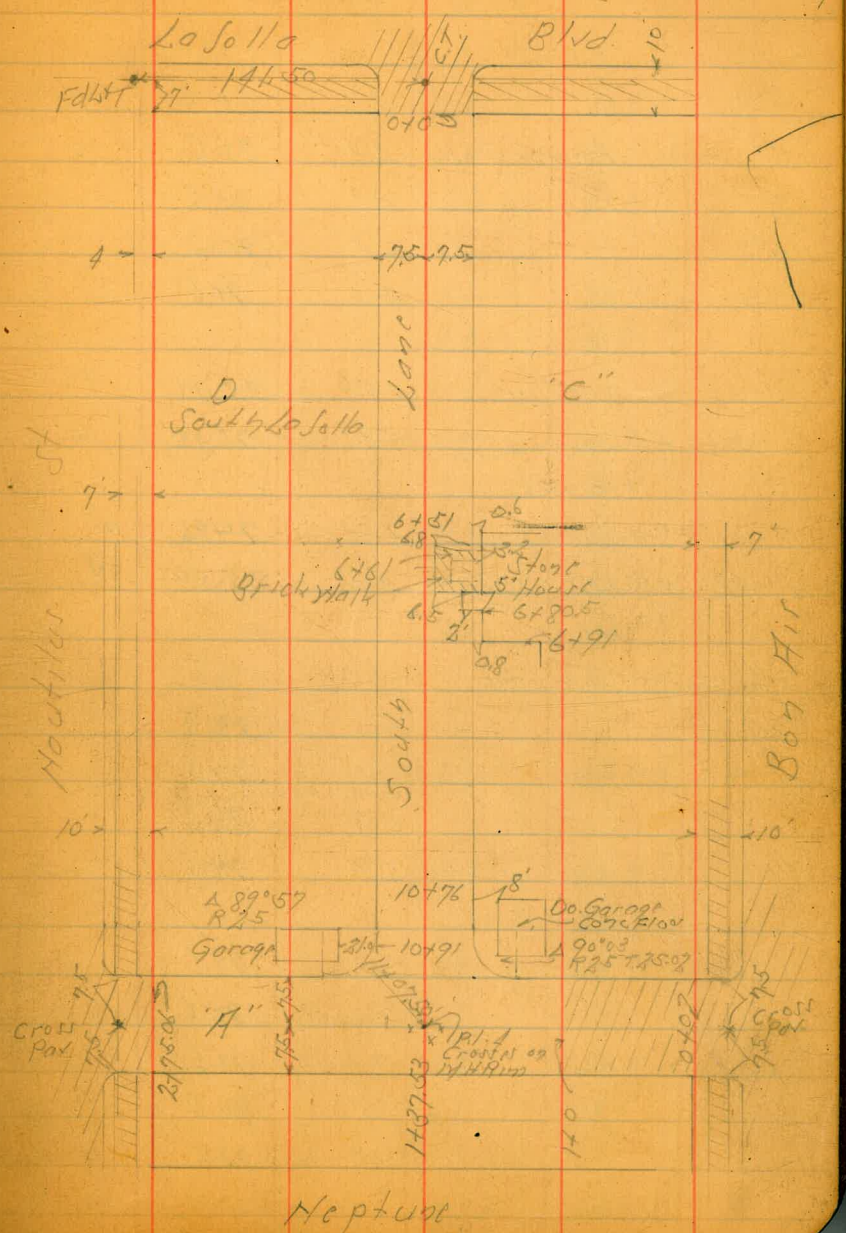
Indexed
 c.s.k.

June 16-41
 Sisson
 Northrup
 Moore
 Hibbs 75

B.M.	10.99	70.51	59.52
TP	8.06	78.38	0.19
TP	7.37	79.92	5.83
		0-10: W Cb La Jolla Blvd	
J of Paving		4.40	75.52
J		4.29	75.63
H		4.23	75.69
		0+0: W La Jolla	
N Cb Top		3.61	76.31
N Gutter on Paving		3.79	76.13
J		3.97	75.95
S Gutter		3.85	76.07
S Cb Top		3.74	76.18
		0+10	
-10		4.2	75.7
S		3.5	76.4
J		3.6	76.3
H		3.5	76.4
		0+25	
-18: S W Cur. Cross House			
H		3.7	76.2
J		3.7	76.2
S		3.8	76.1
+10		4.3	75.6

SW B.P.
 Back edge
 + Montelido

Plot. r Red on Profile # 2660
 G.B.H. 6-30-41



South Lane

72.72

3+47

S+2 = Fly Cypress Hedge ✓

3+50

S	51	62.6
S	48	62.9
S	52	62.5
H	50	62.2
+10	45	62.2

3+75

N-0.2 = S. E. Cor. Stucco Garage North Entrance

3+95

N-0.2 = S.W. Cor. Stucco Garage = Fly Stucco Wall

3+96

S-1.0 = N.W. Cor. 10 Garage South Entrance

3+99

S+1.2 = Fly Picket Pole

4+0

H	64	66.3
S	63	66.4
+5.5 = N.W. Cypress Hedge ✓		
S	61	66.6
+5	56	67.1

4+24

N-0.3 = Fly Stucco Wall

TP 2.28 67.74 7.26 65.46

67.74

77

4+42

N-5.9 = Fly Do Garage

Conc Floor

4+50

N-5.9	1.85	65.89	✓
-10	2.9	64.8	
S	2.6	65.1	
S	2.7	65.0	
H	2.26	65.1	

4+58

N-5.7 = Fly Do Garage

Conc Floor

4+76

N-1.9 = Fly Lot 4 Fence

4+99

S+1.2 = Fly Picket Pole

5+0

H	3.6	64.1	
S	3.8	63.9	
S	3.7	64.0	
+10	3.9	63.8	

5+17

N-8 = Fly Garage Dist Floor 3.6

5+25

N-1.7 = Fly Lot 4 Fence

S+1.2 = Fly Picket Fence

N-8	3.6	64.1	✓
N-1.7			✓
S+1.2			✓

6774
5+50

-10	4.8	62.9	
S	4.8	62.9	
S	4.9	62.8	
H	5.0	62.7	
+10	4.7	63.0	

5+55

S+1.7 = Fly Conc Apron	4.75	62.99	✓
S+1.4 = Wly Picket Fence			✓
S-8.3 = Fly Do Garage Conc Floor	4.85	62.89	✓

5+74

S+1.7 = Wly Conc Apron	5.05	62.69	✓
S-8.3 = Wly Do Garage C.F.	4.90	62.84	✓

5+80

S-0.3 = Fly Conc Apron	5.49	62.25	✓
S-6.5 = Fly Do Garage Conc Floor	5.34	62.40	✓

5+96

S-0.3 = Wly Conc Apron	5.47	62.27	✓
S-6.5 = Wly Do Garage Conc Floor	5.33	62.41	✓

5+97

S-0.3 = Fly Board Fence			✓
-------------------------	--	--	---

5+99

S+0.4 = Fly Porcup Pole			✓
-------------------------	--	--	---

6774

6+0

-10	6.0	61.7	
H	6.1	61.6	
S	6.2	61.5	
S	5.8	61.9	
+5	5.9	61.7	

6+49

S+0.4 = Fly 12" Sec Tr			✓
------------------------	--	--	---

6+50

-10	7.0	60.7	
S	6.8	60.9	
S	7.3	60.4	
H	7.3	60.4	
+10	7.1	60.6	

6+51

S-0.6 = Wly Board Fence = Fly Rock House			✓
--	--	--	---

6+61

S+1.7 = 3.2 Conc Walk	7.05	60.69	✓
S 0.7 Walk	7.03	60.71	✓

6+74

S+1.7 = 3.5 Tile Walk	7.18	60.58	✓
S 0.7 Walk	7.20	60.54	✓

6+84

H - 18.6 = Fly Conc Apron	7.65	60.09	✓
H - 21.6 = Garage Conc Floor	7.52	60.2	✓

78

South Lane

	6774			
	7+0			
-10		8.4	573	
N		8.7	52.0	
Z		8.6	591	
+1.3 = Sly 14' Tree				✓
S+0.6 = Fly Picket Fence		8.2	52.5	✓
	7+02			
S+0.7 = Sly Power Pole				✓
	7+24			
H-7.5 = S W Car Garage	8.70		52.0	✓
	H Entrance Conc Floor			
-TP	2.41	61.04	9.11	58.63 ✓
	7+50			
S		3.3	57.7	
Z		3.4	57.6	
N		3.5	57.5	
+10		3.3	57.7	
	7+69			
S-0.8 = Wly Picket Fence				✓
	7+77			
H-7.0 = Sly Conc Apron	3.87		57.17	✓
H-8.9 = Z Garage Conc F	3.71		57.33	✓
	7+82			
S-6.0 = Fly Conc Apron	4.28		56.76	✓
S-8.3 = Fly Do Garage	4.22		56.81	✓
	Conc Floor			

61.04

~~6771~~

79

	7197			
S-6.2 = Wly Conc Apron	4.44		56.60	✓
S-8.5 = Wly Do Gar Conc Floor	4.31		56.73	✓
H-4.7 = Z Do Garage Dirt P	4.4		56.6	✓
	8+0			
N		5.0	56.0	
Z		5.0	56.0	
S		4.8	56.2	
+1.2 = Fly Board Fence				✓
	8+27			
S+0.8 = Sly Power Pole				✓
	8+49			
-10		6.6	54.4	
-2.4 = Wly Board Fence				✓
S		6.8	54.2	
Z		6.9	54.1	
N		7.0	54.0	
+10		6.3	54.7	
	8+65			
S-5.5 = Z Garage Conc Floor	6.83		54.21	✓
	8+70			
S-2.5 = Wly Cypress Hedge				✓
	9+0			
-10		8.5	52.5	
N		8.0	53.0	
Z		8.1	52.9	

