

1347

PASTS

---

LEVEL 200K

No. 380 P

---

MICROFILMED  
DEC 23 1964

*Indexed*  
ENGINEERING DEPARTMENT,  
CITY OF SAN DIEGO,  
CALIFORNIA.

Our Leather Bound Engineers Note Books are carried in the following rulings:

- No. 380 LEVEL BOOK. Left and Right Hand Page the same as Left Hand Page of this Book.
- No. 382 FIELD BOOK. Left Hand Page as in this Book, Right Hand Page 4 x 4 to the inch, Center Line Red.
- No. 384 MINING TRANSIT BOOK. Left Hand Page as in this Book, Right Hand Page 8x8 to the inch, Center Line Red.
- No. 385 FIELD BOOK. Left Hand Page as in this Book, Right Hand Page 8 vertical and 4 horizontal lines to the inch, Center Line Red.

We also carry the Note Books listed above, bound in extra strong Fabri-Hide (otherwise the same quality of book), which can be furnished at a somewhat lower price.

In ordering Fabri-Hide covered books, add the letter "F" to catalog number.

**THE FREDERICK POST CO.**  
*ENGINEERING and DRAFTING SUPPLIES*  
IRVING PARK STATION  
CHICAGO, ILL.

*No. 385 3887 - 6/20/60 - MH*

## Levels

6<sup>th</sup> St. Ext. to Chesterton 1-8

X-sec. Maple. Sumac to Laurel... 14-26

" .. Fairmount Ave. Myrtle to OLIVE... 27-38

" Bay View Court ties... 41

" Alley BIK. 174, U.H. .... 47

Lincoln to Polk, bet. Alabama + Mississippi

Survey for proposed site of San Diego... 52

Gun Club

X-sec. Nutmeg, 32<sup>nd</sup> West 26.2' wide... 66

Re X-sec. Alley BIK. 174, U.H. .... 68

X-sec. Olive St. West of Pl. w. of... 70

32<sup>nd</sup> St. to Nutmeg

Frary Heights Prelim. Sewers... 71

"A" line & Alley BIK. 15

Elevation s newly const. sewer... 72

M. H. and exposed ends Frary Hts.

Proposed sewer at Riding Academy... 74

Balboa Park

Final alley paving BIK. 174, U.H. .... 76

Lincoln to Polk, bet. Alabama

and Mississippi

Final alley paving BIK. 53, U.H., Monroe... 77

to Madison, bet. Arizona and Hamilton

P.L. of Gaines and Rosecrans... 78

Morena Blvd. to Cherry

Slab 9  
London

Levels From Walker's circuit  
on 6<sup>th</sup> St. Ext. to Chesterton

Hub 30' Rt. Sta 118+50.6 <sup>m</sup> of Ext.				
BM	12 23	218.13		205.70
T.P.	12.78	230.61	0.30	217.83
T.P.	12.93	243.50	0.04	230.57
Hub 15' Lt. of Pl. Sta 124+52.3				
BM	12.19	255.47	0.22	243.28
T.P.	11.92	267.37	0.00	255.47
T.P.	12.87	279.93	0.33	267.06
Hub 25' Lt. of 131+00				
BM	12.20	291.97	0.16	279.77
T.P.	12.78	304.52	0.23	291.74
T.P.	12.26	316.75	0.03	304.49
T.P.	12.97	329.72	0.00	316.75
50' Rt 141+00				
BM	11.89	341.61	0.00	329.72
T.P.	12.19	353.36	0.44	341.17
47' Rt of 148+00				
BM	4.38	356.54	1.20	352.16
T.P.	2.17	355.03	3.70	352.84
T.P.	4.32	352.97	6.38	348.65
T.P.	3.90	348.62	8.25	344.72
T.P.	7.67	345.34	10.95	337.67
T.P.	8.99	352.40	1.93	343.41
T.P.	5.56	357.06	0.90	351.50
BM Hub NW Lind Vista & Melford	5.66	351.40		351.40
T.P.	1.07	352.57	5.56	351.50

		352.57		
T.P.	2.20	345.56	9.21	343.36
T.P.	9.97	346.16	9.37	336.19
T.P.	6.39	352.55	0.00	346.16
T.P.	9.70	356.75	5.50	347.05
T.P.	4.06	355.71	5.10	351.65
BM			3.56	352.15 (352.16)
T.P.	0.57	343.57	12.71	343.00
T.P.	0.15	330.83	12.79	330.78
BM			1.19	329.74 (329.72)
T.P.	0.08	318.00	13.01	317.92
T.P.	1.29	306.49	12.80	305.20
T.P.	0.48	294.02	12.95	293.54
T.P.	0.99	282.26	12.75	281.27
BM			2.47	279.79 (279.77)
T.P.	1.88	271.18	12.96	269.30
T.P.	0.16	267.22	4.12	267.06
T.P.	0.17	254.48	12.91	254.31
B.M.			11.21	243.27 (243.28)
T.P.	0.72	242.20	13.00	241.48
T.P.	0.06	229.18	13.08	229.12
T.P.	0.24	216.42	13.00	216.18
BM	Beginning		10.51	205.91 (205.90)

5/11/29  
London

Check Elev's on Chesterton.  
(P.L. 1198) Linda Vista Mesa.

Hub NW Linda Vista & Medford.				
B.M.	3.25	354.65		351.40
N.W. Linda Vista & Medford.				
B.M.	Bench Men. inside P.	3.42		351.23
T.P.	3.15	350.36	7.44	347.21
Axd Post NE Linda Vista & Chesterton set by Taylor.				
B.M.			3.43	346.93
T.P.	7.53	355.82	2.07	348.29
B.P. N.E. Linda Vista & Shenandoah.				
B.M.	7.74	361.66	1.90	353.92
T.P.	4.21	365.43	0.44	361.22
B.P. S.E. Linda Vista & Hennewood				
B.M.	2.09	356.70	10.82	354.61
T.P.	7.98	360.46	4.22	352.48
Axd Post NE Linda Vista & Cambridge				
B.M.	Set by Taylor		8.71	351.75
T.P.	7.85	368.25	0.06	360.40
Linda Vista Rt.				
F.R.P. Hub	Sta 135705		2.68	365.57

Taylor's El.  
347.18

Taylor's El.  
352.02

From  
B.M. 1040  
365.70

Levels on corners taken at center of return unless otherwise noted.

B.M.	6.19	357.94		351.75
† Alley	E of Linda Vista & Cambridge Co. S			351.1
"	"	S.L.	6.8	351.1

Cambridge & Templeton

Int & S			5.2	352.7
N.W.			6.3	351.6
S.W.			3.8	354.1
S.E.			4.8	353.1
N.E.			6.3	351.6

Cambridge & Montrose

Int & S			1.9	356.0
S.W.			1.3	356.6
S.E.			0.9	357.0
T.P.	7.94	363.97	1.89	356.05

Cambridge & Westmorland.

Int & S			6.0	358.4
N.W.			7.0	357.0
S.W.			6.0	358.0
S.E.			6.8	357.2
N.E.			7.0	357.0
T.P.	1.76	360.28	5.47	358.52

## Cambridge &amp; Homewood Dr.

360.28

Int $\perp$ S	10.5	349.8
N.E.	9.1	351.2
N.W.	12.1	348.2
S.W.	10.0	350.3
S.E.	11.0	349.3

## Normandie &amp; Sherwood Dr.

BC ret SW on Normandie	3.5	356.8
EC ret SW on Sherwood	3.2	357.1
BC ret NW on Sherwood	0.4	359.9
T.P. 1273	371.76	1.25 359.03
EC ret NW on Normandie	8.1	363.7
T.P. 1270	384.38	0.08 371.68

## Birmingham &amp; Normandie

S.E.	11.2	373.2
N.E.	9.3	375.1
EC ret NW on Normandie	8.5	375.9
BC ret NW on Birmingham	10.2	

## Curve Lt. in Normandie North of Birmingham -

BC West	4.3	380.1
" East	4.7	379.7
EC North	6.2	378.2
EC South	5.0	379.4
T.P. 2.50	380.28	6.60 377.38

380.28

## Normandie &amp; Westmerland.

NE	3.0	377.3
N.W.	4.2	376.1
West - Westmerland on N. Point.	3.8	376.5
East	2.7	377.6

EC Curve in Westmerland 120' SW of Term of Normandie.

West	8.1	372.2
East	6.6	373.7

## Westmerland &amp; Birmingham

Int $\perp$ S	9.7	370.6
NE	8.3	372.0
SE	10.7	369.6
SW	10.5	369.8
N.W.	9.3	371.0
T.P. 0.02	367.36	12.94 367.34

## Westmerland &amp; Sherwood

Int $\perp$ S	4.8	362.6
N.W.	4.3	363.1
SW	5.7	361.7
SE	6.3	361.1
NE	3.7	363.7
T.P. 3.86	358.37	12.85 354.51

35837

Sherwood & Birmingham

Int. & S.	52	353.2
NE.	54	353.0
S.E.	4.7	353.7
S.W.	63	352.1
N.W.	6.4	352.0
& Alley E of Linda Vista	54	353.0
& " " " " " "	5.9	352.5

N.L. Sherwood  
S.L. Sherwood

Sherwood & Linda Vista

NE	4.5	353.9
S.E.	57	352.7

Cambridge & Linda Vista

NE	89	349.5
SE	9.6	348.8
B.M.	6.58	351.79 (35175)

at east N.E. Cambridge & Linda Vista

BP SE Linda Vista & Homewood Dr.

BM	18.11	367.72	359.61
----	-------	--------	--------

Linda Vista & Homewood Dr.

S.E.	13.2
NE	15.5

Homewood Dr & Templeton

Int. & S.	2.2
N.W.	4.1
S.W.	4.5

S.E.	0.5
N.E.	0.3

T.P.	703	373.94	0.81	366.91
------	-----	--------	------	--------

Homewood & Montrose

Int. & S	6.5
S.E.	4.4
N.E.	5.4
N.W.	7.0
S.W.	7.3

Homewood & Westmoreland

N.W.	10.1
NE	11.4
E.C. rd SE on Homewood	10.0
B.C. rd SE on Westmoreland	8.3
S.W.	7.8

4 x 4 Post SW Mayfield & Westmoreland

T.P.	370	372.60	5.04	368.90
B.M.	0.41	371.40	1.61	370.99

371.40

Mayfield Dr. &amp; Westmoreland

Int. & S	2.4
N.W.	1.5
N.E.	2.6
S.E.	3.4
S.W.	2.4

Westmoreland &amp; Brentwood.

Int. & S	6.7			
N.W.	6.3			
S.W.	7.7			
T.P.	0.13	359.39	12.14	359.26

Westmoreland &amp; Stratford.

Int. & S.	8.1
N.W.	6.9
N.E.	9.1
S.E.	9.2
S.W.	8.0

Westmoreland &amp; Chesterton Dr.

Int. & S	10.4			
N.W.	9.6			
S.W.	11.4			
T.P.	12.91	363.74	8.59	350.80

363.74

Chesterton Dr. &amp; Ridgeway Dr.

N.W.	6.7
BC ret NE on Chesterton	11.4
EC ret NE on Ridgeway	0.2

Chesterton Dr &amp; Redfield.

Int. & S	11.0
N.W.	11.0
N.E.	12.6
S.E.	11.0
S.W.	12.2

T.P. 3.54 356.29 10.96 352.75

Chesterton Dr &amp; Ryeland St.

Int. & S	5.0
N.E.	5.2
N.W.	5.6

Chesterton Dr &amp; Montrose

Int. & S	7.9
N.W.	7.4
N.E.	7.5
S.E.	8.0
S.W.	8.8

S'y Term of Montrose

W.	5.1			
E.	5.3			
T.P.	2.68	351.13	7.84	348.45

5



351.13

Chesterton Dr &amp; Templeton.

Int. E S	4.7	341.9
N.W.	4.2	342.2
N.E.	4.6	
S.E.	5.5	
S.W.	4.6	347.1

Chesterton &amp; Linda Vista

Int E S on Pav.	5.40	
S.W.	8.1	
N.W.	8.2	
N.E.	6.3	
S.E.	7.6	
ax Post NE Chesterton B.M. & Linda Vista.	4.21	346.92 (346.73)

Alley East of Linda Vista

E - S.L. Chesterton	5.6	
E - N.L. "	5.1	
T.P.	6.25	356.58 0.80 350.33

Templeton &amp; Shenandoah

Int. E S	2.2	
N.W.	1.4	
N.E.	2.4	
S.E.	3.5	
S.W.	1.9	

Alley East of Linda Vista

E - N.L. Shenandoah	2.7	
E - S.L. "	4.0	

6

356.58

T.P. 9.95 366.52 0.01 356.57

Shenandoah &amp; Montrose

Int E S	5.5	
S.W.	7.3	
N.W.	7.4	

Montroses Stratford.

Int. E S	5.3	
N.E.	4.2	362.3
S.E.	4.9	361.6

Montrose &amp; Ridgeway

Int. E S	5.6	
S.E.	5.2	
N.E.	1.9	

T.P. 5.33 370.87 0.96 365.56

Ridgeway &amp; Richland.

Int E S	5.3	
S.W.	5.3	
S.E.	7.9	

Ridgeway &amp; Redfield.

Int E S	7.2	
S.W.	9.4	
S.E.	12.4	
T.P.	8.08	375.04 3.88 367.01

375.04

## Stratford &amp; Brentwood.

Int. & S	9.4
S.E.	11.6
N.E.	9.3

## Stratford &amp; Glenmore

Int. & S	6.8
S.E.	6.7
N.E.	10.2
T.P.	4.43
	369.11
	10.36
	364.68

## Glenmore &amp; Mayfield.

Int. & S	2.0	367.1
S.E.	2.1	367.0
S.W.	3.5	365.6

## Montrose &amp; Mayfield.

Int. & S	6.5	362.6
N.W.	6.1	363.0
N.E.	5.3	363.8
S.E.	6.6	362.5
S.W.	7.7	361.4
T.P.	2.11	365.64
	5.58	363.53

## Templeton &amp; Mayfield.

Int. & S	4.1
N.W.	4.4
N.E.	1.2
S.E.	4.9
S.W.	5.7

5.05  
2.5  
2.7

365.64

## Alley East of Linda Vista

& - S.L. Mayfield.	7.2
& - N.L. "	5.8

## Mayfield &amp; Linda Vista

S.E. top eb	4.74			
N.E. " "	3.92			
T.P.	0.71	360.78	5.57	360.07
B.M.			6.87	353.91 (353.92)

## Check Levels for sewer Main

## Leading from Cambridge St. to Tank.

B.M.	344	355.19		351.75	AXA Post Linda Vista Cambridge
5+51 <sup>89</sup> L (M.H.)			5.7	349.5	
T.P.	0.78	343.10	12.87	342.32	
T.P.	0.18	330.22	13.06	330.04	
8+99 <sup>34</sup> L (M.H.)			8.2		
T.P.	2.95	320.12	13.05	317.17	
11+70 L (M.H.)			1.3		
B.M.			5.45	314.67	marked on lath. (314.92)
T.P.	1.97	309.57	12.52	307.60	
13+18 L (M.H.)			+2.7		
14+85 L (M.H.)			6.6		
16+62 <sup>96</sup> L (M.H.)			8.0		
T.P.	1.94	298.54	12.97	296.60	
19+00 L (M.H.)			4.3		
20+40 L (M.H.)			10.7		
T.P.	0.81	290.00	9.35	289.19	

24+79.96  
= 972.89

290.00

Taylor  
275.8  
Taylor  
269.2

△ M.H. Int. of Lines 14.7 275.3  
10+72.83 Head of Settling tank 21.3 268.7

B.M. 1.61. 355.53 353.92

Linda Vista & Shenandoah

S.W. 2.8

Wellington & Shenandoah

S.E. 6.1

S.W. 6.1

Oakwood & Shenandoah

T.P. 4.95 353.43 7.05 348.48

S.E. 6.6

S.W. 6.0

N'ly Term Maywood

S.E. 6.4

S.W. 5.6

N'ly Term Chesterton

E 6.5

W 7.0

T.P. 2.32 348.70 7.05 346.38

N.W.

348.70

Maywood & Oakwood

N.W. 6.1

S.W. 7.6

Int. & S 6.6

Chesterton & Oakwood

Int. & S 9.8

N.W. 8.8

S.W. 10.0

S.E. 11.7

N.E. 10.3

Chesterton & Wellington

N.W. 5.2

N.E. 3.7

S.E. 7.0

S.W. 7.2

B.M. <sup>aka Post N.E.</sup> Wellington & Chesterton 1.80 346.90













Maple-Sumac-Laurel  
Cross Section

50' wide  
10' CB  
75' 0"

BM	4.03	301.22	297.19	SFBP Quince + Fairmount
TP	1.95	297.57	5.60	295.62
TP	0.83	288.34	10.04	287.53
Set BM		8.19	280.17	NHBP Maple + Fairmount

N.C. Fairmount 0-20

N Top Cb	8.29	280.07
Gutter on Par	8.23	279.63
Cb	8.93	279.43
L	9.17	279.19
Cb	9.40	278.96
S Gutter	9.50	278.86
E Top Cb	8.98	279.38

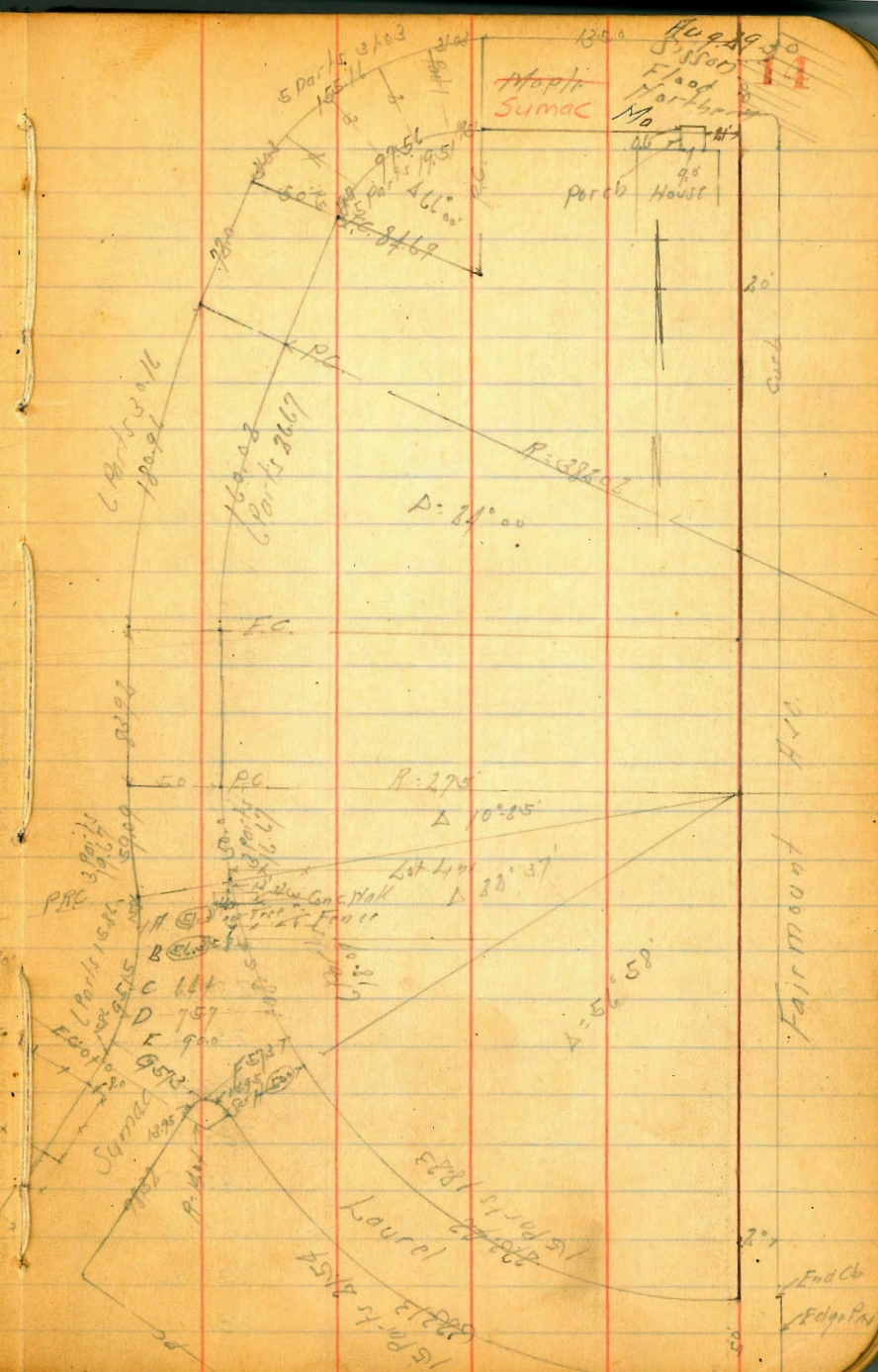
N.H. Fairmount

S	8.4	280.0
Cb Top	8.85	279.51
Gutter on Par	9.45	278.91
"	9.11	279.25
L	8.93	279.43
"	8.80	279.56
Gutter	8.71	279.65
Cb	8.16	280.70
N	7.8	280.6

Plotted 9-6-1930  
C.B.H.

W.S. N.H. Fairmount

N	6.9	281.5
Cb	6.9	281.5



28836

1/4	7.3	2811
1/2	7.2	2812
1/4	7.5	2809
+4	6.9	2815
Cb	6.8	2816
S	6.6	2818
65 M		
S	5.5	2829
Cb	5.8	2826
+3	5.9	2825
1/4	6.7	2817
1/2	6.8	2822
1/4	6.6	2818
+2	6.1	2823
Cb	6.0	2824
M	5.9	2825
85 M		
M	5.2	2832
Cb	5.0	2834
+3	5.1	2833
1/4	5.7	2827
1/2	5.4	2830
1/4	5.9	2825
+3	5.2	2832
Cb	5.2	2832
S	5.4	2830

28836

15

100 M		
S	5.6	2828
Cb	5.4	2830
+1	5.3	2831
1/4	6.0	2824
1/2	5.6	2828
1/4	5.7	2827
+1	5.1	2833
Cb	5.0	2834
M	4.9	2835
135 M - B.C.		
M	5.6	2828
Cb	5.9	2824
+3	5.9	2825
1/4	6.6	2818
1/2	6.5	2819
1/4	6.9	2815
+1	5.9	2825
Cb	6.0	2824
S	6.4	2820
Part 1		
S	7.2	2812
Cb	7.2	2812
+5	7.2	2812
1/4	8.0	2804
1/2	7.7	2807

288.36

1/4	7.9	280 5
+2	7.2	281 2
cb	7.2	281 2
H	7.1	281 3
Part 2		
-5	9.4	279 0
H	9.0	279 4
cb	9.0	279 4
+5	8.8	279 6
1/4	9.3	279 1
1/2	8.9	279 4
1/4	9.3	279 1
+8	8.2	280 2
cb	7.9	280 4
S	8.0	280 4
Part 3		
S	8.8	279 6
cb	9.2	279 2
+5	9.8	278 6
1/4	10.6	277 7
1/2	10.6	277 7
1/4	10.8	277 6
cb	11.2	277 2
H	11.9	276 5
+10	13.0	275 4

288.36

16

TP	279	279.9°	11.25	277.11
Part 4				
-10			7.3	272 6
H			6.2	273 7
cb			5.1	274 8
1/4			3.6	276 3
1/2			3.6	276 3
1/4			3.9	276 0
+2			4.0	275 9
1/4			3.2	276 7
cb			2.9	277 0
S			3.3	277 6
Part 5 = 50				
S			3.2	276 7
cb			4.0	275 9
+3			4.1	275 1
1/4			4.8	275 1
1/2			4.7	275 2
1/4			4.8	275 1
cb			6.9	273 0
H			8.4	271 5
710			10.1	269 8
21 J EC.				
-10			11.8	268 1
H			9.9	270 0
cb			7.9	272 0

2799°

+5	53	2746
1/2	52	2747
1/2	49	2750
1/4	53	2746
cb	47	2752
f	31	2761

45° 50' 50

f	39	2760
cb	48	2751
1/4	57	2742
1/2	52	2747
1/4	57	2742
+1	55	2744
cb	82	2717
H	10.1	269.8
+10	18.3	267.6

72° 5' = 90

-10	18.4	267.5
H	9.5	270.4
cb	78	2721
+6	58	2741
1/4	6.0	273.9
1/2	56	2743
1/4	61	273.8
cb	52	274.7
f	44	275.5

2799°

Part 1

f	3.5	276.4
cb	4.0	275.9
+4	4.7	275.2
+6	6.4	273.5
1/4	6.4	273.5
1/2	6.0	273.9
1/4	6.1	273.8
+2	6.2	273.7
cb	7.5	272.4
H	9.9	270.0
+10	13.8	266.1

Part 2

-10	13.8	266.1
H	9.4	270.5
cb	7.7	272.2
+5	6.3	273.6
1/4	6.4	273.5
1/2	6.2	273.7
1/4	6.7	273.2
+4	4.5	275.4
cb	4.2	275.7
f	3.7	276.2

Part 3

f	4.6	275.3
cb	5.2	274.7

17

2799°

1/1	56	2743
1/4	73	2726
1/2	70	2729
3/4	73	2726
+1/2	73	2726
cb	85	2714
H	102	2697
+10	184	2675

Part 4

-10	132	2667
H	110	2689
cb	92	2707
+5	82	2717
1/4	82	2717
1/2	80	2719
3/4	83	2716
+5	63	2736
cb	61	2738
F	54	2745

Part 5

F	60	2739
cb	66	2733
+3	68	2731
1/4	89	2710
1/2	87	2712
3/4	90	2709

2799°

cb	103	2696
H	120	2679
+10	152	2647

Part 6 = FC

-10	158	2641
H	133	2666
cb	107	2692
+3	98	2701
1/4	96	2703
1/2	92	2707
3/4	94	2705
cb	80	2719
F	68	2731

20.985 of FC

F	72	2727
cb	82	2717
+2	83	2716
1/4	99	2700
1/2	97	2702
3/4	99	2700
cb	103	2696
H	156	2643
+10	196	2603

11.965

-10	180	2619
H	146	2653

18

27990

Cb	11.3	2683
+2	10.4	2695
1/4	10.1	2698
1/2	9.9	2700
1/4	10.4	2695
+5	8.8	2711
Cb	8.2	2717
1	7.6	2723

6294 S

1	7.8	2721
Cb	8.3	2716
+3	8.6	2713
1/4	10.5	2694
1/2	10.1	2698
1/4	10.4	2695
Cb	11.2	2687
1/4	13.0	2669
+10	15.7	2642

8392 S = P.C. 9-2905 E.L.

-10	13.9	2660
1/4	12.8	2671
Cb	11.5	2684
1/4	10.7	2692
1/2	10.5	2694
1/4	11.1	2688
1/4	9.0	2709

27990

Cb		8.6	2713	19
F		8.0	2719	
TP	1.18	273.08	8.00	27190
		Part 1		

F		1.2	271.9
Cb		2.2	270.9
+2		2.5	270.6
1/4		4.5	268.6
1/2		4.0	269.1
1/4		4.3	268.8
Cb		5.0	268.1
1/4		5.9	267.2
1.208 - Ground Above		5.5	267.6
: Floor At Entrance		3.92	269.16

Part 2

-10		7.2	265.9
1/4		6.1	267.0
Cb		4.9	268.2
1/4		4.5	268.6
1/2		4.1	269.0
1/4		4.6	268.5
+5		2.9	270.2
Cb		2.5	270.6
F		1.6	271.5

Part 3 - P.P.C. 07/1

F = Floor		2.4	270.7
-----------	--	-----	-------

Aug 30-30

873.08

Cb	3.1	270.0	
1/4	4.8	268.3	13' Sap Proc on F.B. =
1/5	4.4	268.7	Good Walk
1/11	4.9	268.2	33' = 270.70
Cb	5.1	268.0	1st Dept of Walk
H	5.6	267.5	1st 105'
+10	6.8	266.3	33' = 269.78
	Sec A		51.2 4703
-10	6.8	266.3	
H	6.0	267.1	
Cb	5.0	268.1	4' Sap Sect - Tree 6' diam.
+5	5.4	267.7	3.2' W of F.B.
1/4	5.2	267.9	
1/5	4.5	268.6	
1/4	4.9	268.2	
+5	3.3	269.8	
Cb	3.9	270.2	
F	2.2	270.9	
	Sec B		56.2 4791
F = dirt drive	3.1	270.0	
Cb	3.6	269.5	
+4	3.8	269.3	
1/4	5.3	267.8	
1/5	4.9	268.2	
1/4	5.5	267.6	
+5	5.9	267.2	

873.08

20

+7	5.2	267.9	
Cb	5.4	267.7	
H	6.4	266.7	
+10	7.2	265.9	
	Sec C		64.4 4111
-	7.6	265.5	
H	6.7	266.4	
Cb	6.0	267.1	
+3	5.8	267.3	
+5	6.5	266.6	
1/4	6.0	267.1	
1/5	5.2	267.9	
1/4	5.5	267.6	
+2	5.8	267.3	
+7	4.1	269.0	
Cb	4.1	269.0	
F	3.7	269.4	
	Sec D		75.7 4139
F	4.1	268.0	
Cb	4.7	268.4	
+5	5.0	268.1	
+9	6.1	267.0	
1/4	5.7	267.4	
1/5	5.7	267.4	
1/4	6.5	266.6	
+8	7.1	266.0	

273.08

+12	65	2666
Cb	66	2665
H	72	2659
+10	81	2650

Sec F

-10	85	2646
H	80	2651
Cb	74	2657
+3	73	2658
+6	80	2651
1/4	69	2662
1/2	62	2669
1/4	62	2669
+6	68	2663
Cb	60	2671
F	58	2673

Sec F

F	51	2673
Cb	65	2666
1/4	69	2662
1/2	68	2663
1/4	76	2655
Cb	75	2656
H	84	2647

Sec G

SP	84	2647
----	----	------

700 1/4-125

573 1/4-92

572 1/4-92

273.08

Cb	78	2653
1/4	79	2652
1/2	77	2654
1/4	82	2649
15	87	2644
18	78	2653
Cb	78	2653
H	80	2651

Sec H = opp EC. 1404' Road

50 1/4-75

-10	91	2640
H	89	2642
+3	76	2655
Cb	78	2653
1/4	76	2655
13	74	2657
15	75	2656
Cb	67	2664
F	62	2669

Plotted 9-6-20  
 Laurel St. from  
 To Fairmount Ave.  
 CBH

H<sup>o</sup>1

F	63	2668
Cb	72	2658
1/4	78	2653
1/2	76	2655
1/4	77	2654
Cb	73	2658
+8	78	2653

21



273.08

H	9.4	263 7	✓
+10	10.6	262 5	
N°2			
-10	11.2	261 9	
H	10.0	263 1	✓
+2	8.6	264 5	
cb	7.6	265 5	
1/4	8.0	265 1	
1/2	7.8	265 8	
1/2	7.8	265 3	
cb	7.7	265 4	
F	6.6	266 5	
N°3			
F	6.4	266 7	
+5	7.3	265 8	
cb	7.5	265 6	
1/4	7.7	265 4	
1/2	7.6	265 5	
1/4	7.7	265 4	
cb	8.3	264 8	
+6	8.3	264 8	
H	10.3	262 8	✓
+10	11.2	261 8	
N°4			
-20.5 = Floor Cor. Parcb	9.27	263 71	✓
-18 = Bottom Step	10.25	262 83	✓

273.08

22

H	9.2	263 9	✓
cb	8.2	264 9	
1/4	7.7	265 4	
1/2	7.4	265 7	
1/4	7.3	265 8	
cb	6.8	266 3	
F	5.9	267 2	
N°5			
F	5.0	268 1	
cb	5.6	267 5	
1/4	6.4	266 7	
1/2	6.6	266 5	
1/4	6.8	266 3	
cb	7.8	265 3	
H	8.1	265 0	✓
+10	9.1	264 0	
N°6			
-10	7.7	265 4	
H	7.0	266 1	✓
cb	6.8	266 3	
1/4	5.8	267 3	
1/2	5.0	268 1	
1/4	4.8	268 3	
cb	4.8	268 3	
F	3.8	269 3	

N°7

27308

F	37	269.4
+2	4.0	269.1
+3	5.2	267.8
cb	5.0	268.1
1/4	5.6	267.5
1/2	5.8	267.3
1/4	5.9	267.2
cb	5.9	267.2
H	5.9	267.2
+10	6.3	266.8
N°8		
SW	5.5	267.6 ✓
cb	5.9	267.2
1/4	5.6	267.5
1/2	5.4	267.7
1/4	5.4	267.7
cb	5.2	267.8
NE	4.7	268.4
N°9		
-2	3.2	269.9
NE	5.8	267.3
cb	5.5	267.6
1/4	6.0	267.1
1/2	5.9	267.2
1/4	6.3	266.8
cb	6.4	266.7

27308

SW	6.7	266.4 ✓
+3	4.2	268.9
N°10		
-3	4.8	268.3
S	6.8	266.3 ✓
cb	6.6	266.5
1/4	6.5	266.6
1/2	6.3	266.8
1/4	6.0	267.1
cb	5.6	267.5
+9	5.4	267.7
H	2.8	270.3
N°11		
H	2.4	270.7
+1	5.4	267.7
cb	5.8	267.3
1/4	6.1	267.0
1/2	6.2	266.9
1/4	6.6	266.5
cb	6.8	266.3
S	7.1	266.0 ✓
+2	4.8	268.3
N°12		
-1	4.1	269.0
S	7.5	265.6 ✓
cb	7.3	265.8

23

22308

1/4	69	2662
1/2	66	2665
1/4	62	2669
cb	64	2667
H	60	2671
+2	19	2712
N°13		
-1	1.5	2716
H	74	2657
cb	76	2655
1/4	76	2655
1/2	79	2652
1/4	8.5	2646
cb	91	2640
S	87	2644 ✓
+1	36	2695
N°14		
-1	52	2699
S	89	2642 ✓
cb	94	2637
1/4	90	2641
1/2	82	2649
1/4	79	2652
cb	78	2653
+8	77	2654
H	14	2717

273.08

24

271 of N°15		
H	12	2719
+2	67	2664
cb	74	2657
1/4	73	2658
1/2	78	2653
1/4	76	2655
cb	77	2654
S	69	2662 ✓
+3	84	2707
N°15 - W.L. Fairmount		
-3	73	2658
S	77	2654 ✓
cb	76	2655
1/4	76	2655
1/2	75	2656 ✓
1/4	73	2659
cb	72	2659
H	72	2659 ✓
2 1/2 E of N°15 - W Cb of Fairmount		
H Tip of End Cb	860	26448
Gull H on Passag	900	264.08
cb " "	905	264.03
1/4 " "	915	263.93
1/2 " "	925	263.83
1/4 " "	934	263.74

873.08

Cb	at Paving	942	263.66
S	"	950	263.58

## Sumac Cross Section

273.08

FC 010

50 ft. in  
10' chs

25

See Sketch Page 14

F		8.6	264.5
+5		7.9	265.2
06		8.4	264.7
+3		8.9	264.3
1/4		8.1	264.5
1/2		8.5	264.6
1/4		8.9	264.2
+5		9.0	264.1
06		8.5	264.6
H		8.7	264.4

25 J of FC

H = 10' Dist Dr.		9.9	263.2
Cb		9.9	263.2
+3		10.3	262.8
1/4		10.0	263.1
1/2		9.6	263.5
1/4		9.9	263.2
+4		10.3	262.8
Cb		10.0	263.1
F		10.3	262.8

50 J

F		11.7	261.4
06		11.4	261.7
1/4		11.1	262.0
1/2		10.6	262.5

273.08

26

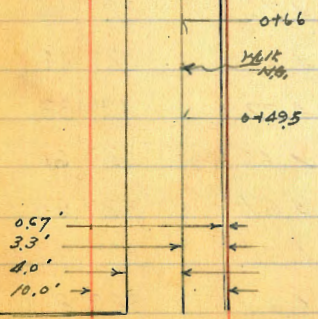
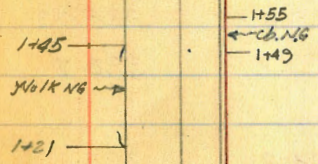
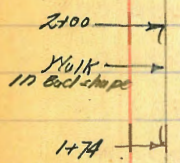
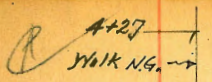
1/4			10.8	262.3	
+3			11.1	262.0	
cb			10.6	262.5	
H			11.1	262.0	
	955 of EC				
H			11.6	261.5	
cb			11.3	261.8	
12			11.7	261.4	
1/4			11.5	261.6	
1/2			11.2	261.9	
1/4			11.8	261.3	
cb			12.1	261.0	
F			12.7	260.4	
	9832: PC 27 F				
F			13.4	259.7	on Hub
cb			13.1	260.5	
1/4			12.2	260.9	
1/2			11.8	261.3	
1/4			12.1	261.0	
cb			11.6	261.5	
H			11.5	261.6	
H	11.84	283.73	1.19	271.89	on SW BP
TP	129.5	293.09	3.59	280.14	Maplet Fairmount
TP	8.02	300.88	0.23	292.86	
BM			3.73	297.15	5F3P Quincy Fairmount 297.19

WALKER  
Bliss  
Dobert  
Albome  
11-18-90

FAIRMOUNT AVE.  
Bet. Myrtle and Olive  
Cross Sections For Side Walks.

Station	Left Side	Right Side	Elevation
1.65	342.54	340.89	
T.P.	0.32	332.30	331.28
0+00 = S.W. Myrtle Ave			
H.W.	1.9		330.4
W edge Walk	1.84		330.46
E "	1.20		330.40
W.Cb.	1.90		330.40
E.Cb.	1.84		330.46
+3.3' on W edge Walk	1.67		330.63
+7.3' " E. "	1.55		330.75
E	1.6		330.7
0+17			
E	2.5		329.8
E edge Walk	2.21		330.09
W " "	2.27		330.03
E.Cb.	2.30		330.00
0+32			
E.Cb.	2.25		329.35
W edge Walk	2.78		329.52
E. " "	2.69		329.61
E	2.8		329.5
0+41			
E	3.0		329.3
E edge Walk	2.83		329.47
W " "	2.99		329.31

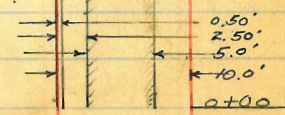
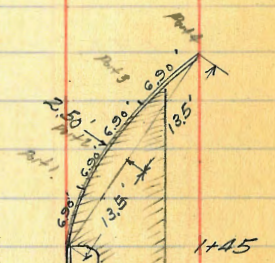
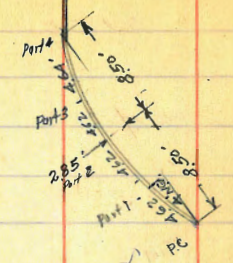
WALKER  
Bliss  
Dobert  
Albome  
11-18-90  
Fairmount



MYRTLE

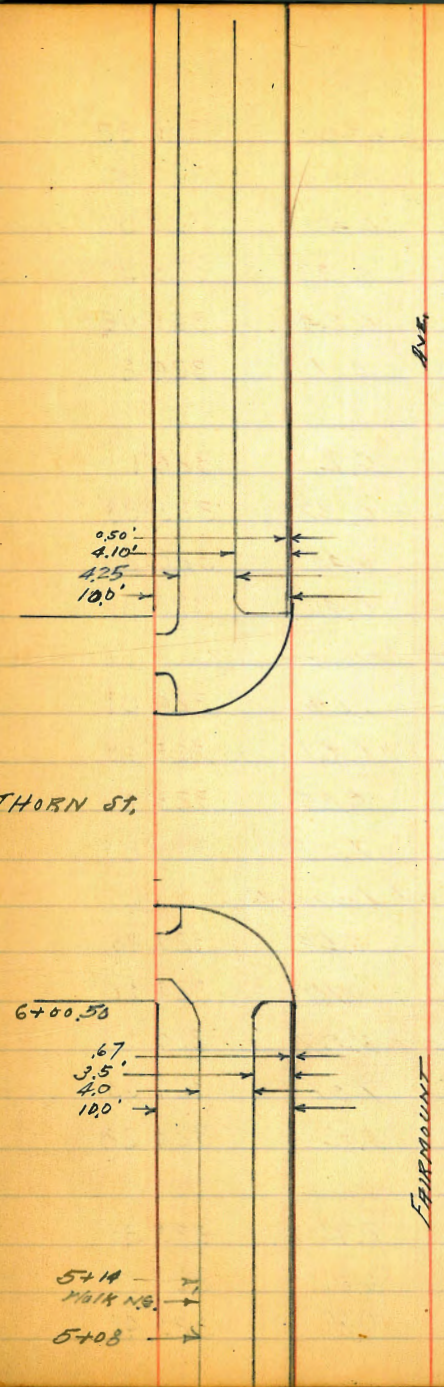
27

FAIRMOUNT

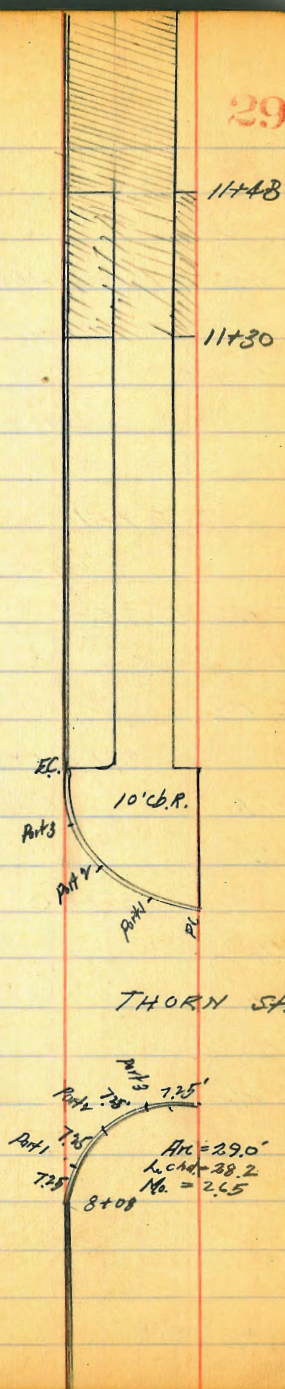


AVE.

E. cb.	3.08	329 22
0+50		
E	3.3	329 0
E edge Walk	3.13	329 17
W. " "	3.25	329 05
E. cb.	3.47	328 83
W. cb.	3.31	328 99
E edge Walk	3.35	328 95
W " "	3.22	329 08
W. L.	3.3	329 0
0+63		
E. cb.	3.76	328 54
W edge E. Walk	3.64	328 66
E " " "	3.57	328 73
E	3.6	328 7
1+00		
E	4.8	327 5
E edge Walk	4.76	327 54
W " "	4.86	327 44
E. cb.	4.27	327 33
W. cb.	4.66	327 64
E edge W. Walk	4.67	327 63
W " " "	4.56	327 74
W. L.	4.5	327 8
1+45 = P.C. cb. Returns on West		
W. L.	5.7	326 6

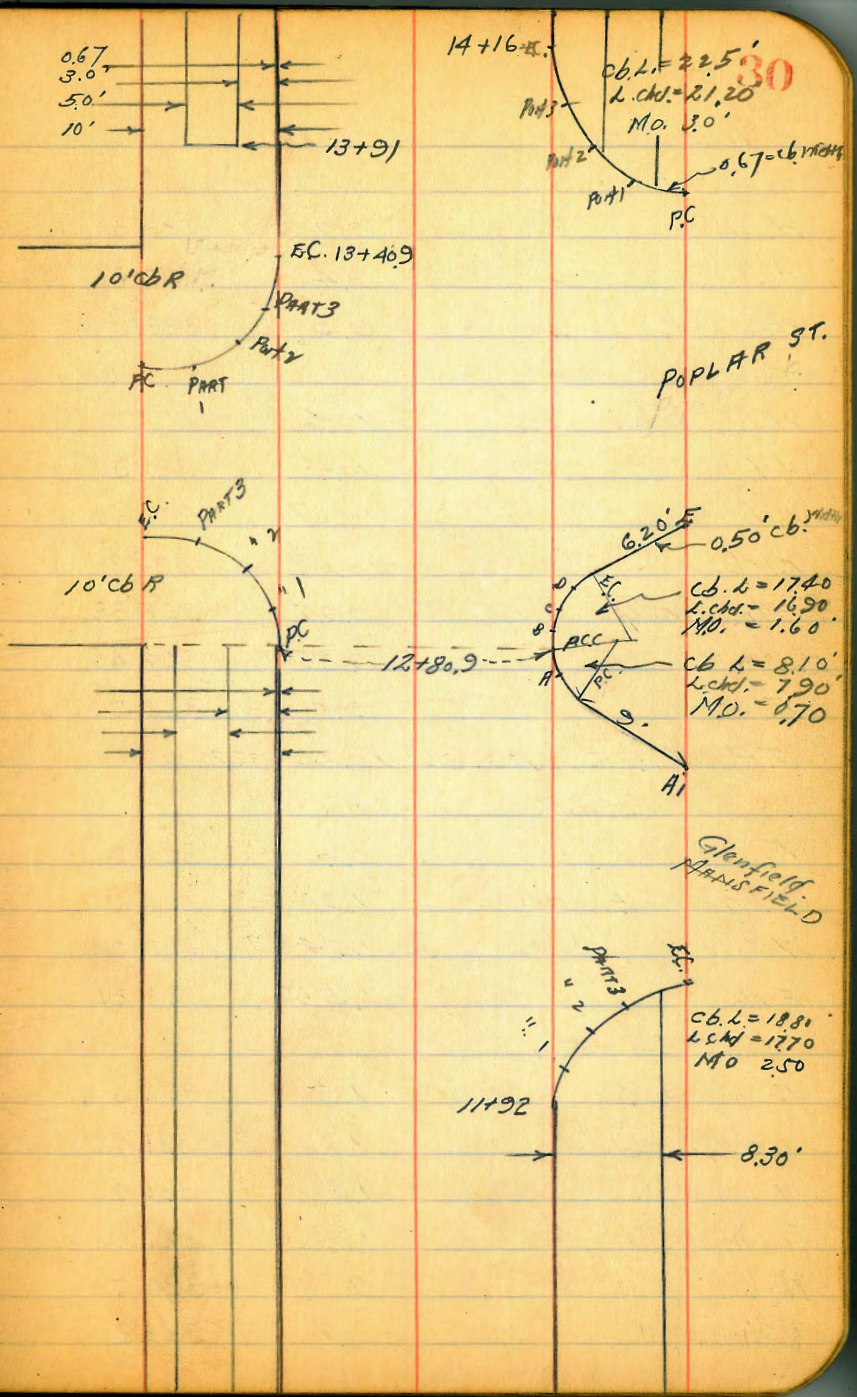


N. edge N. Mark	5.92	326 38
N. cb.	5.99	326 31
E. cb.	6.40	325 90
N. edge E. Mark	6.33	325 97
E " E "	6.24	326 06
E	6.1	326 2
1+49		
E	6.2	326 1
E edge E. Mark	6.32	325 98
N " " "	6.46	325 90
E. cb.	6.46	325 84
N.W. Return at Lexington Ave		
Part 1	6.29	326 01
" 2	6.61	325 69
" 3	6.85	325 45
" 4	7.03	325 27
S.W. Returns at Lexington		
P.C.	8.54	324 76
Part 1	8.10	324 20
" 2	7.97	324 33
" 3	7.97	324 33
" 4 = E.C.	8.02	324 28
1+80		
E. cb.	6.94	325 36
N. edge E. Mark	6.87	325 43
E " " "	6.86	325 48





E		6.7	325.6
	2+00		
E		7.0	325.3
E. Edge E. Walk on old walk		7.02	325.28
" " " " "New"		7.04	325.26
" " " " " " "		7.11	325.19
" " " " "old "		7.16	325.14
E. cb		7.29	325.01
	2+51		
E		7.6	324.7
E edge E. Walk		7.77	324.53
" " " " " " "		7.86	324.44
E. cb		7.91	324.39
	2+51 = E.C. SW. Return at Livingston.		
" cb		8.02	324.28
" L.		8.1	324.2
	3+00		
" L.		8.6	323.7
" cb		8.94	323.36
E. cb		8.66	323.64
" edge E. Walk.		8.61	323.69
E " " "		8.54	323.76
E		8.1	324.2
	3+50		
E		8.7	323.6
E edge E. Walk		9.33	322.97



322.30

W edge E Walk	9.36	322.94
E cb.	9.42	322.88
W cb.	9.77	322.53
+3	9.4	322.9
W.L.	9.3	323.0
4+00		
W.L.	10.6	321.7
+7	10.4	321.9
W cb.	10.67	321.63
E cb.	10.07	321.23
W Edge E Walk	9.25	322.35
E " "	9.85	322.45
E	9.6	322.7
T.P. 1.25 323.36	10.29	322.01
4+27		
E	0.8	322.6
E edge Walk	1.31	322.05
W " "	1.34	322.02
E cb.	1.55	321.81
4+50		
E	1.3	322.0
E edge Walk	1.73	321.63
W " "	1.80	321.56
E cb.	1.90	321.46
W cb.	2.59	320.77
+3'	2.7	321.2

323.36

31

W.L.	2.6	320.7
5+00		
W.L.	3.4	320.0
+7	3.2	320.2
W cb.	3.50	319.86
E cb.	2.73	320.63
W Edge E Walk	2.59	320.77
E " " "	2.52	320.83
E	2.1	321.3
5+50		
E	3.2	320.1
E Edge E Walk	3.24	320.12
W " " "	3.31	320.05
E cb.	3.33	320.03
W cb.	4.34	319.02
+3	4.1	319.3
W	4.4	319.0
6+00.5 = N.H. Thorn st on East		
W.L.	5.4	318.0
W cb.	5.21	318.15
E cb.	4.07	319.29
W Edge E Walk	4.02	319.34
E " " "	3.98	319.38
E	4.0	319.4
6+04.5 P.C. Ret. on E 4 Parks - 10' Roadw		
P.C.	4.05	319.31

Part 1	4.07	319.29
" 2	4.06	319.30
" 3	4.05	319.31
" 4 = E.C.	4.12	319.24
S.E. Pt. 10' cb. Radius 4 Parts		
cb. P.C. on Thorn.	5.48	317.88
Part 1	5.43	317.93
" 2	5.42	317.94
" 3	5.40	317.96
" 4 = E.C. on Fairmount	5.38	317.98
6 + 40.5		
M.cb.	5.78	317.58
+ 8	6.1	317.3
M.L.	6.5	316.8
6 + 80.5 = S. of Thorn.		
E	5.3	318.0
E edge E. Walk.	5.31	318.05
M " " "	5.43	317.93
E cb.	5.42	317.94
M cb.	6.43	316.93
M.L.	6.7	316.7
7 + 00		
M.L.	6.9	316.4
M.cb.	6.89	316.47
E cb.	5.90	317.46
W. Edge E. Walk.	5.80	317.56

E edge E. Walk.	5.74	317.62
E	5.76	317.7
7 + 50		
E	6.7	316.7
E. edge E. Walk	6.79	316.57
M " " "	6.92	316.44
E cb.	6.91	316.45
M cb.	7.20	315.40
M.L.	7.9	315.4
8 + 0.8 = P.C. cb Pt NW Cr. Thorn st.		
M.L.	9.4	314.0
M cb.	9.24	314.12
E. cb.	8.18	315.18
M edge Walk.	8.15	315.21
E " "	8.03	315.33
E.	8.1	315.3
NW Return. Thorn st.		
Part 1	9.39	313.97
" 2	9.49	313.87
" 3	9.58	313.78
E.C.	9.73	313.63
S.W. Return Thorn st.		
P.C.	10.94	312.42
Part 1	10.97	312.39
" 2	10.95	312.41
" 3	10.94	312.42

328.76

8+88.3 = E.C. Bk	10.95	212.41
TR	1.03	313.44
8+88.3	10.95	312.41
Y.L.	1.2	312.2
E edge Y Walk	0.98	312.46
2+00		
Y.L.	1.9	312.1
Y edge Y Walk	1.22	312.22
E " E "	1.26	312.18
Y cb.	1.28	312.16
E cb.	0.30	313.14
TR	3.05	315.46
Y edge E Walk	1.93	312.41
E " " "	3.27	312.19
E " " "	2.20	312.26
E.	2.1	313.3
2+50		
E	3.3	312.1
E edge E Walk	3.27	312.19
Y " " "	3.33	312.13
E, cb.	3.42	312.03
Y cb.	4.39	311.07
Y edge Y Walk	4.23	311.23
Y.L.	4.2	311.2
10+00		
Y.	5.4	310.0
Y edge Y Walk	5.35	310.11

315.46

33

E edge Y Walk	5.33	310.13
E cb.	4.50	310.96
Y edge E Walk	4.41	311.05
E " " "	4.32	311.14
E	4.4	311.0
10+50		
E	5.2	310.2
E edge E Walk	5.40	310.06
Y " E "	5.46	310.00
E cb.	5.53	309.93
Y cb.	6.54	308.92
E edge Y Walk	6.49	308.97
Y " " "	6.44	309.02
Y.L.	6.3	309.1
11+00		
Y.L.	7.4	308.0
Y edge Y Walk	7.47	307.99
E " " "	7.55	307.91
Y cb.	7.63	307.83
E cb.	6.59	308.87
Y edge E Walk	6.56	308.90
E " " "	6.50	308.96
E	6.8	308.6
11+50		
E	7.5	308.0
E edge E Walk	7.48	308.98

W edge E Walk	7.52	307.94
E cb.	7.57	307.89
W cb.	8.60	306.86
+ 8.3 = W edge Walk	8.36	307.10
M.L.	8.3	307.2

11+92 = PC N.Y. Rot. Glenfield St.

W	9.5	306.0
+ 1.7 = W edge Walk	9.49	305.97
W cb.	9.61	305.85

N.Y. Return of Glenfield St.

Part 1	9.55	305.91
" 2	9.51	305.95
" 3 in Dense Wx	10.08	305.38
" 4 - E.C. " "	10.15	305.31

12+00 on E

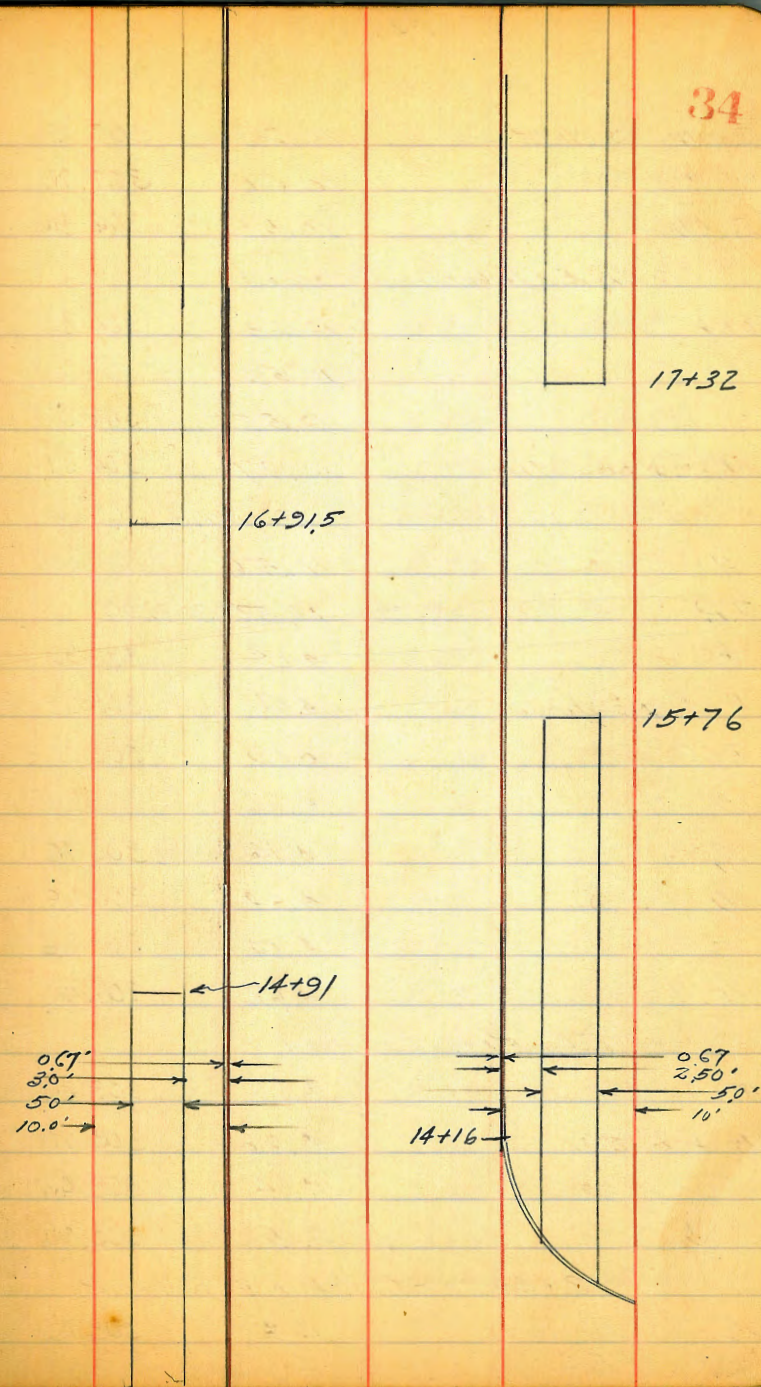
E cb.	8.77	306.69
W edge E Walk	8.67	306.79
E " " "	8.63	306.83
E	8.4	307.0

12+50

E	9.6	305.8
E edge E Walk	9.75	305.71
W " " "	9.80	305.66
E cb.	9.87	305.59

12+80.9 = N.A. Red Wood on E

E	10.3	305.16
---	------	--------



31546

E edge E Walk	10.33	305.13
W " " "	10.40	305.06
E cb	10.52	304.94
N.E. Return Redwood		
Part 1	10.53	304.93
" 2	10.53	304.93
" 3	10.55	304.91
E.C. on Redwood	10.47	304.99
N.W. Return at Poplar St.		
A1	11.56	303.90
T.P.	4.22 308.10	11.56 303.90
FC	4.14	303.96
A = 2 1st curve	4.17	303.93
PCC	4.19	303.91
B	4.26	303.84
C	4.34	303.76
D	4.44	303.66
EC	4.54	303.56
E	4.62	303.48
S.E. Ret. Redwood		
PC. on Redwood	4.50	303.60
Part 1	4.60	303.50
" 2	4.64	303.46
" 3	4.65	303.45
13+20.9 = E.C. Ret. NE Redwood		
E	4.4	303.7
E, cb at E.C.	4.66	303.44

308.10

35

13+91 = Beginning Walk on E		
E cb.	5.75	302.35
W edge E. Walk	5.66	302.44
E " " "	5.62	302.48
E	5.2	302.9
S.E. Ret. at Poplar St.		
PC.	6.43	301.67
Part 1	6.42	301.68
" 2	6.34	301.76
" 3	6.30	301.80
14+16 = E.C. SE Ret.		
E.C. on cb.	6.31	301.79
+2.5 = edge Walk	6.21	301.89
+7.5 = W " "	6.20	301.90
W	6.3	301.8
14+50		
W	7.0	301.1
W edge W Walk	7.05	301.05
E " " "	7.12	300.98
W cb.	7.21	300.89
E cb.	7.23	300.87
+3' on W edge Walk.	7.12	300.98
+8 " E " "	7.01	301.09
14+91 = End Walk on E		
E	8.2	299.9
E edge E Walk.	7.95	300.15

308.10

W edge E Walk	2.02	300.08
T.P. 2.94 302.87	8.17	299.93
E cb. in Drive Way	3.49	299.38
15+00		
E	3.0	299.8
E cb.	3.13	299.74
W cb.	3.18	299.69
E edge W Walk	3.13	299.74
W " " "	3.08	299.79
W	2.8	300.0
15+50		
W	3.9	298.9
W edge W Walk	4.26	298.61
E " " "	4.32	298.55
W cb.	4.38	298.49
E cb.	4.45	298.42
E	4.2	298.6
15+76 - End Walk on West.		
W cb.	4.87	298.00
E edge W Walk	4.82	298.05
W " " "	4.79	298.08
W.	4.4	298.4
16+00		
W	4.8	298.0
W cb.	4.99	297.88
E cb.	5.24	297.63

302.87

E	5.3	297.5	36
16+50			
E	5.5	297.3	
E cb.	5.30	297.57	
W cb.	5.20	297.67	
W	4.8	298.0	
16+91.5 = Beginning Walk on E			
W	4.8	298.0	
W cb.	5.25	297.62	
E cb.	5.24	297.63	
W edge E Walk	5.16	297.71	
E " " "	5.12	297.75	
E	4.9	298.0	
17+32 = Beginning Walk on W			
E	5.2	297.6	
E edge E Walk	5.21	297.66	
W " " "	5.28	297.59	
E cb.	5.32	297.55	
W cb.	5.32	297.55	
E edge W Walk	5.28	297.59	
W " " "	5.18	297.69	
W	4.9	298.0	
18+00			
W	5.2	297.6	
W edge W Walk	5.32	297.55	
E " " "	5.40	297.47	

302.87

W cb.	5.49	297.38
E cb. in Drive Way	6.01	296.86
+ 8 = E edge E Walk	5.38	297.49
E	5.5	297.3

18+47.5 = N.E. Return at Quince St.

E	5.4	297.4
E edge E Walk.	5.50	297.37
W " " "	5.58	297.29
E cb. at P.C.	5.64	297.23
Part 1	5.63	297.24
" 2	5.61	297.26
" 3	5.62	297.25
E.C.	5.57	297.30

18+52 = P.C. NW Return.

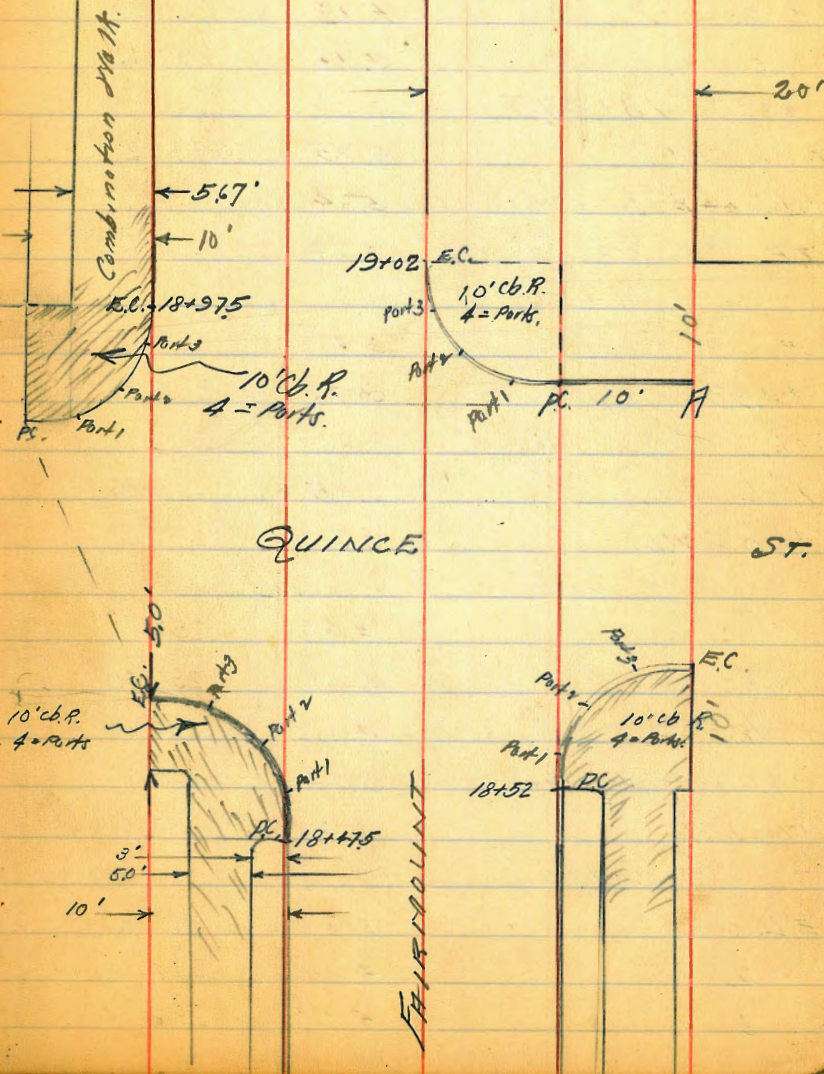
W on Walk.	5.42	297.45
W cb. P.C.	5.59	297.28
Part 1	5.63	297.24
" 2	5.63	297.24
" 3	5.63	297.24
E.C.	5.54	297.33

S.W. Ret. Quince

A. on cb.	5.70	297.17
P.C.	5.77	297.10
Part 1	5.77	297.10
" 2	5.75	297.12
" 3	5.77	297.10
E.C. = 19+02	5.79	297.08

South

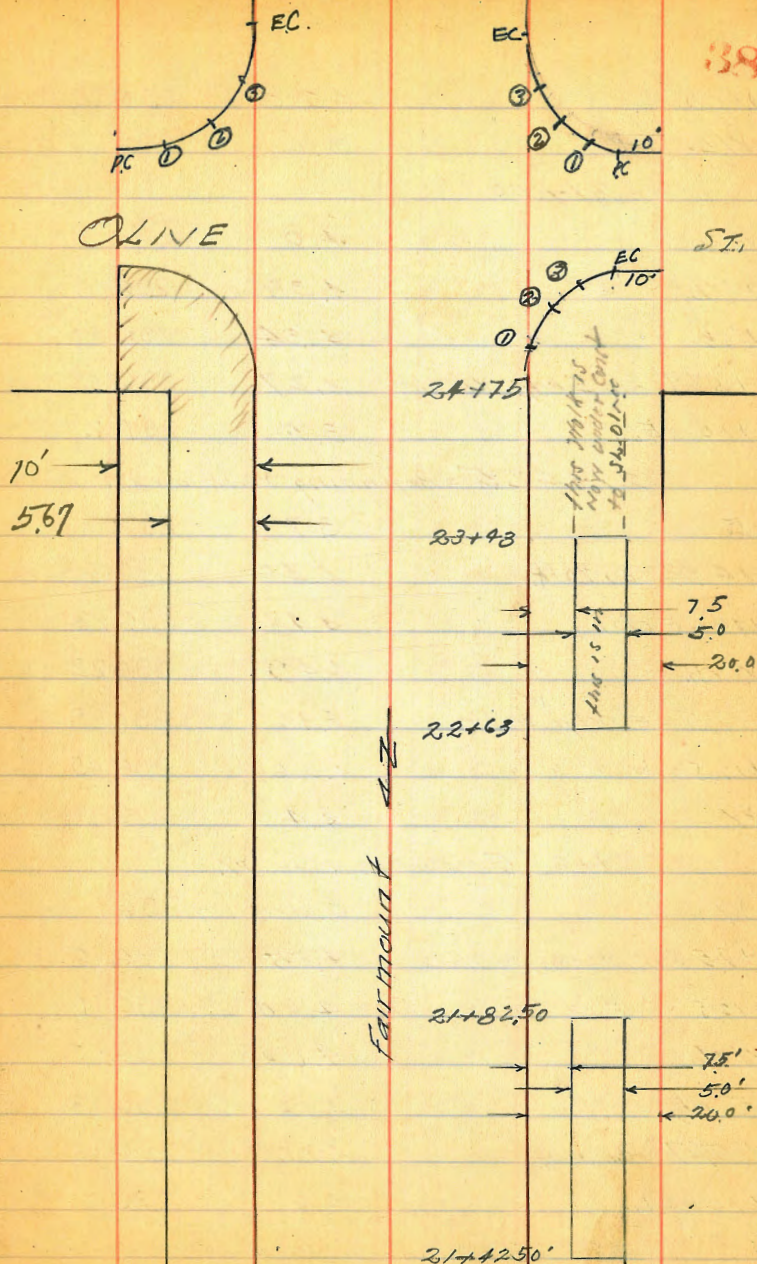
37





302.87

19+02 on Y.L.	5.7	297.1
S.E. Return.		
Pl. on Quince	5.72	297.15
Part 1	5.73	297.14
" 2	5.73	297.14
" 3	5.75	297.12
18+475		
E.cb E.C.	5.75	297.12
+10' = E edge E Walk edge	5.64	297.23
T.P.	3.58 300.71	5.74 297.13
19+50		
E	3.1	297.6
+4.33 = E edge Walk	3.78	296.93
E.cb.	3.81	296.90
W.cb.	3.85	296.86
+20 - Y.L.	3.7	297.0
20+00		
W	3.6	297.1
W.cb.	4.01	296.70
E.cb.	4.02	296.69
+5.67 = E edge Walk	3.94	296.77
+10 - E.L.	3.2	297.5
20+50		
E.L.	3.5	297.2
+4.33 = edge Walk.	4.06	296.65
E.cb.	4.77	296.54



300.71

YCb.	4.20	296.51
YK.	3.6	297.1
21+00		
YL.	4.0	296.7
YCb.	4.32	296.39
Ecb.	4.34	296.37
+5.67 on E edge Walk	4.27	296.47
+10 = EL.	3.5	297.2
21+42.5 = Beginning Walk on YL		
E	3.7	297.0
+4.33 on Walk	4.10	296.31
+10 = Ecb.	4.48	296.23
YCb.	4.49	296.22
+7.5 = E edge Walk	4.36	296.35
+12.5 = Y " " "	4.26	296.45
Y	4.4	296.3
21+82.5 = End Walk on YL		
Y	4.6	296.1
+7.5 on W edge W Walk	4.55	296.16
+12.5 E " " "	4.60	296.11
YCb.	4.68	296.03
Ecb.	4.58	296.13
+5.67 = edge Walk	4.55	296.16
+10 = EL.	4.0	296.7
22+63 = Beginning Walk on YL		
E.L.	4.1	296.6

300.71

39

+4.33 = edge Walk	4.88	295.83
+10 = Ecb.	4.92	295.79
YCb.	4.95	295.76
+7.5 <sup>E edge</sup> on Walk	4.84	295.87
+15' " W edge Walk	4.75	295.96
Y	4.4	296.3
23+43 = End Walk on W.		
Y	5.0	295.7
+7.5 on W edge Walk	5.02	295.69
+15 " E " "	5.07	295.64
YCb.	5.25	295.46
Ecb.	5.23	295.48
+5.67 on Walk	5.17	295.54
E	4.2	296.5
24+00		
E	4.6	296.1
+4.33 on Walk	5.30	295.41
+10 = Ecb.	5.41	295.30
YCb.	5.39	295.32
Y	5.3	295.4
24+75 = NL. olive st.		
Y	5.4	295.3
YCb.	5.66	295.05
Ecb.	5.65	295.06
+10'	5.38	295.33
chk. SE BR. Quince + Fairmount	3.58	297.13
chk. SE. Tipton dt. olives	4.11	296.60

FAIRMOUNT Ave  
Cont from P. 39

40

2.57 299.17  
N.E. Return

296.60

SE 1/4  
01/26  
Fairmount

①  
P.C.

4.15  
4.13

295 02  
295 04

P.C. 4.11 295 06  
① 4.11 295 06  
② 4.08 295 09  
③ 4.04 295 13  
E.C. 3.98 295 19

S.E. Return

P.C. 4.51 294 66  
① 4.61 294 56  
② 4.65 294 52  
③ 4.64 294 53  
E.C. 4.60 294 57

S.W. Return

E.C. 4.59 294 58  
③ 4.52 294 61  
② 4.64 294 53  
① 4.64 294 53  
P.C. 4.65 294 52  
M.L. 4.52 294 65

N.W.

M.L. 3.92 295 25  
E.C. 4.02 295 15  
③ 4.09 295 08  
② 4.12 295 05

Bay View Court Cross Section  
Lyndon Road to Lyndon Road

30' wide

Sept 4-31  
41  
Moore  
Sisson  
Hartmann

BM	0.44	252.46	252.02
TP	8.13	255.59	247.46

S.W. 8 P  
Lyndon Rd  
S. 1/2 Sec 1

Sec A

E - Ely Edgerdalk	3.08	252.51
Cb Top	3.37	252.22
Gutter	3.80	251.79

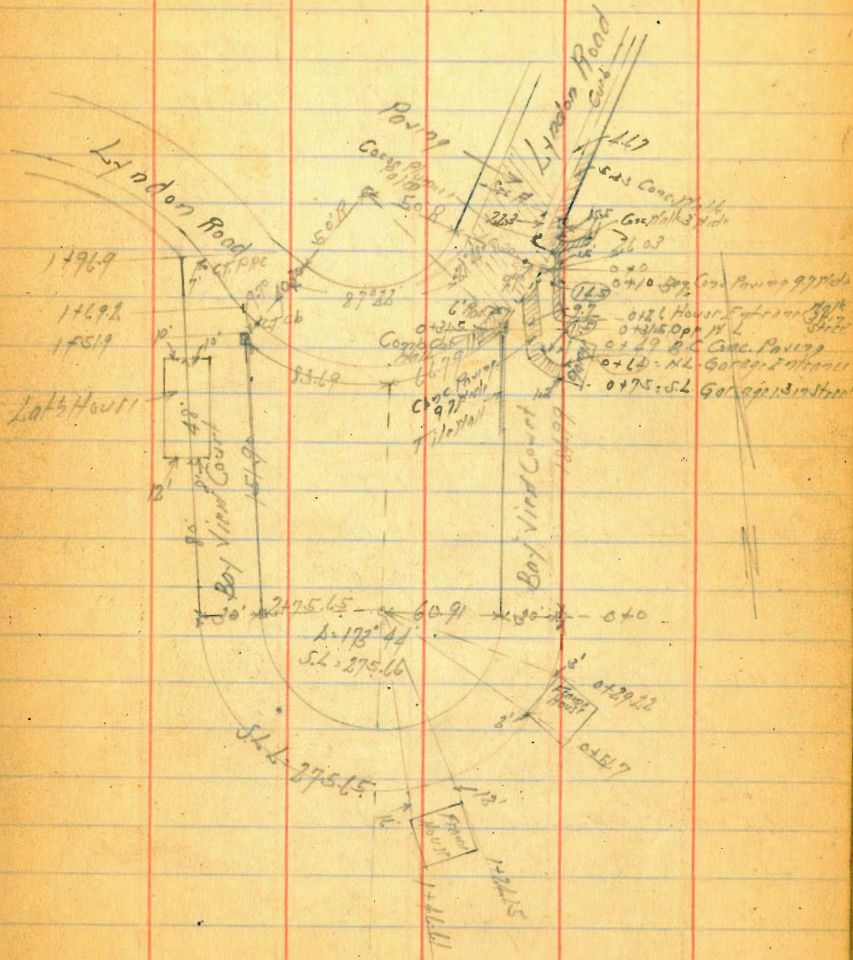
22.5' of Sec A - End Curb Walk & Curb

E 07' Curb Walk	4.22	251.37
+8' - Top Curb	4.30	251.29
+8' - E Edge Pavng	4.53	251.07
+18' - E Cb of Lyndon Rd	4.33	251.26
+18' 07' Pavng Gutter	4.85	250.74

0+10 = 36.035 of P.L. E.L. Lydon & Bay View Rd

1.5 W of E.L. E Edge Walk	6.00	249.59
1.5 W of E.L. - Edge Curb Strip Pav	5.52	250.02
24.5 W - 1/2 Valley Gutter	5.70	249.89
0+23		
1.0 W of E.L. - E Edge Curb Walk	7.57	248.02
1.35 W " " - E Edge Strip Pav	6.62	248.97
2.32 W " " " " " "	6.72	248.87
2.5 W " " " " " "	6.82	248.77
2.5 W " " " " " "	6.35	248.24
Gutter W End L. Cb. Pav	6.86	248.93

Plotted FEB



Boy View Court

25559

0+26

E.L. on Core Walk	8.00	247.59
+5 - W Edge Core Walk	7.63	247.96
+13.2 - E Edge Strip Pav	6.85	248.74
+22.9 - W " " "	6.45	249.14

0+31

E.L. Sly Edge Core Walk	8.13	247.46
+12.9 - E Edge Strip Pav	7.33	248.26
+22.6 - W " " "	6.96	248.63
+30 = M. Boy View d. y. EL	6.56	249.03
+30.3 = Top of Core Walk	6.6	249.0

0+49

E.L.	10.8	244.8
+11.5 - E Edge Core Paving 85	9.46	246.13
+21.2 - W " " "	9.18	246.41
+30 - M.	8.4	247.19
+30.3 - Tile Wall	8.3	247.29
TP 0+44	246.23	9.50
		246.09

0+64

E.L. on Top Retaining Wall	2.47	243.76
+10 - on Core Strip Pav	1.99	244.24
+15 - W Edge " " "	1.82	244.41
+28	1.6	244.6
M.L.	0.8	245.4
+20 = E.L. Garage		

24623

42

0+75

E on Garage Floor	2.87	243.36
+1.3 on Top Retaining Wall	2.49	243.74
+2 Feet " "	3.7	242.5
+10	3.4	242.8
M.S.	3.6	242.6
+24	3.6	242.6
+30 = M.L. of Edge of Pav	2.7	242.5
+30 = Sly Edge of Core Walk	1.53	244.70

0+85

-10 = Sly Edge Garage	11.4	234.8
E.L.	6.4	239.8
+3	4.8	241.4
+10	5.1	241.1
+15 = L	5.2	241.0
+24	5.4	240.8
+29 = 2 1/2 Cypress Tree	3.3	242.9

0+98

-10	14.1	232.1
E.L.	8.1	238.1
+10	7.2	239.0
+15 = L	7.3	238.9
+24	7.5	238.7
+29 = 2 1/2 Diam Cypress Tree	5.0	241.2
+30.5 = Edge Tile Wall		

+09 = 2 1/2"  
Diam Cypress  
Tree

Boy View Court

246.23

1+23

-0.5 - 1/2 Case Walk  
1/4 End of Tilt Wall  
1/4 End Wire Fence 996 236.27

11 10.5 235.7

+7 11.7 234.5

+15 11.3 234.9

+20 11.3 234.9

+26 11.5 234.7

F 13.8 232.4

+15 22.3 223.9

TP 0.02 233.48 1277 233.46

1+55

-15 15.3 218.2

F 10.0 223.5

+10 3.9 229.6

+15 3.8 229.7

+30 - 1/2 1.3 229.2

+0.5 - Wire Fence

1+84.99 - BC = 0+0

-0.5 - Wire Fence

11 9.6 222.9

+15 - 1/2 8.9 224.6

+20 10.7 222.8

+30 - F 18.2 215.3

+15 23.0 210.5

TP 0.84 222.15 1217 221.31

222.15

0+29.22

-20 18.3 203.9

-3' - 1/2 Case House on Floor 11.9 210.3

F 12.3 209.9

+5 12.6 209.6

+10 6.0 216.2

+15 2.8 219.4

+18 1.1 221.1

+30 - 1/2 1.7 220.5

+0.5 - Wire Fence

0+51.7

-0.5 - Wire Fence

11 3.7 218.5

+13 3.3 218.9

+15 - 1/2 1.7 217.5

+20 1.9 210.3

+28 - 1/2 Case House on Brook 11.7 210.43

+30 - F 13.0 209.2

+20 2.0 202.2

0+30.91

-20 17.8 204.4

F or S 13.3 208.9

+6 13.2 209.0

+10 11.0 211.2

+15 - 1/2 9.0 213.2

+19 6.0 216.2

43

Boy View Court

	222.15		
+30 = JH	6.1	216.1	
+1.5 = Hire Fence			
	1+70.13		
-1.0 = Hire Fence			
JH or H	7.4	214.8	
+15 = S	7.6	214.6	
+18	12.0	210.2	
+20	12.6	209.6	
+30 = S or J	14.4	207.8	
+15	17.4	204.8	
	1+17.41		
-15	15.3	206.9	
S	13.8	208.4	
+10	12.4	209.8	
+13	11.3	210.9	
+15 = S	7.7	214.5	
+30 = H	7.7	214.5	
+1.5 = Hire Fence			
	1+22.15		
-1.0 = Hire Fence			
H	8.0	214.2	
+15 = S	8.2	214.0	
+20	9.0	213.2	
+22	13.0	209.2	
22.0 = Large Palm Tree			

222.15

44

+30 = S	13.6	208.6	
+12 = H.E. Cor Frame House on Floor	14.78	207.35	
+20	15.4	206.8	
	1+46.61		
-16 = JH Cor Frame House	16.0	206.2	
S	12.8	209.4	
+8	11.8	210.4	
+10	9.0	213.2	
+15 = S	8.6	213.6	
+30 = H	8.4	213.8	
+10 = Hire Fence			
TP	6.84	221.94	70.5
	1+75.83		
H	7.2	214.7	
+1 = Hire Fence	7.7	214.2	
+4	9.4	212.5	
+15 = S	9.4	212.5	
+20	9.5	212.4	
+22	9.5	212.4	
S	12.6	209.3	
+15	15.8	206.1	
	2+05.04		
-15	16.1	205.8	
S	11.0	210.9	
+15 = S	10.2	211.7	
+27	9.8	212.1	

Boynton Court

22194

+30 - N x Hill Fence 80 213.9

2+3482

N x Hill Fence 64 215.5

+4 10.6 211.3

+15 = S 10.6 211.3

+30 = J 11.0 210.9

+5 11.5 210.4

2+7565 - FC - End of Grading 040

-51 = Bottom Croy 370 184.9

-41 351 186.8

-20 235 198.4

-5 16.0 205.9

S or N 12.0 209.9

+10 11.6 210.3

+15 = S 10.5 210.4

+20 10.4 211.5

+25 91 212.8

+28 = End of Hill Fence

+30 - Hor E 332 218.62

2474 FC

F 40.8 222.7

+15 = S 6.3 215.6

N 135 208.4

+25 261 195.8

How about  
S or N  
Connections  
For this  
District

02 Hub

22194

50 ft of FC

-25 240 197.9

N 132 208.7

S 56 216.3

TP 1198 23340 0.52 22142

F 92 224.2

80 ft of FC

F 71 226.3

+15 = S 129 220.5

+22 E Edge Lot 6 House 151 218.3

+30 = N 194 214.0

+12 = N 1/4 Lot 6 House 238 209.6

Top Cobble Wall 205 212.9

128 ft

-20 198 213.6

-10 = N 1/4 Lot 4 House 170 216.4

N 140 219.4

+10 = N 1/4 Lot 4 House 100 223.4

+15 = S 79 225.5

F 2.3 231.1

TP 1227 24168 0.99 23281

15190 ft = S 1/4 Lot Lyndon 02 E

F on S 1/4 Edge Case Walk 332 241.36

S 98 234.9

N 156 229.1

+22 158 218.9



Boy View Court

241.68

1692 H of EC

-22	18.3	225.4
H	9.7	234.0
+15 = L	4.0	240.7
+29 = S/C of Lynden	1.04	240.64
129 Gutter	4.39	240.29
E of Pax 129	1.33	240.35

1969 H of L = S/C of Lynden as per

L = L Lynden as per	4.02	240.66
+15 = L of Pax 129	4.86	239.82
+17.5 = S/C of Lynden Gutter	5.06	239.62
+17 Top Curb	4.52	240.16
+30 = H of Conc Walk	3.95	240.73
TP 10.47	252.50	265
BM	0.45	252.05

S H of  
Lynden  
St James  
252.02

20' wide

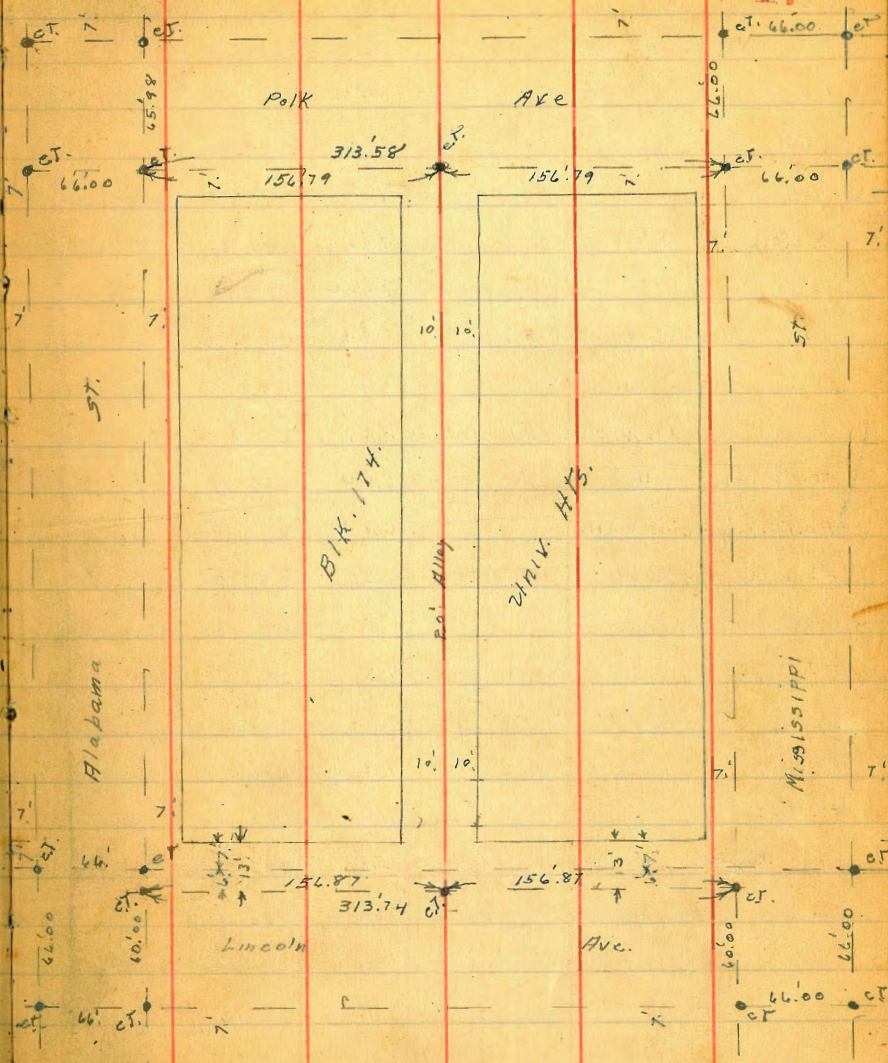
X. See Alley BIK 174. U.P.  
Lincoln to Polk Bet Alabama & Mississippi Sts

See Page 68 For Re X Sec.

5-2-32  
Miller  
Walker  
Blair.

Indexed  
C.S.K.

B.M. B.P.	1.33	301.31		299.98
T.P.	2.32	291.07	12.56	288.75
Set B.M. B.P.			5.21	285.84
T.P.	11.66	300.82	1.91	289.16
E.	Top wall		10.10	290.72
E.	cmt. ch	N. End	12.07	288.25
E.	pavmt.		12.25	288.57
+ 3'	"		12.28	288.54
+ 3'	Top wall extending North		10.12	290.70
±	pavmt.	N. End	12.36	288.46
+ 6.6	"	"	12.04	288.78
+ 6.6	Top wall extending North		9.45	291.37
W.	pavmt.	N. End	11.97	288.85
W.	cmt. ch	"	11.82	289.00
W.	Top wall		9.46	291.36
W		5' N.	8.7	292.1
+ 3.4	Top wall		9.00	291.8
+ 3.5			10.4	290.4
+ 4			11.3	289.5
±			11.3	289.5
+ 7			11.2	289.6
+ 7.	Top. cmt. wall		9.60	291.2
E.			9.6	291.2
T.P.	11.66	300.82	11.66	289.76



47

300.82

7.9' N = S. End. cmt. walk on W. of in Alley

E	9.1	291.7
+ 3.1' Top wall	9.15	291.67
+ 3.1	10.7	290.1
⊕	10.6	290.2
+ 4	10.6	290.2
+ 6.7	9.6	291.2
+ 4.7 Top wall	8.62	292.20
+ 9.9 E. Edge S. End cmt. walk	6.96	293.86
W. on " "	6.96	293.86
17' N = N. End. cmt. wall on E.		
W. on cmt. walk	6.84	293.98
+ 0.1 E. edge cmt. walk	6.84	293.98
+ 3.2 Top. cmt. wall	7.74	293.08
+ 3.3	8.5	292.3
+ 5.	9.2	291.6
⊕	9.2	291.6
+ 4.	9.2	291.6
+ 6.9	8.6	292.2
+ 7.0 Top. N. end. cmt. wall	7.78	293.04
E.	7.8	293.0
28' N		
E	7.1	293.7
+ 5	7.7	293.1
⊕	7.8	293.0
+ 5	7.7	293.1
+ 6.7	7.3	293.6

300.82

Alley BK 174.4-H.

48

+ 6.7 Top cmt. wall	6.93	293.89
+ 9.9 E. Edge cmt. walk	6.61	294.21
W. on " "	6.61	294.21
36' N = N. End. cmt. wall on W.		
41' N = N. End. of this walk See Page 48		
W. on cmt. walk at S.E. cor. int. porch.	6.44	294.36
+ 3.2 " " + N. end cmt. wall	6.58	294.24
42' N = W. end cmt. wall on W.		
W. on N. End. cmt. walk	6.30	294.52
+ 3.2 " " E. edge cmt. walk	6.36	294.46
+ 7	6.8	294.0
⊕	6.8	294.0
+ 6	7.0	293.8
E.	6.6	294.2
+ 6.1 = cmt. Apron	6.70	294.1
57' N = N. end above garages		
E-6.1 = cmt. Apron.	6.45	294.32
E.	6.2	294.6
⊕	5.9	294.9
W.	5.6	295.2
70' N. str. double garage on W. cmt. floor		
W-8 floor	5.5	295.3
W	5.6	295.2
⊕	5.5	295.3
E	5.7	295.1

22' Back

This Garage gone

300.82

101' N. ctr. double garage on E. cmt. floor 5.4 Back.

E-5.4 floor	4.33	296.39
E	4.3	296.8
☼	4.5	296.3
W.	4.3	296.8

111' N. = S. End. Double garage on E. cmt. floor 5.5 Back

W	4.1	296.7
☼	4.3	296.5
+9.5 = W. edge cmt. apron	3.82	292.00
E on " "	3.80	292.02
+5.5 floor	3.73	292.09

131' N. = N. end above garages.

E-5.5 floor	3.71	292.11
E. on cmt apron	3.82	292.00
+0.5 = W. edge " "	3.83	296.99
☼	3.7	292.1
W.	3.7	292.1

N. End. cmt. apron on E. 0.5 in Alley

136' N. S. " cmt wall on S. line

0.5 W. of E. line on cmt. apron.	3.65	292.12
160' N.		

W.	2.6	298.2
☼	2.7	298.1
E N. End. above wall	2.7	298.1

189' N. S. End Double garage on W. cmt. floor 5.4 Back

E	1.8	299.0
☼	2.1	298.2
W	2.2	298.6

300.82

Alley Bill. 174. 4.H.

189' N. (con)

49

W+0.4 = E. edge cmt. apron	2.16	298.66
W+5.4 = floor	2.00	298.82
210' N. = N. end. above garage.		

☼ Pipe + Wire Mesh fence on E. 0.7 in Alley

W-5.4 floor	1.95	298.87
-------------	------	--------

W-0.4 E. edge cmt. apron	2.00	298.82
--------------------------	------	--------

W.	2.0	298.8
----	-----	-------

☼	1.8	299.0
---	-----	-------

+9.3 S. End. of fence	1.6	299.2
-----------------------	-----	-------

E	1.6	299.2
---	-----	-------

250' N.

E.	0.7	300.1
----	-----	-------

E+1. Pipe + Wire Mesh Fence	0.7	300.1
-----------------------------	-----	-------

☼	1.2	299.6
---	-----	-------

W.	1.2	299.6
----	-----	-------

T.P.	7.12	306.99	0.95	299.87
------	------	--------	------	--------

260' N. =				
☼ N. End. Pipe + Wire Mesh Fence	1.0	in Alley.		
☼ S. End. Wood. + Wire Mesh Fence	0.7	in Alley.		

265' N.

W	7.3	299.7
---	-----	-------

+5	6.9	300.1
----	-----	-------

☼	7.0	300.0
---	-----	-------

E.	6.8	300.4
----	-----	-------

300' N.

E	6.2	300.8
---	-----	-------

E+0.3 = Fence	6.2	300.8
---------------	-----	-------

☼	6.3	300.7
---	-----	-------

W.	6.3	300.7
----	-----	-------

306.99

311' N.

⊕ Top M.H. Rim	6.13	300.56
----------------	------	--------

340' N

W.	6.5	300.5
----	-----	-------

⊕	6.3	300.2
---	-----	-------

+ 9' 5" Fence	6.0	301.0
---------------	-----	-------

E	6.0	301.0
---	-----	-------

400' N.

E	5.7	301.3
---	-----	-------

+ 0.9" = Fence	5.9	301.1
----------------	-----	-------

+ 5	6.4	300.6
-----	-----	-------

⊕	6.5	300.5
---	-----	-------

W.	6.7	300.3
----	-----	-------

409' N. = S. End. cmt. Wall on E. 1.2 lb Alley ✓ ✓

E + 1.2 Top wall	5.3	301.7
------------------	-----	-------

E + 1.2 ground.	5.7	301.3
-----------------	-----	-------

444' N. = N. End. above wall. 1.3 in alley

E + 1.3 Top wall	5.3	301.7
------------------	-----	-------

E + 1.3 ground.	5.7	301.3
-----------------	-----	-------

446' N garage on W. dirt floor 3' Back.

W - 3 floor	7.0	300.0
-------------	-----	-------

W.	6.6	300.4
----	-----	-------

+ 5	6.2	300.8
-----	-----	-------

⊕	6.1	300.9
---	-----	-------

E.	5.4	301.2
----	-----	-------

306.99

Alley BIK 174 U.H.

452' N. garage on E. dirt floor 1.3 Back

E - 1.3 floor	5.7	301.3
---------------	-----	-------

457' N.

E	5.7	301.3
---	-----	-------

⊕	6.1	300.9
---	-----	-------

W.	6.2	300.8
----	-----	-------

468' N. garage on W. cmt. floor 2.5 Back.

W. - 2.5 floor	6.2	300.8
----------------	-----	-------

W.	6.1	300.9
----	-----	-------

+ 4	5.7	301.3
-----	-----	-------

⊕	5.6	301.4
---	-----	-------

E.	4.8	302.2
----	-----	-------

480' N.

E	4.6	302.4
---	-----	-------

+ 2	5.0	302.0
-----	-----	-------

⊕	5.2	301.8
---	-----	-------

W.	5.6	301.4
----	-----	-------

503' N. garage on E. cmt floor 4.2 Back.

W	5.0	302.0
---	-----	-------

⊕	4.8	302.2
---	-----	-------

E	4.7	302.3
---	-----	-------

+ 4.2 floor.	4.6	302.4
--------------	-----	-------

518' N. ctn double garage on W. cmt. floor 2.1 Back

E	4.5	302.5
---	-----	-------

⊕	4.8	302.2
---	-----	-------

+ 8.8 E. edge cmt. apron.	5.22	301.77
---------------------------	------	--------

W. on " "	5.30	301.69
-----------	------	--------

+ 2.1 floor	5.16	301.83
-------------	------	--------

50

306.99

536' N S. End. cmt. apron Double garage one cmt. floor 0.2 Back.

W.	4.9	302.1
⊕	4.9	302.1
+ 7.3 = w. edge cmt. apron	4.2	302.57
E. on " "	4.05	302.94

558' N. N. End above garages.

E. floor	4.33	302.66
+ 2.7 = w. edge cmt. apron	4.61	302.38
⊕	4.9	302.1
W.	5.2	301.8

585' N

W	5.7	301.3
⊕	5.2	301.8
+ 3	5.0	302.0
+ 8.8 = w. wall. of shed	3.3	303.2

573' N. = S. End. shed on E. 1.0' in alley.  
This shed is gone

6400

0.9 W. of E. line shed. shed gone	3.5	303.5
E + 3'	4.2	302.8
⊕	5.5	301.5
+ 6	6.2	300.8
W.	6.1	300.9

609.9 N. = S. line Polk Ave

W. cmt. ch.	6.09	300.90
W. pavmt.	6.15	300.84
⊕	6.05	300.94

306.99

Alley BIK 174.2.H.

+ 9' on ground at N.W. cor shed.	4.2	302.8
T.P.	11.65	312.98
E. pavmt.	11.42	301.56
E. cmt. ch.	11.01	301.97

14' N. of S. line = S. ch. line Polk.

E. Top ch	11.15	301.83
E. gutter pavmt.	11.86	301.12
⊕ " "	12.35	300.63
W " "	12.77	300.21
W. cmt. ch.	12.33	300.65

R.M. B.P.	3.07	309.92
-----------	------	--------

T.P.	8.23	318.10
3.11		309.87

T.P.	10.26	327.68
0.64		317.47

chk R.M. B.P.

2.72	324.96	= 324.95
------	--------	----------

S.E. Polk  
+ MISSISSIPPIS.E. T. 496  
+ Polk

See Page 68

Plotted GEB 5'-5.32

51

indexed  
c.s.k.

Survey for proposed Site of  
San Diego Gun Club

P.L. 1203

p 53 & road levels to site

p 55 stadia survey

Moore  
S. 2301  
Northport  
2-21-36



± Levels on proposed Road  
to Site of Gun Club.

±

53

4+00

9.0

3+00

7.1

2+00

5.3

1+00

3.6

+35

4.3

+27 build 12" Culv. parallel with ex. paving strip

$\frac{80}{30}$

6.6

$\frac{61}{30}$

all rods on  
hard pan

+20

5.3

+10 Wly edge pav.

5.25

0+00 = Δ 93°58' Lt. E of Linda Vista pav.

5.75

0+00 - 50

7.18

T.P. 12.83 383.37 0.91 370.54

383.37

T.P. 8.53 371.48 0.67 362.95

T.P. 10.45 363.64 3.58 353.17

S&B.P. 2.14 356.75 354.61

Linda Vista  
Home



T #1 at Hub 4.6 ✓ 378.75

T #2 " " 4.25 379.14

10+00 = A 1350' RY at Hub. 90° with ± lease

9

T.P. 4.7 383.37 - 1.36 379.70

8

7

+50

6+00

+71

+10 Build 12" Cul. at 90° with ±

5+00

T.P. 8.6 380.56 11.37 372.00  
383.37

54

374.11 Hub

at Hub 16.1 14.3 11.4 8.0 220.27  
300 500 100 100 100 100 100 100  
8.5 8.7 6.4 8.96  
100 200 300 400 = T #3  
at Hub

5.7

383.37

2.7

4.9

4.3

6.6

8.8

9.8  
20

9.0

8.5  
20 = 11/17

9.0

380.56

Stadia Contour Survey  
 S.D. Gun Club Site PL 1203  
 Note! HZ. & V. taken Clockwise.  
 Beg. Series #1

378.75 = El. 2<sup>nd</sup>  
 5.13  
 373.88 = HI.

F.S. on 10+00

= Middle cross hair

T #1	HZ.	V. A	Upper	Rod S.I. <sup>3</sup>	Lower	Slope DISTANCE	Diff. El.	Corr. DIST.	Elev
	20° 50'	-0° 28'	6.13	"		200'	-1.63	200	373.12 # 6007
	" "	0° 00'	5.60	"		94'	0.0	94	378.75
	44° 03'	+0° 10'	6.23	"		220'	+0.64	220	373.39 6 007
	" "	+0° 05'	5.71	"		116'	+0.17	116	378.92
	" "	+0° 15'	5.41	"		56'	+0.24	56	378.99
	64° 40'	+0° 30'	5.39	"		52'	+0.45	52	379.20
	" "	+0° 18'	5.61	"		96'	+0.50	96	379.25
	" "	+0° 28'	5.88	"		150'	+1.22	150	379.97
	" "	+0° 07'	6.17	"		208'	+0.43	208	375.18 # 6007
	85° 10'	0° 00'	6.23	"		220'	0.0	220	378.75
	" "	+0° 18'	5.85	"		144'	+0.76	144	379.51

Could not see rod with  
 lower cross hair acct. of brush  
 2 x diff. of upper & middle hair = Dist.  
 or Slope

signifies rod was  
 held 4' above ground, etc.  
 account of brush too high  
 to set middle cross hair  
 on rod of 5.13

38	83.88 = HZ.	HZ.	V. A	Upper	Rod	Lower	Slope Distance	Diff. E.I.	Corr. Dist.	Elev.
38	T #1	85° 10'	+0° 28'	5.54	J.13		78'	+0.64	78'	379.39
		90° 00'	+0° 32'	5.44	"		62'	+0.58	62'	379.33 Taken on Line of Firing Line
		" "	+0° 34'	5.80	"		134'	+1.34	134'	380.09
		" "	+0° 23'	6.26	"		226'	+1.52	226'	380.27
		104° 30'	+0° 05'	6.33	"		240'	+0.35	240'	379.10
		" "	+0° 15'	5.87	"		148'	+0.64	148'	379.39
		" "	+0° 05'	5.54	"		78'	+0.11	78'	378.86
		120° 42'	-1° 55'	5.53	"		80'	-2.67	80'	376.08
		" "	-1° 52'	5.84	"		142'	-4.62	142'	374.13
		" "	-0° 58'	6.37	"		248'	-4.19	248'	374.56
		135° 53'	-2° 22'	6.53	"		280'	-11.55	279.5	367.20
		" "	-2° 57'	6.03	"		180'	-9.25	179.6	369.50

383.88 = H.I.

	HZ.	V. A	upper	Rod	lower	Slope Distance	Diff. El.	Corr. Dist.	Elev.
T #1	N5°53'	-3°36'	5.59	5.13		92'	-5.77	91.66'	372.98
	N5°54'	-4°47'	5.51	"		76'	-6.32	25.50'	372.43
	"	-4°45'	5.65	"		144'	-11.89	143.0'	366.86
	"	-3°58'	6.26	"		226'	-15.60	225.0'	363.15
	"	-3°43'	6.70	"		314'	-20.32	312.7'	358.43
	"	-3°27'	7.10	"		394'	-23.78	392.7'	354.97 Sly rim draw 75' more = Bot. Draw
	N69°58'	-3°20'	7.17	"		408'	-23.68	406.6'	355.07 Nly rim draw
	"	-4°14'	6.92	"		358'	-26.15	356.1'	250.60 2 boot Bot. draw
	"	-4°16'	6.55	"		284'	-21.15	282.5'	357.60 Sly rim draw
	"	-4°27'	6.17	"		208'	-16.09	206.8'	362.66
	"	-4°50'	5.89	"		152'	-12.75	150.9'	366.00
	"	-5°16'	5.58	"		90'	-8.23	89.27	370.52
	"	-3°18'	5.28	"		30'	-1.72	29.91	377.03

57

383.88.47

#1	Flt	Vs	upper	rod	lower	Slope dist.	Diff. ft.	Corr. Dist.	Elev.
	19° 20'	-2° 41'	5.27	5.13		28'	-1.32	27.94	377.43
"	"	-5° 26'	5.54	"		82'	-7.73	81.29	371.02
"	"	-4° 43'	5.93	"		160'	-13.11	158.9	365.64
"	"	-4° 28'	6.29	"		232'	-18.02	230.7	360.73 1/4" rim draw
"	"	-4° 27'	6.72	"		318'	-24.70	316.2	354.05 Bot. draw
"	"	-2° 58'	7.00	"		374'	-19.33	373.1	359.42 1/4" rim draw
"	"	-1° 55'	7.33	"		440'	-14.71	439.5	364.04
"	205° 43'	-1° 34'	7.28	"		430'	-11.75	429.7	367.00
"	"	-2° 46'	6.88	"		350'	-16.87	349.2	361.88 1/4" rim draw
"	"	-4° 18'	6.63	"		300'	-22.43	298.4	356.32 Bot. draw
"	"	-4° 10'	6.22	"		218'	-15.80	216.8	362.95 1/4" rim
"	"	-4° 50'	5.85	"		144'	-12.09	143.0	366.66
"	"	-4° 53'	5.36	"		46'	-3.90	45.67	374.75

58

323.880 H1

#1	Ht.	V. A	Upper	Rod	Lower	Slope Dist.	Diff. Fl.	Corr. Dist.	Elev.
	205° 43'	-2° 30'	5.25	5.13		24'	-1.05	23.95	377.70
	238° 10'	-1° 21'	5.25	"		24'	-0.57	24'	378.18
	" "	-1° 01'	5.71	"		116'	-8.13	115.4	370.62
	" "	-2° 25'	6.23	"		220'	-9.27	219.6	369.48
	" "	-2° 30'	6.50	"		274'	-11.94	273.5	366.81 Sly rim draw
	" "	-2° 11'	6.77	"		328'	-12.48	327.5	361.27 Dot. draw 5' boot
	" "	-1° 16'	7.14	"		398'	-8.80	398	369.75 Nly rim draw
	251° 20'	-0° 59'	7.37	"		448'	-7.70	448	367.05 Nly rim 4' boot
	" "	-1° 29'	7.02	"		378'	-9.78	377.8	362.97 Dot. draw 6' boot
	" "	-1° 39'	6.53	"		280'	-8.06	279.8	370.69 Sly rim draw
	" "	-1° 40'	6.14	"		202'	-5.87	201.8	372.88
	" "	-3° 45'	5.70	"		114'	-7.45	113.5	371.30
	" "	-1° 55'	5.29	"		32'	-1.08	32	377.67

59

38388 = H.1.

#1	Hz.	V.A.	upper	rod	Lower	Slope Dist.	Diff. E/.	Corr. Dist.	Elev. Notes
	270° 00'	-1° 33'	5.24	5.13		22'	- 0.60	22	378.15 Line of Fire line
"	"	-3° 45'	5.64	"		102'	- 6.63	101.6	372.12 " "
"	"	-1° 40'	6.09	"		192'	- 5.58	191.8	373.17 " "
"	"	-0° 38'	6.41	"		256'	- 1.72	256	377.03 " "
"	"	-0° 05'	6.67	"		304'	- 0.35	304	375.40 3' boot " "
	278° 50'	+0° 36'	6.62	"		298'	+ 3.12	298	376.87 5' boot approx. high PT. K1011
"	"	-0° 41'	6.30	"		234'	- 2.79	234	375.96
"	"	-1° 58'	5.94	"		162'	- 5.60	161.8	373.15
"	"	-3° 31'	5.62	"		98'	- 6.00	97.63	372.75
"	"	-1° 46'	5.30	"		34'	- 1.06	34	377.69
	292° 50'	-1° 47'	5.30	"		34'	- 1.07	34	377.68
"	"	-2° 56'	5.68	"		110	- 5.62	109.7	373.13
"	"	-1° 28'	6.03	"		180'	- 4.01	179.9	374.14

60

382.88 = H1

#1	$\alpha$	Az.	V. a	Upper	Rod	Lower	Slope Dist.	Diff. El.	Corr. Dist.	Elev.
		292° 50'	-0° 23'	6.46	5.13		266'	-1.78	266	376.97
		" "	-0° 23'	6.91	"		356'	-2.39	356	376.36
		315° 27'	-0° 16'	6.95	"		364'	-1.70	364	377.05
		" "	-0° 45'	6.42	"		258'	-3.38	258	375.37
		" "	-1° 41'	5.90	"		154'	-4.52	153.9	374.23
		" "	-1° 45'	5.57	"		78'	-2.38	77.9	376.37
		" "	-1° 10'	5.29	"		32'	-0.65	32	378.10
		330° 15'	-0° 48'	5.27	"		28'	-0.37	28	378.38
		" "	-0° 57'	5.50	"		74	-1.23	74	377.52
		" "	-0° 58'	5.89	"		152	-2.56	152	376.19 Approx. site Club House
		" "	-0° 35'	6.23	"		220	-2.24	220	376.51
		" "	-0° 04'	6.68	"		310	-0.36	310	378.39
		348° 40'	-0° 05'	6.59	"		292	-0.42	292	378.33

61



383.88

#1 π	Hz	V. s	Upper	Rod	Lower	Slope Dist	Diff. El.	Corr. Dist.	Elev.
	348° 40'	-0° 09'	6.20	5.13		214	-0.56	214	378.19
"	"	-0° 20'	5.81	"		136	-0.79	136	377.96
"	"	+0° 20'	5.41	"		56	+0.33	56	379.08
	360° = 0° 00'	-0° 08'	5.47	"		68	-0.16	68	378.59
"	"	-0° 23'	6.21	"		216	-0.45	216	378.30 last shot of series #1

579.10 = Elev  
5.28  
384.50 = H.I. F.S. on #1 π

A turned blackwood

#2 π	Hz	V. s	Upper	Rod	Lower	Slope Dist	Diff. El.	Corr. Dist.	Elev.
	63° 00'	-0° 23'	5.37	5.08		58'	-0.39	58	378.73 beg. series #2
"	"	-1° 41'	5.69	"		122	-3.59	122	375.53
"	"	-1° 55'	6.14	"		212	-7.09	211.8	371.03 / 6007
"	"	-1° 51'	6.64	"		312	-10.07	311.7	369.05
	85° 44'	-1° 31'	6.75	"		334	-8.83	333.8	370.29
"	"	-2° 30'	6.36	"		256	-11.15	255.5	367.97

62

384.20=H.1

#27	Ht.	V.A	upper	rod	lower	Slope Dist.	Diff. E.	Corr. Dist.	Elev.
	85°44'	-2°39'	5.98	5.08		180'	-8.31	179.7	370.81
"	"	-3°08'	5.58	"		100	-5.46	99.7	373.66
"	"	-1°02'	5.27	"		38	-0.69	38	378.43
	110°24'	-2°36'	5.26	"		36	-1.63	35.93	377.49
"	"	-4°06'	5.69	"		122	-8.71	121.4	370.41
"	"	-2°53'	6.25	"		234	-11.76	233.4	367.36
	130°50'	-3°47'	5.98	"		180	-11.85	179.3	367.27
"	"	-4°16'	5.60	"		104	-7.71	103.4	371.41
"	"	-3°30'	5.25	"		34	-2.07	33.87	377.05
	168°00'	-3°42'	5.27	"		38	-2.45	37.84	376.67
"	"	-3°34'	5.65	"		114	-7.08	113.6	372.04
"	"	-3°00'	6.03	"		190	-9.93	189.5	369.19
	188°30'	-2°17'	6.14	"		212	-8.44	211.7	370.68

63

384.20 = H.I.

#2 T	HZ.	V. a	Upper	Rod	lower	Slope Dist.	Diff E.L.	Corr. Dist.	Elev.
	188° 30'	-2° 48'	5.72	5.08		128'	-6.24	127.7	372.88
"	"	-4° 00'	5.33	"		50'	-3.48	49.76	375.64
	216° 26'	-4° 02'	5.30	"		44'	-3.09	43.79	376.03
"	"	-3° 22'	5.06	"		116'	-6.80	115.6	372.32
"	"	-2° 48'	6.04	"		192'	-9.37	191.6	369.75
"	"	-2° 43'	6.47	"		278'	-13.16	277.4	365.96
	239° 43'	-4° 18'	6.28	"		240'	-17.94	238.7	361.18
"	"	-4° 35'	5.85	"		154'	-12.27	153.0	366.85
"	"	-4° 18'	5.54	"		92'	-6.88	91.51	372.24
"	"	-4° 04'	5.24	"		32'	-2.26	31.84	376.86
	267° 40'	-3° 13'	5.21	"		26'	-1.46	25.92	377.66
"	"	-5° 22'	5.72	"		128'	-11.92	126.9	367.20
"	"	-5° 29'	6.09	"		202'	-19.21	200.2	359.91

last shot on Serras #2

37441 = El.  $\pm$  10' M of  
 37936 = H.I.

Reg. Series #3  
 take clockwise

#3 T.	Az.	V. A	upper	Rod	lower	Slope Dist.	DIFF. El.	Corr. Dist.	Elev.
	34° 50'	+0° 42'	5.39	5.15		48'	+0.59	48'	375.00
"	"	+1° 26'	5.69	"		108'	+2.71	108	377.12
	65° 00'	-0° 38'	5.9°	"		150'	-1.66	150	372.75
"	"	-0° 05'	5.48	"		66'	-0.10	66	374.31
	90° 00'	-1° 25'	5.46	"		62'	-1.53	62	372.88
"	"	-1° 35'	5.86	"		142'	-3.92	141.9	370.49
"	"	-2° 02'	6.09	"		188'	-6.67	182.8	367.74 Sly rim draw
"	"	-2° 12'	6.30	"		230'	-8.82	229.7	364.59 Bot. draw 1'6007

2-3-39  
MillerX Sec. Nutmeg St. 32<sup>nd</sup> West 3.94 Indexed  
26.2' wide c.s.k.

286.28

66

A.M.B.P.	0.10	294.18	294.08	N.E. Nutmeg + Bancroft.	±	4.8	281.9
T.P.B.P. Pub. Co.	2.07	286.28	284.21	32 <sup>nd</sup> + Bancroft	N	3.0	283.3
	0 + 00 = W line 32 <sup>nd</sup>					0 + 75	
N		1.0	284.68		N	4.3	282.0
+ 1: N. E. W. End,		1.42	284.66		±	6.6	279.7
gutter pav. "		2.13	284.15		+ 8	8.2	278.1
+ 131 = ± 4 11 W		2.18	284.10		S	10.8	275.5
± + 11 gutter pav. W. End		2.80	283.48 ✓		+ 7	13.0	273.3
" " ch. " "		2.34	283.24		+ 25	23.0	263.3
S.		2.1	284.2			1400	
	0 + 60 W.			S-13		13.0	273.3
S-10		4.0	282.3	S-6		9.4	276.9
S		1.4	284.9	S		8.8	277.5
±		1.1	285.2	±		6.3	280.0
N		1.4	284.9	N		3.7	282.6
	0 + 25					1425	
N		1.8	284.5	N		3.4	282.9
±		2.0	284.3	±		5.6	280.7
+ 7		2.2	284.1	S		8.5	277.8
S		6.5	279.8	+ 8		16.0	276.3
+ 6		10.0	276.3			1450	
+ 15		14.0	272.3	S-7		12.4	273.9
	0 + 50			S.		10.4	275.9
S-22		22.8	263.5	+ 6		7.8	278.5
S		11.3	275.0	±		6.3	280.0
+ 10		4.8	281.5	N		4.1	282.2

286.28

1+75

N	4.2	282.1
E	7.1	279.2
+6	9.2	277.1
S	13.0	273.3
+15	20.0	266.3

2+00

-15	18.8	267.5
S	13.5	272.8
E	7.6	278.7
N	5.5	280.8

2+25

N	6.9	279.4
E	9.2	277.1
S	15.0	271.3
+13	19.8	266.5
+25	26.4	259.9

2+50

S-30	33.0	251.3	253.3
S	19.0	265.3	267.3
+6		268.3	270.3
E	14.0	270.3	272.3
N	8.5		272.8

T.P.	1.70	275.29	12.49	273.59
------	------	--------	-------	--------

275.29

2+75

N	2.3	273.0	
E	6.6	268.7	
S	13.0	262.3	
+13	19.6	255.2	
+30	25.2	250.1	
+46	wash	24.5	246.8

2+85 W=P.

-40	25.8	246.5
-30	25.2	250.1
-15	23.2	252.1
S	16.1	259.2
E	9.2	265.1
N	5.6	269.7

3+00

N	13.0	262.3
---	------	-------

2+85 W=RL

N+25		00	275.3	
T.P.	10.65	285.48	0.46	274.83
N+40		6.6	278.9	
N+75		3.2	282.3	
N+100		1.3	284.2	
N+150		+1.5	282.0	
N+200		+3.5	289.0	
T.P.	7.90	292.29	0.49	284.99
B.P. PL. Cor	32.2	284.22	8.67	284.22

67

2-4-39  
Miller  
Walker  
Bliss

Ret See. Alley BIK 174 U.H.  
See Page 47 for Original

6.71 300.95 294.24

New. 0+62 N = S. End. Garage on W. dirt floor 4.9' Back

W - 4.9 = S.E. Cor Garage floor 4.42 296.53

W - 0.9 = S.E. Cor. cnt. Apron 5.39 295.56

1+0.1 N

0.9' W. of W = E. Edge cnt. Apron 4.41 296.54

4.9 " " " = " " garage 4.41 296.54

1+0.9 N = N End above garage bldg on W New.

4.9 W of W = N.E. Cor. apron - bldg 4.27 296.68

0.9 " " " = N.E. " cnt apron. 4.30 296.65

T.P. 7.00 307.33 0.62 300.33

3+40

W 6.8 300.5 OK

+10' W. 7.1 300.2

4+00

W 7.0 300.3 OK

W+4W = E. side House 7.3 300.0

4+57

W 6.5 300.8 OK

+5' W. 7.0 300.3

New 4+98 = S. End. double garage on E cnt. floor 4.2' Back

E-2.7 4.67 302.66

E-4.2 = floor 4.40 302.93

307.33

5+07 = N. End above garage on E.

68

E-4.2 = floor 4.43 302.90

E-2.7 = W. edge cnt. apron. 4.64 302.69

New. 5+68 garage on W. dirt floor 10' Back

W-1.0 = floor 5.9 301.4

W 5.8 301.5

4 5.5 301.8

+3 5.3 302.0

E 3.5 301.8

5+80

E 3.9 303.4

+5 4.7 302.6

+8 5.6 301.7

4 5.6 301.7

W 5.8 301.5

+3 6.4 300.9

6+09.9 N = S. Line Polk. Ave.

E S. End. Pav 6.39 300.94 OK

P.L. North of Notman  
See Page 66

Top Curb Palm Est 32	5.6	301.9	296.3
E.P.L. 17' Pt. on Olive St.	9.75	292.15	on cont. Man
87' S.	12.8	279.1	
50' S. St.	4.2	292.65	288.4
on 17' Pt.	0.5	292.65	292.15
50' W on Olive on 17' Pt.	3.2		289.45
95' W on Olive	4.6		288.05
120' W on Olive	6.1		286.3
50' S on W	8.1		284.5
50' S. E	6.9		285.7
100 S. E	9.5		283.1
N. Alley 1+27 S E	10.5 11.4		282.1 281.2
S Alley 1+42 W	13.7 16.5		278.9 276.1
E	13.8		278.8
1+82 E	19.0		273.6
2+32 E 15' N	19.6 15.3		273.0 277.3
282'	22.3		270.3
on P.L. on PL 50' S Alley	12.3		280.3
N.L. Alley 100 S. Alley	7.4 6.4		285.2 286.2

3 50 W Olive  
6 50 W  
3120 W  
130 W  
1170 W  
58' H. N.D.  
H. 95  
H. 100  
H. 50

2.1	294.25	292.15
6.2		288.05
8.8		285.45
10.8		283.45
11.9		282.35
15.0		279.25
9.8		284.45
7.7		283.45
7.7		286.5
4.0		290.2
4.6		289.6
.1		294.4

N. on P.L.	.1		294.4
50' S. 50' W.P.L.	7.8		287.4
100' S.	9.3		284.9
150' S.	12.0		282.2
105.	17.		274.2
on cur	7.2	293.35	292.15
50' W.	5.1		288.25
	11.7		281.65

69

290.6





3-10-39  
miller  
Walker  
Bliss

Frang Hts Prelim Sewers  
"A" Line & Alley BIK. 15

Est Top Post  
S.W.C. 2810

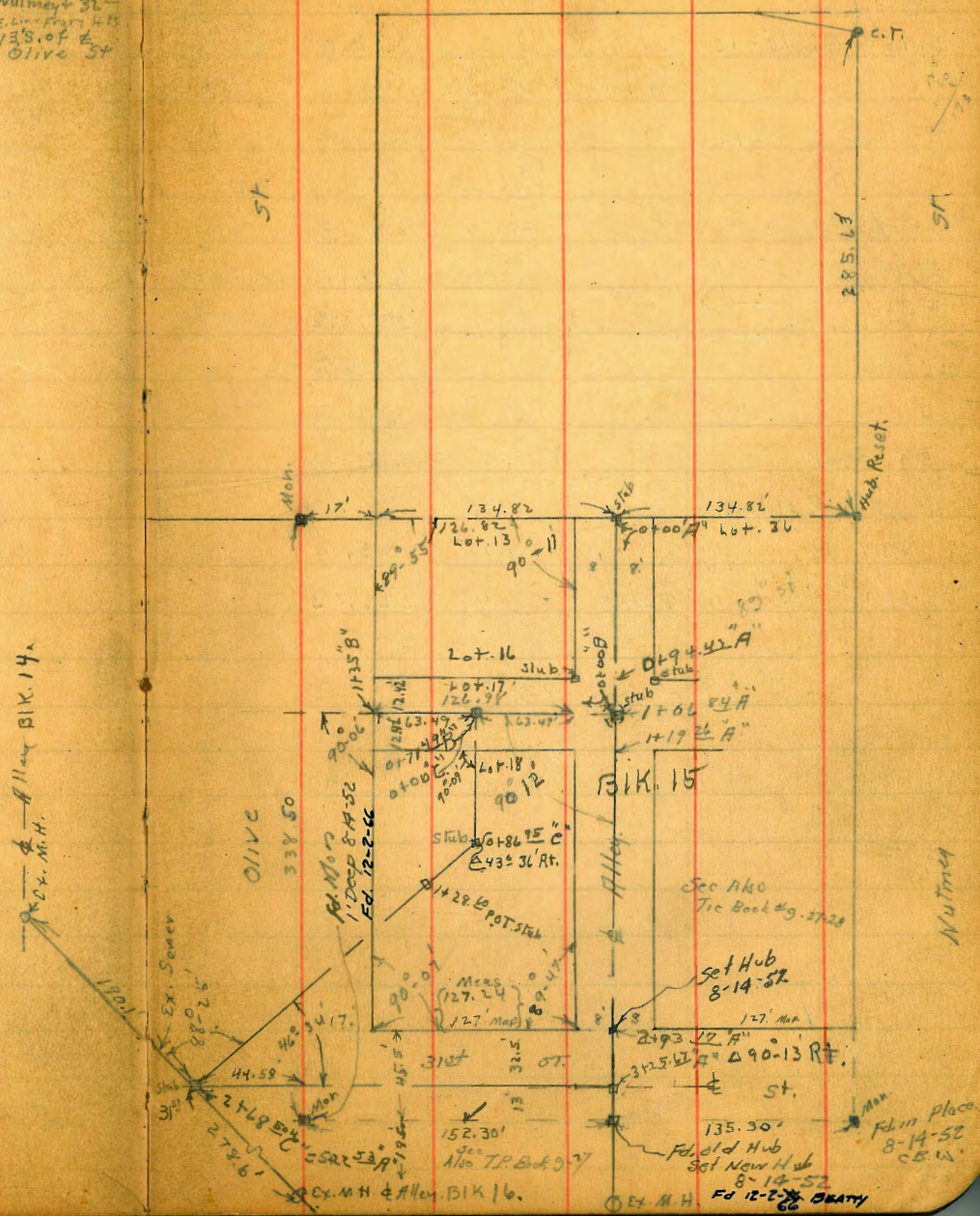
Indexed  
C.S.K.

32<sup>nd</sup>

ST

Pueblo Cor  
Nutmeat 32<sup>nd</sup>  
E. Line Frang Hts  
135' of E  
Olive St

B.M. B.P. pay	10.70	294.91		294.21
Set B.M. Mon			3.09	291.82
0+00 = stub E. Line Frang Hts & Alley			8.61	286.30
0+50 W.			12.4	282.51
T.P.	1.22	283.76	12.37	282.54
1+00			5.2	278.56
1+06 <sup>84</sup> & stub			6.48	277.28
T.P.	7.64	284.92	6.48	277.28
1+28			10.5	274.42
+47			15.7	269.2
T.P.	0.23	272.47	12.64	272.24
T.P.	0.26	260.05	12.68	259.79
1+90			14.8	245.25
1+90	3.17 of E		17.8	242.25
2+10			17.1	242.95
T.P.	0.17	246.96	13.26	246.79
2+50			6.3	240.66
3+00			8.9	238.06



"A" Line & Alley Bk. 13

246.96

3+17			10.8	236.16	
3+25 <sup>67</sup>	Δ 90°-13'	RT. & 31 <sup>st</sup> St	13.03	233.93	& stub
		"A" Line & 31 <sup>st</sup> St.			
T.P.	0.47	234.40	13.03	233.93	
3+45			+0.4	234.8	
3+75			3.0	231.4	
3+75	3' LT		7.2	227.2	
4+00			7.7	226.7	
4+50			7.7	226.7	
5+00			7.0	227.4	
5+01	s. side wash		9.2	225.2	
4+18	" " " "		9.2	225.2	
4+22 <sup>53</sup>	{ & 31 <sup>st</sup> St } { Ex. sewer }	& stub	7.67	226.73	

F Line = 221.5

if str. good  
bet. mh.

See Page 73

Walker Elevations Newly Const. Sewer  
Bliss  
Benzidine M.H. And exposed ends  
4-25-39  
Frory Hts.

B.P. on Mass Page 71	1.74	293.56		291.82	
T.P.	0.77	282.51	11.82	281.74	
8' South of 0+00 "B" line Page 71 = 80' South of Newly Const M.H. which is 0+71.99 P-71					
Flowline		11.73	270.78	D.E.	
0+71.99 "B" line p-71		12.87		M.H.	
T.P.	7.47	277.58	12.40	270.11	
0+86.95 "C" line p-71		9.29		Δ in sewer Flowline	
T.P.	4.84	280.61	1.81	275.77	
chk. on ground 1+47-P-71		11.3	269.3	✓	

73

"B" Line  $\perp$  Lot 17 =  $\perp$  25' N+S. Alley proposed.

248.33

244.92

0+00 B = 1+06 <sup>4"</sup> A 7.64 277.28  
 0+25 North 4.9 280.02  
 0+71 <sup>4"</sup> B = 0+00 C  $\perp$  stub 3.02 281.90  
 1+00 1.8 283.12  
 1+35 <sup>4"</sup> B S. Line Olive 0.8 284.12

2+05 10.5 237.83  
 T.P. 2.36 238.19 12.50 235.83  
 2+30 8.7 229.49  
 2+50 10.0 228.19

73

"C" Line = split of Lots bet. Olive + Alley S. of Olive

0+00 C = 0+71 <sup>4"</sup> B E stub 3.02 281.90  
 0+25 West 4.8 280.12  
 0+55 8.6 276.32  
 0+70 11.8 273.12

2+51 S. sidewalk 12.4 225.79  
 2+65 12.6 225.59  
 2+68 <sup>50</sup> C = Ex. Sewer  $\perp$  stub 11.46 226.73  
 = 5+22 <sup>53</sup> A  
 190.1' N.C. of 2+68 <sup>50</sup> = Ex. M.H. Top Rim 4.10 234.09  
 " " " " " " F.L. 9.08 227.11

H. str. g. vol. bet. m.h.s = 226.73  
 E. line = 221.5  
 } Alley BIK. 14.

T.P. 0.23 272.47 12.68 272.24

T.P. 2.10 227.39 12.90 225.29

0+86 <sup>85</sup> C =  $\Delta$  43° 36' Rt. 0.97 271.50  $\perp$  stub

278.6 S.W. of 2+68 <sup>50</sup> = Ex. M.H. Top Rim 7.58 219.81  
 " " " " " " F.L. 13.58 213.81

} Alley BIK. 16

0+95 1.5 270.97  
 1+28 <sup>6</sup> 6.4 266.07

T.P. 0.34 260.31 12.50 259.97

1+78 12.8 247.51

T.P. 0.94 248.33 12.92 247.39

Proposed Sewer at Riding Academy.  
Balboa Park.

202.99

Floor of Horse Shoe Office 5.60 197.4

Level of Proposed Patio 5.60 197.4

10' N.E. at End, stucco Wall 5.25 197.25

T.P. 2.49 198.03 2.45 195.54

0+00

0+00 Sewer ground at Bldg on fill 3.6 194.4

0+00 Nail in wall for Grade 2.43 195.60 190.75 +4.85

0+00 5' N. on fill 3.6 194.4

0+00 12' N. Nat. Gr. 7.2 190.8

0+00 24' N " " 8.8 189.2

0+50 S.Wly.

Nail in bldg for cut 4.02 194.01 189.50 +4.51

" ground fill 5.0 193.0

7' N " " 5.1 192.9

10' N " Nat. 7.1 190.9

20' N " " 8.3 189.7

1+00 S.Wly.

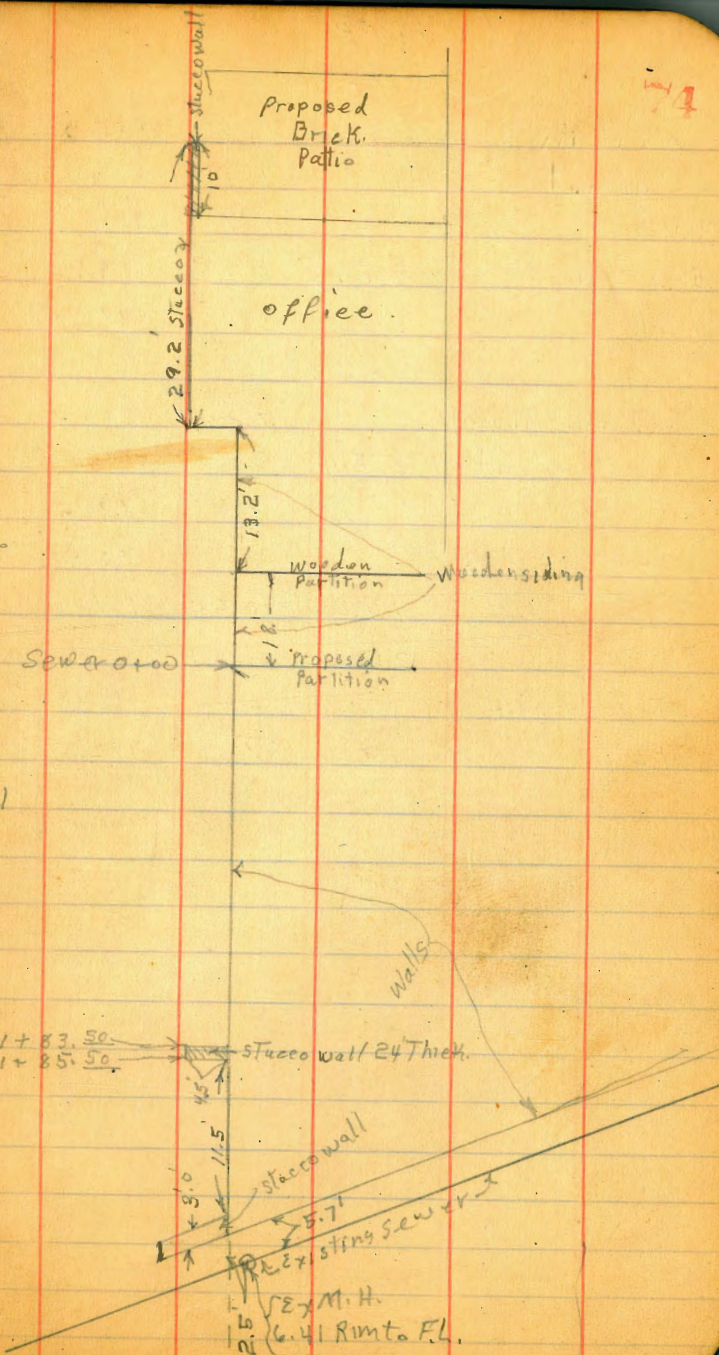
Nail in Bldg for Cut 5.37 192.66 188.25 +4.41

at Bldg ground fill 6.4 191.6

5' N.Wly. " " 7.0 191.0

10' " Nat. 8.2 189.8

20' " " " 9.2 188.8



198.03

1+50

75

Nail in Bldg for Cut	6.80	191.23	187.00	+4.23
ground at Bldg. Fill	7.7	190.3		
3.N " " Fill	7.7	190.13		
5.N " " Natural	8.9	189.1		
10.N " " "	9.4	188.6		

1+83<sup>50</sup>

Mark. on wall	7.00	191.03	184.17	+4.86
ground at Bldg. Fill	8.6	189.4		
N " " Natural "	9.8	188.2		
1+90 Brk 4 Δ		190.42	186.00	+4.42
T.P. 3.81	19/26	10.58	187.45	

2+06 = ex. M.H.

Top. of M.H.	2.28	188.98	184.00	+4.98
FL. " " " N.W. Cor Stable	6.41	182.57		
	8.67			

el. profile  
 M.H. starts at  
 Sewer from Riding  
 Stables to Cabins  
 Canyon Line

Final Alley Paving Block 174  
 University Heights  
 From Lincoln to Park Between Abbanox Miss.

INDEXED  
EFB

May 2. 40  
 Sisson  
 Hartberg  
 H Moore

Park Ave

6

20 x 60.8 = 1216.00

$\frac{20.1+20}{2} \times 24 = 481.20$

20.1 x 76 = 1527.60

$\frac{20+20.1}{2} \times 50 = 1,002.50$

minus 2' x 3'

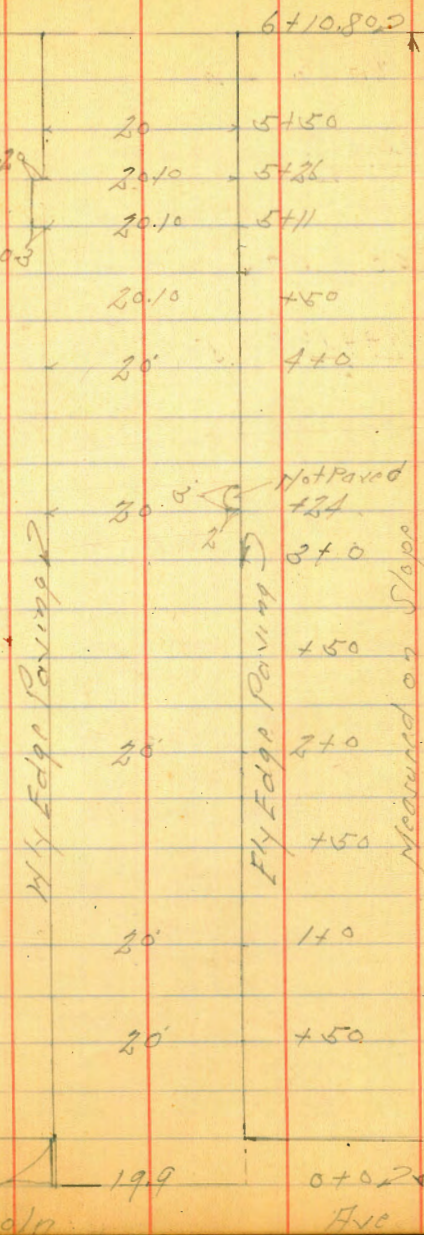
6.00

20' x 350' = 7,000.00

$\frac{19.9+20}{2} \times 50 = 997.50$   
 $\frac{12,224.80}{6.00}$

Pavement = 12,218.80

Block 174  
 University Hts



8' curb 96  
 Lincoln Ave





P.L. of Gainer & Rosecrans  
Morena Blvd to Cherry

Sherman St

INDEXED  
EFB

May 2 to  
Sisson  
Northorn  
H Moore 78

Greenwood

548.40  
LST

LST  
ST

565.11

Riley

ST

Hail Pat.

Blvd 2  
5796  
2473

ST

Gainer

Stub

Fort Stockton

Morena

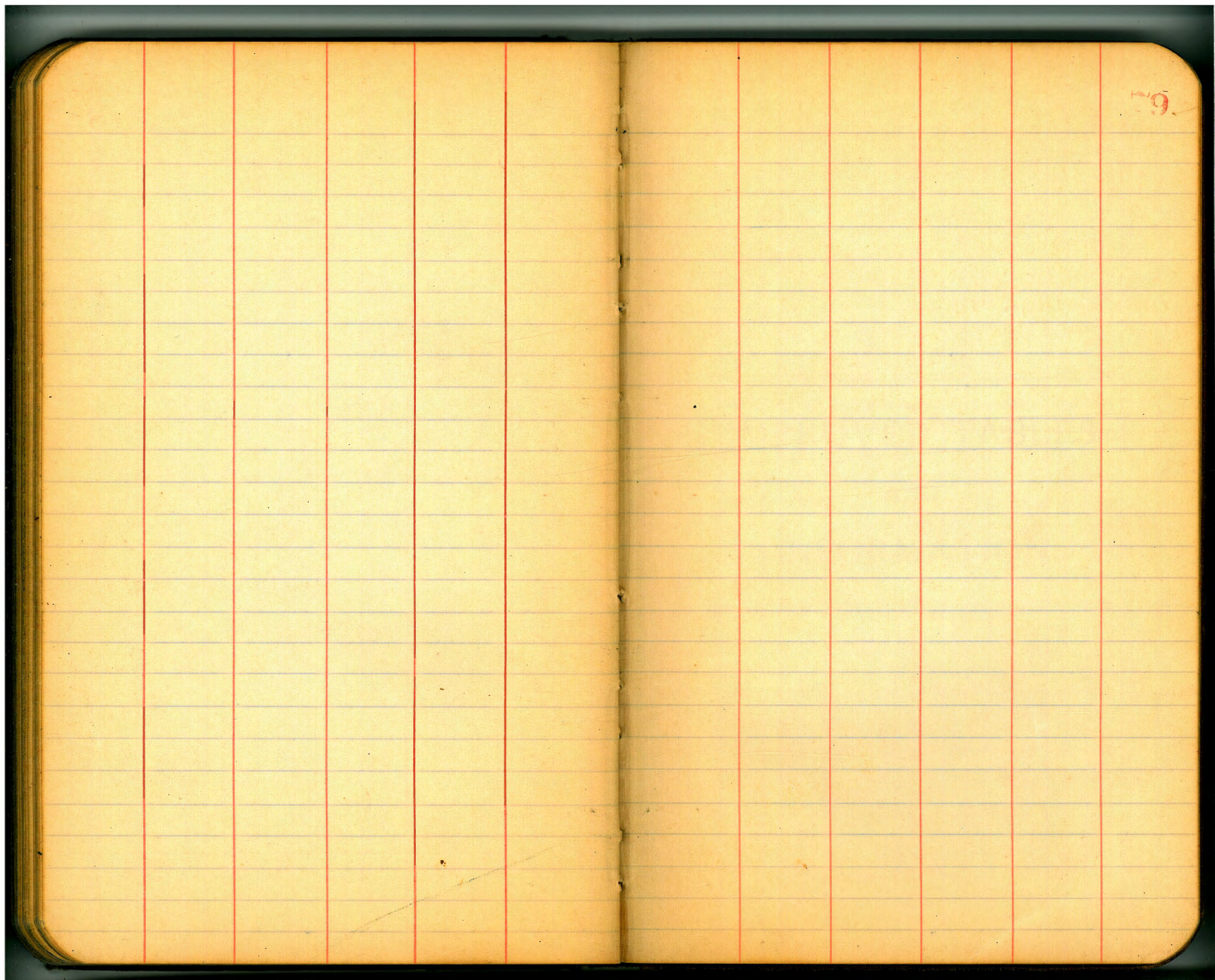
336

Cherry

Rosecrans

ST

Stub



9



205.90

Sta 115+50 30' R

M 265  
L.C. 28.20  
A.C. 29.00

179.60  
93.58  
86.02

5.0  
268.3

5 8.8  
245.3

+12.15.0

+70 22.0  
25 1.5

301.20  
307.99.0  
6.7  
300.8

307.33  
300.94  
6.39

2.6  
3.6  
6.2

3.96

1.3

7.3  
6.8

207.3  
301.5  
5.8

284.24  
11.64  
271.59  
1.70  
273.29

6.9  
277.6  
3.9

185.0  
4.625

7.3  
302.2

5.22  
3.8

264.  
27  
241  
11  
230

ENGINEERING DEPARTMENT,  
CITY OF SAN DIEGO,  
CALIFORNIA.