

1354



FIELD BOOK

No. 385F

MICROFILMED  
DEC 23 1964

Our Leather Bound Engineers Note Books are carried in the following rulings:

- No. 380 LEVEL BOOK. Left and Right Hand Page the same as Left Hand Page of this Book.
- No. 382 FIELD BOOK. Left Hand Page as in this Book, Right Hand Page 4 x 4 to the inch, Center Line Red.
- No. 384 MINING TRANSIT BOOK. Left Hand Page as in this Book, Right Hand Page 8x8 to the inch, Center Line Red.
- No. 385 FIELD BOOK. Left Hand Page as in this Book, Right Hand Page 8 vertical and 4 horizontal lines to the inch, Center Line Red.

We also carry the Note Books listed above, bound in extra strong Fabri-Hide (otherwise the same quality of book), which can be furnished at a somewhat lower price.

In ordering Fabri-Hide covered books, add the letter "F" to catalog number.

**THE FREDERICK POST CO.**  
ENGINEERING and DRAFTING SUPPLIES  
IRVING PARK STATION  
CHICAGO, ILL.

ENGINEERING DEPARTMENT  
CITY OF SAN DIEGO  
CALIFORNIA

957  
211  
248

X Sec, Del Mar	Cabina to Santa Barbara	1
" " Venice	Orchard to Coronado	8 7
" " 35 <sup>th</sup> ST	Newton to Acacia	15 2
" " Boston Ave	34 to 36	19
" " Acacia ST	Rigel to Sive	29 4
" " Cottonwood St	Sive to Pluto	35 1
		7
		8
" " N+S Alley 129 Univ. Hts		59 1
" " SICARD ST	Harrison to Iiring	61 1
		96
		50
		.9
		.7
		.6
		6.2
		6.1
		6.74
		8.77
		8.0
		8.1
		8.4
		8.7

X-Section Del Mar Ave. - Catalina to  
NW. Line Santa Barbara.  
80' Wide 20' S.W. 10' Quarters

STA	+	H.I.	-	Elev.
SW. B.P. Del Mar & Santa Barbara				250.36
	1.9W	252.28		
T.P.			12.24	240.04
	1.00	241.04		
T.P.			12.93	228.11
	1.69	229.80		
T.P. SE. Fire Hydr. Venice & Del Mar			5.64	224.16
	1.04	225.20		
T.P.			12.96	212.24
	1.15	213.39		
T.P.			13.03	200.36
	0.8W	201.18		
T.P.			13.21	187.97
	3.11	191.08		
0+00 NW. Line Pavement Catalina Blvd. - Paved				
+7.2W			4.87	186.21
✓			5.49	185.59
SW. Curb Top			5.51	185.57
Position ✓				
1/4			5.55	185.53
¢			5.66	185.42
1/4			5.9W	185.16
Position NE			6.28	184.80

Plotted  
7-2-29 J.C.

July 1<sup>st</sup> 1929  
Curbs & Side Walks  
are constructed.

Jacobs Kernan }  
Boatley }  
Clarey }

STA	+	H.I.	-	Elev.
+9.7			6.01	185.07
✓			6.66	184.42
				0+31
NE. Curb Top			5.04	186.04
✓			5.7	185.4
1/4			5.4	185.7
¢			5.3	185.8
1/4			5.0	186.1
SW. Curb Top			5.0	186.1
✓			4.1W	186.96
				0+50
SW. Curb Top			3.58	187.50
✓			4.1W	186.9
1/4			4.4	186.7
¢			4.5	186.6
1/4			4.9	186.2
NE. Curb Top			5.0	186.1
✓			4.34	186.74
				1+00
NE. Curb Top			2.31	188.77
✓			3.1	188.0
1/4			3.0	188.1
¢			2.7	188.49
1/4			2.0	188.7

191.08

Sta	+	H.I.	-	Elev.
SW Curb Bott.			2.6	188.5
✓ Top			2.09	188.99
1 + 07 <sup>25</sup> SW. Line Alley				
SW. Line Curb Top			1.61	189.47
✓ Bott.			2.1	189.0
SW. Curb Top			1.90	189.18
✓ Bott.			2.3	188.8
1/4			2.1	189.0
☉			2.3	188.8
1/4			2.6	188.5
NE. Curb Bott.			2.7	188.4
✓ Top			1.99	189.2
NE. Line Curb Bott.			2.0	189.1
✓ Top			1.74	189.34
1 + 22 <sup>25</sup> NW. Line Alley				
NE. Line Curb Top			0.83	190.25
✓ Bott.			1.5	189.6
NE. Curb Top			1.04	190.04
✓ Bott.			1.7	189.4
1/4			1.7	189.4
☉			1.5	189.6
1/4			1.3	189.8
SW. Curb Bott.			1.3	189.8
✓ Top			0.84	190.24
SW. Line Curb Top			0.59	190.49

Sta	+	H.I.	-	Elev.
Curb Bott.			1.1	190.0
T.P.	11.81	202.30	0.59	190.49
1 + 50				
SW. Curb Top			10.12	192.18
✓ Bott.			10.8	191.5
1/4			11.1	191.2
☉			11.1	191.2
1/4			11.2	191.1
NE. Curb Bott.			11.3	191.0
✓ Top			10.37	191.93
2 + 00				
NE. Curb Top			6.37	195.93
✓ Bott.			7.4	194.9
1/4			7.2	195.1
☉			7.0	195.3
1/4			7.0	195.3
SW. Curb Bott.			7.3	195.0
✓ Top			6.39	195.91
2 + 50				
SW. Curb Top			2.53	199.77
✓ Bott.			3.4	198.9
1/4			3.1	199.2
☉			3.2	199.1
1/4			2.9	199.4

2

214.23

Sta	+	H.I.	-	Elev.
NE. Curb Bott.			3.4	199.9
✓ Top			2.45	199.85
T.P.			0.16	202.14

12.09 214.23 ✓

3+00

NE. Curb Top			10.55	203.68
✓ Bott.			11.3	202.9
1/4			11.4	202.8
¢			11.3	202.9
1/4			11.3	202.9
SW. Curb Bott.			11.4	202.8
✓ Top			10.55	203.68

3+50

SW. ✓ Top			6.83	207.40
✓ Bott.			7.9	206.3
1/4			7.8	206.4
¢			7.6	206.6
1/4			7.6	206.6
NE. Curb Bott.			7.5	206.7
✓ Top			6.86	207.37

4+00

N.E. ✓ Top			2.93	211.30
✓ Bott.			3.8	210.4
1/4			3.9	210.3
¢			3.8	210.4

3

Sta	+	H.I.	-	Elev.
1/4			3.6	210.6
SW. Curb Bott.			3.9	210.3
✓ Top			2.96	211.27
T.P.			0.78	213.45

11.75 225.204

4+50

SW. Curb Top			10.05	215.15
✓ Bott.			10.8	214.4
1/4			10.9	214.3
¢			10.9	214.3
1/4			10.9	214.3
NE. Curb Bott.			10.8	214.4
✓ Top			10.03	215.17

5+00

NE. Curb Top			6.33	218.87
✓ Bott.			7.2	218.0
1/4			7.3	217.9
¢			7.3	217.9
1/4			7.2	218.0
SW. ✓ Bott.			7.2	218.0
✓ Top			6.45	218.75

5+25

SW. Curb Top			4.95	220.258
✓ Bott.			5.7	219.5
1/4			5.4	219.8

STA	+	H.I.	-	Elev.	STA	+	H.I.	-	Elev.
ϕ			5.5	219.7		0+50			
1/4			5.5	219.7	NE. Curb Top			5.82	226.17
N.E. Curb Bott.			5.6	219.6	✓ Bott.			6.6	225.4
✓ Top			4.66	220.54	1/4			6.8	225.2
	S+6v <sup>65</sup>	SW. Line Venice			ϕ			6.6	225.4
NE. ✓ Top			4.50	222.70	1/4			6.4	225.6
✓ Bott.			3.4	221.8	SW. Curb Bott.			6.4	225.6
1/4			3.6	221.6	✓ Top			5.78	226.21
ϕ			3.6	221.6		1+00			
1/4			3.6	221.6	SW. Curb Top			3.58	228.41
SW. Curb Bott.			3.9	221.3	✓ Bott.			4.4	227.6
✓ Top			3.49	221.71	1/4			4.6	227.4
Top Five Hydr.			1.0	224.20	ϕ			4.7	227.3
✓				224.16	1/4			4.7	227.3
	7.83	231.99	✓		NE. Curb Bott.			4.6	227.4
0+00	NW. Line Venice				✓ Top			3.86	228.13
SW. Curb Top			7.2v	224.17		1+50			
✓ Bott.			8.4	223.6	NE. Curb Top			1.91	230.08
1/4			8.3	223.7	✓ Bott.			2.7	229.3
ϕ			8.2v	223.8	1/4			2.4	229.6
1/4			8.3	223.7	ϕ			2.3	229.7
NE. Curb Bott.			8.4	223.6	1/4			2.2	229.8
✓ Top			7.65	224.34	SW. Curb Bott.			2.2	229.8
					✓ Top			1.4	230.6

STA	+	H.I.	-	Elev.
T.P.			0.91	231.08
	12.13	243.21	✓	
	2+00			
SW. Curb Top			10.68	232.53
✓ Bottom			11.7	231.5
1/4			11.4	231.8
¢			11.5	231.7
1/4			11.7	231.5
NE. Curb Bottom			11.2	231.0
✓ Top			11.2	232.0
	2+50			
NE. ✓ Top	15'		9.27	233.94
✓ Bottom			10.3	232.9
1/4			9.9	233.3
¢			9.7	233.5
1/4			9.5	233.7
SW. Curb Bottom			9.6	233.6
✓ Top			8.60	234.61
	3+00			
SW. ✓ Top			6.55	236.66
✓ Bottom			7.7	235.5
1/4			7.7	235.5
¢			7.8	235.4
1/4			8.0	235.2
NE. Curb Bottom			8.2	235.0

STA	+	H.I.	-	Elev.
NE. Curb Top			7.37	235.84
	2+50			
NE. ✓ Top			5.5	237.7
✓ Bottom			6.4	236.8
1/4			6.1	237.1
¢			5.7	237.5
1/4			5.6	237.6
SW. ✓ Bottom			5.5	237.7
✓ Top			4.4	238.8
	4+00			
SW. Curb Top			2.35	240.86
✓ Bottom			3.6	239.6
1/4			3.6	239.6
¢			3.8	239.4
1/4			4.2	239.0
NE. Curb Bottom			4.3	238.9
✓ Top			3.57	239.64
	4+50			
NE. Curb Top			1.62	241.59
✓ Bottom			2.4	240.8
1/4			2.0	241.2
¢			1.7	241.5
1/4			1.5	241.7
SW. Curb Bottom			1.5	241.7
T.P. ✓ Top			0.30	242.91



STA	+	H.I.	-	Elev.
	9.30	252.21	✓	
	S+00			
SW. Curb Top			7.14	245.07
✓ Bott.			8.1	244.1
1/4			8.0	244.2
¢			8.4	243.8
1/4			8.8	243.4
NE. ✓ Bott.			9.3	242.9
✓ Top			8.53	243.68
	S+50			
NE. Curb Top			6.61	245.60
✓ Bott.			7.2	245.0
1/4			6.7	245.5
¢			6.3	245.9
1/4			6.0	246.2
SW. Curb Bott.			6.0	246.2
✓ Top			4.93	247.28
60' Wide, 10' SW. 10' Quarter G+00 SW. Line Santa Barbara				
SW. Curb Top			3.03	249.18
✓ Bott.			4.2	248.0
1/4			4.2	248.0
¢			4.1	248.1
1/4			4.9	247.3
NE. Curb Bott.			5.6	246.6
✓ Top.			4.71	247.5

STA	+	H.I.	-	Elev.
	SW. Curb Line Santa Barbara			
NE. Line Curb Top			5.12	247.09
✓ Bott.			5.8	246.4
NE. Curb Top			4.75	247.46
Bott.			5.6	246.6
1/4			4.4	247.8
¢			3.8	248.4
1/4			3.5	248.7
SW. Curb Bott.			4.2	248.0
Top			2.86	249.35
SW. Line Curb Top			2.59	249.62
✓ Bott.			3.5	248.7
	SW 1/4 Santa Barbara			
SW. Line			3.0	249.2
SW. Curb			3.1	249.1
1/4			3.2	249.0
¢			3.5	248.7
1/4			3.9	248.3
NE. Curb			4.4	247.8
NE. Line			5.3	246.9
	¢ Santa Barbara			
NE. Line			4.7	247.5
NE. Curb			4.0	248.2
1/4			3.7	248.5
¢			3.4	248.8

Sta	+	H.I.	-	Elev.
1/4			3.1	249.1
SW. Curb			2.9	249.3
SW. Line			2.4	249.8
NW 1/4 Santa Barbara				
SW. Line			2.4	249.8
SW. Curb			2.9	249.3
1/4			3.1	249.1
☐			3.4	248.8
1/4			3.6	248.6
NE. Curb			4.0	248.2
NE. Line			4.5	247.7
NW Curb Line Santa Barbara				
NE. Line Curb Top			3.85	248.36
✓ Bott.			5.00	247.2
NE. Curb Top			3.90	248.3
✓ Bott.			4.4	247.8
1/4			4.0	248.2
☐			3.6	248.6
1/4			3.4	249.0
SW. Curb Bott.			2.8	249.4
✓ Top			1.85	250.36
SW. Line Curb Top			1.85	250.36
✓ Bott.			2.6	249.6

Sta	+	H.I.	-	Elev. <sup>7</sup>
NW. Line Santa Barbara				
SW. Curb Top			1.82	250.39
✓ Bott.			2.5	249.7
1/4			2.7	249.5
☐			3.1	249.1
1/4			3.6	249.6
NE. Curb Bott.			4.0	248.2
✓ Top			3.88	248.33
			1.84	250.37
SW. BP. Del Mar & Santa Barbara				
				250.36

X-Section Venice from SW Orchard  
to NE Line Coronado.

STA	+	H.I.	-	Elev.
SE. Fire Hydr. Venice & Del Mar				224.16
	1.43	225.59	✓	
	SW Line Orchard			
SE. SW Curb Top			9.28	216.31
✓ Top			9.7	215.9
1/4			8.9	216.7
☐			8.4	217.2
1/4			7.8	217.8
NW. Curb Bolt			7.6	218.0
✓ Top			6.83	218.76
	SW. Curb Orchard			
NW. Line Curb Top			6.97	218.62
✓ Bolt			7.4	218.2
NW. Curb Top			7.9	217.7
✓ Bolt			8.1	217.5
1/4			8.7	216.9
☐			9.2	216.4
1/4			9.8	215.8
SW. Curb Bolt			9.6	216.0
✓ Top			9.38	216.21
SW. Line Curb Top			9.98	216.18
✓ Bolt			10.1	215.5
	SW. 1/4 Orchard			
NW. Line			7.0	218.6
NW. Curb			7.5	218.1

Plotted 7-5-29  
F.C.

60' Wide, 10' SW, 10' Quarters

STA	+	H.I.	-	Elev.
1/4			7.9	217.7
☐			8.4	217.2
1/4			8.8	216.8
SW. Curb			9.5	216.1
SW. Line			10.0	215.6
	☐ Orchard			
SE SW. Line			9.9	215.7
SW. Curb			9.3	216.3
1/4			8.7	216.9
☐			8.3	217.3
1/4			7.8	217.8
NW. Curb			7.4	218.2
NW. Line			7.0	218.6
	NE 1/4 Orchard			
NW. Line			7.1	218.5
NW. Curb			7.4	218.2
1/4			7.7	217.9
☐			8.3	217.3
1/4			8.8	216.8
SW. Curb			9.3	216.3
SW. Line			9.8	215.8
	NE Curb Orchard			
SW. Line Curb Top			9.41	216.18
✓ Bolt			10.3	215.29
SW. Curb Top			9.23	216.36

Sta	+	H.I.	-	Elev.
SW. Curb Pkoff.			9.9	215.7
1/4			9.0	216.6
1/2			8.5	217.1
3/4			8.3	217.3
NW. Curb Pkoff.			7.7	217.9
Top			7.15	218.44
NW. Line Curb Top			6.95	218.64
0+00			7.9	
NE. Line Orchard				
NW. Curb Top			6.98	218.61
✓ Pkoff.			7.8	217.8
1/4			7.8	217.8
1/2			8.2	217.4
3/4			8.9	216.7
SE St. Curb Pkoff.			9.8	215.8
✓ Top			9.0	216.57
0+50				
SE St. Curb Top			8.05	217.54
✓ Pkoff.			8.7	216.9
1/4			7.9	217.7
1/2			7.3	218.3
3/4			6.9	218.7
NW. Curb Pkoff.			6.8	218.8
✓ Top			6.08	219.51
1+00				
NW. Curb Top			5.08	220.51
✓ Pkoff.			5.9	219.7

Sta	+	H.I.	-	Elev.
1/4			6.1	219.5
1/2			6.3	219.3
3/4			7.0	218.6
SW. Curb Pkoff.			7.6	218.0
✓ Top			7.11	218.48
1+40				
SW. Line Curb Top			6.22	219.37
✓ Pkoff.			7.1	218.5
SW. Curb Top			6.35	219.24
✓ Pkoff.			6.7	218.9
1/4			6.3	219.3
1/2			5.8	219.8
3/4			5.5	220.1
NW. Curb Pkoff.			5.1	220.5
✓ Top			4.40	221.19
NW. Line Curb Top			4.25	221.34
✓ Pkoff.			4.4	221.2
1+60				
NW. Line			4.0	221.6
NW. Curb			5.0	220.6
1/4			4.9	220.7
1/2			5.2	220.4
3/4			5.8	219.8
SW. Curb Pkoff.			6.0	219.0
✓ Top			5.99	219.6

STA	+	H.I.	-	Elev.	Sta	+	H.I.	-	Elev.
SW. Line	Curb Top		5.78	219.81	NW. Curb Top		1.77		223.82
	✓	Booth.	6.5	219.1	NW. Line Top	Sidewalk	1.03		224.56
		2+00				Ground	0.9		224.7
SW. Curb	Top		5.25	220.34		SW. Curb	Del Mar		
	✓	Booth.	5.8	219.8	NW. Line	Curb Top	1.39		224.20
1/4			5.0	220.6		✓	Booth.	2.1	223.1
¢			4.3	221.3	NW. Curb	Top	1.68		223.91
1/4			4.1	221.5		✓	Booth.	2.4	223.2
NW. Curb.	No Curb or		4.1	221.5	1/4			2.8	222.8
NW. Line	Sidewalk		3.0	222.6	¢			3.1	222.5
	2+50				1/4			3.5	222.1
NW. Line			1.7	223.9	SE SW. Curb	Booth.	3.68		221.91
NW. Curb			2.9	222.7		✓	Top	4.1	221.5
1/4			3.2	222.4	SE SW. Line	Curb Top	3.91		221.68
¢			3.4	222.2		✓	Booth.	4.3	222.71
1/4			4.0	221.6			SW 1/4	Del Mar	
SW. Curb	Booth.		4.6	221.0	SE SW. Line		4.0		221.6
	✓	Top	4.34	221.25	SW. Curb		3.60		222.0
(Only 38' between Curb.)	3+00	SW. Line	Del Mar		1/4			3.3	222.3
SE SW. Curb	Top		3.53	222.06	¢			2.9	222.7
	✓	Booth.	3.9	221.7	1/4			2.5	223.1
1/4			3.2	222.3	NW. Curb		2.2		223.4
¢			4.8	222.8	NW. Line		1.8		223.8
1/4			2.7	222.9					
NW. Curb	Booth.		2.5	223.1					

STA

+ H.I. -  
 ☐ Del Mar

Elev.

STA

+ H.I. -

Elev.

NW. Line 1.7 223.9  
 NW. Curb 2.1 223.5  
 1/4 2.4 223.2  
 ☐ 2.8 222.8  
 1/4 3.2 222.4  
 SW. Curb 3.5 222.1  
 SW. Line 4.0 221.6

NE 1/4 Del Mar

SW Line 4.0 221.6  
 SW. Curb 3.5 222.1  
 1/4 3.2 222.4  
 ☐ 2.8 222.8  
 1/4 2.5 223.1  
 NW. Curb 2.1 223.5  
 ✓ Line 1.8 223.9

NE. Curb Del Mar

NW. Line Curb Top 1.28 224.31  
 ✓ Bottom 2.1 223.5  
 NW. Curb Top 1.40 224.19  
 Bottom 2.3 223.3  
 1/4 2.6 223.0  
 ☐ 2.9 222.7  
 1/4 3.0 222.6  
 SE Curb Bottom 3.4 222.2

SW Curb Top 2.77 222.82  
 SW. Line Curb Top 2.90 222.7  
 ✓ Bottom 3.8 221.8

0+00

NE. Line Del Mar

SW Curb Top 2.37 223.22  
 ✓ Bottom 3.0 222.6  
 1/4 2.4 223.2  
 ☐ 2.0 223.6  
 1/4 1.7 223.9  
 NW. Curb Bottom 1.8 223.8  
 ✓ Top 1.21 224.4

SE. Fire Hydr. Venice & Del Mar

9.92 234.08

0+50

NW. Curb Top 7.60 226.57  
 ✓ Bottom 8.2 225.9  
 1/4 8.4 225.7  
 ☐ 8.6 225.5  
 1/4 9.0 225.1  
 SW. Curb Bottom 9.9 224.2  
 ✓ Top 9.03 225.05

1+00

SW. Curb Top 7.41 226.6  
 ✓ Bottom 8.2 225.9  
 1/4 7.5 226.6

11

± 3.4.08

12

STA	+	H.I.	-	Elev
¢			7.0	227.1
¼			6.7	227.3
NW. Curb Bottom.			6.3	227.8
✓ Top			5.52	228.56
1+40 SW. Line Alley				
NW. Line Curb Top			4.52	229.6
✓ Bottom.			5.2	228.9
NW. Curb Top			4.7	229.36
✓ Bottom.			5.6	228.5
¼			6.0	228.18
¢			6.3	227.8
¼			6.9	227.3
SW. Curb Bottom.			7.0	227.1
✓ Top			6.76	227.32
SW. Line Curb Top			6.57	227.
✓ Bottom.			7.2	226.9
1+60 NW. Line Alley				
SW. Line Curb Top			6.61	227.5
✓ Bottom.			7.4	226.7
SW. Curb Top			6.79	227.29
✓ Bottom.			7.3	226.8
¼			6.8	227.3
¢			6.2	227.9
¼			5.8	228.3
NW. Curb Bottom.			5.6	228.5

STA	+	H.I.	-	Elev
			4.80	229.28
Curb Top			4.54	229.54
NW. Line Curb Top			5.0	229.1
✓ Bottom.				2+00
NW. Curb Top			5.10	228.92
✓ Bottom.			5.6	228.5
¼			5.8	228.3
¢			6.1	228.0
¼			6.8	227.3
SW. Curb Bottom.			7.6	226.5
✓ Top			7.10	226.98
2+50				
SW. Curb Top			7.48	226.60
✓ Bottom.			7.9	226.2
¼			7.2	226.9
¢			6.5	227.5
¼			6.2	227.9
NW. Curb Bottom.			6.1	228.0
✓ Top			5.51	228.57
3+00 SW. Line Coronado				
NW. Curb Top			5.88	228.20
✓ Bottom.			6.6	227.5
¼			6.8	227.3
¢			7.2	226.9
¼			7.8	226.3

STA	+	H.I.	-	Elev.
SW. Curb Top			8.5	225.6
✓ Bott.			7.85	226.23
SW. Curb Coronado				
SW. Curb Line Curb Top			8.31	225.77
✓ Bott.			9.3	224.8
SW. Curb Top			8.06	226.02
Bott.			8.7	225.4
1/4			8.1	226.0
☒			7.6	226.5
1/4			7.2	226.9
NW. Curb Bott.			6.5	227.6
✓ Top			5.7	228.36
NW. Line Curb Top			5.5	228.56
✓ Bott.			6.5	227.6
SW. 1/4 Coronado				
NW. Line			6.6	227.5
NW. Curb			6.8	227.3
1/4			7.3	226.8
☒			7.7	226.4
1/4			8.4	225.7
SW. Curb			8.9	225.2
SW. Line			9.5	224.6
☒ Coronado				
SW. Line			9.7	224.4
SW. Curb			8.9	225.2

Plotted  
1-5-29  
J.C.

STA	+	H.I.	-	Elev.
1/4			8.3	225.8
☒			7.6	226.5
1/4			7.2	226.9
NW. Curb			6.9	227.2
NW. Line			6.5	227.6
NE 1/4 Coronado				
NW. Line			7.2	226.9
NW. Curb			7.2	226.9
1/4			7.5	226.6
☒			7.9	226.2
1/4			8.3	225.8
SW. Curb			8.9	225.2
SW. Line			9.5	224.6
NE. Curb Coronado				
SW. Line Curb Top			9.34	224.74
✓ Bott.			10.0	224.1
SW. Curb Top			8.93	225.15
✓ Bott.			9.5	224.6
1/4			8.4	225.7
☒			8.0	222.1
1/4			7.8	226.3
NW. Curb Bott.			7.4	226.7
✓ Top			6.59	227.49
NW. Line Curb Top			6.47	227.61
✓ Bott.			7.2	226.9



Sta		H.I.	Elev.
	NE. Coronado.		
NW. Curb Top		6.85	227.23
✓ Bott.		7.5	226.6
1/4		7.8	226.2
¢		8.4	225.6
1/4		8.7	225.3
SW. Curb Bott.		9.4	224.7
✓ Top		8.93	225.16

8-3-29 X-section 35<sup>th</sup> St. Newton  
 A.C. Bliss to Acacia - 60' wide 10' cbs. 10' 1/4s  
 Drebert  
 Runcer

T 39.15  
 0+50

15

B.M. S.W. Top Hydrant - 35 <sup>th</sup> St. Newton	35.48	W	3.7	35.5	
+3.67		cb	3.7	35.5	
T 39.15		1/4	4.1	35.1	
S.W. Newton - 0100 - Existing paving		¢	3.8	35.4	
W	56	33.6	1/4	3.7	35.5
+9.25 - Top cb	570	33.45	+6	2.8	36.4
G	6.18	32.97	cb	2.6	36.6
1/4	564	33.51	E	2.5	36.7
¢	538	33.77			
1/2	525	33.90			
+10.75 - G	522	33.93	E	3.0	36.2
Top cb	460	34.55	cb	3.0	36.2
E	36	35.6	+4	3.0	36.2
	0+75		1/4	4.0	35.2
E	2.3	36.9	¢	4.0	35.2
cb	3.3	35.9	1/4	4.4	34.8
1/4	3.8	35.4	+7	3.7	35.5
¢	3.8	35.4	cb	3.9	35.3
1/4	4.1	35.1	W	4.1	35.1
cb	3.6	35.6			
W	3.9	35.3			
	0+22		W	4.2	35.0
6" Tree 3.5' in st. from W.L.			cb	4.5	34.7
	0+47		+5	4.7	35.0
4" Tree 3' in st. from W.L.			1/4	4.8	34.4
			¢	4.5	34.7

Plotted 8-13-29 EAB.

T 39.15

1/4	4.5	34.7
+6	3.5	35.7
cb	3.5	35.7
E	3.5	35.7

1401

4" Tree 2' in St from W.L.

1425

E	3.8	35.4
cb	4.1	35.1
+5	4.2	35.0
1/4	4.8	34.4
φ	5.0	34.2
1/4	5.2	34.0
cb	5.5	33.7
+8	4.8	34.4
W	4.8	34.4

1450

W	5.5	33.7
cb	5.8	33.4
1/4	5.6	33.6
φ	5.4	33.8
1/4	5.4	33.8
cb	5.0	34.2
E	4.4	34.8

T 39.15

1465

φ 8' Garage 14' Back EL. Dint Floor	4.1	35.1
-------------------------------------	-----	------

1475

E	4.5	34.7
cb	4.5	34.7
+4	4.6	34.6
+8	6.0	33.2
1/4	6.0	33.2
φ	5.8	33.4
1/4	6.1	33.1
cb	6.1	33.1
W	5.8	33.4

1486

φ 2' Concrete Walk at E.L.	4.55	34.60
----------------------------	------	-------

2400

W	6.0	33.2
cb	6.0	33.2
1/4	6.5	32.7
φ	6.4	32.8
1/4	6.5	32.7
+5	6.0	33.2
cb	5.7	33.5
E	5.2	34.0

2425

E	5.6	33.6
cb	6.6	32.6

16

T 39.15

1/4	6.8	32.4
¢	6.7	32.5
1/4	6.9	32.3
cb	6.7	32.5
w	6.8	32.4
2+50		
w	7.0	32.2
cb	6.9	33.3
1/4	7.2	32.0
¢	7.0	32.2
1/4	7.2	32.0
1/4	7.3	31.9
1/6	6.3	32.0
cb	6.5	32.7
E	6.2	32.0
2+75		
E	5.9	33.3
cb	6.0	33.2
1/5	6.2	33.0
1/7	7.5	31.7
1/4	7.5	31.7
¢	7.3	31.9
1/4	7.5	31.7
cb	7.6	31.6
w	7.5	31.7

T 39.15

17

3400 = N.L. Boston

w	7.8	31.4
cb	7.6	31.6
1/4	7.9	31.3
¢	7.7	31.5
1/4	7.8	31.4
1/3	7.9	31.3
1/5	7.0	32.2
cb	7.0	32.2
E	6.5	32.7
B.M. S. E. Hub. Boston +35 <sup>th</sup>		
+331		

- 769 31.46

T 33.77

S.L. Boston - 2000

E	2.8	31.5
cb	3.1	30.7
1/4	2.0	31.8
1/7	2.9	30.9
1/4	3.0	30.8
¢	3.3	30.5
1/4	3.3	30.5
cb	2.7	31.1
w	2.9	30.9
0+25		
w	2.6	31.2
cb	3.0	30.8

33.77

1/4	36	30.2
£	35	30.3
1/4	34	30.4
cb	2.9	30.9
E	2.6	31.2

0+50

E	2.6	31.2
cb	3.4	30.4
1/4	3.7	30.1
£	3.7	30.1
1/4	4.0	29.8
cb	4.0	29.8
W	4.8	29.0

0+65 = N.L. Acacia on W.L.

W	5.1	28.7
cb	4.6	29.2
1/4	4.3	29.5
£	3.9	29.9
1/4	3.9	29.9
cb	3.5	30.3
E	3.4	30.4

N.L. Acacia from 0+65 W.L. to 1+13.72 E.L. - 77' on Angle

E	4.1	29.7
cb	3.6	30.2
1/4	4.6	29.2

33.77

18

1/4	4.2	29.6
£	4.2	29.6
1/4	4.4	29.4
cb	4.8	29.0
W	5.1	28.7

8-5-29 X-section Boston Ave - 34<sup>th</sup> to  
 J.C. Bliss 36<sup>th</sup> - 80' wide 14' cbs - 13' 1/4s -  
 Drebert  
 Rauner

Σ 47.74

B.M. S.E. Prop Hub 35<sup>th</sup> + Boston 31.46  
 + 9.04 40.50  
 T.P. -1.73 38.77  
 + 8.97

φ 5.5 42.2  
 1/4 5.9 41.8  
 cb 6.5 41.2  
 S 7.0 40.7

Σ 47.74

0+75

W.L. 36<sup>th</sup> = 0+00

N 2.2 45.5  
 cb 3.4 44.3  
 1/4 4.1 43.6  
 φ 4.6 43.1  
 1/4 5.6 42.1  
 cb 6.6 41.1  
 S 7.3 40.4

S 7.5 40.2  
 cb 7.0 40.7  
 1/4 6.4 41.3  
 φ 6.1 41.6  
 1/4 5.9 41.8  
 cb 5.3 42.4  
 N 4.9 42.8

Plotted 8-13-1929 EAB

0+25

1+00

S 6.8 40.9  
 cb 6.1 41.6  
 1/4 5.3 42.4  
 φ 5.0 42.7  
 1/4 4.6 43.1  
 cb 3.4 44.3  
 N 2.6 45.1

N 5.5 42.2  
 cb 5.8 41.9  
 1/4 6.6 41.1  
 φ 6.7 41.0  
 1/4 7.0 40.7  
 cb 7.9 39.8  
 S 8.2 39.5

0+50

1+25

N 3.8 43.9  
 cb 4.2 43.5  
 1/4 5.3 42.4

φ 3.5 Concrete Walk at S.L. 7.93 39.81  
 S 8.0 39.7  
 cb 8.0 39.7  
 1/4 7.7 40.0

18

$\pi$  47.74

♀	7.4	40.3
1/4	7.3	40.4
cb	7.0	40.7
N	6.2	41.5

1450

N	6.7	41.0
cb	7.0	40.7
1/4	7.7	40.0
♀	8.0	39.7
1/4	8.3	39.4
cb	8.8	38.9
S	8.8	38.9

1475

S	10.0	37.7
cb	9.7	38.0
1/4	8.7	39.0
♀	8.6	39.1
1/4	8.4	39.3
cb	7.6	40.1
N	7.4	40.3

2400

N	8.0	39.7
cb	8.8	38.9
1/4	9.0	38.7
♀	9.2	38.5

$\pi$  47.74

20

1/4	9.4	38.3
cb	10.2	37.5
S	10.6	37.1

2425

S	10.7	37.0
cb	10.1	37.6
1/4	10.0	37.7
♀	10.0	37.7
1/4	9.5	38.2
cb	9.7	38.0
N	9.2	38.5

2450

N	9.3	38.4
cb	9.5	38.2
+5	9.6	38.1
+6	10.4	37.3
1/4	10.2	37.5
♀	10.4	37.3
1/4	10.5	37.2
cb	10.9	36.8
S	10.7	37.0

2472

3' Concrete Walk at S.L.	10.84	369.0
--------------------------	-------	-------

19

T 47.74

2475

S	11.2	36.5
cb	11.4	36.3
1/4	11.0	36.7
φ	10.9	36.8
1/4	10.8	36.9
+7	10.6	37.1
+8	9.7	38.0
cb	9.7	38.0
N	9.5	38.2

3400

N	10.8	36.9
cb	10.1	37.6
+4	10.2	37.5
+6	11.2	36.5
1/4	11.4	36.3
φ	11.4	36.3
1/4	11.5	36.2
cb	12.2	35.5
S	12.0	35.7

T.P.

+195

3363

T 38.63

3425

φ 3' Concrete Walk at S.W.	3.15	35.48
S	3.5	35.1

-11.06 3668

T 38.63

21

cb	3.3	35.3
1/4	3.0	35.6
φ	2.9	35.7
1/4	2.8	35.8
cb	2.3	36.3
N	2.5	36.1

3450

N	2.7	35.9
cb	3.1	35.5
1/4	3.2	35.4
φ	3.4	35.2
1/4	3.5	35.1
cb	3.6	35.0
S	3.6	35.0

3475

S	3.8	34.8
cb	3.8	34.8
1/4	4.0	34.6
φ	4.0	34.6
1/4	3.5	35.1
c	4.2	35.4
N	3.1	35.5



T 3863

4700

N	3.8	34.8
cb	4.4	34.2
1/4	4.0	34.6
¢	4.3	34.3
1/4	4.4	34.2
cb	4.9	33.7
S	4.8	34.8

4725

S	5.0	33.6
cb	4.9	33.7
1/4	4.6	34.0
¢	4.6	34.0
1/4	4.5	34.1
77	4.4	34.2
79	3.0	35.6
cb	3.0	35.6
N	3.5	35.1

4750

N	4.1	34.5
cb	4.4	34.2
1/4	4.6	34.0
¢	4.8	33.8
1/4	4.9	33.7
cb	5.4	33.2
S	4.6	34.0

T 3863

4775

S	4.8	33.8
cb	5.0	33.6
1/4	5.1	33.5
¢	5.0	33.6
1/4	4.8	33.8
77	4.9	37.7
79	4.1	34.5
cb	4.2	34.4
N	3.4	35.2

5700

N	4.0	34.6
cb	4.5	34.1
1/4	5.0	33.6
¢	5.3	33.3
1/4	5.3	33.3
cb	5.8	32.8
S	5.7	32.9

5725

S	6.0	32.6
cb	6.0	32.6
1/4	5.6	33.6
¢	5.5	33.1
1/4	5.2	33.4
78	5.3	33.3
710	4.1	34.5

22

π 38.63

cb	3.8	34.8
N	3.8	34.8
	5+50	
N	5.1	33.5
cb	5.3	33.3
1/4	5.6	33.0
¢	5.9	32.7
1/4	6.0	32.6
cb	6.7	31.9
S	6.6	32.0
	5+75	
S	7.3	31.3
cb	7.0	31.6
1/4	6.3	32.3
¢	6.2	32.4
1/4	6.0	32.6
+7	6.1	32.5
+10	4.4	34.2
cb	4.2	34.4
N	4.1	34.5
	6+00 = E.L. 35 <sup>th</sup>	60' wide 10' cbs 10' 1/4's
N	6.0	32.6
cb	6.2	32.4
1/4	7.0	31.6
¢	6.6	32.0

π 38.63

23

1/4	6.8	31.8
cb	6.5	32.1
S	7.1	31.5
	E cb 35 <sup>th</sup>	
S	7.0	31.6
cb	6.5	32.1
1/4	7.2	31.4
¢	6.8	31.8
1/4	7.2	31.4
cb	7.3	31.3
N	6.4	32.2
	E 1/4 35 <sup>th</sup>	
N	7.2	31.4
cb	7.4	31.2
1/4	7.3	31.3
¢	7.2	31.4
1/4	7.5	31.1
cb	7.8	30.8
S	7.9	30.7
	¢ 35 <sup>th</sup>	
S	8.0	30.6
cb	7.8	30.8
1/4	7.4	31.2
¢	7.3	31.3
1/4	7.5	31.1

T 3863

cb	7.3	31.3
N	7.1	31.5
	W 1/4 35 <sup>th</sup>	
N	7.3	31.3
cb	7.5	31.1
1/4	7.5	31.1
£	7.5	31.1
1/4	7.7	30.9
cb	8.1	30.5
S	8.2	30.4
	W cb 35 <sup>th</sup>	
S	7.7	30.9
cb	7.7	30.9
1/4	7.5	31.1
£	7.4	31.2
1/4	7.7	30.9
cb	7.5	31.1
N	7.1	31.5
	W. L. 35 <sup>th</sup> = 0+00	
N	7.2	31.4
cb	7.4	31.2
1/4	7.7	30.9
£	7.4	31.2
1/4	7.4	31.2
cb	7.3	31.3

T 38.63

24

S	7.5	31.1
	B.M.S.E Prop Hub 35 <sup>th</sup> + Boston - 7.17 31.46 ✓	
	+ 144	
	π 32.90	
	0+25	
S	1.2	31.7
cb	2.0	30.9
1/4	2.2	30.7
£	2.2	30.7
1/4	2.1	30.8
cb	1.9	31.0
N	1.8	31.1
	0+50	
N	2.6	30.3
cb	2.8	30.1
1/4	2.5	30.3
£	2.9	30.0
1/4	3.0	29.9
cb	2.9	30.0
S	3.3	29.6
	0+75	
S	4.6	28.3
cb	4.2	28.7
1/4	3.6	29.3
£	3.6	29.3

T 32.90

1/4	3.3	29.6
cb	3.2	29.7
N	3.0	29.9

1+00

N	3.4	29.5
cb	3.9	29.0
1/4	4.2	28.7
¢	4.5	28.4
1/4	4.4	28.5
cb	4.6	28.3
S	5.4	27.5

1+25

S	6.1	26.8
cb	6.2	29.7
1/4	5.2	27.7
¢	5.2	27.7
1/4	4.8	28.1
cb	4.7	28.2
N	4.0	28.9

1+50

N	4.3	28.6
cb	4.8	28.1
1/4	5.1	27.8
¢	5.8	27.1
1/4	6.0	26.9

T 32.90

25

cb	6.3	26.6
S	6.5	26.4

1+25

S	7.3	25.6
cb	7.0	25.9
1/4	6.2	26.7
¢	6.1	26.8
1/4	5.6	27.3
1/4	5.7	27.2
1/4	4.6	28.3
cb	4.6	28.3
N	5.0	27.9

2+00

N	5.6	27.3
cb	6.0	26.9
1/4	6.1	26.8
¢	6.4	26.5
1/4	6.8	26.1
cb	7.5	25.4
S	8.4	24.5

2+25

S	8.2	24.7
cb	7.4	25.5
1/4	6.8	26.1
¢	6.7	26.2

32.90

1/4	6.4	26.5
cb	5.1	27.8
N	4.1	28.8

2+50

N	5.4	27.5
cb	6.0	26.9
1/4	6.9	26.0
¢	6.8	26.1
1/4	6.7	26.2
+6	6.9	26.0
+7	6.2	26.7
cb	6.4	26.5
S	7.4	25.5

2+75

S	7.8	25.1
cb	7.5	25.4
1/4	7.2	25.7
¢	7.0	25.9
1/4	7.1	25.8
cb	6.8	26.1
N	6.3	26.6

3+00

N	7.1	25.8
cb	7.1	25.8
1/4	7.4	25.5

32.90

26

¢	7.2	25.7
1/4	7.6	25.3
cb	8.1	24.8
S on 3' Concrete Walk 3' in st from S.L.	7.40	25.50

3+25

S	7.7	25.2
cb	7.9	25.0
1/4	7.9	25.0
¢	7.5	25.4
1/4	7.8	25.1
cb	7.6	25.3
N	7.4	25.5

Note - Sta. 2+85 to 4+21 Fence 3' in st from S.L.

3+50

N	7.4	25.5
cb	7.6	25.3
1/4	8.2	24.7
¢	8.1	24.8
1/4	8.3	24.6
cb	7.9	25.0
S	7.8	25.1

3+75

S	8.1	24.8
cb	8.0	24.9

π 32.90

47	9.6	23.3
1/4	9.1	23.8
¢	8.9	24.0
1/4	9.1	23.8
cb	8.8	24.1
N	8.6	24.3

Note - 3+75 to 4+25 fence 5' in St from N.L.

T.P. -9.26 23.14

+1.86

π 25.00

4+05

N	1.3	23.7
cb	2.2	22.8
1/4	2.0	23.0
¢	2.4	22.6
1/4	2.3	22.7
cb	2.4	22.6
S	2.4	22.6

4+05

3' Walk 5' in St. from N.L. 0.96 24.04

4+25

S	3.7	21.3
cb	3.8	21.2
1/4	3.6	21.4
¢	3.1	21.9

π 25.00

27

1/4	2.9	22.1
cb	2.9	22.1
N	2.9	22.1

4+50

N	3.5	21.5
cb	3.9	21.1
1/4	4.4	20.6
¢	4.9	20.1
1/4	5.1	19.9
cb	5.3	19.7
S	4.8	20.2

4+65

6" Tree 16' in St. from N.L.

4+75

S	6.6	18.4
cb	7.0	18.0
1/4	7.3	17.7
¢	6.7	18.3
1/4	6.6	18.4
cb	5.6	19.4
N	5.4	19.6

5+00

N	7.8	17.2
cb	8.6	16.4
1/4	8.6	16.4

π 25.00

£	8.6	16.4
1/4	8.9	16.1
cb	8.8	16.2
S	8.7	16.3

5+25

S	10.0	15.0
cb	10.1	14.9
1/4	10.4	14.6
£	10.8	14.2
1/4	11.8	13.2
cb	10.6	14.4
N	10.5	14.5

5+38

N	13.2	11.8
cb	14.9	10.1
1/4	16.0	9.0
£	14.5	10.5
1/4	12.3	12.7
cb	11.4	13.6
S	10.8	14.2

T.P. -12.98 12.02

+0.07

π 12.09

5+50

S	2.9	9.2
cb	3.7	8.4

π 12.09

28

1/4	41	8.0
£	56	6.5
1/4	7.0	5.1
cb	7.0	5.1
N	53	6.8

5+75

N	12.6	-0.5
cb	12.1	0.0
1/4	12.7	-0.6
£	12.8	-0.7
1/4	12.5	-0.4
cb	12.3	-0.2
S	11.5	0.6

6+00 = E.L. 3474

S	12.7	-0.6
cb	12.9	-0.8
1/4	13.0	-0.9
£	13.1	-1.0
1/4	13.0	-0.9
cb	13.2	-1.1
N	13.1	-1.1

T.P. S.E. Top Hydrant + 3474 + Newton - 663 5.46

+ 11.26 16.72

T.P. - 0.29 16.43

+ 12.73 29.16

1916

29.16

-0.09

29.07

+9.72 38.79

35.56

+2.31

B.M. S.W. Top Hydrant 35<sup>th</sup> & Newton -3.73

35.48 Correct  
Error .009

π 33.71

+8.89 44.37

E.L. Rigel = 0+00

B.M. S.E. Top Hydrant 35<sup>th</sup> & National -0.19

44.18

Note - 0+00 to 0+35 4-6" trees 1' east from S.E.

S	6.7	27.1
cb	6.4	27.4
1/4	5.7	28.1
1/4	5.5	28.3
1/4	5.2	28.6
cb	4.8	29.0
N	4.9	28.9
0+25		
N	4.5	29.3
cb	4.5	29.3
1/4	6.0	27.8
1/4	5.9	27.9
1/4	6.2	27.6
cb	7.8	26.0
S	7.9	26.0
0+50		
S	8.6	25.2
cb	8.7	25.4
1/10	7.4	26.4
1/4	6.6	27.2

PLOTTED 8-14-29 EAB

8-9-29  
J.C. Bliss  
Drebert  
Raney

X-section Acadia St. - Rigel to Sive  
80' wide - 14' cbs 13' 1/4s

29

B.M. S.E. Prop. Hub 35<sup>th</sup> & Boston

31.46



$\pi 33.77$ 

¢	6.1	27.7
1/4	6.3	27.5
cb	5.6	28.2
+5	3.9	29.9
N	3.8	30.0

0+75

N	3.7	30.1
+1/2	4.0	29.8
cb	5.1	28.7
1/4	6.2	27.6
¢	6.2	27.6
1/4	6.3	26.5
cb	8.1	25.7
S	8.4	25.4

0+92

¢ 2 Cement to Wall at 5.6	7.48	26.29
---------------------------	------	-------

1+00

S	7.5	26.3
cb	7.3	26.5
1/4	6.5	27.3
¢	6.0	27.8
1/4	6.0	27.8
cb	5.3	28.5
+5	3.8	30.0
N	3.8	30.0

 $\pi 33.77$ 

30

1+25

N	3.6	30.2
+10	3.9	29.9
cb	4.8	29.0
1/4	5.9	27.9
¢	5.7	28.1
1/4	6.0	27.8
cb	6.2	27.6
S	6.8	27.0

1+50

S	6.3	27.5
cb	5.5	28.3
1/4	5.1	28.7
¢	5.1	28.7
1/4	5.2	28.6
cb	3.8	30.0
N	3.6	30.2

1+75

N	3.3	30.5
cb	3.5	30.3
1/4	4.4	29.4
¢	4.4	29.4
1/4	4.4	29.4
cb	5.0	28.8
S	6.4	27.4

33.77

2+00

S	6.1	27.7
cb	5.4	28.4
1/4	4.0	29.8
£	3.9	29.9
1/4	4.1	29.7
cb	3.4	30.4
N	2.9	30.9

2+25

N	2.9	30.9
cb	3.0	30.8
1/4	3.7	30.1
£	3.6	30.2
1/4	3.8	30.0
cb	5.6	28.2
S	6.2	27.6

-3.66 30.11

+3.40

33.51

2+50

S	5.4	28.1
cb	5.2	28.3
1/4	3.6	29.9
£	3.3	30.2
1/4	3.2	30.3
cb	2.9	30.6

33.51

31

2.8

30.7

2+75

N	2.8	30.7
N	2.2	31.3
cb	3.2	30.3
1/4	3.1	30.4
£	3.3	30.2
1/4	3.6	29.9
cb	4.9	28.6
S	5.3	28.2

3+00

S	3.4	30.1
cb	3.2	30.3
1/4	3.5	30.0
£	3.5	30.0
1/4	3.2	30.3
cb	3.0	30.5
N	2.8	30.7

3+25

N	2.8	30.7
cb	2.8	30.7
1/4	3.3	30.2
£	3.8	29.7
1/4	4.0	29.5
cb	3.5	30.0
S	4.2	29.3

33.51

3450

S	4.1	29.4
cb	4.3	29.2
1/4	4.2	29.3
ϕ	3.9	29.6
1/4	3.6	29.9
cb	3.5	30.0
N	2.9	30.6

3475

N	3.4	30.1
cb	3.5	30.0
1/4	3.8	29.7
ϕ	4.1	29.4
1/4	4.4	29.1
cb	4.3	29.2
S	3.7	29.8

4400

S	4.9	28.6
cb	5.0	28.5
1/4	4.7	28.8
ϕ	4.3	29.2
1/4	4.2	29.3
cb	3.6	29.9
N	3.6	29.9

33.51

4418

ϕ 4' Concrete Walk 1' in St. from S.L. 4.99 28.52

N	4.2	29.3
cb	4.4	29.1
1/4	4.1	29.4
ϕ	4.5	29.0
1/4	5.1	28.4
cb	5.1	28.4
S	5.0	28.5

4450

S	4.5	29.0
cb	4.4	29.1
+6	4.4	29.1
+8	5.2	28.3
1/4	5.2	28.3
ϕ	4.7	28.8
1/4	4.7	28.8
cb	5.3	28.2
N	5.2	28.3

4475

N	5.7	27.8
cb	5.3	28.2
1/4	5.1	28.4
ϕ	5.0	28.5
1/4	5.6	27.9

$\pi 33.51$ 

+4	56	27.9
+9	4.2	29.3
cb	4.5	29.0
S	5.5	28.0
	5+00	
S	5.5	28.0
cb	5.2	28.3
1/4	6.1	27.4
¢	5.6	27.9
1/4	5.6	27.9
cb	5.0	28.5
N	6.0	27.5
	5+25	
N	7.2	26.3
cb	7.1	26.4
1/4	6.0	27.5
¢	6.2	27.3
1/4	6.4	27.1
+4	6.5	27.0
+9	5.6	27.9
cb	5.4	28.1
S	5.4	28.1
3' Walk at S.L.	5.27	28.24

 $\pi 33.51$ 

33

5+50

S	6.0	27.5
cb	5.9	28.6
+6	6.2	27.3
+9	7.5	26.0
1/4	7.3	26.2
¢	6.9	27.6
1/4	6.6	27.9
cb	7.6	26.9
N	7.4	26.1
	5+75	
N	7.4	26.1
cb	7.8	30.7
1/4	7.3	26.2
¢	7.5	26.0
1/4	8.0	25.5
+5	8.3	25.2
+7	7.4	26.1
cb	7.1	26.4
S	7.0	26.5
	6+00 = W.L. Sire St. 60' wide 10' ch. 10' 1/2	
S	8.4	25.1
cb	8.8	25.7
1/4	8.3	25.2
¢	7.6	25.9
1/4	7.7	25.8

T 33.51

+7	7.9	25.6
+10	6.6	26.9
cb	6.5	27.0
N	6.4	27.1
	W cb Sire	
N	6.2	27.3
cb	6.6	27.9
+6	8.0	25.5
1/2	7.7	25.8
♀	7.8	25.7
1/4	8.4	25.1
cb	9.4	24.1
S	9.1	24.4
	♀ Sire	
S	10.5	23.0
cb	10.1	23.4
1/4	8.8	24.7
♀	8.2	25.3
1/4	7.8	25.7
+7	7.8	25.7
+9	6.8	26.7
cb	6.8	26.7
N	6.3	27.2

T 33.51

34

Ecb Sire

N	6.6	26.9
cb	7.0	26.5
+6	8.1	25.4
1/4	7.9	25.6
♀	8.1	25.4
1/4	9.0	24.5
cb	10.0	23.5
S	10.6	22.9
	EL Sire	
S	10.3	23.2
cb	9.6	23.9
1/4	9.1	24.4
♀	8.2	25.3
1/4	8.2	25.3
+7	8.1	25.4
+9	7.2	26.3
cb	7.1	26.4
N	6.6	26.9
T.P		-0.32 33.19

+240 35.59

B.M.S.E. Prop Hub 35<sup>th</sup> + Boston -4.10 31.49

Correct 31.46

8-10-29 X-section - Cottonwood - Sive to Photo  
 J.C. Bliss 80' wide. 14' cbs - 13' 1/2 -  
 Drebert  
 Ravnex

$\pi$  16.75

35

B.M. Copper Stack in Apr. 35<sup>th</sup> & Cottonwood

14.92

1-83

$\pi$  16.75

W.L. Sive = 0+00

S	14.2	2.6
cb	14.2	2.6
¢	13.8	3.0
cb	13.7	3.1
N	13.4	3.4
.	0+25	
N	13.2	3.6
cb	13.4	3.4
¢	13.8	3.0
cb	13.9	2.9
S	14.0	2.8
.	0+75	
S	14.0	2.8
cb	13.9	2.9
¢	13.9	2.9
cb	13.6	3.2
N	14.0	2.8
.	1+25	
N	13.8	3.0
cb	13.7	3.1
¢	13.7	3.1

Plotted 8-14-29 EAB.

cb	13.7	3.1
S	13.8	3.0
.	1+75	
S	13.7	3.1
cb	14.0	2.8
¢	14.0	2.8
cb	14.1	2.7
N	14.3	2.5
.	2+25	
N	14.1	2.7
cb	14.3	2.5
¢	14.6	2.2
cb	14.6	2.2
S	14.1	2.7
.	2+75	
S	14.8	2.0
cb	14.4	2.4
¢	14.5	2.3
cb	14.4	2.4
N	14.8	2.0
.	3+00	
N	12.4	2.4
cb	13.3	3.5
1/4	14.1	2.7
¢	14.8	2.0

$\pi$  16.75

1/4	15.3	1.5
cb	15.0	1.8
S	14.8	2.0

3+25

Out 15 - Toe Slope	15.0	1.8
S	12.7	4.1
cb	11.0	5.8
1/4	10.0	6.8
q	9.1	7.7
1/4	8.8	8.0
cb	7.1	9.7
N	5.9	10.9

3+40

N	3.7	13.1
cb	4.0	12.8
1/4	4.6	12.2
q	5.6	9.2
1/4	6.6	10.2
cb	7.2	9.6
S	9.4	7.4

Out 25 - Toe Slope

14.7 2.1

3+60

Out 30 - Toe Slope	15.1	1.7
S	6.9	9.9
cb	5.5	11.3

 $\pi$  16.75

36

1/4	4.9	11.9
q	4.4	11.4
1/4	4.1	12.7
cb	3.8	13.0
N	3.3	13.5

3+80

N	3.9	12.9
cb	4.7	12.1
1/4	5.4	11.4
q	5.2	11.6
1/4	5.5	11.3
cb	6.4	10.4
S	9.2	7.6

Out 30 - Toe Slope

15.5 1.3

4+15

S - Toe Slope	16.6	0.2
cb	16.0	0.8
1/4	15.4	1.4
q	14.3	2.5
1/4	12.5	4.3
cb	11.5	5.3
N	10.3	6.5

4+40

N	15.2	1.6
cb	15.8	1.0

$\Sigma 16.75$ 

1/4	16.6	0.2
Q	17.2	-0.4
1/4	17.7	-0.9
cb	17.8	-1.0
S	17.5	-0.7

 $4+75$ 

S	12.5	4.3
cb	12.7	4.1
1/4	12.1	4.7
Q	14.0	4.8
1/4	14.8	2.0
cb	14.5	2.3
N	14.2	2.6

 $5+00$ 

N	8.6	8.2
cb	8.2	8.6
1/4	8.0	8.8
Q	7.0	9.8
1/4	6.8	10.0
cb	7.0	9.8
S	7.0	9.8

 $5+25$ 

S	3.5	13.3
cb	3.2	13.6
1/4	3.7	13.6

 $\Sigma 16.75$ 

37

Q	3.1	13.7
1/4	3.1	13.7
cb	2.9	13.9
N	3.1	13.7

 $5+50$ 

N	0.2	16.6
cb	0.4	16.4
1/4	0.8	16.0
Q	1.2	15.6
1/4	1.4	15.4
cb	1.5	15.3
S	1.4	15.4

T.P.

0.97 15.78

 $46.89$  $\Sigma 22.67$  $5+75$ 

Q 3 Concrete Wall 3.5' in St. from 54.	6.53	16.14
S	6.6	16.1
cb	6.3	16.4
1/4	6.0	16.7
Q	5.6	17.1
1/4	5.2	17.5
cb	4.8	17.9
N	4.9	17.8



T 22.67

C+02.45 = E.L. Rigel

N	45	18.2
cb	50	17.7
1/4	54	17.3
¢	59	16.8
1/4	6.3	16.4
cb	6.9	15.8
S	70	15.7

B.M. Copper Peak in 13.7.19.35<sup>th</sup> Cottonwood - 7.74 14.93  
 Correct 14.92

+ 2.07

T 17.01

W.L. Rigel = 0+00

S	45	12.5
cb	35	13.5
1/4	29	14.1
¢	2.4	14.6
1/4	22	14.8
+7	2.0	15.0
+9	0.8	16.2
cb	0.8	16.2
N	0.0	17.0
	0+25	
N	0.7	16.3
cb	1.7	15.3
+4	2.2	14.8

T 17.01

38

46	3.0	14.0
1/4	3.2	13.8
¢	3.5	13.5
1/4	4.0	13.0
cb	4.3	12.7
S	5.2	11.8

0+50

S	6.1	10.9
cb	5.1	11.9
+6	5.5	11.5
1/4	5.2	11.8
¢	4.7	12.3
1/4	4.6	12.4
+5	5.1	11.9
+8	4.5	12.5
cb	3.9	13.1
N	2.8	14.2

0+75

N	3.5	13.5
+6	5.3	11.7
cb	6.0	11.0
1/4	6.0	11.0
¢	6.1	10.9
1/4	6.5	10.5
+7	6.8	10.2

T. 17.01

cb	6.2	10.8
S	7.1	9.9
	1400	
S	8.5	8.5
cb	8.0	9.0
14	7.8	9.2
♀	7.4	9.6
14	7.5	9.5
+5	7.7	9.4
cb	6.8	10.2
+9	6.1	10.9
N	4.5	12.5
	1425	
N	6.1	10.9
+3	6.9	10.1
cb	7.8	9.2
14	8.3	8.7
♀	8.6	8.4
14	8.9	8.1
cb	9.4	7.6
S	9.2	7.8
	1450	
S	9.7	7.3
cb	10.4	6.6
14	9.8	7.2

T. 17.01

39

♀	9.5	7.5
14	9.5	7.5
cb	9.0	8.0
+11	8.3	8.7
N	6.6	10.4
	1475	
N	8.0	9.0
+8	9.4	7.6
cb	10.1	6.9
14	10.2	6.8
♀	10.2	6.8
14	10.6	6.4
cb	11.2	5.8
S	11.4	5.6
	2100	
S - Bottom ditch	17.5	-0.5
cb	14.3	2.7
14	12.1	4.9
♀	11.2	5.8
14	11.0	6.0
cb	10.2	6.8
+8	9.6	7.4
N	8.4	8.6

T.P

2.27

T 6.51

-12.77

4.24

π 6.31

2+25

N	0.5	5.8
+10	1.2	5.1
cb	2.3	4.0
1/4	4.5	1.8
⊥	6.7	-0.4
1/4 - Bottom ditch	7.2	-0.9
+10	7.4	-1.1
cb	6.6	-0.3
+7 - N Edge fill road	4.6	1.7
S	5.0	1.3
Out 15 - S. edge fill road	4.5	1.8
	2+40	
Out 8 - S - Base fill road	7.8	-1.5
S -	5.9	+0.4
+5 - S - edge fill road	4.7	1.6
cb	4.9	1.4
1/4 - N edge fill road	5.5	.8
+6 - N base " "	6.8	.8
⊥ - Bottom ditch	7.4	-1.1
1/4	7.2	-0.9
cb	6.2	-0.1
N	4.0	2.3
	2+60	
N	7.7	-1.4
cb - Bottom ditch + N base fill road	7.8	-1.5

π 6.31

40

1/4	6.5	-0.2
+3 - N edge fill road	5.6	+0.7
⊥	5.1	1.2
1/4 - S edge fill road	5.6	0.7
cb - S base " "	8.1	-1.8
S	8.6	-2.3
	2+84	
S	8.5	-2.2
cb	8.5	-2.2
1/4	8.5	-2.2
⊥	8.1	-1.8
+7 - S base fill road	7.5	-1.2
1/4	5.4	+0.9
+2 - S edge fill road	5.1	1.2
cb	4.9	1.4
N - edge fill road	4.8	1.5
	3+00	
N - S edge fill road	5.2	1.1
cb - S base " "	8.0	-1.7
1/4	8.6	-2.3
⊥	8.5	-2.2
1/4	8.5	-2.2
cb	8.5	-2.2
S	8.5	-2.2

π 6.31

3+50

S	8.5	-2.2
cb	8.5	-2.2
£	8.5	-2.2
cb	8.3	-2.0
N	8.3	-2.0

4+00

N	8.1	-1.7
cb	8.1	-1.7
£	8.1	-2.7
cb	8.3	-2.0
S	8.3	-2.0

4+50

S	8.2	-1.9
cb	8.2	-1.9
£	8.1	-1.8
cb	8.1	-1.8
N	8.1	-1.8

5+00

N	8.2	-1.9
£	8.2	-1.9
S	8.3	-2.0

5+50

S	8.3	-2.0
£	8.4	-2.1
N	8.2	-2.9

π 6.31

6+00 = E.L. Pluto

41

N	7.9	-1.6
£	8.1	-1.7
S	8.1	-1.8
T.P.		-1.46    4.85

11.45    16.30

B.M. Copper tack in 13' Man Rigel x Cotton Wood 14.0    14.90

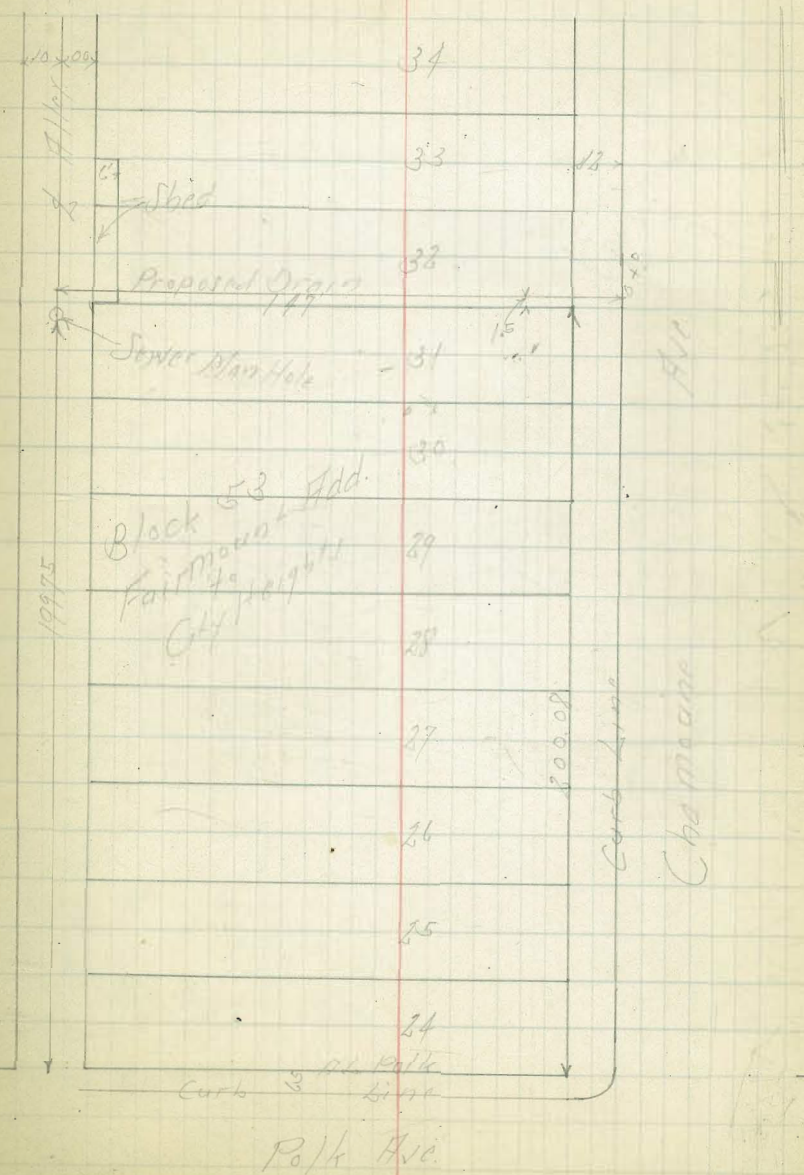
Correct 14.92

Proposed Drain Block 53  
Fairmount Add.

10-23-29  
Sutton  
Melling  
Hart  
Stover  
42

BM	382	355.02	351.20	Orange Ch...
0 to	West Curb of Chamber	5.61	379.41	
	Top of Curb	5.02		
	12 ft. N. L. of Chamber	4.9		
	50 ft	4.9		
	100 ft	5.3		
	130 ft	4.8		
	137 ft - East Line of Alley	4.8		
	147 ft - S. of Alley	4.1		

BM		35.05		Polk Ch...
----	--	-------	--	------------

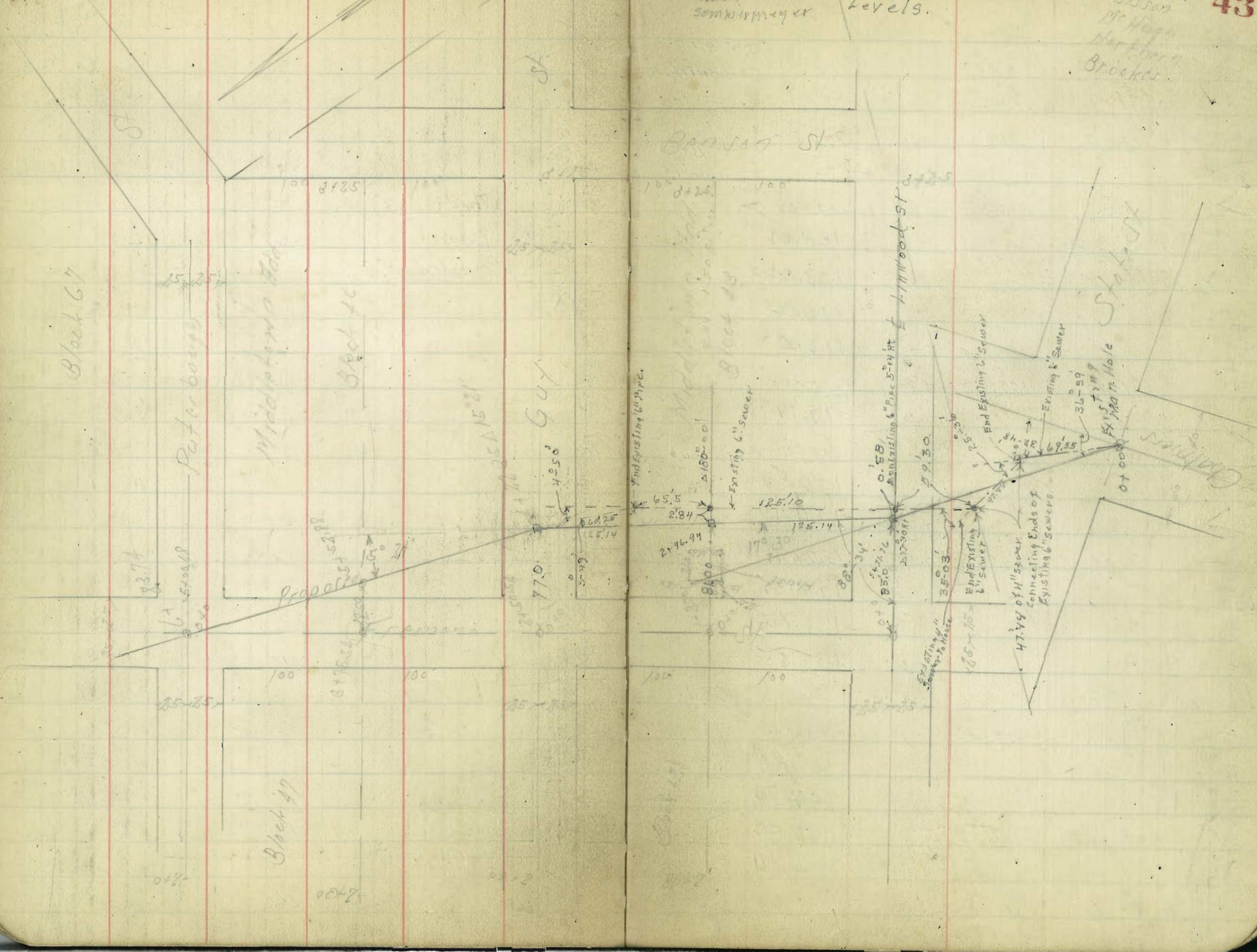


Proposed Sewer  
Blocks 43 + 46 Middlebury Road

Location of Existing 4" 6" Sewers  
8-4-30  
Mills  
Sankirmyer  
See Page 64 for  
Levels.

10-25-30  
Sisson  
McPhee  
Harkness  
Brooker.

43



Senior Levels

Bischof 43 + 46 Middleton Road

BM	127.5	78.83		66.07	SW 93
TP	126.3	91.05	0.41	78.42	Chalmers/John
TP	120.5	102.80	0.30	90.75	
BM			5.69	97.11	SF B.P.
TP	125.0	115.30	0.00	102.80	Chalmers/John
0 + 0	Fishing Man Hole		7.21	108.04	
	00 Rim of Chalmers SF				
	Floor Line		12.21	103.04	
+50			5.1	110.2	
+70			8.5	112.8	
TP	127.9	137.89	0.29	115.0	
+50			10.7	117.19	
+71.76	TP 127.30		9.01	118.88	on floor
	- 0 + 75 add. 2.00				
2 + 0			7.0	120.89	
+50			3.7	124.19	
TP	127.3	140.85	0.27	127.62	
3 + 0			12.5	128.35	
+35			9.0	131.85	
+75			5.3	135.55	
+122.35	TP 141.15		0.11	140.74	on floor
	- 0 + 77 2.50				
TP	127.0	153.84	0.11	140.74	
+50			8.7	145.14	
+60			6.1	147.74	
5 + 0			3.1	150.44	
+50			1.0	152.84	
TP	133.4	166.98	0.30	153.61	

166.98

6 + 0			10.2	156.78	
+20	Center of Cluster of		8.1	158.38	
+20			4.4	162.58	
+20			4.8	162.18	
TP	127.0	179.45	0.30	166.68	
+55			9.7	169.78	
+70			1.3	175.18	
+10.21	- 4' from end of		0.08	179.46	on floor
	Pole change				

10-25-39  
S. Bischof  
Middleton Road  
Brookline  
44

Section Levels  
Peterborough St  
East of Fremont

179.45 Fort Page etc

0+0	Peterborough St Fremont		0.02	179.46	oak St
+12			55	173.98	
+20			16	177.98	
+35			14	178.08	
+60			21	176.38	
+75			11	173.38	
+85			11	168.38	
+10			27	176.68	
TP	138	185.11	107	172.11	
TP	1311	199.09	0.90	182.01	
+30			53	192.78	
TP	1295	210.94	0.09	191.99	
+60			40	206.94	
TP	1233	223.04	0.23	210.71	
+73			5.5	214.54	
TP	1295	225.83	0.16	222.88	
+80			11.5	224.33	
+90			4.0	231.83	
TP	13.05	242.25	0.62	235.20	
2+0			10.8	237.45	
+25			5.7	242.55	
+70			0.0	248.25	
TP	0.30	236.25	12.30	235.95	
TP	0.35	223.64	12.96	213.29	
TP	0.37	211.32	12.69	210.95	
BM			6.59	204.10	NW Profile Across St



Sider Levels		Start of Formant		Ford Paper
Peterborough		17948		
0.0 - 2 Peterborough		0.02		179.46 ✓
+10		0.1		179.48 ✓
+30		0.3		179.28 ✓
+60		0.7		172.28 ✓
+50		0.5		172.98 ✓
+60		0.6		174.88 ✓
+70		0.7		172.18 ✓
TP	698	185.21	0.02	178.41 ✓
+10			0.2	182.54 ✓
TP	1311	198.01	0.30	181.94 ✓
TP	1285	210.94	0.09	197.99 ✓
+25			0.2	198.74 ✓
+30			0.4	199.54 ✓
+32			0.0	202.94 ✓
+40			0.6	209.34 ✓
TP	1283	213.04	0.31	210.71 ✓
+45			0.1	213.94 ✓
+55			0.6	216.94 215.94 ✓
+70			0.1	218.44 ✓
+87			0.5	213.54 ✓
+10			0.0	204.04 ✓

Solar Levels  
Gay St. East of Fremont

47

BM	12.51	153.26		140.71	0.0566 152.225
TP	11.35	164.40	0.21	153.05	
0.00 - 2. Gay + Fremont			0.80	113.10	0.2566
+15			1.17	<del>103.70</del>	152.7
+27				146.0	
+35				141.5	
+67				129.5	
+77 - 12.2.35				140.71	0.2566
+82				146.4	
+10			2.4	158.2	
+20			1.0	163.4	
TP	11.74	175.34	0.20	163.60	
+21			9.4	165.94	
+40			1.6	172.74	173.74
TP	12.23	187.33	0.84	172.50	
+70			5.7	181.63	
2.40			0.3	187.03	
TP	12.21	197.29	2.30	185.00	Hall. Pole 54.475
+56			2.2	195.09	
TP	7.21	204.21	0.24	197.05	
+75			6.8	197.46	
3.10			4.9	199.36	
+2.5 - H.L. Benson			4.2	200.06	
TP	4.32	206.02	2.56	201.70	
BM			1.20	204.81	NW P. on Hall Benson's Guy 204.81

Sadder Levels

Guy St. Start of Fremont

48

BM	12.50	153.26	-	140.76	castles 112225 09770094
TP	11.35	164.40	0.21	153.05	
TP	11.74	175.34	0.80	163.60	
0+0 - Guy & Fremont			11.71	163.60	
TP	12.83	187.33	0.84	174.50	
+2.0			10.6	176.73	
+4.5			4.1	183.23	
TP	12.26	197.29	2.00	185.03	Half Peb 1425501 Fremont
+1.0			5.6	191.69	
+5.0			1.6	195.69	
2+0			2.8	194.49	
+3.0			4.7	192.59	
+5.0			9.0	188.29	

Sadder Levels

Linwood St Fremont to Bausry

BM	1.65	165.15 ✓		169.10	on Stake 2 Guy Fremont	TP	5.56	168.28 ✓	166.28 ✓
0+0	* Linwood St		12.35	152.80	on Stake 2 Guy Fremont	BM		171.84 ✓	170.92 ✓
TP	Fremont 0.51	153.36 ✓	12.35	152.90					
+10			1.8	146.56 ✓					
+20			1.1	138.96 ✓					
TP	0.42	141.23 ✓	12.55	140.81 ✓					
+25			7.3	133.93 ✓					
+41			10.0	131.23 ✓					
+48			14.3	126.93 ✓					
TP	2.79	131.05 ✓	12.97	128.26 ✓					
+73			7.5	123.55 ✓					
+75			11.1	119.95 ✓					
+85 = 14217.4			12.8	118.87 ✓	on Stake				
1+05			12.7	118.35 ✓					
+20			6.6	124.45 ✓					
+40			0.2	130.85 ✓					
TP	12.32	143.17 ✓	0.20	130.85 ✓					
+55			7.7	135.47 ✓					
2+0			2.0	141.17 ✓					
TP	12.73	155.18 ✓	0.22	142.95 ✓					
+20			8.6	147.08 ✓					
+45			1.4	154.28 ✓					
TP	16.82	168.21 ✓	0.28	155.40 ✓					
3+0			8.6	159.68 ✓					
+25 = 14282.00			5.8	162.48 ✓					

Half All  
171.84  
170.92  
170.92  
170.92

Water Line  
Linwood to Benson  
- off West of 2

BM	155	165.15	113.60	155.73	on 2 Stubs Sp. 1 Record
0+0	- 1/2	Frame on Paving	9.41	152.05	
+25			13.1		
TP	0.56	153.36	12.35	152.80	on 2 Stubs Linwood Frame
+35			8.2	145.16	
+45			15.4	137.96	
TP	0.42	141.23	12.55	140.81	
+50			7.3	133.93	
+66			9.6	131.63	
+73			14.2	126.93	
TP	2.79	131.05	12.97	129.66	
+98			7.9	123.15	
+100			12.0	119.05	
+30			11.4	117.65	
+45			7.8	123.25	
+65			1.2	129.75	
TP	12.32	143.17	0.80	130.85	
+80			9.4	133.77	
+125			3.6	139.57	

Sewer Levels

Freemont St Linwood to Peterborough

10-29-29 51

BM	12.25	115.65	152.90	on 25th St Linwood to Freemont
0+0	1/2 Linwood to Freemont	16.85	152.90	
+10		14.8	150.85	
+25		10.1	155.55	
+70		10.7	154.95	
+70		10.1	157.55	
+25	1/2 Blk 13	7.42	158.22	on 25th St
+55		3.3	162.45	
TP	961	174.97	0.29	115.36
+90		7.3	167.67	
2+28		5.0	169.97	
+40		9.6	165.37	
+50.54	1/2 Freemont to Gen	11.36	163.61	on 25th St
+65		9.5	165.47	
181		12.2	162.77	
3+16		10.5	162.47	
TP	996	172.93	12.00	162.97
+36		13.2	159.73	
+50		13.6	159.33	
+75.51	1/2 Blk 24	12.62	160.81	on 25th St
+70		8.7	164.23	
+30		5.3	167.63	
+50		12.4	160.63	
+75		10	171.93	
TP	890	181.66	0.17	172.76

181.66  
1190  
5700.18 - 1/2 Peterborough  
2.5  
2.18  
178.16  
179.48 on 25th St

Sewer Levels

Block 46 Middlebury Add East of Fremont  
From 2. Fremont to Beavon

BM	12.58	17.289 ✓		110.31	20370 2. Fremont 1.25 611 46
0+0	- 212552 - 2. Fremont		12.58	169.31 ✓	
+15			192	153.69 ✓	
+35.5 - 5-5288			201	152.79 ✓	
+50			202	152.69 ✓	
+56			180	154.89 ✓	
+75			117	161.19 ✓	
+85			74	165.49 ✓	
TP	12.12	181.12 ✓	0.15	172.21 ✓	
+10			72	177.22 ✓	
TP	12.52	195.95 ✓	100	183.43 ✓	
+20			91	186.55 ✓	
+40			23	193.65 ✓	
TP	12.55	207.11 ✓	106	194.89 ✓	
+60			81	199.34 ✓	
+85			16	205.84 ✓	
TP	12.70	219.93 ✓	0.31	207.63 ✓	
212.5			2.1	217.83 ✓	
TP	9.00	221.23 ✓	0.61	219.32 ✓	
+70			39	222.42 ✓	
3+0			2.2	224.12 ✓	
1.25 - Hill Beavon			0.5	225.82 ✓	
TP	1.50	215.35 ✓	13.56	213.76 ✓	114 Prop. 114
BM			10.54	204.81 ✓	Beavon 64 204.80

Seller Levels

Block 47 Middletown Fdd West of Front

				200 Sub 2 Frontal 375.51
BM	12.58	17289 ✓	16021	
+10	317554		12.58	16031 ✓
TP	12.18	18141 ✓	0.65	17221 ✓
+25			99	174.52 ✓
TP	12.53	18575 ✓	100	18141 ✓
+15			600	189.95 ✓
TP	12.55	20741 ✓	106	19480 ✓
+10			82	198.64 ✓
+10			05	206.94 ✓
TP	12.70	21971 ✓	021	207.23 ✓
+25			102	209.73 ✓
+50			91	210.53 ✓
+10			114	208.53 ✓
+30			172	202.73 ✓



Survey Levels

Block 42 Middle lot on N Side West of Fremont

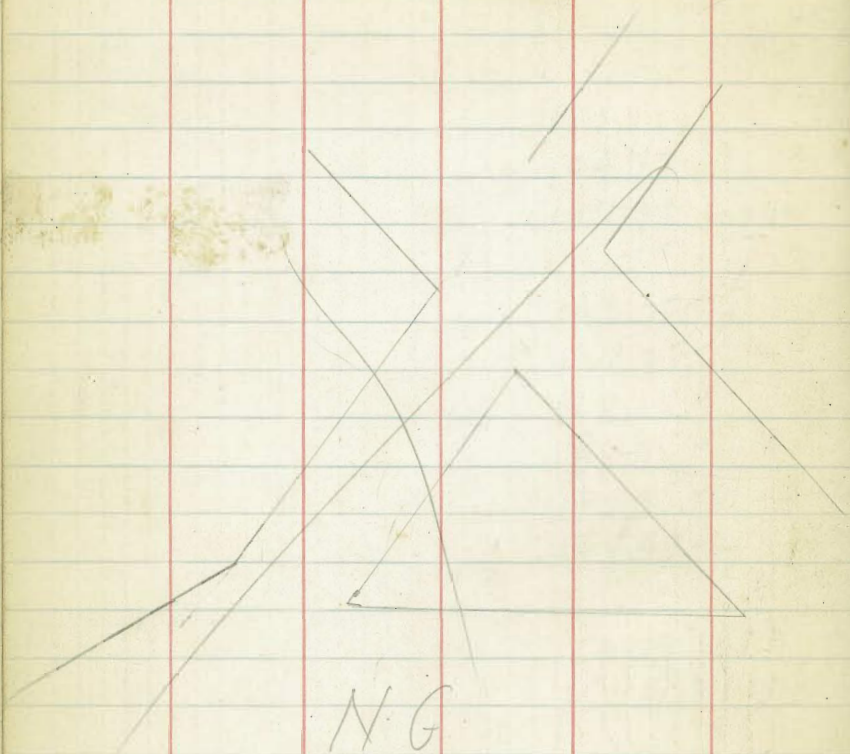
BM	13.80	172.03 ✓		158.21	on Stub. to Fremont St 8/15/23
0+0 = <sup>142.5</sup> of Fremont			13.80	158.22	
+15			7.7	164.32	
+22			6.8	165.22	
+25			2.0	170.02	
TP	12.26	184.16 ✓	8.62	171.40 ✓	
+42			18.7	170.86	
+43			11.0	173.26	
+58			11.1	173.16	
+60			8.7	175.56	
TP	11.85	189.57 ✓	6.54	177.76 ✓	
+74			14.7	174.87 ✓	
+80			13.7	176.87 ✓	
+115			10.0	179.57 ✓	
+55			8.7	180.87 ✓	
+10			11.5	178.07 ✓	
+35			13.5	176.07 ✓	
+37			14.7	174.87 ✓	
+48 = East Edge of Main			15.4	174.17 ✓	
5th Floor of Main			11.4	178.17 ✓	

Sector Levels

Block 43 Middleham Road  
From 2 Fragment du Bassin

BM	000	158.29	158.22	158.22	on Stub Fragment 1 172.0
070			007	158.22 ✓	
+17			69	151.39 ✓	
+34			125	144.79 ✓	
+37 - West Edge of House			235	138.79 ✓	137.79
TP	205	149.65 ✓	1889	145.40 ✓	
+60			184	129.05 ✓	
+81 - 249691			192	128.25 ✓	
+97			192	128.15 ✓	
+10			187	133.75 ✓	
+22			21	145.35 ✓	
+30			20	145.45 ✓	
TP	124	157.58 ✓	088	147.17 ✓	
+33			88	150.78 ✓	
+58			18	157.78 ✓	
TP	124	172.02 ✓	000	159.58 ✓	
+78			72	164.72 ✓	
+10			11	167.92 ✓	
+25			00	172.02 ✓	
TP	128	184.26 ✓	022	171.40 ✓	
+50			100	174.26 ✓	
+75			77	176.56 ✓	
+70			66	177.66 ✓	
+25 - N. of Section			19	179.36 ✓	
BM			1339	170.87 ✓	N. of Wells Basson/Ham 170.81

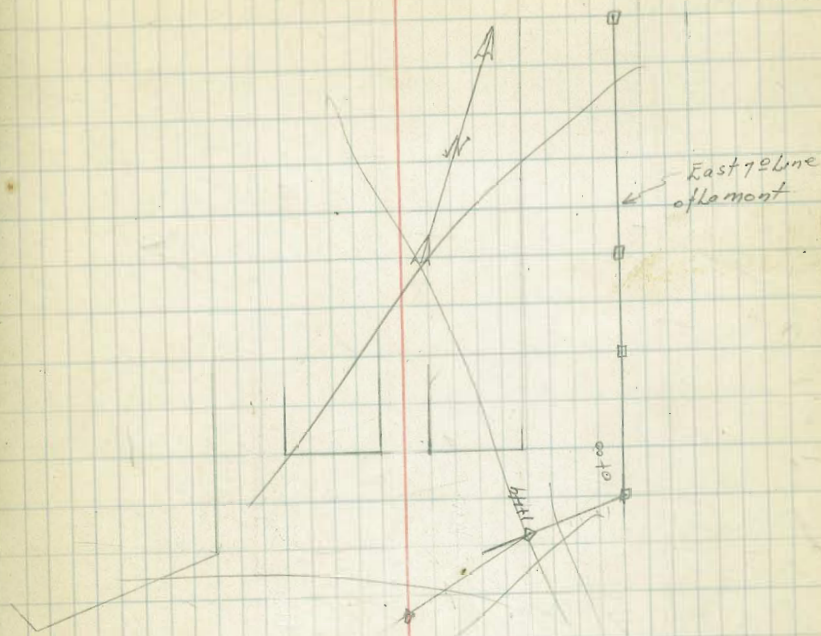
Bluff line Survey



N.G.

See

56



Bill Bliss Notes  
 Joe Duermit X  
 J. Jacob's moon chain  
 H-Soper chain  
 Dec 5, 1929

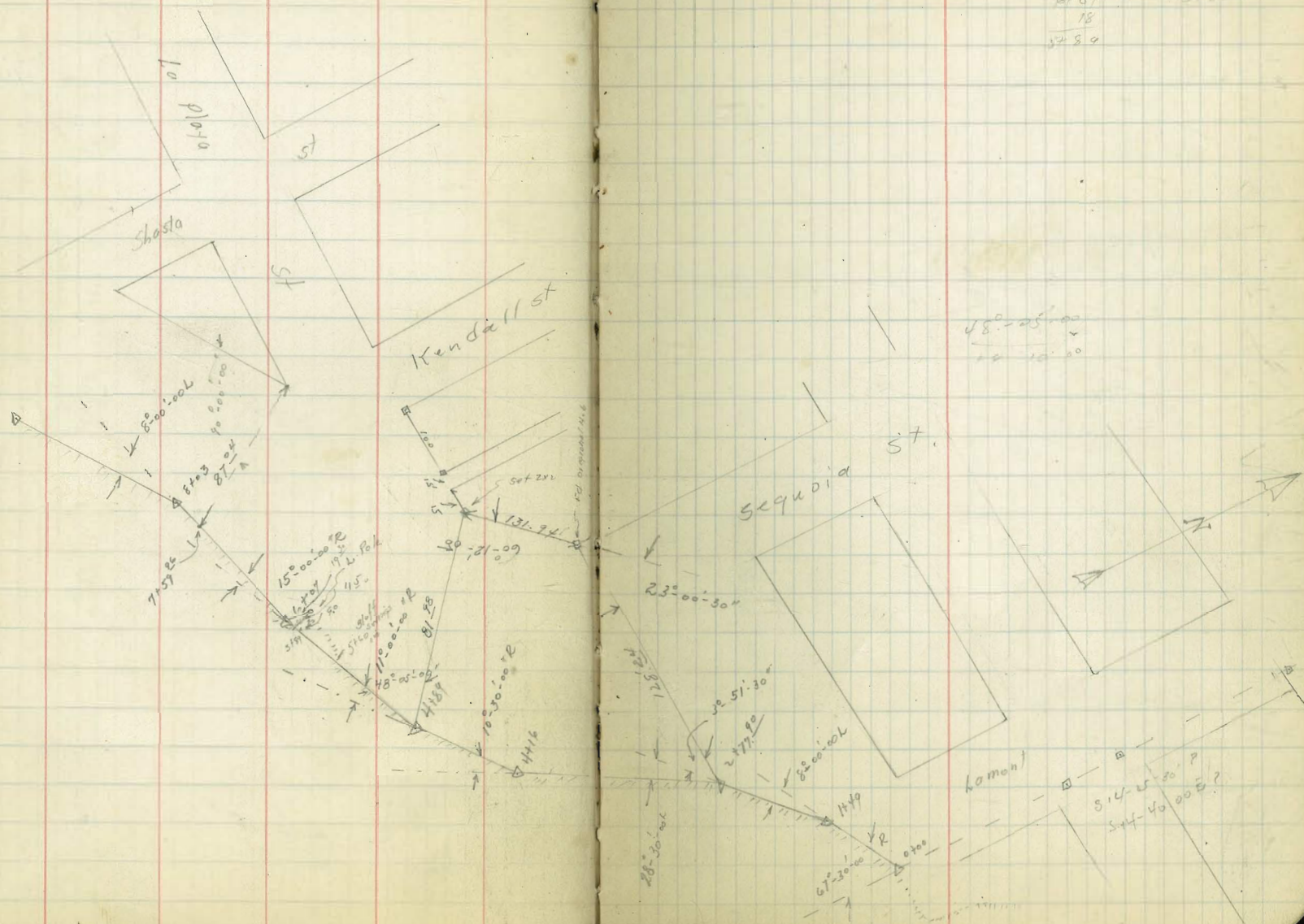
Bluff Line Survey from the Intersection  
 of the E 75 line of Lamont produced Southern to  
 Crown Point Sky line of Pueblo Lot 1800

57

4.60  
 17  
 5.160

6.07  
 18  
 24.89

18°-25'-00"  
 18°-25'-00"



Fd. Mon  
E

S 75° 10' 50" W

Fd. Mon  
E

Southern Line  
of Pueblo Lot 1800

216

12° 55' 00" N

MISSION

8000.00

7000.00

2600.00

1400

1800

199.46

50° 54' 30"

Shasta

8110

8000.00

8195

8000.00

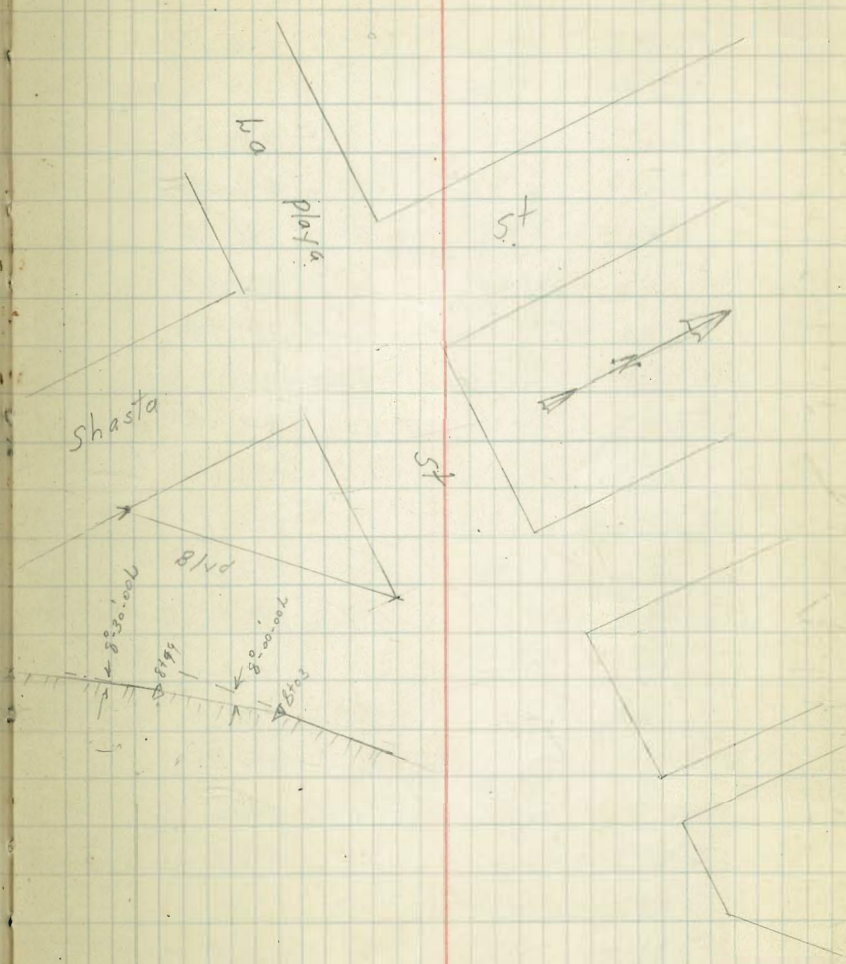
8110

10

1010

5+

5+



12/12/29  
 Floor  
 Provis  
 50/100

X sec N. & S. Alley 129 U. H.  
 From E.W. Alley 129 to Howard St

29556

59

	+	x	-	Flor	Howard & Florida
N.W. B.P.	4.97	295.56	"	290.59	
0-14 = Cb line of Howard					
Top Cb. W.			4.93	290.63	
Gutter			5.56	290.00	
E			5.44	290.14	
Gutter			5.32	290.24	
Top Cb. E			4.62	290.94	
0+00 = N.L. Howard					
Top Ret E			4.37	291.19	
Prmt E			4.58	290.98	
E on prmt			5.00	290.56	
Prmt W.			4.95	290.61	
W. Cb. Top Ret			4.76	290.80	
0+5					
W			4.8	290.8	
+3			5.2	290.4	
E			5.0	290.6	
E = fence line also			4.8	290.8	
0+15					
E			4.8	290.8	
E + 0.3 = fence			4.8	290.8	
E			5.3	290.3	
+8			5.2	290.4	
W			4.8	290.8	

Plot Head  
 12-12-29

0+48 = Garage on W line					
Cent floor = Alley line					
W. on floor	4.82	290.74			
+3	4.7	290.9			
E	5.3	290.3			
+ 9.4 = fence	4.5	291.1			
E	4.6	291.0			
0+75					
E-5	5.5	290.1			
E	5.4	290.2			
E + 0.40 = fence	5.0	290.6			
+3	4.8	290.8			
E	5.2	290.4			
+5	4.7	290.9			
W	4.7	290.9			
+5	5.10	289.86			
+44	5.1	289.7			
+ 47 = \$ Storm drain 2.55 @ Box + 8.5		287.1			
1+07 \$ garage on E 2' Back					
dirt floor					
W	4.2	291.4			
+4	4.5	291.1			
E	5.1	290.5			
+6	4.6	291.0			
+9	5.7	290.4			
E	5.2	290.4			
+2 dirt floor/Garage	5.3	290.3			

295.56

	1417	= Garage on E 26'	
		Back dirt floor	
E-2.6		5.3	290.3
E		5.0	290.6
+3		4.6	291.0
Q		5.0	290.6
+7		4.4	291.2
W		4.1	291.5
	1432	= Garage on E Cement	
		floor & apron	
W		3.9	291.7
+3		4.0	291.6
+5		4.5	291.1
Q		4.8	290.8
+9.5 = edge of Apron		4.04	291.52
E		3.96	291.60
+20 = cement floor		3.66	291.90
	1439	= Garage on E Cement	
		floor & apron	
E-2.2 = floor		3.67	291.87
E on apron		3.91	291.65
+0.4 = edge apron		3.95	291.61
Q		4.7	290.9
+5		4.6	291.0
+7		4.0	291.6
W		4.0	291.6

295.56

60

	1448	= Garage on E Cement	
		floor & apron	
W.		3.6	292.0
+2		3.7	291.9
+5		4.5	291.1
Q		4.7	290.9
E.L. = edge of Apron		3.83	291.73
+3.2 floor of Garage		3.34	292.22
	1470		
E.		3.4	292.2
Q		4.5	291.1
W.		3.7	291.9
	1475	= S.H. E & W. Alley on	
		Pavement	
W.		4.15	291.41
Q		4.45	291.11
E.		4.05	291.51
	1485	= E & W Alley paved	
E		4.30	291.26
Q		4.40	291.16
+2	} 10'-3" wide on & Alley does not drain by 25	4.42	291.14
+5		4.44	291.12
W		4.43	291.13
+5		4.36	291.20
B.M.		4.97	290.57
			290.59
			0.00

6/3/30  
Flood  
Pearce  
Ravine

10' Cbs 40' Rdway 10' 100  
Cbs & Walks in and O.K.

X sec Sicard St  
Harrison to Irving

B.M. NW.C.P. 77.56  
+      X      -      Elev

628      83.84

0-14 = E.Cb Irving on Prmt

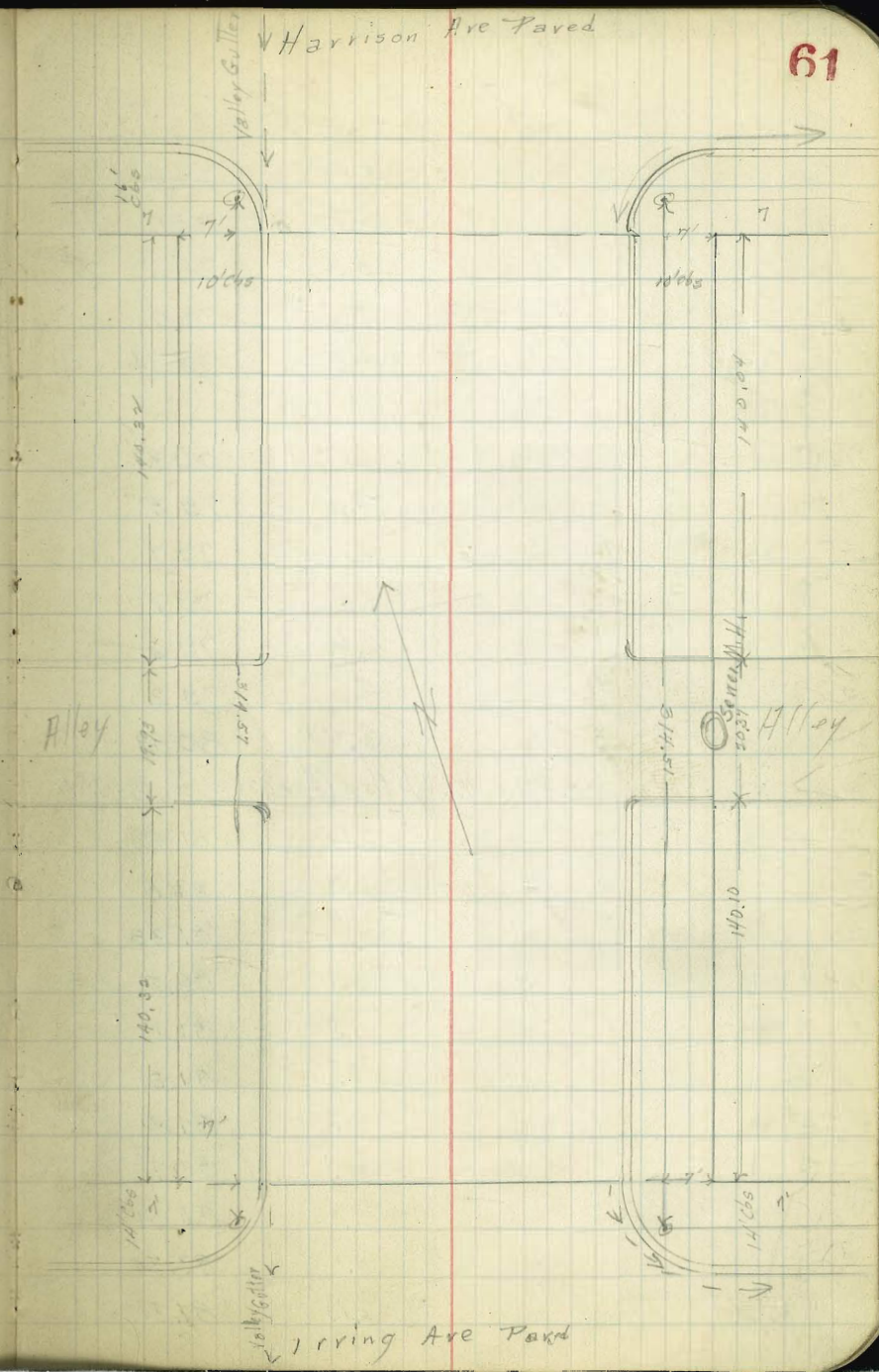
N.L. - 10 Prmt	6.91	76.93
N.L. "	7.01	76.83
Gut. "	7.05	76.79
14 "	6.76	77.08
4 "	6.70	77.14
14 "	6.76	77.08
Gut "	6.90	76.94
S.L. "	7.09	76.75
S.L. + 10 "	7.19	76.65

Plotted cbs 6-25-30  
C.B.H.

0700 = E.L. Irving

SCb Top	6.35	77.49
SGut on Prmt	6.96	76.88
14	6.63	77.21
4	6.53	77.31
14	6.63	77.21
Gut	6.93	76.91
Top Cb N.	6.31	77.53
Top Cb N	4.90	78.94
Gut	5.15	78.3

0750





83.84

	+	π	-	Elev
1/4			5.4	78.4
¢			5.5	78.4
1/4			5.6	78.2
Gut			5.8	78.0
Top Cb. S.			4.90	78.94
	14.00			
Top Cb. S.			3.51	80.33
Gut			4.3	79.5
1/4			4.1	79.7
¢			4.1	79.7
1/4			4.2	79.6
Gut			4.6	79.2
Top Cb. N.			3.51	80.33
	17.40 = N.L. Alley (For exact Measure see sketch)			
N.L. Top Alley Ret			2.15	81.69
N.L. Dirt			2.0	81.8
Cb Top Alley Ret			2.46	81.38
Gut			3.1	80.7
1/4			2.7	81.1
¢			2.8	81.0
1/4			2.8	81.0
Gut			3.1	80.7
Top Cb. Alley Ret			2.33	81.51
S.L. Dirt			2.1	81.7
S.L. Top Alley Ret			2.13	81.71

83.84

62

	+	π	-	Elev
				17.50 = ¢ Sewer M.H. Centered on South Line
Top Rim			1.76	82.08
				17.60 = E.L. Alley (see sketch)
S.L. Top Alley Ret			1.66	82.18
S.L. Dirt			1.7	82.1
Top Cb. Alley Ret			1.85	81.99
Gut			2.6	81.2
1/4			2.2	81.6
¢			2.1	81.7
1/4			2.2	81.6
Gut			2.4	81.4
Top Cb. Alley Ret			1.82	82.02
N.L. Top Cb. Alley Ret			1.57	82.27
N.L. dirt			1.7	82.1
	27.00			
T.P. 7.10		89.93	1.01	82.93
Top Cb. N.			6.72	83.21
Gut			7.2	82.7
1/4			7.1	82.8
¢			7.1	82.8
1/4			7.4	82.5
Gut			7.8	82.1
Top Cb. S.			6.80	83.13

	+	-	Elev
	89.93		
	2750		
Top Cb 5		5.38	84.55
Gut		6.2	83.7
1/4		5.9	84.0
2		5.8	84.1
1/4		5.9	84.0
Gut		6.0	83.9
Top Cb N.		5.56	84.37
	3+00.50 = W.L. Harrison		
Top Cb. N		4.00	85.93
Gut on Prmt		4.74	85.19
1/4 " "		4.23	85.70
2 " "		4.08	85.85
1/4 " "		4.31	85.62
Gut " "		4.70	85.23
Top Cb 5.		3.96	85.97
	3+16.5 = W.C. Harrison		
SL-10 prmt		4.66	85.27
SL "		4.52	85.41
Cb "		4.32	85.61
1/4 "		4.03	85.90
2 "		3.94	85.99
1/4 "		4.12	85.81
Cb.		4.49	85.44
N.L.		4.54	85.39
+10		4.44	85.49

BM N.W. 8 P.

89.93

290

87.23 = 87.05 = .02 Error

63

Levels on Existing Sewers  
from Existing M.H. & Chalmer St SW Ly  
Line of State Thru BIK 43 Middletown Add

8-5-30  
Miller  
Sommermeier  
Stub Sta 1171.76  
Page 44

BM.	0.65	119.53	118.88	
00-Existing M.H. {Chalmers SW Ly. line state	11.48	108.95	✓	Top M.H.
0+0 Δ 32°-48' Lt. from Chalmers	16.49	103.04	✓	Flow Line
0+69.55 {Connection 4" pipe End Existing 6" Pipe	8.4	111.1	✓	ground
0+69.55 Δ 25°-36' Lt.	13.01	106.52	✓	FL. 6" pipe
1+17.43 {connection of 6" & 4" pipes	5.5	114.0	✓	ground
1+17.43 Δ 35°-03' Rt.	7.69	111.84	✓	FL. 4" pipe
1+17.43	6.86	112.67	✓	FL. 6" Am. & Nello
1+24	3.8	115.7	✓	ground
1+76.20 {4thwood St 85.54 S. of Fremont St.	0.8	118.7	✓	ground
1+76.20 Δ 5°-14' Rt.	2.73	116.80	✓	FL. 6" pipe
T.P.	12.64	131.56	✓	0.65 118.88
2+40	7.5	124.1	✓	ground
3+01.80 {BIK 43 Middletown Add 93.24 S. of Fremont St.	3.4	128.2	✓	ground
3+01.80 No A at this station	5.47	126.09	✓	FL. 6" pipe
T.P.	9.03	140.44	✓	0.15 131.41
3+45	8.3	132.1	✓	ground
3+67.30 End. of Existing 6" Sewer	5.4	135.0	✓	ground
3+67.30 6" x 4" y to House to N.	9.50	130.94	✓	FL. 6" sewer

Levels on BIK 43 Middletown Add

8-5-30  
Miller  
Sommermeier  
64

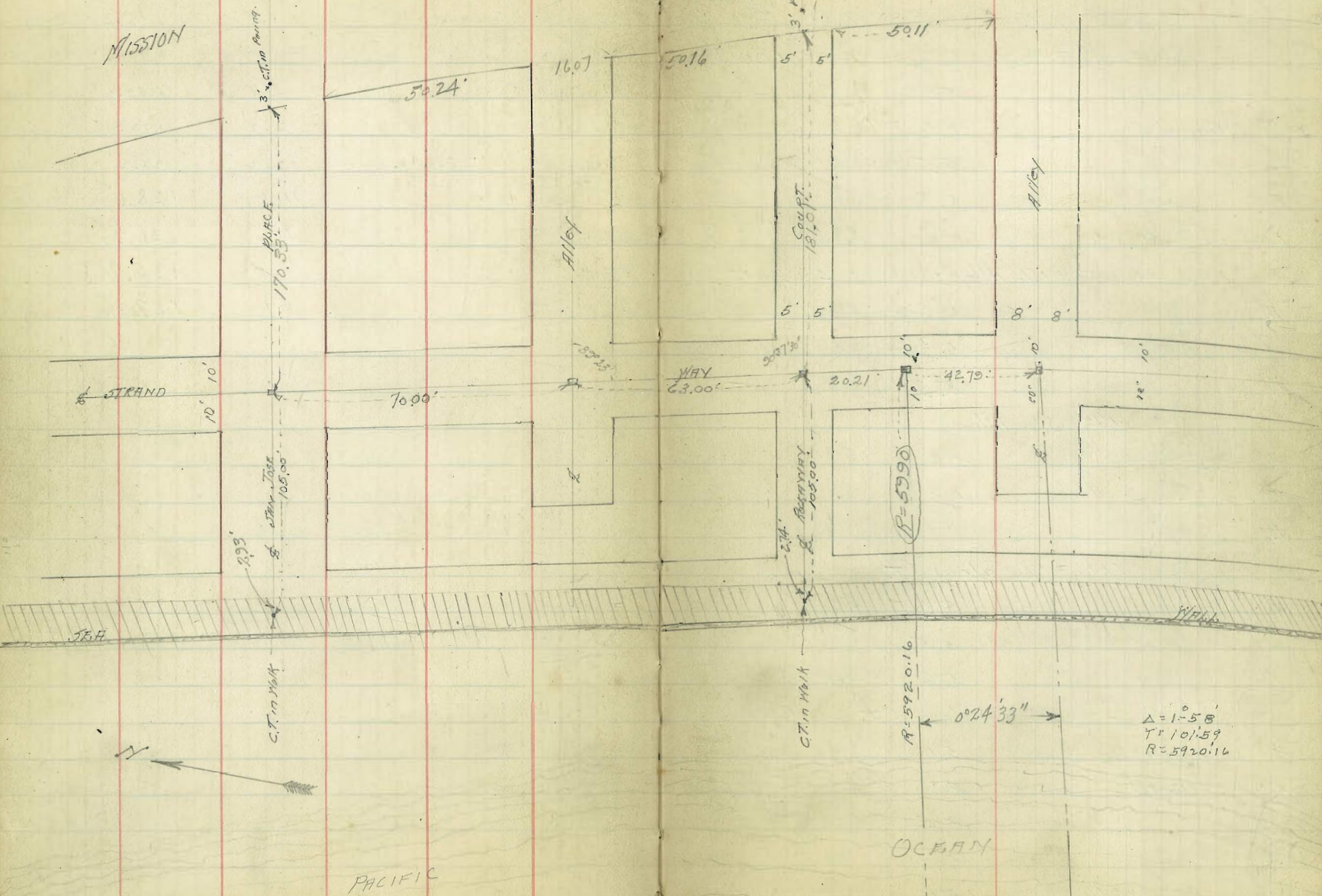
140.44 Topp Page

125' S.E. of Fremont	+ 4.8	145.2	✓
121' " " " "	+ 5.0	145.4	✓
101' " " " "	5.8	134.6	✓
97' " " " "	12.2	128.2	✓
83.84 " " " " = Existing Sewer	12.2	128.2	✓ ground
66' " " " "	11.8	128.6	✓
57' " " " "	9.2	131.2	✓
56' " " " "	3.5	136.9	✓
37' " " " "	3.1	137.3	✓

Walker  
Bliss  
Diebert

# TIES TO ROCKAWAY COURT

BLVD.



MISSION

3' section bearing

PURCE  
170.55

STRA. TIES  
105.00

C.T. in WALK

16.07

50.24

50.16

5' 5'

50.11

ALLEY

5' 5'

5' 5'

5' 5'

2.14

C.T. in WALK

R=5990

ALLEY

8' 8'

8' 8'

10' 10'

12' 10'

WAY  
63.00

20.21

42.70

R=5920.16

0°24'33"

Δ=1°58'  
T=101.59  
R=5920.16

OCEAN



Walker  
Buss  
Dobson  
4-3-3)

ROSS Section  
STRAND MAY 20' wide  
From South Line 500 Girt Court  
to N.W. Queenstown Court

4.42 11.50 7.08 S.W. San Jose  
B.P. on San Jose

J.L. SEA GIRT COURT = 0+00

West. on Board Walk	5.33	6.17	✓
W " Ground	5.6	5.9	
♀	5.5	6.0	
E	5.7	5.8	
East. on Board Walk	5.60	5.90	↓

0+50 = N.W. Alley's Nos 204 & 205

E	5.6	5.9	
♀	5.3	6.2	
W	5.3	6.2	

0+66 = S.L. Alley

W	5.6	5.9	
♀	5.5	6.0	
E	5.6	5.9	

1+16 = N.W. Salem Ct

E	5.6	5.9	
♀	5.5	6.0	
W	5.6	5.9	

1+26 = S.L. Salem Ct

W on Board Walk	5.10	6.40	
W " Grounds	5.6	5.9	
♀	5.4	6.1	
E	5.5	6.0	
E on Board Walk	5.10	6.40	

Reduced by JER  
Plotted by CEH  
4-4-1931

11.50

66

1+71 = Garage on E. 5th Floor Red = 5.59 5.91

E	5.5	5.0
♀	5.4	6.1
W	5.5	6.0

1+76 = N.W. Alley's 198 + 199

W	5.4	6.1
♀	5.3	6.2
E		

1+98 = Garage on E 5.6 5.9 ↓ dirt floor  
5.03  
2+32 = 2 Gar. MH. 4'x4' 5.5' East ♀ 6.47 Conc.

2+42 = N.W. SAN JOSE PL.

E	5.4	6.1
♀	5.0	6.5
W	5.4	6.1

J.L. SAN JOSE = 0+00

W	4.6	6.9
♀	4.4	7.1
E	4.7	6.8

0+15

E	4.4	7.1
♀	4.0	7.5
W	4.1	7.4

0+50 = N.W. Alley's 196 + 197

W	4.3	7.2
♀	4.3	7.2

1150

E		4.6	6.9	
	0+66 = S.L. Alleys 196 + 197			
E		4.5	7.0	
L		4.2	7.3	
N		4.2	7.3	
	0+74 = Garage on N			
		4.0	7.5	dirt Floor
	1+16 = N.L. Rockaway Ct			
N		4.0	7.5	
L		4.0	7.5	
E		4.0	7.5	
	1+26 = S.L. Rockaway Ct			
E		4.2	7.3	
L		4.0	7.5	
N		4.1	7.4	
	1+4121 = B.C. St.			
N		4.0	7.5	
L		4.0	7.5	
E		4.3	7.2	
	1+68 = Garage on West. Con Floor			
T.P.	3.69	11.24	3.95	7.55
	on Above Garage Floor			
		3.44	7.80	✓
	1+76 = N.L. Alleys 190 + 191			
E		4.0	7.2	
L		3.7	7.5	
N		3.5	7.7	
	1+92 = S.L. Alleys 190 + 191			

1124

67

N		3.7	7.5	
L		3.7	7.5	
E		4.2	7.0	
	<sup>2</sup> X+42.01 = N.L. Redondo Court			
E		4.1	7.1	
L		3.9	7.3	
N		3.9	7.3	
	<sup>2</sup> X+52.01 = S.L. Redondo Court			
N on Board Walk		3.4	7.8	
N		3.8	7.4	
L		3.8	7.4	
E		4.1	7.1	
E on Board Walk		3.3	7.9	
	<sup>3</sup> X+02.02 = N.L. Alleys 188 + 189			
E		4.0	7.2	
L		4.0	7.2	
N		3.7	7.5	
	<sup>3</sup> X+18.02 = S.L. Alleys 188 + 189			
West. on Board Walk		3.6	7.6	
" " Ground		4.0	7.2	
L		3.8	7.4	
E		4.3	6.9	
	<sup>3</sup> X+68.02 = N.L. Queenstown Ct			
E		3.9	7.3	
L		3.9	7.3	
N		4.0	7.2	
" on Board Walk		3.2	8.0	

CROSS SECTION  
 ROCKAWAY COURT 10' wide  
 From W.L. Mission Blvd. to SEA WALL

1124 = H.I. from P-67

W.L. Mission Blvd. = 0+00

Sls on Con Walk	11.06	0.18	
L " " "	11.05	0.19	
N " " "	11.05	0.19	
0+21 = 2' Con Esc + Elec Box	2.5' x 2.5'		
N	10.7	0.5	
+2 on Board Walk	10.60	0.64	✓
L " " "	10.69	0.55	✓
+2.5' Wedge Con Esc	10.69	0.55	
S.L.	10.7	0.5	
0+46 =			
S.L.	10.4	0.8	
+2	10.4	0.8	
+2 on Board Walk	10.04	1.20	✓
L " " "	10.03	1.21	✓
+3 " " "	9.92	1.32	✓
N	9.9	1.3	
	9.19	2.05	✓
0+60 = Porch on South			
0+70			
N	9.4	1.8	
+2	9.4	1.8	
+2 on Board Walk	9.17	2.07	✓
L " " "	9.21	2.03	✓
+3 " " "	9.2	2.0	✓

4/3/31  
 Produced by J.E.F.  
 Profile Plotted by C.B.H.

Q

1124

68

+3	10.0	1.2	
5	10.2	1.0	
+5	10.4	0.8	
	8.85	2.39	✓
0+84 = 2' Board Walk + Porch on South			
0+94 = 2' " " on South = 2' Con Walk on North			
on South Board Walk	8.39	2.85	✓
3' x 2' = top Con Walk	8.23	3.01	✓
1+00 = East edge House on South		0.32' in court	
5-5	8.9	2.3	
5	8.9	2.3	
+2	8.9	2.3	
+2' on Board Walk	8.09	3.15	
L " " "	8.07	3.17	✓
+3 " " "	8.04	3.20	
N	8.1	3.1	
1+06 = 2' Board Step on N	7.81	3.43	✓
1+21 = Board Walk	7.06	4.18	on South
1+25			
N	6.7	4.5	
+2' on Walk	6.85	4.39	
L " " "	6.92	4.32	✓
+3 " " "	6.95	4.29	
+3 on Ground	8.0	3.2	
5	8.0	3.2	
1+39 = 2' 3' Con Walk on North			✓
5-5	6.4	4.8	

1124

68

S		5.9	5.3	
+2	on Board Walk	6.01	5.23	
♀	" " "	6.00	5.24	✓
+3	" " "	6.01	5.23	
+3	" Con Walk	6.08	5.16	✓
	1+48 = ♀ Board Step on N	<sup>5.54</sup> 5.54	5.70	✓
	1+65 = ♀ Paunch on N	3.74	7.50	✓
	1+70 = End Board Walk			✓
N		3.89	7.35	
+2	on Board Walk	3.87	7.37	
♀	" " "	3.86	7.38	✓
+2	" " "	3.88	7.36	
S		3.9	7.3	
	1+71.0 = ♀ L. Strand Walk			✓
S		3.8	7.4	
♀		3.9	7.3	
N		3.8	7.4	
	M.L. Strand Walk = 0+00			
N		3.6	7.6	
+2		3.6	7.6	
+2	on Board Walk	3.21	8.03	
♀	" " "	3.20	8.04	✓
+3	" " "	3.17	8.07	
+3		3.6	7.6	
S		3.6	7.6	
	0+22 = ♀ Con Step on South			✓

1124

69

	South on Con. Step	2.92	8.32	✓
S	" " "	3.42	7.80	
+1	" " "	3.44	7.80	
+1	" " "	4.11	7.13	
+2	" " "	4.11	7.13	
+2	" Board Walk	4.11	7.13	
♀	" " "	4.17	7.07	✓
+3	" " "	4.11	7.13	
N		4.0	7.2	
0+27	♀ Board Walk	4.45	6.79	( on North)
	0+45 = end Board Walk			✓
N		5.2	6.0	
+2	on Board Walk	4.91	6.33	
♀	" " "	5.00	6.24	✓
+3	" " "	5.0	6.2	✓
S		5.2	5.9	
	0+75			
S		5.8	5.4	
♀		5.9	5.3	
N		6.1	5.1	
	0+92 = east edge esplanade			
N	on Con Walk	6.56	4.68	✓
♀	" " "	6.57	4.67	✓
S	" " "	6.57	4.67	✓
	T.P. 171	8.75	4.20	7.04
	Ch. 817. P. 66	1.67	7.08	7.08
			0.00 = Error	



69

70

N.E. cor Eads & Rushville  
for drainage

4-22-31  
Miller  
Sommer Meyer  
Oshorn  
Northert

X see Eads.

71

30' Roadway

Rushville St.

15'0

10' Rad.

14'0

5 R. Roadway.

Eads

Ⓟ

B.M.	2.14	133.19	131.05
10' N. of N. Line Rushville			
E. gutter		2.56	130.63
+5 W		2.54	130.65
+10 W		2.39	30.80
+15 W		2.39	30.80
+20 W		2.39	30.80
+25 W		2.55	30.64
+30 W		2.66	30.53
+35 W		2.74	30.45
+40 W		2.87	30.32
5' N. of N. Line Rushville			
E. gutter		2.59	30.60
+5 W		2.56	30.63
+10'		2.53	30.66
+15		2.52	30.67
+20		2.53	30.66
+25		2.60	30.59
+30		2.68	30.51
+35		2.80	30.39
+40		2.92	30.27
N. line Rushville			
E. cmt. ch		2.16	31.03
E. gutter		2.63	30.56
+5 W.		2.59	30.60
+10'		2.56	30.63
+15'		2.54	30.65

Raymond  
7/24/31

133.19  
N. line Rushville (con)

+20'	2.62	30.57
+25'	2.66	30.53
+30'	2.71	30.48
+35'	2.82	30.37
+40'	2.98	30.21

5' S. of N. line Rushville P.C. 10' Rad

E. cmt. cl.	2.15	31.04
E. gutter	2.60	30.59
+5' W	2.53	30.66
+10'	2.54	30.65
+15'	2.59	30.60
+20'	2.65	30.54
+25'	2.72	30.47
+30'	2.79	30.40
+35'	2.90	30.29
+40'	3.05	30.14

10' S. of S. line Rushville

1.5 E. of E. ch. line = cmt. cl. on curve	1.96	31.23
E. gutter	2.46	30.73
E. ch. line of Eads.	2.48	30.71
+5' W	2.48	30.71
+10'	2.54	30.65
+15'	2.62	30.57
+20'	2.70	30.49
+25'	2.80	30.39
+30'	2.86	30.33

133.19,

Eads + Rushville

72

+35'	3.00	30.19
+40'	3.12	30.07

15' S. of S. line Rushville = N. ch. line Rushville

E. line Eads. cmt. cl.	1.47	31.72
" " " gutter	1.91	31.28
+4' W = P.C. 10' Rad. gutter	2.05	31.14
" " " " " cmt. cl.	2.63	31.56
E. ch. line Eads	2.38	30.81
+5'	2.49	30.70
+10'	2.59	30.60
+15'	2.70	30.49
+20'	2.80	30.39
+25'	2.91	30.28
+30'	3.02	30.17
+35'	3.12	30.07
+40'	3.25	29.94

20' N. of N. line Rush

E. gutter	2.47	30.72
+5' W	2.46	30.73
+10' W	2.43	30.76
+15' W	2.42	30.77
	2.41	30.78

30' N. of N. line Rushville

E. cmt. cl.	1.87	31.32
E. gutter	2.41	30.78
+5' W	2.38	30.81
+10' W	2.34	30.85

Moore  
12-29-57

Indexed  
C.S.K.

73

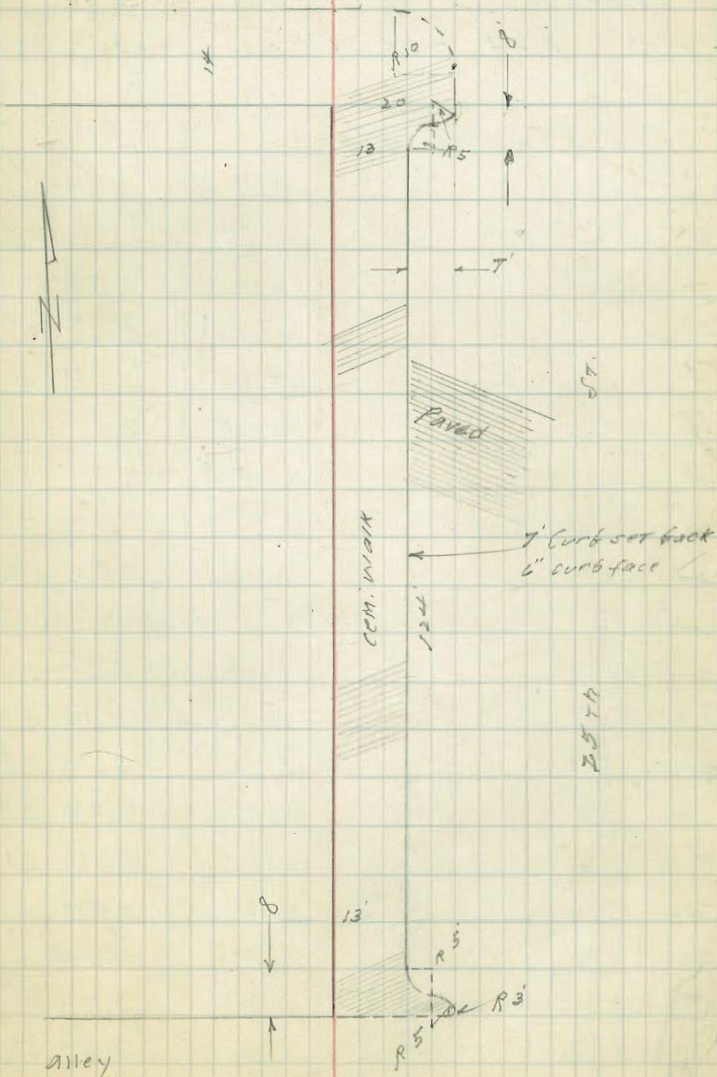
Curb set back Location

W side 25th bet. Imperial & Central Ave.

Note - curb on S'A Returns are  
ramped to paving  $1\frac{1}{2}:1$

Imperial

ave



Moose  
v-1240

INDEXED  
EPB

74

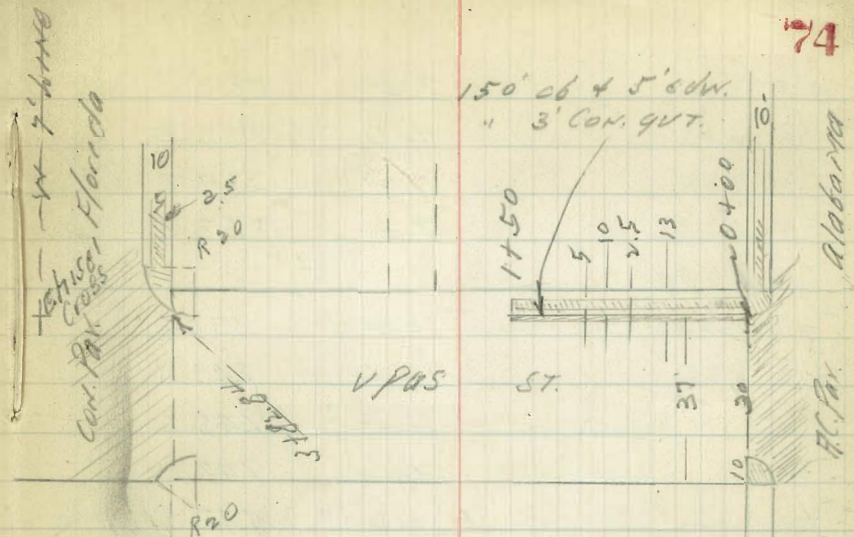
XSEC UPAS ST 50' wide  
Florida to Ala.  
10' cbs

NOTE! STA. ON N cb WINE OF UPAS.  
UPAS  
NWBP 0.89 240.39 259.50 Ala.

0-10 W of Ala.

NW	cb	0.70	259.69
"	gut	1.37	259.02
cb	PAV	1.14	259.25
1/4	"	0.95	259.44
c	"	0.78	259.61
1/4	"	0.75	259.64
cb	"	0.81	259.58
SL	cb	0.44	259.95
N	gut	1.05	259.34
0+00 W.L. Ala. STA. ON N cb UPAS			
S		0.4	260.0
cb	TOP RET.	0.56	259.83
gut	PAV	1.16	259.23
1/4	"	1.14	259.25
c	"	1.15	259.24
1/4	"	1.31	259.08
gut	"	1.58	258.81
cb	TOP RET	0.87	259.52
N		0.6	259.8

Redy Plot on old profile 873  
4-2-40 CBH.



260.39

0+01	16" P.A.	S + 7.7	
0+17	Euc. Tree	S + 11	12" di.
0+34	Acacia "	S + 10.5	6" "
0+40	Pepper "	S + 9.5	2" "
0+44	" "	S + 9.5	14" "
0+50 IN DRIVE			
N		6.7	253.7
+2.5	N edge INK	6.47	253.92
+7.5	S " "	6.62	253.75
cb	gut	7.44	252.93
+3	edge CON. GUT	7.34	253.05
1/4		7.4	253.0

240.39

247.55

75

c		7.4	253.0
1/4		7.4	252.8
cb		7.2	253.2
S		7.0	253.4
	1+00		
S		10.2	250.2
+4		10.6	249.8
+4		11.8	248.6
cb		12.0	248.4
1/4		12.4	247.8
c		13.3	247.1
1/4		13.2	247.2
+4.5	edge 3' gut	13.13	247.26
gut		13.24	247.13
cb	corn.	12.53	247.86
N		12.4	248.0
T.P.	0.17	247.55	13.01 247.38
	1+50		
N		5.4	242.2
+2.5	N edge wk.	5.36	242.19
+7.5	S " "	5.49	242.06
cb	end cb 4' walk	5.51	242.04
gut	+ 3' con. gut.	6.22	241.33
+3	S edge "	6.22	241.33

1/4		5.8	242.3
c		5.1	242.5
1/4		4.7	242.9
cb		4.3	243.3
+3		4.2	243.4
+4		2.8	244.8
S		2.4	245.0
	1+56 14" A.P.		
	1+64		
S	+ 14 S.M. P.M.	3.50	244.05
"	" F.L.	8.63	238.92
	1+75		
S		5.6	242.0
cb		6.1	241.5
+3		6.2	241.4
+5		7.2	240.4
1/4		7.3	240.3
c		7.1	240.5
1/4		7.1	240.5
+4		7.2	240.4
cb		8.1	239.5
N		8.6	239.0
	2+00		
N		12.8	234.8
cb		12.1	235.5
1/4		10.6	237.0

247.55

c	10.7	236.9
1/2	11.1	236.5
+2	10.9	236.7
cb	9.6	238.0
S	9.5	238.1

+18

S	12.9	234.7
cb	12.9	234.7
+3	13.1	234.5
+5	14.8	232.8
1/2	15.1	232.5
c	15.2	232.4
1/4	15.3	232.3
cb	14.5	233.1
+5	14.4	233.2
N	15.7	231.9
+10	21.2	226.4

T.P. 0.59 235.84 17.30 235.25

+40

-10	17.2	218.6
N	12.6	223.2
cb	8.9	226.9
1/2	8.9	226.9
c	9.0	226.8

235.84

76

1/2	8.7	227.1
+4	7.4	228.4
cb	7.1	228.7
S	6.8	229.0

T.P. 0.04 223.33 17.55 223.29

+70

S	1.2	222.1
cb	1.7	221.6
+5	3.8	219.5
1/4	3.8	219.5
c	4.0	219.3
1/2	3.5	219.8
cb	3.4	219.9
N	4.4	216.9
+10	10.4	212.9

+100

-15	18.3	205.0
N	14.3	209.0
cb	10.2	213.1
1/2	10.4	212.9
c	10.9	212.4
1/2	10.8	212.5
+7	10.7	212.6
+4	8.4	214.9

223.33

1/4 + 6 14" PP		
cb	7.8	215.5
S	7.5	215.8

T.P. 0.33 211.34 12.32 211.01

3 + 30

S	1.6	209.7
cb	1.7	209.6
+3	2.3	209.0
+5	5.9	205.4
1/4	5.9	205.4
c	5.5	205.8
1/4	5.3	206.0
+8	5.3	206.0
cb	8.0	203.3
+7	12.0	199.3
N	12.2	199.1
+15	12.9	198.4

3 + 60

-10	15.1	195.2
N	15.0	195.3
cb	14.0	197.3
1/4	13.1	198.2
c	12.6	198.7
1/6	13.1	198.2

211.34

+5	12.9	298.4
cb	8.7	202.6
S	8.4	202.7

T.P. 2.73 200.98 13.09 198.25

3 + 72.84 cb. P.C.

S	1.6	199.4
+4	1.7	199.3
cb top end	3.52	197.46
+1	4.4	196.6
1/4	4.7	196.3
c	4.5	196.5
1/4	4.8	196.2
+6.5	5.1	195.9
cb top end	3.91	197.07
N	4.9	196.1

3 + 82.84 = E L Florida St.

N	5.8	195.2
+7 top ob	5.75	195.23
+7 gut. Pav	6.46	194.52
cb Pav.	6.40	194.58
1/4 "	6.23	194.75
c "	6.13	194.85
1/4 "	6.05	194.93
cb "	6.04	194.96



200.98

cb + 3	= gut Pav	6.02	194 96
" + 3	= Top cb. Ret	5.12	195 86
S		4.3	196 7

## E of Florida + 7

S	gut Pav.	6.81	194.17
S	Top end Ret.	6.00	194.98

## E. cb. Line Florida

S	Pav.	6.84	194 14
cb	"	6.66	194 32
1/4	"	4.48	194 30
0	"	4.77	194 21
1/4	"	6.87	194 11
cb	"	6.98	194 00
N	"	7.00	193.98
3' E of N = Top cb		6.15	194 83
N + 10 P.C. cb		6.05	194 93
" "	gut	6.96	194 02

SW cor B.M. B.P.

Florida + Myrtle 2.93 198.05

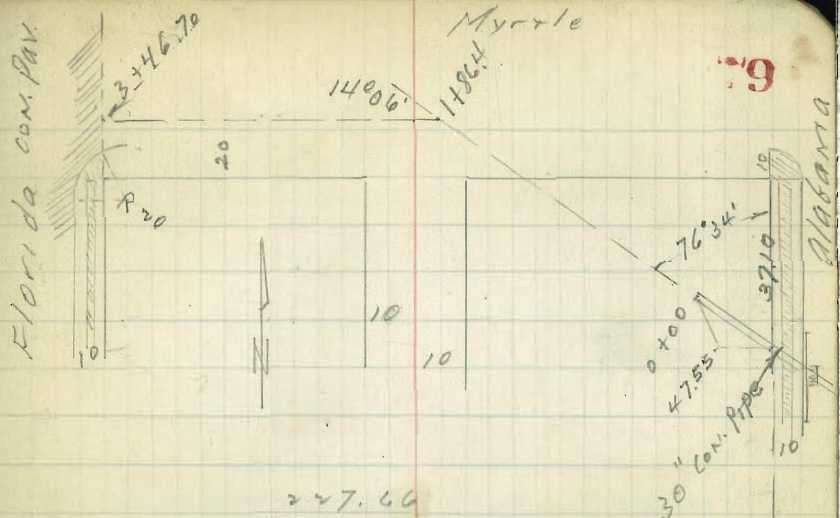
78

Moore  
41540

INDEXED  
EFB

Proposed Storm Ditch  
ON Myrtle, bet. Florida & Ala. STS.

				Myrtle Sta.
NWB.P.	134	252.84	251.50	✓
T.P.	0.11	240.19	240.08	✓
T.P.	0.30	227.66	227.36	✓
0+00	FL outlet 30" Pipe	3.50	224.16	
0+03	E	6.2	221.5	
0+14	E	5.5	222.2	
"	10 RT	+0.5	228.2	
"	10 LT	5.8	221.9	
0+25	E	2.8	224.9	
"	10 RT	+1.8	229.5	
"	5 LT	6.1	221.6	
"	15 LT	6.4	221.3	
0+50	E	3.2	224.5	
"	10 RT	0.7	227.0	
"	15 LT	8.8	218.9	
"	25 LT	7.8	219.9	
1+00	E	5.2	222.5	
"	20 LT	10.7	217.0	
"	10 RT	2.5	225.2	
1+50	E	9.2	218.5	
"	15 LT	13.7	214.0	
"	10 RT	5.4	222.3	



2+50	E	227.66		
1+86.4	E	1496.4	8.2	219.5
"	15 LT		10.9	216.8
"	10 RT		6.4	221.3
T.P.	0.66	215.47	1225	215.41
2+50	E		5.9	209.6
"	10 RT		5.8	209.7
"	10 LT		5.7	209.8
3+00	E		12.7	202.8
"	10 RT		12.4	203.1
"	10 LT		12.4	203.1
T.P.	1.78	204.33	1797	202.55
3+36.7	E		4.8	199.5
"	10 RT		4.8	199.5
"	10 LT Top end		4.28	200.05
3+46.7	EL Florida		5.91 E on Pav.	198.42

631 198.04 198.05  
Bench Book = 198.01

DIRECTIONS FOR USE OF TABLES

TABLE No. 1.

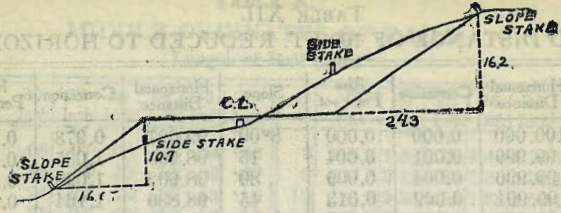
Distance of slope stake from side or shoulder stake for any width roadway, slope  $1\frac{1}{2}$  to 1. If ground is nearly level the cut or fill at side stake is located by the double entry method in left column and top row. The number in body

from side stake to slope stake. If ground is not

IMPROVED TABLES  
AND  
INFORMATION

To find Tangent and External for curve of any other degree, divide by degree of curve and add correction found in column of corrections. Degree of curve with a given  $P$  may be found by dividing tangent (or external), opposite  $P$  by given tangent (or external). The distance from a point on the tangent to the curve is very nearly the square of the tangent length divided by twice the radius.

S. 14<sup>e</sup> 40 - 00 E



**DISTANCES FROM SIDE STAKES FOR CROSS-SECTIONING.**

SLOPE 1 1/2 TO 1. ROADWAY OF ANY WIDTH.

	0	.1	.2	.3	.4	.5	.6	.7	.8	.9	
0	0 00	0 15	0 30	0 45	0 60	0 75	0 90	1 05	1 20	1 35	0
1	1 50	1 65	1 80	1 95	2 10	2 25	2 40	2 55	2 70	2 85	1
2	3 00	3 15	3 30	3 45	3 60	3 75	3 90	4 05	4 20	4 35	2
3	4 50	4 65	4 80	4 95	5 10	5 25	5 40	5 55	5 70	5 85	3
4	6 00	6 15	6 30	6 45	6 60	6 75	6 90	7 05	7 20	7 35	4
5	7 50	7 65	7 80	7 95	8 10	8 25	8 40	8 55	8 70	8 85	5
6	9 00	9 15	9 30	9 45	9 60	9 75	9 90	10 05	10 20	10 35	6
7	10 50	10 65	10 80	10 95	11 10	11 25	11 40	11 55	11 70	11 85	7
8	12 00	12 15	12 30	12 45	12 60	12 75	12 90	13 05	13 20	13 35	8
9	13 50	13 65	13 80	13 95	14 10	14 25	14 40	14 55	14 70	14 85	9
10	15 00	15 15	15 30	15 45	15 60	15 75	15 90	16 05	16 20	16 35	10
11	16 50	16 65	16 80	16 95	17 10	17 25	17 40	17 55	17 70	17 85	11
12	18 00	18 15	18 30	18 45	18 60	18 75	18 90	19 05	19 20	19 35	12
13	19 50	19 65	19 80	19 95	20 10	20 25	20 40	20 55	20 70	20 85	13
14	21 00	21 15	21 30	21 45	21 60	21 75	21 90	22 05	22 20	22 35	14
15	22 50	22 65	22 80	22 95	23 10	23 25	23 40	23 55	23 70	23 85	15
16	24 00	24 15	24 30	24 45	24 60	24 75	24 90	25 05	25 20	25 35	16
17	25 50	25 65	25 80	25 95	26 10	26 25	26 40	26 55	26 70	26 85	17
18	27 00	27 15	27 30	27 45	27 60	27 75	27 90	28 05	28 20	28 35	18
19	28 50	28 65	28 80	28 95	29 10	29 25	29 40	29 55	29 70	29 85	19
20	30 00	30 15	30 30	30 45	30 60	30 75	30 90	31 05	31 20	31 35	20
21	31 50	31 65	31 80	31 95	32 10	32 25	32 40	32 55	32 70	32 85	21
22	33 00	33 15	33 30	33 45	33 60	33 75	33 90	34 05	34 20	34 35	22
23	34 50	34 65	34 80	34 95	35 10	35 25	35 40	35 55	35 70	35 85	23
24	36 00	36 15	36 30	36 45	36 60	36 75	36 90	37 05	37 20	37 35	24
25	37 50	37 65	37 80	37 95	38 10	38 25	38 40	38 55	38 70	38 85	25
26	39 00	39 15	39 30	39 45	39 60	39 75	39 90	40 05	40 20	40 35	26
27	40 50	40 65	40 80	40 95	41 10	41 25	41 40	41 55	41 70	41 85	27
28	42 00	42 15	42 30	42 45	42 60	42 75	42 90	43 05	43 20	43 35	28
29	43 50	43 65	43 80	43 95	44 10	44 25	44 40	44 55	44 70	44 85	29
30	45 00	45 15	45 30	45 45	45 60	45 75	45 90	46 05	46 20	46 35	30
31	46 50	46 65	46 80	46 95	47 10	47 25	47 40	47 55	47 70	47 85	31
32	48 00	48 15	48 30	48 45	48 60	48 75	48 90	49 05	49 20	49 35	32
33	49 50	49 65	49 80	49 95	50 10	50 25	50 40	50 55	50 70	50 85	33
34	51 00	51 15	51 30	51 45	51 60	51 75	51 90	52 05	52 20	52 35	34
35	52 50	52 65	52 80	52 95	53 10	53 25	53 40	53 55	53 70	53 85	35
36	54 00	54 15	54 30	54 45	54 60	54 75	54 90	55 05	55 20	55 35	36
37	55 50	55 65	55 80	55 95	56 10	56 25	56 40	56 55	56 70	56 85	37
38	57 00	57 15	57 30	57 45	57 60	57 75	57 90	58 05	58 20	58 35	38
39	58 50	58 65	58 80	58 95	59 10	59 25	59 40	59 55	59 70	59 85	39
40	60 00	60 15	60 30	60 45	60 60	60 75	60 90	61 05	61 20	61 35	40
41	61 50	61 65	61 80	61 95	62 10	62 25	62 40	62 55	62 70	62 85	41
42	63 00	63 15	63 30	63 45	63 60	63 75	63 90	64 05	64 20	64 35	42
43	64 50	64 65	64 80	64 95	65 10	65 25	65 40	65 55	65 70	65 85	43
44	66 00	66 15	66 30	66 45	66 60	66 75	66 90	67 05	67 20	67 35	44
45	67 50	67 65	67 80	67 95	68 10	68 25	68 40	68 55	68 70	68 85	45
46	69 00	69 15	69 30	69 45	69 60	69 75	69 90	70 05	70 20	70 35	46
47	70 50	70 65	70 80	70 95	71 10	71 25	71 40	71 55	71 70	71 85	47
48	72 00	72 15	72 30	72 45	72 60	72 75	72 90	73 05	73 20	73 35	48
49	73 50	73 65	73 80	73 95	74 10	74 25	74 40	74 55	74 70	74 85	49
50	75 00	75 15	75 30	75 45	75 60	75 75	75 90	76 05	76 20	76 35	50

Computed by L. Leland Locke.

201.39

194.08  
4.20  
196.28

5.49  
5.30  
0.19

77.05  
288.05 - 20 288.10  
289.31 - 291.22

Florida  
Alab

175  
58  
48  
175  
148



125  
81  
44

250.36 -  
+ 1.94 ✓  
252.28 ✓  
- 12.24  
240.04 ✓  
+ 1.00  
241.04 ✓  
- 12.93  
228.11 ✓  
+ 1.69  
229.80 ✓  
- 5.64  
224.16 ✓  
+ 1.04  
225.20 ✓  
- 12.96  
212.24 ✓  
+ 1.15  
213.39 ✓  
- 13.03  
200.36 ✓  
+ 0.84  
201.18 ✓  
- 13.21  
187.97 ✓  
+ 3.11  
191.08  
- 0.59  
190.49 ✓  
11.81  
202.30 ✓  
0.16  
202.14 ✓  
12.09  
214.23 ✓  
0.78  
213.45 ✓

213.45  
11.75  
225.20  
1.00  
224.20  
224.16  
+ 7.83  
231.99 ✓  
0.91  
231.08 ✓  
12.13  
243.21 ✓  
0.30  
242.91 ✓  
9.30  
252.21 ✓  
1.84  
250.37 ✓  
224.16  
+ 1.43  
225.59  
224.16  
9.92  
234.08  
251.50  
213.45 ✓

235.0  
28-00-30  
525-15.11  
8.95  
1.95  
7.00

ENGINEERING DEPARTMENT,  
CITY OF SAN DIEGO,  
CALIFORNIA.  
14121  
3079  
17600  
251.50  
NXX