

1355



FIELD BOOK

1355

MICROFILMED
DEC 23 1964

This notebook supplied by engineer M.H.

Our Leather Bound Engineers Note Books are carried in the following rulings:

- No. 380 LEVEL BOOK. Left and Right Hand Page the same as Left Hand Page of this Book.
- No. 382 FIELD BOOK. Left Hand Page as in this Book, Right Hand Page 4 x 4 to the inch, Center Line Red.
- No. 384 MINING TRANSIT BOOK. Left Hand Page as in this Book, Right Hand Page 8x8 to the inch, Center Line Red.
- No. 385 FIELD BOOK. Left Hand Page as in this Book, Right Hand Page 8 vertical and 4 horizontal lines to the inch, Center Line Red.

We also carry the Note Books listed above, bound in extra strong Fabri-Hide (otherwise the same quality of book), which can be furnished at a somewhat lower price.

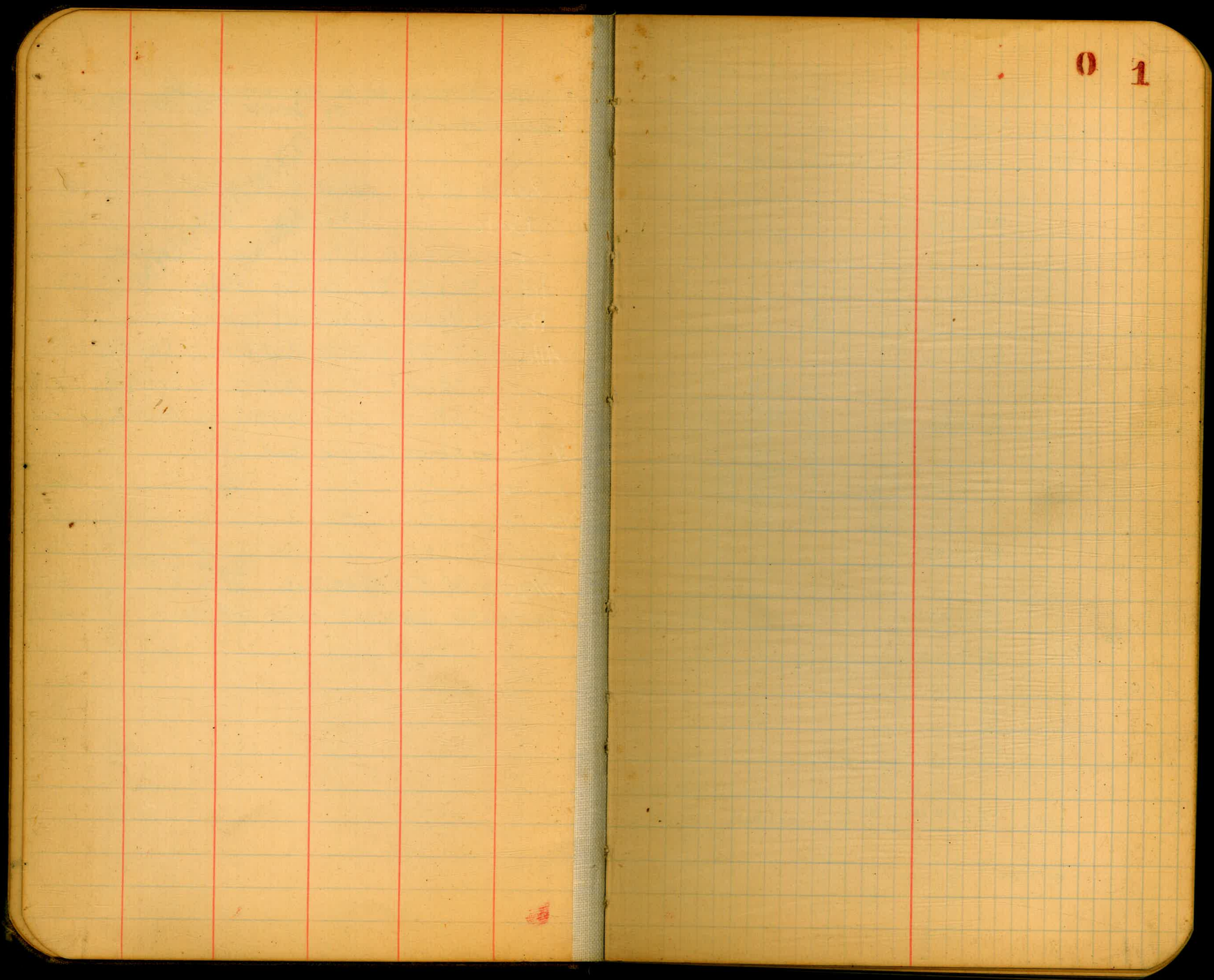
In ordering Fabri-Hide covered books, add the letter "F" to catalog number.

THE FREDERICK POST CO.
ENGINEERING and DRAFTING SUPPLIES
IRVING PARK STATION
CHICAGO, ILL.

MICROFILMED
DEC 23 1964

Alignment - x section 60' St. Marlborough - Oak
By Joeqer July 1-29 1 to 13
Lexington - Poplar.

Laurel St.	Ketner to Atlantic	14.
Date	28 th to Fern	22
Alley Blk 64	City Hts. Landis to Wightman	34
Int. of Florida St.	South of Univ.	37
Powder House Canyon Road	Balboa Park	46
Alley Blk 71	City Hights Wightman to Landis	47
" " 78	✓ ✓ Landis to Dwight	50
" " 98	✓ ✓ Dwight to Myrtle	52
"A"	Powder House Canyon Road	57
✓ ✓ / / /	Levels	60
B	✓ / / /	69
✓ / / / /		72
Alley Blk 96	E.W. Morse Sub. ^{30th to 31st} E & F	75
Construction Alignment,	March 10 th 1931	78

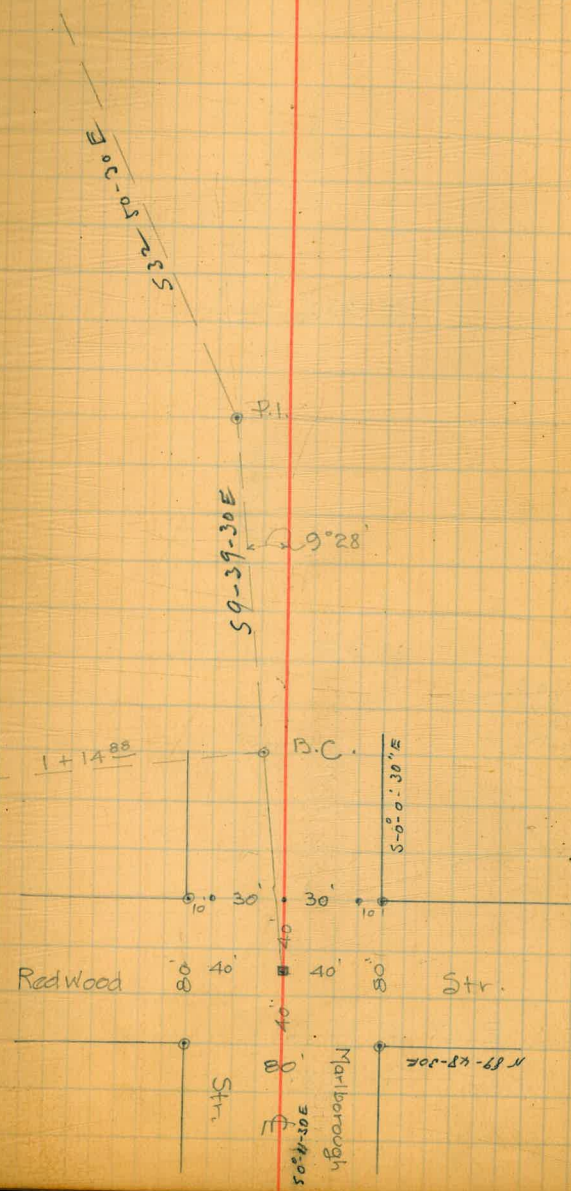


01

Alignment & X-Section of New
60' Street Continuing Marlborough
and Oak Str. from Redwood down
across Lexington and up to Poplar.

STA	Align.	Defl. &	Tree Bearing	Curve Data	Dist. P.I. - P.I.
4+50		9°36.05'	✓		
4+00		8°10.10'			
3+50		6°44.16'	✓		
3+00		5°18.21'	✓	$\Delta = 23^{\circ}11'$ $\Sigma \Delta = 46^{\circ}22'$ $EX = 20'$ $R = 1000'$ $T = 205.12'$ $L = 404.63'$ $Ch = 49.98'$	P.I.
2+50		3°52.27'	✓		
2+00		2°26.32'	✓		
1+50		1°00.37'	✓		320.00
1+14 ⁸⁸	B.C.	Lt			
1+00					
0+00		9°28' - L			

Jaeger
Bailey
Clavert
Kearnan } July 1st 1929.



Sta Align. Dept. 4 True Bear. Curve Data P.I. - P.I. Dist.

8+83⁴⁷ 13°19'30" - L

8+00

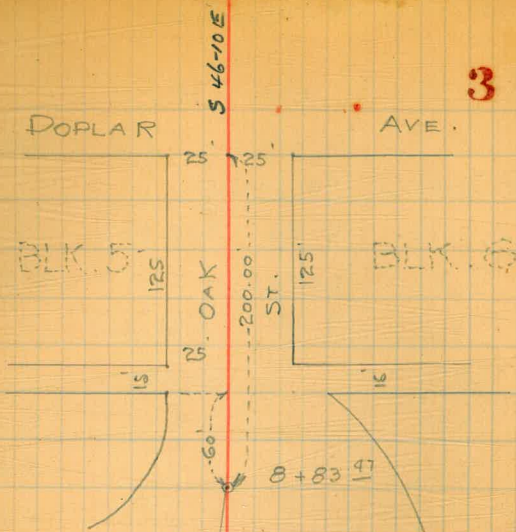
7+00

6+00

5+19⁵¹ E.C. 11°35.50' ✓

5+00 11°01.99' ✓

3



S 32-50-30 E

13°19'30"

6
48 16
13 19 30
3 2 50 30

5+19⁵¹ E.C.

Sta	X-Section		60' Str.	10' SW.
	+	H.I.	-	Elev.
NW. B.P. Thorn & Marlborough				301.82
	0.24	302.06 ✓		
T.P.			12.67	289.39
	3.99	293.38 ✓		
		0+00		
+15'			6.0	
+13'			5.9	
+5'			4.0	
W.L.			4.4	
+5'			8.4	
W. Curb			9.0	
W%			10.3	
⊕			13.1	
T.P.			13.0	280.38
Hand Lev	0.0	280.38		
E/a Top			4.7	
Bottom			9.6	
+3'			13.0	
E. Curb			6.1	
	Instr.	293.38 ✓		
E.L.			14.0	
+20'			13.8	
	0+40	S.L. Redwood		
T.P.			13.0	280.38

Sta			H.I.	Elev.
	+	-		
Hand Lev	0.0		280.38	
+30'			12.2	
T.P.			13.0	267.38
	0.0		267.38	
+16'			5.4	
+13'			5.8	
+7'			8.7	
+3'			5.5	
E.L.			3.7	
E. Curb T.P.			0.0	267.38
	13.0		280.38	
E/a			9.0	
⊕			5.8	
W%			2.7	
	Instr.		293.38 ✓	
W. Curb			12.6	
W.L.			11.4	
+15'			9.4	
+30'			4.7	
	0+75			
+30'			10.5	
T.P.			12.31	281.07
	1.09		282.11 ✓	
W.L.			3.0	
W. Curb			5.6	

STA	+	H.I.	-	Elev.
W 1/4			8.9	
¢			12.7	
T.P.			13.0	269.11
Hand Level	0.0	269.11		
E 1/4			4.4	
E. Curb			8.4	
+ 5'			13.2	
E.L.			8.7	
	Instr.	282.11 ✓		
+ 35'			3.8	
	1 + 14	88 B.C.		
+ 35'			4.8	
T.P.			13.0	269.11
Hand Level	0.0	269.11		
E.L.			7.2	
E. Curb			11.8	
+ 5'			16.0	
E 1/4			13.8	
¢			8.0	
W 1/4			3.7	
	Instr.	282.11 ✓		
W. Curb			12.7	
W.L.			8.8	
+ 25'			2.6	

STA	+	H.I.	-	Elev.
	1 + 50			
+ 30'			6.4	
+ 10'			10.1	
T.P.			13.0	269.11
Hand Level	0.0	269.11		
W.L.			1.2	
W. Curb			5.6	
W 1/4			10.6	
¢			15.2	
+ 5'			19.1	
E 1/4			17.2	
+ 3'			13.6	
E. Curb			11.0	
E.L.			6.9	
	Instr.	282.11 ✓		
+ 25'			8.9	
	2 + 00			
+ 25'			10.8	
T.P.			13.11	269.00
	5.21	274.21 ✓		
+ 15'			8.7	
+ 10'			10.6	
T.P.			13.0	261.21
Hand Level	0.0	261.21		
E.L.			2.0	

STA	+	H.I.	-	Elev.
E. Curb			5.9	
E/4			9.6	
+7'			13.1	
☐			15.3	
+5'			12.4	
W/4			9.6	
W. Curb			6.5	
W.L.			2.3	
	Instr.	274.21 ✓		
+20'			5.7	
+30'			4.3	
	2+40			
+45'			4.9	
+35'			6.4	
	T.P.		13.0	261.21
	HandLevel	0.0	261.21	
W.L.			7.4	
W. Curb			10.8	
+7'			13.3	
+8'			17.3	
W/4			17.3	
+5'			15.3	
☐			15.5	
+4'			12.6	
E/4			10.7	

STA	+	H.I.	-	Elev.
+4'			10.0	
E. Curb			7.1	
E.L.			4.0	
	Instr.	274.21 ✓		
+25'			11.0	
	T.P.		13.13	261.08
	4.30	265.38 ✓		
	2+70			
+25'			6.0	
E.L.			10.2	
E. Curb			12.7	
	T.P.		13.0	252.38
	HandLevel	0.0	252.38	
E/4			2.2	
☐			5.5	
+7'			8.0	
W/4			11.2	
W. Curb			8.6	
W.L.			3.2	
	Instr.	265.38 ✓		
+35'			1.3	
	3+00			
+35'			5.4	
	T.P.		13.0	252.38
	HandLevel	0.0	252.38	

STA	+	H.I.	-	Elev.
W.L.			3.8	
W. Curb			7.6	
W/4			12.1	
+4'			14.0	
¢			11.0	
E/4			5.0	
E. Curb			1.0	
	Instr.	265.38 ✓		
E.L.			11.2	
+30			8.1	
T.P.			12.57	252.81
	4.07	256.88 ✓		
	3+50			
+20			10.4	
+5'			12.7	
T.P.			13.0	243.88
Hand Level	0.0	243.88		
E.L.			1.0	
E. Curb			4.7	
E/4			9.4	
+9'			9.9	
¢			6.8	
W/4			3.0	
	Instr.	256.88 ✓		
W. Curb			12.6	

STA	+	H.I.	-	Elev.
W.L.			9.4	
+30'			4.3	
T.P.			12.80	244.08
	1.43	245.51 ✓		
	3+85			
+30'			1.6	
+15'			5.5	
W.L.			8.1	
W. Curb			10.1	
W/4			12.4	
¢			12.7	
E/4			13.2	
E. Curb			13.3	
+5'			15.8	
E.L.			15.8	
+20			14.4	
	4+00			
+20'			17.2	
+10'			15.8	
E.L.			15.4	
E. Curb			14.8	
E/4			14.2	
¢			14.3	
W/4			14.8	
W. Curb			16.2	

Sta	+	H.I.	-	Elev.
W.L.			17.2	
+20'			17.4	
T.P.			8.91	236.60
	3.35	239.95		
+20'	4+50		15.2	
W.L.			13.1	
W. Curb			13.1	
W/g			13.5	
T.P.			13.0	226.95
Hand Level	4.0	230.95		
¢			4.7	
E/g			4.5	
E. Curb			6.8	
E.L.			6.9	
+20'			4.4	
	5+00			
+20'			1.0	
E.L.			5.3	
E. Curb			6.7	
+5'			8.1	
E/g			8.0	
¢			6.4	
W/g			6.3	
W. Curb			6.5	
W.L.			7.1	

Sta	+	H.I.	-	Elev.
+7'			7.1	
+8'			10.3	
+20'			10.2	
	5+19 ⁵¹	E.C.		
+20'			10.0	
W.L.			10.6	
+9'			10.3	
W. Curb			9.1	
W/g			7.9	
¢			9.0	
E/g			9.1	
+3'			6.1	
E. Curb			2.8	
T.P.			0.0	230.95
	13.0	243.95		
+5'			10.5	
E.L.			9.3	
+20'			2.0	
	5+34			
	Instr.	239.95		
T.P.			0.0	239.95
Hand Level	13.0	252.95		
+20'			5.7	
E.L.			11.7	
	Instr.	239.95		

Sta	+	H.I.	-	Elev.
E. Curb			3.9	
E/4			8.5	
+5'			11.7	
⊕			14.5	
+4.2'	Top		15.8	
W/4	Bottom		18.2	
	Top		12.2	
W. Curb	Bottom		18.2	
	Top		8.2	
+4'	Top		11.3	
	Bottom		18.2	
+5'			15.5	
W.L.			17.0	
+20'			16.8	
	T.P.		2.79	237.16
		11.84	249.00	✓
		5+50		
+20'			3.5	
W.L.			6.0	
W. Curb			10.0	
	T.P.		13.0	236.00
	Hand Level	0.0	236.00	
W/4			1.8	
⊕			6.8	
+5'			11.0	

Sta	+	H.I.	-	Elev.
E/4			6.3	
E. Curb			0.2	
	Inst.	249.00	✓	
E.L.			7.9	
+20'			0.6	
	T.P.		0.26	248.74
		12.48	261.22	✓
		6+00		
	T.P.		0.0	261.22
	Hand Level	13.0	274.22	
+55'			8.1	
	Inst.	261.22	✓	
	T.P.		13.0	248.22
	Hand Level	0.0	248.22	
E.L.			3.8	
+5'			6.7	
+6'			9.0	
+7'	Top		8.8	
E. Curb			9.5	
+7'			11.2	
+8'			8.2	
E/4			7.9	
+4'			5.2	
+5'			2.5	
⊕			1.5	

Sta	+	H.I.	-	Elev.
	Instr.	261.22 ✓		
W/4			10.8	
W. Curb			6.1	
W.L.			11.6	
T.P.			0.0	261.22
Hand Level	13.0	274.22 ✓		
+25'			6.6	
	6+50			
+35'			0.0	
W.L.			10.0	
W. Curb			13.0	
	Instr.	261.22 ✓		
W/4			4.3	
¢			8.2	
E/4			12.8	
+17'			17.6	
E. Curb			13.5	
E.L.			10.1	
T.P.			0.52	260.70
	12.27	272.97 ✓		
+45'			4.0	
	6+85			
T.P.			0.0	272.97
Hand Level	4.7	277.67		
+55'			0.0	

Sta	+	H.I.	-	Elev.
	Instr.	272.97 ✓		
T.P.			13.0	259.97
Hand Level	0.0	259.97		
E.L.			5.2	
+5'			6.6	
E. Curb			9.8	
+7'			9.7	
E/4			8.0	
¢			3.9	
	Instr.	272.97 ✓		
W/4			12.2	
W. Curb			8.5	
W.L.			4.2	
T.P.			1.17	271.80
	12.90	284.70 ✓		
+25'			7.0	
	7+00			
+25'			6.5	
T.P.			13.0	271.70
Hand Level	0.0	271.70		
W.L.			3.0	
W. Curb			7.3	
W/4			11.8	
¢			16.5	
+8'			19.0	

Sta	+	H.I.	-	Elev.
	8' South	Top of Manhole	17.5	
E/a			19.0	
E. Curb			14.5	
E.L.			10.6	
	Inst.	284.70 ✓		
+50'			6.1	
	7+29			
+30'			5.0	
	T.P.		13.0	271.70
Hand Level	0.0	271.70		
E.L.			5.3	
E. Curb			7.8	
E/a			11.7	
ϕ			13.4	
W/a			9.0	
W. Curb			5.1	
W.L.			1.3	
	Inst.	284.70 ✓		
+35'			2.8	
	7+60			
+35'			2.2	
W.L.			10.7	
	T.P.		13.0	271.70
Hand Level	0.0	271.70		
W. Curb			1.0	
W. 1/4 b			4.9	

Sta	+	H.I.	-	Elev.
ϕ			10.0	
E/a			10.5	
E. Curb			7.3	
E.L.			3.9	
	Inst.	284.70 ✓		
+25'			4.5	
	7+87			
+15'			3.2	
	T.P.		13.0	271.70
Hand Level	4.0	275.70		
E.L.			1.2	
E. Curb			6.0	
+5'			9.6	
E/a			11.3	
+5'			10.7	
ϕ			7.2	
W/a			3.6	
W. Curb			0.5	
	Inst.	284.70 ✓		
W.L.			6.7	
+15'			1.4	
	8+10			
+15'			0.7	
W.L.			3.0	
W. Curb			6.5	

STA	+	H.I.	-	Elev.
W/4			9.5	
¢			14.2	
+5'			15.4	
+7'			16.1	
E/4			17.3	
+5'			17.0	
E. Curb			13.9	
E.L.			8.4	
+15'			3.2	
	8+31			
+10'			2.0	
E.L.			4.7	
E. Curb			8.5	
+5'			11.3	
E/4			13.4	
+5'			14.8	
¢			10.7	
W/4			5.3	
+8'			2.8	
W. Curb			2.3	
W.L.			0.8	
+10'			0.0	
T.P.			0.23	284.47
	8.19	292.66		

STA	+	H.I.	-	Elev.
	8+50			
+10'				6.7
W.L.				7.4
W. Curb				8.2
W/4				9.1
+5'				10.0
¢				13.3
+6'				17.0
E/4				17.5
+1'				16.0
+6'				14.1
+7'				12.2
E. Curb				11.6
E.L.				9.1
+10'				9.0
	8+70			
+10'				8.2
E.L.				8.2
E. Curb				8.2
E/4				8.3
¢				8.4
W/4				8.0
W. Curb				7.5
W.L.				6.9
+10'				6.0

Sta	+	H.I.	-	Elev.
		8+83.97		
+10 ✓			5.5	
W.H.			5.8	
W.Curb			6.3	
W/c			6.8	
⊥			7.3	
E/c			7.4	
E.Curb			7.7	
E.L.			7.7	
+10			7.4	
T.P.			5.17	287.49
B.M. NW. 1" Pipe Oak & Poplar, F.B. 1314, pg. 60				287.46

37.64
24' W

80' wide
14' ebs
13' 1/2 S

Laurel St X Sec. Kellner Blvd
to Atlantic St

11-70-29
mill

s.e. Laurel
& Kellner.

B.M.	4.67	37.64	32.97
00 = W. Line Kellner			
S. line	5.46	32.19	cont walk
+ 2.2 N. edge cont walk	5.48	32.16	
S. emb. ch. W. End.	6.00	31.64	
gutter Pavmt.	6.59	31.07	
+ 6.5 s. edge pavmt. to West	6.38	31.26	
1/4 on pavmt.	6.02	31.62	
1/2 " "	5.62	32.01	
1/4 " "	5.52	32.12	
gutter " " N. edge	5.59	32.00	
N. emb. ch. W. End.	4.92	32.72	
N. line on emb. walk	4.40	33.24	
G.R.W.			
N. on emb walk to N.	4.28	33.36	
+ 0.3	4.9	32.7	
+ 10.25 Δ on N. edge pavmt.	5.74	31.90	
N. et line on pavmt.	6.03	31.61	
1/4 " "	5.96	31.68	
1/2 " "	6.02	31.62	
1/4 " "	6.34	31.30	
+ 7.5 s. edge Pavmt.	6.77	30.87	
+ 12	6.9	30.7	
ch	6.1	31.5	
+ 11.8 N.W. Cor emb. walk	5.36	32.28	
S. line on " "	5.37	32.27	

Plo Hed 11/15/29

S.	7.4	30.2
ch	7.6	30.1
+ 1	8.0	29.6
+ 4.5 s. edge Pavmt.	7.88	29.76
1/4 on "	7.64	30.00
1/2 " "	7.47	30.17
1/4 " "	7.64	30.00
ch " "	8.20	29.44
+ 3.75 Δ on N. edge Pavmt	8.13	29.51
N.	7.9	29.7
31.7 W E. line Drive		
N. on Pavmt	9.07	28.57
ch " "	9.11	28.53
1/4 " "	8.30	29.34
1/2 " "	8.08	29.56
1/4 " "	8.17	29.47
+ 7.2 s. edge Pavmt.	8.37	29.27
+ 11	8.5	29.1
ch	8.1	29.5
S.	8.4	29.2
45' W		
S	9.7	27.9
ch	9.6	28.0
+ 5.7 = S Edge Pavmt	9.52	28.12
1/4 on "	9.37	28.27
1/2 " "	9.30	28.34

37.64

45' W. (con)

1/4 on Pavmt	9.57	28.07
el	10.22	27.42
N.	10.42	27.22

60' W. N. line Drive

N. on Pavmt.	10.73	26.91
el	11.13	26.51
1/4	10.84	26.80
1/4	10.70	26.94
1/4	10.76	26.88
+7.3 s. edge	10.93	26.71
el	11.7	26.4
S	10.9	26.7

76' W. E. End Door to Garage

S.	12.8	24.8
el	13.0	24.6
+5.7 s. edge pavmt	12.60	25.04
1/4 on	12.50	25.14
1/4	12.28	25.36
1/4	12.43	25.21
el	12.69	24.9.5
N. floor	12.96	24.68
T.P.	0.27	24.95
	12.96	24.68

86.5' W. = W. End door

N. on Pavmt floor	0.76	24.19
el	1.20	23.75
1/4	0.91	24.04

24.95

Laurel St

15

1/4 on pavmt	0.75	24.20
1/4	0.96	23.99
+7.3 = s. edge Pavmt.	1.07	23.88
el	1.0	23.95 24.0
S.	1.3	23.65 23.7

91.0 W.

S.	1.6	23.4
el	1.7	23.6
+5.7 = s. edge pavmt.	1.54	23.41
1/4 on	1.42	23.53
1/4	1.25	23.70
1/4	1.44	23.51
el	1.77	23.18
+3.75 A on N. Edge Pavmt.	1.72	23.23
N.	1.4	23.6

111.1' W.

N	3.8	21.2
+10.25 = A on N. edge Pavmt.	3.93	21.02
el on	3.89	21.06
1/4	3.56	21.39
1/4	3.38	21.57
1/4	3.42	21.53
+7. = s. edge	3.56	21.39
el	3.4	21.6
S	3.2	21.8

24.95

115' W. E. Line Drive

S		3.4	21.6
cl		3.6	21.4
+ 5.7 = S. edge parmt.		3.88	21.07
1/4	on "	3.73	21.22
1/4	" "	3.72	21.23
1/4	" "	3.93	21.02
cl	" "	4.20	20.75
N	" "	3.98	20.97

132' W = W. Line Drive

N.	on parmt	4.92	20.03
cl	" "	5.14	19.81
1/4	" "	4.99	19.96
1/4	" "	4.88	20.07
1/4	" "	5.01	19.94
+ 7.5 = S. edge "		5.12	19.83
cl		5.0	20.0
S		4.6	20.4

137' W

S.		4.8	20.2
cl		5.3	19.7
+ 5.5 = S. edge parmt.		5.40	19.55
1/4	on "	5.23	19.72
1/4	" "	5.11	19.84
1/4	" "	5.22	19.73
cl	" "	5.40	19.55
+ 3.75 = A on N. edge Parmt.		5.36	19.59

24.95

Laurel St.

16

N.		5.3	19.7
175' W = E. line E.T. S.F. R. of W. = W. End. Parmt.			
N		6.6	18.4
+ 16.5 = N.W. Cor Parmt.		6.97	17.98
cl.	on parmt	7.03	17.92
1/4	" "	6.80	18.15
1/4	" "	6.71	18.24
1/4	" "	6.83	18.12
+ 7.7 = S.W. Cor Parmt.		7.05	17.90
cl		7.2	17.8
S		7.6	17.4
+ 5		7.6	17.4

200' W = E. line California St 75' Wide

S-S		9.2	15.8
S		9.2	15.8
cl		9.0	16.0
1/4		8.8	16.2
1/4		7.7	17.3
1/4		7.4	17.6
cl		7.4	17.6
N		7.1	17.9

5' W. E. Line Cal. St.

N		7.4	17.6
cl		7.5	17.5
1/4		7.1	17.9
1/4		7.7	17.3

24.95

S. 1/4		9.0	16.0
cb		9.1	15.9
+6		9.0	16.0
+8 1/4 A.T.S.F. Drainage ditch		10.3	14.7
S " " " " " "		10.5	14.5
+5 " " " " " "		10.6	14.4
+9.0 " " " " " "		11.0	14.0
	10' W. of line cal. st.		
-5		9.4	15.6
S		9.3	15.7
cb		9.1	15.9
1/4		9.2	15.8
1/2		8.5	16.5
1/4		7.2	17.9
cb		7.4	17.6
N		7.3	17.7
	14' W.		
-6.0 in A.T.S.F. Drainage Ditch		9.8	15.2
N " " " " " "		10.1	14.9
cb " " " " " "		9.9	15.1
1/4 " " " " " "		9.9	15.1
1/2 S. End " " " " " "		9.9	15.1
1/4		9.1	15.9
cb		9.1	15.9
S		9.5	15.5
+5		9.5	15.5
T.P.	1.76	17.13	9.58 15.37

inlet small
of pipe.

17.13

Laurel St.

22.6 W. = E. Rail A.T.S.F. Main line

17

5-5 ground		1.9	15.2
S "		1.9	15.2
S. Top Rail		1.42	15.71
cb ground		1.3	15.8
1/4 "		1.3	15.8
1/2 "		1.7	15.4
1/2 Top Rail		1.29	15.84
1/4 ground		1.7	15.4
cb "		1.7	15.4
N "		1.7	15.4
N Top Rail		1.14	15.99
+5 ground		1.7	15.4
	27.4 W. = W. Rail A.T.S.F. Main line		
-5 ground		1.7	15.4
N "		1.7	15.4
N Top Rail		1.15	15.98
cb ground		1.8	15.3
1/4 "		1.8	15.3
1/2 "		1.8	15.3
1/2 Top Rail		1.27	15.86
1/4 ground		1.9	15.2
cb "		1.9	15.2
S "		1.9	15.2
S Top Rail		1.42	15.71
+5 ground		1.9	15.2

17.13

34.67 W. of E. line = 0. d. Line Cal. St

S-5	3.0	14.1
S	2.6	14.5
d	1.6	15.5
"4	1.5	15.6
4	1.5	15.6
"4	1.9	15.2
cb	1.9	15.2
N	1.8	15.2
+5	1.8	15.3

47.84 W = 4 Rdw.

N-5	1.7	15.4
N	1.7	15.4
d	1.9	15.2
"4	2.0	15.1
4	2.2	14.9
"4	2.2	14.9
cb	2.0	15.1
S	2.6	14.5
+5	3.2	13.9

61. W = 1 W. d. Line

-5	3.1	14.0
S	2.6	14.5
cb	2.7	14.4
"4	2.8	14.3
4	2.7	14.4
"4	1.9	15.2

17.13.

Laurel St

18

cb	2.1	15.0
N	2.1	15.0
+5	2.0	15.1

00 = W. Line Cal. St = 75' W. of E. Line

N	2.1	15.0
cb	1.9	15.2
"4	2.1	15.0
4	2.8	14.3
"4	3.1	14.0
cb	3.2	13.9
S	3.1	14.0
+5	3.2	13.9

30' W

S	4.0	13.1
cb	3.8	13.3
"4	3.6	13.5
4	4.2	12.9
"4	4.2	12.9
cb	3.7	13.4
N	3.5	13.6

55' W

N. Top E. Rail of Spur	5.45	11.68
N. ground	5.7	11.4
cb	5.7	11.4
"4	5.7	11.4
4	5.6	11.5

17.13
55' W. (com)

1/4	5.2	11.9
cb	4.5	12.6
S	4.0	13.1
60' W.		
S	4.5	12.6
cb	4.6	12.5
1/4	5.6	11.5
±	5.8	11.3
1/4	5.8	11.3
cb	5.8	11.3
N. on top	6.1	11.0
N. on Top W. Rail of Spur	5.63	11.50
65' W.		
N.	6.2	10.9
+ 6.1 = Top W. Rail of Spur	5.80	11.33
+ 1/4 = cb = Top " " " + dirt	5.82	11.31
1/4	6.0	11.1
±	6.0	11.1
1/4	5.8	11.3
cb	4.7	12.4
S.	4.5	12.6
90' W.		
S-10	12.2	4.9
S.	11.0	6.0
+ 6	6.3	10.8
cb	6.4	10.7

17.13

Laurel St 19

1/4	6.6	10.5
+ 7 = Top E. Rail of Spur	6.62	10.51
±	6.6	10.5
+ 1.3 = Top W. Rail of Spur	6.66	10.47
1/4	6.7	10.4
cb	6.8	10.3
N	6.7	10.4
110' W		
N.	6.8	10.3
cb	6.9	10.2
1/4	6.7	10.4
±	6.5	10.6
1/4	7.0	10.1
+ 9.2 = Top W. Rail of Spur	7.28	9.85
cb	7.5	9.6
+ 3.3 = Top E. Rail of Spur	7.22	9.91
S	7.5	9.6
120' 3" N		
S. on Top E. Rail of Spur	7.47	9.66
S. dirt	7.8	9.3
+ 6.8 = Top W. Rail of Spur	7.53	9.60
cb	7.5	9.6
1/4	7.2	9.9
±	6.7	10.4
1/4	6.8	10.3
cb	7.0	10.1
N	6.8	10.3

el

17.13
127' W.

N	6.9	10.2
el	7.1	10.0
1/4	6.9	10.2
1/4	6.8	10.3
1/4	7.4	9.7
el	7.6	9.5
S. ground.	7.8	9.3
S. Top W. Rail of Spur	7.68	9.45
160' W.		
S.	8.1	9.0
el	8.1	9.0
1/4	7.8	9.3
1/4	7.5	9.6
1/4	7.4	9.7
el	7.3	9.8
N.	7.3	9.8
200' W. = E. Line Atlantic St		
100' N. of H. Line	6.8	10.3
50' " " "	6.8	10.3
N	7.7	9.4
el	7.9	9.2
1/4	7.9	9.2
1/4	7.9	9.2
1/4	8.2	8.9
el	8.4	8.7
S.	8.2	8.9

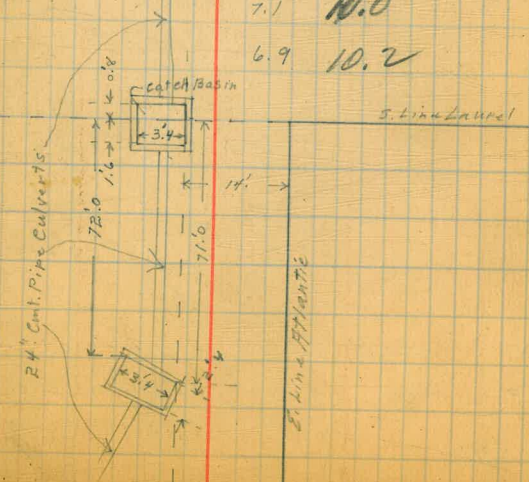
17,13

Latrol St

20

5.76
9.44
15.20
9.55
4.91
14.46

50' S. of S. Line	9.1	8.0
100' " " "	9.2	7.9
14' W. of E. Line Atlantic		
100' S. of S. Line	9.5	7.6
71' " " " " E. cor. of grating	9.50	7.63
71' " " " " Set on Diagonal	15.20	1.93
71' " " " " Flow Line	9.2	7.9
50' " " " "	8.63	8.50
S-1.6 = S.E. Cor. Catch Basin	8.63	8.50
S.	8.63	8.50
S+0.8 = N.E. Cor. Catch Basin	14.46	2.67
el	8.5	8.6
1/4	8.3	8.8
1/4	8.2	8.9
1/4	8.0	9.1
el	7.9	9.2
N.	7.7	9.4
+50' North	7.1	10.0
100' North	6.9	10.2



17.13

35' W. of E. line Atlantic st =
E. Edge Fence of Lindberg Field

100' N. of N. Line	7.2	9.9
50' " " " "	7.6	9.5
N	8.1	9.0
eb	8.4	8.7
"4	8.5	8.6
4	8.4	8.7
"4	8.4	8.7
eb	8.6	8.5
S.	8.8	8.3
50' S. of S. line	9.3	7.8
100' " " " "	9.9	7.2

75' W. of E. line Atlantic

100' S. of S. line	10.2	6.9
50' " " " "	9.8	7.3
S	9.2	7.9
eb	9.0	8.1
"4	9.0	8.1
4	8.7	8.4
"4	8.6	8.5
eb	8.5	8.6
N	8.5	8.6
50' N	7.9	9.2
100' N	7.6	9.5

T.P. 10.21 26.06 1.28 15.85 ✓

T.P. 9.50 34.93 0.63 25.43 ✓

chk. original B.M. 1.96 32.97 = 32.97 ✓

Laurel St.

21

Date St. Cross Section
38th St. to Ferry

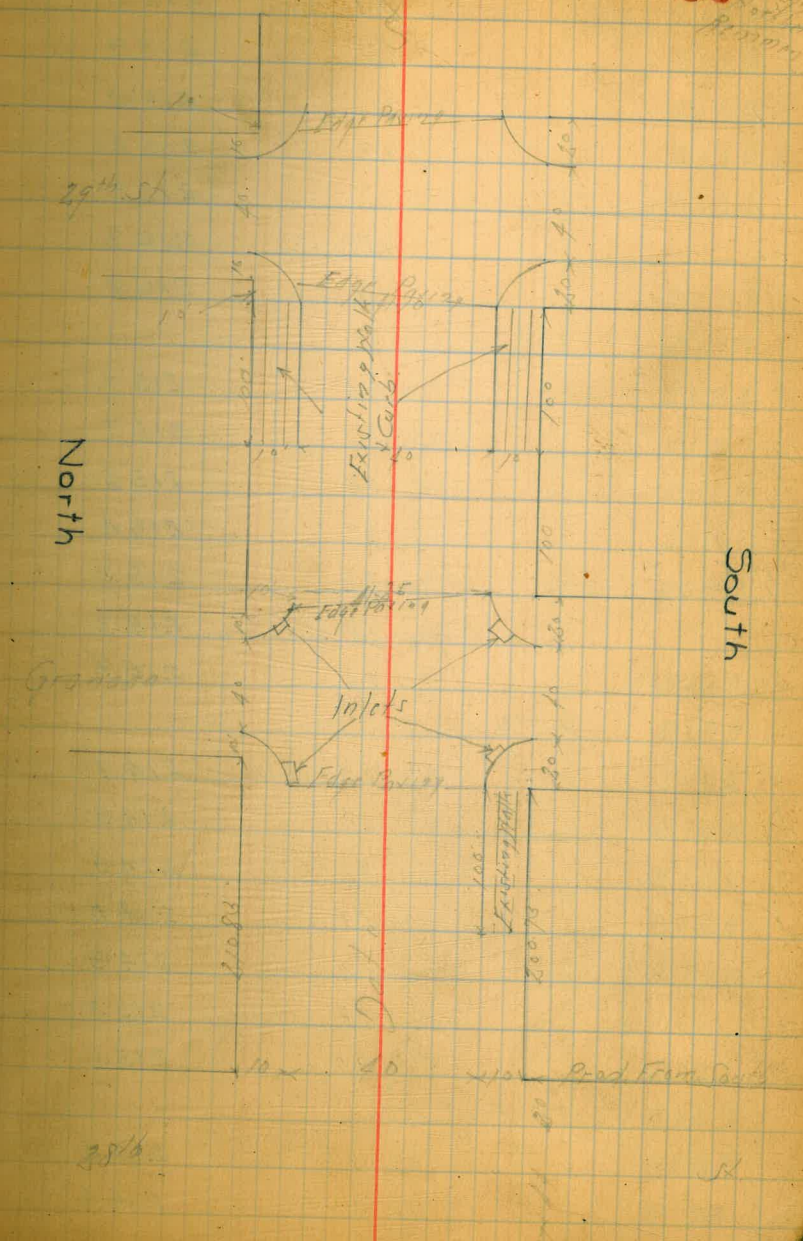
60' 1/2
10' 1/2
10' 1/2

BM	10.15	218.10	2079.5	SW BP Total Granite
				28' 1/2 10' 1/2 11' 1/2
				Ms. 28 th Produced from Sect 4
S		0.0	218.1	
cb		0.0	218.1	
1/4		0.0	218.1	
1/4		0.0	218.1	
1/4		0.0	218.1	
H		0.0	218.1	
				MS of 28 th
		1.2	216.9	
		1.0	217.1	
		0.9	217.2	
		0.9	217.2	
		0.9	217.2	
		0.9	217.2	
		1.0	217.1	
		1.2	216.8	
		1.3	216.8	
		1.3	216.8	
		1.5	216.6	
		1.5	216.6	
		1.5	216.6	
		1.7	216.4	

Plotted 1/24/30

CBH

1/4



North

South

38th

Dates

218/10

218/10

23

H	23	2158
cb	22	2159
H	21	2160
S	19	2162
H	18	2163
cb	18	2163
S	19	2162
F H		
S	24	2157
cb	24	2157
H	25	2156
S	27	2154
H	28	2153
cb	28	2153
H	28	2153
F Cb		
H	34	2147
cb	32	2149
H	33	2149
S	33	2148
H	32	2149
cb	28	2153
S	30	2151
8 F of FCB		
S	37	2144
cb	37	2144

H	41	2140
S	42	2139
H	45	2136
cb	51	2130
H	57	2124
F L of 28/10		
H	64	2117
cb	74	2117
H	57	2124
S	54	2127
H	53	2128
cb	50	2131
S	48	2133
20 F of F L 28/10		
S	69	2112
cb	73	2108
H	75	2106
S	73	2108
H	76	2105
cb	77	2104
H	74	2110
15 F		
H	78	2103
cb	81	2100
H	82	2099
S	78	2103

Date 5/1

218/10

1/2	83	209.3
1/2	85	209.6
cb	79	210.2
S	76	210.5
75 E		
S	84	209.7
cb	88	209.3
1/4	89	209.2
1/2	86	209.5
1/4	88	209.3
1/2	89	209.2
cb	84	209.7
1/2	83	209.8
100.73 E - End of Col. Halk and		
1/2	83	209.8
cb	87	209.7
1/2	88	209.3
1/4	89	209.4
1/2	85	209.6
1/4	89	209.2
Gutter	71	209.0
cb - End	86	209.48 ✓
S	85	209.6
125 E		
S	87	209.4
cb Top	89.6	209.14

218/10

24

Gutter	95	208.6
1/4	92	208.9
1/2	87	209.4
1/4	90	209.1
cb	87	209.4
1/2	86	209.5
150 E		
1/2	88	209.3
cb	91	209.0
1/4	93	208.8
1/2	90	209.1
1/4	95	208.6
Gutter	98	208.3
cb Top	93.4	208.76
S	96	209.1
175 E		
S	97	208.4
cb Top	97.0	208.40
Gutter	101	208.0
1/4	97	208.4
1/2	96	208.5
1/4	97	208.4
cb	93	208.8
1/2	91	209.0
200.73 E - End of Granite From Gully		
1/2	90	209.1

John St

21810

Cb End Rd	915	208 95
Gutter on Paving	10.00	208 10
" " "	971	208 39
" " "	955	208 55
" " "	997	208 12
Gutter " "	10.68	207 42
Cb Top	10.19	207 91
" " "	97	208 4
N.Cb Granada		
S Gutter on Paving	10.75	207 35
Cb " "	10.85	207 25
" " "	10.08	208 02
" " "	970	208 40
" " "	959	208 51
Cb " "	967	208 43
N Gutter	963	208 47
L Granada		
H on Paving	895	209 15
Cb " "	904	209 06
" " "	920	208 90
" " "	940	208 70
" " "	973	208 37
Cb " "	10.20	207 90
" " "	10.11	207 99
FCB		
S Gutter on Paving	10.22	207 38

21811

25

Cb on Paving	10.56	207 54
" " "	986	208 24
" " "	957	208 58
" " "	965	208 65
Cb " "	958	208 52
N Gutter	962	208 48
- F Edge Paving on Granada		
TP	1276 220.67	10.15 207 95
N Cb Top	11.66	209 01
Gutter on Paving	12.58	208 39
" " "	12.01	208 66
" " "	12.00	208 67
" " "	12.72	208 24
Gutter " "	12.15	207 52
S Cb Top	12.56	208 17
- S.Cb Granada from S to East Ed on N		
" " "	12.2	208 4
Cb Top	12.50	208 17
Gutter on Paving	13.45	207 52
" " "	12.3	208 3
" " "	11.6	209 0
" " "	11.8	208 8
Cb " "	11.6	209 0
" " "	10.9	210 0
- S.E. of E.L. Granada on N		
" " "	9.4	211 4

District

	22067	
+7	9.4	211.2
cb	10.6	210.0
1/4	10.9	209.7
1/2	10.7	209.9
1/4	11.2	209.4
cb	11.1	209.5
S	10.9	209.7
50' F		
S	9.3	211.3
cb	9.9	210.7
1/4	9.5	210.8
1/2	9.2	211.4
1/4	9.3	211.3
cb	9.0	211.6
1/3	8.3	212.3
1/4	8.1	212.2
75' F		
1/4	6.5	214.1
+7	6.6	214.0
cb	7.1	213.0
1/4	7.6	213.0
1/2	7.7	212.9
1/4	8.4	212.2
cb	8.3	212.3
S	7.8	212.8

100' F = 1/2 End of Wall

	22067	26
S	6.5	214.1
cb Top	6.8	214.20 ✓
Gutter	6.8	213.8
1/4	6.8	213.8
1/2	6.3	214.3
1/4	6.4	214.2
Gutter	6.3	214.3
cb Top	5.6	215.01 ✓
1/4	5.3	215.4
125' F		
1/2 cb	4.3	216.40
Gutter	4.8	215.8
1/4	4.9	215.7
1/2	4.8	215.8
1/4	5.1	215.2
Gutter	5.5	215.1
1/2 cb	5.0	215.58
150' F		
S	3.6	217.06
Gutter	3.9	216.7
1/4	3.9	216.7
1/2	3.3	217.3
1/4	3.6	217.0
Gutter	3.7	217.2
1/2 cb	2.9	217.74

175' F

33218

Cb on Paving	1217	220.01
" "	11.66	220.54
" "	11.45	220.73
" "	11.50	220.68
Cb " "	11.71	220.47
H Gutter	11.24	220.44
f 29 th		
H on Paving	10.96	221.22
Cb " "	11.23	220.95
" "	11.07	221.11
S " " - MH	11.13	221.05
" "	11.24	220.94
Cb " "	11.43	220.75
S " "	11.59	220.59
f Cb 29 th St		
S Gutter on Paving	11.76	220.42
Cb " "	11.49	220.69
" "	11.02	221.16
S " "	10.90	221.38
" "	10.78	221.48
Cb " "	10.96	221.22
H Gutter	10.90	221.28
f L of 29 th on Diamond-Edge Paving		
H Cb	10.11	222.06
Gutter on Paving	10.90	221.28
" "	10.40	221.78

22067

H Cb	1.52	219.15
Gutter	2.0	218.6
" "	2.1	218.5
" "	2.0	218.6
" "	2.4	218.2
Gutter	2.7	218.0
SCB	2.12	218.55
200 E - W L 39 th From South		
SCB	0.55	220.12 ✓
Gutter on Paving	1.15	219.52 ✓
" "	0.7	220.0
" "	0.5	220.1
" "	0.8	219.8
Gutter	0.8	219.8
H Cb	0.19	220.48 ✓
12.03 23218 0.55 220.15		
200 E - 0.25 - W Edge Paving		
310 E - 0.25		
H Cb	11.18	221.00 ✓
Gutter on Paving	11.94	220.24 ✓
" "	11.71	220.47
" "	11.69	220.49 ✓
" "	12.04	220.14
Gutter " "	12.65	219.53
SCB	12.05	220.13
W Cb of 29		
S Gutter on Paving	12.18	219.70

232.18

2 on Paving	10.42	221.76
1/4	10.73	221.45
Gutter	11.59	220.59
SCB	11.13	221.06
	FL 29 th 25 10' F of FL 29 th	
SCB	11.12	221.06
Gutter on Paving	11.59	220.59
1/4	10.6	221.6
2	10.2	222.0
1/4	10.2	222.0
Gutter	10.1	222.1
SCB	9.45	222.73
	25' F of FL 29 th on 5	
SCB	7.81	224.37
Gutter	8.6	223.6
1/4	8.5	223.4
2	8.9	223.3
1/4	9.5	222.7
Gutter	9.7	222.5
SCB	9.51	222.67
	50' F	
SCB	7.89	224.30
Gutter	8.1	224.1
1/4	8.1	224.1
2	7.3	224.9
1/4	7.0	225.2

232.18

28

Gutter	6.9	225.3
SCB	6.12	226.06
	75' F	
SCB	4.18	227.70
Gutter	5.2	227.0
1/4	5.1	226.8
2	5.6	226.6
1/4	6.5	225.7
Gutter	6.6	225.6
SCB	6.31	225.87
	100' F	
SCB	4.64	227.54
Gutter	4.9	227.3
1/4	4.8	227.4
2	4.0	228.2
1/4	3.7	228.5
Gutter of 120' on Paving	4.34	227.84
	125' F	
SCB	1.19	230.99
Gutter	2.0	230.2
1/4	2.0	230.2
2	2.1	229.8
1/4	3.0	229.2
Gutter	3.3	228.9
SCB	3.07	229.11
TP	70.18 211.63	1.43 230.75

34/33

24/33

1505

Sb	1048	230.75
Gutter	106	230.6
"	103	230.9
"	95	231.7
"	94	231.8
Gutter	90	232.2
Hcb	857	232.66

1755

Hcb	192	234.31
Gutter	75	233.7
"	75	233.7
"	77	233.5
"	85	232.7
Gutter	90	232.2
S.Cb	886	232.37

2005 - H.C. Date 80 11 16 74 Cbs

S.Cb	715	234.08
Gutter on Pavement	776	233.47
"	787	234.19
"	145	234.78
"	170	235.13
Gutter	101	235.22
H.Cb	519	236.04

H.C. of Date

H.Gutter on Pavement	567	235.56
----------------------	-----	--------

Cb on Pavement	570	235.53
"	580	235.43
"	612	235.11
"	666	234.57
"	740	233.80
S.Gutter	782	233.41

to Date

S on Pavement	719	234.04
"	674	234.49
"	630	234.93
"	587	235.36
"	533	235.90
Cb	490	236.33
"	453	236.70

F.Cb

H.Gutter on Pavement	487	236.36
Cb	505	236.18
"	540	235.83
"	592	235.31
"	662	234.61
Cb	748	233.75
S.Gutter	777	233.26

B.M.

F. of Date

S.Cb	713	234.10
Gutter on Pavement	767	233.56

23711 Date 23711 237.04

Date

24/22

1/1	60	234	59
2		528	235 45
1/1		528	236 01
Gutter		191	236 29
HCB		415	237 08
45 F of E. Gale			
HCB		392	237 31
Gutter		48	236 4
1/1		19	236 3
2		57	235 5
1/1		65	234 7
Gutter		70	234 2
SCB		182	234 41
50 F			
SCB		641	234 82
Gutter		67	234 5
1/1		68	235 0
2		53	235 9
1/1		46	236 6
Gutter		45	236 7
HCB		342	237 61
75 F			
HCB		339	237 84
Gutter		12	237 0
1/1		11	236 8
2		50	236 2

24/23

30

1/1		58	235.4
Gutter		64	234.8
SCB		604	235.19
100 F			
SCB		561	235.62
Gutter		61	235.1
1/1		55	235.7
2		46	236.6
1/1		41	237.1
Gutter		40	237.2
HCB		312	238.10
125 F			
HCB		195	238.28
Gutter		39	237.3
1/1		37	237.5
2		46	237.0
1/1		57	236.1
Gutter		58	235.4
SCB		589	235.94
150 F			
SCB		181	236.37
Gutter		53	235.9
1/1		48	236.4
2		38	237.4
1/1		34	237.8
Gutter		34	237.8

Date

08

24-23

HCB	267	238.56
	1755	
HCB	247	238.76
Gutter	22	238.0
"	32	238.0
"	37	237.5
"	45	236.7
Gutter	49	236.3
Scb	156	236.67
	80 1170	
	1100	
Scb	420	237.03
Gutter on Paving	463	236.60
"	393	237.30
"	348	237.75
"	330	238.03
Gutter	298	238.25
HCB	266	239.01
	HCB of 30th St	
H. Gutter on Paving	291	238.31
Cb	349	237.94
"	342	237.56
"	103	237.21
"	436	236.87
Cb	413	236.55
S Gutter	481	236.42

23-23

24-23

31

S on Paving	431	236.91
Cb	388	237.35
"	352	237.71
"	317	238.06
"	283	238.40
Cb	243	238.80
"	199	239.24
	F Cb of 30th	
H Gutter on Paving	288	238.35
Cb	340	238.03
"	358	237.65
"	399	237.24
"	434	236.89
Cb	461	236.57
S Gutter	488	236.35
	F Cb of 30th St	
S Cb	476	237.07
Gutter on Paving	457	236.66
"	383	237.40
"	345	237.78
"	308	238.15
Gutter	300	238.23
HCB	248	239.05
TP	297	237.19
	24th St of 13th St	
HCB	147	238.69

SW 87

237.19 24th St

Date	ST		
		240/6	
Gutter		2.2	237.9
"		2.5	237.7
L		2.5	237.7
"		3.2	236.9
Gutter		3.7	236.5
SCb		3.34	236.82
		50' of FL 30% N	
SCb		3.57	236.59
Gutter		4.0	236.2
"		3.5	236.7
L		2.8	237.4
"		2.8	237.4
Gutter		2.8	237.4
NCb		1.91	238.45
		75'	
NCb		2.02	238.14
Gutter		2.8	237.3
"		3.1	237.0
L		3.2	237.0
"		3.8	236.4
Gutter		4.1	236.0
SCb		3.83	236.33
		100'	
S Gutter in givc		4.70	235.46
"		4.0	236.2
L		2.5	236.7

Date	ST		
		240/6	
"		3.5	236.7
Gutter		3.0	237.2
NCb		2.21	237.90
		125'	
NCb		2.19	237.67
Gutter		3.5	236.6
"		3.8	236.4
L		3.8	236.4
"		4.4	235.7
Gutter		4.8	235.4
SCb		4.29	235.87
		150'	
SCb		4.51	235.64
Gutter		5.1	235.0
L		4.6	235.5
L		4.0	236.1
"		4.1	236.0
Gutter		4.0	236.1
NCb		2.88	237.28
		175'	
NCb		3.37	236.85
Gutter		4.5	235.6
"		4.4	235.7
L		4.4	235.7
"		4.9	235.3
Gutter		5.3	234.8

Scb	472	235.43
200 I		
S. Gutter on Drive way	547	234.69
H	51	235.0
L	46	235.6
H	48	235.4
Gutter	47	235.5
Hcb	377	236.39
2307 I - H. Fern		
Hcb	433	235.93 ✓
Gutter on Porch	484	235.32 ✓
H	484	235.32
L	476	235.20
H	531	234.85
Gutter	566	234.50 ✓
Scb	521	234.95 ✓
Hcb of Fern		
S. L. in Gutter on Porch	578	234.18 ✓
Cb	565	234.51
H	540	234.76
L	583	234.93 ✓
H	510	234.06
Cb	491	235.25
H. in Gutter	470	235.46 ✓

Alley Block 64 Chippewas
 From Landis to Harrison
 Between 37th St. & Charlotte

20' wide

3450'

34

Plotted 1/24-30 CBA

BM	845	34370	335.25	NWB P Landis 31/100
TP	940	34504	8.06	335.11
N. Cont. line of Landis				
N Top Corb		914	335.90	N. of Alley Redwood St. at S. side of block
E " "		965	335.39	Corner York to Garage
N. of Landis				
E		89	336.1	
S		91	335.9	
W		84	336.6	
N. of N. of Landis				
N		76	337.8	
+6		85	336.5	
S		84	336.6	
E		79	337.1	
S. of N. of Landis				
E		70	338.0	
S		73	337.7	
N		69	338.1	
50'				
N		62	338.8	W. of 18' of 100' Garage Cont. line
S		63	338.7	329.57 ✓
E		59	339.1	
75'				
E		59	339.1	
S		60	339.0	

				57	339.3	
				100'		
				55	339.5	Well on E
				50	340.0	Garage Dirt floor
				52	339.8	57 = 339.3
			125'			
				50	340.0	100' NW
				48	340.2	Garage
				50	340.0	Cont. line
			150'			
				50	340.0	115'
				47	340.3	115'
				48	340.1	Garage 339.75 ✓
			175'			
				48	340.1	
				46	340.4	
				48	340.1	
			200'			
				45	340.2	305' N 120'
				49	340.1	Garage Dirt floor
				48	340.1	50 = 340.0
			220'			
			Cont. line to Garage	44	340.40	✓
				48	340.2	107' N 100'
				48	340.2	9' N 10'
				48	340.1	Garage Dirt floor

	250'		
N		19	3401
S		17	3403
E		50	3400
	275'		
E		53	3397
S		19	3401
N		16	3404
	300'		
N		17	3403
S		19	3401
E		51	3396
	330'		
E	at Top of Bottom Step	50	339.84
E	at Ground	55	339.5
S		53	3397
N		50	340.0
	370'		
N		54	339.6
S		53	339.7
E		55	339.5
	390'		
E	at Garage DIRT Floor	51	339.9
S		52	339.8
N		51	339.9
	415'		

231' N
135' N of W.L.
Garage
DIRT Floor
340.201
190' N of W.L.
Garage
DIRT Floor
52 = 339.8
108' N
77' N of W.L.
Garage
DIRT Floor
341.80 ✓

			38	341.2
			15	340.5
			18	340.2
			18	340.2
			39	341.1
			38	341.2
			31	341.9
			29	342.3
			33	341.7
			32	341.8
			31	341.9
			29	342.1
			31	341.9
			31	341.9
			30	342.0
			28	342.7
			20	343.0
			26	342.4
			26	342.4
			25	342.5
			21.4	342.90

10.7 = Garage DIRT Floor
450' N
175' N
487' N
Garage Wood Floor
500' N
530' Garage
525' N

348.20

-8	Garage Conc Floor	557	342.63 ✓
E		57	342.5
W		54	342.8
17		52	343.0
H		47	343.5

555 N

-35	Garage Dred Floor	41	344.1
H		16	343.6 ✓
W		18	343.4
E		51	343.1

585 N

E	W Edge Frame House	43	343.9 ✓
W		48	343.4
H		42	344.0

595 N

H		41	344.1
W		50	343.2
15		51	343.1
F		41	343.8

600 N - S.L. Nightman

E		56	342.6 Note: Alley
W		58	342.4 W Edge Wall
H		53	342.9 Cross Wall

S.C. of Nightman

H on Top Cb		573	342.47
E on Top Cb		638	341.62
RM		943	340.87

36

Flood
Process
Kauai

Levels on Intersections of
Florida St. S. of University
Robinson St. ^{80' wide 14' 6" 19' 4"}
_{10 R. Returns}

276.89

37

B.M. S.W. R.P.	2.99	276.89	273.90	Robinson Florida
E.L. Florida St. above Pymt				
S.Cb. Top Ret		3.96	272.93	
S.Gut		4.37	272.52	
S. 1/4		3.74	273.15	
⊕		3.16	273.73	
N. 1/4		2.79	274.10	
N.Gut		2.59	274.30	
Top Cb		1.91	274.98	
E.L. Florida + 5				
N.Cb Top on Ret.		1.95	274.94	
N.Gut		2.66	274.23	
N. 1/4		3.02	273.87	
⊕		3.36	273.53	
S. 1/4		3.80	273.09	
S.Gut		4.48	272.41	
S.Cb Top on Ret.		3.96	272.93	
E.Cb Florida St				
S.L. Top Cb		3.95	272.94	
Gut		4.64	272.25	
+ 4 = P.C. 10' R. Ret Top Cb.		3.94	272.95	
Gut		4.58	272.31	
S.Cb. Line		4.27	272.62	
S 1/4		3.85	273.04	
⊕		3.53	273.36	

PLOTTED
H.C.M.

N. 1/4		3.16	273.73	
N.Cb. Line		2.92	274.07	
+ 10 = P.C. 10' Ret. Gut		2.00	274.89	
P.C. Top Cb.		2.62	274.27	
N.L. Gut		2.57	274.32	
N.L. Top Cb.		2.03	274.86	
E.Cb Florida St + 5				
N.L.		2.34	274.55	
N.Cb. Line		2.58	274.31	
N. 1/4		2.92	273.97	
⊕		3.07	273.62	
S. 1/4		3.63	273.26	
S.Cb. Line		4.02	272.87	
S.L.		4.38	272.51	
E. 1/4 Florida St.				
S.L.		4.20	272.69	
S.Cb. Line		3.78	273.11	
S. 1/4		3.42	273.47	
⊕		3.07	273.82	
N. 1/4		2.77	274.17	
N.Cb. Line		2.37	274.52	
N.L.		2.11	274.78	
⊕ Florida St				
N.L.		1.70	275.19	
N.Cb. Line		2.11	274.78	

PLOTTED
H.C.M.

N 1/4	240	274.49
Q	275	274.14
S 1/4	311	273.78
S.Cb Line	348	273.41
S.L.	391	272.98
W 1/4 Florida St		
SL	384	273.05
Scb Line	339	273.50
S 1/4	299	273.90
Q	258	274.31
N 1/4	222	274.67
N.Cb Line	187	275.02
N.L.	1.64	275.25
W 1/4 Florida St + 5		
N.L.	169	275.27
N.Cb Line	182	275.07
N 1/4	219	274.70
Q	258	274.31
S 1/4	300	273.89
Scb Line	341	273.48
S.L.	382	273.07
W.Cb. Florida St		
SL Top	298	273.91
Gut	390	272.99
+ 4 = P.C. 10 R Ret	294	273.95
Gut	379	273.10

PLOTTED
H.C.M.

S.Cb Line	349	273.40
S 1/4	301	273.88
Q	257	274.32
N 1/4	221	274.68
N.Cb Line	181	275.08
+ 10 = P.C. 10 R Ret Gut	160	275.29
P.C. Top Cb	095	275.94
N.L. Top Cb	092	275.97
N.L. Gut	160	275.29
W Cb Florida St + 5		
N.Cb. on Ret Top. (No. 15)	100	275.89
Gut	169	275.20
N 1/4	200	274.89
Q	237	274.52
S 1/4	286	274.03
Scb Line	356	273.33
Scb + 10 = Gut	361	273.28
Scb Top on Ret	296	273.99
W.L. Florida		
Scb Top	293	273.96
Gut	354	273.35
S 1/4	270	274.19
Q	205	274.84
N 1/4	177	275.12
N Gut	160	275.29
N.Cb Top	094	275.95

PLOTTED
H.C.M.

276.89

239.68

39

T.P.	1.88	266.91	11.86	265.03
T.P.	1.96	256.13	12.74	254.17
T.P.	0.20	244.33	12.00	244.13
B.M. S.M.B.R.	3.68	239.68	8.33	236.00

Cypress St
Florida

Taken 80' wide 20' Cb 10' 1/4's
10' R. Returns on W. 20' R. Returns on E.
W.L. Florida - 10

Top Cb. S		2.19	237.49
Top Cb. N		1.27	238.41
	W.L. Florida		
N. Cb Top		2.72	236.96
Got		3.18	236.50
N 1/4		3.26	236.42
♀		3.43	236.25
S 1/4		3.74	235.94
S Got		4.11	235.57
S. Cb. Top		3.67	236.01

PLOTTED
H.C.M.

	W.L. Florida + 5		
S Cb on Top Ret = 06-14		3.67	236.01
Got		4.32	235.36
S. Cb. line		4.28	235.40
S. 1/4		4.03	235.65
♀		3.76	235.92
N. 1/4		3.80	236.08

N. Cb Line	3.37	236.31
N. Got	3.23	236.35
Top Cb on Ret + 1/4	2.84	236.84

	W. Cb. Florida St		
N.L. Top. Cb.	2.78	236.90	
Got	3.35	236.33	
+ 10 = P.C. 10' R. Ret Top	2.84	236.84	
Got	3.46	236.22	

N Cb Line	3.68	236.00
N 1/4	3.92	235.76
♀	4.07	235.61

PLOTTED
H.C.M.

S. 1/4	4.33	235.35
S Cb Line	4.51	235.17
+ 10 = P.C. 10' R. Ret Got	4.60	235.08
P.C. Top Cb	3.63	236.05
S.L. Top Cb	3.73	235.95
Got	4.76	234.92

	W Cb. Florida St + 5		
S.L.	4.98	234.70	
+ 10	4.89	234.79	
S Cb Line	4.77	234.91	
S 1/4	4.63	235.05	
♀	4.40	235.28	
N 1/4	4.35	235.43	
N Cb Line	4.08	235.60	

23968

+ 10	3.90	235.78
N.L.	3.56	236.12
W. 1/4 Florida St		
N.L.	3.86	235.82
+ 10	4.24	235.44
N.Cb Line	4.38	235.30
N 1/4	4.56	235.12
♀	4.70	234.98
S 1/4	4.90	234.78
S.Cb Line	5.06	234.62
+ 10	5.19	234.49
S.L.	5.26	234.42
♀ Florida St		
S.L.	5.80	233.88
+ 10	5.73	233.95
S.Cb Line	5.58	234.10
S 1/4	5.38	234.30
♀	5.22	234.46
N 1/4	5.07	234.61
N.Cb Line	4.90	234.78
+ 10	4.76	234.92
N.L.	4.48	235.26
E 1/4 Florida St		
N.L.	4.34	235.34
+ 10	4.65	235.03

PLOTTED
H.C.M.

23968

40

N.Cb Line	4.82	234.86
N. 1/4	4.95	234.73
♀	5.11	234.57
S 1/4	5.23	234.45
S.Cb Line	5.35	234.33
+ 10	5.49	234.19
S.L.	5.71	233.97
E 1/4 Florida St + 5		
S.L.	5.61	234.07
+ 10	5.35	234.33
S.Cb Line	5.20	234.48
S 1/4	5.12	234.56
♀	5.02	234.66
N 1/4	4.90	234.78
N.Cb Line	4.77	234.91
+ 10	4.62	235.06
N.L.	4.32	235.36
E.Cb Florida St		
N.L. - RC 208 Ret Top	3.75	235.93
Got	4.32	235.36
+ 10	4.70	234.98
N.Cb Line	4.92	234.86
N. 1/4	4.88	234.80
♀	5.00	234.68
S. 1/4	5.04	234.64

PLOTTED
H.C.M.

239.68

S. Cb. Line	5.11	234.57
+ 10	5.23	234.45
3 L. Got	4.71	234.97
S. L. Top Cb RC. 30' R Ret	5.55	234.13
E. Cb. Florida St + 5		
J. L. + 13 = Top Cb on Return	4.65	235.03
Got	5.25	234.43
S. Cb. Line	5.23	234.45
S. 114	5.13	234.55
⊕	5.04	234.64
N. 114	5.01	234.67
N. Cb. Line	5.12	234.56
+ 7 Got	5.04	234.64
Top Cb on Return	4.48	235.20
E. L. Florida St		
N. L. + 17 = Top Cb on Return	4.99	234.69
Got	5.51	234.17
N. Cb. Line	5.42	234.26
N. 114	5.19	234.49
⊕	5.15	234.53
S. 114	5.21	234.47
S. Cb. Line	5.47	234.21
+ 3 = got	5.55	234.13
Top Cb on Return	4.96	234.72

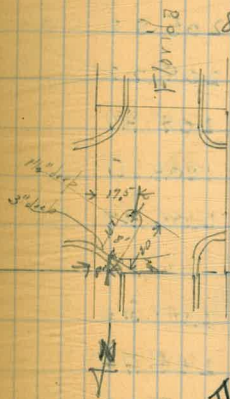
PLOTTED
HCM.

239.68

E. L. + 10 = E. C. 30' R Ret ⁴¹		
S. Cb. Top @ end of Ret	5.95	233.73
N. Cb. Top " " " "	6.00	233.68

Levels for patch on format
N.E. Cor Cypress & Florida

8' x 20'

PLOTTED
HCM

N.W. Cor patch	4.49	235.19
⊕ patch on Cb.	4.70	234.98
E.E. Cor of patch	4.93	234.75
1/2' along E of patch		
E. Edge	4.95	234.83
⊕	4.71	234.97
W. Edge	4.66	235.02
10' along E of patch		
W. Edge	4.80	234.88
⊕	4.77	234.89
E. Edge	4.82	234.86
30' along E of patch		
⊕	4.87	234.81

S.W. B.P.

3.68

236.00 Cypress
Florida

Levels in Florida St at C6 outlet
Between Cypress & Myrtle

BM - S.W.B.P.	1258	210.57	197.99	Florida & Myrtle
25.55 of S. end C6 outlet = 0+00				
W. C6 Top		3.61	206.96	
Gut.		4.90	206.37	
1/4		4.75	205.82	
1/2		5.35	205.22	
3/4		5.20	205.37	
Gut.		5.06	205.51	
E Top C6.		4.24	206.33	
0+25.5 = S.E. of C6 outlet				
E Top C6.		3.57	207.00	
Lip of C6 outlet		4.83	205.74	
1/4		4.81	205.76	
1/2		4.69	205.88	
3/4		4.00	206.57	
Gut.		3.35	207.22	
W Top C6.		2.72	207.85	
0+50				
W Top C6.		1.86	208.71	
Gut		2.58	207.99	
1/4		3.21	207.36	
1/2		3.86	206.71	
3/4		4.18	206.39	
Lip C6 outlet		4.19	206.38	
E Top C6.		2.86	207.71	

PLOTTED H.C.M.

21057

42

0+74.2 = N End C6 outlet

E Top C6	2.06	208.41
Lip of C6 outlet	3.36	207.21
1/4	3.28	207.29
1/2	3.06	207.51
3/4	2.43	208.14
Gut.	1.84	208.73
W Top C6.	1.11	209.46
1+06 = Back in Grade		
W Top C6.	0.13	210.44
Gut	0.76	209.81
1/4	1.33	209.24
1/2	1.95	208.62
3/4	1.87	208.70
Gut	1.81	208.76
Top C6.	1.14	209.43
S.W.B.P.	72.58	197.99

PLOTTED H.C.M.

Florida & Myrtle

Myrtle & Florida Intersection

Myrtle 80' wide 20' Cb 10' 1/2 S

20' R. Ret on 4 corners

B.M. SW. CR. 6.01 204.00 197.99 Florida St Myrtle

E.L. Florida - 10 = E.C. 20' R. Ret.

S. Cb Top @ ends / Ret 3.97 200.03

N. Cb Line 3.50 200.50

E.L. Florida

N.H. + 17: Top Cb on Ret 4.64 199.36

Cut 5.37 198.63

N. Cb Line 5.37 198.63

N. 1/4 5.36 198.64

Q 5.42 198.58

S. 1/4 5.58 198.42

S. Cb Line 5.76 198.24

+ 3 = got 5.84 198.16

Top Cb on Ret 5.16 198.84

E.L. Florida + 5

S.L. + 13: Top Cb on Ret 5.52 198.48

Cut 6.26 198.74

S. Cb Line 6.30 197.80

S. 1/4 6.01 197.99

Q 5.85 198.15

N. 1/4 5.74 198.26

N. Cb Line 5.63 198.37

+ 7 Got 5.64 198.36

Top Cb on Ret 4.98 199.02

E. Cb. Florida ST

43

N.L. Top Cb P.C. 20' R. Ret 4.96 199.04

Cut 5.62 198.38

N. Cb Line 5.94 198.06

N. 1/4 6.09 197.91

Q 6.22 197.78

S. 1/4 6.38 197.62

S. Cb Line 6.53 197.47

S.L. Cut 6.88 197.12

Top Cb. P.C. 20' R. Ret. 6.03 197.97

E. Cb Florida + 5

S.L. 6.93 197.07

S. Cb 6.64 197.36

S. 1/4 6.47 197.53

Q 6.27 197.73

N. 1/4 6.15 197.85

N. Cb 6.00 198.00

N.L. 5.69 198.31

E. 1/4 Florida ST

N.L. 3.77 198.23

N. Cb 6.08 197.92

N. 1/4 6.24 197.76

Q 6.38 197.62

S. 1/4 6.55 197.45

S. Cb 6.71 197.29

S.L. 7.01 196.99

Florida St

S.L.	7.15	196.85
S.Cb.	6.87	197.13
S. 1/4	6.68	197.32
¢	6.53	197.47
N. 1/4	6.38	197.62
N.Cb.	6.30	197.70
N.L.	5.90	198.05

W 1/4 Florida ST

N.L.	5.82	198.18
N.Cb.	6.18	197.82
N 1/4	6.30	197.70
¢	6.46	197.54
S. 1/4	6.62	197.38
S.Cb.	6.75	197.25
S.L.	7.00	197.00

W 1/4 Florida + 5

S.L.	6.92	197.08
S.Cb.	6.64	197.36
S 1/4	6.50	197.50
¢	6.36	197.64
N. 1/4	6.21	197.79
N.Cb.	6.07	197.93
N.L.	5.75	198.25

W.Cb. Florida St

44

N.L. Top 16 P.C. 20'R Ret	4.99	199.01
Got	5.65	198.35
N.Cb.	5.75	198.25
N 1/4	5.93	198.07
¢	6.10	197.90
S 1/4	6.21	197.79
S Cb	6.34	197.66
S.L. Got	6.95	197.15
Top Cb P.C. 20'R Ret	5.99	198.01

W.Cb. Florida + 5

S.L. + 13 Top Cb on Ret	5.02	198.98
Got	5.85	198.15
S.Cb.	5.69	198.31
S 1/4	5.58	198.42
¢	5.43	198.57
N 1/4	5.28	198.72
N.Cb.	5.12	198.88
+ 7 = Got	5.20	198.75
Top Cb on Ret.	4.53	199.47

N.L. Florida

N.L. + 17 Top Cb on Ret	3.69	200.31
Got	4.36	199.64
N.Cb.	4.36	199.64
N 1/4	4.50	199.50
¢	4.61	199.39

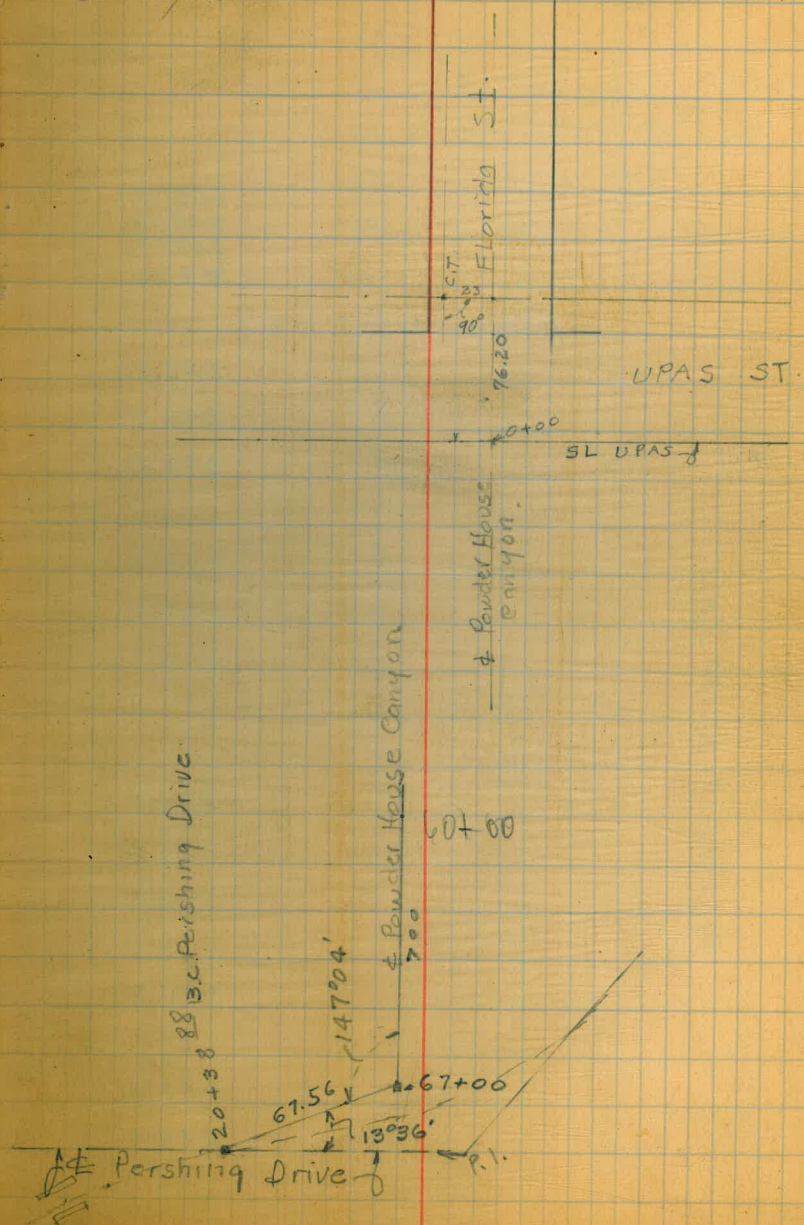
S 114	4.78	199.22	
S C6	4.85	199.15	
+3 = Gut	4.87	199.13	
Top C6 on Rot	4.16	199.84	
W.L. Florida + 10			
EE, Ret at end of S.C6	2.05	201.95	
" " " " " N.C6.	1.69	202.31	
S.M.B.P.	6.01	197.99 ✓	Florida + Milk

5/15/30
Louton

Powder House Canyon Road
Balboa Park

0+00	=	SL UPAS N.L. Balboa Park	
0+64 ^{55'}	P.O.T.	Nail.	
3+00	P.O.T.	Hub	
7+50	L.	Hub	$\Delta = 2^{\circ}53' L$
16+53.	P.O.T.	Hub	
18+00	Junc. ?	Hub	
18+55	" ?	Hub	
19+18	P.O.T.		
26+60	P.O.T.	Hub	
29+35	P.O.T.	Hub	
41+40	P.O.T.	Hub	
43+50 ²⁰	P.O.T.	Hub	
57+15	P.O.T.	Hub	
62+00	P.O.T.	Hub	
67+00		Hub	

See Page 28



Flood
Pearce
Kauney

Alley Blk 71 City Heights

7/23/30

X sec.
30' Wide Retention at
both ends

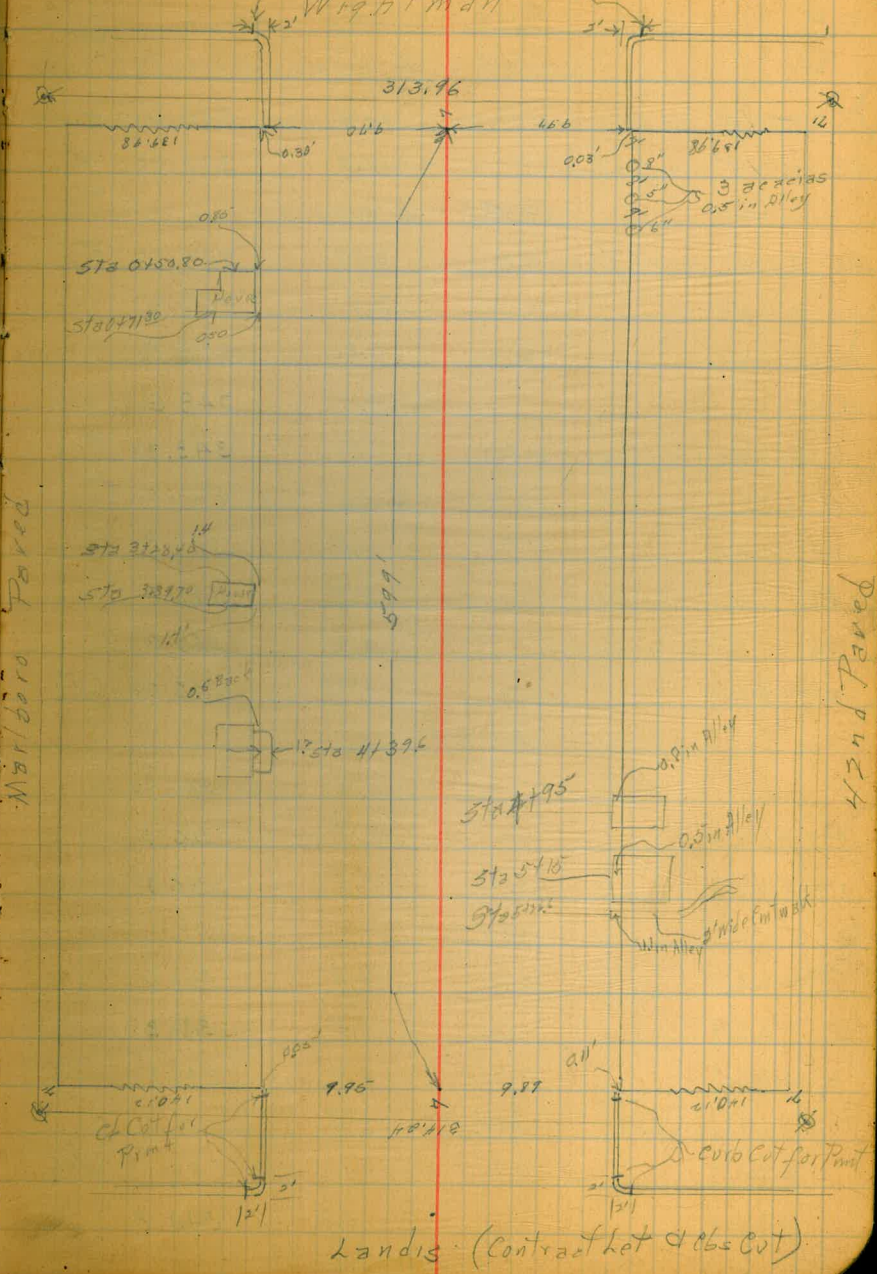
	+	X	-	Elev
B.M. N.W.B.P.	7.27	354.36		347.09
Elev Print	W.L. 42nd + S.C.B. Wightman			2.78
"	E.L. Marlboro	"	"	7.76
Top CB	E.L. Alley	"	"	4.58
Rake Grade	E.L. Alley	"	"	5.03
Top CB	W.L.	"	"	5.02
Rake Grade	W.L.	"	"	5.15
				349.78
				349.33
				349.34
				348.91
	0+00 = S.L. Wightman			
E Top Ret	(dirt Same)	4.4		349.92
Φ		4.7		349.7
W. Top Ret	(" ")	4.95		349.41
		0+10		
W.		4.3		350.0
Φ		4.2		350.2
E.		3.7		350.7
T.P.	2.19	352.31	4.24	350.12
		0+50		
E.		1.8		350.5
Φ		2.1		350.2
W.		2.1		350.2
		0+71.30		
W.L. - 0.92	Floor level of House Cmt foundation	0.92		351.39
		1+00		
W		2.9		249.4
Φ		2.6		249.7
E		3.1		249.2

Plotted 7-28-30 CBH

Note
distances
on sketch

31K 71

Rated Grade From 42nd
To Marlboro NW 42
NW 42
347.57
352.57
47



Landis (Contract let & obs cut)

	+	³ 252.131	-	31K(11)	Elev
T.P.	253	252.65	219	250.12	
		1+35 =	Single Garages both Sides		
E.L. - 18'			3.04	349.61	✓
W.L. + 14'			3.63	349.02	✓
		1+61 =	Single Garages both Sides		
E.L. - 10			3.09	349.56	✓
E.L.			3.8	348.8	
⊕			3.8	348.8	
W.L.			4.0	348.6	
+ 12			3.78	348.87	✓
		2+07 =	Cmt floor Garage on E.		
W			4.8	347.8	
⊕			4.9	347.7	
E			4.6	348.0	
E+3			4.43	348.22	✓
		2+58			
E			5.4	347.2	
⊕			5.9	346.7	
W.			5.8	346.8	
		3+00			
W.			6.6	346.0	
⊕			6.4	346.2	
E.			6.5	346.1	
T.P.	420	350.11	6.74	345.71	
		3+28.3	Car House on W. 1/4 Back ✓		
			4.3	345.8	

	+	350.11	-	31K(71)	Elev 48
				3+37.7	
				Car House on W. 1/4 Back ✓	
				on cement floor of yard	4.24
				3+46 = edge of cmt yard on W. 1/4 Back	345.87 ✓
E.				4.6	345.5
⊕				4.4	345.7
W				4.3	345.8
W+12 on cmt yard				4.24	345.87 ✓
				4+00	
W.				5.3	344.8
⊕				5.0	345.1
E.				5.0	345.1
				4+58.5 =	⊕ double Garage on E.
				built under Apt. House 2 story ✓	
E.L. - 8'				4.52	345.59 ✓
				4+39.6 =	⊕ double garage on W. outside
				16.5' wide abron extends 1.2 into Alley	
W.L. - 1.2 = edge abron				5.28	344.83 ✓
W.L. + 0.5 = floor				5.01	345.10
				4+50	
E				5.2	344.9
⊕				5.0	344.7
W.				5.7	344.4 ✓
				4+75 =	⊕ Cmt floor Single Garage on E.
				8' in Alley	
W				4.7	343.9
⊕				5.8	344.3

350.11

Bik (71)

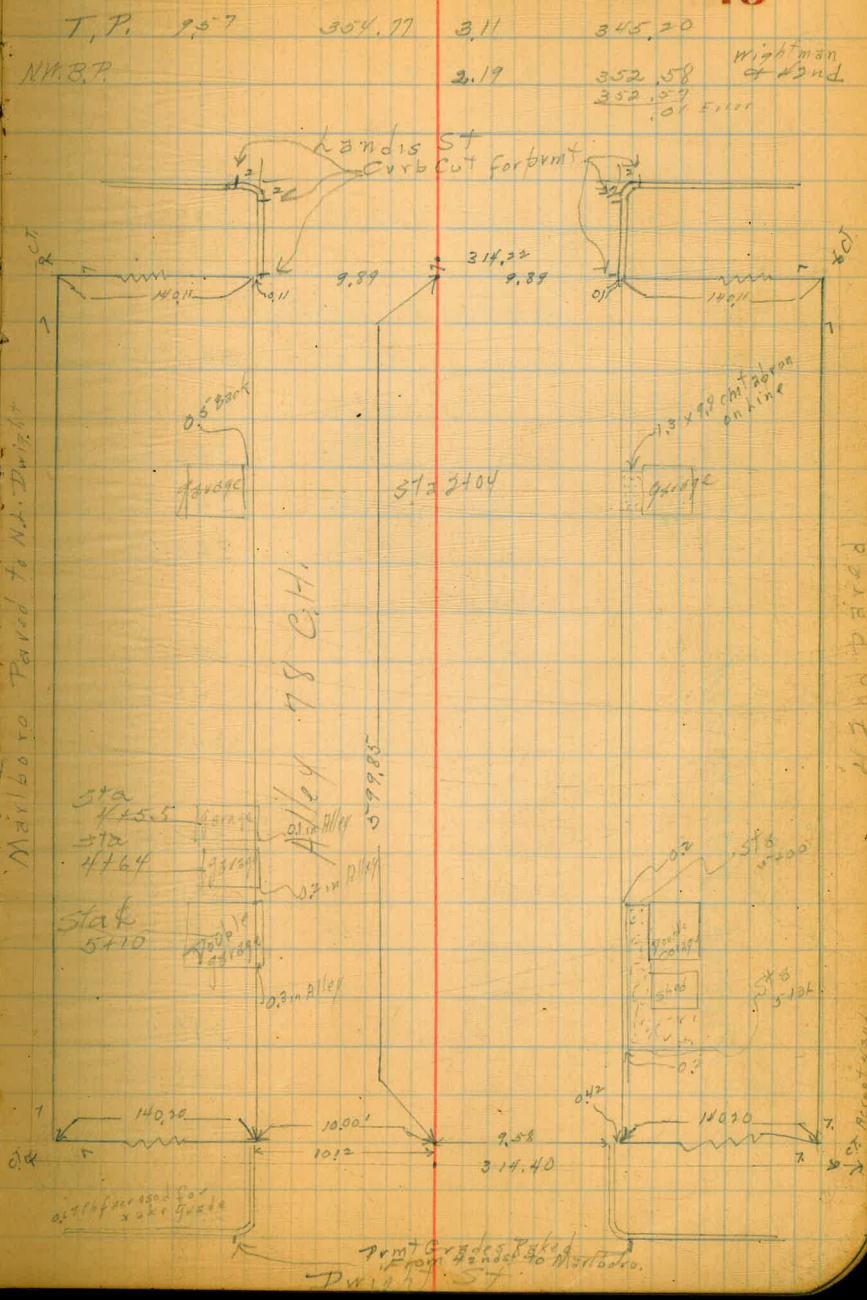
Elev

+	T	-	Elev
\$ + 9.2 = Cmt floor of Garage	5.92	344.21	/
T.P.	4.20	348.31	6.00 344.11
\$ + 9.5 = dirt floor	4.3	344.0	/
\$ + 26.6 = 2' wide cement walk on East 1.1 in alley	5 + 1.5 = 6.5		
\$ + 8.9 = end of walk	4.54	343.77	/
	5 + 5.0		
E	4.7	343.4	
\$	4.8	343.5	
W.	4.8	343.5	
	5 + 7.5		
W.	4.8	343.5	
\$	4.7	343.6	
E	4.5	343.8	
	5 + 9.9 = Nt. Landis		
E Top Cb.	5.46	342.85	
E Cb Cut for Prmt	5.69	342.62	See sketch
\$	5.2	343.1	dis 0.3
W Cb Cut for prmt	5.61	342.70	
W Top Cb.	5.36	342.95	
N. Cb. Landis			
W Cb dot for Prmt on Alley	5.98	342.33	} see sketch
W " " " " on Landis	6.15	342.16	
E " " " " on Alley	6.07	342.24	
E " " " " on Landis	6.21	342.10	

348.31

Bik (78)

49



T.P. Topol preceding page
200 347.20

345.20

X Sec Alley 78 City Heights

For Sketch see preceding page

Cb Cut scb lands E of Alley	540	341.80
" " Ecb Alley soft lands	526	341.94
" " W. " " " "	522	341.98
" " S " lands W. of Alley	537	341.83
0+00 = S.L. lands		
Top Cb W.	4.65	342.55
Cb Cut for prmt W.	4.80	342.40
♀	4.7	342.5
Cb Cut for prmt E.	4.73	342.47
Stop Cb E.	4.57	342.63
0+50		
E.	5.5	341.7
♀	5.8	341.4
W.	6.1	341.1
1+00		
W.	6.4	340.8
♀	6.6	340.6
E.	6.4	340.8
1+50		
E.	6.8	340.4
♀	6.9	340.3
W.	7.0	340.2
2+00		
W.	7.4	339.8

Plotted - 7-28-30 GBH

347.20

Blk (78)

50

♀	7.2	340.0
E.	7.1	340.1
T.P. 428	344.51	7.01 340.15
2+04 = ♀ Single Garages both sides ✓		
E.L. = ^{Cement} apron 9.8 wide	4.44	340.07 ✓
E.L. - 1.3 Cmt floor	4.42	340.09 ✓
W.L. + 0.5 = dirt floor	4.7	339.8 ✓
2+28 = ♀ Single Garage on E ✓		
E.L. - 1.2 = Cmt floor	4.68	339.83 ✓
2+68 = ♀ 2' wide Cmt walk on W. ✓		
E.	5.4	339.1
♀	5.2	339.3
W.	5.6	338.9
+ 0.5 = Cmt walk	5.45	339.06 ✓
3+00		
W.	5.9	338.6
♀	6.0	338.5
E.	5.5	339.0
3+14 = ♀ Single Garage on E ✓		
E - 2.8 = dirt floor	5.9	338.6 ✓
3+50		
E.	6.1	338.4
♀	6.4	338.1
W.	6.7	337.8
T.P. 578	341.75	6.54 337.97

341.75

Bik (78)

341.75

Bik (78)

51

3+71 = ϕ Garage on E	✓		
E.L. + 18" = Cmt floor	3.42	338.33	✓
4+00			
W.	4.6	337.1	
ϕ	4.5	337.2	
E.	4.4	337.3	
4+138 = N. Cor. House on W.	✓		
W.L. + 1.5 = floor level	4.40	337.35	✓
4+33.8 = S. Cor. House on W.	✓		
W.L. + 1.0 = floor level	4.40	337.35	
4+28 = CL ^{single} Garage on E	✓		
E.L. - 3.8 = Cmt floor	4.62	337.13	✓
4+44 = ϕ Single Garage on W	✓		
W.L. + 0.10 = Cmt floor	5.11	336.64	✓
4+55 = ϕ Garage on W 0.10 in Alley			
E.	5.1	336.6	
ϕ	5.3	336.4	
+ 9.9 = board floor of Garage	5.19	336.56	✓
4+64 = ϕ Garage on W 0.2 in Alley			
ϕ + 9.8 = board floor	5.16	336.59	✓
5+00			
W.	6.0	335.7	
ϕ	5.8	335.9	
E.	5.5	336.2	✓
+ 0.2 = start of cement apron	5.42		
5+10 = ϕ double Garage on E/W			
E + 5.9 = Cmt floor	5.37	336.38	✓

E.L. - 0.2 edge of apron	5.42	336.33	✓
ϕ	5.8	336.0	
+ 9.7 = dirt floor	6.0	335.7	✓
5+36 = end of Cmt apron on E	✓		
E.L. + 0.2	5.85	335.90	✓
3+75			
W.	7.0	334.7	
ϕ	7.1	334.6	
E.	6.7	335.0	
T.P. 4.33	339.45	7.63	334.12
5+75			
E.	3.4	334.0	
ϕ	5.0	333.4	
W.	4.3	334.1	
5+79.85 = N.L. Dwight			
W Top of Ret end.	5.47	332.98	
W dirt	5.2	333.2	
ϕ	5.5	333.0	
E dirt	5.1	333.3	
E Top of Ret end	5.18	333.27	
N. Cb., Dwight			
E Top Cb.	5.38	333.07	
E Raked grade 42nd to Marlboro print	6.04	332.41	
W " " " " " "	6.35	332.10	
W Top Cb.	5.70	332.70	✓
N.W. B.P.	7.41	331.07	Marlboro
T.P.	4.33	334.12	Dwight
N.W. B.P.	5.30	334.12	42nd
	5.30	334.12	Dwight

333.45

Blk 98

3+75

W 6.4 327.1
 Φ 6.5 327.0
 +5 6.5 327.0
 E 6.7 326.8
 T.P. 134 328.23 6.59 326.97

4+00

E 2.4 325.8
 +5 2.3 325.9
 Φ 2.2 326.0
 W 2.2 326.0

4+41 = Φ garage on E. back ✓

E+6.5 = dirt floor 3.0 325.2

4+56 = Φ garage both sides

W-4 = Cmt floor 3.86 324.37 ✓

W 4.1 324.1

Φ 4.2 324.0

+5 4.0 324.2

E 3.7 324.5

+4.9 = dirt floor 3.5 324.7 ✓

4+69 = Φ 2' sidewalk on E. 5' back

E-0.3 = mt walk 3.80 324.43 ✓

5+00

E 5.5 322.7

+5 5.8 322.4

Φ 5.8 322.4

W 5.1 323.1

Blk 98

328.23

54

5+38 = Φ garage on E 4.8 back ✓

W 7.9 320.3
 Φ 8.5 319.7
 +5 8.4 319.8
 E = edge of 9' wide cement apron 8.07 320.16
 +4.8 = cmt. floor 7.56 ✓ 320.67

5+44 = N end of Rattle wall on E. 0.10 back

Top of wall 7.85 320.58

Dirt 8.2 320.0

5+53

E-0.10 = Top of wall 8.01 320.22 ✓

E 8.9 319.3

+5 7.7 318.5

Φ 10.0 318.2

W 10.1 318.1

5+73

W-5 11.8 316.4

W 12.1 316.1

Φ 12.1 316.1

+5 11.3 316.9

E 10.7 317.5

E+0.10 Top of Wall 8.77 319.46 ✓

T.P. 7.29 323.15 12.37 315.86

6+00.75 = N.L. Myrtle

E+0.10 Top corner wall (in ally) 4.69 318.46 ✓

E Top Co. 6.68 316.47 ✓

E dirt	7.1	3160
+ 5	7.6	3155
±	8.0	3151
N	8.4	3147
+ 5	8.4	3147

N. Cb Myrtle

Rake grade for Cb W of Alley 7.65 31550

" " " front " " 8.35 31480

Top Cb E 6.73 31642

Rake grade for front east L. Alley 7.43 31572

N.W. B.P. 1.47

N.W. B.P. 13.05

321.68 Myrtle
 321.62 Myrtle
 310.10 Myrtle
 310.07 Myrtle
 .03 diff

"A" Line Powder House Canyon Road
Parshing Drive to Florida St
"A" Line Starting At Sta 7+50
See Page 78

20+74.59 EC

A = 53.5'

R = 1500'

T = 73.15'

L = 146.17'

D 11459

19+28.42 PC Lt

13+0 P.O.T

7+50 P.O.T = A of old Line

See "B" Page 69

0+0 = S. L. Upas St Florida See Page 46

Spot 15-30
57
Survey
Net 196
North

20+74.59 EC

19+28.42 PC

Old 7+50 P.O.T

See Page 46

Upas St

Florida St. Powder House Canyon Road

S. L. Upas

51+0 P.O.T.

47+65.41 E.C.

A. 5.00

P. 1500.0

T. 65.19

L. 130.90

46+34.51 P.C.R.

39+50 P.O.T.

31+0 P.O.T.

27+0 P.O.T.

68+92.78 EC

A = 44' 13"

R = 400.0

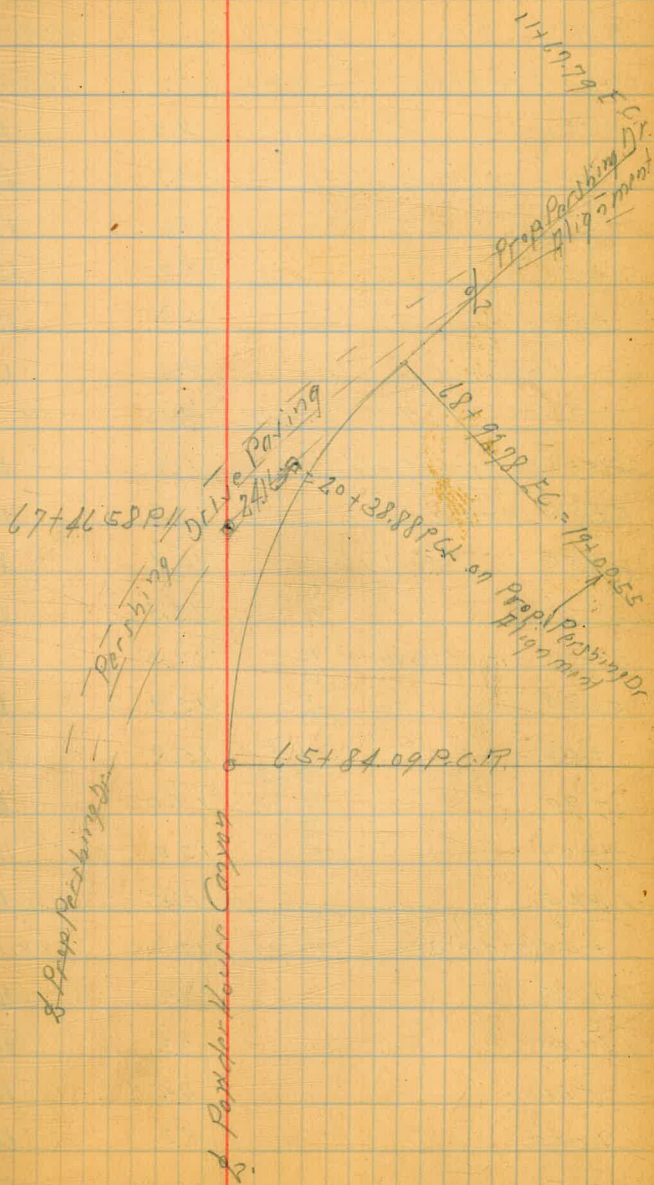
T = 163.49

L = 308.69

65+84.09 P.C.T

60+0 P.O.T

55+90.73 P.O.T



A Line Powder House Canyon Road
& Levels

60

Sep. 17-30
S. 5007
H. Huggs
No. 1900

BM	1.80	199.79	197.99	194.00
0+00 PAYMENT (Forecast)			5.79	194.00
+50			5.0	194.8
1+00			4.1	195.7
+50			4.6	195.2
2+00			5.7	194.1
+50			6.3	193.5
3+00 Hub			7.7	192.1
T.P.	8.07	198.41	9.45	190.34
3+50 = Bottom of Wash			11.9	186.5
4+00 in Wash			12.5	185.9
+50 " "			12.9	185.5
5+00 " "			13.3	185.1
+50 out of Wash			12.5	185.9
6+00			13.9	184.5
+50			15.8	182.6
+90			17.0	181.4
7+00			13.8	184.6
+25			10.5	187.9
T.P. beginning of A Line			10.28	188.13
+50 (on Hub) 0.88	188.96			
+75			3.6	185.3
8+00			3.3	185.6
+50			6.6	182.3
9+00			8.3	180.6
+50			10.0	178.9

Plotted 9-22-30
G.B.H.

	188.96			
10+00		11.2	177.7	
T.P.	1.24	11.23	177.73	
+50		4.1	174.8	
11+00		6.9	172.0	
+50		7.2	171.7	
+70 = Top of Wash		8.0	170.9	
+75 Bottom		10.1	168.8	
+80 Top		8.2	170.7	
12+00		7.4	171.5	
+50		5.8	173.1	
T.P.				
13+00 (Hub) 0.85	173.42	6.10	172.57	
+50		3.2	170.2	
14+00		4.5	168.9	
+50		6.2	167.2	
15+00		7.6	165.8	
+40 Top Wash		9.9	163.5	
+50 Bottom		12.9	160.5	
+65 Top		10.2	163.2	
16+00		9.9	163.5	
+50		9.6	163.8	
17+00		9.5	163.9	
+45 Top Wash		9.9	163.5	
+50 Bottom		11.2	162.2	
+75 "		11.9	161.5	
+80 Top		10.3	163.1	

8 Levels Potlatch House Canyon Road

62

		173.42		
18+00			11.1	162.3
T.P.	1.74	164.36	10.80	162.62
+50			2.2	162.2
19+00			3.7	160.7
19+28.42	P.C Hub		4.78	159.58
+50			4.7	159.7
20+00			5.5	158.9
+50			6.8	157.6
20+74.59	EC Hub		7.25	157.11
21+00			7.8	156.0
+50 - Bottom Wash			11.1	153.3
22+00	" "		12.8	151.6
+50			11.4	153.0
+75			11.4	153.0
23+00			10.3	154.1
T.P.	8.62	161.82	11.16	153.20
+10			5.3	156.5
+50			6.9	154.9
+75			8.1	153.7
24+00			7.7	154.1
+50			8.0	153.8
25+00			8.9	152.9
+25			11.0	150.8
+50			10.4	151.4
26+00			10.7	151.1

161.82

26+35			5.1	156.7
+50			4.9	156.9
27+00	Hub		5.92	155.90
+50			7.0	154.8
+92	Top Wash		10.6	151.2
+96	Bottom		12.6	149.2
28+00	TOP		10.2	151.6
+10			8.6	153.2
+50			8.0	153.8
29+00			7.7	154.1
+50			7.8	154.0
T.P.	2.24	157.14	6.92	154.90
30+00			3.1	152.7
+50			5.9	151.2
31+00	Hub		8.02	149.12
+25			9.9	147.2
+50			13.0	144.1
T.P.	0.82	145.34	12.62	144.52
32+00			4.7	140.6
+50			7.0	138.3
33+00			7.8	137.5
+50			9.7	135.6
34+00			9.7	135.6
+50			11.3	134.0
35+00			12.6	132.7

2 Levels Powder House Canyon Road
145.34

64

T.P.	6.87	140.20	12.01	133.33
35+50			8.6	131.6
36+00			8.4	131.8
+25			7.4	132.8
+50			6.1	134.1
+75			5.1	135.1
37+00			5.0	135.2
+50			4.6	135.6
38+00			5.6	134.6
+50			6.7	133.5
39+00			7.3	132.9
T.P.				
+50	Hub 4.59	136.51	8.28	131.92
+75			5.1	130.9
40+0			9.5	127.0
+25			10.0	126.5
+50			10.8	125.7
+55 =	Bottom Yard		11.5	125.0
+70 =	"	Prop Drains	12.4	124.1
+75			10.9	125.6
41+0			9.6	126.9
+25			7.2	129.3
+50			5.1	131.4
42+0			5.0	131.5
+50			7.1	129.4
43+0			7.8	128.7
+50			8.4	128.1

136.51

4410			97	126.8	
+10			10.3	126.2	
+13	Bottom Yard Front		13.3	123.2	Proposed Drain
+17	Parshing Drive		10.3	126.2	
+50			10.2	126.3	
1510			11.6	124.9	
TP	1.25	129.99	1077	125.74	
+50			14	125.6	
4610			48	125.2	
+50			49	125.1	
4710			58	124.2	
TP	1.52	125.67	584	124.15	07 Pgs 48+256
+50			84	123.2	
+6541	PC on Hub		8.43	123.24	
4810			31	122.5	
+50			3.6	122.0	
-4910			5.3	120.9	
+50			12.5	113.1	
5010			9.2	116.4	
+50			9.3	116.3	
TP	0.48	113.58	1257	113.10	
5110	07 Hub		1.71	111.87	
+25			4.6	109.0	
+50			3.7	109.9	
5210			6.2	107.4	

113.58

52+50			8.3	105.3
53+0			8.4	105.2
+50			8.8	104.8
+85			8.9	104.7
54+0			6.1	107.5
+40			5.6	108.0
+41			9.4	104.2
+50			9.8	103.8
+51			5.8	107.8
55+0			6.4	107.2
+50			6.4	107.2
56+0			6.0	107.6
+50			8.6	105.0
TP	2.17	109.40	6.35	107.33
57+0			5.2	104.2
+50			5.6	103.8
58+0			6.7	102.7
+50			7.5	101.9
59+0			7.1	102.3
+50			7.4	102.0
60+0	0.72 Hub		9.46	99.94
TP	0.70	100.64	9.41	99.94
+50			8.4	97.2
61+0			5.0	95.6
+50			5.3	95.3

Levee to Pender House Canyon Road

83

100.64

62+0			61	94.5
+50			71	93.5
63+0			8.5	92.1
+50			8.7	91.9
64+0			9.8	90.8
+50			10.7	89.9
TP	2.27	93.17	97.4	90.90
65+0			8.7	90.5
+50			5.1	88.1
+82.09 PCR			5.39	87.78 <small>on Hub</small>
66+0			5.7	87.5
+50			5.8	87.4
67+0			5.6	87.6
+50			5.8	87.4
68+0			6.5	86.7
+50			6.5	86.7
+54 = Edge Pn 171			6.59	86.58
+92.78 = EC on "			6.73	86.44
TP for Check			5.49	87.68

on Hub
 2+3380 PCR
 2+3380 PCR
 2+3380 PCR
 87.70
 N° 11405914

67

67

68

B Line Powder House Canyon Road
Pershing Drive to Florida St.

(C)

38+0 P.O.T. See Page 78

30+50 P.O.T.

27+0 P.O.T.

25+0 P.O.T.

18+66.71 F.C.

$$\Delta = 5^{\circ} 06'$$

$$R = 1500.0$$

$$T = 66.81$$

$$L = 133.52$$

17+33.19 P.C.L. = 17+33.19 "A" Line

Note: Station 0+0 to 17+33.19 See A Line Page 57

69

Oct. 1-30
Sisson
McHugh
Porter

For Grades See Grade # 174

38+0 P.O.T. 35' 40'

30+50 P.O.T. 35' 35'

25+0 P.O.T. 35' 35'

18+66.71 F.C. 30' 35'

17+33.19 P.C. 40' 35'

B'Line

70

68+89.73 E.C. = 19+05.88 Proposed Parking Dr.

$A = 42^{\circ}57'$

$R = 400.0$

$T = 157.36$

$L = 299.85$

65+89.88 P.C.R.

60+50 P.O.T.

57+50 P.O.T.

52+75.85 E.C.

$A = 5^{\circ}48'$

$R = 1500.0$

$T = 75.99$

$L = 151.84$

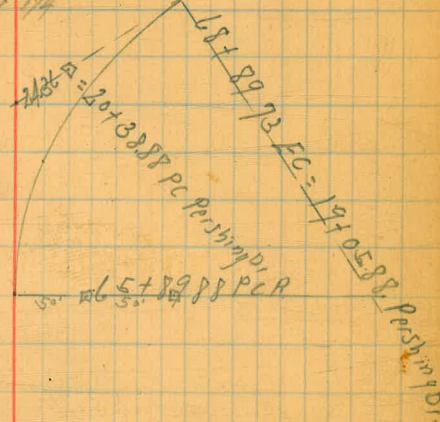
51+24.01 P.C.R.

44+50 P.O.T.

See Page 78

Note: For Grades See Grade 174

P.I.



60+50 P.O.T. 25' 30' 30'

52+75.85 E.C. 35' 35' 35'

51+24.01 P.C.R. 35' 35' 35'

44+50 P.O.T. 35' 35' 35'

70

71

2 Levels B-Line Powder House Canyon Road

161.33

0d 3.30
S 1507
North
Flood

BM	573	165.31	159.58	07/11/05
17+0	PEL	Station 040 701743319	See 9/10/05	19+28.42 PEL
18+0		Page 60 to 62		
+50		3.0		
+6671 F		3.1		
19+0		3.53	161.78	07/10/06
+50		5.1		
20+0		5.9		
+50		6.2		
21+0		7.0		
+50		7.5		
22+0		10.7		
TP	492	160.40	9.83	155.48
+50			5.4	07 Top 12+50
23+0			2.6	
+50			5.0	
24+0			5.0	
+50			5.0	
25+0	POT		7.07	153.33
+50			7.2	07/11/06
26+0			4.2	
+50			1.3	
TP	258	161.33	1.65	158.75
27+0	POT		3.51	36+36
+50			3.1	157.82

27+96	Bottom Wash from	11.0	150.3
28+0		8.7	
+50		5.7	
29+0		4.6	
+50		4.8	
30+0		6.6	
+50 POT		9.07	152.26
31+0		11.4	07/11/06
31+50		15.4	
TP	0.96	150.03	12.26
32+0		9.0	149.07
32+50		11.1	
33+0		12.1	
TP	542	143.02	12.43
+50			137.60
34+0		6.9	
+50		6.7	
35+0		8.5	
+50		10.3	
36+0		11.1	
+50		10.2	
37+0		8.3	
+50		7.3	
38+0		7.4	
TP	2.08	136.88	8.22
+50			134.80
		3.0	07/11/06 38+0 POT

136.88

39+0		3.9
+50		4.7
+70		6.0
40+0		9.8
+50		11.3
+68 = Bottom ^{Large} Wash from E		12.8
+75		11.3
41+0		9.9
+50		5.5
42+0		5.5
+50		7.7
43+0		8.3
+50		9.1
44+0		10.3
+10		10.8
+14 = Bottom Wash from		13.8
^{Parish 179 Orine}		
+17		10.7
+50 Pot		10.88
45+0		12.1
+50		13.1
TP	3.80	12.822
46+0		3.5
+50		3.5
47+0		4.3
+50		5.2

124.42

07/10/06
07/10/06
37744518

128.22

48+0		5.3
+50		5.4
49+0		9.0
+50		10.9
50+0		9.3
+35		9.7
+37 = Bottom Wash from		11.3
^{Parish 151 Or.}		
+50		10.8
51+0		11.0
+84.01 PCR		7.81
+50		5.4
52+0		7.3
+20		10.8
TP	1.24	117.16
+30		3.0
+50		6.8
+75.85 = F.C.		9.8
53+0		11.1
+30		11.6
+50		9.6
+65		8.1
+85		3.0
54+0		3.8
+50		6.0
55+0		7.0

115.92

07/10/06

Blind

117.16

55+50			7.0	
56+0			8.0	
+50			10.0	
57+0			11.3	
+50			11.2	
TP	2.13	108.05	112.4	105.92
58+0			3.1	on Hub 57+50 Pat.
+50			5.0	
59+0			3.4	
+50			3.7	
60+0			5.2	
+50 Pat.			7.40	100.65 on Hub
61+0			10.3	
+50			11.1	
62+0			12.3	
+50			13.4	
TP	1.84	97.26	126.3	95.42
63+0			3.8	on Top State 131.50
+50			4.5	
+65			4.1	
64+0			5.7	
+50			6.6	
65+0			6.5	
+50			9.0	882
66+0			9.8	

74

97.26

TP	536	93.17	9.75	87.81	on Hub 15.8A097 8778
66+50			5.8		
67+0			5.6		
+50			5.8		
68+0			6.5		
+50			6.5		
+89.73 E.C. on Paying			6.70	86.47	

26 wide

X Sec. Alley BIK 96. C.W. Morse Sub
30th to 31st Bet E. & F. Sts.2-5-31
Miller
Osborne

BM. B.P.	12.97	179.96	166.99	s.e. 30 th & F. Sts.
	E. ch. line 30 th			
S. ent. ch		3.91	176.05	
S. gutter paymt.		4.52	175.44	
☒ " "		4.04	175.92	
N " "		3.55	176.41	
N. ent. ch.		2.92	177.04	
	0+00 = E. line 30 th St.			
N. ent. ch 15.0' 26 in alley		2.85	177.11	
N. paymt		3.13	176.83	
☒ " "		3.72	176.24	
S. " "		3.72	176.24	
S. ent. ch. on line		3.63	176.33	
	10' E.			
S		3.3	176.6	
☒		3.0	176.9	
N		2.3	177.6	
	35' E			
N		1.6	178.3	
☒		2.4	177.5	
S		3.2	176.7	
	69' E. garage on N. ent. floor oil Backs			
S		1.6	178.3	
☒		1.1	178.8	
+7 edge chit. apron		0.77	179.19 ✓	
N. on floor		0.52	179.44 ✓	

Plotted Feb. 6-31

179.96
100' E.

75

N		0.7	179.2
☒		1.1	178.8
S		1.9	178.0
+5		2.4	177.5
	130' E		
-5		1.6	178.3
S		1.1	178.8
☒		0.4	179.5
N		0.0	179.9
T.P.	4.85	184.53	0.28 179.68
	150' E		
N		4.3	180.2
☒		5.2	179.3
S		5.5	179.0
	175' E		
S		4.7	179.8
☒		4.2	180.3
N		3.7	180.8
	200' E		
N		4.0	180.5
☒		4.7	179.8
S		4.5	180.0
	250' E		
S		4.8	179.7
☒		4.8	179.7
N		4.2	180.3

	184.53		
	3.00' E.		
N	4.3	180.2	
☉	4.7	179.8	
S	5.2	179.3	
	325' E.		
S	4.7	179.8	
☉	4.3	180.2	
N	3.8	180.7	
	346' E. garage on N dirt floor 1.5' Back ✓		
N floor	4.1	180.4 ✓	
☉	4.4	180.1	
S	4.8	179.7	
	370' E.		
S	5.3	179.2	
☉	4.6	179.9	
N	3.6	180.9	
	382' E = garage on N dirt floor 6.2' Back ✓		
N-L2 floor	4.3	180.2 ✓	
N	4.4	180.1	
☉	4.7	179.8	
S	4.9	179.6	
	400' E.		
S	4.6	179.9	
☉	5.0	179.5	
N	4.5	180.0	

	184.53		
	425' E. garage on N dirt floor 2.5' Back ✓		
N-2.5 floor	4.7	179.8 ✓	
N.	5.0	179.5	
☉	5.8	178.7	
S.	5.9	178.6	
	445' E.		
S.	6.9	177.6	
☉	6.3	178.2	
N.	5.5	179.0	
	470' E. garage on S dirt floor 5.4' Back ✓		
N	7.5	177.0	
☉	8.3	176.2	
S.	9.2	175.3	
+5.4 floor	9.4	175.1 ✓	
	500' E.		
S.	11.3	173.2	
☉	10.6	173.9	
N.	10.2	174.3	
T.P.	2.03	175.21	11.35
	garage on N dirt floor 5.1' Back ✓		173.18
531' E	" " S dirt " 6.4	" " ✓	168.8
N-5.1 floor		3.20	172.01 ✓
N-3.8 edge apron		3.50	171.71 ✓
N		3.9	171.3
☉		4.2	171.0
S		5.2	170.0
+6.4 floor		6.3	168.9

175.21

550'.E.

S	4.8	170.4
Φ	4.8	170.4
N	4.1	171.1

580'.E.

N	4.0	171.2
Φ	5.0	170.2
S	5.4	169.8

601'.E. = W. line 31st St.

S. ent. ch + dirt	4.58	168.63
Φ	5.60	169.61
N. ent. ch + dirt	3.91	171.30

8'.E. of W. line = W. edge of 5.5 ent. gutter

N. ent. ch.	4.06	171.15
N. W. edge ent. gutter	4.90	170.31
Φ " " " "	6.08	169.13
S " " " "	7.26	167.95
S. ent. ch.	6.78	168.43

T.P.	7.20	182.05	0.36	174.85
------	------	--------	------	--------

T.P. BM. B.P.	10.77	189.71	3.11	178.94
---------------	-------	--------	------	--------

ch BM.		3.63	186.08 = 186.1030 th L.C.
--------	--	------	--------------------------------------

Alley BIK 96. E.W. Morse

77

Not given in
of the
of SeptS.W. 31st
+ E. Sts

Hyd. SE.

Alignment Powder House Camp Road
From Perry's Drive to Florida St.

As Stated For Construction

30+50 P.O.T

25+00 P.O.T

17+43.66 F.C.

A = 4° 55'

P = 1500.0

T = 64.46

L = 128.92

16+14.94 P.C.L

13+0 P.O.T

7+50 P.O.T

0+0 = Start Upas St.

78

March 10-31
Sisson
McHugh
Northrup

30+50 P.O.T □ 35 □ 35 □

25+00 P.O.T □ 35 □ 35 □

17+43.66 F.C. □ 35 □

16+14.94 P.C.L □ 35 □ 35 □

7+50 P.O.T □ 35 □ 35 □

0+0

Start Upas

Florida St
7+50
35
35

68+89.73 EC = 19+0588 Proposed Perch Pond

$A = 42^{\circ} 57'$

$R = 400.0$

$T = 15736$

$L = 29985$

65+89.88 PCR

60+50 POT

57+50 POT

52+73.46 EC

$A = 5^{\circ} 37'$

$R = 1500.0$

$T = 7358$

$L = 14704$

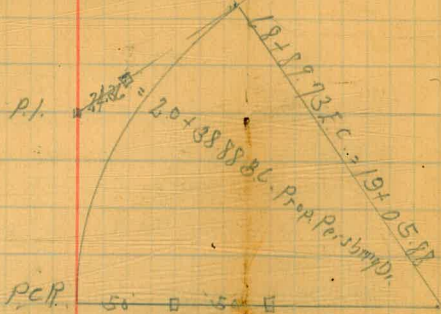
51+91.42 PCR

44+50 POT

38+0 POT

79

15736
2436
13300



53+75.85 POT 35 35

52+73.46 EC

51+91.42 PCR 35 35

44+50 POT 35 35

38+0 POT 35 35

DIRECTIONS FOR USE OF TABLES

TABLE No. 1.

Distance of slope stake from side or shoulder stake for any width roadway, slope $1\frac{1}{2}$ to 1. If ground is nearly level, the cut or fill at side stake is located by the double entry method in left column and top row. The number in body

of table in same row and column gives distance from side stake to slope stake. If ground is not

level, the side stake and slope stake, lower stake by this amount if cut, elevate if fill. Add this amount to cut or fill and distance in table. Set up rod at this point, and line of sight should cut target.

TABLE No. 2.

To find Tangent and External for curve of any other degree, divide by degree of curve and add correction found in column of corrections. Degree of curve with a given T may be found by dividing tangent (or external), opposite T by given tangent (or external).

The distance from a point on the tangent to the curve is very nearly the square of the tangent length divided by twice the radius.

**IMPROVED TABLES
AND
INFORMATION**

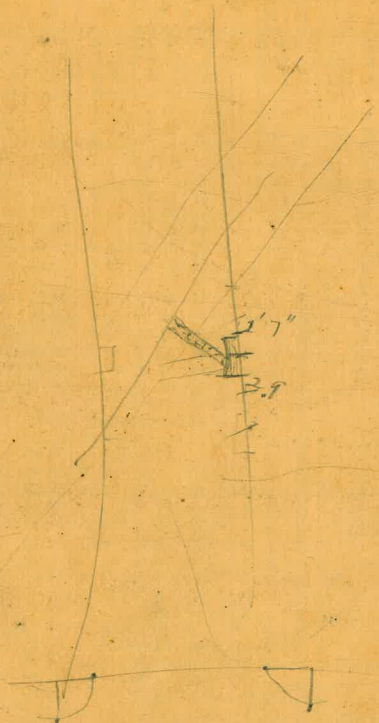
R. 6 St X Sec Florida Ave E.

Cypress St X Sec 9th St

B.M. N.W. 1st Pipe Poplar & Oak

287.46

Lee F.B. 1314 pg. 60



301.84	237.16
0.24	+ 11.84
302.08 ✓	249.00 ✓
12.67	- 0.26
289.39 ✓	248.74 ✓
+ 3.99	+ 12.48
293.38 ✓	261.22 ✓
12.31	0.52
281.07 ✓	260.70 ✓
+ 1.04	+ 12.27
282.11 ✓	272.97 ✓
- 13.11	- 1.17
269.00 ✓	271.80
+ 5.21	+ 12.90
274.21 ✓	284.70 ✓
- 13.13	- 0.23
261.08	284.47 ✓
4.30	+ 8.19
265.38 ✓	292.66 ✓
- 12.57	5.17
252.81 ✓	287.49
+ 4.07	
256.88	
- 12.80	
244.08 ✓	
1.43	
245.51 ✓	
- 8.91	
236.60 ✓	
+ 3.35	
239.95 ✓	
- 2.79	
237.16 ✓	

5.00
342.33
+ 87