

1356

PASTS

LEVEL BOOK

No. 380 F

21
16
20
1 +
6 9

MICROFILMED
DEC 23 1964

ENGINEERING DEPARTMENT,
CITY OF SAN DIEGO,
CALIFORNIA.

Our Leather Bound Engineers Note Books are carried in the following rulings:

- No. 380 LEVEL BOOK. Left and Right Hand Page the same as Left Hand Page of this Book.
- No. 382 FIELD BOOK. Left Hand Page as in this Book, Right Hand Page 4 x 4 to the inch, Center Line Red.
- No. 384 MINING TRANSIT BOOK. Left Hand Page as in this Book, Right Hand Page 8x8 to the inch, Center Line Red.
- No. 385 FIELD BOOK. Left Hand Page as in this Book, Right Hand Page 8 vertical and 4 horizontal lines to the inch, Center Line Red.

We also carry the Note Books listed above, bound in extra strong Fabri-Hide (otherwise the same quality of book), which can be furnished at a somewhat lower price.

In ordering Fabri-Hide covered books, add the letter "F" to catalog number.

THE FREDERICK POST CO.
ENGINEERING and DRAFTING SUPPLIES
IRVING PARK STATION
CHICAGO, ILL.

Induced bpp 373
4/30/30
H.H.

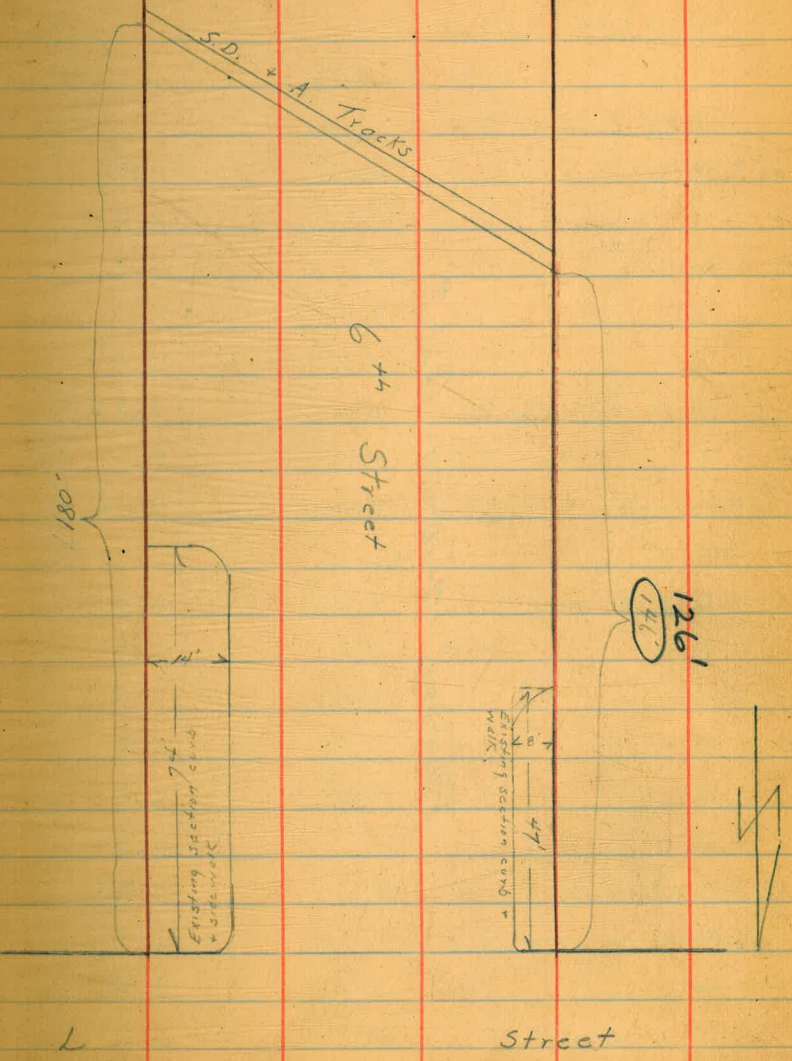
1914
1915
1916
1917
1918
1919
1920
1921
1922
1923
1924
1925
1926
1927
1928
1929
1930

13

X Sec. Alley 170 University Hts	4
" " Eads Ave. Prospect to Silverado	8
" " " " Rushville intersection.	11
" " Calif. St. Thorn to Vine	13
" " Vine St. AT&F West	19
Plan of Park Blvd. El Cajon to Normal	21
X Sec. Palm St. Union to State	22
X Sec intersection Palm & Columbia.	30

7-9-29 X-section 6th St. L to
 J.C. Bliss S.D. + A Tracks 80' wide
 Diebert 14' cbs
 Rauner 13' 1/4 S

0 1



B.M. N.E. Top Hydrant 6th & L 5.74
+0.54

T 6.28

S.H. L St = 0+00

East top existing cb	3.45	2.83
G	3.9	2.4
1/4	4.1	2.2
⊥	4.3	2.0
1/4	4.3	2.0
cb - Top concrete drain cleanout	4.46	1.82
+6-G	4.2	2.1
Top existing cb	4.0	2.26
0+75		
Top existing cb on West	4.05	2.23
G	4.3	2.0
+6 = cb line	4.5	1.8
1/4	4.4	1.9
⊥	4.2	2.1
1/4	4.1	2.2
cb + Gutter + Drive Way	4.05	2.23
0+47 = End existing cb on West		
East top existing cb	3.69	2.59
G	4.1	2.2
1/4	4.2	2.1
⊥	4.3	2.0

Plotted 7-10-29 - G.M.J.

T 6.28

2

1/4	4.5	1.8
cb	4.6	1.7
W = P.C. of Return at end of existing	4.4	
cb + Walk on West - Gutter	4.4	1.9
Tpcb	4.03	2.25
0+74 = End existing cb + Walk on East		
W	4.9	1.4
cb	4.8	1.5
1/4	4.8	1.5
⊥	4.5	1.8
1/4	4.5	1.8
G - Top culvert Grating	4.23	1.55
Tpcb	3.71	2.57
E.L. Tpcb	3.22	3.06
G -	4.0	2.3
1+00		
E	4.3	2.0
cb	4.4	1.9
1/4	4.7	1.6
⊥	4.6	1.7
1/4	4.9	1.4
cb	4.9	1.4
W	5.1	1.2

T 6.28

1426 = North rail S.D. & A on W.L. 6th

W-Top rail	4.31	1.97
W-Ground	4.7	1.6
cb-Top Grating culvert inlet	5.32	0.96
Flow line culvert	9.50	-3.22
1/4	4.8	1.5
1/2	4.7	1.6
1/4	4.6	1.7
cb	4.5	1.8
E	4.5	1.8

① 174 on E.L. 6th

Top grating culvert inlet	5.20	1.08
Flow line culvert	7.70	-1.42

Section along North rail S.D. & A Tracks from

1480 on East to 1426 on West

E-Top rail	4.20	2.08
Ground	4.6	1.7
cb-Top rail	4.20	2.08
Ground	4.2	2.1
1/4-Top rail	4.15	2.13
Ground	4.2	2.1
1/2 Top rail	4.19	2.09
Ground	4.2	2.1
1/4-Top rail	4.23	2.05
Ground	4.3	2.0
cb-Top rail	4.32	1.96

T 6.28

3

Ground	4.6	1.7
W-Top rail	4.31	1.97
Ground	4.7	1.6

7-9-29 X-section Alley Block 170
 J.C. Bliss Univ. Hts. 20' Wide
 Drebert Between Arizona + Hamilton - Polk
 Ranney to Lincoln

B.M. N.E.B.P. Lincoln + Arizona 320.08
 + 6.00

Σ 326.08

North Gutter Lincoln

W 5.40 320.68
 ♀ 5.22 320.86
 E 4.98 321.10

Plotted 7-11-29 - G.M.J.

Lincoln = 0 + 100 - Pared

E Top ob 4.04 322.04
 G 4.39 321.69
 ♀ 4.98 321.10
 G 4.78 321.30
 W Top ob 4.62 321.46

0425

W 4.4 321.7
 ♀ 4.2 321.9
 E 4.3 321.8

0450

E 3.6 322.5
 ♀ 3.5 322.6
 W 3.5 322.6

0455

♀ Concrete Garage Area at W.L. 3.43 322.65

0475

W 3.1 323.0

Σ 326.08

4

♀ 3.1 3.1 323.0
 E 2.9 2.9 323.2

0492

♀ 10' Garage 1' Back E.L. Dirt Floor 3.0 323.1

1400

E 2.7 323.4
 ♀ 2.6 323.5
 W 2.9 323.2

1412

♀ 20' Double Garage 4' Back W.L. - Dirt Floors

South edge 2.7 323.4

North edge 2.5 323.6

1418

♀ 8' Garage 4' Back E.L. Concrete Floor 2.15 323.93

1425

W 2.1 324.0

♀ 2.3 323.8

E 2.3 323.8

1427

♀ 8' Garage 4' Back E.L. Concrete Floor 1.88 324.20

1436

♀ 5' Garage 4' Back E.L. Concrete Floor 1.77 324.31

1445

♀ 8' Garage 4' Back E.L. Concrete Floor 1.59 324.49

T 326.08

1+50

E	2.0	324.1
Q	1.7	324.4
W	1.6	324.5

1+57

Q 8' Garage 3' Back E.L. Dirt Floor	2.0	324.1
-------------------------------------	-----	-------

1+66

Q 8' Garage 3' Back E.L. Dirt Floor	2.0	324.1
-------------------------------------	-----	-------

1+69

Q 8' Garage 8' Back W.L. Dirt Floor	1.8	324.3
-------------------------------------	-----	-------

1+75

W	1.8	324.3
---	-----	-------

Q	1.7	324.4
---	-----	-------

E	1.6	324.5
---	-----	-------

1+94

Q 8' Garage 8' Back W.L. Dirt Floor	1.4	324.7
-------------------------------------	-----	-------

2+00

E	0.6	325.5
---	-----	-------

Q	0.7	325.4
---	-----	-------

W	0.8	325.3
---	-----	-------

T.P.	-0.57	325.51
------	-------	--------

+8.35

T 333.86

2+25

W	8.6	325.3
---	-----	-------

Q	8.3	325.6
---	-----	-------

T 333.86

5

E	8.3	325.6
---	-----	-------

2+50

E	8.0	325.9
---	-----	-------

Q	8.1	325.8
---	-----	-------

W	7.5	326.4
---	-----	-------

2+75

W	7.5	326.4
---	-----	-------

Q	7.7	326.2
---	-----	-------

E	7.8	326.1
---	-----	-------

3+00

E	6.7	327.2
---	-----	-------

Q	6.9	327.0
---	-----	-------

W	6.9	327.0
---	-----	-------

3+09

Q 1/2' Double Garage at E.L. with 18" Concrete Apron projecting into Alley

South edge - Edge Apron	6.50	327.36
-------------------------	------	--------

Floor	6.05	327.81
-------	------	--------

North edge - edge apron	6.36	327.50
-------------------------	------	--------

Floor	6.09	327.77
-------	------	--------

3+25

W	6.7	327.2
---	-----	-------

Q	6.6	327.3
---	-----	-------

E	6.3	327.6
---	-----	-------

3+43

Q 1/2' Garage at E.L. Concrete Floor	5.73	328.13
--------------------------------------	------	--------

T 333 86

3+50

E	59	328.0
☿	62	327.7
W	65	327.4

3+75

W	59	328.0
☿	58	328.1
E	57	328.2

4+00

E	53	328.6
☿	52	328.7
W	49	329.0

4+25

W	48	329.1
☿	49	329.0
E	51	328.8

4+50

E	46	329.3
☿	45	329.4
W	45	329.4

4+70

☿ 8' Garage at EL. Concrete Floor	394	329.92
-----------------------------------	-----	--------

4+75

W	42	329.7
☿	42	329.7
E	37	330.2

T 333 86

6

5+00

E	3.5	330.4
☿	3.9	330.0
W	4.0	329.9

5+15 to 5+47 = string of 4 Garages at
 WL. with 2' Concrete Apron in Poor shape projecting into Alley

South end - edge apron	3.80	330.06
- Floor	3.63	330.23
North end - edge apron	3.29	330.57
- Floor	3.17	330.69

5+25

W	3.5	330.4
☿	3.5	330.4
E	3.3	330.6

5+50

E	2.8	331.1
☿	3.1	330.8
W	3.1	330.8
T.P.		-2.17 331.69

Garage 5+45

T 336.25

5+58

☿ 8' Garage 8' Back EL. Concrete Floor	4.01	332.24
5+67 to 5+89 = small concrete Wall 0.5 Back		
EL. - South end - Top Wall	3.94	332.31
" - Base "	4.7	331.5

T 330.25

7

North end - Top wall 388 332.37

" " - Base " 45 331.7

5775

W 47 331.5

N 5.0 331.2

E 4.6 331.6

5789 - to 6+00 - Small concrete wall at

E.L. - South end top wall 362 332.63

" " Base " 44 331.8

North end Top wall 358 332.67

" " Base " 42 332.0

6+00 = S.L. Polk

E - Top existing return 307 333.18

G 4.2 332.0

N 4.8 331.4

G 4.7 331.5

W - Top existing return 387 332.38

B.M. S.E. B.D. Polk - Arizona -6.35 329.90

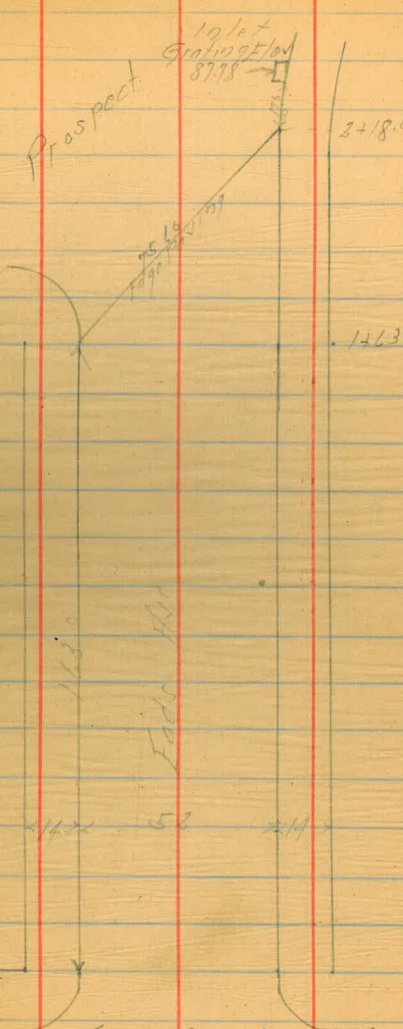
Correct 329.95

Eads Ave Cross Section
Silverado to Prospect

BM	676	9467	8791	SEBP Prospect 2015
				H/S Silverado
N Ch Top		215	92.02	
Gutter 20 Pcs		317	91.50	
"		268	92.05	
L		210	92.47	
TP	379	9596	92.47	
"	22 Pcs	338	92.48	
Gutter		370	92.36	
E Ch Top		275	93.01	
				25' x of H/S Silverado
E Ch Top		320	92.46	
Gutter		40	91.7	
"		40	91.7	
L		41	91.6	
"		46	91.1	
Gutter		51	90.6	
N Ch Top		145	91.31	
				50' "
N Ch Top		507	90.69	
Gutter		57	90.0	
"		51	90.6	
L		11	91.1	
"		45	91.2	
Gutter		15	91.2	

90' wide
11' 6" high
13' 0" high

9-29-28
Sisson
Repl. man
Northrup
Kane



Reduced by C.B.H. 9-28-29

Note very deep gutter
Silverado St. See Section Page 9

	9576		
F.		390.	91.86
	9577		
Fcb		440	91.36
Gutter		50	90.7
"		51	90.6
"		51	90.6
"		51	90.1
Gutter		64	89.3
Hcb Top		519	90.57
	100' N		
Hcb Top		627	89.47
Gutter		70	88.7
"		62	89.5
"		57	90.0
"		55	90.2
Gutter		55	90.2
Fcb Top		487	90.89
	125' N		
Fcb Top		532	90.39
Gutter		60	89.7
"		62	89.5
"		62	89.5
"		62	88.9
Gutter		76	88.1
Hcb Top		698	88.78
	150' N		

	9578		
Hcb Top		762	88.13
Gutter		81	87.6
"		74	88.3
"		62	88.9
"		62	89.0
Gutter		67	89.0
Fcb Top		580	89.96
	112' N		
Fcb Top		602	89.74
Gutter		70	88.7
"		70	88.7
"		70	88.7
"		76	88.1
Gutter on Pav		832	87.44
Hcb Top		775	88.01
	113' N and 218' N on Diagonal		Width 7510 2111890
Hcb Top		775	88.01
Gutter on Pav		832	87.44
"		764	88.12
"		735	88.41
"		747	88.29
Gutter		781	87.95
Fcb Top		703	88.73
	North Corner line of Silverado		80' wide 77' high 13' 10" dia
F Gutter on Pav		821	
Cb		350	

9576

10

7/1	at Pav	371
2		395
7/1		414
CB		433
H.		438

Leads Hill Cross Section
 H.L. Rushville

80 yds
 14 Cb
 13' Qls

B.M.	3.87	136.47	132.60
TP	5.48	135.61	130.13

S.L. Rushville

H		62	129.4
Cb on Top		646	129.15
Gutter on Parapet		696	128.65
" " "		630	129.31
" " "		586	129.75
" " "		591	129.85
Gutter " "		588	129.73
Cb on Top		540	130.21
F " "		45	131.1

Sch of Rushville

F on Ch		496	130.87
Gutter on Par		518	130.43
Cb " "		543	130.18
" " "		548	130.13
" " "		511	129.93
" " "		606	129.55
Cb " "		149	129.12
H. Gutter on		692	128.69
on Cb		151	129.10

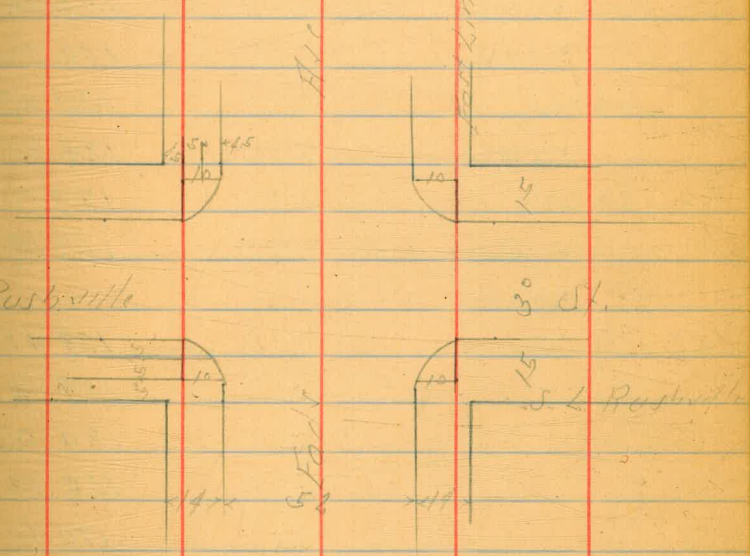
S 1/4 of Rushville

H on Par		651	129.10
Cb " "		613	129.48

SET on Hill
 Gasket
 Lead

Rushville
 60 yds
 15 Cb
 7.5 Qls

Rushville



9-27-29
 Sisson
 Popinger
 Northman
 Kozoff

11

13561

W	as Pav	528	129.83
L	"	545	130.16
W	"	521	130.40
Cb	"	504	130.57
F	"	471	130.90

H. Parkville

L	as Pav	441	131.19
Cb	"	479	130.82
W	"	505	130.56
L	"	534	130.27
W	"	511	129.97
Cb	"	590	129.71
W	"	622	129.39

114

W	as Pav	613	129.48
Cb	"	585	129.76
W	"	556	130.05
L	"	528	130.33
W	"	500	130.61
Cb	"	469	130.92
F	"	432	131.29

H. Cb. Parkville

F	Gutter	434	131.27
as Cb Top		390	131.71
Cb	as Pav	480	130.81
W	"	507	130.57

12

13561

L	as Pav	534	130.27
W	"	564	129.97
Cb	"	593	129.68
H	as Gutter	621	129.37
as Cb Top		511	129.97

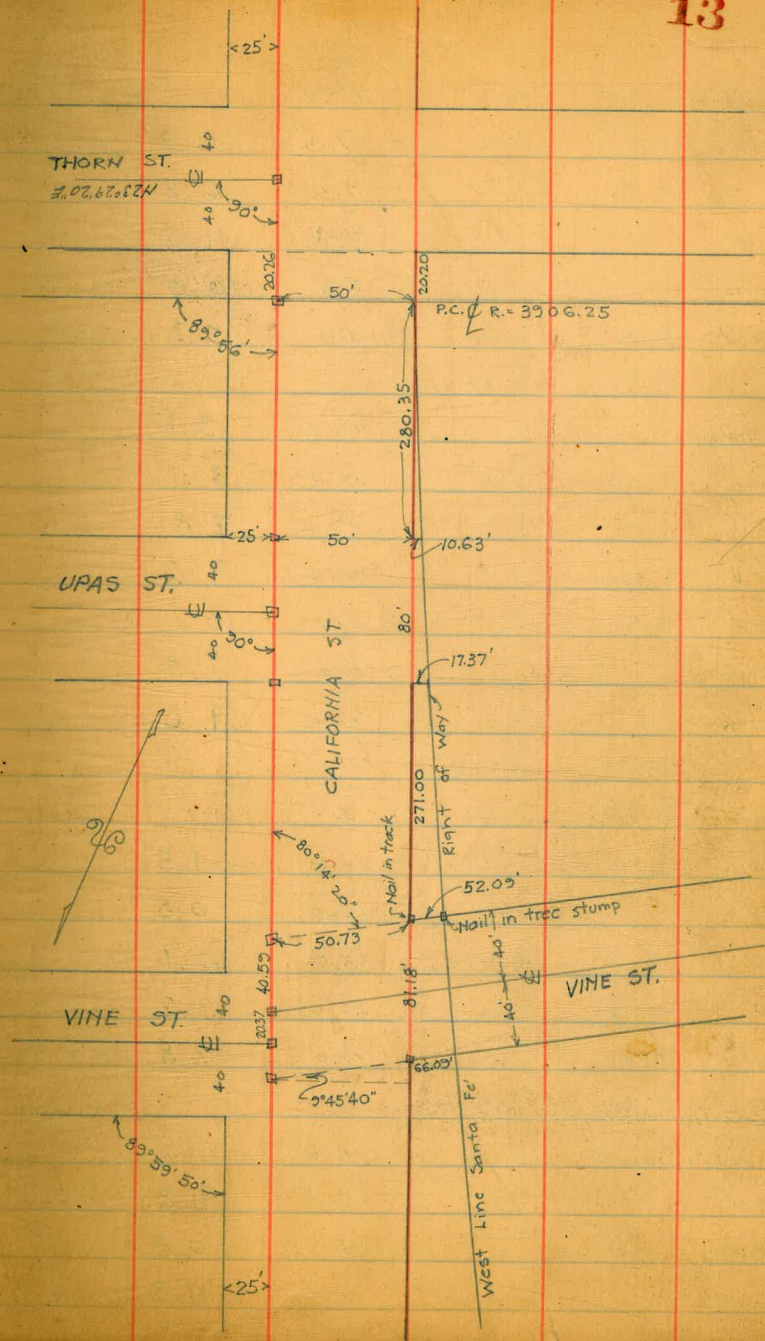
H. Parkville

W	"	55	130.1
Cb Top		542	130.19
Gutter as Pav		584	129.79
W	"	535	130.26
L	"	508	130.53
W	"	498	130.63
Gutter		505	130.56
Cb Top		457	131.04
F	"	38	131.8

10-10-29
Miller

Additional Sections California St
Thorn Park
Original Notes Book 1272 Page 33
These Notes to Cover Santa Fe R. of Way on W.

B.M. Mon.	9.98	24.01	14.03	± Thorn E. Line Cal
T.P.	4.23	15.77	12.47	11.54
00 = N. Line Thorn				
W. Line Cal		5.8	10.0	✓
+20' W		5.6	10.2	
+30' W		6.0	9.8	
0+08 N				
W. Line Cal		5.1	10.7	✓
+20' W		5.5	10.3	
+30' W		6.1	9.7	
0+17' N				
W. Line Cal		4.4	11.4	✓
+20' W		5.8	10.0	
+30' W		6.1	9.7	
0+20 = P.C. Santa Fe Right of Way				
0+21 ± 54" Cast. Pipe Culvert - Extension of S.F. Arch. Culvert				
W. Line Cal		9.4	6.4	under Culvert
+45' W - W. End 54" culvert		9.40	6.37	F Line
+7' W		9.4	6.4	
+8' W		5.3	10.5	
+20' W		5.5	10.3	
+30' W		6.4	9.4	



15.77

0+25' N

E. E. of W. line	11.8	4.0
W. line	9.5	6.3
+8' W	9.6	6.2
+9' W	4.8	11.0
+20' W	5.5	10.3
+30' W	6.5	9.3

0+31' N

E. E. of W. line	12.7	3.1
W. line	12.7	3.1
+8' W	13.0	2.8
+9' W	4.2	9.6
+20' W	5.7	10.1
+25' W	8.5	7.3
+30' W	6.2	9.6

0+38' N

W. line	5.4	10.4 ✓
+7' W	14.3	1.5
+15' W	15.0	0.8
+20' W	5.7	10.1
+30' W	12.6	3.2
+40' W	13.0	2.8

0+47' N

W. line California	5.6	10.2 ✓
+17' W	6.0	9.8
+20' W	15.0	0.8
+40' W	14.0	1.8

15.77

California 57.

14

0+58' N

W. line Cal	6.0	9.8 ✓
+20' W	5.7	10.1
+30' W	6.1	9.7

0+87' N

W. line Cal	6.4	9.4 ✓
+20' W	5.6	10.2
+30' W	6.0	9.8

1+50' N

W. line Cal	6.2	9.6
+7' W	4.7	11.1
+13' W	5.7	10.1
+30	6.0	9.8

2+60' N

W. line Cal	5.4	10.2
+7' W	3.5	12.3
+13' W	5.0	10.8
+30' W	5.6	10.2

2+50' N

W. line Cal	4.4	11.4
+9' W	1.8	14.0
+14' W	2.3	13.5
+23' W	5.1	10.7
+30	5.5	10.3

20.70

N. ct

15.77
3 + 00⁵⁵ N = S. Line Upas ST

W. line Cal	2.5	13.3
+ 6' W	1.7	14.1
+ 10.63 W = W. line R of way.	1.3	14.5
+ 19 W	1.4	14.4
+ 27 W	4.6	11.2
+ 35 W	5.2	10.6

T.P. 7.27 20.70 2.34 13.43

S. ct.

W. line Cal	7.0	13.7
W. line R of way	6.5	14.2
+ 10 W	6.4	14.3
+ 27 W	9.0	11.7
+ 35 W	9.9	10.8

S. ct

W. line Cal	6.8	13.9
W. line R of way	6.6	14.1
+ 22 W	6.4	14.3
+ 28 W	8.8	11.9
+ 40 W	9.8	10.9

S. Upas.

W. line Cal	6.8	13.9
W. line R of way	6.8	13.9
+ 22 W	6.5	14.2
+ 30 W	9.2	11.5
+ 40 W	9.9	10.8

N. W

W. line Cal	6.7	14.0
W. line R of way	6.8	13.9
+ 23 W	6.8	13.9
+ 33 W	9.1	11.6
+ 40 W	9.8	10.9

W. line Cal	6.7	14.0
W. line R of way	6.8	13.9
+ 25 W	7.0	13.7
+ 35 W	9.5	11.2
+ 40 W	9.7	11.0

00 = N. line Upas

W. line Cal	6.4	14.3
+ 17.37 W = W. line R of way	7.0	13.7
+ 25 W	7.1	13.6
+ 32 W	8.7	12.0
+ 40 W	9.6	11.1

0 + 30' N

W. line Cal	6.4	14.3
+ 5 W	6.1	14.6
+ 8 W	7.4	13.3
W. line R of way	7.2	13.5
+ 32 W	7.7	13.0
+ 45 W	9.1	11.6

0 + 50' N

W. line Cal	5.5	15.2
+ 5 W	5.4	15.3
+ 15 W	8.0	12.7
W. line R of way	7.4	13.3
+ 33 W	7.3	13.4
+ 45 W	9.3	11.4

20.70

1+00 N

W. line Cal.	5.1	15.6 [✓]
+15' W	5.5	15.2
W. line R. of W.	7.4	13.6
+50' W	8.2	12.5

1+22 N

W. line Cal	4.1	16.6 [✓]
+11' W	4.5	16.2
W. line R. of W.	7.0	13.7
+55' W	8.3	12.4

1+50 N

W. line Cal	3.3	17.4 [✓]
+5' W	5.2	15.5
+10' W	4.2	16.5
W. line R. of W.	6.6	14.1
+55' W	8.0	12.7

2+00 N

W. line Cal	4.6	21.3 [✓]
+10' W	4.2	16.5
W. line R. of W.	5.7	15.0
+65' W	7.3	13.4

T.P.

8.37

24.47

4.60 16.10

2+50 N

W. line Cal	2.0	22.5 [✓]
+5' W	2.1	22.4 [✓]
+18' W	8.3	16.2
W. line R. of W.	9.0	15.5

24.47

+60' W	10.2	14.3
+75' W	10.7	13.8

2+71 Non W. line Cal = S. line Vine on W.

Following sections at 80° W 20' from California St = line Vine west

W. line Cal	2.0	22.5
+7' W	2.0	22.5
+24' W	8.1	16.4
+52.29 W = W. line R. of W.	8.9	15.6
+62' W	10.2	14.3
+75' W	10.5	14.0

5.64

W. line Cal	1.2	23.3
+12' W	2.1	22.4
+24'	8.0	16.5
W. line R. of W.	8.8	15.7
+65' W	10.0	14.5
+80' W	10.1	14.4

5.14

W. line Cal	1.8	22.7
+12' W	2.1	22.4
+17' W	3.1	21.4
+26' W	7.8	16.7
W. line R. of W.	8.7	15.8
+65' W	9.6	14.9
+80' W	9.9	14.6

24.47
♀

W. line Cal	2.8	21.7
+ 3	1.7	22.8
E. Rail	1.43	23.04
W. "	1.24	23.23
+ 14	2.0	22.5
+ 20	3.1	21.4
+ 30	7.8	16.7
+ 45	7.2	17.3
W. line R. of W.	8.5	16.0
+ 65' W	9.8	14.7
+ 80' W	9.9	14.6

N. 1/4

W. line Cal	3.5	21.0
+ 6 W	1.8	22.7
+ 12	2.1	22.4
+ 21	3.1	21.4
+ 28	6.9	17.6
+ 45	8.0	16.5
W. line R. of W.	8.8	15.7
+ 70	9.6	14.9
+ 85' W	9.9	14.6

N. 1/4

W. line Cal.	2.0	22.5
+ 3	3.5	21.0
+ 9	1.8	22.7
+ 19	2.1	22.4

24.47

California

17

+ 24	3.1	21.4
+ 31	7.3	17.2
+ 45	7.9	16.6
W. line R. of W.	8.5	16.0
+ 72	9.3	15.2
+ 85' W	9.8	14.7

N. line Vine to W.

W. line Cal	1.2	23.3
+ 5 W	3.4	21.1
+ 11 W	1.8	22.7
+ 13.5 = E. Rail	1.30	23.17
+ 18.6 = W "	1.49	22.9.8
+ 21	2.1	22.4
+ 27	3.2	21.3
+ 35	7.0	17.5
+ 50	7.8	16.7
+ 66.29 = W. line R. of W.	8.8	15.7
+ 100' W.	9.8	14.7

Location of 4 Levels on A.T.S.F.
Drainage Ditch at California + Vine sts.
Main Ditch

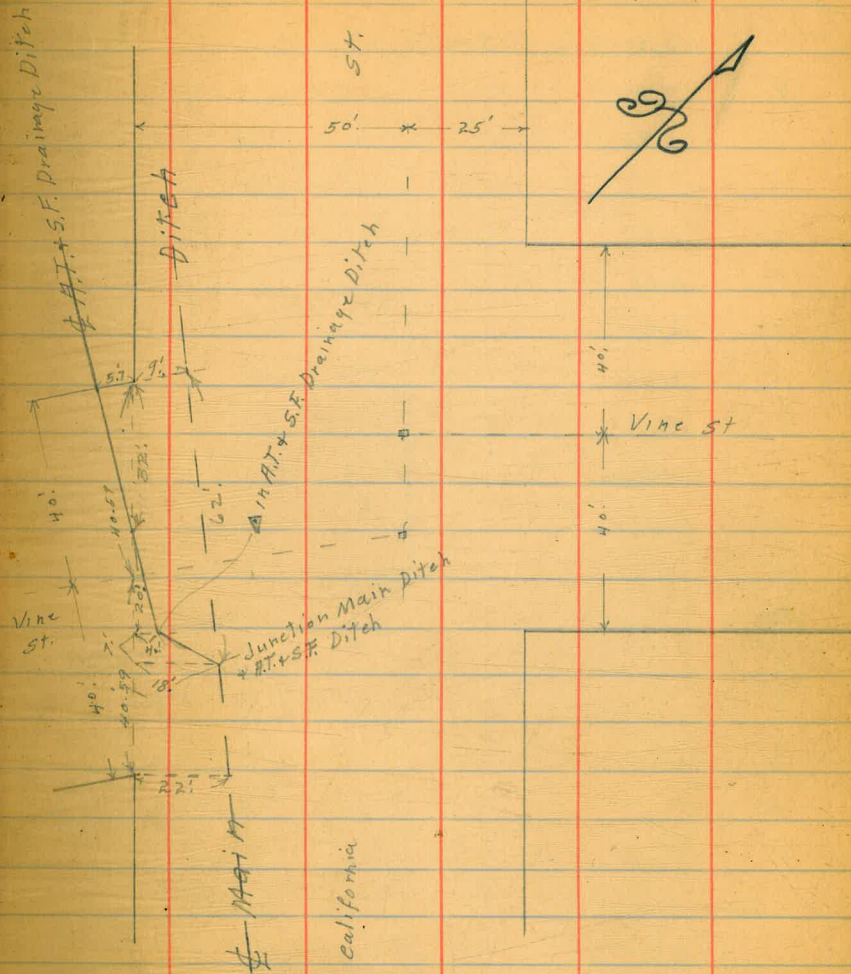
BM.	4.44	27.83.	23.17
80' N. of N. Line Vine Produced from W.	7.6		20.2
30' " " " " " " " " " "	7.4		20.2
00 = N " " " " " " " " " "	7.2		20.6
Junction Main Ditch			
62 S. of 00 = A.T. + S.F. Ditch	7.5		20.3
5' line Vine St. Produced from W.	7.7		20.1
30' S. of S. line	7.7		20.1

9' E. of W. line
California

A.T. + S.F. Drainage Ditch

27.83

80' N. of N. Line Vine Produced from W.	6.5	21.3
30' " " " " " " " " " "	6.6	21.2
N. Line Vine	6.7	21.1
in A.T. + S.F. Drainage		
53' S. of N. Line - A Ditch	7.1	20.7



80' wide Vine St X Sec. from W. line H.T. ST
 14' obs
 R. of Way West.
 11-20-29 Miller

18.26

19

P.M.	0.41	23.58	23.17	
	W. line AT + S.F.R. of W. on Curve.			
N		7.9	15.7	
cl		7.6	16.0	
14		7.8	15.8	
cl		7.6	16.0	
14		7.8	15.8	
cl		7.9	15.7	
S		8.0	15.6	
T.P.	2.58	18.26	7.90	15.68
	10' W. on S } at 90° 00' from line of Vine 9.72 W. " N }			
S-20		4.0	14.3	
S		3.9	14.4	
cl		3.7	14.6	
14		3.5	14.8	
cl		3.3	15.0	
14		3.1	15.2	
cl		3.1	15.2	
N		2.8	15.5	
N+20		2.6	15.7	
	50' W. on S. at 90° 00'			
N-20		3.9	14.4	
N		4.4	13.9	
cl		4.4	13.9	
14		4.6	13.7	
cl		4.5	13.8	

14		4.6	13.7
cl		4.7	13.6
S		4.6	13.7
S+20		4.6	13.7
	7.5' W. on S. at 90° 00'		
S-20	on Lindberg Field Fill	7.7	10.6
S	" " " "	7.5	10.8
cl	" " " "	7.5	10.8
14	" " " "	7.3	11.0
cl		6.9	11.4
14		6.2	12.1
cl		5.8	12.5
N		5.5	12.8
+20		5.6	12.7
	85' W. on S. at 90° 00'		
-20		6.6	11.7
N	on Lindberg Field Fill	7.3	11.0
cl	" " " "	7.3	11.0
14	" " " "	7.4	10.9
cl	" " " "	7.5	10.8
14	" " " "	7.5	10.8
cl	" " " "	7.3	11.0
S	" " " "	7.2	11.1
S+20	" " " "	7.5	10.8

18.26

110' W. on S. at 90°-00

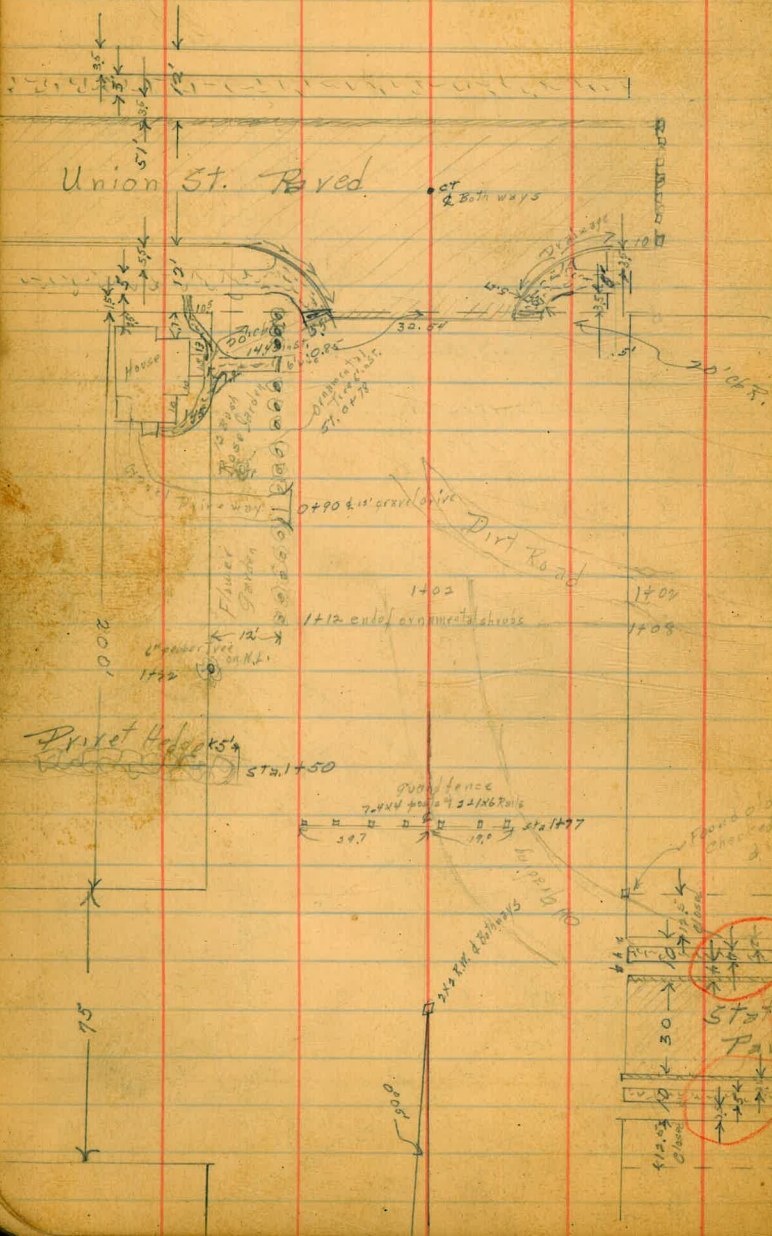
5-20	on Lindberg Field Fill	7.3	11.0
S	" "	6.9	11.4
el	" "	7.1	11.2
14	" "	7.4	10.9
4	" "	7.1	11.2
14	" "	7.3	11.0
el	" "	7.3	11.0
N	" "	7.0	11.3
7-20	" "	7.3	11.0

Vine St.

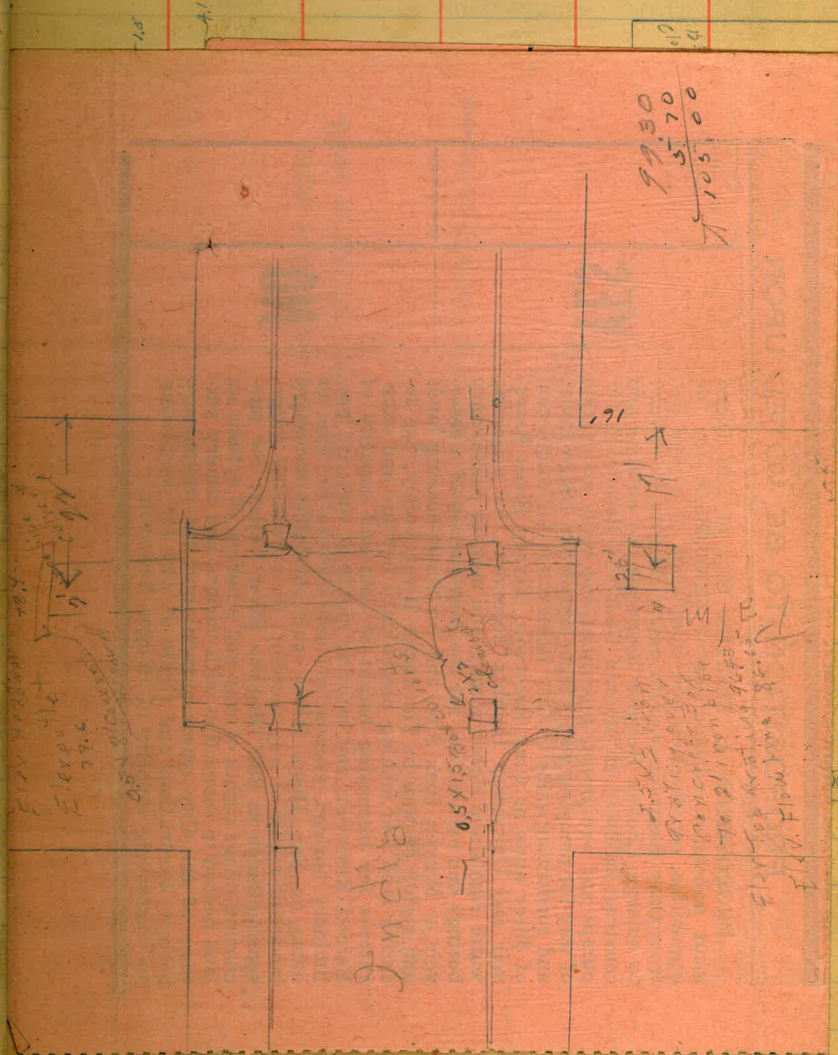
20

Flood
Record
Krumey
3/26/30

X section Palm St. Union to state 251 obs. 7.5 1/45



State St



9930
5.70
105.00

Note dif.

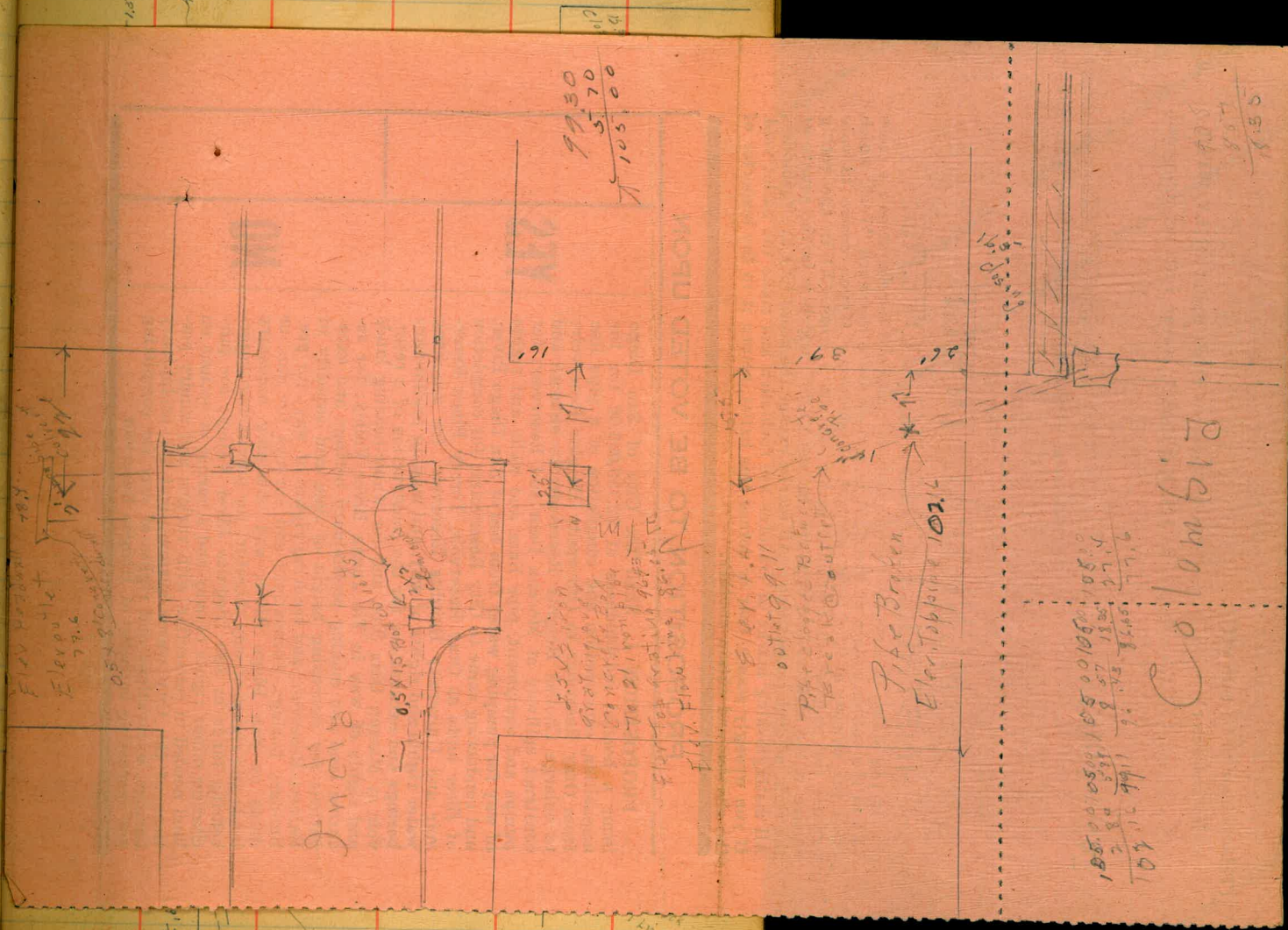
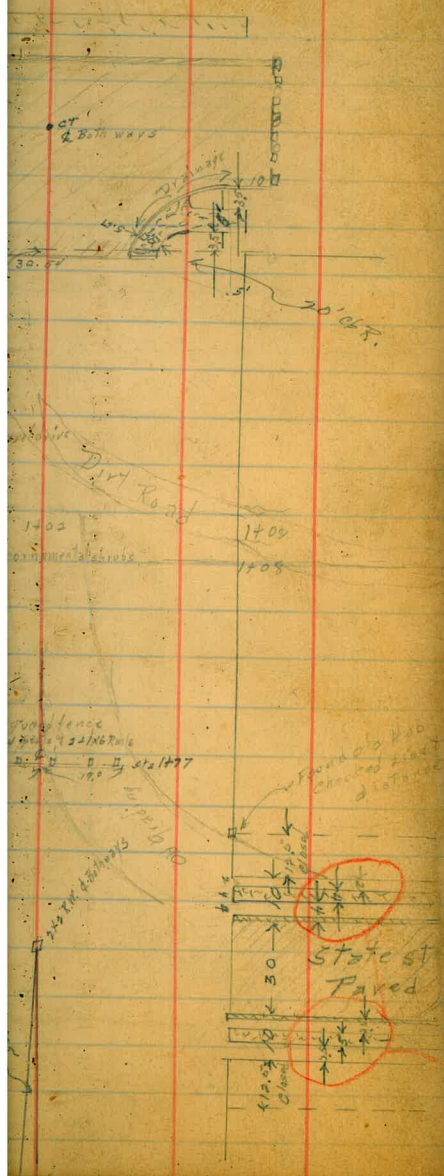
Elev. Flowline 99.11

10 in. dia.

Pipe broken. Stopped
40' below this point
Elev. Top pipe 102.16.

Line of Columbia

State St



99.30
5.70
105.00

185.00
2.80
182.20
105.00
77.20
105.00
187.20

Colombia

Note dif.

Pipe broken. Stopped
up below this point
Elev. Top of 102.16.

Elev. Flanking 99.11

Line of Columbia

(This number to be torn off
by Inspector)

No 79038

Mark Crosses (X) on Ballot ONLY WITH
RUBBER STAMP; Never with pen or pencil.

(Fold Ballot to this perforated line, leaving Top Margin Exposed)

MUNICIPAL TICKET INSTRUCTIONS TO VOTERS:

If you desire to vote for the proposition contained herein, stamp a cross (X) in the voting square at the right of and opposite the word "Yes", which is in the square at the right of such proposition. If you desire to vote against the proposition contained herein, stamp a cross (X) in the voting square at the right of and opposite the word "No", which is in the square at the right of such proposition. All marks except the cross (X) are forbidden. All distinguishing marks or erasures are forbidden and make the ballot void. If you wrongly stamp, tear or deface this ballot, return it to the inspector of the election and obtain another.

PROPOSITION TO BE VOTED UPON

PROPOSITION I. Shall the City of San Diego incur a bonded indebtedness of \$2,750,000.00 for the acquisition, construction and completion of a pipe line from Otay Reservoir to University Heights Reservoir; to enlarge Chollas Heights Reservoir; to enlarge and construct spillway at Morena Dam and Reservoir; for pumps and equipment, pipe lines and wells and rights of way for pumping water from bed of San Diego River, and conducting same to City Reservoirs; for completion of filter units at Otay Reservoir, Torrey Pines Reservoir and University Heights Reservoir; for acquiring water rights and rights of way, and making preliminary borings and excavations for the construction of a reservoir at Marron Dam Site, and for water-bearing lands and rights of way in Tia Juana River Valley; for securing land and making preliminary borings and excavations for increasing height of dam and capacity of Barrett Reservoir, and securing rights of way; for preliminary borings, excavations and surveys for dam or dams on San Diego River, and obtaining necessary lands and rights of way therefor; for purchasing water-bearing lands in San Dieguito River Valley; for purchasing minor rights of way and securing of options on land needed in connection with various and sundry portions of the City water system; and for preliminary borings, excavations and rights of way for completing and increasing capacity of Hodges Reservoir.

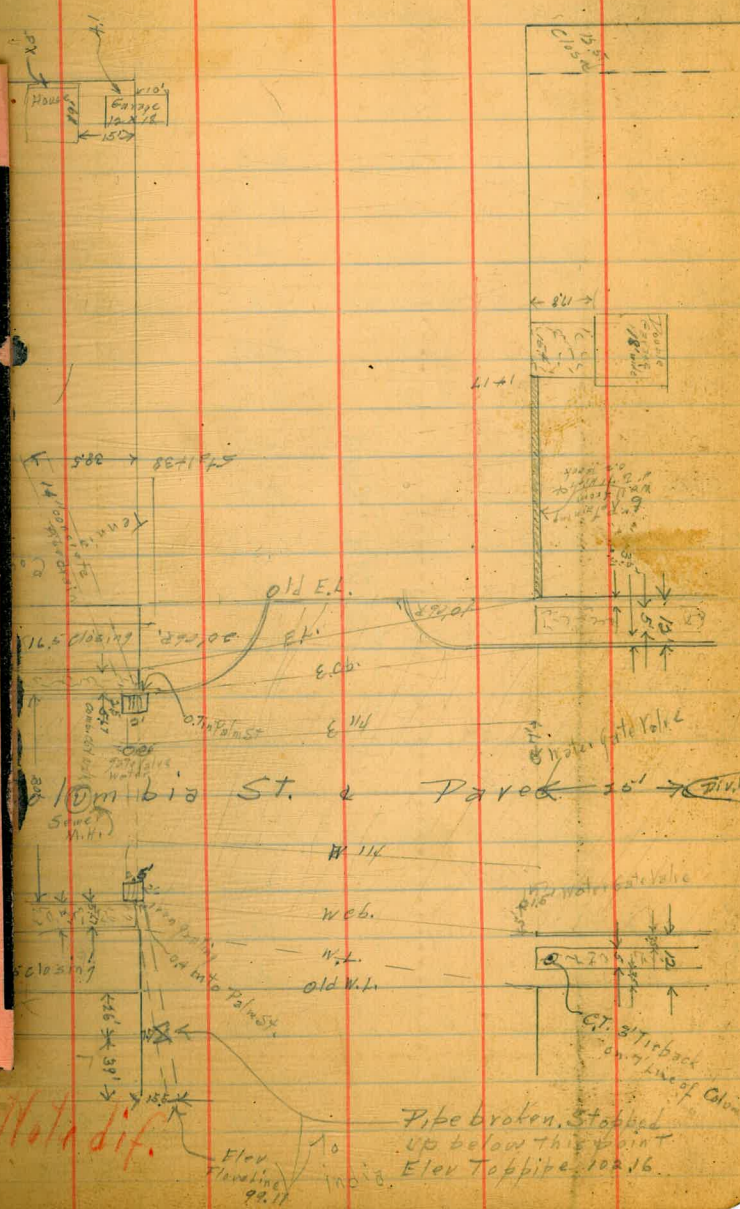
YES

NO

Flood
Reserve
Rovine
\$26,330

X section Palm St.
Union to State
25' cbs. 75' 1/2

State St



3/27/30
 This B.M. was set
 from Palm of Ind. B.M.
 200.00 which is in
 set Turner's
 29.

see Palm St Check B.M. Elev. v.s.
 25' Cbs 75' 45' R29 Biford Reducing
 Notes

199.76
~~200.00~~

	+	-	Elev	
B.M. 3' Tr back	1.44		199.76 200.00	N.W. Union Palm
			198.32	
				0-12 = W. Cb of Union St.
N. 1. Top Cb		3.60	196.16 ✓	
Gut		4.18	195.58	
+5 = P.C. Top Cb.		3.70	196.06 ✓	
Gut		4.26	196.50	
Cb. on prmt		4.23	195.53	
1/4		4.22	195.54	
¢		4.28	195.48 ✓	
1/4		4.38	195.38	
Cb.		4.54	195.22	
+20 = P.C. Top Cb.		4.34	195.42 ✓	
Gut		4.94	194.82	
S. L. Top Cb		4.57	195.19 ✓	
Gut.		5.17	194.59	
+10 Top Cb at end		5.28	194.48	
Gut at end of prmt.		5.99	193.77	
				0+00 = W. L. Union
S. L.		4.06	195.70	
+1/2 edge of walk		4.64	195.12	
+233 = Cb Top on Ret		4.08	195.68	
Gut		5.20	194.56	
Cb line		5.13	194.63	
1/4		4.88	194.88	
¢		4.66	195.10	

Plotted Road.

	+	-	Elev	
1/4		4.66	195.10	
Cb line		4.72	195.04	
+ 12 Gut		4.73	195.03	
Cb Top on Ret		4.29	195.47	
+9 = inside edgwalk		4.04	195.72	
N. L.		3.13	196.4	
				N.W. Ret Palm & Union
P.C. Top		3.70	196.06	
Gut		4.25	195.50	
+8 around arc Top		3.85	196.91	
Gut		4.41	195.35	
+16 on arc Top		4.06	195.70	
Gut		4.58	195.18	
+24 = end Cb		4.29	195.47	
Gut		4.73	195.03	
				S.W. Ret Palm & Union
P.C. Top		4.34	195.42	
Gut		4.94	194.82	
+8 on Arc Top		4.20	195.56	
Gut		4.78	194.98	
+16 on Arc Top		4.25	195.51	
Gut		4.87	194.89	
+24 = end Cb Top		4.68	195.08	
Gut		5.20	194.56	

199.76
~~200.00~~

	+	x	-	Elev
		0+7		
- 10.5 = Cor House			2.7	197 0
+ 5 on S. walk			2.72	197 06
N.L.			3.0	196 7
+ 14			3.5	196 2
Cb			4.4	195 3
1/4			4.2	195 5
⊕			4.0	195 7
1/4			2.9	196 8
Cb			1.7	198 0
+ 10			0.4	199 3
S.L.			1.2	198 5
		0+20		
on Walk Cor porch = N.L. - 1.9			3.83	196 93
		0+27 = ⊕ 6' S walk		
S.L.			1.6	198 1
+ 10			1.7	198 0
Cb			2.6	197 1
1/4			2.5	197 2
⊕			4.0	195 7
1/4			4.1	195 6
Cb			4.4	195 3
+ 10.5 = edge of Walk			3.33	196 43
N.L. on "			2.74	196 82
+ 1.9			3.80	196 86
+ 2 on Step			2.39	197 37

199.76
~~200.00~~

	+	x	-	Elev
		0+35		
on walk, cor porch = N.L. - 1.9			3.14	196 62
		10+52		
N.L. - 15 = Cor. House Ground			5.4	194 3
Floor elev.			13.2	198.44
- 6 on walk			4.90	194 82
N.L.			4.9	194 8
+ 14			4.4	195 3
Cb.			5.0	194 7
1/4			5.0	194 7
⊕			5.0	194 7
1/4			4.0	195 3
Cb.			3.9	195 8
+ 13			3.2	196 5
S.L.			2.5	197 2
		0+78 = Beginning of 8' rd to S. 5' centered		
S.L.			4.7	195 0
+ 15			5.9	193 8
Cb.			6.0	193 7
1/4			5.5	194 2
⊕			5.4	194 3
1/4			5.8	193 9
Cb.			5.9	193 8
+ 10			6.6	193 1
N.L.			7.5	192 2
+ 25 = gravel driveway into garage			7.7	190 0

See sketch

149.76
~~200.00~~

	+	-	Elev	
			190.7	is gravel
			191.5	See sketch
N.L.		9.0	190.7	
+ 14 end of grading and driveway		8.2	191.5	
				0+96
N.L.		9.1	190.6	
14		8.8	190.9	
+ 17		7.8	191.9	
Cb.		7.6	192.1	
14		7.2	192.5	
☐		6.8	192.9	
14		6.0	193.7	
Cb.		6.0	193.7	
S.L. on Rd. to S.		6.4	193.3	
				1+02 = ☐ Dirt road to S at st.
S.L.		6.5	193.2	
+ 20		6.1	193.6	
Cb.		6.1	193.6	
14 edge of old grading		7.5	192.6	See sketch
☐		7.5	192.2	
14		7.9	191.8	
Cb.		8.1	191.6	
+ 10		9.3	190.4	
N.L.		10.2	189.5	
+ 10		11.4	188.3	
				1+08 = Line of dirt road to South. Levels taken opposite of 8' rdway.

~~200.00~~
197.76

25

	+	-	Elev	
			6.7	193.0
			7.2	192.5
			6.6	193.1
			5.3	194.4
			4.8	194.9
			5.2	194.5
				1422
			12.7	187.0
			11.4	188.3
			10.7	189.0
			10.2	189.5
			9.9	189.9
			9.7	190.0
			9.6	190.1
			8.6	191.1
			8.1	191.6
				1740
			10.1	189.6
			11.0	188.7
			12.0	187.7
			11.8	187.9
			11.8	187.9
			12.2	187.5
			13.8	185.9
			14.9	184.8

~~200.00~~
199.76

~~189.74~~
190.18

	X	Elev
T.P.	1+50 = 189.94 190.18	187.02 187.25
- 10	12.24	183.7
N.L.	6.2	184.5
+ 5 at end of Hedge	0.4	184.9
cb.	0.0	185.9
114	4.0	186.1
E = edge of old grading	3.8	186.7
114	3.2	186.7
cb = edge of old grading	3.2	186.8
+ 2	3.1	187.7
S.L.	2.2	188.2

1+70

S.L.	1.7	185.9
+ 20 = edge of old grading	4.0	185.2
cb	4.7	184.2
114	3.7	184.6
E = edge of old grading	3.3	184.5
114	3.4	183.4
cb	6.5	183.1
+ 5	6.8	182.7
+ 10	7.2	183.5
+ 16	6.4	182.3
N.L.	7.6	182.1
+ 10	7.8	180.0

	X	Elev
	1+88	
- 10	13.4	176.5
N.L.	12.5	177.4
cb	9.8	180.1
114	9.3	180.6
E	9.3	181.9
114	8.0	182.9
cb	7.0	182.6
+ 12	7.3	181.9
+ 13	9.0	183.1
S.L.	6.8	183.3

2+00 = E.L. State St. to N.

S.L. = edge of old grading	6.6	180.1
cb =	9.8	181.4
114	8.5	180.6
E	9.3	179.5
114	10.4	177.8
cb	12.1	177.2
N.L.	12.7	175.6
+ 10	14.3	174.2

3.63 ~~180.97~~
184.57

~~177.34~~
177.58

2+12.5 = E.L. State To South

- 10	12.60	171.7
N.L.	9.2	172.6
+ 10	9.3	173.9
cb.	7.0	174.3

181.81
180.97
π

+	-	Elev
114	6.1	174.8
♀	5.8	175.1
114	3.8	177.1
Cb.	3.4	177.5
+ 15 - edge of old grading	1.3	179.6
S.L.	1.0	179.9

State Street Taken as a

50' st, 10' Cbs. & 7.5' 1/4's To correspond with improvements to South of Palm

E.L. State (to S) + 5

S.L. on S. walk	11.84	169.13
+ 5	11.8	169.1
Cb.	7.9	173.0
114	6.8	174.1
♀	6.6	174.3
114	6.8	174.1
Cb.	7.5	173.4
+ 15	7.8	173.1
N.L.	9.0	171.9
+ 10	10.1	170.8

S. Cb State St. (to S)

- 10	11.0	169.9
N.L.	10.0	170.9
Cb.	9.0	171.9
114	7.7	172.7

181.81
180.97
π

27

+	-	Elev
♀	7.6	173.3
114	8.5	172.4
Cb.	10.8	170.1
+ 10	13.7	167.2
S.L. dirt	12.7	168.2
St Top Cb.	11.97	169.00
Gut	12.50	168.47
+ 15 Cb	10.29	169.68
Gut	10.85	170.12

E 1/4 State St (to S)

- 15 print	11.20	169.7
S.L. "	12.92	168.05
Cb	15.3	165.6
+ 5	15.2	165.7
114	13.6	167.3
♀	8.4	172.5
114	9.1	171.8
Cb.	10.3	170.6
N.L.	11.8	169.1
+ 10	12.5	168.4

♀ State St.

- 10	14.3	166.6
N.L.	13.1	167.8
+ 15	12.3	168.6
Cb	12.4	168.5

~~181.57~~
180.97

~~169.14~~
168.90

28

	+	T	-	Elev
114			11.8	169 1
+5			12.2	1687
T.P.	0.33	168.90 169.14	12.40	168.57 168.91
¢			4.0	1649
114			4.1	1648
cb.			4.2	1647
S.L. on Print			14.5	167 45
+10			0.36	168.54
		W 114 State St (715.)		
-15			0.54	168.36
S.L. on print			7.28	166 62
cb			4.8	164 1
114			5.1	163 8
¢			4.8	164.1
+5			4.9	164.0
114			1.8	167 1
cb.			2.1	166 8
N.L.			2.6	166 3
+			4.2	164 7
		W. cb State St. (to 5)		
-10			5.1	163 8
N.L.			4.0	164 9
+15			3.3	165 6
cb			4.0	164 9
+4			4.1	164.8

	+	T	-	Elev
114			6.0	162 9
¢			5.7	163 0
114			6.1	162 8
cb			5.6	163 3
S.L. dirt			3.3	165 6
Top cb			2.82	166 08
Govt			3.27	165 63
+15 Top cb.			1.05	167 85
Govt			1.53	167 37
		W.L. State St (to 50)		
inside cor. of walk at end			2.67	166.21
S.L.			2.9	166 0
+15			6.1	162 8
cb			6.9	162 0
114			7.2	161 7
¢			7.3	161 6
114			7.4	161 5
+5			7.2	161 7
cb			6.3	162 6
+10			5.0	163 9
N.L.			4.0	162 9
+10			7.6	161.3
		+ 12.5 = W.L. State to N		
-10			10.2	158.7
N.L.			9.8	159.1

168,90

SE 110.96

Correct
29
99.30

	T	T	-	Elev
Cb.			8.7	160.2
114			7.3	159.6
4			7.3	159.6
1/4			9.2	157.7
Cb			7.1	159.8
S.L.			6.2	162.7

	T	T	-	Elev
N.E.B.P.			12.19	112.03
T.P.			11.88	122.86
T.P.			12.26	134.89
T.P.			12.47	146.75
T.P.			12.65	159.66
T.P.			12.74	170.84
T.P.			12.57	182.82
T.P.			12.97	195.76
T.P.			6.04	201.65

99.54

Palm 4
India

0 + 10 = Ch wood floor Garage

on North 10' in St.
floor elev. at front 15.58

Elev of floor of House 15 N of N.H. (see sketch)

	T	T	-	Elev
Floor level				17.00
T.P.	0.65	156.89	12.66	156.24

1 + 08 & Double Garage on S. (see sketch)

	T	T	-	Elev
Abren @ S.L.			12.95	
Floor level & 17.9 Back of S.L.			9.18	

T.P.	10.3	145.19	12.73	144.16
T.P. Cor Wall	10.66	145.84	10.01	135.18

Palm 4
Columbia

T.P. on Wall			2.28	143.56
T.P.	0.66	133.80	12.70	143.80

Olive 4
Columbia

T.P.	0.39	121.93	12.26	121.44
T.P.	0.87	110.03	12.67	109.16

103.80
3.34
106.34
70.1
79.30

S.E.B.P.	2.82	103.31	7.08	100.95
N.E.B.P.	7.04	106.34	4.07	102.17

Olive 4
India
Error Palm 4
99.30 India

S.E.B.P.			3.24	103.66
----------	--	--	------	--------

Byince 4
India

Flood
Pearce
River

~~138.40~~
138.40

X section Intersection of
Palm & Columbia (sketch P. 22)

Palm 80' wide 25' cbs 7 1/2' 1/4's

Columbia 42' wide on N. 6' cbs 7 1/2' 1/4's

" 75' on S. 13' cbs 12 3/4' 1/4's

T.P. Cor. Wall

3.22

~~138.40~~
128.64

~~135.48~~
125.72

Columbia
Palm (P. 22)

+ - - Elev.

Old E.L. of Columbia

S. Palm - 0.2 Top Retaining wall 3.22 135.18

S.L. Base of wall 5.4 133.0

+ 25' Top of 10' R. Ret 6.86 132.04

Gut 6.98 131.42

1/4 6.72 131.68

1/2 6.71 131.69

3/4 6.91 131.49

Gut 7.38 131.02

Cb end 20' R. Ret 6.77 131.61

+ 18 7.1 131.3

N.L. 8.7 129.7

N. E. Ret. Columbia 20' R.

N.L. of Palm on top Cb. 7.39 131.04

Gut on Grating 8.15 130.25

Bottom Box 10.18 128.22

Bottom Stand pipe 1 dia 29.29 129.11 109.11

+ 5' - P.C. Ret Top 7.40 131.00

Gut 8.14 130.26

+ 15 Top 7.40 131.00

Gut 8.04 130.36

+ 25 Top 7.18 131.22

Gut 7.81 130.59

+ 36.4 - E.C. Top 6.83 131.57

Gut 7.43 130.97

+ 38.9 - end Cb 6.78 131.61

Gut = end print 7.38 131.02

S. E. Ret. Columbia 10' R.

S.L. Top Cb. 6.37 131.03 132.03

Gut 7.06 131.34

+ 15' - P.C. Ret Top 6.90 131.90

Gut 7.21 131.19

1/2 10' R. Ret Top 6.44 131.96

Gut 7.14 131.26

E.C. Top 6.39 132.01

Gut 7.00 131.40

+ 2 - end Cb 6.37 132.03

Gut = end print 6.98 131.42

E.L. Columbia on diagonal

N.L. 7.2 131.2

N.L. + 23 6.7 131.5

N.Cb. Line on print 7.67 130.73

1/4 7.37 131.03

1/2 7.15 131.25

~~13860~~
13840

	T	Elev
114	7.02	131.38
S.Cb Line on prmt	7.04	131.36
+ 2	6.2	132.2
S.L.	5.4	133.2

E.C. Columbia

- 15 Top Cb.	5.85	132.55
But	6.56	131.84
S.L. Top Cb	6.37	132.03
* Gut	7.06	131.34
S.Cb Line	7.32	131.08
14	7.34	131.04
£	7.53	130.87
14	7.65	130.75
N.Cb Line	7.78	130.62
N.L. Top Cb	8.15	130.25
Gut on grating	7.39	131.01
+ 15 Top Cb.	6.91	131.49
Gut	7.42	130.78

E 14 Columbia

- 15	7.65	130.75
N.L.	8.17	130.23
Cb.	7.83	130.57
14	7.72	130.68
£	7.57	130.81
14	7.45	130.95

~~13860~~
13840

	T	Elev
S.Cb.	7.34	131.06
S.L.	6.97	131.43
+ 15	6.60	131.80

£ Columbia

- 25 Top & wall	5.92	132.48
prmt	6.53	131.87
- 15	6.84	131.56
S.L.	7.20	131.20
S.Cb.	7.58	130.82
14	7.69	130.71
£	7.79	130.61
14	7.93	130.47
N.Cb	8.06	130.34
N.L.	8.45	129.95
+ 7	8.28	130.12
+ 10 £ Sewer M.H. on cover	8.03	130.37
+ 15	7.96	130.44

W. 14 Columbia

- 15	8.49	129.91
N.L.	9.03	129.37
N.Cb.	8.57	129.83
14	8.41	129.99
£	8.16	130.14
14	8.19	130.11
S.Cb.	8.16	130.14

31

This prmt
Broken down
badly

~~43864~~
13840

~~75564~~
13840

32

	+	T	+	Elev
S.L.			7.86	130 59
+ 15			7.60	130 80
W. Cb. Columbia				
- 15 Top Cb			8.03	130 37
got			8.65	129 75
S.L. Top Cb at end			8.30	130 10
got print.			8.86	129 54
S.L. dirt			8.4	130 0
S.Cb. edge print			9.09	129 31
dirt			8.4	130 0
1/4 edge print			9.04	129 36
dirt			8.8	130 1
Q edge print			9.27	129 13
dirt			8.7	129 7
1/4 edge print			9.26	129 14
dirt			8.6	129 8
N.Cb. edge print			9.36	129 04
dirt			8.5	129 9
N.L. dirt			7.1	129 3
got on Grating			9.92	128 48
Top Cb.			9.39	129 01
Flowline Box			12.12	126 18
" " 1' stand pipe			32.69	105 71
+ 15 Top Cb			8.88	129 52
got.			9.13	128 97

	+	T	-	Elev
New. W.L. Columbia				
N.L.			8.1	130 3
N.Cb Line			8.3	130 1
1/4			8.3	130 1
Q			8.3	130 1
1/4			8.5	129 9
S.Cb line			9.0	129 4
+ 20			9.6	128 8
S.L.			8.3	130 1
Old W.L. Columbia				
S.L.			8.3	130 1
+ 6			9.9	128 5
Cb			9.7	128 7
+ 3			8.7	129 7
1/4			8.8	129 6
Q			9.3	129 1
+ 5			9.5	128 9
1/4			11.3	127 1
Cb.			12.4	126 0
+ 15			12.3	126 1
+ 20			10.7	127 7
N.L.			12.8	125 6
Inlet of Dam 38' N of N.L. Palm 78.5' E of New E.L. Columbia				
Flowline			23.8	135 18
T.R. Cornwall			3.22	125 42

See Sketch

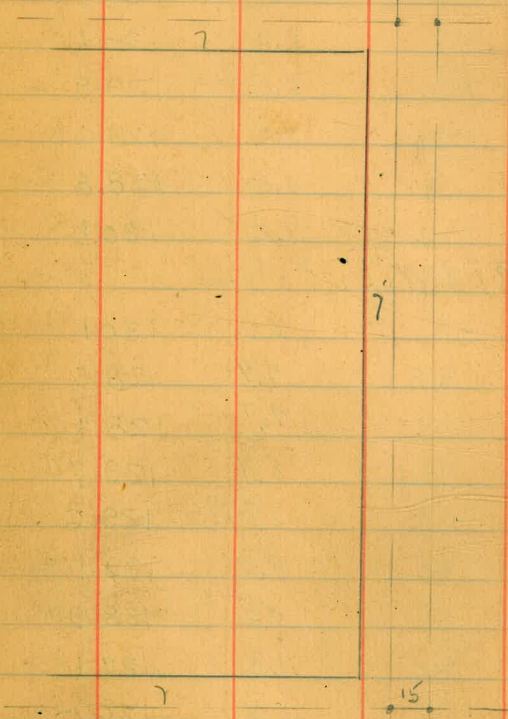
S.E. Palm
Columbia

Survey of improvements on W. side
6th St Bet Hawthorn + Ivyst.

8-14-30
Miller
Sommerville
W. High
Flood.

35-

Ivy



Hawthorne

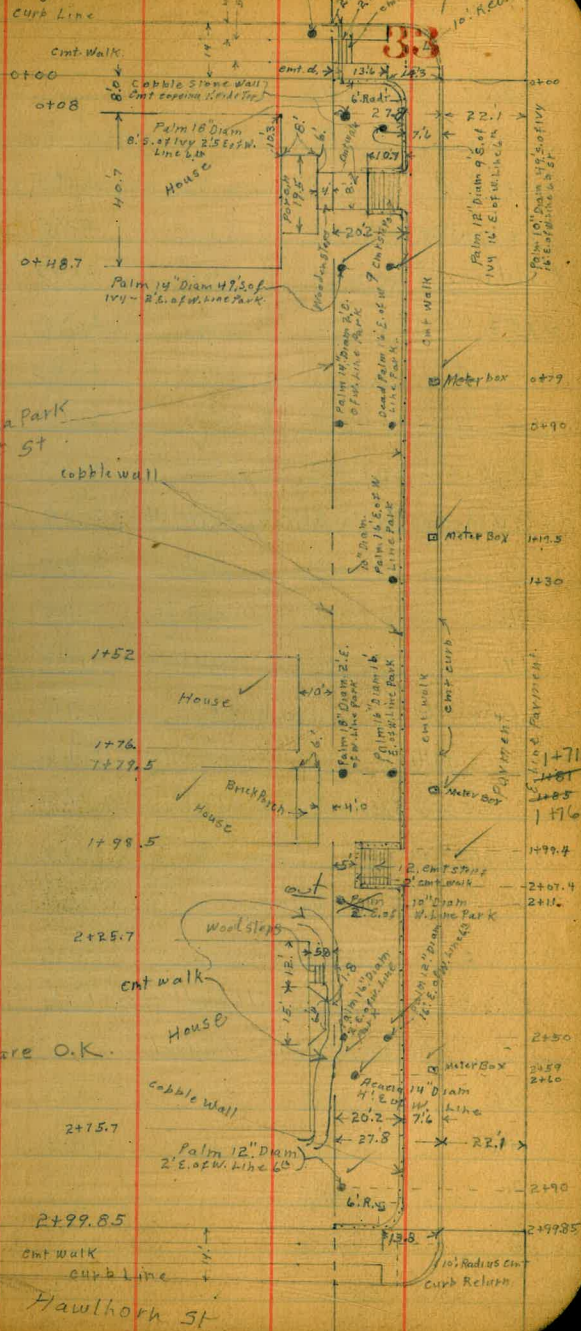
35-

179.5
3.5
176.0
2.4
152.0

27.
12
15
64
186
7

Trees checked are O.K.

Ivy St.



Where Balboa Park
= W. Line 6th St

W. d. 20' ed W line Park
60' Roadway
W. 30' of Roadway Paved

X See 6th St Laurel to Date

8-14-30
Miller

253.33

34

B.M.	1.40	253.33	251.93
S. curb line Laurel 14' N. of S. line			
W line emt. cl	2.45	250.88	
W line gutter	2.95	250.38	
W. cl line	2.67	250.66	
+15 = 1/4 edge	2.22	251.11	
+30 = 1/2	2.03	251.30	
+45 = 3/4	2.13	251.20	
+60 = E. cl line	2.52	250.81	
cl + 7' W. edge asphalt walk to S. on emt. cl	2.09	251.24	
" " " " " gutter	2.40	250.73	
cl + 14 E. " " " " " emt. cl	2.08	251.25	
cl + 7 " " " " " gutter	2.58	250.75	
+20 = E. line cl	2.11	251.22	
+20 = " " gutter	2.65	250.68	
0.5 N. of S. Line Laurel = N. line asphalt walk to E.			
E. cl of 6 th St	2.18	251.15	
+7 E. = W. edge asphalt walk N+S	2.09	251.24	
+14 E = E " " " " "	2.00	251.33	
+20 E = E. line on asphalt walk	1.90	251.43	
00 = S. line Laurel			
E. cl.	2.18	251.15	
gutter	2.63	250.70	
1/4	2.26	251.07	
1/2	2.17	251.14	
3/4	2.43	250.90	

N. 6th St
Laurel

gutter	2.84	250.49
W. cl.	2.30	251.03
5 edge asphalt walk E+W. + 09 = 5 end full pay mt.		
W. cl	2.39	250.94
gutter	2.97	250.36
1/4	2.54	250.79
1/2 send par mt.	2.32	251.01
1/4 " " "	2.40	250.93
gutter " " "	2.73	250.60
E. cl.	2.20	251.13
cl + 7 = W. edge asphalt walk N+S	2.11	251.22
cl + 14 E " " " " "	2.00	251.33
cl + 20	1.84	251.49
+ 12 = 5 end asphalt walk N+S.		
E. cl + 7 W. edge send walk	2.08	251.25
E " + 14 E " " " "	2.00	251.33
+ 13 = Acacia Tree 3.5 E. of E. cl. 5. end emt. cl. on E. + 31 = Acacia Tree 3.3 E. of E. cl.		
E. cl, S. end	2.39	250.94
gutter	3.0	250.3
1/4	2.5	250.83
1/2 E. edge par mt.	2.36	250.97
1/4	2.64	250.69
gutter	3.12	250.21
W. cl	2.52	250.81

Notes Reduced
by L.P.L.

253.33
0+50

w. cl	2.75	250.58
gutter	3.29	250.04
"	2.73	250.60
⊕ E. parmt.	2.46	250.87
"	2.6	250.72
+14	3.2	250.12
E. cl. on lawn	2.4	250.92
cl+3 Palm Tree		
cl+7 on lawn	2.3	251.02
cl+7.2 wedge dirt walk	2.5	250.82
+13.8 E " " "	2.5	250.82
+14. on lawn	2.2	251.12

0+91 Palm 3' E. of E. cl

1+00

cl+94 Lawn	2.8	250.52
cl-13.8 E. edged dirt walk	3.1	250.22
cl-7.2 W " " "	3.1	250.22
cl-7 Lawn	2.8	250.52
cl	3.0	250.32
+1	3.7	249.62
"	3.2	250.12
⊕	2.89	250.44
"	3.15	250.18
gutter	3.65	249.62
w. cl	3.12	250.21

253.33

6th St

35

1+31 Palm 3' E. of E. cl.

1+50

w. cl	3.55	249.78
gutter	4.05	249.25
"	3.52	249.81
⊕	3.29	250.04
"	3.8	249.53
+14	4.2	249.13
cl on lawn	3.5	249.82
+7 "	3.2	250.12
+7.2 wedge dirt walk	3.6	249.72
+13.8 E " " "	3.6	249.72
+14. Lawn	3.2	250.12

1+71 Palm 3' E. of E. cl

2+00.

E. cl-14.5 Lawn	3.8	249.52
" " -14 E. edged dirt walk	4.0	249.32
" " -7.2 W " " "	4.1	249.22
" " -7. Lawn	3.8	249.52
cl	3.9	249.42
+1	4.7	248.62
"	4.2	249.12
⊕	3.72	249.61
"	3.90	249.42
gutter	4.42	248.91
w. cl	3.90	249.42

253.33

2+11 Palm 3' E. of E. curb

2+50

W. ch	4.21	249.12
gutter	4.76	248.57
"	4.29	249.04
⊕	4.02	249.29
"	4.4	248.93
+14 gutter	5.0	248.33
el lawn	4.5	248.83
+7 lawn	4.3	249.03
+7.2 wedge dirt walk	4.6	248.73
+14 E " " "	4.5	248.83
+14.2 lawn.	4.3	249.03

2+51 Palm 3' E. of E. curb

2+90 Palm 3' E " " "

3+00 = N. line Kalmia { 80' wide
20' chs

el - 14. lawn	4.7	248.63
el - 13.9 E. edge dirt walk	4.9	248.43
el - 7.2 W " " "	4.9	248.43
el - 7. lawn	4.8	248.53
E el lawn.	4.9	248.43
+1 gutter	5.4	247.93
"	4.7	248.63
⊕	4.47	248.86
"	4.68	248.65
gutter	5.08	248.25
W. ch.	4.57	248.82

253.33

N. ch line Kalmia

6th St

36

W. line ent. ch to W.	4.33	249.00
" " gutter 10 E	4.56	248.77
" " gutter	5.21	248.12
W. ch line	5.21	248.12
"	4.94	248.39
⊕	4.77	248.56
"	5.0	248.33
+14 gutter	5.6	247.73
E. ch on lawn	5.0	248.33
el +7 "	5.0	248.33
" +7.2 wedge dirt walk	5.1	248.23
" +14 E " " "	5.1	248.23
" +14.2 lawn.	4.9	248.43
⊕ Kalmia		
el - 14.2 lawn	5.2	248.13
" - 14 E. edge dirt walk	5.4	247.93
" - 3 Palm Tree	5.4	247.93
" - 7.3 W " "	5.4	247.93
" - 7. lawn	5.2	248.13
E. ch. "	5.3	248.03
+1 gutter	5.9	247.43
"	5.2	248.13
⊕	5.06	248.27
"	5.20	248.13
+9 Top Sewer M.H.	5.22	248.11
W. ch line	5.40	247.93
W. line	5.30	248.03

253.33

S. el. line Kalmia

W. line end-el	5.79	247.54
" " gutter	6.29	247.04
W. el line	5.89	247.44
" " "	5.63	247.70
⊕	5.42	247.91
" "	5.6	247.73
+ 14 gutter	6.3	247.03
E. el. Lawn	5.6	247.73
+ 7 " "	5.5	247.83
+ 7.2 wedge dirt walk	5.8	247.53
+ 14. E. " " "	5.6	247.73
+ 14.2 Lawn	5.4	247.93

00 = S. line Kalmia

E. el - 14.2 Lawn	5.7	247.63
" " - 14. E. edge dirt walk	6.0	247.33
" " - 7.2 W " " "	6.1	247.23
" " - 7. Lawn	5.8	247.53
E. el " "	5.9	247.43
+ 1 gutter	6.7	246.63
" "	6.0	247.33
⊕	5.77	247.56
" "	6.03	247.30
gutter	6.45	246.88
W. el.	5.82	247.51

0+10 Palm 3' E. of E. el.

253.33

0+50

6th St

37

W. el	7.25	246.08
gutter	7.93	245.40
" "	7.44	245.89
⊕	7.14	246.19
" "	7.1	246.23
+ 14	7.7	245.63
E. el Lawn	7.0	246.33
" " + 3 Palm Tree		
" " + 7 Lawn	6.9	246.43
" " 7.2 wedge dirt walk	7.1	246.23
" " 14 E " " "	7.0	246.33
" " + 14.2 Lawn	6.8	246.53

0+90 Palm Tree 3' E. of E. el.

1+00

E. el - 14.2 Lawn	8.1	245.23
" " - 14. E. edge dirt walk	8.3	245.03
" " - 7.2 W " " "	8.5	244.83
" " - 7. Lawn	8.1	245.23
E. el. " "	8.2	245.13
+ 1 gutter	9.5	243.83 ✓
" "	8.6	244.73
⊕	8.55	244.78
" "	8.89	244.44
gutter	9.28	244.05
W. el	8.89	244.44
T.P.	1.64	245.33
	9.64	243.69

245.33

1+30 Palm Tree 3' E. of E. cl.

1+50

W. cl	2.35	242.98
gutter	2.84	242.49
"	2.33	243.00
⊥	2.00	243.33
"	2.0	243.33
+14	2.5	242.83
E. cl. Lawn	1.5	243.83
+7. "	1.3	244.03
+7.2 wedge dirt walk	1.7	243.63
+14. E " " "	1.5	243.83
+14.2 Lawn	1.3	244.03

1+70 Palm Tree 3' E. of E. cl.

2+00

E. cl - 14.2 Lawn	2.4	242.93
" " - 14. E. edge dirt walk	2.8	242.53
" " - 7.2 W " " "	3.0	242.33
" " - 7 Lawn	2.6	242.73
E. cl "	2.9	242.43
+1. gutter	3.7	241.63
"	3.3	242.03
⊥	3.44	241.89
"	3.80	241.53
gutter	4.43	240.90
W. cl.	3.84	241.49

245.33

2+10 Palm Tree 3' E. of E. cl.

2+50

W. cl	5.34	239.99
gutter	5.94	239.39
"	5.29	240.04
⊥	4.88	240.45
"	4.6	240.73
+14 gutter	5.1	240.23
E. cl. Lawn	4.1	241.23
E. cl. + 3 Palm Tree	3.9	241.43
+7 "		
+7.2 wedge dirt walk	4.3	241.03
+14 E " " "	4.1	241.23
+14.2 Lawn.	3.7	241.63

2+90 Palm Tree 3' E. of E. cl.

3+00 = N. Live Juniper 80' wide
14' curb
13' 1/4 s.

E. cl - 14.2 Lawn	4.9	240.43
" " - 14. E. line dirt walk	5.4	239.93
" " - 7.2 W " " "	5.5	239.83
" " - 7 Lawn	5.2	240.13
" " "	5.3	240.03
+1 gutter	5.8	239.53
"	5.9	239.43
⊥	6.43	238.90
"	6.80	238.53
gutter	7.36	237.97
W. cl.	6.82	238.51

6th St
38

245.33

N. el. Line Juniper

W. line emt. el	7.78	237.55
" " gutter	8.59	236.74
W. el	7.89	237.44
" "	7.15	238.18
⊕	6.57	238.76
" "	6.47	239.23
+14	6.8	238.73
E. el s. end lawn	5.6	239.73
E. el + 7. " " "	5.6	239.73
" " + 7.2 W. edge dirt walk	5.7	239.63
" " + 14 E " " "	5.8	239.53
" " + 14.2 lawn	5.3	240.03
" " + 50 "	5.0	240.33
" " + 100. "	4.0	241.33
1.5' S. of N. el. dirt gutter to E.		
E. el - 100.	4.9	240.43
" " - 50	5.7	239.63
" "	6.0	239.33
N. 1/4 Juniper		
E. el - 100	4.5	240.83
" " - 50	5.4	239.93
" "	5.5	239.83
" "	6.0	239.33
⊕	6.52	238.81
" "	6.98	238.35
W. el	7.47	237.86
W. line	8.10	237.23

245.33

⊕ Juniper

6th St.

39

W.	8.02	237.31
W. el	7.34	237.99
1/4	7.00	238.33
⊕	6.56	238.77
" "	6.3	239.03
E. el	6.0	239.33
+50	5.3	240.03
+100	4.4	240.93
S. 1/4 Juniper		
E. el - 100	4.7	240.63
" " - 50.	5.6	239.73
E. el	6.2	239.13
" "	6.5	238.83
⊕	7.01	238.32
" "	7.34	237.99
W. el.	7.69	237.64
W.	8.35	236.98
11.5' S. of S. 1/4 = dirt gutter to E.		
100' E. of E. el.	5.2	240.13
50' E. " " "	6.1	239.23
10.5' S. of ⊕ Juniper		
2' E. of E. el Meter box 1.3 E x W x 0.8 N x S Iron cover		
on cover	6.2	239.13
on Meter	7.6	237.73

245.33
S. el. Juniper st.

W. line curb. el	8.36	236.97
" " gutter	8.93	236.70
W. el	8.28	237.05
"4	7.73	237.60
¢	7.39	237.94
"4	7.0	238.33
E. el	7.2	238.13
+7	6.5	238.83
+12	6.5	238.83
+14	5.6	239.73
+50	5.0	240.33
+100	4.3	241.03

from S.S. to 11'S. of S. el. Juniper
dirt walk runs East. from 12' E. of E. el of 6"
00 = S. line Juniper

E. el. - 13' E. edge dirt walk	6.7	238.63
E. el. - 7.0 W. " " "	6.8	238.53
" " - 6.8 Lawn	6.4	238.93
E. el. "	6.7	238.63
+1 gutter	7.6	237.73
"4	7.5	237.83
¢	7.82	237.51
"4	8.12	237.21
gutter	8.66	236.67
W. el	8.04	237.29

0+10 Palm Tree 3' E. of E. el

245.33

0+50

W. el	9.95	235.38
gutter	10.60	234.73
"4	10.12	235.21
¢	9.84	235.49
"4	10.0	235.33
+14 gutter	10.4	234.93
E. el	9.4	235.73
" " + 3 Palm Tree		
" " + 4.8 Lawn	9.2	236.13
" " + 7 W. edge dirt walk	9.6	235.73
" " 14 E. " " "	9.4	235.93
" " 14.2 Lawn	9.0	236.33

0+90 Palm Tree 3'E. of E. el

1400

E. el - 14.2 Lawn	12.2	233.13
" " - 14 E. Edge dirt walk	12.6	232.73
" " - 7 W. " " "	12.8	232.53
" " - 6.8 Lawn	12.5	232.83
E. el "	12.7	232.63
+1 gutter	13.3	232.03
"4	12.6	232.73
¢	11.90	233.43
"4	12.19	233.14
gutter	12.62	232.71
No curb in drive	12.55	232.78

T.P. 0.15 232.76 12.72 232.61 W. curb

1431 Palm Tree 3'E. of E. el. Line

240
243

6th ST

40

232.76

1+50

w. cl.	1.84	230.92
gutter	2.53	230.23
"	2.12	230.64
⊥	1.89	230.87
"	2.6	230.16
+14 gutter	3.6	229.16
E. cl. on lawn	2.9	229.86
" " +6.5 "	2.8	229.96
" " +7 W. edge dirt walk	3.4	229.36
" " +14 E " " "	3.1	229.66
" " +14.2 lawn	2.8	229.96

1+70 Palm Tree 3'E. of E. cl. Line

2+00

E. cl. - 14.2 Lawn	5.1	227.66
" " - 14 E. edge dirt walk	5.6	227.16
" " - 6.7 W " " "	5.7	227.06
" " - 6.5 Lawn	5.2	227.56
" " Line on "	5.3	227.46
+1. gutter	6.1	226.66
"	5.2	227.56
⊥	4.45	228.31
"	4.67	228.09
gutter	5.05	227.71
W. cl.	4.37	228.39

2+10 Palm Tree 3'E. of E. cl.

232.76

2+50

6th St

41

w. cl.	6.95	225.81
gutter	7.62	225.14
"	7.28	225.48
⊥	7.08	225.68
"	7.9	224.86
+14 gutter	8.9	223.86
E. cl. Lawn	8.2	224.56
+3 Palm Tree.		
+6.4 Lawn	8.0	224.76
+6.6 W. edge dirt walk	8.4	224.36
+14.2 E " " "	8.3	224.46
+14.3 Lawn	7.7	225.06

2+90 Palm Tree 3'E. of E. cl. Line

3+01 = N. Line 1/4 St. ^{80' wide}_{11' cbs}
15' 1/2 s.

E. cl. - 14.3 Lawn	10.0	222.76
" " - 14. E. edge dirt walk	10.5	222.26
" " - 6.2 W " " "	10.6	222.16
" " - 6 Lawn	10.2	222.56
E. cl. line	10.4	222.36
+1. gutter	11.0	221.76
"	10.3	222.46
⊥	9.68	223.08
"	9.91	222.85
gutter	10.18	222.58
W. cl.	9.50	223.26
+7 = E. edge cmt. walk	9.38	223.38
+14 = W " " "	9.24	223.52

232.76

N. line Ivy st (con)

W Line	9.3	223.46	
W Line + 1	8.3	224.46	
+ 25.	8.0	224.76	
+ 50.	8.0	224.76	
N.B. This station should be Before N. line Ivy			
2 + 96 Catch Basin 1.5 x 1.5 E. Edge 0.2 W. of E. d. line			
Catch Basin Top grating	10.8	221.96	
" " F.L. 4" Iron Pipe	13.6	219.16	
T.R.B.M.	2.30	224.35	10.71 222.05
			S.W. 6" + 1V4
4's of N. line Ivy = s edge walk to W (End of Harmonet)			
50' W of 6 th St	0.78	223.57	
30' W " " "	0.45	223.90	
18' W " " "	0.29	224.06	
" " " " "	0.00	224.35	
1.6 E " " " Top Step Walk to W	+ 0.03	224.38	2 Steps
2.6 E " " " Bottom Step " " E	0.93	223.42	
6' E " " " " " " " " " " "	1.00	223.35	
9.3 S. of N. line Ivy = s edge walk to W			
6' E W. line to " " " " " " " " " " "	1.25	223.10	
2.6 " " " " " Bottom step walk to E	1.05	223.30	2 Steps
1.6 E " " " " " Top " " " " W	0.05	224.30	
W " " " " " " " " " " "	0.12	224.23	
18' W of " " " " " " " " " " "	0.40	223.95	
30' " " " " " " " " " " "	0.57	223.78	
50' " " " " " " " " " " "	0.86	223.49	

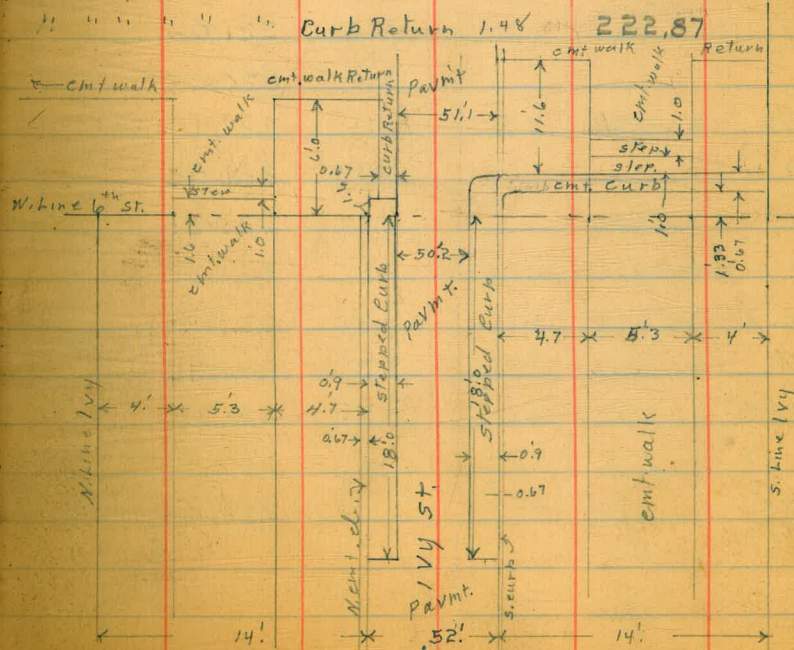
224.35

N. line Ivy st.

42

6th St

50' W of W. line 6 th cl.	0.98	223.37	
" " " " " gutter	1.71	222.64	
30' " " " " " cl.	0.68	223.67	
" " " " " " gutter	1.46	222.89	
18' " " " " " Top cl.	0.52	223.83	
" " " " " " gutter	1.29	223.06	on W. end of steps curb 0.9 wide
0.9 S. of above s. side stepped curb	1.29	223.06	4 pavmt.
W. line 6 th Top cl.	0.30	224.05	
" " " " " " stepped cl.	1.08	223.27	
0.9 S. of above " " "	1.09	223.26	
" " " " " " gutter pavmt.	1.86	222.49	
1.6 E. of W. line 6 th	1.10	223.25	Stepped cl. to W. E. end.
" " " " " " Curb Return	1.48	222.87	



224.35

N. el line 1/4 st (con)

10. E. of w. line 6 th P.C. 10' Bad Return	1.52	222.83
" " " " " " " " " "	2.10	222.25
W. el. line	2.51	221.84
W. el + 7.8 = el line bet 1/4 + Hawthorn	2.57	221.78
" "	2.32	222.03
⊕	2.15	222.20
" "	2.5	221.85
E. el	3.2	221.15
+ 10	2.7	221.65
+ 20	2.2	222.15
T.P. 2.34	224.39	2.30 222.05
N. 1/4 1/4		
E. el - 20	3.3	221.09
" " - 10	3.3	221.09
" "	4.0	220.39
" "	3.2	221.19
⊕	2.87	221.52
" "	3.04	221.31
+ 7.2 W. el. bet 1/4 + Hawthorn	3.27	221.12
W. el	3.05	221.34
W.	1.97	222.42
+ 18	1.45	222.94
+ 38	1.48	222.91
+ 50	1.72	222.68

224.39

⊕ 1/4

6th ST

W-50	2.05	222.34
W-30	1.81	222.58
W-18	1.80	222.59
W	2.41	221.98
W. el to N	3.60	220.79
+ 7.8 el.	3.85	220.54
+ 9.8 M.H.	3.79	220.60
" "	3.80	220.59
⊕	3.63	220.76
" "	4.0	220.39
E. el	4.9	219.49
+ 3' Palm Tree		
+ 10	4.0	220.39
+ 18 Palm Tree		
+ 20	3.8	220.59
S. 1/4		
E. el - 20	4.7	219.69
- 10	4.9	219.49
E. el	5.4	218.99
" "	4.9	219.69
⊕	4.37	220.02
" "	4.65	219.74
+ 7.2 el. line to S	4.73	219.66
W. el to N	4.40	219.99
W. line	2.99	221.40
+ 18	2.44	221.95

43

224.39
S. 1/4 Ivy (Con)

W. line + 30	2.49	221.90
" " + 50	2.71	221.68
S. cl. Ivy		
W. line - 50 Top cl.	3.06	221.33
" " - 50 gutter	3.64	220.75
" " - 30 Top cl.	2.82	221.57
" " - 30 gutter	3.40	220.99
" " - 18 Top cl.	2.61	221.78
" " - 18 gutter	3.25	221.14
" " - 18 = 0.9 N. of S. cl. {Wedge stepped Curb + pavmt.	3.30	221.09
W. line Top cl.	2.36	222.03
" " " stepped curb	3.24	221.15
" " 0.9 N. of S. cl. gutter pavmt.	3.92	220.47
" " + 2 Top curb to W.	2.34	222.05
" " + 2 " " " E. (Curb Return)	2.91	220.48
" " + 2 " stepped curb	3.16	221.23
" " + 2 gutter pavmt.	4.06	220.33 ✓
" " + 17.8 P.E. 10 Rad. cl. Ret Top cl.	4.66	219.73 ✓
" " + 17.8 " " " " gutter	5.12	219.27 ✓
" " + 27.8 = W. line to S.	5.55	218.84
" " + 35 = W. 1/4	5.46	218.93
♀	5.11	219.28
1/4	5.3	219.09
E. cl	6.0	218.39
+ 3	5.4	218.99
+ 20	5.4	218.99

6th St

224.39

4.67 S. of N. cl. = Wedge ent. walk

44

13.6 E. of W. line = w end solid Return	4.54	219.85
4' " " " Bottom steps walk to E	3.91	220.48
2' " " " Top " " " W	2.27	222.12
" " " " " " " " W	2.27	222.12
" " + 18	2.54	221.85
" " + 30	2.76	221.63
" " + 50	2.97	221.42
10' S. of N. cl. = S. edge ent. walk		
W. line - 50	2.88	221.51
" " - 30	2.62	221.77
" " - 18	2.44	221.95
" " "	2.20	222.19
2' E. of " " Top steps walk to W.	2.21	222.18
4' E. " " " Bottom " " " E	3.86	220.53
13.6 " " " " w end solid Return	4.63	219.76
00 = S. line 1/4		
E. cl - 20	6.3	218.09
" " - 3	6.1	218.29
" "	6.8	217.59
1/4	6.2	218.19
♀	5.92	218.47 ✓
+ 15 = W. 1/4	6.29	218.10 ✓
W. 1/4 + 7.2 gutter	4.44	217.95 ✓
" " + 7.2 ent. cl.	5.78	218.61
W. cl. line on P.L. 6 Rad. Wall Curve	5.33	219.06
" " + 6 P.C. " " " "	4.73	219.66
" " + 6 S. " " " "	2.55	221.84

Bottom Wall
on Solid Return
Top of level

00 = S. Line 1/4. (con)

W. d. + 17 bottom wall dirt	3.8	220.59
" " + 18 N + s curb also top. W. end cobble wall	2.11	222.28
W. line dirt	2.0	222.39
" " + 18 "	2.2	222.19
" " + 30 "	2.3	222.09
" " + 50 "	2.8	221.59
+ 06 S. E. C. 6' Rad. one cobble wall		
W. line	2.0	222.39
W. d. line Top cobble wall at E. C.	3.04	221.35
" " + 0.2 walk at Bottom wall	5.76	218.63
" " + 7.8 = W. d.	6.06	218.33
+ 10 Palm Tree 3' E. of E. d. line		
+ 10 " " 18 " " " "		
{ S. edge cobble wall to W.		
+ 24.3 W. edge cmt. walk + steps to House		
7.8 E. of W. d. line = W. d.	7.07	217.32
Bottom Wall		
0.2 " " " " = W. edge walk	6.86	217.53
W. d. line Top wall	3.89	220.50
" " " " walk to W.	6.86	217.53
1.5 W. of " " " Bottom of 9. steps	4.85	217.54
10.5 " " " " { Top W. end cobble wall	3.05	221.34
W. line { W. end walk		
{ Bottom wooden steps	2.79	221.60
4' W. of W. line porch floor	0.26	224.13
{ N. edge cobble wall to W.		
+ 32.2 " " out walk + steps		
W. line { W. end walk		
{ Bottom wooden steps	2.81	221.58
10.5 W. of W. d. line { Top of out steps		
{ W. end cobble wall	3.02	221.37
1.5 " " " " Bottom of steps	7.22	217.17

W. d. line Top cobble wall	4.31	220.08
" " " Bottom of wall on walk	7.26	217.13
0.2 E. of W. d. line = W. edge cmt. walk	7.26	217.13
2.8 " " " " = W. d.	7.48	216.91
+ 50		
W. line	3.9	220.49
+ 10	4.0	220.39
W. d. line Top wall	5.22	219.17
" " " + 0.2 { Bottom wall		
{ W. edge walk	8.18	216.21
" " " + 7.8 W. d.	8.38	216.01
" " " " " gutter	9.02	215.37
" " " + 15 '14	8.83	215.56
4	8.42	215.97
14	8.6	215.79
E. d.	9.1	215.29
+ 3 Palm Tree		
+ 8 Path	8.6	215.79
+ 13 Path	9.0	215.39
+ 18 Palm Tree		
+ 20.	9.1	215.29
+ 70 Palm Tree 18' E. of E. d.		
+ 70 " " 3 " " " "		
+ 00		
E. d. - 20	11.1	213.29
" " - 13	11.3	213.09
" " - 8	11.3	213.09
" " - 2	11.1	213.29
E. d.	11.8	212.59

224.39
1+00 S. of 1v4 (coh)

E. 1/4	11.1	213.29
±	11.02	213.37
+15 = 1/4	11.38	213.01
W. 1/4 + 7.2 = gutter	11.59	212.80
" " " " W. ed.	10.95	213.44
" " + 14.8 { Bottom wall W. edge walk	10.78	213.61
W. ed. line Top wall	7.72	216.67
+ 10	5.9	218.49
W. Line	5.9	218.49
1+30 Palm Tree 3' E. of E. ed.		
1+30 " " 18' " " " "		
1+50		
W. line	7.6	216.79
+ 10	7.7	216.69
W. ed. line Top wall	10.12	214.27
T.P. 4.19 215.53	13.05	211.34
+ 0.2 { Bottom wall W. edge walk	4.58	210.95
+ 7.8 - emb. ed.	4.69	210.84
+ 7.8 gutter	5.31	210.22
+ 15 1/4	5.06	210.47
± E. edge parmt.	4.70	210.83
1/4	4.8	210.73
E. ed. line	5.4	210.13
+ 1	4.7	210.83
+ 8 Path	5.1	210.43
+ 13	4.9	210.63
+ 20	4.6	210.93

215.53

1+70 Palm Tree 18' E of ed. line		
1+70 Palm Tree 3.5 E. of E. ed. line		
1+82 3" Water Tap 1.0 " " " "		
1+99 ± { S. edge cobble wall on N. side 12 cmt. steps N. " 12 cmt. steps		
7.8 E. of W. ed. Line = emb. ed.	7.21	208.32
0.2 " " " " { Bottom wall W. edge walk	7.09	208.44
W. ed. line Top wall	3.52	212.01
1.7 W. of W. ed. line Bottom 12 steps	7.08	208.45
12' " " " " Top, W. end wall	0.35	215.18
13' " " " " Top 12 steps	0.65	214.88
15' " " " " { N. End W. edge } emb. walk	0.60	214.93
W. line	0.5	215.03
2+00		
E. ed - 20	7.3	208.23
" " - 13 Path	7.4	208.13
" " - 8	7.5	208.03
" " - 2	7.4	208.13
E. ed. line	8.0	207.53
1/4	7.4	208.13
±	7.23	208.30
+ 15 = 1/4	7.67	207.86
1/4 + 7.2 gutter	7.87	207.66
" + 7.2 emb. ed.	7.25	208.28
W. ed. line on walk	7.13	208.40
+ 1.7 Bottom steps	7.08	208.45
+ 13' Top "	0.65	214.88
+ 15 W. edge walk	0.60	214.93
W. line	0.5	215.03

215.53

2+07.4 { N. edge wall s side 12 emt. steps
S " 12 emt. steps

W. line	0.7	214.83
+5 = W. edge s. end emt. walk	0.65	214.88
+7 = Top steps	0.63	214.90
+8 = W. end cobble wall	0.38	215.15
+18.3 Bottom steps	7.15	208.38
W. cl. line Top wall	4.00	211.53
" " " + 0.2 { Bottom wall W. edge walk	7.53	208.00
" " " + 7.8 emt. cl.	7.65	207.88
2+10 Palm Tree 3.5 E. of E. cl. line		
2+10 " " 18. " " " " "		
2+50		
E. cl. line - 20	9.5	206.03
" " " - 18 Palm Tree		
" " " - 13 Path	9.8	205.73
" " " - 8	9.9	205.83
" " " - 3.5 Palm Tree		
" " " - 2	9.6	205.93
" " "	10.6	204.93
" "	10.0	205.53
±	9.84	205.69
" "	10.20	205.33
+7.2 gutter	10.41	205.12
+7.2 emt. cl.	9.84	205.69
+14.8 { Bottom wall W. edge walk	9.72	205.81
W. cl. line Top cobble wall	6.29	209.24

215.53

198.47

6th St

47

W. cl. line + 10	2.1	213.43
W. line	1.8	213.73
2+87		
W. line	2.8	212.73
+10	4.1	211.43
W. cl. line Top wall	8.22	207.31
" " " + 0.2 { Bottom wall W. edge walk	11.60	203.93
" " " + 7.8 W. emt. cl.	11.74	203.77
2+94 P.C. 6' Rad. curve of cobble wall		
7.8 E. of W. cl. line - W. emt. cl.	12.08	203.45
0.2 " " " " " { Bottom wall W. edge walk	11.93	203.60
W. cl. line Top wall at P.C.	8.53	207.00
" " " + 10	6.2	209.33
W. line	5.8	209.73
3+00 = W. line Hawthorn		
W. line - W. end cobble wall Top	8.90	206.63
" " Bottom wall	12.5	203.03
" " + 14 P.C. 6' R. curve on wall Top	8.79	206.74
" " + 14 Wedge solid Return	12.74	202.79
W. cl. line on walk	12.44	203.09
" " " + 7.8 = emt. cl.	12.35	203.18
" " " + 7.8 = gutter	12.98	202.55
" " " + 15 = 1/4	12.78	202.75
±	12.42	203.11
E. 1/4	12.6	202.93
T.P. 0.53 204.01	12.05	203.48
2+90 Palm tree 3.5 E. of E. cl.		
2+90 Palm 18' E. of E. curb		

Hawthorn { 80' wide
14' elev
13' 1/4

204.01

3+00 = N. line Hawthorn St (Coh)

E. cb.	1.5	202.51
+ 2	0.9	203.11
+ 8 Path	1.1	202.91
+ 13	1.1	202.91
+ 20	0.9	203.11

14' S. of N. line = N. cb. Hawthorn

E. cb - 20	1.6	202.41
" " - 13 Path	1.8	202.21
" " - 8	1.7	202.31
" " - 2	1.6	202.41
" "	2.0	202.01

E. '14 1.7 202.31

⊕ E. edge pavmt. 1.57 202.44

W. '14 1.92 202.09

+ 7.2 web line Bet + Hawthorn 2.10 201.91

W '14 + 15 = W " " S. of " 2.26 201.75

" " + 2.2 = P.C. 10' Rad tet 2.29 201.72 gutter

" " " " " " " 1.63 202.38 Top cl.

W. line 6" gutter 2.34 201.67

" " " 1.66 202.35

N '14 Hawthorn

W. line 2.56 201.45

W. cb line to S 2.69 201.32

" " " to N 2.70 201.31

" " " 2.57 201.44

⊕ 2.28 201.74

204.01

6th St

48

E. '14	2.4	201.61
E. cb	2.7	201.31
+ 1	2.3	201.71
+ 8 Path	2.4	201.61
+ 13	2.5	201.51
+ 20	2.1	201.91

⊕ Hawthorn

- 20 2.7 201.31

- 18.5 Palm Tree

- 13 Path 3.0 201.01

- 8 3.1 200.91

- 3.5 Palm Tree

- 1 3.9 201.01

E. cb 3.4 200.61

" '14 3.0 201.01

⊕ 2.96 201.05

W. '14 3.15 200.86

+ 7.2 W. cb to N 3.27 200.74

W. cb to S 3.29 200.72

W. line 2.99 201.02

S. '14 Hawthorn

W. line 3.74 200.27

W. cb to S 4.02 199.99

+ 7.8 web to N 4.01 200.00

W. '14 3.84 200.17

⊕ 3.62 200.39

204.01
S. 1/4 Hawthorn (eow)

E. '14	3.7	200.31
E. cl	4.3	199.71
+ 24	3.6	200.41
+ 8	3.8	200.21
Path		
+ 13	3.7	200.31
+ 20.	3.5	200.51

S. cl. line

- 20	4.2	199.81
- 13	4.4	199.61
Path		
- 8.	4.4	199.61
- 2	4.3	199.71
E. cl	5.0	199.01
E. '14	4.4	199.61
φ	4.30	199.71
W. '14	4.52	199.49
+ 7.2 = cl. line	4.73	199.28
W. cl. to S	4.80	199.21
W. line gutter	4.71	199.30
" " Top cl. at P.C. 20' Rad ^{seurb} Return	4.13	199.88

00 = S. line Hawthorn

19.1 E of W line 6'4" } cent cl		
0.9 W of W cl line to S } on Return Curve	5.08	198.93
" " " " " " " " } gutter	5.68	198.33
W. cl. line to S	5.67	198.34
+ 7.8 = W. cl. line Bet. Hawthorn & Ivy	5.44	198.57
W. '14	5.24	198.77
φ.	5.04	198.97

204.01

49

E. '14	5.0	199.01
E. cl	5.6	198.41
+ 3	5.0	199.01
+ 8	5.2	198.81
Path		
+ 13	5.0	199.01
+ 20	4.7	199.31

0+06 = P.C. 20' Rad Ret S.W. Cor. 6" Hawthorn

E-20	5.0	199.01
- 13	5.3	198.71
Path		
8	5.5	198.51
- 2	5.3	198.71
E. cl	5.9	198.11
" '14	5.4	198.61
φ E. line Pavmt.	5.36	198.65
W. '14	5.57	198.44
gutter	5.97	198.04
W. emb. cl.	5.41	198.60
" " + 7 E. line emb. walk to S	5.24	198.77
" " + 14 W " " " " "	5.13	198.88

0+10

Palm Tree 4. E. of E. cl.

" " 18.5 E of E. cl.

204.01

0+50

20' W. of W line 6 th = W. cont. db	7.62	196.39
gutter	8.20	195.81
1/4	7.85	196.16
Φ	7.59	196.42
1/4	7.6	196.41
E. db	8.3	195.71
+3	7.6	196.41
+4 = Palm Tree		
+8	7.8	196.21
Path		
+13	7.7	196.31
+18 Palm Tree		
+20	7.5	196.51
6+91 Palm Tree 4' E. of E. db		
0+91 " " 18.5 " " "		
1+00		
E. db - 20	10.1	193.91
-13	10.4	193.61
Path		
-8	10.4	193.61
-3	10.3	193.71
E. db line	11.1	192.91
1/4	10.4	193.61
Φ	10.22	193.79
1/4	10.43	193.58
gutter	10.86	193.15
W. db.	10.25	193.76

204.01

6+55+

50

1+31 Palm 3.5 E. of E. db
 1+31 " 18' E. of E. db

1+50

W. db	12.81	191.20
gutter	13.38	190.63
1/4	12.96	191.05
Φ E. edge parrot.	12.80	191.21
1/4	12.9	191.11
E. db	13.5	190.51
+3	12.8	191.21
+8	12.9	191.11
Path		
+13	12.8	191.21
+20	12.6	191.41
T.R	0.41	191.26
1+71 Palm 4' E. of E. db line	13.16	190.85
1+71 " 18.3 " " " "		
2+00		
E. db - 20	2.4	188.86
-13	2.9	188.36
Path		
-8	3.2	188.06
-3	2.9	188.36
E. db	3.5	187.76
1/4	2.9	188.36
Φ	2.57	188.69
1/4	2.80	188.46
gutter	3.23	188.03
W. db.	2.55	188.71

191.26

R+11 Palm Tree 3.8 E. of E. cl line
 R+11 " " 18.3 " " " " "

R+50

W. cl 5.20 186.06
 gutter 5.87 185.39
 1/4 5.50 185.76
 ♀ E. edge paymt. 5.24 186.02
 1/4 5.5 185.76
 E. cl 5.9 185.36
 + 2 5.4 185.86
 + 8 Path 5.7 185.56
 + 13 + 20 5.6 185.66
 5.3 185.96

R+52 Palm 3.8 E. of E. cl line

R+52 " 18.3 " " " " "

R+90 " 3.8 " " " " "

R+90 " 18.3 " " " " "

R+95 = P.C. 20 Rad. cl. Return NW. cor. 6th + Grape

E. cl - 20 7.5 183.76
 - 13 Path 8.1 183.16
 - 8 8.1 183.16
 - 2 7.8 183.46
 E. cl line 8.2 183.06
 + 3 8.9 182.36
 E. 1/4 7.8 181.46
 ♀ 7.73 183.53
 1/4 8.04 183.22

191.26

65 St

51

gutter 8.22 183.04
 Web at P.C. 20 Rad. cl. Return 7.65 183.61
 + 7 = E. Edge emt. walk 7.41 183.85
 + 14 = W " " " 7.28 183.95
 3+01 = N. line Grape St ^{80 w. d. e} _{14. d. s} ^{13 1/2}
 1/4 W. of W. cl line = N. cl on Return 7.91 183.35
 gutter 8.56 182.70
 W. cl line 8.60 182.66
 + 4 8.73 182.53
 1/4 8.47 182.79
 ♀ 8.17 183.09
 1/4 8.2 183.06
 + 11 9.1 182.16
 E. cl line 8.6 182.66
 + 3 8.2 183.06
 + 8 Path 8.4 182.86
 + 13 8.1 183.16
 + 20 7.7 183.56

N. cl Grape

E. cl - 20 8.3 182.96
 - 13 Path 8.6 182.66
 - 8 9.2 182.06
 - 3 9.0 182.26
 E. cl line 9.4 181.86
 + 5 9.9 181.36
 1/4 9.0 182.26
 ♀ 9.15 182.11

191.26

N. cl Grapes (Con)

W ¹⁴	9.38	181.88
+11	9.68	181.58
W. cl line	9.56	181.70
W. line gutter	9.92	181.34
" " amt. dat P.C. 20 R. Return	9.24	182.02

N. 1/4 Grapes

W	10.17	181.09
W. cl	10.37	180.99
+4	10.38	180.98
14	10.11	181.15
♀ E. edge parh't.	9.94	181.32
14	9.7	181.56
+7	10.5	180.76
2. cl	10.0	181.26
+	9.7	181.56
+8 Path	9.7	181.56
+13	9.3	181.96
+20	7.0	182.26

♀ Grapes

E. cl -20	9.8	181.46
" " -18 Palm Tree		
" " -13	10.0	181.26
Path		
-8	10.1	181.16
-3.8 Palm Tree		
E. cl	10.1	181.16
+7	10.9	180.36
14	10.4	180.86

191.26

6th ST

♀	10.67	180.59	52
14	10.83	180.43	
+12	11.24	180.02	
W. cl line	10.62	180.64	
W. line	11.51	179.75	

S. 1/4 Grapes

W. line	11.52	179.74
W. cl	12.01	179.25
14	11.69	179.57
-♀	11.40	179.86
14	10.9	180.36
+9	11.6	179.66
E. cl	11.2	180.06
+3	10.7	180.56
+8	10.7	180.56
Path		
+13	10.4	180.86
+20	10.1	181.16

S. cl. Grapes

E. cl -20	11.1	180.16
-13	11.2	180.06
Path		
-8	11.5	179.76
-3	11.5	179.76
E. cl	12.0	179.26
+3	12.6	178.66
+5	12.1	179.16
14	11.5	179.76

191.26
S. el. Grape (con)

♀		12.04	179.22
W. '14		12.49	178.77
W. el line		12.84	178.42
W. line gutter		12.77	178.49
" " el at P.C. 20' R. Return		12.24	179.02
T.P.	0.16	180.22	11.20 180.06
	00 =	S. line Grape St	
1' W. of W. el line = curb on curb		2.25	177.97
gutter		2.80	177.42
W. el line		2.80	177.42
'14		2.18	178.04
♀		1.63	178.59
'14		1.1	179.12
+11		2.1	178.12
E. el line		2.1	178.12
+8		1.3	178.92
+13	Path	1.0	179.22
+20		0.4	179.82
	0+06 =	P.C. 20' R. Ret on S.W. cor	
E. el - 20		0.6	179.62
-13		1.3	178.92
-8	Path	1.5	178.72
E. el line		2.2	178.02
+4		2.3	177.92
'14		1.4	178.82
♀		1.91	178.31

F.H. S.W. 6"
+ Grape.

180.22

6th St

53

W. '14		2.51	177.71
gutter		3.09	177.13
W. el		2.52	177.70
0+10	Palm	3.8	E. of E. el
0+10	"	18.3	" " " "
0+49	"	3.8	" " " "
0+49	"	18.3	" " " "
		0+50	
W. el		4.47	175.75
gutter		5.01	175.21
'14		4.47	175.75
♀		4.10	176.12
'14		3.8	176.42
+11		4.3	175.92
el line		4.3	175.92
+2		3.9	176.32
+8		3.6	176.62
+13	Path	3.4	176.82
+20		3.2	177.02
0+90	Palm	4' C. of E. el line	
0+90	"	18.3	" " " "

180.22
1+00

e. cl -20	5.9	174.32
-13	6.2	174.02
-8 Path	6.3	173.92
-2	6.5	173.72
E. cl line	7.1	173.12
1/4	6.3	173.92
¢	6.45	173.77
1/4	6.92	173.30
gutter	7.53	172.69
W. cl.	6.97	173.25

1+29 Palm 3.8 E. of E. cl line

1+29 " 18.3 " " " "

1+40 N. End amt. curb on East.

W. cl	8.84	171.38
gutter	9.35	170.87
1/4	8.82	171.40
¢	8.38	171.84
1/4	8.5	171.72
gutter	8.8	171.42
E. cl. 30.4 E. of ¢	8.21	172.01
+8	8.3	171.92
+13 Path.	8.2	172.02
+20	7.5	172.72

1+69, Palm 3.8 E. of E. cl.

1+69 " 18.3 " " " "

180.22
1+70

54
6th St

e. cl -20	9.00	171.22
-13	9.4	170.82
-8 Path	9.9	170.32
E. amt. cl is 30.4 E. of ¢	9.68	170.54
gutter	10.5	169.72
1/4	10.0	170.22
¢ E. edge parmt.	9.75	170.47
1/4	10.18	170.04
gutter	10.70	169.52
W. cl.	10.20	170.02

2+00

w. cl	11.64	168.58
gutter	12.15	168.07
1/4	11.58	168.64
¢ E. edge Parmt.	11.28	168.94
1/4	11.5	168.72
gutter	12.0	168.22
E. cl 30.4 E. of ¢	11.09	169.13
+8	11.2	169.02
+13 Path	11.1	169.12
+20	10.7	169.52
T.P.	0.88	169.03
12.07	168.15	Top Pipe

2+09 Palm 3.8 E. of E. cl

2+09 " 18.3 " " " "

2+49 " 3.8 " " " "

2+49 " 18.3 " " " "

169.03

R+50

E. el-20	1.5	167.53
-13	2.0	167.03
Path		
-8	2.5	166.53
E. el 30.4 E. of ϕ	2.33	166.70
gutter	3.2	165.83
"4	2.7	166.33
ϕ E. edge parmt	2.46	166.57
"4	2.81	166.22
gutter	3.36	165.67
W. el.	2.85	166.18
R+95' = P.C. 20' Rad Ret. NW. Fir + 6'		
Tordel	5.13	163.90
gutter	5.66	163.37
3+01 = N line Fir $\left\{ \begin{array}{l} 80' \text{ w. d. } \\ 14' \text{ el. } \\ 13' \text{ up. } \end{array} \right.$		
W. line of W. el. line = ent. el. on curve	5.36	163.67
gutter	5.90	163.13
el. line	5.89	163.14
"4	5.22	163.81
ϕ E. edge parmt	4.87	164.16
"4	5.10	164.03
gutter	5.6	163.43
E. ent. el. 30.4 E. of ϕ	4.75	164.28
+7	4.7	164.33
Path		
+14	4.2	164.83
+20	3.4	165.63

169.03

6th ST

55

R+89 Palm 3.7' E. of E. el.		
R+89 " 18' " " " "		
N. el. Fir ST		
E. el-20	4.4	164.63
-14	5.0	164.03
Path		
-7	5.2	163.83
E. el 30.4 E. of ϕ	5.32	163.71
gutter	6.1	162.93
"4	5.6	163.43
ϕ E. edge parmt.	5.46	163.57
"4	5.74	163.29
W. el. line	6.30	162.73
W. line gutter	7.10	161.93
" " el.	6.38	162.65
N. '14 Fir ST		
W. Line	6.90	162.13
W. d. "	6.75	162.28
"4	6.24	162.79
ϕ E. edge parmt	5.98	163.05
"4	6.1	162.93
gutter	6.4	162.63
E. el 30.4 E. of ϕ	5.81	163.22
+7	5.7	163.33
Path		
+14	5.5	163.53
+20	5.1	163.93

169.03

N. 1/4 + 11 Palm Tree 3.5 E. of E. db

" " + 11 " " 12. " " " "

E Fir St

E. db - 20	5.4	163.63
- 14 path	5.9	163.13
- 7	6.2	162.83
E. db 30.4 E. of E	6.29	162.74
gutter	6.9	162.13
" 1/4	6.5	162.53
E. edge pavmt.	6.50	162.53
" 1/4	6.81	162.22
db	7.19	161.84
W line	7.01	162.02

S. 1/4 Fir St

W. line	7.60	161.43
db	7.78	161.25
" 1/4	7.25	161.78
E. edge Pavmt.	6.99	162.04
" 1/4	7.2	161.83
gutter	7.5	161.53
E. db 30.4 E. of E	6.76	162.27
+ 7' path	6.9	162.13
+ 14'	6.6	162.43
+ 20'	6.0	163.03

S. 1/4 + 9 N. End of lawn on East.

169.03

S. db. Line Fir St.

6th St

56

S. db - 14.2 Lawn	6.6	162.43
- 14 path	7.0	162.03
- 7.2	7.2	161.83
- 7 Lawn	6.9	162.13
E. db 30.4 E. of E	7.22	161.81
gutter	8.2	160.83
" 1/4	7.6	161.43
E. edge pavmt	7.48	161.55
" 1/4	7.76	161.27
W. db	8.32	160.71
W. Line gutter	8.54	160.49
" " db.	7.95	161.08

0+00 = S. line Fir St.

0.8 w. of db line = db. on Return	8.37	160.66
gutter	8.92	160.11
W. db Line	8.90	160.13
" 1/4	8.23	160.80
E. edge pavmt.	7.94	161.09
" 1/4	8.1	160.93
gutter	8.7	160.33
E. db. 30.4 E. of E	7.71	161.32
+ 7 Lawn	7.4	161.63
+ 7.2	7.6	161.43
+ 14	7.4	161.63
+ 14.2 lawn	7.1	161.93

169.03

0+06. = AC. 20' Rad. Ret.

W. el at P.C.	8.55	160.48
gutter	9.09	159.94
0+09 Palm Tree 3.5 E of E. el		
0+09 " " 18' " " " "		
0+49 " " 3.5 " " " "		
0+49 " " 18' " " " "		

0+50

E. el - 14.2 Lawn	8.8	160.23
-14 Path	9.1	159.93
-7.2	9.2	159.83
-7 Lawn	9.0	160.03
E. el 30.2 E. of ♀	9.30	159.73
gutter " "	10.3	158.73
" " "	9.8	159.23
♀ E. edge pavmt	9.47	159.56
" " "	9.80	159.23
gutter	10.37	158.66
W. el.	9.90	159.13
0+89 Palm Tree 3.5 E. of E. el		
0+89 " " 18' E " " "		
W. el	11.30	157.73
gutter	11.82	157.21
" " "	11.28	157.75
♀ E. edge pavmt	10.95	158.08
" " "	11.2	157.83
gutter	11.8	157.23
E. el 30' E. of ♀	10.83	158.20

60' Roadway OK from Here S.

169.03

65st

57

E. el +7 Lawn	10.6	158.43
+7.2 path	10.8	158.23
+14	10.7	158.33
+14.2 Lawn	10.4	158.63
1+29 Palm Tree 3.5 E. of E. el		
1+29 " " 18' E of E. el		

1+50

E. el - 14.2 Lawn	12.0	157.03
-14 Path	12.2	156.83
-7.2	12.4	156.63
-7 Lawn	12.2	156.83
E. el	12.39	156.64
gutter	13.2	155.83
" " "	12.7	156.33
♀	12.44	156.59
" " "	12.76	156.27
gutter	13.25	155.78
W. el.	12.77	156.26
T.P. 009	156.18	12.94 156.09
1+69 Palm Tree 3.5 E of E. el		
1+69 " " 18' " " " "		
W. el	1.35	154.83
gutter	1.84	154.34
" " "	1.37	154.81
♀	1.10	155.08

156.18
2+00 (con)

E. 1/4 gutter	1.4	154.78
E. el	2.3	153.88
	7.07	155.11
+7' Lawn	0.8	155.38
+7.2	1.0	155.18
+14.	0.8	155.38
+14.2 Lawn	0.6	155.58
2+09 Palm Tree	3.5 E. of E. el	
2+09 "	18' E. " " "	
2+49 "	3.5 " " " "	
2+49 "	18. " " " "	
2+50		
E. el - 14.2 Lawn	2.1	154.08
-14 Path	2.4	153.78
-7.2	2.5	153.68
-7 Lawn	2.4	153.78
E. el	2.63	153.55
gutter	3.2	152.98
"	2.8	153.38
♀	2.59	153.59
"	2.81	153.37
gutter	3.26	152.92
W. el.	2.76	153.42

2+89 Palm 3.5 E. of E. el
2+89 " 18' " " " "

156.18

2+94 P.C. 20' Radius Return.

6th St
58

Top W. el at P.C.	3.98	152.20
gutter	4.54	151.64
3+00 = N. Line Elm	$\left\{ \begin{array}{l} 80' \text{ wide} \\ 14' \text{ els} \\ 13' 11/2 \end{array} \right.$	
No. W. of W. el line cont. el on Return		
gutter	4.73	151.45
W. el line	4.71	151.47
"	4.29	151.89
♀	4.06	152.12
"	4.1	152.08
gutter	4.8	151.38
E. el	4.10	152.08
+7 Lawn	3.9	152.28
+7.2 Path	4.1	152.08
+14	3.8	152.38
+14.2 Lawn	3.6	152.58
N. curb Elm St		
E. el - 14.2 Lawn	4.0	152.18
-14 Path	4.3	151.88
-7.2	4.5	151.68
-7. Lawn	4.2	151.98
E. el.	4.51	151.67
gutter	5.3	150.88
"	4.4	151.78
♀	4.44	151.74
"	4.65	151.53
W. el. line	4.92	151.26

156.18
N. curb of Elm (con)

W. line el. at P.C. 20' Rad. Ret. 5.08 151.10
" " gutter 5.69 150.49

N. 1/4 Elm

W. line 5.64 150.54
W. el. line 5.12 151.06
" 1/4 5.00 151.18
¢ 4.57 151.61
" 1/4 4.8 151.38
gutter 5.7 150.48
E. el. + lawn 4.87 151.31
+ 7' lawn 4.5 151.68
+ 7.2 Path 4.8 151.38
+ 14. 4.6 151.58
+ 14.2 lawn. 4.3 151.88

6.5 S. of N. 1/4 S. end lawn

E. el. - 14.2 S. end lawn 4.7 151.48
- 14. E. edge path 5.0 151.18
- 7.2 W. " " 5.0 151.18
- 7. S. end lawn 4.8 151.38
E. el. + lawn. 5.08 151.10

7' S. of N. 1/4 N. side walk

E. el. + N. side dirt Path 5.08 151.10
+ 7.2 " " " " 5.1 151.08
+ 14.2 N. " " " " to W. 5.04 151.14

156.18
¢ Elm St

6th St
59

E. el. - 14. E. edge path 5.1 151.08
- 7.2 W. " " 5.2 150.98
E. el. 5.26 150.92
gutter 5.8 150.38
" 1/4 5.0 151.18
¢ E. edge parvt 5.12 151.06
" 1/4 5.35 150.83
W. el. line 5.47 150.71
W. line 5.76 150.42

4' S. of ¢ S. side walk

E. el. - 14.2 S. side dirt walk to E 5.17 151.01
- 7.2 S. " " dirt Path 5.3 150.88
E. end. el. 5.38 150.80

5' S. of ¢ = N. end. lawn.

E. end. el. + lawn 5.41 150.77
+ 7 " " 5.1 151.08
+ 7.2 Path 5.4 150.78
+ 14. 5.1 151.08
+ 14.2 lawn. 4.9 151.28

S. 1/4 Elm

W. line 6.20 149.98
" el. line 5.87 150.31
" 1/4 5.65 150.53
¢ 5.44 150.74
" 1/4 5.4 150.78
gutter 6.3 149.88

156.18
S. 1/4 Elm (con)

e. el	5.63	150.55
+7.1 Lawn	5.4	150.78
+7.2	5.6	150.58
Path		
+14.	5.3	150.88
+14.2 Lawn	5.1	151.08

S. el Elm.

S. el - 14.2 Lawn	5.4	150.78
-14. Path	5.6	150.58
-7.2	5.8	150.38
-7 Lawn	5.6	150.58
e. el	5.96	150.22
gutter	6.5	149.68
1/4	5.7	150.48
⊕	5.77	150.41
1/4	6.03	150.15
W. el. line	6.32	149.86
W. line gutter	6.98	149.20
W. " curb	6.46	149.72

0+00 = S. line Elm.

0.9 W. of W. el. line curb on Return	6.38	149.80
gutter	6.89	149.29
W. el. line	6.89	149.29
1/4	6.42	149.76
⊕	6.14	150.04
1/4	6.1	150.08
gutter	6.9	149.28

156.18

6th St

60

e. el.	6.24	149.90
+7.1 Lawn	6.0	150.18
+7.2 Path	6.2	149.98
+14.1	6.0	150.18
+14.2 Lawn	5.7	150.48

0+06 = P.C. 20' Rad. Return

Top el	6.58	149.60
gutter	7.02	149.16

0+10 Palm Tree 3.5 E. of e. el

0+10 " " 18. " " " "

0+50

E. el - 18. Palm Tree		
-14.2 Lawn	6.9	149.28
-14. Path	7.2	148.98
-7.2	7.3	148.88
-7. Lawn	7.2	148.98
-3.5 Palm Tree		

E. el	7.43	148.75
-------	------	--------

gutter	8.1	148.08
--------	-----	--------

1/4	7.4	148.78
-----	-----	--------

⊕ E. edge pavmt.	7.42	148.76
------------------	------	--------

1/4	7.69	148.49
-----	------	--------

gutter	8.20	147.98
--------	------	--------

W. el.	7.76	148.42
--------	------	--------

0+90 Palm Tree 3.5 E. of e. el

0+90 " " 18. " " " "

156.18
1+00

w. cl	9.10	147.08
gutter	9.60	146.58
"4	9.00	147.18
⊕	8.66	147.52
"4	8.7	147.48
gutter	9.3	146.88
E. cl.	8.56	147.62
+7' Lawn	8.3	147.88
+7.2 Path	8.5	147.68
+14.	8.3	147.88
+14.2 Lawn	8.0	148.18
1+30 Palm Tree 3.5 E. of E. cl.		
1+30 " " 18. " " " "		
T.P.	3.20	149.32
10.06 146.12		
1+50		
E. cl - 14.2 Lawn	2.4	146.92
-14. path	2.6	146.72
-7.2	2.8	146.52
-7 L.	2.6	146.72
E. cl	2.83	146.49
gutter	3.6	145.72
"4	3.2	146.12
⊕	3.13	146.19
"4	3.56	145.76
gutter	4.15	145.17
w. cl.	3.64	145.68

149.32

6th St

61

1+69 Palm Tree 3.5 E. of E. cl		
1+69 " " 18. " " " "		
1+85 Δ on E. edge Pavmt.		
w. cl	4.60	144.72
gutter	5.09	144.23
"4	4.44	144.88
⊕ E. edge pavmt at A	4.06	145.26
"4	4.0	145.32
gutter	4.3	145.02
E. cl.	3.62	145.70
+7' Lawn	3.4	145.92
+7.2 Path	3.6	145.72
+14.	3.4	145.92
+14.2 Lawn	3.2	146.12
2+09 Palm Tree 3.5 E. of E. cl.		
2+09 " " 18. " " " "		
2+25		
E. cl - 14.2 Lawn	4.0	145.32
-14. Path	4.2	145.12
-7.2	4.5	144.82
-7. Lawn	4.3	145.02
E. cl	4.50	144.82
gutter	5.3	144.02
"4 E. Edge pavmt.	4.88	144.44
⊕	5.04	144.28
"4	5.49	143.83

149.32

2+25 (eoh)

gutter 6.19 143.13

W. el. 5.68 143.64

2+65 P.I.E. line parmt. & ed.

W. el. 6.77 142.55

gutter 7.26 142.06

"4 6.50 142.82

4 6.03 143.29

"4 5.90 143.42

gutter parmt. 6.06 143.26

8. el. 5.38 143.94

+ 7' Lawn 5.2 144.12

+ 7 1/2 path 5.4 143.92

+ 14' 5.1 144.22

+ 14 1/2 lawn. 4.9 144.92

chk BM. 7.08 142.24 = 142.17

Notes Reduced
by L.P.L.
6-25-30

SW. 6th Ed.
Date

6.25 ST.

62

80' wid
14' chs
13' 1/4s

Juniper St X See. 6th St. East

9-24-30
Miller
Sommerhager
Osborn

244.74

63

T.P. Page 40

12.13

244.74

232.61

00 = E. el. Line 6th ST.

S. Line on lawn

6.1 234.6 ✓

S. el

6.6 238.1 ✓

1/4

5.6 239.1 ✓

ϕ

5.4 239.3 ✓

1/4

4.9 239.8 ✓

el

5.4 239.3 ✓

N. Line on lawn

4.7 240.0 ✓

7' E = W. edge dirt walk N. & S.

N

4.9 239.8 ✓

el

5.0 239.7 ✓

+1. gutter

5.2 239.5 ✓

1/4

4.9 239.8 ✓

ϕ

5.2 239.5 ✓

1/4

5.7 239.0 ✓

+11. gutter

6.4 238.3 ✓

el

5.9 238.8 ✓

S

6.2 238.5 ✓

13' E. of E. el.

S

6.1 238.6 ✓

+3 = S. edge dirt walk to E.

5.8 238.9 ✓

+8.8 " " " "

5.5 239.2 ✓

+10 " " " "

5.5 239.2 ✓

el " " "

6.1 238.6 ✓

+2 gutter

6.1 238.6 ✓

1/4

5.7 239.0 ✓

ϕ

5.2 239.5 ✓

1/4

5.0 239.7 ✓

+12. gutter

5.3 239.4 ✓

el

5.2 239.5 ✓

N.

4.8 239.9 ✓

14.2 E. of E. el.

N. Lawn

4.3 240.4 ✓

el "

4.7 240.0 ✓

+1. gutter

5.3 239.4 ✓

1/4

5.0 239.7 ✓

ϕ

5.2 239.5 ✓

1/4

5.7 239.0 ✓

+11. gutter

6.1 238.6 ✓

el. Flower bed

5.0 239.7 ✓

+4 " "

5.0 239.7 ✓

+5.5 walk

5.6 239.1 ✓

+11 " "

5.8 238.9 ✓

+12 flower bed

5.3 239.4 ✓

+14 = S. " "

5.3 239.4 ✓

18' E. of E. el.

11.5 N of S. Line Gum Tree 6" Diam

20' E. of E. el.

S. Flower bed

5.1 239.6 ✓

+2 " "

5.1 239.6 ✓

+3 walk

5.5 239.2 ✓

R44.74

20' E of E. cl. of 6" (con)

5 + 8.5 walk	5.3	✓39.1 ✓
+ 9 flower bed	4.9	✓39.8 ✓
cl. " "	5.2	✓39.5 ✓
+ 2 gutter	5.9	✓38.8 ✓
"	5.6	✓39.1 ✓
♀	5.1	✓39.6 ✓
"	5.1	✓39.6 ✓
+ 12 gutter	5.2	✓39.5 ✓
cl. lawn	4.7	✓40.0 ✓
N. " "	4.2	✓40.5 ✓

41' E. of E. cl.

11.5 N. of S. line gum tree 14" Diam

50' E. of E. cl. 6"

N. Lawn	3.5	✓41.2 ✓
cl. " "	4.3	✓40.4 ✓
+ 1. gutter	5.1	✓39.6 ✓
"	4.8	✓39.9 ✓
♀	4.7	✓40.0 ✓
"	5.0	✓39.7 ✓
+ 11. gutter	5.3	✓39.4 ✓
cl. flower bed	4.4	✓40.3 ✓
+ 5 " "	4.4	✓40.3 ✓
+ 5.5 walk	4.7	✓40.0 ✓
+ 11. " "	4.8	✓39.9 ✓
+ 12 flower bed	4.5	✓40.2 ✓
5 " "	4.5	✓40.2 ✓

R44.74

63' E. of E. cl.

11.5 N. of S. line Gum Tree 12" Diam

86' E. of E. cl.

11.5 N. of S. line Gum Tree 12" Diam

100' E. of E. cl.

5 flower bed.	3.6	✓41.1 ✓
+ 2 " "	3.6	✓41.1 ✓
+ 3 walk	3.8	✓40.9 ✓
+ 8.5 " "	3.9	✓40.8 ✓
+ 9 flower bed.	3.7	✓41.0 ✓
cl. " "	3.6	✓41.1 ✓
+ 2 gutter	4.6	✓40.1 ✓
"	4.1	✓40.6 ✓
♀	3.8	✓40.9 ✓
"	3.9	✓40.8 ✓
+ 12 gutter	4.2	✓40.5 ✓
cl. lawn	3.4	✓41.3 ✓
N. " "	2.9	✓41.8 ✓

104' E. of E. cl.

Gum Tree 2' S. of N. line 32" Diam

108' E. of E. cl.

Gum Tree 11.5 N. of S. line 16" Diam

131' E. of E. cl.

Gum Tree 11.5 N. of S. line 3" Diam

Juniper 54

64

244.74

150' E. of E. d. line 6th

N. lawn	2.6	✓42.1	✓
db "	2.8	✓41.9	✓
+1. gutter	3.5	✓41.2	✓
"	3.2	✓41.5	✓
⊥	3.1	✓41.6	✓
"	3.4	✓41.3	✓
+12. gutter	3.8	✓40.9	✓
db flower bed	2.8	✓41.9	✓
+5. " "	2.8	✓41.9	✓
+5.5 walk	3.2	✓41.5	✓
+11. "	3.2	✓41.5	✓
+12 flower bed	2.7	✓42.0	✓
S " "	2.7	✓42.0	✓

154' E.

Gum Tree 11.5 N. of S. Line 16" Diam

177' E.

Gum Tree 11.5 N. of S. Line 3" Diam

179' E.

Gum Tree 2.5 of N. Line 24" Diam

199' E.

Gum Tree 11.5 N. of S. Line 14" Diam

200' E. of E. d. line 6th

S. flower bed	2.0	✓42.7	✓
+2 " "	2.0	✓42.7	✓
+3 walk	2.4	✓42.3	✓
+8.5 "	2.4	✓42.3	✓

244.74

Juniper St.

+9. flower bed.	2.0	✓42.7	✓ 65
db " "	2.0	✓42.7	✓
+1. gutter	3.0	✓41.7	✓
"	2.5	✓42.7	✓
⊥	2.2	✓42.5	✓
"	2.3	✓42.4	✓
+12 gutter	2.8	✓41.9	✓
db lawn	1.9	✓42.8	✓
N " "	1.4	✓43.3	✓
T.P.	6.24	248.49	2.49
			242.25

218' E. of E. d. 6th - w. edge dirt path from N. cl. North.

N. on lawn to w.	4.9	✓43.6	✓
N. on w. edge path.	5.3	✓43.2	✓
db. on " " "	5.7	✓42.8	✓
db " lawn to w.	5.2	✓43.3	✓
+1. gutter	6.2	✓42.3	✓
"	5.6	✓42.9	✓
⊥	5.5	✓43.0	✓
"	5.9	✓42.6	✓
+12 gutter	6.4	✓42.1	✓
db. flower bed.	5.4	✓43.1	✓
+5. " "	5.4	✓43.1	✓
+5.5 walk	5.9	✓42.6	✓
+11. " "	5.8	✓42.7	✓
+12 flower bed	5.5	✓43.0	✓
S. " "	5.5	✓43.0	✓

248.49

226' E. of E. cl. 6th { w. edge dirt path from S. cl. South.
" " " " " " " " " " " " " North.

	248.5	✓	
S. in flower bed to W.	5.4	✓43.1	/
S on W. edge dirt path	5.9	✓42.6	/
S + 2 " " "	5.9	✓42.6	/
S + 2 flower bed to W.	5.4	✓43.1	/
S + 3. s. edge dirt walk	5.9	✓42.6	/
S + 8.5 N " " "	5.8	✓42.7	/
S + 9 W " " "	5.8	✓42.7	/
S + 9 flower bed to W.	5.4	✓43.1	/
S. cl. " " " "	5.5	✓43.0	/
S. cl. W. edge dirt walk	6.0	✓42.5	/
+ 1 gutter	6.3	✓42.2	/
"	5.7	✓42.8	/
♀	5.4	✓43.1	/
"	5.5	✓43.0	/
+ 12. gutter.	5.9	✓42.6	/
cl. E. edge dirt path	5.6	✓42.9	/
cl. Lawn to E.	5.1	✓43.2	/
N. " " "	4.9	✓43.6	/
N. E. edge dirt walk.	5.3	✓43.2	/
w. edge flower bed from S. cl. South.			
234' E. of E. edge dirt walk from S. cl. South.			
N. Lawn	4.6	✓43.9	/
cl. "	4.9	✓43.6	/
+ 1. gutter	5.7	✓42.8	/
"	5.3	✓43.2	/
♀	5.2	✓43.3	/
"	5.6	✓42.9	/

248.49

Juniper St.

	248.5	✓		66
cl. in dirt gutter	6.0	✓42.5	✓	
+ 1 on E. dirt path	5.8	✓42.7	✓	
+ 1 " flower bed to E.	5.3	✓43.2	✓	
S. " " " " E	5.3	✓43.2	✓	
S. on E. edge dirt path	5.8	✓42.7	✓	
238' E. of E. cl.				
Gum Tree 12' S. of N. line		34" Diam		
255' E. of S. cl. 6 th				
Gum Tree 4' S. of N. line				
275' E. of E. cl. Linol th				
S. flower bed	4.4	✓44.1	/	
S + 6 Gum Tree 16" Diam	4.4	✓44.1	/	
cl. flower bed	4.6	✓43.9	/	
+ 1. gutter	5.5	✓43.0	/	
"	5.0	✓43.5	/	
♀	4.7	✓43.8	/	
"	4.8	✓43.7	/	
cl. in gutter	4.9	✓43.6	/	
+ 1 Lawn	4.3	✓42.2	/	
N	3.7	✓44.8	/	
290' E. of E. cl. 6 th				
N. Lawn	3.5	✓45.0	/	
+ 10 "	3.9	✓44.6	/	
+ 11 gutter	4.5	✓44.0	/	
cl.	4.5	✓44.0	/	
"	4.4	✓44.1	/	

248.49
290' E. of E. d. Lth (con)

±	248.5 7.3	✓462 /
14	4.7	✓438 /
cl	5.1	✓436 /
+ 2 gutter	5.1	✓434 /
+ 3 flowerbed	4.5	✓460 /
S " "	4.5	✓460 /

302' E. of E. d. Lth

S. flower bed	4.5	✓440 /
+4 " "	4.5	✓440 /
+5 gutter	5.1	✓436 /
S. d. line	4.9	✓436 /
14	4.4	✓441 /
±	4.1	✓446 /
14	4.1	✓446 /
N. d. line	4.4	✓441 /
+12 gutter	4.1	✓446 /
Non lawn	3.5	✓450 /

305' E. on N. line } W. line Dirt Road = 7th St.
312' " " S " }

N. edge Roadway	4.0	✓445 /
N. d. line	4.0	✓445 /
N 14	3.9	✓446 /
±	4.0	✓445 /
S. 14	4.3	✓442 /
S. d. line	4.5	✓440 /
S. line	5.0	✓455 /

0+50

E-15	14.0	170.8
E	9.9	174.9
+15	9.2	175.6
+1.7	7.5	177.3
⊕	7.3	177.5
+7	6.8	178.0
W.	5.7	179.1

0+60

W	5.5	179.3
+4	6.6	178.2
⊕	7.3	177.5
+8.4 Fence	7.6	177.2
+9	9.7	175.1
E	10.1	174.7
+15	14.2	170.6

0+63

-15	14.0	170.8
E	10.1	174.7
+1.6 = N. End. Lattice Fence	9.4	175.4
+7	7.3	177.5
⊕	7.2	177.6
+6	6.5	178.3
W	5.6	179.2

1+00

W	5.9	178.9
⊕	6.4	178.4

+5	6.8	178.0
E	9.9	174.9
+8	12.3	172.5
+15	13.7	171.1

1+40.25 = S. Line E+W. Alley

E	9.5	175.3
+4	8.8	176.0
+9	6.0	178.8
⊕	5.9	178.9
W.	5.4	179.4

1+50.25 ⊕ E+W. Alley

W	5.2	179.6
⊕ on Hub.	6.14	178.63
+2	6.2	178.6
E.	9.0	175.8

1+60.25 = N. Line E+W. Alley.

E	9.5	175.3
+3	8.8	176.0
+8	5.8	179.0
⊕	5.6	179.0
W.	5.0	179.8

11. W. of W. Line = ⊕ Door^{south} entrance Garage dirt floor.
 W-11. = dirt floor

3.4 181.4

✓
184.77

2+00 = S. Side garage on W. Dir. floor on W. Lin
Door hangs in Alley

w	4.2	180.6
+2	4.4	180.4
+4	5.6	179.2
⊥	5.9	178.9
+3	5.9	178.9
E.	9.5	175.3
+10	11.7	173.1
+13	14.5	170.3
+15	14.5	170.3

2+32 E.

E - 15	12.9	171.9
E - 10	11.6	173.2
E	6.8	178.0
⊥	6.6	178.2
+7	6.1	178.7
+9 = S. End, Lattice Fence Wooden Wall	5.1	179.7
w	4.0	180.8

2+50

w	5.0	179.8
+0.6 = N. End. above wall & Fence	5.7	179.1
⊥	6.6	178.2
E	6.7	178.1
+10	7.9	176.9
+15	12.5	172.3

✓
183.27

T.P. — 4.72 — 183.27 — 6.22 — 178.55 —

✓
183.27

70

2+75

E - 15	11.5	171.8
E - 10	9.6	173.7
E	5.2	178.1
⊥	4.4	178.5
w	4.5	178.8

2+84 garage on W. under House out floor 3' Back.

w - 3' = floor	5.69	177.58
w	5.6	177.8
+7	4.7	178.6
⊥	4.7	178.6
E	5.2	178.1
+10	9.6	173.7
+12.5	11.5	171.8

3+0 30 = S. Line F. St.

E - 15.	12.0	171.3
E - 10.	11.0	172.3
E - 3.	6.5	176.8
E	5.7	177.6
⊥	5.1	178.2
+8	4.5	178.8
w	3.4	179.5

14' N. = S. of Lin - G. St.

w	4.0	179.3
+2	4.8	178.5
⊥	5.3	178.0
E.	5.1	177.6

153.33

1+25

-10	9.8	143.5
N	10.2	143.1
±	10.0	143.3
S	10.5	142.8
+10	11.1	142.2

← T.P. — 0.16 — 140.64 — 12.85 — 140.48 —

1+50

-10	2.7	137.9
S	3.0	137.6
±	3.4	136.8
N	3.8	136.8
+10	3.4	137.2

1+75

-10	8.7	131.9
N	9.0	131.6
±	9.2	131.4
S	9.3	131.3
+10	9.0	131.6

2+00

-10	13.7	126.9
S	13.0	127.6
±	13.1	127.5
N	13.3	127.3
+10	13.3	127.3

← T.P. — 3.34 — 131.32 — 12.66 — 127.98 —

131.32

2+25

-15	6.2	125.1
N	6.4	124.5
±	6.5	124.8
S	6.5	124.8
+15	6.7	124.6

2+40

-15	8.8	122.5
S	8.7	122.6
±	8.5	122.8
N	8.1	123.2
+15	7.9	123.4

2+65

-15	7.0	124.3
N	7.5	123.8
±	8.0	123.3
S	8.1	123.2
+15	8.4	122.9

2+80 = W Line

S	5.3	126.0
± on Hub.	5.48	125.84
N	5.3	126.0

← T.P. — 4.97 — 135.57 — 0.72 — 130.60 —

72

135.57
 (E+W) Alley 140' W. of 27th
 14' N. of S. Line = S. d. Line F. St.

-10	5.0	130.6
W	4.0	131.6
±	1.9	133.7
E	0.2	135.4

0+00 = S. Line F. St.

E	1.0	134.6
±	2.7	132.9
W	4.5	131.1
+10	5.6	130.0

0+06

9.5 E of ± N.E. Cor garage under House Dirt-floor N. Entrance

W-10	6.3	129.3
W	4.6	131.0
±	2.5	133.1
+9.5	2.5	133.1
E = floor of garage	1.0	134.6

0+28

E Top. concrete wall to S.
 Top. Foundation to N

±	1.4	134.2
+0.7 S.W. cor. above House	3.4	132.2
±	4.0	131.6
W	5.1	130.5
+10	7.1	128.5

0+48

5' W. of ± = Pepper Tree 24" Diam

135.57
 0+50

73

-10	8.1	127.5
W	6.5	129.1
±	5.2	130.4
+9.5	4.5	131.1
E = S. End Top. of wall	2.5	133.1
E ground. to South	4.5	131.1

0+83

E Line = ± Pepper Tree 24" Diam

1+00

E	3.5	132.1
±	6.0	129.6
W	6.9	128.7
+10	8.2	127.4

1+40¹⁵ = N. Line E+W. Alley

W	9.6	126.0
±	7.9	127.7
E	5.5	130.1

1+50¹⁵ = ± E+W. Alley

E	6.3	129.3
± Top M.H.	6.36	129.21
W. Hub.	9.73	125.84

1+60¹⁵ = S. Line E+W. Alley

±	9.6	126.0
±	8.4	127.2
E	6.8	128.8

135.57

1+80

E	7.7	127.9
±	9.4	126.2
W	10.4	125.2
+10	11.7	123.9

2+00

-10	13.5	122.1
W	12.2	123.4
±	11.3	124.3
E	9.2	126.4

2+50

E	12.3	123.3
+1.3 = N. End. Fence	12.6	123.0
±	13.8	121.8
W.	15.4	120.2
+5 in wash.	15.8	119.8
+10	15.4	120.2

2+80

-10	15.2	120.4
W	16.2	119.4
+5 = wash	16.7	118.9
±	15.6	120.0
E = Fence	14.6	121.0

3+00³ = N. Lin. G. St.

E = S. End. ^{above} Fence	15.2	120.4
± Wash	16.9	118.7
W.	16.0	119.6
+10	15.1	120.5

135.57

14.5 = N. d. Lin. of G. St.

74

-10	14.9	120.7
W	15.6	120.0
± = wash	16.9	118.7
E	15.7	119.9

T.P. — 12.71 — 148.14 — 0.14 — 135.43 —

T.P. — 12.62 — 160.20 — 0.56 — 147.58 —

T.P. — 12.86 — 172.88 — 0.18 — 160.02 —

T.P. — 11.64 — 184.45 — 0.07 — 172.81 —

chk. orig BM

12.44 171.97 = 171.99 ✓

X sec alley 15' wide
 Bet. 35th & Wilson
 Meade & Madison Monroe
 BIK A TUALTA HTS

Meade
 11-20-37

Indexed
 C.S.K.

394.28

NWBP	6.08	394.28	388.20	Meade Wilson
	N.E. Meade = 0+00			
E. ob		6.35	387.93	
" pav		6.55	387.73	
C "		6.79	387.49	
W "		6.69	387.59	
" ob		6.40	387.88	
	0+15			
W		5.3	389.0	
C		5.0	389.3	
E		4.9	389.4	
	0+25			
- 1.2 SW Con Stucco Res.		4.3	390.0	Note 1
E		4.3	390.0	owner says
C		4.5	389.8	only 8" footing
W		4.8	389.5	on foundation
	0+50			
W		4.3	390.0	
C		4.0	390.3	
E		3.8	390.5	
+ 1.2 = Res		3.8	390.5	
	0+66			
- 1.2 NW Con Stucco Res.		3.9	390.4	
E		3.8	390.5	

C		3.8	390.5
W		4.1	390.2
	0+90		
W		4.0	390.3
C		3.8	390.5
E		3.9	390.4
	+ 2.5 E 12' Con. Apron	3.84	390.44 Level
	+ 7.5 " Sin. gar con. floor	3.53	390.75
	1+42		
- 3	Sin. gar dirt fl.	4.1	390.2
E		3.9	390.4
C		3.7	390.6
W		3.7	390.6
	1+75		
W		3.5	390.8
C		3.5	390.8
E		3.4	390.9
	2+00		
E		3.4	390.9
C		3.2	391.1
W		3.3	391.0
	2+50		
W		3.0	391.3
C		3.1	391.2
E		3.2	391.1

3700

E		3.3	391.0
C		3.2	391.1
W		3.2	391.1
T.P.	6.00	397.59	3.13 391.15
	3750		
W		6.0	391.6
O		6.1	391.5
E		6.3	391.3
	4700		
E		6.0	391.6
C		6.0	391.6
W		6.0	391.6
	4750		
W		5.9	391.7
C		5.8	391.8
E		5.8	391.8
	4761		
- 8 S.W. 900 con. fl.		5.36	392.23
E		5.4	392.2
C		5.4	392.2
W		5.5	392.1

4786

W		4.7	392.9
O		4.7	392.9
E		5.0	392.6
+ 8 S.W. 900 con. fl.		5.11	392.48
	5700		
E		4.7	392.9
O		4.7	392.9
W		4.8	392.8
	5750		
W		4.9	392.7
C		4.9	392.7
E		5.0	392.6
	5785		
E		5.4	392.2
C		5.3	392.3
W		5.1	392.5
	6400.18 = 54 Madison Monroe		
W top cb		5.86	391.73
" par		6.05	391.54
C "		6.14	391.19
E "		6.08	391.51
" top cb		5.87	391.72
T.P.	238	393.53	6.44 391.15
T.P.	262	391.56	4.59 388.74
NW 3P	3574 Meade		4.65 386.91 386.87
" Wilson "			3.35 388.21 388.20

Moore
1-16-40

184.53 ✓

1/4 Sec N 1/4 S alley 140' E of 26th
Blk 37 Parish & Loomis Sub.
Sec P. 48

SWBP 12.34 184.53

171.99 26th & G St

0-14 N. of G St.

W 2.0 180.1

C 2.2 180.3

E 5.5 179.0

00 N. of G St.

-10 10.3 174.2

F 7.7 176.8

+1.8 S end hat. fence

+4 5.0 179.5

C 4.7 179.8

+5 4.6 179.9

W 3.3 181.2

+1 S end ^{stucco} con. wall 2.4 181.9 Base ↓

0 + 14

-1 N " " 2.4 182.1 ↓

-0.2 14" Tol. Pole

W 2.4 182.1

+5 5.1 179.4

C 5.2 179.3

C + 6

+9 fence

F

+10

0 + 25

-10

E

+1

+5

C

+5

W

+1 House fd.

0 + 50

W

C

+4

E fence

+2

+10

0 + 43

-10

-2

E N end fence

+5

C

W

5.5

179.0 ⁷⁷⁷

9.0

175.5

12.1

172.4

12.4

172.1

8.8

175.7

6.8

177.7

5.7

178.8

5.4

179.1

5.0

179.2

8.9

180.6

3.9

180.6

5.2

179.3

5.8

178.7

6.1

178.4

7.8

176.7

9.9

174.6

12.3

172.2

12.2

172.3

9.9

174.6

8.3

176.2

6.3

178.2

5.9

178.6

5.3

179.2

Reduced 1-17-40
Plot. on Profile 2696
C.B.H.

184.53

1+00

-1.2	W end Con. wall	5.4	179.1
W		5.4	179.1
+0.4	10" P.P.		
c		5.7	178.8
+4		4.2	178.3
E		8.4	176.3
+4		11.0	173.5
+10		11.9	172.6

1+04

W-1.2	9' 6" Con. walk	5.4	179.37
-------	-----------------	-----	--------

T.P.	5.4	183.94	5.83	178.70
------	-----	--------	------	--------

1+09

W-5.4	SL 4 Car gar ^{dirt}	4.65	Bot. door	179.29
-------	------------------------------	------	-----------	--------

1+40.15 SL alley E

-10		10.7	173.2
-3		8.8	175.1
E		6.6	177.3
+4		5.1	178.8
C		4.8	179.1
W		4.6	179.3

1+47

W-5.7	NL 4 can gar ^{dirt}	4.64	179.30
-------	------------------------------	------	--------

183.94

78

1+48

W-3.3	9' 3" walk Con	4.5	179.79
	1+50.15 E alley E		
W		4.3	179.6
c		4.8	179.1
+5		5.0	178.9
E		7.7	176.2
+10		10.9	173.0
	1+40.15 N 4 alley E		

-10		10.8	173.1
E		8.8	175.1
+1		4.4	177.5
+5		5.1	178.8
e		4.7	179.2
W		4.2	179.7

1+44

E+1.1	Send Top ^{wedge}	4.42	177.52	0.7	Con wall
-------	---------------------------	------	--------	-----	----------

1+79

-11	8' gar dirt	2.4	181.5	Entrance
W		4.4	179.5	
c		4.8	179.1	
+5		5.3	178.6	
+9	Top wall	6.31	177.63	
E		8.5	175.4	
+7	against house	12.2	171.7	

183.94

1+97			
E + 0.9	N. end wall	4.51	177.43
2+00			
-10		12.5	171.4
E		8.5	175.4
+1		4.8	177.1
+4		5.5	178.4
C		5.1	178.8
+5		4.8	179.1
W	Send gar dirt	3.5	180.4
2+12			
W + 0.8	14" P.P.		
2+32			
W + 0.5	Send Lat fence		
2+50			
W + 0.5	N " "	5.0	178.9
C		5.8	178.1
E		6.2	177.7
+10		10.8	173.1
T.P.	4.68	182.89	5.73 178.21
2+75			
-10		10.2	172.5
E		4.9	178.0

182.89

79

c		4.2	178.5
+7		4.5	178.4
W		3.8	179.1
+2.5	against House	2.9	180.0
2+84			
W - 3	E gar cent	5.30	177.59
W		5.1	177.8
+6		4.2	178.5
c		4.2	178.5
E		4.9	178.0
+10		10.2	172.5
3+00.30	SL F 5x		
-10		10.7	172.2
E		5.1	177.8
c		4.8	178.1
+8		4.2	178.7
W		3.5	179.4
+4		1.6	181.3
506	F 5x		
W		3.9	179.0
+4		4.7	178.2
C		4.9	178.0
+9		5.2	177.7
E		4.0	176.9
+10		10.9	172.0

DIRECTIONS FOR USE OF TABLES

TABLE No. 1.

Distance of slope stake from side or shoulder stake for any width roadway, slope 1 1/2 to 1. If ground is nearly level, the cut or fill at side stake is located by the double entry method in left column and top row. The number in body

from side stake to slope stake. If ground is not level, the amount of cut or fill is found by the amount of cut or fill and the amount in table. Set up rod at this point, and line of sight should cut target.

IMPROVED TABLES
AND
INFORMATION

TABLE No. 2.

To find Tangent and External for curve of any other degree, divide by degree of curve and add correction found in column of correction. Degree of curve with a given I may be found by dividing tangent (or external), opposite I by given tangent (or external). The distance from a point on the tangent to the curve is very nearly the square of the tangent length divided by twice the radius.

125.01
 146.75
 11.32
 135.43
 8.93
 144.36
 0.34
 143.82
 3.5
 122

ENGINEERING DEPARTMENT
 CITY OF SAN DIEGO
 CALIFORNIA

125.00
 125.00
 130.00

Bot pipe 22.56
 10.13
 32.69

Bot Box 12.12

125
 15
 161.58
 124
 14
 439.58

200
 138
 42
 145
 78.0

171.99
 12.79
 184.77
 6.22
 178.55
 4.72
 183.27
 9.53
 173.74
 4.21
 177.95
 12.64
 165.31
 0.74
 166.09
 12.48
 153.61
 0.22
 153.33
 12.85
 140.48
 0.16
 140.64
 12.66
 127.98
 3.34
 131.32
 3.73
 130.60
 4.97
 135.57
 0.14
 135.43
 12.71
 148.14
 0.56
 147.58
 12.62
 160.20
 0.18
 160.02
 12.86
 172.88
 0.07
 172.81
 11.64
 184.45
 12.48
 171.77

50
 75
 85
 110

125
 15
 161.80
 124
 14
 439.80

440.15
 439.80
 35