

1357

PASTS

LEVEL BOOK

No. 330 F

1357

*Two ordered to pp 52 25 pp 148*

ENGINEERING DEPARTMENT,  
CITY OF CALIFORNIA, SAN DIEGO.

MICROFILMED  
DEC 23 1964

1012  
6  
9609

Our Leather Bound Engineers Note Books are carried in the following rulings:

- No. 380 LEVEL BOOK. Left and Right Hand Page the same as Left Hand Page of this Book.
- No. 382 FIELD BOOK. Left Hand Page as in this Book, Right Hand Page 4 x 4 to the inch, Center Line Red.
- No. 384 MINING TRANSIT BOOK. Left Hand Page as in this Book, Right Hand Page 8x8 to the inch, Center Line Red.
- No. 385 FIELD BOOK. Left Hand Page as in this Book, Right Hand Page 8 vertical and 4 horizontal lines to the inch, Center Line Red.

We also carry the Note Books listed above, bound in extra strong Fabri-Hide (otherwise the same quality of book), which can be furnished at a somewhat lower price.

In ordering Fabri-Hide covered books, add the letter "F" to catalog number.

**THE FREDERICK POST CO.**  
ENGINEERING and DRAFTING SUPPLIES  
IRVING PARK STATION  
CHICAGO, ILL.

ENGINEERING DEPARTMENT  
CITY OF CALIFORNIA, SAN DIEGO.

Winnett St slope stakes set	1
Xsec. Lowell St - Rosecrans to Bay	3
" " F. St. 28 <sup>th</sup> to 30 <sup>th</sup>	8-18
" " College Way El Cajon Ave to Arava	19-

Xsec Olive Fairmount to Highland	26
" " 44 <sup>th</sup> at Olive	34
" " Alleys adjacent to Olive	34-35
" " Monroe Ave - 40 <sup>th</sup> to Central	45
" " OLIVE Fairmount to 44 <sup>th</sup>	47
" " Alley Blk 8 Wilshire Place <sup>Monroe</sup> Meade	53
" " Date St. 6 <sup>th</sup> to 9 <sup>th</sup>	57
" " Alley Blk 1 Corcoran's Add	65
X SEC ALLEY BLK 3 EASTGATE	76-80

7-10-29 Slope stakes East side Winnett  
 J.C. Bliss Tooley to Lemon Grove Blvd  
 Ranner  
 Osborn Stakes 1/2 to 1

1

Sta	E.L. Grade	Cut or fill at E.L.	Outs
N.H. Tooley	412.4	C 6.0	V
0+25	411.4	C 6.9	V
0+50	410.1	C 6.6	V
0+75	408.3	C 7.2	V
1+00	405.9	C 4.5	V
1+25	402.9	C 2.9	V
1+50	399.5	C 1.9	V
1+75	395.9	C 2.9	V
2+00	392.3	C 1.2	V
+25	388.7	C 1.3	V
+50	385.1	F 0.4	1.0
+75	381.5	F 2.8	3.0
3+00	378.0	F 3.3	4.0
+25	374.4	F 6.0	5.5
+50	370.8	F 10.1	8.0
+60		F 9.0	7.4
+75	367.4	F 7.4	6.5
4+00	363.9	F 6.0	7.0
+25	360.9	F 6.6	6.0
+50	357.7	F 6.9	6.0
+75	355.0	F 5.2	4.5
5+00	352.5	F 4.1	4.3
+25	350.0	F 4.7	4.5
+50	347.5	F 4.2	4.5
+75	345.0	F 3.2	3.6

Sta	Grade	at E.L.	Out
6+00	342.5	F4.1	4.0
+25	340.0	F3.8	5.0
+50	337.5	F2.8	3.2
+75	335.0	F3.5	4.0
7+00	332.5	F2.7	3.2
+25	330.0	F2.6	3.0
+50	327.5	F2.9	3.0
+75	325.2	F3.7	3.8
8+00	323.1	F4.1	5.0
+25	321.2	F4.6	5.0
+50	319.6	F5.7	6.5
+75	318.1	F6.6	8.0
9+00	316.8	F8.9	9.5
+25	315.7	F9.3	14.0
+50	314.5	F7.5	15.8
+75	313.4	F6.9	17.0
10+00	312.1	F5.1	13.0
+25	310.6	F5.4	14.0
+50	308.7	F7.1	16.3
+75	306.5	F7.6	13.5
11+00	304.0	F7.4	13.0
+25	301.2	F5.7	10.0
+50	298.0	F5.5	16.5
+75	294.8	F4.4	14.0
12+00	291.6	F2.7	8.2

C. J. Wall

12+25	288.4	F0.8	1.5
12+50	285.2	F0.6	1.0
+75	282.0	C0.3	✓
13+00	278.8	C4.0	✓
+25	275.6	C1.2	✓
13+25			
13+50			
13+75	274.1	F0.7	1.0

2

7-10-1907 X-section Lowell St  
 J.C. Bliss  
 Ranner Rosecrans to San Diego Bay  
 Osborn 70' Wide 18' cbs - 34" Roadway

B.M. S.W.B.P. Lowell & Rosecrans 806.

+3.05

π 11.11

E.L. Rosecrans = 0+100

S	3.5	7.6
cb	3.4	7.7
♀	3.3	7.8
cb	3.5	7.6
N	2.7	8.4
0+25		
N	2.4	8.7
cb	2.3	8.8
+v	4.1	7.0
♀	3.3	7.8
+14	4.2	6.9
cb	3.4	7.7
S	3.1	8.0
0+50		
S	3.9	7.2
cb	4.2	6.9
+v	4.3	6.8
+4	4.7	6.4
♀	3.9	7.2
+13	4.3	6.8
cb	2.8	8.3

Plotted 7-19-29 - G.M.L.

π 11.11

3

N	2.6	8.5
0+75		
N	4.3	6.8
cb	4.4	6.7
+4	5.0	6.1
♀	4.5	6.6
cb	5.0	6.1
S	4.9	6.2
1+00		
S	5.5	5.6
cb	5.5	5.6
♀	5.1	6.0
cb	5.1	6.0
N	4.8	6.3
1+50		
N	6.2	4.9
cb	6.3	4.8
♀	6.2	4.9
cb	6.6	4.5
S	6.7	4.4
2+00		
S	7.8	3.3
cb	7.9	3.2
♀	7.4	3.7
cb	7.5	3.6

T 11.11

T 5.71

4

E.L. Scott = 0.400

N	7.4	3.7
	2.50	
N	8.6	2.5
cb	8.8	2.3
♀	8.6	2.5
cb	9.0	2.1
S	9.0	2.1
3400 = W.L. Scott		
S	9.9	1.2
cb	7.9	1.2
♀	9.6	1.5
cb	9.7	1.4
+10	7.4	1.7
N	8.8	2.3
T.P.		-9.74 1.39

70' wide 34' Roadway  
12.00

+434

T 5.71

♀ Scott

N	31	2.6
+7	4.2	1.5
cb	4.4	1.3
♀	4.6	1.1
cb	4.6	1.1
S	4.7	1.0

S	56	0.1
cb	54	0.3
♀	50	0.7
cb	50	0.7
+10	4.9	0.8
N	3.2	2.5
0.50		
N	38	1.9
+5	4.9	0.8
cb	5.5	0.2
♀	5.7	0.0
cb	6.1	-0.4
S	6.2	-0.5
1.00		
S	6.3	-0.6
cb	6.0	-0.3
♀	5.8	-0.1
cb	5.6	+0.1
+17	5.3	+0.4
N	4.3	+1.4
1.50		
N	3.7	+2.0
+5	5.5	+0.2
cb	6.0	-0.3
♀	6.1	-0.4

T 5.71

cb	6.3	-0.6
S	6.2	-0.5
	2+00	
S	5.8	-0.1
cb	6.5	-0.8
¢	6.1	-0.4
cb	6.1	-0.4
+12	5.7	+0.0
N	4.5	+1.2

2+50

N	3.8	+1.9
+5	5.7	0.0
cb	6.0	-0.3
¢	6.3	-0.6
cb	6.2	-0.5
S	6.2	-0.5

3+00 = shafter

S	6.1	-0.4
cb	6.4	-0.7
¢	6.3	-0.6
cb	6.3	-0.6
+12	6.2	-0.5
N	3.8	+1.9

T 5.71

¢

N	4.1	+1.6
+5	6.3	-0.6
cb	6.4	-0.7
¢	6.2	-0.5
cb	6.4	-0.7
S	6.4	-0.7
T.P.		-6.28 (-0.57)

+5.27

T 4.90

E.L. shafter = 0+00

S	5.0	-0.3
cb	5.6	-0.9
¢	5.4	-0.7
cb	5.2	-0.5
+12	5.0	-0.3
N	3.0	+1.7

0+50

N	2.6	+2.1
+5	4.9	-0.2
cb	5.0	-0.3
¢	5.3	-0.6
cb	5.3	-0.6
S	5.2	-0.5

5



π 4.70

1+00

S	4.7	00
cb	5.1	-04
φ	4.9	-02
cb	4.6	+01
HV	4.4	+03
N	2.8	+19

1+18

N	2.7	+20
+S	4.7	+00
cb	4.8	-01
φ	4.8	-01
cb	4.4	+03
S	3.8	+01

1+25

S	6.4	-17
+7	4.4	+03
cb	5.3	-06
φ	4.5	+02
cb	4.8	-01
HV	4.8	-01
N	2.9	+18

1+50

N	3.1	+1.6
+S	4.4	+03
cb	3.9	+08

π 4.70

6

φ	6.5	-18
cb	7.1	-24
S	6.8	-21

1+75

S	6.1	-14
cb	6.5	-18
φ	6.9	-22
cb	6.8	-21
+HV	6.2	-15
N	4.0	+07

2+00

N	6.3	-16
cb	6.8	-21
φ	6.4	-17
cb	5.6	-09
S	7.3	-26

2+25

S - Water's edge	8.8	-41
cb	7.4	-27
φ	5.8	-11
cb	6.0	-13
N	6.0	-13

2+50

N	5.6	-09
cb	6.4	-17

π 470

€ 7.8 -31

cb - Water's edge 9.3 -46

2475

€ = Water's edge 9.3 -46

cb 8.2 -35

N 6.7 -20

3405

N = Water's edge 9.2 -45

B.M. S.W. Prop Hub -5.25 (-0.55)

+5.52 4.97

B.M. Nails in Pole Lowell + Scott -3.08 1.89

T.P. -2.00 2.97

+858 11.55

B.M. S.W. B.P. Lowell + Reservoirs 3.44 8.11

Correct 8.06

7

80' wide F. 5T. X Sec. 30<sup>th</sup> to R8<sup>th</sup> 8-22-19  
 14' els miller  
 13' 1/4s  
 5' ent walk 4.5 from ct.

3M. R10 169.09 166.99 + F.S.T. 5E. 30<sup>th</sup>

00 = N. line 30<sup>th</sup> ST.

s ent. cl	2.00	167.1	
gutter pavmt	2.59	166.50	
"y "	1.80	167.29	
⊕ "	1.13	167.96	
"y "	0.81	168.28	
gutter "	0.66	168.43	
N. ent. cl	0.00	169.09	
	50' W		
N. ent. cl	0.76	168.33	
gutter	1.6	167.5	
"y	1.8	167.3	
⊕	1.8	167.3	
"y	2.2	166.9	
gutter	3.0	166.1	
S. ent. cl	2.75	166.34	
	100' W		
S. ent. cl	3.50	165.59	
gutter	3.6	165.5	
"y	3.1	166.0	
⊕	2.5	166.6	
"y	2.4	166.7	
gutter	1.9	167.2	
N. ent. cl	1.51	168.58	167.58

Plotted 8-24-29 EAPB

169.09

125' W

8

N. ent. cl	2.11	166.98	
gutter	2.5	166.59	
"y	2.9	166.2	
⊕	3.1	166.0	
"y	3.8	165.3	
gutter	4.2	164.9	
S. ent. cl	4.08	165.01	
	150' W		
S. ent. cl	5.03	164.06	
gutter	5.4	163.7	
"y	5.0	164.1	
⊕	4.2	164.9	
"y	4.2	164.9	
gutter	3.6	165.5	
N. ent. cl	3.18	165.91	
	175' W		
N. ent. cl	4.50	164.59	
gutter	5.1	164.0	
"y	3.6	163.5	
⊕	5.8	163.3	
"y	4.6	162.5	
gutter	7.0	162.1	
S. ent. cl	6.55	162.54	

167.09  
200' W = W. End ent walk + cl on N.

S. ent. cl	8.50	160	59
gutter	8.9	160	2
"	8.5	160	6
⊕	7.7	161	4
"	7.8	161	3
gutter	7.0	161	5
N. End N. ent. cl	6.45	162	64
+ 4.5 = S. edge ent walk	6.35	162	74
+ 9.5 = N. " " "	6.25	162	84
+ 14 = N. line	5.8	163	3

201' W.

N	4.2	164	9
+ 5	6.0	163	1
cl	6.6	162	5
+ 1	7.1	162	0
"	7.9	161	2
⊕	7.8	161	3
"	8.6	160	5
gutter	9.0	160	1
S. ent. cl	8.60	160	49

249' W.

S. ent. cl	12.70	156	39
gutter	13.1	156	0
"	12.8	156	3
⊕	12.1	157	0
"	12.1	157	0

169.09

+ 13	11.9	157	2
cl	10.9	158	2
+ 8	10.6	158	5
N	8.8	160	3

250' W = E. End ent walk + cl on N.

N	10.8	158	3
+ 4.5 = N. edge ent walk	10.80	158	29
+ 9.5 = S. " " "	10.96	158	13
N. ent. cl	11.00	158	09
gutter	11.8	157	3
"	12.2	156	9
⊕	12.2	156	9
"	12.9	156	2
gutter	13.3	155	8
S. ent. cl	12.80	156	29

T.P. 2.10 156.01 13.18 155.91

300' W.

S. ent. cl	3.97	152	04
gutter	4.6	151	4
"	4.2	151	8
⊕	3.6	152	4
"	3.8	152	2
gutter	3.4	152	6
N. ent. cl	2.42	153	59

156.01  
325' W = W. End cmt. walk + ch. on S.

N. ent. ch	4.68	151.33
gutter	5.4	150.6
"4	6.0	156.0
±	5.6	150.4
"4	6.3	149.7
gutter	6.8	149.2
S. ent. ch	6.13	149.88
+ 4.5 = N. edge cmt. walk	6.00	150.01
+ 9.5 = S. " " "	5.90	150.11
.5	5.3	150.7

350' W. = W. End cmt. walk + ch. on N

S	7.5	148.5
+13	8.1	147.9
ch	9.2	146.8
"4	8.2	147.8
±	7.8	148.2
"4	8.0	148.0
gutter	7.7	148.3
N. ent. ch	6.92	149.09
+ 4.5 = S. edge cmt. walk	6.80	149.21
+ 9.5 = N. " " "	6.70	149.31
N.	6.3	149.7

352' W

N	5.4	150.6
+4	6.9	149.1
+12	7.2	148.8

156.01

F. 5F

10

ch	7.9	148.1
"4	8.1	147.9
±	8.0	148.0
"4	8.4	147.6
ch.	9.3	146.7
+1	8.3	147.7
S	7.8	148.2

375' W.

S.	9.0	147.0
+2	10.5	145.5
+13	10.5	145.5
ch.	10.9	145.1
"4	10.3	145.7
±	10.0	145.0
"4	9.9	146.1
+12	10.5	145.5
ch.	9.2	146.8
N.	9.0	147.0

400' W.

N	11.4	144.6
ch.	11.3	144.7
+1	11.9	144.1
"4	11.6	144.4
±	11.8	144.2
"4	12.2	144.8
+11	12.6	143.4

756.01

400' W. (con)

cb	11.9	144.1
+12	12.2	143.8
S.	11.0	145.0

T.P.	2.91	145.69	13.23	142.78
------	------	--------	-------	--------

425' W.

S	1.9	143.8
+3	3.2	142.5
cb.	2.8	142.9
+2	3.3	142.4
4.	3.0	142.7
φ	2.7	143.0
4	2.4	143.3
+13	2.6	143.1
cb	1.8	143.9
N	1.8	143.9

450' W.

N-30	17.6	138.1
N-20	17.0	138.7
N	3.2	142.5
+2	2.6	143.1
cb	2.4	143.3
+1	3.2	142.5
4	3.2	142.5
φ	3.5	142.2
4	3.6	142.1
+12	4.0	141.7

145.69

F 5+

11

cb	3.4	142.3
+12	4.1	141.6
S	4.8	140.9
+18	13.9	131.8
+30	13.0	132.7

475' W.

-35	17.1	128.6
-25	17.6	128.1
S	4.6	141.1
+6	3.5	142.2
+12	3.5	142.2
cb	4.5	141.2
4	4.2	141.5
φ	4.0	141.7
4	3.7	142.0
cb	3.8	141.9
+1	3.0	142.7
N	3.0	142.7
+23	17.7	128.0
+30	17.8	128.9

500' W. = E. Side 30" Ent. Pipe Culvert

-40	18.2	127.5
-30 = N. End ent. Intake	19.9	125.8
-24 = N. 30" Pipe	20.2	125.5
-24 Top Intake Wall	16.4	129.3
N.	3.9	141.8

Tax slope  
E.L.

145.69

500' W. (con)

+3		3.6	142.1
el		2.8	142.9
+0.5 = N.E. Cor. R'-4" x R'-4" grating	catch basin	4.00	141.69
1/4		3.6	142.09
1/4		4.0	141.69
1/4		4.2	141.5
+12.5 = S.E. cor 2'-4" x 2'-4" C.R. grating		5.1	140.6
el		4.7	141.0
+2		3.4	142.3
+11		3.8	142.9
S		6.0	139.7
+27.7 Top Wing wall at outlet		18.9	125.8
+27.7 outlet 30" Culvert		23.8	121.9
+33.7 S. end ent. spillway		24.1	121.6
+45		24.0	121.7
	525' W		
S-40		22.4	123.3
S-26		20.0	125.7
S		5.0	140.7
+2		3.4	142.3
+12		3.0	142.7
el		4.0	141.7
1/4		3.6	142.1
e		3.2	142.5
1/4		3.0	142.7
el		2.9	142.8

145.69

F ST

12

+2		2.3	143.4
+13		2.4	143.3
N		3.0	142.7
+2		2.6	143.1
+21		13.4	132.3
+30		14.0	131.7
	550' W		
N		0.7	145.0
+13		1.0	144.7
el		2.0	143.7
1/4		1.4	144.3
1/4		1.6	144.1
1/4		2.1	143.6
+11		2.8	142.9
el		1.8	143.9
+12		2.0	143.7
S		3.5	142.2
+30		21.6	124.1
+40		22.6	123.1
	601' W = E. line R9 <sup>th</sup> ST		
-27		11.4	134.3
-16		8.1	137.6
T.P.	13.07 158.60	0.16	145.53
S		10.5	148.1
+1		9.7	148.9
el		9.9	148.7

158.60  
E. Lin = 29<sup>th</sup> St (CON)

s, cl + 3	11.3	147.3
1/4	10.1	148.5
♀	9.6	149.0
1/4	9.5	149.1
cl	10.2	148.4
+ 2.	9.1	149.5
N	8.6	150.0

E. cl

N	9.0	149.6
cl	9.8	148.8
1/4	9.3	149.3
♀	9.2	149.4
1/4	9.8	148.8
+ 8	10.6	148.0
cl	10.3	148.3
S	10.1	148.5

E. 1/4

S	9.7	148.9
cl	10.0	148.6
+ 6	10.2	148.4
1/4	9.6	149.0
♀	9.2	149.4
1/4	9.0	149.6
cl	9.3	149.3
N	8.5	150.1

158.60  
E 29<sup>th</sup> St.

F 5<sup>th</sup>

13

N	8.2	150.4
cl	8.7	149.9
+ 1	9.1	149.5
1/4	8.8	149.8
♀	8.9	149.7
1/4	9.4	149.2
+ 7	9.7	148.9
cl	9.6	149.0
S.	9.1	149.5

W. 1/4

S	9.2	149.4
cl	9.1	149.5
1/4	9.1	149.5
♀	8.6	150.0
1/4	8.4	150.2
cl	8.5	150.1
N	8.4	150.2

W. cl

N	7.9	150.7
cl	8.0	150.6
1/4	8.0	150.6
♀	8.2	150.4
1/4	8.8	149.8
cl	8.6	150.0
S.	8.9	149.7



158.60  
00 = W. Line R 9<sup>th</sup> St

S.	8.0	150.6
el	8.1	150.5
"4	8.2	150.4
⊕	7.8	150.8
"4	7.6	151.0
el	7.5	151.1
N	7.2	151.4

25' W.

N	4.3	154.3
+2	5.2	153.4
el	5.4	153.2
+1	6.2	152.4
"4	5.9	152.7
⊕	6.0	152.6
"4	6.3	152.3
+10	6.8	151.8
el	6.0	152.6
+12	5.6	153.0
S	4.3	154.3

50.3 W = E. End cmt. walk + el. on N.

S	1.3	157.3
+2	2.7	155.9
el	3.0	155.6
+2	3.8	154.8
"4	3.5	155.1
⊕	3.0	155.6

158.60

F 5 P

14

"4	3.0	155.6
gutter	3.0	155.6
N. ent. el	2.05	156.55
+4.5 = S. edge cmt. walk	1.93	158.67
+9.5 = N " " "	1.86	156.74
N.	1.2	157.4
T.P.	12.46	170.50
	0.56	158.04

100' W = N. End cmt. walk + el. on N

N.	7.6	162.9
+4.5 = N. edge cmt. walk	8.22	162.28
+9.5 = S " " "	8.36	162.14
N. ent. el	8.47	162.03
gutter.	9.4	161.1
"4	9.5	161.0
⊕	9.0	161.5
"4	9.6	160.9
+10	10.0	160.5
el	8.7	161.8
S.	8.5	162.0

116' W.

E. End S. ent. step	5.35	165.15
+1.5 = S. E. cor. cmt. walk	6.43	164.07
el. on cmt. walk	6.83	163.67
+0.2 = N. E. cor. cmt. walk	6.87	163.63
+2	8.0	162.5
"4	7.7	162.8

170.50  
116' W. (con)

¢	7.2	163.3
1/4	7.7	162.8
+ 12	7.6	162.9
¢	6.8	163.7
+ 11	6.9	163.6
N.	6.3	164.2
122' W.		
N.	5.2	165.3
+ 3	5.9	164.6
¢	6.2	164.3
+ 2	6.8	163.7
1/4	7.0	163.5
¢	6.6	163.9
1/4	7.0	163.5
+ 10	7.5	163.0
+ 12.2 = N.W. cor emt. walk	6.87	163.63
¢	6.85	163.65
+ 12.2 = S.W. cor emt. walk	6.41	164.09
S on W. end emt. slet	5.33	165.17
150' W = E. End emt. walk & ¢, on N.		
S. + 0.3 Face Wall	3.8	166.7
¢	4.4	166.1
+ 3	5.1	165.4
1/4	4.6	165.9
¢	4.1	166.4
1/4	4.4	166.1

170.50

22.5

F. 57

15

gutter	4.6	165.9
N. emt. ¢	3.78	166.72
+ 4.5 = S. edge emt. walk	3.66	166.84
+ 9.5 = N " " "	3.56	166.94
N.	3.0	167.5
160' W Brk on curb.		
N. emt. ¢	3.05	167.45
gutter	3.7	166.8
1/4	3.6	166.9
¢	3.4	167.1
1/4	4.0	166.5
+ 10	4.5	166.0
¢	3.7	166.8
+ 13.7 Face Wall	3.2	167.3
185' W Brk		
S + 0.4 = Face wall	1.9	168.6
¢	2.3	168.2
+ 4	3.0	167.5
1/4	2.6	167.9
¢	2.1	168.4
1/4	2.4	168.1
gutter	2.4	168.1
N. emt. ¢	1.72	168.78

170.50

215' W. = Brk.

N. ent. el	0.94	169.56
gutter	1.4	169.1
"	1.5	169.0
±	1.3	169.2
"	1.7	168.8
+ 7	2.0	168.5
el	1.5	169.0
+13.6 = Face wall	1.1	169.4

225' W. = W. End ent. el. + walk on N.

S + 0.5 = W. End. Face wall	0.4	170.1
el	1.3	169.2
+ 4	1.7	168.8
"	1.5	169.0
±	1.1	169.4
"	1.2	169.3
gutter	1.3	169.2
N. ent. el	0.80	169.70
+ 4.5 = S. edge ent. walk	0.49	169.81
+ 9.5 = N " " "	0.59	169.91
+ 11	0.2	170.3
N	+ 1.0	171.50

T.P. 2.16 171.87 0.79 169.71 Back curb

235' W Brk

N	0.5	171.4
+ 6	2.0	169.9
el	2.3	169.6

171.87

F. St.

16

+ 1	2.8	169.1
"	2.6	169.3
±	2.5	169.4
"	2.8	169.1
+ 10	3.0	168.9
el	2.5	169.4
+ 8	2.0	169.9
S	1.3	170.6

260' W Brk

S	1.8	170.1
+ 3	2.9	169.0
el	3.2	168.7
+ 4	3.8	168.1
"	3.5	168.4
±	3.0	168.9
"	3.1	168.8
el	3.6	168.3
+ 1	2.8	169.1
+ 10	2.3	169.6
N	0.7	171.2

285' W Brk

N	2.7	169.8
+ 1	3.4	168.5
el	3.8	168.1
+ 1	5.1	166.8
"	4.4	167.5

171.87

285' W. (con)

±	4.2	167.7
1/4	4.6	167.3
+11	5.1	166.8
cl	4.3	167.6
+10	3.9	168.0
S	2.3	169.6
310' W. Brk.		
S	3.9	168.0
+4	5.4	166.5
cl	6.0	165.9
+2	6.7	165.2
1/4	6.2	165.7
±	5.8	166.1
1/4	6.2	165.7
+11	6.3	165.6
cl	5.2	166.7
+9	4.4	167.1
N	3.7	168.2
335' W. Brk.		
N	6.2	165.7
+3	7.4	164.5
cl	7.9	164.2
+2	9.0	162.9
1/4	8.6	163.3
±	8.2	163.7
1/4	8.8	163.1

171.87

F. St.

17

+8	9.2	162.7
cl	8.2	163.7
+10	7.8	164.1
S	5.9	166.0
360' W. Brk. E.V.C.		
S	8.4	163.5
+3	10.8	167.1
cl	11.5	160.4
+5	12.3	159.6
1/4	11.6	160.3
±	11.2	160.7
1/4	11.4	160.5
cl	11.6	160.3
+1	10.3	161.6
N	9.7	162.2
T.P.	0.12	159.05
410' W.		
N	3.2	155.9
+13	4.1	155.0
cl	4.8	154.3
1/4	4.6	154.5
±	4.4	154.7
1/4	5.0	154.1
+9	5.3	153.8
cl	5.0	154.1
S	3.6	155.5

159.05  
460' W.

S			8.9	150.2
+4			11.0	148.1
cb			11.1	148.0
+3			12.0	147.1
1/4			11.5	147.6
±			10.8	148.3
1/4			10.8	148.3
+11			10.8	148.3
cb			12.8	146.3
+1			10.0	149.1
+8			9.7	149.4
N			11.1	148.0
+5			7.3	149.8
T.P.	0.05	145.92	13.18	145.87
		510' W		
N			1.7	144.2
+3			2.9	143.0
cb			2.9	143.0
+2			4.6	141.3
+4			3.5	142.4
1/4			4.0	141.9
±			4.1	141.8
1/4			4.8	141.1
+12			5.0	140.9
cb			4.3	141.6
S			4.2	141.7

145.92

535' W.

F. ST.

18

S			7.6	138.3
cb			7.8	138.1
1/4			7.9	138.0
±			7.1	138.8
1/4			7.4	138.5
cb			6.6	139.3
+10			5.5	140.4
N			3.5	142.4
N			7.1	138.8
+4			8.1	137.8
cb			8.6	137.3
+2			9.3	136.6
1/4			9.2	136.7
±			9.6	136.3
1/4			10.6	135.3
cb			10.5	135.4
S			10.1	135.8
T.P.	12.91	154.36	4.47	141.45
T.P.	6.58	160.64	0.30	154.06
chk on B/M. Mon. N. W. 28 <sup>th</sup> & EST			3.25	157.39 = 157.40

College Way Cross Sections  
El Cajon Rte to Arava St

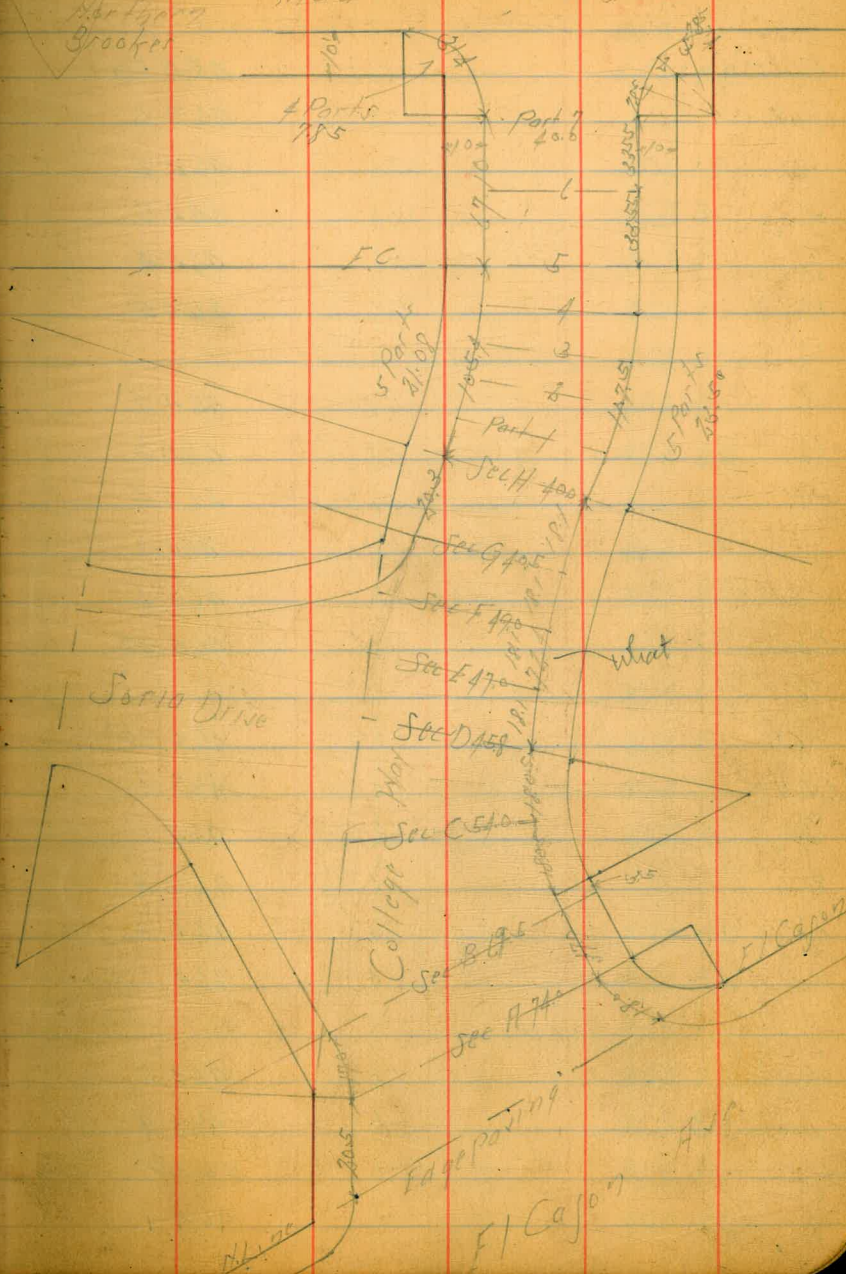
60' x 40'  
10' x 10'  
10' x 10'

BM	4.25	469.52	465.27	101.88 El Cajon Gibbs 14.224
N Top Cb		459	464.93	
Gutter		509	464.43	
1/4		493	464.59	
1/2		498	464.54	
3/4		523	464.29	
Gutter		555	463.97	
E Top Cb		493	464.59	
Sec A				
E Top Cb		472	464.79	74.00 11.95
Gutter		515	464.0	
1/4		513	464.2	
1/2		51	464.4	
3/4		48	464.7	
Gutter		49	464.6	
N Top Cb		463	464.89	
Sec B				
N Top Cb		465	464.90	69.5 11
Gutter		49	464.6	
1/4		49	464.6	
1/2		19	464.6	
3/4		55	464.0	
Gutter		57	463.8	
E Top Cb		488	464.64	

Plotted Oct 29 1919

10-23-19  
Survey  
McHugh  
Markings  
Brooker

Adams Ave 19



College May

469.52

Sec C

540 FCB West

F Top cb	506	464.50
Gutter	59	463.6
"	55	464.0
"	50	464.5
"	51	464.4
"	50	464.5

Sec D - Cb P.C.C. on F 158

"	52	464.3
"	52	464.3
"	51	464.4
"	53	464.2
Gutter	59	463.6
FCB	514	464.38

Sec E

170

FCB	520	464.32
Gutter	61	463.4
"	54	464.1
"	51	464.4
"	53	464.2
"	54	464.1

Sec F

190

"	60	463.5
"	51	463.9
"	52	464.3
"	51	464.1

469.52

20

Gutter	62	463.3
FCB	527	464.25

Sec G

105 Cb to Cb

FCB	537	464.15
Gutter	62	463.3
"	57	463.8
"	53	464.2
"	55	464.0
Gutter	61	463.4
FCB	511	464.28

Sec H - P.P.C. on F

" Cb	534	464.18
Gutter	62	463.3
"	51	463.9
"	54	464.1
"	58	463.7
Gutter	63	463.2
FCB	540	464.12

Part I

FCB	550	464.02
Gutter	62	463.3
"	59	463.7
"	54	464.1
"	57	463.8
Gutter	62	463.2
FCB	523	464.09

College Way

46352

Part 2

Hcb	548	464.04
Gutter	63	463.2
"	58	463.7
L	56	463.9
"	60	463.5
Gutter	64	463.1
Ecb	555	463.97

TP	114	16786	580	11372
----	-----	-------	-----	-------

Part 3

Ecb	400	463.86
Gutter	47	463.1
"	43	463.5
L	40	463.8
"	42	463.6
Gutter	49	462.9
Hcb	395	463.91

Part 4

Hcb	398	463.88
Gutter	50	462.8
"	46	463.6
L	41	463.7
"	44	463.4
Gutter	47	463.1
Ecb	401	463.80

Part 5 = EC

16786

21

Ecb	414	463.72
Gutter	49	462.9
"	46	463.2
L	42	463.6
"	43	463.5
Gutter	51	462.7
Hcb	408	463.78

Part 6

Hcb	418	463.68
Gutter	51	462.7
"	45	463.3
L	43	463.5
"	46	463.2
Gutter	50	462.8
Ecb	421	463.62

Part 7

= PC of 2090690		
Ecb	431	463.55
G	47	462.9
"	47	463.1
L	44	463.4
"	45	463.3
G	54	462.4
Hcb	426	463.64

S/A Ref 47

J End

	426	463.60
	433	463.53



College Hoy 467.86

2		429	463.57
3		421	463.60
4 = W End 20 R Return		424	463.62
	SE Return		
S End		432	463.54
1		433	463.58
2		426	463.60
3		434	463.62
4 = East End		415	463.71
	NE Return		
East End		447	463.39
1		456	463.30
2		461	463.25
3		467	463.19
4 = NE End		472	463.14
	NW Return		
W End		457	463.29
1		465	463.21
2		470	463.16
3		476	463.14
4 = NW End		468	463.18
	2 Adams		
1		45	463.3
Cb		58	462.6
14		48	463.0
2		44	463.4

467.86

22

14		47	463.1
Cb		51	462.4
Y		47	463.1
	10 ft of H.L. Adams - EC - 20 R Cb Return		
Y Cb		49	463.18
Gutter		57	462.1
14		49	462.9
2		48	463.0
14		52	462.6
Gutter		51	462.2
ECb		471	463.15
	50 ft of H.L. Adams		
ECb		486	463.00
Gutter		56	462.2
14		51	462.7
2		49	462.9
14		50	462.8
Gutter		58	462.0
W Cb		477	463.09
	100 ft		
Y Cb		495	462.91
Gutter		59	461.9
14		51	462.7
2		50	462.8
14		54	462.4
Gutter		60	461.8

College Day

46286

FCb	500	46286
	150 N	
FCb	522	46264
Gutter	60	4618
1/4	55	4623
1/2	52	4626
1/4	55	4623
Gutter	59	4619
FCb	504	46282
	200 N	
FCb	523	46263
Gutter	60	4616
1/4	51	4622
1/2	54	4624
1/4	57	4621
Gutter	63	4615
FCb	533	46253
	250 N	
FCb	548	46238
Gutter	64	4614
1/4	51	4622
1/2	54	4624
1/4	57	4621
Gutter	64	4614
FCb	537	46249
	300 N	

46786

23

FCb	558	46228
Gutter	65	4613
1/4	59	4619
1/2	51	4622
1/4	60	4618
Gutter	61	4612
FCb	561	46225
TP	425	46634
	350 N	
FCb	438	46206
Gutter	52	4611
1/4	46	4617
1/2	43	4620
1/4	46	4617
Gutter	52	4611
FCb	423	46211
	400 N	
FCb	437	46197
Gutter	53	4610
1/4	48	4615
1/2	44	4619
1/4	49	4614
Gutter	55	4608
FCb	441	46190
	450 N	
FCb	463	46171

## College Boy

466.34

Gutter	56	460.7
"	49	461.4
£	42	461.7
"	50	461.3
Gutter	55	460.8
Hcb	156	461.78
500N		
Hcb	471	461.63
Gutter	57	460.6
"	50	461.3
£	48	461.5
"	51	461.2
Gutter	57	460.6
FCb	477	461.57
1550N		
FCb	495	461.39
Gutter	58	460.5
"	52	461.1
£	49	461.4
"	50	461.3
Gutter	58	460.5
Hcb	489	461.45
600N		
Hcb	510	461.24
Gutter	60	460.3
"	52	461.1

24

466.34

£	50	461.3
"	54	460.9
Gutter	61	460.2
FCb	508	461.26
650N		
FCb	525	461.09
Gutter	62	460.1
"	58	460.5
£	51	460.9
"	56	460.7
Gutter	62	460.1
Hcb	525	461.09
700N - Break in Grade		
Hcb	549	460.85
Gutter	65	459.8
"	57	460.6
£	57	460.6
"	60	460.3
Gutter	65	459.8
FCb	538	460.96
750N		
FCb	623	460.11
Gutter	72	
"	66	
£	64	459.9
"	65	

College Way

466.34

466.34

25

G	71	
HCB	6.04	460.30
	800.11	
HCB	6.68	459.72
Gutter	7.6	
"	7.0	
"	7.1	459.2
"	7.3	
Gutter	7.8	
F.C.B.	6.87	459.47
	850.11	
F.C.B.	7.57	458.77
Gutter	8.3	
"	7.7	
"	7.5	458.8
"	7.7	
Gutter	8.2	
HCB	7.21	459.08
	870.11 = P.C. of 20 P. Returns = 10.5 of 8.2. 7.1000	
HCB	7.69	458.65
Gutter on line	8.50	457.84
"	8.1	
"	7.8	458.5
"	8.2	
Gutter on Conc.	8.95	457.39
F.C.B.	8.15	458.19

BN

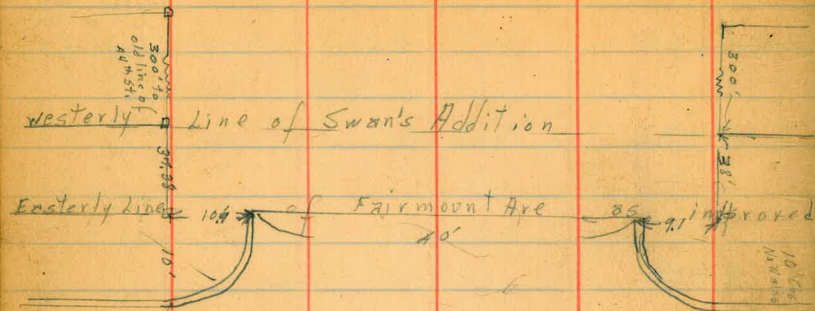
5.57

460.77

 8.17 on line  
 4.100 + 4.100  
 460.77

12/5/29  
Flood  
Pease  
Salisbury

X-section @ Olive St  
Fairmount to Highland  
60' wide 10' cbs, 10' 1/4"



Fairmount Ave. Paved

Detail of Intersection of Olive St with  
Easterly Line of Fairmount Ave and  
existing improvements

B.M.

297.19 S.E.B.P. Fairmount + Quince



12-9-29  
J.C. Bliss  
Drebert  
Kanev  
X-section Olive St. Fairmount  
to about 200' East of Highland  
60' wide - 10' cbs 10' 1/4"

B.M. S.E.B.P. Fairmount + Quince		297.19
23.71	300.90	
T.P. - N.E. Prop. Hub Fairmount + Olive	-590	295.00
+720		
	π 302.20	
E.L. Fairmount = 0100 - See sketch for location existing paving		
N	7.2	295.0
7pcb	6.94	295.26
6	7.55	294.65
1/4	7.65	
6	7.70	294.5
1/4	7.85	
6	8.03	294.17
7pcb	7.49	294.71
5	7.6	294.6
	0405	
5	5.9	296.3
cb	5.5	
1/4	5.6	
+1	5.6	
+3	6.4	
6	6.9	295.3
1/4	6.9	
+2	5.5	
cb	6.2	

Plotted  
T.G.H.

T 302.20

T 302.20

27

1400

N	6.7	295.5
	0+25	
N	5.4	296.8
cb	5.5	
1/4	5.8	
¢	5.7	296.5
1/4	5.6	
cb	5.6	
S	5.6	296.6
	0+50	
S	5.2	297.0
cb	5.2	
1/4	5.1	
¢	5.3	296.9
1/4	5.3	
cb	5.3	
N	5.3	296.9
	0+75	
N	5.0	297.2
cb	5.0	
1/4	5.1	
¢	5.3	296.9
1/4	5.1	
cb	5.1	
S	5.1	297.0

S	5.7	296.5
cb	4.9	
1/4	4.9	
¢	5.3	296.9
1/4	5.0	
cb	4.9	
N	5.0	297.2
	1+25	
N	5.2	297.0
cb	5.0	
1/4	5.4	
¢	5.5	296.7
1/4	5.6	
cb	5.5	
S	6.1	296.1
	1+50	
S	6.4	295.8
cb	6.1	
1/4	6.1	
¢	6.0	296.2
1/4	5.9	
cb	5.4	
N	5.5	296.7
Out 28. Concrete footing School Bldg	5.8	296.72

T 302.20

1475

N	6.0	296.2
cb	6.0	
1/4	6.2	
£	6.5	295.7
1/4	6.6	
cb	6.8	
S	6.5	295.7

2400

S	6.9	295.3
cb	6.7	
1/4	6.5	
£	6.4	295.8
1/4	6.3	
cb	6.1	
N	5.9	296.3

2425

N	5.4	296.8
cb	5.5	
1/4	5.6	
£	5.7	296.5
1/4	5.8	
cb	5.9	
S	6.3	295.9

T 302.20

2450

S	5.7	296.5
cb	5.5	
1/4	5.5	
£	5.5	296.7
1/4	5.3	
cb	5.3	
N	5.0	297.2

2475

N	5.0	297.2
cb	5.2	
1/4	5.2	
£	5.3	296.9
1/4	5.3	
cb	5.6	
S	5.5	296.7

3400

S	5.6	296.6
cb	5.5	
1/4	5.4	
£	5.5	296.7
1/4	5.2	
cb	5.2	
N	5.1	297.1

28

T 302.20

44th  
60' wide  
18" c 55  
101 1/2 25

W.L. 44th = 3738 S.L. + 3738 - N.L.

T 298.60

29

N	5.2	297.0	
cb	5.3		
1/4	5.5		
¢	5.7	296.5	
1/4	5.8		
cb	5.9		
S	6.2	296.0	
B.M. N.W. Prop Hub 44th x Olive	5.15	297.05	
+1.55			

T 298.60

w cb 44th

S	2.5	296.1	
cb	2.4		
1/4	2.3		
¢	2.1	296.5	
1/4	1.8		
cb	1.7		
N	1.5	297.1	
¢ 44th			
N	1.5	297.1	
cb	1.6		
1/4	1.7		
¢	2.2	296.4	
1/4	2.3		
cb	2.4		

S	2.5	296.1	
E cb 44th			
S	2.4	296.2	
cb	2.2		
1/4	2.1		
¢	1.7	296.9	
1/4	1.4		
cb	1.4		
N	1.3	297.3	
EL. 44th = 0+00			
N	1.4	297.2	
cb	1.8		
1/4	1.6		
¢	1.7	296.9	
1/4	2.0		
cb	2.2		
S	2.4	296.2	
0+25			
S	2.7	295.9	
cb	2.3	296.3	
1/4	2.2	296.4	
¢	1.8	296.8	
1/4	1.7	296.0	
cb	1.6	297.0	
N	1.3	297.3	



T 298.60

0450

N	1.8	296.8
cb	2.2	296.4
1/4	2.3	296.3
¢	2.6	296.0
1/4	2.7	295.9
cb	2.9	295.7
S	3.0	295.6

0475

S	3.4	295.2
cb	3.5	295.1
1/4	3.4	295.2
¢	3.3	295.3
1/4	3.2	295.4
cb	3.0	295.6
N	2.8	295.8

1400

N	3.6	295.0
¢	3.9	294.7
1/4	3.9	294.7
¢	4.0	294.6
1/4	4.1	294.5
cb	4.3	294.3
S	4.5	294.1

T 298.60

1425

Out 25-Floor New House	2.8	295.8
S	5.2	293.4
cb	5.0	293.6
1/4	4.9	293.7
¢	4.7	293.9
1/4	4.5	294.1
cb	4.4	294.2
N	4.3	294.3

1450

N	5.3	293.3
cb	5.5	293.1
1/4	5.6	293.0
¢	5.7	292.9
1/4	5.7	292.9
cb	5.9	292.7
N (S)	6.0	292.6

1475

N (S)	7.1	291.5
cb	7.2	
1/4	7.3	
¢	7.1	291.5
1/4	7.1	
cb	7.0	
N	6.6	292.0

30

T 29860

1769 to 1793 - Wall at N.L.  
 West end top wall 6.26 292.34  
 1781 & 4' walk flush with wall 6.32 292.28  
 East end top wall 6.47 292.13

2+00

N 8.7 289.9  
 cb 8.5  
 1/4 8.5  
 & 8.4 290.2

1/4 8.4  
 cb 8.2

S 8.0 290.6

2+25

S 10.0 288.6

cb 10.2

1/4 10.6

& 10.7 287.9

1/4 10.8

cb 10.9

N 11.2 287.4

B.M. N.W. Top Hub Olive & Alley Block 5.11 293.44

T 29860

31

2+50

N 15.3 283.3

cb 14.3

1/4 13.9

& 13.5 285.1

1/4 13.2

cb 12.9

S 12.4 286.2

T.P. 13.28 285.32

+1.06

T 286.38

2+75

S 2.9 283.5

cb 3.5

1/4 4.1

& 4.0 282.4

1/4 4.3

cb 5.4

N 7.2 279.2

3+00 = W.L. Highland - 80' wide

N 11.3 275.1

cb 10.8

1/4 10.2

& 9.4 277.0

1/4 8.4

cb 7.4

S 6.8 280.1

Note - Owing to tall brush - sections East of W.L. Highland are taken irregularly

T 286.38

Note W.L. Highland-East only 3 shots per section N - & - S.

& Highland

S 13.1 273.3  
 & 16.0 270.4  
 T.P. -13.23 273.15  
 +0.56

T 273.71

E.L. Highland = 0+100

& 12.5 261.2  
 S 8.6 265.1  
 T.P. -12.51 261.20  
 +0.23

T 261.43

0+25

S 2.4 259.0  
 & 4.6 256.8  
 Plotted T&H. 0+50  
 & 11.5 249.9  
 S 8.8 252.6  
 T.P. -12.95 248.48

T 248.56

0+75

S 3.9 244.7  
 & 6.7 242.4

T 248.56

32

1+00

& 13.9 234.7  
 T.P. -12.95 235.61

40.00

T 235.61

S 1.9 233.7

1+25

S 10.3 225.3

& 9.4 226.2

1+50

& 16.9 218.7  
 T.P. -12.97 222.64

+0.33

T 222.97

S 4.9 218.1

1+75

1+66-S.L. 10.2 212.8

1+70-S.L. Toe slope in water course 15.5 207.5

T.P. -12.51 210.46

+10.09 T 220.55

&

1+66- Toe slope 9.8 210.8

1+80- West bank water course 10.3 210.3

1+85- Bottom 12.0 208.6

T 220.55

N.L.

2+05 = Bottom water course	11.4	2092	
2+00 = West bank "	9.2	2114	
1+75 = Toe slope	7.7	2129	
1+50	1.9	2187	
T.P.		-0.42	220.13

+12.33 T 232.46

1+25	6.5	2260	
T.P.		-0.22	232.24

+12.90 T 245.14

1+00	12.5	2326	
0+75	4.7	240.4	
T.P.		0.07	245.07

+12.20 T 257.27

0+50	10.2	247.1	
0+25	3.7	253.6	
T.P.		-0.01	257.26

+12.45 T 269.71

0+00 = E.L. Highland	10.8	2589	
B.M. N.E. Prop. Hub Olive x Highland	10.75	258.96	
Q Highland	2.2		
T.P.		0.10	269.61

+12.64 T 282.25

W.L. Highland	7.2		
T.P.		-0.33	281.92

+11.92 293.84

29384

B.M. N.W. Alley Block 2 + Olive 0.36 293.48

+7.02 300.50

B.M. N.E. Hub 44<sup>th</sup> + Olive 3.25 297.25

Correct 297.30

12-10-29 Levels along to Alley in Block 2  
J.C. Bliss Swans Add & Block B Swans  
Drebert Second Add.  
Canner

Levels on 44th - Olive to 200'  
South - 44th is 60' wide

B.M. N.E. Hub Olive & Alley in Block 2 293.48  
432

B.M. N.E. Hub 44th & Olive 297.80  
+1.58

Σ 297.80

Σ 298.88

Block B - Swans Second Add.

S.L. Olive 20+00

S.L. Olive 20+00	5.2	2926
+25	5.6	2922
+50	5.9	2919
+75	6.3	2915
1+00	6.9	2909
+25	7.1	2907
+50	7.6	2902
+75	8.6	2892
2+00	9.0	2888

E	2.6	2963
R	2.7	2962
W	2.7	2962
	0+25	
W	3.0	2959
R	3.2	2957
E	3.1	2958
	0+50	
E	3.4	2955
R	3.6	2953
W	3.6	2953
	0+75	
W	3.9	2950
R	4.5	2944
E	4.1	2948
	1+00	
E	5.2	2937
R	5.2	2937
W	4.4	2945

Block 2 - Swans Add

N.L. Olive 20+00	4.5	2933
+25	4.6	2932
+50	4.6	2932
+75	4.5	2933
1+00	4.4	2934
+25	4.5	2933
+50	4.7	2931
+75	5.0	2928
2+00	5.6	2922

Alley continues down into canyon.

T 298.88

1+25

W	4.7	294.2
♀	5.9	293.0
E	6.2	292.7

1+50

F	6.7	292.2
♀	5.8	293.1
W	4.9	294.0

1+25

W	4.7	294.2
♀	5.9	293.0
E	6.7	292.2

2+00

E	6.3	292.6
♀	5.9	293.0
W	4.6	294.3

Alley in Block A  
Swans Second Add

35

B.M. N.E. Hub 44<sup>th</sup> Olive

297.30

+3.29

T 300.59

S.L. Olive = 0+00

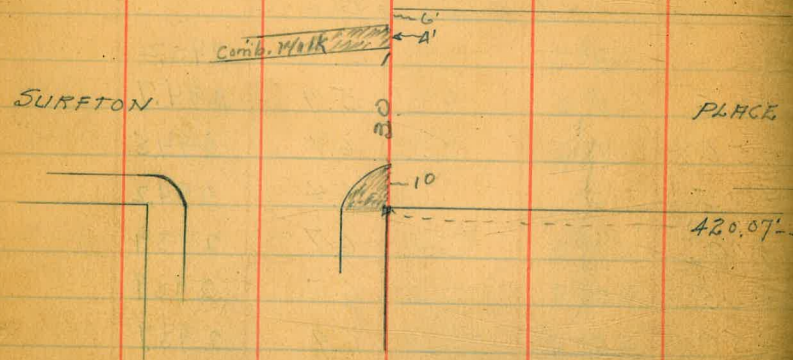
S.L	5.4	295.2
+25	5.9	294.7
+50	6.1	294.5
+75	6.4	294.2
1+00	6.7	293.9
+25	6.7	293.9
+50	6.9	293.7
+75	7.1	293.5
2+00	7.1	293.5

1491  
1492

Malkey.  
 370 Blus  
 No. 1001.  
 Drebert.  
 3-7-30

CROSS SECTION MONTE VISTA ST. 50' wide  
 Bet. Belvedere and Arenas Aves. 10' cbs.  
 7.5' A.S.

36



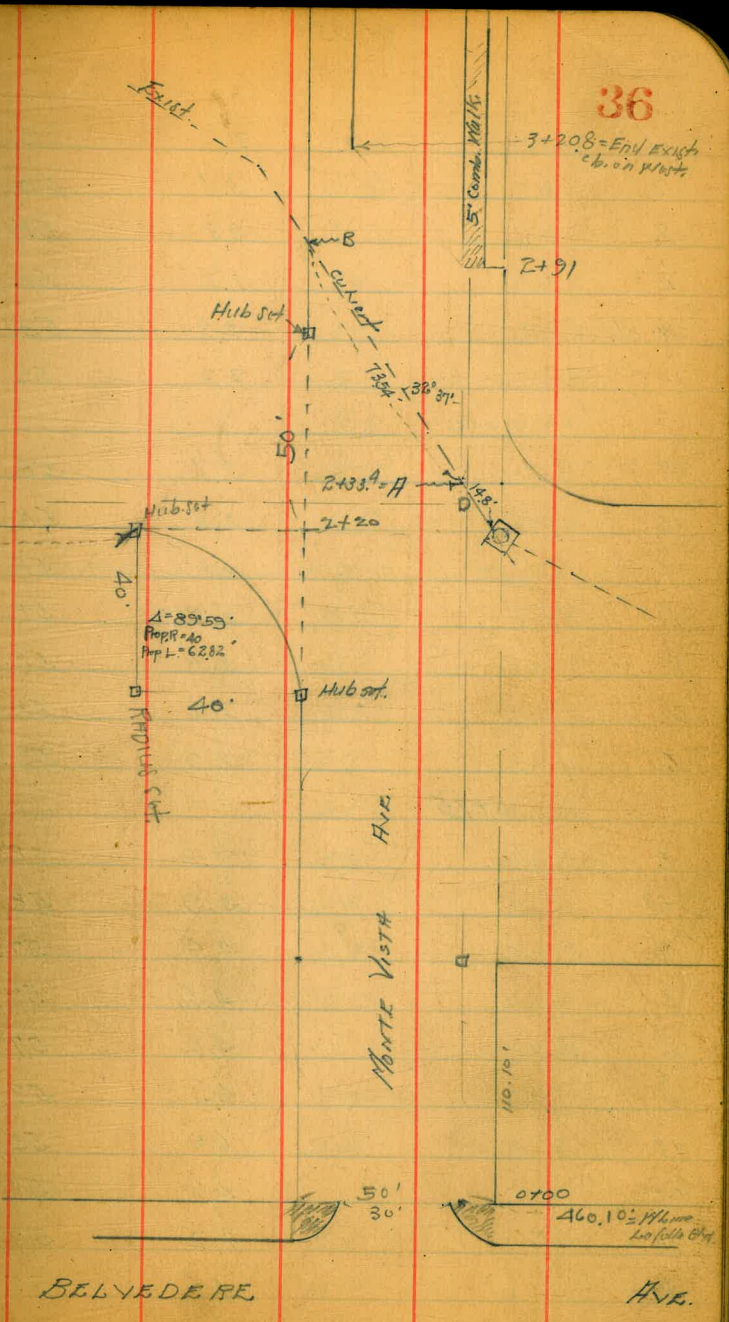
	HI	Elev
B.M.	2.38	61.95
		59.57
		59.57
		58.7
Top ch.	3.37	58.58 ✓
G on Pav.	3.95	58.00 ✓
H	3.65	58.30
R	3.46	58.49 ✓
E	3.34	58.61
E Gut. on Pav.	3.48	58.47 ✓
E to top cb.	2.97	58.95 ✓
E	2.8	59.1
E	2.6	59.3

Plotted 2-14-30  
 G.D.H.

0+05

SWCP  
 Belvedere  
 + Monte Vista  
 30' st  
 10' cbs.  
 7.5' A.S.

59.57  
 4.28  
 61.95



3+20.8 = Elev exact  
 cb. on pav.

2+91

2+33.9 = A

2+20

110.10'

0+00

460.10' = 110' line  
 to fall 8' 4"

61.95

cb.	2.7	59.2
$\frac{1}{4}$	3.1	58.8
$\frac{1}{2}$	3.3	58.6
$\frac{3}{4}$	3.2	58.7
W cb	2.8	59.1
W	2.2	59.7
	0+50	
W	3.7	58.2
cb.	3.6	58.3
$\frac{1}{2}$	3.6	58.3
$\frac{1}{2}$	3.9	58.0
$\frac{1}{2}$	3.7	58.2
cb.	3.4	58.5
E.	2.9	59.0
	0+75	
E	3.6	58.3
+7	3.9	58.0
cb.	4.4	57.5
$\frac{1}{4}$	4.6	57.3
$\frac{1}{2}$	4.6	57.3
$\frac{1}{4}$	4.5	57.4
+3	6.0	55.9
+5	4.2	57.7
cb.	4.2	57.7
W	4.6	57.3

1+00

61.95

37

W	5.5	56.4
+3	11.8	50.1
cb.	11.2	50.7
$\frac{1}{4}$	5.4	56.5
$\frac{1}{2}$	5.6	56.3
$\frac{1}{2}$	5.9	56.0
cb.	5.6	56.3
+3	5.0	56.9
E.	4.5	57.4
	1+10 = End Proposed curb here on West.	
E	4.6	57.3
+8	5.2	56.7
cb.	5.9	56.0
$\frac{1}{2}$	6.2	55.7
$\frac{1}{2}$	6.1	55.8
$\frac{1}{4}$	5.9	56.0
cb.	5.8	56.1
+3	6.4	55.5
+8	12.7	49.2
W	13.1	48.8
+1	7.2	54.7
+12	5.5	56.4
	1+25	
-24	6.0	55.9
-6	14.9	47.0
W	12.0	49.9



cb.	8.4	53.5
$\frac{1}{2}$	6.9	55.0
$\frac{1}{2}$	6.9	55.0
$\frac{1}{2}$	7.0	54.9
cb.	6.9	55.0
+3	6.3	55.6
$\frac{1}{2}$	6.0	55.9
	1+50	
F.	8.0	53.9
cb.	8.7	53.2
$\frac{1}{2}$	8.7	53.2
$\frac{1}{2}$	9.1	52.8
$\frac{1}{2}$	9.5	52.4
cb.	10.8	51.1
W	12.4	49.5
+12	16.3	45.6
+20	14.6	47.3
	1+75	
-35	14.7	47.2
-25'	17.3	44.6
W	12.5	49.4
cb.	11.3	50.6
$\frac{1}{2}$	10.8	51.1
$\frac{1}{2}$	11.1	50.8
$\frac{1}{2}$	11.4	50.5
cb.	11.4	50.5

E	9.8	52.1
T.P.	4.21	53.28
	2+00	12.88
		49.07
-10	4.6	48.7
F	2.6	50.7
cb.	3.3	50.0
$\frac{1}{2}$	4.3	49.0
$\frac{1}{2}$	5.6	47.7
$\frac{1}{2}$	5.2	48.1
+3	5.1	48.2
cb.	3.5	49.8
W	3.7	49.6
+20	6.1	47.2
	2+08	
-20	5.7	47.6
-5	4.7	48.6
W	3.7	49.6
+6	3.5	49.8
cb.	5.0	48.3
+5	6.9	46.4
$\frac{1}{2}$	7.2	46.1
$\frac{1}{2}$	7.2	46.1
$\frac{1}{2}$	7.7	45.6
cb.	8.3	45.0
F	7.6	45.7
+10	7.0	46.3

5328

B+20 = 5/8 Surfton Place

-10	7.6	45.7
E on Ground	8.0	45.3
E on Rim M.H. Cleanout	8.3	45.0
A on top Pipe	8.85	44.43
cb.	8.3	45.0
$\frac{1}{4}$	8.5	44.8
$\frac{1}{2}$	8.7	44.6
$\frac{3}{4}$	10.2	43.1
cb	8.4	44.9
+6	3.8	49.5
N	4.1	49.2

B+30

N	5.8	47.5
cb.	14.0	39.3
$\frac{1}{8}$	14.0	39.3
+3	13.0	40.3
$\frac{1}{4}$	10.8	42.5
$\frac{1}{2}$	8.9	44.4
cb.	8.6	44.7
E	8.5	44.8
+10	9.8	43.5
+15	6.4	46.9

B+37.5

-10	5.9	47.4
-8	6.2	47.1

5328

39

-7	10.2	43.1
E	10.5	42.8
cb.	9.3	44.0
$\frac{1}{4}$	9.0	44.3
$\frac{1}{2}$	12.0	41.3
$\frac{3}{4}$	12.3	41.0
cb.	8.6	44.7
+5	6.8	46.5
N	6.5	46.8

B+45 = 1/2 Surfton Place on N

N	6.5	46.8
cb.	7.2	46.1
$\frac{1}{4}$	8.8	44.5
$\frac{1}{2}$	10.0	43.3
$\frac{3}{4}$	8.4	44.5
cb.	7.0	46.3
E	5.9	48.0
+10	3.3	50.0

B+52.5 = N 1/2 Surfton Pl. on N

-10	2.0	51.3
E	2.3	51.0
cb.	5.4	47.9
$\frac{1}{4}$	6.7	46.6
$\frac{1}{2}$	6.2	47.1
$\frac{3}{4}$	6.6	46.7
cb.	6.8	46.5

W	6.8	46.5
Z+70 = N. h. Surfton Pl on W		
W	7.0	46.3
cb.	7.0	46.3
$\frac{1}{2}$	6.5	46.8
$\frac{1}{2}$	6.0	47.3
$\frac{1}{4}$	5.9	47.4
cb	5.3	48.0
+5	4.9	48.4
E	2.7	50.6
Z+80		
E	3.0	50.3
+4	5.2	48.1
cb.	5.4	47.9
$\frac{1}{2}$	5.8	47.5
$\frac{1}{2}$	5.8	47.5
$\frac{1}{4}$	6.3	47.0
cb.	10.3	43.0
W	10.8	42.5
+10	9.2	44.1
Z+91 = beginning Exact Comb. Walk on E		
-10	10.9	42.4
W	12.0	41.3
B. on top Pipe	11.27	42.01
cb.	11.0	42.3
$\frac{1}{4}$	5.8	47.5

$\frac{1}{2}$	5.5	47.8
$\frac{1}{4}$	5.8	47.5
Gut.	5.9	47.4
E <sub>2</sub> top cb.	5.31	47.97 ✓
+5 " side Walk	5.23	48.05
+8	5.1	48.2
E	3.3	50.0
3+05		
E	3.8	49.5
+3	4.9	48.4
cb.	5.41	47.87
Gut.	6.0	47.3
$\frac{1}{2}$	5.9	47.4
$\frac{1}{2}$	5.6	47.7
$\frac{1}{4}$	6.0	47.3
cb.	6.2	47.1
+1	6.4	46.9
W	11.9	41.4
+10	12.4	40.9
3+20.8 = End Exact cb on W		
-20	13.1	40.2
-10	11.6	41.7
W	7.5	45.8
cb. on top	6.02	47.26
Gut.	6.6	46.7
$\frac{1}{4}$	6.1	47.2

5328

2	5.7	47.6
1/2	6.0	47.3
Grd.	6.2	47.1
E. top cb.	5.5/	47.77
+5	5.4	47.9
1/2	3.7	49.6

CROSS SECTION SURETON PL. <sup>50' wide</sup> 7.5' Z.C.  
 0+00 = N. line Monte Vista

N	7.0	46.3
cb.	6.8	46.5
1/2	6.8	46.5
2	6.5	46.8
1/2	6.5	46.8
cb.	5.8	48.5
S	4.1	49.2

0+35' - 1/2 Back Porch on North to House 2' Back

-10	7.7	45.6
S	6.9	46.4
cb.	7.1	46.2
1/2	7.2	46.1
2	7.4	45.9
1/2	7.4	45.9
cb.	7.4	45.9
N	7.2	46.1
+2' = top of Porch.	6.73	46.55 ✓

Plotted 2/14-30

5328

41

T.P. 6.72 53.03 6.97 46.31

0+60 = 1/2 Garage on North Con. Floor Mill, Con. Apron Approach. ✓

-5' = Garage Floor.	6.86	46.17 ✓
-1/2' = toe Con Apron	7.09	45.94 ✓
N	7.2	45.8
cb.	7.1	45.9
1/2	7.1	45.9
2	6.9	46.1
1/2	7.0	46.0
cb.	6.9	46.1
S	7.5	45.5
+10.	6.5	46.5

0+81 = 1/2 Garage on N. <sup>on line</sup> Con. Floor. Con. Apron Approach. ✓

-10	1.0	52.0
S	2.2	50.8
+8	6.3	46.7
cb.	6.6	46.4
1/2	6.5	46.5
2	6.6	46.4
1/2	6.6	46.4
cb.	6.8	46.2
+6 = toe Apron.	6.81	46.22 ✓
N = Garage Floor.	6.55	46.48 ✓
0+93 = 1/2 Back Porch on N	6.14	46.89 ✓
+100		
N. 5	6.4	46.6

N	6.4	46.6
cb	6.3	46.7
$\frac{1}{4}$	5.9	47.1
$\frac{1}{2}$	5.6	47.4
$\frac{3}{4}$	5.8	47.2
cb.	5.3	47.7
+5	3.2	49.8
S	2.4	50.6
+5	0.9	52.1
1435		
-5	1.1	51.9
S	1.7	51.3
+5	3.4	49.6
cb.	3.7	49.3
$\frac{1}{4}$	3.8	49.2
$\frac{1}{2}$	4.1	48.9
$\frac{3}{4}$	4.3	48.7
cb.	5.0	48.0
N	5.2	47.8
+5	5.4	47.6
1446 = $\frac{1}{2}$ Brick Walk on N	4.73	48.30 <sup>2' 10" st.</sup>
+46 = " " " " "	1.60	48.43 on line
+46 = " " " " "	5.60	47.43 1' North NL
1462 = $\frac{1}{2}$ Garage on N. Cen. Floor Cen. Apron		
N	4.35	48.68 ✓
+1.6 = toe Apron	4.49	48.54 ✓

cb.	4.5	48.5
$\frac{1}{4}$	4.1	48.9
$\frac{1}{2}$	4.1	48.9
$\frac{3}{4}$	3.9	49.1
cb.	3.7	49.3
+9	2.6	50.4
S	1.7	51.3
+5	1.2	51.8
1479 = $\frac{1}{2}$ Garage on N Ribbon Drive ✓		
S	1.4	51.6
S	1.8	51.2
+1	2.2	50.8
cb.	2.6	50.4
$\frac{1}{4}$	3.3	49.7
$\frac{1}{2}$	3.8	49.2
$\frac{3}{4}$	4.0	49.0
cb.	3.5	49.5
+9 on toe Ribbon Drive	3.77	49.26 ✓
2+00		
N	4.2	48.8
cb.	3.3	49.1
$\frac{1}{4}$	3.6	49.4
$\frac{1}{2}$	3.4	49.6
$\frac{3}{4}$	3.3	49.7
cb.	3.0	50.0
S	2.5	50.5

5303

+5	2.1	50.9	
	R+47 = 1/2 Con. Walk on South on line 3.5' Wide ✓		
S on Walk.	3.80	49.23 ✓	
cb.	4.3	48.7	
1/2	4.7	48.3	
1/2	4.6	48.4	
1/4	4.6	48.4	
cb.	4.8	48.2	
N	5.4	47.6	
+5	5.8	47.2	
	R+84 = 1/2 Ribbon Dr. on South ✓		
-5	7.0	46.0	
N	6.5	46.5	
cb.	6.0	47.0	
1/2	5.6	47.4	
+2	6.1	46.9	
1/2	5.9	47.1	
1/4	5.5	47.5	
cb.	5.3	47.7	
S	4.8	48.2	
+42 = 1/2 Ribbon Drive	4.58	48.45 ✓	
R+96.8 = Ribbon Drive on South	5.77	47.26 ✓ on line	
	R+50		
S	8.0	45.0	
cb.	8.5	44.5	
1/2	8.5	44.5	

5303

43

1/2		8.6	44.4
+5		8.9	44.1
1/2		8.4	44.6
cb.		9.0	44.0
N		9.4	43.6
+5		9.6	43.4
	4+00		
-5		10.1	42.9
N		10.2	42.8
cb.		10.6	42.4
1/2		11.2	41.8
1/2		11.0	42.0
1/2		11.0	42.0
cb.		11.0	42.0
S		10.8	42.2
	4+30		
S		11.9	41.1
cb.		12.1	40.9
1/2		12.1	40.9
1/2		12.1	40.9
1/2		12.0	41.0
1/2		12.1	40.9
cb.		12.1	40.9
N		11.4	41.6
+5		11.6	41.4
	4+55		
T.P.	776	49.45	11.34
			41.69

-5	9.8	39.6
N	9.9	39.5
+5	9.4	40.0
cb.	10.3	39.1
$\frac{1}{2}$	10.1	39.3
$\frac{2}{3}$	10.1	39.3
$\frac{1}{4}$	10.3	39.1
cb.	10.0	39.4
S	9.5	39.9

4+60<sup>47</sup> = El. Vista del Mar Area

S on Walk	10.12	39.33
S " top cb.	10.47	38.98 ✓
" " / " Pav.	11.06	38.39 ✓✓
$\frac{1}{4}$ " "	10.66	38.79
$\frac{2}{3}$ " "	10.48	38.97 ✓
$\frac{1}{4}$ " "	10.57	38.94
Gut. " "	10.69	38.76 ✓✓
N top cb.	10.14	38.31 ✓
cb + L = edge Walk	10.01	39.44
N	10.4	39.0
+5	10.2	39.2





375.57

H.L. Monroe #1 Alley from N

N of Conc Walk 125 371.32

L 12 371.4

E of Conc 120 371.37

Dirt 43 371.3

070

337 Road Sta

Ncb 155 371.02

Gutter 53 370.3

1/4 47 370.9

L 13 371.3

1/4 41 371.5

Gutter 43 371.3

Scb 272 371.85

0125

Scb 289 371.68 337 Road Sta

Gutter 43 371.3

1/4 45 371.1

L 47 370.9

1/4 50 370.6

Gutter 55 370.1

Ncb 185 370.72

0750

341 Road Sta

Ncb 502 370.55

Gutter 56 370.0

1/4 53 370.3

L 50 370.6

375.57

46

1/4 47 370.9

Gutter 46 371.0

Scb 412 371.45

0775

349 Road Sta

Scb 434 371.23

Gutter 50 370.6

1/4 49 370.7

L 50 370.6

1/4 55 370.1

Gutter 56 370.0

Ncb 19 Conc Drive 562 369.95

0798 - P.C. of N

355 Road Sta

Ncb 542 370.15

Gutter 59 369.7

1/4 53 370.3

L 51 370.5

1/4 51 370.5

Scb L 52 370.4

S.L. Monroe #1 Alley from South

N Top Cb 128 371.29

Gutter on Pav 128 184 370.73

L " " 508 370.59

E " " 182 370.75

1425

Skirt 46 371.0

1/4 47 370.9

37557

Cb	53	3703
1/4	52	3704
1/2	51	3704
3/4	53	3703
Cb	55	3701
7/8 - Existing Cb	555	37002
Gutter	60	3696
87.1' H of H.L. Control - H End of Paving		
1/8 - Existing Cb Top	558	36999
Gutter on Paving	608	36949
H Cb h " "	560	36997
1/4 " " "	550	37007
1/2 " " "	544	37013
3/4 " " "	547	37010
Gutter " " "	575	36982
5 Cb - H End	504	37053
H.L. Control Prod from J.L.P. 1/4		
5 Cb	571	36986
Gutter on Paving	624	36933
1/4 " " "	580	36977
1/2 " " "	570	36997
3/4 " " "	581	36976
Gutter " " "	623	36934
H Cb	581	36976
B.M.	518	36989

S.W.B.P.  
Mount  
Control5/9/30  
London  
S.E.B.P.  
Fairmount & QuinceX sec Olive St From W.L. Fairmount  
to EL 44<sup>th</sup> 60' wide 10' cbs 30' Rdway

47

B.M.	577	302.96		297.19
T.P.	6.33	301.89	7.40	295.56
0-70	50' wide 10' cbs 30' Rdway. = W.L. Fairmount			Fairmount Neth Lines meet 50' wide Waf
Scb			7.14	94.75
gut			7.77	94.12
1/4			7.51	94.38
1/2			7.21	94.68
3/4			7.13	94.76
gut			7.16	94.73
Neb			6.58	95.31
60' wide 0-50' wide Fairmount				
50' N	gutter		7.14	94.75
50' N			6.60	95.39
N.L.	top cb		6.76	95.13
N.L.	gut		7.29	94.60
cb	Pav.		7.48	94.41
1/4	✓		7.58	94.31
1/2	✓		7.68	94.21
3/4	✓		7.76	94.13
cb	gut		7.81	94.08
cb	top cb		7.25	94.64
SL	top cb		7.45	94.44
SL	gut		8.02	93.87
50'S	top cb		8.57	93.42
50'S	gut		9.19	92.70

Plotted 5-12-30-C.B.H.

301.89

0-40 = w 1/4 Fairmount.

50's	Pav	8.83	93.16
SL	✓	7.63	94.26
cb	✓	7.47	94.42
1/4	✓	7.41	94.45
⊕	✓	7.32	94.67
1/4	✓	7.25	94.64
cb	✓	7.12	94.77
N.L.	✓	6.98	94.91
50'N		6.82	95.07

0-30 = ⊕ Fairmount

50'N	Pav	6.65	95.24
N.L.	✓	6.80	95.19
cb	✓	6.96	94.93
1/4	✓	7.04	94.85
⊕	✓	7.14	94.78
1/4	✓	7.26	94.63
cb	✓	7.32	94.57
SL	✓	7.48	94.41
50's	✓	8.72	93.17

48

0-20 = E 1/4 Fairmount

301.89

50's	Pav	8.82	93.07
SL	✓	7.55	94.44
cb	✓	7.49	94.40
1/4	✓	7.35	94.54
⊕	✓	7.30	94.69
1/4	✓	7.18	94.71
cb	✓	7.10	94.79
N.L.	✓	7.01	94.88
50'N	✓	6.78	95.11

0-10 = Ecb Fairmount

50'N	gutter	7.10	94.79
50'N	top eb	6.60	95.29
N.L.	gut	7.34	94.55
N.L.	top eb	6.80	95.09
cb	Pav	7.42	94.47
1/4	✓	7.53	94.46
⊕	✓	7.63	94.26
1/4	✓	7.67	94.22
cb	✓	7.82	94.07
SL	✓	7.92	93.97
SL	top eb	7.33	94.56
50's	gutter	9.07	92.82
50's	top eb	8.54	93.35

of improvement only

0+00 = ELA Fairmount <sup>301.89</sup>

S.L.		7.3	94.59
cb	top	7.17	94.70
cb	gut. Pav	7.73	94.16
1/4	Pav	7.57	94.32
1/2	v	7.43	94.46
1/2	v	7.37	94.52
cb	v	7.28	94.61
cb	top eb	6.63	95.26
N.L.		6.4	95.5

0+10

N.L.		5.0	96.9
cb		5.4	96.5
ts		5.3	96.6
1/4		6.1	95.8
1/2		6.4	95.5
1/4		5.4	96.5
cb		5.2	96.7
S.L.		5.4	96.5

0+37±

S.L.		5.2	96.7
cb		5.2	96.7
1/4		5.0	96.9
1/2		5.2	96.7
1/4		5.1	96.8
cb		5.2	96.7
N.L.		5.2	96.7

0+50

N.L.		4.9	97.0
cb		5.0	96.9
1/4		4.9	97.0
1/2		4.9	97.0
1/4		4.9	97.0
+3		4.4	97.5
cb		4.8	97.1
S.L.		4.9	97.0

0+75

S.L.		5.0	96.9
cb		4.8	97.1
1/4		4.8	97.1
1/2		4.7	97.0
1/4		4.8	97.1
cb		4.6	97.3
N.L.		4.6	97.3

1+00

N.L.		4.6	97.3
cb		4.6	97.3
(cb)	top 3" weeper.	4.94	96.95
1/4		4.9	97.0
1/2		5.1	96.8
1/4		4.6	97.3
cb		4.9	97.0
S.L.		5.3	96.6

301.89

1+25

S.L.	5.7	96.2
eb	5.1	96.8
1/4	5.2	96.7
+	5.4	96.5
1/4	5.0	96.9
eb	4.7	97.2
N.L.	4.1	97.8

Steps { 1+64 <sup>3' North</sup> wend step  
Main Entrance { 1+78 E ✓ ✓

5.18	96.71
5.22	96.67

1+50

N.L.	5.0	96.9
eb	4.8	97.1
1/4	5.4	96.5
+	5.8	96.1
1/4	5.8	96.1
eb	5.8	96.1
S.L.	6.0	95.9

1+57 <sup>Weeper</sup> Ncb top of SA' 5.69 96.20

1+77<sup>2</sup> = WL Alley

S.L.	6.7	95.2
eb	6.4	95.5
1/4	6.4	95.5
+	6.1	95.8
1/4	6.0	95.9
eb	5.9	96.0
N.L.	5.9	96.0

1+97<sup>2</sup> = EL Alley

N.L.	5.6	96.3
eb	5.8	96.1
1/4	6.0	95.9
+	6.1	95.8
1/4	6.2	95.7
eb	6.4	95.5
S.L.	6.7	95.2

2+25

S.L.	6.0	95.9
eb	5.8	96.1
1/4	5.9	96.0
+	5.4	96.5
1/4	5.3	96.6
eb	5.1	96.8
N.L.	4.9	97.0

(2+27<sup>E</sup>) top of Weeper Nobles 5.32 96.68

2+50

N.L.	4.6	97.3
eb	4.9	97.0
1/4	5.0	96.9
+	5.2	96.7
1/4	5.3	96.6
eb	5.2	96.7
S.L.	5.2	96.7

2+75

30189

S.L.	5.3	96.6
cb	5.2	96.7
1/4	4.9	97.0
±	4.8	97.1
1/4	4.5	97.4
cb	4.5	97.4
N.L.	4.4	97.8

3+00

N.L.	4.4	97.5
cb	4.4	97.5
1/4	4.7	97.2
±	5.2	96.7
1/4	5.1	96.8
cb	5.1	96.8
S.L.	5.3	96.6

3+37<sup>2</sup> = m.L. 44<sup>th</sup>

S.L.	5.8	96.1
cb	5.6	96.3
1/4	5.5	96.4
±	5.4	96.5
1/4	5.2	96.7
cb	5.1	96.8
N.L.	4.8	97.1

44<sup>th</sup> 60' wide 10' cbs 40' RdwayWeb 44<sup>th</sup>

N.L.	4.8	97.1
cb	5.0	96.9
1/4	5.1	96.8
±	5.3	96.6
1/4	5.5	96.4
cb	5.6	96.3
S.L.	5.8	96.1

w 1/4 44<sup>th</sup>

S.L.	5	
S.L.	5.7	96.2
cb	5.7	96.2
1/4	5.5	96.4
±	5.4	96.5
1/4	5.0	96.9
cb	5.0	96.9
N.L.	4.8	97.1

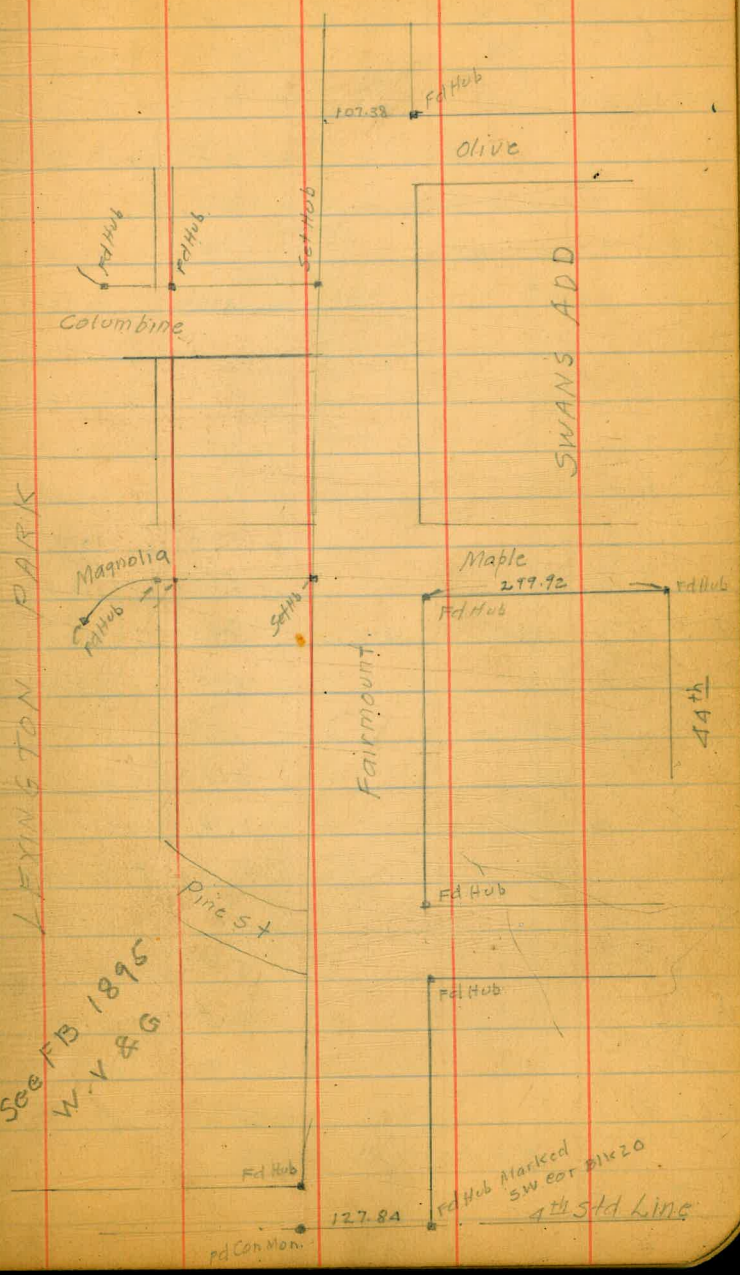
± 44<sup>th</sup>

N.L.	4.8	97.1
cb	4.9	97.0
1/4	5.0	96.9
±	5.4	96.5
1/4	5.6	96.3
cb	5.6	96.3
S.L.	5.8	96.1

E 1/4 44th 301.89		
S.L.	5.8	961
eb	5.6	963
1/4	5.6	963
±	5.4	965
1/4	5.0	969
cb	4.8	971
N.L.	4.8	971
E cb 44th		
N.L.	4.7	972
eb	4.7	972
1/4	4.8	971
±	5.2	967
1/4	5.5	964
cb	5.5	964
S.L.	5.8	961
EL 44th		
S.L.	5.8	961
eb	5.4	965
1/4	5.3	966
±	5.1	968
1/4	4.9	970
eb	4.7	972
N.L.	4.8	971
Hub NW olive & 44th	4.87	297.02 (297.05)
B.M.		

See FB 1895 W.V & G

See FB 1895 W.V & G



Flood  
Police  
Rauner

8/15/30  
Order # 12213

B.M. Marlboro Meade  
1221.366.09

Monroe Ave Paved  
Set Ct. & Alley 5' N of St. Monroe

53

X sec Alley 8 Wilshire Place

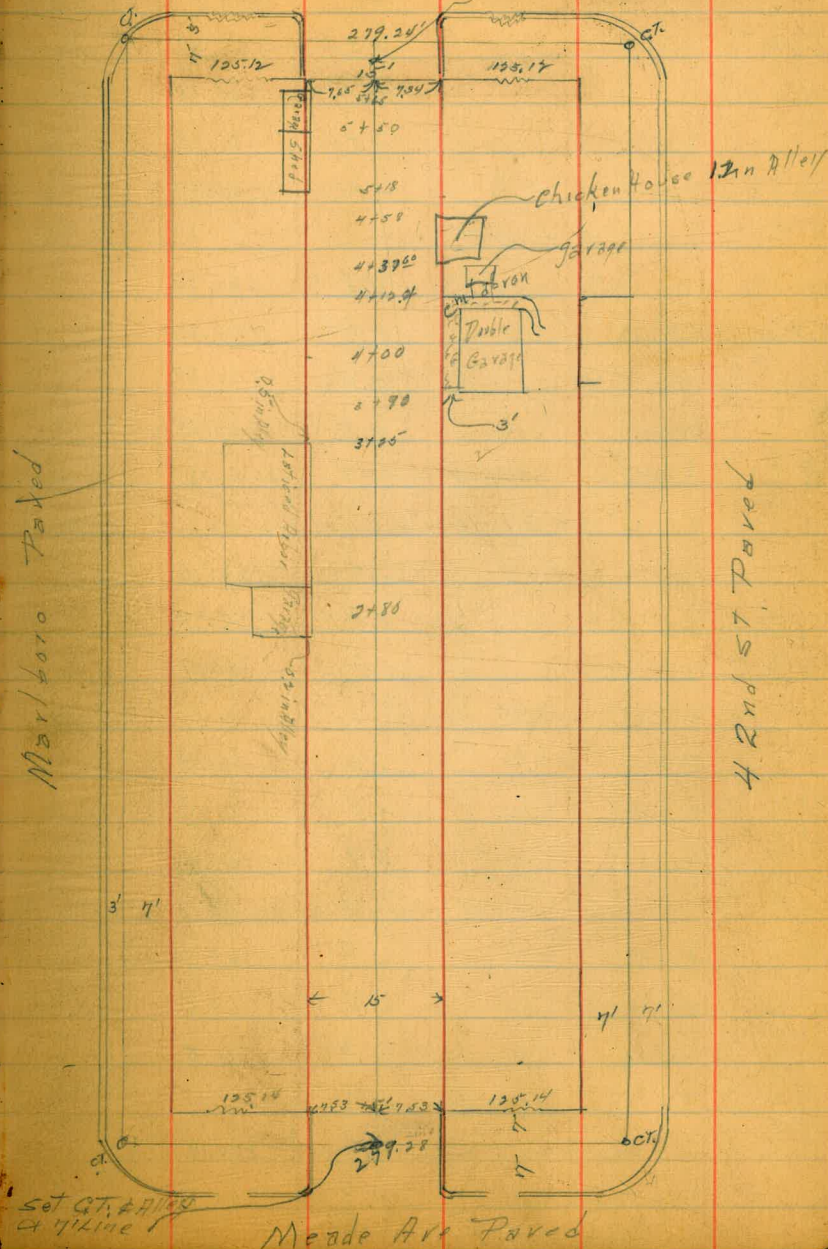
	+	-	Elev
B.M. N.W. B.P.	5.82	370.36	364.54

Section Taken Along N. Cb of Meade  
from 42nd to Marlboro

W.L. 42nd & N. Cb. Meade		5.76	364.60
" " " " Bot "		6.12	364.54
Top Cb E.L. Alley		5.10	365.26
Pgmt " " "		5.65	364.74
" & " "		5.62	364.74
" W.L. " "		5.58	364.79
Top Cb W.L. Alley		5.05	365.31
T.P.	5.35	370.28	5.43 364.93
B.M. Marlboro & Meade		4.95	365.93 = 366.01 Record
E.L. Marlboro & N. Cb Meade		4.80	365.93
" " " " got "		5.10	365.18
Check back on orig B.M.		5.74	364.54

Section Across Alley 7' S of N.L. Meade

W. Cb top		4.81	365.47
W. prmt		5.12	365.16
&		5.39	364.99
E prmt		5.19	365.09
E Cb top		4.90	365.38
O+00 = N.L. Meade			
E Top Cb.		4.83	365.45





370.25

	+	π	-	Elev
E prmt			5.08	365.20
Φ prmt			5.10	365.18
W. "			4.90	365.38
W Top C <sub>6</sub>			4.91	365.57
	0 + 01			
W.			4.8	365.48
+ 4.2 = gas M.H.			4.94	365.34
Φ			5.0	365.28
E			4.8	365.48
T.P.	4.90	370.28	4.90	365.38
	0 + 37 = Beginning of picket fence on E			0.1 Back
E.			4.7	365.6
Φ			4.8	365.5
W.			4.6	365.7
	1 + 00 = End of picket fence on E			0.3 Back
W.			4.9	365.4
Φ			4.8	365.5
E			4.7	365.6
	1 + 50 = End of Board fence on E			0.4 Back
E.			4.6	365.7
Φ			4.8	365.5
W			4.5	365.8
	2 + 00			
W			4.4	365.9
Φ			4.2	366.1

370.28

54

	+	π	-	Elev
E.			4.5	365.8
	2 + 38			
E			4.5	365.8
Φ			4.7	366.1
W			4.3	366.0
	2 + 51 = Φ Sewer M.H. on Φ Alley			
On Rim of Mild.			3.91	366.37
	2 + 80 = Φ Garage on W 0.2 in Alley			
W. 10" cement floor			3.68	366.60
Φ			4.0	366.3
E.			4.0	366.3
T.P.	5.97	372.65	3.60	366.68
	3 + 25 = Hand arbor on W 2.5 in Alley			
	This arbor extends so. to join Garage at Sta. 2 + 80			
E.			5.9	366.75
Φ			5.8	366.85
+ .7			5.9	366.75
W			5.7	366.95
	3 + 75			
W.			5.5	367.15
Φ			5.3	367.35
E			5.1	367.55
	4 + 00 = Φ double Garage on E 3' Back			
	Cement Apron 22.4 long on E line			
	3 + 90			
S. end Apron on E line			5.02	367.63
	4 + 12.4			
End of Apron on E line			4.95	367.70

372.65

	+	-	Elev
E - 3 = Cmt floor		4.64	368.01
E = edge of 46.00		5.02	367.63
♀		5.12	367.45
W		5.4	367.25
4+32 = ♀ single garage on E 3.2 Back			
W		5.3	367.35
♀		5.0	367.65
E		4.8	367.85
+ 32 = dirt floor		4.6	368.05
4+37.6 to 458 = Chicken house on E			
		1.2 in Alley	
4+66.6 = ♀ single garage on E 1.35 back			
E - 13 = Board floor		4.11	368.54
E		4.5	368.15
♀		4.4	368.25
W		4.9	367.75
	5+00		
W - 5		4.4	368.25
W		4.3	368.35
+ 2		4.2	368.45
♀		3.9	368.75
E		3.9	368.75
5+18 = Sand Shed <sup>on W.</sup> 0.2 in Alley			
E		3.6	369.05
♀		3.5	369.15
+ 5		3.5	369.15

372.66

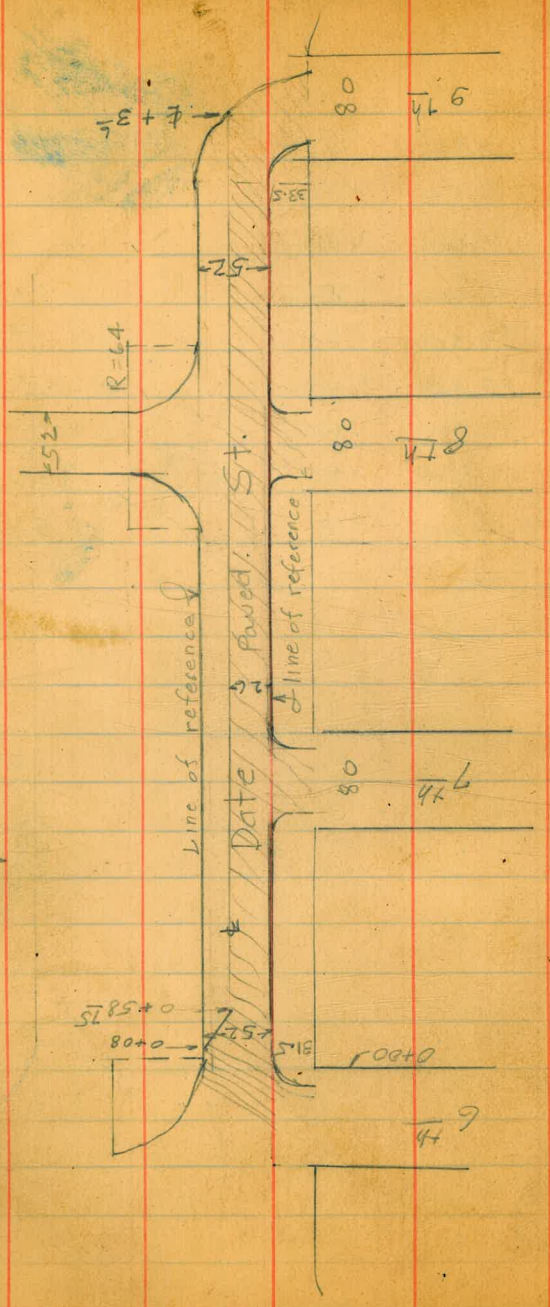
55

	+	-	Elev
W		4.3	368.35
+ 5		4.4	368.25
5+56 = ♀ Sewer M.H. on ♀			
On Rim of M.H.			
		3.69	368.96
5+65 = end of Shed & garage on			
W. 0.75 in Alley			
W		3.8	368.85
♀		4.2	368.45
E		3.9	368.75
5+71 = N.L. Monroe			
E Top C6		3.99	
+ 15 = Gutter		4.57	368.00
♀		4.78	367.87
W		4.49	368.16
+ 15 = Top C6		4.00	
5+76 = 1/2 way to C6 of Monroe			
W Top C6		4.10	
W Gut		4.64	368.01
♀		4.86	367.79
E Gut		4.73	367.92
E		4.10	368.55
T.P.	4.77	373.43	3.95 368.66
5+81 = 5.06 Monroe			
W. 42.5 C6 Monroe		5.32	368.11
W. 42.5 Gutter Monroe		5.77	367.46

373.43

	+	x	-	Elev
E.L. Alley 9 S. 06 Monroe			4.98	368.45
E.L. " " " 9th "			5.70	367.73
E " " " "			6.65	367.79
W.L. " " " "			5.64	367.79
W.L. " " " 06 "			4.97	368.46
E.L. Marlboro 9 S. 06 "			4.63	368.80
" " " 59th "			5.45	367.98
T.P.	4.37	372.79	5.01	368.42
N.H. B.P. 12th 9 Meade			8.26	364.50 <del>364.54</del>

56



X Sec Date St. from 6th to 9th

2/2/31  
London

57

BM	1108	153.25	142.17	sw 6th & Date.
	0+00 = E.L. 6th on South.		153.25	
Sub		9.84	143.41	
cut		10.33	142.92	
1/4		9.73	143.52	
1/2		9.41	143.84	
3/4		9.34	143.91	
Neb	Par.	9.71	143.54	
+0Z	cut	9.73	143.52	
+0Z	Chonret	9.12	144.13	
	0+08			
Neb		8.77	144.48	
cut		9.43	143.82	
1/4		9.01	144.24	
1/2		9.10	144.15	
3/4		9.48	143.77	
cut		10.07	143.18	
Sub		9.51	143.74	
	0+58.75			
Sub		6.98	146.27	
cut		7.42	145.83	
1/4		6.87	146.38	
1/2		6.41	146.84	
+9		6.6	146.7	
1/4		6.4	146.9	

Plotted  
8-10-1931  
J.P.

Date St

0458<sup>25</sup>

15325

N4+10	6.9	146.4
gut	7.2	146.1
Ncb	6.20	147.05
1+00		
Ncb	4.16	149.09
gut	5.3	148.0
1/4	4.4	148.9
±	4.40	148.85
1/4	4.84	148.41
gut	5.29	147.96
Seb	4.87	148.38
1+50		
Seb	2.28	150.97
gut	2.78	150.47
1/4	2.38	150.87
±	2.02	151.23
1/4	2.1	151.2
gut	2.7	150.6
Ncb	1.94	151.31
T.P	7.78	160.70
	0.33	152.92

0.3

6<sup>th</sup> to 9<sup>th</sup>

16070

2+01<sup>3</sup> = WL 7<sup>th</sup>

Ncb	7.13	153.57	
gut	7.8	152.9	
+3	8.0	152.7	
+5	7.6	153.1	
1/4	7.3	153.4	
±	7.07	153.63	
1/4	7.34	153.36	
gut	7.76	152.94	
Seb	7.04	153.66	
Web. 7 <sup>th</sup>			
Seb-10	tab cb	6.33	154.37
Seb-10	gut	6.88	153.82
Seb		7.06	153.64
1/4		6.72	153.98
±		6.46	154.24
1/4		6.7	154.0
+6		7.1	153.6
gut		7.1	153.6
Ncb		6.56	154.14
W 1/4 7 <sup>th</sup>			
Ncb		5.99	154.71
gut		6.64	154.06
+6		6.6	154.1
1/4		6.0	154.7
±		5.87	154.83

58

w/4 7<sup>th</sup>

		<u>160.70</u>	
S'4	6.05	154.65	
Seb line Pav	6.19	154.51	
± 7 <sup>th</sup>			
Seb line Pav	5.53	155.17	
1/4	5.42	155.28	
±	5.26	155.44	
+11	5.6	155.1	
1/4	5.4	155.3	
+5	5.7	155.0	
gut	6.0	154.7	
Neb	5.47	155.23	

E'4 7<sup>th</sup>

Neb	4.91	155.79	
gut	5.4	155.3	
+3	5.6	155.1	
1/4	4.9	155.8	
+12	4.8	155.9	
±	4.65	156.05	
1/4	4.79	155.91	
Seb line Pav	4.95	155.75	

Feb 7<sup>th</sup>

		<u>160.70</u>	
Seb-10	+ap c b	3.36	157.34
Seb-10	gut	4.23	156.47
Seb line		4.47	156.23
1/4		4.24	156.46
±		4.09	156.61
+1		4.2	156.5
1/4		4.3	156.4
gut		5.0	155.7
Feb		4.24	156.46

0+00 = EL 7<sup>th</sup>

Neb	3.69	157.01	
gut	4.2	156.5	
+3	4.6	156.1	
+4	4.3	156.4	
1/4	3.7	157.0	
+4	3.8	156.9	
+12	3.6	157.1	
±	3.45	157.25	
1/4	3.64	157.06	
gut	3.98	156.72	
Seb	3.36	157.34	

0+50	160-70		
Seb		1.48	159.22
gut		2.13	158.57
1/4		1.68	159.02
⊕		1.44	159.26
1/4		1.6	159.1
+9		2.0	158.7
+11		2.3	158.4
gut		2.0	158.7
Neb		1.49	159.21
T.P. 10.78	171.00	0.48	160.22
1+00			
Neb		9.68	161.32
gut		10.2	160.8
+2		10.4	160.6
+4		9.8	161.2
1/4		9.5	161.5
+4		9.4	161.6
⊕		9.66	161.34
1/4		9.96	161.04
3gut		10.40	160.60
Seb		9.75	161.25

1+50 = BC ref on North	171.00		
Seb		7.87	163.13
gut		8.43	162.57
1/4		7.98	163.02
⊕		7.58	163.42
+1		7.7	163.3
+11		7.3	163.7
1/4		7.3	163.7
gut		8.0	163.0
Neb		7.45	163.55
1+75			
Neb-6 top eb ref		6.40	164.60
Neb-6gut		6.7	164.3
eb		6.6	164.4
1/4		6.3	164.7
⊕		6.62	164.38
1/4		7.01	163.99
gut		7.44	163.56
Seb		6.88	164.12
2+00			
Seb		5.94	165.06
gut		6.49	164.52
1/4		6.08	164.92
⊕		5.66	165.34
1/4		5.4	165.6
cb		5.4	165.6

2400 = w.l. 8 <sup>th</sup>		171.00
Neb +10	5.5	165.5
+20	5.6	165.4
+26 gut	5.3	165.7
+26 top eb ret	5.01	165.99
w.l. 8 <sup>th</sup> +7		
Neb-37 top eb ret North	4.40	166.60
Web 8 <sup>th</sup>		
Neb-100 top eb	2.04	168.96
Neb-100 gut	2.7	168.3
-63 Ec. ret	3.39	167.61
-63 gut	3.7	167.3
-28	4.9	166.1
-11	4.7	166.3
Neb	4.9	166.1
1/4	5.0	166.0
±	5.32	165.68
1/4	5.70	165.30
Seb	6.07	164.93
+10 gut	6.29	164.71
+10 top eb	5.72	165.28

61

w.l. 8 <sup>th</sup>		171.00
Seb line Paw	5.64	165.36
1/4	5.42	165.58
±	5.04	165.96
1/4	4.7	166.3
Neb line	4.5	166.5
+50	3.6	167.4
+100	2.3	168.7
± 8 <sup>th</sup>		
Neb-100	2.1	168.9
-50	3.2	167.8
Neb line	4.4	166.6
1/4	4.6	166.4
±	4.96	166.04
1/4	5.32	165.68
Seb paw	5.55	165.45
± 8 <sup>th</sup>		
Seb	5.76	165.24
1/4	5.49	165.51
±	5.11	165.89
1/4	4.7	166.3
Neb	4.5	166.5
+50	3.7	167.3
+100	2.1	168.9



Feb 8<sup>th</sup>

		171.00	
Neb-100	top cb	2.02	168.98
-100	gut	2.6	168.4
-63	Ec ref. North	3.33	167.67
-63	gut	3.9	167.1
-41		4.8	166.2
-23		4.9	166.1
Ncb		4.8	166.2
1/4		4.8	166.2
+9		5.0	166.0
⊕		5.27	165.73
1/2		5.74	165.26
Seb	paw.	6.22	164.78
+10	gut	6.47	164.53
+10	top cb	6.03	164.97
Ec b	8 <sup>th</sup> +7		
Xneb +32	top cb on ret North	4.44	166.56
	0+00 - EL 8 <sup>th</sup>		
Neb-22	top cb ret	4.83	166.17
-22	gut	5.2	165.8
-20		5.6	165.4
-8		5.7	165.3
Neb		5.2	165.6
1/4		5.1	165.9
+9		5.2	165.8
⊕		5.52	165.48
1/4		5.95	165.05

86  
52  
34

62

	0+00		
5 gut		6.49	164.51
Seb		6.04	164.96
	0+25		
Seb		6.27	164.73
gut		6.87	164.13
1/4		6.32	164.68
⊕		5.97	165.03
1/4		6.3	164.7
Neb		6.7	164.3
+4 gut		6.4	164.6
+4 top cb ret		5.95	165.05
	0+50 = Ec ret North		
Neb		6.85	164.15
gut		7.8	163.2
1/4		7.2	163.8
⊕		6.72	164.28
1/4		6.94	164.06
gut		7.37	163.63
Seb		6.84	164.16

0475		171.00		
Seb			7.58	163.42
gut			8.16	162.84
1/4			7.77	163.23
±			7.55	163.45
1/4			8.1	162.9
+6			8.1	162.9
gut			8.8	162.2
Neb			7.74	163.26
T.P.	1.29	163.65	8.64	162.36
1+00				
Neb			1.26	162.39
gut			2.2	161.5
1/4			1.6	162.1
+10			1.2	162.5
±			1.27	162.38
1/4			1.46	162.19
gut			1.87	161.78
Seb			1.27	162.38
1+25				
Seb			2.55	161.10
gut			3.09	160.56
1/4			2.67	160.98
±			2.30	161.35
1/4			2.4	161.3
gut			3.2	160.5
Neb			2.15	161.50

1+50		163.65		
Neb			3.06	160.59
gut			4.2	159.5
+2			4.3	159.4
+3			3.9	159.8
1/4			3.4	160.3
+8			3.4	160.3
±			3.53	160.12
1/4			4.03	159.62
gut			4.48	159.17
Seb			3.98	159.67
1+84 = P.C. Curve North & South				
Seb			6.02	157.63
gut			6.53	157.12
1/4			5.72	157.93
±			5.10	158.55
+4			5.0	158.7
1/4			4.7	159.0
+10			5.3	158.4
+11			5.6	158.1
gut			5.4	158.3
Neb			4.38	159.27

Date

Date

64

2+00 = W.L. 9 <sup>th</sup>		163.65
Neb +15	4.98	158.67
+15 gut	6.1	157.6
1/4	5.4	158.3
±	5.73	157.92
1/4	6.34	157.31
Seb	7.21	156.44
+42 gut	7.54	156.11
+42 top eb ret	7.08	156.57
Wcb 9 <sup>th</sup>		
Seb -32 <sup>5</sup> E.c. ret. gut	8.88	154.77
-32 <sup>5</sup> top eb	8.50	155.15
Seb	7.36	156.29
1/4	6.77	156.88
±	6.34	157.31
+6	6.1	157.6
1/4	6.1	157.6
+7 gut	6.5	157.2
+7 top eb	5.62	158.03
W 1/4 9 <sup>th</sup>		
Neb +12 <sup>2</sup> top eb	6.25	157.40
+12 <sup>2</sup> gut	7.1	156.6
1/4	7.1	156.6
±	6.88	156.77
1/4	7.15	156.50
Seb	7.61	156.00

± 9 <sup>th</sup>	163.65			
Seb	8.00	155.65		
1/4	7.67	155.98		
±	7.57	156.08		
+38 gut	7.6	156.1		
+32 top eb	7.04	156.61		
± 9 <sup>th</sup> + 3 <sup>6</sup>	= end up based portion			
± top eb	7.22	156.43		
gut	7.72	155.93		
1/4	7.85	155.80		
Seb	8.10	155.55		
B.M.	8.49	155.16	sw 9 <sup>th</sup> & Date	
T.P.	4.09	166.64	1.10	162.55
T.P.	0.31	153.95	13.00	153.64
B.M.			11.80	142.15
				6 <sup>th</sup> → Date

3-25-31  
 2 miles  
 Sommermeyer  
 Osborne  
 X Sec. Alley BIK l. J.T. Corcorans. 20' wide  
 Center to Rushville bet. Fay + Eads

B.M. Topwall	6.00	138.60		132.60	s. e. Eads + Center
Set B.M. B.P.			8.55	130.05	N.E. Eads + Center
T.P.	7.80	145.96	0.44	138.16	

10' N. of S. Line = S. ch. Center.

E. ent. ch		7.46		138.50	
E. gutter parmt.		8.21		137.75	
± "		8.73		137.23	
W " "		9.15		136.81	
W. ent. ch		8.62		137.34	

00 = S. Line Center

W. ent. ch		8.34		137.62	
W. parmt.		8.31		137.65	
± "		8.31		137.65	
E "		7.74		138.18	
E. ent. ch		7.27		138.69	

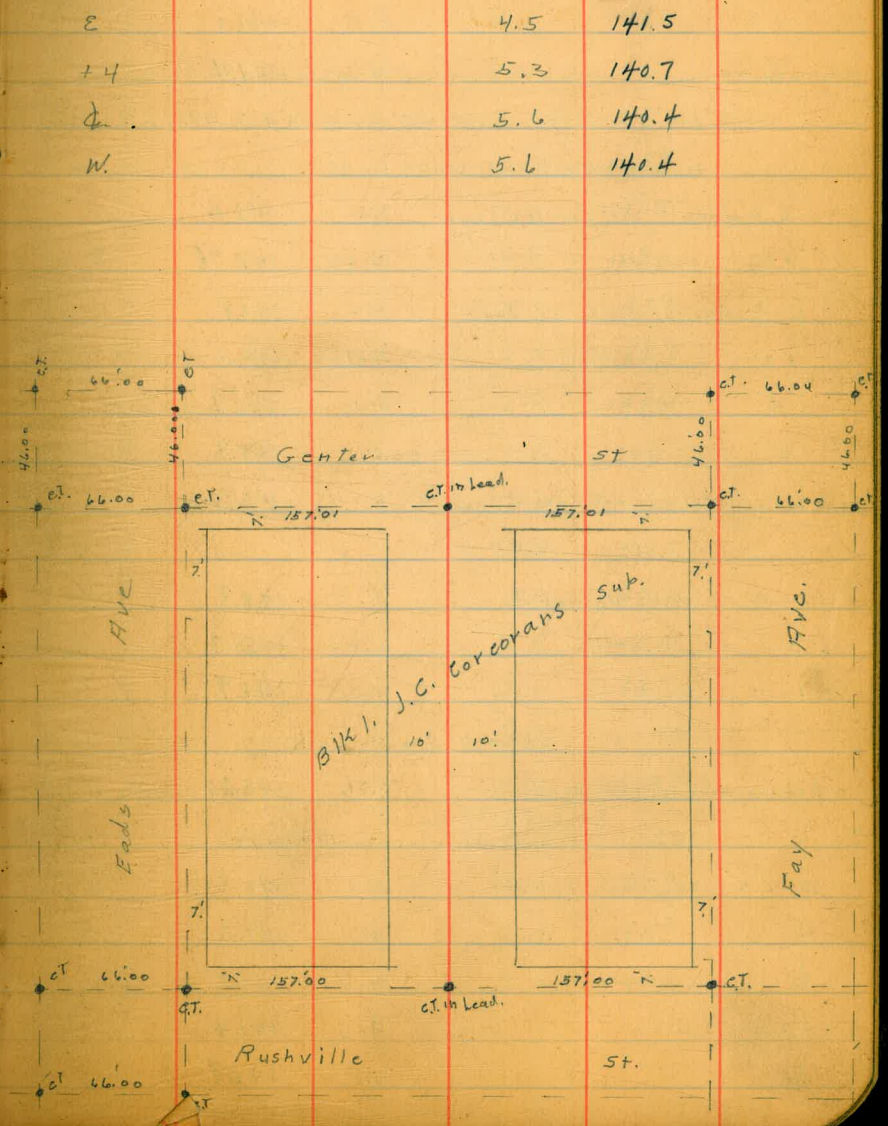
J.F.R. 3/26-1931

E		5.7		140.3	
+4		7.4		138.6	
±		7.7		138.3	
+7		7.8		138.2	
W		6.4		139.6	
	2' 5				
	15' 5				
W		6.3		139.7	
±		6.5		139.5	
+6		6.4		139.6	
E		4.8		141.2	

145.96

65

Bet S. line Center + 100's Boxwood Hedge  
 on E. W. edge 0.7 in Alley Roots on E. Alley line  
 50's



145.96

86.5 garage on W. cmt. floor	4.5 Back	
N-4.5	5.24	140.72
W	5.5	140.5
⊕	5.0	141.0
+7	5.0	141.0
E	4.6	141.4
100.5 to 117.5 S 4" cmt. wall on E. 0.4 in Alley <sup>Hedge</sup> protecting Cypress		
101.4 S. = N. End cmt. Court on W.		
E. E of wall Not for yardage	3.4	142.4
E Top " " " "	2.98	142.98
E to 4 Feet " Use for yardage	4.2	141.8
+2'	4.9	141.1
⊕	5.1	140.9
W	5.1	140.9
+2.1 = E. Edge cmt. court.	5.24	140.72
117.5 S.		
E. East of wall No yardage	3.1	142.9
Top " " "	2.83	143.13
E + 0.4 dirt	4.1	141.9
119.1 S ⊕ cmt. walk		
E. line W. end cmt. walk.	3.76	142.20
122.5 S. { 5 End. cmt. Court N. End. N. Entrance Garage		
W-2.5 E. edge cmt. court.	5.11	140.85
W	4.7	141.3
⊕	4.8	141.2
+7	4.6	141.4
E	4.1	141.9

145.96

Alley Bk 1 - Concoran's

66

158.5 garage on E. dirt floor	3.8 Back	
E-3.8	3.5	142.5
E	3.9	142.1
⊕	4.2	141.8
W	5.0	141.0
167.7 to 198.7 S. Wooden Retaining wall & Board Fence on E. & W. in Alley		
180.5 N. Entrance garage on W. dirt floor 0.4 Back		
W-2' floor	5.1	140.9
W	4.5	141.5
⊕	4.0	142.0
+7	4.1	141.9
+9.4 Use for yardage N & S	3.3	142.7
S. Back of wall	1.6	144.4
T.P. 5.28	147.43	3.81
234.5 garage on W. cmt. floor 7.5 Back		
E	4.4	143.0
+3	5.1	142.3
⊕	5.0	142.4
W	5.1	142.3
W+6.5 E. End cmt. apron	5.46	141.95
W+7.5 floor.	5.44	141.99
280.5		
W	4.7	142.7
⊕	4.5	142.9
E	4.0	143.4

147.43

325' S.

E	3.6	143.8
+3	4.1	143.3
±	4.1	143.3
W	4.5	142.9

360' S

W	4.7	142.7
±	4.6	142.8
+7	4.5	142.9
E	4.0	143.4

387' S. ± Double garage on E. dirt floor 7.2 Bark

E-72 floor	4.3	143.1
E	5.2	142.2
±	5.6	141.8
W.	5.8	141.6

400' S

W	6.3	141.1
±	6.3	141.1
E.	5.5	141.9

438' S.

E	6.6	140.8
+5	8.0	139.4
±	8.0	139.4
W	8.1	139.3

458' S

W	9.1	138.3
±	9.0	138.4
E.	8.3	139.1

• 147.43

Alley BIKI. Carcorans

500' S = N. line Rushville

67

E. ent. el	8.98	138.45
E. parmit	9.15	138.28
± "	9.85	137.58
W "	9.98	137.45
W. ent. el	9.90	137.53

15' S. of N. Line = N. ch. line

W. ent. el	10.04	137.39
W. parmit	10.47	136.96
± "	10.09	137.34
E "	9.58	137.85
E. ent. el.	9.07	138.36

T.P. 1.60 141.91 7.12 140.31

CHK BM. BP 10.86 131.05

N.E. Eads.  
+ Rushville

Except 150' from Center South  
10' rec. East of Mass

5-22-35 see Date St. 6<sup>th</sup> to 9<sup>th</sup> Aves.  
 52' Roadway. S. 1/2 Paved. N. 1/2 Unpaved.

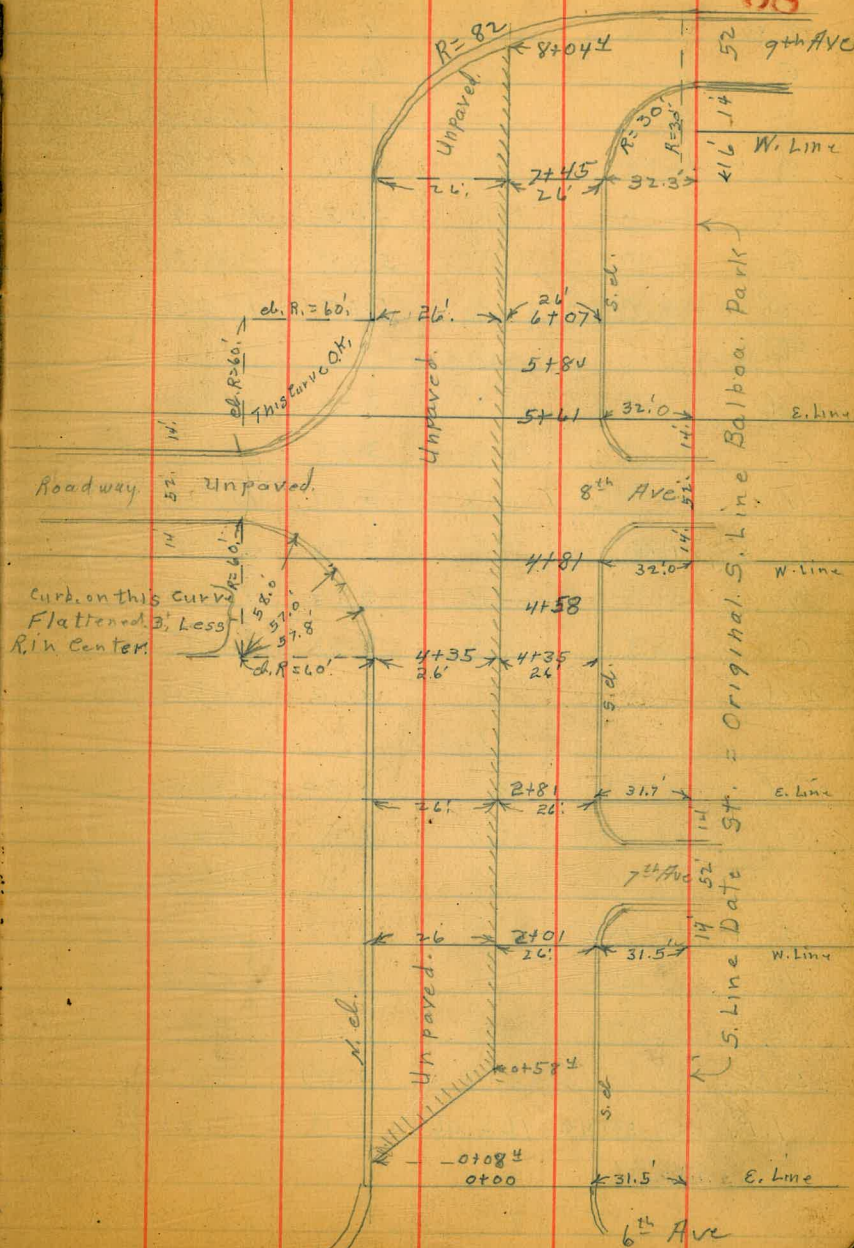
B.M. B.P. 9.67 151.84 142.17 S.W. 6<sup>th</sup> + Date

0+00 = E. Line 6<sup>th</sup> Ave

s. cl.		8.40	143.44
G. on par		8.89	142.95
1/4 " "		8.35	143.49
1/4 " "		8.02	143.82
1/4 " "		7.88	143.96
G " "		8.29	143.55
N. cl.		7.69	144.15
	0+08 1/4		
N. cl.		7.31	144.53
G. Pav. to W.		7.99	143.85
1/4 " "		7.57	144.27
1/4 " "		7.61	144.23
1/4 " "		7.97	143.87
G " "		8.53	143.31
s. cl.		7.99	143.85
	0+33 1/4		
s. cl.		6.77	145.07
G on pav.		7.23	144.61
1/4 " "		6.70	145.14
1/4 " "		6.27	145.57
1/4 N. Edge "		7.29	144.55
G		6.6	145.24
N. cl.		6.04	145.80

Indexed  
 C.S.K.

68



151.89

0+58.4

N. cl		4.79	147.05
G		5.5	146.34
1/4		5.1	146.74
⊕ N. Edge Pav		4.99	146.85
1/4	"	5.43	146.41
G	"	5.98	145.86
s. cl.		5.55	146.29

1+00

s. cl.		3.43	148.41
G	pav	3.85	147.99
1/4	"	3.37	148.47
⊕ Edge Pav		2.96	148.88
1/4		3.1	148.74
G		3.5	148.34
N. cl		2.70	149.14

1+50

N. cl		0.50	151.34	
G		1.2	150.64	
1/4		0.8	151.04	
⊕ N. Edge Pav		0.57	151.27	
1/4	"	0.94	150.90	
G		1.31	150.53	
s. cl.		0.84	151.00	
T.P.	10.40	162.06	0.18	151.66

162.06

Date St

69

2+01 = W. Line 7<sup>th</sup>

s. cl.		8.36	153.70
G	pav	9.01	153.05
1/4	"	8.65	153.41
⊕ N. edge "		8.37	153.69
1/4		8.8	153.26
G		9.1	152.96
N. cl		8.53	153.53

2+15 = W. cl. Line

N. cl		7.91	154.15
G		8.4	153.66
1/4		8.1	153.96
⊕ N. edge pav		7.78	154.28
1/4	"	8.00	154.06
S G	"	8.37	153.69

2+41 ⊕

S. G	pav	6.87	155.19
1/4	pav	6.73	155.33
⊕ N. edge Pav		6.57	155.49
1/4		7.0	155.06
G		7.3	154.76
N. cl		6.80	155.26

2+67 = E. cl. Line

N. cl		5.57	156.49
G		6.1	155.96
1/4		5.9	156.16



162.06

± N. edge Pav	5.40	156.66
"	5.54	156.52
S.G	5.79	156.27
2+81 = E. Line 7 <sup>th</sup> St.		
S. eb.	4.67	157.39
G pav	5.31	156.75
"	4.93	157.13
± N. edge "	4.77	157.29
"	5.2	156.86
G	5.6	156.46
N. eb	5.01	157.05

3+31

N. eb	2.81	159.25
G	3.3	158.76
"	3.0	159.06
± N. edge Pav	2.71	159.35
"	3.00	159.06
G	3.40	158.66
S. eb.	2.75	159.31

3+81

S. eb	0.69	161.37
G pav	1.40	160.66
"	1.03	161.03
± N. edge "	0.69	161.37
"	0.6	161.46
G	1.2	160.86

162.06

Date St.

70

N. eb	0.69	161.37
T.P.	9.77	171.41
+35 B.C. Curb on N.		
N. eb. at B.C.	7.68	163.73
G	8.0	163.41
"	7.7	163.71
± N. edge Pav	7.78	163.63
"	8.20	163.21
G	8.65	162.76
S. eb	8.07	163.34

4+58

S. eb	7.29	164.12
G Pav	7.84	163.57
"	7.40	164.01
± N. edge "	6.98	164.43
"	6.8	164.61
N. eb. Line	6.8	164.61
T.N. = N.G.	7.0	164.41
T.N. = N. eb. on Curve.	6.64	164.77

4+81 = W. Line 8<sup>th</sup> Ave

26.5' N. of N. eb. Line = N. eb.	5.37	166.04
26.5' " " " " = G	5.9	165.51
N. eb. Line	5.8	165.61
"	5.9	165.51
± N. edge Pav	6.00	165.41
"	6.45	164.96

		171.41	
4+81 (con.)			
G. Pav.		6.85	164.56
S. cb.		6.30	165.11
4+95 = W. Curb. Line			
S. G. Pav.		6.43	164.98
1/4 "		6.06	165.35
ϕ N. edge "		5.67	165.74
1/4 "		5.14	166.01
N. cb. Line		5.3	166.11
+30' N		5.5	165.91
+60' N Gutter		4.5	166.91
+60' N = B.C. Curb.		3.78	167.63
+110' N on "		2.7	168.71
+110' N Gutter		2.01	169.40
5+08 = W. 1/4			
N. cb - 110'		2.3	169.11
N. cb - 60'		3.9	167.51
N. " - 30'		4.3	167.11
N. cb. Line		4.9	166.51
1/4 "		5.1	166.31
ϕ = N. edge Pav		5.40	166.01
1/4 "		5.74	165.67
S. cb. Line "		5.97	165.44
5+21 = ϕ 8 <sup>th</sup> Ave.			
S. cb. Line Pav		5.91	165.50
1/4 "		5.69	165.72
ϕ = N. Line "		5.35	166.06

		171.41		Date St
1/4				5.1 166.31
N. cb. Line				4.7 166.71
+30				3.9 167.51
+60				3.5 167.91
+110				2.1 169.31
5+34 = E. 1/4				
N. cb +110				2.1 169.31
+60				4.0 167.41
+30				4.2 167.21
N. cb. Line				4.9 166.51
1/4				5.3 166.11
ϕ = N. Line Pav				5.44 165.93
1/4 "				5.87 165.54
S. cb. Line "				6.13 165.28
5+47 = E. cb. Line				
S. cb. Line Pav.				6.61 164.80
1/4 "				6.11 165.30
ϕ N. edge "				5.62 165.79
1/4 "				5.2 166.21
N. cb. Line				5.2 166.21
+30				5.2 166.21
+60 G				4.5 166.91
+60 cont. cb at B.C.				3.83 167.58
+110 " "				1.94 169.45
+110 G				3.0 168.41

171.41

5+61 = E. Line 8<sup>th</sup> Ave

22.2 N. of N. ch. Line = ent. ch	5.18	166.23	on curve
22.2 " " " " " = Gutter	5.7	165.71	
N. ch. Line	5.9	165.51	
" "	5.6	165.81	
☐ N. Line Pav	5.89	165.52	
" "	6.34	165.07	
S. G. "	6.88	164.53	
S. ch	6.41	165.00	

5+84

S. ch	6.60	164.81
G Pav	7.22	164.19
" "	6.68	164.73
☐ N. Edge "	6.31	165.10
" "	6.4	164.61
N. ch. Line	7.0	164.41
5.4 N. of ch. Line = G	6.7	164.71
5.4 " " " " = ch.	6.21	165.20

6+07 = B.C. Curbon N.

N. ch	7.07	164.34
G	8.0	163.41
" "	7.5	163.91
☐ = N. edge Pav	6.97	164.44
" "	7.18	163.23
G	7.64	163.77
S. ch	7.12	164.29
T.P. 0.15	164.45	7.11 164.30

164.45

6+36.

S. ch	1.00	163.45
G Pav	1.56	162.89
" "	1.20	163.25
☐ N. edge "	0.93	163.52
" "	1.5	162.95
G	2.0	162.45
N. ch.	1.12	163.33

6+86

N. ch	2.90	161.55
G	3.9	160.55
" "	3.3	161.15
☐ = N. edge Pav	3.03	161.42
" "	3.41	161.04
G "	3.85	160.60
S. ch	3.30	161.15

7+45 = B.C. Curbs { S. ch. 30' Radius  
N. ch. 82' "

S. ch	6.77	157.68
G Pav	7.29	157.16
" "	6.47	157.98
☐ = N. edge "	5.83	158.62
" "	5.6	158.85
G	6.0	158.45
N. ch.	5.12	159.33

164.45

7+61 = W. Line 9<sup>th</sup> Ave

1.7' s. of N. ch. Line = N. ch	5.73	158.72	on Curve
1.7' s. " " " " = G	6.14	158.05	
1/4	6.3	158.15	
ϕ = N. edge Pav.	6.49	157.96	
1/4	7.11	157.34	
S. ch. line "	7.97	156.48	
7+75 = W. ch. Line			
S. ch. Line Pav	8.13	156.32	
1/4	7.52	156.89	
ϕ = N. edge "	7.10	157.35	
1/4	7.1	157.35	
+ 7.1 = G	6.8	157.65	
+ 7.1 = N. ch	6.36	158.09	on Curve

7+88 = W. 1/4

12.4' s. of N. ch. line = N. ch	6.99	157.46	on Curve
12.4' " " " " = G	7.5	156.95	
1/4	7.5	156.95	
ϕ = N. Edge Pav	7.62	156.83	
1/4	7.94	156.51	
S. ch. line "	8.33	156.12	

8+01 = ϕ 9<sup>th</sup> Ave

S. ch. line	8.73	155.72	
1/4	8.43	156.02	
ϕ = N. Edge Pav	8.29	156.16	
+ 3.4 = G	8.3	156.15	
+ 3.4 = N. ch.	7.78	156.67	

164.45

Date st

8+04<sup>40</sup> = E. End. Unpaved Strip.

73

ϕ = N. ch	7.99	156.46	
ϕ = Gutter Pav.	8.48	155.97	
T.P.	2.23	166.53	0.15 164.30
T.P.	0.05	153.58	13.00 153.53
B.M. BR. S. W. 6 <sup>th</sup> + Date.	11.38	142.20 = 142.17	

Cross Section Surf on Place  
 Monte Vista West 200'

50' Wide

See Sketch Page 36

B.M. 0.87 60.39 ✓ 59.52 S.M.B.P. Belvedere  
 TP 4.31 52.53 ✓ 12.17 48.22 Monte Vista

2 Monte Vista

-40 1.9 50.6

S 4.1 48.4

2 5.1 47.4

H 5.2 47.3

+51 5.1 47.4

McB Monte Vista

-51 Gutter 5.75 46.78

Sly End Curb Top 5.36 47.17

H 5.5 47.0

2 5.5 47.0

S 4.6 47.9

+40 2.5 50.0

McL Monte Vista = 0+0

-40 2.2 49.3

S 5.0 47.5

2 5.8 46.7

+10 6.1 46.4

H 6.0 46.5

+15 9.5 43.0

0+2'

H +7.3 = Nly Post Pole 14' diam

INDEXED  
 EFB

52.53 ✓

0+10

-15

H

+15

2

S

+15

0+20

-15

S

2

+10

+12

H

+5

0+34

-13 = 1/2 4.5' Brick Porch

H

+12

2

S

0+60

S

2

H

Feb. 15-46  
 Sisson  
 Northern  
 Osborn 74

9.7 42.6

6.4 46.1

6.2 46.3

6.0 46.5

5.2 47.3

4.9 47.6

5.0 47.5

5.6 46.9

6.0 46.5

6.3 46.2

5.8 46.7

6.6 45.9

6.7 45.8

6.07 46.46

6.2 46.3

5.9 46.6

6.0 46.5

5.6 46.9

5.8 46.7

5.9 46.6

6.6 45.9

52.53 ✓

+2 = 5/4 Conc Apron	6.66	45.87
+4.6 = 2 Garage Conc Floor	6.54	45.99
	0+66	
N +4.7 = 5/4 Brick Wall Top	5.19	47.34
	0+90	
N = 0.5 Brick Patch	5.69	46.84
+4.7 = 2.5 Brick Walk	5.86	46.67
2	5.9	46.6
+17	5.5	47.0
S	1.8	50.7
	1+15	
S	1.6	50.9
+9	5.1	47.4
2	5.4	47.1
N = 5/4 Conc Apron	5.86	46.67
+5.2 = 2 Garage Conc Floor	5.79	46.74
	1+25	
N +4.6 = 1 1/4 Brick Wall Top	4.40	48.13
	1+45	
N = 2.5 Brick Walk	4.17	48.36
+4 = 5/4 2.5" "	4.27	48.26
2	4.5	48.0
+14	4.8	47.7
S	1.7	50.8

75

52.53

	1+62		
N = 2 Garage Conc Floor	3.83	48.70	
+2 = 5/4 Conc Apron	4.02	48.51	
	1+69		
N +4 = 2.5 Brick Walk	3.45	49.08	
	1+70		
N +7.5 = 1 1/4 Pav Pali			
	1+79		
N	3.4	49.1	
+1.3 = 2 Rubber Conc Dr.	3.35	49.18	
+10	3.2	49.3	
2	3.5	49.0	
+15	3.1	49.4	
S	1.2	51.3	
	2+0		
S	2.4	50.1	
2	3.2	49.3	
N	3.5	49.0	
TP	10.13	61.79	51.66
BM		3.27	59.52

Starting 59.52

Walker  
Bass  
Isbell  
5-28-40

CROSS SECTION ALLEY Bk. 3 - EASTGATE  
Between 45th and Chamounie  
From Orange Ave to El Cajon Ave

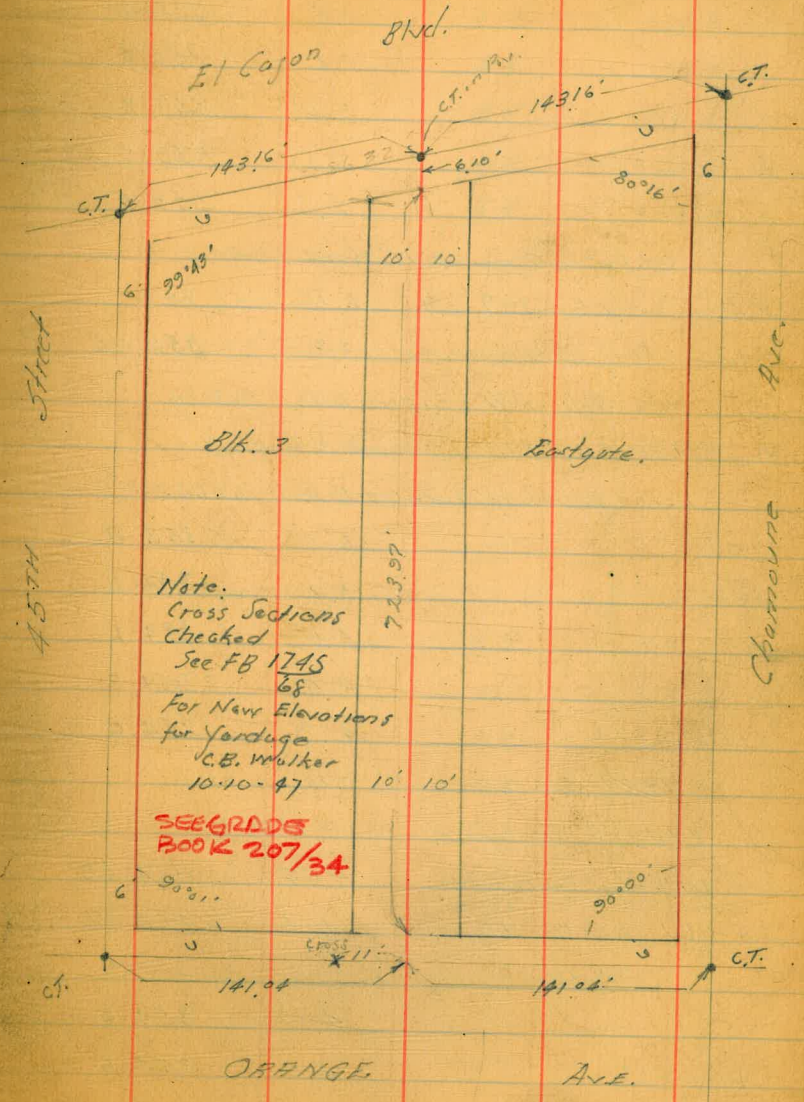
	4.96	356.16	351.20	P.M. B.P. NW Orange & Chamounie
0 - 15.8' = N. cb. Line Orange Ave.				
E - 135° = Paving NW Chamounie	5.61	350.55		
" top cb. " "	5.04	351.12		
E top cb.	4.44	351.72		
" Gut. Ground.	5.0	351.2		
E on "	4.9	351.3		
" "	4.8	351.4		
W top cb.	4.38	351.78		
+ 135° = N.E. paving at 45th	4.37	351.79		
" NE top cb.	3.80	352.36		
0+100 = N.E. ORANGE AVE.				
+ 015 W cb.	4.10	352.06		
" Gut.	4.0	352.2 (351.8)		
E	4.2	352.0 (351.8)		
+ 6	4.3	351.9		
E Gut.	3.8	352.4 (351.7)		
E top cb.	4.22	351.94		
0+20				
E	2.9	353.3		
+ 5	3.3	352.9		
E	3.3	352.9		
+ 5	2.9	353.3		
W	2.4	353.8		

Notes Red. T. Plat on Profile 2489  
C.B.H. 5-29-40

Cont. P. 77

INDEXED  
EFB

76



35616

Alley 81k 3.  
Eastgate

0+50

-10	1.8	354.4
W	1.8	354.4
L	2.4	353.8
E	2.5	353.7
+10	2.7	353.5

0+56 = L Garage on W. Conc. floor.

T.P. 5.11 359.09 2.18 353.98

W+3.3 = Floor of Above Garage 3.40 352.76 ✓

0+71 = Pole on W = 0.15 in Alley = Back edge

0+91 = L Guy Dead man → 0.8 in Alley

1+00 = Beginning Fence on E 0.10 in Alley

-10'	5.3	353.8
E	5.1	354.0
L	5.0	354.1
W	4.4	354.7
+10	4.2	354.9

1+37 = End Fence on E 0.10 in Alley

1+43 = L Garage on W 3.1' Back ✓

L+9.9 = toe Conc. Apron 4.44 354.65 ✓

W+3.1 on " Floor. 4.14 354.95 ✓

1+50

-5	4.6	354.5
W	4.6	354.5
L	4.7	354.4
E	5.0	354.1
+5'	5.1	354.0

35909

77

1+99 = Pole on West 0.5' in Alley = West edge.

E-10	4.8	354.3
E	4.8	354.3
L	4.5	354.6
W	4.4	354.7
+10	4.4	354.7

1+75 = Beginning fence on East on Line

2+11.5 = End " " " 0.5 in Alley

2+16 = L Garage on E Conc. floor

T.P. 5.40 360.00 4.49 354.60

E+3.7 on Conc. floor Manqor. 5.04 354.96 ✓

2+23 = Beginning fence on E 0.2' in Alley

2+59 = End " " " 0.15 " "

2+50 = Beginning fence on W 0.35' in Alley

-10	4.9	355.1
W	4.9	355.1
L	5.0	355.0
E	5.0	355.0
+10	5.2	354.8

2+62.8 = L MH 4.73 355.27 Rim ✓  
4.80 355.20 ✓

2+65 = L Garage on E 0.1' in Alley Conc. floor.

2+78 = End fence on W 0.3' in Alley

3+00

E	4.7	355.3
L	4.7	355.3
W	4.6	355.2
+5	4.8	355.2



360.00

3+08 = Garage on West.

W - toe Conc. Apron	4.73	355.27	✓
+3.7 = Conc. floor	4.41	355.59	✓

3+47 = Pole on W 0.6' in Alley = W edge.

3+50

-10	4.7	355.3
W	4.7	355.3
L	4.7	355.3
E	4.8	355.2
+5	4.8	355.2

3+25 = Beginning fence on E on line

3+70 = End " " 0.2 in Alley

4+00

-5	4.4	355.6
E	4.4	355.6
L	4.5	355.5
+6	4.6	355.4
W	4.2	355.8
+10	4.3	355.7

4+08 = Beginning Conc. Slab on E. on line ✓  
3.95 356.05

4+24 = End conc. slab. 3.88 356.12 on East. ✓

4+09 = Beginning fence on W on line.

4+26 = Pole on W 0.4' in Alley back edge.

4+27

-10	3.8	356.2
W	3.8	356.2
+3	4.3	355.7

360.00

78

L	4.3	355.7
+7	4.0	356.0
E	4.4	355.6
+15	4.3	355.7

4+60

-10	4.0	356.0
E	4.1	355.9
+3	3.8	356.2
L	4.0	356.0
W	3.9	356.6
+10	3.2	356.8

5+00 = Fence on W 0.6 in Alley

-10	3.0	357.0
W	3.1	356.9
L	3.6	356.4
E	3.4	356.6
+20	3.6	356.4
TP	6.24	362.62
	3.62	356.38

5+24 = Pole on W 0.8 in Alley = W edge.

5+50 = Fence on W 0.5 in Alley.

-10	5.7	356.9
E	5.7	356.9
L	5.8	356.8
W	5.3	357.3
+10	5.3	357.3

362.62

5+90 = Garage on E.		
E + 18' = toe Asphalt paving	4.60	358.02
+ 313 = Garage Floor	4.52	358.10
5+90 = Fence on W on line.		
6+00		
-10	5.0	357.6
W	5.0	357.6
L	4.8	357.8
E	4.7	357.9
6+25 = Pole on W 0.8 in Alley = Wedge		
6+41 = N edge Garage on East	4.18	357.44
		North Entrance Conc. Floor
-5	4.2	358.4
E	4.2	358.4
L	4.4	358.2
W	4.0	358.6
+10	4.2	358.4
	3.94	358.68
6+58 = Garage on W Conc. Floor 4' Back		
6+96 = Pole on W 0.7 in Alley = W edge.		
7+00		
W	4.0	358.6
L	4.1	358.5
+8	4.2	358.4
E	3.8	358.8
+5	3.9	358.7

362.62

79

TP	4.66	363.16	4.12	358.50
	7+23	97 = S.L.	E.1 Canyon	section diag. on line
E top cb.			5.21	357.95
" Gut on paving			5.31	357.85
E+3' on "			5.42	357.74
15' " "			5.70	357.46
17' " "			5.52	357.64
L " "			5.56	357.60
14' " "			5.53	357.63
17' " "			5.28	357.88
+996 = dug. on Pav.			5.18	357.98
+996 on top cb.			5.03	358.13
	7+32			
W top cb.			5.08	358.08
" Gut. on Pav.			5.18	357.78
14' " "			5.56	357.60
16' " "			5.73	357.43
L " "			5.80	357.36
13' " "			5.77	357.39
15' " "			5.84	357.32
17' " "			5.67	357.49
E " "			5.55	357.61
" top cb.			5.30	357.86
	7+37			
E top cb.			5.38	357.78
" Gut.			5.96	357.20

36316

E +5' on Pav.	6 10	357 06
+7 " "	6 00	357 16
L " "	5 94	357 22
+11 " "	5 98	357 18
+6 " "	5 79	357 37
W Gut " "	5 67	357 49
" top cb.	5 14	358 02
7+40.2 = South cb. Line E/Cajon		
-20 on cb.	5 29	357 87
-20 " Pav.	5 60	357 56
W " cb.	5 22	357 94
" " Pav.	5 78	357 38
L " "	5 96	357 20
E " "	6 06	357 10
E top cb.	5 42	357 74
+20 " "	5 60	357 56
+20 " Paving	6 15	357 01
Chk. S.W. B.P. El Cajon & Chumune	6.55	356. 61

356 58 - B.M.  
0.03 - E. 1187.

DIRECTIONS FOR USE OF TABLES

TABLE No. 1.

Distance of slope stake from side or shoulder stake for any width roadway, slope 1 1/2 to 1. If ground is nearly level, the cut or fill at side stake is located by the double entry method in left column and top row. The number in body

from side stake to slope stake. If ground is not

**IMPROVED TABLES**  
AND  
**INFORMATION**

To find Tangent and External for curve of any other degree, divide by degree of curve and add correction found in column of corrections. Degree of curve with a given  $L$  may be found by dividing tangent (or external), opposite  $L$  by given tangent (or external).  
The distance from a point on the tangent to the curve is very nearly the square of the tangent length divided by twice the radius.

TABLE X.  
MIDDLE ORDINATES OF RAILS  
Length of Rail (feet)

C o /	R Feet	30 Inch	28 Inch	26 Inch	24 Inch	22 Inch	20 Inch	C o	R Feet	30 Inch	28 Inch	26 Inch	24 Inch	22 Inch	20 Inch
0-20	17189	.08	.07	.06	.05	.04	.03	8	716.8	1.88	1.64	1.42	1.20	1.01	.84
0-40	8594	.16	.14	.12	.10	.08	.07	9	637.3	2.12	1.84	1.60	1.35	1.14	.94
1-0	5730	.24	.20	.18	.15	.13	.10	10	573.7	2.36	2.05	1.78	1.50	1.27	1.04
1-20	4297	.31	.27	.23	.20	.17	.13	11	521.7	2.59	2.26	1.95	1.65	1.39	1.15
1-40	3438	.39	.34	.29	.25	.21	.17	12	478.3	3.83	2.47	2.15	1.81	1.54	1.26
2-0	2865	.47	.41	.35	.30	.25	.20	13	441.7	3.05	2.66	2.30	1.96	1.66	1.36
2-20	2456	.55	.48	.41	.35	.29	.23	14	410.3	3.30	2.87	2.48	2.10	1.78	1.46
2-40	2149	.63	.55	.47	.40	.33	.27	15	383.1	3.54	3.08	2.68	2.26	1.91	1.57
3-0	1910	.71	.62	.53	.45	.38	.31	16	359.3	3.76	3.28	2.83	2.40	2.04	1.67
3-20	1719	.78	.68	.59	.50	.42	.35	17	338.3	4.00	3.48	3.02	2.57	2.16	1.78
3-40	1563	.86	.75	.65	.55	.46	.38	18	319.6	4.21	3.67	3.18	2.70	2.28	1.87
4-0	1433	.94	.82	.71	.60	.50	.42	19	302.9	4.45	3.89	3.36	2.86	2.41	1.98
4-20	1323	1.02	.89	.77	.65	.55	.45	20	287.9	4.70	4.09	3.55	3.00	2.54	2.09
4-40	1228	1.10	.96	.83	.70	.59	.48	22	262.0	5.16	4.44	3.84	3.30	2.80	2.29
5	1146	1.18	1.03	.89	.75	.63	.52	24	240.5	5.64	4.92	4.20	3.59	3.04	2.50
6	955.3	1.41	1.23	1.06	.90	.76	.62	26	222.3	6.07	5.29	4.58	3.88	3.29	2.70
7	819.0	1.65	1.44	1.24	1.05	.89	.73								

TABLE XI.  
SHORT RADIUS CURVES

Radius Feet	Chord Feet	Central Angle	Deflection Angle	Deflection for 1 Foot
35	10	16-26	8-13	49.3
45	10	12-46	6-23	38.3
50	15	17-16	8-38	34.5
60	15	14-22	7-11	28.8
75	15	11-30	5-45	23.0
100	20	11-30	5-45	17.3
120	20	9-34	4-47	14.3
150	20	7-39	3-49	11.5
190	25	7-32	3-46	9.15
200	25	7-10	3-35	8.6
225	25	6-25	3-12	7.7
240	25	5-58	2-59	7.2
250	25	5-44	2-52	6.9
275	25	5-12	2-36	6.2
288	50	9-58	4-59	6.0
300	50	9-32	4-46	5.7
350	50	8-12	4-06	4.9
376	50	7-40	3-50	4.6
400	50	7-10	3-35	4.3
410	50	7-00	3-30	4.2

To find length of curve divide angle from P. C. to P. T. by central angle of chord and multiply by length of chord.

TABLE XII.  
INCLINED DISTANCE OF 100 FT. REDUCED TO HORIZONTAL

Slope	Horizontal Distance	Correction	Rise Per Foot	Slope	Horizontal Distance	Correction	Rise Per Foot
0°00'	100.000	0.000	0.000	8°00'	99.027	0.973	0.139
15'	99.999	0.001	0.004	15'	98.965	1.035	0.143
30'	99.996	0.004	0.009	30'	98.902	1.098	0.148
45'	99.991	0.009	0.013	45'	98.836	1.164	0.152
1 00	99.985	0.015	0.017	9 00	98.769	1.231	0.156
15	99.976	0.024	0.022	15	98.700	1.300	0.161
30	99.966	0.034	0.026	30	98.629	1.371	0.165
45	99.953	0.047	0.031	45	98.556	1.444	0.169
2 00	99.939	0.061	0.035	10 00	98.481	1.519	0.174
15	99.923	0.077	0.039	15	98.404	1.596	0.178
30	99.905	0.095	0.044	30	98.325	1.675	0.182
45	99.885	0.115	0.048	45	98.245	1.755	0.187
3 00	99.863	0.137	0.052	11 00	98.163	1.837	0.191
15	99.839	0.161	0.057	15	98.079	1.921	0.195
30	99.813	0.187	0.061	30	97.992	2.008	0.199
45	99.786	0.214	0.065	45	97.905	2.095	0.204
4 00	99.756	0.244	0.070	12 00	97.815	2.185	0.208
15	99.725	0.275	0.074	15	97.723	2.277	0.213
30	99.692	0.308	0.078	30	97.630	2.370	0.216
45	99.657	0.343	0.083	45	97.534	2.466	0.221
5 00	99.619	0.381	0.087	13 00	97.437	2.563	0.225
15	99.580	0.420	0.092	15	97.338	2.662	0.229
30	99.540	0.460	0.096	30	97.237	2.763	0.233
45	99.497	0.503	0.100	45	97.134	2.866	0.238
6 00	99.452	0.548	0.105	14 00	97.030	2.970	0.242
15	99.406	0.594	0.109	15	96.923	3.077	0.246
30	99.357	0.643	0.113	30	96.815	3.185	0.250
45	99.307	0.693	0.118	45	96.705	3.295	0.255
7 00	99.255	0.745	0.122	15 00	96.593	3.407	0.259
15	99.200	0.800	0.126	15	96.479	3.521	0.263
30	99.144	0.856	0.131	30	96.363	3.637	0.267
45	99.087	0.913	0.135	45	96.246	3.754	0.271

TABLE XIII.  
MINUTES IN DECIMALS OF A DEGREE.

0 30"	.00833	10 30"	.17500	20 30"	.34167	30 10"	.50833	40 30"	.67500	50 10"	.84167
1 00	.01667	11 00	.18333	21 00	.35000	31 00	.51667	41 00	.68333	51 00	.85000
30	.02500	30	.19167	30	.35833	30	.52500	30	.69167	30	.85833
2 00	.03333	12 00	.20000	22 00	.36667	32 00	.53333	42 00	.70000	52 00	.86667
30	.04167	30	.20833	30	.37500	30	.54167	30	.70833	30	.87500
3 00	.05000	13 00	.21667	23 00	.38333	33 00	.55000	43 00	.71667	53 00	.88333
30	.05833	30	.22500	30	.39167	30	.55833	30	.72500	30	.89167
4 00	.06667	14 00	.23333	24 00	.40000	34 00	.56667	44 00	.73333	54 00	.90000
30	.07500	30	.24167	30	.40833	30	.57500	30	.74167	30	.90833
5 00	.08333	15 00	.25000	25 00	.41667	35 00	.58333	45 00	.75000	55 00	.91667
30	.09167	30	.25833	30	.42500	30	.59167	30	.75833	30	.92500
6 00	.10000	16 00	.26667	26 00	.43333	36 00	.60000	46 00	.76667	56 00	.93333
30	.10833	30	.27500	30	.44167	30	.60833	30	.77500	30	.94167
7 00	.11667	17 00	.28333	27 00	.45000	37 00	.61667	47 00	.78333	57 00	.95000
30	.12500	30	.29167	30	.45833	30	.62500	30	.79167	30	.95833
8 00	.13333	18 00	.30000	28 00	.46667	38 00	.63333	48 00	.80000	58 00	.96667
30	.14167	30	.30833	30	.47500	30	.64167	30	.80833	30	.97500
9 00	.15000	19 00	.31667	29 00	.48333	39 00	.65000	49 00	.81667	59 00	.98333
30	.15833	30	.32500	30	.49167	30	.65833	30	.82500	30	.99167
10 00	.16667	20 00	.33333	30 00	.50000	40 00	.66667	50 00	.83333	60 00	1.00000

4.57

50.00  
305  
 53.05  
 974  
43.31  
 434  
47.65  
 627  
41.38  
 527  
46.65  
 522  
41.43  
 552  
46.95  
 200  
44.95  
 858  
53.53  
 344  
50.09

495  
13  
 508  
521  
13  
 534  
547  
14  
 561  
23  
 584  
23  
 607

561  
25  
 586  
25  
 611  
25  
 636  
50  
 686  
59  
 745  
16  
 761  
14  
 775  
53  
 828  
20  
 848

804.40

1.016  
6  
 6096

760.16  
 711.80  
471.96  
 735.98  
1210  
 738.8

790.07  
610  
 723.97

158.60  
8.16  
 150.44

460.07  
11.27  
80  
 681.27  
20  
 60  
14  
 46

81 41.91  
 10.4

35  
46  
23  
35  
 558

137.55  
107.25  
 562.75

58.0  
 57.0  
 57.4

2.81  
14  
 2.67  
41  
 26  
 67

5+61  
46  
 6707  
495  
 521

627  
581  
 0.46

132.60  
6.00  
 138.60  
0.44  
 138.16  
7.80  
 145.96  
3.81  
 142.15  
5.28  
 147.43  
7.12  
 140.31  
1.60  
 141.91  
10.84  
 131.05

ENGINEERING DEPARTMENT  
 CITY OF SAN DIEGO, CALIFORNIA

ENGINEERING DEPARTMENT  
 CITY OF SAN DIEGO, CALIFORNIA