

1366

1882  
1883  
1884  
1885  
1886  
1887  
1888  
1889  
1890  
1891  
1892  
1893  
1894  
1895  
1896  
1897  
1898  
1899  
1900

1366

ENGINEERING DEPARTMENT,  
CITY OF  
SAN DIEGO,  
CALIFORNIA.

MICROFILMED  
DEC 23 1964

Our Leather Bound Engineers Note Books are carried in the following rulings:

- No. 380 LEVEL BOOK. Left and Right Hand Page the same as Left Hand Page of this Book.
- No. 382 FIELD BOOK. Left Hand Page as in this Book, Right Hand Page 4 x 4 to the inch, Center Line Red.
- No. 384 MINING TRANSIT BOOK. Left Hand Page as in this Book, Right Hand Page 8x8 to the inch, Center Line Red.
- No. 385 FIELD BOOK. Left Hand Page as in this Book, Right Hand Page 8 vertical and 4 horizontal lines to the inch, Center Line Red.

We also carry the Note Books listed above, bound in extra strong Fabri-Hide (otherwise the same quality of book), which can be furnished at a somewhat lower price.

In ordering Fabri-Hide covered books, add the letter "F" to catalog number.

**THE FREDERICK POST CO.**  
*ENGINEERING and DRAFTING SUPPLIES*  
IRVING PARK STATION  
CHICAGO, ILL.

1320

X Sec.	1 <sup>st</sup> St	Penn. to Bridge	1
"	Collier	33 to Hawley.	5
X Section	Langley St &	to Island	12-21.
X Sec.	S.D. Russ H.S.	Practice F.B. field	22
Levels for Culvert	S. side	Upas at California	31
	Intersection Hancock &	Winder	35
	Aristo St.	Pine to Cherry	40
	Alley Blk 8 Reed &	Hubbell 29 to 30	44
"	72	City Hts Nightman-Landis	48
"	77	" " Landis to Dwight	51
"	99	" " Dwight to Myrtle	55
"	105	" " Myrtle to Thorn	62
X Sec. Alley	<sup>811</sup> 58	Park Villas Upas to Myrtle Bel. 33 <sup>rd</sup> & 1/2 to	65

9-26-29 X-section 1st St. - Edge of Paving  
 J. C. Bliss  
 Lynn Dredert 100 South of Pennsylvania to North edge of  
 Chuck Rauver Budge - 62.13 wide at Pennsylvania - 10' 6" 10.5' 4.45

B.M. N.W. B.P. 3rd & Pennsylvania 279.34  
 +0.58 279.92  
 B.M. S.E. Top Hydrant 1st & Pennsylvania -7.59 272.33  
 T.P. -9.75 270.17  
 +2.43

T 272.60

Paving 100' S of 5L Penn. = 0 + 00

E Tpcb	3.42	269.18
G	4.01	268.59
1/4	3.71	268.89
L	3.61	268.99
1/4	3.88	268.72
G	4.51	268.09
W Tpcb	3.97	268.73
W	3.6	269.0
W	0425	
cb	4.5	268.1
1/4	5.0	267.6
Q	5.0	267.6
1/4	4.6	268.0
G	4.3	268.9
E Tpcb	4.2	268.4
	3.63	268.97

Notes Reduced by CBH 9-27-29

Profile # 1430

T 272.60

0+50

E Tpcb	3.72	268.88
G	4.4	268.2
1/4	5.5	267.1
£	5.6	267.0
1/4	5.6	267.0
cb	5.4	267.2
W	4.3	268.3

0+67

Rambling Eucalyptus Tree at 5' West of £

0+75

W	8.7	263.9
cb	6.8	265.8
1/4	5.8	266.8
£	6.6	266.0
1/4	6.6	266.0
+6	4.0	268.6
G	4.3	268.3
ETpcb	4.03	268.57

Palm Tree on this section - 3' West of E cb.

0+92

Palm Tree 4' West of East cb

1+00 = End of cb on East

ETpcb	4.22	268.38
G	4.6	268.0

Note-Fill falls away on 1/4 one to one slope

T 272.60

2

+4	4.7	267.9
1/4	8.0	264.6
£	7.9	264.7
1/4	8.5	264.1
cb	8.9	263.7
W	10.8	261.8

Rambling Eucalyptus on this section 2' West of £

1+23

Web Line = Edge Fill	10.6	262.0
1/4	9.5	263.1
£	9.5	263.1
1/4	9.8	262.8
+3	9.8	262.8
cb	4.6	268.0
+2.5 = Edge walk	4.36	268.24

Note

1700 to 1750 along East cb Line &amp; spreading into st. there is tangled mass of shrubbery

1750

Edge sidewalk	4.68	267.92
cb	5.5	267.1
1/4	10.9	261.7
£	11.0	261.6
1/4	11.1	261.5

π 272.60

+5 = Edge Fill	10.8	261.8
	1+75	
3' West of $\frac{1}{4}$ = edge fill	12.0	260.6
$\frac{1}{2}$	12.0	260.6
$\frac{1}{4}$	12.0	260.6
cb	6.2	266.4
Edge of Walk	4.88	267.72
	2+00 = End of Walk on East	
E	4.9	267.7
+75 = Edge Walk	5.20	267.40
cb	8.2	263.7
+8	12.4	260.2
$\frac{1}{4}$	12.5	260.1
$\frac{1}{2}$	12.5	260.1
$\frac{1}{4}$ = Edge Fill	13.9	258.7
	2+25	
$\frac{1}{4}$ = Edge Fill	13.4	259.2
$\frac{1}{2}$	12.7	259.9
$\frac{1}{4}$	12.9	259.7
+4	12.0	260.6
cb	7.1	265.5
+6	4.2	268.4
E	4.2	268.4

π 272.60

2+50

3

E	3.9	268.7
+5	4.3	268.3
cb	6.2	266.4
+2	6.6	266.0
+5	11.1	261.5
$\frac{1}{4}$	12.4	260.2
$\frac{1}{2}$	12.5	260.1
$\frac{1}{4}$	13.0	259.6
+4 = Edge fill	12.7	259.9
	2+75	
7' West of n $\frac{1}{4}$ = Edge fill	12.2	260.4
$\frac{1}{4}$	12.2	260.4
$\frac{1}{2}$	12.6	260.0
$\frac{1}{4}$	12.5	260.1
+3	11.6	261.0
cb	6.0	266.6
+3	4.5	268.1
E	3.7	268.9
	3+00	
E	4.1	268.5
+4	5.4	267.2
cb	5.8	266.8
+2	6.1	266.5
+8	12.2	260.4
$\frac{1}{4}$	12.3	260.3

T 27260

4

♀	12.3	260.3
1/4	11.9	260.7
cb	12.3	260.3
W	15.4	257.2
Out 4 - Top old retaining wall	17.1	255.5
3+34 = North edge bridge		
4' West of W 1/4 = Edge Fill	12.4	260.2
1/4	12.4	260.2
♀ = Floor Bridge	12.5	260.1
1/4	12.3	260.3
+3	11.7	260.9
cb	7.7	264.9
+3 = Edge sidewalk - South end	6.27	265.33

Note

3+02 to 3+34 there is 4' strip of sidewalk  
inside edge 3' back of cb line.

North end edge walk	5.89	266.71
B.M. S.E. Top Hydrant 1st & Penn	0.25	272.35
+7.62		279.97
B.M. NW B.P. 3rd & Penn	0.61	279.36

60' wide 12' chs 9.5' / 4.5	Collier St & See 33rd to Hawley	10-9-29 Miller	395.09 377.99 394.32 397.16	391.07 393.91	5E. 33rd & Copley	5.02 4.69	5.46 392.47	389.63
BM.					s. emb. ch			
T.P.					gutter			
33rd paved	00 = E. line	33rd St.		35.8 wide	"			
N. emb. ch			4.87	389.45	"			
gutter pavement			5.32	389.00	"			
"			4.98	389.34	gutter			
♀ "			4.95	389.37	N. emb. ch			
"			5.29	389.03	+ 1. dirt			
gutter "			5.65	388.67	+ 6.1 s. edge walk			
S. emb. ch			5.20	389.12	+ 10.4 N " " + curb & dirt			
	50' E.	35.8 Rdw			N. line dirt			
s. emb. ch			5.15	389.17				
gutter			5.6	388.7				
"			5.0	89.3				
♀			4.8	389.5				
"			5.0	89.3				
gutter			5.3	389.0				
N. emb. ch			4.76	389.56				
	100' E	35.8 Rdw						
N. emb. ch			4.58	389.74				
gutter			5.2	389.1				
"			4.7	389.6				
♀			4.4	389.7				
"			4.9	399.4				
gutter			5.3	389.0				
S. emb. ch			5.04	389.28				

PLOTTED Oct 7-29 - C.H.H.

394.32 397.16	133.2 = N. Line Alley	on N. only	35.8 Rdw
			4.82
			5.2
			4.8
			4.4
			4.5
			5.1
			4.44
			4.4
			4.31
			4.19
			3.8
	148' E. = E. Line Alley		35.7 Rdw.
			3.8
			4.06
			4.20
			4.4
			4.44
			5.0
			4.7
			4.4
			4.8
			5.4
			4.84

389.50<sup>5</sup>  
389.1  
389.5  
389.9  
389.8  
389.2  
389.88  
389.9  
390.01  
390.13  
390.5  
390.5  
390.26  
390.12  
389.9  
389.88  
389.3  
389.6  
389.9  
389.5  
388.9  
389.48



397.92  
 397.16  
 200' E. 35.7 Rdw.

S. emb. ch	4.60	389 72
gutter	5.1	389.2
"	4.6	389 7
♀	4.3	390.0
"	4.5	389 8
gutter	4.8	389.5
N. emb. ch	4.30	390.02

240' E. 35.7 Rdw.

N. emb. ch	4.11	390.21
gutter	4.4	389.7
"	4.2	390 1
♀	4.2	390.1
"	4.5	389 8
gutter	4.9	389.4
S. emb. ch	4.42	389.90

Felton Paved 281' E. - N. line Felton 35.7 Rdw.

S. emb. chs	4.29	390.03
gutter Parvt.	4.62	389.70
" "	4.20	390 12
♀ "	4.00	390 32
" "	4.00	390 32
gutter "	4.22	390 10
N. emb. ch	3.87	390.45

T. P. B.M. 5.34 395.30  
 398.14 4.36 392.80  
 389.96 4 Felton

398.14 395.30 Collier Ave.  
 00 = E. line Felton 35.65 Rdw.

N. emb. ch	5.19	390 11 6
gutter parvt.	5.74	389.56
"	5.44	
♀ "	5.44	389 96
"	5.63	
gutter "	6.11	389.19
S. emb. ch	5.61	389.69

From 4.4 E. to 12.4 E. emb. ch on N. Austroel  
 12.4 E. 35.6 Rdw.

S. emb. ch	5.56	389.74
gutter	6.1	389.2
"	5.5	389.8
♀	5.2	390.1
"	5.3	390 0
gutter	5.8	389.5
N. emb. ch	5.26	390.04

50' E. 35.8 Rdw.

N. emb. ch	5.17	390.13
gutter	5.8	389.5
"	5.3	390 0
♀	5.0	390 3
"	5.6	389.7
gutter	6.1	389.2
S. emb. ch	5.48	389.87

395.30

398.14

100.8 35.6 Rdw.

s. emb. ch	5.15	390.15
gutter	5.7	389.6
"	5.3	390.0
¢	4.9	390.4
"	5.2	390.1
gutter	5.6	389.7
N. emb. ch	5.00	390.30
133.8 = N. Line Alley 35.7 Rdw.		
N. Line dirt	4.2	391.1
+ 7.6 N. Line Walk & ch. & dirt	4.42	390.88
+ 5.9 S " " "	4.55	390.75
+ 10 dirt	4.8	390.5
+ 12 N. emb. ch	4.84	390.46
gutter	5.4	389.9
"	5.0	390.3
¢	4.7	390.6
"	5.1	390.2
gutter	5.5	389.8
S. emb. ch	5.15	390.15
+ 6.1 = N. edge walk	4.84	390.46
+ 10.4 = S " "	4.75	390.55
+ 10.4 = N. End Alley Pavmt.	4.67	390.63
140.5 E = ¢ Alley		
10.4 S. of S. ch. = N. End Alley Pavmt. 4.90		390.40

395.30

398.14

Callier Ave.

140 E Con.

10.4 S. of S. ch. = N. End Alley Pavmt	4.57	390.73
10.4 S " " = S. Edge ch. & walk	4.41	
6.1 " " " = N " "	4.55	
s. emb. ch	4.83	390.47
gutter	5.2	390.1
"	5.0	390.3
¢	4.7	390.6
"	4.9	390.4
gutter	5.4	389.9
N. emb. ch	4.80	390.50
+ 2 dirt	4.7	390.6
+ = s. edge walk	4.54	390.76
+ = N " " + ch & dirt	4.41	390.89
N. line dirt.	4.1	391.2
165.8 35.55 Rdw.		
N. emb. ch	4.78	390.52
gutter	5.5	389.8
"	5.0	390.3
¢	4.6	390.7
"	4.9	390.4
gutter	5.0	390.3
S. emb. ch	4.54	390.76

2. Alley Return  
Busted Retop

398.14 39530

186' E. 35.6 Rdw.

S. ent. cl.	4.65	390.65
gutter	5.2	390.1
"	4.8	390.5
E	4.7	390.9
"	4.8	390.5
gutter	5.2	390.1
N. ent. cl.	4.74	390.56

210' E. 35.65 Rdw.

N. ent. cl.	4.63	390.67
gutter	5.2	390.1
"	4.7	390.6
♀	4.5	390.8
"	4.8	390.5
gutter	5.2	390.1
S. ent. cl.	4.50	390.80

223' E. 35.7 Rdw.

S. ent. cl.	4.66	390.64
gutter	5.2	390.1
"	4.8	390.5
♀	4.6	390.7
"	4.7	390.6
gutter	5.2	390.1
N. ent. cl.	4.62	390.68

398.14 39530 Collier Ave.

140' E. (240' E?) 35.7 Rdw.

N. ent. cl.	4.50	390.80	8
gutter	5.1	390.2	
"	4.7	390.6	
♀	4.5	390.8	
"	4.7	390.7	
gutter	5.2	390.1	
S. ent. cl.	4.62	390.68	

281.32 = W. line 34<sup>th</sup> St (paved) 35.7 Rdw.

S. ent. cl.	4.38	390.92		
gutter parvt.	4.83	390.47		
"	4.32	390.98		
♀	4.17	391.13		
"	4.35	390.95		
gutter	4.73	390.57		
N. ent. cl.	4.32	390.98		
T.P.	4.72	396.04	398.88	
		3.94	394.16	391.32

00 = E. line 34<sup>th</sup> St 35.7 Rdw.

N. ent. cl.	4.80	391.24
gutter parvt.	5.32	390.72
"	4.99	
♀	5.04	391.00
"	5.31	
gutter	5.83	390.21
S. ent. cl.	5.38	390.66

	398.88	396.04	
	50' E	35.6 Rdw.	
s. ent. cl		5.24	390.80
gutter		5.6	390.4
"		5.3	390.7
♀		4.9	391.1
"		5.0	391.0
gutter		5.2	390.8
N. ent. cl.		4.72	391.32

	100' E.	35.7 Rdw.	
N. ent. cl.		4.63	391.41
gutter		5.3	390.7
"		5.0	391.0
♀		4.8	391.2
"		5.2	390.8
gutter		5.5	390.5
s. ent. cl.		4.98	391.06

From 120' E. to 133' E. s. curb & Alley Return gone

" 131' " " 133' " Alley Return on N. Busted

" 133' E. = N. line Alley 35.7 Rdw.

N. line Dirt		3.8	392.2
+ 1.5 N. End walk + cl. + dirt		4.20	391.84
+ 5.85 " " "		4.40	391.64
+ 11 dirt		4.5	391.5
N. ent. cl		4.65	391.39
gutter		5.0	391.0
"		4.6	391.4
♀		4.5	391.5

	396.99	398.88	Collier Ave
"			
"			
gutter		4.9	391.1
s. ent. cl		5.3	390.7
+ 2 dirt		4.91	391.13
+ 6.1 = N. line walk		4.6	391.4
+ 10.4 = S " " + cl + dirt		4.42	391.62
S. line dirt		4.29	391.75
		3.8	392.2
	148' E. = E. line Alley	35.45 Rdw	
S. line dirt		3.8	392.2
+ 1.6 = S. End walk + cl. + dirt		4.22	391.78
+ 5.9 = N " "		4.32	391.72
+ 10 dirt		4.4	391.6
s. ent. cl		4.61	391.43
gutter		5.3	390.7
"		4.9	391.1
♀		4.6	391.4
"		4.8	391.2
gutter		5.0	391.0
N. ent. cl.		4.56	391.48
+ 1 dirt		4.5	391.5
+ 6.1 S. side walk		4.26	391.78
+ 10.5 N " " + cl + dirt		4.07	391.95
N. line		3.8	392.2

Alley Return Busted

39689  
398.88

200' E. 35.45 Rdw.

N. ent. el	4.1	391.63
gutter	4.9	391.1
"	4.6	391.4
φ	4.5	391.5
"	4.7	391.3
gutter	5.0	391.0
S. ent. el	4.35	391.69

240' E. 35.55 Rdw.

S. ent. el	4.18	391.86
gutter	4.7	391.3
"	4.5	391.5
φ	4.4	391.6
"	4.6	391.4
gutter	5.0	391.0
N. ent. el.	4.35	391.69

From 259.2 to 265.8 N. el. out.

282.5 E. = W. line pavmt on Hawley Blvd

N. ent. el	4.13	391.91			
gutter Pavmt	5.03	391.01			
"	4.08	391.96			
φ	3.87	392.17			
"	3.94	392.10			
gutter "	4.37	391.67			
S. ent. el.	3.93	392.11			
T. P.	3.74	397.90	4.12	394.16	391.34
T. P.	4.40	394.36	5.10	392.80	399.96

394.36  
397.20

Collier Ave

395.31

T. P. 5.68

398.15

4.73

392.47

389.62

AK. original BM.

4.24

391.07

391.07

393.91 = 393.91

J.C. Bliss Addition Notes 1st St  
 Drebert See page 1 this book  
 Rauner

	$\pi$ 272.60	
	0+05	
E.L.	2.6	270.0
+V	3.2	269.4
	0+50	
E.L.	2.9	269.7
+V	3.4	269.2
	0+75	
E.L.	3.2	269.4
+V	3.6	269.0
	1+00	
E.L.	3.6	269.0
+V	4.0	268.6
	1+25	
E.L.	4.2	268.4
+V	4.3	268.3
	1+50	
E.L.	4.2	268.4
+V	4.6	268.0
	1+75	
E.L.	4.4	268.2
+V	4.7	267.9
	3+34	
E.L.	6.0	266.6

11-2-29 Culvert levels on 1st St. North end  
 J.C. Bliss of Bridge to Bottom of Canyon  
 Rauner

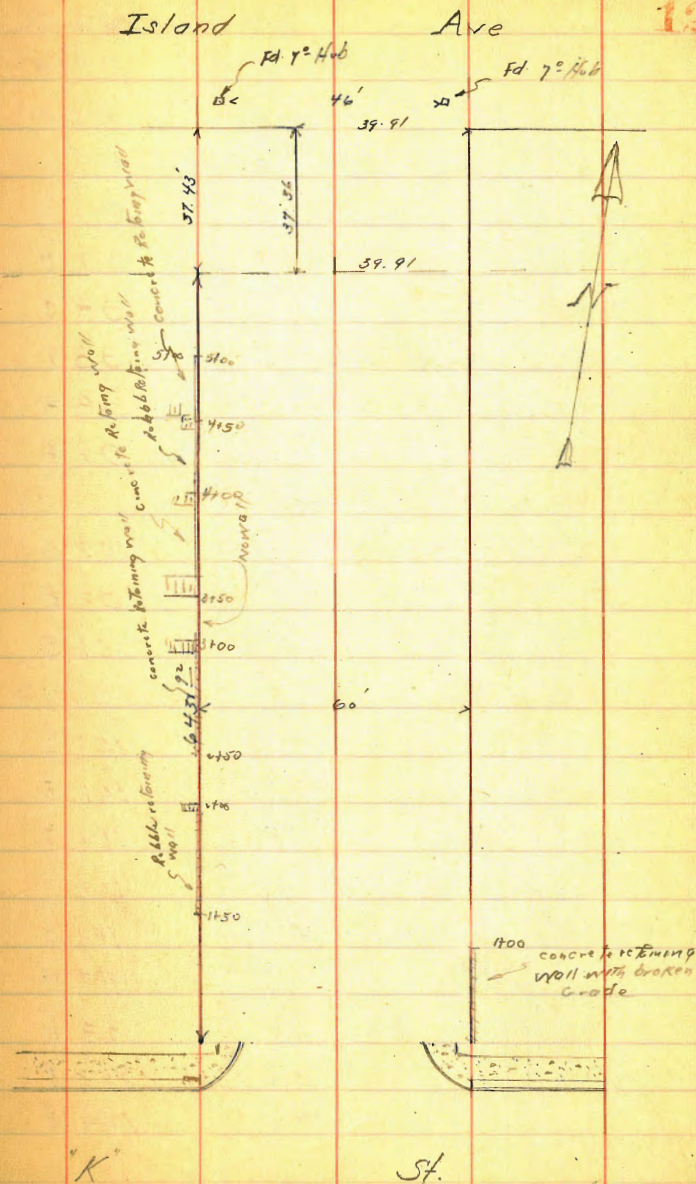
Edge walk south end - See page 4 this book		11
+0.40	$\pi$ 265.73	265.33
3+34 of Xsection 1st St. = 0+00		
0+00	3.8	261.93
+05	4.2	261.53
+08	7.8	257.93
+14	9.4	256.33
T.P.		-13.00 252.73
+0.60	253.33	
+22	1.7	251.63
+30	7.0	246.33
+39	10.6	242.73
T.P.		-11.87 241.46
+2.90	244.36	
+48	5.5	238.86
+56	2.5	236.86
+63 - Bottom Canyon	10.2	234.16

B. H. Bliss  
 Joe Duermit  
 J. Jacobszoon  
 H. Soper  
 Dec. 2, 1929

X Section Langley Street from the  
 North line of K St to the South line of Island  
 Ave

	+	H I	-	Elev	60' St 10' obs 10' 1/2 NWBP 27' 2" K
B.M.	257	105.56		102.99	
TP	1129	108.52	8.33	97.23	
		N line K = 00			
N			108	97.7	
N Top cb			1129	97.32	
G			12.03	96.49	
12			11.69	96.83	
8			11.68	96.84	
14			12.28	95.24	
G			13.00	95.52	
G Top cb			12.46	96.08	
F			12.1	96.5	
			0.405		
E			11.1	97.4	
cb			11.7	96.8	
14			11.9	96.6	
8			11.3	97.2	
14			4.3	97.2	
76			11.4	97.1	
cb			10.4	98.1	
75			10.4	98.1	
K			9.2	99.3	
			0.725		
N			7.3	101.2	

These are New Notes for the package.  
 Reduced by CBH



	HI	-	Elev
	108.52		
+4		8.5	100.0
cb		8.7	99.8
+2		8.5	100.0
+4		9.4	99.1
1/4		9.3	99.2
⊕		9.5	99.0
1/4		9.8	98.1
+5		9.8	98.7
cb		9.7	98.8
E		9.1	99.4
	0.150		
E		5.9	102.6
+5		6.5	102.0
cb		6.6	101.9
+3		6.9	101.6
+7		6.6	101.9
1/4		7.0	101.5
⊕		6.8	101.7
1/4		6.6	101.9
+6		6.8	101.7
+8		5.6	102.9
cb		5.5	103.0
+6		5.2	103.3
1/4		4.0	104.5
	0.156	Walk on East concrete	
4.3. Back ⊕		4.22	104.30

	HI	-	Elev
	108.52		
	0.775		
W		0.0	108.5
+6		2.3	106.2
cb		2.5	106.0
+1		2.5	106.0
+5		3.6	104.9
1/4		3.4	105.1
⊕		3.7	104.8
1/4		3.8	104.7
+5		3.6	104.9
cb		3.4	105.1
E		2.9	105.6
	0.794	Single Garage on East	
	Dirt/100 - on line ⊕	0.6	107.9
	1.00		
E		0.4	108.1
cb		0.7	107.8
+5		0.9	107.6
1/4		0.9	107.6
⊕		0.6	107.9
1/4		0.4	108.1
+5		0.4	108.1
T.P.	13.00	121.19	0.33 108.19
cb		12.0	109.2
+5		12.0	109.2



	+	HI	-	Elev
		12119		
W			10.4	110.8
		1725		
W			5.6	115.6
+4			8.4	112.8
cb			8.9	112.3
+5			9.9	111.3
14			10.0	111.2
⊕			10.2	111.0
+8			10.8	110.4
14			10.8	110.4
+5			10.7	110.5
cb			10.2	111.0
+5			10.0	111.2
E			8.2	113.0
		1750		
E			5.1	116.1
+5			7.1	114.1
cb			6.8	114.4
+3			7.2	114.0
+6			7.5	113.7
14			7.4	113.8
⊕			6.8	114.4
14			6.8	114.4
+6			6.6	114.6
cb			5.6	115.6

	+	HI	-	Elev
		12119		
			5.2	116.0
W			3.6	117.6
		1752		
W			4.8	116.4
+4			5.2	116.0
cb			5.3	115.9
+4			6.3	114.9
14			6.5	114.7
⊕			6.5	114.7
14			7.1	114.1
+4			7.2	114.0
+7			6.9	114.3
cb			6.7	114.5
+5			6.7	114.5
E			4.8	116.4
		1775		
E			2.6	118.6
+4			3.7	116.5
cb			3.8	116.4
+3			4.2	117.0
+6			4.5	116.7
14			4.1	117.1
⊕			3.8	117.4
14			3.7	117.5
+7			3.3	116.9

	+	H.I 121.19	-	Elev
cb			2.7	118.5
W			2.1	119.1
TP	1193	132.79	0.33	120.86
			1192 Concrete Stairway on West	+5
on line	Concrete S-End Bottom Step		10.57	122.22
			1198 N-End Concrete Stairway on West	
	on line	Concrete N-End Bottom Step	10.52	122.27
W on Ground			10.9	121.9
+5			11.4	121.4
cb			11.5	121.3
+2			12.1	120.7
1/4			12.9	120.2
±			12.6	120.2
1/4			13.0	119.8
+6			13.1	119.7
cb			12.8	120.0
+7			12.6	120.2
E			11.8	121.0
			2100	
E			11.4	121.4
+3			12.5	120.3
cb			12.6	120.2
+4			12.8	120.0
1/4			12.7	120.1

	+	H.I 132.79	-	Elev
			12.4	120.4
			12.3	120.5
			12.0	120.8
			11.2	121.6
			11.1	121.7
			9.0	123.8
			2125	
			4.5	128.3
			8.0	124.8
			8.3	124.5
			9.0	123.8
			9.5	123.3
			9.6	123.2
			9.3	123.5
			9.8	123.0
			9.9	122.9
			9.6	123.2
			9.5	123.3
			8.2	124.6
			2145 Concrete Stairway on East	
			on line Concrete S-End Bottom Step	6.50
			2150 N-End concrete Stairway on East	
			on line N-End Bottom Step	6.39
				6.3
				6.4
				126.40
				126.5
				126.4

+	H.I. 132.79	-	Elev
c6		6.8	126 0
1/4		6.7	126 1
2		6.3	126 5
1/4		6.4	126 4
t5		6.5	126 3
t8		5.8	127 0
c6		5.4	127 4
t5		5.2	127 6
W		3.0	129 8
	2152		
W		4.2	128 6
t5		4.9	127 9
c6		5.1	127 7
t2		5.5	127 3
t5		6.2	126 6
1/4		6.1	126 7
2		6.0	126 8
1/4		6.4	126 4
c6		6.3	126 5
t2		6.0	126 8
t7		6.0	126 8
E		5.2	127 6
	2175		
E		2.9	129 9
t8		3.3	129 5

+	H.I. 132.79	-	Elev
		3.5	129 3 <b>16</b>
		3.8	129 0
		3.6	129 2
		3.3	129 5
		3.4	129 4
		3.2	129 6
		2.5	130 3
		2.4	130 4
		2.2	130 6
		1.5	131 3
	728	139.68	0.39 132.40
			2194 S End Concrete Stairway on West
	on line S End Bottom Step	5.34	134 34
			2199 N End Concrete Stairway on West
	on line N End Bottom Step	5.33	134 35
		3.00	
		4.9	134 8
		5.9	133 8
		6.6	133 1
		7.6	132 1
		7.4	132 3
		7.3	132 4
		7.8	131 9
		8.1	131 6
		7.7	132 0
		7.3	132 4

	+	H.I. 139.68	-	Elev
E			7.1	132.6
			37.5	
E			5.4	134.3
+8			5.5	134.2
cb			6.0	123.7
+5			6.2	133.5
1/4			5.9	133.8
ϕ			5.4	134.3
1/4			5.5	134.2
+7			5.4	134.3
cb			4.7	135.0
+4			4.0	135.7
W			3.0	136.7
			37.50	
W			2.9	136.8
cb			4.1	135.7
+5			4.6	135.1
1/4			4.7	135.0
ϕ			4.5	135.2
1/4			5.1	134.6
+5			5.3	134.4
cb			5.0	134.7
E			4.4	135.3
			37.51 - Concrete Stair way on west	
3" wide	ϕ	Bottom Step	2.61	137.07

	+	H.I. 139.68	-	Elev
				440.400 100-470 <b>17</b>
				37.75
E			4.8	135.9
cb			5.2	134.5
+2			5.5	134.2
1/4			5.3	134.4
ϕ			4.7	135.0
1/4			4.9	134.8
+3			5.1	134.6
+8			4.7	135.0
cb			4.3	135.4
+3			4.1	135.6
W			3.6	136.1
			47.00	
W			4.2	135.5
+5			4.9	134.8
+8			4.9	134.8
cb			5.2	134.5
+8			6.2	133.5
1/4			6.0	133.7
ϕ			5.7	134.0
1/4			6.5	133.2
+7			7.0	132.7
cb			6.6	133.1
+3			6.1	133.6
+7			5.9	133.8
E			5.4	134.3

	H.I.	Elev	
	139.68		
4102	S End Concrete Stair way on West		+6
online S End Bottom step	4.69	134.99	cb
4106	N End Concrete Stair way on West		+5
online N End Bottom step	4.70	134.98	E
	4+25		
E	8.5	131.2	
+5	8.9	130.8	TP
cb	9.2	130.5	
+2	9.8	129.9	E
+5	9.7	130.0	+6
1/4	9.2	130.5	cb
2	8.5	131.2	+3
1/4	8.7	131.0	1/4
+4	9.0	130.7	2
+8	8.5	131.2	1/4
cb	7.9	100 131.8	+6
W	7.5	132.2	+8
	4+50		cb
W	10.7	129.0	+2
+8	11.1	128.6	W
cb	11.6	128.1	
+4	12.1	127.6	W
+7	12.3	127.4	+7
1/4	12.1	127.6	cb
2	12.1	127.6	+1
1/4	12.4	127.3	1/4

	H.I.	Elev	
	139.68		
	12.9	126.8	18
	12.4	127.3	
	12.1	127.6	
	11.8	127.9	
	4+51.50	Concrete Stair way on West	
online	Bottom step	10.00	129.68
0.28	126.76	13.20	126.48
	4+75		
	1.5	124.2	
	2.6	124.1	
	2.8	123.9	
	3.4	123.3	
	3.1	123.6	
	2.7	124.0	
	2.6	124.1	
	2.7	124.0	
	2.4	124.3	
	1.8	124.9	
	1.4	125.3	
	0.4	126.3	
	5+00		
	3.6	123.1	
	4.8	121.9	
	5.4	121.3	
	6.0	120.7	
	6.2	120.5	

	H.I. 126.76	-	Elev
ϕ		6.2	1205
14		6.5	1202
17		7.1	1196
cb		6.6	120.1
12		6.2	1205
15		6.3	1204
19		6.2	1205
E		5.7	121.0
		5/02	
E		6.0	1207
15		6.6	1201
18		4.5	1202
cb		6.8	1199
13		7.4	119.3
14		6.8	1199
ϕ		6.6	120.1
14		6.5	120.2
18		6.9	1198
cb		5.6	121.1
12		5.3	1216
15		5.0	1217
W		2.4	124.3
		5/15	
W		3.6	1231
cb		7.1	119.6
15		8.1	118.6

	H.I. 126.76	-	Elev
		7.9	118.8 <b>19</b>
		8.0	118.7
		8.3	118.4
		8.9	117.8
		7.9	118.8
		8.0	118.7
		7.5	119.2
		3/25	
		9.5	117.2
		9.8	116.9
		9.6	117.1
		9.9	116.8
		10.6	116.1
		10.4	116.3
		9.9	116.8
		9.5	117.2
		9.5	117.2
		9.9	116.8
		9.3	117.4
		8.4	118.3
		8.3	118.4
		7.3	119.4
		5/50	
		10.4	116.3
		11.6	115.1
		12.3	114.4

	+	H.I. 126.76	-	Elev
Q				
14+5			13.0	113.7
17 1/4			12.9	113.8
cb 1/2			12.9	113.8
17 1/4			13.6	113.1
15+8			14.1	112.6
19 cb			13.2	113.5
E 1/2			12.9	114.7
E			12.7	114.0
E TP	0.68	114.65	12.79	113.97
13				
12 E			4.4	110.2
cb 1/2			4.5	110.1
1+4			4.2	110.4
1+8			4.5	110.1
Q cb			4.2	110.4
1+1			4.8	109.8
1+3			5.3	109.3
Q 1/4			4.7	109.9
1 Q			4.3	110.3
13 1/4			4.4	110.2
W 1/4			4.7	109.9
15			4.1	110.5
W 1/8			4.2	110.4
Q cb			3.5	111.1
1+1			3.4	111.2

	+	H.I. 114.65	-	Elev
16			3.2	111.4
W			1.7	112.9
			6+00	
W			6.5	108.1
17			6.8	107.8
cb			7.2	107.4
12			7.6	107.0
1/4			7.8	106.8
Q			7.8	106.8
1/4			8.0	106.6
15			8.2	106.4
17			7.7	106.9
cb			7.9	106.7
E			7.9	106.7
			6+25	
E			10.7	103.9
cb			10.1	104.5
1/4			10.2	104.4
Q			10.1	104.5
1/4			9.9	104.7
15			9.9	104.7
17			10.2	104.4
cb			10.3	104.3
18			10.1	104.5
W			9.4	105.2

H.I.  
11465

Elev

6+43

Spotcatch Area 12

N	10.9	103.7
cb	11.5	103.1
75	11.0	103.6
14	10.8	103.8
1/2	10.8	103.8
1/4	10.8	103.8
+8	10.8	103.8
cb	11.3	103.3
E	11.3	103.3
6+30 ch Single Garage on East		
3 <sup>rd</sup> back Driveway	11.0	103.6
6+43		
E	11.3	103.3
+10	11.3	103.3
+12	10.8	103.8
+20	10.9	103.7
+30	10.8	103.8
+39 <sup>el</sup>	10.8	103.8
6+50		
-39 <sup>el</sup>	10.9	103.7
-30	11.0	103.6
-20	11.1	103.5
+13	11.0	103.6
-10	11.5	103.1
E	11.4	103.2

H.I.  
11465

21

6+59. to Curb Inlet

2' x 2.5' on cb line Top Gate	12.18	102.47		
6+75				
E	11.3	103.3		
+10	11.5	103.1		
+11	11.6	103.0		
+15	11.0	103.6		
+20	10.9	103.7		
+30	10.5	104.1		
+39.91	9.9	104.7		
6+81 <sup>20</sup> S. line of Island Ave				
-39.91	9.5	105.1		
-30	10.2	104.4		
-20	10.7	103.9		
-10	11.1	103.5		
E	11.4	103.2		
Section on Cb Line of Island Ave				
E	11.2	103.4		
+10	11.1	103.5		
+20	10.5	104.1		
+30	10.0	104.6		
+39.91	9.7	104.9		
TP	100	105.57	10.08	104.57
TP	0.75	95.87	10.45	95.12
TP	3.33	90.33	8.87	87.00
TP	4.29	87.71	6.91	83.42
check BM			8.27	79.44
				74.47

5EAP  
K 29<sup>3</sup>  
74.47 = 53 error



Walker  
Lecker  
McHooz  
Mannay  
1-30-30

SAN DIEGO RUSS HIGH SCHOOL  
PRACTICE FOOTBALL FIELD  
AND R.O.T.C. GROUNDS

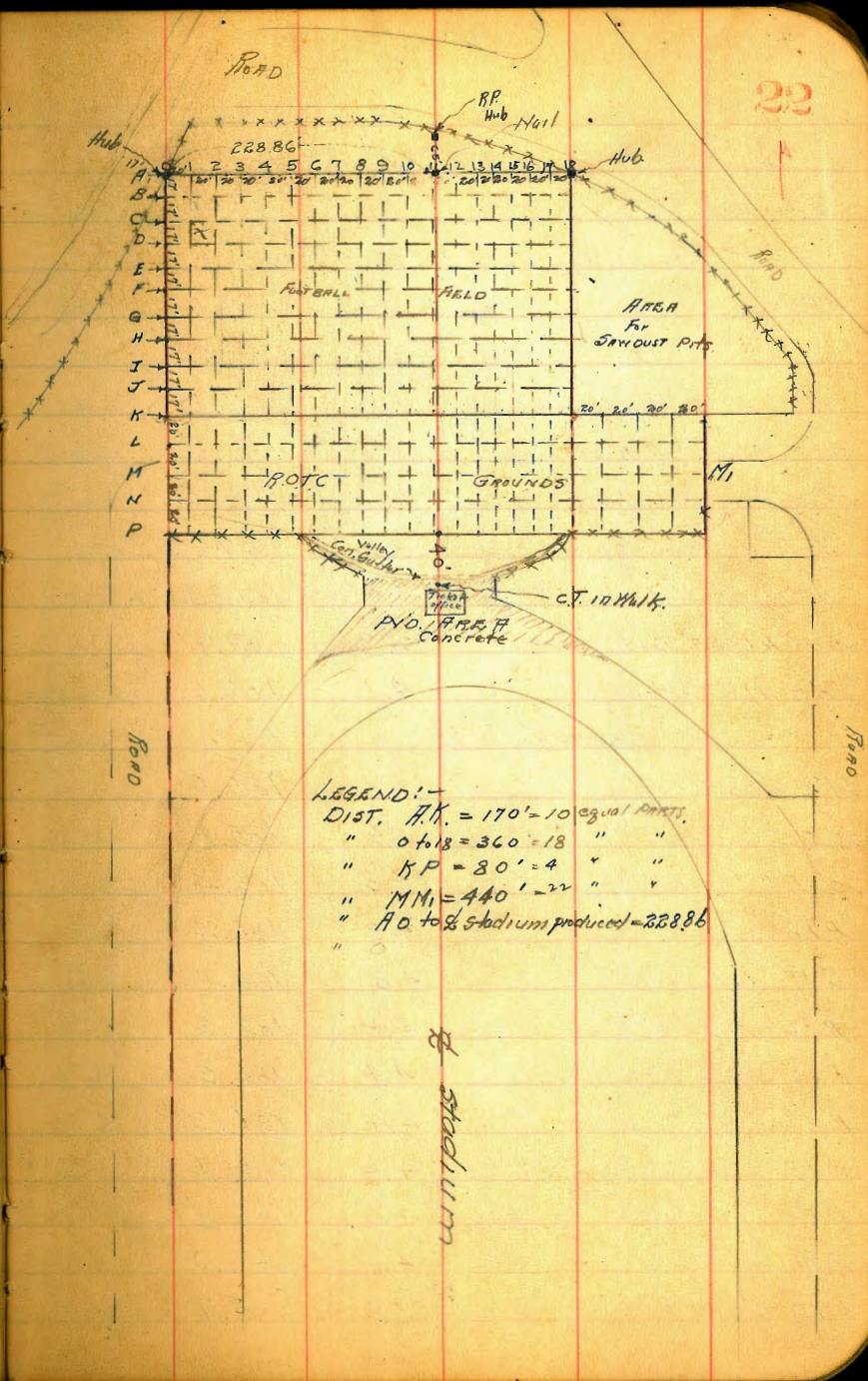
CROSS SECTIONS

	11.81	120.87		109.06
T.P.	12.74	132.51	1.10	119.77
T.P.	12.12	144.53	0.10	132.41
T.P.	12.89	157.37	0.05	144.48
T.P.	12.33	169.52	0.18	157.19
T.P.	11.58	181.02	0.08	169.44
T.P.	13.48	190.72	3.78	177.29

SECTION A

A0 - 20.5 = E. Rail Cor Track.	6.08	184.64
A0 on Hub.	5.67	185.05
30' N #0	4.8	186.9
A1	4.9	185.8
A2	4.9	185.8
A3	4.9	185.8
A4	5.0	185.7
40' N A4	3.2	187.5
A5	4.9	185.8
A6	4.8	185.9
A7	4.6	186.1
A8	4.4	186.3
50' N A8	2.4	188.3
A9	4.3	186.4
A10	4.3	186.4

8M  
SW 7' 4" x  
Hub  
16' 2 1/2'



190.72

A 11	4.1	186.6
A 12	4.0	186.7
50' N A 12	1.8	188.9
A 13	3.8	186.9
A 14	3.6	187.1
A 15	3.5	187.2
A 16	3.6	187.1
50' N A 16 = 8' 11" Road	1.7	189.0
30' N A 16 = Fence line	2.1	188.6
A 17	3.5	187.2
A 18' 0" Hub	3.49	187.23
30' N A 18 = 1/2 Road	2.9	187.8
20' E A 18 = 1/2 Road	4.1	186.6
SECTION B		
24' E B 18 = 1/2 Road	5.1	185.6
25' E " "	5.4	185.3
20' E " "	4.3	186.4
B 18	4.3	186.4
B 17	4.3	186.4
B 16	4.4	186.3
B 15	4.4	186.3
B 14	4.4	186.3
B 13	4.6	186.1
B 12	4.6	186.1
B 11	4.7	186.0
B 10	5.0	185.7

190.72

B 9	5.0	185.7
B 8	5.1	185.6
B 7	5.3	185.4
B 6	5.5	185.2
B 5	5.6	185.1
B 4	5.6	185.1
B 3	5.6	185.1
B 2	5.6	185.1
B 1	5.7	185.0
B 0	6.1	184.6
28' N B 0 + E Rail S.D.E. R.R. Co.	6.70	184.02
SECTION C		
30' N C 0	7.1	183.6
C 0	6.6	184.1
C 1	6.2	184.5
C 2	6.2	184.5
C 3	6.2	184.5
C 4	6.2	184.5
C 5	6.2	184.5
C 6	6.2	184.5
C 7	6.1	184.6
C 8	5.9	184.8
C 9	5.6	185.1
C 10	5.6	185.1
C 11	5.4	185.3
C 12	5.3	185.4

23

C13	5.4	185.3
C14	5.3	185.4
C15	5.3	185.4
C16	5.2	185.5
C17	5.1	185.6
C18	5.1	185.6
17' E C18 = Fence line	5.1	185.6
33' E C18 = Hedge Road.	5.5	185.2
SECTION D		
18' E D18 = Fence line	5.0	185.7
D18	6.0	184.7
D17	6.1	184.6
D16	6.1	184.6
D15	6.2	184.5
D14	6.1	184.6
D13	6.0	184.7
D12	6.0	184.7
D11	6.1	184.6
D10	6.3	184.4
D9	6.4	184.3
D8	6.6	184.1
D7	6.7	184.0
D6	6.7	184.0
D5	6.9	183.8
D4	6.8	183.9
D3	6.6	184.1

D2	6.7	184.0
D1	7.0	183.7
D0	7.2	183.5
30' W D0	7.6	183.1
SECTION E		
30' W E0	8.0	182.7
E0	7.6	183.1
E1	7.6	183.1
E2	7.5	183.2
E3	7.3	183.4
E4	7.4	183.3
E5	7.4	183.3
E6	7.4	183.3
E7	7.3	183.4
E8	7.2	183.5
E9	7.0	183.7
E10	6.9	183.8
E11	6.9	183.8
E12	6.8	183.9
E13	6.9	183.8
E14	7.0	183.7
E15	7.0	183.7
E16	7.0	183.7
E17	7.0	183.7
E18	7.0	183.7
13' East E18 = Fence L1170	7.0	183.7

64' East F18 = X edge Road.	7.6	183.1
SECTION F		
8' East F18 = Fence line	7.7	183.0
F18	7.7	183.0
F17	7.9	182.8
F16	7.8	182.9
F15	7.7	183.0
F14	7.7	183.0
F13	7.7	183.0
F12	7.5	183.2
F11	7.4	183.3
F10	7.6	183.1
F9	7.6	183.1
F8	7.8	182.9
F7	7.9	182.8
F6	7.9	182.8
F5	8.0	182.7
F4	8.0	182.7
F3	8.1	182.6
F2	8.2	182.5
F1	8.1	182.6
F0	8.1	182.6
30' N. F0	8.1	182.6
SECTION G		
30' N. G0	8.8	181.9
G0	8.7	182.0

G1	8.6	182.1
G2	8.4	182.3
G3	8.8	181.9
G4	8.7	182.0
G5	8.7	182.0
G6	8.6	182.1
G7	8.4	182.3
G8	8.5	182.2
G9	8.2	182.5
G10	8.2	182.5
G11	8.2	182.5
G12	8.3	182.4
G13	8.0	182.7
G14	8.3	182.4
G15	8.4	182.3
G16	8.5	182.2
G17	8.6	182.1
G18	8.6	182.1
4' E G18 = Fence line	8.7	182.0
86' E G18 = X edge Road	10.0	180.7
SECTION H		
1' E H18 = Fence line	8.3	182.4
H18	8.3	182.4
H17	8.3	182.4
H16	8.1	182.6
H15	8.7	182.0

190.72

H14	9.5	181.2
H13	10.6	180.1
H12	11.1	179.6
H11	11.2	179.5
H10	10.6	180.1
H9	9.4	181.3
H8	9.0	181.7
H7	9.1	181.6
H6	9.2	181.5
H5	9.2	181.5
H4	9.2	181.5
H3	8.9	181.8
H2	9.2	181.5
H1	9.5	181.2
H0	9.6	181.1
30' W. H0	9.5	181.2
SECTION I		
30' W. I0	10.7	180.0
I0	10.2	180.5
I1	10.1	180.6
I2	10.0	180.7
I3	9.6	181.1
I4	9.5	181.2
I5	9.6	181.1
I6	9.5	181.2
I7	9.6	181.1

180.72

I8	10.5	180.2
I9	12.0	178.7
I10	13.5	177.2
I11	13.5	177.2
I12	13.5	177.2
I13	12.7	178.0
I14	11.7	179.0
I15	10.9	180.7
I16	9.6	181.1
I17	9.7	181.0
I17+18 = Fence Line	9.8	180.9
I18	9.8	180.9
50' East I18	10.2	180.5
98' I18 = Hedge Road	11.4	179.3
SECTION J		
99' E J18 = Hedge Road	12.3	178.4
80' E J18	11.5	179.2
50' E J18	11.0	179.7
J18	10.6	180.1
J17	10.5	180.2
J16	10.3	180.4
J15	12.0	178.7
J14	14.0	176.7
J13	13.8	176.9
J12	13.7	177.0
J11	13.8	176.9

26

190.72

J10	13.7	177.0
J9	13.8	176.9
J8	12.5	178.2
J7	10.5	180.2
J6	10.1	180.6
J5	9.9	180.8
J4	10.1	180.6
J3	10.5	180.2
J2	10.7	180.0
J1	10.8	179.9
J0	10.9	179.8
30' N. J0	11.0	179.7

SECTION K = N. line ROTC Grounds

30' N. K0	12.0	178.7
K0	12.0	178.7
K1	12.0	178.7
K2	11.9	178.8
K3	11.4	179.3
K4	11.3	179.4
K5	11.1	179.6
K6	11.3	179.4
K7	12.7	178.0
K8	13.9	176.8
K9	13.7	177.0
K10	12.6	178.1
K11	12.2	178.5

190.72

K12	13.4	178.3
K13	13.2	177.5
K14	14.0	176.7
K15	14.2	176.5
K16	12.5	178.2
K17	11.7	179.0
K18	11.9	178.8
K19	11.9	178.8
K20	11.8	178.9
K21	12.0	178.7
K22	12.4	178.3
18' E. K22 <sup>w</sup> - edge Road	13.0	177.7

SECTION L

L22	12.8	175.9
L21	13.9	176.8
L20	13.8	176.9
L19	13.8	176.9
L18	13.7	177.0
L17	13.6	177.1
L16	14.5	176.2
L15	14.0	176.7
L14	13.3	177.4
L13	12.3	178.4
L12	12.0	178.7
L11	12.0	178.7
L10	12.9	178.4

27

190.76

L9		13.9	176.8	
L8		13.7	177.0	
L7		14.1	176.6	
L6		13.3	177.4	
L5		12.8	177.9	
L4		13.0	177.7	
L3		13.3	177.4	
L2		13.9	176.8	
L1		13.9	176.8	
L0		13.4	177.3	
30' N. L0		14.0	176.7	
T.P.	7.44	184.68	13.48	177.24

SECTION M. M. = 2 R.O.T.C. Grounds

30' N. M0		8.7	176.0
28' N. M0		9.7	175.0
M0		8.9	175.8
M1		8.7	176.0
M2		8.7	176.0
M3		8.5	176.2
M4		8.3	176.4
M5		8.5	176.2
M6		7.9	176.8
M7		7.8	176.9
M8		8.0	176.7
M9		7.7	177.0
M10			

184.68

M11		6.0	178.7
M12		5.8	178.9
M13		5.7	179.0
M14		6.1	178.6
M15		8.0	176.7
M16		7.9	176.8
M17		8.0	176.7
M18		8.3	176.4
M19		8.5	176.2
M20		8.8	175.9
M21		8.4	176.3
M22		8.4	176.3
40' E. M22 = 2' North of South Road		8.6	176.1

SECTION N

40' E. N24		9.5	175.2
N22		8.6	176.1
N21		7.7	177.0
N20		7.8	176.9
N19		7.8	176.9
N18		7.9	176.8
N17		7.9	176.8
N16		8.6	176.1
N15		8.0	176.7
N14		7.8	176.9
N13		6.3	178.4
N12		6.1	178.6
N11		6.2	178.5

28

N10	6.4	178.3
N9	8.3	176.4
N8	8.4	176.3
N7	9.6	175.1
N6	8.1	176.6
N5	8.3	176.4
N4	8.3	176.4
N3	8.3	176.4
N2	8.6	176.1
N1	8.3	176.4
N0	9.0	175.7
12.5' W. N0 - 1/2 Road	9.1	175.6

## SECTION P - End of Work.

12.5' W. P0 - 1/2 Road	9.8	174.9
6' W. P0	10.2	174.5
P0	7.8	176.9
40'S. P0	7.8	176.9
P1	7.6	177.1
P2	5.3	179.4
18' South P2	7.7	177.0
25' " P2	10.1	174.6
50' " P2	10.5	174.2
P3	7.7	177.0
P4	7.5	177.2
P5	7.3	177.4
P6	7.4	177.3

20' South P6	7.9	176.8
25' " P6	10.3	174.4
50' " P6	10.5	174.2
P7	7.3	177.4
P8	8.3	176.4
P9	8.4	176.3
18' South P9 on Con. Gutter. - Final Gutter.	8.57	176.1
P10	7.4	177.3
P11	6.8	177.9
37' South P11 = on Paved Area	8.73	175.95
P12	6.7	178.0
P13	7.4	177.3
30' South P13 on Con Gutter.	8.85	175.83
P14	8.0	176.7
P15	8.2	176.5
P16	7.8	176.9
20' South P16	7.9	176.8
25' " P16	10.0	174.7
P17	7.9	177.4
P18	7.3	177.4
P19	7.3	177.4
20' South P19	7.7	177.0
25' " P19	9.6	185.1 <sup>3</sup>
P20	7.1	177.6
P21	7.4	177.3
P22	7.3	177.4

This is level  
with exist.  
- Roadway

This is Elev. of  
con. work through  
Ticket office at  
- N. end of stadium.

This gutter is  
on an Mc. in  
Front of ticket  
office at N. end  
of stadium.



184.68

25' South PTV	7.9	176.8
30' " PTV	9.6	175.1
50' " PTV	10.3	174.4
25' East PTV	8.2	176.5
30' " PTV	10.3	174.4
40' " PTV <sup>APPROX.</sup> = Road	9.7	175.0
	8.68	176.00

SET B.M. on copper tack in E. stadium 40' South Section P  
 10' Front of ticket office North end Stadium

T.P.	3.75	180.99	7.44	177.24
T.P.	0.21	168.94	12.56	168.73
T.P.	0.25	156.83	12.36	156.58
T.P.	0.28	144.35	12.76	144.07
T.P.	0.01	131.74	12.62	131.73
T.P.	-0.01	119.24	12.51	119.23

Chk. on B.M. Page 22

10.17	109.07
	109.06 = B.M.
	0.01 = Error.

30

Levels for Culvert on S. line Upas  
at California

3/19/30  
Muller

S. E. Upas &  
Kellner

B.M. BP	4.93	45.49		40.56
T.P.	0.32	32.78	13.03	32.46
T.P.	1.11	23.89	10.00	22.78
0+00 = W. line California			10.5	13.4
0+16			7.6	15.3
0+25			2.4	21.5
0+37 <sup>3</sup> W. Rail A.T. S.F. R.R.			0.97	22.92
0+39 <sup>2</sup> E. A.T. S.F. R.R. ground			1.4	22.5
0+42 <sup>4</sup> E. Rail			0.76	23.13
0+55			1.7	22.2
0+63			6.0	17.9
0+72 <sup>6</sup> Ditch			6.2	17.7
0+75 = E. Line California			5.8	18.1

PLOTTED

Levels for Culvert on line 16' N. of S. line of Walnut.

3/21/30

S.E. Kellner  
+ Walnut.

B.M. B.P.	1.45	42.49		41.04	
SW line Kellner					
00 = W. end 18" Ent. Pipe			6.84	35.65	F.L.
0+00 W. line Kellner			3.03	39.46	
Top paymt.					
" " " "					
" " Top paymt R.'S. of Culvert			2.48	40.01	
0+10			3.4	39.1	
0+14			8.5	34.0	
0.5 N. of 0+18			3.6	38.9	
0+22			3.6	38.9	
R.'S. of 0+22			8.7	33.8	
0+50			5.1	37.4	
0+85			7.4	35.1	
0+95			9.0	33.5	
1+15			9.2	33.3	
1+60			12.1	30.4	
T.P.	2.51	31.84	13.16	29.33	
2+00 = E. line California			3.6	28.2	
2+37.5 = " "			6.2	25.6	
2+63 = W. ch. line "			6.7	25.1	
2+75 = W. line "			7.7	24.1	
S. on W. ch. line California					
00 = 16' N. of S. line Walnut			6.7	25.1	
0+50			7.4	24.4	
1+00			7.8	24.0	

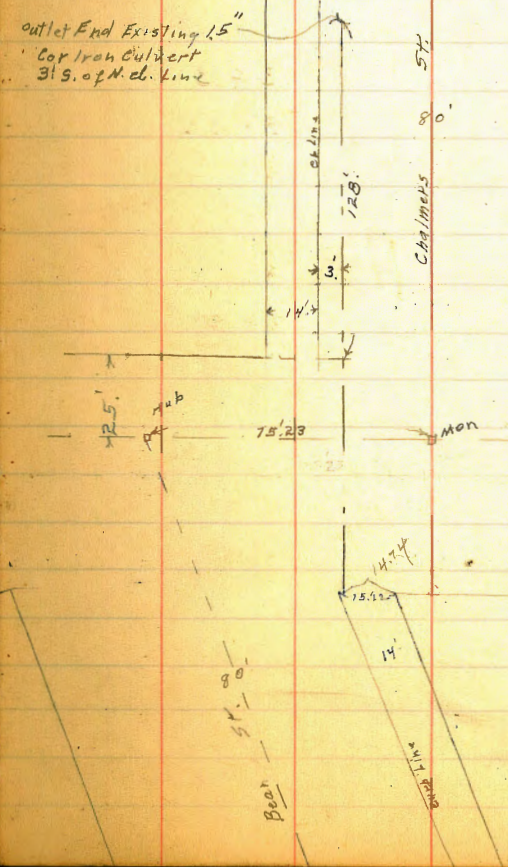
32

BM.	Levels for Culvert Chalmers St.			
	Kettner to California 3' S. of N. ch. line			
0+00 =	0.09	49.87	6.1	43.8
0+30			6.4	43.5
0+60			6.0	43.9
0+75			5.6	44.3
0+84			9.0	40.9
1+00			10.2	39.7
1+28 = E. line California			11.2	38.7
T.P.	3.29	40.06	13.10	36.77
1+65 = E. Cal			4.0	36.1
1+91 W. ch. line Cal			5.5	34.6
2+03 W. ch. line "			5.9	34.2
2+13			6.3	33.8
T.P.	9.10	48.39	0.77	39.29
W.L. + 50		34.2	2.0	32.2
" + 110			5.4	28.8

3/21/30  
S.E. Kettner & Chalmers.  
Flowline

Kettner

15.12  
2.33  
12.79



Locations & Levels on Culvert.

At California & Winder

48.39 Page 33

3/21/30  
miles

21.85  
2.45  
19.10

34

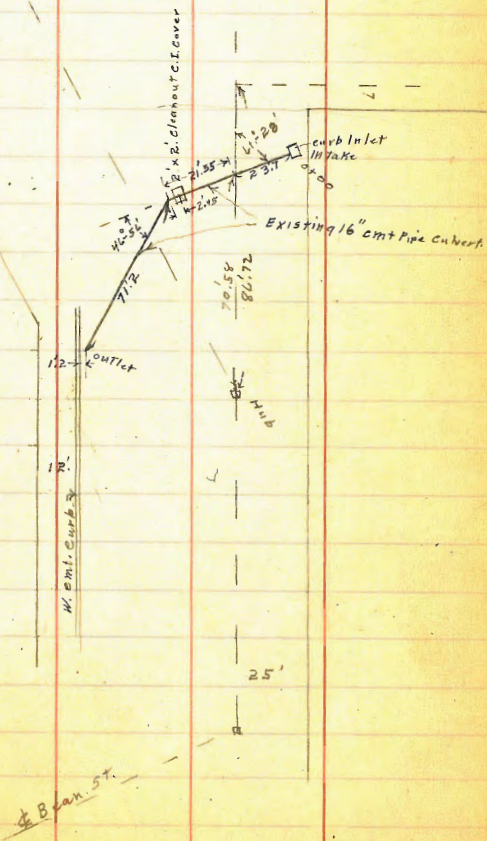
00=el.inlet	6.10	42.29	Flow Line
0+42 <sup>3</sup> & cleanout	7.51	40.88	" "
" " "	5.14	43.25	Top Cover
0+45 <sup>25</sup> A	5.2	43.2	ground
1+16 <sup>45</sup> outlet 16" cmt. Pipe Culvert	8.64	39.75	Flow Line
" " " " " "	7.07	41.22	TOP PIPE
1.2 W. of outlet Top cmt. Curb	6.60	41.79	
25' S. of outlet on W. cmt. el. California	7.45	40.94	
50 " " " " " "	8.24	40.15	
75 " " " " " "	9.08	39.31	
100 " " " " " "	9.87	38.52	

~~Winder St~~

California St

25'

Winder St



Winder St

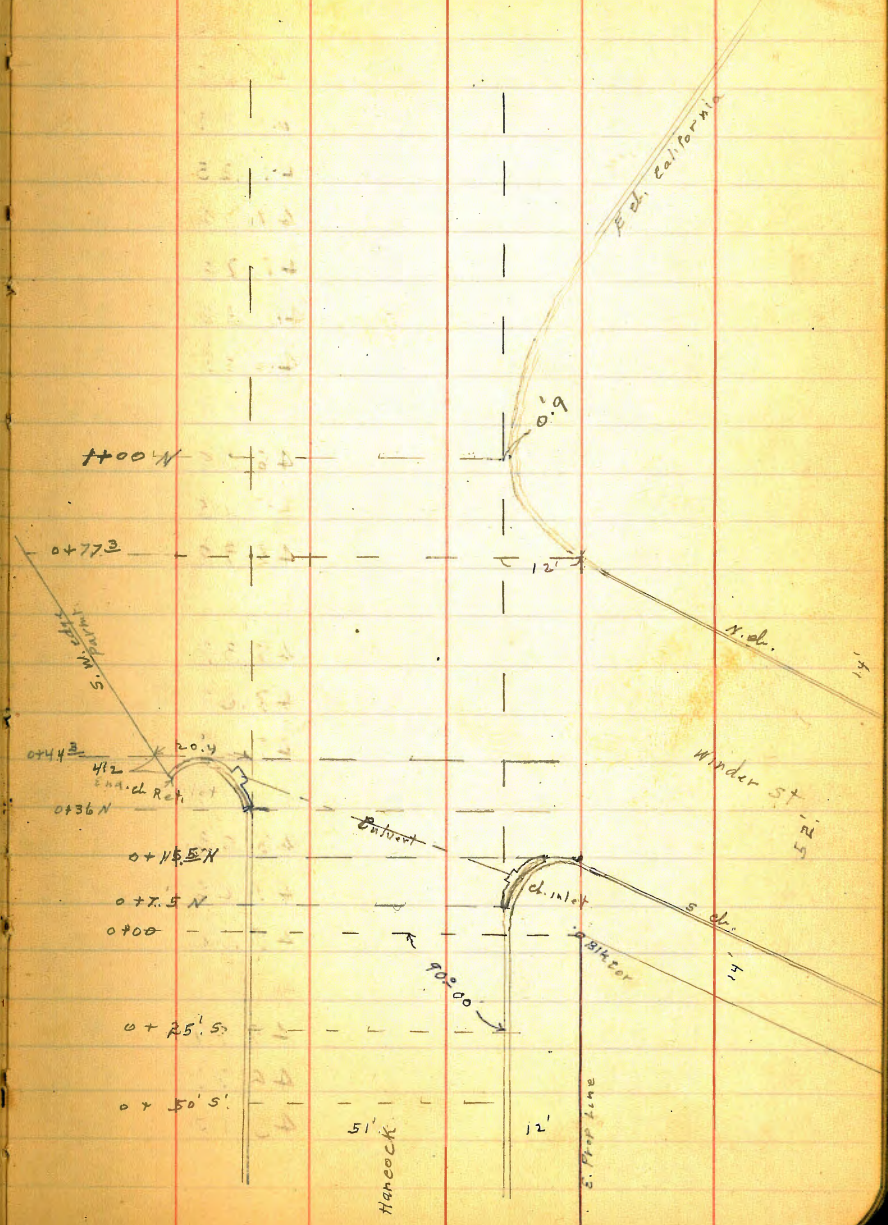
X Sec Intersection Hancock  
& Winder

3/25/30  
Miller

S.E. Kettner  
& Chalmers

35

BM.	4.00	53.86	49.78
		0+50.5	
E. ent. el		4.83	49.03
gutter		5.48	48.38
+12.75' 1/4		5.61	48.25
+25.5 = $\phi$		5.93	47.93
+38.25 = 1/4		6.63	47.23
gutter		7.60	46.26
W. ent. el		7.01	46.85
		0+25.5	
W. ent. el		7.38	46.48
gutter		7.98	45.88
1/4		6.92	46.94
$\phi$		6.27	47.59
1/4		5.95	47.91
gutter		5.85	48.01
E. ent. el		5.20	48.66
	0+00		
E. ent. el		5.52	48.34
gutter		6.18	47.68
1/4		6.32	47.54
$\phi$		6.65	47.21
1/4		7.36	46.50
gutter		8.38	45.48
W. ent. el		7.76	46.10



53.86  
0+7.5 N = S. End ch. Inlet on E.

E. ent. ch	5.48	48.38
gutter lip of inlet	6.26	47.60
5' West.	6.24	47.62
0+13.5 N. N. End ch. inlet on E.		
W. ent. ch	8.03	45.83
gutter	8.63	45.23
"	7.74	46.12
♀	6.93	46.93
"	6.46	47.40
5' W. of E. ch	6.25	47.61
E. ch. line	6.15	47.71
7.8' = gutter at N. End of inlet	5.91	47.95
" " ent. ch	5.07	48.79
12' E. = E. line Hancock ent. ch	4.81	49.05
" " " " gutter	5.54	48.32
0+25 N		
E. line	5.49	48.37
E. ch line	6.17	47.67
"	6.59	47.27
♀	7.07	46.79
"	7.83	46.03
gutter	8.80	45.06
W. ent. ch	8.16	45.70
0+36 N = S. End ch. inlet on W.		
W. ent. ch	8.39	45.47
gutter	9.13	44.73
"	7.96	45.90
♀	7.32	46.54

53.86

"	6.75	47.11
E. ch. line	6.29	47.62
E. line Hancock	5.63	48.23
0+44 3/4 N		
E. line	5.82	48.04
E. ch. line	6.44	47.42
"	6.89	46.97
♀	7.40	46.46
"	8.12	45.74
W. ch. line	9.16	44.70
11' W. = W. ent ch. inlet gutter	9.74	44.12
11' " " " " ent. ch	8.94	44.92
20.4 W. = W. edge Pavmt.	9.85	44.01
4.2 S. of above at End of ch. gutter	9.73	44.13
9.2 " " " " " " ent. ch	8.91	44.95
0+55 N		
46' W. of W. ch = W. Rail & Trnck	10.93	43.13
28' " " " " " " " "	10.41	43.45
26.3' " " " " " " " "	10.33	43.53
12' " " " " " " " "	9.67	44.19
W. ch. line	9.22	44.64
"	8.32	45.54
♀	7.65	46.21
"	7.07	46.79
E. ch. line	4.71	47.15
E. line	6.24	47.62

53.86

0+70 N.

E. line	7.05	46.81
E. cl "	7.20	46.66
1/4	7.41	46.45
1/2	7.96	45.90
1/4	8.46	45.40
W. cl. line	9.12	44.74
12' W.	9.63	44.23
28' W = E. Rail	10.64	43.22
35' W = W. edge parmt.	10.73	43.13
46' W = W. Rail	10.90	42.96
	0+77 E	
46' W = W. Rail	11.00	42.86
39' N = W. edge parmt.	10.90	42.96
28' W = E. Rail	10.75	43.11
12' W	9.65	44.21
W. cl. line	9.20	44.66
1/4	8.63	45.23
1/2	8.08	45.78
1/4	7.58	46.28
E. cl. line	7.50	46.36
E. line gutter	7.50	46.36
" " cmt. cl	6.89	46.97
	1+00 N.	
0.92' E. cl. line = E. cmt. cl.	7.53	46.33
" " " " gutter	8.21	45.65
E. cl. line	8.20	45.66

53.86

Hancock &amp; W. Under

1/4	8.05	45.81	37
1/2	8.30	45.56	
1/4	8.82	45.04	
W. cl. line	9.45	44.41	
+12	9.90	43.96	
+28 = E. Rail	10.96	42.90	
+46 = W. Rail	11.18	42.68	
	1+25' W		
46' W = W. Rail	11.34	42.50	
28' W = E. Rail	11.15	42.71	
12' W	10.24	43.62	
W. cl. line	9.82	44.04	
1/4	9.12	44.74	
1/2	8.59	45.27	
1/4	8.43	45.43	
E. cl. line	8.58	45.28	
2.6' E. E. E. gutter	8.58	45.28	
2.6' E = E. cmt. cl	7.87	45.99	
	1+50' N.		
7.5' E. of E. cl. line = E. cmt. cl	8.30	45.56	
gutter	8.98	44.88	
E. cl. line	9.06	44.80	
1/4	9.04	44.82	
1/2	9.02	44.84	
1/4	9.50	44.36	
W. cl. line	10.13	43.73	



53.46

1+50' N. (Eon)

12' W. of W. cl line	10.54	43.32
28' W " " = E. Rail	11.38	42.48
46 " " " = W. "	11.60	42.26
1+57' N		
46' W of W. cl line = W. Rail	11.68	42.18
28 " " " " = E. "	11.47	42.39
12 " " " "	10.62	43.24
W. cl line	10.24	43.62
" "	9.71	44.15
⊕	9.26	44.60
" "	9.30	44.56
E. cl line	9.19	44.67
9.5' E. of E. cl line = gutter	9.01	44.85
" " " " " " = cent. cl.	8.34	45.52

1+75' N.

16' E. of E. cl line = E. cent. cl.	8.06	45.80
" " " " " " = gutter	8.64	45.22
E. cl line	8.92	44.94
" "	9.57	44.29
⊕	10.00	43.86
" "	10.25	43.61
W. cl line	10.44	43.42
12' W	10.95	42.91
28' W = E. Rail	11.72	42.14
46 W = W. Rail	11.86	42.00

53.86

Hancock + W. Under.

2+00' N.

38

12' W. of W. cl	11.46	42.40
W. cl line	11.00	42.86
" "	10.64	43.22
⊕	10.16	43.70
" "	9.12	44.74
E. cl line	8.41	45.45

+42' Page 34 Top Cover

10.62

43.24 = 43.25.  
for chk.

Proposed Section Block U Montclair  
South of Maple

For Dodge

BM

2.69

298.49

295.80

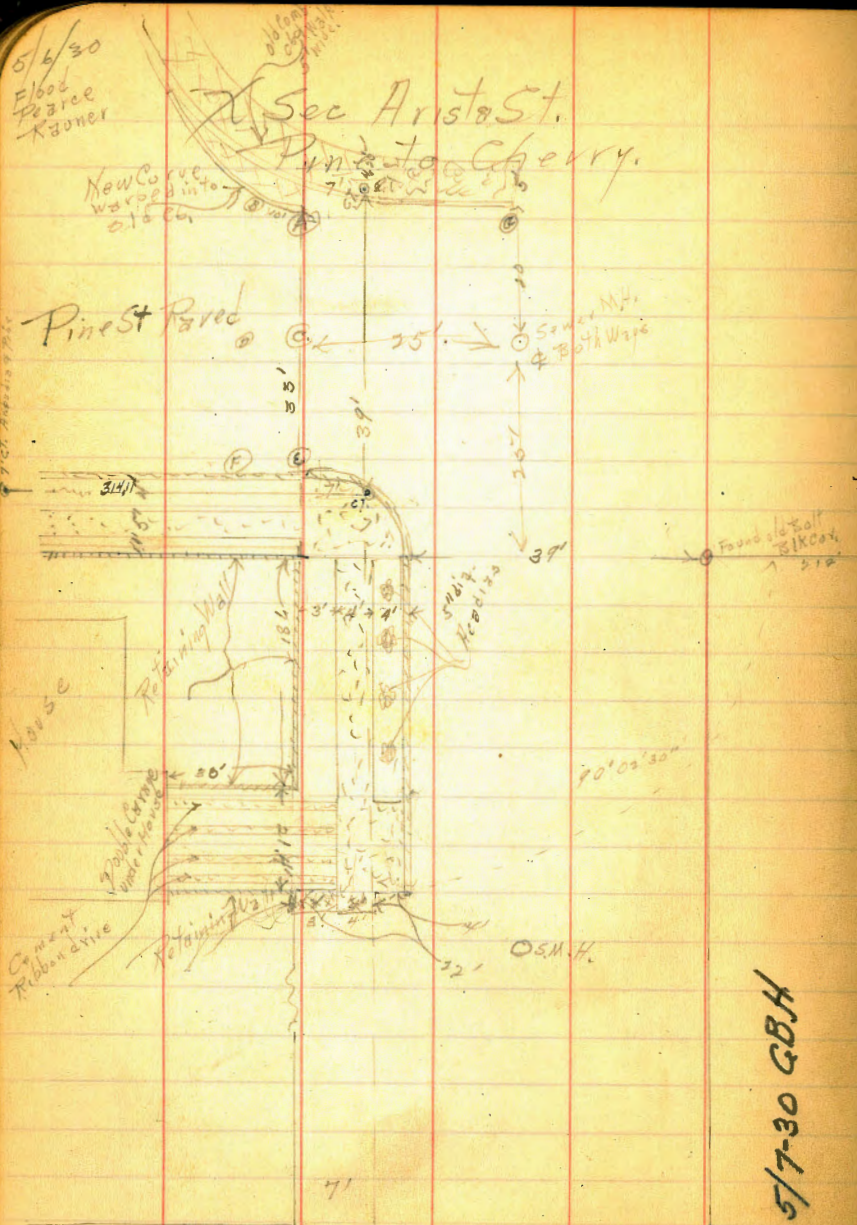
SE Part Hub  
Maple Boundary

4-24-30

39

5/6/30  
E. Wood  
P. Tree  
K. Corner

Sec Aristo St.  
Pine to Cherry.



Plotted 5/7-30 GBH

	+	π	-	Elev	40
NK.B.P.	1.42	365.84		263.92	Ambudist Pine
T.P.	0.35	253.58	12.11	253.28	
End of New Curve (Washed into Old Curve)					
Point A on Sketch					
Top Cb.		7.64		245.94	
Print		8.14		245.44	
Point B on Curve 10' Back along Cb Line					
Top Cb		6.73		246.85	
Gut.		7.25		246.33	
E Line Aristo St					
Pine (C)		7.41		246.17	
" (D)		6.64		246.94	
E Line Aristo N. Cb. Pine					
Top. Cb. (E)		7.56		246.02	
Gut		8.12		245.46	
T.p.	3.17	249.22	7.53	246.05	
10' Back along N Cb Pine					
Top. Cb. (F)		2.26		246.96	
Gut.		2.80		246.42	
End of Old 5' Comb Cb Walk					
S. Side of Pine, Point (G) on Sketch					
Top Cb		5.25		243.97	
Dirt		4.7		244.5	
Inside edge of Walk on Ch		5.17		244.05	
Dirt		4.4		244.8	

249.22

+	π	-	Elev
	♀ Pine & Aristo		
Top Sander M.H.		3.95	245.27
	0 + 00 = N.L. Pine St		
	11' Cb's 4' 1/4's		
W.L.		4.4	244.8
W. cb.		4.1	245.1
1/4		3.8	245.4
♀		3.4	245.8
1/4		3.6	245.6
Gut		3.5	245.7
Top Cb		3.17	246.05
E.L.		2.94	246.28
Top Ret. Wall		0.36	248.86
T.P.	7.31 255.20	1.33	247.87
	0 + 50		
Top Ret Wall E.L.		3.66	251.54
Ground		5.9	249.3
Top Cb.		6.07	249.13
Gut		6.6	248.6
1/4		7.0	248.2
♀		7.0	248.2
1/4		7.5	247.7
Cb		7.5	247.7
W.L.		8.1	247.1
+ 10		9.2	246.0

255.20

0 + 7.8 = Brk-edged drive

-10		8.5	246.7
W.L.		6.2	249.0
Cb.		5.9	249.3
1/4		6.0	249.2
♀		5.8	249.4
1/4		5.4	249.8
Gut dirt		4.9	250.3
But. on driveway		4.78	250.42
Top Cb.		4.29	250.91
+ ♀ = edge of Walk		4.09	250.11
E.L.		4.1	251.1
Top Ret Wall		2.01	253.19
+ 30 Floor level Double Garage		3.14	252.06
	0 + 99.5 = N. edge Drive		
Top Wall		1.21	253.99
E.L.		3.62	251.58
+ 7 = edge of Walk		3.82	251.38
Cb. on <u>Tip of Drive</u>		4.43	250.77
1/4		4.7	250.5
♀		4.7	250.5
1/4		4.8	250.4
Cb.		5.2	250.0
W.L.		4.7	250.5
+ 10		5.2	250.0

See sketch.

	+	258.70	-	Elev
-10			4.5	2507
W.L.			4.4	2508
Cb			5.0	2502
1/4			4.6	2506
Φ			4.6	2506
1/4			4.4	2508
Cb Line dirt			4.2	2510
+4 edges of walk at end			3.79	251.41
+7 = E.L. on walk			3.63	251.57
Top Ret wall at end			1.19	254.01
			1749	
-2	-2.7			257.9
E.L.			1.6	2536
Cb.			1.6	2536
1/4			1.5	2537
Φ			1.1	2541
1/4			1.4	2538
Cb.			1.4	2538
W.L.			1.0	2542
+10			1.3	2539
T.P.	8.33	263.06	0.47	254.73
			1750	
-10			9.4	2536
W.L.			9.0	2540
Cb.			9.1	2539

	+	263.06	-	Elev	42
1/4			9.0	254.0	
Φ on right of Sewer N.H.			8.83	254.23	
+3			8.1	255.0	
45			4.9	258.2	
1/4			4.1	259.0	
Cb			2.8	260.3	
E.L.			1.4	261.7	
			2700		
E.L.			0.5	262.5	
Cb.			1.7	261.4	
1/4			2.9	260.1	
+2			3.2	259.8	
Φ			7.0	256.0	
1/4			7.4	255.6	
Cb.			7.6	255.4	
W.L.			7.4	255.6	
+13			14.0	249.0	
+25			15.9	247.1	
			2750		
-25			16.3	246.7	
-7			12.5	250.5	
W.L.			9.3	253.7	
+5			7.1	255.9	
Cb.			7.0	256.0	
Φ			6.9	256.1	

263.06

	+	K	-	Elev
+ 5			3.0	2600
114			2.5	2605
Cb.			1.8	2612
E.L.			0.7	2623

3+00 = S.L. Cherry St

P.L.			2.6	2604
Cb.			3.0	2600
114			4.3	258.7
⊕			7.0	2560
114			7.3	2557
Cb.			7.4	2556
+ 3			7.7	2553
W.L.			10.4	2526

+ 25 = edge of Mission Valley Cliff			20.7	2423
T.P.	2.56	258.49	7.13	255.93

+ 25 = ⊕ Cherry St

- 25 edge Mission Valley			21.2	2373
W.L.			12.7	2458
Cb.			9.2	2493
114			6.4	2521
⊕			4.4	2541
114			3.2	2553
Cb.			2.6	2559
W.L.			1.5	2570
+ 25			2.9	2556

3.15  
258.49

+ 25 = N.L. Cherry

- 25			7.3	2512
E.L.			8.3	2502
Cb.			9.0	2490
114			10.6	2479
⊕			11.5	2470
114			13.0	2455
Cb.			14.4	2441
W.L.			17.3	2412
+ 25 in Mission Valley			24.8	2337
T.P.	3.32	259.16	2.71	255.78
T.P.	12.67	266.08	5.67	253.41
N.W.B.P.			21.3	263.95

Ambedia of Pine  
0.8 Error

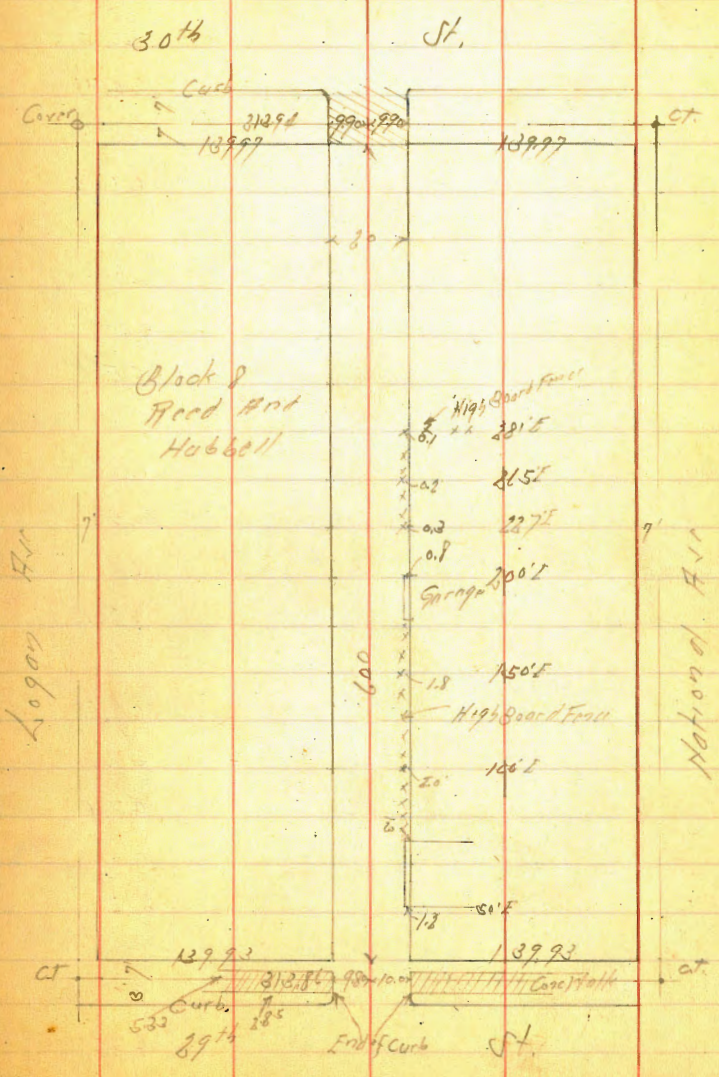
Alley Block 8 Reed And Hubbell  
 From 29th to 30th St  
 Between National + Logan

30' wide

7-3-30  
 S. B. B.  
 Hubbell  
 Handy

B.M.	7.25	69.19	61.94	NMBP Not logged + 29th
	E.C. of 29th St.			
S	Top Curb	4.63	64.56	
N	"	4.48	64.91	
	E.L. of 29th St.			
N	on E Edge Walk	4.09	65.10	
N	"	4.2	65.0	
S	"	4.4	64.8	
S	"	4.5	64.7	
S	on Edge Walk	4.38	64.81	
	15' E of E.L. 29th			
S	"	4.0	65.2	
S	"	3.8	65.4	
S	"	4.1	65.1	
N	"	3.3	65.9	
	38' E of E.L. 29th			
-0.3	Garage Conc Floor	3.20	65.99	
N	"	3.2	66.0	
+1.2	Edge Conc Apron	3.23	65.96	
S	"	3.3	65.9	
S	"	3.1	66.1	
	50' E			
S	"	3.1	66.1	
+1.2	H.A. De Garage Dirt Floor	3.1	66.1	
S	"	3.0	66.2	

Plotted July 5-1930 GBH



69.19

H		3.0	662
	70°F		
-0.7	= Garage Con. Floor	2.85	6634
H		2.9	663
L		2.7	665
+8.7	= H. Edge Garage Dirt Floor	2.9	663
S		3.0	662
	100°F		93°F of 5.129 2 Garage 4.6 of 11.6
S		2.4	668
L		2.3	669
H		2.7	665
	125°F		109°F of 5.129 Dirt Floor 1.6 of 11.6
H		2.3	669
L		2.3	669
+8	= Garage Dirt Floor	2.1	671
S		2.1	671
	150°F		2.2 = 66.9
S		1.9	67.3
L		2.0	67.2
H		2.2	67.0
	180°F		194°F of 5.129 Dirt Floor 0.9 of 11.6
H		2.0	67.2
L		1.9	67.3
+8.3	= Garage Plank Floor	2.2	67.0
S		2.3	66.9
	200°F		1.7 = 67.3

69.19

S		2.1	67.1
	70°F		
+0.8	= H. Edge Garage Dirt Floor	2.1	67.1
L		1.8	67.4
H		1.9	67.3
TP	4.4	71.33	2.10
	225°F		67.09
H		4.4	66.9
L		4.3	67.0
S		4.8	66.5
	265°F		3.8 = 67.5
S		5.5	65.8
L		5.2	66.1
H		5.2	66.1
	300°F		7.7 of 11.6
H		5.1	66.2
L		5.3	66.0
S		5.6	65.7
	325°F		4.8 = 66.5
S		5.8	65.5
L		5.1	66.2
H		5.3	66.0
	350°F		8.6 of 11.6
H		5.4	65.9
L		5.0	66.3
S	= L Garage Dirt Floor	5.7	65.6
	375°F		

45



71.33

S		5.3	66.0
L		4.9	66.4
H		5.1	66.2
	400' E		
H		4.9	66.4
L		4.5	66.8
S		4.5	66.8
	420' E		
S		4.1	67.2
H		4.1	66.9
L		4.1	67.2
H		4.5	66.8
	440' E		
H		3.7	67.6
L		3.5	67.8
	496' Garage Dirt Floor	3.5	67.8
	470' E		
S		3.5	67.8
L		3.2	68.0
H		3.2	68.1
	500' E		
H		3.6	67.7
L		3.6	67.7
S		3.8	67.5
	522		
-40' = E Lot Do Garage Dirt Floor		4.1	67.2

593' E = 2  
Garage Conc  
Floor  
on H.L.

499 = 66.35

502' E = H.L.  
Do Garage  
Dirt Floor  
40' 67.3

71.33

S		3.9	67.4
L		3.5	67.8
H		3.5	67.8
	548' E		
	-0.6 = 2 Garage Dirt Floor	3.5	67.8
H		3.5	67.8
L		3.4	67.9
S		3.8	67.5
	439 = 2 Do Garage Dirt Floor	4.1	67.2
	590' E		
S		3.8	67.5
L		3.3	68.0
H		3.0	68.3
	590' E		
H		2.4	68.9
H		3.3	68.0
L		3.5	67.8
S		3.5	67.8
	600' E = H.L. 20' 6' H		
S	Top Carb	3.55	67.78
S	Parting	3.67	67.66
L	" + N.H. Rim	4.02	67.31
H	"	3.70	67.63
H	Top Cb	3.42	67.91
	H Cb of 307' H		
H	on Parting	4.34	66.99

46

71.33

L on paving

4.50

66.83

S " "

4.60

66.73

TP 5.15

72.44

4.04

67.29

BM

7.50

64.94

N.Y. B.P.  
National 130  
6991

47

Flood  
Prevent  
Rauner

4/6/30

N. sec Alley 72 ft. 20' wide  
+  
- Elev.

B.M. N.W. CP. 4.12 358.73 354.61

Section on N. Cb. of Wightman

N. Cb. Wightman	W.L. VanDyke prmt	4.95	353.78
"	" " " " Cb.	4.22	354.51
E.L. Alley N. Cb. Wightman	Cb.	5.08	353.65
E.L. Alley 2' S. of N. Cb. Wightman	prmt	4.75	353.98
R " " " " " "	" " " "	5.07	353.66
W.L. " " " " " "	" " " "	4.87	353.86
W.L. " " N. Cb. Wightman	" " " "	5.16	353.57
E.L. 42nd " " " " Cb.	" " " "	5.70	352.83
" " " " " " " " prmt.	" " " "	6.57	352.14

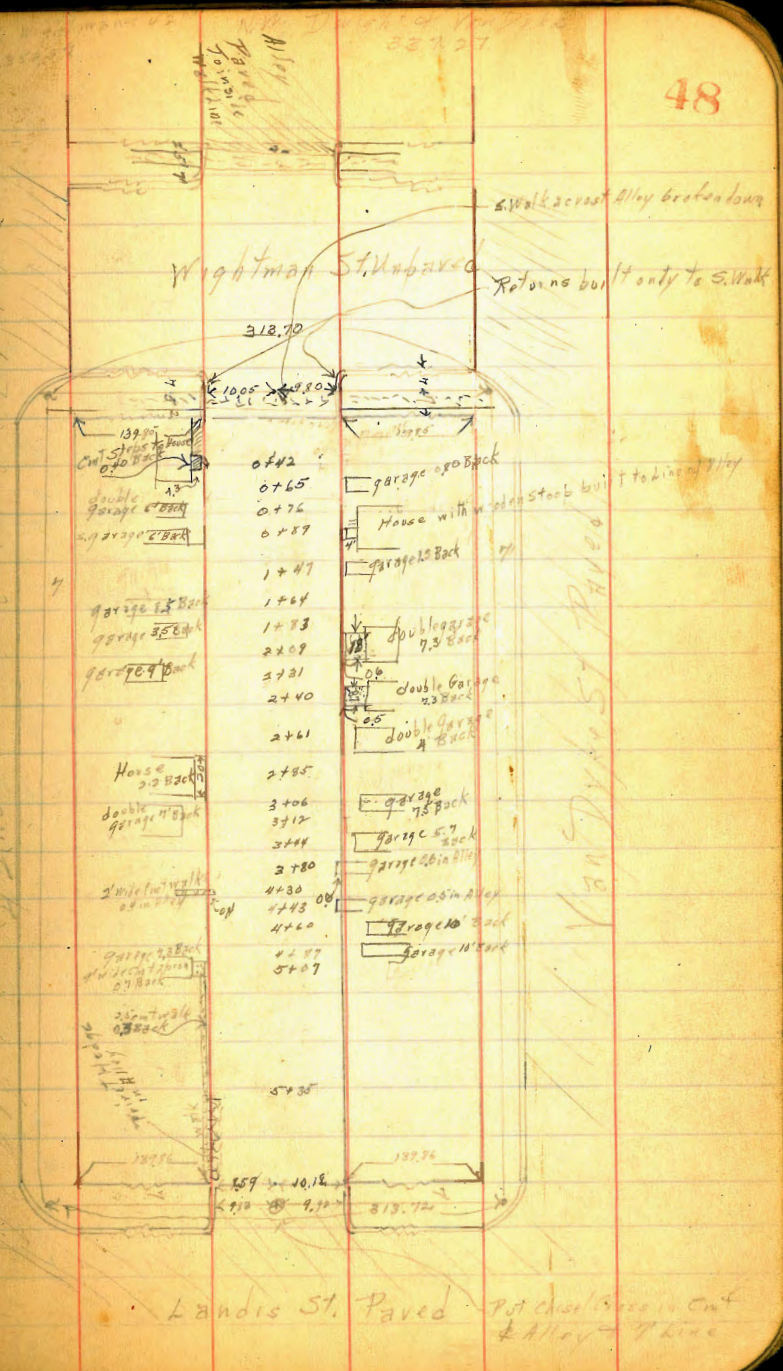
Section on S. Cb. Wightman

E.L. 42nd S. Cb. Wightman	Cb.	6.21	352.52
" " " " " " " " prmt	" " " "	4.93	351.80
W.L. Alley " " " " Cb.	" " " "	5.51	353.22
" " " " " " " " dirt	" " " "	6.0	352.73
E.L. " " " " " " " " Cb.	" " " "	5.30	352.43
W.L. VanDyke S. Cb. " " " " "	" " " "	4.65	354.08
" " " " " " " " prmt.	" " " "	5.11	353.62

0-07 = outer edge of walk

E Top Cb		5.12	353.61	✓
+ 5 SW breakdown		5.32	353.41	
±	between these pts	5.7	353.0	✓
+ 8	" " "	5.33	353.40	
W		5.00	353.43	✓

Plotted 8-30-30 L.R.L.



358.73

+ π - Elev  
0 + 00 = S.L. Wightman

W	5.1	353.6	✓
⊕	5.3	353.4	✓
E	4.8	353.9	✓

0 + 10

E	4.8	353.9	✓
⊕	5.0	353.7	✓
W	5.1	353.6	✓

0 + 42 = ⊕ Cement Steps to House on W. 0.40 Back

W - 0.4 Top of Step. 4.49 354.24

W 5.0 353.7 ✓

⊕ 4.9 353.8 ✓

E 5.0 353.7 ✓

0 + 65 ⊕ Garage on E 0.8 Back

E - 0.8 cnt floor 5.02 353.71 ✓

0 + 76 ⊕ Garage on W 6' Back

W + 6.0 dirt floor 5.15 353.3 ✓

0 + 89 = ⊕ Garage on W. 6' Back

House on E Line

E K floor level of House 4.25 354.48 ✓

E.L. dirt 6.1 352.6 ✓

⊕ 5.6 353.1 ✓

W 5.7 352.8 ✓

+ 6 = dirt floor 5.8 352.9 ✓

358.73

+ π - Elev

1 + 47 ⊕ Garage on E 1.3 Back

W 7.1 351.6 ✓

⊕ 7.0 351.7 ✓

E 7.0 351.7 ✓

+ 1.3 dirt floor 7.0 351.7 ✓

1 + 64 ⊕ Garage on W 8.5 Back

W + 8.5 dirt floor 7.7 351.0 ✓

1 + 83 ⊕ Garage on W 3.5 Back

E 7.5 351.2 ✓

⊕ 8.0 350.7 ✓

W 8.1 350.6 ✓

+ 3.5 cnt floor 7.76 350.97 ✓

2 + 09 = ⊕ double Garage on E with 18'

wide cnt apron 0.6 Back Garage is 7.3 Back

⊕ Apron = E - 0.6 7.84 350.89 ✓

E - 7.3 cnt floor 7.56 351.17 ✓

T.P. 3.40 353.86 8.27 350.46

2 + 31 = ⊕ Garage on W 9' Back

W - 9.0 - dirt floor 4.2 349.7 ✓

3 + 40 = ⊕ double garage on E with 18' wide

cnt apron 0.5' back Garage is 7.3 back

W. 4.1 349.8 ✓

⊕ 3.7 350.2 ✓

+ 5 3.4 350.5

E 3.3 350.6 ✓

E + 0.5 = edge of Apron 3.32 350.54

49

353.86

	+	π	-	Elv	
E+7.3 = cmt floor			3.20	350.66	✓
2+61 = $\Phi$ double garage on E 4' Back					
E-40 = cmt floor			3.48	350.38	✓
2+95 = $\Phi$ No. side W 2.2 Back					
floor level			4.00	349.86	✓
			3+00		
E			4.3	349.6	✓
$\Phi$			4.6	349.3	✓
W.			4.6	349.3	✓
3+06 = $\Phi$ garage on E 7.5' Back					
E-75 dirt floor			4.5	349.4	✓
3+12 = $\Phi$ double garage W 7' Back					
W-7 dirt floor			4.7	349.2	✓
3+44 = $\Phi$ garage on E 5.7' Back					
W			5.6	348.5	✓
$\Phi$			5.2	348.7	✓
E			5.1	348.8	
+5.7			4.96	348.90	✓
3+58 = $\Phi$ Sower M.H. on $\Phi$ Alley					
Rim			5.51	348.35	✓
3+80 = $\Phi$ garage on E 0.6 in Alley					
E+06 dirt floor			5.8	348.1	✓
			4+00		
E			6.3	347.6	✓
$\Phi$			6.5	347.4	✓
W.			6.1	347.8	✓

353.86

50

	+	T	-	Elv	
4+30 = $\Phi$ 2' wide cmt walk on W 0.4 in Alley			7.23	346.63	✓
4+43 = $\Phi$ garage on E 0.5 in Alley			7.3	346.6	✓
W.			7.5	346.4	✓
$\Phi$			7.4	346.5	
+5			6.7	347.2	✓
+9.5 wood floor					
4+60 = $\Phi$ garage on E 12' back			6.87	346.99	✓
E-12 = Cmt floor			8.17	345.69	
T.P.	4.34	350.03			
4+87 = $\Phi$ garage on E 10' Back			2.99	347.04	✓
E-10 = cmt floor			4.3	345.7	✓
E			4.3	345.7	✓
$\Phi$			4.6	345.4	✓
W.					
5+07 = $\Phi$ garage on W with 9' wide					
cmt apron 0.7 Back Garage is 7.3 back			4.32	345.71	✓
W-0.7 apron			4.32	345.71	✓
W-7.3 cmt floor					
3+35 = end of Hedge & cmt walk on W			4.5	345.5	✓
W-0.3 on cmt walk			4.9	345.1	✓
W.			4.8	345.2	✓
$\Phi$			4.8	345.2	
+5			4.5	345.5	✓
E					

350.03  
+      -      Elev  
5+90

E		5.6	344.4	✓
♀		5.6	344.4	✓
W.		5.6	344.4	✓
5+98.53 = N.L. Landis Paved				
W Top Ob		5.87	344.16	
W. prmt.		5.91	344.12	✓
♀ "		6.34	343.69	✓
E "		6.10	343.93	✓
E Top Ob		5.95	344.08	
T.P.	4.40	348.23	6.20	343.83

Section Along N. Ob Landis

W.L. Van Dyke 4 N Ob Landis		3.37	344.86	
" " " " gut "		3.98	344.25	
E.L. Alley 4 N " "		4.85	343.38	
" " " N Ob "		4.36	343.87	
♀ " N gut "		5.02	343.54	
W.L. Alley " " " "		5.03	343.20	
" " " Ob "		4.45	343.78	
E.L. 43rd " " " "		5.46	342.77	
" " " gut "		6.05	342.18	

Section on S Ob Landis

E.L. 43rd 4 S Ob Landis		5.94	342.29	
" " " 5 pt "		6.46	341.77	
W.L. Alley " " " "		5.54	342.71	
" " " Ob "		5.11	343.12	
♀ " " gut "		5.45	342.78	

Plotted 8-30-30 L.R.L.

348.23  
+      -      Elev  
51

E.L. Alley 4 S Ob Landis		4.80	343.43	
" " " " gut "		5.35	342.88	
W.L. Van Dyke 4 " " "		4.40	343.83	
" " " " Ob "		3.82	344.41	
B.M. N.W. 3.P.		3.28	344.95	Van Dyke 4 Landis
Sec Alley 77 C.H. 20' wide				
Landis to Dwight Lot. 42nd & Van Dyke				
B.M. N.W. 3.P.	3.14	348.19	344.95	
0+00 = S.L. Landis				

E.L. Top Ob		4.38	343.71	✓
E.L. prmt		4.61	343.48	✓
4.82		4.82	343.27	
♀ prmt		5.01	343.08	✓
W.L. prmt		4.72	343.37	✓
W.L. Top Ob		4.62	343.47	✓

0+50

W.		4.9	343.2	✓
♀		5.3	342.8	✓
"		5.1	343.0	
E		5.2	342.9	✓

0+63 & garage on E 6' Back

E-6 = cmt floor		5.00	343.09	✓
0+60 = Steps House on W 225 feet				
W+0.2 cmt slab		5.10	342.99	✓
0+82 & garage on E 6' Back				
E-6 = cmt floor		5.49	342.61	✓

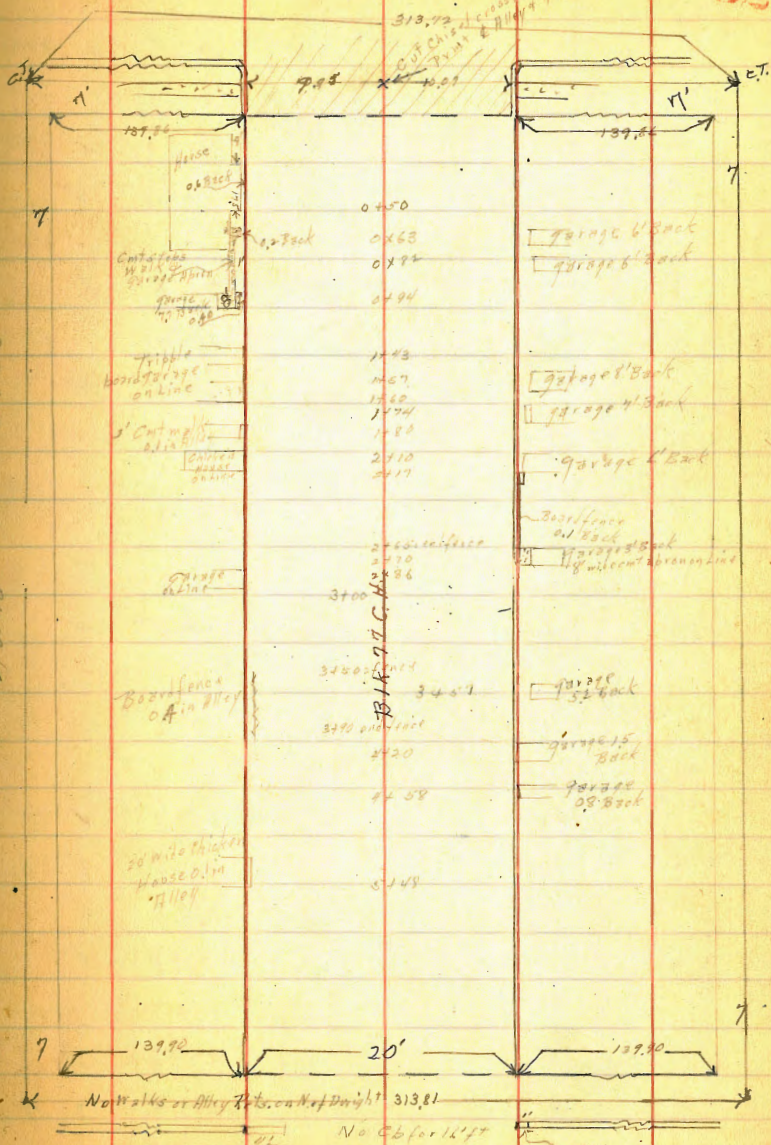
348.09

	+	-	Flor	
	0 + 94 =	Garage on W 7.7 Back	with 8' wide cement apron 0.4 Back	
E		5.4	342.7	✓
W		5.7	342.4	
E		5.6	342.5	✓
W		5.6	342.5	✓
+ 0.4 =	cnt apron			
		5.8	342.61	✓
+ 7.7 =	cnt floor			
		5.40	342.69	✓
	1 + 43 =	"Shack" Garage on W. built to Line		
W =	dirt floor	6.5	341.6	✓
T.P.	4.07	345.22	6.24	341.15
	1 + 57 =	Garage on E 8' Back		
E - 8 =	dirt floor	4.0	341.2	✓
E		4.1	341.1	✓
W		3.9	341.3	
E		4.1	341.1	✓
W =	dirt floor	4.0	341.2	✓
	1 + 60 =	Garage on W on W Line		
W =	cnt floor	3.93	341.29	✓
	1 + 74 =	Garage on E 7' Back		
E + 7 =	dirt floor	4.2	341.0	✓
	1 + 80 =	Cnt Walk on W on W Alley		
W + 0.1	on cnt floor	3.92	341.30	✓
	1 + 10 =	Chicken House on W. of Garage 6' Back	Filler	
W		4.4	340.8	✓

344.71  
344.42  
344.27

Landis St. Pared

52



Dwight St Unpared

345.22

	+	π	-	Elev	
♀			4.4	340.8	✓
W			4.3	340.9	
E			4.2	341.0	✓
+6 = dirt floor			4.1	341.1	✓
			2+65 = end of fence E		
E			4.8	340.4	✓
W			5.0	340.2	
♀			5.2	340.0	✓
W			4.9	340.3	✓
			2+70 = ♀ garage on E 3' Back with		
			8' wide amt apron to E line		
E = amt apron			5.02	340.20	✓
E + 3 = amt floor			4.83	340.39	✓
			2+86 = ♀ garage on W line		
W = dirt floor			5.2	340.0	✓
			3+15		
W.			5.4	339.8	✓
♀			5.4	339.8	✓
W			5.4	339.8	
E			5.4	339.8	✓
			3+57 = ♀ garage on E 5' Back		
E - 5.2 = dirt floor			5.6	339.6	✓
E			5.7	339.5	✓
W			5.7	339.5	
♀			5.8	339.4	✓
W			5.8	339.4	✓

345.22

	+	π	-	Elev	
T.P.	5.63	343.10	5.75	339.47	
			+20 = ♀ garage on E 1.5		
W.			4.2	338.9	✓
♀			4.1	339.0	✓
W			4.0	339.1	
E			3.8	339.3	✓
			+1.5 = dirt floor		
			3.8	339.3	✓
			+4.38 = ♀ garage on E 0.8 Back		
E - 0.8 = dirt floor			4.5	338.6	✓
E			4.4	338.7	✓
W			4.5	338.6	
♀			4.5	338.6	✓
W			4.2	338.9	✓
			5+00		
W			4.7	338.2	✓
♀			4.8	338.3	✓
W			4.8	338.3	
E			5.2	337.9	✓
			5+48 = 5' end of Chicken House <sup>SW</sup> side in Alley		
E			5.5	337.6	✓
W			5.6	337.5	
♀			5.8	337.3	✓
W			5.8	337.6	✓
			5+70		
W			5.8	337.3	✓

53



340.10

	+	π	-	Elev	
♀			6.7	337.0	✓
112			6.0	337.1	
E			5.8	337.3	✓
		5799.83 = N.L.		Dwight	
E			6.7	336.2	✓
114			7.3	335.8	
♀			7.4	335.7	
114			7.0	336.1	
W.			6.5	336.6	
T.P.	4.29	340.01	7.38	335.72	

## Section Along N. Cb. Dwight St

W.L. Van Dyke & N.Cb Dwight			2.90	337.11	
" " " " " got "			3.40	336.61	
E.L. Alley - 1 " " Cb "			4.08	335.93	
" " " " " " "			4.27	335.74	
" " " " " got "			4.6	335.4	
♀ " " " " " "			4.8	335.2	
W.L. " " " " " "			4.8	335.2	
" " " " " Cb "			4.30	335.71	
E.L. 42nd " " " "			5.43	334.58	
E.L. " " " " got "			6.08	333.93	

## Section Along S. Cb. Dwight

E.L. 42nd and S. Cb Dwight			5.95	334.06	
" " " " " got "			6.43	333.58	
W.L. Alley " " " " "			5.7	334.8	
" " " " " Cb "			4.61	335.40	

340.01

	+	π	-	Elev	
♀ Alley and S got Dwight			5.1	334.9	
E.L. " " " " " "			4.9	335.1	
" " " " " Cb. "			4.42	335.57	
W.L. Van Dyke and S. Cb "			3.21	336.80	
" " " " " got "			3.82	336.19	
B.M. N.W. B.P.			5.40	334.61	Dwight 4
B.M. N.W. B.P.	9.05	346.28	2.78	337.23	Dwight 4
B.M. N.W. B.P.	8.00	352.96	1.32	344.96	Van Dyke
T.P.	7.39	357.30	3.05	349.91	Van Dyke
B.M. N.W. B.P.	3.53	358.15	2.68	354.62	Dwight 4
B.M. N.W. B.P.	2.30	354.82	5.63	352.53	Dwight 4
B.M. N.W. B.P.			7.20	349.02	Dwight 4

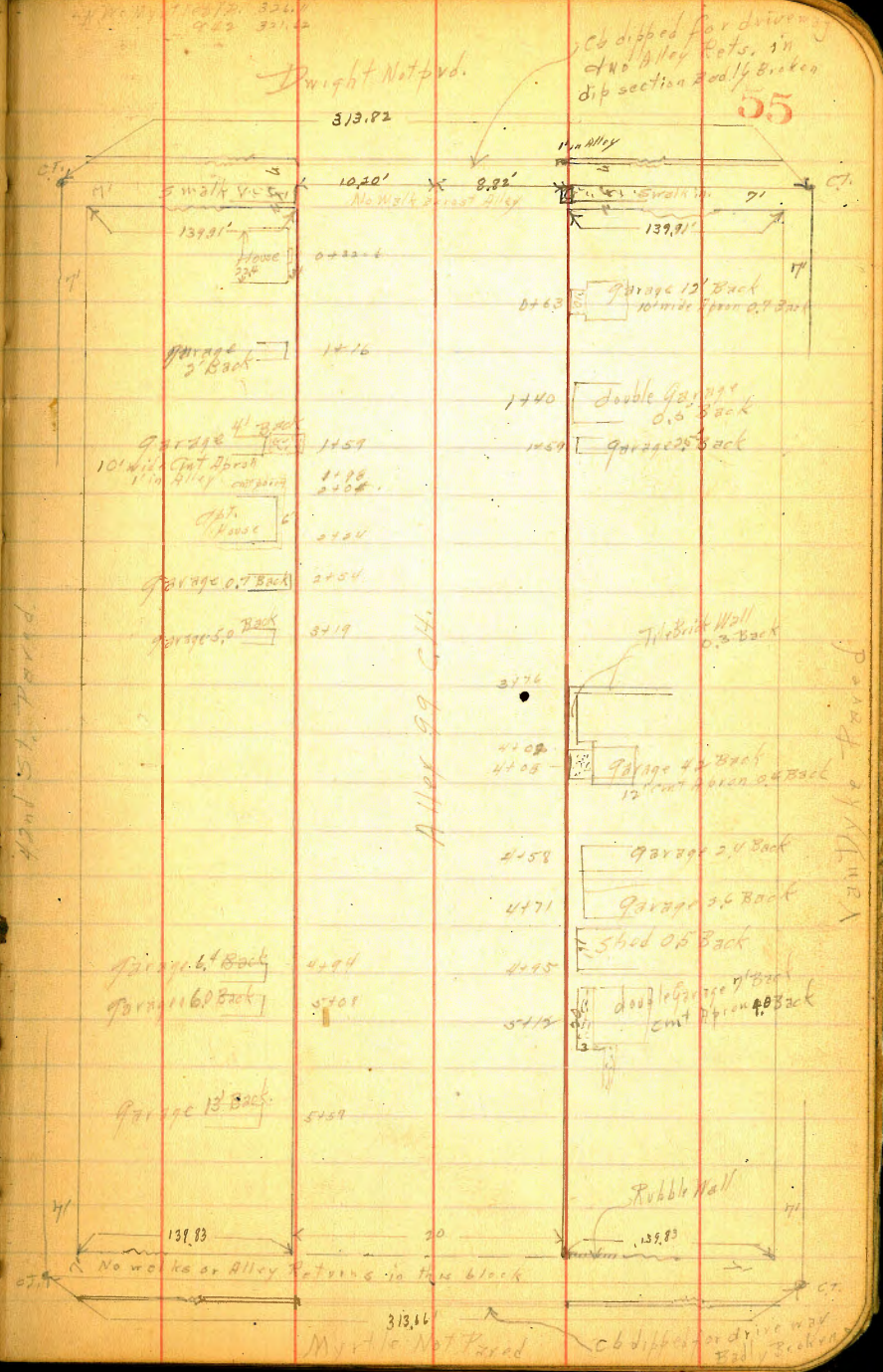
"You pays your money &amp; you takes your choice."

1122  
Trevor  
Kramer

X sec Alley 99 C.H. 20' wide  
from Dwight to Myrtle between 12nd & Van Dyke  
For Co section see preceding notes

B.M.M.B.P.	3.69	340.96	337.27	Dwight + Van Dyke
0-07 = N edge of Walk				
E on Walk		5.04	335.92	
+ 1.2 = end Walk		5.06	335.90	
1/4		5.4	335.6	
1/2		5.4	335.6	
3/4		5.4	335.6	
W on Walk		5.34	335.62	
0-02 = S edge of Walk				
1/4 end of walk		5.38	335.68	
E 1/2 end of walk		5.09	335.87	
0+00 = St. Dwight				
E		4.8	336.2	✓
1/4		5.3	335.7	
1/2		5.3	335.7	✓
3/4		5.2	335.8	✓
0+52 = E St. House on W				
W-3 = floor level on steps		3.70	337.26	✓
W.		5.0	336.0	✓
1/2		4.8	336.2	✓
3/4		4.6	336.4	
E		4.6	336.4	✓
0+63 = E Garage on E 12' Back 10' wide Apron 0.7 Back				
E - 0.7 on apron		5.09	335.87	✓
E		5.1	335.9	✓

Plotted 9-2-30 L.R.L.



Co dipped for driving  
of No Alley Pts. in  
dip section 2nd 1/2 Broken

55

Alley 99 C.H.

Van Dyke Paved

Co dipped for driving  
of No Alley Pts. in  
dip section 2nd 1/2 Broken

340.76

	+	T	-	Elev	
1/4			5.0	335.0	
⊕			5.1	335.9	✓
W			5.5	335.5	✓
		1+16 = ⊕ Garage on W 2' Back			
W - 2 = dirt floor			6.1	334.9	
W			6.0	335.0	✓
⊕			6.0	335.0	✓
1/4			6.0	335.0	
E			6.0	335.0	✓
		1+40 = ⊕ double Garage on E 20'			
E - 0.5 = dirt floor			6.0	335.0	✓
T.P.	4.2	338.75	6.45	334.51	
		1+59 = ⊕ Garage on W 4' 3" Back			
E - 2.5 = dirt floor			4.2	334.6	✓
E			4.2	334.6	✓
1/4			4.2	334.6	
⊕			4.3	334.5	✓
+9 = edge of iron			3.9	334.81	✓
W on "			3.9	334.85	✓
+4 = cont floor			3.84	334.91	
		2+04 = N end of Apt House on W, 6.08 Back			
Floor level of cont porch W-6.0			4.0	334.05	✓
W			4.8	334.0	✓
⊕			4.9	333.9	✓
1/4			4.9	333.9	
E			4.5	334.3	✓

339.75

	+	T	-	Elev	
					56
					2+24 = S end of Apt House on W 6.3 Back
W - 6.2 = floor level			4.70	334.05	✓
					2+54 = ⊕ Garage on W 0.7 Back
E			5.1	333.7	✓
1/4			5.1	333.7	
⊕			5.2	333.6	✓
W			5.5	333.8	✓
+0.7 = dirt floor			5.5	333.3	✓
					3400
W			6.1	332.7	✓
⊕			6.1	332.7	✓
1/4			6.2	332.6	
E			6.3	332.5	✓
					3+17 = ⊕ Garage on W 5.0 Back
W - 5.0 = cont floor			6.41	332.34	✓
T.P.	2.95	335.30	6.40	332.35	
					3+50
E			3.3	332.0	✓
1/4			3.3	332.0	
⊕			3.1	332.2	✓
W			3.4	331.9	✓
					3+76 = N end of Tribick Wall on E 6' 4" 0.3 Back
W			3.8	331.5	✓
⊕			3.4	331.9	✓
1/4			3.5	331.8	
E			3.0	332.3	✓

335.30

+ T - Elev

4+08 = Garage on E 4.2 Back

with 12' wide Cmt Apron 0.4 Back

E - 4.2 = cmt floor	3.64	331.66	✓
E - 0.4	3.82	331.48	✓
E	4.0	331.3	✓
1/4	4.1	331.2	
Φ	4.1	331.2	✓
W.	3.9	331.4	✓

4+58 = Garage on E 2.4 Back

W	5.0	330.3	✓
Φ	4.6	330.7	✓
1/4	4.7	330.6	
E	4.7	330.6	✓
+ 2.4 = dirt floor	4.6	330.7	✓

4+71 = Garage on E 2.4 Back

- 2.6 = dirt floor	5.0	330.3	✓
E	5.0	330.3	✓
1/4	5.0	330.3	
Φ	5.0	330.3	✓
W	5.3	330.0	✓

4+94 = Garage on W 6.4 Back

W - 6.4	4.1	329.2	✓
W	4.1	329.2	✓
Φ	5.6	329.7	✓
1/4	5.5	329.8	
E	5.1	330.2	✓

335.30

+ T - Elev

5+08 = Garage on W 6.1 Back

W + 6.0 = dirt floor

6.4	328.9	✓	
5+19 = Cobble Garage on E 7' Back			
with 20' wide cmt apron 4' Back			
E - 7 = floor level	5.34	329.96	✓
E - 4 = Apron (hard 20')	5.49	329.81	✓
E	5.6	329.7	✓
1/4	6.1	329.2	
Φ	6.2	329.1	✓
W.	6.5	328.8	✓

5+57 = Garage on W 13' Back

W - 13 = dirt floor	7.1	328.2	✓
W.	6.9	328.4	✓
Φ	7.0	328.3	✓
1/4	6.9	328.4	
E	6.7	328.6	✓

T.P. 3.34 329.57 10.07 325.23

5+94

E	1.1	327.5	✓
1/4	2.9	325.7	
Φ	3.6	325.0	✓
13	3.5	325.1	
W.	1.2	327.4	✓

5+00.07 = NL Myrtle

W.	3.4	325.2	
----	-----	-------	--

#	+	-	Elev.
		4.5	324.1
		4.0	324.6
E - end of Rubble Wall		4.1	324.5 ✓

Section on N. Cb of Myrtle St

W.L. Van Dyke And N. Cb Myrtle	3.52	326.05
" " " " N. G.T. "	3.20	325.37
E.L. Alley & " " "	5.2	323.4
" " " " Cb "	4.50	324.07
" " " " G.T. "	5.6	323.2
W.L. " " " " "	5.4	323.2
" " " " Cb. "	4.87	323.70
E.L. 42nd St " " "	6.96	321.61
" " " " G.T. "	7.49	321.08

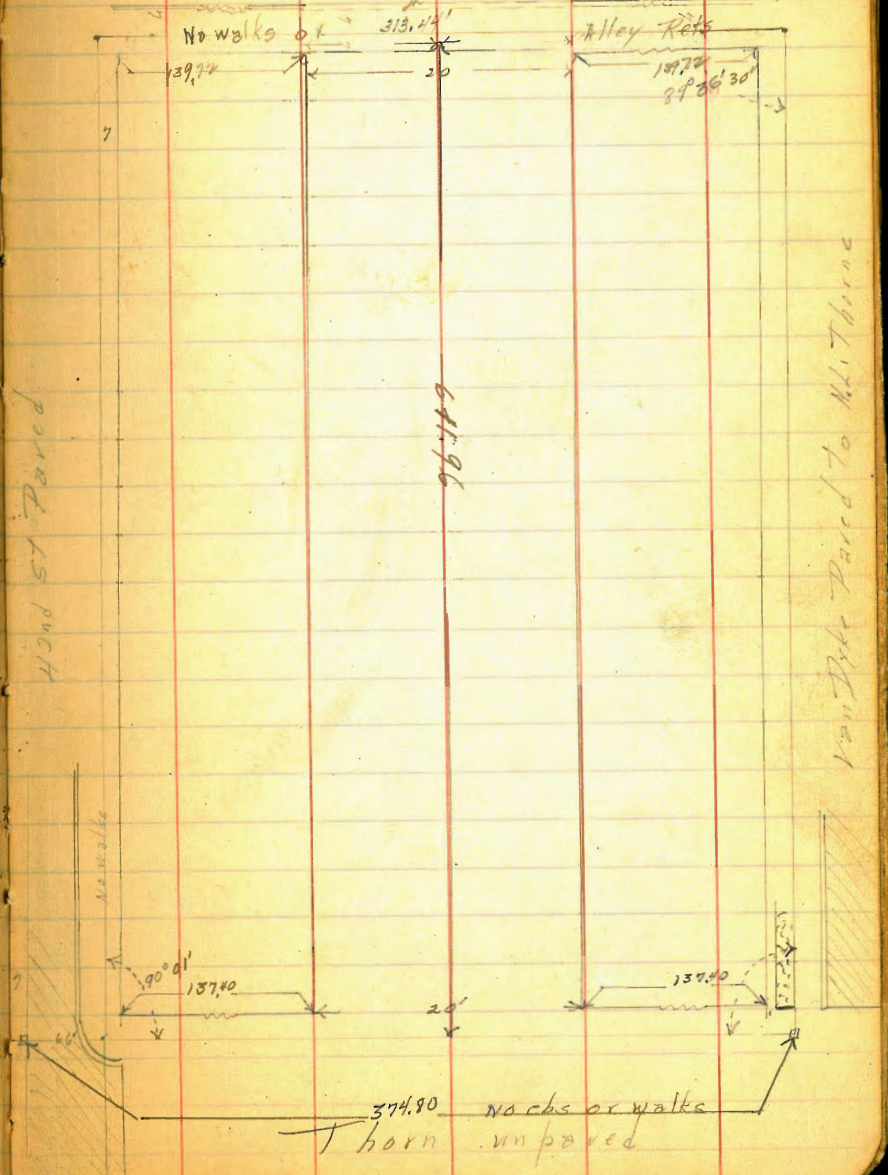
Section on S. Cb Myrtle

E.L. 42nd St And S. Cb Myrtle	7.97	320.60
" " " " G.T. "	8.53	320.04
W.L. Alley " " "	6.26	322.31
" " " " Cb. "	5.70	322.87
" " " " G.T. "		
E.L. " " " " "	5.86	322.71
E.L. " " " " Cb. "	5.38	323.19
W.L. Van Dyke " " "	3.00	325.57
" " " " " " G.T. "	3.49	325.08
B.M. N.W.B.P.	2.48	326.07
B.M. N.W.B.P.	6.95	321.62

8' Cb. Myrtle  
S. Cb. Myrtle  
S. Cb. Myrtle

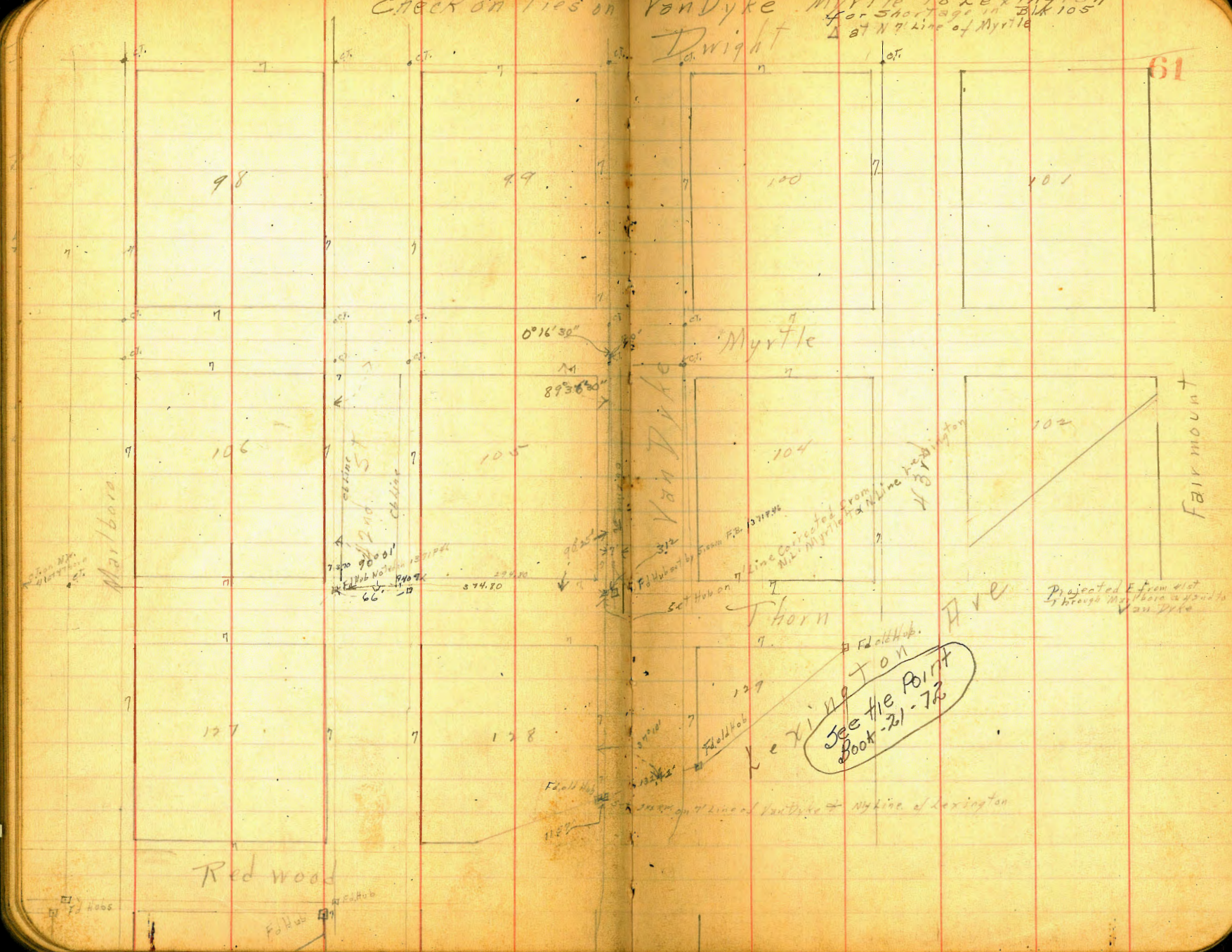
Myrtle St  
Van Dyke  
Myrtle St  
42nd St  
321.62

Myrtle unpaved for Drive 60T  
Cb dipped for Drive 60T  
realigning pipe on 1 row



Check on Ties on VanDyke Myrtle to Lexington  
 for Shortage in Blk 105  
 at N 9 Line of Myrtle  
 Dwight

61



Marlboro  
 2nd  
 Ch. line  
 7320 90°01'  
 7400 90°01'  
 66  
 374.70

VanDyke

Myrtle

Thorn

Lexington Ave  
 See the Point  
 Book - 21 - 72

Fairmount

Redwood

Projected E from 41st  
 through Myrtle to VanDyke

Intersection of VanDyke & Myrtle = N 9 Line of Lexington

X sec Alley 105 C.H.

	+	π	-	Elev	
B.M. W.B.P.	26.6	328.77		326.11	Myrtle & Van Dyke
					0400 = S.L. Myrtle
E.			4.5	324.3	✓
W.			4.6	324.2	
♀			5.3	323.5	✓
W.			5.1	323.7	✓
	0417				
W.			4.4	324.4	✓
♀			4.5	324.3	✓
W.			3.7	325.1	
E.			3.7	325.1	✓
	0454 = ♀ Garage on W				5th Back
♀			5.3	323.5	✓
W.			5.4	323.4	
♀			5.4	323.4	✓
W.			5.4	323.4	✓
W + 5 = dirt floor			5.4	323.4	✓
	0463 = Hand Chicken House				0.25 Back
W + 0.25			5.3	323.5	✓
	0478 = Sand				" " "
W - 0.25			5.5	323.3	✓
T.P.	2.97	325.37	6.9	322.40	

Plotted 9-2-30 L.R.L.

	+	π	-	Elev	
					325.37
					1.409 = ♀ Garage on W
W - 5.3 = cmt floor			3.34	322.03	✓
W.			3.6	321.8	✓
♀.			3.7	321.7	✓
W.			3.6	321.8	
E.			3.5	321.9	✓
	1450 = Hand Chicken House				0.43 Back
E.			4.5	320.9	✓
♀.43			4.6	320.8	
W.			4.7	320.7	
♀			5.2	320.2	✓
W.			5.0	320.4	✓
	1463 = Sand @ House				0.56 in Alley
	2406 = ♀ Garage on E				0.3 in Alley
W.			6.7	318.7	
♀			6.7	318.7	✓
W.			6.2	319.2	
+ 5.9 = cmt floor			5.95	319.42	✓
	2432 = ♀ Garage on W				4th Back
	with 8' wide cmt apron				2.9 Back
E.			6.9	318.5	✓
W.			6.8	318.6	
♀			7.1	318.3	✓
W.			7.2	318.2	✓
+ 7.4 = cmt apron			7.09	318.28	✓
+ 4.4 = " floor			6.9	318.46	✓

	325.37 K	-	Elev	
	2+80	=	chick garage on E 1.7 in Alley	
W			8.7	316.7 ✓
⊕			8.7	316.7 ✓
1/4			8.2	317.2
+ 3.8		=	board floor	7.8 317.6 ✓
	3+00			
E			8.4	317.0 ✓
1/4			8.8	316.6
⊕			9.0	316.4 ✓
W			9.1	316.3 ✓
	3444	=	Garage on W 8' Back	
		with 8	wide cmt apron	6.8 Back
W-8'		cmt floor	9.62	315.75 ✓
W-6.8'		" apron	9.92	315.45
W			10.0	315.4 ✓
⊕			9.7	315.7 ✓
1/4			9.7	315.7
E			9.7	315.7 ✓
	3+84	=	N end Chickentouse on E 1.8 in Alley	
E+1.8			10.4	315.0 ✓
	4+00	=	S end " " " "	
E+1.8			10.5	314.9 ✓
	4+05	=	Garage on E 1.8 in Alley	
E+1.8 = cmt floor			10.07	315.30 ✓
1/4			10.53	314.84
⊕			10.9	314.5 ✓
W			11.2	314.2

	325.37 K	-	Elev	
	4+35	=	Garage on W 7.5 Back	
		with 8'	wide apron	6' Back
W-7.5		=	cmt floor	11.58 313.79
W-6		=	cmt apron	11.76 313.61
T.P.	3.33		316.05	11.65 313.92
	4+58	=	Garage on W	
		5.3 Back	with 8' wide cmt apron	1' back
W-2.3		=	cmt floor	3.92 313.13 ✓
W-1		=	" apron	3.5 312.90 ✓
W			3.1	313.0 ✓
⊕			3.1	313.0 ✓
1/4			3.0	313.1
E			3.9	313.2 ✓
	5+00			
E			4.2	311.9 ✓
1/4			4.2	311.9
⊕			4.3	311.8 ✓
W			4.3	311.8
	5+39	=	Garage on W 6.6	
		Back	with 8' wide apron	5' Back
W-6.6		=	floor	5.38 310.77 ✓
W-5		=	apron	5.66 310.39 ✓
	5+57	=	Garage on E 0.4 Back	
W			6.1	310.0 ✓
⊕			6.1	310.0 ✓

63



314.00

	T	Elev	
1/4	5.9	310.2	
NE	5.7	310.4	✓
+ 0.4 dirt floor	5.7	310.4	✓
	5780		
E	6.5	309.6	✓
1/4	6.8	309.3	
♀	7.0	309.1	✓
W.	6.7	309.4	✓
	5497.94 = N.L. Thorn St		
W	8.4	307.7	✓
+ 2	8.5	307.6	
+ 3	1.7	306.4	
♀	9.9	306.2	✓
1/4	8.6	307.5	
E	7.4	308.7	✓
	N.L. Thorn + 7		
NE	11.2	304.9	
1/4	10.7	305.4	
♀	10.9	305.2	
W	11.2	304.9	
	W.Cb. Thorn		
W	11.1	304.0	
♀	11.7	304.4	
1/4	11.7	304.4	
E	11.6	304.5	

316.05

	T	Elev	
T.P.	5.76	309.76	12.05 308.00
N.Cb. Thorn + E.L. Wood			9.90 299.86
N. got " " " "			10.70 299.06
N.L. Thorn + W.Cb. VanDyke			1.07 308.69
N.L. Thorn + N. got " "			1.63 308.13
N.L. Thorn + end Walk " "			0.87 308.89
T.P.	11.16	320.14	0.78 308.98
T.P.	8.10	323.29	0.55 319.59
N.W. B.P.			2.16 326.13
			326.11
			0.25

64

100 m of N.Cb.

N.Y. 1/4  
VanDyke

326.11



321.38

Bet 67'.N. + 87'.N. Cypress Hedge on E.

outer edge 0.8 in Alley Trunks 0.3 out of Alley

91'.N = garage on E. cmt. floor 6'. Back

E-6 floor 6.14 315 24

E. on w. edge cmt. apron 6.20 315 18

T1 5.9 315 5

E 5.7 315 7

W 5.6 315 8

99'.N.

W 5.8 315 6

E 5.8 315 6

E 6.0 315 4

101'.N

E 7.1 314 3

+5 5.9 315 5

E 5.9 315 5

W 5.6 315 8

106'.N. garage on E. cmt floor 5.8 Back

W 5.8 315 6

E 5.9 315 5

+2.5 5.9 315 5

E 6.9 314 5

E+5.8 floor 6.9 314 5

321.38

Alley BIK 58. Park Villas

141'.E - garage on E. cmt. floor 6'. Back

66

E-6. floor 6.87 314 51

E 6.7 314 7

E 5.9 315 5

W 5.9 315 5

173'.N garage on E. cmt. floor 5.5 Back

W 5.3 316 1

E 5.5 315 9

E 6.0 315 4

+5.5 floor 6.26 315 12

175'.N E 1.8 walk on W. 0.1 Back

W-0.1 E. end walk. 5.4 316 0

200'.N

E 5.7 315 7

E 5.5 315 9

W 5.1 316 3

215'.N

W 5.5 315 9

E 5.5 315 9

+6 5.5 315 9

E 4.7 316 7

245'.N

E 5.8 315 6

+3 6.0 315 4

E 5.8 315 6

W 5.2 316 2

321.38

Bet 67' N. + 87' N. Cypress Hedge on E.

outer edge 0.8 in Alley Trunks 0.3 out of Alley

91' N = garage on E. cmt. floor 6' Back

E-6 floor 6.14 31524

E. on w. edge cmt. apron 6.20 31518

T1 5.9 3155

E 5.7 3157

W 5.6 3158

99' N.

W 5.8 3156

E 5.8 3156

E 6.0 3154

101' N

E 7.1 3143

+5 5.9 3155

E 5.9 3155

W 5.6 3158

106' N. garage on E. cmt floor 5.8 Back

W 5.8 3156

E 5.9 3155

+2.5 5.9 3155

E 6.9 3145

E+5.8 floor 6.9 3145

321.38

Alley B/K 58. Park Villas

141' E-garage on E. cmt. floor 6' Back

66

E-6 floor 6.87 31451

E 6.7 3147

E 5.9 3155

W 5.9 3155

173' N garage on E. cmt. floor 5.5 Back

W 5.3 3161

E 5.5 3159

E 6.0 3154

+5.5 floor 6.26 31512

175' N E 1.8 walk on W. 0.1 Back

N-0.1 E. End walk. 5.4 3160

200' N

E 5.7 3157

E 5.5 3159

W 5.1 3163

215' N

N 5.5 3159

E 5.5 3159

+4 5.5 3159

E 4.7 3167

245' N

E 5.8 3156

+3 6.0 3154

E 5.8 3156

W 5.2 3162

321.38

259' N Garage on E cmt. floor 1.9 Back

W		5.7	3157
E		5.6	3158
+ 7.3	on W. edge cmt. apron	5.97	31541
E.	on " "	5.9	3155
E + 1.9	floor	5.83	31555
264' N.			
E		5.8	3156
E ground		5.6	3158
E Top M.H.		5.42	31596
W		5.4	3160

295' N

W		4.3	3171
E		4.3	3171
E		4.9	3165

300' N. = S. Line Myrtle

E, on S. end cmt. ch. Ret		4.47	31691
E " " " pavmt.		4.53	31685
E " " " "		4.65	31673
W " " " "		4.25	31713
W, " " " cmt. ch. Ret.		4.03	31735

10' N. = S. ch Line Myrtle

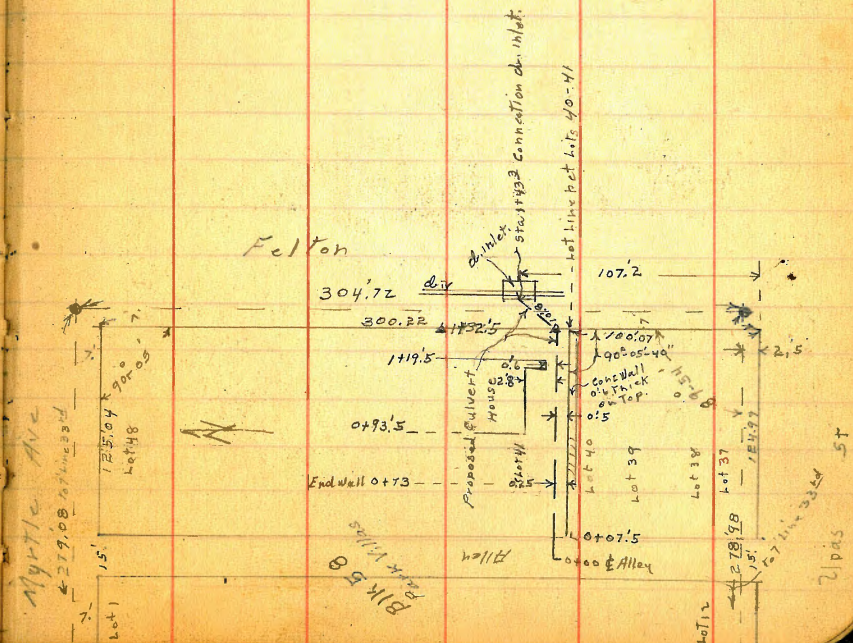
W. cmt. ch		4.12	31726
W. gutter pavmt.		4.60	31678
E " " "		4.87	31651
E " " "		5.02	31636

Blk BIK 58 Park Villas

321.38

E. cmt. ch		4.66	31672	67
chk. BM		9.14	312.24 =	N.W. Felton + 2 pas
chk original BM		2.93 ✓	312.35 ✓	
			31845	

Profile for Culvert Page 68



Levels for Proposed Culvert 0.5  
 N. of lot line Bet Lots 40441 BIK 58. Park Villas  
 Plat Page 67.

B.M.	6.50	318.74	312.24	N.W. Pelton & Ugas
0+00 = $\phi$ Alley			3.2	315.5
0+7.5 E. line Alley			4.1	314.6
0+13 <sup>2</sup> W. End Garage R.S. $\phi$ Culvert.			3.9	
0+13 <sup>5</sup> W " " 0.5 N. $\phi$ "			3.9	
0+30 <sup>5</sup> E. End Garage 0.5 N. $\phi$ Culvert			4.1	
0+34 <sup>5</sup> E " " 1.5 S. $\phi$ "			4.5	
0+70			4.1	
2' N. of $\phi$ at Sta 0+70			7.0	
0+73 W. End. cmt. wall			5.4	
				(W. Face of wall) 0.25 N. of Plat line 0.25 S. of $\phi$ Culvert
2' N. of $\phi$ at Sta 0+73			7.3	
				(N. Face wall 0.35 S. of $\phi$ Culvert)
0+93.5 W. Side House 2.8 N. of $\phi$ Culvert			8.0	
1+18 <sup>5</sup>			8.9	
1+19 <sup>5</sup>			9.7	
				{ E. Side House - S. Side 2.8 N. of Culvert E. Side House - False Front 0.6 N. of Culvert. N. Face wall 0.5 S. of $\phi$ Culvert.
1+32 <sup>5</sup> = $\Delta$ Culvert = N. Line 33 <sup>rd</sup> St			11.2	
T.P.	5.43	313.21	10.96	307.78
1+43 <sup>3</sup> Connection $\phi$ Culvert + $\phi$ cl. inlet			6.05	Top. cl.
" " " " " "			7.05	grating
" " " " " "			9.40	F.L.
chk B.M.			0.97	312.24

1/27/30  
London

X sec 41st From El Cajon to  
350' North  
md. c.s.k.

69  
sw El Cajon  
41st

B.M. 5.94 370.36 364.42

0+00 = N.L. El Cajon

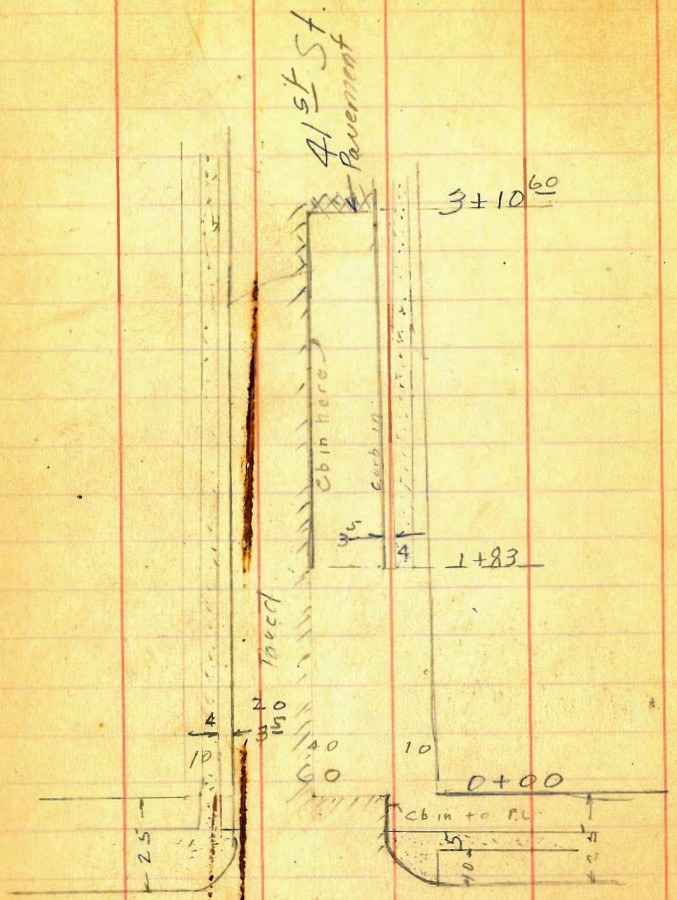
EL	5.5	364.9
Ecb	5.15	365.21
put	6.00	364.36
1/4	5.78	364.58
±	5.75	364.61
1/4	5.95	364.41
w put	6.17	364.19

0+25

wcb	5.77	364.59
put	6.09	364.27
1/4	5.90	364.46
±	5.76	364.60
+5	5.0	365.4
1/4	4.8	365.6
cb	5.7	364.7
EL	5.5	364.9

0+50

EL	5.5	364.9
cb	5.4	365.0
1/4	5.4	365.0
±	5.69	364.67
1/4	5.88	364.48
put	6.05	364.31
cb	5.73	364.63



El Cajon.

A1st

370.36

0+75

wgut	5.91	364.45
1/4	5.79	364.57
⊕	5.62	364.74
1/4	5.6	364.8
cb	4.7	365.7
E.L.	5.4	365.0

1+00

EL	5.2	365.2
cb	5.1	365.3
+5	5.0	365.4
1/4	5.6	364.8
⊕	5.51	364.85
1/4	5.67	364.69
wgut	5.87	364.49
cb	5.66	364.70

1+25

wcb	5.56	364.80
gut	5.80	364.56
1/4	5.57	364.79
⊕	5.44	364.92
+6	4.7	365.7
1/4	4.7	365.7
cb	5.0	365.4
E.L.	5.1	365.3

A1st

370.361+44<sup>2</sup>

Sedge Drive 25 in	4.71	365.65
1751		
N v v v v	4.67	365.69
150		
EL	4.66	365.70
cb	5.2	365.2
1/4	5.5	364.9
⊕	5.34	365.02
1/4	5.52	364.84
gut	5.75	364.61
wcb	5.52	364.84

1+83

wcb	5.39	364.97
gut	5.73	364.63
1/4	5.43	364.93
⊕	5.24	365.12 <sup>OK</sup>
1/4	5.2	365.2
gut	4.8	365.6
Ecb	4.57	365.79
+3 <sup>5</sup> walk	4.51	365.85
+7 <sup>5</sup> ✓	4.50	365.86
EL	4.6	365.8

70



41<sup>st</sup>

370.36

2+00

Ecb	4.50	365.86
gut	4.8	365.6
1/4	4.9	365.5
⊕	5.13	365.23 <sup>OK</sup>
1/4	5.38	364.98
gut	5.64	364.72
Web	5.34	365.02

2+25

Web	5.29	365.07
gut	5.68	364.68
1/4	5.33	365.03
⊕	5.00	365.36 <sup>OK</sup>
1/4	4.9	365.5
gut	4.6	365.8
Ecb	4.43	365.93

2+50

Ecb	4.39	365.97
gut	4.7	365.7
1/4	4.8	365.6
⊕	5.01	365.5
⊕		365.35
1/4	5.26	365.10
gut	5.57	364.79
Web	5.19	365.17

41<sup>st</sup>

370.36

2+75

Web	5.16	365.20
gut	5.60	364.76
1/4	5.21	365.15 <sup>OK</sup>
⊕	4.82	365.54 <sup>OK</sup>
1/4	4.8	365.6
T.P.	5.01	370.42
gut	4.8	365.6
Ecb	4.49	365.93

3+00

Ecb	4.43	365.99
gut	4.6	365.8
1/4	4.7	365.7
⊕	4.93	365.6
⊕		365.49
1/4	5.20	365.22
Wgut	5.55	364.87

3+10<sup>b</sup>

Web	5.11	365.31
gut	5.57	364.85
1/4	5.19	365.23
⊕	4.89	365.6
⊕		365.53
1/4	4.78	365.64
gut	5.08	365.34
Ecb	4.41	366.01

71

41 5L

3+50		370.42	
Ecb		3.93	366.49
gut		4.63	365.79
1/4		4.55	365.87
1/4		4.53	365.89
1/4		4.78	365.64
W gut		5.24	365.18
B.M		0.00	364.42
Curb & gutter levels N. to Monroe			
B.M	7.83	372.25	364.42
A+00			
Web		6.48	365.77
gut		6.86	365.39
E gut		6.16	366.09
Ecb		5.59	366.66
A+50			
Ecb		5.20	367.05
gut		5.86	366.39
gut		6.50	365.75
Web		6.02	366.23
S+00			
Web		5.51	366.74
gut		6.08	366.17
gut		5.40	366.85
Ecb		4.74	367.51

5+50		372.25	
Ecb		4.48	367.77
gut		5.15	367.10
gut		5.83	366.42
Web		5.02	367.23
6+07 1/2 = S.L. Meade			
Web		4.44	367.81
gut		5.36	366.89
gut		4.79	367.46
Ecb		4.10	368.15
0+00 = N.L. Meade			
Ecb		4.41	367.84
gut		5.03	367.22
gut		5.03	367.22
Web		4.57	367.68
0+50			
Web		4.64	367.61
gut		5.06	367.19
gut		4.95	367.30
Ecb		4.39	367.86
1+00			
Ecb		4.38	367.87
gut		4.87	367.38
gut		4.94	367.31
Web		4.65	367.60

5 54  
41  
13

72

A1<sup>ST</sup>

1+50	372.25		
Web	4.56	367.69	
gut	4.83	367.42	
gut	4.71	367.54	
Ecb	4.32	367.93	

2+00			
Ecb	4.30	367.95	
gut	4.53	367.72	
gut	4.75	367.50	
Web	4.53	367.72	

2+50			
Web	4.44	367.81	
gut	4.73	367.52	
gut	4.45	367.80	
Ecb	4.19	368.06	

3+00			
Ecb	4.02	368.23	
gut	4.32	367.93	
gut	4.74	367.51	
Web	4.50	367.75	

3+50			
Web	4.36	367.89	
gut	4.55	367.70	
gut	4.11	368.14	
Ecb	3.83	368.42	

A1<sup>ST</sup>

4+00	372.25		
Ecb	3.67	368.58	
gut	3.97	368.28	
gut	4.49	367.76	
Web	4.23	368.02	

4+50			
Web	4.13	368.12	
gut	4.35	367.90	
gut	3.93	368.32	
Ecb	3.48	368.77	

5+00			
Ecb	3.16	369.09	
gut	3.61	368.64	
gut	4.22	368.03	
Web	4.02	368.23	

5+71<sup>5</sup> = S.L. Monroe

Web	3.17	369.08	
gut	3.87	368.38	
gut	3.35	368.90	
Ecb	2.77	369.48	

73

Survey BIK 58 Hortons  
 Bet 8<sup>th</sup>, 9<sup>th</sup>, E. & F.  
 Bdw. 214.26

3-10-32  
 Miller  
 Walker  
 Bliss

Indexed  
 C.S.K.

214.38

214.39

Ed. CT  
 16.87

314.32 T.P.  
 380.32 T.P.  
 380.32 Meas.  
 314.32 T.P.  
 314.45 Meas.

BIK. 48  
 Hortons  
 2-11-37  
 Miller

9th CT  
 15.97

66.00

Set. CT

314.30 Meas.  
 314.30 T.P.

314.31 Meas.  
 314.31 T.P.

10th CT  
 15.97

66.00

Set. CT

314.32 Meas.  
 314.32 T.P.

314.33 Meas.  
 314.33 T.P.

T.P. Man  
 214.09

214.02 Meas.

66.00

C.T.H.

Ave

314.43

8<sup>th</sup>

65.82

CT

66.00

CT

E. St

314.32

214.445

BIK 58  
 Hortons

214.52

F. St

65.97

CT

65.88

CT

65.97

CT

65.97

CT

65.97

CT

65.97

CT

65.97

CT

65.97

CT

65.97

CT

65.97

CT

65.97

CT

65.97

CT

65.97

CT

74

Ave

314.22

9<sup>th</sup>

66.00

CT

66.00

CT

Fd. New C.T.P. at N.E. cor  
 9<sup>th</sup> & E. 0.55' W. of True  
 T.P. 15.39 from C.T.  
 N.W. T.P. Removed  
 3-10-37 Miller

CT Replaced  
 1-3-36 Moore

CT Replaced  
 66.00

90° 00'

89° 59'

0.075' of line

CT

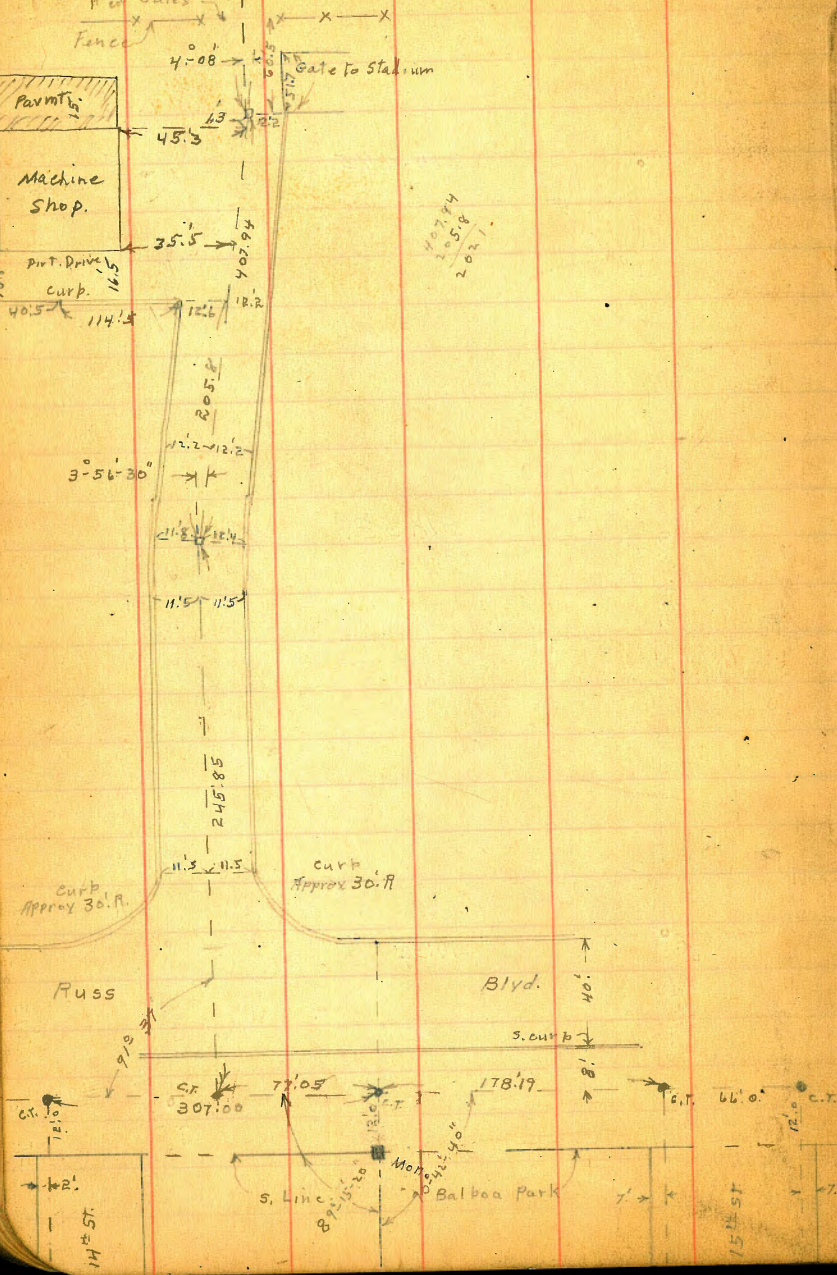
66.00

CT

66.00

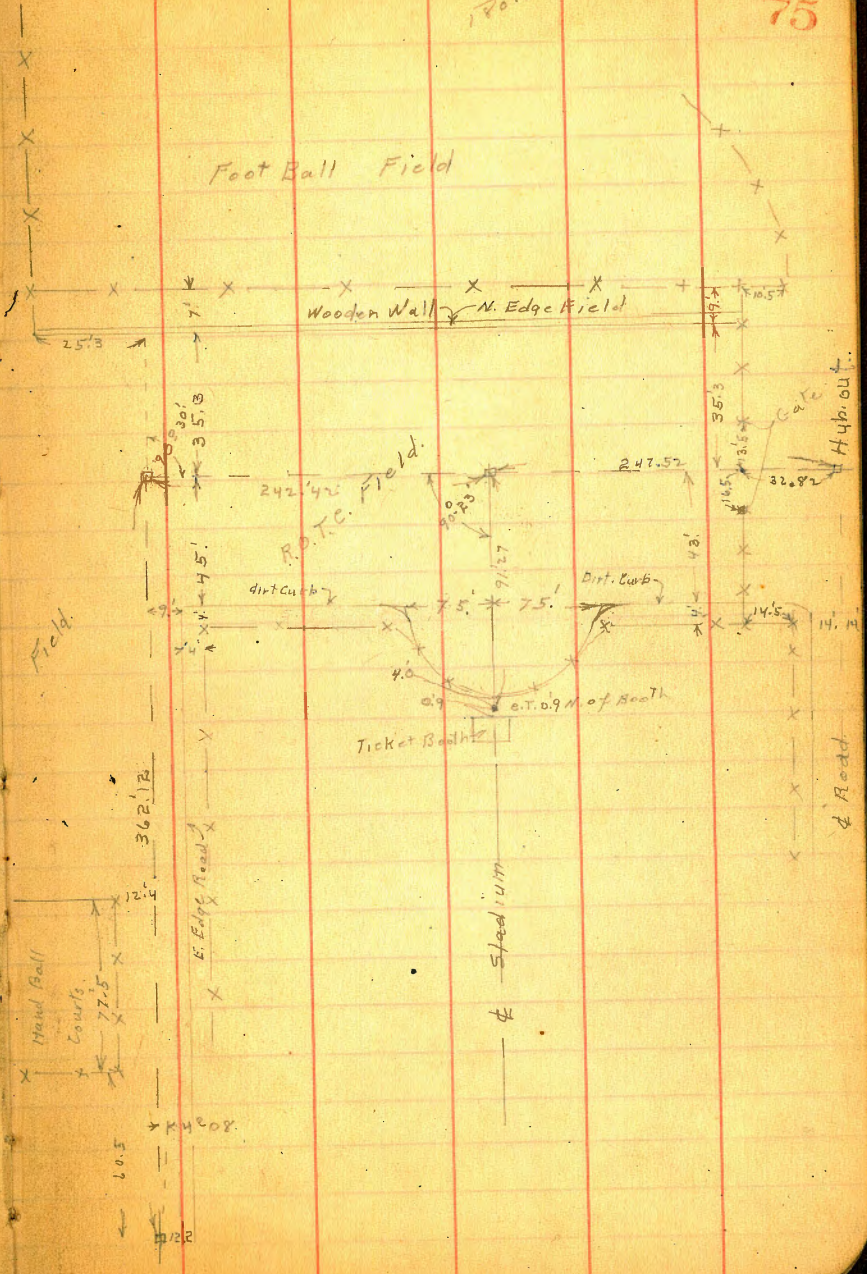
CT

9/15/32 Road Location at Stadium  
in Balboa Park



87-37  
90-23  
180-00

65-08-30  
294.27



76

77

78



E-  
E.  
T  
E  
E  
E  
E  
E  
E

DIRECTIONS FOR USE OF TABLES

TABLE No. 1.

Distance of slope stake from side or shoulder stake for any width roadway, slope 1 1/2 to 1. If ground is nearly level, the cut or fill at side stake is located by the double entry method in left column and top row. The number in body

of table in same row and column gives distance from side stake to slope stake. If ground is not

IMPROVED TABLES AND INFORMATION

TABLE No. 2.

To find tangent and External for curve of any other degree, divide by degree of curve and add correction found in column of correction. Degree of curve with a given L may be found by dividing tangent (or external), opposite L by given tangent (or external). The distance from a point on the tangent to the curve is very nearly the square of the tangent length divided by twice the radius.

31366  
151.83

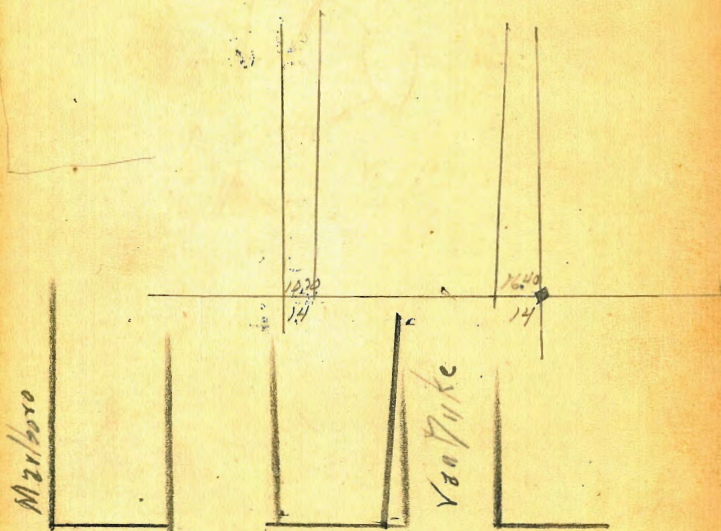
85.61  
98.43  $\overline{)842700}$   
78744

55268  
49215  
60450  
39054  
18920

601.24

$\overline{)10124}$   
10

57 1/2 52.09



$\overline{)139972}$   
13986  
80.  
78.  
87.85  
24595

40.  
80  
170  
65  
355

$\overline{)34410}$   
337  
37982  
499  
34383

489.94  
242.02  
247.52  
32.82  
214.79

E.W. Road.  
1447.  
Cabrillo  
1426.

$\overline{)138}$   
605  
775

$\overline{)1338}$   
13280  
12  
13790

26.65

26.72  
125.36  
75.23  
347.31

17

428  
35.3  
7.0

$\overline{)343.23}$   
343.23  
3.82  
3.82

3.6212  
317.  
45.12

ENGINEERING DEPARTMENT,  
CITY OF SAN DIEGO,  
CALIFORNIA.

24  
25  
40.5  
28.5  
126.0  
12  
178  
1.27  
37.5  
176.55  
25.5  
1491.0  
12  
2030

23.7  
19.1  
42.8  
2.48  
45.25  
71.2  
171.65

89-16 W 10 S.

90-42 E 10 S.

47.96  
182  
229.95  
77.05  
307.00