

1368

PASADENA

FIELD BOOK

No. 3857

5th St 344.48  
Madrone 4884

65th - Imperial to Ridgeway  
Madrone - 65th to 500' West  
Shales - " " " "  
Sullivan = " " " "  
Benso st = 500' each side 65th  
Eleanor = Entire length  
Bishop = " " "  
Medio Drive " " "  
SE Top Hydrant 65th + Fop. 223.86

This fully indexed of 100 NH

MICROFILMED

DEC 23 1964

Our Leather Bound Engineers Note Books are carried in the following rulings:

- No. 380 LEVEL BOOK. Left and Right Hand Page the same as Left Hand Page of this Book.
- No. 382 FIELD BOOK. Left Hand Page as in this Book, Right Hand Page 4 x 4 to the inch, Center Line Red.
- No. 384 MINING TRANSIT BOOK. Left Hand Page as in this Book, Right Hand Page 8x8 to the inch, Center Line Red.
- No. 385 FIELD BOOK. Left Hand Page as in this Book, Right Hand Page 8 vertical and 4 horizontal lines to the inch, Center Line Red.

We also carry the Note Books listed above, bound in extra strong Fabri-Hide (otherwise the same quality of book), which can be furnished at a somewhat lower price.

In ordering Fabri-Hide covered books, add the letter "F" to catalog number.

**THE FREDERICK POST CO.**  
ENGINEERING and DRAFTING SUPPLIES  
IRVING PARK STATION  
CHICAGO, ILL.

		Page
Anna St	Marena Blvd. North	1
65 <sup>th</sup>	imperial to Ridgeway	35
Madrone	65 <sup>th</sup> to Curve West	54
Shaules	65 <sup>th</sup> to west	59
Sullivan	65 <sup>th</sup> to west	62
Benson	65 <sup>th</sup> to West	66
Medio Dr	65 <sup>th</sup> " "	73
Bishop + Eleanor	intersection	77

01

Anna St

BM	12.13	19.95	7.82	SEBP Chesnut/Taylor
TP	5.71	23.51	2.15	17.80
TP	5.89	18.77	10.63	12.88
T.P.	4.87	19.06	4.58	14.19

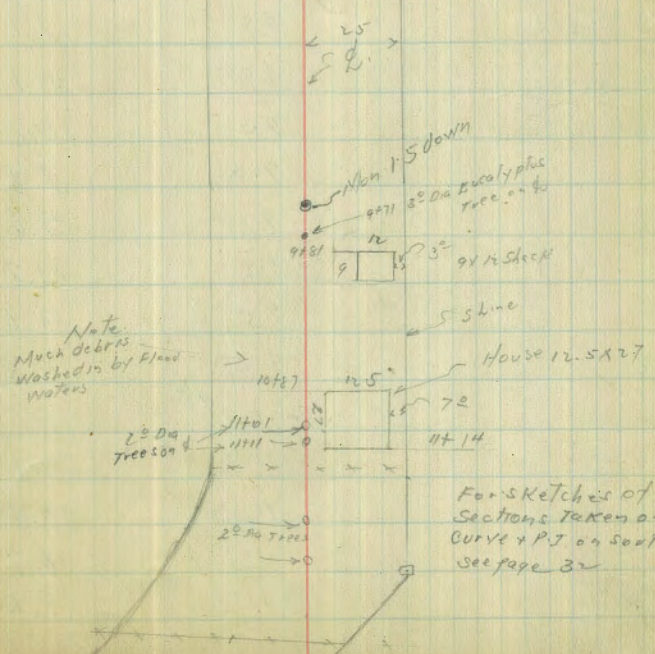
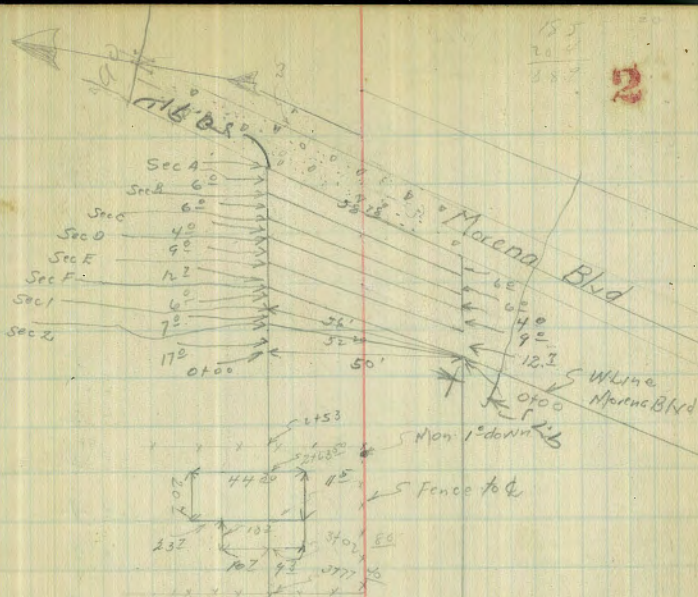
Sec A Along Parking

N-20		4.39	14.67
N		4.41	14.65
+10		4.44	14.62
+20		4.45	14.61
+30		4.50	14.56
+40		4.52	14.57
+50		4.49	14.57
+58 <sup>75</sup>	Skline	4.5	14.54
+78 <sup>80</sup>		4.55	14.51

Sec B

-78 <sup>80</sup>		4.3	14.7
-58 <sup>74</sup>	Skline	4.2	14.8
-50		4.3	14.7
-40		4.2	14.8
-30		4.4	14.6
-20		4.2	14.8
-10		4.2	14.8
N Line		4.1	14.9
+20		4.3	14.7

Plotted 10/21-29 - C.B.H.



HI  
1906

Sec C 6°

-20	6.7	12.3
N	7.4	11.6
+10	7.0	12.0
+20	6.8	12.2
+26	7.5	11.5
+30	5.8	13.2
+40	5.5	13.5
+50	5.6	13.4
+58 <sup>80</sup> slope	5.2	13.8
+78 <sup>80</sup>	6.1	12.9

Sec D 4°

-20	9.0	10.0
-58 <sup>80</sup> slope	8.9	10.1
-50	8.9	10.1
-40	9.0	10.0
-30	9.2	9.8
-20	9.4	9.6
-10	8.8	9.2
N	9.5	9.5
+20	9.2	9.8

Sec E 9°

-20	11.9	7.1
-10	10.6	8.4
N	10.3	8.7
+10	11.0	8.0

HI  
1906

#1 - chord C  
#2  
#3  
#4  
#5

3

+20	10.1	8.9
+30	10.1	8.9
+40	10.0	9.0
+50	10.4	8.6
+58 <sup>80</sup> slope	10.2	8.8
+78 <sup>80</sup>	10.2	8.8
T.P. 152	12.95	7.63

Sec F 12.7

-78 <sup>80</sup>	7.0	5.9
-58 <sup>80</sup>	7.4	5.5
-50	7.7	5.2
-40	7.7	5.2
-30	7.7	5.2
-20	8.3	4.6
-10	8.5	4.4
N	7.9	5.0
+20	8.3	4.6

Sec G

-20	8.7	4.2
N	8.9	4.0
+10	8.5	4.4
+20	8.4	4.5
+30	8.1	4.8
+40	8.1	4.8
+50	7.8	5.1

HZ  
1295

+56 Skimo	7.4	55
+20	7.0	59
	Sec 2	52 20 20
-20	7.0	59
-52 <sup>20</sup> Skimo	7.4	55
-40	8.1	48
-30	8.2	47
-20	8.3	46
-10	8.2	47
N line	7.4	5.5
+20	7.2	57
	0700 Sea sketch	From Sec 2 170
-20	6.4	65
N	6.7	62
+10	6.9	6.0
+20	7.0	59
+30	7.4	5.5
+34	8.0	49
+40	7.9	50
+45	8.1	48
+50	7.4	55
	0750	
-70	6.7	62
-60	5.9	70
-50	5.9	70

HZ  
1295

-40	5.6	7.3
-30	5.4	7.5
-25	5.6	7.3
-20	6.1	6.8
N	6.1	6.8
+13	5.8	7.1
+20	5.3	7.6
	0775	
-20	5.4	7.5
-13	5.8	7.1
N	5.2	7.7
+10	5.1	7.8
+20	5.4	7.5
+25 1/2	5.0	7.9
+30	5.1	7.8
+40	5.1	7.8
+50 Skimo	5.2	7.7
+70	5.6	7.3
	1100	
-70	4.9	8.0
-50	4.8	8.1
-40	4.8	8.1
-30	4.6	8.3
-25	4.8	8.1
-20	5.2	7.7
-10	5.0	7.9

HI  
12 95

N	51	78
+20	51	7.8
	1750	
-20	4.3	86
N	4.8	81
+10	4.8	81
+20	4.8	81
+25 &	4.7	8.2
+30	4.8	8.1
+40	4.8	8.1
+50 S. Line	4.6	8.3
+20	4.4	8.5
	2100	
-70	4.3	86
-50 S. Line	5.0	79
-40	4.9	8.0
-25	5.1	7.8
-15	5.3	7.6
-5	5.3	7.6
N	5.0	7.9
+20	5.1	7.8
	2750	
-20	4.9	80
N	4.8	81
+15	5.0	7.9
+25	4.6	8.3

HI  
12 95

+30	5.0	5 7.9
+40	4.6	8.3
+50 S. Line	4.7	8.2
+70	4.8	8.1
Set BM. Pueblo Mon. <sup>300</sup> 307.	5.67	7.28
	2763 <sup>50</sup>	Born. See sketch page 2
-70	4.7	8.2
-50	5.3	7.6
-45	5.1	7.8
-40	4.7	8.2
-30	4.7	8.2
-25	4.9	8.0
-20	5.1	7.8
-10	4.7	8.2
N	4.7	8.2
+20	4.8	8.1
	2780	
N	4.7	8.2
+10	4.3	8.6
+25	4.2	8.7
+30	4.2	8.7
+42	4.0	8.9
+50	4.2	8.7
+70	4.4	8.5
	3700	
-70	4.2	8.7

HI  
1295

E		39	90
-40		39	90
-35		39	90
-25 f		36	93
-20		41	88
-10		41	88
N		4.2	8.7
TP	Hand Level		
	4.60	14.87	2.68
			10.27
		3750	
-20		6.1	8.7
N		5.7	9.1
+15		58	90
+25 f		57	91
+35		5.4	94
TP	2.60	12.87	4.60
			10.27
+50 S Line		3.4	94
+70		3.7	91
		4400	
-70		3.9	89
-50 S Line		3.7	91
-40		2.9	190
-35		2.4	10.4
-25 f		2.5	10.3
-20		3.1	98
-10		3.7	91

HI  
12.87

N	4.0	6	8.8
+20	4.1		8.8
	4418		
-20	4.5		8.3
N	4.4		8.4
+15	4.2		8.6
+25	3.5		9.3
+30	3.1		9.7
+40	3.6		9.2
+50	4.1		8.7
+70	3.9		9.0
	4150		
-70	4.6		8.2
-50	4.4		8.4
-37	4.7		8.1
-30	4.1		8.7
-25 f	4.3		8.5
-15	4.6		8.2
N	4.9		8.0
+20	5.3		7.5
	5700		
-20	5.8		7.0
N	6.1		6.7
+10	5.9		7.0
+25	5.3		7.5
+35	5.6		7.2



HZ.  
12.87

+45	58	70
+50	54	74
+70	53	7.5
	5+25	
-70	6.8	60
-50	6.9	60
-40	6.8	60
-25¢	6.4	64
-10	6.3	6.5
N	6.7	6.1
+20	6.5	6.3
	5+40	
-20	6.7	6.1
N	6.7	6.1
+10	6.6	6.2
+25¢	6.4	6.4
+40	7.0	5.8
+50	7.3	5.5
+70	7.0	5.8
	5+65	
-70	6.5	6.3
-50	6.6	6.2
-40	6.7	6.1
¢-25	6.7	6.1
-10	7.2	5.6
N	7.4	5.4

HZ.  
12.87

+20	7.4	5.4
	5+85	
-20	7.9	4.9
N	8.1	4.7
+10	7.9	5.0
+20	7.6	5.2
+25	7.3	5.5
+35	7.7	5.1
+50	7.8	5.0
+70	7.8	5.0
	6+00	
-70	8.2	4.6
-50	8.2	4.6
-35	8.4	4.4
-25¢	8.1	4.7
-15	7.8	5.0
+3	7.8	5.0
N	9.1	3.7
+20	10.1	2.7
	6+38	
-20	11.1	1.7
-10	9.9	3.0
N	7.9	5.0
+15	7.4	5.4
+25¢	7.2	5.6
+35	7.4	5.4

H.I.  
12.87

+50	8.1	7.5	5.3
+70		7.4	5.4
T.P.	709	12.65	7.31
		6+47	5.56
-70		7.2	5.4
-50		7.3	5.3
-35		7.4	5.2
-25		6.8	5.8
-20		7.0	5.6
-15		8.7	3.9
N		10.8	1.8
+20		11.1	1.5
		6+55	
-20		14.4	-1.8
N		13.3	-0.7
+10		11.8	0.8
+20		10.0	2.6
+25		7.7	4.9
+27		7.1	5.5
+40		7.1	5.5
+50		7.4	5.2
+70		7.2	5.4
		6+65	
-70		7.6	5.0
-50		7.6	5.0
-40		7.5	5.1

H.I.  
12.65

-25		7.4	5.2
-20		8.1	4.5
-15		9.8	2.8
N		10.7	1.9
+20		12.9	-0.3
		6+74	
-20		7.4	5.2
N		7.5	5.1
+15		7.7	4.9
2		7.4	5.2
+35		7.5	5.1
+50		7.9	4.7
+70		7.9	4.7
		6+88	
-70		8.1	4.5
-50		7.9	4.7
-35		7.7	4.9
-30		7.5	5.1
-25		7.6	5.0
-18		7.5	5.1
-10		9.3	3.3
N		9.2	3.4
+3		7.5	5.1
+20		7.4	5.2
		6+95	
-20		6.8	5.8

H.I.  
12.65

N	7.4	5.2
+15	8.0	4.6
+20	7.3	5.3
+25	7.3	5.3
+35	7.6	5.0
+50	7.8	4.8
+20	8.0	4.6
7+00		
-20	7.7	4.9
-50	7.6	5.0
-35	7.6	5.0
-25	7.0	5.6
-15	7.2	5.4
N	7.1	5.5
+20	6.7	5.9
7+25		
-20	6.4	6.2
N	6.9	5.7
+10	6.9	5.7
+25	6.5	6.1
+30	7.0	5.6
+40	6.5	6.1
+50 Skime	6.7	5.9
+70	6.4	6.2
7+50		
-7.0	5.2	7.0

H.I.  
12.65

9

-50 Skime	5.7	6.9
-40	5.7	6.9
+25	5.5	7.1
-15	5.8	6.8
N	5.8	6.8
+20	6.0	6.6
7+75		
-20	5.5	7.1
N	5.5	7.1
+15	4.7	7.9
+25	4.4	8.2
+40	4.5	8.1
+50 Skime	4.2	8.4
+70	4.5	8.1
8+00		
-70	4.3	8.3
-50 Skime	4.1	8.5
-40	4.4	8.2
-25 d	4.2	8.4
-15	4.1	8.5
N	4.4	8.2
+20	5.3	7.3
8+25		
-20	5.7	6.9
N	5.5	7.1
+15	5.4	7.2

H.I.  
12.65

+25	4.6	80
+30	4.3	83
+40	4.2	84
+50 S line	4.2	84
+70	4.0	86
	8+40	
-70	5.3	73
-50 S line	5.4	72
-35	5.4	72
-25 S	5.6	70
-15	5.4	72
N	5.6	70
+20	5.7	69
	8+50	
-20	5.8	68
N	5.6	70
+15	6.0	66
+25	6.3	63
+30	6.6	60
+40	6.0	66
+50	5.3	73
+70	4.8	78
	8+60	
-70	5.8	68
-50	6.8	5.8
-35	6.3	6.3

H.I.  
12.65

10

	5.6	7.0
	5.4	7.2
	5.9	6.7
	5.9	6.7
	8+70	
	5.8	6.8
	5.8	6.8
	5.7	6.9
	5.2	7.4
	5.1	7.5
	4.8	7.8
	4.8	7.8
	8+90	
	5.6	7.0
	5.8	6.8
	6.0	6.6
	6.0	6.6
	6.1	6.5
	5.7	6.9
	9+00	
	5.7	6.9
	6.0	6.6
	6.9	5.7
	6.9	5.7
	6.3	6.3
	6.6	6.0

H.I.  
12.65

+35		6.3	63
+50		6.0	66
+70		6.2	64
T.P.	3.38	13.81	222
		9415	10.43
-70		7.6	62
-50		7.6	62
-35		7.5	63
-30		8.4	54
-25		5.9	7.9
-15		6.7	71
N		5.7	81
+20		6.5	73
		9425	
-20		7.7	61
N		7.7	61
+15		8.5	53
+25		8.7	51
+35		8.8	5.0
+50		8.0	5.8
+70		7.6	6.2
		9438	
-70		8.3	55
-50		8.1	57
-40		8.4	54
-25		8.0	5.8

H.I.  
13.81

11

		90	4.8
		94	4.4
		93	4.5
		81	5.7
		71	6.7
		9442	
		67	7.1
		70	6.8
		84	5.4
		93	4.5
		77	6.1
		67	7.1
		7.4	6.4
		7.5	6.3
		8.0	5.8
		9450	
		78	6.0
		72	6.6
		65	7.3
		56	8.2
		52	8.6
		53	8.5
		6.7	7.1
		63	7.5
		37	8.1

HI  
13.81

9+57

-20	53	8.5
N	54	8.4
+10	67	7.1
+25	71	6.7
+35	58	8.0
+45	64	7.4
+50	73	6.5
+70	73	6.5

-70	7.6	6.2
-50	7.4	6.4
-35	7.3	6.5
-25	6.0	7.8
-15	5.0	8.8
N	4.6	9.2
+20	4.8	9.0

-20	5.6	8.2
N	6.3	7.5
+20	6.8	7.0
+25	7.0	6.8
+40	7.2	6.6
+50	7.8	6.0
+70	8.4	5.4

10+00

HI  
13.81

12

10+00

-70	8.4	5.4
-50	6.8	7.0
-40	7.0	6.8
-25	7.2	6.6
-15	7.2	6.6
N	7.4	6.4
+20	7.5	6.3

10+12

-20	7.0	6.8
N	6.6	7.2
+15	6.7	7.1
+25	6.3	7.5
+35	6.4	7.4
+45	6.4	7.4
+50	8.3	5.5
+70	8.3	5.5

TP 2.83

10.32 6.32

7.49

10+35

-20	2.3	8.0
-7	5.6	4.7
N	3.9	6.4
+15	4.0	6.3
+25	4.1	6.2
+40	5.2	5.1
+50	4.8	5.5

HZ  
10.32

+70	4.3	6.0
	10+50	
-70	6.4	3.9
-50 Sline	5.3	5.0
-35	5.8	4.5
-25 ♀	5.4	4.9
-8	6.0	4.3
-7	8.6	1.7
N	10.1	0.2
+10	8.7	1.6
+20	6.0	4.3
	10+60	
-20	4.8	5.5
-10	9.2	1.1
N	9.2	1.1
+10	5.6	4.7
+25	6.0	4.3
+40	5.8	4.5
+50	4.8	5.5
+70	4.6	5.7
	10+70	
-70	4.1	6.2
-50	4.0	6.3
-35	4.9	5.5
-25	5.8	4.5
-15	7.4	2.9

HZ  
10.32

13

N	8.2	2.1
+10	9.1	1.2
+20	5.2	5.1
	10+81	
-20	8.3	2.0
N	8.1	2.2
+15	7.5	2.8
+20	7.4	2.9
+25	5.4	4.9
+40	4.4	5.9
+50	4.1	6.2
+70	3.8	6.5
	10+88	
-70	3.8	6.5
-50 Sline	4.0	6.3
-35	4.4	5.9
-25 ♀	3.7	6.6
-15	5.6	4.7
-5	5.7	4.6
N	4.4	5.9
+6	4.0	6.3
+16	8.2	2.1
+20	8.9	1.4
	11+00	
-20	4.2	6.1
N	4.3	6.0

10+87  
Shack 72 off Sline  
1251-7

11+01 25.  
Tree 48

H.I.  
10.32

+10		3.9	6.4
+20		2.1	8.2
+25		3.3	7.0
+40		3.8	6.5
+50	Sline	3.4	6.9
+70		3.0	7.3
	See Detail Page 32	11.13 el. P.C. = Sec A on North	11.10 el. on
-70		2.9	7.4
-50		2.8	7.5
-40		2.9	7.4
TP	4.72	10.74	4.30 6.02
-25		2.7	8.0
-15		2.3	8.4
N		3.9	6.8
+20		4.4	6.3
		P.C. 17 cross fence	
-20		4.1	6.6
N		4.2	6.5
+15		3.7	7.0
+25		3.6	7.1
+40		3.1	7.6
+50		3.1	7.6
+70		3.1	7.6
		Sec B	
79		3.2	7.5
-59	Sline	3.5	7.2

H.I.  
10.74

14

-30	3.8	6.9
-5	4.1	6.6
N	4.0	6.7
+20	4.6	6.1
	Sec C = P.C. = 00	TR. Back to Monument 11.49
N-20	4.0	6.7
N	3.9	6.8
+25	3.2	7.5
+35	4.1	6.6
+50 Sline	3.7	7.0
+70	3.5	7.2
	0+25	
-70	4.0	6.7
-50	4.1	6.6
-40	4.6	6.1
-25	4.3	6.4
-10	3.8	6.9
N	3.5	7.2
+20	3.9	6.8
	0+50	
-20	4.4	6.3
N	4.4	6.3
+15	4.7	6.0
+25	4.8	5.9
+40	4.6	6.1
+50	4.4	6.3



HI.  
10.74

HI.  
12.33

15

				-52	6.6	5.7
+62		42	6.5	-50	5.8	6.5
+64		31	7.6	-47	5.4	6.9
+70		3.1	7.6	-35	5.4	6.9
T.P.	4.11	12.33	2.52	8.22	5.8	6.5
		0170	also Crassas fence	-17	4.3	8.0
-70		6.3	6.0	N	3.6	8.7
-65		6.2	6.1	+13	4.4	7.9
-60		5.1	7.2	+20	6.4	5.9
-50		5.0	7.3			
-40		6.0	6.3	-20	1109 4.2	8.1
-33		5.7	6.6	-9	3.9	8.4
-25		6.2	6.1	N	4.6	7.7
-10		6.6	5.7	+20	4.5	7.8
N		6.6	5.7	+25	4.8	7.5
+20		6.5	5.8	+35	6.1	6.2
		0190	also Crassas fence	+50.5	7.2	5.1
-20		6.8	5.5	+70	6.9	5.4
N		6.8	5.5			
+15		6.9	5.4	-70	4.8	7.5
+25		6.8	5.5	-63	6.7	5.6
+35		6.3	6.0	-50	7.0	5.3
+5		6.4	5.9	-35	7.0	5.3
+70		7.1	5.2	-25	6.9	5.4
		1700		-18	6.7	5.6
-90		7.0	5.3	-5	4.6	7.7

HI.  
12.33

N	45	7.8
+20	49	7.4
	1+28	
-20	50	7.3
-10	51	7.2
N	65	5.8
+10	68	5.5
+25¢	7.2	5.1
+35	7.0	5.3
+50sline	6.8	5.5
+57	6.8	5.5
+65	4.3	8.0
+70	4.4	7.9
	1+35	
-70	4.3	8.0
-56	4.3	8.0
-50	4.6	7.7
-35	6.9	5.4
-25¢	7.1	5.2
-10.	7.2	5.1
N	68	5.5
+12	65	5.8
+20	5.3	7.0
	1+45	
-20	6.7	5.6
N	7.2	5.1

HI  
12.33

16

+15	7.2	5.1
+25¢	6.6	5.7
+35	6.8	5.5
+45	6.4	5.9
+50sline	4.2	8.1
+70	4.0	8.3
	1+55	
-70	4.1	8.2
-50sline	4.1	8.2
-45	4.0	8.3
-35	3.4	8.9
-25¢	3.1	9.2
-18	3.4	8.9
N	7.1	5.2
+20	6.9	5.4
	1+61	
-20	7.2	5.1
-14	7.1	5.2
-2	3.8	8.5
N	3.7	8.6
+15	3.2	9.1
+25¢	3.3	9.0
+30	3.8	8.5
+50sline	4.1	8.2
+70	4.1	8.2
+79 3.30	12.21 3.42	8.91

H.I.  
1221

2100

-70	3.9	8.3
-50 s	4.0	8.2
-35	3.9	8.3
-25 $\phi$	3.7	8.5
-10	3.8	8.4
N	3.5	8.7
+20	3.7	8.5

2150

-20	4.2	8.0
N	4.1	8.1
+15	4.3	7.9
+25	4.4	7.8
+35	4.2	8.0
S+50	4.3	7.9
+70	4.3	7.9

3100

-70	4.3	7.9
-50	4.4	7.8
-35	4.6	7.6
-25 $\phi$	4.7	7.5
-10	4.6	7.6
N	4.7	7.6
+17	4.6	7.6
+20	3.8	8.4

H.I.  
1221

3150

17

-20	4.7	7.5
N	4.5	7.7
+25 $\phi$	4.4	7.8
+50 s	4.3	7.9
+70	4.3	7.9

4100

-70	4.6	7.6
-50	4.6	7.6
-25	4.4	7.8
N	4.4	7.8
+20	4.8	7.4

4150

-20	4.8	7.4
N	4.7	7.5
+25 $\phi$	4.9	7.3
+50 s L	4.9	7.3
+70	4.7	7.5

4181

Cross SE RR. E. of W. 105.

-70	5.6	6.6
-50	5.8	6.4
-30	5.1	7.1
-25 $\phi$	5.5	6.7
-10	5.7	6.5
N	5.5	6.7
+20	5.5	6.7

H.I.  
12.21

1676

18

4789<sup>50</sup> Crosses Ref RR on N side

5417 Top RR Fill on N

-20 5.9 6.3  
N 6.8 5.4  
+10 6.3 5.9  
+25 5.6 6.6  
+40 5.5 6.7  
+50 5.7 6.5  
+70 5.2 7.0

-70  
-63  
-70  
-40  
-30  
-25¢  
-10

4.0 12.7  
4.8 11.9  
4.9 11.8  
4.9 11.8  
6.3 10.4  
6.3 10.4  
7.6 9.1

5400

N

9.8 Toe 6.9  
10.0 6.7

-70 5.0 7.2  
-50 5.6 6.6  
-40 5.7 6.5  
-25¢ 6.2 6.0  
-10 6.6 5.6  
N 6.5 5.7  
+20 6.8 5.4

+20  
-20  
N  
+10  
+20  
+25

5425  
7.4 9.3  
4.8 11.9  
4.6 12.1  
4.6 12.1  
4.3 12.4

5407

+40

3.9 12.8  
3.0 13.7

-20 6.8 5.4  
N 6.5 5.7  
+10 6.5 5.7  
+20 5.6 6.6  
+25¢ 5.8 6.4  
+35 5.4 6.8  
+50 Toe RR Fill 4.9 7.3  
+70 1.3 10.9

+50  
5 Top Rail  
-50  
+30  
-25  
-15  
N

5427<sup>50</sup> Crosses E Rail on S line  
2.47 14.29  
3.0 13.7  
3.1 13.6  
3.3 13.4  
4.1 12.6  
4.6 12.1

T.P. 6.37 16.76 1.82 10.39-

H.I.  
1676

5+32 <sup>65</sup> S Line Crosses W Rail

W Top Rail	2.48	14.28	-70
	5+34		-50
N	3.1	13.6	-25
+25	3.0	13.7	-10
+50 S Line	3.0	13.7	N

5+37 <sup>25</sup> N Line Crosses E Rail

Top Rail	2.58	14.18	+20
	5+40		-20
N	3.1	13.6	N
+25	3.1	13.6	+10
+35	3.6	13.1	+25 6
+50 S	4.6	12.1	+40

5+41 <sup>48</sup> N Line Crosses W Rail

Top Rail	2.59	14.17	+50
	5+45		+70
-70	6.9	9.8	-70
-50	4.8	11.9	-50
-25	4.2	12.5	-35
-15	4.0	12.7	-25
N	3.3	13.4	-10

5+52

N	4.7	12.0	N
+25	7.3	9.4	+20
+50 S	7.6	7.1	-20
+70	10.9	5.8	N

H.I.  
1676

19

5+56 Top RR Fill on S Line

	11.7	5.0
	11.2	5.5
	9.5	7.2
	7.8	8.9
	6.5	10.2
	5.0	11.7

5+62 Top RR Fill N Line

5+66 Pole off N Line

	9.0	7.7
	11.0	5.7
	11.1	5.6
	11.8	4.9
	11.5	5.2
	11.8	4.9
	12.1	4.6

5+70

	12.9	3.8
	12.8	3.9
	13.1	3.6
	12.9	3.8
	12.4	4.3
	11.2	4.5
	11.6	5.1

5+81

	12.5	4.2
	12.4	4.3

05  
81

H.I.  
16.76

5780<sup>60</sup>  
Crosses RR P. of W. of  
004.3

5785 Pole 17' off  
N-line

+15	11.8	4.9	-25.6
+25	11.5	5.2	-10
+35	11.9	4.8	N
+50	12.5	4.2	+20
+70	12.8	3.9	

5789 40 crosses  
A.T. & S.L. R.R. Ref. Way on N 12.8

5790 57' Pole 12' off N-line

-70	12.8	3.9	N
-50	12.3	4.4	+10
-35	11.5	5.2	+13
-25	11.3	5.4	+25
-15	11.0	5.7	+35
N	11.4	5.3	+42
+20	11.4	5.3	+50

6700

-20	11.4	5.3	+20
N	11.5	5.2	TP 6.64

+15	11.4	5.3	
+25.6	11.3	5.4	-70
+35	11.2	5.5	-60
+50	12.1	4.6	-50
+70	14.2	2.5	-45

6710 Top RR 4 1/2

-70	12.8	3.9	-25.6
-59	11.6	5.1	-15
-50	11.6	5.1	-5
-35	11.6	5.1	N
			+15

H.I.  
16.76

20

11.5	5.2
11.4	5.3
11.4	5.3
11.6	5.1
6717	

11.2	5.5
11.4	5.3
11.2	5.5
10.1	6.6
10.3	6.4
10.2	6.5
9.5	7.2
9.2	7.5
9.2	7.5
10.8	5.9

15.38 800

8.74

6725

8.4	7.0
5.7	9.7
4.9	10.5
6.0	9.4
6.5	8.9
7.0	8.4
6.9	8.5
8.1	7.3
8.8	6.6

H.I.  
15.38

Shan 15x1650  
6127 20 42

6132

H.I.  
15.38

21  
61624  
7776 24  
pc. on South

South curve  
Δ 43°-57'-00"  
chord 9.49 5 parts 54'

Sec B. Second chord on North = 54'

-10	6.1	9.3
N	5.3	10.1
+15	5.0	10.4
+25 d	5.0	10.4
+35	4.6	10.8
+46 h.s.	4.7	10.7
N. Curve 9.49 chords 5 parts Δ 43°-57'-00" 6145 22 = PC on N = 6145 22 on S		
-70	11.2	4.2
-62	5.8	9.6
-50 S. line	6.2	9.2
-35	5.2	10.0
-25 s	5.1	10.3
+15	5.2	10.2
N	5.2	10.2
+20	5.1	10.3
chord #1 Sec A. = on North = 6158 98 on South		
-52 House	6.6	8.8
X	7.1	8.3
+15	7.9	7.5
+20	8.2	7.2
+25 s d	8.4	7.0
+35	7.9	7.5
+45	9.2	6.2
+51.5° S. line	9.4	6.0
+62	11.7	3.7
+72	12.0	3.4

-74	10.5	4.9
-54.5	12.1	3.3
-42	11.1	3.6
-30	11.3	4.1
-10	10.6	4.8
N	10.6	4.8
3rd chord on N = 12th chord on South		
Sec C		
-10	10.3	5.1
N	10.9	4.5
+15	11.0	4.4
+25	11.3	4.1
+28 s d	11.4	4.0
+35	12.1	3.3
+45	13.1	2.3
+50	12.4	3.0
+57° S. line	11.3	4.1
+62	9.8	5.6
+77	9.8	5.6
60' Chord #4 on North = Sec D chord #2 on South		
-80	9.9	5.5
-73	10.0	5.4
S-60	9.4	6.0
-45	10.0	5.4
-35	12.2	3.2
-25	13.0	2.4

H.I.  
1538

-15	12.4	30
N	14.0	14
+5	14.9	08
+13	12.4	30
+23	10.4	50
+30	10.3	5.1
	Sec E	Chord 4 on North = Chord 4 on South 58.50
-20	10.4	5.0
-5	14.5	0.9
N	14.0	14
+15	12.7	2.7
+25	10.4	5.0
+35	10.0	5.4
+45	9.6	5.8
+58 <sup>E.S.</sup>	9.8	5.6
+78 <sup>E</sup>	9.2	6.2
	Sec F	58.60 PC on North = PC on South
-78 <sup>E</sup>	9.1	6.3
-58 <sup>E</sup>	9.2	6.2
-50	9.7	5.7
-40 <small>Crack 2003</small>	9.4	6.0
-25	9.5	5.9
-19	9.8	5.6
-8	13.5	1.9
N	14.6	08
+7	15.6	-0.2

H.I.  
1538

22

+13	13.4	20
+20	12.0	34
	Sec G	P.C. on N = 12.35 N of P.C. on South = 0+00
-20	12.0	3.4
-13	13.4	20
-7	15.6	-0.2
N	14.6	0.8
+5	14.1	1.3
+14	9.9	5.5
+17	9.5	5.9
+18.75 <small>W</small>	9.3	6.1
+40	9.2	6.2
+50	9.4	6.0
+57.50 <small>W</small>	9.0	6.4
+77.5	9.0	6.4
	of 11	
-77.5	8.7	6.7
-57.5 <small>W</small>	9.0	6.4
-54.5	8.9	6.5
-50	9.9	5.5
-38	9.2	6.2
-26	9.1	6.3
-18	9.0	6.4
-13	8.9	6.5
-9	9.3	6.1
-4	10.0	5.4



H.I.  
15.38

H.I.  
15.38

23

E	N	11.7	3.7	+20	9.2	6.2
+2		11.8	3.6	-20	14.00	6.5
+10		14.6	0.8	N	8.9	6.5
+20		14.5	0.9	+15	9.4	6.0
+28		12.2	3.2	+28 <sup>25¢</sup>	9.5	5.9
		0+25	35. back to 20x20. Stock	+40	9.7	5.7
-25		12.3	3.1	+50	9.9	5.5
-18		11.8	3.6	+57.5	9.2	6.2
-5		8.9	6.5	+77.5	9.2	6.2
N		8.7	6.7		17.11 45 = 00. see sketch	
+15		8.6	6.8	8	9.1	6.3
+28 <sup>25¢</sup>		9.1	6.3	5	8.9	6.5
+40		9.4	6.0	-50	10.0	5.4
+50		9.6	5.8	-40	10.1	5.3
+57 <sup>25¢</sup>		9.1	6.3	-30	9.7	5.7
+77 <sup>25¢</sup>		9.0	6.4	-26 <sup>75</sup>	9.3	6.1
		0+50	6x6 58 back	-15	9.1	6.2
-77.5		8.8	6.6	N	8.8	6.6
-58.5		9.0	6.4	+20	8.6	6.8
-50		9.7	5.7		0+00	50' street
-40		9.2	6.2	N	9.0	6.4
-28 <sup>25¢</sup>		9.3	6.1	+15	9.3	6.1
-40		9.2	6.2	+25.4	9.7	5.7
-10		9.2	6.2	+35	10.1	5.3
N		9.1	6.3	+40	10.1	5.3

H.I.  
15.38

H.I.  
12.74

24

8		88	6.6	+12
+20		91	6.3	+13
check AM	8.29	12.74	10.93	4.45
		0150		
S-20		79	4.8	+22
S		75	5.2	+25
+10		73	5.4	+30
+15		78	4.9	+40
+20		74	5.3	+50 N.W.
+25		68	5.9	+70
+35		74	5.3	
+50		75	5.2	-70
+70		67	6.0	-50
		0+75		-35
-70		75	5.1	-27
-50		76	5.1	-25
-35		8.2	4.5	-20
-25		7.8	4.9	-15
-20		8.4	3.3	-10
-15		8.6	4.1	5
-10		8.4	4.3	+13
S		8.3	4.4	+20
+20		7.2	5.3	
		1+00		
-20		4.6	8.1	
S		5.5	7.2	

7.2	5.5
7.9	4.8
8.1	4.6
7.6	5.1
8.1	4.6
8.6	4.1
9.2	3.5
8.6	4.1
7.8	4.9
1+15	
8.6	4.1
8.6	4.1
8.0	4.7
7.5	5.2
6.0	6.7
6.3	6.4
6.0	6.7
4.6	8.1
4.5	8.2
5.2	7.5
6.6	6.1
1+28	
7.1	5.6
6.9	5.8
5.6	7.1
5.1	7.6

H.I.  
12.74

+13	5.1	7.6
+15	5.5	7.2
+20	5.5	7.2
+25	5.8	6.9
+26	7.3	5.4
+35	7.8	4.9
+50	7.8	4.9
+70	9.1	3.6
	1+45	
-70	7.7	5.0
-50	7.4	5.3
-35	7.3	5.4
-26	7.5	5.2
-25	6.0	6.7
-20	6.9	5.8
-15	7.2	5.5
-7	7.7	5.0
5	7.6	5.1
+20	7.9	4.8
	1+65	
-20	7.3	5.4
5	7.9	4.8
+12	7.9	4.8
+15	8.2	4.5
+20	8.2	4.5
+25 \$	7.7	5.0

H.I.  
12.74

25

+35	7.7	5.0
+50 N	7.6	5.1
+70	7.3	5.4
	1+90	
-70	8.1	4.6
-50	8.7	4.0
-35	9.0	3.7
-25 \$	7.5	5.2
-20	7.4	5.3
-15	7.8	4.9
-10	7.5	5.2
5	7.3	5.4
+20	7.0	5.7
	2+00	
-20	7.0	5.7
5	7.3	5.4
+10	7.4	5.3
+15	7.5	5.2
+20	7.5	5.2
+25	7.2	5.5
+32	8.1	4.6
+40	8.5	4.2
+50	8.9	3.8
+70	8.6	4.1
	2+20	
-70	8.5	4.2

N-50	8.0	4.7	T.P 4.40	9.82	7.32	5.42
-40	7.5	5.2	-15		4.8	5.0
-35	7.2	5.5	-10		4.7	5.1
-25¢	6.7	6.0	S		4.6	5.2
-20	7.1	5.6	+20		4.6	5.2
15	7.6	5.1			3+50	
S	7.2	5.5	+20		5.1	4.7
+20	7.3	5.4	S		4.8	5.0
	2+50		+7		4.6	5.2
-20	7.4	5.3	+15		5.1	4.7
S	7.4	5.3	+20		4.6	5.2
+10	7.2	5.5	+25		4.6	5.2
+12	7.7	5.0	+35		5.3	4.5
+18	7.5	5.2	+50 N		5.0	4.8
+20	7.2	5.5	+70		5.3	4.5
+25¢	7.2	5.5			4+00	
+30	8.0	4.7	-70		4.8	5.0
+40	7.9	4.8	-50		4.9	4.9
+50 N	7.4	5.3	-35		4.6	5.2
+70	7.7	5.0	-30		4.7	5.1
	3+00		-25		3.8	6.0
-70	7.7	5.0	-20		4.5	5.3
-50	7.6	5.1	-15		5.1	4.7
-40	7.8	4.9	S		5.3	4.5
-25¢	7.6	5.1	+20		5.6	4.2
-20	7.7	5.0				

HZ

9.82

4+30

-20	5.5	4.3
5	5.6	4.2
+10	5.2	4.6
+20	5.4	4.4
+25	4.6	5.2
+33	4.7	5.1
+40	4.2	5.6
+50	4.4	5.4
+70	4.8	5.0
4+40		
-70	4.5	5.3
-50	5.0	4.8
-40	5.0	4.8
-35	5.3	4.5
-25 &	4.7	5.1
-20	5.0	4.8
-15	5.5	4.3
S.	5.7	4.1
+10	5.7	4.1
+20	4.9	4.9
4+50		
-20	5.2	4.6
S.	5.8	4.0
+10	5.7	4.1
+15	5.6	4.2

HZ

9.82

27

+20	5.2	4.6
+25	5.0	4.8
+33	4.8	5.0
+50 N line	5.2	4.6
+70	4.8	5.0
4+60		
-70	4.7	5.1
-50	5.0	4.8
-40	4.9	4.9
-25	4.8	5.0
-20	5.2	4.6
-16	5.2	4.6
-10	5.6	4.2
S	5.7	4.1
+20	5.3	4.5
4.66 <sup>67</sup> S. Line of Archibald St <small>Fence N 72 W</small>		
-20	5.1	4.7
S	5.8	4.0
+10	5.6	4.2
+15	5.6	4.2
+20	5.4	4.4
+25 &	4.2	5.6
+40	4.2	5.6
+50 N	4.6	5.2
+70	4.6	5.2

HZ  
9.82  
5+00

4193 Louisa  
04 West 2' 17' Street

✓ 622 Hen House  
HI  
9.82

20.5  
12  
20.5 off  
N. Line  
22.5  
11.12  
02

28  
Shack 10X

-70	4.9	49
-57	5.2	46
-50 N. Line	4.7	51
-35	4.7	51
25	5.0	48
-20	5.6	42
-15	6.3	35
-7	5.7	4.1
S	5.5	43
+20	5.1	4.7
5150		
-20	5.5	43
S	5.5	43
+7	5.5	43
+10	6.0	3.8
+17	5.7	4.1
+23	5.9	4.9
+25	5.3	4.5
+28	4.8	5.0
+35	4.8	5.0
+40	4.9	4.9
+50	5.2	4.8
+70	5.1	4.7
6100		
-70	5.6	4.2

-50	crosses
-34	fence
-28	
-25	
-17	
-10	
-5	
S	
+20	
7P.	<del>4.20</del> 4.12
-20	
S	
+7	
+10	
+15	
+20	
+25	
+35	to crosses fence
+50	
+70	
Floor off/loose	
-12	
N	
+25	
-20	

5.5	4.3
5.1	4.7
5.4	4.4
5.9	3.9
6.0	3.8
6.1	3.7
5.5	4.3
5.3	4.5
5.2	4.6
8.29	5.65
6150	
4.3	4.0
4.3	4.0
4.3	4.0
4.7	3.6
4.6	3.7
4.4	3.9
4.1	4.2
4.0	4.3
4.6	4.3
4.1	4.2
S. End Residence on East	
7:00	11.8 Back 7:32 N. End
1.85	6.44
4.2	4.1
4.1	4.2
3.8	4.7
4.2	4.1

H.I.  
829

H.I.  
829

29

-15	4.8	3.5
-7	4.5	3.8
S	4.7	3.6
+20	4.2	4.1
	7750	
-20	4.3	4.0
S	4.6	3.7
+3	4.8	3.5
+6	5.3	3.0
+14	4.9	3.4
+20	4.7	3.6
+25	4.3	4.0
+35	4.0	4.3
+40 <small>crosses fence</small>	4.0	4.3
+50	4.3	4.0
+70	4.5	3.8
	8703 <small>38 Δ on N line see sketch Page 31</small>	
-70	4.0	4.3
-50	4.1	4.2
-40	4.1	4.2
-35	4.5	3.8
-25	4.2	4.1
-20	4.8	3.5
-10	5.3	3.0
S	4.6	3.7
+20	4.5	3.8

	8150	
-20	5.1	3.2
-5	5.1	3.2
S	4.8	3.5
+13	4.7	3.6
+15	5.6	2.7
+20	5.6	2.7
+22	5.2	3.1
+26 <small>50 d</small>	5.0	3.3
+30	4.6	3.7
+44 <small>crosses fence</small>	4.6	3.7
+53 <small>10 N line</small>	4.6	3.7
+73 <small>10</small>	4.5	3.8
	9400	
-76 <small>20</small>	4.5	3.8
-56 <small>20 N line crosses</small>	4.5	3.8
-48	4.6	3.7
-40	4.9	3.4
-30	5.3	3.0
28 <small>10 d</small>	5.2	3.1
-17	5.2	3.1
-16	4.8	3.5
S	5.2	3.1
+20	5.1	3.2
	9733 <small>38</small>	
-20	5.3	3.0

HI  
8.29

30

S			5.2	3.1
+5			5.2	3.1
+15			4.9	3.4
+20			5.2	3.1
+25			5.0	3.3
+30			5.8	2.5
+40			5.5	2.8
+50			5.3	3.0
+ N			4.8	3.5
+E			4.7	3.6
Set BM. Mon. 4 Ann. NW Co. Pueblo lot 272			6.10	2.19

TP 6.20 10.07 4.42 3.87

check BM 5.62 4.45

TP 4.37 10.36 4.08 5.99

TP 8.24 17.56 0.94 9.42

TP 5.79 19.48 3.97 13.69

TP 5.58 20.74 4.32 15.16

TP 5.69 22.37 4.06 16.68

TP 4.43 23.77 3.03 19.34

check BM 3.67 20.10

= 20.07

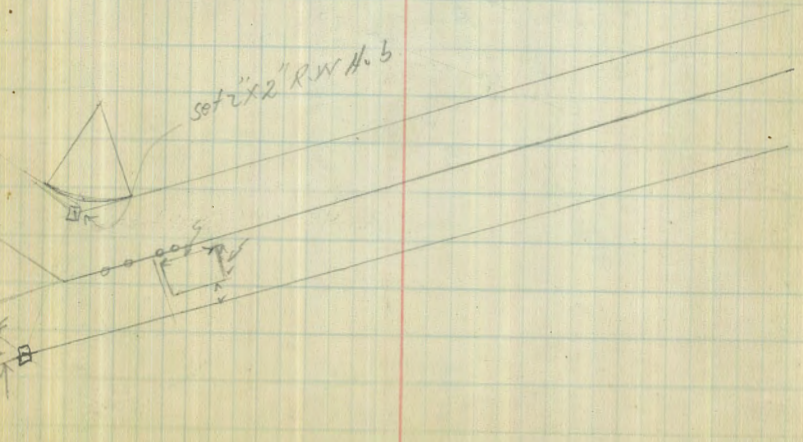
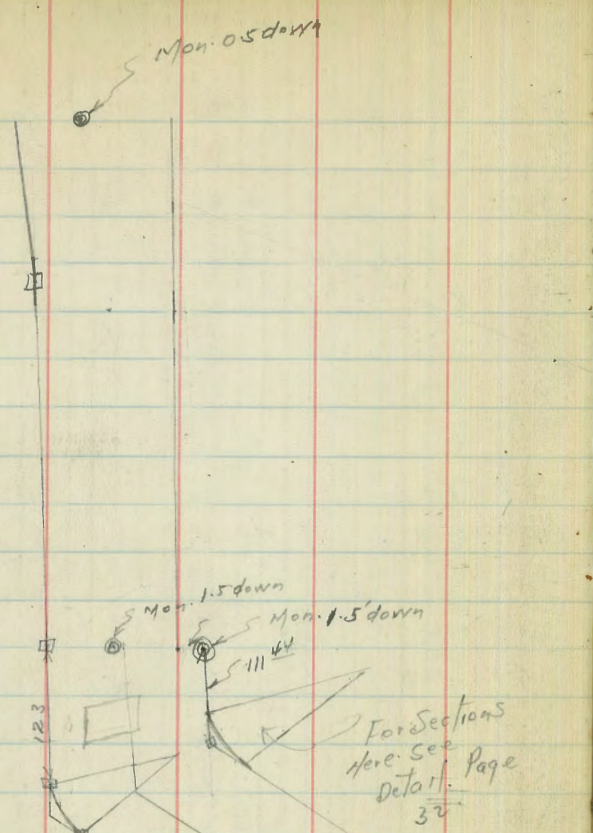
0.030 error

Brass plug  
in bridge  
sidewalk

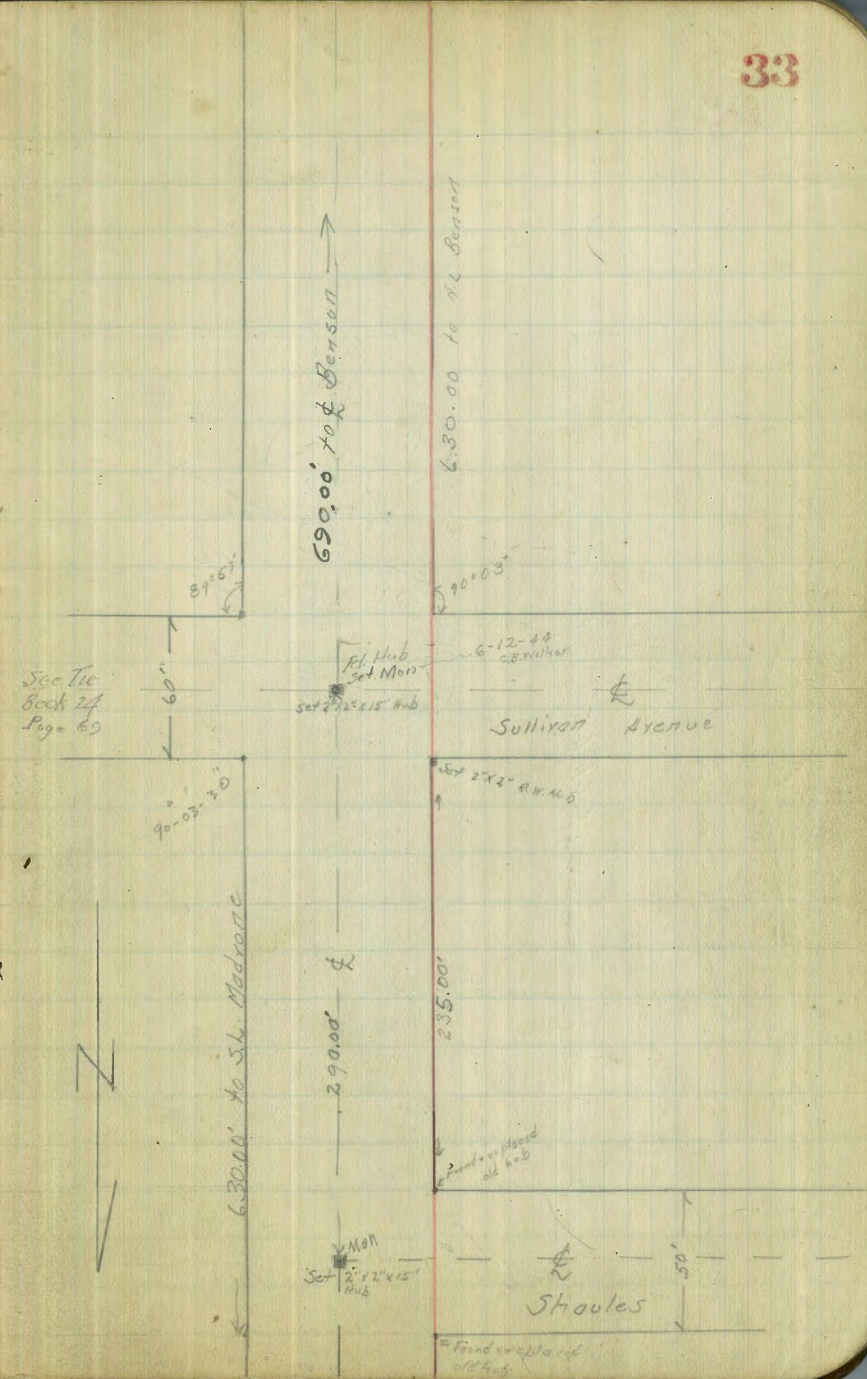
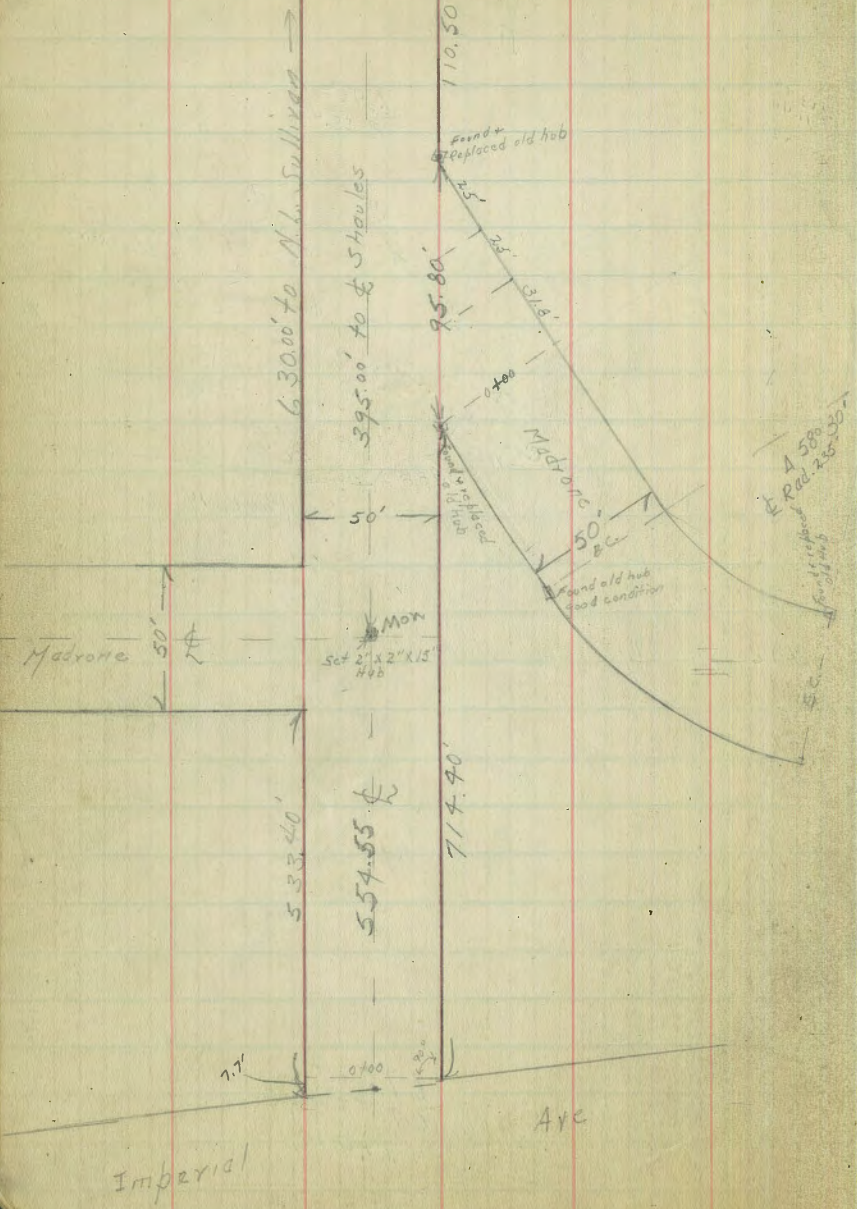
S End & West Side

Cont. 1370-9-











11-21-28 X-section 65<sup>th</sup> St. Imperial to  
 J.C. Bliss Ridge way - 5.0' wide 10' cbs  
 Drebert 30' Roadway  
 Rauner

π 231.97

65<sup>th</sup> St.

35

B.M. S.E. Top Hydrant 65<sup>th</sup> + Imperial 223.86

+ 8.11

π 231.97

Section South Gutter Line on Imperial

EL Top cb 10.61 221.36  
 G 11.34 220.63  
 cb 11.25 220.72  
 ♀ 11.13 220.84  
 cb 11.09 20.88  
 G 11.14 20.83  
 W.L. Top cb 10.59 21.38

Plotted 12-3-29 TGH

S.L. Imperial on existing Parapet

W Top cb 10.47 21.50  
 G 10.80 21.17  
 1/4 10.72 21.25  
 ♀ 10.60 21.37  
 1/4 10.74 21.23  
 G 11.02 20.95  
 E Top cb 10.52 21.45

0+00 - Sketch Page 33

E Top cb 9.77 22.20  
 G 10.4 21.6  
 ♀ 10.2 21.8  
 cb 10.4 21.6  
 W on existing walk 10.87 21.60

W 6.7 25.3  
 cb 8.1 23.9  
 ♀ 7.0 25.0  
 G 7.2 24.8  
 E Top cb 6.60 25.37  
 0+43 = End existing curb on East  
 E Top cb 4.23 27.74  
 G 4.7 27.3  
 ♀ 4.6 27.4  
 cb 5.3 26.7  
 W 4.4 27.6

0+50

W 3.5 28.5  
 cb 4.2 27.8  
 ♀ 3.6 28.4  
 cb 3.4 228.6  
 E 3.4 28.4  
 T.P. -0.04 231.93

-12.44

π 244.37

0+75

E 11.7 232.7  
 cb 11.8 232.6  
 ♀ 12.3 232.1  
 cb 13.0

T 24437

+3	12.2	232.2
W	12.0	32.4
	140.0	
W	8.8	35.6
+7	8.1	
+8	9.7	
cb	9.9	
£	9.7	35.2
cb	8.8	35.6
E-Concrete Drive	8.24	36.1
	1425	
out 6. Concrete Porch	4.18	
E	5.2	39.2
cb	6.0	38.4
£	6.3	38.1
cb	6.8	
W	5.5	38.9
	1450	
W	2.1	42.3
cb	1.6	
£	1.0	43.4
cb.	1.9	42.5
E	2.4	42.0

1460

Lower step of series, <sup>of steps</sup> walk 15' & REL. 0.29

T 24437

65th St

36

T.P.	0.18	244.19
	1204	
	1468	
	1475	
	2400	
	11.95	
	267.82	

E	9.8	246.4
cb	10.1	46.1
£	9.3	46.9
cb	8.6	
W	10.5	45.7
	5.7	50.5
cb	6.0	
£	7.0	49.2
cb	8.0	48.2
E	8.0	48.2
	1.0	55.2
cb	1.0	55.2
T.P.	0.36	255.87
	10.7	57.1
cb	10.7	
W	10.5	57.3

π 267.82

2+25

W	20	65.8
cb	2.7	
♀	4.2	63.6
cb	5.6	62.2
E	6.1	261.7

2+28

End of Walk that started at 140. N. on 9' Back EL. 832

T.P.	0.00	267.82
------	------	--------

+13.26

π 281.08

2+50

Out 10	14.5	
E	12.7	268.4
cb	11.8	69.3
♀	10.0	91.1
cb	8.4	
W	7.6	73.5

2+75

W	08	80.3
cb	19	
♀	34	77.7
cb	5.6	75.5
E	7.3	73.8
Out 10	7.9	

π 281.08

65th St

37

3+00

Out 10	2.2	
E	0.5	280.6
T.P.		-0.17 280.91

+12.73

π 293.64

cb	11.2	82.4
♀	9.0	84.0
cb	8.9	
W	7.0	86.6

3+25

W	0.6	93.0
cb	2.0	
♀	3.7	89.9
cb	5.5	88.1
E	7.2	86.4
Out 15	10.2	

3+50

Out 15	4.3	
E	2.3	91.3
cb	0.4	93.2
T.P.		0.00 293.64

+12.21

π 305.85

♀	10.2	295.7
cb	7.5	298.3

305.85

W	5.4	300.5	
T.P.		0.00	305.85
	+12.16		

318.01

3+75

W	11.0	07.0	
cb	12.5		
Q	15.2	302.8	
cb	18.8	299.2	
E	21.2	296.8	
Out 15	23.4		

4+00

Out 20	21.2		
E	14.5	303.5	
cb	12.8	305.2	
E	9.6	08.4	
cb	6.7		
W	4.6	13.4	
T.P.		0.00	318.01

+13.07

331.08

4+25

W	10.4	320.7	
cb	13.0		
Q	16.5	314.6	

331.08

38

65<sup>54</sup>54

cb	20.2	310.9	
E	22.2	308.9	
Out 20	28.0		

4+50

Out 20	23.7		
E	17.5	13.6	
cb	14.3	316.8	
Q	10.5	20.6	
cb	8.0		
W	6.6	24.5	

4+75

W	2.8	28.3	
cb	5.0		
Q	8.3	22.8	
cb	11.3	319.8	
E	14.6	16.5	
Out 20	20.8		

5+00

Out 20	16.6		
E	10.5	20.6	
cb	8.4	322.7	
Q	4.9	26.2	
cb	1.6		
W	40.5	30.6	



T 331.08

T.P.

+10.08

0.00 331.08

T 341.16

5+25<sup>20</sup> = N. L. Madrone - 50' wide 10' cbs

W 4.9 36.3  
 cb 8.3  
 ♀ 12.7 28.5  
 cb 16.6 324.6  
 E 19.1 22.1

N. cb Madrone

E 18.4 22.8  
 cb 16.1 25.1  
 ♀ 11.9 29.3  
 cb 7.0 34.2  
 W 3.5 37.7

♀ Madrone

W 1.7 39.5  
 cb 4.8  
 ♀ 10.5 30.7  
 cb 15.2 26.0  
 E 18.2 23.0

S cb Madrone

E 17.3 23.9  
 cb 13.7 27.5  
 ♀ 8.8 32.4

T 341.16

39 65<sup>th</sup> St.

✓

3.7

0.4

40.8

S. L. Madrone = +100

W 0.0 41.2  
 cb 3.5  
 ♀ 8.5 32.7  
 cb 13.0 28.2  
 E 16.6 24.6

B.M. Hub at Intersection of 65<sup>th</sup> x Madrone 10.48 330.68

+12.59

T 343.27

0+25

0+30 24.8  
 0+20 21.7  
 0+7 - Bottom ditch across Madrone 20.3

E. 16.7 26.6  
 cb 13.1 330.2  
 ♀ 8.0 35.3  
 cb 3.3  
 W 0.0 43.3

0+33

W 0.0 43.3  
 cb 2.8  
 ♀ 7.7 35.6  
 cb 13.5 29.8

π 343.27

+5 = Bottom ditch across Madrone 16.6 326.7

E 16.4 261.9

Out 30 240

+40

Out 30 23.8

E 15.1 28.2

cb 14.7 328.6

+2 = Bottom ditch across Madrone 12.2 331.1

♀ " " " 10.1 332

cb " " " 4.0

W " " " 1.8 41.5

T.P. 0.00 343.27

+11.89 π 355.16

+50.11

W 9.3 45.9

cb 12.6

♀ 17.6 37.6

cb 22.4 332.8

E 25.0 30.2

Out 30 32.6

+7.5

Out 30 27.0

E 19.0 36.2

cb 16.0 339.2

♀ 12.2 43.0

π 355.16

40

65<sup>th</sup> St.

cb 8.0

W 4.9 50.3

T.P. 0.00 355.16

+12.56

π 367.72

+40.0

W 11.1 55.6

cb 13.8

♀ 17.4 50.3

cb 21.6 346.1

E 24.7 43.0

Out 30 33.0

+38.7 = Intersection N. 265<sup>th</sup> & N. 2 Madrone on West

Out 30 23.0

E 14.1 53.6

cb 11.6 356.1

♀ 7.0 60.7

cb 3.0

W 0.4 67.3

T.P. N.W. Prop. Hub 65<sup>th</sup> & Madrone - 0.37 367.35

+12.17

π 379.52

+50

W 9.3 70.2

cb 11.5

π 379.52

42  
359.52  
20.17

Q	15.8	63.7	
cb	20.0	359.5	
E	22.8	56.7	
Out 30	32.4		
	1+75		
Out 30	25.8		
E	16.6	62.9	
cb	13.7	365.8	
Q	9.5	70.0	
cb	52		
W = Base fill Existing roadway on Madrone	30	76.5	
Outs = Top " " " " " "	0.5		
T.P.		0.00	379.52
	11.00		
	π 390.52		
	2+00		
W	11.0	79.5	
cb = Top fill present roadway	10.4		
+5 = base " " " " " "	13.5		
Q	16.3	74.2	
cb	20.3	370.2	
E	23.4	67.1	
Out 30	32.8		
	2+25		
Out 30	28.0		

π 390.52

41

65th St.

E	19.6	70.9	
cb	16.7	373.8	
Q = Base fill	12.6	77.9	
+5 = Top " " " " " "	9.4		
cb	9.7		
+6 = Base cut present roadway	9.6		
W = Top " " " " " "	6.6	83.9	
	2+34 <sup>30</sup> = Intersection W. 65th & St. Madrone on West		
B.M. = S.W. Corner Hub 65th & Madrone	6.08	384.44	
W	6.1	84.4	
+2 = Top cut	6.3	84.7	
+6 = Base cut	9.1		
cb	9.3		
+11 = Top fill	9.0		
Q = Base " " " " " "	11.5	79.0	
cb	15.6	74.9	
E	18.0	72.5	
Out 30	26.2		
	2+50		
Out 30	23.4		
E	15.5	75.0	
cb	13.1	77.4	
+10 = Base fill	10.4	380.1	
Q = Top " " " " " "	8.1	82.4	
cb = Base cut	8.0		

T 390.52

+5 = Top cut	50	
W	44	861
	2+7.5	
W	2.7	882
+8 = Top cut	3.7	
cb	4.3	
+3 = Base cut	6.4	
♀	6.3	842
+3 = Top fill	6.1	
+8 = Base "	8.6	381.9
cb	9.9	80.6
E	12.5	78.0
Out 20	17.9	
	3400	
Out 20	14.4	
E	9.5	81.0
cb	7.5	83.0
+10 = Top fill	4.0	85.9
♀	4.7	85.8
+9 = Base cut	4.7	
+13 = Top "	2.7	
cb	2.5	
W	1.3	89.2

T 390.52

42

3+25

65<sup>th</sup> St.

W	0.2	90.3
cb	1.3	
+3 = Top cut	1.7	
+8 = Base "	3.4	
♀	3.3	87.2
+8 = Top fill	3.3	87.2
cb	5.3	85.2
E	7.5	83.0
Out 20	11.7	
	3+45.0 = N.L. Shavles St. 50' wide 10' cbs 30' Roadway	
Out 20	9.2	
E	5.5	85.0
cb	3.8	386.7
+6 = Top fill	2.5	88.0
♀	2.4	88.1
+6	2.3	
cb	0.7	
T.P.		0.00 390.52
	+10.43	
	T 400.95	
W	10.2	390.8
B.M. N.W. Top Boulder 1' from N.W. cor. 65 <sup>th</sup> + Shavles	9.48	391.47

$\pi$  400.95

N cb Shovels

W	10.0	391.0
cb	11.1	
♀	12.3	388.7
+10	12.6	388.4
cb	13.9	
E	15.6	85.4
Out 10	17.3	

♀ Shovels

Out 10	16.2	
E	14.8	86.2
cb	13.3	387.7
+5	11.9	389.1
♀	11.9	89.1
+7	11.5	
+10	10.5	
cb	9.8	
W	9.0	92.0

S cb Shovels

W	8.3	92.7
cb	9.1	
+10	11.2	
♀	11.2	89.8
+8	11.0	90.0
cb	12.5	388.5
E	13.8	87.2

 $\pi$  400.95

43

65<sup>th</sup> St

out 10

15.0

S.L. Shovels - 0+10

out 10

14.2

E

13.0

88.0

cb

12.1

388.7

+5

11.3

389.7

+7

10.5

♀

10.6

90.4

+5

10.8

+10

9.6

cb

8.9

W

8.1

92.9

0+25

W

6.6

94.4

cb

7.5

+8

9.1

♀

9.1

91.9

+8

9.0

392.0

cb

10.3

390.7

E

10.8

90.2

out 10

11.7

0+50

E

8.7

92.3

cb

8.0

393.0

+6

7.6

393.4

T 400.95

+8	7.0	394.0
£	7.3	93.7
+7	7.7	
+11	6.6	
cb	6.0	
W	5.5	95.5
0+75		
W	5.0	96.0
cb	4.9	
+4	5.4	
+7	6.2	
£	5.9	95.1
cb	6.1	394.9
E	6.5	94.5
1+00		
E	5.4	95.6
cb	5.1	95.9
£	5.1	95.9
cb	4.9	
W	4.8	96.2
1+25		
W	4.8	96.2
cb	4.9	
£	5.2	95.8
cb	5.0	396.0

T 400.95

65<sup>th</sup> St.

44

E	5.1	95.9
1+50		
E	5.5	95.5
cb	5.4	395.6
£	5.8	95.2
cb	5.5	
W	5.6	95.4
1+75		
W	6.5	94.5
cb	6.5	
£	6.8	94.2
cb	6.4	94.6
E	6.0	95.0
2+00		
E	7.2	93.8
cb	7.6	93.4
£	8.4	92.6
cb	8.3	
W	8.5	92.5
2+35 = N.L. Sullivan = 60' wide 10' cbs 10' / 45		
W	11.5	89.5
cb	11.8	
£	11.3	89.7
f10	11.4	89.6
cb	10.4	90.6

π 400.95

E	10.0	91.0	
B. M. Top Hob & 65 <sup>th</sup> + Sub. Line S.L. Sullivan	-13.08	387.87	
	+264.		

π 390.51

N cb Sullivan

E	0.5	90.5
cb	1.4	89.1
⊥	1.4	89.1
cb	1.8	
W	2.3	88.2
	⊥ Sullivan	
W	3.3	87.2
cb	3.2	
⊥	2.7	87.8
cb	2.1	88.4
E	2.1	88.4

S cb Sullivan

E	3.3	87.2
cb	3.9	86.6
⊥	4.1	86.4
cb	4.5	
W	4.8	85.7

π 390.51

65<sup>th</sup> ST.

S.L. Sullivan = 0+00

45

W	5.5	85.9
cb	5.2	
⊥	5.1	85.4
cb	4.5	86.0
E	4.1	86.4
	0+25	
E	5.4	85.1
cb	5.9	84.6
⊥	6.8	83.7
cb	7.0	
W	7.3	83.2
	0+50	
W	8.6	81.9
cb	8.3	
⊥	8.2	82.3
cb	6.8	83.7
⊥	6.7	83.8
	0+75	
E	7.7	82.8
cb	8.2	82.3
⊥	9.4	81.1
cb	9.4	
W	9.9	80.6

T 390.51

1+00

w	11.0	79.5
cb	10.3	
♀	10.4	80.1
cb	9.1	81.4
E	8.8	81.7

1+25

E	9.5	81.0
cb	10.0	80.5
♀	11.2	79.3
cb	11.3	
w	11.8	78.7

1+50

w	12.7	77.8
cb	12.3	
♀	12.0	78.5
cb	10.9	79.6
E	10.3	80.2

1+75

E	11.0	79.5
cb	11.7	78.8
♀	12.6	77.9
cb	13.1	
w	13.3	77.2

T 390.51

46

65th St

2+00

w	14.1	76.4
cb	13.6	
♀	13.2	77.3
cb	12.1	78.4
E	12.1	78.4

2+25

E	12.3	78.2
cb	12.9	77.6
♀	13.9	76.6
cb	14.1	
w	14.5	76.0

2+50

w	15.0	75.5
cb	14.7	
♀	14.3	76.2
cb	13.7	76.8
E	12.9	77.6

T.P.

13.17 377.34

0.54

T 377.88

2+75

E	1.1	76.8
cb	1.5	76.4
♀	2.3	75.6
cb	2.5	



T 3 77.88

W	2.7	75.2
3+00		
W	3.6	74.3
cb	3.1	
£	3.1	74.8
cb	2.3	75.6
E	1.8	76.1
3+25		
E	2.6	75.3
cb	3.0	74.9
£	3.8	74.1
cb	4.2	
W	4.5	73.4
3+50		
W	5.7	72.7
cb	5.3	
£	5.0	72.9
cb	4.2	73.7
E	3.8	74.1
3+75		
E	3.1	72.9
cb	5.5	72.4
£	6.3	71.6
cb	6.7	
W	7.2	70.7

T 3 77.88

47 65th St

4+00		
W	9.2	68.7
cb	8.7	
£	8.0	69.9
cb	7.2	70.7
E	6.7	71.2
4+25		
E	8.8	69.1
cb	9.5	68.4
£	10.8	67.1
cb	11.1	
W	11.8	66.1
4+50		
W	15.0	62.9
cb	14.1	
£	13.2	64.7
cb	12.0	65.9
E	11.2	66.7
T.P		13.21 36467
+1.07		
T 365.74		
E	1.4	64.3
cb	2.3	63.4
£	3.6	62.1
cb	4.5	
W	5.3	60.4
Outis	6.4	

T 365.74

5+00

Out 15	8.4	57.3
W	7.2	58.5
cb	6.5	
♀	5.3	60.4
cb	4.2	61.5
E	3.1	62.6

5+25

E	4.1	61.6
cb	5.1	60.6
♀	6.0	59.7
cb	7.1	
N	8.0	59.7
out 15	9.0	

5+50

out 15	9.0	
W	8.0	59.7
cb	6.9	
♀	6.2	59.5
cb	5.5	60.2
E	4.3	61.4

5+75

E	4.6	61.1
cb	5.1	60.6
♀	6.0	59.7
cb	7.2	

T 365.74

65th St.

48

W	7.7	58.0
out 15	8.6	

6+00

out 15	7.9	
W	7.0	58.7
cb	6.4	
♀	5.5	60.2
cb	4.5	61.2
E	4.0	61.7

6+30 = N. L. Benson

60' wide  
91' x 65'  
201/165

E	3.0	62.7
cb	3.6	62.1
♀	4.4	61.3
cb	5.3	
W	5.8	59.9

N. L. Benson

W	4.9	60.8
cb	4.8	
♀	4.0	61.7
cb	3.3	62.4
E	2.6	63.1

♀ Benson

E	2.0	63.7
cb	2.7	63.0
♀	3.2	62.5

CLP

T 365.74

cb	3.4		
w	3.5	62.7	
	S cb Benson		
w	1.8	63.9	
cb	1.9		
♀	1.9	63.8	
cb	1.7	64.0	
E	1.7	64.0	
	S.L. Benson = 0700		
E	1.3	64.4	
cb	1.1	64.6	
♀	1.3	64.4	
cb	1.1		
w	1.0	64.7	
T.P		-0.72	365.02

+11.19

T 376.21

B.M. S.E. Spike in Pole	65 <sup>th</sup> Benson	9.93	366.28
		0725	
w	9.4	66.8	
cb	9.7		
♀	10.3	65.9	
cb	10.2	66.0	
E	10.4	65.8	

65<sup>th</sup> St

49

T 376.21

0450

E	8.5	67.7	
cb	8.2	68.0	
♀	8.3	67.9	
cb	7.7		
w	7.2	69.0	
	0425		
w	5.1	71.1	
cb	5.6		
♀	6.3	69.9	
cb	6.1	70.1	
E	6.3	69.9	
	1400		
E	4.5	71.7	
cb	4.2	72.0	
♀	4.4	71.8	
cb	3.6		
w	3.1	73.1	
	1425		
w	1.0	75.2	
cb	1.5		
♀	2.4	73.8	
cb	2.3	73.9	
E	2.7	73.5	

T 376.21

1250

E	0.9	75.3
cb	0.3	75.9
T.P.	-0.12	376.09

+12.64

T 388.73

♀	12.6	376.1
cb	12.1	
W	11.8	76.9

1475

W	9.8	78.9
cb	10.1	
♀	10.7	78.0
cb	11.2	77.5
E	11.4	77.3

2+00

E	9.5	79.2
cb	9.3	79.4
♀	8.9	79.8
cb	8.3	
W	8.2	80.5

2+25

W	6.2	82.5
cb	6.6	
♀	7.1	81.6
cb	7.3	81.4

T 388.73

50

65<sup>th</sup> St.

E	7.4	81.3
---	-----	------

2+50

E	5.4	83.3
cb	5.1	83.6
♀	5.2	83.5
cb	4.8	
W	4.5	84.2

2+75

W	2.5	86.2
cb	2.8	
♀	3.2	85.5
cb	3.1	85.6
E	3.4	85.5

3+00

E	1.0	87.7
cb	1.0	87.7
♀	1.3	87.4
cb	0.9	
W	0.6	88.1

-0.04 388.69

+12.05

T 400.74

π 400.74

3+25

w	10.5	390.2
cb	10.7	
£	11.7	89.0
cb	10.7	90.0
E	10.8	89.9

3+50

E	9.8	90.9
cb	9.4	91.3
£	9.7	91.0
cb	9.4	
w	9.8	90.9

3+75

w	7.8	92.9
cb	7.3	
£	7.6	93.1
cb	8.4	92.3
E	8.6	92.1

4+00

E	5.3	95.4
cb	5.4	95.3
£	4.4	96.3
cb	4.4	
w	4.3	96.4

π 400.74

51

4+25

65<sup>th</sup> ST.

w	0.8	99.9
cb	1.1	
£	1.1	99.6
cb	0.9	99.8
E	1.9	98.8

T.P

-0.39 400.35

+11.88

π 412.23

4+50

E	8.6	403.6
cb	8.6	403.6
£	9.9	402.3
£	9.1	403.1
cb	8.6	
w	7.9	404.3

4+75

w	4.7	08.0
£8	4.4	
cb	5.3	
£	6.4	05.8
£8	7.7	05.0
cb	5.9	406.3
£3	5.3	
E	5.5	06.7

T 412.23

+86<sup>65</sup> N.L. Bishop + Eleanor Drive opening.

50' wide  
10' cbs

E	5.0	072
+6	4.8	407.4
cb	5.6	406.6
+6	6.5	05.7
⊥	5.6	06.6
cb	4.3	
+5	2.7	
W	2.6	09.6

B.M. N.W. Prop Cor. 65<sup>th</sup> + Eleanor Drive - 2.66 409.57

N cb opening

W	2.7	09.5
cb	4.1	
⊥	5.1	07.1
+10	6.1	06.1
cb	5.6	06.6
+5	4.8	
E	5.0	072

⊥ opening

E	5.9	06.3
+5	5.5	
cb	6.5	05.7
+10	6.7	05.5
⊥	5.8	06.4
cb	3.0	
W	2.0	410.2

T 412.23

65<sup>th</sup> St.

52

S cb opening

W	11	11.1
cb	2.1	
+8	2.6	
⊥	6.8	05.4
+7	8.3	03.9
cb	8.1	04.1
+2	8.1	
+7	7.1	
E	7.3	04.9

S.L. opening = 0+00

E	8.7	03.5
cb	9.7	03.0
+1	8.8	03.4
⊥	8.0	04.2
+5	5.3	
cb	3.7	
W	2.1	410.1

0+25

W	5.5	06.7
cb	7.6	
+1	9.7	
⊥	11.0	01.2
+3	12.3	399.9
cb	13.0	399.2
+5	13.1	
E	12.0	399.6

T 412.23

0+50

E	15.5	96.7	
+3	18.5		
cb	18.4	393.8	
+5	18.1	394.1	
+6	16.0	396.2	
E	14.8	97.4	
cb	10.7		
W	9.4	02.8	
T.P.		13.21	399.02

0.10

T 399.12

0+67

W	10.4	98.7	
cb	0.9		
E	4.0	95.1	
+8=Top cut	5.7	393.4	
+10=Base cut	9.0	390.1	
cb	9.3	390.8	
+8=Base cut	9.0	390.1	
E=Top cut	4.6	94.5	

0+83

Out 14=Edge Ridgeway Paving	13.81		
Out 4=Fl <sup>NE end</sup> / 12" Colvert under 15'	15.06	84.1	
E	12.5	86.6	
cb	12.7	386.9	

T 399.12

+5=Base cut	11.9	387.2	
+10=Top "	7.0	392.1	
E	6.1	93.0	
cb	3.7	395.4	
W	2.5	96.6	
	1+00		
W	5.3	93.8	
cb	6.4		
E	9.1	90.0	
+4=Top cut	9.9		
T.P.		-11.89	387.23

+565

T 392.88

+10=Base cut	9.1	13.7	
cb	8.9		
+2.5=Edge Ridgeway Paving	8.93		
E=On " "	9.00	83.88	
Out 21.5=East edge " "	9.04		
	1+25=AL Media Drive - 25' Wide		
E	11.6	81.3	
+1=East edge Ridgeway Paving	11.41		
cb on " "	11.19	381.69	
E=West edge " "	10.90	81.98	
+6=Base cut	11.2	391.7	
+11=Top cut	4.5		

392.88

+25 = N.L. Medio (cont.)

cb	3.5	
W	2.8	90.1
+150 = S.L. Medio 25' Wide		
W	5.4	87.5
+8	6.5	
cb	11.2	
+2	12.7	
+7 = west edge pavement	12.43	
±	12.69	80.20
+12.4 East edge pavement	13.32	379.56
cb	13.7	379.2
+4 base cut	13.5	
+8 top cut	8.9	
E	8.9	84.0

B.M. S.E. Nails in Pole 65 <sup>th</sup> + Medio	-10.91	381.97
T.P.	-0.86	392.02
T.P. +10.39	402.41	-0.99
+2.5	398.40	

B.M. B.P. & Paying at Woodman = Skyline Drive + National Ext.	8.45	389.95
Correct		389.83
Error		0.12

11-26-29  
J.C. Bliss  
Orabert  
Rover

X-section Madrone Street E.L. 65<sup>th</sup>  
+0 E.C. first curve West of 65<sup>th</sup> 50' wide  
Note cut & fill in Notes refer to Present Roadway

54

B.M. S.W. Cor. Property Hub +0.35 384.44

+384.79

X-section of triangle between 0100 & S.W. Cor. 65<sup>th</sup> + Madrone See sketch Page 33

S.W. Cor. 65<sup>th</sup> + Madrone 0100 0.4 384.4

0125	
W	0.4 384.4
+8 = Top cut present road	2.3
cb	3.6
+2 = Base cut	5.1
+5 = W.L. 65 <sup>th</sup>	5.1

Ecb +9 = W.L. 65<sup>th</sup> - Base fill 8.1  
+13 = Top fill existing road 5.7

±	5.9	378.9
+11 = Base cut	1.2	
cb = Top cut	3.1	
W	1.2	83.6

+81.8 = 0100 - see sketch Page 33

W	2.4	82.4
+8.5 Top cut	4.3	
cb	6.3	
+V = Base cut	7.9	
± = Top fill	7.5	77.3
+4 = Base "	10.5	



T 38479

cb	13.7	
E	17.4	367.4
0+25		
Out 15 = W.L. 65 <sup>th</sup>	25.9	
E	20.3	64.5
cb	16.8	
♀ = Base gill	11.8	73.0
H = Top "	9.0	
cb	9.0	
H2 = Base cut	8.9	
H6 = Top "	6.0	
W	4.8	80.0
0+50		
W = Top cut	7.0	77.8
H3 = Base "	9.7	
cb	9.8	
H7 = Top gill	9.6	
H2 = Base "	12.6	
♀	13.9	70.9
cb	19.0	
E	22.3	62.5
Out 20	29.6	

30

T 38479

Madison

55

0+75 = South Bank Water Course

Out 20	30.2	
E	24.2	360.6
cb	21.1	
♀ = Base gill	16.3	68.5
H1 = Top "	10.7	
cb	10.8	
W	10.1	74.7

0+87 = Bottom of Water Course

W = Top cut	9.3	75.5
H2 = Base "	10.7	
cb	11.0	
H4 = Top gill	11.1	
♀ = Base "	17.3	67.5
H5	22.1	
cb	25.5	
E	28.1	56.7
Out 20	38.0	

1+00 = North Bank Water Course

Out 20	28.2	
E	22.8	62.0
cb	19.8	
♀ = Base gill	17.8	67.0
H10 = Top "	11.6	
cb	11.0	
H7 = Base cut	10.9	

W = Top cut	9.5	75.3
	1+25	
W = Top cut	11.7	73.1
+8 = Base "	11.2	
cb	11.3	
+13 = Top gill	11.2	
⊕	12.7	72.1
+2 = Base gill	13.7	
cb	16.7	
E	18.4	66.4
+0+20	24.6	
	1+4 9.9 = B.C.	Δ 58°30' ⊕ Rad. 235' 8 Parts
Out 20	20.9	
E	16.5	68.3
cb	13.3	
+9 = Top gill	10.8	
⊕	11.1	73.7
+9 = Base cut	10.9	
+12 = Top "	8.2	
cb	7.6	
W	6.1	78.7
	Part 1	
Out 1' = Concrete House step	534	
W	7.2	77.6
cb	9.1	
+10 = Top cut	9.7	

+13 = Base cut	11.7	
⊕	11.9	72.9
cb	11.5	
+5 = Top gill	11.4	
E	13.2	71.6
Out 20	20.0	
	Part 2	
Out 20 = Base gill	20.8	
Out 4 = Top "	13.1	
E	13.2	71.6
cb	13.1	
⊕	13.3	71.5
+6 = Base cut	12.9	
+7 = Top "	9.0	
cb	9.1	
W	7.8	77.0
T 9		-12.27 37 2.52
	Part 3	
	Part 3	
S	0.2	73.4
cb	1.7	
+9 = Top cut	2.7	
+11 = Base "	5.7	
⊕	5.7	67.9

T 373.56

cb	52	
+3=Top Gill	53	
N	8.0	65.6
Out 20	14.7	

Part 4

Out 20	20.0	
N	14.5	59.1
cb=Base Gill	11.7	
+5=Top "	9.6	
♀	9.6	64.0
+6=Base cut	10.9	
+10=Top "	6.9	
cb	5.2	
S	2.7	70.9

Part 5

S	58	67.8
cb	8.3	
+5=Top cut	9.6	
+10=Base "	14.1	
♀	13.4	60.2
+10=Top Fill	13.3	
cb=Base "	16.5	
N	18.1	55.5
Out 20	23.8	

T 373.56

Madrone

57

Part 6

Out 20	28.6	
N	21.6	52.0
+8=Base Gill	20.0	
cb	18.4	
+4=Top Gill	15.8	
♀	16.4	57.2
+3=Base cut	16.7	
+5=Top "	13.2	
cb	10.5	
S	7.6	66.0

Part 7

S	10.2	63.4
cb	12.6	
+10=Top cut	14.8	
+11=Base "	19.0	
♀	19.2	54.4
+10=Top Gill	18.8	
cb=Base "	22.2	
N	25.5	48.1
Out 20	32.2	
E.C.		
Out 20	38.3	
N	30.8	42.8
cb=Base Gill	26.8	
+7=Top "	22.2	

T 373.56

¢		22.9	50.7	
+6=Base cut		22.9		
+17=Top "		16.8		
cb		15.7		
S		13.1	60.5	
B.M. Top E.C. Hub S.L. Madrone		13.05	360.51	
T.P.		0.00	373.56	
	11.07	384.63		
B.M. S.W. Prop Hub 15 <sup>th</sup> + Madrone		0.21	384.42	
		Correct	384.44	

Madrone

58

11-26-29 X-section Shales Ave N.W. 65<sup>th</sup> to

C. Bliss 500' West. 50' wide - 10' abs  
Drebert 30' Roadway  
Roney

B.M. N.W. Top Boulder Near H.W. Cox (Page 42)

11.25

391.47

T 402.72

W.L. 65<sup>th</sup> St. - 0+00

N 11.8 - 390.9

cb 11.8

f 10.7 - 92.0

cb 10.1

S 9.8 - 92.9

0+25

S 7.2 95.5

cb 7.7

f 8.4 94.3

cb 8.8

N 9.2 93.5

0+50

N 6.2 96.0

cb 6.5

f 6.1 96.6

cb 5.7

S 5.4 97.3

0+75

S 3.5 399.2

cb 3.7

f 3.9 98.8

Plotted 12-3-29 T.E.H.

Shales

T 402.72

59

cb

4.1

N

4.3

398.4

+400

N

2.1

400.6

cb

2.0

f

2.1

400.6

cb

2.1

S

1.8

400.9

T.P

000 402.72

+1285

T 415.57

S

12.8

402.8

cb

12.6

f

12.7

402.9

cb

12.4

N

12.3

403.3

+150

N

10.2

405.1

cb

10.1

f

10.5

405.1

cb

10.5

S

11.0

404.6

T 415.57

1+75

S	9.4	406.2
cb	9.1	
♀	8.6	4070
cb	7.8	
N	7.5	4081

2+00

N	2.8	412.8
cb	4.5	
♀	6.1	409.5
cb	7.1	
S	7.6	4080

2+25

S	5.5	410.1
cb	4.5	
♀	2.7	12.9
cb	0.4	
T.P.		0.06

11.93

415.51

T 427.44

10.9 16.5

2+50

N	7.0	20.4
cb	7.4	
♀	11.6	15.8
cb	13.8	

T 427.44

Shoules

50

15.7 12.2

2+75

S	15.7	12.2
cb	12.4	15.0
♀	11.8	
cb	9.1	18.3
N	6.3	
N	4.0	23.4

3+00

N	2.5	24.9
cb	4.1	
♀	6.7	20.7
cb	9.3	
S	10.8	16.6

3+25

S	8.6	18.8
cb	6.9	
♀	4.5	22.9
cb	2.7	
N	1.0	26.4

3+50

N	0.7	26.7
cb	1.9	
♀	3.7	24.2
cb	5.6	
S	7.1	20.3

π 427.44

3+75

S	52	222
cb	4.4	
£	2.8	246
cb	2.1	
N	1.5	259

4+00

N	3.4	240
cb	3.2	
£	2.8	246
cb	3.6	
S	4.0	234

4+25

S	3.7	242
cb	3.4	
£	3.7	237
cb	5.0	
N	6.1	213

4+50

N	10.8	416.6
cb	9.2	
£	6.5	420.9
cb	4.7	
S	3.7	237

π 427.44

4+75

S	6.0	214
cb	8.6	
£	10.9	165
cb	14.0	
N	16.6	108

OUT 20

228

5+00

OUT 20

30.0

N	24.5	4029
cb	21.1	
£	17.1	4103
cb	14.2	
S	11.0	4164

T.P. Paying Stake 500 West 65<sup>th</sup> on Sullivan 13.27 414.17  
 check on Sullivan x-section (page 85)

1126-29 X-section Sullivan Ave. W.L. 65<sup>th</sup> to  
 J. C. Bliss  
 Dreber  
 Ranner

T 398.32

Sullivan  
 62

B.M. Top Hub Intersection of 65<sup>th</sup> & Subline to Sullivan (0+0) 387.87  
 +10.45

T 398.32

W.L. 65<sup>th</sup> = 0+00

S	13.3	3850
cb	12.6	
1/4	11.9	
¢	11.1	872
1/4	10.5	
cb	10.0	
N	8.8	895
0+25		
N	9.1	892
cb	9.9	
1/4	11.1	
¢	11.7	871
1/4	12.3	
cb	13.1	
S	13.9	844
0+50		
S	14.2	841
cb	13.4	
1/4	12.5	
¢	11.5	868
1/4	11.5	

Plotted 12-3-29 TGH

cb	10.2	
N	9.4	889
0+75		
N	9.6	887
cb	10.6	
1/4	11.7	
¢	11.8	865
1/4	12.8	
cb	13.6	
S	14.5	838
1+00		
S	14.8	835
cb	13.9	
1/4	13.1	
¢	12.0	86.3
1/4	12.0	
cb	10.8	
N	9.8	885
1+25		
N	9.7	886
cb	10.7	
1/4	12.0	
¢	12.0	86.3
1/4	13.1	
cb	13.9	



398.32

S	14.9	834
	17.50	
S	14.9	834
cb	13.8	
1/4	13.0	
¢	12.0	86.3
1/4	11.8	
cb	10.6	
N	9.8	88.5
	17.5	
N	9.5	88.8
cb	10.6	
1/4	11.7	
¢	11.7	86.6
1/4	13.0	
cb	14.0	
S	15.0	83.3
	24.00	
S	14.7	83.6
cb	13.7	
1/4	12.7	
¢	11.5	86.8
1/4	11.4	
cb	10.3	
N	9.1	89.2

398.32

63 Sullivan

2+25

N	8.7	89.6
cb	9.9	
1/4	11.1	
¢	11.2	87.1
1/4	12.6	
cb	13.3	
S	14.3	84.0
	2+50	
S	13.7	84.6
cb	12.9	
1/4	11.9	
¢	10.6	87.7
1/4	10.5	
cb	9.3	
N	8.2	90.1
	2+75	
N	7.4	90.9
cb	8.3	
1/4	9.6	
¢	9.7	88.6
1/4	10.9	
cb	11.8	
S	12.7	85.6

398.32

3400

S	12.0	86.3
cb	11.1	
1/4	10.1	
¢	8.9	89.4
1/4	8.9	
cb	7.6	
N	6.8	91.5

3725

N	5.6	92.7
cb	6.6	
1/4	8.0	
¢	8.1	90.2
1/4	9.2	
cb	10.2	
S	11.2	87.1

3750

S	10.4	87.9
cb	9.5	
1/4	8.6	
¢	7.1	91.2
1/4	7.0	
cb	5.6	
N	4.6	93.7

398.32

Sullivan

64

3775

N	3.4	94.9
cb	4.3	
1/4	5.8	
¢	6.1	92.7
1/4	7.4	
cb	8.3	
S	9.4	88.9

4700

S	8.8	89.5
cb	7.7	
1/4	6.6	
¢	5.4	92.9
1/4	4.6	
cb	3.4	
N	2.4	95.9

4725

N	0.6	97.7
cb	1.8	
1/4	3.0	
¢	3.8	94.5
1/4	5.0	
cb	6.6	
S	7.7	90.6

T 398.32

4+50

S	5.7	926
cb	4.2	
1/4	2.8	
£	1.4	969
1/4	0.0	
T.P.		0.47

+12.39

T 410.24

cb	10.3	399.9
N	8.8	

4+75

N	4.0	406.2
cb	5.6	
1/4	6.9	
1/4	7.8	
£	9.6	400.6
1/4	11.2	
cb	12.4	
S	14.3	395.9

5+00

S	11.0	399.2
cb	9.4	
1/4	7.5	
£	5.7	404.5
1/4	4.0	

Sullivan

T 410.24

65

L9	3.6	
cb	2.3	
N	0.9	409.3
T.P.		198 408.26

+ 776 416.02

B.M. 500 West 15<sup>th</sup> on N. h. Sullivan (Page 61) 1.88 414.14

Correct 414.17

Note - Ground South of Sullivan same general slope as Street.

11-27-29

X-section Benson Ave - 500' West  
and 500' East of 65<sup>th</sup> 60' wide  
10' cbs  
10' 74.5C. Bliss  
Drebert  
RaneyB.M. S.E. Spike in Pole 65<sup>th</sup> x Benson

3.52

366.28

1/4

7.2

cb

8.2

N

9.2

60.6

out 15

10.5

S

5.2

64.6

0+75

cb

5.7

out 15

9.9

1/4

6.8

N

8.1

61.7

1/2

7.6

62.2

cb

7.0

1/4

8.3

cb

9.0

1/4

5.9

N

9.9

59.9

1/4

4.9

64.9

cb

2.8

out 15

0+25

11.1

58.7

S

1.8

68.0

N

9.8

60.0

1+00

cb

9.0

S

0.6

69.2

1/4

8.2

cb

1.4

1/2

7.2

62.6

1/4

2.2

1/4

6.3

cb

5.4

1/2

3.7

66.6

S

4.5

65.3

1/4

4.7

cb

5.5

0+50

3.2

66.6

N

7.0

62.8

cb

4.5

out 15

9.1

5.90

1/4

5.3

1/2

6.3

63.5

Benson

T 369.80

66

π 369.80

1+25

out 15	7.4	
N	5.3	64.5
cb	3.8	
1/4	2.6	
£	1.7	62.1
1/4	1.0	
cb	0.3	
T.P		0.13

42.49

π 372.16

S	1.9	70.3
---	-----	------

1+50

S	1.3	78.9
---	-----	------

cb	1.9	
----	-----	--

1/4	2.8	
-----	-----	--

£	3.3	68.9
---	-----	------

1/4	4.1	
-----	-----	--

cb	5.0	
----	-----	--

N	6.4	65.8
---	-----	------

out 15	8.5	
--------	-----	--

1+75

out 15	8.2	
--------	-----	--

N	5.9	66.3
---	-----	------

cb	4.8	
----	-----	--

1/4	4.0	
-----	-----	--

π 372.16

Season

17

£	3.2	69.0
---	-----	------

1/4	2.6	
-----	-----	--

cb	1.7	
----	-----	--

S	1.0	71.2
---	-----	------

2+00

S	0.9	71.3
---	-----	------

cb	1.7	
----	-----	--

1/4	2.5	
-----	-----	--

£	3.2	69.0
---	-----	------

1/4	4.0	
-----	-----	--

cb	4.8	
----	-----	--

N	5.8	66.4
---	-----	------

out 15	7.4	
--------	-----	--

2+25

out 15	7.4	
--------	-----	--

N	5.8	66.4
---	-----	------

cb	4.9	
----	-----	--

1/4	4.0	
-----	-----	--

£	3.2	69.0
---	-----	------

1/4	2.4	
-----	-----	--

cb	1.6	
----	-----	--

S	0.8	71.4
---	-----	------

$\pi$  372.16

2+50

S	0.8	71.4
cb	1.8	
1/4	2.5	
♀	3.3	68.9
1/4	4.2	
cb	5.1	
N	6.0	66.2
Out 15	7.4	

2+75

Out 15	7.7	
N	6.2	66.0
cb	5.3	
1/4	4.4	
♀	3.5	68.7
1/4	2.6	
cb	1.7	
S	1.0	71.2

3+00

S	1.4	70.8
cb	2.0	
1/4	3.0	
cb (e?)	4.0	68.2
1/4	5.0	
cb	5.8	
N	6.8	65.4
Out 15	8.3	

 $\pi$  372.16

(3+25

Out 15	9.1	
N	7.5	64.7
cb	6.4	
1/4	5.4	
♀	4.5	67.7
1/4	3.6	
cb	2.6	
S	1.7	70.5

(3+50

S	2.3	69.9
cb	3.3	
1/4	4.3	
♀	5.2	67.0
1/4	6.3	
cb	7.3	
N	8.3	65.9
Out 15	9.9	

(3+75

Out 15	11.6	
N	9.5	62.7
cb	8.3	
1/4	7.2	
♀	6.2	66.0
1/4	5.2	
cb	4.2	
S	3.1	69.1

Benson

68

T 372.16

4+00

S	3.2	69.0
cb	4.5	
1/4	5.6	
£	6.8	65.4
1/4	8.1	
cb	9.4	
N	10.8	61.4
Out 15	13.1	

4+25

Out 15	14.3	
N	11.6	60.6
cb	9.8	
1/4	8.4	
£	6.9	65.3
1/4	5.6	
cb	4.3	
S	2.9	69.3

4+50

S	2.9	69.3
cb	4.1	
1/4	5.5	
£	7.0	65.2
1/4	8.5	
cb	10.2	
N	12.0	60.2
Out 15	14.7	

T 372.16

4+75

Out 15	15.1	
N	11.8	60.4
cb	9.6	
1/4	8.0	
£	6.5	65.7
1/4	5.0	
cb	3.9	
S	2.6	69.6

5+00

S	2.9	69.3
cb	4.2	
1/4	5.3	
£	6.5	65.7
1/4	7.9	
cb	9.8	
N	12.0	60.2
Out 15	15.5	

B.M.S.E. Spike in pole 65<sup>th</sup> x Benson 5.90 366.26

Correct 366.28

Benson  
59

712.38 378.66

EL. 65<sup>th</sup> = 0+00

S	14.1	64.6
cb	14.5	
1/4	15.1	
2	15.1	63.6
1/4	15.2	
cb	15.6	
N	15.8	62.9
0+25		
N	14.8	63.9
cb	14.5	
1/4	14.3	
2	14.0	64.7
1/4	13.5	
cb	13.4	
S	12.9	65.8
0+50		
S	11.5	67.2
cb	12.0	
1/4	12.3	
2	12.5	66.2
1/4	12.7	
cb	12.9	65.8

BM  
366.28

N  
N  
cb  
1/4  
2  
1/4  
cb  
S  
S  
cb  
2  
cb  
N  
cb  
cb  
S

378.66

13.2	65.5
0+75	
11.5	67.2
11.4	
11.1	
10.9	67.8
10.8	
10.7	
10.4	68.3
1+00	
9.1	69.6
9.2	
9.4	69.3
9.7	
9.7	69.8
1+25	
8.8	69.9
8.5	
8.2	70.5
8.0	
7.6	71.8



378.66

1+50

S	6.5	72.7
cb	6.7	
£	6.8	71.9
cb	7.1	
N	7.3	71.4

1+75

N	6.2	72.5
cb	6.1	
£	5.7	73.0
cb	5.6	
S	5.4	73.3

2+00

S	4.5	74.2
cb	4.5	
£	4.8	73.9
cb	4.9	
N	5.1	73.7

2+25

N	4.1	74.6
cb	4.1	
£	3.8	74.9
cb	3.6	
S	3.3	75.4

378.66

2+50

S	2.8	75.9
cb	3.0	
£	2.9	75.8
cb	3.2	
N	3.2	75.5

2+75

N	2.6	76.1
cb	2.6	
£	2.3	76.4
cb	2.2	
S	1.9	76.8

3+00

S	1.1	77.6
cb	1.7	
£	1.9	76.8
cb	2.2	
N	2.2	76.5

3+25

N	2.1	76.6
cb	1.9	
£	1.5	77.2
cb	1.3	
S	1.0	77.7

Season

71

378.66

3750

S	0.8	77.9
cb	1.2	
¢	1.6	77.1
cb	2.0	
N	2.1	76.6

3775

N	2.4	76.3
cb	2.3	
¢	1.7	77.0
cb	1.3	
S	0.9	77.8

4400

S	1.2	77.5
cb	1.4	
¢	2.0	76.7
cb	2.8	
N	3.2	75.5

4425

N	3.6	75.1
cb	3.1	
¢	2.5	76.2
cb	2.0	
S	1.8	76.9

378.66

4450

S	2.3	76.4
cb	2.5	
¢	3.2	75.5
cb	3.7	
N	4.0	74.7

4475

N	4.4	74.3
cb	4.7	
¢	3.7	75.0
cb	3.3	
S	3.0	75.7

5100

S	3.9	74.8
cb	4.0	
¢	4.7	74.0
cb	4.6	
N	4.8	73.9

Benson

73

11-29-29 X-section Medio Drive 65<sup>th</sup> to 66<sup>th</sup>

J.C. Bliss Robert West. Width as indicated in notes

Raised

B.M. S.E. Nails 65<sup>th</sup> x Medio

381.97

+13.16

T 395.13

25' wide

W.L. 65<sup>th</sup> = 0+00

N 5.1 90.0

Q 6.7

S 8.4 86.7

Out 10 10.3

0+25

Out 10 7.0

S 5.0 90.1

Q 2.6

N 0.4 94.7

T.P. 0.00 395.13

+11.80

T 406.93

0+50

N 7.1 99.8

Q 9.3

S 12.4 94.5

Out 10 14.0

0+75

Out 10 8.6

S 6.9 400.0

T 406.93

3 Medio

3.7

2.3

404.6

-0.00 406.93

T.P.

+11.63

T 418.56

1+00

N 9.00 409.56

Q 10.8

S 13.6 405.0

Out 10 15.2

1+25

Out 10 9.8

S 8.1 410.5

Q 5.6

N 3.8 414.8

T.P. 0.00 418.56

+12.27

T 430.83

1+50

N 10.6 420.2

Q 12.4

S 14.7 416.1

Out 10 16.4

T 430.83

1+71.4 = Intersection N.L. Media &amp; S.L. Bishop

Out 10	12.8	
S	11.0	419.8
£	8.9	
N	7.0	423.8

2+00

N	1.9	428.9
£	5.0	
S	6.8	424.0
Out 10	9.5	

2+21.75 = Media Now 50' wide - see sketch

Out 10	7.0	
S	4.6	426.2
cb	3.2	
£	1.3	429.5
T.P		000

2.59

T 438.42

cb	1.3	
N	3.9	434.5
B.M. N.W. Prop. Hub Bishop x Media	-3.90	434.52

2+50

N	1.4	437.0
cb	3.4	
£	7.5	430.9

T 438.42

74

Media

cb	8.9	
S	9.6	428.8
Out 10	13.0	

2+75

Out 10	13.3	
S	10.0	428.4
cb	9.1	
£	7.3	431.1
cb	3.0	
N	0.9	437.5

3+00

N	3.9	434.9
cb	5.8	
£	9.4	429.0
cb	11.8	
S	13.7	424.7
Out 10	16.0	

3+25

Out 10	19.5	
S	18.0	420.4
cb	15.6	
£	12.3	426.1
cb	10.2	
N	8.0	430.4
T.P.		-12.95 + 25.47

T 413.59

5

Medio

TP 425.47

+0.75

T 426.22

3+50

N 1.2 425.0

cb 3.4

4 6.0 420.2

cb 7.9

J 10.1 416.1

out 10 12.0

3+75

out 10 18.0

J 16.3 409.9

cb 14.7

4 12.3 413.9

cb 10.0

N 8.7 417.5

T.P 13.00 413.22

10.6 403.0

12.0

4+25

18.1

17.0 394.6

16.3

15.2 398.4

13.2

12.3 401.3

T.P

+ 0.27

T 400.70

4+50

N 7.1 393.6

cb 7.5

4 8.9 391.8

cb 10.7

J 11.6 389.1

out 10 12.6

T.P

13.07 387.63

0.37

T 413.59

4+00

N 3.8 409.8

cb 4.9

4 7.1 406.5

cb 9.1

13.07 387.63

T 387.86

4+75

out 10 5.6 382.3

J 4.6 383.3

cb 4.1

T 387.86

♀	3.6	384.3
cb	2.1	
N	1.5	386.4
	5+00	
N	7.5	380.4
cb	7.9	
♀	8.3	379.6
cb	9.5	
S	9.8	378.1
Out 10	9.8	
T.P.		13.25

+0.15 T 374.76

	5+25	
S	1.9	372.9
cb	1.6	
♀	0.6	374.2
cb	0.6	
N	0.3	374.5
	5+50	
N	4.9	369.9
cb	5.5	
♀	5.5	369.3
cb	6.1	
S	6.3	368.5

T 374.76

76

5+75

Media

S	9.6	365.2
cb	10.0	
♀	10.3	364.5
cb	10.3	
N	10.2	364.6
	6+00	
N	17.9	359.9
cb	15.1	
♀	14.3	360.5
cb	12.8	
S	11.4	363.4

6+25

S	14.2	360.6
cb	15.7	
♀	17.7	357.1
cb	20.6	
N	20.1	354.7
Out 10	21.0	

6+60.3 = Sub. Line

Out 10	27.2	
N	28.0	346.8
cb	26.9	
♀	22.8	352.0
cb	20.7	
S	18.3	356.5

87

T 374.76

T.P. 0.00 374.76

+12.44 387.20

T.P. 0.00 387.20

+12.80 400.00

T.P. 0.00 400.00

12.92 412.92

T.P. -0.00 412.92

10.49 423.41

B.M. Top Pipe N. of Eleanor & W. L. Edwards Tract 2.95 420.46

11-30-29 X-section Bishop & Eleanor  
Intersection & Bishop Drive  
J.C. Bliss See sketch Page 34 this Book.  
Drebert  
Ranner

77

B.M. N.W. 1/4 65' & Eleanor 409.57

+10.31 + 419.88

Bishop & Eleanor Intersection = <sup>See sketch Page 34</sup> for shot numbers

1 10.3 409.58

2 10.8 409.1

3 3.6 16.3

4 7.3 12.6

5 3.0 16.9

6 5.6 14.3

7 6.7 13.2

8 7.4 410.5

Bishop Drive = 50' wide 10' cbs 50' Roadway

0+00 = see sketch Page 34

N 3.0 16.9

cb 4.0

k 5.2 14.7

cb 5.4

S 6.8 13.1

0+10 10.1

0+25

0+10 8.7

S 6.0 13.9

cb 3.5

k 3.2 16.7

cb 0.9

Plotted 12-4-29  
T.E.H.

T 419.88

0.00 419.88

T.P.

+13.00

T 432.88

N

12.5 20.4

0+50

N

9.7 23.2

cb

11.0

q

13.7 19.2

cb

14.6

S

17.4 15.5

Out 10

19.7

0+75

Out 10

17.1

S

15.1 17.8

+5

12.5

cb

12.3

q

11.4 21.5

cb

8.4

N

7.2 25.7

1+00

N

4.6 28.3

cb

6.0

+5

7.7

q

9.4 23.5

cb

10.5

T 432.88

78

+5

10.8

S

12.7

20.2

Out 10

15.8

1+2.5

Out 10

13.8

S

11.0

21.9

+5

8.6

cb

8.2

q

7.5

25.4

+5

6.7

cb

3.4

N

1.8

31.1

0.31 432.57

+3.45

T 436.02

1+50

N

2.8

33.2

cb

4.7

+10

7.7

q

8.8

27.2

cb

9.3

S

12.1

23.9



436.02

1467.17 = N.L. Medio on S.L. Bishop = Sketch Page 34

S	12.1	23.9
cb	8.6	
£	7.5	28.5
+8	7.0	
cb	4.2	
N	1.7	34.3

Section from 1467.17 on S.L. Bishop to 1493.48

on N.L. Bishop - sketch Page 34 - this book

N	1.5	34.5
cb	4.6	
+4	6.1	
£	6.8	29.2
cb	8.0	
J	12.1	23.9

B.M. N.W. Hub Medio & Bishop

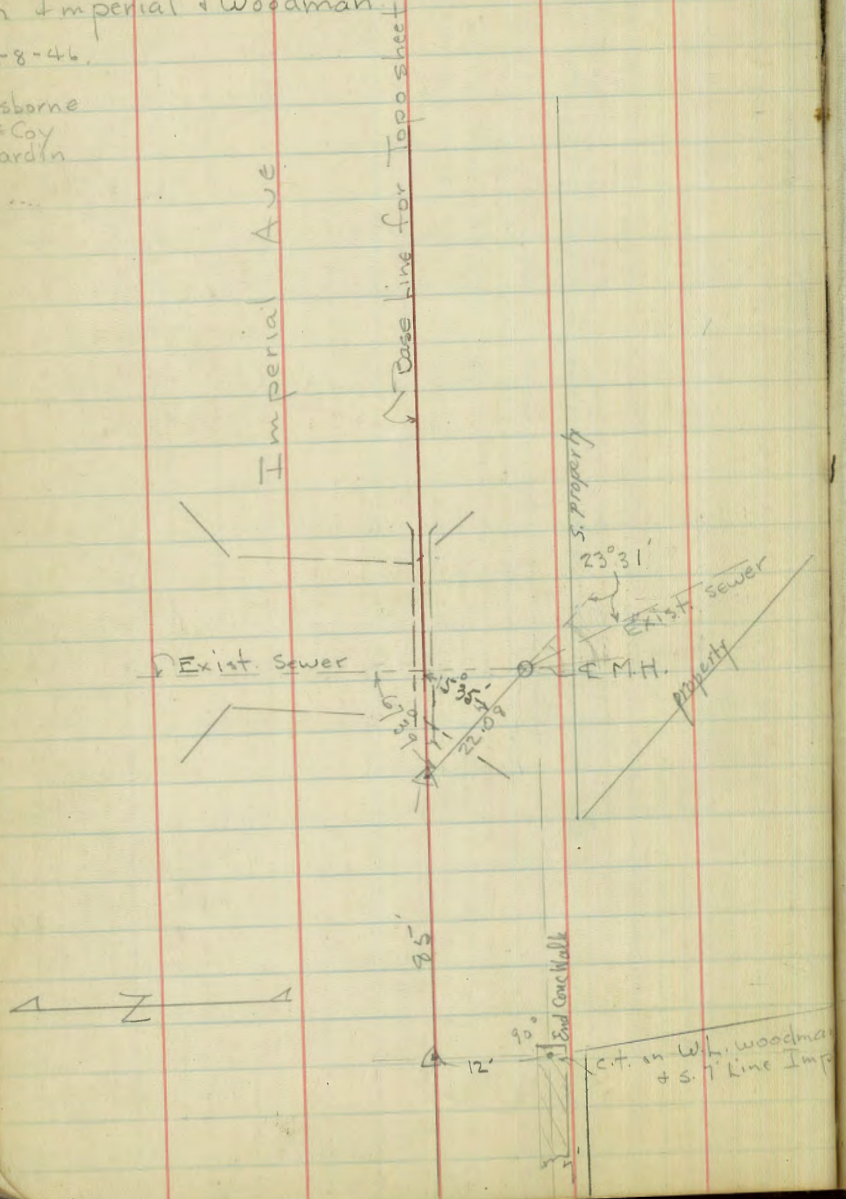
1.50 434.52

Correct 434.52

Location of Sewer line under Bridge  
on Imperial + Woodman

6-8-46

Osborne  
1<sup>st</sup> Coy  
Hardin



67-39  
15-38  
83-14

Sewer Plan  
6558-L  
160/49  
17/10/51

DIRECTIONS FOR USE OF TABLE

TABLE No. 1.

Distance of slope stake from side or shoulder  
stake for any width roadway, slope 1 1/2 to 1.  
If ground is nearly level, the cut or fill at side  
stake is located by the double entry method in  
left column and top row. The number in body

table in same row and column gives distance  
from side stake to slope stake. If ground is not

the side stake and slope stake, lower target by this  
amount if cut, elevate if fill. Add this amount  
to cut or fill and find distance in table. Set up

rod at this point and line of sight should cut  
target. The distance from a point on the tangent to  
length divided by twice the radius.

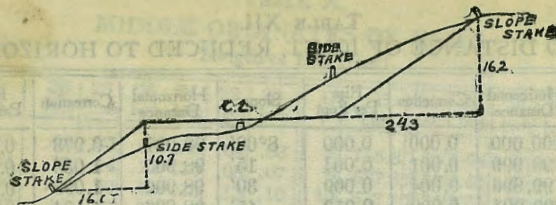
necessary.

TABLE No. 2.

To find Tangent and External for curve of  
any other degree, divide by degree of curve and  
add correction found in column of corrections.

Degree of curve with a given L may be found  
by dividing tangent (or external), opposite L by  
given tangent (or external).

The distance from a point on the tangent to  
the curve is very nearly the square of the tangent  
length divided by twice the radius.



DISTANCES FROM SIDE STAKES FOR CROSS-SECTIONING.

SLOPE 1 1/4 TO 1. ROADWAY OF ANY WIDTH.

	0	.1	.2	.3	.4	.5	.6	.7	.8	.9	
0	0.00	0.15	0.30	0.45	0.60	0.75	0.90	1.05	1.20	1.35	0
1	1.50	1.65	1.80	1.95	2.10	2.25	2.40	2.55	2.70	2.85	1
2	3.00	3.15	3.30	3.45	3.60	3.75	3.90	4.05	4.20	4.35	2
3	4.50	4.65	4.80	4.95	5.10	5.25	5.40	5.55	5.70	5.85	3
4	6.00	6.15	6.30	6.45	6.60	6.75	6.90	7.05	7.20	7.35	4
5	7.50	7.65	7.80	7.95	8.10	8.25	8.40	8.55	8.70	8.85	5
6	9.00	9.15	9.30	9.45	9.60	9.75	9.90	10.05	10.20	10.35	6
7	10.50	10.65	10.80	10.95	11.10	11.25	11.40	11.55	11.70	11.85	7
8	12.00	12.15	12.30	12.45	12.60	12.75	12.90	13.05	13.20	13.35	8
9	13.50	13.65	13.80	13.95	14.10	14.25	14.40	14.55	14.70	14.85	9
10	15.00	15.15	15.30	15.45	15.60	15.75	15.90	16.05	16.20	16.35	10
11	16.50	16.65	16.80	16.95	17.10	17.25	17.40	17.55	17.70	17.85	11
12	18.00	18.15	18.30	18.45	18.60	18.75	18.90	19.05	19.20	19.35	12
13	19.50	19.65	19.80	19.95	20.10	20.25	20.40	20.55	20.70	20.85	13
14	21.00	21.15	21.30	21.45	21.60	21.75	21.90	22.05	22.20	22.35	14
15	22.50	22.65	22.80	22.95	23.10	23.25	23.40	23.55	23.70	23.85	15
16	24.00	24.15	24.30	24.45	24.60	24.75	24.90	25.05	25.20	25.35	16
17	25.50	25.65	25.80	25.95	26.10	26.25	26.40	26.55	26.70	26.85	17
18	27.00	27.15	27.30	27.45	27.60	27.75	27.90	28.05	28.20	28.35	18
19	28.50	28.65	28.80	28.95	29.10	29.25	29.40	29.55	29.70	29.85	19
20	30.00	30.15	30.30	30.45	30.60	30.75	30.90	31.05	31.20	31.35	20
21	31.50	31.65	31.80	31.95	32.10	32.25	32.40	32.55	32.70	32.85	21
22	33.00	33.15	33.30	33.45	33.60	33.75	33.90	34.05	34.20	34.35	22
23	34.50	34.65	34.80	34.95	35.10	35.25	35.40	35.55	35.70	35.85	23
24	36.00	36.15	36.30	36.45	36.60	36.75	36.90	37.05	37.20	37.35	24
25	37.50	37.65	37.80	37.95	38.10	38.25	38.40	38.55	38.70	38.85	25
26	39.00	39.15	39.30	39.45	39.60	39.75	39.90	40.05	40.20	40.35	26
27	40.50	40.65	40.80	40.95	41.10	41.25	41.40	41.55	41.70	41.85	27
28	42.00	42.15	42.30	42.45	42.60	42.75	42.90	43.05	43.20	43.35	28
29	43.50	43.65	43.80	43.95	44.10	44.25	44.40	44.55	44.70	44.85	29
30	45.00	45.15	45.30	45.45	45.60	45.75	45.90	46.05	46.20	46.35	30
31	46.50	46.65	46.80	46.95	47.10	47.25	47.40	47.55	47.70	47.85	31
32	48.00	48.15	48.30	48.45	48.60	48.75	48.90	49.05	49.20	49.35	32
33	49.50	49.65	49.80	49.95	50.10	50.25	50.40	50.55	50.70	50.85	33
34	51.00	51.15	51.30	51.45	51.60	51.75	51.90	52.05	52.20	52.35	34
35	52.50	52.65	52.80	52.95	53.10	53.25	53.40	53.55	53.70	53.85	35
36	54.00	54.15	54.30	54.45	54.60	54.75	54.90	55.05	55.20	55.35	36
37	55.50	55.65	55.80	55.95	56.10	56.25	56.40	56.55	56.70	56.85	37
38	57.00	57.15	57.30	57.45	57.60	57.75	57.90	58.05	58.20	58.35	38
39	58.50	58.65	58.80	58.95	59.10	59.25	59.40	59.55	59.70	59.85	39
40	60.00	60.15	60.30	60.45	60.60	60.75	60.90	61.05	61.20	61.35	40
41	61.50	61.65	61.80	61.95	62.10	62.25	62.40	62.55	62.70	62.85	41
42	63.00	63.15	63.30	63.45	63.60	63.75	63.90	64.05	64.20	64.35	42
43	64.50	64.65	64.80	64.95	65.10	65.25	65.40	65.55	65.70	65.85	43
44	66.00	66.15	66.30	66.45	66.60	66.75	66.90	67.05	67.20	67.35	44
45	67.50	67.65	67.80	67.95	68.10	68.25	68.40	68.55	68.70	68.85	45
46	69.00	69.15	69.30	69.45	69.60	69.75	69.90	70.05	70.20	70.35	46
47	70.50	70.65	70.80	70.95	71.10	71.25	71.40	71.55	71.70	71.85	47
48	72.00	72.15	72.30	72.45	72.60	72.75	72.90	73.05	73.20	73.35	48
49	73.50	73.65	73.80	73.95	74.10	74.25	74.40	74.55	74.70	74.85	49
50	75.00	75.15	75.30	75.45	75.60	75.75	75.90	76.05	76.20	76.35	50

Computed by L. Leland Locke.

0158 = W edge Last House on N/NK

192 = E " " " " "

1407 = Last fence

$$\begin{array}{r}
 381.97 \\
 \underline{13.16} \\
 395.13 \\
 \underline{11.80} \\
 406.93 \\
 \underline{11.63} \\
 418.56 \\
 \underline{12.27} \\
 430.83 \\
 \underline{7.59} \\
 438.42 \\
 \underline{3.90} \\
 442.32
 \end{array}$$

80

$$\begin{array}{r}
 437.52 \\
 \underline{0.35} \\
 437.87 \\
 \underline{10.31} \\
 419.88 \\
 \underline{13.00} \\
 432.88 \\
 \underline{0.31} \\
 432.57 \\
 \underline{3.45} \\
 436.02 \\
 \underline{1.50} \\
 434.52
 \end{array}$$

$$\begin{array}{r}
 533.4 \\
 \underline{77} \\
 525.70 \\
 \underline{25} \\
 50.70 \\
 \underline{3.85} \\
 35.455
 \end{array}$$

$$\begin{array}{r}
 533.40 \\
 \underline{525.70} \\
 1059.10 \\
 \underline{529.55} \\
 385
 \end{array}$$