

1370

1370

BOOK

No. 530 F

MICROFILMED

DEC 23 1964

CITY OF  
SAN DIEGO,  
CALIFORNIA  
ENGINEERING DEPARTMENT

Our Leather Bound Engineers Note Books are carried in the following rulings:

- No. 380 LEVEL BOOK. Left and Right Hand Page the same as Left Hand Page of this Book.
- No. 382 FIELD BOOK. Left Hand Page as in this Book, Right Hand Page 4 x 4 to the inch, Center Line Red.
- No. 384 MINING TRANSIT BOOK. Left Hand Page as in this Book, Right Hand Page 8x8 to the inch, Center Line Red.
- No. 385 FIELD BOOK. Left Hand Page as in this Book, Right Hand Page 8 vertical and 4 horizontal lines to the inch, Center Line Red.

We also carry the Note Books listed above, bound in extra strong Fabri-Hide (otherwise the same quality of book), which can be furnished at a somewhat lower price.

In ordering Fabri-Hide covered books, add the letter "F" to catalog number.

**THE FREDERICK POST CO.**  
*ENGINEERING and DRAFTING SUPPLIES*  
IRVING PARK STATION  
CHICAGO, ILL.

X. Sec. Alley 10 Brook Add	1
" " " 186 Mrs T 67 Shamans	3
" " Anna Ave -	9
" " 40 <sup>TH</sup> ST. Monroe Ave to N. End	12
" " Madison Ave - Cherokee to Terrace Dr.	20
" " Fern Glen - La Solla Blvd to Monte Vista	37
Location existing water mains Blk 389 Pac. Bch.	44
X Sec. Fern Glen Olivetas to Monte Vista	43
" " Ward Road & Portion of 38 <sup>th</sup> St.	45
Plan Sea Lane - Olivetas - Monte Vista	52
Sewer Level's Olivetas - Monte Vista	53
X Sec. ARENAS St. La Solla Blvd. to Monte Vista	54
" " Sea Lane " " " " "	58
" " Olivetas Sea Lane to Fern Glen	61
" " Monte Vista " " " " "	66

11/20/29  
Moore

Alley off 10 Brooks Add.  
Private Paving Contract  
Bernard Carroll  
width from E.L.  
12.5  
2.5 on W. Excepted.

276.41

1

NWCD 0.84 278.11 277.27 off Brooks

T.P. 5.11 276.41 6.81 271.30

0+00 = N.H. Brooks, on front

W. on front 5.39 271.02

E " " 5.49 270.82

E " " 5.19 271.23

0+05

E 4.6 271.8

E 5.0 271.4

W 4.8 271.6

0+50

W-9.5 on CL Garage floor <sup>Board</sup> 5.18 271.73

W 5.3 271.1

E 5.1 271.3

E 5.0 271.4

0+75

E-8.75 E Garage floor dirt 3.6 272.8

E 5.0 271.4

E 5.4 271.0

W+5 5.4 271.0

1+00

W-5 6.0 269.4

W 6.1 270.3

E 5.5 270.9

E 5.5 270.9

12/11/29/CAH

Garages Put on Profile

T.P. 7.06 278.45 5.02 271.39

1+30

E-8 E Garage Cmt floor 7.03 271.42

E 7.0 271.45

E 7.1 271.35

W 7.4 271.05

W+5 8.4 270.05

1+43

W-5 8.0 270.45

W-3 7.6 270.85

W-2 7.0 271.45

W 6.9 271.55

E 6.6 271.95

E 6.9 271.55

E+9 E Garage Cmt floor 6.92 271.53

1+60

E 6.4 272.05

E 5.7 272.25

W 6.1 272.35

+2.5 5.7 272.75

+5 Brick Area 7.3 271.15

1+68

W-3.5 on Cmt Hd wall to steps, Horse 5.20 273.25

W 5.70 272.75

E 5.4 273.95

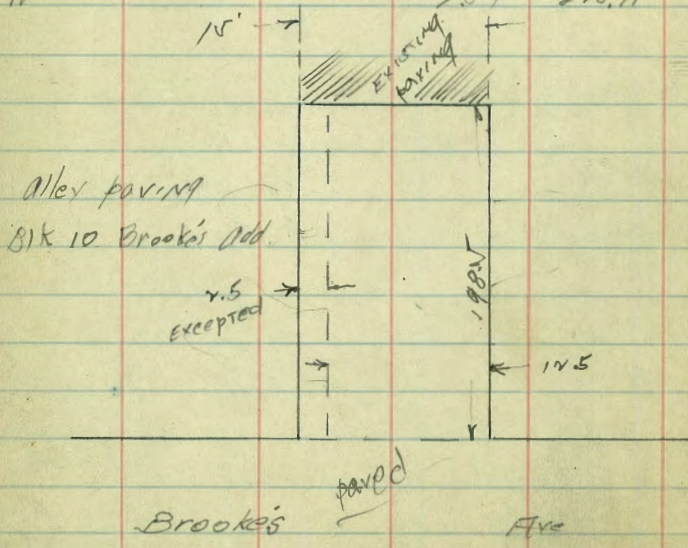
12.5 wide  
2.5 on side Excepted  
2' drain

W. E.  
Construction Notes Alley 10 Brooks Add. <sup>2</sup>

	278.45		
E	6.2	272.25	
	1 + 92		
E	4.7	273.25	
☉	4.3	274.15	
W	4.3	274.15	
	1 + 98.5 = End Existing prvmt		
W	4.00	274.45	
☉	4.18	274.27	
E	3.96	274.49	
	2 + 18.5 on Ex. Prvmt.		
E	2.42	276.03	
☉	2.74	275.71	
W	2.54	275.91	

0 + 00 Mt. Brookes	271.02	532 532	271.23	5.11
+ 25	271.10	5.34 4.48 7.76	271.28	5.06 4.44 7.57
+ 50	271.19	5.15 5.20 -0.10	271.32	5.02 4.92 70.10
+ 75	271.27	4.73 5.22 -1.04	271.37	4.97 4.18 7.77
1 + 00	271.36	4.14 6.03 7.13	271.42	4.58 5.18 7.10
1 + 38.5 P.K.C.	271.5	Molin 4.50 House 3.50 7.10	271.5	4.50 4.77 7.10
1 + 58.5	271.9	7.10 4.78 -1.68	272.0	4.00 4.06 -0.06
+ 78.5	273.0	5.45 5.50 -1.0	273.1	5.35 7.18 3.78 3.96
1 + 98.5 = Exst. Prvmt.	274.45		274.49	

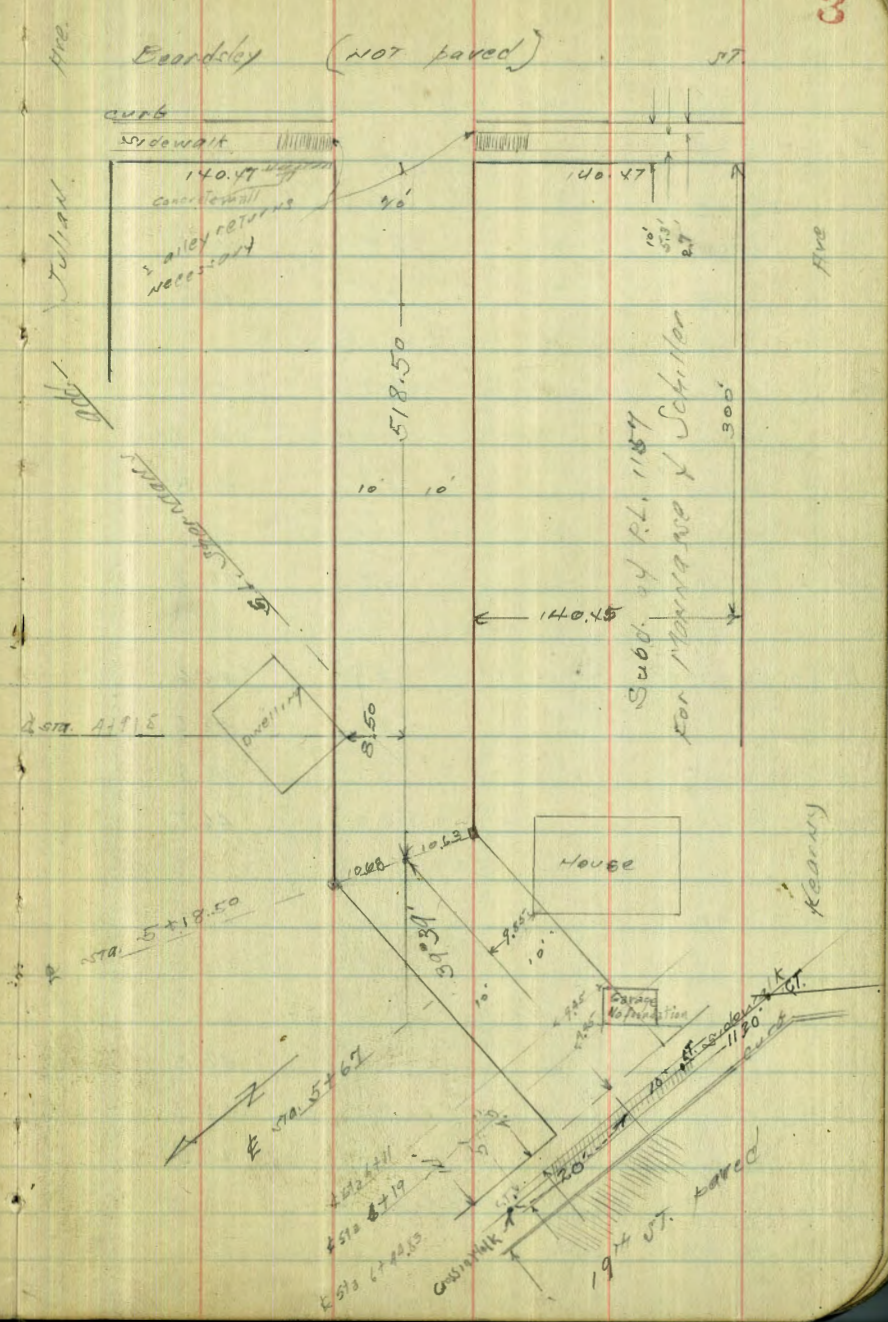
278.45 X taking from  
Preceding Notes  
6.74  
271.71  
4.24  
276.00  
4.62  
271.38  
4.96  
272.34  
5.04  
271.30 = T.P. #1 P1 This Book  
271.20



X sec of Alley 516 186 M+S  
 " " " " 67 STAIRWAYS

Stationing	Elev.	Keams
S.E.B.P.M. 3.97	50.01	46.04 Beardsley
N.L. of Keams W.C. Top	4.00	46.01
" " " " front	4.64	45.37
S.E. Julian W.C. Top	5.58	44.43
" " " " front	6.18	43.83
N.E. Julian & Beardsley NEBP	5.03	44.98 = 44.98 ground
W.C. Beardsley ST		
S.L. - 3' R.C. Proposed Alley Return	4.71	45.30
S.L. Top Cb.	4.71	45.30
N.L. Top Cb.	4.79	45.22
N.L. + 3' R.C. Proposed Return	4.82	45.19
W.C. Beardsley + 8 = inside edge of walk		
N.L. on walk	4.58	45.43
S.L. on walk	4.42	45.59
N.L. Beardsley = 0+00		
S.L.	3.9	46.1
E = Top of Sener M.H.	4.4	45.6
N.L.	3.8	46.2
N.L. + 0.2 Top of Retaining wall facing Beardsley	2.09	47.92
0+10		
N.L.	2.3	47.7
E	3.3	46.7
+ 7	3.8	47.2
S.L.	2.6	47.4

Plotted  
C.B.H.



50.01

0+34 = ♀ Garage on S

S.L. - 18 = dirt floor Garage	2.5	47.5
S.L.	2.6	47.4
♀	2.7	47.3
N.L.	2.8	47.2

0+44 = ♀ Garage on S

S.L. - 2 = dirt floor	2.7	47.3
-----------------------	-----	------

0+55 = ♀ Garage on S 0.20 in Alley

S.L. + 0.20 = dirt floor	3.2	46.8
--------------------------	-----	------

0+63 = ♀ Garage on S line

S.L. = dirt floor	3.3	46.7
-------------------	-----	------

0+86 = ♀ Garage on N

N.L. - 2 = dirt floor	3.4	46.6
-----------------------	-----	------

N.L.	3.4	46.6
------	-----	------

♀	3.7	46.3
---	-----	------

S.L. = Horse wall built to line	3.3	46.7
---------------------------------	-----	------

0+95 = ♀ Garage on N

N.L. - 2 = dirt floor.	3.5	46.5
------------------------	-----	------

T.P.	3.13	19.22	3.91	46.10
------	------	-------	------	-------

1+30

S.L.	3.7	45.5
------	-----	------

♀	3.5	45.7
---	-----	------

N.L.	3.3	45.9
------	-----	------

1+54 = ♀ Garage on N

N.L. - 2 = dirt floor	3.6	45.6
-----------------------	-----	------

49.27

1+63 = ♀ Garage on N

N.L. - 2.2 = dirt floor	3.5	45.7
-------------------------	-----	------

N.L.	3.7	45.5
------	-----	------

+5	4.3	44.9
----	-----	------

♀	4.4	44.8
---	-----	------

S.L.	4.9	44.3
------	-----	------

+5	4.6	44.6
----	-----	------

1+95 = ♀ Garage on N

N.L. - 0.30 = dirt floor	4.6	44.6
--------------------------	-----	------

N.L.	4.6	44.6
------	-----	------

♀	4.7	44.5
---	-----	------

S.L.	5.1	44.1
------	-----	------

+35 = Natural line of surface drainage	5.3	43.9
--	-----	------

+50 = " " " "	5.7	43.5
---------------	-----	------

2+00 = Sewer M.H.

Top of cover	4.95	44.47
--------------	------	-------

2+55 = ♀ Garage on S

S.L. - 0.70 = dirt floor	5.0	44.2
--------------------------	-----	------

S.L.	5.0	44.2
------	-----	------

♀	5.0	44.2
---	-----	------

N.L.	4.5	44.7
------	-----	------

T.P.	1.48	15.53	5.17	44.05
------	------	-------	------	-------

2+65 = ♀ Garage on S

S.L. - 0.70 = dirt floor	1.5	44.2
--------------------------	-----	------

2+94 = ♀ Garage on N 0.7' in Alley

N.L. + 0.7 = dirt floor	1.6	43.9
-------------------------	-----	------

4

1553

☐	2.0	43.5
S.L.	1.7	43.8
S.L. + 2.4 = door of House <sup>on</sup> sill	0.46	45.07
3+00 = beginning of Cmt wall on N line		
N.L. = Top Wall	1.94	43.59
3+09 = Concrete Step of House S.L. - 0.70		
S.L. - 0.7 Top of Step	0.80	44.73
S.L. - 0.6 = dirt	1.9	43.6
S.L.	2.0	43.5
☐	2.9	43.1
N.L. dirt	2.4	43.1
N.L. = Top wall	2.03	43.50
+ 1	3.1	42.4
3+15 = beginning Cmt S. Walk on S.		
3' wide and 0.70 Back of S.L.		
Top walk	1.99	43.54
3+32 = end of above walk ☐		
beginning of Steps to House on S. Also ☐ Concrete walk to House on N. Wall in Alley		
N.L. - 1 on walk	3.33	42.20
N.L. on wall	3.02	42.51
N.L. + dirt	3.1	42.4
☐	3.0	43.5
S.L.	1.3	43.2
+ 0.7 on walk	2.07	43.46

4553

5

3+37 = Concrete Step to House on S.

S.L. - 0.70 = Top Step	0.87	44.66
S.L. - 0.6 = dirt	2.3	43.2
3+48 = ☐ Cement step & walk to House on N		
S.L.	2.6	42.9
+ 1.6	3.6	41.9
☐	3.6	41.9
+ 8.9 dirt	3.3	42.2
+ 3.9 = ☐ Top step 4.2 wide & 11 in Alley	3.6	42.37
N.L. on Sidewalk = 3' in grade of wall	2.2	42.81
3+79 = ☐ Garage on S.		
S.L. - 3 = dirt floor	4.2	41.4
3+86 = end of wall on N		
N.L. - 1	5.4	40.1
N.L. = end wall	5.04	40.49
N.L. = dirt	5.3	40.2
☐	5.2	40.3
S.L.	4.6	40.9
3+91 = ☐ Garage on S.		
S.L. - 3.9 = dirt floor	4.5	41.0
3+00		
S.L. - 3.5 = Cmt side walk to House	4.51	41.02
S.L. - 0.3 = ☐ " " " Apron 6' wide	4.93	40.60
S.L.	5.2	40.3
☐ on cover Sewer M.H.	5.52	40.01



N.L.	6.3	39.2
N.L. + 0.90 = 4' emt walk to House	6.00	39.53
	4+21	
N.L.	6.8	38.7
4	6.7	38.8
S.L.	5.8	39.7
	4+50	
S.L.	7.6	37.9
4	8.3	37.2
+ 9.5 = fence	8.3	37.2
N.L.	8.4	37.1
+ 5	9.4	36.1
	4+78 = E. Edge of shed in Alley	
N.L. - 5	10.5	35.0
N.L. = N.L. of shed	10.5	35.0
4 57.5h. of shed	10.3	35.2
4	10.2	35.3
+ 2	10.0	35.5
+ 4	9.6	35.9
5h	9.5	36.0
	4+89 = WE. Edge of Shed in Alley	
S.L.	10.9	34.6
+ 6	10.8	34.7
4	10.8	34.7
+ 3 = S edge of shed	10.8	34.7

+ 7	10.8	34.7
+ 8	12.3	33.2
N.L.	12.5	33.0
	4+91.5 = Corner of House in Alley 1.5'	
N.L. + 1.5 = dirt at cor House	13.2	32.3
floor level	11.0	34.5
T.P.	1.63	34.41
	12.55	32.98
	5+11 = Sewer NH 1/5' of 4 Alley	
Top Corner	3.43	31.18
	5+06 = Avocado Tree in proposed	
	opening 6.8 N of 4	
Ground @ base	3.2	31.4
	5+15 = Fig Tree 2' S of 4	
Ground @ base	3.8	30.8
	5+18.50 = 4 @ 39'39" diagonal	
	across 4 - distance 21.26'	
N.L.	3.9	30.7
4	4.0	30.6
S.L.	4.0	30.6
	5+23 = RT angles to 5h Angle	
S.L. A	4.0	30.6
4	4.2	30.4
N.L.	4.3	30.3

34,61

5+36

N.L.	6.2	29.4
Φ	5.2	29.4
+5	5.3	29.3
S.L.	6.2	28.4

5+36.5 = Chicken Run board fence

S.L.	7.0	27.6
Φ	7.0	27.6
N.L.	7.8	26.8
+10	8.0	26.6
+11	10.0	24.6
+20	10.3	24.3

5+46

N.L. -10	10.0	24.6
N.L.	9.9	24.7
Φ	8.9	25.7
S.L.	8.1	26.5

5+67 = Cor of House in S. Alley 0.15

S.L. grnd @ Cor House	7.2	25.4
Approx floor level	7.8	26.8
+3	7.6	25.0
+7	8.5	26.1
Φ	8.5	26.1
N.L.	8.5	26.1

34,61

6+00

N.L.	7.9	26.7
+8	7.9	26.7
Φ	8.3	26.3
+5	9.6	25.0
+6	10.4	23.2
S.L.	10.4	24.2
+10	10.5	24.1

6+19 = Cor Garage in Alley 5.55'

S.L.	10.8	23.8
+55 @ Cor Garage (dirt floor)	10.7	23.9
+7	9.2	25.4
Φ	8.2	26.4
N.L.	8.0	26.6

6+27 = end fence on projected

E. line of Sigbee

N.L.	8.1	26.5
Φ	8.3	26.3
+2	8.9	25.7
+3	10.6	24.0
S.L.	10.7	23.9
Φ Sta 6+44.83 = E.L. 19th St.		
S.L.	9.3	25.3
Φ	8.7	25.9
N.L.	8.7	25.9

3461

+ 4.5 = inside edge of walk

N.L.	9.12	25.49
¢	9.38	25.23
S.L.	9.72	24.89

E Cb of 19<sup>th</sup> St

S.L. - 11 = P.C. of Cb

Top Cb	10.08	24.53
--------	-------	-------

prmt	10.77	23.84
------	-------	-------

S.L. - 3 = P.C. proposed Alley Ret	9.86	24.75
------------------------------------	------	-------

prmt	10.53	24.08
------	-------	-------

S.L. Top Cb	9.75	24.86
-------------	------	-------

prmt	10.45	24.16
------	-------	-------

¢ Top Cb	9.44	25.17
----------	------	-------

prmt	10.13	24.48
------	-------	-------

N.L. Top Cb	9.15	25.46
-------------	------	-------

prmt	9.85	24.76
------	------	-------

+ 3 = P.C. Alley Ret	9.07	25.54
----------------------	------	-------

prmt	9.79	24.82
------	------	-------

+ 25 Top Cb.	8.40	26.21
--------------	------	-------

prmt	9.10	25.51
------	------	-------

T.P. 3.65	29.38	8.88	25.73
-----------	-------	------	-------

NEBP Kearny + Sigbee	5.95	23.43 - 23.50	Rec'd
----------------------	------	---------------	-------

8

1-23-30

X-section Anna Ave. N.L. P.L.

C. Bliss

Drebert

272 to N.L. Rolston, 60 wide 10' cbs

Rauner

10' 1/45

Clovert

B.M. Top Man. &amp; Anna + N.W. cor P.L. 272 2.19

+ 6.38

T 8.57

N.L. P.L. 272 = 0+00

E	52.	3.3
cb	53	3.2
1/4	58	2.7
¢	64	2.1
1/4	55	3.0
cb	52	3.3
W	54	3.1

0+25

W	55	3.0
cb	54	3.1
1/4	57	2.8
¢	58	2.7
1/4	60	2.5
cb	58	2.7
E	56	2.9

0+50

E	6.0	2.5
cb	6.2	2.3
1/4	6.0	2.5
¢	5.7	2.8
1/4	5.8	2.7

T 8.57

9

cb	5.9	2.6
1/4	4.8	3.7
W	5.4	3.1

0+75

W	5.3	3.2
cb	5.7	2.8
1/4	5.8	2.7
¢	5.7	2.8
1/4	5.7	2.8
cb	6.0	2.5
E	6.1	2.4

1+00

E	5.7	2.8
cb	5.7	2.8
1/4	5.5	3.0
¢	5.6	2.9
1/8	5.0	3.5
1/4	5.5	3.0
1/7	5.6	2.9
cb	4.9	3.6
W	5.2	3.3

$\pi = 8.57$ 

14 4.5 = S.L. Rolston

60' wide  
10' obs  
10' 1/4

w	56	30
cb	54	32
1/4	50	36
ϕ	53	33
1/4	55	31
cb	56	30
E	56	30

5 cb

E	56	30
cb	55	31
1/4	55	31
ϕ	53	33
1/4	50	36
cb	54	32
w	53	33

5 1/4

w	52	34
cb	54	32
1/4	51	35
ϕ	53	33
1/4	52	34
cb	56	30
E	57	29

 $\pi = 8.57$ 

E Rolston

10

E	56	30
cb	55	31
1/4	54	32
ϕ	53	33
1/4	53	33
cb	51	35
w	51	35

N 1/4

w	53	33
cb	53	33
1/4	53	33
ϕ	54	32
1/4	53	33
cb	54	32
E	55	31

N 2/4

E	56	30
cb	56	30
1/4	55	31
ϕ	55	31
1/4	54	32
cb	55	31
w	58	28

T=8.57

N.L. Rolston

11

W	55	31
cb	57	29
14	58	28
¢	58	28
14	56	30
cb	56	30
E	56	30

40th St Cross Section  
 Monroe Ave to North End

60' wide  
 15' C&S  
 9'

SWBP  
 Monroct 3811

BM	2.01	376.51	374.50
TP	5.90	376.74	370.84

N.C.B. of Monroct Ave

H	on Parapet	5.38	371.42
Cb	" "	5.18	371.56
1/4	" "	5.07	371.67
1/2	" "	5.00	371.74
1/4	" "	5.06	371.68
Cb	" "	5.23	371.51
F	" "	5.33	371.41

N.E. Monroct Ave

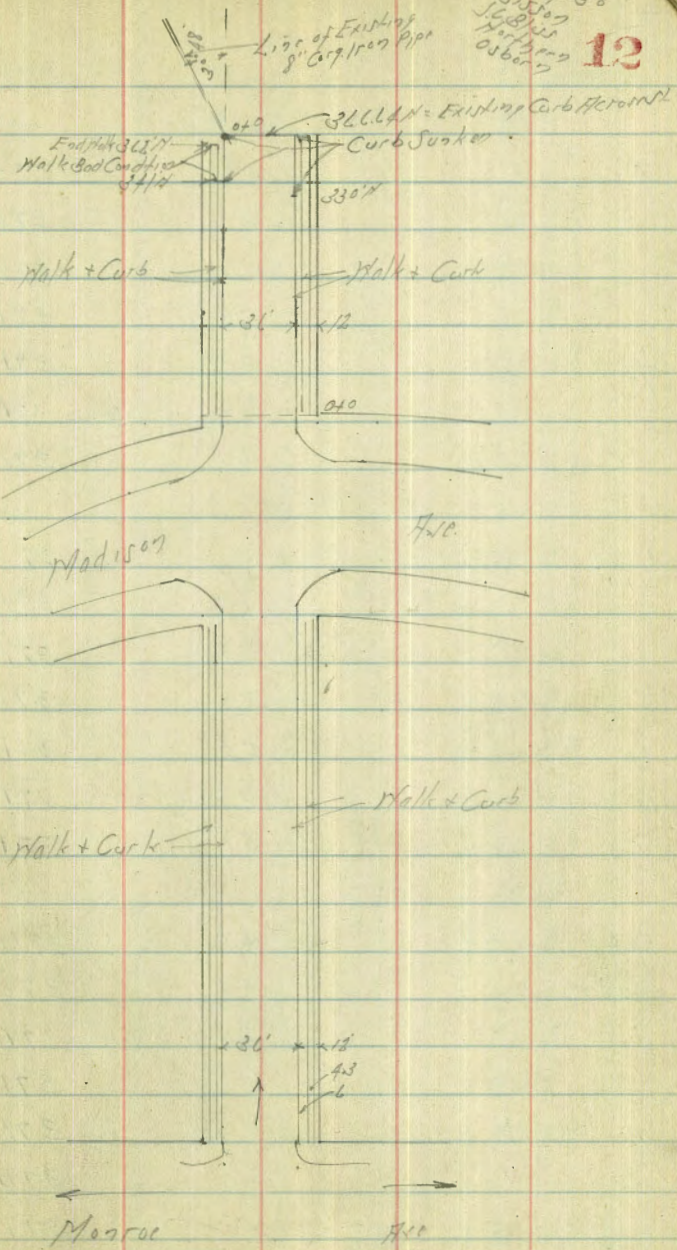
F Cb		4.88	371.86
Gutter on Parapet		5.45	371.29
1/4		5.25	371.49
1/2		5.16	371.62
1/4		5.11	371.58
Gutter		5.35	371.39
N.C.B.		4.77	372.02

H Cb		4.90	371.84
Gutter		5.6	371.1
1/4		5.1	371.6
1/2		5.0	371.7
1/4		5.3	371.4
Gutter		5.7	371.0

Plotted 4-4-30 1/4

25' H

3-19-30  
 S. J. ...  
 12



37674

FCb	492	371.82
	50' N of N.L. of Monnet	
FCb	501	371.73
G	57	371.0
1/4	52	371.5
1/2	50	371.7
3/4	51	371.6
G	55	371.2
Ncb	502	371.72
	75' N	
Ncb	510	371.64
G	57	371.0
1/4	52	371.5
1/2	50	371.7
3/4	53	371.4
G	57	371.0
FCb	510	371.64
	100' N	
FCb	521	371.53
Gutter	59	370.8
1/4	53	371.4
1/2	51	371.6
3/4	53	371.4
G	58	370.9
Ncb	522	371.52
	125' N	

37674

Ncb	521	371.50
Gutter	58	370.9
1/4	53	371.4
1/2	50	371.7
3/4	53	371.4
Gutter	59	370.8
FCb	527	371.47
	150' N	
FCb	526	371.28
Gutter	59	370.8
1/4	54	371.3
1/2	52	371.5
3/4	55	371.2
Gutter	59	370.8
Ncb	530	371.44
	175' N	
Ncb	535	371.39
Gutter	60	370.7
1/4	54	371.3
1/2	52	371.5
3/4	54	371.3
Gutter	60	370.7
FCb	531	371.43
	200' N	
FCb	535	371.39
Gutter	60	370.7

13



40th St.

376.74

1/4	55	371 2
1/2	52	371 5
1/4	54	371 3
Gutter	6.0	370 7
HCB	5.40	371 34
2.15 H		
HCB	5.46	371.28
Gutter	6.0	370 7
1/4	55	371 2
1/2	53	371 4
1/4	55	371 2
Gutter	6.1	370 6
FCB	5.44	371.30
2.50 H		
FCB	5.38	371 36
Gutter	6.0	370 7
1/4	5.1	371 1
1/2	5.3	371 4
1/4	5.5	371 2
Gutter	5.9	370 8
HCB	5.54	371.20
2.25 H		
HCB	5.14	371 10
Gutter	6.2	370 5
1/4	5.5	371 2
1/2	5.4	371.3

376.74

14

1/4	56	371 1
Gutter	6.1	370 6
FCB	5.50	371 2.4
3.00 H		
FCB	5.58	371 16
Gutter	6.2	370 5
1/4	5.6	371.1
1/2	5.4	371.3
1/4	5.6	371.1
Gutter	6.3	370 4
HCB	5.67	371 07
2.15 H		
HCB	5.74	371 00
Gutter	6.3	370 4
1/4	5.9	370.8
1/2	5.5	371 2
1/4	5.7	371.0
Gutter	6.3	370 4
FCB 19 (Cone) DPH	6.26	370 48
3.50 H		
FCB	5.76	370 98
Gutter	6.3	370 4
1/4	5.9	370 8
1/2	5.6	371 1
1/4	5.9	370 8
Gutter	6.4	370.3

376.74

Wcb	58	370.93
375H		
Wcb	587	370.87
Gutter	65	370.2
1/4	59	370.8
1/2	57	371.0
1/4	60	370.7
Gutter	62	370.5
ECb	580	370.94

400H

ECb	586	370.88
Gutter	65	370.2
1/4	60	370.7
1/2	57	371.0
1/4	60	370.7
Gutter	65	370.2
Wcb	595	370.79

425H

Wcb	601	370.73
Gutter	65	370.2
1/4	61	370.6
1/2	58	370.9
1/4	60	370.7
Gutter	65	370.2
ECb	597	370.77

380

374.58

596

370.78

374.58

15

450H

ECb	385	370.73
Gutter	44	370.2
1/4	40	370.6
1/2	37	370.9
1/4	41	370.5
Gutter	45	370.1
Wcb	395	370.63

475H

Wcb	400	370.58
Gutter	45	370.0
1/4	40	370.6
1/2	38	370.8
1/4	39	370.7
Gutter	44	370.1
ECb	388	370.70

500H

ECb	390	370.68
Gutter	44	370.2
1/4	41	370.5
1/2	38	370.8
1/4	41	370.5
Gutter	45	370.1
Wcb	404	370.53

525H

Wcb	415	370.43
-----	-----	--------

4016 St.

37458

Gutter	42	3699
"	42	3704
L	39	3707
"	41	3705
Gutter	45	3701
Lcb 10 Case Drive	451	370.04
550"		
FCB	410	37048
Gutter	46	3700
"	41	3705
L	40	3706
"	43	3703
Gutter	48	3698
Hcb	425	370.33

5747" H. S.L. Madison on W

Hcb	420	370.38
Gutter	48	3698
"	44	3702
L	40	3706
"	43	3703
Gutter	47	3699
FCB	413	370.45

5747" H on W

5747" H on E = S.L. Madison

FCB	417	370.41
Gutter	47	3699
"	44	3702

37458

16

L	41	3705
"	44	3702
Gutter	48	3698
Hcb	419	37039
R.M.	462	36996 Madison + 4060
H.L. Madison		
Hcb	474	36984
Gutter	53	3693
"	49	3697
L	47	3699
"	50	3696
Gutter	54	3692
FCB	471	36987
H.L. Madison 567 E		
153" H of H.L. Madison 10 277" or Property line		

FCB	476	36982
Gutter	55	3691
"	50	3696
L	48	3698
"	51	3695
Gutter	51	3690
Hcb	491	36967

25" H of H.L. Madison

Hcb	520	36938
Gutter	60	3686
"	53	3692
L	51	3694

374.51

1/4	52	369 4
Gutter	57	368 9
FCB 12 Conc. Drive	519	368 89
50' H		
FCB	541	369 14
Gutter	63	368 3
1/4	56	369 0
1/2	54	369 2
1/4	57	368 9
Gutter	63	368 3
HCB	512	368 96
75' H		
HCB	597	368 61
Gutter	66	368 0
1/4	60	368 6
1/2	56	369 0
1/4	60	368 6
Gutter	65	368 1
FCB 12 Conc. Drive	648	368 10
100' H		
FCB	619	368 39
Gutter	70	367 6
1/4	63	368 3
1/2	60	368 6
1/4	63	368 3
Gutter	70	367 6

374.58

17

HCB	634	368 24
175' H		
HCB	662	367 96
Gutter	74	367 2
1/4	66	368 0
1/2	63	368 3
1/4	66	368 0
Gutter	73	367 3
FCB	657	368 01
150' H - Break in Grade		
FCB	692	367 66
Gutter	76	367 0
1/4	70	367 6
1/2	68	367 8
1/4	71	367 5
Gutter	77	366 9
HCB	700	367 58
TP	0.51	367.74
175' H		
HCB	680	366 94
Gutter	74	366 3
1/4	69	366 8
1/2	66	367 1
1/4	70	366 7
Gutter	74	366 3
FCB	673	367 01

46th St.

367.74

200 //

FCB	152	366.22
Gutter	21	365.6
1/4	18	365.9
1/2	15	366.2
1/4	19	365.8
Gutter	24	365.3
HCB	151	366.23

225 //

HCB	288	364.86
Gutter	32	364.4
1/4	30	364.1
1/2	27	365.0
1/4	28	364.9
Gutter	32	364.4
FCB 1260c Drive	326	364.48

250 //

FCB	131	363.43
Gutter	49	362.8
1/4	42	363.4
1/2	42	363.5
1/4	44	363.3
Gutter	50	362.7
HCB	131	363.38

275 //

HCB	615	361.59
-----	-----	--------

367.74

Gutter	65	361.218
1/4	62	361.5
1/2	58	361.9
1/4	60	361.7
Gutter	66	361.1
FCB	588	361.86

300 //

FCB	753	360.21
Gutter	84	359.3
1/4	77	360.0
1/2	75	360.2
1/4	81	359.6
Gutter	82	359.4
HCB	804	359.70

325 //

HCB	980	357.94
Gutter	102	357.4
1/4	98	357.9
1/2	93	358.4
1/4	94	358.3
Gutter	96	358.1
FCB	920	358.54

350 //

FCB	102	357.1
1/4	108	356.9
1/2	110	356.7

40th St.

367.74

1/2		11.5	356.2
+9		11.7	356.0
Gutter		12.4	355.3
HCB Top		12.44	355.30
361.64 H = H End			
TP	4.09	359.68	12.15
HCB		5.58	354.10
Flank Line Existing 8" C/Pipe		6.58	353.10
1/4 on Curb + Dirt		5.08	354.60
1/2 " " "		4.74	354.94
1/2 " " "		5.00	354.68
HCB " " "		4.53	355.15

Proposed Drain  
North End 40th St. 359.68

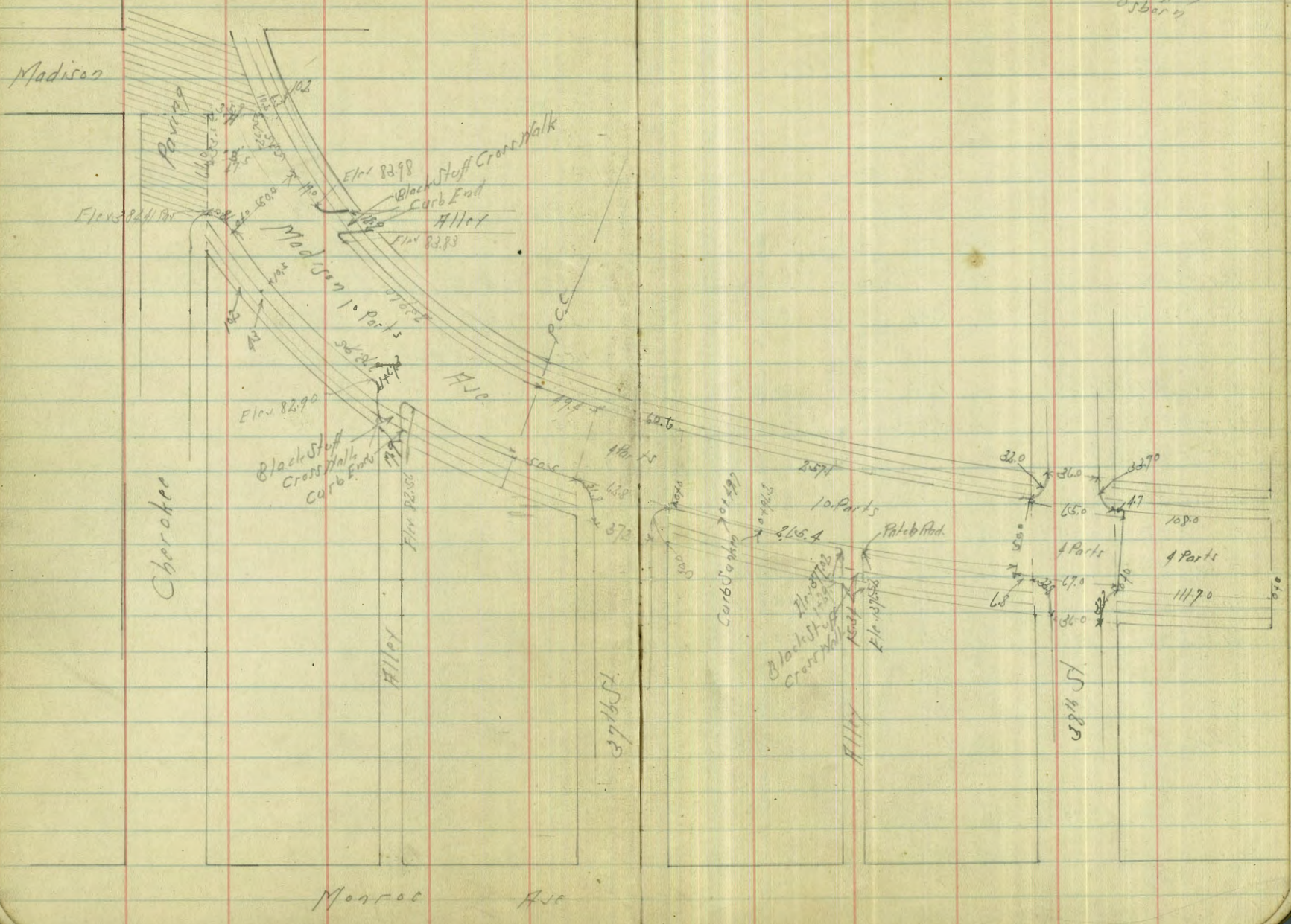
See Sketch Page 12			
0.20	Top Curb		5.58
	Flank Line of Existing 8" C/Pipe		6.58
	+5		5.6
	+10		8.5
TP	0.26	347.07	12.67
			347.01
	+25		3.7
	+30		11.7
TP	0.27	334.43	12.91
			334.16
	+40		6.2
	+50 = 1st Ward Road		8.7
	+65 " " "		8.7
	+85		7.4
	+70 = Bottom of Gulch		16.9

19

Madison Ave. Cross Sec.  
Cherokee to Terrace Drive.

3-21-30  
Survey  
S. C. Blair  
Northey  
Osborn

20



Madison Ave Cross Section  
 Cherokee to Terrace Drive  
 South to Curb Line Stationing

100' x 100'  
 25' C&S  
 12.5' Q11

68845

BM	382	390.50	386.68	SFBP Narrower Cherokee
TP	359	388.45	5.64	384.81
BM			2.69	385.76

1/4	41	3843
1/2	40	3844
3/4	41	3840
F Cb	45	3839
F	41	3840

Sec A = S.L. Madison From West

5479 SE

H.F. Cb	4.70	383.75
Gutter on Pavement	5.67	383.18
179 W of H.Cb	4.63	383.82
25.8 W = Edge Pavement	4.43	384.02
Sec B		
Edge Pavement	4.14	384.31
22.75 F	4.0	384.4
12.5 F - Gutter	5.0	383.4
H.F. Cb	4.56	383.89

F	45	3839
Cb Top	4.22	383.73
Gutter	5.1	383.3
1/4	4.7	383.7
1/2	4.3	384.1
1/4	4.3	384.1
Gutter	4.6	383.8
H.Cb	4.19	384.26

8219 SE

0+0		
F Cb	4.39	384.06
Gutter	5.0	383.4
1/4	4.4	384.0
1/2	3.9	384.5
1/4	3.9	384.5
Gutter	4.0	384.4
H.Cb	3.59	384.86

H.Cb	4.18	383.97
Gutter	4.9	383.5
1/4	4.6	383.8
1/2	4.5	383.9
1/4	4.9	383.5
Gutter	5.6	382.8
F Cb	4.97	383.48

10958 SE

27.39 SE of 0+0

H.Cb	3.85	384.60
G	4.3	384.1

F Cb	5.28	383.17
Gut	5.8	382.6
1/4	5.1	383.3



388.45

1/2	48	383 6
1/4	49	383 5
Gutter	51	383 3
N.Cb	484	383 61

136.97SE

S.N.Cb	10 Can. 2571	567	382 78
Gutter		57	382 7
1/4		53	383 1
1/2		52	383 2
1/4		56	382 8
Gutter		62	382 2
N.E.Cb		512	382 83

114.97SE

N.F.Cb		593	382 52
Gutter		66	381 8
1/4		60	382 4
1/2		54	383 0
1/4		57	382 7
Gutter		60	382 4
S.N.Cb		553	382 92
S.N.L		53	383 1

191.7SE

S.N.L		56	382 8
S.N.Cb		602	382 43
Gutter		65	381 9
1/4		60	382 4

388.45

1/2	59	382 5
1/4	63	382 1
Gutter	69	381 5
N.F.Cb	622	382 23

219.16SE

N.F.Cb		666	381 79
Gutter		72	381 1
1/4		67	381 7
1/2		63	382 1
1/4		62	382 1
Gutter		69	381 5
S.N.Cb		625	382 10

246.55SE

S.N.Cb		668	381 77
Gutter		75	380 9
1/4		68	381 6
1/2		66	381 8
1/4		69	381 5
Gutter		76	380 8
N.F.Cb		704	381 41

273.95SE-P.C.C.

N.F.Cb		730	381 15
Gutter		79	380 5
1/4		71	381 3
1/2		69	381 5
1/4		71	381 3

22

N 22.29  
S 79.10N 24.06  
S 75.67

Madison Hill

388 45

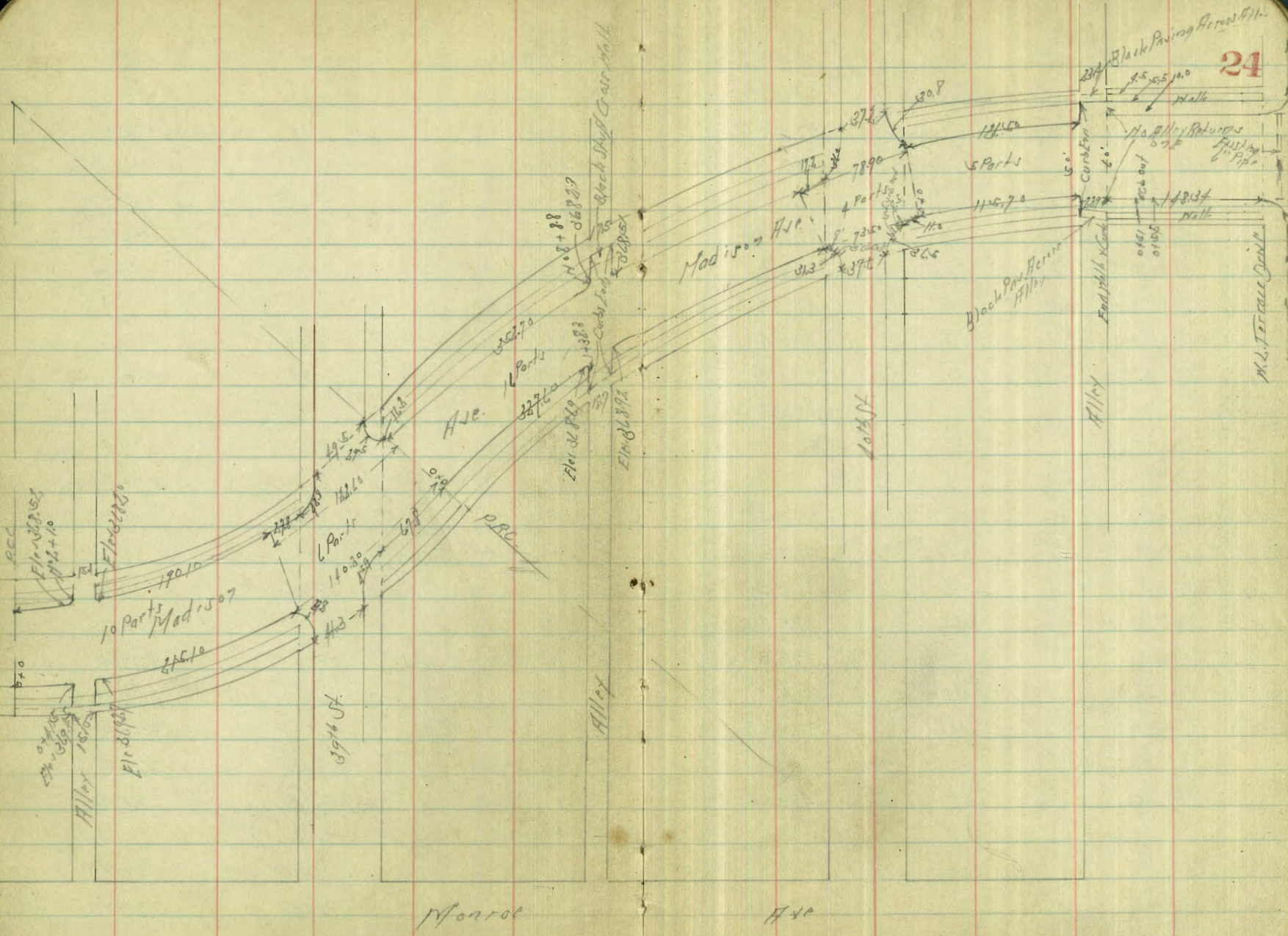
38392

3-27-30

23

Gutter		78	3806
S/Cb		709	381 36
	39920 F		
S/Cb		732	381 07
Gutter	N=206	80	3804
"	S=25.67	75	3809
1/2		72	381 2
"		75	3809
Gutter		84	3800
N/Cb		778	38067
	38745 F = H.L. 37 <sup>th</sup> from South		
N/Cb		809	38034
Gutter		87	3797
"		79	3805
1/2		74	381 0
"		77	3807
Gutter		82	3801
S/Cb		780	38065
TP	L-23	383.92	38169
		1.76	Hills Park Madison 37 <sup>th</sup>
	340.15 E		
S/Cb line		39	3800
"		33	3806
1/2		30	3809
"		37	3802
Gutter		43	379 6
N/Cb top		377	380.15

	255.85		
N/Cb		376	379 96
Gutter		46	3793
"		39	3800
1/2		32	3807
"		35	3804
S/Cb line		41	3798
	371.55 F		
S/Cb line		44	379.5
"		38	380.1
1/2		36	3803
"		41	379.8
Gutter		50	3789
N/Cb Top		414	379.76
	387.65 F = F.L. 37 <sup>th</sup> from S. = 0.1		
N/Cb		431	37961
Gutter		52	378.7
"		45	3794
1/2		39	3800
"		41	3798
Gutter		43	3796
S/Cb		35	3804
	S.L. Madison #137151		37.3
N/Cb of 37 <sup>th</sup>		38	38079
Gutter of Paris		362	38030
"		342	38050



24

Monroe

Ave

Madison Hill

383.98

2 on Pav 199	347	380 45
1/4 " "	362	380 30
Gutter " "	406	379 86
F cb Top	355	380.37
26.54 F of		
S. cb	403	379 89
Gutter	48	379 1.
1/4	15	379 4
2	15	379 4
1/4	5.1	378 8
Gutter	56	378 3
Hcb	482	379 10
53.08 F		
Hcb	551	378 41
Gutter	63	377 6
1/4	5.6	378 3
2	52	378 7
1/4	51	378 8
Gutter	54	378 5
S. cb	438	379 34
79.62 F		
S. cb 12 Drive	589	378 03
G	59	378.0
1/4	59	378 0
2	63	377 6
1/4	62	377 7

383.92

Gutter	70	3769 <sup>25</sup>
Hcb	634	377 56
106.14 F		
Hcb	726	376 56
Gutter	81	375 8
1/4	71	376.8
2	67	377.2
1/4	67	377.2
Gutter	72	376 7
S. cb	630	377 62
132.70 F		
S. cb line	78	376.1
Gutter		
1/4	74	376 5
2 on MH Rim	740	376 52
1/4	79	376.00
Gutter	89	375 0
Hcb	810	375.72
S. L. Madison Ht Alley from South		
H L of Alley	53	378 6
2 " "	60	377 9
2 " "	62	377 7
159.24 F		
Hcb	900	374 92
Gutter	97	374.2
1/4	87	375.2

383.91

L	82	375.7
1/4	81	375.8
Gutter	81	375.3
Scb	786	376.06
18578F		
Scb	852	375.40
Gutter	N 25.27 S 26.96 95	374.4
1/4	90	374.9
L	91	374.8
1/4	95	374.4
Gutter	106	373.3
Hcb	985	374.07
21203F		
Hcb	10.70	373.22
Gutter	N 25.27 S 26.96 11.2	372.7
1/4	104	373.5
L	99	374.0
1/4	98	374.1
Gutter	102	373.7
Scb	927	374.65
23886E		
Scb	1000	373.92
Gutter	N 25.27 S 26.96 107	373.2
1/4	106	373.3
L	107	373.2
1/4	113	372.6

383.92

26

Gutter	119	372.0
Hcb	11.61	372.31
26540E = Opp 7.6.38 <sup>th</sup> from 11		
Hcb	12.34	371.58
Gutter	12.4	371.5
1/4	11.7	372.2
L	11.3	372.6
1/4	11.1	372.8
Gutter	11.5	372.4
Scb	10.65	373.27
28215F		
Scb Line	11.8	372.1
1/4	11.4	372.5
L	11.5	372.4
1/4	11.8	372.1
Hcb Line	12.6	371.7
298.90E		
Hcb Line	12.2	371.7
1/4	12.0	371.9
L on MH Road	11.78	372.14
1/4	11.7	372.2
Scb Line	12.1	371.8
31565E		
Scb Line	12.2	371.7
1/4	12.1	371.8
L	12.1	371.8

Madison Ave.

383.92

1/4	12.4	371.5
Hcb L	12.9	371.0
232.4F = FL 38 <sup>th</sup> from S - 220		
Hcb	12.00	370.92
Gutter	13.2	370.7
1/4	12.9	371.0
L	12.4	371.5
1/4	12.3	371.6
Gutter	12.5	371.4
SCb	12.0	371.92
S.L. Madison #1 38 <sup>th</sup>		
Fcb	11.96	371.96
Gutter	13.2	371.7
1/4	11.7	372.2
L	11.3	372.6
1/4	11.3	372.6
Gutter	11.5	372.4
Hcb	11.00	372.92
H.L. Madison #1 38 <sup>th</sup>		
Hcb	12.34	371.58
Gutter	13.1	370.8
1/4	12.8	371.1
L	12.8	371.1
1/4	13.2	370.7
Gutter	13.6	370.3
Fcb	13.15	370.77

383.92

27

TP	279	373.77	12.94	370.98
279 <sup>th</sup> F of FL 38 <sup>th</sup> from S				
SCb			2.31	371.46
Gutter			2.8	371.0
1/4			2.5	371.3
L			2.7	371.1
1/4			3.2	370.6
Gutter			3.8	370.0
Hcb			3.30	370.47
558.5 F				
Hcb			3.82	369.97
Gutter			4.3	369.5
1/4			3.6	370.2
L			3.2	370.6
1/4			3.0	370.8
Gutter			3.5	370.3
SCb			4.85	370.92
837.7 F				
SCb			3.38	370.39
Gutter			4.1	369.7
1/4			3.6	370.2
L			3.7	370.1
1/4			4.1	369.7
Gutter			4.7	369.1
Hcb			4.88	369.49
111.70 F = PCC				

3737)

HCB	471	369 06
Gutter	53	368 5
1/4	46	369 2
1/2	41	369 7
1/4	40	369 8
Gutter	42	369 6
SCB 12 Con. DRIK	100	369 77
21.51 F of P.C.C		
SCB	398	369 79
Gutter	46	369 2
1/4	43	369 5
1/2	44	369 4
1/4	48	369 0
Gutter	53	368 5
HCB	491	368 83
13.02 F		
HCB	525	368 52
Gutter	57	368 1
1/4	50	368 8
1/2	45	369 3
1/4	46	369 2
SCB Line	49	368 9
S.L. Madison #1 #1/4		
1/4	34	369 4
1/2	35	370 3
1/4	36	370 2

373.77

28

H.L. Madison #1 #1/4		
1/4	51	368 7
1/2	57	368 1
1/4	56	368 2
64.53 F		
SCB	462	369 15
Gutter	51	368 7
1/4	49	368 9
1/2	49	368 9
1/4	53	368 5
Gutter	60	367 8
HCB	553	368 24
86.04 F		
HCB	583	367 94
Gutter	64	367 4
1/4	56	368 2
1/2	53	368 5
1/4	52	368 5
Gutter	56	368 2
SCB	502	368 75
107.55 F		
SCB	549	368 28
Gutter	61	367 7
1/4	56	368 2
1/2	56	368 2
1/4	60	367 8

Madison Hill 37377

Gutter	66	367 2
H Cb in Conc Drive	660	367 17
12906 F		
H Cb	634	367 43
Gutter	69	366 9
"	63	367 5
"	58	368 0
"	59	367 9
Gutter	65	367 3
Scb	579	367 98
15057 F		
Scb	614	367 63
Gutter	68	367 0
"	62	367 6
"	61	367 6
"	64	367 4
Gutter	71	366 7
H Cb 10 Conc Drive	704	366 73
17208 F		
H Cb	680	366 97
Gutter	72	366 6
"	68	367 0
"	64	367 4
"	65	367 3
Gutter	69	366 9
Scb	642	367 30

37377

29

Scb	626	367 01
Gutter	70	366 8
"	68	367 0
"	66	367 2
"	71	366 7
Gutter	75	366 3
H Cb	705	366 72
21510 F = H.L. 39th from S		
H Cb	731	366 46
Gutter	76	366 2
"	72	366 6
"	68	367 0
"	70	367 8
Gutter	71	366 7
Scb	708	366 69
23846 F		
Scb L	69	366 9
"	75	366 3
"	74	366 4
"	74	366 4
Gutter	79	365 9
H Cb	760	366 17
31103 F		
H Cb L	80	365 8
"	76	366 2

19359 F

N 17.59  
S 22.84

N 19.12  
S 22.73

N 19.17  
S 22.73

N 19.12  
S 22.73



37377

♂		79	3659
♀		69	3669
ScbL		70	3668
	28519F		
Scb		690	36687
Gutter		72	3666
♀	N=1917 S=24.73	73	3665
♂		73	3665
♀		73	3665
HcbL		71	3664
	30756F		
HcbL		77	3661
♀		75	3663
♂	N=1917 S=24.73	69	3669
♀		70	3668
Gutter		72	3666
Scb		68	3670
	33192F		
Scb		650	36727
Gutter		71	3667
♀	N=1917 S=24.73	68	3660
♂		67	3671
♀		71	3667
HcbLinc		76	3662
	35532F: P.P.C. 3040		
Hcb		738	36639

373.77

Gutter		78	3660	30
♀		72	3656	
♂		66	3672	
♀		66	3662	
Gutter		71	3667	
Scb		637	36740	
	H.L. Madison #1 39 <sup>th</sup>			19.5 Hidi
Hcb		798	36579	
Gutter		83	3655	
♀		80	3658	
♂		74	3664	
♀		77	3661	
Gutter		81	3657	
Scb		748	36629	
	J.L. Madison #1 39 <sup>th</sup>			41.3 Hidi
Scb		685	36692	
Gutter		73	3665	
♀		67	3671	
♂		67	3671	
♀		69	3669	
Gutter		73	3665	
Hcb		688	36689	
	2047F of P.P.C.			
Scb	S 1967 N 22.81	615	36762	
Gutter		68	3660	
♀		64	3674	

Madison Ave.

37377

1/2	64	367.4
1/4	70	366.8
Gutter	76	367.2
HCB	72	366.51
	40.95 F	
HCB	704	366.73
Gutter	75	366.3
1/4	69	366.9
1/2	62	367.6
1/4	62	367.6
Gutter	67	367.1
SCB	589	367.88
	61.42 E	
SCB	575	368.02
Gutter	66	367.2
1/4	61	367.7
1/2	61	367.7
1/4	66	367.2
Gutter	74	366.4
HCB	676	367.01
	81.96 E	
HCB	655	367.22
Gutter	73	366.5
1/4	64	367.4
1/2	59	367.9
1/4	59	367.9

37377

Gutter	64	367.4	31
SCB	553	368.24	
	102.37 E		
SCB	536	368.41	
Gutter	62	367.6	
1/4	57	368.1	
1/2	57	368.1	
1/4	62	367.6	
Gutter	71	366.7	
HCB	631	367.46	
	122.85 E	alley m. 8	
HCB	613	367.64	
Gutter	68	367.0	
1/4	6.0	367.8	
1/2	5.4	368.4	
1/4	5.5	368.3	
Gutter	6.0	367.8	
SCB	5.14	368.63	
	142.32 E	alley m. 8	
SCB L	57	368.1	
Gutter			
1/4	52	368.6	
1/2	51	368.7	
1/4	5.6	368.2	
Gutter	6.5	367.3	
HCB	596	367.81	

37377

S.L. Madison H. Alley

H. L. Alley	41	369.7
1/2	40	369.8
E	39	369.9

16380 F

H. C. B.	570	368.07
Gutter	64	367.4
1/4	54	368.4
1/2	48	369.09
1/4	51	368.7
Gutter	54	368.4
SCB	483	368.94
TP	L22 37466 5.33	368.44

H.L. Madison H. Alley

H	48	369.8
1/2	52	369.4
E	51	368.6

18487 F

SCB	553	369.13
Gutter	61	368.6
1/4	59	368.7
1/2	56	369.0
1/4	61	368.5
H. C. B. line	68	367.8

20475 F

H. C. B.	618	368.48
----------	-----	--------

37466

Gutter	68	367.9 <b>32</b>
1/4	61	368.6
1/2	56	369.0
1/4	56	369.0
Gutter	61	368.5
SCB	520	369.36

22522 F

SCB	512	369.54
Gutter	58	368.8
1/4	55	369.1
1/2	54	369.2
1/4	58	368.8
Gutter	65	368.1
H. C. B.	595	368.71

24570 F

H. C. B.	574	368.92
Gutter	63	368.3
1/4	57	368.9
1/2	53	369.3
1/4	53	369.3
Gutter	57	368.9
SCB	490	369.76

26617 F

SCB	480	369.86
Gutter	55	369.1
1/4	51	369.5

Madison Ave 37466

2	51	3695
1/4	54	3692
Gutter	61	3685
NCB	650	36916
28665F		
NCB 12 Coas Drive	582	36884
Gutter	58	3688
1/4	53	3693
2	49	3697
1/4	50	3696
Gutter	54	3692
Scb	464	37002
30712F		
Scb	451	37015
Gutter	52	3694
1/4	48	3698
2	48	3698
1/4	51	3695
Gutter	55	3691
NCB	495	36971
32260F = 1/2 40th from N = S		
NCB	486	36980
Gutter	52	3694
1/4	49	3697
2	46	3700
1/4	46	3700

S 1967  
N 2289

37466

Gutter	50	369.6	33
Scb	145	37021	
34597F			
Scb L 20	45	3701	
1/4	44	3702	
2	44	3702	
1/4	47	3699	
Gutter	50	3696	
NCB	478	36988	
36435F			
NCB L	48	3698	
1/4	46	3700	
2	43	3703	
1/4	44	3702	
Scb L	43	3703	
38272F			
Scb L	47	3699	
1/4	47	3699	
2	44	3702	
1/4	46	3700	
NCB L	48	3698	
40110 = F.L. 10th from N = 000			
NCB	500	369.66	
Gutter	55	3691	
1/4	49	3697	
2	46	3700	

37466

1/4	18	3698
Gutter	55	3691
SCB	460	37006
BIM	476	36990
23.14 F of E.L. 40' 1/2 From N		
SCB	494	36972
Gutter	58	3688
1/4	52	3694
1/2	50	3696
1/4	55	3691
Gutter	60	3686
HCB	536	36930
4L28F		
HCB	582	36884
Gutter	66	3680
1/4	59	3687
1/2	55	3691
1/4	56	3690
Gutter	62	3684
SCB	529	36937
6942F		
SCB	571	36895
Gutter	65	3681
1/4	59	3687
1/2	59	3687
1/4	64	3672

37466

34

Gutter	70	3676
HCB	640	36826
925LF		
HCB	693	36773
Gutter	74	3672
1/4	66	3680
1/2	62	3684
1/4	63	3683
Gutter	68	3678
SCB	604	36862
11570F = H.L. Alley		
SCB	638	36828
Gutter	70	3676
1/4	67	3679
1/2	66	3680
1/4	70	3676
Gutter	76	3670
HCB	728	36738
12860F = F.L. Alley - 0.0		
HCB	782	36684
Gutter	82	3664
1/4	70	3676
1/2	70	3676
1/4	71	3675
Gutter	73	3673
SCB	690	36776

Madison Ave. 37466

S.L. Madison at Alley

D.H. Alley	5.5	369 1
L	5.4	369 2
F	5.6	369 0

N.L. Madison at Alley

F.L. Alley	7.1	367.5
L	6.9	367.7
H.L.	5.8	368.8

25' E of E.L. Alley

N.C.B.	8.3°	366 36
Gutter	9.0	365 6
"	7.9	366 7
L	7.5	367 1
"	7.7	366 9
Gutter	8.3	366 3
SCB	7.9	367 25

50' E of E.L. Alley

SCB	7.96	366 70
Gutter	8.9	365 7
"	8.3	366 3
L	8.1	366 5
"	8.6	366 0
Gutter	9.6	365 0
N.C.B.	8.98	365 68

75'

N.C.B.	9.43	365 23
--------	------	--------

374.66

35

Gutter	10.2	364 4
"	9.6	365 4
L	8.6	366 0
"	8.8	365 8
Gutter	9.5	365 1
SCB	8.48	366 18

100' E

SCB	8.90	365 76
Gutter	10.0	364 7
"	9.3	365 3
L	9.2	365 4
"	9.7	364 9
Gutter	10.7	363 9
N.C.B.	9.98	364 68

125' E

N.C.B.	10.42	364 24
Gutter	11.1	363 5
"	10.2	364 4
L	9.8	364 8
"	9.8	364 8
Gutter	10.1	364 5
SCB	9.40	365 26

148.34 = H.L. Terrace Drive

SCB	9.88	364 78
Gutter on Paving	10.36	364 30
"	10.16	364.50

374.66

1/2 on Pass 129  
1/4 " " "  
Gutter " "  
HCB

1020

364.46

1060

364.06

1121

363.35

1088

363.78

36

Fern Glen Cross Section  
La Solla Blvd to Monte Vista

No. 35-38  
Sisson  
1904  
05627

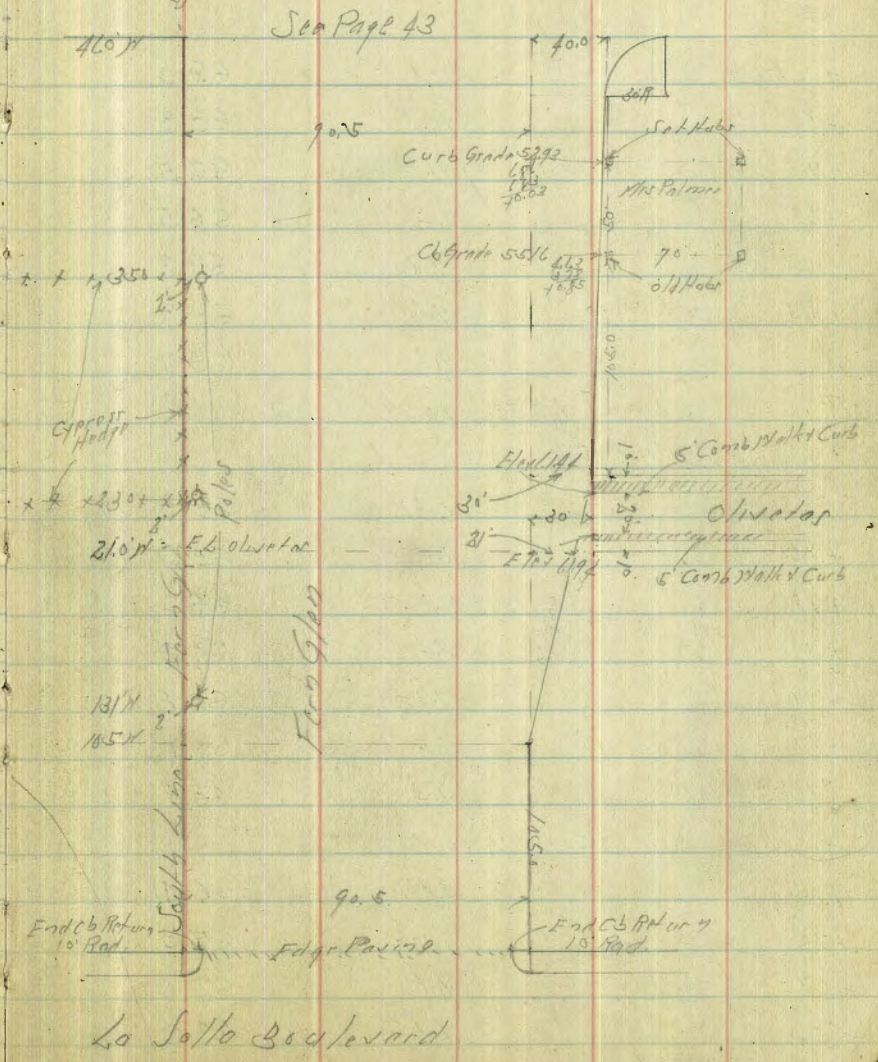
BM	0.11	79.12	79.01	S.F.P.P. La Solla Blvd Westburn
		W. Ch of La Solla Blvd		
S	on Paving	8.43	70.69	
S	on Top Curb	7.77	71.35	
+10	Ch on Paving	8.49	70.63	
+30	"	8.55	70.57	
+50	"	8.78	70.34	
+70	"	9.01	70.11	
+80.5	Ch	9.13	69.99	
+90.5	W of Gutter	9.33	69.79	
		W. La Solla Blvd		
+90.5	W	8.4	70.7	
+80.5	Ch	8.48	70.64	
	Gutter on Paving	9.19	69.93	
+65	"	8.77	70.35	
+50	"	8.57	70.55	
+30	"	8.44	70.68	
+10	Gutter	8.50	70.62	
Ch Top		7.83	71.29	
S		7.7	71.4	
		Plotted 6-6-30 C.B.H.		
		25' W of W. La Solla Blvd.		
S		8.3	70.8	
+20		8.6	70.5	
+40		9.0	70.1	
+65		9.3	69.8	

Note: - Line of Fern Glen Used as Baseline

W. Monte Vista

Monte Vista

See Page 43





Fenn Glen

79.12

+75	9.3	69.8
+83	10.6	68.5
+87	9.7	69.4
+90.5 = H	9.3	69.8

(50' H)

+90.5 = H	10.1	69.0
+78	10.3	68.8
+75	11.6	67.5
+62	12.6	66.5
+50	9.8	69.3
+25	9.4	69.7
J	9.4	69.7

TP 134 69.59 10.87 68.25

75' H

J	0.6	69.0
+25	0.6	69.0
+38	1.0	68.6
+60	5.4	64.2
+70	2.8	66.8
+80	1.5	68.1
+90.5	1.3	68.3

105' H: Δ 0.2 H

+90.5	3.2	66.4
+80	3.7	65.9
+67	6.6	63.0
+57	6.6	63.0

69.59

+50	4.3	65.3 <b>38</b>
+37	2.0	67.6
+20	1.7	67.9
J	1.3	68.3

125' H

J	2.0	67.6
+25	2.1	67.5
+50	2.7	66.9
+62	7.2	62.4
+77	6.5	63.1
+90.5	4.6	65.0
+94.5 = H.L.	4.3	65.3

+113.5 = South Edge Driv

+0.005 at top

150' H

+118.4 = South Edge Driv	2.89	66.70
+99.5 H.L.	5.3	64.3
+90.5	6.5	63.1
+77	8.4	61.2
+62	3.8	65.8
+40	3.1	66.5
+20	2.8	66.8
J	2.7	66.9

175' H

J	3.7	65.9
+20	3.8	65.8
+40	4.5	65.1

Febr 9/19

69.59

+62	5.2	644
+76	9.6	600
+90.5	8.3	613
+104.5-N	5.9	637
+1231 - South Edge Drive to Do Garage	4.07	6552
200 M		
+1280 - S Edge Drive	5.38	6421
+109.5-N	6.6	630
+100	7.4	622
+90.5	10.3	593
+72	10.3	593
+70	7.3	623
+50	7.5	621
+35	5.7	639
+25	4.8	648
5	4.5	651
2100 - E.L. Olivetas Place		
5	4.8	648
+15	1.8	648
+30	5.3	643
+50	8.5	61.1
+67	8.5	61.1
+73	10.8	58.8
+83	10.9	58.7
+90.5	10.0	59.6

69.59

+100	7.2	624	39
+111.5-N	7.1	62.5	
+129.9 - S Edge Drive	6.95	62.64	
230 M - Olivetas Place			
+120 - oil Paving	8.51	61.08	
+116-N	8.3	61.3	
+90.5	7.4	62.2	139 M
+85	7.1	62.5	19 M - N.L. - N.H. Rim Storm Drain
+80	11.6	58.0	98
+60	12.2	57.4	
+45	7.5	60.1	
+40 - Sewer N.H. Rim	8.71	60.88	
+25	5.7	63.9	
+10	5.3	64.3	
5	5.2	64.4	
2450 M - N.L. Olivetas Place			
5	6.1	63.5	
+20	6.5	63.1	
+10	6.6	63.0	
+50	7.0	60.6	
+60	13.8	55.8	
+65	12.0	57.6	
+70	10.8	58.8	
+83	11.4	58.2	
+86	8.8	60.8	
+90.5	8.3	61.3	
+105.0	8.4	61.2	

Fern Glen

6959

+120.5	8.6	61.0
+140	8.8	60.8
+140	8.8	60.8
+121.7	8.5	61.1
+105.0	8.4	61.2
+90.5	9.0	60.6
+81	10.6	59.0
+70	12.3	57.3
+60	16.8	52.8
+47	7.3	62.3
+25	7.3	62.3
5	6.8	62.8
5	7.8	61.8
+20	8.3	61.3
+35	9.3	60.3
+50	10.3	59.3
+61	17.9	51.7
+66	12.0	51.6
+73	13.0	56.6
+83	12.7	56.9
+90.5	10.7	58.9
+93	9.9	59.7
+105.0	9.2	60.4
+122.9	8.9	60.7
+140	9.3	60.3
+140	10.3	59.3
+124.1	10.3	59.3

275W

300W

325W

6959

40

+110.0	10.5	59.1
+97	10.8	58.8
+90.5	11.9	57.7
+75.0	13.7	55.9
+65.0	20.5	49.1
+48.0	12.6	57.0
+32.0	10.4	59.2
+17.0	9.5	60.1
5	8.4	61.2
5	9.7	59.9
+15	11.8	57.8
+30	12.5	57.1
TR	210	59.79
+50	12.90	56.69
+65	6.0	53.8
+78	11.4	48.4
+90.5	3.2	56.6
+110.0	3.6	56.2
+125.3	3.0	56.8
+140	3.0	56.8
+140	2.7	57.1
+140	4.1	55.7
+126.5	5.3	54.5
+110.0	5.4	54.4
+90.5	5.1	54.7
+80	5.8	54.0
+70	8.6	51.6

250W

375W

Fern Glen

5979

+58	11.6	48.2	J
+55	13.1	46.7	
+47	10.4	49.4	J
+40	9.3	50.5	+13
+30	6.4	53.4	+25
+15	2.2	57.6	+45
J	0.8	59.0	+60
	400' H		+75
J	1.2	58.6	+87
+15	2.1	57.7	+90.5
+33	3.5	56.3	+98.0
+50	8.3	51.5	+109.0
+60	14.2	45.6	52.83
+67	11.9	47.9	+135.0
+80	10.2	49.6	+130.5
+90.5	8.5	51.3	+141.0
+110.0	8.0	51.8	
+127.6	7.2	52.6	+141.0
+140.0	5.6	54.2	+130.5
+140.0	8.1	51.7	+135.0
+129.1	8.2	51.6	+110.0
+108.0	12.1	47.7	+98.0
+90.5	14.9	44.9	+90.5
+80.0	11.5	48.3	+85.0
+67.0	6.9	52.9	+70
+50.0	4.3	55.5	+50
+25.0	3.4	56.4	

5979

41

19	57.9	
40' H = E.L. Montelista		Montelista 50' wide 10' cbs
2.6	57.2	
3.4	56.4	
4.9	54.9	
6.3	53.5	
7.6	52.2	
8.1	51.7	
8.3	51.5	
9.6	50.2	
14.0	45.8	
10.45	49.34	
14.1	45.4	
15.8	44.0	
13.0	46.8	
8.7	51.1	
		E.Cb of Montelista
11.8	48.0	
14.4	45.4	
15.8	44.0	
14.9	44.9	
15.0	44.8	
10.2	49.6	
9.3	50.5	
9.6	50.2	
7.5	52.3	

Fern Glen

59.79

+25	55	54.3
S	38	56.0
L Monte Vista		
S	41	55.7
+80	58	54.6
+40	69	52.9
+60	84	51.4
+75	99	49.9
+90.5	122	47.6
+108.0	150	44.8
+121.0	156	44.2
+126.0	174	42.4
+130.5-N	168	43.0
+141.0	188	46.0
WCB		
+130.5-N	128	47.0
+120.0	171	42.7
+104.0	106	49.2
+90.5	108	49.6
+75.0	90	50.8
+60	90	50.8
+40	84	51.4
+40	87	51.1
+14	59	53.9
S	38	56.0

W.L. Monte Vista

59.79

S	71	52.7
+10	101	49.7
+20	111	48.7
+35	104	49.4
+55	105	49.3
+75	101	49.7
+90.5	102	49.6
+110.0	106	49.2
+121.0	127	47.1
+130.5-N	130	46.8

BM

0.30

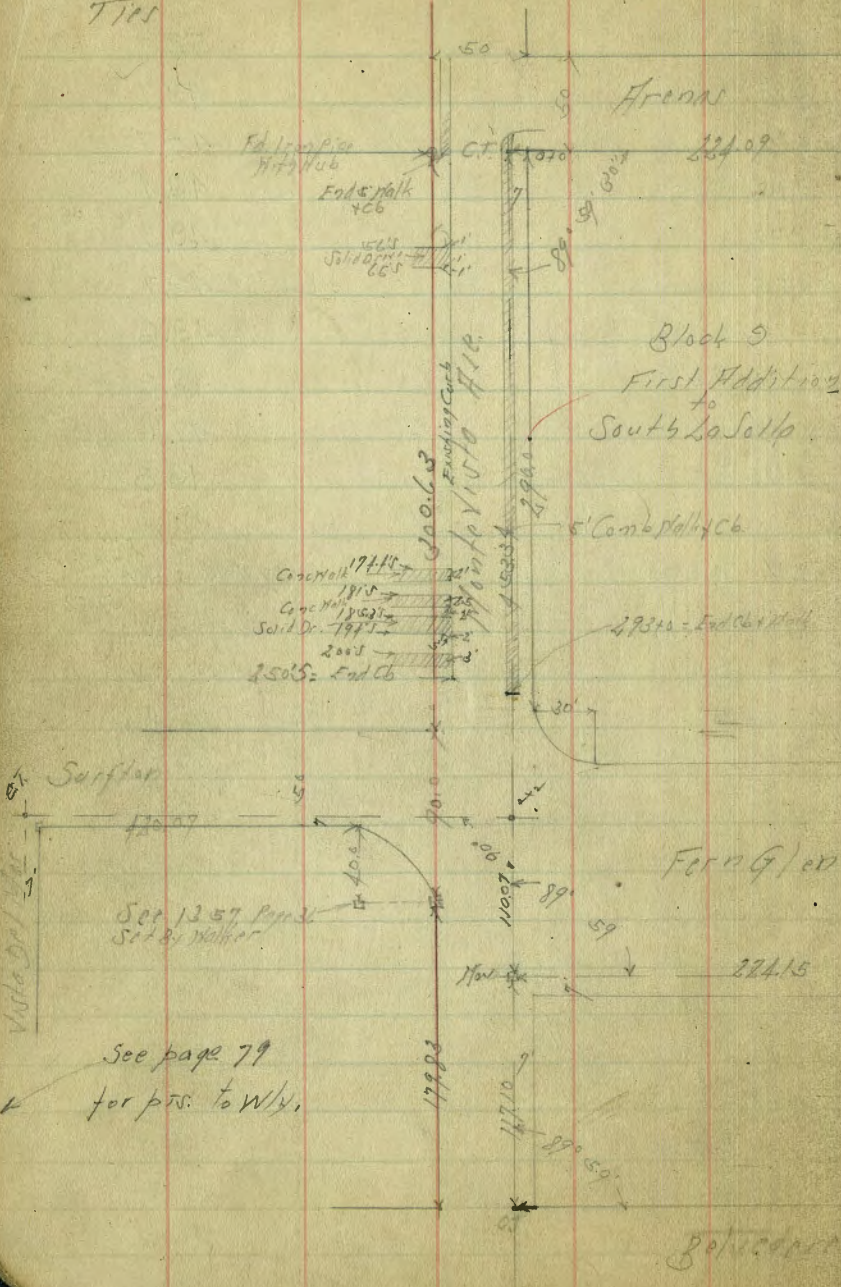
59.49

 SW BP  
 8' distance +  
 Monte Vista  
 59.52

42

Fern Glen Olivaria Mont Vista Farms Indexed  
C.S.K.

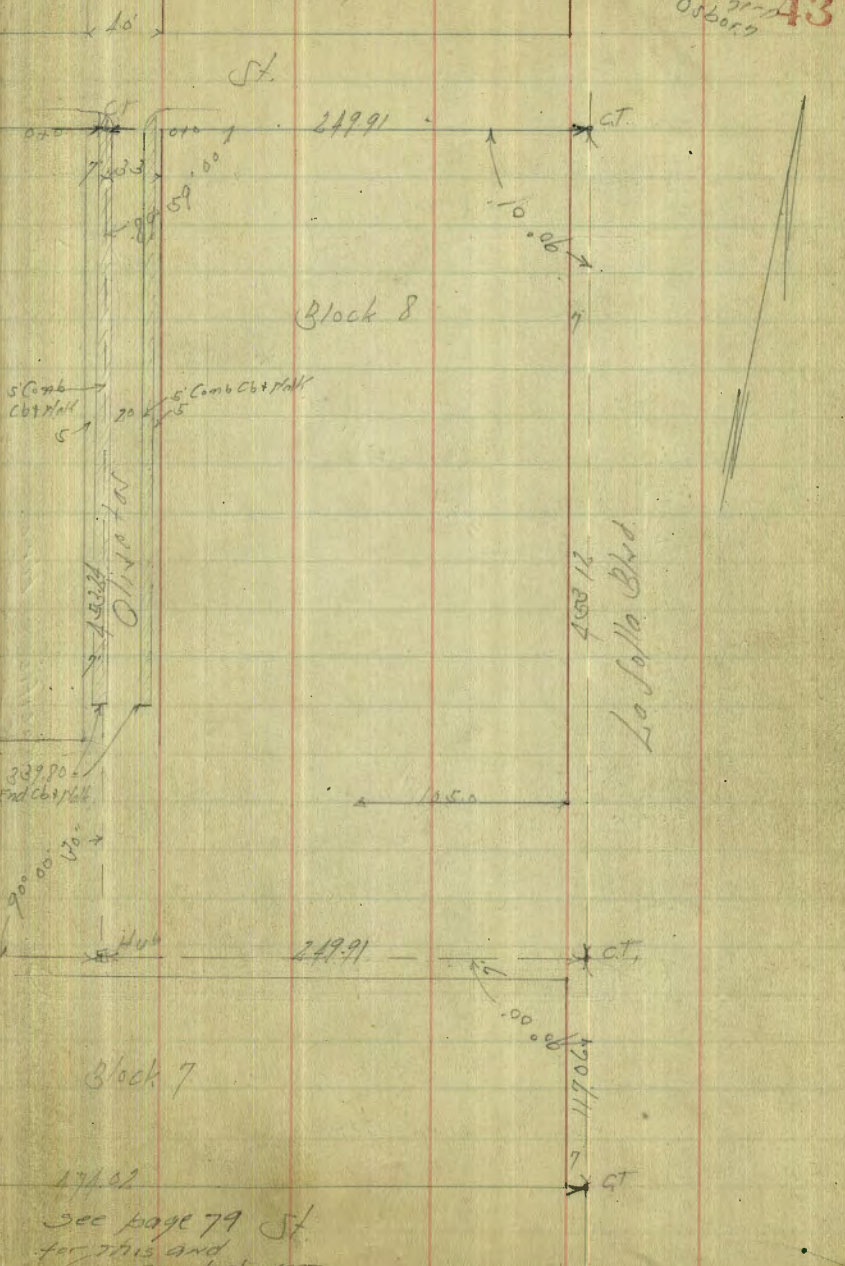
Ties



11714.0000  
2139.00  
2139.00  
2139.00

Notes: For Ties North of Fern St  
See Page 52

C. 4-30  
S. 5500  
S. C. B. 111  
North 51-1  
Osborn  
**43**

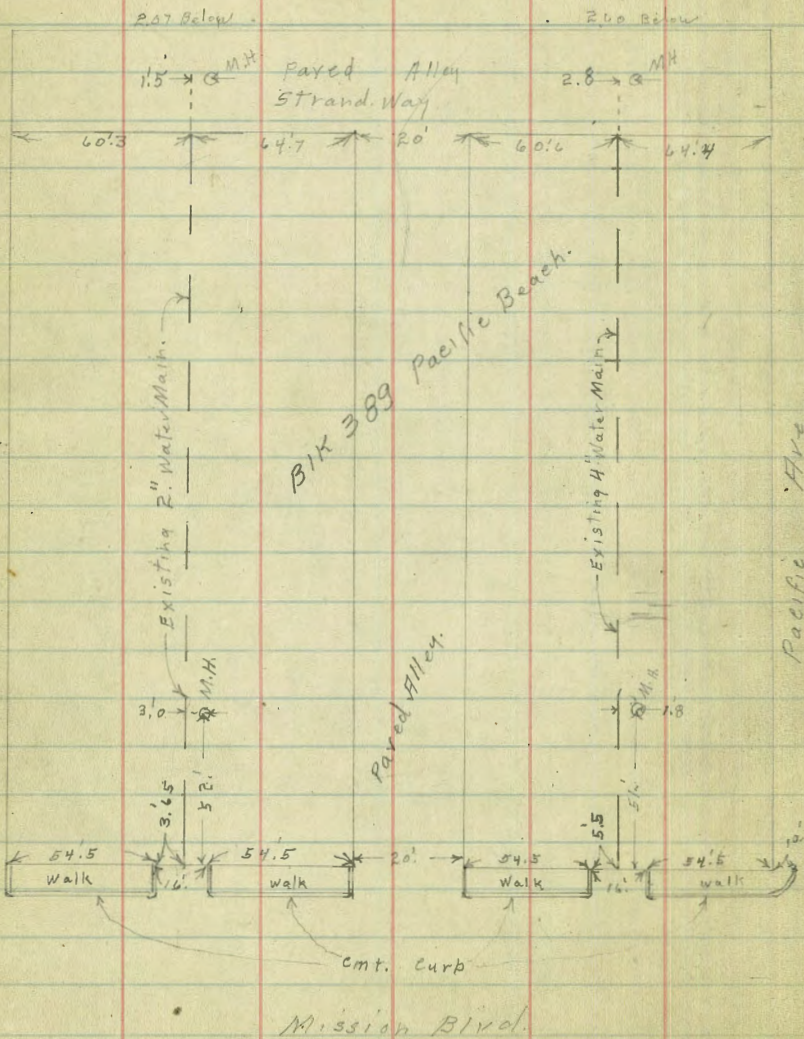


Location Water Mains  
 BIK 389 Pacific Beach

9.19.30  
 mill

B.M. B.P. NE. Pacific Mission	B.M. Tack N.W. Alley North Mission
-1.63	-1.02
6.17	5.58
$\bar{x}$ 4.54	$\bar{x}$ 4.56

44



Water Pipe Levels First Line S. of Pacific Ave

$\bar{x}$  4.54

W. Line Mission Blvd	8.62	Top 4" Main
130' W.	6.85	" " "
230' W = E. Line Strand Way	4.40	" " "

Water Pipe Levels 2<sup>nd</sup> Line S. of Pacific Ave

$\bar{x}$  4.54

W. Line Mission Blvd	8.78
130' W	7.21
230' W = E. Line Strand Way	4.90

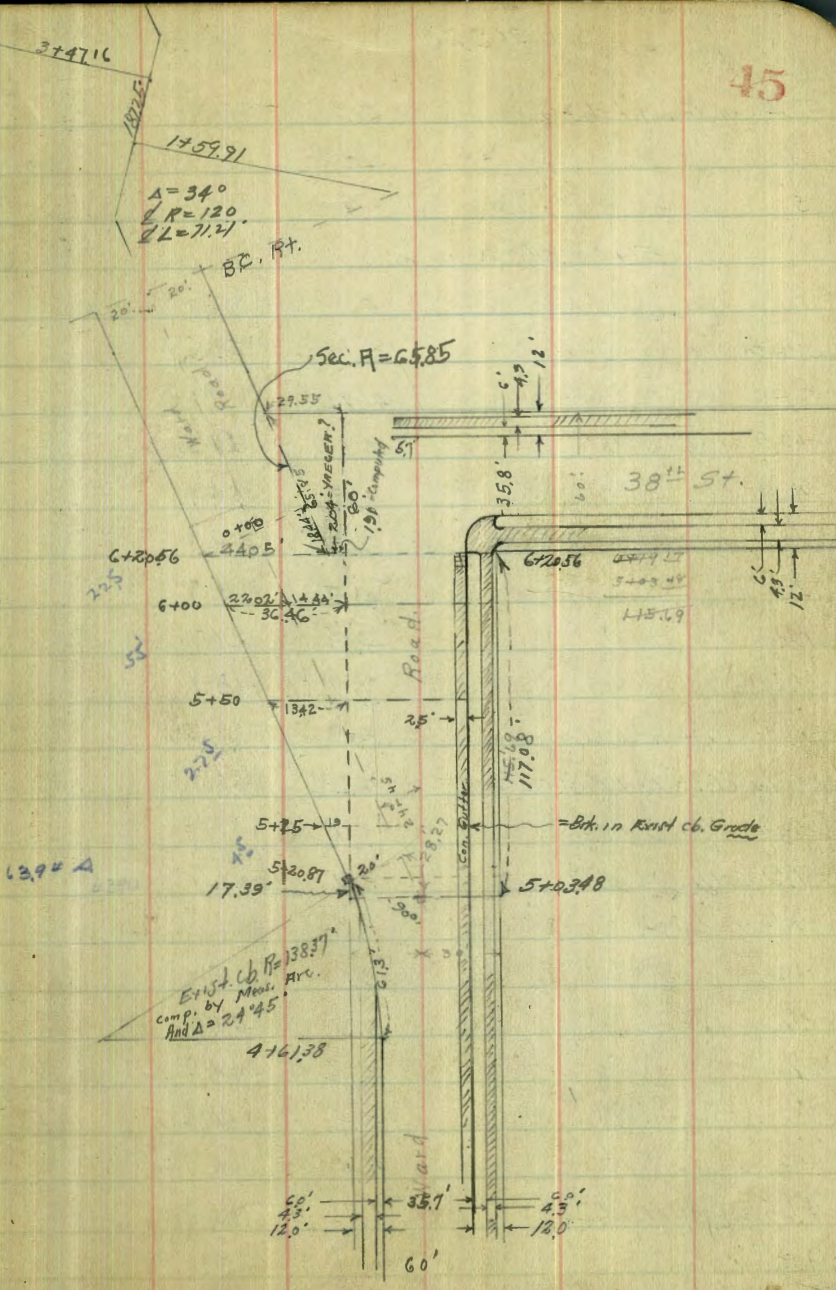
Braemar Pl.

Pacific Ave

Walker  
Bliss  
Dreber  
10-16

CROSS SECTION  
WARD ROAD AND PORTION 38th St.  
From station 4+61.38 to 6+20.56 WARD RD =  $\frac{12' \text{ cb}}{3' \text{ PLS}}$

	1.65	387.93		385.78	S.E. B.P. Shows structure
T.P.	0.66	376.68	11.41	376.02	S.E. B.P. 38th + W. Rd. Pl.
T.P.	1.80	370.55	7.93	368.75	
T.P.	7.28	369.20	8.63	361.92	
	Set S.M. Set Brass Plug in cb.	5.19	364.01		Set S.P. 5th Cor. Ward + 38th
	4+61.38 = P.C. cb on North.				
S		1.7		367.5	
S top cb.		1.79		367.41	
Gut. on Con.		2.68		366.52	
+2.5' edge Cor Gut.		2.45		366.75	
$\frac{1}{4}$		2.2		367.0	
$\frac{1}{2}$		2.2		367.0	
$\frac{3}{4}$		2.7		366.5	
Gut. (on this side Con. Gut No Good)		3.4		365.8	
cb.		2.71		366.49	
N		2.6		366.6	
	5+03.48				
N		4.4		364.8	
+6.60' = cb Face on top		4.45		364.75	
Gut		5.1		364.1	
cb.		4.6		364.6	
$\frac{1}{4}$		4.2		365.0	
$\frac{1}{2}$		3.8		365.4	
$\frac{3}{4}$		3.8		365.4	
+6.5' = Edge Cor. Gutter		4.17		365.02	





369.20

Gut. on Con. at cb.	4.36	364.84
cb.	3.50	365.70
S	3.4	365.8
5+20.87 = Δ on N		
S	4.0	365.2
S cb.	4.11	365.09
Gut.	4.76	364.24
+2.5 = N edge Gutter.	4.66	364.54
$\frac{1}{2}$	4.3	364.9
$\frac{1}{2}$	4.3	364.9
$\frac{1}{2}$	4.5	364.7
cb.	4.9	364.3
+7	5.1	364.1
N on Gut. at cb	5.9	363.3
N on cb. = End Bust. cb. on N.	5.26	363.94
5+2.5		
-3	5.2	364.0
-1.9 = N.L. Yard Ref.	6.7	363.1
N = N.L. 60' St.	6.0	363.2
+2	5.0	364.2
cb	5.0	364.2
$\frac{1}{2}$	4.6	364.6
$\frac{1}{2}$	4.4	364.8
$\frac{1}{2}$	4.4	364.8
+6.5 = N edge Con. Gutter.	4.76	364.44
Gut. on Con.	5.10	364.10
cb.	4.97	364.93

369.20

46

5+50		
S	4.4	364.8
S top cb.	4.55	364.65
Gut. on Con.	5.43	363.77
+2.5 = N edge Con. Gutter.	5.21	363.99
$\frac{1}{2}$	4.7	364.5
$\frac{1}{2}$	4.9	364.3
$\frac{1}{2}$	5.1	364.1
cb.	5.5	363.7
N	5.9	363.3
+7	6.0	363.2
+13.47 = N.L. Yard Ref.	6.9	362.3
+15	6.1	363.1
6+00 = S Garage on N Con. Floor		
-48.46 = on Garage Floor	8.40	360.80
-41.46 = South edge Con. Apron. to Garage	8.60	360.60
-39'	8.2	361.0
-36.46 = N.L. Yard Ref.	9.1	360.1
-34'	8.1	361.1
-14.44 = 2' Yard 60' St.	7.4	361.8
N.L. YARD = 60' St.	6.9	362.3
cb.	6.3	362.9
$\frac{1}{2}$	5.9	363.3
$\frac{1}{2}$	5.6	363.6
$\frac{1}{2}$	5.5	363.7
+6.5 = N edge Con. Gutter.	5.75	363.45

369.20

Gut.	5.93	363.27
cb.	5.05	364.15
6+20.56 = N. 38 <sup>th</sup> St		
S	5.1	364.1
cb.	5.26	363.94
Gut. on Grating cb. Inlet.	6.13	363.07
+7.5 = N edge " " "	6.14	363.06
$\frac{1}{4}$	5.6	363.6
$\frac{1}{2}$	5.9	363.3
$\frac{3}{4}$	6.2	363.0
cb.	6.6	362.6
N	7.2	362.0
+1.91 = S edge 40' st. on N	7.3	361.9
+23.93 = S " " "	8.0	361.2
+40	8.5	360.7
+45.97 = N. " " "	9.4	359.8
+51	8.2	361.0

Cross Sections on 38<sup>th</sup> St. <sup>12' chs.</sup> <sub>9' 2 1/2'</sub> Yard Rd.  
50' South S.L. YARD Rd.

T.P.	2.17	366.18	5.19	364.01	on B.P. SE Yard 38 <sup>th</sup>
E			0.9	365.28	
E top lb.			1.01	365.17	
Gut.			1.6	364.6	
$\frac{1}{4}$			1.2	365.0	
$\frac{1}{2}$			1.1	365.1	
$\frac{3}{4}$			1.2	365.0	

366.18

Gut.	1.5	<u>366.2</u> 364.7	47
cb.	1.03	365.15	
0+50 = S.L. YARD ROAD			
		12' chs 9' 2 1/2'	
N	2.1	364.1	
N cb.	2.20	363.98	
Gut.	2.2	363.3	
$\frac{1}{4}$	2.2	364.0	
$\frac{1}{2}$	2.1	364.1	
$\frac{3}{4}$	2.2	364.0	
Gut.	2.8	363.4	
cb.	2.01	364.17	
E	1.9	364.3	
South cb. Yard St.			
E	2.1	364.1	
cb.	2.21	363.97	
Gut.	3.0	363.2	
$\frac{1}{4}$	2.6	363.6	
$\frac{1}{2}$	2.5	363.7	
$\frac{3}{4}$	2.4	363.8	
Gut.	2.7	363.5	
N	3.10	363.1	
S St			
N	2.6	363.6	
cb.	2.7	363.5	
$\frac{1}{4}$	2.7	363.5	
$\frac{1}{2}$	2.7	363.5	

1/4	3.0	363.2
Gut.	3.03	363.15
cb.	2.31	363.87
E	2.2	364.0

2 YARD ST.

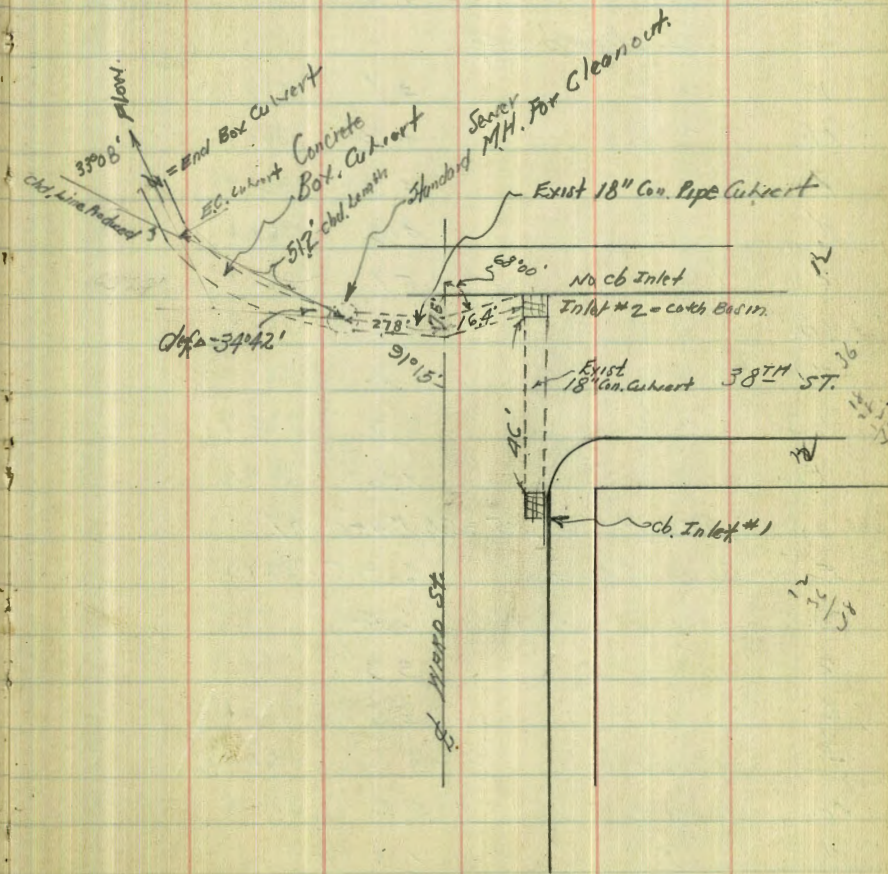
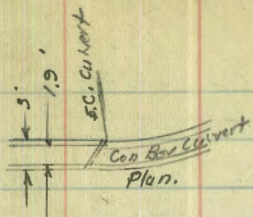
E cb.	2.41	363.77
Gut	3.3	362.9
1/4	3.4	362.8
E on Rim sewer M.H	3.05	363.13
E on Fwy " " "	6.23	359.95
1/4	3.0	363.2
cb.	2.9	363.3
	2.9	363.3
5' N 2 Yard = End cb. & Walk on East	2.51	363.67

N 14

1/4	3.2	363.0
cb.	3.3	362.9
1/4	3.4	362.8
E	3.6	362.6
1/4	3.9	362.3
Gut.	4.1	362.1
cb.	2.5	363.7
E	2.9	363.9

N 11

E	2.1	364.1
1/4	2.6	363.6



cb.	4.7	361.5
4	4.5	361.7
L	4.2	362.0
4	3.9	362.3
cb.	3.7	362.5
M.	3.6	362.6
N.W. WARD ST.		
M	4.1	362.1
cb.	4.3	361.9
4	4.3	361.9
L	4.6	361.6
4	5.1	361.1
cb.	5.4	360.8
+1	5.2	361.0
+2	2.3	363.9
E	1.6	364.6
SEC A = 65.85 = S.W. WARD Rd		
E on Van Box. Gilbert	6.95	359.53
cb.	6.4	359.8
4	5.9	360.3
4	5.6	360.6
4	5.2	361.0
cb.	4.8	361.4
M	4.3	361.9

CROSS 40' Road WARD Rd 566 75 1145

0+00. See sketch.

N-5	5.4	360.8
N	6.3	359.9
cb.	5.5	360.7
4	5.3	360.9
L	5.3	360.9
4	5.2	361.0
cb.	5.1	361.1
S	5.0	361.2
0+50		
S	7.1	359.1
cb.	7.1	359.1
4	7.1	359.1
4	7.1	359.1
4	7.1	359.1
cb.	7.1	359.1
N	7.6	358.6
+2	8.1	358.1
+5	6.2	360.0
+10	6.0	360.2
0+88.7 = BC. Rd 4 R=120° = A 34°00'		
-5	7.3	358.9
N	8.2	358.0
+3	10.1	356.1
cb.	9.1	357.1

'14	8.9	357.3
6	9.1	357.1
7	9.0	357.2
cb.	8.9	357.3
+3	9.6	356.6
5	8.7	357.5
+5	8.4	357.8
1729.3 = center of curve		
-5	9.8	356.4
5	11.1	355.1
cb.	10.6	355.6
7	10.7	355.5
6	10.8	355.4
7	10.8	355.4
cb.	10.9	355.3
+3	11.7	354.5
N	11.2	355.0
+5'	10.3	355.9
1759.91 = E.C.		
-10	13.1	353.1
-5'	14.0	352.2
N	13.8	352.4
cb.	13.4	352.8
7	13.0	353.2
6	12.9	353.3
7	12.9	353.3

cb.	12.7	353.5
5	13.1	353.1
+5	11.9	354.3
LEVELS on Exist. Drains sketch P-48		
on Grotting Inlet #1	3.10	363.08
on Floor at " #1	5.22	360.96
" " " " #2 From West	6.33	359.85
" Grotting " #2	3.03	363.15
" Floor " " #2 to North	6.45	359.73
on Rim MH Cleanout.	5.11	361.07
" Floor " " "	8.17	358.01
on top Box Cleanout at E.C.	7.16	359.02
" Floor " " " "	8.55	357.63
2' East E.C. = End Side Wall on Box Cleanout	8.77	357.41
10.5' " " = toe Lip " " "	9.01	357.17
J.P.	2.21	355.69
	12.70	353.48
Σ +00		355.7
-5	2.7	353.0
5	4.1	351.6
+3	5.2	350.5
cb.	4.6	351.1
7	4.9	350.8
6	5.0	350.7
7	4.9	350.8
+4'	4.7	351.0
cb.	5.8	349.9

35569

N	5.2	$\frac{355.7}{350.5}$
+5	2.3	353.4
	3+50	
-5	6.9	348.8
N	8.1	347.6
cb	7.3	348.4
$\frac{1}{2}$	7.5	348.2
$\frac{1}{4}$	7.5	348.2
$\frac{1}{2}$	7.5	348.2
cb	7.6	348.1
S	6.4	349.3
+5'	5.3	350.4
	3+00	
-5	8.6	347.1
S	9.0	346.7
cb.	10.4	345.3
$\frac{1}{2}$	10.0	345.9
$\frac{1}{4}$	9.9	345.8
$\frac{1}{4}$	9.7	346.0
cb.	9.8	345.9
N	10.4	345.3
+5	10.8	344.9
+10	10.1	345.6
	3+47.16 - BC. Lt.	
-12'	11.7	344.0
-10'	14.1	341.6

35569

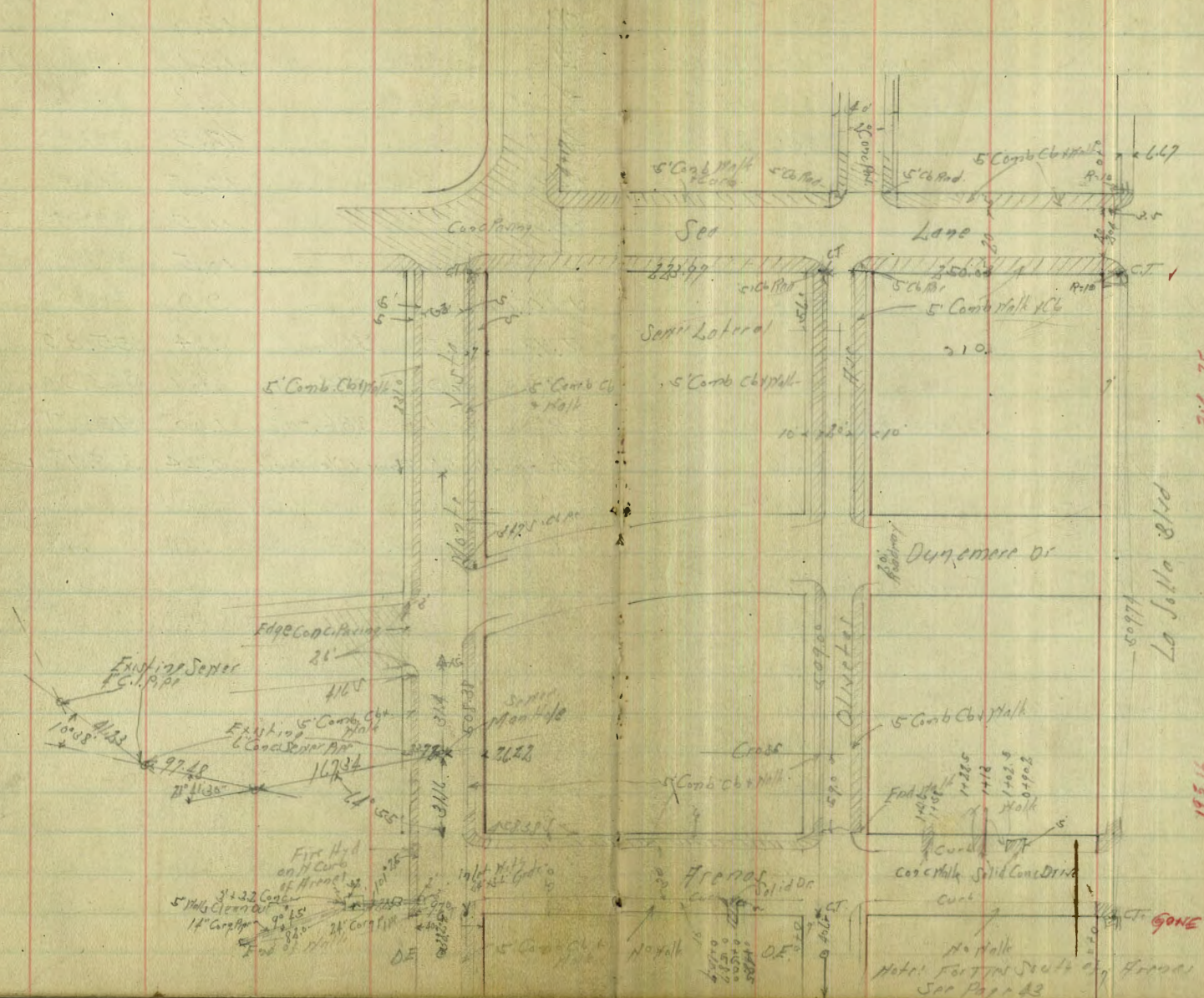
51.

-5	13.1	342.6		
N	11.9	343.8		
cb.	12.0	343.7		
$\frac{1}{2}$	12.1	343.6		
$\frac{1}{4}$	12.1	343.6		
$\frac{1}{4}$	12.3	343.4		
+4	12.5	343.2		
cb.	11.5	344.2		
S	10.5	345.2		
+10	9.9	345.8		
T.P.	12.27	367.62	0.34	355.35
T.P.	8.92	374.87	1.67	365.95
T.P.	12.15	386.02	1.00	373.87
Chk. on S.E. B.P. Adams + Cherokee St.	0.24	385.78		

Sea Lane - Olivet - Mantel  
Ties

at Reading on T.S.P. Sheet 2150  
1/17/41 2877

Hot. 21.30  
51302  
Mellor  
Hartman  
Parker



3161.75

La Jolla Blvd

509.91

195.16

HOT. GONE

Hot. Hall  
HOTEL FORTY-NINE SEVENTH ST. ST. FRANCISCO  
SEE PAGE 43

Olivetas & Montevista  
Levels of Existing Sectors.

53

BM	0.83	6856	6774	NW B.P. H. point La Silla Blvd.
TP	4.15	1133	1138	5718

DE Olivetas South of Arena  
0.7 Top Pipe  
D.E.  
0.7 Top Pipe  
#3rd Pipe

40.6 S of SL Arena	5.53	55.80	
43.3 S " " "	7.87	53.46	

Cross Olivetas Part of Arena  
on Top of Cross  
Concrete

59.0 N of H.L. Arena	7.95	53.38	
		76	

Lateral Olivetas South of Seaboard  
on Top of 6" Pipe  
Concrete

56.0 S of SL Seaboard	4.53	56.80	
TP	2.57	51.02	12.87
			48.46

DE Montevista South Arena  
on Top Pipe  
# Bottom Pipe  
on Top of 6" Pipe

38.2 S of SL Arena	6.19	44.84	
41.2 S " " "	7.16	41.87	

Man Holes North of Arena  
Top of Solid  
6" Pipe Concrete

31.16 N of H.L. Arena	6.30	44.73	
42.56 N of H.L. Arena Angle Point North of M.H.	6.26	44.77	Top of 6" Conc Pipe 4.315 N of M.H.

Montevista N of Junction  
Top 6" Conc  
Pipe  
Top of  
NW Montevista  
Arena

231.0 S of SL Seaboard	4.70	46.33	
BM	3.81	47.22	



Arenas St Cross Section  
La Jolla Blvd. to Montecito

50 ft. to  
10' Cb  
75 ft

18.10

No. 12-20  
54

BM	036	18.10	47.74	117.89 Arenas St	1/4	3.59	64.51
		W.L. La Jolla Blvd.			1/2	3.43	64.67
					1/4	3.61	64.49
N		0.3	67.8		Gutter	2.73	64.37
Cb		0.47	67.63		Cb	3.10	65.00
Gutter		1.12	66.98		S	2.9	65.2
1/2		0.98	67.12			7.5 ft	
1/2		0.88	67.22		S	4.3	63.8
1/4		1.03	67.07		Cb	4.46	63.64
Gutter		1.32	66.78		Gutter	5.12	62.98
Cb		0.56	67.54		1/4	4.99	63.11
S		0.3	67.8		1/2	4.65	63.45
					1/4	4.81	63.29
S		1.5	66.6		Gutter	5.10	63.00
Cb		1.85	65.25		Cb	4.46	63.68
Gutter		2.49	65.61		N	4.6	63.5
1/4		2.35	65.75			100 ft	
1/2		2.08	66.02		N	5.6	62.5
1/4		2.28	65.82		Gutter 12 ft.	6.35	61.75
Gutter		2.43	65.67		1/4	6.21	61.89
Cb		1.83	66.27		1/2	5.94	62.16
N		1.9	66.2		1/4	6.34	61.76
		50 ft			Gutter	6.57	61.53
N		3.2	64.9		Cb	5.89	62.21
Cb		3.10	65.00		S	6.0	62.1
Gutter		3.12	64.28			12.5 ft	

Plotted Nov. 25-1930 C.B.H.

S	7.1	61.0
Cb	6.95	61.15
Gutter	7.53	60.57
1/4	7.47	60.63
1/2	7.34	60.76
1/4	7.62	60.48
Gutter	7.83	60.28
Cb	7.17	60.93
H	7.3	60.8
150' H		
H	8.2	59.9
Cb	8.29	59.81
Gutter	9.00	59.10
1/4	8.81	59.29
1/2	8.66	59.44
1/4	8.81	59.29
Gutter	8.91	59.19
Cb	8.33	59.77
S	8.1	60.0
175' H		
S	9.3	58.8
Cb	9.66	58.44
Gutter	10.22	57.88
1/4	10.06	58.04
1/2	10.00	58.10
1/4	10.12	57.98

Gutter	10.27	57.83
Cb	9.60	58.50
H	9.4	58.7
200' H		
H	10.7	57.4
Cb	11.09	56.09
Gutter	11.60	56.50
1/4	11.43	56.67
1/2	11.10	57.00
1/4	11.31	56.79
Gutter	11.48	56.62
Cb	10.88	57.22
S	10.4	57.7
209' H - F.L. Olivetas		
S	10.9	57.2
Cb	11.38	56.72
Gutter	11.95	56.15
1/4	11.68	56.42
1/2	11.51	56.59
1/4	11.75	56.35
Gutter	11.98	56.12
Cb	11.46	56.64
H	11.1	57.0
H.L. Olivetas		
Hcb	11.94	56.16
Gutter	12.88	55.22

Armas St.

68.10

1/4		12.61	55.49
TP	1.27	56.45	55.18
1/2		0.91	55.54
1/4		1.04	55.41
Gutter		1.24	55.21
cb		0.81	56.24
S		0.2	56.0
2.511 of H.L. Oliver			
S		1.5	54.9
cb		1.47	54.98
Gutter		2.18	54.27
1/4		1.94	54.51
1/2		1.86	54.60
1/4		1.91	54.54
Gutter		2.21	54.24
HCB		1.50	54.95
50.11			
HCB		2.67	53.78
Gutter		3.40	53.05
1/4		3.01	53.44
1/2		2.98	53.53
1/4		3.11	53.34
Gutter 10 Drive		3.31	53.14
cb			
S		2.7	53.7

7.5.11

56.45

56

S		4.4	52.0
cb		3.94	52.51
Gutter		4.47	51.98
1/4		4.25	52.20
1/2		4.15	52.30
1/4		4.29	52.16
Gutter		4.75	51.70
HCB		3.95	52.50
100.11			
H Gutter 12 Drive		5.78	50.67
1/2		5.46	50.99
1/2		5.30	51.15
1/4		5.45	51.00
Gutter		5.89	50.56
cb		5.20	51.25
1/2		5.8	50.6
S		7.1	49.3
1/2		8.0	48.4
12.5.11			
- 10		10.7	45.7
S		8.4	48.0
1/2		7.1	49.3
cb		6.40	50.05
Gutter		6.98	49.47
1/4		6.58	49.87
1/2		6.40	50.05

Arenas

56.45

1/4	658	49.87
Gutter	697	49.48
HCB	636	50.09
150 W		
HCB		
Gutter mdr.	812	48.33
1/4	776	48.69
L	751	48.91
1/4	772	48.73
Gutter	819	47.26
Cb	760	48.85
+7	80	48.4
S	94	47.0
+10	114	45.0
175 W		
-10	140	42.4
S	110	45.4
+4	92	47.2
Cb	886	47.59
Gutter	938	47.07
1/4	893	47.52
L	890	47.55
1/4	911	47.34
Gutter	944	47.01
HCB	880	47.65

200 W

56.45

HCB	1000	46.45
Gutter	1066	45.79
1/4	1020	46.25
L	995	46.50
1/4	1011	46.34
Gutter	1089	45.56
Cb	1027	46.18
+L	102	46.2
S	112	45.2
+10	150	41.4
210.09 W = E.L. Montevideo		
S	106	45.8
+5	101	46.3
Cb	1057	45.88
Gutter	1108	45.37
1/4	1045	45.00
L	1030	46.15
1/4	1066	45.79
Gutter	1101	45.44
HCB	1047	45.98
3M	925	47.20

H.M. Top Hyd  
 For m.s. / m.s. / m.s. / m.s.  
 49.22

57

Sea Lane Cross Section  
La Jolla Blvd. to Monte Vista

30' Hole  
5 Cb's

BM	5.61	73.38	69.74
		1.61	71.77
TP	0.39	19.79	3.98
		1.61	71.77
		0.53	69.26
		1.00	68.79
		0.83	68.96
		1.02	68.77
		0.38	69.41
		0.56	69.23
		1.14	68.65
		0.88	68.91
		1.00	68.79
		0.53	69.26
		1.41	68.18
		2.28	67.51
		1.97	67.82
		2.13	67.66
		1.64	68.15
		2.82	66.97
		3.25	66.54
		2.01	66.71

Plotted Nov - 25 - 1930 G.B.H.

NE. Moynihan  
Sea Lane to La Jolla  
from South  
end of Cb Return on Diagonal

NE. La Jolla Blvd Prod from S-010

Nov 22-30  
58

5 Gutter	12.91	3.79	66.50
	7.51		
Scb		3.73	66.06
Gutter		4.38	65.41
z		4.19	65.60
Gutter		4.31	65.48
Hcb		3.89	65.90
	100'H		
Hcb		5.01	64.78
Gutter		5.43	64.36
z		5.17	64.62
Gutter		5.32	64.47
Scb		4.71	65.08
	125'H		
Scb		5.79	64.00
Gutter		6.41	63.38
z		6.18	63.61
Gutter		6.57	63.22
Hcb		6.06	63.73
	150'H		
Hcb		7.05	62.74
Gutter		7.60	62.19
z		7.17	62.62
Gutter		7.37	62.42
Scb		6.80	62.99
	175'H		

Sea Lane

6979

S cb	9.87	61.92
Gutter	8.39	61.40
L	8.21	61.58
Gutter	8.52	61.27
H cb	8.05	61.74

196.4' EL Oliveter from N

H cb	8.88	60.91
Gutter	9.30	60.47
L	8.99	60.80
G	9.14	60.65
S cb	8.74	61.05

206.4' H. F. cb

S cb	9.01	60.75
Gutter	9.11	60.35
L	9.33	60.46
Gutter	9.65	60.14
H on Pav	9.57	60.22
H on cb	9.08	60.71

210.5' H. F. L. Oliveter from S

H on Conc Pav	9.60	60.19
cb	9.69	60.10
L	9.41	60.33
Gutter	9.50	60.29
S cb	9.11	60.63

220.5' H. F. cb. Oliveter from S

S Top cb	9.38	60.41
----------	------	-------

6979

59

S Gutter	9.83	59.96
cb	9.84	59.95
L	9.78	60.01
cb	10.04	59.75
H on Conc Pav	9.84	59.95

226.5' H. = H cb from N

H Top cb	9.83	59.96
H Gutter	10.21	59.58
cb	10.08	59.71
L	9.84	59.95
cb	9.78	60.01
S	9.85	59.94

240' H. = H cb from S

S Top cb	9.78	60.01
S Gutter	10.25	59.54
cb	10.19	59.60
L	10.28	59.51
Gutter	10.58	59.21
H cb	10.03	59.76

250.5' H. = H L Oliveter from S

H cb	10.49	59.30
Gutter	11.00	58.79
L	10.60	59.19
G	10.41	59.33
S cb	9.78	60.01

275' H

## Sealant

69.79

Scb	1095	58.84
Gutter	11.58	58.21
L	11.65	58.14
Gutter	11.80	57.99
Hcb	11.51	58.28

300' N

Hcb	12.60	57.19
Gutter	13.05	56.74
L	12.64	57.15
Gutter	12.69	57.10
Scb	12.08	57.71

TP	1.37	59.11	12.05	57.74
----	------	-------	-------	-------

325' N

Scb	2.18	56.63
Gutter	3.10	56.01
L	3.10	56.01
Gutter	3.48	55.63
Hcb	3.05	56.06

350' N

Hcb	4.18	54.93
Gutter	4.60	54.51
L	4.22	54.83
Gutter	4.25	54.86
Scb	3.65	55.46

375' N

Scb	4.73	54.38
-----	------	-------

59.11

Gutter	5.19	53.92
L	5.27	53.84
Gutter	5.67	53.44
Hcb	5.30	53.81

400' N

Hcb	6.31	52.77
Gutter	6.78	52.33
L	6.48	52.63
Gutter - Drive	6.41	52.70

419' N = E.L. Monte Vista front - <sup>2 1/2</sup> End of Case Port.

Scb	6.57	52.54
Gutter	7.07	52.04
L	7.12	51.98
Gutter	7.38	51.73
Hcb	7.05	52.06

460' N = E.L. Monte Vista front

H.L. as Case Port	8.84	50.27
Cb	9.09	50.02
L	8.81	50.27
Gutter	8.95	50.16
Scb	8.57	50.54

8.55 50.56 <sup>SE 1/4</sup> Sealant Monte Vista

Olinos Ave. Cross Section  
Sea Lane to Fern Glen

40' wide  
10' cut

65.00

Nov 24-30

61

Page 60

TP	721	65.00	5774
	SL Sea Lane		
HCB		499	60.01
Gutter		541	59.54
Z		504	59.96
Gutter		503	59.97
FCB		460	60.40
	25' S of SL Sea Lane		
FCB		413	60.37
Gutter		514	59.86
Z		523	59.77
Gutter		561	59.39
HCB		514	59.86
	50' S		
HCB		515	59.85
Gutter		575	59.25
Z		525	59.75
Gutter		519	59.81
FCB		466	60.34
	75' S		
FCB		471	60.26
Gutter		545	59.55
Z		532	59.78
Gutter		570	59.30
HCB		519	59.81

Plotted Nov. 25-1930 C.B.H.

100' S

HCB		582	59.78
Gutter		580	59.20
Z		540	59.60
Gutter		532	59.68
FCB		481	60.19
	125' S		
FCB		491	60.09
Gutter		525	59.65
Z		541	59.59
Gutter		585	59.15
HCB		535	59.65
	150' S		
HCB		543	59.57
Gutter		592	59.08
Z		557	59.43
Gutter		556	59.44
FCB			
	175' S		
Gutter		561	59.39
Z		583	59.17
Gutter		608	58.92
HCB		556	59.44
	200' S		
HCB		562	59.38
Gutter		608	58.92



Olivetas Ave.

65.00

6228

62

£		576	59.24
Gutter		566	59.38
FCB		507	59.93
	245'S		
FCB		507	59.93
Gutter		566	59.34
£		600	59.00
Gutter in Diver		627	58.73
	250'S		
HCB		528	59.22
Gutter		623	58.77
£		591	59.09
Gutter		588	59.12
FCB		518	59.82
	275'S		
FCB		521	59.79
Gutter		582	59.18
£		586	59.14
Gutter		627	58.63
H		585	59.15
TP	3.57	628	629
			58.71
	294'S = HCB PC of gutter		
HCB		321	59.07
Gutter		383	58.45
£		314	59.14
Gutter		306	59.22

FCB		259	59.69
	314'S = HCB of gutter		
F on P.W.		296	59.32
CB		300	59.28
£		311	59.17
CB		367	59.61
H on P.W.		423	58.05
	314'S = £		
H		390	58.38
CB		353	58.75
£		318	59.10
CB		285	59.43
F		257	59.71
	324'S = SCB of gutter		
F on P.W.		334	58.94
CB		322	59.06
£		338	58.90
CB		389	58.39
H		451	57.77
	334'S		
HCB		353	58.75
Gutter		421	58.07
£		358	58.70
Gutter		368	58.60
FCB		301	59.27
	351'S		

Olivette

6228

FCB	3.35	58.93
Gutter	4.02	58.25
L	3.97	58.31
Gutter	4.44	57.84
HCB	3.81	58.47

375 S

HCB	4.35	57.93
Gutter	4.82	57.46
L	4.58	57.70
Gutter	4.50	57.78
FCB	3.85	58.53

400 S

FCB	4.33	57.95
Gutter	4.85	57.43
L	4.84	57.44
Gutter	5.23	57.05
HCB	4.82	57.46

425 S

HCB	5.40	56.88
Gutter	5.83	56.45
L	5.27	57.01
Gutter	5.35	56.93
FCB	4.90	57.38

459 S - N. Francis

FCB	5.12	56.66
Gutter	6.20	56.08

Francis  
50.00  
7.5

6228

L	6.12	56.16
Gutter	6.52	55.76
HCB	6.10	56.18

469 S - HCB Francis

H on Pav	7.14	55.24
cb	6.59	55.69
L	6.41	55.87
cb	6.28	56.00
L on Pav	6.13	56.15

H 14

L	5.90	56.38
cb	6.10	56.18
L	6.27	56.01
cb	6.52	55.76
H	6.76	55.52

L Francis

H	6.69	55.59
cb	6.35	55.93
L	6.24	56.04
cb	6.07	56.21
F	5.67	56.61

S 14

F	5.82	56.45
cb	6.17	56.11
L	6.33	55.95
cb	6.50	55.78

63

Olijetae

6228

H		686	55.42
	Sc6		
H in Box		708	55.20
CB		671	55.57
L		644	55.84
EB		622	56.06
F		613	56.15
	S-L Areas		
FCB		552	56.76
Gutter		611	56.17
L		620	56.08
Gutter		654	55.74
HCB		604	56.24
	25 S of SL Areas		
HCB		565	56.63
Gutter		627	56.01
L		580	56.48
Gutter		575	56.53
FCB		515	57.13
	50' S		
FCB		480	57.48
Gutter		545	56.83
L		554	56.74
Gutter		585	56.43
HCB		530	56.98
	75 S		

6228

HCB		490	57.38
Gutter		557	56.71
L		504	57.24
Gutter		504	57.24
FCB		445	57.83
	100' S		
FCB		389	58.39
Gutter		447	57.81
L		465	57.63
Gutter		511	57.17
HCB		448	57.80
	125' S		
HCB		411	58.17
Gutter		471	57.57
L		422	58.06
Gutter		433	57.95
FCB		359	58.69
TP	6.08 6408	428	58.00
	150' S		
FCB		500	59.08
Gutter		556	58.52
L		567	58.41
Gutter		598	58.10
HCB		552	58.56
	175' S		
HCB		516	58.92

64

Olivetor

64.08

Gutter	570	58.38
L	517	58.91
Gutter	522	58.86
FCB	459	59.49
200'S		
FCB	422	59.86
Gutter	477	59.31
L	497	59.11
Gutter	523	58.85
Hcb	477	59.31

225'S

Hcb	436	59.72
Gutter	494	59.14
L	445	59.63
Gutter	446	59.62
FCB	386	60.22

250'S

FCB	335	60.73
Gutter	418	59.90
L	416	59.92
Gutter	447	59.61
Hcb	399	60.09

275'S

Hcb	359	60.49
Gutter	418	59.90
L	364	60.44

64.08

Gutter	368	60.40
FCB	360	61.08
300'S		
FCB	270	61.38
Gutter	343	60.65
L	356	60.52
Gutter	381	60.27
Hcb	318	60.90

225'S

Hcb	285	61.23
Gutter	235	60.73
L	300	61.08
Gutter	302	61.06
FCB in Drive	283	61.25

339'S = South End of Camp 5' Cb &amp; Walk

FCB	210	61.98
Gutter	279	61.29
L	295	61.13
Gutter	323	60.85
Hcb	261	61.47

TP	0.12	51.58	1262	51.46
BM			434	47.24

H. H. Forth  
 H. H. Forth  
 17/26

Monte Vista Hill Cross Section  
Sea Level to Fern Glen

50 N. 10  
10' Cb  
75' S

54.9)

66

BM	441	54.97	50.56
	S.L. Sea Level		
FCB	445	50.52	
Gutter	5.00	49.97	
"	5.15	49.82	
"	5.30	49.67	
"	5.49	49.48	
Gutter	5.72	49.25	
HCB	5.00	49.97	
	25 S of S.L. Sea Level		
HCB	5.12	49.84	
Gutter	5.27	49.10	
"	5.60	49.37	
"	5.30	49.67	
"	5.14	49.83	
Gutter	5.23	49.74	
FCB	4.59	50.38	
	50 S		
FCB	4.66	50.31	
Gutter	5.32	49.65	
"	5.20	49.77	
"	5.36	49.61	
"	5.12	49.35	
Gutter	5.93	49.04	
HCB	5.28	49.69	

Plotted Nov. 26 - 1930

SE 7' Tack  
Sea Level  
Monte Vista

75 S

HCB	5.41	49.56
Gutter	5.98	48.99
"	5.50	49.47
"	5.22	49.75
"	5.24	49.73
Gutter in Ditch	5.43	49.54
FCB		
	100 S	
FCB	4.75	50.22
Gutter	5.48	49.49
"	5.38	49.59
"	5.44	49.53
"	5.71	49.26
Gutter	6.14	48.83
HCB	5.44	49.53
	125 S	
HCB	5.59	49.38
Gutter	6.18	48.79
"	5.69	49.28
"	5.54	49.43
"	5.37	49.60
Gutter	5.40	49.57
FCB	4.83	50.14
	150 S	
FCB	4.89	50.09

Montevista Ave

5497

Gutter	547	49.50
"	543	49.54
2	546	49.51
"	571	49.26
Gutter	629	48.68
HCB	561	49.36

175'S

HCB		
Gutter in Driv	624	48.73
"	580	49.17
2	548	49.49
"	552	49.45
Gutter	555	49.42
FCS	499	49.98

200'S

Gutter in Driv	567	49.30
"	566	49.31
2	571	49.26
"	591	49.03
Gutter	628	48.69
HCB	587	49.10

225'S

HCB	605	48.92
Gutter	638	48.59
"	605	48.92
2	591	49.23

5497

"	570	49.27
Gutter	562	49.35
FCS	515	49.82

255'S

FCS	518	49.79
Gutter	571	49.26
"	579	49.18
2	574	49.23

JP 461	5320	638	48.59
"		435	48.85
Gutter		470	48.50
HCB		438	48.82

275'S

HCB	442	48.78
Gutter	483	48.37
"	438	48.82
2	398	49.22
"	406	49.14
Gutter	407	49.13
FCS	355	49.65

300'S

FCS	360	49.60
Gutter	420	49.00
"	404	49.16
2	401	49.19
"	461	48.56

57

Gutter	5.07	48.13
HCB	4.55	48.65
325'S		
HCB	4.70	48.50
Gutter	5.14	48.06
1/4	4.64	48.56
1/2	4.13	49.07
1/4	4.18	48.02
Gutter	4.38	48.82
ECB	3.74	49.46

342'S = Cb PC on F

ECB	3.25	49.45
Gutter	4.32	48.88
1/4	4.30	48.90
1/2	4.29	48.91
1/4	4.75	48.45
Gutter	5.33	47.87
HCB	4.83	48.37

357'S = HCB Dugmeter on F

HCB	4.83	48.37
Gutter	5.34	47.86
1/4	4.87	48.33
1/2	4.32	48.88
1/4	4.43	48.77
CB	4.47	48.73
F on Pav	3.47	49.73

+ 1 on Pav	3.43	49.97
on Cb = EC	2.54	50.66
370'S = Cb PC on F		
F	3.65	49.55
CB	4.47	48.73
1/4	4.48	48.72
1/2	4.64	48.56
1/4	5.00	48.20
Gutter	5.38	47.82
HCB	4.81	48.39

381'S = S Cb on F + HCB on F

H on Cb	4.76	48.44
H on Conc Pav	5.38	47.82
+ 3 on Pav	5.31	47.89
CB	5.54	47.66
1/4	5.09	48.11
1/2	4.64	48.56
1/4	4.55	48.65
CB	4.61	48.59
F on Pav	3.82	49.38
F on Cb = EC	3.10	50.10

390'S = Cb PC on F

ECB	4.47	48.72
Gutter	5.18	48.02
1/4	4.97	48.23
1/2	4.96	48.24

Monte Vista

5380

'H	535	47.85
Cb	560	47.60
+7 = Edge Core Pav	520	48.00
H 07 " "	525	47.95
406'S		
H 07 End Cb PC	511	48.09
H " Pav	512	47.58
+3 = Edge Core Pav	512	47.58
Cb	627	46.93
'H	587	47.33
L	548	47.72
'H	565	47.55
Gutter	592	47.28
FCb	520	48.00

416'S = Cb PC 07 H

FCb	561	47.59
Gutter	639	46.81
'H	598	47.22
L	578	47.42
'H	628	46.92
Gutter	675	46.45
HCB-PC	600	47.20

450'S

HCB	789	45.31
Gutter	831	44.89
'H	782	45.38

5320

89

L	733	45.87
'H	746	45.74
Gutter	765	45.55
FCb	694	46.26
458'S = NL HPC 01		
FCb	732	45.88
Gutter	780	45.40
'H	780	45.40
L	767	45.53
'H	812	45.08
Gutter	863	44.57
HCB	827	44.93

HCB of HPC 01

HCB	836	44.90
Gutter	882	44.38
'H	855	44.65
L	833	44.87
'H	819	45.01
Cb	799	46.21
F 07 Pav	778	45.42
F " Cb	721	45.99

L HPC 01

F	706	46.14
Cb	741	45.79
'H	771	45.49
L	785	45.35

HPC 01  
50' H. do  
10' Cb  
75' 01'



Montevista

5320

1/4	8.39	44.81
Gutter	8.92	44.28
HCB	8.31	44.89

S. Cb. of Arcades - 10' lat on N

HCB	8.25	44.85
Gutter on Grating at East	9.20	44.00
Flax. Line of 10' lat	11.15	41.05
1/4	8.70	44.50
L	8.30	44.90
1/4	8.15	45.05
Cb	8.00	45.20
F on Pav	7.84	45.36
F on Cb	7.33	45.87

S. L. Arcades

L Cb	7.34	45.86
Gutter	7.94	45.26
1/4	7.70	45.50
L	7.85	45.35
1/4	8.39	44.81
Gutter	9.05	44.15
Cb	8.33	44.87
H	8.5	44.7
BIM	6.01	47.19

25' S of S. L. Arcades

H	8.3	44.9
Cb	8.10	45.20
Gutter	8.83	44.37
1/4	8.22	44.98

53.20

L	7.62	45.58
1/4	7.50	45.70
Gutter	7.70	45.50
F Cb	7.08	46.12

50' S

F Cb	6.89	46.31
Gutter	7.60	45.60
1/4	7.32	45.88
L	7.43	45.77
1/4	7.93	45.27
Gutter	8.47	44.73
Cb	7.77	45.43
H	8.0	45.2

75' S

H	7.7	45.5
Cb	7.58	45.62
Gutter	8.29	44.91
1/4	7.59	45.62
L	7.25	45.95
1/4	7.30	45.90
Gutter	7.49	45.71
F Cb	6.72	46.48

100' S

F Cb	6.54	46.66
Gutter	7.29	45.91
1/4	7.15	46.05
L	7.06	46.14
1/4	7.41	45.79

70

Montevista

5320

Gutter	810	4510
Cb	734	4586
H	77	-458
H	73	-459
Cb	718	4602
Gutter	785	4535
1/4	703	4617
1/2	685	4635
1/4	693	4627
Gutter	712	4508
FCB	638	4682
	150'S	
FCB	617	4703
Gutter	690	4630
1/4	664	4656
1/2	664	4656
1/4	700	4620
Gutter	761	4559
Cb	691	4629
H	70	462
	175'S	
H	69	463
Cb	663	4657
Gutter	744	4576
1/4	672	4648
1/2	643	4677
1/4	654	4666

5320

71

Gutter	671	4649
FCB	600	4720
	200'S	
FCB	587	4733
Gutter	664	4656
1/4	625	4695
1/2	614	4706
1/4	658	4668
Gutter	712	4608
Cb	645	4675
H	66	466
	225'S	
H	65	467
Cb	625	4695
Gutter	697	4623
1/4	636	4684
1/2	600	4720
1/4	609	4711
Gutter	643	4677
FCB	569	4751
	250'S - End of Cb on H	
FCB	546	4774
Gutter	609	4711
1/4	590	4730
1/2	571	4749
1/4	606	4714

Monte Visto

53.80

50.94

72

Gutter		66.3	46.57	H	4.9	46.0
Cb - End		6.00	47.20	Cb	4.6	46.3
H		7.3	45.9	"H	4.3	46.6
TP	1.84	50.94	41.0	49.10	3.8	47.1
	27.51			"H	3.5	47.4
-10		9.7	41.2	Cb	2.7	48.2
H		9.6	41.3	7.5	2.4	48.5
+5		9.2	41.7	F	0.0	50.9
Cb		6.9	44.0			
+5		3.7	47.2	F	4.2	46.7
"H		3.6	47.3	Cb	5.0	45.9
L		3.31	47.63	"H	5.4	45.5
"H		3.56	47.38	L	4.8	46.1
Gutter		3.71	47.18	"H	5.0	45.9
FCB		3.07	47.87	Cb	4.6	46.3
	293'S = End of Cb + Path on F			H	4.2	46.7
FCB		2.91	48.03			
Gutter		3.8	47.1			
"H		3.2	47.7			
L		3.6	47.3			
"H		4.2	46.7			
+3		4.2	46.7			
Cb		5.7	45.2			
H		7.1	43.8			
+5		7.1	43.8			

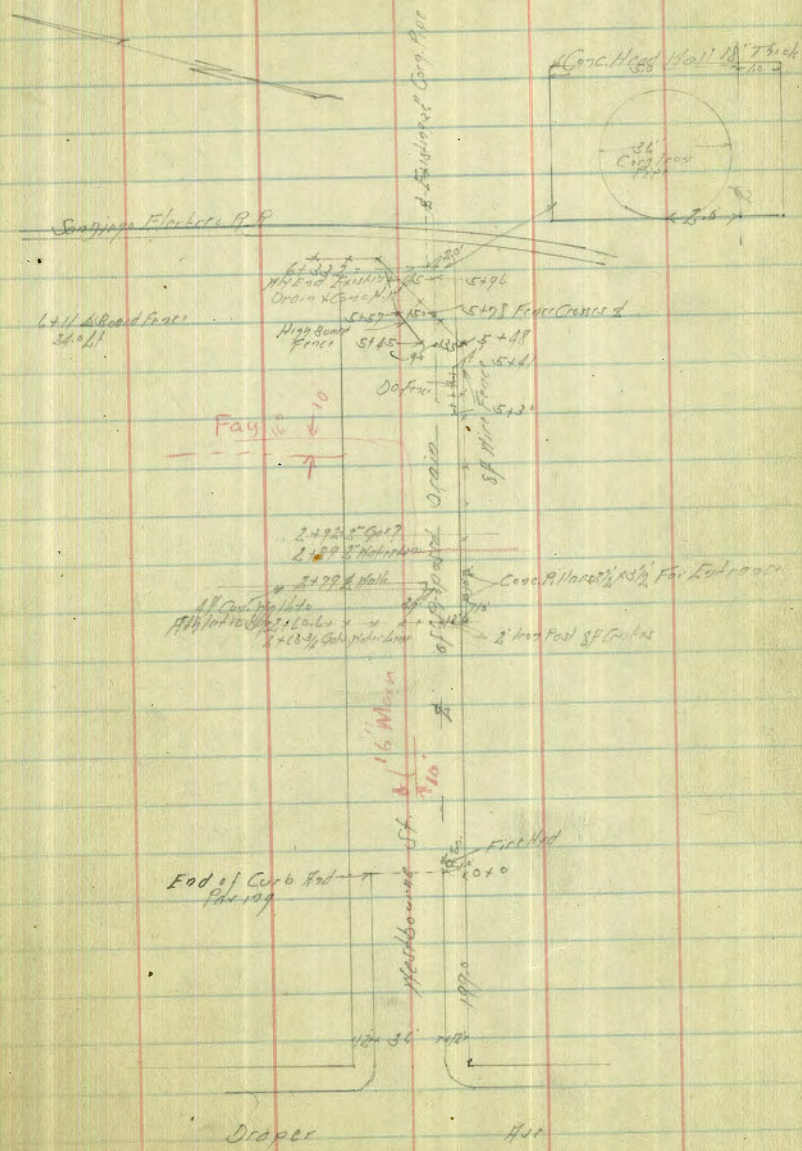
229.2'S

300.63' = H.L. Surface From H

Westbourne St Proposed Storm Drain  
From End of Paving End of Draper to  
San Diego Electric R.R.

Indexed  
c.s.K.

BM	12.95	91.96		79.01	J.F.B.P. Los Jolla Blvd Westbourne
TP	12.87	104.19	0.34	91.62	
TP	12.57	115.62	1.44	103.05	J.F.B.P. Westbourne Street
		0-50			
1/2	on Gutter Paving	4.57		111.05	
		0+0			
1/2	on Gutter Paving	1.88		113.74	✓
	Top Curb	1.23		114.39	✓ Check Profile Grade
	3.5 ft. N Edge Walk	1.12		114.50	
	8.5 ft. S	1.02		114.60	
	12' ft.	1.0		114.6	
	9' ft on Paving	1.38		114.24	
	18 ft on ft - S Westbourne	1.27		114.35	
	27 ft " " N 1/4	1.67		113.95	
	36 ft " " N Gutter	2.26		113.36	
	Top Curb	1.71		113.91	
	39.5 ft. S Edge Walk	1.62		114.00	
	14.5 ft. N	1.52		114.10	
	48 ft. N. L. Westbourne	2.9		112.7	
		0+25			
	30 ft	0.8		114.8	
	5 ft	0.0		115.6	
	1/2	0.5		115.1	
	5 ft	0.1		115.5	
TP	11.95	137.4	0.13	115.49	



Dr. 23.31  
Meer  
S. 1109  
Northern  
73

127.44

12' Pt - S. L. Westhouse 11.5 115.9

0750  
12' Pt 10.3 117.1  
6' Pt 10.6 116.8  
5' Pt 11.1 116.3  
3' Pt 11.1 116.3  
1/2 10.0 117.4  
3' Lt 8.9 118.5  
15' Lt 11.5 115.9  
30' Lt 12.2 115.2

0775  
30' Lt on Playing Field 10.7 116.7  
15' Lt 10.4 117.0  
13' Lt 9.4 118.0  
1/2 9.0 118.4  
3' Pt 10.2 117.2  
6' Pt 10.2 117.2  
6' Pt 8.9 118.5  
12' Pt 8.8 118.6

120  
12' Pt 7.5 119.9  
6' Pt 7.2 120.2  
6' Pt 9.9 117.5  
2' Pt 9.9 117.5  
1/2 7.3 120.1

6' Lt 7.2 120.2  
30' Lt 10.0 117.4

1735  
30' Lt on Playing Field 8.6 118.8  
20' Lt 8.5 118.9  
10' Lt 5.1 122.3  
2' Lt 5.5 121.9  
2' Lt 7.7 119.7  
1/2 8.1 119.0  
6' Pt 7.7 119.7  
6' Pt 5.5 121.9  
12' Pt 5.6 121.8

1717  
12' Pt 5.0 122.4  
9' Pt 5.1 122.3  
9' Pt 7.4 120.0  
2' Pt 7.3 120.1  
1/2 6.6 120.8  
2' Lt 4.8 122.6  
10' Lt 4.4 123.0  
20' Lt 8.1 119.0  
30' Lt - Playing Field 8.2 119.2

1415  
30' Lt 7.7 119.7  
19' Lt 7.9 119.5  
12' Lt 4.2 123.2

4' H	41	123.3
2' H	5.8	121.6
2	13	121.1
1' H	19	120.5
1' H	72	120.2
1' H	3.4	124.0
12' H	13	123.1
12' H	18	125.6
8' H	17	125.7
8' H	38	123.6
2	4.3	123.1
3' H	17	125.7
12' H	22	125.2
23' H	70	120.4
30' H of Playing Field	6.1	121.3
30' H	50	122.4
19' H	43	123.1
10' H	00	127.4
8' H	19	125.5
3' H	18	125.6
2' H	29	124.5
2	29	124.5
3' H	66	126.8
12' H	05	126.9

210

2125

TP	12.18	139.45	017	127.27
		2140		
12' H			11.4	128.1
4' H			10.8	128.7
4' H			14.3	125.2
2' H			14.3	125.2
2			12.2	127.3
2' H			11.0	128.5
13' H			11.5	128.0
23' H			15.0	124.5
30' H			15.2	124.3
			2160.6 - Cross Difference	
30' H			11.1	128.4
15' H			10.5	129.0
2			10.4	129.1
2' H of 1/2 Pipe Ground			13.0	126.5
2' H			13.0	126.5
5' H			11.8	127.7
10' H			10.2	129.3
10' H			10.2	129.3
12' H				
			2170.6 - 1/4 Line of Cross P. Net	
12' H			9.1	130.4
7' H			8.9	130.6
6' H			12.1	127.4
2' H			12.1	127.4

139.45

2	115	128.0	⊙
2 1/2	97	129.8	
10 1/2	91	130.1	
30 1/2	108	128.7	

2+99 = 2 4 Core Walk

53 1/2 - Sky Blk Line on Core Walk	1071	128.74	
30 1/2 - Sky Blk Line on Core Walk	1050	128.95	
37 1/2 - Sky End of " "	873	130.72	
2 1/2	90	130.5	
2	119	127.6	⊙
1 1/2	113	128.2	
7 1/2	88	130.7	
13 1/2	87	130.8	

2+99

2 on 2" Pipe Top	1142	128.03	
------------------	------	--------	--

2+92

2 on Top 2" Pipe	1088	128.63	
------------------	------	--------	--

3+0

12 1/2	77	131.8	
1 1/2	83	131.2	
2 1/2	99	129.6	
2	99	129.6	⊙
1 1/2	98	129.7	
2 1/2	80	131.5	
15 1/2	87	130.8	
22 1/2	102	129.2	

139.45

30 1/2 on Playing Field	10.4	129.1	⊙
	2 1/2		

30 1/2	96	129.9	
2 1/2	90	130.5	
15 1/2	68	132.7	
6 1/2	59	133.7	
2	65	133.0	⊙
2 1/2	78	131.7	
6 1/2	78	131.7	
6 1/2	62	133.3	
13 1/2	54	134.1	

4+0

12 1/2	29	136.6	
1 1/2	35	136.0	
6 1/2	49	134.6	
4 1/2	49	134.6	
2	42	135.3	⊙
6 1/2	31	136.4	
18 1/2	47	134.8	
2 1/2	70	132.5	
30 1/2 on Playing Field	8.0	131.5	

4+50

30 1/2	66	132.9	
2 1/2	59	133.6	
16 1/2	16	137.9	
5 1/2	06	138.9	

139.45

2		16	137.9	✓
1' Pt		20	136.5	
5' Pt		22	136.3	
7' Pt		25	139.0	
13' Pt		27	138.8	
TP	12.20	151.22	139.02	

5+0

13' Pt		10.2	140.0	
6' Pt		10.6	140.6	
4' Pt		12.8	138.4	
2' Pt		12.8	138.4	
1/2		11.3	139.9	✓
5' Lt		10.1	141.1	
17' Lt		11.5	138.7	
21' Lt		15.8	135.4	
30' Lt		16.7	134.5	

5+41 1/2 Header Strips 22 Lt

30' Lt on Play 12g Field	15.8	135.4	
22' Lt - Bottom Strips 5' wide	15.0	136.2	
14.5' Lt - Top	10.55	140.67	
10.5' Lt - Sky Platform	10.7	150.5	
2' Lt	8.4	142.8	
1/2	8.9	142.3	✓
3' Pt	9.1	142.1	
2' Pt	10.7	140.5	
6' Pt	10.8	140.4	

151.22

77.

6' Pt	9.6	141.6	
13' Pt	8.4	142.8	
13' Pt	6.4	144.8	
10' Pt	8.3	142.9	

5+78

1/2 - Misc Fence	8.3	142.9	✓
7' Lt	7.1	144.1	
14' Lt - Board Fence	7.7	143.5	
30' Lt	14.4	136.8	

5+96

30' Lt	14.3	136.9	
21' Lt	13.2	138.0	

17.5' Lt - Board Fence	8.0	143.2	
7' Lt - Misc Fence	7.4	143.8	
5' Lt	8.3	142.9	
1/2	8.1	143.1	✓

7' Pt	7.9	143.3	
12' Pt	6.0	145.2	
16' Pt	4.2	147.0	

6+11

17' Pt	3.4	147.8	
12' Pt	5.8	145.4	
1/2	7.9	143.3	✓
4' Lt	8.2	143.0	
16' Lt	7.0	144.2	
21' Lt - Board Fence	9.5	141.7	



15/22

78

	L+21		
25 Lt		82	143.0
18 1/2 Lt - A Wire Fence		76	143.6
7 Lt		65	144.5
5 Lt		81	143.1
3 Lt		81	143.1
1/2		72	144.0 ✓
6 Ft		54	145.8
12 Ft		51	146.1

L+33.2 = Nly End of Existing 36" Corrugated Pipe

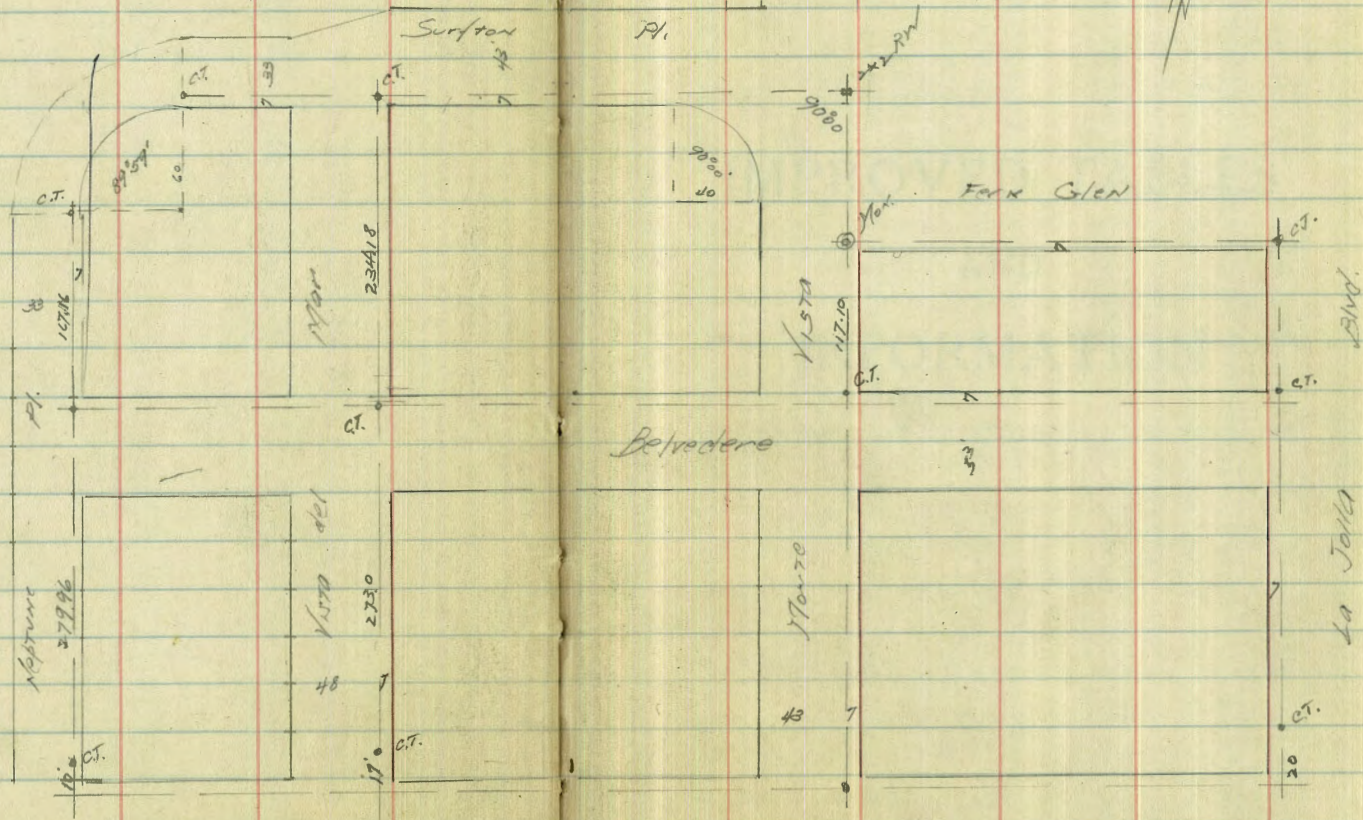
10 Ft		49	146.3		
1 Ft - S End Case Hand Hole		50	146.2		
1/2		60	145.2		
2 Lt - 36" Corrugated Pipe Floor Level		61	145.04		
2 Lt Ground		77	143.5		
5 Lt - N End Case H.H.		52	146.0		
10 Lt		51	146.1		
TP	0.37	138.91 ✓	1218	138.54 ✓	
TP	0.52	126.55 ✓	1288	126.02 ✓	
TP			1218	114.37 ✓	Top Curb 810

Ties for First Add. to So. La Jolla

North  
Visual  
Northward

922000

G.B. 115-44



indexed  
C.S.K.

CL. 922000 on T.S. 11/41 21/41  
11/7/41 21/41

79

see page 43

PI.

Surfex 43

Fork Glen

Belvedere

Westbourne

La Jolla

BND.

DIRECTIONS FOR USE OF TABLES

TABLE No. 1.

Distance of slope stake from side or shoulder  
stake for any width roadway, slope 1 to 1.  
If ground is nearly level, the cut or fill on side  
stake is located by the double entry method in  
left column and top row. The number in body

IMPROVED TABLES  
AND  
INFORMATION

TABLE No. 2.

To find Tangent and External for curve of  
any other degree, divide by degree of curve and  
add correction found in column of corrections.  
Degree of curve with a given  $T$  may be found  
by dividing tangent (or external), opposite  $T$  by  
given tangent (or external).  
The distance from a point on the tangent to  
the curve is very nearly the square of the tangent  
length divided by twice the radius.

251 75.7 E

ENGINEERING DEPARTMENT,  
CITY OF CALIFORNIA.  
S IN 21-60.

310  
212  
572 - JAN 41

54.5  
5.4  
60.3  
54.5  
54.5  
16  
125.0  
60.3  
64.7

34716  
12991  
18725  
5.03  
3.97  
1.07

46.0  
44.0  
1.14

125  
60.4  
64.4  
179.60  
88.45  
91° 15'

10.7  
10.6 + 7.  
8.9 + 8  
8.3

453.14  
83.50  
369.64

3442  
69° 24'