

1376

THE
LIBRARY

OF THE

UNIVERSITY

The index is pp 28 of 27 in A.H.

Top. Ex 20 Main 8.66 22 outside
Send. Ex Curb 4.73
3.93
1.84 = 22"
5.77 Bottom Price below Curb

MICROFILMED
DEC 23 1964

Our Leather Bound Engineers Note Books are carried in the following rulings:

- No. 380 LEVEL BOOK. Left and Right Hand Page the same as Left Hand Page of this Book.
- No. 382 FIELD BOOK. Left Hand Page as in this Book, Right Hand Page 4 x 4 to the inch, Center Line Red.
- No. 384 MINING TRANSIT BOOK. Left Hand Page as in this Book, Right Hand Page 8x8 to the inch, Center Line Red.
- No. 385 FIELD BOOK. Left Hand Page as in this Book, Right Hand Page 8 vertical and 4 horizontal lines to the inch, Center Line Red.

We also carry the Note Books listed above, bound in extra strong Fabri-Hide (otherwise the same quality of book), which can be furnished at a somewhat lower price.

In ordering Fabri-Hide covered books, add the letter "F" to catalog number.

THE FREDERICK POST CO.
ENGINEERING and DRAFTING SUPPLIES
IRVING PARK STATION
CHICAGO, ILL.

The sidewalk to pp 28 of 27th St.

X Sec. Chesterton Dr. Redfield to N. Moreland 2
Blk survey La Mesa Colony 7

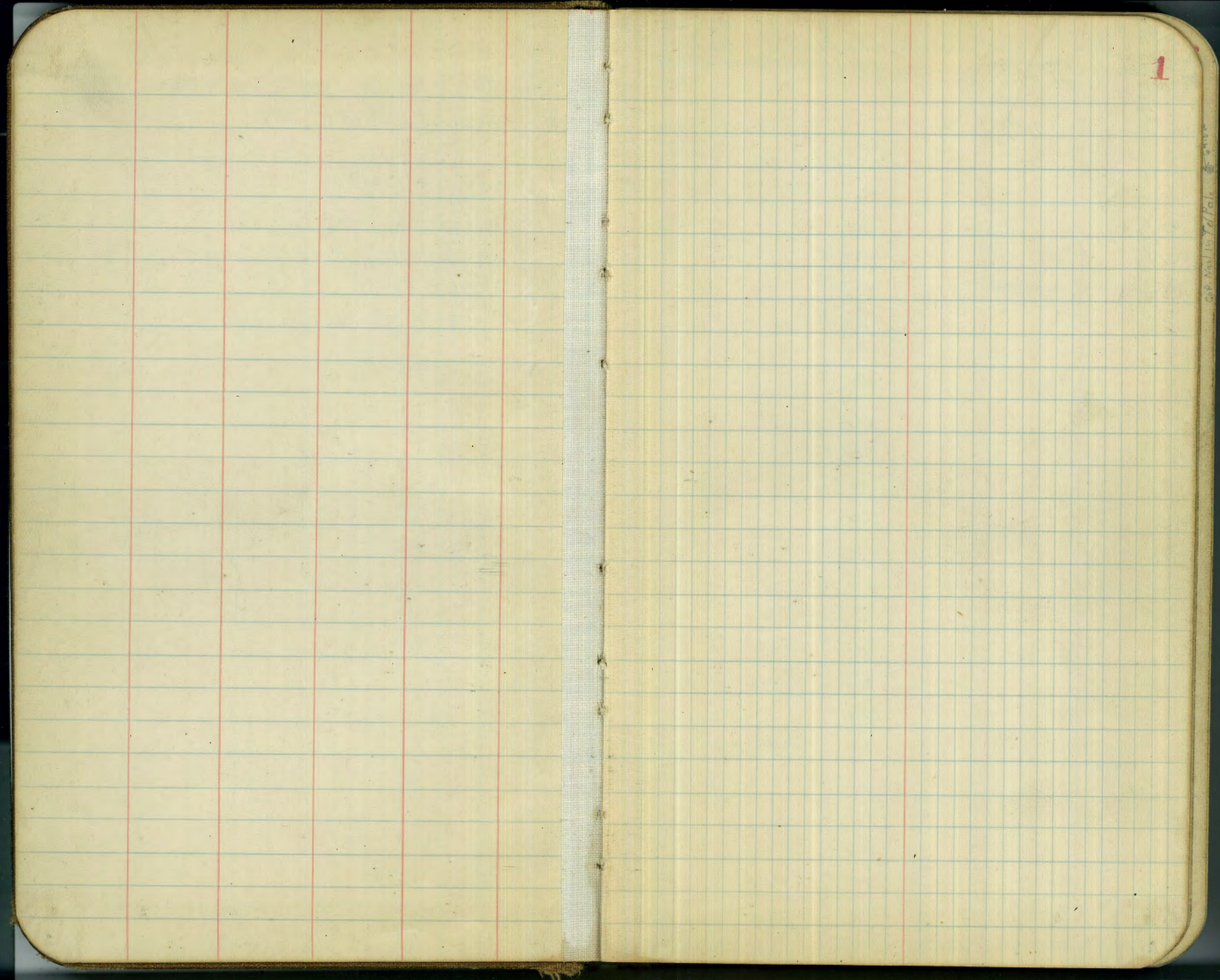
X Sec. ORANGE Ave. = 41st to 43rd 17

Location of Bldg. E. side 7th "C" Bndy. 29

Sewer Levels Avenue Court. 30

Kettner Blvd. "B" to Nutmeg, 32

(Above is sidewalk Job only)



1

Geo. M. Smith & Co. N.Y.

B. B. Hiss - Notes
 Joe Duermitt
 J. Jacobszoon
 if So per
 Dec 18, 1929

X-Section - Chesterton Drive
 from the E. line of Redfield to the W. line
 of Westmoreland

NE. Marker 574 358.97 353.23

Redfield
 & Chesterton
 same use as
 above

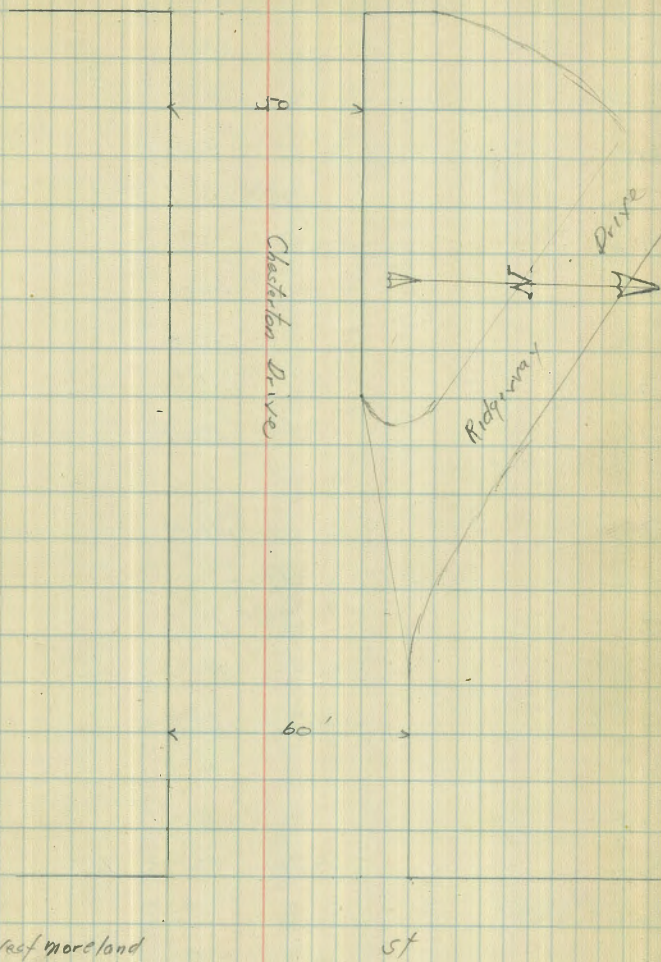
at 00 E. line of Redfield

-10	6.2	
S	6.0	
+15	6.6	352.4
+20	6.9	
+30	7.0	
+35	7.6	
+37	7.1	
+50	8.0	
+60	8.0	
	at 25	
-60	8.9	
-50	8.9	
-36	8.7	
-35	9.3	
-25	8.2	
-15	8.2	350.8
-5	7.4	
+10	7.4	
	at 50	
-10	9.5	
S	9.4	
+15	9.4	349.6
+25	9.2	

Redfield

St

2



35897

+35	9.9	
+50 N	9.9	
+60	9.5	
0+75		
-60	9.8	
-50	10.0	
-35	10.4	
-25	9.6	
-15	10.4	348.6
S	11.0	
+10	11.4	
1+00		
-10	11.8	
S	11.2	
+7	11.1	
+15	10.3	348.7
+25	9.6	
+35	10.3	
+50 ^{Nline}	9.7	
+60	9.0	
1+25		
-60	8.1	
-50 ^{N.L.}	9.0	
-35	9.7	
-25 ϕ	9.1	

358:97

3

-15	10.0	349.00
-7	10.7	
S.	10.7	
+10	11.5	
1+50		
-10	10.6	
S	10.4	
+15	9.5	349.5
+25 ϕ	8.4	
+35	9.1	
+40	8.4	
+50 NL	7.3	
+60	6.8	
1+75		
-60	4.9	
-50 NL	5.6	
-38	6.7	
-34	8.1	
-25 ϕ	7.5	
-15	8.6	350.4
S	9.2	
+10	9.7	
2+00		
-10	8.5	
S.	8.2	
+7	7.6	

358.97

+15	7.4	351.6
+25	6.6	
+34	7.4	
+37	5.7	
+50	4.1	

2+25

-50	3.8	
-36	5.3	
-34	6.6	
-25	5.8	
-15	6.6	352.4
8	7.2	

+10

2+50

-10	7.0	
5	6.4	
+9	6.3	
+15	5.8	353.2

+25

+34

+36

+50

2+73

-51

-37

-35

358.97

-25	4.2	
-15	5.1	353.9
-6	6.1	
5	6.3	
+10	6.4	

3+00

-10	5.5	
5	5.1	
+9	5.0	

+15

+17

+25

+35

+45

+53 N/km

3+25

-54² NL

-45

-35

-25

-19

5

+10

3+50

-10

5

+15

4

358.97

47
358.97

→ 3158.0
Red 1.5

358.97

4425
77
4417.3

5

4417.30 P.C. on rd

+20 ^{PKM}	4.2	354.8 -	-60 NL	6.6	
+30	4.1		-50	6.8	
+40	4.1		-40	7.9	
+50	4.0		-30	7.5	
+56 NL	4.0		-20	8.0	350.2
	3+7.5		-8	8.3	
-57 ⁵⁰ NL	4.2		5.	8.4	
-47	4.8		+10	8.4	
-45	6.3			4+5.0	
-35	5.4		-10	9.3	
-30	5.0		5.	9.1	
-20	5.7	353.3	+10	9.0	
-8	6.2		+20	8.9	350.1
5	6.5		+30	8.8	
+10	7.0		+40	9.3	
	4+0.0		+50	9.0	
-10	7.7		+60	8.9	
5.	7.8			4+7.5	
+10	7.5		-60	9.6	
+20	7.1	351.9	-50	9.7	
+30	6.6		-40	9.9	
+41	7.5		-30	9.2	
+43	6.6		-20	9.5	349.5
+59 NL	5.8		-10	9.9	
			5	9.9	

H.I.
358.97

+10	10~	
	5700	
-10	11.0	
S	11.1	
+20	10.5	348.5
+30	9.6	
+35	9.7	
+40	10.3	
+50	10.1	
+60 NL	9.9	
	5125	
-60 NL	9.7	
-50	10.1	
-40	10.3	
-30	9.7	
-20	10.6	348.4
-10	11.0	
S	11.1	
+10	11.1	
	5750	
-10	11.2	
S	11.1	
+10	10.8	
+20	10.8	348.2
+30	9.9	

H.I.
358.97

6

+35	10~	
+40	10.8	
+50	10.0	
+60	9.6	
	5179	50 NW line of West Meadow
-60	9.3	
-50	9.7	
-40	9.9	
-40	10.6	
-30	10~	
-20	10.9	348.1
-10	10.5	
S.	10.9	
+10	10.9	
	check B.M.	NW Westmeadow Proprietor + Charleston
	9.33	349.64

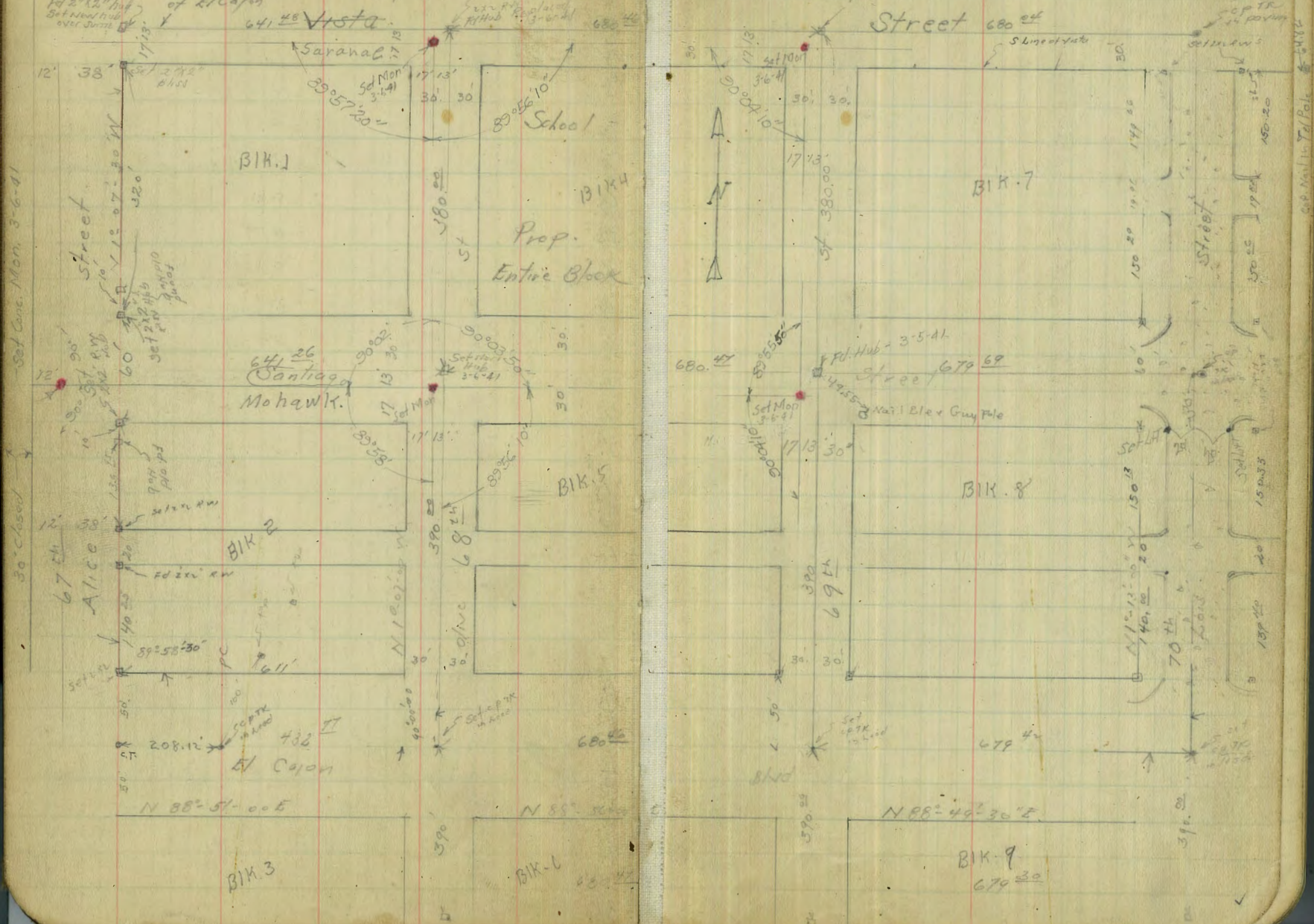
GP Mill in T/1/101

Bill Bliss
Joe Duermitt
J. Jacobs
Morgan
Jan 6 1894

Block Survey La Mesa Colony

Note: All Bearings Taken from Map Drawn
by Watson, Valle & Gough for the Improvement
of El Cajon

Checked with N.P. Sheets
4314 15-16-17-18
1/16/11 7



Set Conc. Mon. 3-6-41

30' closed

Hub 1d Replaced 3-6-41

Hub 3-5-41

Set 1st 1st 1st

Set Nail in Top Pole

Sta Align Def Bearing Curve Data Mag Bq

9

680.56

N 88° 56' 30" E

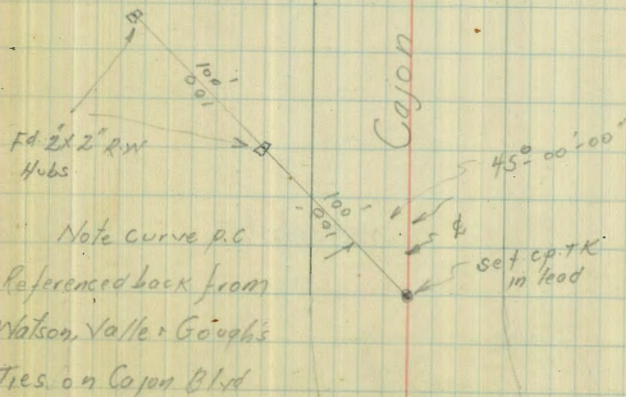
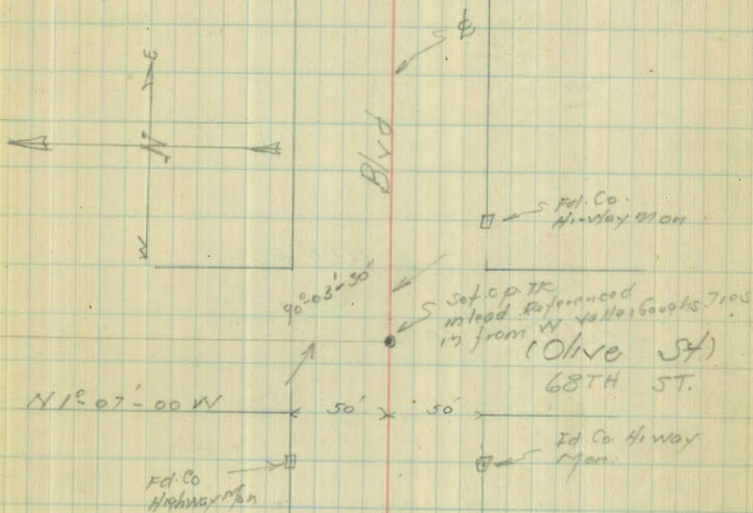
X 0° 05' 00" R

432.77

ctac PC

Y

N 88° 51' 30" E



Sta Align Def Bearing

679.42

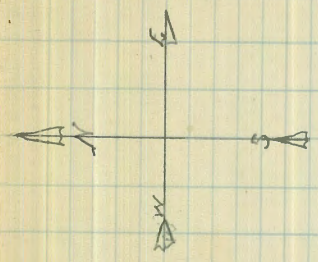
N 88° 50' 00" E

Δ 0° 06' 30" Lt

680.44

N 88° 56' 30" E

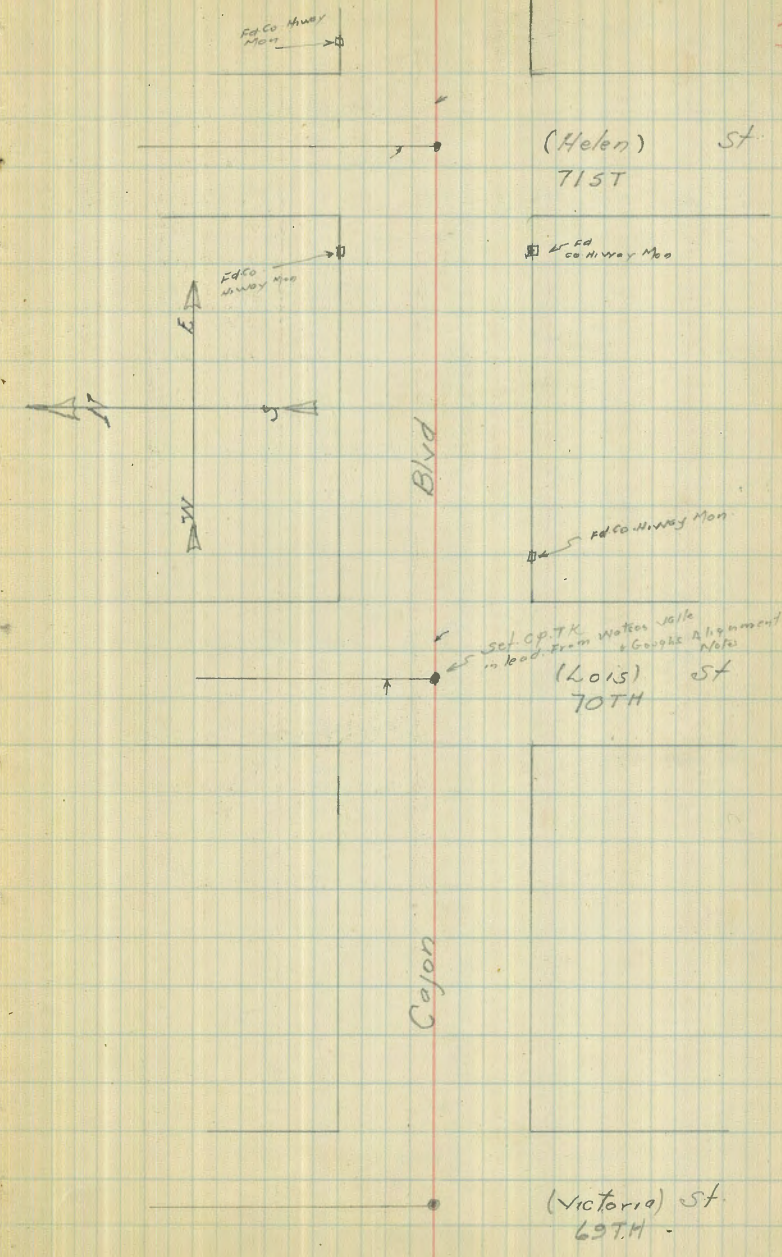
*



89° 57' 00"
 set optk
 in lead W. V. + Curve
 Align. Note
 (Victoria) Street
 69TH

set optk
 in lead
 (Olive) St
 68TH

Sta	Alignment	Def	Bearing
			$N 88^{\circ} 48' 30'' E$
	680		
X		$0^{\circ} 01' 30'' L$	
	679.42		$N 88^{\circ} 50' 00'' E$
Y		$0^{\circ} 06' 30'' L$	

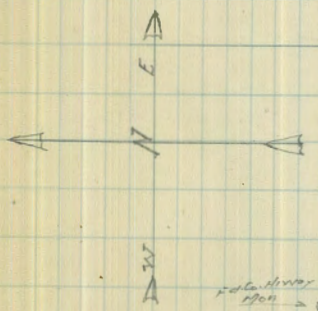


Sta Alignment Def Bearing Coordinates

680
X
680

N 88° 46' 30" E

N 88° 46' 30" E



Ed Co. Hwy
Man

St
Normans

Set c.p. in hood
referenced to James Watson
(Isabella) St.
73 RD
Valko & Coombs
Alignment Notes

Ed Co
Hwy Man

Ed Co. Hwy
Man

Set c.p. in hood
referenced to James W. Valko & Coombs
(Dora) St
72 RD
Alignment Notes

Ed Co. Hwy
Man

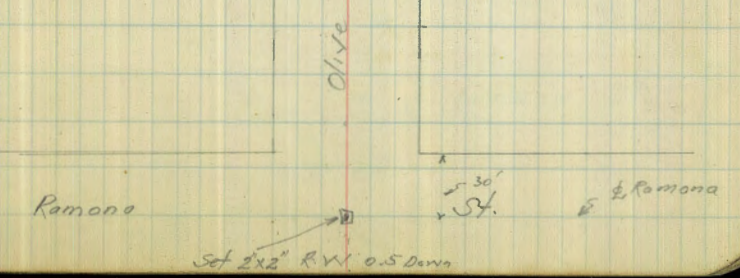
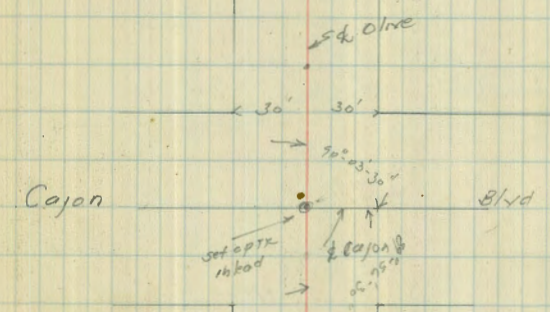
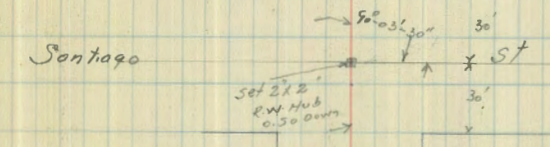
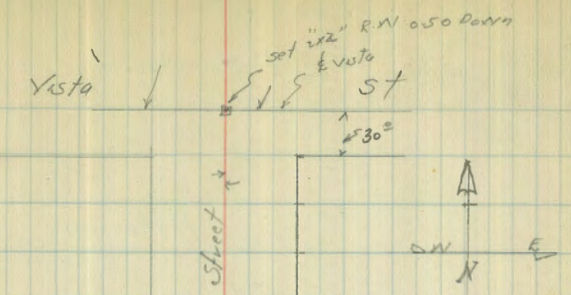
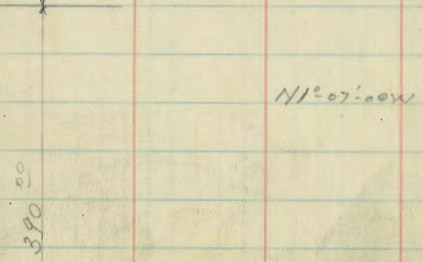
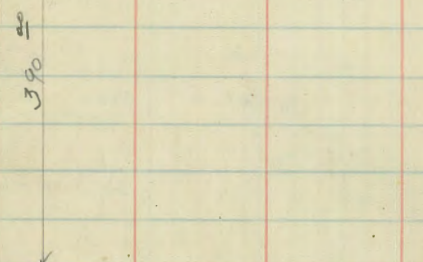
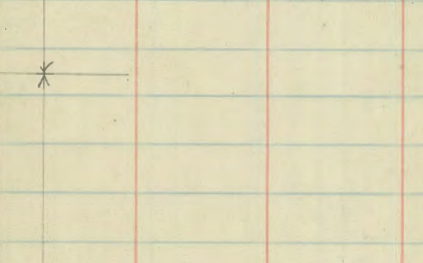
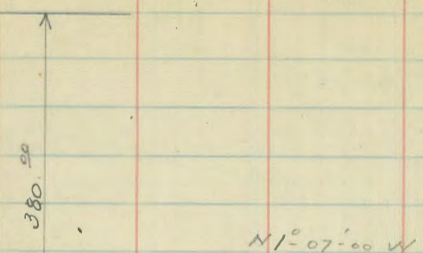
Ed Co. Hwy Man

Cajon

Set c.p. in hood
(Helen) St
71 ST

Alignment (Olive) St La Mesa Cobay
68TH

Sta. Align Def. Bearing



Alignment (Victoria) St La Mesa Colony
69TH

Sta

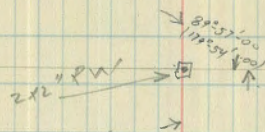
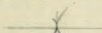
Align

Def

Bearing

360.00

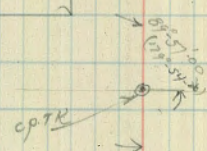
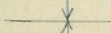
N1°07'00"W



Santiago St

390.00

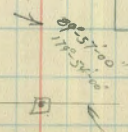
N1°07'00"W



El Cajon Blvd

390.00

N1°07'00"W



Ramona St

↳ k Vista

Alignment (Alice) St. Lo Maso Colocar
 67TH ALICE
 Bearing

Alice

Def

360

360

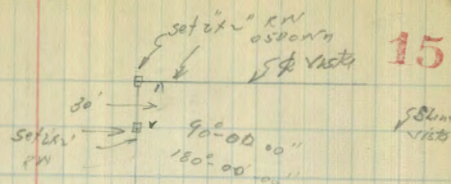
360

340

20

340

N. 1° 07' - 30" W

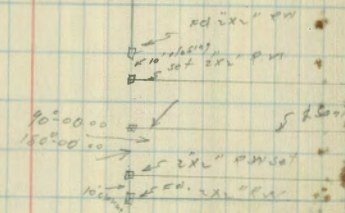


15

360

Edge of Alice

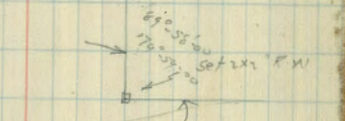
St



For Distance set

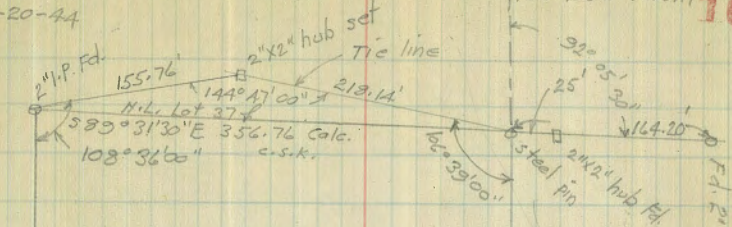
set 2x CW

set 2x CW Alice



Alignment Ramona Street
La Mesa Colony

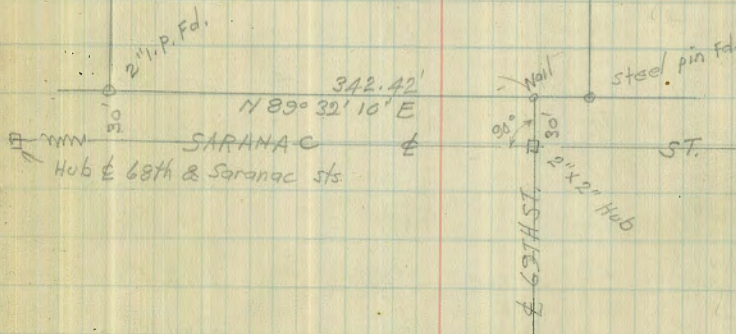
Bliss ^{indexed} OSK (copied from notes on loose leaf - C.S.K.)
Osborne SURVEY OF A PORTION OF LOT 37, LAMESA COLONY 16
11-20-44



Portion of
Lot 37, La Mesa Colony

N 0° 31' 20" W
M.L. Lot 37
531.96'

N 0° 31' 20" W
M.L. Lot 37
691.89'



CC 44/20/14

Bliss Osborne

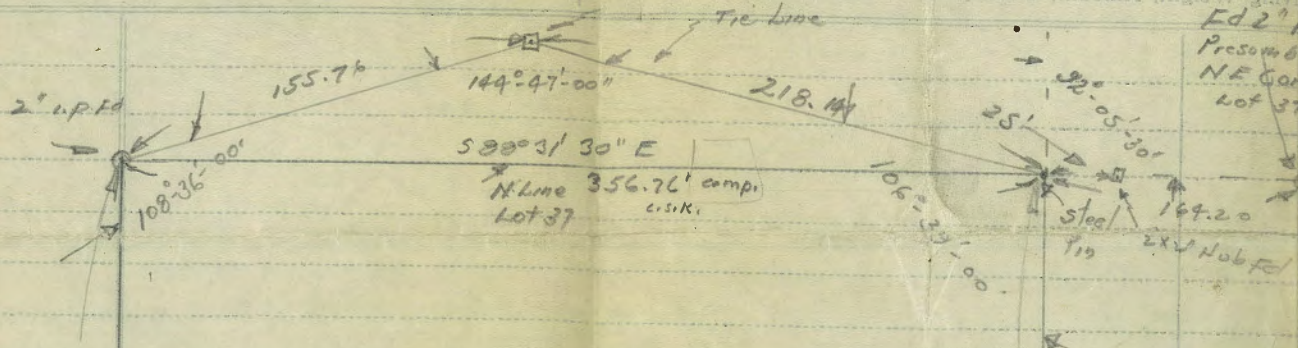
Survey of a Portion of Lot 37, La Mesa Colony

Receipt

34C
M

Received Under Requisition the Following in Good Order:
For
Dept.

Received Receipts Promptly to PURCHASING DEPARTMENT
Showing Weight, Amount, Description or Measurement.



Portion of Lot 37, La Mesa Colony

TO PURCHASING DEPARTMENT

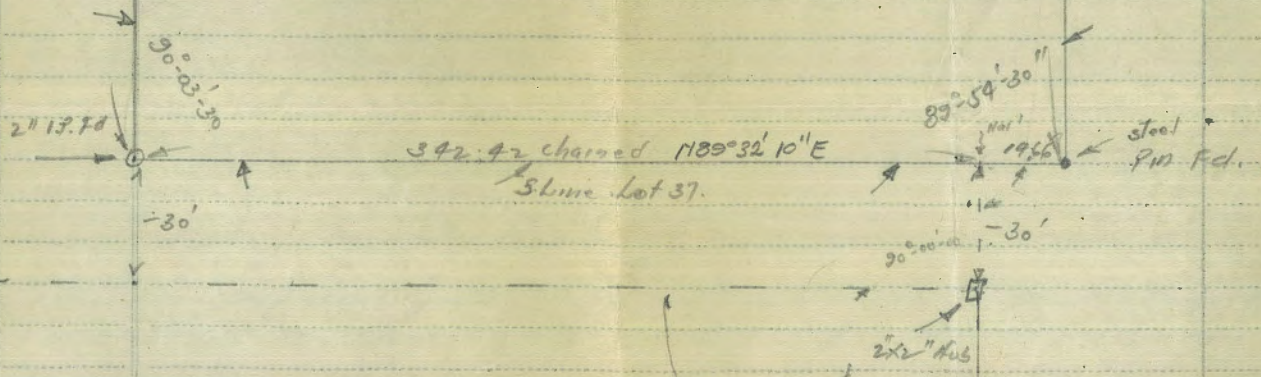
Under Provisions of Section 55, City Charter, Furnish the following to

CITY OF SAN DIEGO, CAL.

CITY ENGINEERING DEPT.

901.86 chained
N00°31'25\"/>

919.89 chained
N00°33'50\"/>



140

CC

REQUISITION No.

PRINTED IN SAN DIEGO

1376-7
7
sec FB 1376
6974
700321W
Wg. 510-D

Subject Allowance
Do Not Exceed
Above Items

Orange Ave. Cross Section
41st St to 43rd St.

80' wide
11' Cb
13' 9" 11

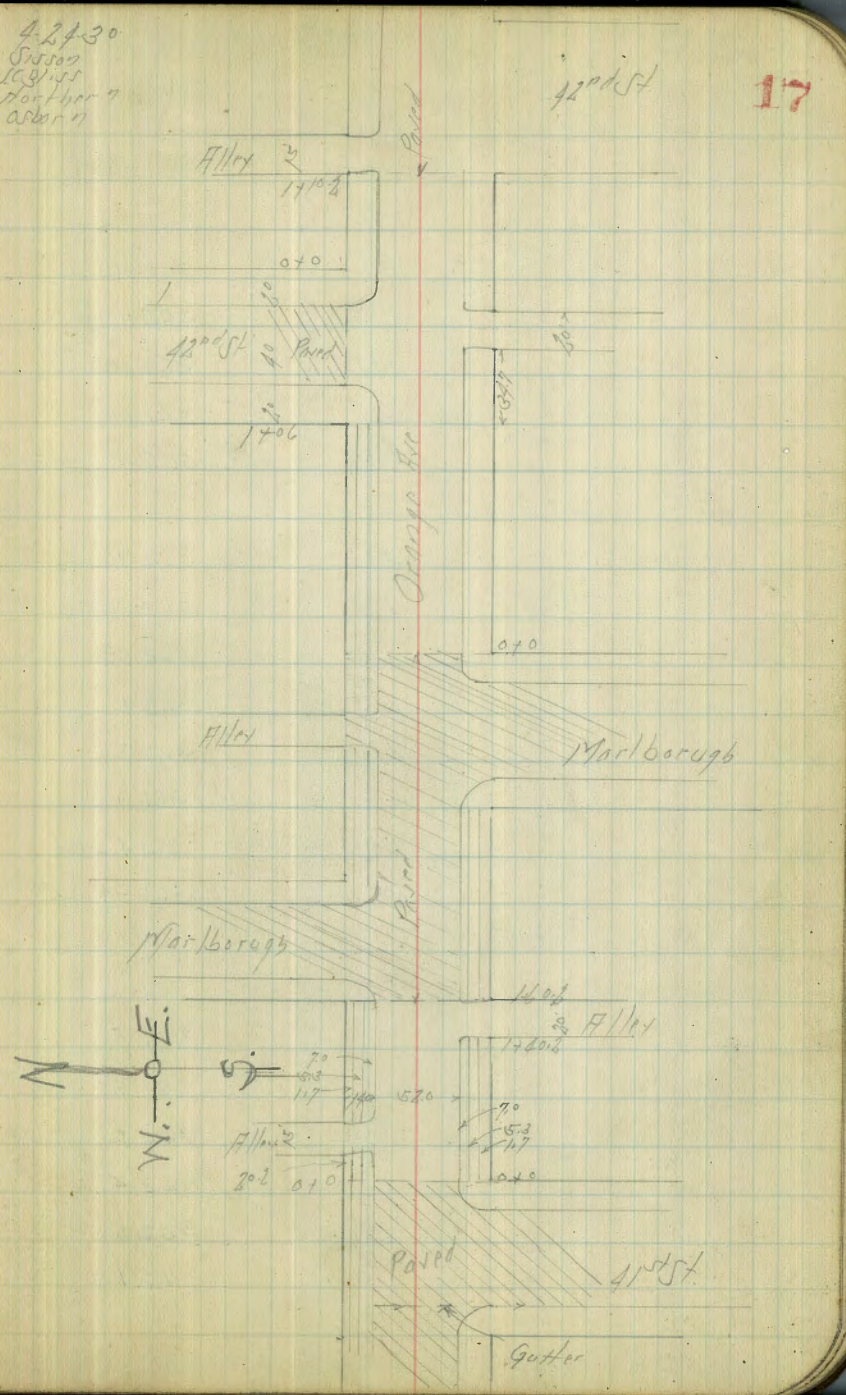
4-24-30
Sisson
108115
North 7th
2500' 11

42nd St

17

BM	427	36708	36281	NXBP 0m 7/11 + 4 5/8
H Cb of 41 st from S = N+S Gutter				
H Cb		4.58	36250	
Gutter on Pav		5.40	36168	
1/4		5.54	36154	
1/2		5.56	36152	
3/4		5.62	36146	
S Cb		5.73	36135	
S		5.98	36130	
1/2 41 st From S				
S on Pav		5.81	36207	
Cb		4.98	36210	
1/4		4.84	36224	
1/2		4.64	36244	
3/4		4.80	36228	
Gutter		5.84	36180	
H Cb		4.52	36256	
1/2 Cb of 41 st From S				
H Cb		4.51	36257	
Gutter on Pav		5.25	36183	
1/4		4.81	36227	
1/2		4.61	36242	
3/4		4.94	36214	
Cb		5.52	36156	
S		5.86	36122	

cb. Plotted 4-29-30
C.B.H.



Orange Hill

362.08

E. of 41st St From S.

Scb	5.27	361 81
Gutter on Paving	5.78	361 30
1/4	5.17	361 91
2	4.79	362 29
1/4	4.88	362 26
Gutter	5.86	361 82
P.Cb	7.61	362 47

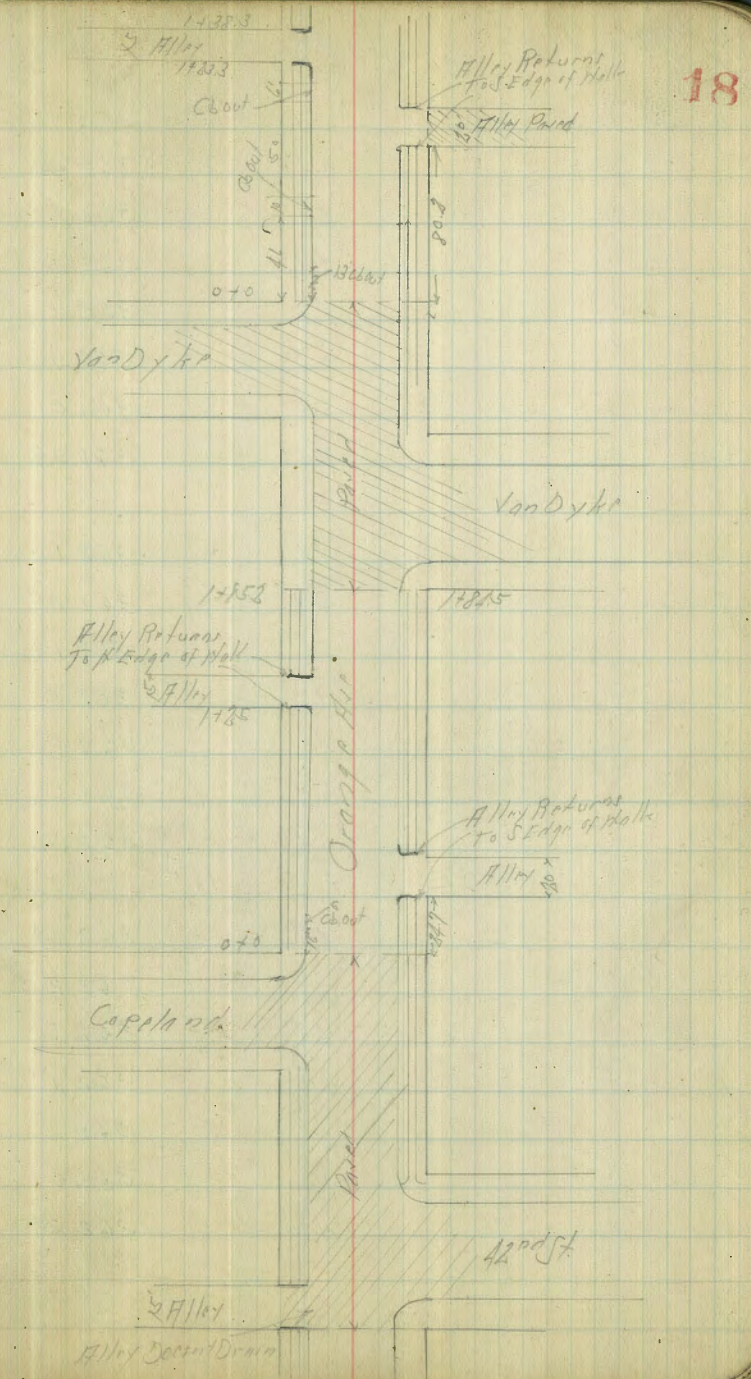
20.2 E. of 42nd Alley on N.

N on top of dirt	4.37	362 71
cb	4.56	362 52 ✓
Gutter	5.05	362 08
1/4	4.7	362 4
2	4.8	362 3
1/4	5.3	361 9
Gutter	5.7	361 4
Scb	5.14	361 94

27.5 E. of 2nd Alley N.

Scb	5.12	361 96
Gutter	5.6	361 5
1/4	5.2	361 9
2	4.8	362 3
1/4	4.7	362 4
cb	4.6	362 5
N	4.0	362.1

35 E. of 2nd Alley from S.



Orange Ave.

367.08

N or Cb	437	362 71
Cb	448	362 60
Gutter	48	362 3
"	47	362 4
"	49	362 2
"	52	361 9
Gutter	55	361 6
Scb	513	361 95

75 F

Scb	492	362 16
Gutter	53	361 8
"	50	362 1
"	47	362 4
"	46	362 5
Gutter	50	362 1
N Cb	449	362 59

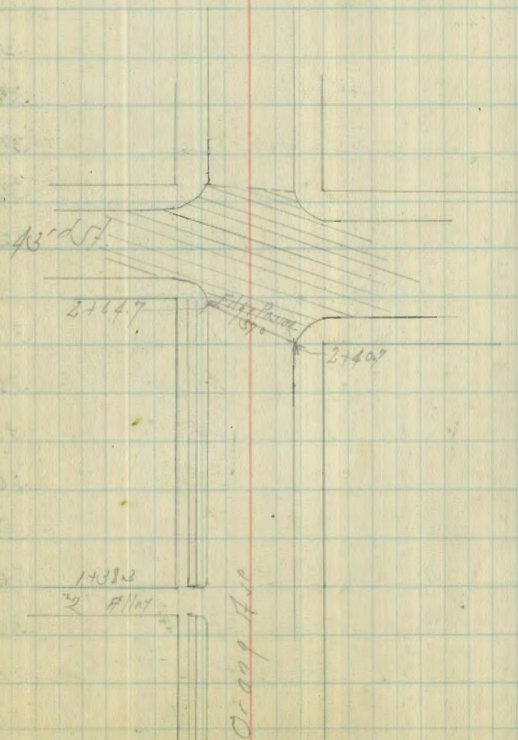
100 F

N Cb	414	362 64
Gutter	49	362 2
"	45	362 6
"	47	362 4
"	49	362 2
Gutter	53	361 8
Scb	484	362 24

125 F

Scb	480	362 28
-----	-----	--------

19



Gutter	52	361 8
"	48	362 3
"	45	362 6
"	46	362 5
Gutter	50	362 1
Hcb	451	362 57

1402 E - H.L. Alley from S

Hcb	442	362 65
Gutter	50	362 1
"	45	362 6
"	43	362 8
"	46	362 5
Gutter	51	362 0
Sb	477	362 31
S: End Ch + Dist	458	362 50

1502 - L. Alley from S

S	44	362 7
Ch	46	362 5
"	44	362 7
"	43	362 8
"	45	362 6
Gutter	50	362 1
Hcb	445	362 63

1602 E - E.L. Alley - H.L. Marlborough from N

Hcb	448	362 60
Gutter on Pav	490	362 18

1/4 on Pav	437	362.71
" " "	438	362.70
" " "	461	362.47
Gutter	507	362.01
Sb	466	362.46
S on End Ch	436	362.72

E.L. of Marlborough from N

Sb	442	362.66
Gutter on Pav	491	362.17
" " "	450	362.58
" " "	420	362.88
" " "	427	362.81
Gutter " "	463	362.45
Hcb	407	363.01

H.L. of Marlborough from S

Hcb	378	363.30
Gutter on Pav	441	362.64
" " "	400	363.08
" " "	390	363.18
" " "	426	362.82
Gutter " "	461	362.47
Sb	415	362.93

040 - E.L. of Marlborough from S

Sb	434	362.74
Gutter on Pav	480	362.28
" " "	406	363.02

Orange Ave

367.08

1/2 on Pav 199	378	363.30
1/4	383	363.25
Gutter	430.	362.78
HCB	3.90	363.38
IP	155 367.73	3.90 363.18

25' Top EL Mailbox up front

HCB	445	363.28
Gutter	50	362.7
1/4	49	362.8
1/2	48	362.9
1/4	49	362.8
Gutter	53	362.4
Sub	491	362.77

50' E

Sub	497	362.76
Gutter	52	362.5
1/4	51	362.6
1/2	49	362.8
1/4	49	362.8
Gutter	51	362.7
HCB	155	363.18

75'

HCB	151	363.15
Gutter	52	362.5
1/4	49	362.8
1/2	49	362.8

367.73

21

1/4	52	362.5
Gutter	53	362.4
Sub	515	362.68

101' E - 11.2' 12th From N

Sub	516	362.63
Gutter	55	362.2
1/4	58	362.5
1/2	49	362.8
1/4	50	362.7
Gutter	51	362.6
HCB	470	363.03

11.5' E of 42nd

N on End Pav 191	505	362.68
CB	49	362.8
1/4	52	362.5
1/2	50	362.7
1/4	53	362.4
Gutter	55	362.2
Sub	515	362.58

31.7' E of 11.2' 12th = 11.2' E of front

S Top CB	491	362.77
SD 111	52	362.5
CB	519	362.54
Gutter	51	362.1
1/4	58	362.5
1/2	49	362.8

1/4	50	362.7
cb	48	362.9
H on Edge Pavings	480	362.93
1/2 of 42 nd St from H		
H on Edge Pavings	483	362.90
cb	48	362.9
1/4	49	362.8
1/2	50	362.7
1/4	51	362.6
cb	51	362.6
S	52	362.5
E of Alley from S		
S Top (bid) dist	507	362.66
cb	535	362.38
Gutter	54	362.1
1/4	53	362.4
1/2	49	362.8
1/4	50	362.7
cb	50	362.7
H on Edge Pavings	509	362.64
E cb of 42 nd St		
H on Pavings	511	362.45
cb	52	362.5
1/4	51	362.6
1/2	50	362.7
1/4	53	362.4

Gutter on Conc. Drive	571	362.02
E.L. of 42 nd St from H		
Scb	533	362.40
Gutter	60	361.7
1/4	54	362.3
1/2	50	362.7
1/4	53	362.4
Gutter	53	362.4
H cb	494	362.79
25 th E		
H cb	510	362.63
Gutter	56	362.1
1/4	54	362.3
1/2	53	362.4
1/4	55	362.2
Gutter	59	361.8
Scb	543	362.30
50 th E		
Scb	549	362.24
Gutter	59	361.8
1/4	55	362.2
1/2	53	362.4
1/4	55	362.2
Gutter	58	361.9
H cb	571	362.52

Hcb 12 Conc Driv	588	361.85
"	54	362.3
"	52	362.5
"	54	362.3
Gutter	6.0	361.7
Scb	551	362.22
100' E		
Scb	556	362.17
Gutter	6.0	361.71
"	54	362.3
"	52	362.4
"	54	362.3
Gutter	58	361.9
Hcb	537	362.36
110' E - W.L. Alley + W.L. 42 nd		
Hcb	541	362.32
Gutter on Pav	574	361.99
" " "	538	362.35
" " "	536	362.37
" " "	511	362.07
Gutter " "	6.28	361.45
Scb	564	362.09
E of 42 nd St From S		
S on Pav	560	362.13
cb " "	556	362.17
" " "	550	362.23

E on Pav	534	362.39
" " "	552	362.21
Gutter " in Driv	595	361.78
E-L of 42 nd		
Hcb	574	361.99
Gutter on Pav	616	361.61
" " "	560	362.13
" " "	552	362.21
" " "	574	361.99
Gutter " "	610	361.63
Scb	578	361.95
W.L. of Copeland from N		
Scb	586	361.87
Gutter on Pav	623	361.50
" " "	577	361.96
" " "	562	362.11
" " "	575	361.98
Gutter " "	611	361.57
Hcb	578	361.95
E of Copeland on N		
N on Pav	611	361.57
cb " "	618	361.25
" " "	592	361.81
" " "	572	362.01
" " "	583	361.90
Gutter " "	630	361.43

Orange Hill

367.73

Scb		596	36177
	E.L. of Copeland front		
Scb		596	36177
Gutter on Pavng		641	36132
"	"	595	36178
"	"	591	36182
"	"	608	36165
Gutter	"	654	36119
Hcb		610	36163
IP	399	36591	581
			66192
	Orange Hill Copeland 36190		
	347'E - H.L. Alley front		
Hcb		440	36151
Gutter		50	3609
"		43	3616
"		41	3618
"		43	3617
Gutter		48	3611
Scb		428	36163
	347'E - H.L. Alley		
S		40	3619
cb		42	3617
"		42	3617
"		41	3618
"		43	3616
Gutter		49	3610
Hcb		449	36142

36591

24

	447'E - H.L. Alley		
Hcb		445	36146
Gutter		47	3612
"		43	3616
"		41	3618
"		43	3616
Gutter		46	3613
cb		428	36163
S		39	362,0
	75'E		
Scb		443	36148
Gutter		48	3611
"		44	3615
"		42	3617
"		44	3615
Gutter		48	3611
Hcb		453	36138
	100'E		
Hcb		460	36131
Gutter		52	3607
"		41	3615
"		43	3616
"		45	3614
Gutter		50	3609
Scb		459	36132
	125'E - H.L. Alley front		

Scb	458	36133
Gutter	51	3608
"	46	3613
L	43	3616
"	44	3615
Gutter	49	3610
HCB	457	36134
H	43	3616
132.5 E = L Alley from N		
H	43	3616
cb	44	3615
"	45	3614
L	44	3615
"	41	3613
Gutter	50	3609
Scb	463	36128
140 E = E L Alley		
Scb	473	36118
Gutter	51	3608
"	46	3613
L	44	3615
"	46	3613
Gutter	49	3610
cb	473	36118
H	42	3617

160 E

HCB	47	3612
Gutter	53	3606
"	47	3612
L	44	3615
"	45	3614
Gutter	51	3608
Scb	413	36108
185 E on N 1845 E on S = Edge Paving of Van Dyke		
Scb	410	36111
Gutter on Paving	516	36075
"	415	36126
L	443	36148
"	462	36129
Gutter	513	36078
HCB	480	36111
L Van Dyke from S		
HCB	485	36106
Gutter on Pav	522	36069
"	415	36126
L	455	36136
"	484	36107
cb	534	36057
S	509	36082
E L Van Dyke from S		
Scb	489	36102
Gutter on Pav	549	36042

Orange Flc

36591

1/4 on Pavilion	546	36045
2 " "	536	36055
1/4 " "	526	36065
Gutter " "	520	36071
Hcb	495	36096

2 Van Dyke from N

N on Pavilion	468	36129
Cb " "	472	36119
1/4 " "	464	36127
2 " "	464	36127
1/4 " "	498	36093
Gutter " "	564	36027
Scb	581	36090

010 - FL Van Dyke from N

Scb	509	36083
Gutter on Pavilion	568	36023
1/4 " "	495	36096
2 " "	464	36127
1/4 " "	470	36121
Gutter " "	497	36094
Hcb	455	36136

25 Feb of Van Dyke

Hcb	455	36136
Gutter	52	3607
1/4	47	3612
2	47	3612

36591

1/4	500	3609
Gutter	55	3604
Scb	514	36077

50 E

Scb	518	36079
Gutter	560	36031
1/4	50	3609
2	46	3613
1/4	47	3612
Gutter	50	3609
Hcb	455	36136

802 E - 1/4 L 1/4 from S

Hcb	468	36129
Gutter	571	3608
1/4	48	3611
2	45	3614
1/4	49	3610
Gutter	55	3604
Cb	511	36080
S on Pavilion	492	36099

902 E - 2 1/4 from

S on Pavilion	524	36067
Cb	54	3605
1/4	50	3609
2	47	3612
1/4	48	3611

26

Orange Ave.

365.91

Gutter	53	3606
Hcb	467	361.24
100.8 E - EL Alloy on S		
Hcb	466	361.25
Gutter	52	3607
"	48	3611
"	47	3612
"	51	3608
Gutter	57	3602
Cb	515	360.76
S on Paving	500	36091
123.3 E - EL Alloy on S		
Scb	537	360.64
Gutter	57	3602
"	50	360.9
"	48	3611
"	49	3610
Gutter	50	3609
Cb	413	361.28
H	43	3616
130.8 E - EL Alloy		
H	45	3614
Cb	46	3613
"	48	3611
"	48	361.1
"	51	3608

36591

Gutter	59	360.27
Scb	589	360.62
138.3 E - EL Alloy on H		
Scb in Conc Drive	585	360.06
"	51	360.8
"	49	361.0
"	49	361.0
Gutter	53	360.6
Cb	425	361.06
H	48	361.1
170 E		
Hcb	490	361.01
Gutter	56	360.3
"	51	360.8
"	48	361.1
"	52	360.7
Gutter	58	360.1
Scb	544	360.47
200 E		
Scb	551	360.33
Gutter	59	360.0
"	54	360.5
"	49	361.0
"	50	360.9
Gutter in Conc Drive	541	360.50
225 E		

Orange Ave.

365.91

28

Hcb	5.18	36083
Gutter	57	3602
"	52	3607
L	5.0	3609
"	54	3605
Gutter	60	359.9
Scb	51	3603

2407-142 48rd on V

Scb	558	36033
Gutter on Parking	620	359.71
"	55	3604
L	57	3607
"	54	3605
Gutter	55	3604
Hcb	503	36088

2407-142 on V
2407-142 on VEdge Parking
W of 43rd St on Day 57012

Hcb	496	36095
Gutter on Parking	552	36039
"	530	36061
L	521	36065
"	565	36026
Gutter	620	35971
Scb	558	36033
BN	498	36093

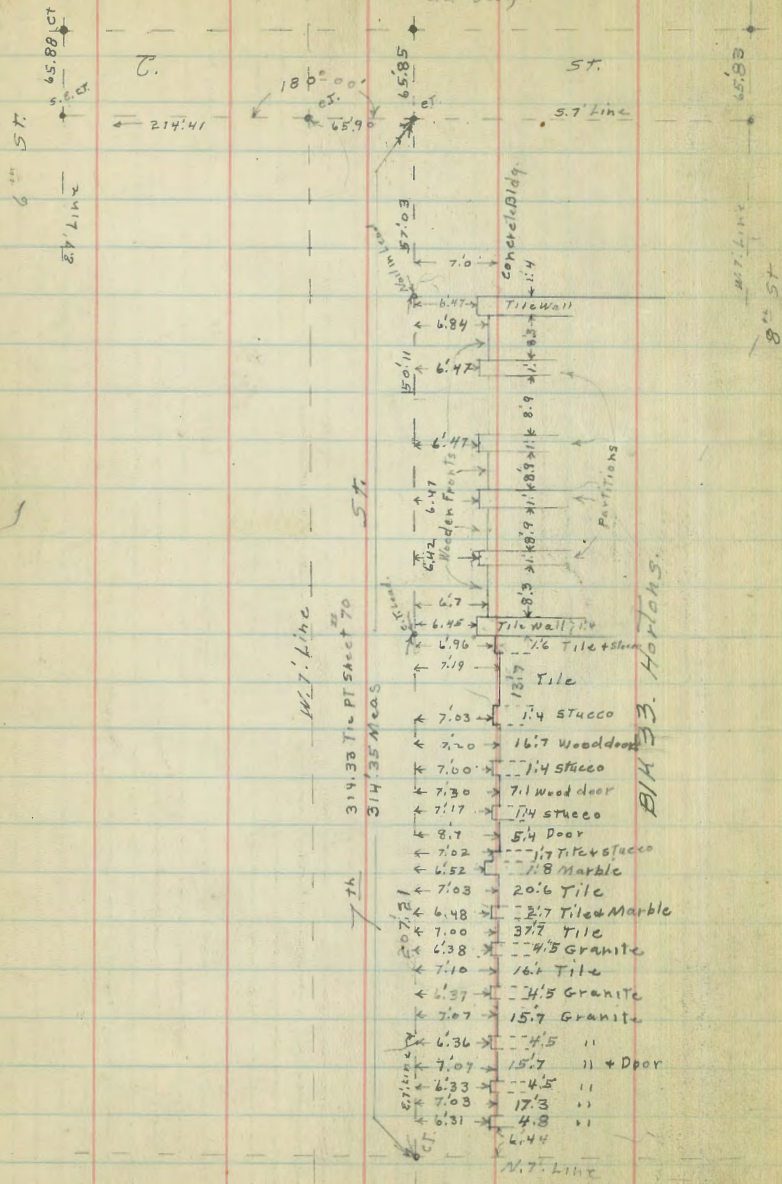
HW 3P

Orange Ave

31101

12/3/30
Miller
Osborne

Location of Bldgs. E. Side 7th St
Bet. C. St & Broadway



Broadway

BK 33. HORTONS.

Avenue Courts Sewer Levels

Line from M.H. #2 to M.H. #3 (con)
78.77

0+50		6.7	72.1	4+68.1
1+05 E. edge cnt. walk to N		4.87	73.90	5+23.1
1+14 = W " " " "		4.63	74.14	5+32.3
1+50		3.4	75.4	5+68.1
2+00	N.G.	4.7	77.1	6+18.1
2+12 Top E. Alley dr		1.56	77.21	6+30.1
2+12 ¹ Alley Pavmt		1.80	76.97	6+30.2
2+19 ¹ M.H. #3 1/2 N+S. Alley		1.85	76.92	6+37.2 on pavmt.
T.P.	10.87	88.17	77.30	

Line from M.H. #3 N. 250.0 to DE

M.H. #3 = 0+00		11.25	76.92	
0+03 N = N. Line National		11.01	77.16	N. edge pavmt.
0+50 N		9.3	78.9	
1+05 N		6.8	81.4	
1+20 N		5.2	83.0	
1+45 N		4.6	83.6	
1+85 N		2.3	85.9	
2+25 N		0.4	87.8	
2+50 N = D.E.		1.2	87.0	
Above T.P.	9.79	87.09	77.30	

Line from M.H. #3 to M.H. #4 1.5 N. of E. Line 39th St.

0+00 = M.H. #3		10.14	76.91	6+41.5
0+07 ⁹ Alley Pavmt		9.79	77.30	+49.4
0+08 W. Alley dr.		9.33	77.76	+50.4
0+50		8.1	79.0	+91.5
1+05 ³ E. Edge cnt. walk		6.33	80.76	7+46.8

87.09

31

1+14 ² W. edge cnt. walk	6.13	80.96	7+55.9
1+50	4.8	82.3	+91.5
2+00	3.3	83.8	8+41.5
2+13.5 E. Line 39 th E. End cnt. Return	2.95	84.14	+55
2+15 M.H. #4 on cnt. Return	2.97	84.12	
Line from M.H. #4 N. 250.0 to D.E. 1.5 N. of E. Line 39 th			
0+03 N. Line National N. End cnt. Return	2.96	84.13	
0+50	2.4	84.7	
1+00	1.4	85.7	

T.P. B.M. 7.75	90.80	4.04	83.05 + National
1+50		4.1	86.7
2+00		3.2	87.6
2+50 D.E.		2.6	88.2

S.W. 39th

Xsec. and levels for walk on
Kettner Blvd B to Nutmeg

B to A East side

1/5/31 Loudon

32

Ⓢ

B.M. 7.27 20.10 12.83 NE Kettner
& B

0+00 = N.L. B.

5th E west rail 7.28 12.82

EL on rail 7.38 12.72

Ecb 7.63 12.47

0+03

Ecb 7.63 12.47

+3 7.0 13.1

EL 6.4 13.7

3E 7.5 12.6

0+25

5th E west rail 7.10 13.0

3E 7.5 12.6

EL 6.8 13.3

+8 5.8 14.3

Ecb 7.53 12.57

0+50

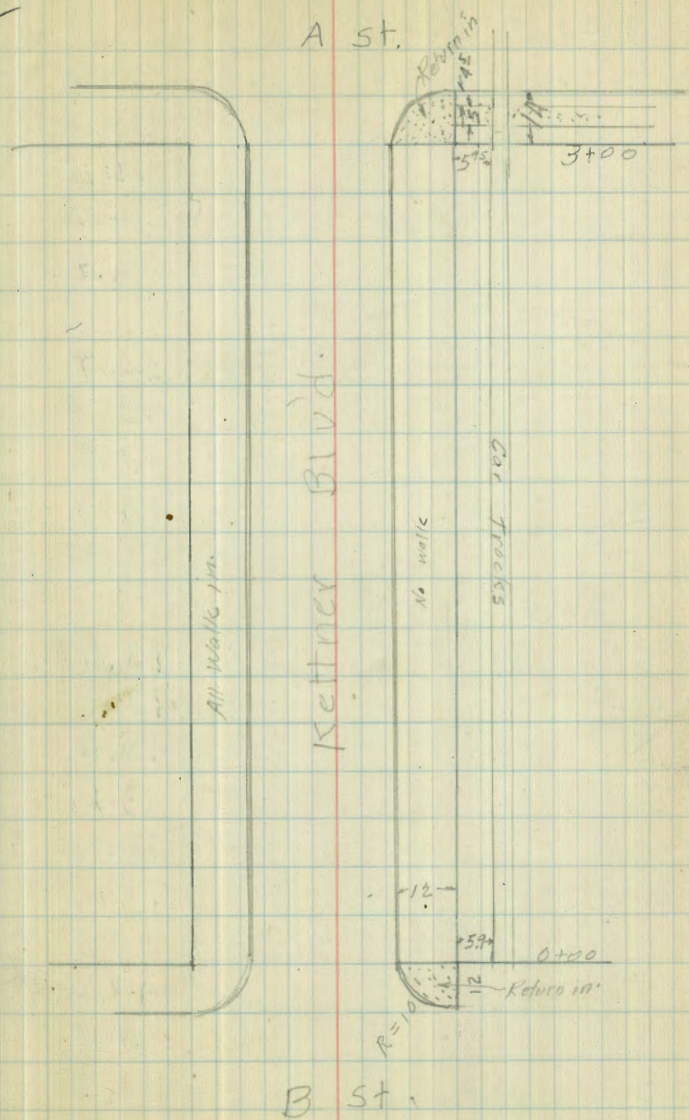
Ecb 7.46 12.64

+4 6.1 14.0

EL 6.1 14.0

3E 7.3 12.8

5th E w. rail 6.90 13.2



B to A East side.

0+75 20.10

5 th E w. rail	6.80	13.3
3 E	7.1	13.0
EL	5.6	14.5
+8	6.0	14.1
Ecb	7.30	12.8

1+00

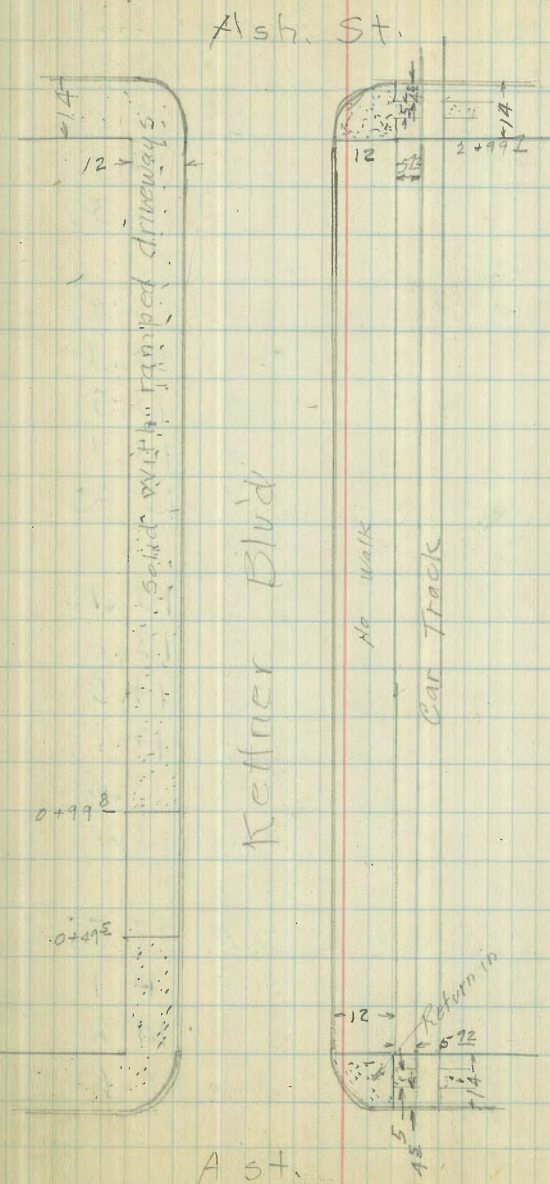
Ecb	7.20	12.9
+4	6.3	13.8
EL	6.2	13.9
3 E	7.0	13.1
5 th E w. rail	6.72	13.38

1+25

5 th E w. rail	6.63	13.47
3 E	7.0	13.1
EL	6.5	13.6
+9	6.5	13.6
Ecb	7.08	13.02

1+50

Ecb	6.90	13.2
+3	6.4	13.7
EL	6.0	14.1
2 E	6.9	13.2
5 th E	6.66	13.44

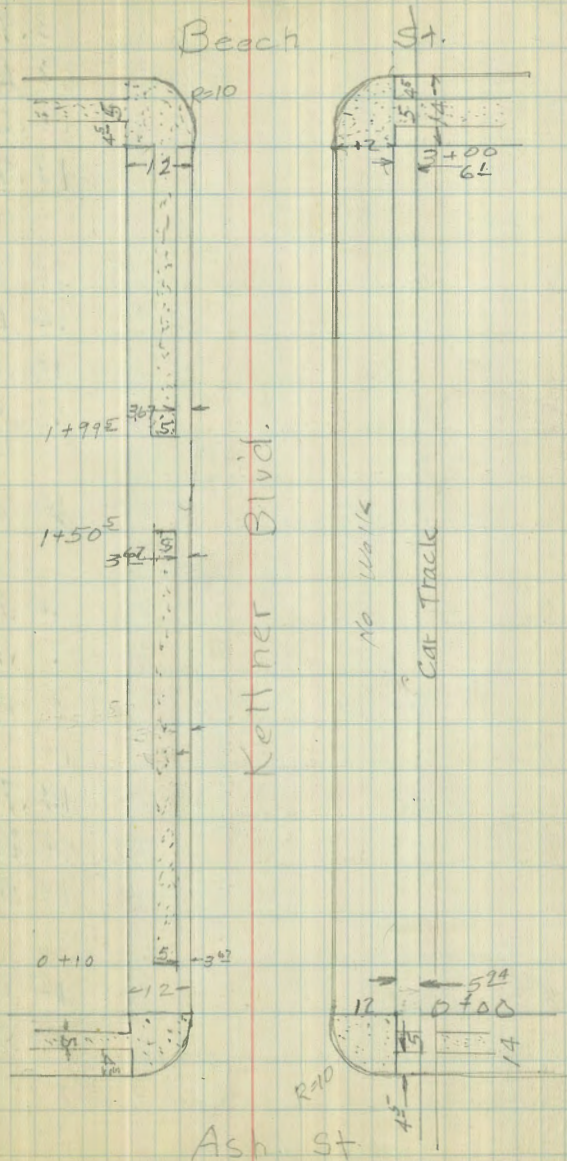


B to A E side.

20.10

34

1+75		
5 ¹ E w rail	6.53	13.57
4E	6.7	13.4
EL	6.3	13.8
+10	6.4	13.7
Ecb	6.73	13.37
2+00		
Ecb	6.62	13.48
+5	6.1	14.0
+7	6.6	13.5
EL	6.4	13.7
5 ² E w rail	6.47	13.63
2+25		
5 ² E w rail	6.36	13.74
4E	6.5	13.6
EL	5.6	14.5
+8	6.0	14.1
+10	6.6	13.5
Ecb	6.48	13.62
2+50		
Ecb	6.33	13.77
+3	6.0	14.1
EL	5.5	14.6
4E	6.5	13.6
5 ² E w rail	6.24	13.86



B to A E side

2+75 20.10

5 th E w.rail	6.16	13.94
4 E	6.5	13.6
E.L.	5.5	14.6
Ecb	6.23	13.87

2+96

Ecb	6.15	13.95
+3	5.7	14.4
E.L.	5.5	14.6
3 E	6.2	13.9

3+00

5 th E w.rail	6.08	14.02
4 E	6.3	13.8
E.L. ret.	5.85	14.25
Ecb	6.14	13.96

A to Ash East side

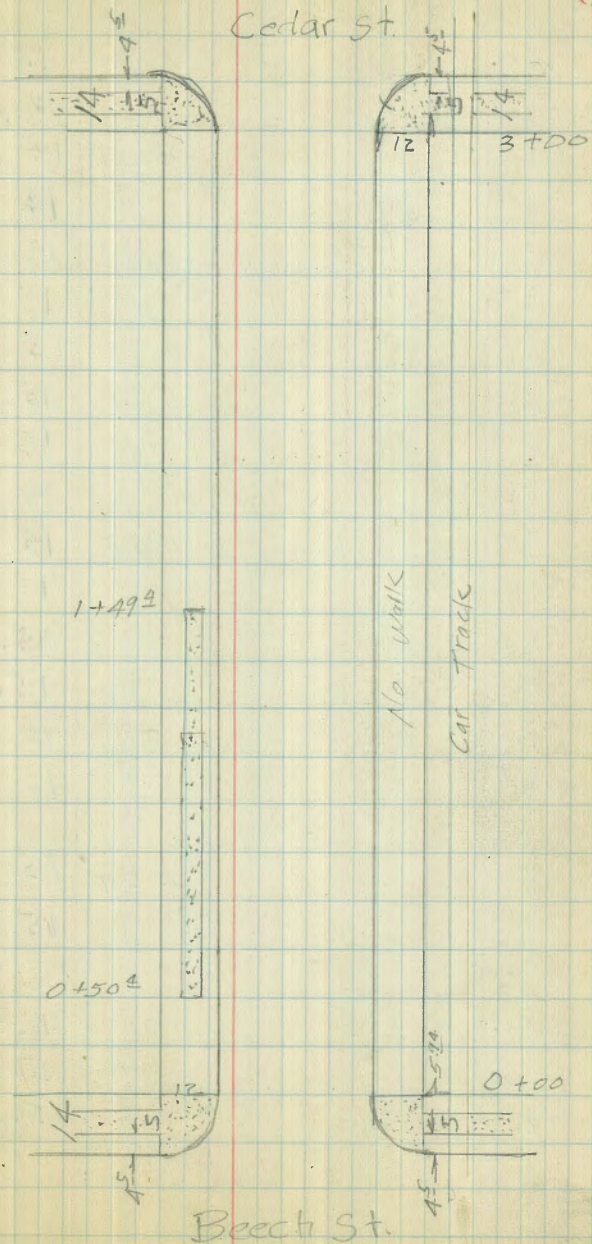
0+00 = ML. A:

5 th E w.rail	5.33	14.77
E.L. ret.	4.82	15.28
Ecb	5.08	15.02

0+10

Ecb	5.03	15.07
+3	5.6	14.5
E.L.	5.0	15.1
3 E	5.6	14.5

35

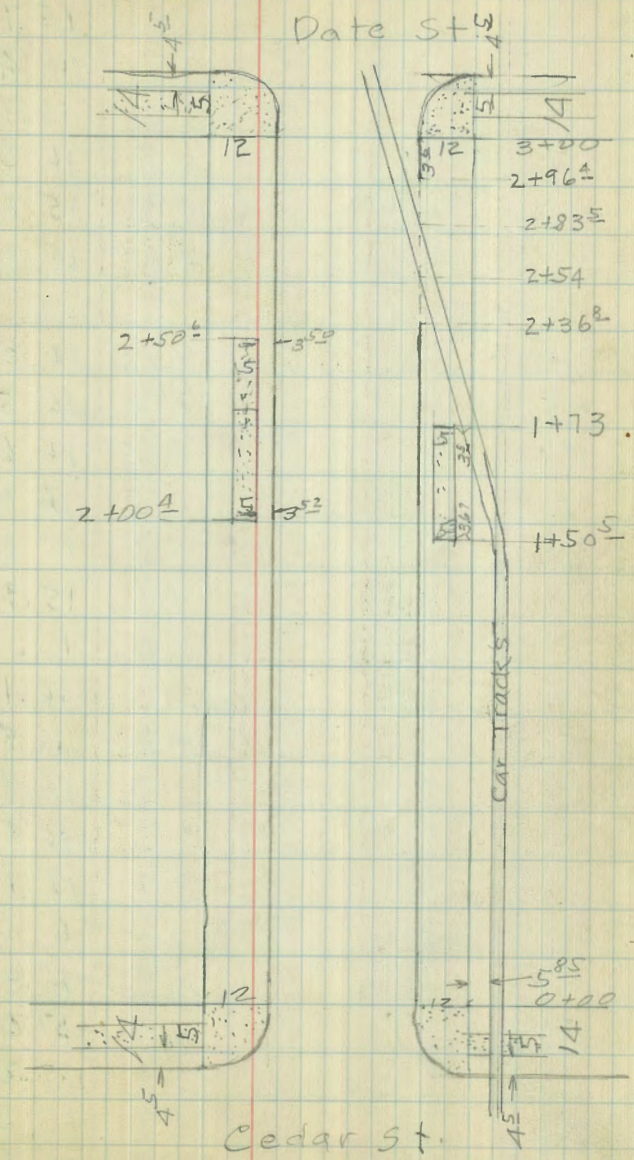


Beech St.

20.10

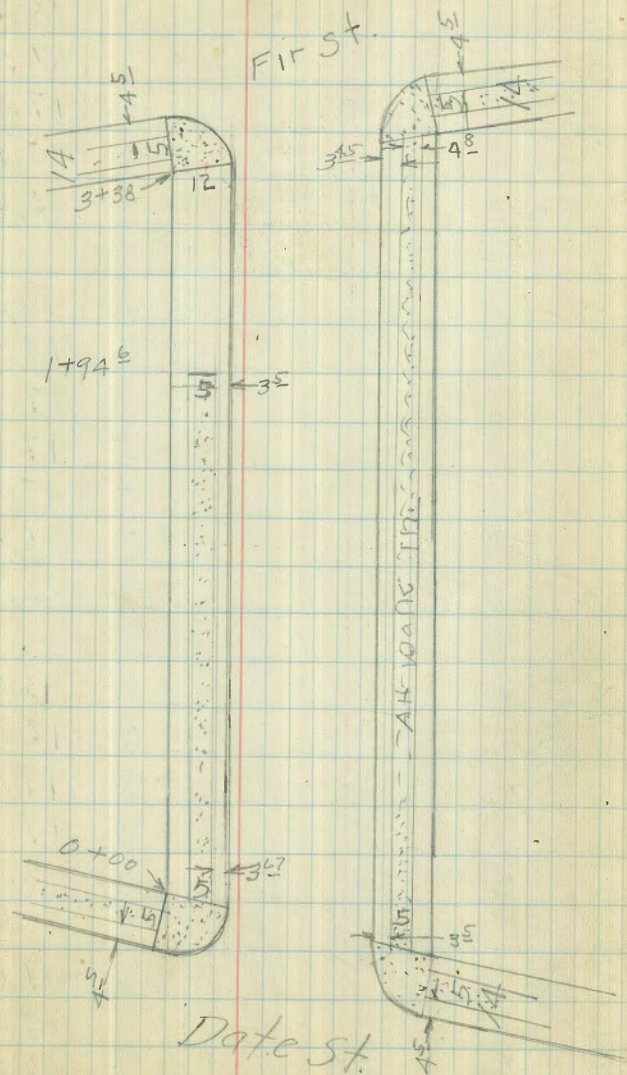
DWSA to Ash E Side

5 th E. w.rail	5.14	14.96
4E	5.5	14.6
EL.	4.5	15.6
+9	5.5	14.6
Ecb	4.91	15.19
0+50		
Ecb	4.70	15.4
+5	4.3	15.8
EL.	4.1	16.0
4E	5.3	14.8
5 th E w.rail	4.98	15.12
0+75		
5 th E w.rail	4.77	15.33
4E	5.0	15.1
EL.	3.7	16.4
Ecb	4.55	15.55
1+00		
Ecb	4.39	15.71
+3	4.8	15.3
+5	4.0	16.1
EL.	3.7	16.4
4E	4.9	15.2
5 th E w.rail	4.56	15.54



A to Ash Esido

1+25		20.10	
5 ⁹ E	4.35	15.75	
4.E.	4.7	15.4	
EL.	3.6	16.5	
+7	3.6	16.5	
+10	4.3	15.8	
Ecb	4.25	15.85	
1+50			
Ecb	4.06	16.04	
+5	3.6	16.5	
EL.	3.5	16.6	
1E	3.7	16.4	
4E	4.5	15.6	
5 ⁹ E w.rail	4.16	15.94	
1+75			
5 ⁹ E w.rail	3.94	16.16	
4E	4.3	15.8	
2E	3.3	16.8	
EL.	3.3	16.8	
Ecb	3.91	16.19	
2+00			
Ecb	3.72	16.38	
+4	3.1	17.0	
EL.	2.9	17.2	
2E	2.9	17.2	
4E	4.1	16.0	
5 ⁹ E w.rail	3.76	16.34	



Ato Ash E side

38

2+25 20.10

5 th E w rail	3.57	16.51
4E	4.0	16.1
2E	2.7	17.4
EL	2.6	17.5
+4	2.6	17.5
Feb	3.58	16.52

2+50

Feb	3.40	16.7
+4	3.0	17.1
+6	2.8	17.3
EL	2.5	17.6
2E	2.7	17.4
4E	3.7	16.4
5 th E w rail	3.38	16.72

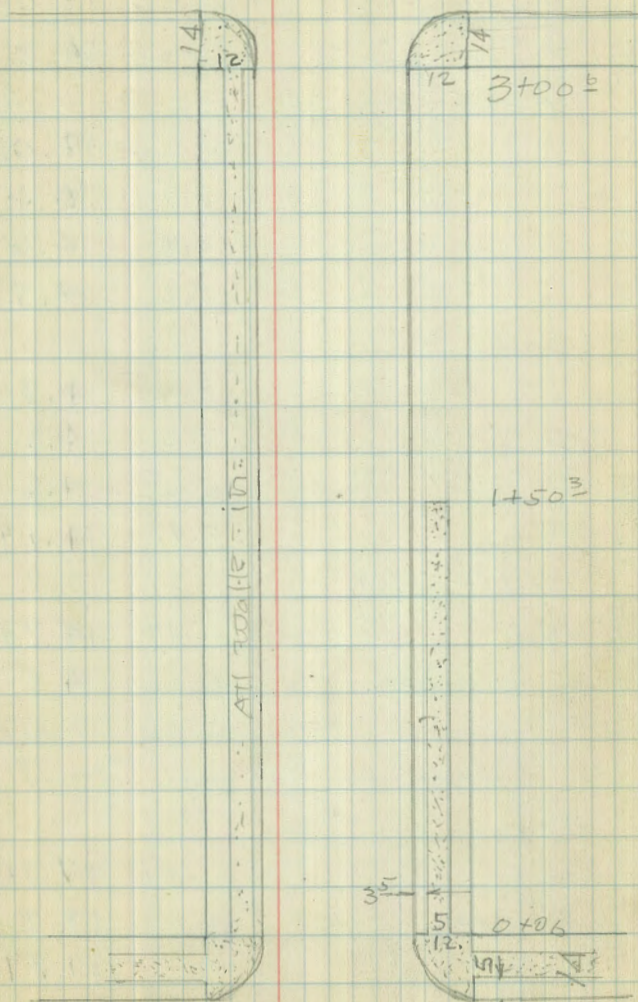
2+75

5 th E w rail	3.20	16.9
4E	3.6	16.5
2E	2.8	17.3
EL	2.6	17.5
Feb	3.27	16.83

3+00 = 3L Ash

Feb	3.13	16.97
EL ret.	2.80	17.3
4E	3.3	16.8
5 th E w rail	3.01	17.09

Grape St



Fir St

20.10

A to Ash West Side.

0+49.5

web 6.26 13.84

w.L. back walk 5.90 14.2

0+75

web 6.08 14.02

+5 5.7 14.4

+10 5.5 14.6

w.L. 5.6 14.5

0+95

w.L. 5.3 14.8

+2 5.3 14.8

+7 5.5 14.6

web 5.91 14.19

0+99.8

web 5.87 14.23

w.L. ramped. 5.60 14.5

T.P. 7.41 25.21 2.30 17.80

Ash to Beech East Side.

0+00 = N.L. Ash

Ecb 7.31 17.90

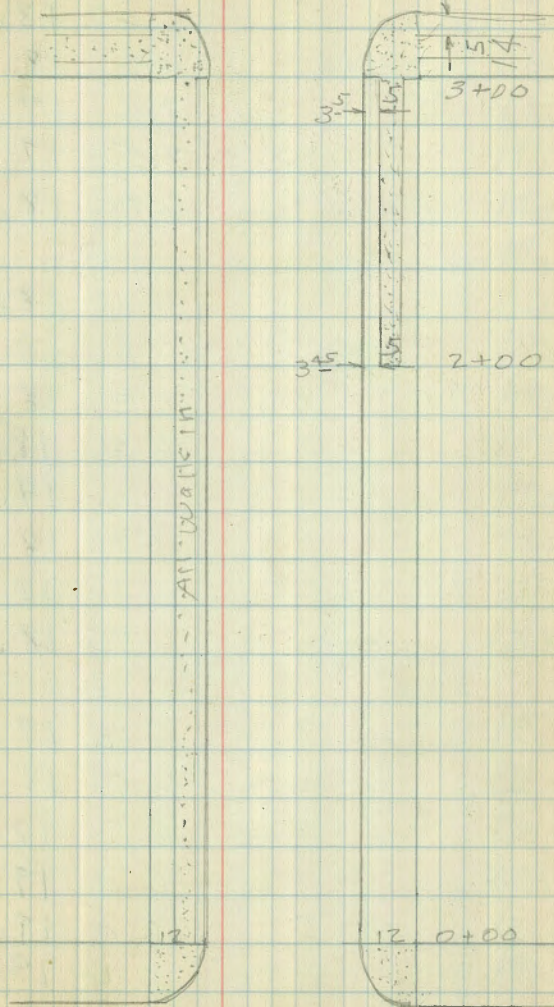
EL ret. 7.00 18.21

4E 7.4 17.8

5¹/₂E w rail 7.17 18.04

39

Hawthorne st.



Grape st.

Ash to Beach E. Side

0+25	25.21		
5 ² E w. rail	6.79	18.42	
4E	7.2	18.01	
EL	6.8	18.4	
+7	7.4	17.8	
+11	7.5	17.7	
Ecb	6.98	18.23	

0+50

Ecb	6.69	18.52	
+1	7.0	18.2	
+10	6.3	18.9	
EL	6.3	18.9	
2E	6.2	19.0	
4E	6.9	18.3	
5 ² E	6.9	18.3	
5 ² E w rail	6.45	18.76	

0+75

5 ² E w. rail	6.13	19.08	
5 ² E	6.5	18.7	
4E	6.5	18.7	
1E	6.0	19.2	
EL	6.0	19.2	
+8	6.1	19.1	
Ecb	6.40	18.8	

Ash to Beach E Site

40

1+00	25.21		
Ecb	6.10	19.11	
+8	5.8	19.4	
EL	5.8	19.4	
2E	5.7	19.5	
4E	6.2	19.0	
5 ² E	6.2	19.0	
5 ² E w rail	5.80	19.41	

1+25

5 ² E w rail	5.51	19.70	
5 ² E	5.9	19.3	
4E	5.9	19.3	
2E	5.3	19.9	
EL	5.3	19.9	
+9	5.1	20.1	
Ecb	5.74	19.47	

1+50

Ecb	5.46	19.75	
+6	5.1	20.1	
EL	4.9	20.3	
2E	4.9	20.3	
4E	5.7	19.5	
5 ² E	5.6	19.6	
5 ² E w rail	5.24	19.97	

Ash to Beech E Side
25.21

1+75		
5 th E w rail	5.00	20.21
5 th E	5.4	19.8
4E	5.4	19.8
1E	4.7	20.5
EL	4.7	20.5
+8	4.6	20.6
Feb	5.18	20.03

2+00		
Feb	4.90	20.31
+5	4.5	20.7
EL	4.2	21.0
2E	4.2	21.0
4E	5.2	20.0
5 th E	5.1	20.1
5 th E w rail	4.68	20.53

2+25		
5 th E rail	4.35	20.86
5 th E	4.8	20.4
3E	4.7	20.5
2E	3.6	21.6
EL	3.6	21.6
+7	4.0	21.2
Feb	4.58	20.63

Ash to Beech E side
25.21

41

2+50		
Feb	4.28	20.93
+5	3.6	21.6
EL	3.3	21.9
1 st E	3.2	22.0
3E	4.3	20.9
5 th E	4.4	20.8
5 th E w rail	4.06	21.15

2+75		
5 th E w rail	3.76	21.45
5 th E	4.1	21.1
3E	4.1	21.1
1 st E	2.9	22.3
EL	2.9	22.3
Feb	3.00	22.21

2+90		
Feb	3.81	21.40
+4	3.1	22.1
EL	2.8	22.4
1 st E	2.7	22.5
3E	3.9	21.3
5 th E	3.9	21.3
5 th E w rail	3.59	21.62

25.21

3+00 = S.L. Beech

5 ¹ / ₂ E rail	3.50	21.71
5 ¹ / ₂ E	3.8	21.4
4 ¹ / ₂ E	3.7	21.5
2 E	3.3	21.9
E.L. ret.	3.44	21.77
Ecb	3.74	21.47
B.M	9.05	16.16

Ash to Beech West side

B.M	11.07	27.22	16.15
-----	-------	-------	-------

0+00 = N.L. Ash

Web	10.93	16.29
w.L. ret	10.72	16.50

0+10

w.L.	11.1	16.1
+3 ⁵ / ₂ back walk	10.68	16.54
+8 ⁵ / ₂ front walk	10.75	16.47
web	10.83	16.39

1+50⁵/₂

web	9.32	17.90
+3 ⁵ / ₂ front walk	9.22	18.00
+8 ⁵ / ₂ back walk	9.15	18.07

1-50⁵/₂ (ground)

w.L.	9.5	17.7
+6	9.7	17.5
web	9.32	17.90

Ash to Beech W. side

42

1+75 27.22

web	9.06	18.16
+3	9.0	18.2
+9	9.4	17.8
w.L.	9.2	18.0

1+9.7

w.L.	8.8	18.4
+8	9.0	18.2
web	8.83	18.39

1+9.9⁵/₂

web	8.80	18.42
+3 ⁵ / ₂ front walk	8.73	18.49
+8 ⁵ / ₂	8.63	18.59
w.L.	8.6	18.6

Beech to Cedar West side

0+00 = N.L. Beech

web	7.27	19.95
w.L. ret.	6.86	20.36

0+35

w.L.	7.5	19.7
+1	6.8	20.4
+5	6.9	20.3
+10	6.6	20.6
web	6.70	20.52

Beech to Cedar W. side.

0+50	27.22		
web	6.45	20.77	
+3 ⁵ walk	6.27	20.95	
+8 ⁵ v	6.23	20.99	
w.L.	6.5	20.7	
1+49 ⁴			
w.L.	5.28	21.94	
+3 ⁵ walk	4.66	22.56	
+8 ⁵ v	4.74	22.48	
web	4.77	22.43	
1+53			
web	4.74	22.48	
+4	5.1	22.1	
w.L.	5.1	22.1	
1+75			
w.L.	4.9	22.3	
+4	5.0	22.2	
+9	4.4	22.8	
web	4.36	22.86	
2+00			
web	3.86	23.36	
+5	4.0	23.2	
+6	4.4	22.8	
+10	4.5	22.7	
w.L.	4.2	23.0	

Beech to Cedar W. side.

43

2+25	27.22		
w.L.	3.6	23.6	
+5	3.8	23.4	
+9	3.4	23.8	
web	3.48	23.74	
2+50			
web	3.06	24.16	
+3	3.1	24.1	
+8	3.4	23.8	
w.L.	3.3	23.9	
2+75			
w.L.	3.1	24.1	
+8	2.6	24.6	
web	2.62	24.60	
2+97			
web	2.26	24.96	
+2	1.8	25.4	
+4	2.1	25.1	
w.L.	2.2	25.0	
3+00 = SL Cedar			
w.L. ret.	1.88	25.34	
web	2.24	24.98	

Beech to Cedar E side

27.22

0+00 = N.L. Beech

Ecb	5.24	22.00
EL ret.	5.04	22.18
5 ⁹ E	5.2	22.0
5 ⁹ E w. rail	4.88	22.34

0+05

5 ⁹ E	5.1	22.1
EL	4.6	22.6
+8	4.6	22.6
Ecb	5.15	22.07

0+23

Ecb	4.88	22.34
+8	4.0	23.2
EL	4.0	23.2
2E	4.3	22.9
4E	5.2	22.0
5 ⁹ E	5.2	22.0
5 ⁹ E w. rail	4.58	22.64

0+50

5 ⁹ E w. rail	4.24	22.98
5 ⁹ E	4.7	22.5
EL	4.8	22.4
+5	4.6	22.6
Ecb	4.55	22.67

Beech to Cedar E side

44

0+75 27.22

Ecb	4.22	23.00
+3	4.5	22.7
EL	4.5	22.7
4 ⁵ E	4.9	22.3
5 ⁹ E	4.5	22.7
5 ⁹ E w. rail	3.87	23.35

1+00

5 ⁹ E w. rail	3.56	23.66
5 ⁹ E	4.4	22.8
EL	4.5	22.7
+2	4.3	22.9
+9	4.2	22.8
Ecb	3.90	23.3

1+25

Ecb	3.54	23.68
+1	3.8	23.4
+9	3.6	23.6
EL	3.7	23.5
2E	4.0	23.2
5 ⁹ E	3.9	23.3
5 ⁹ E w. rail	3.25	23.97

Beech to Cedar E side.

1+50	27.22		
5 ¹ / ₂ E w rail	2.94	24.28	
5 ¹ / ₂ E	3.4	23.8	
2 ⁵ / ₂ E	3.6	23.6	
1 ⁵ / ₂ E	3.2	24.0	
EL	3.2	24.0	
+10	3.5	23.7	
Ecb	3.22	24.00	

1+75

Ecb	2.88	24.34	
E.L.	2.5	24.7	
2E	3.1	24.1	
5 ¹ / ₂ E	3.0	24.2	
5 ¹ / ₂ E w rail	2.63	24.59	

2+00

5 ¹ / ₂ E w rail	2.32	24.90	
5 ¹ / ₂ E	2.7	24.5	
3E	2.9	24.3	
1 ⁵ / ₂ E	2.0	25.2	
EL	1.7	25.5	
+2	1.5	25.7	
+9	2.0	25.2	
Ecb	2.60	24.62	

Beech to Cedar E side.

45

2+25	27.22		
Ecb	2.26	24.96	
+5	1.4	25.8	
+10	1.0	26.2	
EL	1.3	25.9	
1E	1.4	25.8	
3E	2.5	24.7	
5 ¹ / ₂ E	2.5	24.7	
5 ¹ / ₂ E w rail	2.00	25.2	

2+50

5 ¹ / ₂ E w rail	1.68	25.54	
5 ¹ / ₂ E	2.1	25.1	
3E	2.1	25.1	
1E	0.8	26.4	
EL	0.7	26.5	
+2	0.2	27.0	
+8	1.0	26.2	
Ecb	1.90	25.3	
BN	9.97	35.67	1.52

new 100 ft
cedar
25.70

2+75

Ecb	9.99	25.68	
+3	9.1	26.6	
+11	8.2	27.5	
EL	8.7	27.0	
3E	10.4	25.3	
5 ¹ / ₂ E	10.4	25.3	
5 ¹ / ₂ E w rail	9.84	25.83	

Beech to Cedar E side.

2+95	35.67		
5 ² E		9.9	25.8
3E		10.0	25.7
EL.		8.7	27.0
+2		7.9	27.8
+9		8.7	27.0
Ecb		9.80	25.87

3+00 = S.L. Cedar.

Ecb		9.75	25.92
EL. ret.		9.33	26.34
5 ² E		9.6	26.1
5 ² E w.rail		9.52	26.15

Cedar to Date E Side

0+00 = N.L. Cedar

5 ² E w.rail		8.42	27.25
5 ² E		8.6	27.1
3E		8.6	27.1
EL. ret.		7.74	27.93
Ecb		8.00	27.67

0+25

Ecb		7.78	27.89
+4		7.7	28.0
EL.		7.6	29.1
2E		7.6	28.1
4E		8.4	27.3
5 ² E		8.3	27.4
5 ² E w.rail		8.02	27.65

Cedar to Date East side

46

0+50	35.67		
5 ² E w.rail		7.68	27.99
5 ² E		8.1	27.6
5E		8.1	27.6
2E		7.2	28.5
EL.		7.2	28.5
Ecb		7.57	28.10

0+75

Ecb		7.35	28.32
+1		7.7	28.0
+10		6.9	28.8
EL.		6.8	28.9
2E		6.9	28.8
4E		7.9	27.8
5 ² E		7.8	27.9
5 ² E w.rail		7.37	28.30

1+00

5 ² E w.rail		7.17	28.50
5 ² E		7.8	27.9
4E		7.7	28.0
2E		6.8	28.9
EL.		6.6	29.1
+3		6.5	29.2
+11		7.4	28.3
Ecb		7.23	28.44

1+25	35.67		
Ecb	7.00	28.67	
EL	6.6	29.1	
1E	6.7	29.0	
4E	7.7	28.0	
5E	7.7	28.0	
5E w rail	7.04	28.63	
1+505			
4E w rail	6.89	28.78	
4E	7.4	28.3	
3E	7.4	28.3	
EL	6.5	29.2	
+3E walk	6.48	29.19	
+8E ✓	6.62	29.05	
Ecb	6.75	28.92	
1+73			
Ecb	6.60	29.07	
+3E walk	6.54	29.13	
+8E ✓	6.36	29.31	
EL	7.5	28.2	
1E	7.5	28.2	
1E w rail	6.82	28.85	

2+00	35.67		47
2E E rail	6.66	29.01	
EL	7.5	28.2	
+29 w rail	6.77	28.90	
+29	7.3	28.4	
+6	7.3	28.4	
+9	6.3	29.4	
Ecb	6.39	29.28	
2+25			
Ecb	6.28	29.39	
+1	6.6	29.1	
+5	6.8	28.9	
+5 w rail	6.73	28.94	
+10 E rail	6.66	29.01	
+10	6.7	29.0	
EL	6.6	29.1	
2+368			
EL	6.1	29.6	
+4 E rail	6.70	29.0	
+9 w rail	6.84	28.83	
+11	6.7	29.0	
Ecb	6.17	29.50	
Equt	6.88	28.79	

Cedar to Date E side

2+54	35.67		
E gut	6.80	28.87	
Eeb like W.rail	6.78	28.89	
+5 E.rail	6.78	28.89	
+7	6.6	29.1	
E.L.	3.7	32.0	
2+83 ^S			
Eeb line E.rail.	6.56	29.11	
+2	6.2	29.15	
+6	4.9	30.8	
E.L.	5.0	30.67	
2+96 [±]			
E.L.	4.6	31.1	
+7	4.6	31.1	
Eeb	5.75	29.92	
Egut	6.43	29.34	
3+00 = 5L Date			
Eeb	5.73	29.94	
E.L. ret.	5.37	30.30	

Cedar to Date W side

	35.67		48
0+00 = NL Cedar.			
W.eb	9.95	25.72	
WL-ret.	9.67	26.00	
0+03			
W.L.	9.2	26.5	
+3	9.6	26.1	
+6	9.4	26.3	
+8	9.5	26.2	
Web	9.90	25.87	
0+25			
wcb	9.66	26.01	
+3	9.0	26.7	
W.L.	9.0	26.7	
0+46			
w.L.	8.8	26.9	
+6	9.1	26.6	
+10	8.8	26.9	
Web	9.54	26.13	
0+50			
wcb	9.52	26.15	
+3	9.1	26.6	
+6	9.5	26.2	
W.L.	9.3	26.4	

Cedar to Date W. Side.

35.67

1+00

W.L.	9.0	26.7
+6	9.2	26.5
Web	9.09	26.58

1+50

Web	8.77	26.90
W.L.	8.8	26.9

2+00^a

W.L. on ext walk	8.10	27.57
+3 ⁵ walk	8.16	27.51
+8 ⁵ ✓	8.14	27.53
Web	8.37	27.30

2+50^b

Web	7.97	27.70
+3 ⁵ walk	7.80	27.87
+8 ⁵ ✓	7.77	27.90
W.L.	7.6	28.1

2+54

W.L.	8.2	27.5
+4	7.6	28.1
+9	7.4	28.3
Web	7.94	27.73

Cedar to Date W. side.

35.67

49

2+75		
Web	7.78	27.89
+3	7.3	28.4
+8	7.4	28.3
W.L.	8.7	27.0

2+96

W.L.	7.6	28.1
+3	7.2	28.5
+8	7.0	28.7
Web	7.60	28.07

3+00 = S.L. Date

Web	7.57	28.10
W.L. ret.	7.33	28.34

Date to Fir west side

0+00 = N.L. Date on West

1+94^b

Web	4.90	30.77
+3 ⁵ walk	4.83	30.84
+8 ⁵ ✓	4.77	30.90
W.L.	5.0	30.7

2+50

W.L.	4.6	31.1
Web	4.46	31.21

3+00

Web	4.07	31.65
W.L.	4.2	31.5

Date to Fir W. side

35.67

3+36⁵ = 5L Fir on Nest

WL	ret	3.46	32.21
wcb		3.72	31.95
B.M	5.89	37.84	3.72 31.95

Return
Fir S.W.

Fir to Grape East Side

1+50³ 10+00 = NL Fir

Ecb		4.21	33.63
+3 ⁵	walk	4.17	33.67
+8 ⁵	v	4.08	33.76
EL		3.7	34.1

1+57

EL		1.8	36.0
+2		3.3	34.5
+6		3.8	34.0
+10		3.7	34.1
Ecb		4.23	33.61

1+75

Ecb		4.33	33.51
+3		3.7	34.1
+7		3.9	33.7
+10		3.6	34.2
EL		2.7	35.1

Fir to Grape E side

2+00 37.84

50

EL		2.5	35.3
+2		3.6	34.2
+7		3.8	34.0
+10		4.0	33.8
Ecb		4.44	33.40
2+25			
Ecb		4.54	33.30
+3		4.1	33.7
+7		4.2	33.6
+10		3.8	34.0
EL		2.6	35.2
2+50			
EL		3.2	34.6
+4		4.3	33.5
Ecb		4.67	33.17
2+75			
Ecb		4.80	33.04
+8		4.7	33.1
EL		3.6	34.2
2+95			
EL		3.7	34.1
+2		4.3	33.5
+7		4.3	33.5
Ecb		4.92	32.92

37.84
 3+00^b = SL. Grape
 Feb 4.92 32.92
 E.L. ret 4.70 33.14

Grape to Hawthorne E. side.

0+00 = N.L. Grape
 E.L. ret. 4.51 33.33
 Feb 4.81 33.03

0+25
 Feb 4.67 33.17
 E.L. 4.5 33.3

0+50
 E.L. 4.4 33.4
 +5 4.5 33.3
 +9 4.4 33.4
 Feb 4.50 33.34

0+75
 Feb 4.36 33.48
 E.L. 4.0 33.8

1+00
 E.L. 4.0 33.8
 +3 4.0 33.8
 +6 4.2 33.6
 Feb 4.17 33.67

Grapeto Hawthorne E side

37.84 51
 1+25
 Feb 4.04 33.80
 E.L. 3.7 34.1

1+50
 E.L. 3.9 33.9
 +6 4.0 33.8
 Feb 3.90 33.9

1+75
 Feb 4.06 33.78
 +9 3.8 34.0
 E.L. 3.8 34.0

2+00^E
 E.L. 4.0 33.8
 +3^E walk 3.99 33.85
 +8^E ✓ 4.06 33.78
 Feb 4.22 33.62
 B.M. 7.85 29.99
 B.M. 5.09 35.11 30.02

N.W. Corner of Hawthorne

Hawthorne to Ivy West Side.

35.11

0400 = NL Hawthorne

2+00

Web 6.41 28.70

W.L. walk 6.05 29.06

2+05

W.L. 6.4 28.7

+5 5.6 29.3

+8 5.7 29.4

Web 6.46 28.65

2+25

Web 6.60 28.51

+5 5.6 29.5

+8 5.9 29.2

W.L. 6.4 28.7

2+50

W.L. 6.3 28.8

+7 5.7 29.4

Web 6.78 29.33

2+97

Web 7.04 28.07

+3 6.0 29.1

+7 6.5 28.6

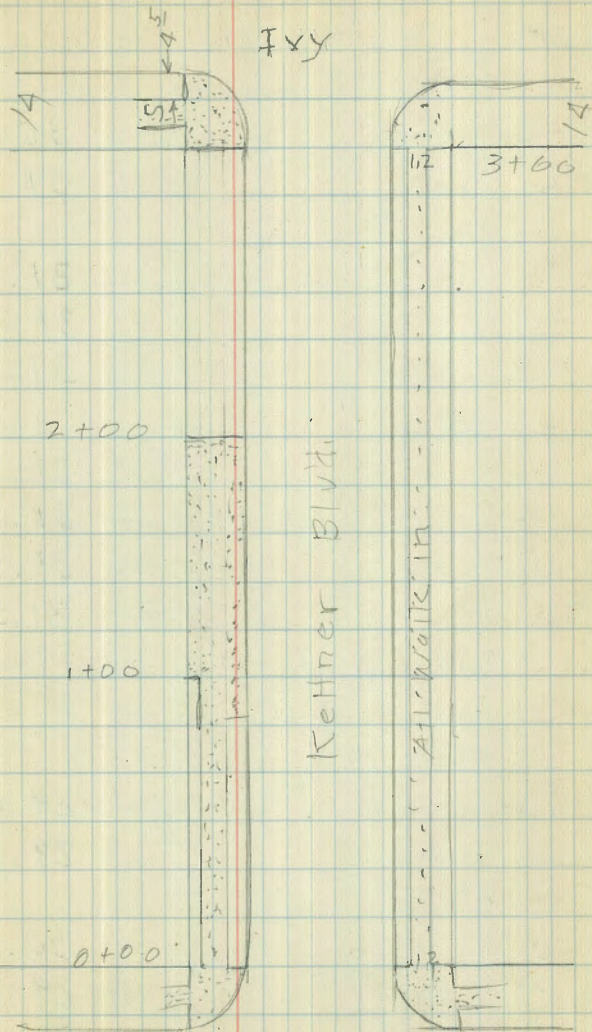
W.L. 6.5 28.6

3+00 = S.L. Ivy

W.L. ret. 6.82 28.29

Web 7.07 28.04

Note: All walks in on both sides from Ivy to Juniper.



Hawthorne

Juniper to Kalmia East side.

35.11

N.W. Juniper
e Kettner

B.M. 7.65 36.67 6.07 29.04

0+00 = N.L. Juniper

Ecb 5.72 30.97

EL. ret. 5.36 31.33

0+25

EL. 5.2 31.5

+5 5.7 31.0

Ecb 5.61 31.08

0+50

Ecb 5.55 31.14

+35 walk 5.44 31.25

+85 ✓ 5.33 31.36

EL 5.2 31.5

Juniper to Laurel West side

0+00 = N.L. Juniper

1+50

Web 7.22 29.47

W.L. walk 7.03 29.66

1+7.5

W.L. 6.7 30.0

+5 7.0 29.7

+10 6.6 30.1

Web 7.22 29.47

Laurel st.

6+80

5+56

4+30

4+30

4+20

1+50

1+00

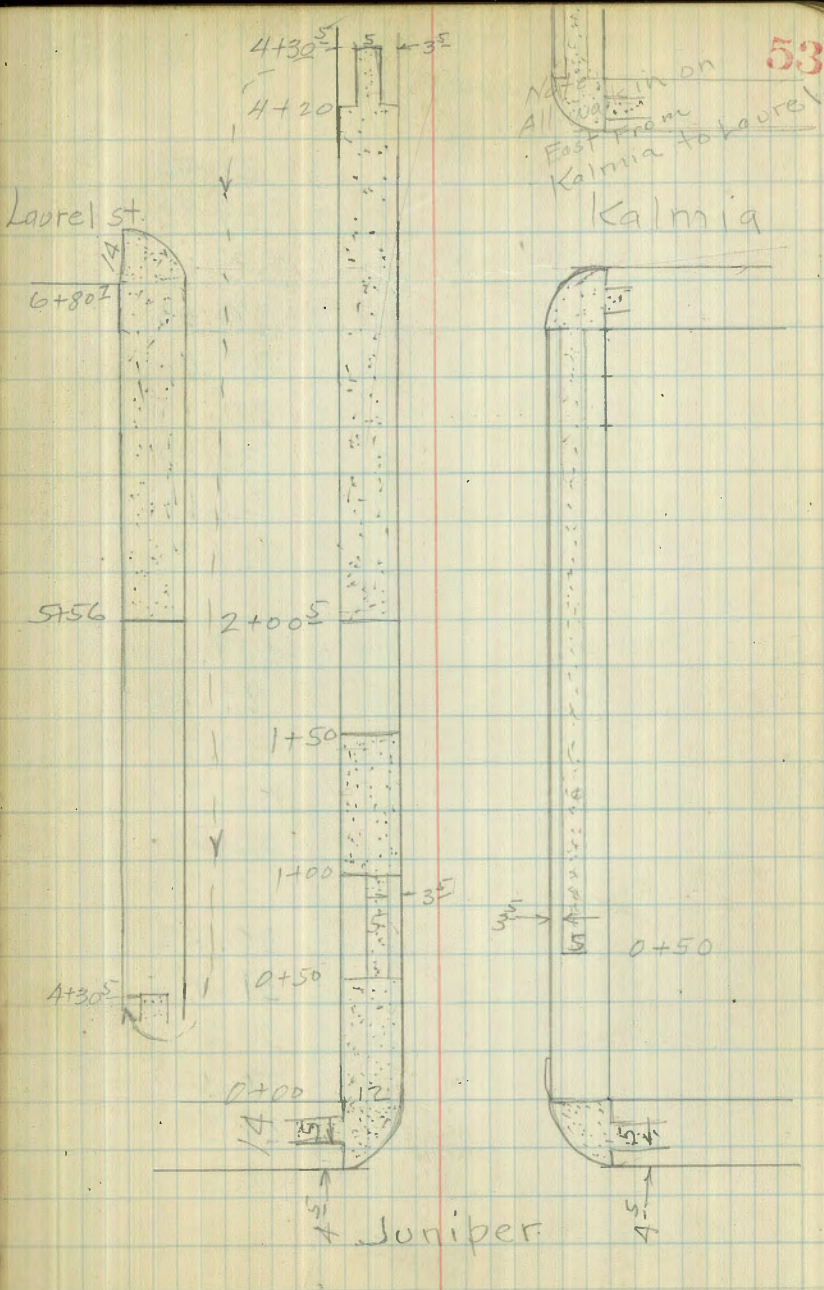
0+50

0+00

Juniper

Notes
All on
East from
Kalmia to Laurel.
Kalmia

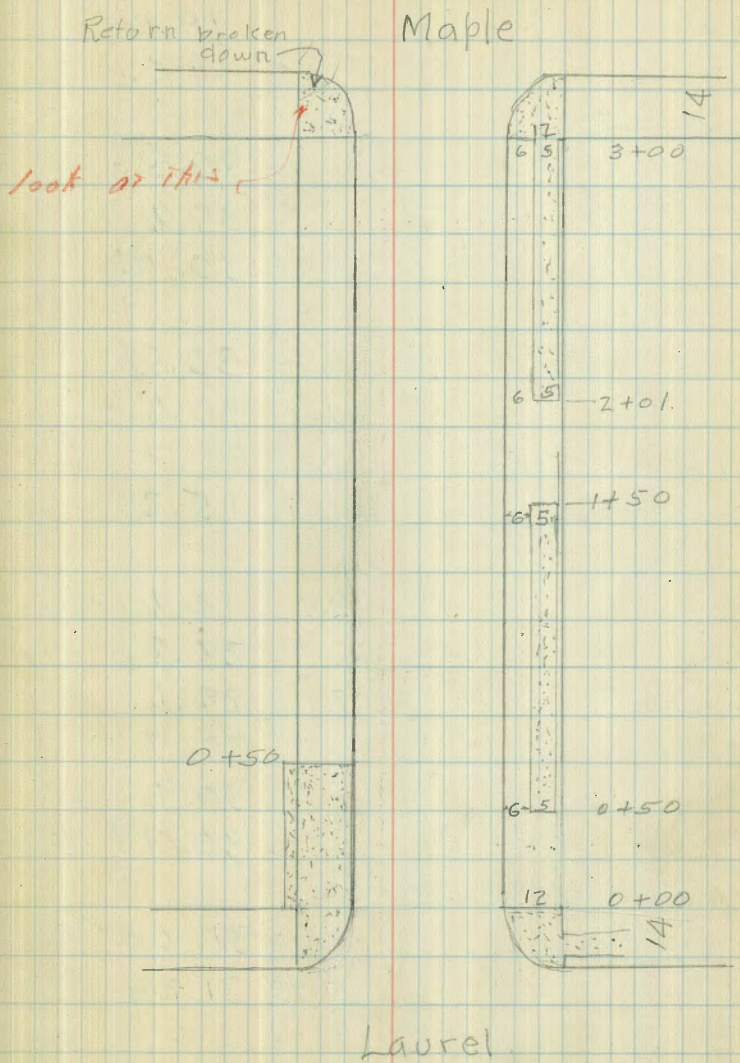
53



Juniper to Laurel west side.

54

2+00 ^E	36.59	
Web	7.23	29.46
W.L. walk	6.77	29.90
4+30 ^E		
Web	6.66	30.03
+2	5.7	31.0
+3 ^E walk	6.54	30.15
+8 ^E ✓	6.40	30.29
W.L.	8.6	24.1
2W	19.0	17.7
4+35		
W.L.	19.0	17.7
W.L.	7.0	29.7
+5	6.1	30.6
+10	5.9	30.8
Web	6.60	30.09
4+50		
Web	6.47	30.22
+3	5.7	31.0
+7	6.1	30.6
+9	7.4	29.3
+10	16.4	20.3
W.L.	17.9	18.8



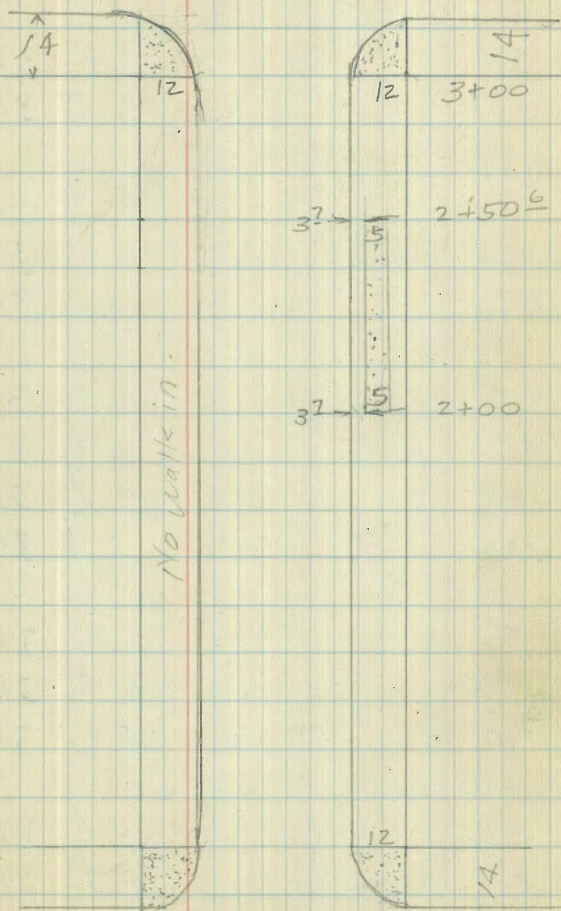
Juniper to Laurel west side.

4+75	36.69		
W.L.	17.7	19.0	
+1	17.7	19.0	
+2	7.0	29.7	
+4	6.2	30.5	
+9	5.9	30.8	
Web	6.28	30.41	
5+00			
Web	6.11	30.58	
+3	6.1	30.6	
+9	7.0	29.7	
W.L.	21.5	15.2	
5+25			
3W	19.9	16.8	
3W	7.9	28.8	
W.L.	7.1	29.6	
+3	6.0	30.7	
+9	5.8	30.9	
Web	5.92	30.77	
5+56			
web	5.66	31.03	
W.L.	5.43	31.26	
B.M	10.22	43.20	3.71 32.98

SE Laurel
Kalmia

55

Notmeg.



Maple

Laurel to Maple East side.

= N.L. Laurel

0+00 43.20

Ecb		9.12	34.09
EL	ret	8.78	34.42
	0+25		
EL		8.8	34.4
Ecb		8.87	34.33
	0+50		
Ecb		8.50	34.70
+6	walk	8.32	34.88
+11	✓	8.26	34.94
	1+50		
EL		6.9	36.3
+1	walk	6.97	36.23
+6	✓	7.07	36.13
Ecb		7.18	36.02
	1+70		
Ecb		6.93	36.27
+5		6.4	36.8
EL		5.9	37.3
	2+01		
EL		5.9	37.3
+1	walk	6.31	36.89
+6	✓	6.41	36.79
Ecb		6.46	36.74

Laurel to Maple W. Side.

56

43.20

	0+00 = N.L. Laurel		
	0+50		
Wcb		9.53	33.67
WL	walk	9.32	33.88
	0+75		
WL		9.8	33.4
+1		9.3	33.9
+8		9.0	34.2
Wcb		9.20	34.0
	1+00		
Wcb		8.90	34.30
+3		8.7	34.5
+11		9.1	34.1
WL		9.4	33.8
	1+25		
WL		8.4	34.8
+1		8.5	34.7
+8		8.3	34.9
Wcb		8.58	34.62
	1+50		
Wcb		8.26	34.94
+3		8.0	35.2
+11		8.3	34.9
WL		8.7	34.5

Laurel to Maple W. side

1+75	43.20		
W.L.	9.0	34.2	
+1	8.2	35.0	
+9	7.7	35.5	
Web	7.95	35.25	
2+00			
Web	7.60	35.60	
+3	7.4	35.8	
+11	7.7	35.5	
W.L.	8.4	34.8	
2+25			
W.L.	8.1	35.1	
+1	7.1	36.1	
+9	6.9	36.3	
Web	7.27	35.93	
2+50			
Web	6.94	36.28	
+3	6.6	36.6	
+11	6.9	36.3	
W.L.	7.4	35.8	
2+75			
W.L.	7.7	35.5	
+1	6.7	36.5	
+9	6.3	36.9	
Web	6.53	36.67	

43.20

57

3+00 = SL Maple

Web	6.25	36.95
W.L. ret.	6.10	37.10

Maple to Nutmeg West side

0+00 = N.L. Maple

Web	4.76	38.44
W.L. ret.	4.46	38.74

0+25

W.L.	4.1	39.1
+1	3.7	39.5
+9	3.7	39.5
Web	4.17	39.03

0+50

Web	3.71	39.49
+4	3.2	40.0
+11	3.1	40.1
W.L.	3.7	39.5

0+75

	3.3	39.9
+1	2.6	40.6
+9	2.7	40.5
Web	3.18	40.02

1+00

Web	2.72	40.48
+5	2.3	40.9
+11	2.1	41.1
W.L.	1.9	41.3

Maple to Nutmeg W side

1+25	43.20		
W.L.	1.2	42.0	
+1	1.7	41.5	
+8	1.9	41.3	
Web	2.28	40.92	
1+50			
Web	1.73	41.47	
+4	1.1	42.1	
+11	1.2	42.0	
W.L.	1.0	42.2	
1+75			
W.L.	0.6	42.6	
+8	0.8	42.4	
Web	1.25	41.95	
T.P.	5.29	47.65	0.84
2+00			
Web	5.20	42.45	
+3	4.8	42.8	
+6	5.0	42.6	
W.L.	4.7	42.9	
2+25			
W.L.	4.3	43.3	
+8	4.3	43.3	
Web	4.76	42.89	

Maple to Nutmeg W side

2+50	47.65		58
Web	4.30	43.35	
+4	3.8	43.8	
W.L.	3.9	43.7	
2+75			
W.L.	3.9	43.7	
+1	3.4	44.2	
+5	3.5	44.1	
Web	3.90	43.75	
3+00 = SL Nutmeg			
Web	3.32	44.33	
W.L.	3.03	44.62	
Maple to Nutmeg east side			
0+00 = NL Maple			
Ecb	8.06	39.59	
EL ret.	7.79	39.86	
0+25			
EL	7.0	40.6	
Ecb	7.71	39.94	
0+50			
Ecb	7.07	40.58	
EL	6.1	41.5	
0+75			
EL	5.0	42.6	
+6	6.3	41.3	
Ecb	6.60	41.05	

1+00 47.65
 Ecb 6.09 41.56
 +4 5.7 41.9
 EL 4.1 43.5

1+25
 EL 3.9 43.7
 +6 5.1 42.5
 Ecb 5.58 42.07

1+50
 Ecb 5.11 42.54
 EL 4.5 43.1

1+75
 EL 4.2 43.4
 +6 4.6 43.0
 Ecb 4.66 42.99

2+00
 Ecb 4.09 43.56
 +32 walk 3.99 43.66
 +82 v 3.82 43.83
 EL 3.7 43.9

2+50^c
 EL 2.8 44.8
 +35 walk 2.88 44.77
 +85 v 3.00 44.65
 Ecb 3.14 44.51

2+75 47.65
 Ecb 2.64 45.01
 +6 2.6 45.0
 EL 2.2 45.4
 2+97
 EL 1.2 46.4
 +6 1.6 46.0
 +6 2.0 45.6
 Ecb 2.14 45.51

3+00 = 5L. Nutmeg
 Ecb 2.14 45.51
 EL rel 1.87 45.78
 SE Kottner & Nutmeg
 B.M 2.15 45.50

Alignment of Road in Part
 From Pershing Drive to Arizona + Casper Sts

March 5-31
 Survey 60
 McHenry
 Hoffman

7+14.32 E.C.

$A = 52^{\circ}42'$

$R = 370.0$

1+50 Post

$L = 346.32$

$T = 183.27$

3+74.00 B.C.H.

0+86.22 E.C.

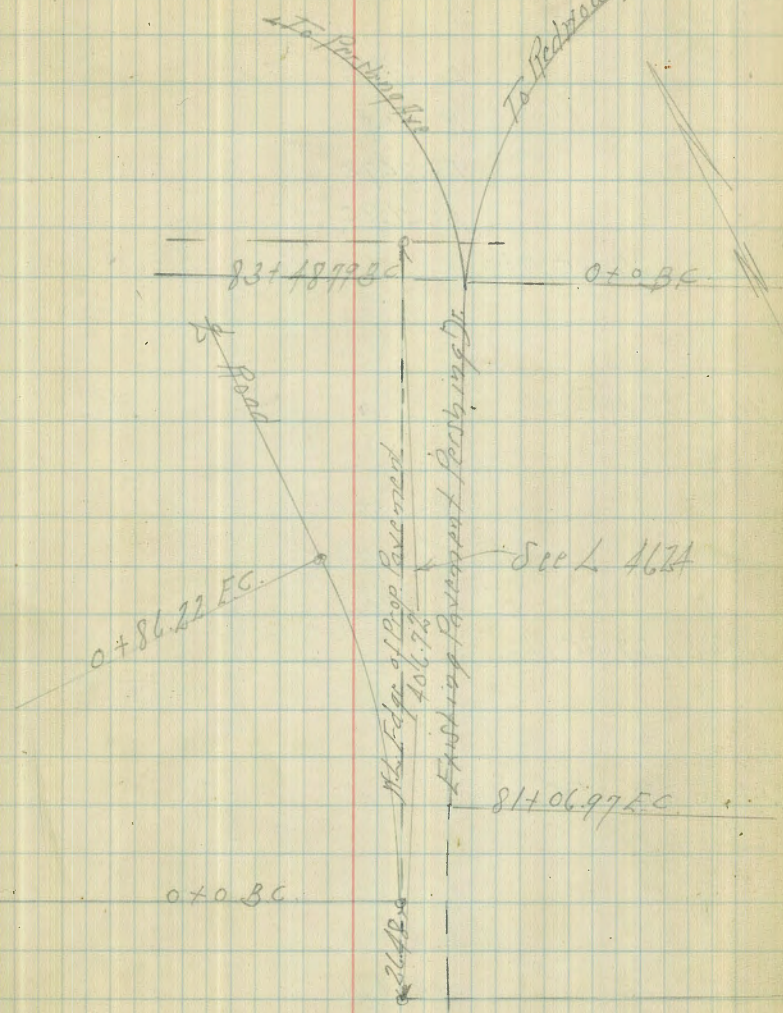
$A = 26^{\circ}00'$

$R = 190.0$

$L = 86.22$

$T = 43.86$

0+0 = B.C.H.



18 + 268° FC

$\Delta = 41^{\circ} 50'$

$R = 60.0$

$T = 247.5$

$L = 46.95$

17 + 79.85 BC PL

16 + 48.48 EC

$\Delta = 64^{\circ} 20'$

$R = 250.0$

$T = 157.23$

$L = 280.71$

13 + 67.77 BC LH

10 + 37.20 EC

$\Delta = 31^{\circ} 32'$

$R = 450.0$

$L = 217.66$

$T = 127.05$

7 + 89.54 BC PL

21+6699 P.O.T. = N.L. Upas St

7-230 30° →
d. Horiz. 30°

21+6699 = N.L. Upas

197

30°

Sly Edge Paving

Upas St.

20+9378 E.C.

A = 69°39'

P = 96.54

T = 47.16

L = 117.36

19+7612 P.P.C.

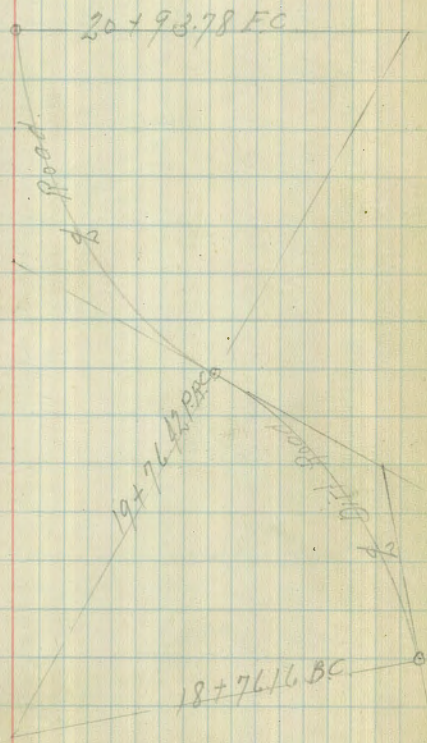
A = 35°54'

P = 160.0

T = 51.83

L = 100.25

18+7616 B.C.Lt



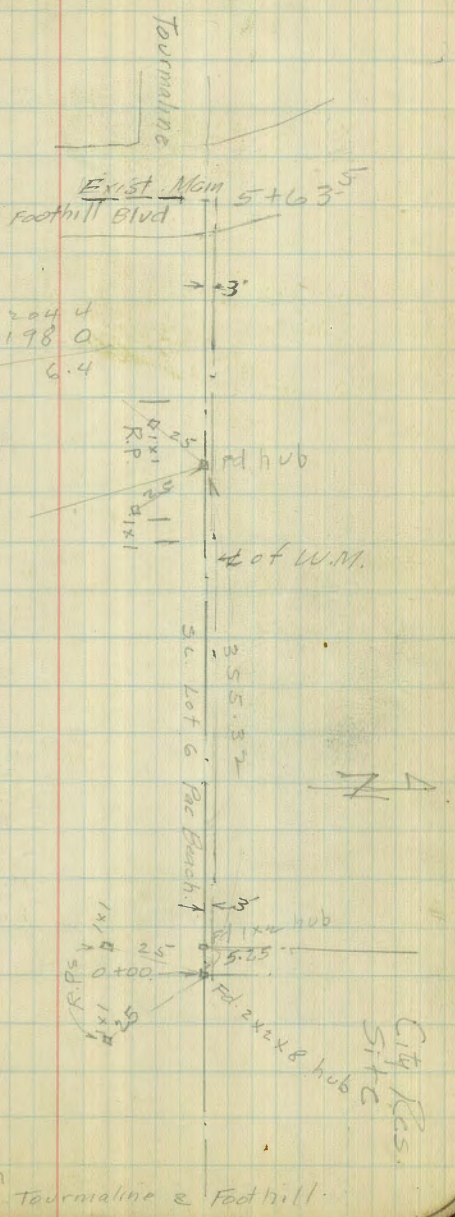
18+2680 P.P.C.

Ⓞ

Stalces for Water Main
in Lot G Pacific Beach. PL. 1784. 63

		274.3	El.	Grade	Cut.
0+00	stlk.	1.3	273.0	269.0	C-4.0
+21		5.1	269.2		
750	stlk.	2.0	260.6	256.0	C 4.6
+69	IK	5.8	256.8		
1+00	stlk.	3.6	247.1	243.0	C 4.1
1+25	stlk. Brk.	10.7	240.0	225.5	C 14.5
1+27	EL Windsor	20.1	230.6		
1+41	connect	9.6	229.0		
1+70	near w ch	10.7	227.9		
1+95	stlk Brk.	9.3	229.3	222.5	C 6.8
2+09		8.9	229.7		
2+40		3.6	211.1		
2+50		5.5	209.2	205.4	C 3.8
2+78		10.8	203.9		
3+00	stlk.	12.6	202.1	197.5	C 4.6
3+50	stlk.	15.0	199.7	196.5	C 3.2
4+00	stlk.	13.3	201.4	195.5	C 5.9
4+23		11.7	203.0		
4+50	stlk.	4.0	198.4	194.5	C 3.9
4+75		7.9	194.5		
5+00	stlk.	1.7	188.5	181.4	C 7.1
5+16		5.6	185.1		
5+30	stlk	6.9	183.3	173.5	C 9.8
5+32		7.2	183.0		
5+33.4	EL Hill Blvd	12.1	178.1		
4.5		12.7	177.5		
4.3		13.3	176.9	173.0	C 3.9

237.67 - B.M.
7.16
244.83
3.02
241.81
12.03
253.84
0.74
253.10
12.68
265.78
0.77
265.01
9.32
274.33
12.99
261.55
1.04
262.59
12.37
250.20
0.52
250.72
12.88
237.84
0.71
238.55
12.71
225.84
1.02
226.86
12.69
214.77
0.57
214.74
12.87
201.87
0.55
202.42
12.71
189.51
0.70
190.21
10.62
179.59 - B.M.



Hub. NE Tourmaline & Foothill.

75. Wide
12. d-3
12.75 Wns.

Fortuna St. X Sec. Haines to Frontera

6-2-21
Miller
Forsyth
California

B.M.B.P. 12.45 33.64 21.19
T.P. 12.70 40.96 5.38 28.26

set AM, NW T. Hub 0.54 40.42 Fortuna + Haines

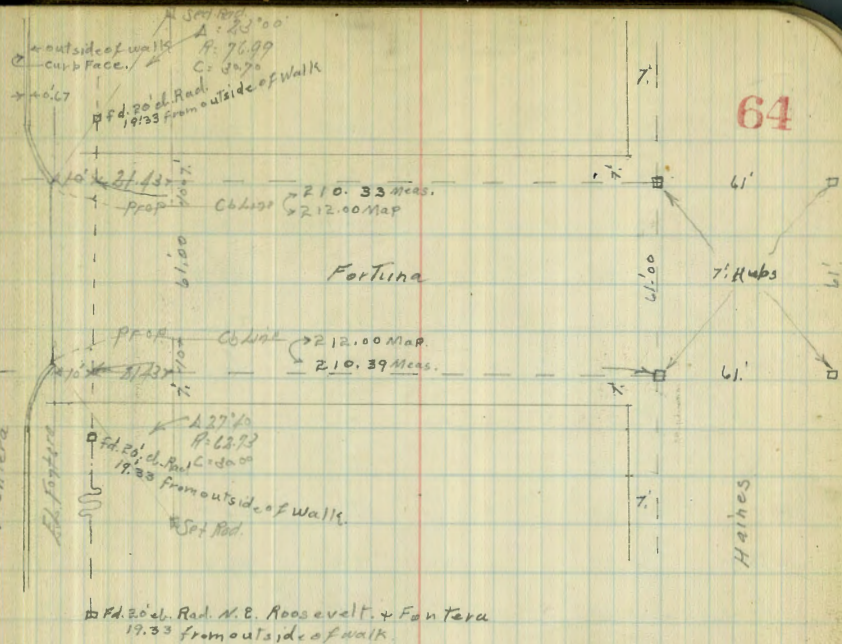
10' e. of W. line Haines

N. on Natural ground	0.0	41.0
do	0.1	40.9
1/4	0.4	40.6
1/2	0.8	40.2
3/4	1.2	39.8
do	1.6	39.4
S	2.2	38.8

00 = W. line Haines

S. Nat ground	2.8	38.2
+7	2.3	38.7
do	2.6	38.4
1/4	2.2	38.8
1/2	1.9	39.1
3/4	1.3	39.7
do	0.9	40.1
+4	0.8	40.2
N. Nat ground	0.3	40.7
25 W.		
N-10 Nat ground	1.0	39.4
N	1.6	39.4
+1.5	1.7	39.3
+5	3.8	37.2

64



Fd. 20' d. Rad. N.E. Roosevelt + Fortuna
19.33 from outside of walk.

X 40.96

25' W. (con)

do	4.0	37.0
1/4	4.2	36.8
1/2	4.4	36.6
3/4	5.0	36.0
do	5.3	35.7
+4	5.4	35.6
+7	4.3	36.7
S. Nat ground	4.4	36.6

40.96
50' W

S. Nat ground	4.4	34.6
+3	2.4	34.6
+6	7.8	33.2
cb	7.7	33.3
"4	7.2	33.8
♀	7.0	34.0
"4	6.6	34.4
cb	6.1	34.9
+7	5.7	35.3
+10.5	3.6	37.4
N. Nat ground.	3.8	37.2

90' W

N-10 Nat ground	7.2	33.8
N.	7.5	33.5
+2.	7.5	33.5
+6	10.0	31.0
cb	10.0	31.0
"4	10.1	30.9
♀	10.1	30.9
"4	10.2	30.8
cb	10.8	30.2
+8	11.0	30.0
+11	9.6	31.4
S. Nat. ground.	9.8	31.2

Fortuna.

40.96

103' W

65

S. Nat ground	10.5	30.5
+0.5	10.6	30.4
+3.0	12.0	29.0
cb	11.7	29.3
"4	11.0	30.0
♀	10.9	30.1
"4	11.2	29.8
cb	10.9	30.1
+6	10.9	30.1
+10	8.6	32.4
N. Nat ground.	8.6	32.4

106' W

N. Nat. ground	8.8	32.2
+2	9.0	32.0
+6	11.2	29.8
cb	11.1	29.9
"4	11.4	29.6
+8	11.2	29.8
♀ on Top M.H. Cover	10.10	30.86
+4	11.5	29.5
"4	11.4	29.6
cb	12.0	29.0
+9	12.3	28.7
+11.5	11.0	30.0
S Nat ground	11.0	30.0

40.96

110' W.

S Nat. ground	11.2	29.8
+0.5	11.2	29.8
+3	12.5	28.5
cb	12.2	28.8
"4	11.9	29.1
¢	11.8	29.2
"4	11.5	29.5
cb	11.5	29.5
+6	11.4	29.6
+10	8.8	32.2
N. Nat. ground	8.8	32.2
150' W.		
N Nat ground	10.7	30.3
+2	10.9	30.1
T.P.	4.66	32.44
	13.18	27.78
+6	5.0	27.4
cb	5.1	27.3
"4	5.3	27.1
¢	5.7	26.7
"4	5.6	26.8
cb	5.8	26.6
S	6.1	26.3
+2 Nat ground	4.4	28.0

32.44

Fortuna

203.33 W on N } R. 20' Rad. cl. Ret.
203.39 " " }

66

S-6 Nat ground	8.1	24.3
S	9.0	23.4
cb	9.1	23.3
"4	9.1	23.3
¢	8.9	23.5
"4	8.8	23.6
cb	8.5	23.9
+7	8.4	24.0
+11	6.9	26.1
N. Nat ground	6.3	26.1
212.0 W on N } E. End. cmt. cb & Pavmt 211.2 W on S }		
N.	8.4	24.0
+10.1 = Back of curb E. End.	8.67	23.77
+11.5 = gutter on S. edge pavmt.	9.23	23.21
"4 = " " " "	9.21	23.23
¢ " " " "	9.34	23.10
"4 " " " "	9.62	22.82
cb + 1.25 gutter " " " "	10.03	22.41
cb + 2.9 = Back of curb E. End.	9.37	23.05
S.	9.6	22.8
213.4 W = E. End. cmt. walk on N + S.		
S - 0.5 = S. edge cmt. walk E. End.	9.84	22.60
S + 4.6 = N " " " E. End.	9.65	22.79
N + 0.3 = N. edge cmt. walk E. End.	8.45	23.99
N + 5.3 = S " " " E. End.	8.59	23.85

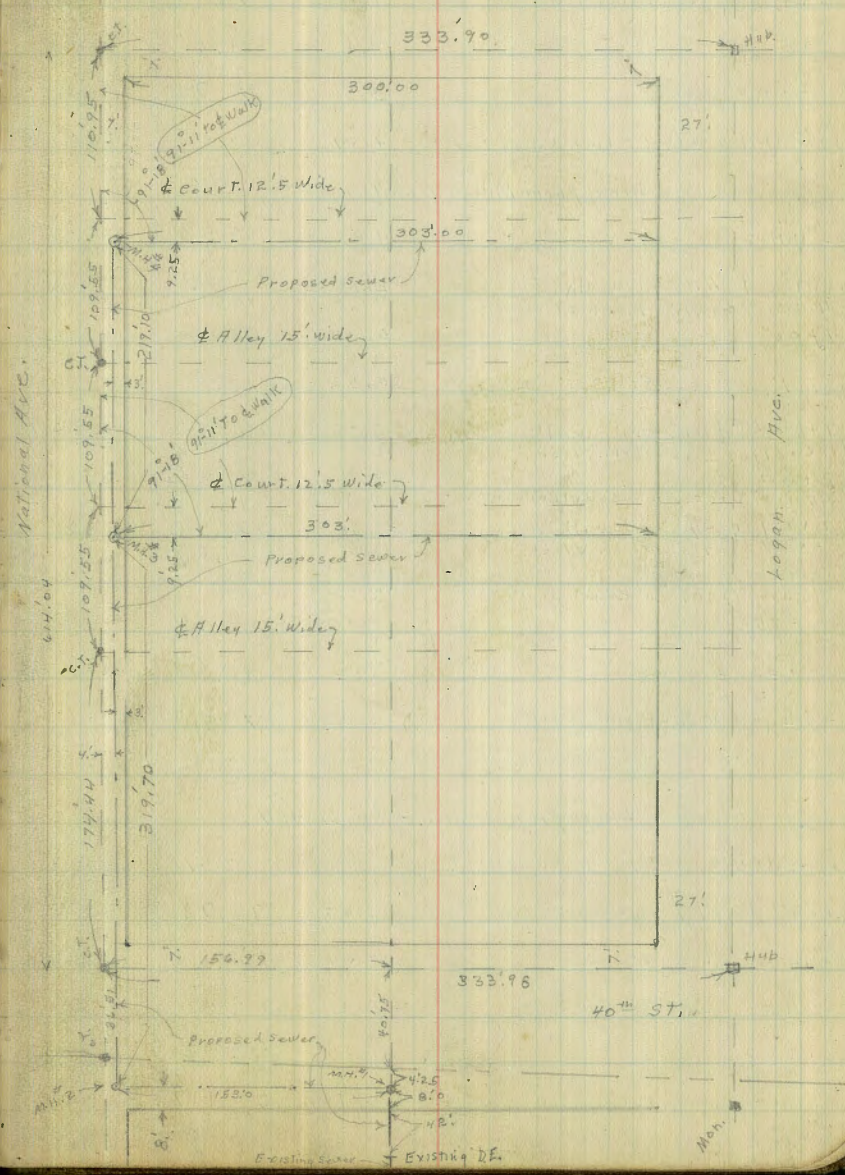
32.44
3.64
28.80
5.17
33.97
12.47
21.50
24.19

Relocation Sewers Avenue Courts
original survey page 30.

9-16-31
Miller
Walker
13133
S. 550 ft.
SW. 40th
& National

37.00
13.00
50.00

BM. BP	6.79	69.87	63.08	
00=Existing D.E. 42' E. of E. Line 40 th St.	13.15	54.72	FL.	
11.4	10.4	59.47	ground.	
0+30	12.4	57.47		
0+40	11.7	58.17		
0+50 M.H. 1 on stub	9.89	59.98	0+50 *	
0+25	6.6	63.27	0+75	
0+50	5.2	64.67	1+00	
0+75	4.7	65.17	+25	
1+00	3.4	66.47	+50	
1+25	2.9	66.97	+75	
1+45	4.5	65.37	+95	
1+50 Niche National	6.9	62.97	2+00	
1+53=M.H. 2 on stub	6.90	62.97	+03 *	
0+02 ent. ch	6.95	62.92	+05	
0+02 gutter pavnt.	7.41	62.46	+05	
0+22=4 40 th St. on pavnt	6.04	63.83	+25	
0+42 gutter pavnt.	5.55	64.32	+45	
0+42 ent. ch.	4.84	65.03	+45	
0+52 W Line 40 th St	4.5	65.37	+54	
1+00	3.4	66.47	3+03	
1+50	1.6	68.27	+53	
T.P.	9.89	78.46	1.30	68.57
2+00	8.5	69.96	4+03	
2+12 1/2 ent. d.e. line Alley	8.20	70.26	+15.3	
2+12 1/2 pavnt.	8.41	70.05	+15.3	



78.44

1+19.4 $\frac{1}{2}$ Alley	8.51	69.95	4+22.4
2+27 ⁰⁰ parvt.	8.17	70.29	+30
2+27 ⁰⁰ cont. ab. w. line Alley	7.73	70.73	+30
2+50	7.1	71.36	+53
3+00	5.5	72.96	5+03
3+19 ²⁰ M.H. 3 S.E. of E. line Wallace Court.	4.87	73.59	5+22.70

Line from M.H. 3 North.

00 = M.H. 3	4.87	73.59	5+22.7
0+41 ⁰⁰ $\frac{1}{2}$ 4' cnt. walk.	2.93	75.53	+64.1
14.5 E. of 0+41 ⁰⁰ porch floor	1.9	76.56	
1+00	0.3	78.16	6+22.7
T.P.	8.40	86.28	0.58
1+63 ²⁰ $\frac{1}{2}$ 4' cnt. walk	5.75	80.53	+86.6
14.5 E. of 1+63.2 on porch floor.	3.6	82.68	
2+00	3.9	82.38	7+22.7
3.5 W. of 2+00 on court walk	4.31	81.97	
2+09 $\frac{1}{2}$ 4' cnt. walk.	3.71	82.57	+31.7
14.5 E. of 2+09 on porch floor.	1.4	84.88	
2+50	2.5	83.78	+72.7
3.5 W. of 2+50 on court walk.	3.67	82.61	
2+75	3.2	83.08	+97.7
3+03	5.5	80.78	8+25.7
3.5 W. of 3+03 on court cnt. walk	6.43	89.85	

Line from M.H. 3 To M.H. 4

0+00 = M.H. 3	7.57	81.16	73.59	5+22.7
0+04 ²⁰ = E. edge cnt. walk	7.25	73.91	+27.4	
0+14 = W " " "	7.06	74.10	+36.7	
0+50	5.9	75.26	+72.7	
1+00	4.2	76.96	6+22.7	
1+11 ²⁰ cnt. ab. E. line Alley	3.97	77.17	+34.4	

81.16

Avenue Courts sewer.

68

1+11 ²⁰ gutter parvt.	4.23	76.93	6+34.4
1+14 ⁰⁰ $\frac{1}{2}$ Alley on parvt.	4.26	76.90	6+41.5
1+26 ⁵⁰ gutter parvt	3.89	77.27	6+49.3
1+26 ⁵⁰ cnt. ab. w. line Alley	3.45	77.71	+49.3
1+53. $\frac{1}{2}$ B' cnt. walk	2.62	78.54	+75.7
2+00	1.1	80.06	7+22.7
2+19 ⁰⁰ M.H. 4 on stub	0.68	80.48	7+41.8
T.P. 10.22	90.70	0.68	80.48
Line from M.H. 4 North.			
2+00 = M.H. 4	10.22	80.48	7+41.8
0+50 $\frac{1}{2}$ 4' cnt. walk	8.21	82.49	+91.8
15' East of 0+50 on porch floor	7.44	83.26	+91.8
0+95	6.8	83.9	8+36.8
1+00 $\frac{1}{2}$ 4.3 cnt. walk	6.30	84.4	+41.8
78.2 East of 1+00 = porch floor	5.56	85.13	+41.8
1+50	4.0	86.7	8+91.8
19' East of 1+50 porch floor	3.5	87.2	+91.8
3.5 W. of 1+50 on court walk	4.32	86.38	+91.8
1+67	3.17	87.53	9+08.8
9.5 E. of 1+67 porch floor	1.4	89.3	+08.8
2+00	2.4	88.4	+41.8
2+25	1.8	88.9	+66.8
3.5 W. of 2+25 on court walk	2.45	88.25	+66.8
2+50	2.5	88.2	+91.8
3+00	3.4	87.3	10+21.8
13.5 E. of 2+00 cnt. porch	4.9	89.8	+21.8
3.5 W. of 2+00 Court Walk	3.89	86.81	+21.8

90.70

3+03

4.4

86.3

10444.8

3.5 W. of 3+03 on court walk

5.0

85.7

1144.8

chk B.M.

7.68

83.02

sw. 39' +
National
83.05

See book 1429 p 12

4-25-33
Mills
Bliss

X See Alley BIK 6. Blairs Highlands.
Palm to Nutmeg bet. 29th + Granada.
16' wide

B.M. B.P. 6.90 317.81 310.91 N.E. Palm + Granada

10' N. of S. line = S. cl. Line Palm St.

W	cont. cl.	5.58	312.23
W	gutter Parmt.	6.00	311.81
±	"	5.74	312.07
E	"	5.72	312.09
E.	cont. cl.	5.31	312.50

oo = S. Line Palm St

7.85 E. of ±	cont. cl.	5.06	312.75
" " "	parmt	5.34	312.47
±	"	5.57	312.24
7.95 W. of ±	"	5.45	312.36
" " "	cont. d	5.27	312.54

10' S.

W		4.8	313.0
±	✓	5.1	312.7
+7		4.9	312.9
E		4.0	313.8
	30' S.		
E		4.3	313.5
±	✓	4.5	313.3
W.		4.6	313.2

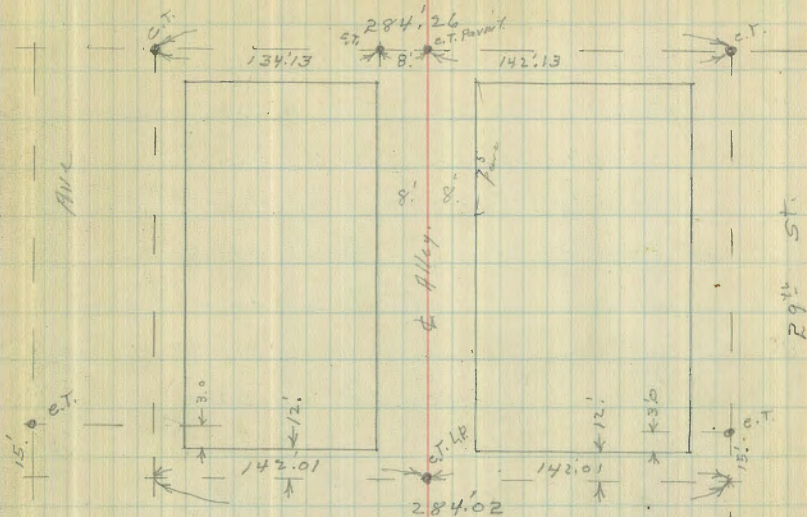
44' S garage on E cont. floor 11' Back

E - 4.5	cont. apron	4.1	313.7
E - 11.0	floor.	3.85	313.96

Indexed
C.S.K.

Settled on T.P. Sh. 167
11/14/33
? not under.
5t. **70**

Palm



Nutmeg

St.

Garage on W. cont. floor 6.0 Back
57.5 " " E dirt " 4.5 "

W - 6.0	floor	4.8	313.0
W - 2.5	cont. apron	4.85	312.96
W	✓	4.8	313.0
±		4.6	313.2
E		4.3	313.5
+4.5	floor	4.1	313.7

70' S garage on E dirt floor 4.5 Back

E - 4.5	floor	4.6	313.2
E.		4.6	313.2

From 86' S to 100' S. Board Fence on E. 0.25 in Alley.

317.81

100'. S

E.	5.0	312.8
☿	4.9	312.9
W.	4.9	312.9
T.P.	2.29	315.13

143'. S. garage on W. wood floor 1.5 Back

W-1.5 floor 3.1 312.0

W 3.1 312.0

☿ 3.1 312.0

E 3.1 312.0

175'. S.

E 3.4 311.7

☿ 3.4 311.7

W 3.6 311.5

200'. S.

W 3.7 311.4

☿ 4.1 311.0

+ 7.5 N. End Board Fence in Alley 4.1 311.0

229'. S 4.4 310.7

7.5 E. of ☿ S. End Board Fence in Alley

240'. S. double garage on E. cmt. floor 9.5 Back

E-9.5 floor 4.10 311.03

E 4.5 310.6

☿ 4.7 310.4

W. 4.8 310.3

292'. S

Alley Bk L. Blair's Highlands

315.13

256'. S. garage on E. dirt floor 0.5 in Alley.

7.5 E. of ☿ floor. 5.0 310.1

292'. S.

☿ on N.H. rim. 5.78 309.35

300'. S.

W. 5.9 309.2

☿ 6.0 309.1

+ 7.6 Wire fence to S. 0.4 in Alley 5.8 309.3

330'. S.

7.6 E. of ☿ = fence to N. 0.4 in Alley 6.7 309.4

☿ 6.8 309.3

W 6.9 309.2

346'. S

6'. W. of ☿ Pepper Tree 12" Diam.

350'. S

W. 7.3 307.8

☿ 7.4 307.7

E. 7.1 308.0

384'. S. garage on E. cmt. floor 0.2 Back

E floor 7.3 307.8

+ 3 7.5 307.6

☿ 8.5 306.6

W 8.7 306.4

393'. S. garage on W. cmt. floor 12' Back

W-12 floor 8.6 306.5

390'. S

on E.
N. end Double garage, E. Entrance 0.3 in Alley

71

315.13

400's

W	8.9	306.2
+	8.8	306.3
E	8.5	306.6

411's

S. End. Double garage on E. 0.7 in Alley

N. " Fence on E. 0.9 in Alley

434' S. S. End. Fence on E. 0.5 in Alley

E. 10.1 305.0

+0.5 Fence to N 10.1 305.0

+ 10.4 304.7

W 10.8 304.3

T.P. 0.65 304.60 11.18 303.95

450' S. S. End. Fence on W. 0.4 in Alley
N " " " E. 0.6 " "

W. 0.7 303.9

+ 0.8 303.8

E 0.3 304.3

473's

S. End. Fence on E. 0.6 in Alley

477' S. = N. End. emt. Apron on E. 0.2 Back ^{Double garage} 15 5.9 Back

E + 0.2 emt. Apron 1.88 302.72

2.3 302.3

2.4 302.2

498' S. S. End. Double garage on E.
S. " emt. Apron.

E - 5.9 floor 1.77 302.83

E. on emt. apron 2.46 302.14

304.60 Alley BIKL Blair's Highlands.

498's

72

+	3.5	301.1
+	4.0	300.6
W.	3.5	301.1

507's garage on E. emt floor 4' Back

E - 4.1' floor 2.74 301.86

E - Wedge emt. apron. 3.40 301.20

+ 4.2 300.4

W 4.6 300.0

540's

W 7.6 297.0

+ 6.7 297.9

E 5.7 298.9

573's

E 9.0 295.6

+ 9.3 295.3

+ 10.2 294.4

+ 11.1 293.5

W. 10.4 294.2

T.P. 3.68 296.90 11.38 293.22

598.35 = N. End. Paymt.

W. Top ch. 5.90 291.0

W. gutter paymt 6.53 290.30

+ 5.91 290.99

+ 7.75 " " 5.38 291.52

+ 7.75 Top ch. 4.87 292.03

296.90

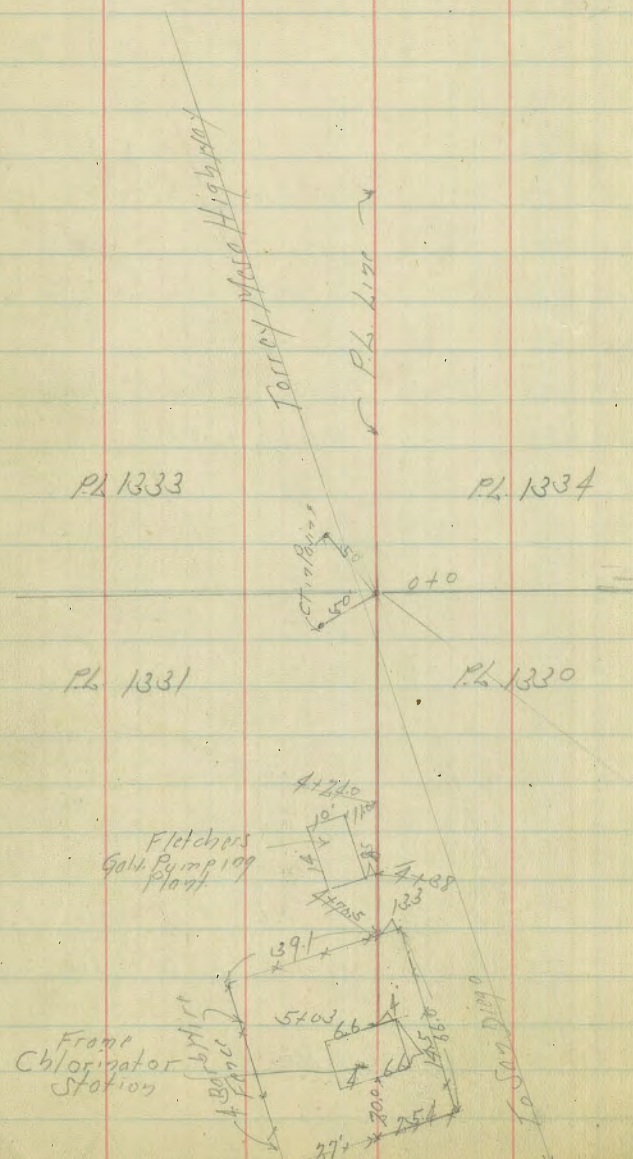
598.85 S. = N. Line Nutmeg

603.85 S. = N. of Line Nutmeg.

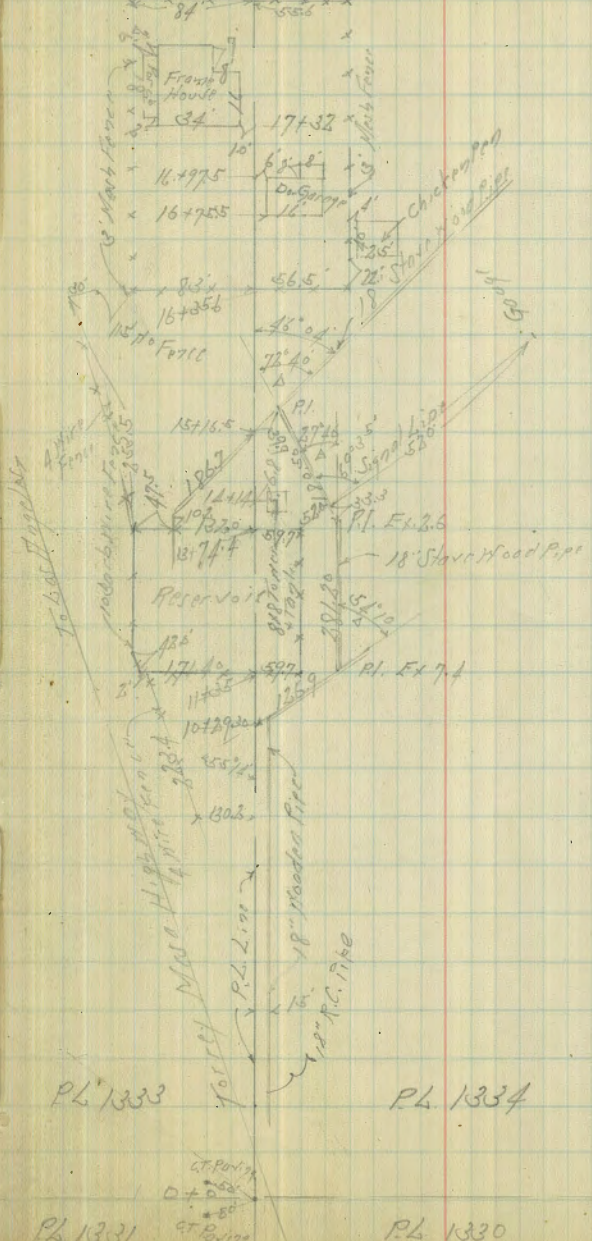
E - 5'	Top of at P. e.	4.34	292.56	
E - 5'	gutter pavmt.	4.91	296.99	
E.	"	5.35	291.55	
±	"	6.14	296.76	
+ 7.3	= w. gutter = curb inlet.	6.93	289.97	
+ 7.3	Top. of.	5.96	290.94	
T.P.	9.72	305.44	1.18	295.72
B.M. BP			6.48	298.96
				N.W. 29"
				± Nutmeg
T.P.	11.27	316.01	0.70	304.74
T.P.	3.49	317.93	1.57	314.44
				N.E. 29"
B.M. BP			3.02	314.91 = 314.92
				± Palm
				N.E. Palm
B.M. BP			7.02	310.91
				± Granada

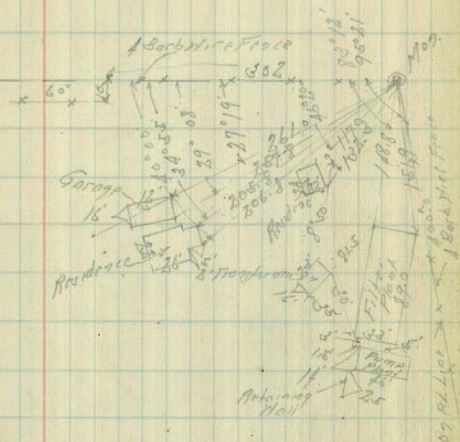
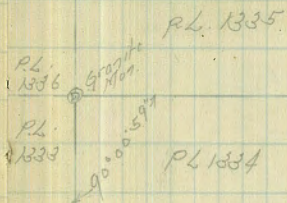
Torry Pinn. Reservoir And
Chlorinator Station

indexed
C.S.K.



PL 1336
PL 1333
1740
90°00'
84°
55.5
PL 1334
5-9-33
Moore
S. 555
Hartman 74





PL 1331

Sewer Grades for 39th off National Ave
 July 5-1933

Jan-5-33

Sta	+	HI	-	83.02	BM	
		73 ⁴				
0+00			655	83.81		581
MHN#6		9034				
50			596	84.4		570
1+00			511	85.2		585
50			419	86.2		607
2+00			372	86.9		601
50 DE			276	87.8		610

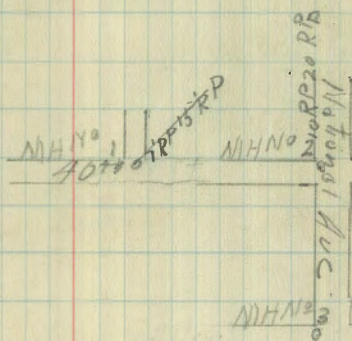
National Ave

76

39th St

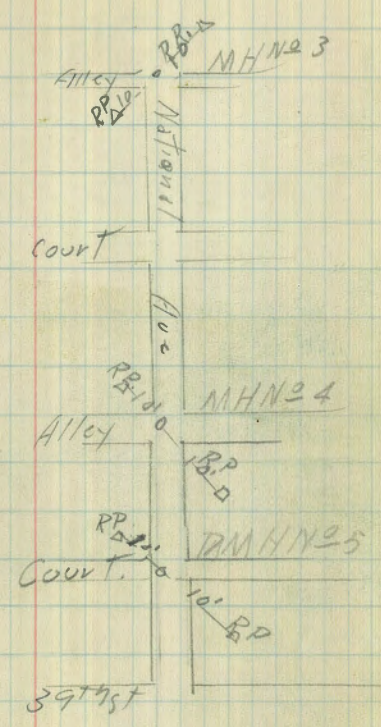
Sewer Grades for 43rd St. to National
 To 39th SW 39th St. & Nat.

Sta	+	HI	-	83.02	BM	
		939		63.08	SW cor 40 th St. & Nat.	
		72 ⁷²				
0+50			1264	59.83		276
MHN#1						
1+00			825	63.72		630
50			628	64.19		842
2+03			934	63.13		499
MHN#2						
50			731	65.16		361
3+00			608	66.39		534
50			434	68.11		554
4+00			275	69.72		567
MHN#3						
4+22.4			258	69.89		517
			068 TP	71.79		



Sta.	F	HI	Elev	TP	COT
	9.89	81.68	7179		
MHN#3 4+30			6982		612
5+00			103 719		622
5+50			865 734		702
6+00			719 745		812
MHN#4 6+91.5			561 764		817
TP			485 752		
	798	8757	109 7959		
7+00			827		1004
MHN#5 7+51.05			682 6976		1099
7+51.05			75.32		573
8+00			515 824		612
8+50			362 814		661
MHN#6 8+85			380 838		572

4.54



Sewer Grades for Alleys of
National Ave between 39th and 40th
Elev

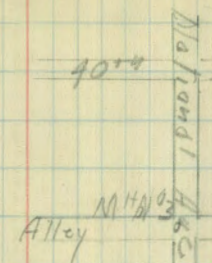
Jan-5-33

78

Sta + HI - Cut
143 7312 7179

M/H N^o 3
50 151 716
1+00 45 721
1+50 30 728
2+00 7312 + 489 HI
- 408 7900
2+50 DE 214 7100
139 TP

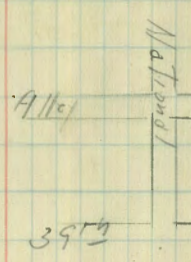
654 ✓
~~544~~ 705
~~504~~ 705
642 781
~~312~~ 951



M/H N^o 4
TP
0+00 1163 8846

50 981 789
1+00 720 808
50 465 832
2+00 185 862
2+50 DE 132 812
1163

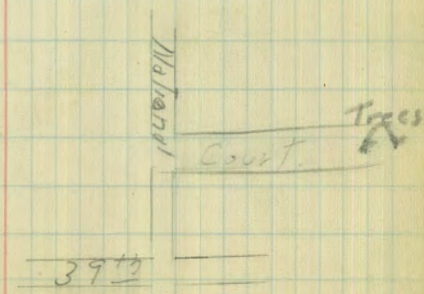
~~49~~ 615
52 -
63
786
714



BN
8302 SW corner 39th Nat.

M/H N^o 5 185 8487
0+63 521 792
1+00 561 793
50 721 772
2+00 923 757
2+50 DE

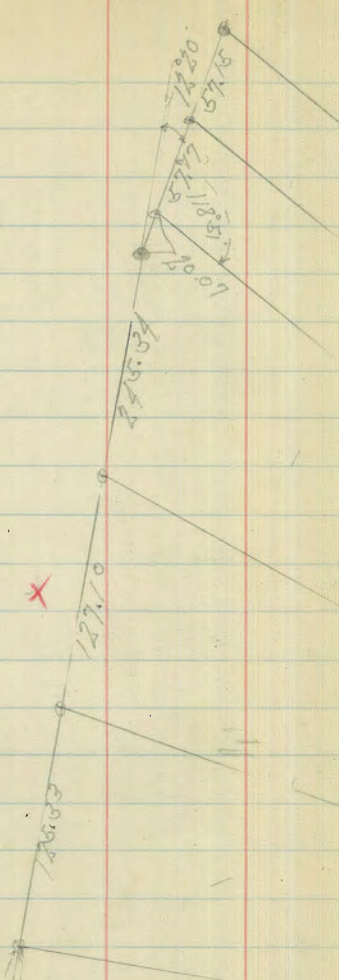
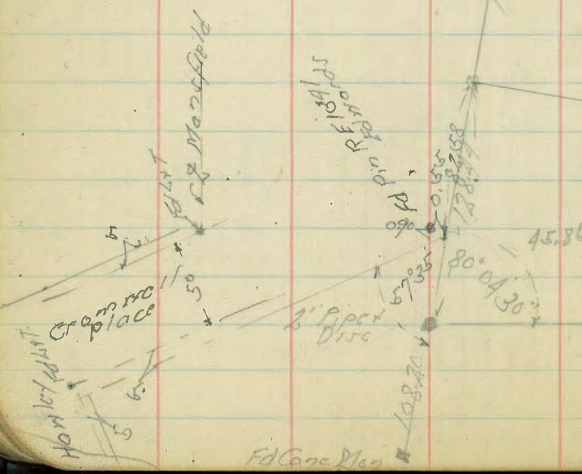
946
883
688
451
24



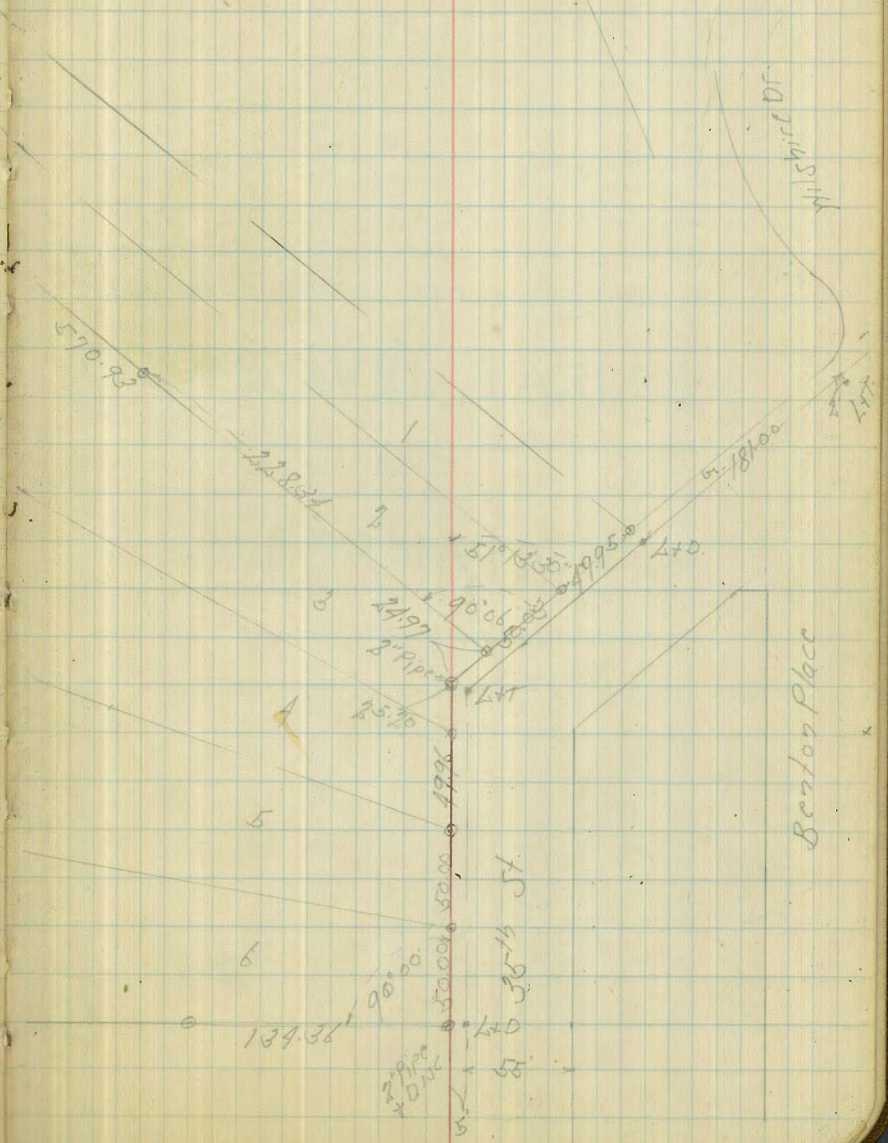
Mission View Point

indexed
e.s.k.

- 2" Pipe + Disc
- 1/4 " " "
- Conc Man
- Lead + Tack



March 17-18
Sisson
Hortberry
X Moorl.



DIRECTIONS FOR USE OF TABLES

TABLE No. 1.

Distance of slope stake from side or shoulder stake for any width roadway, slope $1\frac{1}{2}$ to 1. If ground is nearly level, the cut or fill at side stake is located by the double entry method in the table. The number in body of the table in any row and column gives the distance from side stake to slope stake. If ground is not

IMPROVED TABLES

AND

INFORMATION

0-0 6-00
00-54 30
00 00 00
necessary.

TABLE No. 2.

To find Tangent and External for curve of any other degree, divide by degree of curve and add correction found in column of corrections.

Degree of curve with a given L may be found by dividing tangent (or external), opposite L by given tangent (or external).

The distance from a point on the tangent to the curve is very nearly the square of the tangent length divided by twice the radius.

30981
139.60
170.21
30.61

DIRECTIONS FOR USE OF TABLES

TABLE No. 1.

Distance of slope stake from side or shoulder stake for any width roadway, slope $1\frac{1}{2}$ to 1. If ground is nearly level, the cut or fill at side stake is located by the double entry method in left column and top row. The number in body of table in same row and column gives distance from side stake to slope stake. If ground is not level estimate the difference in elevation between the side stake and slope stake, lower target by this amount if cut, elevate if fill. Add this amount to cut or fill and find distance in table. Set up rod at this point, and line of sight should cut target. If it does not make the slight adjustment necessary.

TABLE No. 9.

To find Tangent and External for curve of any other degree, divide by degree of curve and add correction found in column of corrections.

Degree of curve with a given I may be found by dividing tangent, (or external), opposite I by given tangent, (or external).

The distance from a point on the tangent to the curve is very nearly the square of the tangent length divided by twice the radius.

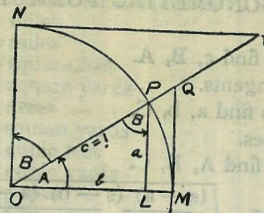
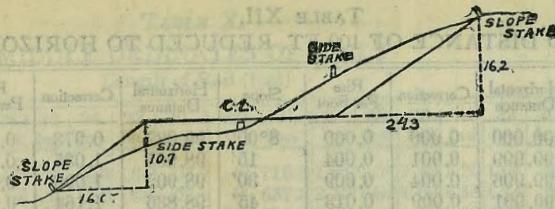


TABLE II
TRIGONOMETRIC FORMULÆ.

$$\begin{aligned} \angle A &= \angle MOP & \angle B &= \angle PON = \angle OPL \\ R &= OB = c = 1 \\ \sin A &= \frac{a}{c} = \frac{a}{1} = a = \cos B = LP \\ \cos A &= \frac{b}{c} = \frac{b}{1} = b = \sin B = OL \\ \tan A &= \frac{a}{b} = \frac{MQ}{OM} = \frac{MQ}{1} = MQ = \cot B = \frac{1}{MQ} \\ \cot A &= \frac{NT}{ON} = \frac{NT}{1} = NT = \tan B = \frac{1}{NT} \\ \sec A &= \frac{OQ}{OM} = \frac{OQ}{1} = OQ = \csc B = \frac{1}{OQ} \\ \csc A &= \frac{OT}{ON} = \frac{OT}{1} = OT = \sec B = \frac{1}{OT} \\ \text{vers } A &= \frac{LM}{OP} = LM = \text{covers } B \\ \text{covers } A &= \frac{OP - LP}{OP} = OP - LP = \text{vers } B \\ \text{exsec } A &= PQ = \text{coexsec } B \\ \text{coexsec } A &= PT = \text{exsec } B \\ \sin \frac{1}{2} A &= \sqrt{\frac{1 - \cos A}{2}} & \cos \frac{1}{2} A &= \sqrt{\frac{1 + \cos A}{2}} \\ \sin 2A &= 2 \sin A \cos A & \cos 2A &= \cos^2 A - \sin^2 A \\ \text{Law of Sines} & \frac{\sin A}{a} = \frac{\sin B}{b} = \frac{\sin C}{c} \\ \text{Law of Cosines} & c^2 = a^2 + b^2 - 2ab \cos C \\ \text{Law of Tangents} & \frac{a+b}{a-b} = \frac{\tan \frac{1}{2}(A+B)}{\tan \frac{1}{2}(A-B)} \end{aligned}$$



DISTANCES FROM SIDE STAKES FOR CROSS-SECTIONING.

SLOPE 1 1/4 TO 1. ROADWAY OF ANY WIDTH.

	0	.1	.2	.3	.4	.5	.6	.7	.8	.9	
0	0.00	0.15	0.30	0.45	0.60	0.75	0.90	1.05	1.20	1.35	0
1	1.50	1.65	1.80	1.95	2.10	2.25	2.40	2.55	2.70	2.85	1
2	3.00	3.15	3.30	3.45	3.60	3.75	3.90	4.05	4.20	4.35	2
3	4.50	4.65	4.80	4.95	5.10	5.25	5.40	5.55	5.70	5.85	3
4	6.00	6.15	6.30	6.45	6.60	6.75	6.90	7.05	7.20	7.35	4
5	7.50	7.65	7.80	7.95	8.10	8.25	8.40	8.55	8.70	8.85	5
6	9.00	9.15	9.30	9.45	9.60	9.75	9.90	10.05	10.20	10.35	6
7	10.50	10.65	10.80	10.95	11.10	11.25	11.40	11.55	11.70	11.85	7
8	12.00	12.15	12.30	12.45	12.60	12.75	12.90	13.05	13.20	13.35	8
9	13.50	13.65	13.80	13.95	14.10	14.25	14.40	14.55	14.70	14.85	9
10	15.00	15.15	15.30	15.45	15.60	15.75	15.90	16.05	16.20	16.35	10
11	16.50	16.65	16.80	16.95	17.10	17.25	17.40	17.55	17.70	17.85	11
12	18.00	18.15	18.30	18.45	18.60	18.75	18.90	19.05	19.20	19.35	12
13	19.50	19.65	19.80	19.95	20.10	20.25	20.40	20.55	20.70	20.85	13
14	21.00	21.15	21.30	21.45	21.60	21.75	21.90	22.05	22.20	22.35	14
15	22.50	22.65	22.80	22.95	23.10	23.25	23.40	23.55	23.70	23.85	15
16	24.00	24.15	24.30	24.45	24.60	24.75	24.90	25.05	25.20	25.35	16
17	25.50	25.65	25.80	25.95	26.10	26.25	26.40	26.55	26.70	26.85	17
18	27.00	27.15	27.30	27.45	27.60	27.75	27.90	28.05	28.20	28.35	18
19	28.50	28.65	28.80	28.95	29.10	29.25	29.40	29.55	29.70	29.85	19
20	30.00	30.15	30.30	30.45	30.60	30.75	30.90	31.05	31.20	31.35	20
21	31.50	31.65	31.80	31.95	32.10	32.25	32.40	32.55	32.70	32.85	21
22	33.00	33.15	33.30	33.45	33.60	33.75	33.90	34.05	34.20	34.35	22
23	34.50	34.65	34.80	34.95	35.10	35.25	35.40	35.55	35.70	35.85	23
24	36.00	36.15	36.30	36.45	36.60	36.75	36.90	37.05	37.20	37.35	24
25	37.50	37.65	37.80	37.95	38.10	38.25	38.40	38.55	38.70	38.85	25
26	39.00	39.15	39.30	39.45	39.60	39.75	39.90	40.05	40.20	40.35	26
27	40.50	40.65	40.80	40.95	41.10	41.25	41.40	41.55	41.70	41.85	27
28	42.00	42.15	42.30	42.45	42.60	42.75	42.90	43.05	43.20	43.35	28
29	43.50	43.65	43.80	43.95	44.10	44.25	44.40	44.55	44.70	44.85	29
30	45.00	45.15	45.30	45.45	45.60	45.75	45.90	46.05	46.20	46.35	30
31	46.50	46.65	46.80	46.95	47.10	47.25	47.40	47.55	47.70	47.85	31
32	48.00	48.15	48.30	48.45	48.60	48.75	48.90	49.05	49.20	49.35	32
33	49.50	49.65	49.80	49.95	50.10	50.25	50.40	50.55	50.70	50.85	33
34	51.00	51.15	51.30	51.45	51.60	51.75	51.90	52.05	52.20	52.35	34
35	52.50	52.65	52.80	52.95	53.10	53.25	53.40	53.55	53.70	53.85	35
36	54.00	54.15	54.30	54.45	54.60	54.75	54.90	55.05	55.20	55.35	36
37	55.50	55.65	55.80	55.95	56.10	56.25	56.40	56.55	56.70	56.85	37
38	57.00	57.15	57.30	57.45	57.60	57.75	57.90	58.05	58.20	58.35	38
39	58.50	58.65	58.80	58.95	59.10	59.25	59.40	59.55	59.70	59.85	39
40	60.00	60.15	60.30	60.45	60.60	60.75	60.90	61.05	61.20	61.35	40
41	61.50	61.65	61.80	61.95	62.10	62.25	62.40	62.55	62.70	62.85	41
42	63.00	63.15	63.30	63.45	63.60	63.75	63.90	64.05	64.20	64.35	42
43	64.50	64.65	64.80	64.95	65.10	65.25	65.40	65.55	65.70	65.85	43
44	66.00	66.15	66.30	66.45	66.60	66.75	66.90	67.05	67.20	67.35	44
45	67.50	67.65	67.80	67.95	68.10	68.25	68.40	68.55	68.70	68.85	45
46	69.00	69.15	69.30	69.45	69.60	69.75	69.90	70.05	70.20	70.35	46
47	70.50	70.65	70.80	70.95	71.10	71.25	71.40	71.55	71.70	71.85	47
48	72.00	72.15	72.30	72.45	72.60	72.75	72.90	73.05	73.20	73.35	48
49	73.50	73.65	73.80	73.95	74.10	74.25	74.40	74.55	74.70	74.85	49
50	75.00	75.15	75.30	75.45	75.60	75.75	75.90	76.05	76.20	76.35	50

Computed by L. Leland Locke.

680
360

C
o / F
0-20 17
0-40 8
1-0 5
1-20 4
1-40 3
2-0 2
2-20 2
2-40 2
3-0 1
3-20 1
3-40 1
4-0 1
4-20 1
4-40 1
5
6
7

To find