

1394

College Sewer

BASTIS

---

LEVEL BOOK

No. 380 F

---



MICROFILMED

DEC 23 1964

Our Leather Bound Engineers Note Books are carried in the following rulings:

No. 380 LEVEL BOOK. Left and Right Hand Page the same as Left Hand Page of this Book.

No. 382 FIELD BOOK. Left Hand Page as in this Book, Right Hand Page 4 x 4 to the inch, Center Line Red.

No. 384 MINING TRANSIT BOOK. Left Hand Page as in this Book, Right Hand Page 8x8 to the inch, Center Line Red.

No. 385 FIELD BOOK. Left Hand Page as in this Book, Right Hand Page 8 vertical and 4 horizontal lines to the inch, Center Line Red.

We also carry the Note Books listed above, bound in extra strong Fabri-Hide (otherwise the same quality of book), which can be furnished at a somewhat lower price.

In ordering Fabri-Hide covered books, add the letter "F" to catalog number.

**THE FREDERICK POST CO.**  
*ENGINEERING and DRAFTING SUPPLIES*  
IRVING PARK STATION  
CHICAGO, ILL.



Walker  
 Y. M. Bliss  
 Dribert 44-30  
 Matheson

LEVELS FOR SEWER PLANT  
 STATE COLLEGE  
 Contour - Location Page 2

	6.26	436.39		430.13	BM Top Man Sketch p. 2 USGS Datum
T.P.	0.68	424.15	12.92	423.47	
T.P.	0.14	411.36	12.93	411.22	
T.P.	0.52	398.98	12.90	398.46	
T.P.	0.00	386.12	12.86	386.12	
T.P.	0.63	374.03	12.72	373.40	
T.P.	0.23	361.51	12.75	361.28	
T.P.	0.93	349.84	12.60	348.91	
T.P.	0.16	337.63	12.37	337.47	
T.P.	2.33	327.25	12.71	324.92	on Hub #5 Page 2
T.P.	1.59	321.46	7.38	319.87	

Line A-A

A 0		+10.5	332.0	
+14'		+3.0	324.5	
A-1		+7.0	328.5	
+12'		+8.0	329.5	
A-2		+6.8	328.3	
A-3		+2.6	324.1	
A-4		-0.8	320.7	
A-5 on Hub		1.59	319.87	
A-6		+1.4	322.9	
A-7		+3.7	325.2	
A-8		+6.4	327.9	
A-9		+12.3	333.8	
A-10		+17.5	339.0	

321.46

Line B-B<sub>1</sub>

B-10		+3.6	325.1
B-9		1.4	320.1
B-8		6.5	315.0
B-7		10.9	310.6
B-6		13.2	308.3
15' West B-6		19.3	302.2
B-5		13.5	308.0
12' West B-5		17.5	304.0
B-4		14.0	307.5
10' West B-4		17.5	304.0
15' South B-4		13.0	308.5
B-3		10.8	310.7
B-2		6.6	314.9
12' South B-2		3.7	317.8
B-1		3.9	317.6
7' South B-1		6.2	315.3
B-0		+2.5	324.0

Line C-C<sub>1</sub>

C-0		7.6	313.9
+14'		11.0	310.5
C-1		16.7	304.8
+8		14.5	307.0
C-2		18.5	303.0
+10		19.2	302.3
C-3		22.2	299.3







321.46

C-4			20.1	301.4
C-5			19.9	301.6
C-6			21.0	300.5
C-7			21.8	299.7
C-8			19.2	302.3
C-9			15.7	305.8
C-10			10.3	311.2
T.P.	4.50	312.94	13.02	308.44
T.P.	1.68	301.97	12.65	300.29
	Line D-D1			
D-10			5.0	297.0
D-9			9.0	293.0
15' West D-9			15.0	287.0
D-7			6.4	295.6
D-6			4.2	297.8
D-5			2.9	299.1
10' West D-5			5.1	296.9
D-4			4.2	297.8
10' West D-4			5.7	296.3
D-3			6.4	295.6
15' South D-3			7.0	295.0
D-2			6.4	295.6
15' South D-2			4.7	297.3
20' " D-2			7.7	294.3
D-1			4.2	297.8
8' South D-1			2.3	299.7

on Rock  
6.5' East D-5  
3' South D-5

301.97

3

D-0			0.7	301.3
	Line E-E1			
E-0			11.0	291.0
+12			10.1	291.9
E-1			12.7	289.3
+6			15.0	287.0
+15			12.0	290.0
E-2			11.9	290.1
+13			11.0	291.0
E-3			10.0	292.0
E-4			8.9	293.1
E-5			9.8	292.2
+15			11.0	291.0
E-6			12.5	289.5
3' West E-6			16.1	285.9
E-7			13.6	288.4
5' West E-7			15.7	286.3
E-8			15.2	286.8
E-9			18.4	283.6
+12			19.3	282.7
E-10			18.2	283.8
15' West E-10			23.8	278.2
	Line F-F1			
F-10			26.5	275.5
F-9			22.3	279.7
F-8			19.5	282.5



301.97

7' West F-8	21.6	280.4
F-7	18.5	283.5
7' West F-7	20.5	281.5
T.P. 2.06 291.06	12.97	289.00
F-6	7.4	284.5
10' West F-6	10.5	281.4
20' South F-6	7.8	284.1
F-5 on Redwood Hub.	6.75	284.31
7' South F-5	5.0	286.9
10' " F-5	4.6	287.3
13' West of Above	3.3	282.6
13' "	12.1	279.8
F-4	4.4	287.5
17' South F-4	2.4	289.5
16' West Above	6.9	285.0
F-3	2.3	289.6
16' West F-3	6.6	285.3
13' South F-3	2.6	289.3
16' West	6.7	285.2
F-2	4.4	287.5
12' West F-2	6.0	285.9
8' South F-2	6.0	285.9
12' West of Above	7.1	284.8
15' South F-2	8.5	283.4
22' " F-2	11.9	280.0
F-1	11.0	280.9

291.06

4

8' South F-1	10.0	281.9
3' " F-1	10.1	281.8
F-0	9.2	282.7
10' West F-0	12.7	279.2
Line G-G1		
G-0	18.1	273.8
13' West G-0	25.0	266.9
G-0 + 12	17.0	274.9
G-0 + 17	19.0	272.9
G-1	14.6	277.3
10' West G-1	16.4	275.5
14' " G-1	18.0	273.9
G-1 + 10'	11.4	280.5
G-2	9.5	282.4
10' West G-2	13.5	278.4
G-2 + 10'	9.3	282.6
10' West (G-2 + 10')	17.3	274.6
G-3	9.5	282.4
10' West G-3	14.2	277.7
G-4	10.9	281.0
10' West G-4	15.2	276.7
18' " G-4	20.1	271.8
T.P. 1.37 279.59	12.84	278.22
G-5	4.1	275.5
12' West G-5	9.0	270.6
G-6	6.2	273.4



279.59

8' West G-6	9.6	270.0
G-7	7.5	272.1
7' West G-7	10.0	269.6
G-8	8.4	271.2
12' West G-8	12.2	267.4
G-8 + 15'	7.0	272.6
12' West (G-8-15')	12.9	266.7
G-9	6.8	272.8
+12	6.9	272.7
G-10	9.1	270.5
T.P.	5.77	272.73
	12.63	266.96

Line H-H<sub>1</sub>

H-10	14.5	258.2
10' South H-10	12.8	259.9
H-9	11.6	261.1
5' West H-9	13.4	259.3
15' South H-9	9.4	263.3
H-8	8.8	263.9
H-7	7.9	264.8
H-6	6.4	266.3
5' West H-6	7.7	265.0
H-5	8.0	266.7
10' West H-5	9.6	263.1
16' " " "	13.2	259.5
10' South H-5	7.0	265.7

272.73

14' West (20' South H-9)	12.8	259.9
H-4	5.3	267.4
12' South H-4	4.8	267.9
H-3	5.8	266.9
17' South H-3	5.7	267.0
H-2	3.7	269.0
5' South H-2	3.3	270.4
H-1	5.4	267.3
15' South H-1	10.4	262.3
H-0	14.2	258.5
4' West H-0 - Bottom creek	12.0	253.7
4' South H-0	14.2	258.5
5' " H-0	17.7	255.0
16' " H-0 - Bottom creek	18.5	254.2

Line I-I<sub>1</sub>

20' South I-0	16.5	256.2
14' East (20' South I-0)	17.4	255.3
15' " " "	19.0	253.7
16' South I-0	17.5	255.2
6' " I-0	20.0	252.7
I-0	21.1	251.6
4' West I-0	19.1	253.6
6' " I-0	17.1	255.6
I-0 + 6'	21.1	251.6
6' East (I-0 + 6')	19.0	253.7
T.P.	0.06	259.93
	12.86	259.87

5



I-1	9.8	250.1
5' East (I-1)	9.8	250.1
6' " (I-1)	6.0	253.9
5' West (I-1)	9.8	250.1
6' " (I-1)	7.3	252.6
19' North I-1	10.9	249.0
10' East (13' North I-1)	0.9	259.0
I-2	9.4	250.5
4' East (I-2)	4.4	255.5
3' West (I-2)	11.4	248.5
9' " (I-2)	11.4	248.5
13' " (I-2)	9.4	250.5
3' North (I-2)	9.2	250.7
4' " (I-2)	7.3	252.6
12' " (I-2)	8.0	251.9
4' West (12' North I-2)	10.1	249.8
5' " ( " )	11.1	248.8
12' " ( " )	12.3	247.6
17' " ( " )	10.1	249.8
I-3	9.0	250.9
5' West (I-3)	11.8	248.1
13' " "	13.0	246.9
15' " "	11.0	248.9
I-4	8.5	251.5
3' West (I-4)	9.6	250.3
4' " "	12.9	247.0

8' West (I-4)	14.5	245.4
19' " "	13.6	246.3
12' North I-4	7.7	252.2
10' West (12' North I-4)	13.6	246.3
I-5	7.9	252.0
12' West (I-5)	14.8	245.1
15' North I-5	5.0	254.9
I-6	5.8	254.1
I-7	6.6	253.3
10' West (I-7)	11.4	248.5
15' North I-7	6.0	253.9
15' West (15' North I-7)	11.1	248.8
I-8	6.0	253.9
12' West (I-8)	10.0	249.9
13' North I-8	7.2	252.7
12' West (13' North I-8)	10.9	249.0
I-9	9.5	250.4
7' West (I-9)	11.4	248.5
I-10	15.5	244.4
Line J-J1		
20' North J-10	29.0	230.9
10' " J-10	29.0	230.9
8' " J-10	24.8	235.1
J-10	23.7	236.2
10' West J-10	27.5	232.4
J-9	17.8	242.1



12' West (J-9)	21.9	238.0
14' South (J-9)	16.8	243.1
8' West (14' South J-9)	21.2	238.7
10' " "	24.0	235.9
J-8	17.7	242.2
7' East (J-8)	15.3	244.6
5' West "	22.6	237.3
10' " "	23.6	236.3
10' South J-8	18.9	241.0
23' West (10' South J-8)	22.0	237.9
11' " ( " )	23.3	236.6
15' " ( " )	20.1	239.8
J-7	21.9	238.0
6' East (J-7)	20.5	239.4
12' West "	22.2	237.7
15' " "	20.0	239.9
17' South (J-7) in creek	21.6	238.3
18' " " on bank	17.6	242.3
J-6	16.6	243.3
8' East (J-6)	14.9	245.0
5' West "	17.6	242.3
6' " "	18.8	241.1
10' " "	19.1	240.8
J-5	15.7	244.2
10' South J-5	15.0	244.9
13' West (10' South J-5)	16.6	243.3

20' South J-5	15.4	244.5
J-4	14.8	245.1
J-3	10.3	249.6
J-2	9.1	250.8
J-1	7.7	252.2
12' West (J-1)	7.8	252.1
12' South (J-1)	7.1	252.8
10' West (12' South J-1)	7.1	252.8
15' " ( " )	5.9	254.0
J-0	4.9	255.0
Line K-K <sub>1</sub>		
K-0	2.6	257.3
20' West (K-0)	+5.7	265.6
K-1	4.8	255.1
20' West (K-1)	+3.2	263.1
K-2	6.3	253.6
20' West (K-2)	+1.7	261.6
K-3	9.3	250.6
20' West (K-3)	1.6	258.3
K-4	12.5	247.4
20' West K-4	4.9	255.0
K-5 on Redwood Hub.	15.02	244.91
20' West K-5	6.9	253.0
4' East (K-5)	17.4	242.5
K-6	18.0	241.9
5' East (K-6)	17.0	242.9



12' East (K-6)	17.8	242.1
5' West "	17.5	242.4
20' " "	8.4	251.5
K-7	19.4	240.5
20' West (K-7)	16.0	243.9
11' East "	19.9	240.0
K-8	20.2	239.7
7' East (K-8)	21.0	238.9
12' " "	23.1	236.8
20' West "	19.0	240.9
17' North (K-8)	22.7	237.2
K-9	25.1	234.8
7' West (K-9)	23.4	236.5
20' " "	22.6	237.3
6' East "	24.0	235.9
K-10	26.0	233.9
8' East (K-10)	28.0	231.9
15' West "	26.0	233.9
20' " "	22.8	237.1
8' North in Bottom creek	28.0	231.9
15' " on Bank	25.5	234.4
TP 12.81	272.72	0.02 259.91
TP 12.97	285.41	0.28 272.44
chk. on L Hub line F-5 Page 4	1.10	284.31 ✓
TP 12.29	297.54	0.16 285.25
TP 12.63	309.99	0.18 297.36

T.P. 12.71	322.02	0.68	309.31
chk. on L Hub A-5 Page 1	2.19	319.83	BM
T.P. 11.98	333.07	0.93	321.09
T.P. 12.25	344.42	0.90	332.17
T.P. 12.64	353.14	3.92	340.50
T.P. 12.67	364.74	1.07	352.07
T.P. 12.68	376.39	1.03	363.71
T.P. 12.34	388.21	0.52	375.87
T.P. 12.48	399.82	0.87	387.34
T.P. 12.76	412.21	0.39	399.45
T.P. 13.02	425.18	0.05	412.16
T.P. 11.06	435.81	0.43	434.75

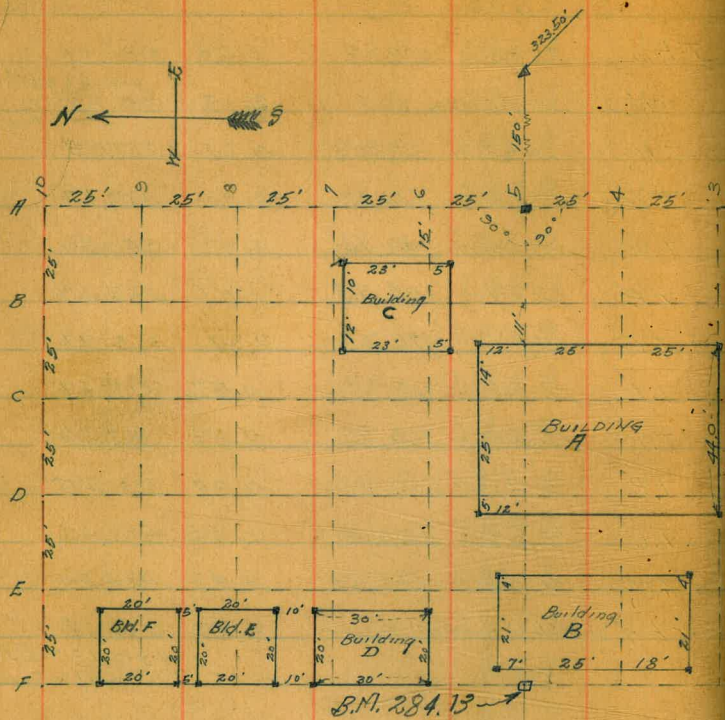
chk. on starting BM. Page 1 5.69 430.12  
430.13 = BM.  
0.01 = Error.

This set of data  
Range Hence Error



Walker  
 Wm Blis  
 Draft  
 Mathew  
 4-15-30

LOCATION SEWAGE DISPOSAL BUILDINGS  
 SAN DIEGO  
 STATE COLLEGE



Note: 2"x2" Redwood Hubs set at all corners of Bldg. Except where noted as Stake in Level notes.

284.13 = Above F.B.  
 2147  
 2927 = T.P.  
 291.62 = T.P. = B.M.

R.P. Line only

LEVELS For Bld. C

	0.32	320.19		319.87
S.E. Cor. on Hub	6.61			313.58
14' North on East line	5.4			314.8
N.E. Cor. on Hub	4.07			316.12
11' West of N.E. Cor. on North line	10.6			309.6
T.P.	1.12	308.63	12.68	307.51
N.W. Cor. on Hub	4.53			304.10
5' North Above Cor.	3.6			305.0
5' West NW Cor.	6.3			302.3
14' South NW " on West line	5.5			303.1
5' West of 14' South	6.7			301.9
11' East " " "	0.4			308.2
S.W. Cor. on Hub	5.72			302.91
5' West SW Cor. on Shine	6.7			301.9
5' South " " " "	5.4			303.2
7' East SW Cor. on 5'	3.3			305.3

B.M. on Hub "A5"  
 Page 1

LEVELS For Bld. A

N.E. Cor. on Hub	4.90			303.73
27' South N.E. Cor. on East line	4.1			304.5
52' " " " " "	5.0			303.6
S.E. Cor. on Hub	3.53			305.10
15' West S.E. Cor. on South line	2.4			299.2
30' " " " " "	11.8			296.8
S.W. Cor. on Hub	13.57			295.06
5' South SW Cor. on West line	13.6			295.0



## Levels For Bld. A Cont.

5' West. SW Cor. on South line	14.2	294.4
15' North SW " " West line	12.1	296.5
27' " " " " " "	11.0	297.6
40' " " " " " "	10.4	298.2
50' " " " " " "	10.3	298.3
NW Cor. on Hub.	10.81	297.82
5' N NW Cor. on " "	11.1	297.5
5' N " " " North "	12.0	296.6
10' East " " " " "	8.9	299.7
30' " " " " " "	7.8	300.8
T.P. 1.28	297.11	12.80
		295.83

## Levels For Bld. B

N.E. Cor. on Hub.	3.78	293.33
10' South N.E. Cor. on East line	3.2	293.9
20' " " " " " "	3.4	293.7
35' " " " " " "	3.1	294.0
J.E. Cor. on Hub.	3.80	293.31
10' West S.E. Cor. on South line	5.6	291.5
SW Cor. on Hub.	7.96	289.15
5' South SW Cor. on West line	7.7	289.4
5' West " " " South "	8.9	288.2
18' North " " " West "	9.1	288.0
32' " " " " " "	9.5	287.6
NW Cor. on Hub	12.75	284.36
5' N NW Cor. on West line	12.7	284.4
5' West " " " North "	14.1	283.0

12' East NW Cor. on North	8.5	288.6
T.P. on Hub. " F 5 " sec. P-4	12.75	284.36
		284.31 = B.M.
		0.05 = Error.
Correction Here 7.52	291.83	284.31 = Above B.M.

## LEVELS For Bld. D

J.E. Cor. Stub.	5.06	286.77
15' North S.E. Cor. on East line	5.3	286.5
N.E. Cor. on Hub.	5.41	286.42
8' West N.E. Cor. on North "	6.8	285.0
NW Cor. on Hub.	8.53	283.30
5' West NW Cor. " " "	9.8	282.0
15' South " " " West "	8.7	283.1
SW Cor. on Hub.	8.28	283.55
5' South SW Cor. on " "	8.3	283.5
5' West " " " South "	9.8	282.0
6' East " " " East "	6.8	285.0
15' " " " " " "	6.0	285.8

## LEVELS For Bld. E

SE Cor. on Hub.	4.93	286.90
10' North S.E. Cor. on East line	5.9	285.9
N.E. Cor. on Stub.	7.60	284.23
10' West N.E. Cor. " North "	8.9	282.9
NW Cor. on Stub.	10.63	281.20
5' West NW Cor. on " "	11.6	280.2
10' South " " " West "	9.5	282.3
SW Cor. on Hub.	8.95	282.88



291.83

## Levels For Bld. E Cont.

5' West S.W. Cor. on South line	10.4	281.4
10' East " " " "	6.9	284.9

## LEVELS For Bld. F

S.E. Cor. on Hub.	8.93	283.50
10' North S.E. Cor. on East line	9.4	282.4
N.E. Cor. on Hub.	10.34	281.49
5' North N.E. Cor. on " "	10.5	281.3
10' West " " " North "	12.0	279.8
N.W. Cor. on Hub.	13.96	277.87
5' North N.W. Cor. on West "	15.0	276.8
5' West " " " North "	14.8	277.0
10' South N.W. " " West "	12.3	279.5
S.W. Cor. on Hub.	11.14	280.69
5' West S.W. Cor. on South line	12.0	279.8
10' East " " " " "	9.7	282.1



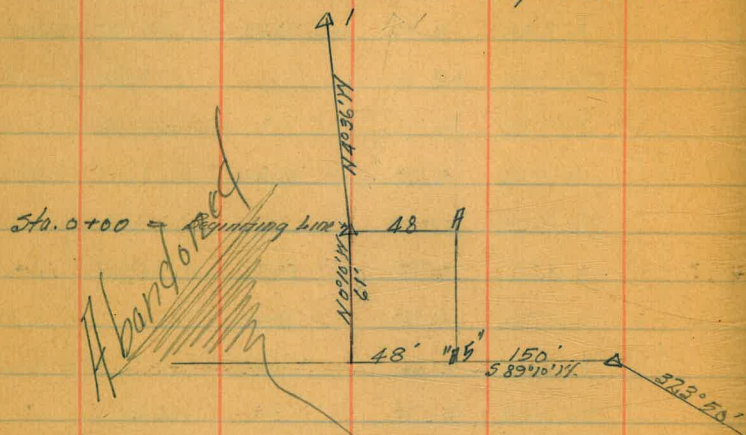
Walker,  
M. Bliss  
Drebert  
Nothman

STADIA SURVEY For 15' Road.  
From Sewage Disposal Plant  
to Power Plant  
STATE College site

Azimuths from North.

Inst. Constant = 1.0

This line for 8.00% Grade.



READINGS From Sta. 0+00 Elev 301.5

Stations	Azimuths	Stadia	Vert. A	Horiz. dist.	Elev.
A1	355° 24'	1.40	+6° 25'	139.4	317.0

READINGS From Sta. A1 Elev. 317.0

Sta. 0+00					
	1.40	-6° 25'	139.4	301.5	
	7° 39'	0.2	+6° 45'		
	53° 16'	0.4	+25° 02'		
	326° 27'	0.25	-20° 09'		
	354° 48'	0.50	-8° 09'		
	7° 39'	0.50	-0° 28'		
	24° 27'	0.54	+11° 12'		
	350° 38'	0.69	-10° 24'		

READINGS From Sta. A1 Elev 317.0

12

Station	Azimuth	Stadia	Vert. A	Horiz. dist.	Elev.
	7° 39'	0.68	+0° 23'		
	21° 04'	0.76	+9° 19'		
	17° 54'	1.12	+10° 28'		
	7° 39'	1.10	+5° 18'		
	357° 33'	1.12	-0° 17'		
	356° 45'	1.37	+0° 14'		
	7° 39'	1.32	+5° 52'		
	15° 48'	1.38	+9° 38'		
B2	5° 12'	1.94	+3° 38'	194	329.28

READINGS From B2 Elev. 329.28

Station					
B2	1.93	-3° 38'	11-194'	329.28	
	188° 15'	0.20	+17° 15'		
	186° 37'	0.12	+1° 00'		
	253° 53'	0.25	-23° 36'		
	345° 18'	0.39	-11° 45'		
	18° 28'	0.19	-1° 15'		
	94° 15'	0.24	+15° 08'		
B3	75° 11'	0.51	+3° 25'	51.7	332.38

READINGS From B3 Elev. 332.38

Station					
B2	0.51	-3° 25'			
	120° 24'	1.03	+4° 35'		
	134° 03'	1.07	+9° 10'		
	107° 05'	1.07	+0° 27'		
	118° 10'	1.70	+4° 09'		



READINGS From #3 Elev. 332.38

Sta.	Azimuth	Stadia	Vert. A	Horiz. dist.	Elev.
	111°34'	1.73	+1°56'		
	121°48'	1.76	+6°28'		
	125°44'	2.45	+7°04'		
	119°15'	2.15	+4°40'		
	115°33'	2.43	+3°08'		
	127°15'	3.00	+3°02'		
	128°17'	3.05	+4°22'		
	124°16'	3.20	+6°40'		
#4	119°15'	3.50	+5°13'	348.1	364.14

READINGS From Sta #4 Elev. 364.14

Sta.	Azimuth	Stadia	Vert. A
#4		3.50	-5°12'
	17°39'	0.26	-22°55'
	204°27'	0.22	+17°00'
	150°38'	0.50	+13°00'
	122°40'	0.44	+4°20'
	27°45'	0.46	-7°12'
	110°00'	0.90	-1°50'
	124°55'	0.84	+4°20'
	138°20'	0.92	+9°58'
	132°00'	1.41	+7°28'
	123°05'	1.38	+3°54'
	116°36'	1.38	+1°20'
	116°40'	1.62	+1°22'
	123°15'	1.64	+3°55'

READINGS From #4 Elev. 364.14

Sta.	Azimuth	Stadia	Vert. A	Horiz. dist.	Elev.
	120°53'	1.70	+6°58'		
#5	123°37'	2.54	+3°55'	253.8	381.49

READINGS FROM #5 Elev. 381.7 = Mean

Sta.	Azimuth	Stadia	Vert. A
#4		2.54	M-3°58'
	283°24'	0.48	+4°55'
	302°52'	0.42	-3°40'
	317°32'	0.60	-10°30'
	27°02'	0.21	-26°40'
	208°34'	0.24	+22°55'
	173°50'	0.41	+20°03'
	152°44'	0.26	+12°32'
	114°06'	0.29	-12°00'
	111°40'	0.64	-12°48'
	131°46'	0.66	0°0'
	140°13'	0.47	+4°39'
	154°05'	0.53	+14°10'
	147°16'	0.78	+11°22'
	141°11'	0.88	+10°15'
	127°25'	0.78	+1°55'
	112°20'	0.72	-8°45'
	107°32'	0.81	-10°32'
	119°44'	0.88	-3°57'
	126°34'	1.02	+1°50'
	132°15'	1.14	+6°07'



READINGS FROM  $\square 5$  Elev. 381.7

Station	Azimuth	Stadia	Vert. $\Delta$	Horiz. dist.	Elev.
	138° 45'	1.24	+10° 00'		
	138° 28'	1.30	+8° 40'		
	119° 36'	1.30	+8° 45'		
	106° 15'	1.24	+6° 00'		
	105° 28'	1.06	+1° 08'		
	103° 39'	0.90	-5° 20'		
	89° 40'	0.96	-5° 25'		
	96° 22'	1.08	+0° 55'		
	101° 06'	1.30	+5° 32'		
	95° 40'	1.28	+2° 52'		
	90° 43'	1.16	-1° 48'		
	85° 23'	1.55	+2° 22'		
	91° 34'	1.72	+4° 57'		
	95° 50'	1.88	+6° 15'		
	102° 57'	1.70	+7° 20'		
	114° 10'	1.48	+7° 58'		
	131° 36'	1.38	+9° 15'		
	84° 21'	1.94	+4° 35'		
	80° 45'	1.88	+3° 23'		
	89° 04'	2.08	+5° 47'		
	83° 30'	2.56	+4° 41'		
	76° 48'	2.56	+4° 15'		
	71° 32'	2.50	+3° 07'		
$\square 6$	130° 41'	1.16	+7° 47'	114.9	397.15

~~Abandoned~~

READINGS FROM  $\square 6$  Elev. 397.15

Station	Azimuth	Stadia	Vert. $\Delta$	Horiz. dist.	Elev.
$\square 7$	35° 07'	3.30	-2° 14'	330	384.25
N.W. Cor. Power House		3.84	+2° 05'	384	398.0
$\square 8$	119° 58'	1.92	+2° 33'		



Walker  
W. Elias  
L. D. Hart  
A. Matheson  
4-17-30

Stadia location for Road line "B"  
From  $\square 0$  on P-12  
to Power House GRADE 4.5%

Azimuths from North

READINGS FROM  $\square 0$  Elev. 301.5

Station	Azimuth	Stadia	Vert. A	Horiz. dist.	Elev.
$\square 1$	352°39'	1.42	+4°30'	143	312.7

READINGS FROM  $\square 1$  Elev. = 312.7

$\square 2$	359°49'	1.90	+1°08'	191'	316.5
-------------	---------	------	--------	------	-------

READINGS FROM  $\square 2$  Elev. 316.5 - <sup>4.5%</sup> to Power House

$\square 1$		1.90	-1°08'		
$\square 3$	21°07'	0.72	+0°10'	73'	316.7

READINGS FROM  $\square 3$  Elev. 316.7 <sup>317.45 - corrected 317.3</sup>  
<sub>Grade 31.7</sub>

$\square 4$	113°35'	4.40	+2°44'		
-------------	---------	------	--------	--	--

READINGS FROM  $\square 4$  Elev. = 339.0 <sup>Sta = 81.25</sup>  
<sub>Grade = 5.8%</sub>

$\square 4$ line "A"	225°45'	0.67	+19°34'		
$\square 3$ line "B"		4.30	-2°47'		
$\square 5$		0.20			Grade 339.4
$\square 6$	129°05'	2.74	+3°33'		338.0

READINGS FROM  $\square 6$  Elev. 338.0

$\square 6$	129°05'	2.74	+3°33'		354.9
-------------	---------	------	--------	--	-------

READINGS FROM  $\square 6$  <sup>Corrected Elev.</sup>  
<sub>by level</sub> → 357.0

$\square 5$		2.76	+3°58'		
$\square 7$	30°03'	2.74	+0°41'		360.3

READINGS FROM  $\square 7$  Elev. 360.3

$\square 6$		2.76	-0.42		
-------------	--	------	-------	--	--

READINGS FROM  $\square 7$  Elev. 360.3

15

Station	Azimuth	Stadia	Vert. A	Horiz. dist.	Elev.
$\square 8$	81°17'	0.88	+1°34'		362.7

READINGS FROM  $\square 8$  Elev. 362.9 - <sup>Correction by level</sup>

$\square 9$	138°43'	2.42	+5°10'		384.6
$\square 10$	56°11'	2.36	+0°31'		

READINGS FROM  $\square 9$  Elev. = 384.6

$\square 10$	56°11'	2.36	+0°31'		
--------------	--------	------	--------	--	--



Walker  
 170.815  
 2.18.30

TRANSIT Location ROAD GRADE 4.5%  
 From SEWAGE DISPOSAL PLANT  
 to POWER HOUSE  
 STATE COLLEGE SITE

Station	Alignment	Def. Δ	True Bearing	CURVE DATA
4+00		37° 45' 45"		Δ = 113° 46' ✓
+75		25° 49' 25"		LR = 60'
+50		13° 53' 25"		LR = 119.14'
+20.91 = B.C. PT.				LR = 91.98 ✓
3+00				
+50	152.99'		N1° 01' W N1° 11' W	✓ 270.01'
2+00				Δ = 7° 10' ✓ LR = 400
+67.92 = E.C.				LR = 50.06'
+50			P.I.	LR = 25.04 ✓ .05
+25				
+17.86 B.C. PT.				
1+00				142.90'
+50	117.86'		N8° 11' W N7° 21' W	
0+00				

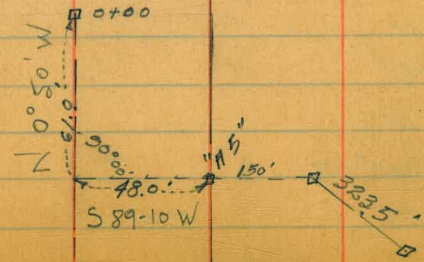
Stub

Stub □ E.C.

Stub □ P.I.

Stub □ B.C.

Note: For Cross Sections see Page 22





Station	Align.	Def. $\Delta$	True Bearing	Curve Data	
+03.80	=B.C.	7°45'			Hub.
9+00		7°32'			
+75		6°06'04"			
+50		4°40'06"			
+25		3°14'08"		$\Delta = 15°30'$ ✓	
8+00		1°48'10"		$R = 500'$	
+75		0°23'13"		$L = 135.26$	
				$LST. 68.04$ ✓	
7+68.54	=B.C.	Pl.			Hub.
+50					
7+00			567°15'E 566°25'E	488.51'	
+50					
			328.49'		
6+00					
+50					
5+00					
+75					
+50					
+40.05	=E.C.				Hub.
4+25		49°41'55"			



Station	Align.	Def. $\Delta$	TRUE BEARING	Curve Data
+75		$39^{\circ}07'28''$		$\Delta = 108^{\circ}41'$ ✓
+50		$31^{\circ}16'00''$		$\&R = 90'$
+25		$23^{\circ}12'31''$		$\&L = 170.72'$
14+00		$15^{\circ}15'03''$		$\&ST = 125.44'$ ✓
+75		$7^{\circ}17'35''$		
13+52.09 = B.C.		RT.		
13+00				
+50	$156.90'$ ✓		$N 39^{\circ}12'E$ $N 30^{\circ}02'E$	$352.65$
12+00				
+95.19 = E.C.		$49^{\circ}31'30''$		$\Delta = 99^{\circ}03'$ ✓
+75		$40^{\circ}00'00''$		$\&R = 60'$
+50		$28^{\circ}05'42''$		$\&L = 104.19'$ 103.72
+25		$16^{\circ}11'26''$		$\&ST = 70.31'$ ✓
11+00		$4^{\circ}17'09''$		
10+91.7 equation.				
10+41.5 B.C.		LT.		
+75				
+50				
+25	$137.80'$ ✓		$S 51^{\circ}45'E$ $S 50^{\circ}55'E$	$275.55$
10+00				
+75				
+50				
9+25				

Stub

Stub

Stub



Stations	Align.	Def. $\Delta$	True Bearing	Curve Data
19+54.74 = E.C.		20°43'30"		$\Delta = 41°27'$ ✓
+50		19°12'57"		$\frac{1}{2}R = 90'$
+25		11°15'30"		$\frac{1}{2}L = 6510'$
19+00		3°18'03"		$\frac{1}{2}ST = 34.05'$ ✓
18+89.69 = B.C.		184		
+50				
	137.04' ✓		N 55°21'E ✓	
			N 56°11'E ✓	
18+00				
17+52.59 = E.C.		41°16'00"		$\Delta = 82°32'$ ✓
17+50		20°16'40"		$\frac{1}{2}R = 75'$
+25		30°43'36"		$\frac{1}{2}L = 108.03'$
17+00		21°16'37"		$\frac{1}{2}ST = 65.81'$
+75		11°37'40"		
+50		3°04'41"		
16+44.56 = B.C.		67		
16+00				
	121.75' ✓		S 42°07'E	
			S 41°17'E ✓	313.00'
+50				
+2281 = E.C.		54°20'30"		
15+00		47°04'		

Stub

Stub

Stub

Stub

Stub



⊥

Station    Align.    Def. Δ    True Bearing    Curve Data

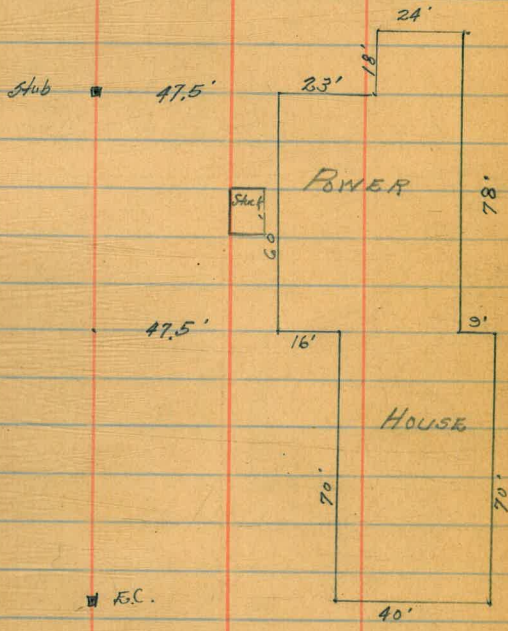
20+86.47

131.73' ✓

S 83° 12' E  
S 82° 22' E

12+34.74 = P.C.

18+89.63 = P.C.









Walker  
 1120 BWS  
 Debut  
 No. 1001  
 9-22-30

CROSS SECTION 15' Road  
 State College Site  
 Location Page 16-20 this Book.

325.44

22

on Hub '93' Page 1

	5.57	325.44 ✓	319.87	
0+00				
8' Lt		28.8	296.6	
Lt.		26.8	298.6 ✓	
L		23.9	301.5 ✓	
Rt.		20.4	305.0	
5' Rt		18.2	307.2	
	0+50			
8' Rt.		10.3	315.1	
Rt.		14.8	310.6 ✓	
L		19.2	306.2 ✓	
Lt		23.2	302.2 ✓	
10' Lt.		29.1	296.3 ✓	
15' Lt.		31.7	293.7 ✓	
	1+00			
15' Lt		27.8	297.6 ✓	
Lt		18.8	306.6 ✓	
L		14.8	310.6 ✓	
Rt.		10.3	315.1 ✓	
8' Rt.		5.5	319.9 ✓	
	1+17.86 - 8c. Rt.			
10' Rt.		2.7	322.7 ✓	
Rt.		8.6	316.8 ✓	
L		13.1	312.3 ✓	
Lt.		17.4	308.0 ✓	

10' Lt.	23.4	302.0 ✓
	1442.89 = Center of Curve	
10' Lt.	23.6	301.8 ✓
Lt.	16.5	308.9 ✓
L	12.1	313.3 ✓
Rt.	8.1	317.3 ✓
10' Rt.	2.2	323.2 ✓
	1+67.92 - 5c	
10' Rt.	1.9	323.5 ✓
Rt.	7.8	317.6 ✓
L	13.3	312.1 ✓
Lt.	18.1	307.3 ✓
33' Lt.	37.9	287.5 ✓
	2+00	
44' Lt.	43.4	282.0 ✓
18' Lt.	31.0	294.4 ✓
Lt.	23.0	302.4 ✓
L	18.6	306.8 ✓
Rt.	14.3	311.1 ✓
5' Rt.	11.0	314.4 ✓
	2+20	
5' Rt	9.5	315.9 ✓
Rt.	12.5	312.9 ✓
L	17.1	308.3 ✓
Lt.	21.3	304.1 ✓
26 Lt.	35.3	290.1 ✓



325.44

50' Lt.		47.4	278.0	✓
	2+50			
40' Lt.		38.9	286.5	✓
14' Lt.		32.8	302.6	✓
Lt.		14.4	311.0	✓
⊥		10.2	315.2	✓
Rt.		6.1	319.3	✓
6' Rt.		2.9	322.5	✓
	2+75			
6' Rt.		0.7	324.7	✓
Rt.		4.0	321.4	✓
⊥		7.7	317.7	✓
Lt.		11.7	313.7	✓
5' Lt.		14.7	310.7	✓
	3+00			
25' Lt.		26.0	299.4	✓
Lt.		12.3	313.1	✓
⊥		8.4	317.0	✓
Rt.		4.1	321.3	✓
6' Rt.		0.9	324.5	✓
	3+20.91 = B.C. Rt.			
6' Rt.		0.7	324.7	✓
Rt.		3.6	321.8	✓
⊥		7.9	317.5	✓
Lt.		12.4	313.0	✓
30' Lt.		28.3	297.1	✓

325.44

TP	12.63	334.26	✓	3.81	321.63	
	3+50					
15' Lt.				27.0	307.3	✓
Lt.				19.0	315.3	✓
⊥				15.3	319.0	✓
Rt.				11.6	322.7	✓
10' Rt.				7.1	327.2	✓
	3+75					
10' Rt.				5.8	328.5	✓
Rt.				8.6	325.7	✓
⊥				10.8	323.5	✓
Lt.				12.9	321.4	✓
5"				14.4	319.9	✓
	4+00					
5' Lt.				14.6	319.7	✓
Lt.				13.2	321.1	✓
⊥				11.0	323.3	✓
Rt.				9.0	325.3	✓
10 "				6.3	328.0	✓
	4+25					
10 Rt.				6.7	327.6	✓
Rt.				9.6	324.7	✓
⊥				11.9	322.4	✓
Lt.				14.3	320.0	✓
5' Lt.				15.9	318.4	✓
	4+40.05 = B.C.					

23



334.26

8' Lt.		16.0	318.3	✓
Lt.		13.5	320.8	✓
Lt.		11.3	323.0	✓
Rt.		9.1	325.2	✓
5' Rt.		7.4	326.9	✓
	4+65			
5' Rt.		6.0	328.3	✓
Rt.		7.0	327.3	✓
Lt.		9.0	325.3	✓
Lt.		11.3	323.0	✓
10' Lt.		14.4	319.9	✓
	5+100			
10' Lt.		13.8	321.5	✓
Lt.		10.5	323.8	✓
Lt.		8.4	325.9	✓
Rt.		6.0	328.3	✓
5' Rt.		4.6	329.7	✓
T.P.	10.28 338.29	6.25	328.01	✓
	5+25			
5' Rt.		7.6	330.7	✓
Rt.		9.0	329.3	✓
Lt.		10.6	327.7	✓
Lt.		13.5	324.8	✓
8' Lt.		16.0	322.3	✓
	5+50			
8' Lt.		15.1	323.2	✓

338.29

Lt.		13.1	325.2	✓
Lt.		11.3	327.0	✓
Rt.		9.1	329.2	✓
5' Rt.		7.4	330.9	✓
	5+75			
5' Rt.		5.9	332.4	✓
Rt.		7.9	330.4	✓
Lt.		10.3	328.0	✓
Lt.		12.6	325.7	✓
8' Lt.		14.4	323.9	✓
	6+100			
5' Lt.		12.7	325.6	✓
Lt.		11.6	326.7	✓
Lt.		9.5	328.8	✓
Rt.		7.5	330.8	✓
5' Rt.		5.9	332.4	✓
	6+25			
5' Rt.		3.6	334.7	✓
Rt.		5.5	332.8	✓
Lt.		8.5	329.8	✓
Lt.		10.7	327.6	✓
5' Lt.		12.0	326.3	✓
	6+50			
5' Lt.		10.2	328.1	✓
Lt.		8.8	329.5	✓
Lt.		6.4	331.9	✓

24



338.29

Rt.		4.2	334.1	✓	
5"		2.6	335.7	✓	
	7+00				
5' Rt.		11.0	339.3	✓	
Rt.		1.4	336.9	✓	
L		4.0	334.3	✓	
Lt.		6.0	332.3	✓	
5' Lt.		7.3	331.0	✓	
T.P	12.56	349.37	✓	1.48	336.81
	7+35				
10' Lt.		17.5	331.9	✓	
Lt.		14.9	334.5	✓	
L		12.5	336.9	✓	
Rt.		10.3	339.1	✓	
5' Rt.		9.0	340.4	✓	
	7+68.5 <sup>st</sup> = B.C.				
5' Rt.		7.4	342.0	✓	
Rt.		9.3	340.1	✓	
L		12.3	337.1	✓	
Lt.		14.5	334.9	✓	
5' Lt.		10.9	333.5	✓	
	8+00				
8' Lt.		16.8	332.6	✓	
Lt.		13.5	335.9	✓	
L		11.0	338.4	✓	
Rt.		8.5	340.9	✓	

349.37

25

5' Rt.		6.9	342.5	✓
	8+25			
5' Rt.		6.2	343.2	✓
Rt.		7.2	342.2	✓
L		9.4	340.0	✓
Lt.		12.4	337.0	✓
8' Lt.		14.9	334.5	✓
	8+50			
8"		13.7	335.7	✓
Lt.		11.9	337.5	✓
L		9.7	339.7	✓
Rt.		7.0	342.4	✓
5' Rt.		5.2	344.2	✓
	8+75			
5' Rt.		4.5	344.9	✓
Rt.		5.4	344.0	✓
L		7.7	341.7	✓
Lt.		10.1	339.3	✓
5' Lt.		11.3	338.1	✓
	9+03.80 = B.C.			
8' Lt.		10.8	338.6	✓
Lt.		8.6	340.8	✓
L		6.5	342.9	✓
Rt.		4.5	344.9	✓
5' Rt.		2.9	346.5	✓
	9+25			



349.37

5' Rt.	70.6	350.0	✓
Rt.	1.8	347.6	✓
L.	3.9	345.5	✓
Lt.	6.6	342.8	✓
5' Lt.	8.6	340.8	✓

9+50

5' Lt.	7.7	341.7	✓
Lt.	5.5	344.1	✓
L.	2.5	347.1	✓
Rt.	71.2	350.6	✓
5' Rt.	13.3	352.7	✓

T.P. 10.35 358.24 ✓ 148 347.89

9+75

6' Rt.	3.9	354.3	✓
Rt.	6.5	351.7	✓
L.	10.1	348.1	✓
Lt.	14.0	344.2	✓
10' Lt.	19.2	339.0	✓

10+00

10' Lt.	17.9	340.3	✓
Lt.	13.0	345.2	✓
L.	9.6	348.6	✓
Rt.	6.0	352.2	✓
6' Rt.	2.5	355.7	✓

10+20

6' Rt. 2.4 355.8 ✓

358.24

Rt.	5.2	353.0	✓
L.	9.3	348.9	✓
Lt.	12.5	345.7	✓
10' Lt.	16.9	341.3	✓

 $\frac{10+41}{10+91} = 80. \text{ Lt. (Equation.)}$ 

10' Lt.	18.4	344.8	✓
Lt.	8.8	349.4	✓
L.	4.7	353.5	✓
Rt.	11	357.1	✓
7' Rt.	72.0	360.2	✓

11+00

8' Rt.	13.5	361.7	✓
Rt.	0.2	358.0	✓
L.	3.6	354.6	✓
Lt.	7.4	350.8	✓
5' Lt.	10.1	348.1	✓

11+25

13' Lt.	16.4	341.8	✓
Lt.	12.3	345.9	✓
L.	10.3	347.9	✓
Rt.	8.3	349.9	✓
5' Rt.	7.0	351.2	✓

11+34

5' Rt.	2.8	348.4	✓
Rt.	11.4	346.8	✓
L.	13.8	344.4	✓

26



358.24

Lt.	15.9	342.3	✓
20'	23.2	335.0	✓
25	23.1	335.1	✓

11+36 = a.k. For Culvert Cont. on Radial Line

-30	27.6	330.6	✓
Lt.	21.1	337.1	✓
L	17.9	340.3	✓
Rt.	14.1	344.1	✓
6' Rt.	11.8	346.4	✓
10' Rt.	10.8	347.4	✓

11+38

10' Rt.	8.3	349.9	✓
Rt.	11.4	346.8	✓
L	13.8	344.4	✓
Lt.	16.5	341.9	✓
22' Lt.	22.0	336.2	✓
Chk. on R.M. on stub opp. to P-79	6.84	351.39 = B.M. 351.40	✓

11+50

25' Lt.	23.8	334.4	✓
15' "	19.8	338.4	✓
Lt.	13.5	344.7	✓
L	10.5	347.7	✓
Rt.	8.0	350.2	✓
5' Rt.	6.1	352.1	✓

11+75

5' Rt.	4.4	353.8	✓
--------	-----	-------	---

358.24

Rt.	5.9	352.3	✓
L	8.9	349.3	✓
Lt.	11.9	346.3	✓
7' Lt.	15.5	342.7	✓
15' Lt.	18.9	339.3	✓
21' "	22.4	335.8	✓
26' "	25.4	332.8	✓
33' " = Bottom ditch.	33.4	324.8	✓
40' " on top of B.M. at ditch	30.0	328.2	✓
11+95.19 = E.C.			

45' Lt. top ditch	31.5	326.7	✓
37' " = Bottom "	34.5	323.7	✓
29' " = top "	25.7	332.5	✓
21' "	21.7	336.5	✓
13' "	17.2	341.0	✓
Lt.	10.9	347.3	✓
L	6.9	351.3	✓
Rt.	3.6	354.6	✓
5' Rt.	1.0	357.2	✓

12+25

5' Rt.	70.2	358.4	✓
Rt.	27	355.5	✓
L	6.7	351.5	✓
Lt.	10.1	348.1	✓
10' Lt.	15.1	343.1	✓
23' "	22.4	335.8	✓

27



358.24

36' Lt		28.4	329.8	✓	
40 "		30.3	327.9	✓	
	12+50				
35' Lt		25.5	332.7	✓	
26 "		22.0	336.2	✓	
18 "		16.1	342.1	✓	
13 "		13.5	344.7	✓	
Lt.		6.8	351.4	✓	
2		3.1	355.1	✓	
Rt.		+0.5	358.7	✓	
5' Rt.		+2.7	360.9	✓	
T.P.	10.45	366.76	✓	1.93	356.31
	12+80	4000 359			
5' Rt.		3.2	363.6	✓	
Rt.		5.5	361.3	✓	
2		9.0	357.8	✓	
Lt.		11.9	354.9	✓	
6' Lt.		14.6	352.2	✓	
	13+00				
15' Lt.		19.1	347.7	✓	
5 "		13.7	353.1	✓	
Lt.		11.4	355.4	✓	
2		8.1	358.7	✓	
Rt.		5.0	361.8	✓	
5' Rt.		2.9	363.9	✓	
	13+25				

366.76

5' Rt		1.3	365.5	✓	28
Rt		3.3	363.6	✓	
2		6.2	360.6	✓	
Lt.		9.2	357.6	✓	
5' Lt.		11.3	355.5	✓	
	13+52.29				
5' Lt.		10.0	356.8	✓	
Lt.		8.1	358.7	✓	
2 on Stake		5.32	361.44	✓	
Rt.		2.5	364.3	✓	
5' Rt.		0.4	366.4	✓	
	13+75				
5' Rt.		+0.2	367.0	✓	
Rt.		1.7	365.1	✓	
2		4.1	362.7	✓	
Lt.		6.9	359.9	✓	
5' Lt.		8.8	358.0	✓	
	14+00				
5' Lt.		6.3	359.9	✓	
Lt.		5.3	361.5	✓	
2		3.0	363.8	✓	
Rt.		0.7	366.1	✓	
5' Rt.		0.2	365.9	✓	
T.P.	12.78	378.26	✓	1.28	365.48
	14+25				
6' Rt.		9.9	368.4	✓	



Rt		11.2	367.1	✓
L		13.5	364.8	✓
Lt.		16.0	362.3	✓
5' Lt		17.5	360.8	✓
	14+50			
5' Lt.		16.0	362.3	✓
Lt		14.5	363.8	✓
L		12.2	366.1	✓
Rt.		10.4	367.9	✓
5' Rt.		9.1	369.2	✓
	14+75			
5' Rt.		7.6	370.7	✓
Rt.		9.3	369.0	✓
L		11.4	366.9	✓
Lt.		13.3	365.0	✓
5' Lt		14.8	363.5	✓
	15+100			
5' Lt.		15.3	363.0	✓
Lt		13.3	365.0	✓
L		11.1	367.2	✓
Rt		9.0	369.3	✓
5' Rt.		7.5	370.8	✓
	15+22.81 = B.C.			
5' Rt.		6.0	372.3	✓
Rt.		7.9	370.4	✓
L on stub		10.38	367.88	✓ ✓

Lt.		12.9	365.4	✓
10' Lt.		16.2	362.1	✓
	15+50			
10' Lt.		15.2	363.1	✓
Lt.		11.7	366.6	✓
L		8.5	369.8	✓
Rt.		5.8	372.5	✓
5' Rt.		4.0	374.3	✓
	16+100			
5' Rt.		1.0	377.3	✓
Rt.		2.9	375.4	✓
L		5.8	372.5	✓
Lt.		8.7	369.6	✓
10' Lt.		12.8	365.5	✓
	16+30			
10' Lt.		11.0	367.3	✓
Lt.		6.8	371.5	✓
L		3.3	375.0	✓
Rt.		0.5	377.8	✓
5' Rt.		+1.0	379.3	✓
	16+44.56 = B.C. Lt.			
5' Rt.		+1.4	379.7	✓
Rt.		1.0	377.3	✓
L		4.0	374.3	✓ ✓
Lt.		7.2	371.1	✓
10' Lt.		11.1	367.2	✓



	16+75			
15' Lt.		13.5	364.8	✓
Lt.		6.8	371.5	✓
ℓ		3.6	374.7	✓
Rt.		0.6	377.7	✓
5' Rt.		+1.5	379.8	✓

	17+00			
5' Rt.		+0.9	379.2	✓
Rt.		0.6	377.7	✓
ℓ		2.8	375.5	✓
Lt.		6.3	372.0	✓
12' Lt.		11.0	367.3	✓

	17+25			
8' Lt.		6.3	372.0	✓
Lt.		2.9	375.4	✓
ℓ		0.0	378.3	✓
Rt.		+2.5	380.8	✓
5' Rt.		+4.3	382.6	✓

T.P. 12.96 390.48 ✓ 0.74 377.52

17+52.59 = E.C.

5' Rt.		2.9	387.6	✓
Rt.		5.2	385.3	✓
ℓ on stub.		7.82	382.66	✓
Lt.		10.7	379.8	✓
5' Lt.		12.5	378.0	✓

18+00

5' Lt.		10.2	380.3	✓
Lt.		8.8	381.7	✓
ℓ		6.4	384.1	✓
Rt.		4.2	386.3	✓
5' Rt.		2.6	387.9	✓

18+25

5' Rt.		0.0	390.5	✓
Rt.		2.2	388.3	✓
ℓ		4.3	386.2	✓
Lt.		7.0	383.5	✓
5' Lt.		8.7	381.8	✓

18+50

5' Lt.		8.0	382.5	✓
Lt.		6.3	384.2	✓
ℓ		3.9	386.6	✓
Rt.		2.0	388.5	✓
5' Rt.		0.4	390.1	✓

12.18 397.27 ✓ 5.39 385.09 chk. on 877.  
10' Lt. P. 79  
Sta. 19+05

18+89.63 = B.C. Rt.

5' Rt.		7.4	389.9	✓
Rt.		8.4	388.9	✓
ℓ on stub.		10.57	386.70	✓
Lt.		12.6	384.7	✓
5' Lt.		13.9	383.4	✓

19+25

5' Lt.		11.9	385.4	✓
--------	--	------	-------	---



Lt.	10.9	386.4	✓
♀	9.1	388.2	✓
Rt.	7.6	389.7	✓
5' Rt.	6.9	390.4	✓

19+54.74

2.8' Lt.	10.511	0.7	396.6	✓
8" "	" "	3.2	395.1	✓
Lt.	" "	5.9	391.4	✓
+2 Not Ground		7.8	389.5	✓
♀ on Stub.		8.31	388.96	✓
Lt.		9.4	387.9	✓
5' Lt.		10.5	386.8	✓

19+60

10' Lt.	11.0	386.3	✓
Lt.	8.9	388.4	✓
♀	8.2	389.1	✓
Rt.	6.9	390.4	✓
10' Rt.	3.9	393.4	✓

19+90

10' Rt.	3.6	393.7	✓
Rt.	6.1	391.2	✓
♀	7.3	390.0	✓
Lt.	8.3	389.0	✓
10' Lt.	10.2	387.1	✓

20+00

10' Lt.	9.9	387.4	✓
---------	-----	-------	---

Lt.	7.9	389.4	✓
♀	7.4	389.9	✓
Rt.	7.0	390.3	✓
10' Rt.	5.8	391.5	✓

20+30

10' Rt.	5.4	391.9	✓
Rt.	6.1	391.2	✓
♀	6.7	390.6	✓
Lt.	8.4	388.9	✓
10' Lt.	9.6	387.7	✓

20+50

20' Lt.	on Not. Ground	13.5	383.8	✓
14' "	" " "	12.4	384.9	✓
9' "	" Fill	9.9	387.4	✓
Lt.	" "	7.6	389.7	✓
♀	" "	6.9	390.4	✓
Rt.	" "	6.4	390.9	✓
10' Rt.	" "	5.4	391.9	✓

20+86.47

10' Rt.	10.511	6.6	390.7	✓
Rt.	" "	7.7	389.6	✓
♀ on Stub.		8.55	388.72	✓
Lt.		10.1	387.2	✓
10' Lt.		11.4	385.9	✓



Walked  
with Boss  
to McHoon  
175' High  
Summer 1935

5-2-30

# Location Portion Proposed Sewer State College site "A" line

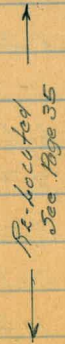
=  $\Delta$  Pt.  $51^{\circ}50'30''$   
4+34.17 = End location

+75 = POT.

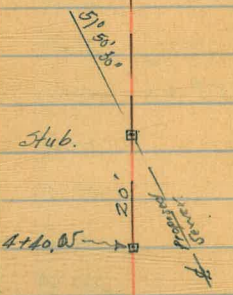
3+35.5  $\Delta$  Pt.  $68^{\circ}02'30''$

1+40 = POT.

0+00



2 Road Station = 7+68.54  $\rightarrow$  -80.84



Road Station = 4+40.05

Sub.

Sub.

NE. Cor. 75' 125'  
Bld. C  
Page 9



Walker  
And Party  
5-2-90

LEVELS For Sewer line "A"  
Location P-33

33

				BM. on Hub. "A" page 1
	3.14	323.01		319.87
0+00 on Hub NE Cor. Bldg C		6.88	316.13	
T.P.	10.97	330.44	3.54	319.47
+50		8.8	321.6	
+75		5.3	325.1	
1+00		2.4	328.0	
T.P.	10.11	337.82	2.73	327.71
+15		7.5	330.3	
+40 = P.O.T. Facing stake		5.56	332.26	
+75		6.2	331.6	
2+00		10.8	327.0	
+35		14.2	323.6	
+65		10.5	327.3	
+85		9.7	328.1	
3+00		10.5	327.3	
+35.5 = A Bldg		12.40	325.42	
T.P.	4.20	332.67	2.35	335.47
+55		7.6	332.1	
+70		5.9	333.8	
+90		7.3	332.4	
4+05		9.7	330.0	
+347 on Facing stake		14.52	325.15	
Rough check of stake 4+40.25 p24		16.6	323.07	



Walker  
5-2-30

LEVELS on  $\frac{1}{2}$  Semi-Tangents P18  
For Proposed Sewer Line  
State College

38738

34

	✓		BM on Sub P-79 app. 76. 11+50
10+41 = 10+91 - BC. P18	3.71	361.10	351.39
= 0+00		7.6	353.5
+13		5.9	355.2
+25		6.9	354.2
+37		10.1	351.0
+45		9.6	351.5
+50		11.0	350.1
+51		13.1	348.0
+58		12.7	348.4
+61		9.1	352.0
+70.31 = P.I. on Hub		4.07	357.03
+78		3.6	357.5
+90		5.0	356.1
+105		8.7	352.4
+23		10.8	350.3
+140.62 = P.C. = 11+95.19 P27		9.75	351.35

1+00	7.2	380.2
+10	6.7	380.7
+25	4.8	382.6
+31.62	4.72	382.66

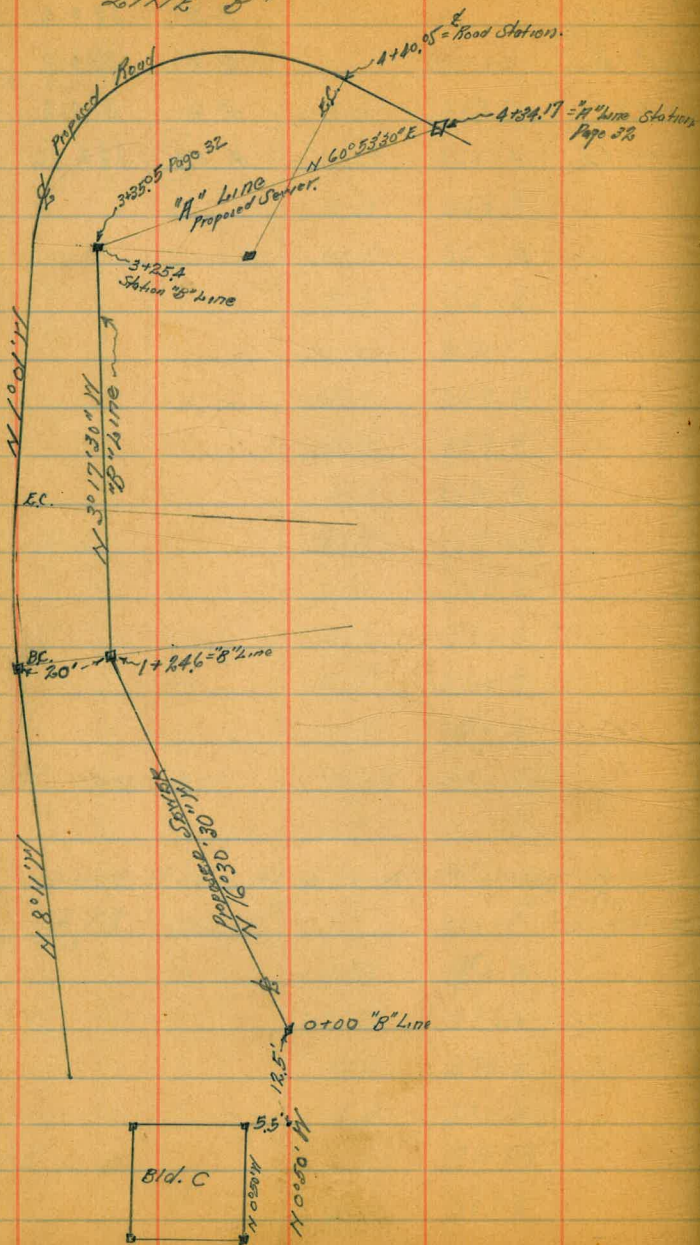
LEVELS  $\frac{1}{2}$  ST. S. Bet. st. 16+44.56 and 17+56.59 P19

16+44.56 = BC. P19	4.72	387.38	382.66	Hub 17+56.59 P30
= 0+00		13.2	374.2	
+11		11.9	375.5	
+45		8.4	379.0	
+55		6.4	381.0	
+65.81 = P.I. on Sub		3.84	384.54	
+78		5.6	381.8	



Walker  
 1120 Bliss  
 No Moon  
 Osborne  
 5-7-30

Location of a Portion of Proposed  
 Sewer line State College site  
 LINE "B"



PRELIMINARY LEVELS  
 For "B" line Sewer  
 location on opposite Page 35

Station	Grade	Height	Notes
10.23	330.10	319.87	RM. Hub "A" P-2
0+00 on Stake	3.33	320.77	
+50	7.3	322.8	
1+00	6.2	323.9	
+24.6 = Δ H	6.06	324.04	
+50	4.5	325.6	
+70	4.8	325.3	
+81	7.6	322.5	
2+00	10.4	319.7	
+25	10.6	319.5	
+50	6.0	324.1	
+65	4.4	325.7	
+85	4.0	326.1	
3+05	4.3	325.8	
+25.40 = 3135.2 "B" Line	4.70	325.40	325.42 = RM. Hub P-33 0.02 Error







LEVELS FOR WATER MAIN

LINE "A" Sketch P-33  
37

	5.43	435.56		430.13	814. on Mon. P-1 U.S. G.S. Datum
Left & M. top Cor Mon H22-P-33			4.90	430.66	
T.P.	0.84	423.51	12.91	422.67	
Levels on line "A" from 0+00 to 1+50 by Hand level					
	12.9	332.8		319.87	814. on Mon. P-1
0+00			11.0	321.8	
T.P.	12.8	345.4	0.2	332.6	
+25			8.2	337.2	
T.P.	12.9	357.9	0.4	345.0	
+50			5.9	352.0	
T.P.	13.0	370.2	0.7	357.2	
+75			3.0	367.2	
T.P.	13.0	382.7	0.5	369.7	
+89			11.3	371.4	
T.P.	13.9	395.3	0.3	382.4	
1+00			12.1	383.2	
T.P.	12.8	407.5	0.6	394.7	
+25			6.5	401.0	
+30			2.7	404.8	
T.P.	12.1	419.0	0.6	406.9	
+45			6.1	412.9	
+50 0" Stub			5.2	413.8	
423.51 - Above H.I. Level					
chk. on Hand level Turn at 1+50			10.01	413.5	
0.3 - Error Hand level					

423.51

LEVELS PROPOSED Water, Site H27

Tank

0" A"	4.7	418.8
1" A"	5.9	417.6
2" A"	7.2	416.3
3" A"	8.5	415.0
4" A"	10.0	413.5
5" A"	11.2	412.3
6" A"	12.5	411.0
7" A"	14.2	409.3
8" A	16.3	407.0
8" B"	15.7	407.8
7" B"	13.9	409.6
6" B"	12.2	411.3
5" B"	11.0	412.5
4" B"	9.9	413.6
3" B"	8.4	415.1
2" B"	7.0	416.5
1" B"	5.9	417.6
0" B"	4.7	418.8
0" C"	4.7	418.8
1" C"	5.7	417.8
2" C"	6.2	417.3
3" C"	8.5	415.0
4" C"	9.9	413.6
5" C"	11.2	412.3
6" C"	12.6	410.9
7" C"	13.9	409.6



8"E"	15.6	407.9
8"D"	15.8	407.7
7"D"	14.3	409.2
6"D"	12.7	410.8
5"D"	11.2	412.3
4"D"	10.0	413.5
3"D"	8.1	415.4
2"D"	6.3	417.2
1"D"	5.8	417.7
0"D"	5.0	418.5
0"E"	5.3	418.2
1"E"	6.2	417.3
2"E"	6.9	416.6
3"E"	8.7	414.8
4"E" on Hub (reviny stake)	10.23	413.28
5"E"	11.6	411.9
6"E"	13.0	410.5
7"E"	14.6	408.9
8"E"	16.1	407.4
8"F"	16.6	406.9
7"F"	15.0	408.5
6"F"	13.5	410.0
5"F"	12.2	411.3
4"F"	10.9	412.6
3"F"	9.3	414.2
2"F"	7.3	416.2

1"F"	6.3	417.2
2"F"	5.7	417.8
0"G"	6.4	417.1
1"G"	7.3	416.2
2"G"	8.4	415.1
3"G"	9.9	413.6
4"G"	11.5	412.0
5"G"	12.7	410.8
6"G"	14.1	409.4
7"G"	15.5	408.0
8"G"	16.5	407.0
8"H"	16.5	407.0
7"H"	15.7	407.8
6"H"	14.9	408.6
5"H"	13.4	410.1
4"H"	12.1	411.4
3"H"	10.5	413.0
2"H"	9.0	414.5
1"H"	7.8	415.7
0"H"	6.8	416.7
0"I"	7.4	416.1
1"I"	8.6	414.9
2"I"	10.1	413.4
3"I"	11.5	412.0
4"I"	13.0	410.5
5"I"	14.3	409.2



6" I"	15.3	408.2
7" I"	16.3	407.0
8" I"	17.6	405.9

LEVELS on Water Line "B" to Proposed <sup>Topk</sup> Side No. 2

0+00	18.7	404.8
+23	9.4	414.1
+38	7.7	
+65	8.5	
T.P.	11.80	435.19
	0.12	433.39

0+35

10' Lt	18.0	417.2
2	18.5	416.7
5' Rt - Brown Canyon	19.8	415.4
10' Rt	21.5	413.7

0+65

16' Rt	20.4	414.8
6' Rt - Brown Canyon	16.2	419.0
2	15.1	420.1
10' Lt	14.3	420.9

0+90

10' Lt	11.5	423.7
2	12.0	423.2
8' Rt	12.7	422.5
13' Rt - Brown Canyon	13.7	421.5
18' Rt	15.5	419.7

17.25		
20' Rt	15.5	419.7
13' Rt - Brown Canyon	10.8	424.4
2	9.7	425.5
10' Lt	9.5	425.7

17.55 = A Rt

Section on Directly

10' Lt	7.6	427.6
2 on Pav. State	8.14	427.05
13' Rt - Brown Canyon	9.0	426.2
23' Rt	12.9	422.3

17.75

15' Rt	14.9	420.3
2 - Brown Canyon	8.1	427.2
10' Lt	7.1	428.1

17.88

10' Lt	6.7	428.5
4' Lt - Brown Canyon	7.9	427.8
2	8.6	426.6
10' Rt	13.9	421.3

17.95

10' Rt	11.7	423.5
2 - Brown Canyon	7.6	427.6
10' Lt	6.7	428.5

20.05

10' Lt	6.2	429.0
2	7.0	428.2



10' Bl. = Bow Canyon 8.5 426.7  
 20' Bl. 12.8 422.4

Water Tank  
 LEVELS For Proposed Site NO 2

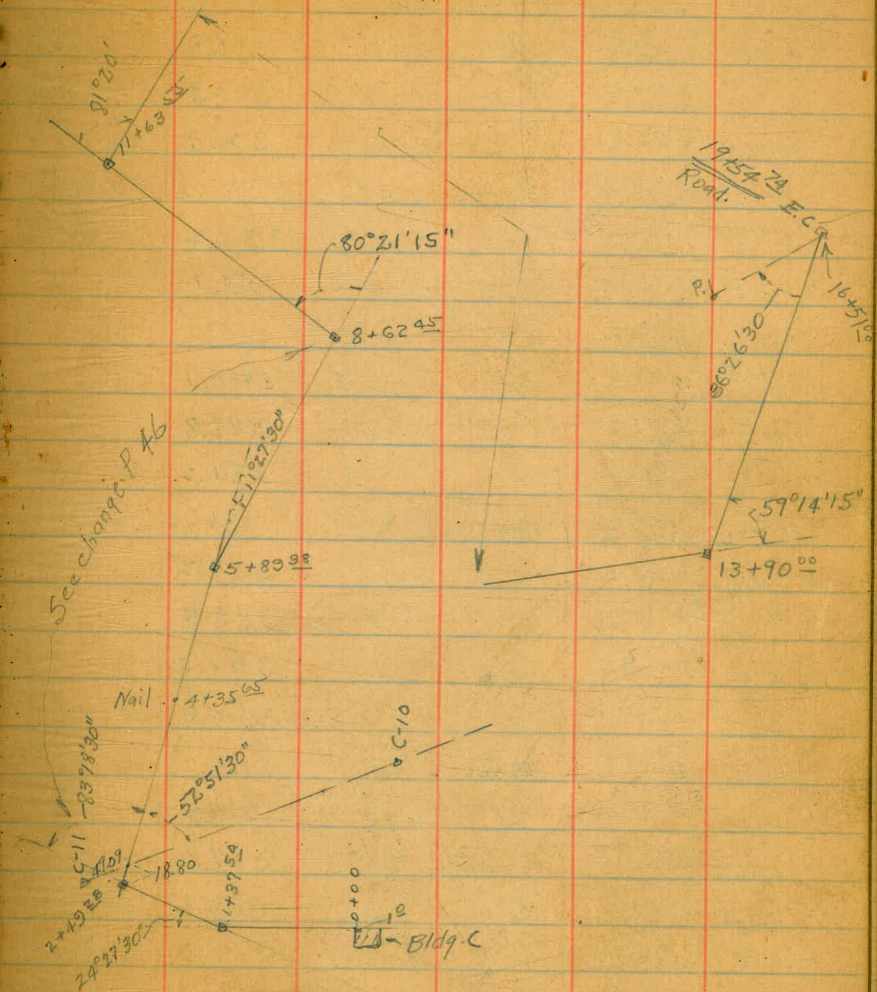
0 "A" 17.7 417.5  
 1 "A" 10.4 424.8  
 +5 8.6 426.6  
 2 "A" 7.9 427.3  
 3 "A" 6.8 428.4  
 4 "A" 6.1 429.1  
 5 "A" 6.0 429.2  
 6 "A" 5.6 429.6  
 6 "B" 5.6 427.6  
 5 "B" 5.9 429.3  
 4 "B" 6.0 429.2  
 3 "B" 6.8 428.4  
 2 "B" 7.8 427.4  
 1 "B" 9.3 425.9  
 +4 10.2 425.0  
 0 "B" 13.3 421.9  
 3' West 0 "C" = Bow Canyon 12.7 422.5  
 0 "C" 11.6 423.6  
 1 "C" 9.3 425.9  
 2 "C" 7.9 427.3  
 3 "C" 6.9 428.3  
 4 "C" 6.2 429.0

5 "C" 5.8 429.4  
 6 "C" 5.5 429.7  
 6 "D" 5.3 429.9  
 5 "D" 5.7 429.5  
 4 "D" 6.3 428.9  
 3 "D" on Bridge Stake 6.95 428.24  
 2 "D" 8.0 427.2  
 1 "D" 9.7 425.5  
 0 "D" 12.7 422.5  
 +10 = Bow Canyon 14.7 420.5  
 -10 = " " 15.3 419.9  
 0 "E" 12.4 422.8  
 1 "E" 9.7 425.5  
 2 "E" 8.1 427.1  
 3 "E" 7.0 428.2  
 4 "E" 6.4 428.8  
 5 "E" 5.8 429.4  
 6 "E" 5.2 430.0  
 8 "F" 5.3 429.9  
 5 "F" 5.8 429.4  
 4 "F" 6.5 428.7  
 3 "F" 7.2 428.0  
 2 "F" 8.2 427.0  
 1 "F" 10.3 424.9  
 0 "F" 12.9 422.3  
 +10 = Bow Canyon 16.6 418.6



435.19

10' North -10' = Brown Canyon	19.4	415.8
0" G"	16.4	418.8
10' South 0" G"	22.0	413.2
1" G"	13.2	422.0
10' South 1" G"	19.2	416.0
5' North 1" G"	11.0	424.2
2" G" - Brown Canyon	9.4	425.8
10' South 2" G"	15.4	419.8
3" G"	7.5	427.7
10' South 3" G"	11.5	423.7
4" G"	6.5	428.7
12' South 4" G"	8.0	427.2
5" G"	5.7	429.5
6" G"	5.3	429.9
check on Co. Man. No 2	4.51	430.68
		430.66 - BM
		0.02

Wright's  
townshipSewer line from Bldg C, Disposal  
Plant to Power House - State College. 41



Profile of Sewer Line Spew on P41

Hub NE Cor  
Blk C  
B.M.

	12.77	328.89		316.12
0+00 = 10' NE Cor Blk C	12.1	316.8		
+25	8.0	320.9		
+50	3.2	325.7		
T.P.	12.10	340.35	0.62	328.25
+75	10.2	330.2		
1+00	6.3	334.1		
T.P.	12.39	352.49	0.25	340.10
1+37.59 L	12.4	340.1		
+63	5.7	346.8		
+88	1.3	351.2		
T.P.	12.04	364.02	0.51	351.98
2+00	10.8	353.2		
2+49.28 L	5.6	358.4		
+65	2.0	362.0		
+75	1.2	362.8		
T.P.	11.09	375.45	0.26	363.76
3+00	10.6	364.9		
+25	8.3	367.2		
+50	6.9	368.6		
+75	5.5	370.0		
4+00	4.6	370.9		
+35	3.5	372.0		
+60	1.3	374.2		
T.P.	12.50	387.05	0.90	374.55

387.05

42

4+75	13.3	373.8
5+00	12.8	374.3
+25	12.2	374.9
+50	11.3	375.8
+75	12.4	374.7
+89.88 L	12.5	374.6
6+25	9.9	377.2
+50	9.2	377.9
+75	8.3	378.8
7+00	7.6	379.5
T.P.	5.17	384.94
+25	7.28	379.77
+50	5.5	379.4
+82	5.5	379.4
8+12	3.6	381.3
+55	8.8	376.1
8+62.25 L	13.9	371.0
8+68	9.5	375.4
+73	14.5	370.4
+85	11.3	373.6
9+00	12.6	372.3
+15	10.7	374.2
+25	10.4	374.5
+50	12.9	372.0
+75	15.3	369.6
10+00	12.5	372.4
	10.8	374.1



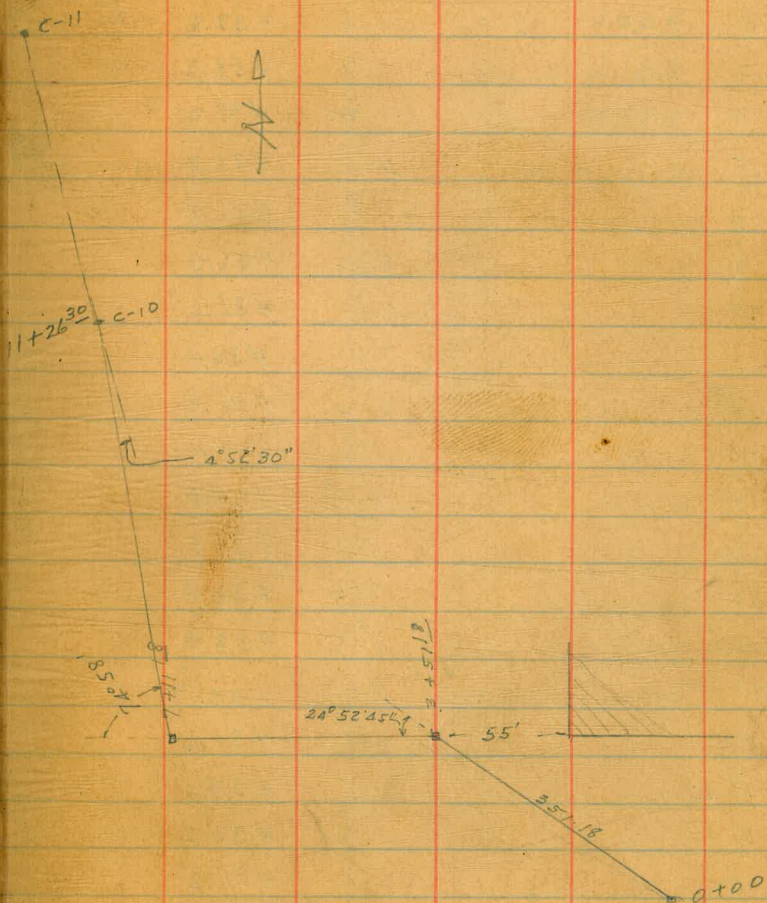
38494

10+50			7.0	377.9
11+00			3.5	381.4
T.P.	11.46	392.07	4.33	380.61
11+63 <sup>5</sup>	L		12.5	379.6
12+00			9.1	383.0
+50			8.2	383.7
13+00			9.4	382.7
+25			9.7	382.2
+55			11.2	380.9
+75			11.3	380.8
13+90 <sup>2</sup>	L		8.2	385.9
14+10			9.6	380.5
+25			10.9	381.2
+50			7.5	384.6
+75			6.1	386.0
15+00			4.9	387.2
+32			2.2	389.9
T.P.	12.90	402.80	2.17	389.90
+75			11.5	391.3
16+00			12.0	390.8
+25			12.5	390.3
16+51			14.0	388.9
B.M. Hub NW of Power House			6.16	396.64
on stub (Walker 388.16)			13.89	388.93

(Marked 395.65)

7/11/30  
London.Line for Electrical Conduit at  
State College.

13





Profile of Electrical conduit lines  
Shown on P. 43

Con. Man. No. 2  
(P. 2)  
B.M.

	10.57	441.23		430.66
0+00			3.9	437.3
+50			3.6	437.6
+60			2.9	438.3
1+00			4.2	437.0
+45			4.5	436.7
2+00			5.8	435.4
+50			5.2	436.0
3+00			5.6	435.6
+30			4.8	436.4
+51 <sup>18</sup> L			6.2	435.0
4+00			6.6	434.6
+50			6.2	434.8
5+00			7.1	434.1
+50			7.8	433.4
6+00			8.8	432.4
T.P.	3.20	435.77	8.44	432.79
+50			4.4	431.6
7+11 <sup>18</sup> L			6.5	429.5
+50			5.8	430.2
8+00			4.8	431.2
+50			4.8	431.2
9+00			5.1	430.9
+50			7.1	428.9
10+00			9.2	426.8

44

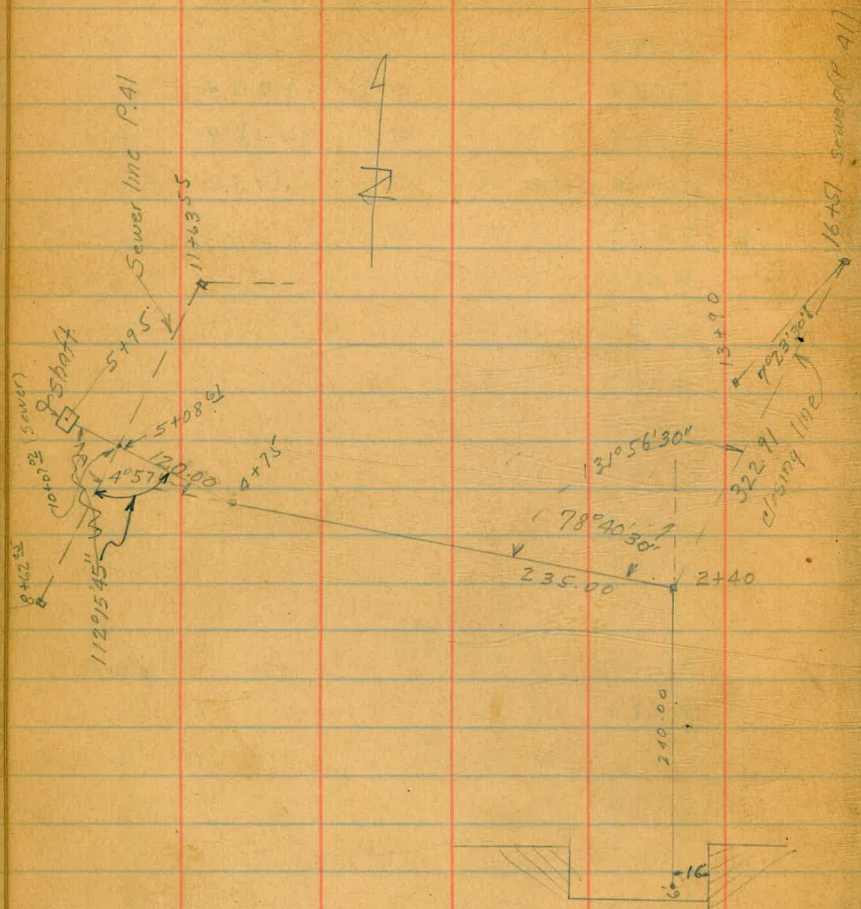
435.99

10+00			12.0	424.0
T.P.	2.27	445.96	12.30	423.69
10+80			5.6	420.4
11+00			8.1	418.9
+26 <sup>30</sup> End. = C-10			11.0	415.0
2 A P 37			9.66	416.30 (416.3)



7/2/30  
London.

Location for Acid Sewer from  
Lab. to cess-pool State College.



Profile of line on opp Page

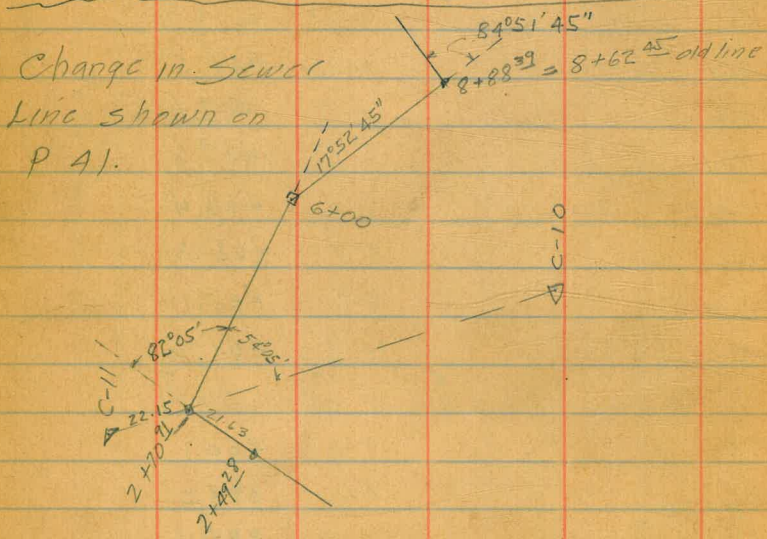
45

B.M.	12.71	409.36		396.65
T.P.	11.50	420.61	0.25	409.11
T.P.	8.16	426.07	2.70	417.91
0+00			2.8	423.3
+50			3.6	422.5
+65			4.2	421.9
1+00			7.2	418.9
+40			11.4	414.7
+75			11.4	414.7
T.P.	0.82	414.01	12.88	413.19
2+00			4.5	409.5
+25			5.7	408.4
+40			6.5	405.6
+50			7.6	406.4
3+00			9.7	405.3
+50			8.9	405.1
A+00			12.8	401.2
T.P.	0.50	402.31	12.20	401.81
+25			1.60	400.7
+36			4.0	398.3
+50			7.9	394.4
T.P.	0.30	390.07	12.54	389.77
+75			2.4	387.7
T.P.	0.27	377.42	12.92	377.15
5+20			7.4	370.0
T.P.	0.26	364.97	12.71	364.71



Profile - Change in Sewer  
on Opp. Page.

		364.97		
5+45		8.2	356.8	
+65		18.0	347.0	
+77		23.7	341.3	
+80		26.2	338.8	
+91		32.7	332.3	
+93		36.3	328.7	
T.P.	10.88	375.34	0.51	364.46
10+00 sewer (P42)		1.15	374.19	



T.P.	5.11	368.87		363.76
2+70 <sup>91</sup>			11.7	357.2
3+00			9.5	359.4
+50			7.8	361.1
+65			6.1	362.8
4+00			6.6	362.3
+50			5.3	363.6
+75			3.7	365.2
5+00			4.1	364.8
T.P.	12.10	376.29	4.68	364.19
+50			10.6	365.7
6+00			12.1	364.2
+50			9.4	366.9
7+00			4.6	371.7
+50			2.8	373.5
T.P.	9.39	383.02	2.66	373.63
8+07			5.4	377.6
+50			9.7	373.3
+70			12.9	370.1
8+88 <sup>39</sup> = 8+62 <sup>45</sup>			7.5	375.5



stations from Page 44

New levels across College Grounds

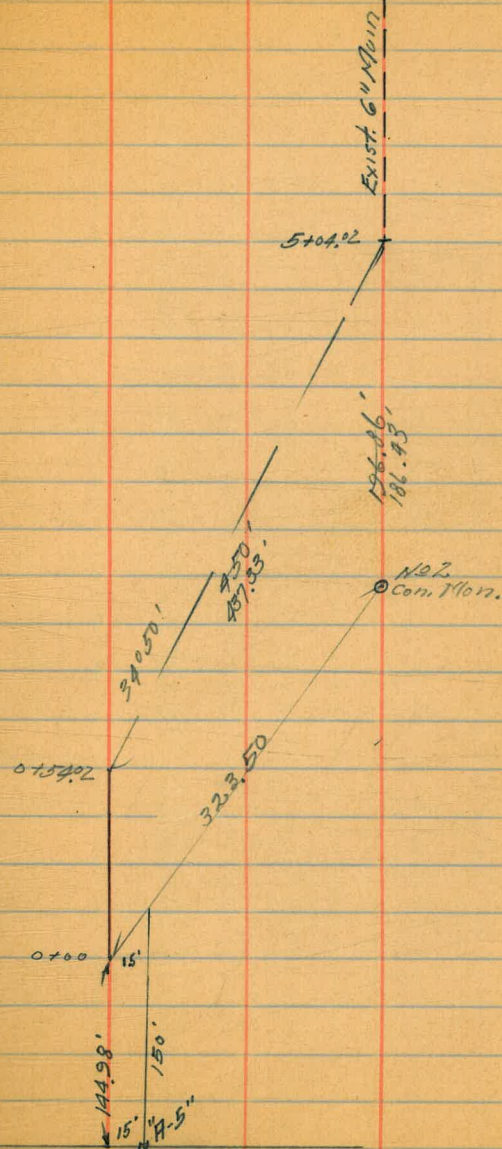
<del>7+11.18</del>	<del>10.13</del>		
	5.00	439.6	434.6
3+00		5.2	434.4
2+50		5.3	434.3
2+00		5.3	434.3
1+50		5.5	434.1
1+00		5.9	433.7
0+50		6.2	433.4
0+00		4.7	434.9
0+25		6.1	433.5
3+51.18	H.I. - 5.2		434.4



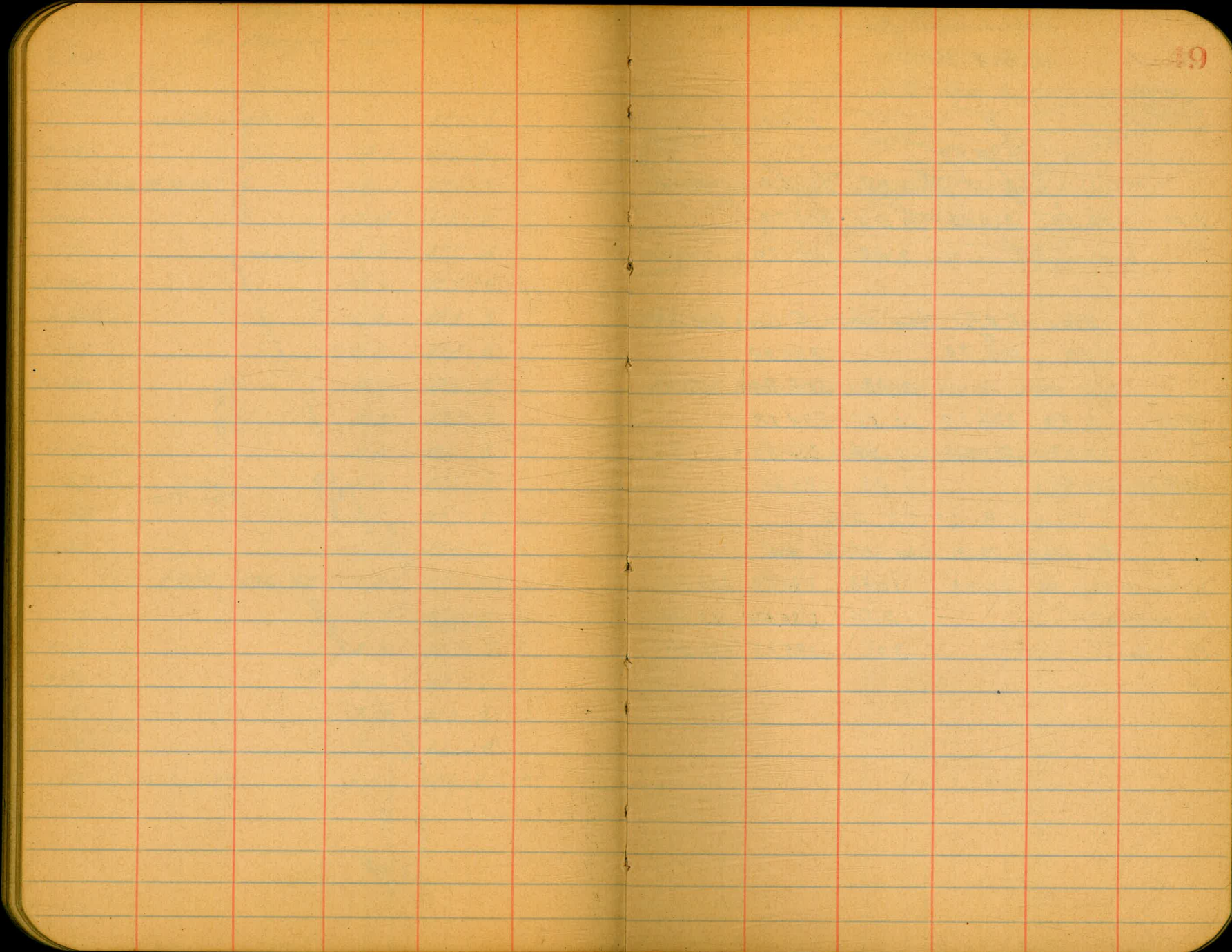
Walker  
 Bliss  
 Drebert  
 Kanagy 11-3-90

PRELIMINARY LEVELS  
 For WATER LINE

	0.53	431.19		430.66
0+00			18.7	412.5
	+54.02 = $\Delta$ 17.34° 50'		15.1	416.1
1+00			12.4	418.8
+50			8.8	422.4
2+00			7.9	423.3
+50			6.4	424.8
+75			6.2	425.0
3+00			4.7	426.5
+25			5.5	425.7
+50			4.4	426.8
+65			4.8	426.4
+75			3.6	427.6
4+00			2.3	428.9
T.P.	7.85	436.58	2.46	428.73
+10			7.5	429.1
+25			8.9	427.7
+50			6.6	430.0
+75			7.4	429.2
+91.35 = Elev. 5+04.02			5.2	431.4
chk. on starting B.M.			5.92	430.66 ✓









Additional Bench Marks  
SEWER Plant

	+	x	-	Elev.
		294.57		
		11.94		282.63
T.P.	12.55	306.53	0.59	293.98
			2.33	304.20

Elev. of B.M.s From stake @ Grade Book 144-40

	3.39	306.73		303.34
			2.33	304.40
T.P.	0.59	294.77	12.55	294.18
	12.21	295.04	11.94	282.83
cht. on stake (23)			11.43	283.61

GRADES for 6" C.I. Line

Bet. Sludge Tank and Sludge Bed.

90° Bend at Sludge Bed	295.04	10.48	284.56	284.56
30' South - Δ "Y"		9.54	285.50	285.50
15' " East		9.67	285.97	285.97

50

B.M. Page 9

~~291.62~~  
~~282.51~~  
294.57-x

LARGE NAIL in Con. Footing NW Cor. Sand Filter.

LARGE NAIL in Con. Shoulder SW Cor. Sludge Tank.

LARGE NAIL in Con. Shoulder SW Cor. Sludge Tank.

" " " " Footing NW Cor. Sand Filter.







Indexed  
C.S.N.

Level's Sewer Blk 123-148  
Choates Addition

5/14/35

B4C  
33rd + 34th

52

Partridge  
Bower

FL. M.H.

Sta	B.S.	I.I.	F.S.	Elev	6" B.P. Man NW-33rd
	8.76	115.31		106.55	
0+00 M.H. 215D	4.88	114.40	5.79	109.52	
M.H. 215D			5.4	109.0	
T.P.	11.60	120.63	5.37	109.03	
0+50			1.6	119.0	
T.P.	11.50	131.765	0.365	120.265	
T.P.	12.085	142.83	1.02	130.745	
1+00			11.65	131.1	
1+38.11	Hub		6.47	136.36	
1+50			6.0	136.8	
2+00			3.2	139.6	
T.P.	12.59	154.85	0.57	142.26	
Center of S. Side House #1			10.2	144.7	
2+50 Center of S. Side House #2			11.1	143.8	
			6.5	148.4	
3+00			6.8	148.1	
3+50 T.P.	12.80	167.23	0.42	154.43	
4+00			6.6	160.6	
4+50			2.4	164.8	
T.P.	8.03	174.21	1.05	166.18	
5+00 Center of N. Side House #4			6.5	167.7	
Center of S. Side House #3			9.0	165.2	
			2.2	174.0	

FL. Ev. M.H. = 0+00

0+50

0+80

1+20 Brk

1+60

2+00 = M.H.

+40

+80

3+20

+60

+ Brk

+40

+80

5+25 = D.E.

104.91

15.36

120.55

119.73

12.65

132.88

0.77

131.91

11.23

143.14

0.00

143.14

11.38

154.52

0.65

153.87

13.15

167.02

0.70

166.32

6.28

172.60

4.40

168.20

148.20

FL. M.H.

104.91 ✓

111.71 C 4.96

118.51 C 8.74

125.31 C 9.14

127.65 C 9.21

130.0 C 9.54

135.0 C 8.14

140.0 C 6.34

145.0 C 5.42

150.0 C 5.53

155.0 C 5.20

157.24 C 6.74

159.48 C 6.84

162.0 C 6.10

5+50  
ground  
check

Sewer Const.

Moore 10-31-36



Sta.	B.S.	I.I.	F.S.	Elev	
		174.21			
5+50			6.0	168.2	
6+00	Erod.		7.7	166.5	
0.13	162.86	11.48	162.73		checking
0.50	150.42	12.94	149.92		Back To Mark 33rd 3/4 D.
3.65	141.295	12.775	137.645		
1.03	129.73	12.595	128.70		
0.275	116.865	13.14	116.59		
		10.34	106.525		6" B.P. Mark N.W. 33rd D. Elev 106.55



Orchard Flc Curb Levels  
 East of Santa Barbara St to Vanice  
 Existing Curb & Walk on South

BM	278	255.09	252.31	NW 80 foot Santa Barbara & Orchard
				FL Santa Barbara = 0+0
SCb Top		4.84	250.25	
Gutter		5.1	250.0	
∫		4.5	250.6	
Cb Ground		4.4	250.7	
+2		3.8	251.3	
N.L.		2.6	252.5	
				0+25
N.L.		2.6	252.5	
+10		4.6	250.5	
+18		4.0	251.1	
Cb on Ground		5.1	250.0	
∫		5.4	249.7	
Gutter		5.6	249.5	
SCb Top		5.26	249.83	
				0+50
SCb Top		5.81	249.28	
Gutter		6.1	249.0	
∫		6.2	248.9	
Cb		6.1	249.0	
+2		5.5	249.6	
N.L.		4.7	250.4	

80' wide  
 20' Cb

Dec. 4, 40  
 Sisson  
 North San  
 N Moorl

				255.09
				0+75
N.L.			6.0	249.1
Cb			7.0	248.1
∫			7.1	248.0
Gutter			6.8	248.3
SCb Top			6.51	248.58
				1+0
SCb Top			7.56	247.53
Gutter			8.0	247.1
∫			8.2	246.9
Cb			8.3	246.8
+5			7.8	247.3
N.L.			6.8	248.3
				1+25
N.L.			7.9	247.1
+18			9.0	246.1
Cb			9.6	245.5
∫			9.5	245.6
Gutter			9.4	245.7
SCb Top			8.94	246.15
				1+50 - N End Cb on N
SCb Top			10.44	244.65
Gutter			10.8	244.3
∫			10.9	244.2
Gutter			11.1	244.0



255.09

HCB Top = Hly End	10.45	244.64
H L	10.1	245.0
1795		
HCB Top	11.93	243.16
Gutter	12.4	242.7
⌘	12.4	242.7
Gutter	12.4	242.7
SCB Top	11.97	243.12
TP	1.44	244.36
	12.17	242.92
210		
SCB Top	2.74	241.62
Gutter	3.2	241.2
⌘	3.1	241.3
Gutter	3.0	241.4
HCB Top	2.70	241.66
310		
HCB Top	8.73	235.63
Gutter	9.1	235.3
⌘	9.4	235.0
Gutter	9.3	235.1
SCB Top	8.64	235.72
TP	1.33	233.69
	12.00	232.36
410		
SCB Top	3.79	229.90
Gutter	4.1	229.3

233.69

⌘	4.4	229.3
Gutter	4.4	229.7
HCB Top	3.81	229.88
510		
HCB Top	9.37	224.32
Gutter	10.0	223.7
⌘	10.0	223.7
Gutter	10.0	223.7
SCB Top	9.40	224.29
TP	2.33	224.29
	11.73	221.96
.610 = H.L. Venice		
SCB Top	5.62	218.67
Gutter	6.0	218.3
⌘	5.9	218.4
Gutter	6.2	218.1
HCB Top	5.59	218.70
BM	5.50	218.79

J.P.P. Venice Orchard



Cross Section T St.  
 W.L. Elizabeth St to 650' West

60' side

Index of  
 LM

Sept 21  
 Sidon  
 Northway 56  
 W Moor

B.M.	112	88.29	87.17	S E Top of T St 145 1/2
	0+0 - W.L. Elizabeth St From N.			
N		10.7	77.6	
S		9.6	78.7	
S		10.1	78.2	
	0+50			
S		11.7	76.6	
S		11.6	76.7	
N		13.8	74.5	
TP	0.29	76.43	12.15	76.14
	1+0			
N		4.1	72.3	
S		2.3	74.1	
S		1.8	74.6	
	1+35			
S		3.4	73.0	
S		4.7	71.7	
N		5.3	71.1	
	1+70			
N		7.1	69.3	
S		5.8	70.6	
S		5.1	71.3	
	2+0			
S		6.5	69.9	
S		7.5	68.9	

Red 77-plot 9-10-41  
 Profile 2902

	76.43	76	68.8
	2+50		
N		9.5	66.9
S		9.1	67.3
S		8.5	67.9
	2+70 = E.L. 44 1/2 St From S = W.L. Grade Area of 2		
S		11.0	65.4
S		10.8	65.6
N		10.0	66.4
	3+0 - 1/2 44 1/2		
N		10.8	65.6
S		11.6	64.8
S		12.5	63.9
TP	2.35	66.81	11.97
	64.46		
	3+30 = W.L. 44 1/2 St From S		
S		2.6	64.2
S		3.3	63.5
N		2.5	64.3
	3+70		
N		3.6	63.2
S		4.6	62.2
S		5.4	61.4
	4+0		
S		7.2	59.6
S		4.5	62.3



		66.81		
H			44	62.4
	41.50			
H			5.5	61.3
+			5.3	61.5
S			7.3	59.5
	51.0			
S			8.0	58.8
+			7.0	59.8
H			7.1	59.7
	57.50			
H			9.3	57.5
+			8.9	57.9
S			9.4	57.4
	61.0			
S			10.9	55.9
+			10.8	56.0
H			11.4	55.4
	67.30			
H			11.6	55.2
+			11.2	55.6
S			11.6	55.2
TP	0.31	56.66	10.46	56.35
TP	1.21	45.73	12.41	52.7
TP	6.82	44.76	7.82	37.84
BM			3.22	42.74

NFBPCOL  
100' East  
S. 20' M. 1900'  
OCCON V. 100'  
42.43

BM	0.74	42.17		42.43
TP	6.98	44.23	5.92	37.25
TP	11.95	53.69	2.49	41.74
TP	11.84	64.96	0.57	53.12
TP	11.90	76.79	0.07	64.89
TP	12.08	88.45	0.42	76.37
BM			3.00	85.45
TP	4.89	92.78	0.56	87.89
BM			5.64	87.14
BM	0.02	87.19		87.17
TP	0.13	76.27	11.05	76.14
TP			11.80	64.47

NFBPCOL  
100' East  
S. 20' M. 1900'  
OCCON V. 100'

S. 20' M. 1900'  
OCCON V. 100'  
From West  
85.44

SET OFF HYD  
TST + 45' H. 100'  
87.17

SET OFF HYD  
TST + 45' H. 100'



Sewer location + levels. 43<sup>rd</sup> + Hilltop

Void  
See Page 59

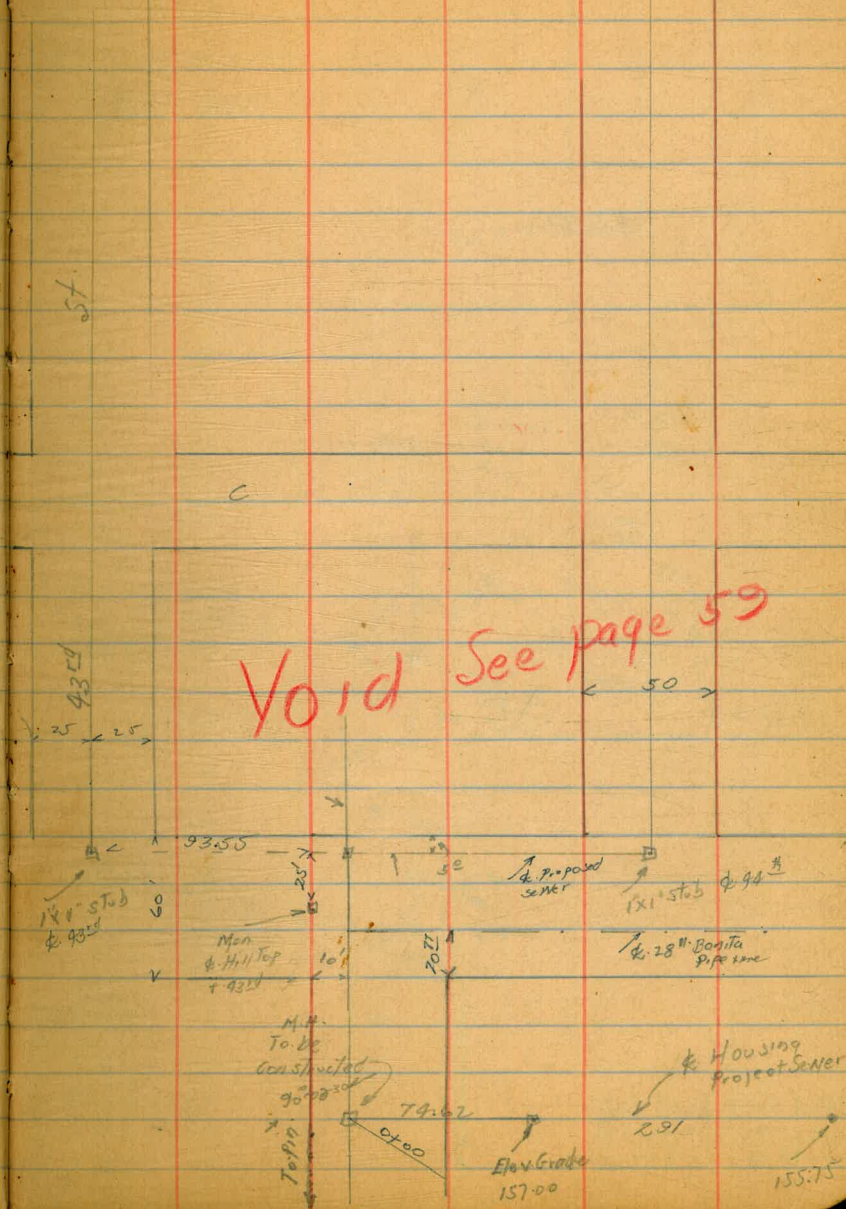
1+14.93 L Rt 89°-55'-30

0+83.93 @ Hilltop

0+80.10 int 28" Bonita Pipeline

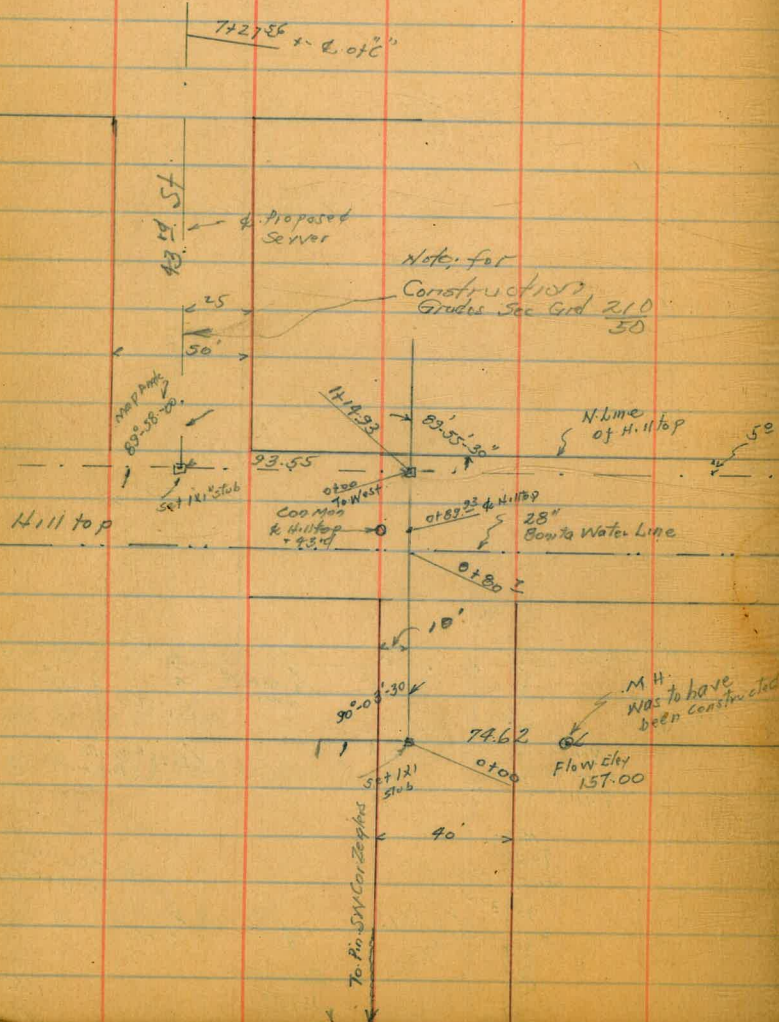
0+00.1 90°-03'-30 Rt

3.54





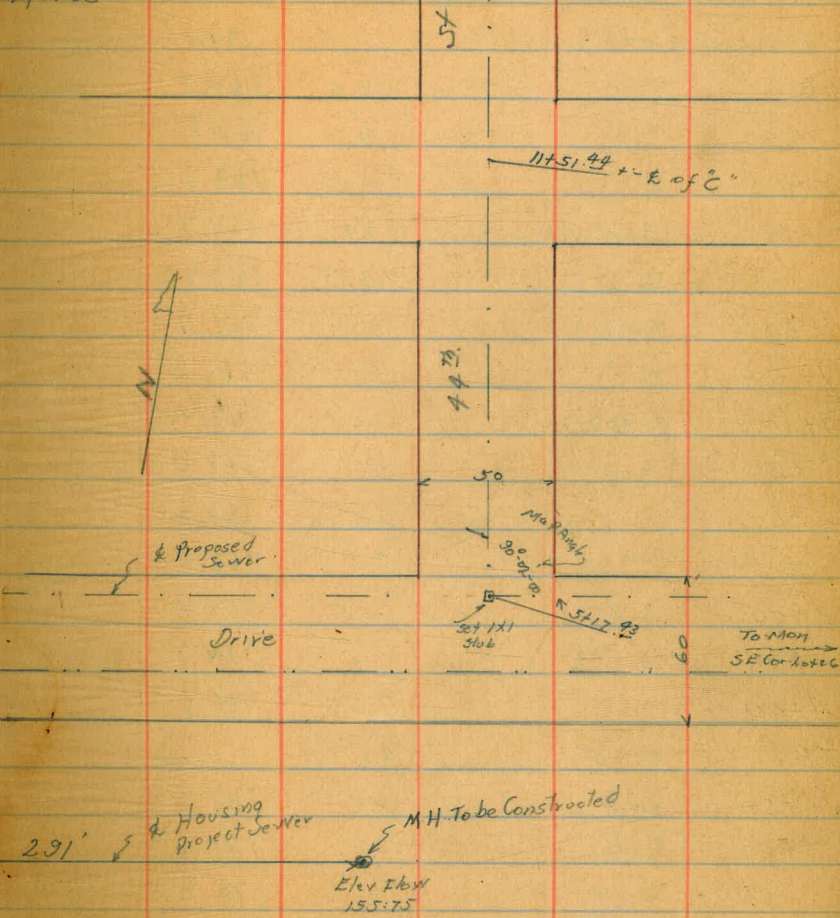
Sketch of  
Broadway  
Map 1753



Indexed  
C-SK

59

Proposed Sewer Layout  
43<sup>rd</sup> + Hilltop Drive  
Acres



Ziegler's  
Orchard Tract  
Map 1701

See book 1975 p.44  
for part constructed.  
3-17-42 G.R.H.



Bliss  
Sommermyer  
Beggs  
115141

Sewer Location and Levels. 43<sup>d</sup>

\* Hilltop East on Hilltop to 44<sup>th</sup> & N. on 44<sup>th</sup> to 17<sup>th</sup> 1/4' North  
SW. from 44<sup>th</sup> Hilltop

#24  
B.M. elevations  
city datum

640	171.07	164.67	750	52	171.5
746 <sup>6</sup> East of 0+00 Ground	10.0	161.1	7+00	48	171.9
0+00	10.4	160.7		42	172.5
+50	8.3	162.8		3.3	173.4
+65	7.2	163.9		2.9	173.8
+80 <sup>20</sup> 16" Sanito Pipe line Gd	6.4	164.7	9+00	2.1	174.6
" " on top 28" pipe	10.15	160.92	T.P.	12.59	187.34
+89 <sup>23</sup> & Hilltop	5.4	165.7		1.90	174.75
1+08	4.9	166.2		11.7	175.6
1+14.93 L. Rt 87°55'30"	3.67	167.40		10.2	177.2
+50	4.1	167.0		8.0	179.3
2+00	4.5	166.6		5.3	182.0
+50	5.1	166.0		2.3	185.0
3+00	6.3	164.8		T.P.	10.54
+50	6.4	164.7		12+00	137.45
4+00	4.5	166.6		9.8	187.7
T.P.	965	176.65		7.3	190.2
+50	8.4	168.3		6.1	191.4
+87	6.1	170.6		5.1	192.4
+91	6.7	170.0		9.8	187.7
5+00	5.9	170.8		4.2	193.3
+17 <sup>43</sup> L. Lt on 11" stub	4.70	171.95		10.7	186.8
+50	4.1	172.6		3.6	193.9
6+00	4.8	171.9		11.9	185.6
				4.6	192.9
				13.2	184.3
				6.0	191.5

\*  
176.65

50



T  
197.45

61

16+00		8.4	189.1	
" "	100' Lt	17.0	180.5	
+20	SSide Res on West $\phi$	10.5	187.0	
"	Floor Res. 100' Lt	17.5	180.0	
+50		12.5	185.0	
17+00		15.0	182.5	
+14.		15.7	181.8	
+14	100' Lt	20.4	177.1	
" "	100' Rt	14.8	182.7	
Set T.P. $\phi$	42 <sup>nd</sup> for check	2.05	195.40	500 sight



Sewer Levels 43<sup>rd</sup> St North  
of Hilltop Drive.

See sketch  
page 59

	8.40	173.07		164.67
See sketch 0+00			5.7	167.4
+50			6.0	167.1
+65			6.2	166.9
+80			6.7	166.4
+93 <sup>55</sup> 1. Rt.			6.71	166.36
+100			6.4	166.7
+50			3.8	169.3
+200			1.3	171.8
T.P.	12.70	185.23	0.54	172.53
+50			11.4	173.8
+300			9.4	175.8
+50			8.0	177.2
+400			6.5	178.7
+50			5.0	180.2
+500			3.3	181.9
" " S. Side Res 110' Lt. Floor			5.8	179.4
+50			1.5	183.7
T.P.	12.14	197.00	0.37	184.86
+600			11.1	185.9
+50			9.0	188.0
+700			6.8	190.2
+27 <sup>56</sup> & C.			5.5	191.5
" 200' West on & C.			9.5	187.0

↑  
197.00

62

300' West & C		9.7	187.3
+27 <sup>56</sup> 100' E on & C.		3.1	193.9
" " 200' " " " "		3.5	193.5
Note C St Slopes to 44 <sup>th</sup>			
+750		4.3	192.7
+800		1.8	195.2
T.P.	7.71	203.06	1.65
+50		5.4	197.7
+900		3.1	200.0
+40		1.6	201.5
+1000		1.8	201.3
+15	Note Ground on left is above d.	2.4	200.7
" " 100' Rt		12.0	191.1
" " 150' "		15.8	187.3
+50		4.3	198.8
+1100		7.8	195.3
Check turn from 44 <sup>th</sup>		7.59	195.47
+1100 100' Rt		17.0	186.1
+50		12.6	190.5
+1200		19.5	183.6
" " 100' Rt		24.4	178.7
+50		25.6	177.5
+90		30.0	173.1

Probably Best  
500' sight  
0.07 error





























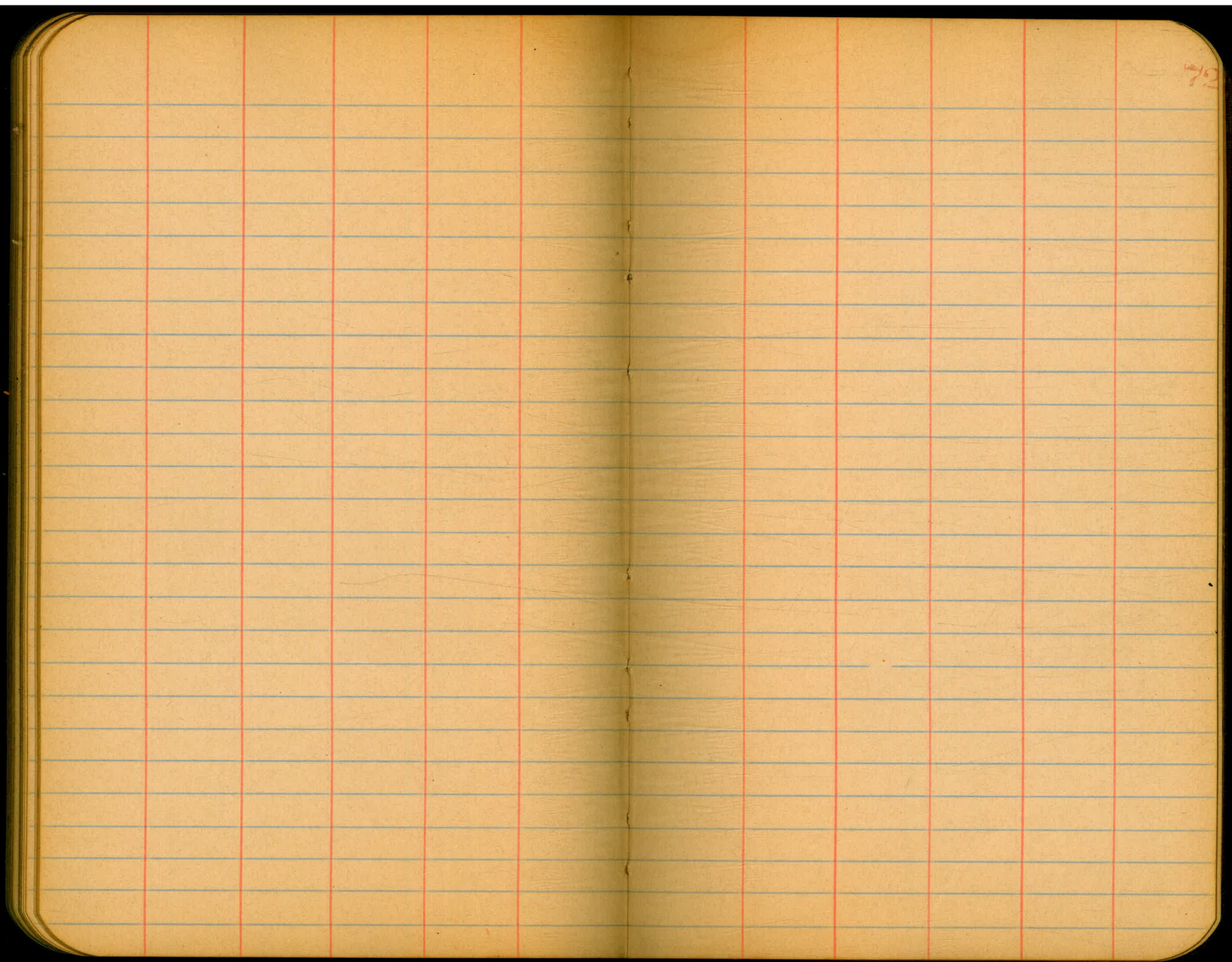












1/2









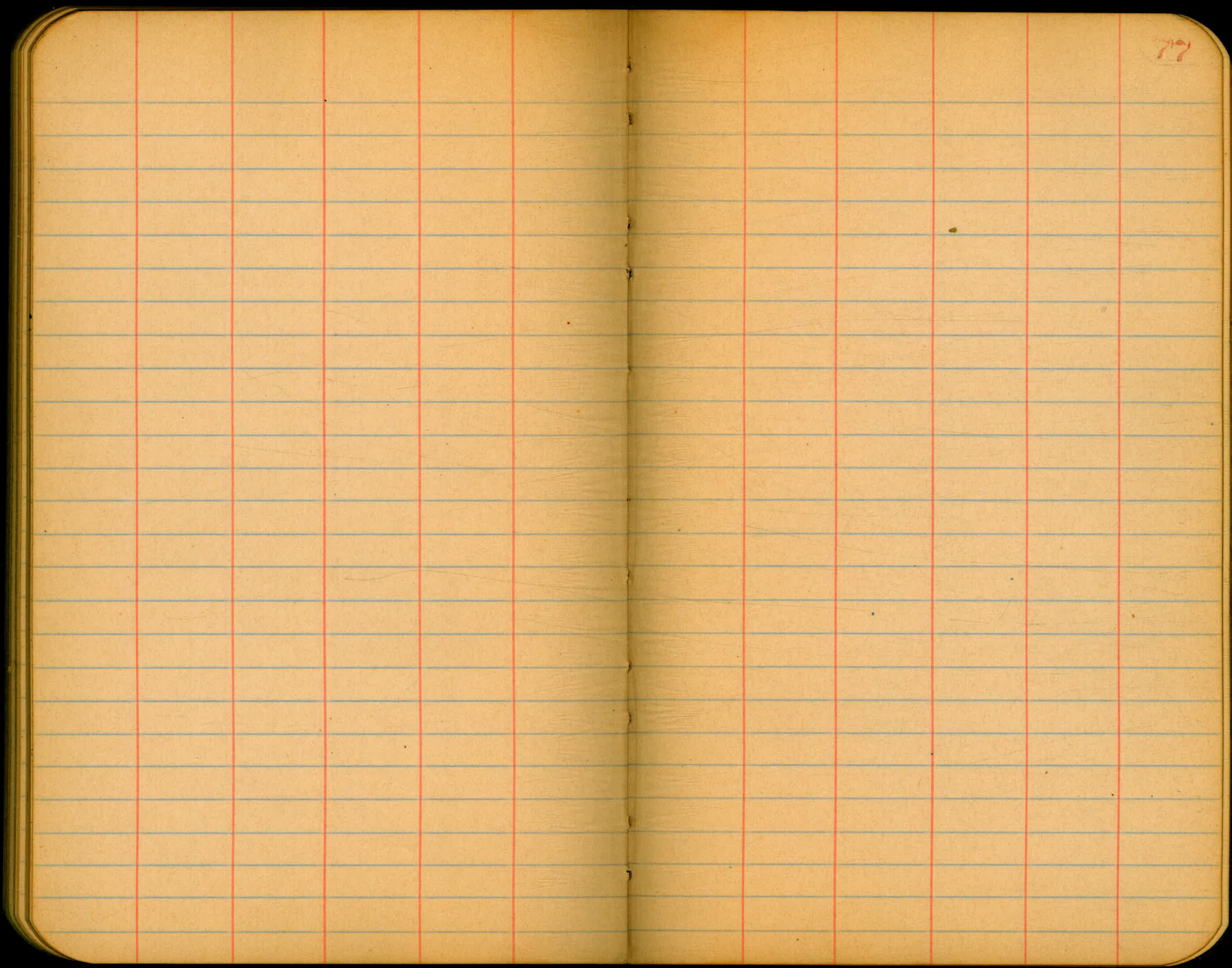






76











BENCH LEVELS  
State College Sewer  
From Disposal Plant to Power House

	3.67	323.54		319.87	BM on Hub #15 Page 1 USGS Datum.
on stub #1 "B" Line		10.50		313.04	
" " #2 "B"		6.40		317.14	
T.P.	12.67	339.81	6.40	317.14	
#3 "B"		12.36		317.45	
T.P.	12.92	340.88	1.85	327.96	
T.P.	12.39	352.13	1.14	339.74	
T.P.	12.72	364.13	0.72	351.41	
			12.74	351.39	BM on stub. OPHNSO BM.
T.P.	12.79	364.38	12.54	351.59	BM.
T.P.	12.93	376.75	0.56	363.82	
T.P.	12.26	388.78	0.23	376.52	on Rock 10' LT
T.P.	12.14	397.23	3.69	385.09	BM. 1945
			0.58	396.65	BM. R.R. above 2' on stub.
T.P.	12.76	409.18	0.81	396.42	
T.P.	10.86	418.99	1.05	408.13	
T.P.	11.24	429.97	0.26	418.73	
T.P.	6.92	435.28	1.61	428.36	
chk. on BM. top Man Page 1		515		430.13	
				430.13 - BM Page 1	
				O.P.O. = Error.	



DIRECTIONS FOR USE OF TABLES

TABLE No. 1.

Distance of slope stake from side or shoulder  
stake for any width roadway, slope 1/2 to 1.  
If ground is nearly level, the cut or fill of side  
stake is located by the double entry method in  
left column and top row. The number in body

---

---

**IMPROVED TABLES**  
**AND**  
**INFORMATION**

---

---

To find Tangent and Extent for curve of  
any other degree, divide by degree of curve and  
add correction found in column of correction.  
Degrees of curve with a given  $T$  may be found  
by dividing tangent (or extent), opposite  $T$  by  
given tangent (or extent).  
The distance from a point on the tangent to  
the curve is very nearly the square of the tangent  
length divided by twice the radius.



TABLE X.  
MIDDLE ORDINATES OF RAILS  
Length of Rail (feet)

C o /	R Feet	30 Inch	28 Inch	26 Inch	24 Inch	22 Inch	20 Inch	C o	R Feet	30 Inch	28 Inch	26 Inch	24 Inch	22 Inch	20 Inch
0-20	17189	.08	.07	.06	.05	.04	.03	8	716.8	1.88	1.64	1.42	1.20	1.01	.84
0-40	8594	.16	.14	.12	.10	.08	.07	9	637.3	2.12	1.84	1.60	1.35	1.14	.94
1-0	5730	.24	.20	.18	.15	.13	.10	10	573.7	2.36	2.05	1.78	1.50	1.27	1.04
1-20	4297	.31	.27	.23	.20	.17	.13	11	521.7	2.59	2.26	1.95	1.65	1.39	1.15
1-40	3438	.39	.34	.29	.25	.21	.17	12	478.3	3.83	2.47	2.15	1.81	1.54	1.26
2-0	2865	.47	.41	.35	.30	.25	.20	13	441.7	3.05	2.66	2.30	1.96	1.66	1.36
2-20	2456	.55	.48	.41	.35	.29	.23	14	410.3	3.30	2.87	2.48	2.10	1.78	1.46
2-40	2149	.63	.55	.47	.40	.33	.27	15	383.1	3.54	3.08	2.68	2.26	1.91	1.57
3-0	1910	.71	.62	.53	.45	.38	.31	16	359.3	3.76	3.28	2.83	2.40	2.04	1.67
3-20	1719	.78	.68	.59	.50	.42	.35	17	338.3	4.00	3.48	3.02	2.57	2.16	1.78
3-40	1563	.86	.75	.65	.55	.46	.38	18	319.6	4.21	3.67	3.18	2.70	2.28	1.87
4-0	1433	.94	.82	.71	.60	.50	.42	19	302.9	4.45	3.89	3.36	2.86	2.41	1.98
4-20	1323	1.02	.89	.77	.65	.55	.45	20	287.9	4.70	4.09	3.55	3.00	2.54	2.09
4-40	1228	1.10	.96	.83	.70	.59	.48	22	262.0	5.16	4.44	3.84	3.30	2.80	2.29
5	1146	1.18	1.03	.89	.75	.63	.52	24	240.5	5.64	4.92	4.20	3.59	3.04	2.50
6	955.3	1.41	1.23	1.06	.90	.76	.62	26	222.3	6.07	5.29	4.58	3.88	3.29	2.70
7	819.0	1.65	1.44	1.24	1.05	.89	.73								

TABLE XI.  
SHORT RADIUS CURVES

Radius Feet	Chord Feet	Central Angle	Deflection Angle	Deflection for 1 Foot
35	10	16-26	8-13	49.3
45	10	12-46	6-23	38.3
50	15	17-16	8-38	34.5
60	15	14-22	7-11	28.8
75	15	11-30	5-45	23.0
100	20	11-30	5-45	17.3
120	20	9-34	4-47	14.3
150	20	7-39	3-49	11.5
190	25	7-32	3-46	9.15
200	25	7-10	3-35	8.6
225	25	6-25	3-12	7.7
240	25	5-58	2-59	7.2
250	25	5-44	2-52	6.9
275	25	5-12	2-36	6.2
288	50	9-58	4-59	6.0
300	50	9-32	4-46	5.7
350	50	8-12	4-06	4.9
376	50	7-40	3-50	4.6
400	50	7-10	3-35	4.3
410	50	7-00	3-30	4.2

To find length of curve divide angle from P. C. to P. T. by central angle of chord and multiply by length of chord.

TABLE XII.  
INCLINED DISTANCE OF 100 FT. REDUCED TO HORIZONTAL

Slope	Horizontal Distance	Correction	Rise Per Foot	Slope	Horizontal Distance	Correction	Rise Per Foot
0°00'	100.000	0.000	0.000	8°00'	99.027	0.973	0.139
15'	99.999	0.001	0.004	15'	98.965	1.035	0.143
30'	99.996	0.004	0.009	30'	98.902	1.098	0.148
45'	99.991	0.009	0.013	45'	98.836	1.164	0.152
1 00	99.985	0.015	0.017	9 00	98.769	1.231	0.156
15	99.976	0.024	0.023	15	98.700	1.300	0.161
30	99.966	0.034	0.026	30	98.629	1.371	0.165
45	99.953	0.047	0.031	45	98.556	1.444	0.169
2 00	99.939	0.061	0.035	10 00	98.481	1.519	0.174
15	99.923	0.077	0.039	15	98.404	1.596	0.178
30	99.905	0.095	0.044	30	98.325	1.675	0.182
45	99.885	0.115	0.048	45	98.245	1.755	0.187
3 00	99.863	0.137	0.052	11 00	98.163	1.837	0.191
15	99.839	0.161	0.057	15	98.079	1.921	0.195
30	99.813	0.187	0.061	30	97.992	2.008	0.199
45	99.786	0.214	0.065	45	97.905	2.095	0.204
4 00	99.756	0.244	0.070	13 00	97.815	2.185	0.208
15	99.725	0.275	0.074	15	97.723	2.277	0.212
30	99.692	0.308	0.078	30	97.630	2.370	0.216
45	99.657	0.343	0.083	45	97.534	2.466	0.221
5 00	99.619	0.381	0.087	13 00	97.437	2.563	0.225
15	99.580	0.420	0.092	15	97.338	2.662	0.229
30	99.540	0.460	0.096	30	97.237	2.763	0.233
45	99.497	0.503	0.100	45	97.134	2.866	0.238
6 00	99.452	0.548	0.105	14 00	97.030	2.970	0.242
15	99.406	0.594	0.109	15	96.923	3.077	0.246
30	99.357	0.643	0.113	30	96.815	3.185	0.250
45	99.307	0.693	0.118	45	96.705	3.295	0.255
7 00	99.255	0.745	0.122	15 00	96.593	3.407	0.259
15	99.200	0.800	0.126	15	96.479	3.521	0.263
30	99.144	0.856	0.131	30	96.363	3.637	0.267
45	99.087	0.913	0.135	45	96.246	3.754	0.271

TABLE XIII.  
MINUTES IN DECIMALS OF A DEGREE.

0 30"	.00833	10' 30"	.17500	20' 30"	.34167	30' 10"	.50833	40' 30"	.67500	50' 10"	.84167
1 00	.01667	11 00	.18333	21 00	.35000	31 00	.51667	41 00	.68333	51 00	.85000
30	.02500	30	.19167	30	.35833	30	.52500	30	.69167	30	.85833
2 00	.03333	12 00	.20000	22 00	.36667	32 00	.53333	42 00	.70000	52 00	.86667
30	.04167	30	.20833	30	.37500	30	.54167	30	.70833	30	.87500
3 00	.05000	13 00	.21667	23 00	.38333	33 00	.55000	43 00	.71667	53 00	.88333
30	.05833	30	.22500	30	.39167	30	.55833	30	.72500	30	.89167
4 00	.06667	14 00	.23333	24 00	.40000	34 00	.56667	44 00	.73333	54 00	.90000
30	.07500	30	.24167	30	.40833	30	.57500	30	.74167	30	.90833
5 00	.08333	15 00	.25000	25 00	.41667	35 00	.58333	45 00	.75000	55 00	.91667
30	.09167	30	.25833	30	.42500	30	.59167	30	.75833	30	.92500
6 00	.10000	16 00	.26667	26 00	.43333	36 00	.60000	46 00	.76667	56 00	.93333
30	.10833	30	.27500	30	.44167	30	.60833	30	.77500	30	.94167
7 00	.11667	17 00	.28333	27 00	.45000	37 00	.61667	47 00	.78333	57 00	.95000
30	.12500	30	.29167	30	.45833	30	.62500	30	.79167	30	.95833
8 00	.13333	18 00	.30000	28 00	.46667	38 00	.63333	48 00	.80000	58 00	.96667
30	.14167	30	.30833	30	.47500	30	.64167	30	.80833	30	.97500
9 00	.15000	19 00	.31667	29 00	.48333	39 00	.65000	49 00	.81667	59 00	.98333
30	.15833	30	.32500	30	.49167	30	.65833	30	.82500	30	.99167
10 00	.16667	20 00	.33333	30 00	.50000	40 00	.66667	50 00	.83333	60 00	1.00000

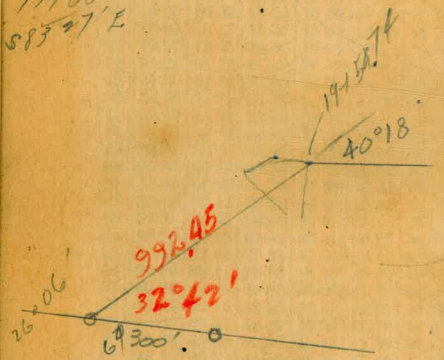


1277  
 1376  
 119015  
 325.04  
 23.9  
 3239  
 17.5

3015  
 235  
 3137  
 3354  
 217  
 294  
 195  
 278  
 85

3165  
 315.0  
 37.0  
 383.7 = 540440 ±

96'33"  
 17960  
 583'27"E



2559  
 2052  
 1071  
 1000  
 2565  
 13  
 2600

54-05  
 52-51-30  
 1-13-30  
 83-18-30  
 82-05-00

163  
 18  
 142  
 1119  
 158  
 165  
 175  
 27  
 21.2  
 285  
 14  
 67  
 7501  
 4632  
 379  
 168  
 316  
 101  
 374  
 32350  
 109  
 2543  
 .84

54-05-  
 108-10

349.4  
 15.9  
 333.5

247.28  
 51.63  
 270.91

84-52  
 169-43-30  
 84-51-45

17-52-30  
 35-05-30  
 17-52-45

6797.62  
 4706.62  
 2.91.00