

1395



EMER BOOK

No. 980 F

ENGINEERING DEPARTMENT,  
CITY OF CALIFORNIA, SAN DIEGO.  
MICROFILMED  
DEC 23 1964

Our Leather Bound Engineers Note Books are carried in the following things:

- No. 380 LEVEL BOOK. Left and Right Hand Page the same as Left Hand Page of this Book.
- No. 382 FIELD BOOK. Left Hand Page as in this Book, Right Hand Page 4 x 4 to the inch, Center Line Red.
- No. 384 MINING TRANSIT BOOK. Left Hand Page as in this Book, Right Hand Page 8 x 8 to the inch, Center Line Red.
- No. 385 FIELD BOOK. Left Hand Page as in this Book, Right Hand Page 8 vertical and 4 horizontal lines to the inch, Center Line Red.

We also carry the Note Books listed above, bound in extra strong Fabri-Hide (otherwise the same quality of book), which can be furnished at a somewhat lower price.

In ordering Fabri-Hide covered books, add the letter "F" to catalog number.

**THE FREDERICK POST CO.**  
*ENGINEERING and DRAFTING SUPPLIES*  
IRVING PARK STATION.  
CHICAGO, ILL.

## Index

Atlantic St. x sections Grape to Broadway	1 to 22
Archer St. x Sections Cass to Everts	24 - 36
Daves St Xsections Archer to Turquoise	36 - 41
Culvert locations 10 <sup>th</sup> + University	42 - 43
Hortensia St Xsections Joan to Congress	45 - 55
Guy St Xsections Hortensia to Witherby	55 - 57
Sewer in Belt St. E to G Sts.	58 - 59
Buildings S.W. Old TOWN	60 - 62
Alley Blk 14 Central Homestead	65 - 71
"    "    D Terolto Hts	72 - 76



Atlantic St. Cross Section

NL Grape to Broadway

See Book 1379 page 72

100' N side  
8' cb  
21' 9 1/2

1028

4-15-30  
J. W. 27  
J. C. 1/2  
H. 1/2  
W. 1/2  
C. 1/2  
2

BM	020	3119	30.99	SW 8P Grape & Ketchum	1/4	4.0	C 3 ✓
TP	0.03	18.56	12.65	18.54	1/4	3.9	C 4 ✓
TP	1.49	10.88	9.77	8.79	SE T. 1/4 Grape Atlantic	4.0	C 3 ✓
		NL Grape St	See 1380 page 12 For Sketch		CB	4.1	C 2 ✓
L		3.4	6.9 ✓		N	4.2	C 1 ✓
cb		2.9	4 ✓		1/10	4.3	C 0 ✓
1/4		2.0	8.3 ✓				
1/2		3.1	7.2 ✓				
1/4		2.6	6.7 ✓		1/2 Grape	4.2	C 1 ✓
cb		3.3	7.0 ✓			4.1	C 2 ✓
N		3.4	6.9 ✓		cb	4.0	C 3 ✓
1/10		3.5	6.8 ✓		1/4	3.9	C 4 ✓
		1/2 cb of Grape			1/2	3.9	C 4 ✓
-10		4.6	5.7 ✓		1/4	3.8	C 5 ✓
N		4.5	5.8 ✓		E on Parking	3.62	C 6 ✓
cb		4.5	5.8 ✓				
1/4		4.2	6.1 ✓		E on Parking	3.83	C 4.5 ✓
1/2		4.2	6.1 ✓		1/4	3.8	C 5 ✓
1/4		3.5	6.8 ✓		1/4	4.1	C 2 ✓
cb		3.7	6.6 ✓		1/2	4.0	C 3 ✓
E on End Curb		3.9°	6.38 ✓		1/4	4.0	C 3 ✓
E on Parking		4.47	5.61 ✓		cb	4.2	C 1 ✓
		N 1/4			N	4.3	C 0 ✓
E on Parking		3.81	6.44 ✓		1/10	4.2	C 1 ✓
cb		3.9	6.4 ✓				
					-10	4.5	5.8 ✓

Plotted A-9-30 C.B.H.

10.28

W	4.5	58	✓	
Cb	4.4	59	✓	F
1/4	4.5	58	✓	Cb
1/2	4.1	62	✓	1/4
1/4	3.8	65	✓	1/2
Cb	3.8	65	✓	1/4
F on Top Cb End	3.72	65.6	✓	Cb
F on Paving	4.44	58.4	✓	W
	S-L Grape			110
F	3.8	65	✓	
Cb	3.8	65	✓	110
1/4	3.9	66	✓	W
1/2	4.1	62	✓	Cb
1/4	4.6	57	✓	1/4
Cb	4.4	59	✓	1/2
W	5.2	51	✓	1/4
110	5.1	52	✓	Cb
	18 1/2 S-L Grape on E S-L Grape on W = 0.70			F
-10	5.1	52	✓	
W	5.2	51	✓	F
Cb	4.6	57	✓	Cb
1/4	4.1	62	✓	1/4
1/2	4.0	63	✓	1/2
1/4	4.1	62	✓	1/4
Cb	4.2	61	✓	Cb
F	4.0	63	✓	W

10.28

3

50' Top S-L Grape on W

	4.5	5.8	✓	
	4.9	5.4	✓	20' S-L Grape - 10' W of E.L.
	4.6	5.7	✓	10' W of E.L.
	4.0	6.3	✓	
	5.2	5.1	✓	15' - 2' of Conc. Drive 1/2 W of E.L.
	5.4	4.9	✓	
	5.6	4.7	✓	4.0 5.6B
	5.7	4.6	✓	
	100' S			
	5.5	4.8	✓	10 1/2' Conc. Path
	5.8	4.5	✓	10' W of E.L.
	5.9	4.4	✓	
	6.0	4.3	✓	
	6.1	4.2	✓	
	5.6	4.7	✓	
	5.7	4.6	✓	
	5.1	4.9	✓	
	150' S			
	5.9	4.4	✓	
	6.0	4.3	✓	
	5.9	4.4	✓	
	5.8	4.5	✓	
	5.4	4.9	✓	
	5.5	4.8	✓	
	5.5	4.8	✓	

Atlantic St.

10.28

710		5.6	4.7 ✓	
	300 S			
-10		5.9	✓ 4.4	197 S - Polr
H		5.9	✓ 4.4	14 F of HL
Cb		5.9	✓ 4.4	
1/4		5.9	✓ 4.4	
2		5.8	✓ 4.5	218 S - Core Mark on EL
1/4		5.6	✓ 4.7	565 = 4.5
Cb		6.2	✓ 4.1	
F		6.0	✓ 4.3	
	350 S			
F		6.0	4.3 ✓	
Cb		6.2	4.1 ✓	250 S - Polr
1/4		5.7	4.6 ✓	16 W of EL
2		5.7	4.6 ✓	
1/4		5.8	4.5 ✓	
Cb		6.0	4.3 ✓	
H		6.1	4.2 ✓	
710		5.9	4.4 ✓	
	300 S			
-10		5.9	4.4 ✓	
H		6.1	4.2 ✓	
Cb		6.3	4.0 ✓	
1/4		6.0	4.3 ✓	
2		6.0	4.3 ✓	
1/4		5.9	4.4 ✓	

10.28

4

		6.5	3.8 ✓	
		6.3	4.0 ✓	
	350 S			
		6.3	4.0 ✓	
		6.5	3.8 ✓	
		5.7	✓ 4.6	37 S - Polr
		5.4	4.9 ✓	10 W of EL
		5.6	4.7 ✓	
		5.5	4.8 ✓	
		5.5	4.8 ✓	
		5.6	4.7 ✓	
	400.92 S - HL			Flm 80 W of 14 Cb
		5.3	5.0 ✓	
		5.4	4.9 ✓	
		4.7	5.6 ✓	
		5.4	4.9 ✓	
		6.1	4.2 ✓	
		5.6	4.7 ✓	
		5.6	4.7 ✓	
		5.9	4.4 ✓	
	3.02 9.30	4.00	6.28	Settophid Flm Atlantic
	11 Cb			
		5.2	4.1 ✓	
		5.3	4.0 ✓	
		5.2	4.1 ✓	
		4.9	4.4 ✓	

9.30

1/4	5.0	43	✓	1/4
Cb	3.8	55	✓	1/4
H	3.7	56	✓	1/4
110	3.3	60	✓	Cb
				F
-10	4.5	48	✓	
H	4.9	44	✓	F
Cb	5.3	4.0	✓	Cb
1/4	5.6	3.7	✓	1/4
1/4	5.4	3.9	✓	1/4
1/4	5.0	4.3	✓	1/4
Cb	5.2	4.1	✓	Cb
F	5.0	4.3	✓	H
				110
F	5.4	3.9	✓	
Cb	5.5	3.8	✓	-10
1/4	4.8	4.5	✓	H
1/4 - MH Pms	3.25	5.55	✓	Cb
1/4	4.7	4.6	✓	1/4
Cb	6.2	3.1	✓	1/4
H	5.9	3.4	✓	1/4
110	5.3	4.0	✓	Cb
				F
-10	6.4	2.9	✓	
H	6.2	3.1	✓	F
Cb	5.4	3.9	✓	Cb

N 1/4

1/2 Elm

S 1/4

9.30

4.3	5.0	5
4.0	5.3	✓
5.0	4.3	✓
5.3	4.0	✓
5.4	✓ 3.9	1.5 of Sch = Poll 1.5 E of 1/4 L.
S Cb	4.0	✓
	4.1	✓
	4.1	✓
	4.9	✓
	4.6	✓
	3.6	✓
	3.5	✓
	3.1	✓
S L Elm	2.8	✓
	2.7	7.5 of SL = Poll 1.4 N of EL.
	2.9	✓
	3.2	✓
	4.1	✓
	4.2	✓
	4.0	✓
	3.9	✓
10.5 of S L Elm	4.0	✓
	3.9	✓



Atlantic St 9.30

1/4	51	42	✓	H
1/2	52	37	✓	Cb
1/4	61	✓ 3.2	2 1/2' S - 2' Duct to Foundry on EL	1/4
Cb	59	✓ 3.4	5/8 = 4.12	1/2
H	42	✓ 5.1		1/4
710	45	✓ 4.8		Cb
	50'S			F
-10	42	51	✓	
H	39	54	✓	F
Cb	39	54	✓	Cb
1/4	41	47	✓	1/4
1/2	58	3.5	✓	1/2
1/4	57	✓ 3.6	93'S - Duct Stop on EL	1/4
Cb	55	✓ 3.8	5/16 = 4.14	Cb
F	54	✓ 3.9		H
	100'S			+10
F	51	39	✓	
Cb	54	39	✓ 125'S - P/L	-10
1/4	54	39	✓ 15' F of ML	H
1/2	54	39	✓	Cb
1/4	56	37	✓	1/4
Cb	49	4.4	✓	1/2
H	49	4.4	✓	1/4
710	45	4.8	✓	Cb
	150'S			F
-10	48	4.5	✓	

9.30

6

50	4.3	✓	
51	4.2	✓	
58	3.5	✓	
53	✓ 4.0		150'S - P/L
52	✓ 4.1		13' H of EL
51	✓ 4.2		
49	✓ 4.4		189'S on 2 - MH 308 on 10
	200'S		
47	4.6	✓	
49	4.4	✓	
50	4.3	✓	
45	4.8	✓	
53	4.0	✓	
50	4.3	✓	
49	4.4	✓	
49	4.4	✓	
	250'S		
49	4.4	✓	
49	4.4	✓	
48	4.5	✓	
46	4.7	✓	
51	✓ 4.2		297'S - P/L
49	4.4	✓	15' F of ML
51	4.2	✓	
47	4.6	✓	
	300'S		

9.30

F	4.1	4.9	✓	300 S. A. 10
Cb	4.6	4.7	✓	12' W 4 E L
1/4	4.5	4.8	✓	
1/2	4.6	4.7	✓	
1/4	4.5	4.8	✓	
Cb	4.6	4.7	✓	
H	4.7	4.6	✓	
110	4.7	4.6	✓	

3.50 V

-10	4.2	5.1	✓	
H	4.3	5.0	✓	
Cb	4.3	5.0	✓	
1/4	3.7	5.6	✓	
1/2	4.0	5.3	✓	
1/4	4.3	5.0	✓	
Cb	4.3	5.0	✓	
F	4.0	5.3	✓	

403.52 S = H. L. Cedar. Prod. W on W

F	3.9	5.4	✓	400 S. A. 10
Cb	3.9	5.4	✓	12' W 4 E L
1/4	4.3	5.0	✓	
1/2	4.0	5.3	✓	
1/4	3.8	5.5	✓	
Cb	3.6	5.7	✓	
H	4.1	5.2	✓	
110	4.0	5.3	✓	

9.30

421.08 S on F  
403.52 S on F = H. L. Cedar 101.53 Wide  
See 1380 Paper

-10	4.2	5.1	✓	
H	4.2	5.1	✓	
Cb	4.4	4.9	✓	Cedar
1/4	3.5	5.8	✓	80' Wide 1/4 Cbs
1/2	4.1	5.2	✓	
1/4	3.7	5.6	✓	
Cb	3.8	5.5	✓	
F	3.8	5.5	✓	

B.M. 2.08 9.81 1.57 7.73 SET up West  
Cedar Atlantic

H. C. of Cedar

F	4.1	5.7	✓	
Cb	4.5	5.3	✓	
1/4	4.1	5.7	✓	
1/2	4.2	5.6	✓	
1/4	4.7	5.1	✓	
Cb	4.9	4.9	✓	
H	4.9	4.9	✓	
110	4.7	5.1	✓	

-10	4.0	5.8	✓	Put in on 1/4 12' W 4 E L
H	4.4	5.4	✓	
Cb	4.4	5.4	✓	
1/4	4.4	5.4	✓	
1/2	4.4	5.4	✓	
1/4	4.1	5.7	✓	

Atlantic St.

981

cb		41	57	✓
F		42	56	✓
	1/2 Cedar			
F		4.0	58	✓
cb		3.9	59	✓
1/4		4.1	57	✓
1/8		4.0	58	✓
1/4		3.8	60	✓
cb		3.5	63	✓
H		4.2	56	✓
+10		4.2	56	✓
	5 1/4			
-10		4.3	55	✓
H		4.0	58	✓
cb		4.2	56	✓
1/4		3.9	59	✓
1/8		4.3	55	✓
1/4		4.0	58	✓
cb		4.0	58	✓
F		4.0	58	
	S cb			
F		3.9	59	✓
cb		4.2	56	✓
1/4		4.2	56	✓
1/8		4.3	55	✓
1/4		4.1	5.1	✓

981

8

cb		43	55	✓
H		45	53	✓
+10		42	56	✓
	S.L. Cedar		65' S of S.Cb. Rd.	
-10		48	50	14' E of H.L.
H		48	5.0	✓
cb		48	50	✓
1/4		46	5.2	✓ 25' S - Rd.
1/8		46	52	✓ 9' N of F.L.
1/4		44	54	✓
cb		40	5.8	✓
F		41	5.7	✓
	50' S of S.L. Cedar			
F		4.0	5.8	✓
cb		4.5	5.3	✓
1/4		4.5	5.3	✓
1/8		4.0	5.8	✓
1/4		4.5	5.3	✓
cb		4.1	5.7	✓
H		4.5	5.3	✓
+10		4.4	5.4	✓
	100' S			
-10		4.7	5.1	✓
H		4.8	5.0	✓
cb		4.9	4.9	✓
1/4		4.5	5.3	✓

981

Z	4.6	5.2	✓	
1/4	4.5	5.3	✓	
Cb	3.8	6.0	✓	
F	3.6	6.2	✓	
	150'S			
F	4.0	✓ 5.8	156'S-Pole	
Cb	4.5	✓ 5.3	9'W of FL	
1/4	5.0	4.8	✓	
Z	4.5	5.3	✓	
1/4	4.5	5.3	✓	
Cb	4.8	5.0	✓	
H	4.8	5.0	✓	
710	4.8	5.0	✓	
	200'S			
-10	4.7	✓ 5.1	202'S-Pole	
H	4.6	✓ 5.2	11'E of Pole	
Cb	4.4	✓ 5.4		
1/4	4.4	✓ 5.4		
Z	4.9	✓ 4.9		
1/4	4.9	4.9	✓	
Cb	4.6	5.2	✓	
F	4.4	5.4	✓	
	250'S			
F	4.4	5.4	✓	
Cb	4.3	5.5	✓	
1/4	4.3	5.5	✓	

981

9

Z	3.9	5.9	✓	
1/4	4.3	5.5	✓	
Cb	4.1	5.7	✓	
H	4.1	5.1	✓	
710	3.8	6.0	✓	
	280'S			
-10	3.1	6.1	✓	
H	3.2	✓ 6.6	282'S-Pole	
Cb	3.9	✓ 5.9	9'W of FL	
1/4	3.6	6.2	✓	
Z	3.9	5.9	✓	
1/4	4.5	5.3	✓	
Cb	4.6	5.2	✓	
F	4.4	5.4		
	299.92'S = 11.2 Beech	80'W of 11' Cb		
F	4.7	5.1	✓	
Cb	4.5	✓ 5.3	299'S-Pole	
1/4	4.3	✓ 5.5	14'E of 11.2	
Z	4.4	5.4	✓	
1/4	4.0	5.8	✓	
Cb	4.2	5.6	✓	
H	4.4	5.4	✓	
710	4.3	5.5	✓	
	11' Cb of Beech			
-10	3.4	6.4	✓	
H	3.1	6.7	✓	

Atlantic St.

9.81

cb		30	68	✓
1/4		38	60	✓
1/2		42	56	✓
1/4		44	54	✓
cb		49	49	✓
F	Top of End	485	496	✓
F	on Paving	510	4.21	✓
TP	2.44	9.91	2.34	7.47
	11' 1/4			SE Top of End Beech of H/End
F	on Paving	508	4.83	✓
cb		48	5.1	✓
1/4		47	5.2	✓
1/2		38	6.1	✓
1/4		35	6.4	✓
cb		35	6.4	✓
H		36	6.3	✓
110		36	6.3	✓
	1/2 Beech			
-10		35	6.4	✓
H		35	6.4	✓
cb		39	6.1	✓
1/4		33	6.6	✓
1/2		3.8	6.1	✓
1/4		4.6	5.3	✓
cb		48	5.1	✓
F	on Paving	505	4.86	✓

9.91

10

	S 1/4			
F	on Paving	5.23	4.68	✓
cb		4.8	5.1	✓
1/4		4.1	5.3	✓
1/2		4.0	5.9	✓
1/4		3.6	6.3	✓
cb		3.9	6.0	✓
H		3.6	6.3	✓
110		3.5	6.4	✓
	S cb			
-10		4.0	5.9	✓
H		4.0	5.9	✓
cb		4.2	5.7	✓
1/4		4.2	5.7	✓
1/2		4.5	5.4	✓
1/4		4.9	5.0	✓
cb		4.9	5.0	✓
F	on Paving	5.84	4.07	✓
F	on Top of End	5.14	4.77	✓
	S. L. Beech			
F		4.6	5.3	✓
cb		4.7	5.2	✓
1/4		5.0	4.9	✓
1/2		5.1	4.8	✓
1/4		4.7	5.2	✓
cb		4.5	5.4	✓

9.91

H	4.6	5.3 ✓
710	4.6	5.3 ✓
50 S of SL Beach		
-10	4.7	5.2 ✓
H	4.7	5.2 ✓
Cb	4.6	5.3 ✓
1/4	4.7	5.2 ✓
1/2	5.0	4.9 ✓
1/4	4.8	5.1 ✓
Cb	4.8	5.1 ✓
F	4.8	5.1 ✓
100 S		
F	4.8	5.1 ✓
Cb	4.7	✓ 5.2 11 S of Pol
1/4	4.9	✓ 5.0 12 W of EL
1/2	5.1	4.8 ✓
1/4	4.6	5.3 ✓
Cb	4.9	5.0 ✓
H	5.0	4.9 ✓
710	5.0	4.9 ✓
150 S		
-10	4.9	5.0 ✓
H	5.0	4.9 ✓
Cb	5.0	4.9 ✓
1/4	5.2	4.7 ✓
1/2	5.1	4.8 ✓

9.91

1/4	4.7	5.2 ✓
Cb	5.3	4.6 ✓
F	5.3	4.6 ✓
200 S		
F	5.4	4.5 ✓
Cb	5.0	✓ 4.9 20 S of Pol
1/4	5.1	✓ 4.8 14 E of M.S.
1/2	4.7	✓ 5.2
1/4	4.6	✓ 5.3
Cb	4.9	✓ 5.0 22 S of Pol
H	4.9	✓ 5.0 5 W of EL
710	4.8	✓ 5.1
250 S		
-10	4.5	5.4 ✓
H	4.5	5.4 ✓
Cb	4.6	5.3 ✓
1/4	4.7	5.2 ✓
1/2	4.8	5.1 ✓
1/4	5.7	4.2 ✓
Cb	5.1	4.8 ✓
F	4.8	5.1 ✓
299 98 S - 1/2 AS 6 80 W of M.C.S.		
F	5.1	4.8 ✓
Cb	5.3	4.6 ✓
1/4	5.3	4.6 ✓
1/2	4.5	5.4 ✓

Atlantic St.

991

1/4	43	56	✓
cb	45	54	✓
H	44	55	✓
710	46	53	✓
Hcb			
-10	43	56	✓
H	44	55	✓
cb	44	55	✓
1/4	44	55	✓
1/2	50	49	✓
1/4	52	47	✓
cb	55	44	✓
F on Paving	638	353	✓
F Top Cb End	586	405	✓
H 1/4			
F on Paving	570	421	✓
cb	57	42	✓
1/4	58	41	✓
1/2	55	44	✓
1/4	53	46	✓
cb	52	47	✓
H	51	48	✓
710	52	47	✓
3.55 of 1/4 = 1 Edge Paving from H			
-10 on Paving	532	469	✓
H	533	458	✓

991

cb on Paving	538	453	12 ✓
1/4 " "	550	441	✓
1/2 " "	567	424	✓
1/4 " "	576	415	✓
cb " "	570	421	✓
F " "	562	429	✓
L			
F on Paving	558	433	✓
cb " "	566	425	✓
1/4 " "	572	419	✓
1/2 " "	560	431	✓
1/4 " "	545	446	✓
cb " "	536	455	✓
H " "	531	460	✓
710 " "	521	470	✓
9.6 S of L - S Edge Strip			
-10 on Paving	532	459	✓
H " "	540	451	✓
cb " "	547	444	✓
1/4 " "	554	437	✓
1/2 " "	567	424	✓
1/4 " "	577	414	✓
cb " "	580	411	✓
F " "	575	416	✓
S 1/4			
F on Paving	592	399	✓

991				991				4-7-30	
cb	61	38	✓	7/4		43		56	13
7/4	60	39	✓	7/4		47		52	✓
7/4	56	43	✓	cb		48		51	✓
7/4	55	44	✓	7/4		50		49	✓
cb	55	44	✓	7/10		46		53	✓
7/4	55	44	✓	BM	3.58	10.33	3.26	6.65	SET up Hid Hsb + H/lookie
7/10	54	45	✓		50.5 of SL Hsb				
	5 cb			-10		5.0		52	✓
-10	45	54	✓	7/4		49		53	✓
7/4	49	50	✓	cb		66		36	✓
cb	47	52	✓	7/4		51		51	✓
7/4	51	48	✓	7/4		51		51	✓
7/4	44	55	✓	7/4		49		53	✓
7.5	47	52	✓	7/4		47		55	✓
7/11	65	34	✓	cb		52		50	✓
7/4	51	48	✓	7/4		49		53	✓
cb	62	37	✓		100.5				
F on Paring	1.63	3.28	✓	7/4		50		52	✓
F on Top cb Foot	1.18	3.73	✓	cb		51		51	✓
	5.2. Hsb			7/4		53		49	✓
7/4	52	✓ 47	4.5 off 2 Hsb = Polp	7/4		45		57	✓
cb	53	✓ 46	1/2 E of 7/4	7/4		50		52	✓
7/4	43	✓ 5.6	13U = Polp	7/13		49		53	✓
7/4 on MH Rim	5.13	✓ 4.78	1/2 F of 7/4	cb		66		36	✓
7/8	44	✓ 3.8		7/4		48		54	✓
7/9	61	✓ 3.8		7/4		51		51	✓



Atlantic St.

1083

+10		5.0	52 ✓		1/4
	150 S			130 S - Pole	1/2
-10		5.0	52 ✓	3' E of N6	1/4
N		4.6	56 ✓		Cb
Cb		6.5	37 ✓	119 S - Pole	F
+5		4.3	59 ✓	9' N of E6	
1/4		4.7	55 ✓		F
1/2		4.7	55 ✓	170 S - Pole	Cb
1/4		5.3	49 ✓	112 of N6	1/4
Cb		5.3	49 ✓		1/2
F		4.9	53 ✓		1/4
	200 S				7.15
F		4.7	55 ✓		Cb
Cb		5.2	50 ✓		1.4
1/4		5.0	52 ✓		N
1/2		4.8	54 ✓		+10
1/4		4.5	57 ✓		
+1.5		4.3	59 ✓		
Cb		6.5	37 ✓		+10
N		4.8	54 ✓		N
+10		4.8	54 ✓		+5
	250 S				Cb
-10		5.1	51 ✓	150 S - Pole	+5
N		5.2	50 ✓	1' E of N6	1/4
Cb		6.5	37 ✓		1/2
+5		4.8	54 ✓		1/4
					Cb

1083

14

		5.1	51 ✓		
		5.2	50 ✓		
		5.1	51 ✓		
		5.6	46 ✓		
		5.0	52 ✓		
	300 S = 116.75 S.			80' N of 14 Cb	
		4.9	53 ✓		
		5.7	45 ✓		
		4.9	53 ✓		
		4.4	57 ✓		
		4.8	54 ✓		
		5.2	50 ✓		
		6.7	3.5 ✓		
		4.9	53 ✓		
		4.4	58 ✓		
		4.7	55 ✓		
	N Cb				
		4.7	55 ✓		
		4.7	55 ✓		
		4.9	53 ✓		
		6.6	3.6 ✓		
		5.1	51 ✓		
		5.0	52 ✓		
		4.6	56 ✓		
		4.7	55 ✓		
		5.5	4.7 ✓		

10.23

F		49	53 ✓
	N 1/4		
F		52	50 ✓
Cb		55	47 ✓
1/4		44	58 ✓
8		42	60 ✓
1/4		46	56 ✓
+13		48	54 ✓
Cb		66	36 ✓
+4		48	54 ✓
H		43	59 ✓
+10		41	61 ✓
	1/2 AST		
-10		45	57 ✓
H		47	55 ✓
+5		47	55 ✓
Cb		66	36 ✓
+5		41	61 ✓
1/4		43	59 ✓
8		52	50 ✓
1/4		48	54 ✓
+5 = MH. on P100		44	57 ✓
Cb		53	49 ✓
F		53	49 ✓
	S 1/4		
F		52	49 ✓

10.23

Cb		54	48 ✓ <sup>15</sup>
1/4		52	50 ✓
8		48	54 ✓
1/4		45	57 ✓
+15		43	59 ✓
Cb		66	36 ✓
+4		42	60 ✓
H		43	59 ✓
+10		45	57 ✓
	S Cb		
-10		42	60 ✓
H		46	56 ✓
+2		48	58 ✓
Cb		69	33 ✓
+4		46	56 ✓
1/4		40	62 ✓
8		46	56 ✓
1/4		46	56 ✓
Cb		57	45 ✓
F		58	44 ✓
	S. L. AST		
BY		312	7.11 S.E. Top 4yd AST & Flow's
F		55	4.7 2 (5yd) FN = P11
Cb		58	4.4 1/2 E of P11
1/4		55	4.7
8		48	5.4

Atlantic St.

10.23

1/4	44	5.8	✓
+15	45	5.7	✓ 145' P. of E
cb	68	3.4	✓ F of H. 2
+4	40	6.2	✓
W	41	6.1	✓
+10	38	6.4	✓
(50' S of S. L. AS)			
-10	52	5.0	✓
W	50	5.2	✓
+4	51	5.1	✓
cb	68	3.4	✓
+5	49	5.3	✓
1/4	47	5.5	✓
1/2	56	4.6	✓
1/4	62	4.0	✓
cb	57	4.5	✓
F	58	4.4	✓
(100' S)			
F	58	4.4	✓
cb	58	4.4	✓
1/4	62	4.0	✓
1/2	60	4.2	✓
1/4	55	4.7	✓
+15	56	4.6	✓
cb	70	3.2	✓
+4	52	5.0	✓

10.23

W	50	5.2	✓ 16
+10	53	5.0	✓
(150' S)			
-10	5.8	4.4	✓
W	5.8	4.4	✓
1/2	5.5	✓ 4.7	163' S = P. of
cb	70	✓ 3.2	F of H. 4
+5	57	4.5	✓
1/4	5.8	4.4	✓
1/2	5.8	4.4	✓
1/4	5.8	4.4	✓ 138' S = Bottom
cb	5.6	4.6	of 3 Conc Strs
F	5.3	4.9	to Sect 107/6
TP	4.94	9.89	0.6 W of E. 2
(200' S)			
F	46	5.3	✓
cb	48	5.1	✓
1/4	5.1	4.8	✓
1/2	5.3	4.6	✓
1/4	5.0	4.9	✓ 217' S = Bottom
+15	5.2	4.7	of 3 Conc Strs
cb	6.6	3.3	to Sect 107/6
W	4.7	5.2	0.6 W of E. 2
+10	5.1	4.8	3.58 = 6.31
(250' S)			
-10	46	5.3	

939

H	4.5	5.4	✓
Cb	6.8	3.1	✓
+5	4.0	5.9	✓
1/4	5.3	4.6	✓
5	5.2	4.7	✓
1/4	5.2	4.7	✓
Cb	4.8	5.1	✓
F	4.8	5.1	✓

300'S = 7 = 8° St. N6.

F	5.1	4.8	✓	300'S = 2 Poles
Cb	5.1	4.8	✓	2' of N6
1/4	5.1	4.8	✓	13' 2" of N6
5	5.3	4.6	✓	
1/4	4.3	5.6	✓	
Cb	6.9	3.0	✓	
H	3.4	6.5	✓	
+10	4.0	5.9	✓	

320'S

-10	3.9	6.0	✓
H	5.0	4.9	✓
+3	6.5	3.4	✓
Cb	6.7	3.2	✓
+5	3.7	6.2	✓
1/4	3.5	6.4	✓
5	4.6	5.3	✓
1/4	4.5	5.4	✓

989

Cb	4.8	5.1	✓	17
F	5.0	4.9	✓	

340'S

-17 = N Rail Santa Fe	4.60	5.29	✓
F	4.6	5.3	✓
Cb	4.6	5.3	✓
1/4	4.2	5.7	✓
5	3.6	6.3	✓
1/4	4.2	5.7	✓
Cb	4.6	5.3	✓
H	4.5	5.4	✓
+10	4.4	5.5	✓

360'S

-10	4.5	5.4	✓
H	4.5	5.4	✓
Cb	4.6	5.3	✓
1/4	4.2	5.7	✓
5	3.3	6.6	✓
1/4	4.1	5.8	✓
Cb	4.1	5.8	✓
F	4.9	5.0	✓
+7.5 = N Rail	4.74	5.15	✓

380'S = 3 81° 0' St.

F = N Rail	4.80	5.09	✓
F	5.4	4.5	✓
Cb	5.0	4.9	✓

Atlantic St.

989

1/4		37	62	✓
1/2		40	59	✓
1/4		47	52	✓
cb		49	50	✓
H		46	53	✓
+10		47	52	✓
	400'S			
-10		50	49	✓
H		50	49	✓
cb		49	50	✓
1/4		48	51	✓
1/2		48	51	✓
1/4		50	49	✓
cb		54	45	✓
+0.6 = H Rail		492	4.97	✓
F		5.6	4.3	✓
on Edge Brick Pavmg		5.62	4.27	✓
	450'S			
F on Edge Brick Pavmg		5.60	4.29	✓
cb		58	4.1	✓
+11 = H Rail		528	4.61	✓
+14 = H Rail		523	4.66	✓
1/4		55	4.4	✓
1/2		50	4.9	✓
1/4		50	4.9	✓
cb		48	5.1	✓

989

18

H		51	48	✓
+10		50	49	✓
	500'S			
-10		51	48	✓
H		50	49	✓
cb		48	51	✓
1/4		50	49	✓
1/2		46	53	538'S = H Rail 13' E of mid
+177 = H Rail		5.40	4.49	
1/4		5.9	4.0	✓
+57 = H Rail		5.52	4.37	✓
cb		5.9	4.0	✓
F		5.7	4.2	✓
+0.3 = Edge Brick Pavmg		5.60	4.29	✓
	550'S			
F = Edge Brick		5.65	4.24	✓
cb		58	4.1	✓
+158 = H Rail		5.52	4.37	✓
1/4		60	3.9	✓
+8.1 "		5.52	4.37	✓
1/2		4.9	5.0	✓
1/4		5.0	4.9	✓
cb		50	4.9	✓
H		51	4.8	✓
+10		51	4.8	✓
	600'S			

9.89

-10	52	4.7	✓
H	54	4.5	✓
Cb	54	4.5	✓
1/4	54	4.5	✓
1/2	52	4.7	✓
+11.4 - H Rail	5.56	4.33	✓
1/4	61	3.8	✓
+5.4 - H Rail	5.74	4.15	✓
Cb	58	4.1	✓
F	57	4.2	✓
+0.1 - Edge Brick Paving 6.50'S	5.68	4.21	✓
F - Edge Brick Pa	5.65	4.24	✓
Cb	5.9	4.0	✓
+15.8 - H Rail	5.62	4.27	✓
1/4	61	3.8	✓
+9.4 - H Rail	5.50	4.39	✓
1/2	52	4.7	✓
1/4	54	4.5	✓
Cb	53	4.6	✓
H	51	4.8	✓
+10	50	4.9	✓
	700'S		
-10	51	4.8	✓
H	52	4.7	✓
Cb	54	4.5	✓

9.89

19

1/4	57	4.2	✓
1/2	55	4.4	✓
+9.8 - H Rail	5.55	4.34	✓
+11.9 - H Rail	5.56	4.33	✓
1/4	61	3.8	✓
+5.5 - H Rail	5.70	4.19	✓
Cb	60	3.9	✓
F	56	4.3	✓
+0.3 - Edge Brick Paving 7.50'S	5.62	4.27	✓
-0.2 - Edge Brick Paving	5.65	4.24	✓
F	57	4.2	✓
Cb	58	4.1	✓
+15.5 - H Rail	5.70	4.2	✓
1/4	61	3.8	✓
+9.3 - H Rail	5.60	4.29	✓
+17.4 - H Rail	5.70	4.19	✓
1/2	63	3.6	✓
1/4	55	4.4	✓
Cb	57	4.2	✓
H	55	4.4	✓
+10	55	4.4	✓
	800'S		
-10	49	5.0	
H	59	4.0	
Cb	59	4.0	

Atlantic St. 989

1/4	6.2	3.7	✓
+105 = N Rail	5.95	3.94	✓
1/2	6.4	3.5	✓
+11.7 = N Rail	5.63	4.26	✓
1/4	6.2	3.7	✓
+5.7 = N Rail	5.70	4.19	✓
Cb	5.8	4.1	✓
F	5.6	4.3	✓
+0.5 = Edge Brick Paving	5.63	4.27	✓
850'S			
-0.2 = Edge Brick Paving	5.58	4.31	✓
F	5.6	4.3	✓
Cb	5.9	4.0	✓
+15.7 = N Rail	5.70	4.19	✓
1/4	6.2	3.7	✓
+9.5 = N Rail	5.67	4.22	✓
1/2	6.0	3.9	✓
+13.7 = N Rail	5.98	3.91	✓
1/4	6.2	3.7	✓
Cb	6.6	3.3	✓
N	6.2	3.7	✓
+1.0	5.6	4.3	✓
900'S			
-1.0	6.2	3.7	✓
N	6.2	3.7	✓
Cb	6.2	3.7	✓

989

+6 = N Rail	5.92	3.97	✓	
1/4	5.6	4.3	✓	
1/2	5.32	9.38	5.83	4.06
1/2		5.3	4.1	✓
+11.5 = N Rail	5.18	4.20	✓	
1/4		5.8	3.6	✓
+5.4 = N Rail	5.19	4.19	✓	
Cb	5.4	4.0	✓	
F	5.1	4.3	✓	
+0.2 = Edge Brick Paving	5.09	4.29	✓	
950'S				
-0.2 = Edge Brick Paving	5.08	4.30	✓	
F	5.1	4.3	✓	
Cb	5.5	3.9	✓	
+8.7 = N Rail	5.23	4.15	✓	
+15.5 = N Rail	5.23	4.15	✓	
1/4	5.7	3.7	✓	
+7.3 = N Rail	5.22	4.16	✓	
1/2	5.2	4.2	✓	
1/4	5.2	4.2	✓	
Cb	5.1	4.3	✓	
N	5.0	4.4	✓	
+1.0	4.8	4.6	✓	
+23.7 = N Rail	4.83	4.55	✓	
1000'S				
-1.0	4.8	4.6	✓	

20

938

W	4.9	4.5
CB	4.8	4.6
1/4	5.2	4.2
1/2	4.9	4.5
+11.8 = W Rail	5.25	4.13
1/4	5.7	3.7
+5.6 = W Rail	5.26	4.12
+17.4 = W Rail	5.24	4.14
CB	5.7	3.7
F	5.4	4.0
+0.3 = Edge Pavement	5.40	3.98 ✓

April 15<sup>th</sup> 30

1029 S. N.L. Broadway

-0.3 = Edge Brick Pavement	5.71	3.67 ✓
F	5.71	3.67 ✓
CB	5.31	4.07 ✓
+2.8 = W Rail	5.21	4.17 ✓
+15.3 = W	5.25	4.03 ✓
1/4 on Pavement	5.43	3.95 ✓
+9.2 = W Rail	5.26	4.12 ✓
1/2 on Pavement	5.28	4.10 ✓
1/4 " "	5.55	3.83 ✓
CB on " "	6.35	3.13 ✓
+1.7 = Gutter	6.27	3.11 ✓
+1.7 = Top of Exist. 12x6	5.52	3.86 ✓
W	4.9	4.5 ✓

Plotted by K.F.J.

30.8 S of H.L.

938

W on Pavement	6.08	3.36
CB " "	6.03	3.35
1/4 " "	5.48	3.90
1/2 " "	5.30	4.08
1/4 " "	5.31	4.17
CB " "	5.19	4.19
F	5.94	3.44
+3 = F Edge of 24"x21" Grating	6.38	3.00
TP	7.23	11.35
BM	0.81	10.54

SF BP  
Broadway  
Katharine  
1050

21



Atlantic St  
 Sketch of Santa Fe Track  
 From A St to Broadway

West Rail	West Rail	West Rail	St.	Curb
149	138	149		
21' x 21' Grating				
N 1/2 Broadway	108	135	149	1029
	116	118	148	1000
	167	168	148	950
	221	149	17.5	900
8' x 73' - 5' x 11'	237	147	25.5	850
	233	148	147	800
	235	148	81	750
Brick Paving	235	146	21	700
	238	146	67	650
	236	150		600
	238	133		550
	233	90		500
	190			450
	7.5			400
Edge Brick Paving				380
	7.5			360
West Rail	170			340
				300
				250
				200
				150
				100
				50
				0+0

A St.

Atlantic

100

10' of Curbs 15' off line 30' Grating 17'

Curb



Archer St. Cross Section  
W.L. Cass to Ed. Frank

70 ft. wide  
15 Cbs  
10 Qts

Ⓢ

173.79

Sept 4-36  
D. J. ...  
173.79  
No. 1000  
164.2  
24

BM	11.46	146.31	134.85	S.F. BP Targuainet Cass	1/4	9.6	164.2
TP	12.87	158.90	146.03		1/4	9.0	164.8
TP	8.10	166.54	158.44	SX Hairs Polr	cb	8.6	165.2
BM	10.02	2.77	163.77	Archer Cass	H	8.2	165.6
	W.L. Cass					7.5	166.3
		10.8	163.0	Cass 80 ft. wide	H	7.4	166.4
		10.3	163.5	14 Cbs 13 Qts	cb	8.2	165.6
		10.2	163.6		1/4	8.5	165.3
		10.5	163.3		1/4	9.0	164.8
		10.2	163.6		1/4	9.8	164.0
		9.3	164.5		cb	10.2	163.5
		9.2	164.6		S	10.6	163.2
		9.0	164.8				
		8.5	165.3		S		163.7
	W.C.B.				cb	10.1	163.7
		8.3	165.5		1/4	9.6	164.2
		8.1	165.0		1/4	9.6	164.2
		9.1	164.7		1/4	8.7	165.1
		9.2	164.6		1/4	8.6	165.2
		10.0	163.8		1/4	8.6	165.2
		10.5	163.3		1/4	8.1	165.7
		11.0	162.8		1/4	8.1	165.7
					cb	7.6	166.2
					H	6.9	166.9
	W.L.						
		10.6	163.2		H	6.9	167.1
		10.1	163.7		cb	7.3	166.5

Plotted 9-11-30 - C.B.H.

W.L. Cass

1/4

1/4 cb

Archer St

173.79

+5	7.9	165.9
+6	8.5	165.3
44	8.3	165.5
2	8.5	165.3
74	9.1	164.7
+4	9.4	164.4
+5	8.9	164.9
06	8.9	164.9
S	9.5	164.3

FL Cont

S	8.8	165.0
06	8.4	165.4
+5	8.5	165.3
+6	9.0	164.8
74	8.7	165.1
2	7.9	165.9
74	8.0	165.8
+3	8.1	165.7
+4	7.5	166.3
06	6.9	166.9
H	6.0	167.8

50' E of FL Cont

H	4.6	169.2
06	5.1	168.7
+6	6.1	167.7
+7	6.7	167.1

173.79

25

71	6.5	167.3
2	6.1	167.7
74	6.9	166.9
+4	7.3	166.5
+5	7.0	166.8
06	7.1	166.7
S	7.5	166.3

75' E

S	6.8	167.0
06	6.4	167.4
+5	6.1	167.7
+6	6.5	167.3
74	6.3	167.5
2	5.4	168.4
74	5.5	168.3
+4	5.8	168.0
+5	5.1	168.7
06	4.8	169.0
H	3.8	170.0

100' E

H	3.6	170.2
06	4.2	169.6
+5	4.6	169.2
+6	5.3	168.5
74	5.2	168.6
2	5.2	168.6

Archer St

17379

March

74	58	168.0
cb	58	168.0
S	62	167.6
	125 F	
S	58	168.0
cb	55	168.3
+6	52	168.6
+7	57	168.1
1/4	55	168.3
2	51	168.7
1/4	5.0	168.8
cb	46	169.2
H	3.3	170.5
	150 F	
H	42	169.6
cb	46	169.2
+5	48	169.0
+6	53	168.5
1/4	52	168.6
2	50	168.8
1/4	59	167.9
+3	60	167.8
+4	56	168.2
cb	58	168.0
S	61	168.7

175 F

17379

March

26

J	65	167.3
cb	62	167.5
+5	61	167.7
1/4	66	167.2
1/4	62	167.6
2	53	168.5
1/4	54	168.4
+4	55	168.3
+5	49	168.9
cb	45	169.3
H	3.9	169.9
	200 F	
H	40	169.8
cb	47	169.1
+6	46	169.2
+7	50	168.8
1/4	52	168.6
2	53	168.5
1/4	63	167.5
+5	66	167.2
+6	63	167.5
cb	64	167.4
S	68	167.0
	225 F	
S	71	166.7
cb	66	167.2

188' E = Palm tree  
16.5' S of H.L.

214' E = Palm tree  
16.5' S of H.L.

Archer St

173.79

74	63	167.5
+5	66	167.2
74	64	167.4
74	54	168.4
74	56	168.2
+3	59	168.1
74	54	168.4
cb	48	169.0
N	42	169.6
N	40	169.8
cb	47	169.1
+5	51	168.7
76	55	168.3
74	56	168.2
74	54	168.4
+6	61	167.7
+7	65	167.3
cb	62	167.6
5	64	167.4
5	70	166.8
5	70	166.8
cb	63	167.5
+5	63	167.5
+6	64	167.4

250' E

275' E

173.79

27

74	61	167.7
74	52	168.6
74	52	168.6
+4	53	168.5
+5	48	169.0
cb	47	169.1
N	39	169.9
N	34	170.4
cb	43	169.5
+5	46	169.2
+6	51	168.7
74	51	168.7
74	50	168.8
74	60	167.8
+5	64	167.4
+6	62	167.6
cb	65	167.3
5	70	166.8
5	73	166.5
cb	64	167.4
+5	60	167.8
+6	62	167.6
74	60	167.8
74	52	168.6

300' E

325' E

Archer St.

173.79

1/2		52	168.6
1/4		53	168.5
1/6		39	169.9
cb		39	169.9
H		27	171.1
TP	4.88	173.56	511
	350°F		168.68 ✓
H		22	171.4
cb		36	170.6
+5		41	169.5
1/7		50	168.6
1/4		52	168.4
5		52	168.4
1/4		62	167.4
+5		65	167.1
1/6		62	167.4
cb		66	167.0
5		70	166.6
	375°F		
5		70	166.6
cb		64	167.2
1/4		62	167.4
+5		60	167.6
1/4		57	167.9
5		47	168.9
1/4		42	169.4

173.56

28

1/3		41	169.5
+5		28	170.8
cb		23	171.3
H		10	172.6
	400°F		
H		12	172.4
cb		26	171.0
1/6		31	170.5
1/7		38	169.8
1/4		38	169.8
5		41	169.5
1/4		51	168.5
cb		55	168.1
5		65	167.1
	425°F		
5		70	166.6
cb		60	167.6
1/4		55	168.1
5		45	169.1
1/4		43	169.3
1/3		43	169.3
+5		32	170.3
cb		28	170.8
H		12	172.4
	450°F		
H		18	171.8

Archer St.

173.56

cb	3.5	170.1
+4	3.8	169.8
+6	5.1	168.5
1/4	5.0	168.6
1/2	5.2	168.4
1/4	6.3	167.3
cb	6.8	166.8
S	7.7	165.9

175.1

S	8.7	164.9
cb	7.5	166.1
1/4	7.1	166.5
1/2	6.0	167.6
1/4	5.9	167.7
+4	5.9	167.7
+6	4.8	168.8
cb	4.3	169.4
H	3.4	171.2

198.4 I-2 H. L. DAWES

H	3.9	170.7
cb	5.1	168.5
+5	5.8	167.8
+7	6.9	166.7
1/4	6.9	166.7
1/2	6.8	166.8
1/4	8.1	165.5

DAWES  
80 ft. H.  
20 cb  
10 1/4

173.56

29

cb	8.5	165.1
S	9.3	164.3
W cb		
S	10.3	163.3
cb	9.6	164.0
1/4	8.7	164.9
1/2	7.6	166.0
1/4	7.3	166.3

+4	7.3	166.3
+6	6.2	167.4
cb	5.5	168.1
H	3.6	170.0

H 1/4

H	3.9	169.7
cb	6.0	167.6
+4	6.3	167.3
+6	7.4	166.2
1/4	7.4	166.2
1/2	7.6	166.0
1/4	8.7	164.9
cb	9.3	164.3
S	10.0	163.6

1/2 DAWES

S	10.0	163.6
cb	9.4	164.2
1/4	8.9	164.7



Archer St.

173.56

2	75	166.1
1/4	76	166.0
1/4	74	166.2
76	64	167.2
cb	62	167.4
H	44	169.2

F 1/4

H	46	169.0
cb	63	167.3
+5	77	165.9
1/4	77	165.9
2	79	165.7
1/4	91	164.5
cb	98	163.8
J	106	163.0

F cb

J	105	163.1
cb	98	163.8
1/4	91	164.5
2	81	165.5
1/4	79	165.7
+5	78	165.8
cb	65	167.1
H	48	168.8

E.L. JONES

H	54	168.2
---	----	-------

173.56

30

cb	67	166.9
+1	76	166.0
1/4	79	165.7
2	80	165.6
1/4	89	164.7
cb	97	163.9
J	107	162.9

2<sup>nd</sup> F of E.L. Jones

J	104	163.2
cb	98	163.8
1/4	90	164.6
+5	76	166.0
2	76	166.0
1/4	75	166.1
+6	76	166.0
cb	70	166.6
H	53	168.4

50 F

H	47	168.9
cb	62	167.4
+5	71	166.5
1/4	70	166.6
2	70	166.6
+7	68	166.8
1/4	77	165.9
+2	88	164.8

Archer St.

173.56

cb	92	164.4
S	99	163.7
75 F		
S	91	164.5
cb	82	165.4
+L	77	165.9
1/4	65	167.1
1/2	64	167.2
1/4	63	167.3
cb	56	168.0
H	41	169.5

89' F of E<sub>6</sub>  
D<sub>1</sub> = 1.75 of S<sub>6</sub>  
Conc. Driv<sup>g</sup> ✓  
910 = 164.46

100 F

-0.9 = Conc. Dr	280	167.8
H	31	170.5
cb	48	168.8
+5	55	168.1
1/4	56	168.0
1/2	57	167.9
1/4	64	167.2
cb	75	166.1
S	83	165.3

974 F of E<sub>2</sub>  
D<sub>1</sub> = 0.7 of H<sub>2</sub>  
Conc. Driv<sup>g</sup> ✓  
277 = 170.79

1044 F =  
Conc. Driv<sup>g</sup> ✓  
271 = 170.85

125 F

S	92	166.4
cb	67	166.9
1/4	56	168.0
1/2	46	169.0

173.56

31

1/4	45	169.1
+L	46	169.0
cb	41	169.5
H	23	171.3
+0.1 = Conc. Apron	208	171.48
150 F		
H	14	172.2
cb	21	171.5
+A	32	170.4
1/4	31	170.5
1/2	30	170.6
1/4	39	169.7
+1	44	169.2
cb	49	168.7
S	57	167.9

131.4 F =  
Ely of Conc. Apron  
of H of H<sub>2</sub>  
3.55 = 171.51

141 F =  
Group on S<sub>6</sub>  
Diff Floor  
65 = 167.0

1201 181.94

175 F

TP	363	169.93
S	127	169.2
cb	123	169.6
78	117	170.2
1/4	107	171.2
1/2	100	171.9
1/4	99	172.0
+5	98	172.1
cb	91	172.8
H	76	174.3

Arch St.

181.94

200' F

H	57	176.2
cb	69	175.0
+5	78	174.1
1/4	79	174.0
5/8	81	173.8
1/4	94	172.5
cb	105	171.4
S	112	170.7

225' F

S	93	172.6
cb	87	173.2
1/4	76	174.3
+5	65	175.4
5/8	60	175.9
1/4	59	176.0
+5	59	176.0
cb	51	176.8
H	37	178.2

250' F

H	17	180.2
cb	32	178.7
+5	40	177.9
1/4	42	177.7
5/8	43	177.6
+5	45	177.4

181.94

32

1/4	58	176.1
cb	68	175.1
S	74	174.5

275' F

S	58	176.1
cb	49	177.0
1/4	41	177.8
+5	33	178.6
5/8	28	179.1
1/4	25	179.4
cb	16	180.3
H	01	181.8
TP	919 191.01	012 181.82

284' F

H	86	182.4
cb	99	181.0
1/4	111	179.9
5/8	114	179.6
1/4	126	178.4
cb	135	177.5
S	149	176.1

291' F

-10	149	176.1
S	162	174.7
1/10	139	177.1
cb	133	177.7

Archer St.

19101

1/4	122	178.8
1/2	108	180.2
1/4	107	180.3
cb	95	181.5
H	82	182.8
300 F		
H	75	183.5
cb	89	182.1
1/4	103	180.7
1/2	104	180.6
1/4	118	179.2
cb	130	178.0
+9	156	175.4
S	13.6	177.4
325 F		
S	120	179.0
cb	119	179.1
+5	124	178.6
1/4	121	178.9
+5	121	178.9
1/2	108	180.2
1/4	103	180.7
+1	94	181.6
cb	79	183.1
H	64	184.6

343 F

19101

33

H	65	184.5
+10	97	181.3
cb	112	179.8
1/4	109	180.1
1/2	100	181.0
+5	92	181.8
1/4	94	181.6
cb	98	181.2
S	113	179.7
360 F		
S	110	180.0
cb	97	181.3
+5	95	181.5
1/4	85	182.5
1/2	73	183.7
1/4	71	183.9
cb	66	184.4
+10	91	181.9
H	90	182.0
+10	59	185.1
370 F		
-15	54	185.6
-5	87	182.3
H	90	182.0
+7	54	185.6
cb	58	185.2

Archer St.

191.01

'/4	62	184.8
8	71	183.8
'/4	84	182.6
+5	93	181.7
cb	94	181.6
J	107	180.3
379'E		
J	105	180.5
cb	90	182.0
+5	89	182.1
'/4	78	183.2
8	67	184.3
'/4	59	185.1
cb	51	185.9
+10	42	186.8
N	43	186.7
+15	81	182.9
400'E		
N	32	187.8
cb	40	187.0
+5	53	185.7
'/4	53	185.7
8	56	185.4
'/4	67	184.3
+7	83	182.7
cb	84	182.6

191.01

J	95	181.5
425'E		
J	91	181.9
cb	79	183.1
+3	72	183.8
'/4	66	184.4
8	53	185.7
'/4	48	186.2
+5	47	186.3
+7	36	187.4
cb	35	187.5
N	22	188.8
450'E		
N	19	189.1
cb	33	187.7
+3	37	187.3
+5	44	186.6
'/4	49	186.1
8	55	185.5
'/4	67	184.3
cb	82	182.8
J	92	181.8
475'E		
J	94	181.6
cb	82	182.8
'/4	68	184.2

34

Archer St.

191.01

2	52	185.8
1/4	47	186.3
7/4	46	186.4
cb	22	188.8
H	0.9	190.1
TP	8.07	196.52
	2.56	188.45
500' E - HL Events Produced from Sed's		
H	55	191.0
cb	70	189.5
+2	73	189.2
+5	86	187.9
1/4	88	187.7
2	100	186.5
1/4	118	184.7
cb	138	182.7
S	150	181.5
HCB		
S	150	181.5
cb	133	183.2
+5	119	184.6
1/4	109	185.6
2	92	187.3
1/4	80	188.5
+5	74	189.1
cb	60	190.5
H	43	192.2

Events  
80' wide  
20' cb  
10' Q1

196.52

35

H 1/4	3.9	192.6
cb	5.7	190.8
+5	6.7	189.8
1/4	7.5	189.0
2	8.5	188.0
1/4	10.6	185.9
+7	11.6	184.9
cb	13.0	183.5
S	14.0	182.5
2 Events		
S	13.9	182.6
cb	12.0	184.5
7/4	10.9	185.6
1/4	9.9	186.6
2	8.0	188.5
1/4	6.8	189.7
+5	6.1	190.4
cb	4.9	191.6
H	3.2	193.2
E 1/4		
H	2.2	194.3
cb	4.0	192.5
+5	5.3	191.2
1/4	6.2	190.3
2	7.2	189.2

Archer St.

19652

1/4		93	187.2
cb		114	185.1
S		13.3	183.2
	FCB		
S		128	183.7
cb		107	185.8
1/4		85	188.0
1/2		64	190.1
1/4		57	190.8
1/5		52	191.3
cb		31	193.4
N		18	194.7
	F.L. Events Prod. from South		
N		0.1	196.4
cb		24	194.1
1/5		42	192.3
1/4		47	191.8
1/2		57	190.8
1/4		76	188.9
cb		98	186.7
S		118	184.7
TP	016	18489	1179 184.73
TP	254	17552	1191 17298

Dorris St. Cross Section  
Archer St to Turquoise

175.52 St. Ford

S.L. Archer

80' wide  
30' CBH  
10' 9' 15'

36

N		113	164.2
cb		124	163.1
1/4		120	163.5
1/2		119	163.6
1/4		126	162.9
cb		125	163.0
F		126	162.9
TP	202	16487	1270 162.82
	50' S of S.L. Archer		
F		44	160.4
cb		40	160.8
1/4		41	160.7
1/2		36	161.2
1/4		33	161.5
cb		36	161.2
1/2		31	161.7
N		15	163.3
	100' S		
N		49	159.9
1/2		54	159.4
cb		59	158.9
1/4		57	159.1
1/2		55	159.3
1/4		61	158.7

Plotted 9-10-30 CBH

Dennis St.

164.84

cb	61	158.7	
F	62	158.6	
	125°		
F	76	157.2	128°
cb	68	158.0	28° E of NW 2: 945 N.W.
1/4	66	158.2	625 158.49
1/2	61	158.7	
1/4	63	158.5	132.5°
cb	65	158.3	Section NW 2 of Dennis
+2	60	158.8	625 158.09
N	59	158.9	
	140°		
N	69	157.9	
+18	69	157.9	
cb	75	157.3	
1/4	67	158.1	
1/2	67	158.1	
1/4	71	157.7	
cb	76	157.2	
F	82	156.6	
	165°		
F	89	155.9	
cb	88	156.0	
1/4	88	156.0	
1/2	84	156.7	
1/4	84	156.4	

164.84

cb	88	156.0	37
+2	83	156.5	
N	81	156.7	
	190°		
N	96	155.2	
+15	95	155.3	
cb	10.0	154.8	
1/4	94	155.4	
1/2	93	155.5	
1/4	98	155.0	
+2	10.0	154.8	
cb	97	155.1	
F	98	155.0	
	215°		
F	10.6	154.2	
cb	11.8	153.6	
1/4	11.0	153.8	
1/2	10.7	154.1	
1/4	10.7	154.1	
cb	11.0	153.8	
+5	10.5	154.3	
N	10.4	154.4	
	246°		
N	11.2	153.6	
+15	11.2	153.6	
cb	12.0	152.8	



Domas St.

167.84

7/4 118 153.0  
 2 117 153.1  
 1/4 122 152.6  
 cb 118 153.0  
 F 117 153.1

2655: H.L. Agate

Agate

80 Mid.  
20 Cb  
10 Q11

F 125 152.3  
 cb 125 152.3  
 1/4 127 152.1  
 2 125 152.3  
 1/4 127 152.1  
 cb 128 152.0  
 +5 125 152.3  
 H 122 152.6

H cb

H 127 152.1  
 cb 132 151.6  
 1/4 133 151.5  
 2 133 151.5  
 1/4 134 151.4  
 cb 138 151.0  
 F 137 151.1

NE pole

TP 0.57 153.38 1203 152.81  
 H 1/4  
 F 22 151.2  
 cb 24 151.0

153.38

38

1/1 23 151.1  
 2 21 151.3  
 1/4 21 151.3  
 cb 20 151.4  
 H 15 151.9

2 Agate

H 1.7 151.7  
 cb 25 150.9  
 1/4 25 150.9  
 2 23 151.1  
 1/4 27 150.7  
 cb 26 150.8  
 F 25 150.9

S H

F 28 150.6  
 cb 31 150.3  
 1/4 32 150.2  
 2 29 150.5  
 1/4 30 150.4  
 cb 29 150.5  
 H 24 151.0

S cb

H 24 151.0  
 cb 33 150.1  
 1/4 34 150.0  
 2 33 150.1

Dawn St.

153.38

1/4	37	149.7
C3	37	149.7
F	37	149.7
J.L. Agate		
F	40	149.4
C3	38	149.6
+5	45	148.9
1/4	44	149.0
1/4	39	149.5
1/4	40	149.4
C6	39	149.5
+5	33	150.1
H	35	149.9
50 S of J.L. Agate		
H	44	149.0
+15	47	148.7
C6	53	148.1
1/4	53	148.1
1/4	54	148.0
1/4	59	147.5
+3	55	147.9
C2	55	147.9
F	57	147.7
100 S		
F	67	146.7
C6	66	146.8

153.38

39

+7	65	146.9
1/4	70	146.4
1/4	67	146.7
1/4	67	146.7
C3	68	146.6
+5	63	147.1
H	61	147.3
150 S		
H	75	145.9
C6	78	145.6
1/4	80	145.4
1/4	81	145.3
1/4	83	145.1
+3	78	145.6
C6	81	145.3
F	82	145.2
TP	382 147.33 987	143.51
200 S		
F	40	143.3
C6	39	143.4
+7	40	143.3
1/4	44	142.9
1/4	42	143.1
1/4	40	143.3
+7	41	143.2
C6	39	143.4

1525 S of  
S.W. Pt. N.H.  
at Cape  
& Dawn  
8.68 144.70

Damon

14733

+5	3.5	143.8
H	3.2	144.1
	250'S	
H	5.7	141.6
+1.5	5.3	142.0
Cb	5.8	141.5
1/4	5.1	141.7
5	5.8	141.5
1/4	6.1	141.2
+3	5.7	141.6
Cb	5.8	141.5
F	5.5	141.8
	290'S	
F	6.7	140.6
+10	6.4	140.9
Cb	6.9	140.4
+7	7.0	140.3
1/4	7.6	139.7
5	7.9	139.4
1/4	7.7	139.6
Cb	7.7	139.6
H	6.9	140.4
	302'S	
H	7.5	139.8
+11	8.3	139.0
Cb	8.4	138.9

14733

10

1/4	8.7	138.6
5	8.7	138.6
1/4	8.2	139.1
Cb	7.7	139.6
+10	7.2	140.1
F	7.5	139.8
	307'S = HL Turquoise	
F	8.9	138.4
+17.3 = Top of Cb	9.02	138.31
Gutter on Pavilion	9.55	137.78
Cb	9.54	137.79
1/4	9.34	137.99
5	9.24	138.09
1/4	9.32	138.01
Cb	9.48	137.85
+2.7 = Gutter " "	9.55	137.78
Top of End	8.92	138.41
H	8.8	138.53
	10' S of HL = Cb of Turquoise	
H on Pavilion	9.70	137.53
Cb	9.71	137.57
1/4	9.69	137.64
5	9.64	137.69
1/4	9.73	137.60
Cb	9.77	137.56
F	9.94	137.39

Turquoise  
6' Cb  
15' Cb  
20' End.

DOWN ST

41

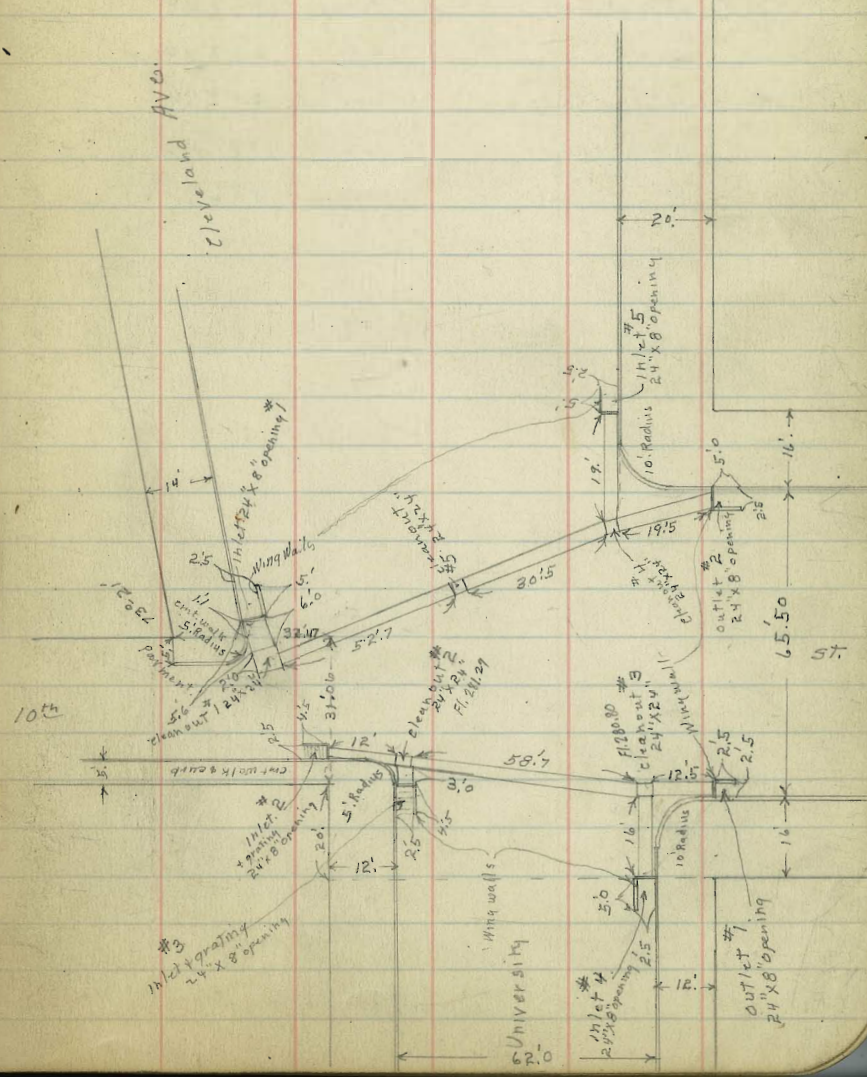
TP	4.84	14733 14460	7.57	139.76	SE BP
BM			9.75	13485	TURQUANET COIL 13485

10-3-30  
MILL  
S. W. 10<sup>th</sup> + Univ  
S. W. 10<sup>th</sup> + Univ

Ⓢ

Cross section culvert opening 24" X 8"

BM					
Inlet #1	N.E. Cor. E. End Return	F.L. End Wingwall	6.43	282.19	
"	"	F.L. at inlet	6.51	282.11	
"	"	Top Pavmt	5.27	283.35	
"	"	" curb			
Cleanout #1	N.E. Cor Top		5.27	283.35	
"	"	F.L.	6.57	282.05	
Cleanout #5	φ Univ Top		5.12	283.50	
"	"	F.L.	6.80	281.82	
Cleanout #4	S.E. Cor Top		5.77	282.85	
"	"	F.L.	7.00	281.62	
Inlet #5	S.E. Cor E. End Ret.	F.L. End wing wall	6.33	282.29	
"	"	F.L. at inlet	6.80	281.82	
"	"	Top Pavmt	5.76	282.86	
"	"	Top curb			
Outlet #2	S.E. Cor S. End Ret	Top el.	5.77	282.85	
"	"	pavmt	6.00	282.62	
"	"	F.L. at outlet	7.24	281.34	
"	"	F.L. S. end wing wall	7.24	281.38	
10' s. of above	- gutter Pavmt.		7.34	281.28	
Outlet #1	S.W. cor. S. End Ret	F.L. at outlet	8.00	280.62	
"	"	Top el.			
"	"	pavmt	6.76	281.86	
Cleanout #3	S.W. Cor. Top		6.54	282.04	
"	"	F.L.	7.82	280.80	
Inlet #4	S.W. Cor W. End Ret.	F.L. at W. end wing wall	7.18	281.44	
"	"	F.L. at inlet	7.60	281.02	
"	"	Top Pavmt	6.60	282.02	
"	"	" curb			



10<sup>th</sup> + Univ Culverts (con)

π 288.62

43

cleanout # 2 N.W. Cor.	Top	6.01	282.61
" " " " "	FL	7.33	281.29
Inlet # 3 N.W. Cor N. End Ret.	FL N. End wing wall	6.90	281.72
" " " " "	FL at inlet	7.00	281.62
" " " " "	Top cl. } " " " " " parmt. }	6.00	282.62
Inlet # 2 N.W. Cor N. End Ret.	FL at N. End wing wall	6.48	282.14
" " " " " "	FL " Inlet	7.13	281.49
" " " " " "	Top curb } " " " " " parmt. }	5.91	282.71

c

ln/

ln

Hortensia St Cross Section.  
 Juan St to Congress

50' wide  
 10' curb  
 75' sidewalks

BM	0.78	261.80		261.02	NEBP Suspect Blvd with curb
TP	0.37	249.28	12.89	248.91	
TP	0.50	237.15	12.63	236.65	
TP	0.20	224.39	12.96	224.19	
BM Set			4.30	220.09	578BP Juan St Hortensia

S.L. Juan St

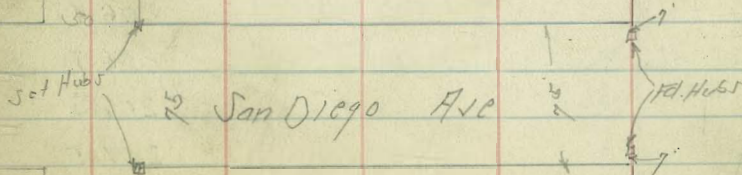
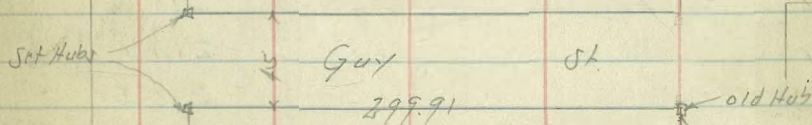
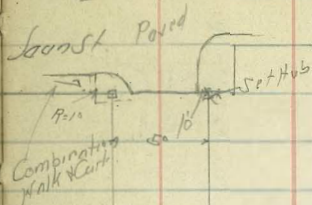
W		4.4		220.0
+9 - End Cb		3.35		221.04
Gutter on Pav		3.24		220.55
" " "		3.30		221.09
Gutter " "		2.91		221.48
Cb on End		2.44		221.95
+5 - E. Edge Walk		2.32		221.07
+6		0.8		223.6
E		0.0		224.4

25' S of S.L. Juan St

E		6.1		218.3
cb		6.7		217.7
"		5.8		218.6
"		5.8		218.6
"		6.3		218.1
cb		6.6		217.8
"		7.3		217.1
"		10.7		213.7

Plotted 10-30-30 CBM

50' S



45

Oct 27-30  
 Sisson  
 Flood  
 McHugh  
 Porter  
 Pecker  
 Duermil

Guy St

St

200.17  
 with curb

7.5

old Hub



Hortensia

22439

cb		10.3	2141	
1/4		9.8	2146	
1/2		9.8	2146	
1/4		9.8	2146	
cb		9.7	2147	
F		9.3	2151	
	7.5 J			
F		12.6	2118	
cb		13.5	2109	
1/4		13.3	2111	
1/2		13.2	2112	
1/4		13.3	2111	
cb		13.9	2105	
H		14.6	2098	
+10		15.2	2091	
TP	0.14	211.63	12.90	21149
	100 J			
-10		7.6	2040	
H		7.1	2045	
cb		5.9	2057	
1/4		5.2	2064	
1/2		4.9	2067	
1/4		4.7	2069	
cb		4.1	2075	
F		2.9	2087	

12.5 J

21163

46

F		7.0	2046	
cb		8.0	2036	
1/4		8.5	2031	
1/2		8.3	2033	
1/4		9.1	2025	
cb		9.6	2020	
H		10.0	2016	
+10		10.7	2009	
	150 J			
-10		12.8	1988	
H		12.5	1991	
cb		12.5	1991	
1/4		12.0	1996	
1/2		11.1	2005	
1/4		11.6	2000	
cb		11.5	2001	
F		11.2	2004	
TP	1.85	200.63	12.85	19878
	175 J			
F		3.0	1976	
cb		3.0	1976	
1/4		3.0	1976	
1/2		3.0	1976	
1/4		3.5	1971	
cb		3.3	1973	
H		3.1	1975	

Hortensia

200.63

+10	3.3	1973
	19986'S = H.L. Guy Front	
+10	3.5	1971
H	39	1967
Q	41	1965
"	48	1958
z	44	1962
"	48	1958
cb	50	1956
F	50	1956

222.36'S = ~~z~~ Guy

F	62	1944
cb	53	1953
"	56	1950
z	55	19512
"	51	1955
cb	48	1958
H	40	1966

214.86: S.L. Guy

H	32	1974
cb	48	1958
"	58	1948
z	50	1956
"	66	1940
cb	72	1934
F	798	19265

on St. Hill  
Hortensia  
Guy

200.63.

47

275V	-10	13.3	187.3
	F	7.8	190.8
	cb	8.0	192.6
	"	7.0	193.6
	z	4.8	195.8
	"	5.5	195.1
	cb	3.6	197.0
	H	2.6	198.0

200V

H	24	198.2
cb	4.0	196.6
"	6.6	193.0
z	6.0	194.6
"	8.6	192.0
cb	9.6	191.0
F	12.1	188.5
+15	19.1	181.5

220V

-25	25.9	174.7
F	17.3	183.3
cb	14.6	186.0
"	12.4	188.2
z	11.6	189.0
"	9.3	191.3
cb	7.1	193.5



Hortensia

166.62  
162.62

+25		2.3	159.3
	410.5		
-25		4.6	158.0
F		18.0	144.6
+5		20.2	142.4
Cb		17.4	145.2
1/4		15.4	147.2
1/2		14.7	147.9
1/4		14.3	148.3
Cb		13.4	149.2
H		12.0	150.6
+15		8.2	154.4
TP	0.24	150.18	126.8
	482.5		149.94
-15		5.6	144.6
H		8.1	142.1
Cb		8.4	141.8
1/4		9.4	140.8
1/2		11.7	138.5
1/4		12.0	138.2
Cb		11.4	138.8
+3		6.9	143.3
F		3.2	147.0
+10		0.0	150.2
	444.725	112 San Diego Ave	75 Side 12.5 cbs
-10		2.0	148.2
			13.5914

150.18

49

F	6.6	143.6
Cb	10.8	139.4
+5	13.3	136.9
1/4	16.3	133.9
1/2	17.0	133.2
1/4	16.0	134.2
Cb	13.9	136.3
H	12.4	137.8
+15	9.5	140.7
	N.Cb of Sand 10.70	
-15	13.3	136.9
H	15.9	134.3
Cb	16.3	133.9
1/4	18.9	131.3
1/2	20.0	130.2
1/4	18.1	132.1
+2	15.0	135.2
Cb	12.2	138.0
F	7.7	142.5
	H 1/4	
F	8.0	142.2
Cb	13.4	136.8
+5	15.9	134.3
1/4	18.5	131.7
1/2	21.7	128.5
1/4	21.7	128.5

Hortensio

150.18

cb		20.0	1302
H		18.8	1314
+15		16.9	1333
	2 San Diego Ave		
-15		20.3	1299
H		22.0	1282
cb		23.3	1269
1/4		23.6	1266
1/2	02 MH Rim	22.1	1281
+5		21.3	1289
1/4		19.1	1311
+3		16.1	1341
cb		14.1	1361
F		8.9	141.3
	S 1/4		
F		10.6	139.6
TP	0.07	127.25	1300
			137.18
cb		2.5	134.7
1/4		6.9	130.3
+2		11.1	126.1
1/2		12.5	124.7
1/4		12.6	124.6
cb		12.4	124.8
H		12.4	124.8
+15		10.7	126.5

S cb

137.25

50

-15		13.8	123.4
H		13.9	123.3
cb		14.5	122.7
1/4		14.8	122.4
1/2		13.6	123.6
+5		12.0	124.2
1/4		8.0	129.2
cb		5.1	132.1
F		1.0	136.2
	S 1/2 San Diego Ave - 020		
F		4.5	132.7
cb		7.8	129.4
+5		9.4	127.8
1/4		12.1	124.6
1/2		14.5	122.7
1/4		15.6	121.6
cb		18.3	118.9
H		18.0	119.2
+15		17.1	120.1
	20 S of S 1/2 San Diego Ave		
-15		23.5	113.7
H		24.6	112.6
+3		20.0	107.2
cb		20.8	116.4
1/4		17.6	119.6
1/2		17.3	119.9

Hortensio

137.25

1/4		15.3	121.9
+2		12.6	124.6
0.6		11.3	125.9
F		8.4	128.8
	200 of S. L. San Diego		
F		9.4	127.8
Cb		12.6	124.6
1/4		13.9	123.3
+2		16.3	120.9
1/2		18.0	119.2
1/4		18.3	118.9
Cb		21.0	116.2
H		31.4	105.8
+2		25.6	111.6
+15		25.0	112.2
	50.5		
-15		30.6	106.6
H		35.3	101.9
Cb		26.6	110.6
1/4		24.2	113.0
1/2		23.6	113.6
1/4		21.2	116.0
Cb		19.1	118.1
F		17.2	120.0
TP	0.67	125.08	128.4
TP	0.15	112.29	129.4
			124.4
			112.14

112.29

51

	75.5		
	-10	0.0	112.3
F		0.8	111.5
Cb		2.1	110.2
1/4		3.3	109.0
1/2		3.9	108.4
1/4		4.6	107.7
Cb		6.5	105.8
H		10.0	102.3
+10		14.1	98.2
+15		11.2	101.1
+25		10.2	102.1
	100.5		
-25		14.0	98.3
-20		17.2	95.1
H		13.9	98.4
Cb		12.0	100.3
1/4		11.2	101.1
1/2		10.0	102.3
1/4		9.6	102.7
Cb		8.9	103.4
F		8.6	103.7
+10		8.2	104.1
TP	0.42	100.23	121.8
	125.5		
	-20	6.6	93.6

Hortensia

100.23

F	5.3	94.9
cb	5.6	94.6
1/4	5.9	94.3
1/2	5.8	94.4
1/4	5.9	94.3
cb	6.3	93.9
H	7.7	92.5
+10	9.1	91.1
+20	5.6	94.6
-2.5	7.7	92.5
-10	13.0	87.2
H	13.0	87.2
cb	13.1	87.1
1/4	13.1	87.1
1/2	13.3	86.9
1/4	13.3	86.9
cb	13.9	87.3
F	13.9	87.3
+2.5	11.9	88.3
-1.5	0.0	100.2
F	1.6	98.6
cb	4.4	95.8
1/4	8.1	92.1
1/2	13.0	87.2

150'S

170'S

100.23

52

1/4	13.9	86.3
cb - Bottom dash	17.0	83.2
H	15.4	84.8
+2.5	12.5	87.7
-2.5	14.7	85.5
-5	15.2	85.0
H - Bottom dash	17.9	82.3
cb	14.1	86.1
1/4	13.1	87.1
1/2	8.1	92.1
1/4	3.8	96.4
cb	0.4	99.8
TP	12.36	112.55
F	8.7	103.8
+10	7.8	104.7
-10	2.5	109.0
F	4.7	107.8
+7	6.4	106.1
cb	9.7	102.8
1/4	12.3	100.2
1/2	16.4	96.1
1/4	20.1	92.4
cb	23.7	88.8
H	27.2	85.3

179'S

12.36

112.55

100.19

200'S

Hortensio

112.55

+25		284	84.1
	220'S		
-25		23.8	88.7
-15		24.5	88.0
N		188	93.7
cb		15.1	97.4
1/4		12.9	99.6
2		10.4	102.1
1/4		7.7	104.8
cb		5.6	107.0
F		3.1	109.5
+5		2.3	110.3
	237'S		
-5		0.0	112.6
F		0.8	111.8
cb		3.0	109.6
1/4		4.7	107.8
2		6.7	105.8
1/4		9.0	103.6
cb		10.9	101.6
N		13.3	99.2
+5		19.7	92.8
+20		20.0	92.6
	245'S		
-20		18.8	93.8
-10		16.6	96.0

112.55

53

N		17.7	94.9
+5		16.7	95.9
cb		9.1	103.5
1/4		7.6	105.0
2		5.4	107.2
1/4		3.7	108.9
cb		2.0	110.6
F		0.4	112.2
+5		0.0	112.6
	251'S		
F		0.3	112.3
cb		1.8	110.8
1/4		3.3	109.3
2		4.8	107.8
1/4		6.7	105.8
cb		8.8	103.8
N		10.0	102.6
+5		16.4	96.1
+15		17.3	95.3
+20		13.7	98.8
	270'S		
-20		10.7	101.8
N		6.9	105.6
cb		5.3	107.3
1/4		4.1	108.5
2		3.3	109.3



Hortensia

112.55

1/4		29	109.6	
cb		22	110.3	
F		1.0	111.6	
TP	792	120.18	0.29	112.26
	3001 = H.L. Congress St			
F		2.6	117.6	
cb		6.3	113.9	
1/4		7.1	113.1	
1/2		8.5	111.7	
1/4		12.1	108.1	
cb		12.3	107.9	
H		17.3	102.9	
+15		17.8	102.4	
	1/2 Congress St			
-15		14.2	106.0	
-10		18.2	102.0	
H		13.1	107.1	
1/4		9.0	111.2	
cb		8.6	111.6	
1/4		6.9	113.3	
1/2	0.2 Mar	5.89	114.29	
1/4		4.2	116.0	
cb		2.5	117.7	
F		0.5	119.7	
	S.L. Congress St			
F		0.0	120.2	

120.18

cb		2.1	118.1	
1/4		2.5	117.7	
1/2		5.1	115.1	
1/4		6.5	113.7	
cb		7.6	112.6	
H		9.1	111.1	
+15		12.5	107.7	
TP	0.08	107.69	12.57	107.61
TP	0.31	95.24	12.76	94.93
TP	0.22	82.57	12.89	82.35
TP	0.02	69.60	12.99	69.58
	1.41	58.58	12.43	57.17
BM			4.80	53.78

54

Cand. 150.  
S.M. Hills  
35.28  
38.11  
3.97

11.11 Date  
13.11.15  
La. fallatur  
TF 10.4  
TF 53.84

Guy St. Cross Section  
Hortensia to Witherby

15' wide  
75 Cb's

204.21

(P)

55

BM	11.56	204.21	192.65	J.F. Hub. Hortensia Guy
		E.L. of Hortensia		
✓		11.6	192.6	
Cb		11.2	193.0	
✓		9.8	194.4	
Cb		9.1	195.1	
N		8.7	195.5	
		20' E of E.L. Hortensia		
N		8.1	196.0	
Cb		8.8	195.4	
✓		9.8	194.4	
Cb		15.3	188.9	
S		15.7	188.5	
+15		17.8	186.4	
		40' E of E.L. Hortensia		
-20		21.0	183.2	
S		15.7	188.5	
Cb		12.5	191.7	
✓		9.6	194.6	
Cb		7.7	196.5	
N		6.9	197.3	
		60' E		
N		5.3	198.9	
Cb		6.2	197.9	
✓		8.1	194.1	

Plotted 10-31-30

Cb		10.9	193.3	
S		11.9	192.3	
+15		16.0	188.2	
	80' E			
		11.4	192.8	
S		8.4	195.8	
Cb		7.5	196.7	
✓		5.3	198.9	
Cb		4.5	199.7	
N		3.7	200.5	
	100' E			
N		1.3	202.9	
Cb		1.9	202.3	
✓		2.6	201.6	
Cb		4.3	199.9	
S		5.0	199.2	
+10		6.1	198.1	
	125' E			
		2.0	202.2	
S		0.8	203.4	
7P	12.76	216.82	0.15	204.06
Cb		12.7	204.1	
✓		11.6	205.2	
Cb		10.9	205.9	
N		10.5	206.3	
	150' E			

Guy St

216.82

H	7.4	209.4
cb	8.3	208.5
g	8.6	208.2
cb	10.6	206.2
S	11.1	205.7
+10	12.1	204.7

175' F

-10	10.7	206.1
S	9.7	207.1
cb	8.5	208.3
g	7.3	209.5
cb	6.4	210.4
H	5.0	211.8

200' F

H	3.1	213.7
cb	4.1	212.7
g	5.5	211.3
cb	7.4	209.4
S	8.4	208.4
+10	9.8	207.0

225' F

-10	8.4	208.4
S	6.9	209.9
cb	5.4	211.4
g	2.6	214.2

TP	12.90	228.96	0.76	216.06
----	-------	--------	------	--------

228.96

cb	11.8	217.1
H	10.1	218.8

250' F

H	7.7	221.2
cb	8.8	220.1
g	12.1	216.8
cb	14.3	214.6
S	15.9	213.0
+10	18.0	210.9

275' F

-10	14.0	214.9
S	12.0	216.9
cb	10.0	218.9
g	6.8	222.1
cb	4.6	224.3
H	1.7	227.2

TP	11.44	239.89	0.51	228.45
----	-------	--------	------	--------

300' F = N.L. of Wilberby

H	9.0	230.9
cb	10.7	229.2
g	13.8	226.1
cb	16.2	223.7
S	17.8	222.1
+10	19.6	220.3

20' F of N.L. Wilberby

-10	14.5	225.4
-----	------	-------

56

Guy St

239.89

57

S			11.1	228.3	
cb			10.0	229.9	
Z			7.5	232.4	
cb			5.5	234.4	
N			5.0	234.9	
TP	7.06	246.70	0.25	239.64	
	40 F of N.L. of M. L. Hrsby				
	-25 = S.C. of Guy from East				
			5.84	240.86	
H			6.1	240.1	
cb			7.4	239.3	
Z			7.9	238.8	
cb			11.2	235.5	
S			12.2	234.5	
710			13.5	233.2	
TP	12.81	259.40	0.11	246.59	
TP	7.16	265.97	0.79	258.61	
BM			4.78	260.97	

NFBP  
 Sum of BM  
 + M.L. Hrsby  
 261.02

Dec. 30, 30  
 Pub.  
 Van.

Sewer in Belt St bet E + G

Grade Cut.

See Constr. Notes Harbor Field Notes

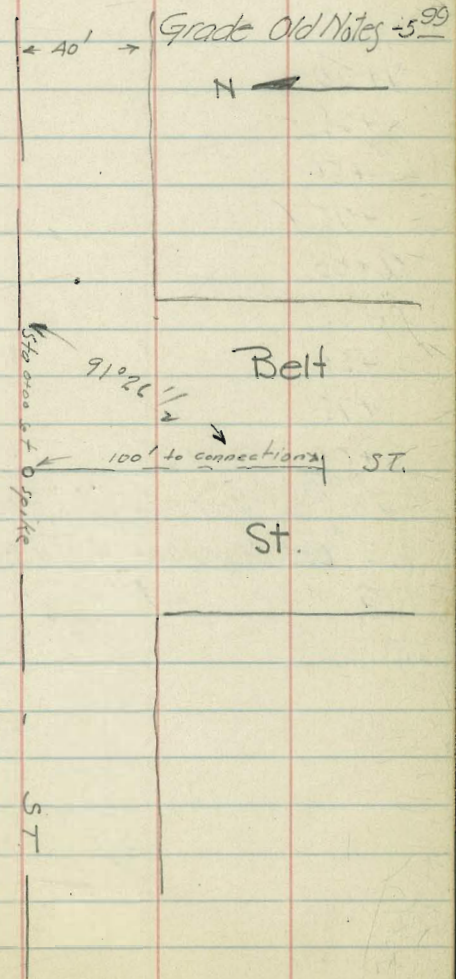
58

BM SE Cor Broad + Kettner	342	1392	1050		
T.P. ATLANTIC + F	378	947	823	5.69	
Nail in T. Bldg SE Cor	664	1005	606	3.41	
Rim N.H. & ATLANTIC + F St			608	3.77	
0+00 East M.H. No 1 6' W + 6' South			525	4.80	
+25			527	4.78	
+50			524	4.81	
+75			503	5.02	
1+00 Connection			511	4.94	

10.3 deep	Flow line = -6.33	
-3.28	808	
-3.35	813	
-3.43	824	
-3.50	852	
-3.58	852	

Line North

0+00 M.H. No 1 6' West of M.H. No 1	523	482	-3.28	810
+25	511	494	-3.18	812
+50	460	545	-3.08	853
+75	449	556	-2.98	854
1+00	531	474	-2.88	762
+25	502	503	-2.78	781
+50	509	496	-2.68	764
+75	479	526	-2.58	784
2+00	442	563	-2.48	811
+25	438	567	-2.38	805
+50	455	550	-2.28	778
+75	412	593	-2.18	811
3+00 DE. E E Street	389	616	-2.08	824
	435	5.70		

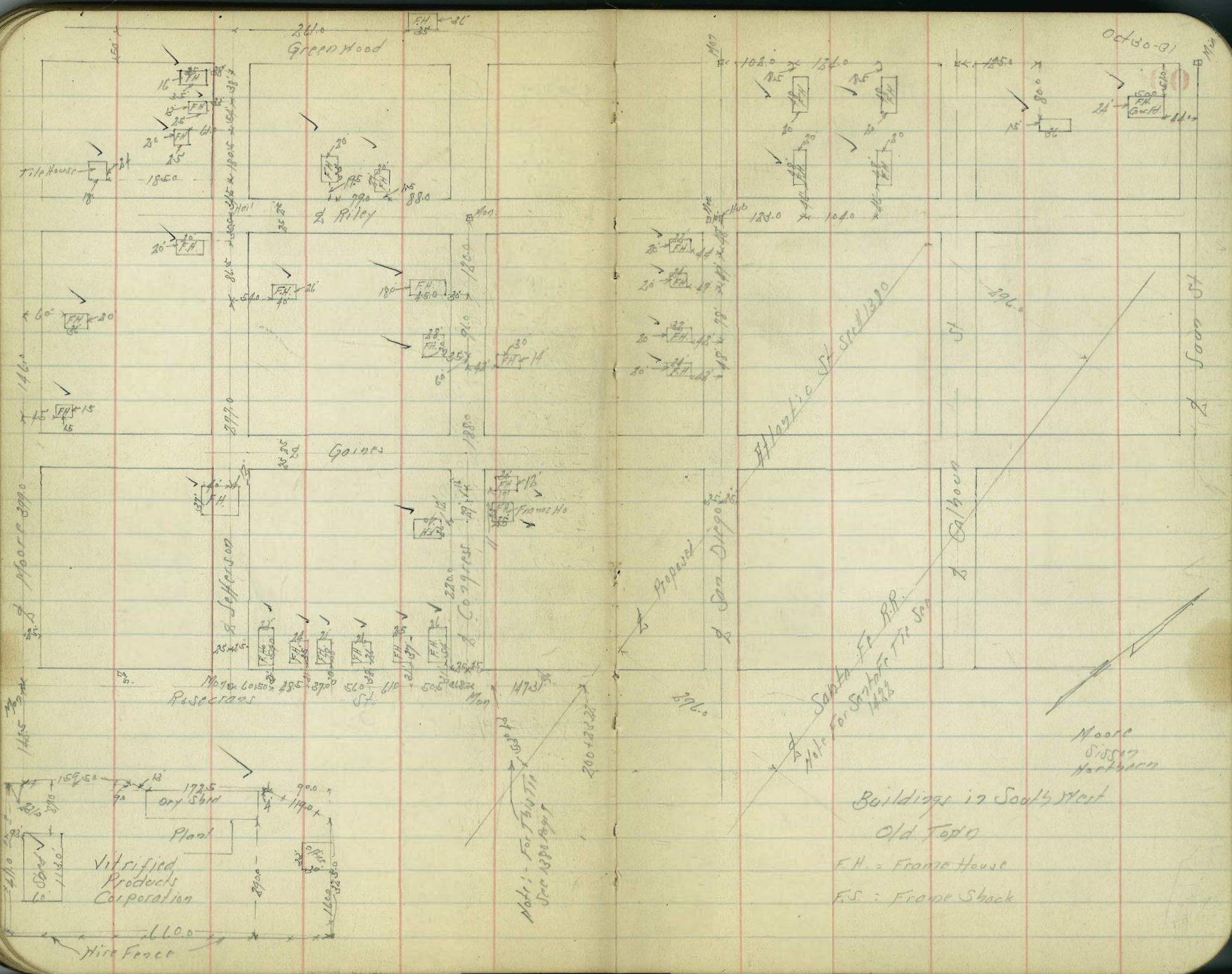


Dec. 30 30  
Van  
Bub

59

Sewer in Belt St. E to G  
Line South

			Elev.	Grade	Cut
00 = MH #1		1005		-328	
+25		498	507	-318	825
+50		414	591	-308	899
+75		456	549	-298	847
1+00		336	669	-288	957
+25		322	683	-278	961
+50		531	474	-268	742
+75		505	500	-258	758
2+00		319	686	-248	934
+25		383	622	-238	860
+50		513	492	-228	720
+75		632	373	-218	591
3+00 MH #2		706	299	-208	507
<sup>NPTB</sup> Top of Rail Santa Fe Spur Track		629	376		
⊕ E. East Edge pave Harbor St.		593	412		
⊕ G. " " " " "		605	400		
TP	370	886	489	516	
			290	596	599 B.M. Broadway Pier.



Oct 30-91

Greenwood

Riley

Gaines

Jefferson

Cognate

Framco

Atlantic St

Proposed  
San Diego

Santa Fe RR  
Note: For Santa Fe RR  
1/22

Calhoun

Van St

Vitrified  
Products  
Corporation

Plant

Hire Fence

Buildings in South West

Old Town

F.H. = Frame House

F.S. = Frame Shack

Note  
Sisson  
Northwest

Note: For T. B. T. H.  
See 1890 Map

T. B. T. H.

F.H. 20

F.H. 15

F.H. 30

F.H. 25

F.H. 20

F.H. 15

F.H. 10

F.H. 5

F.H. 10

F.H. 15

F.H. 20

F.H. 25

F.H. 30

F.H. 35

F.H. 40

F.H. 45

F.H. 50

F.H. 55

F.H. 60

F.H. 65

F.H. 70

F.H. 75

F.H. 80

F.H. 85

F.H. 90

F.H. 95

F.H. 100

F.H. 105

F.H. 110

F.H. 115

F.H. 120

F.H. 125

F.H. 130

F.H. 135

F.H. 140

F.H. 145

F.H. 150

F.H. 155

F.H. 160

F.H. 165

F.H. 170

F.H. 175

F.H. 180

F.H. 185

F.H. 190

F.H. 195

F.H. 200

F.H. 205

F.H. 210

F.H. 215

F.H. 220

F.H. 225

F.H. 230

F.H. 235

F.H. 240

F.H. 245

F.H. 250

F.H. 255

F.H. 260

F.H. 265

F.H. 270

F.H. 275

F.H. 280

F.H. 285

F.H. 290

F.H. 295

F.H. 300

F.H. 305

F.H. 310

F.H. 315

F.H. 320

F.H. 325

F.H. 330

F.H. 335

F.H. 340

F.H. 345

F.H. 350

F.H. 355

F.H. 360

F.H. 365

F.H. 370

F.H. 375

F.H. 380

F.H. 385

F.H. 390

F.H. 395

F.H. 400

F.H. 405

F.H. 410

F.H. 415

F.H. 420

F.H. 425

F.H. 430

F.H. 435

F.H. 440

F.H. 445

F.H. 450

F.H. 455

F.H. 460

F.H. 465

F.H. 470

F.H. 475

F.H. 480

F.H. 485

F.H. 490

F.H. 495

F.H. 500

F.H. 505

F.H. 510

F.H. 515

F.H. 520

F.H. 525

F.H. 530

F.H. 535

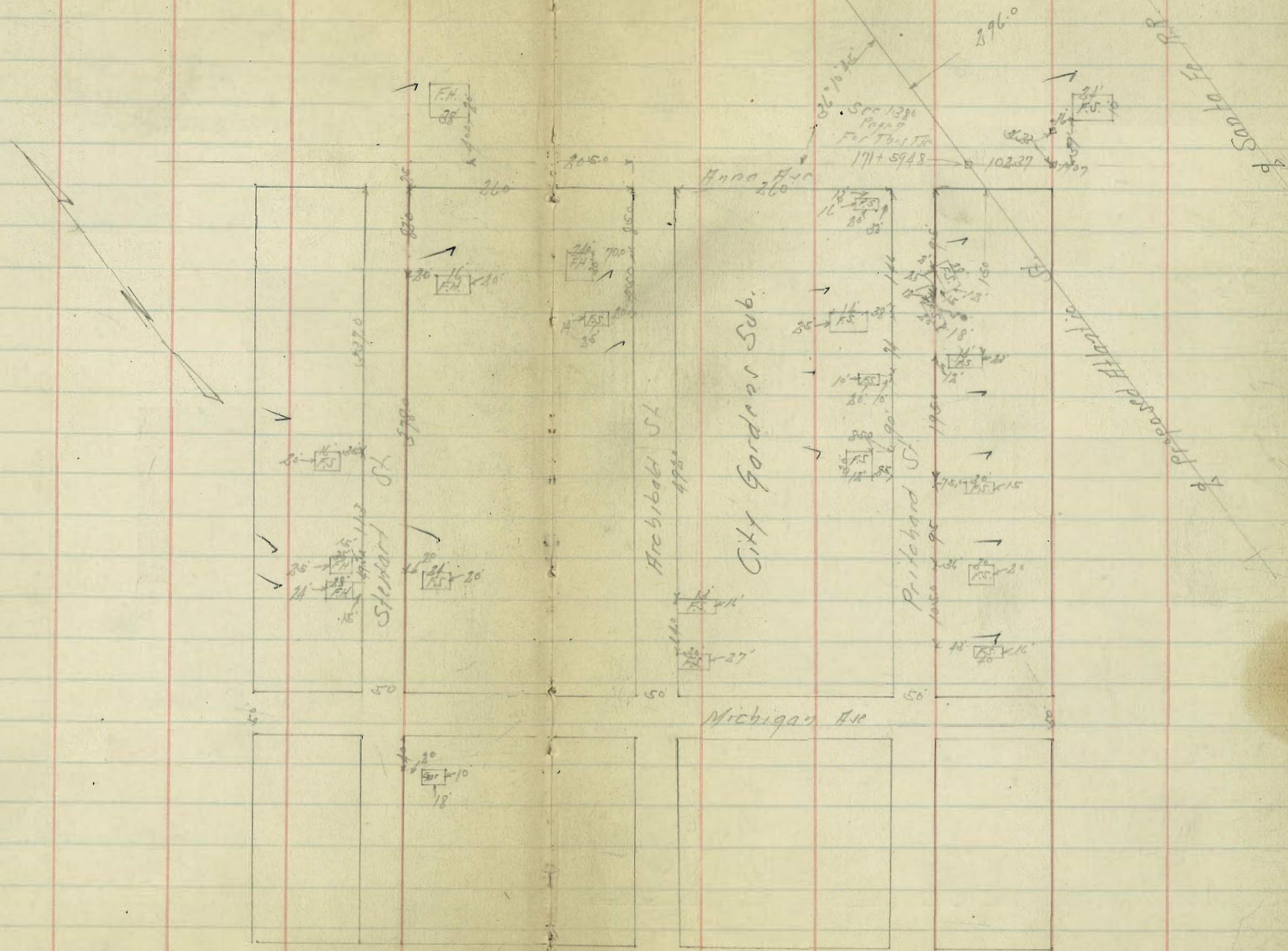
F.H. 540

F.H. 545

F.H. 550

Buildings in City Garden Sub.

Nov-1-31  
Mount  
Cutter  
North  
61

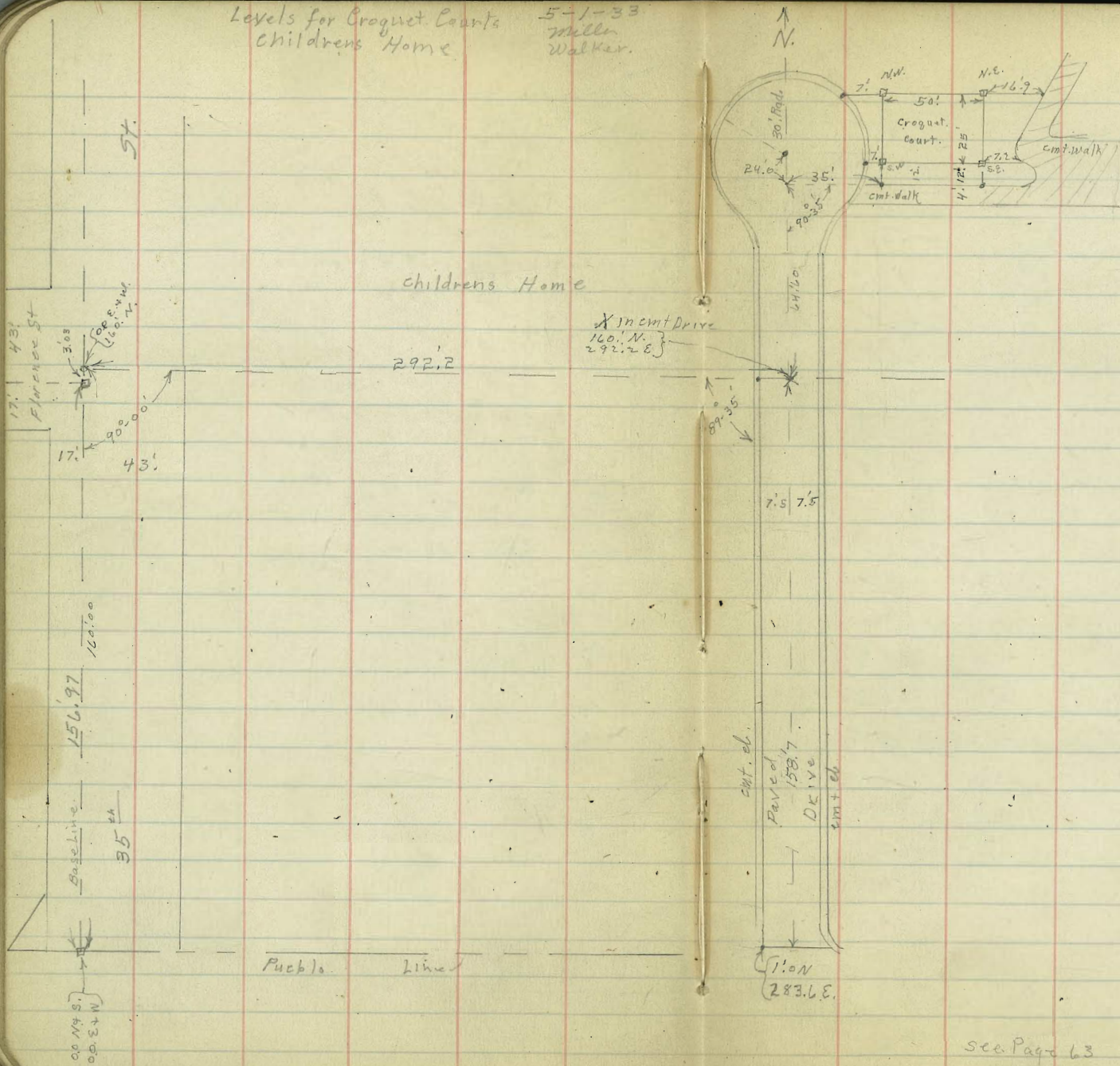




Levels for Croquet Courts  
childrens Home

5-1-33  
Miller  
Walker.

62



(Con) from Page 62.

S.E. 36<sup>th</sup>

4449

71.10

75' N

B.M. B.P. 12.89 49.82 ✓ 36.93 ✓  
 B.M. C.T. 10' Tie Back S.W. 7' Hub. 0.71 49.11 ✓  
 T.P. 11.90 61.49 ✓ 0.23 49.59 ✓  
 T.P. 9.78 71.10 ✓ 0.17 61.32 ✓

175' E  
 200' E  
 225' E  
 250' E  
 275' E

14.0 57.1  
 12.8 58.3  
 10.1 61.0  
 7.6 63.5  
 5.7 65.4

63

1.0 N. = S. Fence

283.4 E. = w. curb emt. dr 3.39 67.71  
 275' E 4.2 66.9  
 250' E 5.7 65.4  
 225' E 7.0 64.1  
 200' E 8.5 62.6  
 175' E 9.8 61.3

175' E  
 250' E  
 225' E  
 200' E  
 175' E

100' N

6.5 64.6  
 8.6 62.5  
 11.3 59.8  
 13.6 57.5  
 15.0 56.1

25' N.

175' E 11.4 59.7  
 200' E 9.9 61.2  
 225' E 7.8 63.3  
 250' E 6.3 64.8  
 275' E 4.6 66.5

175' E  
 200' E  
 225' E  
 250' E  
 275' E

125' N.

16.4 54.7  
 14.4 56.7  
 11.8 ✓ 59.3  
 9.7 61.4  
 7.7 63.4

50' N

275' E 5.3 65.8  
 250' E 6.7 64.4  
 225' E 9.0 62.1  
 200' E 11.5 59.6  
 175' E 12.8 58.3

284.4 E = w. curb emt. drive  
 T.P. 3.42 67.09

7.00 64.10  
 7.43 63.67

Croquet. Court. Page 62

67.09

64

S.W. Cor	Stab		4.57	62.52	63.10	-0.58
S.E. "	"		2.86	64.23	63.30	+0.93
N.E. "	"		2.91	64.18	63.20	+0.98
N.W. "	"		4.99	62.10	63.00	-0.9

7' W. of N.W. Cor	Curb Banjo.		4.95	62.14		
7' W. " S.W. "	" " "		4.78	62.31		
12' S. S.W.	Cent Walk		4.23	62.86		
12' S. S.E.	" " "		2.53	64.56		
7.2 E. S.E.	" " "		2.23	64.86		
16.9 E. N.E.	" " "		2.09	65.00		

T.P.	4.63	59.70	12.02	55.07		
B.M. B.P.			8.90	50.80	N.W. 35"	12.28
					+ Florence	
T.P.	1.95	56.42	5.23	54.47		
T.P. Top A44	6.89	50.94	12.37	44.05	S.E. 35"	
	3.73	44.98	9.69	41.25	= 44.19 + Nat.	
chk original B.M.			8.05	36.93		

Survey & Topog of W. 240' of Lot H  
 BIK 14. Central Homestead  
 for Childrens Hospital & Pool.

2-8-34  
 Miller  
 Walker  
 Bliss

N. line of North Lane = 00 N + S. for Topog.

E " " 35<sup>th</sup> St. = 00 E + W " "

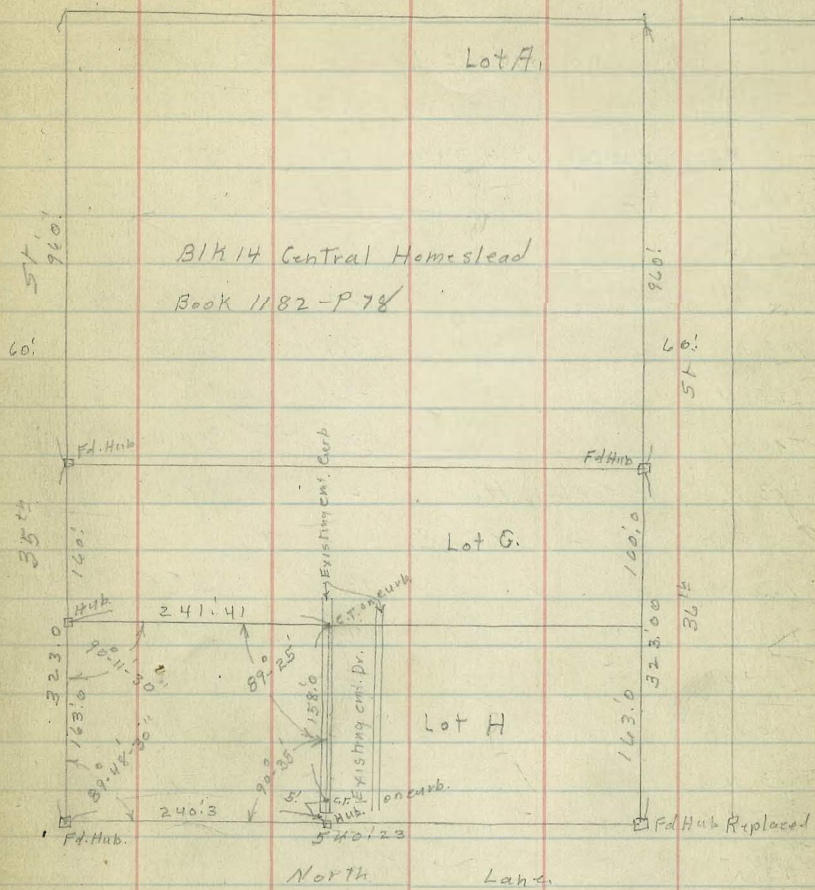
BM. B.P. 11.54 62.34 56.80 + Florence. N.W. 35<sup>th</sup> + Florence.

60' W. of 00 = W. line 35<sup>th</sup> St.

Distance	Value 1	Value 2
10' S. of 00 = 10' S. of N line	8.9	53.5
00 N + S = N line North Lane	8.7	53.6
25' N	6.9	55.4
50' N	5.7	56.6
75' N	5.6	56.7
100' N	6.2	56.1
125' N	7.2	55.1
138' N	8.1	54.2
140' N = S. line Florence St.	10.6	51.7
151' N = s. ch. " "	11.00	51.34
163' N	11.6	50.7
50' W. of 00		
140' N	9.8	52.5
151' N	10.7	51.6
30' W. of 00 = 35 <sup>th</sup> St.		
163' N	10.4	51.9
140' N	9.1	53.2
125' N	8.7	53.6
100' N	7.4	54.9
75' N	6.3	56.0
50' N	5.7	56.6
25' N	6.1	56.2

Ocean View Blvd.

65



F. R. Hope Jr. Architect Wants 1' Contour Map.

Phone Main 2525 When Completed

62.34

00. N+S = N line North lane	6.9	55.4
10'. S	7.3	55.0
00 E+W = E. Line 35 <sup>th</sup> St.		
10'. S	5.5	56.8
00 N+S = S.W. Cor Lot. H. Blk 14	5.4	56.9
25'. N	5.3	57.0
50'. N	5.8	56.5
75'. N	6.7	55.6
100'. N	8.4	53.9
125'. N	9.4	52.5
140'. N	10.9	51.4
163'. N = N.W. Cor Lot. H.	12.2	50.1
25'. E.		
163'. N	13.3	49.0
140'. N	11.7	50.6
125'. N	10.5	51.8
100'. N	9.2	53.1
75'. N	7.6	54.7
50'. N	6.3	56.0
25'. N	5.2	57.1
00	3.9	58.4
10'. S	4.2	58.1
50'. E.		
10'. S	3.3	59.0
00	3.4	58.9
25'. N	4.9	57.4

Topog. for Childrens Hospital  
62.34

50'. N	6.0	56.3
75'. N	7.2	55.1
100'. N	8.6	53.7
125'. N	10.5	51.8
140'. N	11.5	50.8
163'. N	13.0	49.3
80'. E.		
163'. N	12.5	49.8
140'. N	10.9	51.4
125'. N	9.8	52.5
110'. N	8.5	53.8
100'. N	8.0	54.3
75'. N	6.6	55.7
50'. N	5.6	57.7
25'. N	4.6	57.7
10'. N	4.0	58.3
00	2.6	59.7
10'. S	2.6	59.7
85'. E.		
110'. N	8.6	53.7
106'. N	6.5	55.8
100'. N	6.3	56.0
75'. N	5.9	56.4
50'. N	5.6	56.7
88'. E.		
25'. N	4.5	57.8
20'. N	4.3	58.0

66

	62.34		
	92' E		
25' N		5.7	56.6
20' N		4.2	58.1
10' N		3.8	58.5
	105' E		
10' S		2.0	60.3
00		2.2	60.1
10' N		3.4	58.9
20' N		4.2	58.1
25' N		5.5	56.8
50' N		5.4	56.9
75' N		5.4	56.9
100' N		5.6	56.7
110' N		6.1	56.2
115' N		8.1	54.2
125' N		8.8	53.5
140' N		9.8	52.5
163' N		11.0	51.3
	135' E		
163' N		8.7	53.6
140' N		7.8	54.5
125' N		7.2	55.1
118' N		6.8	55.5
113' N		5.7	56.6
100' N		5.4	56.9
75' N		5.4	56.9
50' N		5.3	57.0

	62.34	Topog for Childrens Hospital	
			67
25' N		5.0	57.3
18' N		2.7	59.4
10' N		2.5	59.8
00		1.1	61.2
10' S		1.4	61.2
	140' E		
10' N		2.2	60.1
18' N		2.4	59.9
25' N		2.9	59.4
50' N		4.0	58.3
75' N		5.0	57.3
T.P.	7.7	68.88	1.23
		61.11	
	150' E		
10' S		6.9	62.0
00		6.8	62.1
10' N		7.8	61.1
25' N		8.5	60.4
50' N		10.0	58.9
75' N		11.0	57.9
100' N		11.5	57.4
118' N		12.7	56.2
125' N		12.9	56.0
140' N		13.4	55.5
163' N		14.2	54.7

68.88  
175' E

163' N	11.7	57.2
140' N	11.1	57.8
125' N	10.6	58.3
100' N	9.6	59.3
75' N	8.8	60.1
50' N	7.6	61.3
25' N	6.4	62.5
10' N	5.6	63.3
00	5.2	63.7
10' S	5.9	63.0

200' N.

10' S	4.3	64.6
00	3.9	65.0
25' N	4.6	64.3
50' N	5.2	63.7
75' N	5.6	63.3
100' N	6.9	62.0
125' N	8.0	60.9
140' N	8.8	60.1
163' N	9.6	59.3

215' E

163' N	8.6	60.3
140' N	7.8	61.1
125' N	6.9	62.0
100' N	5.1	63.8
75' N	4.3	64.6

68.88

Topog. for Childrens Hospital

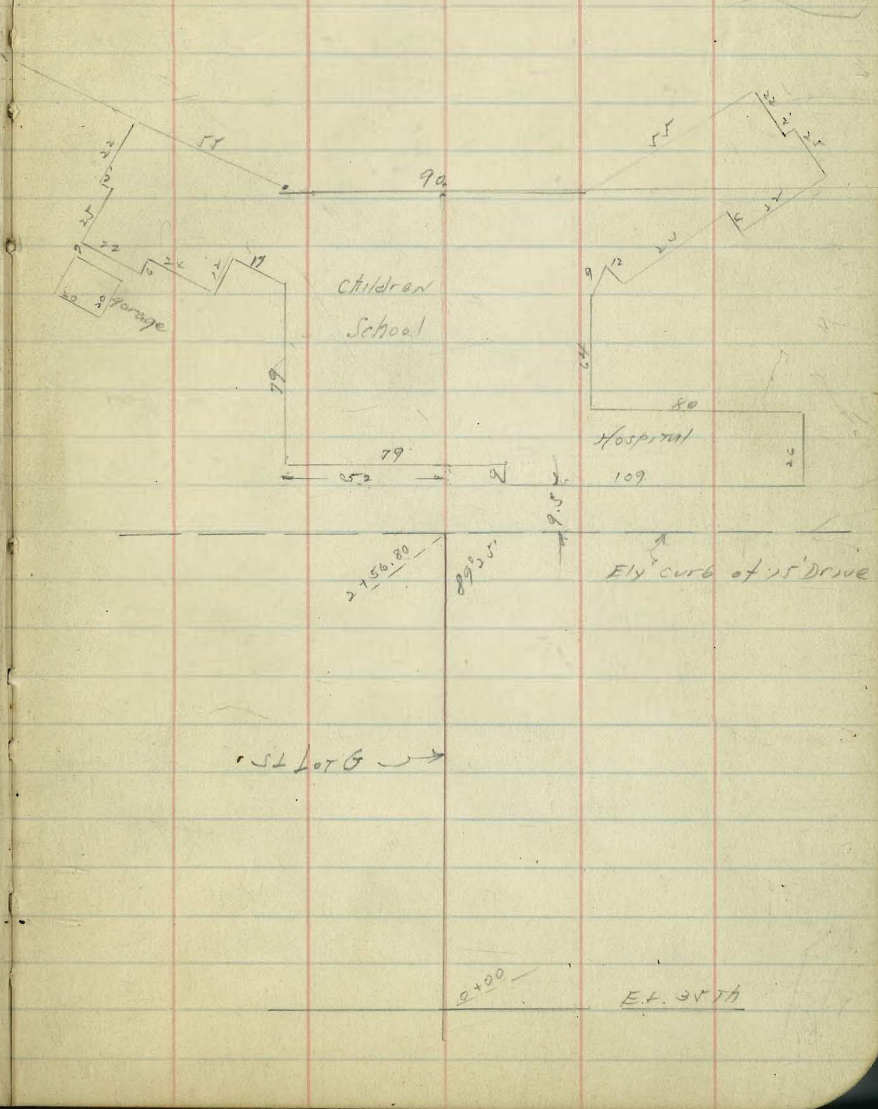
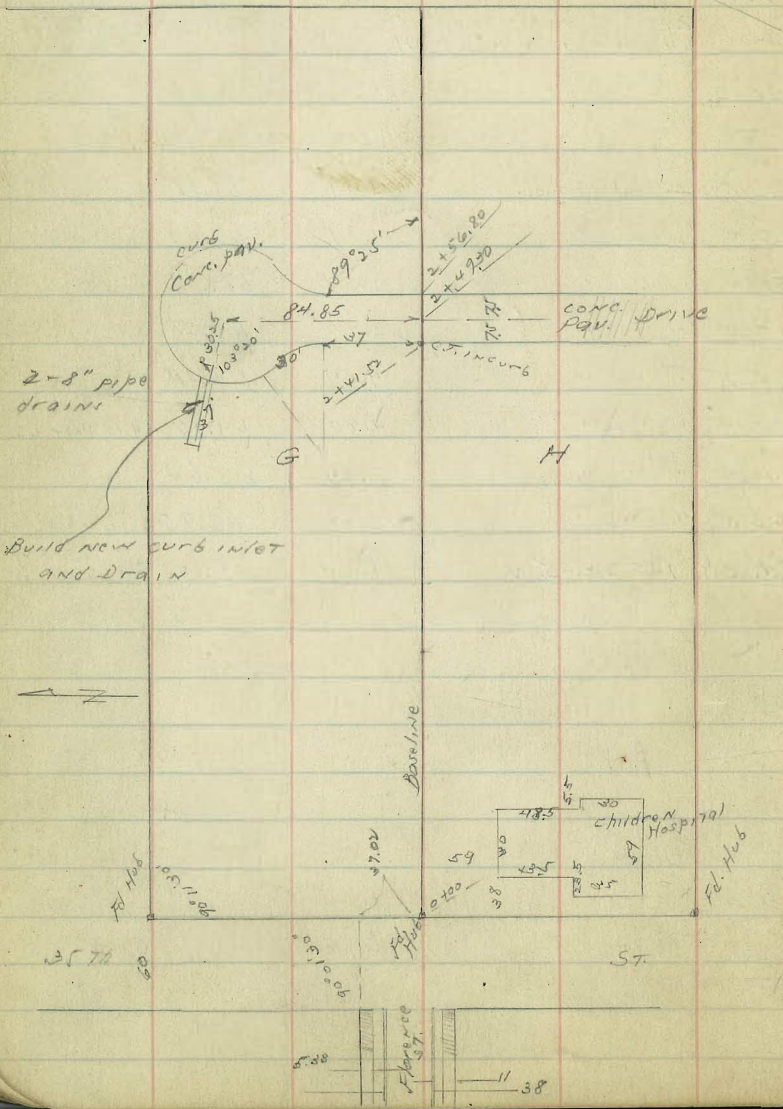
68

50' N	3.6	65.3
25' N	3.1	65.8
00	2.9	66.0
10' S	3.3	65.6
240' E on s. line Lot H. } = W. end curb of cent. Drive 241' E " " " " H. }		
10' S	2.3	66.6
00	1.8	67.1
1' N on s. end cent. dr.	1.17	67.71
25' N. on cent. dr.	1.79	67.09
50' N " " "	2.54	66.34
75' N " " "	3.28	65.60
100' N " " "	4.04	64.84
125' N " " "	4.80	64.08 = 64.10 Page 63.
140' N " " "	5.24	63.64
163' N " " "	5.93	62.95
BM C.T. 140.32 - 5' N.	1.24	67.64

Contour levels of Lots 8-H Central Homestead

see p 68

Moore  
12-11-30





LT

\$ of Lot G = Caroline  
Ry

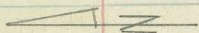
70

0 + 75	35.8	37.0	38.7	41.6	44.3	44.4	47.6	49.9	51.8	52.0	52.2	52.2
	27.6	26.4	24.7	21.8	19.1	19.0	15.8	14.0	11.4	11.4	7.2	7.2
	160	155	125	105	85	80	37	7	23	34	43	50

0 + 50	30.8	35.3	36.4	39.8	43.0	46.7	46.7	48.8	51.1	51.7	52.0	56.0
	22.4	28.1	27.0	28.6	20.4	16.7	16.7	12.6	12.3	11.7	7.4	7.4
	160	145	120	80	60	48	37	7	23	34	44	50

0 + 25	32.4	35.3	35.8	38.8	40.8	43.5	45.3	46.3	48.6	50.9	51.4	53.9	55.9
	21.0	28.1	27.4	24.6	22.6	18.9	18.1	17.1	14.8	12.5	12.0	7.5	7.5
	160	150	130	100	80	70	50	37	7	23	30	44	50

0 + 10	50.1	51.0	52.1	55.5	55.5
	12.3	12.4	11.8	7.9	7.9
		23	34	44	50



0 + 00 = 702 S. of the Ely Production of  
of the  $\frac{1}{2}$  of Florence St.

37.1	38.9	40.1	43.3	44.9	47.8	50.1	50.3	51.9	53.2
26.3	24.5	23.3	20.1	18.5	15.6	13.3		11.5	10.2
160	155	135	100	80	37	7	131	23	60

0 - 30	43.9	46.3	47.4	48.3	49.9	51.6	51.9	52.3	53.2	54.0
	19.5	17.1	16.0	15.1	13.5	11.8		11.1	10.4	9.4
	160	152	120	80	37	7	11.5	12	23	50

00 - 60	47.2	49.8	50.7	51.1	50.87	50.2	50.8	50.6	50.9	51.30	51.5
	16.2	13.6	12.7	12.3	12.54	13.3	12.6		12.5	12.39	11.9
	160	130	100	37	26	26	7	12.8	12	12.66	23

3574 +  
Florence 12.59 63.39

50.80 NWBP

63.39

17.

2076

PT.

71

2 + 41.52

59.1	60.3	60.21	60.29	60.77
<u>2.3</u>	<u>3.1</u>	<u>3.8</u>	<u>3.10</u>	<u>2.42</u>
160	145	115.6	100	80
			Pay	Pay

61.59	62.45	62.95
<u>1.80</u>	<u>2.94</u>	
37.66	7.66	0.44

2 + 25

59.9	59.6	59.7	59.51	59.52
<u>5.5</u>	<u>5.8</u>	<u>8.7</u>	<u>3.88</u>	<u>3.87</u>
160	143	127	100.6	80
			Pay	Pay

60.23	59.9	60.8	61.7	62.9
<u>3.0</u>	<u>3.5</u>	<u>2.0</u>	<u>1.7</u>	<u>2.1</u>
69.6	37	7	23	50

2 + 00

55.6	55.6	54.9	55.7
<u>7.8</u>	<u>7.8</u>	<u>8.5</u>	<u>7.7</u>
160	130	120	104

57.4	57.8	58.6	59.3	60.3	61.6
<u>6.0</u>	<u>5.0</u>	<u>4.8</u>	<u>4.1</u>	<u>3.1</u>	<u>1.8</u>
80	60	37	7	23	50

1 + 75

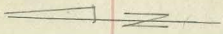
53.8	53.1	52.6	54.2
<u>9.4</u>	<u>10.2</u>	<u>10.8</u>	<u>9.2</u>
160	140	110	80

56.2	56.4	56.9	57.8	59.0
<u>7.2</u>	<u>7.0</u>	<u>6.5</u>	<u>5.4</u>	<u>4.4</u>
60	37	7	23	50

1 + 50

51.7	51.1	50.9	52.1
<u>11.7</u>	<u>12.3</u>	<u>12.5</u>	<u>11.3</u>
160	140	100	80

53.6	54.2	54.7	55.5	56.5
<u>9.8</u>	<u>9.4</u>	<u>8.7</u>	<u>7.9</u>	<u>6.9</u>
60	37	7	23	50



1 + 25

48.4	48.3	48.6	50.1
<u>15.0</u>	<u>15.1</u>	<u>12.8</u>	<u>13.3</u>
160	130	100	80

51.0	52.2	52.8	54.0	54.9	56.4
<u>12.4</u>	<u>11.2</u>	<u>10.6</u>	<u>9.4</u>	<u>8.5</u>	<u>7.0</u>
70	37	7	23	45	50

0 + 95

42.2	43.3	44.0	46.5
<u>21.2</u>	<u>20.1</u>	<u>19.4</u>	<u>16.9</u>
100	140	110	80

48.5	49.4	50.6	52.2	53.6	55.2
<u>14.9</u>	<u>14.0</u>	<u>12.8</u>	<u>11.2</u>	<u>9.8</u>	<u>8.2</u>
55	37	7	23	37	50

0 + 85

51.9	52.7	55.3	56.4
<u>11.2</u>	<u>10.7</u>	<u>8.1</u>	<u>7.0</u>
23	35	24	50

63.39

Cross Section Alley Block D Teralta Heights  
From Meade to Monroe Between  
Cherokee + 37th St.

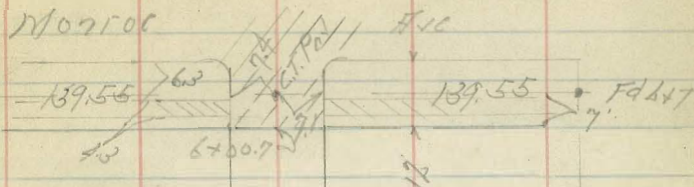
Indexed  
LM

June 19-41  
S.W. 02  
North 5th  
Moore  
A1619 72

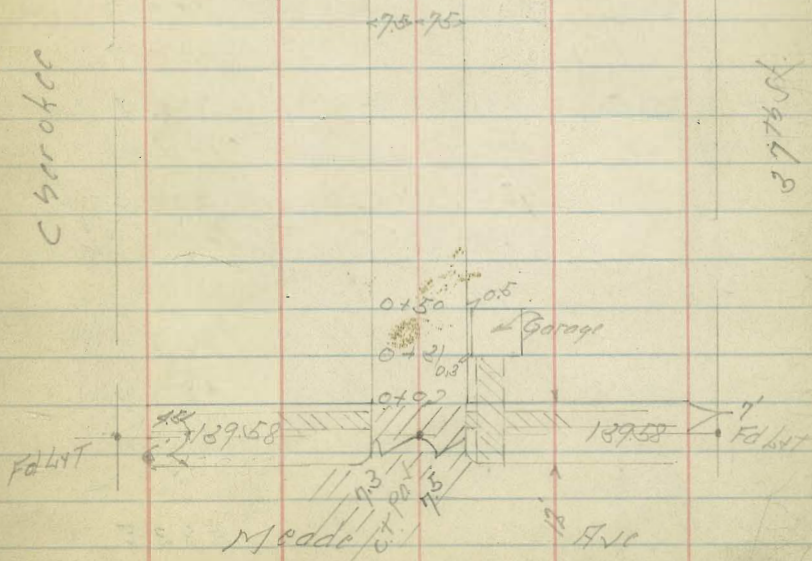
BM	262	386.76	384.19	N.W. 8 P. Meade + Cherokee
		0-12 = N/Cb Meade Ave		
N of Paving		5.23	381.53	✓
S " "		5.34	381.42	✓
E " "		5.48	381.28	✓
		-0.7 = S/W Picket Fence		✓
E Top Cb		4.80	381.96	✓
E Gutter of Paving		5.00	381.76	✓
S " "		5.13	381.63	✓
N Gutter " "		4.80	381.96	✓
N Top Cb		4.50	382.26	✓
		+0.3 = S/W 3 Board Fence		✓
		0+10		
N		3.6	383.2	
+3		4.3	382.5	
S		4.4	382.4	
+4		4.8	382.0	
E		4.6	382.2	
+1.4 = N/Wy Conc Drive		4.44	382.32	✓
		0+31		
-1.3 = N/Wy Conc Drive		4.10	382.66	✓
-0.3 = N/Wy Picket Fence				✓
E		4.0	382.8	
S		4.0	382.8	
+9		3.9	382.9	

Notes Red + Plot  
6-21-41 C.B.H.

Cherokee



Block D  
Teralta Hts



37th St

28676

W	3.3	3835
	0+37	
W-0.3	- Nly 3 Board Fence ✓	
	0+44	
W-5.2	- 1/2 Garage Conc Floor 2.53	38423 ✓
W-0.6	- 2 Conc Apron 2.17	38359 ✓
	0+50	
W	3.7	3831
1/2	3.9	3829
+7.4	- Fly Paper Pole ✓	
F	3.6	3832
+0.5	- 1/4 W Conc Stucco ✓ Garage	
TP	4.70 38773 273	38303 ✓
	0+60	
F-10.2	- 2 Garage Dirt F. 4.9	3828 ✓
	0+71	
F-4.4	- 2 3/4 Conc Walk 4.88	38285 ✓
W-0.1	- 5 ly Picket Fence ✓	
	0+75	
F	4.8	3829
1/2	4.8	3829
W	4.7	3830
+0.3	- Nly Picket Fence ✓	
+1.1	- S E Cor Garage Dirt Floor South Entrance	4.2 3835 ✓

28773

1+0

-1.5	- N E Cor Garage ✓ 50x70 10 200	
W	4.7	3830
1/2	4.8	3829
+7.2	- 5 ly Lath Fence ✓	
F	4.8	3829
	1+50	
-1.0	4.9	3828
F	4.7	3830
+0.20	- Nly Lath Fence ✓	
1/2	4.7	3830
W	4.7	3830
+1.0	4.5	3832
	1+60	
W-10'	- 2 Garage Dirt Floor 4.4	3833 ✓
F-10'	- 1/2 " Conc Floor 4.86	38287 ✓
	1+75	
F-0.1	- Fly Paper Pole ✓	
W-1.2	- 5 ly Picket Fence ✓	
	1+90	
F-10'	- 2 Garage Conc F 4.68	38305 ✓
	2+0	
-1.0	4.0	3837
W	4.1	3836
1/2	4.7	3830

387.73

F 4.8 382.9

+1.0 4.8 382.9

2+0.7

F-1.0 = 1/2 Garage Dirt Floor 4.9 382.8 ✓

2+1.2

H-1.0 = Nly Picket Fence ✓

2+1.4

F-1.0 = Sky Lots Fence ✓

2+4.3

H-0.1 = Sky Picket Fence ✓

2+5.0

-5.1 4.9 382.8

F 4.5 383.2

2 4.4 383.3

H 4.2 383.5

+1.0 4.1 383.6

2+5.1

F-0.8 = Nly Lots Fence ✓

TP 5.54 389.13 4.14 383.59

2+6.6

F-6 = Sky Do Garage C.F. 5.95 383.18 ✓

2+7.3

H-1.0 = Nly Picket Fence 5.89 383.24

2+8.2

F-6 = Nly Do Garage Core Floor ✓

389.13

2+8.5

F-1.5 = Sky Picket Fence ✓

3+0

-1.0 4.8 384.3

H 5.1 384.0

2 5.4 383.7

F 5.2 383.9

+0.5 = Fly Power Pole ✓

Nly Picket Fence ✓

+1.7 = Sky Board Fence ✓

3+5.0

F 5.1 384.0

2 5.2 383.9

H 5.1 384.0

+1.0 5.0 384.1

2+5.1

F-2.6 = Nly Board Fence ✓

3+5.2

F-2.4 = Sky Shed ✓

3+6.0

F-2 = Sky Wire Fence ✓

F-2.5 = Nly Shed ✓

3+8.3

H-3.7 = 1/2 Garage Dirt F 4.5 384.6 ✓

389.13

	4+0		
-10	4.1	385.0	
W	4.4	384.7	
Z	4.4	384.7	
F	4.7	384.4	
+0.6 = Fly Power Pole	✓		
+2 = Wly Wire Fence	✓		
	4+16		
E-5.5 = 1/2 Garage Conc Floor	4.75	384.38	✓
	4+25		
W-0.9 = Fly Board Fence	✓		
	4+42		
F-6' = 1/2 10" Conc Slab	4.50	384.63	✓
	4+50		
-10	4.8	384.3	
F	4.7	384.4	
Z	4.6	384.5	
W	4.2	384.9	
+0.9 = Wly Board Fence	✓		
+0.9 = Fly Picket Fence	✓		
TP	4.81	389.37	4.43 384.70
	5+0		
-10	4.5	385.0	
-0.6 = Wly Picket Fence	✓		
W	4.6	384.9	
Z	4.8	384.7	

389.51

F	5.0	384.5	
+10	5.4	384.1	
	5+07		
W-8.3 = 1/2 Garage Conc Floor	4.05	385.46	✓
	5+30		
W-10.0 = Fly Conc Apron	3.75	385.76	✓
W-12.0 = Fly Do Garage CF	3.63	385.88	✓
	5+42		
E-17' = Wly Conc Apron	5.25	384.26	✓
F-18.5 = 1/2 Garage Conc Floor	5.12	384.39	✓
	5+48		
W-10 = Wly Conc Apron	3.93	385.58	✓
W-12 = Wly Do Garage Conc Floor	3.78	385.73	✓
	5+50		
-10	4.7	384.8	
F	4.6	384.9	
+0.2 = Fly Power	✓		
Z	4.4	385.1	
W			
+0.7 = Fly Board Fence	✓		
+10	4.1	385.4	
	5+56		
F-6.5 = Wly Conc Apron	4.54	384.97	✓
F-8.5 = 1/2 Garage C.F.	4.84	385.17	✓

389.51

5+60  
 W-0.9 = 5 1/4 Frame Bldg ✓  
 = 1/4 Board Fence ✓

5+63.5

E-6.5 = 2 1/5 Conc Walk 4.55

384.96 ✓

5+77

W-1.0 = H F Cor Garage 3.47

386.04 ✓

W-12.5 = 5 Fly Cypress Hedge ✓

5+80

W 4.2 385.3

L 4.5 385.0

F 4.3 385.2

5+90

F 4.4 385.1

L 4.5 385.0

W 4.3 385.2

TP 4.59 389.55 4.55 384.96

6+0070 = 5 1/2 Monrac

W Top cb 4.77 384.78 ✓

W Gutter on Pav 5.01 384.54 ✓

L 2 = H Fly Cypress Hedge ✓

L on Pav 5.27 384.18 ✓

F Gutter on " 5.22 384.23 ✓

F Top cb 5.09 384.46 ✓

389.53

6+12.7 = 5 1/2 Monrac

F on Pav 5.65 383.90 ✓

L " " 5.53 384.02 ✓

W " " 5.40 384.15 ✓

BM 4.48 391.23 2.80 386.75

TP 3.81 389.38 5.66 385.57

BM 5.26 384.12

5 1/2 BP  
 Monrac  
 Cypress  
 386.68

1 1/2 BP  
 Meadey  
 Cypress  
 384.14



77



78



DIRECTIONS FOR USE OF TABLES

TABLE No. 1.

Distance of slope stake from side or shoulder  
taken for any width roadway, slope 1 to 4  
If ground is nearly level, the cut or fill at side  
stake is located by the double entry method in  
left column and top row. The number in body

IMPROVED TABLES

AND

INFORMATION

To find Tangent and External for curve of  
any other degree, divide by degree of curve and  
add constant found in column of constants.  
Degree of curve with given L may be found  
by dividing tangent (or external) opposite L by  
given tangent (or external).  
The distance from a point on the tangent to  
the curve is very nearly the square of the tangent  
length divided by twice the radius.

ENGINEERING DEPARTMENT,  
CITY OF SAN DIEGO,  
CALIFORNIA.

71.10  
61.49  
0.17  
61.32  
9.78  
71.10  
7.43  
63.67  
3.42  
67.09  
12.02  
55.07  
4.63  
59.70  
5.23  
54.47  
1.95  
56.42  
12.37  
44.05  
6.89  
50.94  
9.69  
41.25  
3.73  
44.98  
36.93  
8.05

ENGINEERING DEPARTMENT,  
CITY OF SAN DIEGO,  
CALIFORNIA.

4.0  
2.9  
2.4

1924  
214  
214  
214