

our. No. 1412 -

NAME EL - CAJON

JOB #244

A. S. 1. 1. 1.

Class \_\_\_\_\_ Course \_\_\_\_\_ Party \_\_\_\_\_

TIE BOOK

411

# FIELD NOTES

No. 403 P

ESPECIALLY ADAPTED

TO THE USE OF

ENGINEERING STUDENTS

---

**EUGENE DIETZGEN Co.**

MANUFACTURERS

**DRAWING MATERIALS**

**MATHEMATICAL AND SURVEYING INSTRUMENTS**

**MEASURING TAPPS**

CHICAGO SAN FRANCISCO NEW YORK  
NEW ORLEANS PITTSBURGH

MICROFILMED  
DEC 23 1964

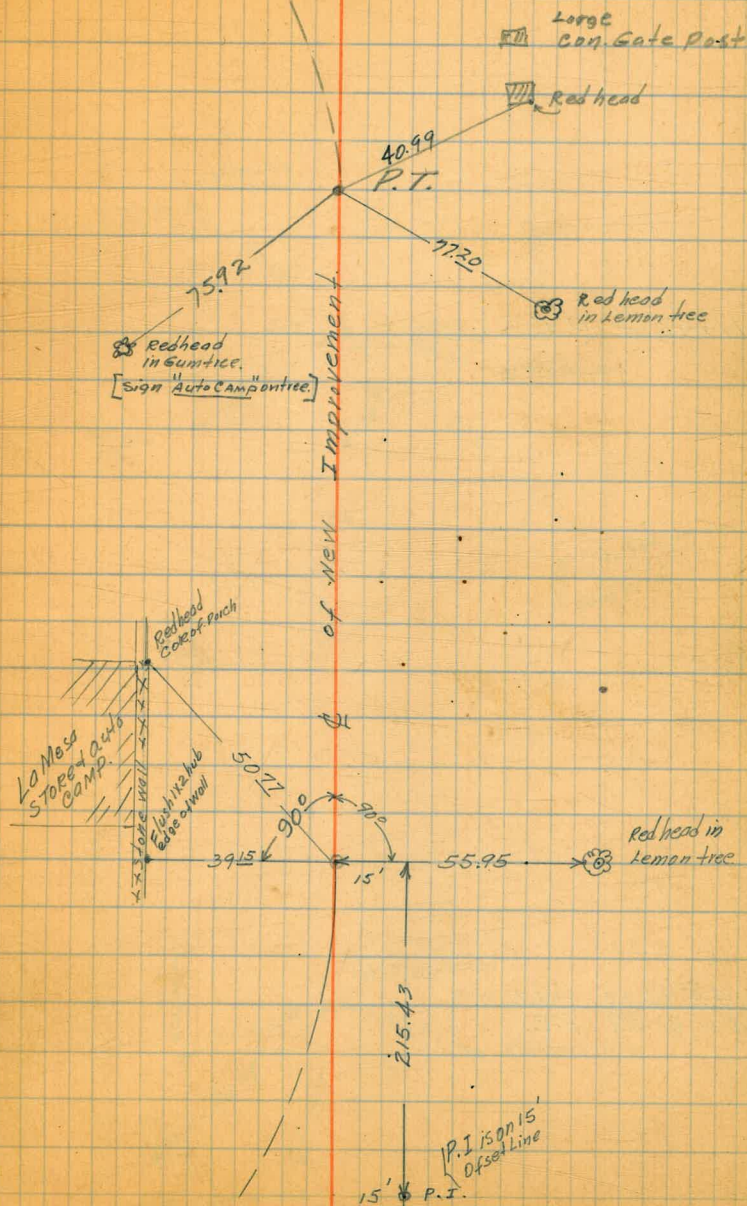
INDEX  
El Cajon Blvd.

	Page
Ties to curvepoints on $\epsilon$ From east end of Job west 1.- Reference Points Stations:	
118+57 <sup>12</sup> P.T. and 122+48 <sup>54</sup> P.C. -----	1
111+48 <sup>18</sup> P.T. " $\frac{114+82^{32} \text{ P.O.T.}}{114+81^{27} \text{ P.C.}}$ -----	2
104+36 <sup>30</sup> P.I. " 105+68 <sup>28</sup> P.C. -----	3
96+96 <sup>25</sup> P.C. " 101+25 <sup>21</sup> P.T. -----	4
92+39 <sup>62</sup> P.I. -----	5
38+36 <sup>44</sup> P.T. " $\frac{35+26^{15}}{35+50^{53}} = \text{P.C.}$ -----	6
41+70 <sup>28</sup> P.O.T. " $\frac{47+49^{93}}{47+49^{33}} = \text{P.C.}$ -----	7
58+39 <sup>62</sup> P.I. " $\frac{54+06^{21}}{49+36^{23}} = \text{P.T.}$ -----	8
71+99 <sup>62</sup> P.T. " 65+19 <sup>62</sup> P.T. -----	
71+99 <sup>12</sup> -----	9

118+57 1/2 PT

122+48.56 P.C.

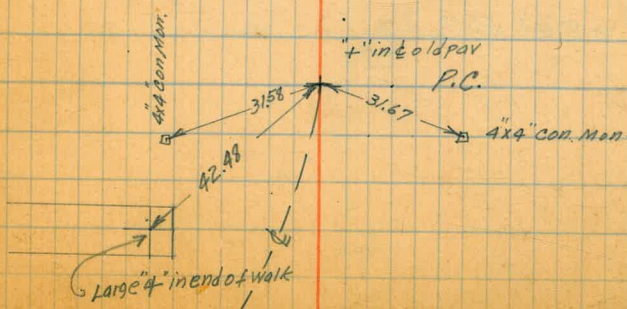
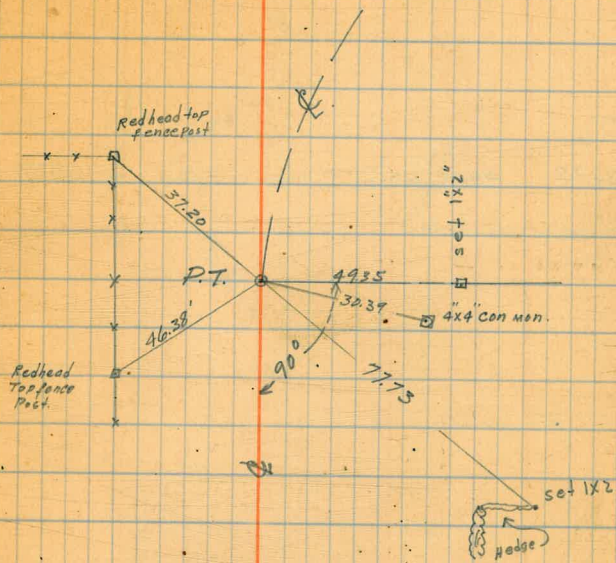
Sept. 1st 1927  
Treadwell  
Reed  
Ruplinger 1.



111+48 18 P.T.

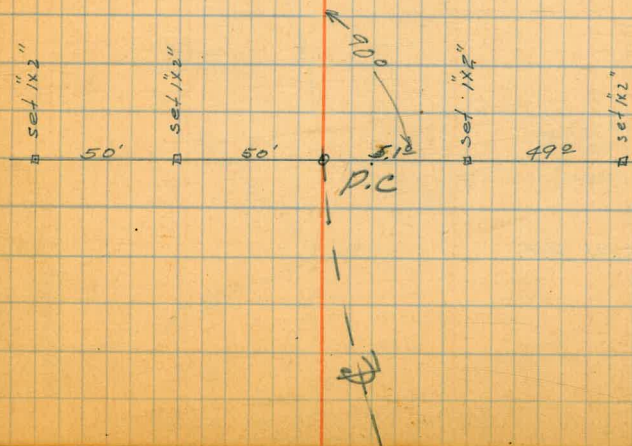
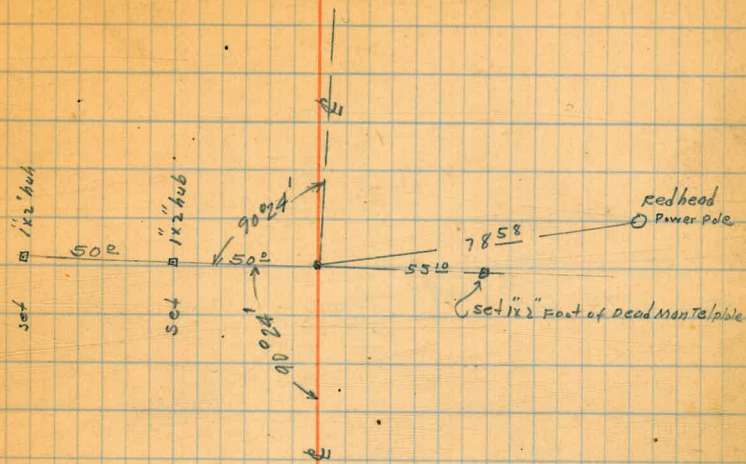
114+82.32 P.O.T.  
114+81.29 P.C.

2 34.35  
15

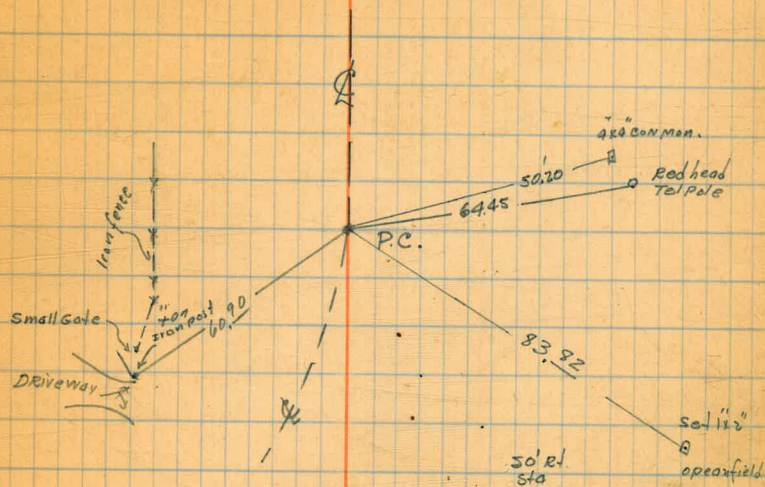


104+36<sup>30</sup> Angle pt.

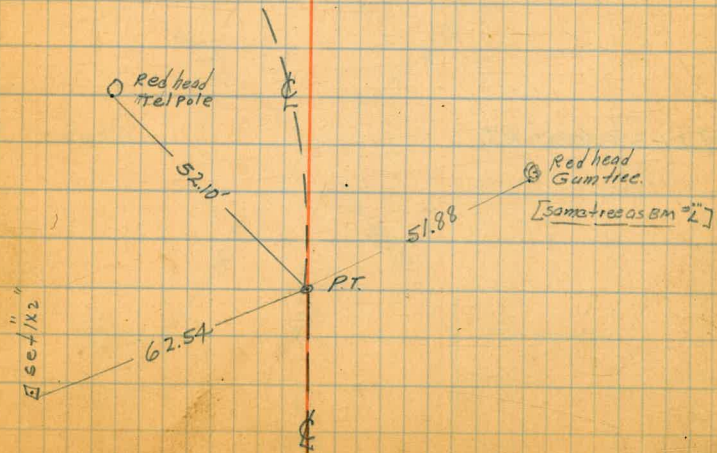
105+6828 P.C.



96+96.75 P.C.

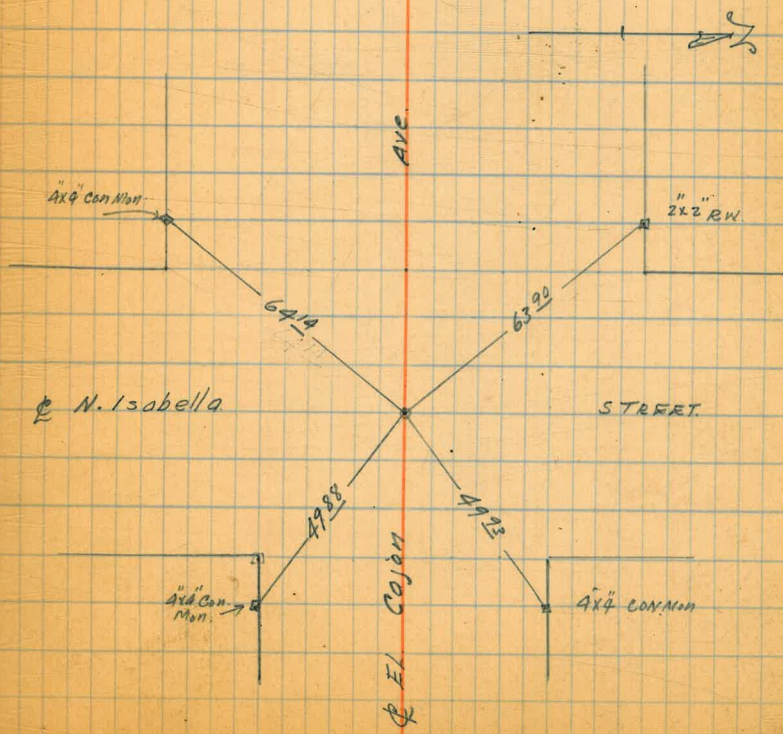


101+25.91 P.T.



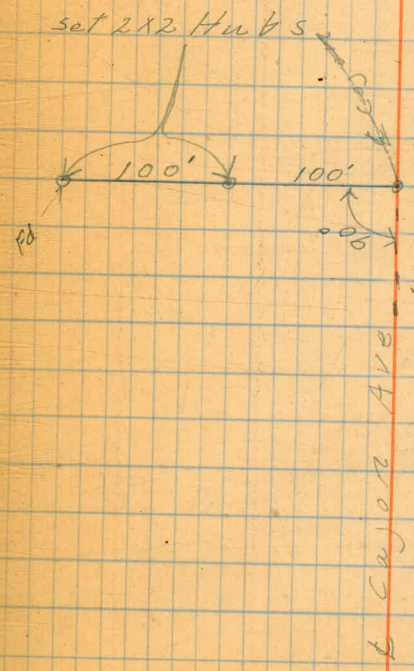
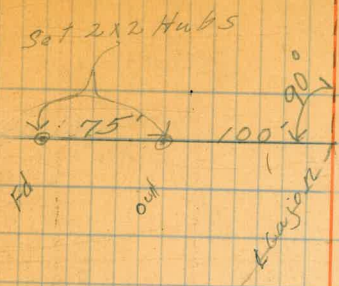
4985

92+39.62 P.I.  
30  
62.62



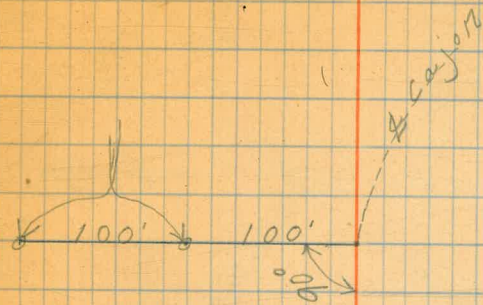
38+36<sup>44</sup> P.T.

35+26<sup>10</sup> = P.C.  
35+50<sup>50</sup>



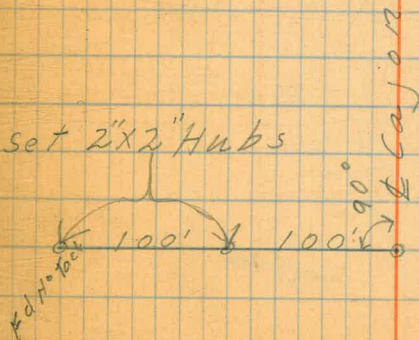


$44+49^{23} = P.C.$   
 $44+49^{23}$



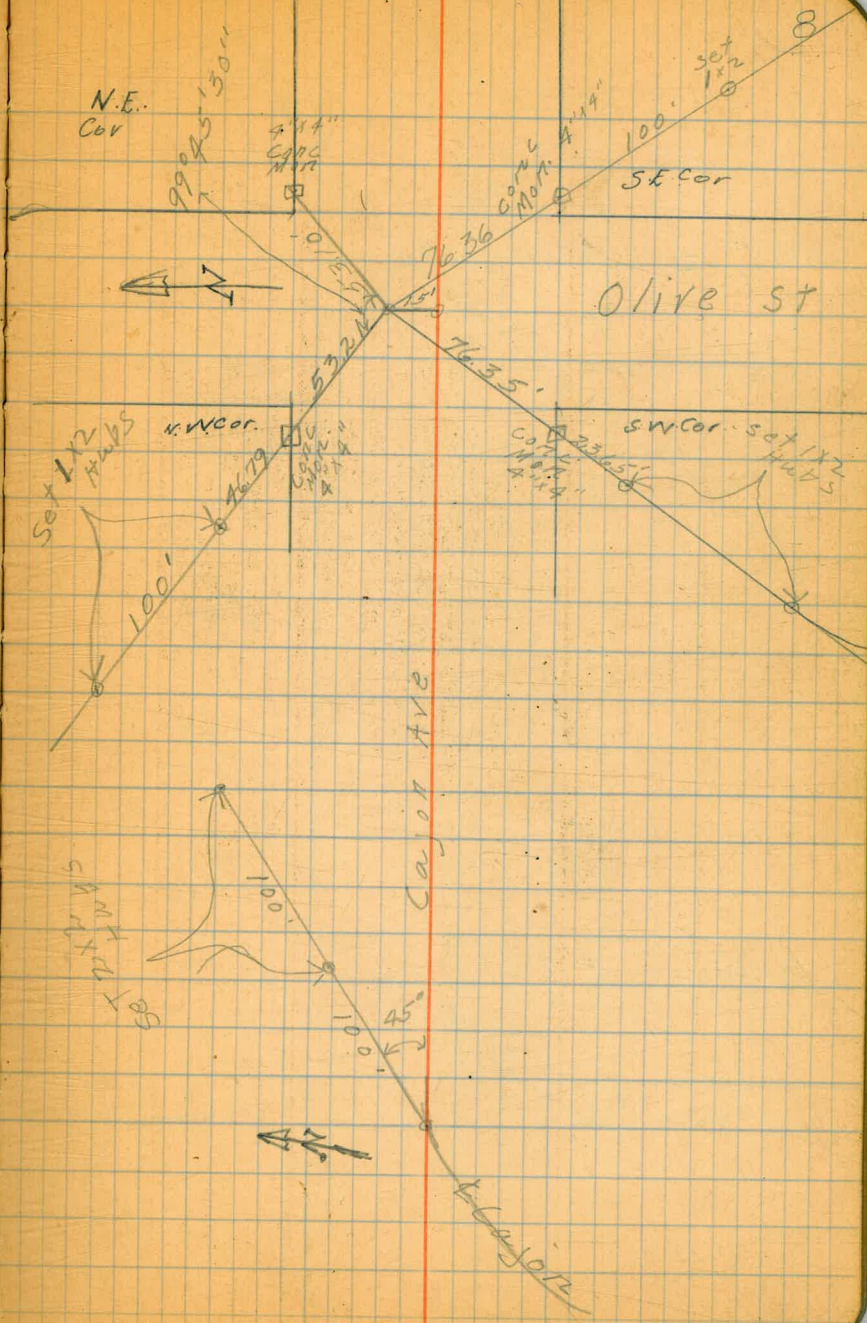
$41+70^{38} P.O.T$

set 2'x2" Hubs



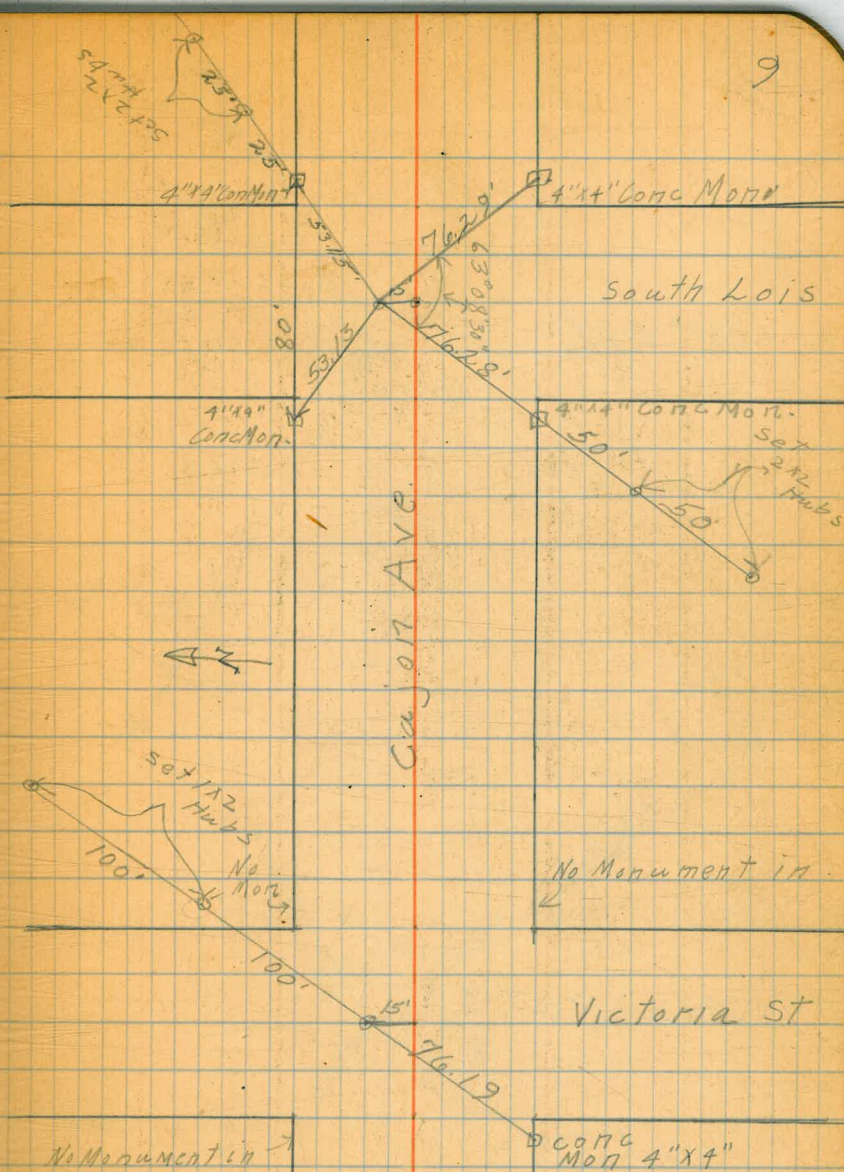
58+39<sup>62</sup> Angle Point

54+06<sup>85</sup> = P.T.  
49+36<sup>29</sup>



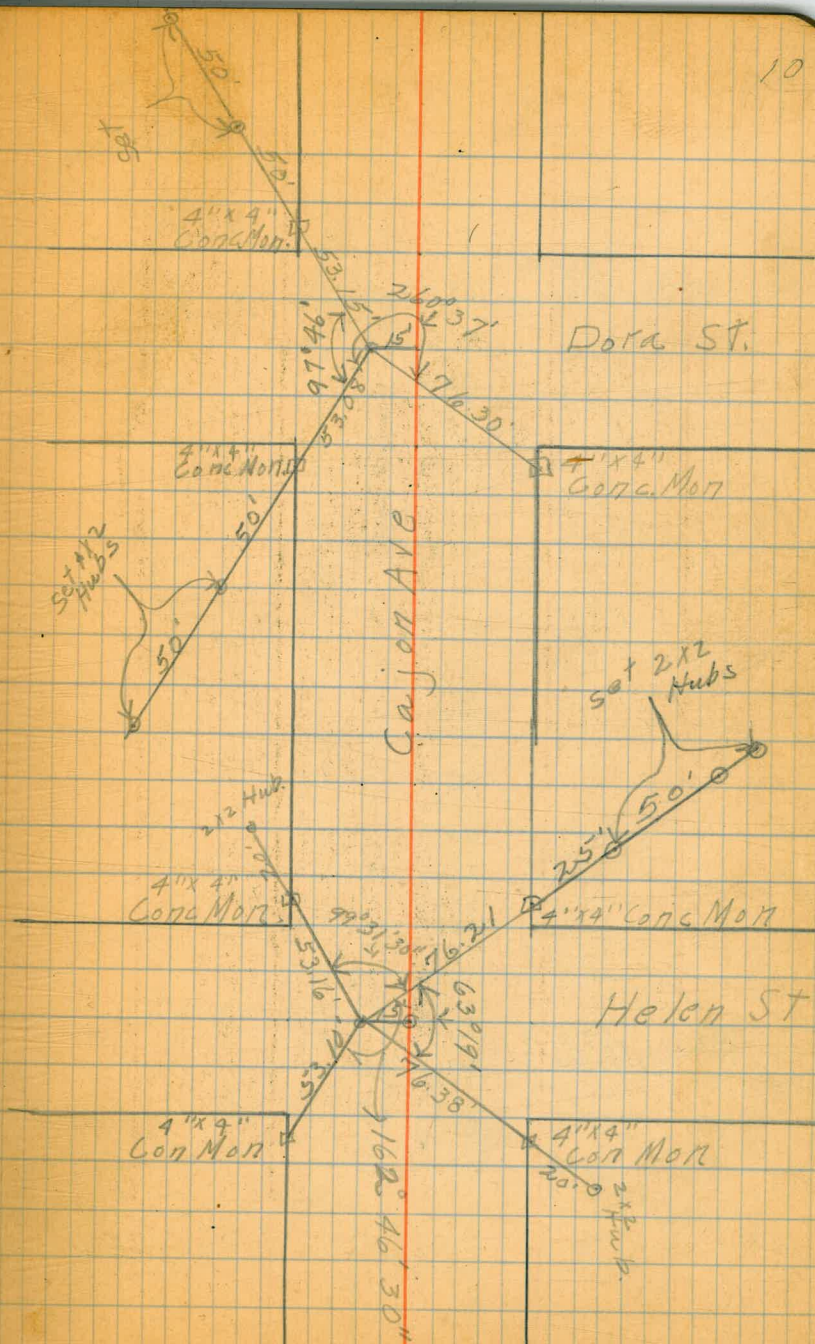
71499<sup>62</sup> = Angle Point  
71499<sup>62</sup>

65419<sup>62</sup> = P.I.  
65420<sup>27</sup>



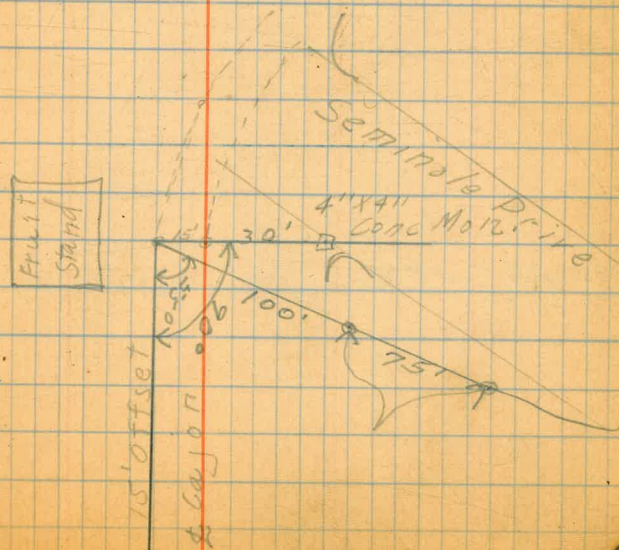
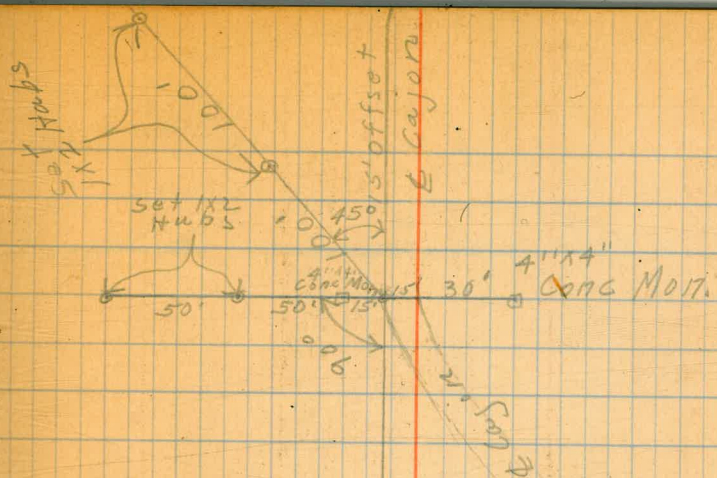
85+59.62 P.O.T.

78+79.62 P.O.T.



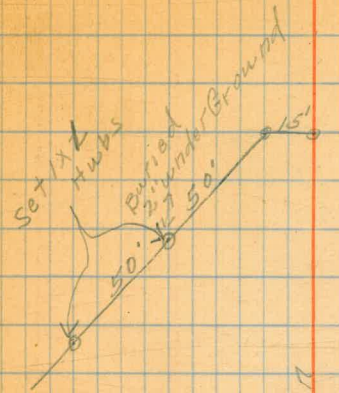
29+54.44 P.T.

27+18<sup>26</sup>  
27+91.48 = B.C.



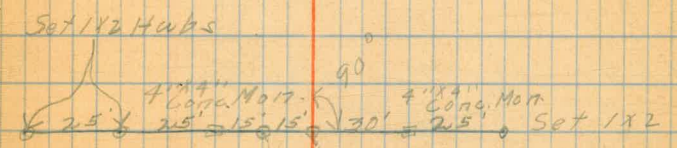


12+30<sup>50</sup> = P.O.T.



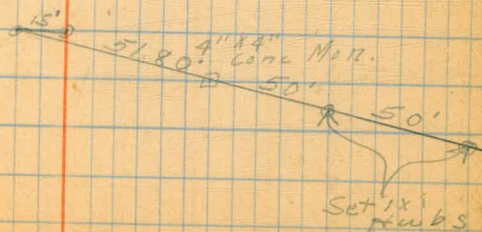
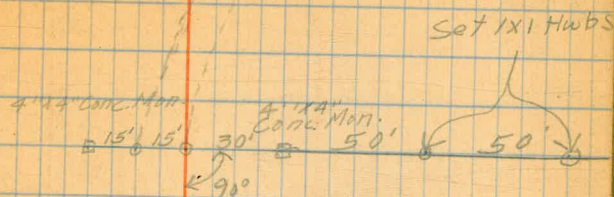
4' 10" off

8+34<sup>92</sup> P.T.



6+48<sup>25</sup>  
6+48<sup>56</sup> = P.C.

0+00 Beginning of Improvement





76.21

27+95.11

49+36.29  
62.01  

---

48+74.21